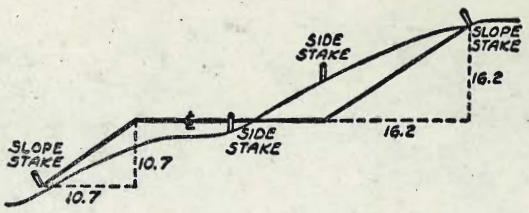


G-397



DISTANCES FROM SIDE STAKES FOR CROSS-SECTIONING
SLOPE 1 TO 1. ROADWAY OF ANY WIDTH

	0	.1	.2	.3	.4	.5	.6	.7	.8	.9	
0	0.00	0.10	0.20	0.30	0.40	0.50	0.60	0.70	0.80	0.90	0
1	1.00	1.10	1.20	1.30	1.40	1.50	1.60	1.70	1.80	1.90	1
2	2.00	2.10	2.20	2.30	2.40	2.50	2.60	2.70	2.80	2.90	2
3	3.00	3.10	3.20	3.30	3.40	3.50	3.60	3.70	3.80	3.90	3
4	4.00	4.10	4.20	4.30	4.40	4.50	4.60	4.70	4.80	4.90	4
5	5.00	5.10	5.20	5.30	5.40	5.50	5.60	5.70	5.80	5.90	5
6	6.00	6.10	6.20	6.30	6.40	6.50	6.60	6.70	6.80	6.90	6
7	7.00	7.10	7.20	7.30	7.40	7.50	7.60	7.70	7.80	7.90	7
8	8.00	8.10	8.20	8.30	8.40	8.50	8.60	8.70	8.80	8.90	8
9	9.00	9.10	9.20	9.30	9.40	9.50	9.60	9.70	9.80	9.90	9
10	10.00	10.10	10.20	10.30	10.40	10.50	10.60	10.70	10.80	10.90	10
11	11.00	11.10	11.20	11.30	11.40	11.50	11.60	11.70	11.80	11.90	11
12	12.00	12.10	12.20	12.30	12.40	12.50	12.60	12.70	12.80	12.90	12
13	13.00	13.10	13.20	13.30	13.40	13.50	13.60	13.70	13.80	13.90	13
14	14.00	14.10	14.20	14.30	14.40	14.50	14.60	14.70	14.80	14.90	14
15	15.00	15.10	15.20	15.30	15.40	15.50	15.60	15.70	15.80	15.90	15
16	16.00	16.10	16.20	16.30	16.40	16.50	16.60	16.70	16.80	16.90	16
17	17.00	17.10	17.20	17.30	17.40	17.50	17.60	17.70	17.80	17.90	17
18	18.00	18.10	18.20	18.30	18.40	18.50	18.60	18.70	18.80	18.90	18
19	19.00	19.10	19.20	19.30	19.40	19.50	19.60	19.70	19.80	19.90	19
20	20.00	20.10	20.20	20.30	20.40	20.50	20.60	20.70	20.80	20.90	20
21	21.00	21.10	21.20	21.30	21.40	21.50	21.60	21.70	21.80	21.90	21
22	22.00	22.10	22.20	22.30	22.40	22.50	22.60	22.70	22.80	22.90	22
23	23.00	23.10	23.20	23.30	23.40	23.50	23.60	23.70	23.80	23.90	23
24	24.00	24.10	24.20	24.30	24.40	24.50	24.60	24.70	24.80	24.90	24
25	25.00	25.10	25.20	25.30	25.40	25.50	25.60	25.70	25.80	25.90	25
26	26.00	26.10	26.20	26.30	26.40	26.50	26.60	26.70	26.80	26.90	26
27	27.00	27.10	27.20	27.30	27.40	27.50	27.60	27.70	27.80	27.90	27
28	28.00	28.10	28.20	28.30	28.40	28.50	28.60	28.70	28.80	28.90	28
29	29.00	29.10	29.20	29.30	29.40	29.50	29.60	29.70	29.80	29.90	29
30	30.00	30.10	30.20	30.30	30.40	30.50	30.60	30.70	30.80	30.90	30
31	31.00	31.10	31.20	31.30	31.40	31.50	31.60	31.70	31.80	31.90	31
32	32.00	32.10	32.20	32.30	32.40	32.50	32.60	32.70	32.80	32.90	32
33	33.00	33.10	33.20	33.30	33.40	33.50	33.60	33.70	33.80	33.90	33
34	34.00	34.10	34.20	34.30	34.40	34.50	34.60	34.70	34.80	34.90	34
35	35.00	35.10	35.20	35.30	35.40	35.50	35.60	35.70	35.80	35.90	35
36	36.00	36.10	36.20	36.30	36.40	36.50	36.60	36.70	36.80	36.90	36
37	37.00	37.10	37.20	37.30	37.40	37.50	37.60	37.70	37.80	37.90	37
38	38.00	38.10	38.20	38.30	38.40	38.50	38.60	38.70	38.80	38.90	38
39	39.00	39.10	39.20	39.30	39.40	39.50	39.60	39.70	39.80	39.90	39
40	40.00	40.10	40.20	40.30	40.40	40.50	40.60	40.70	40.80	40.90	40
41	41.00	41.10	41.20	41.30	41.40	41.50	41.60	41.70	41.80	41.90	41
42	42.00	42.10	42.20	42.30	42.40	42.50	42.60	42.70	42.80	42.90	42
43	43.00	43.10	43.20	43.30	43.40	43.50	43.60	43.70	43.80	43.90	43
44	44.00	44.10	44.20	44.30	44.40	44.50	44.60	44.70	44.80	44.90	44
45	45.00	45.10	45.20	45.30	45.40	45.50	45.60	45.70	45.80	45.90	45
46	46.00	46.10	46.20	46.30	46.40	46.50	46.60	46.70	46.80	46.90	46
47	47.00	47.10	47.20	47.30	47.40	47.50	47.60	47.70	47.80	47.90	47
48	48.00	48.10	48.20	48.30	48.40	48.50	48.60	48.70	48.80	48.90	48
49	49.00	49.10	49.20	49.30	49.40	49.50	49.60	49.70	49.80	49.90	49
50	50.00	50.10	50.20	50.30	50.40	50.50	50.60	50.70	50.80	50.90	50

Distance of slope stake from side or shoulder stake for any width roadway, slope 1 to 1. If ground is nearly level, the out or fill at side stake is located by the double entry method in left column and top row. The number in body of table in same row and column gives distance from side stake to slope stake. If ground is not level estimate the difference in elevation between the side stake and slope stake, lower target by this amount if cut, elevate if fill. Add this amount to cut or fill and find distance in table. Set up rod at this point, and line of sight should cut target. If it does not make the slight adjustment necessary.

MICROFILMED

APR 19 1965

	0
0	0.00
1	1.00
2	2.00
3	3.00
4	4.00
5	5.00
6	6.00
7	7.00
8	8.00
9	9.00
10	10.00
11	11.00
12	12.00
13	13.00
14	14.00
15	15.00
16	16.00
17	17.00
18	18.00
19	19.00
20	20.00
21	21.00
22	22.00
23	23.00
24	24.00
25	25.00
26	26.00
27	27.00
28	28.00
29	29.00
30	30.00
31	31.00
32	32.00
33	33.00
34	34.00
35	35.00
36	36.00
37	37.00
38	38.00
39	39.00
40	40.00
41	41.00
42	42.00
43	43.00
44	44.00
45	45.00
46	46.00
47	47.00
48	48.00
49	49.00
50	50.00

Distance of ground is measured from column and side stake to side stake and cut or fill and if it does not

DIRECTIONS FOR USE OF TABLES

TABLE No. XIV

Distance of slope stake from side of shoulder
 stake for any width roadway slope 1 1/2 to 1
 If ground is nearly level the cut or fill at the

IMPROVED TABLES
 AND
 INFORMATION

TABLE No. VIII

To find the degree and distance of curve of
 any other degree divide by degree of curve and
 add correction found in column of correction.
 Degree of curve with a given L may be found
 by dividing tangent (or external) opposite L by
 constant (or external).
 The distance from a point on the tangent to
 the curve may be found by dividing the tangent
 length divided by twice the radius.

Storm Drain 32nd to 33rd

S-13-58

7.0.

Plan 5325-D 1

70+02.09 = E. outside of Box

70+06.09 = E. Side of Box

69+90.09 = E

69+73.09 = W. outside of Box

69+74.09 = W. Side of Box

69+42.92 = Ang.

69+10.95

68+78.95 = E Clean Out. Top =

68+43.95 = 6' Bk. = N.

68+08.95

67+73.95

67+38.95

67+03.95

66+68.95

66+25.72 = Ang.

66+10.95 = E. end Inlet

65+92.2 = E Box

33.5

Top. cb.

72.43

72.10⁴³ Co.33

72.43

66.00^{2 43} C 6.43

72.46

66.00 C 6.46

W. Top cb.

72.00

72.10 F 0.10

72.21

72.10 Co.11

72.00

66.00² C 6.00

71.98

66.00 5.98

72.24

66.10 6.14

73.17

66.20 6.97

72.24⁸³ Co.59

72.83

66.30 6.53

73.09

66.57 6.52

74.26

66.84 7.42

74.52

67.11 7.41

74.94

67.38 7.56

75.51

67.65 7.86

75.75

67.92 7.83

76.49

68.21^{6 49} 8.28

Top cb.

76.48

75.83^{6 48} 588 C 0.65

76.51

76.51^{6 51} 8.01

Top cb.

76.51

76.13^{51 6.1} C 0.38

Mid Pt.			76.27	⁶²⁷ 68.75	7.52
Sly. Box = PC. outside 21' NW. Ret. -32nd	6' Bk	of cb.	76.94	⁶⁹⁴ 69.00	7.94
		Top cb.	76.94	⁶⁹⁴ 76.72 ^{.76}	C 0.22
N. end = outside		Top cb.	77.17	⁷¹⁷ 76.92 ^{6.84}	C 0.25

Beq at 4-24" 69+90.09 - going E.

70+06.09 = end of Inlet.

+37.26 = Ang.

+70

71+05

+40

+75

72+10

+45

+80

73+15

+50

+85

74+20

	66.00	
72.75	²⁷⁵ 66.12	6.63
72.82	²⁸² 66.24	6.58
73.04	³⁰⁴ 66.37	6.67
73.15	³¹⁵ 66.50	6.65
74.01	⁴⁰¹ 66.63	7.38
73.94	³⁹⁴ 66.76	7.18
74.87	⁴⁸⁷ 66.89	7.98
74.90	⁴⁹⁰ 67.02	7.88
75.03	⁵⁰³ 67.15	7.88
75.32	⁵³² 67.28	8.04
75.47	⁵⁴⁷ 67.41	8.06
75.08	⁵⁰⁸ 67.53	7.55

74 + 42.08 = E "Y"			75.30	⁵³⁰ 67.60	7.70
Sly. inside edge of Box - 7' Bk. of cb.	I.E.	75.70	75.74	⁵⁷⁴ 71.00	4.74
N. end of inlet Top of cb.			75.74	⁷⁴ 75.54	C 0.20
N. end of inlet - 20' B-2 = outside - 7' Bk.	Top of cb.	75.70	75.74	⁷⁴ 75.63	C 0.11
74 + 75			75.84	⁵⁸⁴ 67.83	8.01
75 + 10			76.05	⁶⁰⁵ 68.08	7.97
+ 45			76.32	⁶³² 68.32	8.00
+ 80			76.45	⁶⁴⁵ 68.56	7.89
76 + 15			76.83	⁶⁸³ 68.81	8.02
+ 50			77.07	⁷⁰⁷ 69.06	8.01
+ 85			77.35	⁷³⁵ 69.30	8.05
77 + 20			77.54	⁷⁵⁴ 69.54	8.00
+ 65.96 = Ang.			77.48	⁷⁴⁸ 69.87	7.61
+ 99.20 = E Box	I.E.		78.53	⁸⁵³ 70.10	8.43
	Top cb.		78.53	⁸⁵³ 77.76	C 0.77
E. end of Inlet - B-2 = outside	Top of cb.		78.58	⁸⁵⁸ 77.95	C 0.63

Stake - 2-7' - Type "K" Inlets.

Sta.

S. Side
4-24" Pipes

4

69 + 83.36 = W. end - outside

I.E.

71.47

^{1 47}
63.29

C 8.18

Top

71.47

⁺⁷
71.20

C 0.27

69 + 90.36 = ~~Φ~~

Top

71.44

^{1 44}
71.20

C 0.24

69 + 97.36 = E. end outside

71.44

^{1 44}
63.29

C 8.15

Curb Grades N. Side of El Cajon

N.E. Ret at Boundary

⁸²⁰
77.59 C0.61

Meet = cb Line of Boundary

77.55 = ⁹⁰qt. 78.20 78.16 C0.04

1/4 77.72 78.12 F0.40

1/2 ⁷⁶⁴
77.47 C0.21 77.68 78.07 F0.39

3/4 77.63 78.03 F0.40

E.C. = El Cajon = 0+00

77.35 F0.08 77.27 77.98 F0.71

+35' 77.13 77.64 F0.51

+70 77.05 77.31 F0.26

1+05' 76.73 76.98 F0.25

+24.1 = P.C. - 32nd ^{6.85}
76.13 C0.72 76.85 76.80 C0.05

1/4 P.W. Ret 76.76 76.78 F0.02

1/2 ⁵²
76.07 C0.51 76.52 76.76 F0.24

3/4 76.15 76.74 F0.59

E.C. = By inlet

76.75 76.72

N.E. Ret. 32nd

76.44

Meet = 32nd

^{6.33}
75.97 C0.36 76.33 76.40 F0.07

1/4 ^{6.40}
75.86 C0.54 76.40 76.35 C0.05

1/2 ^{6.29}
75.75 C0.54 76.29 76.30 F0.01

3/4 ⁹³
75.64 C0.29 75.93 76.25 F0.32

^{5.93}

E.C. = El Cajon = 0 + 00

0 + 22.3 = end of inlet

+ 42.3 = Brk.

+ 80

1 + 15

+ 50

+ 85

2 + 20

+ 39.4 = B.C. Bancroft

1/4

1/2

3/4

E.C. = Meet.

N.E. Ret. Bancroft.

B.C. = Meet

1/4

1/2

3/4

E.C. = El Cajon = 0 + 00

76.14 = end

75.76

76.18
5 76

F 0.42

75.88

75.88

75.87

75.61
87

C 0.26

75.47

75.21
47

C 0.26

75.09

74.84
5 09

C 0.25

74.60

74.46
60

C 0.14

74.29

74.08
29

C 0.21

73.59

73.71
89

F 0.12

3 39
72.83

C 0.56

73.39

73.50
59

F 0.11

73.50

73.50

G

F 0.34

3 68
72.96
C 0.72

73.68

73.50
68

C 0.18

73.64

73.50
64

C 0.14

gut = 73.11

73.55

73.50

C 0.05

72.98
063 04
72.44

80

Cross C 0.60

73.04

72.94
3 04

C 0.10

F 0.14

72.09 72.23
09

72.75

72.84
75

F 0.09

72.24
64

C 0.40

72.64

72.75
64

F 0.11

72.53

72.73
53

F 0.20

72.03
50

C 0.47

72.50

72.70
50

F 0.20

0+25				72.20	72.46	F 0.26	
+48.1			⁸⁷ 71.58	C 0.29	71.87	72.25	F 0.38
+63.1			⁷⁶ 71.43	C 0.33	71.76	72.14	F 0.38
+79.1 = W. end of Inlet.			= Top	71.91	72.10		

E. end of inlet = 0+00

0+11			²¹³ 71.47	C 0.66	72.13	72.19	F 0.06	
+21			²⁰⁴ 71.61	C 0.43	72.04	72.28	F 0.24	
+56					72.11	72.58	F 0.47	
+81					72.32	72.78	F 0.46	
1+06.2 = B.C. = 12' Rad.			⁵⁶ 72.33	C 0.23	72.56	73.00	F 0.44	
1/4					72.65	73.05	F 0.48	
1/2	W. gut.	72.34	⁶⁴ 72.65	C 0.19	72.84	73.09	F 0.25	
3/4					72.80	73.17	F 0.37	
EC = Meet			gut. 72.82		73.25	73.18		
N.E. Ret. 33rd Pl.								
Meet			gut. 73.21	⁴⁶ 73.17	C 0.29	73.46	73.50	F 0.04
1/4	E. gut.	72.21			73.07	73.48	F 0.41	
1/2			^{3 01} 72.98	C 0.03	73.01	73.47	F 0.46	

135
23
965

3/4			73.02	73.46 ₀₂	F 0.44
E.C. = 0+00		✓	73.00	73.45	F 0.45
0+35			73.25	73.69 ₂₅	F 0.44
+70			73.55	73.92 ₅₅	F 0.37
1+05			74.01	74.16 ₀₁	F 0.15
+40			74.28	74.39 ₂₈	F 0.11
+75			74.51	74.63 ₅₁	F 0.12
2+00			74.61	74.80 ₆₁	F 0.19
+26.2 = B.C. 33 rd		.67	74.82	74.98 ₈₂	F 0.16
1/4			74.72	75.00 ₇₂	F 0.28
1/2		74.45 ⁸³ C 0.38	74.83	75.03	F 0.20
3/4			74.75	75.05 ₇₅	F 0.30
E.C. = Meest		got 4.62	75.07	75.08	
N.E. Ref. 33 rd					
10' N. of inlet		got - 75.01		75.66	
N. - inlet				75.63	
5 - "				75.54	
P.C.		7 ⁵⁷⁰ 74.75 C 0.95	75.70	75.53 ₇₀	C 0.17
1/4			75.68	75.52 ₆₈	C 0.16
Cont. on P. 10					

B.M. = NW. 15' Rad. Cross

76.51

9

7" K Inlet - NW Cor. 37th + El. Cajon

Top of cb. - w. end - 6' Bk. 75.96 75.62⁹⁶ C 0.34

Top " - E " 75.94 75.60⁹⁴ C 0.34

I.E. at E. inside of Box 75.94 76.00^{5.94} C 5.94

I.E. = Should meet Exist. pipe - 32' along Curve 75.07 68.76^{5.07} C 6.31

4" K Inlets - 38th - N.W. + N.E.

Exist. Box - Make into Cleanout Cross at Cor. of Rim 68.52 I.E. of pipe 63.00^{8.52} C 5.52

Exist I.E. 59.80

K - at NW Cor. - 7' Bk. at P.C. I.E. to S. 69.62 63.50^{9.62} C 6.12

I.E. To E 69.62 65.00^{9.62} C 4.62

Top - cb. 69.62 69.45⁶² C 0.17

K at N.E. Cor. 7' Bk. - 4' N. - Top cb. 69.67 69.48⁶⁷ C 0.19

K at N.E. Cor 6' Bk. at P.C. I.E. 69.30 66.00^{9.30} C 3.30

Top cb. 69.30 69.00^{9.30} C 0.30

6' Bk. - 4' N. Top cb. 69.31 69.02³¹ C 0.29

Cont. on P. 30

Cont. from P. 8

10

NE. Ret 33rd

1/2

⁵¹⁰
74.79 C0.31 75.10 75.51 F0.41

3/4

75.13 75.51 F0.38

E.C. - 33rd = 0+00

✓ 75.14 75.50 F0.36

0+35

75.42 75.69 F0.27

+70

75.22 75.88 F0.64

+95

75.44 76.02 F0.58

1+15.62 = P.C. = 4' Rad.

75.46 75.67 76.13 F0.46

E.C. = Alley

75.77 F0.10 75.67 76.27 F0.66

Prop. Line - West.

Pave =

76.36 76.44 76.48 F0.04

Prop. Line - East.

Pave =

76.67 76.85 76.67 C0.18

P.C. = Alley

75.88 F0.05 75.83 76.39 F0.56

E.C. = 1+43.62

^{5.83}
75.58 - 8 75.83 76.25 F0.42

1+75

76.50 76.43 C0.07

2+10

76.63 76.63 G

+35

76.83 76.77 C0.06

2+58.95 = P.C. Felton

✓ 76.91 76.90 C0.01

1/4

76.88 76.90 F0.02

1/2

⁹¹
76.42 C0.49 76.91 76.91 G.

3/4

76.86 76.95 F0.09

N. Side

795
8.58 11

E.C. = Felton = Meet.

cb - 77.00 = Meet. 76.92

Top. cb.

N.E. Ret.

P.C. = in Dr.

got.

77.56⁵⁶ C0.38 = Meet. 77.56 77.62 F0.06

1/4 77.43 77.64 F0.21

1/2 77.11⁶⁸ C0.57 77.64 77.67 C0.01

3/4 77.36 77.70 F0.34

E.C. = 0+00

76.89 - F0.09 76.80 77.72 F0.92

0+02.3 = W. end Inlet.

77.76 77.74 C0.02

+23.3 = E end.

77.12⁹⁶ C0.84 77.96 77.95 C0.01

+41 = Brk

8" 78.28 78.13 C0.15

+80

78.63 78.51 C0.12

1+16 = P.C. 4' Rad.

78.20 - 8" 78.82 78.86 F0.04

E.C. Alley

78.73⁸² C0.09 78.82 79.23 F0.41

Prop. Line W.

20' N. 79.69

79.60³³ - 5" F0.27 79.33 79.82 F0.49

Prop. Line E.

17.5 E Alley

Conc. 79.53

79.84³³ - 18" F0.22 79.62 79.98 F0.36

E.C. Alley

78.89⁶² C0.26 79.15 79.39 F0.24

1+44 = P.C. - 4' Rad.

8" 79.15 79.09 C0.06

+75

79.49 79.42 C0.07

2+10

79.86 79.79 C0.07

Cont. on P. 15

Curb Stakes - S. side El Cajon -

Iowa to Boundary

$\frac{23}{55}$

12

0+00 = N.L. Iowa

⁹⁴ 72.58 C 0.36 72.94 ⁹⁴ 72.86 C 0.08

+35 73.71 73.82 F 0.11

+65 73.94 74.64 F 0.70

+95.53 74.57 75.48 F 0.91

1+15.53 5.71 5.34 74.87 75.89 F 1.02

+35.53 75.38 76.25 F 0.87

+55.53 6.40 6.00 75.88 76.53 F 0.65

+75.53 76.16 76.81 F 0.65

1+96.70 = P.C. 8" = C 76.98 77.03 F 0.05

1/4 76.32 76.92 F 0.60

1/2 ^{6.53} 76.30 C 0.23 76.53 76.82 F 0.29

3/4 76.29 76.71 F 0.42

E.C. in Dr. ⁵³ 76.25 C 0.28 76.53 76.61 F 0.08

Boundary

76.35 = Conc.

Meet - S.E. Ret.

76.34 = AC Meet. 76.75 76.75 = Exist Top

#1 76.32 C 0.26 76.58 76.76 F 0.18

2 76.28 C 0.76 77.04 76.77 C 0.27

3 76.23 C 0.55 76.78 76.78 G

#4 76.18 C 0.63 76.81 76.79 C 0.02

E.C. = 0+00 76.96 76.27 76.13 = 8" 76.78 76.80 F 0.02

S. Side

13

0+00 = E.C. - Boundary

				76.80	
+25			76.45	76.61 ₄₅	F 0.16
+50			76.17	76.43 ₁₇	F 0.26
+75			76.28	76.22 ₂₈	C 0.06
1+00			75.76	76.02 ₇₆	F 0.26
+25			75.49	75.80 ₄₉	F 0.31
+50			75.31	75.58 ₃₁	F 0.27
+75			74.80	75.34 ₈₀	F 0.54
2+00			74.65	75.10 ₆₅	F 0.45
+35			74.10	74.67 ₁₀	F 0.57
+70			74.23	74.25 ₂₃	F 0.02
3+00			73.57	73.83 ₅₇	F 0.26
+40			73.32	73.41 ₃₂	F 0.09
+75			72.62	72.99 ₆₂	F 0.37
4+10			72.57	72.57	G
+50			71.91	72.09 ₉₁	F 0.18
+91			71.69	71.60	C 0.09
5+11		70.73 = 8"	71.10	71.40 ₁₀	F 0.30
+31		70.60 ₀₄ C 0.44	71.04	71.25 ₀₄	F 0.21
+51 = W. end Inlet.		70.37 ₃₄	71.16 _{Top}	71.20 ₀₄	

S. Side

14

5 + 65 = E. end Inlet.

+80

+95

6 + ^{29.2}24.2

+54.2

+89.2

7 + 24.2

+59.2

+94.2 = Brk.

8 + 29.2

+64.2

+99.2

9 + 34.2

+54.2 = P.C. = S.W. Ret

1/4

1/2

3/4

E.C. = Meet. - 33rd

Cont. - P. 16

70.37³⁰

70.61⁰⁰ C 0.47

70.74 = 8"

Top.
71.16

71.08

71.66

71.55

71.46

71.68

72.87

73.24

73.49

73.84

73.95

8"

74.19

73.81⁴⁰ C 0.59

73.85²⁹ C 0.44

73.88⁰⁶ C 0.18

73.92

74.40

74.29

74.18

74.06

74.16

71.20

71.25

71.41⁶⁶

71.75⁵⁵

72.10⁴⁶

72.51⁶⁸

72.90⁶⁷

73.31²⁴

73.72⁴⁹

74.08⁹⁴

74.32⁹⁵

74.41¹¹

74.37

74.35²⁹

74.33¹⁸

74.32⁰⁶

74.30¹⁶

74.28¹⁶

F 0.17

C 0.25

F 0.20

F 0.64

F 0.83

F 0.03

F 0.07

F 0.23

F 0.24

F 0.37

F 0.22

C 0.03

F 0.06

F 0.15

F 0.26

F 0.14

Cont. from P. 11

W. Side

15

	W. PC.	79.75						
2 +	5' W. of W. Joint.	79.76			80.13	80.05 ¹³	C 0.08	
+	W. Joint	79.75						
	8" E.	79.72	8"		80.07	80.30 ₀₇	F 0.23	
1/4	8" E.	79.72	80.36	79.66 ⁰³⁶	C 0.70	80.05	80.31 ₀₅	F 0.26
1/2	W. Joint	79.72		79.77 ⁰⁵	C 0.28	80.05	80.33 ₀₅	F 0.28
3/4	W. Joint	79.74				80.09	80.34 ₀₉	F 0.25
E.C.	8" E.	79.78	9.90	79.90	Top.	80.36	80.36	Meet
N.	E. Joint		.18	80.47				
Meet	E. PC.	79.87		80.14	80.73	80.67	80.67 ⁷³	C 0.06
1/4			.67	79.74 ⁶⁷	C 0.93	80.38	80.60 ₃₈	F 0.22
1/2				79.92 ²⁰	C 0.28	80.20	80.52 ₂₀	F 0.32
3/4						80.18	80.48 ₁₈	F 0.30
E.C. =				8"		80.37	80.45 ₃₇	F 0.08
0 + 30						80.50	80.49	C 0.01
+ 60						80.18	80.53 ₁₈	F 0.35
+ 90						80.61	80.57 ₆₁	C 0.04
1 + 16			9.94	8"		80.54	80.61 ₅₄	F 0.07
E.C.				80.20 ⁵⁴	C 0.34	80.54	80.70	F 0.16
W. Pro				80.54 ¹⁰³	C 0.49	81.03	80.84 ⁵⁴	C 0.19

48
80.38

Cont. on P. 20

Cont. from P. 11

N. Side

15

2 + 35					80.13	80.05 ¹³	C 0.08	
+ 59.3	= PC. N.W. Ret.		8"		80.07	80.30 ₇	F 0.23	
1/4	Gr. of Gut. - I.E.	$\frac{9.84}{9.66}$	80.36	79.66 ⁰³⁶	C 0.70	80.05	80.31 ₅	F 0.26
1/2		$\frac{C 0.18}{}$		79.77 ⁰⁵	C 0.28	80.05	80.33 ₀₅	F 0.28
3/4						80.09	80.34 ₀₉	F 0.25
E.C. = Meet - 24 ⁴⁵			79.90	79.90	Top. 80.36	80.36	Meet.	
N.E. Ret.			80.18	80.47				
Meet.				80.14	80.73	80.67	80.67 ⁷³	C 0.06
1/4	Gr. of Gut. - I.E.	$\frac{0.05}{9.74}$	80.67	79.74 ⁶⁷	C 0.93	80.38	80.60 ₃₈	F 0.22
1/2		$\frac{C 0.31}{}$		79.92 ⁰²⁰	C 0.28	80.20	80.52 ₂₀	F 0.32
3/4						80.18	80.48 ₁₈	F 0.30
E.C. = 0+00				8"		80.37	80.45 ₃₇	F 0.08
0+30						80.50	80.49	C 0.01
+60						80.18	80.53 ₁₈	F 0.35
+90						80.61	80.57 ₁₈	C 0.04
1 + 16.25 = PC. 4' Rad.				9.94	8"	80.54	80.61 ₅₄	F 0.07
E.C. to Alley				80.20 ⁵⁴	C 0.34	80.54	80.70	F 0.16
W. Prop.			86.61	80.54 ¹⁰³	C 0.49	81.03	80.84 ₅₄	C 0.19
			80.38 ⁴⁸					

Cont. on P. 20

Cont. from P. 14

S. Side

S.E. Ret. 33rd

Meet.		73.86	74.16	74.35 ₁₂	F 0.19
1/4			73.96	74.40 ₉₆	F 0.44
1/2		73.88 ¹⁴	C 0.26 74.14	74.46 ₁₄	F 0.32
3/4			74.12	74.51 ₁₂	F 0.39
E.C. = 0+00		8"	73.96	74.57 ₉₆	F 0.61
0+30			74.58	74.67 ₅₈	F 0.09
+60			74.83	74.78	C 0.05
+90			74.93	74.88 ₉₃	C 0.05
1+20 ₀₆ P.C. 4' Rad.		8"	74.65	74.99 ₆₅	F 0.34
E.C. = Alley		74.58 ₆₅	C 0.07 74.65	75.08 ₆₅	F 0.43
W. Prop.	74.70 = ±	74.88	75.08	75.22 ₈₈	F 0.14
E. Prop		75.06	74.95	75.27 ₉₅	F 0.32
E.C. Alley		74.62 ₉₅	C 0.33 74.95	75.12 ₉₅	F 0.17
P.C. = 1+43.06		8"	74.84	75.05 ₈₄	F 0.21
1+73			75.28	75.23 ₇₃	C 0.05
2+03			75.44	75.41 ₄₄	C 0.03
+33			75.77	75.59 ₇₇	C 0.18
+61.12 = P.C. = S.W. Ret. Felton		8"	76.01	75.75 ₆₁	C 0.26
1/4			75.94	75.74 ₉₄	C 0.20

SW Ret. Felton

1/2	75.12 ⁶⁸	C 0.56	75.68	75.73	F 0.05
3/4			75.80	75.72	C 0.08
E.C. = Meet.	75.16			75.70	

SE Ret. Felton

Meet	75.70			76.14	
1/4			75.95	76.25 ₇₅	F 0.30
1/2	75.75 ⁰⁰	C 0.25	76.00	76.35	F 0.35
3/4			76.00	76.41	F 0.41
E.C. = 0+00	8"		76.28	76.47 ₂₈	F 0.19
0+30			76.64	76.85 ₆₄	F 0.21
+60			77.13	77.24 ₁₃	F 0.11
+90			77.20	77.62 ₂₀	F 0.42
1+17.65 = PC = 4' Rad.	8"		77.46	77.98 ₄₆	F 0.52
E.C. = Alley	77.58	F 0.12	77.46	78.11 ₄₆	F 0.65
W. Prop.	77.62 ⁶⁵	C 0.35	PK-77.97	78.25 ₉₇	F 0.28
E. Prop	77.84 ⁸⁸	C 0.61	PK-78.45	78.47	F 0.02
PC = Alley	77.80	F 0.04	77.76	78.33 ₇₆	F 0.57
E.C. = 1+40.65 = 4' Rad.	8"		77.76	78.26 ₇₆	F 0.50
1+70.65			78.23	78.36 ₂₃	F 0.13

S. Side

18

2+00.65					78.46	78.46	G.
+30.65					78.76	78. ⁷⁶ 56	CO.20
+58.92 = P.C.	34 th	- S.W. Ret.	8"		78.83	78. ⁸³ 64	CO.19
1/4	Cor. Gut. I.E.	78.78	78. ⁷⁸ 02	CO.76	78.67	78.70	FO.03
1/2			78. ⁵⁹ 16	CO.43	78.59	78. ⁶⁷ 76	FO.17
3/4					79.01	78. ⁵⁹ 78	CO.23
Meet.			78.35			78.81	
	S.E. Ret.	34 th					
Meet			78.38	78.45		78.88	
1/4	Cor. Gut. I.E.	78.85	78. ⁸⁵ 11	CO.74	78.96	78.86	CO.10
1/2			78.29	CO.55	78.82	78.85	FO.03
3/4					78.83	78.84	FO.01
E.C. = 0+00		16	8"		79.03	78.83	CO.20
0+30					78.99	78.89	CO.10
+60					79.00	78.95	CO.05
+90					79.06	79.01	CO.05
1+18 = P.C. 4' Rad			8"		79.12	79.07	CO.05
E.C. To Alley			78.66	CO.46	79.12	79.16	FO.04
W. Prop.			79.10	CO.43	79.53	79.30	CO.23
	No Pave in Alley	±	78.75				

S. Side

19

E. Prop

79.09 C0.42 79.51 79.34 C0.17

P.C. = To Alley

78.70 C0.38 79.08 79.20 FO.12

E.C. = 4' Rad = 1+41

8.46 - 8" 79.08 79.13 FO.05

1+71

79.05 79.19 FO.14

2+01

79.13 79.25 FO.12

+31

79.22 79.30 FO.08

+59.07 = P.C. Swift - S.W. Ret.

8" 79.23 79.35 FO.12

1/4

79.20 79.33 FO.13

1/2

78.73 C0.43 79.16 79.30 FO.14

3/4

78.90 79.27 FO.37

E.C. = Meet.

78.78 ^{.50} 79.25 ✓

S.E. Ret. Swift.

Meet

79.17 79.17 Meet. 79.45 ^{.49}

1/4

79.28 79.60 FO.32

1/2

79.20 C0.10 79.30 79.70 FO.40

3/4

79.26 79.80 FO.54

E.C. = 0+00

79.23 - 8" 79.46 79.90 FO.44

+30

79.66 80.02 FO.36

+60

79.86 80.15 FO.29

+90

79.67 80.28 FO.61

Cont. - P. 23

E. Prop.			⁵⁹ 80.51		80.99	⁹⁹ 80.86	C-0.13
P.C. - To Alley			80.22	F0.11	80.11	80.72	F-0.61
EC = 1+44.25			9.98	8"	80.11	80.65	F-0.54
+74.25					80.28	80.70	F-0.42
2+04.25					80.67	²⁸ 80.75	F-0.08
+34.25					80.72	⁶⁷ 80.80	F-0.08
+60.30 = P.C. - N.W. Ret. Swift			8"		80.82	80.85	F-0.03
1/4	Cor. Gut. I.E.	80.86	⁸⁶ 80.24	C-0.62	80.71	80.85	F-0.14
1/2			⁶⁰ 80.35	C-0.25	80.60	80.86	F-0.26
3/4					80.85	80.87	F-0.02
EC = Meet.			⁸⁶ 80.53	C-0.33	80.86	80.88	F-0.02
N.E. Ret. Swift.							
Meet.		80.75	80.52		81.13	^{80.95} 81.18	F-0.05
1/4	Cor. Gut. I.E.	80.59	⁵⁹ 80.37	C-0.22	81.18	81.16	C-0.02
1/2			⁸⁵ 80.47	C-0.38	80.85	81.14	F-0.29
3/4					81.21	⁷¹ 81.12	C-0.09
EC = 0+00			8"		80.75	81.10	F-0.35
0+30					81.47	⁴⁷ 81.20	C-0.27
+60					81.63	⁶³ 81.30	C-0.33

0+90				81.95	81.40 ⁹⁵	C 0.55
1+15.56 = P.C. = 4' Rad.			80.83 = 8"	81.88	81.50 ⁸⁸	C 0.38
E.C. To Alley			81.13 ⁸⁸ C 0.75	81.88	81.63 ⁸⁸	C 0.25
W. Prop.		81.92	81.72	82.29	81.84 ²⁹	C 0.45
E. Prop.	± 81.52 ^{.63}	81.85	81.76	82.53	81.91 ²⁵³	C 0.62
P.C. to Alley			81.20 ³⁷ C 0.17	81.37	81.70 ³⁷	F 0.33
E.C. = 4' Rad. = 1+43.56			80.92 = 8"	81.37	81.59 ³⁷	F 0.22
1+73.60				81.72	81.69 ³⁷	C 0.03
2+03.60				81.77	81.80	F 0.03
+33.60				81.74	81.91 ⁷⁴	F 0.17
2+59.47 = P.C. = N.W. Ret. 35 th			8"	81.77	82.09 ⁷⁴	F 0.23
1/4				81.78	82.04 ⁷⁸	F 0.26
1/2			81.45 ⁵⁴ C 0.09	81.54	82.08 ⁵⁴	F 0.54
3/4				81.70	82.12 ⁷⁰	F 0.42
E.C. = Meet.		81.72	81.58	81.67	82.15 ⁶⁷	F 0.48
N.E. Ret. 35 th						
P.C. = Meet.			81.52 ⁶⁶	82.18	81.94 ²¹⁵ 82.20	F 0.02
1/4				82.04	81.95 82.15 ⁰⁴	F 0.11
1/2			81.42 ⁸⁴ C 0.42	81.84	81.97 82.10 ⁸⁴	F 0.26
3/4				82.00	81.98 82.05	F 0.05

N. Side

81.09
80.43
161.52
80.76

E.C. = 0 + 00 - N.E. Ret. 35th

+35

+70

1 + 05

+40

+75

2 + 10

+35

+59.11 = P.C. - N.W. Ret. Wilson

1/4

Cor. Gut = I.E

80.96

8"

80.58 C

1/2

80.75 C

3/4

E.C. = Meet

80.86

N.E. Ret. Wilson

P.C. = Meet

81.09

80.91

1/4

Cor. Gut = I.E

80.95

80.78 C

1/2

80.76 C

3/4

E.C. = 0 + 00

8" 0.43

0 + 40

Cont. P. 27

81.73

81.73

81.10

C 0.16

81.28

80.93

C 0.63

C 0.35

57.20
6.03
1.17
35

603
62
56.65
55
57.20

56.03
54.89
1.14

54.89
60
55.49
54
56.03

66.12
59.1
16.09

88.19
20.1
58.09
28.65
20.1
66.85

58.85
20.1
66.85

26
66.85
68.25

54.27

71.1
61.17
80.09

71.1
68.85
68.25

1.911
11.4
68.25
86.17

86.17

1.911
0.581
1.332

3.03
2.88
5.91
2.95

81.27

22

9

5

7

9

8

0

-

62.50
 32

 62.82
 37

 63.19
 56

 63.37
 37

 63.93

28
 15

 43

62.50
 20

 62.90
 46

 63.36
 82

 63.82

02	63.44
59	64.39
109	63.28
55	63.19
63.50	63.10

N. Side

$$\begin{array}{r} 81.09 \\ 80.43 \\ \hline 161.52 \\ 80.76 \end{array}$$

$$\begin{array}{r} 43 \\ 91 \\ \hline 134 \\ 67 \end{array}$$

22

E.C. = 0 + 00 - N.E. Ret. 35 th	81.33	82.19	82.00	C 0.19
+35		82.25	81.90 ²⁵	C 0.35
+70		81.74	81.81 ⁷⁴	F 0.07
1 + 05		82.00	81.71 ⁰⁵	C 0.29
+40		82.05	81.62 ⁰⁵	C 0.43
+75		81.82	81.52 ⁸²	C 0.30
2 + 10		81.77	81.43 ⁷⁷	C 0.34
+35		81.57	81.36 ⁵⁷	C 0.21
+59.11 = P.C. - N.W. Ret. Wilson	8"	81.65	81.30 ⁶⁵	C 0.35
1/4 Cor. Gut = I.E.	80.96	80.58 ⁹⁶ C 0.38	81.60	81.29 ⁶⁰ 81.34 ⁶⁰ C 0.26
1/2		80.75 ⁴⁸ C 0.73	81.48	81.28 ⁴⁸ 81.38 ⁴⁸ C 0.10
3/4		- 81.46	81.26 ⁴⁶ 81.42 ⁴⁶	C 0.04
E.C. = Meet	80.86 ^{1.10}		81.25 ⁴⁶ 81.46 ⁴⁶	
N.E. Ret. Wilson				
P.C. = Meet	81.09	80.91	81.51	81.51 [✓]
1/4 Cor. Gut = I.E.	80.95	80.78 ⁹⁵ C 0.47	81.64	81.40 ⁶⁴ C 0.24
1/2		80.76 ²¹ C 0.45	81.21	81.30 ²¹ F 0.09
3/4			81.36	81.20 ³⁶ C 0.16
E.C. = 0 + 00	8" ^{0.43}	81.73 ¹⁷²	81.10	C 0.63
0 + 40		81.28	80.93 ²⁸	C 0.35
Cont. P. 27				

1+18.56 = P.C. - 4' Rad.		79.72 = 8"	79.87	80.39	FO.52
E.C. = To Alley		79.98 FO.11	79.87	80.48	FO.61
W. Prop.	80.22	80.13	79.97	80.62	FO.65
E. Prop.	80.03 80.27	80.16	80.50	80.68	FO.18
P.C. to Alley		80.04 FO.09	79.95	80.54	FO.59
E.C. = 4' Rad. = 141.45		79.80 = 8"	79.95	80.47	FO.52
1+71.56			80.30	80.58	FO.28
2+01.56			80.79	80.69	CO.10
+31.56			80.93	80.80	CO.13
+61.76 = P.C. - SW. Ret. 35 ⁴⁴		80.23 = 8"	81.07	80.90	CO.17
1/4			80.84	80.88	FO.04
1/2		80.26 ⁵⁷ CO.31	80.57	80.86	FO.29
3/4			80.67	80.84	FO.17
Meet.	Exist. 80.35	80.30	80.64	80.82	FO.18
SE. Ret. 35 ⁴⁴					
Meet.		80.70 [✓]	81.20	81.20 [✓]	
1/4			81.47	81.25 ⁴⁷	CO.22
1/2		80.69 ¹¹² CO.43	81.12	81.30 ₂	FO.18
3/4			81.04	81.32 ₀₄	FO.28

S. Side

81.00 - Wilson
79.32 - 36th

24

S.E. Ret. 35th

EC = 0 + 00

+30

+60

+90

1 + 20.05^{19.05} = PC - 4' Rad.

EC = To Alley

W. Prop.

E. Prop.

PC = To Alley

EC = 4' Rad = 1 + 42.05

1 + 72.05

2 + 02.05

+32.05

+61.56 = PC - S.W. Ret. - Wilson

1/4

1/2

3/4

EC = Meet.

8"

81.05

81.35

F 0.30

80.98

81.27₉₈

F 0.29

80.88

81.18₈₈

F 0.30

80.88

81.09₈₈

F 0.21

80.33 = 8"

80.67

81.00₆₇

F 0.33

80.57₆₇ C 0.10

80.67

81.07₆₇

F 0.40

80.91

80.85

81.21₈₅

F 0.36

81.15 - 81.22

80.81

81.18₈₁

F 0.37

80.54₉₇ C 0.43

80.97

81.04₉₇

F 0.07

80.28 = 8"

80.97

80.95

C 0.02

80.75

80.86₇₅

F 0.11

80.70

80.77

F 0.07

80.45

80.68₄₅

F 0.23

8"

80.44

80.60₄₄

F 0.16

80.39

80.55₃₉

F 0.16

79.84₀₃₉ C 0.55

80.39

80.50₃₉

F 0.11

80.37

80.46₄₂

F 0.09

79.72

79.75

80.40

S.E. Ret. - Wilson

Meet.			79.48 ⁴²	79.51	80.00 ⁵¹	F 0.49
1/4				79.63	80.05 ⁶³	F 0.42
1/2			79.51 ⁷⁵ C 0.24	79.75	80.10 ⁷⁵	F 0.35
3/4				80.04	80.15 ⁰⁴	F 0.11
PC = 0+00			79.53 = 8"	80.24	80.20	C 0.04
0+20				79.89	80.25 ⁸⁹	F 0.36
+40				79.81	80.15 ⁸¹	F 0.34
+80				79.53	79.78 ⁵³	F 0.25
1+18.30 = PC. - 4' Rad.			8.66 = 8"	79.18	79.43 ¹⁸	F 0.25
EC To Alley			9.18 18.97 C 0.21	79.18	79.47 ¹⁸	F 0.29
W. Prop	14	7.48	79.31 ⁵⁹ C 0.28	79.59	79.61	F 0.02
E. Prop	E = 79.06	9.19	79.15 ²⁹ C 0.13	79.28	79.45 ²⁸	F 0.17
PC = To Alley			78.81 ⁹⁸ C 0.17	78.98	79.31 ⁹⁸	F 0.33
EC = 4 Rad = 1+41.30			8.51 = 8"	78.98	79.18 ⁹⁸	F 0.20
+71.30				78.58	78.90 ⁵⁸	F 0.32
2+01.30				78.38	78.62 ³⁸	F 0.24
2+31.30				78.18	78.34 ¹⁸	F 0.16
+57.52 = PC. = SW. Ret. 36+1			8"	78.07	78.10 ⁰⁷	F 0.03
1/4				78.18	78.06 ¹⁸	C 0.12

1/2			77. ⁸¹ 39	C 0.42	77.81	78.03	F 0.22			
3/4					77.89	78. ⁸¹ 00	F 0.11			
Meet.	= 36 ⁺⁴	SW Ret.	77.35	77.29	77.96	77.96				
	SE Ret. 36 ⁺⁴									
Meet.			7.44	77.41	cross 77.92	77. ^{.99} 99	F 0.07			
1/4					77.77	77.96	F 0.19			
1/2					77. ⁸² 33	C 0.49	77.82	77.94	F 0.12	
3/4					77.98	77.92	C 0.06			
E.C. = 0+00				7.23 = 8"	77.86	77.90	F 0.04			
+30					77.63	77.72	F 0.09			
+60					77.25	77.54	F 0.29			
+90					77.20	77.36	F 0.16			
1+16.10 = P.C. = 4' Rad.				8"	76.73	77.21	F 0.48			
E.C. = To Alley					76.75	F 0.02	76.73	77.25	F 0.52	
W. Prop.					77.12	77.13	F 0.02	77.11	77.35	F 0.24
E. Prop.		E = 76.79	77.14	77.08	F 0.24	76.84	77.32	F 0.48		
P.C. = To Alley				76.68	F 0.24	76.44	77.18	F 0.74		
E.C. = 4' Rad = 1+39.10				6.41 = 8"	76.44	77.08	F 0.64			
+69.10					76.76	76.90	F 0.14			

Cont. on P. 33

N.E. - Wilson

0 + 75				81.00	80.65		C 0.35
1 + 10				80.75	80.35 ²⁵		C 0.40
+ 45				80.32	80.06 ³²		C 0.26
+ 80				80.14	79.76 ¹⁴		C 0.38
2 + 15				79.98	79.47 ⁹⁸		C 0.51
+ 40				79.70	79.26 ⁷⁰		C 0.44
+ 59.10 = PC	= NW. Ret.	36 th		79.33	79.10 ³³		C 0.23
1/4	Cor. Gut. - I.E.		78.55	78.32 ⁵⁵	79.30	79.10 ³⁰	C 0.23
1/2				78.57 ⁶⁸	78.68	79.10	F 0.42
3/4				79.32	79.10 ³²		C 0.22
Meet.			78.68	78.58	79.09	79.09	
	N.E. Ret.	36 th					
Meet = in Dr.			78.41 ⁴	78.24	78.64	78.90	F 0.26
1/4	Cor. Gut. = I.E.		78.12	78.08 ¹²	78.11	78.84 ¹¹	F 0.73
1/2				78.19 ²³	78.23	78.77 ²³	F 0.54
3/4					78.54	78.71 ⁵⁴	F 0.17
E.C. = 0 + 00				79.77 = 8"	78.55	78.64 ⁵⁵	F 0.09
+ 35					78.36	78.44 ³⁶	F 0.08
+ 70					78.13	78.23 ¹³	F 0.10

1+05		78.74		77.68	78.02 ₆₈	F 0.34
+40		78.47		77.73	77.81 ₇₃	F 0.08
+75				77.40	77.60	F 0.20
2+10				76.97	77.39 ₉₇	F 0.42
+45				76.99	77.18 ₉₉	F 0.19
+58.90 = P.C. - N.W. Ref. Cherokee		6.43 · 8"		76.81	77.10 ₈₁	F 0.29
1/4 Cor. Gut = I.E.		76.60	76.28 ⁶⁰ C 0.32	76.96	77.11 ₉₆	F 0.15
1/2			76.52 ⁹⁵ C 0.43	76.95	77.12 ₉₅	F 0.17
3/4				76.83	77.14 ₈₃	F 0.31
E.C. = Meet. = in Dr.		76.61	76.54	77.09	77.17 ₀₉	F 0.08
N.E. Ref. Cherokee						
Meet. = in Dr.		76.35	76.35 [↓]	76.55	76.96 ₅₅	F 0.41
1/4 Cor. Gut = I.E.		76.31	75.98 ³¹ C 0.33	76.58	76.84 ₅₈	F 0.26
1/2			76.09 ⁴⁶ C 0.37	76.46	76.73 ₄₆	F 0.27
3/4				76.86	76.62	C 0.24
E.C. = 0+00			583 = 8"	76.11	76.50	F 0.39
0+35				76.83	76.38 ¹¹	C 0.45
+70				76.68	76.26 ⁶⁸	C 0.42
1+05 Prop. walk	7.11			76.25	76.14 ²⁵	C 0.11

1+40 - Prop. Walk	7.48			76.27	76.02 ²⁷	C 0.25
+75				76.09	75.90 ⁶⁰⁹	C 0.19
2+10	= Brk.			76.04	75.78 ⁶⁰⁴	C 0.26
+38.85 ^{20.5 Brk.}				75.87	75.77 ⁸⁷	C 0.10
+48.70 = Inlet = w		75.77		5.77	75.62	
Inlet = E		75.74		4.90 gut	75.60	
PC. = NW 37 th				74.94 ⁵⁸⁷ C 0.51	75.45	F 0.25
1/4				75.00	75.40	F 0.28
1/2				75.06 ²⁵ C 0.19	75.25	F 0.42
3/4				75.19	75.65	F 0.46
E.C. = Meet in Dr.		↓ 75.18	75.18	75.29	75.64 ¹⁹	F 0.35
N.E. Ret. 37 th						
Meet. in Dr. walk 550	↓ 4.98	74.98		74.95	75.45	F 0.50
1/4				74.92	75.40 ⁹⁵	F 0.48
1/2				74.78 ⁹⁹ C 0.21	75.35 ⁷²	F 0.36
3/4				75.31	75.30 ¹⁹	C 0.01
E.C. = 0+00			74.58	74.96	75.25 ⁹⁶	F 0.29
0+35				74.86	74.97 ⁸⁶	F 0.11
+70	0+90 walk = 75.09			74.54	74.69 ⁵⁴	F 0.15
Cont. on R 35						

Cont. from P. 9

Inlet - N.W. Cor. 39th - "K" - 4'

3' w. of P.C. = Ely. of Box

E. end - 6' Bk. of cb.

I.E.

0.60

Top of cb.

0.21

W. end

Top of cb.

0.19

4' "K" Inlet - S.W. Cor. 39th

4.1' w. of P.C. = Ely. of Box

E. end - 6' Bk. of cb.

I.E.

0.38

Top of cb.

0.13

W. end

Top of cb.

0.11

Set 22' Rad. - 24' of pipe

6' w. Radial = Meet.

0.52

4' "K" Inlet - N.W. Cor. 40th - E. end = 4'

E. end - 6' Bk. of cb.

I.E.

58

0.12

Top of cb.

0.26

W. end

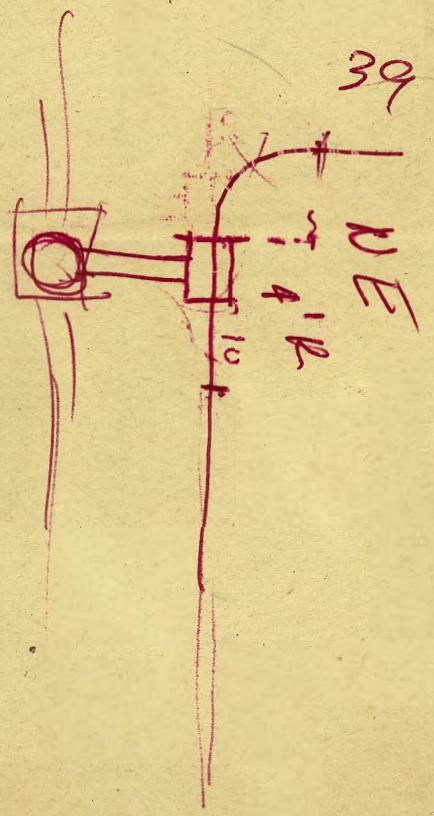
Top of cb.

66.66

66.36

0.30

66.39	66.10
8	15
<u>66.47</u>	<u>66.25</u>
66.57	81
66.66	<u>66.43</u>
66.77	19.99
	18
	<u>66.79</u>
	66.97
	18
	<u>67.15.13</u>
	67.33
	30



Inlet - N.W. Cor. 39th - "K" - 4'

3' W. of P.C. = Ely. of Box

E. end - 6' Bk. of cb.

I.E.

67.10

7¹⁰
60.50

C 6.60

Top of cb.

67.10

7¹⁰
66.89

C 0.21

W. end

Top of cb.

67.11

7¹¹
66.92

C 0.19

4' "K" Inlet - S.W. Cor. 39th

4.1' W. of P.C. = Ely. of Box

E. end - 6' Bk. of cb.

I.E.

8.06
61.60 C 6.46 67.947.98
61.60

C 6.38

Top of cb.

8.06
67.85 C 0.21 67.947.98
67.85

C 0.13

W. end

Top of cb.

8.10
67.89 C 0.21 68.008.00
67.89

C 0.11

Set 22' Rad. - 24' of pipe

6' W. Radial - Meet.

67.34

7.34
60.82

C 6.52

4' "K" Inlet - N.W. Cor. 40th - E. end = 4' from P.C.

E. end - 6' Bk. of cb.

I.E.

58.23
IE of Inlet
66.626.62
59.50

C 7.12

Top of cb.

66.62

6.62
66.36

C 0.26

W. end

Top of cb.

66.66

6.66
66.36

C 0.30

A.C. 64.19
146
2.73

$\frac{62.25}{146} = \text{Bot. Ans}$
 $\frac{60.92}{54}$

$59.76 = \text{I.E.}$
170
 $\frac{61.46}{82} = \text{TOP}$

$\frac{59.36}{93} = .43$

1+26 = Sewer
 $\frac{976}{593}$

$\frac{61.64}{0.92} = \text{Top w.}$
72

$58.93 = \text{I.E.}$ 31
 $\frac{62.28}{64}$

4' K - NW. Cor Central - E end - 5.6 from

P.C. = To Meet Exist. Pipe

E end - 6' Bk. of cb.

I.E.

65.67
 $\frac{65.67}{58.00}$

C 7.67

W. end " " "

Top - cb.

65.67
 $\frac{65.67}{65.42}$

C 0.25

Exist pipe - 8.5

Top - cb.

65.67
 $\frac{65.67}{65.46}$

C 0.21

56.87
 $\frac{56.87}{56.83}$

4' K Inlet - SE. Cor Central - Moved to Miss

Pole - W. edge = 0.7 E. of P.C.

W. edge = 0 + 00.7

Top cb. got

$\frac{4.78}{63.67} = 1.11$ 64.78

$\frac{78}{64.50} = 1.11$ C 0.28

E. edge = 0 + 06.04

Top cb.

$\frac{4.81}{63.68} = 1.13$ 64.81

$\frac{81}{64.51} = 1.11$ C 0.30

Req 18" Pipe = 0 + 00

I.E.

64.81
 $\frac{4.81}{60.33} = 1.11$ C 4.48

0 + 09.56

64.83
 $\frac{4.83}{60.28} = 1.11$ 4.55

0 + 45

64.61
 $\frac{4.61}{60.13} = 1.11$ 4.48

+ 80

64.68
 $\frac{4.68}{59.97} = 1.11$ 4.71

1 + 10

64.75
 $\frac{4.75}{59.84} = 1.11$ 4.91

+ 45

64.78
 $\frac{4.78}{59.69} = 1.11$ 5.09

+ 80

64.74
 $\frac{4.74}{59.13} = 1.11$ 5.61

2 + 10

64.67
 $\frac{4.67}{58.57} = 1.11$ 6.10

2 + 39.17 = B.C.

64.65
 $\frac{4.65}{58.44} = 1.11$ 6.21

2+48.73 = at Box

W. end Box

E. end Box = 4' W. of P.C.

Req. 18" To E.

approx - 17.2 = Clean out.

I.E.

Top cb.

Top cb.

I.E.

I.E.

Gut.

64.79

^{4 79} 63.70 c 1.09 64.79

^{4 79} 63.68 c 1.11 64.79

64.79

Cross at Cor. 63.48

Exist I.E. 57.30

^{4 79} 58.40

^{7 9} 64.53

^{3 9} 64.51

^{4 79} 58.00

^{3 48} 57.60

6.39

C 0.26

C 0.28

6.79

5.88

4' K inlet - N.W. Cor. 41st

E. end = 2.33' W. of P.C.

W. end = 7.67' W. of P.C.

Top cb.

I.E.

Top cb.

I.E.

Gut.

8' BK

^{4 87} 63.83 c 1.04 64.87

^{4 89} 63.82 c 1.07 64.89

^{8 7} 64.65

^{4 87} 58.00

^{8 9} 64.66

^{4 87} 58.00

C 0.22

C 6.87

C 0.23

C 6.89

4' K. Inlet N.W. Cor. 42nd

E. end = 3.33' W. of P.C.

W. end = 8.67' W. of P.C.

Top cb.

I.E.

Top cb.

I.E.

^{4 79} 63.73 c 1.06 64.79

^{4 84} 63.74 c 1.10 64.84

^{7 9} 64.56

^{4 79} 56.00

^{8 4} 64.57

^{4 84} 56.00

C 0.23

C 8.79

C 0.27

C 8.84

Cont. on P. 75

5.24
4.84

Cont. from P. 26 = S. Side

E. of 36th

1+99.10				76.49	76.72 ₄₉	F 0.23
2+29.10				76.15	76.55 ₁₅	F 0.40
2+55.15 = P.C. - SW. Ref. Cherokee		5.73 = 8"		75.74	76.40 ₇₄	F 0.66
1/4				76.01	76.38 ₀₁	F 0.37
1/2			6.00	75.71 C 0.29	76.00	F 0.36
3/4				76.02	76.34 ₀₂	F 0.32
E.C. = Meet.		5.69	75.60	75.98	76.32 ₉₈	F 0.34 ^{To} 6.32
SE Ref Cherokee						
Meet.		5.26	75.26	76.08	75.94 ₀₈	C 0.14
1/4			75.29	75.75	75.97 ₇₅	F 0.22
1/2			75.33 ₈₁ C 0.48	75.81	76.00 ₈₁	F 0.19
3/4			75.36	75.80	76.03 ₈₀	F 0.23
E.C. = o + oo			75.40 = 8"	75.74	76.07 ₇₄	F 0.33
+30				75.33	75.81 ₃₃	F 0.48 ^{6.07}
+60				75.30	75.54 ₃₀	F 0.24
+90				75.23	75.28	F 0.05
1+16.45 = P.C. = 4' Rad.			4.18 = 8"	74.97	75.05 ₉₇	F 0.08
E.C. = To Alley			74.59 ₉₇ C 0.38	74.97	75.09 ₉₇	F 0.12
W. Prop.		75.16	75.14	75.43	75.23	C 0.20

⁷⁶
E = 74.58

E. Prop.		74.75	74.76	74.67	75.10 _{4 07}	F 1.03	
P.C. = To Alley			74.46	74.46	74.96 ₊₆	F 0.50	
E.C. = 4' Rad = 1+39.25			4.17 = 8"	74.46	74.84 ₄₆	F 0.38	
1+69.45				74.47	74.55 ₄₇	F 0.08	
1+99.45				73.98	74.26 _{3 98}	F 0.28 ⁴⁵²	
2+29.45			8"	73.75	73.96 ₇₅	F 0.21	
+59.45 = ^{30'} P.C. = 37 th - SW. Ret.			⁵⁵ 73.20 C 0.35	73.55	73.70 ₇₅₅	F 0.15	
1/4				73.34	73.65 ₅₄	F 0.31	
1/2			⁴¹ 73.12 C 0.29	73.41	73.69 ₄₉	F 0.19	
3/4				73.35	73.55	F 0.20	
Meet. in Dr.							
SE Ret. 37 th		3.05	73.05	72.88	72.88	73.50 _{2 88}	F 0.62
Meet.							
		2.69	72.69		73.33	73.33	
1/4					73.37	73.35	C 0.02
1/2			¹¹ 72.73 C 0.38	73.11	73.38	F 0.27	
3/4				73.07	73.40 ₀₉	F 0.33	
E.C. = 0+00	73.16 ₁₃	73.42 ₂₇	72.76 = 8"	73.30	73.43	F 0.13	
0+10	5.29			73.53	73.50	C 0.03	
+20				72.91	73.57 ₉₁	F 0.677	
Cont. P. 36							

1+05				74.43	74	40	C 0.03	
1+40				73.79	74	.12	F 0.33	
+75				73.95	73	.83	C 0.12	
2+10	1+95 = D.	74.54		3.13	73.25	73	55	F 0.30
+35				2.82	72.94	73	35	F 0.41
+59.25 = P.C.	= N.W. Ret	M ^c Clintock	72.48	72.83	73	.15	E 0.32	
1/4	Cov. Gut = I.E.	72.90	72.38	C 0.52	72.88	73	16	F 0.28
1/2			72.69	C 0.20	72.89	73	17	F 0.28
3/4					73.10	73	18	F 0.08
Meet.		got 2.90	72.90	Top	73.19	73	19	
	NE. Ret - M ^c Clintock							
Meet.			72.45	72.91	72	.81	C 0.10	
1/4	Cov. Gut = I.E.	72.54	72.18	C 0.36	72.87	72	79	C 0.08
1/2			72.26	C 0.40	72.66	72	78	F 0.12
3/4					72.75	72	77	F 0.02
E.C. = 0+00		72.60	72.75	F 0.15	2.08 = 8"	72.71	72.75	F 0.04
0+35					72.76	72	44	C 0.32
+70					71.84	72	10	F 0.26
1+05					71.31	71	69	F 0.38
+40		71.91			70.82	71	25	F 0.43

Cont. on P. 38

0 + 55			73.15	73.52	F 0.39	39	
+ 90	walk	73.83	3.79	73.10	73.46	F 0.39	39
1 + 25			72.83	73.40 ₈₃	F 0.57	61	
+ 60			72.99	73.35 ₉₉	F 0.36	41	
+ 95			73.04	73.29 ₀₄	F 0.25	31	
2 + 30			73.11	73.23 ₁₁	F 0.12	19	
+ 60			73.14	73.18 ₁₄	F 0.04	12	
+ 91 = Brk.			73.04	73.13 ₀₄	F 0.09		
3 + 16			72.60	73.07 ₆₀	F 0.47		
3 + 41	rc.		72.18	72.96 ₁₈	F 0.78		
3 + 66			71.99	72.87 ₉₉	F 0.88		
3 + 91 = Brk.			71.97	72.62 ₉₇	F 0.65		
4 + 26			72.30	72.31	F 0.01		
+ 61			71.83	72.01 ₈₃	F 0.18		
+ 96			71.67	71.70 ₆₇	F 0.03		
5 + 31			71.17	71.40 ₁₇	F 0.23		
+ 66			70.99	71.10 ₉₉	F 0.11		
6 + 01			70.37	70.80 ₃₇	F 0.43		
+ 36			70.61	70.49 ₆₁	C 0.12		

Cont. on P. 37

6+71 ³⁵				70.21	70.18 ²¹	C 0.02
7+06				69.41	69.87 ⁴¹	F 0.46
+41			T.P.	69.25	69.56 ²⁵	F 0.31
+76				69.08	69.25 ⁸⁸	F 0.17
8+11 ³⁵				68.85	68.94 ⁸⁵	F 0.09
+46				68.49	68.63 ⁴⁹	F 0.14
+81 ²⁵				68.09	68.32 ⁰⁹	F 0.23
9+06				67.83	68.10 ⁸³	F 0.27
+21.8 = Brk.			Errade	67.68	67.96 ⁶⁸	F 0.28
W. end = +31.6		67.07		67.88	67.89	
E. end			67.02			
			67.09 = Exist	67.87	67.85 = cot. 0.83	
9+40.1 = P.C.	- S.W. Ret.	29 th	66.97 = 10°	67.52	67.80 ⁵²	F 0.28
1/4				67.58	67.77 ⁵⁸	F 0.19
1/2			67.05	67.67	67.75 ⁰⁵	F 0.08
3/4				67.73	67.72	C 0.01
EC. = Meet.			67.08	67.50	67.69 ⁵⁰	F 0.19

Cont. From P. 35

- N.

Side - McClinton - E.

9.02 = B.P. 38

1+75				70.57	70.75 ₅₇	F 0.18
2+10				70.04	70.25 ₀₄	F 0.21
+35				69.92	69.90	C 0.02
+59, 29 = PC	- N.W. Ret.	38 th	68.88 = 8"	69.34	69.55 ₃₄	F 0.21
1/4				69.34	69.52 ₃₄	F 0.18
1/2			9.20 68.75 C 0.45	69.20	69.50 ₂₀	F 0.30
3/4				69.27	69.48 ₂₇	F 0.21
E.C. = Inlet.			68.62	69.47	69.45	C 0.02
N. end.			68.65	69.45	69.48	F
+14 = Meet.			68.92	69.50	69.51 = Meet.	
	N.E. Ret.	38 th				
Meet.			68.67 = gut.	69.06	69.08 = Meet.	
+14 = N. end.				68.99	69.02	
PC = Inlet.			68.15	68.98	69.00	
1/4				68.95	69.02 ₉₅	F 0.07
1/2			86 68.30 C 0.56	68.86	69.05 ₈₆	F 0.19
3/4				69.10	69.07	C 0.03
EC = 0+00			68.43 = 8"	68.98	69.10 ₉₈	F 0.12
0+35				68.59	68.79 ₅₉	F 0.20

0+70				68.43	68.48 ₄₃	F 0.05		
1+05				68.21	68.17 ¹	C 0.04		
+40				67.87	67.86	C 0.01		
+75				67.56	67.55	C 0.01		
2+10				66.94	67.25 ₉₄	F 0.31		
+37.30 = Brk.			66.34 = 8'	66.79	67.01 ₉₄	F 0.22		
inlet = +47.3			66.05	66.90	66.92	F 0.02		
E. end.				66.88				
PC = 2+55.25' - N.W. Ret. 39 th			66.04 ⁵⁰	C 0.46	66.50	66.87 ₅₀	F 0.37	
1/4				66.70	66.86 ₇₀	F 0.16		
1/2			66.12 ⁶¹	C 0.49	66.61	66.85 ₆₁	F 0.24	
3/4				66.36	66.84 ₃₆	F 0.48		
EC = Meets. = in Dr.			66.20	66.26	66.84	66.83	C 0.01	
N.E. Ret. 39 th								
Meets		↓	5.92	65.92 ⁴¹	C 0.49 ^{stake}	66.41	66.49 ₄₁	F 0.08
1/4				65.90 ⁵⁹	C 0.69	66.59	66.51	C 0.08
1/2				65.88 ⁶¹	C 0.73	66.61	66.54 ₆₁	C 0.07
3/4				65.86 ⁶⁵⁹	C 0.73	66.59	66.57	C 0.02
EC = 0+00 = w. end				65.84 ⁶⁷²	C 0.88	66.72	66.60	C 0.12
0+07 = W. end } New Inlet				65.81		66.64		
+12.34 = E. end }						66.67		

0+25			66.08 = 8"	66.44	66.73 ₄₇	F 0.29	
0+50		walk 67.11		66.25	66.83 ₂₅	F 0.58	
+75				66.26	66.81 ₂₆	F 0.55	
1+00				66.21	66.77 ₂₁	F 0.56	
+35				66.26	66.67 ₂₆	F 0.41	
+70				66.30	66.57 ₃₀	F 0.27	
2+05				66.15	66.47 ₁₅	F 0.32	
+35.8							
+36.2 = 10' from end of Inlet.			65.72 = 8"	66.24	66.39 ₂₄	F 0.15	
inlet = w.		65.45		66.35	66.36	F	
(inlet - E. = 33')		Aut. 65.47		66.33	66.36		
P.C. = NW. Ret 40 th - 12' Rad.							
1/4			65.57 ⁹³	C 0.42	65.93	66.33 ₉₃	F 0.40
1/2			65.54		65.97	66.31 ₉₇	F 0.34
3/4			65.58 ⁶¹⁰	C 0.52	66.10	66.30 ₉₇	F 0.20
Meet			65.61		65.97	66.28 ₉₇	F 0.31
		65.65	65.65		66.42	66.27 ₄₂	C 0.15
	N.E. Ret. 40 th						
Meet			65.95			66.58	
1/4					66.25	66.56 ₂₅	F 0.31
1/2			65.89 ⁶³¹	C 0.42	66.31	66.54 ₃₁	F 0.23
3/4			6.24	66.24	66.52 ₂₄	F 0.28	

Cont. on P. 46

Cont. from P. 37 - S. Side

39th - E.

$\frac{64}{88}$

41

SE. Ret. - 39th



Meet	6.92	66.92	66.85	67.31 ₈₅	F 0.46	
1/4				67.78		
1/2		¹⁸ 66.77	C 0.41	67.18	67.30 ₁₈	F 0.12
3/4				67.30		
EC = 0 + 00		¹⁶ 66.63 = 8"		67.10	67.30	F 0.20
+35				66.79	67.13 ₇₉	F 0.34
+70				66.83	66.96 ₈₃	F 0.13
1 + 05				67.01	66.79 ₇₉	C 0.22
+40				66.24	66.61 ₂₄	F 0.37
+75				66.46	66.43	C 0.03
2 + 10				66.36	66.25 ₃₆	C 0.11

+39.4 = PC. - S.W. Ret. - 40th

1/4		65.43 = 8"	65.98	66.10 ₉₈	F 0.12	
1/2			65.81	66.07	F 0.26	
3/4		⁷² 65.41	C 0.31	65.72	66.05 ₇₂	F 0.33
Meet			65.41	65.33	66.03 ₃₃	F 0.70
		⁶³ 65.40	65.71	65.63	66.00 ₆₃	F 0.37
		C 0.23				

PK. in Pole 66.95 = from 39th

S. Side - 40th

E.

42

SE. Ret. 40th

Meet

65

65.12

65.77

1/4

65.65

65.76

F 0.11

1/2

65.10 Co. 65 65.75

65.75

G

3/4

65.54

65.74

F 0.20

E.C. = 0+00

65.07 = 8"

65.47

65.74

F 0.27

0+30

65.56

65.62

F 0.06

+60

65.48

65.50

F 0.02

+90

65.39

65.39

G

1+15¹⁵ PC - 4' Rad.

64.63 = 8"

65.09

65.30

F 0.21

E.C. = To Alley

64.78 Co. 31 65.09

65.28

F 0.19

W. Prop.

5.47

65.35 Co. 13 65.48

65.50

F 0.02

E. Prop.

5.66

65.24 Co. 36 65.60

65.44

C 0.16

PC to Alley

64.80 F 0.01 64.79

65.30

F 0.51

E.C. = 4' Rad = 1+38.15

64.53 = 8"

64.79

65.20

F 0.41

1+68.15

64.90

65.10

F 0.20

+98.15

64.97

64.98

F 0.01

2+28.15

64.86

64.86

G

2+56.30 = P.C. - S.W. Ret. Central

64.08

64.56

64.75

F 0.19

1/4 = Cor. of Gut. - I.E.

64.33

64.01 Co. 32 64.54

64.70

F 0.16

S. Side - Central - E.

32.3
11.5
43.8

1/2			64.09 ⁴⁶	C 0.37	64.46	64.65 ⁴⁶	F 0.19
3/4					64.54	64.61 ⁵⁴	F 0.07
Meet.		4.10	64.10		64.75	64.58	
S.E. Ret. - Central							
Meet.			63.91		64.43	64.38 ⁴³	C 0.05
1/4 = Cor. Gut = I.E.		64.23	63.89 ²³	C 0.34	64.51	64.42 ⁵¹	C 0.09
1/2			63.77 ³³	C 0.56	64.33	64.44	F 0.11
3/4					64.30	64.46	F 0.16
E.C. = 0 + 00	0 + 00.5 = w. inlet	64.46 ³⁶¹	63.63			64.47	
0 + 16	P. Inlet	64.43 ^{3.68}			64.45	64.47	F 0.02
+ 51	0 + 06				64.09	64.60 ⁰⁹	F 0.51
0 + 96					64.14	64.72 ¹⁴	F 0.58
1 + 18.44 = P.C. = 4' Rad.			34 - 8"		64.30	64.84 ³⁰	F 0.54
E.C. = To Alley			64.43 ⁴⁸	F 0.45	63.98	64.93 ⁴⁸	F 0.95
W. Prop.		4.69	64.65 ⁴⁸	C 0.01	64.66	65.07 ^{4.68}	F 0.41
E. Prop.	0.30 Bk.	4.48	64.54 ¹⁰	C 0.56	65.10	65.09 ^{4.63}	C 0.01
P.C. = To Alley			64.45 ⁸²	C 0.38	64.83	64.95 ⁸²	F 0.12
E.C. = 4' Rad. =	1 + 41.44		36 - 8"		64.33	64.86 ³³	F 0.53
1 + 76.44					64.25	64.73 ²⁵	F 0.48

S. Side

18.3
28.3
11.5
37.8

40.22
19.32
59.54

2 + 11.44 _{28.78}							
+40.22	w. +50.22 = Inkst	64.47		64.25	64.61	F 0.36	
+59.54 = P.C. = S.W. Ret. -	E 46 PC	64.42	63.65	64.17	64.51	F 0.34	
1/4 - Cor. Gut. = IF	41 st	64.00	63.66	63.66 ²⁷ Co.61	64.27	64.40	F 0.13
1/2			63.89 ⁰⁰	Co.11	64.08	64.38	F 0.30
3/4			63.68	Co.46	64.14	64.36	F 0.22
Meet					64.20	64.34	F 0.14
						64.32	Co.19

SE Ret. 41st

Meet.				63.86	64.43	64.43	G	
1/4 - Cor. Gut. = IF		64.27	64.00	Co.27	64.27	64.50	F 0.23	
1/2			63.96 ²⁹	Co.33	64.29	64.58	F 0.29	
3/4					64.34	64.65	F 0.31	
E.C. = 0 + 00			64.06		64.49	64.73	F 0.24	
0 + 30					64.49	64.80	F 0.31	
+60					64.61	64.87	F 0.26	
+90					64.63	64.94	F 0.31	
1 + 18.30 = P.C. = 4' Rad.				4.33	64.51	65.00	F 0.49	
E.C. - To Alley				64.59	F 0.09	64.50	65.09	F 0.59
W. Prop				64.85	F 0.12	64.73	65.23	F 0.50

.78 = Paue.

S. Side

E. Prop.	Conc. 64.82	64.79 ⁸⁴	C 0.05	64.84	65.26 ₈₄	F 0.42	
P.C. = To Alley		64.62 ₃₄	F 0.28	64.34	65.12 ₃₄	F 0.78	
EC = 4' Rad = 1+41.30				64.34	65.05 ₃₄	F 0.71	
1+71.30				64.64	65.12 ₆₄	F 0.48	
2+01.30	65.62			64.80	65.19 ₈₀	F 0.39	
+31.30				65.00	65.26	F 0.26	
+47.45		.62		65.15	65.29	F 0.14	
+57.45 = P.C.	S.W. Ret. - Marlborough.	.52 - 8"		65.16	65.19	F 0.03	
1/4				65.16	65.13	C 0.03	
1/2		64.47 ⁸¹	C 0.34	64.81	65.06 ₈₁	F 0.25	
3/4				64.80	65.00 ₈₀	F 0.20	
Meet.		4.42	64.42	65.04	64.93 ₄	C 0.11	
	SE. Ret. Marlborough.						
Meet		↓	64.24 ⁹² = qd.	64.92	64.85 ⁹² = Top.	C 0.07	
1/4				64.41	64.85 ₄₁	F 0.44	
1/2			64.28 ³⁶	C 0.08	64.36	64.86 ₃₆	F 0.50
3/4				64.52	64.86 ₅₂	F 0.34	
EC = 0+00			4.20 - 8"	64.54	64.87 ₅₄	F 0.33	
0+30				64.28	64.82 ₂₈	F 0.54	
+60				64.48	64.77 ₄₈	F 0.29	

Cont. on P. 51

Cont from P. 40

- N. Side 40[±] - E.

46

NE. Ret. 40[±]

E.C. = 0+00

66.26 66.50₂₆ F 0.24

0+30

66.27 66.37 F 0.10

+60

65.70 66.23₇₀ F 0.53

+90

66.05 66.09 F 0.04

1+15.3 = P.C. = 4' Rad

5.30

65.93 65.97 F 0.04

E.C. = To Alley

65.53

66.03

W. Prop.

65.76 = Pavc

66.17

E. Prop.

± 65.45

65.81

66.10

P.C. = To Alley

65.46

65.96

E.C. = 4' Rad. = 1+38.3

5.19

65.73 65.86₇₃ F 0.13

1+68.3

65.56 65.74₅₆ F 0.18

+98.3

65.55 65.62₅₅ F 0.07

2+28.3

5.73

inlet

W 65.41

E. 65.40 - 64.57

8" face

65.26 65.50₂₆ F 0.24

56.13

5+9.34

+55.9 = P.C.

= N.W. Ret. Central

64.59 C 0.61 65.20 65.40 F 0.20

1/4 = Cor. Gut. = I.F.

65.13 65.33 F 0.20

1/2

64.63⁹⁴ C 0.31 64.94 65.27₉₄ F 0.33

3/4

64.81 65.20₈₁ F 0.39

Meet.

64.66

65.16 65.14 C 0.02

N. Side

47

N.E. Ret. - Central ↓

Meef.		64.69		65.24	65.20	C 0.04
1/4 = Cor. Gut. = I.F.				64.87	65.21 ₈₇	F 0.34
1/2		64.63 ⁹⁵	C 0.32	64.95	65.23 ₉₅	F 0.28
3/4				65.15	65.24 ₁₅	F 0.09
EC = 0 + 00		4.58		65.17	65.25 ₁₇	F 0.08
+30				65.02	65.18 ₀₂	F 0.16
+60				64.88	65.11 ₈₈	F 0.23
+90				64.90	65.04 ₉₀	F 0.14
1 + 18.35 = P.C. = 4' Rad.		4.30		64.67	64.97 ₆₇	F 0.30
EC = To Alley		64.54 ¹⁴	C 0.60	65.14	65.04	C 0.10
W. Prop	65.13	65.05	F 0.02	65.03	65.18	F 0.15
E. Prop	65.03	64.80 ²¹	C 0.41	65.21	65.15 ²¹	C 0.06
PC = To Alley		64.51 ₁₉	F 0.32	64.19	65.01	F 0.82
EC = 4' Rad. = 1 + 41.35		4.25		64.81	64.92 ₈₁	F 0.11
1 + 71.35				64.88	64.85	C 0.03
2 + 01.35				64.73	64.78	F 0.05
^{38.12} +39.47 = pw. Inlet.				64.72	64.71	C 0.01
+57.23 = P.C. = N.W. Ret. 41 st		63.93 ⁵⁸	C 0.65	64.58	64.67 ₅₈	F 0.09
1/4 = Cor. Gut. = I.F.	64.04	64.06	F 0.02	64.31	64.65 ₃₁	F 0.34
inlet W. 64.71 E. 64.68	63.90 = gut.					

N. Side

48

1/2			64.04 ³³	C 0.29	64.33	64.63	F 0.30
3/4					63.75	64.61 ⁷⁵	F 0.86
Meet.		64.16	64.16		64.59	64.60	F 0.01

N.E. Ret. 41st

Meet.			64.53 ⁴		65.03	64.96 ^{5 03}	C 0.07
1/4 = Cor. Gut - IE.		64.44	64.24 ⁴⁴	C 0.20	64.61	64.96 ⁶¹	F 0.35
1/2			64.43 ⁶⁴	C 0.21	64.64	64.97 ⁶⁴	F 0.33
3/4					64.84	64.98 ⁸⁴	F 0.14
E.C. = 0 + 00			8"		64.81	65.00 ⁸¹	F 0.19
+30					65.15	65.07 ¹⁵	C 0.08
+60					65.03	65.14 ⁰³	F 0.11
+90					65.03	65.21 ⁰³	F 0.18
1+16.18 = P.C. = 4' Rad.			4.60 - 8"		64.84	65.27 ⁸⁴	F 0.43
P.C. = To Alley			64.90	F 0.06	64.84	65.40 ⁹⁰	F 0.56
W. Prop		5.50	65.54	C 0.07	65.61	65.61	G
E. Prop	split Pave	5.47	65.51 ⁵¹	F 0.33	65.18	65.64 ⁵¹	F 0.46
P.C. = To Alley			64.93 ⁹³	C 0.37	65.30	65.43 ⁹³	F 0.13
E.C. = 4' Rad. = 1+39.38			4.65 - 8"		65.21	65.32 ⁶⁵	F 0.11
1+69.25					65.02	65.39 ⁰²	F 0.37

1+99.25				65.17	65.46	F 0.29
2+29.25				65.38	65.53 ₃₈	F 0.15
+55.24 = P.C. N.W. Ret	Marlborough.	493 = 8"		65.41	65.69 ₄₁	F 0.19
1/4	↓s			65.32	65.57 ₃₂	F 0.25
1/2		⁵³⁰	64.97 C 0.33	65.30	65.55 ₃₀	F 0.25
3/4		cross		65.66	65.52 ₆₆	C 0.14
Meet.			65.01	65.64	65.50 ₆₄	C 0.14
	N.E. Ret Marlborough					
Meet.	↓s		64.70 = gut		65.30 = Top	
1/4				64.90	65.30 ₉₀	F 0.40
1/2			⁹⁵ 64.66 C 0.29	64.95	65.30 ₉₅	F 0.35
3/4				65.17	65.30 ₁₇	F 0.13
P.C. = 0 + 00			4.63	64.90	65.30 ₉₀	F 0.40
0 + 30				64.83	65.21 ₈₃	F 0.38
+60				64.98	65.12 ₉₈	F 0.14
+90				64.97	65.03 ₉₇	F 0.06
1+16.05 P.C. = 4' Rad.			4.28 = 8"	64.86	64.95 ₈₆	F 0.09
E.C. to Alley			⁸⁵ 64.52 C 0.33	64.85	65.02 ₈₅	F 0.17
W. Prop.		64.60	64.65 - ?	66.26	65.16 ₆₅	C 1.10
			61.61			

E. Prop.		64.65	⁵⁰⁹ 64.65	C 0.44	65.09	65.12 [✓]	F 0.03
PC. - To Alley			⁷⁴ 64.48	C 0.26	64.74	64.98 ⁷⁴	F 0.24
EC. - 4' Rad =	1 + 39.65		4.22		64.74	64.89	F 0.04
+ 74.4					64.67	64.79 ⁶⁷	F 0.12
2 + 0 9.4					64.76	64.69	C 0.07
2 + 41.68	10' from Inlet				64.59	64.60	F 0.01
Wly inlet			Top 64.53			64.57	
Ely inlet		gut. 63.70	Top 64.53				
PC = 2 + 60.47 =	NW Ret. 42 nd		⁵¹ 63.74	C 0.77	64.51	64.52	F 0.01
1/4			63.76		64.48	64.51	F 0.03
1/2			²⁶ 63.74	C 0.48	64.26	64.50 ²⁶	F 0.24
3/4			63.80		64.17	64.49	F 0.32
Meet			63.82		64.32	64.48 ³²	F 0.16
Meet	1/2 NE Ret. 42 nd		63.42		64.00	63.90 ^{TOP}	
1/4	1 - Slot.				64.16	63.92 ⁶	C 0.24
1/2			¹⁸ 63.38	C 0.80	64.18	63.95 ¹⁸	C 0.23
3/4					63.96	63.97	F 0.01
EC. = 0 + 00			63.33		64.13	64.00	C 0.13

Cont. on P. 52

Cont. from P. 45

S. Side

Marlborough - E.

3.76 = 70'

51

0+90				64.42	64.72 ₄₂	F 0.30
1+16.40 = PC = A' Rad.			4.00 = 8'	64.42	64.67 ₄₂	F 0.25
E.C. = To Alley			64.24 ⁴² C 0.18	64.42	64.74 ₄₂	F 0.32
W. Prop.	4.74 = cb = A.C.		64.68 ⁵⁷ F 0.11	64.57	64.88 ₅₇	F 0.31
E. Prop.	4.59 " "		64.52 ⁵⁷ C 0.26	64.78	64.85 ₇₈	F 0.07
PC = To Alley			64.21 ²⁶ C 0.05	64.26	64.71 ₂₆	F 0.45
E.C. = 4' Rad = 1+39.40			3.95 = 8"	64.52	64.62 ₅₂	F 0.10
1+69.2				64.56	64.57	F 0.01
+99.2				64.52	64.51	C 0.01
2+29.2				64.50	64.46 ⁵⁰	C 0.04
+65.57 = P.C. = S.W. Ret	42 nd		3.73	64.27	64.40 ₂₇	F 0.13
1/4 = Cor. of Gut = I.E.		63.97	63.68 ⁹⁷ C 0.29	64.19	64.37 ₁₉	F 0.18
1/2			63.85 ⁶⁹ F 0.16	63.69	64.34 ₆₉	F 0.65
3/4				63.97	64.31 ₉₇	F 0.34
Meet.		3.98	64.06	64.26	64.28	F 0.02
Meet -	S.E. Ret. 42 nd	3.84 ⁸⁶	63.84		64.41 ^{TOP}	
1/4 Cor. of Gut = I.E. $\frac{1}{2}$ - flat		63.79	63.58 ⁷⁹ C 0.21 - PK	64.37	64.35	C 0.02
1/2			63.68 ³⁴ C 0.66	64.34	64.30	C 0.04
3/4				64.12	64.25	F 0.13
PC = 0100	Cont. on P. 57		63.53	64.14	64.20 ₁₄	F 0.06

Cont. from P. 50

N.

Side - 42nd - E.

52

0+00 = E.C. - NE. Ret. 42nd0+35 64.32 63.95³² C 0.37+70 64.15 63.89¹⁵ C 0.261+06¹⁶ PC. = 4' Rad. 3.16 = 8" 63.99 63.83⁹⁹ C 0.16E.C. = To Alley 63.44⁹⁹ C 0.55 63.99 63.94⁹⁹ C 0.05

W. Prop. 4.06 64.00 C 0.20 64.20 64.15 C 0.05

E. Prop. 3.69 63.78 F 0.02 63.76 64.02⁹² F 0.26PC = To Alley 63.38⁵⁴ C 0.20 63.58 63.88⁵⁸ F 0.30E.C. = 4' Rad = 1+29.16₃₅ 3.29 = 8" 63.58 63.79⁵⁸ F 0.211+64₃₅ 63.82 63.74 C 0.081+99 63.48 63.68⁴⁸ F 0.202+27.81 = 10 w. of Inlet 63.55 63.63⁵³ F 0.18

w. inlet 63.55 63.61

E. inlet 62.69 63.52 63.60

P.C. = 2+45.29 62.77 63.51 63.60 F 0.09

1/4 = Cor. of Cut = I.E. 63.02 62.99⁰² C 0.03 63.55 63.55⁰² G1/2 62.83⁴⁴ C 0.61 63.44 63.49 F 0.053/4 63.26 63.43²⁶ F 0.17E.C. = Meet. = NW. Ret. - Copeland 62.89 63.61 63.38²⁰ C 0.23

N.E. Ret. - Copeland - Cross Gut

Meet.		63.28	63.67	63. ⁶⁷ ₅₈	C 0.09		
1/4	Cor. of Gut = I.E.	63.31	63. ³¹ ₁₂	C 0.19	63.64	63.65	F 0.01
1/2		63. ⁷⁹ ₂₃	C 0.56	63.79	63.72	C 0.07	
3/4			63.76	63.79	F 0.03		
E.C. = 0+00		63.18	63.78	63. ⁸⁵ ₈₅	F 0.07		
0+30			63.77	63. ⁹⁵ ₇₇	F 0.18		
+60			63.81	64. ⁰⁵ ₈₁	F 0.24		
+90			63.92	64. ¹⁴ ₉₂	F 0.22		
1+16.15 = P.C. = A Rad.		3.55 = 8"	63.84	64. ²² ₈₄	F 0.38		
E.C. = To Alley		63.81	F 0.38	63.43	64.31	F 0.88	
W. Prop.	- 0.14 Bk. = P.K.	64. ⁴³ ₁₀	C 0.53	64.63	64. ⁴⁵ ₆₃	C 0.18	
E. Prop.	± 63.96	64. ⁹⁵ ₃₆	C 0.59	64.95	64. ⁹⁵ ₅₀	C 0.45	
P.C. = To Alley		63. ⁴¹⁷ ₈₆	C 0.31	64.17	64. ³⁶ ₁₇	F 0.19	
E.C. = A Rad = 1+39.16		3.62 = 8"	64.17	64. ²⁹ ₁₇	F 0.12		
1+69.16			64.37	64.38	F 0.01		
1+99.16			64.28	64. ⁴⁷ ₂₈	F 0.19		
2+29.16			64.35	64. ⁵⁶ ₃₅	F 0.21		
2+55.20 = P.C. = N.W. Ret. Van Dyke.		63.94 = 8"	64.54	64. ⁶⁵ ₅₄	F 0.11		
1/4			64.41	64.61	F 0.20		

N. Side Van Dyke - E.

1/2	↑	64.06 ³³ C 0.27	64.33	64.58 ³³	F 0.25
3/4			64.17	64.55 ³³	F 0.38
EC. = Meet. = N.W. Ret. Van Dyke		64.14	64.19	64.52 ¹⁹	F 0.33

Meet. = PC - N.E. Ret. Van Dyke		63.55 ⁵⁶ 58 ⁹ out.		63.85 = Top	
1/4			63.69	63.87 ⁶⁹	F 0.18
1/2	↑	63.41 ⁵⁶ C 0.15	63.56	63.90 ⁵⁶	F 0.34
3/4			63.80	63.92 ⁸⁰	F 0.12
EC. = 0 + 00		63.28	63.81	63.95 ⁸¹	F 0.14

0 + 07.5	out. To Make Drain				
+15					
+22.5					
+30		63.15	63.42	63.82 ⁴²	F 0.40
+60			63.19	63.36 ¹⁹	F 0.17
+90			62.89	62.90	F 0.01
1 + 15.89 PC = 4" Rad.		1.83	62.36	62.50 ³⁶	F 0.14

EC. = To Alley		62.03 ²¹ C 0.18	62.21	62.53 ²¹	F 0.32
W. Prop	2.43	62.45	63.22	62.90 ²¹	C 0.32
E. Prop.	2.08	62.13	62.48	62.72 ⁴⁸	F 0.24

N. Side

43rd - E

55

P.C. = To Alley

62.08⁷⁴ F0.34 61.74 62.58⁷⁴ F0.84

E.C. = 4' Rad = 1+38.89

1.31-8" 61.82 61.98⁸² F0.16

1+69

60.79 60.91⁷⁴ F0.12

+99

59.89 59.85⁷⁴ C0.04

2+29

58.55 58.79⁵⁵ F0.24+54.87 = P.C. N.W. Ret. 43rd7.20 57.84 57.87⁵⁵ F0.03

1/4 = Cor. Gut = I.F.

56.85 56.65⁸⁵ C0.20 57.77 57.67⁷⁴ C0.08

1/2

56.90⁸⁸ F0.02 56.88 57.52⁸⁸ F0.64

3/4

57.05 57.35⁸⁵ F0.30

E.C. = Meet.

↑

6.11 56.61 57.07 57.18⁸⁵ - 18

P.C. = Meet.

N.E. Ret. 43rd5.40 55.40 55.85 55.77⁸⁵ C0.08

1/4

Cor. Gut = I.F.

55.82 55.49⁸² C0.33 55.65 55.71⁸⁴ F0.06

1/2

55.15⁷⁴ C0.59 55.74 55.66⁸⁴ C0.08

3/4

56.06 55.61⁸⁵ C0.45

E.C. = 0+00

4.89 55.95 55.56⁹⁵ C0.39

0+30

55.11 54.85¹¹ C0.26

+60

54.43 54.15⁴³ C0.28

+90

53.45 53.45⁴⁵ G

N. Side - 43-d E.

68
06
62

56

1 + 16.15 ⁵ PC = 4 Rad.		94	52.67	52.84	F 0.17	
E.C. = To Alley		^{3 10} 52.33	C 0.77	53.10	^{3 10} 52.83	C 0.27
W. Prop.	2.61	52.66		52.81	52.97	F 0.16
E. Prop. = Pipe	2.11	52.21		52.06	52.82	F 0.76
PC. = To Alley		52.06	F 0.31	51.75	52.68	F 0.93
E.C. = 4 Rad. = 1 + 39.15		1.85	+1	51.86	52.55	F 0.69
1 + 74.15				51.65	52.06	F 0.41
2 + 09.15				51.16	51.59	F 0.43
2 + 38.02 = 10' W. of Inlet				51.07	51.20	F 0.13
W. inlet.					51.07	
E. inlet.		50.13			51.02	
PC = 2 + 55.21 = N.W. Ret. - Fairmount.		⁹⁴ 50.17	C 0.67	50.84	51.00	F 0.16
1/4				50.87	50.99	F 0.12
1/2		⁷⁷ 50.32	C 0.45	50.77	50.97	F 0.20
3/4				50.45	50.95	F 0.50
E.C. = Meet		50.52		50.55	50.94	F 0.39

S. Side - 42nd - E.

Cont. from P. 51

0+00 = S.E. Ret. 42nd

0+30

+60

+90

1+10.92 = P.C. = 4' Rad.

E.C. = To Alley

W. Prop

E. Prop

P.C. = To Alley

E.C. = 4' Rad = 1+33.92

1+64

+94

2+24

+50.51 = P.C. = S.W. Ret. - Copeland

1/4

1/2

3/4

EC = Meet.

30' S.

33
23
10

57

64.20

64.02 64.12 F0.10

63.75 64.03 F0.28

63.69 63.94 F0.25

3.20 = 8" 63.41 63.87 F0.44

63.44 F0.03 63.41 63.94 F0.53

63.68 C0.90 64.58 64.08 C0.50

63.57 C0.25 63.82 64.02 F0.20

63.38 C0.09 63.47 63.88 F0.41

3.12 = 8" 63.46 63.79 F0.33

63.49 63.67 F0.18

63.23 63.56 F0.33

63.12 63.45 F0.33

2.68 62.37 63.35 F0.98

63.08 63.30 F0.22

62.64 C0.21 62.85 63.24 F0.39

62.93 63.18 F0.25

62.61 63.32 63.12 C0.20

62.50 62.76

S. Side - Copeland - E.

58

30' S. of PC = Gut. 62.32

S.E. Ret. Copeland	50's	62.24 ²²	62.70
Meet = PC.	gut. 2.59	62.38 ^{3.03} Co.65	63.11 63.03 .03 Top Co.08
1/4		62.82	63.05 ⁸² Fo.23
1/2		62.41 ^{3.07} Co.66	63.07 G
3/4		63.13	63.08 Co.05
E.C. = 0+00		62.43	63.00 63.10 Fo.10
0+30			63.11 63.19 Fo.08
+60			63.16 63.28 ¹⁶ Fo.12
+90			62.99 63.37 ⁹⁹ Fo.38
1+15.9 = PC. = 4' Rad.		2.77	63.44 ¹⁸ Fo.26
E.C. = To Alley		63.63 ^{3.89} Fo.14	62.89 63.53 ^{3.89} Fo.64
W. Prop.	2.93	62.16 ^{4.37} Co.21 = nail	64.37 63.67 ^{4.37} Co.70
E. Prop.	± 62.85	3.40	63.42 ^{7.5} Fo.67 62.75
PC = To Alley		63.07 ⁶ Co.09	63.16 63.57 ⁶ Fo.41
E.C. = 4' Rad. = 1+38.9		2.83	63.16 63.50 ¹⁶ Fo.34
1+69			63.34 63.55 ³⁴ Fo.21
+99			63.14 63.60 ⁹⁹ Fo.46
2+29			63.42 63.68 ²⁹ Fo.23
2+55.15 = PC. S.W. Ret. Van Dyke		3.03	63.32 63.70 ³² Fo.38
1/4			63.45 63.65 ³² Fo.20

S. Side Van Dyke - E.

59
29

95
30
65

59

1/2			^{2.24} 62.95	C 0.29	63.24	63.49	F 0.36
3/4	\$				63.56	63.55	C 0.01
E.C. = Meet.	↓		2.88	62.88	63.51	63.50	C 0.01

SE. Ret. Van Dyke

Meet.			2.36	62.36		63.03 ^{1.02}		
1/4	\$				63.14	63.07 ¹⁴	C 0.07	
1/2	↓			⁶⁹ 62.43	C 0.26	62.69	63.10 ⁶⁹	F 0.41
3/4					62.94	63.14 ⁹⁴	F 0.20	
E.C. = 0 + 00				62.50	63.28	63.18	C 0.10	
0 + 25					63.19	63.25 ¹⁹	F 0.06	
+ 50					63.25	63.32 ²⁵	F 0.07	
+ 77.46					63.35	63.40	F 0.05	
²⁵ 1 + 02.46					63.45	63.34 ⁴⁵	C 0.11	
^{13.5} + 15.96 PC = 4' Rad.				2.52	63.25	63.19 ²⁵	C 0.06	
E.C. = To Alley				¹⁹ 62.77	C 0.42	63.19	63.27 ¹⁹	F 0.08
W. Prop.	= Prop = pipe		3.35	63.37	63.34	63.48	F 0.14	
E. Prop.	= Prop.		3.01	63.05	63.31	63.36 ³¹	C 0.25	
PC = 4' Rad = To Alley				62.42 ³⁷	F 0.05	62.37	62.92 ³⁷	F 0.55
E.C. 1 + 38.96				2.07	62.42	62.74 ⁴²	F 0.32	

38.96
13.50
52.46

S. Side - 43rd

Meet 7.52

9.1 7.31

7.17

± 56.76 - 82

60

+ 13.5 = 1+52.46

+ 25 1+77.46

25 2+02.46

60.52 - 61.02 ^{steps}

25 2+27.46

59.27

25

2+55.05 = P.C. = S.W. Ret. 43rd

1/4 - Cor. of Gut 6.84

56.81

1/2

3/4

E.C. = Meet.

57.06

57.72

57.73

F 0.01

56.82 F 0.01

57.53

57.68

F 0.15

56.90 C 0.80

57.70

57.62

C 0.08

57.64

57.56

C 0.08

56.97

57.50

P.C. = Meet. = S.E. Ret. 43rd C.B.K.

1/4 Cor. of Gut 6.44

56.48

1/2

3/4

E.C. = 0+00

0+30

+60

+90

56.44

57.14

57.02

C 0.12

56.36 C 0.12

56.66

56.93

F 0.27

56.23 C 0.40

56.63

56.85

F 0.22

56.62

56.76

F 0.14

56.01

56.37

56.68

F 0.31

55.38

55.79

F 0.41

54.79

54.90

F 0.11

53.22

54.00

F 0.78

S. Side - Fairmount.

61

1 + 16.1 = PC = 4' Rad			52.62	53.22 ¹⁷ ₆₂	F 0.60
EC = To Alley		52.68	F 0.07	52.61	53.18 F 0.57
W. Prop	52.80	52.87 ^{3 48}	C 0.61	53.48	53.32 ⁴⁸ C 0.16
E. Prop	2.38	52.42 ⁹³	C 0.51	52.93	52.87 ⁹³ C 0.06
PC = To Alley		52.23 ¹⁴	F 0.09	52.14	52.73 ¹⁴ F 0.59
EC = 4' Rad = 1 + 39.1			52.15 ¹⁴	52.63 ¹³	F 0.48
1 + 69.1			52.19	52.47 ¹⁴	F 0.28
1 + 99.1			51.96	52.32 ⁹⁶	F 0.36
2 + 27.32 = 10' W. of Inlet		8"	51.91	52.18 ⁹¹	F 0.27
W. inlet				52.15	
E. inlet		51.26 ⁸⁹	32' tip	52.09 ⁸⁹	
PC = 2 + 45.02 = S.W. Ret Fairmount		51.27 ⁸⁹	C 0.62	51.89	52.09 ⁸⁹ F 0.20
1/4			51.74	52.07 ⁷⁴	F 0.33
1/2		51.35 ⁶²	C 0.27	51.62	52.05 ⁶² F 0.43
3/4			52.07	52.03	C 0.04
EC = Meet.		51.35	.40	52.01	

N.E. Ret. Fairmount - To

44⁴ - N. Side

62

N.E. Ret. - Fairmount

N. End - on Fairmount.

Meet. = 34.01 U. of P.C.

24.01 - N. = Inlet = Nly.

18.67 N = " Sly. end.

P.C.

1/4

1/2

3/4

R.C. = 0+00

0+13.33 = W. end Inlet

0+18.67 = E. end "

0+28.67 = Gut Brk.

0+58.67

+88.67

1+03.80 = Meet = P.C.

50.39

50.21

50.22

51 = 8"

50.49

50.56

51.25

50.94

= 8" 0.73

50.83

50.65 - .60

50.69 - .66

= 8"

51.08

51.26

51.66

51.64

57

50.86^{Top}

50.90

50.98³51.18⁴⁹51.24⁵⁰

51.29

51.35⁹⁴51.40⁵⁸

51.48 - 47

51.52 - 46

51.61⁸⁸51.85²⁶52.09⁶⁰

52.21

F 0.69

F 0.68

F 0.04

F 0.41

F 0.57

F 0.53

F 0.59

F 0.43

		8' bk. of cb. face	
4' K Inlet - N.W. Cor. Copeland		Gut.	
E. end = 2.33 w. of P.C.	Top cb.	^{4 13} 62.77 C 1.36	^{4 13} 64.13 63.60 C 0.53
	I.E.		^{4 13} 55.00 C 9.13
W. end = 7.67 w. of P.C.	Top cb.	^{4 28} 62.78 C 1.50	^{4 28} 64.28 63.61 C 0.67
	I.E.		^{4 28} 55.00 C 9.28
Extra 4' K Inlet - N.E. Cor. 39 th .			
W. end = 7' from P.C.	Top cb.		66.61 66.64 F 0.03
	I.E.		66.61 ^{66 64} 60.50 C 6.11
E. end = 12.34 from P.C.	Top cb.		66.55 66.67 F 0.12
4' K - N.W. Cor. Fairmount			
E. end = 2' w. of P.C.	Top		51.34 ³⁴ 51.03 C 0.31
	I.E.		51.34 ^{51 34} 45.50 C 5.84
W. End = 7.34 from P.C.	Top		51.36 ³⁶ 51.07 C 0.29
I.E. of Box = New C.O.	P.K.		^{50 25} 50.25 45.00 C 5.25
Bottom			44.57
N.E. Cor. Fairmount - N. Inlet - 4' K			
N. End = 24.01 from P.C.	Top = 5' bk.		51.07 ⁰⁷ 50.92 C 0.15
S. End = 18.67 " "	Top		51.14 ¹⁴ 50.98 C 0.16
	I.E.		51.14 ¹⁴ 46.50 C 4.64

50.22
 $\begin{array}{r} 3.87 \\ 46.35 \end{array}$

50.22
 $\begin{array}{r} 3.98 \\ 46.24 \end{array}$

NE Cor.

48.60
 $\begin{array}{r} 1.68 \\ 46.92 \\ \hline 68 \end{array}$

47.32
 $\begin{array}{r} 1.68 \end{array}$

P.K. at Box = I.E. of Pipe

To N.

50.22

50.22
 46.00

C 4.22

To E

50.22

0.22
 46.24

C 3.98

W. end = ^{13.33} ~~18.67~~ from P.C.

Top

51.43

51.52

F 0.09

I.E.

51.43

⁴³
 46.74

C 4.69

E. end = 24.01 ^{18.67}

Top

51.47

51.57

F 0.10

S.W. Cor Fairmount = "K-1" Inlet

E. end = 2.34 w. of P.C.

Top

52.27

²⁷
 52.10

C 0.17

W. End = 7.68 w. of P.C.

I.E.

52.27

²⁷
 48.20

C 4.07

Top

52.35

³⁵
 52.13

C 0.22

I.E. of Pipe

P.K.

51.36

³⁶
 46.55

C 4.81

New Loc. NE. - To E.

E. end = 18.67 from P.C.

Top

51.43

51.52
₄₃

F 0.09

W. end = 13.33 from P.C.

Top

51.38

51.48

F 0.10

I.E.

³⁸
 47.32

C 4.06

51.48
 $\begin{array}{r} 83 \\ 50.65 \\ 9.00 \end{array}$

36.5 To P.C.
 41.5 To stake

water =

Cross
 51.75

51.92
₇₈

F 0.17

The image shows an open notebook with two facing pages. The pages are cream-colored and feature light blue horizontal lines. A vertical red margin line is present on each page, creating a narrow left margin. The notebook is bound in the center, and a small white tab is visible at the bottom edge. The pages are otherwise blank.

8 W. of E. Cb. 0+00 = PC Line

64.09	63.96	63.92	63.75	64.06
0	10	15	25	35

E - 20 out 63.95

E - 20 out 64.21

12

63.53

$\frac{17}{63.65}$

$\frac{30}{18.5}$

3.74

$\frac{12}{3.86}$

3.94

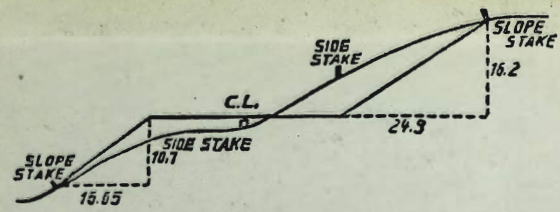
4.21

$\frac{3.86}{3.5}$

37th
38th

73.13
.18
73.23
29
35
40
46
52
57

13
49
62
57
13
44



DISTANCES FROM SIDE STAKES FOR CROSS-SECTIONING.
SLOPE 1 1/2 TO 1. ROADWAY OF ANY WIDTH.

	0	.1	.2	.3	.4	.5	.6	.7	.8	.9	
0	0.00	0.15	0.30	0.45	0.60	0.75	0.90	1.05	1.20	1.35	0
1	1.50	1.65	1.80	1.95	2.10	2.25	2.40	2.55	2.70	2.85	1
2	3.00	3.15	3.30	3.45	3.60	3.75	3.90	4.05	4.20	4.35	2
3	4.50	4.65	4.80	4.95	5.10	5.25	5.40	5.55	5.70	5.85	3
4	6.00	6.15	6.30	6.45	6.60	6.75	6.90	7.05	7.20	7.35	4
5	7.50	7.65	7.80	7.95	8.10	8.25	8.40	8.55	8.70	8.85	5
6	9.00	9.15	9.30	9.45	9.60	9.75	9.90	10.05	10.20	10.35	6
7	10.50	10.65	10.80	10.95	11.10	11.25	11.40	11.55	11.70	11.85	7
8	12.00	12.15	12.30	12.45	12.60	12.75	12.90	13.05	13.20	13.35	8
9	13.50	13.65	13.80	13.95	14.10	14.25	14.40	14.55	14.70	14.85	9
10	15.00	15.15	15.30	15.45	15.60	15.75	15.90	16.05	16.20	16.35	10
11	16.50	16.65	16.80	16.95	17.10	17.25	17.40	17.55	17.70	17.85	11
12	18.00	18.15	18.30	18.45	18.60	18.75	18.90	19.05	19.20	19.35	12
13	19.50	19.65	19.80	19.95	20.10	20.25	20.40	20.55	20.70	20.85	13
14	21.00	21.15	21.30	21.45	21.60	21.75	21.90	22.05	22.20	22.35	14
15	22.50	22.65	22.80	22.95	23.10	23.25	23.40	23.55	23.70	23.85	15
16	24.00	24.15	24.30	24.45	24.60	24.75	24.90	25.05	25.20	25.35	16
17	25.50	25.65	25.80	25.95	26.10	26.25	26.40	26.55	26.70	26.85	17
18	27.00	27.15	27.30	27.45	27.60	27.75	27.90	28.05	28.20	28.35	18
19	28.50	28.65	28.80	28.95	29.10	29.25	29.40	29.55	29.70	29.85	19
20	30.00	30.15	30.30	30.45	30.60	30.75	30.90	31.05	31.20	31.35	20
21	31.50	31.65	31.80	31.95	32.10	32.25	32.40	32.55	32.70	32.85	21
22	33.00	33.15	33.30	33.45	33.60	33.75	33.90	34.05	34.20	34.35	22
23	34.50	34.65	34.80	34.95	35.10	35.25	35.40	35.55	35.70	35.85	23
24	36.00	36.15	36.30	36.45	36.60	36.75	36.90	37.05	37.20	37.35	24
25	37.50	37.65	37.80	37.95	38.10	38.25	38.40	38.55	38.70	38.85	25
26	39.00	39.15	39.30	39.45	39.60	39.75	39.90	40.05	40.20	40.35	26
27	40.50	40.65	40.80	40.95	41.10	41.25	41.40	41.55	41.70	41.85	27
28	42.00	42.15	42.30	42.45	42.60	42.75	42.90	43.05	43.20	43.35	28
29	43.50	43.65	43.80	43.95	44.10	44.25	44.40	44.55	44.70	44.85	29
30	45.00	45.15	45.30	45.45	45.60	45.75	45.90	46.05	46.20	46.35	30
31	46.50	46.65	46.80	46.95	47.10	47.25	47.40	47.55	47.70	47.85	31
32	48.00	48.15	48.30	48.45	48.60	48.75	48.90	49.05	49.20	49.35	32
33	49.50	49.65	49.80	49.95	50.10	50.25	50.40	50.55	50.70	50.85	33
34	51.00	51.15	51.30	51.45	51.60	51.75	51.90	52.05	52.20	52.35	34
35	52.50	52.65	52.80	52.95	53.10	53.25	53.40	53.55	53.70	53.85	35
36	54.00	54.15	54.30	54.45	54.60	54.75	54.90	55.05	55.20	55.35	36
37	55.50	55.65	55.80	55.95	56.10	56.25	56.40	56.55	56.70	56.85	37
38	57.00	57.15	57.30	57.45	57.60	57.75	57.90	58.05	58.20	58.35	38
39	58.50	58.65	58.80	58.95	59.10	59.25	59.40	59.55	59.70	59.85	39
40	60.00	60.15	60.30	60.45	60.60	60.75	60.90	61.05	61.20	61.35	40
41	61.50	61.65	61.80	61.95	62.10	62.25	62.40	62.55	62.70	62.85	41
42	63.00	63.15	63.30	63.45	63.60	63.75	63.90	64.05	64.20	64.35	42
43	64.50	64.65	64.80	64.95	65.10	65.25	65.40	65.55	65.70	65.85	43
44	66.00	66.15	66.30	66.45	66.60	66.75	66.90	67.05	67.20	67.35	44
45	67.50	67.65	67.80	67.95	68.10	68.25	68.40	68.55	68.70	68.85	45
46	69.00	69.15	69.30	69.45	69.60	69.75	69.90	70.05	70.20	70.35	46
47	70.50	70.65	70.80	70.95	71.10	71.25	71.40	71.55	71.70	71.85	47
48	72.00	72.15	72.30	72.45	72.60	72.75	72.90	73.05	73.20	73.35	48
49	73.50	73.65	73.80	73.95	74.10	74.25	74.40	74.55	74.70	74.85	49
50	75.00	75.15	75.30	75.45	75.60	75.75	75.90	76.05	76.20	76.35	50

THE NATIONAL BLANK BOOK COMPANY
HOLYOKE MASSACHUSETTS
NEW YORK CHICAGO BOSTON SAN FRANCISCO