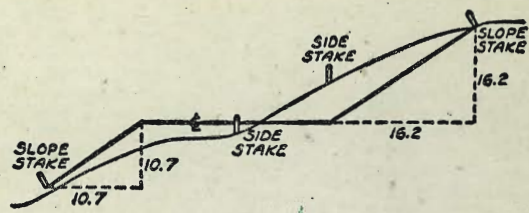


G-407



DISTANCES FROM SIDE STAKES FOR CROSS-SECTIONING
SLOPE 1 TO 1. ROADWAY OF ANY WIDTH

	0	1	.2	.3	.4	.5	.6	.7	8	9	
0	0.00	0.10	0.20	0.30	0.40	0.50	0.60	0.70	0.80	0.90	0
1	1.00	1.10	1.20	1.30	1.40	1.50	1.60	1.70	1.80	1.90	1
2	2.00	2.10	2.20	2.30	2.40	2.50	2.60	2.70	2.80	2.90	2
3	3.00	3.10	3.20	3.30	3.40	3.50	3.60	3.70	3.80	3.90	3
4	4.00	4.10	4.20	4.30	4.40	4.50	4.60	4.70	4.80	4.90	4
5	5.00	5.10	5.20	5.30	5.40	5.50	5.60	5.70	5.80	5.90	5
6	6.00	6.10	6.20	6.30	6.40	6.50	6.60	6.70	6.80	6.90	6
7	7.00	7.10	7.20	7.30	7.40	7.50	7.60	7.70	7.80	7.90	7
8	8.00	8.10	8.20	8.30	8.40	8.50	8.60	8.70	8.80	8.90	8
9	9.00	9.10	9.20	9.30	9.40	9.50	9.60	9.70	9.80	9.90	9
10	10.00	10.10	10.20	10.30	10.40	10.50	10.60	10.70	10.80	10.90	10
11	11.00	11.10	11.20	11.30	11.40	11.50	11.60	11.70	11.80	11.90	11
12	12.00	12.10	12.20	12.30	12.40	12.50	12.60	12.70	12.80	12.90	12
13	13.00	13.10	13.20	13.30	13.40	13.50	13.60	13.70	13.80	13.90	13
14	14.00	14.10	14.20	14.30	14.40	14.50	14.60	14.70	14.80	14.90	14
15	15.00	15.10	15.20	15.30	15.40	15.50	15.60	15.70	15.80	15.90	15
16	16.00	16.10	16.20	16.30	16.40	16.50	16.60	16.70	16.80	16.90	16
17	17.00	17.10	17.20	17.30	17.40	17.50	17.60	17.70	17.80	17.90	17
18	18.00	18.10	18.20	18.30	18.40	18.50	18.60	18.70	18.80	18.90	18
19	19.00	19.10	19.20	19.30	19.40	19.50	19.60	19.70	19.80	19.90	19
20	20.00	20.10	20.20	20.30	20.40	20.50	20.60	20.70	20.80	20.90	20
21	21.00	21.10	21.20	21.30	21.40	21.50	21.60	21.70	21.80	21.90	21
22	22.00	22.10	22.20	22.30	22.40	22.50	22.60	22.70	22.80	22.90	22
23	23.00	23.10	23.20	23.30	23.40	23.50	23.60	23.70	23.80	23.90	23
24	24.00	24.10	24.20	24.30	24.40	24.50	24.60	24.70	24.80	24.90	24
25	25.00	25.10	25.20	25.30	25.40	25.50	25.60	25.70	25.80	25.90	25
26	26.00	26.10	26.20	26.30	26.40	26.50	26.60	26.70	26.80	26.90	26
27	27.00	27.10	27.20	27.30	27.40	27.50	27.60	27.70	27.80	27.90	27
28	28.00	28.10	28.20	28.30	28.40	28.50	28.60	28.70	28.80	28.90	28
29	29.00	29.10	29.20	29.30	29.40	29.50	29.60	29.70	29.80	29.90	29
30	30.00	30.10	30.20	30.30	30.40	30.50	30.60	30.70	30.80	30.90	30
31	31.00	31.10	31.20	31.30	31.40	31.50	31.60	31.70	31.80	31.90	31
32	32.00	32.10	32.20	32.30	32.40	32.50	32.60	32.70	32.80	32.90	32
33	33.00	33.10	33.20	33.30	33.40	33.50	33.60	33.70	33.80	33.90	33
34	34.00	34.10	34.20	34.30	34.40	34.50	34.60	34.70	34.80	34.90	34
35	35.00	35.10	35.20	35.30	35.40	35.50	35.60	35.70	35.80	35.90	35
36	36.00	36.10	36.20	36.30	36.40	36.50	36.60	36.70	36.80	36.90	36
37	37.00	37.10	37.20	37.30	37.40	37.50	37.60	37.70	37.80	37.90	37
38	38.00	38.10	38.20	38.30	38.40	38.50	38.60	38.70	38.80	38.90	38
39	39.00	39.10	39.20	39.30	39.40	39.50	39.60	39.70	39.80	39.90	39
40	40.00	40.10	40.20	40.30	40.40	40.50	40.60	40.70	40.80	40.90	40
41	41.00	41.10	41.20	41.30	41.40	41.50	41.60	41.70	41.80	41.90	41
42	42.00	42.10	42.20	42.30	42.40	42.50	42.60	42.70	42.80	42.90	42
43	43.00	43.10	43.20	43.30	43.40	43.50	43.60	43.70	43.80	43.90	43
44	44.00	44.10	44.20	44.30	44.40	44.50	44.60	44.70	44.80	44.90	44
45	45.00	45.10	45.20	45.30	45.40	45.50	45.60	45.70	45.80	45.90	45
46	46.00	46.10	46.20	46.30	46.40	46.50	46.60	46.70	46.80	46.90	46
47	47.00	47.10	47.20	47.30	47.40	47.50	47.60	47.70	47.80	47.90	47
48	48.00	48.10	48.20	48.30	48.40	48.50	48.60	48.70	48.80	48.90	48
49	49.00	49.10	49.20	49.30	49.40	49.50	49.60	49.70	49.80	49.90	49
50	50.00	50.10	50.20	50.30	50.40	50.50	50.60	50.70	50.80	50.90	50

Distance of slope stake from side or shoulder stake for any width roadway, slope 1 to 1. If ground is nearly level, the cut or fill at side stake is located by the double entry method in left column and top row. The number in body of table in same row and column gives distance from side stake to slope stake. If ground is not level estimate the difference in elevation between the side stake and slope stake, lower target by this amount if cut, elevate if fill. Add this amount to cut or fill and find distance in table. Set up rod at this point, and line of sight should cut target. If it does not make the slight adjustment necessary.

DIRECTIONS FOR USE OF TABLES

TABLE No. XIV

Distance of slope staks from rise or shoulder
stake for any width roadway slope 1 1/2 to 1.
If ground is nearly level, the cut or fill is small.

IMPROVED TABLES
AND
INFORMATION

TABLE No. XIII

To find Tangent's Distance for curve of
any other degree, divide by degree of curve and
add tangent's distance of correction.
Degree of curve with a given L may be found
by dividing tangent for reference degree L by
given tangent (for example).
The distance from a point on the tangent to
the curve is very nearly the square of the tangent
length divided by twice the radius.

TABLE XIII—CORRECTIONS FOR TANGENTS AND EXTERNALS

These corrections are to be added to the approximate values, found by dividing the tangent, or external, for a 1° curve (Table VIII) by the degree of curve, in order to obtain the true tangents, or externals. Intermediate values may be obtained by interpolation.

FOR TANGENTS ADD

Central Angle	DEGREE OF CURVE													
	5°	10°	15°	20°	25°	30°	35°	40°	45°	50°	55°	60°	65°	70°
10°	.03	.06	.09	.13	.16	.19	.22	.25	.28	.31	.34	.38	.42	.46
15°	.04	.10	.14	.19	.24	.29	.34	.39	.45	.51	.53	.58	.63	.68
20°	.06	.13	.19	.26	.32	.39	.45	.51	.58	.65	.72	.79	.84	.90
25°	.08	.16	.24	.33	.40	.49	.58	.67	.75	.83	.90	.99	1.06	1.14
30°	.10	.19	.29	.39	.49	.59	.69	.79	.89	.99	1.09	1.20	1.29	1.39
35°	.11	.22	.34	.47	.58	.69	.79	.89	1.04	1.29	1.42	1.54	1.66	
40°	.13	.26	.40	.53	.67	.80	.93	1.06	1.20	1.34	1.49	1.64	1.79	1.94
45°	.15	.30	.44	.60	.76	.91	1.06	1.21	1.37	1.52	1.70	1.87	2.04	2.21
50°	.17	.34	.51	.68	.85	1.02	1.19	1.36	1.54	1.72	1.91	2.10	2.29	2.48
55°	.19	.38	.57	.76	.95	1.14	1.32	1.52	1.72	1.92	2.14	2.35	2.56	2.77
60°	.21	.42	.63	.84	1.05	1.27	1.49	1.71	1.94	2.17	2.38	2.60	2.83	3.07
65°	.23	.46	.69	.93	1.16	1.40	1.64	1.88	2.13	2.38	2.63	2.88	3.13	3.39
70°	.25	.51	.76	1.02	1.28	1.54	1.80	2.06	2.33	2.60	2.88	3.16	3.44	3.72
75°	.27	.56	.83	1.12	1.40	1.69	1.98	2.27	2.57	2.87	3.16	3.47	3.78	4.09
80°	.30	.61	.91	1.22	1.53	1.84	2.15	2.46	2.78	3.10	3.44	3.78	4.12	4.46
85°	.33	.66	1.00	1.33	1.68	2.02	2.36	2.70	3.05	3.40	3.77	4.14	4.55	4.89
90°	.36	.72	1.09	1.45	1.83	2.20	2.57	2.94	3.32	3.70	4.10	4.50	4.91	5.32
95°	.39	.79	1.19	1.55	1.94	2.32	2.70	3.08	3.46	3.84	4.24	4.65	5.06	5.48
100°	.43	.86	1.30	1.74	2.18	2.62	3.06	3.50	3.95	4.40	4.88	5.37	5.85	6.34
110°	.51	1.03	1.56	2.08	2.61	3.14	3.67	4.21	4.76	5.31	5.86	6.43	7.01	7.60
120°	.62	1.25	1.93	2.52	3.16	3.81	4.45	5.11	5.77	6.44	7.12	7.80	8.50	9.22

FOR EXTERNALS ADD

Central Angle	DEGREE OF CURVE													
	5°	10°	15°	20°	25°	30°	35°	40°	45°	50°	55°	60°	65°	70°
10°	.001	.003	.004	.006	.007	.008	.009	.011	.012	.014	.015	.017	.018	.020
15°	.003	.007	.010	.014	.018	.023	.027	.029	.032	.035	.039	.043	.047	.051
20°	.006	.011	.017	.022	.028	.034	.038	.045	.051	.057	.063	.070	.076	.083
25°	.009	.018	.027	.036	.046	.056	.065	.074	.083	.093	.106	.120	.127	.135
30°	.013	.025	.038	.051	.065	.078	.090	.103	.116	.129	.149	.170	.179	.188
35°	.018	.035	.054	.072	.086	.109	.131	.153	.175	.197	.213	.230	.247	.264
40°	.023	.046	.070	.093	.117	.141	.172	.203	.234	.265	.277	.290	.315	.341
45°	.030	.060	.093	.119	.153	.184	.216	.254	.289	.325	.351	.378	.411	.445
50°	.037	.075	.116	.151	.189	.227	.266	.305	.345	.384	.425	.467	.508	.550
55°	.046	.093	.142	.188	.236	.283	.332	.381	.420	.479	.530	.582	.641	.700
60°	.056	.112	.168	.225	.283	.340	.398	.457	.516	.575	.636	.697	.774	.851
65°	.067	.135	.204	.273	.343	.412	.483	.554	.625	.697	.771	.845	.922	1.01
70°	.080	.159	.240	.321	.403	.485	.568	.652	.735	.819	.906	.994	1.08	1.17
75°	.095	.182	.266	.353	.440	.528	.617	.707	.797	.887	.977	1.07	1.18	1.29
80°	.110	.220	.332	.445	.558	.671	.787	.903	1.02	1.13	1.25	1.38	1.50	1.62
85°	.128	.259	.391	.524	.657	.790	.926	1.06	1.20	1.34	1.47	1.62	1.76	1.91
90°	.149	.299	.450	.603	.756	.910	1.07	1.22	1.38	1.54	1.70	1.87	2.03	2.20
95°	.174	.350	.522	.706	.885	1.06	1.25	1.43	1.62	1.80	1.99	2.18	2.38	2.58
100°	.200	.401	.604	.809	1.01	1.22	1.43	1.64	1.85	2.06	2.28	2.50	2.73	2.96
110°	.268	.536	.806	1.08	1.35	1.63	1.91	2.20	2.48	2.76	3.05	3.35	3.66	3.96
120°	.360	.721	1.08	1.45	1.82	2.19	2.57	2.95	3.33	3.72	4.11	4.50	4.91	5.32

INDEX

	Pg.
KATE SESSIONS PARK: PK-ROAD	1
Sewer	13
WALK @ LAMONT ^{LOPING &}	16
ALLEY BIK 4: AMERICAN PK. ADDIT	18
REPUBLIC + Tooley to Lot 137 w/ly Line	21
STORM-DRAIN-Tooley	26
GRADES, w/ly side SWAN: NLY	
Springfield: ST. STA: 3+05	
to 3+40 AS PER DWG # 6356-F-D	36
ALLEY BIK 30, FAIRMOUNT ADD:	
POLK to ORANGE	37
STORM-DRAIN Lot 39 LEMON-	40
VILLA (University, NLY)	
STORM-DRAIN + SOLEDAD Rd	41
(IN SESSIONS PARK)	
Imps: 42nd ST: Hill Top	} 43
to "C" ST.	

INDEX

JOB	Pg.
ALLEY BIK "A" (INGRAHAM to JEWELL) bet Chalcedony + Missouri	48
ALLEY BIK 106 (PAC-BEACH) bet. LAW + CHALCEDONY JEWELL to KENDALL	50
ALLEY BIK #2 (PAC-BEACH) (bet LAW + CHALCEDONY) INGRAHAM to JEWELL	52
ALLEY BIK #108 (PAC-BEACH) (bet. LAW + CHALCEDONY) HAINES to INGRAHAM	54
ALLEY BIK #146 (PAC-BEACH) (bet. DIAMOND + MISSOURI) HAINES to INGRAHAM	56
ALLEY BIK #145 (PAC-BEACH) (bet. MISSOURI + DIAMOND) INGRAHAM to JEWELL	58
ALLEY BIK #1 (PAC-BEACH) (bet. BERYL + LAW.) INGRAHAM to JEWELL	60
KEMPER-MIDWAY City Prop. Fire-sta #34 et, al	63

	Pg.
Alley BIK 4 OCEAN BEACH PARK	67
Alley BIK 28 "	69

CLARK
STEFFENS
RBRENNIA
ANDERSON
9-28-60
W.O. 21642

(KATE SESSIONS PARK)
PARK Rd

Note: Fill slope 2:1
cut slope 4:1 except around island-6:1
All stubs set at toe & at shoulder

STA	LT.	CB	E	CB	RT	STA	LT.	CB	E	CB	RT
0+55.19	274.40	74.25 FO.15		75.83 C1.43	274.40	1+15.19 =	67.6 274.10	73.96 FO.14		74.45 C0.35	84.1 274.10
							E.C. = end Berms & Beg. Type "G" C.B.S. & Beg. PAV.				C10.0 @ 40' 4:1
0+35.19	276.20	74.9 75.58 FO.62		77.10 C0.90	276.20	1+05.19	273.70	73.28 FO.42		74.28 C0.58	273.70
		F1.3 @ 2.6' top 2:1 pt.		C3.7 @ 148' 4:1							
0+15.19	278.30	77.87 FO.43		77.95 FO.35	278.30	0+95.19	273.30	73.28 FO.02		74.37 C1.07	273.30
						0+90.19 = E	273.20				273.20
							Culvert + inlets			(see Pg 14 For inlets)	
0+05.19	279.40	78.54 FO.86		78.50 FO.90	279.40	0+85.19	273.30	73.14 FO.16		74.18 C0.88	273.30
0+00						0+75.19	68.2 273.40	73.60 C0.20		74.95 C1.55	81.4 273.40
							F5.2 @ 10.4' top 2:1				C8.0 @ 32' 4:1

B.M.

272.946 = U.S.N Mon
225' Ely of sly int. of

Soledad Rd + Los Altos Rd

Notes: FIG
shown
Symbol
= dist to left

= Beg
Berms LT
& RT.

= P.T. E Pro- Soledad Rd
' NWly of B.C.

STA	LT	CB	E	CB	RT	STA	LT	CB	E	CB	RT	
2+25	278.22	77.92 F0.30		77.53 F0.69	278.22	3+04.9 ⁺ = CB EC 39' RT ONLY				81.35 C0.05	281.30	
2+00	70.7 277.28 F6.6 @13.2 2:1	76.82 F0.46		76.80 F0.48	82.9 277.28 C 5.6 @22.4 4:1	(= CB BC 37' RT. (62' Rad) Beg. with RT (6') 3+02.92 = B.C STREET. (= Bay Widening) @ RT = CB EC 25' RT.)	79.15 281.15 F2.00 @4' 2:1	81.26 C0.11	81.38 C0.12	84.1 281.26 C 2.8 @11.2 4:1	80.61 F0.59	281.20
1+75	276.35	75.52 F0.83		76.10 F0.25	276.35	2+92.92 = CB BC RT (10' CB RAD.)				79.84 F0.93	280.77	
1+50	67.9 275.41 F7.5 @15' 2:1	74.82 F0.59		75.30 F0.11	84.0 275.41 C 8.6 @34.4 BK RT 4:1	2+75	280.10	80.22 C0.12	79.76 F0.34	280.10		
1+25	274.47	74.12 F0.35		74.86 C0.39	274.47	2+50	73.3 279.16 F5.9 @11.8 2:1	79.40 C0.24	78.80 F0.36	83.0 279.16 C 3.8 @15.2 4:1		

STA.	LT.	CB	E	CB	RT
6+50	93.7 294.70 F1.0 @2' 2:1	94.64 FO.06		94.63 FO.07	98.7 294.70 C4.0 @16' 4:1
6+25		93.33 FO.33		93.20 FO.46	293.66
6+00	90.7 292.61 F1.9 @3.8 2:1	92.33 FO.28		92.17 FO.44	95.3 292.61 C2.7 @10.8' 4:1
5+75	291.57	91.14 FO.43		91.38 FO.19	291.57
5+70 [±] X-water-line					
5+50	86.6 290.52 F3.9 @7.8 2:1	90.16 FO.36		90.70 FO.18	91.1 290.52 C0.6 @2.4' BKHT 4:1

Note: See pg 12
 For Sdy, Island CBs

6+97.3[±]
 CB BC
 15' RT
 only
 (CB Rad=15')

6+95.31=
 BC Street
 89.7
 296.60
 F6.9
 @13.8
 2:1

6+75

STA.	LT.	CB	E	CB	RT
				97.71 FO.31	300.8 298.02 C2.8 #3= ES
				97.32 FO.25	297.57 #2
				97.07 FO.06	297.13 #1
				96.74 FO.04	300.71 296.70 BC
				96.61 FO.01	300.9 296.60 C4.3 @17.2 4:1
				96.60 FO.14	295.74

STA:	LT	CB	±	CB	RT
8+16.04	301.85	02.08 C0.23		02.52 C0.67	301.85
7+90.56	91.5 300.76	99.00.89 C0.13		01.62 C0.86	304.1. RT 300.76
CB P.C.C.R.T. ONLY (30' Rad. CB) 45' RT ±	F9.3 @18.6 to 2:1 HPT			01.30 C1.20	C3.3 @19.8 BK HPT. 6:1 300.10 #1
7+66.74	299.72	99.64 F0.08		00.58 C0.88	299.70 #2
LT only				99.71 C0.21	299.50 #3
7+42.93	88.0 298.68	98.30 F0.38			
LT only	F10.7 @21.4 2:1				
7+19.12	297.64	97.38 F0.26			
LT only					

STA:	LT	CB	±	CB	RT
9+21.53	97.3 303.20	02.95 F0.25			02.57 F0.63 303.20
	F5.9 @11.8' 2:1				
9+01.53	303.74	03.24 F0.50			03.16 F0.58 303.74
8+81.53	99.4 303.88	03.72 F0.16			03.49 F0.39 303.88
	F4.5 @9' to 2:1 HPT				
8+61.53	303.61	03.75 C0.14			03.77 00.16 303.61
	= mid-pt curve (40' RT ± to BS) (CB Rad. For ISLAND CBs)				
8+41.53	97.2 302.95	03.27 C0.32			03.45 C0.50 306.5 302.95
	F5.8 @11.6' 2:1				C3.5 @21' BK HPT. 6:1

CLK:

303.81 = 303.87 = NWly ch
 con BASE FLAG-Pole

6

STA:	LT.	CB	E	CB	RT	STA:	LT.	CB	E	CB	RT
944.53	93.2 302.28 LT. only F9.1 @ 18.2 to 2:1 #1/2	02.29 CO.01				10+27.75 = P.R.C Street	91.2 297.30 F6.1 @ 12.2 2:1	97.12 FO.18		97.65 CO.35	99.9 297.30 C2.6 @ 10.4' BK 4:1 #1/2
						10+25.7 ⁺ = CB P.C. RT. only				97.70 CO.29	297.41 P.C. ↓
				00.02 FO.68	04.7 300.70 #3 C4.0 @ 24' BK H.P.T. 6:1					98.33 CO.33	298.00 #
				01.42 CO.12	301.30 #2	10+6.19	298.55	98.28 FO.27			
				02.59 CO.64	301.95 #1	9+84.64	93.8 299.79 F6.0 @ 12' to H.P.T. 2:1	89.54 FO.25		98.97 FO.23	300.1 299.20 C0.9 P.C. #3
9432.51 = CB, P.C. on RT only (30' CB Rod.) (45' RT #)				02.93 CO.23	04.7 302.70 P.C. C2.0 @ 12' BK H.P.T. 6:1	9+63.08 LT. only		04.27 CO.23			

STA:	LT.	CB	E	CB	RT.
11+25	291.82	92.32 C0.50		92.57 C0.75	291.82
11+00	293.23	93.42 C0.49		94.03 C0.80	293.23
10+87.79	293.90	93.4 F0.5 @1' BKHP 2:1		96.7 293.90 C2.8 @1.2' BKHP 4:1	
10+75	294.64	94.58 F0.06		95.07 C0.43	294.64
10+50	296.05	95.99 F0.06		96.88 C0.83	296.05

STA:	LT.	CB	E	CB	RT.
11+77.8 [±]					88.04 C0.45
11+75	289.00	89.50 C0.50		89.38 C0.38	289.00
11+50	290.41	90.97 C0.56		90.83 C0.42	290.41
11+47.83	290.51	90.8 C0.3 @1.2' BKHP 4:1		92.2 290.51 C1.7 @6.8 BKHP 4:1	

STA:	LT.	CB	E	CB	RT
12+42.87	82.9 285.21				82.8 284.94
Rough-grade only	F2.3 @4.6' BK H.P.T. 2:1				F2.1 @4.2' BK H.P.T. 2:1
12+31.20	85.71 285.85	FO.14		85.82 CO.24	285.58
12+09.8 ⁺				87.12 CO.37	286.75 EC
CB EC, RT only					
-Req walk					
12+07.87	287.0 287.12	87.52 CO.40		87.44 CO.42	84.0 287.02 EC
A.P.R.C. STREET 4' CB E.C 25' RT	FO.1. @0.2 BK 2:1				F3.0 @6' BK H.P.T. 2:1
CB.B.C 37' RT				87.35 CO.46	286.89

STA:	LT.	CB	E	CB	RT
13+27.87	281.80	81.88 CO.08		82.18 CO.63	281.55
13+17.87	281.90	79.6 81.94 CO.04		82.20 CO.55	79.5 281.65
		F2.3 @4.6' BK H.P.T. 2:1			F2.2 @4.4' BK H.P.T. 2:1
12+97.87	282.40	82.44 CO.04		82.75 CO.60	282.15
12+77.87	283.30	80.2 83.24 FO.06		83.11 CO.06	81.9 283.05
R-Grade Also CB		F3.1 @6.2' BK H.P.T. 2:1			F1.2 @2.4' BK H.P.T. 2:1
12+54.53	284.58	84.47 FO.11		84.63 CO.30	284.33

STA:	LT.	CB	E	CB	RT.
13+84.61	282.75	83.25 C0.50		83.10 C0.60	282.50

13+57.87	77.4 282.10	82.45 C0.35		82.20 C0.35	78.4 281.85
----------	----------------	----------------	--	----------------	----------------

F5.0
@ 10' BK H.P.T.
4' PT.
2:1

F3.5
@ 7' BK H.P.T.
2:1

13+37.87	281.80	82.06 C0.26		82.20 C0.65	281.55
----------	--------	----------------	--	----------------	--------

13+32.87
= ASPH-
DRAINS
LT.+RT.
(= 2' OPNG. IN
CB
(F-LINE CHANNEL)
= 9" T. ELEV.)

STA:	LT.	CB	E	CB	RT.
14+09.64			#2		

CB P.C.C.
15' RT.
ONLY

82.42
F0.94 283.36 #2
= C

82.47 MID. PT.
F0.68 283.15 #1

= CB BC
25' RT
ONLY

83.38 84.6
C0.43 282.95 BC
C 1.6

= end walk
13+99.10
= CB BC
37' RT.
ONLY

83.28 90.4
C0.45 282.83 BC
F2.4
@ 48' BK H.P.T.
2:1

13+96.92
= CB BC 39' RT
ONLY

83.36
C0.68 282.68 BC

Cul-DE-SAC = end Park Rd

Note: PTs Lettered A-B-C etc
clock-wise around circle
beg. N'y Pt. (TOP)

Cul-DE-SAC (CONT)

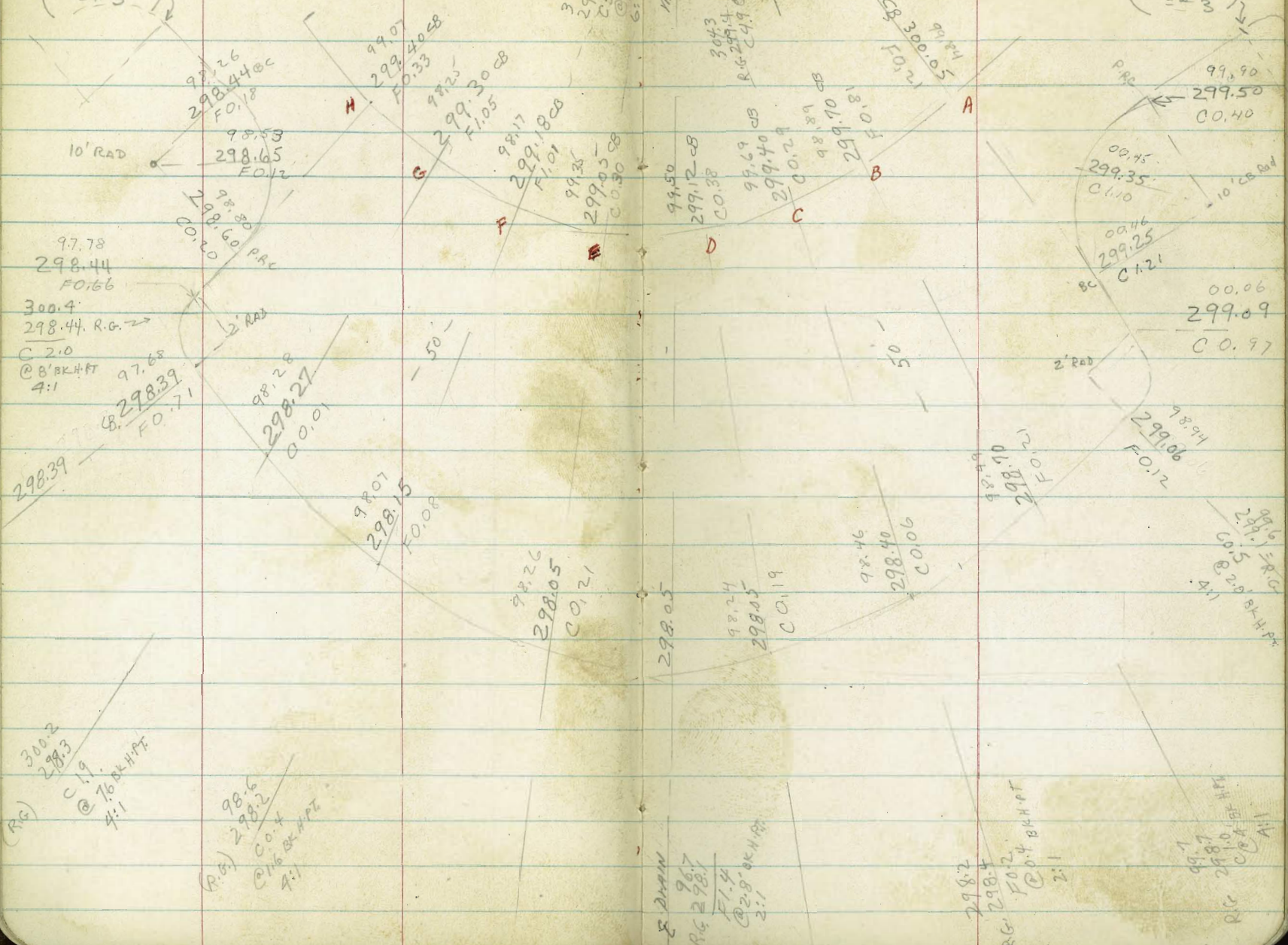
INNER CB ONLY
(CONT)

STA:	INNER CB		OUTSIDE CB		
	CB	R. grade	CB	R. grade	
"F"	84.41 C0.56	283.85	84.26 C0.26	284.00	CB
"E"	84.41 C0.31	284.10	85.08 C0.48	85.2 284.60 C0.6 @ 2.4' BK H.P. 4:1	
"D"	85.18 C0.68	284.50	84.97 F0.03	285.00	" " 83.73 I F0.27 284.00
"C"	85.11 C0.36	284.75	85.16 F0.09	86.7 285.25 C 1.4 (6') @ 5.6' BK H.P. 4:1	" " 84.58 H C0.48 284.10
"B"	84.63 C0.13	284.50	85.27 C0.27	85.4 285.00 C0.4 @ 1.6' BK H.P. 4:1	" " 84.28 G C0.48 283.80
"A"	83.94 F0.11	284.05	84.77 C0.22	84.45 284.55 F0.1 @ 2' BK H.P. 2:1	

PARK RD:
Sly CBS: ISLAND

(See Pg 4)
=# 3

05.4
299.40 R.G.
@ 36' BK.H.F.T
6:1
304.9
299.2 = R.G.
297.7
@ 36' BK.H.F.T
6:1



STAIRS Lettered clock-wise
Around Island CBS

(See Pg 6)
=# 3

97.78
298.44
FO.66
300.4
298.44 R.G. →
C 2.0
@ 8' BK.H.F.T
4:1
97.68
B. 298.39
FO.71

(R.G.)
300.2
298.3
C 1.9
@ 76' BK.H.F.T
4:1

(R.G.)
98.6
298.2
C 0.4
@ 16' BK.H.F.T
4:1

E DRAIN
R.G. 298.7
F 1.4
@ 28' BK.H.F.T
2:1

298.2
R.G. 298.4
FO.2
@ 0.4' BK.H.F.T
2:1

99.7
298.0
R.G.
@ 10' BK.H.F.T
1:1

298.39

99.01
298.15
FO.08

98.26
298.05
C 0.21

298.05
98.24
298.05
C 0.19

98.46
298.40
C 0.06

98.49
298.10
FO.12

99.6
298.1
R.G.
C 0.5
@ 20' BK.H.F.T
4:1

298.44 R.G. →

98.38
298.60
PAC

98.28
298.27
C 0.01

99.01
299.40
FO.33

99.25
299.30
FO.08

99.17
299.18
FO.01

99.50
299.12
C 0.38

99.69
299.40
C 0.29

98.81
299.10
FO.21

99.90
299.50
C 0.40

98.94
299.06
FO.12

98.94
299.06
FO.12

00.06
299.09
C 0.97

10' RAD

98.53
298.65
FO.12

2' RAD

50'

50'

2' RAD

10' CBS RAD

mid-pt.
curve

304.3
R.G. 297.4
@ 24.9
C 6.1

304.7 R.G.
C 46.8
@ 27.6
G 6.1

99.74
300.05
FO.21

A

B

C

D

F

G

H

PAC

BC

99.90
299.50
C 0.40

98.45
299.35
C 1.10

98.46
299.25
C 1.21

98.94
299.06
FO.12

99.6
298.1
R.G.
C 0.5
@ 20' BK.H.F.T
4:1

99.7
298.0
R.G.
@ 10' BK.H.F.T
1:1

298.2

R.G. 298.4
FO.2
@ 0.4' BK.H.F.T
2:1

R.G.

SEWER:

13

STA:

2+00

78.59
272.67
C 5.92

4+10

3.892

85.93
280.00
C 5.93

1+60

78.02
271.40
C 6.62

3+65

84.03
278.25
C 5.78

1+20

77.80
270.12
C 7.68 $\Delta = 31^\circ 27' 30''$ 3+20 = M.H. #1
Stubs 5.20' + 10' RT
& m.H. on split282.34
276.50 = F.L.
C 5.84

0+80

77.52
268.85
C 8.67

2+80

81.08
275.22
C 5.86

0+40

277.27
267.57
C 9.70

2+40

280.01
273.95
C 6.060+00 = EXIST M.H. #4
(Soledad Rd)278.96
266.30
C 12.66~~265.88 = F.L.~~
CONNECT
WITH EXIST. F.L.
= 266.15

B.M. (See Pg. I)

2x2
143 Radial
TB/M
= 292.38

INLETS:
MID-PT CURVE
S'y CB: ISLAND

BM

303.87 = NW'y CHD CONC. BASE
Flag-Pole
@ ISLAND

81.77
281.75 = TPCB
C0.02

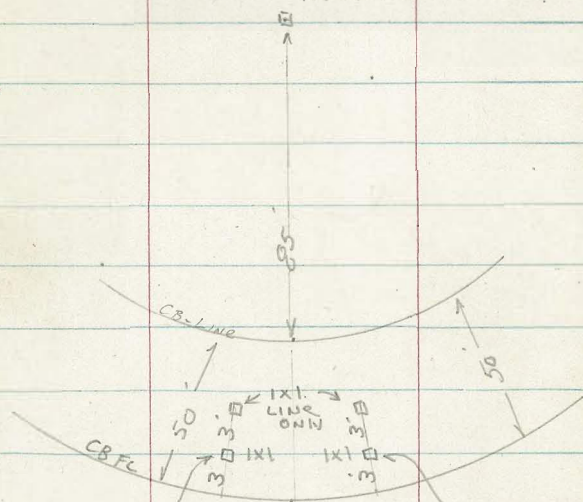
81.77
281.25 = GUT F DRAIN
C0.52

INLET: 13+32.87 PK. RD.

15



RADIUS PT.



TPCB 297.81
298.05
Pa.24

GUT.
CB 297.81
297.38
C0.43

97.75
292.71 = Base of
C5.04 Rock

297.75
298.05 TPCB
Pa.30

97.75
297.38 = GUT
C0.37

97.75 F.LINE
297.41 = G. DRAIN.
GUT.
C0.34

5' 1x1

1x1

81.89
281.75 TPCB
C0.14

82.00
281.55 = TPCB
C0.45

82.00
280.91 = GUT & DRAIN
C1.09

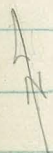
82.04
281.55 = TP CB
C0.47

82.04
280.88 = GUT
C1.76

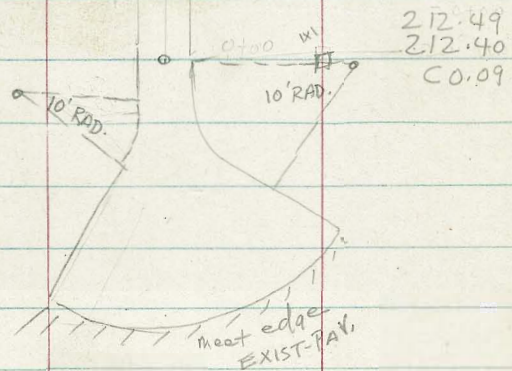
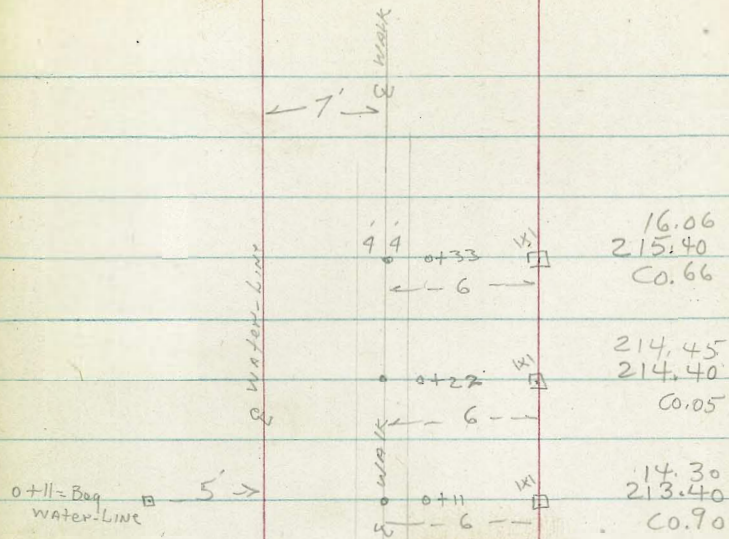


5' 1x1 = end pipe

81.7
276.4 = Base
C5.3 Rock



WALK LAMONT-LORING



CLARK
 STEFFENS
 ABRENNIA
 ANDERSON

11-14-60
 W.O. 32569

ALLEY BK 4: AMERICAN PK

ADDIT:

	LT	±	RT (ELY)	
STA:	Note: All stubs 3' BK edge PAR unless noted			
0+60	93.12 88.75 C4.37		92.31 89.05 C3.32	
0+40 = B.V.C	85.65 85.10 C0.55		86.93 85.70 C1.53	1.5' BK e.p.
0+25	84.96 81.80 C3.11		83.46 82.10 C1.36	1.5' BK e.p.
0+10	81.54 → 81.54 78.50 C3.04	78.25 C3.29	79.44 78.80 C0.64	1.5' BK e.p.
0+00	76.70 76.40 C0.30	76.40	77.20	Set X on fl. CB
note: 1.0' PAR EXCEPTION LT & RT = 18' PAR. ALLEY width (way + ELY)				

T.B.M:

75.90 = chx

Ref: DWG: #8533-AD

18

City Notes: W.O: 32569 (25020)
 ALLEN 4-2-59
 D-14

STA:	LT	±	RT (ELY)	
2+00 = B.V.C	102.55 103.70 F1.15		106.23 104.00 C2.23	
1+75	100.95 101.27 F0.32		102.96 101.57 C1.39	
1+50	79.83 98.85 C0.98		100.38 99.15 C1.23	
1+25	94.96 96.42 F1.46		100.44 96.72 C3.72	1.8' BK e.p.
1+00 = E.V.C	94.78 94.00 C0.78		99.84 94.30 C5.54	2' BK e.p.
0+80	93.71 91.72 C1.99		99.14 92.02 C7.12	2' BK e.p.

(0-07) ± ALLEY 4" NLY 7' LINE TICONDEROGA
 (City notes)

BIK 4

19

STA:	LT.	E	RT. (Elev)
3+50	117.35 117.20 Co.15		118.65 117.50 C1.15
3+25	113.62 114.95 F1.33		116.24 115.25 Co.99
3+00	112.73 112.70 Co.03		114.11 113.00 C1.11
2+75	112.21 110.45 C1.76		112.27 110.75 C1.52
2+50	107.63 108.20 Fo.57		110.02 108.50 C1.52
2+25	105.89 105.95 Fo.06		108.20 106.25 C1.95

STA:	LT.	E	RT. (Elev)
4+75	127.25 128.45 F1.20		129.38 128.75 Co.63
4+55 = SEW LAT (3) ON RT		127.83 119.50 C8.33	127.83 121.90 = F.L. C5.93 Prop.
4+50	127.12 126.20 Co.92		127.15 126.50 Co.65
4+25	123.35 123.95 Fo.60		125.37 124.25 C1.12
4+00	122.19 121.70 Co.49		123.63 122.00 C1.63
3+75	118.77 119.45 Fo.68		120.97 119.75 C1.22

RIK 4

STA:	LT.	E	RT (Ely)
5+75	135.38 138.20 F2.82		138.72 138.50 C0.22
5+57=SEW LAT # ① ON RT.		137.36 128.80 C8.56	137.36 134.60 = FL Prop. C5.76
5+50	134.14 135.70 F1.56 (ALTERNATE Loc.)		36.28 136.00 C0.28
5+42 = Sew Connect to House			136.30 130.20 = FL C6.1 PL
5+25	131.91 133.20 F1.29		134.18 133.50 C0.68
(see above 5+42) 5+05=SEW LAT # ② ON RT.		133.13 124.00 C9.13	133.13 126.40 = FL Prop. C6.73
5+00=RIK	128.80 130.70 F1.90		131.97 131.00 C0.97

STA:	LT.	E	RT (Ely)
CHK: →		139.90 = Lip CONC. APPROX 2 ALLEY + S.L BUNKER HILL (CITY NOTES)	
		139.60 = 139.58	UNIL Pole #3449
6+00=S. LINE BUNKER HILL meet EXIST	139.30	(meet EXIST)	141.19
5+90	136.32 137.40 F3.08	140.58 139.50 C1.08	140.58 140.00 C0.58
5+80=BVC	135.50 138.70 F3.20	39.29 ← 138.40 C0.89	139.29 139.00 C0.29

C/ARK
 STEFFENS
 ABRENNILA
 ANDERSON
 11-16-60
 W.O. #33090

Republic ST:
 Tooley to w/ly Line Lot 139

21

STA	prop.	CB	E	CB	prop.	STA.	LT.	CB	E	CB	RT
						1+80	454.07	54.74 454.07 C0.67		53.67 453.60 C0.07	453.60
0+55	448.43	50.34 448.43 C1.91		49.27 448.59 C0.68	448.59	1+60	54.50 453.68 C0.82	54.56 453.68 C0.88		53.41 453.25 C0.16	53.42 453.25 C0.17
0+30	49.11 446.80 C2.31	47.96 446.80 C1.16		47.70 447.14 C0.56	4760 447.14 C0.46	1+40	453.06	54.13 453.06 C1.07		52.66 452.71 F0.05	452.71
0+10 = CB EC LT.	445.50					1+25 = W.S. RT					51.92 452.18 F0.26
						1+20	54.04 452.29 C1.75	54.13 452.29 C1.84		52.09 452.00 F0.09	51.56 452.00 F0.44
0+05 = CB EC RT.				46.04 445.70 C0.34		1+00	451.29	51.50 451.29 C0.21		51.16 451.10 C0.06	451.10
0+00 = S. LINE TOOLEY						0+80 = BVC	51.97 450.06 C1.91	50.58 450.06 C0.52		50.52 450.04 C0.48	50.51 450.04 C0.47

T.B.M.

45014 = CHD NELY Corner Con + slab
 House, SWLY Republic + Tooley (0+50 Republic)

Republic

STA.	LT.	CB	♀	CB	RT	STA.	LT.	CB	♀	CB	RT.
						4+75	455.32	55.83 455.32 C0.51		57.15 455.08 C2.07	455.08
3+25	454.73	55.59 454.73 C0.86		55.40 454.37 C 1.03	454.37	4+50	55.76 455.22 C0.54	55.77 455.22 C0.55		55.86 454.96 C0.90	55.87 454.96 C0.91
3+00	55.91 454.63 C1.28	54.53 454.63 F0.10		54.09 454.25 F0.16	54.08 454.25 F0.17	4+25	455.12	55.92 455.12 C0.80		55.61 454.84 C0.77	454.84
2+75	454.53	54.91 454.53 C0.38		53.78 454.14 F0.36	454.14	4+00	56.41 455.02 C1.39	56.41 455.02 C1.39		55.65 454.72 C0.93	55.71 454.72 C0.99
2+62.8				453.68	or						
2+50	54.79 454.44 C0.35	54.75 454.44 C0.31		53.95 454.02 F0.07	53.97 454.02 F0.05	3+75	454.93	56.66 454.93 C1.73		55.75 454.61 C1.14	454.61
2+25	454.34	55.22 454.34 C0.88		53.95 453.90 C0.05	453.90					449.1	449.50
2+00	54.81 454.24 =E.V.C C0.57	54.84 454.24 C0.60		54.31 453.78 C0.53	54.16 453.78 C0.38	3+50	56.54 454.83 C1.71	56.54 454.83 C1.71		55.70 454.49 C1.21	55.63 454.49 C1.14
										449.1	449.50

Already connect.
3+62.8 = SEW.
LAT ① RT

Cont'd
to
Survey

STAI	LT.	CB	E	CB	RT.	STAI	LT.	CB	E	CB	RT.
6+00	55.56 455.81 F0.25	55.59 455.81 F0.22		56.13 455.66 C0.47	56.07 455.66 C0.41						
5+80= SEW LAT. (2) LT.	55.71 450.75 C4.96	connect. to chimney 55.71 450.35 C5.36				7+00	56.41 456.21 C0.20	56.32 456.21 C0.11		56.41 456.13 C0.28	56.37 456.13 C0.24
5+75	455.71	55.92 455.71 C0.21		55.99 455.55 C0.44	455.55	6+82.8= W.S. RT. check with prop. owner may not need					56.45 456.1 C0.35
5+70= W.S. LT	55.6 455.7 F0.1					6+75	456.11	56.24 456.11 C0.13		56.41 456.02 C0.39	456.02
5+50	55.84 455.62 C0.22	55.79 455.62 C0.17		56.11 455.53 C0.58	56.11 455.53 C0.58	6+50	55.97 456.01 F0.04	56.01 456.01 Grade		56.12 455.90 C0.22	55.98 455.90 C0.08
5+25	455.52	55.91 455.52 C0.39		55.16 455.31 F0.15	455.31	6+25	455.91	55.91 455.91 GRADE		56.15 455.78 C0.37	455.78
5+00	55.76 455.42 C0.34	55.86 455.42 C0.44		57.18 455.19 C1.99	55.67 455.19 C0.48	6+15=SEW. LAT. (3) LT.	55.85 450.80 C5.05			55.9 438.0 17.9	

T.B.M = 455.25 = ch □ NW 1/4 Cor Conc. LDG
 #1737 Republic (LT.)
 Republic

STA:	LT.	CB	E	CB	RT.
8+30	55.34 455.70	55.34 455.70		54.75 454.70	55.25 454.70
=B.V.C	F0.36	F0.36		C0.05	C0.55
(175) 8+12.5	456.05	55.30 456.05 F0.75		54.72 455.20 F0.48	455.20
(175) 7+95	56.77 456.40	56.77 456.40		55.09 455.70	55.50 455.70
	C0.37	C0.37		F0.61	F0.20
7+75 =	57.33 456.50	57.01 456.50		55.68 456.00	55.68 456.00
B.C	C0.83	C0.51		F0.32	F0.32
7+50	57.26 456.41	57.27 456.41		56.24 456.13	56.18 456.13
	C0.85	C0.86		C0.11	C0.05
7+2.5	456.31	57.12 456.31 C0.81		56.41 456.25 C0.16	456.25

Worst Serv. on left
 on right
 here

STA:	LT.	CB	E	CB	RT.
9+50	4225 449.25	48.17 449.25			50.45 448.90
	F7.00	F1.08			C1.53
	-toe @ 10.5 1 1/2				C1.55
	hinge pt. = PL				
9+30	450.20	48.53 450.20 F1.67			51.17 449.50 C1.67
9+10	50.89 451.50	50.88 451.50			51.81 450.50
	F0.61	F0.62			C1.31
8+90 =	452.85	52.46 452.85			52.98 451.85
P.R.V.C.		F0.39			C1.13
8+70	53.39 454.05	53.50 454.05			54.16 453.05
	F0.66	F0.55			C1.11
8+50	455.00	54.76 455.00			54.44 454.00
		F0.24			C0.44

Republic

25

STA:	LT.	CB	ε	CB	RT.	STA:	LT.	CB	ε	CB	RT.
10+90	31.5 447.34 F1 5.8 @23.7' 1 1/2:1	46.60 447.34 F0.74		49.61 447.84 C1.77	49.60 447.84 C1.76	12+20.70 =E.V.C. 6° 44.44' εch=20'	44.13 445.45 F1.32	44.75 445.45 F0.70		47.98 446.25 C1.73	48.08 446.25 C1.83
10+65	447.51	46.80 447.51 F0.71		49.95 448.01 C1.94	448.01	12+00.70 3° 22.22' εch=20'	44.63 446.15 F1.52	45.25 446.15 F0.90		48.47 446.85 C1.62	48.15 446.85 C1.30
10+40	32.4 447.67 F1.527, @23' 1 1/2:1	46.91 447.67 F0.76		50.19 448.17 C2.02	50.12 448.17 C1.95	11+80.70= B.C.	44.04 446.60 F2.56	45.97 446.60 F0.63		48.00 447.20 C0.80	48.64 447.20 C1.44
10+15	447.84	47.09 447.84 F0.75		47.91 448.34 F0.43	448.34	11+60.70	44.93 446.90 C0.03			47.29 447.40 F0.11	447.40
9+89.94 =E.V.C.	35.0 448.00 F13.0 @195' 1 1/2:1	47.44 448.00 F0.56		49.05 448.50 C0.55	49.95 448.50 C1.95	11+40.70= B.V.C.	36.3 447.00 F10.7 @16' 1 1/2:1	46.77 447.00 F0.23		46.77 447.50 F0.73	49.42 447.50 C1.92
9+68.64 E.G.	47.63 448.60 F0.97	49.15 448.60 C0.55		49.81 448.60 C1.21	50.08 448.60 C1.48	11+15	447.17	46.57 447.17 F0.60		47.53 447.67 F0.14	447.67

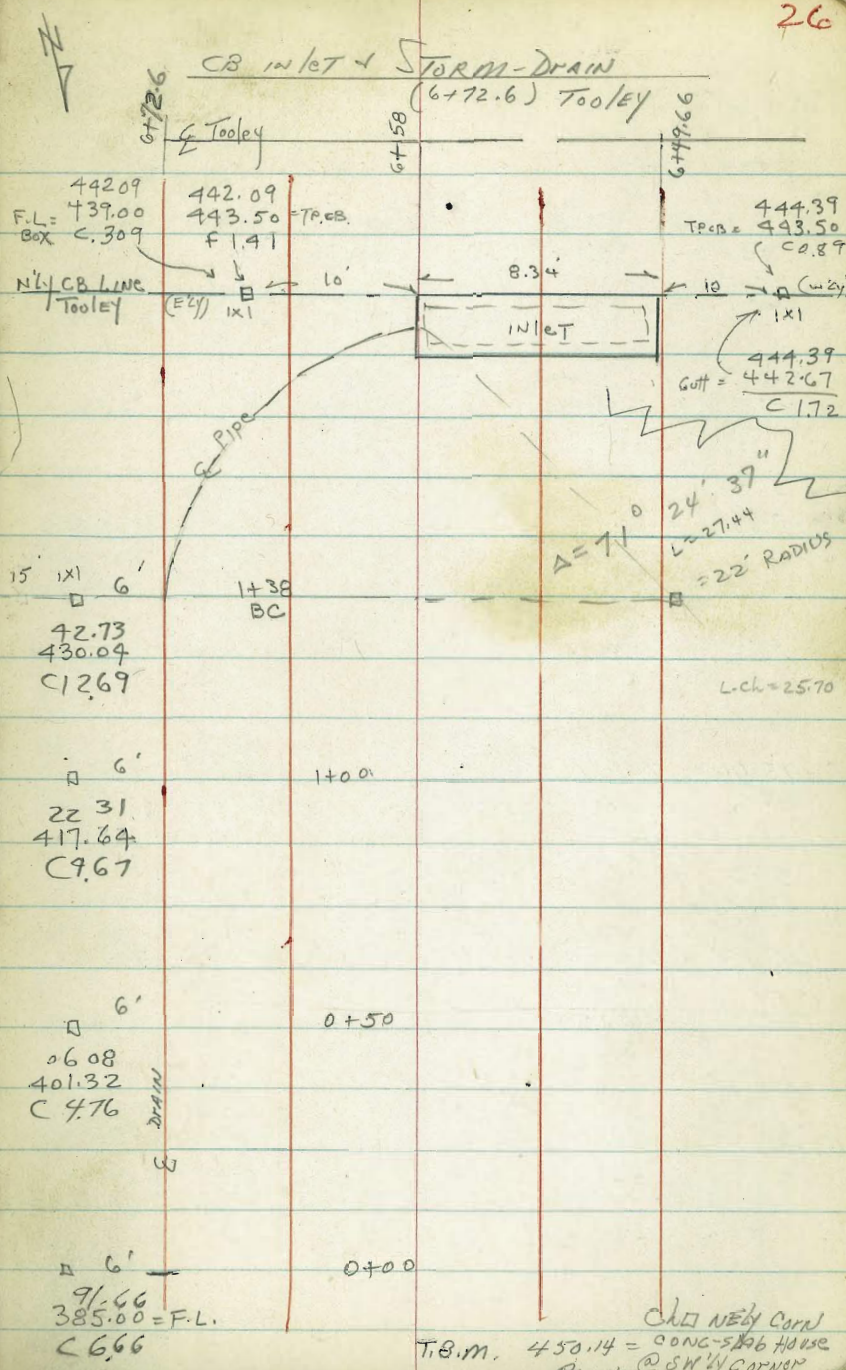
T.B.M. = 445.85 = NAIL Pole #371118
(12+67.5' RT.)

Republic

26

STA.	LT.	CB	Q	CB	RT.
13+52.68 = end CB RT. 28° 58.9'				43.09 441.50 C1.59	43.93 441.50 C2.43
Ech = 7.4' 13+45.70 27° 48.3'	Frontly (25' same)			44.04 441.75 C2.29	441.75
13+43.57 = end CB LT. 27° 26.8' Ech = 22.87'	35.7 440.90 F5.2 @ 7.8' 1 1/2:1	40.64 440.90 F0.26			
13+20.70 23° 35.5' Ech 24.97'	34.40 441.75 F7.35 @ 11.00 1 1/2:1	41.02 441.75 F0.73		45.38 442.65 C2.73	445.28 442.65 C2.63
12+95.70 19° 22.8' Ech 24.97'	33.8 442.67 F8.81 @ 13.4' 1 1/2:1	41.90 442.67 F0.77		45.23 443.55 C1.68	445.20 443.55 C1.65
12+70.70 15° 10' Ech 24.97'	34.5 443.60 F9.1 @ 13.5' 1 1/2:1	42.83 443.60 F0.77		45.46 444.45 C1.01	445.40 444.45 C0.95
12+45.70 10° 57.2' Ech 24.97'	36.0 444.53 F8.53 @ 12.8 1 1/2:1	43.92 444.53 F0.61		46.79 445.35 C1.44	47.41 445.35 C2.06

steps on P.L. (2' BK CB)



OLD NEW CORN
T.B.M. 450.14 = CONC-5106 HOUSE
@ SW CORNER
Rep. 4750/ley

Tooley $\frac{1}{2}$ From Wly Line Lot 126
to WINNETT (600 wly-w Line Republic)

STA:	(Wly) LT.	CB	E	CB	RT
0+90=SEW LAT (6) LT	39.95 435.20 C 4.75		39.95 432.20 C 7.75		
0+70=SEW LAT (5) LT	38.97 432.90 C 6.07		38.97 432.19 C 6.78		
0+68.66	436.43	37.35 436.43 C 0.92		38.38 436.92 C 1.46	436.92
0+55=W.S. LT.	34.5 433.9 C 0.6				
0+43.66= B.V.C.	33.11 431.74 C 1.37	32.38 431.74 C 0.64		33.55 432.24 C 1.31	37.36 432.24 C 5.12
0+21.83	427.32	28.93 427.32 C 1.61		30.02 427.82 C 2.20	427.82
0+00	23.72 422.90 C 0.82	24.25 422.90 C 1.35		23.46 423.40 C 0.06	26.24 423.40 C 2.84

B.M:

451.41 = BOLT - CON. Co.
BASE FLAG pole 30' ±
Wly of Republic, ON N-Side TOOLEY

STA:	(Wly) LT.	CB	E	CB	RT
1+93.66 = E.V.C	47.81 447.90 F 0.09	47.82 447.90 F 0.08			47.58 448.11 F 0.53
1+90= SEW. LAT (8) LT.	47.73 442.80 C 4.93		47.73 431.8 C 5.93		47.65 448.11 F 0.46
1+68.66	447.21	47.07 447.21 F 0.14			47.24 447.51 F 0.27
1+55= SEW LAT (7) LT.	45.93 441.60 C 4.33		45.93 440.00 C 5.9		47.24 447.51 F 0.27
1+43.66	45.10 445.71 F 0.61	45.45 445.71 F 0.26			44.42 446.08 F 1.66
1+40= W.S. LT.	45.35 445.40 F 0.05				
1+25=SEW. LAT (8) RT.			44.26 432.1 C 12.16		44.26 434.50 C 9.76 PL
1+18.66	443.40	43.35 443.40 F 0.05			44.13 443.84 C 0.29
1+05=W.S. LT.	41.64 441.70 F 0.06				
0+93.66	40.81 440.32 C 0.49	40.52 440.32 C 0.20			44.08 440.79 C 0.29

TOOLEY

STA:	LT.	CB	E	CB	RT.
3+43.66	449.64	^{49.76} 449.64 Co.12		^{48.90} 449.04 Fo.14	449.04
3+18.66 = BY C.LT.	^{50.77} 449.40 C 1.37	^{49.66} 449.40 Co.26		^{48.59} 448.89 Fo.30	^{48.10} 448.89 Fo.71
2+93.66	^{50.49} 449.10 C 1.39	^{49.41} 449.10 Co.31		^{48.62} 448.74 Fo.12	^{48.83} 448.74 Co.09
2+68.66	448.80	^{49.44} 448.80 Co.64		^{48.86} 448.59 Co.27	448.59
2+43.66	^{50.72} 448.50 C 2.22	^{48.58} 448.50 Co.08		^{48.95} 448.43 Co.52	^{48.74} 448.43 Co.31
2+18.66	448.20	^{48.41} 448.20 Co.21		^{48.73} 448.27 Co.46	448.27
2+05 = W.S LT.	^{48.40} 448.04 Co.36				

STA:	LT.	CB	E	CB	RT.
#1	449.27	^{48.80} 449.27 Fo.47			
4+14.18 = CB, BC, LT.	^{49.75} 449.50 Co.25	^{49.05} 449.50 Fo.45			
4+08.66 RT. only					^{49.46} 449.35 Co.11
					^{49.54} 449.35 Co.19
3+93.66 LT. only	449.63	^{49.59} 449.63 Fo.06			
3+88.66 RT. only					^{49.70} 449.30 Co.40
3+68.66 = BVC RT	^{50.20} 449.74 Co.46	^{49.79} 449.74 Co.05			^{49.07} 449.20 Fo.13
3+52-SEW LAT @ RT					^{48.37} 438.6 C 9.77
					Conn. to Army ^{48.37} 439.20 C 9.17

TOOLEY

STAI	LT.	CB	E	CB	RT.	STAI	LT.	CB	E	CB	RT.
#2	448.18	4831 448.18 Co.13				5750	446.07	4579 446.07 Fo.28		46.33 446.71 Fo.38	446.71
E.C. (Low Fulmer) (NEW RET.)	4794 447.80 Co.14	48.18 447.80 Co.38				5725	46.43 446.84 Fo.91	46.58 446.84 Fo.26		48.22 447.39 Co.83	4871 447.39 Cl.32
4768.66 RT. only				48.46 448.85 Fo.39	448.85	-already in 5713.8 = SEW LAT (10) LT.	47.06 442.50 C4.56		47.06 441.9 C5.16	conn. to Army	
						5700	447.61	47.63 447.61 Co.02		49.33 448.07 Cl.26	448.07
4748.66 RT. only				49.74 449.22 Co.52	49.79 449.22 Co.57						
						4788.66 E.V.C. RT. only				48.65 448.38 Cl.27	49.91 448.38 Cl.53
4728.66 RT. only				49.65 449.30 Co.35	449.30						
						4784.18 = CB BC LT.	47.53 448.10 Fa.57	48.10 448.10 grade			
E.C. (Low Fulmer)	4897 448.60 Co.37	48.51 448.60 Fo.09									
#2	448.96	48.45 448.96 Fo.51				#1	448.20	48.37 448.20 Co.17			

TOOLEY

CHK: TABM = 450.14 = ch D NELY corr Conc. 30
slab at house SWly Republic +
Tooley (0+50 Republic)

STA:	LT.	CB	E	CB	RT.
6+00 LT. only	444.53	444.53 444.41 FO.12			
#3: CB E.C. (on Republic)				46.04 445.70 CO.34	45.94 445.70 CO.24
#2				45.70 445.60 CO.10	445.60
#1				45.42 445.60 FO.18	445.60
5+87=CB B.C RT. only				45.08 445.70 FO.62	46.42 445.70 CO.72
5+90.6= SEW LAT (11) LT.	45.85 434.80 C11.05	45.85 429.2 C16.65		Count to chimney	
5+75	45.37 445.30 CO.07	45.25 445.30 FO.05		45.64 446.03 FO.39	46.77 446.03 CO.74

STA:	LT.	CB	E	CB	RT
(See Pg 31 For Cor. Ret. S Ely No.) 6+58=E Edge Type K inlet, LT.	38.86 443.50 F46.4	443.50			
6+53.83=E 8' CONC X-GUTT.	442.67-GUTT.				
(For inlet) (See Pg 26)					
6+49.66 =w'dge 7' (8.34) Type K inlet LT.	443.50 443.50 CO.85	443.50			
6+45.6=W.S.LT.					
6+41.30 LT. only	443.59	45.22 443.59 C1.63			
6+35.6=SEW LAT (12) LT.	44.59 433.56 C18.03	44.6 430.0 C14.6			
6+27.55 LT. only		44.60 443.90 CO.80			
6+13.80= B.V.G. LT.	43.52 444.10 FO.58	43.95 444.10 FO.15			
6+00.6= W.S.LT.	43.58 444.5 FO.92				
notes: already A meter this prop					

Tooley

STA:	LT	CB	E	CB	RT
7+23 =P.R.V.C.	44.31 445.46 F1.15	45.12 445.46 F0.34		46.30 445.82 C0.48	50.96 445.82 C5.14
6+95.5	43.49 444.26 F0.77	44.41 444.26 C0.15		45.29 444.89 C0.40	50.49 444.89 C5.60
6+72.6 = E 2nd AIN LT. (See Pg)					
6+68	39.77 443.64 F3.87	43.84 443.64 C0.20		45.72 444.45 C1.27	47.07 444.45 C3.42
6+58 = CB.BC. RT	443.50	443.50		45.55 444.40 C1.15	46.86 444.40 C2.46
#1				45.44 444.56 C0.88	444.56
#2				45.48 444.90 C0.58	444.90
CB E.C R.F. (on Republic)				46.41 445.50 C0.91	46.16 445.50 C0.66

STA:	LT	CB	E	CB	RT
8+50.6 =SEW LAY (13) LT.	45.60 437.40 C8.20				
					45.6 429.2 C16.4
					<i>- NEW CB grade - change</i>
8+48	442.40	41.55 442.40 F0.85	42.70 442.40 C0.30	42.70 441.93 C0.77	441.93
8+23	49.94 444.58 C5.36	43.67 444.58 F0.91	45.72 445.08 C0.64	45.72 444.18 C1.54	47.18 444.18 C3.00
7+98	51.94 445.97 C5.97	47.38 445.97 C1.41	46.68 446.60 C0.08	46.68 445.69 C0.99	48.53 445.69 C2.84
7+73	46.66 446.59 C0.07	46.55 446.59 F0.04	47.51 447.00 C0.51	47.51 446.47 C1.04	52.51 446.47 C6.04
7+48	46.57 446.42 C0.15	46.35 446.42 F0.07	46.45 446.51 F0.06	46.45 446.51 F0.06	51.63 446.51 C5.12

*GRADE CHANGE
by CO. GILSON*

Toohey

414.32
414.51

STA.	LT.	CB	Q	CB	RT.	STA.	LT.	CB	Q	CB	RT.
10+00	422.36	22.88 422.36 C0.52		20.85 421.86 F1.01	421.86						
9+75	26.87 425.72 C1.15	25.36 425.72 F0.36		25.51 425.22 C0.29	23.36 425.22 F1.86	10+68.38= CB B.C. LT.	413.50	13.51 413.50 C0.07			(meet Exist)
9+50	429.08	28.22 429.08 F0.86		28.48 428.58 F0.10	428.58	10+65.38= CB B.C. RT.			12.79 413.05 F0.26	11.4 413.05 F2.65 1.7	
9+25	33.85 432.77 C1.41	31.97 432.44 F0.53		31.45 431.94 F0.49	30.94 431.94 F1.00	10+57.78 =Bk LT. only	17.5 414.55 C2.95	15.17 414.35 C0.62			
9+00	435.80	34.19 435.80 F1.61		35.17 435.30 F0.13	435.30	10+50	415.62	17.52 415.62 C1.90	15.35 415.12 C0.23	415.12	
8+73= E.V.C.	39.60 439.43 C0.17	39.12 439.43 F0.31		38.26 438.93 F0.67	37.80 438.93 F1.13	10+25	21.95 419.00 C2.95	21.02 419.00 C2.02	19.00 418.50 C0.50	16.3 418.50 F2.2	

Fulmar: Tooley, Nly to

STA:	LT	CB	E	CB	RT (ELY)	STA:	LT	CB	E	CB	RT (ELY)
0+44.8 = SEW LAT (14) LT.	48.85 442.00 C6.85		48.85 431.1 47.75			1+10.16 = B.W.G	46.96 445.03 C1.93	44.95 445.03 F0.08		43.56 444.46 F0.90	431.6 444.46 F1.28
0+34.8 = W.S. LT.	48.9 447.7 C1.2					1+09.8 = Sew LAT (15) LT.	47.35 439.80 C7.55		47.35 431.30 C16.05e		
0+25	448.03	48.20 448.03 C0.17		47.87 447.34 C0.53	447.34	1+00	47.32 445.38 C1.94	45.62 445.38 C0.24		44.79 444.80 F0.01	444.05 444.80 F0.75
0+11.33 = CB E.C RT (see pg 29)				48.18 447.80 C0.38	447.80	0+99.8 = W.S. LT.	47.90 45.40 C2.50				
0+09.67 = CB E.C LT see pg 29	448.60	48.51 448.60 F0.09				0+75	446.27	46.83 446.27 C0.56		45.73 445.65 C0.08	445.65
0+00 = E Fulmar & N.W. Tooley						0+50	448.35 447.15 C1.20	47.51 447.15 C0.36		46.48 446.50 F0.02	446.45 446.50 F0.05
B.M				457.41 =	BOLT - CONC BASE Flagpole 300' ± Wly Republic						

FULMAR

34

STA:	LT.	CB	E	CB	RT.	STA:	LT.	CB	E	CB	RT.
2+25	442.68 439.49 C 3.19	40.39 439.49 C 0.90		38.04 438.99 F 0.95	37.58 438.99 F 1.41	3+20.16	434.32	35.39 434.32 C 1.07		33.56 433.82 F 0.26	433.82
2+00	440.83	41.78 440.83 C 0.95		39.26 440.35 F 1.09	440.33	3+07 SEW LAT (17) LT.	38.75 432.60 C 6.15		38.75 432.00 (encase) C 6.75		
1+90.16 =E.V.C.	4445 441.36 C 3.09	42.07 441.36 C 0.71		39.10 440.86 F 1.76	37.76 440.86 F 3.10	3+00.16 = B.V.C.	37.48 435.47 C 2.01	35.98 435.47 C 0.51		35.11 434.97 C 0.14	35.09 434.97 C 0.12
1+70.16	442.39	43.58 442.39 C 1.19		41.81 441.87 F 0.06	441.87	2+75	40.52 436.81 C 3.71	38.54 436.81 C 1.73		34.86 436.31 F 1.45	34.32 436.31 F 1.99
1+50.16	45.14 443.35 C 1.79	44.49 443.35 C 1.14		42.67 442.82 F 0.15	42.70 442.83 F 0.13	2+62 =SEW LAT (16) LT.	41.65 432.50 C 9.15		41.65 431.9 C 9.75g		
1+30.16	444.23	44.69 444.23 C 0.46		43.36 443.64 F 0.28	443.64	2+50	438.15	39.56 438.15 C 1.41		38.49 437.65 C 0.84	437.65

CHK N.W. CHD CONC. LDG #6150
 T.B.M. = 430.42 (FRONT STAIRS)

FULMAR

STA:	LT.	CB	E	CB	RT (Ely)
3+68.80 end CB RT.				27.80 430.50 F2.70	27.4 430.50 F3.1
3+67.31 end CB LT	3580 431.10 C4.70	33.62 431.10 C2.52			
3+50	432.32	34.02 432.32 C1.70		30.87 431.80 F0.93	431.80
3+40.16 = E.V.C.	37.60 433.00 C4.6	34.53 433.00 C1.53		31.91 432.50 F0.59	32.10 432.50 F0.40

CLARK
WENTWORTH
ANDERSON
VINOV

GRADES: W'ly side SWAN + N'ly

SPRINGFIELD: ST. STA'S: 3+05
to 3+40 (For Proposed Common
Driv - Lots 48-49-50)

Ref: DWG'S: 6338-D
6356-F-D

36

378.06

STA. CB. (w'ly)

3+40 79.78
383.20
F 3.42

3+30 82.99
383.90
F 0.91

3+20 81.95
384.60
F 2.65

3+05 80.24
385.65
F 5.41

Note: Stubs set on prop. line:
cuts &/or Fills refer to top-CB elev.

T.B.M.

405.60 = MARK + City Disc Pole # 578863
at SE 1/4 Swan + Springfield (City notes:)

CLARK
WENTWORTH
ABRENILLA
ANDERSON
5-1-61
W.O. 33139

GRADES: ALLEY BIK 30
FAIRMOUNT ADD:
(POLK to ORANGE)

REF: DWG: 9204-D
CITY notes: J-18-19 (Pope)

37

STA	LT.	RT.	STA	LT.	RT.
		Z			
STA:	LT.	RT. (Ely)	1+70	39.85 339.93 FO.08	40.68 340.23 CO.45 stub 2' BK
			stub 2' BK		
0+40 = EVC	32.26 332.48 FO.22	33.06 332.78 CO.28	1+45	38.28 338.95 FO.17	39.48 338.75 CO.73 stub 2' BK
			stub 2' BK		
0+30	31.60 331.81 FO.21	32.30 332.11 CO.27 stub 2' BK	1+20	37.30 336.97 CO.33	37.41 337.27 CO.14 stub 2' BK
0+20 = BVC	330.98 330.76 CO.22	330.52 332.07 331.07 CO.00 stub 2' BK	0+95	35.32 335.48 FO.16	35.92 335.78 CO.14 stub 2' BK
			stub 2' BK		
0+00 = N.L. POLK	SET Y CB end 328.27	328.20 SET V CB end 328.60	0+70	33.80 334.00 FO.20	34.48 334.30 CO.18 stub 2' BK
			stub 2' BK		
note: PAV. width = 19.50' 0+00 to 5+00					
T.B.M = Ch □, NE Alley Ret. (by POPE) =		329.12	0+55	332.93 333.24 FO.31	333.73 333.54 CO.19 stub 2' BK
			stub 2' BK e, PAV		
B.M		343.27 = NE B.P			
		48' Ht POLK			

ALLEY BIK 30 (CONT.)

STA:	LT.	RT.	STA:	LT.	RT.
3+10 stub 2' BK	45.93 346.60 Fo. 67	47.67 346.90 Co. 77 NAIL 0.45 BK	4+35 stub 2' BK	48.36 349.03 Fo. 67	49.48 349.31 Co. 17 stub 2' BK
2+95 stub 2' BK 2+75 end Par. edge 1.0' IN From P.L.	45.28 345.98 Fo. 70	47.53 346.28 Co. 25 NAIL 0.45 BK	4+10 = BVC stub 2' BK	49.05 348.70 Co. 35	49.13 349.00 Co. 13 cht 2' BK
2+70 NAIL 0.35 BK	45.23 344.95 Co. 28	45.78 345.25 Co. 53 stub 2' BK	3+90 stub 2' BK	48.68 348.32 Co. 36	48.98 348.62 Co. 36 cht 2' BK
2+45 NAIL 0.35 BK 2+25 Beg Par. edge 1.0' IN From P.L.	44.80 343.93 Fo. 13	44.78 344.23 Co. 55 stub 2' BK	3+70 cht 2.25 BK	48.10 347.95 Co. 15	48.42 348.25 Co. 17 stub 2' BK
2+20 stub 2' BK	42.29 342.90 Fo. 61	43.27 343.20 Co. 07 stub 2' BK	3+50 cht x 2.15 BK	47.45 347.57 Fo. 12	8.14 347.87 Co. 27 cht 2' BK
1+95 stub 2' BK c. PAR	341.14 341.42 Fo. 28	42.58 341.72 Co. 84 stub 2' BK	3+30 cht 2' BK	46.87 347.20 Fo. 33	47.98 347.50 Co. 48 cht 2' BK

STA.	LT.	RT.	STA.	LT.	RT.
			CHK		348.45 ^E S.E.B.P.
					Church steps, ORANGE & ESTRELLA
5740	48.75 347.51	48.29 347.20			
Stub 2' BK	C1.24	C1.09 Stub 2' BK			
5730 = Sew LAT (1)		48.43 340.70 Prop			
RT		C 7.73			
(5725 Pav. width = 16.0')		48.4 340.3 E C 8.1			
		Stub on 5' BK ALINE			
5720	49.46 348.40	48.48 348.25			
Stub 2' BK	C1.06	C0.23 Stub 2' BK			
			577.35 =	343.60	342.93
			S.L. ORANGE		
5710	49.52 348.60	48.72 348.52			
Ch 2' BK	C0.92	C0.20 Stub 2' BK			
5700 Bay change in Pav. width					
7785	49.18 348.98	49.00 349.07	5760	48.34 345.53	46.27 345.15
Stub 2' BK	C0.20	F0.07 P.K. 0.95 BK	Stub 2' BK	C2.81	C1.12 Stub 2' BK
7760	48.60 349.13	50.10 349.40	5755 = W.S. RT.		48.47 TP 345.7 = Pav.
Stub 2' BK	F0.53	C0.70 NAIL 0.40 BK			C2.77 Stub on 5' BK P.L.

O/ARK
WENTWORTH
ABRENILLA
ANDERSON

W.O.

7-11-61

STORM DRAIN:
SOLEDAD ROAD
(SESSIONS PARK)

41

STA.	GRADES:	STA:	GRADES:
0+87.64 = MID-PT	252.54	2+50	238.61
A = 11° 30'			
E.R. = 90'		2+25	240.75
S.T. = 9.06			
0+79 = B.C.	253.28		
		2+00	242.91
0+50	255.77		
		1+75	245.05
0+25	257.91	1+50	247.19
		1+25	249.33
0+00 = Ely end EXIST. 24" Pipe (Sta 9+77 [±] Soledad Rd.)	260.05 (meet)		
		0+96.29 = E.C.	251.80

T.B.M.

3+51.29 = Fe. CURTAIN WALL 230.40

3+41.29 230.80

3+31.29 = B.V.C 231.60

3+25 232.17

3+00 234.32

2+75 236.47

C/ARK
ABRENIA
ANDERSON

Imp's: 42nd ST.
Hilltop to "C"

Ref: DWG: 1007-LD
(City Notes: W.O. #33155
July-1960 by Baumgartner)

43

10-16-61
W.O. 33155

LT

RT

STA:

P.L

CB

±

CB

P.L

STA:

CB

±

CB

P.L

1+21.4=P.L
N/Ky. LT.
(PAY = -0.47' lower)
58.85
158.47
158.47
CO.38
CO.85 to
PAY

0+50
156.74 55.43
155.46 155.46
C1.28 F0.03
55.45 155.72
155.46 155.46
F0.01 CO.26

1+06.4=P.L
Alley - LT.
(PAY = -0.23' lower)
58.00
157.88
157.88
CO.12
CO.35 to
PAY

0+25
154.99 54.37
154.49
F0.12
54.67
154.49
CO.18
154.49

1+06.4^{EC} Alley
157.72
57.68
157.72
F0.04

0+17.50=
CB-BC
156.48 154.15
154.20 154.20
C2.28 F0.05
154.37 155.05
154.20 154.20
CO.17 CO.85

(4' Alley
RAD.)

1+02.40=Alley
B.C LT. only
157.96 57.63
157.49 157.49
CO.47 CO.14

#1

1+00
157.40 57.55
157.40 157.40
CO.15 57.28
F0.12 156.76
F0.64

CB end (meat)
EXIST

(0+00=N.L)
Hilltop
153.51
153.60

0+75
156.43 56.75
156.43 156.43
CO.32 56.41
F0.02 156.43
156.43

B.M

(Dir. Elev. Rod.)

152.94 = S.W.
B.P. Hilltop & 42nd

Note: Red-Line DATA = Graden change by
OFFICE - 10-23-61

45

LT.				RT.		
STA.	P.L.	CB	±	CB	P.L.	
3+22.27=CB B.C. LT. ONLY	167.21 165.00 C2.21	165.14 165.00 C0.14		66.13 166.00 C0.13	166.00	
# 1 - P. Line @ CB Arc	164.00					
# 2						
↓ CB END. LT (newt EXIST.)						
3+07.8=N.L. Brdway	166.4 164.00 C2.4					
3+02.27 RT. only				65.08 164.87 C0.21	164.87	
2+82.27= BVC RT. ONLY				64.02 164.07 F0.05	166.91 164.07 C2.84	
2+77= W.S. RT.				166.3 163.9=TPCB C2.4		
2+62= SEW. LAT (1) RT.		165.68 154.1 ± C11.50		165.68 158.25=F.L C7.43 P.L.		

LT.				RT.		
STA.	P.L.	CB	±	CB	P.L.	
4+47.67=P.L. alley (Pav=0.19 Lower)	173.76	73.29 173.76 F0.47				
4+47.67 alley E.C.	173.60	73.24 173.60 F0.36				
4+43.67= Alley B.C. LT. ONLY	173.13 173.24 F0.11	73.22 173.24 F0.02				
(note: See pg 46) Fov 4+40						
4+25	171.86 171.96 F0.10	72.13 171.96 C0.17				72.60 172.62 F0.02
4+00	170.26	69.96 170.26 F0.30				71.14 171.01 C0.13
3+75	169.86 168.57 C1.29	68.41 168.57 F0.16				69.57 169.40 C0.17
3+50	166.87	66.87 166.87 Grade				67.97 167.78 C0.19
3+25	165.18	165.25 165.18 C0.07				166.12 166.17 F0.05
						168.76 166.17 C2.59

NOTE: Red-Line DATA: = grade change by office - 10-23-61

LT.				RT.		LT.				RT.		
STA:	P.L	CB	E	CB	P.L	STA:	P.L	CB	E	CB	P.L	
5+00.20	177.60	77.45 177.60 F0.15	178.30	78.76 178.50 C0.26	178.50	5+70.88=CB B.C RT only					185.65 ^{or F} 185.65 ^{EXIST}	
4+80.20= P.R.B.V.C	175.60 176.00 F0.4	75.48 176.00 F0.52	176.50	76.80 176.65 C0.15	178.99 176.65 C2.34	5+83.14= Bik LT. only	183.44 184.20 F0.76	83.94 184.20 F0.26				
4+71.67= AIRY B.C	175.21 175.32 F0.11	75.01 175.32 F0.31				5+70.20	182.67 183.22 F0.55	83.20 183.22 F0.02			184.20 ^{EXIST} 183.79	
4+67.67= AIRY E.C	175.08	74.94 175.08 F0.14				5+45.20	181.36	81.11 181.36 F0.25			182.45 ^{EXIST} 181.54	
4+67.67 = P.L alley (PAR=0.49 lower)	175.24	75.32 175.24 C0.08 C0.57 _{to} PAR.				5+32.7=SEW LAT 4 LT.	179.2 170.3 PL C8.9 PL	179.2 168.0 E C11.2			181.29 ^{EXIST} 180.08 (PLAN)	
4+60.20 RT. only			174.90	75.29 175.00 C0.29	175.00	<u>NOTE:</u> 5+29.5 = Beg EXIST TYPE 4 CB RT.	5+20.20 = E.V.C	178.97 179.50 F0.53	79.17 179.50 F0.33	180.30	80.58 180.50 C0.08	180.87 180.50 F0.37
4+40.20 BYC LT+RT GRADE	172.97 173.00	73.04 173.00 C0.04	173.26	73.59 173.60 F0.01	175.90 173.60 C2.3							

IMP's 42nd (CONT.)

SEW: E EXIST M.H. (E 42nd +
N 45' E ALLEY BIK 1)

STA: P.L. CB E CB. P.L.

STA:

GRADES

CB. end LT.
(meet EXIST)

0+45

178.44
169.73 = F.L.
C 10.71

#1 LT

0+22.50

5+93.14 = CB 183.59 84.22
LT. ONLY 184.40 184.40
F0.83 F0.18

176.51
166.15
C 10.36

CB. END RT.

EXIST. M.H.
E 42nd + E
ALLEY BIK 1
BUENA VISTA

(meet)
164.58 = F.L. (map)

CB #1 RT

STUBS 5' RT & SEW.

CLARK
Wentworth
ABRENIA
ANDERSON
3-19-62
W.O. 31912

GRADES: ALLEY BIK'A
INGRAHAM to JEWEL
KENDRICK'S ADD: -
(bet. Chalcedony & Missouri)

STA:	(N/W) LT.	RT.
0+70 = E.V.C.	stub 2' BK 100.41 100.30 C0.11	stub 2' BK 99.65 100.00 F0.35
0+50	stub 2' BK 100.02 99.60 C00.42	stub 2' BK 98.99 99.30 F0.31
0+30	chx 2' BK 99.68 98.60 C1.08	stub 2' BK 98.52 98.30 C0.22
0+20	stub 2' BK 99.20 98.00 C1.20	chx 2' BK 98.60 97.70 C0.90
0+10	stub 2' BK 97.92 97.30 C0.62	stub 2' BK 97.47 97.00 C0.47
0+00 = E.L. (meet) INGRAHAM	96.30	stub 2' BK 95.80

B.M. P.K. P[#] 1718407-T = 87.94
INGRAHAM ST - ALLEY N OF DIAMOND

Ref: DWG: 10220-2-D
CITY Notes by
WEST
File: C-14
Date: 3-61

Note: 0.25' exception Pav.
tot. Pav. width = 19.50'
Alley width = 20'
GRADES:

STA:	LT.	RT.
2+20 chx 2' BK	103.74 103.10 C0.64	stub 2' BK 102.81 102.80 C0.01
2+00 = B.V.C. chx 1' BK	103.53 102.80 C0.73	stub 2' BK 102.37 102.50 F0.13
1+75 chx 1' BK	103.32 102.45 C0.87	stub 2' BK 102.27 102.15 C0.12
1+50 stub 1.8' BK	102.51 102.10 C0.41	stub 2' BK 101.53 101.80 F0.27
1+25 stub 1' BK	101.72 101.54 C0.18	stub 2' BK 101.15 101.24 F0.09
1+00 NAIL 0.85' BK	101.90 100.98 C0.92	NAIL = edge Pav. 101.76 100.68 C1.08
0+85 NAIL 0.9' BK	101.53 100.64 C0.89	stub 1' BK 99.86 100.37 F0.48

Note: All outs Refer to edge Pav.

ALLEY BIK 'A' (CONT.)

49

STA:	LT (w/ly)	RT	STA:	LT (w/ly)	RT
3+75	NAIL 0.6' BK 104.45 103.72 C0.73	2x2 stub 2' BK 102.76 103.42 F0.66	5+1947 = W.L. Jewell	105.83	105.42
3+50	stub 2' BK 103.86 103.64 C0.22	stub 2' BK 103.37 103.34 C0.03	5+00	stub 2' BK 106.15 105.47 C0.68	CLX 2' BK 104.74 105.17 F0.43
3+25	stub 2' BK 103.85 103.57 C0.28	stub 2' BK 103.29 103.27 C0.02	4+80	NAIL 0.2' BK 105.83 105.06 C0.77	CLX 2' BK 104.28 104.76 F0.48
3+00	Stub 0.5 BK 103.69 103.49 C0.20	stub 2' BK 102.97 103.19 F0.22	4+60	CLX 2' BK 104.76 104.66 C0.10	stub 2' BK 103.85 104.36 F0.51
2+75	NAIL 0.15 BK 104.72 103.41 C1.31	stub 2' BK 102.93 103.11 F0.18	4+40 = E.V.C	stub 2' BK 104.13 104.25 F0.12	stub 2' BK 103.34 103.95 F0.61
2+60	CLX 2' BK 104.11 103.36 C0.75	Stub 2 BK 103.45 103.06 C0.39	4+20	CLX 2' BK 104.10 103.95 C0.15	stub 2' BK 103.42 103.65 F0.23
2+40 = E.V.C	Stub 2' BK 104.24 103.30 C0.94	Stub 2' BK 102.99 103.00 F0.03	4+00 = B.V.C	CLX 2' BK 103.96 103.80 C0.16	Stub 2' BK 102.84 103.50 F0.66

CLARK
Wentworth
ABRENILLA
ANDERSON
3-19-62
W.O. 31912

ALLEY BIK #106: PAC-BEACH

Jewell to KENDALL
(bet. Law + Chalcedony)

REF: DWG # 10220-1-D
CITY notes. by West
File C-14
3-61

Note: Alley width = 20' 50
Par. width = 18'
= 1' acceptance
each side

STA.	LT. (N.Y.)	Stub 2' BK	Stub 2' BK	RT	STA.	Stub 2' BK	Stub 2' BK	RT
1+00	125.99 125.13 C0.86			124.69 124.83 F0.14	2+75			125.98 125.53 C0.45
0+75	126.30 125.03 C1.27	Stub 2' BK	Stub 2' BK	124.63 124.73 F0.10	2+50	Stub 2' BK		125.05 125.43 F0.38
0+60	126.62 124.97 C1.65	Stub 2' BK	Stub 2' BK	124.49 124.67 F0.18	2+25	Stub 2' BK		124.07 125.33 F1.26
0+40 = E.V.C	126.72 124.89 C1.83	Stub 2' BK	Stub 2' BK	124.98 124.59 C0.39	2+00	Stub 2' BK		124.05 125.23 F1.18
0+20	126.93 124.76 C2.17	NAIL 1.06' BK	CHT 1.5' BK	125.16 124.38 C0.78	1+75	Stub 2' BK		123.45 125.13 F1.68
0+00 = E.L. Jewel	123.96			122.70	1+50	Stub 1' BK		123.67 125.03 F1.36
B.M.	P.K. P.P.# 4824 @ 0-62, 13' RT			122.39	1+25	Stub 2' BK		123.49 124.93 F1.44

Cut. Street turned in
3-20-62

C/ANK
WENTWORTH
ABRENILLA
ANDERSON
3-20-62
W.O. 31912

GRADES: ALLEY BIK #2
(bet. Law + Chai/cedony)
INGRAHAM to JEWELL

Ref: DWG: 10220-3-D
CITY notes: by West
File C-14
3-61

Alley width = 20' (52)
Note: Pav. width 19.5'
0.25' Exception - each side

STA:	(Nky) LT		RT	STA:	LT		RT
				2+2.5	114.22 113.83 C0.39	CH X 1.09' BK	Stub 2' BK 113.47 113.53 F0.06
0+70 = E.V.C	110.61 110.47 Stub 2' BK C0.14		Stub 2' BK 110.30 110.17 C0.13	2+10 = E.V.C	114.15 113.63 C0.52	CH X 2' BK	Stub 2' BK 113.43 113.33 C0.10
0+50	110.40 109.80 Stub 2' BK C0.60		Stub 2' BK 109.32 109.50 F0.18	1+90 = B.V.C	113.97 113.17 C0.80	CH X 2' BK	Stub 2' BK 113.31 112.87 C0.44
0+30	109.76 108.80 Stub 2' BK C0.96		Stub 2' BK 109.04 108.50 C0.54	1+65	112.83 112.61 Stub 2' BK C0.22		CH X 2' BK 113.07 112.31 C0.76
0+10	109.23 106.95 Stub 2' BK C2.28		Stub 2' BK 108.84 106.65 C2.19	1+40	112.24 112.05 Stub 2' BK C0.19		Stub 2' BK 112.13 111.75 C0.38
(Meet) 0+00 = E.L	105.80		105.50	1+15	111.73 111.48 Stub 2' BK C0.25		Stub 2' BK 111.49 111.18 C0.31
INGRAHAM							
B.M	P.K Spike P# 4824 0-70, 10' RT		104.91	0+90	111.24 110.92 CH X 2' BK C0.32		Stub 2' BK 110.90 110.62 C0.28

Cut sheet turned in 3-20-62

Cut sheet

(?)

Alley BIK 2 (CONT.)

53

STA:	(N4) LT.	RT	STA:	LT.	RT
3+90	Stub 2' BK 117.65 116.35 C1.30	CHK 2' BK 116.28 116.05 C0.23			
3+70	Stub 2' BK 117.26 115.85 C1.41	NAIL 0.65 BK 116.03 115.55 C0.48	(meet) 5+18.56 = W.L. Jewell	123.10	122.21
3+50 = BVC	Stub 2' BK 116.82 115.45 C1.37	NAIL 0.70 BK 115.81 115.15 C0.66	5+00	Stub 2' BK 122.26 121.80 C0.46	Stub 2' BK 120.59 121.50 F0.91
3+25	Stub 2' BK 115.51 115.13 C0.38	NAIL 0.6' BK 115.54 114.83 C0.71	4+75	Stub 2' BK 120.73 120.17 C0.56	P.K. wall 1.2 BK 120.24 119.87 C0.37
3+00	Stub 2' BK 115.13 114.80 C0.33	NAIL 0.56 BK 114.96 114.50 C0.46	4+50 = E.V.C	Stub 2' BK 119.20 118.55 C0.65	P.K. wall 1.24 BK 118.56 118.25 C0.31
2+75	Stub 2' BK 114.62 114.48 C0.14	NAIL 0.59 BK 114.66 114.18 C0.48	4+30	Stub 2' BK 118.43 117.64 C0.79	Stub 2 BK 116.47 117.34 F0.87
2+50	Stub 2' BK 114.54 114.15 C0.39	NAIL 0.55 BK 114.24 113.85 C0.39	4+10	Stub 2' BK 117.99 116.95 C1.04	P.K. wall 1.08 BK 117.18 116.65 C0.53

CLARK
WENTWORTH
ABREVILLA
ANDERSON
3-20-62
W.O. 31912

ALLEY BIK #108 (PAC-BEACH)
HAINES TO INGRAHAM
(bet. LAW & CALCEDONY)

REF: DWG: 10220-3-D
CITY notes: by West
3-'61
File: C-14

Note: Alley width = 20'
Pav. width = 19.50'
= 0.25' Exception
each side

54

STA:	(N'LY) LT			RT	STA:	LT.			RT
0+75	98.95 98.05 C0.90	Stub 2' BK	Stub 2' BK	98.17 97.75 C0.42	2+25	98.82 98.60 C0.22	Stub 2' BK	97.76 98.30 F0.54	
					2+05 = Sew LAT #① RT.		97.34 91.88 = g	97.34 = F.L. 92.10 Lat Prop C5.24	Stub 5' BK P.L.
0+50	98.73 97.98 C0.75	Stub 2' BK	Stub 2' BK	97.89 97.68 C0.21	2+00 = grid BK Stub 2' BK	98.51 98.40 C0.11	Stub 2' BK	97.65 98.10 F0.45	
0+35	98.92 97.94 C0.98	BK 0.72' BK	Stub 1.25' BK	98.43 97.64 C0.79	1+75	98.68 98.33 C0.35	Stub 2' BK	97.93 98.03 F0.10	
0+20 = grid RT. only	99.27 97.90 C1.37	NAIL 0.78' BK	Stub 2' BK	98.60 97.60 C1.00	1+50	98.58 98.26 C0.32	Stub 2' BK	97.79 97.96 F0.17	
(Meet) 0+00 = E.L. HAINES	97.84			97.37	1+25	99.68 98.19 C1.49	NAIL 0.35' BK	99.36 97.89 C1.47	
B-M SPIKE IN P #657187-H W'ly end alkyl BIK 108				98.35	1+00	99.02 98.12 C0.90	Stub 2' BK	98.22 97.82 C0.40	

Cor-Sheet 3-21-62

ALLEY BK 108 (CONT.)

55

STA:	(NLY) LT		RT	STA:	LT		RT
3+80 = B.V.C. Stub 2' BK	102.21 100.65 C1.56		Stub 2' BK 100.62 100.35 C0.27	(meet) 4+99.10 = W.L. INGRAHAM	104.42		104.14
3+65 Stub 2' BK	101.86 100.43 C1.43		Stub 2' BK 100.45 100.13 C0.32	4+89.10 Stub 2' BK	105.09 104.00 C1.09	ch + 2' BK	103.47 103.70 F0.23
3+50 Stub 2' BK	101.63 100.22 C1.41		ch x 2' BK 100.41 99.92 C0.49	4+75 Stub 2' BK	104.71 103.81 C0.90	ch + 2' BK	103.47 103.51 F0.04
3+25 Stub 2' BK	100.53 99.87 C0.66		ch x 2' BK 99.63 99.57 C0.06	4+60 Stub 2' BK	104.19 103.60 C0.59	ch + 2' BK	103.47 103.30 C0.17
3+00 Stub 2' BK	100.00 99.51 C0.49		Stub 2' BK 99.10 99.21 F0.11	4+40 Stub 2' BK	103.01 102.70 C0.31	Stub 2' BK	101.65 102.40 F0.75
2+75 Stub 2' BK	99.41 99.16 C0.25		Stub 2' BK 98.45 98.86 F0.41	4+20 NAIL 0.36' BK	102.67 101.80 C0.87	NAIL 1.05' BK	102.83 101.50 C1.33
2+50 = grid BK Stub 2' BK	99.15 98.80 C0.35		Stub 2' BK 98.18 98.50 F0.32	4+00 NAIL 0.28' BK	102.52 101.13 C1.39	NAIL 0.62' BK	102.74 100.83 C1.91

CLARK
WENTWORTH
ABRENILLA
ANDERSON
3-21-62
W.O. 31912

STAKE ALLEY BIK 146
PAC-BEACH
HAINES to INGRAHAM
(bet. MISSOURI + DIAMOND)

Ref: DWG: 10220-4-D
city notes: by WEST
File C-14
3-'61

Alley = 20' 56
Par. width 19.50'
0.25' exception
each side

Cut sheet 3-22-62

STA:	(N/L) LT.		RT	STA:	LT.		RT.
1+00	81.69 80.86 CO.83 NAIL 1.05' BK	Stub 2' BK.	81.10 80.74 CO.36	2+50	81.93 81.35 CO.58 Stub 2' BK	ck + 2' BK	81.22 81.05 CO.17
0+80 = E.V.C.	81.56 80.80 CO.76 NAIL 1' BK	ck + 2' BK	80.76 80.70 CO.06	2+30 = Sew LAT. # (3) LT.	81.68 F.L. 76.25 P.L. CO.43 Stub 5' BK PROP.		75.88 F.L. E
0+60	81.60 80.70 CO.90 NAIL 1' BK	ck + 2' BK	80.77 80.60 CO.17	2+25	81.83 81.27 CO.56 Stub 2' BK	Stub 2' BK	80.79 81.00 FO.21
0+40 = B.V.C.	80.68 80.50 CO.18 ck x 2' BK	Stub 2' BK	80.31 80.45 FO.14	2+00	81.54 81.19 CO.35 Stub 1.85' BK	Stub 2' BK	80.59 80.94 FO.35
0+20	80.51 80.27 CO.24 ck x 2' BK	Stub 1.25' BK.	80.83 80.11 CO.72	1+75	81.28 81.11 CO.17 NAIL 0.86' BK	Stub 2' BK	80.97 80.89 CO.08
0+00 = E.L. (meet) (EXIST.) HAINES	80.03		79.76	1+50	81.58 81.03 CO.55 NAIL 1.1' BK	Stub 2' BK	81.09 80.84 CO.25
B.M. = C.TK & DIAMOND +			76.19	1+25	81.40 80.95 CO.45 ck x 2' BK	Stub 2' BK	80.87 80.79 CO.08

ELY 7' LINE HAINES

ALLEY BIK #146 (CONT.)

STAI	(N ² /1) LT.		RT.	STAI	LT.	RT.
4+00	83.75 83.37 Stub 2' BK CO.38		83.35 83.07 Stub 2' BK CO.28			
3+75	83.21 82.95 Stub 2' BK CO.26		82.39 82.65 Stub 2' BK FO.26			
			(meet EXIST)			
3+60	82.72 82.70 Stub 2' BK CO.02		82.30 82.40 Chx 2' BK FO.10	4+98.62 = W.L. INGRAHAM	85.47	85.29
3+40	82.79 82.40 NAIL 0.35' BK CO.39		82.04 82.10 Chx 2' BK FO.06	4+80 Stub 2' BK	85.04 84.70 CO.34	Stub 2' BK 84.31 84.40 FO.09
3+20	82.02 82.10 Chx 2' BK FO.08		81.80 81.80 Chx 2' BK 0.00 grade	4+65 Stub 2' BK	84.66 84.45 CO.21	Stub 2' BK 83.79 84.15 FO.36
3+00	82.03 81.80 Stub 2' BK CO.23		81.54 81.50 Chx 2' BK CO.04	4+50 Stub 2' BK	84.42 84.20 CO.22	NAIL 0.4' BK 84.65 83.90 CO.75
2+75	82.13 81.58 Chx 2' BK CO.55		81.10 81.28 Chx 2' BK FO.18	4+25 Chx 2' BK	84.12 83.78 CO.34	Stub 2' BK 83.19 83.78 FO.29

CLARK
WENTWORTH
ABRENILIA
ANDERSON
3-21-62
W.O. 31912

STAKE ALLEY BIK #145 (PAC-BEACH)
INGRAHAM TO JEWELL
(bet. MISSOURI + DIAMOND)

REF: DWG: 10220-4-D
- NO CITY NOTES - P

Alley width = 20'
PRV. width = 19.50
= 0.25 EXCEPTANCE
EACH SIDE

58

Cont sheet 3-22-62

STA:	(N4) LT.	RT.
0+90	91.46 90.40 C1.06 Ch + wall 0.25' BK	Stub 2' BK 89.55 90.10 F0.55
0+70	90.90 89.93 C0.97 Ch + wall 0.25' BK	Stub 2' 1/4" 2' BK 89.39 89.63 F0.24
0+45	90.17 89.34 C0.83 Ch + 0.85' BK	Stub 2' BK 88.66 89.04 F0.38
0+20 = E.V.C	89.76 88.75 C1.01 Ch + 1.15' BK	Stub 2' BK 88.18 88.75 F0.27
0+10	89.29 88.05 C1.24 Stub 2' BK	Stub 2' BK 87.68 87.75 F0.07
0+00 = E.L.	86.85	86.70
INGRAHAM		
T.O.M	87.03 = Ch + N4y alley BK @ INGRAHAM	
B.M = C.T.R of DIAMOND & ELY 7' Line HAINES		= 76.19

STA:	LT.	RT.
2+40	Stub 2' BK 94.40 94.33 C0.07	Ch + 2' BK 94.41 93.62 C0.79
2+20	Stub 2' BK 94.41 93.62 C0.79	Stub 2' BK 93.46 93.32 C0.14
2+00	Stub 2' BK 93.89 92.90 C0.99	Ch + 2' BK 92.76 92.60 C0.16
1+75	Stub 2' BK 93.07 92.38 C0.69	Ch + 2' BK 92.70 92.08 C0.62
1+50	Ch + wall 0.21' BK 92.24 91.86 C0.38	Stub 2' BK 91.02 91.56 F0.54
1+25	Ch + wall 0.2' BK 91.89 91.33 C0.56	Stub 2' BK 90.43 91.03 F0.60
1+10	Ch + wall 0.21' BK 91.77 91.02 C0.75	Stub 2' BK 90.08 90.72 F0.64

ALLEY BK #145 (CONT.)

59

Cont sheet 3-22-6

STA:	LT.		RT.	STA:	LT.		RT.
3+75	96.46 95.77 Co.69	NAIL 0.45 BK	Stub 2' BK 95.26 95.47 Fo.21				
3+50	97.84 95.56 C228	NAIL 0.51 BK	Stub 2' BK 95.01 95.26 Fo.25	5+20 = W.L. Jewell	96.98		CHK: 96.79 96.79
3+25	96.01 95.34 Co.67	Stub 2' BK	Stub 2' BK 94.97 95.04 Fo.07	5+00	97.48 96.85 Co.63	Stub 2' BK	CHK 2' BK 96.96 96.55 Co.41
3+25 = Sew LAT # (2) LT	96.05 90.50 F.L. C5.45 Prop 96.95 95.34 Pav Co.71 to 2	87.11 & F.L.		4+75	97.26 96.64 Co.62	Stub 2' BK	CHK 2' BK 96.58 96.34 Co.24
3+00	95.80 95.12 Co.68	Stub 2' BK	Stub 2' BK 94.14 94.82 Fo.68	4+50	96.93 96.42 Co.51	Stub 2' BK	CHK 2' BK 96.23 96.12 Co.11
2+80	95.46 94.95 Co.51	Stub 2' BK	Stub 2' BK 94.23 94.65 Fo.42	4+25	96.51 96.20 Co.31	Stub 2' BK	CHK 2' BK 96.29 95.90 Co.39
2+60	95.02 94.75 Co.27	Stub 2' BK	CHK 2' BK 94.49 94.45 Co.04	4+00	96.87 95.79 Co.88	NAIL 0.36 BK	CHK 2' BK 95.72 95.69 Co.03

CLARK
WENTWORTH
ABRENILIA
ANDERSON
3-22-62
W.O. 31912

ALLEY BIK #1 (PAC-BEACH)
(bet. Beryl + LAW)
INGRAHAM to JEWELL

note: Alley = 20'
Pav = 18'
= 1.0' exception
each side

Ref: DWG: 10220-2-D
city notes: by West
File C-14
3-61

60

STA:	(N'Y) LT.		RT	STA:	LT.		RT.
0+70	129.49 129.10 CO.39	Stub 1.10' BK	129.48 128.80 CO.68	2+10 = B.V.C chx 1.2' BK	141.07 139.71 C1.66	NAIL 0.97' BK	139.75 139.11 CO.64
0+50	127.72 126.99 CO.73	Stub 1.10' BK	126.28 126.69 FO.41	1+85 NAIL 1.75' BK	138.62 137.60 C1.02	chx 2' BK	138.66 137.30 C1.36
0+30	125.06 124.30 CO.76	Stub 1.10' BK	125.74 124.00 C1.74	1+60 chx 1.5' BK	137.00 135.78 C1.22	chx wall 1' BK	135.84 135.48 CO.36
0+10	121.96 120.30 C1.66	Stub 1.2' BK	119.02 120.00 FO.98	1+35 Stub 2' BK	133.98 133.97 CO.01	chx 1.05' BK	134.42 133.67 CO.75
0+00 = E. Line INGRAHAM	119.00		117.96	1+10 Stub 2' BK	134.30 132.15 C2.15	chx wall 1.10' BK	132.50 131.85 CO.65
T.B.M. 119.27	N'Y alley B.C at alley			0+90 = E.V.C chx 1.05' BK	130.85 130.70 CO.15	chx 1.05' BK	130.91 130.40 CO.51
B.M. 104.91	= P.K. Pole # 4824 w/ly. side						
INGRAHAM @ alley (bet Low + Chalcedony)							

5/60 + 3-23-62

ALLEY BIK #1 (CONT.)

STAI	LT		RT	STAI	(NLY)LT		RT
3+30=B.V.C NAIL 1.5' BK	142.85 141.80 C1.05		Stub 2' BK 140.64 141.50 FO.86	4+30 ch x 2' BK	145.61 145.00 CO.61	Stub 2' BK	144.58 144.70 FO.12
3+10 Stub 1.4' BK	142.37 141.60 CO.77		Stub 2' BK 140.38 141.30 FO.92	4+15 NAIL 0.9' BK	145.83 144.90 CO.93	Stub 2' BK	144.66 144.60 CO.06
2+90 NAIL 1.45' BK	143.25 141.40 C1.85		Stub 2' BK 140.26 141.10 FO.84	4+00=B.V.C Stub 1' BK	145.41 144.50 CO.91	Stub 2' BK	144.59 144.20 CO.39
2+70 Stub 1.4' BK	142.69 141.20 C1.49		NAIL 1.09' BK 141.88 140.90 CO.98	3+85 ch x 1.6' BK	144.99 143.75 C1.24	Stub 2' BK	143.18 143.45 FO.27
2+50=E.V.C Stub 1' BK	142.54 141.00 C1.54		NAIL 0.74' BK 141.51 140.70 CO.81	3+70=E.V.C ch x 1.7' BK	144.93 143.00 C1.93	Stub 2' BK	142.53 142.70 FO.17
2+30 Stub 1' BK	141.54 140.50 C1.04		NAIL 1.02' BK 141.24 140.20 C1.04	3+50 Stub 1' BK	142.96 142.20 CO.76	Stub 2' BK	141.44 141.90 FO.46

ALLEY BIKI (CONT.)

STA: (w'ly) RT.
LT.

CHK: 104.50 = P.K. Pole # 5737 11' RT

5+18.95 = W.L. 141.65 140.62
JEWELL C.57

5+00 143.22 142.39
stub 1' BK 142.50 stub 2' BK 142.20
C0.72 C0.19

4+80 144.83 142.74
stub 2' BK 143.60 stub 2' BK 143.30
C1.23 F0.56

4+60 144.73 143.19
stub 1' BK 144.40 stub 2' BK 144.10
C0.33 F0.91

4+45 145.14 143.42
stub 0.95' BK 144.85 stub 2' BK 144.55
C0.29 F1.13

CLARK
Wentworth
ABRENNIA
ANDERSON
5-3-62

W.O. 17241
STA.

CITY PROP. KEMPER -
MIDWAY Fire-STA. #34
KEMPER ST. - MIDWAY - NEELY.

REF. DWG'S: 10505-1-D
10505-2-D
CITY NOTES

Note: Rough-GRADE
Substation P. LINE RT 63
4' BK Limits grading on LT.
(grades on LT. refer to grade FIN.)
PAV & ST. = N'wly edge PAV.

STA.	P.L.	LT. E = edge PAV.	EDGE CONC. CURB	RT. Rough-grad P.L.		STA.	LT.	E = edge PAV.	EDGE CONC. CURB	CB. P.L.		
				CB.	CB.					CB.	P.L.	
0+25				1.62	1.62	1+33.70 = B.C. RT		1.77		1.56	2.16	2.2
			1.68	1.88	1.88			2.20	2.00	2.20	2.20	2.0
				Fo.26	Fo.26			Fo.93		Fo.64	Fo.04	Co.2
0+20 = Beg grade At E LT. = edge PAV.						1+25		2.18	1.98	2.19	2.18	1.9
										Co.1		
						1+15 = E 20' curm. Pr. RT						
0+08.68 = P. LINE E.C. 35' RT				1.83	1.83	1+00 = \angle grading LT at 11' LTE		1.57	2.10	1.72	2.46	2.2
								2.10		2.10	2.10	1.9
								Fo.53		Fo.38	Fo.86	Co.3
0+06.63 = EXIST. EC 25' RT = Beg A.C PAV E				1.83	1.83	0+75		2.03	1.83	1.42	2.03	1.7
										Fo.61		
0-04.9 = S'ly edge conc. Pav T.B.M.		1.07				0+50 = \angle grading LT at 8' LTE		1.72	1.95	1.63	1.71	1.7
								1.95	1.75	1.95	1.95	1.7
								Fo.23		Fo.32	Fo.24	grad.
B.M.						0+32.60 E only		1.59	1.70			
								Fo.11				

Ely CB MIDWAY
1.70 = H.T. P.L. #242

3.88 = S.W. B. P.
FRONTIER & FORDHAM

grades For F.G. PAV E
SET ON NAILS LT.

STA:	LT.			RT. (Rough-grade)			STA:	LT.	Σ	EDGE COPY COPY	(ROUGH-GRADE)		
	A.L. END. GRADING = 11' 4.2	g = EDGE PAR.	EDGE COPY COPY	CB	CB	P.L.					CB	CB	P.L.
2+50:		2.56	2.36	1.67 2.56 Fo.89	2.56	2.2							
2+43 = Sew LAT ① RT.	ok	-2.11 g			1.72 ok F.L. -1.51 C. 3.23								
2+25	1.81 2.48 Fo.67	2.48	2.28	1.72 2.48 Fo.76	1.44 2.48 Fl.04	1.4 2.1 Fo.7							
2+00		2.41	2.21	2.02 2.41 Fo.39	2.41	2.1							
1+75		2.33	2.13	2.16 2.33 Fo.17	2.33	2.0							
1+84 = C 42' COMM. DR. RT.													
1+71.73 = E.C RT. Def = 6° 36' 10" Ech = 19.00' 3' BK CB = 15.78'	1.83 2.32 Fo.49	2.32	2.12	2.15 2.32 Fo.17	2.21 2.32 Fo.11	2.2 2.0 Co.2	3+00 = C N+S Ditch @ EST.		1.80 = F.G.				
1+52.715 = mid-pt curve	1.69 2.26 Fo.57	2.26	2.06	2.12 2.26 Fo.14	2.28 2.26 C.02	2.3 2.0 Co.3	2+66.1 g only grade to meet EXIST. PAR.						
Def = 3° 18' 05" Ech = 19.00' 3' BK CB RT = 15.78							2+55 = end CB RT = end PAR.	1.92 2.57 Fo.65	2.57	2.37	1.99 2.57 Fo.60	2.02 2.57 Fo.55	2.0 2.3 Fo.3

DRAINAGE-DITCH				STA	GRADE
5-3-62	Parallel to & N.W. 1/4 ⁽²⁰⁾ OF				
W.O 17241	& KEMPER				
STA		Grade			
1+00		1.98 1.59 C0.39		2+75	1.21
				2+50	1.78 1.26 C0.52
0+75		1.99 1.64 C0.35		2+25	1.91 1.32 C0.59
0+50		2.18 1.70 C0.48		2+00	2.08 1.37 C0.71
0+25.7 = E.C		2.20 1.75 = F.L. C0.45		1+75	2.10 1.42 C0.68
0+10 = B.C	grade 10' LT ON	2.13 1.78 = F.L. C0.35		1+50	2.07 1.48 C.59
$\Delta = 90^\circ$ LT.	RAD. PT.				
R = 10					
L = 15.7					
0+00 Ditch =		1.86 1.80 C0.06	F.L. = Finish Grade PAV	1+25	2.35 1.54 C0.81
(& Kemper ST. STA 3+00)					
T. B.M		3.88 = S.W. B. P	FRONTIER & FORDHAM	MIN. WIDTH DITCH (STUBS SET 5' RT (NW 1/4) & DITCH = 3' BROW TO BROW)	

DRAIN-DITCH-Kemper

STA.

GRADE

2+99.1 = end
Ditch

1.66
1.14
0.52

2+91.1 = E.C

1.73
1.17
0.56

2+80.6 = B.C

$\Delta = 30' LT$
 $R = 20'$
 $L = 10.5'$

1.71
1.20 F.L
0.51

CLARK
Wentworth
ABREUILIA
ANDERSON
5-3-62
W.O. 33126

ALLEY BIK 4 OCEAN BEACH
PARK

Froude to EBERS
bet. LONG BRANCH + BRIGHTON

STA	LT.	♀	RT
0+70 = E.V.C. Ch + 1' BK	54.75 54.47 C0.28	stubi' BK	54.11 54.22 F0.11
0+60 stubi' BK	54.72 54.73 F0.01	stubi' BK	54.39 54.48 F0.09
0+50 = B.V.C. Ch + 0.41' BK	55.56 54.84 C0.72	stubi' BK	54.66 54.59 C0.07
0+35 Ch + 0.41' BK	55.71 54.90 C0.81	stubi' BK	54.78 54.65 C0.13
0+20 stubi' BK edge Pav.	56.20 54.96 C1.24	stubi' BK edge Pav.	54.93 54.71 C0.22
0+00 = Wly Line FROUDE	meet. 55.26		54.70

Note: ALLEY width = 15'
Pav " = 14' = 0.50' except one each side
B.M. 34.49 = N.W.B.P

BRIGHTON & EBERS

REF: DWG: 10331-1-D
City Notes by Shorey
W.O. 33126
12-19-60 File B+C-19

STA	LT.	♀	RT
2+30 stubi' BK	49.13 49.18 F0.05	Chx 2.2 BK	50.68 48.93 C1.75
2+05 stubi' BK E. Pav	49.94 50.00 F0.06	stubi' BK	49.77 49.75 C0.02
1+80 stubi' BK	51.22 50.83 C0.39	stubi' BK	50.41 50.58 F0.17
1+55 stubi' BK	51.54 51.66 F0.12	stubi' BK	51.47 51.41 C0.06
1+30 NAIL 0.23' BK	52.76 52.48 C0.28	stubi' BK	52.19 52.23 F0.04
1+10 Ch + 0.4' BK	53.76 53.15 C0.61	stubi' BK	52.86 52.90 F0.04
0+90 stubi' BK EDGE Pav.	54.21 53.81 C0.40	stubi' BK E. Pav.	53.53 53.56 F0.03

ALLEY BK 4 (CONT.)

68

STA:	LT.		RT.	STA:	LT.		RT.
3+80 = E.V.C	42.34		41.93				
cht 1' BK	41.69	cht 1' BK	41.69				
	CO.65		CO.24				
3+60	43.05		42.86	5+10	37.29		37.25
cht 2' BK	42.80	Stub 1' BK	42.55	cht 1' BK	37.08	cht 1' BK	37.08
	CO.25		CO.31		CO.21		CO.17
3+40 = B.V.C	43.83		43.81	4+90	38.04		38.05
Stub 1' BK	43.84	Stub 1' BK	43.59	Stub 2' BK	37.59	Stub 2' BK	37.59
	FO.01		CO.22		CO.45		CO.46
3+15	46.04		45.27	4+70 = B.V.C	38.48		38.48
Stub 2' BK	45.27	Stub 1' BK	45.02	Stub 2' BK	38.26	Stub 1' BK	38.26
	CO.77		CO.25		CO.21		CO.22
2+90 = E.V.C	47.04		46.99	4+55	39.90		38.80
Stub 1' BK	46.71	cht 2' BK	46.46	Stub 2' BK	38.83	Stub 2' BK	38.83
	CO.33		CO.53		CO.07		FO.03
2+70	47.91		47.53	4+30	40.03		40.34
Stub 1' BK	47.73	Stub 1' BK	47.48	Stub 2' BK	39.78	Stub 2' BK	39.78
	CO.18		CO.05		CO.25		CO.56
2+50 = B.V.C	48.73		48.02	4+05	40.90		41.23
Stub 1' BK	48.51	Stub 1' BK	48.26	Stub 1' BK	40.74	Stub 1' BK	40.74
	CO.22		FO.24		CO.16		CO.99

ALLEY BK 4 (CONT.)

STA:	LT.	RT.
CHK:		
	34.49	= 34.49 = NWBP BRIGHTON EBERS
34.51 PCB		34.18 PCB
6+00.03 (5+99.58 = ELY LINE EBERS Shore)	meet. 34.10	meet 34.09
5+85 chx 1' BK Pov. Edge	35.99 34.74 C1.25	34.57 34.74 F0.17 Stub 2' BK P. Edge
5+70 chx wall 1' BK	38.23 35.39 C2.84	35.89 35.39 C0.50 chx 2' BK P. Edge
5+50 Stub 2' BK	36.53 36.14 C0.39	36.25 36.14 C0.11 chx 2' BK
5+30 Stub 2' BK	36.65 36.67 F0.02	36.72 36.67 C0.05 Stub 2' BK

54.62
W.O. 33126

ALLEY BK 28
OCEAN BEACH PARK
FROUDE to EBERS
bet. CAPE MAY & BRIGHTON

69

STA:	LT.	RT.
1+00 chx 2.26' BK	64.19 63.08 C1.11	63.07 62.78 C0.29 Stub 2' BK
0+75 NAIL 0.76' BK	66.31 65.03 C1.28	65.29 64.93 C0.56 Stub 1.45' BK
0+60 EVC. chx 2' BK	67.82 66.20 C1.62	66.17 65.90 C0.27 Stub 1' BK
0+40 chx 1.93' BK	68.27 67.34 C0.93	67.09 67.04 C0.05 chx 1.43' BK
0+20 Stub 1' BK edge PAR.	67.87 68.04 F0.17	67.54 67.74 F0.20 Stub 1' BK
0+00 = W. Line FROUDE	68.32	67.76
B.M.	68.69 T.P.	67.76 T.P.
		34.49 = NWBP EBERS + BRIGHTON

ANEY BIK 28 - (CONT.)

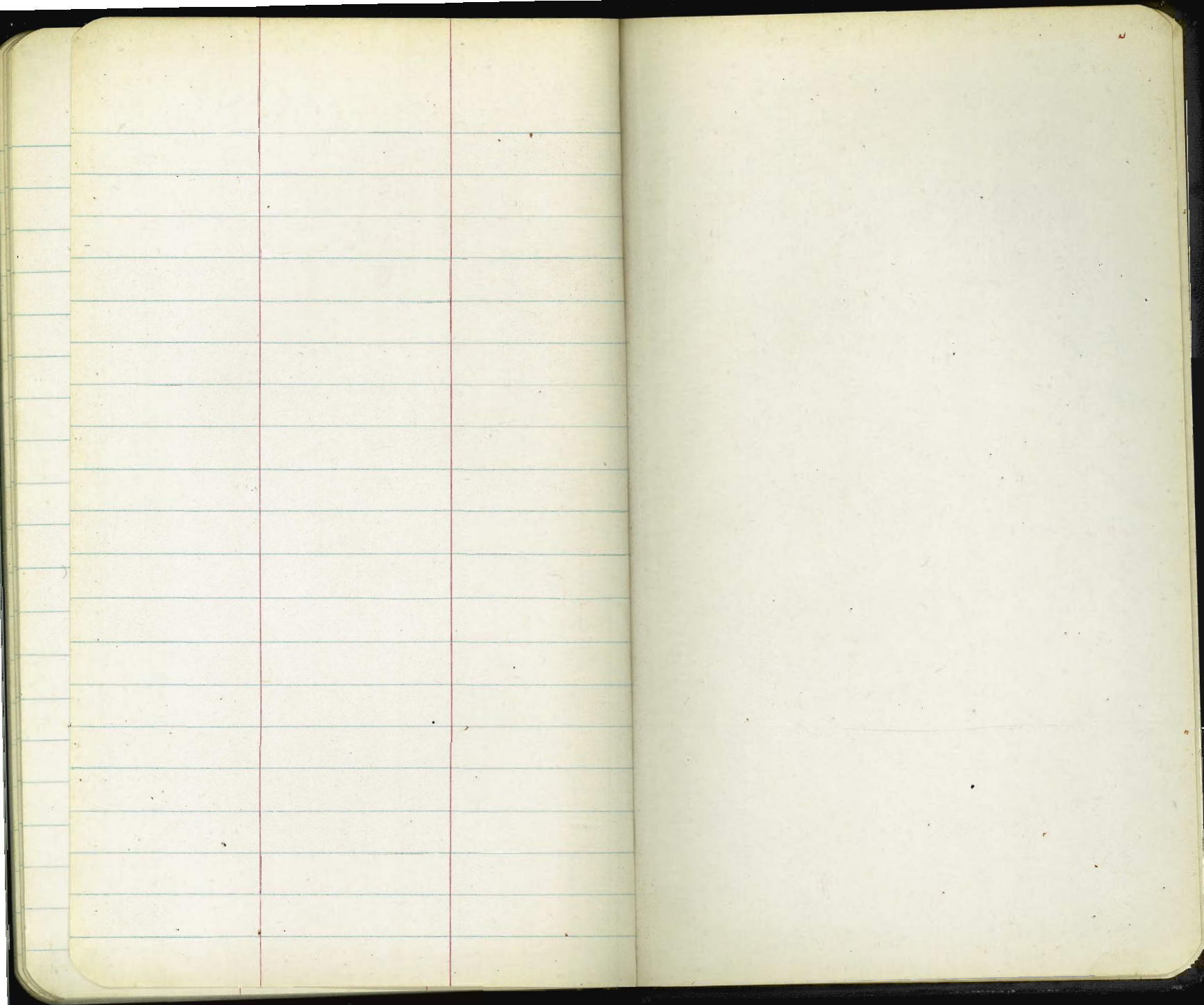
STA:	LT.		RT.
2+10 BVC. Stub 2' BK	55.65 54.94 C0.71	Stub 2' BK	54.51 54.64 F0.13
1+95 Stub 2' BK	56.51 55.97 C0.54	Stub 2' BK	55.70 55.67 C0.03
1+80 EVC. Stub 2' BK	57.83 57.01 C0.82	Stub 2' BK	56.61 56.71 F0.10
1+60 Stub 2' BK	59.06 58.44 C0.62	Stub 2' BK	57.25 58.14 F0.89
1+40 BVC. Stub 2' BK	60.98 59.96 C1.02	Stub 2' BK	59.33 59.66 F0.33
1+20 Stub 2' BK edge Pav.	61.92 61.52 C0.40	Stub 2' BK	60.22 61.22 F1.00

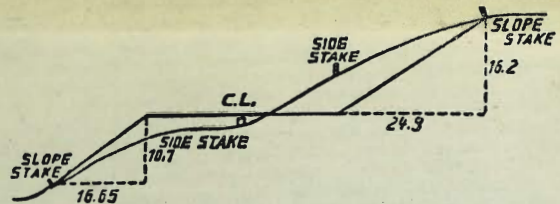
STA:	LT.		RT.
3+50 Stub 2' BK	48.26 48.10 C0.16	Stub 2' BK	47.81 47.80 C0.01
3+30 BVC. Stub 2' BK	49.87 48.80 C1.07	Stub 2' BK	48.37 48.50 F0.13
3+15 Stub 2' BK	50.28 49.51 C0.77	Ch 2' BK	49.81 49.21 C0.60
2+90 Stub 2' BK	51.01 50.70 C0.31	Ch 2' BK	50.41 50.40 C0.01
2+65 Stub 2' BK	52.14 51.89 C0.25	Ch 2' BK	51.30 51.59 F0.29
2+50 EVC. Stub 2' BK	53.55 52.60 C0.95	Stub 2' BK	51.75 52.30 F0.55
2+30 Stub 2' BK Pav. Edge	54.51 53.66 C0.71	Ch 2' BK	53.04 53.36 F0.32

ALLEY BIK 28- (CONT.)

71

STA:	LT.		RT.	STAI:	LT.		RT (W/L)
				CHK:		34.48 = 34.49	NW BP BRIGHTON & EBERS
4+75	41.69 42.13	Stub 2' BK	42.37 42.15 C0.22		Meet		Meet
	F0.44			6+00 (5+99.54 Shorey.)	36.23		36.29
4+50	43.83 43.31	Stub 2' BK	43.29 43.20 C0.09				
	C0.52			5+80 & only		F.G. &	36.81
4+25	45.73 44.49	Stub 2' BK	44.30 44.27 C0.03	5+75	37.71 37.41 C0.30	Stub 1' BK	38.45 37.50 C0.95
	NAIL 0.46 BK			5+50	38.65 38.59 C0.06	Stub 2' BK	39.35 38.70 C0.65
4+10	46.25 45.20	chk 2' Stub BK	45.05 44.90 C0.15	5+25	40.14 39.77 C0.37	Stub 2' BK	40.25 39.90 C0.35
	E.V.C. NAIL 0.45 BK						
3+90	46.93 46.25	Stub 2' BK	45.91 45.95 F0.04				
	NAIL 0.46 BK						
3+70	47.56 47.20	Stub 2' BK edge Pav.	46.86 46.90 F0.04	5+00	41.29 40.95 C0.34	Stub 2' BK edge Pav.	41.36 41.10 C0.26





DISTANCES FROM SIDE STAKES FOR CROSS-SECTIONING.
SLOPE 1 1/2 TO 1. ROADWAY OF ANY WIDTH.

	0	.1	.2	.3	.4	.5	.6	.7	.8	.9	
0	0.00	0.15	0.30	0.45	0.60	0.75	0.90	1.05	1.20	1.35	0
1	1.50	1.65	1.80	1.95	2.10	2.25	2.40	2.55	2.70	2.85	1
2	3.00	3.15	3.30	3.45	3.60	3.75	3.90	4.05	4.20	4.35	2
3	4.50	4.65	4.80	4.95	5.10	5.25	5.40	5.55	5.70	5.85	3
4	6.00	6.15	6.30	6.45	6.60	6.75	6.90	7.05	7.20	7.35	4
5	7.50	7.65	7.80	7.95	8.10	8.25	8.40	8.55	8.70	8.85	5
6	9.00	9.15	9.30	9.45	9.60	9.75	9.90	10.05	10.20	10.35	6
7	10.50	10.65	10.80	10.95	11.10	11.25	11.40	11.55	11.70	11.85	7
8	12.00	12.15	12.30	12.45	12.60	12.75	12.90	13.05	13.20	13.35	8
9	13.50	13.65	13.80	13.95	14.10	14.25	14.40	14.55	14.70	14.85	9
10	15.00	15.15	15.30	15.45	15.60	15.75	15.90	16.05	16.20	16.35	10
11	16.50	16.65	16.80	16.95	17.10	17.25	17.40	17.55	17.70	17.85	11
12	18.00	18.15	18.30	18.45	18.60	18.75	18.90	19.05	19.20	19.35	12
13	19.50	19.65	19.80	19.95	20.10	20.25	20.40	20.55	20.70	20.85	13
14	21.00	21.15	21.30	21.45	21.60	21.75	21.90	22.05	22.20	22.35	14
15	22.50	22.65	22.80	22.95	23.10	23.25	23.40	23.55	23.70	23.85	15
16	24.00	24.15	24.30	24.45	24.60	24.75	24.90	25.05	25.20	25.35	16
17	25.50	25.65	25.80	25.95	26.10	26.25	26.40	26.55	26.70	26.85	17
18	27.00	27.15	27.30	27.45	27.60	27.75	27.90	28.05	28.20	28.35	18
19	28.50	28.65	28.80	28.95	29.10	29.25	29.40	29.55	29.70	29.85	19
20	30.00	30.15	30.30	30.45	30.60	30.75	30.90	31.05	31.20	31.35	20
21	31.50	31.65	31.80	31.95	32.10	32.25	32.40	32.55	32.70	32.85	21
22	33.00	33.15	33.30	33.45	33.60	33.75	33.90	34.05	34.20	34.35	22
23	34.50	34.65	34.80	34.95	35.10	35.25	35.40	35.55	35.70	35.85	23
24	36.00	36.15	36.30	36.45	36.60	36.75	36.90	37.05	37.20	37.35	24
25	37.50	37.65	37.80	37.95	38.10	38.25	38.40	38.55	38.70	38.85	25
26	39.00	39.15	39.30	39.45	39.60	39.75	39.90	40.05	40.20	40.35	26
27	40.50	40.65	40.80	40.95	41.10	41.25	41.40	41.55	41.70	41.85	27
28	42.00	42.15	42.30	42.45	42.60	42.75	42.90	43.05	43.20	43.35	28
29	43.50	43.65	43.80	43.95	44.10	44.25	44.40	44.55	44.70	44.85	29
30	45.00	45.15	45.30	45.45	45.60	45.75	45.90	46.05	46.20	46.35	30
31	46.50	46.65	46.80	46.95	47.10	47.25	47.40	47.55	47.70	47.85	31
32	48.00	48.15	48.30	48.45	48.60	48.75	48.90	49.05	49.20	49.35	32
33	49.50	49.65	49.80	49.95	50.10	50.25	50.40	50.55	50.70	50.85	33
34	51.00	51.15	51.30	51.45	51.60	51.75	51.90	52.05	52.20	52.35	34
35	52.50	52.65	52.80	52.95	53.10	53.25	53.40	53.55	53.70	53.85	35
36	54.00	54.15	54.30	54.45	54.60	54.75	54.90	55.05	55.20	55.35	36
37	55.50	55.65	55.80	55.95	56.10	56.25	56.40	56.55	56.70	56.85	37
38	57.00	57.15	57.30	57.45	57.60	57.75	57.90	58.05	58.20	58.35	38
39	58.50	58.65	58.80	58.95	59.10	59.25	59.40	59.55	59.70	59.85	39
40	60.00	60.15	60.30	60.45	60.60	60.75	60.90	61.05	61.20	61.35	40
41	61.50	61.65	61.80	61.95	62.10	62.25	62.40	62.55	62.70	62.85	41
42	63.00	63.15	63.30	63.45	63.60	63.75	63.90	64.05	64.20	64.35	42
43	64.50	64.65	64.80	64.95	65.10	65.25	65.40	65.55	65.70	65.85	43
44	66.00	66.15	66.30	66.45	66.60	66.75	66.90	67.05	67.20	67.35	44
45	67.50	67.65	67.80	67.95	68.10	68.25	68.40	68.55	68.70	68.85	45
46	69.00	69.15	69.30	69.45	69.60	69.75	69.90	70.05	70.20	70.35	46
47	70.50	70.65	70.80	70.95	71.10	71.20	71.40	71.55	71.70	71.85	47
48	72.00	72.15	72.30	72.45	72.60	72.75	72.90	73.05	73.20	73.35	48
49	73.50	73.65	73.80	73.95	74.10	74.25	74.40	74.55	74.70	74.85	49
50	75.00	75.15	75.30	75.45	75.60	75.75	75.90	76.05	76.20	76.35	50

THE NATIONAL BLANK BOOK COMPANY
 HOLYOKE MASSACHUSETTS
 NEW YORK CHICAGO BOSTON SAN FRANCISCO