

48

G 48  
GRIDLE

Office  
Cal.

MADISON AVE.	2
EAGLE ST	23
COLUMBIA ST	33
GETTI ST	43
SUTTER ST	54
7th St	60
INGALLS ST	66
RANDOLPH ST	68

San Diego Engineers Office  
San Diego, Cal.

Published by H. S. CROCKER COMPANY, Stationers, Drawing  
Materials, Mathematical Instruments, etc., San Francisco.

TRAVERSE TABLE FOR TRANSIT BOOK.

From 1° to 90° for a distance of 100.

Degrees.	DEGREES.		½ DEGREE.		¼ DEGREE.		¼ DEGREE.		Degrees.
	Lat.	Dep.	Lat.	Dep.	Lat.	Dep.	Lat.	Dep.	
0			100.00	0.44	100.00	0.87	99.99	1.31	89
1	99.98	1.75	99.98	2.18	99.97	2.62	99.95	3.05	88
2	99.94	3.49	99.92	3.93	99.91	4.36	99.88	4.80	87
3	99.86	5.23	99.84	5.67	99.81	6.10	99.79	6.54	86
4	99.76	6.98	99.73	7.41	99.69	7.85	99.66	8.28	85
5	99.62	8.72	99.58	9.15	99.54	9.58	99.50	10.02	84
6	99.45	10.45	99.41	10.89	99.36	11.32	99.31	11.75	83
7	99.25	12.19	99.20	12.62	99.14	13.05	99.09	13.49	82
8	99.03	13.92	98.97	14.35	98.90	14.78	98.84	15.21	81
9	98.77	15.64	98.70	16.07	98.63	16.50	98.56	16.93	80
10	98.48	17.36	98.40	17.79	98.33	18.22	98.25	18.65	79
11	98.16	19.08	98.08	19.51	97.99	19.94	97.90	20.36	78
12	97.81	20.79	97.72	21.22	97.63	21.64	97.53	22.07	77
13	97.44	22.50	97.34	22.92	97.24	23.34	97.13	23.77	76
14	97.03	24.19	96.92	24.62	96.81	25.04	96.70	25.46	75
15	96.59	25.88	96.48	26.30	96.36	26.72	96.25	27.14	74
16	96.13	27.56	96.00	27.98	95.88	28.40	95.76	28.82	73
17	95.63	29.24	95.50	29.65	95.37	30.07	95.24	30.49	72
18	95.11	30.90	94.97	31.32	94.83	31.73	94.69	32.14	71
19	94.55	32.56	94.41	32.97	94.26	33.38	94.12	33.79	70
20	93.97	34.20	93.82	34.61	93.67	35.02	93.51	35.43	69
21	93.36	35.84	93.20	36.24	93.04	36.65	92.88	37.06	68
22	92.72	37.46	92.55	37.86	92.39	38.27	92.22	38.67	67
23	92.05	39.07	91.88	39.47	91.71	39.87	91.53	40.27	66
24	91.35	40.67	91.18	41.07	91.00	41.47	90.81	41.87	65
25	90.63	42.26	90.45	42.66	90.26	43.05	90.07	43.44	64
26	89.88	43.84	89.69	44.23	89.49	44.62	89.30	45.01	63
27	89.10	45.40	88.90	45.79	88.70	46.17	88.50	46.56	62
28	88.29	46.95	88.09	47.33	87.88	47.72	87.67	48.10	61
29	87.46	48.48	87.25	48.86	87.04	49.24	86.82	49.62	60
30	86.60	50.00	86.38	50.38	86.16	50.75	85.94	51.13	59
31	85.72	51.50	85.49	51.88	85.26	52.25	85.04	52.62	58
32	84.80	52.99	84.57	53.36	84.34	53.73	84.10	54.10	57
33	83.87	54.46	83.63	54.83	83.39	55.19	83.15	55.56	56
34	82.90	55.92	82.66	56.28	82.41	56.64	82.16	57.00	55
35	81.92	57.36	81.66	57.71	81.41	58.07	81.16	58.42	54
36	80.90	58.78	80.64	59.13	80.39	59.48	80.13	59.83	53
37	79.86	60.18	79.60	60.53	79.34	60.88	79.07	61.22	52
38	78.80	61.57	78.53	61.91	78.26	62.25	77.99	62.59	51
39	77.71	62.93	77.44	63.27	77.16	63.61	76.88	63.94	50
40	76.60	64.28	76.32	64.61	76.04	64.94	75.76	65.28	49
41	75.47	65.61	75.18	65.93	74.90	66.26	74.61	66.59	48
42	74.31	66.91	74.02	67.24	73.73	67.56	73.43	67.88	47
43	73.14	68.20	72.84	68.52	72.54	68.84	72.24	69.15	46
44	71.93	69.47	71.63	69.78	71.33	70.09	71.02	70.40	45
45	70.71	70.71							
Degrees.	Dep.	Lat.	Dep.	Lat.	Dep.	Lat.	Dep.	Lat.	Degrees.
	DEGREES.		½ DEGREE.		¼ DEGREE.		¼ DEGREE.		

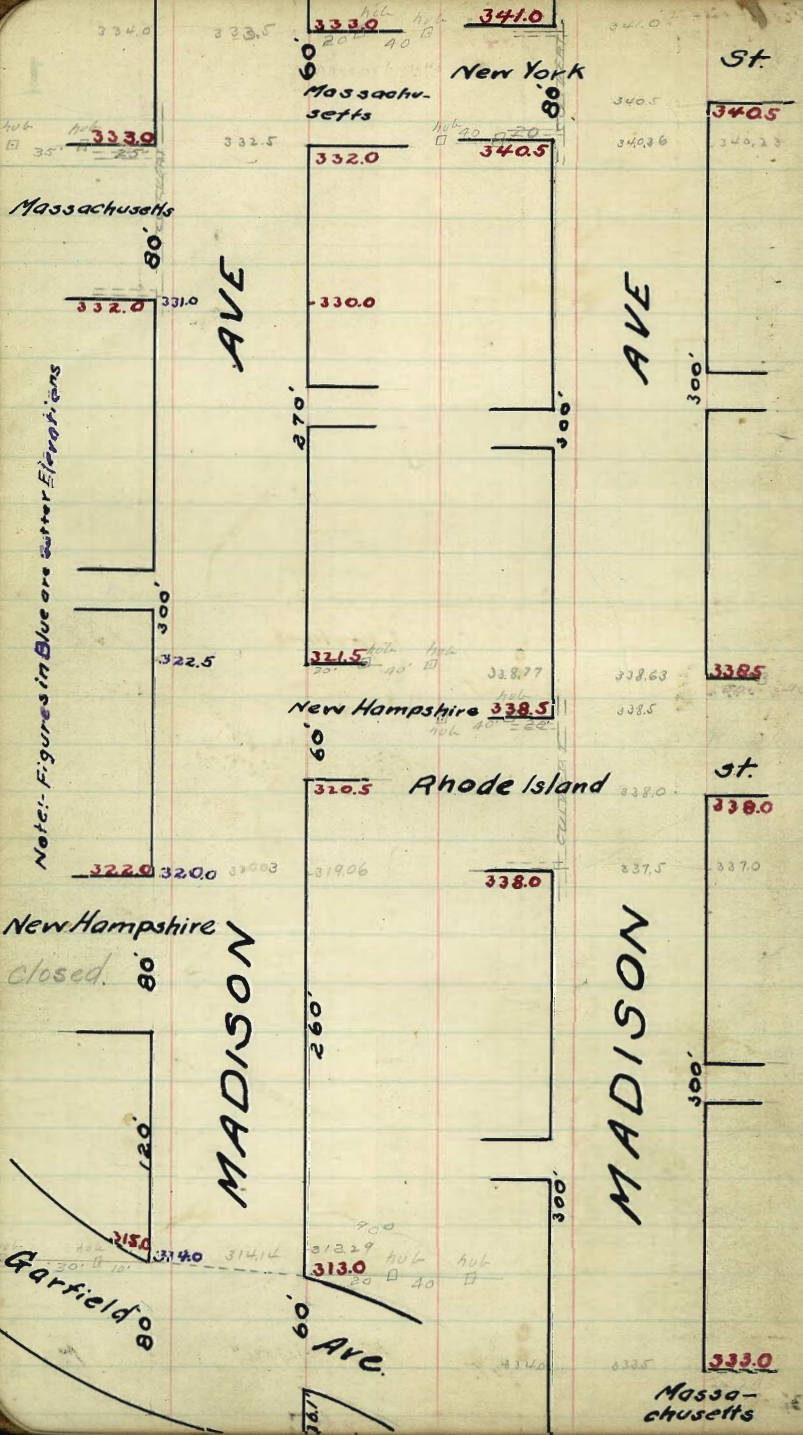
MICROFILMED

APR 5 1965

5-2-5  
565  
535  
525

B.M. 275600 Lewis - Randolph. SW RR spk  
" 275870 " - Ingalls. SE RR spk





AVE

352.0

351.4

North Ave

13 1/2 Ave  
13

Ave

352.0

351.4

MADISON

353.0

352.5

Park

Blvd.

80  
Campus

13 1/2 Mon  
13

Ave

351.2

350.4

353.0

352.5



*West Line Park Blvd*

	351.45	351.2	350.6	350.8	350.2	350.4	350.65
50'	351.58	351.33	350.73	350.95	350.36	350.57	350.82
100'	351.72	351.47	350.87	351.10	350.52	350.73	350.98
140'	351.82	351.57	350.97	351.22	350.64	350.87	351.12
160'	351.88	351.63	351.03	351.28	350.71	350.93	351.18
200'	351.98	351.73	351.13	351.40	350.83	351.07	351.32
250'	352.12	351.87	351.27	351.55	350.99	351.23	351.48
300'	352.25	352.0	351.4	351.7	351.15	351.40	351.65

*East Line North Ave (graded)*

352.30 SW V.W. Mason, 8/10/77

352.30 SW	356.74	356.74	356.74	356.74	356.74
4.94	51.48	51.48	51.48	51.48	51.48
356.74 H.I.	351.72	351.12	351.72	351.72	351.72
350.82	5.02N	5.62S	4.76N	5.26S	4.47N
5.74	4.78	5.92	4.97	5.48	4.99
6.14	4.38	5.02	4.21	5.02	4.40
-2.97	+0.28	-0.32	-0.21	-0.22	0.0
356.74	356.74	356.74	356.74	356.74	356.74
354.87	350.98	351.52	351.32	351.12	351.65
5.16N	5.76S	4.92N	5.43S	4.62N	5.02S
6.30	6.32	4.92	5.59	5.36	5.12
-1.04	-0.56	0.0	-0.17	-0.74	0.03

1/3, Dunkle  
09 Shun  
Cutover Dryell

251.23  
4.57

352.30 BDII	352.0	351.4	351.7	351.15	351.4	351.7	351.27	351.58	351.74
352.30	380	440	420	425	420	420	430	425	431
350.80 H.I.	517	511	512	508	5107				
	497	497	440	497	473				

all stakes

1.57	5.07	5.22	5.64	5.87	5.17	5.27	5.10	5.02	5.02
4.8	4.8	4.8	5.0	4.95	4.38	4.95	4.70	5.0	5.0
5.23	5.07	5.01	5.31	5.07	4.6	5.2	5.0	5.6	5.4
4.77	5.07	4.88	5.49	5.23	4.6	5.2	5.0	5.6	5.4

100' D.I.K.

351.30	55.67	55.67	55.67	55.67	55.67	55.67	55.67
351.25	51.22	51.22	51.22	51.22	51.22	51.22	51.22
351.20	3.55	3.55	3.85	4.67	4.89	5.02	5.02
4.22	3.80	4.60	4.10	4.94	4.34	5.27	5.27
4.57	5.67	5.67	5.67	5.67	5.67	5.67	5.67
5.10	5.07	5.23	5.07	5.02	5.23	5.22	5.22
4.42	4.40	4.84	4.70	5.15	4.99	5.47	5.47
5.67	5.67	5.67	5.67	5.67	5.67	5.67	5.67
5.10	5.15	5.10	5.22	5.10	5.05	5.50	5.50
5.77	4.12	4.27	4.45	4.57	4.72	4.57	4.57
5.67	5.67	5.67	5.67	5.67	5.67	5.67	5.67
5.10	5.09	5.13	5.04	5.07	5.26	5.00	5.00
4.27	4.62	4.54	5.03	4.80	5.31	5.27	5.27
5.67	5.67	5.67	5.67	5.67	5.67	5.67	5.67
5.15	5.143	5.178	5.12	5.12	5.02	5.45	5.45
5.22	4.15	3.69	4.55	4.95	4.85	4.22	4.22
5.47	4.99	3.94	4.80	4.20	5.10	4.47	4.47

West Line North Ave.

N								
00	352.25	352.0	351.40	351.70	351.15	351.4	351.65	
50'	352.42	352.17	351.57	351.88	351.33	351.58	351.83	
100'	352.58	352.33	351.73	352.05	351.51	351.77	352.02	
140'	352.72	352.47	351.87	352.19	351.65	351.91	352.16	
160'	352.78	352.53	351.93	352.26	351.72	351.99	352.24	
200'	352.92	352.67	352.07	352.40	351.87	352.13	352.38	
250'	353.08	352.83	352.23	352.58	352.04	352.31	352.56	
300'	353.25	353.0	352.40	352.75	352.23	352.5	352.75	

East Line Campus Ave (graded)

356.74	356.74	356.74	356.74	356.74	356.74	356.74	356.74	12/ Sample
52.65	52.42	52.02	52.72	52.35	52.02	52.75	52.75	3/ Sample
4.72	4.72	4.72	4.72	4.72	4.72	4.72	4.72	5/ Sample
3.66	3.66	3.66	3.66	3.66	3.66	3.66	3.66	10/ Sample
0.55	0.55	0.55	0.55	0.55	0.55	0.55	0.55	cut 27.42
356.74	356.74	356.74	356.74	356.74	356.74	356.74	356.74	
52.65	52.42	52.02	52.72	52.35	52.02	52.75	52.75	
4.72	4.72	4.72	4.72	4.72	4.72	4.72	4.72	
3.66	3.66	3.66	3.66	3.66	3.66	3.66	3.66	
0.55	0.55	0.55	0.55	0.55	0.55	0.55	0.55	
352.30	352.30	352.30	352.30	352.30	352.30	352.30	352.30	
52.33	52.33	52.33	52.33	52.33	52.33	52.33	52.33	
4.72	4.72	4.72	4.72	4.72	4.72	4.72	4.72	
3.66	3.66	3.66	3.66	3.66	3.66	3.66	3.66	
0.55	0.55	0.55	0.55	0.55	0.55	0.55	0.55	
352.54	352.54	352.54	352.54	352.54	352.54	352.54	352.54	
52.33	52.33	52.33	52.33	52.33	52.33	52.33	52.33	
4.72	4.72	4.72	4.72	4.72	4.72	4.72	4.72	
3.66	3.66	3.66	3.66	3.66	3.66	3.66	3.66	
0.55	0.55	0.55	0.55	0.55	0.55	0.55	0.55	
352.72	352.72	352.72	352.72	352.72	352.72	352.72	352.72	
52.33	52.33	52.33	52.33	52.33	52.33	52.33	52.33	
4.72	4.72	4.72	4.72	4.72	4.72	4.72	4.72	
3.66	3.66	3.66	3.66	3.66	3.66	3.66	3.66	
0.55	0.55	0.55	0.55	0.55	0.55	0.55	0.55	
352.92	352.92	352.92	352.92	352.92	352.92	352.92	352.92	
52.33	52.33	52.33	52.33	52.33	52.33	52.33	52.33	
4.72	4.72	4.72	4.72	4.72	4.72	4.72	4.72	
3.66	3.66	3.66	3.66	3.66	3.66	3.66	3.66	
0.55	0.55	0.55	0.55	0.55	0.55	0.55	0.55	
353.08	353.08	353.08	353.08	353.08	353.08	353.08	353.08	
52.33	52.33	52.33	52.33	52.33	52.33	52.33	52.33	
4.72	4.72	4.72	4.72	4.72	4.72	4.72	4.72	
3.66	3.66	3.66	3.66	3.66	3.66	3.66	3.66	
0.55	0.55	0.55	0.55	0.55	0.55	0.55	0.55	
353.25	353.25	353.25	353.25	353.25	353.25	353.25	353.25	
52.33	52.33	52.33	52.33	52.33	52.33	52.33	52.33	
4.72	4.72	4.72	4.72	4.72	4.72	4.72	4.72	
3.66	3.66	3.66	3.66	3.66	3.66	3.66	3.66	
0.55	0.55	0.55	0.55	0.55	0.55	0.55	0.55	



West Line Campus Ave

N

S

00	353.25	353.0	352.40	352.75	352.22	352.5	352.75
50'	352.65	352.40	351.86	352.24	351.75	352.08	352.33
100'	352.05	351.80	351.32	351.73	351.28	351.66	351.91
140'	351.57	351.32	350.88	351.33	350.91	351.33	351.58
160'	351.33	351.08	350.67	351.12	350.72	351.17	351.42
200'	350.85	350.60	350.23	350.72	350.34	350.83	351.08
250'	350.25	350.00	349.69	350.21	349.87	350.42	350.67
300'	349.65	349.40	349.15	349.70	349.40	350.0	350.25

352.75	53.61	53.61	53.61	53.61	53.61	53.61	53.61
352.65	53.61	53.61	53.61	53.61	53.61	53.61	53.61
352.40	53.61	53.61	53.61	53.61	53.61	53.61	53.61
352.24	53.61	53.61	53.61	53.61	53.61	53.61	53.61
351.75	53.61	53.61	53.61	53.61	53.61	53.61	53.61
352.08	53.61	53.61	53.61	53.61	53.61	53.61	53.61
352.33	53.61	53.61	53.61	53.61	53.61	53.61	53.61
351.91	53.61	53.61	53.61	53.61	53.61	53.61	53.61
351.33	53.61	53.61	53.61	53.61	53.61	53.61	53.61
351.58	53.61	53.61	53.61	53.61	53.61	53.61	53.61
351.42	53.61	53.61	53.61	53.61	53.61	53.61	53.61
351.08	53.61	53.61	53.61	53.61	53.61	53.61	53.61
350.67	53.61	53.61	53.61	53.61	53.61	53.61	53.61
351.17	53.61	53.61	53.61	53.61	53.61	53.61	53.61
350.83	53.61	53.61	53.61	53.61	53.61	53.61	53.61
351.08	53.61	53.61	53.61	53.61	53.61	53.61	53.61
350.67	53.61	53.61	53.61	53.61	53.61	53.61	53.61
350.25	53.61	53.61	53.61	53.61	53.61	53.61	53.61

17/109  
Dunhill  
Shaw  
Rep. 6

22

all stakes  
Dunhill  
Shaw  
Cross

3/10  
check on  
Dunhill  
Shaw  
Cross

East Line Cleveland Ave, (graded)

West Line Cleveland Ave.

N

S

10	349.65	349.40	349.15	349.70	349.40	350.00	350.25
50	349.41	349.16	348.86	349.33	348.98	349.50	349.75
100	349.18	348.93	348.57	348.97	348.55	349.00	349.25
150	349.00	348.75	348.33	348.67	348.21	348.60	348.85
160	348.90	348.65	348.22	348.53	348.04	348.40	348.65
200	348.72	348.47	347.98	348.22	347.70	348.00	348.25
250	348.48	348.23	347.69	347.87	347.28	347.50	347.75
300	348.25	348.00	347.40	347.50	346.85	347.00	347.25

East Line Maryland St.

354.86	354.86	354.86	354.86	354.86	354.86	354.86
49.11	49.25	49.25	49.25	49.25	49.25	49.25
54.54	54.13	53.6	53.6	6.61	6.55	6.55
5.00	6.41	5.75	5.75	6.58	4.75	4.75
5.35	6.00	6.09	6.09	70.23	71.60	71.60
354.86	354.86	354.86	354.86	354.86	354.86	354.86
49.75	49.17	48.55	48.72	48.72	47.75	47.75
5.113	5.684	6.01	6.14	6.14	7.11	7.11
6.09	6.33	5.94	5.94	5.94	7.11	7.11
6.35	6.65	6.07	6.20	6.20	0.0	0.0
53.61	53.61	53.61	53.61	53.61	53.61	53.61
49.25	49.18	48.85	48.72	48.72	48.25	48.25
2.11	4.43	4.76	4.89	5.86	5.36	5.36
53.61	4.68	5.01	5.14	6.11	5.61	5.61
48.25	53.61	53.61	53.61	53.61	53.61	53.61
4.63	48.52	48.21	47.93	47.25	47.25	47.25
53.61	48.52	5.40	5.63	6.33	6.31	6.31
48.25	5.04	5.61	5.61	5.61	5.61	5.61
4.28	53.61	48.67	48.23	47.97	47.50	47.50
53.61	48.97	4.24	5.32	5.74	6.11	6.11
48.25	4.64	53.61	53.61	53.61	53.61	53.61
4.75	53.61	48.33	47.20	47.64	46.85	46.85
53.61	48.55	5.28	5.91	5.92	6.74	6.74
48.25	5.06	53.61	53.61	53.61	53.61	53.61
4.20	53.61	49.00	48.25	48.48	47.25	47.25
4.45	48.25	4.61	5.36	5.13	47.25	47.25
	4.36	4.86	5.61	5.35	6.36	6.36
	4.61				6.01	6.01
348.25	54.77	54.77	54.77	54.77	54.77	54.77
4.52	49.25	48.72	48.25	49.18	49.75	49.65
354.77	7.02	6.05	5.92	5.54	5.02	5.12
48.25	7.27	6.30	6.17	5.84	5.27	5.37
6.52	54.77	54.77	54.77	54.77	54.77	54.77
6.77	47.25	47.99	48.21	48.57	48.99	49.15
7.29	7.19	6.79	6.56	6.20	5.79	5.62
54.77	54.77	54.77	54.77	54.77	54.77	54.77
48.25	47.82	48.23	48.67	48.97	49.33	49.70
7.27	6.92	6.54	6.10	5.80	5.44	5.09
54.77	54.77	54.77	54.77	54.77	54.77	54.77
46.85	47.69	47.70	48.33	48.55	48.26	47.20
7.27	7.08	6.44	6.22	5.94	5.37	5.37
54.77	54.77	54.77	54.77	54.77	54.77	54.77
47.25	48.43	48.25	49.00	49.25	49.41	50.25
7.54	6.29	6.52	5.77	5.54	5.36	4.52
7.77	6.54	6.77	6.02	5.77	5.61	4.77

3/12 Dunkle  
109 Shaw  
Dunkle  
cut 3 files

Dunkle  
Shaw  
Evans

Sheet 0.8  
Dunkle  
Shaw  
Evans

West Line Maryland St.

N

S

00 348.25 348.00 347.40 347.50 346.85 347.00 347.25

50 347.75 347.50 346.90 347.0 346.35 346.50 346.75

100 347.25 347.00 346.40 346.5 345.85 346.00 346.25

140 346.85 346.60 346.00 346.1 345.45 345.60 345.85

160 346.65 346.40 345.80 345.9 345.25 345.40 345.65

200 346.25 346.00 345.40 345.5 344.85 345.00 345.25

250 345.75 345.50 344.90 345.0 344.35 344.50 344.75

300 345.25 345.00 344.40 344.5 343.85 344.0 344.25

East Line Delaware St.

350.16 P.M. N.E. Madison Maryland.

350.16	350.96	350.96	350.96	350.96	350.96
46.75	47.25	47.55	46.25	44.75	45.25
3.71 N	5.15	5.21	4.71 N	6.21 S	5.71 N
2.52	5.51	5.51	5.51	6.11	6.51
4.17	5.8	5.6	5.30	6.01	6.90
5.02	350.96	350.96	350.96	350.96	350.96
5.75	46.25	46.86	45.25	45.75	44.75
5.21 N	4.71 S	4.11 N	5.71 S	5.21 N	6.71 S
5.51	5.51	5.21	5.91	5.91	6.81
-0.20	-0.30	-1.11	-0.20	-0.7	-0.1

51024	5102	5102	5102	5102	5102	370
47.25	47.25	46.25	46.85	45.25	45.25	
3.77	3.27	4.27	4.77	5.77	5.27	
4.17	4.17	5.17	4.42	6.02	5.52	
4.17	4.02	4.52	5.02	6.17	6.12	
3.82	4.67	4.52	4.92	5.52	6.02	
3.42	4.27	4.62	5.57	5.62	6.47	
2.77	3.27	3.77	5.17	4.77	5.77	
3.42	3.52	4.02	5.17	5.02	6.52	

344.23 See page 9,  
6.81  
355.74 S.I.

350.74	350.74	350.74	350.74
348.25	348.25	347.40	347.00
2.49	2.74	3.34	3.24
350.74	350.74	350.74	
348.25	347.00	347.40	
3.49	3.74	3.49	

Checking.  
O.K.

April 6-1910.  
Clough,  
Donner  
Rogers.

Get breaks & raked

of simple  
log show  
single  
cut & file

345.25 345.00 344.40 344.5

345.0 345.0 344.40 344.38

14 344.88 344.88 344.28 344.27

Delaware

0 344.75 344.75 344.15 344.17

St. (North/e)

14 344.63 344.63 344.02 344.08

16 344.5 344.50 343.90 343.98

344.75 344.50 343.90 343.92

344.5 343.85 344.0 344.25

344.2 343.85 344.0 344.00  
342. 343.

344.33 343.72 343.40 343.60

Delaware

344.25 343.60 343.75 343.75

St (30 1/2)

344.17 343.48 343.23 343.23

342.5 342.5  
344.08 343.35 343.5 343.5

344.0 343.35 343.5 343.75

345.75 344.0 343.50  
349.69  
49.00  
5.69  
349.69  
22.50  
6.19

14.50 H.M. Nozzle hydrant S.W. Madison & New York.  
on stake.  
347.87 347.87 347.87 347.87  
344.00 343.35 343.50 343.75  
3.87 4.52 4.37 4.12  
347.87 347.87 347.87 347.87  
344.75 344.50 343.90 343.92  
3.12 3.37 3.97 3.95

347.87 347.87 347.87 347.87  
345.25 345.00 344.40 344.50  
2.62 2.87 3.47 3.37

347.87 347.87 347.87 347.87  
344.50 343.95 344.00 344.25  
3.37 4.02 3.87 3.62

Set breaks cracked.

Checking  
OK.

April 6, 1910  
Clough,  
Donnan,  
Rogers.

West Line Delaware St on North

N C

10 344.15 344.5 343.9 343.92

50 344.16 343.91 343.35 343.43

100 343.58 343.33 342.80 342.95

140 343.12 342.87 342.36 342.56

150 343.00 342.75 342.25 342.46

160 342.88 342.63 342.14 342.36

200 342.42 342.17 341.70 341.97

250 341.83 341.58 341.15 341.49

300 341.25 341.00 340.6 341.0

East Line New York St on North

347.7	44.16	43.85	43.72	42.44	41.83	41.25
6.21	6.20	7.25	7.74	8.24	8.83	9.21
+0.2	+0.60	+0.3	+0.1	+0.3	+0.30	+0.5

34119 34119 34119 34119 34119 34119 34119

341.56 341.56 341.56 341.56 341.56 341.56 341.56

341.56 341.56 341.56 341.56 341.56 341.56 341.56

341.56 341.56 341.56 341.56 341.56 341.56 341.56

341.56 341.56 341.56 341.56 341.56 341.56 341.56

Carb and Property 3/28/10 H.H. H.H. H.H.

346.41 H.I. See Page 13

346.41	346.41	346.41	346.41
343.80	343.35	342.80	342.40
2.51	3.06	3.61	4.16

346.01	346.41	346.01
341.70	341.15	340.60
4.71	5.26	5.81

Clough  
Donnate  
Rogers

\* 343.84

2.23	346.07	344.5	343.9	343.92	343.43	343.35	343.21	344.16
1.57	1.57	2.17	2.15	2.64	2.72	2.16	1.91	
1.32								

343.58	343.83	342.80	342.95	342.46	342.25	342.75	343.0
2.49	2.74	3.27	3.12	3.61	3.82	3.32	3.07

342.42	342.17	341.70	341.97	341.49	341.15	341.58	341.83
3.65	3.90	4.37	4.10	4.58	4.92	4.49	4.24

341.25 341.00 340.6 341.0

4.82 5.07 5.47 5.87

check o.k. apr. 13/10  
except place marked low.

Hchilds  
Butler  
Jayer

West Line Delaware St on South

	c		5	
00	3440	343.35	343.50	343.95
50	343.52	342.90	343.08	343.33
100'	343.04	342.45	342.66	342.91
140	342.66	342.09	342.33	342.58
150'	342.56	342.00	342.25	342.50
160'	342.46	341.92	342.17	342.42
200	342.08	341.56	341.83	342.08
250'	341.60	341.11	341.42	341.67
300'	341.12	340.66	341.0	341.25

East Line New York on South

350.96	340.76	350.76	340.56	350.36	340.16	350.96	340.76
43.75	43.33	42.91	42.49	42.07	41.65	41.23	40.81
7.21	7.43	8.05	8.67	9.29	9.91	10.53	11.15
7.31	7.43	8.45	9.47	10.49	11.51	12.53	13.55
-0.1	+0.2	-0.4	+0.9	-2.0	+1.6	-0.1	+0.5
325.76						28.5	30.1

41.0	43.0	43.8	42.6	42.25	41.2	41.2
5.86	3.34	3.74	4.2	4.61	5.03	5.44
7.61	3.11	3.58	3.95	4.36	4.77	5.17

Curbs and Property Stakes 2/28/10 Hutch Moore Thomas

346.4111 See Page 13.

346.41	346.41	346.41	346.41	346.41	346.41
340.56	341.12	341.11	341.60	341.56	342.08
5.75	5.29	5.30	4.81	4.80	4.33
346.41	346.41	346.41	346.41	346.41	346.41
342.00	342.56	342.45	343.04	342.90	343.52
4.41	3.85	3.96	3.37	3.81	4.18
346.41	346.41				
343.06	344.20				
3.06	2.41				

Clough  
Dorritt  
Rogers

346.07115

341.0	341.25	340.66	341.2	341.60	341.11	341.42	341.67
5.07	4.82	5.41	4.95	4.47	4.96	4.65	4.40
342.08	341.53	341.56	342.08	342.06	342.0	342.25	343.0
3.99	4.24	4.51	3.99	3.51	4.07	3.82	3.57
342.91	342.66	342.45	343.04	343.52	342.90	343.58	343.33
3.16	3.41	3.62	3.03	2.55	3.17	2.99	2.74
343.75	343.50	343.33	344.0				
2.32	2.57	2.72	2.07				

Check O.K. except places marked dot. apr 13/10

Childs  
Butler  
Taylor

341.25 341.00 340.6 341.0

341.00 341.00 340.6 340.83

340.88 340.88 340.45 340.67

New York

340.75 340.75 340.31 340.5

St (North 1/2)

340.63 340.63 340.17 340.46

340.50 340.50 340.03 340.41

340.75 340.50 340.03 340.36

341.12 340.66 341.00 341.25

341.06 340.66 341.00 341.00  
340. 340.

341.00 340.52 340.88 340.88

New York

340.88 340.38 340.75 340.75

St (South 1/2)

340.75 340.24 340.63 340.63

340.63 340.10 340.50 340.5  
339.5 339.5

340.5 340.10 340.50 340.75

339.59 340.0 339.50  
+ 4.70  
344.29  
340.00  
5.38  
345.38  
39.00  
5.88

339.59 B.M. Brass Peg S.W. Rhode Island & Madison

344.59 H.I. B.M. Nozzle hydrant SE. Madison N.Y. Checking.  
340.17 340.52 340.03 340.36 O.K.

344.59 344.59 344.59 344.59  
341.12 340.66 341.00 341.25  
347 293 359 334  
344.59 344.59 344.59 344.59  
341.25 341.00 340.66 341.00  
334 359 396 359

Set break & raked.

April 6-1910.  
Clough.  
Donnan.  
Rogers.

West Line New York on North

N				
00	340.75	340.50	340.03	340.36
50	340.41	340.16	339.71	340.05
100	340.08	339.83	339.39	339.74
150	339.82	339.57	339.13	339.49
160	339.68	339.43	339.00	339.37
200	339.42	339.17	338.74	339.12
250	339.08	338.83	338.42	338.81
300	338.75	338.5	338.1	338.5

East Line Rhode Island on North

34119 B.M. 125 SA N.W. 1132 300 N.Y.

346.40 H.I.	346.40	341.40	346.40	346.40	346.40	346.40	346.40
40.75	40.41	40.03	39.72	39.42	39.03	38.75	38.45
5.65	5.99	6.32	6.59	6.98	7.32	7.65	7.95
9.05	9.57	10.52	11.39	12.78	14.22	15.95	17.95
14.6	16.4	20.2	24.0	28.2	32.9	38.1	43.7

19 Summ  
13/109 Shann  
18  
22

3419 N.W.	40.5	40.16	39.83	39.57	39.17	38.53	38.5
346.34 H.I.	5.84	6.18	6.51	6.77	7.17	7.51	7.84
	5.9	6.26	6.62	6.92	7.24	7.59	7.89

Curb and Property 2/25/10 false name photo

335.89 B.M. Brass Ptg. N.W. Rhode Island & Madison							
41.32							
344.21 H.I.	344.21	344.21	344.21	344.21	344.21	344.21	344.21
340.71	340.03	339.71	339.39	338.73	338.74	338.42	
8.20	4.19	4.50	4.82	5.08	5.47	5.79	
346.41 H.I.	344.21	338.10	6.11				

St. George's  
Donnato  
No Rogers

337.89	44.93	44.93	44.93	44.93	44.93	44.93	44.93
5.04	39.71	39.39	39.13	38.79	38.42	38.10	37.75
11.93 H.I.	5.22	5.54	5.80	6.19	6.51	6.83	
40.03							
4.70							

Summ  
Shann  
Ewart

346.07 H.I.							
340.75	340.50	340.03	340.36	340.05	339.71	340.16	340.41
5.32	5.57	6.04	5.71	6.02	6.36	5.91	5.66
340.05	339.83	339.39	339.74	339.43	339.06	339.50	339.70
5.99	6.24	6.68	6.33	6.64	7.06	6.87	6.32
339.42	339.17	338.74	338.72	338.81	338.72	338.83	339.08
6.64	6.94	7.33	6.95	7.26	7.65	7.24	6.99
338.5	338.1	338.1	338.75				
7.57	7.97	7.57	7.32				

checked O.K. apr 13/10  
except places marked low

Colville  
Patten  
Taylor



West Line New York on South

	C		S
00	340.5	340.10	340.50 340.75
50	340.19	339.78	340.16 340.41
100	339.88	339.46	339.83 340.08
140	339.63	339.20	339.57 339.82
150	339.57	339.13	339.50 339.75
160	339.50	339.07	339.43 339.68
200	339.25	338.81	339.17 339.42
250	338.94	338.49	338.83 339.08
300	338.63	338.17	338.50 338.75

East Line Rhode Island on South

346.40	346.40	346.40	346.40	346.40	346.40	346.40	346.40
340.75	40.41	20.05	39.82	39.42	39.05	38.75	38.50
5.65	5.99	6.32	6.65	6.98	7.32	7.65	7.98
5.15	4.93	4.52	4.25	3.98	3.62	3.25	2.88
+0.50	+1.0	+0.50	+1.0	+0.60	+1.3	+0.70	

346.24 HI

40.5	40.16	39.83	39.50	39.17	38.83	38.50
584	615	651	684	717	751	784
501	578	626	659	692	726	759

Curb and Property 3/28/10 Kate Ann Jones

339.99 B.N. Brass Pig S.W. Rhode Island & Madison

344.21 HI	344.21	344.21	344.21	344.21	344.21	344.21
334.17	338.63	338.49	338.92	339.81		
6.04	5.58	5.72	5.27	5.40		

344.21	344.21	344.21	344.21	344.21	344.21	344.21
339.20	339.13	339.57	339.46	339.98	339.79	340.12
4.96	5.08	4.64	4.75	4.83	4.43	4.02

344.21	344.21					
340.10	340.50					
4.11	3.71					

44.93 HI	44.93	44.93	44.93	44.93	44.93	44.93	44.93
38.63	38.94	39.25	39.57	39.88	40.19	40.50	40.83
6.30	5.99	5.68	5.34	5.05	4.74	4.43	4.10

339.89 B.N. Brass Pig S.W. Rhode Island & Madison

344.59 HI	344.59	344.59	344.59	344.59	344.59	344.59
340.50	340.10	340.50	340.75	Checking.		
4.09	4.49	4.09	3.87			

Set breaks & raked. Checking O.K.

14  
1/2 sample  
of  
Shun  
69  
April

Clough,  
Donnan,  
Rogers.

April 6-1910.  
Clough,  
Donnan,  
Rogers

338.75 338.50 338.10 338.50

338.50 338.50 338.10 338.15

338.37 338.37 337.93 337.94

Rhode Island

338.25 338.25 337.75 337.83

St (North 1/2)

338.13 338.13 337.57 337.73

338.00 338.00 337.40 337.62

338.25 338.00 337.40 337.50

338.63 338.17 338.50 338.75

338.60 338.17 338.50 338.50  
337.5 337.5

338.57 338.02 337.88 337.88

Rhode Island

338.53 337.88 338.25 338.25

St (South 1/2)

338.50 337.74 337.63 337.63

337. 337.  
338.25 337.60 338.00 338.00

338.0 337.60 338.00 338.25

338.89  
1.00  
341.49  
37.50  
5.99  
41.49  
37.50  
4.99

337.50 337.0  
339.99 B.M. Onass Ply S.W. Rhode Island + Madison  
2.84  
342.73 H.I.  
Checking.  
O.K.  
Clough,  
Donnan,  
Rogers,  
April 6-1910

342.73 342.73 342.73 342.73  
338.00 337.60 338.00 338.15  
4.73 0.13 4.73 4.49

342.73 342.73 342.73 342.73  
338.25 338.00 337.50 337.50  
4.48 4.73 5.23 5.23

342.73 342.73 342.73 342.73  
338.63 338.17 338.50 338.25  
4.10 4.06 4.23 3.98

342.73 342.73 342.73 342.73  
338.75 338.50 338.10 338.50  
3.98 4.23 4.63 4.23

Set breaks & raked.

West Line Rhode Island on North

N. C

338.25 338.00 337.40 337.50

337.42 337.17 336.57 336.27

336.59 336.34 335.74 335.84

335.92 335.67 335.07 335.17

335.76 335.51 334.91 335.01

335.59 335.34 334.74 334.84

334.92 334.67 334.07 334.17

334.08 333.83 333.23 333.33

333.25 333.00 332.40 332.50

East Line Massachusetts on North

339.57 BM Brass Peg SW. Rhode Island & Madison  
 2.84  
 342.73 342.73 342.73 342.73 342.73 342.73  
 338.25 337.42 336.57 335.72 334.87 334.02 333.25  
 4.48 5.31 6.14 6.81 7.21 8.65 7.47  
 1.78 3.21 3.68 4.21 5.31 6.25 7.48  
 +1.70 +2.10 +2.50 +2.60 +2.50 +2.60 +1.50

339.70 339 3717 36.24 3551 2717 3353 33.0  
 342.70 410 493 505 588 672 754 839  
 339.59 1.56  
 341.39 1/2  
 BM Brass Peg SW. Rhode Island & Madison  
 341.35 341.35 341.35 341.35 341.35 341.35  
 337.40 336.57 335.74 334.97 334.67 334.07  
 3.95 7.78 5.61 6.77 6.68 8.28  
 341.35 341.35  
 338.23 334.92  
 9.12 6.43

12 Simpson  
 141  
 109 16

339.59 BM Brass Peg SW. Rhode Island & Madison  
 1.26  
 341.35 341.35 341.35 341.35 341.35 341.35  
 337.40 336.57 335.74 334.97 334.67 334.07  
 3.95 7.78 5.61 6.77 6.68 8.28  
 341.35 341.35  
 338.23 334.92  
 9.12 6.43

See page 19  
 335.74 335.79 335.79 335.79  
 334.08 333.83 333.23 333.23  
 1.71 1.96 2.64  
 Checking O.K.  
 April 6-1910.  
 Clough.  
 Donnan  
 Rogers

Set breaks & raked.

West Line Rhode Island on South

C S

00	338.0	337.60	338.00	338.25
50	337.25	336.81	337.17	337.42
100	336.50	336.02	336.34	336.59
150	335.70	335.38	335.67	335.92
160	335.60	335.07	335.34	335.59
200	335.00	334.43	334.67	334.92
250	334.25	333.64	333.83	334.08
300	333.5	332.85	333.0	333.25

East Line Massachusetts on South

342.73	342.73	342.73	342.73	342.73	342.73	342.73
38.25	37.42	36.59	35.72	34.92	34.08	33.25
4.98	5.51	6.14	6.81	7.51	8.25	9.03
3.38	3.51	3.69	3.91	4.17	4.45	4.73
+4.1	+1.50	+3.30	+2.90	+1.90	+2.50	+0.80

17/19 Blunk  
109  
17/19  
Blunk

342.73	339.89	342.09	342.09	342.09	342.09	342.09	342.09	342.09
11.71 T.P.	2.20	37.42	36.59	35.72	34.92	34.08	33.25	33.25
331.02	342.09442	4.67	5.50	6.17	7.17	8.01	8.84	9.68
2.38	335.20	4.92	5.75	6.42	7.42	8.26	9.09	
333.40412	3.94							
	4.09							

339.99 BK Brass Pig SW Rhode Island + Madison

341.35	341.35	341.35	341.35	341.35	341.35	341.35
338.55	338.64	334.25	334.25	334.25	334.25	334.25
7.52	7.71	7.10	6.19	6.68	6.92	
341.35	341.35	341.35	341.35	341.35	341.35	341.35
335.79	335.88	335.80	336.02	336.50	336.61	337.25
6.86	5.97	5.45	5.33	4.65	4.54	4.10
341.35	341.35	341.35				
337.17	337.60	338.81				
4.18	3.76	3.35				

1/10  
Clough,  
Donnan,  
Rogers.

339.89	41.73	41.73	41.73	41.73	41.73	41.73
1.84	37.17	36.39	35.67	34.67	33.83	33.00
341.73442	4.56	5.37	6.04	7.06	7.90	8.73
33.80						
3.73						

Blunk  
Donnan  
no record

335.79 T.I. See page 19.

335.79	335.79	335.79	335.79
333.25	333.60	332.85	332.50
2.54	2.79	2.94	2.29

Checking  
D.K.

April 6-1910.  
Clough,  
Donnan,  
Rogers.

Set breaks + raked.

N

C  
 333.5 332.85 333.0 333.25

333.33 332.85 333.0 333.0  
 332. 332.

333.17 332.60 332.75 332.25

Massachusetts

333.0 332.35 332.50 332.50

St. on South

332.83 332.10 331.75 331.75

332.67 331.85 332.0 332.0

333.25 333.00 332.4 332.5 331.85 332.0 332.25

333.00 333.0 332.40

332.75 332.75 332.15

Massachusetts

332.50 332.50 331.90 331.75 330.98 331.0 331.25

St on North

332.25 332.25 331.65

332.00 332.00 331.40

332.25 332.00 331.40 331.0 330.10 330.0 330.25

333.0 32.0 31.0 30.0  
 096 196 296 396  
 333.96 171 271 371

Carbair's Property 2/2/10 Watch

339.42 R.M. Brass Pig SW Rhode Island + Madison

0.36  
 340.76 340.75 340.75 340.75 340.75 340.75 340.75  
 330.10 331.00 331.40 331.75 332.50 332.40  
 10.66 9.75 9.35 9.02 8.85 8.85  
 340.75 340.75 340.75 340.75 340.75  
 332.50 331.95 332.45 333.00 332.50  
 8.25 8.90 7.90 7.25 8.75

4/10  
 Clough.  
 Donnan.  
 Rogers.

341.49 332.0 331  
 332.00  
 9.49

341.49  
 31.00  
 10.49

335.79 H.I. See page 19.

335.79 335.79 335.79 335.79  
 330.20 330.00 330.15 331.00  
 5.59 5.79 5.69 4.79

Checking, O.K.

April 6-1910.  
 Clough.  
 Donnan.  
 Rogers.

335.79 335.79 335.79 335.79 335.79 335.79 335.79  
 332.20 332.00 331.85 331.50 332.40 332.00 332.25  
 3.59 3.79 3.94 3.29 3.39 2.79 2.54

Set breaks & raked.

West Line Massachusetts on North

N Curb gutter 4 24' r  
00 332.25 332.0 331.00 331.40 331.0

50' X 330.58 330.33 328.76 328.16 328.76

100' 328.92 328.67 326.52 326.98 326.52

140' 327.58 327.33 324.74 325.14 324.74

150' 327.00 324.41 324.91 324.41

160' 326.92 326.67 323.24 324.28 323.84

170-66 New Hous 325.92 325.67 322.50 322.90 322.5

200' 325.58 325.33 322.27 322.67 322.27

250' 323.92 323.67 321.14 321.54 321.10 (checking)

300' 322.25 322.0 320.00 320.40 320.03

40' 320.85 320.60 318.80 319.20 318.5

80' 319.45 319.20 317.60 318.00 317.67

50' 317.70 317.45 316.10 316.50 316.20

100' 315.95 315.70 314.60 315.00 314.73

120' 315.25 315.0 314.0 314.40 314.14

East Line Garfield on North

333.40 332.40 333.40 333.40 333.40 333.40 333.40  
332.40 330.60 329.92 327.57 257.92 323.92 322.25  
1.15  
0.85  
40.30  
-0.2  
-0.50  
-1.0  
-1.50  
-3.70  
3/4 Dunilla  
1/4 log shunt  
19  
32

333.40 322.30 322.50 322.30  
1.25 7.0  
321.12 319.45 317.70 315.25  
1.18  
2.85  
321.30 HI 2.85 9.60 7.05  
4.05 4.30 7.00  
4 2.3 0.0  
323.6 HI 320 30.32 25.67 22.0 25.33 23.67 22.0  
1.95 1.95 3.63 5.29 8.96 10.29 11.96  
322.91 3.63 3.63 5.02 5.02  
0.29  
322.70 HI 20.60 17.20 17.25 15.29 15.0  
2.10 3.50 5.25 7.00 7.70  
1.85 3.25 5.00

Curb and Property 3/2/10 Hotel New England  
322.40 BIK Brass Pig, S.W. Rhode Island 4. M. O. Wilson  
1.07  
321.84 320.32 320.32 320.32 320.32 320.32  
70.80 327.76 326.92 326.92 324.91 324.91  
328.08 1.18 1.56 3.40 3.80 5.81  
328.26  
330.32 HI 330.32 330.32 330.32 330.32  
9.91 328.27 328.27 321.18 320.32  
20.41 7.60 8.08 8.78 9.22  
1.48  
322.09 HI 322.09 322.09 322.09 322.09 322.09 322.09  
319.40 318.95 318.00 317.67 316.50 316.20 315.00  
2.88 3.24 4.08 4.42 5.59 5.89  
22.08 322.09 322.09  
314.78 314.40 314.14  
7.36 7.69 7.95

324.89 321.77 321.77 321.77 321.77 321.77  
2.01 25.07 27.00 25.33 23.67 22.00  
321.90 3.12 4.79 6.46 8.12 9.79  
12.40  
324.55 324.16 HI. See page 21. April 6-1910.  
2.59  
331.79 324.16 324.16 324.16 324.16  
32.33 314.40 314.10 313.03 316.20  
1.46 9.16 10.16 9.16 8.91  
324.16 324.16 324.16 324.16  
323.92 323.67 321.14 321.54 321.10  
1.24 0.49 3.02 2.62 3.06  
Checking  
OK.

322.09 HI 322.09 322.09 322.09 322.09 322.09 322.09  
319.40 318.95 318.00 317.67 316.50 316.20 315.00  
2.88 3.24 4.08 4.42 5.59 5.89  
22.08 322.09 322.09  
314.78 314.40 314.14  
7.36 7.69 7.95

324.89 321.77 321.77 321.77 321.77 321.77  
2.01 25.07 27.00 25.33 23.67 22.00  
321.90 3.12 4.79 6.46 8.12 9.79  
12.40  
324.55 324.16 HI. See page 21. April 6-1910.  
2.59  
331.79 324.16 324.16 324.16 324.16  
32.33 314.40 314.10 313.03 316.20  
1.46 9.16 10.16 9.16 8.91  
324.16 324.16 324.16 324.16  
323.92 323.67 321.14 321.54 321.10  
1.24 0.49 3.02 2.62 3.06  
Checking  
OK.

320.67 HI. See page 20 Set breaks + raised.  
320.67 320.67 320.67 320.67 320.67  
320.08 320.33 322.27 322.67  
8.09 8.34 8.40 8.09

330.34 HI. See page 21.  
330.34 HI. See page 21.  
335.79 335.79 335.79 335.79 335.79  
332.20 332.08 331.00 331.40 331.00  
3.84 3.79 4.74 4.08 4.74

330.34 HI. See page 21.  
330.34 HI. See page 21.  
335.79 335.79 335.79 335.79 335.79  
332.20 332.08 331.00 331.40 331.00  
3.84 3.79 4.74 4.08 4.74

335.79 335.79 335.79 335.79 335.79  
332.20 332.08 331.00 331.40 331.00  
3.84 3.79 4.74 4.08 4.74

335.79 335.79 335.79 335.79 335.79  
332.20 332.08 331.00 331.40 331.00  
3.84 3.79 4.74 4.08 4.74

335.79 335.79 335.79 335.79 335.79  
332.20 332.08 331.00 331.40 331.00  
3.84 3.79 4.74 4.08 4.74

335.79 335.79 335.79 335.79 335.79  
332.20 332.08 331.00 331.40 331.00  
3.84 3.79 4.74 4.08 4.74

80' W. of Mass on S (Sec. P18)

331.0 330.10 330.00 330.25

125' W

328.99 328.09 327.99 328.24

145' W

328.09 327.19 327.09 327.34

170' W

326.97 326.07 325.97 326.22

220' W

324.74 323.84 323.74 323.99

270' W. EL. New Han S

322.5 321.60 321.5 321.75

60' W

322.26 321.6 321.5 321.5  
320.5 320.5

1/4

322.03 321.30 320.75 320.75

New Hampshire

0

321.80 321.00 321.00 321.00

St (on South)

1/4

321.57 320.70 320.25 320.25

0

321.33 320.40 319.5 319.5  
320.5 320.5

321.10 320.40 320.5 320.75

333.40	333.40	333.40	333.40	333.40
330.25	328.29	326.22	323.99	321.75
3.15	5.11	7.18	9.41	11.65
5.07	7.00	1.82	2.71	1.22
-2.92	-1.89	-0.3	-0.3	-0.2

1/4 Sample  
109 Spin  
20  
April

22

333.96 ft. 37.99 25.97 23.74 21.5 20.5

332.70 ft. 5.97 8.02 10.22 12.46 12.20  
5.72 7.77 9.90 12.21 7.95  
Curb and Property 312.10 Hotel

334.89 BM. Brass Plg. S.W. Rhode Island & Madison.

340.96	330.32	330.32	330.32	330.32	330.32	330.32
10.40	329.25	328.25	326.07	324.97	323.84	324.74
330.86	21.3	7.30	4.20	3.35	2.42	5.86
330.32 HI						

3 Clough  
3 Donnan  
10 Rogers

330.32	330.32	330.32
321.60	322.00	320.40
9.72	7.92	9.92

HI 330.34 See page 21.

330.67 HI

Checking.

O.K.

April 6-1910.  
Clough,  
Donnan,  
Rogers.

330.67	330.67	330.67	330.67
321.80	321.60	321.80	321.75
8.87	9.07	9.17	8.92

Get breaks & raked.

340.76 340.76  
 323.76 323.76  
 323.01 323.01

West Line New Hampshire St on South

	C	S		
00	321.10	320.40	320.50	320.75
50: Break in d (see R10)	320.03	318.93	319.06	319.31
100	318.56	317.47	317.61	317.86
150	317.09	316.00	316.17	316.42
200	315.61	314.54	314.73	314.98
250 - LL Garfield on d: Break in CL	314.14			
260 on S 255 on C	314.00	312.85	313.00	313.25

East Line of Garfield Ave

322.30	322.30	322.30	322.30	322.30	322.30
20.70	319.31	17.86	16.42	14.98	13.25
1.85	2.79	4.24	5.88	7.32	9.05
5.85	3.90	5.29	6.92	8.42	10.45
-1.30	-1.0	-0.80	-1.10	-1.10	-1.40

1/2 Sample  
 1/29 Shan  
 21 32

322.70	19.06	17.61	16.17	14.73	13.0
	3.64	5.09	6.53	7.97	9.70
	5.89	4.84	2.28	0.72	9.45

Cur and Property 312/110. Hatch

339.89 B.M. brass Nlg S.W. Rhode Island + Madison 3/10

340.86	330.02	330.32	322.09	322.05	322.05	322.09	322.09
10.90	315.93	320.03	312.86	314.54	315.16	316.00	317.09
330.06	7.39	10.29	9.24	7.08	6.48	6.09	5.00
0.26							
330.32	322.09	322.09					
329.91	317.47	318.56					
320.41	2.62	3.53					
1.69							
322.09							

Clough  
 Donnan  
 Rogers

339.89 B.M. See above

340.76	324.16	324.16	324.16	324.16
340.76	314.00	313.45	313.00	313.25
330.06	10.76	11.31	11.16	10.91
0.87				
330.07	324.16	324.16	324.16	324.16
9.88	321.10	320.40	320.50	320.75
320.15	3.06	3.76	3.66	3.41
3.63				
320.16 H.I.				

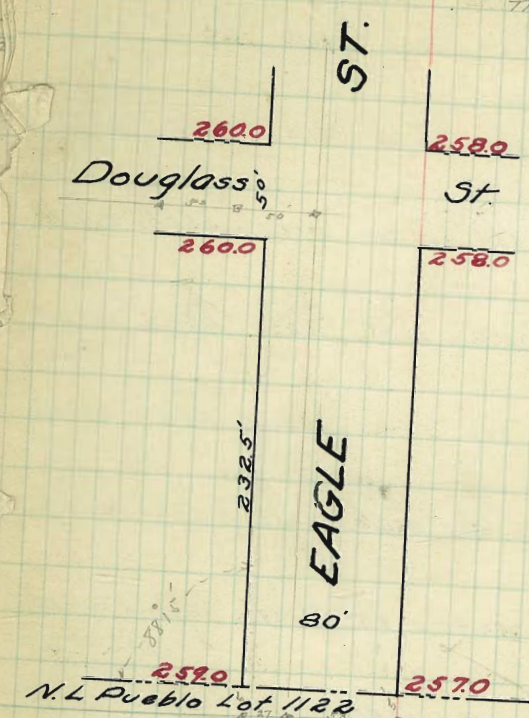
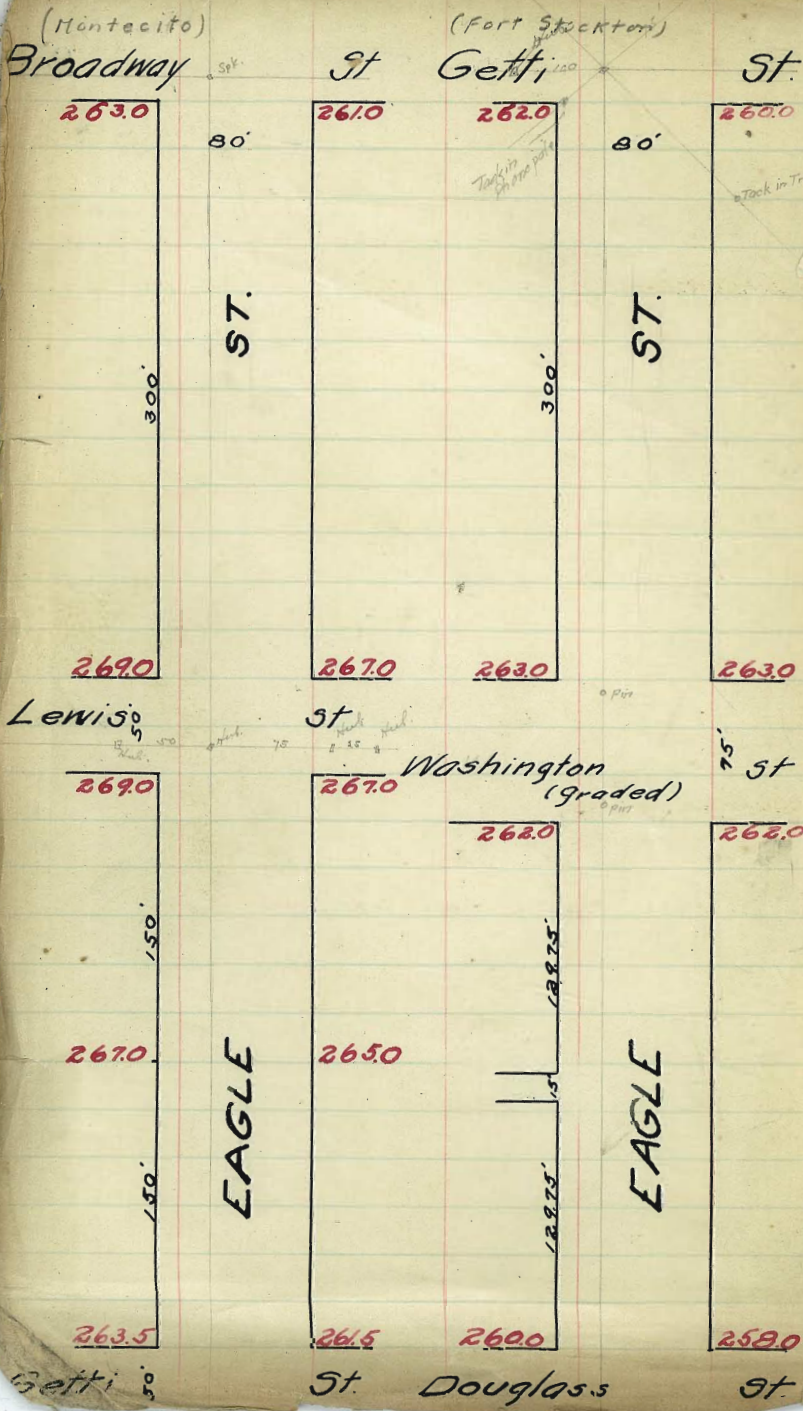
(April 6-1910  
 Clough  
 Donnan  
 Rogers.  
 O.K.  
 Set breaks + raked.

Checking

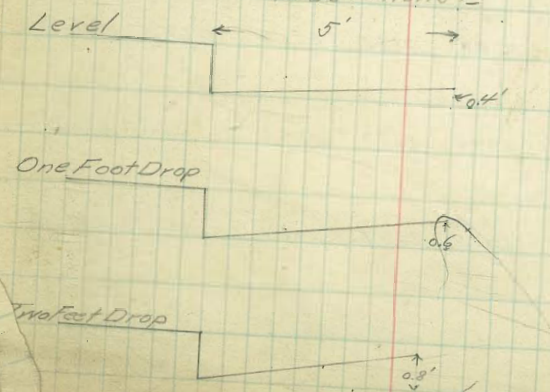


$37 \frac{1}{2}$   
 $\frac{25}{62} \frac{1}{2}$   
 $\frac{68}{130}$

$200 \frac{1}{2}$   
 $\frac{62}{137} \frac{1}{2}$   
 $\frac{68}{205} \frac{1}{2}$



Note:- No "Quarters" on this Street.  
 Break Grade 5' from Curb.  
 Break on Low Side as follows:-



high side, 5' from Curb, Grade 4' above gutter

Tied out  $\frac{1}{12}$  Hatch to  $\frac{1}{10}$  Thomas

West South Line Broadway St. East

30'	263.25	263.0	262.4	262.0	260.80	261.0	261.25
25'	263.75	263.50	262.9	262.5	261.3	261.5	261.75
20'	264.25	264.0	263.4	263.0	261.8	262.0	262.25
15'	264.75	264.50	263.9	263.5	262.3	262.5	262.75
10'	265.25	265.00	264.4	264.0	262.8	263.0	263.25
5'	265.75	265.50	264.9	264.5	263.3	263.5	263.75
0'	266.25	266.00	265.4	265.0	263.8	264.0	264.25
5'	266.75	266.50	265.9	265.5	264.3	264.5	264.75
10'	267.25	267.00	266.4	266.0	264.8	265.0	265.25
15'	267.75	267.50	266.9	266.5	265.3	265.5	265.75
20'	268.25	268.00	267.4	267.0	265.8	266.0	266.25
25'	268.75	268.50	267.9	267.5	266.3	266.50	266.75
30'	269.25	269.0	268.40	268.0	266.80	267.00	267.25

N. Lewis St.

275.60 H	W 6825 +35 45 +1.95	E 6725 825 175 +1.40	6825	6625	6725	6525	6625	6425
			735	735	835	1085	985	1135
			575	735	875	955	60	790
			-2.2	+2.0	+2.6	+0.7	+3.85	+1.95
	6825	6825	6425	6225	6325	6125	6025	6025
	1025	1235	735	1335	1235	1035	1035	1035
	45	875	755	775	1200	1035	60	790
	+1.8	+2.60	+3.9	+3.6	+0.35	-0.85		
66.58	142							
74.22								
2925	6725	6525	6625	6725	6525	6425	6425	6325
571	797	137	817	787	797	1037	797	1137
2425	6325	6325	6125					
1037	1037	1137						
169.27	273.90	273.90	273.90	273.90	273.90	273.90	273.90	273.90
4.25	68.25	68.25	67.25	68.25	67.25	67.25	63.25	
269.27	4.65	5.65	6.65	7.65	8.65	9.65	10.65	
273.90	490							

9-3-10 Sidewalks checked O.K. *Smiller*  
*Thaw*  
*Evans*  
273.79 273.79 273.79 273.79 273.79 273.79  
63.00 69.00 65.00 68.00 69.00 68.00  
11.79 10.79 9.79 8.79 7.79 6.79  
9-5-10 check O.K. *Smiller*  
579

Property stakes  
3 1666  
10 1644  
10 1644

W

E

269.25 269.00 268.40 268.0 266.80 267.00 267.25

curb 269.0 269.0 268.40 268.0 266.80 267.00 267.00  
268. 268. 266. 266.

14 268.4 268.40 266.40 266.40

Lewis

ctr 269.0 269.0 268.0 267.0 267.0

St.

14 268.4 268.40 266.40 266.40

curb 268 268 266 266  
269.0 269.00 268.40 268.0 266.80 267.00 267.00

267.25 269.00 268.40 268.0 266.80 267.00

W South Line Lewis St. E

269.25 269.0 268.40 268.0 266.8 267.0 267.25

268.92 268.67 268.07 267.67 266.47 266.67 266.72

268.58 268.33 267.73 267.33 266.13 266.33 266.58

268.25 268.00 267.40 267.0 265.8 266.00 266.25

267.92 267.67 267.07 266.67 265.47 265.67 265.92

267.58 267.33 266.73 266.33 265.13 265.33 265.58

267.25 267.0 266.40 266.0 264.8 265.0 265.25

266.67 266.42 265.82 265.42 264.22 264.42 264.67

266.08 265.83 265.23 264.83 263.63 263.83 264.08

265.50 265.25 264.65 264.25 263.05 263.25 263.50

264.92 264.67 264.07 263.67 262.47 262.67 262.92

264.33 264.08 263.48 263.08 261.88 262.08 262.33

263.75 263.5 262.9 262.5 261.3 261.5 261.75

N. Line Gettr. St.

269.00 N  
117  
267.83  
277  
275.60 N

6275 6175 / 6492 6292 / 6008 6408 / 6725 6408 / 6725  
525 735 435 615 952 1152 835  
265 265 316 438 682 492 635  
+260 +316 438 +27 +460 +25 +3.8

6722 6592 / 6853 6653 / 6725 6725 / Cut Stakes  
722 947 702 722 635 535 835  
585 535 378 585 450 615  
+233 +270 +214 +317 +154 +27

# Halls  
26 Halls  
70 Halls

26305  
325  
26294 N  
165

6275 6175 / 6492 6292 / 6008 6408 / 6725 6408 / 6725  
318 510 / 701 401 350 250 672 672 165

6722 6592 / 6853 6653 / 6725 6725 /  
602 852 530 702 670 590

26525  
567  
27394 N  
726  
26658  
952  
27675 N

Prop. Stakes 1/2 Halls  
70 Halls

695 683 6707 670 6573 6907 6205  
270 351 217 124 601 714 534

665  
506  
7152 N

615 6267 6223 600 6567 6623 670  
1034 917 801 634 472 551 434

Curb Stakes

73.90 73.90 73.90 73.90 73.90 73.90 73.90 73.90  
67.25 66.58 65.82 65.25 64.08 62.92 61.75 73.90  
6.65 7.32 7.88 8.65 9.22 10.98 12.15  
6.90 7.57 8.23 8.90 10.07 11.23 12.40

7-3-10 side walks check O.K. Drunkle Shaw Evans

269.25 273.77 273.77 273.77 273.77 273.77 273.77 273.77  
27.7 68.00 67.33 66.67 66.00 64.53 63.67 62.50  
273.77 N 5.77 6.96 7.12 7.77 8.96 10.12 11.29

2-5-10 check O.K. Drunkle

275.77  
 61.75  
 2244

275.77  
 61  
 12.79

N  
 263.75 263.5 262.9 262.5 261.3 261.5 261.75 E

263.5 263.5 262.9 262.5 261.3 261.5 261.5  
 262.5 262.5 260.5 260.5

H 262.9 262.9 260.9 260.9

Getti

CH 262.75 262.75 261.75 260.75 260.75

ST

H 261.97 261.97 259.97 259.97

261.0 261.0 259. 259.  
 262.0 262.0 261.0 260.0 260.00

262.25 262.0 261.40 261.0 259.8 260.0 260.25

	W.	S. Line Getti St					E.
00	262.25	262.0	261.4	261.0	259.8	260.0	260.25
25'	262.33	262.08	261.48	261.16	260.03	260.25	260.50
50'	262.42	262.17	261.57	261.33	260.24	260.50	260.75
75'	262.50	262.25	261.65	261.50	260.45	260.75	261.00
100'	262.58	262.33	261.73	261.67	260.67	261.00	261.25
125'	262.67	262.42	261.82	261.83	260.89	261.25	261.50
150'	262.75	262.50	261.90	262.0	261.10	261.50	261.75
175'	262.83	262.58	261.98	262.17	261.33	261.75	262.00
200'	262.92	262.67	262.07	262.33	261.54	262.00	262.25
225'	263.00	262.75	262.15	262.5	261.75	262.25	262.50
250'	263.08	262.83	262.23	262.67	261.97	262.50	262.75
275'	263.17	262.92	262.32	262.83	262.19	262.75	263.00
300'	263.25	263.0	262.4	263.0	262.4	263.0	263.25

N. Line Washington St.

	W	E						
263.09	63.08	62.75	62.92	62.25	62.75	61.75	62.83	61.85
5.26	3.23	3.56	3.81	3.31	3.75	3.25	3.42	3.75
269.00	1.7	3.25	1.5	2.85	2.85	3.20	2.6	2.85
	+4.2	-3.0	+3.9	+3.2	-3.9	+1.25	+3.55	+2.2

	W	E						
263.05	66.31	66.31	66.31	66.31	263.05	66.29		
3.26	63.08	62.25	62.75	61.25	3.24	62.25		
263.145	3.23	4.06	3.56	5.06	263.292	4.04		
60.28	3.48	4.31	3.81	5.31	60.75	4.24		
3.06	4.08	4.31	4.41	6.31	5.74	4.84		
3.31	66.31	66.31	66.31	63.67	66.29	66.29		
66.31	62.67	61.54	62.100	5.64	60.25	61.00		
60.28	3.64	4.94	66.31	66.31	6.04	6.29		
3.21	66.31	66.31	4.31	61.67	66.29	66.29		
✓	61.97	62.33	66.31	61.10	4.76	59.20		
	4.34	3.98	61.10	4.6	66.29	6.29		
	66.31	66.31	5.21	66.31	66.29	6.29		
	62.75	62.07	66.31	61.75	66.29	60.25		
	3.56	4.24	61.75	4.58	66.29	60.25		
	3.21	4.24	4.56	66.31	66.29	60.25		
	✓	66.31	4.51	62.58	66.29	60.25		
		62.75	✓	3.73	3.57	60.25		
		3.64		3.73	4.12	60.25		
		✓		3.73	4.12	60.25		

263.05	263.05	263.05	263.05	263.05
4.68	5.25	5.33		
262.63	262.00	261.40	261.90	259.80
4.58	5.20	5.81	6.21	7.41
267.21				260.00
				7.21

Checked OK except in line  
 blough, Downer, Rogers  
 7-16-10

W S. Line Washington St E

262.0 262.0 261.40 262.0 262.25

25' 261.72 261.09 261.64 261.89

50' ✓ 261.45 260.77 261.28 261.53 ✓

75' 261.18 260.44 260.91 261.16

100' ✓ 260.91 260.10 260.54 260.79 ✓

125' 260.63 259.77 260.18 260.43

150' ✓ 260.36 259.44 259.81 260.06 ✓

175' 260.09 259.11 259.45 259.70

200' 259.82 258.79 259.09 259.34 ✓

225' 259.54 258.46 258.73 258.98

250' 259.27 258.13 258.36 258.61 ✓

275' 260.00 259.0 258.8 258.25 ✓

N. Line Douglass St

263.05	64.74	64.74	64.74	64.74	64.74	64.74
11.67	61.45	60.77	60.36	59.34	59.27	58.25
264.74 HL	3.29	3.75	4.38	5.20	5.47	6.49
62.25				5.65		6.74
2.49	64.74	4.20	64.74	64.74	64.74	64.74
2.74	60.77	64.74	59.44	64.74	58.13	64.74
64.74	3.77	60.10	5.30	58.79	6.61	57.80
21.40		4.64	64.74	5.95	64.74	6.94
3.34	64.74	64.74	60.06	64.74	58.61	64.74
64.74	61.53	60.91	4.68	59.82	6.13	59.00
62.00	3.21	3.83	4.93	4.72	6.38	
3.74	3.46					5.74

5-14-10 all stakes

263.05 BSM n E Wash & Eigh

3.57			
266.62	259.22	259.10	258.82
6.60	5.90	6.10	6.70
260.02	240.00	259.24	
264.90	5.50	6.50	

Checked OK 5' 1/4  
along Donner Rogers  
7.16.10

260  
7.16.10



0490

260.25 260.00 259.20 257.80 258.00

258.00

258.00

258.00

257.80

258.00

258.00

258.00

checked OK

alsought

W.  
00 260.25 260.00 259.40 259.0 257.80 258.0 258.25

25' 260.00 260.0 258.0 258.00

50' 45'

Douglass

75' Cir 260.00 260.00 259.0 258.0 258.00

St.

100' 110'

125' 260.00 260.00 258.0 258.00

L 150 260.25 260.00 259.40 259.0 257.8 258.00 258.25

17'

2'

17'

S. Line Douglass St.

260.25	260.0	259.4	259.0	258.10	258.0	258.25
25'	260.14	259.89	259.29	258.89	257.89	258.14
50'	260.93	259.78	259.18	258.78	257.98	258.03
75'	259.93	259.68	259.08	258.68	257.68	257.93
100'	259.82	259.57	258.97	258.57	257.67	257.82
125'	259.71	259.46	258.86	258.46	257.46	257.71
150'	259.60	259.35	258.75	258.35	257.45	257.60
175'	259.50	259.25	258.65	258.25	257.25	257.50
200'	259.39	259.14	258.54	258.14	257.24	257.39
222.5'	259.25	259.0	258.40	258.0	257.10	257.25

N. Line Pueblo Lot 1126

note - this block changed to 13' 11 1/2"

263.049 B211 Wash - Eagle

30.21	W	E	60.03	58.03	57.82	57.82	57.60	57.60
266.0742	60.25	58.25	60.03	58.03	57.82	57.82	57.60	57.60
	58.25	58.25	58.25	58.25	58.25	58.25	58.25	58.25
	58.25	58.25	58.25	58.25	58.25	58.25	58.25	58.25

64.74	64.74	64.74	64.74	64.74	64.74	64.74	64.74
64.74	64.74	64.74	64.74	64.74	64.74	64.74	64.74
64.74	64.74	64.74	64.74	64.74	64.74	64.74	64.74
64.74	64.74	64.74	64.74	64.74	64.74	64.74	64.74
64.74	64.74	64.74	64.74	64.74	64.74	64.74	64.74
64.74	64.74	64.74	64.74	64.74	64.74	64.74	64.74
64.74	64.74	64.74	64.74	64.74	64.74	64.74	64.74
64.74	64.74	64.74	64.74	64.74	64.74	64.74	64.74
64.74	64.74	64.74	64.74	64.74	64.74	64.74	64.74
64.74	64.74	64.74	64.74	64.74	64.74	64.74	64.74

Cut stakes 1/2 inch  
all stakes  
Dunn  
Thorn  
Ewan

60.02	57.6	58.80	258.00	258.00	258.00	257.60
476	5.74	6.08	6.76	8.00	7.78	7.78
64.78						

Checked OK 13' 11 1/2"

7

8

20

25' 26

30' 26

35' 25

40' 25

45' 24

50' 25

55' 25

60' 25

65' 25

70' 25

75' 25

80' 25

85' 25

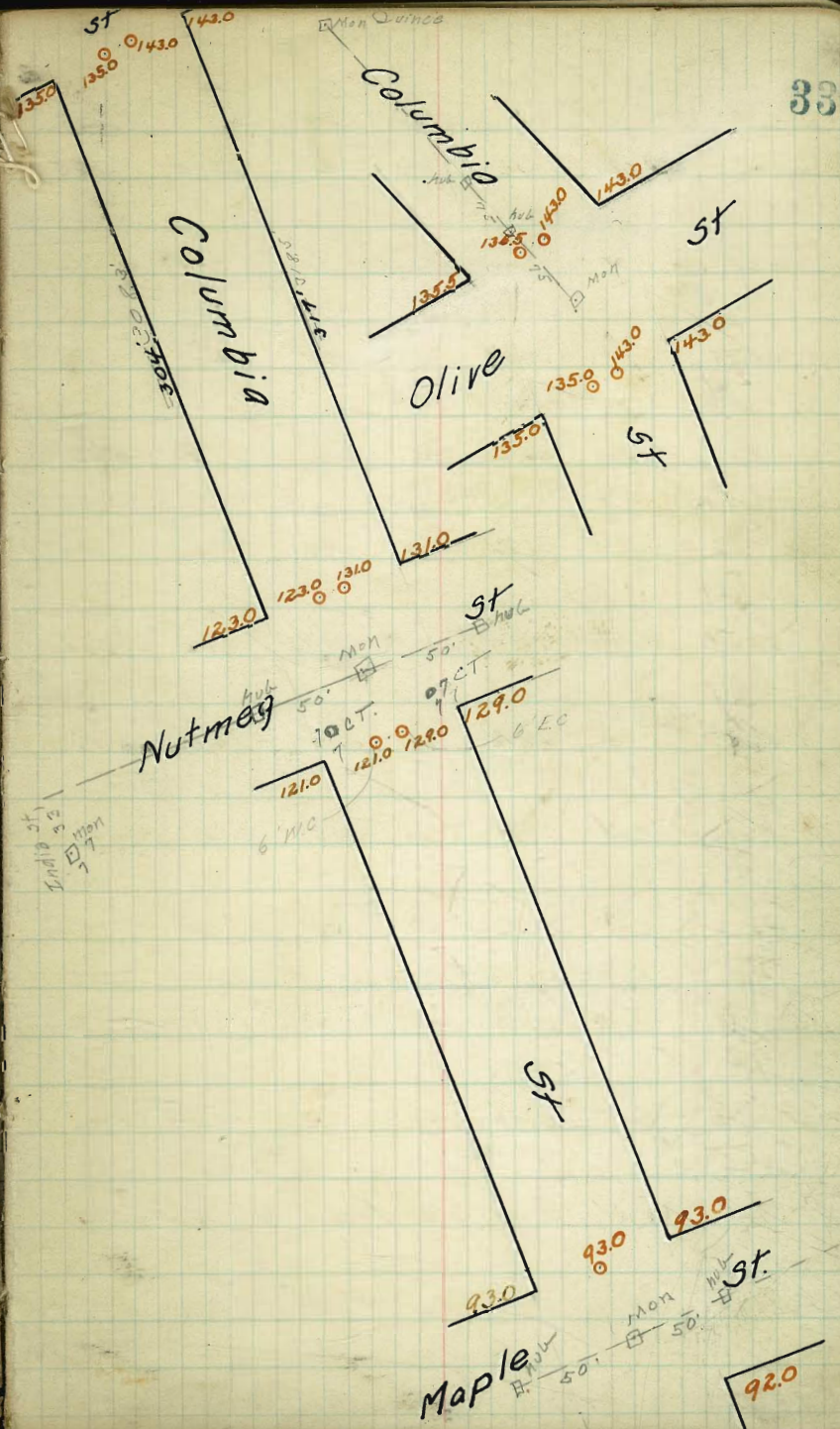
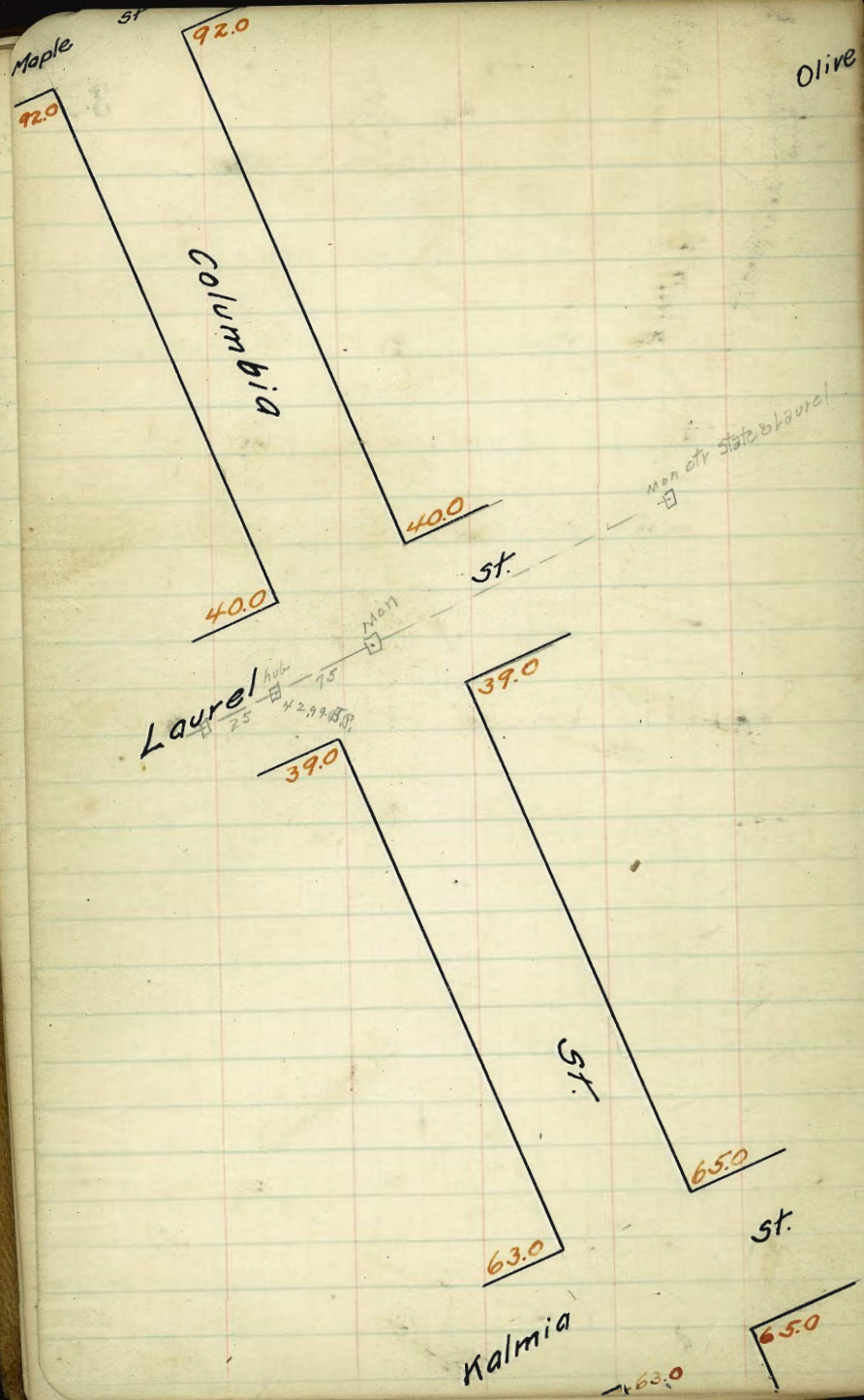
90' 25

95' 25

100' 25

note

Blank lined page with a vertical red margin line on the left side.



56.33 B.M. N2. Cor. Laurel + India 26.8  
brass. plug in mm.

22.7  
4.1  
2.05

34

36.72 HT  
22.70  
2.05  
24.75 26.80  
17.97 9.92

Apr 30, 110

Childs  
Barber  
Taylor

culvert stakes  
24.75 HT  
4.25  
29.00 HT  
22.70  
6.30

26.8  
5 36  
26.0 26  
7.2

	West	S. Line Laurel St.				East	
		co. 6	co. 7	co. 8			
10	39.25	39.00	38.60	39.00	38.60	39.00	39.25
25'	41.25	41.0	40.64	41.08	40.75	41.17	41.42
50'	43.25	43.0	42.68	43.17	42.90	43.34	43.59
75'	45.25	45.0	44.72	45.25	45.05	45.50	45.75
100'	47.25	47.0	co. 3 46.76	co. 4 47.33	co. 5 47.20	co. 6 47.66	47.91
125'	49.25	49.0	co. 4 48.80	co. 4 49.42	co. 5 49.35	co. 6 49.83	50.08
150'	51.25	51.0	50.85	51.50	51.50	co. 2 52.00	52.25
175'	53.25	53.0	52.89	53.58	53.65	54.17	54.42
200'	55.25	co. 4 gte 55.0	54.93	55.67	55.80	56.34	56.59
225'	57.25	57.0	56.97	57.75	57.95	58.50	58.75
250'	59.25	59.0	co. 3 59.01	59.83	60.10	60.67	60.92
275'	61.25	61.0	59.05	61.92	62.25	62.83	63.08
300'	63.25	63.00	63.10	64.00	64.40	65.00	65.25

N. Line Kalmia St.

63.96 Area of Janitor's Account 5716 5716 5716 5716 5716 5716

2.51	6.47	6.47	6.47	57.25	57.25	57.25	57.25	57.25	57.25	57.25	57.25
8.94 H. J.	6.47	6.47	6.47	12.78 P. R.	2.09	1.91	5.41	9.91	9.25	9.25	12.06 P. R.
60.92	11.52	11.52	11.52	55.68	5.00	16.25	11.80	14.98	9.25	9.25	44.50
7.55	9.99	9.99	9.99	1.45	5.30	8.34	5.89	3.47	0.39	1.88	85
1.55	5.39	5.39	5.39	57.16 H. J.							
0.0	+5.39	+6.98		57.16 H. J.							

1-25-10 cut of the sample shown Evans.

46.38 H. J.	46.38	46.38	46.38	46.38	46.38	46.38	46.38	46.38	46.38	46.38	46.38
73.57	74.3	74.3	74.3	74.3	74.3	74.3	74.3	74.3	74.3	74.3	74.3
2.79	12.79	12.79	12.79	12.79	12.79	12.79	12.79	12.79	12.79	12.79	12.79
1.91 H. J.	5.66 W	5.66	5.66	5.66	5.66	5.66	5.66	5.66	5.66	5.66	5.66
7.16											
46.38	7.13	7.13	7.13	7.13	7.13	7.13	7.13	7.13	7.13	7.13	7.13
43.25	13.94	13.94	13.94	13.94	13.94	13.94	13.94	13.94	13.94	13.94	13.94
3.15	6.91	6.91	6.91	6.91	6.91	6.91	6.91	6.91	6.91	6.91	6.91
19.00											
-15.97											

63.96 Bm 5716 5716 5716 5716 5716 5716

5.40	59.00	59.01	59.83	60.10	60.67		
6.97	6.24	6.24	6.24	6.24	6.24		
5.08	5.47	5.47	5.47	5.47	5.47		
10.25	10.32	10.32	10.32	10.32	10.32		

64.38 76.4 H. J. 5100 5085 5150 5170 5200

0.87	2.76	2.76	2.76	2.76	2.76	2.76	2.76
65.25 H. J.	47.60	47.60	47.33	47.20	47.66		
12.26	6.91	6.90	6.25	6.31	5.90		
52.89	43.00	41.68	43.71	42.90	43.34		
0.67	10.52	10.88	10.37	10.66	10.22		
50.25 H. J.	57.00	58.60					
12.40	9.80	10.20					
41.70 H. J.	7.70						
49.80	6.91	6.91	6.91	6.91	6.91		
	52.83	52.83	52.83	52.83	52.83		
63.00	65.91	65.91	65.91	65.91	65.91		
2.91	57.25	56.54	55.25 H. J.	55.43	55.43	55.43	55.43
65.91 H. J.	64.6	63.2	61.25	47.91	43.25	50.65	55.43
55.25	6.91	9.37	4.18	7.52	12.78	5.25	12.78
0.66	65.91	55.60	4.43	7.77	12.78	5.25	13.28
0.91	59.81	10.71	55.43	55.43	55.43	55.43	55.43
65.91	6.90		4.82	8.23	12.78	6.08	
6.90	65.91	65.91	55.43	55.43	55.43	55.43	55.43
1.51	57.25	55.67	61.40	55.43	43.17	49.42	55.43
65.91	6.08	10.24	3.93	9.10	12.26	6.01	
43.00	65.91	65.91	55.43	55.43	55.43	55.43	55.43
1.91	60.10	59.43	51.50	46.76	42.90	48.89	48.89
65.91	1.81	10.92	3.93	6.27	12.78	6.63	
63.10	65.91	65.91	55.43	55.43	55.43	55.43	55.43
7.81	60.10	55.25	52.25	47.25	43.59	48.43	48.43
65.91	4.97	10.66	3.43	5.18	11.84	6.19	
63.25	4.24	10.91		2.43	12.09	6.93	
2.66							
2.91							

10 for check see opp page book

Blough 5.31.10  
Danna  
Pays

7/10 check O.H. Dunne

40.25 40.00 39.60 40.00 39.60 40.00 40.25

40.00 40.00 39.6 40.00 39.60 40.0 40.0  
39.0 39. 39. 39.

39.40 38.75 39.35 39.75 39.35 38.75 39.40

Laurel

39.50 38.5 39.1 39.5 39.10 38.50 39.50

St.

38.85 38.75 38.85 39.25 38.85 38.25 38.85

38. 38. 38. 38.  
 39.00 39.00 38.6 39.0 38.6 39.00 39.00

39.25 39.00 38.60 39.00 38.60 39.00 39.25

488043

400.0 3760  
 8.80 9.20  
 39.50  
 9.50  
 39.20 38.60  
 9.80 10.20

4000 Gradellek

~~4405~~

4000

394

3900

51.88  
 39.50  
 12.38

51.88  
 39.10  
 12.78

Intersect  
 - Adolphus  
 2/4  
 10/20

W S. Line Maple St. E.

50	92.25	92.0	91.6	92.0	91.60	92.0	92.25
75	87.92	87.67	87.27	87.67	87.27	87.67	87.92
100	83.58	83.33	82.93	83.33	82.93	83.33	83.58
125	79.25	79.00	78.60	79.00	78.60	79.00	79.25
150	74.92	74.67	74.27	74.67	74.27	74.67	74.92
175	70.58	70.33	69.93	70.33	69.93	70.33	70.58
200	66.25	66.00	65.60	66.00	65.60	66.00	66.25
225	61.92	61.67	61.27	61.67	61.27	61.67	61.92
250	57.58	57.33	56.93	57.33	56.93	57.33	57.58
275	53.25	53.00	52.60	53.00	52.60	53.00	53.25
300	48.92	48.67	48.27	48.67	48.27	48.67	48.92
325	44.58	44.33	43.93	44.33	43.93	44.33	44.58
350	40.25	40.0	39.60	40.0	39.60	40.00	40.25

N. Line Laurel St.

67.87	73.27	79.27	85.27	91.27	97.27	103.27	109.27
0.43	0.87	1.30	1.74	2.17	2.61	3.04	3.47
67.37	73.37	79.37	85.37	91.37	97.37	103.37	109.37
11.83	11.83	11.83	11.83	11.83	11.83	11.83	11.83
77.72	77.72	77.72	77.72	77.72	77.72	77.72	77.72
66.25	66.25	66.25	66.25	66.25	66.25	66.25	66.25
12.97	12.97	12.97	12.97	12.97	12.97	12.97	12.97
7.97	7.97	7.97	7.97	7.97	7.97	7.97	7.97
66.10	66.10	66.10	66.10	66.10	66.10	66.10	66.10
13.97	13.97	13.97	13.97	13.97	13.97	13.97	13.97
16.85	16.85	16.85	16.85	16.85	16.85	16.85	16.85
3.48E	3.48E	3.48E	3.48E	3.48E	3.48E	3.48E	3.48E

9-25-10 cut to fill North Side Evening

1736	6186	73.05	73.05	84.35	84.35	95.65	95.65
5755	6186	66.25	66.25	77.55	77.55	88.85	88.85
47.72	47.72	47.72	47.72	47.72	47.72	47.72	47.72
5.68	5.68	5.68	5.68	5.68	5.68	5.68	5.68
57.36	57.36	57.36	57.36	57.36	57.36	57.36	57.36

cut to property E. side bank

4880	4880	4880	4880	4880	4880	4880	4880
4880	4880	4880	4880	4880	4880	4880	4880

4880

40.00	40.00	40.00	40.00	40.00	40.00	40.00	40.00
12.40	12.40	12.40	12.40	12.40	12.40	12.40	12.40
5.24	5.24	5.24	5.24	5.24	5.24	5.24	5.24

57.33 56.93 / 7.67 8.07 /

80.02 81.93 / 4.10 4.50 /

77.13	66.90	66.20	66.20
11.48	66.25	57.58	17.88
0.55	9.23	53.96	
0.50	9.27	4.40	
1.20	7.87	50.96	
		4.14	
		9.39	
		9.79	

51.88	51.88	51.88	64.36	64.36	75.40	75.40	75.40	75.40	75.40	85.98	85.98	85.98	92.00
40.35	40.35	40.35	40.35	40.35	40.35	40.35	40.35	40.35	40.35	40.35	40.35	40.35	40.35
11.63	11.63	11.63	11.63	11.63	11.63	11.63	11.63	11.63	11.63	11.63	11.63	11.63	11.63
12.22	12.22	12.22	12.22	12.22	12.22	12.22	12.22	12.22	12.22	12.22	12.22	12.22	12.22

9/10 check O.K. Dunsmuir



93.25 93.00 92.6 93.00 92.6 93.00 93.25

93.00 93.00 92.6 93.0 92.6 93.00 93.0  
92. 92. 92. 92.

92.40 91.75 92.35 92.75 92.35 91.75 92.40

Maple

92.50 91.50 92.1 92.50 92.1 91.50 92.50

St

91.85 91.25 91.85 92.25 91.85 91.25 91.85

91. 91. 91. 92.0 91.6 92.0 91.6 91. 91.  
92.00 92.0 91.6 92.0 91.6 92.0 92.0

92.25 92.00 91.6 92.0 91.6 92.00 92.25

90.1 93.00 92.60  
85 5.21 3.61  
95.36 HRP N V B K  
7.17  
102.53

92.00 91.11  
14.53

92.53  
10.03

93.00 92.60

9.33

98.20  
92.50  
5.70  
98.20  
92.10  
6.10

S Line Nutmeg St.

Curb 1/4 6 1/2 - 6E 1/4 Curb

121.25	121.0	120.6	121.0	129.0	128.6	129.0	129.25
118.92	118.67	118.27	118.67	126.0	125.6	126.0	126.25
116.58	116.33	115.93	116.33	123.0	122.6	123.0	123.25
114.25	114.00	113.6	114.0	120.0	119.6	120.0	120.25
111.92	111.67	111.27	111.67	117.0	116.6	117.0	117.25
109.58	109.33	108.93	109.33	114.0	113.6	114.0	114.25
107.25	107.00	106.6	107.0	111.0	110.6	111.0	111.25
104.92	104.67	104.27	104.67	108.0	107.6	108.0	108.25
102.58	102.33	101.93	102.33	105.0	104.6	105.0	105.25
100.25	100.00	99.6	100.0	102.0	101.6	102.0	102.25
97.92	97.67	97.27	97.67	99.0	98.6	99.0	99.25
95.58	95.33	94.93	95.33	96.0	95.6	96.0	96.25
93.25	93.0	92.6	93.0	92.6	92.6	93.00	93.25

N. Line Maple

102.23	102.23	114.51	114.51	126.27	126.27	126.27	126.27
93.70	93.70	102.58	102.58	117.25	117.25	116.58	121.25
79.8	79.8	11.93	7.26	3.92	9.64	9.64	5.02
77.10W	116.51	5.43	1.36	7.510	7.64	7.64	6.25
9.95	15.26	112.57	75.90	126.27	126.27	126.27	126.27
4.68	7.526	9.26	114.51	111.92	123.25	123.25	125.25
15.30E	11.57	2.96	113.60	14.35	3.02	3.02	12.77
	97.72	+6.80	12.57	7.51	2.74	2.74	138.74
	16.59		126.27	49.54	49.54	49.54	129.25
	9.56						9.19
	7.03						8.99
							+0.20

1-25 - 10 cut 8 fill dunckle

79.91 BM SE India - Palm

39.5	129.0	123.0	117.0	111.0	105.0	99.0	93.0	87.0	81.0
103.59	-2.13	3.57	9.37	15.17	20.97	26.77	32.57	38.37	44.17
2.30	-3.82								
101.54									
12.15									
114.2									
0.20									
114.19									
126.5									
126.87									
119.7									
114.90									
112.3									
115.03									
12.27									
105.81									

all states for E 1/2 dunckle - Blain Evans

97.67	111.07	123.33	123.33	123.33	114.84	116.89
4.86	1.66	16.33	17.67	18.00	107.25	102.33
	123.33	7.00	14.66	11.33	4.94	9.91
	12.25	7.00	12.06	11.44	5.29	9.91
	2.08					
	2.33	9.25	9.25	9.25	9.25	9.25
	2.73	97.67	93.00	97.67	6.56	
	111.84	2.72	6.85	2.18	93.27	2.18
	12.24	2.58	7.25	97.67		
	99.60			0.85		
	90.25					
	79.85					

104.3	110.63	110.63	122.07	122.07	122.07
99.25	105.25	0.52	111.27	117.25	121.77
115.8	110.11	10.82	4.22	121.77	
11.63	5.38	11.96	5.07	11.93	
12.03	5.63	123.07	11.47	5.47	133.70
	6.23				

133.70	133.70	129.25	129.25	129.25	129.25
104.5	4.95	12.67	12.34	13.14	13.10
10.70	4.70	1.47	11.92	11.43	107.25
11.10	8.71	23.44	11.2	11.7	5.55
133.50		116.58	114.7	113.4	6.10
120.25			11.87	113.04	6.50
12.25					11.17
12.50					10.77
33.40					10.75
120.00					1.05
10.70					161.20
					94.92
					3.88
					4.13
					4.53

4/16/10 check D. H. Dunckle

West L. Curb 7/2 6' to 6'E 1/4 E Line  
 123.25 123.0 122.6 123.0 131.0 130.6 131.0 131.25

123.0 123.0 122.6 123.0 131.0 130.6 131.0 131.0  
 122. 122

122.40 121.50 122.1 122.5 130.5 130.1 129.5 130.4

Nutmeg

122.00 121.00 121.6 122.0 130.0 129.6 129.0 130.0  
 Cat

st

121.10 120.50 121.1 121.5 129.5 129.1 128.5 129.10

120. 120. 128. 128  
 121.0 121.0 120.6 121.0 129.0 128.6 129.0 129.0

121.25 121.00 120.6 121.0 129.0 128.6 129.0 129.25

126.27  
 123.25  
 3.02  
 1.55  
 + 1.17  
 4.99  
 356  
 103.77  
 103.73  
 101.17  
 116.58  
 820  
 116.28  
 11.93  
 128.58  
 216  
 128.40  
 1323  
 141.234

1309.1  
 13.05  
 117.86  
 22.5  
 118.124  
 22.9  
 105.23  
 023  
 106.064

13091 ft

124.5 128.5 1238 1270 1210  
 6.41 241 241 241 991

116.40  
 1.72

111.80  
 6.32

107.19  
 10.93

102.58  
 3.48

97.47  
 8.09

95.67  
 10.89

133.70 133.50  
 130.00 122.00  
 3.70 11.50  
 4110 103.50  
 121.60  
 11.90

6" below top of curb

5' below top of curb

121.22  
 9.47

115.38  
 2.74

109.32  
 8.80

103.26  
 2.80

97.20 786 - 1' below grade  
 886

Curb stakes 2  
 10 R

S. Line Olive St.

W. Line Curb 1/4 6'4x6'E 1/4 Curb E. Line

308.3' on W  
818.5' on E 135.25 135.0 134.6 135.0 143.0 142.6 143.0 143.25

300' 142.49 142.20  
275' 133.95 133.70 133.25 133.50 141.53 141.03 141.36 141.61

250' 132.98 132.73 132.28 132.57 140.57 140.08 140.42 140.67

225' 132.01 131.76 131.31 131.61 139.61 139.13 139.48 139.73

200' 131.03 130.78 130.34 130.66 138.66 138.18 138.54 138.79

175' 130.06 129.81 129.38 129.70 137.70 137.24 137.59 137.84

150' 129.09 128.84 128.41 128.74 136.74 136.29 136.65 136.90

125' 128.11 127.86 127.44 127.79 135.79 135.34 135.71 135.96

100' 127.14 126.89 126.47 126.83 134.83 134.39 134.77 135.02

75' 126.17 125.92 125.50 125.87 133.87 133.44 133.83 134.08

50' 125.20 124.95 124.54 124.91 132.91 132.50 132.88 133.13

25' 124.22 123.97 123.59 123.96 131.96 131.55 131.94 132.09

00' 123.25 123.0 122.6 123.0 131.0 130.6 131.0 131.25

N. Line Nutmeg St.

Top table with columns of numbers and some handwritten annotations.

Table with columns of numbers, including some with checkmarks.

Table with columns of numbers, including some with checkmarks.

Table with columns of numbers, including some with checkmarks.

Table with columns of numbers, including some with checkmarks.

Table with columns of numbers, including some with checkmarks.

Table with columns of numbers, including some with checkmarks.

Table with columns of numbers, including some with checkmarks.

Table with columns of numbers, including some with checkmarks.

Handwritten note: 7/8 of 1/2 ...

W. Line Curb 1/4 6W → 76'E 1/4 Curb E. Line

135.75 135.5 135.1 135.5 143.0 142.6 143.0 143.25

135.5 135.5 135.1 135.5 143.0 142.6 143.00 143.00  
 134.5 134.5 142. 142.

134.90 134.37 134.97 135.37 143.0 142.6 142.0 142.60

Olive

135.25 134.25 134.25 135.15 143.0 142.6 142.0 143.00

St

134.73 134.12 134.72 135.12 143.0 142.6 142.0 142.60

134 134 142.0 142.0  
 135.00 135.0 134.6 135.0 143.0 142.6 143.0 143.0

135.25 135.00 134.6 135.0 143.0 142.6 143.0 143.25

135.25  
 9.77  
 145.0447  
 135.25  
 9.77  
 145.04  
 135.25  
 9.77

145.04  
 143.00  
 2.04  
 145.04  
 36.25  
 9.77

135.25  
 9.05  
 139.30  
 132.95  
 6.32

139.30  
 34.85  
 9.45

139.30  
 35.75  
 3.55  
 3.30  
 139.30  
 135.10  
 4.20

135.25  
 12.05  
 147.30  
 43.25  
 4.05  
 4.30  
 147.30  
 42.60  
 4.70

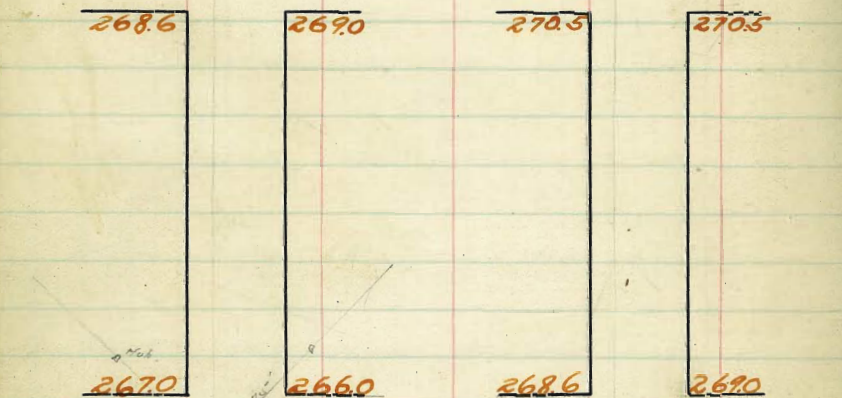
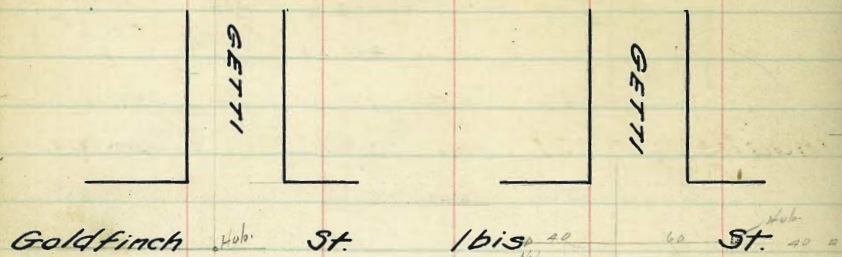
47.30  
 43.00  
 4.30  
 47.30

42

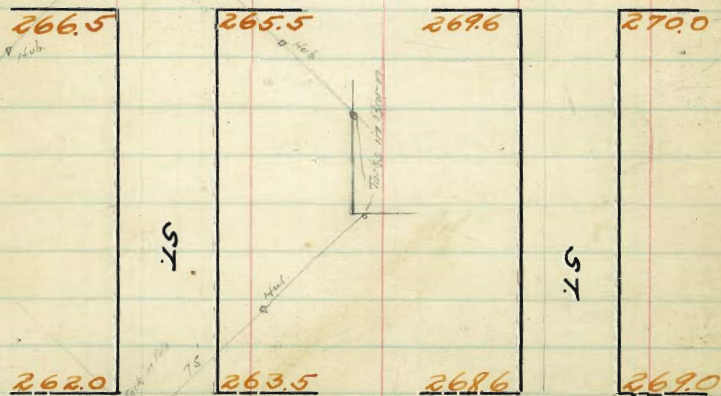
4.50  
 4.75  
 9.05

133.50  
 135.25

9/5/10 all flocks  
 42.60  
 4.70  
 47.30  
 43.00  
 4.30  
 47.30

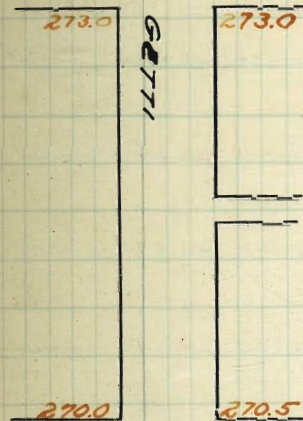


Falcon St. Hawk St.

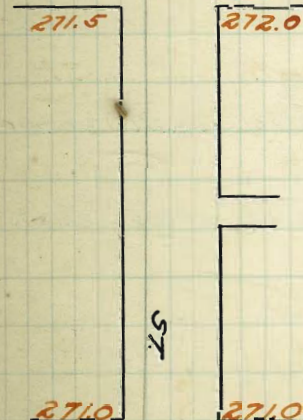


Eagle St. Goldfinch St.

Ingalls



Jackdaw



Ibis

St.

St.

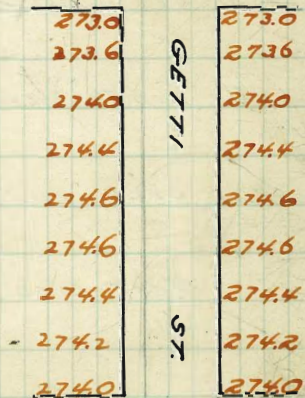
St.

Benches

Falcon SW RR spt Pole	266.150
Goldfinch SW " " "	268.680
Hawk SE " " "	269.717
Ibis NE " " "	270.485
Ingalls NW Cap Jack SW CVR BARR	276.125

Hooker

St.



Ingalls

St.

East Line Falcon St.

	South			North			
10	266.75	266.5	265.9	266.0	265.35	265.5	265.75
25	266.18	265.93	265.40	265.9	265.04	265.25	265.50
50	265.62	265.37	264.91	265.19	264.74	265.00	265.25
75	265.06	264.81	264.42	264.78	264.43	264.75	265.00
100	264.50	264.25	263.93	264.37	264.12	264.50	264.75
125	263.94	263.69	263.44	263.97	263.82	264.25	264.50
150	263.37	263.12	262.75	263.56	263.51	264.00	264.25
175	262.81	262.56	262.46	263.16	263.21	263.75	264.00
200	262.25	262.0	261.97	262.75	262.9	263.5	263.75

West Line Eagle St.

262.049	262.5	0.375	6.337	6.425	6.450	6.475
5.52	7.32	7.82	8.20	7.33	7.07	6.82
271.5745	65.62	65.25	66.2	66.5	66.7	66.8
	5.75	6.30	6.62	6.85	7.07	7.25
	0.45	0.52	0.62	0.65	0.67	0.68
	22.30	22.7	23.12	23.5	23.8	24.0
			66.75	67.5	68.0	68.5
			5.82	5.82	5.82	5.82
			5.52	5.52	5.52	5.52
			-7.0	-7.0	-7.0	-7.0

265.50	272.02	272.02	272.02	272.02	272.02	272.02
6.52	65.00	65.25	65.50	65.75	66.00	66.25
272.02	65.00	65.25	65.50	65.75	66.00	66.25
46.50	7.02	7.77	8.02	8.27	8.52	8.77
5.52						
272.02	272.02	272.02	272.02	272.02	272.02	272.02
18.50	65.25	65.50	65.75	66.00	66.25	66.50
6.52	6.65	7.52	8.90	9.52	10.02	10.52

268.68	265.9	266.0	265.35	265.75	265.50
1.78	4.56	4.46	5.11	4.71	4.96
270.46	266.5	266.5	266.5	266.5	266.5
3.71	3.96				

265.50	264.74	265.19	264.91	265.62	
5.21	5.72	5.27	5.35	4.84	
265.50	62.0	61.7	62.75	62.9	63.5
372.70	79.02	79.13	79.35	79.50	79.60
	63.12	62.95	63.56	63.51	64.0
	89.8	7.15	8.54	8.57	8.10
	64.25	68.93	64.37	64.12	64.5
	7.85	8.17	7.73	7.78	7.60
	65.37	64.91	65.19	64.74	65.0
	6.73	7.19	6.91	7.36	7.10
	66.5	66.9	66.0	66.35	66.5
	5.60	6.20	6.10	6.75	6.61

check  $\frac{3}{15}$  Water 74004 Thomas

265.50	262.0	264.75	265.50
6.34	7.84	4.5	8.34
271.64			

check OK blanch 5-18-70

267.25 267.0 266.40 266.5 265.85 266.00 266.25

267.00 267.00 266.4 266.5 265.85 266.0 266.0  
266. 266. 265 265

F0.3 00.3  
266.4 266.4 266.37 265.4 265.4

Falcon

F0.4 F0.3 F0.2  
266.75 266.75 266.25 265.75 265.75

St.

F0.2  
266.22 266.22 266.12 265.22 265.22

265.5 265.5 264.5 264.5  
266.5 266.5 265.9 266.0 265.35 265.5 265.5

266.75 266.5 265.9 266.0 265.35 265.5 265.75

272.10

6675 6625 6575 6622 664  
585 585 685 588 57

check.  $\frac{3}{15}$  10  
Hatch  
Thompson

271.84 43  
266.50 266.5 265.50 266.25  
5.34 5.84 6.34 5.34  
266.5 266.5 267.0  
5.84 5.34 2.84

check O.K. Lehman 3-18-10



East Line Goldfinch St.

	South					North					
00	268.85	268.6	268.3	268.8	268.40	269.0	269.25				
50	268.65	268.4	268.06	268.51	268.08	268.63	268.88				
100	268.45	268.2	267.83	268.23	267.76	268.25	268.50				
150	268.25	268.0	267.59	267.94	267.45	267.87	268.12				
200	268.05	267.8	267.35	267.65	267.13	267.50	267.75				
250	267.85	267.6	267.11	267.36	266.81	267.12	267.37				
300	267.65	267.4	266.88	267.09	266.49	266.75	267.00				
350	267.45	267.2	266.64	266.79	266.17	266.37	266.62				
400	267.25	267.0	266.4	266.5	265.85	266.0	266.25				

West Line Falcon St.

271.87 Ht	67.25	66.25	67.65	67.00	67.05	67.75	68.25	68.00
271.87	4.32	5.33	3.92	4.57	3.72	3.86	4.12	3.07
268.54	5.78	2.00	6.00	6.32	4.65	5.92	2.22	4.62
271.87	-1.96	-1.67	-2.10	-2.25	-2.5	-2.1	-1.3	-1.6

46.

Cut and fill stakes for Hatch Place Thomas  
 5. N  
 47.0 66.0 / 67.4 66.25 / 67.5 67.5 / 68.25 / 68.6 69.0

272.25 Ht	72.02	72.02	72.02	72.02	72.02	72.02	72.02	72.02
272.25	46.02	47.35	47.76	48.30	48.70	49.00	49.25	49.50
272.25	5.62	4.67	4.26	3.72	3.22	2.72	2.22	1.72
272.25	66.25	67.02	67.65	68.23	68.82	69.40	70.00	70.50
272.25	5.72	4.99	4.57	3.99	3.22	2.72	2.22	1.72
272.25	68.65	68.88	67.13	67.83	68.40	69.00	69.50	70.00
272.25	6.17	5.14	4.77	4.19	3.62	3.02	2.52	2.02

272.10 Ht	67.0	66.7	66.5	65.85	66.0
272.10	5.10	5.7	5.6	6.25	6.10
272.10	67.4	66.85	67.05	66.47	66.75
272.10	4.7	5.22	5.02	5.61	5.35
272.10	67.3	67.35	67.65	67.13	67.50
272.10	4.30	4.75	4.45	4.77	4.4
272.10	68.2	67.83	68.23	67.76	68.25
272.10	3.9	4.27	3.87	4.34	3.85
272.10	68.6	68.3	68.8	68.4	69.0
272.10	3.5	3.8	3.3	3.7	3.10

268.66 Ht	4.85	268.60	268.54	269.20
273.63	5.83	4.87	4.62	

Check OK (Goldfinch already buried)

East Line Hawk St.

	South				North			
00	269.85	269.6	269.3	269.8	269.4	270.00	270.25	
25	269.72	269.41	269.17	269.67	269.27	269.87	270.12	
50	269.60	269.35	269.05	269.55	269.15	269.75	270.00	
75	269.47	269.22	268.92	269.42	269.02	269.62	269.87	
100	269.35	269.10	268.80	269.30	268.90	269.50	269.75	
125	269.22	268.97	268.67	269.17	268.77	269.37	269.62	
150	269.10	268.85	268.55	269.05	268.65	269.25	269.50	
175	268.97	268.72	268.42	268.92	268.52	269.12	269.37	
200	268.85	268.6	268.3	268.8	268.4	269.00	269.25	

West Line Goldfinch St.

274.10	49.10	49.20	49.25	49.25	49.40	49.00
	2.00	2.00	2.00	2.00	2.00	2.00
	2.50	2.50	2.50	2.50	2.50	2.50
	+0.15	+0.32	+0.2	+0.3	+0.2	+0.4

City and Ed States 1/9/10 Hatch Moore Thomas

273.17 Hz	486	490	488.5	492.5	490	49.50	49.25	49.75	49.6	70.00
267.57	401	411	426	386	411	386	376	386	386	386
274.75	426	386	401	386	401	386	386	386	386	386

Curb and Property 2/25/10 Hatch Moore Thomas

272.02 Hz	48.00	48.55	48.90	49.05	49.10	49.10	49.10	49.10	49.10	49.10
	3.12	3.47	3.12	2.97	3.12	3.12	3.12	3.12	3.12	3.12

272.02	48.00	48.55	48.90	49.05	49.10	49.10	49.10	49.10	49.10	49.10
	3.12	3.47	3.12	2.97	3.12	3.12	3.12	3.12	3.12	3.12

272.02	48.00	48.55	48.90	49.05	49.10	49.10	49.10	49.10	49.10	49.10
	3.12	3.47	3.12	2.97	3.12	3.12	3.12	3.12	3.12	3.12

272.10 Hz	486	483	483	487	490	
	3.0	3.3	3.3	3.7	3.15	

268.51	486	483	483	487	490	
	3.0	3.3	3.3	3.7	3.15	

273.74 Hz	486	483	483	487	490	
	3.0	3.3	3.3	3.7	3.15	

273.74 Hz	486	483	483	487	490	
	3.0	3.3	3.3	3.7	3.15	

273.74 Hz	486	483	483	487	490	
	3.0	3.3	3.3	3.7	3.15	

273.74 Hz	486	483	483	487	490	
	3.0	3.3	3.3	3.7	3.15	

269.3 Hz	486	483	483	487	490	
	3.0	3.3	3.3	3.7	3.15	

269.3 Hz	486	483	483	487	490	
	3.0	3.3	3.3	3.7	3.15	

check OK - brought 3-18-10  
(Hawk already broken)

269.3 Hz	486	483	483	487	490	
	3.0	3.3	3.3	3.7	3.15	

East Line Ibis St.

South

North

00	270.75	270.5	270.1	270.5	270.1	270.5	270.75
25'	270.51	270.26	269.88	270.29	269.89	270.31	270.56
50'	270.27	270.02	269.65	270.07	269.67	270.12	270.37
75'	270.04	269.79	269.42	269.86	269.46	269.94	270.19
100'	269.80	269.55	269.20	269.65	269.25	269.75	270.00
125'	269.56	269.31	268.97	269.44	269.04	269.56	269.81
150'	269.32	269.07	268.75	269.22	268.82	269.37	269.62
175'	269.09	268.84	268.52	269.01	268.61	269.19	269.44
200'	268.85	268.6	268.3	268.8	268.4	269.0	269.25

West Line Hawk

69.22	69.22	69.20	70.00	70.27	70.37	70.75	70.75
0.28	0.28	0.20	2.00	3.70	3.67	3.25	3.25
0.15	0.15	0.00	5.30	5.15	3.30	4.00	4.10
-1.5	-1.00	-1.5	-1.3	-1.42	-2.35	-1.85	-2.85

Cut and Fill Station 15410 Hatch Moore Thomas

274.98 HI	6.56	6.90	6.97	6.27	6.55	6.95	7.02	7.12
	6.95	5.85	5.71	5.61	5.43	5.23	4.96	4.76
	0.39	1.05	1.26	0.66	1.12	1.72	2.06	2.36
7.85	7.85	7.85	7.85	7.85	7.85	7.85	7.85	7.85
4.32	4.32	4.32	4.32	4.32	4.32	4.32	4.32	4.32

7.85 Carb and Property 2/26/10 Hatch Moore Thomas

269.72 B.M. 5071 Hawk S.E. R.R. 1/11	274.15	274.15	274.15	274.15	274.15	274.15	274.15
0.03	274.15	274.15	274.15	274.15	274.15	274.15	274.15
274.15 HI	6.82	6.70	6.67	7.01	7.01	7.01	7.01
68.20	5.23	4.95	4.47	4.05	4.05	4.05	4.05
15.85	274.15	274.15	274.15	274.15	274.15	274.15	274.15
274.15	6.82	6.65	7.07	7.07	7.07	7.07	7.07
68.80	4.93	4.50	4.02	3.65	3.65	3.65	3.65
5.35	274.15	274.15	274.15	274.15	274.15	274.15	274.15
274.15	6.82	6.75	6.65	7.01	7.01	7.01	7.01
68.40	5.10	4.90	4.50	4.05	4.05	4.05	4.05
5.35	274.15	274.15	274.15	274.15	274.15	274.15	274.15

274.94 HI	6.84	6.82	6.88	6.84	6.90
0.03	6.84	6.82	6.88	6.84	6.90
270.44	6.97	6.75	6.92	6.82	6.97
6.36	4.87	5.19	4.72	5.12	4.67
275.50 HI	6.55	6.90	6.65	6.95	6.75
	4.39	4.74	4.29	4.69	4.19
	7.02	6.95	7.07	6.67	7.01
	3.92	4.27	3.87	4.27	3.82
	7.05	7.01	7.05	7.01	7.05
	3.44	3.80	3.44	3.84	3.44

check 10 Hatch Moore Thomas

274.31 HI	269.4	269.4	269.00
	5.22	5.52	5.22

270.44 B.M.	270.50	check OK Hatch 2-18-10
5.0	5.0	
275.46	5.0	

271.25 271.0 270.6 271.0 270.6 271.0 271.25

271.0 271.0 270.6 271.0 270.6 271.0 271.0  
 270. 270. 270. 270.

270.4 270.4 270.58 270.87 270.58 270.4 270.4

1615

270.75 270.75 270.75<sup>35</sup> 270.75 270.75<sup>35</sup> 270.75 270.75

51

270.22 270.22 270.42 270.62 270.42 270.22 270.22

269.5 269.5 269.5 269.5  
 270.5 270.5 270.1 270.5 270.1 270.5 270.5

270.75 270.5 270.1 270.5 270.1 270.5 270.75

270.23 1877 NE This - Jetti

15-53  
 275.96 147

70.2 70.75 70.22 70.35  
 5.56 5.21 5.74 5.67

275.30 48

70.4 70.75 70.22 70.35  
 5.4 5.05 5.58 5.45

check  $\frac{2}{10}$  Hotel Terrace Penna

275.46

271.60  
 4.46

270.50  
 4.76

270.51  
 4.71

check W.C. Daugh 3-18-10

$$\begin{array}{r} 20045 \\ 352 \\ 27042 \\ 578 \\ \hline 2762045 \end{array}$$

$$\begin{array}{r} 7125 \\ 575 \\ 245 \\ -1.3 \\ \hline 7125 \\ +0.26 \\ \hline 7151 \\ 589 \\ -0.8 \\ \hline 7137 \\ 458 \\ 603 \\ +0.8 \\ \hline 7142 \\ 478 \\ 242 \\ +0.36 \\ \hline 7160 \\ 460 \\ 406 \\ +0.7 \\ \hline 7154 \\ 466 \\ 406 \\ +0.6 \\ \hline 7153 \\ 437 \\ 397 \\ \hline 7056 \end{array}$$

$$\begin{array}{r} 71.66 \\ 454 \\ 400 \\ \hline 71.66 \\ +0.8 \\ \hline 72.06 \\ 474 \\ 384 \\ \hline 72.06 \\ +0.3 \\ \hline 72.36 \end{array}$$

East Line Jackdaw St.

South

North

00	271.75	271.5	271.22	271.75	271.4	272.0	272.25
40'	271.66	271.41	271.10	271.61	271.25	271.81	272.06
65'	271.60	271.35	271.03	271.52	271.16	271.70	271.95
90'	271.54	271.29	270.96	271.43	271.06	271.58	271.83
115'	271.48	271.23	270.89	271.35	270.97	271.46	271.71
140'	271.42	271.17	270.82	271.26	270.88	271.35	271.60
165'	271.37	271.12	270.74	271.17	270.79	271.23	271.48
190'	271.31	271.06	270.67	271.09	270.69	271.12	271.37
215'	271.25	271.0	270.6	271.0	270.6	271.0	271.25

West Line / bis St

$$\begin{array}{r} 2762045 \\ 374 \\ 27324 \\ 349 \\ \hline 27893 \end{array}$$

$$\begin{array}{r} 710 \\ 398 \\ 373 \\ 715 \\ 348 \\ 323 \end{array}$$

$$\begin{array}{r} 27596 \\ 597 \\ 24999 \\ 720 \\ \hline 27789 \end{array}$$

$$\begin{array}{r} 70.6 \\ 536 \\ 7096 \\ 500 \end{array}$$

$$\begin{array}{r} 710 \\ 480 \\ 7106 \\ 474 \\ 7117 \\ 463 \\ 7129 \\ 450 \\ 7141 \\ 440 \\ 715 \\ 43 \end{array}$$

$$\begin{array}{r} 70.6 \\ 520 \\ 7067 \\ 529 \\ 7096 \\ 500 \\ 710 \\ 480 \\ 706 \\ 513 \\ 7082 \\ 498 \\ 7110 \\ 470 \\ 7122 \\ 458 \end{array}$$

$$\begin{array}{r} 27044 \\ 598 \\ \hline 27642 \end{array}$$

check W. Blough 3-10-11

Jackdaw Street

East Line Ingalls St.

South

North

00'	273.25	273.0	272.6	273.0	272.6	273.00	273.25
25'	272.90	272.65	272.26	272.68	272.29	272.71	272.96
50'	272.55	272.30	271.93	272.36	271.97	272.42	272.67
75'	272.20	271.95	271.60	272.04	271.66	272.13	272.38
100'	271.86	271.61	271.26	271.72	271.34	271.84	272.09
125'	271.51	271.26	270.93	271.40	271.03	271.54	271.79
150'	271.16	270.91	270.59	271.08	270.72	271.26	271.51
175'	270.81	270.56	270.26	270.76	270.40	270.96	271.21
200'	270.25	270.0	269.72	270.25	269.9	270.5	270.75

West Line Jackdaw St

276.20 Ht	7116	7181	7186	7209	7258	7267	7325	7325
122	509	467	439	436	368	568	246	500
276.39	833	489	534	586	435	579	335	500
41.5	-132	52	40	7950	-27	-01	-44	-02
278.65 Ht								51

Check and all taken by the Watch Moore Thomas

275.93 Ht	S	N	7091	7126	7161	7184	7200	7242
59.2	700	705	502	467	432	409	363	351
56.8	518	477	442	407	384	351	321	
730								
293								
263								

Check and Property by 2/25/12 Watch Moore Thomas

275.50 Ht	700	6972	7025	699705
58	608	558	59	58
270.25	7091	7059	7158	7072
56.6	510	532	483	519
270.91 Ht	7161	7126	7172	7134
291	430	465	419	457
273.00	7250	7193	7236	7197
630	361	398	353	394
271.30	730	726	730	7242
	291	331	291	349

Check 2/18/12 Watch Moore Thomas

276.20 Ht	270.44	270.25	270.40
	6.72	5.17	5.71
270.44 - Stat			
7.25			
272.15	272.4		
	4.55		

Check OK Blough 3-18-10

274.25 274.0 273.6 274.0 273.6 274.0 274.25

274.0 274.0 273.6 274.0 273.6 274.0 274.0  
 273. 273. 273. 273. 273. 273. 273.

273.4 273.4 273.55 273.75 273.55 272.75 273.4

Ingalls

273.5 273.5 273.5 273.5 273.5 272.50 273.5

St.

272.85 272.85 273.05 273.25 273.05 272.25 272.85

272.0 272.0 272.6 273.0 272.6 272. 272  
 273.00 273.0 272.6 273.0 272.6 273.0 273.0

273.25 273.0 272.6 273.0 272.6 273.0 273.0

279.30 Ht

$\frac{78.5}{5.3}$

$\frac{73.1}{2.2}$

$\frac{728.5}{245}$

$\frac{784}{59}$

271.55

274.00

273.50

273.00

4.5

Check OK brought 3-18-10

East Line Hooker St.

	South				North			
0	273.25	273.0	272.6	273.0	272.6	273.0	273.25	
25'	273.85	273.6	273.2	273.6	273.2	273.6	273.85	
50'	274.25	274.0	273.6	274.0	273.6	274.0	274.25	
75'	274.65	274.4	274.0	274.4	274.0	274.4	274.65	
100'	274.85	274.6	274.2	274.6	274.2	274.6	274.85	
125'	274.85	274.6	274.2	274.6	274.2	274.6	274.85	
150'	274.65	274.4	274.0	274.4	274.0	274.4	274.65	
175'	274.45	274.2	273.8	274.2	273.8	274.2	274.45	
200'	274.25	274.0	273.6	274.0	273.6	274.0	274.25	

West Line Ingalls St.

274.30 62.6 270.36 Kt	7425 611 621 0.3	611 565 49.4	7435 570 550 565+7.0	570 470 430 40	7465 570 550 450+1.8	570 370 375 +1.75	7485 550 540 3.14	550 232 +3.14
7435 550 370 2.2	74.65 570 385 +2.15	570 335 +2.35	7425 611 420 +1.7	611 420 541 +2.1	7435 651 591 +21	651 591 7.11 +27	7325 711 641 +2.8	711 661 +0.5

Cur. and Property 3/10/10 Kate Moore Thomas

53

27789#	74.0 339 324	74.2 368 344	74.4 349 324	74.6 329 304	74.6 329 304	74.8 349 324	74.0 329 304	73.6 425 404	73.0 459 462
279.30 Kt	74.0 5.30	73.6 5.7	74.2 5.1	73.8 5.5	74.4 4.9	74.0 5.3	74.2 4.7	74.2 4.7	74.2 4.7

74.6 4.7	74.2 5.1	74.0 4.9	74.0 5.3	74.0 5.3	73.6 5.7	73.6 5.7
73.0 6.8	72.6 6.7					

Check. 3 Kate  
15 Moore  
10 Thomas

27300 TP 5.15 277.95	274.01 4.84	274.06 4.75	274.41 4.55	274.6 4.75
----------------------------	----------------	----------------	----------------	---------------

173.66 27300  
2.57 5.95

Check at Blough 1-18-10



ST

2575

2575

Eagle

ST

Grading  
End of work

30' 20'  
2580

2580

2570

2550

ST

Goldfinch

ST

2570

2550

780'

125'

125'

260.0

2550

2540

260.0

SUTTER

SUTTER

150'

150'

2570

2550

2560  
East Line Marine View Tract

2560

Goldfinch

ST

2570

2550

North

South

257.75	257.5	257.1	257.5	257.1	257.5	257.75
--------	-------	-------	-------	-------	-------	--------

257.5	257.5	257.1	257.5	257.1	257.5	257.5
256.5	256.5				256.5	256.5

257.23	257.23	257.18	257.63	257.18	257.23	257.23
--------	--------	--------	--------	--------	--------	--------

Eagle

257.75	257.15	257.35	257.15	257.35	257.75	257.75
--------	--------	--------	--------	--------	--------	--------

St.

257.40	257.4	257.46	257.88	257.46	257.4	257.4
--------	-------	--------	--------	--------	-------	-------

257	257				257	257
258.0	258.0	257.6	258.0	257.6	258.0	258.0

258.25	258.0	257.6	258.0	257.6	258.0	258.25
--------	-------	-------	-------	-------	-------	--------

North W. L. Eagle St. South

Table with columns for North and South measurements along W. L. Eagle St. Rows include measurements from 00 to 480 feet.

East Line Goldfinch St.

April 8-1910. Clough, Donald & Rogers.

252.00 P.M. SW. Cor. Sutter & Goldfinch.

Table with multiple columns of numerical data, likely survey measurements, under the heading '252.00 P.M. SW. Cor. Sutter & Goldfinch.'.

Cut & Fill

Table with columns of numerical data, including 'Curb and Property' and '5/12/10 noted measurements'.

Checked OK Clough, Donald & Rogers 25-10

North

South

257.25	257.0	256.40	266.0	255.1	255.00	255.25
--------	-------	--------	-------	-------	--------	--------

257.0	257.0	255.50	255.0	254.50	255.00	255.00
256.	256.				254.	254.

256.6	256.6	256.1	255.6	255.1	254.6	254.6
-------	-------	-------	-------	-------	-------	-------

Goldfinch

257.0	257.0	256.5	256.0	255.5	255.00	255.00
-------	-------	-------	-------	-------	--------	--------

St.

256.6	256.6	256.1	255.6	255.1	254.60	254.6
-------	-------	-------	-------	-------	--------	-------

256.	256.				254.	254.
257.0	257.0	255.5	255.0	254.50	255.0	255.0

257.25	257.0	256.4	256.0	255.1	255.0	255.25
--------	-------	-------	-------	-------	-------	--------

256.99 Bm

$$\begin{array}{r} 382 \\ 260.81 \end{array}$$

Checked OK

(Laney) 5/25/10  
 (Dunlop)  
 (Rogers)

April 8-1910  
Crough  
Donnan  
Rogers  
58

	North	W. L. Goldfinch St.					South
00	257.25	257.0	256.4	256.0	255.1	255.0	255.25
25'	256.85	256.60	256.00	255.7	254.85	254.80	255.05
50'	256.45	256.20	255.6	255.4	254.60	254.60	254.85
75'	256.05	255.80	255.2	255.1	254.35	254.40	254.65
100'	255.65	255.40	254.8	254.80	254.1	254.20	254.45
125' Brook	255.25	255.0	254.40	254.50	253.85	254.0	254.25
150'	255.40	255.15	254.58	254.72	254.11	254.30	254.55
175'	255.55	255.30	254.76	254.95	254.37	254.60	254.85
200'	255.69	255.44	254.94	255.17	254.63	254.89	255.14
225'	255.84	255.59	255.11	255.40	254.89	255.19	255.44
250'	255.99	255.74	255.29	255.62	255.15	255.49	255.74
275'	256.14	255.89	255.47	255.84	255.41	255.79	256.04
293' <sup>289.8</sup>	256.25	256.0	255.6	256.0	255.60	256.0	256.25

East Line Marine View Addition

B.M. 3 W Cor Sutter & Goldfinch.

256.99	259.52	257.52	258.52	259.52	259.52	259.52
257.00	257.00	256.25	257.80	258.25	258.60	258.60
157.52 H.I.	2.52	4.27	4.27	3.07	3.87	3.87
			6.5	2.00	3.3	3.3
			4.7	1.07	2.07	2.07
			F 2.2			
259.52	259.52	259.52	259.52	259.52	259.52	259.52
254.40	254.20	255.20	256.40	257.60	258.10	258.60
5.07	5.27	4.37	4.12	4.17	4.38	3.80
12.2	10.6	4.2	4.2	5.5	4.5	3.3
0.1	5.3	0.1	4.1	4.1	4.1	0.3
F 7.1	F 10.3		F 8.1	E 1.0	F 0.1	
259.52	259.52	259.52	259.52	259.52	259.52	259.52
3.53	3.74	3.27	3.27	2.6	2.6	2.6
0.9	0.6	0.0	0.0	0.0	0.0	0.0

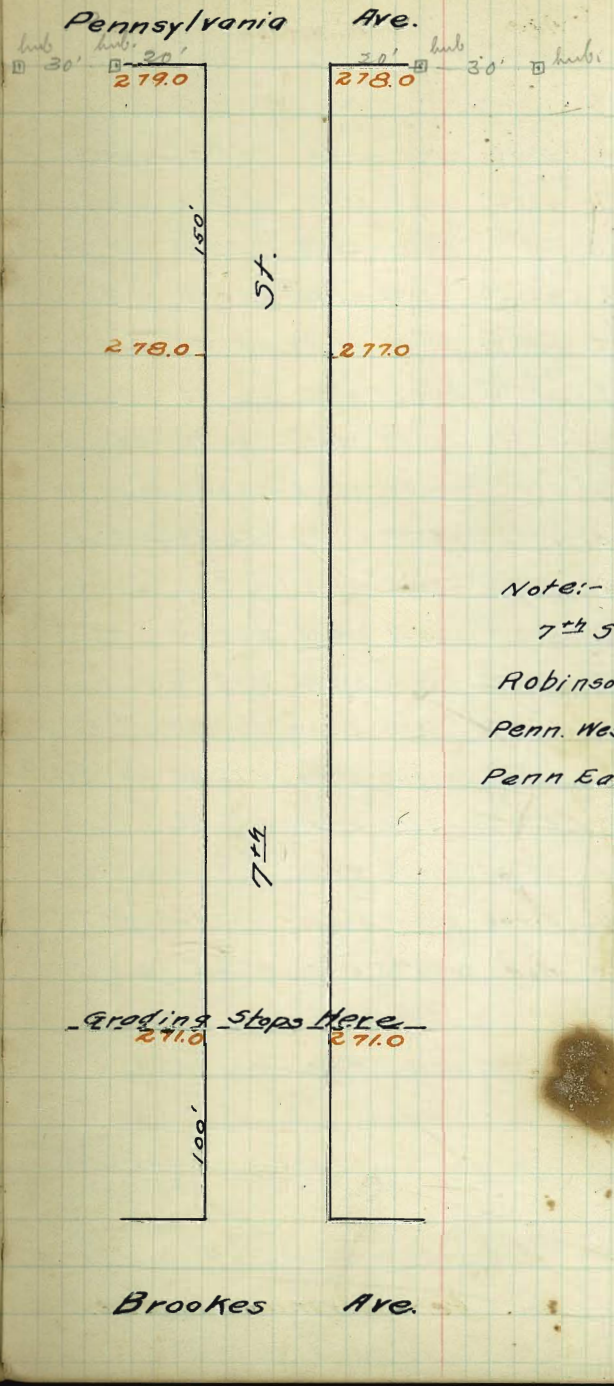
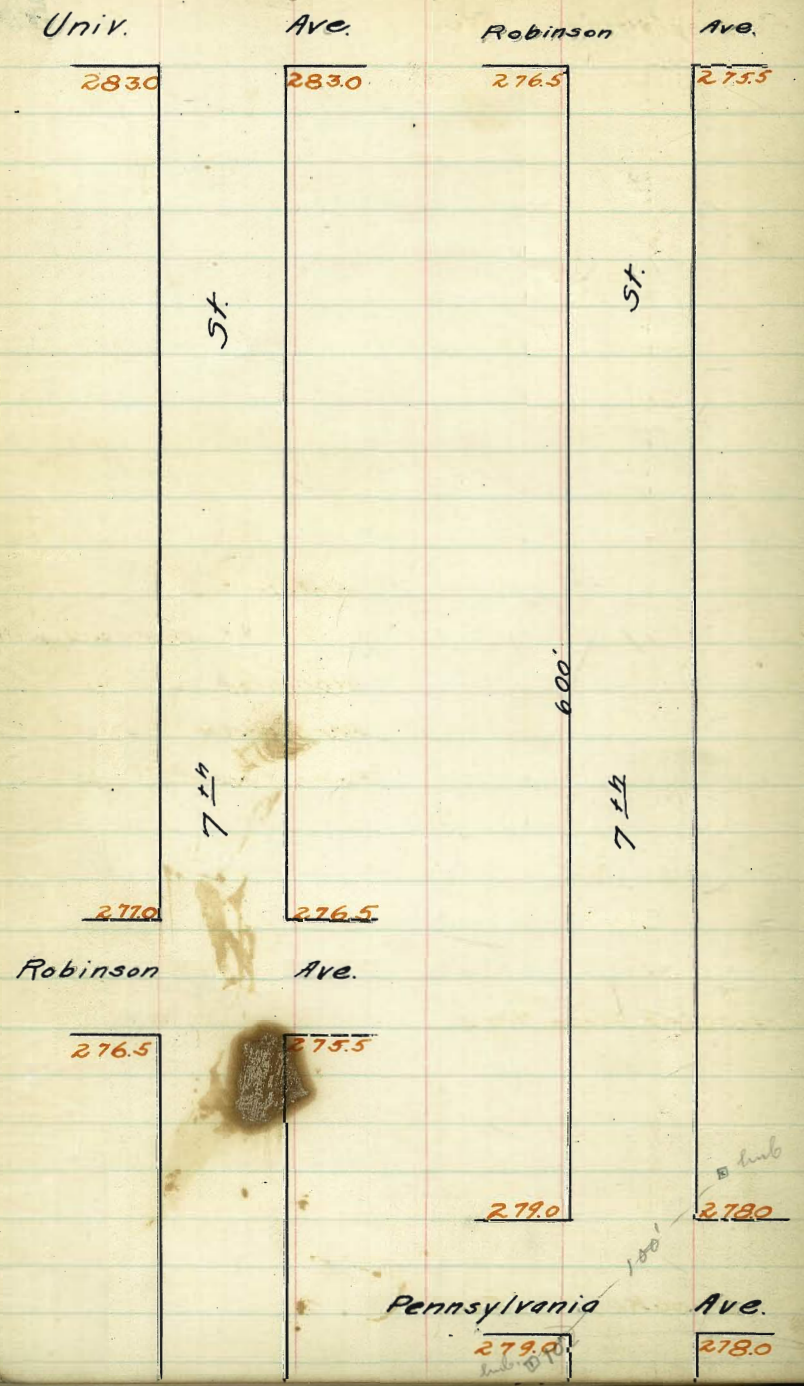
264.30	264.30	264.30	264.30	264.30	264.30	264.30
7.53	7.53	7.53	7.53	7.53	7.53	7.53
255.77	255.77	255.77	255.77	255.77	255.77	255.77
4.36	4.36	4.36	4.36	4.36	4.36	4.36
260.174	260.174	260.174	260.174	260.174	260.174	260.174
8.90	8.90	8.90	8.90	8.90	8.90	8.90

256.89 Bm  
3.82  
260.81 H.I.

257.00	257.00	257.00	257.00	257.00	257.00	257.00
3.81	4.41	4.81	5.21	5.61	6.01	6.41
256.20	256.20	256.20	256.20	256.20	256.20	256.20
4.61	5.01	5.41	5.81	6.21	6.61	7.01
255.40	255.40	255.40	255.40	255.40	255.40	255.40
5.41	6.01	6.41	6.81	7.21	7.61	8.01
255.00	255.00	255.00	255.00	255.00	255.00	255.00
6.21	6.61	7.01	7.41	7.81	8.21	8.61
254.60	254.60	254.60	254.60	254.60	254.60	254.60
7.01	7.41	7.81	8.21	8.61	9.01	9.41
254.20	254.20	254.20	254.20	254.20	254.20	254.20
7.81	8.21	8.61	9.01	9.41	9.81	10.21
253.80	253.80	253.80	253.80	253.80	253.80	253.80
8.61	9.01	9.41	9.81	10.21	10.61	11.01
253.40	253.40	253.40	253.40	253.40	253.40	253.40
9.41	9.81	10.21	10.61	11.01	11.41	11.81
253.00	253.00	253.00	253.00	253.00	253.00	253.00
10.21	10.61	11.01	11.41	11.81	12.21	12.61
252.60	252.60	252.60	252.60	252.60	252.60	252.60
11.01	11.41	11.81	12.21	12.61	13.01	13.41

Checked OK  
Blanch  
Donnan 15-25-10  
Rogers





Note:-  
 7<sup>th</sup> St has 12.5' walks  
 Robinson .. ..  
 Penn. West of 7<sup>th</sup> .. ..  
 Penn East of 7<sup>th</sup> .. 10' ..

~~Grading stops here~~  
 271.0 271.0

May 13/10  
 bluffs  
 Barber  
 Taylor 61

West. S.L. University Ave. East.

283.25	283.0	282.6	283.0	282.6	283.0	283.25
282.96	282.67	282.25	282.65	282.24	282.63	282.85
282.58	282.33	281.91	282.30	281.88	282.27	282.52
282.24	281.99	281.56	281.94	281.52	281.90	282.15
281.90	281.65	281.21	281.59	281.17	281.54	281.79
281.57	281.32	280.86	281.24	280.81	281.17	281.42
281.23	280.98	280.51	280.89	280.45	280.80	281.05
280.89	280.64	280.16	280.54	280.09	280.44	280.69
280.55	280.30	279.81	280.19	279.73	280.07	280.32
280.21	279.96	279.46	279.84	279.38	279.71	279.96
279.88	279.63	279.11	279.48	279.02	279.34	279.59
279.54	279.29	278.76	279.13	278.66	278.98	279.23
279.20	278.95	278.42	278.78	278.30	278.61	278.86
278.86	278.61	277.07	278.43	277.94	278.25	278.50
278.52	278.27	277.72	278.08	277.59	277.88	278.13
278.19	277.94	277.37	277.73	277.23	277.52	277.77
277.85	277.60	277.02	277.37	276.87	277.15	277.40
277.51	277.25	276.64	277.05	276.52	276.85	277.15

N. Robinson Ave.

276.97	277.07	276.49	277.05	276.23	276.50
4.20	4.37	4.32	5.14	4.87	
281.37					
283.00	283.00	282.60			
3.25		4.15			
284.75					

bluffs OK  
 bluffs  
 9-11-10

284.43 R.M. NW. cor. 8th & main ave.

284.43	284.43	282.12	281.79	281.05	280.32
2.32	4.23	4.96	5.70	6.43	
286.75	4.23	4.96	5.70	6.43	
282.21	3.83	4.56	5.10	5.44	
13.50	3.83	4.56	5.10	5.44	
3.2	3.83	4.56	5.10	5.44	
10.3	3.83	4.56	5.10	5.44	
279.59	278.86	278.13	277.40	276.75	cut & fill stakes
7.16	7.89	8.62	9.35	10.00	
6.26	6.62	6.92	7.45	7.99	
10.90	11.2	11.7	11.9	12.1	
277.25	282.58	281.90	281.23	280.51	279.88
7.50	4.17	4.85	5.52	6.20	6.87
9.5	4.1	4.75	5.2	5.8	6.57
0.0	10.0	10.1	10.3	10.4	10.6
277.85	281.11	280.47	279.82	279.17	288.26
8.90	3.92	4.40	4.87	5.35	5.83
8.90	4.17	4.65	5.12	5.60	6.08
0.0	4.17	4.65	5.12	5.60	6.08

No. Dunkle Shaw, Evans

276.97	277.07	276.49	277.05	276.23	276.50
4.20	4.37	4.32	5.14	4.87	
281.37					
283.00	283.00	282.60			
3.25		4.15			
284.75					

all stakes set  
 bluffs  
 9-10-10

280.32	280.32	280.32	280.32	280.32	280.32
280.32	280.32	280.32	280.32	280.32	280.32
280.32	280.32	280.32	280.32	280.32	280.32
280.32	280.32	280.32	280.32	280.32	280.32
280.32	280.32	280.32	280.32	280.32	280.32
280.32	280.32	280.32	280.32	280.32	280.32

check 9  
 10



276.91 Bn 276.94 276.96 276.98 276.99 277.00  
 292 4.37 4.77 4.0 5.15 5.37  
 150.87

Checked OK as marked

West  
 S. L. Robinson Ave

West S. L. Robinson Ave

00	276.75	276.5	275.9	276.0	275.85	275.5	275.75
25	276.85	276.60	276.0	276.10	275.45	275.60	275.85
50	276.96	276.71	276.11	276.21	275.56	275.71	275.96
75	277.06	276.81	276.21	276.31	275.66	275.81	276.06
100	277.17	276.92	276.32	276.42	275.77	275.92	276.17
125	277.21	277.02	276.42	276.52	275.87	276.02	276.27
150	277.37	277.12	276.52	276.62	275.97	276.12	276.37
175	277.48	277.23	276.63	276.73	276.08	276.23	276.48
200	277.58	277.33	276.73	276.83	276.18	276.33	276.58
225	277.69	277.44	276.84	276.94	276.29	276.44	276.69
250	277.79	277.54	276.94	277.04	276.39	276.54	276.79
275	277.89	277.64	277.04	277.14	276.49	276.64	276.89
300	278.00	277.75	277.15	277.25	276.60	276.75	277.0
325	278.10	277.85	277.25	277.35	276.70	276.85	277.10
350	278.21	277.96	277.36	277.46	276.81	276.96	277.21
375	278.31	278.06	277.46	277.56	276.91	277.06	277.31
400	278.41	278.16	277.56	277.66	277.01	277.16	277.41
425	278.52	278.27	277.67	277.77	277.12	277.27	277.52
450	278.62	278.37	277.77	277.87	277.22	277.37	277.62
475	278.73	278.48	277.88	277.98	277.33	277.48	277.73
500	278.83	278.58	277.98	278.08	277.43	277.58	277.83
525	278.93	278.68	278.08	278.18	277.53	277.68	277.93
550	279.04	278.79	278.19	278.29	277.64	277.79	278.04
575	279.14	278.89	278.29	278.39	277.74	277.89	278.14
600	279.25	279.0	278.4	278.5	277.85	278.0	278.25

North Line Pennsylvania Ave.

May 13/10  
 Cut & fill stakes  
 12.21  
 L. L. Taylor 62

276.75	276.96	275.25	275.96	274.54	276.37	276.59
276.75 7.00 1.90 8.0	276.96 9.77 10.52 -0.7	275.25 11.00 0.0 11.3	275.96 10.79 9.4 11.3	274.54 4.95 279.49 276.17 3.32 12.5 -9.2	276.37 3.12 12.1 -9.0	276.59 2.91 6.3 -3.4
276.79	277.0	277.21	277.41	277.62	277.83	278.04
277.0	277.2	277.4	277.6	277.8	278.0	278.2
276.79 2.70 8.9 -6.1	277.0 2.49 4.6 -2.1	277.21 2.25 2.7 -0.4	277.41 2.05 3.6 -1.7	277.62 1.87 3.77 -2.0	277.83 1.66 4.15 -2.7	278.04 1.45 4.15 -2.1
279.25	277.17	277.37	277.57	277.77	277.97	278.17
279.25 0.24 0.85 -0.1	277.17 2.52 3.37 -1.0	277.37 2.12 4.2 -2.2	277.57 1.91 3.91 -2.0	277.77 1.70 2.8 -1.1	277.97 1.49 2.9 -1.3	278.17 1.28 2.2 -0.9
279.04	277.27	277.47	277.67	277.87	278.07	278.27
279.04 0.45 1.15 -0.7	277.27 2.09 277.47 3.25 277.67 252.43	277.47 2.08 277.67 5.07 277.87 6.07	277.67 1.76 277.87 2.97 278.07 3.97	277.87 1.55 278.07 4.87 278.27 5.87	278.07 1.34 278.27 5.87 278.47 6.87	278.27 1.13 278.47 6.87 278.67 7.87
276.97	277.33	277.53	277.73	277.93	278.13	278.33
276.97 1.9 1.80 -0.6	277.33 4.47 5.47	277.53 3.47 4.47	277.73 2.47 3.47	277.93 1.47 2.47	278.13 0.47 1.47	278.33 -0.47 -0.47
277.69	277.96	278.23	278.50	278.77	279.04	279.31
277.69 1.48 1.48 -0.2	277.96 4.06 5.06	278.23 3.06 4.06	278.50 2.06 3.06	278.77 1.06 2.06	279.04 0.06 1.06	279.31 -0.46 -0.46
277.79	278.06	278.33	278.60	278.87	279.14	279.41
277.79 1.48 1.48 -0.2	278.06 4.06 5.06	278.33 3.06 4.06	278.60 2.06 3.06	278.87 1.06 2.06	279.14 0.06 1.06	279.41 -0.46 -0.46
277.89	278.16	278.43	278.70	278.97	279.24	279.51
277.89 1.48 1.48 -0.2	278.16 4.06 5.06	278.43 3.06 4.06	278.70 2.06 3.06	278.97 1.06 2.06	279.24 0.06 1.06	279.51 -0.46 -0.46
278.00	278.26	278.53	278.80	279.07	279.34	279.61
278.00 1.48 1.48 -0.2	278.26 4.06 5.06	278.53 3.06 4.06	278.80 2.06 3.06	279.07 1.06 2.06	279.34 0.06 1.06	279.61 -0.46 -0.46
278.10	278.36	278.63	278.90	279.17	279.44	279.71
278.10 1.48 1.48 -0.2	278.36 4.06 5.06	278.63 3.06 4.06	278.90 2.06 3.06	279.17 1.06 2.06	279.44 0.06 1.06	279.71 -0.46 -0.46
278.21	278.46	278.73	279.00	279.27	279.54	279.81
278.21 1.48 1.48 -0.2	278.46 4.06 5.06	278.73 3.06 4.06	279.00 2.06 3.06	279.27 1.06 2.06	279.54 0.06 1.06	279.81 -0.46 -0.46
278.31	278.56	278.83	279.10	279.37	279.64	279.91
278.31 1.48 1.48 -0.2	278.56 4.06 5.06	278.83 3.06 4.06	279.10 2.06 3.06	279.37 1.06 2.06	279.64 0.06 1.06	279.91 -0.46 -0.46
278.41	278.66	278.93	279.20	279.47	279.74	280.01
278.41 1.48 1.48 -0.2	278.66 4.06 5.06	278.93 3.06 4.06	279.20 2.06 3.06	279.47 1.06 2.06	279.74 0.06 1.06	280.01 -0.46 -0.46
278.52	278.76	279.03	279.30	279.57	279.84	280.11
278.52 1.48 1.48 -0.2	278.76 4.06 5.06	279.03 3.06 4.06	279.30 2.06 3.06	279.57 1.06 2.06	279.84 0.06 1.06	280.11 -0.46 -0.46
278.62	278.86	279.13	279.40	279.67	279.94	280.21
278.62 1.48 1.48 -0.2	278.86 4.06 5.06	279.13 3.06 4.06	279.40 2.06 3.06	279.67 1.06 2.06	279.94 0.06 1.06	280.21 -0.46 -0.46
278.73	278.96	279.23	279.50	279.77	280.04	280.31
278.73 1.48 1.48 -0.2	278.96 4.06 5.06	279.23 3.06 4.06	279.50 2.06 3.06	279.77 1.06 2.06	280.04 0.06 1.06	280.31 -0.46 -0.46
278.83	279.06	279.33	279.60	279.87	280.14	280.41
278.83 1.48 1.48 -0.2	279.06 4.06 5.06	279.33 3.06 4.06	279.60 2.06 3.06	279.87 1.06 2.06	280.14 0.06 1.06	280.41 -0.46 -0.46
278.93	279.16	279.43	279.70	279.97	280.24	280.51
278.93 1.48 1.48 -0.2	279.16 4.06 5.06	279.43 3.06 4.06	279.70 2.06 3.06	279.97 1.06 2.06	280.24 0.06 1.06	280.51 -0.46 -0.46
279.04	279.26	279.53	279.80	280.07	280.34	280.61
279.04 1.48 1.48 -0.2	279.26 4.06 5.06	279.53 3.06 4.06	279.80 2.06 3.06	280.07 1.06 2.06	280.34 0.06 1.06	280.61 -0.46 -0.46
279.14	279.36	279.63	279.90	280.17	280.44	280.71
279.14 1.48 1.48 -0.2	279.36 4.06 5.06	279.63 3.06 4.06	279.90 2.06 3.06	280.17 1.06 2.06	280.44 0.06 1.06	280.71 -0.46 -0.46
279.25	279.46	279.73	280.00	280.27	280.54	280.81
279.25 1.48 1.48 -0.2	279.46 4.06 5.06	279.73 3.06 4.06	280.00 2.06 3.06	280.27 1.06 2.06	280.54 0.06 1.06	280.81 -0.46 -0.46

Check  
 97 1/2  
 Road  
 River

West

East

279.25 279.0 278.4 278.5 277.85 278.0 278.25

279.0 279.0 278.75 278.5 278.25 278.0 278.0

~~CULBERT~~

278.6 279.0 278.75 278.5 278.25 278.0 278.0

Pennsylvania

279.0 279.0 278.75 278.5 278.25 278.0 278.0

AVE.

278.6 278.5 278.5 278.5 278.0 277.5 278.6

278.

278.

277.

277.

279.0 279.0 278.4 278.5 277.85 278.0 278.0

279.25 279.0 278.4 278.5 277.85 278.0 278.25

279.63 HI

180.40 Bm 2 P 20 W 500 Bm 47

278.25

279.0 278.0  
4.28 5.28278.5 278.4 278.0  
4.28 4.18 5.28

277.52

279.0 278.0 278.5 278.25 278.0  
3.52 3.77 4.02 4.37 4.52

180.40 Bm

278.25

279.0 278.4 278.5 278.25 278.0  
4.36 4.96 4.86 5.36 5.26279.0 278.75 278.5 278.25 278.0  
4.36 4.61 4.60 4.11 5.26

Checked OK about

West South Line of Pennsylvania Ave East.

00	279.25	279.0	278.4	278.5	277.65	278.0	278.25
25	279.09	278.84	278.24	278.34	277.67	277.84	278.09
50	278.92	278.67	278.07	278.17	277.52	277.67	277.92
75	278.75	278.50	277.90	278.0	277.35	277.50	277.75
100	278.59	278.34	277.74	277.84	277.19	277.34	277.59
125	278.42	278.17	277.57	277.67	277.02	277.17	277.42
150	278.25	278.0	277.4	277.5	276.85	277.0	277.25
175	277.75	277.5	276.91	277.03	276.40	276.56	276.81
200	277.25	277.0	276.42	276.51	275.95	276.14	276.39
225	276.75	276.5	275.84	276.0	275.51	275.71	275.96
250	276.25	276.0	275.45	275.64	275.06	275.28	275.53
275	275.75	275.5	274.97	275.18	274.61	274.85	275.10
300	275.25	275.0	274.48	274.71	274.17	274.42	274.67
325	274.75	274.5	274.0	274.25	273.72	274.00	274.25
350	274.25	274.0	273.51	273.78	273.28	273.57	273.82
375	273.35	273.10	272.58	272.78	272.24	272.48	272.73
400	272.46	272.21	271.65	271.79	271.19	271.38	271.63
420	271.75	271.5	270.90	271.0	270.35	270.50	270.75
450	270.03	269.78	269.18	269.28	268.63	268.78	269.03
475	268.31	268.06	267.46	267.56	266.91	267.06	267.31
500	266.25	266.0	265.4	265.50	264.85	265.00	265.25

279.69	740	735.1	727.8	722.8	735.7	722.1	716.5	712.4	711.9	718.5
76.5	509	485	471	461	472	453	440	430	424	431
272.0	715	709.0	710	702.5	697.8	693	695	686.3	687.8	
274.0	711	708	705	705	697.8	690	685	680	680	
66.2	65.2	65.5	64.85	65.0						
80.8	86.8	85.8	92.3	90.8						

chick 9 hatch  
3 morn  
60 Roger

Childs Barber Taylor 64  
May 13/10  
cut & fill stakes

282.63	279.44	279.59	278.25	277.25	276.25	275.25
279.25	3.71	4.04	4.38	4.38	6.38	7.38
3.38	2.7	2.0	1.88	3.58	5.38	6.88
5.58	41.0	42.0	42.5	41.8	41.0	41.3
-0.2						

274.25	273.25	278.25	277.92	277.59	277.25	276.39	275.83
8.89	9.38	4.38	4.71	5.04	5.38	6.24	7.10
7.24	8.48	6.3	5.8	5.54	5.5	5.64	6.50
4.1	50.7	-1.9	-1.1	-0.5	-0.1	+0.6	+0.6

274.67	273.82	272.96	18.77	58	272.11	271.25	271.25
7.96	8.91	9.67	271.86	3.96	7.05	4.82	4.82
7.06	8.51	11.07	4.21	7.05	4.82	13.4	13.82
+0.9	+0.5	-1.4	276.07	4.2	-3.1	-8.6	-9.0

272.25	3.82	4.2	-0.4
76.20	76.20	76.20	76.20
72.46	71.75	70.03	66.25
3.74	4.45	6.17	9.25
2.02	2.65	4.34	5.95
+1.74	+1.5	+1.95	-4.0

28140	27800	27600	27400	27200	27000	26800	26600
302	4.72	5.42	4.72	5.72	5.08	6.08	5.42
28340	27800	27600	27400	27200	27000	26800	26600
341	4.82	5.69	5.82	6.82	6.82	7.41	7.82

28150	27700	27500	27300	27100	26900	26700	26500
4.72	5.72	5.72	6.72	6.72	7.72	7.72	8.72
28252	27700	27500	27300	27100	26900	26700	26500
29.5	4.61	5.18	5.04	6.04	6.04	7.04	7.04

279.69	740	735.1	727.8	722.8	735.7	722.1	716.5	712.4	711.9	718.5
76.5	509	485	471	461	472	453	440	430	424	431
272.0	715	709.0	710	702.5	697.8	693	695	686.3	687.8	
274.0	711	708	705	705	697.8	690	685	680	680	
66.2	65.2	65.5	64.85	65.0						
80.8	86.8	85.8	92.3	90.8						

25040 Br

240

28480

28515

28515

28515

28515

28867

28707

28717

27752

27767

27784

27784

27784

27784

27784

27784

28717

28717

28717

28717

28717

28717

28717

28717

28717

28717

28717

27752

27752

27752

27752

27752

27752

27752

27752

27752

27752

27752

27767

27767

27767

27767

27767

27767

27767

27767

27767

27767

27767

27811

27811

27811

27811

27811

27811

27850

27850

27850

27850

27850

27850

27448

27448

27448

27448

27448

27448

27431

27431

27431

27431

27431

27431

27417

27417

27417

27417

27417

27417

27492

27492

27492

27492

27492

27492

27150

27150

27150

27150

27150

27150

27090

27090

27090

27090

27090

27090

27100

27100

27100

27100

27100

27100

27085

27085

27085

27085

27085

27085

27050

27050

27050

27050

27050

27050

26978

26978

26978

26978

26918

26918

26918

26918

26868

26868

26868

26868

26868

26868

26868

26868

26868

26868

26868

26868

26600

26600

26600

26600

26600

26600

26550

26550

26550

26550

26550

26550

26550

26550

26550

26550

26550

26550

26500

26500

26500

26500

26500

26500

Checked OK

Blount  
Dunbar  
Flyeland

Lewis

St.

276.0

275.5

80'

St.

275'

Ingalls

274.0

273.0

Getti

St.

(Fort Stockton)

20 Walks on Ingalls

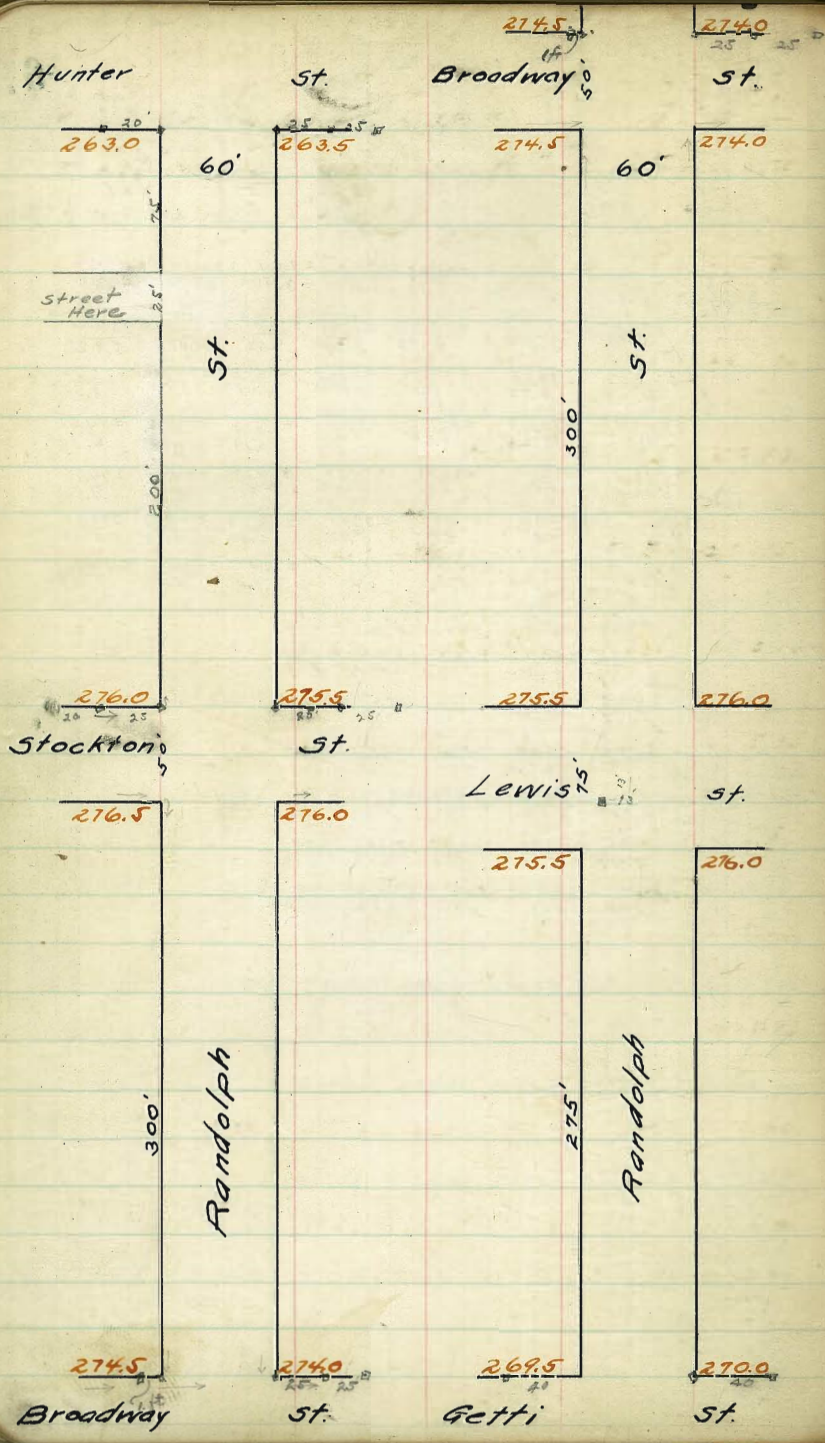
West. S. L. Lewis St. East.

275'	276.25	276.0	275.4	275.75	275.23	275.5	275.75
250'	276.07	275.82	275.22	275.55	275.01	275.27	275.52
225'	275.89	275.64	275.04	275.34	274.79	275.04	275.29
200'	275.70	275.45	274.85	275.14	274.58	274.82	275.07
175'	275.52	275.27	274.67	274.93	274.36	274.59	274.84
150'	275.34	275.09	274.49	274.73	274.15	274.36	274.61
125'	275.16	274.91	274.31	274.58	273.93	274.14	274.39
100'	274.98	274.73	274.13	274.38	273.71	273.91	274.16
75'	274.80	274.55	273.95	274.11	273.50	273.68	273.93
50'	274.61	274.36	273.76	273.91	273.28	273.45	273.70
25'	274.43	274.18	273.58	273.70	273.07	273.23	273.48
00'	274.25	274.0	273.4	273.5	272.85	273.0	273.25

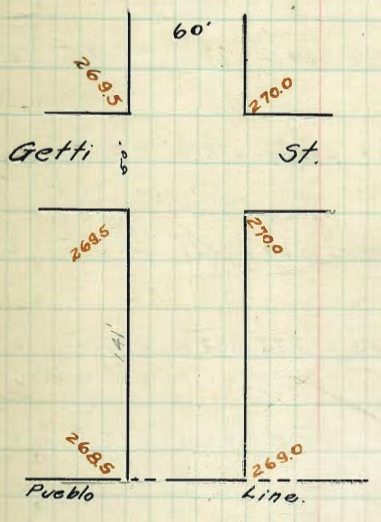
N. L. Gotti St.

Bm 27587 SE Lewis - Ingallo

386	276.07	275.52	275.70	275.07	275.24	275.61
279.73	366	4.21	4.03	4.66	4.89	5.12
	306	3.89	3.33	4.81	4.61	5.60
	406	4.53	4.07	4.15	4.22	5.48
27495	27416	27461	27370	27525	27325	27325
475	5.57	5.72	6.03	5.98	6.48	6.48
350	5.70	4.42	6.33	5.06	6.48	6.48
-0.75	-0.13	+0.20	-0.3	+0.28	Cont. stakes	3/10
275.87	275.75	275.30	275.23	275.75	275.4	276.0
8.47	3.59	2.84	4.71	5.39	3.94	3.34
279.34	275.82	275.22	275.13	275.01	275.27	275.82
	3.27	3.52	4.12	3.79	4.89	4.07
builds	275.07	274.82	274.38	275.14	274.83	275.70
number	4.27	4.52	4.76	4.20	4.49	3.59
Taylor	274.24	275.09	274.48	274.73	274.15	274.36
Feb 17/10	4.00	4.25	4.80	4.61	3.79	4.98
274.16	273.91	273.71	274.32	274.13	274.73	274.98
5.18	5.43	5.63	5.02	5.21	4.61	4.36
grade	274.61	274.36	273.76	273.91	273.28	273.70
status	4.75	4.98	5.58	5.43	6.06	5.89
273.25	273.00	272.81	273.1	273.4	274.0	274.25
6.97	6.34	6.49	5.84	5.94	5.34	5.09
275.87	76.4	75.75	75.23	75.5		
360	3.97	4.07	3.72	4.24	3.97	
279.47	75.82	75.22	75.55	75.01	75.27	
K2	3.85	4.25	3.92	4.42	4.26	
75.48	74.76	75.14	74.58	74.82		
4.02	4.62	4.33	4.99	4.65		
75.09	74.29	74.73	74.15	74.36		
4.65	4.78	4.74	5.32	5.11		
chuck	74.73	74.13	74.32	73.71	73.91	
3/10	4.74	5.34	5.15	5.74	5.84	
10	74.36	73.76	73.91	73.28	73.45	
10	5.11	5.71	5.56	6.19	6.02	
74.0	73.4	73.5	72.85	73.0		
5.47	6.07	5.97	6.62	6.47		



sidewalks Lewis to Hunter 12'  
 Lewis to South End 10'







West South Line Stockton St. East

200' 276.75 276.5 275.9 276.25 275.73 276.0 276.25

250' 276.42 276.17 275.57 275.92 275.39 275.67 275.92

300' 276.08 275.83 275.23 275.58 275.05 275.33 275.58

350' 275.75 275.50 274.90 275.25 274.72 275.00 275.25

400' 275.42 275.17 274.57 274.92 274.39 274.67 274.92

50' 275.08 274.83 274.23 274.58 274.05 274.33 274.58

600' 274.75 274.5 273.9 274.25 273.73 274.00 274.25

ncub 274.5 274.5 273.38 273.25 273.13 274.00 274.00  
273.5 273.5 273. 273.

nk 274.1 274.1 273.88 273.75 273.68 273.6 273.6

Broadway

ctr 274.5 274.5 274.38 274.25 274.13 274.00 274.00

St.

st 274.1 274.1 273.88 273.75 273.68 273.60 273.60

273.5 273.5 273. 273.  
sturb 274.50 274.50 273.38 273.25 273.13 274.0 274.0

sl 274.75 274.5 273.9 274.25 273.73 274.00 274.25

Out and Fill stakes  $\frac{2}{9}$  Hatch  
Moore  
Thomas

CHK OK Apr 19, 1910 Childs  
Barber  
Taylor

	West	South Line Broadway St.					East.
300'	274.75	274.5	273.9	274.25	273.73	274.00	274.25
275'	274.83	274.58	274.01	274.38	273.86	274.17	274.42
250'	274.92	274.67	274.12	274.50	274.0	274.33	274.58
225'	275.00	274.75	274.23	274.63	274.14	274.50	274.75
200'	275.08	274.83	274.34	274.75	274.28	274.67	274.92
175'	275.17	274.92	274.45	274.88	274.42	274.83	275.08
150'	275.25	275.00	274.56	275.0	274.56	275.00	275.25
125'	275.33	275.08	274.67	275.13	274.7	275.17	275.42
100'	275.42	275.17	274.78	275.25	274.84	275.33	275.58
75'	275.50	275.25	274.89	275.38	274.98	275.50	275.75
50'	275.58	275.33	275.00	275.5	275.12	275.67	275.92
25'	275.67	275.42	275.11	275.63	275.26	275.83	276.08
00'	275.75	275.50	275.20	275.75	275.4	276.0	276.25

North Line Lewis St.

Cut and Fill Stakes  $\frac{2}{3}$  Hatch  
Moore  
Thomas

Property stakes  $\frac{2}{5}$  Hatch  
Moore  
Thomas

All Stakes  $\frac{4}{10}$  Hatch  
Moore  
Thomas

chk OK Apr 19, '10 Childs  
Barber  
Taylor

	West	South Line Lewis St					East
275'	275.75	275.5	275.23	275.15	275.4	276.0	276.25
250'	275.20	274.95	274.68	275.30	274.85	275.45	275.70
225'	274.66	274.41	274.13	274.66	274.31	274.91	275.26
200'	274.11	273.86	273.59	274.1	273.76	274.36	274.61
175'	273.57	273.32	273.04	273.57	273.21	273.82	274.07
150'	273.02	272.77	272.50	273.02	272.67	273.27	273.52
125'	272.48	272.23	271.95	272.48	272.13	272.73	272.98
100'	271.93	271.68	271.41	271.93	271.58	272.18	272.43
75'	271.39	271.14	270.86	271.39	271.04	271.64	271.89
50'	270.84	270.59	270.32	270.84	270.49	271.09	271.34
25'	270.30	270.05	269.77	270.30	269.95	270.55	270.80
00'	269.75	269.5	269.23	269.75	269.4	270.00	270.25

North Line Getti St.

Cut and Fill stakes  $\frac{2}{8}$  Hatch  
 Moore  
 Thomas

All stakes  $\frac{2}{10}$  Hatch  
 Moore  
 Thomas

Check OK Apr 19, '10  
 Childs  
 Barber  
 Taylor

269.75 269.5 269.23 269.15 269.4 270.0 270.25

269.5 269.5 268.63 268.75 268.88 270.0 270.0  
268.5 268.5 269. 269.0

1/2 269.1 269.18 269.27 269.35 269.44 269.52 269.60

*Getti*

F0.5 F0.4 F0.3

269.5 269.58 269.67 269.75 269.84 269.92 270.0

*St.*

269.1 269.18 269.27 269.35 269.44 269.52 269.60

268.5 268.5 269. 269.  
269.5 269.5 268.63 268.75 268.88 270.0 270.00

269.75 269.5 269.23 269.75 269.4 270.00 270.25

269.57 269.82 269.05 269.57 269.22 269.82 270.07

269.39 269.14 268.87 269.39 269.04 269.64 269.89

269.32 268.97 268.70 269.22 268.87 269.47 269.72

269.04 268.79 268.52 269.04 268.69 269.29 269.54

268.86 268.61 268.34 268.86 268.51 269.11 269.36

268.75 268.50 268.23 268.75 268.40 269.0 269.25

North Line "Protestant Cemetery"

277.97	274.32	274.32	274.32	274.32	cut & fill	
270.53	70.25	269.37	269.59	268.25	9/11	Dunkle
274.32	4.07	4.93	4.78	5.57	10/11	Shaw
		6.53	6.35	7.97		Evans
		1.60	1.6	2.90		
		274.32	274.32	274.32		
		69.75	69.75	69.25		
		4.57	4.43	5.28		
			7.75	5.07		
			2.5	5.17		
				-0.1		

275.63	273.51	273.51	273.51	273.51	10-6-10	
3.49	70.25	69.89	69.54	68.75		All stakes
277.09	3.26	4.72	3.77	4.76		Dunkle
3.77	3.81	4.37	4.22	5.31		Shaw
270.31	73.51	73.51	73.51	73.51		Evans
3.29	69.46	68.87	68.67	68.22		
278.51	4.18	4.64	4.92	5.28		
	73.51	73.51	73.51	73.51		
	69.75	69.39	69.04	68.75		
	3.76	4.12	4.47	4.76		
	73.51	73.51	73.51	73.51		
	69.23	69.04	68.52	68.40		
	4.23	4.47	4.79	5.11		
	73.51	73.51	73.51	73.51		
	69.75	69.39	69.04	69.25		
	3.76	4.12	4.47	4.76		
	4.01	3.37	4.72	4.51		

270.51	73.51	73.51	73.81	73.81	10/11	Dunkle
3.00	69.75	69.89	69.04	69.25		Shaw
273.41	4.06	3.92	4.77	4.56	10	Evans
270.00	4.31	4.17	5.02	4.81		check O.K. except where
3.81	73.51	73.51	73.81	73.81		marked on app page
273.51	69.23	69.04	68.52	68.40		
3.75	4.58	4.77	5.29	5.41		
4.06	73.81	73.81	73.81	73.81	10/11	check Dunkle
73.81	69.75	69.32	69.04	68.75		
69.50	4.06	4.42	4.77	5.06		
4.31	73.81	73.81	73.81	73.81		
73.81	69.40	68.87	68.69	69.23		
69.67	4.44	4.94	5.12	5.58		
1.14	73.81	73.81	73.81	73.81		
	70.25	69.39	69.54	69.75		
	3.56	4.42	4.27	5.06		
	3.81	4.67	4.57	5.31		

#380

23.36  
6.14  

---

77.22  
4.75  

---

81.97  
74.25  

---

7.72  
81.97  
73.82  

---

8.15

81.97  
8.40  

---

73.57  
2.68  

---

76.20

53.61  
3.00  
50.16  
  
10.8  
2.5  
280  
225  
55  
32  
  
116.59  
21.70  
95  
  
5920  
5320  
600  
5074  
507  
75.93  
  
5094  
4.21  
76.67  
  
20  
20  
20  
20  
20  
20

Lewis 275.60 Randolph SW RR Sp

Published by H. S. CROCKER COMPANY, Stationers, Drawing Materials, and Mathematical Instruments, San Francisco.

Table showing the difference of latitude and departure in running 80 chains at any course from 1 to 60 minutes.

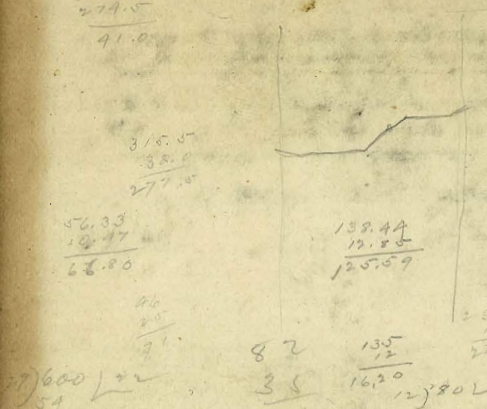
MINUTES.	LKS.	MINUTES.	LKS.	MINUTES.	LKS.
1.....	2½	21.....	49	41.....	95½
2.....	4½	22.....	51½	42.....	98
3.....	7	23.....	53½	43.....	100½
4.....	9½	24.....	56	44.....	102½
5.....	11½	25.....	58½	45.....	105
6.....	14	26.....	60½	46.....	107½
7.....	16½	27.....	63	47.....	109½
8.....	18½	28.....	65½	48.....	112
9.....	21	29.....	67½	49.....	114½
10.....	23½	30.....	70	50.....	116½
11.....	25½	31.....	72½	51.....	119
12.....	28	32.....	74½	52.....	121½
13.....	30½	33.....	77	53.....	123½
14.....	32½	34.....	79½	54.....	126
15.....	35	35.....	81½	55.....	128½
16.....	37½	36.....	84	56.....	130½
17.....	39½	37.....	86½	57.....	133
18.....	42	38.....	88½	58.....	135½
19.....	44½	39.....	91	59.....	137½
20.....	46½	40.....	93½	60.....	140

TABLE FOR RUNNING ON SLOPES.

In the following table the first column shows the angle, the second the number of links to be added to a chain on the slopes, to make one chain, horizontal measurement.

ANGLE	COR. IN LINKS	ANGLE	COR. IN LINKS	ANGLE	COR. IN LINKS	ANGLE	COR. IN LINKS
0		0		0		0	
4	0.24	11	1.88	18	5.14	25	10.54
5	0.38	12	2.24	19	5.76	26	11.26
6	0.55	13	2.63	20	6.42	27	12.24
7	0.76	14	3.06	21	7.11	28	13.57
8	0.98	15	3.53	22	7.85	29	14.34
9	1.24	16	4.02	23	8.64	30	15.47
10	1.55	17	4.56	24	9.47	35	22.07

Handwritten calculations and diagrams on the left page. Includes numbers like 315.5, 277.5, 91.0, 73.51, 31.74, 67.77, 92.52, 139.44, 12.55, 125.59, 151.06, 255.50, 121.67, 8-300, 67.88, 366, 132, 50, 310.5, 75, 10.2, 136, 270, 25, 83.36, 76.40, 69.6, 5.48, 17, 17.2, 73.5, 136, 544, 5916, 308.3, 57.9, 317.2, 73.13, 17, 778.6, 1170, 7616, 5.43, 17, 170, 7.35, 5.65, 1.7, 191.67, 133.67, 133.16.



56.33	59.06	H.I.	55.0	40.6	52.25	6.81	3.0
2.73	3.06			4.81	19.63	46.73	19.63
	5.9.06			11.1	47.54	47.54	47.54
				7.65			
				1.94			
				0.71			
				2.69			
				5.63			
				7.29			
				7.29			
				10.2			
				59.28	43.24	43.24	43.24
				8.29	8.29	8.29	8.29
				8.29	8.29	8.29	8.29
				8.69	8.69	8.69	8.69
				0.4	0.4	0.4	0.4
				57.28	57.28	57.28	57.28
				12.7	12.7	12.7	12.7
				13.4	13.4	13.4	13.4
				0.8	0.8	0.8	0.8
				96.75	96.75	96.75	96.75
				9.21	9.21	9.21	9.21
				65.00	65.00	65.00	65.00
				10.8	10.8	10.8	10.8
				4.42	4.42	4.42	4.42
				20.0	20.0	20.0	20.0
				11.7	11.7	11.7	11.7
				16.7	16.7	16.7	16.7
				73.24	73.24	73.24	73.24
				0.62	0.62	0.62	0.62
				9.7	9.7	9.7	9.7
				10.3	10.3	10.3	10.3
				75.26	75.26	75.26	75.26
				4.36	4.36	4.36	4.36
				6.24	6.24	6.24	6.24
				79.61	79.61	79.61	79.61

26.7 B.M. 22

San Diego, Cal., 19.....

To THE COMMON COUNCIL,  
SAN DIEGO, CALIFORNIA.

Gentlemen: I herewith make application for a survey of  
Lot.....Block.....

Addition to  
San Diego, California.

Owner.....

---

NOTICE: Please have amount of Engineer's Fees endorsed  
hereon before presenting to the Common Council.

---

To THE COMMON COUNCIL,  
SAN DIEGO, CALIFORNIA.

Gentlemen: The Engineering Fees for the above  
described work will be as follows:

Survey, stakes, \$.....

Elevations, .....

Car Fare, .....

Total, \$.....

By .....  
City Engineer of the City of San Diego, Cal.  
Deputy.