

GRADES

49

G49

FALCON ST.

2

GOLDFINCH ST

13

Louisiana and Harvard

20

HAWK ST

24

BRANT ST.

29

HOOKER ST.

33

GETTI ST.

35

ALBATROSS ST. Walnut to 200 St

44

UPAS St. Albatross to Brant

47

UNION ST. PALM to REDWOOD

58

South End of FALCON ST.

64

MURLEW ST.

67

St California to Arctic

78

Published by H. S. CROCKER COMPANY, Stationers, Drawing Materials, Mathematical Instruments, etc., San Francisco.

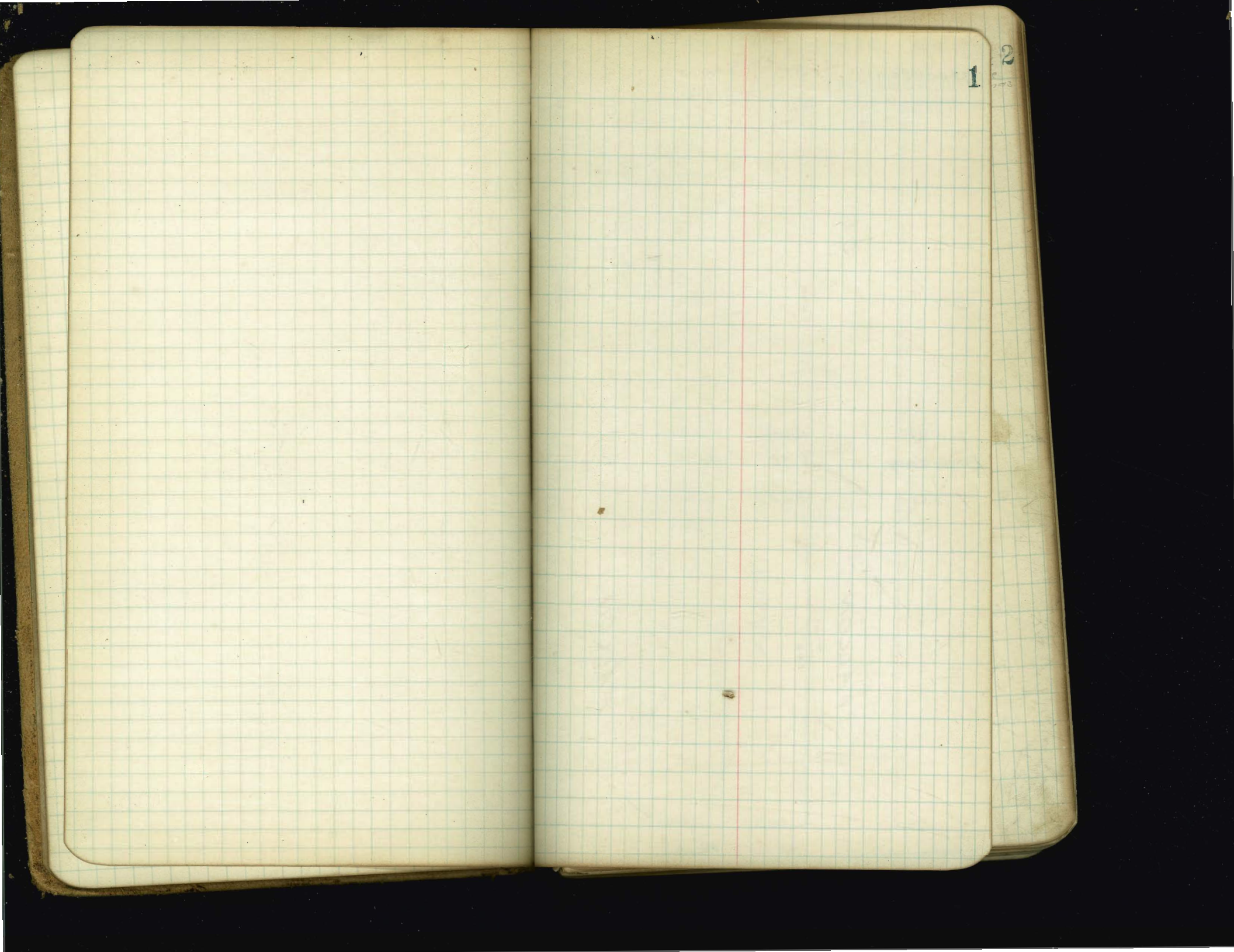
TRAVERSE TABLE FOR TRANSIT BOOK.
From 1° to 90° for a distance of 100.

Degrees.	DEGREES.		¼ DEGREE.		½ DEGREE.		¾ DEGREE.		Degrees.
	Lat.	Dep.	Lat.	Dep.	Lat.	Dep.	Lat.	Dep.	
0			100.00	0.44	100.00	0.87	99.99	1.31	89
1	99.98	1.75	99.98	2.18	99.97	2.62	99.95	3.05	88
2	99.94	3.49	99.92	3.93	99.91	4.36	99.88	4.80	87
3	99.86	5.23	99.84	5.67	99.81	6.10	99.79	6.54	86
4	99.76	6.98	99.73	7.41	99.69	7.85	99.66	8.28	85
5	99.62	8.72	99.58	9.15	99.54	9.58	99.50	10.02	84
6	99.45	10.45	99.41	10.89	99.36	11.32	99.31	11.75	83
7	99.25	12.19	99.20	12.62	99.14	13.05	99.09	13.49	82
8	99.03	13.92	98.97	14.35	98.90	14.78	98.84	15.21	81
9	98.77	15.64	98.70	16.07	98.63	16.50	98.56	16.93	80
10	98.48	17.36	98.40	17.79	98.33	18.22	98.25	18.65	79
11	98.16	19.08	98.08	19.51	97.99	19.94	97.90	20.36	78
12	97.81	20.79	97.72	21.22	97.63	21.64	97.53	22.07	77
13	97.44	22.50	97.34	22.92	97.24	23.34	97.13	23.77	76
14	97.03	24.19	96.92	24.62	96.81	25.04	96.70	25.46	75
15	96.59	25.88	96.48	26.30	96.36	26.72	96.25	27.14	74
16	96.13	27.56	96.00	27.98	95.88	28.40	95.76	28.82	73
17	95.63	29.24	95.50	29.65	95.37	30.07	95.24	30.49	72
18	95.11	30.90	94.97	31.32	94.83	31.73	94.69	32.14	71
19	94.55	32.56	94.41	32.97	94.26	33.38	94.12	33.79	70
20	93.97	34.20	93.82	34.61	93.67	35.02	93.51	35.43	69
21	93.36	35.84	93.20	36.24	93.04	36.65	92.88	37.06	68
22	92.72	37.46	92.55	37.86	92.39	38.27	92.22	38.67	67
23	92.05	39.07	91.88	39.47	91.71	39.87	91.53	40.27	66
24	91.35	40.67	91.18	41.07	91.00	41.47	90.81	41.87	65
25	90.63	42.26	90.45	42.66	90.26	43.05	90.07	43.44	64
26	89.88	43.84	89.69	44.23	89.49	44.62	89.30	45.01	63
27	89.10	45.40	88.90	45.79	88.70	46.17	88.50	46.56	62
28	88.29	46.95	88.09	47.33	87.88	47.72	87.67	48.10	61
29	87.46	48.48	87.25	48.86	87.04	49.24	86.82	49.62	60
30	86.60	50.00	86.38	50.38	86.16	50.75	85.94	51.13	59
31	85.72	51.50	85.49	51.88	85.26	52.25	85.04	52.62	58
32	84.80	52.99	84.57	53.36	84.34	53.73	84.10	54.10	57
33	83.87	54.46	83.63	54.83	83.39	55.19	83.15	55.56	56
34	82.90	55.92	82.66	56.28	82.41	56.64	82.16	57.00	55
35	81.92	57.36	81.66	57.71	81.41	58.07	81.16	58.42	54
36	80.90	58.78	80.64	59.13	80.39	59.48	80.13	59.83	53
37	79.86	60.18	79.60	60.53	79.34	60.88	79.07	61.22	52
38	78.80	61.57	78.53	61.91	78.26	62.25	77.99	62.59	51
39	77.71	62.93	77.44	63.27	77.16	63.61	76.88	63.94	50
40	76.60	64.28	76.32	64.61	76.04	64.94	75.76	65.28	49
41	75.47	65.61	75.18	65.93	74.90	66.26	74.61	66.59	48
42	74.31	66.91	74.02	67.24	73.73	67.56	73.43	67.88	47
43	73.14	68.20	72.84	68.52	72.54	68.84	72.24	69.15	46
44	71.93	69.47	71.63	69.78	71.33	70.09	71.02	70.40	45
45	70.71	70.71							
Degrees.	Dep.	Lat.	Dep.	Lat.	Dep.	Lat.	Dep.	Lat.	Degrees.
	DEGREES.		¼ DEGREE.		½ DEGREE.		¾ DEGREE.		

center from spine to bottom page 75.

2
etc
00000

MICROFILMED
APR 5 1965



(Arbor Drive)
Stockton

2580

2590

St. Lewis

50' St.

261.0

262.0

259.0

260.0

ST.

300'

Excepted

ST.

300'

2630

264.0

266.0

265.5

Broadway

St.

Getti

50' St.

263.0

264.0

267.0

266.5

Excepted
FALCON

300'

FALCON

300'

258.0

259.0

266.0

265.5

Lewis

St.

Washin

St.

Washington

St.

Tied out
4 1/2
12
10
2

265.0

264.5

5' quarters

ST.

275'

267.0

265.0

Douglass

St.

266.0

265.0

TIE TO
P.L. LINE!

FALCON

223'

226'

Pueblo

265.0

264.0

line.
39
Tied in lower Beach Stop

	West	S. L. Stockton St.					East
300	261.25	261.0	260.60	261.5	261.4	262.0	262.25
15	261.42	261.17		261.67	261.57	262.17	262.42
50	261.58	261.33	260.93	261.83	261.73	262.33	262.58
15	261.75	261.50		262.00	261.90	262.50	262.75
00	261.92	261.67	261.27	262.17	262.07	262.67	262.92
15	262.08	261.83		262.33	262.23	262.83	263.08
50	262.25	262.00	261.61	262.50	262.40	263.00	263.25
15	262.42	262.17		262.67	262.57	263.17	263.42
00	262.58	262.33	261.94	262.83	262.73	263.33	263.58
15	262.75	262.50		263.00	262.90	263.50	263.75
50	262.92	262.67	262.28	263.17	263.07	263.67	263.92
15	263.08	262.83		263.33	263.23	263.83	264.08
00	263.25	263.0	262.60	263.5	263.4	264.0	264.25

North Line Broadway St.

297
267.85

Cut Stakes 5/10 Hated
Thomas

	W	E					
270.72	63.25	64.25	62.92	63.92	62.58	63.58	62.25
	7.57	6.57	7.90	6.90	8.24	7.24	8.67
	4.20	6.24	4.10	12.18	3.90	11.00	4.00
	+7.57	+0.8	+3.50	-5.28	+4.44	+3.76	+4.57
	61.92	62.92	61.58	62.58	61.25	62.25	
	8.90	7.90	9.24	8.24	9.57	8.57	
	4.20	6.24	6.32	6.1	11.1	4.57	
	+4.7	-0.5	+3.0	+2.10	-1.53	+4.0	

267.85 N. N. E. on Broadway Falcon

	W	E					
268.62	62.92	63.58	62.35	62.32	61.58	62.25	61.25
64.25	5.70	5.04	6.37	5.70	7.04	6.37	5.1
4.37	5.75	5.79	6.62	5.95	7.24	6.24	1.2
4.62	4.70	6.04	5.37	6.70	6.04	7.37	
5.37	4.95	6.29	5.62	6.95	6.29	7.62	
5.62							

Cur 2 property
Shaw
Evans

	W	E					
267.85	267.92	267.92	267.92	267.92	267.92	267.92	267.92
6.07	6.82	6.25	6.25	6.19	6.25	6.25	6.125
267.72	6.00	5.34	4.67	6.00	6.25	6.67	
63.25	4.25	5.59	4.92	6.25	5.59	6.92	
4.67	4.85	5.97	5.52	6.65	6.19	7.32	
4.92	4.75	5.09	5.42	5.75	6.09	6.42	
5.32	5.65	5.19	5.32	5.85	6.49	6.52	
4.42	5.00	4.01	5.67	5.00	6.34	5.67	
4.52	5.35	4.59	5.92	5.25	6.59	5.92	
3.67							
3.92							

11/10 checked Dutch-Share-Drugs see opp page

11/22 chd C.K. Shaw-Evans + Trichin

2630 level stake
332
2632 ft

9/10/12
4/11/12

26325	26242	26158	cut stakes on W.
337	340	474	side fallon from
	340	1154	Broadway 100' S.
	+0.5	6.8	2 grade stakes and
		1875	curb stakes
2635	26267	26133	
464	547	631	
		26175	
		259	

2630
514
26314

263.25 263.0 262.85 263.5 263.4 264.0 264.25

263.0 263.0 262.85 263.5 263.4 264.0 264.00
262. 262. 263. 263.

14 262.6 262.6 263.10 263.5 263.58 263.6 263.6

Broadway

0 263.0 263.0 263.35 263.5 263.75 264.0 264.0

St.

14 262.6 262.6 263.10 263.5 263.58 263.6 263.6

262. 262. 263. 263.
263.0 263.0 262.85 263.5 263.4 264.0 264.0

263.25 263.0 262.85 263.5 263.4 264.0 264.25

Cut stakes 8/10 Watch Thomas

West	South Line Broadway					East
400' 263.25	263.0	262.85	263.5	263.4	264.0	264.25
350' 262.83	262.58	262.43	263.08	262.98	263.58	263.83
300' 262.42	262.17	262.02	262.67	262.57	263.17	263.42
250' 261.98	261.75	261.60	262.25	262.15	262.75	263.00
200' 261.58	261.33	261.18	261.83	261.73	262.33	262.58
150' 261.17	260.92	260.77	261.42	261.32	261.92	262.17
100' 260.75	260.50	260.35	261.0	260.90	261.50	261.75
75' 260.33	260.08	259.93	260.58	260.48	261.08	261.33
50' 259.92	259.67	259.52	260.17	260.07	260.67	260.92
25' 259.50	259.25	259.1	259.75	259.65	260.25	260.50
0' 259.08	258.83	258.68	259.33	259.23	259.83	260.08
25' 258.67	258.42	258.27	258.92	258.82	259.42	259.67
0' 258.25	258.0	257.85	258.5	258.4	259.0	259.25

270.82 Ht	59.25	60.08	60.92	61.75	62.58	63.42	64.25
	7.57	7.79	7.90	8.07	8.24	8.40	8.57
	1.77	1.77	1.77	1.80	1.82	1.90	1.97
	-1.03	+5.76	+2.67	+2.67	+2.67	+2.67	+2.67
	6.138	6.267	6.335	6.350			
	9.00	8.15	7.57	7.32			
	5.10	4.75	4.67	4.4			
	1.39	1.32	1.09	1.24			
266.47 Ht	59.2	60.92	60.25				
	7.47	8.55	6.22				
	1.39						
	6.9						
267.85 BM	1.01						
268.89	268.86	268.86	268.86	268.86	268.86	268.86	268.86
64.00	63.17	62.83	61.50	60.67	59.83	59.00	58.17
9.86	5.69	6.53	7.36	8.19	9.03	9.86	10.70
5.36	6.19	7.03	7.86	8.69	9.53	10.36	11.20
267.85	268.89	268.89	268.89	268.89	268.89	268.89	268.89
64.00	63.17	62.83	61.50	60.67	59.83	59.00	58.17
9.86	5.69	6.53	7.36	8.19	9.03	9.86	10.70
5.36	6.19	7.03	7.86	8.69	9.53	10.36	11.20
267.85	268.89	268.89	268.89	268.89	268.89	268.89	268.89
64.00	63.17	62.83	61.50	60.67	59.83	59.00	58.17
9.86	5.69	6.53	7.36	8.19	9.03	9.86	10.70
5.36	6.19	7.03	7.86	8.69	9.53	10.36	11.20
267.85	268.89	268.89	268.89	268.89	268.89	268.89	268.89
64.00	63.17	62.83	61.50	60.67	59.83	59.00	58.17
9.86	5.69	6.53	7.36	8.19	9.03	9.86	10.70
5.36	6.19	7.03	7.86	8.69	9.53	10.36	11.20
267.85	268.89	268.89	268.89	268.89	268.89	268.89	268.89
64.00	63.17	62.83	61.50	60.67	59.83	59.00	58.17
9.86	5.69	6.53	7.36	8.19	9.03	9.86	10.70
5.36	6.19	7.03	7.86	8.69	9.53	10.36	11.20
267.85	268.89	268.89	268.89	268.89	268.89	268.89	268.89
64.00	63.17	62.83	61.50	60.67	59.83	59.00	58.17
9.86	5.69	6.53	7.36	8.19	9.03	9.86	10.70
5.36	6.19	7.03	7.86	8.69	9.53	10.36	11.20

North Line Lewis St.

26947	268.86
25825	259.00
10.22	9.86
10.47	

258.0 258.5 258.4 259.0 259.25

258.5 258.4 259.0 259.0
 258. 258.

258.75 258.65 258.25 258.85

Lewis

259.0 258.9 258.50 259.5

St

259.25 259.15 258.75 259.4

		259.	259.
259.5	259.4	260.0	260.00

259.0 259.5 259.4 260.0 260.25

West South Line Lewis St. East.

259.75 259 2218 259.5 259.4 260.0 260.25

227.3 260.02 259.86 260.46 260.71

226.8 260.54 260.32 260.92 261.17

251.3 261.06 260.77 261.37 261.62

261.58 261.23 261.83 262.08

262.10 261.69 262.29 262.54

262.75 262.50 262.95 262.62 262.15 262.75 263.00

263.33 263.08 262.52 263.15 262.82 263.21 263.46

263.92 263.67 263.10 263.67 263.10 263.67 263.92

264.50 264.25 263.67 264.19 263.57 264.12 264.37

265.08 264.83 264.25 264.71 264.05 264.58 264.83

265.67 265.42 264.83 265.23 264.52 265.04 265.29

266.25 266.0 265.4 265.75 265.00 265.5 265.75

N. L. Gotti St.

Top of slope to graded.

Cut stakes 5/10 Habel
10/10 Thomae

272.50 Ht	65.08	67.83	63.92	63.92	62.75	62.0	62.62
71.3	7.42	7.67	8.58	8.58	9.75	9.50	9.88
265.37	5.42	5.77	9.48	5.88	13.75	6.10	9.40
270.82 Ht	-1.5	11.7	-0.9	+2.1	-2.0	+3.4	20.47

61.58	62.08	61.17	60.25
7.24	8.74	7.65	10.57
2.1	5.12	7.10	8.97
+0.14	+3.6	+2.05	+1.6

71.85	71.85	71.85	271.85	267.63	269.47	269.47	269.47
66.25	4.83	4.42	7.92	5.86	61.08	61.17	59.50
5.40	7.02	7.93	263.93	262.07	7.59	3.30	9.97
			3.70	2.40			

71.85	71.85	71.85	267.63	269.47	269.47	269.47	269.47
65.75	65.08	63.92	63.00	269.47	269.47	269.47	269.47
61.0	6.79	7.73	267.63	6.79	7.59	62.59	60.25
			6.79	6.79		8.83	9.22

Property stakes 9/30 Hunkle
10/10 Evans

265.00	269.94	269.94	269.94	269.94	269.94	269.94	269.94
4.44	65.75	65.08	63.92	63.75	62.08	61.17	60.25
269.94	4.44	4.86	6.02	7.19	7.36	8.77	9.67
		5.11	6.27	7.44	8.11	9.02	9.94

269.94	269.94	269.94	269.94	268.86	268.86	268.86
66.25	64.53	63.92	63.00	260.00	60.59	261.58
3.69	5.11	6.02	6.94	2.86	2.10	7.29
3.94	5.36	6.27	7.19	9.36	10.24	11.12

271.00	27.01	27.01	27.01	67.01	67.01	67.01	67.01
266.75	4.32	5.11	6.15	6.96	7.07	7.17	8.90
266.96	4.57	5.36	6.40	7.11	7.32	7.54	9.15
267.61	6.01	6.61	6.96	6.96	6.96	6.96	6.96

267.61	6.01	6.61	6.96	6.96	6.96	6.96	6.96
66.25	6.01	6.61	6.96	6.96	6.96	6.96	6.96
66.25	6.01	6.61	6.96	6.96	6.96	6.96	6.96
3.86	5.07	5.94	6.99	7.66	7.92	8.24	9.45

267.61	6.01	6.61	6.96	6.96	6.96	6.96	6.96
69.61	6.01	6.61	6.96	6.96	6.96	6.96	6.96
69.61	6.01	6.61	6.96	6.96	6.96	6.96	6.96
69.61	6.01	6.61	6.96	6.96	6.96	6.96	6.96

69.61	6.01	6.61	6.96	6.96	6.96	6.96	6.96
69.61	6.01	6.61	6.96	6.96	6.96	6.96	6.96
69.61	6.01	6.61	6.96	6.96	6.96	6.96	6.96
69.61	6.01	6.61	6.96	6.96	6.96	6.96	6.96

267.85	268.89	268.89	268.89	268.89	268.89
10.4	59.50	60.02	60.54	61.06	61.58
268.89	9.29	8.87	8.35	7.83	7.31

	West	South Line Getti St.					East
300'	267.25	267.0	266.4	266.75	266.00	266.5	266.75
275'							
250'	267.08	266.83	266.23	266.59	266.06	266.33	266.58
225'							
200'	266.92	266.67	266.07	266.42	265.90	266.17	266.42
175'							
150'	266.75	266.50	265.90	266.25	265.73	266.0	266.25
125'							
100'	266.58	266.33	265.73	266.08	265.56	265.83	266.08
75'							
50'	266.42	266.17	265.57	265.92	265.40	265.67	265.92
25'							
00'	266.25	266.0	265.40	265.75	265.00	265.5	265.75

N. Line Washington

Cut Stakes $\frac{510}{10}$ Habel
Tanner
Thomson

8

VI	IE								
265.50	66.42	65.92	66.58	66.08	66.75	66.25	66.92	66.42	
272.50	6.85	6.89	5.92	6.42	5.75	6.25	5.58	6.08	
	3.16	4.78	2.92	3.62	2.9	3.96	2.2	4.58	
	+2.92	+1.58	+3.0	+2.52	+2.85	+2.36	+1.48	+1.5	
	4.78	6.65							
	5.42	5.92							
	5.68	5.84							
	-0.26	+0.1							

265.50	71.85	71.85	71.85	71.85	71.85	71.85	71.85	71.85	
271.85	66.42	66.08	66.75	66.42	67.08	66.75	66.42	66.75	
65.75	5.93	5.77	5.10	5.43	4.77	5.10			
6.10	71.85	71.85	71.85	71.85	71.85	71.85	71.85	71.85	
71.85	65.92	66.58	66.25	66.92	66.58	67.25			
66.75	5.93	5.27	5.60	4.93	5.27	4.60			
5.60									

property stake sunk by
Shaw
Evans,

265.50	271.27	271.27	271.27	271.27	271.27	271.27	271.27	271.27	
8.77	6.50	6.17	6.83	6.50	6.17	6.83	6.50	6.17	
271.27	5.77	5.10	5.44	4.77	5.10	4.44	4.77	4.10	
271.27	271.27	271.27	271.27	271.27	271.27	271.27	271.27	271.27	
65.75	6.85	6.08	6.75	6.42	6.75	6.42	6.75	6.42	
5.52	5.93	5.19	5.03	4.85	4.63	4.52	4.52	4.52	
271.27	271.27	271.27	271.27	271.27	271.27	271.27	271.27	271.27	
66.00	5.27	5.60	4.94	5.27	4.60	4.94	4.27	4.27	
5.27									

cut & center
Dunkle
Shaw
Evans,

271.00	271.00	271.00	271.00	271.00	271.00	271.00	271.00	271.00	
65.15	65.15	65.15	65.15	65.15	65.15	65.15	65.15	65.15	
266.25	66.75	66.75	66.75	66.75	66.75	66.75	66.75	66.75	
4.75	4.50	4.50	4.50	4.50	4.50	4.50	4.50	4.50	
5.00	71.00	71.00	71.00	71.00	71.00	71.00	71.00	71.00	
271.00	66.00	66.42	66.58	66.75	66.92	67.08	67.25	67.42	
65.00	5.00	4.58	4.42	4.25	4.08	3.92	3.75	3.58	
5.60	6.75	5.83	4.67	4.25	4.08	3.92	3.75	3.58	
271.00	4.25	4.25	4.25	4.25	4.25	4.25	4.25	4.25	
65.75	71.00	71.00	71.00	71.00	71.00	71.00	71.00	71.00	
5.25	6.40	6.40	6.40	6.40	6.40	6.40	6.40	6.40	
271.00	4.60	4.60	4.60	4.60	4.60	4.60	4.60	4.60	
65.00	71.00	71.00	71.00	71.00	71.00	71.00	71.00	71.00	
6.00	5.25	5.25	5.25	5.25	5.25	5.25	5.25	5.25	
271.00	4.00	4.00	4.00	4.00	4.00	4.00	4.00	4.00	
65.75	71.00	71.00	71.00	71.00	71.00	71.00	71.00	71.00	
5.25	4.25	4.25	4.25	4.25	4.25	4.25	4.25	4.25	
5.50	4.66	4.66	4.66	4.66	4.66	4.66	4.66	4.66	

checked by Transit Dunkle Shaw Evans
side walk on E side does not check,

265.50	270.25		
4.75	4.75		
270.25	266.50		
265.50	4.75		
4.75	4.66		

side checked by Transit Shaw
Evans
Tichenor

270.96
266.50
4.46

267.25 267.0 266.40 266.0 265.10 265.0 265.25

267.00 267.0 266.4 266.0 265.10 265.0 265.00
266. 266. 264. 264.

266.40 266.4 266.15 265.88 265.04 264.6 264.6

Douglass

266.50 266.5 265.90 265.75 264.98 265.0 265.0

St.

265.85 265.85 265.65 265.63 264.92 264.6 264.6

265. 265
266.00 266.0 265.4 265.5 264.85 265.0 265.00

266.25 266.00 265.4 265.5 264.85 265.00 265.25

West South Line Douglass East

00 266.25 266.0 265.4 265.5 264.60 265.0 265.25

25'

50' 266.03 265.78 265.18 265.28 264.38 264.78 265.03

75'

100' 265.80 265.55 264.95 265.05 264.15 264.56 264.81

125'

150' 265.58 265.33 264.73 264.83 263.93 264.34 264.59

175'

200' 265.35 265.10 264.51 264.61 263.70 264.12 264.37

225' on W 265.25 265.00 264.4 264.5 263.60 264.00 264.25

Profile

S. L. Arnold & Choate's Add.

Cut stakes 7/10 Habet
Wood Thomas

11

272.56	W	E	6608	6500	6580	6480
	6625	6525	653	703	676	776
	43	731	413	573	450	540
	491	601				
	+1.4	+1.3	+2.4	+1.8	+2.26	+236

297	6558	6459	6535	6437	6525	6425
	698	798	721	519	731	531
	528	563	621	660	670	730
	+1.7	+2.35	+1.0	+1.59	+0.5	+1.1

271.92	271.92	271.92	271.92	271.92	271.92	271.92
266.25	65103	6580	6459	6535	6425	6425
5.67	6.89	6.12	7.33	6.57	7.67	
5.92	7.14	6.37	7.87	6.82	7.92	

2/10 curb & property
cumb - Shaw Evans

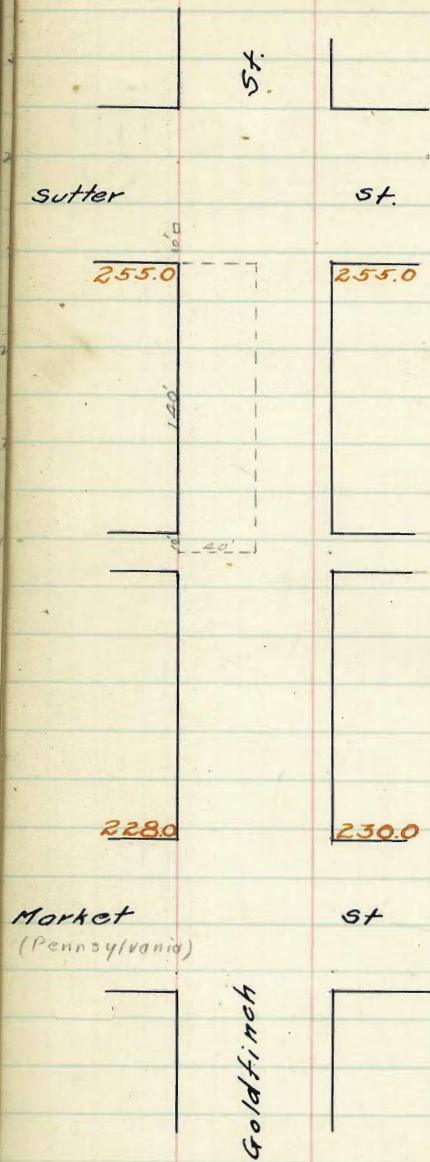
271.92	271.92	271.92	271.92	271.92	271.92
667	6623	6431	6508	6437	6525
6.92	5.89	7.11	6.32	7.55	6.67
✓	6.14	7.36	6.57	7.80	6.92

71.92	71.92	71.92	71.92	71.92	71.92	71.92
6550	6528	6505	6483	6461	6450	6525
6.42	6.61	6.39	7.09	7.21	7.42	6.67
✓	✓	✓	✓	✓	✓	✓

center of
1/2
no E.

270.50	270.96	270.96	270.96	270.96	270.96	270.96
5.06	265.03	265.80	264.59	265.35	269.25	269.25
270.9 647	5.93	5.16	6.37	5.61	6.71	6.71
6525	6.18	5.41	6.62	5.86	6.96	6.96
4.71	5.8	6.01	7.02	6.46	7.36	7.36
7.76	5.67	5.91	6.12	6.36	6.46	6.46
5.56	5.95	6.41	6.22	7.26	6.56	6.56
5.46	9.23	6.16	5.37	6.61	5.71	5.71
6.36	5.18	6.41	5.62	6.56	5.96	5.96
5.71	✓	✓	✓	✓	✓	✓
5.96	✓	✓	✓	✓	✓	✓

1/2 Chick O.H.
Shaw Evans



West S.L. Sutter st. East

255.25	255.0	254.6	255.0	255.0
253.00	252.75	252.39	252.83	
250.75	250.50	250.18	250.67	
248.50	248.25	247.98	248.50	
246.25	246.00	245.77	246.33	
244.00	243.75	243.56	244.17	
241.75	241.5	241.35	242.0	
238.25	238.0	238.1	239.0	230.0

N.L. Market St.

Bm Bw bar monument Sold Truck + Sutter

14

256.99	253.25	253.00	250.67	250.75
0.20	4.94	5.19	9.32	9.44
260.17		0.14	0.14	
9.42				
250.75	250.80	250.18	254.66	
1.12	9.69	10.00	5.59	
253.09	242.5	246.00	243.77	246.33
	6.79	7.04	7.27	6.71
	241.71	241.58	241.35	242.30
	11.39		11.29	11.04
	246.65			
	10.29			
	21.14			

Finishing stakes Mar 7-10
Blanch James Padges

256.29 Bm

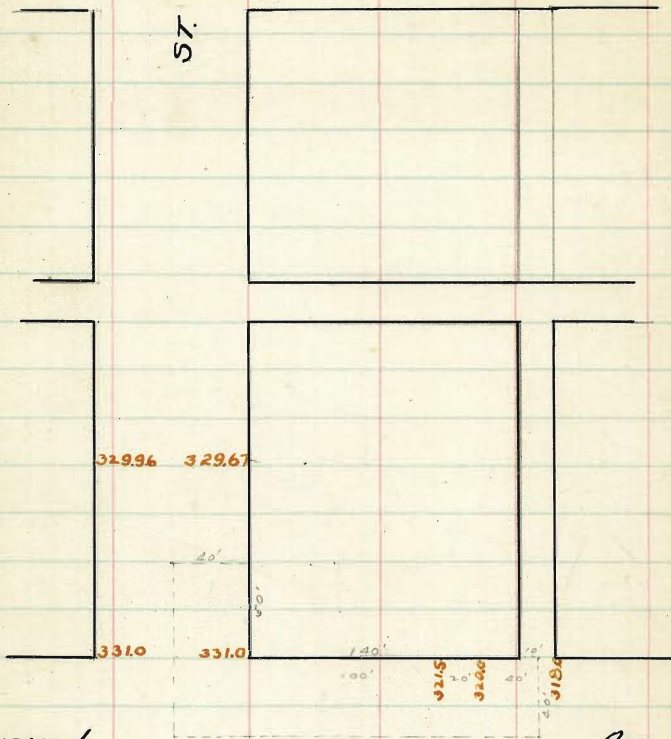
255.00	254.60	253.80
4.83	5.23	
250.50	250.14	250.67
9.33	9.65	9.16
246.00	245.77	246.33
5.10	5.34	4.78
241.50	241.35	242.00
9.61	9.26	9.11

Check OK Blanch
Mar 14-10
Padges

El Cajon

Ave.

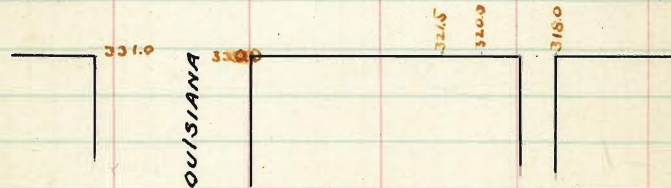
ST.



Howard

Ave.

LOUISIANA



Louisiana

St.

West

100' N 329.96 329.81 329.34 329.67

50' N ✓ 330.40 329.97 330.33 330.58

35' N 330.70 330.28 330.67 330.92

20' N & Monans 331.0 331.0 330.60 331.0 331.25

N curb 330.91 330.60 331.0 331.0
330.0 330.0

N 1/4 330.83 330.61 330.40 330.40

Howard

C 330.75 330.63 330.50 330.50

Ave.

331.0

330.0

East.

322.19 1374 SW Texas - El Campo Florz
1.30
334.44 HI 30.33 29.97 30.40 31.0 30.6 30.4
4.17 4.47 4.02 3.44 3.84 4.08
3.92 3.14

331.25 309 30.6 31.2 31.33
2.82 3.49 3.09 3.46
334.09 HI 30.4 29.97 30.23 31.75 all stakes 5 Hatch
3.69 4.12 3.66 3.34 10 Thomas

331.25 330 30.6 31.0 30.4 30.0 30.33
334.05 30.5 3.45 3.05 3.65 4.05 3.72

Chick. 15 Hatch
12 Thomas
10 Thomas

Hatch
to Williams
to Thomas

Howard

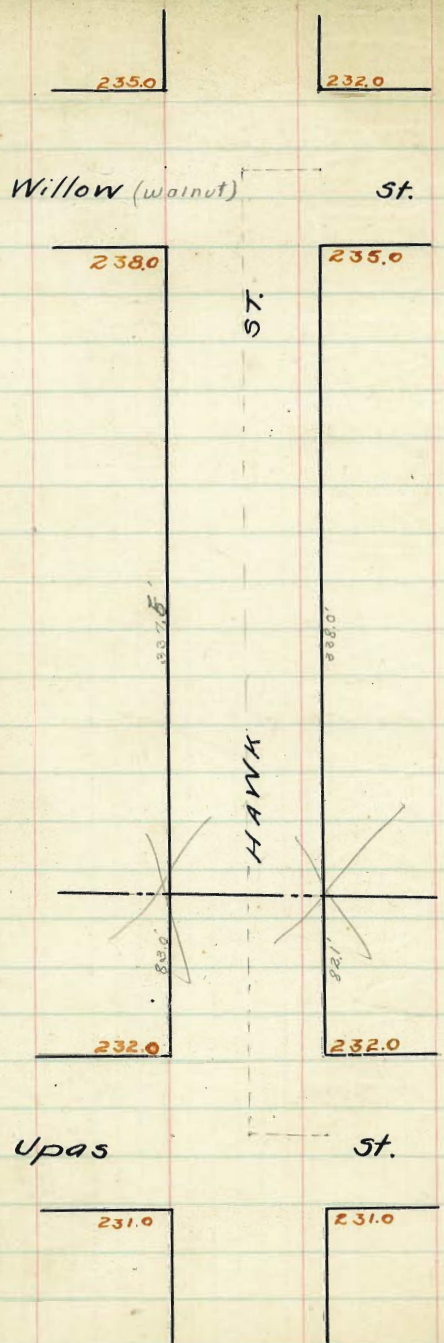
Apr

South	E.L. Louisiana St.				North
00	330.0	330.50	330.40	331.0	331.25
25		328.25	328.08	328.63	328.88
50	✓	326.00	325.75	326.25	326.50
75		323.75	323.43	323.88	324.13
100		321.5	321.5	321.1	321.75
120		320.0	320.0	319.60	320.25
150	✓		318.5	318.1	318.50
160		318.00	318.0	317.60	318.00
				318.00	318.25

Hatch
Moore
Thomas

22

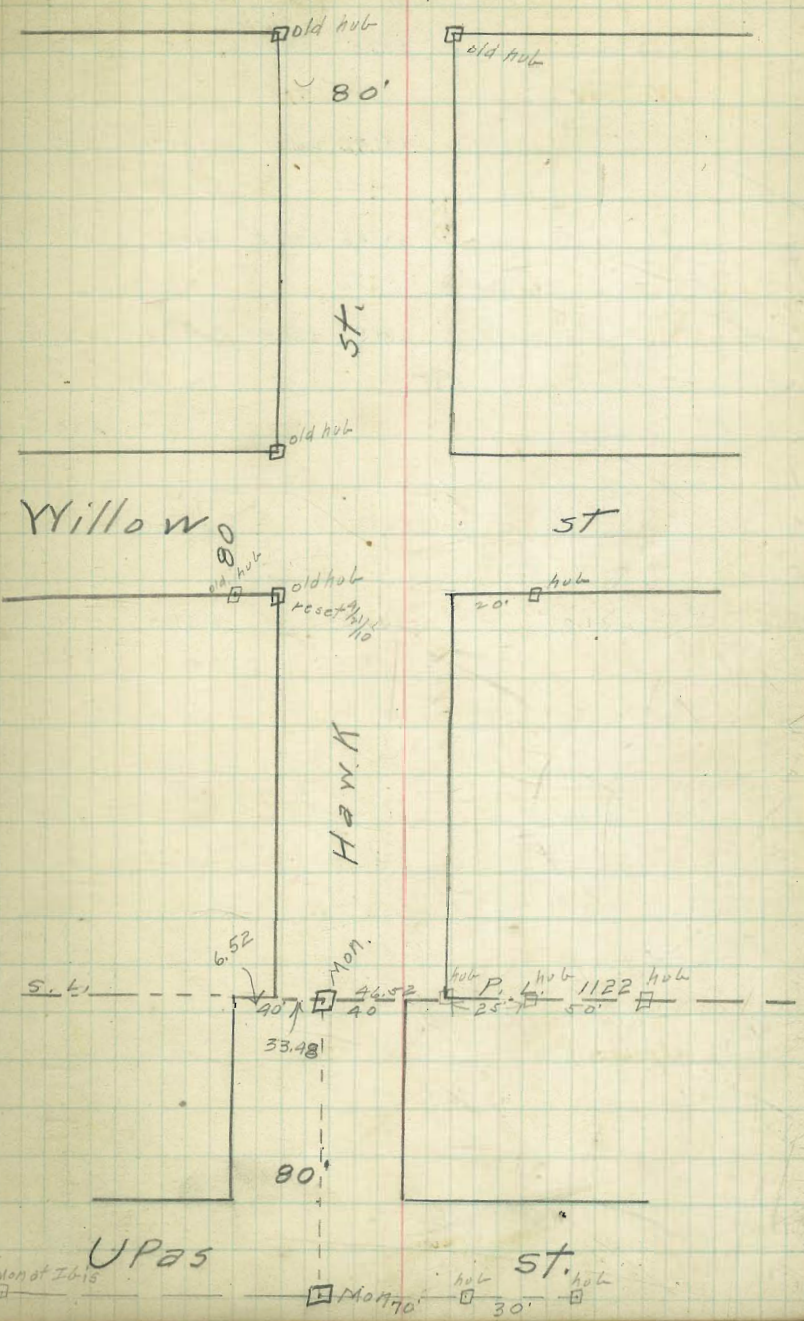
334.44 Nt.	26.25	25.75	26.0	21.5	31.1	31.5
10.32	8.19	8.69	8.44	8.94	43.4	39.4
324.12						3.69
18.2	20.0	19.60	15.5	18.1		
325.44 Nt.	5.44	5.54	6.94	7.34		
	5.19					
334.09 Nt.	30.4	30.5	26.25	25.75	26.0	
12.58	3.69	3.69	7.84	8.34	8.09	
221.50						
32.8						
335.18 Nt.	21.5	21.1	21.5	20	19.8	15.5
	12.59	12.99	12.99	5.18	5.58	6.68
						7.08
	all stakes $\frac{5}{10}$ Hatch Moore Thomas.					
334.05 Nt.	30.5	30.9	31.0	26.0	25.75	26.25
12.58	3.69	3.69	3.05	8.05	8.30	7.80
321.50						
334.05 Nt.	20.0	19.6	20.0	15.5	18.1	18.5
	4.05	4.45	4.05	5.35	5.95	5.55
	check ok. $\frac{5}{10}$ Hatch Moore Thomas.					



Brookes

ST

24



West. south Line Willow St. East.

4205' on W 4201' on E	238.0	236.5	235.25	235.0	235.25
400'		236.28	235.17	234.86	235.11
375'		236.01	234.95	234.68	234.93
350'	✓	235.75	234.72	234.50	234.75
325'		235.48	234.50	234.32	234.57
300'	✓	235.21	234.28	234.14	234.39
275'		234.94	234.05	233.96	234.21
250'	✓	234.68	233.83	233.79	234.04
225'		234.41	233.61	233.61	233.86
200'	✓	234.14	233.38	233.43	233.68
175'		233.87	233.16	233.25	233.50
150'	✓	233.61	232.94	233.07	233.32
125'		233.34	232.72	232.89	233.14
100'	✓	233.07	232.49	232.71	232.96
75'		233.15	232.80	232.82	232.79
50'		232.80	232.27	232.54	232.79
25'		232.54	232.05	232.36	232.61
00'		232.27	231.82	232.18	232.43
00'	232.0	232.0	231.60	232.0	232.25

North Line Upas St.

242.11 B.M. 1100-7 W of s. corner Hank & Willow

245.43 H.I.	245.43	245.43	245.43	245.43	245.43	245.43	245.43
35.25	35.25	39.39	34.68	33.68	33.32	33.32	33.32
10.18	9.62	11.04	10.75	11.75	12.11	12.03	12.03
6.03	3.73	3.24	9.15	6.31	20.22	20.22	20.22
+3.75	+5.95	+7.20	+1.6	+5.44	245.43	245.43	245.43
245.43	245.43	245.43	245.43	245.43	33.02	33.02	33.02
36.50	34.75	35.21	34.04	34.14	12.41	12.41	12.41
8.93	10.68	12.22	11.39	11.29	12.41	12.41	12.41
6.07	3.34	6.00	4.59	11.97	6.67	6.67	6.67
+2.84	+7.34	+4.12	+6.80	-0.65	+5.72	+5.72	+5.72
245.43	236.71	236.91	236.91	236.91	236.91	236.91	236.91
12.14 T.P.	236.71	32.52	33.15	33.07	33.61	33.61	33.61
233.39	232.02	4.37	3.91	3.32	3.30	3.30	3.30
3.62	4.91	4.10	7.76	5.44			
236.71 H.I.	2.31	-4.73	7.00	-1.6			
	-2.8						
			3.76	cut 2 feet 4 1/2	11/10		
			11.40				
			-7.64				

245.43
32.25
232.96
12.41
7.10
15.37
245.43
32.61
12.41
12.41
7.42
15.79
245.43
32.25
15.12
7.39
15.79

245.43
232.96
12.41
7.10
15.37
245.43
32.61
12.41
12.41
7.42
15.79
245.43
32.25
15.12
7.39
15.79

245.43
32.25
232.96
12.41
7.10
15.37
245.43
32.61
12.41
12.41
7.42
15.79
245.43
32.25
15.12
7.39
15.79

245.43
32.25
232.96
12.41
7.10
15.37
245.43
32.61
12.41
12.41
7.42
15.79
245.43
32.25
15.12
7.39
15.79

235.0

233.5

232.0

232.0 232.0
231. 231.

231.75 232.35

Willow

235.0 233.75 232.5 233.0

St.

235.49 234.37 233.25 234.40

235.98 234.99 234.0 / 234.
235.0 235.0

238.0

236.5 235.35 235.0 235.25

245.43 H.S. 245.43
233.00 233.00
10.43 12.43
2.93 9.50
+2.0 +2.9

Upas

242.0

245.0

st.

244.0

246.0

ST.

300'

Thorn

244.0

st.

244.0

BRANT

300'

235.0

spruce

235.0

st.

West	South Line Thorn st.				East		
300'	244.25	244.0	243.6	244.0	243.6	244.0	244.25
275'	243.50	243.25	242.85	243.25	242.85	243.25	243.50
250'	242.75	242.50	242.10	242.5	242.10	242.5	242.75
225'	242.0	241.75	241.35	241.75	241.35	241.75	242.0
200'	241.25	241.00	240.6	241.00	240.6	241.00	241.25
175'	240.50	240.25	239.85	240.25	239.85	240.25	240.50
150'	239.75	239.50	239.10	239.50	239.10	239.50	239.75
125'	239.00	238.75	238.35	238.75	238.35	238.75	239.00
100'	238.25	238.00	237.60	238.0	237.60	238.0	238.25
75'	237.50	237.25	236.85	237.25	236.85	237.25	237.50
50'	236.75	236.50	236.10	236.5	236.10	236.5	236.75
25'	236.00	235.75	235.35	235.75	235.35	235.75	236.00
00	235.25	235.00	234.6	235.0	234.6	235.0	235.25

North Line Spruce st.

245.25 245.0 244.85 245.5 245.4 246.0 246.25

245.0 245.0 244.63 245.23 245.09 246.0 246.0
 244. 244. 245. 245.

244.4 244.41 244.43 244.99 244.79 245.09 245.4

Thorn

ctr 244.5 244.36 244.23 244.75 244.5 244.75 245.0

St

243.85 243.94 244.03 244.51 244.21 244.15 244.10

243 243. 243. 243. 243.
 244.0 244.0 243.82 244.27 243.92 244.0 244.0

244.25 244.0 243.6 244.0 243.6 244.0 244.25

West	South Line Upas St.						East
200'	242.25	242.0	242.10	243.0	243.40	244.0	244.25
175'	242.50	242.25	242.33	243.21	243.57	244.17	244.42
150'	242.75	242.50	242.56	243.42	243.73	244.33	243.58
125'	243.00	242.75	242.79	243.63	243.90	244.50	244.75
100'	243.25	243.0	243.02	243.84	244.07	244.67	244.92
75'	243.50	243.25	243.25	244.05	244.23	244.83	245.08
50'	243.75	243.50	243.48	244.25	244.40	245.00	245.25
25'	244.00	243.75	243.71	244.46	244.57	245.17	245.42
100'	244.25	244.00	243.94	244.67	244.73	245.33	245.58
75'	244.50	244.25	244.17	244.88	244.90	245.50	245.75
50'	244.75	244.50	244.40	245.09	245.07	245.67	245.92
25'	245.00	244.75	244.62	245.29	245.23	245.83	246.08
100'	245.25	245.0	244.85	245.5	245.4	246.0	246.25

North Line Thorn St.

Lewis

277.0

277.0

Hooker

272.0

273

ditto

West South line of Lewis St East

10'	277.25	277.00	276.60	277.0	276.60	277.00	277.25
25'	276.80	276.55	276.17	276.59	276.22	276.64	276.89
50'	276.34	276.09	275.74	276.18	275.84	276.27	276.52
75'	275.89	275.64	275.30	275.77	275.45	275.91	276.16
100'	275.43	275.18	274.87	275.36	275.07	275.55	275.80
125'	274.98	274.73	274.44	274.95	274.69	275.18	275.43
150'	274.52	274.27	274.01	274.55	274.31	274.82	275.07
175'	274.07	273.82	273.58	274.14	273.93	274.45	274.70
200'	273.61	273.36	273.15	273.73	273.55	274.09	274.34
225'	273.16	272.91	272.71	273.32	273.16	273.73	273.98
250'	272.70	272.45	272.29	272.91	272.78	273.36	273.61
275'	272.25	272.0	271.85	272.5	272.40	273.00	273.25

N line Lot 11

B.M. 27707 P.R.S. SW Hooker - Lewis

W	E	W	E
72.0	76.6	76.55	76.17
470	570	515	533
240		240	
76.64	75.30	75.77	75.42
606	640	628	628
581		593	
74.73	74.04	74.95	74.69
592	7.26	675	7.00
73.32	73.58	74.14	73.93
788	812	756	771
72.91	72.71	73.32	73.16
579	7.00	538	5.59
554			
72.0	71.85	72.50	72.40
970	985	920	930
440			

all stakes
61
240
120

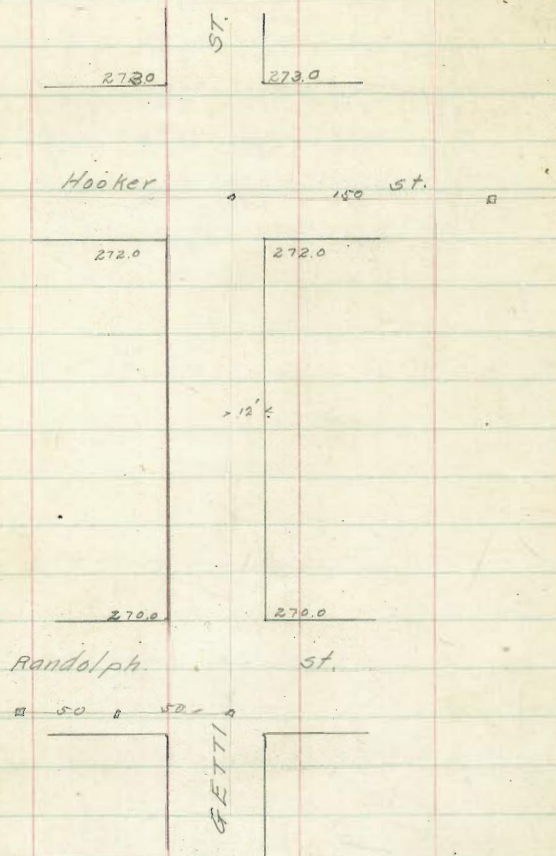
27709
412
281.21
6.67
274.54
2.55
276.87 H3

27700 ✓ 27660 ✓
4.21 4.61
27200 27350 27500 27650 27800
4.89 5.89 5.04 4.37 4.54

Checked OK except as marked
blough Dumar Rogers
7 - 10 - 10

B.M. 27707
3.48
280.65 = 4.1

272.00	271.85	272.50	272.20	273.00
8.85	5.70	8.05	9.15	7.85
272.45	272.28	272.91	272.78	273.36
272.96	272.71	273.32	273.16	273.73
7.44	7.84	7.23	7.39	6.82
273.36	273.15	273.73	273.55	
273.82	273.58	274.14	273.93	274.55
6.75	6.89	6.41	6.62	6.10
274.73	274.40	274.95	274.69	275.28
5.82	6.11	5.60	5.86	5.37
275.26	275.00	275.77	275.48	276.19
4.81				
276.55	276.17	276.59	276.22	276.64
277.0	276.80	277.0	276.60	277.0



North

South

273.25	273.0	272.6	273.0	272.6	273.00	273.25
--------	-------	-------	-------	-------	--------	--------

273.00	273.0	271.43	271.83	271.43	273.00	273.00
272.	272.				272.	272.

272.4	271.75	271.26	271.66	271.26	271.75	272.4
-------	--------	--------	--------	--------	--------	-------

Hooker

272.5	271.50	271.10	272.5	271.10	271.50	272.5
-------	--------	--------	-------	--------	--------	-------

St.

271.85	271.25	271.94	272.34	271.94	271.25	271.85
--------	--------	--------	--------	--------	--------	--------

271.	271.				271.	271.
272.0	272.0	271.78	272.18	271.78	272.0	272.00

272.25	272.0	271.6	272.0	271.6	272.0	272.25
--------	-------	-------	-------	-------	-------	--------

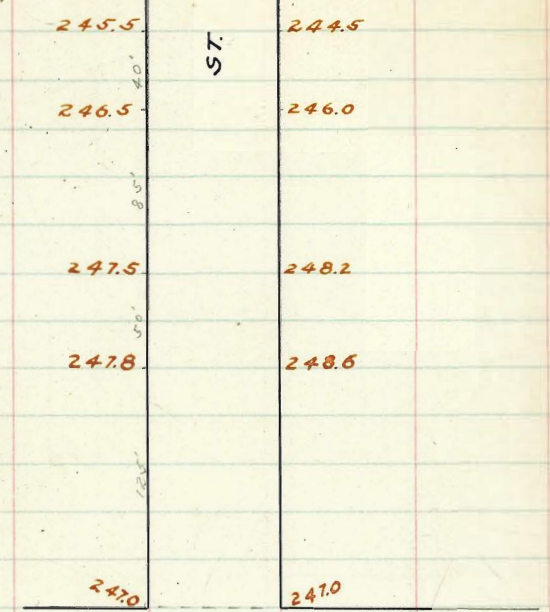
North	West Line Hooker						South
272.25	272.00	271.6	272.0	271.6	272.0	272.25	
15'	272.00	271.75	271.35	271.75	271.35	271.75	272.00
30'	271.75	271.50	271.10	271.5	271.10	271.50	271.75
45'	271.50	271.25	270.85	271.25	270.85	271.25	271.50
60'	271.25	271.00	270.60	271.00	270.60	271.00	271.25
75'	271.00	270.75	270.35	270.75	270.35	270.75	271.00
90'	270.75	270.50	270.1	270.5	270.10	270.50	270.75
105'	270.50	270.25	269.85	270.25	269.85	270.25	270.50
120'	270.25	270.00	269.60	270.0	269.6	270.00	270.25

East Line Randolph

Property Stakes $\frac{6}{12710}$ Hatch
 772.25 Stake
 $\frac{543}{276.25}$ $\frac{7175}{2792}$ $\frac{7125}{543}$ $\frac{7075}{593}$ $\frac{7025}{643}$

276.89 $\frac{27200}{4.89}$ $\frac{27160}{5.29}$
 $\frac{272}{330}$ 270.00 $\frac{270.20}{6.20}$

Checked OK
 7 Blount
 10 Jones
 10 Rogers



WALNUT AVE.

ALBATROSS

245.5	ST.	244.5
246.5		246.0
247.5		248.2
247.8		248.6
247.0		247.0

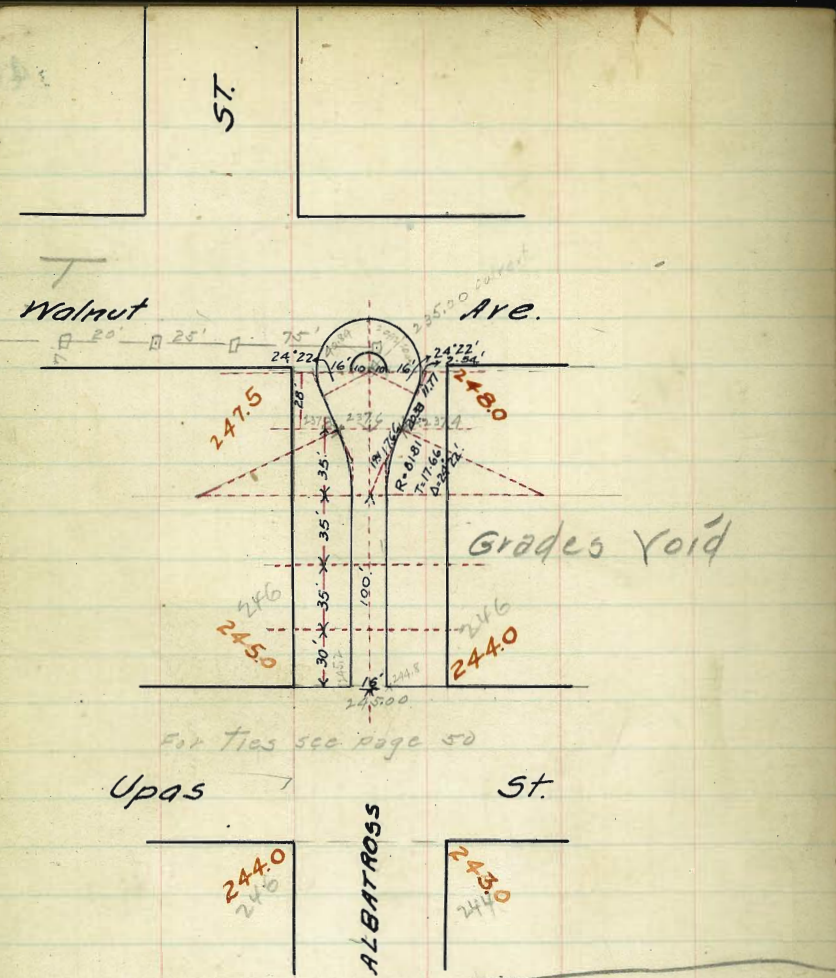
Walden Creek
7th
F

	West	300' N. Walnut						East
300' N. Break	245.75	245.5	244.9	245.0	244.35	244.5	244.75	
275' N.	246.47	246.22	245.62	245.78	245.21	245.44	245.49	
260' N. Break	246.75	246.5	245.9	246.25	245.73	246.0	246.25	
225' N.	247.16	246.91	246.46	246.91	246.50	246.91	247.16	
200' N.	247.46	247.21	246.87	247.38	247.05	247.55	247.80	
175' N. Break	247.75	247.5	247.27	247.85	247.6	248.2	248.45	
150' N.	247.90	247.65	247.43	248.02	247.8	248.40	248.65	
125' N. Break	248.05	247.8	247.6	248.2	248.0	248.6	248.85	
100' N.	247.89	247.64	247.4	247.96	247.72	248.28	248.53	
75' N.	247.73	247.48	247.2	247.72	247.44	247.96	248.21	
50' N.	247.57	247.32	247.0	247.48	247.16	247.64	247.89	
25' N.	247.41	247.16	246.8	247.24	246.88	247.32	247.57	
"	247.25	247.0	246.6	247.0	246.60	247.0	247.25	

300' N.	247.0	247.2	247.8	247.64	247.4	247.6	248.28
275' N.	247.5	248.2	248.0	247.5	247.5	248.2	249.1
260' N.	247.89	247.64	247.4	247.96	247.72	248.28	248.53
225' N.	247.16	246.91	246.46	246.91	246.50	246.91	247.16
200' N.	247.46	247.21	246.87	247.38	247.05	247.55	247.80
175' N.	247.75	247.5	247.27	247.85	247.6	248.2	248.45
150' N.	247.90	247.65	247.43	248.02	247.8	248.40	248.65
125' N.	248.05	247.8	247.6	248.2	248.0	248.6	248.85
100' N.	247.89	247.64	247.4	247.96	247.72	248.28	248.53
75' N.	247.73	247.48	247.2	247.72	247.44	247.96	248.21
50' N.	247.57	247.32	247.0	247.48	247.16	247.64	247.89
25' N.	247.41	247.16	246.8	247.24	246.88	247.32	247.57
"	247.25	247.0	246.6	247.0	246.60	247.0	247.25

Checked OK
Aug 29, 1910
Blough
Dorr
K. 9100

North Line Walnut Ave.



250.90 B.M. 1st Walnut
 1.16
 252.06 H.I.
 2.32
 249.74 T.P.
 2.61
 247.35

247.35
 245.00
 2.35
 2.15
 2.55

247.35
 236.00
 11.35

247.35
 235.00
 12.35

247.35
 235.62
 11.73

247.35
 236.87
 10.48

10.91 cts double
 Board
 Run,

246.00
 2.10
 248.10

1/3 all stakes

245.55

	E	S	W
0+0	245.1	245.1	245.5
+80	243.6	243.6	244.2
+65	241.9	241.5	242.1
+40	240.2	239.7	240.1
+35	238.1	237.7	238.7
+50			238.2
+63	236.5	236.5	237.7
+89		235.6	

1+69 end culvert 235.9

250.90
 1.15
 252.05
 6.93
 245.12
 0.46
 245.58

West South Line Walnut Ave. East

00 247.75 247.5 247.28 247.75 247.4 248.0 248.25

25' 247.38 247.13 246.80 247.26 246.87 247.40 247.40

50' 247.30 247.05 246.74 247.23 246.84 247.40 247.6
 247.00 246.75 246.38 246.77 246.33 246.79 247.04

75' 246.62 246.37 245.95 246.28 245.80 246.19 246.44

100' 246.25 246.00 245.52 245.79 245.26 245.59 245.84

125' 245.87 245.62 245.10 245.30 244.73 244.99 245.24

166' 245.25 245.0 244.4 244.5 243.85 244.0 244.25

245.0 245.0 244.22 244.32 243.67 244.0 244.0

1/4 244.40 244.25 244.06 244.16 243.51 242.75 243.40

UPAS

0 244.50 244.5 243.90 244.0 243.85 242.5 243.50

ST.

1/4 243.85 243.75 243.74 243.84 243.19 242.25 242.85

243. 243. 242. 242.
 244.00 244.00 243.58 243.68 243.02 243.0 243.0

244.25 244.00 243.4 243.5 242.85 243.0 243.25

250.90 Walnut Brass P/q. 1-5-11
 115
 252.05 252.05 252.05 252.05 252.05
 42.25 47.00 45.84 45.25 43.25
 3.80 5.05 6.21 6.80 8.80
 3.20 4.85 4.51 4.10 12.80
 +0.6 +0.20 +1.7 +2.7 -4.0
 252.05 252.05 252.05 252.05 252.05
 47.75 47.04 46.25 44.25 44.25
 4.30 5.01 5.80 7.80 7.80
 7.70 3.51 4.70 5.60 3.00
 -0.6 +1.5 +1.1 +2.2 +2.8

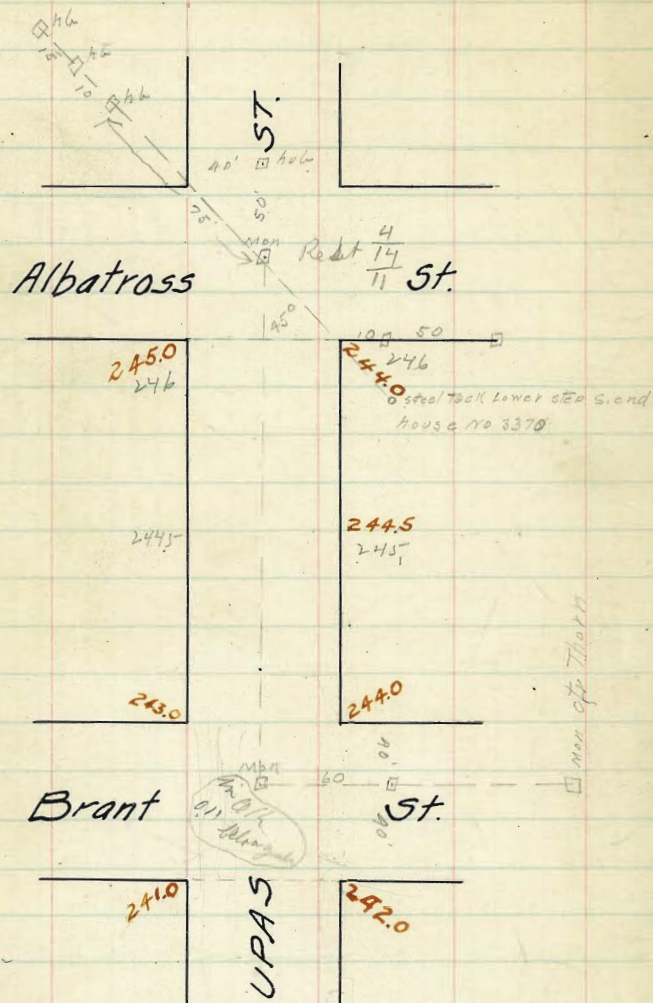
250.90 Bm
 252.40
 7.15
 246.25 246.25 245.75 246.91 246.61 247.61
 5.55 5.55 6.54 4.85 5.15 4.15
 246.25 246.25 245.75 246.91 246.61 247.61
 5.55 5.55 6.54 4.85 5.15 4.15
 246.25 246.25 245.75 246.91 246.61 247.61
 5.55 5.55 6.54 4.85 5.15 4.15

246.60 246.25 246.70 246.32 246.80
 4.86 5.21 4.76 5.14 4.62
 247.05 246.70 247.23 246.86 247.40
 4.41 4.72 4.23 4.90 4.10
 247.50 247.23 247.75 247.40 248.00
 5.96 4.23 3.21 4.06 3.46

246.55 Bm
 4.93
 247.18
 247.50 247.23 247.71 247.90 248.00
 3.68 3.35 3.43 3.78 3.18
 247.05 246.76 247.23 246.86 247.40
 4.12 4.41 3.95 4.32 3.78
 246.60 246.25 246.70 246.32 246.90
 4.58 5.93 4.48 4.86 4.38
 246.00 245.70 245.00 244.00
 5.18 5.58

4-14-11 checked OK blump
 246.25 Bm
 5.15
 247.40
 247.23 247.75 247.40
 4.17 3.65 4.00
 246.25 246.23 246.86
 4.66 4.17 4.54
 246.25 246.70 246.22
 5.15 4.70 5.08
 245.20 246.00 245.20
 5.80 5.90 5.20

7-18-11
 checked 1/2 b after 4.530
 5.90 Pulling blump



	West	S. L. Redwood St.					East
00	205.25	205.0	205.1	206.0	206.4	207.0	207.25
15	205.78	205.53	205.63	206.53	206.93	207.53	207.78
30	206.30	206.05	206.15	207.05	207.45	208.05	208.30
45	206.83	206.58	206.68	207.58	207.98	208.58	208.83
60	207.35	207.10	207.2	208.1	208.5	209.1	209.35
75	207.55	207.3	207.4	208.3	208.7	209.3	209.55
90	207.75	207.5	207.6	208.5	208.9	209.5	209.75
105	207.85	207.6	207.7	208.6	209.0	209.6	209.85
120	207.75	207.5	207.6	208.5	208.9	209.5	209.75
135	207.35	207.1	207.2	208.1	208.5	209.1	209.35
150	206.83	206.58	206.68	207.58	207.98	208.58	208.83
165	206.30	206.05	206.15	207.05	207.45	208.05	208.3
180	205.78	205.53	205.63	206.53	206.93	207.53	207.78
300	205.25	205.0	205.1	206.0	206.40	207.0	207.25

North Line Quince St.

215.81	215.81	215.81	215.81	215.8	215.81	215.81
217.39	217.39	217.39	217.39	217.39	217.39	217.39
218.40	218.40	218.40	218.40	218.40	218.40	218.40
219.41	219.41	219.41	219.41	219.41	219.41	219.41
220.42	220.42	220.42	220.42	220.42	220.42	220.42
221.43	221.43	221.43	221.43	221.43	221.43	221.43
222.44	222.44	222.44	222.44	222.44	222.44	222.44
223.45	223.45	223.45	223.45	223.45	223.45	223.45
224.46	224.46	224.46	224.46	224.46	224.46	224.46
225.47	225.47	225.47	225.47	225.47	225.47	225.47
226.48	226.48	226.48	226.48	226.48	226.48	226.48
227.49	227.49	227.49	227.49	227.49	227.49	227.49
228.50	228.50	228.50	228.50	228.50	228.50	228.50
229.51	229.51	229.51	229.51	229.51	229.51	229.51
230.52	230.52	230.52	230.52	230.52	230.52	230.52
231.53	231.53	231.53	231.53	231.53	231.53	231.53
232.54	232.54	232.54	232.54	232.54	232.54	232.54
233.55	233.55	233.55	233.55	233.55	233.55	233.55
234.56	234.56	234.56	234.56	234.56	234.56	234.56
235.57	235.57	235.57	235.57	235.57	235.57	235.57
236.58	236.58	236.58	236.58	236.58	236.58	236.58
237.59	237.59	237.59	237.59	237.59	237.59	237.59
238.60	238.60	238.60	238.60	238.60	238.60	238.60
239.61	239.61	239.61	239.61	239.61	239.61	239.61
240.62	240.62	240.62	240.62	240.62	240.62	240.62
241.63	241.63	241.63	241.63	241.63	241.63	241.63
242.64	242.64	242.64	242.64	242.64	242.64	242.64
243.65	243.65	243.65	243.65	243.65	243.65	243.65
244.66	244.66	244.66	244.66	244.66	244.66	244.66
245.67	245.67	245.67	245.67	245.67	245.67	245.67
246.68	246.68	246.68	246.68	246.68	246.68	246.68
247.69	247.69	247.69	247.69	247.69	247.69	247.69
248.70	248.70	248.70	248.70	248.70	248.70	248.70
249.71	249.71	249.71	249.71	249.71	249.71	249.71
250.72	250.72	250.72	250.72	250.72	250.72	250.72
251.73	251.73	251.73	251.73	251.73	251.73	251.73
252.74	252.74	252.74	252.74	252.74	252.74	252.74
253.75	253.75	253.75	253.75	253.75	253.75	253.75
254.76	254.76	254.76	254.76	254.76	254.76	254.76
255.77	255.77	255.77	255.77	255.77	255.77	255.77
256.78	256.78	256.78	256.78	256.78	256.78	256.78
257.79	257.79	257.79	257.79	257.79	257.79	257.79
258.80	258.80	258.80	258.80	258.80	258.80	258.80
259.81	259.81	259.81	259.81	259.81	259.81	259.81
260.82	260.82	260.82	260.82	260.82	260.82	260.82
261.83	261.83	261.83	261.83	261.83	261.83	261.83
262.84	262.84	262.84	262.84	262.84	262.84	262.84
263.85	263.85	263.85	263.85	263.85	263.85	263.85
264.86	264.86	264.86	264.86	264.86	264.86	264.86
265.87	265.87	265.87	265.87	265.87	265.87	265.87
266.88	266.88	266.88	266.88	266.88	266.88	266.88
267.89	267.89	267.89	267.89	267.89	267.89	267.89
268.90	268.90	268.90	268.90	268.90	268.90	268.90
269.91	269.91	269.91	269.91	269.91	269.91	269.91
270.92	270.92	270.92	270.92	270.92	270.92	270.92
271.93	271.93	271.93	271.93	271.93	271.93	271.93
272.94	272.94	272.94	272.94	272.94	272.94	272.94
273.95	273.95	273.95	273.95	273.95	273.95	273.95
274.96	274.96	274.96	274.96	274.96	274.96	274.96
275.97	275.97	275.97	275.97	275.97	275.97	275.97
276.98	276.98	276.98	276.98	276.98	276.98	276.98
277.99	277.99	277.99	277.99	277.99	277.99	277.99
278.00	278.00	278.00	278.00	278.00	278.00	278.00
279.01	279.01	279.01	279.01	279.01	279.01	279.01
280.02	280.02	280.02	280.02	280.02	280.02	280.02
281.03	281.03	281.03	281.03	281.03	281.03	281.03
282.04	282.04	282.04	282.04	282.04	282.04	282.04
283.05	283.05	283.05	283.05	283.05	283.05	283.05
284.06	284.06	284.06	284.06	284.06	284.06	284.06
285.07	285.07	285.07	285.07	285.07	285.07	285.07
286.08	286.08	286.08	286.08	286.08	286.08	286.08
287.09	287.09	287.09	287.09	287.09	287.09	287.09
288.10	288.10	288.10	288.10	288.10	288.10	288.10
289.11	289.11	289.11	289.11	289.11	289.11	289.11
290.12	290.12	290.12	290.12	290.12	290.12	290.12
291.13	291.13	291.13	291.13	291.13	291.13	291.13
292.14	292.14	292.14	292.14	292.14	292.14	292.14
293.15	293.15	293.15	293.15	293.15	293.15	293.15
294.16	294.16	294.16	294.16	294.16	294.16	294.16
295.17	295.17	295.17	295.17	295.17	295.17	295.17
296.18	296.18	296.18	296.18	296.18	296.18	296.18
297.19	297.19	297.19	297.19	297.19	297.19	297.19
298.20	298.20	298.20	298.20	298.20	298.20	298.20
299.21	299.21	299.21	299.21	299.21	299.21	299.21
300.22	300.22	300.22	300.22	300.22	300.22	300.22

6 + 7 blought German July 1891

204.59	205.0	206.0	206.05	207.05	208.01
207.0	207.0	208.0	208.0	209.0	210.0
208.0	208.0	209.0	209.0	210.0	211.0
209.0	209.0	210.0	210.0	211.0	212.0
210.0	210.0	211.0	211.0	212.0	213.0
211.0	211.0	212.0	212.0	213.0	214.0
212.0	212.0	213.0	213.0	214.0	215.0
213.0	213.0	214.0	214.0	215.0	216.0
214.0	214.0	215.0	215.0	216.0	217.0
215.0	215.0	216.0	216.0	217.0	218.0
216.0	216.0	217.0	217.0	218.0	219.0
217.0	217.0	218.0	218.0	219.0	220.0
218.0	218.0	219.0	219.0	220.0	221.0
219.0	219.0	220.0	220.0	221.0	222.0
220.0	220.0	221.0	221.0	222.0	223.0
221.0	221.0	222.0	222.0	223.0	224.0
222.0	222.0	223.0	223.0	224.0	225.0
223.0	223.0	224.0	224.0	225.0	226.0
224.0	224.0	225.0	225.0	226.0	227.0
225.0	225.0	226.0	226.0	227.0	228.0
226.0	226.0	227.0	227.0	228.0	229.0
227.0	227.0	228.0	228.0	229.0	230.0
228.0	228.0	229.0	229.0	230.0	231.0
229.0	229.0	230.0	230.0	231.0	232.0
230.0	230.0	231.0	231.0	232.0	233.0
231.0	231.0	232.0	232.0	233.0	234.0
232.0	232.0	233.0	233.0	234.0	235.0
233.0	233.0	234.0	234.0	235.0	236.0
234.0	234.0	235.0	235.0	236.0	237.0
235.0	235.0	236.0	236.0	237.0	238.0
236.0	236.0	237.0	237.0	238.0	239.0
237.0	237.0	238.0	238.0	239.0	240.0
238.0	238.0	239.0	239.0	240.0	241.0
239.0	239.0	240.0	240.0	241.0	242.0
240.0	240.0	241.0	241.0	242.0	243.0
241.0	241.0	242.0	242.0	243.0	244.0
242.0	242.0	243.0	243.0	244.0	245.0
243.0	243.0	244.0	244.0	245.0	246.0
244.0	244.0	245.0	245.0	246.0	247.0
245.0	245.0	246.0	246.0	247.0	248.0
246.0	246.0	247.0	247.0	248.0	249.0

West	South Line Quince St.						East
00	203.25	203.0	202.1	204.0	204.4	205.0	205.25
15'	202.67	202.42	201.52	203.42	203.82	204.42	204.67
50'	202.08	201.83	201.93	202.83	203.23	203.83	204.08 ✓
75'	201.50	201.25	201.35	202.25	202.65	203.25	203.50
100'	200.92	200.67	200.77	201.67	202.07	202.67	202.92
125'	200.33	200.08	200.18	201.08	201.48	202.08	202.33
150'	199.75	199.50	199.60	200.50	200.90	201.50	201.75 ✓
175'	199.17	198.92	199.0	199.92	200.32	200.92	201.17
200'	198.58	198.33	198.43	199.33	199.73	200.33	200.58 ✓
225'	198.00	197.75	197.85	198.75	199.15	199.75	200.00
250'	197.42	197.17	197.27	198.17	198.57	199.17	199.42 ✓
275'	196.83	196.58	196.68	197.58	197.98	198.58	198.83
300'	196.25	196.00	196.10	197.00	197.40	198.0	198.25

North Line Palm St.

203.46	0.14	203.60	0.14	203.74	0.14	203.88	0.14	204.02	0.14	204.16	0.14	204.30	0.14	204.44	0.14	204.58	0.14	204.72	0.14	204.86	0.14	205.00	0.14		
199.70	3.85	199.70	3.85	199.70	3.85	199.70	3.85	199.70	3.85	199.70	3.85	199.70	3.85	199.70	3.85	199.70	3.85	199.70	3.85	199.70	3.85	199.70	3.85	199.70	3.85
192.75	10.80	192.75	10.80	192.75	10.80	192.75	10.80	192.75	10.80	192.75	10.80	192.75	10.80	192.75	10.80	192.75	10.80	192.75	10.80	192.75	10.80	192.75	10.80	192.75	10.80
185.75	5.46	185.75	5.46	185.75	5.46	185.75	5.46	185.75	5.46	185.75	5.46	185.75	5.46	185.75	5.46	185.75	5.46	185.75	5.46	185.75	5.46	185.75	5.46	185.75	5.46
166.75	15.4	166.75	15.4	166.75	15.4	166.75	15.4	166.75	15.4	166.75	15.4	166.75	15.4	166.75	15.4	166.75	15.4	166.75	15.4	166.75	15.4	166.75	15.4	166.75	15.4
168.54	3.90	168.54	3.90	168.54	3.90	168.54	3.90	168.54	3.90	168.54	3.90	168.54	3.90	168.54	3.90	168.54	3.90	168.54	3.90	168.54	3.90	168.54	3.90	168.54	3.90
175.25	6.66	175.25	6.66	175.25	6.66	175.25	6.66	175.25	6.66	175.25	6.66	175.25	6.66	175.25	6.66	175.25	6.66	175.25	6.66	175.25	6.66	175.25	6.66	175.25	6.66
201.41	4.76	201.41	4.76	201.41	4.76	201.41	4.76	201.41	4.76	201.41	4.76	201.41	4.76	201.41	4.76	201.41	4.76	201.41	4.76	201.41	4.76	201.41	4.76	201.41	4.76
196.65	12.61	196.65	12.61	196.65	12.61	196.65	12.61	196.65	12.61	196.65	12.61	196.65	12.61	196.65	12.61	196.65	12.61	196.65	12.61	196.65	12.61	196.65	12.61	196.65	12.61
209.26	7.31	209.26	7.31	209.26	7.31	209.26	7.31	209.26	7.31	209.26	7.31	209.26	7.31	209.26	7.31	209.26	7.31	209.26	7.31	209.26	7.31	209.26	7.31	209.26	7.31
196.88	2.72	196.88	2.72	196.88	2.72	196.88	2.72	196.88	2.72	196.88	2.72	196.88	2.72	196.88	2.72	196.88	2.72	196.88	2.72	196.88	2.72	196.88	2.72	196.88	2.72
206.74	3.00	206.74	3.00	206.74	3.00	206.74	3.00	206.74	3.00	206.74	3.00	206.74	3.00	206.74	3.00	206.74	3.00	206.74	3.00	206.74	3.00	206.74	3.00	206.74	3.00
196.99	5.23	196.99	5.23	196.99	5.23	196.99	5.23	196.99	5.23	196.99	5.23	196.99	5.23	196.99	5.23	196.99	5.23	196.99	5.23	196.99	5.23	196.99	5.23	196.99	5.23
202.22	7.02	202.22	7.02	202.22	7.02	202.22	7.02	202.22	7.02	202.22	7.02	202.22	7.02	202.22	7.02	202.22	7.02	202.22	7.02	202.22	7.02	202.22	7.02	202.22	7.02
197.87	5.05	197.87	5.05	197.87	5.05	197.87	5.05	197.87	5.05	197.87	5.05	197.87	5.05	197.87	5.05	197.87	5.05	197.87	5.05	197.87	5.05	197.87	5.05	197.87	5.05
198.22	3.89	198.22	3.89	198.22	3.89	198.22	3.89	198.22	3.89	198.22	3.89	198.22	3.89	198.22	3.89	198.22	3.89	198.22	3.89	198.22	3.89	198.22	3.89	198.22	3.89
195.50	2.72	195.50	2.72	195.50	2.72	195.50	2.72	195.50	2.72	195.50	2.72	195.50	2.72	195.50	2.72	195.50	2.72	195.50	2.72	195.50	2.72	195.50	2.72	195.50	2.72
207.75	7.02	207.75	7.02	207.75	7.02	207.75	7.02	207.75	7.02	207.75	7.02	207.75	7.02	207.75	7.02	207.75	7.02	207.75	7.02	207.75	7.02	207.75	7.02	207.75	7.02
201.93	5.23	201.93	5.23	201.93	5.23	201.93	5.23	201.93	5.23	201.93	5.23	201.93	5.23	201.93	5.23	201.93	5.23	201.93	5.23	201.93	5.23	201.93	5.23	201.93	5.23
203.00	4.76	203.00	4.76	203.00	4.76	203.00	4.76	203.00	4.76	203.00	4.76	203.00	4.76	203.00	4.76	203.00	4.76	203.00	4.76	203.00	4.76	203.00	4.76	203.00	4.76
208.42	6.55	208.42	6.55	208.42	6.55	208.42	6.55	208.42	6.55	208.42	6.55	208.42	6.55	208.42	6.55	208.42	6.55	208.42	6.55	208.42	6.55	208.42	6.55	208.42	6.55
199.78	8.82	199.78	8.82	199.78	8.82	199.78	8.82	199.78	8.82	199.78	8.82	199.78	8.82	199.78	8.82	199.78	8.82	199.78	8.82	199.78	8.82	199.78	8.82	199.78	8.82
201.80	7.13	201.80	7.13	201.80	7.13	201.80	7.13	201.80	7.13	201.80	7.13	201.80	7.13	201.80	7.13	201.80	7.13	201.80	7.13	201.80	7.13	201.80	7.13	201.80	7.13
197.17	4.53	197.17	4.53	197.17	4.53	197.17	4.53	197.17	4.53	197.17	4.53	197.17	4.53	197.17	4.53	197.17	4.53	197.17	4.53	197.17	4.53	197.17	4.53	197.17	4.53
196.00	3.80	196.00	3.80	196.00	3.80	196.00	3.80	196.00	3.80	196.00	3.80	196.00	3.80	196.00	3.80	196.00	3.80	196.00	3.80	196.00	3.80	196.00	3.80	196.00	3.80

647 2-20-11 blough Penman July 1st 1880

5-11-11 Prohd blough

6-26-11 checked OK blough Quince 27.03

West

East

196.25 196.0 196.10 197.0 197.1 198.00 198.25

196.0 196.0 195.92 196.82 197.32 198.0 198.0
195. 195. 197. 197.

1/4 195.4 194.75 195.76 196.66 197.06 196.75 197.4

Palm

195.5 194.5 195.60 196.50 196.90 196.5 197.5

St. C₂C

1/4 194.85 194.25 195.24 196.34 196.74 196.25 196.85

194. 194. 196. 196.
195.0 195.0 195.28 196.18 196.58 197.0 197.0

1/4 195.25 195.0 195.1 196.0 196.4 197.0 197.25

201.41

201.41

201.41

201.41

201.41

201.41

201.41

201.41

201.41

201.41

201.41

201.41

201.41

201.41

201.41

201.41

201.41

201.41

201.41

201.41

201.41

201.41

201.41

201.41

201.41

201.41

201.41

201.41

201.41

201.41

201.41

201.41

201.41

201.41

201.41

201.41

201.41

201.41

201.41

201.41

201.41

201.41

201.41

201.41

201.41

201.41

201.41

201.41

201.41

201.41

201.41

201.41

201.41

201.41

847 blough
2-20-11

201.41

196.0

6.2

6.2

6.2

6.2

6.2

6.2

6.2

6.2

6.2

6.2

6.2

6.2

6.2

6.2

6.2

6.2

6.2

6.2

6.2

6.2

6.2

6.2

6.2

6.2

6.2

6.2

6.2

6.2

6.2

6.2

6.2

6.2

6.2

6.2

6.2

6.2

6.2

6.2

6.2

6.2

6.2

6.2

6.2

6.2

6.2

6.2

6.2

6.2

6.2

6.2

6.2

6.2

6.2

6.2

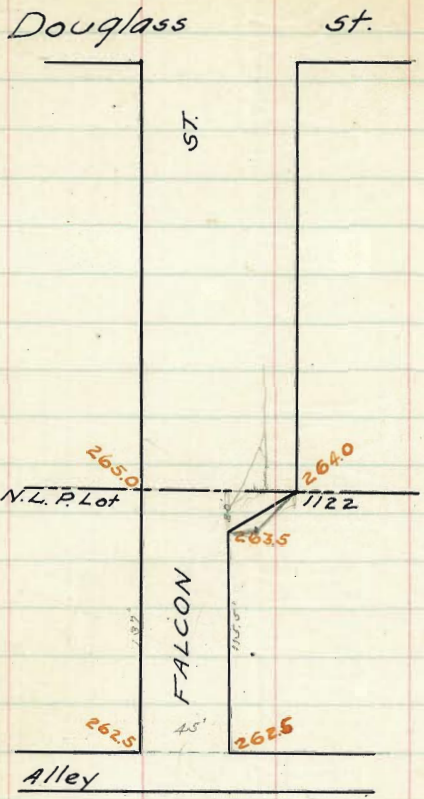
201.80

1975.0

197.0

198.0

checked OK blough
6.27 -11



Note:- 14' Walk on West side.
 10' Walk on East side

West

North Line Pueblo Lot 1122

East

137' on W
135' on E 265.25 265.0 264.4 264.5 263.85 264.0 264.25

115.5' on E 264.86 264.61 264.04 264.20 263.45 263.5 263.75

170' on E
170' on E
170' on E

100' N 264.57 264.32 263.78 263.97 263.27 263.36 263.61

75' N 264.13 263.87 263.36 263.60 262.98 263.15 263.40

50' N 263.66 263.41 262.94 263.23 262.69 262.93 263.18

25' N 263.21 262.96 262.52 262.87 262.39 262.72 262.97

00' 262.75 262.5 262.1 262.5 262.1 262.5 262.75

North Line Alley Blk 483 CC Seaman's

265.25 4.11	269.36 63.75	269.36 64.57	269.36 63.18	269.36 62.75	10-8-10 all plates
269.36 5.72	5.61	4.79	6.18	6.61	Dunkle-Haw-Emms
269.36 5.72	5.86	5.09	6.43	6.56	
269.36 6.47	269.36 69.20	269.36 63.97	269.36 63.73	269.36 62.50	
269.36 6.47	5.16	5.39	6.13	6.56	
69.36 67.86	269.36 63.61	269.36 63.66	269.36 62.75		
7.50 7.75	5.75	5.70	6.61	6.86	
	6.00	5.95			

65

270.96 62.75	270.96 63.18	270.96 64.57	270.96 63.75	270.96 62.75	11/14 11/10
8.21 5.76	7.78 8.03	6.37 6.64	7.21 7.46	7.99 8.24	check O.N. Dunkle Haw Emms
	270.96 63.23	270.96 63.77	270.96 64.20	270.96 63.21	
	7.75	6.99	6.76	7.70	
	270.96 63.26	270.96 63.61	270.96 64.56	270.96 63.00	
7.30 7.55	7.35	7.60	6.18 6.35		

Redwood

St.

207.0
204.4
202.1
199.6
197.6
188.0

ST.

210.0
207.4
205.3
201.6
198.2
188.0

Palm

St.

140.0
137.0
137.0
97.0

Stop Here

137.0
137.0
94.0

Quince

St.

187.0
187.0
140.0
137.0

Olive

CURLEW

St.

140.0

Palm

St.

Spruce

St.

Thorn

St.

220.0
211.4
209.5
208.3
207.8
207.0

50'

Excepted.

50'

223.0
214.4
212.5
211.3
210.8
210.0

235.0
220.0

238.0
223.0

Redwood

St.

Spruce

St.

207.0

CURLEW

210.0

220.0

CURLEW

223.0

	West	South Line Palm St.					East
300'	137.25	137.0	136.6	135.5	134.35	134.0	134.25
275'	133.92	133.67	133.27	132.17	131.02	130.67	130.92
250'	130.58	130.33	129.33	128.83	127.68	127.33	127.58
225'	127.25	127.0	126.6	125.5	124.35	124.00	124.25
200'	123.92	123.67	123.27	122.17	121.02	120.67	120.92
175'	120.58	120.33	119.33	118.83	117.68	117.33	117.58
150'	117.25	117.0	116.6	115.5	114.35	114.0	114.25
125'	113.92	113.67	113.27	112.17	111.02	110.67	110.92
100'	110.58	110.33	109.33	108.83	107.68	107.33	107.58
75'	107.25	107.0	106.6	105.5	104.35	104.0	104.25
50'	103.92	103.67	103.27	102.17	101.02	100.67	100.92
25'	100.58	100.33	99.33	98.83	97.68	97.33	97.58
00'	97.25	97.0	96.6	95.5	94.35	94.0	94.25

North Line Olive St.

West

East

140.25	140.0	139.4	138.5	137.35	137.0	137.25
--------	-------	-------	-------	--------	-------	--------

140.0	140.0	138.86	137.96	136.81	137.0	137.0
139.	139.				136.	136.

1/4	139.4	138.25	138.38	137.48	136.33	135.25	136.4
-----	-------	--------	--------	--------	--------	--------	-------

Palm

074	138.5	137.5	137.9	137.0	135.85	134.5	135.5
-----	-------	-------	-------	-------	--------	-------	-------

st.

1/4	137.35	136.75	137.42	136.52	135.37	133.75	134.35
-----	--------	--------	--------	--------	--------	--------	--------

136.	136				133.	133.
137.0	137.0	136.94	136.04	134.89	134.0	134.0

137.25	137.0	136.4	135.5	134.35	134.0	134.25
--------	-------	-------	-------	--------	-------	--------

	West	South Line Quince St.						East
300'	187.25	187.0	186.6	187.0	186.6	187.0	187.25	
275'	183.33	183.08	182.66	182.95	182.49	182.83	183.08	
250'	179.42	179.17	178.73	178.91	178.39	178.67	178.92	
225'	175.50	175.25	174.80	174.87	174.28	174.50	174.75	
200'	171.58	171.33	170.86	170.83	170.18	170.33	170.58	
175'	167.67	167.42	166.93	166.79	166.07	166.17	166.42	
150'	163.75	163.5	163.0	162.75	161.97	162.00	162.25	
125'	159.83	159.58	159.06	158.70	157.86	157.83	158.08	
100'	155.92	155.67	155.13	154.66	153.76	153.67	153.92	
75'	152.00	151.75	151.20	150.62	149.66	149.50	149.75	
50'	148.19	147.84	147.26	146.58	145.58	145.33	145.58	
25'	144.17	143.92	143.33	142.54	141.45	141.17	141.42	
00'	140.25	140.00	139.4	138.5	137.35	137.00	137.25	
	North Line Palm St							

West

East

188.25 188.0 187.6 188.0 187.6 188.0 188.25

188.0 188.0 187.92 187.82 187.92 188.0 188.0
187 187 187 187

1/4 187.4 186.75 187.26 187.66 187.26 186.75 187.4

Quince

c 187.5 186.50 187.10 187.50 187.10 186.5 187.5

St.

1/4 186.85 186.25 186.94 187.34 186.94 186.25 186.85

186 186 186 186
187.0 187.0 186.78 187.18 186.78 187.0 187.0

187.25 187.0 186.6 187.0 186.6 187.0 187.25

West South Line Redwood St. East

300' 207.25 207.0 207.35 208.5 209.4 210.00 210.25

275' 206.60 206.35 206.70 207.85 208.75 209.35 209.60

250' 205.95 205.70 206.05 207.20 208.10 208.70 208.95

225' 205.30 205.05 205.40 206.55 207.45 208.05 208.30

200' Break in line 204.65 204.4 204.75 205.9 206.8 207.4 207.65

175' 203.80 203.55 203.85 204.95 205.75 206.35 206.60

150' Break in line 202.95 202.7 202.95 204.0 204.70 205.3 205.55

125' 201.40 201.15 201.33 202.3 202.85 203.45 203.70

100' Break in line 199.85 199.6 199.70 200.6 201.0 201.6 201.85

80' Break in line 197.85 197.6 197.35 197.9 197.6 198.2 198.45

50' 194.25 194.0 193.69 194.18 193.85 194.38 194.73

25' 191.25 191.0 190.65 191.09 190.73 191.19 191.44

0' 188.25 188.0 187.6 188.0 187.6 188.0 188.25

- North Line Quince St.

West

East

207.25	207.0	207.35	208.5	209.4	210.0	210.25
--------	-------	--------	-------	-------	-------	--------

207.0	207.0	206.75	207.5	208.25	210.0	210.0
206.	206.				209.	209.

1/4	206.6	207.14	207.62	208.1	208.58	209.06	209.6
-----	-------	--------	--------	-------	--------	--------	-------

Redwood

c	207.0	207.54	208.02	208.5	208.98	209.46	210.0
---	-------	--------	--------	-------	--------	--------	-------

St.

1/4	206.6	207.14	207.62	208.1	208.58	209.06	209.6
-----	-------	--------	--------	-------	--------	--------	-------

206.	206				209.	209.
207.0	207.0	206.75	207.5	208.25	210.0	210.0

207.25	207.0	207.35	208.5	209.40	210.0	210.25
--------	-------	--------	-------	--------	-------	--------

West South Line Spruce St East

220.25 220.0 220.35 221.5 222.4 223.0 223.25

218.10 217.85 218.20 219.35 220.25 220.85 221.10

215.95 215.7 216.05 217.20 218.10 218.7 218.95

213.80 213.55 213.90 215.05 215.95 216.55 216.80

211.65 211.4 211.75 212.9 213.8 214.4 214.65

209.75 209.5 209.85 211.0 211.9 212.5 212.75

208.55 208.3 208.65 209.8 210.7 211.3 211.55

208.05 207.8 208.15 209.3 210.2 210.8 211.05

207.87 207.62 207.97 209.12 210.02 210.62 210.87

207.71 207.46 207.81 208.96 209.86 210.46 210.71

207.56 207.31 207.66 208.81 209.71 210.31 210.56

207.40 207.15 207.50 208.65 209.55 210.15 210.40

207.25 207.0 207.35 208.5 209.4 210.0 210.25

North Line Redwood St

224.16 N.I. 222.5 220.5 19.95 12.15 12.95 11.55 11.05
 217.72 TP 0.71 0.51 5.21 9.51 11.41 12.81 13.61
 217.5 40.20 6.7 0.3 4.0 2.2 4.0 4.0
 212.3 2.41 11.21 10.50 10.87 8.82
 17.6 1.31 3.76 3.45 205.50
 202.7 TP 2.0 7.2 7.2 3.7 16.05
 202.9 N.I. 20 0.8 -0.8 -10.58

223.41 ← Driven to 220.24
 223.93 H.I. Pipe S.E. Cor Spruce & Curlew, Davis Etc

211.5 223.88 228.88 223.88 223.88 228.88 228.88 228.88
 214.32 H.I. 28.00 28.20 11.30 11.50 18.70 19.90 14.60
 00.88 0.62 12.58 12.83 3.78 4.98 9.23
 223.88 223.88 22.86 214.32 214.32 214.32 214.32
 10.00 12.80 12.70 10.90 11.25 10.62 10.87
 9.48 11.38 11.18 3.52 3.27 3.70 3.43
 7.42 7.12 7.14
 214.32 214.32 214.32 214.32 March 11-1912
 4.01 3.76 10.00 4.07
 7.18 6.09 4.12
 Dorman
 Shant
 Devint

192.71 R.M. N.W. Cor Brant & Spruce

205.40 224.04 224.54 224.04 224.54 224.54
 -10.16 23.20 23.20 22.40 21.50 20.34
 23.24 1.29 1.54 2.14 3.04 4.18
 1.80
 224.54 H.I.

223.24 Pk. S.E. Cor Spruce & Curlew

223.26 223.26 223.26 223.26 223.26 223.26 223.26 223.26
 210.0 16.00 17.20 18.10 18.70 18.55 14.65 14.40 13.80
 17.6 6.21 6.06 5.16 4.56 4.31 6.2 2.86 4.44
 212.75 223.26 223.26 214.01 214.01 214.01 214.01 214.01 214.01
 12.90 12.15 12.75 12.80 11.90 11.60 10.45
 11.40.1 10.86 11.11 1.26 1.51 2.11 3.01 3.76
 217.75 214.16 214.16 214.16 214.16 214.16 214.16 214.16 214.16
 1.41 11.53 10.70 09.80 09.05 09.05 09.80 10.20
 214.16 H.I. 2.61 2.86 3.46 4.36 5.11 5.61 4.86 3.96
 42.75 214.16 214.13 214.13 214.13 214.13 214.13 214.13 214.13
 11.3 10.80 10.87 10.42 10.02 09.12 08.37 08.06 08.67
 214.13 3.36 3.09 3.28 3.51 4.11 5.01 5.76 6.07 5.82
 214.13 214.13 214.13 214.13 214.13
 09.71 10.31 10.66 10.20 10.00
 4.42 3.82 3.87 3.88 4.13

March 13-12 { Dorman
 Shant
 Devint

Checked R.H. 3-20-12 { Dorman
 Shant
 Devint

West South Line Spruce St. East

220.25 220.0 220.35 221.5 222.4 223.0 223.25

218.10 217.85 218.20 219.35 220.25 220.85 221.10

215.95 215.7 216.05 217.20 218.10 218.7 218.95

213.80 213.55 213.90 215.05 215.95 216.55 216.80

211.65 211.4 211.75 212.9 213.8 214.4 214.65

209.75 209.5 209.85 211.0 211.9 212.5 212.75

208.55 208.3 208.65 209.8 210.7 211.3 211.55

208.05 207.8 208.15 209.3 210.2 210.8 211.05

207.87 207.62 207.97 209.12 210.02 210.62 210.87

207.71 207.46 207.81 208.96 209.86 210.46 210.71

207.56 207.31 207.66 208.81 209.71 210.31 210.56

207.40 207.15 207.50 208.65 209.55 210.15 210.40

207.25 207.0 207.35 208.5 209.4 210.0 210.25

North Line Redwood St.

224.16 H.I. 2225 2205 19.95 14.15 12.75 11.55 11.05
 211.74 TP 0.71 0.81 5.21 9.57 11.41 12.61 13.11
 214.3 211.21 10.24 6.7 0.3 11.0 12.3 13.1
 202.9 178 1.22 3.76 2.45 205.50
 202.9 178 7.13 0.8 3.7 16.05
 202.9 178 7.13 0.8 3.7 16.05

223.47 H.I. Driven to 223.4
 223.47 H.I. Drive S.E. Cor Spruce & Curlew, Davis Etc

217.53 223.88 223.88 223.88 223.88 223.88 223.88 223.88
 214.32 H.I. 00.88 0.63 12.58 12.33 18.70 19.50 14.60 14.23
 223.88 223.88 22.46 214.82 214.82 214.82 214.82 214.82
 14.10 12.10 12.70 10.90 11.20 11.20 10.87
 9.48 11.39 11.13 3.52 3.27 3.70 3.25
 7.12 7.14 7.14
 214.82 214.82 214.82 214.82 March-1912
 10.31 10.31 10.31 10.31
 7.07 3.76 4.32 4.07
 7.16 6.19 6.19
 Donnan
 Shaw
 Devine

224.71 H.I. N.W. Cor Brant & Spruce
 224.71 224.71 224.71 224.71 224.71 224.71 224.71 224.71
 23.20 23.20 23.20 23.20 23.20 23.20 23.20 23.20
 224.71 224.71 224.71 224.71 224.71 224.71 224.71 224.71
 1.29 1.54 2.14 3.04 4.16

223.24 Pin S.E. Cor Spruce & Curlew
 223.24 223.24 223.24 223.24 223.24 223.24 223.24 223.24
 210.2 16.05 17.20 18.10 18.70 18.95 14.60 14.40 13.90
 10.51 11.76 8.87 6.82 5.16 4.56 4.31 6.61 8.36 9.46
 214.13 223.24 223.24 214.01 214.01 214.01 214.01 214.01 214.01
 12.90 12.15 12.70 12.80 11.90 11.80 10.28
 10.86 11.11 1.26 1.51 2.11 3.07 3.76
 214.16 214.16 214.16 214.16 214.16 214.16 214.16 214.16
 11.53 11.80 10.70 89.80 89.85 84.53 89.80 10.20
 214.16 H.I. 26.1 29.6 34.6 4.36 5.72 3.6 4.96 3.96
 212.75 214.16 214.13 214.13 214.13 214.13 214.13 214.13
 10.90 11.05 10.87 10.62 10.02 89.12 88.37 84.06 84.81
 214.13 3.36 3.08 3.26 3.51 4.11 5.01 5.76 6.07 5.32
 214.13 214.13 214.13 214.13 214.13
 89.71 10.31 10.56 10.25 10.00
 4.42 3.82 3.87 3.88 4.13

Checked R.V. 3-20-12 { Donnan
 Shaw
 Devine }
 March 13-12 { Donnan
 Shaw
 Devine }

BM 223.14 W Pipe SE Con Curlew & Spruce.

225.13

225.13	225.13	225.13	225.13	225.13	225.13	225.13	225.13	225.13	225.13
2260	2200	2240	1960	2000	1960	2100	2100	2100	2100
2.53	2.18	2.53	3.53	3.13	3.23	4.11	3.83	3.13	3.13

74

West

East

220.5 220.0 220.35 221.5 222.4 223.0 223.25

curb 220.0 220.0 219.5 220.5 221.5 222.0 223.0
219. 219. 222. 222.

1/4 219.6 220.14 220.62 221.10 221.58 222.04 222.60

Spruce

0 220.0 220.4 220.8 221.5 221.9 222.46 223.0

st.

1/4 219.6 220.14 220.62 221.10 221.58 222.04 222.60

219. 219. 222. 222.
220.0 220.0 219.5 220.5 221.5 222.0 223.0

220.5 220.0 220.35 221.5 222.4 223.0 223.25

West	South Line Thorn St						East
100'	235.25	235.00	235.35	236.5	237.4	238.0	238.25
90'	234.0	233.75	234.10	235.5	236.15	236.75	237.0
80'	232.75	232.50	232.85	234.0	234.90	235.50	235.75
70'	231.50	231.25	231.60	232.5	233.65	234.25	234.50
60'	230.25	230.0	230.35	231.50	232.40	233.00	233.25
50'	229.0	228.75	229.10	230.5	231.15	231.75	232.0
40'	227.75	227.5	227.85	229.0	229.90	230.50	230.75
30'	226.50	226.25	226.60	227.5	228.65	229.25	229.50
20'	225.25	225.0	225.35	226.5	227.40	228.0	228.25
10'	224.0	223.75	224.10	225.5	226.15	226.75	227.00
0'	222.75	222.5	222.85	224.0	224.90	225.5	225.75
10'	221.50	221.25	221.60	222.5	223.65	224.25	224.50
20'	220.25	220.0	220.35	221.5	222.4	223.0	223.25

20.25	22.75	23.25	25.25	27.25	29.25	31.25	33.25
3.91	4.1	4.30	4.50	4.7	4.9	5.1	5.3
7.20	7.1	7.0	6.8	6.6	6.4	6.2	6.0
11.75	11.7	11.6	11.4	11.2	11.0	10.8	10.6
16.25	16.2	16.1	15.9	15.7	15.5	15.3	15.1
20.75	20.7	20.6	20.4	20.2	20.0	19.8	19.6
25.25	25.2	25.1	24.9	24.7	24.5	24.3	24.1
29.75	29.7	29.6	29.4	29.2	29.0	28.8	28.6
34.25	34.2	34.1	33.9	33.7	33.5	33.3	33.1
38.75	38.7	38.6	38.4	38.2	38.0	37.8	37.6
43.25	43.2	43.1	42.9	42.7	42.5	42.3	42.1
47.75	47.7	47.6	47.4	47.2	47.0	46.8	46.6
52.25	52.2	52.1	51.9	51.7	51.5	51.3	51.1
56.75	56.7	56.6	56.4	56.2	56.0	55.8	55.6
61.25	61.2	61.1	60.9	60.7	60.5	60.3	60.1
65.75	65.7	65.6	65.4	65.2	65.0	64.8	64.6
70.25	70.2	70.1	69.9	69.7	69.5	69.3	69.1
74.75	74.7	74.6	74.4	74.2	74.0	73.8	73.6
79.25	79.2	79.1	78.9	78.7	78.5	78.3	78.1
83.75	83.7	83.6	83.4	83.2	83.0	82.8	82.6
88.25	88.2	88.1	87.9	87.7	87.5	87.3	87.1
92.75	92.7	92.6	92.4	92.2	92.0	91.8	91.6
97.25	97.2	97.1	96.9	96.7	96.5	96.3	96.1
101.75	101.7	101.6	101.4	101.2	101.0	100.8	100.6
106.25	106.2	106.1	105.9	105.7	105.5	105.3	105.1
110.75	110.7	110.6	110.4	110.2	110.0	109.8	109.6
115.25	115.2	115.1	114.9	114.7	114.5	114.3	114.1
119.75	119.7	119.6	119.4	119.2	119.0	118.8	118.6
124.25	124.2	124.1	123.9	123.7	123.5	123.3	123.1
128.75	128.7	128.6	128.4	128.2	128.0	127.8	127.6
133.25	133.2	133.1	132.9	132.7	132.5	132.3	132.1
137.75	137.7	137.6	137.4	137.2	137.0	136.8	136.6
142.25	142.2	142.1	141.9	141.7	141.5	141.3	141.1
146.75	146.7	146.6	146.4	146.2	146.0	145.8	145.6
151.25	151.2	151.1	150.9	150.7	150.5	150.3	150.1
155.75	155.7	155.6	155.4	155.2	155.0	154.8	154.6
160.25	160.2	160.1	159.9	159.7	159.5	159.3	159.1
164.75	164.7	164.6	164.4	164.2	164.0	163.8	163.6
169.25	169.2	169.1	168.9	168.7	168.5	168.3	168.1
173.75	173.7	173.6	173.4	173.2	173.0	172.8	172.6
178.25	178.2	178.1	177.9	177.7	177.5	177.3	177.1
182.75	182.7	182.6	182.4	182.2	182.0	181.8	181.6
187.25	187.2	187.1	186.9	186.7	186.5	186.3	186.1
191.75	191.7	191.6	191.4	191.2	191.0	190.8	190.6
196.25	196.2	196.1	195.9	195.7	195.5	195.3	195.1
200.75	200.7	200.6	200.4	200.2	200.0	199.8	199.6
205.25	205.2	205.1	204.9	204.7	204.5	204.3	204.1
209.75	209.7	209.6	209.4	209.2	209.0	208.8	208.6
214.25	214.2	214.1	213.9	213.7	213.5	213.3	213.1
218.75	218.7	218.6	218.4	218.2	218.0	217.8	217.6
223.25	223.2	223.1	222.9	222.7	222.5	222.3	222.1
227.75	227.7	227.6	227.4	227.2	227.0	226.8	226.6
232.25	232.2	232.1	231.9	231.7	231.5	231.3	231.1
236.75	236.7	236.6	236.4	236.2	236.0	235.8	235.6
241.25	241.2	241.1	240.9	240.7	240.5	240.3	240.1
245.75	245.7	245.6	245.4	245.2	245.0	244.8	244.6
250.25	250.2	250.1	249.9	249.7	249.5	249.3	249.1
254.75	254.7	254.6	254.4	254.2	254.0	253.8	253.6
259.25	259.2	259.1	258.9	258.7	258.5	258.3	258.1
263.75	263.7	263.6	263.4	263.2	263.0	262.8	262.6
268.25	268.2	268.1	267.9	267.7	267.5	267.3	267.1
272.75	272.7	272.6	272.4	272.2	272.0	271.8	271.6
277.25	277.2	277.1	276.9	276.7	276.5	276.3	276.1
281.75	281.7	281.6	281.4	281.2	281.0	280.8	280.6
286.25	286.2	286.1	285.9	285.7	285.5	285.3	285.1
290.75	290.7	290.6	290.4	290.2	290.0	289.8	289.6
295.25	295.2	295.1	294.9	294.7	294.5	294.3	294.1
299.75	299.7	299.6	299.4	299.2	299.0	298.8	298.6
304.25	304.2	304.1	303.9	303.7	303.5	303.3	303.1
308.75	308.7	308.6	308.4	308.2	308.0	307.8	307.6
313.25	313.2	313.1	312.9	312.7	312.5	312.3	312.1
317.75	317.7	317.6	317.4	317.2	317.0	316.8	316.6
322.25	322.2	322.1	321.9	321.7	321.5	321.3	321.1
326.75	326.7	326.6	326.4	326.2	326.0	325.8	325.6
331.25	331.2	331.1	330.9	330.7	330.5	330.3	330.1
335.75	335.7	335.6	335.4	335.2	335.0	334.8	334.6
340.25	340.2	340.1	339.9	339.7	339.5	339.3	339.1
344.75	344.7	344.6	344.4	344.2	344.0	343.8	343.6
349.25	349.2	349.1	348.9	348.7	348.5	348.3	348.1
353.75	353.7	353.6	353.4	353.2	353.0	352.8	352.6
358.25	358.2	358.1	357.9	357.7	357.5	357.3	357.1
362.75	362.7	362.6	362.4	362.2	362.0	361.8	361.6
367.25	367.2	367.1	366.9	366.7	366.5	366.3	366.1
371.75	371.7	371.6	371.4	371.2	371.0	370.8	370.6
376.25	376.2	376.1	375.9	375.7	375.5	375.3	375.1
380.75	380.7	380.6	380.4	380.2	380.0	379.8	379.6
385.25	385.2	385.1	384.9	384.7	384.5	384.3	384.1
389.75	389.7	389.6	389.4	389.2	389.0	388.8	388.6
394.25	394.2	394.1	393.9	393.7	393.5	393.3	393.1
398.75	398.7	398.6	398.4	398.2	398.0	397.8	397.6
403.25	403.2	403.1	402.9	402.7	402.5	402.3	402.1
407.75	407.7	407.6	407.4	407.2	407.0	406.8	406.6
412.25	412.2	412.1	411.9	411.7	411.5	411.3	411.1
416.75	416.7	416.6	416.4	416.2	416.0	415.8	415.6
421.25	421.2	421.1	420.9	420.7	420.5	420.3	420.1
425.75	425.7	425.6	425.4	425.2	425.0	424.8	424.6
430.25	430.2	430.1	429.9	429.7	429.5	429.3	429.1
434.75	434.7	434.6	434.4	434.2	434.0	433.8	433.6
439.25	439.2	439.1	438.9	438.7	438.5	438.3	438.1
443.75	443.7	443.6	443.4	443.2	443.0	442.8	442.6
448.25	448.2	448.1	447.9	447.7	447.5	447.3	447.1
452.75	452.7	452.6	452.4	452.2	452.0	451.8	451.6
457.25	457.2	457.1	456.9	456.7	456.5	456.3	456.1
461.75	461.7	461.6	461.4	461.2	461.0	460.8	460.6
466.25	466.2	466.1	465.9	465.7	465.5	465.3	465.1
470.75	470.7	470.6	470.4	470.2	470.0	469.8	469.6
475.25	475.2	475.1	474.9	474.7	474.5	474.3	474.1
479.75	479.7	479.6	479.4	479.2	479.0	478.8	478.6
484.25	484.2	484.1	483.9	483.7	483.5	483.3	483.1
488.75	488.7	488.6	488.4	488.2	488.0	487.8	487.6
493.25	493.2	493.1	492.9	492.7	492.5	492.3	492.1
497.75	497.7	497.6	497.4	497.2	497.0	496.8	496.6
502.25	502.2	502.1	501.9	501.7	501.5	501.3	501.1
506.75	506.7	506.6	506.4	506.2	506.0	505.8	505.6
511.25	511.2	511.1	510.9	510.7	510.5	510.3	510.1
515.75	515.7	515.6	515.4	515.2	515.0	514.8	514.6
520.25							

West

East

232.25	232.0	232.35	233.5	234.4	235.00	235.25
--------	-------	--------	-------	-------	--------	--------

Curb	232.0	232.0	232.89	234.04	234.94	235.0	235.00
	231.	231.				234.	234.

1/4	232.35	232.25	233.37	234.52	235.42	235.25	234.35
-----	--------	--------	--------	--------	--------	--------	--------

Thorn

C	233.5	233.5	233.85	235.0	235.90	236.5	236.5
---	-------	-------	--------	-------	--------	-------	-------

St.

1/4	234.4	233.75	234.33	235.48	236.38	236.75	237.4
-----	-------	--------	--------	--------	--------	--------	-------

	234	234				237.	237.
	235.0	235.0	234.81	235.96	236.86	238.0	238.0

	235.25	235.0	235.35	236.5	237.4	238.00	238.25
--	--------	-------	--------	-------	-------	--------	--------

250.90 BM 1st Walnut

2.20

250.10 M

7.50

242.50 TP

2.80

249.40 M

1.20

246.40 TP

1.20

247.60 M

1.20

230.70

1.20

236.50 M

1.20

232.30 M

8.30

226.00 TP

3.30

229.40 M

3.00

225.80 TP on Anchor pile E. end Spruce St Bridge Elev. 26

5.32

243.08 BM Nail in light pole SW Grant & Union

1.20

237.24 BM N. on SW Curlew & Thorne

1.20

230.40 S.E. Spruce & Grant

4.5 4.5
 California St.

5.5 5.5
 St.

6.43 6.43
 6.63 6.63
 6.65 6.68
 6.81 6.81
 7.0 7.0
 Arctic St
 (Kettner)

8.0 8.0

Grades are for curb line

7.460 N. S. E. Arctic St E.
 7.72
 12.18M 12.18 12.18 12.18
 6.81 6.68 6.63 6.43
 5.37 5.50 5.55 5.75
 5.77 5.90 5.95 6.15
 ✓ ✓ ✓

