

GRADES

50

CALHOUN ST.	Getti to Lewis	2
IBIS ST.	Wash'n to 150' N. B. y	5
ALTAMIRA PLACE		12
STEPHENS ST.		18
2 ND ST.		22
LEWIS ST.		25
HOWARD ST.		28
DOUGLASS ST.		32
CALHOUN ST.	Lewis to Hunter	35
BROADWAY ST.		42
HUNTER ST.		45
STOCKTON ST.		51
FIRST ST.	ROBINSON SOUTH.	55
FIRST ST.	STOCKTON TO R.L.	57 ¹ / ₂
Florida St.		62
Florence St		72
1 ST ST	Brooks - 200' No	76
Injells	Washington to Douglas	78

650

380

FIELD

276.363

TRAVERSE TABLE FOR TRANSIT BOOK.

From 1° to 90° for a distance of 100.

Degrees.	DEGREES.		¼ DEGREE.		½ DEGREE.		¾ DEGREE.		Degrees.
	Lat.	Dep.	Lat.	Dep.	Lat.	Dep.	Lat.	Dep.	
0			100.00	0.44	100.00	0.87	99.99	1.31	89
1	99.98	1.75	99.98	2.18	99.97	2.62	99.95	3.05	88
2	99.94	3.49	99.92	3.93	99.91	4.36	99.88	4.80	87
3	99.86	5.23	99.84	5.67	99.81	6.10	99.79	6.54	86
4	99.76	6.98	99.73	7.41	99.69	7.85	99.66	8.28	85
5	99.62	8.72	99.58	9.15	99.54	9.58	99.50	10.02	84
6	99.45	10.45	99.41	10.89	99.36	11.32	99.31	11.75	83
7	99.25	12.19	99.20	12.62	99.14	13.05	99.09	13.49	82
8	99.03	13.92	98.97	14.35	98.90	14.78	98.84	15.21	81
9	98.77	15.64	98.70	16.07	98.63	16.50	98.56	16.93	80
10	98.48	17.36	98.40	17.79	98.33	18.22	98.25	18.65	79
11	98.16	19.08	98.08	19.51	97.99	19.94	97.90	20.36	78
12	97.81	20.79	97.72	21.22	97.63	21.64	97.53	22.07	77
13	97.44	22.50	97.34	22.92	97.24	23.34	97.13	23.77	76
14	97.03	24.19	96.92	24.62	96.81	25.04	96.70	25.46	75
15	96.59	25.88	96.48	26.30	96.36	26.72	96.25	27.14	74
16	96.13	27.56	96.00	27.98	95.88	28.40	95.76	28.82	73
17	95.63	29.24	95.50	29.65	95.37	30.07	95.24	30.49	72
18	95.11	30.90	94.97	31.32	94.83	31.73	94.69	32.14	71
19	94.55	32.56	94.41	32.97	94.26	33.38	94.12	33.79	70
20	93.97	34.20	93.82	34.61	93.67	35.02	93.51	35.43	69
21	93.36	35.84	93.20	36.24	93.04	36.65	92.88	37.06	68
22	92.72	37.46	92.55	37.86	92.39	38.27	92.22	38.67	67
23	92.05	39.07	91.88	39.47	91.71	39.87	91.53	40.27	66
24	91.35	40.67	91.18	41.07	91.00	41.47	90.81	41.87	65
25	90.63	42.26	90.45	42.66	90.26	43.05	90.07	43.44	64
26	89.88	43.84	89.69	44.23	89.49	44.62	89.30	45.01	63
27	89.10	45.40	88.90	45.79	88.70	46.17	88.50	46.56	62
28	88.29	46.95	88.09	47.33	87.88	47.72	87.67	48.10	61
29	87.46	48.48	87.25	48.86	87.04	49.24	86.82	49.62	60
30	86.60	50.00	86.38	50.38	86.16	50.75	85.94	51.13	59
31	85.72	51.50	85.49	51.88	85.26	52.25	85.04	52.62	58
32	84.80	52.99	84.57	53.36	84.34	53.73	84.10	54.10	57
33	83.87	54.46	83.63	54.83	83.39	55.19	83.15	55.56	56
34	82.90	55.92	82.66	56.28	82.41	56.64	82.16	57.00	55
35	81.92	57.36	81.66	57.71	81.41	58.07	81.16	58.42	54
36	80.90	58.78	80.64	59.13	80.39	59.48	80.13	59.83	53
37	79.86	60.18	79.60	60.53	79.34	60.88	79.07	61.22	52
38	78.80	61.57	78.53	61.91	78.26	62.25	77.99	62.59	51
39	77.71	62.93	77.44	63.27	77.16	63.61	76.88	63.94	50
40	76.60	64.28	76.32	64.61	76.04	64.94	75.76	65.28	49
41	75.47	65.61	75.18	65.93	74.90	66.26	74.61	66.59	48
42	74.31	66.91	74.02	67.24	73.73	67.56	73.43	67.88	47
43	73.14	68.20	72.84	68.52	72.54	68.84	72.24	69.15	46
44	71.93	69.47	71.63	69.78	71.33	70.09	71.02	70.40	45
45	70.71	70.71							

MICROFILMED

APR 5 1965

ST

Lewis

st.

273.6

273.6

275'

(Palmetto way)

267.0

266.0

Getti

st

CALHOUN

45° 00' 22' 24"
22' 24" ply
B stake
B 50' ply

50' 24' 24" 24" 24"
45° 00' 24' 24" 24"
B 24' B 24' B 24'

West South Line Lewis St East

275' 273.85 273.6 273.2 273.6 273.2 273.6 273.85

250' 273.25 273.00 272.58 272.95 272.53 272.91 273.16

225' 272.65 272.40 271.96 272.31 271.86 272.22 272.47

200' 272.05 271.80 271.35 271.66 271.18 271.53 271.78

175' 271.45 271.20 270.73 271.02 270.53 270.84 271.09

150' 270.85 270.60 270.11 270.37 269.86 270.15 270.40

125' 270.25 270.00 269.44 269.73 269.19 269.45 269.70

100' 269.65 269.40 268.87 269.08 268.52 268.76 269.01

75' 269.05 268.80 268.25 268.44 267.85 268.07 268.32

50' 268.45 268.20 267.64 267.9 267.19 267.38 267.63

25' 267.85 267.60 267.02 267.16 266.52 266.69 266.94

00' 267.25 267.0 266.4 266.5 265.85 266.0 266.25

North Line Gotti St.

273.71 *Blum + Lewis SW RR St*

Mar, 28/10

Childs
Barber
Fayler

276.36 B.M. *SE. cor. Stephens + Lewis Cut + Fall status*

276.36	273.25	272.05	270.85	269.65	268.45	267.21
2.02						
278.38	273.25	272.05	270.85	269.65	268.45	267.21
4.53	5.73	6.83	7.53	8.73	9.93	11.13
4.53	3.7	4.5	6.4	8.3	9.4	10.6
0.0	71.4	71.8	71.1	70.4	70.5	70.5
266.25	267.63	269.01	270.40	271.78	273.16	273.85
12.13	10.75	9.87	7.98	6.60	5.22	4.53
14.9	12.4	10.5	8.8	7.5	5.5	4.64
-2.8	-1.7	-1.1	-0.8	-0.9	-0.3	-0.1

273.71 B.M. *SE. cor. Lewis*

2.07	275.78	75.78	75.78	75.78	75.78	75.78	75.78	75.78
275.78	72.47	71.45	69.70	69.05	66.77	67.25	67.25	67.25
75.78	3.31	4.33	6.08	6.73	8.34	8.73	8.73	8.73
1.93	3.56	4.58	6.33	6.98	9.09	9.58	9.58	9.58
2.18	75.78	75.78	75.78	75.78	75.78	75.78	75.78	75.78
2.58	71.86	70.73	69.19	68.35	66.52	66.90	66.90	66.90
	3.92	5.05	6.59	7.53	9.26	9.78	9.78	9.78
	75.78	75.78	75.78	75.78	75.78	75.78	75.78	75.78
	72.31	71.02	69.53	68.44	67.16	66.50	66.50	66.50
	3.47	4.76	6.05	6.94	8.62	9.18	9.18	9.18
	75.78	75.78	75.78	75.78	75.78	75.78	75.78	75.78
	71.96	70.53	69.47	68.33	67.02	66.25	66.25	66.25
	3.82	5.25	6.29	7.83	8.76	9.93	9.93	9.93
	75.78	75.78	75.78	75.78	75.78	75.78	75.78	75.78
	72.65	71.09	70.25	68.32	67.85	66.25	66.25	66.25
	3.13	4.69	5.53	7.46	7.93	9.53	9.53	9.53
	3.35	4.99	5.73	7.71	8.78	9.78	9.78	9.78

4-5-10

all flats

Crumble

Evans

Thomas

273.71 B.M. *SW. cor. Cathoun & Lewis, RR St*

277.72	277.72	277.72	277.72	277.72	277.72	277.72
278.95	273.60	273.20	272.65	272.40	272.60	272.80
3.97	4.12	4.52	4.12	4.52	4.12	4.97
271.96	271.96	271.96	271.96	271.96	271.96	271.96
267.25	267.00	266.40	266.50	265.95	266.00	266.25
4.61	4.86	5.46	5.36	6.01	5.86	5.61

April 5-1910

Glough

Donnan

Rogers

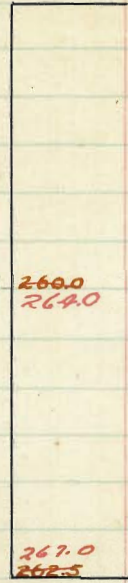
Checking

O.K.

Set breaks & raked.

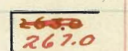
Stockton

st.



Broadway

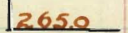
st.



IB/S

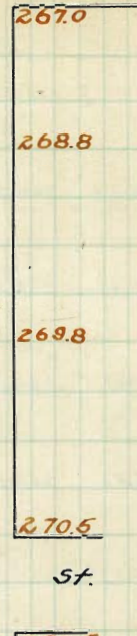
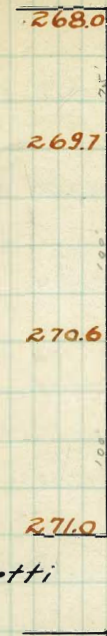
Lewis

st.



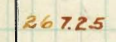
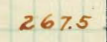
Lewis

st



Getti

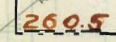
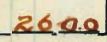
st.



IB/S

Washington

st.



West 150' N. Broadway East
150' N 264.25 264.00 263.60 264.00 263.60 264.00 264.25
Broadway
Creek

264.91 264.66 264.23 264.58 263.60 264.50 264.75

265.58 265.33 264.86 265.16 264.14 265.00 265.25

266.24 265.99 265.49 265.74 264.68 265.50 265.75

266.71 266.66 266.13 266.33 265.22 266.00 266.25

267.58 267.33 266.76 266.91 265.76 266.50 266.75

268.25 268.00 267.40 267.50 266.85 267.00 267.25

268.00 268.00 266.75 266.50 266.25 267.00 267.00
No. E. Broadway St
267.00 266.00

267.60 266.35 267.22 267.10 266.98 266.85 266.60

Broadway

268.00 267.75 267.82 267.50 267.32 267.25 267.00

Street

267.60 266.35 267.22 267.10 266.98 266.85 266.60

268.00 268.00 266.75 266.50 266.25 267.00 267.00
267.00

268.25 268.00 267.40 267.50 266.85 267.00 267.25

So. Broadway St

27393 #0	27392	2739	27392	27393	27393	27393	2739
5.0	5.0	6.0	5.0	6.0	6.0	7.0	9.0
268.7	268.7	267.5	268.4	267.5	266.3	264.1	264.1
267.2	264.7	266.7	266.4	265.4	265.2	264.2	264.2
C.1.5	C.4	C.6	C.2.0	C.2.0	C.7	C.2.0	C.2.0

677 4-4-14 Blough Felt + Shaw

TP 267.99 Sec Page 7

270.50	270.50	270.50	270.50	270.50	270.50	270.50
270.50	270.50	270.50	270.50	270.50	270.50	270.50
270.50	270.50	270.50	270.50	270.50	270.50	270.50
270.50	270.50	270.50	270.50	270.50	270.50	270.50

27200 ft

688	670	675	668.5	670	666	661.2	663.3	662.3	657.6	660
40	400	450	51.5	50	53.4	59.7	56.7	62.4	69.0	
65.33	64.56	65.16	64.65	50	640	606	600	553	413	
6167	714	684	732	70	80	84	813			

all stakes 7/12 Hotel Franklin

Checked, O.K. May 17-12
Dorman
Shant
Devine

	West	South Line Broadway St.				East	
200'	268.25	268.0	267.40	267.50	266.85	267.0	267.25
175'	268.08	267.83	267.23	267.33	266.68	266.83	267.08
150' ✓	267.91	267.66	267.06	267.16	266.51	266.66	266.91 ✓
125'	267.74	267.49	267.89	267.99	266.34	266.49	266.74
100' ✓	267.58	267.33	267.73	267.83	266.18	266.33	266.58 ✓
75'	267.41	267.16	266.56	267.66	266.01	266.16	266.41
50' ✓	267.24	266.99	266.39	266.49	265.84	265.99	266.24 ✓
25'	267.08	266.83	266.23	266.33	265.68	265.83	266.08
0' ✓	266.91	266.66	266.06	266.16	265.51	265.66	265.91 ✓
25'	266.74	266.49	265.89	265.99	265.34	265.49	265.74
50' ✓	266.58	266.33	265.73	265.83	265.18	265.33	265.58 ✓
75'	266.41	266.16	265.56	265.66	265.01	265.16	265.41
100'	266.25	266.00	265.40	265.50	264.85	265.00	265.25

North Line Lewis St.

267.00 3.15 270.15 3.41 266.60 7.33 273.93	265.55 2.90 268.45 3.17 271.62 3.43 275.05	266.55 3.19 269.74 3.45 273.19 3.71 276.90	270.11 4.1 274.21 4.37 278.58 4.63 283.21	270.15 4.2 274.35 4.46 278.81 4.72 283.53	270.15 4.2 274.35 4.46 278.81 4.72 283.53	270.15 4.2 274.35 4.46 278.81 4.72 283.53	270.15 4.2 274.35 4.46 278.81 4.72 283.53	270.15 4.2 274.35 4.46 278.81 4.72 283.53	270.15 4.2 274.35 4.46 278.81 4.72 283.53
--	--	--	---	---	---	---	---	---	---

647 4-4-12

PP 267.04 See Page 9

270.68 247.88 2.80 248.68 2.90 251.58 3.00 254.58 3.10 257.68 3.20 260.68 3.30 263.68 3.40 266.68 3.50 269.68 3.60 272.68 3.70 275.68 3.80 278.68 3.90 281.68 4.00 284.68 4.10 287.68 4.20 290.68 4.30 293.68 4.40 296.68 4.50 299.68 4.60 302.68 4.70 305.68 4.80 308.68 4.90 311.68 5.00	270.68 247.88 2.80 248.68 2.90 251.58 3.00 254.58 3.10 257.68 3.20 260.68 3.30 263.68 3.40 266.68 3.50 269.68 3.60 272.68 3.70 275.68 3.80 278.68 3.90 281.68 4.00 284.68 4.10 287.68 4.20 290.68 4.30 293.68 4.40 296.68 4.50 299.68 4.60 302.68 4.70 305.68 4.80 308.68 4.90 311.68 5.00	270.68 247.88 2.80 248.68 2.90 251.58 3.00 254.58 3.10 257.68 3.20 260.68 3.30 263.68 3.40 266.68 3.50 269.68 3.60 272.68 3.70 275.68 3.80 278.68 3.90 281.68 4.00 284.68 4.10 287.68 4.20 290.68 4.30 293.68 4.40 296.68 4.50 299.68 4.60 302.68 4.70 305.68 4.80 308.68 4.90 311.68 5.00	270.68 247.88 2.80 248.68 2.90 251.58 3.00 254.58 3.10 257.68 3.20 260.68 3.30 263.68 3.40 266.68 3.50 269.68 3.60 272.68 3.70 275.68 3.80 278.68 3.90 281.68 4.00 284.68 4.10 287.68 4.20 290.68 4.30 293.68 4.40 296.68 4.50 299.68 4.60 302.68 4.70 305.68 4.80 308.68 4.90 311.68 5.00	270.68 247.88 2.80 248.68 2.90 251.58 3.00 254.58 3.10 257.68 3.20 260.68 3.30 263.68 3.40 266.68 3.50 269.68 3.60 272.68 3.70 275.68 3.80 278.68 3.90 281.68 4.00 284.68 4.10 287.68 4.20 290.68 4.30 293.68 4.40 296.68 4.50 299.68 4.60 302.68 4.70 305.68 4.80 308.68 4.90 311.68 5.00	270.68 247.88 2.80 248.68 2.90 251.58 3.00 254.58 3.10 257.68 3.20 260.68 3.30 263.68 3.40 266.68 3.50 269.68 3.60 272.68 3.70 275.68 3.80 278.68 3.90 281.68 4.00 284.68 4.10 287.68 4.20 290.68 4.30 293.68 4.40 296.68 4.50 299.68 4.60 302.68 4.70 305.68 4.80 308.68 4.90 311.68 5.00	270.68 247.88 2.80 248.68 2.90 251.58 3.00 254.58 3.10 257.68 3.20 260.68 3.30 263.68 3.40 266.68 3.50 269.68 3.60 272.68 3.70 275.68 3.80 278.68 3.90 281.68 4.00 284.68 4.10 287.68 4.20 290.68 4.30 293.68 4.40 296.68 4.50 299.68 4.60 302.68 4.70 305.68 4.80 308.68 4.90 311.68 5.00
--	--	--	--	--	--	--

Checked O.H. May 17-12

Dorman
Shaver
Devine

all scales 9/11/12

20.66
5.93
17.92

7

	West	South Line Lewis St.					East
275'	268.25	268.0	267.4	267.5	266.85	267.0	267.25
250'	268.82	268.57	267.97	268.08	267.44	267.60	267.85
225'	269.38	269.13	268.53	268.65	268.03	268.20	268.45
200' Brook	269.95	269.7	269.10	269.25	268.62	268.8	269.05
175'	270.17	269.92	269.32	269.49	268.87	269.05	269.30
150'	270.40	270.15	269.55	269.72	269.12	269.30	269.55
125'	270.62	270.37	269.77	269.96	269.36	269.55	269.80
100' Brook	270.85	270.6	270.0	270.20	269.60	269.8	270.05
75'	270.95	270.70	270.10	270.33	269.76	269.97	269.22
50'	271.05	270.8	270.20	270.47	269.92	270.15	270.40
25'	271.15	270.90	270.30	270.61	270.08	270.32	270.57
00	271.25	271.0	270.40	270.75	270.23	270.50	270.75

North Line Gatti St.

3M 25.100 Sp4 Pals 3M Cor Hawk B Lewis.

W	B	F
275' 268.25 267.4	268.0 267.4	267.25 267.4
250' 268.82 267.97	268.57 267.97	267.85 267.97
225' 269.38 268.53	269.13 268.53	268.45 268.53
200' Brook 269.95 269.10	269.7 269.10	269.05 269.10
175' 270.17 269.32	269.92 269.32	269.30 269.32
150' 270.40 269.55	270.15 269.55	269.55 269.55
125' 270.62 269.77	270.37 269.77	269.80 269.77
100' Brook 270.85 270.0	270.6 270.0	270.05 270.0
75' 270.95 270.10	270.70 270.10	269.22 270.10
50' 271.05 270.20	270.8 270.20	270.40 270.20
25' 271.15 270.30	270.90 270.30	270.57 270.30
00 271.25 270.40	271.0 270.40	270.75 270.40

W. 268.25, 268.82, 269.38, 269.95, 270.17, 270.40, 270.62, 270.85, 270.95, 271.05, 271.15, 271.25

B. 268.0, 268.57, 269.13, 269.7, 269.92, 270.15, 270.37, 270.6, 270.7, 270.8, 270.9, 271.0

F. 267.25, 267.97, 268.53, 269.10, 269.32, 269.55, 269.77, 270.0, 270.1, 270.2, 270.3, 270.4

3M 25.100 Sp4 Pals 3M Cor Hawk B Lewis. (Repetitive)

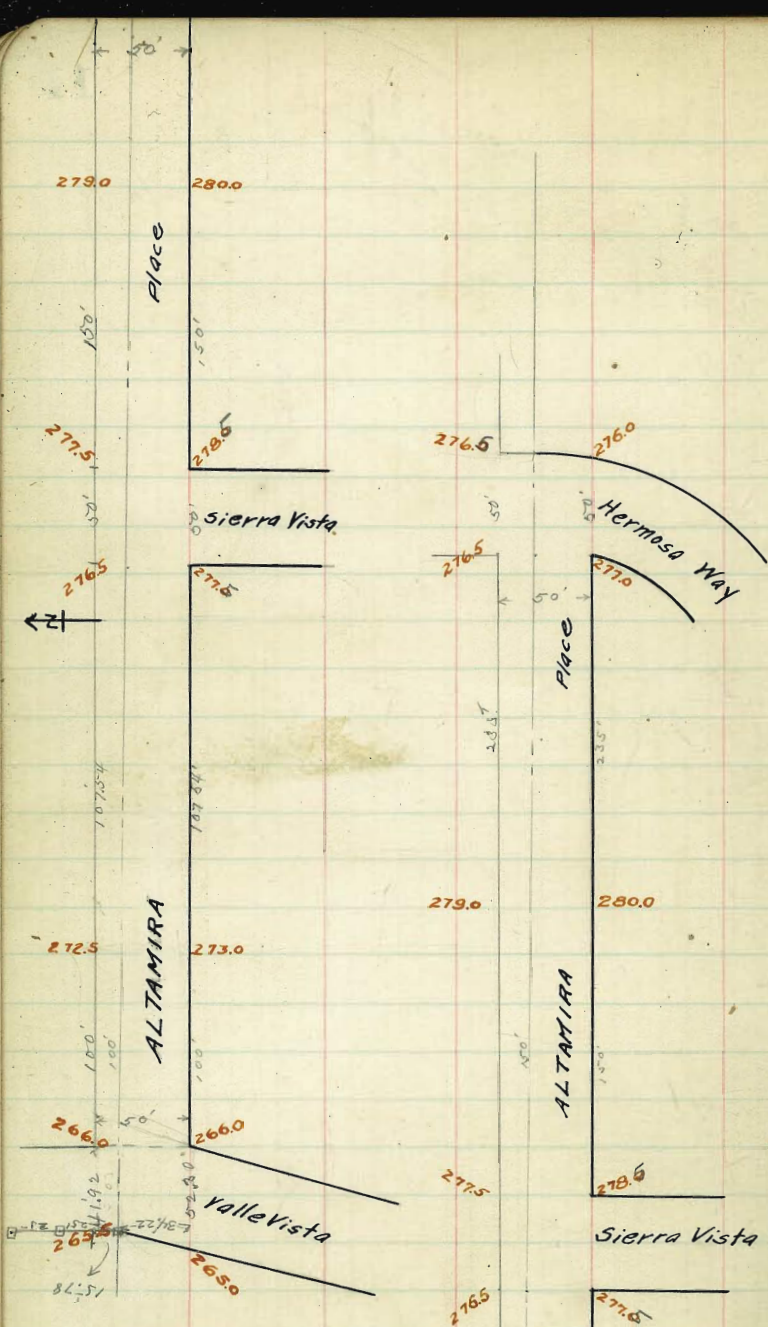
W. 268.25, 268.82, 269.38, 269.95, 270.17, 270.40, 270.62, 270.85, 270.95, 271.05, 271.15, 271.25

B. 268.0, 268.57, 269.13, 269.7, 269.92, 270.15, 270.37, 270.6, 270.7, 270.8, 270.9, 271.0

F. 267.25, 267.97, 268.53, 269.10, 269.32, 269.55, 269.77, 270.0, 270.1, 270.2, 270.3, 270.4

Checked O.H. May 17-12

- Domani
- Shaw
- Gemmie



North

South

266.25	266.0	265.6	266.0	265.6	266.0	266.25
--------	-------	-------	-------	-------	-------	--------

266.0	266.0	265.4	265.80	265.4	266.0	266.00
265.	265.				265.0	265.

265.4	265.48	265.56	265.65	265.75	265.25	265.40
-------	--------	--------	--------	--------	--------	--------

Valle

265.75	265.67	265.58	265.5	265.5	265.50	265.50
--------	--------	--------	-------	-------	--------	--------

Vista

265.13	265.20	265.27	265.35	264.95	264.75	264.85
--------	--------	--------	--------	--------	--------	--------

264.5						
265.50						

		264.25				
		265.25				
	curb Here					

264.

264.

265.0

265.75

265.50

265.25

	North	W.L Sierra Vista						South
207.54	276.75	276.5	276.35	277.0	276.90	277.50	277.75	
172	275.54	275.29	275.11	275.71	275.54	276.14	276.39	
150	274.61	274.36	274.15	274.73	274.49	275.09	275.34	
125	273.68	273.43	273.19	273.74	273.45	274.05	274.30	
100 100's break	272.75	272.5	272.22	272.75	272.40	273.0	273.25	
75	271.13	270.88	270.57	271.06	270.70	271.25	271.50	
50	269.50	269.25	268.91	269.38	269.0	269.50	269.75	
25	267.88	267.63	267.26	267.69	267.3	267.75	268.00	
00	266.25	266.0	265.6	266.0	265.6	266.0	266.25	

EL Valle Vista

21 cut & fill apr. 29/10 { Childs Barber Taylor 14

283.17 HI	274.61	272.75	269.50	122.3			
276.75	8.56	10.42	13.67	270.94 HI			
6.42	7.06	9.5	11.5	1.42			
6.6	2.06	+0.9	+2.2	272.36 HI			
-0.2	+1.5			266.25			
				6.11			
				4.4			
				+1.7			
269.75	273.25	275.34					
13.42	9.92	7.83		265.75			
11.24	8.8	6.9		6.61			
+2.0	+1.1	+0.9		9.7			
				+2.1			
		265.60					
		6.76					
		6.66					
	265.25	266.25	1.9				
	7.11	6.11					
	7.5	6.1					
	-0.2	0.0					
277.81 B7M	66.0	69.25	69.38	69.50	72.50	72.75	73.0
0.91	1320	895	882	870	870	845	820
278.30 HI	1895	740	740	808	840	845	895
		74.36	74.73	75.09	76.50	77.0	77.50
		8.60	8.47	8.11	1.9	1.30	0.7
		6.50	6.50	2.86	1.25		0.95
		12.70	13.20				
				oil stakes	20		
77.51	76.5	76.35	77.0	76.9	77.5		
0.92	2.23	2.08	1.7	1.5	1.23		
78.73/4	74.36	74.15	74.70	74.49	75.09		
	4.87	4.58	4.00	4.34	3.64		
	72.5	72.23	72.75	72.40	73.0		
	6.23	6.00	6.00	6.33	5.73		
	69.25	68.91	69.38	69.0	69.5		
	9.48	9.82	9.85	9.73	9.23		
	66.0	65.6					
	12.73	13.13					

chuck 7/10 H
except a line
Talle Vista

North

South

277.75 277.5 277.35 278.00 277.90 278.50 278.75

278.15 277.80 277.70 278.50
277.5 278.50
277.5

278.00 277.65 277.55 277.25 277.90

Sierra

277.25 277.00 277.85 277.5 277.40 277.00 278.00

Vista

277.70 277.35 277.25 276.75 277.35

277.55 277.20 277.10 276.5
277.50 276.5
277.50

276.75 276.5 276.35 277.00 276.90 277.50 277.75

	North	W. L. Hermosa Way					South
385'	276.75	276.5	276.28	276.75	276.40	277.0	277.25
350'	277.12	276.87	276.62	277.18	276.85	277.45	277.70
325'	277.39	277.14	276.90	277.47	277.17	277.77	278.02
300'	277.66	277.41	277.18	277.76	277.49	278.09	278.34
275'	277.92	277.67	277.45	278.05	277.81	278.41	278.66
250'	278.19	277.94	277.73	278.34	278.13	278.73	278.98
225'	278.45	278.20	278.01	278.63	278.45	279.05	279.30
200'	278.72	278.47	278.29	278.92	278.77	279.37	279.62
175'	278.99	278.74	278.57	279.21	279.08	279.68	279.93
150'	279.25	279.0	278.85	279.5	279.40	280.0	280.25
125'	279.00	278.75	278.60	279.25	279.15	279.75	280.00
100'	278.75	278.50	278.35	279.00	278.90	279.50	279.75
75'	278.50	278.25	278.10	278.75	278.65	279.25	279.50
50'	278.25	278.00	277.85	278.50	278.40	279.00	279.25
25'	278.00	277.75	277.60	278.25	278.15	278.75	279.00
00'	277.25	277.50	277.35	278.0	277.90	278.50	278.75

E. L. Sierra Vista

B.M. S.W. corner of Sierra Vista & Altamira 277.81 16

				265.99				
				9.93			5.35	
279.25	277.66	279.25	280.25	275.92	277.82			
3.92	3.51	3.92	2.92	3.20				
3.42	4.3	2.05	2.92	272.72				
+0.5	+1.4	+4.9	+0.9	10.45				
275.75	278.19	279.75	279.62	283.17			277.25	
4.42	4.98	3.42	3.85	4.92			5.92	
2.8	3.95	1.5	2.15	4.92				
+1.6	+4.0	+1.6	1.40	278.95	278.34	277.70		
	278.72			4.19	4.83	5.47		
278.25	4.45			2.2	2.7	3.6		
4.92	4.22			2.2	2.7	3.6		
2.8	+0.2			12.0	+2.1	+1.9		
+2.1				5.92				
277.75	277.12	278.75	276.75					
4.42	6.01	6.42	6.42	cut & fill				
5.3	5.5	5.3	5.85	apr 29/10				
+0.1	+0.5	+0.1	0.57					
277.81	N	78.50	78.00	79.0	78.5	79.5	79.0	80.0
6.17	2.48	5.48	5.97	4.91	5.48	4.48	4.98	5.98
283.95	2.28	5.28	5.78	4.78	5.28	4.28	4.78	5.78
	78.47	79.37	77.92	78.72	77.41	78.09	76.87	77.45
	5.87	2.87	6.07	5.25	6.07	5.85	7.18	6.83
	5.86	4.86	5.86	5.86	6.22	5.64	5.87	6.25
76.5	77.0	76.5	76.0	78.0	78.5	79.0	79.5	78.92
7.48	6.95	7.48	7.95	5.98	5.45	4.95	4.45	5.04
7.29	6.23	7.29	7.23	5.98	5.45	4.95	4.45	5.04
	77.18	76.75	76.25	78.0	78.5	79.0	79.5	78.92
	6.50	7.23	7.73	5.98	5.45	4.95	4.45	5.04
				Curb. Prop Contee	1/2 Hatch	1/2 Hatch	1/2 Hatch	1/2 Hatch
77.91	N	76.5	76.25	76.75	76.40	77.0		
5.48	6.95	7.22	6.70	7.05	6.05	6.05		
23.45	7.65	7.62	7.78	7.65	7.745			
	6.55	6.83	6.27	6.60	6.00			
	77.41	77.18	77.76	77.49	78.09			
	6.00	6.27	5.70	5.95	5.36			
	77.94	77.73	78.24	78.13	78.73			
	5.61	5.12	5.11	5.32	4.73			
	78.47	78.29	78.92	78.77	79.37			
	4.98	5.16	4.63	4.68	4.05			
	79.0	78.85	79.5	79.4	80.0			
	4.45	4.60	3.95	4.00	3.45			
	78.50	78.35	79.0	78.9	79.5			
	4.95	5.10	4.05	4.55	3.95			
	78.0	77.85	78.50	78.40	79.0			
	5.45	5.60	4.95	5.05	4.45			
	77.5	77.35	78.0	77.9	78.5			
	5.95	6.10	5.45	5.55	4.95			

North

South

276.75 276.50 276.25

276.5 275.5 276.25 275.25 275. 276.0 275.

curb Here

276.1 276.1 276.10 276.10 275.88 275.25 275.85

Hermosa

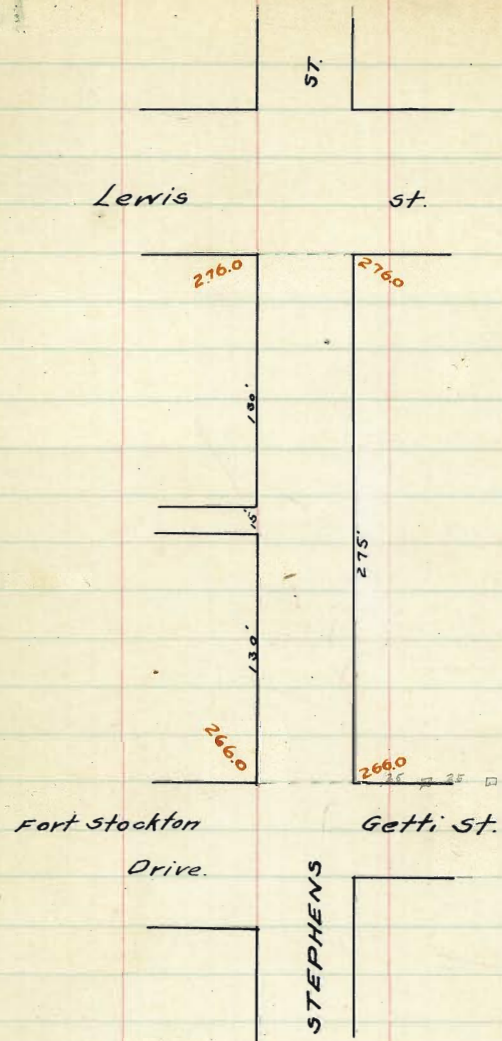
276.5 276.42 276.33 276.25 275.88 275.50 276.5

Way

276.1 276.2 276.3 276.40 276.08 275.75 276.40

275.5 275.5 276. 276. 276.5 276.02 276.55 276.27 277.00 277.00

276.75 276.5 276.23 276.75 276.4 277.00 277.25



$\frac{5}{7}$ Hatch
 $\frac{10}{10}$ Thomas
Cat stakes

West South Line Lewis St. East

276.363 BM 271.5 275.34 197 / 273.54 377 / 271.70 561
 0.95 1.06 1.17 31.0 3.77 377 3.61 6.9
 277.31 2.33 -1.13 5.37 -2.0 7.89 -0.84

275 276.25 276.0 275.6 276.0 275.60 276.0 276.25

269.89 742 268.17 914 266.25 11.06
 7.42 51.0 9.14 6.80 11.06 9.30
 6.75 22.2 8.50 +23.9 10.72 +1.76
 +0.67 +0.64

270 275.34 275.09 274.69 275.09 274.69 275.09 275.34

274.363 BM 76.0 75.6 / 75.09 74.69 / 73.27 72.87 / 71.45 71.05
 0.88 1.24 1.64 2.15 2.55 3.97 4.32 5.79 6.19
 277.24 1.00

275 274.43 274.18 273.78 274.18 273.78 274.18 274.43

6964 6924 / 6782 6742 / 660 65.6
 7.60 8.00 9.42 9.82 11.24 11.64
 7.80 9.17 11
 all stakes $\frac{5}{10}$ Hatch Moore Fitzpatrick

270 273.54 273.27 272.87 273.27 272.87 273.27 273.54

274.363 BM - 76.0 75.6 / 75.09 74.69 / 73.27 72.87 / 71.45 71.05
 1.14 1.50 1.90 2.31 2.81 4.26 4.63 6.05 6.45
 277.50 1.00
 6944 6924 / 6782 6742 / 660 65.6
 7.86 8.24 9.68 10.05 11.50 11.90

275 272.61 272.36 271.96 272.36 271.96 272.36 272.61

check $\frac{5}{10}$ Hatch Moore Fitzpatrick

270 271.70 271.45 271.05 271.45 271.05 271.45 271.70

275 270.80 270.55 270.15 270.55 270.15 270.55 270.80

270 269.89 269.64 269.24 269.64 269.24 269.64 269.89

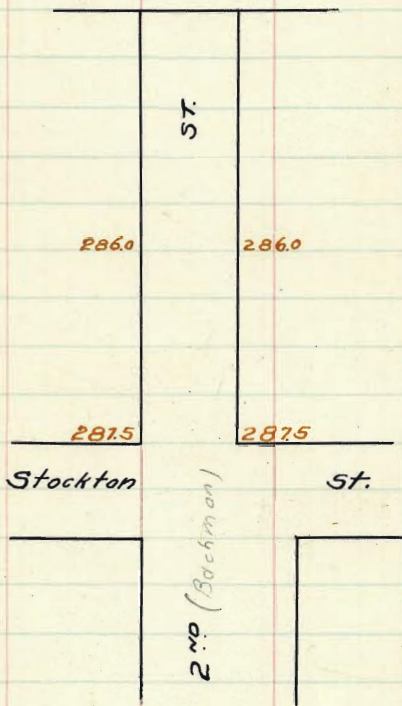
275 268.98 268.73 268.33 268.73 268.33 268.73 268.98

270 268.17 267.82 267.42 267.82 267.42 267.82 268.17

275 267.16 266.91 266.51 266.91 266.51 266.91 267.16

270 266.25 266.0 265.6 266.0 265.60 266.0 266.25

North Line Fort Stockton Drive and Gotti St.



West

East

291.18 1371 RR Spk. SW Cor

2^d 9th Broadway

23

280
295.42 H

W

E

W

E

820
822
878
+37

843
770
+0.73

8625
918
910
+1.07

915
11.60
-1.22

Cut stakes 4/10
Watch Butler Fig.

286.25 286.0 285.6 286.0 285.6 286.0 286.25

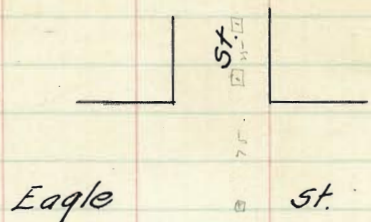
286.62 286.37 285.97 286.37 285.97 286.37 286.62

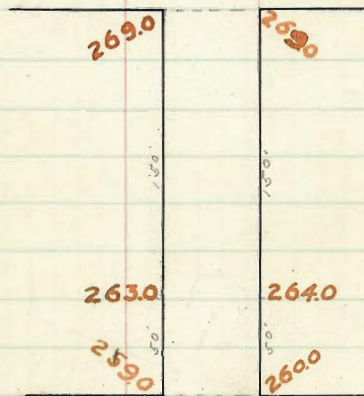
287.00 286.75 286.35 286.75 286.35 286.75 287.00

287.38 287.13 286.73 287.13 286.73 287.13 287.38

287.75 287.5 287.10 287.5 287.10 287.5 287.75

North Line Stockton St.







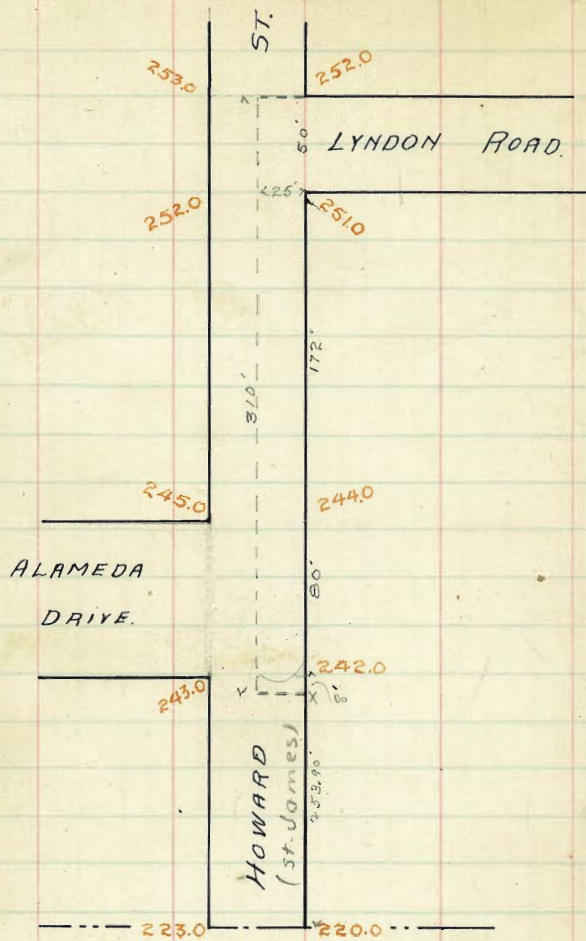
North West Line Eagle St. South

00	269.25	269.0	268.4	2690	268.4	269.0	269.25
25'	268.25	268.0	267.48	26808	267.57	268.17	268.42
50'	267.25	267.0	266.55	267.17	266.73	267.33	267.58
75'	266.25	266.00	265.63	26625	265.90	266.50	266.75
100'	265.25	265.0	264.70	265.33	265.07	265.67	265.92
125'	264.25	264.0	263.78	264.42	264.22	264.83	265.08
150' Break	263.25	263.0	262.85	263.5	263.4	264.0	264.25
175'	261.25	261.0	260.85	261.5	261.40	262.0	262.25
200'	259.25	259.0	258.85	259.5	259.40	260.0	260.25

East Line Falcon St.

267.12 Bm Falcon + Lewis SE 1/4

8.81	17098	27078	27098	27094	27098	6.77
270.98	8.7	27	4.5	1.2	1.6	
260	262.2	268.26	268.1	269.7	269.4	
268.38 TP	262.2	264.2	268.1	265.2	265.9	2 Along
6.92	SEC 1/4	C 3.7	C 5.3	4.1	C 3.5	10 Down
275.30 H)	275.30	275.30	275.30	275.30	275.30	10 Pave
	270.10	271.7	271	271	271.0	
	267.18	267.2	269.2	269.2	269.2	
	C 2.4	4.2	C 2.0	C 2.0	5.1.8	
276.15 H	272.5	275.7	272.5	272.2	272.5	6.25
11.71	8.70	8.57	10.70	10.22	12.90	6.22
264.42	Property attached		1/20		1/20	
20.3						
260.47 H						
269.47 H	273.79	273.79	273.79	73.79	22.25	9/10 double
63.25	267.25	267.25	65.42	63.25	67.05	1/10 share
6.22	9.55	9.55	7.87	10.54	50.25	Evening
5.02	4.79	6.59	8.12	10.79	6.50	Curbs & chrs.
		73.79	73.79	73.79	7.00	
		67.17	65.23	63.00	67.25	
		6.62	5.96	10.29	57.00	
		73.79	73.79	73.79	7.25	
		67.05	65.25	64.25	62.00	
		6.21	5.54	7.54	59.25	
		6.46	5.77	7.74	7.25	
					5.00	
258.00	271.05	271.05	271.05	71.05	71.05	
12.05	63.25	65.92	67.25	62.25	62.25	
271.05 H	7.80	5.13	3.80	1.50	5.80	
66.25	8.05	5.38	4.05	2.05	7.05	
10.50	71.05	71.05	71.05		7.55	
11.05	65.00	65.33	67.17		7.50	
	7.55	5.72	3.58		10.05	
	4.50	71.05	71.05	1/20	7.05	double
	7.05	65.25	67.58	1/20	67.58	share
		5.80	3.76	1/20	3.76	Orange
		6.00	3.71			



265.99 Howard 77 Slackto S.E. Corn
 262.58 Lynden & Sheridan S.E. Corn

West North Line Lyndon Road East.

262.68 from Sherdant Lyndon

N.L. 252.5 251.85 252.0 252.25

7.50
270.00
11.12
258.88
8.70
266.78
12.76
254.02
251.68
254.90
10.47
255.43
3.18
258.161

251.00 250.85 251.00 248.96 249.46
4.90 6.74 6.44
246.93 247.45 244.89 245.29
8.77 8.47 11.00 10.57

Corb 254.3 251.65 252.0 252.0

254.91 54.81 54.81 54.81 54.81 54.81
52.25 51.25 51.25 49.21 47.19 45.14
3.56 3.21 3.56 5.60 7.63 9.67
2.81 3.21 5.55 7.58 9.72
54.81 54.81 54.81 54.81 54.81
51.85 51.50 42.96 48.81 46.78 44.74
262.68 54.81 54.81 43.31 6.00 10.07
10.26 2.81 54.81 54.81 54.81 54.81
272.74 52.50 50.55 49.46 47.43 45.39
12.07 2.31 3.76 5.35 7.38 9.42
260.37 2.31 3.76 5.35 7.38 9.42
0.33
260.70
2.96
257.24
3.57
254.214

Checked 25 High
Blayd 17
Dorman 19
Rogers 10

1/2 254.15 251.50 251.4 251.4

Cor. 254.0 251.85 251.50 251.50

1/2 251.85 251.20 250.85 250.85

Corb 251.7 251.05 251.0 251.0

SL. Lyndon 251.5 250.85 251.0 251.25

25' 250.45 249.83 249.98 250.23

50' 249.46 248.81 248.96 249.21

75' 248.48 247.80 247.95 248.20

100' 247.43 246.75 246.93 247.18

125' 246.41 245.76 245.91 246.16

150' 245.39 244.74 244.89 245.14

253.75 H.F.
251.50 252.0
2.28 1.78
257.5 250.85 251.0 251.25
2.28 2.93 3.78 2.53
249.21 248.96 249.81 249.46
4.57 4.92 4.97 4.32
247.43 246.78 246.93 247.18
6.35 7.00 6.85 6.60
245.74 244.89 244.74 245.39
8.64 8.89 9.04 8.89

8-2-10 all stakes sunk show Evans

No line Alameda

244.5 243.85 244.0 244.25

cut

244.15 243.50 243.65 243.90

1/4

243.82 243.17 243.32 243.57

cut

243.5 242.85 243.0 243.25

1/4

243.17 242.52 242.67 242.95

cut

242.85 242.2 242.35 242.60

So line Alameda

242.5 241.85 242.0 242.25

850 ft Alameda - 260' S of Lyndon

241.83 241.18 241.33 241.58

30

248.61 244.00 244.50
4.61 4.11
243.00 243.8
5.61 4.11
242.39 243.5
6.61 4.11

Checked OK

25 Aug

Alameda 17
Bar 19
Hayes 10

254.91 52.1
49.25 42.25
10.56 12.56
10.81 13.81
54.51 52.1
43.85 43.25
10.76 11.76
54.51 52.1
44.50 43.25
10.51 11.51

1/10
1/10
52.1
43.25
11.50
11.51

1/10 all stakes except row 8' of Alameda which is not graded.

265.99 B.M. at station

11.53
277.52 H.I.

Howard

12.99
264.53 J.P.

0.90
265.43 H.I.

12.73
252.70 J.P.

1.08
253.78 H.I.

244.5 243.85 244.0 244.25
9.28 9.93 9.78 9.53

243.25 243.0 242.85 243.5
10.53 10.79 10.93 10.28

242.5 241.85 242.0 242.25
11.28 11.93 11.78 11.53

241.8 241.33 241.18 241.93
12.20 12.45 12.60 11.95

ST.
Falcon St.

2670
2660
2660
2650

Goldfinch
DOUGLASS St.

North West Line Falcon St. South

100'	267.25	267.0	266.4	266.5	265.85	266.0	266.25
175'	267.13	266.88	266.28	266.38	265.73	265.88	266.13
150'	267.00	266.75	266.15	265.25	265.60	265.75	266.00
125'	266.88	266.63	266.03	266.13	265.48	265.63	265.88
100'	266.75	266.50	265.90	266.00	265.35	265.50	265.75
75'	266.63	266.38	265.78	265.88	265.23	265.38	265.63
50'	266.50	266.25	265.65	265.75	265.10	265.25	265.50
25'	266.38	266.13	265.53	265.63	264.98	265.13	265.38
00	266.25	266.0	265.4	265.5	264.85	265.0	265.25

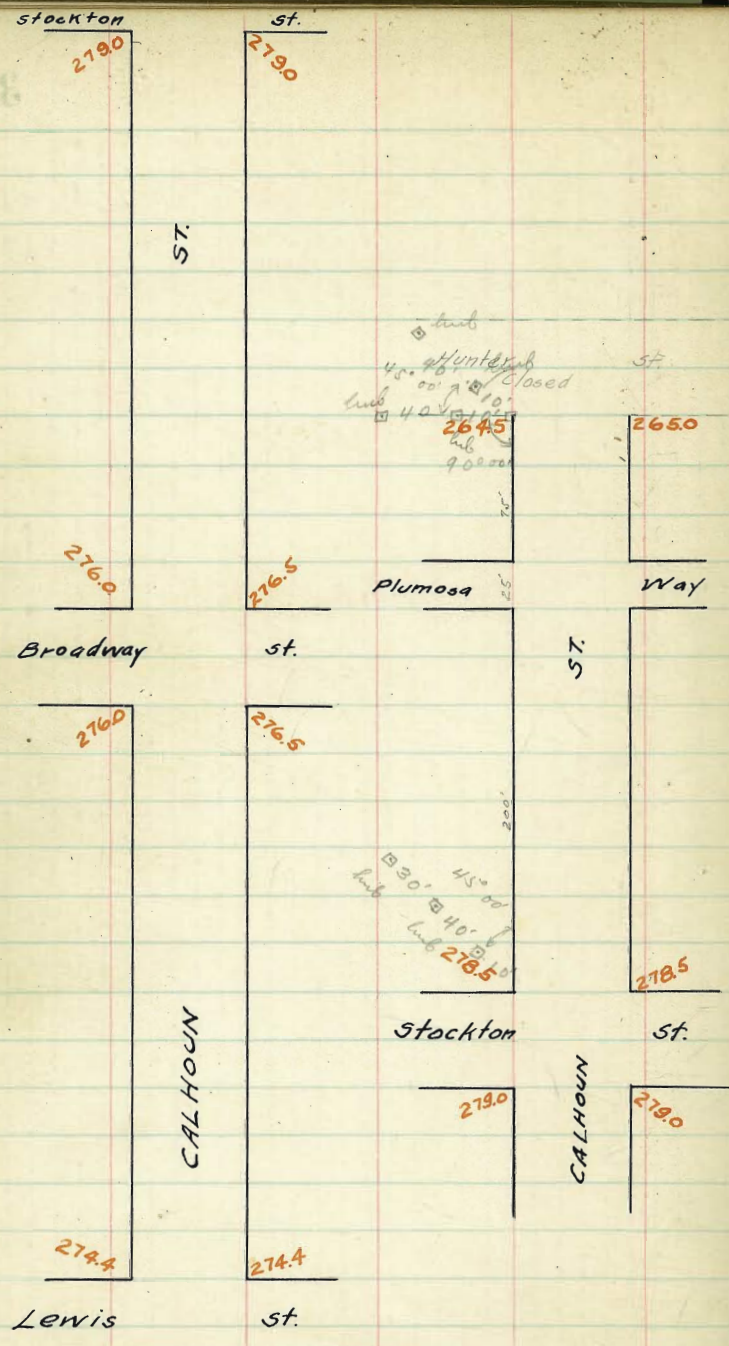
East Line Goldfinch St.

265.50	271.58	271.58	271.58	271.58
6.08	266.100	66.75	607.50	46.25
271.58	5.58	4.83	6.08	5.33
67.25				
4.33	4.58	5.83	5.08	6.33
5.33				

100' property stakes
10' of double - Shaw. Front.

Note:- 12' Walks on Calhoun St
No Walks on Plumosa Way

B.N.I. S.E. cor. Stephens & Fairis 276.36



West

South Line Broadway

East

2300'

276.0

276.5

S

1275'

10200'

11225'

11200'

7125'

5125'

2125'

8100'

75'

50'

25'

20'

274.4

274.4

North Line Lewis St

West

276.0

276.0

Broadway

st.

276.0

276.0

East

276.5

276.5

West

South Line Stockton St.

East

300'

279.0

279.0

275'

250'

225'

200'

175'

150'

125'

100'

75'

50'

25'

0'

276.0

276.5

North Line Broadway St.

282.65
79.00
365

282.65
78.75
290

West

East

278.75 278.5 278.1 278.5 278.1 278.5 278.75

83.35
78.38
4.97

83.35
78.75
4.60

83.35
78.63
4.72

278.5 278.5 278.0 278.5 278.0 278.5 278.5
277.5 277.5 277.5 277.5 277.5 277.5

283.21 H.L.

1/4 278.23 278.13 278.38 278.63 278.38 278.13 278.23

278.5 278.5 278.63 278.75 278.88 279.0 279.0
4.71 4.71 4.58 4.46 4.33 4.21 4.21

Stockton

0 278.75 278.75 278.75⁵⁰ 278.75 278.75⁵⁰ 278.75 278.75

279.25 279.0 278.4 278.25 278.23 278.5 278.75
3.96 4.21 4.81 4.46 4.98 4.71 4.46

St.

chk. o.k. Blueds
Taylor
Bullock Feb. 9/11

1/4 278.4 278.37 278.63 278.88 278.63 278.37 278.4

278. 278.
279.0 279.0 278.5 279.0 278.5 279.0 279.0

279.25 279.0 278.6 279.0 278.6 279.0 279.25

	West	South Line Hunter (closed)					East
300'	264.75	264.5	264.22	264.75	264.4	265.0	265.25
275'	265.92	265.67	265.38	265.90	265.54	266.13	266.38
250'	267.08	266.83	266.54	267.04	266.68	267.25	267.50
225'	268.25	268.00	267.70	268.19	267.82	268.38	268.63
Plumosa Way (no curbs)							
200' S.L. Plumosa Way	269.42	269.17	268.85	269.32	268.96	269.50	269.75
175'	270.58	270.33	270.00	270.18	270.10	270.63	270.88
150'	271.75	271.50	271.16	271.63	271.25	271.75	272.0
125'	272.91	272.66	272.32	272.77	272.39	272.88	273.13
100'	274.08	273.83	273.48	273.92	273.53	274.0	274.25
75'	275.25	275.00	274.51	275.06	274.67	275.13	275.38
50'	276.42	276.17	275.79	276.21	275.81	276.25	276.50
25'	277.58	277.33	276.94	277.35	276.95	277.38	277.63
0'	278.75	278.5	278.10	278.5	278.10	278.5	278.75

North Line Stockton St.

576.36 B.M. S.E. cor. Stephens & Lewis (Club W)
Oct. 29/10 (B40) Taylor

278.00 I.P. on tie line 50' NW of N.W. Cor.

279.78 HI	276.42	274.08	271.75	269.42
278.75	3.36	5.70	8.03	10.36
1.03	1.95	4.0	5.73	10.76
0.9				
+0.1	11.4	11.7	12.3	12.4

268.25	267.08	264.75			
11.53	12.70	15.03			
11.83	11.80	17.425	272.0	269.75	268.63
-0.3	+0.9	5.53	7.78	10.03	11.15
278.75	276.50	4.63	7.1	11.2	12.25
1.03	3.28				
1.33	2.78				
-0.3	+0.5	267.50	12.78		
		12.28	267.00 I.P.		
		13.28	8.32 HI	264.75	
		1.0	275.32	10.57	
			265.25	11.57	
			10.07	-1.0	
			10.6		

cut & fill stakes

278.00	21.08	21.08	21.08	21.08	21.08	21.08	21.08	21.08	21.08
3.08	29.25	21.75	19.75	19.75	19.75	19.75	19.75	19.75	19.75
271.08	6.23	9.23	11.23	11.23	11.23	11.23	11.23	11.23	11.23
70.22	70.22	70.22	70.22	70.22	70.22	70.22	70.22	70.22	70.22
4.46	21.08	21.08	21.08	21.08	21.08	21.08	21.08	21.08	21.08
4.97	23.53	21.16	18.96	22.27	22.27	22.27	22.27	22.27	22.27
71.08	7.55	19.92	12.17	12.17	12.17	12.17	12.17	12.17	12.17
25.78	21.08	21.08	21.08	21.08	21.08	21.08	21.08	21.08	21.08
5.29	23.22	21.08	21.08	21.08	21.08	21.08	21.08	21.08	21.08
21.08	21.08	21.08	21.08	21.08	21.08	21.08	21.08	21.08	21.08
22.21	22.21	22.21	22.21	22.21	22.21	22.21	22.21	22.21	22.21
4.27	21.08	21.08	21.08	21.08	21.08	21.08	21.08	21.08	21.08
21.08	21.08	21.08	21.08	21.08	21.08	21.08	21.08	21.08	21.08
25.81	24.08	22.00	18.27	22.27	22.27	22.27	22.27	22.27	22.27
5.27	7.00	9.08	11.66	6.863	5.19	7.02			
16.88	7.25	9.33	11.91	5.64	5.44	2.27			
4.58				3.09					
4.33									

all stakes

Shaw Evans

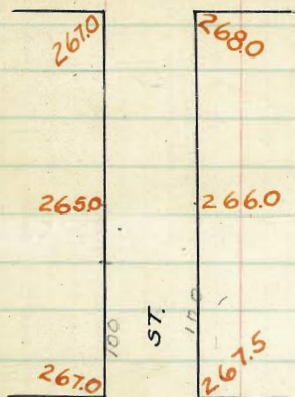
278.00	21.00	21.00	21.00	21.00
3.90	26.12	21.08	21.75	21.75
28.140	2.984	7.524	9.654	9.654
78.75	5.824	7.924	9.224	9.224
2.652	5.194	7.484	9.774	9.774
2.284	5.594	7.874	10.154	10.154
3.304	5.154	7.404	9.654	9.654
3.204	4.904	7.154	9.404	9.404
3.204				
3.204				
3.204				
3.204				

OK

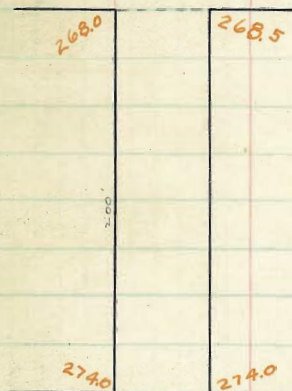
Shaw Evans Tucker

291.40	74.98	74.98	74.98	74.98
9.55	69.42	48.25	47.08	64.75
271.85	5.864	6.734	7.904	10.224
5.13	6.984	8.154	10.484	10.484
5.13	7.284	8.454	10.784	10.784
5.024	6.794	7.964	10.234	10.234
5.484	7.164	8.304	10.584	10.584
5.284	6.604	7.734	9.984	9.984
	6.354	7.484	9.734	9.734

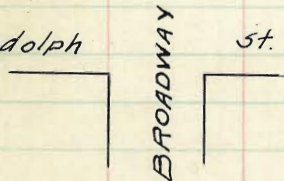
Ingalls st.



Hooker st.



Randolph st.



B.M. R.R. Spk. S.W. C. or Randolph + Leevia
275.60 B.M. 7908
345
279.05

	North	West Line Hooker St.					South
200'	268.25	268.0	267.73	268.25	267.9	268.5	268.75
175'	269.00	268.75	268.46	268.97	268.61	269.19	269.44
150'	269.75	269.5	269.10	269.69	269.33	269.88	270.13
125'	270.50	270.25	269.93	270.41	270.04	270.56	270.81
100'	271.25	271.0	270.67	271.13	270.71	271.25	271.50
75'	272.00	271.75	271.40	271.84	271.46	271.94	272.19
50'	272.75	272.5	272.13	272.56	272.18	272.63	272.88
25'	273.50	273.25	272.87	273.28	272.89	273.31	273.56
00'	274.25	274.0	273.6	274.0	273.6	274.0	274.25

East Line Randolph St.

275.00	7905	7905	7905	7905	7905	7905	7905	7905
3.45	7925	7275	7288	7150	7125	6975	6825	43
279.06 H.I.	4.80	6.30	6.17	7.55	7.80	9.30	10.80	+1.7
	0.0	+0.8	+1.0	+1.7	+0.9	+1.3	10.80	+1.7
79.05	79.05	Shaw	12/					
70.13	6875	Evans	19/					
8.92	1.70	Tichenor	1/0					
+1.5	+1.3							
275.60 B.M.	S.W. Cor	Centre	+ Randolph					
3.46	79.06	7906	7906	7906	7906	7906	7906	7906
279.06 H.I.	72.75	7288	7150	7125	6975	7013	6875	6825
	6.31	6.18	7.56	7.81	9.31	8.93	10.81	10.81
	5.35	5.28	6.00	7.21	8.05	7.93	9.00	9.76
	+0.4	+1.90	+1.6	+1.60	+1.22	+1.00	+1.3	+1.65
Shaw Evans Tichenor 29/12 1/10								
all stakes								
simple - Shaw - Tichenor								
275.60	276.97	276.97	276.97	276.97	276.97	276.97	276.97	276.97
3.61	72.75	71.50	69.75	68.75	1/18	1/11		
279.21	7.22	5.42	7.22	8.22				
24.25	4.47	5.72	7.47	8.47				
4.96	276.97	76.97	76.97	76.97				
5.21	72.13	70.97	69.20	67.90				
274.25	4.84	6.24	7.77	9.07				
2.72	276.97	76.97	76.97	76.97				
276.97 H.I.	22.56	21.53	69.69	68.24				
24.25	4.41	5.84	4.22	8.72				
2.72	76.97	76.97	76.97	76.97				
2.97	72.18	70.67	69.33	67.73				
3.37	4.79	6.30	7.64	9.24				
	76.97	76.97	76.97	76.97				
	71.85	71.25	70.13	68.25				
	4.09	5.72	6.84	8.72				
	4.34	5.97	7.09	8.97				

North

South

Note: - 20' Walks on Hooker South of Broadway
14' " " " " North " " "

B.M. RR Spk S.W. Cor Hooker + Lewis St	Shaw	Evans	Tichenor
277.076	7064	7064	7064
252	6725	6725	6625
279.60	2.89	3.39	4.39
17.55	-0.8	-1.0	-11.5
268.05			-0.9
270.24			-0.2

12/12/10

B.M. RR Spk S.W. Cor Lewis + Randolph St	Shaw	Evans	Tichenor
275.60	7270	7270	7270
3.46	6725	6725	6625
279.06	7270	7270	7270
8.58	5.43	4.95	5.57
270.48	6.41	5.10	6.06
2.22			6.45
272.70 H.I.	-1.0	-0.2	-0.7
			-0.20

29/12/10

100' = 200' 265.25 265.0 264.85 265.5 265.4 266.0 266.25

75 265.75 265.5 266.44 266.69

50 266.25 266.0 265.79 266.37 266.5 266.88 267.13

25 266.75 266.5 266.32 266.57

EL 267.25 267.0 266.73 267.25 266.9 267.5 267.75

curb 267.0 267.0 267.5 267.5
266. 266. 266.5 266.5

14 266.85 266.25 266.75 267.35

Hooker

c 267.5 266.5 267.23 267.75 267.4 267.0 268.0

St.

14 267.4 266.75 267.25 267.9

curb 267. 267 267.5 267.5
268.0 268.0 268.5 268.5

268.25 268.0 267.73 268.25 267.9 268.5 268.75

276.97 H.I.	276.97	276.97	276.97	276.97	276.97
67.40	67.23	67.76	67.76	66.25	66.25
9.57	9.74	9.07	9.22	10.92	10.92
276.97	276.97	276.97	276.97	276.97	276.97
67.50	67.75	68.00	66.70	65.29	65.40
9.77	9.22	8.97	10.07	11.19	11.57
276.97	276.97	276.97	276.97	276.97	276.97
66.85	67.40	67.35	67.25	66.37	65.50
10.12	9.57	9.62	9.72	10.60	11.47
			276.97	276.97	276.97
			66.73	66.18	64.55
			10.24	10.82	12.12
			276.97	276.97	276.97
			67.25	67.13	65.25
			9.72	9.54	11.72
			9.97	10.09	11.27

Hawk

st.

2675

2675

2685

ST.

2685

2700

2705

40' → to descent before bird

Ibis

st.

2695

2700

2675

HUNTER

2685

Jackdaw

st.

2690

2690

OK

North

267.75 267.5 267.35 268.0 267.9 268.5 268.75

267.5 267.5 266.75 267.0 267.25 268.5 268.5
 266.5 266.5 267.5 267.5

267.23 267.43 267.58 267.73 267.88 268.03 268.23

Jackdaw

F.O.9
 267.75 267.95 268.10 268.25 268.40 268.55 268.75

St.

267.4 267.60 267.75 267.9 268.05 268.20 268.4

267. 267. 268. 268.
 268.0 268.0 267.25 267.5 267.75 269.0 269.0

F.I.D

268.25 268.0 267.85 268.5 268.4 269.0 269.25

South

269.18 Ben Sw Manual

464
 273.75
 269.08
 6.05
 275.10

269.08

275.10

269.08

6.10

269.08

7.10

271.83

269.08

7.10

267.5

268.5

269.18

4.53

273.75

269.08

5.26

269.08

3.25

272.93

268.50

4.43

269.08

4.33

272.93

67.75

5.18

C47

3 Blough
 15 Sin
 11 July 1946 46

North West Line Ibis St. South

269.75 269.5 269.23 269.5 269.4 270.0 270.25

269.37 269.12 269.42 269.72 269.97
 269.50 269.25 268.99 269.53 269.21 269.81 270.06

269.14 268.89 268.22 269.55 269.80
 269.15 269.0 268.75 269.31 269.03 269.63 269.88 ✓

268.91 268.66 269.01 269.37 269.62
 269.00 268.75 268.52 269.09 268.84 269.44 269.69

268.68 268.43 268.81 269.20 269.45
 268.75 268.5 268.29 268.87 268.65 269.25 269.50 ✓

268.44 268.19 268.60 269.02 269.27
 268.50 268.25 268.05 268.66 268.47 269.07 269.32

268.21 267.96 268.40 268.85 269.10
 268.15 268.0 267.82 268.44 268.28 268.88 269.13 ✓

267.98 267.73 268.20 268.67 268.92
 268.0 267.75 267.58 268.22 268.09 268.69 268.94

267.75 267.5 267.35 268.0 267.9 268.5 268.75
 East Line Jackdaw St.

27372 27372 27372 27372 27372 27372
 271.51 268.62 266.74 268.22 270.22 271.21
 9.87 269.13 269.2 268.75 269.75 269.88
 276.38 268.5 266.2 269.15 269.85 269.88
 27 272 27372 27372
 41 26 27 27
 269.25 270.2 271.5
 269.25 269.25 270.2
 0.0 C.4 C.4

275.10 268.5 268.5 268.5 269.25 269.25 269.25 269.25
 7.0 6.2 6.0 5.95 6.1 5.97 5.6 5.4

276.35 269.31 268.87 268.40 268.40
 9.04 7.96 7.91
 Allen C. 1/4

269.053.11 274.98 274.98 274.98 274.98 274.98 274.98 274.98
 5.70 68.75 68.00 69.32 69.00 70.00 69.75
 274.984.1 6.23 6.98 5.64 5.98 4.92 5.23
 6.48 7.23 5.91 6.23 5.17 5.48
 74.98 74.98 74.98 74.98 74.98 74.98
 67.75 65.22 68.66 69.09 69.53 69.75
 7.23 6.76 6.32 5.89 5.45 5.23
 7.48 74.98 74.98 74.98 74.98 74.98
 18.99 68.50 69.69 69.50 70.45
 6.04 6.98 5.29 5.98 4.73
 6.29 6.73 5.54 5.73 4.98
 ✓ ✓ ✓ ✓ ✓

5
 16
 11
 5/11
 1/11
 Chuck O.K.
 Sample
 Edwards
 Richard

North

270.25	270.0	269.13	270.25	269.9	270.5	270.75
--------	-------	--------	--------	-------	-------	--------

270.0	270.0	269.64	270.16	269.81	270.5	270.5
269	269				269.5	269.5

c.o. for 13' 1/4

1/4	269.14	269.37	269.56	270.08	269.73	269.87	269.9
-----	--------	--------	--------	--------	--------	--------	-------

1 bis

c	269.75	269.75	269.48	270.00	269.65	270.25	270.25
---	--------	--------	--------	--------	--------	--------	--------

5^t

c.o. for 13' 1/4

1/4	269.73	269.13	269.40	269.92	269.57	269.63	269.73
-----	--------	--------	--------	--------	--------	--------	--------

268.5	268.5				269	269
269.5	269.5	269.32	269.84	269.49	270.0	270.0

269.75	269.5	269.23	269.15	269.4	270.0	270.25
--------	-------	--------	--------	-------	-------	--------

South

275.70	14.5	270.0	270.5
5.10		5.10	4.6
270.0			

all

270.0 TP

6.35

276.25

269.75	270.00	270.25
6.60	6.75	6.90

74.98	74.98	74.98
-------	-------	-------

69.73	70.25	69.90
-------	-------	-------

5.25	4.73	5.08
------	------	------

7/29 for check in opp page
returns cut for 5' 1/4"

74.98	74.98	74.98
-------	-------	-------

69.40	69.75	69.23
-------	-------	-------

5.58	5.23	5.75
------	------	------

drunk

North West Line Hawk St South
 200' 268.75 268.5 268.1 268.5 268.1 268.5 268.75

175' 268.94 268.69 268.83 268.72 268.83 268.75 269.0
 c.o. 37c

150' 269.13 268.88 268.51 268.94 268.55 269.0 269.25

125' 269.32 269.07 268.71 269.16 268.78 269.25 269.50

100' 269.50 269.25 268.91 269.37 269.00 269.5 269.75

75' 269.69 269.44 269.22 269.59 269.23 269.75 270.0

50' 269.88 269.63 269.32 269.81 269.45 270.0 270.25

25' 270.06 269.81 269.52 270.03 269.68 270.25 270.50

00' 270.25 270.0 269.73 270.25 269.9 270.5 270.75
 East Line/bis St.

276.34.43	276.38	276.38	276.38	276.38	276.38	276.38
11.15	3.9	3.9	3.9	3.9	3.9	3.9
275.23	274.9	274.9	274.9	274.9	274.9	274.9
1.336	27.07	27.07	27.07	27.07	27.07	27.07
276.59	01.8	02.7	03.0	2.2	02.6	02.3

276.38	276.38	276.38	276.38
271.0	279.7	278.0	279.1
269.1	269.4	268.2	268.7
2700. TP	0.1	0.4	0.4
463			
274.63			

270.00	270.50	270.50	269.63	269.81	270.00
4.63	4.13	4.13	5.00	4.82	4.63
269.57	269.37	269.50	268.88	269.44	269.00
5.39	5.26	5.13	5.71	5.69	5.63
268.50	all west of off 1/2"				
6.13					

5-18-11 Blough Comment 2/2/11

74.98	74.98	74.98	74.98	74.98	74.98	5/11
70.25	70.50	69.69	69.50	68.94	68.75	for check see opp
4.73	4.98	5.29	5.48	6.04	6.23	page
4.98	4.73	5.54	5.73	6.29	6.48	sample
74.98	74.98	74.98	74.98	74.98	74.98	
70.25	70.03	69.59	69.16	68.72	68.50	
4.73	4.95	5.39	5.72	6.26	6.48	
74.98	74.95	74.98	74.95	74.95	74.98	
70.75	70.06	70.00	69.32	69.00	68.75	
4.23	4.92	4.98	5.66	5.98	6.23	
4.48	5.17	5.23	5.71	6.23	6.48	
✓	✓	✓	✓	✓	✓	

North

South

F 0.4

267.75 267.5 267.1 267.5 267.1 267.5 267.75

267.5 267.5 267.28 267.68 267.28 267.5 267.50
266.5 266.5 266.5 266.5

1/4 267.35 267.25 267.44 267.84 267.44 267.25 267.35

Hawk

c 268.0 268.0 267.60 268.0 267.60 268.0 268.0

St.

1/4 267.9 267.75 267.76 268.16 267.76 267.75 267.9

267.5 267.5 267.5 267.5
268.5 268.5 267.92 268.32 267.92 268.5 268.5

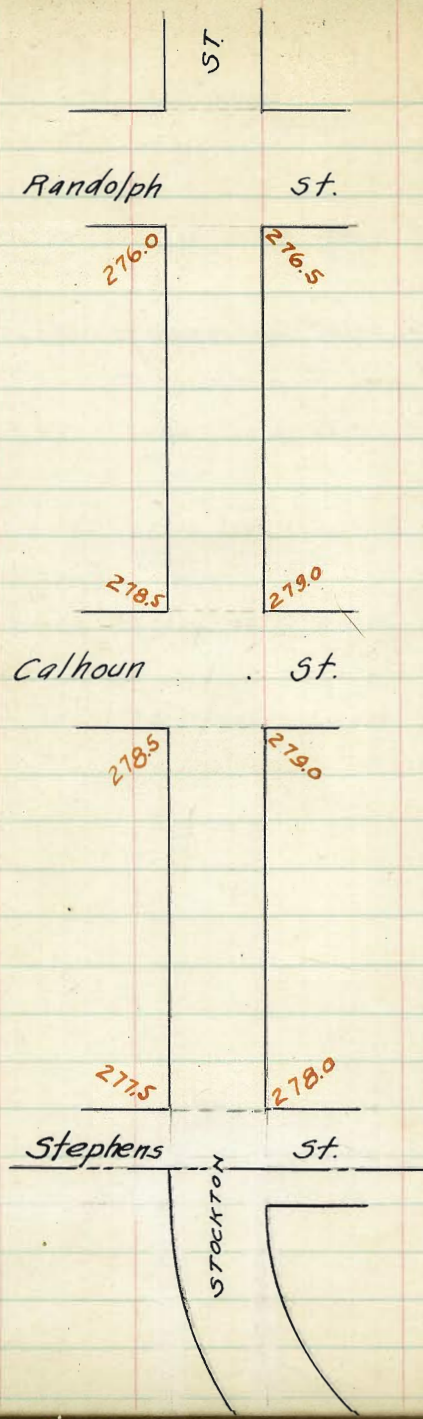
268.75 268.5 268.1 268.5 268.10 268.5 268.75

50

266.59 266.59 266.6
26 26
259.6 259.6
267.7 267.7
259.6 259.6
78.1 78.127463 H.S. 2850 2850 2850
2.13 2.13 2.13

all in blank

74.98
67.75
7.23
7.48for sheet in opp page no returns
cut on S. side



For Inters Calhoun, see Page 39

North West Line Calhoun St South

200' 278.75 278.5 278.23 278.15 278.4 279.0 279.25

175' 278.58 278.33 278.10 278.63 278.28 278.88 279.13

150' 278.50 278.25 277.98 278.50 278.15 278.75 279.00

125' 278.38 278.13 277.85 278.38 278.03 278.63 278.88

100' 278.25 278.0 277.73 278.25 277.90 278.50 278.75

75' 278.13 277.88 277.60 278.13 277.78 278.38 278.63

50' 278.0 277.75 277.48 278.0 277.65 278.25 278.50

25' 277.88 277.63 277.35 277.88 277.53 278.13 278.38

00' 277.75 277.5 277.23 277.75 277.4 278.0 278.25

East Line Stephens St

278.00 on tie hub 50' N.W. of N.W. cor Calhoun St

7.52
28.55 274.1
78.75 85.52 85.52 85.52 85.52 85.52 85.52
79.25 79.40 78.50 78.25 78.75 78.00
6.77 6.27 6.52 7.02 7.27 6.77 7.02
9.0 5.77 5.12 6.60 5.30 6.20
+5.0 +3.40 +0.4 +1.97 +3.17 +0.82

85.52 85.52 85.52
78.00 77.75 78.25
7.52 7.77 7.37
+0.80 +0.17 -0.3
cut + fill

Span
Gravel
11
29
10

8265 H 8265 8265 8265 8265 8265 8265
7925 7900 7810 7875 7823 7850 7875
3400 365 425 390 442 415 390

8265 8265 8265 8265 8265 8265 8265
7900 7875 7810 7850 7825 7850 7850
365 390 450 415 467 440 415

8265 8265 8265 8265 8265
7875 7850 7825 7775 7775
390 415 465 515 560

278.00 283.35 283.35 283.35 283.35
5.30 79.00 78.25 79.50 77.75
283.35 4.60 5.00 4.25 5.60
79.75 5.20 5.35 5.10 5.25

all states 1/4
11
dimple
Shaw
Tipton

4.60 283.35 283.35 283.35 283.35
4.85 78.00 77.75 77.25 77.25
283.35 4.85 5.62 5.70 6.12
283.35 5.12 283.35 283.35 283.35
283.35 77.75 78.25 79.00 77.75
283.35 5.97 5.10 5.35 5.60

4.60 283.35 283.35 283.35 283.35
283.35 78.00 77.90 77.48 77.48
283.35 4.95 4.95 5.87 5.95
4.95 5.10 5.60 5.35

283.35 283.35 283.35 283.35
78.25 78.00 78.25 78.25
4.10 4.60 5.25 5.10
4.35 4.50 5.60 5.35

283.35 283.35 283.35 283.35
78.25 78.00 78.25 78.25
4.10 4.60 5.25 5.10
4.35 4.50 5.60 5.35

278.20 278.25 279.0 277.4 277.75 277.23 277.5 277.75
5.21 4.96 5.21 6.81 5.46 5.98 5.71 5.46

278.00 277.75 277.48 278.0 277.65 278.25 278.00
5.21 5.46 5.73 5.21 5.56 4.96 4.71

278.75 278.50 277.90 278.25 277.73 278.0 278.25
4.46 4.71 5.31 4.96 5.48 5.21 4.96

278.40 278.25 277.98 278.50 278.15 278.75 278.00
4.71 4.96 5.23 4.71 5.06 4.46 4.21

279.25 279.0 278.4 278.75 278.23 278.5 278.75
3.96 4.21 4.81 4.46 4.98 4.71 4.46

chk. O.K. Shields
Taylor Feb 9/11
Wardner

North West Line Randolph St. South

200' 276.25 276.0 275.73 276.25 275.9 276.5 276.75

175' 276.56 276.31 276.04 276.56 276.22 276.82 277.07

150' 276.88 276.63 276.36 276.88 276.53 277.13 277.38

125' 277.21 276.94 276.67 277.19 276.84 277.44 277.69

100' 277.50 277.25 277.00 277.50 277.15 277.75 278.0

75' 277.81 277.56 277.31 277.81 277.46 278.06 278.31

50' 278.13 277.88 277.62 278.13 277.78 278.38 278.63

25' 278.44 278.19 277.92 278.44 278.09 278.69 278.94

00' 278.75 278.5 278.23 278.75 278.4 279.0 279.25

East Line Calhoun St.

For Inters Calhoun, see P39

278.00 T.P. on tie hub 50' N.W. of N.W. cor Calhoun St.

9.41							
282.41 H.I.	82.41	82.41	82.41	82.41	82.41	82.41	82.41
278.75	79.25	78.69	78.13	77.50	77.50	77.38	77.38
3.66	3.16	3.78	4.28	4.91	4.41	5.03	5.03
0.0	0.0	0.0	-0.5	-0.9	-0.2	-0.4	-0.4
							53
							7.82
							5.53
							-0.8

Cut & Fill Stakes

278.00 T.P. on tie hub 50' N.W. of N.W. cor Calhoun St. Station 12/19

573	8373	8378	8373	8373	8378	8378	8378
28373 TP	7875	7863	7750	7738	7625	7487	7487
	498 M	510 M	623 M	638 M	748 M	773 M	773 M
	523 M	535 M	680 M	720 M	773 M	773 M	773 M
	550 M	575 M	685 M	685 M	748 M	748 M	748 M
	498 M	560 M	628 M	677 M	748 M	748 M	748 M
	533 M	585 M	658 M	710 M	748 M	748 M	748 M
	473 M	540 M	573 M	685 M	748 M	748 M	748 M
	448 M						
8339	8339	8339	8339	8339			
7824	7762	7700	7636	7572			
5.14	5.72	6.39	7.03	7.66			

275.60 RR Jct. S.W. Cor Randolph + L & W St. Station 12/19

384	82.65	82.65	82.65	82.65	82.65	82.65	82.65
270.76	76.25	77.09	77.80	78.49	79.25	79.25	79.25
29.0	6.80	5.27	5.15	4.52	3.45	3.45	3.45
27.26	6.85	5.32	5.40	4.77	4.25	4.25	4.25
6.89	6.92	6.12	5.85	5.30	3.90	3.90	3.90
282.65 H.I.	6.40	5.77	5.15	4.52	4.42	4.42	4.42
	6.75	6.29	5.60	4.87	4.15	4.15	4.15
	6.15	6.02	4.90	4.47	4.47	4.47	4.47
	5.94	5.77	4.65	4.22	3.90	3.90	3.90

283.21 H.I.

278.13 277.88 277.62 278.13 277.78 278.38 278.63

5.08 5.33 5.59 5.08 5.43 4.83 4.88

278.0 277.75 277.13 277.53 277.00 277.25 277.50

5.21 5.46 6.06 5.71 6.21 5.96 5.71

276.88 276.63 276.36 276.88 276.53 277.13 277.38

6.33 6.58 6.85 6.33 6.68 6.08 5.83

276.75 276.5 275.9 276.25 275.73 276.0 276.25

6.46 6.71 7.31 6.96 7.48 7.21 6.96

ST.

ROBINSON

AVE

269.0

270.0

257.0

257.5

STOP HERE

FIRST

254.5

255.0

PENNSYLVANIA

AVE.

200
150
450

FIRST ST Grades

70' wide
14' sidewalks
5' / 4's

West South Line of Robinson Ave. East

00 269.25 269.0 268.6 269.5 269.4 270.0 270.25

25 267.25 267.0 266.59 267.46 267.80 267.92 268.17

50 265.25 265.0 264.57 265.41 265.71 265.83 266.08

75 263.25 263.0 262.55 263.37 263.13 263.75 264.0

100 261.25 261.0 260.54 261.33 261.06 261.67 261.92

125 259.25 259.0 258.52 259.29 258.98 260.58 259.83

150 257.25 257.0 256.5 257.25 256.9 257.5 257.75

175 257.12 256.87 256.37 257.12 256.77 257.37 257.62

200 256.98 256.73 256.23 256.98 256.63 257.23 257.48

Grading

540PS

Here.

269.96	271.90	271.90	271.90	260.49
1.75	271.90	271.90	257.25	257.75
271.90	266.03	61.25	14.65	2.74
12.45	5.82	10.65	8.65	9.9
259.22	3.32	6.75	7.6	7.2
1.07	7.19	7.39		
262.49	271.90	271.90	271.90	260.49
	265.25	61.92	256.98	57.48
	6.65	9.98	14.92	3.01
	5.75	8.18	12.72	15.01
	+0.7	+1.8	+2.2	72.0

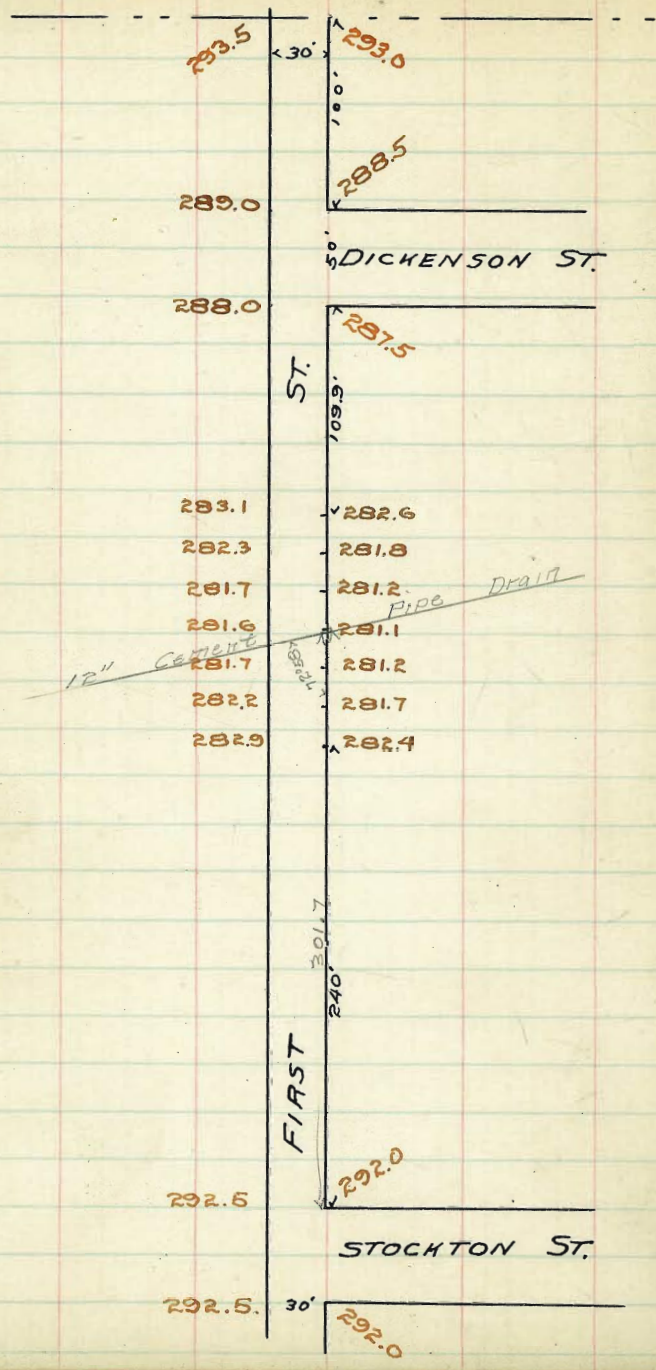
269.96	271.66	271.66	271.66	64.34	64.34	6	all stakes sample Evans Nicholson.
1.70	69.25	66.08	61.25	57.25	56.98	11	
271.66	2.41	5.57	10.41	6.59	7.36		
9.73	2.66	5.83	10.66	6.84	7.61		
261.93	7.66	7.66	7.66	64.34	64.34		
2.47	68.60	65.21	60.54	56.90	64.34		
264.34	3.06	6.75	11.72	7.94	8.11		
7.66	7.66	7.66	64.34	64.34			
69.50	6.41	61.33	57.25	56.78			
2.16	6.24	10.33	7.09	7.36			
7.66	7.66	7.66	64.34	64.34			
69.40	6.52	61.06	56.00	64.34			
2.22	7.09	10.60	7.84	56.63			
7.66	7.66	7.66	64.34	64.34			
20.25	65.25	61.92	57.25	52.48			
1.41	6.48	7.94	7.09	6.96			
1.66	6.66	9.99	7.09	7.11			

269.97	269.00	268.60	268.50	269.40	270.00
2.41	2.38	3.88	2.88	2.58	2.38
272.38	265.00	264.57	265.41	265.21	265.83
11.36	7.58	7.81	6.97	7.17	6.57
261.02	261.00	260.54	261.33	261.00	261.67
3.62	1.24	11.84	11.01	11.32	10.71
264.64	257.00	257.50	257.25	257.00	257.50
	7.64	8.14	7.39	7.74	7.14
	25.22	25.22	25.22	25.63	25.22
	2.81	8.41	7.66	8.11	7.41

Checked 6-7-11

Blough Corner 7 July 1911

269.96	271.61	271.61	271.61	62.89	62.89	6	check D.T. Sample Evans Nicholson.
265	69.25	69.00	64.25	57.25	56.98	11	
271.61	1.36	4.36	7.61	5.14	5.91		
11.36	1.61	7.86	12.01	5.39	6.16		
260.25	7.61	7.61	7.61	62.89	62.89		
2.69	69.00	65.59	60.92	56.90	62.89		
262.89	3.21	5.23	8.48	5.99	6.46		
7.61	7.61	7.61	7.61	62.89	62.89		
69.50	6.22	63.32	58.24	57.25	56.98		
2.77	4.42	8.24	7.22	5.67	5.91		
7.61	7.61	7.61	7.61	62.89	62.89		
69.40	6.31	62.55	54.98	62.89	62.89		
2.16	4.31	9.06	66.50	56.63			
7.61	7.61	7.61	62.89	62.89			
69.25	60.22	63.20	57.83	57.25	57.48		
2.36	3.44	8.36	7.79	7.25	5.41		
2.61	3.69	8.61	12.03	5.64	5.66		



FIRST ST. 30' wide

58

West

East

Sidewalk on East Side 8' wide

West Line	Quarter	Curb	East Line
292.50	291.60	292.0	292.25
292.50	291.60	292.0	292.00
292.50	291.60	291.0	291.40
292.50	291.60	291.0	292.0
292.50	291.60	292.0	292.00
292.50	291.60	292.0	292.25

STOCKTON

ST.

No - West -

5' quarter

West

East

South Line of Dickenson St

469.9	288.0	287.10	287.50	287.75
450	287.11	286.21	286.61	286.86
426	286.0	285.10	285.50	285.75
400	284.88	283.98	284.38	284.63
375	283.77	282.87	283.27	283.52
360	283.1	282.2	282.6	282.85
340	282.3	281.4	281.8	282.05
320	281.7	280.8	281.2	281.45
300	281.6	280.7	281.1	281.35
280	281.7	280.8	281.2	281.45
260	282.2	281.3	281.7	281.95
240	282.9	282.0	282.4	282.65
225	283.5	282.6	283.0	283.25
200	284.5	283.6	284.0	284.25
175	285.5	284.6	285.0	285.25
150	286.5	285.6	286.0	286.25
125	287.5	286.6	287.0	287.25
100	288.5	287.6	288.0	288.25
75	289.5	288.6	289.0	289.25
50	290.5	289.6	290.0	290.25
25	291.5	290.6	291.0	291.25
00	292.5	291.6	292.0	292.25

North Line of Stockton St.

West

East.

FIRST ST
8' walk.
5' $\frac{1}{4}$

60

289.0 288.10 288.5 288.75

288.8 287.90 288.5 288.5

288.65 287.75 287.25 287.9

DICKENSON

288.5 287.60 287.0 288.0

ST.

288.35 287.45 286.75 287.35

288.20 287.30 ^{-10.5} 287.5 287.50

288.0 287.10 287.5 287.75

FIRST ST
8' walk
5' quarter.

61

PUEBLO LINE.

100 293.5 292.6 293.0 293.25

75 291.37 291.47 291.87 292.09

50 291.25 290.35 290.75 291.00

25 290.12 289.22 289.62 289.87

00 289.0 288.10 288.50 288.75

NORTH LINE OF DICHENSON ST.

265.0 265.0 278.0 277.0 292.50 290.50
 Lincoln Ave Polk Ave. Howard Ave.



Univ. Ave. Lincoln Ave. Polk Ave. Howard Ave.
262.0 262.0 277.0 276.0 292.5 290.5

S. W. Lincoln Ave.

400	262.25	262.0	261.60	262.0	261.60	262.0	262.25
425	262.50	262.25	261.82	262.18	261.75	262.12	262.37
450	262.75	262.50	262.05	262.37	261.91	262.25	262.50
475	263.00	262.75	262.27	262.56	262.06	262.37	262.62
500	263.25	263.00	262.50	262.75	262.22	262.50	262.75
475	263.50	263.25	262.72	262.93	262.38	262.62	262.87
450	263.75	263.50	262.95	263.12	262.53	262.75	263.00
425	264.00	263.75	263.17	263.31	262.69	262.87	263.12
400	264.25	264.0	263.40	263.50	262.85	263.0	263.25
375	264.99	264.94	264.34	264.30	263.55	263.66	263.91
350	266.25	265.88	265.28	265.10	264.26	264.33	264.58
320	267.25	267.0	266.40	266.00	265.10	265.0	265.25
310	268.75	268.20	267.60	267.00	266.00	265.80	266.05
370	270.25	270.0	269.40	268.50	267.35	267.0	267.25
350	271.58	271.33	270.73	269.83	268.68	268.33	268.58
325	273.24	272.99	272.39	271.49	270.34	269.99	270.24
300	274.91	274.66	274.06	273.16	272.01	271.66	271.91
275	276.57	276.32	275.72	274.82	273.67	273.33	273.58
250	278.24	277.99	277.39	276.49	275.34	274.99	275.24
225	279.90	279.65	279.05	278.15	277.00	276.66	276.91
200	281.57	281.32	280.72	279.82	278.67	278.32	278.57
175	283.23	282.98	282.38	281.48	280.33	279.99	280.24
150	284.90	284.65	284.05	283.15	282.00	281.66	281.91
125	286.56	286.31	285.71	284.81	283.66	283.32	283.57
100	288.25	288.0	287.40	286.50	285.35	285.0	285.25

N. Line Univ. Ave.

258 00
286 31
1.67

Florida St.

W.

E

265.25 265.0 264.60 265.00 264.60 265.0 265.25

265.0 265.0 264.05 264.45 264.05 265.0 265.0
264.0 264.0 264.0 264.0

264.40 263.25 263.56 263.97 263.56 263.25 264.40

Lincoln

263.50 262.50 262.08 263.48 263.08 262.50 263.50

Ave.

262.35 261.75 262.60 263.00 262.60 261.75 262.35

261.0 261.0 262.12 262.52 262.12 261.0 261.0
262.0 262.0 262.0 262.0 262.0 262.0 262.0

262.25 262.0 261.60 262.00 261.60 262.0 262.25

Florida St.

E.

So. L. Polk St.

600	277.25	277.0	276.40	276.50	275.85	276.0	276.25
575	276.63	276.38	275.80	275.91	275.29	275.44	275.69
550	276.02	275.77	275.20	275.33	274.72	274.88	274.13
525	275.41	275.16	274.60	274.74	274.15	274.33	274.58
500	274.80	274.55	274.00	274.16	273.58	273.77	274.02
475	274.19	273.94	273.40	273.58	273.01	273.22	273.47
450	273.58	273.33	272.80	272.99	272.44	272.66	272.91
425	272.97	272.72	272.20	272.41	271.87	272.11	272.36
400	272.36	272.11	271.60	271.83	271.30	271.55	271.80
375	271.74	271.49	271.0	271.24	270.73	270.99	271.24
350	271.13	270.88	270.40	270.66	270.16	270.44	270.69
325	270.52	270.27	269.80	270.08	269.59	269.88	270.13
300	269.91	269.66	269.20	269.49	269.02	269.33	269.58
275	269.30	269.05	268.60	268.91	268.45	268.77	269.02
250	268.69	268.44	268.00	268.33	267.88	268.22	268.47
225	268.08	267.83	267.40	267.74	267.31	267.66	267.91
200	267.47	267.22	266.80	267.16	266.74	267.11	267.36
175	266.86	266.61	266.20	266.58	266.17	266.55	266.80
150	266.25	266.0	265.60	266.00	265.60	266.0	266.25
125	266.08	265.83	265.43	265.83	265.43	265.83	266.08
100	265.91	265.66	265.26	265.66	265.26	265.66	265.91
75	265.74	265.49	265.09	265.49	265.09	265.49	265.74
50	265.58	265.33	264.93	265.33	264.93	265.33	265.58
25	265.41	265.16	264.76	265.16	264.76	265.16	265.41
0	265.25	265.0	264.60	265.00	264.60	265.0	265.25

N.E. Lincoln Ave.

W.

Florida St. E

67

278.25 278.0 277.40 277.50 276.85 277.0 277.25

278.0	278.0	277.23	277.33	276.68	277.0	277.0
277.0	277.0				276.0	276.0

277.40 276.75 277.07 277.17 276.52 275.75 276.40

Polk

277.50 276.50 276.90 277.00 276.35 275.50 276.50

St.

276.85 276.25 276.73 276.83 276.18 275.25 275.85

276.0	276.0				275.0	275.0
277.0	277.0	276.57	276.67	276.02	276.0	276.0

277.25 277.0 276.40 276.50 275.85 276.0 276.25

W.

So. L. Howard St.

E.

68

400	292.75	292.50	291.90	291.50	290.60	290.50	290.75
	292.18	291.93	291.33	291.00	290.13	290.06	290.31
350	291.62	291.37	290.79	290.50	289.66	289.62	289.87
	291.05	290.80	290.20	290.00	289.19	289.18	289.43
300	290.44	290.24	289.64	289.50	288.72	288.75	289.00
	289.94	289.69	289.09	289.00	288.25	288.31	288.56
250	289.37	289.12	288.62	288.50	287.78	287.87	288.12
	288.81	288.56	287.96	288.00	287.31	287.43	287.68
200	288.25	288.0	287.40	287.50	286.85	287.0	287.25
	287.62	287.37	286.77	286.87	286.22	286.37	286.62
150	287.00	286.75	286.15	286.25	285.60	285.75	286.00
	286.37	286.12	285.52	285.62	284.97	285.12	285.37
100	285.75	285.50	284.90	285.00	284.35	284.50	284.75
	285.12	284.87	284.27	284.37	283.72	283.87	284.12
50	284.50	284.25	283.65	283.75	283.10	283.25	283.50
	283.87	283.62	283.02	283.12	282.47	282.62	282.87
0	283.25	283.00	282.40	282.50	281.85	282.00	282.25
	282.62	282.37	281.77	281.87	281.22	281.37	281.62
150	282.00	281.75	281.15	281.25	280.60	280.75	281.00
	281.37	281.12	280.52	280.62	279.97	280.12	280.37
100	280.75	280.50	279.90	280.00	279.35	279.50	279.75
	280.12	279.87	279.27	279.37	278.72	278.87	279.12
50	279.50	279.25	278.65	278.75	278.10	278.25	278.50
	278.87	278.62	278.02	278.12	277.47	277.62	277.87
0	278.25	278.0	277.40	277.50	276.85	277.0	277.25

N. L. Polk

St.

Florida

St.

W.

E

292.75 292.50 291.90 291.50 290.85 290.50 290.75

292.50 292.50 291.00 290.50 290.00 290.50 290.50
291.5 291.5 289.5 289.5

292.10 291.75 291.42 291.10 290.77 290.45 290.10

Howard

292.50 292.15 291.82 291.50 291.17 290.85 290.50

St.

292.10 291.75 291.42 291.10 290.77 290.45 290.10

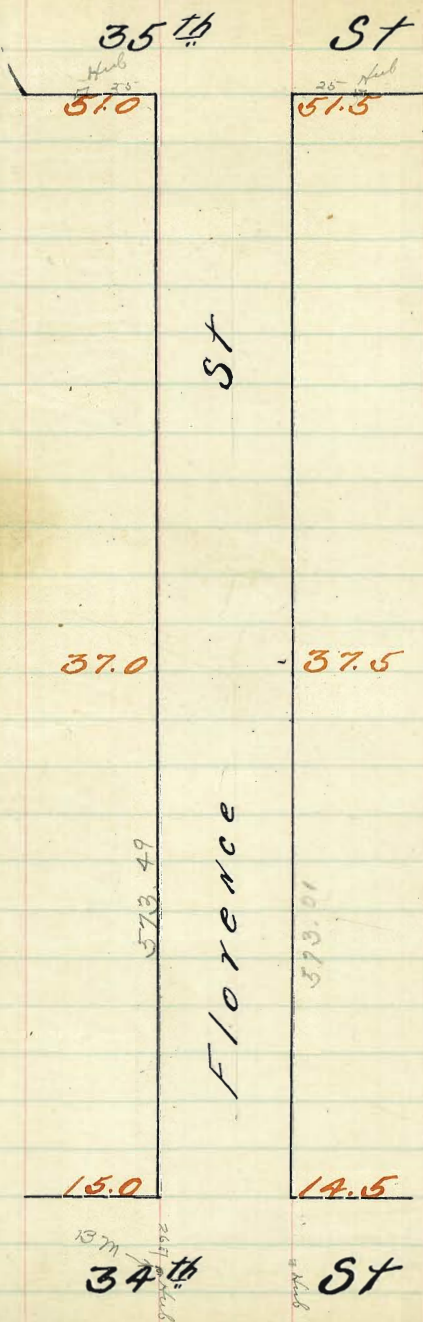
291.5 291.5 291.00 290.50 290.0 289.5 289.5
292.50 292.50 291.00 290.50 290.0 290.5 290.50

292.75 292.50 291.90 291.50 290.85 290.5 290.75

So. L. El Cajon Ave

33736	30085	300.60	300.00	299.80	299.00	299.0	299.25
300	299.08	298.23	298.23	298.14	297.44	295.41	295.66
275	297.90	297.65	297.05	297.04	296.36	296.43	296.68
250	296.72	296.47	295.87	295.94	295.27	295.41	295.66
240	296.25	296.0	295.40	295.50	294.85	295.0	295.25
225	296.03	295.78	295.18	295.23	294.56	294.70	294.95
200	295.67	295.42	294.82	294.82	294.10	294.24	294.49
175	295.30	295.05	294.45	294.40	293.63	293.77	294.02
150	294.94	294.69	294.09	293.99	293.17	293.30	293.55
125	294.57	294.32	294.72	293.57	292.71	292.83	293.08
100	294.21	293.96	293.36	293.16	292.25	292.37	292.62
75	293.84	293.59	292.99	292.74	291.78	291.90	292.15
50	293.48	293.23	292.63	292.33	291.32	291.43	291.68
25	292.11	292.86	292.26	291.91	290.86	290.96	291.21
0	292.75	292.50	291.90	291.50	290.40	290.50	290.75

N. L. Howard St.



18
 2
 21
 8
 13
 10
 4
 10
 11
 31
 07
 31
 12
 34
 33
 12
 45
 48
 10
 53
 6
 11
 1
 1

FLORENCE ST.

North	W.L.	35 th St.			South
					P.M.
51.25	51.0	5073	5125	5090	51.50
50.08	49.83	4956	5018	4973	50.33
48.92	48.67	4839	4892	4857	49.17
47.75	47.50	4722	4775	4740	48.00
46.58	46.33	4605	4658	4623	46.83
45.42	45.17	4489	4542	4507	45.67
44.25	44.00	4372	4425	4390	44.50
43.08	42.83	4255	4308	4273	43.33
41.92	41.67	4139	4192	4157	42.17
40.75	40.50	4022	4075	4040	41.00
39.58	39.33	3905	3958	3923	39.83
38.42	38.17	3789	3842	3807	38.67
37.25	37.00	3672	3725	3690	37.50
35.23	34.98	3468	3518	3482	35.39
33.22	32.97	3264	3313	3274	33.28
31.21	30.96	3060	3106	3067	31.17
29.20	28.95	2856	2901	2859	29.07
27.19	26.94	2652	2695	2651	26.96
25.18	24.93	2448	2490	2444	24.86
23.17	22.92	2244	2284	2236	22.75
21.16	20.91	2040	2078	2028	20.65
19.15	18.90	1836	1872	1821	18.54
17.14	16.89	1632	1667	1613	16.44
15.25	15.00	1440	1475	1422	14.50

E.L. Bath St.

Cut Slakes 75th Hotel Moore Roycroft

73

18406 ROM NE Woodmay - 34th

21.21	525	1475	1714	1669	2116	2090	2518	2511
22.7	670	720	881	526	1291	1317	887	876
12.97	850	745	385	430	101	917	582	851
15.68	+1.2	-2.25	+2.14	+1.26	+2.8	+4.0	+3.56	+8.45
70.71	2920	2922	3322	3353	3725	3715	3958	4008
11.24	487	1587	1197	1124	744	794	561	511
21.95	24	1032	1131	996	810	670	500	361
0.77	+2.6	+5.57	+0.26	+1.7	-0.16	+0.52	+0.6	+1.5
51.95	4192	4242	4425	4475	4658	4708	4892	4992
12.89	3.27	2.77	11.75	11.25	9.41	7.71	7.07	6.57
34.37	2.69	2.47	11.2	5.68	8.21	5.01	6.87	6.77
498	+0.60	+2.0	+2.07	+2.6	+1.2	+2.9	+1.2	+3.80
331.7	5125	5175	4829	53.86	53.86	53.86	41.33	
12.07	475	435	42.5	47.68	48.92	51.75	52.05	
45.19	476	215	4.04	6.78	4.74	2.11	2.28	
802	00	2.1	4.29	7.03	5.19	2.36	41.33	
45.17	6.405 m Mon S.E. 34 th North							
1082	11.05	48.29	48.29	48.29	53.86	53.86	53.86	39.58
55.97	17.95	37.75	39.55	42.42	44.75	46.58	49.42	51.25
	0.85	10.54	8.71	5.87	3.54	7.28	4.94	2.61
	17.10	10.79	3.76	6.12	3.79	7.53	4.69	2.86
	12.09	48.29	48.29	48.29	52.17	52.17	52.17	41.33
	29.19	37.25	40.08	41.92	48.39	46.23	43.72	41.57
	9.44	11.07	2.24	6.87	1.27	3.78	5.40	10.60
	25.75	11.29	2.46	6.62	52.17	52.17	52.17	41.33
	11.45	10.20	11.56	11.13	52.15	48.92	44.25	41.92
	10.20	51.75	41.33	41.33	32.24	32.24	32.24	32.24
	9.26	4.42	33.52	29.20	35.11	24.6	3.25	5.59
	39.64	52.17	290	11.13	51.39	50.73	52.17	52.17
	2.65	12.83	41.33	41.33	30.29	30.29	30.29	30.29
	39.34	1.99	31.72	28.56	14.42	20.40	21.05	21.05
	3.59	21.33	41.33	41.33	30.29	30.29	30.29	30.29
	9.75	12.25	41.33	41.33	30.29	30.29	30.29	30.29
	29.08	2.46	33.23	29.01	29.20	30.78	4.36	4.73
	53.26	30.29	41.33	41.33	30.29	30.29	30.29	30.29
	12.50	11.50	22.49	22.49	22.49	22.49	22.49	22.49
	12.43	11.50	22.49	22.49	22.49	22.49	22.49	22.49
	25.07	11.50	22.49	22.49	22.49	22.49	22.49	22.49
	24.39	11.50	22.49	22.49	22.49	22.49	22.49	22.49
	11.72	11.50	22.49	22.49	22.49	22.49	22.49	22.49
	36.74	11.50	22.49	22.49	22.49	22.49	22.49	22.49
	16.62	11.50	22.49	22.49	22.49	22.49	22.49	22.49
	38.91	11.50	22.49	22.49	22.49	22.49	22.49	22.49
	32.33	11.50	22.49	22.49	22.49	22.49	22.49	22.49
	41.94	11.50	22.49	22.49	22.49	22.49	22.49	22.49
	52.1	11.50	22.49	22.49	22.49	22.49	22.49	22.49
	47.73	11.50	22.49	22.49	22.49	22.49	22.49	22.49
	50.9	11.50	22.49	22.49	22.49	22.49	22.49	22.49
	53.30	11.50	22.49	22.49	22.49	22.49	22.49	22.49
	15.25	14.4	14.75	14.22	14.22	14.22	14.22	14.22
	9.82	10.67	10.89	12.55	10.92	7.98	8.75	8.40
	21.6	200	2075	20.25	209	2113	2225	2252
	37.1	469	459	4.77	2.17	11.07	11.46	11.09
	33.5	232	2401	25.89	29.07	32.97	32.64	33.5
	74	782	678	786	687	2.97	3.20	2.81
	370	3672	5125	26.90	37.50	39.58	39.58	39.58
	10.94	11.22	10.67	11.07	10.94	9.61	8.81	8.11
	21.67	41.30	41.02	41.57	42.07	44.0	42.72	42.25
	6.24	6.25	6.24	6.37	5.70	2.94	4.22	3.69
	46.33	46.05	46.58	46.23	46.83	48.67	48.39	48.92
	4.61	1.89	1.36	1.71	1.11	4.63	4.91	4.38
	5.10	50.73	51.25	50.90	51.50			
	330	2.57	205	240	1.80			

11.05
1.0
3.1
11

all staks
Dimple
Shaw
Richard

Hub. NE Cor 34th Florence

13.59 77 ²	15.0	14.40	14.75	14.22	14.50
18.91	20.50	11.10	12.75	11.28	11.00
35.50 H	16.89	16.32	16.67	16.13	16.44
027	8.61	9.18	8.83	9.37	9.06
25.23					
13	22.91	22.90	22.78	22.28	22.65
38.23 H	4.59	5.10	4.72	5.22	4.85
021					
38.02	24.92	24.48	24.90	24.44	24.86
12.60	2.87	1.02	0.60	1.06	0.64
50.62 H	28.95	28.56	29.01	28.59	29.07
160	9.28	9.67	9.22	9.64	9.16
48.73					
620	32.97	32.64	33.13	32.74	33.28
58.13 H	5.26	5.59	5.10	5.49	4.95
	37.00	36.72	37.25	36.90	37.50
	1.53	1.51	0.98	1.33	0.70
	39.22	39.05	39.58	39.23	39.83
	11.29	11.37	11.04	11.37	10.79
	41.67	41.29	41.92	41.57	42.17
	8.95	9.25	8.70	9.05	8.75
	44.00	43.72	44.25	43.90	44.50
	6.62	6.90	6.37	6.72	6.12
	46.22	46.05	46.58	46.23	46.83
	4.29	4.57	4.04	4.39	3.77
	48.67	48.39	48.92	48.57	49.17
	1.93	2.23	1.70	2.05	1.46
	51.00	50.73	51.25	50.90	51.50
	4.13	4.40	3.88	4.23	3.83

check 5/2/11
 Hatch
 Dugan
 Hall

11
 25
 70
 91
 31
 1

75

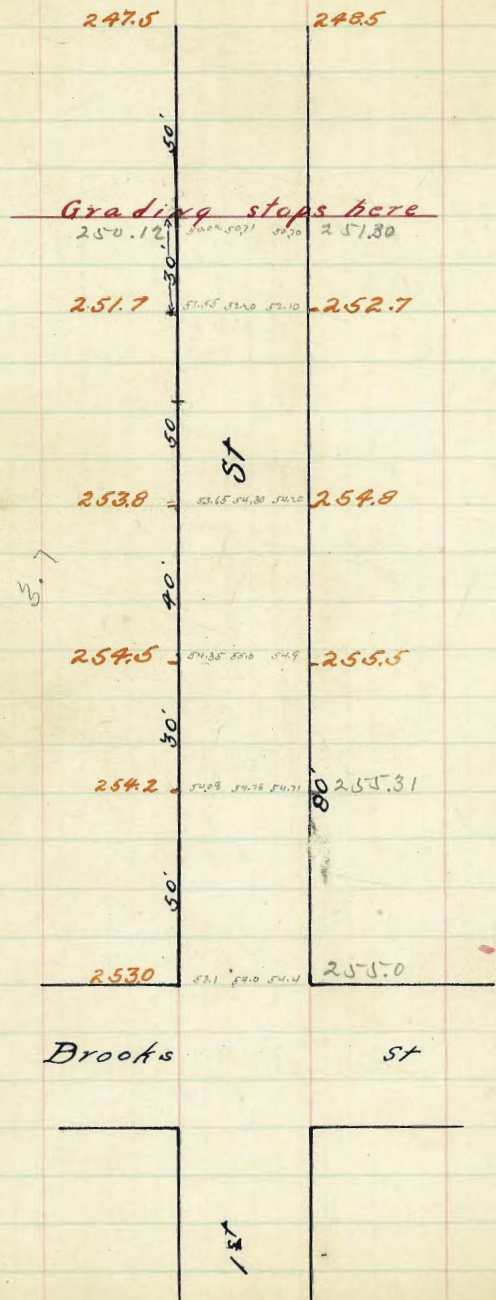
91
92
93
94
95

1

1

1

May 4/11
Checked by Taylor
Boulder



Grades are for curb line

252.90 n.w. cor. pt 7 Brooks

7.38					
260.28	K.L.				
253.25		254.45	254.75	254.05	251.95
7.03		5.83	5.53	6.23	8.33
		5.35	5.23	6.43	8.13
		+0.5	+0.3	-0.2	+0.2
250.37		252.93	255.05	255.71	257.21
9.91	247.37	7.33	5.23	4.53	3.93
9.31	8.91	6.43	5.13	4.33	
+0.6	8.31	+0.9	+0.1	0.2	
	+0.6				
		254.3	1.50	255.56	
		6.0	6.5	4.72	
			3	4.0	
			.1875	4.07	

B.M. 252.90 Brass Plug, return H.W. Cor Brooks B.M. 250.0

252.90	252.40	251.90	251.40	250.90	250.40	249.90	249.40	248.90	248.40
7.38	6.88	6.38	5.88	5.38	4.88	4.38	3.88	3.38	2.88
259.42	258.92	258.42	257.92	257.42	256.92	256.42	255.92	255.42	254.92
6.18	5.68	5.18	4.68	4.18	3.68	3.18	2.68	2.18	1.68
259.42	258.92	258.42	257.92	257.42	256.92	256.42	255.92	255.42	254.92
5.68	5.18	4.68	4.18	3.68	3.18	2.68	2.18	1.68	1.18
5.68	5.18	4.68	4.18	3.68	3.18	2.68	2.18	1.68	1.18
5.68	5.18	4.68	4.18	3.68	3.18	2.68	2.18	1.68	1.18
5.68	5.18	4.68	4.18	3.68	3.18	2.68	2.18	1.68	1.18
5.68	5.18	4.68	4.18	3.68	3.18	2.68	2.18	1.68	1.18
5.68	5.18	4.68	4.18	3.68	3.18	2.68	2.18	1.68	1.18
5.68	5.18	4.68	4.18	3.68	3.18	2.68	2.18	1.68	1.18
5.68	5.18	4.68	4.18	3.68	3.18	2.68	2.18	1.68	1.18
5.68	5.18	4.68	4.18	3.68	3.18	2.68	2.18	1.68	1.18
5.68	5.18	4.68	4.18	3.68	3.18	2.68	2.18	1.68	1.18
5.68	5.18	4.68	4.18	3.68	3.18	2.68	2.18	1.68	1.18
5.68	5.18	4.68	4.18	3.68	3.18	2.68	2.18	1.68	1.18
5.68	5.18	4.68	4.18	3.68	3.18	2.68	2.18	1.68	1.18
5.68	5.18	4.68	4.18	3.68	3.18	2.68	2.18	1.68	1.18

checked property 4-15-12
B.M. 252.90 See above:
259.42 H.I.
6.18 5.68 5.18 4.68 4.18 3.68 3.18 2.68 2.18 1.68
259.42 258.92 258.42 257.92 257.42 256.92 256.42 255.92 255.42 254.92
5.68 5.18 4.68 4.18 3.68 3.18 2.68 2.18 1.68 1.18
5.68 5.18 4.68 4.18 3.68 3.18 2.68 2.18 1.68 1.18
5.68 5.18 4.68 4.18 3.68 3.18 2.68 2.18 1.68 1.18
5.68 5.18 4.68 4.18 3.68 3.18 2.68 2.18 1.68 1.18
5.68 5.18 4.68 4.18 3.68 3.18 2.68 2.18 1.68 1.18
5.68 5.18 4.68 4.18 3.68 3.18 2.68 2.18 1.68 1.18
5.68 5.18 4.68 4.18 3.68 3.18 2.68 2.18 1.68 1.18
5.68 5.18 4.68 4.18 3.68 3.18 2.68 2.18 1.68 1.18

Checked OK 4-27-12

77

79

25-477
9.42

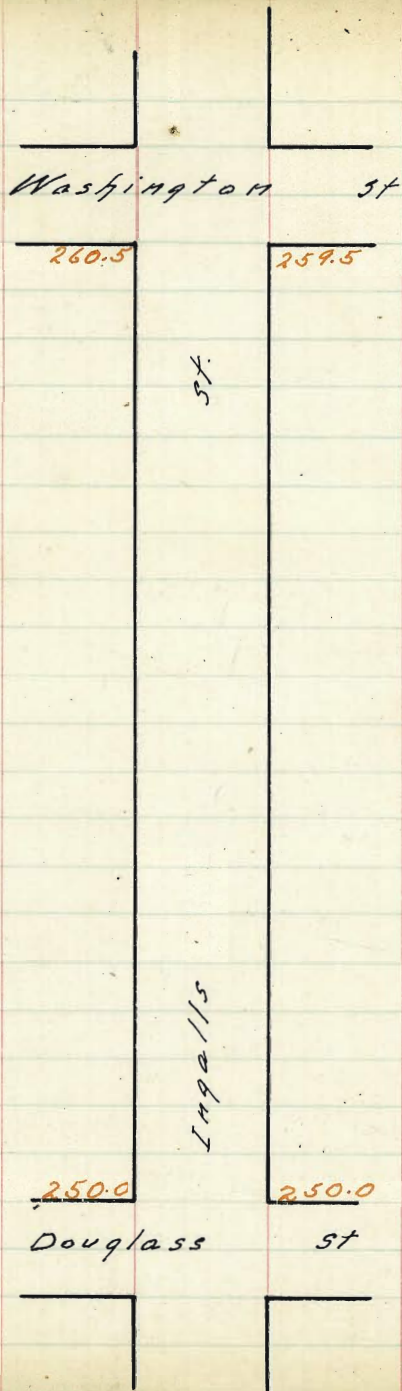
91 57.91
79 7.16
84 7.91
831

57.91

57.91

57.91

57.91



57.77
9.42

91 57.91
12 50.25
59 7.66
49 7.94
8.31

57.91

57.91

57.91

57.91

West

East

So. L. Washington St.

260.75 260.50 259.90 260.00 259.85 259.50 259.75

259.87 259.62 259.04 259.16 258.53 258.70 258.96

259.00 258.75 258.18 258.33 257.72 257.91 258.16

258.12 257.87 257.32 257.49 256.91 257.12 257.37

257.25 257.00 256.46 256.66 256.10 256.33 256.58

256.37 256.12 255.60 255.83 255.28 255.54 255.79

255.50 255.25 254.74 254.99 254.47 254.74 254.99

254.62 254.37 253.89 254.16 253.66 253.95 254.20

253.75 253.50 253.03 253.33 252.85 253.16 253.41

252.87 252.62 252.17 252.49 252.03 252.37 252.62

252.00 251.75 251.31 251.66 251.22 251.58 251.83

251.12 250.87 250.45 250.83 250.41 250.79 251.04

250.25 250.00 249.60 250.00 249.60 250.00 250.25

No. Line Douglas

87
275.73 12th Lane Ingalls. Cut Stakes 7/11

Hotel
Hall

79

W E
59.20 59.16 57.25 56.58 55.50 54.99 53.76 52.41
372 9.56 10.27 11.14 12.23 13.62 13.97 12.21
180 5.76 2.20 10.34 7.48 3.46 2.0 2.4
+6.92 +7.13 +4.07 +0.20 +3.74 +2.85 +4.27 2.0
50.0 51.33 50.25 50.25
1.572 3.77 5.27 5.37
1.112 6.63 10.06 14.59
+4.6 +8.4 -0.62 -11.12

275.87 SE least Ingalls 260.50 259.50
3.66 4.66
278.98 258.75 257.91 257.00 256.33 255.47 254.77
5.06 6.41 6.15 7.11 7.83 8.91 7.42
273.82

L 74.76 250.50 215.16 250.75 251.38 250.00
11.20 4.58 4.72 6.33 6.10 8.04
263.40
7.6
2-11-11 Lamb + Pen blough

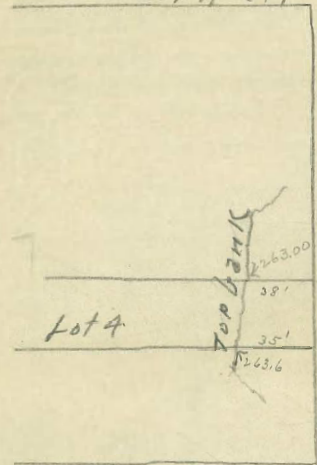
275.87 66.44 66.44 66.44 66.44 57.91 57.91 57.91 57.91
2.55 60.75 58.95 59.12 58.22 59.62 57.62 57.62
278.98 5.69 7.49 8.52 10.65 3.29 5.29 6.79 7.66
3.15 5.94 7.74 8.57 10.90 3.54 5.54 7.04 7.94
258.108 6.54 6.64 6.64 6.64 57.91 57.91 57.91
0.77 6.44 58.53 57.32 58.25 58.81 58.03 58.44
266.49 7.09 7.91 9.72 11.16 4.02 5.88 7.44
10.59 7.09 66.44 66.44 57.91 57.91 57.91 57.91
255.55 6.09 59.16 57.48 55.83 54.16 52.99 50.83
2.36 6.74 7.22 8.95 10.81 3.75 5.42 7.02
257.91 66.44 66.44 66.44 57.91 57.91 57.91 57.91
39.24 58.91 58.60 58.60 53.66 53.77 52.41
7.40 9.53 10.84 4.25 5.74 7.50
266.44 66.44 66.44 57.91 57.91 57.91 57.91
Erwan 57.87 57.37 56.37 54.20 52.77 50.04
Nicherson 6.87 7.07 10.07 3.71 5.24 6.87
6.82 7.37 10.32 3.96 5.29 7.12

9/16 For Check see opposite page

271.90 271.90
3.30 5.90
268.6 263

#380

Perry St.



Lot 4

Robinson Ave

2575
 1111
 14640
 0.45
 261.95
 11.84
 25.89
 11.24
 24.69

190
 157.54
 32.46

32.50
 84.8

7.5 / 2000 1.27
 15.75
 4250 2.57
 3150
 11000
 11025

107.5 / 4000 3.72
 3225
 7750
 7525
 2250 1.86
 2150

107.5 / 4.5 06 4.1
 4300
 2000
 2075
 9250
 8600

276.36
 4.21
 277.57
 10.90
 267.17
 0.69
 267.87
 5.21
 262.66

262.68 262.60
 0.08
 267.83 267.81
 0.02
 267.84

276.36
 5.97
 281.83
 4.79
 277.07
 5.41
 282.50
 4.47
 278.10

81.05
 77.25
 17.8

75.10
 69.23
 3 / 18.87
 47.62
 22.21

74.3
 23
 25.29
 168.6
 193.89

Published by H. S. CROCKER COMPANY, Stationers, Drawing
 Materials, and Mathematical Instruments, San Francisco.

Table showing the difference of latitude and departure in
 running 80 chains at any course from 1 to 60 minutes.

MINUTES.	LKS.	MINUTES.	LKS.	MINUTES.	LKS.
1	2 $\frac{1}{2}$	21	49	41	95 $\frac{1}{2}$
2	4 $\frac{1}{2}$	22	51 $\frac{1}{2}$	42	98
3	7	23	53 $\frac{1}{2}$	43	100 $\frac{1}{2}$
4	9 $\frac{1}{2}$	24	56	44	102 $\frac{1}{2}$
5	11 $\frac{1}{2}$	25	58 $\frac{1}{2}$	45	105
6	14	26	60 $\frac{1}{2}$	46	107 $\frac{1}{2}$
7	16 $\frac{1}{2}$	27	63	47	109 $\frac{1}{2}$
8	18 $\frac{1}{2}$	28	65 $\frac{1}{2}$	48	112
9	21	29	67 $\frac{1}{2}$	49	114 $\frac{1}{2}$
10	23 $\frac{1}{2}$	30	70	50	116 $\frac{1}{2}$
11	25 $\frac{1}{2}$	31	72 $\frac{1}{2}$	51	119
12	28	32	74 $\frac{1}{2}$	52	121 $\frac{1}{2}$
13	30 $\frac{1}{2}$	33	77	53	123 $\frac{1}{2}$
14	32 $\frac{1}{2}$	34	79 $\frac{1}{2}$	54	126
15	35	35	81 $\frac{1}{2}$	55	128 $\frac{1}{2}$
16	37 $\frac{1}{2}$	36	84	56	130 $\frac{1}{2}$
17	39 $\frac{1}{2}$	37	86 $\frac{1}{2}$	57	133
18	42	38	88 $\frac{1}{2}$	58	135 $\frac{1}{2}$
19	44 $\frac{1}{2}$	39	91	59	137 $\frac{1}{2}$
20	46 $\frac{1}{2}$	40	93 $\frac{1}{2}$	60	140

TABLE FOR RUNNING ON SLOPES.

In the following table the first column shows the angle, the second the
 number of links to be added to a chain on the slopes, to make one
 chain, horizontal measurement.

ANGLE	COR. IN LINKS	ANGLE	COR. IN LINKS	ANGLE	COR. IN LINKS	ANGLE	COR. IN LINKS
0		0		0		0	
4	0.24	11	1.88	18	5.14	25	10.54
5	0.38	12	2.24	19	5.76	26	11.26
6	0.55	13	2.63	20	6.42	27	12.24
7	0.76	14	3.06	21	7.11	28	13.37
8	0.98	15	3.53	22	7.85	29	14.34
9	1.24	16	4.02	23	8.64	30	15.47
10	1.55	17	4.56	24	9.47	35	22.07