

51

GRADES

JACKSON ST.	3
KITE ST.	12
LARK ST.	17
BROOKES AVE.	20
PUTERBAUGH ST.	25
TORRENCE ST.	29
SUTTER ST. <i>Trans. the View</i>	32
IBIS ST. <i>Sutler to Bush</i>	37
BUSH ST.	40
WASHINGTON ST. <i>Hawk to W.E. d.</i>	42
FIELD	
Atah St. <i>Union to Up.</i>	34
15th St. <i>G to H.</i>	70
29th St. <i>Holmes to Redwood</i>	72
Hawk St. <i>Hunter to Barr</i>	76

Return to City Engineer's Office
 City Hall, San Diego, Cal.

Published by H. S. CROCKER COMPANY, Stationers, Drawing
Materials, Mathematical Instruments, etc., San Francisco.

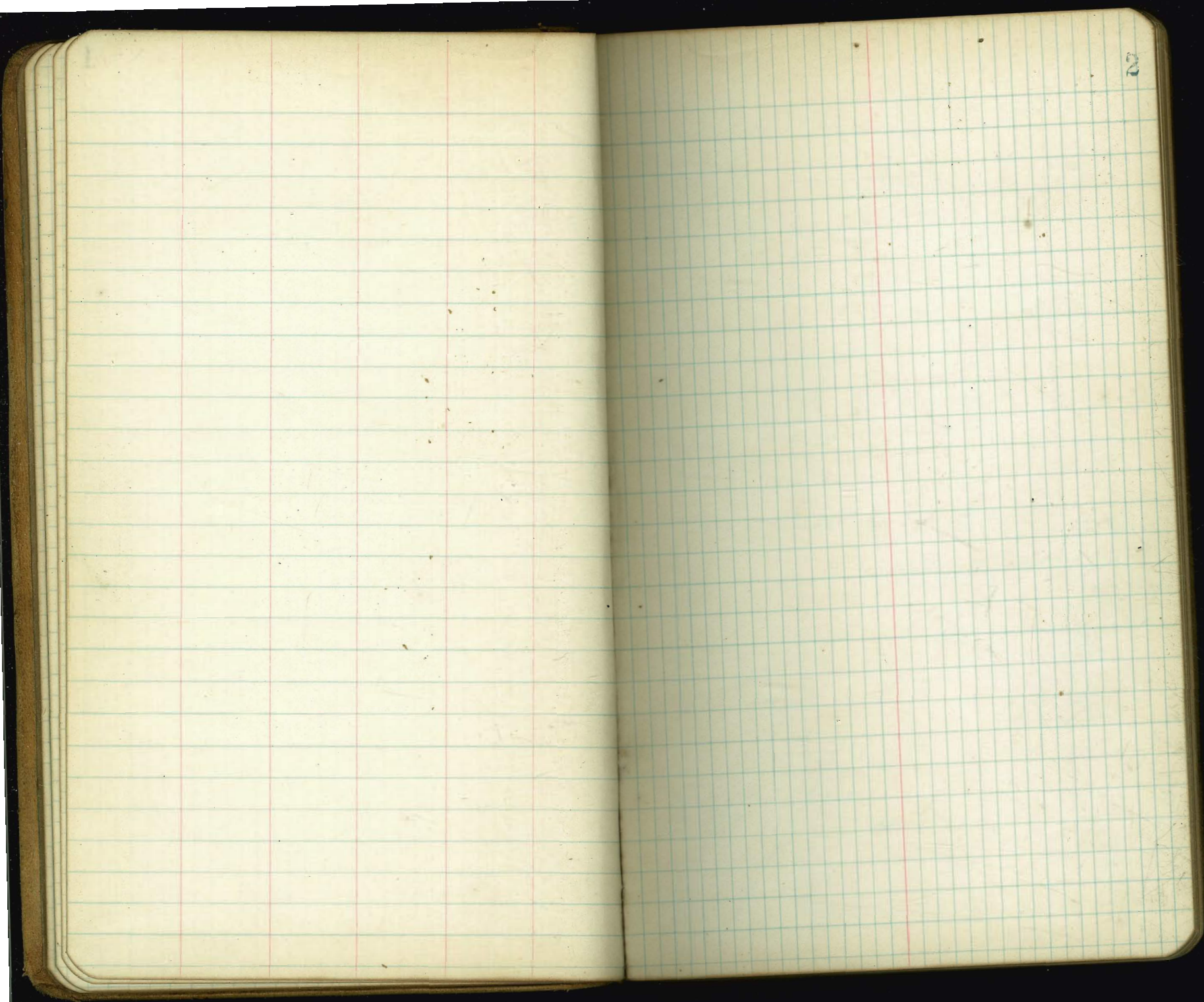
TRAVERSE TABLE FOR TRANSIT BOOK.
From 1° to 90° for a distance of 100.

Degrees.	DEGREES.		¼ DEGREE.		½ DEGREE.		¾ DEGREE.		Degrees.
	Lat.	Dep.	Lat.	Dep.	Lat.	Dep.	Lat.	Dep.	
0	99.98	1.75	100.00	0.44	100.00	0.87	99.99	1.31	89
1	99.94	3.49	99.98	2.18	99.97	2.62	99.95	3.05	88
2	99.86	5.23	99.92	3.93	99.91	4.36	99.88	4.80	87
3	99.76	6.98	99.84	5.67	99.81	6.10	99.79	6.54	86
4	99.62	8.72	99.73	7.41	99.69	7.85	99.66	8.28	85
5	99.45	10.45	99.58	9.15	99.54	9.58	99.50	10.02	84
6	99.25	12.19	99.41	10.89	99.36	11.32	99.31	11.75	83
7	99.03	13.92	99.20	12.62	99.14	13.05	99.09	13.49	82
8	98.77	15.64	98.97	14.35	98.90	14.78	98.84	15.21	81
9	98.48	17.36	98.70	16.07	98.63	16.50	98.56	16.93	80
10	98.16	19.08	98.40	17.79	98.33	18.22	98.25	18.65	79
11	97.81	20.79	98.08	19.51	97.99	19.94	97.90	20.36	78
12	97.44	22.50	97.72	21.22	97.63	21.64	97.53	22.07	77
13	97.03	24.19	97.34	22.92	97.24	23.34	97.13	23.77	76
14	96.59	25.88	96.92	24.62	96.81	25.04	96.70	25.46	75
15	96.13	27.56	96.48	26.30	96.36	26.72	96.25	27.14	74
16	95.63	29.24	96.00	27.98	95.88	28.40	95.76	28.82	73
17	95.11	30.90	95.50	29.65	95.37	30.07	95.24	30.49	72
18	94.55	32.56	94.97	31.32	94.83	31.73	94.69	32.14	71
19	93.97	34.20	94.41	32.97	94.26	33.38	94.12	33.79	70
20	93.36	35.84	93.82	34.61	93.67	35.02	93.51	35.43	69
21	92.72	37.46	93.20	36.24	93.04	36.65	92.88	37.06	68
22	92.05	39.07	92.55	37.86	92.39	38.27	92.22	38.67	67
23	91.35	40.67	91.88	39.47	91.71	39.87	91.53	40.27	66
24	90.63	42.26	91.18	41.07	91.00	41.47	90.81	41.87	65
25	89.88	43.84	90.45	42.66	90.26	43.05	90.07	43.44	64
26	89.10	45.40	89.69	44.23	89.49	44.62	89.30	45.01	63
27	88.29	46.95	88.90	45.79	88.70	46.17	88.50	46.56	62
28	87.46	48.48	88.09	47.33	87.88	47.72	87.67	48.10	61
29	86.60	50.00	87.25	48.86	87.04	49.24	86.82	49.62	60
30	85.72	51.50	86.38	50.38	86.16	50.75	85.94	51.13	59
31	84.80	52.99	85.49	51.88	85.26	52.25	85.04	52.62	58
32	83.87	54.46	84.57	53.36	84.34	53.73	84.10	54.10	57
33	82.90	55.92	83.63	54.83	83.39	55.19	83.15	55.56	56
34	81.92	57.36	82.66	56.28	82.41	56.64	82.16	57.00	55
35	80.90	58.78	81.66	57.71	81.41	58.07	81.16	58.42	54
36	79.86	60.18	80.64	59.13	80.39	59.48	80.13	59.83	53
37	78.80	61.57	79.60	60.53	79.34	60.88	79.07	61.22	52
38	77.71	62.93	78.53	61.91	78.26	62.25	77.99	62.59	51
39	76.60	64.28	77.44	63.27	77.16	63.61	76.88	63.94	50
40	75.47	65.61	76.32	64.61	76.04	64.94	75.76	65.28	49
41	74.31	66.91	75.18	65.93	74.90	66.26	74.61	66.59	48
42	73.14	68.20	74.02	67.24	73.73	67.56	73.43	67.88	47
43	71.93	69.47	72.84	68.52	72.54	68.84	72.24	69.15	46
44	70.71	70.71	71.63	69.78	71.33	70.09	71.02	70.40	45
45									
Degrees.	Dep.	Lat.	Dep.	Lat.	Dep.	Lat.	Dep.	Lat.	Degrees.
	DEGREES		¼ DEGREE.		½ DEGREE.		¾ DEGREE.		

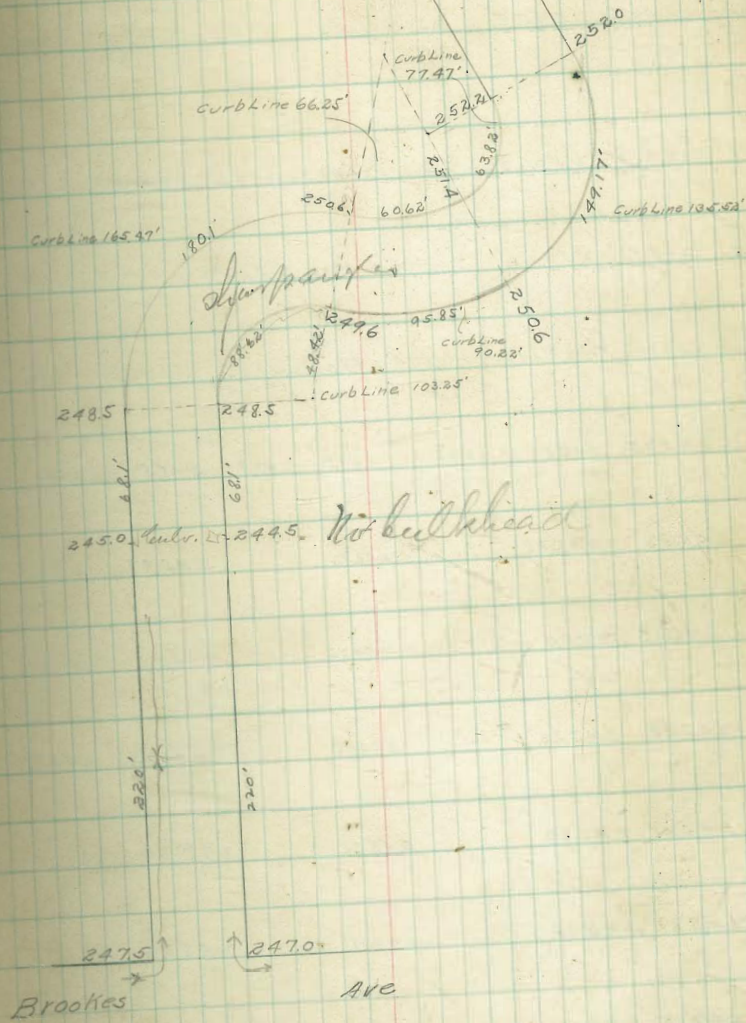
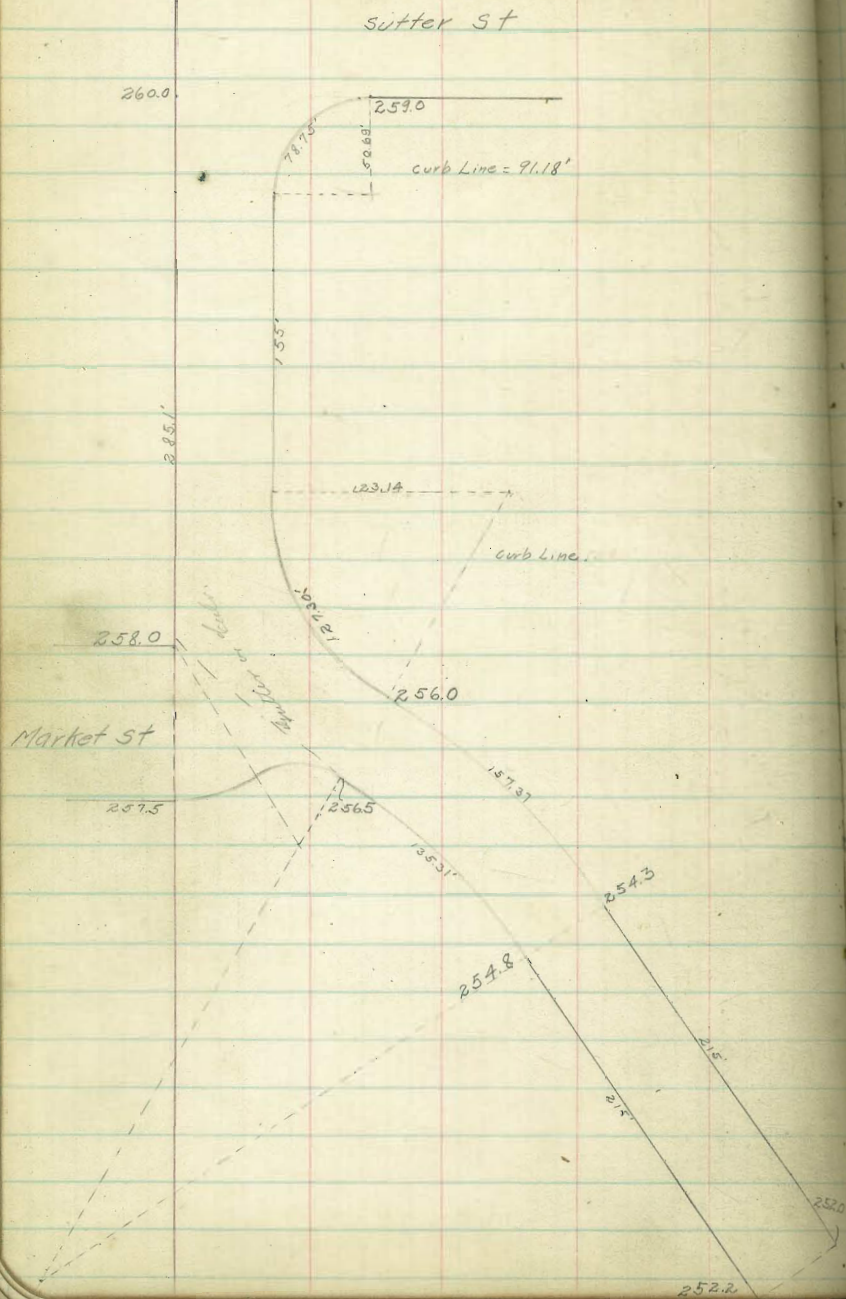
MICROFILMED

APR 5 1965





2



West

East

1811W

8862E 250.85 250.6 2500 2501 250.0 249.6 249.85

PC:00

1395W

6862E 250.38 250.13 249.53 249.74 248.85 249.35 249.60

989W

4262E 249.91 249.66 249.06 249.38 248.5 249.10 249.35

59.30W

28620E 249.44 249.19 248.59 249.02 248.35 248.85 249.10

68.15 248.75 248.5 247.9 248.5 247.9 248.5 248.75

PC:00

25' 246.53 246.28 246.13 245.97 246.22

220' 245.25 245.0 244.75 244.5 244.75

200' 245.48 245.23 244.98 244.73 244.98

150' 246.05 245.80 245.55 245.30 245.55

100' 246.61 246.36 246.11 245.86 246.11

50' 247.19 246.93 246.68 246.43 246.68

20 247.75 247.5 247.25 247.0 247.25

N. Line Brookes Are

North and
West side

South and
East side

5

0382W
149.15E 252.45 252.2 251.6 252.1 251.4 252.0 252.25
RC=00

0382W
125.8E 252.33 252.08 251.48 251.93 251.18 251.78 252.03

4382W
102.4E 252.20 251.95 251.35 251.75 250.96 251.56 251.81

3382W
79.10E 252.08 251.83 251.23 251.58 250.74 251.34 251.59

2382W
55.75E 251.95 251.70 251.10 251.41 250.62 251.12 251.37

1382W
32.40E 251.83 251.58 250.98 251.24 250.4 250.9 251.15

6062W
95.85E 251.65 251.4 250.8 251.0 250.1 250.6 250.85
RC=00

4562W
72.15E 251.45 251.20 250.6 250.77 249.85 250.35 250.60

3062W
48.45E 251.25 251.00 250.4 250.55 249.65 250.10 250.35

1562W
24.75E 251.05 250.8 250.2 250.32 249.45 249.85 250.10

10 250.85 250.60 250.0 250.1 249.2 249.6 249.85

West

East

P.C. South of Market St

12531W 127.37E PC=00	256.75	256.50	255.90	256.25	255.5	256.00	256.25
11431W 124.11E	256.50	256.25	255.65	256.0	255.25	255.75	256.00
9531W 118.55E	256.25	256.0	255.4	255.75	255.0	255.50	255.75
7531W 87.57E	256.0	255.75	255.15	255.5	254.75	255.25	255.50
5531W 64.22E	255.75	255.50	254.90	255.15	254.5	255.0	255.25
3531W 41.07E	255.5	255.25	254.65	255.0	254.25	254.75	255.00
1531W 17.31E	255.25	255.0	255.4	245.75	254.0	254.5	254.75
2152 PC=00	255.05	254.8	254.2	254.55	253.9	254.3	254.55
165	254.45	254.2	253.6	253.98	253.26	253.76	254.01
115	253.85	253.6	253.0	253.41	252.72	253.22	253.47
65	253.25	253.0	252.4	252.84	252.18	252.68	252.93
15	252.65	252.4	251.8	252.27	251.64	252.14	252.39
00	252.45	252.2	251.6	252.1	251.4	252.0	252.25

South and
West side

East

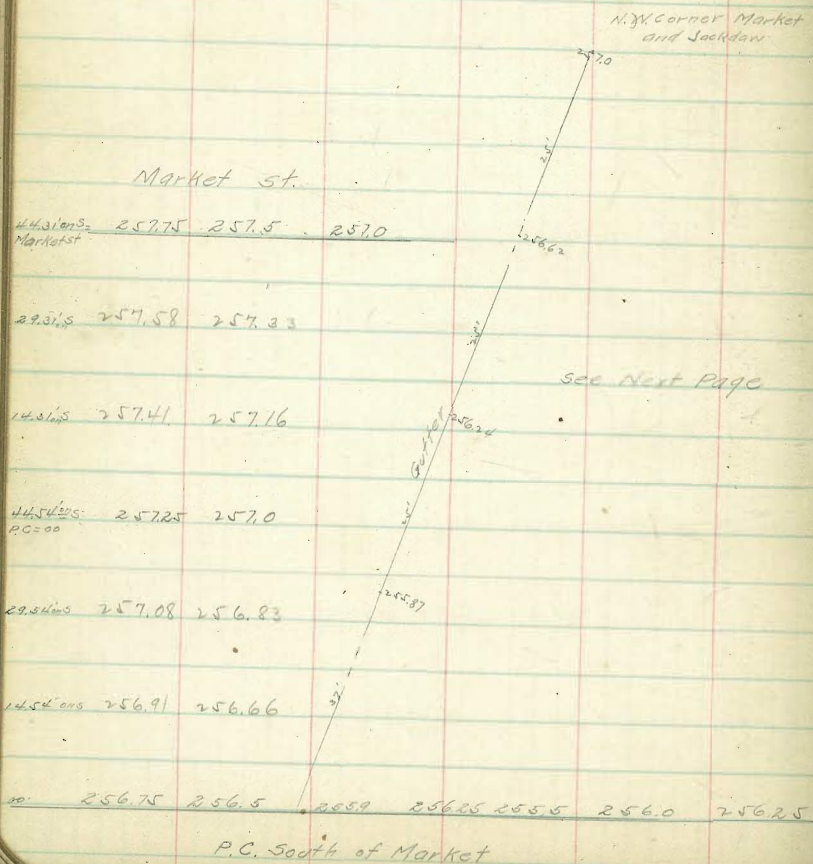
July 16/19

Lelilabo
Barber
Taylor

256.65 H.S.

246.46	246.21	245.7	246.46	246.11	246.71	246.96
10.19	10.44	10.95	10.19	10.54	9.94	9.69

247.75	247.5	246.9	247.25	246.5	247.0	247.25
8.90	9.15	9.75	9.40	10.15	9.65	9.40



West

East

July 16/10 - (Lelields Barber Taylor) 8

25665 H.S.

align

25283 25208 25248 25293 25219 25278 25203
4.32 4.57 5.77 4.72 5.47 4.87 4.62

25259 25234 25274 25258 25223 25283 25208
5.06 5.31 5.91 5.07 5.42 4.82 4.57

25283 25258 25298 25224 25204 25209 25215
4.82 5.07 5.67 5.41 6.25 5.75 5.50

25206 25255 24985 25277 25260 25220 25245
6.05 6.80 6.80 5.88 6.05 5.45 5.22

25205 25208 25220 25232 24955 24985 25201
5.60 5.85 6.45 6.33 7.10 6.80 6.57

2496 24935 24885 24974 24953 25013 25038
7.05 7.80 7.80 6.91 7.12 6.52 6.27

12735
25792 25685 25725 25750

24991 24966 24906 24938 24850 24910 24935
6.74 6.99 7.59 7.27 8.15 7.55 7.30

1072
25766 25666 25706 25731

24910 24885 24835 24902 24859 24919 24944
7.65 7.80 8.80 7.63 8.06 7.46 7.21

872
2574 25647 25687 25712

24875 24813 2479 2485 2479 2485 24875
7.90 8.15 8.75 8.15 8.75 8.15 7.90

672
25714 25618 25668 25693

24675 2465 2459 24667 24615 24675 2470
9.90 10.15 10.75 9.98 10.50 9.90 9.65

472
25686 25608 25648 25673

24525 2450 2444 24475 2440 2445 24475
11.40 11.65 12.25 11.90 12.65 12.15 11.90

273
2566 25578 25628 25653

24532 24507 24457 24532 24497 24557 24582
11.33 11.58 12.08 11.33 11.68 11.08 10.83

10 25675 2565 2559 25625 2565 2560 25625

24639 24614 24554 24589 24514 24564 24589
10.26 10.51 11.11 10.76 11.51 11.01 10.76

West

East

South Line Sutter

285' on W	260.25	260.0					
260' on W	260.08	259.83					
235' on W = E. CORN	259.90	259.65	259.05	258.20	258.84	258.74	258.79
210' on W	259.70	259.48	258.89	258.99	258.1	258.50	258.75
185' on W	259.55	259.30	258.7	258.78	257.86	258.26	258.51
160' on W	259.37	259.12	258.52	258.57	257.62	258.02	258.27
135' on W	259.20	258.95	258.35	258.36	257.38	257.78	258.02
110' on W	259.02	258.77	258.17	258.15	257.14	257.54	257.79
80' on W = E. CORN	258.82	258.57	257.97	257.92	256.85	257.25	257.50
60' on W	258.68	258.43	257.83				
35' on W	258.50	258.25	257.65				
20'	258.25	258.00	257.4				

North Line Market on West

July 16/10

Child
Barber
Taylor

261.23 HI

255.75	255.50	255.02	255.75	255.4	256.0	256.25
5.48	5.73	6.23	5.48	5.83	5.23	4.98
255.75	255.50	254.9	255.25	254.5	255.0	255.25
5.48	5.73	6.33	5.98	6.73	6.23	5.98
254.75	254.50	254.0	254.75	254.4	255.0	255.25
6.48	6.73	7.23	6.48	6.83	6.23	5.98
255.05	254.8	254.2	254.55	253.8	254.3	254.55
6.18	6.43	7.03	6.68	7.43	6.93	6.68
254.01	253.76	253.26	253.98	253.6	254.2	254.45
7.22	7.47	7.97	7.25	7.63	7.03	6.78
253.85	253.6	253.0	253.41	252.72	253.22	253.47
7.38	7.63	8.23	7.82	8.57	8.01	7.76
252.93	252.68	252.18	252.84	252.4	253.0	253.25
8.30	8.55	9.05	8.39	8.83	8.23	7.98
252.65	252.4	251.8	252.27	251.64	252.14	252.39
8.58	8.83	9.43	8.96	9.59	9.09	8.84
990	251.33 J.P.	5.32	256.65 HI			

West

East

July 16/10

Fields
Barber
Taylor 10

256.19 BM1

5.04

261.23 H.F.

259.5	259.75	259.60	259.35	259.20	259.45
1.73	1.48	1.63	1.82	2.03	1.78

259.30	259.05	258.90	259.15	258.99	259.54
1.93	2.18	2.33	2.08	2.24	2.49
258.34	259.20	259.05	259.65	259.90	
2.89	2.03	2.18	1.58	1.33	

260.08	259.83	260.0	260.25		
1.15	1.40	1.23	0.98		

259.55	259.30	259.70	258.78	257.86	258.26	258.51
1.65	1.93	2.53	2.45	3.37	2.97	2.72

258.03	257.78	257.38	258.34	258.35	258.95	259.20
3.20	3.45	3.85	2.87	2.88	2.28	2.03

258.95	258.60	258.0	257.95	257.90	257.30	257.55
2.38	2.63	3.23	3.28	4.33	3.93	3.68

258.50	258.25	257.65	257.40	258.0	258.25
2.73	2.98	3.58	3.83	3.23	2.98

257.75	257.0	257.70	257.75	257.25	257.0	256.5
3.48	4.23	3.73	3.48	3.98	4.23	4.73

257.12	256.87	256.47	256.08	256.48	256.73
4.11	4.36	4.76	5.15	4.76	4.50

256.25	256.0	256.50	256.25	255.9	256.5	256.75
4.98	5.23	5.73	4.98	5.33	4.73	4.48

258.90 259.16

259.2 258.34 258.74 258.99

P.C. south of Sutter

South Line Sutter

75.5' on E

259.5 259.75

63.5' on E

259.35 259.60

48.5' on E

259.20 259.45

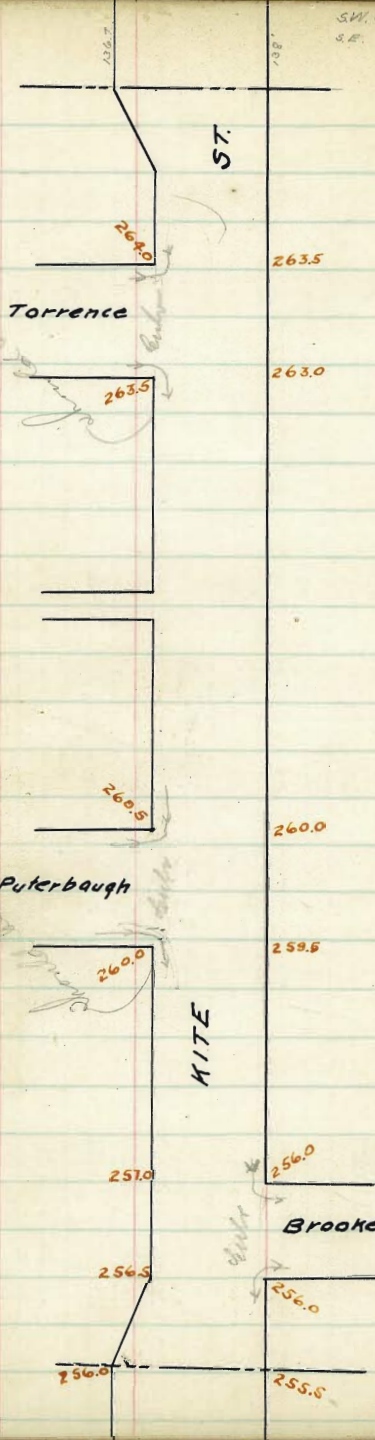
33.5' on E

259.05 259.30

18.5' on E

10

SW. Corner Kite Market 2660
S.E. " " " " 2655



Torrence

Puterbaugh

KITE

Brookes

ST.

264.0

263.5

263.5

263.0

260.5

260.0

260.0

259.5

257.0

256.0

256.5

256.0

256.0

255.5

West

East

South Line Puterbaugh St

123.7 260.25 260.00 259.4 259.75 259.0 259.50 259.75

100 259.67 259.42 258.82 259.13 258.35 258.83 259.05

50 258.46 258.21 257.61 257.81 256.97 257.41 257.66

0 257.25 257.00 256.4 256.5 255.6 256.00 256.25

curb 256.00 256.00
255 255

1/4 255.4

Brookes

0 257.00 256.75 256.15 256.37 255.55 255.00 256.0

Ave

1/4 255.4

curb 255 255
256.0 256.00

0 256.75 256.50 255.90 256.25 255.5 256.00 256.25

24.99 on W
235 on E 256.5 256.25 255.65 256.0 255.25 255.75 256.0

24.99 on W
27 on E 256.25 256.00 255.4 255.75 255.0 255.50 255.75

South Line Marine View

265.43 H.S.

256.20 256.0 256.4 255.25 255.0 255.5 255.75
9.18 9.43 10.03 9.68 10.43 9.93 9.68

256.25 256.0 255.5 256.25 255.9 256.50 256.75
9.18 9.43 9.93 9.18 9.53 8.93 8.68

357.0 256.75 256.15 256.37 255.55 255.77 256.0
8.43 8.68 9.28 9.06 9.38 10.43 9.43

256.25 256.0 255.6 256.5 256.4 257.0 257.25
9.18 9.43 9.83 8.93 9.03 8.43 8.18

258.4 258.21 257.61 257.81 257.97 257.41 257.66
6.97 7.22 7.82 7.62 8.46 8.02 7.77

259.08 258.83 259.35 259.13 258.82 259.42 259.67
6.35 6.60 7.08 6.30 6.61 6.01 5.76

260.25 260.0 259.4 259.75 259.0 259.50 259.75
5.18 5.43 6.03 5.68 6.43 5.93 5.68

Chukiak. Lehibds
Barber
Jager
July 19/10

West South Line Torrence St East

237.5'	263.75	263.5	262.90	263.25	262.50	263.00	263.25
200'	263.28	263.03	262.43	262.88	262.03	262.53	262.78
150'	262.65	262.40	261.80	262.15	261.40	261.90	262.15
100'	262.01	261.76	261.16	261.51	260.76	261.26	261.51
50'	261.38	261.13	260.53	260.88	260.13	260.63	260.88
00'	260.75	260.5	259.90	260.25	259.5	260.0	260.25

curb 260.5
259.5 → 260.50
259.5

1/4 259.90 259.38

Puterbaugh

ctt	260.25	259.25	259.65	260.0	259.25	259.75	260.00
-----	--------	--------	--------	-------	--------	--------	--------

St

1/4 259.50 259.13

curb 260.0
259. → 260.00
259.

00	260.25	260.00	259.40	259.75	259.00	259.50	259.75
----	--------	--------	--------	--------	--------	--------	--------

265.43 ^{1/4}

2600 259.75 259.25 2600 259.65 259.25 260.25
5.43 5.68 6.18 5.43 5.78 6.18 5.18

2607.5 260.5 259.90 260.25 259.5 260.0 260.25
4.68 4.93 5.53 5.18 5.93 5.43 5.18

260.88 260.63 260.13 260.88 260.53 261.13 261.38
4.55 4.80 5.30 4.55 4.90 4.30 4.05

262.01 261.76 261.16 261.57 260.76 261.26 261.57
3.42 3.67 4.27 3.92 4.67 4.17 3.92

262.15 261.90 261.40 262.15 261.80 262.40 262.65
3.28 3.53 4.03 3.28 3.63 3.03 2.78

263.28 263.03 262.43 262.88 262.03 262.53 262.88
2.15 2.40 3.00 2.55 3.40 2.90 2.65

263.25 263.01 262.5 263.25 262.90 263.5 263.75
2.18 2.43 2.93 2.18 2.53 1.98 1.68

1.74
263.69 ^{1/4}

chk O.K. July 19/10
Lehilds
Barber
Taylor

West South Line Market St. East

232.9W
227.8E 266.25 2660 265.4 265.75 26500 265.50 265.75

200W
192.8E

150W
142.8E

100W
92.8E

36.3W
89.5E
26508 264.83 264.23 264.55 263.78 264.28 264.53

50'±
Angle of
on West

264.68 264.43 263.84 264.18 263.44 263.94 264.19

50 264.25 2640 263.4 263.75 2630 263.5 263.75

curb 264.00 264.00
263. 263.

1/4 263.40 262.88

Torrence

50± 263.75 262.75 263.15 263.50 262.75 263.25 263.50

St

1/4 263.00 262.63

262.5 262.5
curb 263.5 263.50

52. 263.75 263.5 262.9 263.25 262.5 263.0 263.25

268.69
5.49
269.18 H.I.

263.75 263.15 263.5 262.75 263.75 263.5
5.43 5.68 6.43 5.93 5.68

263.75 263.5 263.80 263.75 263.4 2640 2642.5
5.43 5.68 6.18 5.43 5.78 5.78 4.93

264.68 264.43 263.94 264.18 263.44 263.94 264.19
4.50 4.75 5.34 5.00 5.74 5.24 4.99

264.53 264.28 263.78 264.55 264.23 264.83 265.08
4.65 4.90 5.40 4.63 4.95 4.35 4.10

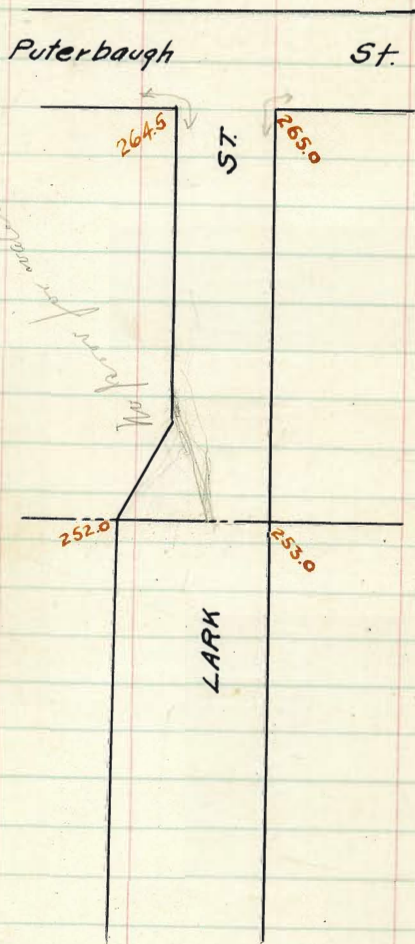
chk OK except gutters across
Torrence, Peterborough & Brooks,
Childs
July 19/10 Barber
Taylor

273.39 H.I.
264.55 263.78 264.28 264.53
8.84 9.61 9.11 8.86

264.19 263.94 263.44 264.18
9.20 9.45 9.95 9.21

263.75 263.0 263.5 263.75
9.64 10.39 9.89 9.64

chk OK Childs
Barber
July 25/10 Taylor



268.15

268.25
 2.65
 268.90 MI

West South Line Puterbaugh st. East

264.75 264.5 264.0 264.75 264.4 265.25 265.25

261.94 261.69 261.19 261.95 261.61 262.21 262.46

259.12 258.87 258.37 259.15 258.82 259.42 259.67

full width

256.31 256.06 255.56 256.34 256.03 256.63 256.88

16434 = 255.51 255.26 254.75 255.54 255.23 255.83 256.08

16434 =

16434 =

16434 =

16434 =

16434 =

16434 =

16434 =

16434 =

16434 =

16434 =

16434 =

16434 =

16434 =

16434 =

16434 =

16434 =

16434 =

16434 =

16434 =

16434 =

16434 =

16434 =

16434 =

16434 =

16434 =

16434 =

16434 =

16434 =

16434 =

16434 =

16434 =

16434 =

16434 =

16434 =

16434 =

16434 =

16434 =

16434 =

16434 =

16434 =

16434 =

16434 =

16434 =

16434 =

16434 =

16434 =

16434 =

16434 =

1/2 width

252.25 252.0 251.6 252.5 252.4 253.0 253.25

21512 on E =

21512 on E =

21512 on E =

21512 on E =

21512 on E =

21512 on E =

21512 on E =

21512 on E =

21512 on E =

21512 on E =

21512 on E =

21512 on E =

21512 on E =

21512 on E =

21512 on E =

21512 on E =

21512 on E =

21512 on E =

21512 on E =

21512 on E =

21512 on E =

21512 on E =

21512 on E =

21512 on E =

21512 on E =

21512 on E =

21512 on E =

21512 on E =

21512 on E =

21512 on E =

21512 on E =

21512 on E =

21512 on E =

21512 on E =

21512 on E =

21512 on E =

21512 on E =

21512 on E =

21512 on E =

21512 on E =

21512 on E =

21512 on E =

South Line Marine View

268.90 H.I.

264.75 264.50 264.0 264.75 264.4 265.0 265.25

261.94 261.69 261.19 261.95 261.61 262.21 262.46
6.96 7.21 7.71 6.95 7.29 6.69 6.44

259.67 259.42 258.82 259.15 258.87 259.47 259.12
9.23 9.48 10.08 9.75 10.53 10.03 9.78

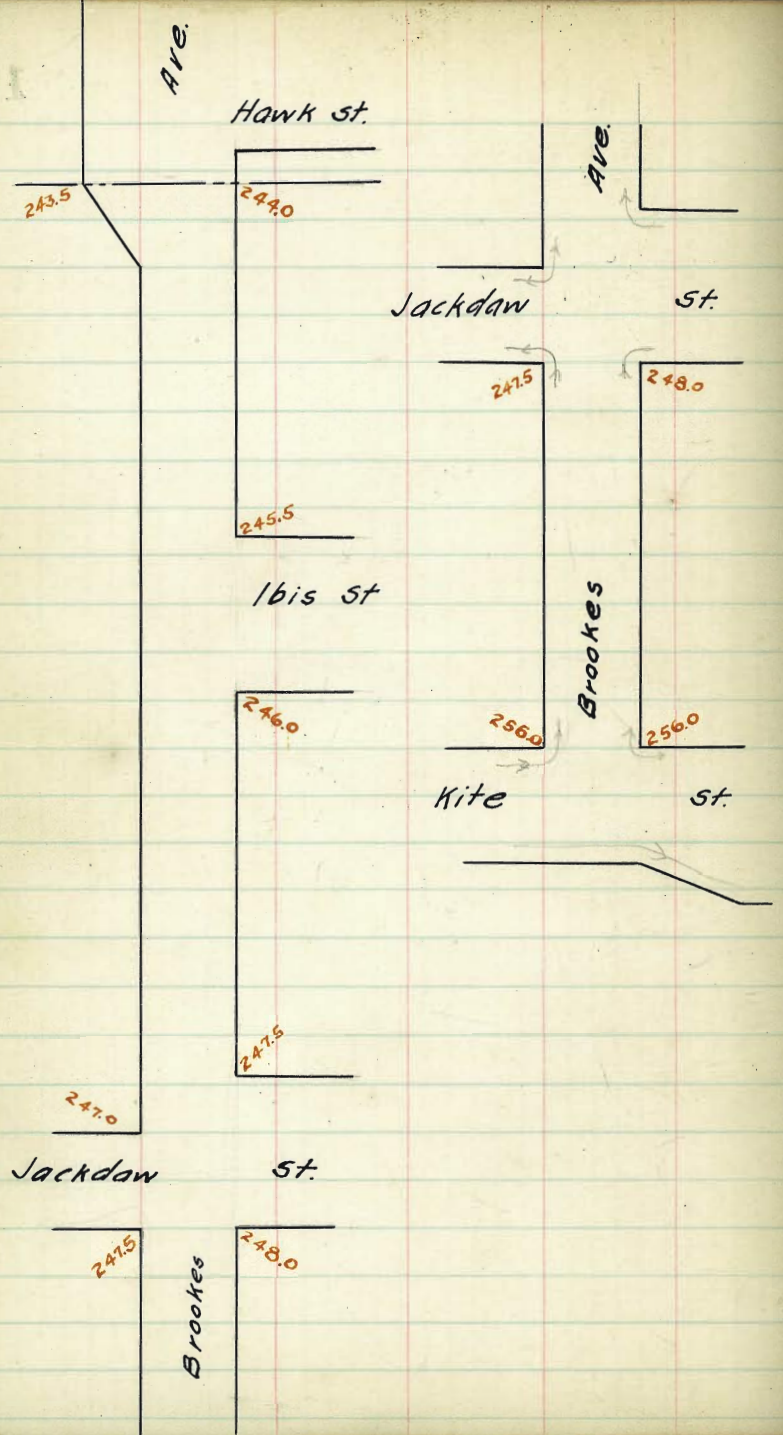
256.31 256.06 255.56 256.34 256.03 256.63 256.88
12.59 12.84 13.34 12.56 12.87 12.27 12.02

12.25
256.65 J.P. 253.25 253.0 252.4 252.5
6.78 10.18 10.43 11.03 10.93
263.43 H.I.

chk. O.K.

July 19/10

Lehilds
Barber
Taylor



North

South

247.25	247.00	246.5	247.25	246.9	247.5	247.75
--------	--------	-------	--------	-------	-------	--------

247.0	247.00				247.5	247.5
246.0	246.0				246.5	246.5

1/4	246.50	246.13			246.63	246.90
-----	--------	--------	--	--	--------	--------

Jackdaw

C	247.25	246.75	246.75	247.50	247.15	246.75	247.75
---	--------	--------	--------	--------	--------	--------	--------

St

1/2	246.90	246.38			246.88	247.40
-----	--------	--------	--	--	--------	--------

246.5	246.5				247.0	247.0
247.5	247.5				248.00	248.00

200'	247.75	247.5	247.0	247.75	247.40	248.00	248.25
------	--------	-------	-------	--------	--------	--------	--------

150'	249.88	249.63	249.1	249.81	249.4	250.00	250.25
------	--------	--------	-------	--------	-------	--------	--------

100'	252.00	251.75	251.2	251.87	251.4	252.0	252.25
------	--------	--------	-------	--------	-------	-------	--------

50'	254.13	253.88	253.3	253.93	253.4	254.0	254.25
-----	--------	--------	-------	--------	-------	-------	--------

0'	256.25	256.0	255.4	256.0	255.4	256.0	256.25
----	--------	-------	-------	-------	-------	-------	--------

East Line Kite St

256.59 B.N.H.

1.03

257.62 H.I.

256.25

1.37

256.0 257.4

1.62 2.22

154.25	257.0	253.4	253.93	253.3	253.88	254.13
3.37	3.62	4.22	3.69	4.32	3.74	3.49

252.0	251.75	251.2	251.87	251.4	252.0	252.25
5.62	5.87	6.42	5.75	6.22	5.62	5.37

250.25	250.0	249.4	249.81	249.1	249.63	249.88
7.37	7.62	8.22	7.81	8.52	7.99	7.74

247.75	247.50	247.0	247.75	247.40	248.0	248.25
9.87	10.12	10.62	9.87	10.22	9.62	9.37

247.75	246.75	247.45	247.50	246.75	247.25	247.25
9.87	10.87	10.47	10.12	10.87	10.37	10.37

247.75	247.0	246.5	247.25	246.9	247.5	247.75
10.37	10.62	11.12	10.37	10.72	10.12	9.87

chk. o.k. except gutter not cut
across Jackdaw
July 19/10
Lehild's
Barber
Taylor

	North							South
EL.	245.09	244.94	244.34	245.17	244.9	245.5	245.75	
Curb						245.5 244.5	245.5 244.5	
1/4							245.0	
	1bis							
Cur	245.37	245.12	244.62	245.43	245.15		245.75	
	St.							
1/4							245.4	
Curb						245.00 246.00	245. 246.00	
200' W.L./bis	245.65	245.40	244.90	245.7	245.40	246.00	246.25	
150'	246.00	245.75	245.25	246.06	245.78	246.38	246.63	
100'	246.35	246.10	245.60	246.42	246.25	246.75	247.00	
50'	246.69	246.44	245.94	246.78	246.63	247.13	247.38	
30' EL. W.L. at South = 00	247.04	246.79	246.29	247.14	247.0 246.9	247.5	247.75	
			246.5	247.25				
20'	247.25	247.00						

East Line Jackdaw St

257.62 H.T.
247.38 247.13 246.63 246.78 245.94 246.44 246.69
10.24 10.49 10.99 10.84 11.68 11.18 10.93
246.35 246.10 245.60 246.42 246.25 246.75 247.0
11.27 11.52 12.02 11.20 11.37 10.87 10.62
246.63 246.38 245.78 246.06 245.25 245.75 246.0
10.99 11.24 11.84 11.56 12.37 11.87 11.62
245.65 245.70 244.90 245.7 245.4 246.0 246.25
11.97 12.22 12.72 11.92 12.22 11.62 11.37
11.35
246.27 J.P.
3.84
250.11 H.T.
245.75 245.15 245.43 244.62 245.12 245.37
4.36 4.96 4.68 5.49 4.99 4.74
245.09 244.84 244.34 245.17 244.9 245.5 245.75
5.02 5.27 5.77 4.94 5.21 4.61 4.36

side intersection not cut out,
+ no gutter graded east & west

North

South

250.11 H.E.

245.34	245.09	244.59	244.79	243.92	244.50	244.75
4.71	5.02	5.52	5.32	6.21	5.61	5.36

244.40	244.15	243.55	244.42	244.18	244.68	244.93
5.71	5.96	6.56	5.69	5.93	5.43	5.18

244.61	244.36	243.86	244.12	243.28	243.88	244.13
5.50	5.75	6.25	5.99	6.83	6.23	5.98

243.75	243.50	243.05	243.75	243.40	244.0	244.25
6.36	6.61	7.11	6.36	6.71	6.11	5.86

chk. OK. Childs
 July 19/10 Barber
 Taylor

East Line Marine View

193.58° on N

153' on S =	243.75	243.50	243.0	243.75	243.40	244.0	244.25
-------------	--------	--------	-------	--------	--------	-------	--------

Public Line

122.57°	244.13	243.88	243.28	244.12	243.86	244.36	244.61
---------	--------	--------	--------	--------	--------	--------	--------

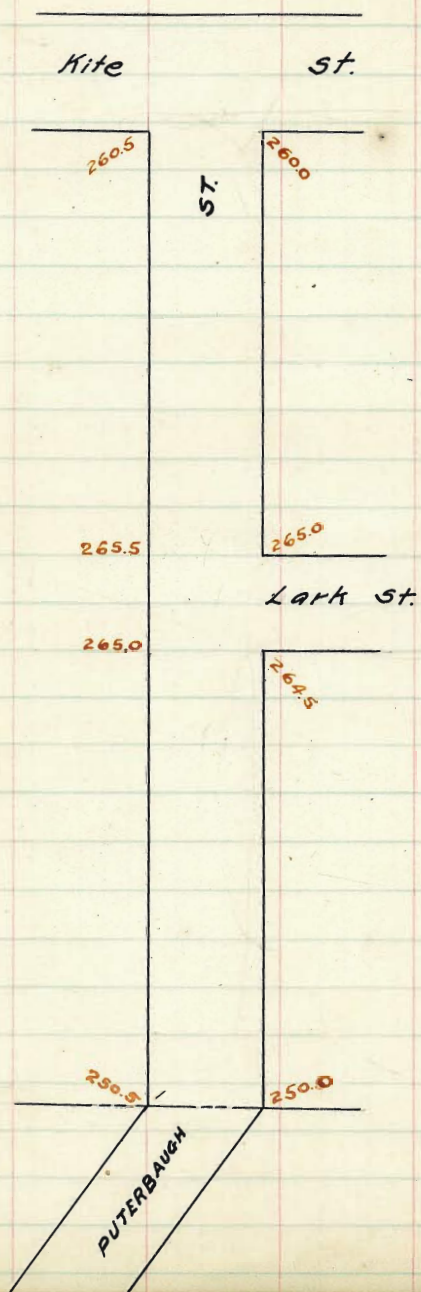
Angle Pt
on North

100'	244.40	244.15	243.55	244.42	244.18	244.68	244.93
------	--------	--------	--------	--------	--------	--------	--------

50'	244.75	244.50	243.90	244.79	244.59	245.09	245.34
-----	--------	--------	--------	--------	--------	--------	--------

00'	245.09	244.84	244.34	245.17	244.90	245.50	245.75
-----	--------	--------	--------	--------	--------	--------	--------

East Line 1 bis St



North

South

265.75 265.5 264.9 265.25 264.5 265.0 265.25

265.0 265.0
264.0 264.0

264.40 264.40

Lark

265.50 265.25 264.65 265.00 264.25 264.50 264.75

St

264.00 264.0

263.5 263.5
264.5 264.5

265.25 265.00 264.4 264.75 264.00 264.5 264.75

262.20 261.95 261.35 261.70 260.96 261.46 261.71

259.15 258.90 258.30 258.66 257.92 258.42 258.67

256.10 255.85 255.25 255.61 254.88 255.38 255.63

253.05 252.80 252.20 252.57 251.84 252.34 252.59

237704N
238550S 250.75 250.5 249.9 250.25 249.5 250.0 250.25

Wes - Line Marine View

268.90 HI.

~~265.50~~ 265.25 264.65 265.0 264.25 264.50 264.75
3.40 3.65 4.25 3.90 4.65 4.40 4.15

264.75 264.5 264.0 264.75 264.4 265.0 265.25
4.15 4.40 4.90 4.15 4.50 3.90 3.65

262.20 261.95 261.35 261.70 260.96 261.46 261.71
6.70 6.95 7.55 7.20 7.94 7.44 7.19

258.67 258.42 257.92 258.66 258.30 258.90 259.15
10.23 10.48 10.98 10.24 10.60 10.00 9.75

26343 HI.

255.63 255.38 254.88 255.61 255.25 255.85 256.10
7.80 8.05 8.55 7.82 8.18 7.58 7.83

253.05 252.80 252.20 252.57 252.94 252.34 252.59
10.38 10.63 11.23 10.86 11.59 11.09 10.84

250.25 250.0 249.5 250.25 249.9 250.5 250.75
13.18 13.43 13.93 13.18 13.53 12.93 12.68

chk. ok. LeRildo
Barber
July 19/10 Taylor

North

West Line Kite St.

South

40	260.75	260.5	259.9	260.25	259.5	260.0	260.25
50	261.89	261.64	261.04	261.39	260.64	261.14	261.39
100	263.02	262.77	262.17	262.52	261.77	262.27	262.52
150	264.16	263.91	263.31	263.66	262.91	263.41	263.66
200	265.29	265.04	264.44	264.79	264.04	264.54	264.79
220	265.75	265.50	264.90	265.25	264.50	265.0	265.25

East Line Lark St.

260.26 ⁷⁰
 577
 265.43 ⁴⁵

27

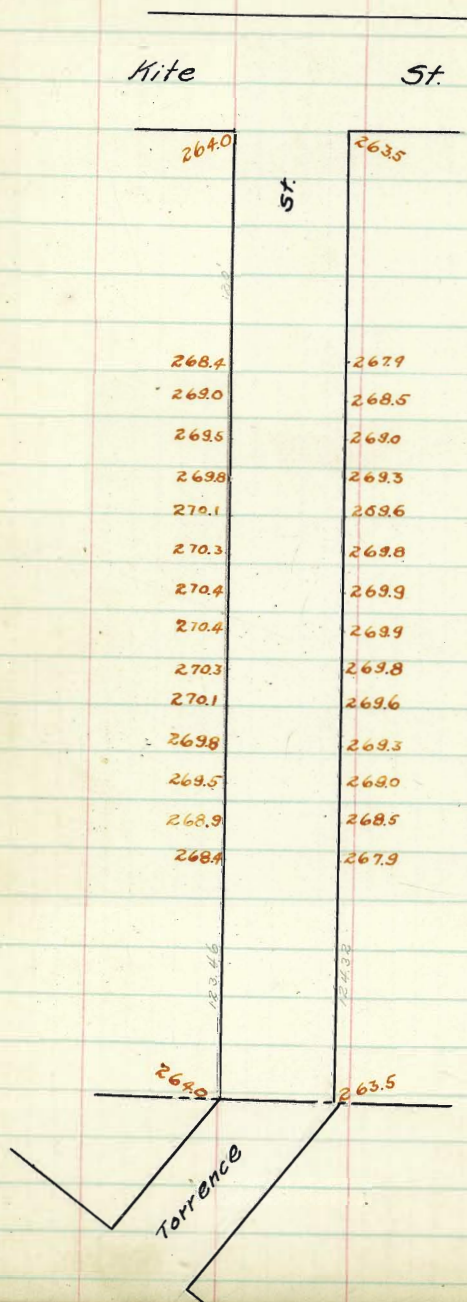
268.90 ⁴⁵

260.75	260.0	259.5	260.25	259.9	260.5	260.75
8.65	8.90	9.40	8.65	9.00	8.40	8.15
261.89	261.64	261.04	261.39	260.64	261.14	261.39
7.01	7.26	7.86	7.51	8.26	7.76	7.51
262.52	262.27	261.77	262.52	262.17	262.77	263.02
6.38	6.63	7.13	6.38	6.73	6.13	5.88
264.16	263.91	263.31	263.66	262.91	263.41	263.66
4.74	4.99	5.59	5.24	5.99	5.49	5.24
265.29	265.04	264.44	264.79	264.04	264.54	264.79
3.65	3.90	4.40	3.65	4.00	3.40	3.15

chk. OK

July 19/10

Schields
 Barber
 Taylor



	North	West Line Kite St.						South
00	264.25	264.00	263.40	263.75	262.90	263.5	263.75	
50	266.08	265.83	265.23	265.58	264.83	265.33	265.58	
100	267.92	267.67	267.07	267.42	266.67	267.17	267.42	
120	268.65	268.40	267.80	268.15	267.40	267.9	268.15	
140	269.25	269.0	268.4	268.75	268.0	268.5	268.75	
160	269.75	269.5	268.9	269.25	268.5	269.0	269.25	
180	270.05	269.8	269.2	269.55	268.8	269.3	269.55	
200	270.35	270.1	269.5	269.85	269.1	269.6	269.85	
220	270.55	270.3	269.7	270.05	269.3	269.8	270.05	
240	270.65	270.4	269.8	270.15	269.4	269.9	270.15	
260	270.65	270.4	269.8	270.15	269.4	269.9	270.15	
280	270.55	270.3	269.7	270.05	269.3	269.8	270.05	
300	270.35	270.1	269.5	269.85	269.1	269.6	269.85	
320	270.05	269.8	269.2	269.55	268.8	269.3	269.55	
340	269.75	269.5	268.9	269.25	268.5	269.0	269.25	
360	269.15	268.9	268.3	268.70	268.0	268.50	268.75	
380	268.65	268.4	267.8	268.15	267.4	267.9	268.15	
400	267.95	267.70	267.30	267.45	266.7	267.20	267.45	
450	266.16	265.91	265.31	265.67	264.93	265.43	265.68	
500	264.37	264.12	263.52	263.89	263.16	263.66	263.91	

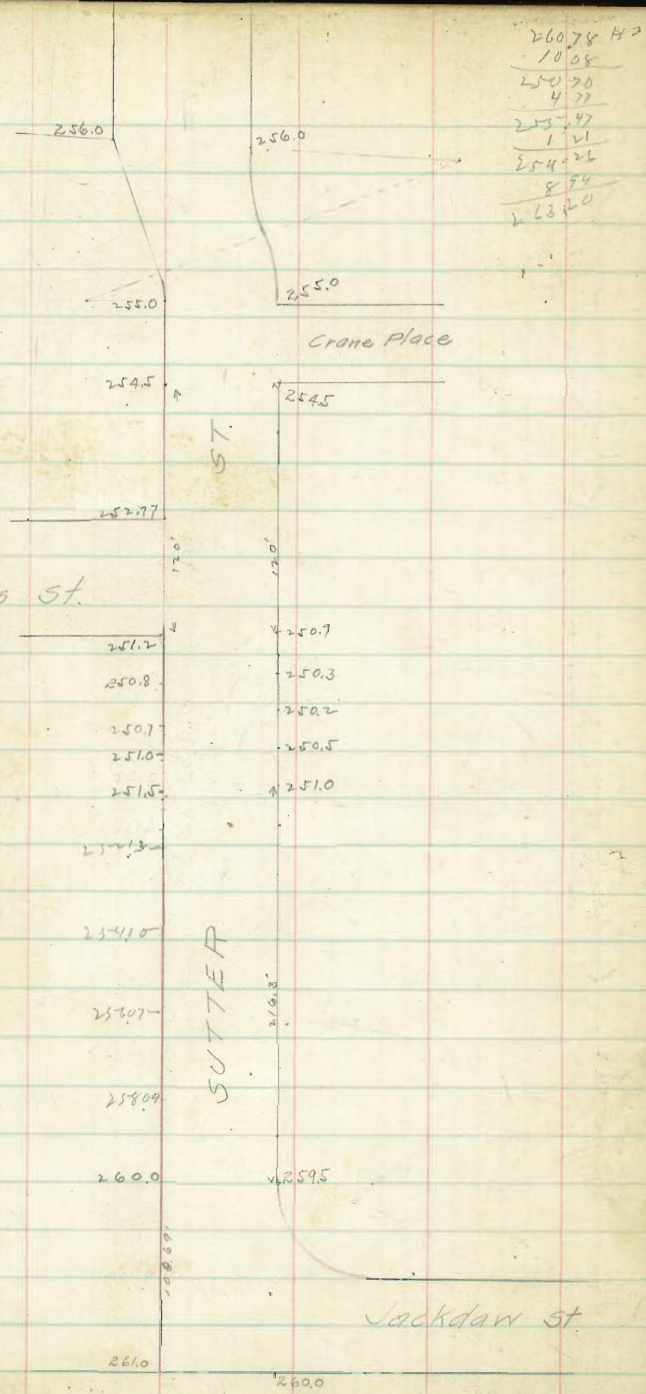
500 264.37
300 263.89

West Line Marine View

263.63 B.M. S.W. cor. Torrance & Kite.							
9.76							
273.39 H.I.							
263.75	263.5	262.9	263.75	263.4	264.0	264.25	
9.64	9.89	10.49	9.64	9.99	9.39	9.14	
266.08	265.83	265.23	265.58	264.83	265.33	265.58	
7.31	7.56	8.16	7.81	8.56	8.06	7.81	
267.42	267.17	266.67	267.42	267.07	267.67	267.92	
5.97	6.22	6.72	5.97	6.32	5.72	5.47	
268.65	268.40	267.80	268.15	267.40	267.90	268.15	
4.74	4.99	5.59	5.24	5.99	5.49	5.24	
269.75	269.5	268.9	269.25	268.5	269.0	269.25	
269.75	269.5	268.9	269.25	268.5	269.0	269.25	
4.64	4.89	5.39	4.64	4.99	4.89	4.14	
269.75	269.5	268.9	269.25	268.5	269.0	269.25	
8.64	8.89	9.49	8.14	8.89	8.39	8.14	
269.75	269.5	268.9	269.25	268.5	269.0	269.25	
3.84	4.09	4.59	3.84	4.19	3.59	3.34	
270.35	270.1	269.5	269.85	269.1	269.6	269.85	
3.04	3.29	3.89	3.54	4.29	3.79	3.54	
270.35	270.1	269.5	269.85	269.1	269.6	269.85	
3.34	3.59	4.09	3.34	3.69	3.09	2.84	
270.05	270.40	269.8	270.15	269.4	269.9	270.15	
2.74	2.99	3.59	3.24	3.79	3.49	3.24	
270.15	269.9	269.3	270.15	269.8	270.40	270.65	
3.24	3.49	3.99	3.24	3.59	2.99	2.74	
270.35	270.3	269.7	270.05	269.3	269.8	270.05	
2.84	3.09	3.69	3.34	4.09	3.59	3.34	
269.85	269.6	269.10	269.85	269.5	270.1	270.35	
3.54	3.79	4.29	3.54	3.89	3.29	3.04	
270.05	269.8	269.2	269.85	268.8	269.3	269.85	
3.34	3.59	4.19	3.54	4.59	4.09	3.84	
269.25	269.0	268.5	269.25	268.9	269.5	269.75	
4.44	4.39	4.89	4.14	4.99	3.89	3.64	
269.15	268.9	268.3	268.70	268.0	268.5	268.75	
4.24	4.49	5.09	4.59	5.39	4.89	4.64	
268.15	267.9	267.4	268.15	267.8	268.4	268.65	
5.24	5.49	5.99	5.24	5.59	4.99	4.74	
267.95	267.70	267.30	267.45	266.7	267.20	267.45	
5.44	5.69	6.09	5.94	6.69	6.19	5.94	
265.68	265.43	264.83	265.67	265.31	265.91	266.16	
7.71	7.96	8.46	7.72	8.08	7.48	7.23	
264.25	264.0	263.40	263.75	263.0	263.5	263.75	
9.14	9.39	9.99	9.64	10.39	9.89	9.64	

check
July 25/10
Schultz
Barber
Taylor

Ibis St.



Jackdaw St

25-6-88 BN 260

Check Grades on Sutter St
Clayton Cunn + July Johnson

32

	n	26078	b	S
E 2 main base (80)	4.7	256.1	4.8	4.7 256.1
E 2 base PL (40)	4.0	256.8	4.6	3.9 256.9
W 2 " "	4.8	256.0	6.2	4.9 255.9
60' 10" base	9.7	251.1	9.4	9.6 251.2
120' " "	11.2	244.3	6.2	10.4 245.1
379' E of Crane Pl = 156' W of Crane Pl	10.9	244.6	6.4	11.4 244.0
357' E of M V	7.9	247.66	6.6	12.3 243.2
339' E of M V	7.7	247.80	6.6	10.8 244.2
317' E of M V	6.8	248.7	6.0	9.7 245.8
300' E of M V	5.0	250.50	4.6	5.1 250.40
250' E of M V	1.3	254.2	0.7	1.0 254.5
200' E of M V	5.0	258.20	5.7	6.6 256.60
150' E of M V	2.7	260.50	3.6	3.5 259.7
100.67	4.2	261.00	2.9	3.5 259.7

North

South

396.7V Break	251.2	250.7
-----------------	-------	-------

376.7V Break	250.8	250.3
-----------------	-------	-------

356.7R Break	250.7	250.2
-----------------	-------	-------

336.7R Break	251.0	250.5
-----------------	-------	-------

316.7R Break	251.5	251.0
-----------------	-------	-------

300'

250'

200'

150'

100.69' = Break E.CONS	260.0	259.5
---------------------------	-------	-------

150'

Jackdaw st

100'

261.0

260.0

West Line Marine View Add.

North
EL 255.25 255.0

255.0 South

255.0
1

Crane

Place

254.5

±60'
N. Crane
Pl. 254.5

254.5

±30'

±0 253.02 252.77

252.77 252.77

±4'

Ibis

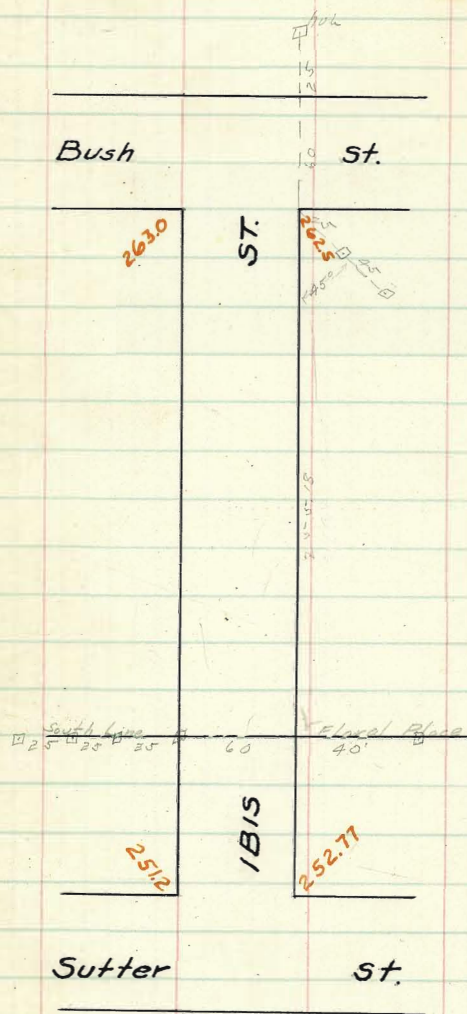
±

st.

±4'

251.2 251.2

251.45 251.2



West South Line Bush st. East

00 263.25 263.0 262.4 262.5 262.23 262.5 262.75

100 261.61 261.36 260.83 261.24 260.82 261.1 2 261.37

200 259.96 259.71 259.27 259.73 259.41 259.76 260.01

300 258.31 258.06 257.70 258.23 258.00 258.40 258.65

400 256.66 256.41 256.14 256.73 256.60 257.04 257.29

500 255.01 254.76 254.58 255.23 255.19 255.68 255.93

600 253.36 253.11 253.01 253.73 253.78 254.32 254.57

700 251.71 251.46 251.45 252.23 252.37 252.96 253.21

800 250.06 251.45 251.2 251.2 251.99 252.17 252.77 253.02

North Line Sutter St.

269.04	269.04	269.04	269.04	269.04	269.04	269.04	269.04
59.75	59.75	59.67	59.67	59.64	59.64	59.64	59.64
7.65	7.65	9.29	10.37	13.00	13.00	13.00	13.00
6.15	6.15	4.57	9.87	7.20	7.20	7.20	7.20
7.15	7.15	4.50	4.05	13.7	13.7	13.7	13.7
269.04	269.04	269.04	269.04	269.04	269.04	269.04	269.04
6.27	6.27	6.03	5.30	5.730	5.730	5.730	5.730
5.18	5.18	7.99	9.01	10.74	11.74	11.74	11.74
		2.89	9.01	6.87	13.27	13.27	13.27
		4.6	7.71	6.87	13.27	13.27	13.27
			11.30	7.37	-1.3	-1.3	-1.3

25.76	25.76	25.76	25.76
5.74	5.74	5.74	5.74
1.2	1.2	1.2	1.2
2.82	2.82	2.82	2.82
1.532	1.532	1.532	1.532
-12.7	-12.7	-12.7	-12.7
253.02	253.02	253.02	253.02
8.50	8.50	8.50	8.50
7.12	7.12	7.12	7.12
261.50H1	261.50H1	261.50H1	261.50H1
253.02	253.02	253.02	253.02
8.50	8.50	8.50	8.50
7.12	7.12	7.12	7.12
11.7 Top of Bush	11.7 Top of Bush	11.7 Top of Bush	11.7 Top of Bush
261.50	261.50	261.50	261.50
253.40	253.40	253.40	253.40
10.05	10.05	10.05	10.05
15.45	15.45	15.45	15.45
5.40	5.40	5.40	5.40

256.99 B.M. Mon. N.Y. Cor Gold Finch + Sutter Sts

264.80	264.80	264.80	264.80	264.80	264.80	264.80	264.80
1.83	1.83	2.224	3.12	4.26	4.50	5.82	6.87
262.97	262.97	262.97	262.97	262.97	262.97	262.97	262.97
0.72	0.72	2.657	2.657	2.657	2.657	2.657	2.657
256.69	256.69	256.69	256.69	256.69	256.69	256.69	256.69
3.31	3.31	9.24	8.58	10.11	11.03		
265.87 H1	265.87 H1	265.87 H1	265.87 H1	265.87 H1	265.87 H1	265.87 H1	265.87 H1
262.75	262.75	262.75	262.75	262.75	262.75	262.75	262.75
3.18	3.18	6.93	6.93	6.93	6.93	6.93	6.93
265.93 H1	265.93 H1	265.93 H1	265.93 H1	265.93 H1	265.93 H1	265.93 H1	265.93 H1
262.50	262.50	262.50	262.50	262.50	262.50	262.50	262.50
3.73	3.73	6.93	6.93	6.93	6.93	6.93	6.93
		6.01	5.92	5.97	5.97	5.97	5.97
		5.24	5.17	5.20	5.22	5.97	5.97
65.93	65.93	65.93	65.93	65.93	65.93	65.93	65.93
58.31	58.31	58.06	58.23	58.20	58.20	58.20	58.20
7.62	7.62	7.87	7.70	7.53	7.28		

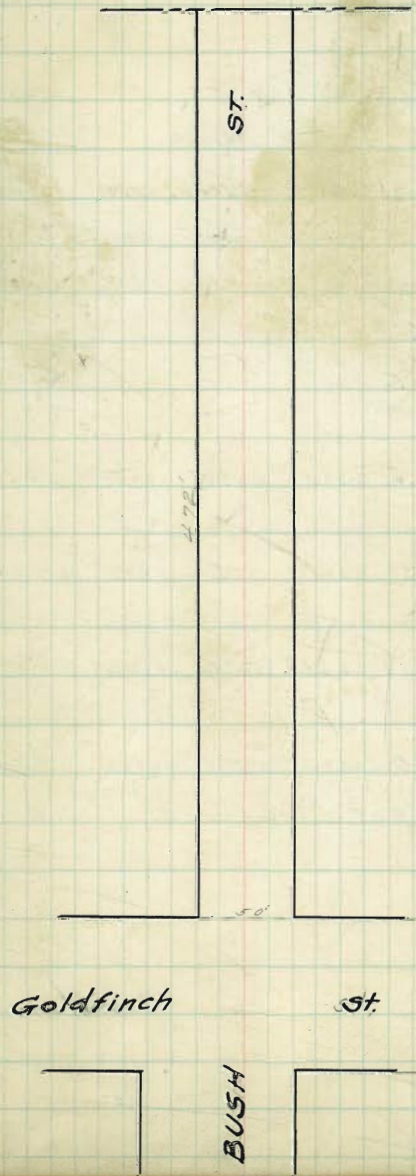
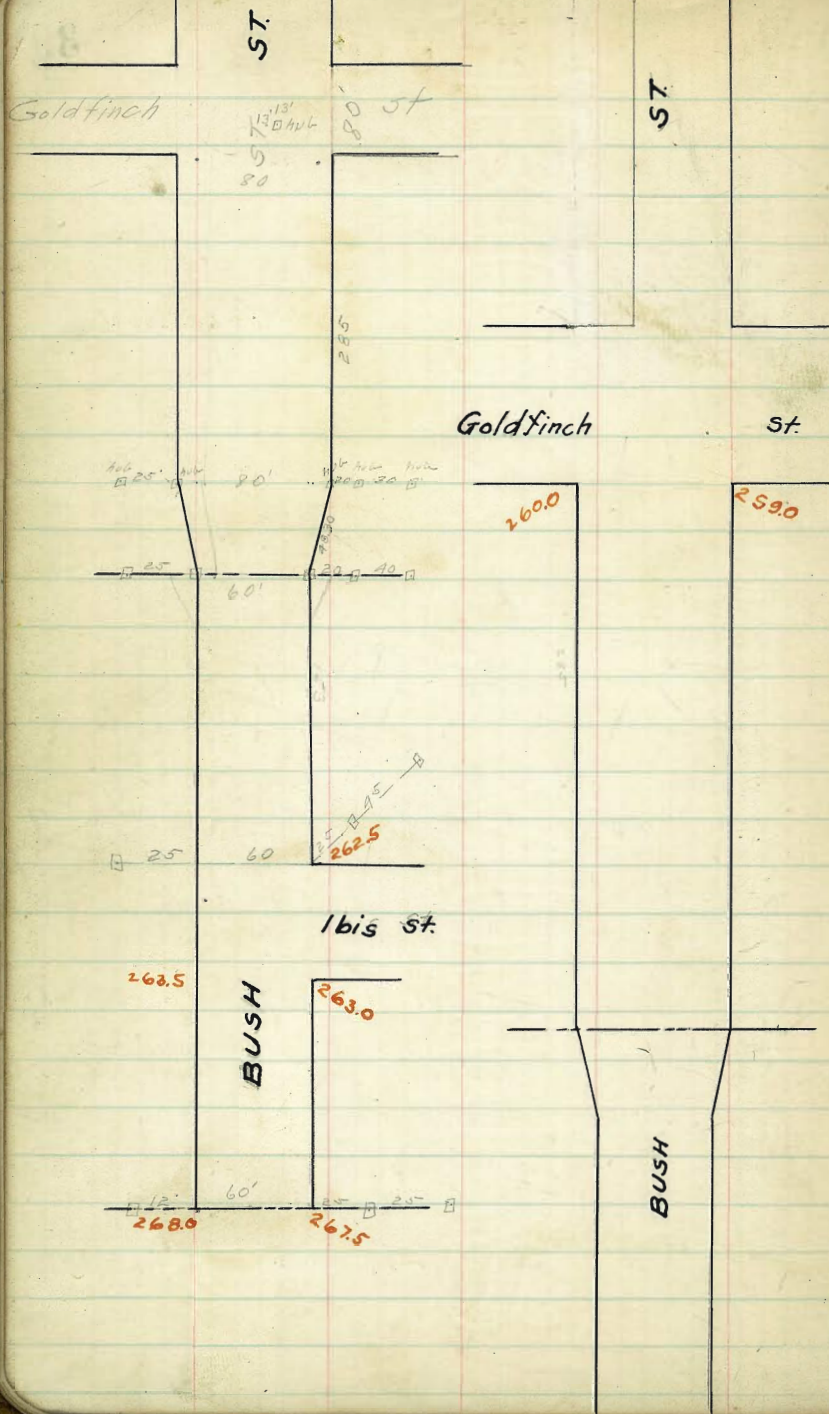
shaw 19/ grapes 12/ Tuleman 40

65.93	65.93	65.93	65.93	65.93	65.93	65.93	65.93
5.22	5.22	5.77	5.20	6.22	5.97		
65.93	65.93	65.93	65.93	65.93	65.93	65.93	65.93
5.83	5.83	5.45	5.08	5.51	5.76		
11.09	11.34	10.85	10.42	10.17			

Feb 8, 11 Childe Taylor Banker

266.64 H2

263.25	263.0	262.2	262.75	262.23	262.5	262.75	262.75
3.37	3.4	4.24	3.89	4.41	4.14	3.9	3.9
261.37	261.12	260.82	261.2	260.83	261.36	261.61	261.61
5.27	5.52	5.82	5.40	5.81	5.28	5.03	5.03
259.96	259.71	259.27	259.73	259.41	259.76	260.01	260.01
6.68	6.93	7.37	6.91	7.23	6.88	6.63	6.63
258.65	258.40	258.00	258.23	257.70	258.06	258.31	258.31
7.97	8.24	8.64	8.41	8.94	8.59	8.33	8.33
256.66	256.41	256.14	256.75	256.60	257.04	257.29	257.29
9.98	10.23	10.50	9.91	10.04	9.60	9.35	9.35
255.93	255.68	255.19	255.23	254.58	254.76	255.01	255.01
10.71	10.96	11.45	11.41	12.06	11.88	11.63	11.63
253.36	253.11	253.01	253.73	253.78	254.24	254.57	254.57
13.28	13.53	13.63	12.91	12.86	12.32	12.07	12.07
253.02	252.77	252.17	251.99	251.2	251.2	251.65	251.65



North

263.37 263.12 262.52 262.81 262.25 262.5 262.75

bans

262.5 262.5
261.5 261.5

4

262.06 262.23

Ibis

263.56 263.31 262.71 263.03 262.49 262.62 262.75

St (low S)

4

262.31 262.4

bans

262. 262.
263.0 263.0

shyqguter

263.75 263.5 262.9 263.25 262.73 263.0 263.25

50

265.64 265.39 264.79 265.14 264.62 264.89 265.14

50

267.53 267.28 266.68 267.03 266.51 266.78 267.03

50

268.25 268.0 267.4 267.75 267.23 267.5 267.75

West Line Floral Place

(Figured)

256.77 M. H. N. Goldfinch 350 to 61

269.78	267.78	274.66	274.66
65.75	225.4	60.14	65.25
6.03	0.12	2.02	6.91
1.83	274.66 H.	6.82	2.9
+4.20		+3.2	+3.5
269.78		274.66	274.66
65.75		60.14	65.25
6.03		2.02	6.91
1.83		6.82	2.9
70.00		+3.2	+3.5

262.97	7094	7094	7094	7094	7094	7094	7094
247	7094	7094	7094	7094	7094	7094	7094
270.84	63.25	63.00	62.75	63.25	62.95	63.00	63.25
7094	7.69	7.94	8.26	7.69	8.09	7.94	7.19
7094	7094	7094	7094	7094	7094	7094	7094
65.00	65.89	65.14	64.89	65.14	65.25	65.89	67.25
5.00	5.55	5.80	6.05	5.80	2.09	2.94	5.19
7094	7094	7094	7094	7094	7094	7094	7094
670.3	66.78	67.03	67.28	67.53	67.50	67.75	
3.91	4.16	3.91	3.66	3.91	3.44	3.19	
7094	7094	7094	7094	7094	7094	7094	7094
6386	6303	6245	6331	6331	6331	6331	6331
7384	7414	8.19	2632				

266.64 H.F.

263.56	263.31	262.71	263.03	262.49	262.62	262.75
3.08	3.33	3.93	3.61	4.15	4.02	3.89
263.25	263.0	262.73	263.25	262.9	263.5	263.75
3.39	3.64	3.91	3.39	3.74	3.14	2.89
265.64	265.39	264.79	265.14	264.62	264.89	265.14
1.00	1.25	1.85	1.50	2.02	1.75	1.50
17.5	J.S.					
264.89	5.15					
270.32	H.J.					

267.75	277.5	267.23	267.75	267.21	268.0	268.25
2.57	2.82	3.09	2.17	2.92	2.32	2.07

263.38
0.84 Shaw Grant Tuckman 1/2

270.22	H.I	7022
6375		6325
647		6974
7022	7022	7022
6504	6504	6753
458	5.08	2.69
7022	7022	
4825	6775	
1.97	2.47	

41

all property stakes

Shaw Grant Tuckman 1/2

North West Line Goldfinch St. South

Table with columns for North, West Line Goldfinch St., and South. Rows include measurements like 260.25, 260.57, 260.89, 261.21, 261.53, 261.85, 262.07, 262.38, 262.72, 263.04, 263.37. Includes handwritten notes like 'shigeputer' and 'East Line/bis St.'.

Main data table with multiple columns of numbers, likely representing measurements. Includes handwritten notes like 'Shaw Evans Tichenor' and 'Feb. 8/11'.

North West Line of Hall's Fence south

472'	220.25	220.0	219.6	220.0	219.6	220.0	220.25
450'	222.11	221.86	221.45	221.84	221.42	221.82	222.07
425'	224.23	223.98	223.56	223.93	223.50	223.89	224.14
400'	226.35	226.10	225.66	226.02	225.58	225.95	226.20
375'	228.47	228.22	227.77	228.11	227.66	228.02	228.27
350'	230.59	230.34	229.88	230.20	229.74	230.08	230.33
325'	232.71	232.46	231.99	232.30	231.82	232.15	232.40
300'	234.83	234.58	234.09	234.39	233.90	234.21	234.46
275'	236.95	236.70	236.20	236.48	235.98	236.28	236.53
250'	239.07	238.82	238.31	238.57	238.05	238.34	238.59
225'	241.19	240.94	240.42	240.66	240.13	240.41	240.66
200'	243.31	243.06	242.52	242.76	242.21	242.47	242.72
175'	245.43	245.18	244.63	244.85	244.29	244.54	244.79
150'	247.55	247.30	246.74	246.94	246.37	246.60	246.85
125'	249.67	249.42	248.85	249.03	248.45	248.67	248.92
100'	251.79	251.54	250.95	251.12	250.53	250.73	250.98
75'	253.91	253.66	253.06	253.22	252.61	252.80	253.05
50'	256.03	255.78	255.17	255.31	254.68	254.86	255.11
25'	258.14	257.89	257.28	257.40	256.76	256.93	257.18
00	260.25	260.0	259.4	259.5	258.85	259.0	259.25

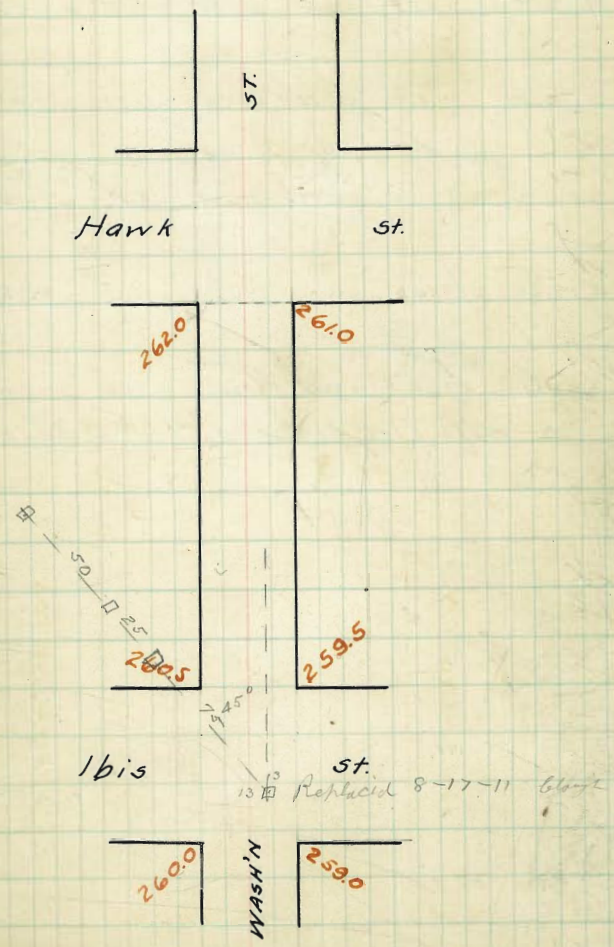
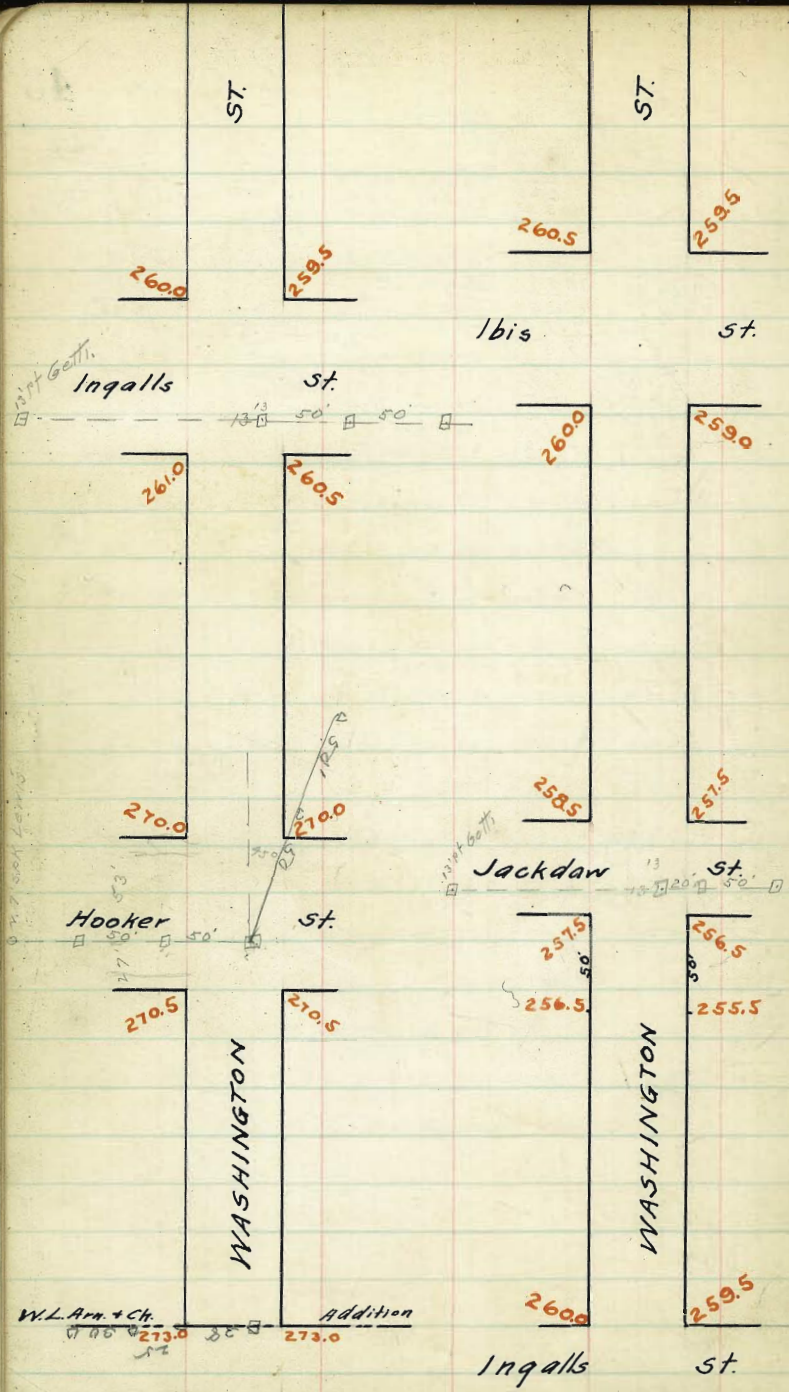
East Line Goldfinch St.

B.M. Brass plug in 77000	N.W. Corner Sutter	Goldfinch St
256.90	63.84	63.84
6.85	56.03	56.11
263.84 H.I.	3.59	7.81
12.61	4.9	7.93
251.23	-0.8	+0.3
1.88		70.80
253.11 H.I.	53.11	53.11
12.37	47.55	46.25
240.74	5.56	6.26
1.58	8.20	3.23
242.32 H.I.	-2.6	+3.03
12.75		
229.59	30.20	30.20
0.61	39.83	38.59
230.20 H.I.	-4.6	-3.9
12.74	8.0	9.1
217.44	-8.0	-9.5
1.73		
219.17 H.I.	19.17	19.17
	26.35	23.11
	-7.18	-2.94
	8.3	10.45
	-15.5	-13.39

256.90	249.25	251.11	250.98	246.5	247.22	258.59
5.94	3.18	2.72	11.95	4.44	8.75	12.88
262.93						
11.27						
250.96						
1.73						
251.47						

Blount Corner 7 2 1/2 ft. 3-13-11

B.M. Brass plug in 77000	N.W. Corner Sutter	Goldfinch St
256.90	63.84	63.84
6.85	56.03	56.11
263.84 H.I.	3.59	7.81
12.61	4.9	7.93
251.23	-0.8	+0.3
1.88		70.80
253.11 H.I.	53.11	53.11
12.37	47.55	46.25
240.74	5.56	6.26
1.58	8.20	3.23
242.32 H.I.	-2.6	+3.03
12.75		
229.59	30.20	30.20
0.61	39.83	38.59
230.20 H.I.	-4.6	-3.9
12.74	8.0	9.1
217.44	-8.0	-9.5
1.73		
219.17 H.I.	19.17	19.17
	26.35	23.11
	-7.18	-2.94
	8.3	10.45
	-15.5	-13.39



	North	West Line Hooker St.					South
173'	270.75	270.5	270.1	270.5	270.1	270.5	270.75
150'	271.08	270.83	270.43	270.83	270.43	270.83	271.08
		<i>better straight</i>	<i>0.15h</i>		<i>0.1h</i>	<i>better straight</i>	
125'	272.44	271.19	270.79	271.19	270.79	271.19	272.44
100'	271.80	271.55	271.15	271.55	271.15	271.55	271.80
		<i>better straight</i>	<i>1h</i>		<i>1h</i>	<i>better straight</i>	
75'	272.16	271.91	271.51	271.91	271.51	271.91	272.16
50'	272.52	272.27	271.87	272.27	271.87	272.27	272.52
		<i>better straight</i>	<i>1h</i>		<i>1h</i>	<i>better straight</i>	
25'	272.88	272.63	272.23	272.63	272.23	272.63	272.88
0'	273.25	273.0	272.6	273.0	272.6	273.0	273.25
		<i>better straight</i>	<i>0.2 low</i>				

West Line Arnold + Choate's Addition

78.26	78.26	78.26	78.26	78.26	78.26
70.75	71.28	71.80	72.52	73.25	
7.51	7.19	6.46	5.74	5.01	
2.71	4.5	2.16	3.34	5.11	
4.8	42.3	47.3	42.4	20.1	
7.01	7.19	6.46	5.74	5.01	
5.71	2.33	3.76	2.94	3.51	
7.18	14.9	17.7	12.8	7.14	
276.35	49	270.5	271.15	271.15	271.15
		5.81	4.80	3.25	4.06
273.58	75.58	75.58	75.58	75.58	75.58
275.30	70.75	71.08	71.80	72.52	73.25
363.34	4.93	4.50	3.78	3.06	2.33
0.02	5.08	4.75	4.03	3.31	2.58
363.02	5.48	5.15	4.43	3.71	2.98
72.56					
375.58			276.51	4.81	
2668 H	271.04	270.83	270.43		
	5.43	5.68	6.08		
	271.20	271.55	271.15		
	24.71	4.96	5.36		
		272.27	271.87		
		4.24	4.64		
	272.52	273.00	272.60		
	5.99	3.51	3.91		
	273.25				
	3.36				
7083	7105	7227	7300	check	8/10/11
583	513	441	365		
623	553	481	405		

Prof + loss blough

all states Evans

St. O.K. except as marked on grade sheet

8/10/11 Hattal

North

270.25 270.0 269.6 270.0 269.6 270.0 270.25

270.0	270.0	slow	slow	slow	270.0	270.0
269.	269.	269.69	270.09	269.69	269.	269.

02 high
quilt

1/4 269.73 269.13 269.77 270.17 269.77 269.13 269.73

Hooker

C	270.25	269.25	269.85	270.25	269.85	269.25	270.25
---	--------	--------	--------	--------	--------	--------	--------

st.

1/4 269.9 269.38 269.93 270.33 269.93 269.38 269.9

269.5	269.5				1 high gutter	269.5
270.5	270.5	270.01	270.41	270.01	269.5	270.5

270.75	270.5	1 high	270.5	1 high	270.5	270.75
	270.5	270.1	270.5	270.1	270.5	270.75

South

275.52
70.25

4.83

5.28 max

5.68 1/4

75.58

72.25

5.33 M

75.08

69.73

5.55 E 1/4

~~70.25~~~~70.25~~

70.49

0.47

70.02

6.66

76.68 1/4

70.25

6.43

74.3

272.41

2.79

269.62 = T.P.

6.89

276.51 = M.1.

269.73

6.78

2

270.25

6.26

270.25

6.26

269.90

6.61

270.00

6.51

270.50

6.01

270.10

6.41

270.50

6.01

618

658

chick

81

11/11

11/11

46

North West Line Ingalls St South

200' v 261.25 261.0 260.4 260.5 260.23 260.5 260.75

170' 262.38 262.13 261.55 261.91 261.43 261.69 261.94

150' 263.50 263.25 262.70 263.07 262.62 262.88 263.13

120' 264.62 264.37 263.85 264.22 263.82 264.07 264.32

100' v 265.75 265.5 265.00 265.38 265.02 265.25 265.50

75' 266.88 266.63 266.15 266.54 266.21 266.44 266.69

50' v 268.00 267.75 267.30 267.69 267.41 267.63 267.88

25' 269.13 268.88 268.45 268.84 268.60 268.82 269.07

0' 270.25 270.0 269.6 270.0 269.6 270.0 270.25

East Line Hooker St

272.26	78.26	78.26	78.26	78.26	78.26	78.26
68.75	63.50	63.50	65.50	65.50	70.25	70.25
17.51	17.76	17.76	12.76	10.26	8.01	8.01
9.81	10.06	10.06	2.36	7.86	7.21	7.21
+7.7	+4.1	+4.1	+4.4	+2.9	+0.8	+0.8
78.26	78.26	78.26	78.26	78.26	78.26	78.26
61.25	63.13	63.13	65.75	67.38	70.25	70.25
17.01	15.13	15.13	12.51	10.35	8.01	8.01
12.67	8.33	8.33	9.21	8.05	6.01	6.01
+4.4	+6.8	+6.8	+2.8	+2.3	+2.0	+2.0

261.25	262.44	265.50	265.25	267.75	267.63
6.15	6.62	4.00	4.25	1.71	1.87
2.70	Prop	6.21.11	George		

275.58	75.58	75.58	75.58	75.58	65.40	61	all stakes
12.56	70.25	68.00	65.50	63.00	60.75	111	D.
263.02	5.33	7.59	7.00	12.08	4.65		E.
2.38	5.58	7.53	10.33	12.33	4.70		T.
265.40	5.88	7.58	7.58	7.58	65.40		
70.49	6.25	6.30	6.00	6.70	60.23		
50	7.22	8.28	10.56	12.88	5.17		
55	7.79	7.58	7.58	7.58	65.40		
51	7.42	67.69	65.38	63.97	60.75		
54	7.49	7.89	10.20	12.51	4.65		
57	7.61	7.58	7.58	7.58	65.40		
52	2.74	67.41	65.00	62.62	60.40		
2.50	3.19	8.17	10.88	12.96	5.00		
3.88	2.50	7.58	7.58	7.58	65.40		
2.56	3.88	67.82	65.75	63.13	61.25		
	2.56	7.70	9.83	12.75	4.15		
		7.95	10.08	12.70	4.40		

261.00	260.22	260.75	260.23	260.50	260.75
11.41	12.01	11.66	12.18	11.71	11.66
263.50	263.25	262.70	263.07	262.62	262.88
4.91	9.16	7.71	9.34	7.79	9.58
265.50	265.00	265.38	265.02	265.25	265.25
6.91	7.41	7.03	7.39	7.16	7.16
267.75	267.30	267.69	267.41	267.63	267.84
4.66	5.11	4.72	5.00	4.78	4.53
270.00	269.60	270.00	269.60	270.00	270.00
2.41	2.81	2.41	2.81	2.41	2.41

North South

260.25	260.0	oil 259.4	oil 259.75	oil 259.25	259.5	259.75
260.0	260.0	259.58	259.93	259.41	259.5	259.5
					258.5	258.5
					with 0.15h	with 0.3h
259.85	259.25	259.74	260.09	259.57	258.75	259.35
		Ingalls				
260.5	oil 259.50	259.90	oil 260.75	259.73	oil 259.0	260.0
		St.				
260.4	259.75	260.06	260.41	259.89	259.25	259.9
		oil gutter				
260.	260.	oil	oil	oil	oil	oil
261.0	261.0	260.22	260.57	260.05	259.5	260.5
		oil gutter				
261.25	261.0	260.4	260.75	260.23	260.5	260.75

Note: - 20' Walks on Ingalls

2683	5.50	257.52	260.0
5.61		7.30	693
261.25		261.00	260.75
oil w. Push	5.80	5.80	633
65.40	65.40	65.40	
60.40	59.90	59.90	
5.00	5.50	5.50	
65.40	65.40	65.40	
60.52	60.00	60.75	
9.90	5.40	5.15	
65.40	65.40	65.40	
59.35	59.35	59.73	
5.55	6.00	5.67	
			259.79 = TP on Walk
			12.62
			272.41
			259.35
			306
			259.90
			12.51
			12.56
			12.56
261.0	259.75	259.50	259.25
260.00			
11.41	12.66	12.91	13.16
12.91	13.16	12.91	12.91
260.40			
12.01			
5.2	260.50	259.25	259.00
	11.91	12.16	13.41
			13.66
			12.91
260.50	259.50	259.90	260.25
11.91	12.91	12.51	12.16
			12.68
			13.41
			259.0
			260.0
7049 Hc	605	61	
	10.0	9.50	
	11.0	10.1	
	10.0	9.75	
	10.25	10.26	
	10.76	10	
	11.50		
	10.50		

Chuck 7/07
Hitch
Halls

North West Line Jackson St. South

256.88 256.88 244.21 244.21 267.75 267.75
13.22 256.75 256.75 257.33 259.73 260.20

257.45 257.2 256.6 256.7 256.05 256.2 256.45

256.95 256.7 256.1 256.2 255.55 255.7 255.95

256.75 256.5 255.9 256.0 255.35 255.5 255.75

257.05 256.82 256.22 256.34 255.71 255.86 256.11

257.60 257.35 256.95 256.91 256.30 256.47 256.72

258.13 257.88 257.28 257.48 256.89 257.08 257.33

258.66 258.41 257.81 258.05 257.47 257.68 257.93

259.19 258.94 258.34 258.62 258.06 258.29 258.54

259.72 259.47 258.87 259.19 258.64 258.89 259.14

260.25 260.0 259.4 259.75 259.23 259.5 259.75

East Line Ingalls St.

256.88 256.88 244.21 244.21 267.75 267.75
13.22 256.75 256.75 257.33 259.73 260.20
244.02 0.11 +12.54 13.17 4.64 7.50
0.15 0.21 11.57 4.86 11.22 7.00
242.14 0.28 -13.66 -15.98 -1.6 4.05
256.88 256.88 244.21 244.21 267.75 267.75
257.35 257.35 257.35 257.35 259.19 259.19
+0.89 11.54 25.6 8.00
0.51 0.29 13.4 11.00 8.26 9.10
256.88 256.88 244.21 244.21 267.75 267.75
13.22 256.75 256.75 257.33 259.73 260.20
256.88 256.88 244.21 244.21 267.75 267.75
13.22 256.75 256.75 257.33 259.73 260.20
256.88 256.88 244.21 244.21 267.75 267.75
13.22 256.75 256.75 257.33 259.73 260.20

26304 26304
258.91 11.35
279.26

26304 Bon Ac Name 25894 25829 2604 25950
1.54 4.27 5.67 6.67 4.29 5.09
244.84 3.23 288 217 2.67
5.98 62.11 6.67 + Prof change
258.60

Table with columns of numbers and handwritten notes like 'all states', 'Duncker Evans', 'Tehmor', '62-11', 'Bubs + Prof', 'change'.

267.75 257.5 256.9 257.0 258.35 256.5 256.75
5.45 5.7 6.3 6.2 6.85 6.7 6.45
255.75 255.5 255.35 256.0 255.9 256.5 256.75
7.45 7.7 7.85 7.2 7.3 6.7 6.45

258.13 257.88 257.28 257.48 258.89 257.08 257.33
5.07 5.32 5.92 5.72 6.31 6.12 5.87
258.54 258.29 258.06 258.62 258.34 258.94 259.19
4.66 4.91 5.14 4.58 4.66 4.26 4.01

260.25 260.0 259.4 259.75 259.23 259.5 259.75
2.95 3.20 3.8 3.45 3.97 3.7 3.45
6288 364 57.99 56.5 57.88 57.88 341
7029 438 60 600 259.79
1049 1109 1072 1136

chuck 8/10 Hatch Moore Hall

North

South

258.75 258.5 257.9 258.0 257.35 257.5 257.75

258.5 258.5 257.7 257.8 257.17 257.5 257.5
257.5 257.5 256.5 256.5

257.9 257.25 257.56 257.66 257.01 256.25 256.9

Jackdaw

258.0 257.0 ^{0.2L}257.40 ^{0.15L}257.50 ^{0.3h}256.85 256.0 257.0

st.

257.35 256.75 257.24 257.34 256.69 255.75 256.35

256.5 256.5 ^{0.1 high} 257.08 257.18 256.53 255.5 ^{0.3 h}255.5
257.5 257.5 256.5 256.5 256.5 256.5

257.75 257.5 ^{0.1 low gutter} 256.9 ^{0.2 low} 257.0 ^{0.1 low} 256.35 ^{0.2 gutter} 256.5 256.75

Intersection graded crossings.

263.20 H.S.

257.0 257.0 257.25 257.50 257.00 258.0
6.20 5.95 5.70 6.20 5.20

6.28
5.80
5.55
5.78
5.48
5.38
6.15
5.75

check 3/4 Hotel

North ^{arb. at high} West Line / bis St. South

215'E 260.25 260.0 259.4 259.5 258.85 ^{0.15h} 259.0 259.25
^{quarter 25 high} ^{quarter 25 high}

190'E 260.08 259.83 259.73 259.33 258.68 258.83 259.08

165'E 259.90 259.65 259.05 259.15 ^{0.15h} 258.50 ^{quarter 25 high} 258.65 258.90

140'E 259.73 259.48 258.88 258.98 258.33 258.48 258.73

115'E 259.55 259.30 258.70 258.80 ^{0.1h} 258.15 ^{quarter 25 high} 258.30 258.55

90'E 259.38 259.13 258.53 258.63 257.98 258.13 258.38

65'E 259.20 258.95 258.35 ^{0.1h} 258.15 ^{0.1h} 257.80 ^{quarter 25 high} 257.95 258.20

40'E 259.03 258.78 258.18 258.18 257.63 257.78 258.03

15'E 258.85 258.60 258.20 258.10 ^{0.15h} 257.45 ^{0.3h quarter} 257.60 257.85

00 258.75 258.5 257.9 ^{0.1 low} 258.0 ^{0.1 low} 257.35 257.5 257.75

East Line Jackdaw St.

Return gutter 0.2 low.

Return gutter 0.4 low.

267.97	267.97	67.97	67.97	67.97	67.97	67.97	67.97	1	cut off
11.92	59.25	59.20	51.55	59.20	57.55	58.75	58.75	28	Dimple
45.89	8.72	8.08	9.42	8.77	10.12	9.22	9.22	11	Shay
0.89	9.72	5.17	2.22	4.67	6.92	6.22	6.22		Richard 50
256.84	-1.0	12.9	10.2	14.1	13.2	13.0	13.0		

7.72	9.07	8.42	9.77	9.14	10.22			
3.82	10.77	5.52	7.67	5.02	7.12			
43.9	-1.7	12.9	12.1	14.1	13.1			

265.15	60.0	59.2	57.65	57.65	57.65	57.65	57.65	57.65	57.65	57.65	57.65	57.65	57.65	57.65	57.65	57.65	57.65	57.65	57.65
665	516	615	570	650	585	680	620	720											
259.50	290	290	290	290	290	290	290	290	290	290	290	290	290	290	290	290	290	290	290
263.15	58.0	57.60	57.60	57.60	57.60	57.60	57.60	57.60	57.60	57.60	57.60	57.60	57.60	57.60	57.60	57.60	57.60	57.60	57.60
263.05	655	755	665	765	665	765	665	765	665	765	665	765	665	765	665	765	665	765	665
	630	730	640	740	640	740	640	740	640	740	640	740	640	740	640	740	640	740	640

264.5	258.65	258.30	257.95	
	595	645	610	

260.25	63.47	63.47	63.47	63.47	63.47	63.47	63.47	63.47	63.47	63.47	63.47	63.47	63.47	63.47	63.47	63.47	63.47	63.47	63.47
3.22	60.25	59.90	59.55	58.20	58.85	57.75	57.75	57.75	57.75	57.75	57.75	57.75	57.75	57.75	57.75	57.75	57.75	57.75	57.75
263.97	3.22	4.57	3.92	5.27	4.62	5.72	5.72	5.72	5.72	5.72	5.72	5.72	5.72	5.72	5.72	5.72	5.72	5.72	5.72

3.47	4.82	4.17	5.52	4.87	5.97	6.12	6.12	6.12	6.12	6.12	6.12	6.12	6.12	6.12	6.12	6.12	6.12	6.12	6.12
4.07	4.97	4.77	5.67	5.47	6.12	6.12	6.12	6.12	6.12	6.12	6.12	6.12	6.12	6.12	6.12	6.12	6.12	6.12	6.12
3.97	4.32	4.67	5.02	5.37	5.47	5.47	5.47	5.47	5.47	5.47	5.47	5.47	5.47	5.47	5.47	5.47	5.47	5.47	5.47
4.62	4.42	5.32	4.27	5.62	4.72	4.72	4.72	4.72	4.72	4.72	4.72	4.72	4.72	4.72	4.72	4.72	4.72	4.72	4.72
4.22	3.57	4.92	4.52	5.27	4.97	4.97	4.97	4.97	4.97	4.97	4.97	4.97	4.97	4.97	4.97	4.97	4.97	4.97	4.97
4.47	3.82	5.17	✓	✓	✓	✓	✓	✓	✓	✓	✓	✓	✓	✓	✓	✓	✓	✓	✓

265.45 H.A.

260.25	260.0	259.4	259.5	258.85	259.0	259.25
5.20	5.45	6.05	5.95	6.60	6.45	6.20

258.90	258.65	258.50	259.15	259.05	259.65	259.90
6.55	6.80	6.95	6.80	6.40	5.80	5.55

259.55	259.30	258.70	258.80	258.15	258.30	258.55
5.90	6.15	6.75	6.65	7.30	7.15	6.90

258.20	257.95	257.80	258.45	258.35	258.95	259.20
7.25	7.50	7.65	8.00	7.10	6.50	6.25

258.75	258.5	257.9	258.0	257.35	257.5	257.75
6.70	6.95	7.55	7.45	8.10	7.95	7.70

69.20	400	465	490	575	560	550		
670	490	455	490	525	560	570		
59.50	430	415	500	575	620	630		
625	470	405	540	575	610	620		
62.18	535	570	605	625	675	685		
	520	555	390	625	660	670		

check 1/4 Hatch

North

260.75	260.5	259.9	260.0	259.85	259.5	259.75
--------	-------	-------	-------	--------	-------	--------

260.5	260.5	259.81	259.91	259.77	259.5	259.5
259.5	259.5				258.5	258.5

1/4	259.9	259.38	259.73	259.83	259.19	259.04	258.9
-----	-------	--------	--------	--------	--------	--------	-------

/bis

260.25	259.25	259.65	259.75	259.10	259.17	259.25	259.25
--------	--------	--------	--------	--------	--------	--------	--------

st.

1/4	259.73	259.13	259.57	259.67	259.01	258.87	258.73
-----	--------	--------	--------	--------	--------	--------	--------

259.	259.				258.	258.
260.0	260.0	259.49	259.59	258.93	259.0	259.0

260.25	260.0	259.4	259.5	258.85	259.0	259.25
--------	-------	-------	-------	--------	-------	--------

263.84	63.74
59.90	
4.94	
63.84	63.84
59.25	
4.59	
63.84	63.84
59.73	
5.11	

265.45 Hz.

259.25	258.75	259.10	259.75	259.65	259.25	260.25
6.20	7.00	6.35	5.70	5.80	6.20	5.2
69.20	59.25	49.5	59.5			

North West Line Hawk St. South

200'E 262.25 262.0 261.4 261.5 260.85 261.0 261.25

150'E 262.07 261.82 260.22 260.32 260.67 260.82 261.07

150'E 261.88 261.63 261.03 261.13 260.48 260.63 260.88
 0.3 high gutter 0.2 high

150'E 261.69 261.44 260.84 260.94 260.29 260.44 260.69

100'E 261.50 261.25 260.65 260.75 260.10 260.25 260.50
 0.1 high 0.1 high 0.2 gutter

75'E 261.32 261.07 260.47 260.57 259.92 260.07 260.32

50'E 261.13 260.88 260.28 260.38 259.73 259.88 260.13
 0.1 high gutter

25'E 260.94 260.69 260.09 260.19 259.54 259.69 259.94

00 260.75 260.5 259.9 2600 259.35 259.5 259.75
 center line about 0.1 high

East Line / bis st.

263.03 B.M. B.P. N.E. Hank & Washington 4' cut of J.K. Bunkle
 1.74 67.97 67.97 67.97 67.97 67.97 // 7.94
 262.97 60.88 60.88 60.13 60.75 // 7.94
 62.75 7.09 6.47 7.22 7.22
 5.72 5.47 3.47 2.44 4.32
 5.72 5.47 3.47 2.44 4.32
 -0.1 +1.6 +2.9 +0.4 +2.9
 6.72 6.09 7.47 6.54 8.22
 5.72 3.69 6.47 4.64 7.22
 0.3 +1.4 +1.0 +1.2 +0.4

263.03 262.0 261.0 260.3 260.69 261.25 260.25 260.85 261.15
 2.12 3.15 4.15 3.52 4.52 3.90 4.90 4.25 5.25
 265.15 2.90 3.90 3.27 4.27 3.65 4.65 4.02 5.02
 260.50 0.59 50 curb stakes 1/2 high
 2.25 5.65 5.90 1/2 high
 2.40 5.90 5.90 1/2 high

263.03 63.84 63.84 63.84 63.84 63.84 63.84 63.84
 0.81 62.03 60.88 61.00 60.13 60.75 // 11
 263.03 1.89 2.76 2.04 3.71 3.09 // 11
 2.59 3.21 2.59 3.76 3.24 // 11
 260.12 3.29 3.36 3.19 4.11 3.74 // 11
 2.34 2.71 3.09 3.96 3.84 // 11
 2.39 2.81 3.74 3.56 4.49 // 11
 2.54 2.21 3.74 3.56 4.49 // 11
 2.09 1.96 3.59 2.71 4.34 // 11
 263.03 3.09 4.09 // 11
 2.47 4.5
 265.45 4.5

262.25 262.0 261.4 261.5 209.85 261.0 261.25
 3.2 3.15 4.05 3.95 4.60 4.45 4.20

260.88 260.68 260.18 261.13 261.03 261.63 261.88
 4.57 4.82 4.97 4.32 4.42 3.82 3.57

261.50 261.25 260.65 260.75 260.10 260.25 260.50
 3.95 4.20 4.80 4.70 5.35 5.20 4.95

260.13 259.88 259.73 260.38 260.28 260.88 261.13
 5.32 5.57 5.72 5.07 5.17 4.57 4.32

260.75 260.5 259.9 260.0 259.35 259.5 259.75
 4.70 4.95 5.55 5.45 6.10 5.95 5.70

6303 520 612 612 608.61 618.2 616.3 612.5 608.8 6050
 119 220 280 270 335 320 237 257 322 370
 2420 220 280 270 335 320 237 257 322 370
 312 312 312 312 312 312 312 312
 337 337 337 337 337 337 337 337

check 5/9 Hatch

cut of J.K. Bunkle
 7.94
 7.94
 52

335.5

335.0

340.5

340.0

345.5

345.0

Gapps

St.

Landis

St.

Wightman St.

335.0

334.5

340.0

339.5

345.0

344.5

St.

St.

333.5

333.5

337.5

337.0

343.0

343.0

Myrtle

St.

Dwight

St.

Gunn

St.

Univ.

Ave.

333.0

333.0

337.0

336.5

342.5

342.5

348.0

349.0

Utah

Utah

330.5

331.0

335.5

335.0

340.5

340.0

345.5

345.0

Upas

St.

Gapps

St.

Landis St.

Wightman St.

near below grade

near below grade

near below grade

near below grade

329.5

346

345.0

Utah St.

West

East

333.75 333.50 333.10 333.50 333.10 333.50 333.75

333.50 333.50 333.01 333.41 333.09 333.50 333.50
 332.5 332.5 332.5 332.5

332.90 332.32 332.93 333.33 332.93 332.32 332.90

Myrtle

333.25 332.25 332.85 333.25 332.85 332.25 333.25

St.

332.72 332.13 332.77 333.17 332.77 332.12 332.72

332.0 332.00 332.69 333.09 332.69 332.0 332.0
 333.00 333.00 332.69 333.09 333.00 333.00

333.25 333.00 332.60 333.00 332.60 333.00 333.25

38.16	38.16	38.16	38.16	38.16
33.25	32.72	33.25	32.90	33.25
4.91	5.44	4.91	5.24	4.91
5.16				4.66
38.16	38.16	38.16	38.16	38.16
32.77	33.17	32.77	32.93	33.33
5.39	4.99	5.39	5.23	4.93
				5.23

7/11 0-3-7.
57

West

East

So. L.

Capps St.

335.25 335.00 334.40 334.75 334.22 334.50 334.75

335.12 334.87 334.29 334.64 334.12 334.41 334.66

335.00 334.75 334.18 334.54 334.03 334.33 334.58

334.87 334.62 334.07 334.43 333.93 334.24 334.49

334.75 334.50 333.96 334.33 333.84 334.16 334.41

334.62 334.37 333.85 334.22 333.75 334.08 334.33

334.50 334.25 333.74 334.12 333.65 333.99 334.24

334.87 334.12 333.64 334.02 333.56 333.91 334.16

334.25 334.00 333.53 333.91 333.47 333.83 334.08

334.12 333.87 333.42 333.81 333.37 333.74 333.99

334.00 333.75 333.31 333.70 333.28 333.66 333.91

333.87 333.62 333.20 333.60 333.19 333.58 333.83

115 1073 10417.09333 183333

333.75 333.50 333.10 333.50 333.10 333.50 333.75

No. L. Myrtle St.

33471.77	340.26	340.26	340.26	340.26	340.26	340.26	340.26	340.26	340.26
5.5	5.5	5.5	5.5	5.5	5.5	5.5	5.5	5.5	5.5
334.7	334.7	334.7	334.7	334.7	334.7	334.7	334.7	334.7	334.7
6.4	6.4	6.4	6.4	6.4	6.4	6.4	6.4	6.4	6.4
334.2	340.26	340.26	340.26	340.26	340.26	340.26	340.26	340.26	340.26
2.5	2.5	2.5	2.5	2.5	2.5	2.5	2.5	2.5	2.5
235.00	334.6	334.6	334.6	334.6	334.6	334.6	334.6	334.6	334.6
234.1	334.6	334.6	334.6	334.6	334.6	334.6	334.6	334.6	334.6
234.1	334.6	334.6	334.6	334.6	334.6	334.6	334.6	334.6	334.6
6.9	6.4	6.4	6.4	6.4	6.4	6.4	6.4	6.4	6.4

335.57	40.14	40.14	40.14	40.14	40.14	40.14	40.14	40.14	40.14
4.57	33.74	34.00	34.05	34.50	34.41	35.00	34.75	34.75	34.75
340.14	6.39	6.14	6.06	5.64	5.64	5.73	5.14	5.59	5.59
	6.64	6.39	6.31	5.89	5.98	5.39	5.64	5.64	5.64
40.14	40.14	40.14	40.14	40.14	40.14	40.14	40.14	40.14	40.14
33.25	35.91	34.25	34.24	34.75	34.58	35.25			
6.39	6.23	5.89	5.90	5.59	5.56	4.89			
6.64	6.48	6.14	6.15	5.64	5.81	5.14			

38.16	38.16	38.16	38.16	38.16	38.16	38.16	38.16	38.16	38.16
33.10	33.25	33.53	33.65	33.96	34.03	34.40	34.75	35.00	35.00
5.06	4.58	4.63	4.51	4.20	4.13	3.76	3.41	3.16	3.16
38.16	38.16	38.16	38.16	38.16	38.16	38.16	38.16	38.16	38.16
33.50	33.70	33.91	34.12	34.33	34.54	34.75			
4.66	4.46	4.25	4.04	3.83	3.62	3.41			
38.16	38.16	38.16	38.16	38.16	38.16	38.16	38.16	38.16	38.16
33.10	33.31	33.47	33.74	33.84	34.18	34.22			
5.06	4.85	4.69	4.44	4.32	3.98	3.94			

339.72	339.72	339.72	339.72	339.72	339.72	339.72	339.72	339.72	339.72
35.25	34.58	34.75	34.24	34.25	33.91	33.91	33.75	33.75	33.75
4.97	5.14	4.97	5.48	5.47	5.21	5.97	5.97	5.97	5.97
4.72	5.39	5.22	5.73	5.72	6.06	6.22			
39.72	39.72	39.72	39.72	39.72	39.72	39.72	39.72	39.72	39.72
34.40	34.03	33.96	33.65	33.53	33.23	33.10			
5.32	5.69	5.76	6.07	6.19	6.44	6.62			
39.72	39.72	39.72	39.72	39.72	39.72	39.72	39.72	39.72	39.72
34.75	34.54	34.33	34.12	33.91	33.70	33.50			
39.72	5.18	5.19	5.60	5.81	6.02	6.22			
34.25	39.72	39.72	39.72	39.72	39.72	39.72	39.72	39.72	39.72
34.18	33.84	33.74	33.47	33.31	33.10	33.10			
5.50	5.54	5.88	5.98	6.20	6.41	6.62			
39.72	39.72	39.72	39.72	39.72	39.72	39.72	39.72	39.72	39.72
34.75	35.00	34.41	34.50	34.08	34.00	33.75			
4.97	4.72	5.31	5.22	5.64	5.72	5.97	5.97	5.97	5.97
5.22	4.97	5.56	5.47	5.89	5.97	6.22			

all stakes 1/11 B.S.T.
check O.K. 1/11

Utah St.

West

East

335.75 335.50 334.90 335.25 334.72 335.00 335.25

335.50 335.50 334.81 335.16 334.63 335.00 335.00
334.5 / 334.00 334.00

334.90 334.32 334.73 335.08 334.65 333.82 334.40

Gapps.

335.25 334.25 334.65 335.00 334.47 333.75 334.75

St.

334.72 334.13 334.57 334.92 334.39 333.63 334.22

335.00 335.00 334.41 334.84 334.31 334.50 334.50
335.50

335.25 335.00 334.40 334.75 334.22 334.50 334.75

334.71
 6.06
 340.77

~~340.77~~
 40.77 40.77 40.77 40.77 40.77
 34.75 34.72 34.75 34.40 35.25
 6.02 6.55 6.02 6.37 5.52
 6.27 5.77
 40.77 40.77 40.77 40.77 40.77
 35.75 34.90 35.25 34.72 35.25
 5.02 5.89 5.52 6.05 5.52
 5.27 5.71
 40.77 40.77 40.77
 34.57 34.72 34.89
 6.20 5.85 6.38
 40.77 40.77 40.77
 34.55 35.08 34.73
 6.22 5.69 6.04

5-5-7
 111 ad stakes 59

West.

East

So. L. Dwight St

33683 TP of Dwight

337.25 337.0 336.90 336.75 336.22 336.50 336.75

481 341.64	341.64	341.64	341.64	341.64	341.64	341.64	341.64	341.64	341.64	341.64	341.64
5.1	5.2	4.8	4.6	4.8	5.90	5.8	5.8	6.7	5.64	5.64	5.64
336.54 1/2m	336.0	336.8	337.0	336.8	336.8	336.8	336.8	336.8	336.8	336.8	336.8
70. Base Post	336.75	337.2	337.3	336.8	336.8	336.8	336.8	336.8	336.8	336.8	336.8
100 S Dwight	336.75	336.8	336.8	336.8	336.8	336.8	336.8	336.8	336.8	336.8	336.8
341.64	341.64	341.64	341.64	341.64	341.64	341.64	341.64	341.64	341.64	341.64	341.64
4.95	5.0	4.9	4.9	5.0	4.9	4.9	4.9	4.9	4.9	4.9	4.9
336.71 Br	336.71	336.71	336.71	336.71	336.71	336.71	336.71	336.71	336.71	336.71	336.71

337.12 336.87 336.27 336.62 336.09 336.37 336.62

337.00 336.75 336.15 336.50 335.97 336.25 336.50

336.87 336.62 336.02 336.37 335.84 336.12 336.37

336.75 336.50 335.90 336.25 335.72 336.00 336.25

336.62 336.37 335.77 336.12 335.59 335.87 336.12

336.50 336.25 335.65 336.00 335.47 335.75 336.00

336.37 336.12 335.52 335.87 335.34 335.62 335.87

336.25 336.00 335.40 335.75 335.22 335.50 335.75

336.12 335.87 335.27 335.62 335.09 335.37 335.62

336.00 335.75 335.15 335.50 334.97 335.25 335.50

335.87 335.62 335.02 335.37 334.84 335.12 335.37

335.75 335.50 334.90 335.25 334.72 335.00 335.25

N. L. Capps St

40.14 4.35	40.14 35.75	40.14 35.50	40.14 36.25	40.14 36.00	40.14 36.75	40.14 36.50	40.14 37.25	40.14 37.00	43.56 4.44-11
337.01	4.39	4.44	4.59	4.14	4.89	3.59	3.64	6.31	max property
6.55	4.64	4.59	4.14	4.89	3.59	3.64	3.59	6.56	O-S-T
343.56 M	40.14 35.25	40.14 36.00	40.14 35.75	40.14 36.50	40.14 36.25	40.14 37.00	40.14 36.75	40.14 37.50	
	4.89	4.14	4.59	3.64	3.89	3.14	6.81		
	5.14	4.39	4.69	3.89	4.14	3.39	7.06		
	40.77 34.90	40.77 34.97	40.77 35.40	40.77 35.47	40.77 35.90	40.77 35.97	40.77 36.40	40.77 36.47	all water
	5.87	5.80	5.37	5.30	4.87	4.80	4.37	4.30	O-S-T
	40.77 35.25	40.77 35.75	40.77 36.00	40.77 36.25	40.77 36.50	40.77 36.75	40.77 37.00	40.77 37.25	
	5.52	5.27	5.02	4.77	4.52	4.27	4.02	3.77	37.27 min
	40.77 34.92	40.77 35.15	40.77 35.22	40.77 35.65	40.77 35.72	40.77 36.15	40.77 36.42	40.77 36.75	
	6.05	5.62	5.55	5.12	5.05	4.62	4.55	4.12	33.25
	334.71 5.01	334.71 37.00	334.71 36.25	334.71 36.50	334.71 35.75	334.71 36.00	334.71 35.25	334.71 35.75	check O.K.
	334.71 36.75	334.71 2.72	334.71 3.47	334.71 3.22	334.71 3.77	334.71 3.72	334.71 4.47	334.71 4.12	simple
	334.71 3.97	334.71 2.97	334.71 2.72	334.71 3.47	334.71 3.77	334.71 3.72	334.71 4.47	334.71 4.12	
	334.71 3.22	334.71 3.72	334.71 3.72	334.71 3.72	334.71 3.72	334.71 3.72	334.71 3.72	334.71 3.72	
	334.71 34.22	334.71 36.15	334.71 35.72	334.71 35.65	334.71 35.22	334.71 35.15	334.71 34.72	334.71 34.72	
	334.71 3.50	334.71 3.47	334.71 4.00	334.71 4.07	334.71 4.50	334.71 4.57	334.71 5.00	334.71 5.00	
	334.71 3.97	334.71 3.22	334.71 3.47	334.71 3.72	334.71 3.97	334.71 4.22	334.71 4.47	334.71 4.47	
	334.71 34.22	334.71 34.22	334.71 35.90	334.71 35.97	334.71 35.90	334.71 34.97	334.71 34.90	334.71 34.90	
	334.71 3.04	334.71 3.75	334.71 3.92	334.71 4.25	334.71 4.32	334.71 4.75	334.71 4.82	334.71 4.82	
	334.71 3.72	334.71 36.50	334.71 36.75	334.71 36.00	334.71 36.25	334.71 35.50	334.71 35.75	334.71 35.75	
	334.71 2.47	334.71 3.22	334.71 3.72	334.71 3.72	334.71 3.72	334.71 3.72	334.71 3.72	334.71 3.72	
	334.71 2.72	334.71 3.47	334.71 3.72	334.71 3.47	334.71 4.22	334.71 4.77	334.71 4.22	334.71 3.97	

Utah St.

West

East

337.75 337.50 336.90 337.25 336.72 337.00 337.25

337.50 337.50 336.81 337.16 336.63 337.00 337.00
336.50 336.5 336 336.

336.90 336.32 336.75 337.08 336.55 335.87 336.40

Dwight

337.25 336.25 336.65 337.00 336.47 336.75 336.75

St.

336.72 336.13 336.57 336.92 336.39 335.63 336.22

337.00 337.00 336.49 336.84 336.31 ^{335.5} 336.50 ^{335.5} 336.50

337.25 337.00 336.40 336.75 336.22 336.50 336.75

337.25 337.25 337.25 337.25 337.25
 36.75 36.72 36.75 36.40 37.25
 6.50 7.03 6.50 6.80 6.00
 6.75 6.25

337.25 337.25 337.25 337.25 337.25
 37.75 36.90 37.25 36.72 37.25
 5.50 6.35 6.00 6.53 6.00
 5.75 6.25

337.25 337.25 337.25
 36.57 36.72 36.39
 6.68 6.33 6.26

337.25 337.25 337.25
 36.55 37.08 36.73
 6.70 6.17 6.53

So. Line Landis St.

√ 340.25 340.00 339.40 339.75 339.22 339.50 339.75

340.04 339.79 339.19 339.54 339.01 339.29 339.54

√ 339.83 339.58 338.98 339.33 338.80 339.08 339.33

339.62 339.37 338.77 339.12 338.59 338.87 339.12

√ 339.41 339.16 338.56 338.91 338.38 338.66 338.91

339.20 338.95 338.35 338.70 338.17 338.45 338.70

√ 338.99 338.74 338.14 338.49 337.96 338.24 338.49

338.79 338.54 337.94 338.29 337.76 338.04 338.29

√ 338.58 338.33 337.73 338.08 337.55 337.83 338.08

338.37 338.12 337.52 337.87 337.34 337.62 337.87

√ 338.16 337.91 337.31 337.66 337.13 337.41 337.66

337.95 337.70 337.10 337.45 336.92 337.20 337.45

√ 337.75 337.50 336.90 337.25 336.72 337.00 337.25

No. Line Dwight St.

340.20	340.67	340.67	340.67	340.67	340.67	340.67	340.67	340.67	340.67
347	340.37	339.47	338.57	340.0	339.3	339.0	338.1	338.7	338.7
343.67	340.1	339.7	339.0	339.2	338.4	338.3	337.5	337.7	337.7
6.84	C.	21.04	22.6	C.	23.24	23.8	23.81	23.87	23.87
58.927P	7.9	7.9	7.9	7.1	7.1	0.1	2.4	7.1	7.1

58.927P	343.67	343.67	343.67	343.67	343.67	343.67	343.67
	51	61	106	106	54	67	67
	358.6	337.6	338.0	338.2	338.2	337.0	337.0
	0.0	332.5	337.7	338.2	337.7	332.0	332.0
647	Blum	Blum	C.2	8.0	C.5	2.2	2.2

340.56 H	43.56	43.56	43.56	43.56	43.56	43.56	43.56	43.56	43.56
	37.25	38.16	38.08	37.99	38.91	38.83	39.75		
	6.01	5.40	5.48	4.57	4.65	3.73	3.51		
	6.56	5.65	5.73	4.82	4.90	3.98	4.06		

	43.56	43.56	43.56	43.56	43.56	43.56	43.56
	37.25	37.66	38.58	38.49	37.41	39.33	40.25
	5.81	5.90	4.92	5.07	4.15	4.23	3.31
	6.06	6.15	5.22	5.32	4.40	4.48	3.56

43.25	43.25	43.25	43.25	43.25	43.25	43.25	43.25	all station
36.90	37.13	37.73	37.96	38.56	38.80	39.40	39.40	9-5-11
6.35	6.12	5.82	6.29	4.69	4.45	3.25		

43.25	43.25	43.25	43.25	43.25	43.25	43.25	43.25
37.25	37.66	38.08	38.49	38.91	39.33	39.75	39.75
6.00	5.59	5.17	4.76	4.34	3.92	3.50	

43.25	43.25	43.25	43.25	43.25	43.25	43.25	43.25
36.72	37.31	37.55	38.14	38.38	38.97	39.22	39.22
6.53	5.94	5.70	5.11	4.57	4.27	4.03	

44.83	44.83	44.83	44.83	44.83	44.83	44.83	44.83	7/17/11 check OK
40.25	37.33	39.41	38.49	38.58	37.66	37.75	37.75	Double
4.58	5.50	5.42	6.34	6.25	7.17	7.08		
4.93	5.70	5.67	6.59	6.50	7.42	7.33		

44.83	44.83	44.83	44.83	44.83	44.83	44.83	44.83
39.40	38.80	38.56	37.96	37.73	37.13	36.90	36.90
5.43	6.03	6.27	6.87	7.10	7.70	7.93	

44.83	44.83	44.83	44.83	44.83	44.83	44.83	44.83
37.20	37.33	38.91	38.49	38.08	37.66	37.25	37.25
5.08	5.50	5.92	6.34	6.75	7.17	7.58	

44.83	44.83	44.83	44.83	44.83	44.83	44.83	44.83
37.22	38.98	38.38	38.14	37.55	37.31	36.72	36.72
5.61	5.85	6.25	6.67	7.28	7.52	8.11	

44.83	44.83	44.83	44.83	44.83	44.83	44.83	44.83
39.74	39.83	38.91	38.99	38.08	38.16	37.25	37.25
5.08	5.00	5.92	5.84	6.75	6.67	7.58	
5.33	5.25	6.17	6.09	7.00	6.72	7.83	

Utah St.

West

East

340.75 340.50 339.90 340.25 339.72 340.00 340.25

340.50 340.50 339.81 340.16 339.63 340.00 340.00
339.5 339.0 339.0

339.90 339.32 339.73 340.08 339.55 338.87 339.40

Landis
 340.25 339.25 339.65 340.00 339.47 338.75 339.75

St.

339.72 339.13 339.57 339.92 339.39 338.63 339.22

340.00 340.0 339.49 339.89 339.31 339.5 339.50 339.50
339.0 339.5 339.5

340.75 340.00 339.20 339.75 339.12 339.50 339.75

43.25 43.25 43.25 43.25 43.25
 39.75 39.72 39.75 39.40 40.25
 3.50 4.03 3.50 3.85 3.00
 3.75 3.25

43.25 43.25 43.25 43.25 43.25
 40.75 39.90 40.25 39.72 40.25
 2.50 3.35 3.00 3.53 3.00
 2.75 3.25

43.25 43.25 43.25
 39.57 39.92 39.39
 3.68 3.33 3.86

43.25 43.25 43.25
 39.55 40.58 39.73
 3.70 3.17 3.52

43.25 43.25 43.25
 39.90 40.25 39.72
 3.35 3.00 3.53

West

East

So. L. Gumm St.

342.75 342.50 342.10 342.50 342.10 342.50 342.75

342.58 342.33 341.91 342.31 341.86 342.29 342.54

342.41 342.16 341.73 342.12 341.62 342.08 342.33

342.24 341.99 341.54 341.93 341.38 341.87 342.12

342.08 341.83 341.36 341.75 341.14 341.66 341.91

341.91 341.66 341.18 341.56 340.90 341.45 341.70

341.74 341.89 340.99 341.37 341.24 341.49

341.58 341.33 340.81 341.18 340.92 341.24 341.29

341.41 341.16 340.63 341.00 341.83 341.08

341.24 340.99 340.94 340.81 340.94 340.62 340.87

341.08 340.83 340.26 340.62 340.41 340.66

340.91 341.66 340.28 340.73 340.96 340.20 340.45

340.75 340.50 339.90 340.25 340.00 340.25

N. Lime Landis St.

347.54 347.84 347.14 347.14 347.14 347.14 347.14
6.65 342.1 343.2 342.4 341.5 341.5 341.9
342.9 342.7 342.7 342.3 341.9 341.9 341.9
342.1 34.6 342.7 341.8 341.8 341.8 341.8
340.20 7.1 7.1 7.1 7.1 7.1 7.1

347.14 347.14 347.14 347.14 347.14 347.14 347.14
341.9 341.3 341.1 341.7 340.9 339.9 339.8 340.4
341.3 341.5 341.1 341.7 341.1 340.9 340.2 340.2
341.3 341.5 341.1 341.7 341.1 340.9 340.2 340.2

St. Blount Park July 1908
4 12 -11

342.21 46.31 46.31 46.31 46.31 46.31 46.31 46.31 46.31
72.25 42.91 41.91 41.79 41.08 41.08 40.25 40.25
3.46 6.80 4.30 4.47 5.73 5.43 5.96 5.96
3.71 4.05 4.55 4.72 5.35 5.38 6.21 5.96

340.75 47.23 47.23 47.23 47.23 47.23 47.23 47.23
6.45 40.26 40.51 40.99 41.30 41.73 42.10
347.23 6.97 6.72 4.29 5.93 5.50 5.13

47.23 47.23 47.23 47.23 47.23 47.23 47.23
90.63 41.20 41.37 41.75 42.12 42.50
6.61 6.33 5.86 5.48 5.11 4.73

47.23 47.23 47.23 47.23 47.23 47.23 47.23
40.12 40.63 40.91 41.26 41.70 42.10
7.11 6.60 6.37 5.87 5.53 5.13

44.23 44.83 44.83 44.83 44.83 44.83 44.83 44.83
42.75 41.91 41.74 41.08 41.67 40.25 40.25
2.05 2.92 2.75 3.09 3.75 4.58 2.92
2.33 2.57 3.17 3.24 4.00 4.00 4.17
2.73 3.10 3.53 3.84 4.32 4.57 5.11

44.83 44.83 44.83 44.83 44.83 44.83 44.83 44.83
41.73 41.30 40.99 40.57 40.26 39.74
3.10 3.53 3.84 4.32 4.57 5.11

44.83 44.83 44.83 44.83 44.83 44.83 44.83 44.83
43.12 41.26 41.37 41.40 40.62 40.25
2.71 3.08 3.46 3.83 4.21 4.58

44.83 44.83 44.83 44.83 44.83 44.83 44.83 44.83
41.20 41.36 40.91 40.63 40.47 39.90
3.15 3.17 3.92 4.20 4.71 4.93

44.83 44.83 44.83 44.83 44.83 44.83 44.83 44.83
3.50 41.08 41.49 41.91 40.46 44.83
4.75 2.75 3.39 3.72 4.17 4.08
4.75 3.70 3.79 3.67 4.42 4.30

7/17 check off
D-S-Ti

Utah St.

West

East

343.25 343.00 342.60 343.00 342.10 343.00 343.25

343.10 343.00 342.51 342.91 342.51 343.00 343.00

342.40 341.87 342.43 342.83 342.43 341.87 342.40

GUNN

342.75 341.75 342.35 342.75 342.35 341.75 342.75

St.

342.22 341.63 342.27 342.67 342.27 341.63 342.22

342.50 342.50 342.19 342.59 342.19 ^{341.5} 342.50 ^{341.5} 342.50

342.75 342.50 342.10 342.50 342.10 342.50 342.75

342.75	49.29	49.29	49.29	49.29	49.29	49.29
<u>6.54</u>	<u>42.75</u>	<u>42.22</u>	<u>42.75</u>	<u>42.90</u>	<u>43.25</u>	
342.29M	6.54	2.07	6.54	6.54	6.04	
	6.79	✓	✓	✓	6.29	

49.29	49.29	49.29
<u>42.27</u>	<u>42.67</u>	<u>42.27</u>
7.02	6.62	7.02

all stakes

49.29	49.29	49.29
<u>42.43</u>	<u>42.83</u>	<u>42.43</u>
6.86	6.46	6.86

D-S.T.

Utah St.

West.

East.

So. Line Wightman St

345.25 345.00 344.75 344.50 344.25 344.00 343.75

345.08 344.83 ~~344.58~~ 344.60 344.88 344.37 344.62

344.91 344.66 ~~344.76~~ 344.45 343.95 344.25 344.50

344.77 344.49 ~~344.77~~ 344.31 343.81 344.12 344.37

344.58 344.33 343.80 ~~344.28~~ 344.16 343.68 344.00 344.25

344.41 344.16 ~~344.28~~ 344.02 343.54 343.87 344.12

344.24 343.99 343.50 ~~343.59~~ 343.87 343.41 343.75 344.00

344.08 343.83 ~~343.50~~ 343.72 343.27 343.62 343.87

343.91 343.66 343.20 ~~343.26~~ 343.58 343.14 343.50 343.75

343.74 343.49 ~~343.24~~ 343.43 343.00 343.37 343.62

343.58 343.33 343.90 ~~343.26~~ 343.29 342.87 343.25 343.50

343.41 343.16 ~~343.26~~ 343.14 342.73 343.12 343.37

343.25 343.00 342.60 343.00 342.60 343.00 343.25

N. L. GUNN ST.

346.27 Bm top of Post Eden 50' of Gunn St

345.6971	349.54	349.54	349.54	349.54	349.54	349.54
385	43	46	52	45	49	48
349.5443	349.25	349.7	349.3	349.0	349.6	349.7
327	34.34	34.7	34.70	34.9	34.6	34.5
346.027	0.4	C.2	7.2	0.0	0.0	C.5

349.54	349.54	349.54	349.54	349.54	349.54
50	50	57	54	61	50
349.54	349.5	349.5	349.1	349.5	349.5
349.2	349.2	349.9	349.7	349.5	349.5
6.2	C.5	7.1	C.4	9.1	C.6
349.54	349.54	647	Clough	4-12-11	
62	64		Duncan		
343.3	343.1		July 1st		
343.85	343.5				
0.0	343.1				

350.51	50.51	50.51	50.51	50.51	50.51	50.51	50.51	50.51	4-25-11
7.25	42.25	41.80	41.88	42.00	42.91	43.50	43.25		Bureau
343.24	5.26	6.01	5.93	6.51	6.60	7.01	7.26		chain
2.95	5.51	6.45	6.18	6.76	6.85	7.26	7.51		reference
346.21	50.51	50.51	50.51	50.51	50.51	50.51	50.51		curb & property
	44.75	44.91	44.24	44.24	43.75	43.58	43.25		
	5.76	5.60	6.26	6.27	6.76	6.93	7.26		
	6.01	5.85	6.51	6.52	7.01	7.18	7.51		

349.29	349.29	49.29	49.29	49.29	49.29	49.29	49.29	all stake
42.60	42.60	43.14	43.50	43.68	44.40	44.22	44.22	D-S-T.
6.69	6.39	6.15	5.79	5.61	5.19	5.07	5.07	

49.29	49.29	49.29	49.29	49.29	49.29	49.29	49.29
43.25	43.79	43.53	43.87	44.16	44.45	44.75	44.75
6.39	6.00	5.71	5.72	5.19	4.24	7.54	7.54

49.29	49.29	49.29	49.29	49.29	49.29	49.29	49.29
42.60	42.87	43.20	43.41	43.80	43.95	44.40	44.40
6.69	6.72	6.09	5.85	5.79	5.34	4.89	4.89

51.45	51.45	51.45	51.45	51.45	51.45	51.45	51.45
45.25	44.50	44.55	44.00	43.91	43.50	43.20	43.20
6.20	6.95	6.87	7.45	7.59	7.95	8.20	8.20
6.45	7.20	7.12	7.70	7.79	8.20	8.45	8.45

51.45	51.45	51.45	51.45	51.45	51.45	51.45	51.45
44.40	43.95	43.50	43.41	43.20	42.87	42.60	42.60
7.05	7.50	7.65	8.04	8.25	8.58	8.85	8.85

57/11 check O.K.
 111 double

51.45	51.45	51.45	51.45	51.45	51.45	51.45	51.45
44.75	44.45	44.16	43.87	43.58	43.29	43.00	43.00
6.70	7.00	7.29	7.58	7.87	8.16		

51.45	51.45	51.45	51.45	51.45	51.45	51.45	51.45
44.75	44.10	43.65	43.50	43.14	42.90	42.60	42.60
7.23	7.35	7.77	7.95	8.31	8.55		

51.45	51.45	51.45	51.45	51.45	51.45	51.45	51.45
44.75	44.91	44.25	44.24	43.75	43.58	43.45	43.45
6.70	6.54	7.20	7.21	7.70	7.87		
6.95	6.79	7.45	7.46	7.95	8.12		

Utah St.

West

East

345.75 345.80 34490 34525 34472 345.00 345.25

345.50 345.50 34491 34516 34463 345.00 345.00
3445 3440

344.90 34432 34483 34508 34455 343.87 344.40

Wightman

34525 344.25 34465 34500 34441 343.75 344.75

St.

34472 344.13 34457 34492 34439 343.62 344.22

345.00 345.00 34449 34484 34431 344.50 344.50
343.50

345.75 345.00 34440 34475 34422 344.50 344.75

49.29	49.29	49.29	49.29	49.29
45.25	44.72	45.25	44.90	45.75
4.04	4.52	4.04	4.39	3.54
4.29				3.79
49.29	49.29	49.29	49.29	49.29
45.25	44.40	44.75	44.22	44.75
4.04	4.89	4.54	5.07	4.54
4.29				4.79

all stakes

D-5-T

67

49.29	49.29	49.29
44.39	44.92	44.57
4.90	4.32	4.72
49.29	49.29	49.29
44.53	45.08	44.55
4.76	4.21	4.74
49.29	49.29	49.29
44.72	45.25	44.90
4.57	4.04	4.39

4.50
35
4.85
51.45
44.75
6.70
51.45
44.67
6.78
51.45
45.00
6.45
51.45
44.65
6.80
51.45
45.25
6.20

West

East

So. Line Univ. Ave

350.83	7w Utah Univ	352.38	352.38	352.38	352.38	352.38	352.38
2.05		352.38	352.38	352.38	352.38	352.38	352.38
352.38		352.38	352.38	352.38	352.38	352.38	352.38
4.22		352.38	352.38	352.38	352.38	352.38	352.38
348.25		352.38	352.38	352.38	352.38	352.38	352.38
348.00		352.38	352.38	352.38	352.38	352.38	352.38
347.85		352.38	352.38	352.38	352.38	352.38	352.38
348.50		352.38	352.38	352.38	352.38	352.38	352.38
348.70		352.38	352.38	352.38	352.38	352.38	352.38
349.0		352.38	352.38	352.38	352.38	352.38	352.38
349.25		352.38	352.38	352.38	352.38	352.38	352.38

348.25 34800 347.85 348.50 348.70 349.0 349.25

348.04 347.79 347.60 348.22 348.09 348.66 348.91

347.83 347.58 347.35 347.95 347.78 348.33 348.58

347.62 347.37 347.11 347.66 347.47 347.99 348.24

347.41 347.16 346.86 347.41 347.17 347.66 347.91

347.20 346.95 346.62 347.14 346.86 347.33 347.58

346.99 346.74 346.37 346.87 346.55 346.99 347.24

346.79 346.54 346.12 346.60 346.25 346.66 346.91

346.58 346.33 345.88 346.33 345.94 346.33 346.58

346.37 346.12 345.63 346.06 345.63 345.99 346.24

346.16 345.91 345.39 345.79 346.33 346.66 345.91

346.15 345.70 345.14 345.52 345.02 345.33 345.58

345.75 345.50 344.90 345.25 344.72 345.00 345.25

No. Line Wightman St.

350.83	350.83	350.83	350.83	350.83	350.83	350.83	350.83	350.83	350.83	350.83	350.83	350.83	350.83	350.83	350.83	350.83	350.83	350.83	350.83
2.05	4.22	6.1	8.2	10.3	12.4	14.5	16.6	18.7	20.8	22.9	25.0	27.1	29.2	31.3	33.4	35.5	37.6	39.7	41.8
352.38	352.38	352.38	352.38	352.38	352.38	352.38	352.38	352.38	352.38	352.38	352.38	352.38	352.38	352.38	352.38	352.38	352.38	352.38	352.38
352.38	352.38	352.38	352.38	352.38	352.38	352.38	352.38	352.38	352.38	352.38	352.38	352.38	352.38	352.38	352.38	352.38	352.38	352.38	352.38
352.38	352.38	352.38	352.38	352.38	352.38	352.38	352.38	352.38	352.38	352.38	352.38	352.38	352.38	352.38	352.38	352.38	352.38	352.38	352.38

647 blight ground - July 1901

4-12-11

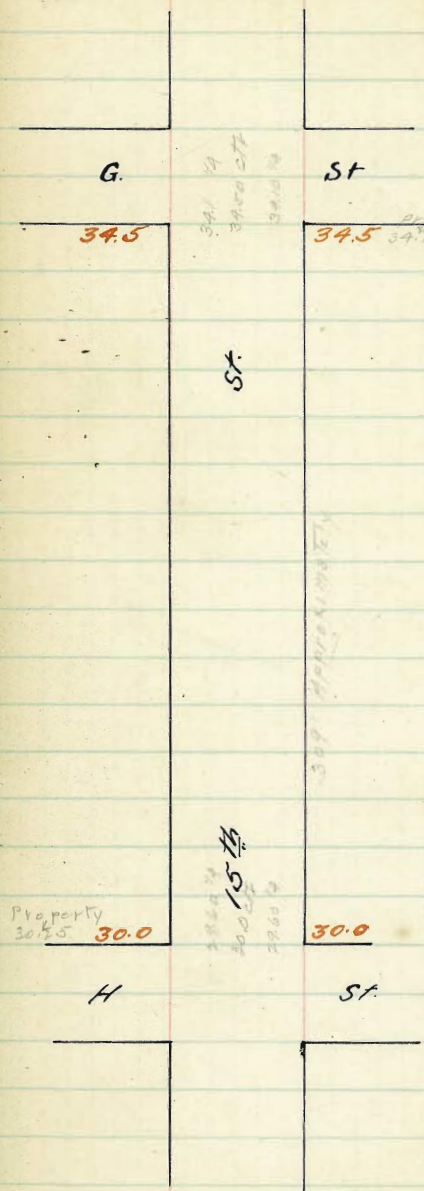
4-25-11

cut the property

all stakes

D-S-T

57/117 check O.K. Brunkle



These grades are for curb line

$\frac{4.12}{36.0741}$ $\frac{36.07}{30.25}$ $\frac{36.07}{34.75}$
 $\frac{5.82}{6.97}$ $\frac{1.32}{1.57}$ $\frac{1.97}{1.97}$
 all stakes except 30A property
 done
 show 70
 set by Transit *Trickner*

15th St

S 2 of G 11

309	3475	3450	3410	3450	3410	3450	3475
311		3363		3363	3323	3263	
310		3290		3290	3250	3290	
317		3217		3217	3177	3217	
311		3145		3145	3105	3145	
311		3072		3072	3032	3072	
3009	3025	3000		3000	2960	3000	3025

N 2 of H 11

71

29.95 Bm NW 1544
~~6.49~~
 35.44

3072	3032	3145	3105	3217	3177
5.72	6.12	4.99	5.29	4.20	4.67
3290	3250	3363	3323	3450	3410
3.24	3.84	2.81	3.21	1.94	2.34

All Notes set 6-15-11

Blount
 Pennan
 July 1st 11

29.95 Bm
~~5.88~~
 35.83

3672	3632	3145	3105	3217	3177
5.71	5.51	4.38	4.76	3.66	3.06
3290	3250	3363	3323	3450	3410
2.73	3.33	2.50	2.60	1.53	1.23

6-18-11

Checked OK Blount Pennan & July 1st 11

304.62 137M 30' Palm Rootal water plug. 72

Redwood	St.	Palm	St.
320.0	320.0	314.5	314.5
	St.	200'	
		312.0	312.0
		200'	
	29 th	308.0	308.0
		200'	
315.0	315.0	299.0	299.0
Palm	St.	Nutmeg	St.

29th St.

West

East

315.25 315.00 314.60 315.00 314.60 315.00 315.25

315.00 315.00
314.00 314.51 314.91 314.51 315.00 315.00
314.00

314.40 313.87 314.43 314.83 314.43 313.87 314.40

Palm

314.75 313.75 314.35 314.75 314.35 313.75 314.75

St.

314.22 313.62 314.27 314.67 314.27 313.62 314.22

314.50 313.50
314.50 314.19 314.59 314.19 313.50
314.50 314.50

314.75 314.50 314.10 314.50 314.10 314.50 314.75

74

West.

East.

So. E. Redwood St.

320.25	320.00	319.60	320.00	319.60	320.00	320.25
320.04	319.79	319.39	319.79	319.39	319.79	320.04
319.83	319.58	319.18	319.58	319.18	319.58	319.83
319.62	319.37	318.97	319.37	318.97	319.37	319.62
319.41	319.16	318.76	319.16	318.76	319.16	319.41
319.20	318.95	318.55	318.95	318.55	318.95	319.20
318.99	318.74	318.34	318.74	318.34	318.74	318.99
318.79	318.54	318.14	318.54	318.14	318.54	318.79
318.58	318.33	317.93	318.33	317.93	318.33	318.58
318.37	318.12	317.72	318.12	317.72	318.12	318.37
318.16	317.91	317.51	317.91	317.51	317.91	318.16
317.95	317.70	317.30	317.70	317.30	317.70	317.95
317.74	317.49	317.09	317.49	317.09	317.49	317.74
317.54	317.29	316.89	317.29	316.89	317.29	317.54
317.33	317.08	316.68	317.08	316.68	317.08	317.33
317.12	316.87	316.47	316.87	316.47	316.87	317.12
316.91	316.66	316.26	316.66	316.26	316.66	316.91
316.70	316.45	316.05	316.45	316.05	316.45	316.70
316.49	316.24	315.84	316.24	315.84	316.24	316.49
316.29	316.04	315.64	316.04	315.64	316.04	316.29
316.08	315.83	315.43	315.83	315.43	315.83	316.08
315.87	315.62	315.22	315.62	315.22	315.62	315.87
315.66	315.41	315.01	315.41	315.01	315.41	315.66
315.45	315.20	314.80	315.20	314.80	315.20	315.45
315.25	315.00	314.60	315.00	314.60	315.00	315.25

No. 2 Palm St.

314.71
722
522.34
222
317.42
325.19
313.31

Cut stakes 10/11 Hatch

75

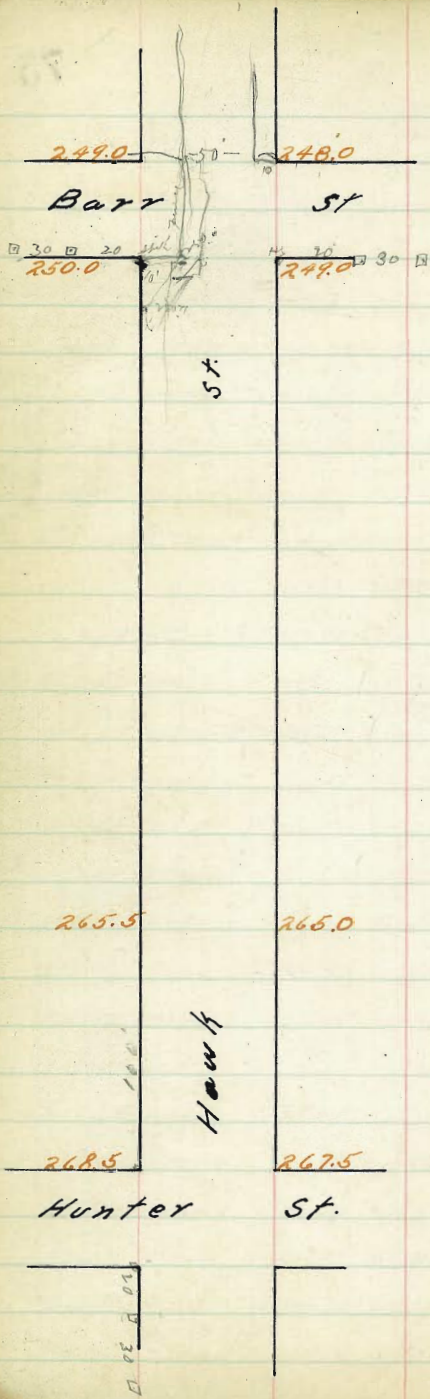
15.66	627	1608	495	1649	554	1691	572
4.87	631	395	627	554	592	572	572
5.87	631	600	627	572	592	478	468
+0.5	+0.15	-0.28	-0.32	0.2	-0.4	+0.34	+0.44

1733	470	1774	429	1816	387	1858	345	1899	304
415	425	429	359	387	307	345	325	304	230
+0.55	+0.35	+0.5	+0.7	+0.37	+0.3	+0.6	+0.4	+0.8	+0.74

1941	578	1983	536	2025	494	2067	452	2109	410
578	578	536	490	494	412	452	410	410	410
+0.78	+0.78	+0.8	+0.96	+0.9	+0.8	+0.6	+0.6	+0.6	+0.6

1216	1705	1749	1791	1835	1874	1916	1958	2000	2041
465	428	332	320	271	221	174	127	80	33
440	395	357	315	273	231	189	147	105	63

Check OK brought 8 + E



C. I. O. So. L. Barr. St. C. 20
250 250.25 250.00 249.40 249.50 248.75 249.00 249.25
275 252.78 251.93 251.33 251.46 250.74 251.00 251.25

250 254.12 253.87 253.27 253.43 252.74 253.00 253.25

225 256.06 255.21 255.21 255.40 254.73 255.00 255.25

200 258.00 257.75 257.15 257.37 256.73 257.00 257.25

175 259.23 259.68 259.08 259.34 258.73 259.00 259.25

150 261.87 261.62 261.02 261.31 260.72 261.00 261.25

125 263.81 263.56 262.96 263.28 262.72 263.00 263.25

100 265.75 265.50 264.90 265.25 264.72 265.00 265.25
Break

75 266.50 266.25 265.65 265.93 265.37 265.62 265.87
C 0.2 C 0.2

50 267.25 267.00 266.40 266.62 266.03 266.25 266.50

25 268.00 267.75 267.15 267.31 266.69 266.87 267.12

268.75 268.50 267.90 268.00 267.35 267.50 267.75

No. 1. Hunter St.

SW
269.88 Mar Jackman & Hunter 647 Blount 1000
268.75 274.00 274.00 274.00 274.00 274.00 274.00
274.00 274.00 274.00 274.00 274.00 274.00 274.00
266.20 266.20 266.20 266.20 266.20 266.20 266.20
267.75 267.75 267.75 267.75 267.75 267.75 267.75
266.20 266.20 266.20 266.20 266.20 266.20 266.20
261.15 261.15 261.15 261.15 261.15 261.15 261.15
1.75
262.90
274.00 274.00 266.20 266.20 266.20 266.20 266.20
274.00 274.00 274.00 274.00 274.00 274.00 274.00
266.20 266.20 266.20 266.20 266.20 266.20 266.20
267.75 267.75 267.75 267.75 267.75 267.75 267.75
266.20 266.20 266.20 266.20 266.20 266.20 266.20
261.15 261.15 261.15 261.15 261.15 261.15 261.15
1.75
262.90

269.88 SW
268.75 Mar Jackman & Hunter
274.94
6.53
268.45
3.01
271.42
6.70
264.72 TP
21.45
266.17
9.17
257.00
267.52
7.50
250.00
7.33
254.35
268.50 267.93 266.50 267.25 267.50
290 256 341 411 396
267.00 266.40 266.82 266.13 266.45
446 5.01 484 5.43 5.21
267.00 266.40 266.82 266.13 266.45
596 6.36 631 6.74 6.52
266.17 266.17 266.17 266.17 266.17
4.25 5.11 4.25 5.11 4.25 5.11
5.75 5.75 5.75 5.75 5.75 5.75
8.40 9.00 8.40 9.00 8.40 9.00
5.37 5.37 5.37 5.37 5.37 5.37
7.81 7.81 7.81 7.81 7.81 7.81
5.00 4.90 4.90 4.80 4.80 4.70
7.00 8.22 8.22 8.22 8.22 8.22
8-16-11 all set Blount
270.84 72.16 72.16 72.16 72.16 59.91 59.91 59.91
1.32 67.12 66.50 63.25 12.45 F 55.25 52.18 49.25
272.16 5.09 5.66 5.91 259.91
60.75 5.29 5.91 9.16 2.20 4.91 7.98 10.66
3.41 72.16 72.16 72.16 59.93 59.91 59.91 59.91
3.66 60.69 65.65 62.72 -0.02 54.73 51.23 48.25
2.26 5.99 6.51 9.44 0.23 5.18 5.58 11.06
4.16 72.16 72.16 72.16 59.91 59.91 59.91 59.91
4.21 67.31 65.93 63.29 59.08 55.40 51.46 49.50
4.91 9.85 6.23 5.88 0.83 4.51 3.45 10.41
4.66 72.16 72.16 72.16 59.91 59.91 59.91 59.91
67.05 65.37 62.96 59.34 57.91 59.91 59.91
72.16 6.79 9.20 0.57 55.21 50.74 49.40
60.00 65.87 72.16 59.91 4.70 9.17 10.51
9.76 6.29 6.35 59.91 59.91 59.91
4.91 6.59 8.60 1.18 56.06 51.25 50.25
59.91 59.91 59.91 59.91 59.91 59.91
59.25 3.85 8.66 9.66
0.66 4.10 8.91 9.91
0.91

5/19/11 Forchet see opp page Blount

Hawk St

West.

East.

78

No returns cut.

249.25 249.00 248.40 248.50 247.85 248.00 248.25

249.00 249.00
248.00 248.60 248.70 249.05 249.00 248.00
247.0

248.40 248.25 248.75 248.85 249.20 247.25 247.75

Barr

249.50 248.50 248.90 249.00 249.35 247.50 248.50

Ave.

249.40 248.75 249.05 249.15 249.50 247.75 248.40

250.00 249.00 249.20 249.30 249.65 248.00 249.00
249.00

250.25 250.00 249.40 249.50 248.75 249.00 249.25

257.35

248.00

248.50 248.00

8-16-11

all

set

Calony

In the following table the first column shows the angle, the second column shows the number of links to be added to a chain on the slopes, to make one chain, horizontal measurement.

ANGLE	COR. IN LINKS	ANGLE	COR. IN LINKS	ANGLE	COR. IN LINKS	ANGLE	COR. IN LINKS
0		0		0		0	
4	0.24	11	1.88	18	5.14	25	10.54
5	0.38	12	2.24	19	5.76	26	11.26
6	0.55	13	2.63	20	6.42	27	12.24
7	0.76	14	3.06	21	7.11	28	13.37
8	0.98	15	3.53	22	7.85	29	14.34
9	1.24	16	4.02	23	8.64	30	15.47
10	1.55	17	4.56	24	9.47	35	22.07

In the following table the first column shows the number of links to be added to a chain on the slopes, to make the chain horizontal measurement.

ANGLE	COR. IN LINKS	ANGLE	COR. IN LINKS	ANGLE	COR. IN LINKS	ANGLE	COR. IN LINKS
°		°		°		°	
4	0.24	11	1.88	18	5.14	25	10.54
5	0.38	12	2.24	19	5.76	26	11.26
6	0.55	13	2.63	20	6.42	27	12.24
7	0.76	14	3.06	21	7.11	28	13.37
8	0.98	15	3.53	22	7.85	29	14.34
9	1.24	16	4.02	23	8.64	30	15.47
10	1.55	17	4.56	24	9.47	35	22.07

4.50
 5.50
 10.00
 5.00

Published by H. S. CROCKER COMPANY, Stationers, Drawing
 Materials, and Mathematical Instruments, San Francisco.

Table showing the difference of latitude and departure in
 running 80 chains at any course from 1 to 60 minutes.

MINUTES.	LKS.	MINUTES.	LKS.	MINUTES.	LKS.
1.....	2 $\frac{1}{3}$	21.....	49	41.....	95 $\frac{1}{3}$
2.....	4 $\frac{1}{3}$	22.....	51 $\frac{1}{3}$	42.....	98
3.....	7	23.....	53 $\frac{1}{3}$	43.....	100 $\frac{1}{3}$
4.....	9 $\frac{1}{3}$	24.....	56	44.....	102 $\frac{1}{3}$
5.....	11 $\frac{1}{3}$	25.....	58 $\frac{1}{3}$	45.....	105
6.....	14	26.....	60 $\frac{1}{3}$	46.....	107 $\frac{1}{3}$
7.....	16 $\frac{1}{3}$	27.....	63	47.....	109 $\frac{1}{3}$
8.....	18 $\frac{1}{3}$	28.....	65 $\frac{1}{3}$	48.....	112
9.....	21	29.....	67 $\frac{1}{3}$	49.....	114 $\frac{1}{3}$
10.....	23 $\frac{1}{3}$	30.....	70	50.....	116 $\frac{1}{3}$
11.....	25 $\frac{1}{3}$	31.....	72 $\frac{1}{3}$	51.....	119
12.....	28	32.....	74 $\frac{1}{3}$	52.....	121 $\frac{1}{3}$
13.....	30 $\frac{1}{3}$	33.....	77	53.....	123 $\frac{1}{3}$
14.....	32 $\frac{1}{3}$	34.....	79 $\frac{1}{3}$	54.....	126
15.....	35	35.....	81 $\frac{1}{3}$	55.....	128 $\frac{1}{3}$
16.....	37 $\frac{1}{3}$	36.....	84	56.....	130 $\frac{1}{3}$
17.....	39 $\frac{1}{3}$	37.....	86 $\frac{1}{3}$	57.....	133
18.....	42	38.....	88 $\frac{1}{3}$	58.....	135 $\frac{1}{3}$
19.....	44 $\frac{1}{3}$	39.....	91	59.....	137 $\frac{1}{3}$
20.....	46 $\frac{1}{3}$	40.....	93 $\frac{1}{3}$	60.....	140

TABLE FOR RUNNING ON SLOPES.

In the following table the first column shows the angle, the second the
 number of links to be added to a chain on the slopes, to make one
 chain, horizontal measurement.

ANGLE	COR. IN LINKS	ANGLE	COR. IN LINKS	ANGLE	COR. IN LINKS	ANGLE	COR. IN LINKS
°		°		°		°	
4	0.24	11	1.88	18	5.14	25	10.54
5	0.38	12	2.24	19	5.76	26	11.26
6	0.55	13	2.63	20	6.42	27	12.24
7	0.76	14	3.06	21	7.11	28	13.37
8	0.98	15	3.53	22	7.85	29	14.34
9	1.24	16	4.02	23	8.64	30	15.47
10	1.55	17	4.56	24	9.47	35	22.07