

GRADES

52

UTAH ST.	6
KANSAS ST.	11
St. Monica	14
TEXAS ST.	17
ROBINSON AVE.	23
Yermont St.	41
Eighth St. University	29

652

380

Eighth St. University	51
Harbor St.	56
Fine St.	60
W. 1st St.	60
Indiana St. to 5th St.	66
Albany St.	67
Alley 3 1/2 St. Matt's A. S.	76
Dove St. Deception to 1st St. Chicago	79

FIELD

Published by H. S. CROCKER COMPANY, Stationers, Drawing Materials, Mathematical Instruments, etc., San Francisco.

TRAVERSE TABLE FOR TRANSIT BOOK.
From 1° to 90° for a distance of 100.

Degrees.	DEGREES.		1/4 DEGREE.		1/2 DEGREE.		3/4 DEGREE.		Degrees.
	Lat.	Dep.	Lat.	Dep.	Lat.	Dep.	Lat.	Dep.	
	0	99.98	1.75	100.00	0.44	100.00	0.87	99.99	
1	99.94	3.49	99.98	2.18	99.97	2.62	99.95	3.05	88
2	99.86	5.23	99.92	3.93	99.91	4.36	99.88	4.80	87
3	99.76	6.98	99.84	5.67	99.81	6.10	99.79	6.54	86
4	99.62	8.72	99.73	7.41	99.69	7.85	99.66	8.28	85
5	99.45	10.45	99.58	9.15	99.54	9.58	99.50	10.02	84
6	99.25	12.19	99.41	10.89	99.36	11.32	99.31	11.75	83
7	99.03	13.92	99.20	12.62	99.14	13.05	99.09	13.49	82
8	98.77	15.64	98.97	14.35	98.90	14.78	98.84	15.21	81
9	98.48	17.36	98.70	16.07	98.63	16.50	98.56	16.93	80
10	98.16	19.08	98.40	17.79	98.33	18.22	98.25	18.65	79
11	97.81	20.79	98.08	19.51	97.99	19.94	97.90	20.36	78
12	97.44	22.50	97.72	21.22	97.63	21.64	97.53	22.07	77
13	97.03	24.19	97.34	22.92	97.24	23.34	97.13	23.77	76
14	96.59	25.88	96.92	24.62	96.81	25.04	96.70	25.46	75
15	96.13	27.56	96.48	26.30	96.36	26.72	96.25	27.14	74
16	95.63	29.24	96.00	27.98	95.88	28.40	95.76	28.82	73
17	95.11	30.90	95.50	29.65	95.37	30.07	95.24	30.49	72
18	94.55	32.56	94.97	31.32	94.83	31.73	94.69	32.14	71
19	93.97	34.20	94.41	32.97	94.26	33.38	94.12	33.79	70
20	93.36	35.84	93.82	34.61	93.67	35.02	93.51	35.43	69
21	92.72	37.46	93.20	36.24	93.04	36.65	92.88	37.06	68
22	92.05	39.07	92.55	37.86	92.39	38.27	92.22	38.67	67
23	91.35	40.67	91.88	39.47	91.71	39.87	91.53	40.27	66
24	90.63	42.26	91.18	41.07	91.00	41.47	90.81	41.87	65
25	89.88	43.84	90.45	42.66	90.26	43.05	90.07	43.44	64
26	89.10	45.40	89.69	44.23	89.49	44.62	89.30	45.01	63
27	88.29	46.95	88.90	45.79	88.70	46.17	88.50	46.56	62
28	87.46	48.48	88.09	47.33	87.88	47.72	87.67	48.10	61
29	86.60	50.00	87.25	48.86	87.04	49.24	86.82	49.62	60
30	85.72	51.50	86.38	50.38	86.16	50.75	85.94	51.13	59
31	84.80	52.99	85.49	51.88	85.26	52.25	85.04	52.62	58
32	83.87	54.46	84.57	53.36	84.34	53.73	84.10	54.10	57
33	82.90	55.92	83.63	54.83	83.39	55.19	83.15	55.56	56
34	81.92	57.36	82.66	56.28	82.41	56.64	82.16	57.00	55
35	80.90	58.78	81.66	57.71	81.41	58.07	81.16	58.42	54
36	79.86	60.18	80.64	59.13	80.39	59.48	80.13	59.83	53
37	78.80	61.57	79.60	60.53	79.34	60.88	79.07	61.22	52
38	77.71	62.93	78.53	61.91	78.26	62.25	77.99	62.59	51
39	76.60	64.28	77.44	63.27	77.16	63.61	76.88	63.94	50
40	75.47	65.61	76.32	64.61	76.04	64.94	75.76	65.28	49
41	74.31	66.91	75.18	65.93	74.90	66.26	74.61	66.59	48
42	73.14	68.20	74.02	67.24	73.73	67.56	73.43	67.88	47
43	71.93	69.47	72.84	68.52	72.54	68.84	72.24	69.15	46
44	70.71	70.71	71.63	69.78	71.33	70.09	71.02	70.40	45

Return to City Engineers Office
City Hall, San Diego, Cal.

56° 28'

347.06
14.21
350.127
- 12.459
337.67
+ 8.35
339.08
- 12.63
325.45
+ 21.225
327.675
- 18.75
316.925
+ 10.20
327.125
- 2.05
324.450

24.75 24.45
24

406
23
7.43

27.15 27.15
29.40 26.80
2.65

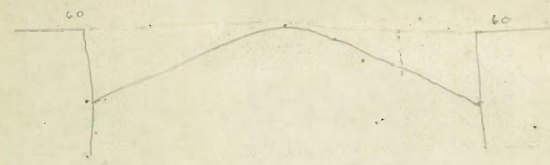
350.27
9.65
354.92

41.92 41.92 41.92 41.92 41.92
57.00 49.50 49.50 50.00 50.00
41.92 5.07 4.42 4.81 4.92
25 25 25
5.92 4.67 4.77
7.0 - 24 + 22

41.92 41.92 41.92 41.92
57.00 57.75 57.75 57.75
3.92 3.17 2.12 6.7

MICROFILMED

APR 5 1965



368.50

81

368.50

Spk

12 20

Bm NW cor RR Spk 350.33

6

Palk

Ave.

Lincoln

Ave.

362.0

362.0

363.0

363.0

ST.

ST.

356.0

357.0

UTAH

UTAH

364.0

364.0

350.0

351.0

Lincoln

Ave.

Univ.

Ave

West	South Line Lincoln Ave.						East	
600'	-1.8	362.26	363.0	362.66	363.0	362.6	363.0	863.25V
550'	-2.2	361.50	361.95	360.91	361.38	361.05	361.50	862.75V
500'	-1.2	369.75	369.50	359.77	359.75	359.50	360.00	360.25V
450'	-0.8	358.00	357.75	357.50	358.13	357.95	358.50	358.75V
400'	-0.4	356.25	356.0	355.85	356.5	356.40	357.0	357.25V
350'	-0.1	355.50	355.25	355.10	355.75	355.65	356.25	356.50
300'	0.0	354.75	354.50	354.35	355.0	354.90	355.50	355.75V
250'	-0.3	354.00	353.75	353.60	354.25	354.15	354.75	355.00
200'	-0.1	353.25	353.00	352.85	353.5	353.40	354.00	354.25V
150'	+0.1	352.50	352.25	352.10	352.75	352.65	353.25	353.50
100'	+0.2	351.75	351.50	351.35	352.0	351.90	352.5	352.75V
50'	-0.7	351.00	350.75	350.60	351.25	351.15	351.75	352.00
0'	-0.2	350.25	350.0	349.85	350.50	350.40	351.00	351.25

Not graded

North Line Univ. Ave.

647 (Landscape) Down Page 23-10 7

357.33 Corn & Walnut & Union

West	East Line						East
600'	356.68	356.68	356.68	356.68	356.68	356.68	356.68
550'	356.20	356.20	356.20	356.20	356.20	356.20	356.20
500'	355.72	355.72	355.72	355.72	355.72	355.72	355.72
450'	355.24	355.24	355.24	355.24	355.24	355.24	355.24
400'	354.76	354.76	354.76	354.76	354.76	354.76	354.76
350'	354.28	354.28	354.28	354.28	354.28	354.28	354.28
300'	353.80	353.80	353.80	353.80	353.80	353.80	353.80
250'	353.32	353.32	353.32	353.32	353.32	353.32	353.32
200'	352.84	352.84	352.84	352.84	352.84	352.84	352.84
150'	352.36	352.36	352.36	352.36	352.36	352.36	352.36
100'	351.88	351.88	351.88	351.88	351.88	351.88	351.88
50'	351.40	351.40	351.40	351.40	351.40	351.40	351.40
0'	350.92	350.92	350.92	350.92	350.92	350.92	350.92

all stakes N of str 145

Note - Street not graded from Mt. University to

Sta 1450 N

For checks see Page 10

West

East

364.25 364.0 363.6 364.0 363.6 364.0 364.25

364.0 364.0 363.48 363.83 363.43 364.0 364.0
363. 363. 363. 363. 363. 363. 363.0

363.4 363.40 363.16 363.56 363.16 362.75 363.4

Lincoln

363.50 363.5 363.10 363.50 363.10 362.50 363.5

Ave

362.85 362.85 362.94 363.34 362.94 362.15 362.85

363.0 363.0 362.78 363.18 362.78 363.0 363.0

F0.3

363.25 363.0 362.6 363.0 362.6 363.0 363.25

363.92	363.92	65.92
4.20	2.00	63.10
368.22 H.I.	365.92 H.I.	2.82
69.20	63.25	65.92
4.22	2.67	63.56
	2.72	2.42
368.22	365.92	65.92
69.40	62.85	63.10
4.82	3.07	2.82
69.22	365.92	
69.50	63.25	
4.72	2.72	
69.22	365.92	
62.85	63.25	
5.37	2.82	
69.22	65.92	
69.25	69.25	
4.97	1.67	
5.22	1.92	
5.62		

5/10 all stakes Aumelle - Hamel Brook

363.92	366.86
2.72	63.25
366.86 H.I.	3.61
63.80	3.56
3.76	4.26
	3.76

5/10 forecheck see opp page Aumelle

368.22 NW 1/4 Sec 4 T14N R14E	551	361.26	362.60	362.25	364	364.75	365.92	365.00	362.25
4.20	2.00	3.78	2.78	1.98	1.33	2.22	2.22	1.92	0.88
368.22	365.92	63.25	63.25	63.25	63.25	63.25	63.25	63.25	63.25
69.20	63.25	2.67	2.67	2.67	2.67	2.67	2.67	2.67	2.67
4.22	2.72	2.72	2.72	2.72	2.72	2.72	2.72	2.72	2.72
368.22	365.92	65.92	65.92	65.92	65.92	65.92	65.92	65.92	65.92
69.40	62.85	63.10	63.10	63.10	63.10	63.10	63.10	63.10	63.10
4.82	3.07	2.82	2.82	2.82	2.82	2.82	2.82	2.82	2.82
69.22	365.92								
69.50	63.25								
4.72	2.72								
69.22	365.92								
62.85	63.25								
5.37	2.82								
69.22	65.92								
69.25	69.25								
4.97	1.67								
5.22	1.92								
5.62									

367 NW 1/4 Sec 4 T14N R14E Lincoln Ave

367	367	367	367	367	367	367	367	367	367
367	367	367	367	367	367	367	367	367	367
367	367	367	367	367	367	367	367	367	367
367	367	367	367	367	367	367	367	367	367
367	367	367	367	367	367	367	367	367	367
367	367	367	367	367	367	367	367	367	367
367	367	367	367	367	367	367	367	367	367
367	367	367	367	367	367	367	367	367	367
367	367	367	367	367	367	367	367	367	367
367	367	367	367	367	367	367	367	367	367

367 NW 1/4 Sec 4 T14N R14E Kansas & University Ave

367	367	367	367	367	367	367	367	367	367
367	367	367	367	367	367	367	367	367	367
367	367	367	367	367	367	367	367	367	367
367	367	367	367	367	367	367	367	367	367
367	367	367	367	367	367	367	367	367	367
367	367	367	367	367	367	367	367	367	367
367	367	367	367	367	367	367	367	367	367
367	367	367	367	367	367	367	367	367	367
367	367	367	367	367	367	367	367	367	367
367	367	367	367	367	367	367	367	367	367

367 NW 1/4 Sec 4 T14N R14E

367	367	367	367	367	367	367	367	367	367
367	367	367	367	367	367	367	367	367	367
367	367	367	367	367	367	367	367	367	367
367	367	367	367	367	367	367	367	367	367
367	367	367	367	367	367	367	367	367	367
367	367	367	367	367	367	367	367	367	367
367	367	367	367	367	367	367	367	367	367
367	367	367	367	367	367	367	367	367	367
367	367	367	367	367	367	367	367	367	367
367	367	367	367	367	367	367	367	367	367

April 1st 1915

Subgrade OK for quantities but very rough.

Donnam Miller Shand

Utah St.

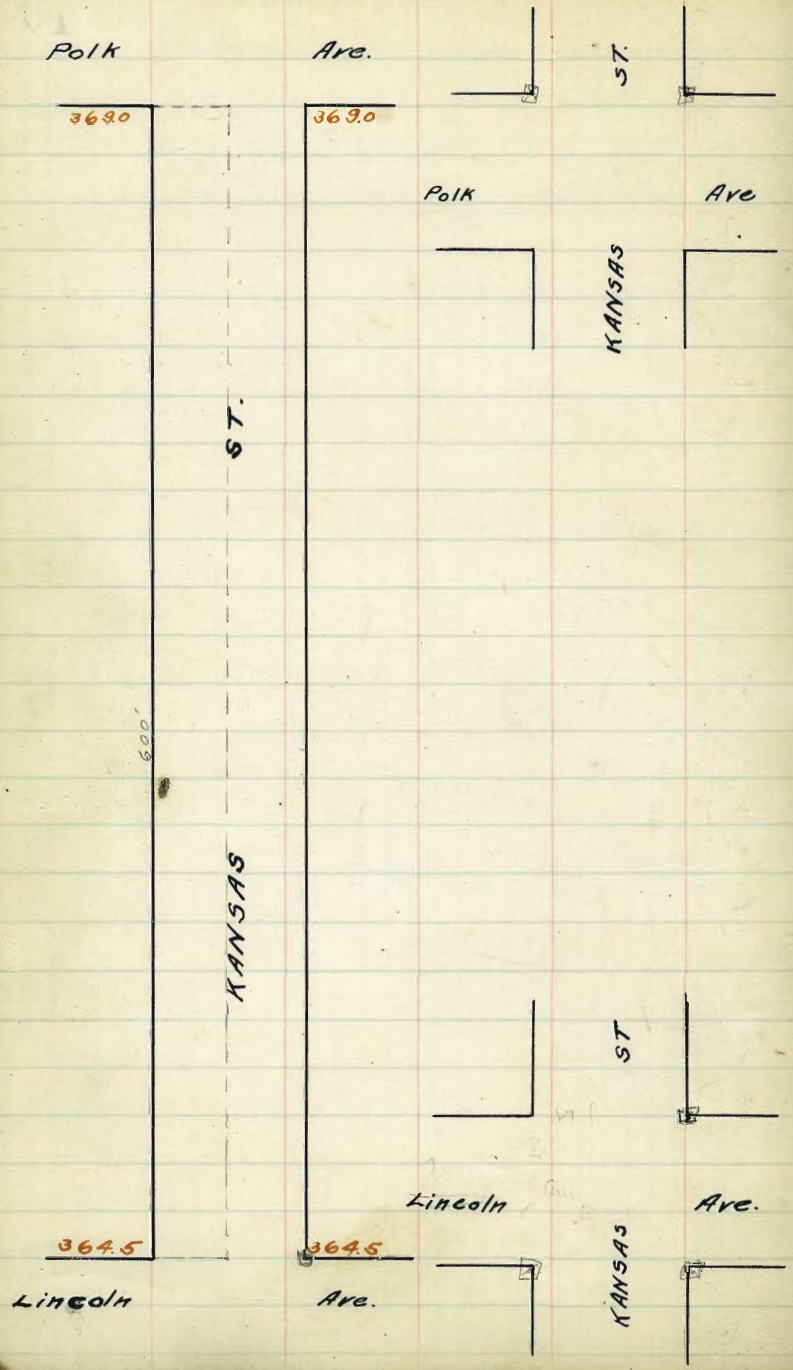
N.L. Polk	36876	36880	36880	36880	36880	36880	36876	± 0.7 ± 0.8
Curb	36740	36741	36801	36841	36801	36741	36740	
N. 1/2	36790	36792	36792	36832	36792	36732	36790	
Center	36824	36726	36786	36824	36784	36724	36824	± 0.4 ± 0.4
S. 1/2	36772	36717	36777	36817	36777	36717	36772	
Curb	36700	36709	36769	36809	36769	36709	36700	
S.L. Polk	36824	36800	36760	36800	36760	36800	36824	± 0.1 - 0.1

Intersection of Polk in fairly good shape but needs a little work done at the East & West Lanes where it is a few tenths high.

That with 1915 } Hemmery Miller Shand. 10

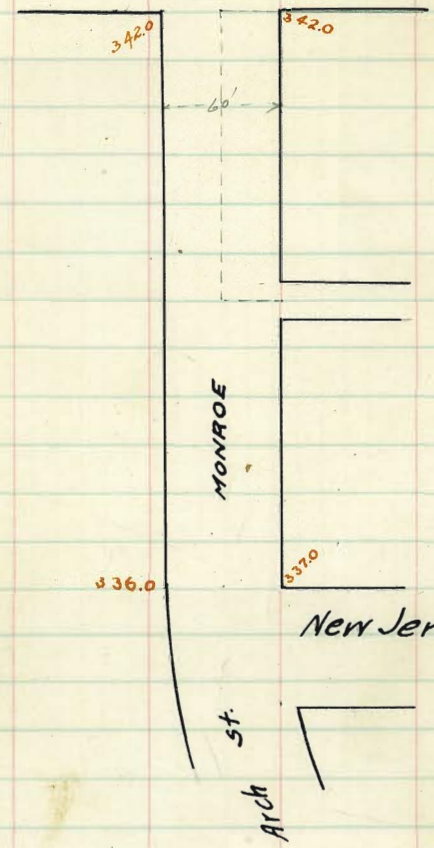
In the file from Lincoln to Polk found subgrade O.K. " " " " " " " " Curb 85 " } Hemmery Miller Shand.

In the file from University Ave to Lincoln on Utah Curb 85 O.K. " " " " " " " " Subgrade " for quantities but very rough & unfinished. April 1st 1915; Hemmery Miller Shand.



Maryland

st.



AVE.

3420

3420

60'

MONROE

336.0

337.0

New Jersey st.

st.

Arch

North West Line Maryland St. South

00	342.0	342.0	341.6	342.0	342.25
25'		341.54	341.16	341.58	341.83
50'	2. low	341.09	340.72	341.17	341.42
75'		340.63	340.30	340.75	341.00
100'	2. low	340.17	339.87	340.33	340.58
125'		339.71	339.43	339.92	340.17
140- EL. 1104		339.45		339.67	339.92
150'	2. low	339.25	339.0	339.5	339.75
175'					
200'					
225'					
250'					
275'					
300'		336.0	336.5	336.4	337.0

East Line New Jersey on S.

May 13/10
 Childs
 Barber
 Taylor
 15
 344.96 B.M. D.E. cor. Minnie & Maryland.
 1.96
 346.92 H.I. 341.42 340.58 339.75
 342.25 5.50 6.34 7.17
 4.67 8.2 8.2 6.9
 -2.7 -1.9 -10.3
 344.96
 2.18
 347.14 H.I. 120 21.6 41.7 40.72 41.09
 8.14 5.54 4.77 6.42 6.05
 4033 3987 4017 395 390 3925
 681 737 677 760 5121 789
 236
 all stakes
 1/2 mile
 from
 origin

Dec. 16/10
 Childs
 Taylor
 Barber
 344.96
 1.87
 346.83 H.I. 342.25 3420 341.6
 4.58 4.83 5.23
 341.09 340.72 341.17 341.42
 6.74 6.11 5.66 5.41
 340.58 340.33 339.87 340.17
 6.25 6.50 6.96 6.66
 339.67 339.92
 7.16 6.97
 344.96 B.M.
 1.58
 346.34 342.25 341.60 341.17 339.75 341.09
 4.54 4.74 5.17 5.62 6.25
 344.96 340.33 339.87 340.17 339.45
 2.04 6.01 6.47 6.17 6.67
 347.00 H.I. 342.25 342.0 342.6
 4.75 5.0 5.4
 341.09 340.72 341.17 341.42
 5.91 6.28 5.83 5.58
 340.58 340.33 339.87 340.17
 6.42 6.67 7.13 6.83
 339.43 339.67 339.92
 7.57 7.33 7.08

ok ok. except center a little low looks good.

Dec. 29/10
 Childs
 Taylor
 Barber

57

TEXAS

17

	West	South Line University Ave. East					
10'	310.25	310.0	310.0	311.5	312.40	313.00	313.25
25'	309.83	309.58	309.55	311.0	311.82	312.42	312.67
50'	309.42	309.17	309.10	310.5	311.23	311.83	312.08
75'	309.00	308.75	308.65	310.0	310.65	311.25	311.50
100'	308.59	308.34	308.20	309.5	310.06	310.66	310.91
125'	308.17	307.92	307.75	309.0	309.48	310.08	310.33
150'	307.75	307.50	307.30	308.5	308.90	309.50	309.75
175'	307.34	307.09	306.85	308.0	308.31	308.91	309.16
200'	306.92	306.67	306.40	307.5	307.73	308.33	308.58
225'	306.50	306.25	305.95	307.0	307.15	307.75	308.00
250'	306.09	305.84	305.50	306.5	306.57	307.17	307.42
275'	305.67	305.42	305.05	306.0	305.98	306.58	306.83
300'	305.25	305.0	304.6	305.5	305.40	306.00	306.25

North Line Wightman St.

305.25 305.0 304.6 305.5 305.4 306.0 306.25

305.0 305.0 304.4 305.32 305.22 306.0 306.00
304 304 304.5 305

1/4 304.4 303.75 304.26 305.16 305.06 304.75 305.4

Nightman

c 304.5 303.50 304.10 305.0 304.90 304.5 305.5

5A

1/4 303.6 303.25 303.94 304.84 304.76 304.25 304.6

303. 303. 304. 304.
304.0 304.00 303.78 304.68 304.58 305.0 305.00

304.25 304.00 303.6 304.5 304.4 305.00 305.25

West South Line Wightman St. East.

40 304.25 304.0 303.6 304.5 304.4 305.00 305.25

25'

50'

75'

100'

160'

180'

200'

220'

240'

260'

280'

300'

325'

350'

375'

400'

425'

450'

475'

500'

525'

550'

575'

603.8 304.25 303.0 302.6 303.5 303.40 304.0 304.25

North Line Landis St.

West

East

303.25	303.0	302.6	302.5	302.4	304.0	304.25
--------	-------	-------	-------	-------	-------	--------

303.0	303.0	302.42	303.32	303.22	304.0	304.00
302.	302.				303.	303.

14	302.4	301.75	302.26	303.16	303.06	302.75	303.40
----	-------	--------	--------	--------	--------	--------	--------

Landis

e	302.5	301.50	302.10	303.00	302.90	302.50	303.50
---	-------	--------	--------	--------	--------	--------	--------

St

14	301.6	301.25	301.94	302.84	302.74	302.25	302.6
----	-------	--------	--------	--------	--------	--------	-------

301.	301.				302.	302.
302.0	302.0	301.78	302.68	302.58	303.0	303.0

302.25	302.0	301.6	302.5	302.4	303.0	303.25
--------	-------	-------	-------	-------	-------	--------

	West	South Line Landis St.	East
00'	302.25	302.00	301.6 302.5 302.4 303.00 303.25
25'	301.75	301.50	
50'	301.25	301.00	
75'	300.75	300.50	
100'	300.25	300.00	
125'	299.75	299.50	
150'	299.25	299.00	
175'	298.75	298.50	
200'	298.25	298.00	
225'	297.75	297.50	
250'	297.25	297.00	
275'	296.75	296.50	
300'	296.25	296.00	
325'	295.75	295.50	
350'	295.25	295.00	
375'	294.75	294.50	
400'	294.25	294.00	
425'	293.75	293.50	
450'	293.25	293.00	
475'	292.75	292.50	
500'	292.25	292.00	
525'	291.75	291.50	
550'	291.25	291.00	
575'	290.75	290.50	
600'	290.25	290.00	

North Line Dwight St.

290.25 290.0

290.0 290.0
289. 289.

1/4 289.40 288.88

Dwight

0 289.75 288.75

St.

1/4 289.00 288.63

288.5 288.5
289.5 289.5

289.75 289.5

West	South Line Dwight St.		East
10	289.75	289.5	289.1
25	289.43	289.18	288.78
50	289.13	288.87	288.47
75	288.81	288.56	288.16
100	288.25	288.25	287.85
125	288.18	287.93	287.53
150	287.87	287.62	287.22
175	287.56	287.31	286.91
200	287.25	287.00	286.60
225	286.73	286.68	286.28
250	286.62	286.37	285.97
275	286.31	286.06	285.66
300	286.00	285.75	285.35
325	285.68	285.43	285.03
350	285.37	285.12	284.72
375	285.06	284.81	284.41
400	284.75	284.50	284.10
425	284.43	284.18	283.78
450	284.12	283.87	283.47
475	283.81	283.56	283.16
500	283.50	283.25	282.85
525	283.19	282.94	282.54
550	282.88	282.63	282.23
575	282.56	282.31	281.91
600	282.25	282.0	281.6

North Line Myrtle St.

West

East

282.25 282.0 281.6

282.0 282.0 281.5
281. 281.

1/4 281.4 280.88 281.43

Myrtle

c 281.75 280.75 281.35

st.

1/4 281.0 280.63 281.27

280.5 280.5
281.5 281.5 281.19

281.75 281.5 281.10

West South Line Myrtle St.

East

00' 281.75 281.5 281.1

25' 281.61 281.36 280.96

50' 281.48 281.23 280.83

75' 281.35 281.10 280.70

100' 281.22 280.97 280.57

125' 281.09 280.84 280.44

150' 280.95 280.70 280.30

175' 280.83 280.57 280.17

200' 280.69 280.44 280.04

225' 280.56 280.31 279.91

250' 280.43 280.18 279.78

283.60mW
284.20mE 280.25 280.0 279.6 280.5 280.4 281.0 281.25

North Line City Park

SW Rich. Pelegrd. 294.453

SE Pelegrd. = 287.784

Vermont

Richmond St.

287.0

AVE.

286.0

294.0

AVE.

294.0

ROBINSON

ROBINSON

282.0

282.0

10th

St.

288.0

Vermont

287.0

St.

Alley

294.0

293.9

291.0

292.0

292.0

290.0

294.5

Richmond

AVE.

Herbert St.

292.0

290.0

Albert St.

289.0

294.5

St.

ROBINSON

Park

301.6

293.0

300.5

288.8

287.5

286.6

286.0

285.7

285.6

285.8

286.2

286.9

288.1

289.7

295.0

Center St.

296.0

294.0

AVE.

300.5

288.8

287.5

286.6

286.0

285.7

285.6

285.8

286.2

286.9

288.1

289.7

295.0

296.0

293.0

Herbert St.

28

Replaced.

Bl'd.

Bldg. on Essex

Grade

1913/18

27

27

27

27

27

27

27

27

27

27

27

27

27

27

27

27

60

60

60

60

60

60

60

60

60

60

60

60

60

60

43' x 27'

53' x 27'

53' x 27'

53' x 27'

53' x 27'

53' x 27'

53' x 27'

53' x 27'

53' x 27'

CT. on

Knob-out

Porch

	North	West Line Vermont St.						South
480'	287.25	287.00	286.4	286.5	285.85	286.00	286.25	
450'	286.94	286.69	286.10	286.21	285.58	285.75	286.0	
425'	286.67	286.42	285.85	285.98	285.36	285.54	285.79	
400'	286.41	286.16	285.60	285.74	285.14	285.33	285.58	
375'	286.15	285.90	285.35	285.51	284.92	285.12	285.37	
350'	285.89	285.64	285.10	285.28	284.70	284.92	285.17	
325'	285.63	285.38	284.85	285.04	284.48	284.71	284.96	
300'	285.37	285.12	284.60	284.81	284.26	284.50	284.75	
275'	285.11	284.86	284.35	284.57	284.03	284.29	284.94	
250'	284.85	284.60	284.10	284.34	283.81	284.08	284.33	
225'	284.59	284.34	283.85	284.11	283.59	283.87	284.13	
200'	284.33	284.08	283.60	283.87	283.37	283.67	283.92	
175'	284.07	283.82	283.35	283.64	283.15	283.46	283.71	
150'	283.81	283.56	283.10	283.40	282.93	283.25	283.50	
125'	283.55	283.30	282.85	283.17	282.71	283.04	283.29	
100'	283.29	283.04	282.60	282.94	282.49	282.83	283.08	
75'	283.03	282.78	282.35	282.70	282.26	282.62	282.87	
50'	282.77	282.52	282.10	282.47	282.04	282.42	282.67	
25'	282.51	282.26	281.85	282.23	281.82	282.21	282.46	
00'	282.25	282.0	281.6	282.0	281.60	282.0	282.25	

East Line 10th St.

2900740
7.31
288.7674
0.77
289.23

44 - 6/23/13

Gregory
Sibley
Cham

30

286.94	286.41	285.79	285.37	284.75	284.33	283.71	283.29	282.77	282.35
2.5	3.38	4.14	4.86	4.88	5.40	5.92	6.44	6.96	7.48
+0.5	+0.3	+0.7	+0.6	+0.5	+0.5	+1.2	+1.4	+0.9	+0.6
286.94	286.51	286.17	285.75	285.33	284.91	284.50	284.08	283.67	283.25
5.73	4.75	4.56	4.98	5.40	5.81	6.23	6.65	7.07	7.48
+0.74	+0.7	+0.7	+0.8	+0.8	+1.1	+1.3	+1.5	+1.7	+1.9

287.75	287.34	286.93	286.52	286.11	285.70	285.29	284.88	284.47	284.06
1.17	1.40	1.65	1.90	2.15	2.40	2.65	2.90	3.15	3.40
287.75	287.34	286.93	286.52	286.11	285.70	285.29	284.88	284.47	284.06
4.33	4.05	3.77	3.49	3.21	2.93	2.65	2.37	2.09	1.81
1.14	1.10	1.06	1.02	0.98	0.94	0.90	0.86	0.82	0.78

287.75	287.34	286.93	286.52	286.11	285.70	285.29	284.88	284.47	284.06
1.17	1.40	1.65	1.90	2.15	2.40	2.65	2.90	3.15	3.40
287.75	287.34	286.93	286.52	286.11	285.70	285.29	284.88	284.47	284.06
4.33	4.05	3.77	3.49	3.21	2.93	2.65	2.37	2.09	1.81
1.14	1.10	1.06	1.02	0.98	0.94	0.90	0.86	0.82	0.78

287.75

3.31

29.11

6.13

284.99

3.10

288.09

287.75 286.93 286.11 285.29 284.47 283.65

4.11 4.71 4.61 5.26 5.11

8.20 6.08

Checked OK 10-11-13

blough Roked

Curbs & Props 9/13

Gregory
Sibley
Cham

North

288.25 288.00 287.4 287.5 286.85 287.00 287.25

288.0 288.0 287.22 287.32 286.67 287.0 287.0
287. 287. 286. 286.

1/4 287.4 286.75 287.06 287.16 286.51 286.75 286.4

Vermont

c 287.5 286.50 286.9 287.0 286.35 286.5 286.5

St.

1/4 286.85 286.25 286.74 286.84 286.19 286.25 285.85

286. 286. 285. 285.
287.0 287.0 286.58 286.68 286.03 286.0 286.0

287.25 287.0 286.4 286.5 285.85 286.0 286.25

South

29208 N 16.4 565 26.35 / 270 875 26.15 / 369 570 86.85
0.43 2.03 6.75 2.23 4.53 5.77 5.73 5.03 5.68

287.24 SE 1/4 26.6 26.6

4.18
291.26

287.00 286.85 287.00 287.40 288.00
9.96 5.1 4.46 4.56 3.94

9285

286.00 285.30 286.10 286.00 287.00
5.76 1.1 3.46 5.4 4.00

286.00 287.00
1.76 1.76

287.00 287.00
4.96 4.96

	North	West Line Richmond St.					South
600'	294.25	294.0	293.6	294.0	293.6	294.0	294.25
575'	294.00	293.75	293.34	293.73	293.31	293.71	293.96
550'	293.75	293.50	293.08	293.46	293.03	293.42	293.67
525'	293.50	293.25	292.82	293.19	292.75	293.12	293.37
500'	293.25	293.00	292.57	292.92	292.47	292.83	293.08
475'	293.00	292.75	292.31	292.65	292.19	292.54	292.79
450'	292.75	292.50	292.05	292.37	291.91	292.25	292.50
425'	292.50	292.25	291.79	292.10	291.63	291.96	292.21
400'	292.25	292.00	291.53	291.83	291.35	291.67	291.92
375'	292.00	291.75	291.27	291.56	291.07	291.37	291.62
350'	291.75	291.50	291.02	291.29	290.78	291.08	291.33
325'	291.50	291.25	290.76	291.02	290.50	290.79	291.04
300'	291.25	291.00	290.50	290.75	290.22	290.50	290.75
275'	291.00	290.75	290.24	290.48	289.94	290.21	290.46
250'	290.75	290.50	289.98	290.21	289.66	289.92	290.17
225'	291.00	290.25	289.72	289.94	289.38	289.62	289.87
200'	290.25	290.00	289.47	289.67	289.10	289.33	289.58
175'	290.00	289.75	289.21	289.40	288.82	289.04	289.29
150'	289.75	289.50	288.95	289.12	288.54	288.75	289.00
125'	289.50	289.25	288.69	288.85	288.26	288.46	288.71
100'	289.25	289.00	288.43	288.58	287.97	288.17	288.42
75'	289.00	288.75	288.17	288.31	287.69	287.87	288.12
50'	288.75	288.50	287.92	288.04	287.41	287.58	287.83
25'	288.50	288.25	287.66	287.77	287.13	287.29	287.54
00'	288.25	288.0	287.4	287.5	286.85	287.0	287.25

East Line Vermont St.

294.45	294.25	294.0	293.75	293.50	293.25	293.0	292.75	292.50	292.25	292.0	291.75	291.50	291.25	291.0	290.75	290.50	290.25	290.0	289.75	289.50	289.25	289.0	288.75	288.50	288.25	288.0	
4.68	4.68	4.68	4.68	4.68	4.68	4.68	4.68	4.68	4.68	4.68	4.68	4.68	4.68	4.68	4.68	4.68	4.68	4.68	4.68	4.68	4.68	4.68	4.68	4.68	4.68	4.68	4.68

294.45	294.25	294.0	293.75	293.50	293.25	293.0	292.75	292.50	292.25	292.0	291.75	291.50	291.25	291.0	290.75	290.50	290.25	290.0	289.75	289.50	289.25	289.0	288.75	288.50	288.25	288.0
4.68	4.68	4.68	4.68	4.68	4.68	4.68	4.68	4.68	4.68	4.68	4.68	4.68	4.68	4.68	4.68	4.68	4.68	4.68	4.68	4.68	4.68	4.68	4.68	4.68	4.68	4.68

291.11 8840 8740 8750 8685 8700
 3.11 3.01 3.61 4.21 4.11

294.45
 4.68
 298.75

294.25
 4.68

Checked
 4.95

Checked OK 10-11-13
 Blough

Refer to Check
 Blough

North

East Line

South

294.75	294.5	294.1	294.5	294.1	294.5	294.75
--------	-------	-------	-------	-------	-------	--------

294.5	294.5	294.01	294.4	294.01	294.5	294.5
293.5	293.5				293.5	293.5

293.90	293.38	293.93	294.33	293.93	293.38	293.9
--------	--------	--------	--------	--------	--------	-------

Richmond

294.25	293.25	293.85	294.25	293.85	293.25	294.25
--------	--------	--------	--------	--------	--------	--------

St.

293.73	293.13	293.77	294.17	293.77	293.13	293.73
--------	--------	--------	--------	--------	--------	--------

293.	293.				293.	293.
294.0	294.0	293.69	294.09	293.69	294.0	294.0

294.25	294.0	293.6	294.0	293.6	294.0	294.25
--------	-------	-------	-------	-------	-------	--------

West Line

Checked OK 10-11-13 Blough

	North	West Line Alvert St on S					South
150'	290.25	290.0	289.40	289.50	288.85	289.0	289.25
125'	290.70	290.45	289.87	290.0	289.38	289.55	289.80
100'	291.15	290.90	290.34	290.50	289.90	290.10	290.35
75'	291.60	291.35	290.81	291.00	290.42	290.65	290.90
50'	292.05	291.80	291.28	291.50	290.95	291.20	291.45
25'	292.50	292.25	291.75	292.00	291.48	291.75	292.00
100'	292.95	292.70	292.22	292.50	292.00	292.30	292.55
75'	293.40	293.15	292.69	293.00	292.53	292.85	293.10
50'	293.85	293.60	293.16	293.50	293.05	293.40	293.65
25'	294.30	294.05	293.63	294.00	293.58	293.95	294.20
00'	294.75	294.50	294.1	294.5	294.1	294.5	294.75

East Line Richmond St.

277.0	276.75 T.P.	276.75	276.75	276.75	276.75	276.75
277.0	276.75 T.P.	276.75	276.75	276.75	276.75	276.75
276.75	276.75	276.75	276.75	276.75	276.75	276.75
276.75	276.75	276.75	276.75	276.75	276.75	276.75
276.75	276.75	276.75	276.75	276.75	276.75	276.75
276.75	276.75	276.75	276.75	276.75	276.75	276.75
276.75	276.75	276.75	276.75	276.75	276.75	276.75
276.75	276.75	276.75	276.75	276.75	276.75	276.75
276.75	276.75	276.75	276.75	276.75	276.75	276.75
276.75	276.75	276.75	276.75	276.75	276.75	276.75

Curbs + Props 9/19/13 Gregory Sherman Shaw

Checked OK 10-11-13 - Blouys

North E time of Albert South

291.25 291.0 290.40 290.50 289.85 290.0 290.25

291.40 290.50 290.8850
7.90

Card 291.05 290.83 290.23 290.33 289.67 290.00 290.00
289.00

Checked OK 10-17-13 Clough

1/4 290.92 290.67 290.07 290.17 289.51 288.75 289.40

Albert

c 290.75 290.50 289.90 290.0 289.35 288.50 289.50

1/2 290.58 290.33 289.73 289.83 289.15 288.25 288.85

Card 290.42 290.17 289.57 289.67 289.02 288.0 289.0
289.00

290.25 290.0 289.40 289.50 288.85 289.0 289.25

W Line

North	West Line Herbert St on S.						South
200'	293.25	293.0	292.40	292.50	291.85	292.0	292.25
15'	293.00	292.75	292.15	292.25	291.60	291.75	292.00
100'	292.75	292.50	291.90	292.00	291.35	291.50	291.75
15'	292.50	292.25	291.65	291.75	291.10	291.25	291.50
100'	292.25	292.00	291.40	291.50	290.85	291.00	291.25
15'	292.00	291.75	291.15	291.25	290.60	290.75	291.00
50'	291.75	291.50	290.90	291.00	290.35	290.50	290.75
15'	291.50	291.25	290.65	290.75	290.10	290.25	290.50
100'	291.25	291.0	290.40	290.50	289.85	290.0	290.25

East Line Albert St on S

285.11 TP
5.80
289.91

cuts & pile 6/3/13
Crago
Stamler
Crown

292.25	291.75	291.25	290.75	290.25
7.06	8.16	8.66	9.16	9.66
5.76	6.26	6.76	7.26	7.76
+1.9	+1.9	+3.2	5.9	6.71
			+3.3	+2.91

293.25	292.75	292.25	291.75	291.25
6.06	7.16	7.66	8.16	8.66
	3.56	4.06	4.56	5.06
	43.6	+4.0	43.2	43.4

296.45 on Hyd
296.75 PD

292.75	292.25	291.75	291.25	290.75	290.25	289.75	289.25	288.75	288.25
4.53	4.75	5.00	5.25	5.50	5.75	6.00	6.25	6.50	6.75
5.53	5.75	6.00	6.25	6.50	6.75	7.00	7.25	7.50	7.75

9120 H
5.80
9650

9120	9050	8980
5.80	6.00	6.20
9120	9100	9100
5.80	5.80	5.80
9350	9250	9150
3.50	4.00	4.50

Popps + Curbs 9/11/13
Crago
Stamler
Crown

Checked OK through
10-11-13

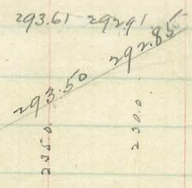
North	East Line						South
294.25	294.0	293.4	293.50	292.85	293.0	293.25	
-10'							
294.0	294.0	293.22	293.32	292.9	293.0	293.0	
-10'	293.0				292.0		
14	293.40	292.75	293.06	293.16	292.51	291.75	
-10'						292.40	
		Herbert					
293.50	292.50	292.90	293.00	292.35	291.50	292.50	
-10'							
		St.					
14	292.85	292.25	292.74	292.84	292.19	291.25	
-10'						291.85	
					291.0		
293.0	292.0	292.58	292.68	292.03	292.0	292.0	
-10'							
293.25	293.0	292.40	292.50	291.85	292.0	292.25	
-10'							
	West Line.						

Checked OK 10-17-13 Laugh

North West Line Center St on North South

225	296.25	296.0	295.6	296.0	295.6	296.0	296.25
200	296.04	295.79	295.37	295.73	295.30	295.67	295.92
175	295.84	295.59	295.14	295.47	295.00	295.33	295.58
150	295.64	295.39	294.91	295.20	294.70	295.00	295.25
125	295.43	295.18	294.68	294.94	294.40	294.67	294.92
100	295.23	294.98	294.45	294.67	294.14	294.33	294.58
75	295.02	294.77	294.22	294.40	293.81	294.00	294.25
50	294.82	294.57	294.00	294.14	293.51	293.67	293.92
25	294.62	294.37	293.77	293.87	293.21	293.33	293.58
00	294.41	294.16	293.54	293.61	292.91	293.00	293.25

E Line of Herbert St.



altos hills 2/13/13 Legion

294.15	293.25	293.92	294.53	295.25	295.92	296.25
5.16	7.14	7.77	7.11	6.47	6.77	5.91
294.21	294.11	294.12	294.12	294.12	294.12	294.12
7.55	6.57	6.40	6.05	5.65	5.14	4.74
301.67	294.11	294.12	294.12	294.12	294.12	294.12

294.79	294.85	296.0	295.72	295.67	295.72	296.04	295.64	295.39	295.25
3.47	3.21	3.26	3.34	3.52	3.47	3.88	3.92	3.82	4.06
294.26	294.26	294.26	294.26	294.26	294.26	294.26	294.26	294.26	294.26
2.71	2.71	2.71	2.71	2.71	2.71	2.71	2.71	2.71	2.71

294.50	294.33	294.15	295.23	294.78	294.57	293.67	293.24	293.54	293.86
4.63	4.93	4.35	4.83	4.07	4.69	5.52	5.37	6.01	6.86
294.16	294.41	294.24	294.25	294.25	294.25	294.25	294.25	294.25	294.25
5.19	4.83	5.34	5.01	5.01	5.01	5.01	5.01	5.01	5.01

Check Bear OK
10-11-13 - [Signature]

North	East Line						South
295.25	295.0	294.6	295.0	294.6	295.0	295.25	
295.0 -10' 294.2	295.0 294.	294.74	295.14	294.74	295.14	295.39	
1/4 294.85	294.25	294.92	295.32	294.92	295.32	295.57	
	Center						
0 295.5	294.5	295.10	295.50	295.10	295.50	295.75	
	St. (on North)						
1/4 295.4	294.75	295.28	295.68	295.28	295.68	295.93	
295. 296.0	295. 296.0	295.46	295.86	295.46	295.86	296.11	
1/10 296.25	296.0	295.60	296.0	295.6	296.0	296.25	

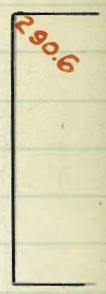
West Line

Checked OK 10-11-13 S. Lough.

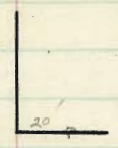
University Ave.



ST.



ST.



Robinson Ave.

Ave.

2860

2870

2870

2890

Essex St.

2880

2890

VERMONT

2850

VERMONT

2840
Hand on 25
N of Finner Co.

Pennsylvania Ave.

Ave.

2870

2880

Robinson Ave.

Ave.

West South Line Robinson Ave. East.

300' V 286.25 286.0 285.85 286.5 286.4 287.0 287.25

250' V 285.92 285.67 285.52 286.17 286.07 286.67 286.92

200' V 285.58 285.33 285.18 285.83 285.73 286.33 286.58

160' 285.32 285.07 284.92 285.57 285.47 286.07 286.32

150' V 285.25 285.0 284.85 285.5 285.4 286.0 286.25

140' 285.19 284.94 284.79 285.44 285.34 285.94 286.19

100' V 284.92 284.67 284.52 285.17 285.07 285.67 285.92

50' V 284.58 284.33 284.18 284.83 284.73 285.33 285.58

00 284.25 284.0 283.85 284.5 284.4 285.0 285.25

North Line Pennsylvania Ave.

Cut 51000 $\frac{6}{7}$ $\frac{4}{1}$

For Inters. Robinson, See Page 31

29388 N3
760
22628
324
28962.16

86.25	87.25	87.92	88.92	89.65	89.65	86.25	86.25
763	663	796	696	403	403	427	327
708	608	706	653	373	373	540	307
+0.55	+0.55	+0.5	+0.35	+0.1	0.0	+0.63	+0.3

8492	8592	8555	8555	8425	8625
470	370	550	590	537	487
430	230	506	590	700	366
-0.1	-0.1	+0.06	+1.14	-1.23	+0.72

28803
379
272.02 N4

292.02	92.02	92.02	92.02	92.02	92.02	28803	28803
8592	86.52	85.25	85.92	84.58	85.25	379	379
635	549	677	610	744	677	272.02 N4	272.02 N4
510	471	577	710	644	777		
525	667	602	735	669	802		

29203 N3
074
28529
367
2773

869	86.85	86.67	85.92	85.92	85.92	84.84	84.84
660	660	660	660	660	660	660	660
553	553	553	553	553	553	553	553

28778 Bm

286.00 285.85 286.50 286.40 287.00

28778 Bm
287.00
287.15
287.30
287.45
287.60
287.75
287.90
288.05
288.20
288.35
288.50
288.65
288.80
288.95
289.10
289.25
289.40
289.55
289.70
289.85
289.95

2840	284.85	284.50	284.60	285.00
474	483	474	474	474
37	367	363	367	367
585	615	620	666	666
645	675	670	676	676
685	685	690	696	696
700	733	735	736	736
685	715	720	726	726

Check 8/11 Hatch
11/11 Hatch
Hall

West South Line Essex St East
 gutter 2h 2 high gutter 2h.

300' 288.25 288.0 287.85 288.5 288.4 289.0 289.25

gutter 15h gutter 25h
 240' ✓ 288.09 287.84 287.69 288.34 288.24 288.84 289.09

200' ✓ 287.93 287.68 287.53 288.16 287.43 288.68 288.93

gutter 2 high 1 high
 160' 287.78 287.53 287.38 288.03 287.28 288.53 288.78

150' 287.75 287.50 287.34 289.0 289.0 288.50 288.75

140' 287.71 287.46 287.31 287.96 287.21 288.46 288.71

gutter 2 high
 100' ✓ 287.58 287.33 287.18 287.83 287.08 288.33 288.58

gutter 1 high
 50' ✓ 287.42 287.17 287.02 287.67 286.92 288.17 288.42

15 low
 00' ✓ 287.25 287.0 286.85 287.5 287.4 288.0 288.25
 North Line Robinson Ave.

25 h. E gutter on Cr line of Intersect
 1 h. W gutter
 35 h. W gutter
 45 h. SE return gutter

29385 H

Cut stakes $\frac{6}{11}$ H M H

43

28809	28909	28793	28878	28778	28878	28758	28858
599	479	595	495	613	513	630	530
625	409	620	520	603	493	580	487
-0.25	+0.1	-0.25	-0.25	+0.1	+0.15	+0.5	+0.78
28742	28842	28725	28825				
646	546	663	563				
620	446	608	483				
-1.56	+1.0	-1.65	+0.5				

288.03 B.M. S.P.S.W. Essex Vermont, Curbs Prop
 727 92.30 92.30 92.30 92.30 92.30 92.30 92.30 72.30 72.30
 292.30 NT, 28.25 28.09 27.93 28.75 27.58 28.42 27.25 28.09

4.05	3.21	4.37	3.55	4.72	3.88	5.05	4.21
4.30	3.46	4.62	3.80	4.97	4.13	5.30	4.46
3.05	4.21	3.37	4.55	3.72	4.88	4.05	
3.30	4.46	3.62	4.80	3.97	5.13	4.30	

288.03 B.M. 8255 8255 8255 8255 8255 8255 8255 8255
 292.30 H 28.25 28.09 27.93 28.75 27.58 28.42 27.25 28.09

8724	88.0	87.90	87.18	87.53	87.73	87.07	87.47	87.57
467	493	493	485	420	430	430	430	446
8685	87.5	87.4						
515	403	423						

29315 H 28840 28785 28850 28840 28900
 5.15 4.30 4.61 4.75 4.11

Check OK
 Also Intersection of
 Robinson & Vermont
 OK

8803	880	8785	876	874	890	884	888	883	883	887
282	475	500	435	445	385	401	417	432	447	463
9285 H						401	417	432	447	463
						401	417	432	447	463
						401	417	432	447	463

West South Line University Ave. East

290.05 289.8 289.6 290.2 290.0 290.6 290.85

289.79 289.54 289.36 289.99 289.85 290.45 290.70

289.52 289.27 289.12 289.79 289.70 290.30 290.55

289.25 289.00 288.88 289.58 289.55 290.15 290.40

288.99 288.74 288.65 288.38 288.40 290.00 290.25

288.72 288.47 288.41 289.17 289.24 289.84 290.09

288.56 288.31 288.27 289.04 289.15 289.75 290.00

288.35 288.10 288.08 288.87 289.03 289.63 289.88

287.82 287.57 287.61 288.45 288.73 289.33 289.58

287.25 287.0 287.1 288.0 288.40 289.0 289.25

North Line Essex St.

SW Univ-Vermont

Cut stakes $\frac{6}{27}$ $\frac{16}{16}$

274.54	290.85	290.85	289.52	290.55	289.9	290.25
289.02			289.52	290.55	289.9	290.25
289.02			289.52	290.55	289.9	290.25
273.95	289.35	289.38	288.82	289.57	272.5	292.5
	5.67	4.16	5.22	4.46	6.77	4.79
	2.1	5.04	6.52	3.56		
		0.85	-1.3	-1.1		

289.75	94.61	94.61	94.61	94.61	94.61	94.61	7/7	Curle & property
294.614	90.65	90.55	88.99	89.88	87.82	89.25	//	Dunkle
	4.56	4.06	5.62	4.73	6.79	5.36		Evans
	4.81	4.31	5.87	4.98	7.04	5.61		Tichenor
	94.61	94.61	94.61	94.61	94.61	94.61		
	90.85	89.52	90.25	88.35	89.58	87.25		
	3.76	5.09	4.36	6.26	5.03	7.36		
	4.01	5.34	4.61	6.51	5.28	7.61		

289.75	94.59	94.59	94.59	94.59	94.59	94.59	94.59	all stake
294.594	89.62	89.70	88.65	89.03	87.61	88.40	//	D
	4.99	4.89	5.74	5.56	6.98	6.17		E
	94.59	94.59	94.59	94.59	94.59	94.59		T
	90.20	89.72	89.38	88.87	88.45	88.00		
	4.39	4.80	5.21	5.72	6.14	6.59		
	94.59	94.59	94.59	94.59	94.59	94.59		
	90.20	89.12	89.90	88.88	89.73	87.10		
	4.59	5.47	5.19	6.51	5.86	7.49		

289.76	289.60	289.20	290.40	290.60
5.05	5.00	5.15	4.79	4.99
294.79				

288.03	287.00	287.10	286.00	285.40	289.00
5.12	6.11	6.21	5.11	4.75	4.11
292.15	898	896	902	900	906
897.6	286	306	24	266	206
290					
286.11	887.4	880.5	89.88	89.40	90
263	392	4.01	325	326	240
	275.9	87.6	88.45	88.73	89.33
	5.9	5.05	4.21	3.73	3.33

check // Hatched // more // Hatched

Monterey

Ave.

281.5

282.0

ST.

284.5

8TH

284.6

University

Ave.

Eighth St.

West

East

48

281.75 281.50 281.22 281.75 281.40 282.0 282.25

281.50 281.50 280.63 280.75 280.87 282.0 282.0
280.50 280.50 281.0 281.00

281.10 281.19 281.27 281.35 281.43 281.51 281.60

MONTREY

281.50 281.58 281.67 281.75 281.83 281.92 282.0

St

281.10 281.17 281.26 281.35 281.44 281.53 281.60

280.5 280.5 281.0 281.0
281.5 280.50 280.63 280.75 280.87 282.0 282.0

281.75 281.50 281.22 281.75 281.40 282.0 282.25

W

E

North end Eighth St.

283.75	283.50	283.22	283.75	283.40	284.00	284.25	100
283.45	283.20	282.92	283.45	283.09	283.69	283.94	50
283.16	282.91	282.63	283.15	282.79	283.39	283.64	100
282.86	282.61	282.33	282.85	282.48	283.08	283.33	150
282.57	282.32	282.04	282.55	282.18	282.78	283.03	200
282.33	282.08	281.74	282.25	281.88	282.48	282.73	250
281.98	281.73	281.45	281.96	281.58	282.18	282.43	300
281.81	281.56	281.27	281.78	281.40	282.0	282.25	350
281.75	281.50	281.22	281.75	281.40			400

287.24 TP 43 287.17	289.67 4.67 285.00 282.35 2.65	289.67 5.00 284.67 281.71 2.96	289.67 5.00 284.67 281.71 2.96	289.67 4.5 285.17 282.4 2.77	289.67 4.67 285.00 282.35 2.65	289.67 4.67 285.00 282.35 2.65	289.67 4.67 285.00 282.35 2.65
289.67 4.67 285.00 282.35 2.65	289.67 4.67 285.00 282.35 2.65	289.67 4.67 285.00 282.35 2.65	289.67 4.67 285.00 282.35 2.65	289.67 4.67 285.00 282.35 2.65	289.67 4.67 285.00 282.35 2.65	289.67 4.67 285.00 282.35 2.65	289.67 4.67 285.00 282.35 2.65
289.67 4.67 285.00 282.35 2.65	289.67 4.67 285.00 282.35 2.65	289.67 4.67 285.00 282.35 2.65	289.67 4.67 285.00 282.35 2.65	289.67 4.67 285.00 282.35 2.65	289.67 4.67 285.00 282.35 2.65	289.67 4.67 285.00 282.35 2.65	289.67 4.67 285.00 282.35 2.65

9-12-11 647 Blough

26744 NO	281.74	282.25	281.88	282.48	282.73	250
288.06	281.74	282.25	281.88	282.48	282.73	250

Monterey St.

287.24 TP 43 287.17	289.67 4.67 285.00 282.35 2.65	289.67 5.00 284.67 281.71 2.96	289.67 5.00 284.67 281.71 2.96	289.67 4.5 285.17 282.4 2.77	289.67 4.67 285.00 282.35 2.65	289.67 4.67 285.00 282.35 2.65	289.67 4.67 285.00 282.35 2.65
289.67 4.67 285.00 282.35 2.65	289.67 4.67 285.00 282.35 2.65	289.67 4.67 285.00 282.35 2.65	289.67 4.67 285.00 282.35 2.65	289.67 4.67 285.00 282.35 2.65	289.67 4.67 285.00 282.35 2.65	289.67 4.67 285.00 282.35 2.65	289.67 4.67 285.00 282.35 2.65
289.67 4.67 285.00 282.35 2.65	289.67 4.67 285.00 282.35 2.65	289.67 4.67 285.00 282.35 2.65	289.67 4.67 285.00 282.35 2.65	289.67 4.67 285.00 282.35 2.65	289.67 4.67 285.00 282.35 2.65	289.67 4.67 285.00 282.35 2.65	289.67 4.67 285.00 282.35 2.65

Blough D & E

10-14-11

Check OK Blough D & E

ROBINSON
AVE.

274.0

266.0

266.0

269.2

270.7

271.8

272.5

272.8

273.0

270.5

66'
ST.

273.0

265.0

ROBINSON
AVE

265.0

268.2

269.7

270.8

271.5

271.8

272.0

240'

EIGHTH

270.0

66'

PENNSYL.
AVE

13 ft. See walls

51

284.43 B.M. N.W. 8th + Minn. ave.

274.99 " " 8th + Rob.

West

East

SOUTH LINE OF ROBINSON AVE. (On east)

	← 13' →		← 5' →		← 5' →		← 13' →	
20	266.25	266.0	265.40	265.50	264.40	265.0	265.25	
25	268.53	268.28	267.68	267.78	266.68	267.28	267.53	
30	269.45	269.2	268.60	268.7	267.60	268.2	268.45	
	Break							
35	270.95	270.7	270.1	270.2	269.1	269.7	269.95	
	Break							
40	272.05	271.8	271.2	271.3	270.2	270.8	271.05	✓
	Break							
45	272.75	272.5	271.9	272.0	270.9	271.5	271.75	✓
	Break							
50	273.05	272.8	272.2	272.3	271.2	271.8	272.05	✓
	Break							
55	273.25	273.0	272.4	272.5	271.4	272.0	272.25	✓
	Break							
60	273.99	273.84	273.24	273.36	272.28	272.88	273.13	
65	274.83	274.58	273.98	274.12	273.07	273.67	273.92	✓
70	272.57	272.32	271.72	271.84	270.86	271.46	271.71	
75	272.31	272.06	271.46	271.66	270.65	271.25	271.50	✓
80	272.05	271.80	271.20	271.42	270.44	271.04	271.29	
85	271.79	271.54	270.94	271.14	270.23	270.83	271.05	✓
90	271.53	271.28	270.68	270.95	270.02	270.62	270.87	
95	271.27	271.02	270.42	270.72	269.82	270.42	270.67	
100	271.17	270.92	270.33	270.64	270.59	270.59	270.59	
105	271.01	270.76	270.16	270.46	269.61	270.21	270.46	
110	270.75	270.50	269.90	270.25	269.40	270.00	270.25	

Grading Stops Here

EIGHTH ST.							
27499 B.M.	84	Robinson	N.W. Cor.	80.72	80.72	80.72	80.72
0.12	7.511	7.511	80.72	80.72	80.72	80.72	80.72
275.741	8.25	8.25	69.45	69.45	70.25	72.05	72.05
7.15	9.86	9.86	71.27	71.27	71.27	71.27	71.27
13.20	12.20	12.20	8.27	8.27	8.27	8.27	8.27
-2.9	+0.1	+0.1	+1.27	+1.27	+1.27	+1.27	+1.27
+3.40	+3.40	+3.40	+3.40	+3.40	+3.40	+3.40	+3.40
273.38	80.72	80.72	80.72	80.72	80.72	80.72	80.72
13.4	7.75	7.75	73.05	73.05	72.25	72.25	72.25
280.72	8.97	8.97	7.67	7.67	8.47	8.47	8.47
2.1	5.57	5.57	+3.92	+3.92	+3.19	+3.19	+3.19
80.72	80.72	80.72	80.72	80.72	80.72	80.72	80.72
72.57	72.05	71.29	70.87	71.53	71.17	70.59	70.59
8.15	8.67	9.43	9.85	9.19	9.55	10.13	10.13
11.0	5.27	6.97	4.37	4.30	8.15	10.93	10.93
+3.75	+3.90	+3.42	+2.98	+3.67	+1.40	-8.0	-8.0
274.89	80.72	80.72	80.72	80.72	80.72	80.72	80.72
80	2.65	2.65	2.65	2.65	2.65	2.65	2.65
275.59	10.54	9.14	10.8	10.8	10.8	10.8	10.8
8.15	8.15	8.15	8.15	8.15	8.15	8.15	8.15
271.75	271.75	271.75	271.75	271.75	271.75	271.75	271.75
278.16	71.27	37.83	272.6	272.6	272.6	272.6	272.6
6.6	5.13	5.13	5.13	5.13	5.13	5.13	5.13
3-14-11							
274.89	80	266.25	265.0	269.20	268.20	270.10	269.50
275.69	2.67	271.80	270.90	272.50	271.50	272.80	271.80
273.06	3.89	272.00	272.58	271.67	272.06	271.55	271.80
276.67	5.13	270.85	270.85	270.92	270.92	270.92	270.92
3-17-11							
274.89	80.72	266.25	265.0	264.40	265.0	265.0	265.0
275.77	4.35	269.2	268.0	268.20	267.60	268.0	268.0
271.54	4.87	270.0	270.0	270.0	270.0	270.0	270.0
274.29	2.97	271.20	271.30	270.2	270.80	270.80	270.80
273.80	3.27	271.20	272.0	272.0	271.50	271.50	271.50
273.80	2.57	272.20	272.30	271.30	271.80	271.80	271.80
273.0	2.77	272.20	272.30	271.4	272.0	272.0	272.0
272.54	3.19	271.82	271.12	272.07	271.67	271.67	271.67
272.06	3.71	271.46	271.66	270.65	271.25	271.25	271.25
271.54	4.75	270.94	271.19	271.23	270.85	270.85	270.85
270.92	5.37	270.63	270.63	270.34	270.34	270.34	270.34

Checked OK Mar 30-11

WEST

EAST.

EIGHTH ST.

53

5' →
← 5'
 266.25 266.0 265.40 265.50 264.40 265.0 265.25

266.25 x 266.0 264.88 264.50 264.12 265.0 265.00
264.5

266.25 x 266.0 264.93 264.80 264.67 264.60 264.40

ROBINSON

266.25 266.0 265.00 265.00 265.0 265.00 265.00

AVE

266.25 x 266.0 264.93 264.80 264.67 264.60 264.40

266.25 x 266.0 264.88 264.50 264.12 265.0 265.00

266.25 266.00 265.40 265.50 264.40 265.0 265.25

SOUTH LINE OF ROBIN AVE (ON WEST)

00	274.25	274.0	273.40	273.50	272.40	273.0	273.25
----	--------	-------	--------	--------	--------	-------	--------

25	271.90	271.65	271.05	271.15	270.05	270.65	270.90
----	--------	--------	--------	--------	--------	--------	--------

50	269.54	269.29	268.69	268.79	268.69	268.29	268.54
----	--------	--------	--------	--------	--------	--------	--------

75	267.19	266.94	266.34	266.44	265.34	265.94	266.19
----	--------	--------	--------	--------	--------	--------	--------

85	266.25	266.0	265.40	265.50	264.40	265.00	265.25
----	--------	-------	--------	--------	--------	--------	--------

NORTH LINE OF ROBIN AVE (ON EAST)

Hortensia St.

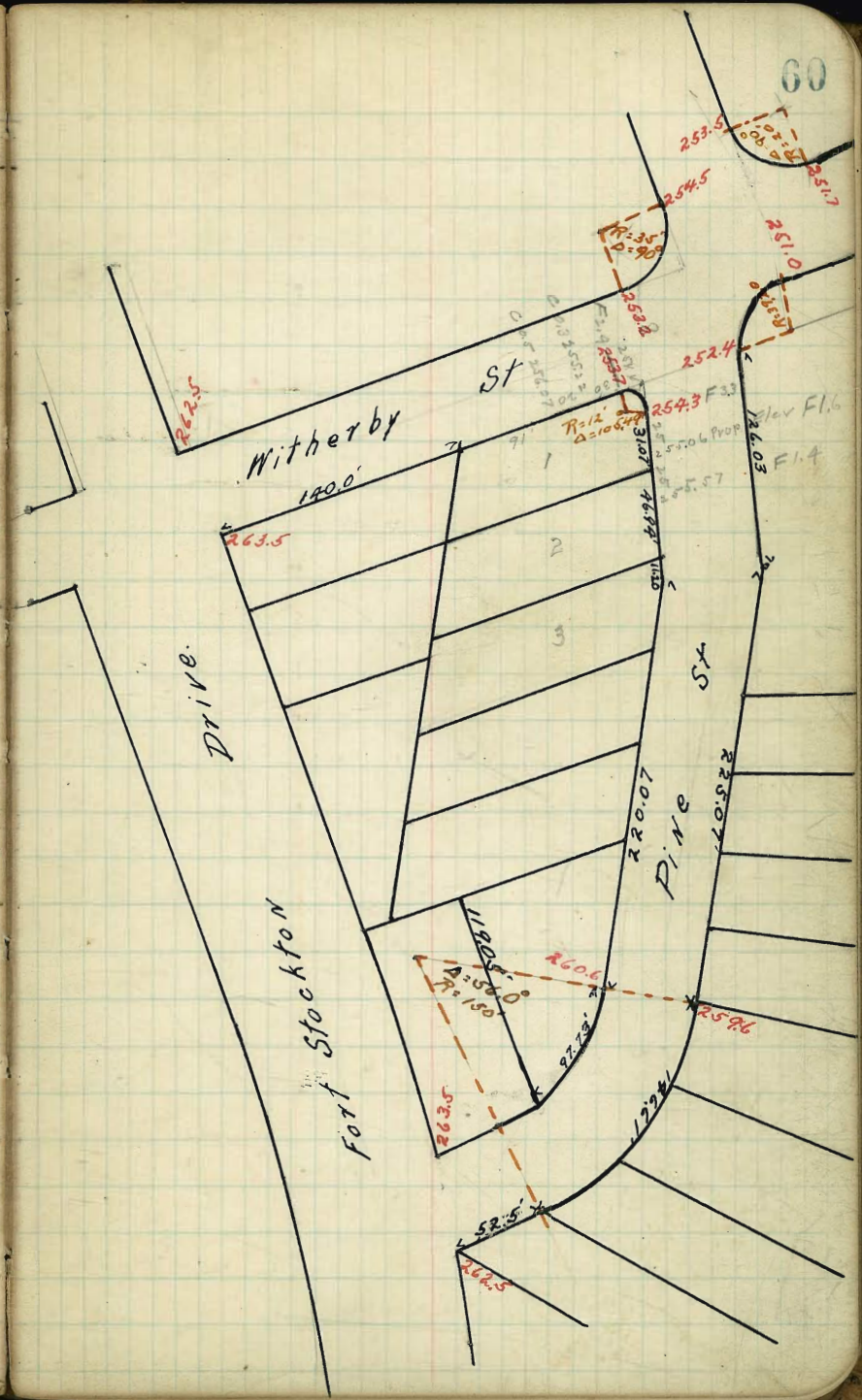
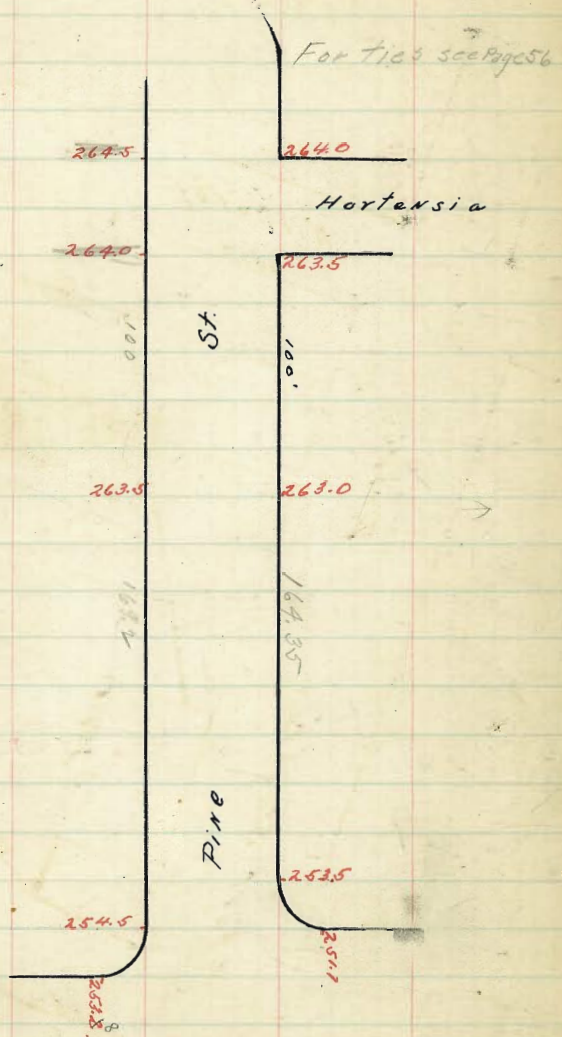
W. Line East end of Hortensia St E. Line

Sta.	251.00	251.25	0400
0700	251.95	251.70	251.22 251.47
0750	252.52	252.27	251.72 251.93
1100	253.09	252.84	252.13 252.38
1115	253.26	253.01	252.69 252.52
1240	253.54	253.29	252.59 252.84
1765	253.83	253.58	253.25 253.16
1790	254.11	253.86	253.23 253.48
2715	254.40	254.15	253.85 253.55 253.80
2740	254.68	254.43	253.87 254.12
2765	254.97	254.72	254.17 254.44
2790	255.25	255.00	254.75 254.77
3715	255.54	255.29	254.84 255.09
3740	255.82	255.57	255.17 255.42
3752.36	255.96	255.71	255.52 255.58
3775.52	256.25	256.00	255.75 255.75
<i>Break</i>			
0700	256.25	256.00	255.75 0400
0725	257.06	256.81	256.53 256.26 256.51
0750	257.87	257.62	257.32 257.07 257.27
0775	258.70	258.45	258.12 257.78 258.03
0796.52	259.40	259.15	258.74 258.69
1722.25	260.23	259.98	259.88 260.13
1747.64	261.06	260.81	261.02 261.57
1780	262.11	261.86	262.11 262.62
1730	263.75	263.50	263.75 264.25

West end Hortensia St.

Sta.	251.00	251.25	0400
0700	251.95	251.70	251.22 251.47
0750	252.52	252.27	251.72 251.93
1100	253.09	252.84	252.13 252.38
1115	253.26	253.01	252.69 252.52
1240	253.54	253.29	252.59 252.84
1765	253.83	253.58	253.25 253.16
1790	254.11	253.86	253.23 253.48
2715	254.40	254.15	253.85 253.55 253.80
2740	254.68	254.43	253.87 254.12
2765	254.97	254.72	254.17 254.44
2790	255.25	255.00	254.75 254.77
3715	255.54	255.29	254.84 255.09
3740	255.82	255.57	255.17 255.42
3752.36	255.96	255.71	255.52 255.58
3775.52	256.25	256.00	255.75 255.75
<i>Break</i>			
0700	256.25	256.00	255.75 0400
0725	257.06	256.81	256.53 256.26 256.51
0750	257.87	257.62	257.32 257.07 257.27
0775	258.70	258.45	258.12 257.78 258.03
0796.52	259.40	259.15	258.74 258.69
1722.25	260.23	259.98	259.88 260.13
1747.64	261.06	260.81	261.02 261.57
1780	262.11	261.86	262.11 262.62
1730	263.75	263.50	263.75 264.25

5-16-11 Check O.K. Double-Gravo-Jehonor



W.

E

North line

301.25 301.00 300.60 301.00 300.60 301.00 301.25

301.30 301.00 300.51 300.91 300.51 301.00 301.00
300.00 300.00 300.00 300.00

300.40 299.88 300.43 300.83 300.43 299.88 300.40

Cypress

300.75 299.75 300.35 300.75 300.35 299.75 300.75

Street

300.23 299.63 300.27 300.67 300.27 299.63 300.23

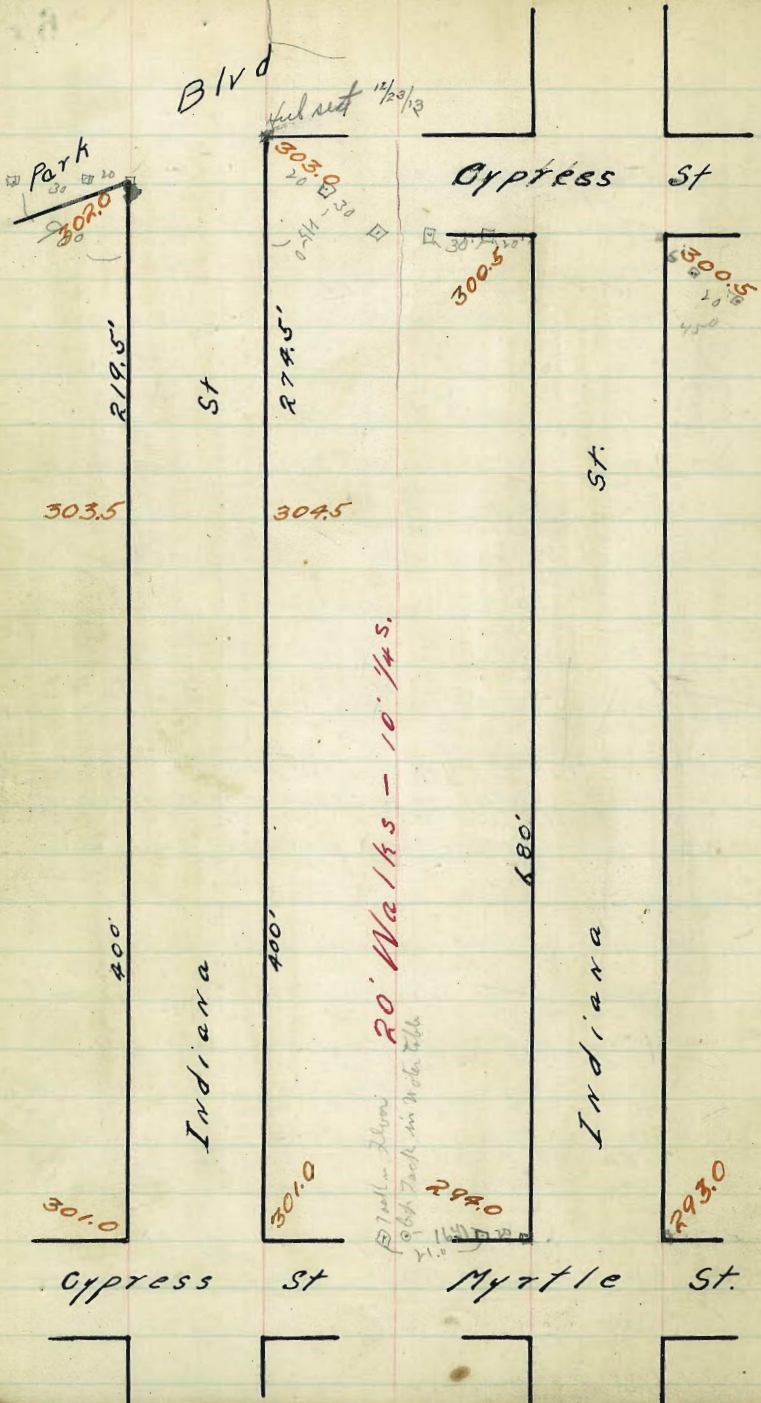
299.50 299.50 300.19 300.59 300.19 300.50 300.50
300.50 300.50

300.75 300.60 300.10 300.50 300.10 300.50 300.75

South line

301.99	301.20	301.60	300.50	300.10	300.71
4.20	5.30	5.40	5.70	6.10	5.40
306.20					
30.92					
100.28					
5.60					
307.90					

check OK 5-8-12



Adams Ave

Ave

Madison Ave

331.0

331.0

338.9

337.6

St.

464'

Alabama

335.7/6 0/11 SW 99 ft Ohio-Alabama

486.3

St.

433'

326.8

Ave.

Alabama

143.5

325.8

325.2

Mission

195.7

Monroe Ave

332.0

Madison Ave

332.0

324.5

331.0

331.0

Monroe Ave

Ave

Meade Ave

Ave

323.0

324.6

318.0

319.0

St.

600'

Alabama

200'

310.0

311.0

Alabama

300'

319.0

Meade Ave

320.0

305.0

El Cajon Ave

306.6

Ave

100 to alley
10' alley
M 17005

68

Alabama St.

West

East

So. Line Meade Arc

100	318.25	318.00	317.60	318.50	318.40	319.00	319.25
	317.58	317.33	316.93	317.83	317.73	318.33	318.58
✓	316.91	316.66	316.26	317.16	317.06	317.66	317.91
	316.24	315.99	315.59	316.49	316.39	316.99	317.24
100	✓ 315.58	315.33	314.93	315.83	315.73	316.33	316.58
	314.91	314.66	314.26	315.16	315.06	315.66	315.91
✓	314.24	313.99	313.59	314.49	314.39	314.99	315.24
	313.58	313.33	312.93	313.83	313.73	314.33	314.58
	312.91	312.66	312.26	313.16	313.06	313.66	313.91
	312.24	311.99	311.59	312.49	312.39	312.99	313.24
✓	311.58	311.33	310.93	311.83	311.73	312.33	312.58
	310.91	310.66	310.26	311.16	311.06	311.66	311.91
100	✓ 310.25	310.00	309.60	310.50	310.40	311.00	311.25
✓	309.83	309.58	309.19	310.10	310.03	310.63	310.88
✓	309.41	309.16	308.78	309.71	309.66	310.26	310.51
	308.99	308.74	308.37	309.37	309.29	309.89	310.14
100	✓ 308.58	308.33	307.96	308.93	308.83	309.43	309.78
	308.16	307.91	307.55	308.54	308.56	309.16	309.41
✓	307.74	307.49	307.14	308.14	308.19	308.79	309.04
	307.33	307.08	306.74	307.75	307.83	308.43	308.68
100	✓ 306.91	306.66	306.33	307.36	307.46	308.06	308.31
100	✓ 306.49	306.24	305.92	306.97	307.07	307.67	307.94
100	✓ 306.08	305.83	305.51	306.58	306.73	307.33	307.58
100	✓ 305.66	305.41	305.19	306.19	306.36	306.96	307.21
100	✓ 305.25	305.00	304.70	305.80	306.00	306.60	306.85

No. El Cajon Arc

20' Walks.
5' (1/4 S)

32090	5.25	6.85	6.08	7.58	6.91	8.31	7.74	9.04
309.33	6.91	5.31	6.08	4.58	5.25	3.85	4.42	3.12
312.76 HI	7.41	4.45	6.91	4.13	6.20	3.40	4.52	1.52
317.16 HI	-0.5	+0.86	-0.83	+0.45	-0.98	+0.25	-0.1	+1.6
311.06	8.58	9.78	12.51	10.25	11.25	11.58	12.58	
321.14 HI	12.56	11.36	11.73	10.63	10.87	9.89	9.56	8.56
	13.38	1.30	1.21	7.93	11.80	7.34	11.6	5.76
	-0.74	+3.06	-0.4	+2.70	-0.7	+2.85	-1.6	+2.8
	12.91	13.91	14.24	15.24	16.58	16.58	16.91	17.91
	8.23	7.23	6.93	5.90	5.56	4.56	4.38	3.23
	10.24	5.10	5.21	4.10	5.90	3.66	7.20	2.92
	-2.1	+2.18	+3.31	+1.3	-3.34	+0.72	-3.67	+0.33
	18.25	19.25						
	23.5	1.59						
	7.02	4.4						
	-4.13	+1.4						

222.14 B.M. from S.W. Cor Texas & El Cajon.

314.78	314.78	314.78	314.78	314.78	314.78	314.78	314.78	314.78	314.78
304.80	306.60	306.60	306.60	306.60	306.60	306.60	306.60	306.60	306.60
7.93	9.18	7.78	5.53	4.95	7.45	6.22	8.12	7.29	5.44
314.78	314.78	314.78	314.78	314.78	314.78	314.78	314.78	314.78	314.78
10.25	10.25	10.25	10.25	10.25	10.25	10.25	10.25	10.25	10.25
4.54	4.54	4.54	4.54	4.54	4.54	4.54	4.54	4.54	4.54

at what end a property should go to grade.
cut stakes on 2' offset as per agreement with contractor
June 8-12 (Dorman
Shaw
Dorman)

319.07	319.07	319.07	319.07	319.07	319.07	319.07	319.07	319.07	319.07
12.00	12.00	12.00	12.00	12.00	12.00	12.00	12.00	12.00	12.00
1.07	.07	1.41	2.74	4.09	5.41	6.74	8.07	9.41	10.74
319.07	319.07	319.07	319.07	319.07	319.07	319.07	319.07	319.07	319.07
12.00	12.00	12.00	12.00	12.00	12.00	12.00	12.00	12.00	12.00
1.07	.07	1.41	2.74	4.09	5.41	6.74	8.07	9.41	10.74

319.07	319.07	319.07	319.07	319.07	319.07	319.07	319.07	319.07	319.07
12.00	12.00	12.00	12.00	12.00	12.00	12.00	12.00	12.00	12.00
1.07	.07	1.41	2.74	4.09	5.41	6.74	8.07	9.41	10.74
319.07	319.07	319.07	319.07	319.07	319.07	319.07	319.07	319.07	319.07
12.00	12.00	12.00	12.00	12.00	12.00	12.00	12.00	12.00	12.00
1.07	.07	1.41	2.74	4.09	5.41	6.74	8.07	9.41	10.74

all stakes
Aug 26-12
(Dorman
Shaw
Dorman)

Camb Stakes 2-24-12
Grade
Bunk
at Dry
check OK
11-12-12

Alabama St.

West

East

319.25 319.00 318.60 319.50 319.40 320.00 320.25

319.00 319.00 318.42 319.32 319.22 320.00 320.00
318.00 318.00 319.00 319.00

318.40 317.75 318.36 319.26 319.16 318.75 319.40

Meade

318.50 317.50 318.10 319.00 318.90 318.50 319.50

Ave.

317.60 317.25 317.84 318.74 318.64 318.25 318.60

317.0 317.0 318.00 317.78 318.68 318.58 318.0 319.00 319.00

318.25 318.00 317.60 318.50 318.40 319.00 319.25

70

Returns + Radia 9-23-12 blank

311.84 TP
1.60
313.42310.00 10.50 11.00
3.42 2.42
30.50 30.50 30.50
8.42 7.62 6.82

11-12-12

OK OK
blank

Alabama St.

West

East

So. Line Monroe St

600	323.25	323.00	322.70	323.80	324.00	324.60	324.85
	323.08	322.83	322.54	323.61	323.80	324.40	324.65
	322.91	322.66	322.37	323.44	323.61	324.22	324.47
	322.74	322.49	322.20	323.26	323.42	324.02	324.27
600	322.58	322.33	322.03	323.08	323.23	323.83	324.08
	322.41	322.16	321.86	322.90	323.04	323.64	323.89
	322.24	321.99	321.69	322.72	322.84	323.44	323.69
	322.08	321.83	321.52	322.54	322.65	323.25	323.50
600	321.91	321.66	321.35	322.36	322.46	323.06	323.31
	321.74	321.49	321.18	322.18	322.27	322.87	323.12
	321.58	321.33	321.00	322.00	322.08	322.68	322.93
	321.41	321.16	320.83	321.82	321.89	322.49	322.74
600	321.24	320.99	320.65	321.64	321.69	322.29	322.54
	321.08	320.83	320.48	321.47	321.50	322.10	322.35
	320.91	320.66	320.31	321.29	321.31	321.91	322.16
	320.74	320.49	320.13	321.11	321.12	321.72	321.97
600	320.58	320.33	319.96	320.93	320.93	321.53	321.78
	320.41	320.16	319.79	320.75	320.74	321.34	321.59
	320.24	319.99	319.62	320.57	320.54	321.14	321.39
	320.08	319.83	319.45	320.39	320.35	320.95	321.20
100	319.91	319.66	319.28	320.21	320.16	320.76	321.01
75	319.74	319.49	319.11	320.03	319.97	320.57	320.82
50	319.58	319.33	318.94	319.85	319.78	320.38	320.63
25	319.41	319.16	318.77	319.67	319.59	320.19	320.44
60	319.25	319.00	318.60	319.50	319.40	320.00	320.25

N. Line Meade Ave.

322.71 70' Nail in Pole NE Cor Monroe - Alabama. cut stakes 4/12/12 H. G. H. Hill

321.24	1925	2025	1958	2063	1991	2101	2024	2107
526	189	723	490	295	257	647	724	607
315.98	527	583	180	500	437	562	1122	563
1164	338	412	31	4125	18	495	40	18.46
521.48	205.5	217.8	2091	2216	2124	2257	2157	2293
543	690	573	667	592	624	494	578	455
328.05	1052	570	1037	585	950	880	920	485
9.51	3.22	00	35	05	322	101.4	33	03
329.36	217	222	222	2369	2228	2208	2291	2227
062	557	417	522	377	490	528	640	479
323.71	742	360	724	322	716	460	921	319
	187	4.57	30	10.57	4.26	0.69	2.76	1.17
	2325	2435						
	6.11	4.51						
	85.2	2.50						
	341	4.2						

not what cut & prop. that could be put to grade. curb stakes on 3' offset as per agreement with Contractor June 3-12 5th Avenue Devine

BM 324.45 3rd Pole SW Cor Monroe & Alabama.

Set curbs on 3' offset

326.75	326.73	326.72	326.72	326.72	326.72	326.72	326.72	326.72
20.00	22.60	24.20	25.80	27.40	29.00	30.60	32.20	33.80
5.10	2.19	2.51	4.07	4.40	2.90	3.27	4.74	4.47
								3.07

BM 324.45 3rd Pole SW Cor Monroe & Alabama.

326.13	326.13	326.13	326.13	326.13	326.13	326.13	326.13	326.13
22.68	21.33	20.99	22.59	21.91	20.66	20.33	21.93	21.14
3.52	4.90	5.14	3.54	4.12	5.47	5.80	4.60	4.99
								6.14
								6.47
								5.27

BM 324.45 3rd Pole SW Cor Monroe & Alabama.

326.13	326.13	326.13	326.13
10.38	19.33	19.00	20.00
5.74	6.80	7.10	6.13

June 27 - all curb & property lines

Devine

BM 324.45 SW corner of Alabama

320.61	30.61	30.61	30.61	30.61	30.61	30.61	30.61	30.61
325.71	28.41	26.51	24.31	23	22.66	22.53	21.80	21.66
5.11	5.11	5.11	5.11	5.11	7.96	7.96	6.60	6.95
								9.28

30.61 30.61 30.61 30.61 30.61 30.61 30.61 30.61 30.61

23.06 23.06 23.06 23.06 23.06 23.06 23.06 23.06 23.06

7.55 7.55 7.55 7.55 7.55 7.55 7.55 7.55 7.55

25.87 25.87 25.87 25.87 25.87 25.87 25.87 25.87 25.87

18.33 18.33 18.33 18.33 18.33 18.33 18.33 18.33 18.33

6.88 6.88 6.88 6.88 6.88 6.88 6.88 6.88 6.88

4.57 4.57 4.57 4.57 4.57 4.57 4.57 4.57 4.57

21.91 21.91 21.91 21.91 21.91 21.91 21.91 21.91 21.91

3.14 3.14 3.14 3.14 3.14 3.14 3.14 3.14 3.14

All curbs. 7/22/12 Gregory Shoemaker Herriot

Not 1/2" & 1/2" checked & reset property lines - see page 84.

11-12 - 12 School St July 31-12

Devine

Alabama St.

West So. L. Madison Ave. East.

00	331.25	331.00	330.40	331.00	330.40	331.00	331.25
25	330.91	330.66	330.08	330.66	330.15	330.75	331.00
50	330.58	330.33	329.77	330.32	329.91	330.51	330.76
75	330.24	329.99	329.46	329.99	329.67	330.27	330.52
100	329.91	329.66	329.15	329.65	329.43	330.03	330.28
	329.57	329.32	328.84	329.32	329.18	329.78	330.03
	329.24	328.99	328.53	328.98	328.94	329.54	329.79
	328.90	328.65	328.21	328.65	328.70	329.30	329.55
100	328.57	328.32	327.90	328.31	328.46	329.06	329.31
	328.24	327.99	327.59	327.98	328.21	328.81	329.06
	327.90	327.65	327.28	327.65	327.97	328.57	328.82
	327.57	327.32	326.97	327.31	327.73	328.33	328.58
100	327.23	326.98	326.66	326.98	327.49	328.09	328.34
	326.90	326.65	326.35	326.64	327.24	327.84	328.09
	326.56	326.31	326.04	326.31	327.00	327.60	327.85
	326.23	325.98	325.73	325.99	326.76	327.36	327.61
100	325.90	325.65	325.42	325.64	326.52	327.12	327.37
	325.57	325.32	325.07	325.34	326.27	326.87	327.12
100	325.46	325.21	325.01	325.20	326.20	326.80	327.05

486.3 324.75
 43.97
 39.64
 26.65
 22.486
 22.482
 22.478
 22.474
 22.470
 22.466
 22.462
 22.458
 22.454
 22.450
 22.446
 22.442
 22.438
 22.434
 22.430
 22.426
 22.422
 22.418
 22.414
 22.410
 22.406
 22.402
 22.398
 22.394
 22.390
 22.386
 22.382
 22.378
 22.374
 22.370
 22.366
 22.362
 22.358
 22.354
 22.350
 22.346
 22.342
 22.338
 22.334
 22.330
 22.326
 22.322
 22.318
 22.314
 22.310
 22.306
 22.302
 22.298
 22.294
 22.290
 22.286
 22.282
 22.278
 22.274
 22.270
 22.266
 22.262
 22.258
 22.254
 22.250
 22.246
 22.242
 22.238
 22.234
 22.230
 22.226
 22.222
 22.218
 22.214
 22.210
 22.206
 22.202
 22.198
 22.194
 22.190
 22.186
 22.182
 22.178
 22.174
 22.170
 22.166
 22.162
 22.158
 22.154
 22.150
 22.146
 22.142
 22.138
 22.134
 22.130
 22.126
 22.122
 22.118
 22.114
 22.110
 22.106
 22.102
 22.098
 22.094
 22.090
 22.086
 22.082
 22.078
 22.074
 22.070
 22.066
 22.062
 22.058
 22.054
 22.050
 22.046
 22.042
 22.038
 22.034
 22.030
 22.026
 22.022
 22.018
 22.014
 22.010
 22.006
 22.002
 21.998
 21.994
 21.990
 21.986
 21.982
 21.978
 21.974
 21.970
 21.966
 21.962
 21.958
 21.954
 21.950
 21.946
 21.942
 21.938
 21.934
 21.930
 21.926
 21.922
 21.918
 21.914
 21.910
 21.906
 21.902
 21.898
 21.894
 21.890
 21.886
 21.882
 21.878
 21.874
 21.870
 21.866
 21.862
 21.858
 21.854
 21.850
 21.846
 21.842
 21.838
 21.834
 21.830
 21.826
 21.822
 21.818
 21.814
 21.810
 21.806
 21.802
 21.798
 21.794
 21.790
 21.786
 21.782
 21.778
 21.774
 21.770
 21.766
 21.762
 21.758
 21.754
 21.750
 21.746
 21.742
 21.738
 21.734
 21.730
 21.726
 21.722
 21.718
 21.714
 21.710
 21.706
 21.702
 21.698
 21.694
 21.690
 21.686
 21.682
 21.678
 21.674
 21.670
 21.666
 21.662
 21.658
 21.654
 21.650
 21.646
 21.642
 21.638
 21.634
 21.630
 21.626
 21.622
 21.618
 21.614
 21.610
 21.606
 21.602
 21.598
 21.594
 21.590
 21.586
 21.582
 21.578
 21.574
 21.570
 21.566
 21.562
 21.558
 21.554
 21.550
 21.546
 21.542
 21.538
 21.534
 21.530
 21.526
 21.522
 21.518
 21.514
 21.510
 21.506
 21.502
 21.498
 21.494
 21.490
 21.486
 21.482
 21.478
 21.474
 21.470
 21.466
 21.462
 21.458
 21.454
 21.450
 21.446
 21.442
 21.438
 21.434
 21.430
 21.426
 21.422
 21.418
 21.414
 21.410
 21.406
 21.402
 21.398
 21.394
 21.390
 21.386
 21.382
 21.378
 21.374
 21.370
 21.366
 21.362
 21.358
 21.354
 21.350
 21.346
 21.342
 21.338
 21.334
 21.330
 21.326
 21.322
 21.318
 21.314
 21.310
 21.306
 21.302
 21.298
 21.294
 21.290
 21.286
 21.282
 21.278
 21.274
 21.270
 21.266
 21.262
 21.258
 21.254
 21.250
 21.246
 21.242
 21.238
 21.234
 21.230
 21.226
 21.222
 21.218
 21.214
 21.210
 21.206
 21.202
 21.198
 21.194
 21.190
 21.186
 21.182
 21.178
 21.174
 21.170
 21.166
 21.162
 21.158
 21.154
 21.150
 21.146
 21.142
 21.138
 21.134
 21.130
 21.126
 21.122
 21.118
 21.114
 21.110
 21.106
 21.102
 21.098
 21.094
 21.090
 21.086
 21.082
 21.078
 21.074
 21.070
 21.066
 21.062
 21.058
 21.054
 21.050
 21.046
 21.042
 21.038
 21.034
 21.030
 21.026
 21.022
 21.018
 21.014
 21.010
 21.006
 21.002
 20.998
 20.994
 20.990
 20.986
 20.982
 20.978
 20.974
 20.970
 20.966
 20.962
 20.958
 20.954
 20.950
 20.946
 20.942
 20.938
 20.934
 20.930
 20.926
 20.922
 20.918
 20.914
 20.910
 20.906
 20.902
 20.898
 20.894
 20.890
 20.886
 20.882
 20.878
 20.874
 20.870
 20.866
 20.862
 20.858
 20.854
 20.850
 20.846
 20.842
 20.838
 20.834
 20.830
 20.826
 20.822
 20.818
 20.814
 20.810
 20.806
 20.802
 20.798
 20.794
 20.790
 20.786
 20.782
 20.778
 20.774
 20.770
 20.766
 20.762
 20.758
 20.754
 20.750
 20.746
 20.742
 20.738
 20.734
 20.730
 20.726
 20.722
 20.718
 20.714
 20.710
 20.706
 20.702
 20.698
 20.694
 20.690
 20.686
 20.682
 20.678
 20.674
 20.670
 20.666
 20.662
 20.658
 20.654
 20.650
 20.646
 20.642
 20.638
 20.634
 20.630
 20.626
 20.622
 20.618
 20.614
 20.610
 20.606
 20.602
 20.598
 20.594
 20.590
 20.586
 20.582
 20.578
 20.574
 20.570
 20.566
 20.562
 20.558
 20.554
 20.550
 20.546
 20.542
 20.538
 20.534
 20.530
 20.526
 20.522
 20.518
 20.514
 20.510
 20.506
 20.502
 20.498
 20.494
 20.490
 20.486
 20.482
 20.478
 20.474
 20.470
 20.466
 20.462
 20.458
 20.454
 20.450
 20.446
 20.442
 20.438
 20.434
 20.430
 20.426
 20.422
 20.418
 20.414
 20.410
 20.406
 20.402
 20.398
 20.394
 20.390
 20.386
 20.382
 20.378
 20.374
 20.370
 20.366
 20.362
 20.358
 20.354
 20.350
 20.346
 20.342
 20.338
 20.334
 20.330
 20.326
 20.322
 20.318
 20.314
 20.310
 20.306
 20.302
 20.298
 20.294
 20.290
 20.286
 20.282
 20.278
 20.274
 20.270
 20.266
 20.262
 20.258
 20.254
 20.250
 20.246
 20.242
 20.238
 20.234
 20.230
 20.226
 20.222
 20.218
 20.214
 20.210
 20.206
 20.202
 20.198
 20.194
 20.190
 20.186
 20.182
 20.178
 20.174
 20.170
 20.166
 20.162
 20.158
 20.154
 20.150
 20.146
 20.142
 20.138
 20.134
 20.130
 20.126
 20.122
 20.118
 20.114
 20.110
 20.106
 20.102
 20.098
 20.094
 20.090
 20.086
 20.082
 20.078
 20.074
 20.070
 20.066
 20.062
 20.058
 20.054
 20.050
 20.046
 20.042
 20.038
 20.034
 20.030
 20.026
 20.022
 20.018
 20.014
 20.010
 20.006
 20.002
 19.998
 19.994
 19.990
 19.986
 19.982
 19.978
 19.974
 19.970
 19.966
 19.962
 19.958
 19.954
 19.950
 19.946
 19.942
 19.938
 19.934
 19.930
 19.926
 19.922
 19.918
 19.914
 19.910
 19.906
 19.902
 19.898
 19.894
 19.890
 19.886
 19.882
 19.878
 19.874
 19.870
 19.866
 19.862
 19.858
 19.854
 19.850
 19.846
 19.842
 19.838
 19.834
 19.830
 19.826
 19.822
 19.818
 19.814
 19.810
 19.806
 19.802
 19.798
 19.794
 19.790
 19.786
 19.782
 19.778
 19.774
 19.770
 19.766
 19.762
 19.758
 19.754
 19.750
 19.746
 19.742
 19.738
 19.734
 19.730
 19.726
 19.722
 19.718
 19.714
 19.710
 19.706
 19.702
 19.698
 19.694
 19.690
 19.686
 19.682
 19.678
 19.674
 19.670
 19.666
 19.662
 19.658
 19.654
 19.650
 19.646
 19.642
 19.638
 19.634
 19.630
 19.626
 19.622
 19.618
 19.614
 19.610
 19.606
 19.602
 19.598
 19.594
 19.590
 19.586
 19.582
 19.578
 19.574
 19.570
 19.566
 19.562
 19.558
 19.554
 19.550
 19.546
 19.542
 19.538
 19.534
 19.530
 19.526
 19.522
 19.518
 19.514
 19.510
 19.506
 19.502
 19.498
 19.494
 19.490
 19.486
 19.482
 19.478
 19.474
 19.470
 19.466
 19.462
 19.458
 19.454
 19.450
 19.446
 19.442
 19.438
 19.434
 19.430
 19.426
 19.422
 19.418
 19.414
 19.410
 19.406
 19.402
 19.398
 19.394
 19.390
 19.386
 19.382
 19.378
 19.374
 19.370
 19.366
 19.362
 19.358
 19.354
 19.350
 19.346
 19.342
 19.338
 19.334
 19.330
 19.326
 19.322
 19.318
 19.314
 19.310
 19.306
 19.302
 19.298
 19.294
 19.290
 19.286
 19.282
 19.278
 19.274
 19.270
 19.266
 19.262
 19.258
 19.254
 19.250
 19.246
 19.242
 19.238
 19.234
 19.230
 19.226
 19.222
 19.218
 19.214
 19.210
 19.206
 19.202
 19.198
 19.194
 19.190
 19.186
 19.182
 19.178
 19.174
 19.170
 19.166
 19.162
 19.158
 19.154
 19.150
 19.146
 19.142
 19.138
 19.134
 19.130
 19.126
 19.122
 19.118
 19.114
 19.110
 19.106
 19.102
 19.098
 19.094
 19.090
 19.086
 19.082
 19.078
 19.074
 19.070
 19.066
 19.062
 19.058
 19.054
 19.050
 19.046
 19.042
 19.038
 19.034
 19.030
 19.026
 19.022
 19.018
 19.014
 19.010
 19.006
 19.002
 18.998
 18.994
 18.990
 18.986
 18.982
 18.978
 18.974
 18.970
 18.966
 18.962
 18.958
 18.954
 18.950
 18.946
 18.942
 18.938
 18.934
 18.930
 18.926
 18.922
 18.918
 18.914
 18.910
 18.906
 18.902
 18.898
 18.894
 18.890
 18.886
 18.882
 18.878
 18.874
 18.870
 18.866
 18.862
 18.858
 18.854
 18.850
 18.846
 18.842
 18.838
 18.834
 18.830
 18.826
 18.822
 18.818
 18.814
 18.810
 18.806
 18.802
 18.798
 18.794
 18.790
 18.786
 18.782
 18.778
 18.774
 18.770
 18.766
 18.762
 18.758
 18.754
 18.750
 18.746
 18.742
 18.738
 18.734

West East
So. line Adams Ave

338.55	338.30	338.00	338.95	339.00	339.60	339.85
337.21	337.96	337.65	338.58	338.62	339.02	339.27
337.87	337.62	337.30	338.21	338.22	338.62	338.87
337.63	337.28	336.96	337.83	337.82	338.22	338.47
337.19	336.94	336.61	337.46	337.42	337.82	338.07
336.85	336.60	336.27	337.08	337.02	337.42	337.67
336.51	336.26	335.93	336.71	336.62	337.02	337.27
336.17	335.92	335.58	336.33	336.22	336.62	336.87
335.83	335.58	335.24	335.96	335.82	336.22	336.47
335.49	335.24	334.89	335.58	335.42	335.82	336.07
335.15	334.90	334.55	335.21	335.02	335.42	335.67
334.81	334.56	334.20	334.83	334.62	335.02	335.27
334.47	334.22	333.86	334.46	334.22	334.62	334.87
334.13	333.88	333.51	334.08	333.82	334.22	334.47
333.79	333.54	333.17	333.71	333.42	333.82	334.07
333.45	333.20	332.82	333.33	333.02	333.42	333.67
333.11	332.86	332.48	332.96	332.62	333.02	333.27
332.78	332.53	332.13	332.58	332.22	332.62	332.87
332.44	332.19	331.79	332.21	331.82	332.22	332.47
332.25	332.00	331.60	332.00	331.60	332.00	332.25
332.00	331.75	331.35	331.75	331.35	331.75	332.00
331.75	331.50	331.10	331.50	331.10	331.50	331.75
331.50	331.25	330.85	331.25	330.85	331.25	331.50
331.25	331.00	330.60	331.00	330.60	331.00	331.25

33213 Br Hub N E Alabama Madison

Cut stakes 9/4/12

74

336.95	336.70	336.45	336.20	335.95	335.70	335.45	335.20	334.95	334.70	334.45	334.20	333.95	333.70	333.45	333.20	332.95	332.70	332.45	332.20
336.95	336.70	336.45	336.20	335.95	335.70	335.45	335.20	334.95	334.70	334.45	334.20	333.95	333.70	333.45	333.20	332.95	332.70	332.45	332.20

at 336.92 spk pole SW cor Adams & Alabama. Set end stakes, & raked.

336.92	336.67	336.42	336.17	335.92	335.67	335.42	335.17	334.92	334.67	334.42	334.17	333.92	333.67	333.42	333.17	332.92	332.67	332.42	332.17
336.92	336.67	336.42	336.17	335.92	335.67	335.42	335.17	334.92	334.67	334.42	334.17	333.92	333.67	333.42	333.17	332.92	332.67	332.42	332.17

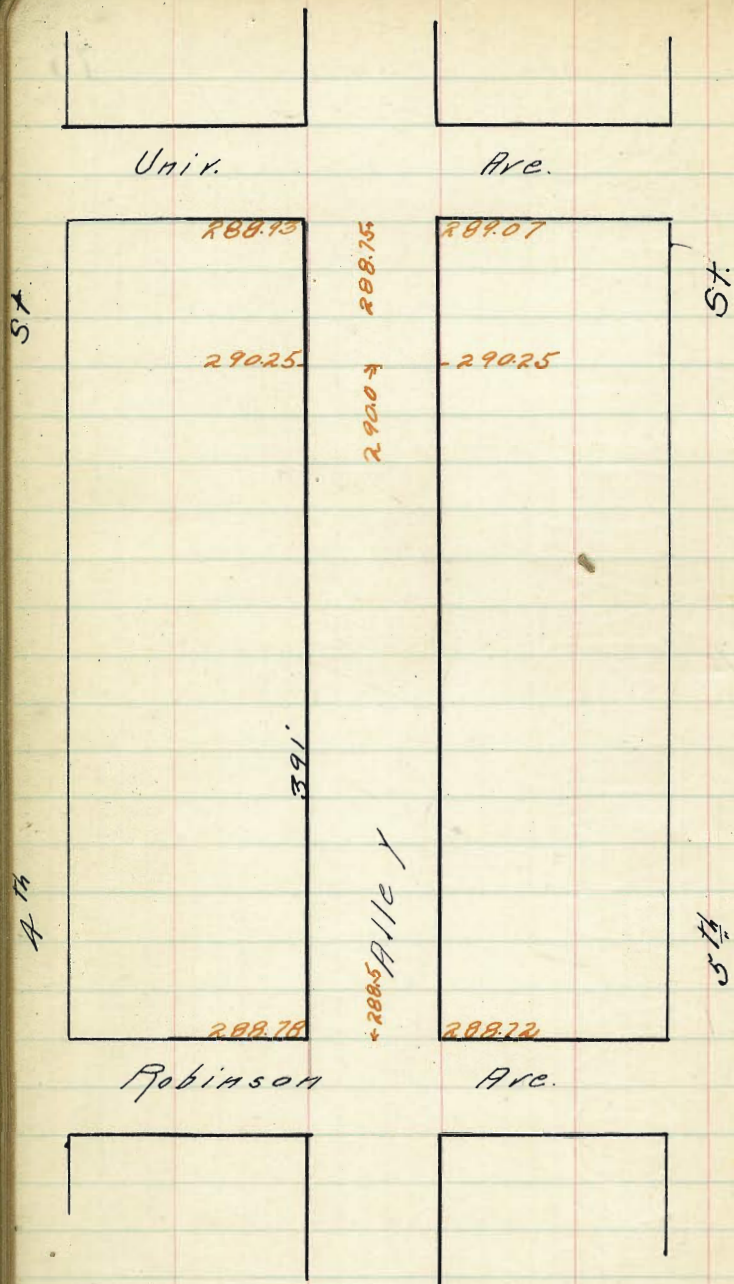
June 24-12 (Donnatti, Shaw, Irvine).
All curbs & props.

set 1/4" and centers Adams to 350 so. of Madison
7/24/12
GREGORY
SHAW
HERRICK

338.92	338.39	338.00	338.95	339.00	339.60
338.92	338.39	338.00	338.95	339.00	339.60

11-12-12 checked OK
Gandy
hubs
top survey
Fitz
Shaw

5th Union 289943 NW 134
5th Robinson 28798 " "



West

East

S. L. Univ. Ave.

416	288.93	288.75	289.07
391 Break	290.25	290.00	290.25
350	290.09	289.84	290.08
300	289.90	289.65	289.89
250	289.71	289.45	289.69
200	289.53	289.26	289.50
150	289.34	289.07	289.30
100	289.15	288.88	289.11
50	288.96	288.69	288.91
00	288.78	288.50	288.72

No. L. Robinson Ave

12/11 Hatch
Trench
Hall

grade stakes
in fences

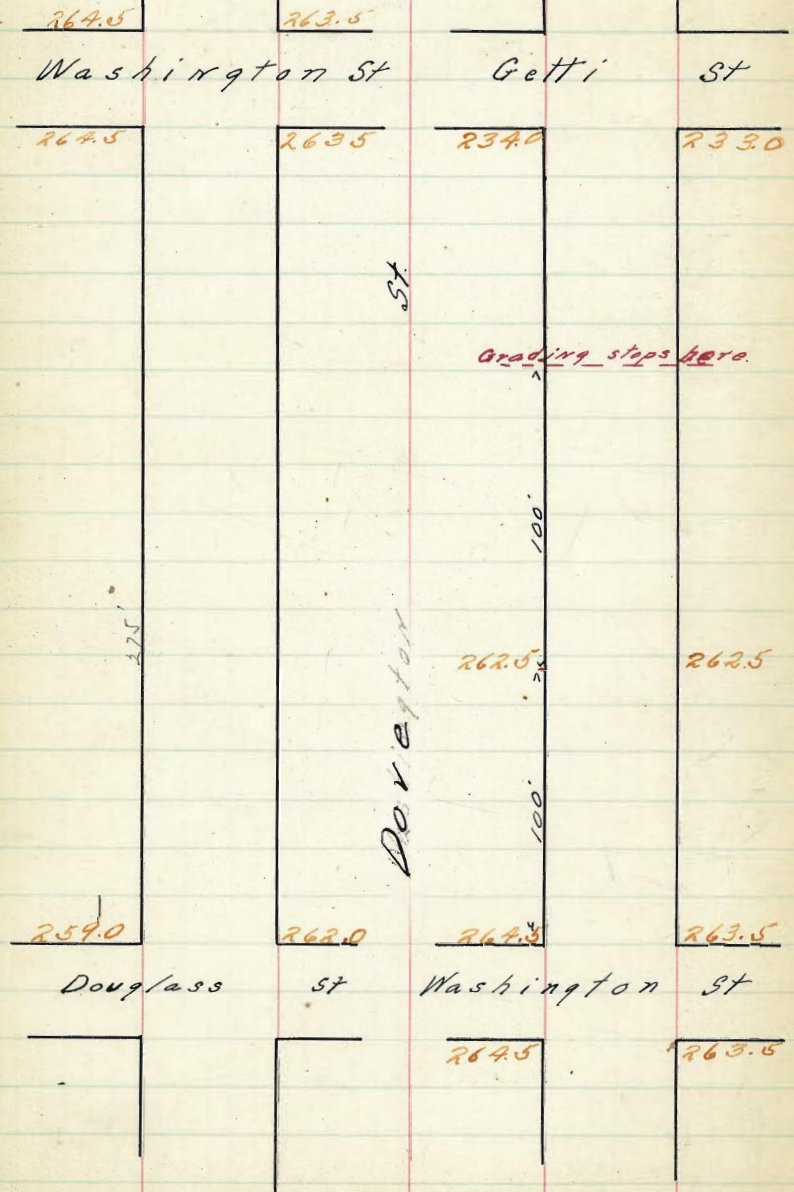
77

NW 28994 Bm

29388 H	8893	5907	19025	19009	8990	8971	19025
28978	445	431	313	329	348	474	512
29465 H	8934	5920	5915	5911	8976	8971	8972
	531	530	550	504	517	572	593
28774 Bm	8875	19025	70.0	19009	8984	9003	8989
	480	313	337	327	354	332	413
29328 H	8965	899	8971	8925	8969	8953	402 476
	437	412	431	457	433	447	
28993	8924	5907	5920	8915	8883	8911	8896 8869
	467	495	472	487	514	491	506 503
all stakes	1/2 H	1/2 H	1/2 H	1/2 H	1/2 H	1/2 H	1/2 H
	561	524	552	530			
28994 Bm	289.07	289.3	290.25	291.29			
	4.73	4.87	3.15	3.71			
29380	289.20	8971	89.15	89.54	89.15		
	4.40	4.57	4.77	4.92	5.15		
28920	8896	8974					
	1.24	1.32					
294.30							

checked OK Blough + Pomeroy

14' Walks.
13' 1/4 S.



7.9
0
f
r
t

Dore

St.

West

East

So. L. Washington St.

81

275	264.75	264.50	263.90	264.00	263.85	263.50	263.75
250	264.25	264.00	263.48	263.68	263.17	263.35	263.61
225	263.75	263.50	263.07	263.36	262.99	263.22	263.47
200	263.25	263.00	262.65	263.04	262.81	263.08	263.34
175	262.75	262.50	262.24	262.72	262.64	262.94	263.20
150	262.25	262.00	261.83	262.40	262.46	262.81	263.06
125	261.75	261.50	261.41	262.09	262.28	262.67	262.93
100	261.25	261.00	261.00	261.77	262.10	262.53	262.79
75	260.75	260.50	260.59	261.45	261.93	262.40	262.65
50	260.25	260.00	260.17	261.13	261.75	262.26	262.52
25	259.75	259.50	259.76	260.81	261.57	262.13	262.38
			.4136	.318	.223	.1363	
00	259.25	259.00	259.35	260.50	261.40	262.00	262.25

Dore

St.

West

East

264.75	264.50	263.90	264.00	263.35	263.50	263.75
--------	--------	--------	--------	--------	--------	--------

264.50	264.50 263.5	263.25	263.00	262.75	263.50 262.50	263.50
--------	-----------------	--------	--------	--------	------------------	--------

264.10	263.92	263.76	263.60	263.44	263.28	263.10
--------	--------	--------	--------	--------	--------	--------

Washington

264.50	264.32	264.16	264.00	263.84	263.68	263.50
--------	--------	--------	--------	--------	--------	--------

St.

264.10	263.92	263.76	263.60	263.44	263.28	263.10
--------	--------	--------	--------	--------	--------	--------

264.50	263.50 264.50	263.25	263.00	262.75	263.50 262.50	263.50
--------	------------------	--------	--------	--------	------------------	--------

264.75	264.50	263.90	264.00	263.35	263.50	263.75
--------	--------	--------	--------	--------	--------	--------

82

71
57
8
75.8
9.5
76
1.5
1.1
1.1

West.

East

S. E. Getty St.

200 = 234.25 234.00 233.40 233.50 233.85 233.00 233.25

275

250

215

Grading steps here.

200 256.75 256.50 256.10 256.50 256.10 256.50 256.75

75 258.25 258.0 257.6 258.0 257.6 258.0 258.25

50 259.75 259.50 259.1 259.5 259.1 259.5 259.75

25 261.25 261.0 260.6 261.0 260.6 261.0 261.25

20 262.75 262.50 262.10 262.50 262.10 262.50 262.75

15 263.25 263.00 262.55 262.87 262.41 262.75 263.00

10 264.75 264.50 263.90 264.10 263.35 263.50 263.75

5 264.25 264.00 263.45 263.62 263.03 263.25 263.50

0 264.75 264.50 263.90 264.10 263.35 263.50 263.75

No. E Washington St.

26446 Bm in front wall

270.20	270.20	270.20	270.20	270.20	270.20	270.20	270.20
8.35	4.74	6.20	4.80	2.85	3.00	4.90	4.90
261.85	264.40	263.70	263.70	261.40	267.70	266.30	265.30
1.79	1.21	1.21	1.21	1.21	1.21	1.21	1.21
270.20	270.20	270.20	270.20	270.20	270.20	270.20	270.20
6.2	7.20	6.2	7.20	6.2	7.20	6.2	7.20
264.00	263.00	264.00	263.00	264.00	263.00	264.00	263.00
5.97	6.30	5.97	6.30	5.97	6.30	5.97	6.30
1.21	1.21	1.21	1.21	1.21	1.21	1.21	1.21

9-24-12 BT 7 Blough

264.46	64.46	64.46	64.46	64.46	64.46	64.46	64.46
3.60	68.06	68.06	68.06	68.06	68.06	68.06	68.06
267.06	69.75	63.25	62.75	59.75	56.25	52.75	49.25
3.31	4.81	5.31	5.81	6.31	6.81	7.31	7.81
3.56	5.06	5.56	6.06	6.56	7.06	7.56	8.06
6.06	6.06	6.06	6.06	6.06	6.06	6.06	6.06
64.00	63.25	62.50	61.75	61.00	60.25	59.50	58.75
4.66	4.81	4.96	5.11	5.26	5.41	5.56	5.71
4.31	68.06	68.06	68.06	68.06	68.06	68.06	68.06
4.56	63.75	63.75	63.75	63.75	63.75	63.75	63.75
4.31	4.31	4.31	4.31	4.31	4.31	4.31	4.31

10/12 Blough
11/23 Evans
11/24 Kerr
Property - curb & etc for all but last row.

264.46	64.46	64.46	64.46	64.46	64.46	64.46	64.46
2.31	66.67	66.67	66.67	66.67	66.67	66.67	66.67
266.47	69.25	63.75	63.25	59.75	56.25	52.75	49.25
1.92	3.92	4.42	4.92	5.42	5.92	6.42	6.92
2.17	3.67	4.17	4.67	5.17	5.67	6.17	6.67
2.37	60.67	60.67	60.67	60.67	60.67	60.67	60.67
3.27	63.25	63.25	63.25	63.25	63.25	63.25	63.25
3.32	5.57	6.07	6.57	7.07	7.57	8.07	8.57
3.42	66.67	66.67	66.67	66.67	66.67	66.67	66.67
2.92	63.25	63.25	63.25	63.25	63.25	63.25	63.25
2.17	66.67	66.67	66.67	66.67	66.67	66.67	66.67

11/24 Blough
11/25 Evans
11/26 Kerr
all stakes

264.46	64.46	64.46	64.46	64.46	64.46	64.46	64.46
3.60	64.80	64.80	64.80	64.80	64.80	64.80	64.80
268.06	68.40	68.40	68.40	68.40	68.40	68.40	68.40
3.31	72.00	72.00	72.00	72.00	72.00	72.00	72.00
3.56	75.60	75.60	75.60	75.60	75.60	75.60	75.60
6.06	79.20	79.20	79.20	79.20	79.20	79.20	79.20
64.00	82.80	82.80	82.80	82.80	82.80	82.80	82.80
4.66	86.40	86.40	86.40	86.40	86.40	86.40	86.40
4.31	90.00	90.00	90.00	90.00	90.00	90.00	90.00
4.56	93.60	93.60	93.60	93.60	93.60	93.60	93.60

Checked Blough

11-12-12
Rough & must line not back

324.98
3.62
328.10 H.I.

328.10 328.10 328.10
22.70 23.80 29.00
5.00 4.80 4.10

28.10 24.10
2.30 24.60
5.10 3.50

312.57
18.34
322.89

22.68 22.68 22.68 22.68 22.68
19.00 18.60 19.50 19.40 20.00
3.68 4.08 3.19 3.28

322.89 22.89 22.89 22.89 22.89
19.00 18.60 19.00 19.40 20.00
3.89 4.29 3.39 3.49 2.89

322.89
2.89

320.10
6.10

326.10
1.64

328.10
1.64

312.57 322.01 322.01 322.01 322.01 322.01
9.47 19.47 17.60 19.07 18.40 19.10
322.61 H.I. 4.01 4.41 3.61 3.61 3.01

322.01
19.60
3.91

312.72
4.12

313.84 H.I.
4.12

308.10
5.28

308.10
5.28

313.89 313.89 313.89 313.89 313.89
06.00 04.72 06.90 06.00 06.60
8.89 9.17 8.09 7.89 7.29

313.89 313.89 313.89 313.89 313.89
10.00 9.60 10.50 10.40 11.00
3.89 4.29 3.29 3.49 2.89

308.10
5.28

308.10
5.28

Mural

84

312.57 - 40 tie-hub for SW Cor Alabama & Meade.

+10.57
323.14 H.I.
312.20
320.91
7.94
326.86 H.I.

322.11 322.11 322.11 322.11 322.11 322.11 322.11 322.11 322.11 322.11
19.00 18.60 19.00 19.40 20.10 20.34 19.78 19.85 18.94 19.38
4.11 4.51 3.61 3.71 3.11 2.73 3.33 3.26 4.17 3.78

322.11 322.11 322.11 322.11 322.11 322.11 322.11 322.11 322.11 322.11
19.26 19.28 20.21 20.16 20.76 21.14 20.84 20.87 19.62 19.89
3.45 3.35 2.80 2.95 2.36 2.97 2.57 2.54 3.45 3.12

322.11 322.11 322.11 322.11 322.11 322.11 322.11 322.11 322.11 322.11
20.03 19.76 20.48 20.93 21.00 21.71 21.21 21.29 20.31 20.16
2.78 3.18 2.18 2.18 1.68 1.20 1.80 1.84 2.80 2.45

326.86 326.86 326.86 326.86 326.86 326.86 326.86 326.86 326.86 326.86
10.89 20.60 21.64 21.69 22.29 22.68 22.89 22.00 21.00 21.88
5.87 6.21 5.22 5.17 4.57 4.13 4.78 4.81 5.96 5.33

326.86 326.86 326.86 326.86 326.86 326.86 326.86 326.86 326.86 326.86
11.66 21.30 22.36 22.46 23.06 23.44 22.94 22.72 21.69 21.99
5.20 5.51 4.50 4.40 3.80 3.42 4.02 4.14 5.17 4.87

326.86 326.86 326.86 326.86 326.86 326.86 326.86 326.86 326.86 326.86
21.33 21.63 23.04 23.23 23.93 24.22 23.61 23.44 22.37 22.66
4.53 4.43 3.78 3.63 3.03 2.64 3.25 3.42 4.45 4.20

326.86 326.86 326.86 326.86 326.86
23.00 22.70 23.30 24.00 24.60
3.56 4.16 3.06 2.86 2.26

See page 71 - July 27-12

Meade

Alabama
Meade
Central

Handwritten mathematical calculations and diagrams on the left page of an open notebook. The page contains various arithmetic problems, including long divisions and multiplications. Notable numbers include 3245, 37 05 30, 16.5, 9900, 328.80, and 4C 71. There are also several diagrams consisting of lines and angles, possibly representing surveying or geometry problems. The text is written in cursive and includes some corrections and annotations.

319.07 26.70 327.37 7.20
 1560 21.97 20.00 1.15
 308.17 4.14 3.84 1.15
 225-48
 11.7
 264.0
 275.5
 149.7
 12

Published by H. S. CROCKER COMPANY, Stationers, Drawing Materials, and Mathematical Instruments, San Francisco.

Table showing the difference of latitude and departure in running 80 chains at any course from 1 to 60 minutes.

MINUTES.	LKS.	MINUTES.	LKS.	MINUTES.	LKS.
1	2 1/2	21	49	41	95 1/2
2	4 1/2	22	51 1/2	42	98
3	7	23	53 1/2	43	100 1/2
4	9 1/2	24	56	44	102 1/2
5	11 1/2	25	58 1/2	45	105
6	14	26	60 1/2	46	107 1/2
7	16 1/2	27	63	47	109 1/2
8	18 1/2	28	65 1/2	48	112
9	21	29	67 1/2	49	114 1/2
10	23 1/2	30	70	50	116 1/2
11	25 1/2	31	72 1/2	51	119
12	28	32	74 1/2	52	121 1/2
13	30 1/2	33	77	53	123 1/2
14	32 1/2	34	79 1/2	54	126
15	35	35	81 1/2	55	128 1/2
16	37 1/2	36	84	56	130 1/2
17	39 1/2	37	86 1/2	57	133
	42	38	88 1/2	58	135 1/2
	44 1/2	39	91	59	137 1/2
	46 1/2	40	93 1/2	60	140

TABLE FOR RUNNING ON SLOPES.

In the following table the first column shows the angle, the second the number of links to be added to a chain on the slopes, to make one chain, horizontal measurement.

ANGLE	COR. IN LINKS	ANGLE	COR. IN LINKS	ANGLE	COR. IN LINKS	ANGLE	COR. IN LINKS
0		0		0		0	
4	0.24	11	1.88	18	5.14	25	10.54
5	0.38	12	2.24	19	5.76	26	11.26
6	0.55	13	2.63	20	6.42	27	12.24
7	0.76	14	3.06	21	7.11	28	13.37
8	0.98	15	3.53	22	7.85	29	14.34
9	1.24	16	4.02	23	8.64	30	15.47
10	1.55	17	4.56	24	9.47	35	22.07

225-48
 11.7
 264.0
 275.5
 149.7
 12