

GRADES

53

29th St.

DALE ST

THORN ST.

GRANADA AVE.

UPAS ST.

PALM ST.

Diagonalia Ave. to Adams

QUINCE ST. Horton to ...

Spruce St. Front L. Dove

Georgia St. Union to Myrtle

IVY St. 19th to East St. 31st

G53

380

FIELD

Dwight St

Dale St. - Palm to Redwood 76

1
4
7
10
17
24
31
39
45
51
74

Published by H. S. CROCKER COMPANY, Stationers, Drawing Materials, Mathematical Instruments, etc., San Francisco.

TRAVERSE TABLE FOR TRANSIT BOOK.

From 1° to 90° for a distance of 100.

Degrees.	DEGREES.		¼ DEGREE.		¼ DEGREE.		¼ DEGREE.		Degrees.
	Lat.	Dep.	Lat.	Dep.	Lat.	Dep.	Lat.	Dep.	
0	99.98		100.00	0.44	100.00	0.87	99.99	1.31	89
1	99.98	1.75	99.98	2.18	99.97	2.62	99.95	3.05	88
2	99.94	3.49	99.92	3.93	99.91	4.36	99.88	4.80	87
3	99.86	5.23	99.84	5.67	99.81	6.10	99.79	6.54	86
4	99.76	6.98	99.73	7.41	99.69	7.85	99.66	8.28	85
5	99.62	8.72	99.58	9.15	99.54	9.58	99.50	10.02	84
6	99.45	10.45	99.41	10.89	99.36	11.32	99.31	11.75	83
7	99.25	12.19	99.20	12.62	99.14	13.05	99.09	13.49	82
8	99.03	13.92	98.97	14.35	98.90	14.78	98.84	15.21	81
9	98.77	15.64	98.70	16.07	98.63	16.50	98.56	16.93	80
10	98.48	17.36	98.40	17.79	98.33	18.22	98.25	18.65	79
11	98.16	19.08	98.08	19.51	97.99	19.94	97.90	20.36	78
12	97.81	20.79	97.72	21.22	97.63	21.64	97.53	22.07	77
13	97.44	22.50	97.34	22.92	97.24	23.34	97.13	23.77	76
14	97.03	24.19	96.92	24.62	96.81	25.04	96.70	25.46	75
15	96.59	25.88	96.48	26.30	96.36	26.72	96.25	27.14	74
16	96.13	27.56	96.00	27.98	95.88	28.40	95.76	28.82	73
17	95.63	29.24	95.50	29.65	95.37	30.07	95.24	30.49	72
18	95.11	30.90	94.97	31.32	94.83	31.73	94.69	32.14	71
19	94.55	32.56	94.41	32.97	94.26	33.38	94.12	33.79	70
20	93.97	34.20	93.82	34.61	93.67	35.02	93.51	35.43	69
21	93.36	35.84	93.20	36.24	93.04	36.65	92.88	37.06	68
22	92.72	37.46	92.55	37.86	92.39	38.27	92.22	38.67	67
23	92.05	39.07	91.88	39.47	91.71	39.87	91.53	40.27	66
24	91.35	40.67	91.18	41.07	91.00	41.47	90.81	41.87	65
25	90.63	42.26	90.45	42.66	90.26	43.05	90.07	43.44	64
26	89.88	43.84	89.69	44.23	89.49	44.62	89.30	45.01	63
27	89.10	45.40	88.90	45.79	88.70	46.17	88.50	46.56	62
28	88.29	46.95	88.09	47.33	87.88	47.72	87.67	48.10	61
29	87.46	48.48	87.25	48.86	87.04	49.24	86.82	49.62	60
30	86.60	50.00	86.38	50.38	86.16	50.75	85.94	51.13	59
31	85.72	51.50	85.49	51.88	85.26	52.25	85.04	52.62	58
32	84.80	52.99	84.57	53.36	84.34	53.73	84.10	54.10	57
33	83.87	54.46	83.63	54.83	83.39	55.19	83.15	55.56	56
34	82.90	55.92	82.66	56.28	82.41	56.64	82.16	57.00	55
35	81.92	57.36	81.66	57.71	81.41	58.07	81.16	58.42	54
36	80.90	58.78	80.64	59.13	80.39	59.48	80.13	59.83	53
37	79.86	60.18	79.60	60.53	79.34	60.88	79.07	61.22	52
38	78.80	61.57	78.53	61.91	78.26	62.25	77.99	62.59	51
39	77.71	62.93	77.44	63.27	77.16	63.61	76.88	63.94	50
40	76.60	64.28	76.32	64.61	76.04	64.94	75.76	65.28	49
41	75.47	65.61	75.18	65.93	74.90	66.26	74.61	66.59	48
42	74.31	66.91	74.02	67.24	73.73	67.56	73.43	67.88	47
43	73.14	68.20	72.84	68.52	72.54	68.84	72.24	69.15	46
44	71.93	69.47	71.63	69.78	71.33	70.09	71.02	70.40	45
45	70.71	70.71							
Degrees.	Dep.	Lat.	Dep.	Lat.	Dep.	Lat.	Dep.	Lat.	Degrees.
	DEGREES		¼ DEGREE.		¼ DEGREE.		¼ DEGREE.		

MICROFILMED

APR 6 1965

Andrew & Co.
Bookbinders & Printers
San Francisco, Cal.

Upas

st.

326.5

326.0

St

323.5

323.0

29 1/2

322.0

321.5

Thorn

st.

West South Line Upas St. East.

600	326.75	326.5	325.9 c.o.2	326.25	325.73	326.00	326.25
			c.o.2				
550	326.15	326.0	325.4	325.75	325.23	325.50	325.75
500	325.75	325.50	325.10 F.o.3	325.25 c.o.2	324.73 c.o.2	325.00	325.25
475			c.o.2		c.o.2		
450	325.25	325.00	324.60	324.75	324.23	324.50	324.75
	F.o.2	F.o.2					
425							
400	324.75	324.50	323.90 F.o.2	324.25 c.o.2	323.73	324.0	324.25
350	324.25	324.0	323.60 c.o.2	323.75	323.23	323.50	323.75
325	F.o.3		c.o.2				
300	323.75	323.5	322.9	323.25	322.73	323.00	323.25
	Crack						
250	323.50	323.25	322.65	323.0	322.48 F.o.4	322.75	323.00
225					F.o.2		
200	323.25	323.00	322.40 F.o.3	322.75 F.o.4	322.23 F.o.2	322.50	322.75
175	F.o.2	F.o.3	F.o.2	F.o.4	F.o.2		
150	323.00	322.75	322.15 F.o.3	322.50 F.o.2	321.98 F.o.3	322.25	322.50
125	F.o.4	F.o.2		F.o.3			
100	322.75	322.50	321.90	322.25	321.73	322.0	322.25
	F.o.3	F.o.2		F.o.3			
75	F.o.3	F.o.2	F.o.2	F.o.3			
50	322.50	322.25	321.65 F.o.3	322.0 F.o.4	321.48	321.75	322.00
25	F.o.3	F.o.2	F.o.3	F.o.4			
00	322.25	322.0	321.4	321.75	321.23	321.5	321.75

North Line Thorn St.

325.00	330.30	320.30
5.20	23.75	6.95??
330.30	6.55	323.32
245.73	6.80	319
4.57	30.30	326.51
30.30	22.90	22.25
26.25	7.40	4.26
4.05		4.51
20.30	30.30	26.51
25.90	23.25	21.20
4.40	7.05	5.11
30.30	30.30	26.51
26.75	22.73	24.25
3.55	7.57	4.76
3.80		26.51
		21.23
		5.25

for check see opp page
 This st was checked with transit
 side walk on E. side Not finished.
 5-10-10 Dunkle - Shaw - Evans,

Upas

st.

323.5

324.0

ST

DALE

318.5

318.5

Thorn

st.

North West Line Date South

208.11'	318.75	318.5	217.9	318.25	317.73	318.0	318.25
				F0.2			
250'	318.95	318.70		318.45		318.20	318.45
							F0.2
225'	319.23	318.98				318.48	318.73
						F0.2	F0.3
200'	319.51	319.26		319.01		318.76	319.01
175'	319.79	319.54				319.04	319.29
150'	320.07	319.82		319.57		319.32	319.57
125'	320.35	320.10				319.60	319.85
							F0.2
100'	320.63	320.38		320.13		319.88	320.13
				F0.3			F0.3
75'	320.81	320.66		320.41		320.16	320.41
				F0.2		F0.2	F0.4
50'	320.94	320.69		320.69	7	320.44	320.69
				F0.2		F0.2	F0.3
25'	321.47	321.22				320.72	320.97
				F0.2		F0.2	F0.3
00	321.75	321.50		320.90	321.25	320.73	321.0
				F0.4			F0.3

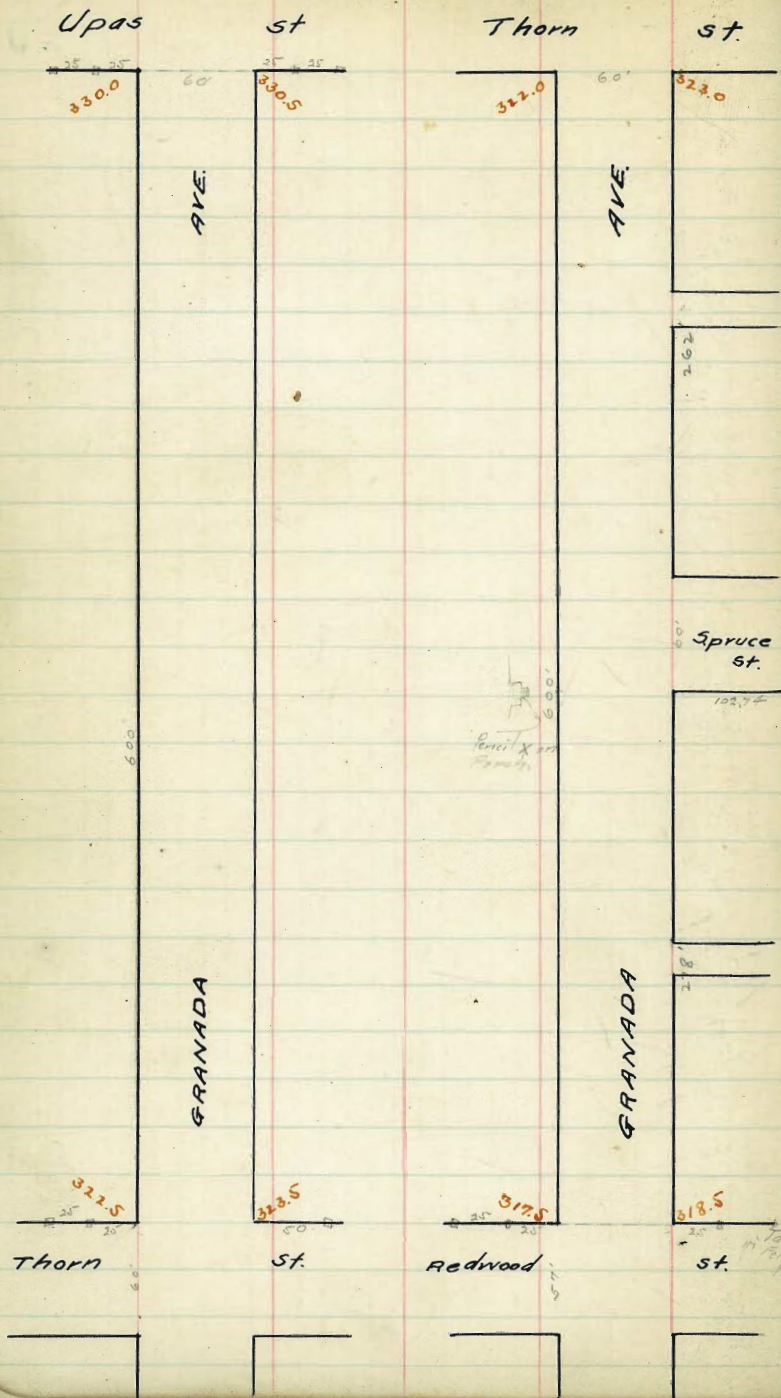
East Line 29th St

326.51	21.25	2.61
20.90		
5.61	5.26	8.26
26.51	8.51	8.78
21.25		
5.26	326.51	
26.51	18.25	
20.73	8.26	
5.78	8.51	
26.51	2.61	
21.25	5.26	
5.26	8.51	
5.51		

checked with Transit for check see opp. page

Sideralk on N not finished

5-10-10 Dunkle - Shaw - Evans.



West	South Line Upas St.						East
330.25	330.00	329.73	330.25	329.90	330.50	330.75	
329.93	329.68	329.42	329.94	329.60	330.20	330.45	
329.62	329.37	329.11	329.64	329.30	329.90	330.15	
329.31	329.06	328.80	329.34	329.01	329.64	329.86	
329.00	328.75	328.49	329.04	328.72	329.32	329.57	
328.68	328.43	328.18	328.73	328.43	329.03	329.28	
328.37	328.12	327.88	328.43	328.14	328.74	328.99	
328.06	327.81	327.57	328.13	327.85	328.45	328.70	
327.75	327.50	327.26	327.83	327.56	328.16	328.41	
327.43	327.18	326.95	327.52	327.27	327.87	328.12	
327.12	326.87	326.64	327.22	326.98	327.58	327.83	
326.81	326.56	326.34	326.92	326.69	327.29	327.54	
326.50	326.25	326.03	326.62	326.40	327.00	327.25	
326.18	325.93	325.72	326.32	326.09	326.69	326.94	
325.87	325.62	325.42	326.02	325.80	326.40	326.65	
325.58	325.31	325.11	325.71	325.51	326.11	326.36	
325.25	325.00	324.80	325.41	325.22	325.82	326.07	
325.83	324.68	324.50	325.11	324.93	325.53	325.78	
324.62	324.37	324.19	324.81	324.64	325.24	325.49	
324.31	324.06	323.88	324.51	324.35	324.95	325.20	
324.00	323.75	323.58	324.20	324.06	324.66	324.91	
323.68	323.43	323.27	323.90	323.77	324.37	324.62	
323.27	323.12	322.96	323.60	323.48	324.08	324.31	
323.06	322.81	322.66	323.30	323.19	323.79	324.04	
322.75	322.5	322.35	323.0	322.90	323.5	323.75	

North Line Thorn St.

Stakes and Ties

323.74	2270	2275	3337	2431	340	2991	3462	2549
326	612	715	589	456	437	396	435	338
326.61	420	497	531	322	497	372	460	335
333.66	1.22	10.97	10.16	10.86	0.1	40.78	0.86	0.0

323.74	2635	2607	2587	2665	2650	2725	2713	2783
326	841	734	779	701	716	691	688	593
326.61	838	480	676	709	713	701	693	613
333.66	0.16	-0.2	12.93	-0.04	0.03	-0.6	0.3	0.3

323.74	2770	2741	2737	2899	290	2957	2962	3015
326	571	525	529	467	466	439	402	357
326.61	578	535	524	430	456	426	394	363
333.66	10.63	0.6	10.25	10.37	1.1	1.16	10.10	0.0

323.74	3025	3076	2250	2344	2354	2352	2248
326	341	291	645	513	471	471	417
326.61	325	253	2375	2466	2437	2444	2248
333.66	10.16	10.33	6.30	5.89	5.88	5.01	6.21

323.74
326
326.61
333.66

2500 2542 2562 2640 2621 2700 2657 2758
6.45 5.63 5.83 5.05 5.20 4.45 4.88 3.77

323.74
326
326.61
333.66

2750 2816 2812 2874 2875 2932 2932 2990 3000 3000
3.91 3.29 6.05 5.42 5.14 4.87 4.80 4.17 4.00 3.67

331.45
3.94

323.74
326
326.61
333.66

2800 2842 2862 2940 2921 3000 2957 3058
4.45 3.63 3.83 3.05 3.20 2.45 2.88 1.77

331.45
3.94

323.74
326
326.61
333.66

2850 2916 2912 2974 2975 3032 3032 3090 3100 3100
3.91 3.29 6.05 5.42 5.14 4.87 4.80 4.17 4.00 3.67

331.45
3.94

323.74
326
326.61
333.66

2900 2942 2962 3040 3021 3100 3057 3158
4.45 3.63 3.83 3.05 3.20 2.45 2.88 1.77

331.45
3.94

323.74
326
326.61
333.66

2950 3016 3012 3074 3075 3132 3132 3190 3200 3200
3.91 3.29 6.05 5.42 5.14 4.87 4.80 4.17 4.00 3.67

331.45
3.94

323.74
326
326.61
333.66

3000 3042 3062 3140 3121 3200 3157 3258
4.45 3.63 3.83 3.05 3.20 2.45 2.88 1.77

331.45
3.94

323.74
326
326.61
333.66

3050 3116 3112 3174 3175 3232 3232 3290 3300 3300
3.91 3.29 6.05 5.42 5.14 4.87 4.80 4.17 4.00 3.67

331.45
3.94

323.74
326
326.61
333.66

3100 3142 3162 3240 3221 3300 3257 3358
4.45 3.63 3.83 3.05 3.20 2.45 2.88 1.77

331.45
3.94

323.74
326
326.61
333.66

3150 3216 3212 3274 3275 3332 3332 3390 3400 3400
3.91 3.29 6.05 5.42 5.14 4.87 4.80 4.17 4.00 3.67

331.45
3.94

323.74
326
326.61
333.66

3200 3242 3262 3340 3321 3400 3357 3458
4.45 3.63 3.83 3.05 3.20 2.45 2.88 1.77

331.45
3.94

323.74
326
326.61
333.66

3250 3316 3312 3374 3375 3432 3432 3490 3500 3500
3.91 3.29 6.05 5.42 5.14 4.87 4.80 4.17 4.00 3.67

331.45
3.94

323.74
326
326.61
333.66

3300 3342 3362 3440 3421 3500 3457 3558
4.45 3.63 3.83 3.05 3.20 2.45 2.88 1.77

331.45
3.94

323.74
326
326.61
333.66

3350 3416 3412 3474 3475 3532 3532 3590 3600 3600
3.91 3.29 6.05 5.42 5.14 4.87 4.80 4.17 4.00 3.67

331.45
3.94

323.74
326
326.61
333.66

3400 3442 3462 3540 3521 3600 3557 3658
4.45 3.63 3.83 3.05 3.20 2.45 2.88 1.77

331.45
3.94

323.74
326
326.61
333.66

3450 3516 3512 3574 3575 3632 3632 3690 3700 3700
3.91 3.29 6.05 5.42 5.14 4.87 4.80 4.17 4.00 3.67

331.45
3.94

323.74
326
326.61
333.66

3500 3542 3562 3640 3621 3700 3657 3758
4.45 3.63 3.83 3.05 3.20 2.45 2.88 1.77

331.45
3.94

323.74
326
326.61
333.66

3550 3616 3612 3674 3675 3732 3732 3790 3800 3800
3.91 3.29 6.05 5.42 5.14 4.87 4.80 4.17 4.00 3.67

331.45
3.94

323.74
326
326.61
333.66

3600 3642 3662 3740 3721 3800 3757 3858
4.45 3.63 3.83 3.05 3.20 2.45 2.88 1.77

331.45
3.94

323.74
326
326.61
333.66

3650 3716 3712 3774 3775 3832 3832 3890 3900 3900
3.91 3.29 6.05 5.42 5.14 4.87 4.80 4.17 4.00 3.67

331.45
3.94

323.74
326
326.61
333.66

3700 3742 3762 3840 3821 3900 3857 3958
4.45 3.63 3.83 3.05 3.20 2.45 2.88 1.77

331.45
3.94

323.74
326
326.61
333.66

3750 3816 3812 3874 3875 3932 3932 3990 4000 4000
3.91 3.29 6.05 5.42 5.14 4.87 4.80 4.17 4.00 3.67

331.45
3.94

323.74
326
326.61
333.66

3800 3842 3862 3940 3921 4000 3957 4058
4.45 3.63 3.83 3.05 3.20 2.45 2.88 1.77

331.45
3.94

323.74
326
326.61
333.66

3850 3916 3912 3974 3975 4032 4032 4090 4100 4100
3.91 3.29 6.05 5.42 5.14 4.87 4.80 4.17 4.00 3.67

331.45
3.94

323.74
326
326.61
333.66

3900 3942 3962 4040 4021 4100 4057 4158
4.45 3.63 3.83 3.05 3.20 2.45 2.88 1.77

331.45
3.94

323.74
326
326.61
333.66

3950 4016 4012 4074 4075 4132 4132 4190 4200 4200
3.91 3.29 6.05 5.42 5.14 4.87 4.80 4.17 4.00 3.67

331.45
3.94

323.74
326
326.61
333.66

4000 4042 4062 4140 4121 4200 4157 4258
4.45 3.63 3.83 3.05 3.20 2.45 2.88 1.77

331.45
3.94

323.74
326
326.61
333.66

4050 4116 4112 4174 4175 4232 4232 4290 4300 4300
3.91 3.29 6.05 5.42 5.14 4.87 4.80 4.17 4.00 3.67

331.45
3.94

323.74
326
326.61
333.66

4100 4142 4162 4240 4221 4300 4257 4358
4.45 3.63 3.83 3.05 3.20 2.45 2.88 1.77

331.45
3.94

323.74
326
326.61
333.66

4150 4216 4212 4274 4275 4332 4332 4390 4400 4400
3.91 3.29 6.05 5.42 5.14 4.87 4.80 4.17 4.00 3.67

331.45
3.94

323.74
326
326.61
333.66

4200 4242 4262 4340 4321 4400 4357 4458
4.45 3.63 3.83 3.05 3.20 2.45 2.88 1.77

331.45
3.94

323.74
326
326.61
333.66

4250 4316 4312 4374 4375 4432 4432 4490 4500 4500
3.91 3.29 6.05 5.42 5.14 4.87 4.80 4.17 4.00 3.67

331.45
3.94

323.74
326
326.61
333.66

4300 4342 4362 4440 4421 4500 4457 4558
4.45 3.63 3.83 3.05 3.20 2.45 2.88 1.77

331.45
3.94

323.74
326
326.61
333.66

4350 4416 4412 4474 4475 4532 4532 4590 4600 4600
3.91 3.29 6.05 5.42 5.14 4.87 4.80 4.17 4.00 3.67

331.45
3.94

323.74
326
326.61
333.66

4400 4442 4462 4540 4521 4600 4557 4658
4.45 3.63 3.83 3.05 3.20 2.45 2.88 1.77

331.45
3.94

323.74
326
326.61
333.66

4450 4516 4512 4574 4575 4632 4632 4690 4700 4700
3.91 3.29 6.05 5.42 5.14 4.87 4.80 4.17 4.00 3.67

331.45
3.94

323.74
326
326.61
333.66

4500 4542 4562 4640 4621 4700 4657 4758
4.45 3.63 3.83 3.05 3.20 2.45 2.88 1.77

331.45
3.94

323.74
326
326.61
333.66

4550 4616 4612 4674 4675 4732 4732 4790 4800 4800
3.91 3.29 6.05 5.42 5.14 4.87 4.80 4.17 4.00 3.67

331.45
3.94

323.74
326
326.61
333.66

4600 4642 4662 4740 4721 4800 4757 4858
4.45 3.63 3.83 3.05 3.20 2.45 2.88 1.77

331.45
3.94

323.74
326
326.61
333.66

4650 4716 4712 4774 4775 4832 4832 4890 4900 4900
3.91 3.29 6.05 5.42 5.14 4.87 4.80 4.17 4.00 3.67

331.45
3.94

323.74
326
326.61
333.66

4700 4742 4762 4840 4821 4900 4857 4958
4.45 3.63 3.83 3.05 3.20 2.45 2.88 1.77

331.45
3.94

323.74
326
326.61
333.66

4750 4816 4812 4874 4875 4932 4932 4990 5000 5000
3.91 3.29 6.05 5.42 5.14 4.87 4.80 4.17 4.00 3.67

331.45
3.94

323.74
326
326.61
333.66

4800 4842 4862 4940 4921 5000 4957 5058
4.45 3.63 3.83 3.05 3.20 2.45 2.88 1.77

331.45
3.94

323.74
326
326.61
333.66

4850 4916 4912 4974 4975 5032 5032 5090 5100 5100
3.91 3.29 6.05 5.42 5.14 4.87 4.80 4.17 4.00 3.67

331.45
3.94

323.74
326
326.61
333.66

4900 4942 4962 5040 5021 5100 5057 5158
4.45 3.63 3.83 3.05 3.20 2.45 2.88 1.77

331.45
3.94

323.74
326
326.61
333.66

4950 5016 5012 5074 5075 5132 5132 5190 5200 5200
3.91 3.29 6.05 5.42 5.14 4.87 4.80 4.17 4.00 3.67

331.45
3.94

323.74
326
326.61
333.66

5000 5042 5062 5140 5121 5200 5157 5258
4.45 3.63 3.83 3.05 3.20 2.45 2.88 1.77

331.45
3.94

323.74
326
326.61
333.66

5050 5116 5112 5174 5175 5232 5232 5290 5300 5300
3.91 3.29 6.05 5.42 5.14 4.87 4.80 4.17 4.00 3.67

331.45
3.94

323.74
326
326.61
333.66

5100 5142 5162 5240 5221 5300 5257 5358
4.45 3.63 3.83 3.05 3.20 2.45 2.88 1.77

331.45
3.94

323.74
326
326.61
333.66

5150 5216 5212 5274 5275 5332 5332 5390 5400 5400
3.91 3.29 6.05 5.42 5.14 4.87 4.80 4.17 4.00 3.67

331.45
3.94

323.74
326
326.61
333.66

5200 5242 5262 5340 5321 5400 5357 5458
4.45 3.63 3.83 3.05 3.20 2.45 2.88 1.77

331.45
3.94

323.74
326
326.61
333.66

5250 5316 5312 5374 5375 5432 5432 5490 5500 5500
3.91 3.29 6.05 5.42 5.14 4.87 4.80 4.17 4.00 3.67

331.45
3.94

323.74
326
326.61
333.66

5300 5342 5362 5440 5421 5500 5457 5558
4.45 3.63 3.83 3.05 3.20 2.45 2.88 1.77

331.45
3.94

323.74
326
326.61
333.66

5350 5416 5412 5474 5475 5532 5532 5590 5600 5600
3.91 3.29 6.05 5.42 5.14 4.87 4.80 4.17 4.00 3.67

331.45
3.94

323.74
326
326.61
333.66

5400 5442 5462 5540 5521 5600 5557 5658
4.45 3.63 3.83 3.05 3.20 2.45 2.88 1.77

331.45
3.94

323.74
326
326.61
333.66

5450 5516 5512 5574 5575 5632 5632 5690 5700 5700
3.91 3.29 6.05 5.42 5.14 4.87 4.80 4.17 4.00 3.67

331.45
3.94

323.74
326
326.61
333.66

5500 5542 5562 5640 5621 5700 5657 5758
4.45 3.63 3.83 3.05 3.20 2.45 2.88 1.77

331.45
3.94

323.74
326
326.61
333.66

5550 5616 5612 5674 5675 5732 5732 5790 5800 5800
3.91 3.29 6.05 5.42 5.14 4.87 4.80 4.17 4.00 3.67

331.45
3.94

323.74
326
326.61
333.66

5600 5642 5662 5740 5721 5800 5757 5858
4.45 3.63 3.83 3.05 3.20 2.45 2.88 1.77

33

West

East

29.42	29.42	329.42
22.25	22.25	4.35
7.17	6.17	324.07
7.42		1.22
49.42	7.17	325.34
21.35		
7.57		
29.42		
22.00		
6.92		
19.42		
29.42		
7.02		
29.42		
23.25		
6.17		
6.44		

322.75 322.50 322.25 322.0 322.90 323.50 323.75

322.5 322.5 322.27 322.93 322.82 323.50 323.5
221.5 321.5 322.5 322.5

W 321.90 321.38 322.18 322.83 322.73 322.38 322.90

Thorn

322.25 321.25 322.10 322.75 322.65 322.25 323.25

Street

W 321.73 321.13 322.02 322.67 322.67 322.13 322.73

321. 321. 322. 322.
322.0 322.0 321.93 322.58 322.48 323.0 323.0

322.25 322.0 321.85 322.5 322.40 323.0 323.25

West	South Line Thorn St.					East.
322.25	322.0	321.85	322.35	322.40	323.00	323.25
322.06	321.81	321.66	322.31	322.21	322.81	323.06
321.88	321.63	321.48	322.13	322.03	322.63	322.88
321.69	321.44	321.29	321.94	321.84	322.44	322.69
321.50	321.25	321.10	321.75	321.65	322.25	322.50
321.31	321.06	320.91	321.56	321.46	322.06	322.31
321.13	320.88	320.73	321.38	321.28	321.88	322.13
320.94	320.69	320.54	321.19	321.09	321.69	321.94
320.75	320.50	320.35	321.00	320.90	321.50	321.75
320.56	320.31	320.16	320.81	320.71	321.31	321.56
320.29	320.04	319.89	320.54	320.44	321.04	321.29

North Line spruce on East

Cut Stakes
Moore
Rogers

	W	E					
322.25	305	305	305	305	305	305	305
322.06	305	305	305	305	305	305	305
321.88	305	305	305	305	305	305	305
321.69	305	305	305	305	305	305	305
321.50	305	305	305	305	305	305	305
321.31	305	305	305	305	305	305	305
321.13	305	305	305	305	305	305	305
320.94	305	305	305	305	305	305	305
320.75	305	305	305	305	305	305	305
320.56	305	305	305	305	305	305	305
320.29	305	305	305	305	305	305	305

Match
Moore
Rogers

Ch. P. H. H. H.
Singh
Rama
Z. H. H. H.

1/15 2/15 3/15 4/15 5/15 6/15 7/15 8/15 9/15 10/15

10/15 11/15 12/15 13/15 14/15 15/15

16/15 17/15 18/15 19/15 20/15

21/15 22/15 23/15 24/15 25/15

26/15 27/15 28/15 29/15 30/15

31/15 32/15 33/15 34/15 35/15

36/15 37/15 38/15 39/15 40/15

41/15 42/15 43/15 44/15 45/15

46/15 47/15 48/15 49/15 50/15

51/15 52/15 53/15 54/15 55/15

56/15 57/15 58/15 59/15 60/15

61/15 62/15 63/15 64/15 65/15

66/15 67/15 68/15 69/15 70/15

71/15 72/15 73/15 74/15 75/15

76/15 77/15 78/15 79/15 80/15

81/15 82/15 83/15 84/15 85/15

86/15 87/15 88/15 89/15 90/15

91/15 92/15 93/15 94/15 95/15

96/15 97/15 98/15 99/15 100/15

West

320.29 320.04 319.89 320.54 320.44 321.04 321.29

320.37 321.04 321.04
320.04 320.04

320.29 319.93 320.44

Spruce

ctr 320.07 319.82 319.67 320.32 320.22 319.82 320.82

Street

320.15 319.70 320.30

319.59 319.59
320.07 320.59 320.59

319.84 319.59 319.44 320.09 319.99 320.59 320.84

East

30966
127
37843
103
31735
699
37434

601
377.92 1074 - Spk in pole SW Cor. Redwood Hwy Granada.

325.40 325.40
19.84 20.87
5.56 5.11
4.28 5.36
325.40 325.40
19.84 20.87
5.76 22.95
5.31
5.41
4.56
4.71

325.5

ST.

Kansas St.

326.0

325.35

Roy St.

30th

326.88

326.0

29th

327.63

326.5

328.5

327.54

Sherman St.

30th

329.5

328.72

325.0

ST

325.0

324.0

Dale

324.5

323.5

330.5

Granada Ave.

331.0

330.0

325.5

Utah st.

UPAS

Kansas

326.0

UPAS

40' 55' 40' 55'

North W.L. Sherman St on North south

329.75 329.5 328.90 329.11 328.52 328.72 328.97

329.94 329.69 ~~329.09~~ 329.09 328.68 329.09 329.34

330.13 329.88 ^{329.37} ^{329.10} 329.26 329.67 ~~328.84~~ 329.46 329.71

330.31 330.06 ~~329.76~~ 329.95 ~~329.00~~ 329.83 330.08

330.50 330.25 ^{329.83} ^{329.67} 329.65 330.23 329.15 330.20 330.45

330.65 330.40 ^{330.02} ^{329.90} 329.80 330.45 329.31 330.5 330.75

330.5 330.5
329.5 329.5

329.88 329.90

Granada

330.88 330.63 330.14 330.43 ^{329.50} 330.25 330.25

Ave

329.63 329.73

329.0 329.0
330.00 330.00

331.10 330.85 330.25 330.42 ^{329.81} 329.69 330.09 330.25

331.25 331.0 330.40 330.45 329.78 329.91 330.16

EAST LINE Utah St.

33753 32971 782 +2.3	33753 33012 741 +2.7	33753 33050 703 +1.8	33753 33045 708 +1.3	33753 33075 678 0.0	33753 33065 698 +2.0
-------------------------------	-------------------------------	-------------------------------	-------------------------------	------------------------------	-------------------------------

Shaw 15/12
Craw
Tichenor 10
Cut + Hill Stakes

33676
0.01
336.77 H.I.

10.57
x 626.20 IR
6.78
332.98 H.I.

332.71
3.27

334.38 H.I. 32872 329.46 330.20 330.5
5.66 4.92 4.18 3.88

330.0 229.91
4.38 4.47

331.0 331.24 331.10 330.85 330.40 330.61
3.38 3.13 3.28 3.53 3.98 3.73

330.50 330.41 329.88 330.13 329.75
3.88 4.13 4.50 4.25 4.63

331.88 H.I. 3188 3188 3188 3188 3188 3188 3188 3188
3019 2988 2928 2967 2884 3041 2933 3023 2965

331.88 3482 3482 3482 3482 3482 3482 3482
3019 2988 3045 2931 3050 3000 3025 2960

330.72 3482 3482 3482 3482 3482 3482 3482
220 502 437 507 402 482 457 532

334.8 H.I. 3482 3482 3482 3482 3482 3482 3482
437 474 419 394 394 394 394

326.20 T.P. Hub. S.E. Cor. 29th + W. 1st St
9.24 3544 3544 3544 3544 3544 3544 3544
3024 2990 2973 2985 2963 3025 3000 2969 3042

335.74 M.I. 3544 3544 3544 3544 3544 3544 3544 3544
554 571 586 581 519 544 575 502

3544 3544 3544 3544 3544 3544 3544 3544
3025 3055 3110 3125 3100 3040 3045 2978 2991 3018

326.20 334.75 334.75 334.75 334.75 334.75 334.75 334.75
8.55 2052 2910 2967 29.90 29.80 29.81 30

334.75 H.I. 6.23 5.65 5.08 4.85 4.90 4.94
30.45 4.30 30.14 30.02 29.83 29.97 28.91

334.75 334.75 334.75 334.75 334.75
4.61 4.73 4.92 5.33 5.85

335.5 H.I. 334.75 334.75 334.75 334.75 334.75
30.14 30.02 29.83 29.97 28.91

329.84 329.77 329.67 329.10 329.44 330.25 329.83 330.25 329.77 330.10
5.27 5.78 5.44 4.77 5.27 4.90 5.37 4.91 5.48 4.61

324.40 320.12 320.48 320.20 330.25 330.84 330.14 330.25 329.84 330.10
4.75 5.13 4.70 5.20 4.75 4.75 4.75 4.75 4.75 4.75

330.84 330.25 330.42 329.81 330.25 331.0 330.25 330.42 329.84 329.91
4.30 4.70 4.73 5.34 5.71 4.75 4.75 4.75 4.75 4.75

4-3-11 Checked OK blough, Pinner, July, 1904

North W.L. 29th St on South South

70' W.L. 29th 327.88 327.63 327.03 327.07 326.38 326.50 326.75

40' 328.25 328.00 327.40 327.48 326.81 326.94 327.19

30 328.75 328.50 327.90 328.02 327.38 327.54 327.79

curb 328.5 328.50
327.5 327.5

14 328.35 327.75

Sherman

cur 329.00 328.00 328.40 328.56 327.94 328.13 328.38

St

14 328.90 328.25

curb 328.5 328.5
329.5 329.50

W.L. 329.75 329.50 328.90 329.11 328.51 328.72 328.97

331.85	331.85	331.85	337.53	337.53
328.25	327.19	329.89	327.79	328.75
3.60	4.66	7.64	9.74	8.78
+2.4	+2.8	337.53	+3.1	+2.7

19

337.53	337.53	cut + full stakes		
329.75	328.97			
7.78	8.56			
+3.1	+3.0			

332.99 HL	327.19	327.79	328.97
326.25	5.79	5.79	4.01
6.23			

329.75	334.88 HL				
3.23		328.00	329.28	328.75	328.50
327.58	327.63	6.22	6.13	5.63	5.88
6.50	6.75				

326.50	326.94	327.54			
7.88	7.44	6.84			
326.20	3188	3188	3188	3188	3188
568	2340	2748	2681	2738	2802
331.88 HL	4.84	4.40	5.01	4.50	38.6
3188	3188	3188	3188	3188	3188
2835	2900	2890	2975	2840	2850
353	1.88	2.98	2.70	3.48	3.0

3/4/11 Sherman

3188	3188	3188	3188	3188	3188
2897	2872	2851	2911	2890	2859
294	3164	337	277	298	238

326.20 P. hmk SE cor 29th W. haw	326.5	326.5	326.5	3/15/11	Shaw
648	3265	3265	3265		
332.65 HL	2840	2856	2794	2813	2808
	428	409	471	452	427
	325	294	332	0.0	0.0
	+1.0	+1.15	+1.32		

4-3-11 Check OK. Street Corn on 7th / 1st

North	West Line Kansas Ston North						South
70'	326.25	326.00	325.40	325.68	325.18	325.35	325.60
55'	326.69	326.44	325.84	326.06	325.50	325.68	325.93
40'	327.13	326.88	326.28	326.44	325.82	326.0	326.25
curb						326.0	326.00
						325.	325.
14'						325.63	325.73
cur	327.62	327.37	326.77	326.76	326.10	326.25	326.25
14'						325.87	325.90
curb						325.5	325.5
						326.5	326.50
14'	327.88	327.63	327.03	327.07	326.38	326.50	326.75

29th
St.

33185	33185	33185	33185	33185	33185	33185
32593	32669	32713	32625	32675	32782	32782
5.92	5.16	4.72	5.60	5.10	5.97	5.97
-0.3	-0.4	+0.9	0.0	0.0	+1.9	+1.9

326.20	325.4	320.68	325.18	325.35	325.60
4.17	4.97	4.69	5.19	5.02	4.77
330.37 Ht.					
325.93	325.68	325.50	326.06	325.84	326.14
4.44	4.69	4.87	4.31	4.83	3.93
326.20	326.25	326.0	325.82	326.44	326.28
8.18	8.13	8.38	8.56	7.94	8.10
334.38 Ht.					7.50
326.20	3188	3188	3188	3188	3188
3188	3188	3188	3188	3188	3188
2578	2520	2520	2520	2520	2520
6.70	6.20	6.20	6.20	6.20	6.20
3188	3188	3188	3188	3188	3188
6.00	6.44	6.60			

3/11/11 Shaw Tubewell

3188	3188	3188	3188	3188	3188
2762	2757	2672	2672	2670	2625
4.20	4.51	5.11	5.12	5.78	5.63
3188	3188	3188	3188	3188	3188
2650	2638	2707	2703	2763	2763
5.38	5.50	4.81	4.95	4.23	
326.20	326.5	326.5	326.5	326.5	326.5
6.75	6.68	6.72	6.70	6.75	6.72
332.63 Ht.					

3/15/11 Shaw Tubewell

33147 Ht.					
3277	3277	3276	3276	3276	3276
4.10	4.70	4.71	4.71	4.71	4.71

4-3-11

Checked OK - Clayton

North West Line Dale on South South

Gutter Across Here

120' 324.75 324.5 323.25 323.0 322.75 323.5 323.75
 (323.90 3240 323.35)

85' 325.04 324.79 324.19 324.31 323.67 323.82 324.07

60' 325.25 325.00 324.40 324.53 323.89 324.05 324.30

45' 325.46 325.21 324.61 324.75 324.12 324.28 324.53

205 325.75 325.5 324.90 325.05 324.43 324.61 324.86
 E.L. Manso

ECurb 325.5 325.5
 324.5 324.5

W4 324.23 324.63

Kansas

325.75 324.75 325.15 325.36 324.80 324.98 325.23

street.

W4 325.40 324.88

325. 325.
 Ncurb 326.0 326.0

W2 326.25 326.00 325.40 325.68 325.18 325.35 325.60

331.85 H1	331.85	331.85	331.85	331.85	331.85
324.07	325.04	325.44	324.53	324.86	325.75
7.78	6.81	6.39	7.32	6.79	6.90
+0.2	+0.7	+0.4	+0.1	+0.1	-0.1

331.85	331.85
326.25	325.60
5.60	6.25
-0.8	-0.4

329.89 H2

325.04	324.79	324.14	324.21	323.67	323.82	324.07
4.84	5.09	5.69	5.67	6.21	6.06	5.81

324.53	324.28	324.12	324.25	324.61	325.21	324.46
5.33	5.60	5.76	5.13	5.27	4.67	4.42

325.70	325.25	324.80	325.05	324.43	324.61	324.86
4.13	4.88	4.98	4.83	5.45	5.27	5.02

325.23	324.98	324.80	325.36	325.15	324.75	325.25
4.65	4.90	5.08	4.52	4.73	5.13	4.13

326.25	326.0	326.40	325.68	325.18	325.35	325.60
3.63	3.88	4.48	4.20	4.70	4.33	4.28

330.22 H1

325.97	324.95	324.19	324.51	324.21	324.92	325.21	324.61	324.55	324.12	324.25
331.47	5.43	6.03	5.57	5.43	6.20	5.61	5.61	5.27	6.10	5.94
325.50	324.98	325.05	324.43	324.41	325.21	325.15	325.36	324.90	324.98	325.25
4.72	5.22	5.17	5.79	5.50	5.72	6.32	6.11	6.27	6.27	6.37
326.0	325.40	325.18	325.18	325.25	325.72	325.15	325.36	324.90	324.98	325.25
5.77	1.00	5.79	6.29	6.11						

Off Street on W4

41-3-11

North West Line 30th St on North South

no 325.25 325.00 324.6 325.00 324.60 325.00 325.25

no 325.13 324.88 324.28 324.44 323.82 324.00 324.25

EW 324.00 324.00
323. 323.

W 323.4 323.40

Date

e 324.94 324.69 324.09 324.22 323.58 323.75 323.75

St

W 323.23 323.23

EW 322.5 322.5
323.5 323.5

W 324.75 324.5 323.9 324.00 323.35 323.5 323.75

336.76 Brass Plug, Mon St. Capps + 30 331.85 75/12 Sham
1.78 331.85 331.85 331.85 323.75 8.10 1/3 Evans
337.94 325.25 326.13 324.75 8.10 Tichenor
839 6.60 6.72 7.15 0.0
329.55 7.15 7.17
2.59
331.85 H.1 cult. Full stakes 22

326.20 325.25 324.0 324.6
3.6.8 4.63 4.88 5.28
329.88 H.1

325.73 324.58 324.28 324.44 323.82 324.0 324.25
4.75 5.00 5.60 5.44 6.06 5.88 5.63

323.75 323.58 324.22 324.09 324.69 324.94
6.13 6.30 5.66 5.79 5.19 4.94

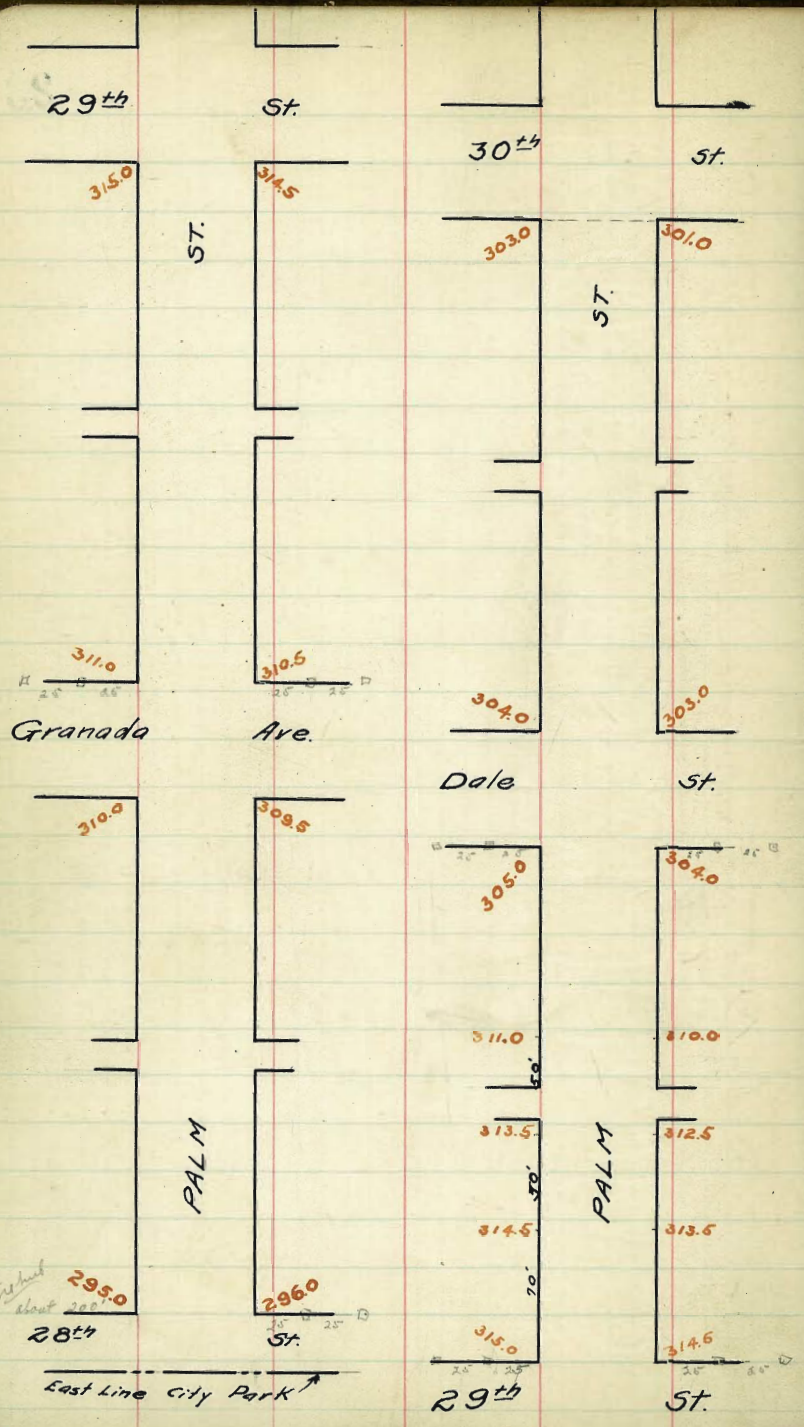
324.71 324.5 323.9 324.0 323.35 323.4 323.75
6.13 5.38 6.98 5.89 6.53 6.39 6.13

324.01 from 336.76 minus 6.75

330.24 325.00 324.0 325.00 324.88 324.28 324.44 323.82 324.00 324.25
5.34 5.94 5.78 6.40 6.20

324.69 324.88 324.22 324.44 323.82 324.00 324.25 323.75 323.75
5.78 6.13 6.40 6.47 5.78 6.20 6.20 6.20 6.20

4-3-11 checked OK brought down + 7.15/1.15



North West Line Granada Ave. South

10' 310.25 310.0 309.4 309.75 309.23 309.5 309.75

25' 308.87 308.62 308.05 308.43 307.94 308.25 308.50

50' 307.48 307.23 306.70 307.11 306.66 307.00 307.25

75' 306.09 305.84 305.36 305.79 305.38 305.75 306.00

100' 304.71 304.46 304.01 304.47 304.10 304.50 304.75

125' 303.31 303.06 302.66 303.15 302.82 303.25 303.50

150' 301.92 301.67 301.32 301.83 301.54 302.00 302.25

175' 300.53 300.28 299.97 300.51 300.26 300.75 301.00

200' 299.14 298.89 298.62 299.19 298.98 299.50 299.75

225' 297.75 297.50 297.28 297.88 297.70 298.25 298.50

250' 296.36 296.11 295.93 296.56 296.42 297.00 297.25

270' 295.25 295.00 294.85 295.5 295.4 296.0 296.25

East Line 28th St.

324.4
303.3
310.38
305.84
311.70 N
1233 310 35
24940
30304
2975 / 30748 30725 / 30471 30475
1.99 2.25 2.98
1.45 3.25 3.15
-0.85 +1.0 +1.3
7.02 6.95
5.90 5.60
4.82 4.43

30192 308.25 / 299.14 299.75 / 296.26 297.25 / 295.25 296.25
9.51 9.48 12.69 11.98 6.70 14.98 7.51 15.48
9.01 8.56 11.26 16.28 8.90 12.08 13.85 19.65
+0.8 +0.92 +0.93 +1.70 2.2 4.20 4.74 4.33

31481 SW 29th Palm
586 31747 31767 31715 31767 31763 31767 30860 30860
7.4 2.1 0.5 9.2 11.9 11.2 4.9 5.0
31767 3103 3101 3085 3085 305.9 306.0 3021 3047
12.5 10 0.5 20.7 20.7 20.4 20.2 20.2
304.82 30860 10960 30800 30800 30800 30800 30800
1.18 21 21 8.5 9.7 1.2 14.2
3081.00 299.9 301.4 299.5 298.3 296.0 295.8
299.2 292 292 292 296.1 296.3 295.2
C.7 C.7 C.2 C.2 2.2 2.1

12-12-11 647

31481 BM SW tie out 29th Palm
1.92 W E
31767.45 100 94 95 723 95 / 723 670 711 666 70
11.98 6.73 7.33 6.95 7.50 7.33 9.50 10.03 9.62 10.07 9.73
304.78 242 401 447 410 45 / 169 132 154 154 20
305.60 NE 12.27 12.12 12.26 12.63 12.23 3.93 4.28 3.71 4.06 3.60
103 889 3.62 9.18 5.25 9.5 / 6.11 6.93 6.56 6.42 7.0
304.59 587 6.14 5.57 5.78 6.24 3.65 3.83 3.20 3.32 3.76
1.5 50 4.85 5.5 5.4 6.0
304.76 NE 9.76 9.71 9.26 9.36 9.76

311.61 NE
307.25 307.00 306.66 307.11 306.70 307.23 307.48
4.36 4.61 4.95 4.50 4.91 4.38 4.13
304.71 304.46 304.01 304.47 304.10 304.50 304.75
6.90 7.15 7.60 7.14 7.51 7.11 6.86
302.20 302.0 301.50 301.83 301.32 301.67 301.92
9.36 9.41 10.07 9.78 10.29 9.94 9.69
299.14 298.89 298.62 299.19 298.98 299.50 299.75
12.47 12.72 12.99 12.42 12.63 12.11 11.86
1209
299.52 IR
2.89 NE
302.41

296.25 296.00 295.4 295.8 294.85 295.00 295.25
6.16 6.41 7.01 6.91 7.56 7.41 7.16

chk. except where marked

Jan 24/12 Schilde
Taylor
Bunker

North

South

311.25 311.0 310.4 310.75 310.23 310.5 310.75

314.81 311.0 10.4 10.5 285 10.1
 265 646 7.06 6.96 76.1 746
 31746 H 696 456 746 311 796

311.0 311.0 310.23 310.58 310.06 310.5 310.5
 310. 310. 309.5 309.5 309.5 309.5

310.50
 1.11 H.
 311.51 H.
 310.0 309.0 309.73 310.23 309.90 309.50 310.5
 1.61 2.61 1.33 1.36 1.71 2.11 1.11
 310.25 310.0 309.4 309.75 309.23 309.50 309.75
 1.86 1.61 2.21 1.86 2.33 2.11 1.86

310.40 309.75 310.07 310.42 309.90 309.25 309.9

Granada

310.5 309.50 309.90 310.25 309.73 309.0 310.0

sign post Ave. bridge

309.85 309.25 309.73 310.08 309.57 308.75 309.35

309. 309. 308.5 308.5
 310.00 310.00 309.57 309.92 309.40 309.50 309.50

310.25 310.0 309.4 309.75 309.53 309.50 309.75

	North	West Line 29th St.					South
00'	315.25	315.00	314.4	314.75	314.23	314.50	314.75
5'	314.88	314.63	314.03	314.38	313.86	314.13	314.38
10'	314.51	314.26	313.66	314.01	313.49	313.76	314.01
					3/21/11		
15'	314.14	313.89	313.29	313.64	313.12	313.39	313.64
20'	313.77	313.52	312.92	313.27	312.75	313.02	313.27
25'	313.40	313.15	312.55	312.90	312.38	312.65	312.90
30'	313.03	312.78	312.18	312.53	312.01	312.28	312.53
35'	312.66	312.41	311.81	312.16	311.64	311.91	312.16
40'	312.29	312.04	311.44	311.79	311.27	311.54	311.79
			3/21/11				
45'	311.92	311.67	311.07	311.42	310.90	311.17	311.42
50'	311.55	311.30	310.70	311.05	310.53	310.80	311.05
55'	311.25	311.00	310.4	310.75	310.23	310.5	310.75

East Line Granada Ave.

315.25	312.75	314.51	314.01	313.77	313.27
0.16	5.6	5.90	6.40	6.64	7.74
4.35	2.6	2.2	5.30	5.64	6.00
-1.9	+1.0	+1.0	+1.1	-1.0	+1.14
313.00	312.50	312.29	311.79	311.55	311.05
7.38	7.98	8.15	8.62	8.86	9.16
7.05	6.75	7.52	8.22	8.16	8.36
+0.12	+1.11	+0.60	+0.4	+0.7	+1.0
314.31	313.81	313.29	312.79	312.29	311.79
15.25	14.93	14.51	14.01	13.77	13.27
28.6	25.6	28.0	28.0	25.4	22.4
12.29	11.74	11.25	11.05	11.25	10.75
7.02	7.52	7.76	8.26	8.06	8.56
314.51	314.01	313.51	313.01	312.51	312.01
3.3	2.94	3.27	3.17	3.14	3.08
317.94	317.44	316.94	316.44	315.94	315.44
2.65	13.2	12.92	13.27	13.55	13.8
5.97	4.4	5.02	4.6	5.19	4.8
1.07	1.44	1.79	1.77	1.54	1.10
5.90	6.50	6.15	6.6	6.40	6.64
1.10	10.40	10.75	10.53	10.50	10.8
6.94	7.54	7.19	7.11	7.44	7.14
311	10.4	10.75	10.23	10.5	11.2
7.06	6.71	7.23	7.9	6.6	6.56
12.29	1.22	1.79	1.27	1.57	1.27
5.22	6.02	5.64	6.19	5.72	4.65
13.52	12.22	12.27	12.5	13.02	12.26
3.92	4.54	4.14	4.71	4.44	3.20
1.50	1.2	1.75	1.23	1.45	1.2
2.6	3.06	2.71	3.23	2.96	2.96

318.43 H

314.01	313.76	313.44	314.01	313.66	314.26	314.51
4.42	4.27	4.94	4.42	4.77	4.17	3.92
313.77	313.62	312.92	313.27	312.75	313.22	313.27
4.66	4.91	5.51	5.76	5.68	5.41	5.16
312.53	312.28	312.01	312.53	312.18	312.78	313.03
5.90	6.15	6.42	5.70	6.25	5.65	5.40
312.29	312.04	311.44	311.79	311.27	311.54	311.79
6.14	6.39	6.99	6.64	7.16	6.89	6.64
310.75	310.5	310.23	310.75	310.40	311.0	311.25
7.68	7.93	8.20	7.68	8.03	7.43	7.18

North

South

315.25	315.0	314.4	314.75	314.25	314.5	314.75
--------	-------	-------	--------	--------	-------	--------

318.43 AS.

315.0	315.0	314.37	314.75	314.13	314.5	314.5
314.	314.				313.5	313.5

314.5	314.58	314.67	314.75	314.84	314.92	315.0
3.93	3.85	3.76	3.68	3.59	3.51	3.43
315.25	315.0	314.4	314.75	314.5	314.75	

314.6	314.52	314.44	314.35	314.27	314.18	314.1
-------	--------	--------	--------	--------	--------	-------

29th

315.0	314.92	314.84	314.75	314.67	314.58	314.5
-------	--------	--------	--------	--------	--------	-------

5th

314.6	314.52	314.44	314.35	314.27	314.27	314.1
-------	--------	--------	--------	--------	--------	-------

314.	314.0				313.5	313.5
315.0	315.0	314.37	314.75	314.13	314.5	314.50

315.25	315.0	314.4	314.75	314.25	314.5	314.75
--------	-------	-------	--------	--------	-------	--------

North West Line Dale St. South

170° V 305.25 305.0 304.6 304.5 303.85 304.0 304.25

150° V 306.45 306.2 305.6 305.7 305.05 305.2 305.45

125° 307.95 / 307.7 307.1 307.2 306.55 306.7 306.95

100° V 309.45 309.2 308.6 308.7 308.05 308.2 308.45

170° V Break 311.25 311.0 310.4 310.5 309.85 310.0 310.25

150° 312.25 312.00 311.4 311.5 310.85 311.0 311.25

120° V Break 313.75 313.50 312.90 313.0 312.35 312.50 312.75

100° 314.15 313.90 313.3 313.4 312.75 312.90 313.15

70° V Break 314.75 314.5 313.90 314.0 313.35 313.5 313.75

50° V 314.89 314.64 314.04 314.1 313.60 313.77 314.04

25° 315.07 314.82 314.22 314.58 313.91 314.15 314.40

00° V 315.25 315.0 314.40 314.75 314.23 314.50 314.75

East Line 29th St.

312.80
143
371.22
442
320.21

2/15/11 cut stakes H.M.R.

29

305.25	304.25	306.95	305.95	309.45	308.45	312.25	310.25
7.60	6.4	7.4	5.4	4.4	2.16	10.16	8.16
6.80	3.7	3.2	3.55	3.2	1.32	8.16	7.16
1.41	+1.15	-0.7	-1.5	-2.84	-1.2	+0.36	+1.41

312.75	312.75	314.75	312.75	314.89	314.04	315.26	314.75
6.66	7.66	5.66	6.66	5.62	6.07	5.16	6.16
5.89	6.12	4.86	5.80	4.66	4.37	4.71	5.22
+1.26	+1.5	+2.8	+1.84	+2.86	+1.2	+0.45	+1.72

304.62	327.1	525	425	645	545	945	845	1125	1025	1375	1275
11.50	10.87	11.87	9.47	10.67	8.67	12.71	11.67	14.82	13.71	17.27	16.27
316.72	1475	1875	1437	1404	1525	1475					
95	1.37	2.37	1.20	2.28	0.87	1.37					

317.91	315.70	1400	1475	1422	314.50	1460	1404	1401	1401	1360	1377
2.87	2.27	2.27	3.00	3.52	3.25	3.11	3.71	3.74	3.74	4.81	5.36

317.75	1100	1150	1000	2077	3072	3067	30500	30454	30400
11.87	6.75	7.25	7.75	10.05	10.11	11.70	1.04		5.04

309.04	1464	1404	1421	136	1279	145	139	120	1325	125
2.33	3.25	3.42	3.25	3.84	3.27	1.2	1.96	1.86	2.51	2.36

317.46	135	129	130	1235	125	110	104	105	975	100
3.28	2.34	2.96	2.96	3.51	3.34	2.31	5.06	5.36	6.01	5.96

315.86	7.7	7.1	7.2	6.50	6.7	5.70	4.6	4.5	3.85	4.0
1.80	8.16	8.76	8.6	9.31	9.16	10.86	11.26	11.36	12.01	11.86

309.06	305.45	305.70	305.06	305.7	305.6	306.2	306.45
2.61	2.86	3.01	2.36	2.46	1.86	1.61	

311.25	310	310.4	310.1	309.55	310.0	310.25
7.18	7.43	8.03	7.98	8.58	8.48	8.78

312.75	312.50	312.35	313.0	312.90	313.50	313.75
5.68	5.93	6.08	5.43	5.53	4.93	4.68

314.75	314.5	313.90	314.0	313.5	313.5	313.75
3.68	3.93	4.53	4.43	5.08	4.93	4.68

315.25	315.0	314.40	314.75	314.23	314.50	314.75
3.18	3.43	4.03	3.68	4.20	3.93	3.68

Property taken up
3/10/11 North
Hall
more
Hall

all stakes 1/15/12 Hatch Kroone Patrick

North

South

30425 3040 303.4 303.5 302.85 303.00 303.25

3040
303. 3040
303. 303.57 303.67 302.02 303.00
302. 303.00
302.

1/4 303.25 303.25 303.73 303.83 303.18 302.75 302.85

Dale

3045 303.5 303.90 3040 303.35 302.50 303.5

St.

1/2 3044 303.75 30407 30417 303.51 302.75 303.4

304 304
305.0 305.0 30423 30433 303.68 3040 303,
3040

30525 305.0 3044 3045 303.85 304.00 30425

4.5 high

308.06 HJ

303.5 302.5 303.31 304.0 303.90 303.5 304.5
4.56 4.86 4.71 4.06 4.16 4.46 3.56
305.21 305.0 304.4 304.5 303.85 304.0 304.0
2.81 3.06 3.66 3.56 4.21 4.06 3.91

30462 B.M. 8th mile west of water
 1/2 mile - 60th Palm

North West Line 30th St. South

266.35 303.25 303.0 302.4 302.0 301.10 301.0 301.25

250' 303.31 303.06 302.46 302.09 301.21 301.12 301.37

225' 303.40 303.15 302.55 302.22 301.37 301.30 301.55

200' 303.49 303.24 302.64 302.27 301.53 301.49 301.74

175' 303.58 303.33 302.73 302.51 301.69 301.68 301.93

150' 303.67 303.42 302.82 302.65 301.85 301.87 302.12

125' 303.76 303.51 302.91 302.79 302.01 302.06 302.31

100' 303.86 303.61 303.01 302.93 302.17 302.25 302.50

75' 303.95 303.70 303.10 302.97 302.34 302.44 302.69

50' 304.05 303.80 303.20 303.21 302.51 302.63 302.88

25' 304.15 303.90 303.30 303.36 302.68 302.82 303.07

0' 304.25 304.0 303.4 303.5 302.85 303.00 303.25

East Line Dale St.

336.763 SE 1/4 Sec 30th Culstake 8/15/11
 280.747 Northwest of Bridge N.M.R. 31

272.77 303.21 301.27 303.49 301.74 303.67 302.12
 272.30 7.54 11.45 9.36 11.11 9.18 107.3
 12.84 2.0 2.36 1.56 2.87 1.86
 304.74 302.86 302.50 304.05 302.58 304.25 303.25

304.62 304.62 304.62 304.62 304.62 304.62 304.62
 304.62 304.62 304.62 304.62 304.62 304.62 304.62

309.04 298.4 209.4 309.14 309.04 308.62 308.62
 9.2 7.8 10.4 11.2 11.2 11.2 11.2

309.24 299.8 301.4 299.2 297.7 297.3 298.2
 5.86 20.2 20.4 30.4 30.2 29.8 30.2

308.62 308.62 308.62 308.62 308.62 308.62 308.62
 308.62 308.62 308.62 308.62 308.62 308.62 308.62

303.0 301.0 303.06 301.12 303.24 301.49
 420 640 436 625 416 591

304.62 304.62 304.62 304.62 304.62 304.62 304.62
 304.62 304.62 304.62 304.62 304.62 304.62 304.62

303.42 301.87 302.61 302.25 303.80 302.63
 398 563 379 515 362 477

304.62 30 24 20 11 10 22 22 22 22 22 22 22 22
 525 588 628 718 725 525 525 525 525 525 525 525 525

324 244 237 153 159 242 252 265 175 157
 504 549 514 675 671 236 542 542 643 641

361 301 292 217 225 350 323 321 251 263
 467 527 535 616 603 243 405 507 577 549

40 32 35 235 30 all stakes 11/12 Kate Moore Point
 428 484 478 543 525

304.62 303.25 303.0 302.4 302.0 301.10 301.0 301.25
 314 4.81 5.06 5.66 6.06 6.96 7.06 6.81
 308.06 301.27 301.2 301.21 302.09 302.46 303.06 303.31
 6.69 6.94 6.85 5.97 5.60 5.00 4.76

303.29 303.24 303.04 303.37 301.83 301.49 301.74
 4.57 4.82 5.42 5.69 6.53 6.57 6.32

302.12 301.87 301.85 302.65 304.82 303.42 303.67
 5.94 6.19 6.21 5.41 5.24 4.64 4.39

303.86 303.61 303.01 302.93 302.17 302.21 302.50
 4.20 4.45 5.05 5.73 5.89 5.81 5.56

302.88 302.63 302.57 303.21 303.20 303.80 304.05
 5.78 5.43 5.45 4.84 4.86 4.26 4.91

304.25 304.0 303.4 303.5 302.85 303.00 303.25
 3.81 4.06 4.66 4.56 5.21 5.06 4.81

$$\begin{array}{r}
 15822 \text{ HI.} \\
 153.75 \\
 \underline{4.47} \\
 5.47 \\
 \underline{-1.0} \\
 4.47 \\
 1.62 \\
 \underline{+2.9} \\
 3.8 \\
 \underline{-0.3} \\
 3.5
 \end{array}$$

$$\begin{array}{r}
 157.78 \text{ HI.} \\
 154.5 \\
 \underline{3.28} \\
 154.75 \\
 \underline{3.03}
 \end{array}$$

N. Magnolia Ave
Union Place S.

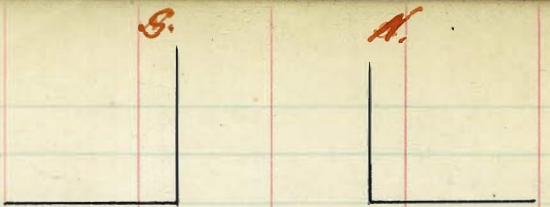
154.25	154.0	153.60	154.00	153.60		
154.12	153.87	153.60	153.94	153.60	154.0	154.25
153.75	153.50	153.10	153.50	153.10	153.50	153.75
152.75	152.50	152.10	152.50	152.10	152.50	152.75
150.75	150.50	150.10	150.50	150.10	150.50	150.75
147.75	147.50	147.36	148.02	147.95	148.55	148.80
144.85	144.60	144.70	145.60	146.0	146.60	146.85
140.94	140.69	140.79	141.70	142.17	142.72	142.97
137.03	136.78	136.90	137.81	138.24	138.84	139.09
133.02	132.77	132.94	133.91	134.36	134.96	135.21
129.21	128.96	129.09	130.02	130.48	131.08	131.33
126.55	126.30	126.50	127.51	128.11	128.71	128.96
	125.70	126.15	126.68	126.00	126.25	

Irving Ave.

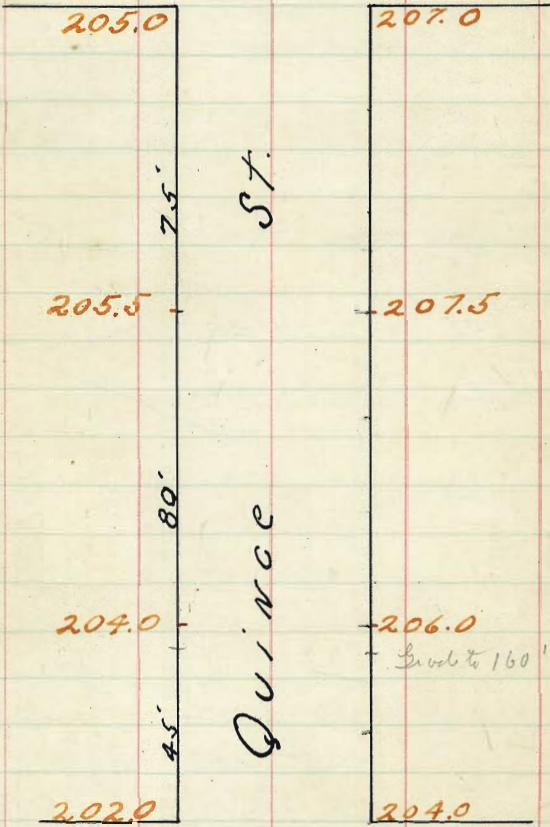
116.10
117.0
127.80 H.I.
2.57
125.28 J.P.
12.89
138.12 H.I.
10.39
127.73 B.M. on hub 43' north of corner
at spring magnolia ave.

126.05	129.21	137.03	126.25	131.33	0.13
11.57	8.91	1.09	11.87	6.79	137.99 J.P.
8.9	7.6	2.6	10.2	5.6	12.28
+2.7	+1.3	-1.5	+1.7	+1.2	150.87 H.I.
	144.83	147.75	150.75	148.50	129.09
	5.52	2.62	-0.32	1.57	11.28
	7.6	4.0	0.8	1.57	10.10
	+2.1	-1.4	-1.2	-0.8	+1.3
	153.75	154.25	152.75	153.75	154.25
	4.07	3.97	5.47	4.47	3.97
	4.02	8.77	5.97	4.87	4.07
	+0.4	+0.2	-0.5	-0.5	-0.5
	150.75	152.75	152.50	152.10	152.10
	7.97	5.97	6.22	6.62	6.62
	158.72 H.I.				
	153.75	153.50	153.10	154.5	154.75
	4.97	5.22	5.62	4.22	3.97
	154.25	154.0	153.6		
	4.47	4.72	5.12		
	127.73 J.P. on hub.				
	11.22			126.15	125.70
	138.95 H.I.	126.0	125.68	1280	1325
	126.25	12.95	13.27		128.3
	12.70				126.5
	126.55	129.21	128.96	129.09	130.02
	12.40	9.74	9.99	9.86	8.93
					8.47
	131.33	137.03	136.78	136.80	137.81
	7.62	1.92	2.17	2.05	1.14
	138.24	138.84	138.84		
	0.71	0.11	12.94	154.78 H.I.	139.09
					12.69
	146.85	146.60	146.0	145.6	140.7
	4.93	5.18	5.78	6.78	7.08
					140.6
	147.55	147.4	148.05	148.55	148.80
	4.23	4.38	5.73	3.23	2.98
	127.73	128.7	128.58	126.0	126.25
	11.25	13.29	13.50	12.94	12.73
	138.95 H.I.	126.0	125.68	126.15	125.70
	126.25	12.95	13.27	1280	1325
	12.40	9.74	9.99	9.86	8.93
	12.43				8.47
	127.73	128.7	128.58	126.0	126.25
	11.25	13.29	13.50	12.94	12.73
	138.95 H.I.	126.0	125.68	126.15	125.70
	126.25	12.95	13.27	1280	1325
	12.40	9.74	9.99	9.86	8.93
	12.43				8.47
	137.81	138.24	138.84	138.84	139.09
	1.17	0.74	0.14	12.94	4.53
				4.78	5.38
	147.55	147.26	148.02	148.55	148.80
	3.63	4.02	5.52	6.53	5.78
					6.65
	147.95	148.55	148.80	148.80	148.80
	3.47	3.47	3.47	3.47	3.47

April 24th
Builds
Fence
Blumber



Union St.



Horton Ave



S QUINCE ST. N

14 Union	205.25	205.0	205.10	206.0	206.4	207.0	207.25
25'E	205.42	205.17	205.26	206.17	206.56	207.17	207.42
50'E	205.58	205.33	205.43	206.33	206.73	207.33	207.58
75'E	205.75	205.50	205.60	206.50	206.9	207.50	207.75
100'E	205.28	205.03	205.13	206.03	206.43	207.03	207.28
125'E	204.81	204.56	204.66	205.56	205.96	206.56	206.81
155'E	204.25	204.0	204.10	205.0	205.90	206.0	206.25
175'E	203.36	203.11	203.21	204.11	204.51	205.11	205.36
200'E	202.25	202.0	202.10	203.0	203.40	204.0	204.25

East line Horton

Grade 100' E of Union

206.10	212.45	212.45	212.45	212.45	212.45	212.45
6.35	6.35	5.35	5.35	5.35	5.35	5.35
212.45	207.00	207.00	207.00	207.00	207.00	207.00
6.35	6.35	5.35	5.35	5.35	5.35	5.35

207.00	207.44	207.44	207.44	207.44	207.44	207.44
4.53	6.24	6.24	6.24	6.24	6.24	6.24
211.53	205.20	205.20	205.20	205.20	205.20	205.20
6.24	6.24	4.20	4.20	4.20	4.20	4.20

204.56	204.66	205.26	205.96	206.56	207.16	207.76	208.36	208.96	209.56	210.16	210.76
6.76	6.76	5.76	5.76	4.76	4.76	4.76	4.76	4.76	4.76	4.76	
207.98	207.98	205.74	205.74	205.74	205.74	205.74	205.74	205.74	205.74	205.74	
7.74	6.74	6.74	6.74	6.74	6.74	6.74	6.74	6.74	6.74	6.74	

5-12-11 All States at Blount Point + City

207.11	205.70	205.70	206.00	206.40	207.00
3.86	5.01	5.01	4.61	4.61	4.61
211.08	205.33	205.43	206.33	206.73	207.23
7.74	5.48	5.58	4.68	4.68	3.68
	205.50	205.60	206.50	206.90	207.50
	5.50	5.40	4.50	4.11	3.50
	204.52	204.62	205.52	205.92	206.52
	6.44	6.34	5.44	5.05	4.45
	204.00	204.10	205.00	205.40	206.00
	7.00	6.90	6.00	5.40	5.00

6-26-11 School OK Blount Point + City

North } West Line of Brant St. } South

00	235.25	235.00	234.40	234.0	233.10	233.00	233.25
25	234.64	234.37	233.77	233.5	232.66	232.62	232.87
50	234.20	233.75	233.15	233.0	232.22	232.25	232.50
75	233.37	233.14	232.52	232.50	231.74	231.7	232.12
100	232.75	232.5	231.70	232.0	231.35	231.5	231.75
125	230.37	230.12	229.57	229.75	229.16	229.37	229.62
150	228.00	227.75	227.25	227.50	226.97	227.05	227.50
175	225.62	225.37	224.70	225.25	224.78	225.12	225.37
200	223.25	223.0	222.60	223.0	222.60	223.0	223.25

East Line of Curlew St.

Spruce St
14' walks
13' 1/4's

Summe
Crown
of
the
line

40

250.90 Brant St. 1st Walnut

1.63	235.64	235.12	233.15	233.15	232.01	2
52.53	235.05	232.50	232.75	227.80	233.25	
6.87	2.97	2.62	10.23	15.68	8.76	
245.72	8.27	2.82	3.73	11.28	2.16	
3.16	7.8	-0.2	16.7	19.9	16.6	
148.88	235.64	235.62	233.15	233.15	232.01	
5.51	233.25	234.00	231.75	229.00	233.25	
243.137	2.40	1.62	11.43	15.15	8.76	
11.37	9.27	1.82	8.43	4.15	7.86	
244.76	-7.0	-0.2	13.0	11.0	10.9	
12.35	243.15	233.31	306	235	227.5	22.5
232.41	12.11	222	306	531	229	22.5
3.21	231.01	225.15	306	506	234	22.5
235.624	1.00	232.24	275	2728	230	230
0.45	232.01	122	10.58	16.04	15.01	224
235.14	13.40	122	10.81	10.81	10.81	10.81
2.04	229.01	232.24	10.81	10.81	10.81	10.81
243.484	2.33	219.25	10.81	10.81	10.81	10.81
	219.25					

North West Line of Curlew South

Spruce St 9' cut & fill
14' walks
13' 1/4's
Bunker
Evans
Dickson

00	220.25	220.00	219.60	220.00	219.60	220.00	220.25
25	215.25	215.00	214.60	215.00	214.60	215.00	215.25
50	210.25	210.00	209.60	210.00	209.60	210.00	210.25
75	205.25	205.00	204.60	205.00	204.60	205.00	205.25
100	200.25	200.00	199.60	200.00	199.60	200.00	200.25
125	195.25	195.00	194.60	195.00	194.60	195.00	195.25
150	190.25	190.00	189.60	190.00	189.60	190.00	190.25
175	185.25	185.00	184.60	185.00	184.60	185.00	185.25
200	180.25	180.00	179.60	180.00	179.60	180.00	180.25

219.35	219.35	206.56	206.56	206.56	206.56
210.25	210.25	220.25	210.25	200.25	190.25
0.00	9.10	13.69	3.69	6.31	16.31
6.40	13.20	3.44	14.10	16.05	16.30
7.30N	-4.21	-17.123	-17.175	-9.745	0.05
219.35	206.56	206.56	195.43	195.43	
12.51	200.25	190.25	180.25	180.25	
206.56	6.31	16.31	15.18	15.18	
0.00	3.91	10.01	10.05	6.38	
206.56	7.44	6.31	75.105	7.90	
11.83					
174.73	226.24 H				
0.70	12.39				
195.43 H	213.85	10	200	190	
	0.52	221	159	1159	170.0
	219.21 H	0.21	104	1164	12.25
	12.00				2.25
	20.81				0.50
	0.25				
	20.59				
	11.52				
	190.36				
	26.7				
	195.05 H				

232.87 T.P. N.W. Cor Brant & Spruce
0.66
233.12
10.06
223.37 T.P. Pipe S.E. Cor Spruce & Curlew - Wallau etc 22341
0.32
223.66 H.I. 223.69 223.69 223.69 223.69 212.20 212.20
12.21 220.25 20.00 20.00 20.20 10.20 10.00
217.48 3.44 3.69 3.69 3.44 7.90 2.40
216.72 H.I. 212.20 212.20 212.20 212.20 212.20 212.20
11.48 10.00 10.20 210.00 200.25 200.00 200.25
200.25 T.P. N.E. 2.20 1.95 12.20 11.98 12.25 17.95
0.48 C.I.3 C.I.2
200.73 H.I. 200.73 200.73 200.73 200.73 MAT 2nd - 1512
140.126 10.48 10.73 10.73 10.48 Domain
0.74 190.97 190.97 190.97 190.97 Shaw
190.97 H.I. 130.25 130.00 130.00 130.00 Dennis
10.72 10.97 10.72 10.97
curbs & property

East Line of Dove St.

223.24	211.87	211.87	211.87		
0.83	09.60	10.00	5.60		
224.07	2.27	1.67	2.27		
12.46					
211.59					
10.29					
211.87 H.I.	200.28	200.28	200.28		
11.34	199.60	199.60	199.60		
200.103	.68	.28	.68		
4.25					
200.28 H.I.	190.56	190.56	190.56		
11.15	189.60	190.00	189.60		
189.13	196	.56	96		
1.43					
190.56	190.56	190.56	190.56		
	179.60	180.00	179.60		
	10.96	10.56	10.96		

checked A.K. Mar 19-12
Domain
Shaw
Dennis

Bush

23125	23100	23085	23150	23140	23100	23225
23158	23133	23118	23180	23173	23233	23258
23191	23166	23151	23216	23206	23266	23291
23228	23200	23185	23250	23240	23300	23325
23258	23233	23218	23280	23273	23333	23358
23291	23266	23251	23316	23306	23366	23391
23325	23300	23285	23350	23340	23400	23425

Ash

23325

23425

23838

23300	23285	23350	23340	23400
5.38	5.53	4.88	4.98	4.88
23260	23251	23316	23306	23366
5.08	5.87	5.22	5.22	4.72
23233	23218	23280	23273	23333
5.29	5.44	4.80	4.90	4.30
23200	23185	23250	23240	23300
5.63	5.78	5.13	5.23	4.63
23166	23151	23216	23206	23266
5.97	6.12	5.47	5.57	4.97
23133	23118	23180	23173	23233
6.30	6.45	5.80	5.90	5.30
23100	23085	23150	23140	23200
5.78	5.33	4.68	4.78	4.18

23358
4.63
1237.63
60
201.58
4.60
236.18

233
5.53
32.250
4.503
32.900
4.503

E 311.0	W 312.0	E 283.5	W 284.5	E 60	W 60
------------	------------	------------	------------	---------	---------

Robinson Ave. Cypress St Myrtle St



Univ. Ave. Robinson Ave. Cypress St.



West

M.L. Robinson

East

46

100	314.25	314.00	313.40	313.50	312.85	313.00	313.25
150	317.25	317.00	316.40	316.50	315.85	316.00	316.25
200	320.25	320.00	319.40	319.50	318.85	319.00	319.25
250	323.25	323.00	322.40	322.50	321.85	322.00	322.25
300	326.25	326.00	325.40	325.50	324.85	325.00	325.25
350	329.25	328.00	327.40	327.50	326.85	327.00	327.25
400	330.05	329.80	329.20	329.30	328.65	328.80	329.05
450	331.45	331.20	330.60	330.70	329.05	330.20	330.45
500	332.65	332.40	331.80	331.90	331.25	331.40	331.65
550	333.65	333.40	332.80	332.90	332.25	332.40	332.65
600	334.45	334.20	333.60	333.70	333.05	333.20	333.45
650	334.85	334.60	334.00	334.10	333.45	333.60	333.85
700	335.15	335.00	334.40	334.50	333.85	334.00	334.25
750	335.06	334.86	334.58	334.68	333.93	334.09	334.34
800	335.16	334.96	334.71	334.81	334.08	334.26	334.51
	335.27	335.07	334.84	334.94	334.23	334.42	334.67
	335.37	335.17	334.98	335.08	334.38	334.58	334.83
	335.47	335.27	335.11	335.21	334.52	334.72	334.99
850	335.58	335.38	335.24	335.34	334.67	334.91	335.16
	335.68	335.48	335.38	335.48	334.82	335.07	335.32
	335.79	335.59	335.61	335.71	334.97	335.23	335.48
	335.89	335.69	335.64	335.74	335.11	335.39	335.64
900	336.00	335.80	335.78	335.88	335.26	335.56	335.81
	336.10	335.90	335.91	336.01	335.41	335.72	335.97
	336.20	336.00	336.05	336.15	335.56	335.88	336.13
950	336.31	336.11	336.18	336.28	335.70	336.05	336.30
1000	336.50	336.30	336.42	336.52	335.97	336.33	336.58
						336.50	336.75

West

North

East

314.25	314.00	313.40	313.50	312.85	313.0	313.25
314.00	314.0	313.05	313.15	312.50	313.0	313.00
313.00	313.0				312.0	
313.40	312.50	312.73	312.83	312.18	311.50	312.40
313.0	312.0	312.40	312.50	311.85	311.00	312.00
312.10	311.50	312.08	312.18	311.53	310.50	311.10
311.0	311.0				310.0	310.0
312.0	312.0	311.75	311.85	311.20	311.0	311.0
312.25	312.0	311.40	311.50	310.85	311.0	311.25

ROBINSON

AVE.

South

check OK

310.25

11.00	13.00	14.00	12.50
9.75	7.25	8.75	8.25

310.25

310.25 - 310.25

310.42	364	3581	2620	25-85	3100	3620	3520	2405	2572	2584
310.42	401	461	472	4.07	420	421	482	2137	4786	484
310.42	760	3540	3574	3526	3572	3570	3572	3577	3487	3570
310.42	442	502	464	5.11	496	463	523	4.77	5.45	5.19
310.42	3522	2.98	3524	3467	3491	3527	3487	3511	3452	3439
310.42	489	544	572	5.75	6.01	5.25	5.87	5.31	5.90	5.84
310.42	2576	2452	2471	2484	2421	250	2460	2450	2385	2400
310.42	526	586	5.71	6.37	6.26	2.11	2.21	2.61	3.26	3.11
310.42	3400	3400	3400	3345	3360	3420	3360	3320	3301	3320
310.42	251	3.11	3.01	3.66	3.71	2.91	3.51	3.41	4.01	3.91
310.42	3340	3280	3200	3221	3240	3170	3060	3070	3000	3000
310.42	271	4.31	4.21	4.96	4.71	5.91	6.51	6.41	7.01	6.91
310.42	2860	2920	2920	2865	2884	2800	2740	2750	2685	2700
310.42	731	7.51	7.81	8.46	8.21	9.11	9.71	9.61	10.26	10.11
310.42	2100	2540	2570	2485	2500	2000	1940	1950	1885	1900
310.42	12.11	11.71	11.11	12.46	12.11	5.63	6.23	6.13	7.09	6.43
310.42	14.00	13.40	13.50	12.85	13.00	2.10.00	2.10.00	2.10.00	2.10.00	2.10.00
310.42	11.03	12.23	12.13	12.78	12.63	1.25	2.10	2.10	2.10	2.10

check OK Block B Robinson

10-23-11 through P & E

West

North

East

384.75 TP

284.00 58.300 384.50 58.250 84.21 84.21
5.27 5.57 5.07 5.07 5.02 5.10

284.25 284.00 283.40 283.50 282.85 283.00 283.25

389.7

284.00 284.00 282.75 282.50 282.25 283.00 283.00
283.00 283.00

289.24 TP

8442 83.81 83.91 83.26 83.41 84.21
4.96 3.57 5.47 6.12 5.96 5.10

283.73 283.56 283.89 283.23 283.06 282.90 282.73

4.60

8400 83.40 83.90 82.81 83.00
5.38 5.98 5.44 4.03 1.36

284.71

290.06

Checked OK Clough D & E

10.23-11 Robinson to Cypress

Cypress

284.25 284.08 283.91 283.75 283.58 283.41 283.25

Street

282.90 283.73 283.56 283.40 283.23 283.07 282.90

283.50 283.50 283.25 283.00 282.75 283.50 282.50
284.50 284.50

284.75 284.50 283.90 284.00 283.85 283.50 283.75

South

89018

South line Cypress St

00	284.75	284.50	283.90	284.00	283.35	283.50	283.75
25	284.95	284.70	284.10	284.20	283.55	283.70	283.95
50	285.75	284.90	284.30	284.40	283.75	283.90	284.15
75	285.35	285.10	284.50	284.60	283.95	284.10	284.35
100	285.55	285.30	284.71	284.81	284.16	284.30	284.55
125	285.76	285.51	284.91	285.01	284.36	284.51	284.76
150	285.96	285.71	285.11	285.21	284.56	284.71	284.96
175	286.16	285.91	285.31	285.41	284.76	284.91	285.16
200	286.37	286.12	285.52	285.62	284.97	285.11	285.36
225	286.57	286.32	285.72	285.82	285.17	285.32	285.57
250	286.77	286.52	285.92	286.02	285.37	285.52	285.77
275	286.97	286.72	286.12	286.22	285.57	285.72	285.97
300	287.18	286.93	286.33	286.43	285.77	285.93	286.18
325	287.38	287.13	286.53	286.63	285.98	286.13	286.38
350	287.58	287.33	286.73	286.83	286.18	286.33	286.58
375	287.78	287.53	286.93	287.03	286.38	286.53	286.78
400	287.98	287.73	287.13	287.23	286.58	286.73	286.98
425	288.19	287.94	287.34	287.44	286.79	286.94	287.19
450	288.39	288.14	287.54	287.64	286.99	287.14	287.39
475	288.59	288.34	287.74	287.84	287.19	287.34	287.59
500	288.80	288.55	287.94	288.04	287.39	287.54	287.79
525	289.00	288.75	288.15	288.24	287.59	287.75	288.00
550	289.20	288.95	288.35	288.45	287.80	287.95	288.20
575	289.40	289.15	288.55	288.65	288.00	288.15	288.40
600	289.60	289.35	288.75	288.85	288.20	288.35	288.60
625	289.81	289.56	288.96	289.05	288.41	288.56	288.81
650	290.01	289.76	289.16	289.26	288.61	288.76	289.01
675	290.21	289.96	289.36	289.46	288.81	288.96	289.21
695	290.25	290.00	289.40	289.50	288.85	289.00	289.25

North line Murtle

27669 70	8470	8375	8315	8215	8175	8155	8156	8156
1287	492	552	1472	542	1932	562	1391	261
279744	127	122	101	922	112	920	1261	1231
190	+3.56	-5.88	+4.6	-4.0	+2.1	-4.7	+1.3	-7.7
28767	8637	8537	8477	8377	8318	8218	8158	8158
1220	1353	423	1310	380	1249	389	1229	299
279744	122	120	102	120	70	532	52	740
190	+2.8	-3.2	+3.8	-8.0	+2.9	-5.0	+7.2	-5.0
8798	8698	8539	8439	8380	8280	8220	8120	8120
1153	257	1148	218	1107	1207	1067	1167	1167
879	379	808	220	350	1547	320	1442	273
190	+8.1	-3.2	+8.2	-2.7	+7.5	-3.4	+7.4	-2.7
8960	8860	9001	8901	9025	8925	8825	8725	8725
1027	1127	986	1036	942	1062	1062	1062	1062
2	1527	420	1036	720	170	170	170	170
190	+2.7	-4.0	+5.56	-4.8	+2.2	-6.8		

Mon 9 Indiana Cypress

30286	8470	8375	8315	8215	8175	8155	8156	8156
1854	500	550	1470	540	1930	560	1390	260
31230	127	122	101	920	110	920	1260	1230
1791	+3.56	-5.88	+4.6	-4.0	+2.1	-4.7	+1.3	-7.7
300139	8637	8537	8477	8377	8318	8218	8158	8158
300	1353	423	1310	380	1249	389	1229	299
300	122	120	102	120	70	532	52	740
1227	+2.8	-3.2	+3.8	-8.0	+2.9	-5.0	+7.2	-5.0
288.32	8698	8539	8439	8380	8280	8220	8120	8120
160	257	1148	218	1107	1207	1067	1167	1167
289.70	879	379	808	220	350	1547	320	1442
5.19	190	+8.1	-3.2	+8.2	-2.7	+7.5	-3.4	+7.4
284.73	8960	8860	9001	8901	9025	8925	8825	8725
7.09	1027	1127	986	1036	942	1062	1062	1062
271.87	2	1527	420	1036	720	170	170	170
16.57	190	+2.7	-4.0	+5.56	-4.8	+2.2	-6.8	
277.34	8470	8375	8315	8215	8175	8155	8156	8156
5.81	500	550	1470	540	1930	560	1390	260
280.15	127	122	101	920	110	920	1260	1230
290.6	+3.56	-5.88	+4.6	-4.0	+2.1	-4.7	+1.3	-7.7
284.75	8637	8537	8477	8377	8318	8218	8158	8158
780	1353	423	1310	380	1249	389	1229	299
642	122	120	102	120	70	532	52	740
271.81	+2.8	-3.2	+3.8	-8.0	+2.9	-5.0	+7.2	-5.0
321	8698	8539	8439	8380	8280	8220	8120	8120
288.00	257	1148	218	1107	1207	1067	1167	1167
626	879	379	808	220	350	1547	320	1442
294.26	190	+8.1	-3.2	+8.2	-2.7	+7.5	-3.4	+7.4
	8960	8860	9001	8901	9025	8925	8825	8725
	1027	1127	986	1036	942	1062	1062	1062
	2	1527	420	1036	720	170	170	170
	190	+2.7	-4.0	+5.56	-4.8	+2.2	-6.8	

Checked OK along D & E

10-23-11

		2760	275.0
	30	2820	281.0
286.0	285.0	2830	282.0
30th St		31st St.	
285.0	284.0	2830	282.0
200'	200'	496'	496'
284.0	283.0	2780	278.0
Dale St			
283.0	282.0	100'	100'
100'	100'	282.0	281.0
278.0	277.0	284.0	283.0
100'	100'	1065'	1065'
265.5	265.0	286.0	285.0
29th St.		30th St	
263.5	263.0	285.0	284.0

IVY } Sidewalks = 16'
 ST } Quarters = 5'

IVY Street

N.

S

Dale Street

283.25	283.0	282.40	282.50	281.60	282.0	282.25
282.00	281.75	281.15	281.25	280.95	280.75	281.00
280.75	280.50	279.90	280.00	279.10	279.50	279.75
279.50	279.25	278.65	278.75	277.85	278.25	278.50
278.25	278.0	277.40	277.50	276.60	277.0	277.25
275.13	274.98	274.28	274.44	273.58	274.0	274.25
272.57	272.32	271.72	271.84	271.10	271.55	271.80
272.00	271.75	271.15	271.38	270.55	271.0	271.25
268.88	268.63	268.03	268.31	267.53	268.0	268.25
265.75	265.50	264.90	265.25	264.50	265.0	265.25

29th St.

[Note - Grades figured for 5' Quarters.]

Cut Stakes

284.37
115
26.24
224
283.25 N.H.

82.5	77.5	78.25	77.25	73.0	71.25	65.75	65.25
26.0	35.0	50.0	6.0	11.25	13.00	18.0	14.0
31.5	25.0	40.0	6.0	7.25	9.60	14.0	14.0
+0.35	+1.0	+0.0	+0.7	+3.0	+2.4	+4.0	+4.0

280.25	83.5	82.0	80.5	79.5	78.0	77.0	72.32	71.55
278.75	3.78	4.93	6.48	7.45	8.93	9.95	5.93	6.70
277.25	65.5	65.0	Curb-Prof.	1/12	Hatch	1/12	1/12	1/12
275.75	8.22	8.72						
273.25	283.04	4.5	8.00	8.00	7.50	7.53	6.00	1.4
271.75	1.35	1.85	1.85	1.85	6.89	11.46	11.46	11.46
270.25	274.39	2.30	8.10	8.10	7.90	7.90	7.90	7.90
268.75	2.30	2.91	2.91	2.91	4.49	5.27	4.49	4.49

288.69	282.25	282.00	281.60	282.00	282.40	283.00	283.25
6.44	6.69	7.09	6.19	6.29	5.69	5.44	
280.75	280.15	279.90	280.00	279.10	279.50	279.75	
7.94	8.19	8.79	8.69	9.59	9.19	8.94	
277.25	277.00	276.60	277.50	277.40	278.00	278.25	
11.44	11.69	12.09	11.19	11.29	10.69	10.44	

12.26	276.43	J.P.	286.20	0.40	286.60	H.L.
278.25	278.0	277.40	277.50	276.60	277.0	277.25
8.39	8.64	9.24	9.14	10.04	9.64	9.39
12.27	274.37	J.P.	1.70	275.47	H.L.	
271.80	271.45	271.10	271.92	271.72	272.32	272.57
3.67	3.92	4.37	3.50	3.75	3.15	2.90
268.75	268.60	268.90	268.25	268.50	268.90	268.25
9.72	9.77	10.57	10.22	10.97	10.47	10.22

chk. ok. Jan 24/14
Shields
Taylor
Blumberg

IVY STREET

N.

S

30th. Street

285.25	285.00	284.40	284.50	283.60	284.00	284.25
285.13	284.88	284.28	284.38	283.88	283.88	284.13
✓ 285.00	284.75	284.15	284.25	283.38	283.75	284.00
284.88	284.63	284.03	284.13	283.23	283.63	283.88
✓ 284.75	284.50	283.90	284.00	283.10	283.50	283.75
284.63	284.38	283.78	283.88	282.98	283.38	283.63
✓ 284.50	284.25	283.65	283.75	282.85	283.25	283.50
284.38	284.13	283.53	283.63	282.73	283.13	283.38
✓ 284.25	284.00	283.40	283.50	282.60	283.00	283.25

Dale Street

cut water 11/44 Hotel
11/11

286.24	850	840	847.5	837.5	84.5	83.5
289.57	537	483	422	522	487	587
	50.4	28.54	10.4	10.4	10.72	10.65
286.24	850	840	847.5	837.5	84.5	83.5
289.57	537	483	422	522	487	587
	50.4	28.54	10.4	10.4	10.72	10.65
286.24	850	840	847.5	837.5	84.5	83.5
289.57	537	483	422	522	487	587
	50.4	28.54	10.4	10.4	10.72	10.65
286.24	850	840	847.5	837.5	84.5	83.5
289.57	537	483	422	522	487	587
	50.4	28.54	10.4	10.4	10.72	10.65

and and Prof

286.24	850	840	847.5	837.5	84.5	83.5
289.57	537	483	422	522	487	587
	50.4	28.54	10.4	10.4	10.72	10.65

286.24
211.5
288.69 H.J.

286.24	285.00	284.40	284.50	283.60	284.00	284.25
3.44	3.69	4.29	4.19	5.09	4.69	4.44
284.00	283.75	283.38	284.25	284.13	284.75	285.00
4.69	4.94	5.31	4.44	4.54	3.94	3.69
284.75	284.00	283.90	284.00	283.10	283.00	283.75
3.94	4.19	4.79	4.69	5.59	5.19	4.94
283.50	283.25	282.85	283.75	283.65	284.25	284.50
5.19	5.44	5.84	4.94	5.04	4.44	4.19
284.25	284.00	283.40	283.50	282.60	283.00	283.25
4.44	4.69	5.29	5.19	6.09	5.69	5.44

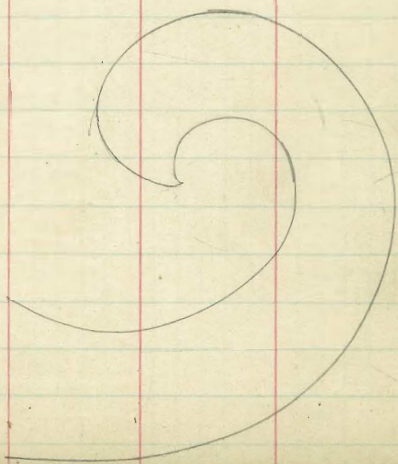
chk. OK Jan 23/12
Lalinda Taylor (Banker)

IVY STREET

Fern Street

284.25	284.00	283.40	283.50	282.60	283.00	283.25
284.37	284.12	283.52	283.62	282.72	283.12	283.37
284.83	284.58	283.98	284.08	283.18	283.58	283.83
285.30	285.05	284.45	284.56	283.65	284.06	284.30
285.77	285.52	284.92	285.02	284.12	284.62	284.77
286.25	286.00	285.40	285.50	284.60	285.00	285.25

4 1/2 ft
30th St
5 ft below



Cut stakes 1/29

289.37	85.3	84.3	286.2	84.0	83.0	85.05	84.06
6.00	4.07	5.07	3.23	5.67	6.67	4.22	5.61
283.37	3.87	4.87	287.47	5.42	6.22	4.37	5.36
2.00	+ 0.2	+ 0.7					
286.11				5.60	5.00	arb. Prof.	1/2 1/2
					4.67		1/2 1/2
286.24							
4.12							
290.36							
284.94						285.39	
5.42						4.97	
286.24							
3.66							
289.90							
286.25	286.00	285.40	285.10	284.60	285.20	285.25	
3.65	3.90	4.00	4.40	5.30	4.90	4.65	
284.30	284.06	283.65	284.56	284.45			
5.60	5.85	6.25	5.34	5.45			
283.40	283.50	282.60	283.00	283.25			
6.50	6.40	7.30	6.90	6.65			

chk. OK except places marked Jan 24/12 J. Schiller
Saylor
Bunker

IVY STREET

31st St.

S

596	283.25	283.00	28240	28250	28160	28200	282.25
575	283.08	282.83	28223	28293	28143	28183	282.08
550	282.88	282.63	28203	28213	28123	28163	281.88
525	282.67	28242	28182	28192	28102	28142	281.67
500	28247	282.22	28162	28172	28082	28122	28147
475	282.27	282.02	28142	28152	28062	28102	281.27
450	282.07	28182	28122	28132	28042	28082	281.07
425	281.87	28162	28102	28112	28022	28062	280.87
400	281.67	28142	28082	28092	28002	28042	280.67
375	281.47	281.22	28062	28071	27982	28022	28047
350	281.26	281.01	28041	28051	27961	28001	280.26
325	281.06	280.81	28021	28031	27941	27981	280.06
300	280.86	280.61	28001	28011	27921	27961	279.86
275	280.66	280.41	27981	27991	27901	27941	279.66
250	280.46	280.21	27961	27971	27881	27921	279.46
225	280.26	280.01	27941	27951	27861	27901	279.26
200	280.05	279.80	27920	27930	27840	27880	279.05
175	279.85	279.60	27900	27910	27820	27860	278.85
150	279.65	279.40	27880	27890	27800	27840	278.65
125	279.45	279.20	27860	27870	27780	27820	278.45
100	279.25	279.00	27840	27850	27760	27800	278.25
75	280.00	279.75	27915	27926	27835	27875	279.00
50	280.75	280.50	27990	28000	27910	27950	279.75
25	281.50	281.25	28065	28075	27985	28025	280.50
00	282.25	282.00	28140	28150	28060	28100	281.25

Fern St

286.201 1177 20
287.30
287.47
287.64

culvert 194 " 263.9 "

286.11	78.75	79.25	79.75	80.25	80.75	81.25	81.75	82.25	82.75
1227	5.84	5.32	4.78	4.23	3.68	3.13	2.58	2.03	1.48
27834	4.00	3.24	2.48	1.73	0.97	0.21	-0.54	-1.29	-2.04
664	-1.26	-1.9	-2.54	-3.18	-3.82	-4.46	-5.1	-5.74	-6.38
279854E	30.46	7.46	80.56	79.86	81.26	82.66	84.06	85.46	86.86
112	3.15	4.15	2.75	3.75	2.35	3.35	4.35	5.35	6.35
27874	2.98	4.60	2.08	3.68	1.28	2.88	4.48	6.08	7.68
417	+0.25	-0.45	+0.7	+0.2	+1.1	+2.7	+4.3	+5.9	+7.5
280514E	82.07	81.07	72.77	81.77	82.77	83.77	84.77	85.77	86.77
27500	4.62	3.52	4.22	5.22	3.82	4.82	5.82	6.82	7.82
271	3.89	3.20	3.54	5.24	3.84	4.84	5.84	6.84	7.84
280714E	3.89	3.20	3.54	5.24	3.84	4.84	5.84	6.84	7.84
364	+0.7	+0.2	+0.7	+0.2	+1.1	+2.7	+4.3	+5.9	+7.5
280710M	Spike = Pal.	SW 31- Ivy	cut stakes	1/24	Habit	1/24	Habit	1/24	Habit

283.07
362
286.69
455
282.191P
1.24
284.88
283.07
320
286.374E
222
514
286.24
379
280.28
802
281.16
548
286.244E
710
386
283.64E
236
8001
646
86.274E
286.24
397
290.214E
794
287.224E
2.14
284.364E
5.11
278.65
5.71
284.05
4.31
279.46
4.70
280.86
3.50
280.26
6.61
281.67
5.20
281.07
5.80
282.47
4.40

282.00 28100 28150 28200 28250 28300 28350 28400 28450 28500

28100 28150 28200 28250 28300 28350 28400 28450 28500 28550

28000 28050 28100 28150 28200 28250 28300 28350 28400 28450

27900 27950 28000 28050 28100 28150 28200 28250 28300 28350

27800 27850 27900 27950 28000 28050 28100 28150 28200 28250

27700 27750 27800 27850 27900 27950 28000 28050 28100 28150

27600 27650 27700 27750 27800 27850 27900 27950 28000 28050

27500 27550 27600 27650 27700 27750 27800 27850 27900 27950

27400 27450 27500 27550 27600 27650 27700 27750 27800 27850

27300 27350 27400 27450 27500 27550 27600 27650 27700 27750

27200 27250 27300 27350 27400 27450 27500 27550 27600 27650

27100 27150 27200 27250 27300 27350 27400 27450 27500 27550

27000 27050 27100 27150 27200 27250 27300 27350 27400 27450

26900 26950 27000 27050 27100 27150 27200 27250 27300 27350

26800 26850 26900 26950 27000 27050 27100 27150 27200 27250

26700 26750 26800 26850 26900 26950 27000 27050 27100 27150

26600 26650 26700 26750 26800 26850 26900 26950 27000 27050

26500 26550 26600 26650 26700 26750 26800 26850 26900 26950

26400 26450 26500 26550 26600 26650 26700 26750 26800 26850

26300 26350 26400 26450 26500 26550 26600 26650 26700 26750

26200 26250 26300 26350 26400 26450 26500 26550 26600 26650

26100 26150 26200 26250 26300 26350 26400 26450 26500 26550

26000 26050 26100 26150 26200 26250 26300 26350 26400 26450

25900 25950 26000 26050 26100 26150 26200 26250 26300 26350

25800 25850 25900 25950 26000 26050 26100 26150 26200 26250

25700 25750 25800 25850 25900 25950 26000 26050 26100 26150

25600 25650 25700 25750 25800 25850 25900 25950 26000 26050

25500 25550 25600 25650 25700 25750 25800 25850 25900 25950

25400 25450 25500 25550 25600 25650 25700 25750 25800 25850

25300 25350 25400 25450 25500 25550 25600 25650 25700 25750

25200 25250 25300 25350 25400 25450 25500 25550 25600 25650

25100 25150 25200 25250 25300 25350 25400 25450 25500 25550

25000 25050 25100 25150 25200 25250 25300 25350 25400 25450

24900 24950 25000 25050 25100 25150 25200 25250 25300 25350

24800 24850 24900 24950 25000 25050 25100 25150 25200 25250

24700 24750 24800 24850 24900 24950 25000 25050 25100 25150

24600 24650 24700 24750 24800 24850 24900 24950 25000 25050

24500 24550 24600 24650 24700 24750 24800 24850 24900 24950

24400 24450 24500 24550 24600 24650 24700 24750 24800 24850

24300 24350 24400 24450 24500 24550 24600 24650 24700 24750

24200 24250 24300 24350 24400 24450 24500 24550 24600 24650

24100 24150 24200 24250 24300 24350 24400 24450 24500 24550

24000 24050 24100 24150 24200 24250 24300 24350 24400 24450

23900 23950 24000 24050 24100 24150 24200 24250 24300 24350

23800 23850 23900 23950 24000 24050 24100 24150 24200 24250

23700 23750 23800 23850 23900 23950 24000 24050 24100 24150

23600 23650 23700 23750 23800 23850 23900 23950 24000 24050

23500 23550 23600 23650 23700 23750 23800 23850 23900 23950

23400 23450 23500 23550 23600 23650 23700 23750 23800 23850

23300 23350 23400 23450 23500 23550 23600 23650 23700 23750

23200 23250 23300 23350 23400 23450 23500 23550 23600 23650

23100 23150 23200 23250 23300 23350 23400 23450 23500 23550

23000 23050 23100 23150 23200 23250 23300 23350 23400 23450

22900 22950 23000 23050 23100 23150 23200 23250 23300 23350

22800 22850 22900 22950 23000 23050 23100 23150 23200 23250

22700 22750 22800 22850 22900 22950 23000 23050 23100 23150

22600 22650 22700 22750 22800 22850 22900 22950 23000 23050

22500 22550 22600 22650 22700 22750 22800 22850 22900 22950

22400 22450 22500 22550 22600 22650 22700 22750 22800 22850

22300 22350 22400 22450 22500 22550 22600 22650 22700 22750

22200 22250 22300 22350 22400 22450 22500 22550 22600 22650

22100 22150 22200 22250 22300 22350 22400 22450 22500 22550

22000 22050 22100 22150 22200 22250 22300 22350 22400 22450

21900 21950 22000 22050 22100 22150 22200 22250 22300 22350

21800 21850 21900 21950 22000 22050 22100 22150 22200 22250

21700 21750 21800 21850 21900 21950 22000 22050 22100 22150

21600 21650 21700 21750 21800 21850 21900 21950 22000 22050

21500 21550 21600 21650 21700 21750 21800 21850 21900 21950

21400 21450 21500 21550 21600 21650 21700 21750 21800 21850

21300 21350 21400 21450 21500 21550 21600 21650 21700 21750

21200 21250 21300 21350 21400 21450 21500 21550 21600 21650

21100 21150 21200 21250 21300 21350 21400 21450 21500 21550

21000 21050 21100 21150 21200 21250 21300 21350 21400 21450

20900 20950 21000 21050 21100 21150 21200 21250 21300 21350

20800 20850 20900 20950 21000 21050 21100 21150 21200 21250

20700 20750 20800 20850 20900 20950 21000 21050 21100 21150

20600 20650 20700 20750 20800 20850 20900 20950 21000 21050

20500 20550 20600 20650 20700 20750 20800 20850 20900 20950

20400 20450 20500 20550 20600 20650 20700 20750 20800 20850

20300 20350 20400 20450 20500 20550 20600 20650 20700 20750

20200 20250 20300 20350 20400 20450 20500 20550 20600 20650

20100 20150 20200 20250 20300 20350 20400 20450 20500 20550

20000 20050 20100 20150 20200 20250 20300 20350 20400 20450

19900 19950 20000 20050 20100 20150 20200 20250 20300 20350

19800 19850 19900 19950 20000 20050 20100 20150 20200 20250

19700 19750 19800 19850 19900 19950 20000 20050 20100 20150

19600 19650 19700 19750 19800 19850 19900 19950 20000 20050

19500 19550 19600 19650 19700 19750 19800 19850 19900 19950

19400 19450 19500 19550 19600 19650 19700 19750 19800 19850

19300 19350 19400 19450 19500 19550 19600 19650 19700 19750

19200 19250 19300 19350 19400 19450 19500 19550 19600 19650

19100 19150 19200 19250 19300 19350 19400 19450 19500 19550

19000 19050 19100 19150 19200 19250 19300 19350 19400 19450

18900 18950 19000 19050 19100 19150 19200 19250 19300 19350

18800 18850 18900 18950 19000 19050 19100 19150 19200 19250

18700 18750 18800 18850 18900 18950 19000 19050 19100 19150

18600 18650 18700 18750 18800 18850 18900 18950 19000 19050

18500 18550 18600 18650 18700 18750 18800 18850 18900 18950

18400 18450 18500 18550 18600 18650 18700 18750 18800 18850

18300 18350 18400 18450 18500 18550 18600 18650 18700 18750

18200 18250 18300 18350 18400 18450 18500 18550 18600 18650

18100 18150 18200 18250 18300 18350 18400 18450 18500 18550

18000 18050 18100 18150 18200 18250 18300 18350 18400 18450

17900 17950 18000 18050 18100 18150 18200 18250 18300 18350

17800 17850 17900 17950 18000 18050 18100 18150 18200 18250

17700 17750 17800 17850 17900 17950 18000 18050 18100 18150

17600 17650 17700 17750 17800 17850 17900 17950 18000 18050

17500 17550 17600 17650 17700 17750 17800 17850 17900 17950

17400 17450 17500 17550 17600 17650 17700 17750 17800 17850

17300 17350 17400 17450 17500 17550 17600 17650 17700 17750

17200 17250 17300 17350 17400 17450 17500 17550 17600 17650

17100 17150 17200 17250 17300 17350 17400 17450 17500 17550

17000 17050 17100 17150 17200 17250 17300 17350 17400 17450

16900 16950 17000 17050 17100 17150 17200 17250 17300 17350

16800 16850 16900 16950 17000 17050 17100 17150 17200 17250

16700 16750 16800 16850 16900 16950 17000 17050 17100 17150

16600 16650 16700 16750 16800 16850 16900 16950 17000 17050

16500 16550 16600 16650 16700 16750 16800 16850 16900 16950

16400 16450 16500 16550 16600 16650 16700 16750 16800 16850

16300 16350 16400 16450 16500 16550 16600 16650 16700 16750

16200 16250 16300 16350 16

1.

Eastline

5 28307
341
28698

82
449 ✓
438 ✓
395 ✓
366 ✓
375 ✓

28687 H.L.

28200
28100
384
28200

28325 2820 28240 28250 28160 28200 28225

28325 28300 28240 28250 28160 28200 28225

28300 28200 28175 28150 28125 28200 28200
28200 28200 28100 28100

3.62 3.87 4.47 4.37 5.27 4.87 4.62
4.87 4.69 4.33 4.37 4.21 4.05 3.87

28200 28218 28234 28210 28266 28282 28300
28325 28300 28240 28250 28160 28200 28225

28260 28272 28226 28210 28194 28178 28160

31st ST

28300 28282 28266 28250 28234 28218 28200

28260 28272 28226 28210 28194 28178 28160

28210 28210 28175 28150 28125 28100 28100
28300 28300 28200 28200

28325 2830 28240 28250 28160 28200 28225

Westline

276.25	276.00	275.40	275.50	274.60	275.00	275.25
277.00	276.75	276.15	276.25	275.35	275.75	276.00
277.75	277.50	276.90	277.00	276.10	276.50	276.75
278.50	278.25	277.65	277.75	276.85	277.25	277.50
279.25	279.00	278.40	278.50	277.60	278.00	278.25
280.00	279.75	279.15	279.25	278.35	278.75	279.00
280.75	280.50	279.90	280.00	279.10	279.50	279.75
281.50	281.25	280.65	280.75	279.85	280.25	280.50
282.25	282.00	281.40	281.50	280.60	281.00	281.25
282.38	282.13	281.53	281.63	280.73	281.13	281.38
282.50	282.25	281.65	281.75	280.85	281.25	281.50
282.63	282.38	281.78	281.88	280.98	281.38	281.63
282.75	282.50	281.90	282.00	281.10	281.50	281.75
282.88	282.63	282.03	282.13	281.23	281.63	281.88
283.00	282.75	282.15	282.25	281.35	281.75	282.00
283.13	282.88	282.28	282.38	281.48	281.88	282.13
283.25	283.00	282.40	282.50	281.60	282.00	282.25

B 1st Street

all stakes 4/17/11 Halls
Halls
Halls

83.25	83.25	73.0	82.0	82.75	81.75	82.5	81.5
6.1	6.1	6.30	7.36	6.61	7.61	6.86	7.86
6.1	6.1	4.76	8.27	8.01	8.04	8.00	4.96
2.5	1.1	1.60	1.76	2.0	1.06	2.5	2.90
82.25	81.25	80.75	79.75	79.25	78.25	77.75	76.75
7.1	5.1	8.1	9.61	10.11	11.11	10.35	12.61
4.01	4.81	5.71	5.31	5.36	7.01	8.5	1.91
+2.7	+3.3	+2.9	+4.3	+1.20	+3.7	-3.85	1.07
76.25	75.25						
1.75	2.15						
9.15	3.22						
-8.0	-1.57						
83.00	82.00	81.00	80.00	79.00	78.00	77.00	76.00
8.25	8.15	8.05	7.95	7.85	7.75	7.65	7.55
1.88	1.88	1.88	1.88	1.88	1.88	1.88	1.88
7.00	7.00	7.00	7.00	7.00	7.00	7.00	7.00
4.85	5.85	6.39	7.89				
1.2	1.6	1.1					
83.00	82.50	82.00	81.50	81.00	80.50	80.00	79.50
4.23	4.23	4.23	4.23	4.23	4.23	4.23	4.23
3.95	3.95	3.95	3.95	3.95	3.95	3.95	3.95
4.23	4.23	4.23	4.23	4.23	4.23	4.23	4.23
5.63	5.63	5.63	5.63	5.63	5.63	5.63	5.63
5.22	5.22	5.22	5.22	5.22	5.22	5.22	5.22
all stakes 1/10/12 Halls							
83.00	81.75	80.50	79.25	78.00	76.75	75.50	74.25
3.48	4.33	5.18	6.03	6.88	7.73	8.58	9.43
4.88	5.73	6.58	7.43	8.28	9.13	9.98	10.83
4.88	5.73	6.58	7.43	8.28	9.13	9.98	10.83
4.88	5.73	6.58	7.43	8.28	9.13	9.98	10.83
7.62	8.47	9.32	10.17	11.02	11.87	12.72	13.57
10.02	10.87	11.72	12.57	13.42	14.27	15.12	15.97
286.87 H.E.							
282.00	281.75	281.50	281.25	281.00	280.75	280.50	280.25
4.87	5.12	5.37	5.62	5.87	6.12	6.37	6.62
282.75	282.50	282.25	282.00	281.75	281.50	281.25	281.00
4.12	4.37	4.62	4.87	5.12	5.37	5.62	5.87
281.50	281.25	281.00	280.75	280.50	280.25	280.00	279.75
5.37	5.62	5.87	6.12	6.37	6.62	6.87	7.12
282.25	282.00	281.75	281.50	281.25	281.00	280.75	280.50
4.62	4.87	5.12	5.37	5.62	5.87	6.12	6.37
279.75	279.50	279.25	279.00	278.75	278.50	278.25	278.00
7.12	7.37	7.62	7.87	8.12	8.37	8.62	8.87
279.25	279.00	278.75	278.50	278.25	278.00	277.75	277.50
7.62	7.87	8.12	8.37	8.62	8.87	9.12	9.37
276.75	276.50	276.25	276.00	275.75	275.50	275.25	275.00
10.12	10.37	10.62	10.87	11.12	11.37	11.62	11.87
276.25	276.00	275.75	275.50	275.25	275.00	274.75	274.50
10.62	10.87	11.12	11.37	11.62	11.87	12.12	12.37

chk. O.K. Jan 24/12
 Leheldt
 Taylor
 Bunker

1920	1910	1610	1600
1910	1900	1590	1580
187.8	186.8	167.0	166.0
	160'	170.2	169.2
175.0	174.0		
173.7	172.7		
172.5	171.5		
171.7	170.7		
171.0	170.0	184.6	183.6
170.7	169.7		
170.6	169.6		
170.9	169.9	191.0	190.0
171.5	170.5	192.5	191.85
172.4	171.4	193.7	192.4
173.9	172.9	193.8	192.8
		194.0	193.0
		194.0	193.0
		193.2	192.2
1900	1890	1920	1910
26th St.		27th St.	
		1910	1900

27th St.

28th St.

ST.

ST.

D

D

26th St.

27th St.

1830	182.0	194.0	195.0
60' 29th St.	60' 29th St.	60' 30th St.	60' 30th St.
184.0	183.0	192.0	194.0
187.2	186.2		22.0'
187.6	186.6	172.64	172.64
187.6	186.6	170.7	170.5
187.4	186.4	169.2	168.9
186.9	185.9	168.3	168.0
186.1	185.1	167.7	167.3
184.9	183.9	167.4	167.0
183.5	182.5	167.3	166.8
		167.4	166.9
		167.7	167.1
178.7	177.7	168.2	167.5
		169.1	168.3
		170.1	169.3
		171.8	170.9
			140'
161.0	160.0	183.0	182.0
100' 28th St.		60' 29th St.	
		184.0	183.0

D. ST.

D. ST.

East line

S

192.25	192.00	191.40	191.50	192.85	191.00	191.25
--------	--------	--------	--------	--------	--------	--------

192.00	192.00 191.00	191.22	191.33	190.67	191.00 192.00	191.00
--------	------------------	--------	--------	--------	------------------	--------

191.40	190.76	191.06	191.17	190.51	189.75	190.40
--------	--------	--------	--------	--------	--------	--------

191.50	190.50	190.89	191.00	190.34	189.50	190.50
--------	--------	--------	--------	--------	--------	--------

27th Street

190.85	190.25	190.73	190.83	190.18	189.25	189.85
--------	--------	--------	--------	--------	--------	--------

191.00	190.00 191.00	190.56	190.66	190.01	189.00 190.00	190.00
--------	------------------	--------	--------	--------	------------------	--------

191.25	191.00	190.40	190.50	189.85	190.0	190.25
--------	--------	--------	--------	--------	-------	--------

West line

East line

161.25	161.00	160.40	160.50	159.85	160.00	160.25
--------	--------	--------	--------	--------	--------	--------

161.00	161.00	160.08	160.18	159.53	160.00	160.00
160.00	160.00					

160.40	159.50	159.74	159.84	159.19	158.50	159.40
--------	--------	--------	--------	--------	--------	--------

28th ST

160.00	159.00	159.40	159.50	158.85	158.00	159.00
--------	--------	--------	--------	--------	--------	--------

159.10	158.50	159.06	159.16	158.51	157.50	158.10
--------	--------	--------	--------	--------	--------	--------

159.00	158.00	158.72	158.82	158.17	157.00	158.00
	159.00				158.00	

159.25	159.00	158.40	158.50	157.85	158.00	158.25
--------	--------	--------	--------	--------	--------	--------

West line

A.

S.

East line

183.25	183.00	182.40	182.50	181.85	182.00	182.25
--------	--------	--------	--------	--------	--------	--------

183.00	183.00 182.00	182.57	182.67	182.02	182.00 181.00	182.00
--------	------------------	--------	--------	--------	------------------	--------

182.85	182.25	182.73	182.83	182.18	181.25	181.85
--------	--------	--------	--------	--------	--------	--------

29th Street

183.50	182.50	182.90	183.00	182.35	181.50	182.50
--------	--------	--------	--------	--------	--------	--------

183.40	182.75	183.06	183.16	182.51	181.75	182.40
--------	--------	--------	--------	--------	--------	--------

184.00	183.00 184.00	183.23	183.33	182.68	182.00 183.00	183.00
--------	------------------	--------	--------	--------	------------------	--------

184.25	184.00	183.40	183.50	182.85	183.00	183.25
--------	--------	--------	--------	--------	--------	--------

West line

30th ST. S

600'	192.25	192.00	192.10	193.00	193.40	194.00	194.25
575'	190.05	189.80	189.84	190.66	190.96	191.55	191.80
550'	187.85	187.60	187.58	188.35	188.56	189.13	189.38
525'	185.65	185.40	185.32	186.04	186.16	186.70	186.95
500'	183.45	183.20	183.07	183.73	183.76	184.28	184.53
475'	181.25	181.00	180.81	181.42	181.36	181.85	182.10
450'	179.05	178.80	178.55	179.11	178.96	179.43	179.68
425'	176.85	176.60	176.29	176.80	176.56	177.00	177.25
400'	174.65	174.40	174.04	174.49	174.16	174.58	174.83
380'	172.89	172.64	172.24	172.64	172.24	172.64	172.89
360'	170.95	170.70	170.30	170.60	170.10	170.50	170.75
340'	169.45	169.20	168.80	169.05	168.50	168.90	169.15
320'	168.55	168.30	167.90	168.15	167.60	168.00	168.25
300'	167.95	167.70	167.30	167.50	166.90	167.30	167.55
280'	167.65	167.40	167.00	167.20	166.60	167.00	167.25
260'	167.55	167.30	166.80	167.05	166.40	166.80	167.05
240'	167.65	167.40	167.00	167.15	166.50	166.90	167.15
220'	167.95	167.70	167.10	167.40	166.85	167.10	167.35
200'	168.45	168.20	167.60	167.85	167.27	167.50	167.75
180'	169.35	169.10	168.50	168.70	168.10	168.30	168.55
160'	170.35	170.10	169.50	169.70	169.10	169.30	169.55
140'	172.05	171.80	171.20	171.35	170.73	170.90	171.15
125'	173.25	173.00	172.40	172.54	171.92	172.09	172.34
100'	175.25	175.00	174.40	174.53	173.90	174.07	174.32
75'	177.25	177.00	176.40	176.52	175.89	176.06	176.31
50'	179.25	179.00	178.40	178.51	177.87	178.04	178.29
25'	181.25	181.00	180.40	180.50	179.86	180.03	180.28
00'	183.25	183.00	182.40	182.50	181.85	182.00	182.25

192.57	192.57	192.57	192.57	192.57	192.57	192.57	192.57
192.55	192.55	192.55	192.55	192.55	192.55	192.55	192.55
179.43	179.43	179.43	179.43	179.43	179.43	179.43	179.43
181.07	181.07	181.07	181.07	181.07	181.07	181.07	181.07
182.24	182.24	182.24	182.24	182.24	182.24	182.24	182.24
182.47	182.47	182.47	182.47	182.47	182.47	182.47	182.47
183.86	183.86	183.86	183.86	183.86	183.86	183.86	183.86
185.82	185.82	185.82	185.82	185.82	185.82	185.82	185.82
186.77	186.77	186.77	186.77	186.77	186.77	186.77	186.77
187.50	187.50	187.50	187.50	187.50	187.50	187.50	187.50
188.17	188.17	188.17	188.17	188.17	188.17	188.17	188.17
188.77	188.77	188.77	188.77	188.77	188.77	188.77	188.77
189.37	189.37	189.37	189.37	189.37	189.37	189.37	189.37
190.00	190.00	190.00	190.00	190.00	190.00	190.00	190.00

194.00	194.00	194.00	194.00	194.00	194.00	194.00	194.00
195.50	195.50	195.50	195.50	195.50	195.50	195.50	195.50
196.20	196.20	196.20	196.20	196.20	196.20	196.20	196.20
197.00	197.00	197.00	197.00	197.00	197.00	197.00	197.00
197.75	197.75	197.75	197.75	197.75	197.75	197.75	197.75
198.40	198.40	198.40	198.40	198.40	198.40	198.40	198.40
199.00	199.00	199.00	199.00	199.00	199.00	199.00	199.00
199.60	199.60	199.60	199.60	199.60	199.60	199.60	199.60
200.20	200.20	200.20	200.20	200.20	200.20	200.20	200.20

194.00	194.00	194.00	194.00	194.00	194.00	194.00	194.00
195.50	195.50	195.50	195.50	195.50	195.50	195.50	195.50
196.20	196.20	196.20	196.20	196.20	196.20	196.20	196.20
197.00	197.00	197.00	197.00	197.00	197.00	197.00	197.00
197.75	197.75	197.75	197.75	197.75	197.75	197.75	197.75
198.40	198.40	198.40	198.40	198.40	198.40	198.40	198.40
199.00	199.00	199.00	199.00	199.00	199.00	199.00	199.00
199.60	199.60	199.60	199.60	199.60	199.60	199.60	199.60
200.20	200.20	200.20	200.20	200.20	200.20	200.20	200.20

194.00	194.00	194.00	194.00	194.00	194.00	194.00	194.00
195.50	195.50	195.50	195.50	195.50	195.50	195.50	195.50
196.20	196.20	196.20	196.20	196.20	196.20	196.20	196.20
197.00	197.00	197.00	197.00	197.00	197.00	197.00	197.00
197.75	197.75	197.75	197.75	197.75	197.75	197.75	197.75
198.40	198.40	198.40	198.40	198.40	198.40	198.40	198.40
199.00	199.00	199.00	199.00	199.00	199.00	199.00	199.00
199.60	199.60	199.60	199.60	199.60	199.60	199.60	199.60
200.20	200.20	200.20	200.20	200.20	200.20	200.20	200.20

194.00	194.00	194.00	194.00	194.00	194.00	194.00	194.00
195.50	195.50	195.50	195.50	195.50	195.50	195.50	195.50
196.20	196.20	196.20	196.20	196.20	196.20	196.20	196.20
197.00	197.00	197.00	197.00	197.00	197.00	197.00	197.00
197.75	197.75	197.75	197.75	197.75	197.75	197.75	197.75
198.40	198.40	198.40	198.40	198.40	198.40	198.40	198.40
199.00	199.00	199.00	199.00	199.00	199.00	199.00	199.00
199.60	199.60	199.60	199.60	199.60	199.60	199.60	199.60
200.20	200.20	200.20	200.20	200.20	200.20	200.20	200.20

194.00	194.00	194.00	194.00	194.00	194.00	194.00	194.00
195.50	195.50	195.50	195.50	195.50	195.50	195.50	195.50
196.20	196.20	196.20	196.20	196.20	196.20	196.20	196.20
197.00	197.00	197.00	197.00	197.00	197.00	197.00	197.00
197.75	197.75	197.75	197.75	197.75	197.75	197.75	197.75
198.40	198.40	198.40	198.40	198.40	198.40	198.40	198.40
199.00	199.00	199.00	199.00	199.00	199.00	199.00	199.00
199.60	199.60	199.60	199.60	199.60	199.60	199.60	199.60
200.20	200.20	200.20	200.20	200.20	200.20	200.20	200.20

194.00	194.00	194.00	194.00	194.00	194.00	194.00	194.00
195.50	195.50	195.50	195.50	195.50	195.50	195.50	195.50
196.20	196.20	196.20	196.20	196.20	196.20	196.20	196.20
197.00	197.00	197.00	197.00	197.00	197.00	197.00	197.00
197.75	197.75	197.75	197.75	197.75	197.75	197.75	197.75
198.40	198.40	198.40	198.40	198.40	198.40	198.40	198.40
199.00	199.00	199.00	199.00	199.00	199.00	199.00	199.00
199.60	199.60	199.60	199.60	199.60	199.60	199.60	199.60
200.20	200.20	200.20	200.20	200.20	200.20	200.20	200.20

194.00	194.00	194.00	194.00	194.00	194.00	194.00	194.00
195.50	195.50	195.50	195.50	195.50	195.50	195.50	195.50
196.20	196.20	196.20	196.20	196.20	196.20	196.20	196.20
197.00	197.00	197.00	197.00	197.00	197.00	197.00	197.00
197.75	197.75	197.75	197.75	197.75	197.75	197.75	197.75
198.40	198.40	198.40	198.40	198.40	198.40	198.40	198.40
199.00	199.00	199.00	199.00	199.00	199.00	199.00	199.00
199.60	199.60	199.60	199.60	199.60	199.60	199.60	199.60
200.20	200.20	200.20	200.20	200.20	200.20	200.20	200.20

7/10 checked O.K. Sample

29th Street

S

N.

East line

600'
 575'
 550'
 525'
 500'
 475'
 450'
 425'
 400'
 350'
 360'
 340'
 320'
 300'
 250'
 240'
 220'
 200'
 180'
 160'
 140'
 125'
 100'
 75'
 50'
 25'
 0

19425 19400 19385 19450 19440 19500 19525

19400 19400 19355 19425 19423 19500 19500
 19300

19340 19250 19326 19400 19404 19375 19440

30th Street

19320 19200 19297 19375 19390 19350 19450

19210 19150 19268 19350 19373 19325 19385

19200 19100 19239 19325 19357 19300 19400 19400
 19200

19225 19200 19210 19300 19340 19400 19425

West line

Utah	St.
<u>3375</u>	<u>3370</u>
	St.
	Dwight
<u>3365</u>	<u>3360</u>
Idaho	St.

Dwight St.

North

W. line Utah

337.75 337.50 336.90 337.25 336.72 337.00 337.25

337.62 337.37 336.77 337.12 336.59 336.87 337.12

337.50 337.25 336.65 337.00 336.47 336.75 337.00

337.37 337.12 336.52 336.87 336.34 336.62 336.87

337.25 337.00 336.40 336.75 336.22 336.50 336.75

337.12 336.87 336.27 336.62 336.09 336.37 336.62

337.00 336.75 336.15 336.50 335.97 336.25 336.50

336.87 336.62 336.02 336.37 335.84 336.12 336.37

336.75 336.50 335.90 336.25 335.72 336.00 336.25

E. line Idaho

South

337.71	42.26	42.26	42.26	42.26
205	37.50	36.75	37.00	36.25
342.24	7.76	5.51	5.26	6.01
	2.96	5.31	5.26	6.71
	+0.3	10.2	0.0	-0.7
	42.26	42.26	42.26	42.26
	37.00	37.25	36.50	36.75
	5.26			
	5.06	5.01	5.76	5.51
		5.01	5.76	5.51
	+0.2	+0.0	-0.2	-0.3

336.54 13m Post 100 S Dwight & Utah

337.78	337.50	336.80	337.25	336.72	337.00
448	5.08	4.7	5.6	4.98	
337.25	336.65	337.00	336.47	336.75	
4.7	5.33	4.98	5.1	5.2	
337.00	336.40	336.75	336.22	336.50	
4.98	5.74	6.23	5.76	5.48	
336.75	336.15	336.50	335.91	336.25	
5.23	5.80	5.41	6.02	5.73	
336.50	335.90	336.25	335.72	336.00	
5.48	6.28	5.73	6.16	5.78	

5/19/11
cut to fill
Dunkle
Expans
Michigan

334.71	41.71	41.71	41.71	41.71	3/11
7.20	37.25	37.42	36.87	37.12	36.37
341.71	4.96	4.09	4.84	4.59	5.34
	4.72	4.34	5.09	4.84	5.59

check D.K. Dunkle
Expans
Michigan

41.71	41.71	41.71	41.71	41.71
36.72	36.77	36.34	36.27	36.89
5.00	4.94	5.37	5.44	5.88
41.71	41.71	41.71	41.71	41.71
37.25	37.12	36.87	36.62	36.37
4.86	4.59	4.84	4.59	5.37
41.71	41.71	41.71	41.71	41.71
36.90	36.59	36.52	36.09	36.02
4.81	5.12	5.19	5.62	5.69
41.71	41.71	41.71	41.71	41.71
37.25	37.12	37.37	36.62	36.89
3.76	4.59	4.34	5.09	5.34
4.21	4.84	4.59	5.34	5.09

hub 60' hub
 Redwood St

312.0

312.0

St

307.37

306.67

200'

Dale

replaced

305.0

60'

304.0

Palm

60'

St

replaced

Date St.

West.

East.

So. L. Redwood St

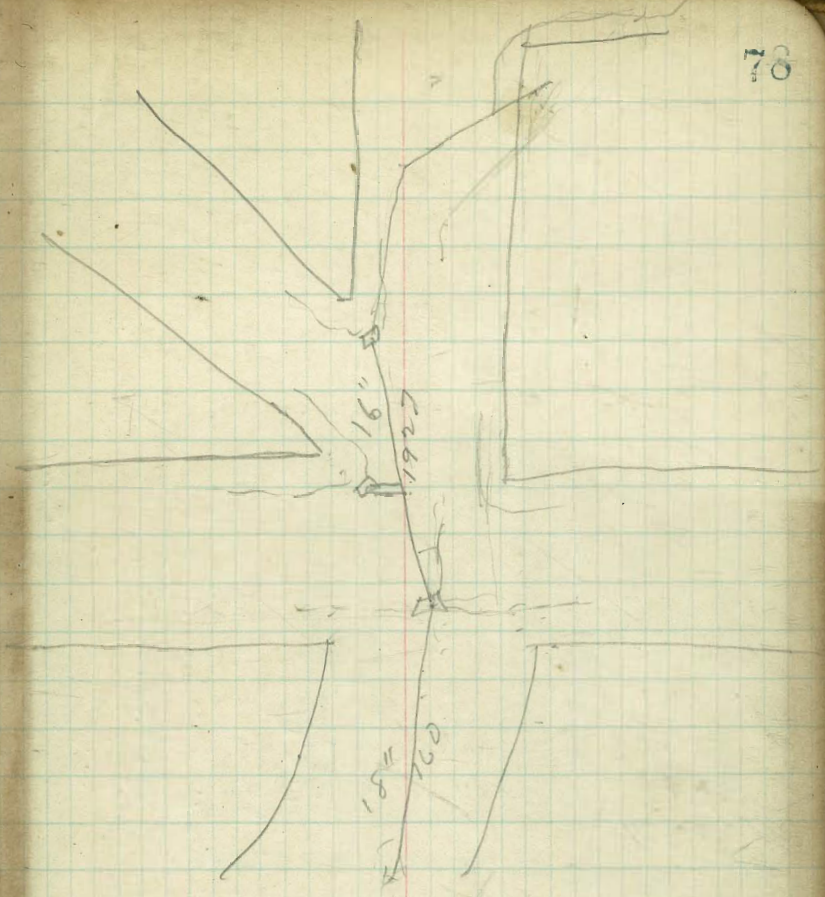
312.25	312.00	311.60	312.00	311.60	312.00	312.25
311.95	311.70	311.30	311.68	311.27	311.66	311.91
311.66	311.41	311.00	311.37	310.95	311.33	311.58
311.37	311.12	310.70	311.06	310.63	310.99	311.24
311.08	310.83	310.40	310.75	310.30	310.66	310.91
310.79	310.54	310.10	310.43	309.98	310.33	310.58
310.49	310.24	309.80	310.12	309.66	309.99	310.24
310.20	309.95	309.50	309.81	309.33	309.66	309.91
309.91	309.66	309.20	309.50	309.01	309.33	309.58
309.62	309.37	308.90	309.18	308.69	308.99	309.24
309.33	309.08	308.60	308.87	308.37	308.66	308.91
309.04	308.79	308.30	308.56	308.04	308.33	308.58
308.74	308.49	308.00	308.25	307.72	307.99	308.24
308.45	308.20	307.70	307.93	307.40	307.66	307.91
308.16	307.91	307.40	307.62	307.07	307.33	307.58
307.87	307.62	307.10	307.31	306.75	306.99	307.24
307.59	307.34	306.80	307.00	306.43	306.67	306.91
307.29	307.04	306.50	306.68	306.11	306.33	306.58
306.99	306.74	306.20	306.37	305.78	305.99	306.24
306.70	306.45	305.90	306.06	305.46	305.66	305.91
306.41	306.16	305.60	305.75	305.14	305.33	305.58
306.12	305.87	305.30	305.43	304.81	304.99	305.24
305.83	305.58	305.00	305.12	304.44	304.66	304.91
305.54	305.29	304.70	304.81	304.17	304.33	304.58
305.25	305.00	304.40	304.50	303.85	304.00	304.25

No. L. Palm St

Kilbuck Taylor 304.6 2 B.M. 8" nail 6"x6" post of water plaq. 30th + palm.

77

313.19	305.93	306.41	306.99	307.59
9.36	8.78	8.20	7.60	
8.26	6.5	6.4	5.1	
9.94	+1.1	+2.0	+1.8	+2.5
9.90				
0.0	308.16	308.70		
7.03	6.45	309.33	309.91	310.49
8.3	3.0	5.86	5.25	4.70
+3.7	+8.5	3.76	3.6	3.3
311.08	311.66	312.25	312.83	313.41
4.11	3.53	2.94	2.35	1.76
8.3	2.8	1.74	1.1	0.5
+0.9	+0.7	+1.2	+1.5	+1.8
309.59	309.91	309.24	309.59	309.91
5.61	6.28	6.95	7.61	8.28
4.0	3.6	3.4	3.2	3.0
+1.0	+0.7	+1.5	+2.4	+3.0
304.62	304.62	304.62	304.62	304.62
5.0	4.0	3.5	3.0	2.5
5.25	4.75	4.25	3.75	3.25
5.9	5.4	4.9	4.4	3.9
7.9	7.4	6.9	6.4	5.9
8.3	7.8	7.3	6.8	6.3
8.7	8.2	7.7	7.2	6.7
9.1	8.6	8.1	7.6	7.1
9.5	9.0	8.5	8.0	7.5
9.9	9.4	8.9	8.4	7.9
10.3	9.8	9.3	8.8	8.3
10.7	10.2	9.7	9.2	8.7
11.1	10.6	10.1	9.6	9.1
11.5	11.0	10.5	10.0	9.5
11.9	11.4	10.9	10.4	9.9
12.3	11.8	11.3	10.8	10.3
12.7	12.2	11.7	11.2	10.7
13.1	12.6	12.1	11.6	11.1
13.5	13.0	12.5	12.0	11.5
13.9	13.4	12.9	12.4	11.9
14.3	13.8	13.3	12.8	12.3
14.7	14.2	13.7	13.2	12.7
15.1	14.6	14.1	13.6	13.1
15.5	15.0	14.5	14.0	13.5
15.9	15.4	14.9	14.4	13.9
16.3	15.8	15.3	14.8	14.3
16.7	16.2	15.7	15.2	14.7
17.1	16.6	16.1	15.6	15.1
17.5	17.0	16.5	16.0	15.5
17.9	17.4	16.9	16.4	15.9
18.3	17.8	17.3	16.8	16.3
18.7	18.2	17.7	17.2	16.7
19.1	18.6	18.1	17.6	17.1
19.5	19.0	18.5	18.0	17.5
19.9	19.4	18.9	18.4	17.9
20.3	19.8	19.3	18.8	18.3
20.7	20.2	19.7	19.2	18.7
21.1	20.6	20.1	19.6	19.1
21.5	21.0	20.5	20.0	19.5
21.9	21.4	20.9	20.4	19.9
22.3	21.8	21.3	20.8	20.3
22.7	22.2	21.7	21.2	20.7
23.1	22.6	22.1	21.6	21.1
23.5	23.0	22.5	22.0	21.5
23.9	23.4	22.9	22.4	21.9
24.3	23.8	23.3	22.8	22.3
24.7	24.2	23.7	23.2	22.7
25.1	24.6	24.1	23.6	23.1
25.5	25.0	24.5	24.0	23.5
25.9	25.4	24.9	24.4	23.9
26.3	25.8	25.3	24.8	24.3
26.7	26.2	25.7	25.2	24.7
27.1	26.6	26.1	25.6	25.1
27.5	27.0	26.5	26.0	25.5
27.9	27.4	26.9	26.4	25.9
28.3	27.8	27.3	26.8	26.3
28.7	28.2	27.7	27.2	26.7
29.1	28.6	28.1	27.6	27.1
29.5	29.0	28.5	28.0	27.5
29.9	29.4	28.9	28.4	27.9
30.3	29.8	29.3	28.8	28.3
30.7	30.2	29.7	29.2	28.7
31.1	30.6	30.1	29.6	29.1
31.5	31.0	30.5	30.0	29.5
31.9	31.4	30.9	30.4	29.9
32.3	31.8	31.3	30.8	30.3
32.7	32.2	31.7	31.2	30.7
33.1	32.6	32.1	31.6	31.1
33.5	33.0	32.5	32.0	31.5
33.9	33.4	32.9	32.4	31.9
34.3	33.8	33.3	32.8	32.3
34.7	34.2	33.7	33.2	32.7
35.1	34.6	34.1	33.6	33.1
35.5	35.0	34.5	34.0	33.5
35.9	35.4	34.9	34.4	33.9
36.3	35.8	35.3	34.8	34.3
36.7	36.2	35.7	35.2	34.7
37.1	36.6	36.1	35.6	35.1
37.5	37.0	36.5	36.0	35.5
37.9	37.4	36.9	36.4	35.9
38.3	37.8	37.3	36.8	36.3
38.7	38.2	37.7	37.2	36.7
39.1	38.6	38.1	37.6	37.1
39.5	39.0	38.5	38.0	37.5
39.9	39.4	38.9	38.4	37.9
40.3	39.8	39.3	38.8	38.3
40.7	40.2	39.7	39.2	38.7
41.1	40.6	40.1	39.6	39.1
41.5	41.0	40.5	40.0	39.5
41.9	41.4	40.9	40.4	39.9
42.3	41.8	41.3	40.8	40.3
42.7	42.2	41.7	41.2	40.7
43.1	42.6	42.1	41.6	41.1
43.5	43.0	42.5	42.0	41.5
43.9	43.4	42.9	42.4	41.9
44.3	43.8	43.3	42.8	42.3
44.7	44.2	43.7	43.2	42.7
45.1	44.6	44.1	43.6	43.1
45.5	45.0	44.5	44.0	43.5
45.9	45.4	44.9	44.4	43.9
46.3	45.8	45.3	44.8	44.3
46.7	46.2	45.7	45.2	44.7
47.1	46.6	46.1	45.6	45.1
47.5	47.0	46.5	46.0	45.5
47.9	47.4	46.9	46.4	45.9
48.3	47.8	47.3	46.8	46.3
48.7	48.2	47.7	47.2	46.7
49.1	48.6	48.1	47.6	47.1
49.5	49.0	48.5	48.0	47.5
49.9	49.4	48.9	48.4	47.9
50.3	49.8	49.3	48.8	48.3
50.7	50.2	49.7	49.2	48.7
51.1	50.6	50.1	49.6	49.1
51.5	51.0	50.5	50.0	49.5
51.9	51.4	50.9	50.4	49.9
52.3	51.8	51.3	50.8	50.3
52.7	52.2	51.7	51.2	50.7
53.1	52.6	52.1	51.6	51.1
53.5	53.0	52.5	52.0	51.5
53.9	53.4	52.9	52.4	51.9
54.3	53.8	53.3	52.8	52.3
54.7	54.2	53.7	53.2	52.7
55.1	54.6	54.1	53.6	53.1
55.5	55.0	54.5	54.0	53.5
55.9	55.4	54.9	54.4	53.9
56.3	55.8	55.3	54.8	54.3
56.7	56.2	55.7	55.2	54.7
57.1	56.6	56.1	55.6	55.1
57.5	57.0	56.5	56.0	55.5
57.9	57.4	56.9	56.4	55.9
58.3	57.8	57.3	56.8	56.3
58.7	58.2	57.7	57.2	56.7
59.1	58.6	58.1	57.6	57.1
59.5	59.0	58.5	58.0	57.5
59.9	59.4	58.9	58.4	57.9
60.3	59.8	59.3	58.8	58.3
60.7	60.2	59.7	59.2	58.7
61.1	60.6	60.1	59.6	59.1
61.5	61.0	60.5	60.0	59.5
61.9	61.4	60.9	60.4	59.9
62.3	61.8	61.3	60.8	60.3
62.7	62.2	61.7	61.2	60.7
63.1	62.6	62.1	61.6	61.1
63.5	63.0	62.5	62.0	61.5
63.9	63.4	62.9	62.4	61.9
64.3	63.8	63.3	62.8	62.3
64.7	64.2	63.7	63.2	62.7
65.1	64.6	64.1	63.6	63.1
65.5	65.0	64.5	64.0	63.5
65.9	65.4	64.9	64.4	63.9
66.3	65.8	65.3	64.8	64.3
66.7	66.2	65.7	65.2	64.7
67.1	66.6	66.1	65.6	65.1
67.5	67.0	66.5	66.0	65.5
67.9	67.4	66.9	66.4	65.9
68.3	67.8	67.3	66.8	66.3
68.7	68.2	67.7	67.2	66.7
69.1	68.6	68.1	67.6	67.1
69.5	69.0	68.5	68.0	67.5
69.9	69.4	68.9	68.4	67.9
70.3	69.8	69.3	68.8	68.3
70.7	70.2	69.7	69.2	68.7
71.1	70.6	70.1	69.6	69.1
71.5	71.0	70.5	70.0	69.5
71.9	71.4	70.9	70.4	69.9
72.3	71.8	71.3	70.8	70.3
72.7	72.2	71.7	71.2	70.7
73.1	72.6	72.1	71.6	71.1
73.5	73.0	72.5	72.0	71.5
73.9	73.4	72.9	72.4	71.9
74.3	73.8	73.3	72.8	72.3
74.7	74.2	73.7	73.2	72.7
75.1	74.6	74.1	73.6	73.1
75.5	75.0	74.5	74.0	73.5
75.9	75.4	74.9	74.4	73.9
76.3	75.8	75.3	74.8	74.3
76.7	76.2	75.7	75.2	74.7
77.1	76.6	76.1	75.6	75.1
77.5	77.0	76.5	76.0	75.5
77.9	77.4	76.9	76.4	75.9
78.3	77.8	77.3	76.8	76.3
78.7	78.2	77.7	77.2	76.7
79.1	78.6	78.1	77.6	77.1
79.5	79.0	78.5	78.0	77.5
79				





Handwritten calculations and notes on the right page, including several vertical columns of numbers and some larger numbers like 3000 and 166.

4	11	25
5	14	26
6	16	27
7	18	28
8	21	29
9	23	30
10	25	31
11	28	32
12	30	33
13	32	34
14	35	35
15	37	36
16	39	37
17	42	38
18	44	39
19	46	40
20		

TABLE FOR RUNNING ON SLOPES.

In the following table the first column shows the angle, the second the number of links to be added to a chain on the slopes, to make one chain, horizontal measurement.

ANGLE	COR. IN LINKS	ANGLE	COR. IN LINKS	ANGLE	COR. IN LINKS	ANGLE	COR. IN LINKS
0		0		0		0	
4	0.24	11	1.88	18	5.14	25	10.54
5	0.38	12	2.24	19	5.76	26	11.26
6	0.55	13	2.63	20	6.42	27	12.24
7	0.76	14	3.06	21	7.11	28	13.37
8	0.98	15	3.53	22	7.85	29	14.34
9	1.24	16	4.02	23	8.64	30	15.47
10	1.55	17	4.56	24	9.47	35	22.07

Published by H. S. CROCKER COMPANY, Stationers, Drawing Materials, and Mathematical Instruments, San Francisco.

Table showing the difference of latitude and departure in running 80 chains at any course from 1 to 60 minutes.

MINUTES.	LKS.	MINUTES.	LKS.	MINUTES.	LKS.
1	2 $\frac{1}{2}$	21	49	41	95 $\frac{1}{2}$
2	4 $\frac{2}{3}$	22	51 $\frac{1}{3}$	42	98
3	7	23	53 $\frac{2}{3}$	43	100 $\frac{1}{3}$
4	9 $\frac{1}{3}$	24	56	44	102 $\frac{2}{3}$
5	11 $\frac{2}{3}$	25	58 $\frac{1}{3}$	45	105
6	14	26	60 $\frac{2}{3}$	46	107 $\frac{1}{3}$
7	16 $\frac{1}{3}$	27	63	47	109 $\frac{2}{3}$
8	18 $\frac{2}{3}$	28	65 $\frac{1}{3}$	48	112
9	21	29	67 $\frac{2}{3}$	49	114 $\frac{1}{3}$
10	23 $\frac{1}{3}$	30	70	50	116 $\frac{2}{3}$
11	25 $\frac{2}{3}$	31	72 $\frac{1}{3}$	51	119
12	28	32	74 $\frac{2}{3}$	52	121 $\frac{1}{3}$
13	30 $\frac{1}{3}$	33	77	53	123 $\frac{2}{3}$
14	32 $\frac{2}{3}$	34	79 $\frac{1}{3}$	54	126
15	35	35	81 $\frac{2}{3}$	55	128 $\frac{1}{3}$
16	37 $\frac{1}{3}$	36	84	56	130 $\frac{2}{3}$
17	39 $\frac{2}{3}$	37	86 $\frac{1}{3}$	57	133
18	42	38	88 $\frac{2}{3}$	58	135 $\frac{1}{3}$
19	44 $\frac{1}{3}$	39	91	59	137 $\frac{2}{3}$
20	46 $\frac{2}{3}$	40	93 $\frac{1}{3}$	60	140

TABLE FOR RUNNING ON SLOPES.

In the following table the first column shows the angle, the second the number of links to be added to a chain on the slopes, to make one chain, horizontal measurement.

ANGLE	COR. IN LINKS	ANGLE	COR. IN LINKS	ANGLE	COR. IN LINKS	ANGLE	COR. IN LINKS
0		0		0		0	
4	0.24	11	1.88	18	5.14	25	10.54
5	0.38	12	2.24	19	5.76	26	11.26
6	0.55	13	2.63	20	6.42	27	12.24
7	0.76	14	3.06	21	7.11	28	13.37
8	0.98	15	3.53	22	7.85	29	14.34
9	1.24	16	4.02	23	8.64	30	15.47
10	1.55	17	4.56	24	9.47	35	22.07