

GRADES

54

THIRD ST. Birch	1
A ST 25th to 27th	6
NUTMEG ST. 5th to Park	10
15th ST. C to S	3
15th ST. N to M	17
JUNIPER ST.	22
THIRD ST. Ivy to Kalmia	33
15th ST. D to E	44
L ST 14th to 15th	47
A ST 22nd to 23rd	50
P ST 25th to 26th & 27th	53
ALLEY to East 15th to 15th	58
15th ST. H to J - 15th to 15th	60
Louisiana St. Union to Lincoln	66
" " " " " Park line	69

G54

FIELD



Published by H. S. CROCKER COMPANY, Stationers, Drawing  
Materials, Mathematical Instruments, etc., San Francisco.

TRANSVERSE TABLE FOR TRANSIT BOOK.  
From 1° to 90° for a distance of 100.

Degrees.	DEGREES.		¼ DEGREE.		½ DEGREE.		¾ DEGREE.		Degrees.
	Lat.	Dep.	Lat.	Dep.	Lat.	Dep.	Lat.	Dep.	
0			100.00	0.44	100.00	0.87	99.99	1.31	89
1	99.98	1.75	99.98	2.18	99.97	2.62	99.95	3.05	88
2	99.94	3.49	99.92	3.93	99.91	4.36	99.88	4.80	87
3	99.86	5.23	99.84	5.67	99.81	6.10	99.79	6.54	86
4	99.76	6.98	99.73	7.41	99.69	7.85	99.66	8.28	85
5	99.62	8.72	99.58	9.15	99.54	9.58	99.50	10.02	84
6	99.45	10.45	99.41	10.89	99.36	11.32	99.31	11.75	83
7	99.25	12.19	99.20	12.62	99.14	13.05	99.09	13.49	82
8	99.03	13.92	98.97	14.35	98.90	14.78	98.84	15.21	81
9	98.77	15.64	98.70	16.07	98.63	16.50	98.56	16.93	80
10	98.48	17.36	98.40	17.79	98.33	18.22	98.25	18.65	79
11	98.16	19.08	98.08	19.51	97.99	19.94	97.90	20.36	78
12	97.81	20.79	97.72	21.22	97.63	21.64	97.55	22.07	77
13	97.44	22.50	97.34	22.92	97.24	23.34	97.13	23.77	76
14	97.03	24.19	96.92	24.62	96.81	25.04	96.70	25.46	75
15	96.59	25.88	96.48	26.30	96.36	26.72	96.25	27.14	74
16	96.13	27.56	96.00	27.98	95.88	28.40	95.76	28.82	73
17	95.63	29.24	95.50	29.65	95.37	30.07	95.24	30.49	72
18	95.11	30.90	94.97	31.32	94.83	31.73	94.69	32.14	71
19	94.55	32.56	94.41	32.97	94.26	33.38	94.12	33.79	70
20	93.97	34.20	93.82	34.61	93.67	35.02	93.51	35.43	69
21	93.36	35.84	93.20	36.24	93.04	36.65	92.88	37.06	68
22	92.72	37.46	92.55	37.86	92.39	38.27	92.22	38.67	67
23	92.05	39.07	91.88	39.47	91.71	39.87	91.53	40.27	66
24	91.35	40.67	91.18	41.07	91.00	41.47	90.81	41.87	65
25	90.63	42.26	90.45	42.66	90.26	43.05	90.07	43.44	64
26	89.88	43.84	89.69	44.23	89.49	44.62	89.30	45.01	63
27	89.10	45.40	88.90	45.79	88.70	46.17	88.50	46.56	62
28	88.29	46.95	88.09	47.33	87.88	47.72	87.67	48.10	61
29	87.46	48.48	87.25	48.86	87.04	49.24	86.82	49.62	60
30	86.60	50.00	86.38	50.38	86.16	50.75	85.94	51.13	59
31	85.72	51.50	85.49	51.88	85.26	52.25	85.04	52.62	58
32	84.80	52.99	84.57	53.36	84.34	53.73	84.10	54.10	57
33	83.87	54.46	83.63	54.83	83.39	55.19	83.15	55.56	56
34	82.90	55.92	82.66	56.28	82.41	56.64	82.16	57.00	55
35	81.92	57.36	81.66	57.71	81.41	58.07	81.16	58.42	54
36	80.90	58.78	80.64	59.13	80.39	59.48	80.13	59.83	53
37	79.86	60.18	79.60	60.53	79.34	60.88	79.07	61.22	52
38	78.80	61.57	78.53	61.91	78.26	62.25	77.99	62.59	51
39	77.71	62.93	77.44	63.27	77.16	63.61	76.88	63.94	50
40	76.60	64.28	76.32	64.61	76.04	64.94	75.76	65.28	49
41	75.47	65.61	75.18	65.93	74.90	66.26	74.61	66.59	48
42	74.31	66.91	74.02	67.24	73.73	67.56	73.43	67.88	47
43	73.14	68.20	72.84	68.52	72.54	68.84	72.24	69.15	46
44	71.93	69.47	71.63	69.78	71.33	70.09	71.02	70.40	45
45	70.71	70.71							
Degrees.	Dep.	Lat.	Dep.	Lat.	Dep.	Lat.	Dep.	Lat.	Degrees.
	DEGREES		¼ DEGREE.		½ DEGREE.		¾ DEGREE.		

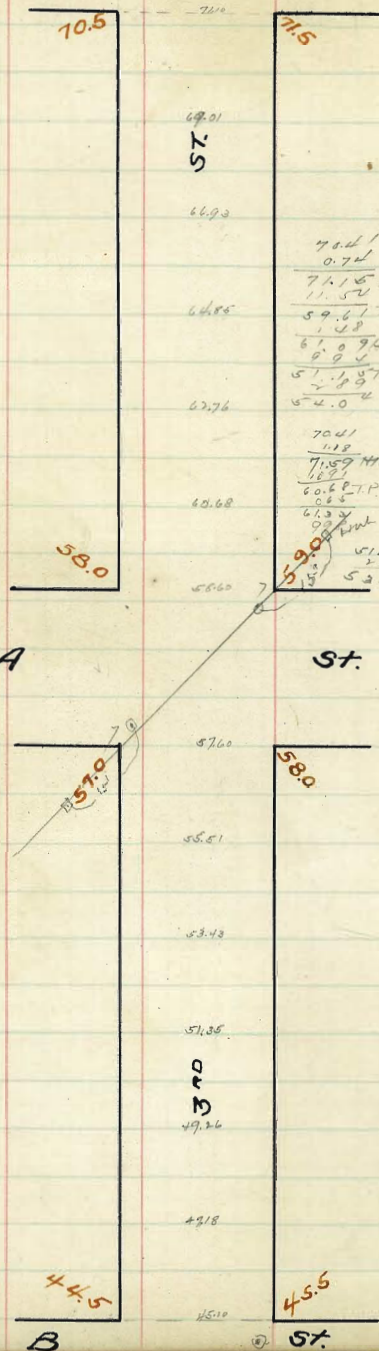
MICROFILMED  
DEC 4 1964

25 21  
30 27  
37 28



Ash

St.



70.41 BM	71.1	4.1	6.93
71.31 M.	0.71	2.38	4.8
60.53 TP	2.57	2.21	3.5
61.77 M.	6.45	2.76	6.67
11.61	2.26	8.58	10.83
60.16	5.32	1.7	7.02
1.29 M.	2.17		2.92
55.21	5.26	8.26	5.51
12.22	4.19		6.21
72.22	1.45		
53.43	5.23		
8.24	10.45		
0.74	-1.19		
71.16 M.	4.26	4.18	4.18
11.52	2.70	2.78	6.86
59.67 TP	1.81	0.32	
1.48	2.32	4.52	6.84
61.09 M.	6.48	4.72	6.76
6.04	12.67	2.69	3.17
57.18 TP	5.51	5.28	5.15
54.04 M.	5.78	7.84	9.94
70.41	4.76	4.87	
11.8	4.98	7.06	
71.59 M.	6.91	6.92	6.95
16.81	2.58	4.66	6.79
60.5 TP	6.68	5.80	5.76
6.5	10.87	2.78	3.73
6.32			
51.35 TP	5.51	5.43	5.35
52.7	5.52	7.90	9.95
52.7	5.26	4.26	4.26
52.7	0.42	4.81	6.67
	70.41		
	4.57		
	74.98		
	69.42		
	6.56		
	6.42		
	6.56		

Note:- Rule of 5 Quarters (Same as in Paving) is to be observed in the grading of this street.



West	South Line Ash St.					East
	5' →				← 5'	
00	70.75	70.50	70.10	71.0	70.20	71.50
	oil high cement down 0.2 high cement curb					
25	69.71	69.46	69.06	69.96	69.86	70.46
50	68.67	68.42	68.02	68.92	68.82	69.42
	co. 39 <sup>th</sup>					
75	67.62	67.37	66.97	67.87	67.77	68.37
100	66.58	66.33	65.93	66.83	66.73	67.33
	co. 39 <sup>th</sup>					
125	65.54	65.29	64.89	65.79	65.69	66.29
150	64.50	64.25	63.85	64.75	64.65	65.25
	co. 2 co. 39 <sup>th</sup> co. 3		co. 39 <sup>th</sup>			
175	63.46	63.21	62.81	63.71	63.61	64.21
200	62.42	62.17	61.77	62.67	62.57	63.17
	co. 39 <sup>th</sup>					
225	61.38	61.13	60.73	61.63	61.53	62.13
250	60.33	60.08	59.68	60.58	60.48	61.08
	co. 39 <sup>th</sup>					
275	59.29	59.04	58.64	59.54	59.44	60.04
300	58.25	58.00	57.60	58.50	58.40	59.00

North Line A St.

6393 Bm 1st of cement post nw bn 3+a

6044 Bm 0 nw 4044

797	5825	5925	6025	6032	6122	6222	6322	6422	6522	6622	6722	6822	6922	7022
6841	10.16	9.16	7.08	8.08	5.29	4.29	2.91	3.91						
66.10	6.67	6.67	6.67	6.67	6.67	6.67	6.67	6.67	6.67	6.67	6.67	6.67	6.67	6.67
73.17	6.67	6.67	6.67	6.67	6.67	6.67	6.67	6.67	6.67	6.67	6.67	6.67	6.67	6.67

6390 Bm 1st of cement post nw bn 3+a

320	5800	5900	6000	6008	6108	6208	6308	6408	6508	6608	6708	6808	6908	7008
67.10	9.10	8.10	7.10	7.10	6.10	5.10	4.10	3.10	2.10	1.10	0.10	0.10	0.10	0.10
66.33	6.33	6.33	6.33	6.33	6.33	6.33	6.33	6.33	6.33	6.33	6.33	6.33	6.33	6.33
73.76	6.33	6.33	6.33	6.33	6.33	6.33	6.33	6.33	6.33	6.33	6.33	6.33	6.33	6.33

6394 Bm 1st of cement post nw bn 3+a

63.95	63.95	63.95	63.95	63.95	63.95	63.95	63.95	63.95	63.95	63.95	63.95	63.95	63.95	63.95
59.25	58.25	60.23	12.42	68.67	67.58	65.50	63.42	61.35	59.27	57.19	55.11	53.03	50.95	48.87
60.44	4.70	5.70	3.62	11.32	5.07	6.16	8.24	10.32	12.41	14.49	16.57	18.65	20.73	22.81
63.95	4.95	5.95	3.87	11.57	5.32	6.41	8.49	10.57	12.66	14.74	16.82	18.90	20.98	23.06
63.74	5.55			73.74	4.07	7.01	7.09	11.17	11.17	15.25	15.25	19.33	19.33	23.41
73.74	10.00			70.90	4.32									
73.74	5.75			73.74	4.32									

quarters det. Schults Taylor Bunker

May 11/11

5.16.11 Checked OK



58.25 58.0 57.60 58.50 58.40 59.00 59.25

58.00 58.00 57.43 58.33 58.23 59.00 59.00  
 57. 57. 58.0 58.

s 57.40 56.90 57.36 58.26 58.16 57.90 58.40

A

c 57.50 56.50 57.10 58.00 57.90 57.50 58.50

St.

ni 56.60 56.70 56.84 57.74 57.64 57.10 57.60

56. 56. 57. 57.  
 57.0 57.00 56.78 57.68 57.58 58.00 58.00

57.25 57.00 56.6 57.5 57.40 58.00 58.25



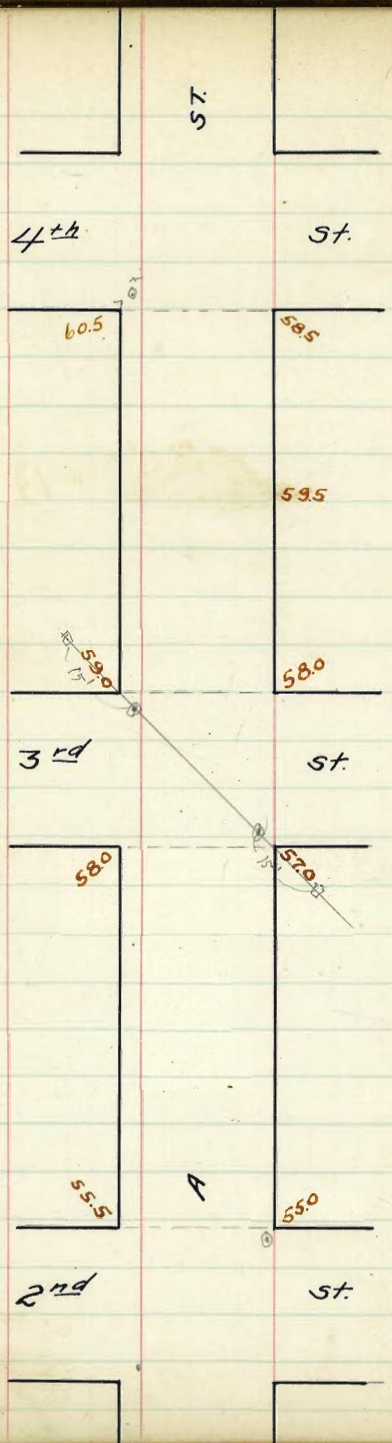








Notes 5' Quarters





North	K.V.L. 3rd St.					South	
200	58.25	58.00	57.40	57.50	56.60	57.00	57.25
175	57.93	57.68	57.08	57.21	56.33	56.75	57.00
150	57.62	57.37	56.77	56.93	56.01	56.50	56.75 ✓
125	57.31	57.06	56.46	56.65	55.81	56.25	56.50
100	57.00	56.75	56.15	56.27	55.55	56.00	56.25 ✓
75	56.68	56.43	55.83	56.09	55.29	55.75	56.00
50	56.37	56.12	55.52	55.81	55.02	55.50	55.75 ✓
25	56.06	55.81	55.21	55.53	54.76	55.25	55.50
0	55.75	55.50	54.90	55.25	54.50	55.00	55.25

E.L. 2nd St.

6044 Bm n q a 647 Blayt 3-14-11

6044	57.62	57.25	56.85	57.00	56.37	55.75	55.25	55.75
6044	57.62	57.25	56.85	57.00	56.37	55.75	55.25	55.75
6044	57.62	57.25	56.85	57.00	56.37	55.75	55.25	55.75

60.49	64.00	64.00	64.00	64.00	64.00	64.00	64.00
7.56	57.25	57.00	56.75	56.50	56.25	56.00	55.75
67.00	64.00	64.00	64.00	64.00	64.00	64.00	64.00

all stakes double  
Tham  
Tichener

55.57 Bm n w 1 a

55.57	57.40	57.20	57.00	56.80	56.60	56.40	56.20
55.57	57.40	57.20	57.00	56.80	56.60	56.40	56.20

62.89	62.89	62.89	62.89	62.89
57.22	57.31	56.20	56.06	57.31
5.89	5.58	6.89	6.83	7.31
6.14	5.83	7.19	7.08	7.31
6.89	6.43	6.89	7.63	7.31
5.23	6.89	5.27	6.89	7.31
6.56	6.89	5.81	7.60	5.76
6.89	7.08	6.89	5.13	6.89
5.93	6.89	5.88	6.89	6.89
4.96	6.89	6.01	5.50	6.89
5.19	6.39	6.26	7.39	6.89
5.79	6.69	6.86	7.64	6.89

check on except where marked on opp. page  
Evans,  
Tichener,



North W.L 4<sup>th</sup> St. South  
200 60.75 60.50 59.90 59.50 58.30 58.5 58.75

175 60.56 60.31 59.71 59.53 58.46 58.15 59.00

150 60.37 60.12 59.52 59.56 58.62 59.0 59.25

125 60.18 59.93 59.33 59.59 58.78 59.15 59.50

100's Break 60.00 59.75 59.15 59.63 58.95 59.50 59.75

75 59.81 59.56 58.96 59.34 58.61 59.12 59.37

50 59.62 59.37 58.77 59.06 58.28 58.75 59.00

25 59.43 59.18 58.58 58.78 57.94 58.37 58.62

00 59.25 59.0 58.40 58.50 57.60 58.00 58.25  
E.L 3<sup>rd</sup> St.

Lower Down 410 617 blough 3-14-11  
62.77 59.62 59.0 59.71 60.22 60.37 60.71  
62.90 60.03 58.00 59.37 58.75 59.75 59.50  
65.03 60.12 4.91 6.28 5.28 5.10

64.00 M 64.00 64.00 64.00 64.00  
58.50 60.37 59.50 59.67 58.25  
5.50 3.63 2.50 4.38 5.75  
64.00 64.00 58.25 64.00 64.00  
59.25 59.52 5.82 58.72 57.60  
57.5 64.00 64.00 58.25 64.00  
62.00 4.48 64.00 58.25 64.00  
64.00 59.63 59.06 64.00  
59.56 4.37 4.94 5.50  
4.44 64.00 64.00 64.00  
64.00 59.15 58.28 59.40  
59.62 5.72 5.60  
5.38 3.95  
64.00 64.00 64.00 64.00  
59.25 60.00 59.00 59.25  
4.75 4.00 5.00 4.75  
4.25 4.25 5.25 5.00

5/11 all states sample  
62.89 62.89 62.89 62.89  
59.43 59.37 60.18 59.00  
3.46 3.52 2.71 3.89  
3.77 3.77 2.76 4.14  
4.37 62.89 3.66 62.89  
62.89 59.61 62.89 58.46  
58.62 4.28 58.78  
4.77 4.11 4.43  
4.52 62.89 62.89  
4.95 59.81 60.56  
3.08 62.89 2.33  
3.33 59.50 2.58  
3.93 3.39 3.15  
3.64

5.804 5.65 5.94 5.84 5.50 5.70 5.82  
62.69 4.69 5.29 5.11 6.07 5.89  
5 59.37 58.77 5.906 5.824 5.875  
16 4.32 4.92 4.0 5.41 4.94  
11 59.71 59.18 59.62 58.94 59.50  
3.54 4.24 4.06 4.94 4.79  
60.12 59.52 59.04 58.62 59.0  
7.57 4.77 4.13 5.13 4.6

5/11 all states sample  
62.89 62.89 62.89 62.89  
59.43 59.37 60.18 59.00  
3.46 3.52 2.71 3.89  
3.77 3.77 2.76 4.14  
4.37 62.89 3.66 62.89  
62.89 59.61 62.89 58.46  
58.62 4.28 58.78  
4.77 4.11 4.43  
4.52 62.89 62.89  
4.95 59.81 60.56  
3.08 62.89 2.33  
3.33 59.50 2.58  
3.93 3.39 3.15  
3.64

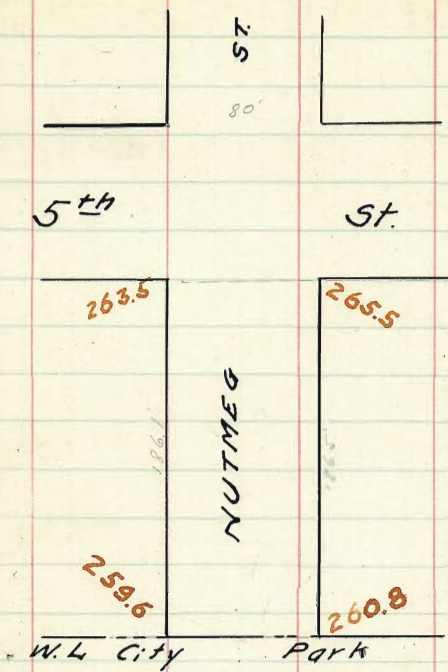
5/11 check OK exact when marked  
on opp. page  
E.L. 3<sup>rd</sup> St.  
"Mehner"

checked OK blough 3-14-11











Breaks 5' from Curb

South East Line of 5<sup>th</sup> St. North

00	263.75	263.5	263.3	264.5	264.9	265.5	265.75
25	263.22	262.97	262.67	263.92	264.27	264.87	265.12
50	262.70	262.45	262.13	263.35	263.64	264.24	264.49
75	262.18	261.93	261.60	262.77	263.01	263.61	263.86
100	261.65	261.40	261.07	262.19	262.38	262.98	263.23
125	261.13	260.88	260.54	261.62	261.75	262.35	262.60
150	260.60	260.35	260.01	261.04	261.12	261.72	261.97
186.1 ans 2	259.85	259.6	259.24	260.2	260.2	260.8	251.05

West Line of City Park

cut + fill Dec. 29/10 Childs Taylor

264.95	264.49	263.23	261.97	261.05
3.62	4.08	5.34	6.60	7.32
268.57 HI.	2.88	3.52	3.92	7.38
265.75	+1.2	+1.8	+2.7	+0.1
2.82				

259.85	260.60	261.65	262.70	263.75
8.72	7.97	6.92	5.87	4.82
8.62	6.47	4.94	4.87	4.22
10.1	+1.5	+2.0	+1.0	+0.6
264.43	263.50	262.79	262.45	262.44
264.95	261.93	263.61	261.40	262.98
265.75	261.93	263.61	261.40	262.98
264.95	261.93	263.61	261.40	262.98
268.35	260.54	261.77	263.01	263.23
264.95	261.93	263.61	261.40	262.98
268.17	260.54	261.77	263.01	263.23
264.95	261.93	263.61	261.40	262.98
268.17	260.54	261.77	263.01	263.23
264.95	261.93	263.61	261.40	262.98
268.17	260.54	261.77	263.01	263.23

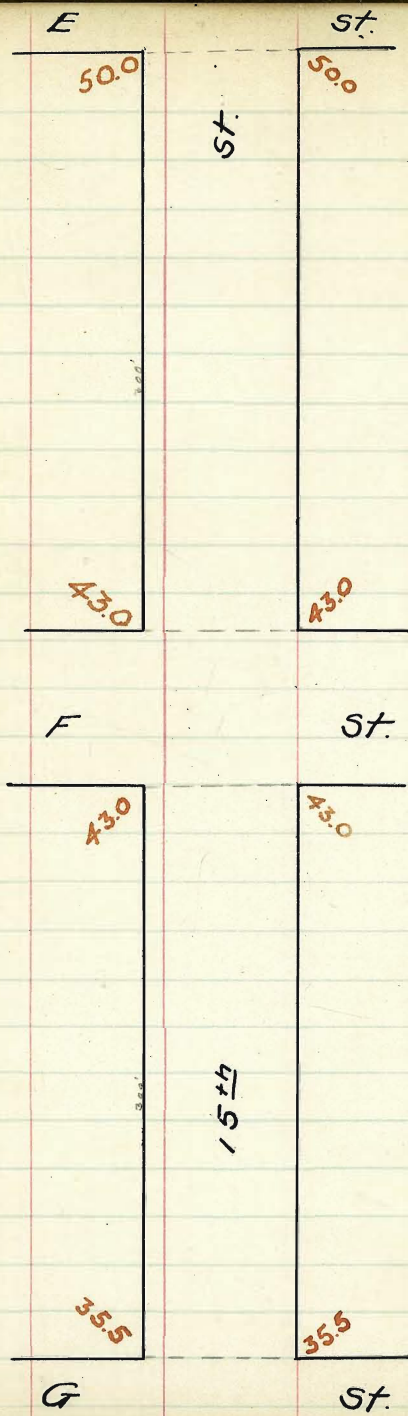
Blough Penna City

2-24-11 Checked OK Blough Penna City











West	South Line E St.						East
300'	50.25	50.00	49.60	50.00	49.60	50.00	50.25
275'	49.67	49.42	49.02	49.42	49.02	49.42	49.67
250'	49.08	48.83	48.43	48.83	48.43	48.83	49.08
225'	48.50	48.25	47.85	48.25	47.85	48.25	48.50
200'	47.92	47.67	47.27	47.67	47.27	47.67	47.92
175'	47.33	47.08	46.68	47.08	46.68	47.08	47.33
150'	46.75	46.50	46.10	46.50	46.10	46.50	46.75
125'	46.17	45.92	45.52	45.92	45.52	45.92	46.17
100'	45.58	45.33	44.93	45.33	44.93	45.33	45.58
75'	45.00	44.75	44.35	44.75	44.35	44.75	45.00
50'	44.42	44.17	43.77	44.17	43.77	44.17	44.42
25'	43.83	43.58	43.18	43.58	43.18	43.58	43.83
00'	43.25	43.00	42.60	43.00	42.60	43.00	43.25
	North Line F St.						

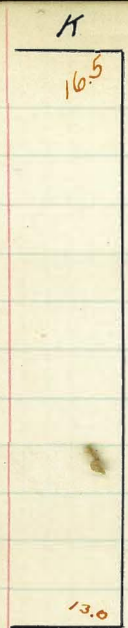




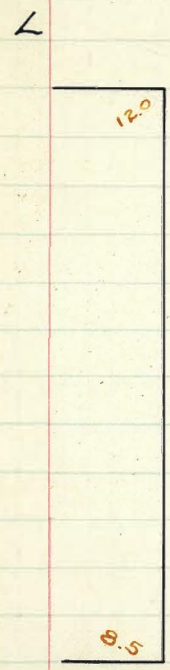






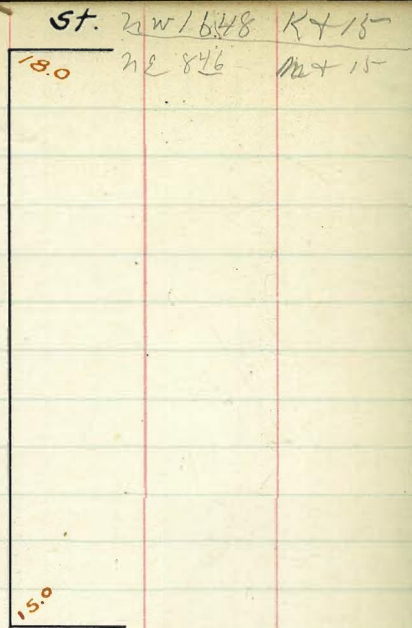


ST.

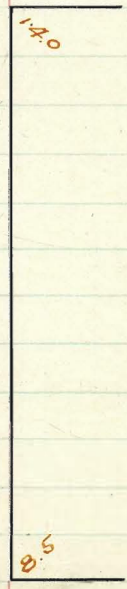


ST.

M



ST.



ST.







W

13.25 13.0 13.10 14.0 14.40 15.00 15.25

Curb 13.00 13.00 12.92 13.82 14.32 15.00 15.00 ✓

14 12.40 11.75 12.76 13.66 14.06 13.75 14.40 ✓

c 12.5 11.50 12.60 13.50 13.90 13.50 14.50 ✓

ST

14 11.85 11.25 12.44 13.34 13.74 13.25 13.85 ✓

Curb 12.00 12.00 12.28 13.18 13.58 14.00 14.00 ✓

12.25 12.00 12.10 13.00 13.40 14.00 14.25 ✓

L

B.M. 1338 Hub N.W. Cor 15<sup>th</sup> & L St.

406	1744	1744	1744	1744	1744	1744
1744 H.1	15.00	14.40	14.50	13.85	14.00	14.25
	2.44 ✓	3.04 ✓	2.94 ✓	3.59 ✓	3.44 ✓	3.19 ✓

1744	1744	1744
1276	1366	1406
4.68	3.78 ✓	3.38

1744
1350
3.94 ✓

Shaw's 23/12/10  
Evans  
Tichner

1744	1744	1744
1244	1334	1374
5.00 ✓	4.10 ✓	3.70 ✓

1744	1744	1744	1744	1744	1744	1744
1225	1200	1210	1300	1340	1400	1425
5.19 ✓	5.44 ✓	5.34 ✓	4.44 ✓	4.04 ✓	3.44 ✓	3.19 ✓

1338 Hub N.W. Cor 15<sup>th</sup> & L Sts

339	16.77	16.77
16.77 H.1	12.60	12.76
4.17 ✓	2.87 ✓	4.01

24/12/10





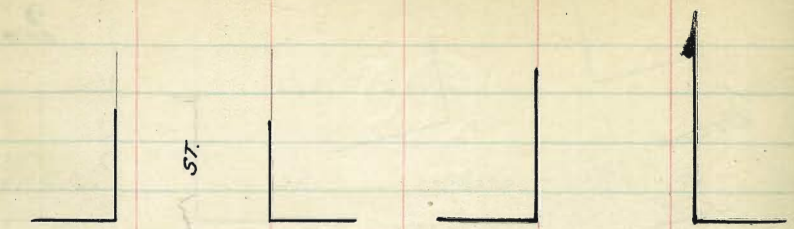












2nd

st.

4th

st.



Spk (covered)  
Spk



213.0
2128 208.2
2127 205.9
2126 204.7
2125 204.4
2124 204.8
2123 205.9
2122 207.5
2120

ST

Grade changed

212.0
211.8
207.2
211.7
204.9
211.6
203.7
211.5
203.4
211.4
203.8
211.3
204.7
211.2
206.5
210.0

1st

st.

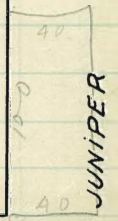
3rd

st.



JUNIPER

This block graded by private contract



Front

Hub (covered)

st.

2nd

st.



	North	West Line Arctic St					South
200'	29.25	29.0	28.6	29.0	28.6	29.00	29.25
175'	27.63	27.38	26.98	27.38	26.98	27.38	27.63
150'	26.00	25.75	25.35	25.75	25.35	25.75	26.00
125'	24.38	24.13	23.73	24.13	23.73	24.13	24.38
100'	22.75	22.5	22.1	22.5	22.1	22.5	22.75
75'	21.13	20.88	20.48	20.88	20.48	20.88	21.13
50'	19.50	19.25	18.85	19.25	18.85	19.25	19.50
25'	17.88	17.63	17.23	17.63	17.23	17.63	17.88
		Grading stops Here.					
0'	16.25	16.00	15.6	16.00	15.60	16.00	16.25
		East Line Calif. St.					

B.M. spk. on fish plate outside of east rail  
just north of junction 30.86

6.17	37.03	H.I.	29.98	26.0	22.75	26.00	12.92	24
30.86	29.25		7.78	7.78	7.03	71.03	24.11	50.
	7.78		8.58	10.2	12.18	12.1	2.85	
	11.18		10.8	10.8	12.18	-1.8	26.96	H.C.
	-3.4			12.2	12.2		22.75	19.50
				17.88	19.50	17.88	4.21	7.46
				9.08	7.46	9.08	4.01	7.16
				5.58	5.16	8.08	+0.2	+0.3
				+2.5	+2.3	+7.0		

31.07 T.P. on rail

0.67	29	29.25	26.00	25.75	22.75	22.5	12.92	17.88
31.74	27.4	27.4	27.4	27.4	27.4	27.4	12.21	17.88
17.26	17.26	17.26	17.26	17.26	17.26	17.26	17.26	17.26
5.16	5.16	5.16	5.16	5.16	5.16	5.16	5.16	5.16
27.52	27.52	27.52	27.52	27.52	27.52	27.52	27.52	27.52
30.86	31.00	26.0	22.5	19.50				
14.5	1.31	6.31	9.81	12.81				
32.31	H.I.							

Curbs + Props  
Gregor  
Miller Shotwater

36.30	28.4	22.50
10.60	7.50	5.00
27.70	17.62	
1.10	10.17	
27.80		

Checked OK 8-20-14 through



North

South

31.25	31.00	30.6	31.0	30.60	31.00	31.25
-------	-------	------	------	-------	-------	-------

C 31.0 30.	31.0 30.	30.24	30.64	30.24	31.00 30.	31.00 30.
---------------	-------------	-------	-------	-------	--------------	--------------

W 30.40	29.5	29.92	30.32	29.92	29.5	30.4
---------	------	-------	-------	-------	------	------

Arctic

C 30.00	29.0	29.6	30.0	29.6	29.0	30.0
---------	------	------	------	------	------	------

St.

W 29.1	28.5	29.28	29.68	29.28	28.5	29.1
--------	------	-------	-------	-------	------	------

C 28. 29.0	28. 29.0	28.96	29.36	28.96	28. 29.00	28. 29.00
---------------	-------------	-------	-------	-------	--------------	--------------

29.25	29.00	28.6	29.0	28.6	29.00	29.25
-------	-------	------	------	------	-------	-------

ARCTIC ST + JUNIPER ST INTERSECTION

W

E

N.L. 29.25	29.00	29.10	30.00	30.40	31.00	31.25
------------	-------	-------	-------	-------	-------	-------

N.C. 29.00 28.00	29.00 28.00	28.50	29.00	29.50	31.00 30.00	31.00 30.00
---------------------	----------------	-------	-------	-------	----------------	----------------

N $\frac{1}{4}$ 28.10	28.92	29.26	29.60	29.94	30.28	30.60
-----------------------	-------	-------	-------	-------	-------	-------

C 29.00	29.32	29.66	30.00	30.34	30.68	31.00
---------	-------	-------	-------	-------	-------	-------

S $\frac{1}{4}$ 28.10	28.92	29.26	29.60	29.94	30.28	30.60
-----------------------	-------	-------	-------	-------	-------	-------

S.C. 28.00 29.00	28.00 29.00	28.50	29.00	29.50	30.00 31.00	30.00 31.00
---------------------	----------------	-------	-------	-------	----------------	----------------

S.L. 29.25	29.00	29.10	30.00	30.40	31.00	31.25
------------	-------	-------	-------	-------	-------	-------

SOUTH

Checked with 9-20-14 along



	North	West Line India St.					South
200'	47.25	47.0	46.6	47.0	46.6	47.00	47.25
175'	45.25	45.0	44.6	45.0	44.6	45.0	45.25
150'	43.25	43.0	42.6	43.0	42.6	43.0	43.25
125'	41.25	41.0	40.6	41.0	40.6	41.0	41.25
100'	39.25	39.0	38.6	39.0	38.6	39.0	39.25
75'	37.25	37.0	36.6	37.0	36.6	37.0	37.25
50'	35.25	35.0	34.6	35.0	34.6	35.0	35.25
25'	33.25	33.0	32.6	33.0	32.6	33.0	33.25
00'	31.25	31.00	30.6	31.0	30.6	31.00	31.25

East Line Arctic St.

B.W. S.W. over India plug. 46.87 - 26

416.37	43.25	39.25	43.25	12.95	35.25	31.25
1.53	5.15	9.15	5.15	35.45	5.0	1.78
48.40	8.35	11.65	5.35	1.88	3.68	4.78
47.25	-3.2	-2.5	-0.2	37.03	1.9	4.0
1.15				30.86		
39.25	35.25	31.25		6.70		
2.22	1.78	5.78		37.6		
3.28	4.18	7.28				
5.5	-3.4	-1.5				

46.87 SW India Jupiter 37.25 T.P.  
47.77 1.02  
39.25

43.0 40.25 39.25 39  
3.11 4.86 8.86 9.11

38.75 T.P.  
5.11  
31.25 T.P. on rail.

5.46 35.25 31 31.11  
4.75 4.75 5.75 5.75

Cooks + Props 4/12  
Grocery  
Shoemaker  
Shaw

46.87 39.25 31.25  
1.24 9.51 3.00  
48.15  
1.24  
35.11  
36.30

Checked OK 9-20-14  
Clough



	North	West Line Columbia St.					South
200'	64.25	64.0	63.6	64.0	63.6	64.00	64.25
175'	62.37	62.12	61.72	62.12	61.72	62.12	62.37
150'	60.50	60.25	59.85	60.25	59.85	60.25	60.50
125'	58.62	58.37	57.97	58.37	57.97	58.37	58.62
100'	56.75	56.5	56.1	56.5	56.1	56.5	56.75
75'	54.87	54.62	54.22	54.62	54.22	54.62	54.87
50'	53.00	52.75	52.35	52.75	52.35	52.75	53.00
25'	51.12	50.87	50.47	50.87	50.47	50.87	51.12
00'	49.25	49.0	48.6	49.0	48.6	49.00	49.25

East Line India St.

B.M. S.W. cor Columbia plug. 63.96 21

6802	60.50	64.25	60.50	56.75	10.24
64.25	7.52	3.77	7.52	11.27	7.86
3.77	11.42	3.57	4.82	10.47	
4.87	-3.9	-0.1	2.7	10.9	
-7.1	13.08	53.0	49.25	56.75	53.0
	54.94	J.P.	8.15	0.65	4.4
	2.46	H.I.	4.1	3.15	7.2
	57.40		10.3	0.0	-2.8
					10.57

46.77	53.00	57.5	56.75	56.5
18.76	2.33	2.35	2.35	2.35
0.22				
39.71	60.50	60.25	64.25	64
12.47	11.32	11.65	7.63	7.73
7.13				
11.765	44	56.50		
1.810	26	11.32		
15.44				
1.70				
57.53				
10.31				
47.0				

Corby Props

Gregory  
Shoemaker  
Shaw

Checked OK 9-20-14 blough



North West Line state St. South

200' 77.25 77.00 76.6 77.00 76.6 77.00 77.25

175' 75.88 75.63 75.23 75.63 75.23 75.63 75.88

150' 74.50 74.25 73.85 74.25 73.85 74.25 74.50

125' 73.13 72.88 72.48 72.88 72.48 72.88 73.13

100' 71.75 71.5 71.10 71.5 71.1 71.5 71.75

75' 70.38 70.13 69.73 70.13 69.73 70.13 70.38

50' 69.00 68.75 68.35 68.75 68.35 68.75 69.00

25' 67.63 67.38 66.98 67.38 66.98 67.38 67.63

00 66.25 66.00 65.6 66.00 65.6 66.00 66.25

East Line Columbia St.

248  
77.04 BM. Sw cur. State

78.94	74.50	71.75	77.25	74.50	71.75	69.00
0.58			2.27	5.02	7.77	10.53
79.52 H.I.	5.02	7.77	2.27	5.82	8.77	10.92
77.25	8.02	11.77	2.27	-0.8	-1.0	-0.3
2.27	-3.0	-4.0	0.3			
			66.25	13.07	68.02 H.I.	69.00
			13.27	10.2	4.06	1.0
			66.57	63.96		3.1
			1.51			7.1
			66.25			66.25
						1.77
						2.37
						-0.6

69.25 BM. 66.25 66.25 66.25 66.25 66.25 66.25 66.25

71.50 71.50 71.50 71.50 71.50 71.50 71.50

67.10 67.10 67.10 67.10 67.10 67.10 67.10

67.10 67.10 67.10 67.10 67.10 67.10 67.10

67.10 67.10 67.10 67.10 67.10 67.10 67.10

Checked OK 9-20-14 blough



	North	West Line Union St.					South	
200'	94.25	94.0	93.85	94.5	94.4	95.0	95.25	
175'	92.38	92.13	91.94	92.56	92.43	93.0	93.25	
150'	90.50	90.25	90.04	90.63	90.45	91.0	91.25	
125'	88.63	88.38	88.13	88.69	88.48	89.0	89.25	
100'	86.75	86.5	86.22	86.75	86.5	87.00	87.25	
75'	84.88	84.63	84.32	84.82	84.53	85.0	85.25	
50'	83.00	82.75	82.41	82.88	82.55	83.0	83.25	
25'	81.13	80.88	80.51	80.94	80.58	81.0	81.25	
00'	79.25	79.0	78.6	79.0	78.6	79.00	79.25	
		East Line State St.						

102.91 H.I.	91.25	94.25	90.50	
95.25	11.66	8.66	12.41	
7.66	12.26	12.96	12.81	
7.76	-0.6	-4.3	-0.4	79.25
0.1				11.35
11.66	13.12	86.75	83.0	79.25
78.94 J.P.	89.79	3.85	7.60	11.35
18.00 Mate	0.81	4.55	7.60	10.75
End of arch.	90.60 H.I.	0.0	0.0	+0.6
90.50	90.25	97.68	95.0	94.0
7.18	7.43	90.48	2.68	3.68
86.50	86.75	97.68	91.0	91.25
11.18	10.93	2.43	6.68	6.43
79.00		12.13	83.0	82.75
7.44		85.55 J.P.	83.0	83.55
		0.89	83.0	82.75
		86.44 H.I.	3.44	3.49
			3.44	3.19
				7.19

29

Checked OK 9-10-14  
Lalouy



North

South

30

98.25 98.00 97.85 98.5 98.4 99.00 99.25

98.0 98.0 97.49 98.14 98.07 99.00 99.00  
97. 97. 98. 98.

1/4 97.4 96.5 97.17 97.82 97.79 97.75 97.4

Curlew

0 97.0 96.0 96.85 97.5 97.5 97.5 97.5

st.

1/4 96.1 95.5 96.53 97.18 97.20 97.22 97.25

95. 95.  
96.0 96.0 96.21 96.86 96.98 97.02 97.13

96.25 96.0 95.85 96.5 96.76 96.82 97.00

East Line Union st.

Checked OK 9-20-14 [signature]



	North	West Line Brant St.					South
200'	128.25	128.00	127.4	127.5	126.85	127.00	127.25
175'	104.50 2	104.25 2	123.70	123.88	123.29	123.5	123.75
150'	120.75	120.50	120.01	120.25	119.74	120.00	120.25
125'	117.00	116.75	116.32	116.63	116.18	116.5	116.75
100'	113.25	113.00	112.62	113.00	112.62	113.00	113.25
75'	109.50	109.25	108.93	109.38	109.07	109.50	109.75
50'	105.75	105.50	105.24	105.75	105.51	106.0	106.25
25'						103.58	103.83
00'	98.25	98.0	97.85	98.5	98.4	99.00	99.25

East Line Curlew St.

97.20 J.P., 100' 20 Curlew Qualifier on curb.

139.15	127.25	12.99				
128.25	11.90	126.27	J.P. road			
10.90		0.10		113.25		
120.75	113.25	126.37	H.I.	13.12		
5.62	13.12	120.25		12.72		
5.82	9.02	6.12		+0.4	106.25	
97.20	-0.2	4.1	-1.4	114.01	J.P.	8.21
12.28				0.45		6.91
109.48	H.I. 99.0	99.25		114.46	H.I.	+1.3
99.25	10.48	15.21		105.75		103.20
10.23	108.58	103.83		8.77		10.56
98.25	5.90	5.65	12.89	3.11		8.66
71.23	106.25	106.0	42.82	+3.6		+7.9
98.0	3.23	34.8		102.07	J.P.	
71.48				0.84		5.71
105.50	105.75	0.08		102.91	H.I.	97.20 J.P.
3.98	3.73	109.40	J.P.			
130.50	120.75	12.02		113.25	113.0	120.0
0.92	0.67	121.42	H.I.	8.17	8.42	1.42
	9.69					5.21
120.50						97.20
130.19	H.I.					102.47
2.18						99.0
128.01	J.P.	End curb	140	Cur. Brant		3.01
153.12	27	275	240			
81	63	86	57			
133.17	113.00	98.00	99.00	96.00	96.00	
131.00	9.20	10.55	9.57	11.55	9.7	
120.17						
1.15						
121.32						
12.10						
108.22						
53						
108.55						
11.80						
96.75						
1.62						
97						

Checked OK 9-20-14 Clough



	North	West Line Albatross St.					South
200'	166.25	166.0	162.6	166.0	165.6	166.0	166.25
1175'	161.75	161.50	161.08	161.44	161.01	161.38	161.63
	.2 high on walk						
450'	157.25	157.00	156.55	156.88	156.41	156.75	157.0
1175'	152.75	152.50	152.03	152.31	151.82	152.13	152.38
1400'	148.25	148.00	147.50	147.75	147.25	147.5	147.75
775'	143.75	143.50	142.98	143.19	142.63	142.88	143.13
550'	139.25	139.00	138.45	138.63	138.04	138.25	138.50 <small>.6 low</small>
325'	134.75	134.50	133.93	134.06	133.44	133.63	133.88 <small>.2 high</small>
100'	130.25	130.0	129.4	129.5	128.85	129.00	129.25

East Line Brant St.

32

174.59	H.I.	126.1	148.25	157.05
166.25		161.98 J.P.	14.83	6.08
8.34		1.10	7.83	11.48
9.24		163.08 H.I.	+7.0	-5.4
-0.9		157.25	12.89	138.50
139.25		5.83	150.19 J.P.	12.30
11.85		1.13	0.61	7.30
2.35		+4.7	150.80 H.I.	+5.0
+9.2		127.5	147.75	
		138.05 J.P.	3.05	
		1.10	2.15	
		159.71 H.I.	10.9	129.25
		130.25	9.90	
		8.90		
168.34	168.34	168.34	168.34	157.46
166.00	166.00	156.75	157.00	148.00
2.34	2.34	11.59	11.34	7.46
			157.46	9.90
145.16	145.16	145.16	138.32	128.32
138.25	139.00	8.93	130.00	129.00
6.91	6.16	136.23	8.32	9.32
		2.09		7.5
		138.32		5.18
168.00				
168.50	11.60	145.00	4.77	4.75
153.25	2.50	8.93	9.1	2.35
153.85				
12.30				
144.15				
144.37				
11.25				
133.15	24.0			

Selected OK 9-20-14 blouff



North West Line Front St. South

200' 186.25 186.0 185.6 186.0 185.6 186.00 186.25

175' 185.00 184.75 184.35 184.75 184.35 184.75 185.00

150' 183.75 183.50 183.1 183.5 183.1 183.5 183.75

120' 182.25 182.0 181.6 182.0 181.6 182.0 182.25

100' 180.85 180.60 180.2 180.6 180.2 180.6 180.85

80' 178.85 178.6 178.2 178.60 178.2 178.60 178.85

50' 174.87 174.62 174.23 174.62 174.23 174.62 174.87

325' 171.56 171.31 170.91 171.31 170.91 171.31 171.56

00 168.25 168.00 167.6 168.0 167.6 168.00 168.25

East Line Albatross St.

B.M. N.W. cor. Front Plug return 185.896

185.90	183.5	182.0	180.6	178.6	33
1.44	3.84	5.34	6.74	8.74	
187.34 H.I.	3.9	5.34	6.7	8.7	
	0.0	0.0	0.0	0.0	
174.62	13.02	16.80	18.60	23.1	
12.72	174.32 J.P.	6.59	0.24	0.32	
12.72	0.27				
0.0	174.59 H.I.				



North	West Line 1 <sup>st</sup> St.						South
200'	201.25	201.0	200.40	200.0	199.1	199.00	199.25
175'	199.50	199.25	198.45	198.37	197.53	197.50	197.75
150'	197.75	197.50	196.90	196.75	195.97	196.00	196.25
125'	196.00	195.75	195.15	195.13	194.41	194.50	194.75
100'	194.25	194.00	193.40	193.50	192.85	193.00	193.25
75'	192.50	192.25	191.65	191.87	191.28	191.50	191.75
50'	190.75	190.50	190.10	190.25	189.60	190.00	190.25
25'	189.00	188.75	188.35	188.62	188.10	188.50	188.75
00'	187.25	187.00	186.4	187.0	186.4	187.00	187.25

East Line Front St.

→ N.B. see FRONT ST Profile ←

This Block Graded by Private Contract



North West Line 2<sup>nd</sup> St South

200' 209.25 209.0 208.4 208.5 207.85 208.0 208.25

175' 208.50 208.25 207.65 207.68 206.98 207.13 207.38

150' 207.75 207.5 206.9 206.87 206.10 206.25 206.50

125' 207.00 206.75 206.15 206.06 205.23 205.38 205.63

100' 206.25 206.0 205.4 205.25 204.35 204.5 204.75

75' 205.50 205.25 204.65 204.43 203.48 203.63 203.88

50' 204.75 204.5 203.9 203.67 202.60 202.75 203.0

25' 204.00 203.75 203.15 202.81 201.73 201.88 202.13

00 203.25 203.0 202.4 202.0 200.85 201.0 201.25

East Line 1<sup>st</sup> St

208.95 B.M. N.W. C.A. 2<sup>nd</sup> 2 Juniper  
 3.65 12.50 12.50 12.50  
 212.50 H. 09.25 06.87 26.25  
 3.25 5.63 6.25  
 3.50 12.50 6.50  
 4.0 12.50 7.10  
 12.50 12.50  
 08.50 12.50 12.50  
 4.00 07.75 05.25  
 4.75 7.25  
 5.00

all stakes from 2<sup>nd</sup> for 100 ft on  
 The NW 1/4 of Juniper

35

211.6

7.5 6.87 6.25  
 3.6 4.3 4.5

Checked OK 9-20-14  
 Blount



	North	West Line 3 <sup>rd</sup> St.					South
200'	212.25	212.0	211.4	211.5	210.85	211.0	211.25
175'	211.88	211.63	211.03	211.13	210.48	210.63	210.88
150'	211.50	211.25	210.65	210.75	210.10	210.25	210.50
125'	211.13	210.88	210.28	210.38	209.73	209.88	210.13
100'	210.75	210.5	209.9	210.0	209.35	209.5	209.75
		Down			high	high	g=3.494
75'	210.38	210.13	209.53	209.63	208.98	209.13	209.38
50'	210.00	209.75	209.15	209.25	208.60	208.75	209.0
		Down					
25'	209.62	209.37	208.77	208.87	208.22	208.37	208.62
0'	209.25	209.0	208.4	208.5	207.85	208.00	208.25
		East Line 2 <sup>nd</sup> St.					

208.95 5.11, N.W. S.P. Jumper 2 2nd  
 8.71  
 217.66 H  
 17.66 17.66 17.66 17.66  
 09.25 09.25 09.25 09.25  
 8.41 8.41 8.41 8.41  
 17.66 17.66 17.66 17.66  
 05.50 10.00 10.00 10.00  
 7.66 7.66 7.66 7.66  
 5.96 5.36 5.36 5.36  
 4.2 4.2 4.2 4.2

20895 13.61 13.61 13.61  
 4.66 09.00 9.25 10.15  
 213.61 H 4.61 4.34 2.86  
 13.61 13.61 13.61  
 05.40 9.15 9.25  
 5.21 4.46 3.71  
 13.61 13.61 13.61  
 03.52 10.25 10.25  
 5.11 3.61 3.61  
 3.26

210.99	210.99	210.99	210.99	210.99	210.99	210.99	210.99	210.99	210.99
4.84	4.84	4.84	4.84	4.84	4.84	4.84	4.84	4.84	4.84
213.99 H	4.99	5.49	5.49	4.72	4.94	5.19	5.49	5.49	5.49

at 12 on north 10' east of E line end.  
 diked on about 10' east of E line end.

20895	20875	209	2085	20875	2085	2085	2085	2085	2085	2085	2085	2085	2085	2085	2085	2085	2085	2085	2085	
218.25	7.19	2.05	2.42	6.75	2.25	2.75	4.42	4.83	4.83	4.83	4.83	4.83	4.83	4.83	4.83	4.83	4.83	4.83	4.83	4.83

216.24 3  
 6.25  
 211.50  
 5.25  
 213.60  
 4.61  
 208.98  
 2.18  
 211.16

checked OK 9-20-14. Delroy



Juniper St.

North

Bo.

Yield

37

Checked OK 9-20-14 Blough

212.25 212.00 211.40 211.50 210.85 211.00 211.25

212.00 212.00 210.75 210.50 210.75 211.00 211.00  
210.0

211.60 211.42 211.26 211.10 210.94 210.78 210.60

Third

212.00 211.82 211.66 211.50 211.34 211.18 211.00

St.

211.60 211.42 211.26 211.10 210.94 210.78 210.60

212.00 212.00 211.75 210.50 210.25 210.0 211.00 211.00

212.25 212.00 211.40 211.50 210.85 211.00 211.25



JUNIPER ST.

No.

South

W.L. of 4th St.

	213.25	213.00	212.40	212.50	211.85	212.00	212.25
40'	208.45	208.20	207.60	207.70	207.05	207.20	207.45
60'	206.15	205.90	205.30	205.40	204.65	204.90	205.15
80'	204.95	204.70	204.10	204.20	203.55	203.70	203.95
100'	204.65	204.40	203.80	203.90	203.25	203.40	203.65
120'	205.05	204.80	204.20	204.30	203.65	203.80	204.05
140'	205.95	205.70	205.10	205.20	204.55	204.70	204.95
160'	207.75	207.50	206.90	207.00	206.35	206.50	206.75
200'	212.25	212.00	211.40	211.50	210.85	211.00	211.25

East Line 3rd St.

N	W.L. 4th St					S
	213.00	212.40	212.50	211.85	212.00	
40'	212.80	212.20	212.30	211.65	211.80	
60'	212.70	212.10	212.20	211.55	211.70	
80'	212.50	212.00	212.10	211.45	211.60	
100'	212.50	211.90	212.00	211.35	211.50	
120'	212.40	211.80	211.90	211.25	211.40	
140'	212.30	211.70	211.80	211.15	211.30	
160'	212.20	211.60	211.70	211.05	211.20	
200'	213.00	211.40	211.50	210.85	211.00	

E.L. 3rd St.

N.B. see page 43 For This Block.



Kalmia

st.

222.0

222.0

57

212.0

212.0

40

Juniper

st.

211.0

211.0

40

THIRD

190.0

187.0

Ivy

st.







West

East

212.25 212.0 211.6 212.0 211.6 212.0 212.25

212.0 212.0 211.4 211.8 211.4 212.0 212.0

1/4 211.2 210.2 211.2 210.2 211.2 210.2 211.2

Juniper

0 211.5 210.5 211.0 211.5 211.0 210.5 211.5

St.

1/4 210.85 210.2 210.4 210.4 210.2 210.2 210.85

210. 210. 210. 210. 210. 210. 210.

211.0 211.0 210.8 210.8 211.2 211.2 211.0

211.25 211.0 210.6 210.6 211.0 211.0 211.25



	West		South Line	Juniper St.		East.
00'	211.25	211.0	210.6	210	210.6	211.0 211.25
10'	209.5	209.25	208.84	209.13	208.67	209.0 209.25
20'	207.75	207.5	207.07	207.25	206.78	207.0 207.25
30'	206.0	205.75	205.30	205.38	204.79	205.0 205.25
40'	204.25	204.0	203.54	203.5	202.85	203.0 203.25
50'	202.5	202.25	201.77	201.63	200.92	201.00 201.25
60'	200.75	200.5	200.0	199.75	198.98	199.0 199.25
70'	199.00	198.75	198.24	197.88	197.04	197.0 197.25
80'	197.25	197.0	196.47	196.0	195.10	195.0 195.25
90'	195.50	195.25	194.70	194.13	193.17	193.0 193.25
100'	193.75	193.50	192.94	192.25	191.23	191.00 191.25
110'	192.0	191.75	191.17	190.38	189.29	189.0 189.25
120'	190.25	190.00	189.40	188.5	187.35	187.00 187.25

North Line Ivy St.

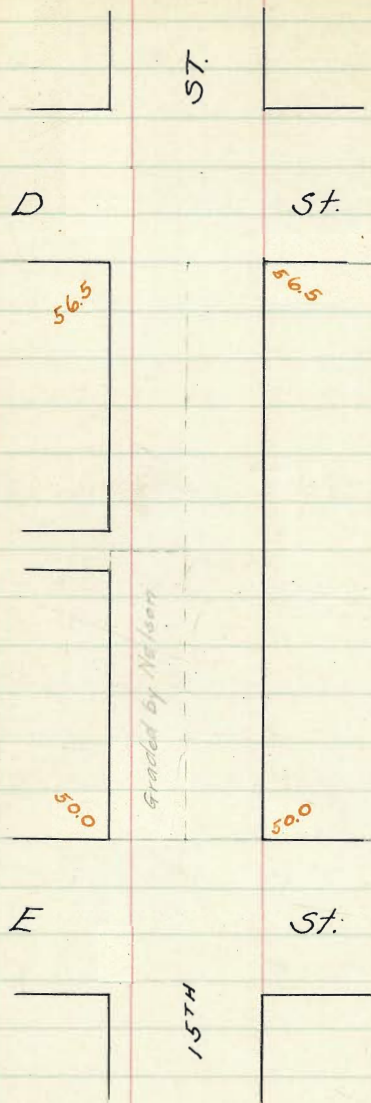
208.95	21.41	209.7	209.01	209.01	96.77	96.37	96.27	3	Constitution E. L.
12.46	11.35	7.25	3.25	3.25	45.25	41.25	37.25	11	W. L.
221.9177	10.16	1.76	5.76	2.76	1.05	5.02	9.02	13	W. L.
209.76	21.935	H. J.	211.25	11.00	0.775	7.50	7.25		
209.101	11.35	2.1	6.25		11.6	11.35	12.10		
196.00	207.41	30	24.35	24.00	10.00	10.50	15.75	12.75	37.25
192.77	207.30	1.35	2.95	3.31	3.70	6.50	5.80	7.50	10.00
214.95	196.00	1.37	9.375	9.250	9.235	9.10	19.025	19.000	8.850
196	197.37		3.62	3.47	3.10	6.37	7.10	7.07	8.85

at base Feb 13-13  
 3-18-13  
 4-30-13  
 Many bad spots, can't pass it  
 check O.K. for grade  
 street not graded to  
 property line on west  
 side from 0.3 to 0.8  
 Derrin  
 Sherr  
 Kerr





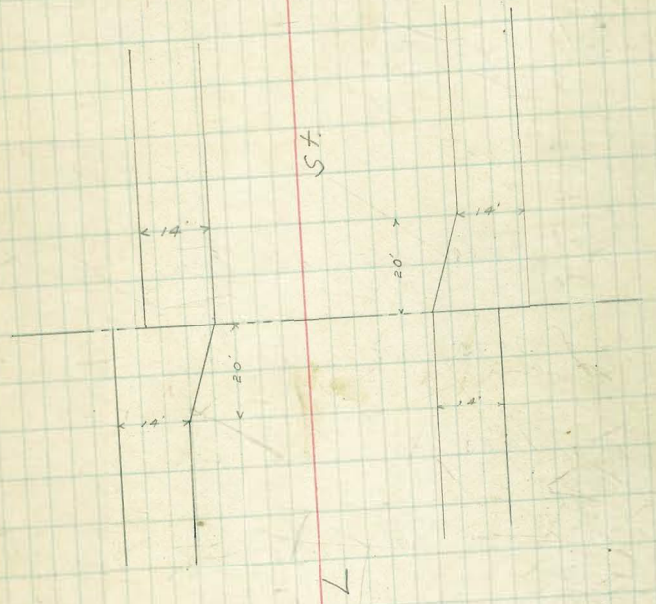
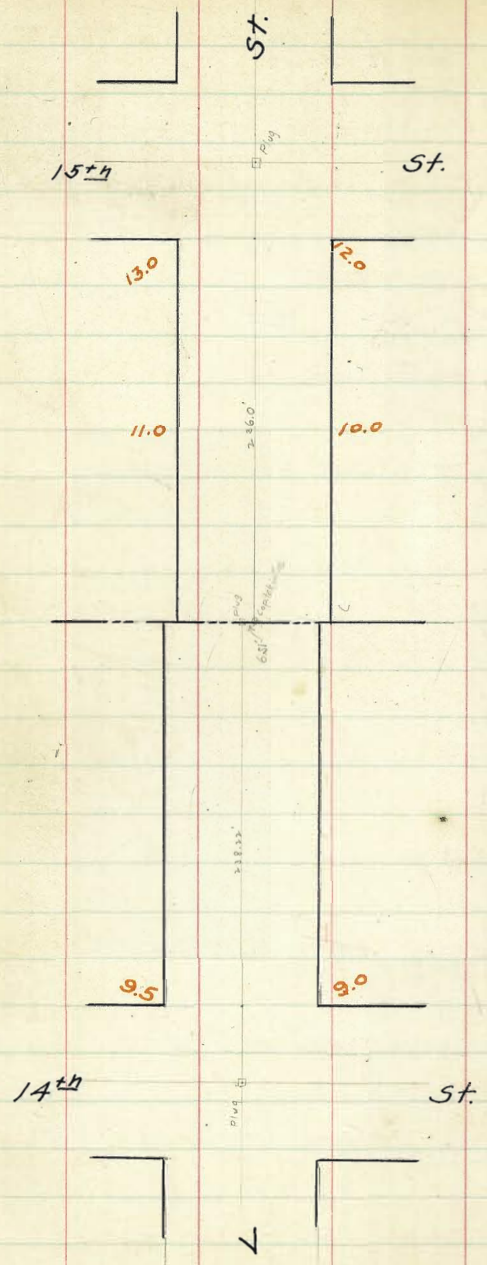












Plot Showing Alignment of Curbs (Tube 5th)

Scale 1" = 40'







Nov

400

350

300

250

200

150

100

50

0

100

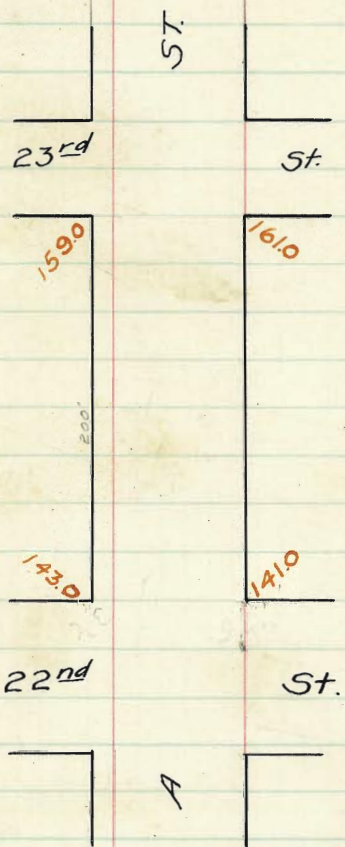
200

300

400

500















27<sup>th</sup>

St.

28<sup>th</sup>

St.

2090

ST.

2090

ST.

195.2	193.8
193.7	192.4
192.4	191.3
191.3	190.3
190.9	189.4
189.1	188.7
189.1	188.1
188.8	187.8
188.6	187.6
188.6	187.5
188.8	187.8
189.3	188.3
190.0	189.0
✓ 191.0	190.0
192.7	191.8
194.4	193.6
196.1	195.4
197.8	197.2

2050

A

2040

2080

A

2080

26<sup>th</sup>

St.

27<sup>th</sup>

St.



No	North	West Line 27 <sup>th</sup> St					South
600	209.25	209.0	208.6	209.0	208.6	209.0	209.25
550	208.98	208.67	208.25	208.63	208.20	208.58	208.83
500	208.58	208.33	207.90	208.25	207.81	208.17	208.42
450	208.25	208.00	207.55	207.88	207.42	207.75	208.00
400	207.92	207.67	207.20	207.50	207.02	207.33	207.58
350	207.58	207.33	206.85	207.13	206.62	206.92	207.17
300	207.25	207.0	206.5	206.75	206.23	206.5	206.75
250	206.92	206.67	206.15	206.38	205.83	206.09	206.34
200	206.58	206.33	205.80	206.00	205.43	205.67	205.92
150	206.25	206.0	205.45	205.63	205.04	205.25	205.50
100	205.92	205.67	205.10	205.25	204.64	204.83	205.08
50	205.58	205.33	204.75	204.88	204.25	204.42	204.67
00	205.25	205.0	204.4	204.5	203.85	204.00	204.25

East Line 26<sup>th</sup> St.

205.26 Bm NE 264 a

21012	21012	21012	21012	21012	21012	21012	21012	21012	21012
4.0	4.0	4.0	4.0	4.0	4.0	4.0	4.0	4.0	4.0
1.90	1.90	1.90	1.90	1.90	1.90	1.90	1.90	1.90	1.90
6.26	6.26	6.26	6.26	6.26	6.26	6.26	6.26	6.26	6.26
214.48	214.48	214.48	214.48	214.48	214.48	214.48	214.48	214.48	214.48
1.7	1.7	1.7	1.7	1.7	1.7	1.7	1.7	1.7	1.7
206.1	206.1	206.1	206.1	206.1	206.1	206.1	206.1	206.1	206.1
206.9	206.9	206.9	206.9	206.9	206.9	206.9	206.9	206.9	206.9
214.48	214.48	214.48	214.48	214.48	214.48	214.48	214.48	214.48	214.48
208.90	208.90	208.90	208.90	208.90	208.90	208.90	208.90	208.90	208.90
207.17	207.17	207.17	207.17	207.17	207.17	207.17	207.17	207.17	207.17
214.48	214.48	214.48	214.48	214.48	214.48	214.48	214.48	214.48	214.48
211.6	211.6	211.6	211.6	211.6	211.6	211.6	211.6	211.6	211.6
208.5	208.5	208.5	208.5	208.5	208.5	208.5	208.5	208.5	208.5
209.1	209.1	209.1	209.1	209.1	209.1	209.1	209.1	209.1	209.1

7-10-11  
 2090 2087.7 2085.8 / 20833 20817 / 2080 2075 20757 20733 /  
 344 375 396 411 427 442 457 472 487 502 517 532 547 562 577 592 607 622 637 652 667 682 697 712 727 742 757 772 787 802 817 832 847 862 877 892 907 922 937 952 967 982 997 1012 1027 1042 1057 1072 1087 1102 1117 1132 1147 1162 1177 1192 1207 1222 1237 1252 1267 1282 1297 1312 1327 1342 1357 1372 1387 1402 1417 1432 1447 1462 1477 1492 1507 1522 1537 1552 1567 1582 1597 1612 1627 1642 1657 1672 1687 1702 1717 1732 1747 1762 1777 1792 1807 1822 1837 1852 1867 1882 1897 1912 1927 1942 1957 1972 1987 2002 2017 2032 2047 2062 2077 2092 2107 2122 2137 2152 2167 2182 2197 2212 2227 2242 2257 2272 2287 2302 2317 2332 2347 2362 2377 2392 2407 2422 2437 2452 2467 2482 2497 2512 2527 2542 2557 2572 2587 2602 2617 2632 2647 2662 2677 2692 2707 2722 2737 2752 2767 2782 2797 2812 2827 2842 2857 2872 2887 2902 2917 2932 2947 2962 2977 2992 3007 3022 3037 3052 3067 3082 3097 3112 3127 3142 3157 3172 3187 3202 3217 3232 3247 3262 3277 3292 3307 3322 3337 3352 3367 3382 3397 3412 3427 3442 3457 3472 3487 3502 3517 3532 3547 3562 3577 3592 3607 3622 3637 3652 3667 3682 3697 3712 3727 3742 3757 3772 3787 3802 3817 3832 3847 3862 3877 3892 3907 3922 3937 3952 3967 3982 3997 4012 4027 4042 4057 4072 4087 4102 4117 4132 4147 4162 4177 4192 4207 4222 4237 4252 4267 4282 4297 4312 4327 4342 4357 4372 4387 4402 4417 4432 4447 4462 4477 4492 4507 4522 4537 4552 4567 4582 4597 4612 4627 4642 4657 4672 4687 4702 4717 4732 4747 4762 4777 4792 4807 4822 4837 4852 4867 4882 4897 4912 4927 4942 4957 4972 4987 5002 5017 5032 5047 5062 5077 5092 5107 5122 5137 5152 5167 5182 5197 5212 5227 5242 5257 5272 5287 5302 5317 5332 5347 5362 5377 5392 5407 5422 5437 5452 5467 5482 5497 5512 5527 5542 5557 5572 5587 5602 5617 5632 5647 5662 5677 5692 5707 5722 5737 5752 5767 5782 5797 5812 5827 5842 5857 5872 5887 5902 5917 5932 5947 5962 5977 5992 6007 6022 6037 6052 6067 6082 6097 6112 6127 6142 6157 6172 6187 6202 6217 6232 6247 6262 6277 6292 6307 6322 6337 6352 6367 6382 6397 6412 6427 6442 6457 6472 6487 6502 6517 6532 6547 6562 6577 6592 6607 6622 6637 6652 6667 6682 6697 6712 6727 6742 6757 6772 6787 6802 6817 6832 6847 6862 6877 6892 6907 6922 6937 6952 6967 6982 6997 7012 7027 7042 7057 7072 7087 7102 7117 7132 7147 7162 7177 7192 7207 7222 7237 7252 7267 7282 7297 7312 7327 7342 7357 7372 7387 7402 7417 7432 7447 7462 7477 7492 7507 7522 7537 7552 7567 7582 7597 7612 7627 7642 7657 7672 7687 7702 7717 7732 7747 7762 7777 7792 7807 7822 7837 7852 7867 7882 7897 7912 7927 7942 7957 7972 7987 8002 8017 8032 8047 8062 8077 8092 8107 8122 8137 8152 8167 8182 8197 8212 8227 8242 8257 8272 8287 8302 8317 8332 8347 8362 8377 8392 8407 8422 8437 8452 8467 8482 8497 8512 8527 8542 8557 8572 8587 8602 8617 8632 8647 8662 8677 8692 8707 8722 8737 8752 8767 8782 8797 8812 8827 8842 8857 8872 8887 8902 8917 8932 8947 8962 8977 8992 9007 9022 9037 9052 9067 9082 9097 9112 9127 9142 9157 9172 9187 9202 9217 9232 9247 9262 9277 9292 9307 9322 9337 9352 9367 9382 9397 9412 9427 9442 9457 9472 9487 9502 9517 9532 9547 9562 9577 9592 9607 9622 9637 9652 9667 9682 9697 9712 9727 9742 9757 9772 9787 9802 9817 9832 9847 9862 9877 9892 9907 9922 9937 9952 9967 9982 9997 10012 10027 10042 10057 10072 10087 10102 10117 10132 10147 10162 10177 10192 10207 10222 10237 10252 10267 10282 10297 10312 10327 10342 10357 10372 10387 10402 10417 10432 10447 10462 10477 10492 10507 10522 10537 10552 10567 10582 10597 10612 10627 10642 10657 10672 10687 10702 10717 10732 10747 10762 10777 10792 10807 10822 10837 10852 10867 10882 10897 10912 10927 10942 10957 10972 10987 11002 11017 11032 11047 11062 11077 11092 11107 11122 11137 11152 11167 11182 11197 11212 11227 11242 11257 11272 11287 11302 11317 11332 11347 11362 11377 11392 11407 11422 11437 11452 11467 11482 11497 11512 11527 11542 11557 11572 11587 11602 11617 11632 11647 11662 11677 11692 11707 11722 11737 11752 11767 11782 11797 11812 11827 11842 11857 11872 11887 11902 11917 11932 11947 11962 11977 11992 12007 12022 12037 12052 12067 12082 12097 12112 12127 12142 12157 12172 12187 12202 12217 12232 12247 12262 12277 12292 12307 12322 12337 12352 12367 12382 12397 12412 12427 12442 12457 12472 12487 12502 12517 12532 12547 12562 12577 12592 12607 12622 12637 12652 12667 12682 12697 12712 12727 12742 12757 12772 12787 12802 12817 12832 12847 12862 12877 12892 12907 12922 12937 12952 12967 12982 12997 13012 13027 13042 13057 13072 13087 13102 13117 13132 13147 13162 13177 13192 13207 13222 13237 13252 13267 13282 13297 13312 13327 13342 13357 13372 13387 13402 13417 13432 13447 13462 13477 13492 13507 13522 13537 13552 13567 13582 13597 13612 13627 13642 13657 13672 13687 13702 13717 13732 13747 13762 13777 13792 13807 13822 13837 13852 13867 13882 13897 13912 13927 13942 13957 13972 13987 14002 14017 14032 14047 14062 14077 14092 14107 14122 14137 14152 14167 14182 14197 14212 14227 14242 14257 14272 14287 14302 14317 14332 14347 14362 14377 14392 14407 14422 14437 14452 14467 14482 14497 14512 14527 14542 14557 14572 14587 14602 14617 14632 14647 14662 14677 14692 14707 14722 14737 14752 14767 14782 14797 14812 14827 14842 14857 14872 14887 14902 14917 14932 14947 14962 14977 14992 15007 15022 15037 15052 15067 15082 15097 15112 15127 15142 15157 15172 15187 15202 15217 15232 15247 15262 15277 15292 15307 15322 15337 15352 15367 15382 15397 15412 15427 15442 15457 15472 15487 15502 15517 15532 15547 15562 15577 15592 15607 15622 15637 15652 15667 15682 15697 15712 15727 15742 15757 15772 15787 15802 15817 15832 15847 15862 15877 15892 15907 15922 15937 15952 15967 15982 15997 16012 16027 16042 16057 16072 16087 16102 16117 16132 16147 16162 16177 16192 16207 16222 16237 16252 16267 16282 16297 16312 16327 16342 16357 16372 16387 16402 16417 16432 16447 16462 16477 16492 16507 16522 16537 16552 16567 16582 16597 16612 16627 16642 16657 16672 16687 16702 16717 16732 16747 16762 16777 16792 16807 16822 16837 16852 16867 16882 16897 16912 16927 16942 16957 16972 16987 17002 17017 17032 17047 17062 17077 17092 17107 17122 17137 17152 17167 17182 17197 17212 17227 17242 17257 17272 17287 17302 17317 17332 17347 17362 17377 17392 17407 17422 17437 17452 17467 17482 17497 17512 17527 17542 17557 17572 17587 17602 17617 17632 17647 17662 17677 17692 17707 17722 17737 17752 17767 17782 17797 17812 17827 17842 17857 17872 17887 17902 17917 17932 17947 17962 17977 17992 18007 18022 18037 18052 18067 18082 18097 18112 18127 18142 18157 18172 18187 18202 18217 18232 18247 18262 18277 18292 18307 18322 18337 18352 18367 18382 18397 18412 18427 18442 18457 18472 18487 18502 18517 18532 18547 18562 18577 18592 18607 18622 18637 18652 18667 18682 18697 18712 18727 18742 18757 18772 18787 18802 18817 18832 18847 18862 18877 18892 18907 18922 18937 18952 18967 18982 18997 19012 19027 19042 19057 19072 19087 19102 19117 19132 19147 19162 19177 19192 19207 19222 19237 19252 19267 19282 19297 19312 19327 19342 19357 19372 19387 19402 19417 19432 19447 19462 19477 19492 19507 19522 19537 19552 19567 19582 19597 19612 19627 19642 19657 19672 19687 19702 19717 19732 19747 19762 19777 19792 19807 19822 19837 19852 19867 19882 19897 19912 19927 19942 19957 19972 19987 20002 20017 20032 20047 20062 20077 20092 20107 20122 20137 20152 20167 20182 20197 20212 20227 20242 20257 20272 20287 20302 20317 20332 20347 20362 20377 20392 20407 20422 20437 20452 20467 20482 20497 20512 20527 20542 20557 20572 20587 20602 20617 20632 20647 20662 20677 20692 20707 20722 20737 20752 20767 20782 20797 20812 20827 20842 20857 20872 20887 20902 20917 20932 20947 20962 20977 20992 21007 21022 21037 21052 21067 21082 21097 21112 21127 21142 21157 21172 21187 21202 21217 21232 21247 21262 21277 21292 21307 21322 21337 21352 21367 21382 21397 21412 21427 21442 21457 21472 21487 21502 21517 21532 21547 21562 21577 21592 21607 21622 21637 21652 21667 21682 21697 21712 21727 21742 21757 21772 21787 21802 21817 21832 21847 21862 21877 21892 21907 21922 21937 21952 21967 21982 21997 22012 22027 22042 22057 22072 22087 22102 22117 22132 22147 22162 22177 22192 22207 22222 22237 22252 22267 22282 22297 22312 22327 22342 22357 22372 22387 22402 22417 22432 22447 22462 22477 22492 22507 22522 22537 22552 22567 22582 22597 22612 22627 22642 22657 22672 22687 22702 22717 22732 22747 22762 22777 22792 22807 22822 22837 22852 22867 22882 22897 22912 22927 22942 22957 22972 22987 23002 23017 23032 23047 23062 23077 23092 23107 23122 23137 23152 23167 23182 23197 23212 23227 23242 23257 23272 23287 23302 23317 23332 23347 23362 23377 23392 23407 23422 23437 23452 23467 23482 23497 23512 23527 23542 23557 23572 23587 23602 23617 23632 23647 23662 23677 23692 23707 23722 23737 23752 23767 23782 23797 23812 23827 23842 23857 23872 23887 23902 23917 23932 23947 23962 23977 23992 24007 24022 24037 24052 24067 24082 24097 24112 24127 24142 24157 24172 24187 24202 24217 24232 24247 24262 24277 24292 24307 24322 24337 24352 24367 24382 24397 24412 24427 24442 24457 24472 24487 24502 24517 24532 24547 24562 24577 24592 24607 24622 2463



No	North					South	
200	208.25	208.00	207.6	208.0	207.6	208.00	208.25
	208.0 207	208.00 207	207.78	208.18	207.78	208.00 207	208.00 207
1/4	207.85	207.75	207.94	208.34	207.94	207.75	207.85
			27 <sup>1/4</sup>				
1/4	208.5	208.5	208.10	208.50	208.10	208.5	208.5
			57				
1/4	208.4	208.25	208.26	208.66	208.26	208.25	208.4
	208. 209.0	208. 209.0	208.42	208.82	208.42	208. 209.0	208. 209.0
	209.25	209.0	208.6	209.0	208.6	209.0	209.25

~~218.53~~  
 8.4 8.5 7.80 / 8.5 7.5 8.1  
 5.43 5.83 5.98 / 5.83 6.33 5.73  
~~212.98 87m-~~  
~~109~~  
 213.42 ~~16~~  
 213.17 ~~14~~  
 8.1 8.5 8.4 / 7.8 5  
 5.92 5.82 4.92 / 5.02 5.57  
 9.0 7.6 / 8.0 7.6 / 8.5 8.1 ~~8.5~~  
 4.7 4.57 / 5.17 4.87 / 4.85 ~~4.77~~







check 7/20/11 Hotel  
Hagber  
Hall

No	20103 HI	1900	1893	1885	1876	1868	1858	1841
	1230	1103	63	63	71	70	68	65
	1833	1163	69	74	77	76	73	70
	19520 HI	1163	68	73	76	75	72	765
	1218	745	79	82	81	81	78	75
	1200	73	78	81	80	78		

1897	1904	1913	(1924	918	9185	9117	913
59	52	23	32	38	375	443	43
65	59	29	937	931	9305	9232	924
64	65	28	1.9	25	285	828	32
705	62	53	952	946	945	9870	933
69			8.4	1.0	1.1	185	18

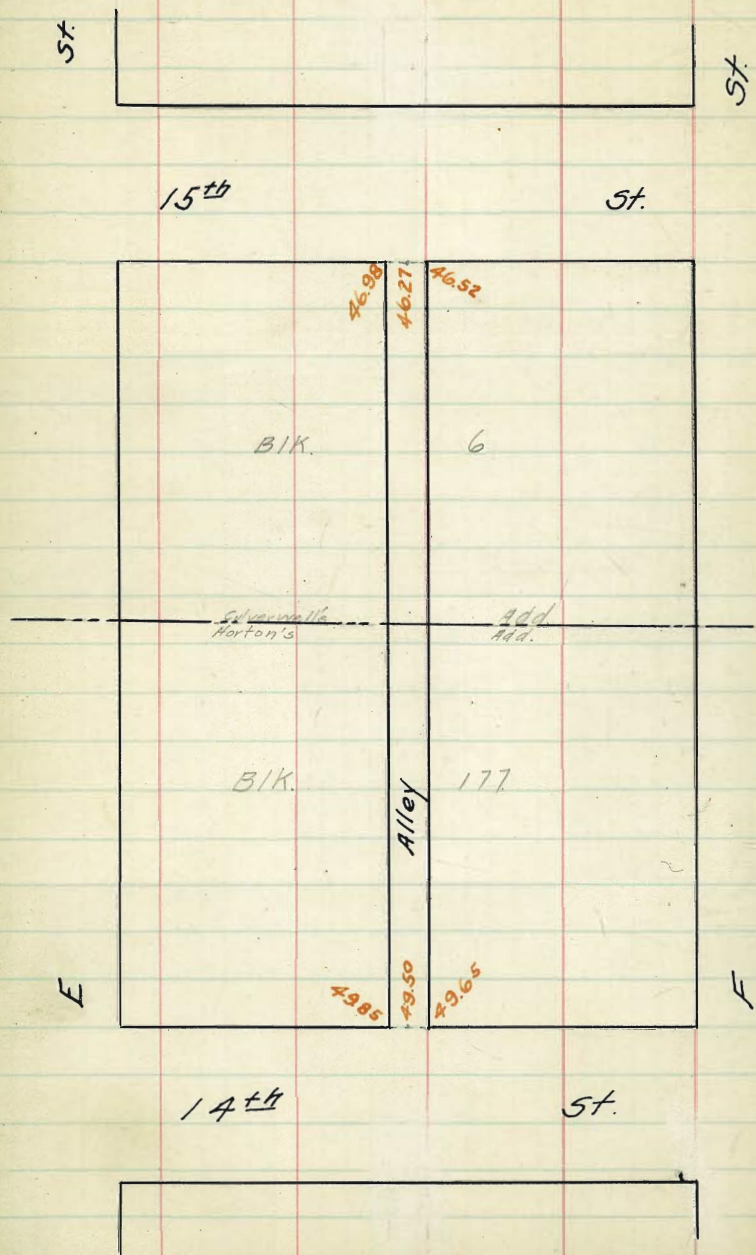
21233 hr 0427

21233 hr 0427	55							
21233 hr 0427	2080	20760	20375	20227	20362	20716	20330	
1278	488		9113	9161	9126	917	913	
20142	8750	9720	9695	9750	9610	8550	9575	9500
1224	500	400	280	400	511	571	550	607
187.01	9440	9380	9200	9340	9160	9270	9210	9120
562	685	745	725	755	765	855	915	910
19463	900	9000	8250	8785	9000	1000	960	960
	100	1085	1075	1140	1100			
	890	8870	8850	8840	8830			
	543	643	583	648	603			
	8880	8840	8830	8765	8780			
	580	643	620	680	683			
	8850	8791	8800	8735	8750			
	613	673	663	720	713			
	8860	8800	8810	8745	8760			
	603	683	653	720	703			
	8880	8820	8830	8765	8780			
	343	643	633	700	683			
	8910	8850	8860	8795	8810			
	553	613	600	67	653			
	8970	8910	8920	8855	8870			
	49	55	54	61	59			
	9070	8980	8990	8925	8940			
	420	48	47	54	520			
	913	907	909	9015	903			
	32	39	38	45	43			
	924	918	9185	9177	915			
	22	25	28	34	33			
	937	931	9305	9232	924			
	19	15	16	23	21			

check OK

change







West Line 15<sup>th</sup> St.

	North	Center	South
4 400'	46.98	46.27	46.52
4 375'	47.16	46.47	46.72
4 350'	47.34 ✓	46.67	46.91
4 325'	47.52	46.87	47.11
4 300'	47.70 ✓	47.07	47.30 ✓
4 275'	47.89	47.28	47.50
4 250'	48.06 ✓	47.48	47.69 ✓
4 225'	48.24	47.68	47.89
4 200'	48.42 ✓	47.88	48.08 ✓
4 175'	48.60	48.08	48.28
4 150'	48.78 ✓	48.29	48.47 ✓
4 125'	48.96	48.49	48.67
4 100'	49.14 ✓	48.69	48.86 ✓
4 75'	49.32	48.89	49.06
4 50'	49.50 ✓	49.09	49.26 ✓
4 25'	49.68	49.29	49.45
4 00'	49.85	49.50	49.65

East Line 14<sup>th</sup> St.

5897 TR. SW 24 1/4 ll	4985	4985	4987	4926	4914	4886
540	482	472	497	511	513	51
54.37	470	480	652	665	73	81
3.50	412	412	487	511	81	6.10
50.97	4878	4847	4847	4808	4769	4770
2.23	5.59	5.70	4.88	5.04	5.41	5.40
53.10	4.00	5.80	1.00	1.2	6.0	5.80
	1.6	0.1	0.1	0.2	0.0	0.0
	4.68	4.65		2.8		
	6.54	6.58				
	0.20	7.0				



NW 1/4 + S. Evans Hwy End Ref. 21.757  
 NE 1/4 + " " " " 28.928

1.55 30.48

T.P. 8.50 21.78

5.80 27.78

27.78	27.78	27.78	27.78	27.78	27.78	27.78	27.78
22.25	22.00	21.60	22.00	21.60	22.00	22.25	
5.53	5.78	6.18	5.78	6.18	5.78	5.53	

27.78	27.78	27.78	27.78	27.78
22.50	22.10	22.50	22.10	22.50
5.28	5.68	5.28	5.68	5.28

27.78	27.78	27.78	27.78	27.78
23.00	22.60	23.00	22.60	23.00
4.78	5.18	4.78	5.18	4.78

27.78	27.78	27.78	27.78	27.78
23.50	23.10	23.50	23.10	23.50
4.28	4.68	4.28	4.68	4.28

FOH

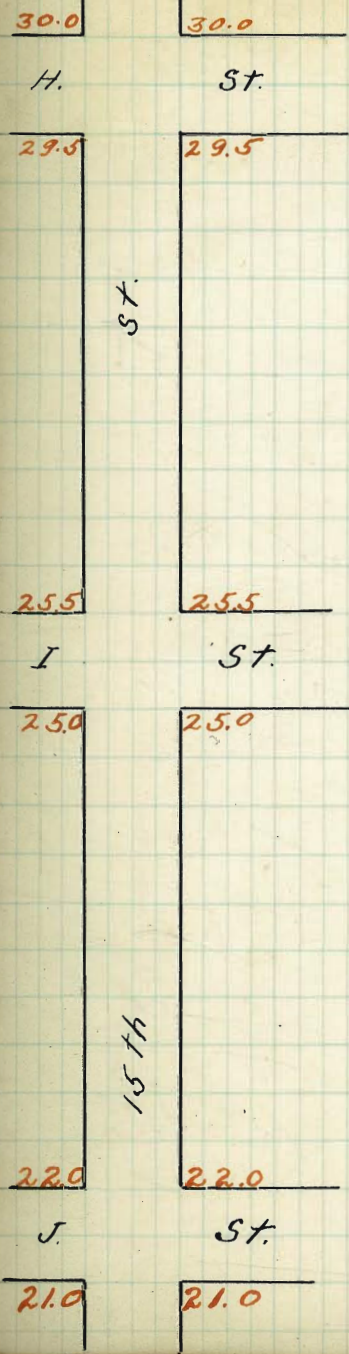
Walks run 1 to 2' low on St. 3 to 4' low on curb.  
 Street checks OK at grade fronts but full of holes.  
 Gutters need cleaning out.  
 Street has appearance of being graded  
 about a year ago.

West  
 Evans  
 Brown  
 9/26/13

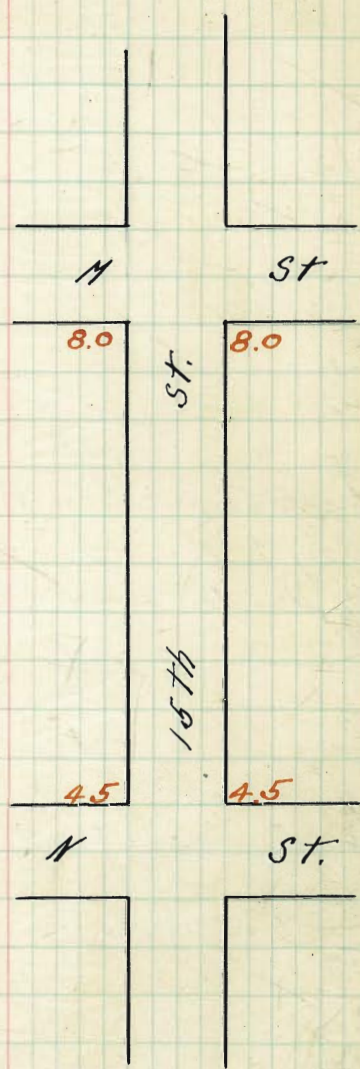
28.93-84	28.08	28.08	28.08	28.08	28.08	28.08	28.08	28.08	28.08
1.52	2.10	2.10	2.10	2.10	2.10	2.10	2.10	2.10	2.10
30.45-85	6.48	6.08	6.48	6.48	6.48	6.48	6.48	6.48	6.48
8.45	6.61	6.61	6.61	6.61	6.61	6.61	6.61	6.61	6.61
22.00-TP curb	6.08	6.08	6.08	6.08	6.08	6.08	6.08	6.08	6.08
6.08	6.08	6.08	6.08	6.08	6.08	6.08	6.08	6.08	6.08
28.08-82	6.08	6.08	6.08	6.08	6.08	6.08	6.08	6.08	6.08

28.08	28.08	28.08	28.08	28.08	28.08
23.50	23.00	23.50	23.00	23.50	23.00
4.58	5.08	4.58	5.08	4.58	5.08
4.93	5.43	4.93	5.43	4.93	5.43
7.1	5.16	7.1	5.16	7.1	5.16
	0.3		0.3		0.3

Not ready for check  
 needs blade to  
 smooth the street  
 start in shops.  
 West Evans - Hatcher  
 9/27/13.



H.  
 ST.  
 I  
 15th  
 J



ST.  
 15th







15th St.

West So. L. H. St. East.

29.75 29.50 29.10 29.50 29.10 29.50 29.75

29.41 29.16 28.76 29.16 28.76 29.16 29.41

29.08 28.83 28.43 28.83 28.43 28.83 29.08

28.74 28.49 28.09 28.49 28.09 28.49 28.74

28.41 28.16 27.76 28.16 27.76 28.16 28.41

28.08 27.83 27.43 27.83 27.43 27.83 28.08

27.74 27.49 27.09 27.49 27.09 27.49 27.74

27.41 27.16 26.76 27.16 26.76 27.16 27.41

27.08 26.83 26.43 26.83 26.43 26.83 27.08

26.74 26.49 26.09 26.49 26.09 26.49 26.74

26.41 26.16 25.76 26.16 25.76 26.16 26.41

26.08 25.83 25.43 25.83 25.43 25.83 26.08

25.75 25.50 25.10 25.50 25.10 25.50 25.75

N. L. - J. - St.

2995 B.M. N.V. 15th St.

2995	32.55	32.55	32.55
2995	32.08	28.91	27.74
	3.47	4.14	4.81
	3.72	4.39	5.06
	4.12	4.79	5.46

All stakes from S.L.H. for 150' S.

6/ sample  
12/ Evans.  
11/ Johnson

62

2995  
29.55  
29.00

2910 / 2883  
4.30 / 5.77

2843 / 2816  
25.9 / 5.84

2776 / 2749  
4.24 / 6.57

2709 / 2691

6-23-11

R. Holt BLU

checked OK

Checked  
P. Johnson  
J. W.



15th St

W. So. L.-I- St. E.

200	25.25	25.00	24.60	25.00	24.60	25.00	25.25
150	25.00	24.75	24.35	24.75	24.35	24.75	25.00
100	24.75	24.50	24.10	24.50	24.10	24.50	24.75
75	24.50	24.25	23.85	24.25	23.85	24.25	24.50
50	24.25	24.00	23.60	24.00	23.60	24.00	24.25
25	24.00	23.75	23.35	23.75	23.35	23.75	24.00
100	<sup>HL</sup> 23.75	<sup>OK</sup> 23.50	<sup>OK</sup> 23.10	<sup>OK</sup> 23.50	<sup>OK</sup> 23.10	<sup>OK</sup> 23.50	<sup>OK</sup> 23.75
175	<sup>HL</sup> 23.50	<sup>OK</sup> 23.25	<sup>OK</sup> 22.85	<sup>HL</sup> 23.25	<sup>OK</sup> 22.85	<sup>HL</sup> 23.25	<sup>OK</sup> 23.50
200	<sup>HL</sup> 23.25	<sup>OK</sup> 23.00	<sup>OK</sup> 22.60	<sup>OK</sup> 23.00	<sup>OK</sup> 22.60	<sup>OK</sup> 23.00	<sup>OK</sup> 23.25
225	<sup>OK</sup> 23.00	<sup>OK</sup> 22.75	<sup>OK</sup> 22.35	<sup>OK</sup> 22.75	<sup>OK</sup> 22.35	<sup>OK</sup> 22.75	<sup>OK</sup> 23.00
250	<sup>OK</sup> 22.75	<sup>OK</sup> 22.50	<sup>OK</sup> 22.10	<sup>OK</sup> 22.50	<sup>OK</sup> 22.10	<sup>OK</sup> 22.50	<sup>OK</sup> 22.75
275	<sup>OK</sup> 22.50	<sup>OK</sup> 22.25	<sup>OK</sup> 21.85	<sup>OK</sup> 22.25	<sup>OK</sup> 21.85	<sup>OK</sup> 22.25	<sup>OK</sup> 22.50
300	<sup>OK</sup> 22.25	<sup>OK</sup> 22.00	<sup>OK</sup> 21.60	<sup>OK</sup> 22.00	<sup>OK</sup> 21.60	<sup>OK</sup> 22.00	<sup>OK</sup> 22.25

N. L.-J- St.

All stakes 11/11 Hatch Moore Hall

21957	NW	16-J (out)	22.0	21.6	22.5	22.1	23.0	68
2893	NE	16-J	5.30	5.7	4.5	5.2	4.30	77
25252	NW	15-F	3.5	2.1	3.5	2.1	4.0	98
192			3.5	4.2				
2730			3.5	4.2				

2192	NE	16-J	1.01	1.0	1.0	1.0	1.0
2724			1.0	1.0	1.0	1.0	1.0
2725			1.0	1.0	1.0	1.0	1.0
2726			1.0	1.0	1.0	1.0	1.0
2727			1.0	1.0	1.0	1.0	1.0
2728			1.0	1.0	1.0	1.0	1.0
2729			1.0	1.0	1.0	1.0	1.0
2730			1.0	1.0	1.0	1.0	1.0

12/5/13 This street has evidently been graded for some time. There are a few low and high places as shown on opposite page. Dirt has washed off curb line into gutters on East side making the sidewalk about 5" narrow and the gutters high. Otherwise it is in as good shape as can be expected after having been graded for any length of time.

Gregory Shumaker



15th St.

No.	W.	So. L. M. St					E.	
400	8.25	8.00	7.60	8.00	7.60	8.0	8.25	
375	7.95	7.70	7.30	7.70	7.30	7.70	7.95	
350	7.66	7.41	7.01	7.41	7.01	7.41	7.66	
325	7.32	7.12	6.72	7.12	6.72	7.12	7.32	
300	7.08	6.83	6.43	6.83	6.43	6.83	7.08	
275	6.79	6.54	6.14	6.54	6.14	6.54	6.79	
250	6.49	6.24	5.84	6.24	5.84	6.24	6.49	
225	6.20	5.95	5.55	5.95	5.55	5.95	6.20	
200	5.91	5.66	5.26	5.66	5.26	5.66	5.91	
175	5.62	5.37	4.97	5.37	4.97	5.37	5.62	
150	5.33	5.08	4.68	5.08	4.68	5.08	5.33	
125	5.04	4.79	4.39	4.79	4.39	4.79	5.04	
100	4.75	4.50	4.10	4.50	4.10	4.50	4.75	

N. L. N. St







Lincoln Ave.

299.0

301.0

300.0

302.0

297.0

300.0

Univ. Ave.



LOUISIANA

ST.

W.

E.

So. Line Lincoln

67

100 299.25 299.00 299.10 300.00 300.40 301.00 301.25

550 299.50 299.25 299.35 300.25 300.65 301.25 301.50

500 299.75 299.50 299.60 300.50 300.90 301.50 301.75

450 300.0 299.75 299.85 300.75 301.15 301.75 302.00

400 300.25 300.0 300.15 301.00 301.40 302.00 302.25

350 299.87 299.62 299.75 300.68 301.15 301.75 302.00

300 299.50 299.25 299.41 300.37 300.90 301.50 301.75

250 299.12 298.87 299.06 300.06 300.65 301.25 301.50

200 298.75 298.50 298.72 299.75 300.40 301.00 301.25

150 298.37 298.12 298.38 299.43 300.15 300.75 301.00

100 298.00 297.75 298.03 299.12 299.90 300.50 300.75

50 297.62 297.37 297.69 298.81 299.65 300.25 300.50

00 297.25 297.00 297.35 298.50 299.40 300.10 300.25

N. L. Univ. Ave



No  
100  
110  
120  
130  
140  
150  
160  
170  
180  
190  
200  
210  
220  
230  
240  
250  
260  
270  
280  
290  
300



276.0

Myrtle St.

276.5

St.

280.5

Dwight St.

281.0

St.

285.0

Landis St.

286.0

St.

290.0

Wightman St

291.0

275.5

277.5

Park Line

276.0

278.0

280.0

280.5

285.0

286.0

289.0

290.0

280.5

281.3

St

St

tie wt. 3/12/11  
Hotel  
12/11  
11/11  
Fall

Note - St. is 60' but  
the 80' hubs are  
the ones tied wt.

Louisiana

Louisiana

277.5

276.7

276.1

275.8

275.7

275.8

276.0

276.5

277.3

278.5

277.7

277.1

276.8

276.7

276.8

277.0

277.5

278.3

276.0

Myrtle St

276.5

St

280.5

Dwight St.

286.0

St

285.0

Landis St

286.0

St



Univ. Ave

295.0

298.0

St

300'

Louisiana

290.0

291.0

Wightman St

289.0

290.0



60' street

# Southline Myrtle

280	275.75	275.50	275.22	275.75	275.40	276.0	276.25
285	275.92	275.67	275.39	275.92	275.57	276.17	276.42
290	276.10	275.95	275.57	276.10	275.75	276.35	276.60
295	276.28	276.03	275.75	276.28	275.93	276.53	276.78
300	276.46	276.21	275.93	276.46	276.11	276.71	276.96
305	276.63	276.38	276.10	276.63	276.28	276.88	277.13
310	276.81	276.56	276.28	276.81	276.46	277.06	277.31
315	276.99	276.74	276.46	276.99	276.64	277.24	277.49
320	277.17	276.92	276.64	277.17	276.82	277.42	277.67
325	277.35	277.10	276.82	277.35	277.0	277.60	277.85
330	277.52	277.27	276.99	277.52	277.19	277.77	278.02
335	277.75	277.50	277.27	277.75	277.40	278.00	278.25

# Parkline

27695	7925-7911	7925	7925	7925	7925	7925
230	415	32	416	54	51	49
279.2	74.1	75.5	75.6	73.2	71.2	74.2
	75.7	76.2	75.1	75.9	76.3	76.4
	75.0	75.4	75.6	75.3	71.1	74.3
	21.0	2.7	2.8	2.2	2.5	2.2
276.50	75.1	72.1	75.1	79.2	79.2	79.2
503	21	11.15	6.7	23.5	44	70.1
287.53	72.4	68.1	72.8	75.2	74.8	75.9
	75.1	76.6	77.1	77.1	77.3	78.7
	72.1	68.1	71.8	75.2	74.2	75.1
	75.0	75.15	74.7	74.7	72.1	71.8
	75.0	75.0	75.27	76.0	75.3	76.8
	60.0	55.3	58.6	53.6	55.0	51.5
	76.74	77.24	77.10	77.60	77.0	78.0
	479	429	423	378	403	353
27131 HI	75.5	75.67	76.03	76.05	76.74	77.10
	581	562	521	521	457	421
	567	521	521	457	449	409
	506	521	502	463	432	396
	511	521	539	502	467	481
	531	512	479	443	397	371

28127	75.5	75.67	76.03	76.05	76.74	77.10
HN C 450 W Gnt C 03	581	562	521	521	457	421
	567	521	521	457	449	409
	506	521	502	463	432	396
	511	521	539	502	467	481
	531	512	479	443	397	371

all 5' steps  
Kater  
more  
hall



Louisiana St.

West

East

North

276.25 276.00 275.72 276.25 275.90 276.50 276.75

276.00 276.00 275.63 276.16 275.81 276.50 276.50

275.40 274.87 275.55 276.08 275.73 275.37 275.90

Middle

275.75 274.75 275.47 276.00 275.65 275.25 276.25

St

275.22 274.62 275.39 275.92 275.57 275.13 275.72

275.50 275.50 275.31 275.84 275.49 276.00 276.00

275.75 275.50 275.22 276.75 275.90 276.50 276.25

South

73

760  
537  
500  
381  
471

760  
707  
735  
682  
717  
657







Louisiana St.

West

East

North

280.75 280.50 280.22 280.75 280.40 281.00 281.25

280.50 280.50 280.13 280.76 280.31 281.00 281.00

279.90 279.37 280.05 280.58 280.23 279.87 280.40

Dwight

280.25 279.25 279.97 280.50 280.15 279.75 280.75

St

279.72 279.13 279.89 280.42 280.07 279.63 280.22

280.00 280.0 279.11 280.34 279.99 280.50 280.50

280.25 280.0 279.72 280.25 279.90 280.50 280.75

South







West	North			East		
------	-------	--	--	------	--	--

285.25	285.00	284.85	285.50	285.40	286.00	286.25
--------	--------	--------	--------	--------	--------	--------

285.00	285.00	284.75	284.50	284.75	286.00	286.00
284.00	284.00				285.00	285.00

284.60	284.77	284.93	285.10	285.26	285.43	285.60
--------	--------	--------	--------	--------	--------	--------

Landis

285.00	285.17	285.33	285.50	285.66	285.83	286.00
--------	--------	--------	--------	--------	--------	--------

Street

284.60	284.77	284.93	285.10	285.26	285.43	285.60
--------	--------	--------	--------	--------	--------	--------

284.00	284.80				286.00	285.00
285.00	285.00	284.75	284.50	284.75	286.00	286.00

285.25	285.00	284.85	285.50	285.40	286.00	286.25
--------	--------	--------	--------	--------	--------	--------

South

BM 244.33 4th cor. NW. of NW. Cor.







West

North

East

39597

895 885 893.5 90 899 895 905  
947 1047 962 897 907 947 1047  
check 2/10 L.M.H.

78

292.25 290.00 289.85 290.50 290.40 291.00 291.25

290.00 290.00 289.68 290.33 290.23 291.00 291.00  
289.00 289.00 290.00 290.00

289.40 288.75 289.51 290.17 290.07 289.75 290.40

Wrightman

289.50 288.50 289.35 290.00 289.90 289.50 290.50

Street

288.85 288.25 289.18 289.83 289.73 289.25 289.85

288.00 288.00 289.02 289.67 289.57 289.00 289.00  
289.00 289.00 289.00 289.00 289.00 289.00

289.25 289.00 288.85 289.50 289.40 290.00 290.25

South







497.0  
10.42  
781.42  
2.12 red  
0.75  
6.57

Cut State  
Surber Can  
Dam

72.89  
73.11  
5.85  
74.14  
62.59  
238.0

328	214	114 1-1 1/2		12.11	61.0	
378	214	184 1-10	10.05	11.44	61.67	1.86
404	214	190 1-10 3/4	5.99	10.77	62.34	2.18
390	214	176 1-9	8.90	10.10	63.01	1.20
394	214	180 1-9 1/2	8.31	9.43	63.68	1.12
375	214	164 1-7 1/2	7.05	8.76	64.35	1.71
374	214	160 1-7 1/2	6.15	8.09	65.02	1.91
378	214	164 1-7 1/4	6.34	7.42	65.69	1.08
375	214	171 1-8 1/2	5.87	6.75	66.36	0.88
369	214	153 1-6 1/2	5.77	6.08	67.03	0.31
371	214	152 1-6 1/2		5.41	67.70	
370	214	161 1-7 1/2		4.74	68.37	
372	214	168 1-7	7.57	9.10	69.04	1.47
377	214	163 1-7 1/2	8.65	8.45	69.71	1.22
374	214	160 1-7 1/4	8.72	8.76	70.38	1.96
380	214	166 1-8	7.50	7.09	71.05	1.21
380	214	166 1-8	4.80	6.42	71.72	0.62
391	214	157 1-7	4.10	6.10	72.0	1.04
395	214	181 1-9 1/4				
387	214	178 1-8 1/2				

1.18 1/2  
1.87

1-10 3/4

76.00  
1.90  
70.10  
74.2

74.0

12.19  
62.03

11.21  
63.00

1-4 1/2" C  
2-2"  
1-2 1/2"  
1-1 1/2"  
1-8 1/2"  
1-11"  
1-1"  
0-10 1/2"  
0-2 1/2"  
0-5 1/2" F  
0-2 3/4" F  
0-11 1/2" F  
0-5" F  
1-7 1/2" C  
2-0 1/2" C

13  
17  
91  
13  
22.1

36.6  
120  
19.6

752  
77  
54  
1.8  
57.6  
11.20  
2.08  
72.5  
73.0  
9.10

100



27832 J E Hall

478A 60.44

3.51

63.95

209.92

2.65

207.27

4.00

197.07

0.49

196.58

11.34

207.92

0.97

206.95

90

72.7

17.3

17.3

0.49

13.1

3.00

1.36

17.3

0.49

13.1

3.00

1.36

17.3

0.49

13.1

3.00

1.36

17.3

0.49

13.1

3.00

1.36

17.3

0.49

13.1

3.00

1.36

17.3

0.49

13.1

3.00

1.36

17.3

0.49

13.1

3.00

1.36

17.3

0.49

13.1

3.00

1.36

17.3

0.49

13.1

3.00

1.36

17.3

0.49

13.1

3.00

1.36

17.3

0.49

13.1

3.00

1.36

17.3

0.49

13.1

3.00

1.36

17.3

0.49

13.1

3.00

1.36

17.3

0.49

13.1

3.00

1.36

17.3

0.49

13.1

3.00

1.36

17.3

0.49

13.1

3.00

1.36

17.3

0.49

13.1

3.00

1.36

17.3

0.49

13.1

3.00

1.36

17.3

0.49

13.1

3.00

1.36

17.3

0.49

13.1

3.00

1.36

17.3

0.49

13.1

3.00

1.36

17.3

0.49

13.1

3.00

1.36

17.3

0.49

13.1

3.00

1.36

17.3

0.49

13.1

3.00

1.36

17.3

0.49

13.1

3.00

1.36

17.3

0.49

13.1

3.00

1.36

17.3

0.49

13.1

3.00

1.36

17.3

0.49

13.1

3.00

1.36

17.3

0.49

13.1

3.00

1.36

17.3

0.49

13.1

3.00

1.36

17.3

0.49

13.1

3.00

1.36

17.3

0.49

13.1

3.00

1.36

17.3

0.49

13.1

3.00

1.36

17.3

0.49

13.1

3.00

1.36

17.3

0.49

13.1

3.00

1.36

17.3

0.49

13.1

3.00

1.36

17.3

0.49

13.1

3.00

1.36

17.3

0.49

13.1

3.00

1.36

17.3

0.49

13.1

3.00

1.36

17.3

0.49

13.1

3.00

1.36

17.3

0.49

13.1

3.00

1.36

17.3

0.49

13.1

3.00

1.36

17.3

0.49

13.1

3.00

1.36

17.3

0.49

13.1

3.00

1.36

17.3

0.49

13.1

3.00

1.36

17.3

0.49

13.1

3.00

1.36

17.3

0.49

13.1

3.00

1.36

17.3

0.49

13.1

3.00

1.36

17.3

0.49

13.1

3.00

1.36

17.3

0.49

13.1

3.00

1.36

17.3

0.49

13.1

3.00

1.36

17.3

0.49

13.1

3.00

1.36

17.3

0.49

13.1

3.00

1.36

17.3

0.49

13.1

3.00

1.36

17.3