

GRADES

55

WEBSTER AVE		2
31 st ST.		13
CROSBY ST		16
SHAW ST		20
Talbot St. Beach to Rosecrans		30
MADISON ST		37
Douglas St	380	42
17 th ST		41
Leaves St. Beach to Park		60

FIELD

Mississippi St - Beach to Park		67
--------------------------------	--	----

655

Faint handwritten notes at the bottom of the page.

277.45
19.6
7.51

Published by H. S. CROCKER COMPANY, Stationers, Drawing Materials, Mathematical Instruments, etc., San Francisco.

TRAVERSE TABLE FOR TRANSIT BOOK.
From 1° to 90° for a distance of 100.

Degrees.	DEGREES.		¼ DEGREE.		½ DEGREE.		¾ DEGREE.		Degrees.
	Lat.	Dep.	Lat.	Dep.	Lat.	Dep.	Lat.	Dep.	
0			100.00	0.44	100.00	0.87	99.99	1.31	89
1	99.98	1.75	99.98	2.18	99.97	2.62	99.95	3.05	88
2	99.94	3.49	99.92	3.93	99.91	4.36	99.88	4.80	87
3	99.86	5.23	99.84	5.67	99.81	6.10	99.79	6.54	86
4	99.76	6.98	99.73	7.41	99.69	7.85	99.66	8.28	85
5	99.62	8.72	99.58	9.15	99.54	9.58	99.50	10.02	84
6	99.45	10.45	99.41	10.89	99.36	11.32	99.31	11.75	83
7	99.25	12.19	99.20	12.62	99.14	13.05	99.09	13.49	82
8	99.03	13.92	98.97	14.35	98.90	14.78	98.84	15.21	81
9	98.77	15.64	98.70	16.07	98.63	16.50	98.56	16.93	80
10	98.48	17.36	98.40	17.79	98.33	18.22	98.25	18.65	79
11	98.16	19.08	98.08	19.51	97.99	19.94	97.90	20.36	78
12	97.81	20.79	97.72	21.22	97.63	21.64	97.53	22.07	77
13	97.44	22.50	97.34	22.92	97.24	23.34	97.13	23.77	76
14	97.03	24.19	96.92	24.62	96.81	25.04	96.70	25.46	75
15	96.59	25.88	96.48	26.30	96.36	26.72	96.25	27.14	74
16	96.13	27.56	96.00	27.98	95.88	28.40	95.76	28.82	73
17	95.63	29.24	95.50	29.65	95.37	30.07	95.24	30.49	72
18	95.11	30.90	94.97	31.32	94.83	31.73	94.69	32.14	71
19	94.55	32.56	94.41	32.97	94.26	33.38	94.12	33.79	70
20	93.97	34.20	93.82	34.61	93.67	35.02	93.51	35.43	69
21	93.36	35.84	93.20	36.24	93.04	36.65	92.88	37.06	68
22	92.72	37.46	92.55	37.86	92.39	38.27	92.22	38.67	67
23	92.05	39.07	91.88	39.47	91.71	39.87	91.53	40.27	66
24	91.35	40.67	91.18	41.07	91.00	41.47	90.81	41.87	65
25	90.63	42.26	90.45	42.66	90.26	43.05	90.07	43.44	64
26	89.88	43.84	89.69	44.23	89.49	44.62	89.30	45.01	63
27	89.10	45.40	88.90	45.79	88.70	46.17	88.50	46.56	62
28	88.29	46.95	88.09	47.33	87.88	47.72	87.67	48.10	61
29	87.46	48.48	87.25	48.86	87.04	49.24	86.82	49.62	60
30	86.60	50.00	86.38	50.38	86.16	50.75	85.94	51.13	59
31	85.72	51.50	85.49	51.88	85.26	52.25	85.04	52.62	58
32	84.80	52.99	84.57	53.36	84.34	53.73	84.10	54.10	57
33	83.87	54.46	83.63	54.83	83.39	55.19	83.15	55.56	56
34	82.90	55.92	82.66	56.28	82.41	56.64	82.16	57.00	55
35	81.92	57.36	81.66	57.71	81.41	58.07	81.16	58.42	54
36	80.90	58.78	80.64	59.13	80.39	59.48	80.13	59.83	53
37	79.86	60.18	79.60	60.53	79.34	60.88	79.07	61.22	52
38	78.80	61.57	78.53	61.91	78.26	62.25	77.99	62.59	51
39	77.71	62.93	77.44	63.27	77.16	63.61	76.88	63.94	50
40	76.60	64.28	76.32	64.61	76.04	64.94	75.76	65.28	49
41	75.47	65.61	75.18	65.93	74.90	66.26	74.61	66.59	48
42	74.31	66.91	74.02	67.24	73.73	67.56	73.43	67.88	47
43	73.14	68.20	72.84	68.52	72.54	68.84	72.24	69.15	46
44	71.93	69.47	71.63	69.78	71.33	70.09	71.02	70.40	45
45	70.71	70.71							
Degrees.	Dep.	Lat.	Dep.	Lat.	Dep.	Lat.	Dep.	Lat.	Degrees.
	DEGREES.		¼ DEGREE.		½ DEGREE.		¾ DEGREE.		

1075 nca - Man + Scott

3944 man

55-01 James + Rose

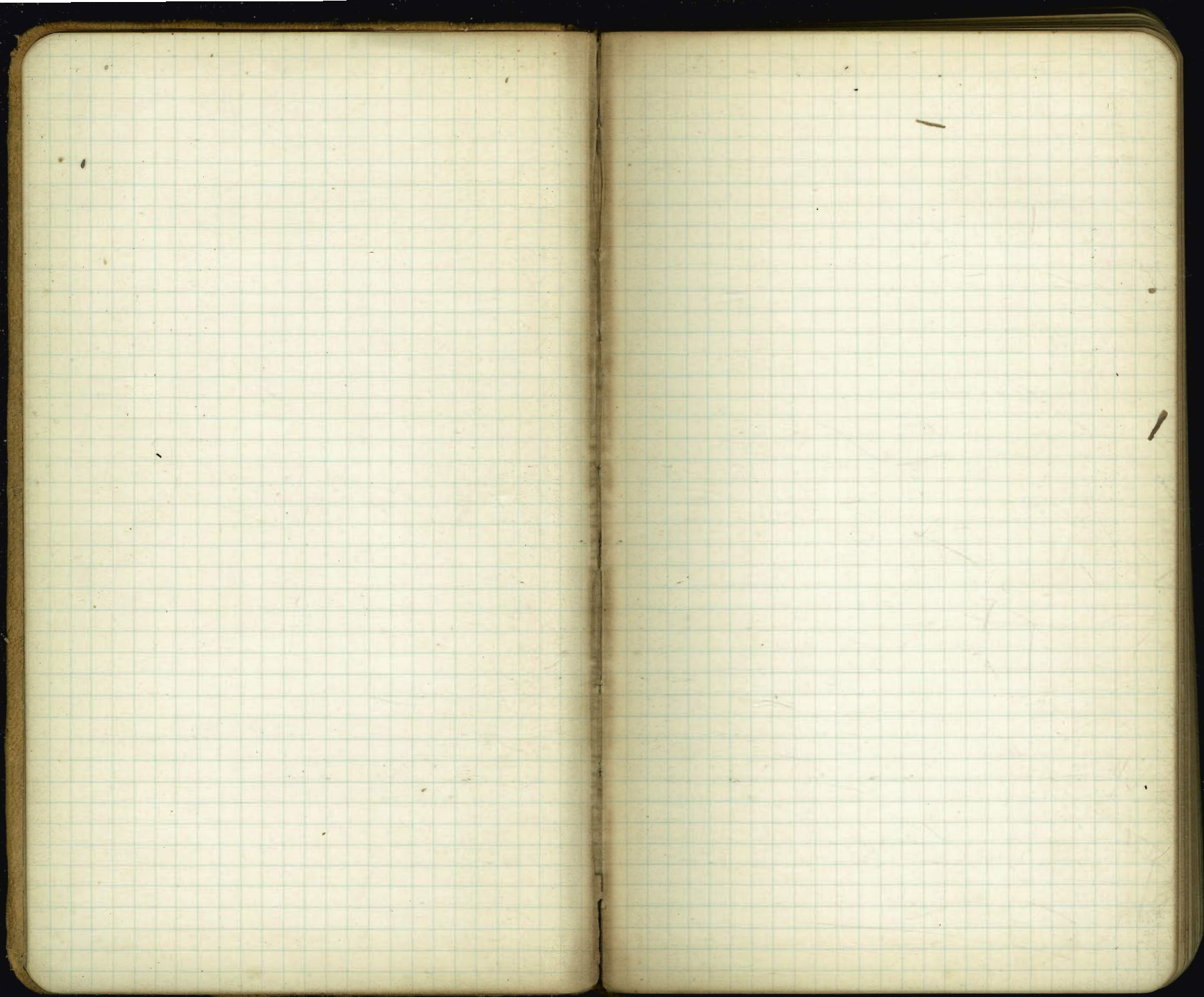
5084 R R Pale

394
29.5
38.5
29.4
19.1

MICROFILMED

APR 6 1965

72,007	SE Phone Pole	Webster	- 29 th
73,530	SE Elec	"	- 30
71,942	"	"	M - 30 th
75,278	"	"	Clay - 30 th



7896 men clay + SL

7157 NS 28+2w
7409 SE 29+2w
7229 SW 20+2w
7508 SE 31+2w
8100 SE 35 00-18

28th St.

68.5

68.0

AVE

600'

WEBSTER

69.6

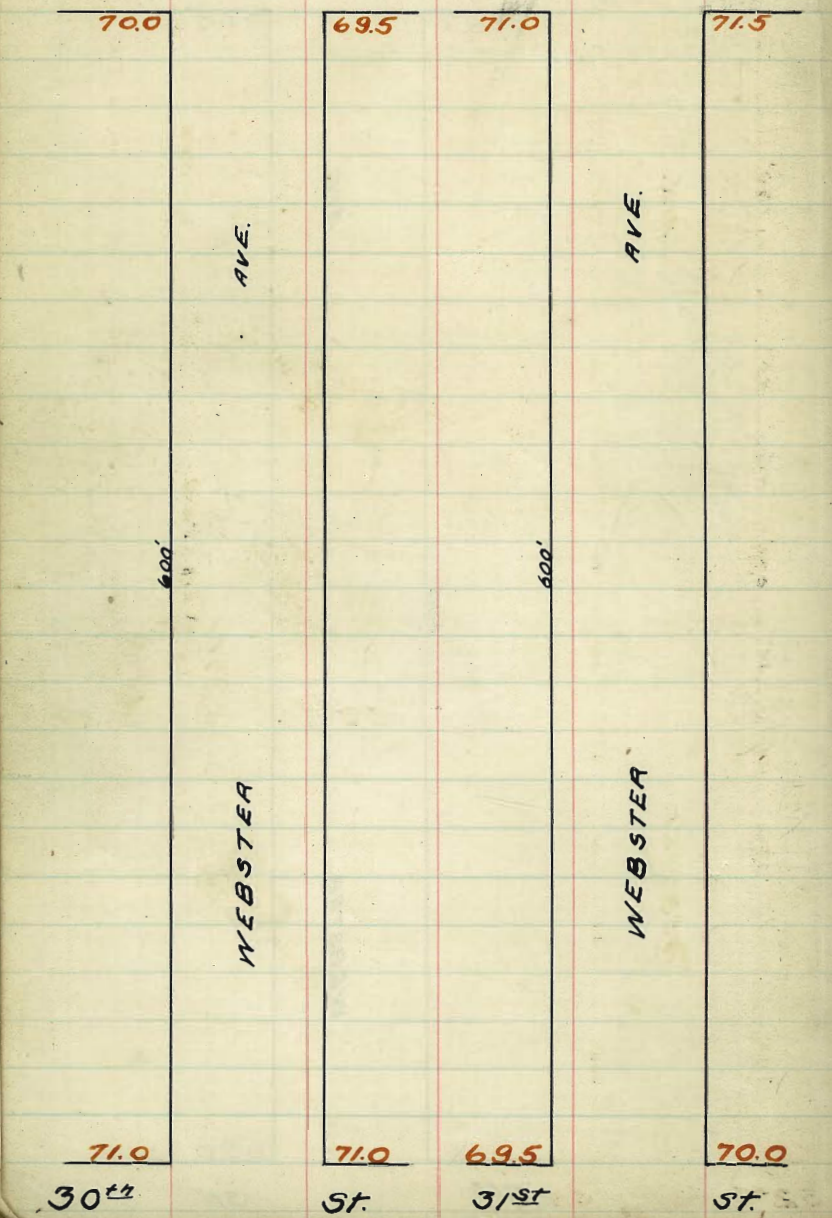
69.0

29th

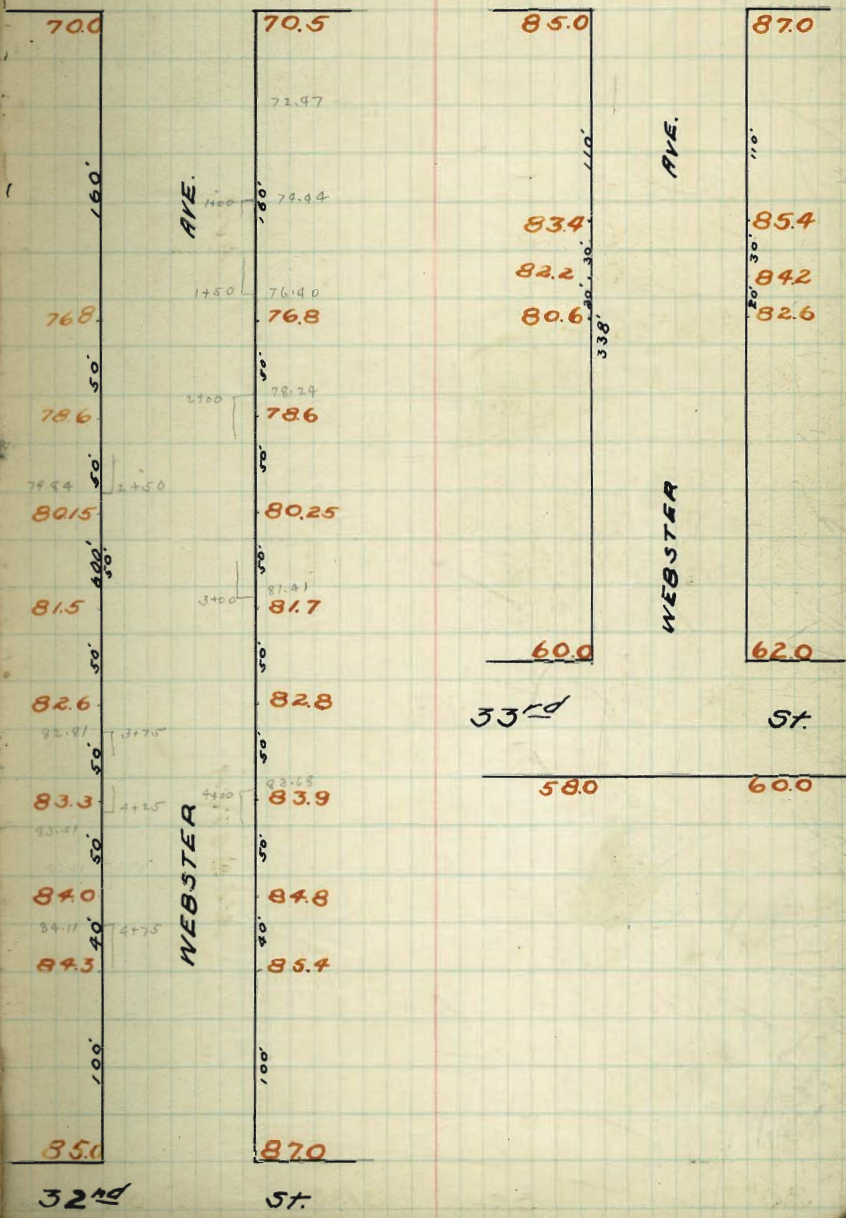
St.

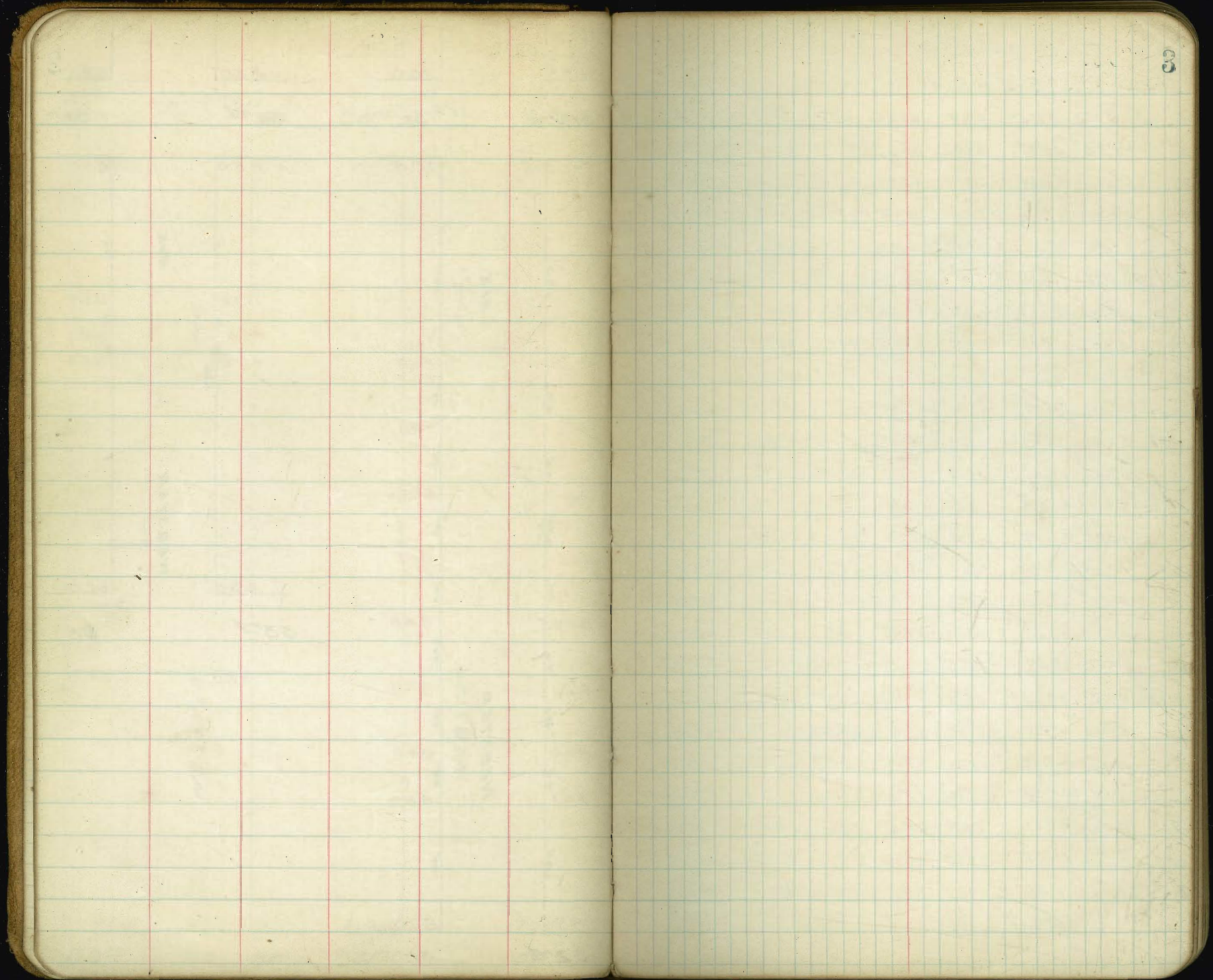
As referred
12/22/10
to sketch
showing
Rogers

69.6 69.0 71.0 71.0
 29th 50.0 - □ 25.0 □ B 50 70th



69.5 70.0 85.0 87.0²
 31st 50.0 - □ 75.0 □ 50.0 □ 75.0 □





South	E. L 28 th						North
00	68.75	68.5	67.9	68.25	67.73	68.0	68.25
25	68.80	68.55	67.95	68.29	67.77	68.04	68.29
50	68.84	68.59	67.99	68.34	67.81	68.08	68.33
75	68.89	68.64	68.04	68.38	67.85	68.12	68.37
100	68.93	68.68	68.08	68.43	67.90	68.16	68.41
125	68.98	68.73	68.13	68.47	67.94	68.20	68.45
150	69.02	68.77	68.17	68.51	67.98	68.25	68.50
175	69.07	68.82	68.22	68.56	68.02	68.29	68.54
200	69.12	68.87	68.27	68.60	68.07	68.33	68.58
225	69.16	68.91	68.31	68.64	68.11	68.37	68.62
250	69.21	68.96	68.36	68.69	68.15	68.41	68.66
275	69.25	69.00	68.40	68.73	68.19	68.45	68.70
300	69.30	69.05	68.45	68.78	68.24	68.50	68.75
325	69.34	69.09	68.49	68.82	68.28	68.54	68.79
350	69.39	69.14	68.54	68.86	68.32	68.58	68.83
375	69.44	69.19	68.59	68.91	68.36	68.62	68.87
400	69.48	69.23	68.63	68.95	68.41	68.66	68.91
425	69.53	69.28	68.68	68.99	68.45	68.70	68.95
450	69.57	69.32	68.72	69.04	68.49	68.75	69.00
475	69.62	69.37	68.77	69.08	68.54	68.79	69.04
500	69.67	69.42	68.82	69.13	68.58	68.83	69.08
525	69.71	69.46	68.86	69.17	68.62	68.87	69.12
550	69.76	69.51	68.91	69.21	68.66	68.91	69.16
575	69.80	69.55	68.95	69.26	68.71	68.95	69.20
600	69.85	69.6	69.0	69.3	68.75	69.0	69.25

E. L 29th

Cut stakes 6/23/10 Hales Moore Patspatrick

4

71576 B7th Spk in Pole NE 38th Webster.

South	E. L 28 th						North
00	68.75	68.5	67.9	68.25	67.73	68.0	68.25
25	68.80	68.55	67.95	68.29	67.77	68.04	68.29
50	68.84	68.59	67.99	68.34	67.81	68.08	68.33
75	68.89	68.64	68.04	68.38	67.85	68.12	68.37
100	68.93	68.68	68.08	68.43	67.90	68.16	68.41
125	68.98	68.73	68.13	68.47	67.94	68.20	68.45
150	69.02	68.77	68.17	68.51	67.98	68.25	68.50
175	69.07	68.82	68.22	68.56	68.02	68.29	68.54
200	69.12	68.87	68.27	68.60	68.07	68.33	68.58
225	69.16	68.91	68.31	68.64	68.11	68.37	68.62
250	69.21	68.96	68.36	68.69	68.15	68.41	68.66
275	69.25	69.00	68.40	68.73	68.19	68.45	68.70
300	69.30	69.05	68.45	68.78	68.24	68.50	68.75
325	69.34	69.09	68.49	68.82	68.28	68.54	68.79
350	69.39	69.14	68.54	68.86	68.32	68.58	68.83
375	69.44	69.19	68.59	68.91	68.36	68.62	68.87
400	69.48	69.23	68.63	68.95	68.41	68.66	68.91
425	69.53	69.28	68.68	68.99	68.45	68.70	68.95
450	69.57	69.32	68.72	69.04	68.49	68.75	69.00
475	69.62	69.37	68.77	69.08	68.54	68.79	69.04
500	69.67	69.42	68.82	69.13	68.58	68.83	69.08
525	69.71	69.46	68.86	69.17	68.62	68.87	69.12
550	69.76	69.51	68.91	69.21	68.66	68.91	69.16
575	69.80	69.55	68.95	69.26	68.71	68.95	69.20
600	69.85	69.6	69.0	69.3	68.75	69.0	69.25

OK Shaw
OK Blough 13/12/10

71576 B7th Spk in Pole NE Cor 29th Webster. 73.62 73.62 73.62 73.62 73.62
 4.16 4.64 5.04 5.12 5.17
 2 stakes In by 22nd Gorman, Miller, Shaw.

South

69.85 69.6 69.0 69.3 68.75 69.0 69.25

69.60 69.6 69.45 69.30 69.15 69.00 69.00
69.6 69.6 68. 68.

1/2 69.30 68.70 69.55 69.41 69.27 68.13 69.73

29±4

cir 69.80 68.80 69.66 69.53 69.39 68.25 69.25

5t.

1/2 69.40 68.90 69.76 69.64 69.51 68.38 68.90

69. 69. 68.5 68.5
70.0 70.0 69.87 69.75 69.63 69.5 69.5

70.25 70.0 69.4 69.25 69.23 69.5 69.75

North

7415-8 TP 6960 6924 6984 7000 6955 6950 6925
EVL 7.24 7.84 7.01 6.84 7.131 7.34 7.89
76.84

7414 7414 7414 7414 7414 7414 7414
6980 6880 6900 6953 6933 6813 6925
4.34 5.34 4.48 4.61 4.75 6.01 4.89

check OK always.

South

North

72.99 BM
5.12
76.11

71.00
5.10

71.50
4.62

71.25
4.87

71.11
5.01

71.25 71.00 70.6 71.0 70.60 71.00 71.25

71.00 71.00 70.6 71.0 70.6 71.00 71.00
70. 70.

71.0 71.00 70.63 71.06 70.68 70.73 70.73

30th

71.0 71.00 70.67 71.11 70.75 71.25 71.25

St.

70.60 70.60 70.70 71.17 70.83 70.90 70.90

70. 70. 70.5 70.5
71.0 71.00 70.73 71.23 70.90 71.50 71.50

71.25 71.00 70.73 71.25 70.90 71.50 71.75

75.47
71.0
4.47

75.47
70.67
4.80

75.47
71.11
4.36

75.47
70.75
4.72

75.47
71.25
4.22

check OK
along

South

North

69.75 69.5 69.23 69.75 69.46 70.0 70.25

69.50 69.5 68.63 68.75 68.88 70.0 70.00
69.5 68.5 69 69.0

4 69.23 69.63 69.75 69.88 70.00 70.13 70.73

31 ST

ctr 69.75 69.75 69.88 700 70.13 70.25 70.25

ST.

4 69.40 69.88 70.00 70.13 70.25 70.38 69.90

69. 69. 69.5 69.5
70.00 70.0 69.13 69.25 69.38 70.5 70.5

70.25 70.0 69.73 70.25 69.90 70.5 70.75

E/W checked OK Blough
12-16-10

	South	E.L. 31st					North	
00' v	70.25	70.0	69.73	70.25	69.90	70.5	70.75	
50' v	72.38	72.13	71.81	72.30	71.93	72.47	72.72	
100' v	74.50	74.25	73.90	74.34	73.96	74.44	74.69	
125'	75.56	75.31	74.94	75.37	74.98	75.42	75.67	
160' v break	77.05	76.8	76.4	76.8	76.40	76.8	77.05	
210' v break	78.85	78.6	78.2	78.9	78.2	78.6	78.85	
260' v break	80.40	80.15	80.78	80.20	79.65	80.25	80.50	
310' v break	81.75	81.5	81.15	81.6	81.1	81.7	81.95	
360' v break	82.85	82.6	82.25	82.7	82.2	82.8	83.05	
410' v break	83.55	83.3	83.05	83.6	83.3	83.9	84.15	
460' v break	84.25	84.0	83.8	84.4	84.2	84.8	85.05	
500' v break	84.55	84.3	84.18	84.85	84.8	85.4	85.65	
550' v	84.90	84.65	84.64	85.43	85.6	86.20	86.45	
600' v	85.25	85.0	85.10	86.0	86.4	87.0	87.25	

W.L. 32nd St.

	N		S		N		S		N		S	
700 ft	70.25	70.75	72.38	72.72	74.50	74.69	77.05	77.05	79.25	79.25	81.5	81.5
750 ft	72.38	72.72	74.50	74.69	77.05	77.05	79.25	79.25	81.5	81.5	83.75	83.75
800 ft	74.50	74.69	77.05	77.05	79.25	79.25	81.5	81.5	83.75	83.75	86.0	86.0
850 ft	76.62	76.81	79.07	79.26	81.32	81.51	83.77	83.96	86.02	86.21	88.28	88.47
900 ft	78.75	78.94	81.20	81.39	83.55	83.74	85.99	86.18	88.44	88.63	90.70	90.89
950 ft	80.87	81.06	83.32	83.51	85.76	85.95	88.20	88.39	90.56	90.75	92.92	93.11
1000 ft	82.99	83.18	85.44	85.63	88.07	88.26	90.50	90.69	92.86	93.05	95.22	95.41
1050 ft	85.11	85.30	87.64	87.83	90.35	90.54	92.78	92.97	95.04	95.23	97.40	97.59
1100 ft	87.23	87.42	89.84	90.03	92.56	92.75	94.90	95.09	97.16	97.35	99.52	99.71
1150 ft	89.35	89.54	92.02	92.21	94.64	94.83	97.00	97.19	99.26	99.45	101.62	101.81
1200 ft	91.47	91.66	94.16	94.35	96.71	96.90	99.14	99.33	101.30	101.49	103.66	103.85
1250 ft	93.59	93.78	96.34	96.53	98.94	99.13	101.38	101.57	103.64	103.83	106.00	106.19
1300 ft	95.71	95.90	98.54	98.73	101.19	101.38	103.62	103.81	105.98	106.17	108.44	108.63
1350 ft	97.83	98.02	100.82	101.01	103.52	103.71	105.96	106.15	108.42	108.61	110.88	111.07
1400 ft	99.95	100.14	103.18	103.37	105.94	106.13	108.40	108.59	110.94	111.13	113.40	113.59
1450 ft	102.07	102.26	105.62	105.81	108.43	108.62	110.96	111.15	113.56	113.75	116.10	116.29
1500 ft	104.19	104.38	108.14	108.33	111.00	111.19	113.54	113.73	116.08	116.27	118.60	118.79
1550 ft	106.31	106.50	110.74	110.93	113.64	113.83	116.14	116.33	118.64	118.83	121.20	121.39
1600 ft	108.43	108.62	113.42	113.61	116.34	116.53	118.80	118.99	121.20	121.39	123.84	124.03
1650 ft	110.55	110.74	116.18	116.37	119.10	119.29	121.80	121.99	123.84	124.03	126.48	126.67
1700 ft	112.67	112.86	119.02	119.21	121.92	122.11	124.44	124.63	126.48	126.67	129.12	129.31
1750 ft	114.79	114.98	121.94	122.13	124.82	125.01	127.12	127.31	129.12	129.31	131.76	131.95
1800 ft	116.91	117.10	124.94	125.13	127.80	127.99	130.00	130.19	131.76	131.95	134.40	134.59
1850 ft	119.03	119.22	128.02	128.21	130.86	131.05	133.00	133.19	134.40	134.59	137.04	137.23
1900 ft	121.15	121.34	131.18	131.37	134.00	134.19	136.00	136.19	137.04	137.23	139.68	139.87
1950 ft	123.27	123.46	134.42	134.61	137.20	137.39	139.00	139.19	139.68	139.87	142.32	142.51
2000 ft	125.39	125.58	137.74	137.93	140.48	140.67	142.00	142.19	142.32	142.51	144.96	145.15
2050 ft	127.51	127.70	141.14	141.33	143.84	144.03	145.00	145.19	144.96	145.15	147.60	147.79
2100 ft	129.63	129.82	144.62	144.81	147.28	147.47	148.00	148.19	147.60	147.79	150.24	150.43
2150 ft	131.75	131.94	148.18	148.37	150.80	150.99	150.00	150.19	150.24	150.43	152.88	153.07
2200 ft	133.87	134.06	151.82	152.01	154.40	154.59	152.00	152.19	151.68	151.87	155.52	155.71
2250 ft	135.99	136.18	155.54	155.73	158.08	158.27	154.00	154.19	153.60	153.79	158.16	158.35
2300 ft	138.11	138.30	159.34	159.53	161.84	162.03	156.00	156.19	155.20	155.39	160.80	160.99
2350 ft	140.23	140.42	163.22	163.41	165.68	165.87	158.00	158.19	156.80	156.99	163.44	163.63
2400 ft	142.35	142.54	167.18	167.37	169.60	169.79	160.00	160.19	158.40	158.59	166.08	166.27
2450 ft	144.47	144.66	171.22	171.41	173.60	173.79	162.00	162.19	160.00	160.19	168.72	168.91
2500 ft	146.59	146.78	175.34	175.53	177.68	177.87	164.00	164.19	161.60	161.79	171.36	171.55
2550 ft	148.71	148.90	179.54	179.73	181.84	182.03	166.00	166.19	163.20	163.39	174.00	174.19
2600 ft	150.83	151.02	183.82	184.01	186.08	186.27	168.00	168.19	164.80	164.99	176.64	176.83
2650 ft	152.95	153.14	188.18	188.37	190.40	190.59	170.00	170.19	166.40	166.59	179.28	179.47
2700 ft	155.07	155.26	192.62	192.81	194.80	194.99	172.00	172.19	168.00	168.19	181.92	182.11
2750 ft	157.19	157.38	197.14	197.33	199.28	199.47	174.00	174.19	169.60	169.79	184.56	184.75
2800 ft	159.31	159.50	201.74	201.93	203.84	204.03	176.00	176.19	171.20	171.39	187.20	187.39
2850 ft	161.43	161.62	206.42	206.61	208.48	208.67	178.00	178.19	172.80	172.99	189.84	190.03
2900 ft	163.55	163.74	211.18	211.37	213.20	213.39	180.00	180.19	174.40	174.59	192.48	192.67
2950 ft	165.67	165.86	216.02	216.21	217.92	218.11	182.00	182.19	176.00	176.19	195.12	195.31
3000 ft	167.79	167.98	220.94	221.13	222.72	222.91	184.00	184.19	177.60	177.79	197.76	197.95
3050 ft	169.91	170.10	225.94	226.13	227.60	227.79	186.00	186.19	179.20	179.39	200.40	200.59
3100 ft	172.03	172.22	231.02	231.21	232.56	232.75	188.00	188.19	180.80	180.99	203.04	203.23
3150 ft	174.15	174.34	236.18	236.37	237.60	237.79	190.00	190.19	182.40	182.59	205.68	205.87
3200 ft	176.27	176.46	241.42	241.61	242.72	242.91	192.00	192.19	184.00	184.19	208.32	208.51
3250 ft	178.39	178.58	246.74	246.93	247.92	248.11	194.00	194.19	185.60	185.79	210.96	211.15
3300 ft	180.51	180.70	252.14	252.33	253.20	253.39	196.00	196.19	187.20	187.39	213.60	213.79
3350 ft	182.63	182.82	257.62	257.81	258.48	258.67	198.00	198.19	188.80	188.99	216.24	216.43
3400 ft	184.75	184.94	263.18	263.37	263.84	264.03	200.00	200.19	190.40	190.59	218.88	219.07
3450 ft	186.87	187.06	268.82	269.01	269.28	269.47	202.00	202.19	192.00	192.19	221.52	221.71
3500 ft	188.99	189.18	274.54	274.73	274.72	274.91	204.00	204.19	193.60	193.79	224.16	224.35
3550 ft	191.11	191.30	280.34	280.53	280.00	280.19	206.00	206.19	195.20	195.39	226.80	226.99
3600 ft	193.23	193.42	286.22	286.41	285.60	285.79	208.00	208.19	196.80	196.99	229.44	229.63
3650 ft	195.35	195.54	292.18	292.37	291.20	291.39	210.00	210.19	198.40	198.59	232.08	232.27
3700 ft	197.47	197.66	298.22	298.41	296.80	296.99	212.00	212.19	200.00	200.19	234.72	234.91
3750 ft	199.59	199.78	304.34	304.53	302.40	302.59	214.00	214.19	201.60	201.79	237.36	237.55
3800 ft	201.71	201.90	310.54	310.73	308.00	308.19	216.00	216.19	203.20	203.39	240.00	240.19
3850 ft	203.83	204.02	316.82	317.01	313.60	313.79	218.00	218.19	204.80	204.99	242.64	242.83
3900 ft	205.95	206.14	323.18	323.37	319.20	319.39	220.00	220.19	206.40	206.59	245.28	245.47
3950 ft	208.07	208.26	329.62	329.81	324.80	324.99	222.00	222.19	208.00	208.19	247.92	248.11
4000 ft	210.19	210.38	336.14	336.33	330.40	330.59	224.00	224.19	209.60	209.79	250.56	250.75
4050 ft												

South

North.

85.25 85.0 85.1 86.0 86.40 87.0 87.25

85.0 85.0 85.1 86.0 86.40 87.0 87.00
84. 84. 86. 86.

84.6 84.6 85.30 86.0 86.45 86.60 86.60

32 nd

85.0 85.0 85.50 86.0 86.50 87.0 87.0

57.

84.60 84.60 85.30 86.0 86.45 86.60 86.60

84. 84. 86. 86.
85.00 85.0 85.1 86.0 86.4 87.0 87.00

85.25 85.0 85.1 86.0 86.4 87.00 87.25

85.00
87.25
90.0885.00
5.0886.00
4.0887.00
3.0884.00
3.68

11

Checked OK Blauvelt & Fitzpatrick
17-19-10.

South North

E. L 32nd St.

00 ✓ 85.25 85.0 85.10 86.00 86.40 87.0 87.25

50' ✓ 84.52 84.27 84.37 85.27 85.67 86.27 86.52

100' 83.80 83.55 83.65 84.55 84.95 85.55 85.80

140' ✓ 83.65 83.4 83.50 84.4 84.8 85.4 84.65

180' ✓ 82.45 82.2 82.30 83.2 83.60 84.2 84.45

220' 80.85 80.6 80.70 81.6 82.00 82.6 82.85

260' 76.22 75.97 ✓ 76.07 76.97 77.37 77.97 78.22

300' 70.48 70.18 70.28 71.18 71.58 72.18 72.43

340' 64.65 64.40 64.50 65.40 65.80 66.40 66.65

388' 60.25 60.0 60.10 61.0 61.40 62.00 62.25

91.045	85.25	87.25	84.52	86.62	83.65	85.65	82.45	84.5
1230	5.85	5.85	6.58	5.58	7.45	6.45	5.65	6.65
7070	5.90	5.25	5.80	5.20	6.25	5.25	6.25	5.70
7700.45	0.0	+0.6	+0.78	+1.98	+1.2	+2.0	+1.9	+2.80
11.5	50.85	82.85	76.22	78.22	70.43	72.43	64.65	66.65
6.70	70.25	82.5	14.85	12.88	20.67	19.67	14.05	12.35
30.2	7.85	8.50	9.12	6.00	11.6	9.7	10.85	8.00
69.85.45	12.7	+2.45	+6.74	+8.88	+9.97	+9.0	+3.9	+4.35
82.72	60.26	62.25	85.25	87.25	84.52	86.52	82.45	84.5
95.57	9.10	7.10	5.14	3.14	5.87	3.87	8.25	5.75
11.55	5.0	4.7	8.41	8.44	8.81	8.25	7.34	6.54
77.006	+2.1	+2.7	7.94	5.94	8.24	7.24	6.25	5.25
1.4	76.22	76.22	70.43	72.43	64.65	66.65	60.25	62.25
81.28	5.00	5.00	1.88	5.88	6.25	4.45	10.85	8.85
12.2	6.7	6.70	fluent		4.0		5.7	6.7
12.15								
9.22								
71.10	9.77	9.77	9.77	9.77	9.77	9.77	9.77	9.77
85.33	87.00	85.00	85.00	86.52	86.22	85.25	84.27	84.5
8.44	4.77	5.77	6.77	5.25	5.50	6.50	7.50	7.25
9.77								
85.33	85.00	85.00	86.00	86.40	87.00	87.22	85.22	86.22
3.09	2.91	3.38	2.91	2.91	1.91	4.14	4.09	2.74
78.42	82.00	82.50	84.40	84.80	85.40	86.00	86.60	87.20
12.46	5.01	4.91	4.01	3.61	3.01	6.21	6.11	5.21
75.97	80.60	80.20	81.60	82.00	82.60	83.20	83.80	84.40
1.23	7.81	7.71	6.81	6.41	5.81	11.44	11.34	10.44
77.28	70.43	70.88	71.88	72.88	73.88	74.88	75.88	76.88
6.87	7.10	7.00	6.10	5.70	5.10	9.13	9.03	8.13
70.47	6.00	6.00	6.00	6.00	6.20	6.13	5.70	5.13
1.12	11.30	11.45	10.30	10.15	9.53			
78.23								
85.23	85.00	85.10	86.00	86.40	87.00	87.22	85.22	86.22
3.80	3.86	2.78	2.86	2.46	1.86	4.59	4.49	3.59
86.86	82.00	82.50	84.40	84.80	85.40	86.00	86.60	87.20
12.89	5.96	5.86	4.96	4.06	3.46	6.16	6.06	5.16
70.97	80.60	80.20	81.60	82.00	82.60	83.20	83.80	84.40
76.47	8.24	8.16	7.24	6.84	6.24	12.99	12.89	11.99
12.04	70.18	70.28	71.18	71.58	72.18	72.78	73.38	73.98
64.97	6.35	6.19	5.29	4.89	4.29	24.40	24.50	25.40
11.41	60.00	60.10	61.00	61.40	62.00	62.60	63.20	63.80
65.84	6.84	5.78	4.88	4.48	3.88	11.07	11.07	10.07
	5.84	5.78	4.88	4.48	3.88			

All in blayt
 12-16-10
 Checked OK - Blayt & Fitzpatrick

South

North

60.25 60.0 60.10 61.0 61.4 62.0 62.25

60.00 60.00 60.1 61.0 61.4 62.0 62.00
59. 59.0 61. 61.

59.40 58.5 59.5 60.5 60.5 60.5 61.40

33 49

59.0 58.0 59.0 60.0 60.0 60.0 61.0

57.

58.10 57.5 58.5 59.5 59.5 59.5 60.10

57. 57. 57.5 58.0 58.5 59. 59.
58.00 58.0 58.5 59.0 59.5 60.00 60.00

58.25 58.25 59.25 60.25 60.25

Grade Sta SW 60.25

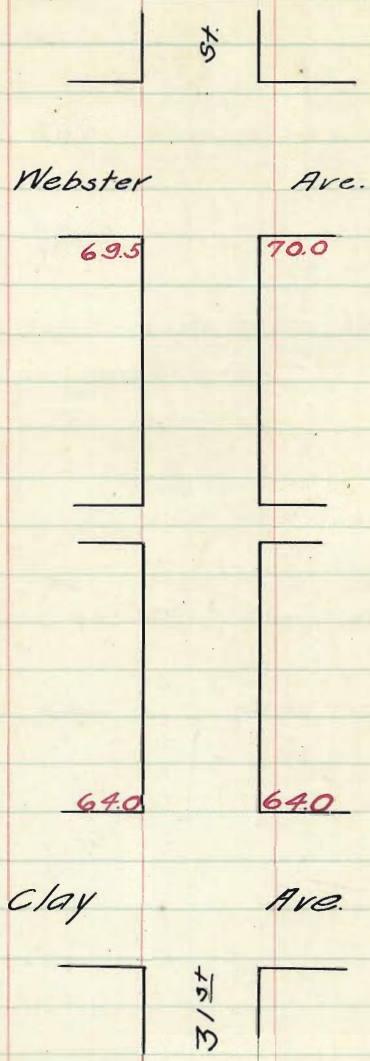
779	
68.04	68.04
58.25	60.25
9.79	7.79
-1.6	-2.0

7152	59.09	58.00	60.00
12.28	12.53	12.53	11.83
59.25			
5.30			
64.75	58.00		
	60.75		

65.84 H2

61.00	60.00	59.00	58.00	57.00
4.88	1.88	6.88	7.23	6.83

Checked OK blough + July 1910
12-19-10



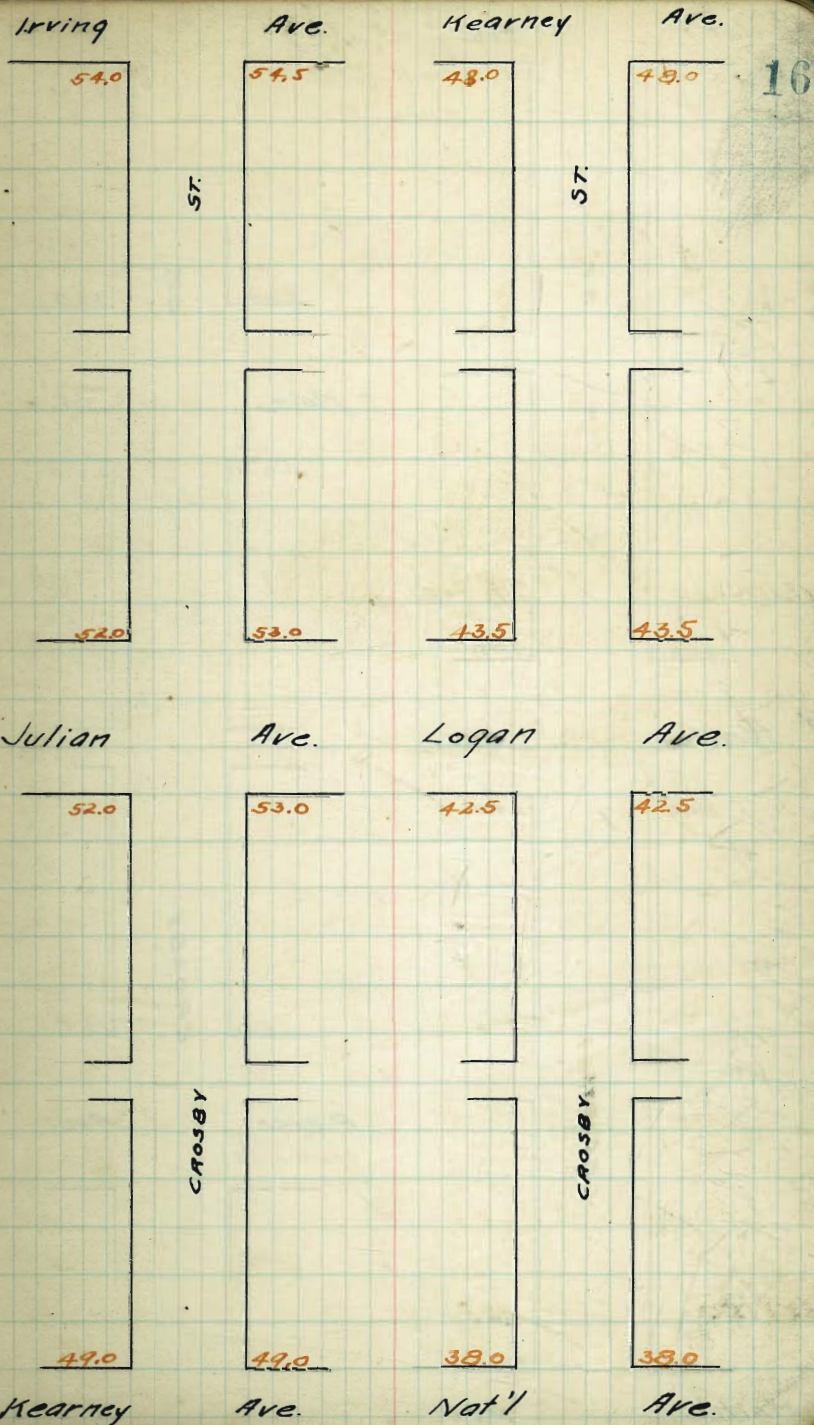
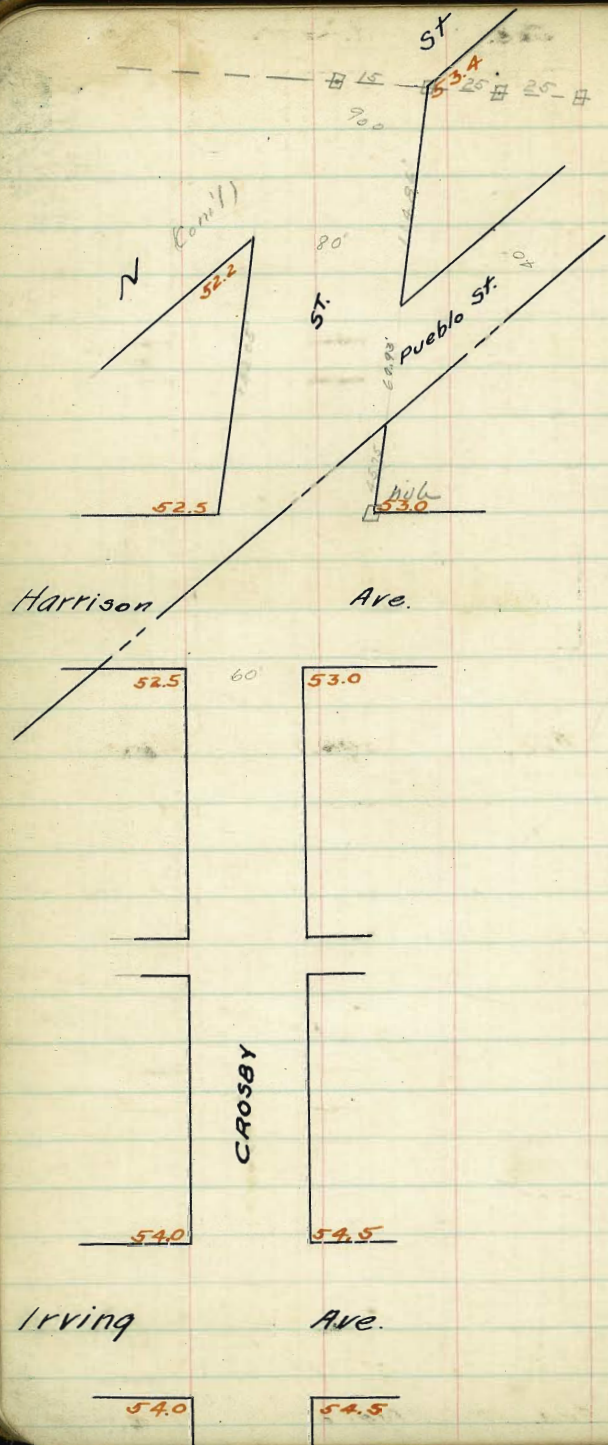
Quarters are 5' from Curb

(5' Quarters)

14

	West	S. L. Webster					East
	69.75	69.5	69.0	69.75	69.4	70.0	70.25
25'	69.29	69.04	68.53	68.27	68.90	69.50	69.75
50'	68.83	68.58	68.07	68.79	68.40	69.00	69.25
75'	68.38	68.13	67.60	68.31	67.90	68.50	68.75
100'	67.92	67.67	67.13	67.83	67.40	68.00	68.25
125'	67.46	67.21	66.67	67.36	66.90	67.50	67.75
150'	67.00	66.75	66.20	66.88	66.40	67.00	67.25
175'	66.65	66.29	65.73	66.40	65.90	66.50	66.75
200'	66.08	65.83	65.27	65.92	65.40	66.00	66.25
225'	65.63	65.38	64.80	65.44	64.90	65.50	65.75
250'	65.17	64.92	64.33	64.96	64.40	65.00	65.25
275'	64.71	64.46	63.87	64.48	63.90	64.50	64.75
300'	64.25	64.00	63.40	64.0	63.4	64.00	64.25

N. L. Clay Ave.



Nat'l

37.0

Ave.

37.0

ST

23.0

ST.

23.0

Main

st.

22.0

22.0

30.0

30.0

Newton

Ave.

29.0

29.0

15.0

CROSBY

15.0

CROSBY

Pierce
(Harbor Dr)

Ave.

23.0

23.0

Main

ST

West
10 on E

53.4 53.65 ✓
ST. 52.80

-45 on E 52.76 53.32 53.57 ✓
N
South Line 52.80

-65 on E 52.72 53.28 53.53 ✓
52.10

+1.36 on E
= 00 on W 52.45 52.2 52.12 72.79 52.66 53.23 53.48 ✓

+13.02 on E
+20.5 on W
= N.L. Harrison
52.50 52.25 52.14 72.78 52.62 53.19 53.44 ✓
50%

N. curb 53.19 53.19
52.19 52.19

ctr 52.56 52.31 52.16 72.77 52.56 52.73 53.13
52.08 52.08

S curb 53.08 53.08

S.L. Pueblo St. 52.62 52.27 52.18 72.76 52.50 53.08 53.33 ✓

+45.4' 52.72 52.47 53.22 52.41 53.00 53.25 ✓
N.L. Harrison
on E. 63 52.4

+57.63' 52.75 52.5
N.L. Harrison
on W 6.6 52.23
6.7
AVE

N.L. Harrison

57.81	57.31	57.31	57.31	57.31	57.31	57.31	57.31	504
2.99	52.45	52.56	33.65	53.57	53.59	53.08	53.33	
57.314	4.26	4.75	3.66	3.74	3.78	4.23	3.98	18
	8.66	7.15	6.56	5.44	8.68	6.43	6.78	
	5.8	-2.4	-2.9	-4.7	-4.9	-2.2	-2.8	

5422 Bm
463
58.95

52.40	52.50	52.10	52.20	52.10	52.79	52.22	52.22
5.55	6.15	6.81	6.71	6.83	6.80	6.22	6.50

53.28	52.72	52.32	53.19	52.22	52.79	52.47	52.22	52.22
5.67	6.23	5.83	5.96	6.23	6.17	6.51	6.20	6.18
52.37	52.18	52.76	52.54	52.34				
6.58	6.77	6.19	6.45	5.87				
52.47	52.22	52.24	52.40	52.26				
6.44	6.73	6.20	6.35	1.30				
52.20								
6.8	all stakes set							

5432 Bm
3.47
57.79

52.20	52.10	52.50	52.50	52.40	52.40	52.66	52.23
5.89	5.49	4.94	4.97	4.59	4.59	5.13	4.56

52.14	52.24	52.00	52.19	52.31	52.16	52.27	52.22	53.13
5.24	5.25	5.01	5.17	5.46	5.44	5.13	5.02	5.26
52.37	52.48	52.26	52.50	52.54	52.50	52.23	52.00	52.22
5.20	5.41	5.20	5.26	4.71	5.25	5.26	5.24	5.39
								4.29

Checked RR Blough Owen City
6-19-11
(Culvert is too short)

West South Line Harrison Ave. East

20'	52.75	52.5	52.23	52.75	52.40	53.00	53.25
25'	52.88	52.63	52.35	52.88	52.53	53.13	53.38
30'	53.00	52.75	52.48	53.00	52.65	53.25	53.50
35'	53.13	52.88	52.60	53.13	52.78	53.38	53.63
40'	53.25	53.00	52.73	53.25	52.90	53.50	53.75
45'	53.38	53.13	52.85	53.38	53.03	53.63	53.88
50'	53.50	53.25	52.98	53.50	53.15	53.75	54.00
55'	53.63	53.38	53.10	53.63	53.28	53.88	54.13
60'	53.75	53.50	53.28	53.75	53.40	54.00	54.25
65'	53.88	53.63	53.35	53.88	53.53	54.13	54.38
70'	54.00	53.75	53.48	54.00	53.65	54.25	54.50
75'	54.13	53.88	53.60	54.13	53.78	54.38	54.63
80'	54.25	54.0	53.73	54.25	53.90	54.5	54.75

North Line Irving Ave.

5432 N 21000 P 25 18 11 W

4-13-11

60.59 3.52 57.07 2.45 57.55	60.59 57.76 7.84 7.34 0.0	60.59 53.50 7.09 5.19 +1.9	60.59 53.25 7.34 5.52 +1.80	60.59 59.00 6.59 3.23 +3.1	60.59 53.75 6.84 2.74 +2.1	60.59 59.50 6.09 2.79 +3.3	60.59 54.25 6.34 2.14 +0.2	60.59 54.75 5.84 1.94 +0.9
54.32 4.60 58.92 53.25 5.67 53.75 5.17 54.25 4.67 54.75 4.17	53.00 5.92	52.5 6.42	52.75 6.17	53.00 5.92	53.25 5.67	53.50 5.42	53.75 5.17	54.00 4.92
53.42 5.14 58.14 5.22 52.74 5.14 58.14 4.16 54.14 3.26	53.00 5.92	52.5 6.42	52.75 6.17	53.00 5.92	53.25 5.67	53.50 5.42	53.75 5.17	54.00 4.92
53.42 5.14 58.14 5.22 52.74 5.14 58.14 4.16 54.14 3.26	53.00 5.92	52.5 6.42	52.75 6.17	53.00 5.92	53.25 5.67	53.50 5.42	53.75 5.17	54.00 4.92
53.42 5.14 58.14 5.22 52.74 5.14 58.14 4.16 54.14 3.26	53.00 5.92	52.5 6.42	52.75 6.17	53.00 5.92	53.25 5.67	53.50 5.42	53.75 5.17	54.00 4.92
53.42 5.14 58.14 5.22 52.74 5.14 58.14 4.16 54.14 3.26	53.00 5.92	52.5 6.42	52.75 6.17	53.00 5.92	53.25 5.67	53.50 5.42	53.75 5.17	54.00 4.92
53.42 5.14 58.14 5.22 52.74 5.14 58.14 4.16 54.14 3.26	53.00 5.92	52.5 6.42	52.75 6.17	53.00 5.92	53.25 5.67	53.50 5.42	53.75 5.17	54.00 4.92

cut to fill
19
Shields
Taylor
Apr. 1911
Rebuck

West South Line Irving Ave East

20	54.25	54.00	53.78	54.25	53.90	54.50	54.75
25	54.08	53.83	53.57	54.10	53.78	54.38	54.63
			Low				
30	53.92	53.67	53.41	53.96	53.65	54.25	54.50
35	53.75	53.50	53.26	53.81	53.53	54.13	54.38
40	53.58	53.33	53.10	53.67	53.40	54.00	54.25
45	53.42	53.17	52.94	53.52	53.28	53.88	54.13
50	53.25	53.00	52.79	53.37	53.15	53.75	54.00
55	53.08	52.83	52.63	53.23	53.03	53.63	53.88
60	52.92	52.67	52.48	53.08	52.90	53.50	53.75
65	52.75	52.50	52.32	52.94	52.78	53.38	53.63
70	52.58	52.33	52.16	52.79	52.65	53.25	53.50
75	52.42	52.17	52.01	52.65	52.53	53.13	53.38
80	52.25	52.00	51.85	52.50	52.40	53.00	53.25

North Line Julian Ave.

57.55	57.55	57.55	57.55	57.55	57.55	57.55	57.55	9-13
58.75	53.92	54.25	53.25	53.75	52.58	53.25	53.25	cut 3 fill
2.90	3.63	3.30	4.30	3.80	4.97	4.30	4.30	Dec 20
2.90	3.23	3.50	4.60	3.60	4.47	4.47	4.47	Shang
-0.1	+0.4	-0.5	-0.3	+0.2	+0.5	+0.5	+0.5	of Linn
57.55	57.55	57.55	57.55	57.55	57.55	57.55	57.55	
58.75	54.50	53.53	54.00	52.72	53.50	52.25	52.25	
3.30	3.05	3.97	3.55	4.63	4.05	5.30	5.30	
3.10	3.35	4.27	3.75	4.63	3.60	5.10	5.10	
70.2	-0.3	-0.3	-0.70	0.0	+0.4	+0.2	+0.2	
54.00								april 19/11
3.92								Childs
57.92	54.00	54.50	54.75	54.50	54.25	53.67	53.92	Jayler
54.25	54.00	54.50	54.75	54.50	54.25	53.67	53.92	Bunker
3.67	3.92	3.42	3.17	3.42	3.67	4.25	4.00	
53.58	53.33	54.00	54.25	54.00	53.75	53.00	53.25	
4.34	4.59	3.92	3.67	3.92	4.17	4.92	4.67	
52.92	52.67	53.10	53.75	53.50	53.25	52.63	52.58	
5.00	5.25	4.42	4.17	4.42	4.67	5.29	5.34	
52.25	52.00	53.00	53.25					
5.67	5.92	4.92	4.67					
54.00	54.00	54.00	54.00	54.00	54.00	54.00	54.00	
4.66	4.66	4.66	4.66	4.66	4.66	4.66	4.66	
54.06	53.87	54.25	53.90	54.50	54.07	53.41	53.65	54.25
5.16	4.81	4.49	3.81	4.16	3.84	4.39	4.65	4.19
52.90	53.33	53.10	52.67	52.90	54.00	52.29	52.27	52.15
57.67	4.73	4.91	4.35	4.66	4.66	5.06	5.27	4.69
52.47	52.48	52.08	52.00	52.50	52.33	52.16	52.09	52.00
5.30	5.19	4.44	4.77	4.17	5.24	5.24	4.88	5.00
52.25	52.25	51.85	52.50	52.40	52.40	52.40	52.40	52.40
5.73	5.73	5.88	5.23	5.33	4.73	4.73	4.73	All set
57.73								blawp
58.26	54.44	53.75	54.25	53.90	54.50	54.50	54.50	6/Gray
3.78	4.26	4.50	4.61	4.50	4.50	4.76	4.76	20/Down
57.48	52.00	51.45	52.50	52.20	52.00	52.00	52.00	11/July
3.21	5.69	5.84	5.19	5.25	4.69	4.69	4.69	
57.67								

Check OK

West South Line Kearney Ave. East.

40	48.25	48.00	47.6	48.0	47.60	48.00	48.25
45	47.88	47.63	47.23	47.63	47.23	47.63	47.88
50	47.50	47.25	46.85	47.25	46.85	47.25	47.50
55	47.13	46.88	46.48	46.88	46.48	46.88	47.13
60	46.75	46.50	46.10	46.50	46.10	46.50	46.75
65	46.38	46.13	45.73	46.13	45.73	46.13	46.38
70	46.00	45.75	45.35	45.75	45.35	45.75	46.00
75	45.63	45.38	44.98	45.38	44.98	45.38	45.63
80	45.25	45.00	44.60	45.00	44.60	45.00	45.25
85	44.88	44.63	44.23	44.63	44.23	44.63	44.88
90	44.50	44.25	43.85	44.25	43.85	44.25	44.50
95	44.13	43.88	43.48	43.88	43.48	43.88	44.13
100	43.75	43.5	43.10	43.5	43.10	43.5	43.75

North Line Logan Ave.

52.91	52.91	52.91	52.91	47.13	47.13
7.83	47.50	46.75	46.00	45.25	44.50
45.08	5.41W	6.16E	6.71W	1.98E	2.63W
2.25	7.61	7.96	7.71	2.68	2.33
47.13W	-2.2	-1.5	-0.8	-0.8	+0.3

52.91	52.91	6.91E	1.98W	2.63E
47.50	46.75	8.51	2.38	2.23
5.41E	6.16W	-1.6	-0.5	-0.1
7.61	8.06			
-1.7	1.9			

53.87	53.87	53.87	53.87	53.87	53.87	53.87	53.87	5/11	all stalled
48.25	47.50	46.75	46.00	45.25	44.50	43.75	43.00	1/11	single
562	6.37	7.42	7.87	8.62	9.37				shave
587	6.62	7.37	8.12	8.87	9.62				mark
627	7.02	7.77	8.52	9.27	10.02				

54.02	48.00	47.60
5.02	6.02	6.42
49.02	43.50	43.10
49.22	5.72	6.12

43.46
 Check OK OK
 6/19/11
 City

West South Line Logan Ave. East

42.75	42.5	42.10	42.50	42.10	42.5	42.75
42.38	42.12	41.73	42.13	41.73	42.13	42.38
						63
42.00	41.75	41.35	41.75	41.35	41.75	42.00
41.63	41.38	40.98	41.38	40.98	41.38	41.63
41.25	41.00	40.60	41.00	40.60	41.00	41.25
						61
40.88	40.63	40.23	40.63	40.23	40.63	40.88
40.50	40.25	39.85	40.25	39.85	40.25	40.50
40.13	39.88	39.48	39.88	39.48	39.88	40.13
39.75	39.50	39.10	39.50	39.10	39.50	39.75
39.38	39.13	38.73	39.13	38.73	39.13	39.38
39.00	38.75	38.35	38.75	38.35	38.75	39.00
38.63	38.38	37.98	38.38	37.98	38.38	38.63
38.25	38.00	37.60	38.00	37.60	38.00	38.25

North Line Nat'l Ave.

43.46
3.35
46.81
42.75
40.6W
+0.8

46.81
42.75
40.6W
+0.8

46.81
41.25
40.50
+1.9

46.81
40.50
39.75
+1.0

46.81
39.00
38.25
+2.5

46.81
38.25
37.50
+0.5

9-12-11
cut off fill
Shaw
Nehmer

486E 481W 556E 631W 706E 781W 856E
471 426 571 506 721 766
+0.1 +1.3 +2.6 +2.0 +0.6 +2.9

43.46
3.24
46.70
42.00
41.70
4.95
5.35

46.70
41.25
40.50
39.75
39.00
38.25

46.70
40.50
39.75
39.00
38.25

46.70
39.00
38.25

46.70
37.50
36.75
36.00
35.25

all stables
Nehmer

43.46
3.24
46.70
42.00
41.70
4.95
5.35

46.70
41.25
40.50
39.75
39.00
38.25

46.70
40.50
39.75
39.00
38.25

46.70
39.00
38.25

46.70
37.50
36.75
36.00
35.25

all stables
Nehmer

6-20-11

West South Line National Ave. East

00	37.25	37.0	36.60	37.0	36.60	37.00	37.25
5	36.67	36.42	36.02	36.42	36.02	36.42	36.67
10	36.08	35.83	35.43	35.83	35.43	35.83	36.08
15	35.50	35.25	34.85	35.25	34.85	35.25	35.50
20	34.92	34.67	34.27	34.67	34.27	34.67	34.92
25	34.33	34.08	33.68	34.08	33.68	34.08	34.33
30	33.75	33.50	33.10	33.50	33.10	33.50	33.75
35	33.17	32.92	32.52	32.92	32.52	32.92	33.17
40	32.58	32.33	31.93	32.33	31.93	32.33	32.58
45	32.00	31.75	31.35	31.75	31.35	31.75	32.00
50	31.42	31.17	30.77	31.17	30.77	31.17	31.42
55	30.83	30.58	30.18	30.58	30.18	30.58	30.83
60	30.25	30.00	29.60	30.00	29.60	30.00	30.25

North Line Newton Ave.

46.81	46.81	46.81	39.17	39.17	39.17	39.17	39.17
2.92	37.25	36.08	34.92	33.75	32.58	31.42	30.25
36.82	9.54E	10.73W	7.15E	5.92W	6.59E	7.75W	8.95E
2.02		10.03	2.65	2.82	3.69	4.55	5.45
39.17W		70.7	+1.5	+2.6	+2.9	+3.2	+0.2

4-14-11
cut off
Ding
Haley
Jefferson

706W	10.73E	7.15W	5.92E	6.59W	7.75E	8.95W
9.73	2.35	3.12	3.59	4.75	8.65	
7.10	4.8	2.3	3.0	3.0	7.0	

5805 20M National Cross	57.0	36.6	35.82	35.40	34.67	34.27	33.52	32.10	31.33	30.90
3.11	2.55	3.02	3.72	4.43	4.88	5.65	6.05	6.82	7.22	
1.10	1.90	3.07	3.00	2.96	4.23	5.40	6.05	6.82	7.22	

all stakes
Hatch 6/11
Moore 11/11
Hall

4450 H3	3700	3660	3700	3660
5.65	5.50	5.34	5.10	4.90
5.53	5.10	4.71	4.30	3.90
4.58				

Check OK 6-20.11

Delough
Dinca
Fitzjames

	West	South Line Xenyon Ave					East
10 v	29.65	29.00	28.60	29.00	28.60	29.00	29.25
25	28.75	28.50	28.10	28.50	28.10	28.50	28.75
50 v	28.25	28.00	27.60	28.00	27.60	28.00	28.25
75	27.75	27.50	27.10	27.50	27.10	27.50	27.75
100 v	27.25	27.00	26.60	27.00	26.60	27.00	27.25
125	26.75	26.50	26.10	26.50	26.10	26.50	26.75
150 v	26.25	26.00	25.60	26.00	25.60	26.00	26.25
175	25.75	25.50	25.10	25.50	25.10	25.50	25.75
200 v	25.25	25.00	24.60	25.00	24.60	25.00	25.25
225	24.75	24.50	24.10	24.50	24.10	24.50	24.75
250 v	24.25	24.00	23.60	24.00	23.60	24.00	24.25
275	23.75	23.50	23.10	23.50	23.10	23.50	23.75
300 v	23.25	23.00	22.6	23.00	22.6	23.00	23.25

North Line Main St.

39.1744 2.20 29.65 2.18 31.8644	27.25 29.25 9.82 7.62 +0.1	28.25 10.02 7.62 +3.3	27.25 11.92W 8.82 +3.1	39.17 26.25 12.92E 8.82 +4.1	31.86 25.25 6.61W 3.81 +2.8	31.86 24.25 7.61E 9.01 +3.6	31.86 23.25 8.61W 8.51 +0.1	4-14-11 cut to fill length 25 width
	9.92E 9.72 +0.2	10.92W 8.02 +2.4	11.92E 8.22 +3.7	12.92W 9.52 +3.4	6.61E 2.51 +4.1	7.61W 5.91 +1.7	8.61E 7.41 +1.2	
30.00 20 22.50 ft 9.74 22.26 ft 351 25.77 ft	29.0 3.1 230 277 2.52	29.6 3.0 226 317	280 4	276 2.4	5 5.4	6 6.4	7 7.4	29.0 23.6 1.77 21.7 1.52
35.26 ft		29.6 4.6	28.0 4.6	28.60 8.12				all stakes Halt Halt
27.58 ft		23.00	22.60	6-20-11				along Dunn July

Track is 0.34 low East curb Line
0.46 low West

West South Line Main St East

00' ✓	22.25	22.00	21.60	22.00	21.60	22.00	22.25
25'	21.67	21.42	21.02	21.42	21.02	21.42	21.67
50' ✓	21.08	20.83	20.43	20.83	20.43	20.83	21.08
75'	20.50	20.25	19.85	20.25	19.85	20.25	20.50
100' ✓	19.92	19.67	19.27	19.67	19.27	19.67	19.92
125'	19.33	19.08	18.68	19.08	18.68	19.08	19.33
150' ✓	18.75	18.50	18.10	18.50	18.10	18.50	18.75
175'	18.17	17.92	17.52	17.92	17.52	17.92	18.17
180' ✓	18.05	17.80	17.40	17.80	17.40	17.80	18.05
200'	17.58	17.33	16.93	17.33	16.93	17.33	17.58
225'	17.00	16.75	16.35	16.75	16.35	16.75	17.00
250'	16.42	16.17	15.77	16.17	15.77	16.17	16.42
275'	15.83	15.58	15.18	15.58	15.18	15.58	15.83
280' ✓	15.72	15.47	15.07	15.47	15.07	15.47	15.72
300' ✓	15.25	15.00	14.60	15.00	14.60	15.00	15.25

North Line Pierce Ave

31.56W 11.89	31.96 22.25	31.56 21.08	31.86 19.92	31.86 18.75	21.60 17.58	21.60 16.42	21.60 15.20	4-14-11 cut off line
17.97 1.63	9.61E 8.91	10.78W 11.08	11.94E 12.14	13.11W 13.11	4.02E 4.62	5.18W 5.88	6.35E 6.05	26 31 7
21.60 4.11	+0.7	-0.3	-0.2	0.0	-0.6	-0.7	+0.3	
9.61W 9.61	10.78E 10.68	11.94W 12.44	13.11E 12.51	4.02W 4.52	5.18E 6.68	6.35W 6.25		
	0.0	+0.1	-0.5	+0.6	-0.5	-1.5	+0.1	

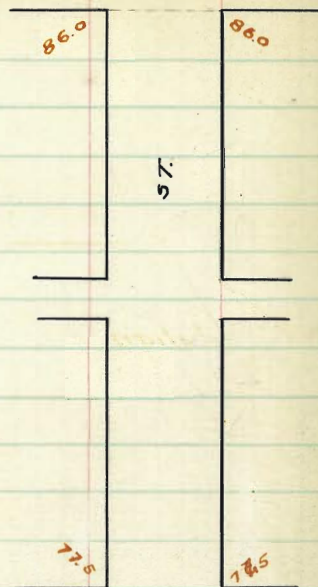
25.77W 3.77 3.77	22.0 2.17	21.6 2.77	20.83 2.29	20.03 5.34	19.67 6.10	19.27 6.50	18.6 7.27	18.1 7.67
17.8 7.97 7.72	17.2 8.97	15.47 10.33	15.07 10.70	10.0 10.52	12.6 11.17		all stakes 12.6 11.17	4 13.11 12.6

22.26 5.31 27.58	SE 2nd	22.26 5.31 27.58	21.60 1.98
21.26 2.54 24.77	Bn	15.00 9.77	14.60 10.17

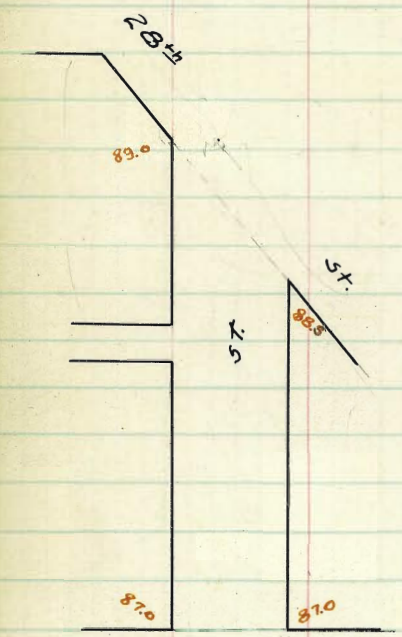
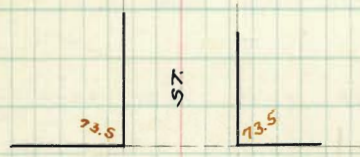
Check OK
Dunn
Fitzgerald

(RR Right of way not graded)

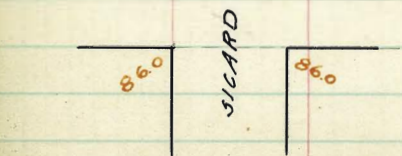
Harrison Ave.



Julian Ave.



Harrison Ave.



Julian Ave.

Kearney Ave.



Marcey

West. south Line Julian Ave. East.

200'	73.00	73.0	72.60	73.00	72.60	73.00	72.25
175'	72.75	72.50	72.09	72.48	72.07	72.46	72.71
150'	72.25	72.00	71.57	71.95	71.53	71.92	72.17
125'	71.75	71.50	71.05	71.43	71.00	71.37	71.62
100'	71.25	71.00	70.54	70.91	70.47	70.83	71.08
75'	70.75	70.50	70.02	70.39	69.94	70.29	70.54
50'	70.25	70.00	69.50	69.87	69.41	69.75	70.00
25'	69.75	69.50	68.99	69.35	68.88	69.20	69.45
0'	69.25	69.00	68.47	68.83	68.35	68.66	68.91
75'	68.75	68.50	67.95	68.31	67.82	68.12	68.37
50'	68.25	68.00	67.44	67.79	67.29	67.58	67.83
25'	67.75	67.50	66.92	67.27	66.76	67.04	67.29
0'	67.25	67.0	66.40	66.75	66.23	66.50	66.75

North Line Kearney Ave.

77.74	73.85	222	72.75	72.17	71.25	71.08	70.25	70.00
434	322	222	322	322	422	421	522	522
290.77	12	-0.2	3.22	3.82	2.22	2.22	50.0	29
249	+0.34		3.04	3.52	2.02	2.22	0.36	29
75.49			40.2	3.52	+0.2			29
	69.25	69.91	68.75	67.53	67.25	66.75	66.25	66.00
	6.02	6.53	7.22	7.66	8.24	8.74	9.24	9.74
	6.60	6.92	7.22	7.66	8.12	8.74	9.24	9.74
	-0.36	-0.36	20.2	-0.4	1.01	0.00		

71.53 Bm W Sampson Kearney

67.00	66.40	66.75	66.25	66.50
4.71	5.51	7.16	7.28	7.41

71.53 Bm W Sampson Kearney

68.00	67.44	67.79	67.29	67.58
5.91	4.77	6.12	6.62	6.20

71.53 Bm W Sampson Kearney

70.00	69.50	69.87	69.41	69.75
3.71	4.41	4.84	5.27	4.26

71.53 Bm W Sampson Kearney

71.00	70.54	70.91	70.47	70.83
2.91	3.37	5.00	3.74	3.08

71.53 Bm W Sampson Kearney

72.00	71.57	71.95	71.53	71.92
1.71	2.34	1.76	2.38	1.99

71.53 Bm W Sampson Kearney

67.00	66.40	66.75	66.25	66.50
4.68	5.28	4.82	5.45	5.18

71.53 Bm W Sampson Kearney

73.00 73.40 72.60 73.00

4.64 5.09

Checked OK

blough Penna July 1910

10.12.10

West	South Line Irving Ave						East
300'	76.75	76.5	76.10	76.50	76.10	76.50	76.75
275'	76.50	76.25	75.85	76.25	75.85	76.25	76.50
250'	76.25	76.00	75.60	76.0	75.60	76.0	76.25
225'	76.00	75.75	75.35	75.75	75.35	75.75	76.00
200'	75.75	75.50	75.10	75.50	75.10	75.50	75.75
175'	75.50	75.25	74.85	75.25	74.85	75.25	75.50
150'	75.25	75.00	74.60	75.0	74.60	75.0	75.25
125'	75.00	74.75	74.35	74.75	74.35	74.75	75.00
100'	74.75	74.50	74.10	74.50	74.10	74.50	74.75
75'	74.50	74.25	73.85	74.25	73.85	74.25	74.50
50'	74.25	74.00	73.60	74.0	73.60	74.00	74.25
25'	74.00	73.75	73.35	73.75	73.35	73.75	74.00
00'	73.75	73.5	73.10	73.50	73.10	73.50	73.75

North Line Julian Ave.

77.84 H2

76.75	109	76.25	1579	75.75	209
1.37	149	1.09	294	2.09	489
-0.5	-0.4	3.89	-2.7	3.92	-2.8
		-2.3			

cut stakes $\frac{4}{10}$ North West Dr 79.

75.25	259	74.75	309	74.25	354	73.75	409
2.69	324	3.09	424	3.54	524	4.09	624
3.78	427	4.34	524	4.89	624	5.44	724
		4.92		5.00		5.00	

72.98 SW Julian

73.50	73.10	74.00	73.60	74.50	74.10	75.00	74.60
6.40	5.90	6.30	5.80	6.70	6.20	6.60	6.10
7.94	7.40	7.80	7.30	8.20	7.70	8.10	7.60
8.98	8.44	8.34	7.80	8.70	8.16	8.60	8.06
10.48	9.94	9.84	9.30	10.20	9.66	10.10	9.56
11.98	11.44	11.34	10.80	11.70	11.16	11.60	11.06
13.48	12.94	12.84	12.30	13.20	12.66	13.10	12.56
14.98	14.44	14.34	13.80	14.70	14.16	14.60	14.06
16.48	15.94	15.84	15.30	16.20	15.66	16.10	15.56
17.98	17.44	17.34	16.80	17.70	17.16	17.60	17.06
19.48	18.94	18.84	18.30	19.20	18.66	19.10	18.56
20.98	20.44	20.34	19.80	20.70	20.16	20.60	20.06
22.48	21.94	21.84	21.30	22.20	21.66	22.10	21.56
23.98	23.44	23.34	22.80	23.70	23.16	23.60	23.06
25.48	24.94	24.84	24.30	25.20	24.66	25.10	24.56
26.98	26.44	26.34	25.80	26.70	26.16	26.60	26.06
28.48	27.94	27.84	27.30	28.20	27.66	28.10	27.56
29.98	29.44	29.34	28.80	29.70	29.16	29.60	29.06
31.48	30.94	30.84	30.30	31.20	30.66	31.10	30.56
32.98	32.44	32.34	31.80	32.70	32.16	32.60	32.06
34.48	33.94	33.84	33.30	34.20	33.66	34.10	33.56
35.98	35.44	35.34	34.80	35.70	35.16	35.60	35.06
37.48	36.94	36.84	36.30	37.20	36.66	37.10	36.56
38.98	38.44	38.34	37.80	38.70	38.16	38.60	38.06
40.48	39.94	39.84	39.30	40.20	39.66	40.10	39.56
41.98	41.44	41.34	40.80	41.70	41.16	41.60	41.06
43.48	42.94	42.84	42.30	43.20	42.66	43.10	42.56
44.98	44.44	44.34	43.80	44.70	44.16	44.60	44.06
46.48	45.94	45.84	45.30	46.20	45.66	46.10	45.56
47.98	47.44	47.34	46.80	47.70	47.16	47.60	47.06
49.48	48.94	48.84	48.30	49.20	48.66	49.10	48.56
50.98	50.44	50.34	49.80	50.70	50.16	50.60	50.06

all set blough Dennis & Fety

10-7-10

Checked OK

blough Dennis & Fety

10-12-10

West	South Line Harrison Ave.						East
300'	86.25	86.0	85.60	86.0	85.60	86.00	86.25
275'	85.55	85.30	84.90	85.30	84.90	85.30	85.55
250'	84.85	84.60	84.20	84.60	84.20	84.60	84.85
225'	83.14	83.89	83.49	83.89	83.49	83.89	83.14
200'	83.43	83.18	82.78	83.18	82.78	83.18	83.43
175'	82.72	82.47	82.07	82.47	82.07	82.47	82.72
150'	82.01	81.76	81.36	81.76	81.36	81.76	82.01
125'	81.30	81.05	80.65	81.05	80.65	81.05	81.30
100'	80.59	80.34	79.94	80.34	79.94	80.34	80.59
75'	79.88	79.63	79.23	79.63	79.23	79.63	79.88
50'	79.17	78.92	78.52	78.92	78.52	78.92	79.17
25'	78.46	78.21	77.81	78.21	77.81	78.21	78.46
00'	77.75	77.50	77.10	77.50	77.10	77.50	77.75

North Line Irving Ave.

57.00 Sidewalk Stake

86.25	475	8485	315	8393	357
87.00	75	315	210	367	306
10.25	1.25	1.25	1.0	257	205.7
76.72		1.85	1.0		
77.12	8291	500	8059	64	7917
77.84	500	413	641	61	783
	350	40.9	500	43	700
			1.4		683
					1.0
77.10	10 Hatch	14 Hatch	10 Drains		
85.15	7710	7710	7892	7852	8034
83.36	7.65	8.07	8.23	8.63	4.81
87.23	84.60	84.20	86.00	85.00	5.21
	493	523	30.3	0.93	3.39
					3.79
					1.97
					2.27

all set

Checked OK 10-12-10

Blunt Iron July 1910

West

East

West Line 2844

240'	89.25	89.0					
235'	89.02	88.77	88.36	88.40			
				88.75			
200' ✓	88.82	88.57	88.16	88.60	88.23 ⁵	88.17	
182.25 17.2 2844	88.68	88.43	88.03	88.47	88.03	88.50	✓ 88.75
150' ✓	88.43	88.18	87.77	88.20	87.78	88.23	88.48
125'	88.23	87.98	87.58	88.00	87.58	88.03	88.28
100' ✓	88.04	87.79	87.38	87.80	87.39	87.82	88.07
75'	87.84	87.59	87.19	87.60	87.19	87.62	87.87
50' ✓	87.64	87.39	86.99	87.40	86.99	87.41	87.66
25'	87.45	87.20	86.80	87.20	86.70	87.21	87.46
00'	87.25	87.0	86.60	87.00	86.60	87.0	87.25

North Line Harrison Ave.

1700 S. 1st St. NW
9225 NE

8725	8832	8925
550	343	300
49	423	38
1.4	28	23

5762 5766 / 8804 8807 / 8823 8828
 4.61 4.59 / 4.51 4.18 / 3.82 3.72
 3.91 6.0 / 2.23 5.68 / 4.50 3.92
 +0.7 -1.4 / .0 -1.5 / -0.7 -2.2

Cut stakes 10 Watch
 10 Acorn 10
 10 Drains

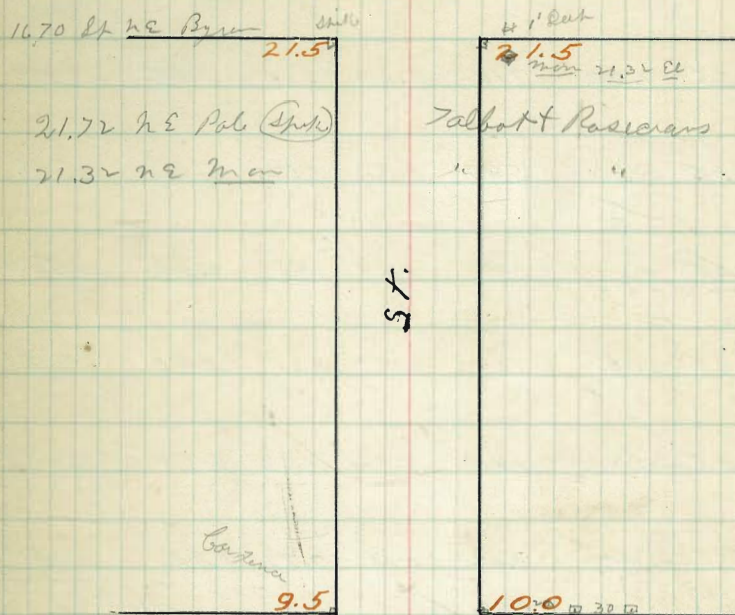
8725	8725	8725	8725	8725	8725	8725	8725
550	550	550	550	550	550	550	550
49	49	49	49	49	49	49	49
1.4	1.4	1.4	1.4	1.4	1.4	1.4	1.4

10-2-16 all set

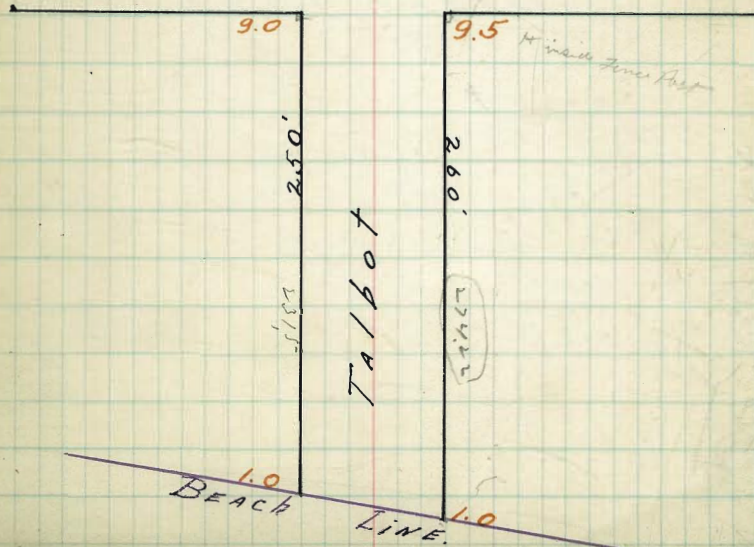
Blanch Omer Fitzpatrick

Checked OK 10-12-10

ROSECRANS ST.



SCOTT ST.



South

E. L. Scott St.

North

10	9.25	9.00	8.71	9.25	8.90	9.50	9.75
----	------	------	------	------	------	------	------

50	7.65	7.40	7.10	7.63	7.26	7.86	8.11
----	------	------	------	------	------	------	------

100	6.05	5.80	5.49	6.01	5.62	6.23	6.48
-----	------	------	------	------	------	------	------

150	4.45	4.20	3.89	4.39	3.99	4.59	4.84
-----	------	------	------	------	------	------	------

200	2.85	2.60	2.28	2.77	2.35	2.96	2.21
-----	------	------	------	------	------	------	------

225	2.05	1.80	1.48	1.96	1.53	2.14	2.39
-----	------	------	------	------	------	------	------

250	1.25	1.00	0.68	1.16	0.72	1.32	1.57
-----	------	------	------	------	------	------	------

0.60

1.00

0.48

1.00

1.25

BEACH LINE.

 647
 21
 111
 blount
 Conman
 My father

34

1510H3	1570	1510	1510	1510	1510	1510
8.15	6.4	6.4	7.2	7.2	6.7	8.7
6.95	8.7	8.7	7.7	7.5	6.4	6.4
2.30	2.7	2.8	2.7	2.6	2.0	6.4
9.25	7.5	7.8	7.4	7.01	6.7	0.0

9.25	9.25	9.25	9.25	9.25	11.2	13.2
3.6	3.2	3.1	4.7	3.6	9.2	9.2
5.6	5.4	5.6	4.5	5.6	1.2	1.2
4.8	6.0.9	6.0.8	2.1	1.6	2.5	2.6
6.8			6.3	6.2		

1390H3	9.00	9.25	9.25	7.40	7.63	7.86	5.80	6.01	6.23
8.6	4.90	4.25	4.40	6.50	6.27	6.04	8.10	7.89	7.67
5.90	4.20	4.39	4.59	2.60	2.77	2.96	1.80	1.51	2.00
3.49	5.04	4.85	4.65	6.60	6.97	6.78	4.00	7.93	8.24
9.24							34	40	60

14.40	7.40	7.10	7.63	7.26	7.86	5.80	5.49	6.01	5.62	6.23
10.00	2.20	1.80	6.77	7.24	6.34	6.60	8.91	8.23	8.78	8.13
4.40	4.20	3.89	4.39	3.99	4.59	2.60	2.77	2.77	2.35	2.96
3.71	10.20	10.20	10.01	10.00	9.81	5.51	5.83	5.34	5.74	5.15
8.11										

check OK

blount Conman

2-10-11

 2 of SE bar not filled out own Pin
 S line 230

South

North

9.75 9.50 9.22 9.75 9.40 10.00 10.25

9.50 9.50 9.12 9.65 9.30 10.00 10.00
8.5 8.5 9.0 9.0

8.90 8.37 9.04 9.57 9.22 8.87 9.40

Scott

9.25 8.25 8.97 9.50 9.15 8.75 9.75

St

8.72 8.12 8.90 9.43 9.08 8.63 9.22

8.00 8.00 8.82 9.35 9.00 8.5 9.50
9.00 9.00

9.25 9.00 8.72 9.25 8.90 9.50 9.75

14.40 9.50 9.25 9.75 9.40 10.00 9.25 9.50 9.75
4.90 5.18 4.25 5.00 4.40 5.15 4.50 4.65
9.20 8.75 9.25 8.20 9.10 5.65 5.35 5.75 4.00
2-20-11
Check OK
Blough
Dorman

South. E.I. ROSECTANS. St. North

200 21.75 21.50 21.10 21.50 21.10 21.50 21.75

150 19.75 19.50 19.03 19.54 19.15 19.58 19.83

200 17.75 17.50 16.97 17.58 17.20 17.66 17.91

150 15.75 15.50 14.90 15.62 15.25 15.74 15.99

100 13.25 13.50 12.84 13.66 13.30 13.83 14.08

50 11.75 11.50 10.78 11.70 11.35 11.91 12.16

10 9.25 9.50 8.72 9.75 9.40 10.00 10.25

W.I. Scott St

6-7

1/ Blough
2/ Dama
7/1 Felypatank

21.32 3.33 24.65 10.45 14.20 8.5 15.10	21.75 2.95 19.80 13.25 6.55	24.65 4.85 19.80 6.85	24.65 5.2 19.35 16.85 2.5	24.65 7.4 17.25 17.91 14.35 20.7	24.65 7.4 17.25 7.01 2.2	24.65 9.2 15.45 15.45 2.2	24.65 9.2 15.45 15.45 2.2	24.65 9.2 15.45 15.45 2.2	
21.32 1.17 2.43 1.05 1.21 1.27 13.70	21.50 2.93 19.57 8.93	19.50 2.93 18.57 8.60	19.54 2.85 18.69 8.60	19.57 2.85 18.72 8.60	17.50 4.93 17.54 4.93	17.66 4.87 17.66 4.87	15.50 6.93 15.50 6.93	15.62 6.81 15.62 6.81	15.74 6.69 15.74 6.69
21.32 1.2 21.94 8.91 12.03 2.87 14.40	21.50 4.4 17.50 4.43 12.03 2.87 8.70	21.80 4.4 16.97 4.36 12.03 2.87 8.70	21.80 4.4 16.97 4.36 12.03 2.87 8.70	21.80 4.4 16.97 4.36 12.03 2.87 8.70	19.50 2.91 19.54 2.91	19.54 2.91 19.54 2.91	19.54 2.91 19.54 2.91	19.54 2.91 19.54 2.91	19.54 2.91 19.54 2.91

2-20-11 check OK Blough Dama

266.34 *Spiraea* *Trias* *ST*
Witherby Madona

Sounded 8" below grade

266.5
267.96 *man NW*
Trias Madona

267.0

BM 26513 Spike in Pole on North Side Stockton Drive. 45 Feet W. of

ST.

~~261.36~~

HOTTENSIA ST.

~~260.5~~

~~261.5~~

MADONA

(Changed to Fort Stockton Dr.)

~~262.0~~

~~263.0~~

Witherby St.

Sounded 25" below grade

South

North

261.41 261.36 260.96 261.82 261.68 262.28 262.53

261.36 261.36
260.36 260.36

260.76 260.15

HOTTEWSIA

260.93 259.93 260.83 261.41 261.29 261.93 262.18

ST.

260.10 259.71

259.50 259.50
260.50 260.50

260.75 260.50 260.10 261.00 260.90 261.50 261.75

MADRONA ST.

South E. W. Triang. St. North

300	266.75	266.50	266.0	266.75	266.40	267.00	267.25
275	266.32	266.07	265.58	266.33	266.00	266.60	266.85
250	265.89	265.64	265.16	265.92	265.61	266.21	266.46
225	265.46	265.21	264.74	265.51	265.21	265.81	266.06
200	265.03	264.78	264.32	265.10	264.82	265.42	265.67
175	264.60	264.35	263.90	264.69	264.43	265.03	265.28
150	264.17	263.92	263.48	264.28	264.03	264.63	264.88
125	263.75	263.50	263.06	263.87	263.64	264.24	264.49
100	263.32	263.07	262.64	263.46	263.25	263.85	264.10
75	262.89	262.64	262.22	263.05	262.85	263.45	263.70
50	262.46	262.21	261.80	262.64	262.46	263.06	263.31
25	262.03	261.78	261.38	262.23	262.07	262.67	262.92
00	261.61	261.36	260.96	261.82	261.68	262.28	262.53

W. I. HOTTENSIA ST.

647 2-1-11
 Grand Run + July 1911
 40

270.07	270.09	270.09	270.09	270.09	270.09	270.09	270.09
267.44	267.44	267.44	267.44	267.44	267.44	267.44	267.44
271.51	271.51	271.51	271.51	271.51	271.51	271.51	271.51
265.95	265.95	265.95	265.95	265.95	265.95	265.95	265.95
270.76	270.76	270.76	270.76	270.76	270.76	270.76	270.76
Cut stakes	Cut stakes	Cut stakes	Cut stakes	Cut stakes	Cut stakes	Cut stakes	Cut stakes
11/31	11/31	11/31	11/31	11/31	11/31	11/31	11/31
266.00	266.00	266.00	266.00	266.00	266.00	266.00	266.00
262.53	262.53	262.53	262.53	262.53	262.53	262.53	262.53
263.07	263.07	263.07	263.07	263.07	263.07	263.07	263.07
265.89	265.89	265.89	265.89	265.89	265.89	265.89	265.89
264.17	264.17	264.17	264.17	264.17	264.17	264.17	264.17
263.75	263.75	263.75	263.75	263.75	263.75	263.75	263.75
263.32	263.32	263.32	263.32	263.32	263.32	263.32	263.32
262.89	262.89	262.89	262.89	262.89	262.89	262.89	262.89
262.46	262.46	262.46	262.46	262.46	262.46	262.46	262.46
261.61	261.61	261.61	261.61	261.61	261.61	261.61	261.61

Dec 22/11
 Childs
 Taylor
 Shunka

South		N. Line			North	
266.75	266.50	266.0	266.75	266.40	267.0	267.25

266.50	266.50	265.68	265.75	265.87	267.00	267.00
265.5	265.5				266.00	266.00

266.10	266.19	266.27	266.35	266.43	266.51	266.60
--------	--------	--------	--------	--------	--------	--------

Trias

266.50	266.59	266.67	266.75	266.83	266.91	267.00
--------	--------	--------	--------	--------	--------	--------

St.

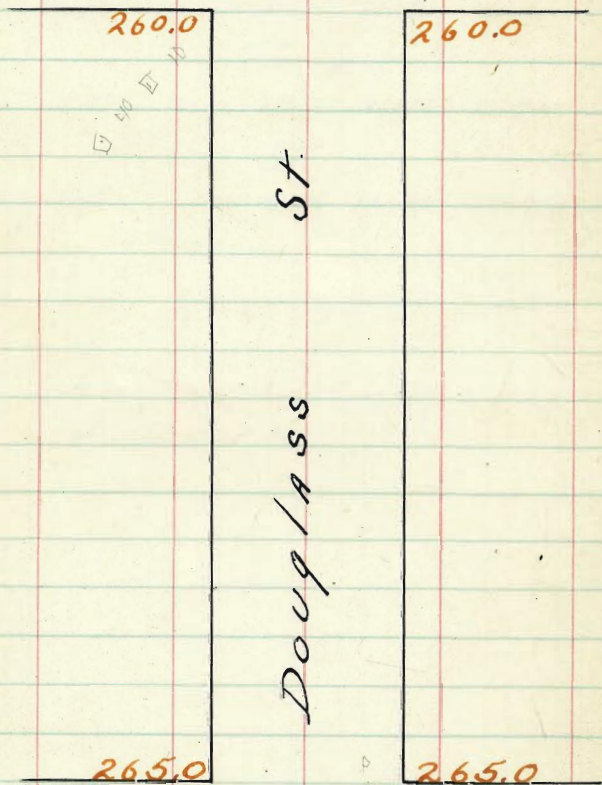
266.10	266.19	266.27	266.35	266.43	266.51	266.60
--------	--------	--------	--------	--------	--------	--------

265.5	265.5				266.5	266.0
266.50	266.50	265.68	265.75	265.87	267.00	267.00

266.75	266.50	266.00	266.75	266.40	267.00	267.25
--------	--------	--------	--------	--------	--------	--------

E. Line.

EAGLE ST.



FALCON ST.

Douglas

South W.L. Eagle St. North

10	260.25	260.00	259.60	260.00	259.60	260.00	260.25
25	260.87	260.62	260.22	260.62	260.22	260.62	260.87
50	261.50	261.25	260.85	261.25	260.85	261.25	261.50
75	262.12	261.87	261.47	261.87	261.47	261.87	262.12
100	262.75	262.50	262.10	262.50	262.10	262.50	262.75
125	263.37	263.12	262.72	263.12	262.72	263.12	263.37
150	264.00	263.75	263.35	263.75	263.35	263.75	264.00
175	264.62	264.37	263.97	264.37	263.97	264.37	264.62
200	265.25	265.00	264.60	265.00	264.60	265.00	265.25

E.L. Falcon St.

263.05 - Bm NE Mark & Eagle

263.05	260.00	260.55	261.50	262.55	263.00	263.55
2.37	3.72	6.74	5.74	4.24	2.99	1.74
265.42	265.00	265.75	264.50	261.25	260.00	265.25
260.05	1.99	3.24	4.99	5.74	6.99	
266.99						

260.55	260.00	261.55	262.50	263.55	265.00
6.85	7.11	5.85	4.60	3.35	1.80
267.40					

2-11-11 Checked OK Exact Brought
Gutter's clean out Felt's Patent

2
16
11
Brought
Shaw
Tatham
43

111.0

109.0

A.

St.

108.0

106.0

72.0

72.0

B.

St

70.0

70.0

60.0

59.5

55.0

54.0

C

St

53.0

52.0

St.

17 th.

Park

Line

122.0

121.0

111.0

109.0

A.

St.

108.0

106.0

40.0 Elev. 124.94

Hub on line bet St - 28
Manure

126.27

125.03

7' Hub

West

East

So. Line B St

300 ✓ 70.25 70.00 69.60 70.00 69.60 70.00 70.25

275 68.58 68.33 67.90 68.29 67.87 68.25 68.50

250 ✓ 66.91 66.66 66.22 66.58 66.14 66.50 66.75

225 65.29 64.99 64.50 64.87 64.41 64.75 65.00

200 ✓ 63.58 63.33 62.80 63.16 62.68 63.00 63.25

175 ✓ F0.1 61.91 61.66 61.10 F0.3 61.45 60.95 61.25 61.50

150 ✓ 60.25 60.00 59.40 59.75 59.22 59.50 59.75

125 59.41 59.16 58.56 58.87 58.32 58.58 F0.3 58.83

100 ✓ 58.58 58.33 57.73 58.00 57.43 57.66 57.91

75 57.74 57.49 56.89 57.12 56.53 56.74 56.99

50 ✓ 56.91 56.66 56.06 56.25 55.64 55.83 56.08

25 56.08 55.83 55.23 55.37 54.74 54.91 55.16

55.25 55.00 54.40 54.50 53.85 54.00 54.25

North Line C St

Cal. Station 11 North
11 West

54.76	55.25	55.25	56.91	56.05	57.65	57.91	60.25	59.75
4.80	0.30		2.24	3.47	0.97	1.64	0.70	-0.20
59.55 H	4.80	0.20	7.20	7.32	6.77	7.00	5.40	5.35
4.52	20	-0.2	-4.56	-3.85	-5.81	-5.86	-6.10	-6.05

63.58	63.25	66.91	66.75
6.65	-3.70	3.82	3.48
50.00	0.00	2.22	3.90
12.65	-1.55	-4.24	-1.28
51.70 H			-0.22

54.16 Bm	55.00	54.40	56.66	55.53	58.33	57.66	60.00	59.50
7.75	7.53	5.75	6.12	4.95	4.45	5.12	3.78	3.38
52.75 H	5.03	5.03	5.87	4.20	4.20	4.57	2.50	3.00
6.22								
6.05	6.20	6.30	6.66	6.65	7.00	Cut 6 - Prop.	8.11	Match
7.22 H	7.22	7.22	4.56	4.72	4.97	12.2	11	11
7.22	7.22	7.22	4.31	4.47				

54.16 Bm	55.00	54.40	54.50	53.85	54.00	54.66	54.66	55.24	55.24
6.33	6.19	6.75	6.75	7.34	7.71	4.80	5.13	4.94	5.14
61.19	5.63	5.73	5.80	5.70	5.66	6.00	5.40	5.25	5.24
1.23	2.86	3.44	3.17	3.74	3.03	1.77	1.74	1.59	1.67

59.96 TP	63.25	62.80	63.16	62.68	63.00	63.25
11.28	7.31	8.44	8.28	8.06	8.24	4.58
71.24 H	70.00	69.60	1/4 + 6			
70.24 TP	1.24	1.24				

74.99	74.99	74.99	74.99	63.43	63.43	63.43	63.43	63.43	63.43
75.25	62.50	66.91	65.00	61.91	52.23	57.74	55.16	55.25	55.25
4.77	6.49	8.08	9.79	1.52	4.60	5.67	8.27	8.18	8.11
4.99	6.74	8.33	10.24	1.77	4.85	5.92	8.52	8.43	
5.33	74.99	74.99	74.99	63.43	63.43	63.43	63.43	63.43	63.43
67.87	66.22	64.41	61.10	58.32	56.89	54.74	52.40	52.40	52.40
74.99	7.12	8.77	10.58	2.33	5.11	6.54	8.69	9.03	9.03
54.85	74.99	74.99	74.99	63.43	63.43	63.43	63.43	63.43	63.43
7.58	6.70	8.41	10.12	1.80	4.56	6.31	8.06	8.93	8.93
63.93 H	74.99	74.99	74.99	63.43	63.43	63.43	63.43	63.43	63.43
67.90	66.74	64.50	60.93	58.56	56.53	55.23	53.55	53.55	53.55
7.09	8.85	10.49	12.27	4.27	6.90	8.20	9.58	9.58	9.58
74.99	74.99	74.99	63.43	63.43	63.43	63.43	63.43	63.43	63.43
55.58	66.70	65.24	61.50	58.41	56.97	56.02	54.25	54.25	54.25
6.41	8.24	9.75	1.93	4.02	6.44	7.35	9.18	9.18	9.18
6.66	8.49	10.00	2.18	4.27	6.69	7.60	9.43	9.43	9.43

17 ¹⁶/₁₁

St.

West

East

817044

49

72.25 72.00 71.60 72.00 71.60 72.00 72.75

72.00 72.00 71.25 71.65 71.25 72.00 72.00
71.00 71.00 71.0 71.0

71.40 70.50 70.92 71.32 70.92 70.50 71.40

71.00 70.00 ^B70.60 71.00 70.60 70.00 71.0070.10 69.50 ^{St.}70.28 70.68 70.28 69.50 70.1069.0 69.0
70.00 70.00 69.95 70.35 69.95 70.00 69.0 69.0
70.00 70.00

70.25 70.00 69.60 70.00 69.60 70.00 70.25

116.25 116.00

~~109.00~~ 109.25

111.00

109.00 109.00

A.

st

108.00 108.00

106.00 106.00

108.25 108.00 107.40 107.00 106.10 106.00 106.25

11333 TP	10925	11643	11491	12225	12125	Cut stakes
1203	6.12	1112	1264	1228	630	6 stake
11537		102	1127	1256	650	63 stake
060		+975	+147	+942	-250	6 stake

11470	115024H	11522	12411	12411	Curve drop
1280	0.49	1125	11991	12225	7/8" Simple
12155H	11513	397	920	136	curves
088	2.95	422	945	2.11	7" radius
12667	12411H	597	12411	12411	
752		622	11643	12225	
13450H			768	286	
070			793	2.11	
1333					
1325					
10732					
1339					

10364H	1160	11040	1100	10910	1090	all stakes
033	336	396	422	526	536	8" stake
1197	311				571	10" stake
11885	11618	11558	11542	11464	11466	
12436H	543	725	422	1022	1020	
	543				990	
	1220	12120	12150	12285	1210	
	286	346	326	4	356	
	261				361	

12232H	12232	12232	12232	8'	check O.K.
10920H	11382	11734	12232	31'	Simple
1307	8.48	4.58	0.07		
1332	2.73	4.83	0.32		

12232	12232	12232	12232
10910	11299	11741	12140
1322	9.03	4.91	0.92
12232	12232	12232	12232
11020	11271	11813	12150
1232	9.61	4.19	0.82
10232	12232	12232	12232
11090	11187	11815	12035
1192	10.45	4.14	1.47
12332	12232	12232	12232
11125	11208	11803	12125
1107	10.24	3.27	1.07
1132	10.99	3.54	1.32

So. Line City Park

106' 122.25 122.00 121.40 121.50 120.85 121.00 121.25

100 121.62 121.37 120.77 120.84 120.18 120.32 120.57

75 119.03 118.78 118.18 118.13 117.41 117.49 117.74

50' 116.43 116.18 115.58 115.42 114.64 114.66 114.91

25 113.84 113.59 112.99 112.71 111.87 111.83 112.08

00 111.25 111.00 110.40 110.00 109.10 109.00 109.25

No. Line A St.

Terms is 60 wide but tie-outs
are for an 80' street

Wightman St Landis St

305.0 306.0 303.0 304.0

107M 303.7
107C 111.1

St

296.2 297.2
295.9 296.9
295.8 296.8
295.9 296.9
296.3 297.3
296.8 297.8

310.0 313.0 Univ. Ave.

Texas

160'

304.0 305.0
Wightman St

Dwight St Myrtle St

290.0 291.0 282.0 283.0

107M 291.59

St

Texas

302.0 303.0 284.5 290.5
Landis St Dwight St

NE

312976 B.M. RR Spk Union Texas. $\frac{7}{12}$ $\frac{11}{14}$

3.52

31654

12.97

304.43

112.7

304.50

129.3

297.57

0.07

297.58

1.293

278.25

1.293

278.56

1.293

279.85

1.293

279.85

1.293

279.85

1.293

279.85

1.293

279.85

1.293

279.85

1.293

279.85

1.293

279.85

1.293

279.85

1.293

279.85

1.293

279.85

1.293

279.85

1.293

279.85

1.293

279.85

1.293

279.85

1.293

279.85

1.293

279.85

1.293

279.85

1.293

279.85

1.293

279.85

1.293

279.85

1.293

279.85

1.293

279.85

1.293

279.85

1.293

279.85

1.293

279.85

1.293

279.85

1.293

279.85

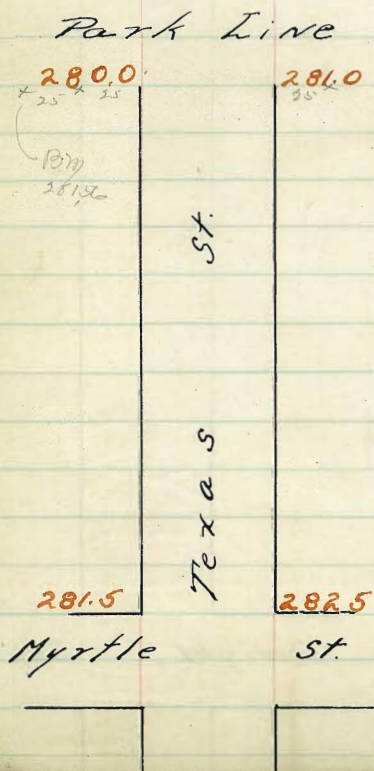
1.293

279.85

1.293

279.85

1.293

206 E gutter - Catehbasin to Wightman
213 W
22 E to toe
46 W " "

Texas St.

58

West.

East.

304.25 304.0 303.60 304.50 304.40 305.0 305.25

304.0 304.0 303.76 304.66 304.56 305.0 305.0
303.0 303.0 304.0 304.0

303.60 303.25 303.86 304.76 304.66 304.25 304.60

Wightman

304.50 303.50 304.16 305.00 304.90 304.50 305.50

St.

304.40 303.75 304.40 305.24 305.14 304.75 305.40

304.0 304.0 305.0 305.0
305.0 305.0 304.50 305.34 305.24 306.0 306.0

305.25 305.0 304.60 305.50 305.40 306.0 306.25

Texas St.

West

East

60

302.25 302.00 301.60 302.50 302.40 303.00 303.25

302.00 302.00 301.76 302.66 302.56 303.00 303.00
301.00 301.00 302.00 302.00

301.60 301.25 301.86 302.76 302.66 302.25 302.60

Landis

302.50 301.50 302.10 303.00 302.90 302.50 303.50

St.

302.40 301.75 302.34 303.24 303.14 302.75 303.40

302.00 303.00 302.44 303.34 303.24 304.00 303.00
303.00 303.00 304.00 304.00

303.25 303.00 302.60 303.50 303.40 304.00 304.25

West

East

N.L. Dwight St.

Table of measurements for West side of N.L. Dwight St. Columns include West, N.L. Dwight St., and East. Values range from 290.25 to 302.25.

So. L. Landis St.

Table of measurements for East side of N.L. Dwight St. Columns include East, N.L. Dwight St., and West. Values range from 290.25 to 302.25.

BT 30367 Sec 66 for SE Cor Landis St Texas.

Table of measurements for East side of So. L. Landis St. Columns include East, So. L. Landis St., and West. Values range from 298.25 to 302.25.

BT 30367 Sec 66

Table of measurements for East side of So. L. Landis St. Columns include East, So. L. Landis St., and West. Values range from 298.25 to 302.25.

all stakes, under on 9' offset.

BT 30367

Table of measurements for East side of So. L. Landis St. Columns include East, So. L. Landis St., and West. Values range from 298.25 to 302.25.

30367
30773 HI

Checked OK except from little touching up. Dec 27-11
Doman, Shaw, & Devine

Texas St.

West

East

62

289.75 289.50 289.10 290.00 289.90 290.50 290.75

289.50 289.50 289.18 290.08 289.98 290.50 290.50
289.50 289.50

288.00 288.62 289.23 290.13 290.03 289.62 289.00

Dwight

289.75 288.75 289.35 290.25 290.15 289.75 290.75

St.

289.40 288.88 289.47 290.37 290.27 289.88 290.40

289.0 289.0 290.0 290.0
290.00 290.00 289.52 290.42 290.32 291.00 291.00

290.25 290.00 289.60 290.50 290.40 291.00 291.25

West East
N. L. Myrtle St.

282.25	282.00	281.60	282.50	282.40	283.00	283.25
282.56	282.31	281.91	282.81	282.71	283.31	283.56
282.87	282.62	282.22	283.12	283.02	283.62	283.87
283.18	282.93	282.53	283.43	283.33	283.93	284.18
283.50	283.25	282.85	283.75	283.65	284.25	284.50
283.81	283.56	283.16	284.06	283.96	284.56	284.81
284.12	283.87	283.47	284.37	284.27	284.87	285.12
284.43	284.18	283.78	284.68	284.58	285.18	285.43
284.75	284.50	284.10	285.00	284.90	285.50	285.75
285.06	284.81	284.41	285.31	285.21	285.81	286.06
285.37	285.12	284.72	285.62	285.52	286.12	286.37
285.68	285.43	285.03	285.93	285.83	286.43	286.68
286.00	285.75	285.35	286.25	286.15	286.75	287.00
286.31	286.06	285.66	286.56	286.46	287.06	287.31
286.62	286.37	285.97	286.87	286.77	287.37	287.62
286.93	286.68	286.28	287.18	287.08	287.68	287.93
287.25	287.00	286.60	287.50	287.40	288.00	288.25
287.56	287.31	286.91	287.81	287.71	288.31	288.56
287.87	287.62	287.22	288.12	288.02	288.62	288.87
288.18	287.93	287.53	288.43	288.33	288.93	289.18
288.50	288.25	287.85	288.75	288.65	289.25	289.50
288.81	288.56	288.16	289.06	288.96	289.56	289.81
289.12	288.87	288.47	289.37	289.27	289.87	290.12
289.43	289.18	288.78	289.68	289.58	290.18	290.43
289.75	289.50	289.10	290.00	289.90	290.50	290.75

S. L. Dwight St.

Cot States 5/12 Nat'l
Hall
63

300.80	297.5	907.5	891.2	901.2	88.5	89.5	87.87	88.7	82.0	88.5
10.55	9.95	11.18	10.13	11.5	10.50	12.43	11.43	10.55	10.55	11.5
27.97	26.5	26.75	26.75	27.25	26.75	27.25	26.75	27.25	26.75	27.25

Have 2012 for N.E. of Texas & Dwight.

296.31 296.31 296.31 296.31 296.31 296.31 296.31 296.31 296.31 296.31 296.31

296.31 296.31 296.31 296.31 296.31 296.31 296.31 296.31 296.31 296.31 296.31

296.31 296.31 296.31 296.31 296.31 296.31 296.31 296.31 296.31 296.31 296.31

291.59 BJT, see above.

296.31 296.31 296.31 296.31 296.31 296.31 296.31 296.31 296.31 296.31 296.31

296.31	296.31	296.31	296.31	296.31	296.31	296.31	296.31	296.31	296.31	296.31
296.31	296.31	296.31	296.31	296.31	296.31	296.31	296.31	296.31	296.31	296.31
296.31	296.31	296.31	296.31	296.31	296.31	296.31	296.31	296.31	296.31	296.31

Oct 29-12 {Common
Sharon
Aurine All stakes

299.70	299.70	299.70	299.70	299.70	299.70	299.70	299.70	299.70	299.70
299.70	299.70	299.70	299.70	299.70	299.70	299.70	299.70	299.70	299.70

Checked OK except for a little tending up. Dec 27-12
Common, Sharon, Aurine

Texas St.

West

East

281.75 281.50 281.10 282.00 281.90 282.50 282.75

281.50 281.50 281.18 282.08 281.98 282.50 282.50
 280.5 280.5 281.5 281.5

281.00 280.62 281.23 282.13 282.03 281.62 282.00

Myrtle

281.75 280.75 281.35 282.25 282.15 281.75 282.75

St.

281.40 280.88 281.47 282.37 282.27 281.88 282.40

281.0 281.0 282.0 282.0
 282.00 282.00 281.52 282.42 282.32 283.00 283.00

282.25 282.00 281.60 282.50 282.40 283.00 283.25

289.20 289.20 289.20 289.20 289.20
 289.40 82.50 81.60 82.00 82.20
 6.83 6.73 7.63 7.23 6.98

West

N.L. Park.

East

284 280.25 280.00 280.60 280.50 280.40 281.00 281.25

285 280.29 280.04 280.64 280.54 280.44 281.04 281.29

280 280.42 280.17 280.77 280.67 280.57 281.17 281.42

285 280.56 280.31 280.91 280.81 280.71 281.31 281.56

280 280.69 280.44 280.94 280.84 280.74 281.44 281.69

285 280.82 280.57 280.17 281.27 280.97 281.57 281.82

280 280.95 280.70 280.30 281.20 281.10 281.70 281.95

285 281.08 280.83 280.43 281.33 281.23 281.83 282.08

280 281.22 280.97 280.57 281.47 281.37 281.97 282.22

285 281.35 281.10 280.70 281.60 281.50 282.10 282.35

280 281.48 281.23 280.83 281.73 281.63 282.23 282.48

285 281.61 281.36 280.96 281.86 281.76 282.36 282.61

280 281.75 281.50 281.10 282.00 281.90 282.50 282.75

S.E. Myrtle St.

W	F						
289.23 HI	817.5	827.5	814.8	824.8	812.2	822.2	
	818.5	828.5	795	815	807	821	821
	797	348	785	385	521	431	
	-0.5	+3.0	-0.1	+2.9	-0.7	+2.2	

289.5	819.5	804.9	816.9	800.2	813.2	802.5	812.5
835	728	834	782	831	781	833	798
900	568	880	612	861	706	808	794
-0.77	+4.6	-0.26	+1.1	+0.2	+4.75	+0.9	-0.04

all stakes Nov 9-1912

289.15	289.15	289.15	289.15	289.15	289.15	289.15	289.15	289.15	289.15
820.0	815.0	812.0	811.0	810.5	81.28	80.85	81.78	81.63	82.23
6.73	7.38	7.23	7.13	7.78	8.00	6.40	7.50	7.00	7.70

all stakes Nov 9-1912

289.23	289.23	289.23	289.23	289.23	289.23	289.23	289.23	289.23	289.23
81.57	81.57	81.47	80.57	80.97	80.70	80.30	81.20	81.10	81.70
7.66	7.36	7.70	8.66	8.24	8.53	8.93	8.03	8.13	7.53

all stakes Nov 9-1912

289.23	289.23	289.23	289.23	289.23	289.23	289.23	289.23	289.23	289.23
81.57	80.90	80.50	79.60	80.50					
7.47	8.47	4.66	3.66	4.93	7.73	9.43	8.43		

all stakes Nov 9-1912

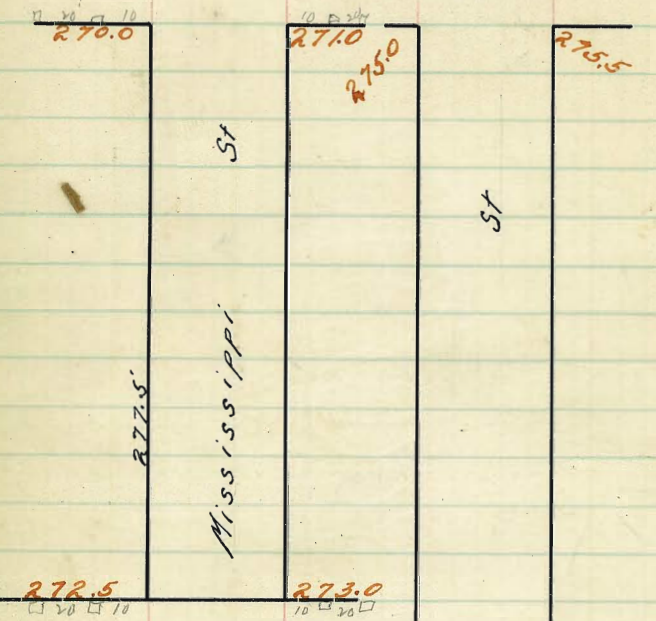
290.47	290.47	284.66	284.66	290.93	290.93	290.93	290.93	290.93	290.93
80.00	82.00	80.00	81.00	82.00	82.00	81.00	81.00	82.00	82.00
7.47	8.47	4.66	3.66	4.93	7.73	9.43	8.43		

all stakes Nov 9-1912

290.99	290.99	290.99	290.99	290.99	290.99	290.99	290.99	290.99	290.99
81.00	80.00	80.00	79.60	80.00	81.00	81.10	82.00	81.90	82.00
7.47	8.47	4.66	3.66	4.93	7.73	9.43	8.43	8.43	8.43

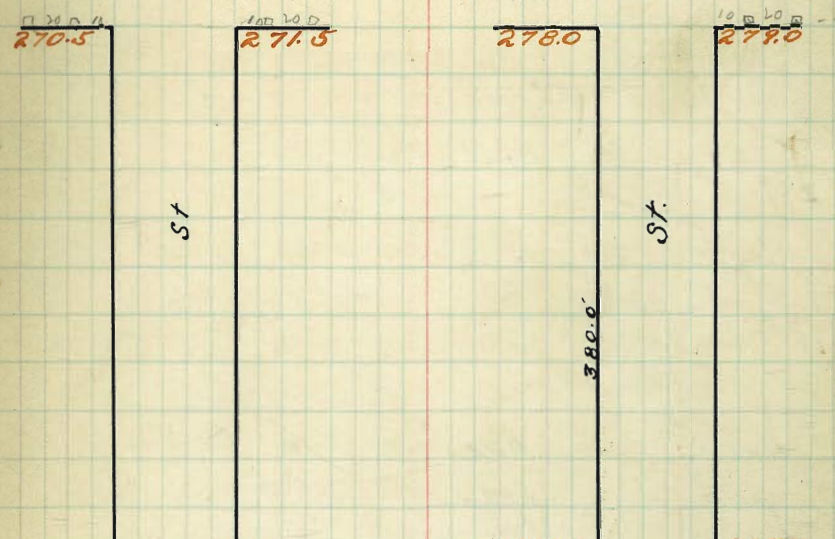
Checked off spect for a little trching up.
Dec 27-12 chorman, Shaw, Deane

271.0
 Myrtle St
 275.0
 272.0
 St Dwight St
 275.5



271.0
 Myrtle St
 272.0
 St

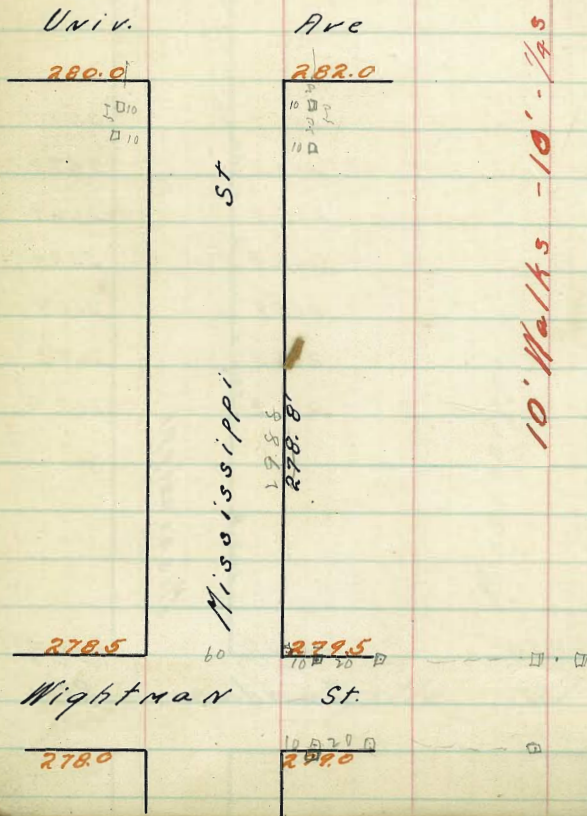
270.0
 Landas St
 271.0
 St
 278.5
 Wightman St
 279.5
 67



275.0
 Dwight St
 275.5
 St
 270.0
 Landas St
 271.0
 St

- 266.7
- 266.2
- 265.9
- 265.8
- 265.9
- 266.3
- 266.9
- 267.7
- 267.2
- 266.9
- 266.8
- 266.9
- 267.3
- 267.9

276
 275.50
 276.50
 276
Sanchez



10' Walks - 10' - 1/4 s

W. So. Line Myrtle E.

10 Walks.

270.25 270.00 26985 270.50 270.90 271.00 271.25

10 1/4 S. 27810 27810 27810 27810 26617 26617

270.47 270.22 270.06 270.70 270.57 271.17 271.42

27684 2709 261.9 2711 10.7 265.2
126 270 270.70 271.6 271.5 272.3
271.86 261.2 271.1 271.0 265.2
1293 271.4 271.5 253.5 265.2
271.1 271.4 271.5 271.5 7.1

270.70 270.45 270.27 270.90 270.75 271.35 271.60

276.71 276.71 276.71 27944 27944 27944
7.3 27 17 41 57 57 41
26910 273.5 275.0 275.0 273.7 273.7 275.25
1.69 2692 272.05 272.7 273 272.5 272.5
264.418 22.6 27.5 27.5 22.3 27.5 27.5
12.23 276.71 276.71 276.71 27944 27944 27944
276.71 276.71 276.71 27944 27944 27944

270.92 270.67 270.49 271.10 270.93 271.53 271.78

6+7 698E 2-23-12

271.15 270.90 270.70 271.31 271.11 271.71 271.96

275.75 276.8 277.69 277.69 277.69 277.69 277.69 277.69 277.69 277.69
1300 7270 7250 7250 7250 7250 7250 7250 7250 7250
4.65 4.70 5.18 5.93 5.16 4.89 5.25 5.66 5.88
C 0 0 0 0 0 0 0 0 0
279.44 279.44 279.44 279.44 279.44 279.44 279.44 279.44 279.44
276.84 See above 276.84 276.84 276.84 276.84 276.84 276.84 276.84 276.84
277.48 277.48 277.48 277.48 277.48 277.48 277.48 277.48 277.48
277.48 277.48 277.48 277.48 277.48 277.48 277.48 277.48 277.48

271.37 271.12 270.91 271.51 271.29 271.89 272.14

275.84 275.84 275.84 275.84 275.84 275.84 275.84 275.84 275.84
4.67 4.67 4.67 4.67 4.67 4.67 4.67 4.67 4.67
271.37 271.37 271.37 271.37 271.37 271.37 271.37 271.37 271.37
276.84 276.84 276.84 276.84 276.84 276.84 276.84 276.84 276.84

271.60 271.35 271.13 271.74 271.47 272.07 272.32

276.84 276.84 276.84 276.84 276.84 276.84 276.84 276.84 276.84
1.25 1.25 1.25 1.25 1.25 1.25 1.25 1.25 1.25
277.09 277.09 277.09 277.09 277.09 277.09 277.09 277.09 277.09
70.05 70.05 70.05 70.05 70.05 70.05 70.05 70.05 70.05
5.64 6.34 6.74 6.34 6.74 6.74 6.74 6.74 6.74
277.09 277.09 277.09 277.09 277.09 277.09 277.09 277.09 277.09
71.35 71.35 71.35 71.35 71.35 71.35 71.35 71.35 71.35
5.74 5.96 5.38 5.62 5.02 5.02 5.02 5.02 5.02

271.82 271.57 271.34 271.91 271.65 272.25 272.50

276.84 276.84 276.84 276.84 276.84 276.84 276.84 276.84 276.84
1.25 1.25 1.25 1.25 1.25 1.25 1.25 1.25 1.25
277.09 277.09 277.09 277.09 277.09 277.09 277.09 277.09 277.09
70.05 70.05 70.05 70.05 70.05 70.05 70.05 70.05 70.05
5.64 6.34 6.74 6.34 6.74 6.74 6.74 6.74 6.74
277.09 277.09 277.09 277.09 277.09 277.09 277.09 277.09 277.09
71.35 71.35 71.35 71.35 71.35 71.35 71.35 71.35 71.35
5.74 5.96 5.38 5.62 5.02 5.02 5.02 5.02 5.02

272.05 271.80 271.55 272.12 271.83 272.43 272.68

276.84 276.84 276.84 276.84 276.84 276.84 276.84 276.84 276.84
1.25 1.25 1.25 1.25 1.25 1.25 1.25 1.25 1.25
277.09 277.09 277.09 277.09 277.09 277.09 277.09 277.09 277.09
70.05 70.05 70.05 70.05 70.05 70.05 70.05 70.05 70.05
5.64 6.34 6.74 6.34 6.74 6.74 6.74 6.74 6.74
277.09 277.09 277.09 277.09 277.09 277.09 277.09 277.09 277.09
71.35 71.35 71.35 71.35 71.35 71.35 71.35 71.35 71.35
5.74 5.96 5.38 5.62 5.02 5.02 5.02 5.02 5.02

272.27 272.02 271.77 272.32 272.01 272.61 272.86

276.84 276.84 276.84 276.84 276.84 276.84 276.84 276.84 276.84
1.25 1.25 1.25 1.25 1.25 1.25 1.25 1.25 1.25
277.09 277.09 277.09 277.09 277.09 277.09 277.09 277.09 277.09
70.05 70.05 70.05 70.05 70.05 70.05 70.05 70.05 70.05
5.64 6.34 6.74 6.34 6.74 6.74 6.74 6.74 6.74
277.09 277.09 277.09 277.09 277.09 277.09 277.09 277.09 277.09
71.35 71.35 71.35 71.35 71.35 71.35 71.35 71.35 71.35
5.74 5.96 5.38 5.62 5.02 5.02 5.02 5.02 5.02

272.50 272.25 271.98 272.52 272.19 272.79 273.04

10-28-12 Check O.G. blough

272.75 272.50 272.22 272.75 272.40 273.00 273.25

276.84 276.84 276.84 276.84 276.84 276.84 276.84 276.84 276.84
1.25 1.25 1.25 1.25 1.25 1.25 1.25 1.25 1.25
277.09 277.09 277.09 277.09 277.09 277.09 277.09 277.09 277.09
70.05 70.05 70.05 70.05 70.05 70.05 70.05 70.05 70.05
5.64 6.34 6.74 6.34 6.74 6.74 6.74 6.74 6.74
277.09 277.09 277.09 277.09 277.09 277.09 277.09 277.09 277.09
71.35 71.35 71.35 71.35 71.35 71.35 71.35 71.35 71.35
5.74 5.96 5.38 5.62 5.02 5.02 5.02 5.02 5.02

Mississippi St.

West.

East

271.25 271.0 270.85 271.50 271.40 272.0 272.25

271.00 271.0 270.68 271.33 271.23 272.0 272.00
 270.00 270.0 271.00 271.00

270.40 269.75 270.51 271.16 271.06 270.75 271.40

270.50 269.50 270.35 271.00 270.90 270.50 271.50
 Muttler St

269.85 269.25 270.19 270.84 270.74 270.25 270.85

269.00 269.00 270.00 270.00 270.0 270.0
 270.00 270.00 270.05 270.67 270.57 271.00 271.00

270.25 270.00 269.85 270.50 270.40 271.00 271.25

317 276.39 H.W. Sec for N.E. Cor of Mississippi & Hwy 76.

270.75	270.75	270.75	270.75	270.75	270.75	270.75	270.75	270.75	270.75
7.75	7.75	7.75	7.75	7.75	7.75	7.75	7.75	7.75	7.75
270.75	270.75	270.75	270.75	270.75	270.75	270.75	270.75	270.75	270.75
10.00	10.00	10.00	10.00	10.00	10.00	10.00	10.00	10.00	10.00
8.25	8.25	8.25	8.25	8.25	8.25	8.25	8.25	8.25	8.25

270.64
 106
 172.96

271.00 7085 7150 7140 7100
 6.90 7.05 6.60 6.20 5.90
 700 7100
 700 6.90

General
 Street
 General

70

10-28-12 Check OK Blount

West

So. L. Dwight

St

East

100	275.25	275.00	274.72	275.25	274.90	275.50	275.75
	275.08	274.83	274.55	275.09	274.75	275.35	275.60
✓	274.91	274.66	274.39	274.93	274.60	275.20	275.45
	274.74	274.49	274.23	274.78	274.46	275.06	275.31
500	✓ 274.58	274.33	274.07	274.62	274.31	274.91	275.46
	274.41	274.16	273.91	274.46	274.17	274.77	275.02
✓	274.24	273.99	273.75	274.91	274.04	274.62	274.87
	274.08	273.83	273.59	274.15	273.87	274.47	274.72
100	✓ 273.91	273.66	273.43	274.00	273.73	274.33	274.58
	273.74	273.49	273.26	273.84	273.58	274.18	274.43
✓	273.58	273.33	273.10	273.68	273.44	274.04	274.29
	273.41	273.16	272.94	273.53	273.29	273.89	274.14
100	✓ 273.24	272.99	272.78	273.37	273.14	273.74	273.99
	273.08	272.83	272.62	273.21	273.00	273.60	273.85
✓	272.91	272.66	272.46	273.06	272.85	273.45	273.70
	272.74	272.49	272.30	272.90	272.71	273.31	273.57
100	✓ 272.58	272.33	272.14	272.75	272.56	273.16	273.41
	272.41	272.16	271.97	272.59	272.42	273.02	273.27
✓	272.24	271.99	271.81	272.43	272.27	272.87	273.12
	272.08	271.83	271.65	272.28	272.12	272.72	272.97
100	✓ 271.91	271.66	271.49	272.12	271.98	272.58	272.83
	271.74	271.49	271.33	271.96	271.83	272.43	272.68
✓	271.58	271.33	271.17	271.81	271.69	272.29	272.64
	271.41	271.16	271.01	271.65	271.54	272.14	272.39
100	✓ 271.25	271.00	270.85	271.50	271.40	272.00	272.25

N. L. Myrtle

St

27778 RP 30 W of N.W. Dwight

276.84 PP 30 E of N.E Dwight

71

27778 Bm	28007	28337	28337	28337	28337	28307	28327
559	249	60	50	50	50	50	50
28337	2785	2774	2784	279	277.6	278.4	277.8
812	275.5	275	275.2	274.7	274.4	275.2	274.82
277.24	63.2	C 1.7	C 3.1	C 3.1	C 3.1	C 3.1	C 3.1
277.24	283.37	283.37	283.37	283.37	283.37	283.37	281.57
277.24	67	86	277.4	277.4	277.4	277.4	277.4
276.84	C 2.5	C 1.9	C 2.9	C 2.9	C 2.9	C 2.9	C 3.5

277.75	79.67	79.67	79.45	79.45	79.45	79.45	79.45
1.24	75.125	75.125	4.00	4.57	4.57	4.57	4.57
279.624	4.37	4.37	4.42	4.42	4.42	4.42	4.42

27778 Bm	28117	28117	28117	28117	28117	28117	28117
445	283	411	328	323	323	323	323
278.85	74.34	74.34	74.34	74.34	74.34	74.34	74.34
3.97	41.7	53	54.9	54.9	54.9	54.9	54.9
274.86	7.66	7.46	23.6	22.85	22.85	22.85	22.85
3.91	6.11	6.11	5.71	5.92	5.92	5.92	5.92

10-28-12 1st unit about

278.85	280.00	280.00	280.00	280.00	280.00	280.00	280.00
1.42	74.42	74.42	74.42	74.42	74.42	74.42	74.42
278.85	280.00	280.00	280.00	280.00	280.00	280.00	280.00

10-28-12 Check OK about

Mississippi St.

West

East

275.25 275.00 274.72 275.25 274.90 275.50 275.75

275.00 275.00 274.12 274.25 274.37 275.50 275.50
274.00 274.0 274.5 274.5

274.60 274.69 274.77 274.85 274.93 275.01 275.10

Dwight

275.00 275.09 275.17 275.25 275.33 275.41 275.50

St.

274.60 274.69 274.77 274.85 274.93 275.01 275.10

274.0 274.0 274.0 274.0
275.00 275.00 274.12 274.25 274.37 275.50 275.50

275.25 275.00 274.72 275.25 274.90 275.50 275.75

27697
RP 30' W Cor of Dwight & Mississippi
27697

280.00	280.00	280.00	280.00	280.00
78.00	78.72	79.44	80.16	80.88
8.00	8.88	9.76	10.64	11.52

Oct 24 12
{Common
Shore
Seal

27977

275.75 74.75
4.39 75.25 74.90 75.50
4.86 4.81 4.41

72

10-28-12 Check OK Blough

West East
So. L. Landis St

Table with columns for West and East measurements. Includes values like 270.75, 270.50, 270.35, 271.00, 270.90, 271.50, 271.75, etc.

N.L. Dwight St.

Table with multiple columns of numerical data, possibly representing survey points or elevations. Includes values like 276.94, 278.01, 276.11, etc.

all stakes to 850' north of Landis
{Shannon Aug 12-12
Cairn

Table with columns of numerical data, likely a continuation of survey measurements. Includes values like 277.75, 279.27, 276.72, etc.

10-28-12 Checked OK Calm

West

East

270.25 270.00 269.85 270.50 270.40 271.00 271.25

270.00 270.00 269.94 270.59 270.49 271.00 271.00
269.00 269.00 270.00 270.00

269.72 269.12 270.02 270.67 270.57 270.12 270.72

Landis

270.25 269.25 270.10 270.75 270.65 270.25 271.25

St

269.90 269.37 270.18 270.83 270.73 270.37 270.90

269.50 269.50 270.26 270.91 270.81 270.50 270.50
270.50 270.50 270.26 270.91 270.81 271.50 271.50

270.75 270.50 270.35 271.00 270.90 271.50 271.75

27756

27756

11

44

27615

2731

2717

2707

24.8

22.4

58

54

27854 Bm

bullet Chem 74

2765

25427

28.09

7.5

12.81

246.9

265.43

2689

166.12

2669

125

19.0

253.70

18.8

254.27

6.2

Bm 27692 Hub SE Cor Landis & Mississippi
27783 MI 27145 277.45 277.45 277.45 277.45 277.45 277.45 277.45 277.45 277.45 277.45 277.45 277.45
272.40 271.00 270.00 270.50 270.75 270.00 270.50 270.00 270.50 270.00 270.50 270.00 270.50
279.60 271.00 270.00 270.50 270.75 270.00 270.50 270.00 270.50 270.00 270.50 270.00 270.50
277.72 Hub at tie for NW Cor Dwight & Mississippi
0d 20-12
Gamm
Bent
Shant

27487

70.50 70.35 71.00 70.90 71.00

407 470 387 3.97 3.07
10.28.12 Checked OK Blauy L

West

East

So. L. Wightman St

Table with columns for West and East measurements, ranging from 278.25 to 270.00.

Table with columns for measurements, including values like 28626, 28626, 28626, 28626, 28626, 28626, 28626, 28626.

Table with columns for measurements, including values like 280.46, 280.46, 280.46, 280.46, 280.46, 280.46, 280.46, 280.46.

Table with columns for measurements, including values like 269.33, 269.33, 269.33, 269.33, 269.33, 269.33, 269.33, 269.33.

Table with columns for measurements, including values like 279.00, 279.00, 279.00, 279.00, 279.00, 279.00, 279.00, 279.00.

Table with columns for measurements, including values like 277.17, 277.17, 277.17, 277.17, 277.17, 277.17, 277.17, 277.17.

Check OK

10-28-12

See also Page 78

West

East

278.75 278.50 278.35 279.00 278.90 279.50 279.75

278.50 278.50 278.26 278.91 278.81 279.50 279.50
277.5 277.5 278.5 278.5

277.90 277.37 278.18 278.83 278.73 278.37 278.90

Wightman

278.25 277.25 278.10 278.75 278.65 278.25 279.25

St

277.72 277.12 278.02 278.67 278.57 278.12 278.72

277.0 277.0 278.0 278.0
278.00 278.00 277.94 278.59 278.49 279.00 279.00

278.25 278.00 277.85 278.50 278.40 279.00 279.25

28365	784	785	7850	7890	7900
231	5.65	5.80	5.75	5.25	4.21
276.34	750	1437	755	750	700
89	2.5	2.5	1.70	1.80	1.20
277.15	7205	7190	7235	7245	7205
922	5.17	5.32	4.67	4.77	5.17
268.100	6007	6892	6957	6897	7107
6.87	8.15	8.30	7.45	8.25	7.15
274.87	6070	6635	6720	6710	6770
	10.22	10.67	10.02	10.72	9.52
	6610	6605	6670	6610	6720
	8.67	8.82	8.77	8.37	7.17
	6590	6575	6640	6630	6600
	8.77	9.12	8.32	8.37	1.77
	6839	6822	6839	6870	6839
	6.18	6.63	6.78	6.48	5.48
	70.20	67.85	70.70	70.20	71.00
	4.87	5.22	4.37	4.47	3.87

10-28-12 Checked OK Clowry

