

56

- GRADES -

Newport Ave. Abbott to Guizot.	1.
Brighton Ave Abbott to Guizot.	17.
Cape May Ave. Ocean to Guizot.	32.
SARATOGA AVE. OCEAN to Guizot	46
SANTA MONICA AVE. OCEAN to Guizot	62
BRIGHTON AVE. SPRAY TO ABBOTT	15

380

FIELD

G56

Published by H. S. CROCKER COMPANY, Stationers, Drawing
Materials, Mathematical Instruments, etc., San Francisco.

TRAVERSE TABLE FOR TRANSIT BOOK.

From 1° to 90° for a distance of 100.

Degrees.	DEGREES.		½ DEGREE.		¼ DEGREE.		¼ DEGREE.		Degrees.
	Lat.	Dep.	Lat.	Dep.	Lat.	Dep.	Lat.	Dep.	
0			100.00	0.44	100.00	0.87	99.99	1.31	89
1	99.98	1.75	99.98	2.18	99.97	2.62	99.95	3.05	88
2	99.94	3.49	99.92	3.93	99.91	4.36	99.88	4.80	87
3	99.86	5.23	99.84	5.67	99.81	6.10	99.79	6.54	86
4	99.76	6.98	99.73	7.41	99.69	7.85	99.66	8.28	85
5	99.62	8.72	99.58	9.15	99.54	9.58	99.50	10.02	84
6	99.45	10.45	99.41	10.89	99.36	11.32	99.31	11.75	83
7	99.25	12.19	99.20	12.62	99.14	13.05	99.09	13.49	82
8	99.03	13.92	98.97	14.35	98.90	14.78	98.84	15.21	81
9	98.77	15.64	98.70	16.07	98.63	16.50	98.56	16.93	80
10	98.48	17.36	98.40	17.79	98.33	18.22	98.25	18.65	79
11	98.16	19.08	98.08	19.51	97.99	19.94	97.90	20.36	78
12	97.81	20.79	97.72	21.22	97.63	21.64	97.53	22.07	77
13	97.44	22.50	97.34	22.92	97.24	23.34	97.13	23.77	76
14	97.03	24.19	96.92	24.62	96.81	25.04	96.70	25.46	75
15	96.59	25.88	96.48	26.30	96.36	26.72	96.25	27.14	74
16	96.13	27.56	96.00	27.98	95.88	28.40	95.76	28.82	73
17	95.63	29.24	95.50	29.65	95.37	30.07	95.24	30.49	72
18	95.11	30.90	94.97	31.32	94.83	31.73	94.69	32.14	71
19	94.55	32.56	94.41	32.97	94.26	33.38	94.12	33.79	70
20	93.97	34.20	93.82	34.61	93.67	35.02	93.51	35.43	69
21	93.36	35.84	93.20	36.24	93.04	36.65	92.88	37.06	68
22	92.72	37.46	92.55	37.86	92.39	38.27	92.22	38.67	67
23	92.05	39.07	91.88	39.47	91.71	39.87	91.53	40.27	66
24	91.35	40.67	91.18	41.07	91.00	41.47	90.81	41.87	65
25	90.63	42.26	90.45	42.66	90.26	43.05	90.07	43.44	64
26	89.88	43.84	89.69	44.23	89.49	44.62	89.30	45.01	63
27	89.10	45.40	88.90	45.79	88.70	46.17	88.50	46.56	62
28	88.29	46.95	88.09	47.33	87.88	47.72	87.67	48.10	61
29	87.46	48.48	87.25	48.86	87.04	49.24	86.82	49.62	60
30	86.60	50.00	86.38	50.38	86.16	50.75	85.94	51.13	59
31	85.72	51.50	85.49	51.88	85.26	52.25	85.04	52.62	58
32	84.80	52.99	84.57	53.36	84.34	53.73	84.10	54.10	57
33	83.87	54.46	83.63	54.83	83.39	55.19	83.15	55.56	56
34	82.90	55.92	82.66	56.28	82.41	56.64	82.16	57.00	55
35	81.92	57.36	81.66	57.71	81.41	58.07	81.16	58.42	54
36	80.90	58.78	80.64	59.13	80.39	59.48	80.13	59.83	53
37	79.86	60.18	79.60	60.53	79.34	60.88	79.07	61.22	52
38	78.80	61.57	78.53	61.91	78.26	62.25	77.99	62.59	51
39	77.71	62.93	77.44	63.27	77.16	63.61	76.88	63.94	50
40	76.60	64.28	76.32	64.61	76.04	64.94	75.76	65.28	49
41	75.47	65.61	75.18	65.93	74.90	66.26	74.61	66.59	48
42	74.31	66.91	74.02	67.24	73.73	67.56	73.43	67.88	47
43	73.14	68.20	72.84	68.52	72.54	68.84	72.24	69.15	46
44	71.93	69.47	71.63	69.78	71.33	70.09	71.02	70.40	45
45	70.71	70.71							
Degrees.	Dep.	Lat.	Dep.	Lat.	Dep.	Lat.	Dep.	Lat.	Degrees.
	DEGREES.		½ DEGREE.		¼ DEGREE.		¼ DEGREE.		

1-14-33-38

MICROFILMED
APR 6 1965

Bacon

st

Cable

st

DeFoe

st.

Ebers

st.

1

AVE.

AVE.

AVE.

AVE.

NEWPORT

NEWPORT

NEWPORT

NEWPORT

Abbott

st.

Bacon

st.

Cable

st.

DeFoe

st.

low tide - 63 - 27

Froude

St.

Guizot

St.

AVE.

AVE.

NEWPORT

NEWPORT

Ebers

St.

Froude

St.

^{14'}
Note:- ~~20'~~ Walks on Newport.
12' Walks on All Cross Streets

do
do
do

North

South

6.70 6.45 5.85 6.40 5.98 6.35 6.60

6.45 6.45 5.68 6.20 5.80 6.35 6.35
5.45 5.45 5.35 5.35

1/4 5.85 5.20 5.51 6.15 5.64 5.10 5.75

Abbott

C 5.95 4.95 5.35 5.90 5.48 4.85 5.85

St.

1/4 5.30 4.70 5.19 5.75 5.32 4.60 5.20

4.45 4.45 4.35 4.35
5.45 5.45 5.03 5.60 5.16 5.35 5.35

5.70 5.45 4.85 5.40 4.98 5.35 5.60

	North	West Line Bacon St.				South	
600'	10.75	10.5	10.35	11.0	10.9	11.5	11.75
550'	10.42	10.17	9.98	10.61	10.49	11.07	11.32 ✓
500'	10.08	9.83	9.62	10.23	10.08	10.66	10.91 ✓
450'	9.75	9.50	9.26	9.85	9.67	10.23	10.48 ✓
400'	9.42	9.17	8.90	9.47	9.26	9.80	10.05 ✓
350'	9.08	8.83	8.56	9.09	8.85	9.37	9.62 ✓
300'	8.75	8.50	8.20	8.71	8.44	8.94	9.19 ✓
250'	8.42	8.17	7.84	8.33	8.03	8.51	8.76 ✓
200'	8.08	7.83	7.50	7.95	7.62	8.08	8.33 ✓
150'	7.75	7.50	7.14	7.57	7.21	7.65	7.90 ✓
100'	7.42	7.17	6.78	7.19	6.80	7.22	7.47
75' = Creek	7.25	7.0	6.6	7.0	6.6	7.0	7.25
50'	7.07	6.82	6.35	6.80	6.39	6.68	6.93
20'	6.75	6.45	5.85	6.40	5.98	6.35	6.60

East Line Abbott St.

1227 11.07
 2.67
 15.17
 6.18
 9.19
 4.96
 13.86

1517 1517 1517 1517 1517 1517 1517 1517 1517 1517
 35 30 38 40 50 47 45 45 45 45
 11.70 11.2 11.24 11.2 10.4 10.5 10.5 10.5 10.5 10.5
 10.5 11.7 11.5 10.4 10.4 10.9 10.5 10.5 10.5 10.5
 0.5 0.5 0.1 0.8 C.1 C.1 10.5 2.5 2.5 2.5
 7.2 7.2 7.2 7.2 7.2 7.2 7.2 7.2 7.2 7.2

1117 1517 1386 1386 1386 1386 1386 1386 1386 1386
 6.4 7.0 6.0 6.1 6.1 6.1 6.1 6.1 6.1 6.1
 8.8 8.2 8.25 8.36 8.36 8.36 8.36 8.36 8.36 8.36
 9.6 8.2 8.2 9.19 8.2 8.2 8.2 8.2 8.2 8.2
 2.8 2.9 2.9 2.9 2.9 2.9 2.9 2.9 2.9 2.9

1386 1386 1386 1386 1386 1386 1386 1386 1386 1386
 6.2 13.6 5.0 8.6 8.6 8.6 8.6 8.6 8.6 8.6
 9.6 7.4 7.4 7.4 7.4 7.4 7.4 7.4 7.4 7.4
 2.2 2.2 2.2 2.2 2.2 2.2 2.2 2.2 2.2 2.2

1227 326
 15.53
 7.42
 8.06
 4.21
 12.27

635 700
 5.92 5.17

1227 1056 1150 1017 1107
 280 407 321 480 370
 14.77 883 937 850 854
 10.55 4190 4136 5.25 4679
 3.15
 13.73
 5.17
 4.84
 13.01

783 804 432 688 645 638
 5.18 493 6.17 633 6.36 6.66

1227 1104 1150
 4.63 5.20 5.40

6.45 6.40
 4.27 5.20
 1.402

7-8-12
 7-16-12
 8-7-12

Checked OK though

North

11.25 11.0 10.85 11.5 11.4 12.0

11.0 11.0 10.75 11.40 11.30 12.0 12.00
10.0 10.0 11. 11.

1/4 10.40 9.88 10.68 11.33 11.22 10.88 11.40

Bacon

c 10.75 9.75 10.60 11.25 11.15 10.75 11.75

st.

1/4 10.23 9.63 10.52 11.18 11.08 10.63 11.23

9.5 9.5 10.5 10.5
10.5 10.5 10.45 11.10 11.00 11.5 11.5

10.75 10.5 10.35 11.0 10.90 11.5 11.75

12.27 mm 10.50 11.50 11.00 12.00
5.80 6.07 6.07
17.47Checked OK *Alway*

8-21-12

12.27 11.50 10.75
3.15 4.29 4.89
15.39

	North	West Line Cable St.				South	
600'	15.75	15.5	15.35	16.0	15.90	16.5	16.75
550'	15.38	15.13	14.98	15.63	15.53	16.13	16.38
500'	15.00	14.75	14.60	15.25	15.15	15.75	16.00
450'	14.62	14.37	14.22	14.87	14.77	15.37	15.62
400'	14.25	14.00	13.85	14.50	14.6	15.00	15.25
350'	13.87	13.62	13.47	14.12	14.02	14.62	14.87
300'	13.50	13.25	13.10	13.75	13.65	14.25	14.50
250'	13.12	12.87	12.72	13.37	13.27	13.87	14.12
200'	12.75	12.50	12.35	13.00	12.90	13.50	13.75
150'	12.38	12.13	11.98	12.62	12.53	13.13	13.38
100'	12.00	11.75	11.60	12.25	12.15	12.75	13.00
50'	11.63	11.38	11.23	11.87	11.78	12.38	12.63
00'	11.25	11.0	10.85	11.5	11.40	12.0	12.25

East Line Bacon St.

1771 20 SW boll + new part

300'	2071	2071	2071	2071	2071	2071	2071	2071	2071	2071	2071
362	32	32	42	42	42	42	42	42	42	42	42
21.9	17.59	17.59	16.2	16.2	16.2	16.2	16.2	16.2	16.2	16.2	16.2
6.50	16.35	16.35	15	15	15	15	15	15	15	15	15
14.90	18.91	18.91	18.91	18.91	18.91	18.91	18.91	18.91	18.91	18.91	18.91
12.6	C 1.1	C 1.8	C 1.2	C 1.5	C 1.8	C 1.2	C 1.2	C 1.2	C 1.2	C 1.2	C 1.2
18.90	18.91	18.91	18.91	18.91	18.91	18.91	18.91	18.91	18.91	18.91	18.91
12.15	18.91	18.91	18.91	18.91	18.91	18.91	18.91	18.91	18.91	18.91	18.91
12.15	C 1.2	C 1.7	C 1.9	C 1.2	C 1.3	C 1.0	C 1.0	C 1.0	C 1.5	1.6	1.50

1771 02m

362	1475	1475	1437	15.37
21.9	6.25	5.65	7.03	6.102
6.50	13.25	14.25	12.87	13.87
14.90	7.40	7.78	6.83	5.03
12.6	12.50	13.50	11.75	12.75
18.90	6.40	5.40	6.15	7.03
12.15	11.00	12.00	7.70	6.00

Proof of the 6-25-12
 Leans 7-6-12
 Leaked OK blough
 8-7-12

North

16.25 16.0 15.85 16.5 16.4 17.0

16.0 16.0 15.75 16.4 16.3 17.0
15. 15. 16. 16.

1/4 15.40 14.88 15.67 16.32 16.22 15.88 16.40

Cable

0 15.75 14.75 15.60 16.25 16.15 15.75 16.75

st.

1/4 15.20 14.63 15.52 16.17 16.07 15.63 16.23

14.5 14.5 15.5 15.5
15.5 15.5 15.45 16.10 16.0 16.5 16.5

15.75 15.5 15.35 16.0 15.9 16.5 16.75

South

17.25

17.71
495
24.19

15.50 16.5 16.00 17.5
6.69 5.69 6.19 17.9

Sheep OK 7-25-12 cloudy

North West Line DeFoe St. South

600	25.25	25.00	24.6	25.0	24.6	25.0	25.25
500	24.50	24.25	23.88	24.30	23.92	24.33	24.58
400	23.75	23.50	23.15	23.59	23.23	23.67	23.92
300	23.00	22.75	22.42	22.88	22.55	23.00	23.25
200	22.25	22.00	21.69	22.17	21.87	22.33	22.58
150	21.50	21.25	20.96	21.46	21.18	21.67	21.92
100	20.75	20.50	20.23	20.75	20.5	21.00	21.25
50	20.00	19.75	19.50	20.05	19.87	20.33	20.58
0	19.25	19.00	18.77	19.34	19.18	19.67	19.92
	18.50	18.25	18.04	18.63	18.45	19.00	19.25
	17.75	17.50	17.31	17.92	17.77	18.33	18.58
	17.00	16.75	16.58	17.21	17.08	17.67	17.92
	16.25	16.00	15.85	16.5	16.4	17.00	17.25

East Line Cable St.

1771	2393	239	239	239	239	239
1324	1000	1393	1003	1003	1003	1003
200	40	52	42	42	42	42
200	192	200	200	200	200	200
200	199	200	200	200	200	200
200	199	200	200	200	200	200
200	199	200	200	200	200	200

1771 Bx	2704	2704	2704	2704	2704	2704
173	1600	1700	1635	1707	1750	1833
1484	884	884	884	884	884	884
1900	1467	1725	2033	2450	2800	3216
584	517	407	431	434	384	339
2225	2300	2225	2225	2310	2307	2420
3300	517	517	517	434	438	420

6-3-12 847
 6-18-12
 7-8-12
 Checked OK
 8-7-12

North

South

26.25	26.00	25.6	26.0	25.6	26.00	26.25
-------	-------	------	------	------	-------	-------

26.00 25	26.00 25	25.40	25.80	25.40	26.00 25.0	26.00 25
-------------	-------------	-------	-------	-------	---------------	-------------

25.4	24.75	25.25	25.65	25.25	24.75	25.4
------	-------	-------	-------	-------	-------	------

De Foe

25.5	24.50	25.10	25.50	25.10	24.50	25.5
------	-------	-------	-------	-------	-------	------

St.

24.85	24.25	24.95	25.35	24.95	24.25	24.85
-------	-------	-------	-------	-------	-------	-------

24 25.00	24 25.00	24.80	25.20	24.80	24 25.00	24 25.00
-------------	-------------	-------	-------	-------	-------------	-------------

25.25	25.00	24.6	25.0	24.6	25.00	25.25
-------	-------	------	------	------	-------	-------

Checked OK 6-24-11 Colony

	North	West Line Ebers St.						South
600'	44.25	44.0	43.6	44.0	43.6	44.0	44.25	
550'	39.05	38.8	38.4	38.8	38.4	38.8	39.05	
500'	37.85	37.6	37.2	37.6	37.2	37.6	37.85	
450'	36.65	36.4	36.0	36.4	36.0	36.4	36.65	
Break								
400'	34.55	34.3	33.90	34.3	33.90	34.3	34.55	
Break								
350'	33.15	32.90	32.5	32.9	32.5	32.9	33.15	
Break								
300'	32.17	31.92	31.52	31.92	31.52	31.92	32.17	
250'	31.19	30.94	30.54	30.94	30.54	30.94	31.19	
200'	30.20	29.95	29.55	29.95	29.55	29.95	30.20	
150'	29.21	28.96	28.56	28.96	28.56	28.96	29.21	
100'	28.23	27.98	27.58	27.98	27.58	27.98	28.23	
50'	27.24	26.99	26.59	26.99	26.59	26.99	27.24	
0.00	26.25	26.0	25.6	26.0	25.6	26.00	26.25	
		East Line DeFoe St.						

North

45.25 45.0 44.6 45.0 44.6 45.0 45.25

South

45.0 45.0 44.4 44.8 44.4 45.0 45.0
44. 44.

44.4 43.75 44.25 44.65 44.25 43.75 44.4

Ebers

44.5 43.5 44.1 44.5 44.1 43.5 44.5

St

43.85 43.25 43.95 44.35 43.95 43.25 43.85

43. 43.
44.0 44.0 43.8. 44.2 43.8 44.0 44.0

44.25 44.0 43.6 44.0 43.6 44.0 44.25

	North	West Line Froude St.					South
600'	104.25	104.0	103.85	104.5	104.4	105.0	105.25
550'	99.33	99.08	98.91	99.55	99.44	100.0	100.25
500'	94.41	94.16	93.98	94.59	94.43	95.0	95.25
450'	89.50	89.25	89.04	89.63	89.45	90.0	90.25
400'	84.58	84.33	84.10	84.67	84.46	85.0	85.25
350'	79.66	79.41	79.16	79.71	79.48	80.0	80.25
300'	74.75	74.50	74.23	74.75	74.50	75.0	75.25
250'	69.83	69.58	69.29	69.79	69.52	70.0	70.25
200'	64.92	64.67	64.35	64.83	64.53	65.0	65.25
150'	60.00	59.75	59.41	59.88	59.55	60.0	60.25
100'	55.08	54.83	54.48	54.92	54.57	55.0	55.25
50'	50.17	49.92	49.54	49.96	49.58	50.0	50.25
0'	45.25	45.0	44.6	45.0	44.6	45.0	45.25

East Line Ebers St.

North

South

105.25 105.0 104.85 105.5 105.4 106.0 106.25

105.0 105.0 104.65 105.3 105.2 106.0 106.0
104. 104. 105. 105.

104.4 103.75 104.50 105.15 105.05 104.75 105.4

Froude

104.5 103.5 104.35 105.0 104.90 104.50 105.5

St

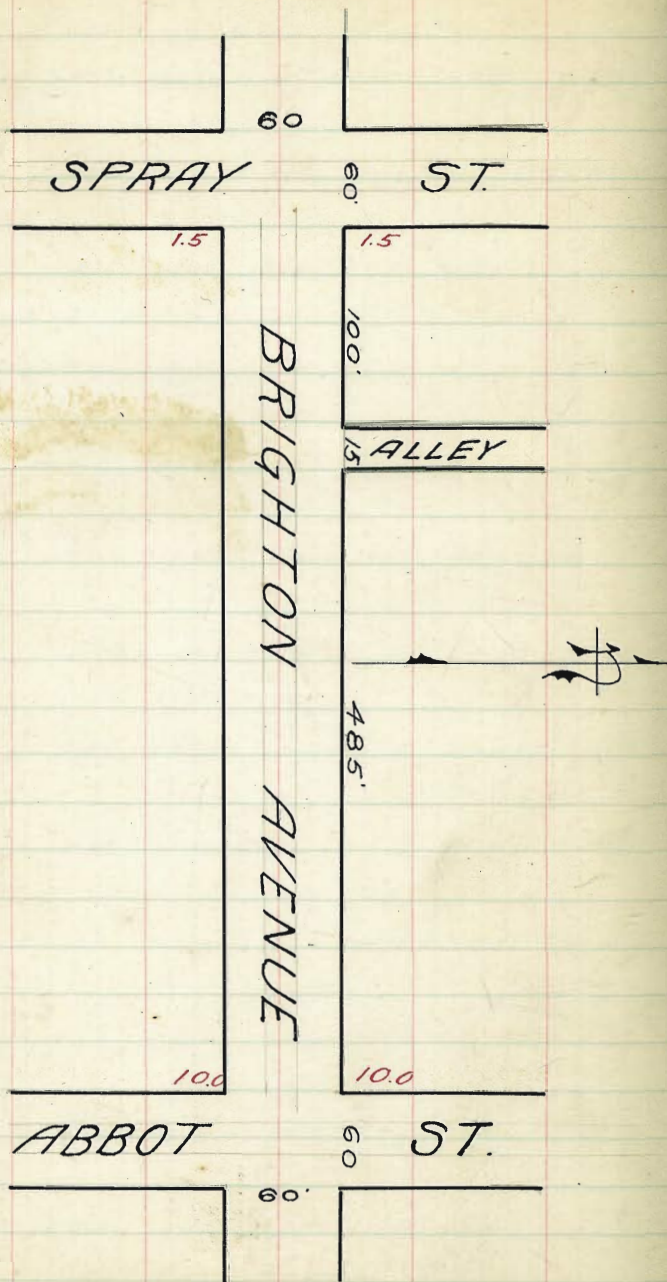
103.85 103.25 104.20 104.85 104.75 104.25 104.85

103. 103. 104. 104.
104.0 104.0 104.05 104.7 104.6 105.0 105.0

104.25 104.0 103.85 104.5 104.4 105.0 105.25

	North	West Line Guizot St.						South
1600'	164.25	164.0	163.85	164.5	164.4	165.0	165.25	
1550'	159.33	159.08	159.43	159.58	159.48	160.08	160.33	
1500'	154.42	154.17	154.52	154.67	154.57	155.17	155.42	
1450'	149.50	149.25	149.60	149.75	149.65	150.25	150.50	
1400'	144.58	144.33	144.67	144.83	144.73	145.33	145.58	
1350'	139.67	139.42	139.77	139.92	139.82	140.42	140.67	
1300'	134.75	134.50	134.85	135.0	134.90	135.50	135.75	
1250'	129.83	129.58	129.93	130.08	129.98	130.58	130.83	
1200'	124.92	124.67	125.02	125.17	125.07	125.67	125.92	
1150'	120.00	119.75	120.10	120.25	120.15	120.75	121.0	
1100'	115.08	114.83	115.18	115.33	115.23	115.83	116.08	
1050'	110.15	109.90	110.27	110.42	110.32	110.92	111.17	
1000'	105.25	105.0	104.85	105.5	105.4	106.0	106.25	

East Line Froude St.



1000' Abbot St. 1.50
 200' 5.76
 1200' 6.50
 6.50
 5.76
 1.53
 7.26

1.50
 5.76

GRADES ON BRIGHTON AVE
600 W of ABBOTT to SPRAY ST. N

600	1.75	1.50	1.10	1.50	1.10	1.50	1.75
550	2.46	2.21	1.81	2.21	1.81	2.21	2.46
500	3.17	2.92	2.52	2.92	2.52	2.92	3.17
450	√3.87	3.62	3.22	3.62	3.22	3.62	3.87
400	√4.58	4.33	3.93	4.33	3.93	4.33	4.58
350	√5.29	5.04	4.64	5.04	4.64	5.04	5.29
300	√6.00	5.75	5.35	5.75	5.35	5.75	6.00
250	√6.71	6.46	6.06	6.46	6.06	6.46	6.71
200	√7.42	7.17	6.77	7.17	6.77	7.17	7.42
150	√8.12	7.87	7.47	7.87	7.47	7.87	8.12
100	√8.83	8.58	8.18	8.58	8.18	8.58	8.83
50	√9.54	9.29	8.89	9.29	8.89	9.29	9.54
Abbott	10.25	10.0	9.60	10.0	9.60	10.0	10.25

W LINE of ABBOTT ST.

W.L.	10.25	10.0	9.60	10.0	9.60	10.0	10.25
W.Crd	10.00	10.0	9.60	10.0	9.60	10.0	10.0
W. 1/4	9.60	9.60	9.60	10.0	9.60	9.60	9.60
Center	10.0	10.0	10.0	10.0	10.0	10.0	10.0
E 1/4	9.60	9.60	9.60	10.0	9.60	9.60	9.60
E.Crd	10.00	9.00	9.60	10.0	9.60	9.00	10.0
E Line	10.25	10.0	9.60	10.0	9.60	10.0	10.25

EAST LINE of ABBOTT ST

1000 bank	1350	1350	1350	1350	1350	1350	1350	1350	1350	1350	1350	1350	1350
	3.50	4.0	4.7	4.7	5.2	4.7	3.0	1.50	0	0	0	0	0
	1.00	9.0	8.8	8.8	8.3	8.8	10.50	7.5	8.7	8.7	8.7	8.7	8.7
	3.50	9.29	8.8	8.8	8.1	8.1	9.5	7.4	7.4	7.4	7.4	7.4	7.4
	6.84	8.29	8.8	8.8	8.4	8.4	10.5	5.1	5.1	5.1	5.1	5.1	5.1
	6.51	8.29	8.8	8.8	8.4	8.4	10.5	5.1	5.1	5.1	5.1	5.1	5.1
	4.84	8.29	8.8	8.8	8.4	8.4	10.5	5.1	5.1	5.1	5.1	5.1	5.1
	1350	1350	1350	8.46	8.46	8.46	8.46	8.46	8.46	8.46	8.46	8.46	8.46
	6	4.50	4.1	7.8	7.8	4.5	4.5	4.5	4.5	4.5	4.5	4.5	4.5
	7.50	4.50	4.1	6.7	6.7	4.0	3.5	3.4	3.4	3.4	3.4	3.4	3.4
	6.7	4.5	4.1	5.3	5.3	4.0	3.5	3.4	3.4	3.4	3.4	3.4	3.4
	6.4	4.5	4.1	5.3	5.3	4.0	3.5	3.4	3.4	3.4	3.4	3.4	3.4
	8.46	8.46	8.46	8.46	8.46	8.46	8.46	8.46	8.46	8.46	8.46	8.46	8.46
	6.7	6.7	6.7	7.8	7.8	4.5	4.5	4.5	4.5	4.5	4.5	4.5	4.5
	6.7	6.7	6.7	7.8	7.8	4.5	4.5	4.5	4.5	4.5	4.5	4.5	4.5
	6.7	6.7	6.7	7.8	7.8	4.5	4.5	4.5	4.5	4.5	4.5	4.5	4.5
	6.7	6.7	6.7	7.8	7.8	4.5	4.5	4.5	4.5	4.5	4.5	4.5	4.5

61 77.16 = 12

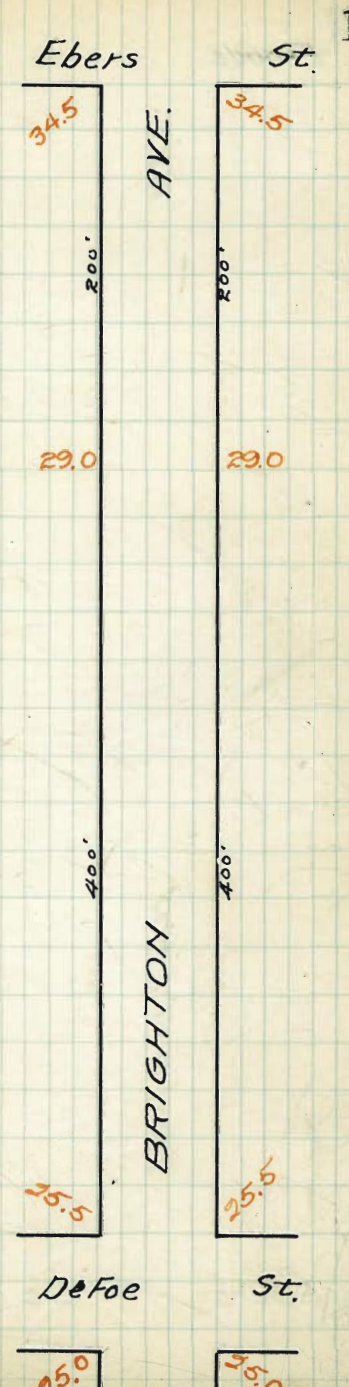
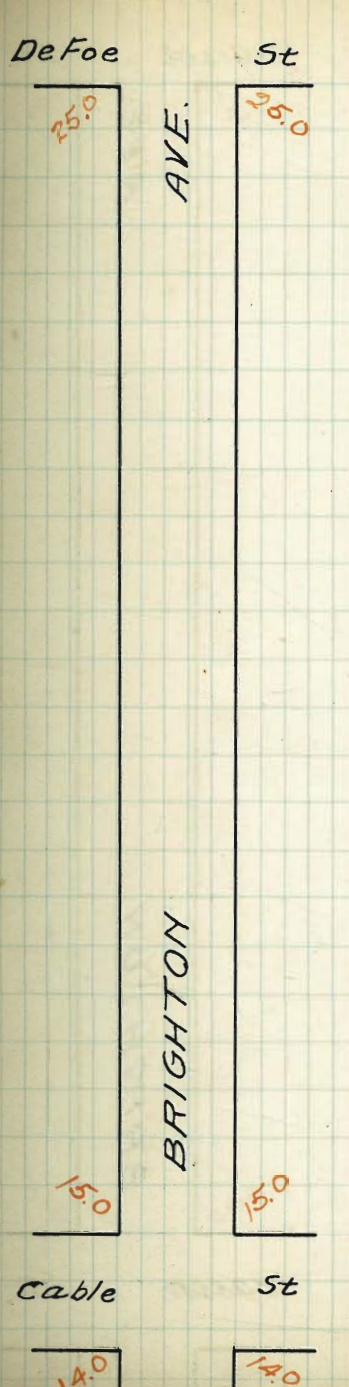
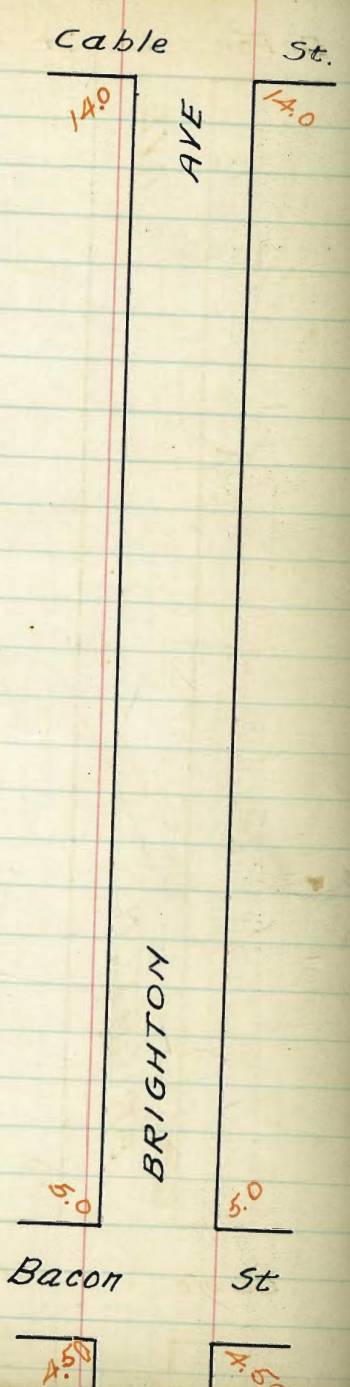
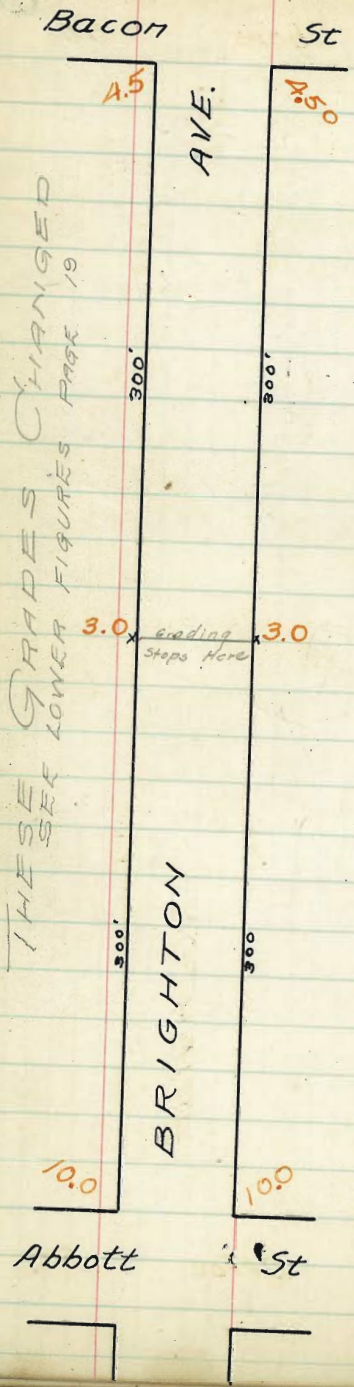
Set level stake W of 7 23 - 13

check OK

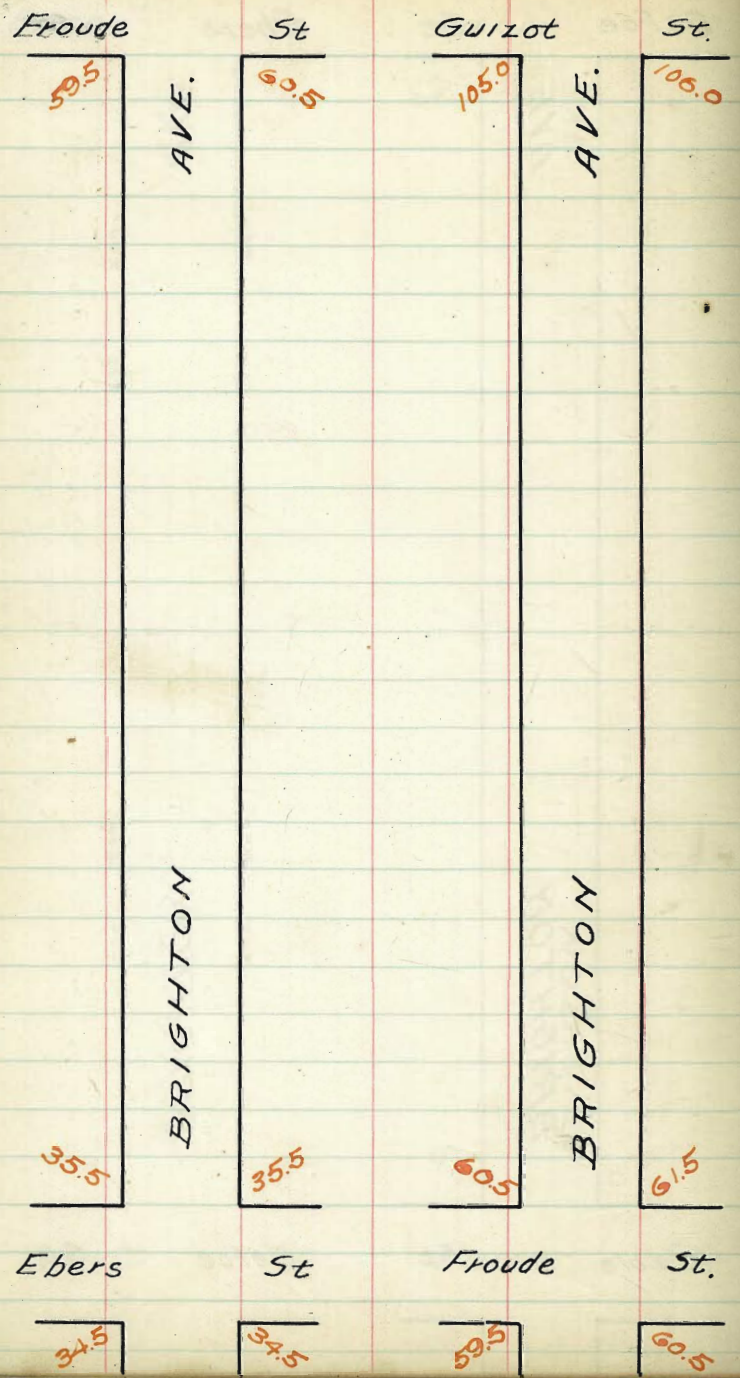
9-27-12

Open to W of Abbott

1000 Bk	1350	1350	1350
5.29	4.50	3.03	1.50
15.50	13.50	8.81	4.50
		3.55	7.46



THESE GRADES CHANGED
SEE LOWER FIGURES PAGE 19



Note: 12' walks on Brighton
12' - Cross streets

North West Line of Bacon St. South

600	4.75	4.50	4.10	4.50	4.10	4.50	4.75
550	5.21	4.96	4.56	4.96	4.56	4.96	5.21
500	5.67	5.42	5.02	5.42	5.02	5.42	5.67
450	6.12	5.87	5.47	5.87	5.47	5.87	6.12
400	6.58	6.33	5.93	6.33	5.93	6.33	6.58
350	7.04	6.79	6.39	6.79	6.39	6.79	7.04
300	7.50	7.25	6.85	7.25	6.85	7.25	7.50
250	7.96	7.71	7.31	7.71	7.31	7.71	7.96
200	8.42	8.17	7.77	8.17	7.77	8.17	8.42
150	8.87	8.62	8.22	8.62	8.22	8.62	8.87
100	9.33	9.08	8.68	9.08	8.68	9.08	9.33
50	9.79	9.54	9.14	9.54	9.14	9.54	9.79
00	10.25	10.00	9.60	10.00	9.60	10.00	10.25

East Line Abbott St.

500	9.30	9.30	9.30	9.3	9.3	9.3	9.3	9.3	9.3	9.3	9.3	9.3	9.3
400	4.6	4.50	4.2	4.4	4.4	4.4	4.4	4.4	4.4	4.4	4.4	4.4	4.4
300	4.70	4.70	4.70	4.7	4.7	4.7	4.7	4.7	4.7	4.7	4.7	4.7	4.7
200	4.8	4.8	4.8	4.8	4.8	4.8	4.8	4.8	4.8	4.8	4.8	4.8	4.8
100	4.9	4.9	4.9	4.9	4.9	4.9	4.9	4.9	4.9	4.9	4.9	4.9	4.9
00	5.0	5.0	5.0	5.0	5.0	5.0	5.0	5.0	5.0	5.0	5.0	5.0	5.0

Set level stake 7-22-13 blough
check OK blough
9-27-13

North

South

5.15	5.00	4.60	5.00	4.60	5.00	5.25
5.00 4.00	5.00 4.00	4.50	4.90	4.50	5.00 4.00	5.00 4.00
4.40	3.87	4.42	4.82	4.42	3.87	4.40
Bacon						
4.75	3.75	4.35	4.75	4.35	3.75	4.75
St.						
4.22	3.62	4.27	4.67	4.27	3.62	4.22
3.50 4.50	3.50 4.50	4.20	4.60	4.20	3.50 4.50	4.50
4.75	4.50	4.10	4.50	4.10	4.50	4.75

check OK always
9-27-13

North	West Line Cable St.						South
600	√ 14.25	14.00	13.60	14.00	13.60	14.00	14.25
550	√ 13.50	13.25	12.85	13.25	12.85	13.25	13.50
500	√ 12.75	12.50	12.10	12.50	12.10	12.50	12.75
450	√ 12.00	11.75	11.35	11.75	11.35	11.75	12.00
400	√ 11.25	11.00	10.60	11.00	10.60	11.00	11.25
350	√ 10.50	10.25	9.85	10.25	9.85	10.25	10.50
300	√ 9.75	9.50	9.10	9.50	9.10	9.50	9.75
250	√ 9.00	8.75	8.35	8.75	8.35	8.75	9.00
200	√ 8.25	8.00	7.60	8.00	7.60	8.00	8.25
150	√ 7.50	7.25	6.85	7.25	6.85	7.25	7.50
100	√ 6.75	6.50	6.10	6.50	6.10	6.50	6.75
50	√ 6.00	5.75	5.35	5.75	5.35	5.75	6.00
00	5.25	5.00	4.60	5.00	4.60	5.00	5.25

East Line Bacon St.

500 Bush	12.45	12.45	12.45	12.45	12.45	12.45	12.45	12.45	12.45
7.45	7.25	6.7	6.2	6.5	5.8	5	4.5	4.5	4.5
12.45	5.25	5.1	6.25	6.05	6.7	7.41	8.00	8.0	8.0
2.35	7.01	6.4	6.00	6.00	6.7	6.7	7.50	7.5	7.5
10.13		0.3				0.0	2.5	2.5	2.5
6.77	12.45	12.45	12.45	12.45	12.45	12.45	12.45	12.45	12.45
16.90	3.5	3.6	3.7	3.8	3.9	4.0	4.1	4.2	4.3
2.94	0.05	5.8	9.7	9.1	10.1	10.2	11.0	10.8	11.4
14.00	8.1	8.8	8.6	9.0	9.2	9.7	10.5	10.5	11.1
	0.9	6.6	0.0	2.6	0.4	0.5	0.0	0.5	0.2
16.90	16.90	16.90	16.90	16.90	16.90	16.90	16.9	16.9	16.9
4.6	4.6	3.7	5.1	3.4	5	5	5	5	5
12.3	14.3	13.2	12.9	13.1	13.9	13.9	13.9	14.5	14.5
12.0	12.4	12.7	12.3	13.1	13.5	13.7	14.1	14.5	14.5
0.3	6.3	6.5	6.2	0.0	0.0	0.0	0.0	0.0	0.0

Leadb. Lark, Roked at 7-18-12

Check OK through

9-27-13

15:00 am

North

15.25	15.00	14.60	15.00	14.60	15.00	15.25
-------	-------	-------	-------	-------	-------	-------

15.00	15.00	14.40	14.80	14.40	15.00	15.00
-------	-------	-------	-------	-------	-------	-------

14.40	13.75	14.25	14.65	14.25	13.75	14.40
-------	-------	-------	-------	-------	-------	-------

Cable

14.50	13.50	14.10	14.50	14.10	13.50	14.50
-------	-------	-------	-------	-------	-------	-------

St.

13.85	13.25	13.95	14.35	13.95	13.25	13.85
-------	-------	-------	-------	-------	-------	-------

14.00	14.00	13.80	14.20	13.80	14.00	14.00
-------	-------	-------	-------	-------	-------	-------

14.35	14.00	13.60	14.00	13.60	14.00	14.35
-------	-------	-------	-------	-------	-------	-------

South

1400

22

Check OK along
9-27-13

North West Line of DeFoe St South

600	25.25	25.00	24.60	25.00	24.60	25.00	25.25
500	24.44	24.17	23.77	24.17	23.77	24.17	24.44
500	23.58	23.33	22.93	23.33	22.93	23.33	23.58
450	22.75	22.50	22.10	22.50	22.10	22.50	22.75
400	21.92	21.67	21.27	21.67	21.27	21.67	21.92
350	21.08	20.83	20.43	20.83	20.43	20.83	21.08
300	20.25	20.00	19.60	20.00	19.60	20.00	20.25
250	19.42	19.17	18.77	19.17	18.77	19.17	19.42
200	18.58	18.33	17.93	18.33	17.93	18.33	18.58
150	17.75	17.50	17.10	17.50	17.10	17.50	17.75
100	16.92	16.67	16.27	16.67	16.27	16.67	16.92
50	16.08	15.83	15.43	15.83	15.43	15.83	16.08
00	15.25	15.00	14.60	15.00	14.60	15.00	15.25

East Line of Cable St

14.44 TP	22.00	22.00	22.00	22.00	22.00	22.00	22.00	22.00	22.00
22.00	15.00	15.00	15.00	15.00	15.00	15.00	15.00	15.00	15.00
20.00	7.00	7.00	7.00	7.00	7.00	7.00	7.00	7.00	7.00
27.75	4.00	4.00	4.00	4.00	4.00	4.00	4.00	4.00	4.00
25.00	1.00	1.00	1.00	1.00	1.00	1.00	1.00	1.00	1.00
27.75	17.00	17.00	17.00	17.00	17.00	17.00	17.00	17.00	17.00
25.00	18.00	18.00	18.00	18.00	18.00	18.00	18.00	18.00	18.00
27.75	19.00	19.00	19.00	19.00	19.00	19.00	19.00	19.00	19.00
25.00	20.00	20.00	20.00	20.00	20.00	20.00	20.00	20.00	20.00
27.75	21.00	21.00	21.00	21.00	21.00	21.00	21.00	21.00	21.00
25.00	22.00	22.00	22.00	22.00	22.00	22.00	22.00	22.00	22.00
27.75	23.00	23.00	23.00	23.00	23.00	23.00	23.00	23.00	23.00
25.00	24.00	24.00	24.00	24.00	24.00	24.00	24.00	24.00	24.00
27.75	25.00	25.00	25.00	25.00	25.00	25.00	25.00	25.00	25.00
25.00	26.00	26.00	26.00	26.00	26.00	26.00	26.00	26.00	26.00
27.75	27.00	27.00	27.00	27.00	27.00	27.00	27.00	27.00	27.00
25.00	28.00	28.00	28.00	28.00	28.00	28.00	28.00	28.00	28.00
27.75	29.00	29.00	29.00	29.00	29.00	29.00	29.00	29.00	29.00
25.00	30.00	30.00	30.00	30.00	30.00	30.00	30.00	30.00	30.00
27.75	31.00	31.00	31.00	31.00	31.00	31.00	31.00	31.00	31.00
25.00	32.00	32.00	32.00	32.00	32.00	32.00	32.00	32.00	32.00
27.75	33.00	33.00	33.00	33.00	33.00	33.00	33.00	33.00	33.00
25.00	34.00	34.00	34.00	34.00	34.00	34.00	34.00	34.00	34.00
27.75	35.00	35.00	35.00	35.00	35.00	35.00	35.00	35.00	35.00
25.00	36.00	36.00	36.00	36.00	36.00	36.00	36.00	36.00	36.00
27.75	37.00	37.00	37.00	37.00	37.00	37.00	37.00	37.00	37.00
25.00	38.00	38.00	38.00	38.00	38.00	38.00	38.00	38.00	38.00
27.75	39.00	39.00	39.00	39.00	39.00	39.00	39.00	39.00	39.00
25.00	40.00	40.00	40.00	40.00	40.00	40.00	40.00	40.00	40.00
27.75	41.00	41.00	41.00	41.00	41.00	41.00	41.00	41.00	41.00
25.00	42.00	42.00	42.00	42.00	42.00	42.00	42.00	42.00	42.00
27.75	43.00	43.00	43.00	43.00	43.00	43.00	43.00	43.00	43.00
25.00	44.00	44.00	44.00	44.00	44.00	44.00	44.00	44.00	44.00
27.75	45.00	45.00	45.00	45.00	45.00	45.00	45.00	45.00	45.00
25.00	46.00	46.00	46.00	46.00	46.00	46.00	46.00	46.00	46.00
27.75	47.00	47.00	47.00	47.00	47.00	47.00	47.00	47.00	47.00
25.00	48.00	48.00	48.00	48.00	48.00	48.00	48.00	48.00	48.00
27.75	49.00	49.00	49.00	49.00	49.00	49.00	49.00	49.00	49.00
25.00	50.00	50.00	50.00	50.00	50.00	50.00	50.00	50.00	50.00

Bank of the Rockwell 7-17-13
 Check OK
 9-27-13

North

South

25.75 25.50 25.10 25.50 25.10 25.50 25.75

25.50 25.50 25.00 25.40 25.00 25.50 25.50

24.90 24.38 24.92 25.33 24.92 24.38 24.90

De Foe }

25.25 24.25 24.85 25.25 24.85 24.25 25.25

St.

24.72 24.12 24.77 25.17 24.77 24.12 24.72

25.00 25.00 24.70 25.10 24.70 25.00 25.00

25.25 25.00 24.60 25.00 24.60 25.00 25.25

Check Off

9-27-13

North West Line of Ebers St. South

600	34.75	34.50	34.10	34.50	34.10	34.50	34.75
550	33.37	33.12	32.72	33.12	32.72	33.12	33.37
500	32.00	31.75	31.35	31.75	31.35	31.75	32.00
450	30.62	30.37	29.97	30.37	29.97	30.37	30.62
400	29.25	29.00	28.60	29.00	28.60	29.00	29.25
Break							
350	28.81	28.56	28.16	28.56	28.16	28.56	28.81
300	28.37	28.12	27.72	28.12	27.72	28.12	28.37
250	27.94	27.69	27.29	27.69	27.29	27.69	27.94
200	27.50	27.25	26.85	27.25	26.85	27.25	27.50
150	27.06	26.81	26.41	26.81	26.41	26.81	27.06
100	26.62	26.37	25.97	26.37	25.97	26.37	26.62
50	26.19	25.94	25.54	25.94	25.54	25.94	26.19
00	25.75	25.50	25.10	25.50	25.10	25.50	25.75

East Line of DeFoe St

2500	32.35	32.35	32.35	32.35	32.35	32.35	32.35	32.35
2400	31.91	31.91	31.91	31.91	31.91	31.91	31.91	31.91
2300	31.47	31.47	31.47	31.47	31.47	31.47	31.47	31.47
2200	31.03	31.03	31.03	31.03	31.03	31.03	31.03	31.03
2100	30.59	30.59	30.59	30.59	30.59	30.59	30.59	30.59
2000	30.15	30.15	30.15	30.15	30.15	30.15	30.15	30.15
1900	29.71	29.71	29.71	29.71	29.71	29.71	29.71	29.71
1800	29.27	29.27	29.27	29.27	29.27	29.27	29.27	29.27
1700	28.83	28.83	28.83	28.83	28.83	28.83	28.83	28.83
1600	28.39	28.39	28.39	28.39	28.39	28.39	28.39	28.39
1500	27.95	27.95	27.95	27.95	27.95	27.95	27.95	27.95
1400	27.51	27.51	27.51	27.51	27.51	27.51	27.51	27.51
1300	27.07	27.07	27.07	27.07	27.07	27.07	27.07	27.07
1200	26.63	26.63	26.63	26.63	26.63	26.63	26.63	26.63
1100	26.19	26.19	26.19	26.19	26.19	26.19	26.19	26.19
1000	25.75	25.75	25.75	25.75	25.75	25.75	25.75	25.75

Check OK Change
9-27-13

North

South

35.75 35.50 35.10 35.50 35.10 35.50 35.75

35.50 35.50 34.90 35.90 34.90 35.50 35.50

34.90 34.75 34.75 35.15 34.75 34.75 34.90

Ebers

35.00 34.00 34.60 35.00 34.60 34.00 35.00

St.

34.35 33.75 34.45 34.95 34.45 33.75 34.35

34.50 34.50 34.80 34.70 34.80 34.50 34.50

34.75 34.50 34.10 34.50 34.10 34.50 34.75

4172
9.30
37.93
70
33.63
8.13
25.50 ✓

257.70 245.00
572 120

Check OK *Clayton*

9-27-13

North 598 West Line of Froude St.

	600	59.75	59.50	59.35	60.00	59.90	60.50	South 6x1 60x75
	550	57.75	57.50	57.33	57.96	57.83	58.42	58.67
	500	55.75	55.50	55.31	55.92	55.77	56.33	56.58
	450	53.75	53.50	53.29	53.87	53.70	54.25	54.50
	400	51.75	51.50	51.27	51.83	51.63	52.17	52.42
	350	49.75	49.50	49.25	49.79	49.57	50.09	50.34
	300	47.75	47.50	47.27	47.75	47.50	48.00	48.25
	250	45.75	45.50	45.20	45.71	45.43	45.92	46.17
	200	43.75	43.50	43.18	43.67	43.37	43.84	44.09
	150	41.75	41.50	41.16	41.62	41.30	41.75	42.00
	100	39.75	39.50	39.14	39.58	39.23	39.67	39.92
	50	37.75	37.50	37.12	37.54	37.17	37.59	37.84
	00	35.75	35.50	35.10	35.50	35.10	35.50	35.75

East Line of Ebers St.

35.20	35.20	35.20	35.20	35.20	35.20	35.20	35.20	35.20	35.20	35.20	35.20	35.20	35.20	35.20
-------	-------	-------	-------	-------	-------	-------	-------	-------	-------	-------	-------	-------	-------	-------

45.35	45.35	45.35	45.35	45.35	45.35	45.35	45.35	45.35	45.35	45.35	45.35	45.35	45.35	45.35
-------	-------	-------	-------	-------	-------	-------	-------	-------	-------	-------	-------	-------	-------	-------

55.40	55.40	55.40	55.40	55.40	55.40	55.40	55.40	55.40	55.40	55.40	55.40	55.40	55.40	55.40
-------	-------	-------	-------	-------	-------	-------	-------	-------	-------	-------	-------	-------	-------	-------

65.40	65.40	65.40	65.40	65.40	65.40	65.40	65.40	65.40	65.40	65.40	65.40	65.40	65.40	65.40
-------	-------	-------	-------	-------	-------	-------	-------	-------	-------	-------	-------	-------	-------	-------

75.40	75.40	75.40	75.40	75.40	75.40	75.40	75.40	75.40	75.40	75.40	75.40	75.40	75.40	75.40
-------	-------	-------	-------	-------	-------	-------	-------	-------	-------	-------	-------	-------	-------	-------

85.40	85.40	85.40	85.40	85.40	85.40	85.40	85.40	85.40	85.40	85.40	85.40	85.40	85.40	85.40
-------	-------	-------	-------	-------	-------	-------	-------	-------	-------	-------	-------	-------	-------	-------

95.40	95.40	95.40	95.40	95.40	95.40	95.40	95.40	95.40	95.40	95.40	95.40	95.40	95.40	95.40
-------	-------	-------	-------	-------	-------	-------	-------	-------	-------	-------	-------	-------	-------	-------

105.40	105.40	105.40	105.40	105.40	105.40	105.40	105.40	105.40	105.40	105.40	105.40	105.40	105.40	105.40
--------	--------	--------	--------	--------	--------	--------	--------	--------	--------	--------	--------	--------	--------	--------

Check OK Blough
9-27-13

North

South

60.75 60.50 60.35 61.00 60.90 61.50 61.75

60.50 60.50 60.15 60.80 60.70 61.50 61.50
59.5 59.50 60.5 60.5

59.90 59.25 60.00 60.65 60.55 60.75 60.90

Froude

60.00 59.00 59.85 60.50 60.40 60.00 61.00

St.

59.35 58.75 59.70 60.35 60.25 59.75 60.35

58.5 58.50 59.55 60.20 60.10 60.50 59.5 60.50

59.75 59.50 59.85 60.00 59.90 60.50 60.75

West Line of Guizot St.

600	105.25	105.00	104.85	105.50	105.40	106.00	106.25
550	101.54	101.29	101.14	101.79	101.69	102.29	102.54
500	97.83	97.58	97.43	98.08	97.98	98.58	98.83
450	94.12	93.87	93.72	94.37	94.27	94.87	95.12
400	90.42	90.17	90.02	90.67	90.57	91.17	91.42
350	86.71	86.46	86.31	86.96	86.86	87.46	87.71
300	83.00	82.75	82.60	83.25	83.15	83.75	84.00
250	79.29	79.04	78.89	79.54	79.44	80.04	80.29
200	75.58	75.33	75.18	75.83	75.73	76.33	76.58
150	71.87	71.62	71.47	72.12	72.02	72.62	72.87
100	68.17	67.92	67.77	68.42	68.32	68.92	69.17
50	64.46	64.21	64.06	64.71	64.61	65.21	65.46
00	60.75	60.50	60.35	61.00	60.90	61.50	61.75

East Line of Froude St.

Cape May Ave.

	North	West Line Abbott St.					South
00	9.15	8.9	8.3	8.75	8.28	8.6	8.85
50'	8.65	8.40	7.83	8.26	7.80	8.14	8.39
100'	8.15	7.90	7.35	7.78	7.33	7.67	7.92
150'	7.66	7.41	6.88	7.30	6.86	7.20	7.45
200'	7.19	6.92	6.40	6.82	6.39	6.74	6.99
250'	6.68	6.43	5.93	6.34	5.91	6.27	6.52
300'	6.19	5.94	5.45	5.86	5.43	5.80	6.05
350'	5.70	5.45	4.98	5.39	4.96	5.34	5.59
400'	5.21	4.96	4.50	4.91	4.49	4.87	5.12
450'	4.72	4.47	4.03	4.43	4.02	4.40	4.65
500'	4.23	3.98	3.55	3.96	3.54	3.94	4.19
550'	3.74	3.49	3.08	3.48	3.07	3.47	3.72
570' End of Block on south	3.54	3.29	2.89	3.29	2.88	3.28	3.53
600'	3.25	3.0	2.6	3.0	2.6	3.0	3.25

Pacific Ocean

1063 ftm top of Road Past San Diego & Abbott

15.96	15.96	15.96	15.96	15.96	15.96	15.96	15.96	15.96	15.96	15.96	15.96	15.96	15.96	15.96	15.96	15.96	15.96	15.96	15.96	
9.32	7.8	10.0	8.9	6.3	3.4	3.9	11.5	6	10.0	7.8	8.9	10.0	8.9	6.3	3.4	3.9	11.5	6	10.0	
8.85	9.15	8.65	8.4	7.9	8.5	7.9	8.5	7.9	8.5	7.9	8.5	7.9	8.5	7.9	8.5	7.9	8.5	7.9	8.5	7.9
15.96	15.96	15.96	15.96	15.96	15.96	15.96	15.96	15.96	15.96	15.96	15.96	15.96	15.96	15.96	15.96	15.96	15.96	15.96	15.96	15.96
7.2	7.1	15.96	15.96	15.96	15.96	15.96	15.96	15.96	15.96	15.96	15.96	15.96	15.96	15.96	15.96	15.96	15.96	15.96	15.96	15.96
4.3	3.7	8.4	8.5	8.5	8.5	8.5	8.5	8.5	8.5	8.5	8.5	8.5	8.5	8.5	8.5	8.5	8.5	8.5	8.5	8.5
4.1	3.5	6.6	3.5	6.0	6.2	5.7	5.2	2.9	3.8	4.7	4.8	4.2	2.0	2.8	2.2	2.8	2.2	2.8	2.2	2.8
8.54	8.54	8.54	8.54	8.54	8.54	8.54	8.54	8.54	8.54	8.54	8.54	8.54	8.54	8.54	8.54	8.54	8.54	8.54	8.54	8.54
2.7	2.0	1.7	1.7	1.7	1.7	1.7	1.7	1.7	1.7	1.7	1.7	1.7	1.7	1.7	1.7	1.7	1.7	1.7	1.7	1.7
7.24	7.19	7.5	7.5	7.5	7.5	7.5	7.5	7.5	7.5	7.5	7.5	7.5	7.5	7.5	7.5	7.5	7.5	7.5	7.5	7.5

Choc Rev OK Blough
12-30-12

Cape May Ave

North

South

9.15 8.9 8.3 8.75 8.28 8.6 8.85

8.9 8.9 7.83 7.75 7.68 8.6 8.6
7.9 7.9 7.6 7.6

14 8.5 8.36 8.30 8.25 8.20 8.14 8.2

Abbott

c 8.9 8.82 8.78 8.75 8.71 8.68 8.6

St.

14 8.5 8.36 8.30 8.25 8.20 8.14 8.2

7.9 7.9 7.6 7.6
8.9 8.9 7.83 7.75 7.68 8.6 8.6

9.15 8.9 8.3 8.75 8.28 8.6 8.85

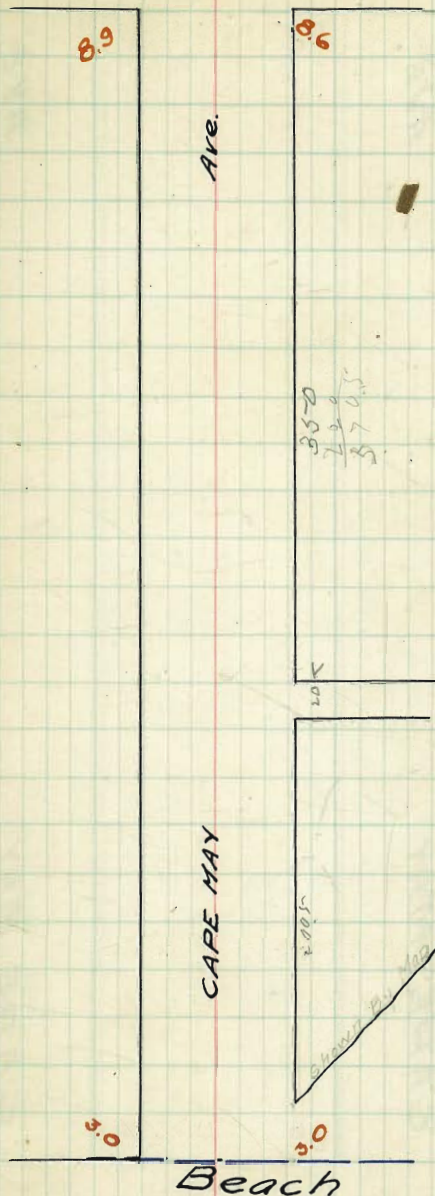
1060 860 1063 860 300
243 472 1210 413 873
13.06

10.23 8.4 10-21-12
245 1.81 8.6
13.08 4.98 4.32 4.98
6.60
6.48
3.98
9.96

Abbott

St.

31



33.0
7.9
8.7
8.5

lines

Bacon

St

Cable

St

625

AVE.

66

13.00

AVE.

13.00

CAPE MAY

8.9

8.6

6.75

CAPE MAY

7.00

Abbott

St

Bacon

St

8.9

8.6

6.75

6.6

DeFoe

St.

Ebers

St 32

24.00

AVE.

24.00

26.00

AVE.

27.00

CAPE MAY

13.50

13.50
13.50
13.50

24.5

24.5

Cable

St

DeFoe

St.

13.00

13.00

24.0

24.0

Froude

St.

Guizot

St

76.00

AVE.

77.00

126.00

AVE.

127.00

300'

300

260

260'

54.00

55.00

100.00

101.00

300'

CAPE MAY

300'

38.00

77.00

340'

CAPE MAY

340'

78.00

Ebers

St.

Froude

St

36.00

37.00

76.00

77.00

North	West Line Bacon St.						South
600'	6.50	6.25	5.94	6.42	6.0	6.6	6.85
550'	6.73	6.47	6.13	6.61	6.19	6.77	7.02
500'	6.94	6.69	6.33	6.81	6.39	6.93	7.18
450'	7.16	6.91	6.52	7.00	6.57	7.1	7.35
400'	7.38	7.13	6.72	7.20	6.76	7.27	7.52
350'	7.60	7.35	6.91	7.39	6.95	7.44	7.69
300'	7.82	7.57	7.11	7.59	7.14	7.6	7.85
250'	8.04	7.79	7.30	7.78	7.33	7.77	8.02
200'	8.26	8.01	7.50	7.98	7.52	7.93	8.18
150'	8.48	8.23	7.70	8.17	7.71	8.1	8.35
100'	8.70	8.45	7.90	8.37	7.90	8.27	8.52
50'	8.92	8.67	8.10	8.56	8.09	8.44	8.69
00	9.15	8.9	8.3	8.75	8.28	8.6	8.85

East Line Abbott St.

1877	1877	1877	1877	1877	1877	1877	1877	1877
12	11.3	9.0	10.3	10.5	10.0	10.5	10.0	10.0
6.77	7.5	7.5	8.5	8.7	8.8	8.8	8.8	8.8
8.8	8.9	8.7	8.5	8.7	8.8	8.8	8.8	8.8
22.0	21.3	21.8	22.0	21.8	21.8	21.8	21.8	21.8
11.97	11.97	11.97	11.97	11.97	11.97	11.97	11.97	11.97
10.6	10.6	10.6	10.6	10.6	10.6	10.6	10.6	10.6
6.85	6.85	6.85	6.85	6.85	6.85	6.85	6.85	6.85
33.8	33.8	33.8	33.8	33.8	33.8	33.8	33.8	33.8
11.97	11.97	11.97	11.97	11.97	11.97	11.97	11.97	11.97
8.1	8.1	8.1	8.1	8.1	8.1	8.1	8.1	8.1
11.97	11.97	11.97	11.97	11.97	11.97	11.97	11.97	11.97
2.8	2.8	2.8	2.8	2.8	2.8	2.8	2.8	2.8
10-7-12	10-7-12	10-7-12	10-7-12	10-7-12	10-7-12	10-7-12	10-7-12	10-7-12

10-22-12
 Checked, OK
 12-30-12

Cape May St

	North	West Line of Cable St.						South
600	13.25	13.00	12.60	13.00	12.60	13.00	13.25	
550	✓ 12.73	12.48	12.08	12.49	12.08	12.50	12.75	
500	✓ 12.21	11.96	11.57	11.99	11.57	12.00	12.25	
450	✓ 11.69	11.44	11.05	11.47	11.05	11.50	11.75	
400	11.17	10.92	10.54	10.96	10.54	11.00	✓ 11.25	
350	10.65	10.40	10.02	10.45	10.02	10.50	✓ 10.75	
300	10.12	9.87	9.50	9.93	9.50	10.00	✓ 10.25	
250	9.60	9.35	8.99	9.42	8.99	9.50	✓ 9.75	
200	9.09	8.83	8.47	8.91	8.47	9.00	✓ 9.25	
150	8.56	8.31	7.96	8.40	7.96	8.50	8.75	
100	✓ 8.04	7.79	7.44	7.89	7.44	8.00	8.25	
50	7.52	7.27	6.93	7.38	6.92	7.50	7.75	
00	7.00	6.75	6.41	6.87	6.40	7.00	7.25	

East Line of Bacon St

15-38 ... 50' ... 67m

8.06 ... 36

15.38 Pm	17.40	17.40	17.40	17.40	17.40	17.40	17.40	17.40
202	1.8	3.0	4.1	4.4	4.1	4.1	4.1	4.1
17.40	14.6	14.4	13.3	15.0	11.7	11.7	11.7	11.7
6.80	1.7	1.7	1.7	1.7	1.7	1.7	1.7	1.7
10.60	1.9	1.9	1.9	1.9	1.9	1.9	1.9	1.9
2.75	1.7	1.7	1.7	1.7	1.7	1.7	1.7	1.7
13.35	17.40	17.40	17.40	17.40	17.40	17.40	17.40	17.40
13.35	13.35	13.35	13.35	13.35	13.35	13.35	13.35	13.35
7.8	6.7	6.7	6.7	6.7	6.7	6.7	6.7	6.7
4.6	4.6	4.6	4.6	4.6	4.6	4.6	4.6	4.6
7.8	7.8	7.8	7.8	7.8	7.8	7.8	7.8	7.8
7.8	7.8	7.8	7.8	7.8	7.8	7.8	7.8	7.8
7.8	7.8	7.8	7.8	7.8	7.8	7.8	7.8	7.8

806 Pm	779	806	821	850	883	900	935	950	987	1000	1040	1050
1490	5.2	5.2	5.2	5.2	5.2	5.2	5.2	5.2	5.2	5.2	5.2	5.2
470	10.2	11.0	11.4	11.4	11.4	11.4	11.4	11.4	11.4	11.4	11.4	11.4
8.30	6.19	6.1	6.27	6.27	6.27	6.27	6.27	6.27	6.27	6.27	6.27	6.27
5.05	10.2	11.0	11.4	11.4	11.4	11.4	11.4	11.4	11.4	11.4	11.4	11.4
13.25	8-25	12	12	12	12	12	12	12	12	12	12	12
10.75	8-25	12	12	12	12	12	12	12	12	12	12	12
6.34	7.60	6.75	6.75	6.75	6.75	6.75	6.75	6.75	6.75	6.75	6.75	6.75
17.11	14.26	11.72	11.72	11.72	11.72	11.72	11.72	11.72	11.72	11.72	11.72	11.72
6.20	7.65	7.65	7.65	7.65	7.65	7.65	7.65	7.65	7.65	7.65	7.65	7.65
6.34	6.61	6.61	6.61	6.61	6.61	6.61	6.61	6.61	6.61	6.61	6.61	6.61
17.11	5.11	5.11	5.11	5.11	5.11	5.11	5.11	5.11	5.11	5.11	5.11	5.11
11.72	11.72	11.72	11.72	11.72	11.72	11.72	11.72	11.72	11.72	11.72	11.72	11.72

6.61	7.01	6.87	6.75	6.75	6.75	6.75	6.75	6.75	6.75	6.75	6.75	6.75
4.75	4.75	4.75	4.75	4.75	4.75	4.75	4.75	4.75	4.75	4.75	4.75	4.75
11.36	11.36	11.36	11.36	11.36	11.36	11.36	11.36	11.36	11.36	11.36	11.36	11.36

Checked OK - Calange
12-30-12

Cape May St.

North

South

13.75 13.50 13.10 13.50 13.10 - 13.50 13.75

13.50 13.50 13.00 13.40 13.00 13.50 13.50

12.90 12.37 12.93 13.33 12.93 12.37 12.90

Cable

13.25 12.75 12.85 13.25 12.85 12.75 13.25

St.

12.73 12.13 12.77 13.17 12.77 12.13 12.73

13.00 13.00 12.70 13.10 12.70 13.00 13.00

13.25 13.00 12.60 13.00 12.60 13.00 13.25

check OK 7-25-12 Blauy

37

North West Line of DeFoe St South

600	24.25	24.00	23.60	24.00	23.60	24.00	24.25
550	23.37	23.12	22.72	23.12	22.72	23.12	23.37
500	22.50	22.25	21.85	22.25	21.85	22.25	22.50
450	21.62	21.37	20.97	21.37	20.97	21.37	21.62
400	20.75	20.50	20.10	20.50	20.10	20.50	20.75
350	19.87	19.62	19.22	19.62	19.22	19.62	19.87
300	19.00	18.75	18.35	18.75	18.35	18.75	19.00
250	18.12	17.87	17.47	17.87	17.47	17.87	18.12
200	17.25	17.00	16.60	17.00	16.60	17.00	17.25
150	16.37	16.12	15.72	16.12	15.72	16.12	16.37
100	15.50	15.25	14.85	15.25	14.85	15.25	15.50
50	14.62	14.37	13.97	14.37	13.97	14.37	14.62
00	13.75	13.50	13.10	13.50	13.10	13.50	13.75

East Line of Cable St.

15.38
 7.06
 22.44
 2.50
 20.14
 6.94
 27.08

22.44 22.44 22.44 22.44 22.44 22.44
 6.3 6.3 6.3 6.3 6.3 6.3
 16.1 16.1 16.1 16.1 16.1 16.1
 19.1 19.1 19.1 19.1 19.1 19.1
 18.0 18.0 18.0 18.0 18.0 18.0
 12-20-11 27.08 27.08 27.08 27.08 27.08 27.08
 4.5 4.5 4.5 4.5 4.5 4.5
 22.44 22.44 22.44 22.44 22.44 22.44
 13.75 13.75 13.75 13.75 13.75 13.75
 17.87 17.87 17.87 17.87 17.87 17.87
 14.62 14.62 14.62 14.62 14.62 14.62
 17.87 17.87 17.87 17.87 17.87 17.87
 6.48 6.48 6.48 6.48 6.48 6.48
 17.87 17.87 17.87 17.87 17.87 17.87
 4.62 4.62 4.62 4.62 4.62 4.62

14.37 14.37 14.37 14.37 14.37 14.37
 5.0 5.0 5.0 5.0 5.0 5.0
 16.1 16.1 16.1 16.1 16.1 16.1
 17.87 17.87 17.87 17.87 17.87 17.87
 18.75 18.75 18.75 18.75 18.75 18.75
 19.62 19.62 19.62 19.62 19.62 19.62
 20.50 20.50 20.50 20.50 20.50 20.50
 21.37 21.37 21.37 21.37 21.37 21.37
 22.25 22.25 22.25 22.25 22.25 22.25
 23.12 23.12 23.12 23.12 23.12 23.12
 24.00 24.00 24.00 24.00 24.00 24.00

Checked OK
 12-30-12

Cape May St.

North

South

24.75	24.50	24.10	24.50	24.10	24.50	24.75
-------	-------	-------	-------	-------	-------	-------

24.50 23.50	24.50 23.5	24.00	24.40	24.00	24.50 23.5	24.50 23.5
----------------	---------------	-------	-------	-------	---------------	---------------

23.90	23.36	23.92	24.32	23.92	23.36	23.90
-------	-------	-------	-------	-------	-------	-------

De Foe

24.25	23.25	23.85	24.25	23.85	23.25	24.25
-------	-------	-------	-------	-------	-------	-------

St.

23.72	23.12	23.77	24.17	23.77	23.12	23.72
-------	-------	-------	-------	-------	-------	-------

23. 24.00	23. 24.00	23.70	24.10	23.70	23. 24.00	23. 24.00
--------------	--------------	-------	-------	-------	--------------	--------------

24.25	24.00	23.60	24.00	23.60	24.00	24.25
-------	-------	-------	-------	-------	-------	-------

checked
(Antus)

6-24-12 blough

	North	West Line of Ebers St					South
600	36.75	36.00	35.85	36.50	36.40	37.00	37.25
550	35.79	35.04	34.87	35.50	35.37	35.96	36.21
500	34.33	34.08	33.89	34.50	34.35	34.92	35.17
450	33.37	33.12	32.91	33.50	33.32	33.87	34.12
400	32.42	32.17	31.93	32.50	32.30	32.83	33.08
350	31.46	31.21	30.95	31.50	31.27	31.79	32.04
300	30.50	30.25	29.98	30.50	30.25	30.75	31.00
250	29.54	29.29	29.00	29.50	29.22	29.71	29.96
200	28.58	28.33	28.02	28.50	28.20	28.67	28.92
150	27.62	27.37	27.04	27.50	27.17	27.62	27.87
100	26.67	26.42	26.06	26.50	26.15	26.58	26.83
50	25.71	25.46	25.08	25.50	25.12	25.54	25.79
00	24.75	24.50	24.10	24.50	24.10	24.50	24.75

East Line of DeFoe St.

Cape May St

41

North

South

37.75	37.00	36.85	37.50	37.40	38.00	38.25
-------	-------	-------	-------	-------	-------	-------

37.00	37.00	36.65	37.30	37.20	38.00	38.00
36.	36				37.	37.

36.40	35.75	36.50	37.15	37.05	36.75	37.40
-------	-------	-------	-------	-------	-------	-------

Ebers

36.50	35.50	36.35	37.00	36.90	36.50	37.50
-------	-------	-------	-------	-------	-------	-------

St.

35.85	35.35	36.20	36.85	36.75	36.75	36.85
-------	-------	-------	-------	-------	-------	-------

35.	35.				36.	36.
36.00	36.00	36.05	36.70	36.60	37.00	37.00

36.25	36.00	35.85	36.50	36.40	37.00	37.25
-------	-------	-------	-------	-------	-------	-------

Cape May St

42

North West Line of Froude St South

600	76.25	76.00	75.85	76.50	76.40	77.00	77.25
550	72.58	72.33	72.18	72.83	72.73	73.33	73.58
500	68.92	68.67	68.52	69.17	69.07	69.67	69.92
450	65.25	65.00	64.85	65.50	65.40	66.00	66.25
400	61.58	61.33	61.18	61.83	61.73	62.33	62.58
350	57.92	57.67	57.52	58.17	58.07	58.67	58.92
300	54.25 Break	54.00	53.85	54.50	54.40	55.00	55.25
250	51.42	51.17	51.02	51.67	51.57	52.17	52.42
200	48.58	48.33	48.18	48.83	48.73	49.33	49.58
150	45.75	45.50	45.35	46.00	45.90	46.50	46.75
100	42.92	42.67	42.52	43.17	43.07	43.67	43.92
50	40.08	39.83	39.68	40.33	40.23	40.83	41.08
00	37.25	37.00	36.85	37.50	37.40	38.00	38.25

East Line of Ebers St.

Cape May St

43

North

South

77.25	77.00	76.85	77.50	77.40	78.00	78.25
-------	-------	-------	-------	-------	-------	-------

77.00	77.00	76.65	77.00	77.20	78.00	78.00
76.	76.				77.	77.

76.40	76.47	76.50	77.15	77.05	76.75	77.40
-------	-------	-------	-------	-------	-------	-------

Froude

76.50	76.40	76.35	77.00	76.90	76.50	77.50
-------	-------	-------	-------	-------	-------	-------

St

75.85	76.09	76.20	78.85	76.75	76.25	76.55
-------	-------	-------	-------	-------	-------	-------

75.	75.				76.	76
76.00	76.00	76.05	76.70	76.60	77.00	77.00

76.25	76.00	75.85	76.50	76.40	77.00	77.25
-------	-------	-------	-------	-------	-------	-------

	North	West Line of Guizot St.					South
600	126.75	126.00	125.85	126.50	126.40	127.00	127.75
575	123.75	123.50	123.35	124.00	123.90	124.50	124.75
550	121.75	121.00	120.85	121.50	121.40	122.00	122.25
525	118.75	118.50	118.35	119.50	118.90	119.50	119.75
500	116.75	116.00	115.85	116.50	116.40	117.00	117.25
475	113.75	113.50	113.35	114.00	113.90	114.50	114.75
450	111.75	111.00	110.85	111.50	111.40	112.00	112.25
425	108.75	108.50	108.35	109.00	108.90	109.50	109.75
400	106.75	106.00	105.85	106.50	106.40	107.00	107.25
375	103.75	103.50	103.35	104.00	103.90	104.50	104.75
350	101.75	101.00	100.85	101.50	101.40	102.00	102.25
325	100.75	100.00	99.85	100.50	100.40	101.00	101.25
325	^{Break} 99.24	98.99	98.84	98.49	99.39	99.79	100.24
300	97.55	97.30	97.15	97.80	97.70	98.30	98.55
275	95.85	95.60	95.45	96.10	96.00	96.60	96.85
250	94.16	93.91	93.76	94.41	94.31	94.91	95.16
225	92.47	92.22	92.07	92.72	92.62	93.22	93.47
200	90.78	90.53	90.38	91.03	90.93	91.53	91.78
175	89.09	88.84	88.69	89.34	89.24	90.84	91.09
150	87.40	87.15	87.00	87.65	87.55	88.15	88.40
125	85.71	85.46	85.31	85.96	85.86	86.46	86.71
100	84.02	83.77	83.62	84.27	84.17	84.77	85.02
75	82.32	82.07	81.92	82.57	82.47	83.07	83.32
50	80.63	80.38	80.23	80.88	80.78	81.38	81.63
25	78.94	78.69	78.54	79.19	79.09	79.69	79.94
00	77.25	77.00	76.85	77.50	77.40	78.00	78.25

East Line of Froude St.

North

South

45

127.75	127.00	126.85	127.50	127.40	128.00	128.25
--------	--------	--------	--------	--------	--------	--------

127.00	127.00	126.85	126.50	126.95	128.00	128.00
--------	--------	--------	--------	--------	--------	--------

126.40	126.65	126.77	126.90	127.02	127.15	127.40
--------	--------	--------	--------	--------	--------	--------

Guizot

126.50	126.75	126.87	127.00	127.12	127.25	127.50
--------	--------	--------	--------	--------	--------	--------

St.

125.85	126.10	126.22	126.35	126.47	126.60	126.85
--------	--------	--------	--------	--------	--------	--------

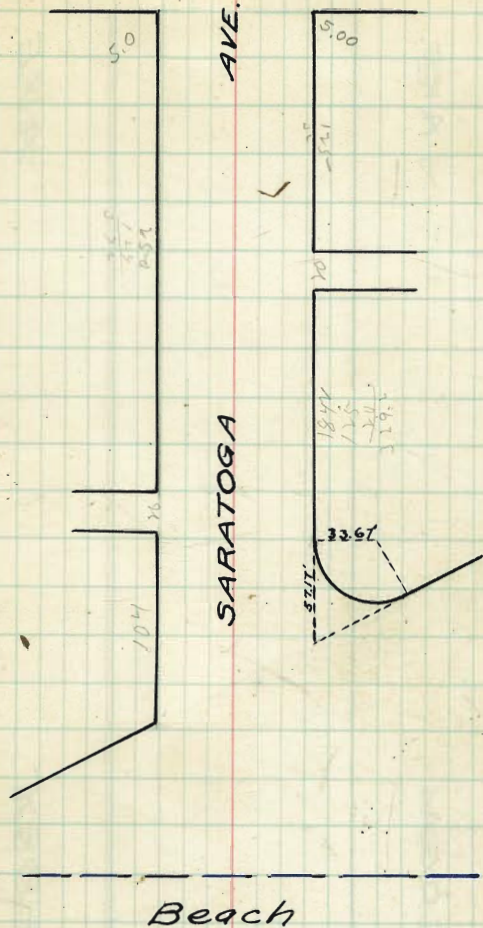
126.00	126.00	125.25	125.50	126.75	127.00	127.00
--------	--------	--------	--------	--------	--------	--------

126.25	126.00	125.85	126.50	126.40	127.00	127.25
--------	--------	--------	--------	--------	--------	--------

Abbott

St.

46



Bacon

St.

Cable

St.

DeFoe

St.

Ebers

St. 47

25

AVE.

275

AVE.

55

SARATOGA

55

SARATOGA

Abbott

St

Bacon

St.

Cable

St

DeFoe

St.

50

50

50

50

SARATOGA

SARATOGA

Froude

St

Guizot

St.

AVE

AVE.

SARATOGA

SARATOGA

300'

300'

420'

420'

1390

1400

Ebers

St

Froude

St.

Handwritten notes and small diagrams at the bottom right of the page.

	West Line Abbott St.							
North								South
00'	5.25	5.0	4.60	5.00	4.60	5.0	5.25	
25'	5.04	4.79	4.39	4.79	4.39	4.79	5.04	
50'	4.84	4.59	4.19	4.59	4.19	4.59	4.84	
75'	4.64	4.39	3.99	4.39	3.99	4.39	4.64	
100'	4.44	4.19	3.79	4.19	3.79	4.19	4.44	
125'	4.24	3.99	3.59	3.99	3.59	3.99	4.24	
150'	4.04	3.79	3.39	3.79	3.39	3.79	4.04	
175'	3.84	3.59	3.19	3.59	3.19	3.59	3.84	
200'	3.63	3.38	2.98	3.38	2.98	3.38	3.63	
225'	3.43	3.18	2.78	3.18	2.78	3.18	3.43	
250'	3.23	2.98	2.58	2.98	2.58	2.98	3.23	
275'	3.05	2.80	2.40	2.80	2.40	2.80	3.05	
300'	2.84	2.59	2.19	2.59	2.19	2.59	2.84	
325'	2.64	2.39	1.99	2.39	1.99	2.39	2.64	
350'	2.44	2.19	1.79	2.19	1.79	2.19	2.44	
374'	2.25	2.0	1.60	2.0	1.60	2.0	2.25	

Pacific Ocean.

Bm 10.63
Top of High Part
Abbott + Sand 49

1358.62	10.54	1358	1358	1338	1358	1358	1358	
6.2		6.2	6.2	6.2	6.2	6.2	6.2	
6.7	TP	6.7	6.7	6.7	6.7	6.7	6.7	
5		5	5	5	5	5	5	
11.26		11.26	11.26	11.26	11.26	11.26	11.26	
91	91	85	85	85	85	85	85	
27	27	3.3	3.3	3.3	3.3	3.3	3.3	
4.24	4.24	3.6	3.6	3.6	3.6	3.6	3.6	
27	27	3.3	3.3	3.3	3.3	3.3	3.3	
21.3	21.8	2.3	2.3	2.3	2.3	2.3	2.3	
11.63	10.63	2.80	2.80	2.80	2.80	2.80	2.80	
13.63	8.63	8.14	8.14	8.14	8.14	8.14	8.14	
	11.41							

10-22-12 burbs
checked OK
1-23-13
slough

Saratoga St

	5.25	5.50	5.10	5.50	5.10	5.50	5.25
c	5.50 4.50	5.50 4.50	5.00	5.40	5.00	5.50 4.50	5.50 4.50
1/4	4.90	4.32	4.92	5.32	4.92	4.32	4.90
Abbot							
c	5.25	4.25	4.85	5.25	4.85	4.25	5.25
St.							
1/4	4.72	4.18	4.72	5.18	4.72	4.17	4.72
c	5.00 4.00	5.00 4.00	4.70	5.10	4.70	5.00 4.00	5.00 4.00
	5.25	5.00	4.60	5.00	4.60	5.00	5.25

10.63
 1.31
 11.94

 5.50 5.50
 6.74 6.84

 5.50 4.60
 6.94 7.34
 2.84 2.40
 9.14 9.64

North	West Line Bacon St						South
600'	7.25	7.50	7.16	7.62	7.15	7.75	8.00
575'	7.66	7.41	7.07	7.63	7.07	7.65	7.90
550'	7.58	7.33	6.98	7.44	6.98	7.56	7.81
525'	7.50	7.25	6.90	7.35	6.90	7.46	7.71
500'	7.42	7.17	6.81	7.26	6.81	7.37	7.62
475'	7.33	7.08	6.73	7.17	6.73	7.28	7.53
450'	7.25	7.00	6.64	7.08	6.64	7.18	7.43
425'	7.17	6.92	6.55	7.00	6.55	7.09	7.34
400'	7.08	6.83	6.47	6.91	6.47	7.00	7.25
375'	7.00	6.75	6.38	6.82	6.38	6.90	7.15
350'	6.92	6.67	6.30	6.73	6.30	6.81	7.05
325'	6.83	6.58	6.21	6.64	6.21	6.72	6.97
300'	6.75	6.50	6.12	6.55	6.12	6.62	6.87
275'	6.67	6.42	6.04	6.47	6.04	6.53	6.78
250'	6.58	6.33	5.95	6.38	5.95	6.44	6.69
225'	6.50	6.25	5.87	6.29	5.87	6.34	6.59
200'	6.42	6.17	5.78	6.21	5.78	6.25	6.50
175'	6.33	6.08	5.70	6.12	5.70	6.15	6.40
150'	6.25	6.00	5.61	6.03	5.61	6.06	6.31
125'	6.17	5.92	5.52	5.94	5.52	5.96	6.21
100'	6.08	5.83	5.44	5.85	5.44	5.87	6.12
75'	6.00	5.75	5.35	5.77	5.35	5.78	6.03
50'	5.92	5.67	5.27	5.68	5.27	5.69	5.94
25'	5.83	5.58	5.18	5.59	5.18	5.59	5.84
00'	5.75	5.50	5.10	5.50	5.10	5.50	5.75

806.67	17.89	19.89	22.96	22.96	22.96	22.96	22.96
11.82	12.15	96	35	2.17	2.17	2.17	2.17
19.79	7.9	100	29.4	7.6	2.06	1.50	1.50
11.6	7.7	80	2.8	2.6	7.9	1.76	1.76
18.73	5.5	240	C 12.8	C 6.0	13.2	C 7.2	13.2
4.23							
22.9							
806	13.14	13.14	13.14	13.14	13.14	13.14	13.14
4.7	4.7	4.8	4.8	4.8	4.8	4.8	4.8
12.14	4.7	8.4	8.3	8.1	8.1	8.1	8.1
20.19	8.4	8.4	8.3	8.1	8.1	8.1	8.1
11.6	6.7	5.9	5.7	6.1	6.1	6.1	6.1
18.14	1.7	C 2.5	C 2.4	C 2.0	C 2.4	1.9	2.3
18.74							
9.8	20.03	20.03	20.03	20.03	20.03	20.03	20.03
5.89	8.00	0.0	9.4	7.4	5.2	4.2	1.0
4.23	1.20	2.00	10.6	1.6	1.7	1.8	1.2
13.14	7.0	1.7	7.8	6.7	7.0	6.1	6.9
806.67	C 4.6		C 2.5	C 2.0	C 1.8	C 2.4	C 1.7
11.79							
19.50	13.58	13.58	13.58	13.58	13.58	13.58	13.58
2.04	4.6	5.1	5.0	5.0	5.6	8.1	6.4
12.78	9.0	8.0	8.1	8.1	5.8	5.9	5.7
2.28	6.3	6.2	6.0	6.1	2.7	C 2.6	2.7
20.03	C 2.7	C 1.5	2.0	1.5	7	8	1.2
7.21							
13.14	11.6	11.6	11.6	11.6	11.6	11.6	11.6
10.63	4.9	4.9	4.9	4.9	4.9	4.9	4.9
11.01	2.7	2.7	2.7	2.7	2.7	2.7	2.7
6.21	5.7	5.7	5.7	5.7	5.7	5.7	5.7
4.79	6.7	6.7	6.7	6.7	6.7	6.7	6.7
11.00	10.63	11.40	5.50	5.85	6.00	6.50	6.80
8.06	3.00	2.81	3.50	3.46	10.63	5.70	8.01
11.06	10	2.50	banks	12.01	12.01	12.01	12.01
13.48	7.50	7.16	7.62	7.15	7.75	7.75	7.75
	1.01	1.44	5.96	1.43	5.83	5.83	5.83

1-24-13 checked OK

Abbott
E.L. BACON ST.

North

South

8.25	8.0	7.66	8.12	7.65	8.25	8.50
------	-----	------	------	------	------	------

8.0	8.0	7.56	8.02	7.55	8.25	8.25
7.1	7.1				7.25	7.25

7.82	6.87	7.48	7.94	7.47	7.12	8.12
------	------	------	------	------	------	------

BACON

7.75	6.75	7.41	7.87	7.40	7.00	8.00
------	------	------	------	------	------	------

St.

7.62	6.62	7.33	7.79	7.32	6.87	7.87
------	------	------	------	------	------	------

6.5	6.5				6.75	6.75
7.50	7.50	7.26	7.72	7.25	7.75	7.75

7.75	7.50	7.16	7.62	7.15	7.75	8.00
------	------	------	------	------	------	------

806 Bm

4.93

12.99

900

4.99

7.50

3.29

8.25

4.74

7.75

5.24

Checked OK Blough

12-23-12

Saratoga Ave.

North

15.75 15.50 15.10 15.50 15.10 15.50 15.75

15.50 15.50 15.00 15.40 15.00 15.50 15.50
~~14.50~~ ~~14.50~~ ~~14.50~~ ~~14.50~~

14.90 14.37 14.92 15.32 14.92 14.37 14.90

Cable

15.25 14.25 14.85 15.25 14.85 14.25 15.25

St.

14.72 14.12 14.77 15.17 14.77 14.12 14.72

14.00 14.00 14.70 15.10 14.70 14.00 14.00
15.00 15.00

15.25 15.00 14.60 15.00 14.60 15.00 15.25

South

Check OK 7-25-12 Blough

54

Saratoga Ave.

North

South

25.75 25.50 25.10 25.50 25.10 25.50 25.75

25.50 25.50 25.80 25.40 25.00 25.50 25.50
 24.50 24.50 24.50 24.50

24.90 24.37 24.92 25.32 24.92 24.37 24.90

DEFOE

25.25 24.25 24.85 25.25 24.85 24.25 25.25

St.

24.72 24.12 24.77 25.17 24.77 24.12 24.72

24.00 24.00 24.70 25.10 24.70 24.00 24.00
 25.00 25.00 24.70 25.10 24.70 25.00 25.00

25.25 25.00 24.60 25.00 24.60 25.00 25.25

Checked OK 6-24-12 Clough

Saratoga St.

North

W. L. Eberts.

South

600	43.25	43.00	42.72	42.50	43.40	44.00	44.25
550	41.78	41.53	41.25	42.00	41.87	42.45	42.70
500	40.33	40.08	39.78	40.50	40.35	40.91	41.16
450	38.87	38.62	38.31	39.00	38.82	39.36	39.61
400	37.41	37.16	36.85	37.50	37.30	37.82	38.07
350	35.95	35.70	35.38	36.00	35.77	36.29	36.54
300	34.50	34.25	33.91	34.50	34.25	34.75	35.00
250	33.04	32.79	32.44	33.00	32.72	33.20	33.45
200	31.58	31.330	30.97	31.50	31.20	31.66	31.91
150	30.12	29.87	29.50	30.00	29.67	30.12	30.37
100	28.67	28.42	28.04	28.50	28.15	28.58	28.83
50	27.21	26.96	26.56	27.00	26.62	27.04	27.29
00	25.75	25.50	25.10	25.50	25.10	25.50	25.75

E. L. DeFoe

Saratoga St.

58

North

South

44.25	44.00	43.85	44.50	44.40	45.00	45.25
-------	-------	-------	-------	-------	-------	-------

44.00	44.00	43.65	44.30	44.20	45.00	45.00
43.00	43.00				44.00	44.00

43.40	42.75	43.47	44.15	44.05	43.75	44.40
-------	-------	-------	-------	-------	-------	-------

E B E T S.

43.50	42.50	43.30	44.00	43.90	43.50	44.50
-------	-------	-------	-------	-------	-------	-------

S T.

42.85	42.25	43.12	43.85	43.75	43.25	43.85
-------	-------	-------	-------	-------	-------	-------

42.00	42.00				43.00	43.00
43.00	43.00	42.95	43.70	43.60	44.00	44.00

43.25	43.00	42.85	43.50	43.40	44.00	44.25
-------	-------	-------	-------	-------	-------	-------

North	W. L. Froude						South
600	89.25	89.00	88.85	89.50	89.40	90.00	90.25
550	84.25	84.00	83.85	84.50	84.40	85.00	85.25
500	79.25	79.00	78.85	79.50	79.40	80.00	80.25
450	74.25	74.00	73.85	74.50	74.40	75.00	75.25
400	69.25	69.00	68.85	69.50	69.40	70.00	70.25
350	64.25	64.00	63.85	64.50	64.40	65.00	65.25
300	59.25	59.00	58.85	59.50	59.40	60.00	60.25
BREAK							
250	56.75	56.50	56.35	57.00	56.90	57.50	57.75
200	54.25	54.00	53.85	54.50	54.40	55.00	55.25
150	51.75	51.50	51.35	52.00	51.90	52.50	52.75
100	49.25	49.00	48.85	49.50	49.40	50.00	50.25
50	46.75	46.50	46.35	47.00	46.90	47.50	47.75
00	44.25	44.00	43.85	44.50	44.40	45.00	45.25

F. L. EBETS

SAYATOGA St.

60

North

South

90.25 90.00 89.85 90.50 90.40 91.00 91.25

90.00 90.00 89.75 90.30 90.20 91.00 91.00
89.00 89.00 90.00

89.40 89.75 89.55 90.15 90.05 89.75 90.40

FROUDE

89.50 88.50 89.35 90.00 89.90 89.50 90.50

St.

88.85 88.25 89.15 89.85 89.75 89.25 89.85

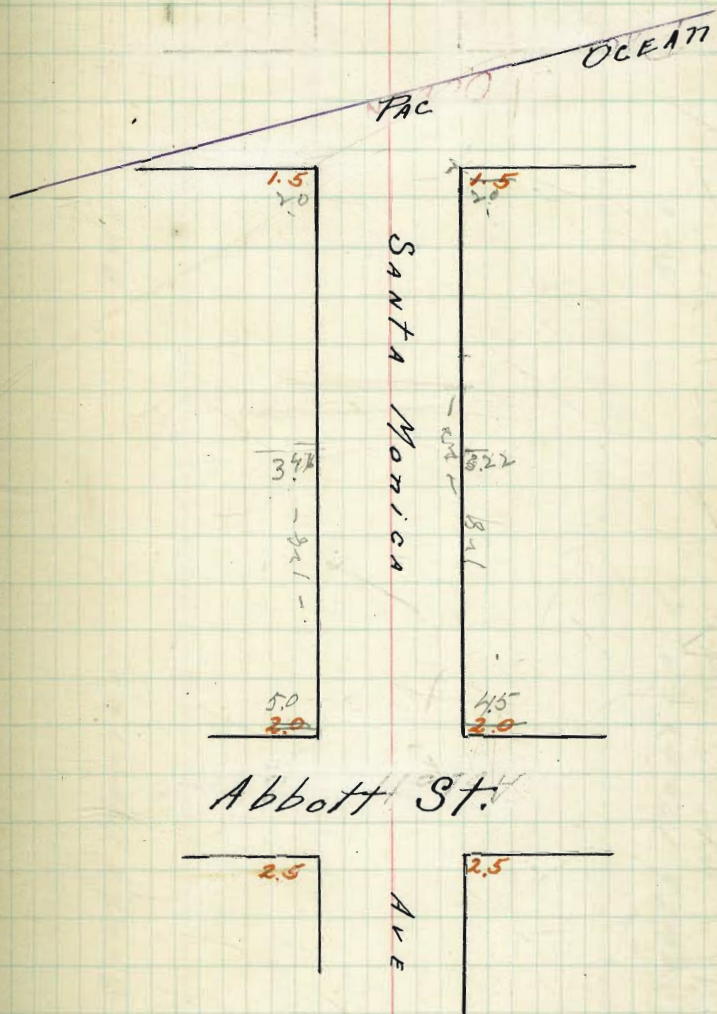
88.00 88.00 88.95 89.70 89.60 90.00 90.00
89.00 89.00 89.00 89.00

89.25 89.00 88.85 89.50 89.40 90.00 90.25

North W. L. Guizot South

500	139.25	139.00	138.85	139.50	139.40	140.00	140.25
550	134.25	134.00	133.85	134.50	134.40	135.00	135.25
500	129.25	129.00	128.85	129.50	129.40	130.00	130.25
450	124.25	124.00	123.85	124.50	124.40	125.00	125.25
420	121.25	121.00	120.85	121.50	121.40	122.00	122.25
400	119.78	119.53	119.38	120.03	119.93	120.53	120.78
350	116.09	115.84	115.69	116.34	116.24	116.84	117.09
300	112.40	112.15	112.00	112.65	112.55	113.15	113.40
250	108.70	108.45	108.30	108.95	108.85	109.45	109.70
200	105.01	104.76	104.61	105.26	105.16	105.76	106.01
150	101.32	101.07	100.92	101.57	101.47	102.07	102.32
100	97.63	97.38	97.23	97.88	97.78	98.38	98.63
50	93.94	93.69	93.54	94.19	94.09	94.69	94.94
00	90.25	90.00	89.85	90.50	90.40	91.00	91.25

E. L. Froude



9.25

10.0

16.5

63

17.0

BACON St.

Cable St.

8.75

9.0

16.0

16.5

Ave.

Ave.

Santa Monica

Santa Monica

50
2.5

75
2.5

30 30
9.25

Div
10.0

Abbott St.

BACON St.

15
2.0

50
2.0

8.75

90.0

24.5 24.5 48.0 48.0 96.0 97.0 145.0 146.0

DE FOE ST EBERS ST FROUDE ST GUIZOT ST

24.0 24.0 47.0 47.0 95.0 96.0 144.0 145.0

A.V.E.

SANTA MONICA

A.V.E.

SANTA MONICA

A.V.E.

SANTA MONICA

A.V.E.

SANTA MONICA

16.5 17.0 24.5 24.5 48.0 48.0 96.0 97.0

GABIE ST. DE FOE ST. EBERS ST FROUDE ST.

16.0 16.5 24.0 24.0 47.0 47.0 95.0 96.0

64

145.0

300'

340'

128.0

129.0

65.0

66.0

SANTA MONICA AVE

North	W. LINE Abbot						South
00	4.75	4.5	4.22	4.75	4.40	5.0	5.25
25	4.50	4.25	3.96	4.48	4.12	4.70	4.96
50	4.25	4.00	3.70	4.20	3.84	4.40	4.65
75	4.00	3.75	3.43	3.92	3.56	4.10	4.35
100	3.75	3.50	3.17	3.65	3.28	3.80	4.05
135	3.50	3.25	2.91	3.38	3.02	3.50	3.75
150	3.47	3.25	2.91	3.28	2.92	3.46	3.71
150	3.25	3.00	2.65	3.10	2.72	3.20	3.45
175	3.00	2.75	2.39	2.82	2.44	2.90	3.15
200	2.75	2.50	2.12	2.55	2.16	2.60	2.85
225	2.50	2.25	1.86	2.28	1.88	2.30	2.55
250	2.25	2.00	1.60	2.00	1.60	2.0	2.25

5:27 Bm 6a Hander Rd farm

65

1454 40	1488	1488	1488	1488	834	827	834	830	830	830	830
10.61	10.61	10.61	10.61	10.61	5.6	5.6	5.6	5.6	5.6	5.6	5.6
3.66	3.66	3.66	3.66	3.66	2.7	2.7	2.7	2.7	2.7	2.7	2.7
3.98	3.98	3.98	3.98	3.98	2.9	2.9	2.9	2.9	2.9	2.9	2.9
8.34	8.34	8.34	8.34	8.34	0.7	0.7	0.7	0.7	0.7	0.7	0.7
	11-26	11									

10.63	10.63	10.63	10.63	10.63	10.63	10.63	10.63	10.63	10.63	10.63	10.63
5.6	5.6	5.6	5.6	5.6	5.6	5.6	5.6	5.6	5.6	5.6	5.6
2.0	2.0	2.0	2.0	2.0	2.0	2.0	2.0	2.0	2.0	2.0	2.0
3.6	3.6	3.6	3.6	3.6	3.6	3.6	3.6	3.6	3.6	3.6	3.6
5.6	5.6	5.6	5.6	5.6	5.6	5.6	5.6	5.6	5.6	5.6	5.6
4.76	4.76	4.76	4.76	4.76	4.76	4.76	4.76	4.76	4.76	4.76	4.76
10.03	10.03	10.03	10.03	10.03	10.03	10.03	10.03	10.03	10.03	10.03	10.03

957 346 377
6.73 6.77

Curbs 1-20-13

Checked OK

2-21-12

Clough

Santa Monica Ave

EAST LINE of ABBOTT ST.

VE	5.25	5.0	4.72	5.25	4.90	5.50	5.75
ECurb	5.0	5.0 4.0	4.64	5.17	4.82	5.50 4.50	5.50 1.5
EL4	4.40	3.87	4.56	5.08	4.74	4.37	4.90
Carter	4.75	3.75	4.47	5.00	4.66	4.25	5.25
W4	4.22	3.62	4.39	4.92	4.57	4.12	5.72
WCurb	4.50	3.50 4.50	4.30	4.83	4.48	4.0 5.0	5.0
W.L.	4.75	4.50	4.22	4.75	4.4	5.0	5.25

W. LINE of ABBOTT ST.

1063 Bm

174				
12.35				
7.09				
5.21	7.70	11.00	11.00	
4.28				
9.59	5.70	7.50	4.50	
	4.58	11.00	5.00	

1063 Bm

1.31	5.00	4.72	5.25	4.90	5.50
11.94	6.34	7.22	6.62	7.00	6.74
	4.50	4.22	4.75	4.40	5.70

521 Bm

5.14	5.00	5.00	5.50
10.82	5.80	5.57	5.30
	4.50	4.72	5.00
	6.30	6.07	5.80

Santa Monica Avenue

1075 Bm Bacon + SM

N.	W LINE Bacon						S
600 9.00	8.75	8.41	8.87	8.40	9.0	9.25	
575 8.84	8.59	8.26	8.72	8.25	8.85	9.10	
550 8.69 ✓	8.44	8.10	8.57	8.11	8.71	8.96	
525 8.53	8.28	7.95	8.42	7.96	8.56	8.81	
500 8.37 ✓	8.12	7.80	8.26	7.84	8.42	8.67 ✓	
475 8.22	7.97	7.64	8.11	7.67	8.27	8.52	
450 8.06	7.81	7.49	7.96	7.52	8.12	8.37	
425 7.91	7.66	7.33	7.81	7.38	7.98	8.23	
400 7.75	7.50	7.18	7.66	7.23	7.83	8.08	
375 7.59	7.34	7.03	7.51	7.09	7.69	7.94	
350 7.44	7.19	6.87	7.36	6.94	7.54	7.79	
325 7.28	7.03	6.72	7.21	6.80	7.40	7.65	
300 7.13	6.88	6.56	7.06	6.65	7.25	7.50	
275 6.97	6.72	6.41	6.91	6.50	7.10	7.35	
250 6.81	6.56	6.26	6.76	6.36	6.96	7.21 ✓	
225 6.66	6.41	6.10	6.61	6.21	6.81	7.06	
200 6.50	6.25	5.95	6.46	6.07	6.67	6.92	
175 6.34	6.09	5.80	6.30	5.92	6.52	6.77	
150 6.19	5.94	5.64	6.15	5.77	6.37	6.62	
125 6.03	5.78	5.49	6.00	5.63	6.23	6.48	
100 6.87	5.62	5.34	5.85	5.48	6.08	6.33 ✓	
75 5.72	5.47	5.18	5.70	5.34	5.94	6.19	
50 5.56	5.31	5.03	5.55	5.19	5.79	6.04	
25 5.41	5.16	4.87	5.40	5.05	5.65	5.90	
0 E LINE Abbot	5.25	4.72	5.25	4.90	5.50	5.75	

E. LINE Abbott

1575	1575	1575	1575	1575	1575	2349	2349
2.38	5.8	6.5	6.6	6.8	6.1	7.5	7.7
1.34	9.9	8.2	9.3	9.8	9.4	13.4	15.5
1.08	9.2	8.0	8.5	8.7	8.1	15.5	2.5
23.49	2.7	0.2	0.3	0.1	0.3	0.4	1.9
2.0	2.49	2.49	2.49	2.49	2.49	2.49	14.88
14.16	2.0	1.9	1.5	1.5	1.5	1.5	14.88
2.72	2.0	2.0	2.0	2.0	2.0	2.0	14.88
14.58	1.2	1.2	1.2	1.2	1.2	1.2	14.88
14.88	1.48	1.48	1.48	1.48	1.48	1.48	11.29
5.0	6.5	7.2	8.1	9.8	9.8	7.6	1.6
9.5	8.2	7.2	8.1	8.1	8.1	1.9	0
1.2	4.2	3.8	3.8	3.8	3.8	3.8	2.7
0.5	0.7	0.7	0.7	0.7	0.7	0.7	7.11
10.75	7.40	8.1	8.1	9.1	1.7	4.8	1.7
3.75	7.40	8.1	8.1	9.1	1.7	4.8	1.7
17.50	8.76	8.7	8.7	8.7	8.7	8.7	8.7
10.03	10.03	10.03	10.03	10.03	10.03	10.03	10.03
2.0	3.0	6.0	6.0	7.0	9.0	9.0	9.0
0.8	8.0	0.8	0.8	0.8	0.8	0.8	0.8
				2.0	2.0	2.0	2.0

Combs set 1-20-13
 Checked OK
 2-22-12

Along
 Along

North

South

Intersection of Baum St.

EL	9.50	9.25	9.04	8.83	8.60	8.40	8.25
el	9.25 8.25	9.25 8.25	8.92	8.52	8.20	8.00 9.0	8.00 9.0
1/4	8.65	8.13	8.82	9.37	9.05	8.75	9.40
c	9.00	8.00	8.73	9.25	8.90	8.50	9.50
1/4	8.47	7.83	8.63	9.12	8.75	8.25	8.85
el	8.75 8.75	7.75 8.25	8.54	8.98	8.60	8.0 9.0	8.0 9.0
wL	9.00	8.75	8.41	8.88	8.70	9.0	9.25

10.76
4.79
15.55

100 9.25 9.00 8.75
5.55 6.30 6.15 6.80

Checked OK columns

12-13-12

10.75
4.51
15.06

9.00
6.06
6.31

10.75
4.80
15.05

8.25 8.89 9.00
6.80 6.67 6.55
8.25 9.63 10.00
6.30 5.92 5.70

1076 Spill in Pale SW Basin
 1659. 20 m e Cable 4 San Man ^{+ San Man} 69

N

W. LINE CABLE

S

600	16.25	16.0	15.73	16.25	15.9	16.5	16.75
5+50	15.68	15.43	15.16	15.69	15.35	15.95	16.20
5+00	15.12	14.87	14.61	15.14	14.81	15.41	15.66
4+50	14.55	14.30	14.05	14.59	14.27	14.87	15.12
4+00	13.97	13.74	13.49	14.03	13.73	14.32	14.57
3+50	13.43	13.18	12.94	13.48	13.18	13.78	14.03
3+00	12.87	12.62	12.38	12.93	12.64	13.24	13.49
2+50	12.31	12.06	11.82	12.38	12.10	12.70	12.95
2+00	11.74	11.49	11.26	11.83	11.56	12.16	12.41
1+50	11.14	10.93	10.71	11.28	11.02	11.62	11.87
1+00	10.62	10.37	10.15	10.73	10.48	11.08	11.33
0+50	10.06	9.81	9.59	10.18	9.94	10.54	10.79
0+00	9.50	9.25	9.04	9.63	9.40	10.0	10.25

12.27 22m	16.20	16.00	15.70	16.0	15.80	16.00	16.00	16.00	16.00	16.00	16.00	16.00	16.00	16.00	16.00	16.00	16.00	16.00	16.00	16.00
3.56	6.0	6.0	6.0	6.0	6.0	6.0	6.0	6.0	6.0	6.0	6.0	6.0	6.0	6.0	6.0	6.0	6.0	6.0	6.0	6.0
15.73	9.0	9.4	9.5	10.0	10.3	10.0	10.4	10.4	11.1	11.1	11.9	11.9	11.9	11.9	11.9	11.9	11.9	11.9	11.9	11.9
4.97	8.0	8.0	8.5	9.0	9.0	9.0	9.6	9.6	10.4	10.4	11.1	11.1	11.1	11.1	11.1	11.1	11.1	11.1	11.1	11.1
10.76 13m	16.00	16.00	16.00	16.00	16.00	16.00	16.00	16.00	16.00	16.00	16.00	16.00	16.00	16.00	16.00	16.00	16.00	16.00	16.00	16.00
16.01	6.0	6.0	6.0	6.0	6.0	6.0	6.0	6.0	6.0	6.0	6.0	6.0	6.0	6.0	6.0	6.0	6.0	6.0	6.0	6.0
0.12	11.0	11.0	11.0	11.0	11.0	11.0	11.0	11.0	11.0	11.0	11.0	11.0	11.0	11.0	11.0	11.0	11.0	11.0	11.0	11.0
15.87 13m Post	16.00	16.00	16.00	16.00	16.00	16.00	16.00	16.00	16.00	16.00	16.00	16.00	16.00	16.00	16.00	16.00	16.00	16.00	16.00	16.00
4.30	7.0	7.0	7.5	8.0	8.0	8.0	8.6	8.6	9.4	9.4	10.1	10.1	10.1	10.1	10.1	10.1	10.1	10.1	10.1	10.1
20.19	20.00	20.00	20.00	20.00	20.00	20.00	20.00	20.00	20.00	20.00	20.00	20.00	20.00	20.00	20.00	20.00	20.00	20.00	20.00	20.00
3.60	6.0	6.0	6.0	6.0	6.0	6.0	6.0	6.0	6.0	6.0	6.0	6.0	6.0	6.0	6.0	6.0	6.0	6.0	6.0	6.0
16.49	16.00	16.00	16.00	16.00	16.00	16.00	16.00	16.00	16.00	16.00	16.00	16.00	16.00	16.00	16.00	16.00	16.00	16.00	16.00	16.00

Checked OK
 2-22-12
 Blough

East LINE Bacon

N

SANTA MONICA AVENUE
INTERSECTION GABLE ST.

S

EAST L

	16.75	16.5	16.23	16.75	16.40	17.0	17.25
ch	16.5 15.5	16.5 15.5	16.13	16.65	16.30	17.0 16.0	17.0 16.0
1/4	15.90	15.37	16.05	16.58	16.22	15.87	16.40
2	16.25	15.25	15.97	16.50	16.15	15.75	16.75
1/4	15.72	15.12	15.90	16.43	16.07	15.62	16.23
ch	15.0 16.0	15.0 16.0	15.82	16.35	16.0	15.50 16.50	15.50 16.50
m.l.	16.25	16.0	15.72	16.25	15.90	16.50	16.75

check OK

7-25-12 Clough

16.50	16.50	16.25	16.00
15.50	15.50	15.25	15.00
25.00	16.50	16.75	17.25
	16.00	16.00	15.00

N

SANTA MONICA AVENUE

West Line DeFoe St.

600	24.25	24.0	23.60	24.0	23.60	24.0	24.25
550	23.62	23.37	22.98	23.39	23.0	22.41	22.66
500	23.0	22.75	22.37	22.79	22.40	22.83	23.08
450	22.37	22.12	21.75	22.18	21.80	22.24	22.49
400	21.75	21.50	21.14	21.58	21.2	21.66	21.91
350	21.12	20.87	20.52	20.97	20.6	21.08	21.33
300	20.50	20.25	19.91	20.37	20.0	20.50	20.75
250	19.87	19.62	19.29	19.77	19.40	19.91	20.16
200	19.25	19.0	18.68	19.16	18.80	19.33	19.58
150	18.62	18.37	18.06	18.56	18.20	18.75	19.00
100	18.0	17.75	17.45	17.95	17.60	18.16	18.41
050	17.37	17.12	16.83	17.35	17.0	17.54	17.83
0.00	16.75	16.5	16.22	16.75	16.40	17.0	17.25

East Line Cable

S

1659 W. NE Cable + San Mon

27.11 New 1st Level Post + 27.11

1659 Bm	23.65	23.65	23.65	23.65	23.65	23.65	23.65	23.65
23.65	6.6	6.4	5.7	5.4	5.8	5.4	4.8	4.8
23.65	17.0	17.3	18.0	17.4	17.8	18.3	18.8	18.7
23.65	14.6	13.8	13.7	15.2	18.6	19.1	19.6	19.2
27.11 Bm	21.15	20.4	21.5	21.4	21.6	21.3	21.8	21.5
27.11 Bm	6.82	7.04	7.5	7.4	7.6	7.8	7.8	7.5
27.11 Bm	27.87	27.87	27.87	27.87	27.87	27.87	27.87	27.87
27.11 Bm	0.84	4.3	4.3	2.5	2.9	3.2	4.7	6.7
27.11 Bm	19.4	19.4	20.2	19.4	20.4	20.8	21.3	21.0
27.11 Bm	19.9	20.1	20.7	20.5	21.1	21.3	21.9	21.7
27.11 Bm	18.5	19.2	20.5	20.5	20.9	20.5	21.3	21.6
27.11 Bm	2.5	7.7	7.7	2.7	2.7	2.5	2.2	2.1
27.11 Bm	27.97	27.97	27.97	27.97	27.97	27.97	27.97	27.97
27.11 Bm	6	16.10	5.4	5.2	3.0	4.1	3.3	4.5
27.11 Bm	22.00	22.00	22.6	22.6	24.8	22.6	24.7	24.7
27.11 Bm	22.34	22.5	22.6	22.6	22.6	22.6	22.6	22.6
27.11 Bm	2.4	7.1	7.1	7.1	7.1	7.1	7.1	7.1

11-29-11

6-9-11

Checked OK. Blough

2-22-12

N N

SANTA MONICA

S

72

600 E 24.5 24.5 24.1 24.5 24.1 24.5 27.75

550 23 cl 24.5 24.5 24.0 24.40 24.0 24.5 24.50
23.5 23.5 23.5 23.5

500 1/4 23.90 23.37 23.92 24.32 23.92 23.37 23.9

DEFOE

450 23 c 24.25 23.25 23.85 24.25 23.85 23.25 24.25

St.

400 1/4 23.72 23.12 23.78 24.18 23.78 23.12 23.72

350 2 cl 24.0 24.0 23.70 24.10 23.70 24.0 24.0
22.0 23.0 23.0 23.0

300 2 W 24.25 24.0 23.60 24.0 23.60 24.0 24.25

250 1/4

200 1/4

150 1/4

100 1/4

050 1/4

000 1/4

Checked

6-24-12 Clough

(Gutter) ✓

24.25

North W.L.F. BEERS South

600	47.25	47.00	46.60	47.00	46.6	47.0	47.25
550	45.37	45.12	44.72	45.12	44.72	45.12	45.37
500	43.50	43.25	42.85	43.25	42.85	43.25	43.50
450	41.62	41.37	40.97	41.37	40.97	41.37	41.62
400	39.75	39.50	39.10	39.50	39.10	39.50	39.75
350	37.87	37.62	37.22	37.62	37.22	37.62	37.87
300	36.00	35.75	35.35	35.75	35.35	35.75	36.00
250	34.12	33.87	33.47	33.87	33.47	33.87	34.12
200	32.25	32.00	31.60	32.00	31.60	32.00	32.25
150	30.37	30.12	29.72	30.12	29.72	30.12	30.37
100	28.50	28.25	27.85	28.25	27.85	28.25	28.50
50	26.62	26.37	25.97	26.37	25.97	26.37	26.62
00	24.75	24.50	24.1	24.50	24.1	24.50	24.75

L.L. DE FOE

North

South

48.25 48.00 47.60 48.00 47.60 48.00 48.25

48.00 48.00 47.40 47.80 47.40 48.00 48.00
47.00 47.00 47.00 47.00

47.4 46.75 47.25 47.65 47.25 46.75 47.40

EBETS

47.50 46.50 47.10 47.50 47.10 46.50 47.50

St

46.85 46.25 46.95 47.35 47.95 46.25 46.85

46.00 46.00 46.80 47.20 46.80 46.00 46.00
47.00 47.00 47.00 47.00

47.25 47.00 46.60 47.00 46.60 47.00 47.25

North			W. L. Froude			South		
600	95.25	95.00	94.85	95.50	95.40	96.00	96.25	
550	90.25	90.00	89.85	90.50	90.10	91.00	91.25	
500	85.25	85.00	84.85	85.50	85.10	86.00	86.25	
450	80.25	80.00	79.85	80.50	80.40	81.00	81.25	
400	75.25	75.00	74.85	75.50	75.40	76.00	76.25	
350	70.25	70.00	69.85	70.50	70.40	71.00	71.25	
300	65.25	65.00	64.85	65.50	65.40	66.00	66.25	
BREAK								
250	62.41	62.16	61.97	62.58	62.43	63.00	63.25	
200	59.58	59.33	59.10	59.66	59.46	60.00	60.25	
150	56.74	56.49	56.22	56.74	56.49	57.00	57.25	
100	53.91	53.66	53.35	53.83	53.53	54.00	54.25	
50	51.08	50.83	50.47	50.91	50.56	51.00	51.25	
00	48.25	48.00	47.60	48.00	47.60	48.00	48.25	

E. L. EBETS ST.

Santa Monica St

North

South

96.25 96.00 95.85 96.50 96.40 97.00 97.25

96.00 96.00 95.65 96.30 96.20 97.00 97.00
 95.00 95.00 96.00 96.00

95.40 94.75 95.50 96.15 96.05 95.75 96.40

Froude

95.50 94.50 95.35 96.00 95.70 95.50 96.50

St.

94.85 94.25 95.20 95.85 95.75 95.25 95.85

94.0 94.00 95.05 95.70 95.60 95.0 95.0
 95.00 95.00 96.00 96.00

95.25 95.00 94.85 95.50 95.40 96.0 96.25

W

North W.L. Guizot St. South

600	140.25	1440	143.85	144.50	144.40	145.0	145.25
575	142.70	142.45	142.29	142.95	142.85	143.45	143.70
550	141.16	140.91	140.76	141.41	141.31	141.91	142.16
525	139.62	139.57	139.22	139.87	139.77	140.37	140.62
500	138.08	137.83	137.68	138.33	138.23	138.83	138.08
475	136.55	136.30	136.15	136.80	136.70	137.36	137.61
450	135.01	134.76	134.61	135.26	135.16	135.76	136.01
425	133.47	133.22	133.07	133.72	133.62	134.22	134.47
400	131.93	131.68	131.53	132.18	132.08	132.68	132.93
375	130.40	130.15	130.00	130.65	130.55	131.15	131.40
350	128.86	128.61	128.46	129.11	129.01	129.61	129.86
340	128.25	128.0	127.85	128.50	128.40	129.0	129.25
325	126.83	126.58	126.43	127.08	126.98	127.59	127.84
300	124.48	124.23	124.08	124.73	124.63	125.24	125.49
275	122.12	121.87	121.72	122.37	122.28	122.88	123.13
250	119.77	119.52	119.37	120.02	119.93	120.53	120.78
225	117.41	117.16	117.01	117.66	117.56	118.17	118.42
200	115.06	114.81	114.66	115.31	115.22	115.81	116.06
175	112.72	112.46	112.31	112.96	112.87	113.46	113.71
150	110.36	110.11	109.96	110.61	110.51	111.11	111.36
125	108.01	107.76	107.61	108.26	108.16	108.76	109.01
100	105.65	105.40	105.25	105.90	105.80	106.40	106.65
75	103.75	103.50	102.90	103.55	103.45	104.05	104.30
50	100.95	100.70	100.55	101.20	101.10	101.70	101.95
25	98.40	98.35	98.20	98.85	98.75	99.35	99.60
00	96.25	96.00	95.85	96.50	96.40	97.00	97.25

E. L. FROUDE St.

95

4350

80

