

57

NIAGARA AVE OCEAN TO GUISON 1-13

Narragansett Ave

Santa Cruz

15

Return to City Engineers Office

29

City Hall San Diego Cal.

Del Monte

45

Pacific Ave

59

LOWELL ST (Roseville) Rosacrans St

to Puoblo line

67

TRANSIT

398

G57

Return to City Engineers Office

City Hall San Diego Cal.

Table showing the difference of latitude and departure in  
running 80 chains at an angle from 1 to 60 minutes.

MICROFILMED  
DEC 4 1964

MINUTES	LKS.	MINUTES.	LKS.	MINUTES.	LKS.
1	2 $\frac{1}{2}$	21	49	41	95 $\frac{1}{2}$
2	4 $\frac{1}{2}$	22	51 $\frac{1}{2}$	42	98
3	7	23	53 $\frac{1}{2}$	43	100 $\frac{1}{2}$
4	9 $\frac{1}{2}$	24	56	44	102 $\frac{1}{2}$
5	11 $\frac{1}{2}$	25	58 $\frac{1}{2}$	45	105
6	14	26	60 $\frac{1}{2}$	46	107 $\frac{1}{2}$
7	16 $\frac{1}{2}$	27	63	47	109 $\frac{1}{2}$
8	18 $\frac{1}{2}$	28	65 $\frac{1}{2}$	48	112
9	21	29	67 $\frac{1}{2}$	49	114 $\frac{1}{2}$
10	23 $\frac{1}{2}$	30	70	50	116 $\frac{1}{2}$
11	25 $\frac{1}{2}$	31	72 $\frac{1}{2}$	51	119
12	28	32	74 $\frac{1}{2}$	52	121 $\frac{1}{2}$
13	30 $\frac{1}{2}$	33	77	53	123 $\frac{1}{2}$
14	32 $\frac{1}{2}$	34	79 $\frac{1}{2}$	54	126
15	35	35	81 $\frac{1}{2}$	55	128 $\frac{1}{2}$
16	37 $\frac{1}{2}$	36	84	56	130 $\frac{1}{2}$
17	39 $\frac{1}{2}$	37	86 $\frac{1}{2}$	57	133
18	42	38	88 $\frac{1}{2}$	58	135 $\frac{1}{2}$
19	44 $\frac{1}{2}$	39	91	59	137 $\frac{1}{2}$
20	46 $\frac{1}{2}$	40	93 $\frac{1}{2}$	60	140

TABLE FOR RUNNING ON SLOPES.

In the following table the first column shows the angle, the second the  
number of links to be added to a chain on the slopes, to make one  
chain, horizontal measurement.

ANGLE	COR. IN LINKS	ANGLE	COR. IN LINKS	ANGLE	COR. IN LINKS	ANGLE	COR. IN LINKS
0		0		0		0	
4	0.24	11	1.88	18	5.14	25	10.54
5	0.38	12	2.24	19	5.76	26	11.26
6	0.55	13	2.63	20	6.42	27	12.24
7	0.76	14	3.06	21	7.11	28	13.37
8	0.98	15	3.53	22	7.85	29	14.34
9	1.24	16	4.02	23	8.64	30	15.47
10	1.55	17	4.56	24	9.47	35	22.07

13.0

14.0

19.5

20.0

27.0

27.0

52.0

53.0

BACON ST.

CABLE ST.

DEFOE ST

EBETS ST.

13.0

14.0

19.0

19.5

26.0

26.0

51.0

52.0

200'

200'

AVE.

AVE.

AVE.

14.0

15.0

34.0

35.0

225'

225'

23.40

23.40

26.50

26.00

NIAGATA

NIAGATA

NIAGATA

13.0

14.0

19.5

20.0

27.0

27.0

BACON ST

CABLE ST

DEFOE ST.

13.0

14.0

19.0

19.5

26.0

26.0

1360 137.0

Froude St

Guizot St

135.0

136.0

186.0

187.0

Ave.

Ave.

180.0

181.0

Niagara

Niagara

400'

400'

52.0

53.0

136.0

137.0

Ebers St.

Froude St.

51.0

52.0

135.0

136.0

North

NIAGARA AVE.

W.L. BACON

South

15.62

3

13.25 13.00 13.85 13.50 13.40 14.00 14.25

15.62 18.52 18.52 18.52 18.52 18.52 18.52 18.52 18.52  
2.90 4.3 5.3 5.8 4.5 4.4 6.2 6.2 4.1  
18.52 14.1 13.40 13.2 14.50 14.7 13.7 14.0 14.4  
2.91 2.41 13.40 13.2 14.50 14.7 13.7 14.0 14.4  
14.61 18.52 18.52 18.52 2.08 2.08 2.08 2.08 2.08  
12.33 12.33 12.33 12.33 12.33 12.33 12.33 12.33 12.33  
26.94 26.94 26.94 26.94 26.94 26.94 26.94 26.94 26.94

13.50 13.25 13.10 13.75 13.65 14.25 14.50

18.52 18.52 18.52 26.94 26.94 26.94 26.94 26.94  
10.2 8.2 10.8 9.2 10.2 8.2 10.8 9.2 10.2  
16.7 18.7 16.1 16.7 16.7 16.7 16.7 16.7  
7.1 2.1 2.1 1.7 1.7 1.7 1.7 1.7  
26.94 26.94 26.94 26.94 26.94 26.94 26.94 26.94  
2.3 2.3 2.3 2.3 2.3 2.3 2.3 2.3  
1.5 1.5 1.5 1.5 1.5 1.5 1.5 1.5

13.75 13.50 13.35 14.00 13.90 14.50 14.75

26.94 26.94 26.94 26.94 26.94 26.94 26.94 26.94  
2.3 2.3 2.3 2.3 2.3 2.3 2.3 2.3  
1.5 1.5 1.5 1.5 1.5 1.5 1.5 1.5  
15.62 15.62 15.62 15.62 15.62 15.62 15.62 15.62  
2.1 2.1 2.1 2.1 2.1 2.1 2.1 2.1

14.00 13.75 13.60 14.25 14.15 14.75 15.00

15.62 15.62 15.62 15.62 15.62 15.62 15.62 15.62  
2.1 2.1 2.1 2.1 2.1 2.1 2.1 2.1  
2.1 2.1 2.1 2.1 2.1 2.1 2.1 2.1  
13.00 14.00 12.25 14.5 13.50 14.50 13.25 14.75  
5.77 4.77 5.77 4.52 5.00 4.27 5.00 4.77  
14.00 14.00 14.00 16.86 18.17 14.75 14.00 20.59  
2.81 6.81 5.77 5.01 3.70 2.14 1.61 1.28  
22.36 22.46 22.40 24.64 24.72 24.72 24.72  
5.95 5.95 4.89 5.87 5.87

14.25 14.00 13.85 14.50 14.40 15.00 15.25

20.64 20.64 20.64 20.64 20.64 20.64 20.64 20.64  
2.6 2.6 2.6 2.6 2.6 2.6 2.6 2.6  
28.13 28.13 28.13 28.13 28.13 28.13 28.13 28.13  
15.62 15.62 15.62 15.62 15.62 15.62 15.62 15.62  
2.1 2.1 2.1 2.1 2.1 2.1 2.1 2.1

16.33 16.08 15.88 16.47 16.31 16.86 17.11

15.62 15.62 15.62 15.62 15.62 15.62 15.62 15.62  
2.1 2.1 2.1 2.1 2.1 2.1 2.1 2.1  
2.1 2.1 2.1 2.1 2.1 2.1 2.1 2.1  
26.94 26.94 26.94 26.94 26.94 26.94 26.94 26.94  
2.3 2.3 2.3 2.3 2.3 2.3 2.3 2.3  
1.5 1.5 1.5 1.5 1.5 1.5 1.5 1.5

18.42 18.17 17.91 18.45 18.22 18.73 18.98

15.62 15.62 15.62 15.62 15.62 15.62 15.62 15.62  
2.1 2.1 2.1 2.1 2.1 2.1 2.1 2.1  
2.1 2.1 2.1 2.1 2.1 2.1 2.1 2.1  
15.62 15.62 15.62 15.62 15.62 15.62 15.62 15.62  
2.1 2.1 2.1 2.1 2.1 2.1 2.1 2.1

20.51 20.26 19.94 20.43 20.13 20.59 20.74

15.62 15.62 15.62 15.62 15.62 15.62 15.62 15.62  
2.1 2.1 2.1 2.1 2.1 2.1 2.1 2.1  
2.1 2.1 2.1 2.1 2.1 2.1 2.1 2.1  
15.62 15.62 15.62 15.62 15.62 15.62 15.62 15.62  
2.1 2.1 2.1 2.1 2.1 2.1 2.1 2.1

22.61 22.36 21.98 22.41 22.04 22.46 22.71

15.62 15.62 15.62 15.62 15.62 15.62 15.62 15.62  
2.1 2.1 2.1 2.1 2.1 2.1 2.1 2.1  
2.1 2.1 2.1 2.1 2.1 2.1 2.1 2.1  
15.62 15.62 15.62 15.62 15.62 15.62 15.62 15.62  
2.1 2.1 2.1 2.1 2.1 2.1 2.1 2.1

23.65 23.40 23.00 23.40 23.00 23.40 23.65

15.62 15.62 15.62 15.62 15.62 15.62 15.62 15.62  
2.1 2.1 2.1 2.1 2.1 2.1 2.1 2.1  
2.1 2.1 2.1 2.1 2.1 2.1 2.1 2.1  
15.62 15.62 15.62 15.62 15.62 15.62 15.62 15.62  
2.1 2.1 2.1 2.1 2.1 2.1 2.1 2.1

24.27 24.02 23.58 23.94 23.50 23.86 24.11

15.62 15.62 15.62 15.62 15.62 15.62 15.62 15.62  
2.1 2.1 2.1 2.1 2.1 2.1 2.1 2.1  
2.1 2.1 2.1 2.1 2.1 2.1 2.1 2.1  
15.62 15.62 15.62 15.62 15.62 15.62 15.62 15.62  
2.1 2.1 2.1 2.1 2.1 2.1 2.1 2.1

25.51 25.26 24.74 25.02 24.60 24.79 25.04

15.62 15.62 15.62 15.62 15.62 15.62 15.62 15.62  
2.1 2.1 2.1 2.1 2.1 2.1 2.1 2.1  
2.1 2.1 2.1 2.1 2.1 2.1 2.1 2.1  
15.62 15.62 15.62 15.62 15.62 15.62 15.62 15.62  
2.1 2.1 2.1 2.1 2.1 2.1 2.1 2.1

26.25 26.00 25.90 26.11 25.51 25.72 25.97

15.62 15.62 15.62 15.62 15.62 15.62 15.62 15.62  
2.1 2.1 2.1 2.1 2.1 2.1 2.1 2.1  
2.1 2.1 2.1 2.1 2.1 2.1 2.1 2.1  
15.62 15.62 15.62 15.62 15.62 15.62 15.62 15.62  
2.1 2.1 2.1 2.1 2.1 2.1 2.1 2.1

Cliff Line.

Checked 5-13-12

Checked

North

NIAGARA AVE.

South

4

8-21-12 Checked OK Clough

13.25 13.00 12.85 13.50 13.40 14.00 14.25

13.00	13.00	12.25	12.50	12.75	14.00	14.00
12.0	12.0				13.00	13.00

14 12.60 12.85 12.98 13.10 13.22 13.35 13.60

BACON

C. 13.00 13.25 13.37 13.50 13.62 13.75 14.00

ST.

14 12.60 12.85 12.98 13.10 13.22 13.35 13.60

12.0	12.0	12.25	12.50	12.75	13.00	13.00
13.00	13.00				14.00	14.00

13.25 13.00 12.85 13.50 13.40 14.00 14.25

North NIAGARA AVE. South  
W. I. GABLE ST.

15.6v RP-20 S.E. 2nd + Rail 5

600	19.25	19.00	18.72	19.25	18.90	19.50	19.75
550	18.75	18.50	18.23	18.77	18.44	19.04	19.29
500	18.25	18.00	17.74	18.29	17.98	18.58	18.83
450	17.75	17.50	17.25	17.81	17.52	18.12	18.37
400	17.25	17.00	16.76	17.33	17.06	17.66	17.91
350	16.75	16.50	16.27	16.85	16.60	17.20	17.45
300	16.25	16.00	15.78	16.37	16.14	16.74	16.99
250	15.75	15.50	15.29	15.89	15.69	16.29	16.54
200	15.25	15.00	14.80	15.41	15.23	15.83	16.08
150	14.75	14.50	14.31	14.93	14.77	15.37	15.62
100	14.25	14.00	13.82	14.45	14.31	14.91	15.16
50	13.75	13.50	13.33	13.97	13.85	14.45	14.70
00	13.25	13.00	12.85	13.50	13.40	14.00	14.25

E. K. BACON ST.

2090

15.6v	21.4v	21.4v	21.4v	21.4v	21.4v	21.4v	21.4v	21.4v	21.4v	21.4v	21.4v	21.4v	21.4v
5.50	1.4v	1.4v	1.4v	1.4v	1.4v	1.4v	1.4v	1.4v	1.4v	1.4v	1.4v	1.4v	1.4v
21.4v	1.4v	1.4v	1.4v	1.4v	1.4v	1.4v	1.4v	1.4v	1.4v	1.4v	1.4v	1.4v	1.4v
2.2v	1.4v	1.4v	1.4v	1.4v	1.4v	1.4v	1.4v	1.4v	1.4v	1.4v	1.4v	1.4v	1.4v
17.4v	1.4v	1.4v	1.4v	1.4v	1.4v	1.4v	1.4v	1.4v	1.4v	1.4v	1.4v	1.4v	1.4v
5.5v	1.4v	1.4v	1.4v	1.4v	1.4v	1.4v	1.4v	1.4v	1.4v	1.4v	1.4v	1.4v	1.4v
23.75	1.4v	1.4v	1.4v	1.4v	1.4v	1.4v	1.4v	1.4v	1.4v	1.4v	1.4v	1.4v	1.4v

15.6v	13.0v	13.0v	14.0v	14.0v	14.0v	14.0v	14.0v	14.0v	14.0v	14.0v	14.0v	14.0v	14.0v
4.14	6.78	5.78	5.78	5.78	5.78	5.78	5.78	5.78	5.78	5.78	5.78	5.78	5.78
19.74	6.78	5.78	5.78	5.78	5.78	5.78	5.78	5.78	5.78	5.78	5.78	5.78	5.78
15.6v	6.78	5.78	5.78	5.78	5.78	5.78	5.78	5.78	5.78	5.78	5.78	5.78	5.78
4.88	6.78	5.78	5.78	5.78	5.78	5.78	5.78	5.78	5.78	5.78	5.78	5.78	5.78
20.5v	6.78	5.78	5.78	5.78	5.78	5.78	5.78	5.78	5.78	5.78	5.78	5.78	5.78
3.0	6.78	5.78	5.78	5.78	5.78	5.78	5.78	5.78	5.78	5.78	5.78	5.78	5.78
17.0v	6.78	5.78	5.78	5.78	5.78	5.78	5.78	5.78	5.78	5.78	5.78	5.78	5.78
2.1	6.78	5.78	5.78	5.78	5.78	5.78	5.78	5.78	5.78	5.78	5.78	5.78	5.78
22.8v	6.78	5.78	5.78	5.78	5.78	5.78	5.78	5.78	5.78	5.78	5.78	5.78	5.78
15.6v	6.78	5.78	5.78	5.78	5.78	5.78	5.78	5.78	5.78	5.78	5.78	5.78	5.78
3.90	6.78	5.78	5.78	5.78	5.78	5.78	5.78	5.78	5.78	5.78	5.78	5.78	5.78
19.0v	6.78	5.78	5.78	5.78	5.78	5.78	5.78	5.78	5.78	5.78	5.78	5.78	5.78

Checked

North

NIAGARA AVE

South

6

check OK 7-25-12 Clough

19.75 19.50 19.22 19.75 19.40 20.00 20.25

19.50 19.50 19.12 19.65 19.30 20.00 20.00  
18.5 18.5 19. 19.

18.90 18.37 19.04 19.57 19.22 18.87 19.40

CABLE

19.25 18.25 18.97 19.50 19.15 18.75 19.75

St.

18.72 18.13 18.90 19.43 19.08 18.63 19.22

18. 18. 18.5 18.5  
19.00 19.00 18.82 19.35 19.00 19.50 19.50

19.25 19.00 18.72 19.25 18.9 19.50 19.75



North

W.L. DE FOE.

South

7

600	26.25	26.00	25.60	26.00	25.60	26.00	26.25
500	25.70	25.45	25.06	25.47	25.08	25.50	25.75
500	25.16	24.91	24.53	24.95	24.56	25.00	25.25
450	24.62	24.37	24.00	24.43	24.04	24.50	24.75
400	24.08	23.83	23.47	23.91	23.53	24.00	24.25
350	23.54	23.29	22.94	23.39	23.01	23.50	23.75
300	22.99	22.74	22.40	22.87	22.49	23.00	23.25
250	22.45	22.20	21.87	22.35	21.98	22.50	22.75
200	21.91	21.66	21.34	21.83	21.46	22.00	22.25
150	21.37	21.12	20.81	21.31	20.94	21.50	21.75
100	20.83	20.58	20.28	20.79	20.43	21.00	21.25
50	20.29	20.04	19.75	20.27	19.91	20.50	20.75
10	19.75	19.50	19.22	19.75	19.40	20.00	20.25

E.L. CABLE ST.

1771	24.31	24.31	24.31	24.31	24.31	24.31	24.31
660	24.31	24.31	24.31	24.31	24.31	24.31	24.31
2962	2962	2962	2962	2962	2962	2962	2962
2962	2962	2962	2962	2962	2962	2962	2962
2962	2962	2962	2962	2962	2962	2962	2962

12-20-11  
 2774  
 215  
 4989  
 680  
 389  
 Cals det 5-13-12

1771	1950	1950	1950	1900	1950	1950
631	4.52	4.52	4.52	4.52	4.52	4.52

checked

North

NIAGATA AVE.

South

8

27.25 27.00 26.60 27.00 26.60 27.00 27.25

27.00 27.00 26.40 26.80 26.40 27.00 27.00  
26 26 26 26

26.40 25.75 26.25 26.65 26.25 25.75 26.4

DEFOE

26.50 25.50 26.10 26.50 26.10 25.50 26.50

ST.

25.85 25.25 25.95 26.35 25.95 25.25 25.85

25 25 26.00 26.00 25.80 26.00 26.00 26.00

26.25 26.00 25.60 26.00 25.60 26.00 26.25

Checked OK 6-24-12 Gault

North

W. L. EBETS

South

600 51.25 51.00 50.85 51.50 51.40 52.00 52.25

550 46.52 46.27 46.12 46.77 46.67 47.27 47.52

500 41.85 41.55 41.40 42.05 41.95 42.55 42.80

450 37.08 36.83 36.68 37.33 37.23 37.83 38.08

420 34.15 34.00 33.85 34.60 34.40 35.00 35.25

400 33.91 33.66 33.49 34.14 34.01 34.61 34.86

350 33.08 32.83 32.60 33.24 33.06 33.66 33.91

300 32.24 31.99 31.71 32.35 32.11 32.71 32.96

250 31.41 31.16 30.83 31.46 31.16 31.76 32.01

200 30.58 30.33 29.94 30.57 30.25 30.80 31.05

150 29.74 29.49 29.05 29.67 29.25 29.85 30.10

100 28.91 28.66 28.17 28.78 28.50 28.90 28.15

50 28.08 27.83 27.28 27.89 27.55 27.95 28.20

00 27.25 27.00 26.40 27.00 26.40 27.00 27.25

E. L. DE FOE

NIAGARA AVE.

North

South

52.25 52.00 51.85 52.50 52.40 53.00 53.25

52.00 52.00 51.65 52.30 52.20 53.00 53.00  
 51.00 51.00 52 52

51.40 50.75 51.50 52.15 52.05 51.75 52.40

EBETS

51.50 50.50 51.35 52.00 51.90 51.50 52.50

ST.

50.85 50.25 51.20 51.85 51.75 51.25 51.85

<sup>50</sup> 51.00 <sup>50</sup> 51.00 51.05 51.70 51.60 <sup>51</sup> 52.00 <sup>51</sup> 52.00

51.25 51.00 50.85 51.50 51.40 52.00 52.25

North

W. L. Froude

South

11

135.25	135.00	134.85	135.50	135.40	136.0	136.25
128.32	128.07	127.92	128.57	128.44	129.07	129.32
121.14	121.16	121.01	121.66	121.56	122.16	122.41
114.49	114.24	114.09	114.74	114.64	115.24	115.49
107.57	107.32	107.17	107.82	107.72	108.32	108.57
100.66	100.41	100.26	100.91	100.81	101.41	101.66
93.74	93.49	93.34	93.99	93.89	94.49	94.74
86.83	86.58	86.43	87.08	86.98	87.58	87.83
79.91	79.66	79.51	80.16	80.06	80.66	80.91
72.99	72.74	72.59	73.24	73.14	73.74	73.99
66.08	65.83	65.68	66.33	66.23	66.83	67.08
59.16	58.91	58.76	59.41	59.31	59.91	60.16
52.25	52.00	51.85	52.50	52.40	53.00	53.25

NIAGARA AVE.

South

North  
 136.25 136.00 135.85 136.50 136.40 137.00 137.25

136.0 136.0 135.65 136.30 136.20 137.0 137.0  
 135. 135.0 136.0 136.

135.90 134.75 135.50 136.15 136.05 135.75 136.40

FROUDE

135.50 134.50 135.35 136.00 135.90 135.50 136.50

St.

134.85 134.25 135.20 136.85 136.75 135.25 135.85

134. 134. 135.05 135.70 135.60 136.00 136.00  
 135.0 135.0

135.25 135.00 134.85 135.50 135.40 136.00 136.25

NIAGARA AVE

North

W. L. Guizot St. South

13

100 186.25 186.0 185.85 186.50 186.40 187.00 187.25

150 184.75 184.50 184.35 185.00 184.90 185.50 185.75

200 183.25 183.00 182.85 183.50 183.40 184.00 184.25

250 181.75 181.50 181.35 182.00 181.90 182.50 182.75

300 180.25 180.00 179.85 180.50 180.40 181.00 181.25

350 178.75 178.50 178.35 179.00 178.90 179.50 179.75

400 169.25 169.00 168.85 169.50 169.40 170.00 170.25

450 163.75 163.50 163.35 164.00 163.90 164.50 164.75

500 158.25 158.00 157.85 158.50 158.40 159.00 159.25

550 152.75 152.50 152.35 153.00 152.90 153.50 153.75

600 147.25 147.00 146.85 147.50 147.40 148.00 148.25

650 141.75 141.50 141.35 142.00 141.90 142.50 142.75

700 136.25 136.0 135.85 136.50 136.40 137.00 137.25

E. F. Frode St.





19.0	19.0	22.5	23.0	31.0	32.0	61.0	62.0
Bacon St		Cable St		DeFoe St		Ebers St	
19.0	20.0	22.5	23.0	30.0	31.0	60.0	61.0
420 Ave.				Ave			
21.0	22.0						
338	34.8						
349	35.8						
358	36.8						
365	37.2						
369	37.4						
372	37.5						
371	37.3						
367	36.8						
360	36.0						
35.0	35.0						
		18.0	19.0	22.5	23.0	31.0	32.0
		Bacon St		Cable St		DeFoe St	
		19.0	20.0	22.5	23.0	30.0	31.0

Narragansett

Narragansett

Narragansett

Narragansett

420

100

800

142.0

141.0

Froude St

St

Guizot St

141.0

140.0

202.0

202.0

Ave.

Ave.

106.0

106.0

Narragansett

Narragansett

61.0

62.0

142.0

141.0

Ebers St

St

Froude St

60.0

61.0

141.0

140.0

NATYAGAMISE H AVE.

North

South

W. L. BACON S.

1925	19.00	18.85	19.50	19.40	20.00	20.25	✓
1948	19.23	19.08	19.73	19.63	20.23	20.48	✓
1972	19.47	19.32	19.97	19.87	20.47	20.72	✓
1996	19.71	19.56	20.21	20.11	20.71	20.96	✓
2020	19.95	19.80	20.45	20.35	20.95	21.20	✓
2044	20.19	20.04	20.69	20.59	21.19	21.44	✓
2067	20.42	20.27	20.92	20.82	21.42	21.67	✓
2091	20.66	20.51	21.16	21.06	21.66	21.91	✓
2015	20.90	20.75	21.40	21.30	21.90	22.15	✓
2125	21.00	20.85	21.50	21.40	22.00	22.25	✓
2317	22.92	22.77	23.42	23.32	23.92	24.17	✓
2637	26.12	25.97	26.62	26.52	27.12	27.37	✓
2957	29.32	29.17	29.82	29.72	30.32	30.57	✓
3277	32.52	32.37	33.02	32.92	33.52	33.77	✓
3405	33.80	33.65	34.30	34.20	34.80	35.05	✓
3515	34.90	34.72	35.35	35.20	35.80	36.05	✓
3605	35.80	35.60	36.20	36.00	36.60	36.85	✓
3675	36.50	36.27	36.85	36.60	37.20	37.45	✓
3715	36.90	36.63	37.15	36.80	37.40	37.65	✓
3745	37.20	36.87	37.35	36.90	37.50	37.75	✓
3735	37.10	36.75	37.20	36.70	37.30	37.55	✓
3625	36.70	36.33	36.75	36.20	36.80	37.05	✓
3625	36.00	35.60	36.00	35.60	36.00	36.25	✓
3563	35.38	34.60	35.19	34.7	35.0	35.25	✓
3525	35.00	34.60	35.00	34.60	35.00	35.25	✓

PAC. OCEAN

Bm 1970 Spike NE in Bm  
Bm 3717 R.P.H. 50.5.3 600'

1925	19.00	18.85	19.50	19.40	20.00	20.25	✓
1948	19.23	19.08	19.73	19.63	20.23	20.48	✓
1972	19.47	19.32	19.97	19.87	20.47	20.72	✓
1996	19.71	19.56	20.21	20.11	20.71	20.96	✓
2020	19.95	19.80	20.45	20.35	20.95	21.20	✓
2044	20.19	20.04	20.69	20.59	21.19	21.44	✓
2067	20.42	20.27	20.92	20.82	21.42	21.67	✓
2091	20.66	20.51	21.16	21.06	21.66	21.91	✓
2015	20.90	20.75	21.40	21.30	21.90	22.15	✓
2125	21.00	20.85	21.50	21.40	22.00	22.25	✓
2317	22.92	22.77	23.42	23.32	23.92	24.17	✓
2637	26.12	25.97	26.62	26.52	27.12	27.37	✓
2957	29.32	29.17	29.82	29.72	30.32	30.57	✓
3277	32.52	32.37	33.02	32.92	33.52	33.77	✓
3405	33.80	33.65	34.30	34.20	34.80	35.05	✓
3515	34.90	34.72	35.35	35.20	35.80	36.05	✓
3605	35.80	35.60	36.20	36.00	36.60	36.85	✓
3675	36.50	36.27	36.85	36.60	37.20	37.45	✓
3715	36.90	36.63	37.15	36.80	37.40	37.65	✓
3745	37.20	36.87	37.35	36.90	37.50	37.75	✓
3735	37.10	36.75	37.20	36.70	37.30	37.55	✓
3625	36.70	36.33	36.75	36.20	36.80	37.05	✓
3625	36.00	35.60	36.00	35.60	36.00	36.25	✓
3563	35.38	34.60	35.19	34.7	35.0	35.25	✓
3525	35.00	34.60	35.00	34.60	35.00	35.25	✓

N.

S.

18

18.25 18.00 17.85 18.50 18.40 19.00 19.00

18.00 18.00 17.25 17.50 17.75 19.00 19.10  
 17.00 17.00 18.00 18.00

17.85 18.10 18.22 18.35 18.47 18.60 18.85

BAGON  
 18.50 18.75 18.87 19.00 19.12 19.25 19.50

ST.  
 18.40 18.65 18.77 18.90 19.02 19.15 19.40

18.00 18.10 18.25 18.50 18.75 19.00 19.00  
 19.00 19.00 20.00 20.00

19.25 19.00 18.85 19.50 19.40 20.00 20.25

W.L. Bacon

1970 Bm

5.69  
 23.39

1800 77.85 1830 1840 1900  
 5.89 5.54 4.87 4.99 4.37

1900 1885 1900 1940 1950  
 4.39 4.44 3.87 3.99 3.31

8-21-12 Checked OK. Calamyl

NATTA GATSETH.

N.

W. E. GABLE.

S<sup>1</sup> P<sup>1</sup>

22.75 22.50 22.22 22.75 22.40 23.00 23.75

19.70 Bm St. Bacon

4.98	24.63	24.64	24.68	24.66	24.64	24.64	24.68	24.66	24.64	24.66
4.98	4.8	4.4	4.7	4.7	4.8	4.7	4.8	4.8	4.8	4.7
27.68	19.9	20.0	19.8	19.6	19.6	19.6	20.0	19.7	19.7	19.4
4.17	18.35	19.0	18.6	18.6	18.6	19.0	20.24	19.07	19.25	19.4
10.507	C1.7	C1.0	C.2	C.2		7.1	7.0	7.04	7.4	7.4
6.27	24.64	24.68	24.64	24.64	24.64	24.64	24.64	24.64	24.64	24.64
27.10	4.8	4.7	4.7	4.7	4.7	4.7	4.7	4.7	4.7	4.7
3.50	19.9	19.4	19.7	20.4	20.4	20.6	20.0	20.7	21.0	21.7
10.60 7P	10.9	20.0	19.2	21.2	21.2	21.2	20.87	21.4	21.9	21.4
	7.18	7.0	7.2	7.0	7.0	7.1	7.0	7.3	7.0	7.2
	27.10	27.0	27.0	27.0	27.0	27.0	27.0	27.0	27.0	27.0
	4.8	4.7	4.7	4.7	4.7	4.7	4.7	4.7	4.7	4.7
	2.8	2.4	2.3	2.3	2.3	2.3	2.3	2.3	2.3	2.3
	2.2	2.1	2.2	2.2	2.2	2.2	2.2	2.2	2.2	2.2
	7.2	7.1	7.1	7.1	7.1	7.1	7.1	7.1	7.1	7.1

22.37 22.42 21.85 22.39 22.06 22.66 22.91

22.00 21.75 21.49 22.04 21.73 22.33 22.58

21.62 21.37 21.12 21.68 21.39 21.99 22.24

21.25 21.00 20.76 21.33 21.06 21.66 21.91

20.87 20.62 20.39 20.97 20.73 21.33 21.58

20.50 20.25 20.03 20.62 20.39 20.99 21.24

20.12 19.87 19.67 20.17 20.06 20.66 20.91

19.75 19.50 19.30 19.91 19.73 20.33 20.58

19.37 19.12 18.94 19.56 19.39 19.99 20.24

19.00 18.75 18.57 19.20 19.06 19.66 19.99

18.62 18.37 18.21 18.85 18.73 19.33 19.58

18.25 18.00 17.85 18.50 18.40 19.00 19.25

E. F. BAGOTT.

19.70 Bm	18.00	19.00	18.07	18.03	18.75	19.66	19.12	19.99	19.50	20.33
5.22	6.73	5.92	6.56	5.60	6.18	5.27	5.41	4.94	5.43	4.60
24.93	19.67	20.66	20.25	20.99	20.62	21.03	21.00	21.66	21.52	21.99
4.04	5.06	4.27	4.68	3.94	4.31	3.60	4.24	5.88	5.97	5.32
24.57	21.75	22.33	22.12	22.6	22.50	23.00				
1.77	3.89	5.01	5.22	4.68	4.84	4.24				
27.37										
4.17										
19.70 Bm	18.00	19.00	18.07	18.03	18.75	19.66	19.12	19.99	19.50	20.33
4.27	5.97	4.97	5.97		6.18	5.27	5.41	4.94	5.43	4.60
20.97										
23.81 Bm	4.27	2.75	2.50		all banks in	1-5-12				60.00
3.41	5.20	5.22	4.77							
27.27	Checked	OK			21-6-12					Chas. J. James 4.24

NAYAGANSETH.

North

East

South

2255-43

2250 2220  
4.75 5.25

2275 2240 2300  
4.75 5.05 4.45

22.75 22.50 22.22 22.75 22.40 23.00 23.25

check OK 7-25-12 change

22.50 22.50 21.25 21.75 21.87 23.00 23.00  
21.50 21.50 22.0 22.0

22.10 22.22 22.29 22.35 22.42 22.48 22.60

GABLE

22.50 22.62 22.69 22.75 22.82 22.88 23.00

ST

22.10 22.22 22.29 22.35 22.42 22.48 22.60

21.50 21.50 22.0 22.0  
22.50 22.50 21.62 21.75 21.87 23.00 23.00

22.75 22.50 22.22 22.75 22.40 23.00 23.25

West

15N

W. L. D. E. F. O. E.

S

10 6  
21 8  
31 2

28m 2381 20' 2E 8. cable + New  
" 31.98 20' 2E of Outpost " 21

30.25	30.00	29.85	30.50	30.40	31.00	31.25
29.62	29.37	29.21	29.85	29.73	30.33	30.58
29.00	28.75	28.57	29.20	29.06	29.66	29.91
28.37	28.12	27.94	28.56	28.39	28.99	29.24
27.75	27.50	27.30	27.91	27.73	28.33	28.58
27.12	26.87	26.67	27.27	27.06	27.66	27.91
26.50	26.25	26.06	26.62	26.39	26.99	27.24
25.87	25.62	25.39	25.97	25.73	26.33	26.58
25.25	25.00	24.76	25.33	25.06	25.66	25.91
24.62	24.37	24.12	24.68	24.39	24.99	25.24
24.00	23.75	23.49	24.04	23.73	24.33	24.58
23.37	23.12	22.85	23.39	23.06	23.66	23.91
22.75	22.50	22.22	22.75	22.40	23.00	23.25

F. T. CABLE

236071	2081	2081	2081	2081	2081	2081	2081	2081	2081	2081
721	23	24	25	26	27	28	29	30	31	32
30.81	23.17	23.21	23.25	23.29	23.33	23.37	23.41	23.45	23.49	23.53
27.67	27.25	27.25	27.25	27.25	27.25	27.25	27.25	27.25	27.25	27.25
24.94	24.25	24.25	24.25	24.25	24.25	24.25	24.25	24.25	24.25	24.25
21.99	21.99	21.99	21.99	21.99	21.99	21.99	21.99	21.99	21.99	21.99
31.99	31.99	31.99	31.99	31.99	31.99	31.99	31.99	31.99	31.99	31.99

2381 13m	2250	2300	2312	2366	2325	2433	2437	2499
28.81	6.21	5.81	5.69	5.75	5.06	4.98	4.44	3.52
2081	2500	2521	2562	2633	2605	2699	2687	2766
665	5.41	4.80	4.84	4.73	4.21	3.97	3.59	2.80
30.46	2750	2833	2812	2899	2875	2968	2937	3033
2500	7.03	6.30	6.41	5.94	5.78	4.87	5.16	4.22
27.92	31.98	31.44	30.00	banks all set				6.9
6.61	4.33	5.31	2.31	1-5-12				3.5
31.99	31.99	31.99	31.99	31.99	31.99	31.99	31.99	31.99

Checked OK 2-C-12 Change Date + July

2381  
27.92

31.25 31.00 30.85 31.50 31.40 32.00 32.25

31.00 31.00 30.25 30.50 30.25 32.00 32.00  
29.00 29.00 31.00 31.00

30.40 30.65 30.78 30.90 31.02 31.15 31.40

DE FOE

30.50 30.75 30.88 31.00 31.12 31.25 31.50

St.

29.85 30.10 30.22 30.35 30.48 30.60 30.85

29.00 29.00 30.00 30.00 29.25 29.50 29.75 30.00 30.00  
30.00 30.00 29.25 29.50 29.75 31.00 31.00

30.25 30.00 29.85 30.50 30.40 31.00 31.25

31.98 Bn  
1.83  
36.81

30.00 29.85 30.50 30.40 31.00  
6.81 8.96 6.31 6.41 5.81

31.00 30.85 31.50 31.40 32.00  
5.81 5.96 5.31 5.41 4.81

Checked OK 6-24-12

blough





W. L. EBERTS.

60.25 60.00 59.85 60.50 60.40 61.00 61.25  
 56.75 56.50 56.35 57.00 56.90 57.50 57.75  
 53.25 53.00 52.85 53.50 53.40 54.00 54.25  
 49.75 49.50 49.35 50.00 49.90 50.50 50.75  
 46.25 46.00 45.85 46.50 46.40 47.00 47.25  
 42.75 42.50 42.35 43.00 42.90 43.50 43.75  
 39.25 39.00 38.85 39.50 39.40 40.00 40.25  
 37.91 37.66 37.51 38.16 38.06 38.66 38.91  
 36.58 36.33 36.18 36.83 36.73 37.33 37.58  
 35.24 34.99 34.84 35.49 35.39 35.99 36.24  
 33.91 33.66 33.51 34.16 34.06 34.66 34.91  
 32.58 32.33 32.18 32.83 31.73 33.33 33.58  
 31.25 31.00 30.85 31.50 31.40 32.00 32.25

E. L. DE FOE.

31.96 Bm 4238 4238 4238 4238 4238 4238 4238  
 11.90 88 76 88 76 88 76  
 4238 32.9 30.8 34.8 33.6 34.7 35.7 37.3 37.9  
 2.15 C.1 C.2 34.7 33.9 34.7 35.9 37.5 37.9  
 39.43 TP 7.01 7.03 7.05 7.07 7.09 7.11 7.13 7.15  
 12.95 4238 4238 4238 4238 4238 4238 4238  
 52.38 11 12 13 14 15 16 17 18  
 0.24 37.5 39.5 36.4 41.1 43.5 41.8 44.6  
 51.64 34.5 38.9 39.2 40.5 43.7 42.7 45.8  
 12.42 7.6 Cal 3.88 C.9 7.2 4.5 6.2  
 64.10 L H 5238 5238 5238 5238 5238 5238 5238 5238  
 2.93 8 8 8 8 8 8 8  
 11.13 46.5 46.3 50.5 47.5 50.9 50.9 50.9  
 44 21.5 17.2 18.7 49.7 50.9 53.8 53.8  
 46.3 46.5 48.1 42.5 50.9 53.8 53.8 53.8  
 7.20 7.7 7.7 7.7 7.7 7.7 7.7 7.7  
 31.96 31.96 31.96 31.96 31.96 31.96 31.96 31.96  
 8.44 9.44 8.44 8.44 8.44 8.44 8.44 8.44  
 40.42 37.66 39.00 40.00 42.50 43.00 46.00 47.00 49.50 50.50  
 140.00 5.500 5.500 5.750 5.750 6.000 6.000 6.100  
 1.16 9.50 8.50 8.50 8.50 8.50 8.50 8.50  
 5.16 21.03 22.00 40.00 39.00 40.00 Break  
 10.96 7.97 8.97 7.97 1.97 1.97 1.97 1.97  
 12.54 5.40 6.00 6.10  
 31.96 31.96 31.96 31.96 31.96 31.96 31.96 31.96  
 8.44 36.80 36.80 36.80 36.80 36.80 36.80 36.80  
 40.97 49.13 0.28 49.85 12.76 61.61  
 39.00 38.85 39.50 39.40 40.00 40.00  
 10.13 10.28 9.63 9.73 9.73  
 60.00 59.85 60.00 60.40 61.00  
 1.51 1.76 1.11 1.21 1.61

Chitral OK

2-6-12 Bombay D... ..

31.96 20.25 20.25 20.25 20.25 20.25 20.25 20.25  
41.13 20.50 20.50 20.50 20.50 20.50 20.50 20.50

24

## East

61.25 61.00 60.85 61.50 61.40 62.00 62.25

61.00 61.00 60.65 61.30 61.20 62.00 62.00  
61.00 61.00

60.90 59.75 60.50 61.15 61.05 60.75 61.90

## EGETS.

60.50 59.50 60.35 61.00 60.90 60.50 61.50

## St.

57.85 59.25 60.20 60.85 60.75 60.25 60.85

59.00 59.00 60.05 60.70 60.60 60.00 60.00  
60.00 60.00

60.25 60.00 59.85 60.50 60.40 61.00 61.25

## West

600	141.25	141.00	140.4	140.5	139.85	140.00	140.25
550	135.41	135.16	134.6	134.75	134.12	134.53	134.58
500	129.57	129.32	128.8	129.00	128.42	128.66	128.91
450	123.74	123.49	123.00	123.25	122.71	123.0	123.25
400	117.91	117.66	117.20	117.50	117.01	117.33	117.58
350	112.08	111.83	111.40	111.75	111.30	111.66	111.91
300	106.25	106.00	105.60	106.0	105.6	106.00	106.25
	98.75	98.50	98.12	98.58	98.23	98.65	98.90
	91.25	91.00	90.66	91.16	90.86	91.32	91.57
	83.75	83.50	83.20	83.75	83.49	83.99	84.24
	76.25	76.0	75.75	76.33	76.13	76.66	76.91
	68.75	68.50	68.30	68.91	68.76	69.33	69.54
	61.25	61.00	60.85	61.50	61.40	62.00	62.25

Eastline EBERS

East

S

142.25	142.00	141.40	141.5	140.85	141.00	141.25
--------	--------	--------	-------	--------	--------	--------

142.00	142.00	141.20	141.30	140.65	141.00	141.00
141.00	141.00				140.00	140.00

141.40	140.75	141.05	141.5	140.50	139.75	140.40
--------	--------	--------	-------	--------	--------	--------

Froude St.

141.50	140.50	140.9	141.00	140.85	139.5	140.50
--------	--------	-------	--------	--------	-------	--------

140.85	140.25	140.75	140.85	140.20	139.25	139.85
--------	--------	--------	--------	--------	--------	--------

140.00	140.00				139.00	139.00
141.00	141.00	140.00	140.7	140.05	140.00	140.00

141.25	141.00	140.40	140.5	139.85	140.00	140.25
--------	--------	--------	-------	--------	--------	--------

West

NARRAGANSETT ST.

W. L. GUIZOT ST.

28

202.25 202.00 201.6 202.00 201.60 202.00 202.25

197.25 197.00 196.57 196.94 196.51 196.88 197.13

192.25 192.00 191.55 191.90 191.45 191.80 192.05

187.25 187.00 186.54 186.96 186.37 186.72 186.97

182.25 182.00 181.52 181.92 181.33 181.64 181.89

177.25 177.00 176.51 176.78 176.27 176.56 176.81

172.25 172.00 171.49 171.74 171.21 171.48 171.73

167.25 167.00 166.48 166.70 166.15 166.40 166.65

162.25 162.00 161.46 161.66 161.09 161.32 161.57

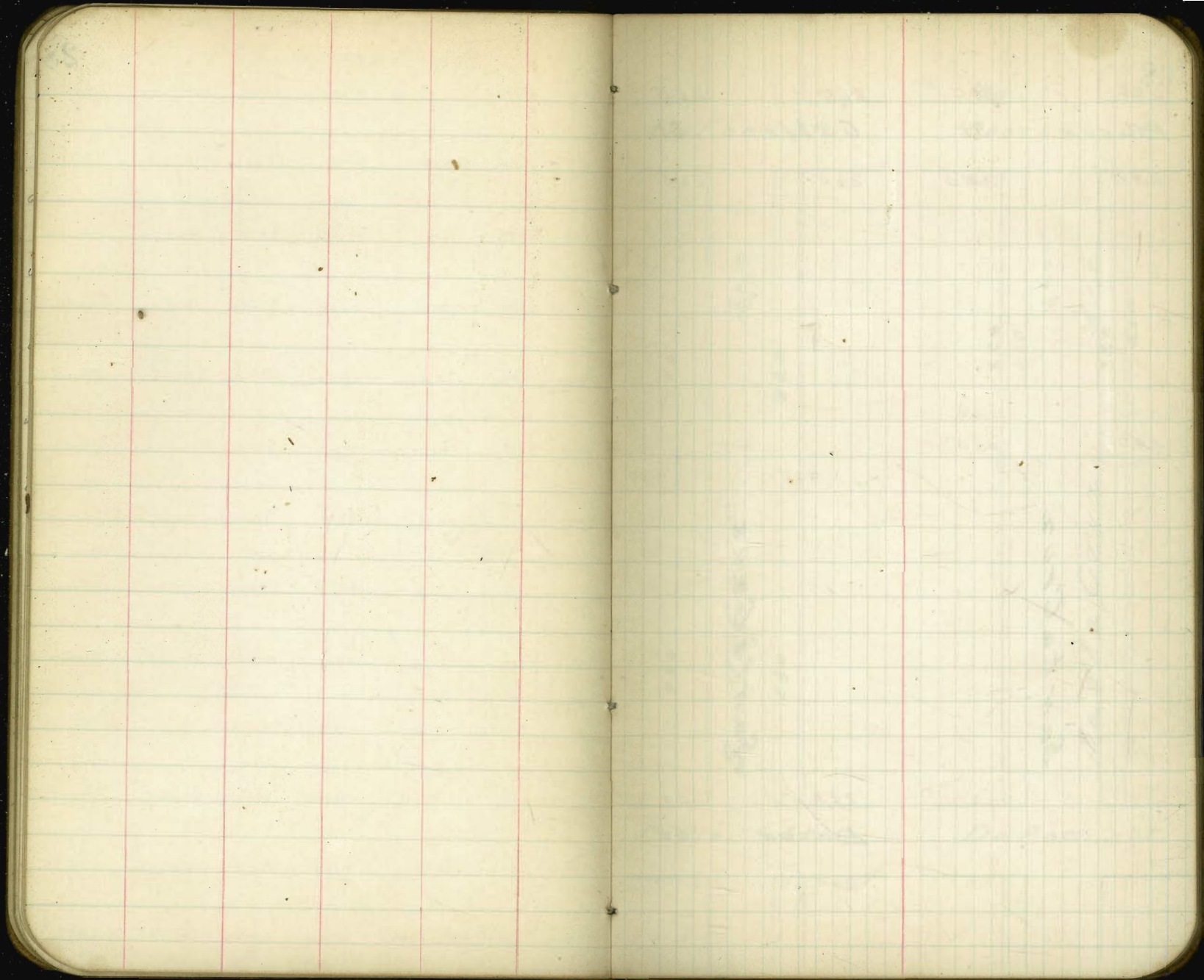
157.25 157.00 156.45 156.62 156.03 156.24 156.49

152.25 152.00 151.43 151.58 150.97 151.16 151.41

147.25 147.00 146.41 146.54 145.91 146.08 146.33

142.25 142.00 141.40 141.50 140.85 141.00 141.25

E. L. FROUDE ST.



29.0 30.0 26.0 26.5 53.0 54.0 96.0 97.0

Bacon St Cable St DeFoe St Ebers St

29.0 30.0 26.0 26.5 52.0 53.0 95.0 96.0

RR  
Ave.

RR

Ave

320'

Ave.

320'

260'

Ave.

260'

44.0 Beach Line 45.0

Santa Cruz

Santa Cruz

Santa Cruz

Santa Cruz

35.5

36.0

86.0

87.0

29.0 30.0 26.0 26.5 53.0 54.0  
Bacon St Cable St DeFoe St

29.0 30.0 26.0 26.5 52.0 53.0



1490	150.0		
Froude St		Guizot St	

1480	149.0	217.0	218.0
------	-------	-------	-------

Ave.

Ave.

Santa Cruz

Santa Cruz

96.0	97.0	149.0	150.0
------	------	-------	-------

Ebers St		Froude St	
----------	--	-----------	--

95.0	96.0	148.0	149.0
------	------	-------	-------

# W. U. Bacon

31

005 29.25 29.00 28.85 29.50 29.40 30.00 30.25

050 32.59 32.35 32.19 32.44 32.74 33.34 33.59

100 35.94 35.69 35.54 36.19 36.09 36.69 36.94

150 39.29 39.04 38.89 39.54 39.44 40.04 40.29

200 42.64 42.39 42.24 42.89 42.79 43.39 43.64

250 44.25 44.0 43.85 44.50 44.40 45.00 45.25

East line

29.25 29.00 28.81 29.50 29.40 30.00 30.25

29.00 29.00 28.25 28.50 28.75 30.0 30.0

29.00 29.00 28.25 28.50 28.75 30.0 30.0

## Bacon

## st

28.60 28.85 28.97 29.10 29.22 29.35 29.60

29.00 29.25 29.37 29.50 29.62 29.75 30.00

28.60 28.85 28.97 29.10 29.22 29.35 29.60

28.00 28.00 28.25 28.50 28.75 29.00 29.00

29.00 29.00 28.25 28.50 28.75 30.00 30.00

29.25 29.0 28.85 29.50 29.40 30.0 30.25

Bm 29.40 Sp. L. W.

### 29.30 H SE Bacon + S B.

10.70	10.00	7.80	4.00	4.00	4.00	4.25	4.65	4.65	4.90	4.90
40.00	4.3	1.1	8.7	5.3	1.1	7.4	4.25	4.25	4.3	4.25
6.5	3.5	2.8	3.7	3.7	3.8	4.1	4.1	4.3	4.3	4.2
7.0	3.5	2.8	3.1	3.1	2.5	3.6	3.6	3.5	3.5	3.2
49.65	4.9	4.6	4.6	4.6	6.9	6.9	6.9	6.9	6.9	6.9
4.5	4.5	4.5	4.5	4.5	4.5	4.5	4.5	4.5	4.5	4.5
4.5	4.5	4.5	4.5	4.5	4.5	4.5	4.5	4.5	4.5	4.5
4.5	4.5	4.5	4.5	4.5	4.5	4.5	4.5	4.5	4.5	4.5
20.7	20.7	20.7	20.7	20.7	20.7	20.7	20.7	20.7	20.7	20.7

29.70	29.00	30.00	32.35	33.34	35.69	36.69	39.04	40.14
1.67	11.17	10.17	7.8	6.83	4.48	3.78	8.40	7.10
4.0	4.2	4.3	4.4	4.4	4.4	4.4	4.4	4.4
3.3	4.7	3.7	3.7	3.7	3.7	3.7	3.7	3.7
36.94	10.2	29.40	29.2	4.84				
10.2	48.1	48.1	48.1	48.1	48.1	48.1	48.1	48.1

Checked OK  
5-15-12

No intersection

Bacon St + Santa Cruz  
Intersection  
8-21-12 Checked OK

N. W.L. Cable S.

26.25	26.10	25.72	26.15	25.90	26.50	26.75
26.37	26.12	25.85	26.38	26.04	26.64	26.89
26.50	26.25	25.98	26.52	26.19	26.79	27.04
26.62	26.37	26.11	26.65	26.33	26.93	27.18
26.75	26.50	26.24	26.79	26.48	27.08	27.33
26.87	26.62	26.37	26.92	26.62	27.22	27.47
27.00	26.75	26.50	27.06	26.77	27.37	27.62
27.12	26.87	26.63	27.19	26.92	27.52	27.77
27.25	27.00	26.76	27.33	27.06	27.66	27.91
27.37	27.12	26.89	27.46	27.21	27.81	28.06
27.50	27.25	27.02	27.60	27.35	27.95	28.20
27.62	27.37	27.15	27.73	27.50	28.10	28.35
27.75	27.50	27.28	27.87	27.64	28.24	28.49
27.87	27.62	27.41	28.01	27.79	28.39	28.64
28.00	27.75	27.54	28.14	27.94	28.54	28.79
28.12	27.87	27.67	28.28	28.08	28.68	28.93
28.25	28.00	27.80	28.41	28.23	28.83	29.08
28.37	28.12	27.93	28.55	28.37	28.97	29.22
28.50	28.25	28.06	28.68	28.52	29.12	29.37
28.62	28.37	28.19	28.82	28.67	29.27	29.52
28.75	28.50	28.32	28.95	28.81	29.41	29.66
28.87	28.62	28.45	29.09	28.96	29.56	29.81
29.00	28.75	28.58	29.22	29.10	29.70	29.95
29.12	28.87	28.71	29.36	29.25	29.85	30.10

29.25 29.00 28.85 29.50 29.40 30.00 30.25  
E.L. Bacon St.

✓ Bm 29.40

3200	3200	3200	3200	3200	3200	3200
29.66	29.75	29.84	29.93	30.02	30.11	30.20
234	300	300	300	300	300	300
00	00	00	00	00	00	00
3200	3200	3200	3200	3200	3200	3200
264	264	264	264	264	264	264
277	277	277	277	277	277	277
262	262	262	262	262	262	262
217	217	217	217	217	217	217
3249	3249	3249	3249	3249	3249	3249
265	265	265	265	265	265	265
277	277	277	277	277	277	277
262	262	262	262	262	262	262
217	217	217	217	217	217	217

11-8-11-047 8942

3389	2900	3000	2675	2970	2850	2900	2820	2900
264	4.89	239	0.14	4.19	0.39	4.48	5.64	4.77
277	277	277	277	277	277	277	277	277
262	262	262	262	262	262	262	262	262
217	217	217	217	217	217	217	217	217
3004	265	4.29	3004	265	4.29	3004	265	4.29
2940	279	3.24	2940	279	3.24	2940	279	3.24
2940	4.67	3.01	2940	4.67	3.01	2940	4.67	3.01
24.01	5.01	4.01	24.01	5.01	4.01	24.01	5.01	4.01

STR 3-9-12

Checked OK 3-18-12

26.25 26.00 25.73 26.25 25.90 26.50 26.75

3004  
1.85  
31.89

2600 2650  
5.39

26.00 26.00 25.73 25.25 25.38 26.50 26.50  
25.00 25.00 25.50 25.50

3004  
1.95  
30.99

2600 2650  
4.99

Check OK 7-25-12 blouy

25.60 25.73 25.79 25.85 25.91 25.97 26.10

Cable

26.00 26.13 26.19 26.25 26.31 26.37 26.50

St.

25.60 25.73 25.79 25.85 25.91 25.97 26.10

25.00 25.00 25.13 25.25 25.38 25.50 25.50  
26.00 26.00 25.13 25.25 25.38 26.50 26.50

26.25 26.00 25.72 26.25 25.90 26.50 26.75

Westline De Foe

Table with columns of numerical data for Westline De Foe, ranging from 800 to 200. Includes handwritten corrections and checkmarks.

Fastline Cable

V Br 3004 50' S.E. Santa Cruz ... Br 5306 SPK Pk

34

Table with columns of numerical data for Fastline Cable, including handwritten calculations and notes like 'Checked OR 5-15-12'.

East line

5325 5300 5285 5350 5340 5400 5425

5300 5300 5225 5250 5275 5400 5400  
5200 5200 5250 5300 5300 5300

De Foe

5240 5265 5277 5290 5303 5315 5340

st

5250 5275 5287 5300 5312 5325 5350

5185 5210 5223 5236 5248 5260 5285

5100 5100 5200 5200 5125 5150 5175 5200 5200  
5200 5200 5200 5300 5300

5225 5200 5185 5250 5240 5300 5325

West line

checked 6-24-12 blought

not down at baseline  
Track 3' up at E End





















24.0

25.0

24.5

25.0

36.0

37.0

71.0

Bacon

St

Cable

St

DeFoe

St

Ebers

St

24.0

25.0

24.5

25.0

35.0

36.0

70.0

71.0

St.

St.

200'

200'

300'

300'

26.0

27.0

26.0

26.5

Del Monte

Del Monte

750'

420'

24.0

25.0

24.5

25.0

36.0

37.0

Bacon

St

Cable

St

DeFoe

St

46.0

47.0

24.0

25.0

24.5

25.0

35.0

36.0

Beach



138.0	138.0		
Froude St		Guizot St	St
137.0	137.0	211.0	211.0
		30 20 P2	
		Del Monte Ave.	
71.0	72.0	138.0	138.0
Ebers St		Froude St	St
70.0	71.0	137.0	137.0

12.27 man NE Bacon + Neufat  
 6.18  
 14.45  
 2.83  
 15.62 RP 20 SE Mayana  
 16.41  
 81  
 17.64 TP RR  
 9.60  
 27.24  
 7.38  
 19.86 W. L. NE Mayana  
 27.14  
 6.37  
 25.87 SE same place

15.62 RP 20 SW  
 Bacon + Mayana 46  
 19.86 NE low Mayana  
 Bacon  
 25.87 SE low Mayana  
 Bacon + Del Monte

Del Monte St

West line Bacon

S

47

00	24.25	24.0	2385	245	2440	25.0	2525
50	24.75	24.50	2435	25.0	2490	25.5	2575
100	25.25	25.00	2485	25.5	2540	26.0	2625
150	25.75	25.50	2535	26.0	2590	26.5	2675
200	26.25	26.00	2585	26.5	2640	27.0	2725
250	28.47	28.22	2811	28.80	2878	29.38	2963
300	30.69	30.44	3037	31.0	3116	31.76	32.01
350	32.91	32.66	3263	33.40	3354	34.14	34.39
400	35.13	34.88	3487	35.70	3592	36.52	36.77
450	37.35	37.10	3715	38.00	3830	38.90	39.15
500	39.57	39.32	3941	40.30	4068	41.28	41.53
550	41.97	41.54	4167	42.60	4306	43.66	43.91
600	44.01	43.76	4393	44.90	4544	46.04	46.29
620	44.90	44.65	4444	45.83	4640	47.0	47.25
650	46.25	46.0	4585	46.50	4640		

Pacific Ocean

2587	29.2	29.2	2952	29.2	29.2	29.2	29.2	29.2	29.2	29.2
4.2	4.2	4.2	4.2	4.2	4.2	4.2	4.2	4.2	4.2	4.2
25.2	25.2	24.7	25.0	25.1	24.6	24.3	24.1	24.1	24.1	24.1
2.9	2.9	2.9	2.9	2.9	2.9	2.9	2.9	2.9	2.9	2.9
29.2	29.2	29.2	29.2	29.2	29.2	29.2	29.2	29.2	29.2	29.2
4.2	4.2	4.2	4.2	4.2	4.2	4.2	4.2	4.2	4.2	4.2
25.2	25.2	24.7	25.0	25.1	24.6	24.3	24.1	24.1	24.1	24.1
2.9	2.9	2.9	2.9	2.9	2.9	2.9	2.9	2.9	2.9	2.9
29.2	29.2	29.2	29.2	29.2	29.2	29.2	29.2	29.2	29.2	29.2
4.2	4.2	4.2	4.2	4.2	4.2	4.2	4.2	4.2	4.2	4.2
25.2	25.2	24.7	25.0	25.1	24.6	24.3	24.1	24.1	24.1	24.1
2.9	2.9	2.9	2.9	2.9	2.9	2.9	2.9	2.9	2.9	2.9
29.2	29.2	29.2	29.2	29.2	29.2	29.2	29.2	29.2	29.2	29.2
4.2	4.2	4.2	4.2	4.2	4.2	4.2	4.2	4.2	4.2	4.2

2587	29.2	29.2	2952	29.2	29.2	29.2	29.2	29.2	29.2	29.2
4.2	4.2	4.2	4.2	4.2	4.2	4.2	4.2	4.2	4.2	4.2
25.2	25.2	24.7	25.0	25.1	24.6	24.3	24.1	24.1	24.1	24.1
2.9	2.9	2.9	2.9	2.9	2.9	2.9	2.9	2.9	2.9	2.9
29.2	29.2	29.2	29.2	29.2	29.2	29.2	29.2	29.2	29.2	29.2
4.2	4.2	4.2	4.2	4.2	4.2	4.2	4.2	4.2	4.2	4.2
25.2	25.2	24.7	25.0	25.1	24.6	24.3	24.1	24.1	24.1	24.1
2.9	2.9	2.9	2.9	2.9	2.9	2.9	2.9	2.9	2.9	2.9
29.2	29.2	29.2	29.2	29.2	29.2	29.2	29.2	29.2	29.2	29.2
4.2	4.2	4.2	4.2	4.2	4.2	4.2	4.2	4.2	4.2	4.2
25.2	25.2	24.7	25.0	25.1	24.6	24.3	24.1	24.1	24.1	24.1
2.9	2.9	2.9	2.9	2.9	2.9	2.9	2.9	2.9	2.9	2.9
29.2	29.2	29.2	29.2	29.2	29.2	29.2	29.2	29.2	29.2	29.2
4.2	4.2	4.2	4.2	4.2	4.2	4.2	4.2	4.2	4.2	4.2

Checked OK 1-24-12 blanch

N

S

East line

24.95 24.0 23.85 24.50 24.40 25.0 25.25

24.0 24.0 23.25 23.50 23.75 25.0 25.0  
23.0 23.0 24.0 24.0

23.60 23.85 23.98 24.10 24.28 24.35 24.60

24.00 23.75 24.37 24.50 24.63 24.75 25.0

23.60 23.55 23.98 24.10 24.23 24.35 24.60

23.0 23.0 23.25 23.50 23.75 24.0 24.0  
24.0 24.0 25.0 25.0

24.25 24.0 23.85 24.50 24.40 25.0 25.25

West line

Bacott

8-21-12 checked OK always

Del Monte St.  
West line Cable

S

49

600	24.75	24.50	24.23	24.75	24.40	25.0	25.25
550	25.00	24.75	24.44	25.00	24.65	25.25	25.50
500	25.25	25.00	24.73	25.25	24.90	25.50	25.75
450	25.50	25.25	24.98	25.50	25.15	25.75	26.00
400	25.75	25.50	25.23	25.75	25.40	26.0	26.25
350	26.00	25.75	25.48	26.00	25.65	26.25	26.50
300	26.25	26.00	25.75	26.25	25.90	26.50	26.75
250	25.92	25.67	25.42	25.96	25.65	26.25	26.50
200	25.58	25.33	25.10	25.66	25.40	26.00	26.25
150	25.25	25.00	24.79	25.37	25.15	25.75	26.50
100	24.92	24.67	24.47	25.08	24.90	25.50	25.75
50	24.58	24.33	24.16	24.74	24.65	25.25	25.50
00	24.25	24.0	23.85	24.50	24.40	25.0	25.25

East line Bacon

25.87	13.50	13.50	13.50	13.50	13.50	13.50	13.50
29.14	20.40	20.40	20.40	20.40	20.40	20.40	20.40
32.01	26.00	26.00	26.00	26.00	26.00	26.00	26.00
32.59	31.00	31.00	31.00	31.00	31.00	31.00	31.00
35.00	35.00	35.00	35.00	35.00	35.00	35.00	35.00
37.50	40.00	40.00	40.00	40.00	40.00	40.00	40.00
40.00	45.00	45.00	45.00	45.00	45.00	45.00	45.00
42.50	50.00	50.00	50.00	50.00	50.00	50.00	50.00
45.00	55.00	55.00	55.00	55.00	55.00	55.00	55.00
47.50	60.00	60.00	60.00	60.00	60.00	60.00	60.00
50.00	65.00	65.00	65.00	65.00	65.00	65.00	65.00
52.50	70.00	70.00	70.00	70.00	70.00	70.00	70.00
55.00	75.00	75.00	75.00	75.00	75.00	75.00	75.00
57.50	80.00	80.00	80.00	80.00	80.00	80.00	80.00
60.00	85.00	85.00	85.00	85.00	85.00	85.00	85.00
62.50	90.00	90.00	90.00	90.00	90.00	90.00	90.00
65.00	95.00	95.00	95.00	95.00	95.00	95.00	95.00
67.50	100.00	100.00	100.00	100.00	100.00	100.00	100.00
70.00	105.00	105.00	105.00	105.00	105.00	105.00	105.00
72.50	110.00	110.00	110.00	110.00	110.00	110.00	110.00
75.00	115.00	115.00	115.00	115.00	115.00	115.00	115.00
77.50	120.00	120.00	120.00	120.00	120.00	120.00	120.00
80.00	125.00	125.00	125.00	125.00	125.00	125.00	125.00
82.50	130.00	130.00	130.00	130.00	130.00	130.00	130.00
85.00	135.00	135.00	135.00	135.00	135.00	135.00	135.00
87.50	140.00	140.00	140.00	140.00	140.00	140.00	140.00
90.00	145.00	145.00	145.00	145.00	145.00	145.00	145.00
92.50	150.00	150.00	150.00	150.00	150.00	150.00	150.00
95.00	155.00	155.00	155.00	155.00	155.00	155.00	155.00
97.50	160.00	160.00	160.00	160.00	160.00	160.00	160.00
100.00	165.00	165.00	165.00	165.00	165.00	165.00	165.00

Checked OK 1-24-12 Blough D & E

## East line

24.75	24.50	2423	2475	2440	25.0	25.25
-------	-------	------	------	------	------	-------

24.50	24.50	2363	2375	2383	25.0	25.0
22.50	23.50				24.0	24.0

24.10	2423	2429	2435	2442	2448	24.60
-------	------	------	------	------	------	-------

24.50	2463	2469	2475	2481	2487	25.0
-------	------	------	------	------	------	------

## CABLE St.

24.10	2423	2429	2435	2442	2448	24.60
-------	------	------	------	------	------	-------

23.50	23.50	2363	2375	2387	24.0	24.0
24.50	24.50				25.0	25.0

24.75	24.50	2423	2475	2440	25.0	25.25
-------	-------	------	------	------	------	-------

check OK 7-25-12 cloudy

DEL MONTE ST.

West line DeFoe

S

600	35.25	35.0	34.85	35.50	35.40	36.0	36.25
550	34.38	34.3	33.95	34.60	34.48	35.08	35.33
500	33.50	33.25	33.06	33.71	33.57	34.17	34.42
450	32.63	32.38	32.18	32.81	32.65	33.25	33.50
400	31.75	31.50	31.29	31.91	31.73	32.33	32.58
350	30.88	30.63	30.41	31.02	30.82	31.42	31.67
300	30.00	29.75	29.53	30.12	29.90	30.50	30.75
250	29.12	28.87	28.64	29.23	29.98	29.58	29.83
200	28.25	28.00	27.76	28.33	28.07	28.67	28.92
150	27.38	27.13	26.84	27.44	27.15	27.75	28.00
100	26.50	26.25	26.00	26.54	26.23	26.83	27.05
50	25.63	25.38	25.11	25.65	25.32	25.92	26.17
00	24.75	24.50	24.23	24.75	24.40	25.0	25.25

East line Cable

36.73 from Lewisville post

27.90 20' n E both + Delmont

51

27.877A	35.57	35.57	35.57	35.57	35.57	35.57	35.57	35.57	35.57	35.57	35.57	35.57	35.57	35.57	35.57	35.57	35.57	35.57	
35.57	35.57	35.57	35.57	35.57	35.57	35.57	35.57	35.57	35.57	35.57	35.57	35.57	35.57	35.57	35.57	35.57	35.57	35.57	35.57
35.57	35.57	35.57	35.57	35.57	35.57	35.57	35.57	35.57	35.57	35.57	35.57	35.57	35.57	35.57	35.57	35.57	35.57	35.57	35.57

36.73 from	35.00	36.00	34.15	35.84	32.25	34.71	32.38	32.41	31.50	32.00
38.14	31.14	2.14	4.01	3.06	4.89	2.97	5.76	4.89	6.49	5.81
35.47	38.63	31.44	29.75	30.64	28.87	29.58	28.07	28.67	22.13	17.75

36.73 from	35.00	36.00	27.91	24.50	25.00	26.00	26.00	26.00	26.00	26.00
38.14	31.14	2.14	4.01	3.06	4.89	2.97	5.76	4.89	6.49	5.81
35.47	38.63	31.44	29.75	30.64	28.87	29.58	28.07	28.67	22.13	17.75

36.73 from	35.00	36.00	27.91	24.50	25.00	26.00	26.00	26.00	26.00	26.00
38.14	31.14	2.14	4.01	3.06	4.89	2.97	5.76	4.89	6.49	5.81
35.47	38.63	31.44	29.75	30.64	28.87	29.58	28.07	28.67	22.13	17.75

Checked OK 1-24/12 blough DFE  
 Grad. Curb & Pavement

N.

S

East line

36.25	36.0	35.85	36.50	36.40	37.0	37.25
36.00	36.00	35.65	36.30	36.20	37.00	37.00
35.00	35.00				36.00	
35.40	34.75	35.50	36.15	36.05	35.75	36.40
35.50	34.50	35.35	36.00	35.90	35.50	36.50
34.85	34.25	35.20	35.85	35.75	35.25	35.85
34.0	34.00	35.05	35.70	35.60	35.00	35.00
35.0	35.00				36.00	36.00
35.25	34.0	34.85	35.50	35.40	36.00	36.25
	35.0					

DeFoe

St.

West line

Checked OK 6-24-12 blaugh

## Westline Eber

700	70.25	70.00	69.85	70.50	70.40	71.00	71.25
550	67.41	67.16	67.01	67.66	67.56	68.16	68.41
500	64.58	64.33	64.18	64.83	64.73	65.33	65.58
450	61.75	61.50	61.35	62.00	61.90	62.50	62.75
400	58.92	58.67	58.51	59.16	59.06	59.66	59.91
350	56.08	55.83	55.68	56.33	56.23	56.83	57.08
300	53.25	53.00	52.85	53.50	53.40	54.00	54.25
250	50.42	50.17	50.02	50.67	50.56	51.17	51.42
200	47.58	47.33	47.18	47.83	47.73	48.33	48.58
150	44.75	44.50	44.35	45.00	44.90	45.50	45.75
100	41.92	41.67	41.52	42.17	42.07	42.67	42.92
50	39.08	38.83	38.68	39.33	39.23	39.83	40.08
00	36.25	36.00	35.85	36.50	36.40	37.00	37.25

## Eastline DeFoe



East line

71.25 71.00 70.55 71.50 71.40 72.00 72.25

71.00 71.00 70.65 71.30 71.20 72.00 72.00  
 70.00 70.00 71.00 71.00

70.40 69.75 70.50 71.15 71.05 70.75 71.40

EBERS

70.50 69.50 70.35 71.00 70.90 70.50 71.50

ST.

69.85 69.25 70.20 70.85 70.75 70.25 70.85

69.00 69.00 70.05 70.70 70.60 70.00 70.00  
 70.00 70.00 71.00 71.00

70.25 70.00 69.85 70.50 70.40 71.00 71.25

West line

## Westline Froude

600	137.25	137.0	136.60	137.0	136.40	137.0	137.25
575	131.75	131.25	133.83	134.26	133.68	134.28	134.53
550	131.75	131.50	131.09	131.54	130.98	131.57	131.82
525	129.00	128.75	128.85	128.81	128.27	128.86	129.11
500	126.25	126.00	125.61	126.08	125.56	126.16	126.41
475	123.50	123.25	122.87	123.35	122.85	123.45	123.70
450	120.75	120.50	120.13	120.62	120.14	120.74	120.99
425	118.00	117.75	117.39	117.89	117.44	118.03	118.28
400	115.25	115.00	114.65	115.16	114.73	115.33	115.58
375	112.50	112.25	111.91	112.43	112.02	112.62	112.87
350	109.75	109.50	109.17	109.70	109.31	109.91	110.16
325	107.00	106.75	106.43	106.97	106.60	107.20	107.45
300	104.25	104.00	103.69	104.24	103.90	104.49	104.74
275	101.50	101.25	100.95	101.52	101.19	101.79	102.04
250	98.75	98.50	98.21	98.79	98.48	99.08	99.33
225	96.00	95.75	95.47	96.06	95.77	96.37	96.62
200	93.25	93.00	92.73	93.33	93.06	93.66	93.91
175	90.50	90.25	89.99	90.60	90.36	90.95	91.20
150	87.75	87.50	87.25	87.87	87.65	88.25	88.50
125	85.00	84.75	84.51	85.15	84.94	85.54	85.79
100	82.25	82.00	81.77	82.42	82.23	82.83	83.08
75	79.50	79.25	79.03	79.69	79.52	80.12	80.37
50	76.75	76.50	76.29	76.96	76.82	77.42	77.67
25	74.00	73.75	73.59	74.23	74.11	74.71	74.96
00	71.25	71.00	70.85	71.50	71.40	72.00	72.25

East line Ebers

East line

S

56

138.25 138.00 137.60 138.00 137.60 138.00 138.25

138.00 138.00 137.40 137.80 137.40 138.00 138.00  
137.00 137.00

137.40 136.75 137.25 137.65 137.25 136.75 137.40

Froude

137.50 136.50 137.10 137.50 137.10 136.50 137.50

St

136.85 136.25 136.95 137.35 136.95 136.25 136.85

136.00 136.00 136.40 137.20 136.80 136.00 136.00  
137.00 137.00

137.25 137.00 136.60 137.00 136.60 137.00 137.25

West line

## West line Guizot

600	211.25	211.00	210.60	211.00	210.60	211.00	211.25
575	208.22	207.97	207.55	207.97	207.55	207.97	208.52
550	205.19	204.94	204.51	204.94	204.51	204.94	
525	202.14	201.89	201.47	201.89	201.47	201.89	
500	199.10	198.85	198.43	198.85	198.43	198.85	
475	196.06	195.81	195.39	195.81	195.39	195.81	
450	193.02	192.77	192.35	192.77	192.35	192.77	
425		189.73	189.31	189.73	189.31	189.73	
400		186.68	186.26	186.68	186.27	186.68	
375		183.64	183.22	183.64	183.22	183.64	
350		180.60	180.18	180.60	180.18	180.60	
325		177.56	177.14	177.56	177.14	177.56	
300		174.52	174.01	174.52	174.01	174.52	
275		171.48	171.06	171.48	171.06	171.48	
250		168.43	168.02	168.43	168.02	168.43	
225		165.39	164.97	165.39	164.97	165.39	
200		162.35	161.93	162.35	161.93	162.35	
175		159.31	158.89	159.31	158.89	159.31	
150		156.27	155.85	156.27	155.85	156.27	
125		153.23	152.81	153.23	152.81	153.23	
100		150.17	149.77	150.17	149.77	150.17	
75		147.12	146.73	147.12	146.73	147.12	
50		144.08	143.68	144.08	143.68	144.08	
25		141.04	140.64	141.04	140.64	141.04	
00	138.25	138.00	137.60	138.00	137.60	138.00	138.25

East line Froude



275 <del>28.5</del>	28.5	51.0	50.0	106.0	106.0	168.0	59 178.0
Cable	St	DeFoe	St	Ebers	St	Froude	St.
275	<del>27.8</del> 28.5	50.0	49.0	105.0	105.0	167.0	169.0
100'		260'		94.0	93.0		
290	31.0	34.0	34.0	84.0	83.0		
100'							
370	39.0 20 20 ally						
150'							
45.0	47.0						
50'		27.5 <del>28.5</del>	28.5	51.0	50.0	106.0	106.0
25.5	47.5						
	Balm	Cable	St	DeFoe	St	Ebers	St
		27.5	<del>27.5</del> 28.5	50.0	49.0	105.0	105.0

Ave.

Pacific  
(Caronado)

Ave.

Pacific

Guizot St

224.0

226.0

Pd
   
20 30

Ave.

Pacific

168.0

170.0

Froude St.

167.0

169.0

N

Pacific Arc

S.

H.T. Cable

27.75 27.50 27.10 28.50 27.10 28.50 28.75

28.00 27.75 27.43 27.91 27.65 28.92 29.17

28.25 28.00 27.76 28.33 28.20 29.33 29.58

28.50 28.25 28.19 28.74 28.75 29.75 30.00

28.75 28.50 28.43 29.16 29.30 30.17 30.42

29.00 28.75 28.76 29.58 29.55 30.88 30.83

29.25 29.00 29.10 30.00 30.40 31.00 31.25

33.25 33.00 33.10 34.00 34.40 35.00 35.25

37.25 37.00 37.10 38.00 38.40 39.00 39.25

39.91 39.66 39.76 40.66 41.06 41.66 41.91

42.58 42.33 42.43 43.33 43.73 44.33 44.58

45.25 45.00 45.10 46.00 46.40 47.00 47.25

45.75 45.50 45.60 46.50 46.90 47.05 47.75

E.T. Bacon St.

Bm 2837 10. NE Gold & H...

47.35 47.35 47.35 61

28.52	33.79	33.79	33.79	33.79	33.79	33.79	33.79	33.79	33.79
5.25	4.8	4.6	4.4	4.2	4.0	3.8	3.6	3.4	3.2
33.79	29.0	19.2	29.4	28.6	28.16	29.0	29.2	28.7	28.7
2.37	28.0	29.2	29.2	28.2	28.5	2.0	2.0	2.4	2.4
31.47	28.0	29.2	29.2	28.2	28.5	2.0	2.0	2.4	2.4
12.24	33.79	33.79	33.79	33.79	33.79	43.81	43.81	43.81	43.81
43.81	3.8	3.8	3.8	3.8	3.8	3.8	3.8	3.8	3.8
7.0	30.8	31.8	31.8	29.8	31.2	35.2	35.2	35.2	35.2
43.01	2.3	2.8	2.6	2.8	2.2	0.4	0.4	0.4	0.4
7.4	43.81	43.81	43.81	50.42	50.42	50.42	50.42	50.42	50.42
50.42	5.0	4.0	4.23	4.8	3.1	3.5	3.9	3.9	3.9
2.27	38.9	40.9	42.3	45.6	47.3	48.0	48.0	48.0	48.0
47.35	28.5	28.5	28.5	28.5	28.5	28.5	28.5	28.5	28.5
	21.1	21.1	21.1	21.1	21.1	21.1	21.1	21.1	21.1

Bm 505C In the Bay Ball

30.04	27.50	28.50	27.71	28.92	28.60	29.33	28.25	29.51	29.51
4.55	7.09	6.49	6.84	5.67	6.59	5.26	6.34	5.84	5.84
34.29	28.50	28.71	28.75	28.59	29.00	31.00	33.00	35.00	35.00
0.48	6.09	4.40	5.84	4.01	5.00	3.20	11.00	9.00	9.00
10.25	59.66	41.66	42.33	40.33	40.33	40.33	45.00	47.00	47.00
44.51	4.70	4.70	2.03	4.85	4.18	2.8	3.68	3.68	3.68
2.00									
44.36									
6.80									
47.18									
30.04	29.00	31.00	47.00	45.00	45.00	45.00	47.00	47.00	47.00
4.24	1.86	2.86	2.87	4.87	4.87	4.87	4.87	4.87	4.87
34.28									
1.81									
32.47									
8.39									
40.86									
3.84									
37.00									
18.87									
42.17									

Checked OK 5-15-11



Pacific Arc

X.E

Cable

W.S.

28.75 28.50 28.10 28.50 28.10 28.50 28.75

28.50 28.50 27.90 28.30 27.90 28.50 28.50  
27.5 27.5 27.5 27.5

27.90 27.25 27.75 28.15 27.75 27.25 27.90

Cable

28.00 27.00 27.60 28.00 27.60 27.00 28.00

S.T.

27.85 26.75 27.45 27.85 27.45 26.75 27.85

26.5 26.5 26.5 26.5  
27.50 27.50 27.30 27.70 27.30 27.50 27.50

27.75 27.50 27.10 27.50 27.10 27.50 27.75

62

3704 50' SE Salsburg + bottle  
4.71  
34.11 28.50 27.50  
5.61 6.61

check OK 7-15-12 blough



N.  
58

Pacific Ave.

S.

Checked OK 6-24-12 Clough

51.25 51.00 50.40 50.50 49.85 50.00 50.25

51.00 51.00 50.20 50.30 49.65 50.00 50.00  
50.00 50.10 49.0 49.0

50.40 49.75 50.05 50.15 49.50 48.75 49.40

DeFoe

50.50 49.50 49.90 50.00 49.35 48.50 49.50

St.

49.85 49.25 49.75 49.85 49.20 49.25 48.85

49.0 49.00 49.60 49.70 49.05 49.00 49.00  
50.00 50.00

50.25 50.00 49.40 49.50 48.85 49.00 49.25

# Lowell St., Roseville.

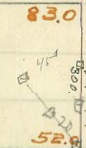
Pueblo line

112.0	70.	112.0
84.0	70.	84.0
83.0	70.	82.0
52.8	70.	53.0
51.0	70.	52.0
27.0	70.	27.0
26.0	70.	26.0
16.5	70.	17.0
15.5	70.	16.0
8.0	70.	9.0

Lowell

Street

X see book 439.  
18 walks  
quarters



2837 20 20 n n w Energy  
1067 70 70 Post Roseville

0 770.18  
101 67.54



35 43 43  
6/1  
80  
150  
40  
100  
50

South

North

W. line														
Rosecrans	8.25	8.00	7.85	8.50	8.40	9.00	9.25	+1.3	+0.4					
50 W	9.50	9.25	9.08	9.71	9.57	10.17	10.44	+1.1	+0.6					
100	10.75	10.50	10.31	10.94	10.73	11.33	11.58	+1.0	+0.6					
150	12.00	11.75	11.54	12.13	11.90	12.50	12.75	+0.8	+0.5					
200	13.25	13.00	12.77	13.33	13.07	13.67	13.94	+0.4	+0.8					
250	14.50	14.25	14.00	14.54	14.23	14.83	15.08	+0.7	+0.6					
300 = EL						15.42								
Locust St	15.75	15.50	15.23	15.75	15.40	16.00	16.25	-0.3	+0.5					
EL Locust	15.75	15.50	15.23	15.75	15.40	16.00	16.25							
E curb	15.50	15.50	15.37	15.89	15.54	16.00	16.00							
E 1/2	15.35	14.75	15.55	16.07	15.74	15.25	15.85							
Center	16.00	15.00	15.73	16.25	15.90	15.50	16.50							
W 1/2	15.90	15.25	15.91	16.43	16.08	15.75	16.40							
W curb	15.50	15.50	16.09	16.61	16.26	16.00	16.00							
W.L. Locust	16.75	16.50	16.23	16.75	16.40	17.00	17.25							
W.L. Locust	16.75	16.50	16.23	16.75	16.40	17.00	17.25							
50 W	18.33	18.08	17.79	18.29	17.93	18.50	18.75	0.0	+0.3					
100	19.94	19.67	19.35	19.83	19.47	20.00	20.25	-0.3	-0.6					
150	21.50	21.25	20.94	21.38	21.00	21.50	21.75	-0.4	-0.2					
200	23.08	22.83	22.48	22.94	22.53	23.00	23.25	0.0	-0.3					
250	24.44	24.14	24.04	24.46	24.07	24.50	24.75	+0.2	-0.1					
300 = EL						25.25								
Evergreen	26.25	26.00	25.60	26.00	25.60	26.00	26.25	+0.3	-0.2					

611 Bond	17.35	17.35	17.35	17.35	17.35	17.35	17.35							
1067 7th	8.25	8.25	8.25	8.25	8.25	8.25	8.25							
1672 2nd	8.25	8.25	8.25	8.25	8.25	8.25	8.25							
1067 7th	8.25	8.25	8.25	8.25	8.25	8.25	8.25							
1672 2nd	8.25	8.25	8.25	8.25	8.25	8.25	8.25							
1067 7th	8.25	8.25	8.25	8.25	8.25	8.25	8.25							
1672 2nd	8.25	8.25	8.25	8.25	8.25	8.25	8.25							
1067 7th	8.25	8.25	8.25	8.25	8.25	8.25	8.25							
1672 2nd	8.25	8.25	8.25	8.25	8.25	8.25	8.25							
1067 7th	8.25	8.25	8.25	8.25	8.25	8.25	8.25							
1672 2nd	8.25	8.25	8.25	8.25	8.25	8.25	8.25							
1067 7th	8.25	8.25	8.25	8.25	8.25	8.25	8.25							
1672 2nd	8.25	8.25	8.25	8.25	8.25	8.25	8.25							
1067 7th	8.25	8.25	8.25	8.25	8.25	8.25	8.25							
1672 2nd	8.25	8.25	8.25	8.25	8.25	8.25	8.25							
1067 7th	8.25	8.25	8.25	8.25	8.25	8.25	8.25							
1672 2nd	8.25	8.25	8.25	8.25	8.25	8.25	8.25							

Checked OK 6-7-14



Lowell ST

South

North

A W.L. Willow	52.25	52.00	51.85	52.50	52.40	53.00	53.25	+5.2	+4.5
A 50' W.	57.42	57.17	56.94	57.50	57.31	57.83	58.08	+6.3	+3.3
A 100	62.58	62.33	62.03	62.50	62.22	62.67	62.92	+5.1	+2.3
C 150	67.75	67.50	67.13	67.50	67.13	67.50	67.75	+5.0	+2.2
200	72.92	72.67	72.22	72.50	72.03	72.33	72.58	+4.9	+2.2
250	78.08	77.83	77.31	77.50	76.94	77.17	77.42	+3.2	+1.7
W 300 = E.L. Plum.	83.25	83.00	82.60	82.50	81.85	82.00	82.25	+3.4	+0.9
E E.L. Plum	83.25	83.00	82.60	82.50	81.85	82.00	82.25		
E curb	83.00	83.00	82.57	82.71	82.10	82.00	82.00		
E 1/4	82.85	82.25	82.78	82.98	82.41	81.50	82.10		
Center	83.50	82.50	83.00	83.25	82.73	82.00	82.00		
W 1/4	83.40	82.75	83.21	83.52	83.04	82.50	83.40		
W curb	83.00	83.00	83.43	83.79	83.35	83.00	83.00		
W.L. Plum	84.25	84.00	83.60	84.00	83.60	84.00	84.25		
E W.L. Plum	84.25	84.00	83.60	84.00	83.60	84.00	84.25	+7.7	+4.1
A 50' W.	89.18	88.93	88.53	88.93	88.53	89.10	89.18	-7.4	+4.5
A 100	94.10	93.85	93.45	93.85	93.45	94.10	94.10	+6.5	+5.7
C 150	99.03	98.78	98.38	98.78	98.38	99.03	99.03	-17.6	+8.1
203. = Pueblo line	104.25	104.00	103.60	104.00	103.60	104.00	104.25	-17.8	+9.5

55.22 SA - Pole NE wellen 598472 to 2nd of NW William  
94.02 72.20 S of SW Plum

7006 7006 7006 7006 8084 8084 8084 8084

67.7 63.6 67.7 63.6 67.7 63.6 67.7 63.6

58.1 57.2 58.1 57.2 58.1 57.2 58.1 57.2

8084 8084 8084 8084 9236 9236 9236 9236

78.9 82.36 78.9 82.36 78.9 82.36 78.9 82.36

77.4 78.1 77.4 78.1 77.4 78.1 77.4 78.1

104.44 104.44 104.44 104.44 104.44 104.44 104.44 104.44

96.1 93.6 96.1 93.6 96.1 93.6 96.1 93.6

91.2 91.2 91.2 91.2 91.2 91.2 91.2 91.2

1137 1137 1137 1137 1137 1137 1137 1137

8493 8493 8493 8493 8493 8493 8493 8493

57.29 57.29 57.29 57.29 57.29 57.29 57.29 57.29

104.07 104.07 104.07 104.07 104.07 104.07 104.07 104.07

59.86 59.86 59.86 59.86 59.86 59.86 59.86 59.86

70.06 70.06 70.06 70.06 70.06 70.06 70.06 70.06

113.7 113.7 113.7 113.7 113.7 113.7 113.7 113.7

52.00 52.00 52.00 52.00 52.00 52.00 52.00 52.00

67.7 67.7 67.7 67.7 67.7 67.7 67.7 67.7

50.84 50.84 50.84 50.84 50.84 50.84 50.84 50.84

77.92 77.92 77.92 77.92 77.92 77.92 77.92 77.92

72.44 72.44 72.44 72.44 72.44 72.44 72.44 72.44

52.06 52.06 52.06 52.06 52.06 52.06 52.06 52.06

104.07 104.07 104.07 104.07 104.07 104.07 104.07 104.07

94.07 94.07 94.07 94.07 94.07 94.07 94.07 94.07

82.00 82.00 82.00 82.00 82.00 82.00 82.00 82.00

81.33 81.33 81.33 81.33 81.33 81.33 81.33 81.33

8.6 8.6 8.6 8.6 8.6 8.6 8.6 8.6

83.95 83.95 83.95 83.95 83.95 83.95 83.95 83.95

92.07 92.07 92.07 92.07 92.07 92.07 92.07 92.07

113.60 113.60 113.60 113.60 113.60 113.60 113.60 113.60

87.8 87.8 87.8 87.8 87.8 87.8 87.8 87.8

87.64 87.64 87.64 87.64 87.64 87.64 87.64 87.64

104.07 104.07 104.07 104.07 104.07 104.07 104.07 104.07

104.07 104.07 104.07 104.07 104.07 104.07 104.07 104.07

87.8 87.8 87.8 87.8 87.8 87.8 87.8 87.8

Checked OK  
6-7-14

95

71





77

78

87

4



65

76



55

78





#99

25.26  
20.01  
1.24  
0.4  
70.1  
66  
77  
2.39  
2.36  
93  
47  
56  
42  
283

26.0  
2.3  
1.26  
62  
66  
66  
76

TRAVERSE TABLE FOR TRANSIT BOOK.  
From 1° to 90° for a distance of 100.

Degrees.	DEGREES.		½ DEGREE.		¼ DEGREE.		¼ DEGREE.		Degrees.
	Lat.	Dep.	Lat.	Dep.	Lat.	Dep.	Lat.	Dep.	
0			100.00	0.44	100.00	0.87	99.99	1.31	89
1	99.98	1.75	99.98	2.18	99.97	2.62	99.95	3.05	88
2	99.94	3.49	99.92	3.93	99.91	4.36	99.88	4.80	87
3	99.86	5.23	99.84	5.67	99.81	6.10	99.79	6.54	86
4	99.76	6.98	99.73	7.41	99.69	7.85	99.66	8.28	85
5	99.62	8.72	99.58	9.15	99.54	9.58	99.50	10.02	84
6	99.45	10.45	99.41	10.89	99.36	11.32	99.31	11.75	83
7	99.25	12.19	99.20	12.62	99.14	13.05	99.09	13.49	82
8	99.03	13.92	98.97	14.35	98.90	14.78	98.84	15.21	81
9	98.77	15.64	98.70	16.07	98.63	16.50	98.56	16.93	80
10	98.48	17.36	98.40	17.79	98.33	18.22	98.25	18.65	79
11	98.16	19.08	98.08	19.51	97.99	19.94	97.90	20.36	78
12	97.81	20.79	97.72	21.22	97.63	21.64	97.53	22.07	77
13	97.44	22.50	97.34	22.92	97.24	23.34	97.13	23.77	76
14	97.03	24.19	96.92	24.62	96.81	25.04	96.70	25.46	75
15	96.59	25.88	96.48	26.30	96.36	26.72	96.25	27.14	74
16	96.13	27.56	96.00	27.98	95.88	28.40	95.76	28.82	73
17	95.63	29.24	95.50	29.65	95.37	30.07	95.24	30.49	72
18	95.11	30.90	94.97	31.32	94.83	31.73	94.69	32.14	71
19	94.55	32.56	94.41	32.97	94.26	33.38	94.12	33.79	70
20	93.97	34.20	93.82	34.61	93.67	35.02	93.51	35.43	69
21	93.36	35.84	93.20	36.24	93.04	36.65	92.88	37.06	68
22	92.72	37.46	92.55	37.86	92.39	38.27	92.22	38.67	67
23	92.05	39.07	91.88	39.47	91.71	39.87	91.53	40.27	66
24	91.35	40.67	91.18	41.07	91.00	41.47	90.81	41.87	65
25	90.63	42.26	90.45	42.66	90.26	43.05	90.07	43.44	64
26	89.88	43.84	89.69	44.23	89.49	44.62	89.30	45.01	63
27	89.10	45.40	88.90	45.79	88.70	46.17	88.50	46.56	62
28	88.29	46.95	88.09	47.33	87.88	47.72	87.67	48.10	61
29	87.46	48.48	87.25	48.86	87.04	49.24	86.82	49.62	60
30	86.60	50.00	86.38	50.38	86.16	50.75	85.94	51.13	59
31	85.72	51.50	85.49	51.88	85.26	52.25	85.04	52.62	58
32	84.80	52.99	84.57	53.36	84.34	53.73	84.10	54.10	57
33	83.87	54.46	83.63	54.83	83.39	55.19	83.15	55.56	56
34	82.90	55.92	82.66	56.28	82.41	56.64	82.16	57.00	55
35	81.92	57.36	81.66	57.71	81.41	58.07	81.16	58.42	54
36	80.90	58.78	80.64	59.13	80.39	59.48	80.13	59.83	53
37	79.86	60.18	79.60	60.53	79.34	60.88	79.07	61.22	52
38	78.80	61.57	78.53	61.91	78.26	62.25	77.99	62.59	51
39	77.71	62.93	77.44	63.27	77.16	63.61	76.88	63.94	50
40	76.60	64.28	76.32	64.61	76.04	64.94	75.76	65.28	49
41	75.47	65.61	75.18	65.93	74.90	66.26	74.61	66.59	48
42	74.31	66.91	74.02	67.24	73.73	67.56	73.43	67.88	47
43	73.14	68.20	72.84	68.52	72.54	68.84	72.24	69.15	46
44	71.93	69.47	71.63	69.78	71.33	70.09	71.02	70.40	45
45	70.71	70.71							
Degrees.	Dep.	Lat.	Dep.	Lat.	Dep.	Lat.	Dep.	Lat.	Degrees.
	DEGREES.		½ DEGREE.		¼ DEGREE.		¼ DEGREE.		

36.78  
11.86  
48.59  
58.  
48.01  
7.75  
55.76  
7.70  
53.06

9278 26.73  
552 1.12  
27227 58.89  
21.98  
6.91

340

11.210  
84.25  
28. 804

28.46  
571  
31.17  
11.45  
19.72  
1.68  
21.40  
18.00  
73

29) 13 ) 22  
58 ) 24  
50 ) 28 ) 87  
30 ) 28 ) 21  
1.29  
5.16  
5-329  
1.29  
14.58  
88  
7.20  
81.51  
1.29  
79.42