

60

Kansas St. Univ. to Upas	2
Wabash St. 37 th to 38 th	18
Milbrae St. Q st to Wabash	25
Hooper St - Lewis to Broadway	23
Ibis St. Hunter to 250 th No	37
Howard St. Sunset Blvd. to Lynn Con	40
WILHELMY & PINE Sts.	47
HOOKER ST.	54
PINE ST. FORT Stockton to Witherby	57
Ingalls St. Getti to Washington	26
HOOKER ST. Washington - Douglas	62
WILLOW ST. Now WALNUT. ARTIC-TO-INDIA	64
VINE ST. ARTIC-TO-INDIA	66

G60

Published by H. S. CROCKER COMPANY, Stationers, Drawing
Materials, Mathematical Instruments, etc., San Francisco.

TRAVERSE TABLE FOR TRANSIT BOOK.

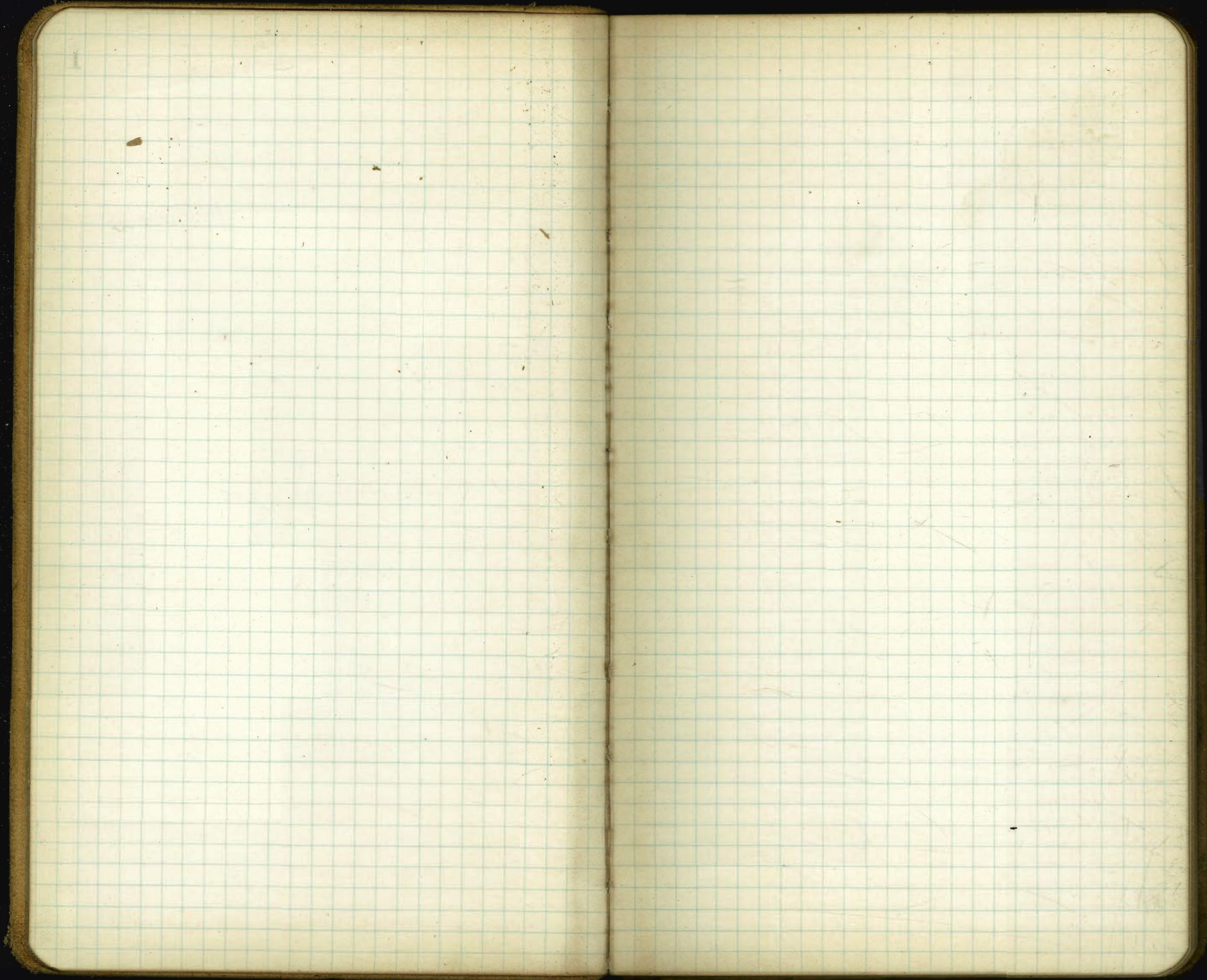
From 1° to 90° for a distance of 100.

Degrees.	DEGREES.		¼ DEGREE.		½ DEGREE.		¾ DEGREE.		Degrees.
	Lat.	Dep.	Lat.	Dep.	Lat.	Dep.	Lat.	Dep.	
0			100.00	0.44	100.00	0.87	99.99	1.31	89
1	99.98	1.75	99.98	2.18	99.97	2.62	99.95	3.05	88
2	99.94	3.49	99.92	3.93	99.91	4.36	99.88	4.80	87
3	99.86	5.23	99.84	5.67	99.81	6.10	99.79	6.54	86
4	99.76	6.98	99.73	7.41	99.69	7.85	99.66	8.28	85
5	99.62	8.72	99.58	9.15	99.54	9.58	99.50	10.02	84
6	99.45	10.45	99.41	10.89	99.36	11.32	99.31	11.75	83
7	99.25	12.19	99.20	12.62	99.14	13.05	99.09	13.49	82
8	99.03	13.92	98.97	14.35	98.90	14.78	98.84	15.21	81
9	98.77	15.64	98.70	16.07	98.63	16.50	98.56	16.93	80
10	98.48	17.36	98.40	17.79	98.33	18.22	98.25	18.65	79
11	98.16	19.08	98.08	19.51	97.99	19.94	97.90	20.36	78
12	97.81	20.79	97.72	21.22	97.63	21.64	97.53	22.07	77
13	97.44	22.50	97.34	22.92	97.24	23.34	97.13	23.77	76
14	97.03	24.19	96.92	24.62	96.81	25.04	96.70	25.46	75
15	96.59	25.88	96.48	26.30	96.36	26.72	96.25	27.14	74
16	96.13	27.56	96.00	27.98	95.88	28.40	95.76	28.52	73
17	95.63	29.24	95.50	29.65	95.37	30.07	95.24	30.49	72
18	95.11	30.90	94.97	31.32	94.83	31.73	94.69	32.14	71
19	94.55	32.56	94.41	32.97	94.26	33.38	94.12	33.79	70
20	93.97	34.20	93.82	34.61	93.67	35.02	93.51	35.43	69
21	93.36	35.84	93.20	36.24	93.04	36.65	92.88	37.06	68
22	92.72	37.46	92.55	37.86	92.39	38.27	92.22	38.67	67
23	92.05	39.07	91.88	39.47	91.71	39.87	91.53	40.27	66
24	91.35	40.67	91.18	41.07	91.00	41.47	90.81	41.87	65
25	90.63	42.26	90.45	42.66	90.26	43.05	90.07	43.44	64
26	89.88	43.84	89.69	44.23	89.49	44.62	89.30	45.01	63
27	89.10	45.40	88.90	45.79	88.70	46.17	88.50	46.56	62
28	88.29	46.95	88.09	47.33	87.88	47.72	87.67	48.10	61
29	87.46	48.48	87.25	48.86	87.04	49.24	86.82	49.62	60
30	86.60	50.00	86.38	50.38	86.16	50.75	85.94	51.13	59
31	85.72	51.50	85.49	51.88	85.26	52.25	85.04	52.62	58
32	84.80	52.99	84.57	53.36	84.34	53.73	84.10	54.10	57
33	83.87	54.46	83.63	54.83	83.39	55.19	83.15	55.56	56
34	82.90	55.92	82.66	56.28	82.41	56.64	82.16	57.00	55
35	81.92	57.36	81.66	57.71	81.41	58.07	81.16	58.42	54
36	80.90	58.78	80.64	59.13	80.39	59.48	80.13	59.83	53
37	79.86	60.18	79.60	60.53	79.34	60.88	79.07	61.22	52
38	78.80	61.57	78.53	61.91	78.26	62.25	77.99	62.59	51
39	77.71	62.93	77.44	63.27	77.16	63.61	76.88	63.94	50
40	76.60	64.28	76.32	64.61	76.04	64.94	75.76	65.28	49
41	75.47	65.61	75.18	65.93	74.90	66.26	74.61	66.59	48
42	74.31	66.91	74.02	67.24	73.73	67.56	73.43	67.88	47
43	73.14	68.20	72.84	68.52	72.54	68.84	72.24	69.15	46
44	71.93	69.47	71.63	69.78	71.33	70.09	71.02	70.40	45
45	70.71	70.71							
Degrees.	Dep.	Lat.	Dep.	Lat.	Dep.	Lat.	Dep.	Lat.	Degrees.
Degrees.	DEGREES.		¼ DEGREE.		½ DEGREE.		¾ DEGREE.		Degrees.

MICROFILMED
APR 6 1965

FROM
Loring's Book Store





Univ.	Ave.	Gunn	St	Dwight St	Myrtle St	
353.35 353.3	353.76 254.01	343.0	343.0 343.25	336.0 336.25	329.0 329.25	328.5 328.75
352.67 352.72	352.80 353.05		342.67 342.72	335.72 335.67	328.75 328.50	328.0 328.15
351.78 351.53	351.84 352.09		341.30 341.58	335.28 335.33		327.0 327.5
350.90 350.65	350.98 351.13		342.00 342.15	335.25 335.00		327.0 327.25
350.01 349.76	349.93 350.17		341.67 341.92	334.92 334.67		326.0 326.75
349.13 348.88	348.96 349.21		341.33 341.58	334.58 334.33		326.0 326.25
348.25 348.0	348.0 348.25	341.0	341.0 341.25	334.0 334.25	326.0 326.25	325.5 325.75
Wightman St	Landis St	Capps St	Upais St			
347.25 347.0	347.0 347.25	340.0 340.25	340.0 340.25	333.5 333.75	333.5 333.75	
346.75 346.50		339.75 339.50		333.17 332.72	332.84 333.09	
346.25 346.0		339.25 339.00		332.67 332.32	332.17 332.42	
345.75 345.50		338.75 338.50		332.40 331.75	331.50 331.75	
345.25 345.0		338.25 338.00		331.91 331.16	330.84 331.09	
344.75 344.50		337.75 337.50		330.83 330.58	330.17 330.42	
344.25 344.0	344.0 344.25	337.0 337.25	337.0 337.25	330.0 330.25	329.5 329.75	
Gunn St	Dwight St	Myrtle St				

St.

St.

Kansas

Kansas

35443 SP... UNIVERSITY.

0.17	355.30	355.30	355.30	355.30	355.30	355.30	355.30	355.30	355.30	50.61	50.61
355.30M	53.05	53.05	51.72	51.13	50.01	49.21	48.25	47.25	47.25	43.00	43.00
347.55	1.75	2.25	3.52	4.17	5.19	6.09	7.05	7.25	7.25	7.25	7.25
350.61	0.0	+1.19	-0.9	+0.7	-0.7	+1.7	-0.4	+0.6	+0.6	347.55	347.55
	355.30	355.30	355.30	355.30	355.30	355.30	355.30	355.30	355.30	347.55	347.55
	57.01	52.67	52.09	50.70	50.17	49.13	48.25	47.25	47.25	347.55	347.55
	1.19	2.63	3.21	4.40	5.13	6.17	7.05	8.05	8.05	350.61	350.61
	0.0	+2.43	2.11	5.20	5.13	6.77	7.05	8.15	8.15	347.55	347.55
			+1.1	-0.8	0.0	-0.6	0.0	-0.1	-0.1		

350.61M

50.61	50.61	50.61	50.61	50.61	50.61	50.61	50.61	50.61	50.61	347.55	347.55
2.227.0	46.25	46.25	45.75	45.25	44.75	44.25	43.25	42.25	42.25	347.55	347.55
347.55	3.6W	4.36E	4.6W	5.36E	5.92W	6.56E	7.36W	7.36W	7.36W	347.55	347.55
347.62	2.96	3.86	5.16	4.66	5.76	6.46	7.36	7.36	7.36	347.55	347.55
	-0.1	+0.5	-0.3	+0.7	+0.1	-0.1	-0.5	+0.3	+0.3		
	3.6E	4.36W	4.56E	5.36W	5.92E	6.36W	7.36E	7.36E	7.36E		
	3.16	4.96	4.76	5.86	6.46	6.66	7.16	7.57	7.57		
	+0.7	-0.6	+0.1	-0.5	-0.6	-0.3	+0.2	+0.1	+0.1		

347.55M

47.62	47.62	47.62	47.62	47.62	47.62	47.62	47.62	47.62	47.62	47.62	47.62
347.55	42.55	42.55	41.92	41.52	41.25	41.25	41.25	41.25	41.25	41.25	41.25
347.55	5.04W	5.76E	5.90W	6.04E	6.37W	6.37W	6.37W	6.37W	6.37W	6.37W	6.37W
347.55	5.04	5.17	5.00	5.84	5.27	5.27	5.27	5.27	5.27	5.27	5.27
347.55	0.0	+0.2	+0.4	+0.2	+0.6	+0.6	+0.3	+0.5	+0.6	+0.9	+0.9
347.55	5.04E	5.37W	5.70E	6.04W	6.37E	6.37E	6.37E	6.37E	6.37E	6.37E	6.37E
347.55	5.22	5.37	5.20	5.74	5.87	5.87	5.87	5.87	5.87	5.87	5.87
347.55	0.3	0.0	+0.4	+0.1	+0.5	0.0	+0.5	+1.5	+0.5	+0.8	+1.0
347.55	39.66	39.66	39.66	39.66	39.66	39.66	39.66	39.66	39.66	39.66	39.66
347.55	35.00	35.00	34.72	34.52	34.25	34.25	34.25	34.25	34.25	34.25	34.25
347.55	4.08W	4.41E	4.74W	5.08E	5.41W	5.41W	5.41W	5.41W	5.41W	5.41W	5.41W
347.55	4.35	5.01	4.84	5.38	6.25	6.25	6.25	6.25	6.25	6.25	6.25
347.55	-0.3	-0.6	-0.1	-0.3	-0.8	-0.4	-1.0	+0.9	-0.9	+0.7	-0.9
347.55	4.08E	4.41W	4.74E	5.08W	5.41E	5.41E	5.41E	5.41E	5.41E	5.41E	5.41E
347.55	3.45	5.21	5.24	6.45	6.31	6.31	6.31	6.31	6.31	6.31	6.31
347.55	+0.4	+0.6	-0.8	-0.5	-1.4	-0.9	-0.5	-0.5	-0.5	-0.5	-0.5
347.55	33.66	33.66	33.66	33.66	33.66	33.66	33.66	33.66	33.66	33.66	33.66
347.55	30.87	30.87	30.87	30.87	30.87	30.87	30.87	30.87	30.87	30.87	30.87
347.55	3.0E	3.0E	3.0E	3.0E	3.0E	3.0E	3.0E	3.0E	3.0E	3.0E	3.0E
347.55	29.25	29.25	29.25	29.25	29.25	29.25	29.25	29.25	29.25	29.25	29.25
347.55	5.6W	6.15	7.15	7.15	8.15	8.15	8.15	8.15	8.15	8.15	8.15
347.55	2.25	5.25	6.35	7.25	8.15	8.15	8.15	8.15	8.15	8.15	8.15
347.55	+2.4	+0.3	+0.8	-0.8	0.0	-0.1	+0.5	+0.5	+0.5	+0.5	+0.5
347.55	35.40	35.40	35.40	35.40	35.40	35.40	35.40	35.40	35.40	35.40	35.40
347.55	30.25	29.75	29.75	29.75	29.75	29.75	29.75	29.75	29.75	29.75	29.75
347.55	5.15	6.65	6.65	7.65	8.65	8.65	8.65	8.65	8.65	8.65	8.65
347.55	3.25	5.25	7.15	7.25	8.25	8.25	8.25	8.25	8.25	8.25	8.25
347.55	+0.2	+1.1	-0.5	+0.4	-0.6	-0.1	+0.1	+0.1	+0.1	+0.1	+0.1

6/11
 // cut 3 fill drunk-le-Eccano, Fickman

Kansas St.

West

East

So. L. Myrtle St

000 329.25 329.00 328.40 328.75 328.22 328.50 328.75

329.00 328.75 328.15 328.50 327.97 328.25 328.50

328.75 328.50 327.90 328.25 327.72 328.00 328.25

328.50 328.25 327.65 328.00 327.47 327.75 328.00

200 328.25 328.00 327.40 327.75 327.22 327.50 327.75

bv

328.00 327.75 327.15 327.50 326.97 327.25 327.50

327.75 327.50 326.90 327.25 326.72 327.00 327.25

327.50 327.25 326.65 327.00 326.47 326.75 327.00

100 327.25 327.00 326.40 326.75 326.22 326.50 326.75

63

75 327.00 326.75 326.15 326.50 325.97 326.25 326.50

50 326.75 326.50 325.90 326.25 325.72 326.00 326.25

25 326.50 326.25 325.65 326.00 325.47 325.75 326.00

6v

00 326.25 326.00 325.40 325.75 325.22 325.50 325.75

N.L. Upas

St.

329.25	329.00	328.40	328.75	328.22	328.50	328.75
34.19	34.19	34.19	34.19	34.19	34.19	34.19
29.75	29.75	29.75	29.75	29.75	29.75	29.75
5.44	5.44	6.44	6.44	7.44	7.44	8.44
5.69	5.69	6.69	6.69	7.69	7.69	8.69

curk 8 000
 Hunt a
 Elwyns: 4
 Nehmer.

333.70	337.00	337.00	337.00	337.00	337.00	337.00	337.00
29.25	28.25	28.25	28.25	27.25	27.25	26.25	26.25
7.45	5.45	5.45	5.45	6.45	6.45	7.45	7.45
4.70	5.70	5.70	5.70	6.70	6.70	7.70	7.70

326.75	290	282	287.5	282	285	285	274	282.5	277.2	280
5.6	7.75	8.31	8.03	8.5	8.5	8.5	8.22	8.22	8.47	8.72
328.22	280	274	277.5	272.2	275	275	269	272.5	267.2	270
331.72	272	282	297	280	272	272	282	287	280	292
	270	262	267.5	262	265	265	259	262.5	257.2	260
	272	282	297	280	272	272	282	287	280	292
	268	252	257.5	252	255	255	249	252.5	247.2	250
	272	282	297	280	272	272	282	287	280	292

324.53	290	284	287.5	282	285	285	274	282.5	277.2	280
6.2	5.0	5.6	5.28	5.81	5.81	5.81	5.5	5.5	5.78	6.03
327.77	280	274	277.5	272.2	275	275	269	272.5	267.2	270
331.68	272	282	297	280	272	272	282	287	280	292
	270	262	267.5	262	265	265	259	262.5	257.2	260
	272	282	297	280	272	272	282	287	280	292
	268	252	257.5	252	255	255	249	252.5	247.2	250
	272	282	297	280	272	272	282	287	280	292

8-15-11 checked OK Blough Pennant & Jy

West

East

2878.41 289. 290 2885 285 2885 295 294 2872 2923
 7.38 7.77 8.28 7.73 7.28 7.58 8.26 7.53

330.25 330.00 329.40 329.75 329.22 329.50 329.75

324.040 2950 2850 2880 2925 2872 2800
 4.53 5.22 5.12 4.78 5.31 4.03

330.00 330.00 329.22 329.57 329.04 329.50 329.50

8-15-11 Check OK Great Center OK

329.40 328.75 329.66 329.41 328.88 328.25 328.90

Myrtle

329.50 328.50 328.90 329.25 328.72 328.00 329.00

U.S.
Sf.

328.85 328.25 328.74 329.09 328.56 327.75 328.35

329.00 329.00 328.58 328.93 328.40 328.50 328.50

329.75 329.00 328.40 328.75 328.22 328.50 328.75

West

East

So. Live Gapps St.

333.75 333.50 333.10 333.50 333.10 333.50 333.75

333.45 333.20 332.79 333.18 332.78 333.16 333.41

333.16 332.91 332.48 332.87 332.46 332.83 333.08

332.87 332.62 332.17 332.56 332.13 332.49 332.74

332.58 332.33 331.86 332.25 331.81 332.16 332.41

332.29 332.04 331.55 331.93 331.48 331.83 332.08

331.99 331.74 331.24 331.62 331.16 331.49 331.74

331.70 331.45 330.94 331.31 330.84 331.16 331.41

331.41 331.16 330.63 331.00 330.51 330.83 331.08

331.12 330.87 330.32 330.68 330.19 330.49 330.74

330.83 330.58 330.01 330.37 329.86 330.16 330.41

330.54 330.29 329.70 330.06 329.54 329.83 330.08

330.25 330.00 329.40 329.75 329.22 329.50 329.75

N. I. Myrtle St

325.47	38.57	38.57	38.57	38.57	38.57	34.19	curbed crop
7.73	33.70	33.63	32.53	31.74	31.21	30.25	
330.89	4.72	5.47	5.89	6.83	7.14	8.16	6/8
339.194	5.07	5.74	6.49	7.08	7.41	8.41	11
	38.57	38.57	38.57	38.57	38.57	34.19	
	33.16	32.41	31.99	31.05	30.83	29.75	
	5.41	6.14	6.58	7.49	7.89	8.94	
	5.66	6.41	6.83	7.74	7.99	8.69	
		X		X			

338.64	38.64	38.64	38.64	38.64	38.64	33.70	33.70
7.27	33.75	33.16	32.41	31.99	31.05	30.83	29.75
331.37	4.89	5.48	6.23	6.65	7.56	2.87	3.95
2.33	5.14	5.73	6.48	6.90	7.81	3.12	4.20
333.70		38.64	38.64	38.64	38.64	33.70	33.70
		33.05	32.53	31.74	31.41	30.41	29.25
		5.56	6.06	6.90	7.23	3.29	3.45
		5.81	6.31	7.15	7.45	3.54	3.70

336.78	38.5	38.5	38.5	38.5	38.5	32.33	32.33	32.33	32.33	32.33	32.33	32.33	32.33
	325	325	325	325	325	325	325	325	325	325	325	325	325
	368	368	368	368	368	368	368	368	368	368	368	368	368
	3174	3124	3162	3116	3149	3126	3060	310	3051	3053			
	504	554	516	512	529	502	615	578	627	575			
	3058	300	3027	2956	3016	300	294	2975	2922	295			
	620	178	671	622	652	695	739	723	756	728			

336.74	38.5	38.5	38.5	38.5	38.5	32.33	32.33	32.33	32.33	32.33	32.33	32.33	32.33
	318	318	318	318	318	318	318	318	318	318	318	318	318
	335.95	6.44	6.84	7.03	7.04	7.00	7.98	7.11					
	331.09	7.61	7.48	7.49	8.13	7.78	8.20	8.70	8.02	8.78	8.43		
	334.03	314	3063	3100	3051	3083	3054	3001	3037	2956	3016		
		157	240	305	372	310	345	401	316	4.17	3.87		
		120	2940	2975	2922	2950							
		403	4.63	6.28	6.81	5.13							

8-15-11 checked OK (laugh) Pomeroy & Co

KANSAS St.

West

East

334.25 334.00 333.60 334.00 333.60 334.00 334.25

334.00 334.00 333.51 333.91 333.51 334.00 334.00
333.00 333.00

3 3340 332.87 333.43 333.83 333.43 332.87 33340

bs Gapps

333.75 332.75 333.35 333.75 333.35 332.75 333.75

St.

333.22 332.63 333.27 333.67 333.27 332.63 333.22

333.50 ^{332.5} 333.50 333.19 333.59 333.19 ^{332.50} 333.52 333.50

333.75 333.50 333.10 333.50 333.10 333.50 333.75

333.50
 332.75
 336.75 - 336.76 1271 35 low Capps - 30 C
 3367841 $\frac{339}{3.87}$ 3375 3322 335 3335
333 353 328 343

33362 T&E Park 3371 3375 3375 3374 3374 3375
339.49 337 333 333

all stakes 7/31 Hatch Moore Hill

8-15-11 Check OK

Kansas St

West

East

So. Line Dwight St

336.25 336.00 335.60 336.00 335.60 336.00 336.25

G. V. O.

336.08 335.83 335.43 335.83 335.43 335.83 336.08

335.91 335.66 335.26 335.66 335.26 335.66 335.91

335.74 335.49 335.09 335.49 335.09 335.49 335.74

335.58 335.33 334.93 335.33 334.93 335.33 335.58

335.41 335.16 334.76 335.16 334.76 335.16 335.41

335.24 334.99 334.59 334.99 334.59 334.99 335.24

335.08 334.83 334.43 334.83 334.43 334.83 335.08

334.91 334.66 334.26 334.66 334.26 334.66 334.91

334.74 334.49 334.09 334.49 334.09 334.49 334.74

334.58 334.33 333.93 334.33 333.93 334.33 334.58

334.41 334.16 333.76 334.16 333.76 334.16 334.41

334.25 334.00 333.60 334.00 333.60 334.00 334.25

N. L. Capps St

336.76 B. 1.81
 338.57 M. 32.57 32.57 32.57 32.57 32.57 32.57
 332.78 32.25 34.58 34.91 35.24 35.58 35.91 36.25
 335.25 4.32 3.79 3.66 3.33 3.79 5.46 8.38
 6.12 4.57 4.24 3.91 3.58 6.04 5.71 2.63
 341.37 M. 0.569
 355.68 M. 2.95
 349.62 M.

344.76 44.76 38.64 38.64 38.64 38.64 38.64
 337.78 35.91 35.58 35.24 34.91 34.58 34.25
 335.29 8.85 3.06 3.40 3.75 4.06 4.39
 2.75 4.10 3.31 3.65 3.98 4.31 4.64
 338.69 M. ✓

340.68 M. 35.64 35.33 35.00 34.66 34.33 34.00
 336.59 4.97 5.30 5.63 5.97 6.30 6.63
 336.75 M. 5.37 5.70 6.03 6.37 6.70 7.03
 1/4 - Cis 7/16, 1/16, 1/8, 1/4, 1/2, 3/4, 1
 315 275 235

339.64 M. 34.60 33.60 34.33 33.97 34.66 34.33 34.00
 336.24 3.24 5.25 5.25 5.25 5.25 5.25
 343.24 2.00 3.60 3.60 3.60 3.60 3.60

341.24 M. 336.09 5.66

8-15-11

Checked OK

Klanik
 Banna
 City Island

Kansas St.

West

East

337.25 337.00 336.60 337.00 336.60 337.00 337.25

337.00 337.00 336.42 336.92 336.42 337.00 337.00

336.40 335.75 336.26 336.66 336.26 335.75 336.40

336.50 335.50 336.10 336.50 336.10 335.50 336.50

St.

335.85 335.25 335.94 336.34 335.94 335.25 335.85

336.00 335.00 335.78 336.18 335.78 335.00 336.00

336.25 336.00 335.60 336.00 335.60 336.00 336.25

336.25

364
9.23

365
9.13

375
9.75

360
9.28

361
9.68

all stakes

7/31

1/2 in
1/2 in
1/2 in

9

336.40

335.75

335.75

336.00

336.00

8-15-11

Charles St.

West

East

So. L. Landis St.

340.25 340.00 339.60 340.00 339.60 340.00 340.25

C3

340.00 339.75 339.35 339.75 339.35 339.75 340.00

339.75 339.50 339.10 339.50 339.10 339.50 339.75

339.50 339.25 338.85 339.25 338.85 339.25 339.50

339.25 339.00 338.60 339.00 338.60 339.00 339.25

339.00 338.75 338.35 338.75 338.35 338.75 339.00

338.75 338.50 338.10 338.50 338.10 338.50 338.75

b4

338.50 338.25 337.85 338.25 337.85 338.25 338.50

338.25 338.00 337.60 338.00 337.60 338.00 338.25

C2

338.00 337.75 337.35 337.75 337.35 337.75 338.00

337.75 337.50 337.10 337.50 337.10 337.50 337.75

337.50 337.25 336.85 337.25 336.85 337.25 337.50

.25

337.25 337.00 336.60 337.00 336.60 337.00 337.25

No. L. Dwight St.

44.63	44.63	44.63	44.63	44.63	44.63	44.63	44.63
6.58	32.25	37.75	38.25	38.75	39.25	39.75	40.25
344.10	7.38	6.82	6.39	5.94	5.38	4.98	4.38
3.24	7.60	7.13	6.60	6.13	5.63	5.13	4.63
347.34							

44.76	44.76	44.76	44.76	44.76	44.76	44.76	44.76
40.25	39.75	39.25	38.75	38.25	37.75	37.25	
7.51	5.01	5.51	6.01	6.51	7.01	7.51	
7.76	5.26	5.76	6.26	6.76	7.26	7.76	
44.76							

344.82	39.5	39.0	38.5	38.0	37.5	37.0	1/2 - C's
6.57	5.77	5.27	4.72	4.22	3.72	3.22	7/10
638.25	5.77	5.27	4.72	4.22	3.72	3.22	7/10
347.25							

34326	370	360	350	340	330	320	310
225	626	616	606	596	586	576	566
340.00	3950	3910	400	3910			
347.00	5.26	4.76	4.26				

340.01 TP	340.00	339.60
4.40	4.41	4.81
344.41		

33624 TP	33700	33660
5.00	4.24	4.24
341.24		

8-17-11 Checked OK blank

Kansas St.

West

East

340824 40.4 40.5 39.8 40.0 40.1
 4.42 4.32 4.97 4.32 4.72

d/stakes

7/31
 Hatch
 Survey
 Hall

341.25 341.00 340.60 341.00 340.60 341.00 341.25

347.00 H.S. 340.50 339.50 340.00

341.00 341.00 340.42 340.82 340.42 341.00 341.00
 340.00 340.00

8-11-11 Checked OK done

340.40 339.75 340.26 340.66 340.26 339.75 340.40

Landis

340.50 339.50 340.10 340.50 340.10 339.50 340.50

St.

339.85 339.25 339.94 340.34 339.94 339.25 339.85

340.00 339.00 339.78 340.18 339.78 339.00 340.00
 340.00 340.00

340.25 340.00 339.60 340.00 339.60 340.00 340.25

KANSAS ST

347.34	41.25	47.34	47.34	47.34	47.34	47.34	47.34	47.34
3.40	41.25	41.53	41.71	42.24	42.52	42.71	43.25	
343.94	6.09	5.76	5.43	5.10	4.76	4.43	4.09	
7.94	6.34	6.01	5.68	5.35	5.01	4.68	4.34	
351.29								

curb
12
curb

West

East

So L.

Gunn St

343.25	343.00	342.60	343.00	342.60	343.00	343.25
343.08	342.83	342.43	342.83	342.43	342.83	343.08
342.91	342.66	342.26	342.66	342.26	342.66	342.91
342.74	342.49	342.09	342.49	342.09	342.49	342.74
342.58	342.33	341.93	342.33	341.93	342.33	342.58
342.41	342.16	341.76	342.16	341.76	342.16	342.41
342.24	341.99	341.59	341.99	341.59	341.99	342.24
342.08	341.83	341.43	341.83	341.43	341.83	342.08
341.91	341.66	341.26	341.66	341.26	341.66	341.91
341.74	341.49	341.09	341.49	341.09	341.49	341.74
341.58	341.33	340.93	341.33	340.93	341.33	341.58
341.41	341.16	340.76	341.16	340.76	341.16	341.41
341.25	341.00	340.60	341.00	340.60	341.00	341.25

349.11	49.11	49.11	49.11	49.11	49.11	49.76	49.76
4.32	43.25	42.91	42.55	42.24	41.91	41.58	41.25
344.12	5.64	5.36	5.05	4.74	4.45	4.18	3.91
344.76	6.11	5.85	5.58	5.31	5.05	4.78	4.51

202
340.12 TP

349.11	49.11	49.11	49.11	49.11	49.11	49.76	49.76
4.32	43.25	42.91	42.55	42.24	41.91	41.58	41.25
344.12	5.64	5.36	5.05	4.74	4.45	4.18	3.91
344.76	6.11	5.85	5.58	5.31	5.05	4.78	4.51

202
340.12 TP

347.00	47.00	47.00	47.00	47.00	47.00	47.00	47.00
347.00	47.00	47.00	47.00	47.00	47.00	47.00	47.00
347.00	47.00	47.00	47.00	47.00	47.00	47.00	47.00

8-11-4 Chuck O'K along

KANSAS ST.

West

East

349.82 Hz 440 484 435 4235 4310 430
 592 642 632 697 672 682
 722

1/2
 1/4
 1/8
 1/16

344.25 344.00 343.60 344.00 343.60 344.00 344.25

345.25 Hz (P)
 610
 349.35 Hz 4350 4250 4310
 585 615

344.00 344.00 343.42 343.84 343.42 344.00 344.00
 348.00

Check OK

343.40 342.75 343.26 343.66 343.26 342.75 343.40

Pub
 GUNN

343.50 342.50 343.10 343.50 343.10 342.50 343.50

cont
 St.

342.85 342.25 342.94 343.34 342.94 342.25 342.85

343.00 342.00 342.78 343.18 342.78 343.00 343.00
 343.00 342.00

343.25 343.00 342.60 343.00 342.60 343.00 343.25

Kansas St.

West.

East

So. L. Wightman St.

347.25 347.00 343.60 347.00 346.60 347.00 347.25

347.00 346.75 346.35 346.75 346.35 346.75 347.00

346.75 346.50 346.10 346.50 346.10 346.50 346.75

346.50 346.25 345.85 346.25 345.85 346.25 346.50

346.25 346.00 345.60 346.00 345.60 346.00 346.25

346.00 345.75 345.35 345.75 345.35 345.75 346.00

345.75 345.50 345.10 345.50 345.10 345.50 345.75

345.50 345.25 344.85 345.25 344.85 345.25 345.50

345.25 345.00 344.60 345.00 344.60 345.00 345.25

345.00 344.75 344.35 344.75 344.35 344.75 345.00

344.75 344.50 344.10 344.50 344.10 344.50 344.75

344.50 344.25 343.85 344.25 343.85 344.25 344.50

344.25 344.00 343.60 344.00 343.60 344.00 344.25

No. L. GUNN St

351.9941,	51.88	51.88	51.28	51.28	51.55	51.85	51.88
	44.75	44.75	45.25	45.25	46.25	46.75	47.25
	7.63	7.13	6.63	6.13	5.63	5.13	4.63
	7.88	7.38	6.88	6.38	5.88	5.38	4.88
	✓	✓	✓	✓	✓	✓	✓

6/107
1/11
Curb & prop.
Kensler
Wrightman
Wrightman 14

349.11	49.11	49.11	49.11	49.11	49.11	49.11	49.11
	46.75	46.25	45.75	45.25	44.75	44.25	
	2.36	2.82	3.26	3.86	4.36	4.86	
	2.61	3.11	3.61	4.11	4.61	5.11	

34876 TP 1/4 E of E. 1/4 on 1/4 Wightman
347.25

349.35	43.5	44.00	43.60	44.50	44.00	44.00	44.60	44.60	45.20	45.00
	4.85	5.25	5.60	6.00	6.40	6.80	7.20	7.60	8.00	8.40
	8.30	8.70	9.10	9.50	9.90	10.30	10.70	11.10	11.50	11.90
	3.55	3.95	4.35	4.75	5.15	5.55	5.95	6.35	6.75	7.15

8-11-11 Check OK. Done

Kansas St.

M.

E.

348.25 348.00 347.60 348.00 347.60 348.00 348.25

348.00 348.00 347.42 347.82 347.42 348.00 348.00
 347.00 347.00

347.40 346.75 347.26 347.66 347.26 346.75 347.40

Wightman

347.50 346.50 347.10 347.50 347.10 346.50 347.50

St.

346.85 346.25 346.94 347.34 346.94 346.25 346.85

347.00 346.00 347.00 346.78 347.18 346.78 347.00 347.00
 346.00 346.00

347.25 347.00 346.60 347.00 346.60 347.00 347.25

354.97 54.97 354.97
 48.25 47.50 6.21 T.P.
 6.72 7.47 348.76 T.P. lath Edge 1/4 Wightman
 6.97 7.8724 348.86
 7.57 349.82 H
 7.47 47.0 47.0 47.0 47.0 47.0
 2.42 2.72 2.52 2.42 2.42 2.97
 8.12
 7.72
 7.97

355.20 HJ 47.50 46.50 47.10
 7.80 8.80 8.20

check OK

Kansas St.

West.

East.

So. L. Wrix Ave.

353.55 353.30 353.01 352.53 353.16 353.76 354.01

353.10 352.85 352.55 353.06 352.69 353.28 353.53

352.66 352.41 352.10 352.60 352.23 352.80 353.05

352.22 351.97 351.65 352.14 351.76 352.32 352.57

351.78 351.53 351.20 351.68 351.30 351.84 352.09

351.34 351.09 350.75 351.22 350.84 351.36 351.61

350.89 350.64 350.30 350.76 350.37 350.88 351.13

350.45 350.20 349.85 350.30 349.91 350.40 350.65

350.01 349.76 349.40 349.84 349.45 349.92 350.17

349.57 349.32 348.95 349.38 348.98 349.44 349.69

349.13 348.88 348.50 348.92 348.52 348.96 349.21

348.69 348.44 348.05 348.46 348.06 348.48 348.73

348.25 348.00 347.60 348.00 347.60 348.00 348.25

No. L. Wightman St

51.89 48.25 3.63 3.88	51.89 49.13 2.75 3.44	51.88 50.17 1.71 1.96	57.35 50.89 6.46 6.71	57.35 52.07 5.26 5.51	57.35 52.66 4.69 4.94	57.35 54.01 3.34 3.59	6 Curbar prop 1/10 1/11 Ernst Tichauer
51.88 1.86 350.02 7.33 357.35	51.89 49.21 2.67 2.92	51.88 50.01 1.87 2.12	57.35 51.13 6.22 6.47	57.35 57.78 5.57 5.92	57.35 53.05 4.30 4.55	57.35 53.55 3.80 4.05	
354.43 0.82 355.25 8.01 347.34 1.87 349.11	50.25 53.05 2.80 2.20 55.25 52.01 3.24	55.25 53.25 2.00 2.45 50.25 52.66 2.59	55.25 51.75 3.47 3.72 50.25 52.02 3.16	55.25 51.13 4.12 4.57 50.25 50.89 4.36	55.25 50.01 5.24 5.49 50.25 50.17 5.08	55.25 49.21 6.04 6.29 50.25 49.13 5.83 6.17	1/10 Curbar prop 1/11 Ernst Tichauer
354.43 0.82 354.97	54.97 50.01 4.96	54.97 52.23 2.74	54.97 50.37 4.60	54.97 49.40 5.57	54.97 48.52 6.45	54.97 47.60 7.37	
54.97 53.53 1.44	54.97 52.60 2.37	54.97 51.63 3.29	54.97 50.76 4.21	54.97 49.84 5.13	54.97 48.92 6.05	54.97 48.00 6.97	
54.97 53.16 1.81	54.97 52.10 2.87	54.97 51.30 3.67	54.97 50.30 4.67	54.97 49.45 5.52	54.97 48.50 6.47	54.97 47.60 7.37	

355.30	48.00	47.60	48.88	48.50	48.92	48.52	48.96
	7.30		6.42	6.50	6.38	6.78	6.34
49.06	49.40	49.84	49.92	50.64	50.70	50.74	50.77
5.74	5.90	5.46	5.38	4.22	5.00	4.34	4.93
5.73	5.20	5.48	5.20	5.44	5.20	5.26	5.20
3.77	4.10	3.22	4.21	2.96	1.89	3.20	2.70
5.30	5.30	5.35	5.16	5.26			
	2.00	2.30	1.77	1.4	1.74		

8-11-11 Checked OK along

North

South

W. I. Milbrae St

275	82.75	82.00	81.40	81.75	81.22	81.50	81.75
250	82.06	81.81	81.21	81.54	81.00	81.27	81.52
225	81.88	81.63	81.03	81.34	80.78	81.04	81.29
200	81.75	81.45	80.85	81.13	80.57	80.81	81.06
175	81.52	81.27	80.67	80.93	80.35	80.59	80.84
150	81.34	81.09	80.49	80.72	80.14	80.36	80.61
125	81.15	80.90	80.30	80.52	79.92	80.13	80.38
100	80.97	80.72	80.12	80.31	79.71	79.90	80.15
75	80.79	80.54	79.94	80.11	79.49	79.68	79.93
50	80.61	80.36	79.76	79.90	79.28	79.45	79.70
25	80.43	80.18	79.58	79.70	79.06	79.22	79.47
				79.545	79.225		
0	80.25	80.00	79.40	79.50	78.85	79.00	79.25

E. L. 37th

St.

Wabash St

North

South

82.25 82.00 81.40 81.75 81.22 81.50 81.75

82.00 82.00 80.88 80.75 80.62 81.50 81.50
 81.00 80.50

81.60 81.50 81.43 81.35 81.27 81.70 81.80

Milbrae

82.00 81.90 81.83 81.75 81.67 81.60 81.50

St.

81.60 81.50 81.43 81.35 81.27 81.20 81.80

82.00 81.00 82.00 80.88 80.75 80.62 81.50 81.50

82.25 82.00 81.40 81.75 81.22 81.50 81.75

South

W.L. 38th St

275 100.95 100.70 100.51 101.12 100.95 101.55 101.80

99.25 99.00 98.77 99.35 99.15 99.72 99.97

97.55 97.30 97.03 97.59 97.36 97.90 98.15

200 95.85 95.60 95.29 95.83 95.56 96.08 96.33

94.15 93.90 93.56 94.07 93.77 94.25 94.50

92.45 92.20 91.82 92.31 91.98 92.43 92.68

90.75 90.50 90.08 90.55 90.18 90.61 90.86

100 89.05 88.80 88.34 88.79 88.39 88.79 89.04

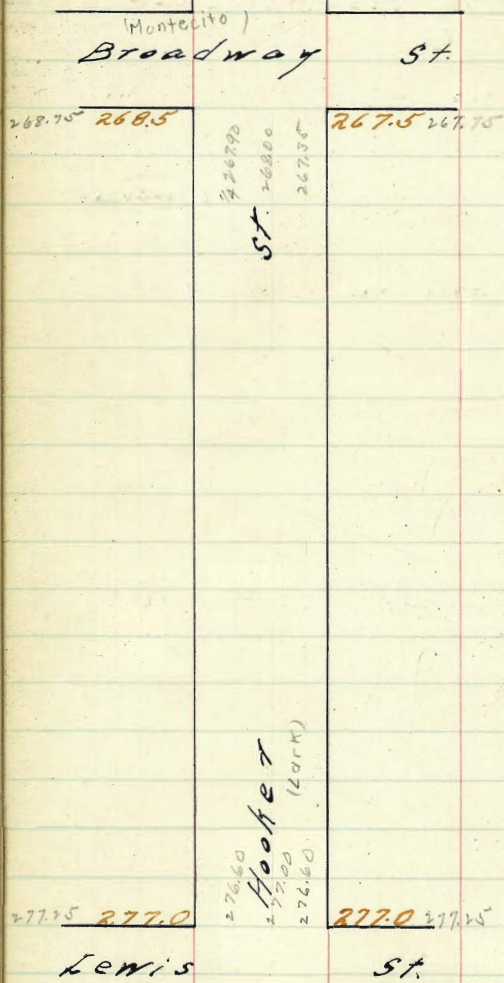
87.35 87.10 86.61 87.03 86.60 86.96 86.21

85.65 85.40 84.87 85.27 84.80 85.14 85.39

83.95 83.70 83.13 83.51 83.01 83.32 83.57

82.25 82.00 81.40 81.75 81.22 81.50 81.75

E.L. Milbrae St



277.08 B.M. 7/11
 279.67 H.I. 268.75
 277.25 10.92
 2.92 11.17
 2.67 11.77
 3.07 11.67
 12.32
 11.72
 12.17

J.M. Lewis & Hooker
 all stakes set by transit

4/20 Simple
 Evans
 Tichenor 23

277.08 = 8 M.
 3.09
 280.17 = H.I.

268.75	268.50	267.90	268.00	267.35	267.50	267.75
11.42	11.67	12.27	12.17	12.82	12.67	12.92
277.25	277.00	276.60	277.00	276.60	277.00	277.25
2.92	3.17	3.57	3.17	3.57	3.17	2.92

277.08
 3.70
 280.78

CHK Evans 7/17/11
 Tichenor

East 1/4 & Gutter High from
 Center high 50 9100 .2 to 3 tenths
 North Lewis

277.08
 3.14
 280.22

277.25	277.00	276.60	277.00	276.60	277.00	277.25
2.97	3.22	3.62	3.22	3.62	3.22	2.97
268.75	268.50	267.90	268.00	267.35	267.50	267.75
11.47	11.72	12.32	12.22	12.87	12.72	12.97

CHK OK. 7/20/11
 Evans
 Tichenor

Hooker St.

24

W

E

So. E. Broadway St

260 268.75 268.50 267.90 268.00 267.35 267.50 267.75

275 269.45 269.20 268.62 268.75 268.12 268.29 268.54

280 270.16 269.91 269.35 269.50 268.89 269.08 269.33

225 270.87 270.62 270.07 270.25 269.66 269.87 270.12

290 271.58 271.33 270.80 271.00 270.43 270.66 270.91

275 272.29 272.04 271.52 271.75 271.20 271.45 271.70

250 272.99 272.74 272.25 272.50 271.97 272.24 272.49

235 273.70 273.45 272.97 273.25 272.74 273.04 273.29

260 274.41 274.16 273.70 274.00 273.51 273.83 274.08

245 275.12 274.87 274.42 274.75 274.28 274.62 274.87

250 275.83 275.58 275.15 275.50 275.05 275.41 275.66

225 276.54 276.29 275.87 276.25 275.82 276.20 276.45

277.25 277.00 276.60 277.00 276.60 277.00 277.25

No. E. Lewis St.

West

East

140	81.75	81.50 2.0908	81.10 2.108	81.50	81.10	81.50 2.068	81.75 2.0626	81.75 2.0452
100	79.65	79.40	79.02	79.43	79.03	79.45	79.70	
	78.35	78.10	77.72	78.13	77.74	78.17	78.42	
	77.04	76.79	76.42	76.84	76.45	76.89	77.14	
	75.73	75.48	75.12	75.55	75.16	75.61	75.86	
100	74.43	74.18	73.82	74.26	73.87	74.33	74.58	
	73.12	72.87	72.52	72.96	72.58	73.06	73.31	
	71.81	71.56	71.22	71.67	71.29	71.78	72.03	
	70.51	70.26	69.92	70.38	70.00	70.50	70.75	
100	69.20	68.95	68.62	69.09	68.71	69.22	69.47	
	67.89	67.64	67.32	67.79	67.42	67.94	68.19	
	66.59	66.34	66.02	66.50	66.13	66.66	66.91	
	65.28	65.03	64.72	65.21	64.84	65.39	65.64	
100	63.97	63.72	63.42	63.92	63.55	64.11	64.36	
75	62.67	62.42	62.12	62.62	62.26	62.83	63.08	
50	61.36	61.11	60.82	61.33	60.97	61.55	61.80	
25	60.05	59.80	59.52	60.04	59.68	60.27	60.52	
00	58.75	58.50	58.22	58.75	58.40	59.00	59.25	

Note no walks

<u>274.0</u>	<u>273.0</u>
GETTI (Fort Stockton)	ST.
<u>274.0</u>	<u>273.0</u>
	ST.
168.5	267.5
	INGALLS
<u>261.0</u>	<u>260.0</u>
WASHINGTON	ST.
<u>260.5</u>	<u>259.5</u>

INGALLS ST.

West	S. Line of Gatti St.				East.		
300	274.25	274.0	273.40	273.50	272.85	273.0	273.25
275	273.33	273.08	272.48	272.58	271.93	272.08	272.33
250	272.42	272.17	271.57	271.67	271.02	271.17	271.42
225	271.50	271.25	270.65	270.75	270.10	270.25	270.50
200	270.58	270.33	269.73	269.83	269.18	269.33	269.58
175	269.67	269.42	268.82	268.92	268.27	268.42	268.67
150	268.75	268.5	267.95	268.0	267.35	267.5	267.75
125	267.50	267.25	266.65	266.75	266.10	266.25	266.50
100	266.25	266.00	265.40	265.50	264.85	265.00	265.25
75	265.00	264.75	264.15	264.25	263.60	263.75	264.00
50	263.75	263.50	262.90	263.00	262.35	262.50	262.75
25	262.50	262.25	261.65	261.75	261.10	261.25	261.50
2	261.35	261.10	260.50	260.60	259.95	260.10	260.35
N.L. 1776	261.25	261.0	260.40	260.50	259.85	260.0	260.25

N.L. 1776 of Washington St.

Note 20' Walks.

275	282.3	282.3	282.3	282.3	282.3	282.3	282.3	282.3	282.3	282.3	282.3	282.3	282.3
270	278.23	278.23	278.23	278.23	278.23	278.23	278.23	278.23	278.23	278.23	278.23	278.23	278.23
265	274.1	274.1	274.1	274.1	274.1	274.1	274.1	274.1	274.1	274.1	274.1	274.1	274.1

SEC. 10 E. INGALLS.

274.24	274.24	274.24	274.24	274.24	274.24	274.24	274.24	274.24	274.24	274.24	274.24	274.24	274.24
270.08	270.08	270.08	270.08	270.08	270.08	270.08	270.08	270.08	270.08	270.08	270.08	270.08	270.08

Change of Grade

272.52	272.52	272.52	272.52	272.52	272.52	272.52	272.52	272.52	272.52	272.52	272.52	272.52	272.52
270.0	270.0	270.0	270.0	270.0	270.0	270.0	270.0	270.0	270.0	270.0	270.0	270.0	270.0

all final stakes from 213

272.52

272.52	272.52	272.52	272.52	272.52	272.52	272.52	272.52	272.52	272.52	272.52	272.52	272.52	272.52
--------	--------	--------	--------	--------	--------	--------	--------	--------	--------	--------	--------	--------	--------

Checked O.K. from 22-13

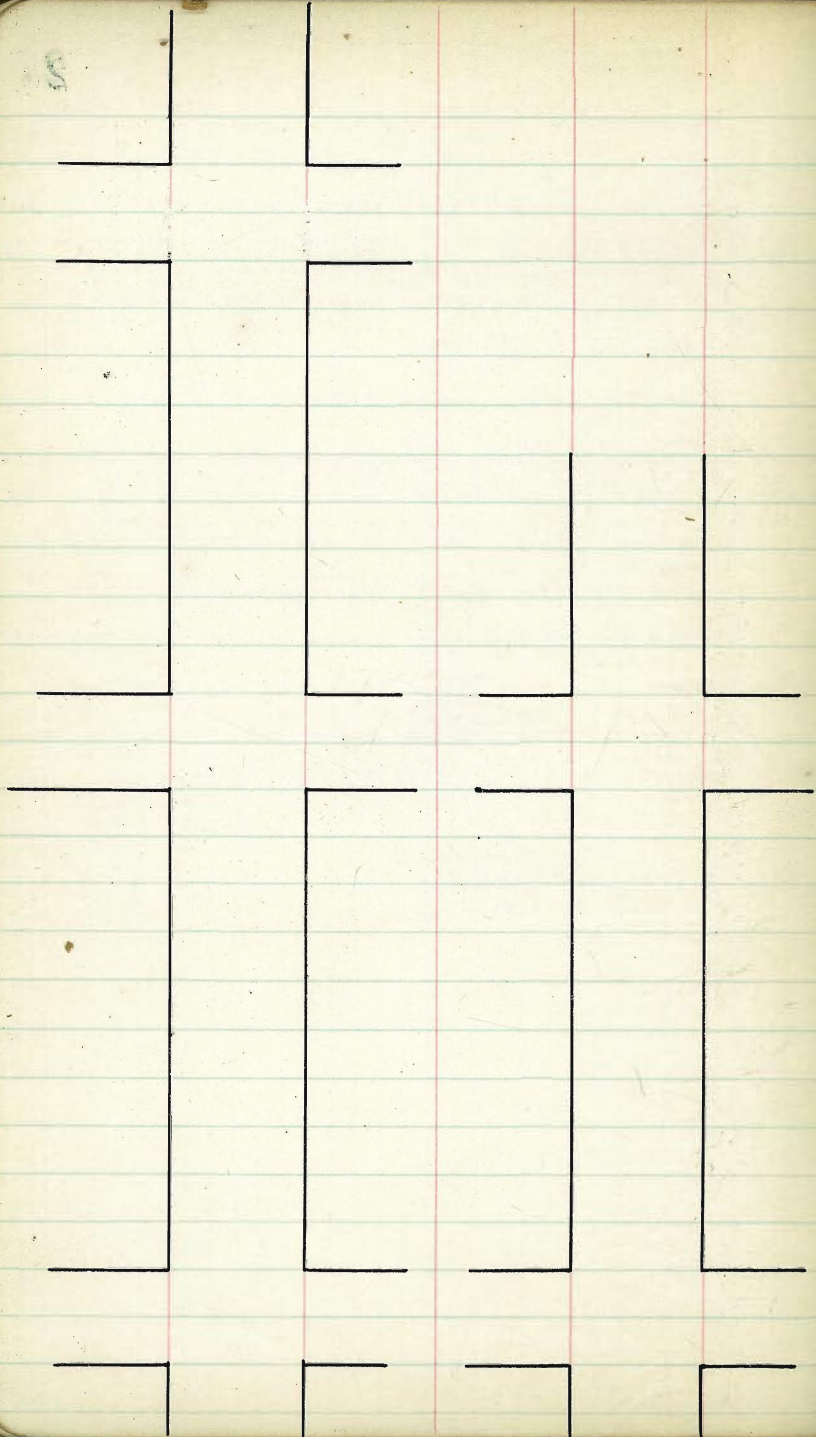
27

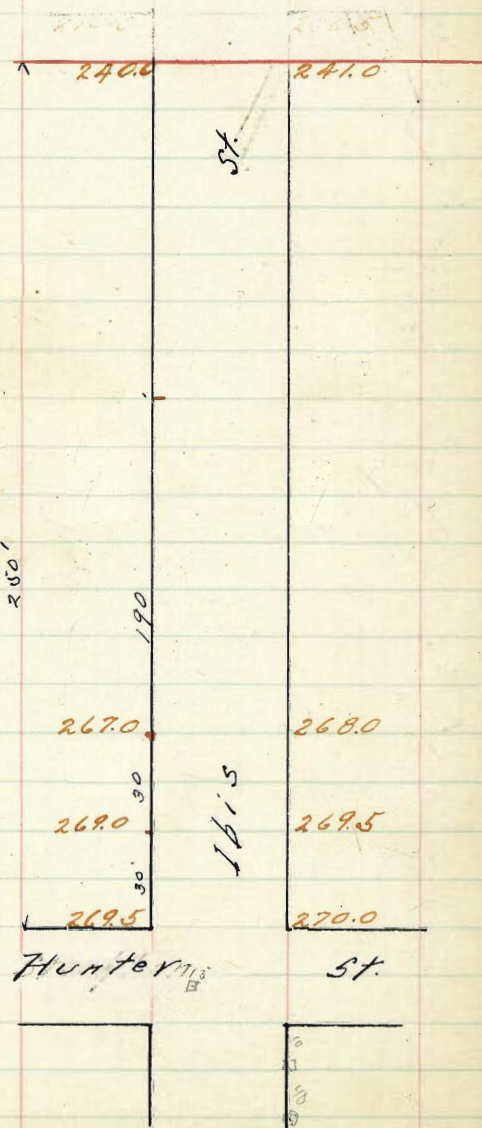
From
Shant
Grove

From
Shant
Grove

From
Shant
Grove

Cut to fill





Sunset

Mon.

Blvd.

272.5

273.0

220.0'

St

255.0'

270.5

Sheridan

271.0

270.0

4.5'

Symon Ave.

268.2

270.0

285.0

285.0'

Howard

St. James

253.0

252.0

Symon Lyndon Road

So. Line Sunset Blvd.

E.
gutter
slight

272.75	272.50	✓	272.75	272.40	273.00	273.25
			272.36	272.23	272.80	273.05
		✓	272.17	272.05	272.61	272.86
			271.98	271.88	272.41	272.66
		✓	271.79	271.71	272.22	272.47
			271.61	271.54	272.02	272.27
		✓	271.42	271.36	271.83	272.08
			271.23	271.19	271.63	271.88
			271.04	271.02	271.44	271.69
			270.89	270.88	271.28	271.53
		✓	270.50	270.40	271.00	271.25

26253 BM, No. SW Cor Sheridan - Lyndan Road.

273.55	7.30	7.27	7.27	7.26	7.25	7.27	7.22	7.17	7.17
270.22	2.02	2.62	2.27	2.41	2.97	2.55	2.50	3.34	3.23
275.21	7.18	7.16	7.12	7.14	7.12	7.10	7.10	7.04	7.05
	3.79	3.66	3.40	3.53	4.00	3.95	4.02	4.62	4.52

26268 BM	2700	2694	2698
	3.0	5.6	4.9
274.70	2710	2700	2700
	4.0	4.20	4.30
270.05	2730	2724	2727
	2.0	2.60	2.24
26268 BM	2710	2700	2700
	3.05	6.05	
274.74	2730		
	3.85		
269.71		10-9-11	
			894E
269.91 TP	262.68		
	12.40		
	275.08		
	273.00	272.40	272.75
	2.08	2.68	2.33

272.17	272.05	272.61	272.22	271.71	271.79
2.91	3.03	2.47	2.56	3.37	3.29
271.42	271.36	271.83	271.44	271.02	271.04
3.66	3.72	3.23	3.64	4.06	4.04
270.50	270.89	270.88	271.28	270.40	270.5
4.58	4.19	4.20	3.80	4.08	4.68

Howard.

West.

East.

42

270.75 270.50

270.50 270.50

Sheridan

Ave on West.

270.00 270.00

270.25 270.00

270.50 270.40 271.00 271.25

270.22 270.20 271.00 271.00
270.0

270.01 270.05 269.75 270.40

Sheridan

7.5 high

269.80 269.90 269.50 270.50

Ave on East.

269.59 269.75 269.25 269.85

269.38 269.60 269.0 270.00

7.4 low

7.4 low

268.20

269.10 269.40 270.00 270.25

275.02

69.5 69.9 69.8 / 70.0 69.4 69.1 /
5.52 5.12 5.22 5.02 5.62 5.92 /
275.08 KE

269.80 269.90 269.50 2
5.28 5.18 5.58
270.0 269.4 269.1
5.08 5.68 5.98

West

Howard St.

East

all stakes 9/14/11. Hatch Moore Hall

43

60 268.20 269.10 269.40 270.00 270.25

27502 M	6683	6631	6619	6367	6324	6327	6052	6016	6026
12.23	8.19	8.71	8.83	11.38	11.78	11.73	2.34	2.70	2.50
26279	5726	5708	5725	5921	540	5253	520	5185	525
2156 M	5.50	5.75	5.41	8.65	8.86	8.33	10.86	11.01	10.36

25 267.64 267.85 268.41 268.66

26991 TP	21185	21317	21052	21576	21421	21244
1.41	4.27	7.65	10.50	3.02	6.24	8.45

50 266.19 266.31 266.83 267.08

27132
1595
258.37
2.08
10-9-11 275.08 46 Q + E

25 264.73 264.77 265.25 265.50

260.45	266.19	266.31	266.83	26367	26324	26327
12.23	8.89	8.77	8.23	11.41	11.84	11.81
262.16	260.16	260.52	25736	25708	25745	
2.91	3.11	2.75	5.91	6.19	5.52	
25483	2540	254.21	25.20	25185	2525	
8.74	9.27	9.06	11.27	11.42	10.77	

100 263.27 263.28 263.67 263.92

125 261.82 261.70 262.10 262.35

150 260.36 260.16 260.52 260.77

175 258.91 258.62 258.94 259.19

200 257.45 257.08 257.36 257.61

225 255.99 255.54 255.79 256.04

250 254.53 254.00 254.28 254.46

285 253.00 252.50 251.85 252.00 252.25

Machine by Under Road.

7.47
267.61 58
sta 5700

TRIAS

St.

266.5

2670

St.

26136

HORTENSIA

St.

260.5

2615

MADRONA

2620

2630

WITHERBY

St.

Bo.

Pine St

No.

Hortensia ST, 263.50 263.75

0 264.75 264.50 26390 26400 26335 26348 263.73

25 264.50 264.25 26365 26380 26319 263.37 263.62

50 ✓ 264.25 264.00 26340 26362 263.04 263.24 263.49

75 264.00 263.75 26315 26348 26288 263.12 263.37

100 ✓ 263.75 263.50 26290 26325 26273 263.00 263.25

125 262.26 262.01 26141 26176 26123 261.51 261.76

150 260.77 260.52 25992 26027 25974 260.02 260.27

175 259.28 259.03 25843 25878 25825 258.53 258.78

200 ✓ 257.78 257.53 25693 25728 25675 257.03 257.28

225 256.70 256.42 25582 25579 25526 255.54 255.79

250 ✓ 254.80 254.55 25395 25430 25377 254.05 254.30

259.2 25425 25400 25340 25375 25322 253.50 253.75

264.2 25396 25371 25311 25360 25315

Hortensia ST.

26376 1874 Sub NE Hortensia

48

with by 947 Molona

266.34	1071	8	N																
226	6275	6375	6425	6350	6375	6325	6109	6036											
270.50	657	707	652	732	707	757	978	1046											
8.59	2.57	7.07	2.15	5.72	6.00	4.83	6.50	6.34											
262.91	+1.50	2.50	+2.21	+1.50	+2.47	+2.74	+3.53	+2.1											
270.52 HI	5743	5747	5577	5458	5275	5375	Cut Stake	11/31											
260.92	544	529	716	529	512	92	Hotch												
262.5 HI	314	332	770	698	970	505	Hotch												
	+1.2	+5.06	-2.6	+1.34	-1.53	+1.07	Hotch												

263.76 263.10 264.50 264.75 263.24 263.49

3.70 HI 8.96 2.96 2.71 4.22 5.97

267.46 HI 264.24 264.50 263.75 263.00

3.71 3.21 3.46 4.21 4.46

263.50 263.75 261.01 260.76 260.02 260.27 257.29 257.04

3.96 3.71 6.48 6.70 7.44 7.17 10.17 10.42

258.02 258.27 257.3 257.29 257.28 257.06 254.31

9.44 9.19 11.93 12.18 257.41 HI 3.35 3.16

253.75 253.10 254.50 254.75 253.9 254.15 254.2 254.45

3.66 3.91 2.91 5.91 2.66 3.51 3.26 3.21 2.96

252.6 252.85 254.46

4.31 4.56

261.16 HI 4200 6200 6273 6300 6391 6371 5060

26.33 5.96 5.1 6.13 5.61 4.91 6.69 7.80

4.07 5.00 5.40 5.75 5.32

260.78 HI 6.40 7.00 6.65 7.18

17.17 HI 6350 6335 6400 6390 6450 6350 6390 6305 6271 6300

4.07 4.52 3.87 3.97 3.47 4.07 4.07 4.07 5.14 4.87

50
 265.25 265.0 264.40 264.50 263.85 264.00 264.25

N
 264.00 264.00
 263.00 260.0

263.87 263.40

Hortensia

50
 265.0 264.75 264.15 264.25 263.60 262.75 263.75

St.

262.63 263.22

262.5 262.5
 263.50 263.50

264.75 264.50 263.90 264.00 263.35 263.50 263.75

E. Witherby

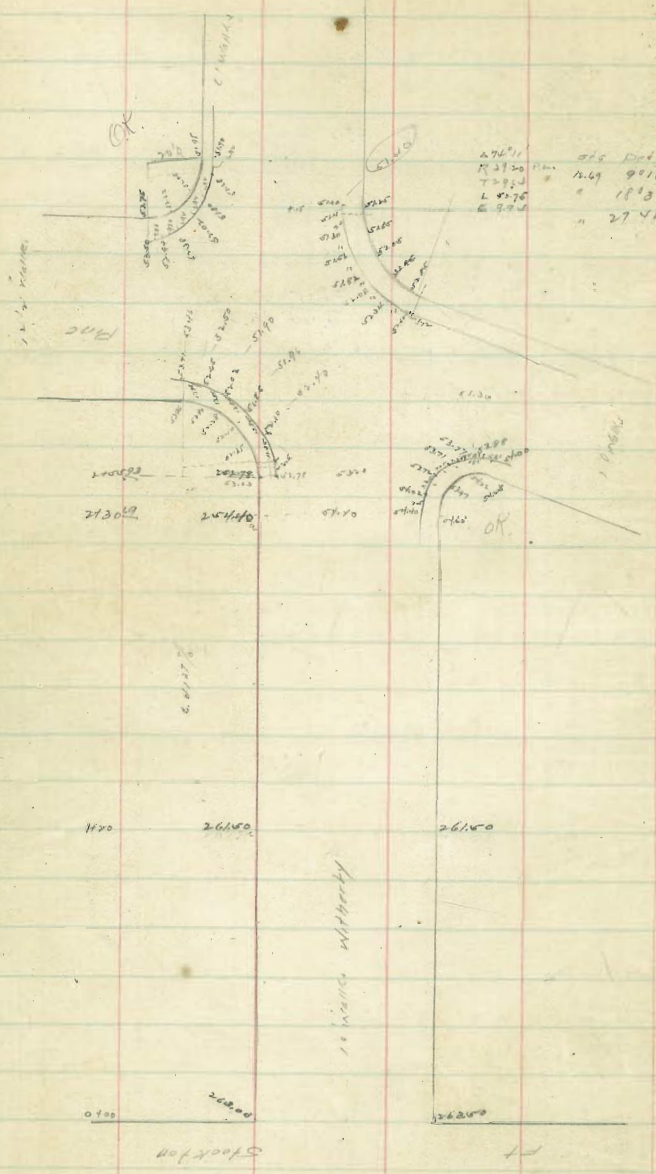
St. W.

No. Line Fort Stockton Drive

00	263.75	263.50	262.90	263.25	262.73	263.0	263.25
00	263.95	263.70	263.10	263.50	263.00	263.30	263.55
40	264.05	263.80	263.20	263.65	263.17	263.50	263.75
60	263.95	263.70	263.10	263.55	263.07	263.40	263.65
80	263.55	263.30	262.90	263.20	262.75	263.10	263.35
100	262.85	262.60	262.40	262.55	262.13	262.50	262.75
120	261.75	261.50	261.10	261.50	261.10	261.50	261.75
150	259.82	259.57	259.17	259.57	259.17	259.52	259.82
175	258.22	257.97	257.57	257.97	257.57	257.97	258.22
200	256.62	256.37	255.97	256.37	255.97	256.37	256.62
230.69	254.65	254.40	254.00	254.40	254.00	254.40	254.65
= B.C. on West							
255.93 =	253.60	253.59	252.79	252.78	252.78	253.03	
B.C. on West.							

263.76
159
265.35
8.99
256.86 BN
8.96
267.32 HI

13.70	23.85	256.86	23.70	63.75	4.8	14.05
4.9	4.66	8.96	4.9	4.66	4.8	4.52
	2.3	267.32		2.3		2.7
	1.96			1.96		1.66
13.80	23.85	62.60	62.85	61.50	61.75	
5.31	5.06	6.01	5.76	7.11	6.86	
5.14.50	1.20					
62.10	63.10	13.41	63.50	63.00	63.55	63.95
6.11	5.51	5.11	5.16	5.34	5.06	4.66
3.48	5.86	5.26	4.94	4.86	5.06	4.75
268.61 HI	63.95	12.75	12.60		5.05	
	4.62	5.76	6.01			
56.33	57.90	52.28	52.10	52.35	52.32	
4.07	8.50	9.12	9.30	9.06	8.87	
81.40 HI	62.75	63.25	63.50	63.65	63.55	63.20
	5.62	4.12	4.07	4.72	4.82	5.17
68.13	63.75	63.50	63.25	63.11	63.17	63.20
13.70	8.62	8.25	4.12	4.31	4.37	4.50
68.13 HI	4.05	3.87	4.12	4.07	3.82	3.62
48.13	4.05	3.77	3.87	3.77	3.75	3.57
48.13 HI	3.22	3.27	3.27	3.27	3.27	3.22
267.07 HI	6.15	5.87				



27611
 27600
 27590
 27580
 27570
 27560
 27550
 27540
 27530
 27520
 27510
 27500
 27490
 27480
 27470
 27460
 27450
 27440
 27430
 27420
 27410
 27400
 27390
 27380
 27370
 27360
 27350
 27340
 27330
 27320
 27310
 27300
 27290
 27280
 27270
 27260
 27250
 27240
 27230
 27220
 27210
 27200
 27190
 27180
 27170
 27160
 27150
 27140
 27130
 27120
 27110
 27100
 27090
 27080
 27070
 27060
 27050
 27040
 27030
 27020
 27010
 27000

27611	27600	27590	27580	27570	27560	27550	27540	27530	27520	27510	27500	27490	27480	27470	27460	27450	27440	27430	27420	27410	27400	27390	27380	27370	27360	27350	27340	27330	27320	27310	27300	27290	27280	27270	27260	27250	27240	27230	27220	27210	27200	27190	27180	27170	27160	27150	27140	27130	27120	27110	27100	27090	27080	27070	27060	27050	27040	27030	27020	27010	27000
27611	27600	27590	27580	27570	27560	27550	27540	27530	27520	27510	27500	27490	27480	27470	27460	27450	27440	27430	27420	27410	27400	27390	27380	27370	27360	27350	27340	27330	27320	27310	27300	27290	27280	27270	27260	27250	27240	27230	27220	27210	27200	27190	27180	27170	27160	27150	27140	27130	27120	27110	27100	27090	27080	27070	27060	27050	27040	27030	27020	27010	27000

ST

GETTI

ST

272.0

273.0

Hooper

270.5

270.0

WASHINGTON

ST

W.C.

E

So. Line Getti St.

10	272.25	272.00	271.85	272.50	272.40	273.00	273.25
45	272.12	271.87	271.69	272.31	272.17	272.75	273.00
50	272.00	271.75	271.52	272.12	271.95	272.50	272.75
75	271.87	271.62	271.36	271.94	271.73	272.25	272.50
100	271.75	271.50	271.20	271.75	271.51	272.00	272.25
125	271.62	271.37	271.04	271.56	271.29	271.75	272.00
150	271.50	271.25	270.87	271.37	271.06	271.50	271.75
175	271.37	271.12	270.71	271.19	270.84	271.25	271.50
200	271.25	271.00	270.55	271.00	270.62	271.00	271.25
225	271.12	270.87	270.39	270.81	270.40	270.75	271.00
250	271.00	270.75	270.22	270.62	270.19	270.50	270.75
275	270.87	270.62	270.06	270.44	269.95	270.25	270.50
300	270.75	270.50	269.90	270.25	269.73	270.00	270.25

No. Line of Washington

50
116

50' wide

No.

E. L. Witterby St.

			252.60	252.85
0489	254.25	254.00	253.30 253.62	253.23 253.48
0495	254.54	254.29	253.90	253.51 253.76
0450	255.07	254.82	254.42	254.01 254.26
0425	255.59	255.34	254.93	254.52 254.77
00-500 B	256.12	255.87	255.45	255.02 255.28
				255.14 255.25
25 East of Sec. A	256.64	256.39	256.08	255.76 256.01
50	257.17	256.92	256.59	256.26 256.51
75	257.70	257.45	257.11	256.77 257.02
100	258.22	257.99	257.62	257.27 257.52
125	258.75	258.50	258.14	257.78 258.03
150	259.28	259.03	258.65	258.27 258.52
175	259.80	259.55	259.17	258.79 259.04
200	260.32	260.07	259.68	259.29 259.54
225 BC	260.75	260.50	260.10	259.70 259.95

Sec. C
 Sec. B
 Sec. A
 125 East Sec. A

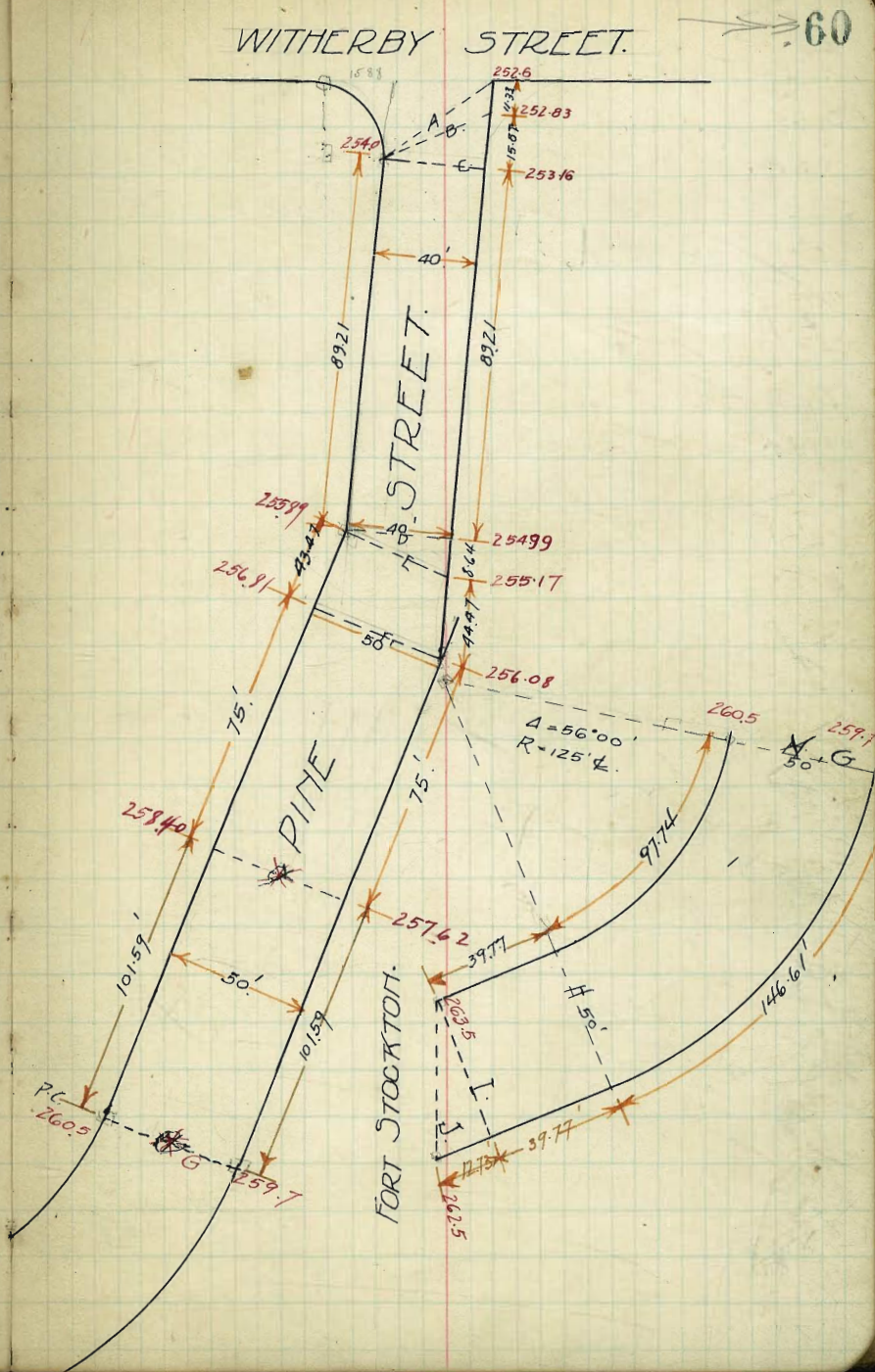
50' wide

59

00 = B.C.	260.75	260.50	260.10	259.70	259.95	00 = B.C.
20	261.14	260.94	260.53	260.12	260.37	30
40	261.62	261.37	260.95	260.54	260.79	50
60	262.06	261.81	261.38	260.96	261.21	30
80	262.49	262.24	261.81	261.38	261.63	120
97.72 = E.C.	262.87	262.62	262.13	261.75	262.00	146.61 = E.C.
39.77 = Fort Staeflen	263.75	263.50	263.00	262.50	262.75	52.5 = Fort Staeflen

PINE STREET.
40' & 50' WIDE.

PL	Curb.	¼	£	¼	Curb.	North P.L.
Sec. A.						252.85
Sec. B.						253.08
Sec. C.	254.25	254.0	253.40	253.58	253.16	253.41
25'E	254.78	254.83	253.93	254.10	253.47	253.92
50'E	255.31	255.06	254.46	254.63	254.01	254.44
75'E	255.84	255.59	254.99	255.14	254.52	254.95
892=D	256.14	255.89	255.29	255.44	254.82	255.24
Sec. E.	256.14	255.89	255.29	255.53	254.95	255.17
" F.	257.06	256.81	256.21	256.45	255.87	256.08
25'E	257.59	257.34	256.74	256.96	256.38	256.84
50'E	258.12	257.87	257.27	257.49	256.90	257.11
75'E	258.65	258.40	257.80	258.01	257.42	257.87
100'E	259.17	258.92	258.32	258.53	257.93	258.38
125"	259.69	259.44	258.84	259.05	258.44	258.89
150"	260.21	259.96	259.36	259.57	258.96	259.15
Sec. G. P.C.	17659"	260.75	260.50	259.90	260.10	259.70
25'E of G.M.F.	261.18	260.93	260.43	260.53	259.15	260.12
50" "	261.62	261.37	260.77	260.96	260.35	260.54
75" "	262.05	261.80	261.20	261.38	260.78	261.22
100'	262.49	262.24	261.64	261.81	261.21	261.40
Sec. H.	12211' a=P.T.	262.88	262.63	262.03	262.20	261.58
3977'E-sec I.	263.15	263.50	262.84	262.91	262.22	262.33
Sec. J. = M.L. Fort Stockton			262.90	263.00	262.35	262.50
						262.75



260.68 BWT Steeplechase & Fox & Stock farm

77.33
269.01 H.L.
77.47
256.54 BWT 1st
74.72
267.50 H.L.
1.50
260.10
75.67
260.67 H.L.
3.84
262.12 BWT NE Coy
Hub fort Stock farm & P.M.C.

261.50	261.50	261.50	261.50	261.50	261.50	261.50	261.50	261.50	261.50
59.00	59.20	59.30	59.40	59.50	59.60	59.70	59.80	59.90	60.00
7.00	8.10	9.20	9.70	9.90	10.00	10.10	10.20	10.30	10.40
261.50	261.50	261.50	261.50	261.50	261.50	261.50	261.50	261.50	261.50
59.00	59.30	59.60	59.90	60.20	60.50	60.80	61.10	61.40	61.70
7.00	8.10	9.20	9.70	9.90	10.00	10.10	10.20	10.30	10.40

261.50	261.50	261.50	261.50	261.50	261.50	261.50	261.50	261.50	261.50
59.77	59.37	59.22	59.04	59.27	59.03	58.83	58.65	58.46	58.27
3.53	4.13	3.88	4.26	4.23	2.77	3.07	2.86	3.44	3.23

261.50	261.50	261.50	261.50	261.50	261.50	261.50	261.50	261.50	261.50
60.07	59.77	59.69	59.07	59.27	60.00	59.90	60.10	59.50	59.70
1.43	2.03	1.82	2.43	2.23	1.00	1.00	1.40	2.00	1.90

260.67	260.67	260.67	260.67	260.67	260.67	260.67	260.67	260.67	260.67
60.73	60.43	60.43	59.75	60.12	60.73	60.43	60.43	59.75	60.12
4.74	5.24	5.14	5.72	5.66	4.40	4.10	4.40	4.70	4.60

260.67	260.67	260.67	260.67	260.67	260.67	260.67	260.67	260.67	260.67
61.27	60.77	60.96	60.30	60.54	61.20	61.20	61.38	60.78	60.87
7.00	7.90	7.71	8.32	8.13	3.87	4.47	4.29	4.89	4.70

260.67	260.67	260.67	260.67	260.67	260.67	260.67	260.67	260.67	260.67
61.14	61.22	61.91	61.21	61.40	61.63	62.03	62.20	61.09	61.77
3.13	4.03	3.70	4.16	4.27	3.08	3.68	3.47	4.09	3.90

260.67	260.67	260.67	260.67	260.67	260.67	260.67	260.67	260.67	260.67
60.80	61.84	62.91	62.22	62.33	63.50	63.90	64.00	62.38	62.80
2.17	2.93	2.76	3.10	3.34	2.17	2.77	2.62	3.02	3.17

282.42 Tom's Sweet Blood & English

- 1.00
- 284.82
- 8.24
- 276.28
- 2.72
- 279.00
- 10.81
- 268.19
- 7.28
- 271.02
- 8.68
- 262.08

HOOKER ST.

BOOK 822

WASHINGTON ST.

270.5

60

270.0

10' walks

10' ⁵/₄

N



300.

HOOKER ST.

266.5

266.0

DOUGLAS

ST.

Hooker ST

63

	W	C	¼	£	¼	C	E	W	E
0 = S.L. Washington	270.75	270.50	269.90	270.25	269.73	270.00	270.25	+20	+20
25	270.42	270.17	269.57	269.92	269.40	269.67	269.92	+44	+34
50	270.08	269.83	269.23	269.58	269.06	269.33	269.58	+42	+40
75	269.75	269.50	268.90	269.25	268.73	269.00	269.25	+42	+46
100	269.42	269.17	268.57	268.92	288.40	268.67	268.92	+43	+49
125	269.08	268.83	268.23	268.58	268.06	268.33	268.58	+41	+43
150	268.75	268.50	267.90	268.25	267.73	268.00	268.25	+36	+35
175	268.42	268.17	267.57	267.92	267.40	267.67	267.92	+30	+29
200	268.17	267.83	267.23	267.58	267.06	267.33	267.58	+22	+18
225	267.75	267.50	266.90	267.25	266.73	267.00	267.25	+16	+09
250	267.42	267.17	266.57	266.92	266.40	266.67	266.92	+12	00
275	267.08	266.83	266.23	266.58	266.06	266.33	266.58	+03	-04
300 = Mt. Douglas	266.75	266.50	265.90	266.25	265.73	266.00	266.25	+04	-15

WILLOW ST. ^{Now} WALNUT ST.

64

ARTIC
Kettner

80' ST

41.00

41.50

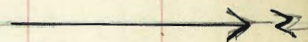
200'

70.00

70.00

INDIA

ST



WILLOW ST Now WALNUT ST

	S	SC	W ⁺ 1/4	+ 1/4	+ 1/4	NC	N
0 = EL. ARTIC	4125	41.00	40.60	41.25	41.10	41.50	41.75
25	44.87	44.62	44.22	44.84	44.66	45.06	45.31
50	48.50	48.25	47.85	48.44	48.22	48.62	48.87
75	52.12	51.87	51.47	52.03	51.79	52.19	52.44
100	55.75	55.50	55.10	55.63	55.35	55.75	56.00
125	59.37	59.12	58.72	59.22	58.91	59.31	59.56
150	63.00	62.75	62.35	62.81	62.47	62.87	63.12
175	66.62	66.37	65.97	66.41	66.04	66.44	66.69
200 WL INDIA	70.25	70.00	69.60	70.00	69.60	70.00	70.25

E

WALNUT ST.

~~WILLOW ST~~

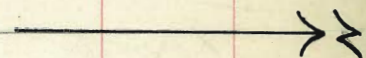
VINE ST BETWEEN ARTIC & INDIA

38.00 38.00

ARTIC 80' ST

40.00 40.00

200'



81.00 80.00

INDIA ST.

83.00 82.00

	VINE ST							
	¹⁴ S	¹² SC	¹⁴ 1/4	¹³ 1/2	¹³ 1/4	¹³ N.C.	¹⁴ N	
0 E.L. ARTIC	40.25	40.00	39.60	40.00	39.60	40.00	40.25	
25	45.87	45.12	44.70	45.06	44.63	45.00	45.25	
50	50.50	50.26	49.80	50.12	49.66	50.00	50.25	
75	55.62	55.37	54.90	55.14	54.69	55.00	55.25	
100	60.75	60.50	60.00	60.26	59.72	60.00	60.25	
125	65.87	65.62	65.10	65.31	64.76	65.00	65.25	
150	71.00	70.75	70.20	70.37	69.78	70.00	70.25	
175	76.12	75.87	75.30	75.43	74.81	75.00	75.25	
200 W.L. INDIA 81.25	81.00	80.40	80.50	79.85	80.00	80.25		

#380

81

$$\begin{array}{r}
 276.60 \\
 267.35 \\
 \hline
 300 \) \ 9.2500 \ \text{ } (308 \\
 \underline{9.50} \\
 2100 \\
 \underline{2400}
 \end{array}$$

$$\begin{array}{r}
 1766 \\
 434 \\
 \hline
 2201
 \end{array}
 \quad
 \begin{array}{r}
 .0308 \\
 50 \\
 \hline
 1.5400
 \end{array}$$

$$\begin{array}{r}
 280.78 \\
 275.06 \\
 \hline
 5.72 = 0.450
 \end{array}$$

$$\begin{array}{r}
 273.52 \\
 \hline
 7.26 = 1.200
 \end{array}$$

$$\begin{array}{r}
 271.98 \\
 \hline
 8.80 = 1.50
 \end{array}$$

$$\begin{array}{r}
 270.44 \\
 \hline
 10.34 = 2.400
 \end{array}$$

$$\begin{array}{r}
 268.90 \\
 \hline
 11.88 = 2.500
 \end{array}$$

$$\begin{array}{r}
 267.36 \\
 \hline
 13.42
 \end{array}$$

$$\begin{array}{r}
 276.60 \\
 1.54 \\
 \hline
 275.06 = 0.450
 \end{array}$$

$$\begin{array}{r}
 273.52 \\
 \hline
 271.98 = 1.50
 \end{array}$$

$$\begin{array}{r}
 271.98 \\
 \hline
 270.44 = 2.000
 \end{array}$$

$$\begin{array}{r}
 270.44 \\
 \hline
 268.90 = 2.400
 \end{array}$$

$$\begin{array}{r}
 268.90 \\
 \hline
 267.36 = 2.500
 \end{array}$$

$$\begin{array}{r}
 267.36 \\
 \hline
 \end{array}$$

397.11
 394.74
 274.17
 3.33
 270.84
 271.9
 262.6
 91
 197
 98
 305/600 (1967)
 305
 55
 29809835
 37459835
 2050109185
 1530
 2000006
 21
 1.06
 2.06
 4.03
 257.8
 5.61
 646
 725
 5000
 725
 10
 11
 18

238
 706
 376
 641
 234.62

Published by H. S. CROCKER COMPANY, Stationers, Drawing Materials, and Mathematical Instruments, San Francisco.

Table showing the difference of latitude and departure in running 80 chains at any course from 1 to 60 minutes.

MINUTES.	LKS.	MINUTES.	LKS.	MINUTES.	LKS.
1.....	2 $\frac{1}{2}$	21.....	49	41.....	95 $\frac{1}{2}$
2.....	4 $\frac{1}{2}$	22.....	51 $\frac{1}{2}$	42.....	98
3.....	7	23.....	53 $\frac{1}{2}$	43.....	100 $\frac{1}{2}$
4.....	9 $\frac{1}{2}$	24.....	56	44.....	102 $\frac{1}{2}$
5.....	11 $\frac{1}{2}$	25.....	58 $\frac{1}{2}$	45.....	105
6.....	14	26.....	60 $\frac{1}{2}$	46.....	107 $\frac{1}{2}$
7.....	16 $\frac{1}{2}$	27.....	63	47.....	109 $\frac{1}{2}$
8.....	18 $\frac{1}{2}$	28.....	65 $\frac{1}{2}$	48.....	112
9.....	21	29.....	67 $\frac{1}{2}$	49.....	114 $\frac{1}{2}$
10.....	23 $\frac{1}{2}$	30.....	70	50.....	116 $\frac{1}{2}$
11.....	25 $\frac{1}{2}$	31.....	72 $\frac{1}{2}$	51.....	119
12.....	28	32.....	74 $\frac{1}{2}$	52.....	121 $\frac{1}{2}$
13.....	30 $\frac{1}{2}$	33.....	77	53.....	123 $\frac{1}{2}$
14.....	32 $\frac{1}{2}$	34.....	79 $\frac{1}{2}$	54.....	126
15.....	35	35.....	81 $\frac{1}{2}$	55.....	128 $\frac{1}{2}$
16.....	37 $\frac{1}{2}$	36.....	84	56.....	130 $\frac{1}{2}$
17.....	39 $\frac{1}{2}$	37.....	86 $\frac{1}{2}$	57.....	133
18.....	42	38.....	88 $\frac{1}{2}$	58.....	135 $\frac{1}{2}$
19.....	44 $\frac{1}{2}$	39.....	91	59.....	137 $\frac{1}{2}$
20.....	46 $\frac{1}{2}$	40.....	93 $\frac{1}{2}$	60.....	140

TABLE FOR RUNNING ON SLOPES.

In the following table the first column shows the angle, the second the number of links to be added to a chain on the slopes, to make one chain, horizontal measurement.

ANGLE	COR. IN LINKS	ANGLE	COR. IN LINKS	ANGLE	COR. IN LINKS	ANGLE	COR. IN LINKS
0		0		0		0	
4	0.24	11	1.88	18	5.14	25	10.54
5	0.38	12	2.24	19	5.76	26	11.26
6	0.55	13	2.63	20	6.42	27	12.24
7	0.76	14	3.06	21	7.11	28	13.37
8	0.98	15	3.53	22	7.85	29	14.34
9	1.24	16	4.02	23	8.64	30	15.47
10	1.55	17	4.56	24	9.47	35	22.07