

62

662

62

62

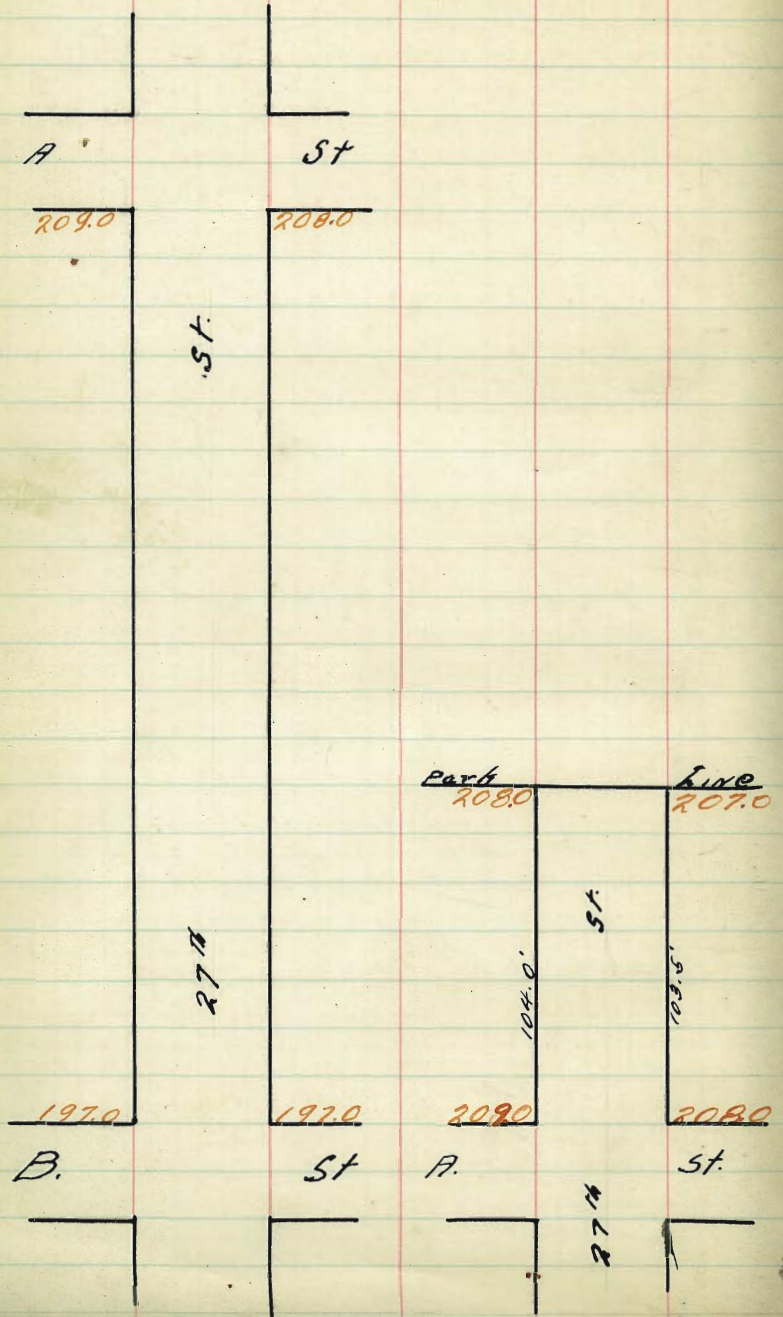
62

MICROFILMED

DEC 4 1964

*Pettif* Exhibit *G*  
In case of *R. J. Kaleb* Plaintiff, No. *22606*  
vs. *City of San Diego* Defendant  
Filed *Feb 17th* 191 *6*  
J. T. BUTLER, Clerk  
By *W. M. Lear* Deputy







West East

So. Line 9. St.

300	209.25	209.00	208.40	208.50	207.85	208.00	207.25
275	208.25	208.00	207.41	207.54	206.91	207.08	207.33
250	207.25	207.00	206.43	206.58	205.97	206.16	206.41
225	206.25	206.00	205.44	205.62	205.03	205.24	205.49
200	205.25	205.00	204.46	204.66	204.10	204.33	204.58
175	204.25	204.00	203.48	203.70	203.16	203.41	203.66
150	203.25	203.00	202.49	202.74	202.22	202.49	202.74
125	202.25	202.00	201.51	201.79	201.28	201.58	201.83
100	201.25	201.00	200.53	200.83	200.35	200.66	200.91
75	200.25	200.00	199.54	199.87	199.41	199.74	199.99
50	199.25	199.00	198.56	198.91	198.47	198.83	199.08
25	198.25	198.00	197.58	197.96	197.53	197.91	198.16
0	197.25	197.00	196.60	197.00	196.60	197.00	197.25

No. L. D. St.

196.97	207.69	207.69	207.69	207.69	207.69	207.69	212.67
10.74	197.25	91.68	201.25	202.14	205.16	206.91	209.25
207.6741	10.44 P.	3.61	6.22 V	5.95 V	3.42 V	1.28 V	3.42 V
0.46	10.92 E.M.	3.86	6.69 V	5.20 V	3.04 V	1.58 V	3.67 V
5.44	11.09 W.	98.47	200.53	202.42	204.46	207.69	4.27 V
212.67 = N. 1	9.22	7.18 V	5.47 V	3.25 V	1.72 V	1.17 V	4.82 V
	207.69	207.69	207.69	207.69	207.69	207.69	4.42 V
	98.91	200.83	202.79	204.66	206.58	208.49	4.67 V
	8.78	6.86 V	4.95 V	3.103 V	1.11 V	1.11 V	4.67 V
	207.69	207.69	207.69	207.69	207.69	207.69	8.19
	98.56	200.53	202.49	204.10	207.69	208.43	8.19
	9.13	7.39 V	5.20 V	3.59 V	1.26 V	1.26 V	8.19
	207.69	207.69	207.69	207.69	207.69	207.69	8.19
	99.25	200.91	203.25	204.58	207.25	207.25	8.19
	8.44	6.78 V	4.44 V	3.11 V	0.44 V	0.44 V	8.19
	8.69	7.03 V	4.64 V	3.36 V	0.69 V	0.69 V	8.19

196.97 10.74

207.69 10.74

77.0 266 199.0 755 98.91 98.47 98.83  
 1055 1070 855 900 844 905 872

201.0 200.53 200.83 200.35 200.66  
 655 702 672 720 689

5.0 249 274 222 249 5.0 426 4.66 410 4.83  
 455 526 471 533 506 265 310 287 345 322

7.0 643 658 577 616 9.0 84 85 785 80  
 656 112 2.97 1.58 1.39 4.17 4.77 4.07 5.22 5.17

check 1/2 Hatch Moore Hall

10-11-11 school blanch Park

27<sup>th</sup>

St.

5

West

East.

209.25 209.00 208.40 208.50 207.85 208.00 208.25

209.00 209.00 207.75 207.50 207.25 208.00 208.00  
208.00 207.00

208.60 208.42 208.26 208.10 207.94 207.78 207.60

209.00 208.82 208.66 208.50 208.34 208.18 208.00

A

St.

208.60 208.42 208.26 208.10 207.94 207.78 207.60

209.00 209.00 207.75 207.50 207.25 208.00 208.00

209.25 209.00 208.40 208.50 207.85 208.00 208.25

8/ Hatch  
1/31/11

21237 H	208.76	207.76	208.25	207.25
	4.11	5.11	4.62	5.62
	2.51	4.51	3.22	4.42
	+1.6	-1.4	+1.40	-3.8

212.67	212.67	212.67	8/29 all stakes
208.25	208.76	207.25	2/11
4.14 ✓	3.91 ✓	5.42 ✓	
1.67 ✓	4.16 ✓	5.67 ✓	Minnie - Evans - Johnson
4.82 ✓	4.76 ✓	5.92 ✓	
4.17 ✓	4.66 ✓	5.17 ✓	
7.27 ✓	5.31 ✓	5.27 ✓	
3.42 ✓	4.91 ✓	4.12 ✓	
3.67 ✓	5.16 ✓	4.67 ✓	

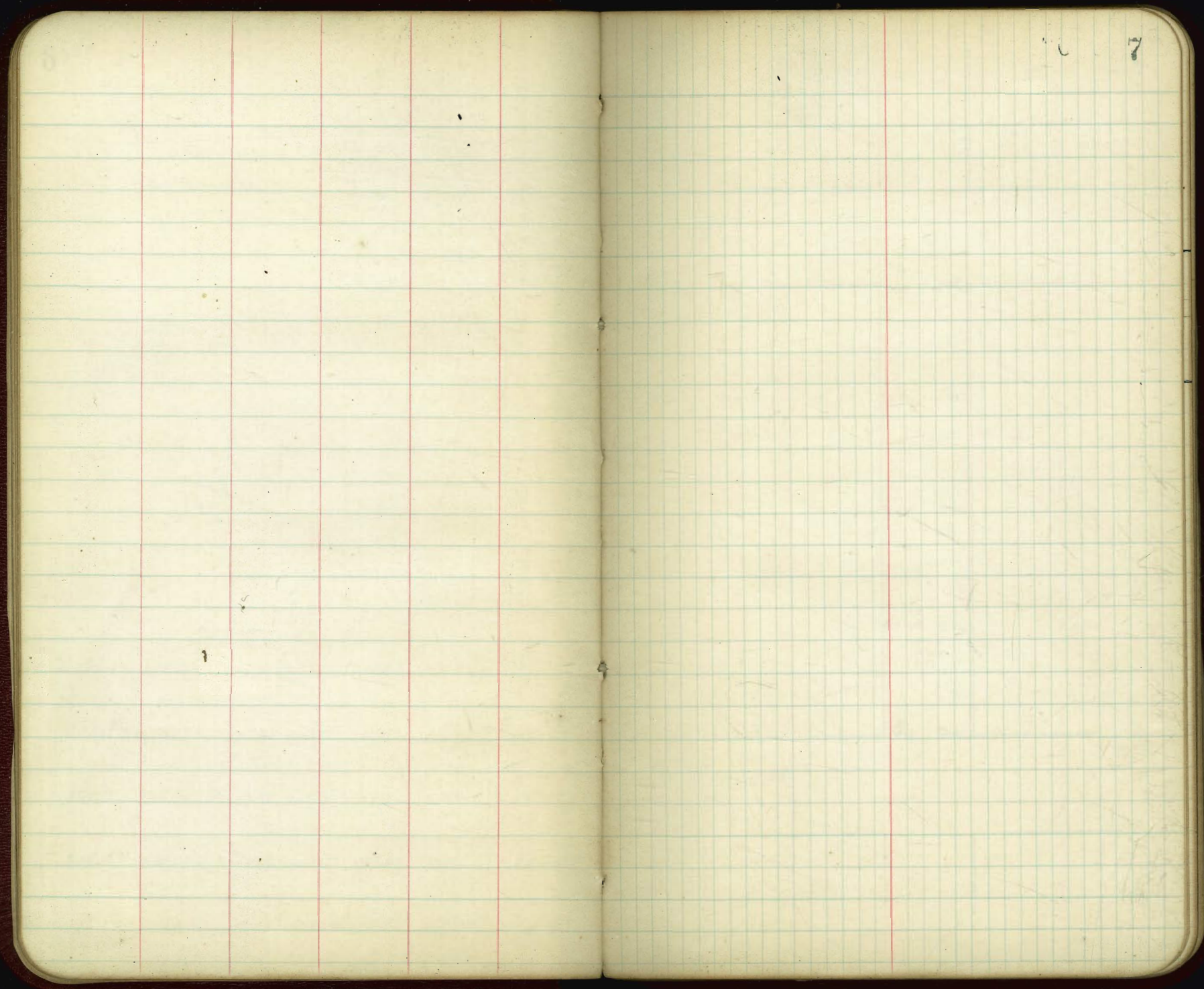
213.17 8.51 7.11 8.01 7.36 7.51 / 8.07 7.5 6.85 7.0  
 2.66 5.26 5.16 5.91 5.66 5.12 5.77 5.67 6.92 6.17  
 check 2/11 Hatch Hooker Hall  
 10-11-11 check OK blaugl 9.12

Park Line

104 ✓	208.25	208.00	207.40	207.50	206.85	207.00	207.25
76	208.52	208.27	207.67	207.77	207.12	207.27	207.52
50	208.76	208.51	207.91	208.01	207.36	207.51	207.76
25	209.00	208.75	208.15	208.25	207.60	207.75	208.00
10	209.25	209.00	208.40	208.50	207.85	208.00	208.25

No. L. A 57.



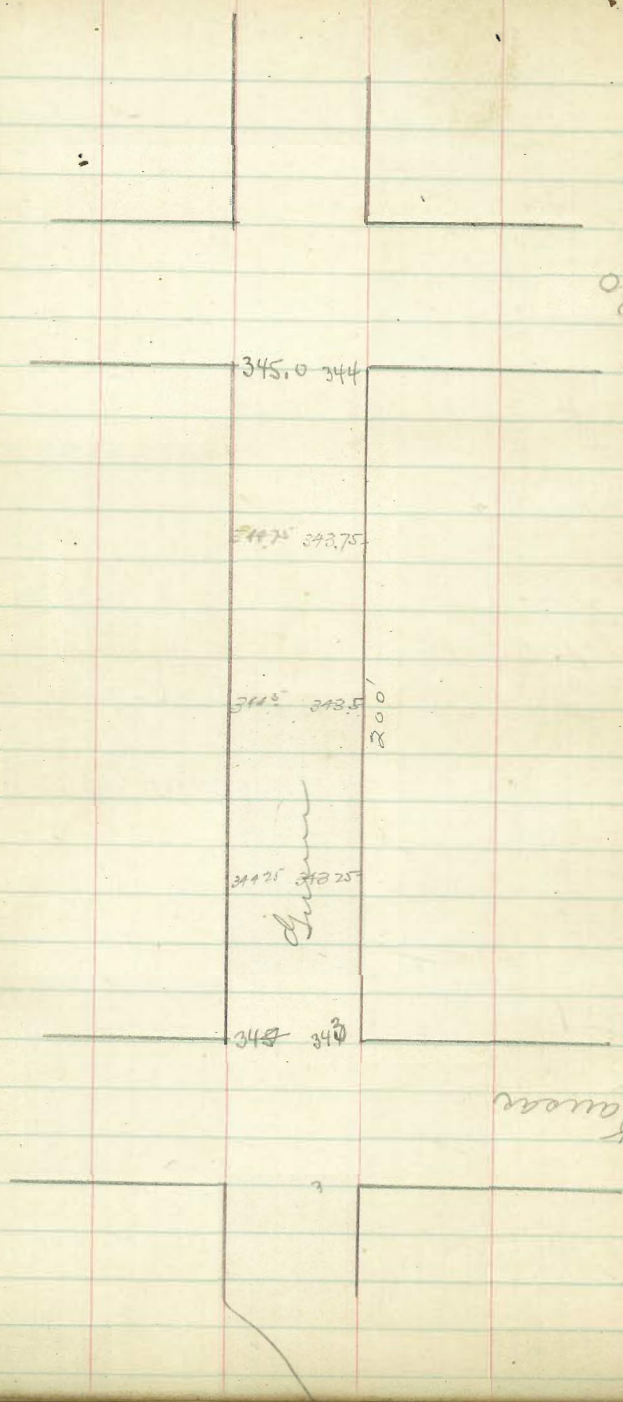


Cutb - Prop. 3/21 Hatch  
 3/21 Hatch  
 3/21 Hatch

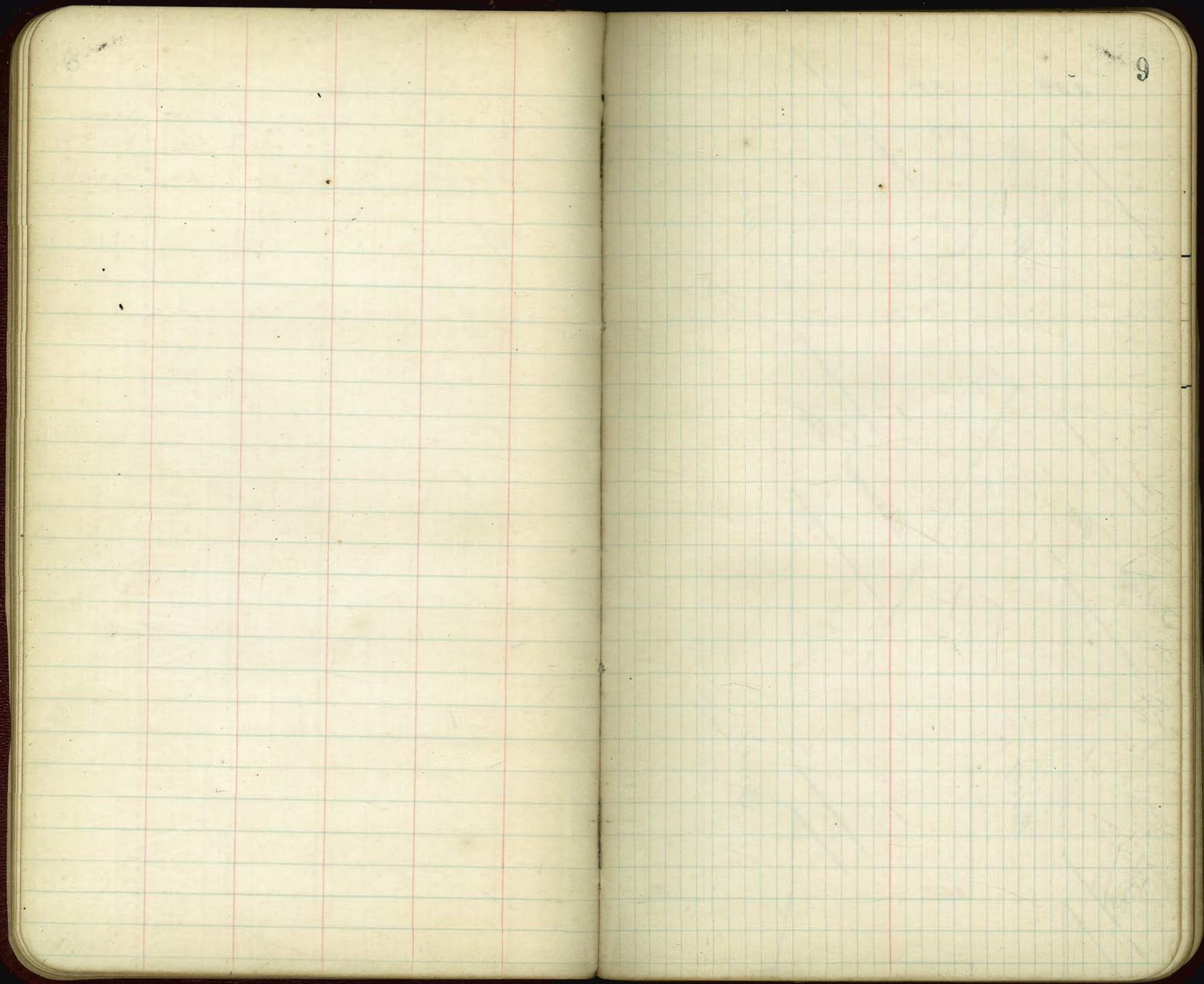
354439 187M Kansas - Winn. RR Spts NE Cor

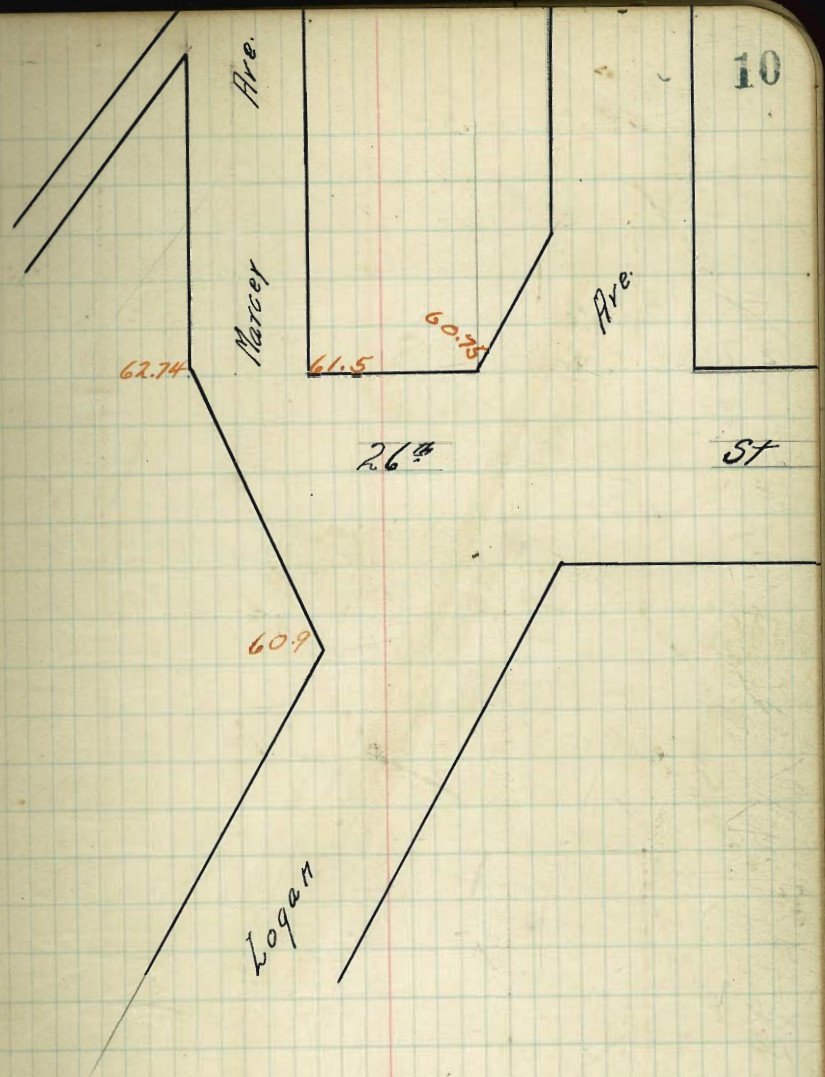
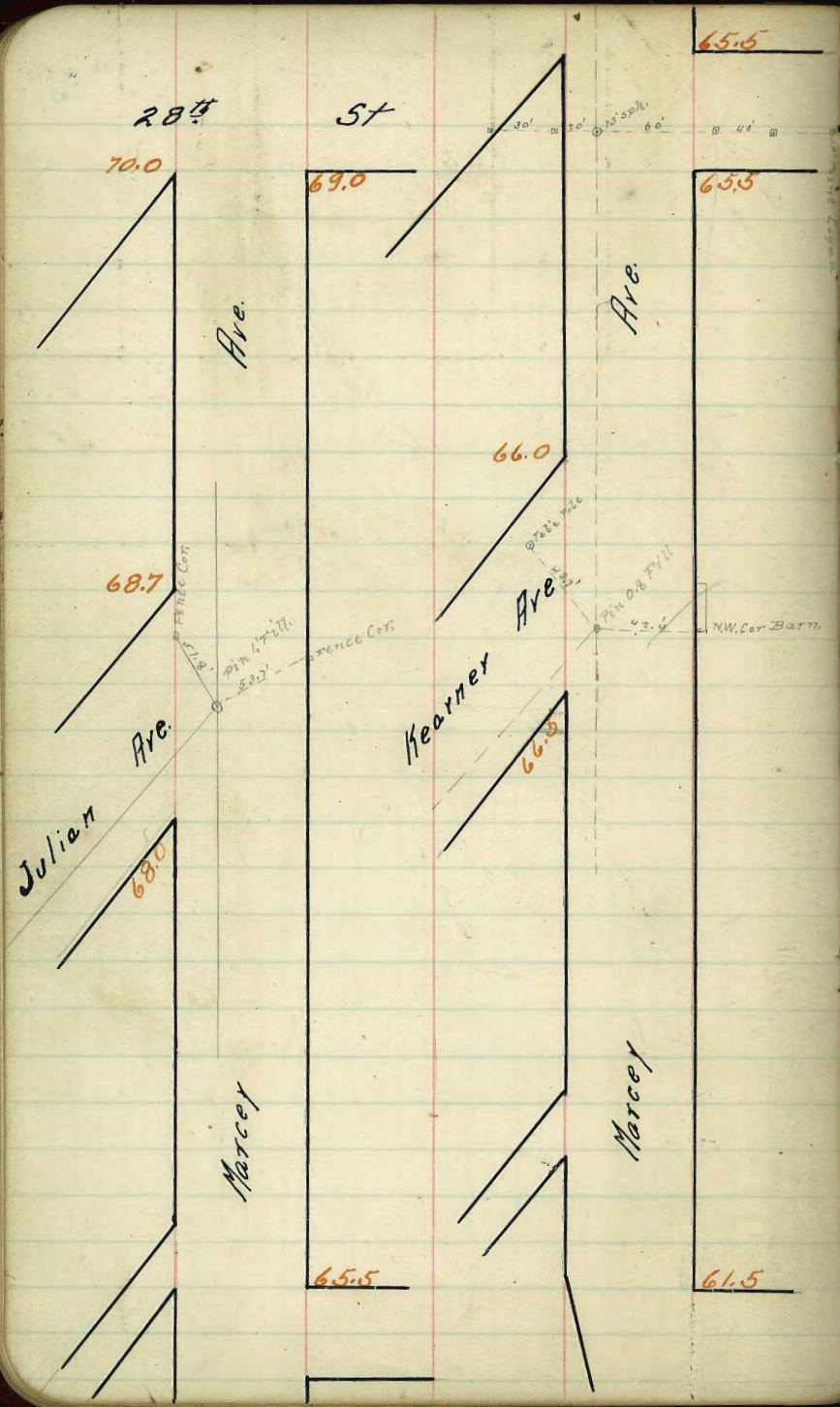
35500	343.0	343.25	343.5	343.75	344.0	345.0
344	614	589	564	539	514	414
346.54	5.89	5.64	5.39	5.14	4.89	3.89
349.14 NE	344.5	344.5	344.75			
	489	464	439			
	464	439	414			

30



Kansas







68.4  
88.4  
20  
6.8

Marcey Ave.

52.74

615

615

6075

LINE  
C  
D

609  
Grade

To here

Alley

1.89

62.91

26.80

1.89

1.89

Logan

Marcey

Ave.

26.72

6000  
291  
59 7109  
872  
276109

27th

47  
3.1  
7.3

66.91	66.66	66.06	66.08	65.39	65.50	65.75	600
66.80	66.55	65.95	65.95	65.25	65.34	65.59	575
66.69	66.44	65.84	65.81	65.10	65.17	65.42	550
66.59	66.34	65.74	65.67	64.94	65.00	65.25	525
66.48	66.23	65.63	65.53	64.77	64.84	65.09	500
66.37	66.12	65.52	65.40	64.64	64.67	64.92	475
66.25	66.00	65.40	65.24	64.46	64.48	64.73	446.5
66.00	66.00						425
65.72	65.72						400
66.25	65.25	65.65	65.15	64.21	64.06	64.29	375
65.90	65.38						350
66.50	66.50						325
66.75	66.50	65.90	65.07	63.96	63.65	63.88	300
66.49	66.24	65.64	64.87	63.78	63.50	63.75	275
66.20	65.95	65.35	64.64	63.58	63.33	63.58	250
65.91	65.66	65.06	64.41	63.39	63.17	63.42	225
65.61	65.36	64.76	64.18	63.19	63.00	63.25	200
65.32	65.07	64.47	63.95	62.99	62.83	63.08	175
65.03	64.78	64.18	63.72	62.79	62.67	62.92	150
64.74	64.49	63.89	63.49	62.60	62.50	62.75	125
64.45	64.20	63.60	63.26	62.40	62.33	62.58	100
64.16	63.91	63.31	63.04	62.20	62.17	62.42	75
63.86	63.61	63.01	62.81	62.00	62.00	62.25	50
63.57	63.32	62.72	62.58	61.80	61.83	62.08	25
63.28	63.03	62.43	62.35	61.61	61.67	61.92	0
62.99	62.74	62.14	62.12	61.41	61.50	61.75	

26th

006866

371681 Brass Plug 21 1/2 & Lap 1 1/2

67.0  
66.0  
3.0

13

66.91	66.31	66.01	66.31	66.31	66.31	66.31	66.31	66.31	66.31	66.31	66.31
66.80	66.29	66.29	66.29	66.29	66.29	66.29	66.29	66.29	66.29	66.29	66.29
66.69	66.28	66.28	66.28	66.28	66.28	66.28	66.28	66.28	66.28	66.28	66.28
66.59	66.27	66.27	66.27	66.27	66.27	66.27	66.27	66.27	66.27	66.27	66.27
66.48	66.26	66.26	66.26	66.26	66.26	66.26	66.26	66.26	66.26	66.26	66.26
66.37	66.25	66.25	66.25	66.25	66.25	66.25	66.25	66.25	66.25	66.25	66.25
66.25	66.24	66.24	66.24	66.24	66.24	66.24	66.24	66.24	66.24	66.24	66.24
66.00	66.00	66.00	66.00	66.00	66.00	66.00	66.00	66.00	66.00	66.00	66.00
65.72	65.72	65.72	65.72	65.72	65.72	65.72	65.72	65.72	65.72	65.72	65.72
66.25	65.25	65.65	65.15	64.21	64.06	64.29					
65.90	65.38										
66.50	66.50										
66.75	66.50	65.90	65.07	63.96	63.65	63.88					
66.49	66.24	65.64	64.87	63.78	63.50	63.75					
66.20	65.95	65.35	64.64	63.58	63.33	63.58					
65.91	65.66	65.06	64.41	63.39	63.17	63.42					
65.61	65.36	64.76	64.18	63.19	63.00	63.25					
65.32	65.07	64.47	63.95	62.99	62.83	63.08					
65.03	64.78	64.18	63.72	62.79	62.67	62.92					
64.74	64.49	63.89	63.49	62.60	62.50	62.75					
64.45	64.20	63.60	63.26	62.40	62.33	62.58					
64.16	63.91	63.31	63.04	62.20	62.17	62.42					
63.86	63.61	63.01	62.81	62.00	62.00	62.25					
63.57	63.32	62.72	62.58	61.80	61.83	62.08					
63.28	63.03	62.43	62.35	61.61	61.67	61.92					
62.99	62.74	62.14	62.12	61.41	61.50	61.75					

all stables

66.91	66.31	66.01	66.31	66.31	66.31	66.31	66.31	66.31	66.31	66.31	66.31
66.80	66.29	66.29	66.29	66.29	66.29	66.29	66.29	66.29	66.29	66.29	66.29
66.69	66.28	66.28	66.28	66.28	66.28	66.28	66.28	66.28	66.28	66.28	66.28
66.59	66.27	66.27	66.27	66.27	66.27	66.27	66.27	66.27	66.27	66.27	66.27
66.48	66.26	66.26	66.26	66.26	66.26	66.26	66.26	66.26	66.26	66.26	66.26
66.37	66.25	66.25	66.25	66.25	66.25	66.25	66.25	66.25	66.25	66.25	66.25
66.25	66.24	66.24	66.24	66.24	66.24	66.24	66.24	66.24	66.24	66.24	66.24
66.00	66.00	66.00	66.00	66.00	66.00	66.00	66.00	66.00	66.00	66.00	66.00
65.72	65.72	65.72	65.72	65.72	65.72	65.72	65.72	65.72	65.72	65.72	65.72
66.25	65.25	65.65	65.15	64.21	64.06	64.29					
65.90	65.38										
66.50	66.50										
66.75	66.50	65.90	65.07	63.96	63.65	63.88					
66.49	66.24	65.64	64.87	63.78	63.50	63.75					
66.20	65.95	65.35	64.64	63.58	63.33	63.58					
65.91	65.66	65.06	64.41	63.39	63.17	63.42					
65.61	65.36	64.76	64.18	63.19	63.00	63.25					
65.32	65.07	64.47	63.95	62.99	62.83	63.08					
65.03	64.78	64.18	63.72	62.79	62.67	62.92					
64.74	64.49	63.89	63.49	62.60	62.50	62.75					
64.45	64.20	63.60	63.26	62.40	62.33	62.58					
64.16	63.91	63.31	63.04	62.20	62.17	62.42					
63.86	63.61	63.01	62.81	62.00	62.00	62.25					
63.57	63.32	62.72	62.58	61.80	61.83	62.08					
63.28	63.03	62.43	62.35	61.61	61.67	61.92					
62.99	62.74	62.14	62.12	61.41	61.50	61.75					

Mar 12-12  
Dorman  
Shaw  
Danne

3/21-12  
Dorman  
Shaw  
Danne

Checked & rec'd all stables as above  
Dorman  
Shaw  
Danne

67.17 66.92 66.82 66.21 65.45 65.50 65.75  
 No. East Line 27th St.

66.18 65.84 65.50 65.50  
 64.50 64.50

66.16 65.81 65.46 65.10

27th

67.04 66.79 66.19 66.14 65.93 65.72 65.50

St.

66.12 65.78 65.44 65.10

66.10 65.80 64.50 64.50  
 65.50 65.50

66.91 66.66 66.06 66.08 65.39 65.50 65.75

So. W. Line of 27th St.



Marcey Ave.

So. W. Line 28th St.

Table with columns for station numbers and measurements. Includes entries like 70.25 70.00 69.40 69.50 68.85 69.00 69.25 400.

Table with columns for station numbers and measurements. Includes entries like 68.95 68.70 68.10 68.21 67.56 67.72 67.97 380 1/2.

Table with columns for station numbers and measurements. Includes entries like 68.35 67.85 67.86 67.21 67.16 67.41.

Table with columns for station numbers and measurements. Includes entries like 68.25 68.00 67.40 67.80 66.85 66.99 66.24 256 1/4.

No. East Line 27th St. 005833

Table with columns for station numbers and measurements. Includes entries like 70.11 70.11 70.11 70.11 70.11 70.11 70.11 70.11 70.11 70.11 70.11 70.11.

Set South line on 2' offset Mar 18-12

Table with columns for station numbers and measurements. Includes entries like 66.02 66.14 66.28 66.34 66.39 66.44 66.49 66.54 66.59 66.64 66.69 66.74.

Table with columns for station numbers and measurements. Includes entries like 73.34 73.34 73.34 73.34 73.34 73.34 73.34 73.34 73.34 73.34 73.34 73.34.

Table with columns for station numbers and measurements. Includes entries like 70.64 70.64 70.64 70.64 70.64 70.64 70.64 70.64 70.64 70.64 70.64 70.64.



56.0	56.0	56.0	56.0	
D		St	E	St
56.0	56.0	56.0	56.540	55.0
	St		St	
	16 <sup>th</sup>		16 <sup>th</sup>	
54.0	54.0	55.0	54.5	52.50
E		St	F	St
54.0	54.0	55.0	55.0	

So. Line of D St

10	56.25	56.00	55.60	56.00	55.40	56.00	56.25
25	56.08	55.83	55.45	55.87	55.50	55.91	56.17
40	✓ 55.92	55.67	55.30	55.75	55.40	55.83	56.08
55	55.75	55.50	55.16	55.62	55.20	55.75	56.00
70	✓ 55.59	55.33	55.01	55.50	55.20	55.67	55.91 ✓
85	55.42	55.17	54.87	55.37	55.10	55.59	55.83
100	✓ 55.25	55.00	54.72	55.25	55.00	55.50	55.75 ✓
115	55.08	54.83	54.58	55.12	54.90	55.42	55.67
130	✓ 54.92	54.67	54.43	55.00	54.80	55.33	55.58 ✓
145	54.75	54.50	54.29	54.87	54.70	55.25	55.50
160	✓ 54.58	54.33	54.14	54.75	54.60	55.17	55.42 ✓
175	54.42	54.17	53.99	54.62	54.50	55.08	55.33
190	54.25	54.00	53.85	54.50	54.40	55.00	55.25

So. Line E St.

16666	14666	125	110	8333
-------	-------	-----	-----	------

60.21  
51.45  
8.76  
5.115

55.89	59.25	59.35	59.35	59.35	59.35	59.35	59.35
59.25	59.35	59.35	59.35	59.35	59.35	59.35	59.35
59.35	59.35	59.35	59.35	59.35	59.35	59.35	59.35

59.19 Hi	54.0	55.0	54.3	55.7	54.7	55.38	55.0	55.5
	519	419	436	202	452	356	419	369

55.89	60.21	60.21	60.21	60.21	60.21	60.21	60.21
55.40	55.01	55.00	54.43	54.60	53.85		
60.21	4.91V	5.20V	5.21V	5.78V	5.61V	6.36V	
60.21	5.75	5.50	5.25	5.00	5.75	5.50	
55.83	4.36V	4.71V	4.96V	5.21	5.46	5.71	
60.21	55.30	60.21	60.21	60.21	60.21	60.21	
55.67	4.71V	5.01V	5.49V	5.41V	5.414	5.410	
4.54					6.07V	5.81	
55.67	55.30	55.75	55.4	55.73			
372	349	304	337	296			
55.33	55.33	55.01	55.50	55.20	55.67		
346	379	329	359	312			
55.39	55.0	54.72	55.25	55.0	55.50		
379	407	354	379	329			
54.67	54.08	55.0	54.70	55.33			
412	436	379	400	346			
54.33	54.14	54.75	54.60	55.17			
446	465	404	419	362			
54.0	53.35	54.5	54.9	56.0			
474	494	429	439	379			

Check 4/12/18  
Hall

W

E

So. Line E. St

00 54.25 54.00 53.85 54.50 54.40 55.00 56.25

25 53.04 53.79 53.64 54.29 54.19 54.79 55.04

50 53.83 53.58 53.43 54.08 53.98 54.58 54.83

75 53.62 53.37 53.22 53.87 53.77 54.37 54.62

100 53.42 53.17 53.02 53.67 53.57 54.17 54.42

125 52.21 52.96 52.81 53.46 53.36 53.96 54.21

150 53.00 52.75 52.60 53.25 53.15 53.75 54.00

175 52.79 52.54 52.39 53.04 52.94 53.54 53.79

200 52.58 52.33 52.18 52.85 52.75 53.35 53.58

225 52.37 52.12 51.97 52.62 52.52 53.12 53.37

250 52.17 51.92 51.77 52.42 52.32 52.92 53.17

275 51.96 51.71 51.56 52.21 52.11 52.71 52.96

300 51.75 51.50 51.35 52.00 51.90 52.50 52.75

No line F. St.

6290 HD	6290	6290	6290	6290	6290	629	629	629
100	2.5	15.0	15.0	15.0	15.0	15.0	15.0	15.0
200	2.5	15.0	15.0	15.0	15.0	15.0	15.0	15.0
300	2.5	15.0	15.0	15.0	15.0	15.0	15.0	15.0
400	2.5	15.0	15.0	15.0	15.0	15.0	15.0	15.0
500	2.5	15.0	15.0	15.0	15.0	15.0	15.0	15.0
600	2.5	15.0	15.0	15.0	15.0	15.0	15.0	15.0
700	2.5	15.0	15.0	15.0	15.0	15.0	15.0	15.0
800	2.5	15.0	15.0	15.0	15.0	15.0	15.0	15.0
900	2.5	15.0	15.0	15.0	15.0	15.0	15.0	15.0
1000	2.5	15.0	15.0	15.0	15.0	15.0	15.0	15.0

check. 1/2 Hotel (gutter and cleaning)

So.

30<sup>th</sup>

St.

2250

2250

200.28

St.

216.0

215.0

DALE

St.

214.5

213.5

200.48

Ash

204.0

203.0

29<sup>th</sup>

St.

No.

Ash

St.

So.

Date

St.

60 214.75 214.50 213.90 214.00 213.35 213.50 213.75

65 213.44 213.19 212.59 212.69 212.04 212.19 212.44

50 212.12 211.87 211.27 211.37 210.72 210.87 211.12

75 210.81 210.56 209.96 210.06 209.41 209.56 209.81

100 209.50 209.25 208.65 208.75 208.10 208.25 208.50

125 208.19 207.94 207.34 207.44 206.79 206.94 207.19

150 206.87 206.62 206.02 206.12 205.47 205.62 205.87

175 205.56 205.31 204.71 204.81 204.16 204.31 204.56

200 204.25 204.00 203.40 203.50 202.85 203.00 203.25

1.3125

209.25 206.62 Prop + amb. Jan 2/12 <sup>ib. build.</sup> Taylor 21  
6.40 7.02 <sup>Chains</sup> 206.87 206.62 205.62 205.87  
215.65 203.50 204.25 8.75 9.03 10.03 9.78  
203.25 12.65 11.40  
12.40

208.57 208.25 209.50 212.12 211.57 210.87 211.12  
7.15 7.40 6.15 3.53 3.78 4.78 4.83  
213.75 213.50 214.50 214.75  
1.90 2.15 1.15 0.90  
0.35 0.60  
215.80

214.72 See page 58.

214.72 214.77 214.77 214.77 214.77 214.77 214.77 214.77 214.77 214.77 214.77 214.77 214.77 214.77 214.77  
10.50 10.50 10.50 10.50 10.50 10.50 10.50 10.50 10.50 10.50 10.50 10.50 10.50 10.50 10.50  
0.77 0.87 0.77 1.03 1.07 0.90 0.80 0.40 0.50 0.90 0.87 0.67 0.62 0.12 0.57

214.72 214.77 214.77 214.77 214.77 214.77 214.77 214.77 214.77 214.77 214.77 214.77 214.77  
0.65 0.67 0.61 0.54 0.66 0.30 0.45 0.50 0.34 0.04 0.00  
8.45 9.70 8.65 9.30 9.10 11.77 11.52 11.27 11.32 10.97

2716.4 120 139 140 1325 136 3/12-12 <sup>Donnan</sup>  
1173 240 324 314 389 364 <sup>Shaw</sup>  
2550 <sup>Sevine</sup>  
251142

1187 1127 1137 1072 1087 725 865 875 810 820  
627 587 577 642 627 757 849 839 904 887

662 602 612 547 562 20 34 35 285 30  
1052 1112 1102 1167 1152 411 271 461 526 511

Check 261 / Hatch Tower Hall

No.

50

205.72  
4.13  
213.85 M.I.

218.80  
10.74  
17.71

22

216.25 216.00 215.40 215.50 214.85 215.00 215.25

216.00 216.00 215.02 215.11 214.48 215.00 215.00  
215.0 215.0 214.0

215.40 214.63 214.88 214.93 214.29 213.63 214.40

215.25 214.25 214.64 214.74 214.10 213.25 214.25

DALTON

Co. B

St.

214.47 213.87 214.45 214.55 213.91 212.87 213.47

214.50 214.50 214.27 214.37 213.72 213.50 213.50  
213.50 212.50

214.25 214.50 213.90 214.00 213.35 213.50 213.75

217.12  
1425 1464 1470 1410 1325  
259 250 240 304 389  
Check 1/29 1/2 Katal  
Hall







336.76 RM. Nor. at Coppo 30-

65

25

DWIGHT

ST

1.5' WALL HS - Redwood to  
THORN ST  
BALANCE 10' WALL HS

UPAS

THORN

ST

334.0  
← 25' W S to Gt

ST

334.0

325.1

ST

324.6

321.5  
with lower bound  
of fence

ST

321.0

ST

MYRTLE

ST

← Centre lower hinge on  
shed door

327.0

326.5

316.75

316.5

GRIM

GRIM

GRIM

GRIM

300'

327.5

327.0

325.4

324.9

322.0

321.5

309.0  
310.0

65

309.0  
310.0

MYRTLE

ST

UPAS

ST

THORN

ST

REDWOOD

ST

327.0

326.5

325.1  
0.25

324.6

321.75	321.5	321.0	321.25
320.96		302.5	
320.17		319.5	
319.37		318.75	
318.58		318.0	
317.79		317.25	
317.0	316.75	316.5	316.75
315.70		315.25	
314.41		314.0	
313.12		312.75	
311.83		311.50	
310.54		310.25	
309.25	309.0	309.0	309.25

Table with columns for 'W.' and 'E.' sections. The 'W.' section contains a grid of numbers, likely representing a survey or a specific data set. The 'E.' section contains a grid of numbers, possibly representing a different survey or data set. The numbers are arranged in rows and columns, with some cells containing multiple values or calculations.

No. Line  
22083 22115 22125 28625 29166

Handwritten notes and calculations on the right side of the page. At the top right, the page number '27' is written. Below it, there are several tables and lists of numbers, some with handwritten annotations. A prominent section is titled 'All Stakes, May 31-12' and includes a list of names: 'Dunbar', 'Shaw', and 'Dennis'. There are also various mathematical calculations, including sums and differences of numbers, and some diagrams or small tables of data.

Table with multiple columns of numbers, possibly representing a survey or a specific data set. The numbers are arranged in rows and columns, with some cells containing multiple values or calculations.

Table with multiple columns of numbers, possibly representing a survey or a specific data set. The numbers are arranged in rows and columns, with some cells containing multiple values or calculations.

Table with multiple columns of numbers, possibly representing a survey or a specific data set. The numbers are arranged in rows and columns, with some cells containing multiple values or calculations.

Table with multiple columns of numbers, possibly representing a survey or a specific data set. The numbers are arranged in rows and columns, with some cells containing multiple values or calculations.

No

Grimm St.

E.

No. Line Myrtle St.

327.75 327.50 326.90 327.25 326.73 327.00 327.25

327.50 327.50  
326.50 326.81 327.16 326.64 <sup>const</sup> 327.00 327.00  
326.00

F.O.B 326.90 326.38 326.73 327.08 326.56 325.87 326.40 <sup>conv</sup>

F.O.A 327.25 326.25 326.65 327.00 326.48 325.75 326.75

Myrtle St.

326.72 326.12 326.56 326.92 326.40 325.62 326.22 <sup>conv</sup>

327.00 327.00 <sup>326.00</sup> 326.48 326.84 326.32 <sup>325.50</sup> 326.50 <sup>conv</sup>

327.25 327.00 326.40 326.75 326.23 326.50 326.75

So. Line Myrtle

327.15  
1.45  
327.53  
18.22  
16.33  
31.73  
24.75  
4.89  
31.73  
18.22  
5.51

334.87  
27.25  
7.12  
7.37  
7.97  
7.62  
8.15  
7.62  
7.87

334.87  
27.45  
6.62  
6.87  
7.47  
7.12  
7.65  
7.12  
7.37

So. Line Myrtle St

327.25 327.00 326.40 326.75 326.23 326.50 326.75

327.12 326.87 326.27 326.62 326.10 326.37 326.62

327.98 326.73 326.13 326.48 325.96 326.23 326.48

326.85 326.60 326.00 326.35 325.83 326.10 326.35

326.71 326.46 325.86 326.21 325.69 325.96 326.21

326.58 326.33 325.73 326.08 325.56 325.83 326.08

326.45 326.20 325.62 325.95 325.43 325.70 325.95

326.32 326.07 325.47 325.82 325.30 325.57 325.87

326.18 325.93 325.33 325.68 325.16 325.43 325.68

326.05 325.80 325.20 325.55 325.03 325.30 325.55

325.92 325.67 325.07 325.42 324.90 325.17 325.42

325.78 325.53 324.93 325.28 324.76 325.03 325.28

325.65 325.40 324.80 325.15 324.63 324.90 325.15

No. Line Upas St

113333

326.76	326.51	326.26	326.01	325.76	325.51	325.26	325.01
326.76	326.51	326.26	326.01	325.76	325.51	325.26	325.01
326.76	326.51	326.26	326.01	325.76	325.51	325.26	325.01

325.85	325.60	325.35	325.10	324.85	324.60	324.35	324.10
325.85	325.60	325.35	325.10	324.85	324.60	324.35	324.10

325.85	325.60	325.35	325.10	324.85	324.60	324.35	324.10
325.85	325.60	325.35	325.10	324.85	324.60	324.35	324.10

326.71	326.46	326.21	325.96	325.71	325.46	325.21	324.96
326.71	326.46	326.21	325.96	325.71	325.46	325.21	324.96

329.53	329.28	329.03	328.78	328.53	328.28	328.03	327.78
329.53	329.28	329.03	328.78	328.53	328.28	328.03	327.78

326.71	326.46	326.21	325.96	325.71	325.46	325.21	324.96
326.71	326.46	326.21	325.96	325.71	325.46	325.21	324.96

Cut Stake  
1/2  
1/2  
1/2

Drum  
Shant  
Pencil  
Kerr

chuck  
Kerr

100% per check on opp page  
11/

E.

No. Line Upas St

325.65	325.40	324.80	325.15	324.63	324.90	325.15
--------	--------	--------	--------	--------	--------	--------

325.40	325.40				324.90	324.90
	324.40				323.90	

Upas St

325.25	324.25	324.65	325.00	324.48	323.75	324.15
--------	--------	--------	--------	--------	--------	--------

St.

325.10	324.10				323.60	
	325.10				324.60	324.60

325.35	325.10	324.50	324.85	324.33	324.60	324.85
--------	--------	--------	--------	--------	--------	--------

So. Line Upas St



W.

Grimm St.

E

So. Line Upas St.

325.35	325.10	324.50	324.35	324.33	324.60	324.85
325.22	324.97	324.37	324.72	324.22	324.47	324.72
325.10	324.85	324.25	324.60	324.08	324.35	324.60
324.97	324.72	324.12	324.47	323.95	324.22	324.47
324.84	324.59	323.99	324.34	323.72	324.09	324.34
324.61	324.46	323.86	324.21	323.61	323.96	324.21
324.58	324.33	323.72	324.08	323.56	323.83	324.08
324.45	324.20	323.60	323.95	323.43	323.70	323.95
324.32	324.07	323.47	323.82	323.30	323.57	323.82
324.19	323.94	323.34	323.69	323.17	323.44	323.69
324.06	323.81	323.21	323.56	323.04	323.31	323.56
323.93	323.68	323.08	323.43	322.91	323.18	323.43
323.80	323.55	322.95	323.30	322.78	323.05	323.30
323.67	323.42	322.82	323.17	322.65	322.92	323.17
323.54	323.29	322.69	323.04	322.52	322.79	323.04
323.41	323.16	322.56	322.91	322.39	322.66	322.91
323.28	323.03	322.43	322.78	322.26	322.53	322.78
323.15	322.90	322.30	322.65	322.13	322.40	322.65
323.02	322.77	322.17	322.52	322.00	322.27	322.52
322.89	322.64	322.04	322.39	321.87	322.14	322.39
322.77	322.52	321.92	322.27	321.75	322.02	322.27
322.64	322.39	321.79	322.14	321.62	321.89	322.14
322.51	322.26	321.66	322.01	321.49	321.76	322.01
322.38	322.13	321.53	321.88	321.36	321.63	321.88
322.25	322.00	321.40	321.75	321.23	321.50	321.75

No. Line THORN St. 12916

From here to Rdwd. cuts are 1 ft deeper than shown. 31

2277	2275	2270	2260	2250	2240	2230	2220	2210	2200	2190	2180	2170	2160	2150	2140	2130	2120	2110	2100	2090	2080	2070	2060	2050	2040	2030	2020	2010	2000	1990	1980	1970	1960	1950	1940	1930	1920	1910	1900	1890	1880	1870	1860	1850	1840	1830	1820	1810	1800	1790	1780	1770	1760	1750	1740	1730	1720	1710	1700	1690	1680	1670	1660	1650	1640	1630	1620	1610	1600	1590	1580	1570	1560	1550	1540	1530	1520	1510	1500	1490	1480	1470	1460	1450	1440	1430	1420	1410	1400	1390	1380	1370	1360	1350	1340	1330	1320	1310	1300	1290	1280	1270	1260	1250	1240	1230	1220	1210	1200	1190	1180	1170	1160	1150	1140	1130	1120	1110	1100	1090	1080	1070	1060	1050	1040	1030	1020	1010	1000	990	980	970	960	950	940	930	920	910	900	890	880	870	860	850	840	830	820	810	800	790	780	770	760	750	740	730	720	710	700	690	680	670	660	650	640	630	620	610	600	590	580	570	560	550	540	530	520	510	500	490	480	470	460	450	440	430	420	410	400	390	380	370	360	350	340	330	320	310	300	290	280	270	260	250	240	230	220	210	200	190	180	170	160	150	140	130	120	110	100	90	80	70	60	50	40	30	20	10	0	-10	-20	-30	-40	-50	-60	-70	-80	-90	-100	-110	-120	-130	-140	-150	-160	-170	-180	-190	-200	-210	-220	-230	-240	-250	-260	-270	-280	-290	-300	-310	-320	-330	-340	-350	-360	-370	-380	-390	-400	-410	-420	-430	-440	-450	-460	-470	-480	-490	-500	-510	-520	-530	-540	-550	-560	-570	-580	-590	-600	-610	-620	-630	-640	-650	-660	-670	-680	-690	-700	-710	-720	-730	-740	-750	-760	-770	-780	-790	-800	-810	-820	-830	-840	-850	-860	-870	-880	-890	-900	-910	-920	-930	-940	-950	-960	-970	-980	-990	-1000
------	------	------	------	------	------	------	------	------	------	------	------	------	------	------	------	------	------	------	------	------	------	------	------	------	------	------	------	------	------	------	------	------	------	------	------	------	------	------	------	------	------	------	------	------	------	------	------	------	------	------	------	------	------	------	------	------	------	------	------	------	------	------	------	------	------	------	------	------	------	------	------	------	------	------	------	------	------	------	------	------	------	------	------	------	------	------	------	------	------	------	------	------	------	------	------	------	------	------	------	------	------	------	------	------	------	------	------	------	------	------	------	------	------	------	------	------	------	------	------	------	------	------	------	------	------	------	------	------	------	-----	-----	-----	-----	-----	-----	-----	-----	-----	-----	-----	-----	-----	-----	-----	-----	-----	-----	-----	-----	-----	-----	-----	-----	-----	-----	-----	-----	-----	-----	-----	-----	-----	-----	-----	-----	-----	-----	-----	-----	-----	-----	-----	-----	-----	-----	-----	-----	-----	-----	-----	-----	-----	-----	-----	-----	-----	-----	-----	-----	-----	-----	-----	-----	-----	-----	-----	-----	-----	-----	-----	-----	-----	-----	-----	-----	-----	-----	-----	-----	-----	-----	-----	-----	-----	-----	-----	-----	-----	-----	----	----	----	----	----	----	----	----	----	---	-----	-----	-----	-----	-----	-----	-----	-----	-----	------	------	------	------	------	------	------	------	------	------	------	------	------	------	------	------	------	------	------	------	------	------	------	------	------	------	------	------	------	------	------	------	------	------	------	------	------	------	------	------	------	------	------	------	------	------	------	------	------	------	------	------	------	------	------	------	------	------	------	------	------	------	------	------	------	------	------	------	------	------	------	------	------	------	------	------	------	------	------	------	------	------	------	------	------	------	------	------	------	------	-------

one Allen Bell 10 Brooke  
Murray  
29th  
30th

look page see map

X sections <sup>Managers</sup> 29 to 30th

X sections Alley Blk 10 Brooke's

5. 2 1/2 W 70 Lot 12

W 70 Lot 13

Block 205

W 10 Lot 15

B. 5 Lot 13

Block 205

35-  
W 10



W.

Grimm St.

E.

322.25 322.00 321.40 321.75 321.23 321.50 321.75

322.00 322.00  
321.00 321.31 321.66 321.14 321.50 321.50  
320.50

c 0.8  
321.40 320.88 321.23 321.58 321.06 320.38 320.90

c 0.5  
321.75 320.75 321.15 321.50 320.98 320.25 321.25

THORN

c 1.1  
321.22 320.62 321.07 321.42 320.90 320.12 320.72

ST.

321.50 320.50  
321.50 320.99 321.34 320.82 320.80  
321.00 321.00

321.75 321.50 320.90 321.25 320.73 321.00 321.25

22.57	22.57	324.63	24.63	24.63
21.25	21.75		21.40	20.90
5.82	5.82		3.23	3.73
6.07	6.07		24.63	24.63
6.07	6.07		21.75	21.75
6.32	5.82		2.88	3.38
6.32	6.17		24.63	24.63
6.57	5.37		21.24	20.72
	5.57		3.41	3.91

Change of Grade - See next Page.

So. Line THORN ST.

821.75	321.50	320.90	321.25	320.73	321.00	321.25
321.27	321.02	320.43	320.77	320.27	320.54	320.79
320.79	320.54	319.96	320.31	319.80	320.08	320.33
320.31	320.06	319.49	319.84	319.34	319.62	319.87
319.83	319.58	319.02	319.37	318.87	319.16	319.41
319.35	319.10	318.54	318.91	318.41	318.71	318.96
318.87	318.62	318.07	318.44	317.95	318.25	318.50
318.39	318.14	317.60	317.97	317.48	317.79	318.04
317.92	317.67	317.13	317.50	317.02	317.33	317.58
317.44	317.19	316.66	317.03	316.56	316.87	317.12
316.96	316.71	316.19	316.56	316.09	316.42	316.67
316.47	316.22	315.72	316.09	315.63	315.96	316.21
316.00	315.75	315.25	315.62	315.16	315.50	315.75
315.52	315.27	314.78	315.16	314.70	315.04	315.29
315.04	314.79	314.31	314.69	314.24	314.58	314.83
314.56	314.31	313.84	314.22	313.77	314.12	314.37
314.08	313.83	313.37	313.75	313.31	313.66	313.91
313.60	313.35	312.89	313.28	312.85	313.20	313.45
313.12	312.87	312.42	312.81	312.38	312.75	313.00
312.64	312.39	311.95	312.34	311.92	312.29	312.54
312.17	311.92	311.48	311.87	311.45	311.83	312.08
311.79	311.54	311.01	311.41	311.00	311.37	311.62
311.21	310.96	310.54	310.94	310.52	310.92	311.17
310.73	310.48	310.07	310.47	310.06	310.46	310.71
310.25	310.00	309.60	310.00	309.60	310.00	310.25

No Line of Redwood St.

46875

2175	2125	2174	2033	1983	1901	1887	1850	1792	1758
142	127	213	253	307	351	405	442	473	534
132	127	239	213	300	351	375	305	27	370
-0.73	-0.24	-0.24	0	-2.19	+1.0	+0.3	+1.37	+1.3	+1.64
1696	1667	160	1575	1502	1483	1205	139	1312	130
492	226	292	707	735	324	554	93	755	292
496	496	523	507	230	530	710	621	750	642
+1.0	+1.8	+1.5	+2.1	+1.08	+2.24	+1.14	+2.66	+2.0	+1.30
127	1208	1121	117	1020	1025	Cut Stakes	1/2	1/2	1/2
1275	724	448	795	1267	1267				
-1.0	+2.9	+1.76	+2.5	+0.67	+1.77				

2105 21P

West South Line of Thorn East

Table with columns for West, South Line of Thorn, and East. Rows include measurements like 321.75, 321.35, 320.95, 320.56, 320.16, 319.77, 319.37, 318.98, 318.58, 318.19, 317.79, 317.39, 317.00, 316.75, 316.35, 315.71, 315.06, 314.41, 313.77, 313.12, 312.48, 311.83, 311.19, 310.54, 309.89, and 309.25. Includes notes like 'co. 2', 'co. 3', 'co. 4', 'co. 5', 'N. Line of Redwood'.

Table with columns for measurements and calculations. Includes handwritten notes like 'cut stakes', 'Hatched', 'Property stakes', 'all stakes', 'Burr', 'N. Line of Redwood'. Contains numerical data and some diagrams.

N. Line of Redwood.

BEECH

St.

213.0

2145

90°

90°

215.34

216.39

215.85

217.00

216.16

217.29

216.37

217.45

216.37

217.50

216.26

217.42

216.00

217.22

90°

90°

2145

216.0

ASH.

St.

213.5

215.0

DALE

20925.27

21075

So. LINE SOUTH

Part

E 57° 02' 51"

St.

85°





Wg

Date Sr E

So. Line Ash Sr

213.75 213.50 213.47 214.25 214.40 215.00 215.25

213.39 213.14 213.1 213.89 214.04 214.64 214.89

✓ 213.04 212.79 212.76 213.54 213.69 214.29 214.54

212.69 212.44 212.41 213.19 213.34 213.94 214.19

✓ 212.33 212.08 212.05 212.83 212.98 213.58 213.83

211.98 211.73 211.70 212.48 212.63 213.23 213.48

✓ 211.62 211.37 211.34 212.12 212.27 212.87 213.12

211.27 211.02 210.99 211.77 211.92 212.52 212.77

✓ 210.92 210.67 210.64 211.42 211.57 212.17 212.42

210.56 210.31 210.28 211.06 211.21 211.81 212.06

✓ 210.21 209.96 209.93 210.71 210.86 211.46 211.71

209.85 209.60 209.57 210.35 210.50 211.10 211.35

✓ 209.50 209.25 209.22 210.00 210.15 210.75 211.00

..354166 So. Line So. Park

cut of fill Schultz Taylor  
Hoco 25/11 Paulsen

37

220.63	13.04	212.33	211.65	210.94	210.21	209.50
213.75	7.39	8.30	9.01	9.71	10.42	11.13
16.88	8.39	9.0	9.3	9.21	10.22	11.2
2.3	-0.8	-0.7	-0.2	+0.5	+0.2	-0.1
-0.5						

211.06	211.71	212.42	213.12	213.83	214.54	215.24
7.63	8.92	5.21	7.37	6.80	6.09	5.38
11.3	8.62	7.31	7.01	6.9	6.29	4.58
11.1	6.3	+0.9	+0.5	-0.1	-0.2	+0.5

125

122

120

1250 1347 1425 1440 1500 1379 1276 1354 1369 1429  
 352 359 274 262 207 423 426 348 333 272

1205 1205 1253 1258 1358 1137 1134 1212 1227 1287  
 272 471 419 409 349 565 563 490 475 415

1067 1060 1122 1157 1217 996 993 1071 1086 1146  
 636 631 569 545 485 704 709 631 616 556

925 925 100 1015 1075 all stakes 1/2 Hatch  
 717 750 702 637 627

217.04 217.04 217.04 217.04 217.04 217.04 217.04 217.04 217.04 217.04 217.04  
 11.37 11.37 12.12 12.12 12.12 11.57 11.57 11.42 10.64 10.67 09.86 09.93 10.71 10.86 11.46  
 6.18 6.31 5.43 5.12 4.68 5.38 5.58 6.13 6.91 6.88 7.58 7.64 6.94 6.69 6.09

217.04 217.04 217.04 217.04 217.04  
 10.75 10.15 10.00 09.92 09.25  
 6.80 7.42 7.65 8.33 8.30

3/22-12 {Duncan  
Vhant  
Denire}

1205 1205 1253 1258 1358 1137 1134 1212 1227 1287  
 272 471 419 409 349 565 563 490 475 415

1067 1060 1122 1157 1217 996 993 1071 1086 1146  
 636 631 569 545 485 704 709 631 616 556

925 925 100 1015 1075 all stakes 1/2 Hatch  
 717 750 702 637 627

1205 1205 1253 1258 1358 1137 1134 1212 1227 1287  
 272 471 419 409 349 565 563 490 475 415

1067 1060 1122 1157 1217 996 993 1071 1086 1146  
 636 631 569 545 485 704 709 631 616 556

925 925 100 1015 1075 all stakes 1/2 Hatch  
 717 750 702 637 627

1205 1205 1253 1258 1358 1137 1134 1212 1227 1287  
 272 471 419 409 349 565 563 490 475 415

1067 1060 1122 1157 1217 996 993 1071 1086 1146  
 636 631 569 545 485 704 709 631 616 556

925 925 100 1015 1075 all stakes 1/2 Hatch  
 717 750 702 637 627

1205 1205 1253 1258 1358 1137 1134 1212 1227 1287  
 272 471 419 409 349 565 563 490 475 415

1067 1060 1122 1157 1217 996 993 1071 1086 1146  
 636 631 569 545 485 704 709 631 616 556

925 925 100 1015 1075 all stakes 1/2 Hatch  
 717 750 702 637 627

3/22-12  
 Check OK 24/12 Hatch

DALE ST. E.

So. Line Beech St.

213.25	213.00	212.97	213.75	213.90	214.50	214.95
213.90	213.65	213.60	214.36	214.48	215.08	215.33
214.55	214.30	214.24	214.97	215.06	215.66	215.91
215.20	214.95	214.87	215.59	215.64	216.24	216.49
215.59	215.34	215.25	215.96	215.99	216.59	216.84
216.10	215.85	216.23	216.43	216.40	217.00	217.25
216.41	216.16	216.04	216.72	216.69	217.29	217.54
216.62	216.37	216.24	216.91	216.85	217.45	217.70
216.62	216.37	216.25	216.94	216.90	217.50	217.75
216.51	216.26	216.15	216.84	216.82	217.42	217.67
216.25	216.00	215.90	216.61	216.62	217.22	217.47
216.00	215.75	215.66	216.38	216.42	216.91	217.21
215.58	215.33	215.26	216.00	216.08	216.68	216.93
215.17	214.92	214.87	215.63	215.74	216.34	216.59

No Line Ash St.

125 147 1525 154 160  
7.14 7.19 6.71 6.2 5.6

214.51  
6.12  
220.63 HI  
218.75  
7.38  
6.87  
4.70

214.38  
215.59  
216.10  
216.41  
216.62  
216.62  
216.37

6.08 5.04 4.53 4.22 4.01 4.01 4.12  
4.38 4.24 4.43 4.72 4.41 4.3 4.92  
+1.70 +1.0 +0.1 -0.5 -0.4 -0.3 -0.8

216.25 215.19 214.75 216.25 216.73 217.47 217.25  
4.38 5.05 5.85 4.28 3.70 3.16 2.76 2.88  
5.05 5.89 6.43 4.09 3.5 3.43 3.31 1.79  
-0.7 -0.5 -0.6 +0.3 +0.2 -0.3 -0.3 +1.1

217.20 217.54 217.25 216.50 215.91 214.75  
2.93 3.07 3.38 3.79 4.72 5.88  
1.93 2.69 2.88 2.99 4.72 5.08  
2.10 +0.4 +0.5 +0.8 +0.0 +0.8

216.50 215.58 215.33 216.68 216.93  
4.30 5.80 4.73 4.97 3.62 3.37

217.47 217.22 216.00 216.95  
2.83 3.08 4.30 4.45

216.00 217.75 217.50 216.37 216.62  
4.12 2.70 2.45 2.37 2.62 3.75 3.50

216.51 216.62 216.37 217.45 217.20 217.54 217.59 216.41  
3.61 3.30 3.75 1.67 2.42 2.58 2.83 3.76 3.71

216.10 215.85 217.00 217.25 216.84 216.59 215.34 215.59  
4.02 4.27 3.12 2.87 3.28 3.53 4.78 4.53

214.55 214.30 215.66 215.91 214.75 214.50 213.00 213.25  
5.57 5.82 4.46 4.21 5.37 5.62 7.12 6.87

130 1297 1275 129 195 / 1438 1422 1447 1506 1546  
763 706 628 613 553 / 573 579 506 497 437

15.34 15.25 15.76 16.0 16.59 / 15.85 15.78 16.02 16.27 17.45  
4.69 4.78 4.87 4.93 5.44 / 4.81 4.90 3.60 3.63 3.08

15.16 16.04 16.72 16.69 17.29 / 16.9 16.9 16.9 16.85 17.45  
3.97 3.99 3.31 3.34 2.72 / 3.66 3.79 3.12 3.18 2.58

16.26 16.57 16.84 16.82 17.22 / 16.0 15.9 16.61 16.62 17.22  
3.77 3.53 3.19 3.21 2.27 / 4.13 4.13 3.22 3.21 2.91

15.33 15.26 16.0 16.8 16.68 / 14.5 14.47 15.25 15.2 16.0  
4.70 4.77 4.83 3.95 3.85 / 5.53 5.56 4.78 4.63 4.49

3rd S.E. Cor 10th & Beech  
11.14  
10.00 12.97 13.75 14.00 14.45 14.92 14.99 15.25 14.99 15.15 14.30 15.84 15.25 15.82 15.88 15.67  
9.89 9.92 8.74 7.99 7.79 6.25 6.84 6.92 7.65 7.05 6.42 6.64 5.73 5.90 5.80

10.88 14.88 14.98 11.00 11.89 11.89 11.89 11.89 11.89 11.89 11.89 11.89 11.89 11.89 11.89 11.89 11.89  
13.28 16.00 16.20 15.58 15.87 16.16 16.00 16.76 16.69 17.09 17.45 16.00 16.41 16.24 16.37  
6.82 5.42 4.54 4.59 4.38 4.47 5.07 5.00 5.74 5.63 5.87 5.47 5.23 5.27 4.67

11.88 11.88 11.88 11.88 11.88 11.88 11.88 11.88 11.88 11.88 11.88 11.88 11.88 11.88 11.88 11.88  
16.15 16.08 16.00 15.86 15.38 14.90 14.47 15.25 15.40 16.00  
5.77 5.82 5.88 6.48 6.64 7.19 7.12 6.44 6.48 6.84

130 1297 1275 1290 145 143 1422 1447 1496 1511  
366 347 271 276 716 734 740 669 661 593

10.82 15.06 15.00 15.97 16.07 15.86 15.73 16.00 16.90 17.0  
6.39 6.01 5.70 5.67 5.07 5.81 5.93 5.82 5.26 4.64

16.16 16.00 16.72 16.69 17.29 / 16.37 16.20 16.91 16.85 17.45  
3.59 3.22 4.74 4.71 4.37 / 5.29 5.42 4.75 4.81 6.21

16.07 16.25 16.20 16.26 16.15 16.32 16.32 16.32 17.42  
5.29 5.41 4.72 4.76 4.16 5.40 5.51 4.32 4.89 4.24

16.0 17.22 15.33 15.26 16.0 16.08 16.68  
3.06 3.70 5.05 / 5.00 6.33 6.40 5.6 5.87 5.79

Check for 10th & Beech

214.74  
cut & fill  
Dec. 28/11

Check for 10th & Beech

(Domine)  
(Sane)  
(Devine)



E STREET  
E Street

17TH

ST.

73.57

73.57

18TH

ST.

85.0

85.0

STREET

55°

55°

833

833

16TH

ST.

829

829

824

824

54°

54°

818

818

811

811

803

803

E STREET

794

794

784

784

32.0

17TH

ST.

771

771

734

734

32.0

737

737

E

50°

50°

15TH

ST.

# E STREET

North
South

East Line of Fifteenth Street

Curb - Prof. 3/10/12 Hatch  
1/2

0700	50.25	50.00	49.60	50.00	49.60	50.00	50.25
0725	50.75	50.50	50.10	50.50	50.10	50.50	50.75
0750	51.25	51.00	50.60	51.00	50.60	51.00	51.25
0825	51.75	51.50	51.10	51.50	51.10	51.50	51.75
1100	52.25	52.00	51.60	52.00	51.60	52.00	52.25
1125	52.75	52.50	52.10	52.50	52.10	52.50	52.75
1150	53.25	53.00	52.60	53.00	52.60	53.00	53.25
1125	53.75	53.50	53.10	53.50	53.10	53.50	53.75
2100	54.25	54.00	53.60	54.00	53.60	54.00	54.25

500 ft  
520  
535 435 535 435  
575 435 575 435  
540 51 52 53 54  
535 435 535 435  
575 435 575 435  
540 51 52 53 54  
535 435 535 435  
575 435 575 435

Check 4/10/12

16

E STREET

North

West side of 16th Street

South

5710 Hz 535 5410 545  
465 405 365

54.25	54.00	53.60	54.00	53.60	54.00	54.25
54.00	54.00 53.00	53.78	54.18	53.78	54.00	54.00 53.00
53.85 1/2	53.25	53.94	54.34	53.94	53.25	53.85
54.60	53.50	54.10	54.50	54.10	53.50	54.50
54.40 1/2	53.75	54.20	54.60	54.20	53.75	54.4
55.00	54.00 55.00	54.42	54.82	54.42	54.00 55.00	55.00
55.25	53.00	54.60	55.00	54.60	55.00	55.25

North

East side of Sixteenth Street

South

	cos				cos
0100	54.00	54.60	55.20	54.60	54.00
0125	56.45	57.05	57.45	57.05	56.45
0150	58.89	59.49	59.89	59.49	58.89
0175	61.34	61.94	62.34	61.94	61.34
1100	63.79	64.39	64.79	64.39	63.79
1125	66.23	66.83	67.23	66.83	66.23
1150	68.68	69.28	69.68	69.28	68.68
1175	71.12	71.72	72.12	71.72	71.12
2100	73.57	74.17	74.57	74.17	73.57

17

Gutter washed out

cut stake 3/10/12 Hotel  
St. James  
Hall

	3	4	5	6	7	8
57.62	70.5	62.25	12.01	65.92	9.37	1.90
62.5	10.2	19.01	6.65	73.7	2.35	4.27
65.2	5.66	9.22	7.2	77.47		
68.25		4.68	7.2			
70.5						
72.1						
73.7						
75.3						
76.9						
78.5						
80.1						
81.7						
83.3						
84.9						
86.5						
88.1						
89.7						
91.3						
92.9						
94.5						
96.1						
97.7						
99.3						
100.9						

Gutter washed out  
4/10/12 Hotel  
St. James  
Hall



E STREET

North West side of Seventeenth Street South

0+00 73.57 74.17 74.57 74.17 73.57

0+20 75.40 Break 76.40 75.40 Break

0+40 77.1 Break 78.10 77.1 Break

0+60 78.4 Break 79.40 78.4 Break

0+80 - E Line 17<sup>34</sup> 79.40 80.00 80.40 80.00 79.40

SO

98 - *cut stake* 3/29/12 Hatch  

	S	N	N	S
1000	75.40	12.56	77.10	78.4
496	12.56	74.3	10.86	9.56
176	73.2	+5.13	41	5.40
	+4.26		+6.46	+4.16
721	75.40	77.1	78.4	79.4
213	1.81	8.6	6.3	5.8
721	0.81	7.1	5.8	5.2
176				4.7
1000	73.23	75.4	77.1	78.4
	0.83	2.33	1.10	1.76
	77.40			
	8.66			
	86.36			

Check 4/10/12 Hatch

E. STREET

North						South					
East 21 <sup>st</sup> of Seventeenth Street											
0100	79.40	80.00	80.40	80.00	79.40						
0120	80.30 Break	80.90	81.30	80.90	80.30 Break						
0140	81.10 Break	81.70	82.10	81.70	81.10 Break						
0160	81.90 Break	82.50	82.90	82.50	81.90 Break						
0180	82.40 Break	83.00	83.40	83.00	82.40 Break						
1100	82.90 Break	83.50	83.90	83.50	82.90 Break						
1120	83.30 Break	83.90	84.30	83.90	83.30 Break						
1150	83.56	84.16	84.56	84.16	83.56						
1175	83.78	84.38	84.78	84.38	83.78						
2100	84.00	84.60	85.00	84.60	84.00						

Old staka 3/19/12 Hatch Street Hall 45

79.40	80.00	80.40	80.00	79.40	754	8110	474	819	606
80.30	80.90	81.30	80.90	80.30	752	674	444	606	470
81.10	81.70	82.10	81.70	81.10	753	434	444	460	470
81.90	82.50	82.90	82.50	81.90	752	422	422	460	470
82.40	83.00	83.40	83.00	82.40	752	422	422	460	470
82.90	83.50	83.90	83.50	82.90	752	422	422	460	470
83.30	83.90	84.30	83.90	83.30	752	422	422	460	470
83.56	84.16	84.56	84.16	83.56	752	422	422	460	470
83.78	84.38	84.78	84.38	83.78	752	422	422	460	470
84.00	84.60	85.00	84.60	84.00	752	422	422	460	470

gutters washed  
silt a little

Check 4/10/12 Hatch Street Hall

79.40	80.00	80.40	80.00	79.40	754	8110	474	819	606
80.30	80.90	81.30	80.90	80.30	752	674	444	606	470
81.10	81.70	82.10	81.70	81.10	753	434	444	460	470
81.90	82.50	82.90	82.50	81.90	752	422	422	460	470
82.40	83.00	83.40	83.00	82.40	752	422	422	460	470
82.90	83.50	83.90	83.50	82.90	752	422	422	460	470
83.30	83.90	84.30	83.90	83.30	752	422	422	460	470
83.56	84.16	84.56	84.16	83.56	752	422	422	460	470
83.78	84.38	84.78	84.38	83.78	752	422	422	460	470
84.00	84.60	85.00	84.60	84.00	752	422	422	460	470



DALE ST. FERN ST.

245.0	244.0	248.0	246.0
		256.0	254.0
		257.2	255.4
		257.8	256.2
		258.1	256.8
		258.4	257.0
		258.4	257.1
		258.2	256.9
		257.7	256.5
230.0	229.0	257.0	256.0

ST.

ST.

29th ST 30th ST

228.0	227.0	236.0	235.0
216.4	218.4 214.8	247.0	246.0

ELM

ELM

GRANADA AVE. DALE ST.

No.

ELM ST

S

West Line 29th St.

60	228.25	228.00	227.40	227.50	226.85	227.00	227.25
75	226.93	226.68	226.15	226.15	225.80	226.05	226.05
80	225.61	225.36	224.80	224.97	224.38	224.59	224.84
95	224.30	224.05	223.50	223.50	223.39	223.64	223.64
100	222.98	222.73	222.22	222.45	221.91	222.18	222.43
25	221.66	221.41	220.85	220.85	220.88	221.23	221.23
50	220.34	220.09	219.62	219.93	219.45	219.77	220.02
75	219.02	218.77	218.30	218.30	218.57	218.82	218.82
85	218.50	218.25	217.85	217.85	218.10	218.35	218.35
90	217.70	217.45	217.05	217.05	217.36	217.61	217.61
220	216.65	216.40	216.00	216.40	216.00	216.40	216.65

E.L. GRAHAM

30	228.25	228.00	227.40	227.50	226.85	227.00	227.25	30 138 578
42	226.93	226.68	226.15	226.15	225.80	226.05	226.05	48
48	225.61	225.36	224.80	224.97	224.38	224.59	224.84	
50	224.30	224.05	223.50	223.50	223.39	223.64	223.64	
60	222.98	222.73	222.22	222.45	221.91	222.18	222.43	
75	221.66	221.41	220.85	220.85	220.88	221.23	221.23	
80	220.34	220.09	219.62	219.93	219.45	219.77	220.02	
85	218.50	218.25	217.85	217.85	218.10	218.35	218.35	
90	217.70	217.45	217.05	217.05	217.36	217.61	217.61	
220	216.65	216.40	216.00	216.40	216.00	216.40	216.65	

all stakes amuse  
Evans  
Kerr.

9-18-12 checked OK blough

East Line of 29th

220.25	230.00	229.40	229.50	228.85	229.00	229.10
230.00	230.00 229.00	229.06	229.16	228.51	229.00 228.00	229.10
229.40	228.50	228.72	228.82	228.17	227.50	228.40

29th

229.00	228.00	228.39	228.49	227.84	227.00	228.00
--------	--------	--------	--------	--------	--------	--------

57

228.10	227.50	228.06	228.16	227.51	226.50	227.10
--------	--------	--------	--------	--------	--------	--------

228.00	227.0 228.00	227.73	227.83	227.18	226.00 227.00	227.00
--------	-----------------	--------	--------	--------	------------------	--------

228.25	228.00	227.40	227.50	226.85	227.00	227.25
--------	--------	--------	--------	--------	--------	--------

West Line of 29th 57

27.0 27.0 27.0 28.0 29.0 29.4 / 28.29 28.4 27.84  
 27.2 27.14 27.4 28.4 29.4 29.4 / 27.5 27.5 27.5  
 6.00

27.25  
 27.25  
 27.25  
 27.25  
 27.25  
 27.25  
 27.25  
 27.25  
 27.25

9-18-12 Check OK Done

No.	ELIM	ST.	So.
	West Line	DALE	ST
200	245.25	245.00	244.40 244.50 243.85 244.00 244.25
25	243.40	243.21	242.61 242.71 242.06 242.21 242.46
50	241.68	241.43	240.83 240.93 240.28 240.43 240.65
75	239.89	239.64	239.04 239.14 238.39 238.64 238.89
100	238.11	237.85	237.26 237.36 236.61 236.86 237.11
125	236.32	236.07	235.47 235.57 234.92 235.07 235.32
150	234.54	234.29	233.69 233.79 233.14 233.29 233.54
175	232.75	232.50	231.90 232.00 231.35 231.50 231.75
200	230.96	230.71	230.11 230.21 229.56 229.71 229.96
210	230.25	230.00	229.40 229.50 228.85 229.00 229.25

29th St

50  
 4112 2028 / 3311 3711 / 2450 2350 / 3022  
 422 422 422 422 / 456 456 / 267 307 / 676  
 512 512 512 512 / 406 456 / 323 106 / 92  
 -22 30 -22 30 -22 30 -22 30  
 +1.5 +1.0 +2.0 +2.1 -2.2  
 +3.84

Grade Book 62 Bm 244.09 End of Curve

4447 USA 4.400 41.43 40.45 3786 3686  
 24 580 6.41 7.41 7.98 1078  
 3429 3229 3000 2810  
 384 7.84 8.15 9.15  
 1st Ref 9-16-12 blange

300 290 275 235 290 / 3429 3360 2079 3314 3329  
 2.12 4.74 4.24 3.29 3.19 1226 148 835 100 875  
 3786 3726 3726 3661 3686 / 4143 4083 4073 4029 4053  
 3.69 4.29 4.19 2.94 4.69 / 512 512 562 621 612  
 450 440 4450 4835 440 all stakes 8/11 11/11  
 1.85 2.15 2.05 2.0 2.5

all stakes 8/11 11/11  
 32.94 32.94 32.94 32.94 32.94  
 11.10 11.10 11.10 11.10 11.10  
 7.00 7.00 7.00 7.00 7.00  
 1.94 1.94 1.94 1.94 1.94  
 5.25 5.25 5.25 5.25 5.25  
 2.15 2.15 2.15 2.15 2.15  
 5.00 5.00 5.00 5.00 5.00  
 5.00 5.00 5.00 5.00 5.00  
 11.08 11.08 11.08 11.08 11.08  
 49.81 49.81 49.81 49.81 49.81  
 41.65 41.65 41.65 41.65 41.65  
 7.83 7.83 7.83 7.83 7.83  
 3.08 3.08 3.08 3.08 3.08  
 5.51 5.51 5.51 5.51 5.51  
 5.66 5.66 5.66 5.66 5.66  
 3.58 3.58 3.58 3.58 3.58  
 5.01 5.01 5.01 5.01 5.01  
 5.11 5.11 5.11 5.11 5.11  
 8.83 8.83 8.83 8.83 8.83  
 9.08 9.08 9.08 9.08 9.08  
 4.51 4.51 4.51 4.51 4.51

Small  
 Edward  
 Kern

2000 2940 2950 2885 2900  
 823 162 165 7.5 7.5  
 3786 3726 2736 2661 3266  
 1029 1059 1079 1154 1129  
 450 440 4450 4835 440  
 3.15 3.15 3.15 4.0 4.15

9-16-12 Checked OK blange

ELM ST

So

W. L. 30th ST

000	258.25	256.00	255.40	255.50	254.85	255.00	255.25
4'	256.07	255.82	255.22	255.32	255.67	254.82	255.07
75	255.13	254.88	254.28	254.38	254.73	253.88	254.13
650	254.00	253.75	253.15	253.25	253.60	252.75	253.00
95	252.88	252.63	252.03	252.13	252.48	251.63	251.88
1100	251.75	251.50	250.90	251.00	250.35	250.50	250.75
1325	250.63	250.38	249.78	249.88	249.23	249.38	249.63
150	249.50	249.25	248.65	248.75	248.10	248.25	248.50
178	248.38	248.13	247.53	247.63	246.98	247.13	247.38
2200	247.25	247.00	246.40	246.50	245.85	246.00	246.25

1.125

DALE ST

000	557.15	559.25	557.75	558.75	558.75	558.75	558.75
100	557.15	559.25	557.75	558.75	558.75	558.75	558.75
200	557.15	559.25	557.75	558.75	558.75	558.75	558.75
300	557.15	559.25	557.75	558.75	558.75	558.75	558.75
400	557.15	559.25	557.75	558.75	558.75	558.75	558.75
500	557.15	559.25	557.75	558.75	558.75	558.75	558.75
600	557.15	559.25	557.75	558.75	558.75	558.75	558.75
700	557.15	559.25	557.75	558.75	558.75	558.75	558.75
800	557.15	559.25	557.75	558.75	558.75	558.75	558.75
900	557.15	559.25	557.75	558.75	558.75	558.75	558.75
1000	557.15	559.25	557.75	558.75	558.75	558.75	558.75
1100	557.15	559.25	557.75	558.75	558.75	558.75	558.75
1200	557.15	559.25	557.75	558.75	558.75	558.75	558.75
1300	557.15	559.25	557.75	558.75	558.75	558.75	558.75
1400	557.15	559.25	557.75	558.75	558.75	558.75	558.75
1500	557.15	559.25	557.75	558.75	558.75	558.75	558.75
1600	557.15	559.25	557.75	558.75	558.75	558.75	558.75
1700	557.15	559.25	557.75	558.75	558.75	558.75	558.75
1800	557.15	559.25	557.75	558.75	558.75	558.75	558.75
1900	557.15	559.25	557.75	558.75	558.75	558.75	558.75
2000	557.15	559.25	557.75	558.75	558.75	558.75	558.75

9-16-12 checked OK blought



ELIM ST.

50

W. L. FERN ST.

120 ✓ 248.25 248.00 247.40 247.00 246.10 246.00 246.25

100 ✓ 250.92 250.67 250.07 249.67 248.77 248.67 248.92

175 ✓ 254.25 254.00 253.40 253.00 252.10 252.00 252.25

160 ✓ 256.25 256.00 255.40 255.00 254.10 254.00 254.25

140 ✓ 257.45 257.20 256.60 256.30 255.45 255.40 255.65

120 ✓ 258.05 257.80 257.20 256.90 256.15 256.20 256.45

100 ✓ 258.35 258.10 257.50 257.45 256.72 256.80 257.05

80 ✓ 258.65 258.40 257.80 257.70 257.03 257.00 257.25

60 ✓ 258.65 258.40 257.80 257.75 257.10 257.35

40 ✓ 258.45 258.20 257.60 257.55 256.82 256.90 257.15

20 ✓ 257.95 257.70 257.10 257.10 256.40 256.50 256.75

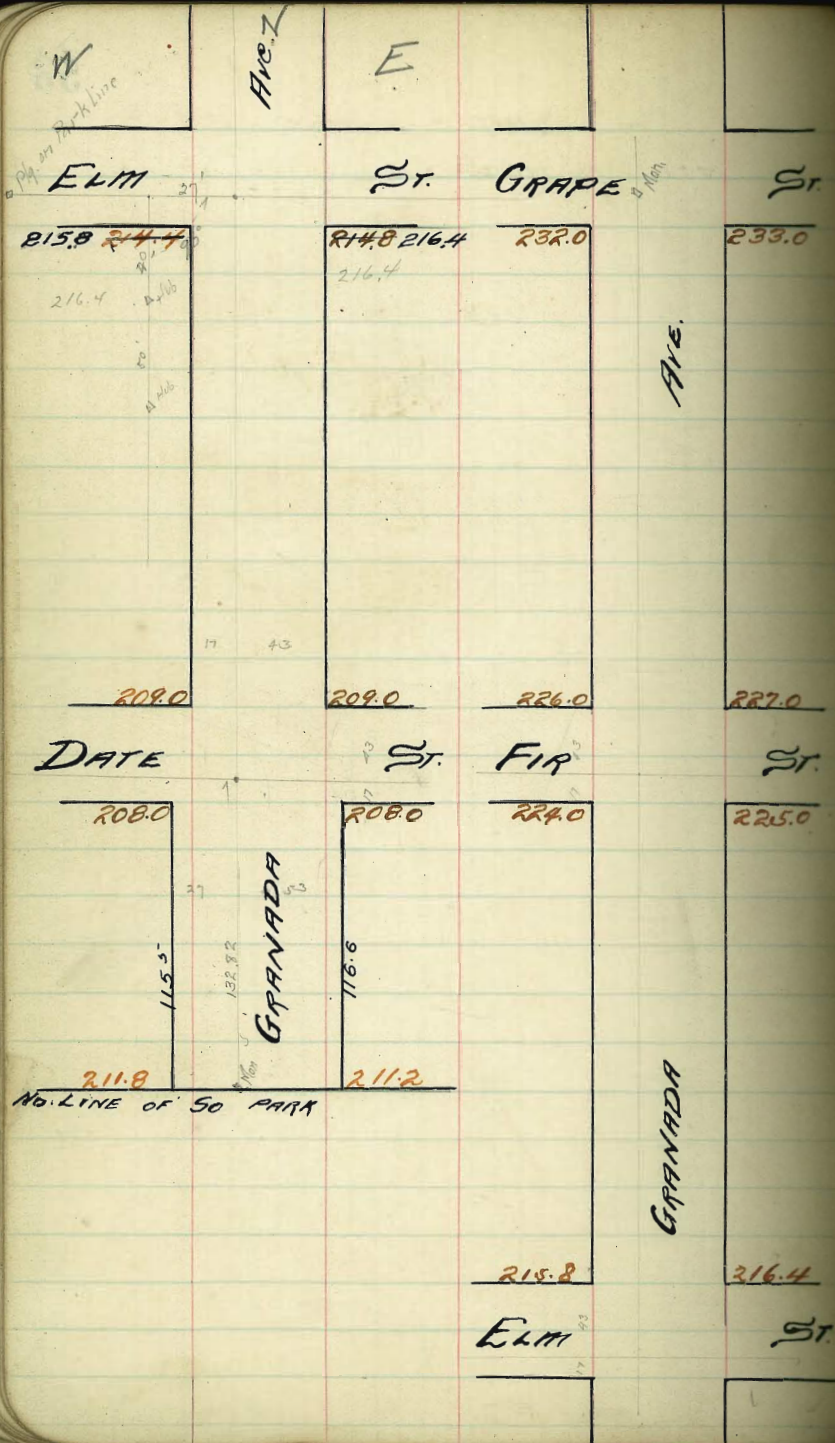
00 ✓ 257.25 257.00 256.40 256.50 255.85 256.00 256.25

E. L. 30th ST.

20750 10711 35 30 30 4 E. L. Monument  
 25725 5625/5795 5675/5845 5715/5865 5735  
 25740 5621 561 471 301 281 281 471  
 358 227 161 393 127 389 123 381  
 +267 +0.24 +19 +0.75 +172 +0.22 +1.53 +0.3  
 5865 5725/5835 5725/5805 5645/5745 5865/5625 5925  
 257 421 317 241 541 501 401 591 521 721  
 155 701 127 375 147 285 146 395 324 468  
 -147 +0.7 +1.54 +0.53 +30 +1.73 +2.05 +1.53 +1.77 +2.61  
 4795 4792 4521 4625  
 10 52 12 54 10 21 15 21  
 155 746 187 187  
 +29 +4.59 -24 +5.1  
 Cut Stakes 1/2 1/2  
 1/2 1/2  
 1/2 1/2

52





No. Line of 50 Park to DATE - 80' WIDE - 20' WALKS  
DATE to GRAPE = 60' " - 10' "

14

E

So. Line of DATE ST

1453 208.25 208.00 207.60 208.08 207.60 208.00 208.25  
 116.6  
 105.5 208.45 208.33 207.91 208.30 207.99 208.27 208.53  
 106.6  
 95 209.58 209.33 208.87 209.24 208.79 209.14 209.39  
 30 ✓ 210.40 210.15 209.65 209.99 209.51 209.83 210.08  
 25 211.23 210.98 210.42 210.75 210.23 210.51 210.76  
 00 = 212.05 211.80 211.20 211.5 210.95 211.2 211.45

on W. side of Granada at Pueblo line

20502 on NW cor Granada - Beech.

210.40 210.05 208.25 208.75  
 3.6 3.92 6.75 6.75  
 0.2 2.1 7.15 8.55  
 +3.4 +1.8 7.15 -2.8  
 WI  
 122.5 11.25 10.20 10.08 10.10 10.10 10.10 10.10  
 189 2.21  
 825 curb - Prof 1/4 1/4  
 2.04

16.21 16.21 16.21  
 11.25 11.25 11.25  
 7.96 7.96 7.96  
 6.84 6.84 6.84  
 10.21 10.21 10.21  
 9.25 9.25 9.25  
 6.86 6.86 6.86  
 10.21 10.21 10.21  
 9.25 9.25 9.25  
 6.84 6.84 6.84  
 16.21 16.21 16.21  
 10.21 10.21 10.21  
 6.70 6.70 6.70

213.22 80 760  
 7.22 6.12  
 11.22 11.80  
 10.24 5.64  
 10.15 9.65 9.99 9.51 9.83  
 5.75 5.75 5.61

9-18-12 School of R. Langr

No Line of Date St

00 209.25 209.0 208.60 209.0 208.60 209.0 209.25

25 209.78 209.53 209.14 209.56 209.16 209.58 209.83

50 210.31 210.66 209.69 210.11 209.73 210.16 210.41

75 210.8.4 210.59 210.23 210.67 210.29 210.73 210.97

100 211.35 211.13 210.77 211.22 210.85 211.31 211.56

25 211.91 211.66 211.32 211.78 211.41 211.89 212.14

50 212.44 212.19 211.86 212.33 211.98 212.47 212.72

75 212.97 212.72 212.40 212.89 212.54 213.05 213.30

200 213.50 213.25 212.94 213.44 213.10 213.63 213.88

30 214.03 213.78 213.49 214.00 213.66 214.20 214.45

50 214.56 214.31 214.03 214.55 214.23 214.78 215.03

75 215.09 214.84 214.57 215.11 214.79 215.36 215.61

800 215.63 215.38 215.12 215.66 215.35 215.94 216.19

30 216.05 215.80 215.55 216.10 215.80 216.40 216.65

So Line of Date St

cut stakes 3/4 Hatch 1001 1274 845 687 56

209.25	209.0	208.60	209.0	208.60	209.0	209.25
1178	1197	1268	1285	1316	1378	1465
1237	1309	1382	1452	1520	1587	1655
687	718	750	782	814	847	880
60	71.68	71.5	71.5	71.5	71.5	71.5
1240	1280	1320	1360	1400	1440	1480
666	626	586	546	506	466	426
621	540	460	380	300	220	140
576	495	415	335	255	175	95
110	73.0	71.5	71.5	71.5	71.5	71.5
9.0	8.6	8.2	7.8	7.4	7.0	6.6
741	731	721	711	701	691	681
124	126	128	130	132	134	136
433	435	437	439	441	443	445
123	123	123	123	123	123	123
210	235	260	285	310	335	360
1080	1055	1030	1005	980	955	930
855	863	871	879	887	895	903

16.21	16.21	16.21	16.21	16.21	16.21	16.21
10.21	11.24	12.27	13.30	14.33	15.36	16.39
5.90	4.25	3.77	3.33	2.89	2.45	2.02
2.10	4.90	4.02	3.03	2.04	1.05	0.07
16.21	16.21	16.21	16.21	16.21	16.21	16.21
8.60	10.30	11.36	12.42	13.48	14.54	16.00
5.62	5.30	4.35	3.41	2.47	1.53	0.59
16.21	16.21	16.21	16.21	16.21	16.21	16.21
10.21	11.22	12.23	13.24	14.25	15.26	16.27
5.70	4.27	3.82	3.37	2.92	2.47	2.02
16.21	16.21	16.21	16.21	16.21	16.21	16.21
3.20	10.20	11.20	12.20	13.20	14.20	15.20
2.40	5.44	4.20	3.27	2.34	1.41	0.48
16.21	16.21	16.21	16.21	16.21	16.21	16.21
10.21	11.21	12.21	13.21	14.21	15.21	16.21
5.70	4.23	3.28	2.33	1.38	0.43	0.48
16.21	16.21	16.21	16.21	16.21	16.21	16.21
10.21	11.21	12.21	13.21	14.21	15.21	16.21
5.70	4.23	3.28	2.33	1.38	0.43	0.48

9-5-12 checked OK

10.21	10.24	10.27	10.30	10.33
8.34	8.65	8.96	9.27	9.58
11.23	10.77	10.31	9.85	9.39
4.07	4.95	4.80	4.67	4.51
9.00	8.60	8.20	7.80	7.40
6.74	7.11	7.48	7.85	8.22

Granada Ave

W

E

0 S, L Elm 214.65 215.81 215.55 216.1 215.8 216.4 215.9

2 Scarb 215.8 215.80 214.35 214.87 214.47 216.4 214.8  
214.80 215.4

8 S 1/4 215.4 214.8 214.60 215.13 214.73 215.4 214.8

EIM

7 Center 215.8 214.8 215.55 216.10 215.8 215.4 215.6

STREET

10 N 1/4 215.4 214.8 215.10 215.67 215.27 215.4 215.80

22 N Carb 215.80 214.80 215.80 215.35 215.93 215.53 215.4 216.4  
215.80 216.4

8 No Line 216.05 215.8 215.55 216.10 215.80 216.4 216.6

215.40  
215.40

15.4 15.8 / 15.55 16.10 15.5  
7.0 7.6 7.5 7.30 7.6  
8.6

all stakes 8 1/2 H 1/4

57

9-18-12 Checked M. Clough

Granada Ave

W North Line of Elm E  
No. L. Elm 21605 216180 21660 21670 21680 21640 21660

20 216.65 216.4 216.24 216.85 216.47 217.07 217.31  
50 217.33 217.08 216.89 217.50 217.14 217.74 217.99  
75 217.98 217.73 217.53 218.16 217.82 218.42 218.67  
100 218.62 218.37 218.18 218.79 218.49 219.09 219.34  
25 219.20 219.01 218.82 219.44 219.16 219.76 220.01  
50 219.90 219.66 219.47 220.09 219.83 220.43 220.68  
75 220.54 220.29 220.11 220.74 220.50 221.10 221.35  
200 221.18 220.93 220.76 221.39 221.18 221.78 222.03  
25 221.83 221.58 221.40 222.04 221.85 222.45 222.70  
50 222.47 222.22 222.05 222.68 222.52 223.12 223.37  
75 223.10 222.85 222.69 223.33 223.19 223.79 224.04  
300 223.74 223.49 223.33 223.95 223.82 224.46 224.71  
320 224.25 224.00 223.85 224.50 224.40 225.00 225.25  
South Line of Elm

Calculation 7/4/12 Hatch 58

W	E	W	E
1605	1615	1723	1799
+221	+100		
152	112	+285	
-15.6	-2.1	11.1	11.2
		-12.48	

2118	2203	2247	2237	2274	2271	2215	2225
830	745	751	610	1157	1022	1107	1033
375	728	215	126	512	343	426	350
+3.15	+0.2	+4.86	+2.9	+6.47	+7.14	+6.88	+7.83

1600	1580	1708	1774	1819	1837	1965	2043
482	5.46	4.18	3.24	2.17	2.89	1.61	1.83

1705	1619	1750	1714	1774	1837	1515	1579	1549	1909
710	727	663	702	624	531	600	539	569	509
1265	1247	1209	1283	1243	1293	1276	1289	1218	1273
435	471	404	425	379	325	342	279	300	240

7-18-12 checked all blings

Granada Ave  
S Line of Fir

W

F

59

9-18-12 checked OK length 7 ft 4 in

S Line 224.25 224.00 223.85 224.50 224.40 225.00 225.30

S Curve 224.00 224.00 224.18 224.63 224.73 225.00 225.00  
223.00 224.00

S 1/4 224.10 223.50 224.52 224.96 225.00 224.50 225.10

Center 225.00 224.00 224.85 225.50 225.70 225.00 226.00

N 1/4 225.40 224.50 225.18 225.83 225.73 225.50 226.40

N Curve 226.00 225.00 225.51 226.16 226.06 226.00 227.00  
226.00 227.00

N Line 226.25 226.00 225.85 226.50 226.40 227.0 227.25

N Line of Fir



Granada Street

N. Line of Fir Street

W NLFir 226.25 226.00 226.85 226.60 226.40 227.00 227.25

25 226.22 226.48 226.33 226.98 226.81 227.48 227.22

50 227.22 226.97 226.82 227.47 227.37 227.97 228.22

75 227.20 229.45 227.30 227.95 227.85 228.45 228.70

100 228.19 227.94 227.79 228.44 228.34 228.94 229.19

25 228.67 228.42 228.37 228.92 228.82 229.42 229.67

50 229.15 228.90 228.75 229.40 229.30 229.90 230.15

75 229.64 229.39 229.24 229.89 229.79 230.39 230.64

200 230.12 229.87 229.72 230.37 230.27 230.87 231.12

25 230.60 230.35 230.20 230.85 230.75 231.35 231.60

50 231.09 230.84 230.69 231.34 231.24 231.84 232.09

75 231.57 231.32 231.17 231.82 231.72 232.32 232.57

310 232.25 232.00 231.85 232.50 232.40 233.00 233.25

S Line of Grape

Cut Stake 3/12 Hatch  
Manning Hall

60

225.33	26.25	27.25	27.22	28.22	28.19	29.19
	9.08	9.08	8.11	7.11		
	3.66	3.66	10.46	14.96		
	+5.22	+5.4	-2.85	+2.13		
	29.15	30.15	30.12	31.12	31.09	32.09
	6.18	5.18	5.21	4.21	4.24	3.24
	17.30	10.84	6.1	4.76	4.26	5.24
	+5.37	+5.66	-0.9	-0.55	-0.2	-0.10
	32.25	32.25	32.00	32.00	31.94	31.94
	3.25	2.05	3.75	3.75	3.74	3.74
	+2.1					
	35.00	35.00	37.14	37.14	37.14	37.14
	11.88	10.85	12.84	11.84	11.85	11.85

227.01	26.00	25.85	26.50	26.40	27.00	26.97	26.80	27.47	27.37	27.97
	6.77	7.14	6.47	6.57	5.57	6.00	6.10	5.80	5.60	5.00
	2.94	2.77	2.84	2.84	2.84	2.84	2.84	2.84	2.84	2.84
	5.01	5.19	4.53	4.63	4.00	4.00	4.00	3.89	3.60	3.07
	2.87	2.87	3.07	3.07	3.07	3.07	3.07	3.07	3.07	3.07
	3.10	3.10	2.6	2.6	2.6	2.6	2.6	2.6	2.6	2.6
	3.20	3.20	3.20	3.20	3.20	3.20	3.20	3.20	3.20	3.20
	3.74	3.89	3.24	3.34	2.74					

229.15	22.87	22.87	22.87	22.87	22.87	22.87	22.87	22.87	22.87	22.87
	2.65	2.65	2.65	2.65	2.65	2.65	2.65	2.65	2.65	2.65
	2.40	2.40	2.40	2.40	2.40	2.40	2.40	2.40	2.40	2.40
	2.80	2.80	2.80	2.80	2.80	2.80	2.80	2.80	2.80	2.80
	2.90	2.90	2.90	2.90	2.90	2.90	2.90	2.90	2.90	2.90
	2.60	2.60	2.60	2.60	2.60	2.60	2.60	2.60	2.60	2.60
	1.60	1.60	1.60	1.60	1.60	1.60	1.60	1.60	1.60	1.60
	1.90	1.90	1.90	1.90	1.90	1.90	1.90	1.90	1.90	1.90
	4.33	4.33	4.33	4.33	4.33	4.33	4.33	4.33	4.33	4.33
	4.33	4.33	4.33	4.33	4.33	4.33	4.33	4.33	4.33	4.33

230.60	25.85	25.85	26.50	26.40	27.00	26.97	26.80	27.47	27.37	27.97
	6.46	6.63	6.00	6.00	5.46					
	2.78	2.78	2.84	2.84	2.84	2.84	2.84	2.84	2.84	2.84
	4.04	4.04	4.04	4.04	4.04	4.04	4.04	4.04	4.04	4.04
	2.87	2.87	3.07	3.07	3.07	3.07	3.07	3.07	3.07	3.07
	2.61	2.76	2.71	2.71	2.71	2.71	2.71	2.71	2.71	2.71
	3.20	3.20	3.20	3.20	3.20	3.20	3.20	3.20	3.20	3.20
	3.11	3.11	3.11	3.11	3.11	3.11	3.11	3.11	3.11	3.11

9-19-12 blocked on blamp



KANSAS

St.

337.0

336.0

St.

336.0

335.5

GRANADA

Ave 30<sup>th</sup>

St.

336.0

335.5

338.0 ✓

338.0

St.

Dwight

337.0

336.5

337.0 ✓

336.0

Dwight

Utah

St. KANSAS

St.

## W. Line GRANADA Ave

200 336.25 336.00 335.40 335.25 335.22 335.50 336.75

175 336.37 336.12 335.52 335.87 335.34 335.62 335.77

150 336.50 336.25 335.65 336.00 335.47 335.75 336.00

125 336.62 336.37 335.77 336.12 335.59 335.87 336.12

100 336.75 336.50 335.90 336.25 335.72 336.00 336.25

75 336.87 336.62 336.02 336.37 335.74 336.12 336.37

50 337.00 336.75 336.15 336.50 335.97 336.25 336.50

25 337.12 336.87 336.27 336.62 336.09 336.37 336.42

00 337.25 337.00 336.40 336.75 336.22 336.50 336.75

125 EAST LINE UTAH ST.

No.

Dwight St.

So.

336.25 336.00 335.40 335.75 335.22 335.50 335.75

336.00 336.00  
336.00 334.88 334.75 334.62 335.50  
334.50 335.50

335.60 335.51 335.43 335.35 335.27 335.19 335.10

GRANDM

336.00 335.91 335.83 335.75 335.67 335.59 335.50

Ave.

335.60 335.51 335.43 335.35 335.27 335.19 335.10

336.00 335.00  
336.00 334.88 334.75 334.62 334.50  
335.50 335.50

336.25 336.00 335.40 335.75 335.22 335.50 335.75

## W. Line. KANSAS ST.

337.25 337.00 336.40 336.50 335.85 336.00 336.25

337.12 336.87 336.27 336.41 335.77 335.94 336.18

336.00 336.75 336.15 336.31 335.69 335.87 336.12

336.87 336.62 336.02 336.22 335.61 335.81 336.06

336.75 336.50 335.90 336.13 335.54 335.75 336.00

336.62 336.37 335.77 336.03 335.46 335.69 335.94

336.50 336.25 335.65 335.94 335.38 335.62 335.87

336.37 336.12 335.52 335.84 335.30 335.56 335.81

336.25 336.00 335.40 335.75 335.22 335.50 335.75

.125

.09375

.01875

.0625

No.

Dwight St.

So

W. Line 30th St

200	338.25	338.00	337.60	338.00	337.60	338.00	338.25
175	338.12	337.87	337.45	337.81	337.38	337.75	338.12
50	338.00	337.75	337.30	337.63	337.16	337.50	337.75
15	337.87	337.62	337.15	337.44	336.94	337.25	337.62
100	337.75	337.50	337.00	337.25	336.73	337.00	337.75
75	337.62	337.37	336.85	337.16	336.51	336.75	337.62
50	337.50	337.25	336.70	336.89	336.29	336.50	337.50
25	337.37	337.12	336.55	336.69	336.07	336.25	337.37
00	337.25	337.00	336.40	336.50	335.85	336.00	337.25

E. Line KANSAS ST.

115 15 \*1875 2187

3676.8M	45.85	42.95	42.95	42.95	42.95
3677.0M	36.25	37.75	37.25	36.75	37.25
	4.73	5.27	5.13	6.23	5.73
	4.73	5.27	5.41	6.48	5.98
	5.58	42.75	42.75	42.75	42.75
		37.12	37.22	36.22	36.22
		5.83	5.98	6.09	6.09
		42.25	42.25	42.25	42.25
		32.25	32.25	36.75	36.75
		5.75	5.75	6.10	6.10
		41.98	41.98	41.98	41.98
		36.73	36.73	36.73	36.73
		5.47	6.26	6.28	7.13
		42.75	42.75	42.75	42.75
		37.15	37.15	36.55	36.55
		5.78	5.78	6.73	6.73
		5.95	5.95	6.95	6.95

11/ Sample Evans  
11/11  
11/2 all states.

checked for grade draft of the low side in a high a distance  
Dec 20-12, 1875, Evans, Kansas

Arizona

295.50

136.50

15'

120'

291.0

Landis.

285.50

291.50

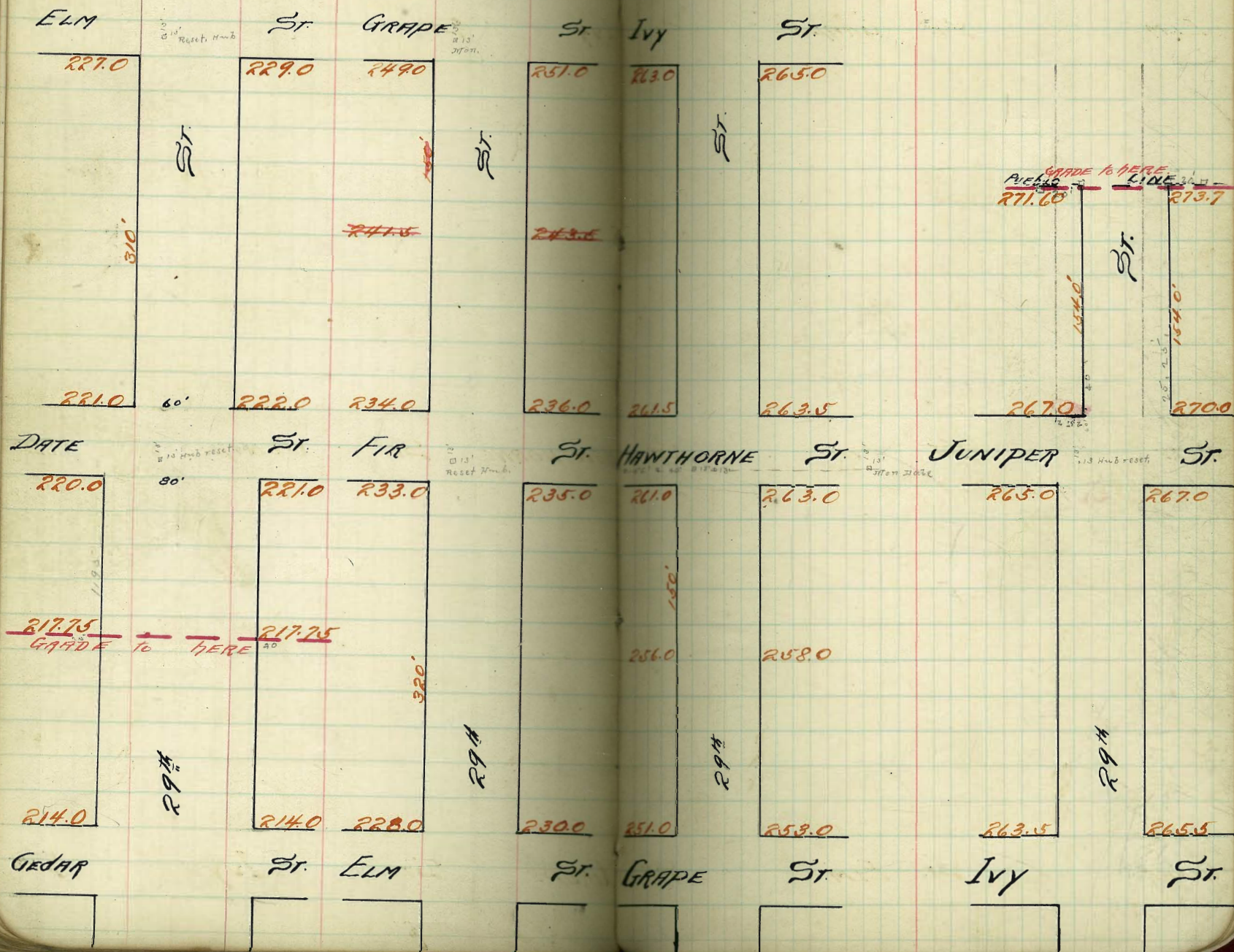
Arnold

30" 40" 60" "

295.61	295.61	295.61
3.25	+ 7.26	
299.86	298.157	298.57
48.50	91.50	91.50
3.26	2.57	2.07

9905







West	So. Line of DATE						East
00	220.25	220.00	219.85	220.50	220.40	221.00	221.25
425	219.28	219.53	219.33	219.92	219.76	220.33	220.58
430	219.31	219.46	218.80	219.35	219.12	219.64	219.89
725	218.84	218.59	218.28	218.77	218.49	218.96	219.21
1005	218.37	218.12	217.76	218.20	217.85	218.28	218.53
116	218.07	217.82	217.42	217.83	217.44	217.85	218.10
119.55 of 21800	217.75	217.35	217.75	217.35	217.75	217.35	218.00

51 line of date  
= N.2. of SP

233.82	233.82	233.82	233.82	233.82	233.82	233.82	233.82
76.00	20.00	19.06	19.04	19.29	19.12	17.75	19.25
137.14	2.02	3.02	4.26	3.68	5.09	5.20	5.57

French Station May 21 1913, Dorman, Bedford, Tenn. etc.

236.96	237.35	237.35	237.35	237.35	237.35	237.35	237.35
13.31	13.56	13.99	13.64	14.08	13.72	13.47	13.47
219.31	219.06	218.80	219.35	219.12	219.64	219.89	219.89
12.53	12.78	13.04	12.49	12.72	12.20	11.98	11.98
221.25	221.00	220.40	220.50	219.85	220.00	220.28	220.28
10.59	10.84	11.44	11.34	11.99	11.84	11.59	11.59

West So. Line Elm 5th

20 227.25 227.00 227.10 228.00 228.40 229.00 229.30

40 226.88 226.63 226.71 227.59 227.96 228.56 228.81

225 226.41 226.16 226.22 227.09 227.42 228.02 228.27

225.94

250 226.94 225.69 225.73 226.58 226.87 227.47 227.72

225 225.47 225.22 225.24 226.07 226.32 226.92 227.17

200 225.00 224.75 224.76 225.56 225.78 226.38 226.63

25 224.63 224.38 224.27 225.05 225.23 225.83 226.05

50 224.06 223.81 223.78 224.56 224.68 225.28 225.53

25 223.59 223.34 223.29 224.04 224.14 224.74 224.99

100 223.13 222.88 222.80 223.53 223.59 224.19 224.44

25 222.66 222.41 222.31 223.02 223.04 223.64 223.79

50 222.19 221.94 221.83 222.52 222.49 223.09 223.34

25 221.72 221.47 221.34 222.00 221.95 222.55 222.80

21.25 221.00 220.85 221.5 221.40 222.00 222.25

201.62	201.62	201.62	201.62	201.62	201.62	201.62	201.62	201.62	201.62
21.25	21.25	21.25	21.25	21.25	21.25	21.25	21.25	21.25	21.25
7.87	10.37	9.43	9.47	7.19	9.47	7.06	6.09	4.89	6.45
9.37	10.37	8.1	8.3	7.7	7.4	5.9	1.4	1.7	7.5
2.5	2.6	2.4	2.4	2.4	2.4	2.1	2.1	2.1	2.1

1/2 m 5' off at Dec 10-12

220.52	220.52	220.52	220.52	220.52	220.52	220.52	220.52	220.52	220.52
9.07	8.27	7.19	8.33	7.39	6.08	4.99	6.46		

220.52	220.52	220.52	220.52	220.52	220.52	220.52	220.52	220.52	220.52
26.02	26.63	27.72	26.94	27.25	29.20				

Safety only May 16 1913

220.52	220.52	220.52	220.52	220.52	220.52	220.52	220.52	220.52	220.52
8.52	8.52	8.43	8.58	7.44	6.33	5.22	6.71		

220.55	220.55	220.55	220.55	220.55	220.55	220.55	220.55	220.55	220.55
24.75	26.38	27.97	26.69	27.00	29.00				

Final plan May 21 1913

231.84 H.T.

221.25	221.00	220.85	221.62	221.40	222.0	222.25			
10.59	10.84	10.99	10.34	10.44	9.84	9.54			

223.34	223.09	222.49	222.52	222.83	222.19	222.19			
8.50	6.75	9.38	9.32	10.01	4.90	9.65			

223.13	222.88	222.80	222.57	223.59	224.19	224.24			
8.71	8.96	9.04	8.31	8.25	7.65	7.40			

224.53	224.28	224.68	224.55	223.78	223.81	224.06			
6.31	6.56	7.16	7.29	8.06	8.03	7.76			

225.00	224.75	224.76	225.56	225.78	226.38	226.63			
6.84	7.09	7.08	6.28	6.06	5.46	5.21			

227.22	227.47	226.87	226.58	225.73	225.69	225.94			
4.12	4.37	4.97	5.26	6.11	6.16	5.90			

227.25	227.00	227.10	228.0	228.4	229.0	229.25			
4.59	4.84	4.74	3.84	3.44	2.84	2.59			

S. L. of FIT STREET

23 320 23325 23330 23310 23400 23414 23350 23352

300 23294 23269 23279 23369 23409 23469 23494

275 23258 23230 23248 23330 23370 23430 23452

250 23216 23191 23201 23291 23331 23391 23416

238 23196 23171 23181 23271 23311 23371 23396

223 23126 23151 23161 23251 23291 23351 23376

200 23137 23112 23122 23212 23252 23312 23337

175 23098 23073 23083 23173 23213 23273 23298

150 23059 23034 23044 23134 23174 23234 23259

125 23020 22995 23005 23095 23135 23195 23220

100 22981 22956 22966 23056 23096 23156 23181

96 22942 22917 22927 23017 23057 23117 23142

50 22903 22878 22888 22978 23018 23078 23103

26 22864 22839 22849 22939 22979 23039 23064

50 22825 22800 22810 22900 22940 23000 23025

234.32	234.32	234.32	234.32	234.32	234.32	234.32	234.32	234.32	234.32
30.25	28.25	29.00	31.00	31.81	29.81	31.47	33.37		
4.07	6.07	5.129	3.29	2.51	4.51	1.73	0.90		
4.27	6.07	5.129	3.29	2.51	4.51	1.73	0.90		
0.0	0.0	F 0.8	C 3.0	0.17	F 9.4	F 3.7	F 1.2		
221.90	221.90	239.00	234.00	204.00	204.00	204.00	234.00		
13.7	6.3	207.16	32.92	284.94	83.24				
209.11	175.5	1.84	7.06	7.98	0.70				
234.37	234.16	19.8	4.3	2.5	0.70				
229.1	210.5	F 3.7	F 3.2	F 3.2	0.0				

44. 234.32 234.32 234.32 234.32 234.32 234.32 234.32 234.32 234.32

234.32	234.32	234.32	234.32	234.32	234.32	234.32	234.32	234.32	234.32
31.91	31.12	30.34	29.56	28.78	28.00				
4.12	5.11	5.86	6.63	7.46	8.24	9.02			

236.59	236.59	236.59	236.59	236.59	236.59	236.59	236.59	236.59	236.59
32.74	33.10	33.00	34.40	35.00	32.91	32.91	32.91	32.01	31.91
3.59	3.99	2.59	2.49	1.59	2.68	3.29	3.69	4.59	4.68

236.59	236.59	236.59	236.59	236.59	236.59	236.59	236.59	236.59	236.59
31.2	31.2	31.2	31.2	31.2	31.2	31.2	31.2	31.2	31.2
5.7	5.07	4.47	4.07	3.07	4.05	4.95	5.85	6.15	6.25

236.59	236.59	236.59	236.59	236.59	236.59	236.59	236.59	236.59	236.59
29.66	29.56	28.76	28.52	28.75	28.15	29.78	29.99	29.78	
7.00	6.90	6.03	5.60	5.00	6.91	7.41	6.82	7.71	7.81

236.59	236.59	236.59	236.59	236.59	236.59	236.59	236.59	236.59	236.59
29.00	29.10	29.00	29.20	29.20	29.20				
8.59	8.49	7.59	7.19	6.59					

235.17	235.17	235.17	235.17	235.17	235.17	235.17	235.17	235.17	235.17
29.00	29.78	29.56	30.24	31.12	31.91	33.00			
7.17	6.39	5.61	4.93	4.05	3.26	2.17			

May 21-1913 Jewish ataker Doman, Bedford, Devine  
231.84

230.25	230.0	229.40	229.0	228.10	228.0	228.25			
1.59	1.84	2.44	2.84	3.74	3.84	3.59			

229.03	228.78	228.88	229.78	230.28	230.78	231.03			
2.91	3.06	2.96	2.06	1.66	1.06	0.81			

231.81	231.56	230.96	230.56	229.66	229.56	229.81			
0.03	0.28	0.88	1.28	2.18	2.28	2.03			

230.59	230.34	147.50							
1.25	1.50	230.37							

233.87	233.12	232.52	232.12	231.24	231.22	231.37			
9.62	9.87	10.47	10.87	11.70	11.87	11.62			

232.16	231.91	232.01	232.91	233.31	233.91	234.16			
10.83	11.08	10.98	10.08	9.68	9.08	8.93			

235.25	235.0	234.4	234.00	233.1	233.0	233.25			
7.74	7.99	8.69	8.99	9.89	9.99	9.74			

228.64	228.39	228.49	229.39	229.79	230.39	230.64			
--------	--------	--------	--------	--------	--------	--------	--	--	--

228.25	228.0	228.10	229.00	229.40	230.0	230.25			
--------	-------	--------	--------	--------	-------	--------	--	--	--

South Line of Grape St (45)

310	249.25	249.00	249.10	249.00	249.40	249.10	249.55
307	249.11	248.86	248.96	248.86	249.26	248.86	249.11
300	248.77	248.52	248.62	248.52	248.92	248.52	248.77
295	248.55	247.30	247.40	248.30	248.70	249.30	248.55
260	246.34	246.09	246.19	247.09	247.49	248.09	248.34
225	244.13	244.88	244.98	245.88	246.28	246.88	247.13
200	243.92	243.67	243.77	244.67	245.07	245.67	245.92
175	242.77	242.46	242.56	243.46	243.86	244.46	244.77
150	241.57	241.26	241.36	242.26	242.66	243.26	243.57
125	240.30	240.05	240.15	241.05	241.45	242.05	242.30
100	239.09	238.84	238.94	239.84	240.24	240.84	241.09
75	237.88	237.63	237.73	238.63	239.03	239.63	239.88
60	236.67	236.42	236.52	237.42	237.82	238.42	238.67
35	235.46	235.21	235.31	236.21	236.61	237.21	237.46
00	234.25	234.00	234.10	235.00	235.40	236.00	236.25

ML of F127151

248.77	248.52	248.62	248.52	248.92	248.52	248.77
248.55	247.30	247.40	248.30	248.70	249.30	248.55
246.34	246.09	246.19	247.09	247.49	248.09	248.34
244.13	244.88	244.98	245.88	246.28	246.88	247.13
243.92	243.67	243.77	244.67	245.07	245.67	245.92
242.77	242.46	242.56	243.46	243.86	244.46	244.77
241.57	241.26	241.36	242.26	242.66	243.26	243.57
240.30	240.05	240.15	241.05	241.45	242.05	242.30
239.09	238.84	238.94	239.84	240.24	240.84	241.09
237.88	237.63	237.73	238.63	239.03	239.63	239.88
236.67	236.42	236.52	237.42	237.82	238.42	238.67
235.46	235.21	235.31	236.21	236.61	237.21	237.46
234.25	234.00	234.10	235.00	235.40	236.00	236.25

400 m Hat Dec-11-12, 4 mm, Shaw, Deane

248.77	248.52	248.62	248.52	248.92	248.52	248.77
248.55	247.30	247.40	248.30	248.70	249.30	248.55
246.34	246.09	246.19	247.09	247.49	248.09	248.34
244.13	244.88	244.98	245.88	246.28	246.88	247.13
243.92	243.67	243.77	244.67	245.07	245.67	245.92
242.77	242.46	242.56	243.46	243.86	244.46	244.77
241.57	241.26	241.36	242.26	242.66	243.26	243.57
240.30	240.05	240.15	241.05	241.45	242.05	242.30
239.09	238.84	238.94	239.84	240.24	240.84	241.09
237.88	237.63	237.73	238.63	239.03	239.63	239.88
236.67	236.42	236.52	237.42	237.82	238.42	238.67
235.46	235.21	235.31	236.21	236.61	237.21	237.46
234.25	234.00	234.10	235.00	235.40	236.00	236.25

248.77	248.52	248.62	248.52	248.92	248.52	248.77
248.55	247.30	247.40	248.30	248.70	249.30	248.55
246.34	246.09	246.19	247.09	247.49	248.09	248.34
244.13	244.88	244.98	245.88	246.28	246.88	247.13
243.92	243.67	243.77	244.67	245.07	245.67	245.92
242.77	242.46	242.56	243.46	243.86	244.46	244.77
241.57	241.26	241.36	242.26	242.66	243.26	243.57
240.30	240.05	240.15	241.05	241.45	242.05	242.30
239.09	238.84	238.94	239.84	240.24	240.84	241.09
237.88	237.63	237.73	238.63	239.03	239.63	239.88
236.67	236.42	236.52	237.42	237.82	238.42	238.67
235.46	235.21	235.31	236.21	236.61	237.21	237.46
234.25	234.00	234.10	235.00	235.40	236.00	236.25

May 21-1913 Finnish stake, Dominion, Bedford, Deane

248.77	248.52	248.62	248.52	248.92	248.52	248.77
248.55	247.30	247.40	248.30	248.70	249.30	248.55
246.34	246.09	246.19	247.09	247.49	248.09	248.34
244.13	244.88	244.98	245.88	246.28	246.88	247.13
243.92	243.67	243.77	244.67	245.07	245.67	245.92
242.77	242.46	242.56	243.46	243.86	244.46	244.77
241.57	241.26	241.36	242.26	242.66	243.26	243.57
240.30	240.05	240.15	241.05	241.45	242.05	242.30
239.09	238.84	238.94	239.84	240.24	240.84	241.09
237.88	237.63	237.73	238.63	239.03	239.63	239.88
236.67	236.42	236.52	237.42	237.82	238.42	238.67
235.46	235.21	235.31	236.21	236.61	237.21	237.46
234.25	234.00	234.10	235.00	235.40	236.00	236.25

South Line of Hawthorn St.

310	261.25	261.0	261.10	262.0	262.40	263.0	263.25
300	260.93	260.68	260.78	261.68	262.08	262.68	262.93
275	260.12	259.87	259.97	260.87	261.27	261.87	262.12
250	259.31	259.06	259.16	260.06	260.46	261.06	261.31
225	258.51	258.26	258.36	259.26	259.66	260.26	260.51
200	257.70	257.45	257.55	258.45	258.85	259.45	259.70
175	256.89	256.64	256.74	257.64	258.04	258.64	258.89
150	256.09	255.84	255.94	256.84	257.24	257.84	258.09
125	255.28	255.03	255.13	256.03	256.43	257.03	257.28
100	254.47	254.22	254.32	255.22	255.62	256.22	256.47
75	253.67	253.42	253.52	254.42	254.82	255.42	255.67
50	252.86	252.61	252.71	253.61	254.01	254.61	254.86
25	252.06	251.81	251.91	252.81	253.21	253.81	254.06
00	251.25	251.00	251.10	252.00	252.40	253.00	253.25

W. H. G. G. G.

260.90	260.90	260.90	260.90	269.98	269.98	269.98	269.98
51.20	53.25	54.22	54.92	64.58	65.08	65.25	66.20
9.60	7.65	5.93	7.98	15.40	13.40	11.70	13.70
0.0	0.0	0.15	0.15	1.4	9.7	6.9	9.9
				24.0	24.7	24.8	24.5

These grades are changed by the  
 13th being 10' longer, and I changed  
 the curve on the cuts on the stakes  
 from the notes above, to

271.39	271.39	271.39	271.39	271.39	271.39	271.39	271.39
61.20	63.25	64.22	64.92	74.58	75.08	75.25	76.20
10.80	9.10	7.38	9.43	19.24	17.24	15.54	17.54
0.3	0.3	0.15	0.15	1.4	9.7	6.9	9.9
				24.0	24.7	24.8	24.5

March 4-1913 finish stakes  
 Domain  
 without  
 bearing

May 22-1913 finish stakes, Domain, Bedford, Devine

267.87	267.87	267.87	267.87	267.87	267.87	267.87	267.87
267.87	267.87	267.87	267.87	267.87	267.87	267.87	267.87
6.79	5.87	5.49	8.73	7.83	7.43	10.34	9.44

260.43	260.43	260.43	260.43	260.43	260.43	260.43	260.43
254.32	255.22	255.62	257.71	258.61	259.01	259.61	260.01
6.11	6.21	4.81	7.72	6.82	6.42		

253.25	253.0	252.4	252.0	251.1	251.0	251.25
2.89	2.64	3.24	3.64	4.34	4.64	4.39
252.86	252.61	252.71	253.61	254.01	254.61	254.86
2.78	3.03	2.93	2.03	1.63	1.03	0.78
256.47	256.22	256.62	257.22	257.82	258.22	258.47
0.83	0.58	0.02	0.42	0.32	1.42	1.17

10' Walks 10' 1/2<sup>s</sup>

North Line of Hawthorn St E

N.L. 261.75 261.50 261.60 262.50 262.90 263.20 263.75

North 261.50 261.50 261.51 262.41 262.81 263.50 263.50  
260.50 262.50

N 1/4 261.38 260.38 261.43 262.33 262.73 262.38 263.38

Center 261.25 260.25 261.35 262.25 262.65 262.25 263.25

S 1/4 261.12 260.12 261.27 262.17 262.57 262.12 263.12

South 261.00 260.00 261.19 262.09 262.49 263.00 263.00

S/line 261.25 261.00 261.10 262.00 262.40 263.00 263.25

South Line of Hawthorn St

268,364.5

261.25 260.55 261.35 262.25 262.65 262.25 263.25  
7.11 8.11 7.01 6.11 5.71 6.11 5.11  
263.75 263.50 262.90 262.50 261.60 261.50 261.75  
4.61 4.86 5.46 5.86 6.76 6.86 6.61





West side  
10' Walks  
10' 1/4

East side  
16' Walks  
12' 1/4

77

North line of Ivy street

NL	263.75	263.50	263.60	264.50	264.90	265.5	265.75
			11.5	11.0	14.5		
curb	263.50	263.50	263.51	264.40	264.80	265.50	265.50
	262.50		10.5	11.0	11.5	264.50	
N 1/4	263.38	262.38	263.43	264.33	264.73	264.38	265.38
			10.5	11.0	11.5		
center	263.25	262.25	263.35	264.24	264.65	264.25	265.25
			10.5	11.0	11.5		
S 1/4	263.12	262.12	263.27	264.17	264.57	264.12	265.12
			10.5	11.0	11.5		
Starb	263.00	262.00	263.19	264.09	264.50	265.00	265.00
	263.00		11.5	13.0	14.5		
S 1/4	263.25	263.00	263.10	264.00	264.40	265.00	265.25

South line of Ivy street

268.36 <sup>1/2</sup>

263.25	262.25	263.35	264.24	264.65	264.25	265.25
5.11	6.11	5.01	4.12	3.71	4.11	3.11
265.75	265.5	264.9	264.5	263.6	263.5	263.75
2.61	2.86	3.46	3.86	4.26	4.86	4.61

Pueblo Line

184 27185 27160 27172 27265 27310 27370 27595

150 27173 27148 27161 27254 27300 27360 27383

125 27098 27073 27090 27187 27240 27300 27325

100 27024 26999 27019 27119 27180 27240 27265

75 26949 26924 26948 27052 27120 27180 27205

50 26874 26849 26877 26985 27060 27120 27145

25 26800 26775 26806 26917 27000 27060 27085

00 26725 26700 26735 26850 26945 27000 27025

North Line of Juniper

278.77	278.77	278.77	278.77	278.77	278.77	278.77
70.25	67.20	69.74	72.24	71.90	70.03	67.20
8.82	11.52	6.12	6.8	10.3	6.8	10.3
	0.0	C 3.6	C 1.6	F 3.4		

on 5 off pad sec 26-12 Danney, Shaw, & Conie

286.24 287.75 Cr 20 & IV

272.89	272.84	272.84	272.84	277.84	277.84	277.84	277.84
67.00	70.00	71.20	68.48	69.99	72.90	73.70	71.60
12.84	7.84	6.64	9.00	7.35	5.44	4.14	6.24
		7+3.0	0+3.0	7+1.8	7+4.0	7+2.8	

Frank Talor May 22-1913 7+3.5 Danney, Redford

272.69	270.00	271.45	268.49	270.24	271.50
247.25	29.90	0.64	3.60	1.86	6.44
4.84		271.20	268.74	269.99	271.40
267.00	170.21	0.89	3.34	2.10	2.4
5.09	1.84				

268.49	272.65	270.21
5.69	3.03	5.44
275.68	273.95	
272.40	1.73	
5.28	273.70	274.53 #2
	1.98	

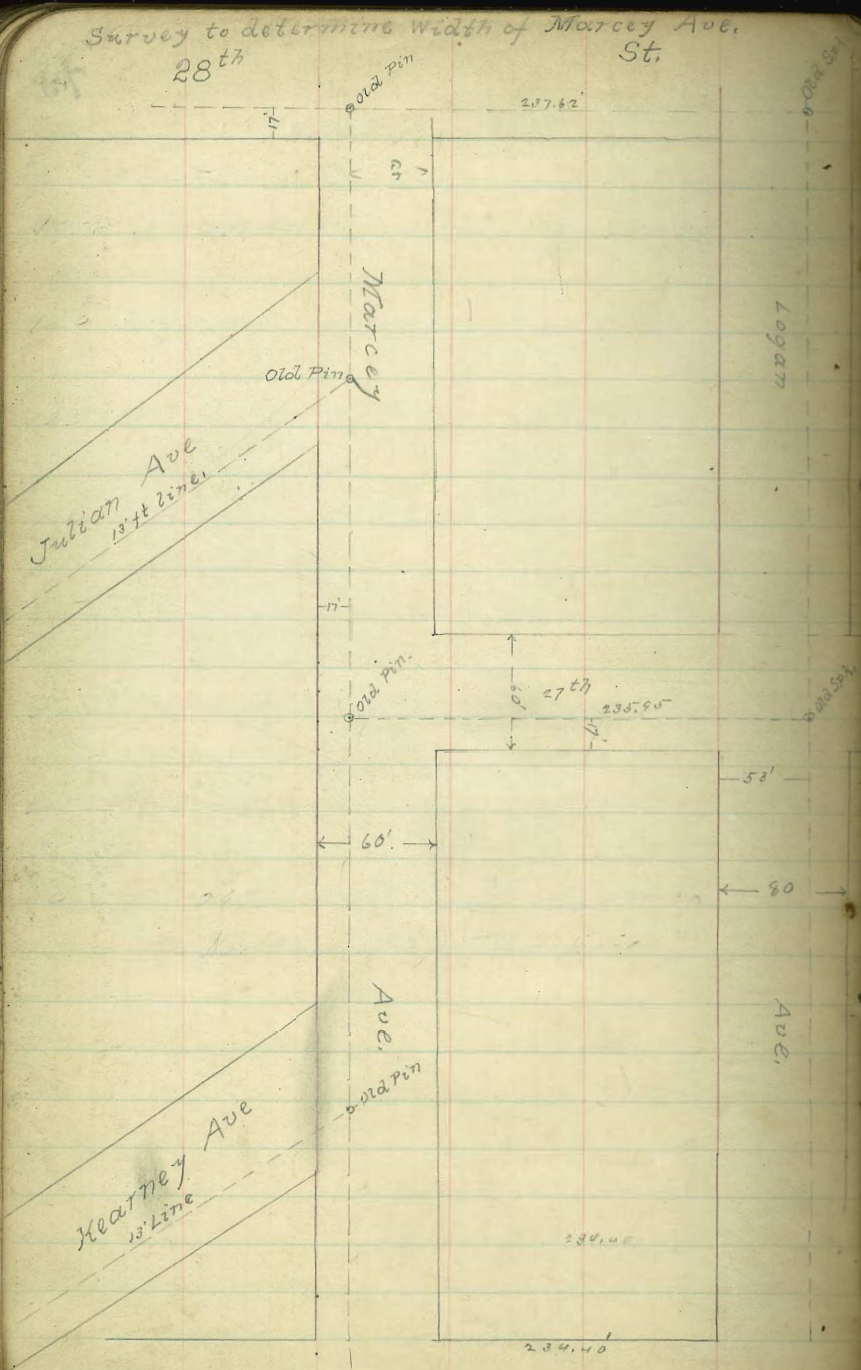
267.25	267.0	267.35	268.5	269.4	270.0	270.25
7.58	7.83	7.48	6.33	5.43	4.83	4.58
271.45	271.20	270.60	269.8	268.77	268.49	268.74
3.38	3.63	4.23	4.98	6.06	6.34	6.09

270.24	269.99	270.19	271.19	271.80	272.40	272.65
4.59	4.84	4.64	3.64	3.03	2.43	2.18
273.95	273.70	273.1	272.65	271.72	271.60	271.85
0.88	1.13	1.73	2.18	3.11	3.23	2.98

Survey to determine width of Marcey Ave. St.

28<sup>th</sup>

St.



193

475  
16  
475  
8

3/07  
12.00  
24.66

3) 100  
33

205.1  
+ 71.6  
276.7  
- 3.0  
273.7

32) 1000.00  
31

20.00  
20.00  
40.00  
40.00  
80.00  
80.00

68.512210617

201.  
21  
279

97.9  
86  
103.9

68.512210617

68.5  
1000.00  
1000.00  
1000.00  
1000.00  
4000.00  
4000.00  
8000.00  
8000.00  
16000.00  
16000.00  
32000.00  
32000.00  
64000.00  
64000.00  
128000.00  
128000.00  
256000.00  
256000.00  
512000.00  
512000.00  
1024000.00  
1024000.00  
2048000.00  
2048000.00  
4096000.00  
4096000.00  
8192000.00  
8192000.00  
16384000.00  
16384000.00  
32768000.00  
32768000.00  
65536000.00  
65536000.00  
131072000.00  
131072000.00  
262144000.00  
262144000.00  
524288000.00  
524288000.00  
1048576000.00  
1048576000.00  
2097152000.00  
2097152000.00  
4194304000.00  
4194304000.00  
8388608000.00  
8388608000.00  
16777216000.00  
16777216000.00  
33554432000.00  
33554432000.00  
67108864000.00  
67108864000.00  
134217728000.00  
134217728000.00  
268435456000.00  
268435456000.00  
536870912000.00  
536870912000.00  
1073741824000.00  
1073741824000.00  
2147483648000.00  
2147483648000.00  
4294967296000.00  
4294967296000.00  
8589934592000.00  
8589934592000.00  
17179869184000.00  
17179869184000.00  
34359738368000.00  
34359738368000.00  
68719476736000.00  
68719476736000.00  
137438953472000.00  
137438953472000.00  
274877906944000.00  
274877906944000.00  
549755813888000.00  
549755813888000.00  
1099511627776000.00  
1099511627776000.00  
2199023255552000.00  
2199023255552000.00  
4398046511104000.00  
4398046511104000.00  
8796093022208000.00  
8796093022208000.00  
17592186044416000.00  
17592186044416000.00  
35184372088832000.00  
35184372088832000.00  
70368744177664000.00  
70368744177664000.00  
140737488355328000.00  
140737488355328000.00  
281474976710656000.00  
281474976710656000.00  
562949953421312000.00  
562949953421312000.00  
1125899906842624000.00  
1125899906842624000.00  
2251799813685248000.00  
2251799813685248000.00  
4503599627370496000.00  
4503599627370496000.00  
9007199254740992000.00  
9007199254740992000.00  
18014398509481984000.00  
18014398509481984000.00  
36028797018963968000.00  
36028797018963968000.00  
72057594037927936000.00  
72057594037927936000.00  
144115188075855872000.00  
144115188075855872000.00  
288230376151711744000.00  
288230376151711744000.00  
576460752303423488000.00  
576460752303423488000.00  
1152921504606846976000.00  
1152921504606846976000.00  
2305843009213693952000.00  
2305843009213693952000.00  
4611686018427387904000.00  
4611686018427387904000.00  
9223372036854775808000.00  
9223372036854775808000.00  
18446744073709551616000.00  
18446744073709551616000.00  
36893488147419103232000.00  
36893488147419103232000.00  
73786976294838206464000.00  
73786976294838206464000.00  
147573952589676412928000.00  
147573952589676412928000.00  
295147905179352825856000.00  
295147905179352825856000.00  
590295810358705651712000.00  
590295810358705651712000.00  
1180591620717411303424000.00  
1180591620717411303424000.00  
2361183241434822606848000.00  
2361183241434822606848000.00  
4722366482869645213696000.00  
4722366482869645213696000.00  
9444732965739290427392000.00  
9444732965739290427392000.00  
18889465931478580854784000.00  
18889465931478580854784000.00  
37778931862957161709568000.00  
37778931862957161709568000.00  
75557863725914323419136000.00  
75557863725914323419136000.00  
151115727451828646838272000.00  
151115727451828646838272000.00  
302231454903657293676544000.00  
302231454903657293676544000.00  
604462909807314587353088000.00  
604462909807314587353088000.00  
1208925819614629174706176000.00  
1208925819614629174706176000.00  
2417851639229258349412352000.00  
2417851639229258349412352000.00  
4835703278458516698824704000.00  
4835703278458516698824704000.00  
9671406556917033397649408000.00  
9671406556917033397649408000.00  
19342813113834066795298816000.00  
19342813113834066795298816000.00  
38685626227668133590597632000.00  
38685626227668133590597632000.00  
77371252455336267181195264000.00  
77371252455336267181195264000.00  
154742504910672534362390528000.00  
154742504910672534362390528000.00  
309485009821345068724781056000.00  
309485009821345068724781056000.00  
618970019642690137449562112000.00  
618970019642690137449562112000.00  
1237940039285380274899124224000.00  
1237940039285380274899124224000.00  
2475880078570760549798248448000.00  
2475880078570760549798248448000.00  
4951760157141521099596496896000.00  
4951760157141521099596496896000.00  
9903520314283042199192993792000.00  
9903520314283042199192993792000.00  
19807040628566084398385987584000.00  
19807040628566084398385987584000.00  
39614081257132168796771975168000.00  
39614081257132168796771975168000.00  
79228162514264337593543950336000.00  
79228162514264337593543950336000.00  
158456325028528675187087900672000.00  
158456325028528675187087900672000.00  
316912650057057350374175801344000.00  
316912650057057350374175801344000.00  
633825300114114700748351602688000.00  
633825300114114700748351602688000.00  
1267650600228229401496703205376000.00  
1267650600228229401496703205376000.00  
2535301200456458802993406410752000.00  
2535301200456458802993406410752000.00  
5070602400912917605986812821504000.00  
5070602400912917605986812821504000.00  
10141204801825835211973625643008000.00  
10141204801825835211973625643008000.00  
20282409603651670423947251286016000.00  
20282409603651670423947251286016000.00  
40564819207303340847894502572032000.00  
40564819207303340847894502572032000.00  
81129638414606681695789005144064000.00  
81129638414606681695789005144064000.00  
162259276832213363391578010288128000.00  
162259276832213363391578010288128000.00  
324518553664426726783156020576256000.00  
324518553664426726783156020576256000.00  
649037107328853453566312041152512000.00  
649037107328853453566312041152512000.00  
1298074214577067007132624082305024000.00  
1298074214577067007132624082305024000.00  
2596148429154134014265248164610048000.00  
2596148429154134014265248164610048000.00  
5192296858308268028530496329220096000.00  
5192296858308268028530496329220096000.00  
10384593716616536057060992658440192000.00  
10384593716616536057060992658440192000.00  
20769187433233072114121985316880384000.00  
20769187433233072114121985316880384000.00  
41538374866466144228243970633760768000.00  
41538374866466144228243970633760768000.00  
83076749732932288456487941267521536000.00  
83076749732932288456487941267521536000.00  
16615349946586457691297588253503072000.00  
16615349946586457691297588253503072000.00  
33230699893172915382595175107006144000.00  
33230699893172915382595175107006144000.00  
66461399786345830765190350214012288000.00  
66461399786345830765190350214012288000.00  
132922799572691661510380700428025728000.00  
132922799572691661510380700428025728000.00  
265845599145383323020761400856051456000.00  
265845599145383323020761400856051456000.00  
531691198290766646041522801712102912000.00  
531691198290766646041522801712102912000.00  
1063382396581533292083045603424205824000.00  
1063382396581533292083045603424205824000.00  
21267647931630665841660912068484116608000.00  
21267647931630665841660912068484116608000.00  
42535295863261331683321824136962332224000.00  
42535295863261331683321824136962332224000.00  
850705917265226633666436482739246644448000.00  
850705917265226633666436482739246644448000.00  
17014118345304532673328729654788932888896000.00  
17014118345304532673328729654788932888896000.00  
34028236690609065346657459309577865777792000.00  
34028236690609065346657459309577865777792000.00  
68056473381218130693314918619155731555584000.00  
68056473381218130693314918619155731555584000.00  
136112946762436261386629837238311461111168000.00  
136112946762436261386629837238311461111168000.00  
27222589352487252277325967447662292222336000.00  
27222589352487252277325967447662292222336000.00  
54445178704974504554651934895324584444672000.00  
54445178704974504554651934895324584444672000.00  
10889035740994900910930386979064916889344000.00  
10889035740994900910930386979064916889344000.00  
21778071481989801821860773958129833778688000.00  
21778071481989801821860773958129833778688000.00  
43556142963979603643721547916259755557376000.00  
43556142963979603643721547916259755557376000.00  
87112285927959207287443095832519511114752000.00  
87112285927959207287443095832519511114752000.00  
174224571855918414574886191665039022229504000.00  
174224571855918414574886191665039022229504000.00  
348449143711836829149772383330078044459008000.00  
348449143711836829149772383330078044459008000.00  
696898287423673658299544766660156088918016000.00  
696898287423673658299544766660156088918016000.00  
1393796574847347316599089533320312177836032000.00  
1393796574847347316599089533320312177836032000.00  
2787593149694694633198179066640624355672064000.00  
2787593149694694633198179066640624355672064000.00  
5575186299389389266396358133281247111344128000.00  
5575186299389389266396358133281247111344128000.00  
1115037259877877853279271626656248222688256000.00  
1115037259877877853279271626656248222688256000.00  
2230074519755755706558543253312496445376512000.00  
2230074519755755706558543253312496445376512000.00  
4460149039511511413117086506624992908753024000.00  
4460149039511511413117086506624992908753024000.00  
8920298079023022826234173013249984177506048000.00  
8920298079023022826234173013249984177506048000.00  
17840596158046045652468346026499968355121216000.00  
17840596158046045652468346026499968355121216000.00  
3568119231609209130493669205299977010242432000.00  
3568119231609209130493669205299977010242432000.00  
7136238463218418260987338410599944020484864000.00  
7136238463218418260987338410599944020484864000.00  
14272476926436836521974676821199888040977728000.00  
14272476926436836521974676821199888040977728000.00  
2854495385287367304394935364239776081955552000.00  
2854495385287367304394935364239776081955552000.00  
5708990770574734608789870728479552163911104000.00  
5708990770574734608789870728479552163911104000.00  
11417981541149469217579741456959104278222208000.00  
11417981541149469217579741456959104278222208000.00  
22835963082298938435159482913918208556444416000.00  
22835963082298938435159482913918208556444416000.00  
45671926164597876870318965827836417112888832000.00  
45671926164597876870318965827836417112888832000.00  
91343852329195753740637931655672834222577664000.00  
91343852329195753740637931655672834222577664000.00  
1826877046583915074812758633113545644455552000.00  
1826877046583915074812758633113545644455552000.00  
3653754093167830149625517266227108889111104000.00  
3653754093167830149625517266227108889111104000.00  
73075081863356602992510345324542177778222208000.00  
73075081863356602992510345324542177778222208000.00  
14615016372671320598502069064908355554444416000.00  
14615016372671320598502069064908355554444416000.00  
29230032745342641197004138129816711110888832000.00  
29230032745342641197004138129816711110888832000.00  
584600654906852823940082762596334222217777664000.00  
584600654906852823940082762596334222217777664000.00  
11692013098137056478801655251926684444355552000.00  
11692013098137056478801655251926684444355552000.00  
23384026196274112957603310503853368888711104000.00  
23384026196274112957603310503853368888711104000.00  
46768052392548225915206621007706737777422208000.00  
46768052392548225915206621007706737777422208000.00  
9353610478509645183041324201541347555444416000.00  
9353610478509645183041324201541347555444416000.00  
18707220957019290366082648403082695111088832000.00  
18707220957019290366082648403082695111088832000.00  
374144419140385807321652968061653822221777664000.00  
374144419140385807321652968061653822221777664000.00  
748288838280771614643305936123307644435552000.00  
748288838280771614643305936123307644435552000.00  
1496577676561543229286611872246614888911104000.00  
1496577676561543229286611872246614888911104000.00  
2993155353123086458573223544493297777822208000.00  
2993155353123086458573223544493297777822208000.00  
598631070624617291714644708898595555444416000.00  
598631070624617291714644708898595555444416000.00  
11972621412492345834292894177991111088832000.00  
11972621412492345834292894177991111088832000.00  
23945242824984691668585783559822221777664000.00  
23945242824984691668585783559822221777664000.0

