

64

664

38.75

38.75

Stake for Chandler  
on Albatross  
Tuesday AM

8-9-10 Cleveland Hts  
6

P.O. objects to set opposite  
said lots -

Was given followed as  
said out on profile?

3727 Albatross St.

Smith

Crocker Quality  
FIELD BOOK

No. \_\_\_\_\_



H. S. CROCKER CO.

SALESMEN AND MANAGERS  
SAN FRANCISCO AND OAKLAND  
CALIFORNIA

BM Men SE Cor Quince & India 100.34

2.45  
105.79  
-4.47  
187.56 1/2 Bush Redwood 3 101.32  
+11.22 State, +12.65  
198.68 113.97  
-9.09 -0.52  
194.54 10 E tic 194.57 112.40

207.17  
-2.60  
204.57 Men Cen Union & Redwood  
202.59 grade 2.00 L 171.07

+12.37  
126.77  
-0.80  
125.97  
-12.26  
113.71  
-0.60  
107.43  
+12.20  
147.73 H II  
0.96  
148.77

Thorn	St		
244.0	244.0		
St.			
235.0	235.0	241.0	243.0
Spruce	St.	Upas	St
233.0	233.0	242.0	244.0
Brant			St.
225.5	225.5	245.0	246.0
Redwood	St.	Thorn	St.
		Brant	

Brant St.

West

East

2

No Line Upas St.

241.25 241.00 241.10 242.00 242.20 243.00 243.25

241.00 241.00 241.27 242.17 242.57 243.00 243.00  
<sub>240.0</sub> <sub>242.0</sub>

240.85 240.25 241.44 242.34 242.74 242.25 242.85

Upas

241.50 240.50 241.60 242.50 242.90 242.50 243.50

St.

241.40 240.75 241.75 242.66 243.06 242.75 243.40

242.00 241.0 241.95 242.88 243.23 243.0 244.00 244.00  
<sub>242.00</sub>

242.25 242.00 242.10 243.00 243.40 244.00 244.25

So Line Upas St.

Brant St.

West

East

So. Line Upas St

3

00	242.25	242.00	242.10	243.00	243.40	244.00	244.25
----	--------	--------	--------	--------	--------	--------	--------

25	242.50	242.25	242.32	243.20	243.56	244.16	244.41
----	--------	--------	--------	--------	--------	--------	--------

50	242.75	242.50	242.55	243.41	243.73	244.33	244.58
----	--------	--------	--------	--------	--------	--------	--------

75	243.00	242.75	242.78	243.62	243.89	244.49	244.74
----	--------	--------	--------	--------	--------	--------	--------

100	So. 243.25	243.00	243.01	243.83	244.06	244.66	244.91
-----	------------	--------	--------	--------	--------	--------	--------

125	243.50	243.25	<del>243.27</del>	<del>244.04</del>	244.23	244.83	245.08
-----	--------	--------	-------------------	-------------------	--------	--------	--------

150	243.75	243.50	243.47	<del>244.24</del>	244.39	244.99	245.24
-----	--------	--------	--------	-------------------	--------	--------	--------

175	244.00	243.75	<del>243.70</del>	<del>244.45</del>	244.56	245.16	245.41
-----	--------	--------	-------------------	-------------------	--------	--------	--------

200	So. 244.25	244.00	<del>243.93</del>	<del>244.66</del>	244.73	245.33	245.58
-----	------------	--------	-------------------	-------------------	--------	--------	--------

225	244.50	244.25	244.16	244.87	244.89	245.49	245.74
-----	--------	--------	--------	--------	--------	--------	--------

250	244.75	244.50	244.39	245.08	245.06	245.66	245.91
-----	--------	--------	--------	--------	--------	--------	--------

275	245.00	244.75	244.62	245.29	245.23	245.83	246.08
-----	--------	--------	--------	--------	--------	--------	--------

300	245.25	245.00	244.85	245.50	245.40	246.00	246.25
-----	--------	--------	--------	--------	--------	--------	--------

No. Line 770274 St.

West

Brant.

East

4

245.25 245.00 244.85 245.50 245.40 246.00 246.25

245.00 245.00 244.63 245.23 245.08 246.00 246.00  
244.0 245.00

244.10 243.75 244.43 244.99 244.79 244.50 245.40

~~TRUTH~~

244.50 243.50 244.23 244.75 244.50 244.00 245.00

243.85 243.25 244.03 244.51 244.21 243.50 244.10

244.0 243.00 244.00 243.82 244.27 243.92 244.00 244.00

244.25 244.00 243.60 244.00 243.60 244.00 244.25



West.

East.

5

So. Line 7707th St

00 244.25 244.00 243.60 244.00 243.60 244.00 244.25

25 243.50 243.25 242.85 243.25 242.85 243.25 243.50

50 242.75 242.50 242.10 242.50 242.10 242.50 243.75

75 242.00 241.75 241.35 241.75 241.35 241.75 242.00

100 241.25 241.00 240.60 241.00 240.60 241.00 241.25

125 240.50 240.25 239.85 240.25 239.85 240.25 240.50

150 239.75 239.50 239.10 239.50 239.10 239.50 239.75

175 239.00 238.75 238.35 238.75 238.35 238.75 239.00

200 238.25 238.00 237.60 238.00 237.60 238.00 238.25

225 237.50 237.25 236.85 237.25 236.85 237.25 237.50

250 236.75 236.50 236.10 236.50 236.10 236.50 236.75

275 236.00 235.75 235.35 235.75 235.35 235.75 236.00

300 235.25 235.00 234.60 235.00 234.60 235.00 235.25

No. Line Spruce St

Brant St.

West

East.

8

235.25<sup>12'</sup> 235.00<sup>12.5'</sup> 234.60<sup>12.5'</sup> 235.00<sup>12.5'</sup> 234.60<sup>12.5'</sup> 235.00<sup>12'</sup> 235.25

235.00 235.00 234.65 235.00 235.00

234.60 233.5 ~~234.32~~ 233.50 234.60

SPRUCE

234.00 233.00 234.00 233.00 234.00

ST.

233.10 232.50 233.68 232.50 233.10

233.00 233.00 233.35 233.00 233.00

233.25<sup>10'</sup> 233.00<sup>10'</sup> 233.00<sup>10'</sup> 233.00<sup>10'</sup> 233.25<sup>10'</sup>

West.

East

## So. Line Spruce St

40	232.25	233.00	232.60	233.00	232.60	233.00	233.25
----	--------	--------	--------	--------	--------	--------	--------

55	232.62	232.37	231.97	232.37	231.97	232.37	232.62
----	--------	--------	--------	--------	--------	--------	--------

50	232.00	231.75	231.35	231.75	231.35	231.75	232.00
----	--------	--------	--------	--------	--------	--------	--------

75	231.37	231.12	230.72	231.12	230.72	231.12	231.37
----	--------	--------	--------	--------	--------	--------	--------

100	230.75	230.50	230.10	230.50	230.10	230.50	230.75
-----	--------	--------	--------	--------	--------	--------	--------

125	230.12	229.87	229.47	229.87	229.47	229.87	230.12
-----	--------	--------	--------	--------	--------	--------	--------

150	229.50	229.25	228.85	229.25	228.85	229.25	229.50
-----	--------	--------	--------	--------	--------	--------	--------

175	228.87	228.62	228.22	228.62	228.22	228.62	228.87
-----	--------	--------	--------	--------	--------	--------	--------

200	228.25	228.00	227.60	228.00	227.60	228.00	228.25
-----	--------	--------	--------	--------	--------	--------	--------

225	227.62	227.37	226.97	227.37	226.97	227.37	227.62
-----	--------	--------	--------	--------	--------	--------	--------

250	227.00	226.75	226.35	226.75	226.35	226.75	227.00
-----	--------	--------	--------	--------	--------	--------	--------

275	226.37	226.12	225.72	226.12	225.72	226.12	226.37
-----	--------	--------	--------	--------	--------	--------	--------

300	225.75	225.50	225.10	225.50	225.10	225.50	225.75
-----	--------	--------	--------	--------	--------	--------	--------

No Line Redwood St.



2680

QUINCE

268.0

St.

FOURTH

2665

PALM

2665

2690

St. REDWOOD

2690

2695

2695

St.

FOURTH

2675

St. QUINCE

2675

2680

2680

2705

St.

2705

2690

St.

2690

West

East

10

## So. Line Quince St.

20	268.25	268.00	267.85	268.50	268.40	269.00	269.25
25	268.12	267.87	267.72	268.50	268.27	268.87	269.12
50	268.00	267.75	267.60	268.37	268.15	268.75	269.00
75	267.87	267.62	267.47	268.12	268.02	268.62	268.87
100	267.75	267.50	267.35	268.00	267.90	268.50	268.75
125	267.62	267.37	267.22	267.87	267.77	268.37	268.62
150	267.50	267.25	267.10	267.75	267.65	268.25	268.50
175	267.37	267.12	266.97	267.62	267.52	268.12	268.37
200	267.25	267.00	266.85	267.50	267.40	268.00	268.25
225	267.12	266.87	266.72	267.37	267.27	267.87	268.12
250	267.00	266.75	266.60	267.25	267.15	267.75	268.00
275	266.87	266.62	266.47	267.12	267.02	267.62	267.87
300	266.75	266.50	266.35	267.00	266.90	267.50	267.75

## No. Line of Palm St.

125

AB ST.

E.

268.25 268.00 267.85 268.50 268.40 269.00 269.25

268.00 268.00 267.25 267.50 267.75 269.00 269.00  
267.0 268.0

267.60 267.78 267.94 268.10 268.26 268.42 268.60

QUINCE

268.00 268.18 268.34 268.50 268.66 268.82 269.00

ST

267.60 267.78 267.94 268.10 268.26 268.42 268.60

268.00 268.00 267.25 267.50 267.75 269.00 269.00  
267.0 268.0

268.25 268.00 267.85 268.50 268.40 269.00 269.25

W.

E

12

## So. Line of Redwood St.

269.75 269.50 269.35 270.00 269.90 270.50 270.75

269.62 269.37 269.22 269.87 269.77 270.37 270.62

269.50 269.25 269.10 269.75 269.65 270.25 270.50

269.37 269.12 268.97 269.62 269.52 270.12 270.37

180 269.25 269.00 268.85 269.50 269.40 270.00 270.25

269.12 268.87 268.72 269.37 269.27 269.87 270.12

269.00 268.75 268.60 269.25 269.15 269.75 270.00

268.87 268.62 268.47 269.12 269.02 269.62 269.87

260 268.75 268.50 268.35 269.00 268.90 269.50 269.75

268.62 268.37 268.22 268.87 268.77 269.37 269.62

268.50 268.25 268.10 268.75 268.65 269.25 269.50

268.37 268.12 267.97 268.62 268.52 269.12 269.37

268.25 268.00 267.85 268.50 268.40 269.00 269.25

125

## No. Line Quince St.





2590 Walnut & 1st N.W. p/ght.

THORN

ST

70

241

242

239.0

239.0

237.0

237.0

234.0

234.0

226

ST

50

100

225

ST.

SPRUCE

ST.

UPAS

ST

70

226

120

226

226

242

244

228.6

228.6

BRANT

228.8

228.8

228.4

228.4

BRANT

225.5

225.5

241

242

REDWOOD

ST

THORN

ST.

241

242

BRANT STREET

15

- W South Ligne of UPASS E
- 0108 24225 242.0 242.1 2430 243.4 2440 24425 .083
  - 0125 242.17 24192 242.00 24288 243.24 24384 24409 .167
  - 0130 242.08 24183 24189 24275 24307 24367 24392
  - 0175 24200 24175 24178 24262 24290 24350 24375
  - 1400 24192 24167 24168 24250 24274 24334 24359
  - 1425 24183 24158 24158 24237 24257 24317 24342
  - 1450 24175 24150 24147 24225 24240 24300 24325
  - 1475 24167 24142 24138 24213 24224 24284 24309
  - 2100 24158 24133 24126 24200 24207 24267 24292
  - 2125 24150 24125 24116 24187 24190 24250 24275
  - 2150 24142 24117 24106 24175 24173 24233 24258
  - 2175 24133 24108 24095 24162 24157 24217 24242
  - 3100 24125 24100 24085 2415 2414 2420 24225

24208	24210	24212	24214	24216	24218	24220	24222	24224	24226
4.82	6.78	7.82	6.98	7.16	7.32	7.48	7.65	7.82	7.98
448.90	449.05	449.20	449.35	449.50	449.65	449.80	449.95	450.10	450.25
449.05	449.20	449.35	449.50	449.65	449.80	449.95	450.10	450.25	450.40

BRANT ST By N.W. Cor Spruce & Brant.

24208	24210	24212	24214	24216	24218	24220	24222	24224	24226
4.82	6.78	7.82	6.98	7.16	7.32	7.48	7.65	7.82	7.98
448.90	449.05	449.20	449.35	449.50	449.65	449.80	449.95	450.10	450.25
449.05	449.20	449.35	449.50	449.65	449.80	449.95	450.10	450.25	450.40

24681  
436  
24240

11191

24681	24682	24683	24684	24685	24686	24687	24688	24689	24690
2.58	2.68	2.78	2.88	2.98	3.08	3.18	3.28	3.38	3.48
420.00	420.00	420.00	420.00	420.00	420.00	420.00	420.00	420.00	420.00

Donner  
Shant  
Dime

2-22-12  
1/24 CG  
Donner  
Shant

Brant Street

25 412.91 366 page 15  
211.68  
100.90 1/2

W

E

North Line of Thorn

N 1/2 24125 24100 24085 2415 2414 24200 24225

N.C. 24100 24100 24025 2405 24075 24200 24200  
24000 24100

N 1/4 2406 24076 24093 2411 24127 24144 2416

Center 2410 24116 24133 2415 24167 24184 2420

S 1/4 2406 24076 24093 2411 24127 24144 2416

S.C. 24100 24100 24025 2405 24075 24200 24200  
24000 24100

So Line 24125 24100 24085 2415 2414 24200 24225

241.40	241.40	241.40	241.40	241.40	241.40	241.40	241.40	241.40	241.40	241.40
41.85	41.85	40.85	41.80	40.80	41.80	41.85	40.85	41.85	41.80	41.80
3.40	3.15	3.15	3.40	3.40	3.40	3.40	3.40	3.15	2.90	3.00
241.40	241.40	241.40	241.40	241.40	241.40	241.40	241.40	241.40	241.40	241.40
42.00	42.25	41.60	42.00	41.60	42.00	42.00	42.25	41.60	41.60	42.00
2.40	2.15	2.90	2.40	2.65	2.40	2.15	3.00	2.90	3.00	

241.40  
41.85  
2.90  
4-26-12  
Donna  
Shane  
Dana



W North Line of Spruce E

N Line 22615 2260 2254 2255 22485 2250 22525

N.C. 2260 2260  
2250 22532 22568 22507 22526 22561

N 1/4 22572 22572 22564 22584 22527 22551 22576

Center 22625 22523 22575 22600 22547 22575 22600

5/4 2259 22538 22586 22616 22568 22599 22624

SC 2265 2255  
2265 22598 22632 22588 22624 22649

Solme 22675 2265 2261 22630 2261 2265 22675

23277	23277	23277	23277	23277	23277
26100	26100	26100	26100	26100	26100
7.77	7.77	7.77	7.77	7.77	7.77

2-23-12 (Dynamite plant)



W

South Line of Spruce

E

0+00 226.75 226.50 226.1 226.50 226.1 226.50 226.75

125 227.19 226.94 226.54 226.94 226.54 226.94 227.19

150 227.63 227.38 226.98 227.38 226.98 227.38 227.63

-0.00

175 228.06 227.81 227.41 227.81 227.41 227.81 228.06

1100 228.50 228.25 227.85 228.25 227.85 228.25 228.50

120 228.85 228.60 228.20 228.60 228.20 228.60 228.85

150 229.05 228.80 228.40 228.80 228.40 228.80 229.05

180 228.65 228.40 228.00 228.40 228.00 228.40 228.65

2100 228.17 227.92 227.52 227.92 227.52 227.92 228.17

125 227.56 227.31 226.91 227.31 226.91 227.31 227.56

150 226.96 226.71 226.31 226.71 226.31 226.71 226.96

275

300

227.19	226.94	226.54	226.94	226.54	226.94	227.19
7.41	6.43	5.69	5.31	5.41	5.51	6.29
+6.2	+2.2	+3.8	+2.2	+2.2	+2.2	+2.2
26.96	28.7	28.7	28.7	28.7	28.7	28.7
7.2	16.89	16.89	16.89	16.89	16.89	16.89
-4.00	-4.7	-4.7	-4.7	-4.7	-4.7	-4.7

227.19	226.94	226.54	226.94	226.54	226.94	227.19
26.96	28.7	28.7	28.7	28.7	28.7	28.7
7.2	16.89	16.89	16.89	16.89	16.89	16.89
-4.00	-4.7	-4.7	-4.7	-4.7	-4.7	-4.7

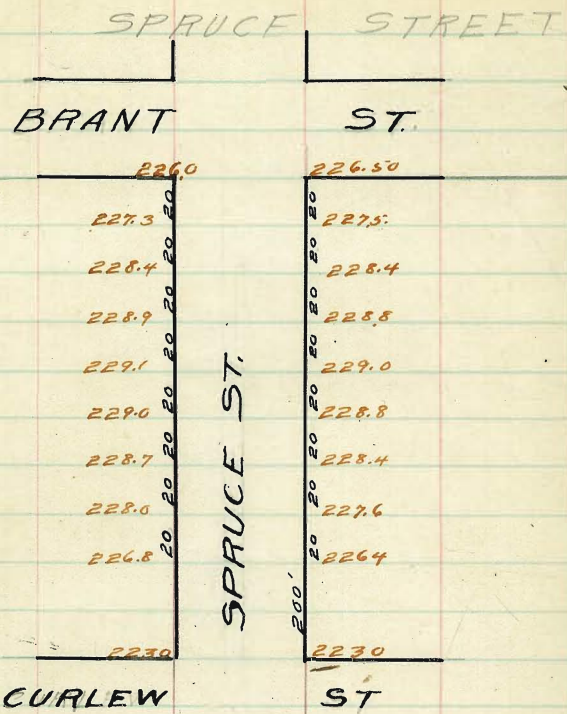
227.19	226.94	226.54	226.94	226.54	226.94	227.19
26.96	28.7	28.7	28.7	28.7	28.7	28.7
7.2	16.89	16.89	16.89	16.89	16.89	16.89
-4.00	-4.7	-4.7	-4.7	-4.7	-4.7	-4.7

227.19	226.94	226.54	226.94	226.54	226.94	227.19
26.96	28.7	28.7	28.7	28.7	28.7	28.7
7.2	16.89	16.89	16.89	16.89	16.89	16.89
-4.00	-4.7	-4.7	-4.7	-4.7	-4.7	-4.7

all stakes 4-25-12  
 {Korman  
 {Hart  
 {Kline

227.19	226.94	226.54	226.94	226.54	226.94	227.19
26.96	28.7	28.7	28.7	28.7	28.7	28.7
7.2	16.89	16.89	16.89	16.89	16.89	16.89
-4.00	-4.7	-4.7	-4.7	-4.7	-4.7	-4.7

check OK 4-27-12  
 Blough





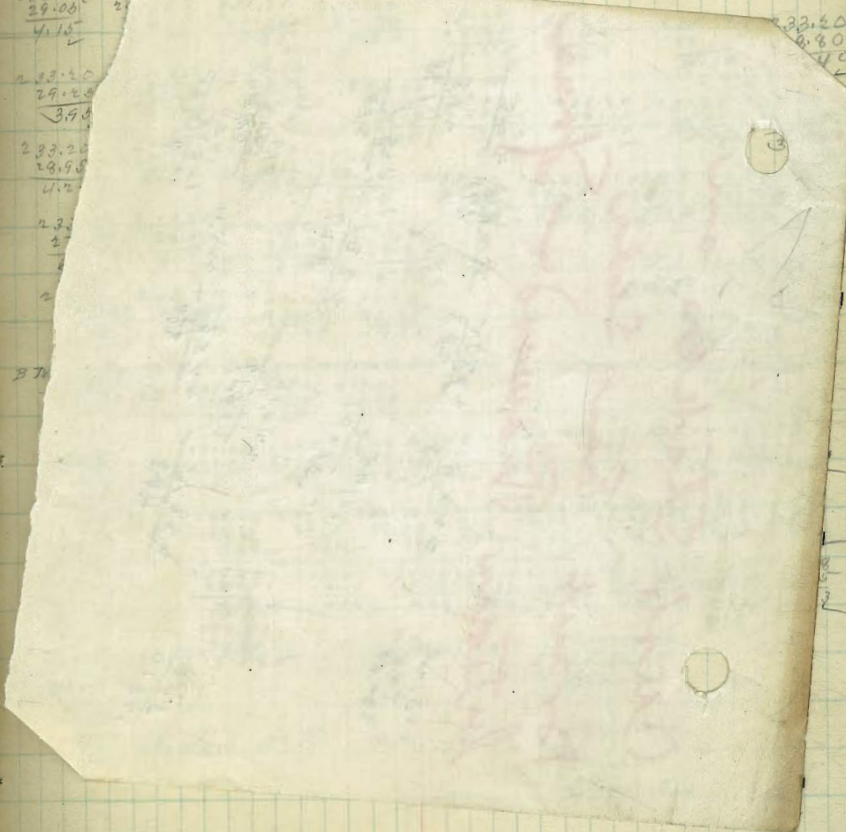
North	SPRUCE ST						South
W.L. Brant 226.35	226.00	225.72	226.25	225.90	226.50	226.75	
		0.04	0.04				
+20	227.35	227.30	226.95	228.40	226.90	227.60	
✓	228.65	228.4	228.0	228.40	228.0	228.4	
140	228.65	228.4	228.0	228.40	228.0	228.4	
160	228.15	228.9	228.50	228.85	228.40	228.8	
180	229.35	229.1	228.70	229.05	228.60	229.0	
100	229.25	229.0	228.60	228.90	228.40	228.8	
120	228.95	228.7	228.10	228.35	228.07	228.4	
140	228.25	228.0	227.40	227.80	227.3	227.6	
160	229.05	226.8	226.2	226.60	226.90	226.4	
170	225.62	225.37	224.85	225.25	224.79	225.13	
200 EL Curkin	223.0	222.60	223.00	222.60	223.00	223.25	
223.25	antimony	Fe	Coat				

24240 Mer Cont West Brant

8.00	241.26	241.26	241.24	241.24	241.24	241.24
250.41	6.1	9.7	16.00	8.5	28	8.1
241.40	235.2	231.6	241.24	232.7	233.4	233.0
86	228.7	228.2	mon	228.6	228.6	229.0
241.24	9	25.4		C 4.1	4.8	C 3.7
9.37	241.24	241.24	241.24	232.77	232.77	232.77
231.87	9.2	11.0	8.1	4.8	6.1	9.4
50	232.0	230.2	227.0	226.0	226.6	226.8
22.7743	229.2	228.6	228.2	228.1	228.6	228.2
	C 1.8	C 1.6	C 1.1	C 1.0	0.0	C 1.2

6472-21-12 6078  
H.P. 232.37 from Non Len Brant & Upas.

232.37	233.20	233.20	233.20	233.20	233.20	233.20
0.33	26.25	26.00	26.50	26.75	27.50	27.75
232.20 H.T.	7.95	7.20	6.70	6.45	5.75	6.45



Curb Stakes on  
 Brant, East Side  
 between Redwood & Spruce

22312  
 746  
 230.58

226.5  
 408

22772  
 283

2286  
 198

225  
 8

.0175  
 20  
 .3500

22731  
 3.27  
 6

288  
 11.78

284  
 2.18

226.15  
 8  
 225.17

548  
 8  
 225.10

22615  
 443

225.64  
 444

225.11

0172  
 56.5  
 548  
 10.50  
 578  
 56.586

23277  
23277  
23277

North SFRUCE ST South

120 229.53 229.36 226.95 228.40 226.90 229.50 229.75

140 228.63 228.4 228.0 228.40 228.0 228.4 228.63

160 229.15 228.9 228.50 228.85 228.40 228.8 229.05

180 229.35 229.1 228.70 229.05 228.60 229.0 229.25

100 229.25 229.0 228.60 228.90 228.40 228.8 229.05

120 228.95 228.7 228.10 228.35 228.07 228.4 228.65

140 228.25 228.0 227.40 227.80 227.3 227.6 227.85

160 229.05 226.8 226.2 226.60 226.90 226.4 226.65

170 225.62 225.37 224.85 225.25 224.79 225.13 225.38

200 E.L. Curlew  
223.25  
autumn 70.5  
GC.4

242.48 Mer and Upas Brant

241.26	241.26	241.24	241.24	241.24	241.24
241.24	241.24	241.24	241.24	241.24	241.24

6472-21-12 6078

H.P. 232.87 From Mer and Upas Brant & Upas.

232.20	232.20	232.20	232.20	232.20	232.20
232.20	232.20	232.20	232.20	232.20	232.20
232.20	232.20	232.20	232.20	232.20	232.20
232.20	232.20	232.20	232.20	232.20	232.20
232.20	232.20	232.20	232.20	232.20	232.20

Del 19-12  
C&P  
Damm  
Bedford  
Devine

B.N. 223.74 1/2 Pond S.E. Cor Curlew & Spruce

223.74	223.74	223.74	223.74	223.74	223.74
223.74	223.74	223.74	223.74	223.74	223.74
223.74	223.74	223.74	223.74	223.74	223.74
223.74	223.74	223.74	223.74	223.74	223.74
223.74	223.74	223.74	223.74	223.74	223.74

Mar 18-12 } Damm  
                  } Shaw  
                  } Devine

Checked OK Mar 19th 12

{ Damm  
   Shaw  
   Devine

B.M. 279.91 Brass Ptg N.W. Cor 5th & Brookes.

+ 3.24  
243.75  
- 3.103  
280.22  
6.38  
286.60 HI

286.60 286.60 286.60 286.60 286.60  
80.40 81.09 82.79 83.58 85.00  
6.20 5.01 3.91 2.62 1.60

22

286.60 286.60 Feb 27-12  
241.95 240.95 Gorman  
4.7 5.7 Bedford  
4.16 5.7  
60.1 0.0 Kemmel

5' stakes

B.M. 279.91 See Above

+ 3.24  
243.75  
- 3.103  
280.22  
4.715  
287.58 HI

June 19, Checked grading, N. E. Set stakes where necessary.

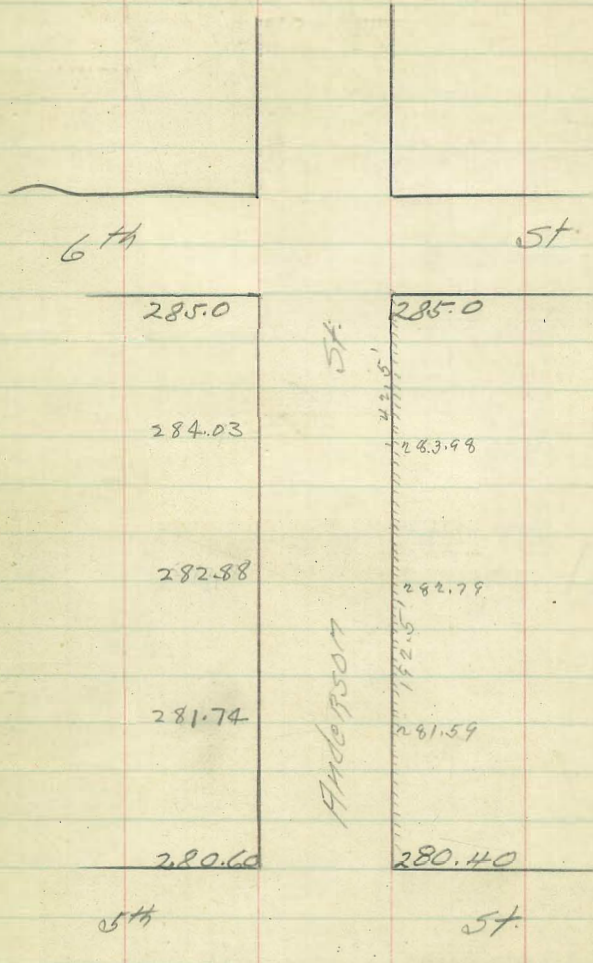
Gorman  
Bedford  
Kemmel

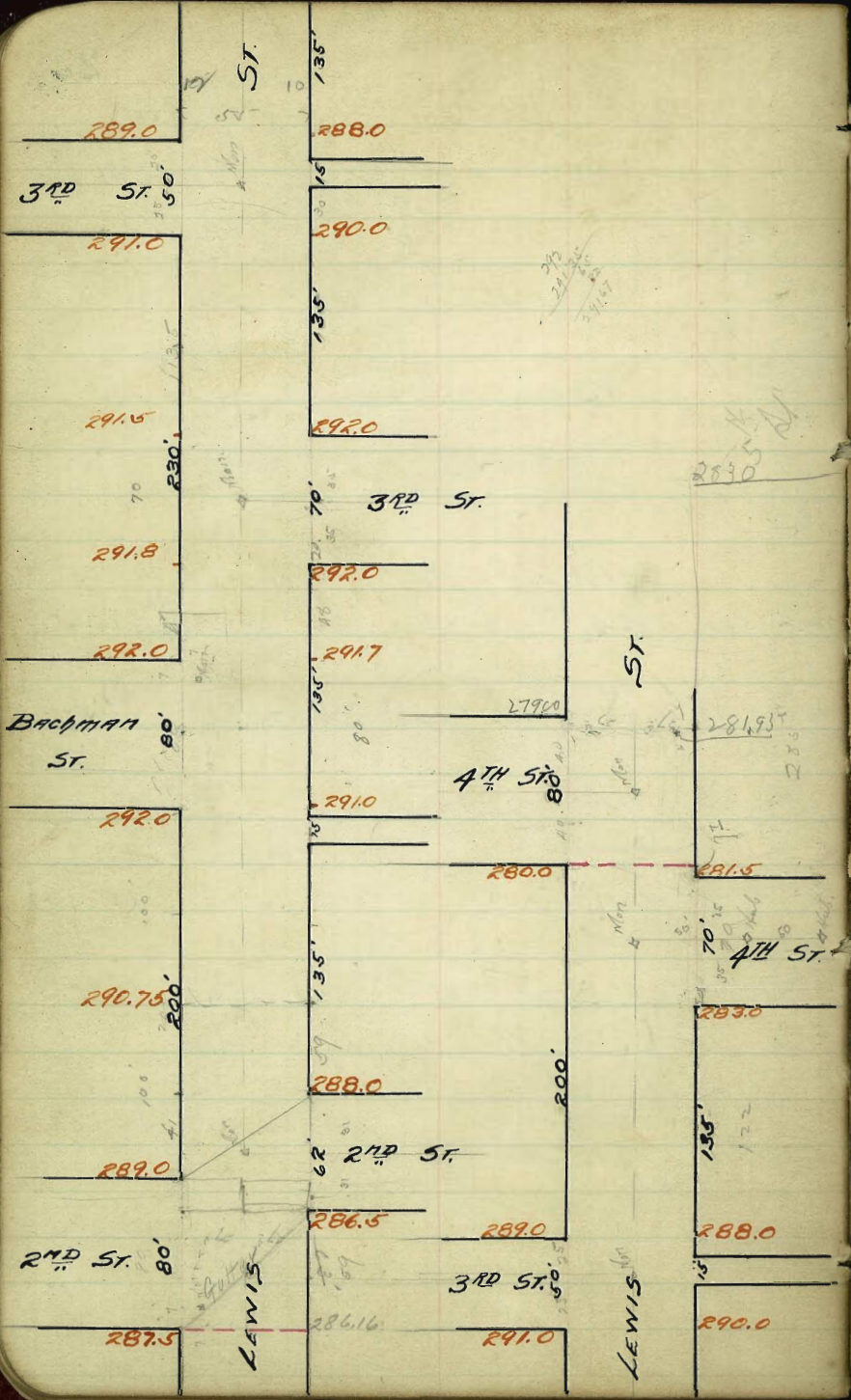
July 9-12, Nothing done since last stakes here on June 19.

West Line 6th St.

197.25	285.25	285.0	284.6	285.0	284.6	285.0	285.25
150	284.28	284.03	283.62	284.01	283.6	283.98	284.73
100	283.13	282.88	282.46	282.84	282.41	282.79	283.04
50	281.99	281.74	281.3	281.67	281.23	281.59	281.84
EL.	280.85	280.6	280.15	280.5	280.05	280.4	280.65

E Line 5th St





510  
 1300  
 50  
 1000

LEWIS ST.

North East Line 2nd St. South

East Line 289.25 289.0 288.4 288.12

E Curb 289.0 289.0  
288.0 288.13 287.94

West Line 2nd St.

E 1/4 289.4 287.62 287.84 287.68 286.65 286.48 286.73

E 1/4 289.4 287.62 287.84 287.68 286.65 286.48 286.73

Center 288.25 287.25 287.65 287.47 286.51 286.4 286.65

W 1/4 287.48 286.87 287.90 287.26 286.37 286.32 286.57

W Curb 287.5 286.5  
287.5 287.16 287.05 286.24 286.24 286.49

W Line 287.75 287.50 286.90 286.83 286.09 286.16 286.41

West Line 2nd St.

288.5  
289.0

1871 2<sup>d</sup> Lewis Piano Plug

190 884 1812 2716 all stakes  
530 570 615 712

LEWIS ST.

North W Line Backman St. South

154 E 292.75 292.0 291.4 291.50 290.85 291.0 291.25

142 292.06 291.81 291.21 291.26 290.59 290.72 290.97

109 291.62 291.37 291.77 290.72 289.95 290.06 290.31

80 291.26 291.01 290.41 290.26 289.48 289.51 289.76

59 291.0 290.75 290.15 289.93 289.12 289.11 289.36

25 E 290.41 290.16 289.56 289.31 288.49 288.47 288.72

E line 2nd St. 289.97 289.72 289.11 288.86 288.03 288.0 288.25

E curb 289.79 289.54 288.94 288.67 287.81 288.0 289.0  
287.0

E 1/4 289.62 289.37 288.77 288.49 287.60 286.62 287.4

C 289.44 289.19 288.59 288.30 287.38 286.25 287.25

W 1/4 289.25 289.0 288.4 288.12 287.16 285.87 286.47

W curb 287.93 286.94 285.5 286.5

W line 287.75 286.72 286.5 286.75

W line 2nd St.

25

all stakes 4/24/12

8972	8912	8884	8803	880	9175	9015	8993	8912	8911
452	511	547	627	620	355	413	437	613	619
9127	9077	9172	8995	9006	9209	914	915	9085	910
293	353	388	435	424	730	790	230	325	320
920	915	9167	9110	9125					
230	240	260	320	215					

287.97 Cn 288.22 288.51 289.72 289.01 289.75 289.93 289.11 289.4

668 287.65 287.65 287.65 287.65 287.65 287.65 287.65 287.65 287.65

294.65 291.27 290.72 291.12 292.2 291.50 291.0

298 323 317 291 291

checked OK 6-28-12 blough

North E. Line 3rd St Hillcrest South

E Line	291.75	291.50	291.22	291.75	291.47	292.0	292.25
E Curb	291.79	291.54	291.25	291.77	291.61	292.0	292.0
E 1/4	291.84	291.59	291.29	291.8	291.76	291.6	291.6
Center	291.89	291.64	291.33	291.82	291.91	292.0	292.0
W 1/4	291.94	291.69	291.38	291.85	291.79	291.6	291.6
W Curb	291.99	291.74	291.41	291.88	291.67	292.0	292.0
West Line	292.05	291.80	291.45	291.9	291.55	292.0	292.25

West Line 3rd St Hillcrest Add.

W Line	291.05	291.8	291.45	291.9	291.55	292.0	292.25
25'	292.13	291.88	291.43	291.88	291.47	291.86	292.11
E Line	292.25	292.0	291.4	291.85	291.38	291.7	291.95

East Line Bachman St.

E Line	292.25	292.0	291.4	291.85	291.38	291.70	291.95
E Curb	292.00	292.0	291.55	291.79	291.78	291.57	291.82
E 1/4	291.6	291.6	291.70	291.72	291.18	291.46	291.7
Center	292.05	292.0	291.84	291.67	291.10	291.35	291.60
W 1/4	291.60	291.6	291.70	291.61	291.04	291.23	291.48
W Curb	292.00	292.0	291.55	291.56	290.94	291.12	291.37

292.25	292.0	291.4	291.5	290.85	291.0	291.25
--------	-------	-------	-------	--------	-------	--------

West Line Bachman St.

29.74	29.74	29.74	29.74	29.74	29.74	29.74	29.74	29.74	29.74
29.20	29.20	29.20	29.20	29.20	29.20	29.20	29.20	29.20	29.20
3.74	4.19	3.92	4.29	3.94					

from 22-12 Cont 1/2  
 292.65-292.75  
 (Hornum)  
 (Hornum)  
 (Hornum)

292.0	291.67	291.5	292.0	291.85	291.70
-------	--------	-------	-------	--------	--------

291.75  
 350  
 291.79

291.50	291.90	292.0	291.0	291.75	292.0
--------	--------	-------	-------	--------	-------

checked OK 6-28-12



7.7 E 280.25	280.0	279.62	280.73	280.86	281.46	281.71
E Line 280.59	280.34	280.25	280.98	281.04	281.50	281.75
EC 281.05	280.8	280.63	281.30	281.29	281.5	281.56
E 1/4 281.61	281.36	281.10	281.71	281.58	280.5	281.24
Center 281.17	281.92	281.58	282.11	281.88	281.24	282.25
W 1/4 282.73	282.48	282.05	282.62	282.19	281.61	282.40
WCurb 283.30	283.05	282.63	282.92	282.48	282.0	283.0
W Line 283.76	283.51	282.91	283.35	282.72	283.0	283.25

West Line 4th St Hillcrest

122 283.76	283.51	282.91	283.25	282.72	283.0	283.25
100 284.75	284.50	283.90	284.20	283.64	283.9	284.15
75 285.87	285.62	285.02	285.27	284.69	284.92	285.17
50 287.0	286.75	286.15	286.35	285.74	285.94	286.19
25 288.12	287.87	287.27	287.42	286.79	286.96	287.21
Eastline 289.25	289.0	288.4	288.50	287.85	289.0	288.25

East Line 3rd St.

E Line 289.25	289.0	288.4	288.5	287.85	288.0	288.25
ECurb 289.0	289.0	288.8	288.9	288.35	288.4	288.65
E 1/4 289.1	288.5	289.1	289.2	288.55	288.7	288.95
Centre 290.0	289.0	289.4	289.5	288.85	289.0	289.25
W 1/4 290.4	289.5	289.7	289.8	289.15	289.3	289.55
WCurb 291.0	290.0	290.0	290.1	289.45	289.6	289.85
W Line 291.25	291.0	290.4	290.5	289.85	290.0	290.25

West Line 3rd St.

113.5=WL 291.25	291.0	290.4	290.5	289.85	290.0	290.25
100 291.31	291.06	290.49	290.65	290.03	290.23	290.48
75 291.42	291.17	290.67	290.92	290.39	290.67	290.92
50 291.53	291.28	290.85	291.20	290.74	291.11	291.36
25 291.64	291.39	291.03	291.47	291.10	291.56	291.81
E Line 291.76	291.5	291.22	291.75	291.47	292.0	292.25

E Line 3rd St Hillcrest

BTE 22-14 Ping SW Cor 4th & Lewis.

34.57	34.57	34.57	34.57	34.57	34.57	34.57
30.34	30.34	30.34	30.34	30.34	30.34	30.34
11.25	11.25	11.25	11.25	11.25	11.25	11.25
29.07	29.07	29.07	29.07	29.07	29.07	29.07
28.89	28.89	28.89	28.89	28.89	28.89	28.89
28.89	28.89	28.89	28.89	28.89	28.89	28.89
28.89	28.89	28.89	28.89	28.89	28.89	28.89
28.89	28.89	28.89	28.89	28.89	28.89	28.89
28.89	28.89	28.89	28.89	28.89	28.89	28.89

June 22-12, Finish 2 1/2 1/2  
 1st 49 H  
 8/12 8/12 8/12  
 8/12 8/12 8/12

8/12	8/12	8/12	8/12	8/12	8/12	8/12
8/12	8/12	8/12	8/12	8/12	8/12	8/12
8/12	8/12	8/12	8/12	8/12	8/12	8/12
8/12	8/12	8/12	8/12	8/12	8/12	8/12
8/12	8/12	8/12	8/12	8/12	8/12	8/12

Checked OK although  
 also checked OK the  
 inspection of Lewis + with st in 5th St and  
 in Hill St Brook

280.00

8340

8450

8675

287.00

291.00

296.75

2918

292.75

Bachman

2900

8320

8420

8635

8850

9050

9175

9175

9190

9185

9150

28150

28300

28390

8591

28800

290.00

292.00

292.61

292.70

2916

28314 Bm 14 Lams

277  
290.21  
270  
280.21  
296.11

83.00

8040

8520

8650

8420

8550

7.91

7.81

7.71

7.41

6.71

7.01

28.75

28.25

28.21

28.21

28.41

28.71

28300 Tpbh

9100 80.00 2000 9124

9114

9111

9114

9115

9110

9111

4.4

6.11

5.0

4.83

4.73

5.20

4.21

4.51

4.11

29188 Bm 304 Lams

4.75  
292.74

282.4

4.4

292.4

4.4

292.0

3.70

292.0

4.30

292.0

4.70

29200 9155

29200 9155

9170

9125

9055

9005

8955

8905

8855

8805

8755

29200 Bm

375

2925

2925

8993

8911

8872

8886

8800

8750

370  
295.17

2800

6.70

2800

8775

2.31

2800

251.71  
282.50  
284.40  
1.00

370  
8100

291.00  
291.12

Bachman

2920

2920

290.75

2890

2875

29161

29150

2915

89,93

8888

8774

29170

29100

2905

8911

8882

2878

PENNSYLVANIA

Ave

ST.

250.0  
250.0

30

251.7

50

253.8

70

254.0

95

254.7

110

253.0

251.3  
253.0

30

252.7

50

254.8

70

255.1

90

255.0

ST

Brookers

Ave

N. 20' ST 10' Walks ST ST E.

.15625.1875

300' No. of N. Line Brooks Ave

200 250.38 250.13 250.02 250.71 250.70 251.30 251.55

175 251.69 251.44 251.32 251.97 251.87 252.47 252.72

170 251.95 251.70 251.55 252.20 252.10 252.70 252.95

150 252.79 252.54 252.39 253.04 252.94 253.54 253.79

125 253.84 253.59 253.44 254.09 253.99 254.59 254.84

120 254.05 253.80 253.65 254.30 254.20 254.80 255.05

100 254.40 254.15 254.00 254.65 254.55 255.15 255.40

80 254.75 254.50 254.35 255.00 254.90 255.50 255.75

75 254.70 254.45 254.30 254.96 254.87 255.47 255.72

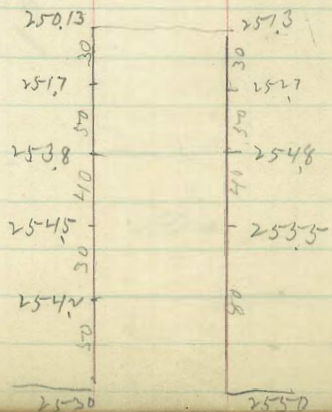
50 254.45 254.20 254.08 254.75 254.71 255.31 255.56

25 253.85 253.60 253.59 254.38 254.66 255.16 255.41

00 253.25 253.00 253.10 254.00 254.40 255.00 255.25

N. Line Brooks Ave.

.125

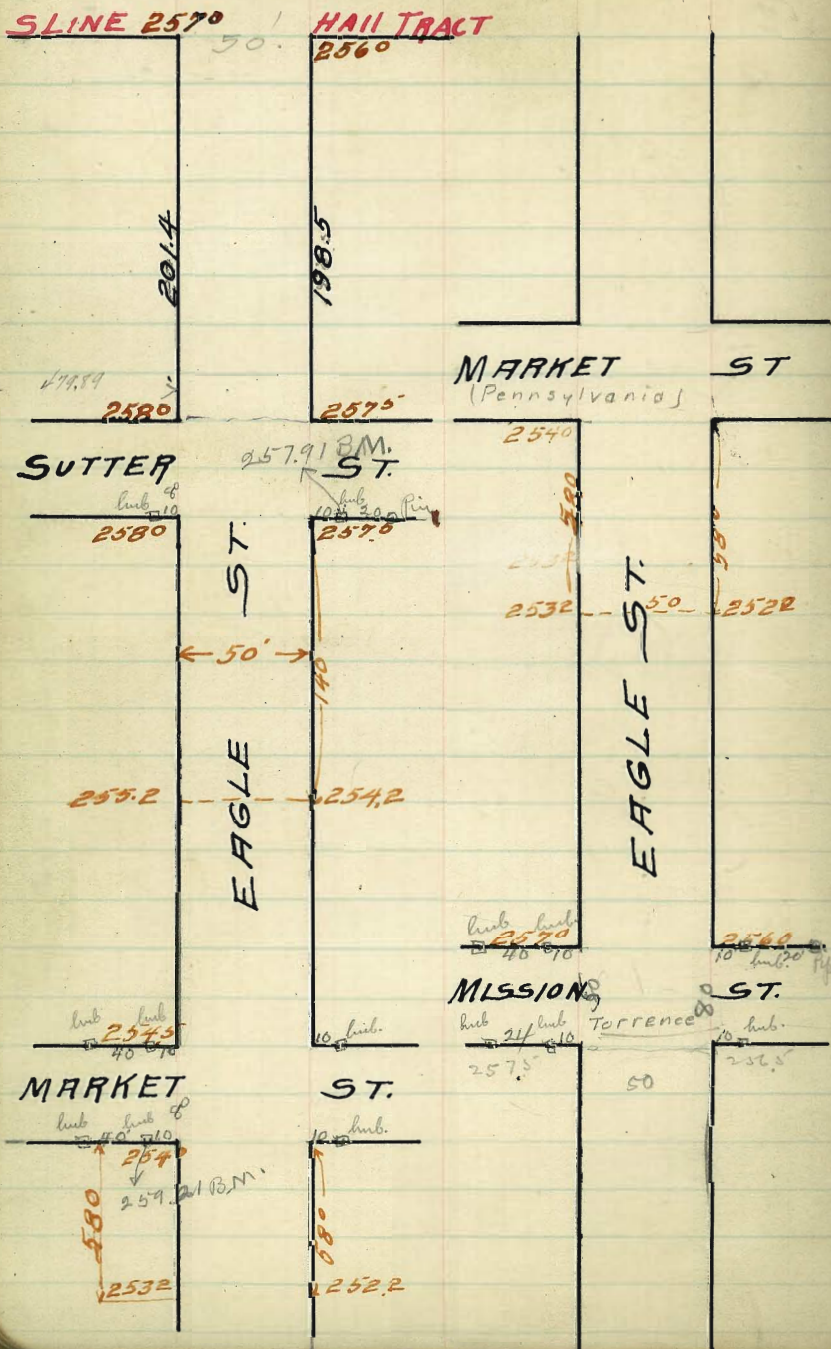


152.90	260.29	260.29	260.29	260.29	260.29	260.29
739	260.29	260.29	260.29	260.29	260.29	260.29
260.29	260.29	260.29	260.29	260.29	260.29	260.29
	7.04	254.96	255.7	255.94	256.0	256.77
		254.2	255.7	255.94	256.0	256.77
		C.8	C.8	C.5	C.1	
260.29	260.29	260.29	260.29	260.29	260.29	260.29
255.12	253.7	252.1	251.0	250.0	251.3	251.3
254.0	252.7	251.2	250.1	250.0	251.3	251.3
C.4	C.1.4	C.4	C.9	C.7	C.7	C.7

Out + Till 4/13 J2 Blayh, Jty. Bick



# Eagle STREET.



50' wide from west Line

257.00 N.E. cor. Sutter & Goldfunch

6.27 H.I. 536

263.27 257.91 B.M. 10' East of S.E. cor. of Sutter

east walk with curbing  
Street made intersections first  
yutens lot.

Make grade run over to make finished at

West 10/24/13.

Crane  
Dennis

W S. LINE OF HALL TRACT. E

2014W 198.5E 25720 25640 25660 25685 2560 256.75

175 257.38 25713 25683 25666 25603 256.20 256.45

150 257.57 25726 25666 25682 25620 256.38 256.63

125 257.63 25738 25698 25697 25637 25657 256.82

100 257.75 25750 25690 25713 25685 25676 25701

75 257.88 25763 25703 25728 25671 25694 25719

50 258.00 25795 25715 25744 25789 25713 25738

25 258.13 25828 25728 25759 25805 25731 25756

00 258.25 2580 25740 25775 25722 25750 25725

NORTH LINE OF SUTTER ST

2579 1. DM. 10' E 35' Cor Sutter & Eagle.

6.00  
263.91-H

Cut + Fills

263.91	263.91	263.91	263.91	263.91	263.91	263.91	263.91	263.91
257.75	258.25	582	584	815	591	621	591	591
616	566	258.09	258.37	255.76	259.00	257.75	258.00	258.00
616	566	258.00	257.33	257.01	257.75	257.51	256.63	256.63
000	000	00.09	0.15	F 1.25	C 0.25	C 0.19	C 1.37	

263.91	263.91
8.71	7.11
258.00	256.80
256.25	257.25
F 1.25	F 0.45

10/22/13  
West Evans - Corrine

Finish Stakes Curbs + Prop.

257.91 0.11  
4.70  
262.61-19

262.61	262.61	262.61	262.61	262.61	262.61	262.61	262.61	262.61
258.25	258.00	257.50	257.75	257.38	257.13	257.75	258.00	258.00
4.86	4.61	5.11	4.86	5.22	5.48	4.86	4.61	

262.61	262.61	262.61	262.61	262.61	262.61	262.61	262.61	262.61
257.75	257.50	254.76	257.01	256.63	256.38	257.26	257.27	257.27
4.86	5.11	5.85	5.60	5.98	6.23	5.35	5.10	

262.61	262.61	262.61	262.61
257.25	257.00	256.00	256.25
5.86	5.61	6.61	6.36

West Evans 11/27/13

30' 5" + 10' walks. 2 1/2 9.

NORTH LINE OF SUTTER ST.

N Line 25825 25800 25740 25775 25722 25750 25795

N Curb 2580 25800 25700 25688 25675 25662 25650 25760 25650

N 1/4 25760 25750 25742 25735 25728 25720 25710

Center 25800 25790 25782 25775 25768 25760 25750

S 1/4 25760 25750 25742 25735 25728 25720 25710

S Curb 25800 25700 25800 25688 25675 25662 25650 25760 25650

S Line 25825 25800 25740 25775 25722 25750 25795

SOUTH LINE OF SUTTER ST.

263.27 H.I.  
258.00  
5.27  
257.73 5.17  
5.52 + 0.45  
5.47  
+ 0.0

26147 H.I.

257.91 = BM.  
477

262.68 H.I. 26268 26268 26268 26268  
257.50 25710 25750 25710 25750

5.18 5.58 5.18 5.58 5.18 ✓

C.O.B. F.O.B. C.O.B.

26268 26268 26268 26268 26268  
25800 25740 25775 25722 25750

4.68 5.28 4.93 5.46 5.18 ✓

5.58 ✓ C.O.B. C.O.B.

26268  
25875  
5.93



SOUTH Line of SUTTER ST.

00 258.25 258.00 257.40 257.25 257.22 257.50 257.25

25 257.75 257.50 256.90 257.21 256.66 256.91 257.16

50 257.25 257.00 256.40 256.64 256.09 256.32 256.57

75 256.75 256.50 255.90 256.12 255.52 255.73 255.98

100 256.25 256.00 255.40 255.57 254.96 255.14 255.39

125 255.75 255.50 254.90 255.03 254.39 254.55 254.80

140 255.45 255.20 254.60 254.70 254.05 254.20 254.46

150 255.41 255.16 254.56 254.64 253.99 254.13 254.38

175 255.36 255.05 254.45 254.51 253.84 253.96 254.21

200 255.19 254.94 254.34 254.37 253.68 253.80 254.05

225 255.08 254.83 254.23 254.23 253.53 253.63 253.88

250 254.97 254.72 254.12 254.09 253.38 253.46 253.71

275 254.86 254.61 254.01 253.95 253.22 253.29 253.54

300 254.75 254.50 253.90 253.81 253.07 253.13 253.38

NORTH Line of Market ST.

263 27 Ht  
256.57  
6.70  
6.2  
+0.5

253.39  
7.88  
13.0  
5.40  
256.25  
7.02  
5.92  
1.2

253.45  
7.82  
7.82  
0.0  
254.97  
8.30  
6.7  
+1.6  
254.75  
8.52  
5.02  
+3.0

253.71  
9.56  
13.16  
-3.6  
253.38  
9.89  
8.79  
+1.1

13.00  
250.27  
1.30  
251.57 Ht.  
254.45  
2.88  
12.22  
-15.20

254.05  
2.48  
10.12  
-12.60  
257.91  
3.56  
261.47  
255.45  
6.02

Rehills  
atten  
Camber  
cut + fill  
Aug. 28/13

254.97  
6.50  
253.46  
8.01

254.72  
6.75  
253.71  
7.76

253.19  
6.28  
253.38  
8.09

254.94  
6.53  
253.13  
8.34  
254.50  
6.97  
254.75  
6.72

256.25  
5.22  
257.75  
3.72

256.00  
5.47  
257.50  
3.97  
258.00  
3.47  
258.25  
3.22

255.14  
6.33  
253.39  
6.08  
257.25  
4.22  
257.00  
4.47  
256.32  
5.15  
256.57  
4.90

257.91  
1.50  
259.41

256.4  
2.41

257.0  
4.21

57.14  
4.27  
57.20  
5.11  
255.10  
6.28  
255.26  
6.25

257.91 - 0.11 - 10' to S of Sutter + Eagle.  
260.21  
257.40  
2.81

260.21  
257.75  
2.46

260.21  
257.22  
2.99

260.21  
254.60  
5.61  
260.21  
254.70  
5.51  
260.21  
254.05  
6.16

260.21  
253.90  
6.31

260.21  
253.81  
6.40

260.21  
253.27  
7.14

260.21  
253.40  
6.81  
260.21  
253.30  
6.91  
260.21  
252.54  
7.67

Set ends + Raked 7/21/13 West - Evans - top  
280.21  
6.75  
254.03 - TP  
5.96  
260.04 - Ht  
Gutters high. surplus dirt on E walk.  
Sutter Intersect. high on N.  
No catch basins in yet.  
Boulders on surface.  
12/1/13. P.S.W. Needs Recheck.

NORTH Line of Market St. 80ft

N Line 25475 254.60 25390 25381 25307 253.13 253.38

N Curb 254.80 254.50 25381 25372 25298 25303 253.03  
253.50 252.03

N 1/4 25390 253.12 25373 25364 25289 25294 252.43

Center 25425 253.25 25365 25356 25281 252.86 252.86

S 1/4 25372 253.38 25357 25347 25272 25277 252.87

S Curb 25400 253.00 25349 25338 25263 25268 252.68  
253.00 251.68

S Line 25425 254.00 25340 25330 25254 25257 252.84

SOUTH Line of Market St.

N. Mission St. <sup>10</sup> 257.25 <sup>75</sup> 257.00 <sup>75</sup> 256.40 <sup>75</sup> 256.00 <sup>75</sup> 255.85 <sup>10</sup> 256.00 256.25

N. Curb <sup>14</sup> 257.00 257.00 256.49 256.59 255.94 256.00 256.00  
256.00 256.00 255.00 255.00

N 1/4 <sup>13</sup> 256.78 256.13 256.57 256.67 256.07 256.13 255.73

Center <sup>10</sup> 257.25 256.75 256.65 256.75 256.10 255.25 256.25

S 1/4 <sup>10</sup> 256.90 256.37 256.73 256.83 256.18 255.37 255.90

S Curb <sup>13</sup> 256.50 256.50 256.81 256.91 256.26 255.50 255.50  
<sup>14</sup> 257.50 257.50 256.80 256.80

S. Mission St. 257.75 257.50 256.90 257.00 256.35 256.50 256.75

263.27 HI  
252.84  
10.43  
9.43  
+4.60  
254.45  
9.02  
4.42  
+4.60  
259.21  
2.08  
261.29 HI  
254.50  
6.79  
254.25  
7.29 7.04  
256.50 256.25  
7.06 7.31  
256.75  
6.81  
257.25  
5.81  
253.13 252.59 36  
8.16 8.70  
253.86 252.84  
7.43 8.45  
252.18 252.08  
7.81 7.17  
27

South Line of Market St.

00	254.25	254.00	253.40	253.30	252.54	252.59	252.84
25	253.90	253.65	253.05	253.04	252.33	252.42	252.67
50	253.56	253.31	252.71	252.78	252.12	252.25	252.50
58	253.45	253.20	252.60	252.70	252.05	252.20	252.45
75	253.72	253.47	252.87	252.97	252.32	252.47	252.72
100	254.11	253.86	253.26	253.36	252.71	252.84	253.11
125	254.50	254.25	253.65	253.75	253.10	253.25	253.50
150	254.89	254.64	254.04	254.14	253.49	253.64	253.89
175	255.29	255.04	254.44	254.54	253.89	254.04	254.29
200	255.68	255.43	254.83	254.93	254.28	254.43	254.68
225	256.07	255.82	255.22	255.32	254.67	254.82	255.07
250	256.46	256.21	255.61	255.71	255.06	255.21	255.46
275	256.86	256.61	256.01	256.11	255.46	255.61	255.86
300	257.25	257.00	256.40	256.50	255.85	256.00	256.25

NORTH LINE of MISSION ST.

See p 36 for Mission St Grades.

Invest of D.W. cur. of market 37

263.27	H.I.	40.6	B.M.	259.21	278	256.46	256.75
253.45		12.89		261.99	H.I.	5.53	5.24
9.82		250.88	J.P.	254.89	2.83	4.80	
6.82		0.15		7.10	+3.0	+0.4	
+3.0		250.53	H.I.	34	257.25	256.25	
254.11		252.45		+3.7	4.74	5.74	
9.16		1.92		254.68	2.34	3.34	
6.26		13.08		6.31	+2.4	+2.4	
+2.90		-15.00		2.31	257.75	255.46	
				+4.0	4.24	6.53	
254.68	253.89	253.11			3.54	8.83	
7.31	8.10	8.89			+0.7	+2.7	
4.21	5.10	10.93					
+3.1	+3.0	-2.10		259.21			
4.31				4.35			
253.11	252.56	253.86	254.11	263.56	H.I.		
10.45	10.70	9.70	9.45	253.45	253.70	252.20	252.45
254.89	254.64	253.64	253.89	10.11	10.36	11.36	11.11
8.67	8.92	9.92	9.67				
254.68	254.43	253.43	253.68	256.46	256.21	255.21	255.46
8.88	9.13	8.73	7.88	7.10	7.35	8.35	8.10
256.21	256.0	257.0	257.25				
7.31	7.56	6.56	6.31				
2600	2600	2600	2600	2600	2600	2600	2600
252.60	252.70	252.05		256.40	256.70	255.85	
7.44	7.34	7.99		3.54	3.54	4.19	
2600	2600	2600		2600			
256.90	257.00	256.35		2.44			
3.14	3.04	3.69		2.75			
				3.05			

A St.

St.

15 th

St.

60'

90.10

90.0

172'

110.30

109.49

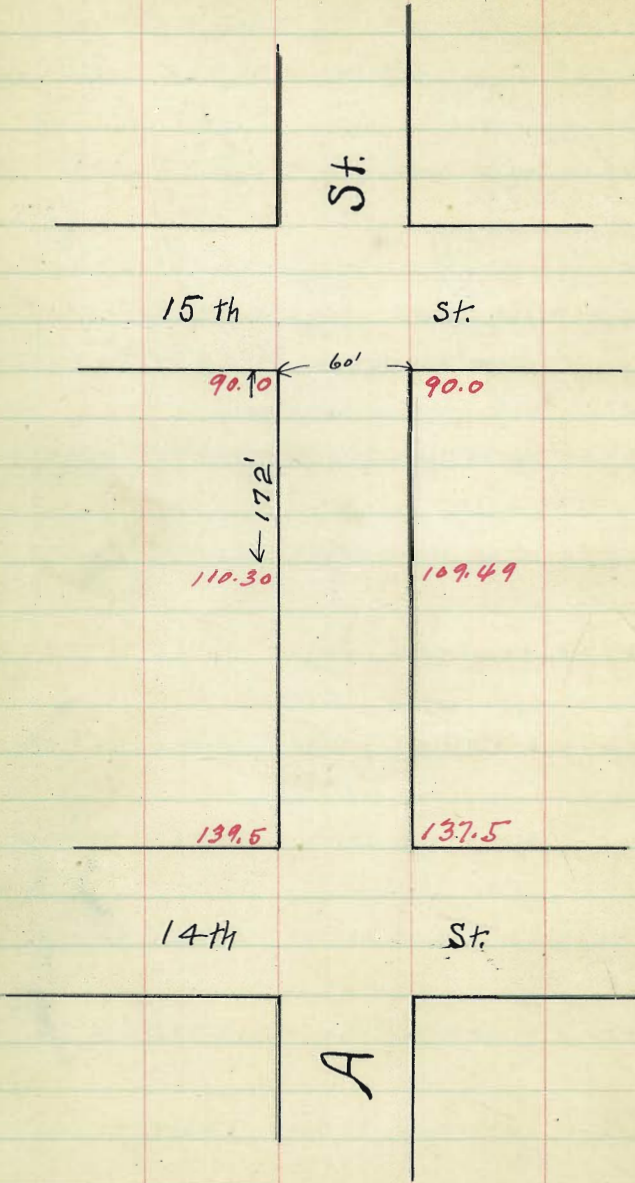
139.5

137.5

14th

St.

A



North	West Line 15th St.					South
90.25	90.0	89.60	90.0	89.60	90.0	90.25
5'	90.84	90.59	90.18	90.58	90.17	90.82
25'	92.20	92.95	92.52	92.89	92.46	92.83
40'	94.97	94.72	94.28	94.62	94.18	94.53
50'	96.15	95.90	95.45	95.78	95.32	95.66
65'	97.92	97.67	97.20	97.52	97.04	97.36
75'	99.10	98.85	98.37	98.67	98.19	98.49
100'	102.05	101.80	101.30	101.56	101.05	101.32
125'	105.0	104.75	104.22	104.45	103.91	104.15
150'	107.95	107.70	107.14	107.35	106.77	106.99
172'	110.55	110.30	109.70	109.89	109.29	109.49

1-25-13 Set 647

blough City & Shm

7644 B.M. B.P. 15th St		106.30		113.19		113.19		3/10	
98.01	156.30	106.30	113.19	113.19	3/10	113.19	113.19	3/10	curb & property
98.01	90.25	96.15	101.52	102.95	109.74	113	109.74	113	sample
98.01	7.76	10.40	4.73	5.24	3.45		5.24	3.45	Evans
98.01	9.01	10.40	4.73	5.24	3.70		5.24	3.70	Kerr
98.01	106.30	106.30	113.19	113.19			113.19	113.19	
98.01	98.91	98.91	102.05	107.24	110.55		107.24	110.55	
98.01	12.59	12.59	4.25	5.95	2.64		4.25	5.95	
98.01	106.30	106.30	4.25	6.20	2.89		4.25	6.20	
98.01	4.81	4.81	1	1	1		4.81	1	
101.79	95.15	101.32	101.02	112.7	112.7	112.7	112.7	112.7	all stakes
112.0	6.17	90.25	95.91	12.2	12.2	15.55	15.55	15.55	1/10
113.19	101.32	11.07	5.47	9.2	9.03	0.72	0.72	0.72	1/3
	1.15	11.32	9.47	4.23	6.97		6.97		sample - Evans - Kerr
	100.17	11.72	12.16	11.27	11.27	11.27	11.27	11.27	
	11.12		95.32	1.80	4.73	2.20	2.20	2.20	
	111.27		6.00	9.97	4.50	1.57	1.57	1.57	
7644 B.M.			12.32	11.27	11.27	11.27	11.27	11.27	
12.92			15.6	7.35	8.87	8.87	8.87	8.87	
89.96			95.78	9.7	3.92	1.35	1.35	1.35	
3			5.84	11.27	11.27	11.27	11.27	11.27	
			101.32	1.85	2.64	2.29	2.29	2.29	
			95.45	12.2	4.13	1.92	1.92	1.92	
			5.87	11.27	11.27	11.27	11.27	11.27	
			11.32	12.7	7.95	9.74	9.74	9.74	
			16.15	9.70	3.32	7.53	7.53	7.53	
			5.17	9.95	3.67	1.72	1.72	1.72	
			5.22	1	1	1	1	1	
			89.60	89.60	95.90	95.45	95.78	95.32	95.66
			12.40	12.40	6.10	6.35	6.22	6.22	6.22
			101.80	101.30	101.56	101.05	101.32		
			170	170	40	1	7		
			112.20	102.14	107.35	106.77	106.99	106.99	
			6.14	6.70	6.15	9.19	9.49		
			1030	9.20	9.89	9.29	9.49		
			3.24	4.14	3.95	4.35	4.35		

checked OK 3-14-13 blough

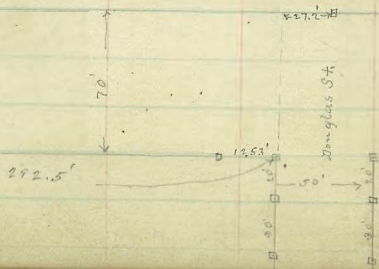
E Line 14th St 139.5

137.5

ALBATROSS STREET.

West.	Curb	1/4.	£	1/4	Curb	East.
S.L. Washington.						PL.
0+00 - 277.25	277.00	276.60	277.20	277.00	277.40	277.65
+25	276.74	276.49	276.09	276.66	276.45	276.84
+50	276.22	275.97	275.57	276.13	275.90	276.29
+75	275.71	275.46	275.06	275.60	275.35	275.74
1+00	275.19	274.94	274.54	275.07	274.80	275.19
+25	274.67	274.42	274.02	274.53	274.24	274.63
+50	274.15	273.90	273.50	273.99	273.69	274.08
+75	273.63	273.38	272.99	273.46	273.14	273.53
2+00	273.12	272.87	272.47	272.92	272.58	272.98
+25	272.60	272.35	271.95	272.39	272.03	272.43
+50	272.08	271.83	271.43	271.85	271.48	271.88
+75	271.56	271.31	270.91	271.32	270.93	271.33
+90	271.04	270.79	270.39	270.80	270.42	270.82
N.E. Douglas St.	271.25	271.00	270.60	271.00	270.60	271.25
N.C.	271.00	269.90	270.50	270.90	270.50	269.90
N 1/4	270.40	269.83	270.42	270.82	270.42	269.82
£	270.75	269.75	270.35	270.75	270.35	269.75
S 1/4	270.23	269.68	270.28	270.68	270.28	269.68
2.C.	270.50	269.60	270.20	270.60	270.20	269.60
S.L. Douglas.	270.75	270.50	270.10	270.50	270.10	270.75

Washington St.



277.25 on plan from S.W. Corner Washington St. & Albatross.

278.24	278.56	278.91	279.26	279.61	279.96	280.31	280.66	281.01	281.36
73.20	73.45	73.70	73.95	74.20	74.45	74.70	74.95	75.20	75.45
1.71	1.81	1.91	2.01	2.11	2.21	2.31	2.41	2.51	2.61
1.8	1.9	2.0	2.1	2.2	2.3	2.4	2.5	2.6	2.7
0.1	0.2	0.3	0.4	0.5	0.6	0.7	0.8	0.9	1.0
278.66	278.96	279.26	279.56	279.86	280.16	280.46	280.76	281.06	281.36
74.00	74.25	74.50	74.75	75.00	75.25	75.50	75.75	76.00	76.25
1.81	1.91	2.01	2.11	2.21	2.31	2.41	2.51	2.61	2.71
1.9	2.0	2.1	2.2	2.3	2.4	2.5	2.6	2.7	2.8
0.2	0.3	0.4	0.5	0.6	0.7	0.8	0.9	1.0	1.1
279.08	279.38	279.68	279.98	280.28	280.58	280.88	281.18	281.48	281.78
74.40	74.65	74.90	75.15	75.40	75.65	75.90	76.15	76.40	76.65
1.91	2.01	2.11	2.21	2.31	2.41	2.51	2.61	2.71	2.81
2.0	2.1	2.2	2.3	2.4	2.5	2.6	2.7	2.8	2.9
0.3	0.4	0.5	0.6	0.7	0.8	0.9	1.0	1.1	1.2
279.50	279.80	280.10	280.40	280.70	281.00	281.30	281.60	281.90	282.20
74.80	75.05	75.30	75.55	75.80	76.05	76.30	76.55	76.80	77.05
2.01	2.11	2.21	2.31	2.41	2.51	2.61	2.71	2.81	2.91
2.1	2.2	2.3	2.4	2.5	2.6	2.7	2.8	2.9	3.0
0.4	0.5	0.6	0.7	0.8	0.9	1.0	1.1	1.2	1.3

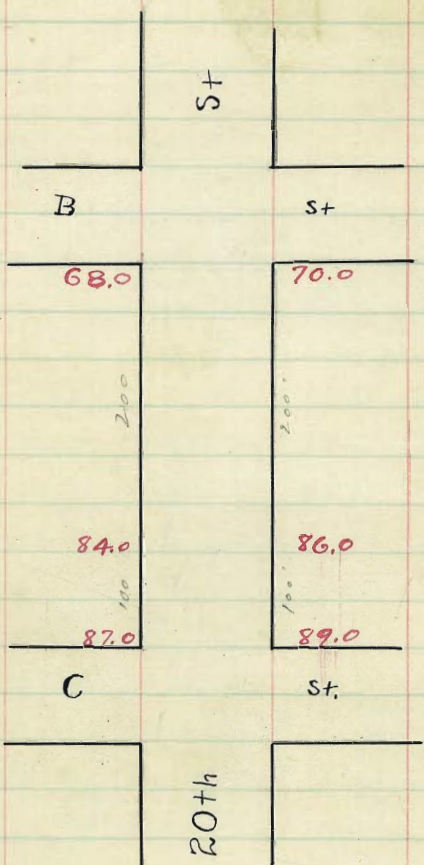
At all stakes with what we show above, Dec. 17-12

278.27	278.57	278.87	279.17	279.47	279.77	280.07	280.37	280.67	280.97
74.80	75.05	75.30	75.55	75.80	76.05	76.30	76.55	76.80	77.05
2.11	2.21	2.31	2.41	2.51	2.61	2.71	2.81	2.91	3.01
2.2	2.3	2.4	2.5	2.6	2.7	2.8	2.9	3.0	3.1
0.5	0.6	0.7	0.8	0.9	1.0	1.1	1.2	1.3	1.4

All of apt East curb of property will have to be checked again as it is entirely too high.  
 Dominion, Bedford, Maine  
 April 10-1913.

278.98	278.90	274.54	273.69	272.47
2.49	5.57	6.93	7.78	9.00
281.47	276.13	275.07	273.99	272.92
	5.34	6.40	7.48	8.56
	275.37	274.50	273.50	272.58
	5.90	6.67	7.48	8.89
	271.48	270.60	270.60	7.97
	9.99	10.87	10.87	
	271.85	271.0	270.47	
	9.62	10.47		
	271.43	270.6		
	10.04	10.87		

3  
0  
1  
1  
1  
1  
2  
1  
1  
1  
1  
1  
1  
1  
1  
1  
1  
1  
1  
1  
1



E-1/2 St = 45' 1/4' Walk.

N.W. Cor 21 & C. Plug end ref. N3.015  
 " " " " 22.00 " " " " 145.425

May 21 - 1913.  
West

41

	NL	+50	100.	150	200
128.00 - 84	8107	70.91 - 141.	92.81	90.81	90.81
15.74 107	1.14	81.75	86.25	82.25	78.25
12.65	70.81 - 147	81.06 - 147	78.56 - 147	8.56 - 147	12.56 - 147
201.11 - 100	89.26	1.06	4.25	6.31	7.02
2.05	1.56 - 147	C 2.5	00 - 147	C 1.7	C 3.5
100.10 - 14	1.10 - 147	F 2.4			
10.01 - 147					
57.00 - 147					
250	90.81	83.35			
70.81	12.27	70.25			
74.25	7.2	13.70 - 147			
12.56 - 147	78.82 - 147	C 3.7			
15.74 - 107	4.83				
C 3.40	83.35 - 147				

SW 20th = S

181	8.55	77.50	24.0	25.0	32	81	81 TP
181	5.92	8.25	2.47	4.17	5.07	8.47	007
							81.07 N

77.0

4.27	3.81	74.0	23	70.0	89
		907	8.07	11.07	12.07

Closest Centers S/20th

74.90 - SW 20th = S

10.41					
19.01 - 21 1/2' from S.E. 20th C.					
2.47					
70.93 - 147					

70.91 ENCL. REF S.E. 20th C

14.14	8.24	26.9	8.54	11.6	77.7	60	77.0	12.1	19.4	14.3	9.2
78.2	1.75	37.3	4.15	6.15	12.70	18.75	5.15	5.15	9.4		

W.

20th St.

E

S. Line of B St.

			<sup>0.9 high</sup> gutter	<sup>0.7 high</sup> ↑	<sup>11 high</sup> ↑
300-S Line	68.00	69.0	69.4	70.00	70.25
285		70.20	70.60	71.20	71.45
275		71.00	71.40	72.0	72.25
265		71.80	72.20	72.80	73.05
250		73.00	73.40	74.00	<sup>0.2 high</sup> 74.25
225		75.00	75.40	76.0	76.25
200		77.00	77.40	78.0	78.25
175		79.00	79.40	80.0	80.25
150		81.00	81.40	82.0	82.25
125		83.00	83.40	84.0	84.25
100	84.0	85.0	85.40	<sup>0.2 low</sup> 86.0	<sup>70.0 low</sup> 86.25
75		85.75	86.15	86.75	87.00
60		86.11	86.51	87.11	87.36
50		86.50	86.90	87.50	87.75
25		87.25	87.65	<sup>15 low</sup> 88.25	88.50
6		87.82	88.22	88.82	89.07
N. Line	87.0	88.00	88.40	89.0	<sup>0.25 low</sup> 89.25
N. Line of C St.					

89.01  
 2.89      8.54 8.80  
 91.90 H.I.    3.5 3.9  
 89.0

2.9  
 86.50 86.9 87.5 87.75  
 5.40 5.0 4.40 4.15  
 86.25 86.0 85.0 85.0  
 5.65 5.90 6.5 6.90  
 81.0 81.4 82.0 82.25  
 10.90 10.50 9.90 9.65  
 7.825

12.65

79.25 J.P.

0.86  
 79.61 H.I.  
 78.25 78.0 77.4 77.0  
 1.36 1.61 2.21 2.61  
 73.0 73.4 74.0 74.25  
 6.61 6.21 5.61 5.36  
 70.25 70.0 69.4 69.0  
 9.36 9.61 10.21 10.61

0.23 0.23 0.23 S.W. 20' 20' 20'  
 0.91 22.76 22.76 22.76      Curb & property from 31' E for 100' South  
 95.75 78.00 78.00 78.00      6/97      50'      50'      50'  
 115.75      4.76      8.76      12.76

82.06  
 8.8  
 22.76 H.I.

14.84 H.I.

1.06

95.90

6.15

89.85

8.86

89.81 H.I.

11.81

78.00

0.76

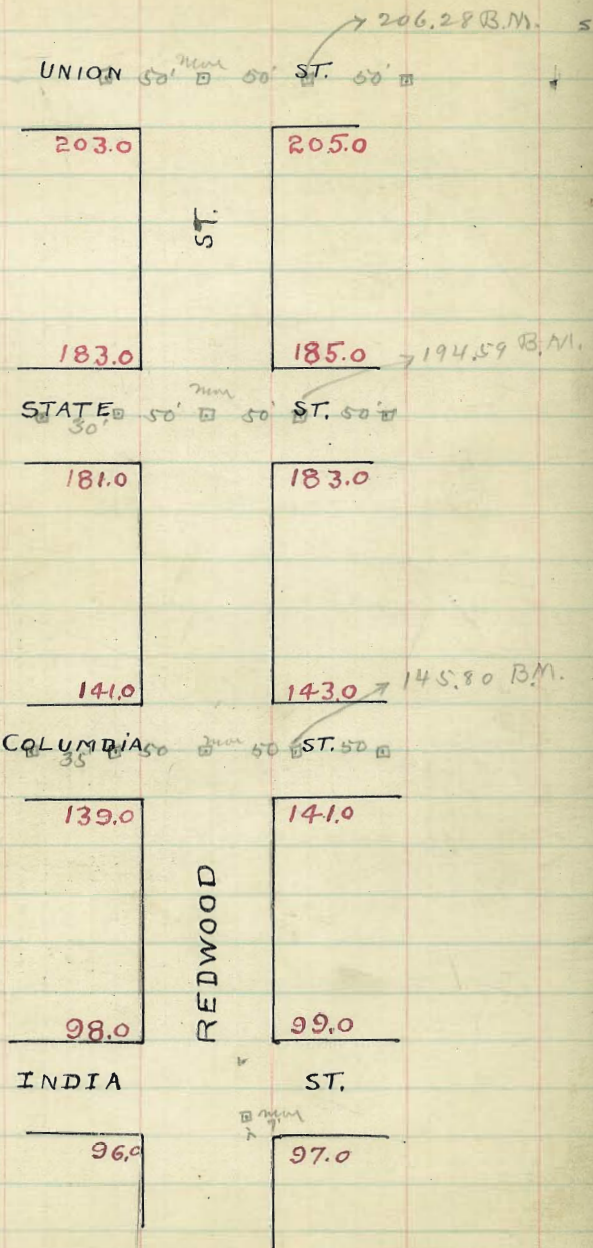
79.66

89.81	89.81	89.81	89.81	89.81	89.81	89.81	89.81	89.81	89.81	89.81	89.81	89.81	89.81
89.00	88.40	88.00	87.00	86.50	86.00	85.40	85.00	84.40	84.00	83.40	83.00	82.40	82.00
0.81	1.41	1.81	3.01	2.91	2.31	3.81	4.41	4.91	3.81	2.41	7.81	8.41	7.81
89.81	89.81	89.81	89.81	89.81	89.81	89.81	89.81	89.81	89.81	89.81	89.81	89.81	89.81
78.00	77.90	77.00	73.00	72.90	72.00	70.00	69.40	69.00					
10.91	12.41	12.81	5.96	5.86	4.96	8.96	9.56	9.96					

Get bank overhangs, grading will pass.  
 June 21-1913 Thomas J. Deane



N



India  
Quince S E Cor. 103.387  
line plus in record 43  
near P.L.

1834 - 1841

1841 - 1845

1845 - 1850

1850 - 1855

1855 - 1860

1860 - 1865

1865 - 1870

1870 - 1875

1875 - 1880

1880 - 1885

1885 - 1890

1890 - 1895

1895 - 1900

1900 - 1905

1905 - 1910

1910 - 1915

1915 - 1920

1920 - 1925

1925 - 1930

1930 - 1935

Aug 6 - 1913  
N 2012  
W 2116

74  
18  
57

Top fire-pling S E Cor of Redwood & Indiana

101.41	101.41
95.00	98.00
2.41	3.41

50 East to the for Cen Redwood & Columbia

145.77	145.77	145.77	145.77
137.00	141.00	143.00	141.00
6.77	4.77	2.77	4.77

137.36 S E Cor of Redwood & State

187.79	187.79	187.79	187.79
185.00	83.00	83.00	81.00
2.79	4.79	4.79	6.79

50 S E Cor of Redwood & Union

209.66	209.66	209.66
203.00	208.00	206.00
5.66	5.66	5.66

Redwood stake on Siffert Aug 1913  
Dorman, Miller, Shaw

1132	1132	1132	1132	1132	1132	1132
108.32	108.32	108.32	108.32	108.32	108.32	108.32
43.68	43.68	43.68	43.68	43.68	43.68	43.68

1132

1132

1132

1132

N. Redwood St. S.

W. Line of Union St.

200	203.25	203.0	203.10	204.0	204.40	205.0	205.25
175	200.75	200.50	200.60	201.50	201.90	202.50	202.75
150	198.25	198.0	198.10	199.0	199.40	200.0	200.25
125	195.75	195.50	195.60	196.50	196.90	197.50	197.75
100	193.25	193.0	193.10	194.0	194.40	195.0	195.25
75	190.75	190.50	190.60	191.50	191.90	192.50	192.75
50	188.25	188.0	188.1	189.0	189.40	190.0	190.25
25	185.75	185.50	185.60	186.50	186.90	187.50	187.75
East Line	183.25	183.0	183.1	184.0	184.40	185.0	185.25

EAST LINE of State

N	ELINE	183.25	183.0	183.10	184.0	184.40	185.0	185.25
Y	E Cor. 6	183.0	183.0	182.76	183.6	184.06	185.0	185.00
S	off	182.40	182.41	182.43	182.33	182.73	184.07	184.40
S	Center	182.0	182.05	182.10	183.00	183.40	183.70	184.0
	w/ly	181.10	181.44	181.77	182.67	183.07	183.08	183.10
	w/Cor. 8	181.0	181.44	182.34	182.74	183.0	183.0	183.0
	w/Line	181.25	181.0	181.10	182.0	182.40	183.0	183.25

West Line of State St.

202.05	188.25	173.25	194.59	746	BM. 10' anta property State	44
153.25	13.80	8.80	155.25	0.94	195.25	200.25
18.80	4.8	1.1	16.80	201.11	J.P.	9.56
11.1	+7.0	+7.7	2.9	87.0	H.E.	4.26
+7.7	3.53		+13.9	209.51	+16.7	+5.3
	206.28	BM. 10' anta prop. Redwood		190.25		205.25
203.25	198.25			19.56		4.56
6.56	11.56			6.76		
11.86	5.66			+12.8		
-4.3	+2.9					

West Aug 6-15

183.25	TP	195.95	195.95	195.95	195.95
172.70		183.25	185.25	190.25	
175.95	175.95	185.25	190.25		
185.25	175.95	185.25	190.25		
16.70	17.70	17.70	17.70		
	5.17				

187.26 Sp. South State & Redwood.  
 19.49 19.84 19.84 19.84 207.17 207.17  
 195.95 93.00 98.00 93.00 99.00 203.00  
 12.44 7.84 2.84 9.17 4.17  
 center of offset corner, Lucas, Shaw.  
 Aug 11-1917

191.44	191.44	191.44	191.44	191.44	191.44	191.44
183.25	183.00	183.10	184.00	184.40	185.00	185.25
8.79	8.44	8.34	7.44	7.04	6.44	6.17

Set ends + holes.

204.57	207.83	207.83	207.83	207.83	207.83	207.83
3.26	207.83	207.83	207.83	207.83	207.83	207.83
4.56	4.83	4.73	3.83	3.43	2.83	2.58

Will have to be re-checked as extreme high. 9/1/13 cont.

West Line of State St.

200'							
W. Line	181.25	181.0	181.10	182.0	182.4	183.0	183.25
175	176.25	176.0	176.10	177.0	177.40	178.0	178.25
150	171.25	171.0	171.10	172.0	172.40	173.0	173.25
125	166.25	166.0	166.10	167.0	167.40	168.0	168.25
100	161.25	161.0	161.10	162.0	162.40	163.0	163.25
75	156.25	156.0	156.10	157.0	157.40	158.0	158.25
50	151.25	151.0	151.10	152.0	152.40	153.0	153.25
25	146.25	146.0	146.10	147.0	147.40	148.0	148.25
E. Line	141.25	141.0	141.10	142.0	142.40	143.0	143.25

E. Line of Columbia St.

E. Line	141.25	141.0	141.10	142.0	142.40	143.0	143.25
E. Curb	141.0	141.0	140.76	141.66	142.06	143.0	143.0
		140.0				142.0	
E. W.	140.40	140.41	140.43	141.33	141.73	142.07	142.40
Center	140.00	140.05	140.10	141.00	141.40	141.70	142.0
W. 1/4	139.10	139.22	139.77	140.67	141.07	141.08	141.10
W. Curb	139.0	139.0	139.44	140.34	140.74	141.0	141.0
W. Line	139.25	139.0	139.10	140.0	140.40	141.0	141.25

W. Line of Columbia St.

152.41 HI	141.25	153.25	072	0.99	173.25
143.25	11.16	12.00	164.52	176.40	173.25
9.16	6.15	2.7	12.87	12.99	16.14
0.03	+5.0	+9.3	177.39 HI	189.39 HI	6.21
+9.1	0.00		163.25	151.25	+9.9
15.125	152.41 HI	171.25	171.14	8.14	0.42
14.1	12.83	6.14	170.8	9.14	188.97 PR
10.7	165.24 HI	4.81		-1.0	13.08
+3.3	4.00				202.05 HI
	+1.5	+1.3			183.25
					18.80
					11.14
					+7.4

14550 - D Trout Columbia

14965	14965	15111	16171	17270	17270	17270
14325	14125	15325	15925	16325	16125	16325
6.20	8.40	12.75	8.40	16.91	11.74	9.85
	16.71	11.74				
	14					
18439	18439	18439	18439	18439	18439	18439
17325	17325	17325	18125			
11.14	13.14	11.14	8.14			

HI 14973 Sec fly leaf, 14973 14973 14973 14973 15261 15261 17002

14.00	139.00	148.00	151.00	161.00	163.00
8.73	10.73	6.73	11.01	1.61	12.02

162.161  
+13.41  
175.02  
0.00  
175.02  
+13.41  
188.43 HI  
+13.41  
197.36 Spz Bar 1/2

197.09  
191.00  
6.09

center on offset, Dorman  
Shomaker  
Shomaker

Aug 18-1913

146.15	146.15	146.75	146.15	146.15	146.15	146.15
147.25	141.00	141.10	142.00	142.40	143.00	143.25
4.90	6.15	5.06	4.15	5.75	3.15	2.90

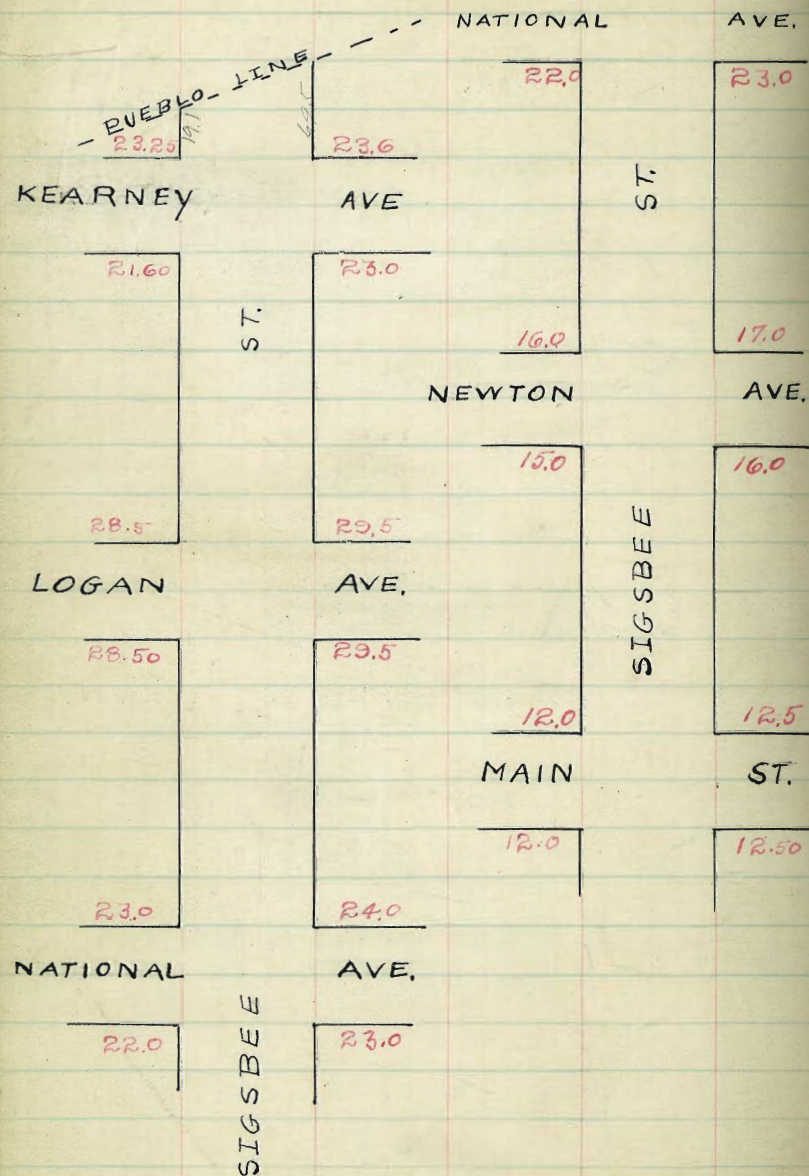
Set ends & Poles.

18726 - D. D. Tedman State

191.44	191.44	191.44	191.44	191.44	191.44	191.44
18325	18300	182.40	182.00	181.10	181.00	181.25
8.19	8.44	9.04	9.44	10.34	10.44	10.14

Must be reduced in high 9/11/13





N.W. Siggsbee & Logan. Pkg. 28.92  
 N.E. " & Main " 24.01  
 S.E. " " Newton Spk. 18.93  
 S.E. " " Main. May. 12.70

642  
 24  
 608  
 20  
 628  
 892  
 52

28.42  
 23.6  
 31.75 - 12  
 777  
 100.75  
 2.96  
 76.10 - 11

26.51 26.11 28.00  
 827 741 19.50  
 74.32 19.17 7.30  
 1.25

17.52 - p. of audit - flood line  
 17.70 - 1/2 in. down - flood line now correct  
 30  
 14.57 - flood line grade at intersection

17.52 - old Colver k. flow line  
 4.31  
 28.93 - 11.3  
 2.41 23.83 23.83  
 19.17 19.30 19.40  
 4.53 4.43





South Line of National Ave.

5 Line	20.75	22.00	21.85	22.50	22.40	23.00	23.25
25	21.75	21.50	21.85	22.00	21.90	22.50	22.75
50	21.75	21.00	20.85	21.50	21.40	22.00	22.25
75	20.75	20.50	20.35	21.00	20.90	21.50	21.75
100	20.25	20.00	19.85	20.50	20.40	21.00	21.25
125	19.75	19.50	19.35	20.00	19.90	20.50	20.75
150	19.25	19.00	18.85	19.50	19.40	20.00	20.25
175	18.75	18.50	18.35	19.00	18.90	19.50	19.75
200	18.25	18.00	17.85	18.50	18.40	19.00	19.25
225	17.75	17.50	17.35	18.00	17.90	18.50	18.75
250	17.25	17.00	16.85	17.50	17.40	18.00	18.25
275	16.75	16.50	16.35	17.00	16.90	17.50	17.75
300 = N.L.	16.75	16.0	15.85	16.50	16.40	17.00	17.25

North Line of Newton Ave.

2532	2532	2532	2532	2532	2532	2532	2532	2532	2532	2532	2532	2532
5.25	5.10	3.82	2.62	2.68	5.25	5.87	3.30	3.72	7.25	7.88	4.12	4.12
22.02	22.22	21.50	22.80	22.04	20.07	19.75	22.02	21.40	18.07	17.64	21.20	21.20
20.25	20.25	21.25	21.25	21.25	20.25	18.25	20.25	19.25	18.25	17.25	18.25	18.25
		0.25	0.55	0.37	0.18	0.50	0.77	0.15	0.16	0.39	0.25	0.25

2532	2532
5.10	5.10
18.50	16.30
15.25	16.25
0.37	0.45

2533	2533	2533	2533	2533	2533	2533	2533	2533	2533	2533	2533	2533
21.00	22.00	21.00	22.00	21.00	20.00	19.00	20.00	19.00	18.00	17.00	18.00	18.00
4.33	5.33	6.33	5.33	6.33	5.33	6.33	5.33	6.33	5.33	6.33	5.33	7.33

main line  
 Finish stakes 2 1/2 ft. West-Edge-Down  
 25.33  
 6.57  
 18.80  
 2.97  
 21.80 = H.S.

25.00	22.00	21.00	22.00	21.00	20.00	19.00	20.00	19.00	18.00	17.00	18.00	18.00
7.37	8.37	9.37	8.37	9.37	8.37	9.37	8.37	9.37	8.37	9.37	8.37	10.37

19.0	18.0	12.84
11.37	12.37	17.53
		1.76
		19.29 H.L.

17.0	18.0	17.0	16.0
2.29	1.29	2.29	3.29



South Line of Newton Ave.

5L	15.25	15.00	14.85	14.50	14.40	16.00	16.25
25	15.00	14.75	14.59	15.22	15.11	15.71	15.96
50	14.75	14.50	14.33	14.96	14.82	15.42	15.67
75	14.50	14.25	14.07	14.69	14.52	15.11	15.37
100	14.25	14.00	13.81	14.42	14.23	14.80	15.05
125	14.00	13.75	13.55	14.14	13.94	14.54	14.79
150	13.75	13.50	13.28	13.87	13.65	14.25	14.50
175	13.50	13.25	13.02	13.60	13.36	13.96	14.21
200	13.25	13.00	12.76	13.33	13.07	13.67	13.92
225	13.00	12.75	12.50	13.06	12.77	13.37	13.62
250	12.75	12.50	12.24	12.79	12.48	13.08	13.33
275	12.50	12.25	11.98	12.52	12.19	12.79	13.00
300-NL	12.25	12.00	11.72	12.25	11.90	12.50	12.75

North Line of Main St.

27.08  
29.16  
29.16

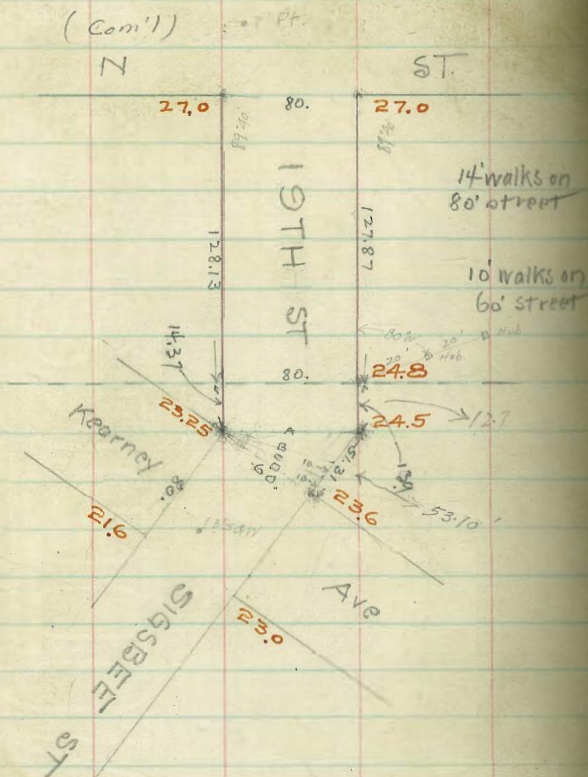
21.30	21.80	21.80	21.80	21.80	21.80	21.80	21.80	21.80	21.80	21.80	21.80	21.80	21.80	21.80	21.80	21.80	21.80	21.80	21.80
5.25	5.25	5.25	5.25	5.25	5.25	5.25	5.25	5.25	5.25	5.25	5.25	5.25	5.25	5.25	5.25	5.25	5.25	5.25	5.25
18.60	18.60	18.60	18.60	18.60	18.60	18.60	18.60	18.60	18.60	18.60	18.60	18.60	18.60	18.60	18.60	18.60	18.60	18.60	18.60
20.35	20.35	20.35	20.35	20.35	20.35	20.35	20.35	20.35	20.35	20.35	20.35	20.35	20.35	20.35	20.35	20.35	20.35	20.35	20.35
21.17	21.17	21.17	21.17	21.17	21.17	21.17	21.17	21.17	21.17	21.17	21.17	21.17	21.17	21.17	21.17	21.17	21.17	21.17	21.17

Cut + full stake 2 1/2 1/4 West - Cross - Down.  
 21.01 - ON NE Sigbee & Mill. Plug.  
 21.02  
 21.07  
 21.13 - TPSE curb Sigbee & Newton  
 20.65-42

20.65	20.65	20.65	20.65	20.65	20.65	20.65	20.65	20.65	20.65	20.65	20.65	20.65	20.65	20.65	20.65	20.65	20.65	20.65	20.65
16.00	15.00	14.50	15.42	14.83	14.00	13.50	14.25	13.67	13.00	4.65	5.65	6.15	5.23	5.82	6.65	7.15	6.40	6.98	7.65

20.65 20.65 20.65 20.65 Finish curb stake 3/4 off det. cane.  
 12.50 13.96 12.50 12.00  
 19.24 NE 8.15 7.57 8.15 8.65

15.0	16.0	15.42	14.50	14.00	14.83	14.25	13.50
4.29	3.39	3.87	4.79	5.29	4.46	5.04	5.79
13.0	13.67	13.08	12.50	12.0	12.50		
6.29	5.62	6.21	6.79	7.29	6.79		



SW & SE Cor. of 19th St established by 19th St produced

NE & SE " of Kearney + Sigbee established by Sigbee produced

W L of 19th connects from Cor to Cor.

EL = 11th W L + 4ft established at int. of 19th St produced

19TH STREET  
SIGSBEE "

53

	W						E W		E
SL. N ST.	27.25	27.00	26.60	27.00	26.60	27.00	27.25	+1.7	+3.0
75'S	26.59	26.34	26.00	26.46	26.13	26.57	26.84	+2.6	+3.2
47	26.14	25.89	25.59	26.08	25.81	26.28	26.53	+1.5	+1.9
50	25.93	25.68	25.40	25.91	25.66	26.14	26.39	-0.8	+0.6
65	25.54	25.29	25.04	25.58	25.38	25.88	26.13	-3.2	-5.5
75	25.27	25.02	24.80	25.37	25.19	25.71	25.96	-3.9	-5.8
83	25.06	24.81	24.60	25.19	25.04	25.57	25.82	-4.5	-6.9
100	24.62	24.37	24.19	24.82	24.73	25.28	25.53	-5.0	-5.6
178 = Pueblo line	23.88	23.63	23.52	24.21	24.20	24.80	25.05	-5.9	-4.2
Sec A	23.50	23.25	23.17	23.88	23.90	24.50	24.75	-0.1	-2.4
Sec B	23.50	23.25	22.97	23.60	23.47	23.95	24.20	-0.1	-2.1
Sec C	23.50	23.25	22.91	23.52	23.34	23.78	24.03	-0.1	-3.7
Sec D	23.50	23.25	22.85	23.43	23.20	23.60	23.85	-0.1	+0.1

NEK	NWK	12500	12500	12500	12500	12500	12500	12500	12500
2824	2824	2824	2824	2824	2824	2824	2824	2824	2824
2400	2400	2400	2400	2400	2400	2400	2400	2400	2400
2285	2285	2285	2285	2285	2285	2285	2285	2285	2285
2170	2170	2170	2170	2170	2170	2170	2170	2170	2170

2824	2400	2285	2170	2055	1940	1825	1710	1595	1480
2824	2400	2285	2170	2055	1940	1825	1710	1595	1480
2824	2400	2285	2170	2055	1940	1825	1710	1595	1480
2824	2400	2285	2170	2055	1940	1825	1710	1595	1480

2744	2629	2514	2399	2284
2744	2629	2514	2399	2284
2744	2629	2514	2399	2284
2744	2629	2514	2399	2284

2756	2641	2526	2411	2296	2181	2066	1951
2756	2641	2526	2411	2296	2181	2066	1951
2756	2641	2526	2411	2296	2181	2066	1951
2756	2641	2526	2411	2296	2181	2066	1951

2756	2641	2526	2411	2296	2181	2066	1951
2756	2641	2526	2411	2296	2181	2066	1951
2756	2641	2526	2411	2296	2181	2066	1951
2756	2641	2526	2411	2296	2181	2066	1951

2756	2641	2526	2411	2296	2181	2066	1951
2756	2641	2526	2411	2296	2181	2066	1951
2756	2641	2526	2411	2296	2181	2066	1951
2756	2641	2526	2411	2296	2181	2066	1951

2756	2641	2526	2411	2296	2181	2066	1951
2756	2641	2526	2411	2296	2181	2066	1951
2756	2641	2526	2411	2296	2181	2066	1951
2756	2641	2526	2411	2296	2181	2066	1951

2756	2641	2526	2411	2296	2181	2066	1951
2756	2641	2526	2411	2296	2181	2066	1951
2756	2641	2526	2411	2296	2181	2066	1951
2756	2641	2526	2411	2296	2181	2066	1951

2756	2641	2526	2411	2296	2181	2066	1951
2756	2641	2526	2411	2296	2181	2066	1951
2756	2641	2526	2411	2296	2181	2066	1951
2756	2641	2526	2411	2296	2181	2066	1951

2756  
2641  
2526  
2411  
2296  
2181  
2066  
1951  
1836  
1721  
1606  
1491  
1376  
1261  
1146  
1031  
916  
801  
686  
571  
456  
341  
226  
111  
-4  
-12  
-20  
-28  
-36  
-44  
-52  
-60  
-68  
-76  
-84  
-92  
-100  
-108  
-116  
-124  
-132  
-140  
-148  
-156  
-164  
-172  
-180  
-188  
-196  
-204  
-212  
-220  
-228  
-236  
-244  
-252  
-260  
-268  
-276  
-284  
-292  
-300  
-308  
-316  
-324  
-332  
-340  
-348  
-356  
-364  
-372  
-380  
-388  
-396  
-404  
-412  
-420  
-428  
-436  
-444  
-452  
-460  
-468  
-476  
-484  
-492  
-500

Final check West Cross River 2/17/04  
chk. A.K. Shields  
Allen  
Mar 23/14 Bedford









128.13  
14.37  
-----  
113.76

128.13  
14.37  
-----  
142.50  
141.77  
-----  
0.73

127.87  
1290  
-----  
141.77

128.13  
15.41  
-----  
143.53

600  
3600  
-----  
5131  
5131  
-----  
1539  
5131  
-----  
25655  
26527  
3800  
-----  
6233  
49  
-----  
1491333  
1341

Contracted per year



San Diego, Cal  
OFFICE OF CIVIL ENGINEERS  
To the  
1810  
7.699769  
2.477122  
0.17671





























29477

E L 4 <sup>14</sup>

S		12.8	282.0
		12.9	282.4
		12.6	282.2
e		12.3	282.5
		12.6	282.2
		14.4	280.4
N		14.9	279.9

T.P.	421	287.43	11.55	283.22
------	-----	--------	-------	--------

7.7 E = W.L. 4 <sup>14</sup> (5" H add)

N		10.9	276.5
		9.2	278.2
		8.6	278.8
e		7.0	280.4
		5.5	281.9
		5.7	281.7
S		5.6	281.8

71

29477

E 1/4

N		11.0	283.8
		11.3	283.5
		11.5	283.3
e		11.5	283.3
		11.8	283.0
		12.2	282.6
S		12.7	282.1

E C.

S		13.0	281.8
		12.3	282.5
		12.1	282.7
e		11.9	282.9
		11.8	283.0
		11.8	283.0
N		11.8	283.0

#10

N		11.9	282.9
		12.0	282.8
		11.9	282.9
e		12.1	282.7
		12.4	282.4
		12.6	282.2
S		13.0	281.8

299.77  
W cb

S	12.1	282.7
	12.0	282.8
	11.8	283.0
e	11.4	283.4
	10.5	284.3
	10.5	284.3
N	10.1	284.7

W 1/2

N	10.6	284.2
	10.9	283.9
	11.1	283.7
e	11.5	283.3
	11.6	283.2
	11.9	282.9
S	12.1	282.7

cr.

S	12.4	282.4
	12.0	282.8
	11.6	283.2
e	11.4	283.4
	11.1	283.7
	10.7	284.1
N	10.5	284.3

299.77  
75' E

N	7.4	287.4
	7.3	287.5
	6.9	287.9
e	7.3	287.5
	7.4	287.4
	7.4	287.4
S	7.0	287.8

100 E

S	9.2	285.6
	9.5	285.3
	9.3	285.5
e	9.2	285.6
	8.2	286.6
	8.3	286.5
N	8.5	286.3

122' E = W. 4-5 (with crest)

<del>N</del>	9.3	285.5
	9.1	285.7
	8.8	286.0
e	10.1	284.7
	10.9	283.9
	11.2	283.6
S	11.3	283.5
	10.5	284.3

29477

S	39	290.9
E L.	3 <sup>1</sup> / <sub>2</sub>	
S	4,1	290.7
	4,4	290.4
	4,4	290.4
C	4,4	290.4
	4,1	290.7
	4,5	290.3
N	5,3	289.5
	25 <sup>1</sup> / <sub>2</sub> E	
N	5,2	289.6
	5,1	289.7
	4,9	289.9
C	5,1	289.7
	5,3	289.5
	5,1	289.7
S	4,7	290.1
	50 <sup>1</sup> / <sub>2</sub> E	
S	5,3	289.5
	5,9	288.9
	5,9	288.9
C	5,9	288.9
	5,9	288.9
	5,9	288.9
N	6,2	288.6

29477

C	3,4	291.4
	3,3	291.5
	3,3	291.5
N	3,6	291.7
	3,7	290.9
	3,5	291.3
	3,3	291.5
C	3,3	291.5
	3,2	291.6
	2,9	291.9
S	3,0	291.8
	E 1/2	
S	3,5	291.3
	3,5	291.3
	3,7	291.1
C	3,7	291.1
	3,8	291.0
	4,5	290.3
N	5,4	289.4
	E Ch	
N	5,7	289.1
	4,2	290.4
	3,9	290.9
C	4,1	290.7
	4,1	290.7
	4,1	290.7

294.77

N	160 F	2.2	292.6
d		2.8	292.0
h		3.0	291.8
c		3.1	291.7
1/2		3.1	291.7
cb		2.9	291.9
f		2.5	292.3
	113 F = w/c	3.2	291.5 <sup>16</sup> Haddd
s		2.7	292.1
		3.1	291.7
		3.4	291.4
c		3.3	291.5
		3.3	291.5
		3.4	291.4
N		2.7	292.1
	w/cb		
N		3.3	291.5
		3.6	291.2
		3.4	291.4
c		3.4	291.4
		3.5	291.3
		3.2	291.6
s		2.9	291.9
	w/1/2		
s		3.2	291.6
		3.3	291.5
		3.5	291.3

296.03

cb		3.5	292.5
s		3.6	292.4
T10	224	294.77	350
		2.5 F	292.53
s		2.1	292.7
cb		2.2	292.6
1/2		2.4	292.4
c		2.6	292.2
1/2		2.8	292.0
d		2.2	292.6
N		2.1	292.7
	10 F		
N		1.9	292.9
cb		2.4	292.4
1/2		2.8	292.0
c		2.7	292.1
1/2		2.6	292.2
d		2.2	292.6
s		2.2	292.6
	7.5 F		
s		2.1	292.7
d		2.3	292.5
1/2		2.7	292.1
c		2.9	291.9
1/2		2.9	291.9
cb		2.1	292.7
N		2.6	292.2



29603

1/4	3,4	292.6
0	3,4	292.6
1/2	3,6	294.4
cb	3,3	292.7
N	2,8	293.2

E 1/4

N	3,0	293.0
cb	3,5	292.5
1/2	3,7	292.3
c	3,5	292.5
1/2	3,5	292.5
cb	3,8	292.2
s	4,3	291.7

E cb

s	4,2	291.8
cb	3,9	292.1
1/2	3,5	292.5
c	3,6	292.4
1/2	3,6	292.4
cb	3,3	292.7
N	3,1	292.9

E 1/4

N	3,0	293.0
cb	3,1	292.9
1/2	3,9	292.6
c	3,5	292.5
1/2	3,3	292.7

29603

47 E = W 1 3<sup>d</sup> (Millerest)

N	3,2	292.8
cb	3,5	292.5
1/2	3,7	292.3
c	3,4	292.6
1/2	3,5	292.5
cb	3,5	292.5
s	3,6	292.4

w cb

s	4,4	291.6
1/2	3,8	292.2
1/2	3,4	292.6
c	3,4	292.6
1/2	3,6	292.4
cb	3,6	292.4
N	2,9	293.1

w 1/2

N	2,9	293.1
cb	3,5	292.5
1/2	3,6	292.4
c	3,4	292.6
1/2	3,6	292.4
cb	3,8	292.2
s	4,4	291.6

or

s	4,1	291.9
cb	3,7	292.3

29603

cb	37	292.3
S	37	292.3
E. cb		
S	37	292.3
cb	37	292.3
1/2	36	292.4
c	37	292.3
1/2	36	292.4
cb	36	292.4
N	33	292.7
El. Bachmayer		
N	34	292.6
cb	33	292.7
1/2	36	292.4
c	36	292.4
1/2	34	292.6
cb	36	292.4
c	34	292.6
25' F		
S	35	292.5
cb	36	292.4
1/2	36	292.4
c	34	292.6
1/2	34	292.6
cb	32	292.8
N	34	292.6

29603

H	40	292.0
c	40	292.0
1/2	39	292.1
cb	39	292.1
N	40	292.0
W 1/4		
N	39	292.1
cb	38	292.2
1/2	38	292.2
c	38	292.2
1/2	40	292.0
S	40	292.0
S	38	292.2
Or.		
S	39	292.1
cb	39	292.1
1/2	39	292.1
c	40	292.0
1/2	39	292.1
cb	39	292.1
N	37	292.3
E 1/4		
N	35	292.5
cb	37	292.3
1/2	36	292.4
c	37	292.3
1/2	38	292.2

296.03

+2	85	292.5
+7	53.7	292.3
N	24.9	291.1
	5.0	291.0

109'E

rcb	4.5	291.5
1/4	4.5	291.5
c	4.5	291.5
1/2	4.6	291.4
b	4.5	291.5
s	4.6	291.4

144'E

s	4.3	291.7
cb	4.3	291.7
1/2	4.4	291.6
c	4.3	291.7
1/4	4.2	291.8
b	4.3	291.7

159'E = Wk. Bachman Place

b	4.1	291.9
1/2	4.0	292.0
c	4.0	292.0
1/4	4.1	291.9
cb	4.1	291.9
s	4.1	291.9

w cb.

s	4.1	291.9
cb	3.9	292.1

296.03

25'E

s	6.3	289.7
1/2	6.1	289.9
1/4	6.2	289.8
c	6.2	289.8
1/2	6.2	289.8
cb	5.9	290.1
+2	4.4	291.6
+7	5.4	291.6
	5.5	290.5
N	5.3	290.7

59'E

v	5.2	290.8
+5	5.2	290.8
+10	3.9	292.1
b	3.5	292.2
1/2	5.2	290.8
1/4	5.5	290.5
c	5.5	290.5
1/2	5.5	290.5
cb	5.3	290.7
s	5.7	290.3

80'E

c	5.2	290.8
cb	5.2	290.8
1/2	5.1	290.9
c	5.0	291.0
1/4	5.0	291.0
cb	4.8	291.2

75' of curb and walk laid from Bachman Place west on north side of Lewis St.

29603

1/2	7.2	288.8
c	7.2	288.5
1/2	7.2	288.8
cb	7.5	288.5
S	8.4	289.6
E cb		
S	8.0	288.0
cb	7.4	288.6
1/2	7.1	288.9
c	7.0	289.0
1/2	7.0	289.0
cb	6.8	289.2
+2	4.5	291.5
+7	4.5 5.7	291.5
N	5.7	290.3
E 1. 2 <sup>nd</sup>		
N	5.5	290.5
+5	5.5 4.3	290.5 291.7
+10	4.6	291.4
cb	6.5	289.5
1/2	6.8	289.2
c	6.9	289.1
1/2	6.9	289.1
b	6.8	289.2
D	6.8	289.2

29603

a	7.9	288.1
1/2	7.7	288.3
b	7.6	288.4
✓	7.3	288.7
W 1/4		
N	6.6	289.4
cb	7.3	288.7
1/2	7.5	288.5
c	7.6	288.4
1/2	7.8	288.2
cb	8.3	287.7
S	9.0	287.0
E 1/4		
c	8.6	287.4
cb	7.7	288.3
1/2	7.6	288.4
c	7.4	288.6
1/2	7.2	288.8
b	7.1	288.9
+2	5.0 4.8	289.0 291.2
+7	4.8 5.0	291.2 290.0
N	6.0	290.0
E 1/4		
N	6.0	290.0
+5	5.9 4.8	290.1 291.2
+10	4.9	291.1
b	7.1	288.9

296.03

503 296.03

288.0 *R. Lewis*

N	Cr.	7.7	288.3
cb		7.7	288.3
1/2		7.7	288.3
c		7.7	288.3
1/2		7.8	288.2
cb		8.1	287.9
S		7.8	288.2
	E 1/2		
S		8.0	288.0
cb		8.0	288.0
1/2		7.9	288.1
c		7.7	288.3
1/2		7.9	288.1
cb		7.8	288.2
N		7.6	288.4
	E Ch = Hillcrest		
N		7.5	288.5
cb		7.9	288.1
1/2		7.8	288.2
c		7.8	288.2
1/2		7.9	288.1
cb		8.1	287.9
S		8.0	287.5
	W Ch		
S		9.1	286.9
cb		8.3	287.7
1/2		8.4	287.6

W 1 2<sup>d</sup> (5<sup>th</sup> St) (Add)

S		8.4	287.6
cb		7.9	288.1
1/2		8.1	287.9
		8.0	288.0
1/2		8.2	287.8
cb		8.1	287.9
N		7.8	288.2
	W Ch		
cb		8.0	288.0
cb		8.0	288.0
1/2		8.0	288.0
c		7.8	288.2
1/2		7.8	288.2
cb		8.2	288.8
S		8.0	288.0
	W 1/2		
S		7.8	288.2
cb		8.1	287.9
1/2		7.7	288.3
c		7.5	288.5
1/2		7.8	288.2
cb		8.0	288.0
N		8.3	287.7

#370

M 220.25 220.00 219.60 220.00 219.60 220.00 220.00

C

1/200 210.25 210.00 209.60 210.00 209.60 210.00 210.25

C

1/1000 200.25 200.00 199.60 200.00 199.60 200.00 200.25

C

100.25 190.25 190.00 189.60 190.00 189.60 190.00 190.25

1475 175.25 175.00 174.60 175.00 174.60 175.00 175.25

2475 160.25 160.00 159.60 160.00 159.60 160.00 160.25

S

223.24  
219.3

224.07 211 211.87 211.87 211.87

12.46 10.25 10.00 10.60

211.87 20.29 1.62 1.87 2.27

211.87 H.I.

200.128 200.128 200.128

0.128 200.128 200.128 199.160

200.128 0.03 0.28 0.65

11.15

190.56 190.56 190.56

190.56 190.56 190.56

190.56 190.56 190.56

190.56 190.56 190.56

190.56 190.56 190.56

190.56 190.56 190.56

190.56 190.56 190.56

190.56 190.56 190.56

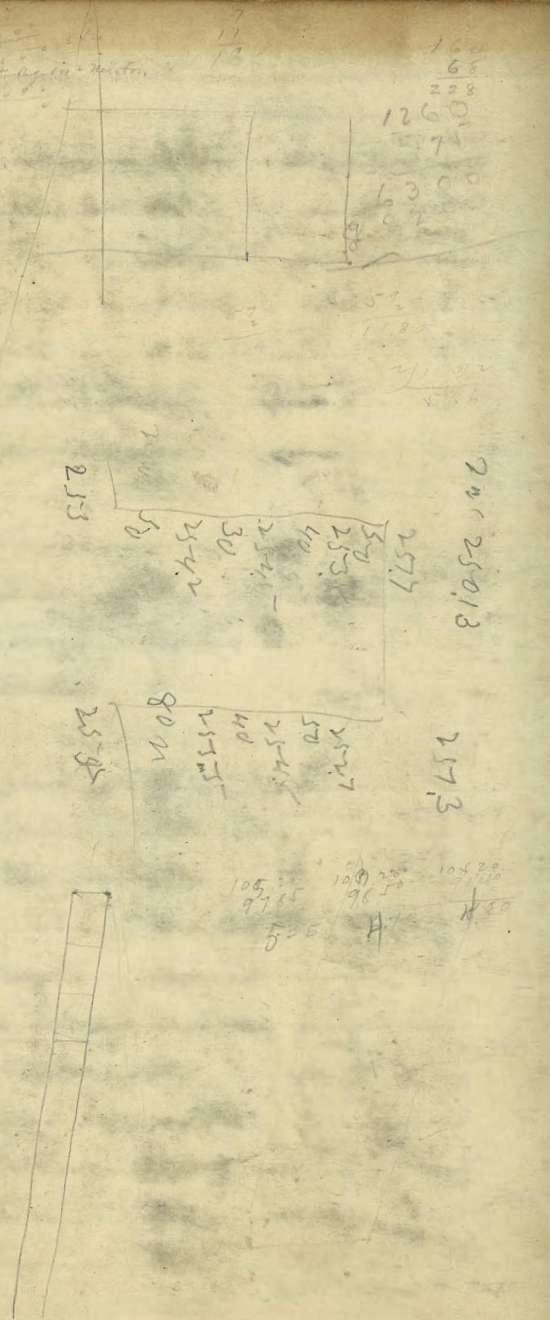
190.56 190.56 190.56

47.95  
41.05  
3.70

20.5  
2.72  
13  
10.91  
36.81  
2.84  
21.10  
130

88 42  
278 122  
417 173  
467 273  
108 42  
213 127  
275 355  
345 415

75.00  
55  
103.00



160  
65  
258  
1260  
175

6300  
1180

257  
25013

2573

105.00  
97.50  
505  
100.00  
96.50  
105.00

28.1  
29  
215  
- 25  
225  
210

