

65

G 65

Small white label on the spine.

Small red stamp on the spine.

MICROFILMED

DEC 4 1964

NW RR 301301 Laguna Arroyo

310000
375000 NW 2000 ft 1907 - 1910

301.80
0.16
302.00
291.70
291.80

Shales { Home 3115 } Doyle
 { Summit 5241 }

Crocker Quality

FIELD BOOK

west



No. _____

fruit
5-11 1/4
8'
19'

MANUFACTURED BY

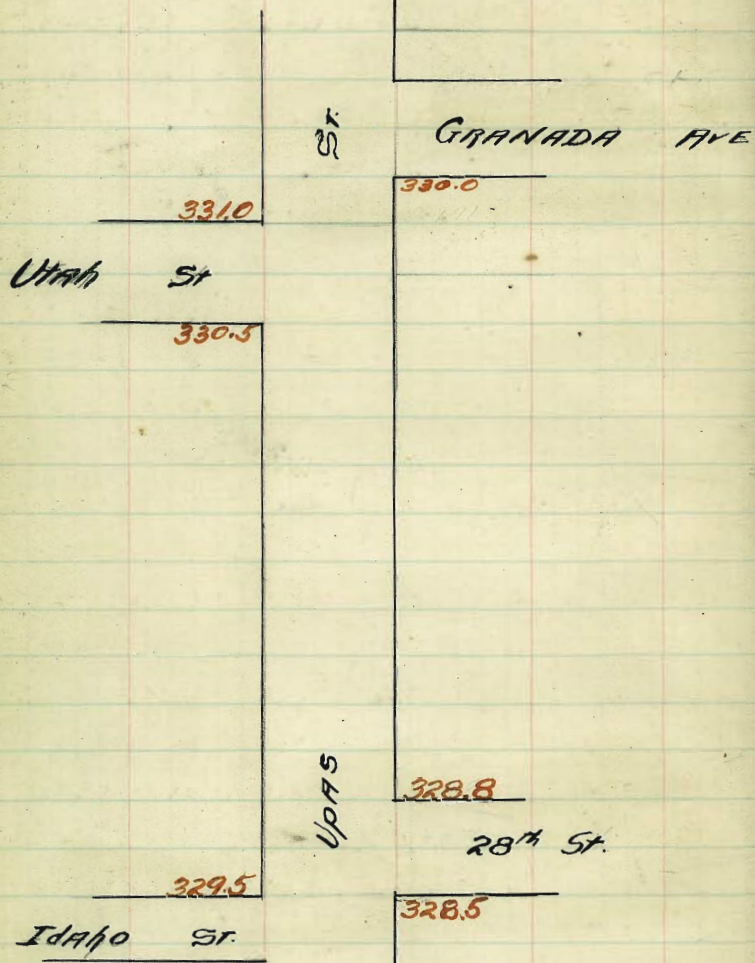
H. S. CROCKER CO.

SAN FRANCISCO AND SACRAMENTO
CALIFORNIA

FROM
LORINGS BOOK STORE
San Diego, Cal.

Page 1

□ 60 □ 40 □ 55 □ Kansas ties



E.L. UTAH ST.

EL 331.25 331.00 330.40 330.45 328.78 329.91 330.16

66 331.00 331.00 319.31 330.37
330.00

14 330.40 329.87 330.23 330.31

UTAH

14 330.75 329.75 330.15 330.24 329.72 329.97

ST.

14 330.22 329.62 330.07 330.17

66 330.50 329.50 330.50 329.99 330.09

W. Line UTAH ST.

100 330.75 330.50 329.90 330.01 329.37 329.53 329.78

125 330.62 330.37 329.77 329.87 329.24 329.41 329.66

150 330.50 330.25 329.65 329.75 329.11 329.30 329.55

125 330.37 330.12 329.52 329.62 328.98 329.18 329.43

100 330.25 330.00 329.40 329.50 328.85 329.06 329.31

75 330.12 329.87 329.27 329.37 328.73 328.94 329.19

125 329.97 329.72 329.12 329.22 328.57 328.80 329.05
125 125 125
155 151

100 329.75 329.50 328.90 329.00 328.35 328.50 328.75

E. Line Idaho ST.

324.76 S.M. Mon S.E. Capps 8-30-76

1.33
339.09
3.4070

334.47 336.64 336.64 336.64 336.64 336.64 336.64 336.64
2.15 329.75 329.05 330.25 329.55 330.75 329.91 330.16

336.64 6.89 7.29 6.39 7.09 5.89 6.67 6.48
6.49 7.29 5.79 6.99 5.89 6.57 6.48
+0.4 +0.3 +0.6 +0.1 1.0 +0.1 0.0

336.64 336.64 336.64 336.64 336.64
328.75 329.97 329.31 330.50 329.78

7.89 6.67 7.33 6.14 6.86
6.89 6.47 7.73 5.94 7.06
+1.0 +0.2 -0.4 +2.2 -0.2

cut & fill 1/2, small - Evans - Johnson

331.23

35.2

334.75 H. 328.50 229.50 329.75

328.75 6.25 5.25 5.00
6.00 329.31 329.06 329.30 329.55 329.78 329.53
328.80 329.05 5.41 5.69 5.45 5.20 4.97 5.22
5.95 5.70

329.72 329.97 330.16 329.91 331.00 331.25 330.75 329.75
5.03 4.78 4.59 4.94 3.70 3.50 4.00 3.00

330.50 330.25 330.50 330.25 330.00 330.25 329.97 329.72
4.25 4.00 4.25 4.50 4.75 4.50 4.78 5.03

prop. & emb.

John Taylor
1/2 Blumberg

331.75 Bm

2.27
303.50

2285 2655 2900 2690 2950
5.00 5.85 4.50 4.60 4.00

2725 2915 2922 2857 2850
3.78 4.58 4.28 4.73 4.70

3000 2900 2950 2885 2880
3.70 4.10 4.00 4.45 4.44

3025 2965 2972 2911 2900
3.35 3.85 3.75 4.27 4.20

3050 2990 3001 2937 2950
3.00 3.60 3.70 4.15 3.99

3075 3015 3024 2922 2922
2.75 3.25 3.26 3.72 3.78

3100 3040 3051 2978 2991
2.50 3.10 3.05 3.72 3.59

1-31-12

1/2 c
Blumberg
Zilly

20' WALKS - 5' QUARTERS

COPLEY

AVE.

3920

3920

STREET

3900

3900

COLLIER

AVE

3895

3895

IDAHO

3860

3860

ADAMS

AVE

17 Nov

Idaho St From El Cajon Ave to

W N. Line of El Cajon E

4100	376.25	376.00	375.40	375.50	374.00	375.00	375.25
425	376.31	376.04	375.46	375.56	374.66	375.06	375.31
450	376.37	376.12	375.32	375.62	374.72	375.12	375.37
475	376.43	376.18	375.38	375.68	374.78	375.18	375.43
400	376.50	376.25	375.45	375.75	374.85	375.25	375.50
425	376.56	376.31	375.51	375.81	374.91	375.31	375.56
450	376.62	376.37	375.57	375.87	374.97	375.37	375.62
475	376.68	376.43	375.63	375.94	375.03	375.43	375.68
2400	376.75	376.50	375.90	376.00	375.70	375.50	375.75
425	376.81	376.56	375.96	376.06	375.16	375.56	375.81
450	376.87	376.62	376.02	376.12	375.22	375.62	375.87
475	376.93	376.68	376.08	376.18	375.28	375.68	375.93
3400	377.00	376.75	376.15	376.25	375.35	375.75	376.00
425	377.06	376.81	376.21	376.31	375.41	375.81	376.06
450	377.12	376.87	376.27	376.37	375.47	375.87	376.12
475	377.18	376.93	376.33	376.43	375.49	375.93	376.18
4100	377.25	377.00	376.40	376.50	375.6	376.00	376.25
425	377.17	376.87	376.27	376.46	375.50	375.92	376.17
450	377.00	376.75	376.15	376.30	375.47	375.85	376.10
475	376.87	376.62	376.02	376.20	375.33	375.77	376.02
5400	376.95	376.50	375.90	376.10	375.25	375.70	376.95
425	376.62	376.37	375.77	376.00	375.16	375.62	375.87
450	376.50	376.25	375.65	375.90	375.07	375.55	376.80
475	376.37	376.12	375.52	375.80	374.95	375.47	375.72
6400	376.25	376.00	375.4	375.7	374.9	375.40	375.65

South Line of Meade

375.69	375.69	375.69	375.69	375.69	375.69	375.69	375.69
375.69	375.69	375.69	375.69	375.69	375.69	375.69	375.69
375.69	375.69	375.69	375.69	375.69	375.69	375.69	375.69
375.69	375.69	375.69	375.69	375.69	375.69	375.69	375.69
375.69	375.69	375.69	375.69	375.69	375.69	375.69	375.69
375.69	375.69	375.69	375.69	375.69	375.69	375.69	375.69
375.69	375.69	375.69	375.69	375.69	375.69	375.69	375.69
375.69	375.69	375.69	375.69	375.69	375.69	375.69	375.69
375.69	375.69	375.69	375.69	375.69	375.69	375.69	375.69
375.69	375.69	375.69	375.69	375.69	375.69	375.69	375.69

Intersect NW Cor El Cajon & Idaho.

381.34	381.34	381.34	381.34	381.34	381.34	381.34	381.34
381.34	381.34	381.34	381.34	381.34	381.34	381.34	381.34
381.34	381.34	381.34	381.34	381.34	381.34	381.34	381.34
381.34	381.34	381.34	381.34	381.34	381.34	381.34	381.34
381.34	381.34	381.34	381.34	381.34	381.34	381.34	381.34
381.34	381.34	381.34	381.34	381.34	381.34	381.34	381.34
381.34	381.34	381.34	381.34	381.34	381.34	381.34	381.34
381.34	381.34	381.34	381.34	381.34	381.34	381.34	381.34
381.34	381.34	381.34	381.34	381.34	381.34	381.34	381.34
381.34	381.34	381.34	381.34	381.34	381.34	381.34	381.34

Curbs on N. Line - Center 1/2 to subgrade

BM 375.16 Mon N.W. Cor El Cajon & Idaho.

1008 Correction to check on Adams Ave. BM's from which this St is set.

375.95	375.95	375.95	375.95	375.95	375.95	375.95	375.95
375.95	375.95	375.95	375.95	375.95	375.95	375.95	375.95
375.95	375.95	375.95	375.95	375.95	375.95	375.95	375.95
375.95	375.95	375.95	375.95	375.95	375.95	375.95	375.95
375.95	375.95	375.95	375.95	375.95	375.95	375.95	375.95

Intersect NW Cor Meade & Idaho.

377.62	377.62	377.62	377.62	377.62	377.62	377.62	377.62
377.62	377.62	377.62	377.62	377.62	377.62	377.62	377.62
377.62	377.62	377.62	377.62	377.62	377.62	377.62	377.62
377.62	377.62	377.62	377.62	377.62	377.62	377.62	377.62
377.62	377.62	377.62	377.62	377.62	377.62	377.62	377.62

Curbs on S. offset Aug 14-12

375.77	375.77	375.77	375.77	375.77	375.77	375.77	375.77
375.77	375.77	375.77	375.77	375.77	375.77	375.77	375.77
375.77	375.77	375.77	375.77	375.77	375.77	375.77	375.77
375.77	375.77	375.77	375.77	375.77	375.77	375.77	375.77
375.77	375.77	375.77	375.77	375.77	375.77	375.77	375.77

Under subgrade & set stakes Dec 14-12

Idaho Str

W

South Line of Meade E

S Line 376.25 376.0 375.4 375.70 374.9 375.4 375.65

S. Curb 376.00 376.00 374.92 374.70 374.48 375.40 375.40
375.00 377.40

S. 1/4 375.76 375.45 375.41 375.30 375.19 375.15 375.0

Center 376.0 375.85 375.81 375.70 375.59 375.55 375.4

Meade Ave

N 1/4 375.6 375.45 375.41 375.30 375.19 375.15 375.0

N Curb 376.00 376.00 374.92 374.70 374.48 375.40 375.40
375.00 377.40

N. Line 376.25 376.00 375.4 375.70 374.9 375.40 375.65

North Line of Meade

375.57	375.57	375.57	375.57	375.57	375.57	375.57	375.57	375.57	375.57
76.00	76.00	76.70	76.50	76.40	76.40	77.60	77.00	77.00	76.00
3.87	4.17	3.97	4.67	4.17	1.97	2.67	2.27	3.07	2.07

375.57	375.57	375.57	375.57	375.57	375.57	375.57	375.57	375.57	375.57
76.00	76.00	76.70	76.50	76.40	76.40	77.60	77.00	77.00	76.00
3.87	4.17	3.97	4.67	4.17	1.97	2.67	2.27	3.07	2.07

375.57
15.30
3.87
checked and found correct status Dec 13-12
Roman, Sherr, & Co.

IDAHO ST.

North Line of Meade E

00	37625	37600	37640	37670	37490	37540	37565
125	37638	37613	37653	37683	37503	37553	37578
140	37652	37626	37666	37696	37516	37566	37591
175	37665	37640	37680	37710	37530	37580	37605
140	37678	37653	37693	37723	37543	37593	37618
125	37691	37666	37706	37736	37556	37607	37634
150	37705	37680	37720	37750	37570	37620	37645
175	37718	37693	37733	37763	37583	37633	37658
2100	37731	37706	37746	37776	37596	37646	37671
125	37745	37720	37760	37790	37610	37700	37725
150	37758	37733	37773	37803	37623	37733	37758
125	37771	37746	37786	37816	37636	37746	37771
3100	37785	37760	37800	37830	37650	37700	37725 +
125	37798	37773	37813	37843	37663	37773	37798
100	37812	37787	37827	37857	37677	37787	37812
125	37825	37800	37840	37870	37690	37800	37825
175	37838	37813	37853	37883	37703	37813	37838
140	37852	37826	37866	37896	37716	37826	37851
125	37865	37840	37880	37910	37730	37840	37865
140	37878	37853	37893	37923	37743	37853	37878
125	37891	37866	37906	37936	37756	37866	37891
150	37905	37880	37920	37950	37770	37880	37905
175	37918	37893	37933	37963	37783	37893	37918
140	37931	37906	37946	37976	37796	37906	37931
125	37945	37920	37960	37990	37810	37920	37945
150	37958	37933	37973	38003	37823	37933	37958
125	37971	37946	37986	38016	37836	37946	37971
140	37985	37960	38000	38030	37850	37960	37985
125	37998	37973	38013	38043	37863	37973	37998
100	38012	37987	38027	38057	37877	37987	38012
125	38025	38000	38040	38070	37890	38000	38025
175	38038	38013	38053	38083	37903	38013	38038
140	38052	38026	38066	38096	37916	38026	38051
125	38065	38040	38080	38110	37930	38040	38065
140	38078	38053	38093	38123	37943	38053	38078
125	38091	38066	38106	38136	37956	38066	38091
150	38105	38080	38120	38150	37970	38080	38105
175	38118	38093	38133	38163	37983	38093	38118
140	38131	38106	38146	38176	37996	38106	38131
125	38145	38120	38160	38190	38010	38120	38145
150	38158	38133	38173	38203	38023	38133	38158
125	38171	38146	38186	38216	38036	38146	38171
140	38185	38160	38180	38210	38050	38160	38185
125	38198	38173	38193	38223	38063	38173	38198
100	38212	38187	38207	38237	38077	38187	38212
125	38225	38200	38240	38270	38090	38200	38225
175	38238	38213	38253	38283	38103	38213	38238
140	38252	38226	38266	38296	38116	38226	38251
125	38265	38240	38280	38310	38130	38240	38265
140	38278	38253	38293	38323	38143	38253	38278
125	38291	38266	38306	38336	38156	38266	38291
150	38305	38280	38320	38350	38170	38280	38305
175	38318	38293	38333	38363	38183	38293	38318
140	38331	38306	38346	38376	38196	38306	38331
125	38345	38320	38360	38390	38210	38320	38345
150	38358	38333	38373	38403	38223	38333	38358
125	38371	38346	38386	38416	38236	38346	38371
140	38385	38360	38380	38410	38250	38360	38385
125	38398	38373	38393	38423	38263	38373	38398
100	38412	38387	38407	38437	38277	38387	38412
125	38425	38400	38440	38470	38290	38400	38425
175	38438	38413	38453	38483	38303	38413	38438
140	38452	38426	38466	38496	38316	38426	38451
125	38465	38440	38480	38510	38330	38440	38465
140	38478	38453	38493	38523	38343	38453	38478
125	38491	38466	38506	38536	38356	38466	38491
150	38505	38480	38520	38550	38370	38480	38505
175	38518	38493	38533	38563	38383	38493	38518
140	38531	38506	38546	38576	38396	38506	38531
125	38545	38520	38560	38590	38410	38520	38545
150	38558	38533	38573	38603	38423	38533	38558
125	38571	38546	38586	38616	38436	38546	38571
140	38585	38560	38580	38610	38450	38560	38585
125	38598	38573	38593	38623	38463	38573	38598
100	38612	38587	38607	38637	38477	38587	38612
125	38625	38600	38640	38670	38490	38600	38625
175	38638	38613	38653	38683	38503	38613	38638
140	38652	38626	38666	38696	38516	38626	38651
125	38665	38640	38680	38710	38530	38640	38665
140	38678	38653	38693	38723	38543	38653	38678
125	38691	38666	38706	38736	38556	38666	38691
150	38705	38680	38720	38750	38570	38680	38705
175	38718	38693	38733	38763	38583	38693	38718
140	38731	38706	38746	38776	38596	38706	38731
125	38745	38720	38760	38790	38610	38720	38745
150	38758	38733	38773	38803	38623	38733	38758
125	38771	38746	38786	38816	38636	38746	38771
140	38785	38760	38780	38810	38650	38760	38785
125	38798	38773	38793	38823	38663	38773	38798
100	38812	38787	38807	38837	38677	38787	38812
125	38825	38800	38840	38870	38690	38800	38825
175	38838	38813	38853	38883	38703	38813	38838
140	38852	38826	38866	38896	38716	38826	38851
125	38865	38840	38880	38910	38730	38840	38865
140	38878	38853	38893	38923	38743	38853	38878
125	38891	38866	38906	38936	38756	38866	38891
150	38905	38880	38920	38950	38770	38880	38905
175	38918	38893	38933	38963	38783	38893	38918
140	38931	38906	38946	38976	38796	38906	38931
125	38945	38920	38960	38990	38810	38920	38945
150	38958	38933	38973	39003	38823	38933	38958
125	38971	38946	38986	39016	38836	38946	38971
140	38985	38960	38980	39010	38850	38960	38985
125	38998	38973	38993	39023	38863	38973	38998
100	39012	38987	39007	39037	38877	38987	39012
125	39025	39000	39040	39070	38890	39000	39025
175	39038	39013	39053	39083	38903	39013	39038
140	39052	39026	39066	39096	38916	39026	39051
125	39065	39040	39080	39110	38930	39040	39065
140	39078	39053	39093	39123	38943	39053	39078
125	39091	39066	39106	39136	38956	39066	39091
150	39105	39080	39120	39150	38970	39080	39105
175	39118	39093	39133	39163	38983	39093	39118
140	39131	39106	39146	39176	38996	39106	39131
125	39145	39120	39160	39190	39010	39120	39145
150	39158	39133	39173	39203	39023	39133	39158
125	39171	39146	39186	39216	39036	39146	39171
140	39185	39160	39180	39210	39050	39160	39185
125	39198	39173	39193	39223	39063	39173	39198
100	39212	39187	39207	39237	39077	39187	39212
125	39225	39200	39240	39270	39090	39200	39225
175	39238	39213	39253	39283	39103	39213	39238
140	39252	39226	39266	39296	39116	39226	39251
125	39265	39240	39280	39310	39130	39240	39265
140	39278	39253	39293	39323	39143	39253	39278
125	39291	39266	39306	39336	39156	39266	39291
150	39305	39280	39320	39350	39170	39280	39305
175	39318	39293	39333	39363	39183	39293	39318
140	39331	39306	39346	39376	39196	39306	39331
125	39345	39320	39360	39390	39210	39320	39345
150	39358	39333	39373	39403	39223	39333	39358
125	39371	39346	39386	39416	39236	39346	39371
140	39385	39360	39380	39410	39250	39360	39385
125	39398	39373	39393	39423	39263	39373	39398
100	39412	39387	39407	39437	39277	39387	39412
125	39425	39400	39440	39470	39290	39400	39425
175	39438	39413	39453	39483	39303	39413	39438
140	39452	39426	39466	39496	39316	39426	39451
125	39465	39440	39480	39510	39330	39440	39465
140	39478	39453	39493	39523	39343	39453	39478
125	39491	39466	39506	39536	39356	39466	39491
150	39505	39480	39520	39550	39370	39480	39505
175	39518	39493	39533	39563	39383	39493	39518
140	39531	39506	39546	39576	39396	39506	39531
125	39545	39520	39560	39590	39410	39520	39545
150	39558	39533	39573	39603	39423	39533	39558
125	39571	39546	39586	39616	39436	39546	39571
140	39585	39560	39580	39610	39450		

IDAHO ST.

South Line of Monroe

SW 1/4 376.85 376.60 376.0 376.30 375.50 376.0 376.25

SC 376.60 376.60 375.52 375.30 375.08 376.00 376.0
 375.60 376.00

S 1/4 376.20 376.05 376.01 375.90 375.79 375.75 375.60

CL 376.60 376.45 376.41 376.30 376.19 376.15 376.00

Monroe Ave

N 1/4 376.20 376.05 376.01 375.90 375.79 375.75 375.60

NC 375.60
 376.60 376.60 375.52 375.30 375.08 376.00 376.00

N Line 376.85 376.60 376.00 376.30 375.5 376.0 376.25

North Line of Monroe

375.50	375.50	375.50	375.50	375.50	375.50	375.50	375.50
375.50	375.50	375.50	375.50	375.50	375.50	375.50	375.50
375.50	375.50	375.50	375.50	375.50	375.50	375.50	375.50
375.50	375.50	375.50	375.50	375.50	375.50	375.50	375.50

379.40 B.T
+ 3.89
383.29 H.T

350.00	350.00	350.00	350.00	350.00
79.00	79.60	79.00	79.60	79.00
4.00	4.78	4.38	4.78	4.00
383.00	380.00	353.00	350.00	350.00
78.00	79.20	78.50	79.40	79.10
4.98	4.10	4.79	3.98	4.29
383.00	79.20			
710				

W South Line of Madison E

SL 379.75 379.50 378.90 379.25 378.50 379.00 379.25

SC 379.50 379.50 378.44 378.25 378.06 379.00 379.00
 378.60 378.50 378.00 378.00

S 1/4 379.10 378.97 378.94 378.85 378.76 378.73 378.60

CL 379.50 379.37 379.34 379.25 378.16 378.13 378.10

N 1/4 379.10 378.97 378.94 378.85 378.76 378.73 378.60

NC 378.50 378.50 378.44 378.25 378.06 379.00 379.00
 378.50 379.50 378.44 378.25 378.06 379.00 379.00

N.L 379.75 379.50 378.90 379.25 378.5 379.0 379.25

N.L of Madison Ave

Idaho St.

15

South Line of Collier

S.L. 389.25 389.50 389.70 389.80 389.90 389.50 389.25

S.C. 389.50 389.50 389.23 389.63 389.23 389.50 389.50
389.50 389.50

S/H 389.00 388.56 389.26 389.66 389.26 388.56 389.00

C.L. 389.75 388.75 389.25 389.75 389.35 388.75 389.75

N/H 389.40 388.94 389.44 389.84 389.44 388.94 389.40

N.C. 389.00 389.00 389.47 389.87 389.47 389.00 389.00
389.00 389.00

N.L. 390.25 390.00 389.60 390.00 389.60 390.00 390.25

North Line of Collier

Idaho St

North Line of Collier

0+00	389.25	389.00	389.60	390.00	389.60	390.00	390.25
+25	390.27	390.17	389.77	390.17	389.77	390.17	390.42
+50	390.38	390.33	389.93	390.33	389.93	390.33	390.58
+75	390.75	390.50	390.10	390.50	390.10	390.50	390.92
+100	390.92	390.67	390.27	390.67	391.27	390.67	390.92
+75	390.98	390.83	390.43	390.83	391.43	390.83	391.08
+50	391.25	391.00	390.60	391.00	390.60	391.00	391.25
+25	391.42	391.17	390.77	391.17	390.77	391.17	391.42
00	391.58	391.33	390.93	391.33	390.93	391.33	391.58
+25	391.75	391.50	391.10	391.50	391.10	391.50	391.75
+50	391.92	391.67	391.27	391.67	391.27	391.67	391.92
+75	392.08	391.83	391.43	391.83	391.43	391.83	392.08
3900	392.25	392.00	391.60	392.00	391.60	392.00	392.25

9771 + 14

9775 91.50 / 9058 91.57 / 9042 90.90 / 9125 91.25 / 9087 91.03 / 9192 91.92 / 9120 91.20
 677 81.87 / 672 81.87 / 673 81.87 / 674 81.87 / 675 81.87 / 676 81.87 / 677 81.87 / 678 81.87 / 679 81.87 / 680 81.87
 681 81.87 / 682 81.87 / 683 81.87 / 684 81.87 / 685 81.87 / 686 81.87 / 687 81.87 / 688 81.87 / 689 81.87 / 690 81.87
 + 2.52 + 1.50 / + 2.52 + 1.50 / + 2.52 + 1.50 / + 2.52 + 1.50 / + 2.52 + 1.50 / + 2.52 + 1.50 / + 2.52 + 1.50 / + 2.52 + 1.50 / + 2.52 + 1.50 / + 2.52 + 1.50
 cut stakes 1/2" Katal Moore halter

16

Express (Corrected) Sp. S.E. Cor Adams E Idaho.

47.29
 392.03
 1.13
 34 + 1.13 Hubs or tie-out for S.E. Cor Collier E Idaho.
 394.69 H.I.

394.65	394.68	394.68	394.69	394.68	394.68	394.68	394.69	394.69	394.69	394.68	394.68	394.68	394.68	394.68
90.25	89.60	90.00	90.08	89.93	90.33	90.92	90.27	90.67	90.25	90.60	90.25	90.60	90.25	90.60
4.43	5.89	4.69	4.10	4.70	4.35	3.76	4.41	4.11	3.42	4.08				
394.68	394.68	394.68	394.68	394.68	394.68	394.68	394.68	394.68	394.68	394.68	394.68	394.68	394.68	394.68
91.00	91.58	91.73	91.33	91.92	91.27	91.67	92.25	91.60	92.08					
3.68	3.10	3.70	3.35	2.75	3.47	3.01	2.93	3.08	2.68					

Set all stakes, 1/2" & 4" Cor to subgrade. Oct 1-12

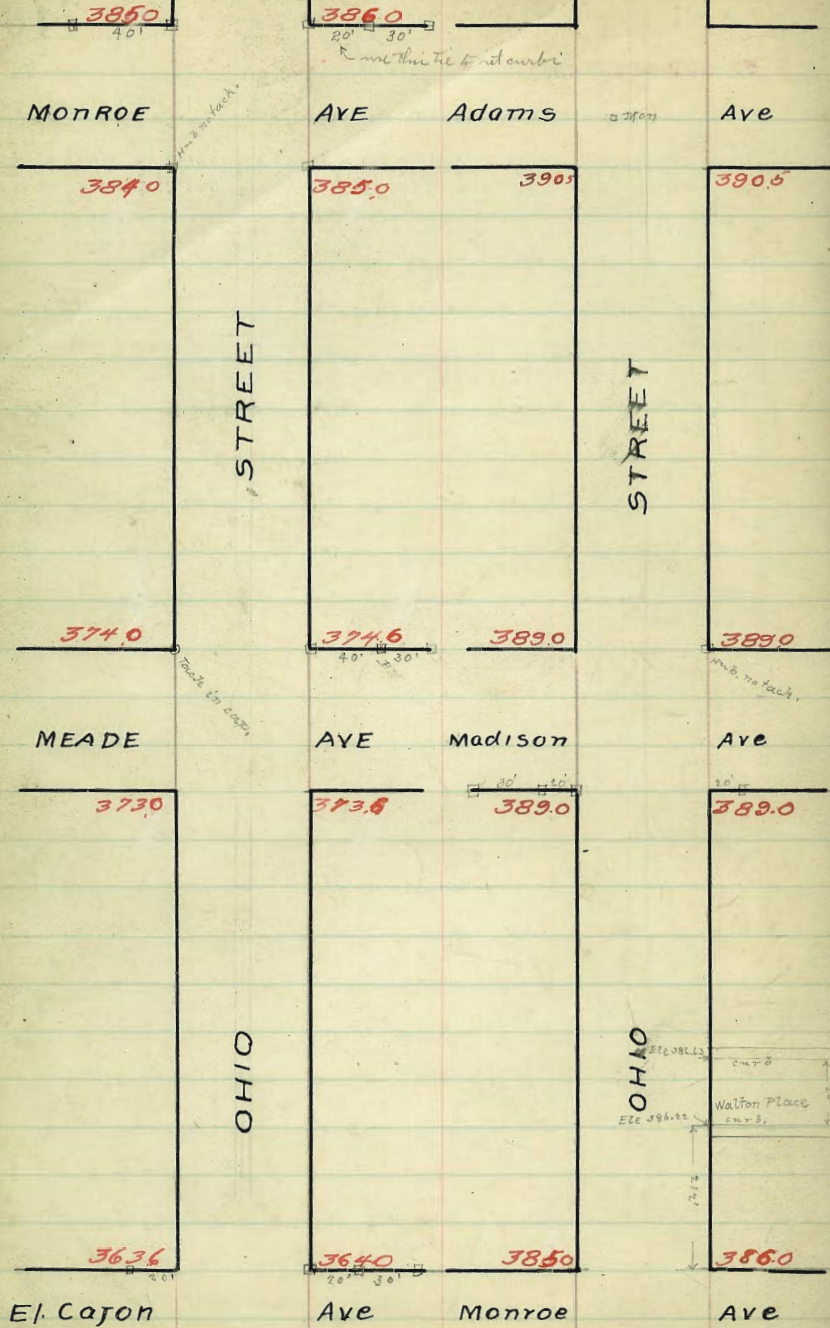
(Roman
 Shant
 Stearns)

394.18 S.E. Above
 10.75
 394.88 H.I.

394.88	394.88	394.88	394.88	394.88	394.88	394.88	394.88	394.88	394.88	394.88	394.88	394.88	394.88	394.88
92.00	92.00	92.00	92.00	92.00	92.00	92.00	92.00	92.00	92.00	92.00	92.00	92.00	92.00	92.00
2.88	2.98	4.88	4.88											

Oct 8-12
 (Roman
 Shant
 Stearns)

20' SIDEWALKS and 5' Quarters



JH10 5 STREET
El Cajon to Adams Street

W					E	
11	362.74	363.60	363.10	363.80	363.40	364.00
25	364.24	364.99	363.49	364.20	363.80	364.40
30	364.63	364.38	363.88	364.54	364.20	364.80
35	365.03	364.78	364.28	364.99	364.60	365.20
40	365.42	365.17	364.67	365.38	365.00	365.60
45	365.81	365.56	365.06	365.28	365.40	366.00
50	366.20	365.95	365.45	366.17	365.80	366.40
55	366.59	366.34	365.84	366.57	366.20	366.80
60	366.98	366.73	366.23	366.97	366.60	367.20
65	367.38	367.13	366.62	367.36	367.00	367.60
70	367.77	367.52	367.02	367.26	367.40	368.00
75	368.16	367.91	367.41	368.15	367.80	368.40
80	368.55	368.30	367.80	368.55	368.20	368.80
85	368.94	368.69	368.19	368.95	368.60	369.20
90	369.33	369.08	368.58	369.34	369.00	369.60
95	369.73	369.48	368.97	369.24	369.40	370.00
400	370.12	369.87	369.37	370.13	369.80	370.40
25	370.57	370.26	369.76	370.53	370.20	370.80
30	370.90	370.65	370.15	370.92	370.60	371.20
35	371.29	371.04	370.54	371.32	371.00	371.60
40	371.68	371.43	370.93	371.72	371.40	372.00
45	372.08	371.83	371.32	372.11	371.80	372.40
50	372.47	372.22	371.72	372.51	372.20	372.80
55	372.86	372.61	372.11	372.90	372.60	373.20
600	373.25	373.0	372.50	373.30	373.00	373.60

277.30 277.32 277.34 277.36 277.38 277.40 277.42 277.44 277.46 277.48 277.50 277.52 277.54 277.56 277.58 277.60 277.62 277.64 277.66 277.68 277.70 277.72 277.74 277.76 277.78 277.80 277.82 277.84 277.86 277.88 277.90 277.92 277.94 277.96 277.98 278.00

278.02 278.04 278.06 278.08 278.10 278.12 278.14 278.16 278.18 278.20 278.22 278.24 278.26 278.28 278.30 278.32 278.34 278.36 278.38 278.40 278.42 278.44 278.46 278.48 278.50 278.52 278.54 278.56 278.58 278.60 278.62 278.64 278.66 278.68 278.70 278.72 278.74 278.76 278.78 278.80 278.82 278.84 278.86 278.88 278.90 278.92 278.94 278.96 278.98 279.00

279.02 279.04 279.06 279.08 279.10 279.12 279.14 279.16 279.18 279.20 279.22 279.24 279.26 279.28 279.30 279.32 279.34 279.36 279.38 279.40 279.42 279.44 279.46 279.48 279.50 279.52 279.54 279.56 279.58 279.60 279.62 279.64 279.66 279.68 279.70 279.72 279.74 279.76 279.78 279.80 279.82 279.84 279.86 279.88 279.90 279.92 279.94 279.96 279.98 280.00

280.02 280.04 280.06 280.08 280.10 280.12 280.14 280.16 280.18 280.20 280.22 280.24 280.26 280.28 280.30 280.32 280.34 280.36 280.38 280.40 280.42 280.44 280.46 280.48 280.50 280.52 280.54 280.56 280.58 280.60 280.62 280.64 280.66 280.68 280.70 280.72 280.74 280.76 280.78 280.80 280.82 280.84 280.86 280.88 280.90 280.92 280.94 280.96 280.98 281.00

18
Stomach
Shard
Cairn

Oct 10 12
Stomach
Shard
Cairn

OHIO STREET

	W						F
S.L. Meade	373.25	373.00	372.85	373.30	373.00	373.60	373.85
S.C.	373.00	373.00	372.75	373.35	373.25	373.60	373.60
		372.00				372.60	
S $\frac{1}{4}$	372.38	372.13	372.81	373.61	373.31	372.73	372.98
S.L.	372.75	372.50	373.00	373.20	373.50	373.10	373.85
N $\frac{1}{4}$	373.12	372.87	373.19	373.99	373.69	373.47	373.72
N.C.	374.00	373.00	373.25	374.05	373.75	374.60	374.60
N.L. Meade	374.25	374.00	373.50	374.30	374.00	374.6	374.85

374.91 40' tie. 3/4 E for NE Cor Meade & Ohio.

13.36	378.07 HI	378.27	378.27
74.00	74.66		
4.17	3.67		

374.91	378.76	378.96
378.76 HI	74.00	73.67
	4.17	3.76

374.91	378.07	378.07	378.07	378.07	378.07
4.17	74.00	74.20	74.50	74.00	74.00
	4.07	3.77	4.07	4.07	4.07

OHIO STREET

W						E
N.L. Meade	374.25	3740	373.50	374.30	374.00	374.6
25	374.67	374.42	373.92	374.73	374.43	375.03
50	375.09	374.84	374.34	375.15	374.87	375.47
75	375.50	375.25	374.76	375.58	375.30	375.90
100	375.92	375.67	375.18	376.00	375.73	376.33
25	376.34	376.09	375.60	376.43	376.16	376.76
50	376.75	376.50	376.02	376.85	376.6	377.2
75	377.17	376.92	376.45	377.28	377.03	377.63
100	377.59	377.34	376.87	377.90	377.47	378.07
25	378.00	377.75	377.29	378.13	377.90	378.50
50	378.42	378.17	377.71	378.55	378.33	378.93
75	378.84	378.59	378.13	378.98	378.77	379.37
100	379.25	379.00	378.55	379.40	379.20	379.80
25	379.67	379.42	378.97	379.83	379.63	380.23
50	380.09	379.84	379.39	380.25	380.07	380.67
75	380.50	380.25	379.81	380.68	380.50	381.10
100	380.92	380.67	380.23	381.10	380.93	381.53
25	381.34	381.09	380.65	381.63	381.37	381.97
50	381.75	381.50	381.07	381.95	381.80	382.40
75	382.17	381.92	381.50	382.38	382.23	382.83
100	382.59	382.34	381.92	382.80	382.67	383.27
25	383.00	382.75	382.34	383.23	383.10	383.70
50	383.42	383.17	382.76	383.65	383.53	384.13
75	383.84	383.59	383.18	384.08	383.97	384.57
100	384.25	384.00	383.60	384.50	384.40	385.00

...Hub for NE Cor Meade & Ohio.

384.44	384.44	384.44	384.44	384.44	384.44	384.44	384.44	384.44	384.44
78.25	78.25	78.25	78.25	78.25	78.25	78.25	78.25	78.25	78.25
10.17	9.57	8.72	7.85	6.95	6.02	5.07	4.11	3.14	2.16
394.44	384.44	374.44	364.44	354.44	344.44	334.44	324.44	314.44	304.44
77.57	78.32	79.18	78.42	77.20	80.05	80.93	80.07	78.42	78.42
6.30	6.12	5.16	4.02	5.19	4.39	3.51	2.35	3.1	2.1
5.3	6.4	3.9	6.0	4.1	3.0	2.0	1.1	0.1	0.1
F 1.4	F 0.3	C 1.4	F 0.0	C 0.2	C 0.3	C 0.0	C 1.2		
384.44	384.44	384.44	384.44	384.44	384.44	384.44	384.44	384.44	384.44
90.92	91.74	82.60	81.70	82.57	83.52	84.39	83.42	83.42	83.42
3.02	2.66	1.77	2.69	1.85	3.02	4.66	5.62	6.6	6.6
2.6	0.9	1.6	2.0	1.1	3.0	3.1	0.6		
C 0.7	C 1.2	C 0.2	C 0.7	F 0.2	C 2.0	F 0.4	F 1.0		

40 - Meade Sept 12-12
 Command
 Shaw
 Devine

...Hub for NE Cor Meade & Ohio.

386.12	386.12	386.12	386.12	386.12	386.12	386.12	386.12	386.12	386.12
80.25	81.00	81.50	82.60	84.20	83.42	82.76	83.60	80.53	84.38
57	1.72	1.02	2.52	1.87	2.72	3.36	2.47	2.58	1.74
386.12	386.12	386.12	386.12	386.12	386.12	386.12	386.12	386.12	386.12
90.08	82.67	82.80	81.92	82.07	81.70	81.07	81.90	81.80	82.60
2.00	3.70	3.07	4.20	3.03	4.37	5.00	4.12	4.32	3.47
386.12	386.12	386.12	386.12	386.12	386.12	386.12	386.12	386.12	386.12
41.74	40.53	81.10	80.23	80.92	80.88	79.87	80.25	80.07	80.53
4.34	5.19	5.02	5.89	5.20	6.03	6.70	5.97	6.05	5.19
381.42	381.42	381.42	381.42	381.42	381.42	381.42	381.42	381.42	381.42
80.95	79.20	79.40	78.55	79.25	78.42	77.71	78.55	78.33	79.18
1.37	2.22	2.02	2.37	2.17	3.00	2.74	2.87	3.07	2.44
381.42	381.42	381.42	381.42	381.42	381.42	381.42	381.42	381.42	381.42
79.82	77.47	77.70	76.87	77.59	76.70	76.02	76.80	76.60	77.42
0.70	3.95	3.72	4.55	3.80	4.67	5.40	4.57	4.82	3.97
381.42	381.42	381.42	381.42	381.42	381.42	381.42	381.42	381.42	381.42
76.29	76.73	76.00	75.18	75.92	75.09	74.34	75.10	74.97	75.72
4.34	5.69	5.42	6.24	5.50	6.33	7.08	6.27	6.55	5.70
381.42	381.42	381.42	381.42	381.42	381.42	381.42	381.42	381.42	381.42
79.90	79.00	74.30	73.52	74.15					
6.07	7.42	7.12	7.92	7.17					

Oct 13-12
 Command
 Shaw
 Devine

...Hub for NE Cor Meade & Ohio.

384.91
 381.2 correction.
 384.91

included 0.75 cent in full Dec 16-12
 Command
 Shaw
 Devine

OHIO STREET

21

W

E

S.L. Mon	38428	38400	38360	38480	38440	38500	38525
----------	-------	-------	-------	-------	-------	-------	-------

S.C.	38400	38400	38385	38475	38465	38500	38500
		38300		3800		38400	

S ¹ / ₄	38338	38313	38391	38481	38471	38413	38438
-------------------------------	-------	-------	-------	-------	-------	-------	-------

Monroe Ave

C.L.	38325	38350	38410	38500	38490	38450	38475
------	-------	-------	-------	-------	-------	-------	-------

N ¹ / ₄	38412	38387	38429	38519	38509	38487	38512
-------------------------------	-------	-------	-------	-------	-------	-------	-------

N.C.	38500	38500	38435	38525	38515	38600	38600
	38400		Excess			38500	

N.L. Monroe	38525	38500	38460	3855	38540	38600	38625
-------------	-------	-------	-------	------	-------	-------	-------

SL. Madison 389.00 388.60 389.00 388.60 389.00 389.25

After should be depressed some this intersection a little to keep water from standing there

SCurb 388.00 389.00 388.60 389.00 388.60 389.00 389.00
 388.00 388.00

S 1/4 388.60 388.60 388.60 389.00 388.60 388.60 388.60

Center 389.0 389.00 389.0 389.00 389.0 389.00 389.0

N 1/4 388.60 388.60 388.60 389.0 388.60 388.60 388.60

N. Curb 389.00 389.00 388.60 389.00 388.60 389.00 389.00
 388.00 388.00

N. Madison 389.25 389.00 388.60 389.00 388.60 389.00 389.25

OHIO STREET

M.L. Madison	388.25	389.00	388.60	389.00	388.60	389.00	388.25
25	389.31	389.06	388.66	389.06	388.66	389.31	
50	389.37	389.12	388.72	389.12	388.72	389.37	
75	389.44	389.19	388.79	389.19	388.79	389.44	
100	389.50	389.25	388.85	389.25	388.85	389.50	
25	389.56	389.31	388.91	389.31	388.91	389.56	
50	389.63	389.38	388.98	389.38	388.98	389.63	
75	389.69	389.44	389.04	389.44	389.04	389.69	
100	389.75	389.50	389.10	389.50	389.10	389.75	
25	389.81	389.56	389.16	389.56	389.16	389.81	
50	389.88	389.63	389.23	389.63	389.23	389.88	
75	389.94	389.69	389.29	389.69	389.29	389.94	
100	390.00	389.76	389.35	389.75	389.35	390.00	
25	390.06	389.81	389.41	389.81	389.41	390.06	
50	390.13	389.88	389.48	389.88	389.48	390.13	
75	390.19	389.94	389.54	389.94	389.54	390.19	
100	390.25	390.00	389.60	390.00	389.60	390.25	
25	390.31	390.06	389.66	390.06	389.66	390.31	
50	390.38	390.13	389.73	390.13	389.73	390.38	
75	390.44	390.19	389.79	390.19	389.79	390.44	
100	390.50	390.25	389.85	390.25	389.85	390.50	
25	390.56	390.31	389.91	390.31	389.91	390.56	
50	390.62	390.37	389.97	390.37	389.97	390.62	
75	390.69	390.44	390.04	390.44	390.04	390.69	
100	390.75	390.50	390.10	390.50	390.10	390.75	

387.00 - 20' tie. H.L. for S.W. Cor. Madison & Ohio.

387.00	387.30	387.60	387.90	388.20	388.50	388.80	389.10	389.40	389.70
387.00	387.30	387.60	387.90	388.20	388.50	388.80	389.10	389.40	389.70
387.00	387.30	387.60	387.90	388.20	388.50	388.80	389.10	389.40	389.70
387.00	387.30	387.60	387.90	388.20	388.50	388.80	389.10	389.40	389.70

389.00 - 50' tie. H.L. for S.E. Cor. Ohio & Adams.

389.00	389.30	389.60	389.90	390.20	390.50	390.80	391.10	391.40	391.70
389.00	389.30	389.60	389.90	390.20	390.50	390.80	391.10	391.40	391.70
389.00	389.30	389.60	389.90	390.20	390.50	390.80	391.10	391.40	391.70

390.00 - 100' tie. H.L. for S.W. Cor. Ohio & Adams.

390.00	390.30	390.60	390.90	391.20	391.50	391.80	392.10	392.40	392.70
390.00	390.30	390.60	390.90	391.20	391.50	391.80	392.10	392.40	392.70
390.00	390.30	390.60	390.90	391.20	391.50	391.80	392.10	392.40	392.70

390.00 - 150' tie. H.L. for S.W. Cor. Ohio & Adams.

390.00	390.30	390.60	390.90	391.20	391.50	391.80	392.10	392.40	392.70
390.00	390.30	390.60	390.90	391.20	391.50	391.80	392.10	392.40	392.70
390.00	390.30	390.60	390.90	391.20	391.50	391.80	392.10	392.40	392.70

Adams
Ohio
Tie

Adams
Ohio
Tie

checked OK Dec 19-12, Adams, Shaw, Perine

LINCOLN

AVE

3180

3190

ARIZONA
STREET

ARIZONA
STREET

3010

3020

UNIVERSITY

AVE

51

Grove

51.

225.5

224.5

227.0

227.0

FERN

51.

226.0

226.0

Cedar

224.0

224.0

30th

51.

200 226.25 226.00 225.60 226.00 225.60 226.00 226.25

175 226.00 225.75 225.35 225.75 225.35 225.75 226.00

150 225.75 225.50 225.10 225.50 225.10 225.50 225.75

125 225.50 225.25 224.85 225.25 224.85 225.25 225.50

100 225.25 225.00 224.60 225.00 224.60 225.00 225.25

75 225.00 224.75 224.35 224.75 224.35 224.75 225.00

50 224.75 224.50 224.10 224.50 224.10 224.50 224.75

25 224.50 224.25 223.85 224.25 223.85 224.25 224.50

00 224.25 224.00 223.60 224.00 223.60 224.00 224.25

Cedar St.

No.

So.

227.25 227.00 226.60 227.00 226.60 227.00 227.25

227.00 227.00 226.35 226.75 226.35 227.00 227.00
226.00 226.00

226.40 225.75 226.22 226.62 226.22 225.75 226.40

FERN

226.50 225.50 226.10 226.50 226.10 225.50 226.50

St.

225.85 225.25 226.97 226.38 225.97 225.25 225.85

225.00

225.00

226.00 226.00 225.85 226.25 225.85 226.00 226.00

226.25 226.00 225.60 226.00 225.60 226.00 226.25

No.

So.

31

W. Line ²⁵ GROVE

200	225.75	225.50	224.90	225.00	224.35	224.50	224.75
175	225.94	225.69	225.11	225.25	224.63	224.81	225.06
150	226.12	225.87	225.32	225.50	224.91	225.12	225.37
125	226.31	226.06	225.54	225.75	225.19	225.43	225.68
100	226.50	226.25	225.75	226.00	225.47	225.75	226.00
75	226.69	226.44	225.96	226.25	225.75	226.06	226.31
50	226.87	226.62	226.17	226.50	226.03	226.37	226.62
25	227.06	226.81	226.39	226.75	226.31	226.68	226.93
00	227.25	227.00	226.60	227.00	226.60	227.00	227.25

E. L. FERN ST.

232.0

232.0

No. Line So. Park

226.75

227.75

226.0

227.0

Cedar

St

226.0

227.0

231.0

232.0

Beech

St

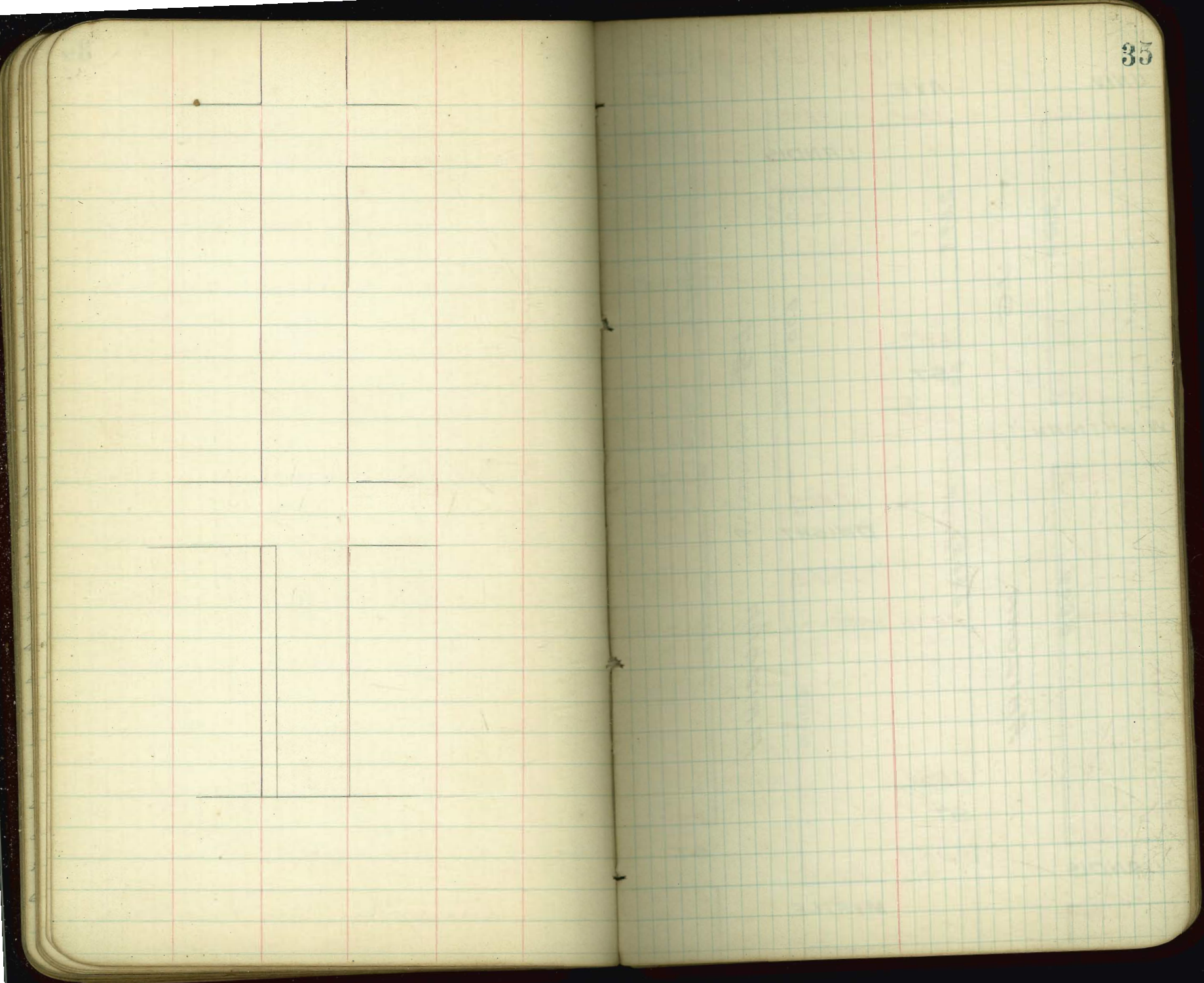
West

EAST

So. Line Cedar St.

30	226.25	226.00	225.85	226.50	226.40	227.00	227.25
75	226.67	226.42	226.27	226.92	226.82	227.42	227.67
50	227.08	226.83	226.68	227.33	227.23	227.83	228.08
25	227.50	227.25	227.10	227.75	227.65	228.25	228.50
200	227.92	227.67	227.52	228.17	228.07	228.67	228.92
75	228.33	228.08	227.93	228.58	228.48	229.08	229.33
50	228.75	228.50	228.35	229.00	228.90	229.50	229.75
25	229.17	228.92	228.77	229.42	229.32	229.92	230.17
200	229.58	229.33	229.18	229.83	229.73	230.33	230.58
75	230.00	229.75	229.60	229.25	230.15	230.75	231.00
50	230.42	230.17	230.02	230.62	230.52	231.17	231.42
25	230.83	230.58	230.43	231.08	230.98	231.58	231.83
20	231.25	231.00	230.85	231.50	231.40	232.00	232.25

No. Line Beech St.



60' ST. 10' WALKS
10' QUARTERS

UNIV.

AVE.

ST.

3024

300.0

285.0

285.5

300.8

249.7

LANDIS

286.8

ST.

ST.

009

285.0

289.0

599.0

MYRTLE

274.0

60 ST.

290.0

60 ST.

273.5

WIGHTMAN

290.0

282.0

283.0

599.7

282.0

60 ST.

200'

599.7

DWIGHT

281.2

ARIZONA

ARIZONA

283.0

231.2

NORTH LINE OF PARK.

270.0

269.0

603.8

2009

285.5

599.5

ST.

274.0

285.0

286.5

ST.

LANDIS

275.0

MYRTLE

273.5

286.0

274.3

Tric outs 3/4 1/2 1/4

25 25 25 25 25 25 25 25 25 25

1/2 35 25 25

60' WIDE 10' QUARTER

South Line of UNIVERSITY AVE

00	302.65	302.40	301.80	301.20	300.70	300.00	300.25
25	301.62	301.37	300.77	300.23	299.27	299.10	299.35
50	300.59	300.34	299.74	299.27	298.34	298.20	298.45
75	299.56	299.31	298.71	298.30	297.41	297.30	297.55
100	298.53	298.28	297.68	297.34	296.48	296.40	296.65
125	297.50	297.25	296.65	296.37	295.57	295.50	295.75
150	296.47	296.22	295.62	295.41	294.61	294.60	294.85
175	295.42	295.19	294.59	294.44	293.68	293.70	293.95
200	294.41	294.16	293.56	293.47	292.74	292.80	293.15
225	293.38	293.13	292.53	292.51	291.81	291.90	292.15
249.716	292.36	292.11	291.51	291.55	290.88	291.00	291.25
N. Carb	291.75	291.70	291.14	291.25	290.63	291.00	291.00
N/4	291.54	291.29	290.77	290.95	290.38	289.75	290.75
Center	291.13	290.88	290.40	290.64	290.13	289.50	290.50
S/4	290.92	290.47	290.03	290.34	289.88	289.25	290.25
S. Carb E	290.31	290.06	289.66	290.04	289.63	289.00	290.00
N. Carb W	290.25	290.00	289.60	290.00	289.60	289.00	290.25
S. Carb East	290.25	290.00	289.60	290.00	289.60	290.00	290.25
N. Carb	290.00	290.00	289.57	289.98	289.57	289.98	290.23
N/4	289.75	289.75	289.34	289.74	289.31	289.70	289.95
Center	289.50	288.50	289.10	289.50	289.05	289.42	289.67
S/4	289.25	288.25	288.87	289.26	288.80	289.14	289.39
S. Carb	289.00	289.00	288.63	289.03	288.54	288.86	289.11
S. Carb W	289.25	289.00	288.40	288.79	288.28	288.58	288.83

S. LINE of WIGHTMAN on West

302.65	302.40	301.80	301.20	300.70	300.00	300.25
301.62	301.37	300.77	300.23	299.27	299.10	299.35
300.59	300.34	299.74	299.27	298.34	298.20	298.45
299.56	299.31	298.71	298.30	297.41	297.30	297.55
298.53	298.28	297.68	297.34	296.48	296.40	296.65
297.50	297.25	296.65	296.37	295.57	295.50	295.75
296.47	296.22	295.62	295.41	294.61	294.60	294.85
295.42	295.19	294.59	294.44	293.68	293.70	293.95
294.41	294.16	293.56	293.47	292.74	292.80	293.15
293.38	293.13	292.53	292.51	291.81	291.90	292.15
292.36	292.11	291.51	291.55	290.88	291.00	291.25
291.75	291.70	291.14	291.25	290.63	291.00	291.00
291.54	291.29	290.77	290.95	290.38	289.75	290.75
291.13	290.88	290.40	290.64	290.13	289.50	290.50
290.92	290.47	290.03	290.34	289.88	289.25	290.25
290.31	290.06	289.66	290.04	289.63	289.00	290.00
290.25	290.00	289.60	290.00	289.60	289.00	290.25
290.00	290.00	289.57	289.98	289.57	289.98	290.23
289.75	289.75	289.34	289.74	289.31	289.70	289.95
289.50	288.50	289.10	289.50	289.05	289.42	289.67
289.25	288.25	288.87	289.26	288.80	289.14	289.39
289.00	289.00	288.63	289.03	288.54	288.86	289.11
289.25	289.00	288.40	288.79	288.28	288.58	288.83

March 21-1913 closed O.K. Deenan, Shaw, Deemer

S. LINE of Land is on West

SL-0455.2	285.00	284.65	285.09	284.68	285.18	285.41
285.25						
0475	285.15	284.90	284.54	284.95	284.47	285.06
100	285.03	284.98	284.40	284.84	284.34	284.91
125	284.90	284.65	284.27	284.71	284.21	284.77
150	284.78	284.53	284.13	284.67	284.07	284.62
175	284.65	284.40	284.00	284.44	283.94	284.48
200	284.53	284.28	283.86	284.30	283.80	284.33
225	284.40	284.15	283.72	284.17	283.67	284.18
150	284.28	284.03	283.59	284.03	283.54	284.04
175	284.15	283.90	283.45	283.90	283.40	283.89
300	284.03	283.78	283.31	283.76	283.27	283.75
125	283.90	283.65	283.18	283.63	283.14	283.60
150	283.78	283.53	283.04	283.49	283.00	283.45
175	283.65	283.40	282.90	283.35	282.87	283.31
400	283.53	283.28	282.77	283.22	282.73	283.16
425	283.40	283.15	282.63	283.08	282.60	283.02
150	283.28	283.03	282.49	282.95	282.47	282.87
175	283.15	282.90	282.36	282.81	282.33	282.72
500	283.03	282.78	282.22	282.68	282.20	282.58
425	282.90	282.65	282.08	282.54	282.07	282.43
450	282.78	282.53	281.98	282.41	281.93	282.29
475	282.65	282.40	281.81	282.27	281.80	282.14
599	282.53	282.28	281.68	282.14	281.67	282.00

N.L. of DWIGHT on E

285.25	285.15	285.03	284.90	284.78	284.65	284.53	284.40	284.28	284.15	284.03	283.90	283.78	283.65	283.53	283.40	283.28	283.15	283.03	282.90	282.78	282.65	282.53	282.40	282.28	
285.25	285.15	285.03	284.90	284.78	284.65	284.53	284.40	284.28	284.15	284.03	283.90	283.78	283.65	283.53	283.40	283.28	283.15	283.03	282.90	282.78	282.65	282.53	282.40	282.28	282.15

NW Arizona & Dwight.

sidewalk station on the West side
Jan 15-12 40man, Shaw, Devine

made in pole SW Cor Landis & Arizona = 295.60 from Arizona & University of B.M.

285.25
285.15
285.03
284.90
284.78
284.65
284.53
284.40
284.28
284.15
284.03
283.90
283.78
283.65
283.53
283.40
283.28
283.15
283.03
282.90
282.78
282.65
282.53
282.40
282.28

285.25
285.15
285.03
284.90
284.78
284.65
284.53
284.40
284.28
284.15
284.03
283.90
283.78
283.65
283.53
283.40
283.28
283.15
283.03
282.90
282.78
282.65
282.53
282.40
282.28

all finish station March 24-13, 40man, Shaw, Devine

checked O.K. March 31-1913 40man, Shaw, Devine

N.L. DWIGHT on East

S	NL	282.53	282.28	281.68	282.14	281.67	282.00	282.2
O	NC	282.48	282.23	281.63	282.04	281.55	282.00	282.0
							281.00	
i	NH	282.43	282.18	281.52	281.95	281.43	280.80	281.7
f	Center	282.38	282.13	281.53	281.85	281.31	280.60	281.6
+ S	1/4	282.33	282.08	281.42	281.76	281.19	280.40	281.4
+ S	1/2 E	282.28	282.03	281.48	281.66	281.07	281.20	281.3
							280.20	
2	NLW	282.25	282.00	281.40	281.60	281.00	281.20	281.4
+ S	1/2 E	282.25	282.00	281.40	281.60	281.00	281.20	281.4
+ N	1/2 W	282.00	282.00	281.34	281.51	280.92	281.12	281.3
			281.00					
+ N	1/4	281.80	280.80	281.16	281.38	280.79	281.00	281.25
3	Center	281.60	280.60	281.02	281.25	280.67	280.88	281.13
+ S	1/4	281.40	280.40	280.88	281.12	280.54	280.76	281.01
+ S	1/2	281.20	281.20	280.74	280.99	280.42	280.64	280.89
			280.20					
+ S	1/2 W	281.45	281.20	280.60	280.86	280.29	280.52	280.77

S Line of DWIGHT on West 2012

2827	2827	28961	28961
2825	2827	2895	2895
2825	2820	2896	2896
2822	2820	2898	2898
2822	2820	2893	2893
2827	2827	28961	28961
2825	2827	2895	2895
2825	2820	2896	2896
2822	2820	2898	2898
2822	2820	2893	2893

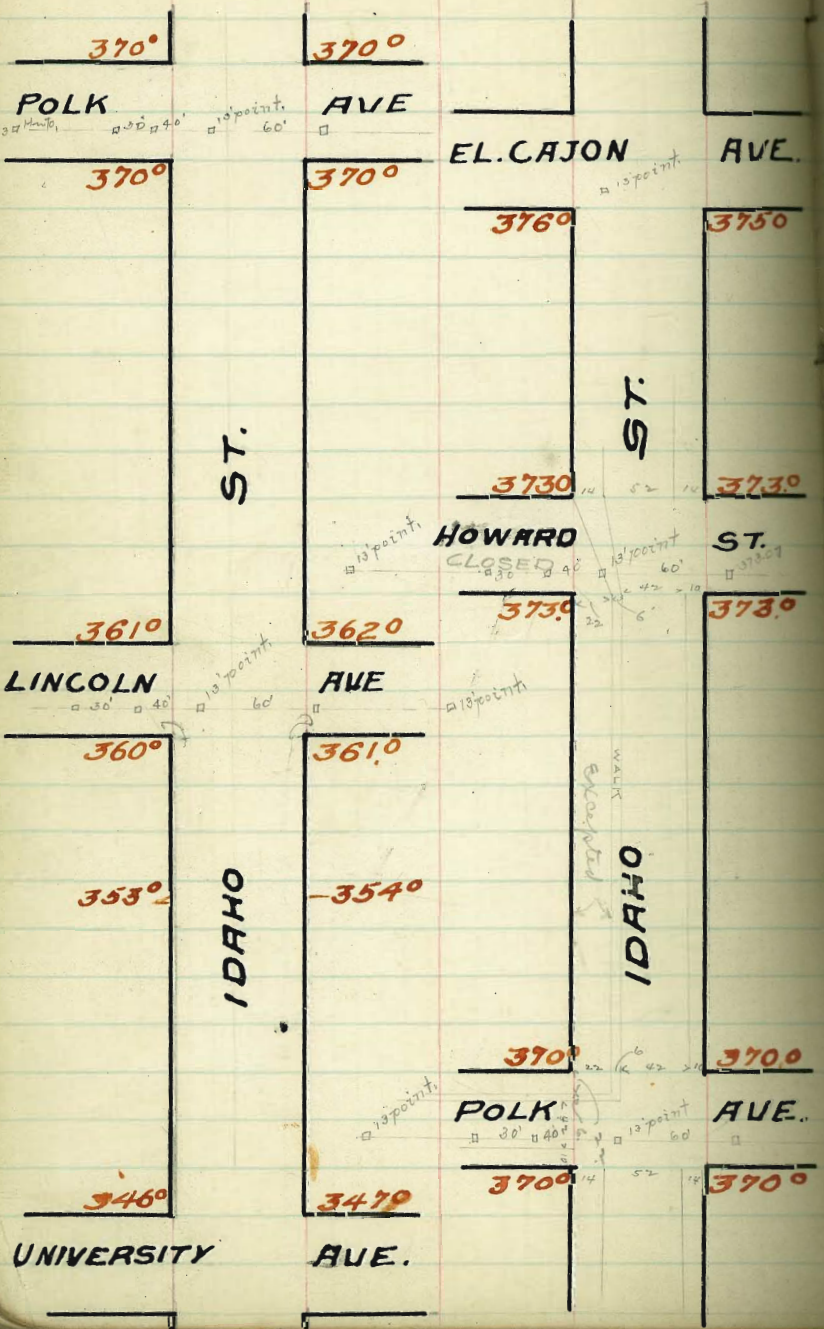
N N. LINE of MYRTIE ST. OTE

SE	NZ. F	275.84	273.59	274.99	274.80	274.00	274.00	274.00
04	NCB	275.74	275.49	274.93	274.70	273.91	274.00	274.00
11	N/4	275.64	275.39	274.86	274.61	273.82	272.88	273.88
+	Center	275.53	275.28	274.80	274.51	273.73	272.75	273.73
15	S/4	275.43	275.18	274.73	274.42	273.64	272.62	273.62
+	LINE	275.32	275.07	274.67	274.32	273.55	272.50	273.50
20	NLW	275.25	275.00	274.62	274.25	273.48	272.50	273.50
+	SLE	275.25	275.00	274.62	274.25	273.48	272.50	273.50
15	NCLW	275.00	275.00	274.53	274.17	273.39	272.40	273.68
17	N/4	274.88	273.88	274.40	274.07	273.27	272.27	273.52
30	Center	274.75	273.75	274.27	273.96	273.15	272.14	273.39
+	S/4	274.62	273.62	274.15	273.85	273.03	272.01	273.26
+	SLP	274.50	274.50	274.03	273.74	272.91	271.88	273.13
12	SLITTCW	274.25	274.50	273.90	273.63	272.79	271.70	273.00

SOUTH LINE MYRTIE on West

275.64	275.39	274.86	274.61	273.82	272.88	273.88
275.74	275.49	274.93	274.70	273.91	274.00	274.00
275.84	273.59	274.99	274.80	274.00	274.00	274.00
275.53	275.28	274.80	274.51	273.73	272.75	273.73
275.43	275.18	274.73	274.42	273.64	272.62	273.62
275.32	275.07	274.67	274.32	273.55	272.50	273.50
275.25	275.00	274.62	274.25	273.48	272.50	273.50
275.25	275.00	274.62	274.25	273.48	272.50	273.50
275.00	275.00	274.53	274.17	273.39	272.40	273.68
274.88	273.88	274.40	274.07	273.27	272.27	273.52
274.75	273.75	274.27	273.96	273.15	272.14	273.39
274.62	273.62	274.15	273.85	273.03	272.01	273.26
274.50	274.50	274.03	273.74	272.91	271.88	273.13
274.25	274.50	273.90	273.63	272.79	271.70	273.00

83.53	83.53
70.25	73.00
8.28	10.53
7.15	13.53
1.11	2.00
10.26	83.53
13.22	73.75
11.5	74.75
	7.78
	10.53
	2.33
	10.4



EL CAJON AVE
 POLK AVE
 HOWARD ST
 LINCOLN AVE
 IDRAHO
 IDRAHO
 POLK AVE
 UNIVERSITY AVE

S. L. LINCOLN AVE

600	360.25	360.00	359.85	360.50	360.40	361.00	360.25
575	359.38	359.13	358.98	359.63	359.53	360.13	360.38
550	358.50	358.25	358.10	358.75	358.65	359.25	359.50
525	357.63	357.38	357.23	357.88	357.78	358.38	358.63
500	356.75	356.50	356.35	357.00	356.90	357.50	357.75
475	355.88	355.63	355.48	356.13	356.03	356.63	356.88
450	355.00	354.75	354.60	355.25	355.15	355.75	356.00
425	354.13	353.88	353.73	354.38	354.28	354.88	355.13
400	353.25	353.00	352.85	353.50	353.40	354.00	354.25
375	352.38	352.13	351.98	352.63	352.53	353.13	353.38
350	351.50	351.25	351.10	351.75	351.65	352.25	352.50
325	350.63	350.38	350.23	350.88	350.78	351.38	351.63
300	349.75	349.50	349.35	350.00	349.90	350.50	350.75
275	348.88	348.63	348.48	349.13	349.03	349.63	349.88
250	348.00	347.75	347.60	348.25	348.15	348.75	349.00
225	347.13	346.88	346.73	347.38	347.28	347.88	348.13
200	346.25	346.00	345.85	346.50	346.40	347.00	347.25

NORTH LINE UNIVERSITY AVE

W. H. NELSON Idaho University Ave.

352.70	352.70	352.70	352.70	352.70	352.70	352.70	352.70	352.70	352.70
47.25	46.25	47.13	48.13	49.00	49.00	49.88	49.88	50.75	49.75
5.50	6.00	5.57	4.57	3.77	4.70	3.92	2.82	1.98	2.90
5.5	6.7	6.8	4.3	2.0	5.3	4.6	2.3	2.15	5.6
0.0	-0.2	-0.2	0.3	-0.2	-0.6	-0.3	0.0	-0.5	-0.6
352.70	352.70	352.70	352.70	352.70	352.70	352.70	352.70	352.70	352.70
47.25	47.13	48.13	49.00	49.00	49.88	49.88	50.75	49.75	49.75
5.50	6.00	5.57	4.57	3.77	4.70	3.92	2.82	1.98	2.90
5.5	6.7	6.8	4.3	2.0	5.3	4.6	2.3	2.15	5.6
0.0	-0.2	-0.2	0.3	-0.2	-0.6	-0.3	0.0	-0.5	-0.6
352.70	352.70	352.70	352.70	352.70	352.70	352.70	352.70	352.70	352.70
47.25	47.13	48.13	49.00	49.00	49.88	49.88	50.75	49.75	49.75
5.50	6.00	5.57	4.57	3.77	4.70	3.92	2.82	1.98	2.90
5.5	6.7	6.8	4.3	2.0	5.3	4.6	2.3	2.15	5.6
0.0	-0.2	-0.2	0.3	-0.2	-0.6	-0.3	0.0	-0.5	-0.6

14 April 22-13
Korman
Bedford
Devine

260.53	260.53	260.53	260.53	260.53	260.53	260.53	260.53	260.53	260.53
5.0	5.0	5.0	5.0	5.0	5.0	5.0	5.0	5.0	5.0
2.33	2.33	2.33	2.33	2.33	2.33	2.33	2.33	2.33	2.33
0.0	0.0	0.0	0.0	0.0	0.0	0.0	0.0	0.0	0.0
5.78	5.78	5.78	5.78	5.78	5.78	5.78	5.78	5.78	5.78
7.50	7.50	7.50	7.50	7.50	7.50	7.50	7.50	7.50	7.50
8.40	8.40	8.40	8.40	8.40	8.40	8.40	8.40	8.40	8.40
9.28	9.28	9.28	9.28	9.28	9.28	9.28	9.28	9.28	9.28
10.15	10.15	10.15	10.15	10.15	10.15	10.15	10.15	10.15	10.15
11.03	11.03	11.03	11.03	11.03	11.03	11.03	11.03	11.03	11.03
11.90	11.90	11.90	11.90	11.90	11.90	11.90	11.90	11.90	11.90

June 16-1913
Korman, Det. Devine

N.L. of LINCOLN AVE.

NL 361.25 361.00 360.85 361.50 361.40 362.00 362.25

W

NCP 361.00 361.00 360.67 361.32 361.22 362.00 362.01
360.00 361.00

N 1/4 360.40 359.75 360.51 361.16 361.06 360.75 361.40

Center 360.50 359.50 360.35 361.00 360.90 360.50 361.50

S 1/4 359.85 359.25 360.19 360.84 360.74 360.25 360.85

SCURP 360.00 359.00 360.03 360.68 360.58 361.00 361.00
360.00 360.00

S Line 360.25 360.00 359.85 360.50 360.40 361.00 361.25

SOUTH Line of Lincoln Ave

59.00
58.28
60.29

60.28 60.29 60.29
59.25 60.50 60.40
39.3 2.78 2.88

363.64 363.64 363.64 363.64 363.64 363.64 363.64
60.85 61.00 61.10 60.90 60.00 59.80
2.79 2.14 2.24 3.24 3.14 3.79
363.64 363.64 363.64
2.95 63.50 53.40
10.79 10.14 10.29

SOUTH LINE OF FOLK AVE

N 570	369.60	370.25	369.60	370.00	369.60	370.00	370.00
N 575	369.88	369.63	369.23	369.65	369.26	369.67	369.88
N 580	369.50	369.25	368.87	369.29	368.92	369.33	369.50
575	369.83	368.88	368.51	368.94	368.58	369.00	369.83
N 500	368.75	368.50	368.14	368.58	368.24	368.67	368.75
475	368.38	368.13	367.78	368.23	367.89	368.33	368.38
450	368.00	367.75	367.41	367.88	367.53	368.00	368.00
425	367.63	367.38	367.05	367.52	367.21	367.67	367.63
S 400	367.25	367.00	366.68	367.17	366.87	367.33	367.25
375	366.88	366.63	366.32	366.81	366.53	367.00	367.25
S 350	366.50	366.25	365.95	366.46	366.18	366.67	366.50
325	366.13	365.88	365.59	366.10	365.84	366.33	366.13
S 300	365.75	365.50	365.22	365.75	365.50	366.00	365.75
275	365.38	365.13	364.86	365.40	365.16	365.67	365.38
250	365.00	364.75	364.50	365.04	364.82	365.33	365.00
225	364.63	364.38	364.13	364.69	364.48	365.00	364.63
200	364.25	364.00	363.77	364.33	364.13	364.67	364.25
175	363.88	363.63	363.40	363.98	363.79	364.33	363.88
150	363.50	363.25	363.04	363.63	363.45	364.00	363.50
125	363.13	362.88	362.67	363.27	363.11	363.67	363.13
100	362.75	362.50	362.31	362.92	362.77	363.33	362.75
75	362.38	362.13	361.94	362.56	362.43	363.00	362.38
50	362.00	361.75	361.58	362.21	362.08	362.67	362.00
25	361.63	361.38	361.21	361.85	361.74	362.33	361.63
00	361.25	361.00	360.85	361.50	361.40	362.00	361.25

NORTH LINE OF LINCOLN AVE

369.18	369.18	369.18	369.18	369.18	369.18	369.18	369.18
62.25	62.25	62.25	62.25	62.25	62.25	62.25	62.25
7.4	7.4	7.4	7.4	7.4	7.4	7.4	7.4
6.6	6.6	6.6	6.6	6.6	6.6	6.6	6.6
7.8	7.8	7.8	7.8	7.8	7.8	7.8	7.8
6.7	6.7	6.7	6.7	6.7	6.7	6.7	6.7
5.9	5.9	5.9	5.9	5.9	5.9	5.9	5.9
5.1	5.1	5.1	5.1	5.1	5.1	5.1	5.1
5.7	5.7	5.7	5.7	5.7	5.7	5.7	5.7
4.8	4.8	4.8	4.8	4.8	4.8	4.8	4.8
4.5	4.5	4.5	4.5	4.5	4.5	4.5	4.5
4.2	4.2	4.2	4.2	4.2	4.2	4.2	4.2
0.1	0.1	0.1	0.1	0.1	0.1	0.1	0.1
-0.5	-0.5	-0.5	-0.5	-0.5	-0.5	-0.5	-0.5
-0.3	-0.3	-0.3	-0.3	-0.3	-0.3	-0.3	-0.3
-0.6	-0.6	-0.6	-0.6	-0.6	-0.6	-0.6	-0.6
-0.5	-0.5	-0.5	-0.5	-0.5	-0.5	-0.5	-0.5
-0.3	-0.3	-0.3	-0.3	-0.3	-0.3	-0.3	-0.3
-0.2	-0.2	-0.2	-0.2	-0.2	-0.2	-0.2	-0.2
-0.2	-0.2	-0.2	-0.2	-0.2	-0.2	-0.2	-0.2
+0.1	+0.1	+0.1	+0.1	+0.1	+0.1	+0.1	+0.1
-0.2	-0.2	-0.2	-0.2	-0.2	-0.2	-0.2	-0.2

371.09	371.09	371.09	371.09	371.09	371.09	371.09	371.09
68.50	68.50	68.50	68.50	68.50	68.50	68.50	68.50
2.59	2.59	2.59	2.59	2.59	2.59	2.59	2.59
3.34	3.34	3.34	3.34	3.34	3.34	3.34	3.34
3.09	3.09	3.09	3.09	3.09	3.09	3.09	3.09
2.76	2.76	2.76	2.76	2.76	2.76	2.76	2.76
4.09	4.09	4.09	4.09	4.09	4.09	4.09	4.09
371.09	371.09	371.09	371.09	371.09	371.09	371.09	371.09
68.50	68.50	68.50	68.50	68.50	68.50	68.50	68.50
2.59	2.59	2.59	2.59	2.59	2.59	2.59	2.59
3.34	3.34	3.34	3.34	3.34	3.34	3.34	3.34
3.09	3.09	3.09	3.09	3.09	3.09	3.09	3.09
2.76	2.76	2.76	2.76	2.76	2.76	2.76	2.76
4.09	4.09	4.09	4.09	4.09	4.09	4.09	4.09
371.09	371.09	371.09	371.09	371.09	371.09	371.09	371.09
68.50	68.50	68.50	68.50	68.50	68.50	68.50	68.50
2.59	2.59	2.59	2.59	2.59	2.59	2.59	2.59
3.34	3.34	3.34	3.34	3.34	3.34	3.34	3.34
3.09	3.09	3.09	3.09	3.09	3.09	3.09	3.09
2.76	2.76	2.76	2.76	2.76	2.76	2.76	2.76
4.09	4.09	4.09	4.09	4.09	4.09	4.09	4.09

366.43	366.43	366.43	366.43	366.43	366.43	366.43	366.43
62.50	62.50	62.50	62.50	62.50	62.50	62.50	62.50
3.18	3.18	3.18	3.18	3.18	3.18	3.18	3.18
3.93	3.93	3.93	3.93	3.93	3.93	3.93	3.93
4.68	4.68	4.68	4.68	4.68	4.68	4.68	4.68
3.76	3.76	3.76	3.76	3.76	3.76	3.76	3.76
4.43	4.43	4.43	4.43	4.43	4.43	4.43	4.43
5.18	5.18	5.18	5.18	5.18	5.18	5.18	5.18

Indicate station offset, June 11-1913
 Dorman, Tex., Dennis

Stromans
 Belford,
 Deone

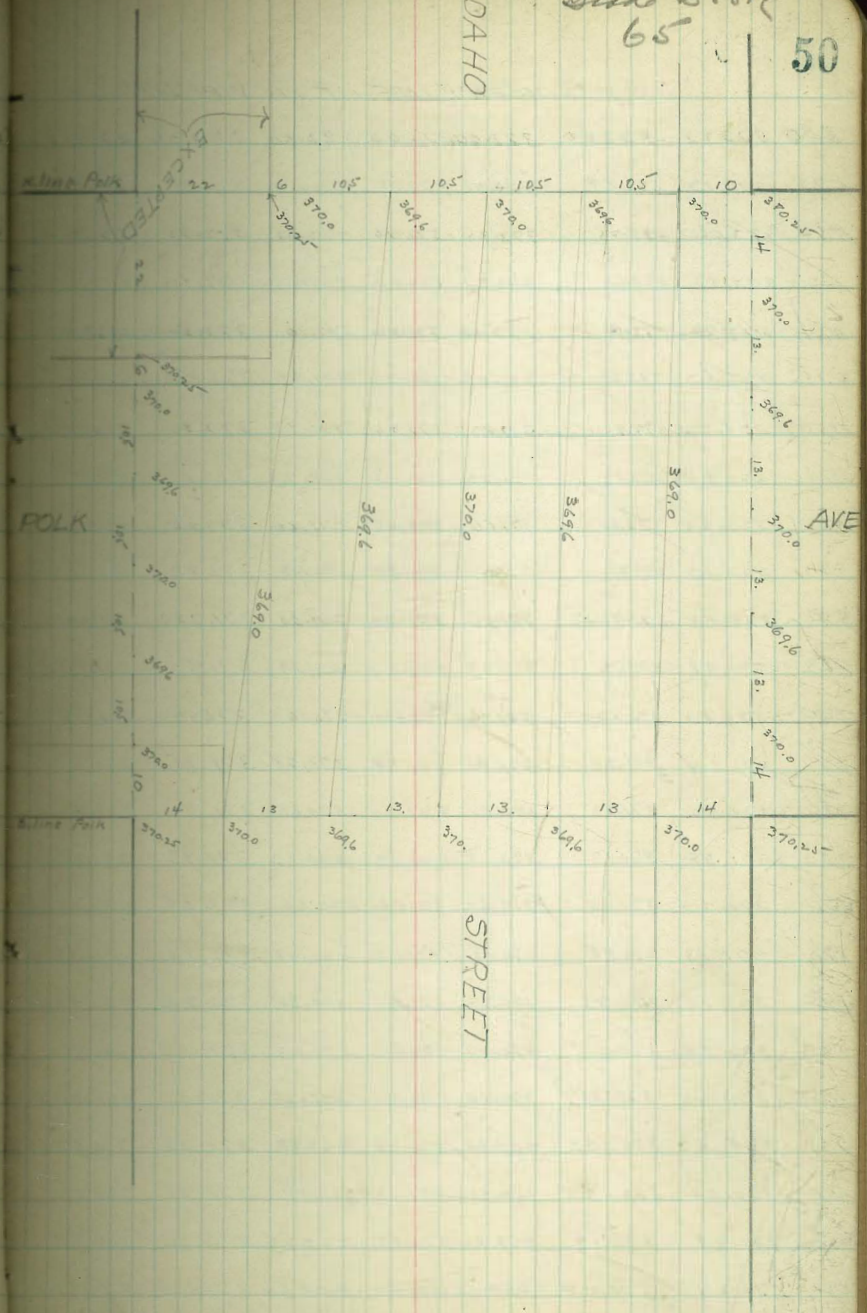
Dead Brook
65 50

IDAHO

NORTH LINE OF POLK AVE

N. Line 370.25	370.00	369.60	370.00	369.60	370.00	370.25
N. CURB	370.00 369.00	369.60	370.00	369.60	370.00 369.00	370.00
N. N.Y.	369.60	369.60	369.60	370.00	369.60	369.60
Center	370.00	370.00	370.00	370.00	370.00	370.00
S. 5/4	369.60	369.60	369.60	370.00	369.60	369.60
S. 5/8	370.00	369.00 370.00	369.60	370.00	369.60	369.00 370.00
S. 1/2	370.25	370.00	369.60	370.00	369.60	370.00

S. LINE OF POLK AVE



SOUTH LINE OF HOWARD AVE

N 600	373.25	373.00	372.60	373.00	372.60	373.00	372.25
N 575	373.13	372.88	372.48	372.88	372.48	372.88	372.13
N 550	373.00	372.75	372.35	372.75	372.35	372.75	372.00
525	372.88	372.63	372.23	372.63	372.23	372.63	372.88
N 500	372.92	372.50	372.10	372.50	372.10	372.50	372.92
475	372.63	372.38	371.98	372.38	371.98	372.38	372.63
450	372.50	372.25	371.85	372.25	371.85	372.25	372.50
425	372.38	372.13	371.73	372.13	371.73	372.13	372.38
S 400	372.25	372.00	371.60	372.00	371.60	372.00	372.25
375	372.13	371.88	371.48	371.88	371.48	371.88	372.13
S 350	372.00	371.75	371.35	371.75	371.35	371.75	372.00
325	371.88	371.63	371.23	371.63	371.23	371.63	371.88
S 300	371.75	371.50	371.10	371.50	371.10	371.50	371.75
275	371.63	371.38	370.98	371.38	370.98	371.38	371.63
250	371.50	371.25	370.85	371.25	370.85	371.25	371.50
225	371.38	371.13	370.73	371.13	370.73	371.13	371.38
200	371.25	371.00	370.60	371.00	370.60	371.00	371.25
175	371.13	370.88	370.48	370.88	370.48	370.88	371.13
150	371.00	370.75	370.35	370.75	370.35	370.75	371.00
125	370.88	370.63	370.23	370.63	370.23	370.63	370.88
100	370.75	370.50	370.10	370.50	370.10	370.50	370.75
75	370.63	370.38	369.98	370.38	369.98	370.38	370.63
S 50	370.50	370.25	369.85	370.25	369.85	370.25	370.50
25	370.38	370.13	369.73	370.13	369.73	370.13	370.38
0 00	370.25	370.00	369.60	370.00	369.60	370.00	370.25

NORTH LINE OF POLK AVE

377.90	377.90	377.90	377.90	377.90	377.90	377.90	377.90	377.90	377.90
76.75	71.00	71.00	71.25	71.25	71.50	71.50	71.75	71.75	72.00
7.05	6.80	6.80	6.55	6.55	6.30	6.30	6.05	6.05	5.80
5.2	4.8	4.8	4.5	4.5	4.2	4.2	3.9	3.9	3.6
-1.4	+1.9	+1.9	-0.4	-0.4	-0.9	-0.9	-1.4	-1.4	-1.9
E	W	W	E	E	W	W	E	E	W

377.90	377.90	377.90	377.90	377.90	377.90	377.90	377.90	377.90	377.90
72.00	72.25	72.25	72.50	72.50	72.75	72.75	73.00	73.00	73.25
5.80	5.55	5.55	5.30	5.30	5.05	5.05	4.80	4.80	4.55
4.2	3.8	3.8	3.5	3.5	3.2	3.2	2.9	2.9	2.6
+1.1	+0.8	+0.8	+2.0	+2.0	+2.1	+2.1	+2.0	+2.0	+1.7
E	E	E	W	W	E	E	W	W	E

April 22-13
 Bedford, Tenn
 Anderson's off at May 29-1913
 Bedford, Tenn

Anderson's station June 10-1913
 Tennessee, Tex, Tenn

Anderson's station June 19-1913
 Tennessee, Tex, Tenn

S. LINE OF EL CAJON AVE

338	376.75	376.00	375.40	375.30	374.85	375.00	375.30
325	376.13	375.88	375.29	375.41	374.76	374.92	375.17
300	375.91	375.66	375.09	375.22	374.60	374.77	375.00
275	375.69	375.44	374.88	375.04	374.43	374.63	374.81
250	375.47	375.22	374.67	374.85	374.26	374.45	374.73
225	375.25	375.00	374.46	374.67	374.10	374.33	374.61
200	375.03	374.78	374.26	374.48	373.93	374.18	374.43
175	374.80	374.55	374.05	374.30	373.76	374.04	374.29
150	374.58	374.33	373.84	374.11	373.60	373.89	374.14
125	374.36	374.11	373.64	373.93	373.43	373.74	373.99
100	374.14	373.89	373.43	373.74	373.27	373.59	373.84
75	373.92	373.67	373.22	373.56	373.10	373.44	373.69
50	373.69	373.44	373.01	373.37	372.93	373.30	373.55
25	373.47	373.22	372.81	373.19	372.77	373.15	373.40
00	373.25	373.00	372.60	373.00	372.60	373.00	373.25

379.74	379.74	379.74	379.74	379.74	379.74	379.74	379.74	379.74	379.74
78.57	78.57	78.57	78.57	78.57	78.57	78.57	78.57	78.57	78.57
5.8	5.8	5.8	5.8	5.8	5.8	5.8	5.8	5.8	5.8
0.0	0.0	0.0	0.0	0.0	0.0	0.0	0.0	0.0	0.0
W	E	E	W	W	E	E	W	W	E

379.74	379.74	379.74	379.74	379.74	379.74	379.74	379.74	379.74	379.74
78.57	78.57	78.57	78.57	78.57	78.57	78.57	78.57	78.57	78.57
5.8	5.8	5.8	5.8	5.8	5.8	5.8	5.8	5.8	5.8
0.0	0.0	0.0	0.0	0.0	0.0	0.0	0.0	0.0	0.0
W	E	E	W	W	E	E	W	W	E

checked & property. Curb on S' offset.
 Dominion Bedford Devine
 May 27 1913

Individual taken June 9th 1913. S' offset.
 Dominion, Tex Devine

checked subgrade June 19-1913
 Dominion, Tex, Devine

Dominion
 Bedford
 Devine

Dominion
 Bedford
 Devine

Dominion,
 Tex Devine

Dominion,
 Tex, Devine

[Blank lined page with red margin lines]

[Blank lined page with red margin lines and page number 54]

WODJNO

WODJNO

WV - MATSON

WV - MATSON

WV - MATSON

WV - MATSON

WV - MATSON

WV - MATSON

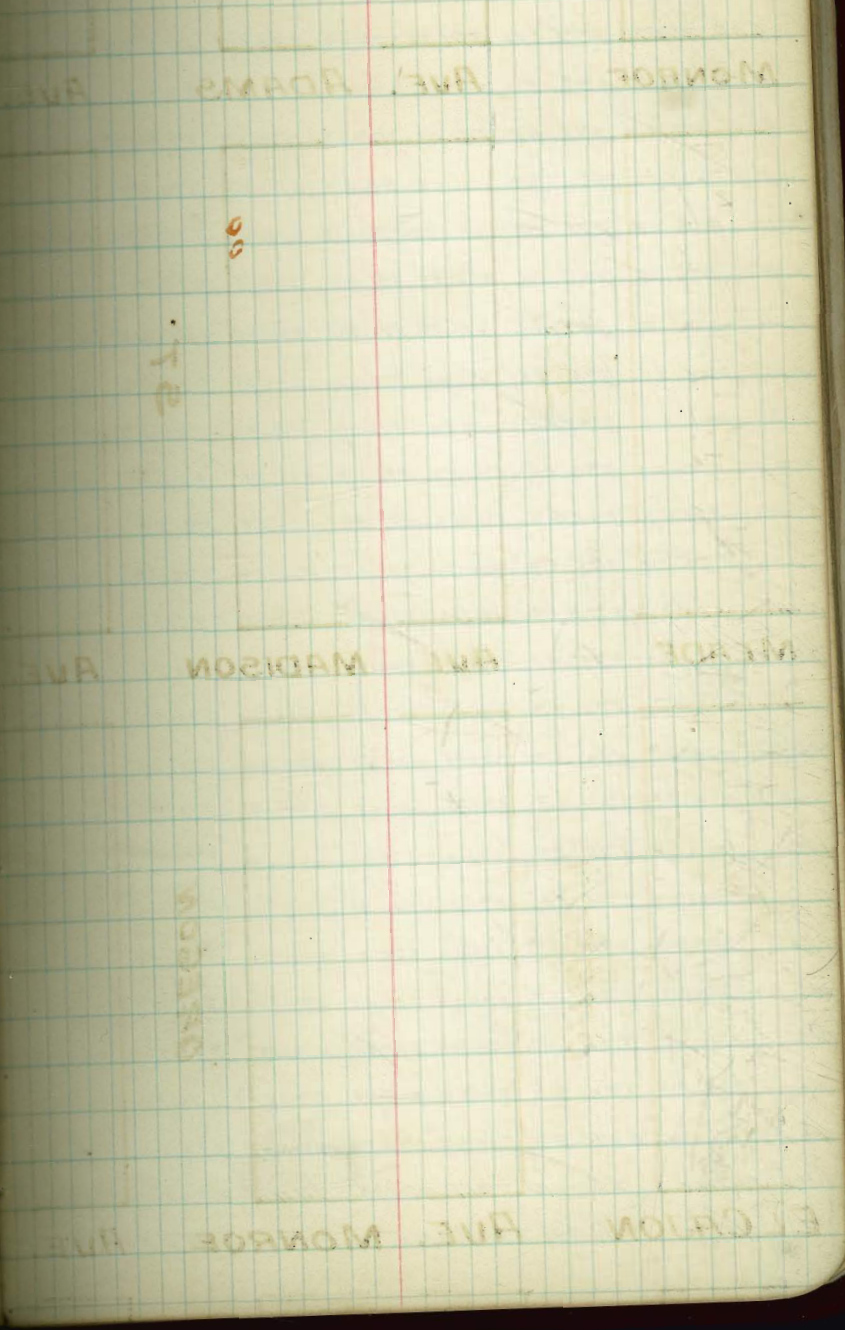
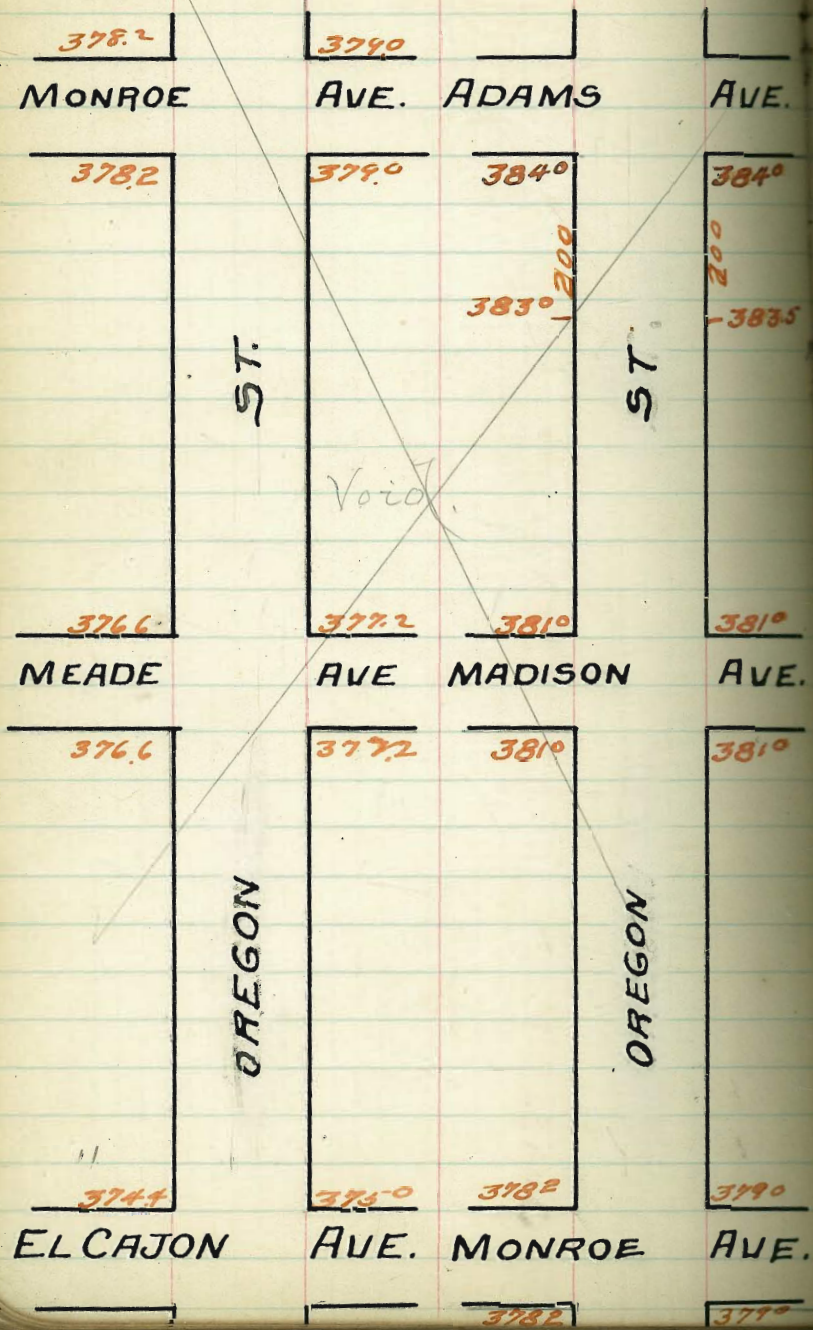
WV - MATSON

WV - MATSON

WV - MATSON

WV - MATSON

MAY 1912 14' WALKS 13' QUARTERS



SOUTH LINE OF Meade

600	376.85	376.60	376.36	376.90	376.60	377.20	377.40
575	376.74	376.51	376.26	376.81	376.51	377.11	377.30
550	376.67	376.42	376.17	376.72	376.47	377.02	377.20
525	376.52	376.33	376.08	376.63	376.33	376.93	377.10
500	376.48	376.23	375.98	376.53	376.23	376.83	377.00
475	376.39	376.14	375.89	376.44	376.14	376.74	376.90
450	376.30	376.05	375.80	376.35	376.05	376.65	376.80
425	376.21	375.96	375.71	376.26	375.96	376.56	376.70
400	376.12	375.87	375.62	376.17	375.87	376.47	376.60
375	376.03	375.78	375.53	376.08	375.78	376.38	376.50
350	375.93	375.68	375.43	375.98	375.68	376.28	376.40
325	375.84	375.59	375.34	375.89	375.59	376.19	376.30
300	375.75	375.50	375.25	375.80	375.50	376.10	376.20
275	375.66	375.41	375.16	375.71	375.41	376.01	376.10
250	375.57	375.32	375.07	375.62	375.32	375.92	376.00
225	375.48	375.23	374.98	375.53	375.23	375.83	375.90
200	375.38	375.13	374.89	375.43	375.13	375.73	375.80
175	375.29	375.04	374.80	375.34	375.04	375.64	375.70
150	375.20	374.95	374.71	375.25	374.95	375.55	375.60
125	375.11	374.86	374.62	375.16	374.86	375.46	375.50
100	375.02	374.77	374.53	375.07	374.77	375.37	375.40
75	374.93	374.68	374.43	374.98	374.68	375.28	375.30
50	374.83	374.58	374.34	374.88	374.58	375.18	375.20
25	374.74	374.49	374.24	374.79	374.49	375.09	375.10
00	374.65	374.40	374.15	374.70	374.40	375.00	375.10

NORTH LINE OF EL CATON AVE.

NORTH LINE of Meade

NL 376.85 376.60 376.35 376.90 376.60 377.20 377.40

Ncb 376.60 376.60 375.75 375.90 375.05 377.20 377.40
375.60 376.20

N $\frac{1}{4}$ 376.20 376.30 376.40 376.50 376.60 376.70 376.80

Center 376.60 376.00 376.80 376.90 377.00 377.10 377.20

S $\frac{1}{4}$ 376.20 376.30 376.40 376.50 376.60 376.70 376.80

Scb 376.60 375.60 376.60 375.75 375.90 375.05 377.20 377.40
376.20

Sl 376.85 376.60 376.35 376.90 376.60 377.20 377.40

South Line of Meade

SOUTH LINE of Montoe Ave.

600	37846	37820	37800	37860	37840	37900	37920
575	37838	37813	37793	37853	37833	37893	37911
550	37831	37807	37786	37846	37825	37885	37910
525	37825	37800	37779	37839	37818	37878	37903
500	37818	37793	37773	37832	37810	37870	37895
475	37812	37787	37766	37825	37803	37863	37888
450	37805	37780	37759	37817	37795	37855	37880
425	37798	37773	37752	37810	37788	37848	37873
400	37792	37767	37746	37803	37780	37840	37865
375	37785	37760	37738	37796	37773	37833	37858
350	37778	37753	37731	37789	37766	37825	37850
325	37772	37747	37724	37782	37758	37818	37843
300	37765	37740	37718	37775	37750	37810	37835
275	37758	37733	37711	37768	37743	37803	37828
250	37752	37727	37704	37761	37735	37795	37820
225	37745	37720	37697	37754	37728	37788	37813
200	37738	37713	37690	37747	37720	37780	37805
175	37732	37707	37683	37740	37713	37773	37798
150	37725	37700	37676	37732	37705	37765	37790
125	37718	37693	37669	37725	37698	37758	37783
100	37712	37687	37663	37718	37690	37750	37775
75	37705	37680	37656	37711	37683	37743	37768
50	37698	37673	37649	37704	37675	37735	37760
25	37692	37667	37643	37697	37668	37728	37753
00	37685	37660	37635	37690	37660	37720	37746

NORTH LINE of Meade Ave.

NORTH LINE of MOTTROE

N.L. 378.45 378.20 378.00 378.60 378.40 378.00 378.20

N.Cb 378.20 378.20 378.40 378.60 378.80 378.00 378.00
378.20 378.00

N/4 378.80 378.84 378.07 378.20 378.33 378.46 378.63

Center 378.20 378.34 378.47 378.60 378.73 378.86 378.99

S/4 378.80 378.84 378.07 378.20 378.33 378.46 378.63

Sb 378.20 378.20 378.40 378.60 378.80 378.00 378.00
378.20 378.40 378.60 378.80 378.00 378.00

S.L. 378.45 378.20 378.00 378.60 378.40 378.00 378.20

SOUTH LINE of MOTTROE

SOUTH LINE OF MADISON AVE

600	381.25	381.00	380.60	381.00	380.60	381.00	381.25
575	381.13	380.88	380.49	380.90	380.51	380.92	381.17
550	381.02	380.77	380.38	380.80	380.42	380.83	381.08
525	380.90	380.65	380.27	380.70	380.32	380.75	381.00
500	380.78	380.53	380.17	380.60	380.23	380.67	380.92
475	380.67	380.42	380.06	380.50	380.14	380.58	380.83
450	380.57	380.30	379.95	380.40	380.05	380.50	380.75
425	380.43	380.18	379.84	380.30	379.96	380.42	380.67
400	380.32	380.07	379.73	380.20	379.87	380.33	380.58
375	380.20	379.95	379.62	380.10	379.77	380.25	380.50
350	380.08	379.83	379.52	380.00	379.68	380.17	380.42
325	379.97	379.72	379.41	379.90	379.59	380.08	380.33
300	379.85	379.60	379.30	379.80	379.50	380.00	380.25
275	379.73	379.48	379.19	379.70	379.41	379.92	380.17
250	379.62	379.37	379.08	379.60	379.32	379.83	380.08
225	379.50	379.25	378.97	379.50	379.22	379.75	380.00
200	379.38	379.13	378.87	379.40	379.13	379.67	379.92
175	379.27	379.02	378.76	379.30	379.04	379.58	379.83
150	379.15	378.90	378.65	379.20	378.95	379.50	379.75
125	379.03	378.78	378.54	379.10	378.86	379.42	379.67
100	379.92	378.67	378.43	379.00	378.77	379.33	379.58
75	378.80	378.55	378.32	378.90	378.67	379.25	379.50
50	378.68	378.43	378.22	378.80	378.58	379.17	379.42
25	378.57	378.32	378.11	378.70	378.49	379.08	379.33
00	378.45	378.20	378.00	378.60	378.40	379.00	379.25

NORTH LINE OF MONROE AVE

NORTH LINE OF MADISON AVE

N.L 381.25 381.00 380.60 381.00 380.60 381.00 381.25

N.Cb 381.00 381.00 380.60 381.00 380.60 381.00 381.00
380.00 380.00

N/4 380.60 380.60 380.60 381.00 380.60 380.60 380.60

Center 381.00 381.00 381.00 381.00 381.00 381.00 381.00

S/4 380.60 380.60 380.60 381.00 380.60 380.60 380.60

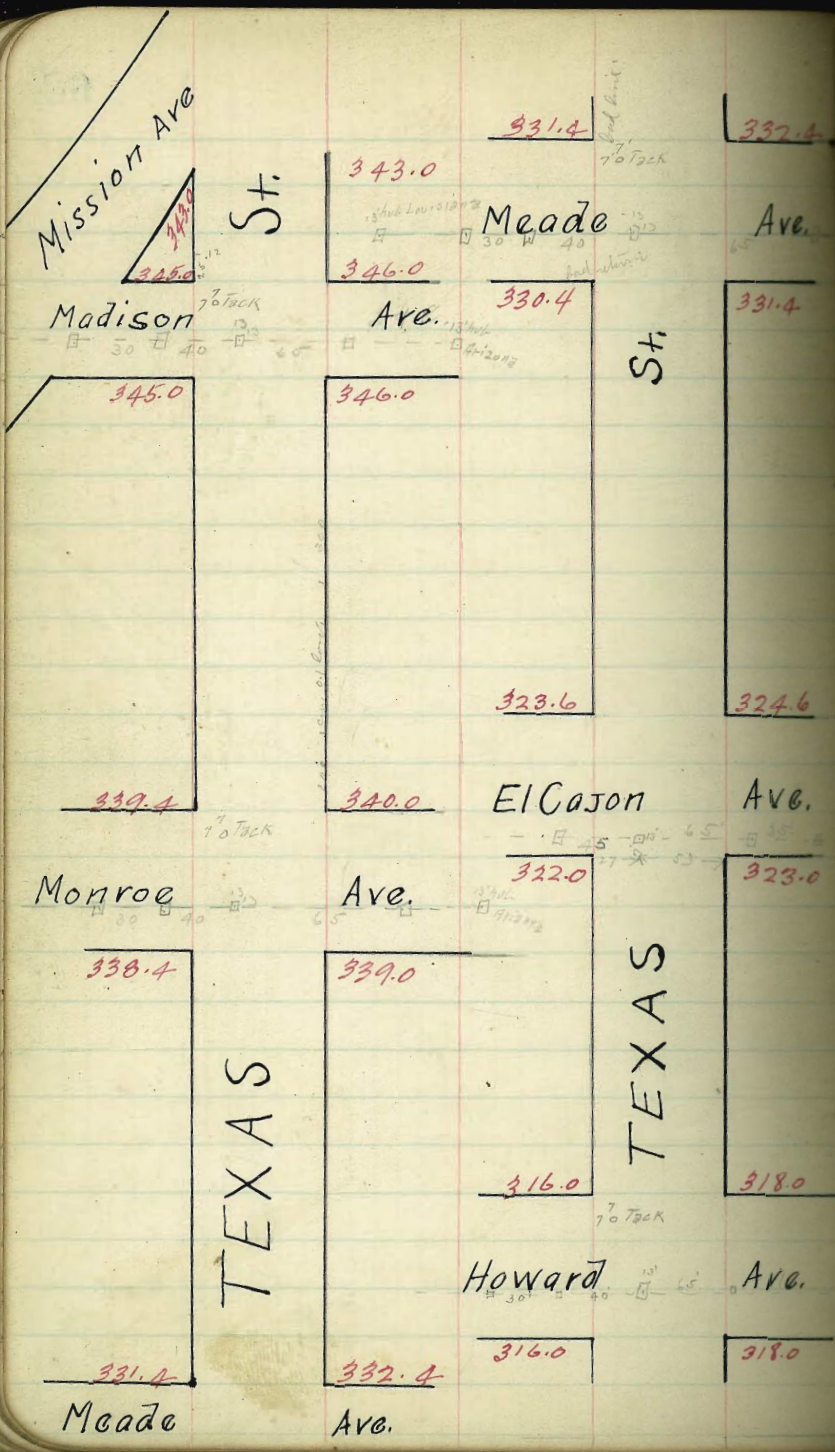
Scb 381.00 380.00 380.60 381.00 380.60 380.00 381.00
381.00 381.00

S Line 381.25 381.00 380.60 381.00 380.60 381.00 381.25

SOUTH LINE OF ADAMS

600	384.75	384.00	383.60	38400	383.60	38400	384.25
575	384.13	383.88	383.49	383.91	383.52	383.94	384.19
550	384.00	383.75	383.38	383.91	383.43	383.85	384.13
525	383.88	383.63	383.27	383.72	383.34	383.82	384.07
500	383.75	383.50	383.17	383.63	383.25	383.75	384.00
475	383.63	383.38	383.06	383.53	383.17	383.69	383.94
450	383.50	383.25	382.95	383.44	383.08	383.63	383.87
425	383.38	383.13	382.84	383.34	382.99	383.57	383.83
400	383.25	383.00	382.93	383.25	382.90	383.50	383.75
375	383.13	382.88	382.60	383.17	382.96	383.34	383.69
350	383.00	382.75	382.46	382.97	382.61	383.19	383.54
325	382.88	382.63	382.33	382.83	382.47	383.03	383.47
300	382.75	382.50	382.20	382.69	382.33	382.88	383.39
275	382.63	382.38	382.06	382.55	382.18	382.72	383.31
250	382.50	382.25	381.93	382.41	382.04	382.56	383.23
225	382.38	382.13	381.80	382.27	381.89	382.41	383.15
200	382.25	382.00	381.67	382.13	381.75	382.25	383.07
175	382.13	381.88	381.53	381.98	381.61	382.09	383.00
150	382.00	381.75	381.40	381.84	381.46	381.94	382.92
125	381.88	381.63	381.27	381.70	381.32	381.78	382.84
100	381.75	381.50	381.13	381.56	381.18	381.63	382.76
75	381.63	381.38	381.00	381.42	381.03	381.47	382.68
50	381.50	381.25	380.87	381.28	380.89	381.31	382.60
25	381.38	381.13	380.73	381.14	380.74	381.16	382.52
00	381.25	381.00	380.60	381.00	380.60	381.00	382.44

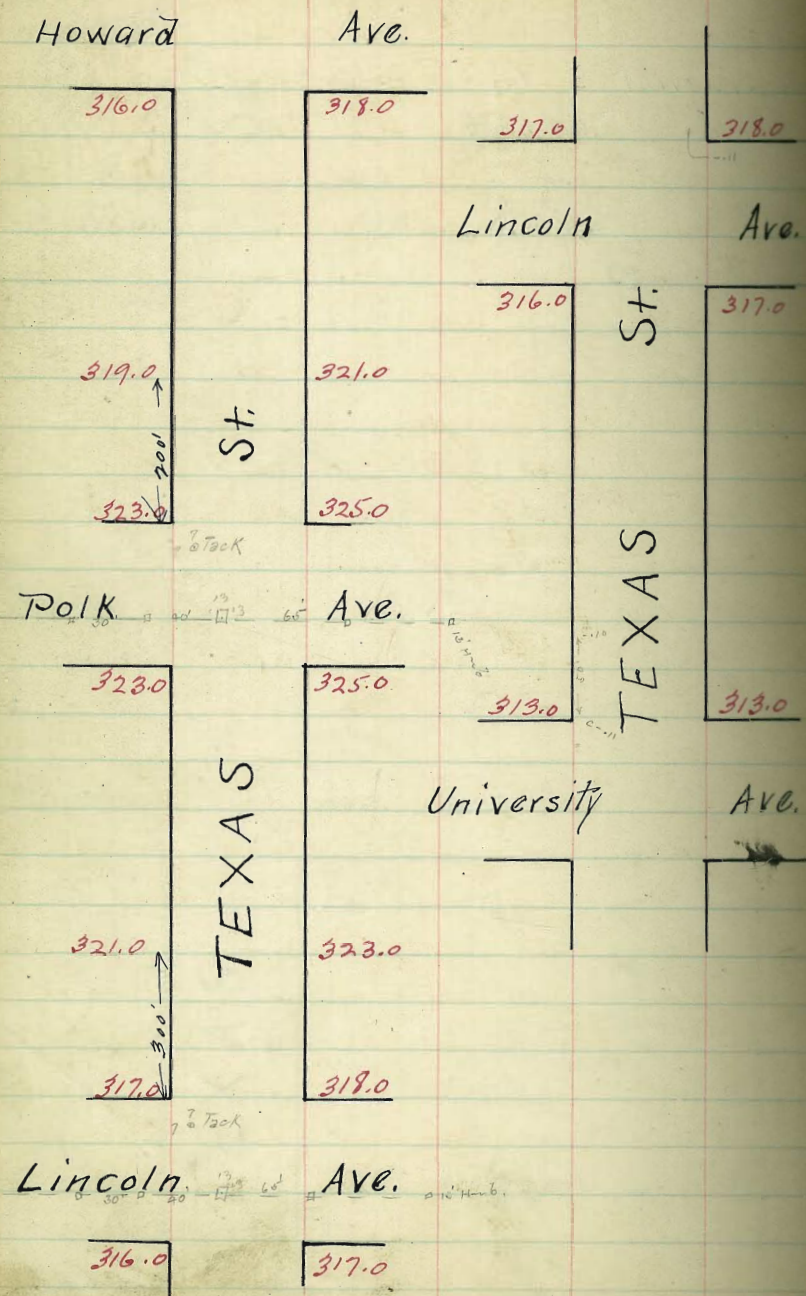
NORTH LINE OF MADISON AVE



Note:
 Sidewalks 14.0'
 114' 13.6'

$$\begin{array}{r} 323.75 \\ 18.00 \\ \hline 341.75 \\ 5.45 \\ \hline 347.20 \\ 1.23 \\ \hline 348.43 \end{array}$$

$$\begin{array}{r} 322.63 \\ 18.00 \\ \hline 340.63 \\ 1.18 \\ \hline 341.81 \\ 6.76 \\ \hline 348.57 \end{array}$$



Texas St.

67

N. Line of Monroe Ave.

N. Line 339.65 339.4 339.15 339.70 339.45 340.0 340.25

N. Curd. 339.4 339.4
338.4 338.98 339.53 339.28 340.0 340.0
339.0 339.0

N. 1/4 338.8 338.15 338.81 339.36 339.11 338.75 339.4

Center 338.9 337.90 338.65 339.20 338.95 338.50 339.50

S. 1/4 338.25 337.65 338.48 339.03 338.78 338.25 338.85

S. Curd. 338.4 337.4
338.4 338.92 338.87 338.62 338.0 339.0
339.0

S. Line 338.65 338.4 338.15 338.7 338.45 339.0 339.25

S. Line of Monroe Ave.

Texas St.

N. Line of Meado Ave.

N. Line 331.65 331.4 331.25 331.9 331.80 332.4 332.65

N. Curb 331.4 331.4 331.08 331.73 331.63 332.4 332.4
331.4

N. 1/4 330.8 330.15 330.91 331.56 331.46 331.15 331.6

Center 330.9 329.90 330.74 331.39 331.30 330.90 331.90

5/8 330.25 329.65 330.58 331.23 331.13 330.65 331.25

S Curb 330.4 329.4 330.4 331.06 330.95 330.4 331.4
330.4 331.4

S Line 330.65 330.4 330.25 330.90 330.80 331.4 331.65

S. Line of Meado Ave.

Texas St.

S. Line of El Cajon Ave.

338'							
S. Line 322.25	322.0	321.85	321.5	322.4	323.0	322.2	
300	321.57	321.32	321.20	321.88	321.84	322.44	322.2
275	321.13	320.88	320.77	321.47	321.47	322.07	322.2
250	320.69	320.44	320.35	321.07	321.10	321.70	321.7
225	320.24	319.99	319.92	320.66	320.73	321.33	321.5
200	319.80	319.55	319.50	320.25	320.36	320.96	321.2
175	319.35	319.10	319.07	319.85	319.99	320.59	320.8
150	318.91	318.66	318.65	319.44	319.62	320.22	320.4
125	318.46	318.21	318.22	319.03	319.25	319.85	320.10
100	318.02	317.77	317.80	318.63	318.88	319.48	319.73
75	317.58	317.33	317.37	318.22	318.51	319.11	319.36
50	317.14	316.89	316.95	317.81	318.14	318.74	318.99
25	316.69	316.44	316.52	317.41	317.77	318.37	318.62
N. Line 316.25	316.0	316.1	317.0	317.4	318.0	318.25	

N. Line of Howard Ave.

N. Line 316.25	316.0	316.1	317.0	317.4	318.0	318.25
N. Cur 316.0	316.0	315.50	316.0	316.50	317.0	318.0
	315.0				317.0	

N. 1/4 315.60	315.95	316.27	316.60	316.92	317.25	317.60
---------------	--------	--------	--------	--------	--------	--------

Center 316.0	316.25	316.67	317.0	317.32	317.65	318.00
--------------	--------	--------	-------	--------	--------	--------

5/4 315.60	315.95	316.27	316.60	316.92	317.25	317.60
------------	--------	--------	--------	--------	--------	--------

S. Cur 315.0	315.0					
316.0	316.0	315.50	316.0	316.50	317.0	318.0
					318.0	318.0

S. Line 316.25	316.0	316.10	317.0	317.40	318.0	318.25
----------------	-------	--------	-------	--------	-------	--------

S. Line of Howard Ave.

323.82	323.82	323.82	323.82	323.82	323.82	323.82	323.82	323.82	323.82
11.20	18.20	18.99	17.14	18.02	18.73	20.47	18.91	19.80	21.21
7.67	5.57	4.83	6.69	5.80	4.07	3.35	4.91	4.02	2.61
7.5	4.5	4.0	6.7	6.0	3.0	2.7	5.2	4.7	2.2
18.1	11.1	10.8	0.0	-0.2	10.6	10.7	-0.3	-0.7	10.9

323.82	323.82	323.82	323.82	323.82	323.82	323.82	323.82	323.82	323.82
21.95	20.69	21.07	22.69	23.25	22.20				
1.87	3.13	2.25	1.13	0.57	1.57				
1.5	3.0	2.4	0.5	0.3	2.0				
17.7	7.01	-0.2	7.06	10.3	-0.9				

319.55	319.55	319.55	319.55	326.05	326.05
16.00	16.00	18.00	18.00	22.00	20.50
3.50	3.50	1.50	1.00	4.00	0.50

april 7-1913
Dorman, Bedford
Dormie

July 15 - include station Dorman, Bedford, Dormie

325.11	325.11	325.11	325.11	325.11	325.11
22.00	23.00	16.00	18.00		
3.11	2.11	9.11	7.11		

included and graded at necessary station
Dorman, Miller, Shaw.

328.09	328.09	328.09	328.09	328.09	328.09
22.00	21.85	22.00	22.40	23.00	
6.09	6.24	5.58	5.68	5.09	

Property line must be
cut back & fixed up.
Dorman, Miller, Shaw
Apr. 18-1913.

328.09	328.09	328.09	328.09	328.09	328.09
23.60	23.45	24.10	24.00	24.60	
4.47	4.64	3.97	3.09	3.49	

Texas St.

S. Line of Howard Ave.

500	316.25	316.0	316.10	317.0	317.4	318.0	318.25
575	316.44	316.19	316.29	317.19	317.59	318.09	318.44
550	316.62	316.37	316.47	317.37	317.77	318.37	318.62
525	316.81	316.56	316.66	317.56	317.96	318.56	318.81
500	317.0	316.75	316.85	317.75	318.15	318.75	319.0
475	317.19	316.94	317.04	317.94	318.34	318.94	319.19
450	317.37	317.12	317.22	318.12	318.52	319.12	319.37
425	317.56	317.31	317.41	318.31	318.71	319.31	319.56
400	317.75	317.50	317.60	318.50	318.90	319.50	319.75
375	317.94	317.69	317.79	318.69	319.09	319.69	319.94
350	318.12	317.87	317.97	318.87	319.27	319.87	320.12
325	318.31	318.06	318.16	319.06	319.46	320.06	320.31
300	318.50	318.25	318.35	319.25	319.65	320.25	320.50
275	318.69	318.44	318.54	319.44	319.84	320.44	320.69
250	318.87	318.62	318.72	319.62	320.02	320.62	320.87
225	319.06	318.81	318.91	319.81	320.21	320.81	321.06
200	319.25	319.0	319.10	320.0	320.4	321.0	321.25
175	319.75	319.50	319.60	320.50	320.90	321.50	321.75
150	320.25	320.0	320.10	321.0	321.40	322.0	322.25
125	320.75	320.50	320.60	321.50	321.90	322.50	322.75
100	321.25	321.00	321.10	322.0	322.40	323.0	323.25
75	321.75	321.50	321.60	322.50	322.90	323.50	323.75
50	322.25	322.0	322.10	323.0	323.40	324.0	324.25
25	322.75	322.50	322.60	323.50	323.90	324.50	324.75
N. Line	323.25	323.0	323.10	324.0	324.4	325.0	325.25

N. Line of Polk Ave.

326.74	326.74	326.74	326.74	326.74	326.74	326.74	326.74
2.49	1.99	2.49	1.49	5.49	3.49	4.49	6.49
2.1	2.0	7.5	7.9	3.7	1.0	-0.4	+1.6
2.0	1.1	0.8	6.4	2.0	2.0	7.5	7.9
2.1	1.1	0.8	6.4	2.0	2.0	7.5	7.9
2.1	1.1	0.8	6.4	2.0	2.0	7.5	7.9

321.85	321.85	321.85	321.85	321.85	321.85	321.85	321.85
1.58	1.58	1.58	1.58	1.58	1.58	1.58	1.58
2.95	2.95	3.23	6.7	5.2	2.7	4.04	10.9
1.0	2.0	1.7	6.7	5.2	2.7	4.04	10.9
1.1	4.09	1.15	-1.5	4.04	10.9		

322.79	322.79	322.83	322.83	322.83	322.83	322.83	322.83
23.00	25.00	23.00	25.00	19.00	19.00	21.00	21.00
3.79	1.79	3.83	1.83	7.83	5.83	5.83	6.41

Indevalli station May 19-1912
 Common, Bedford, Devere

322.49	322.49	322.89	322.89	322.89	322.89	322.89	322.89
19.00	21.00	23.00	25.00	19.00	19.00	21.00	21.00
3.49	1.49	3.89	1.89	7.89	5.89	5.89	6.41

checked out 0.75 July 1-1913
 Common, Tex.

322.25	322.25	322.25	322.25	322.25	322.25	322.25	322.25
16.10	17.00	17.00	17.00	17.00	17.00	17.00	17.00
6.18	5.28	5.28	4.88	4.88	4.88	4.88	4.88

checked out grade
 not necessary at this
 Aug 25-1913

Common, Miller, Shant

324.99	324.99	324.99	324.99	324.99	324.99	324.99	324.99
19.00	19.10	20.00	20.40	21.00	21.00	21.00	21.00
5.99	6.89	4.99	4.59	3.99	3.99	3.99	3.99

Change of Grade.
 16.00 16.10 17.00 17.40 18.00
 4.60 4.85 3.65 3.25 2.65

Bill in good shape, except that high % averages about 125
 low from station 0 to 1450. Property line must be
 out back. Common, Miller, Shant Sep. 18-1913

Texas St.

N. Line of Polk Ave.

5 N. Line 323.25 323.0 323.1 324.0 324.40 325.0 325.25

55 N. Curb 323.0 323.0 323.1 324.0 324.4 325.0 325.0
 322.0 324.0

50 N. 1/4 322.60 322.80 322.95 324.0 324.3 324.6 324.6

45 Center 323.00 323.35 323.67 324.0 324.32 324.65 325.0

40 S. 1/4 322.60 322.80 322.95 324.0 324.3 324.6 324.6

35 S. Curb. 323.00 322.0 323.0 323.1 324.0 324.4 324.0 325.0 325.0

30 S. Line 323.25 323.0 323.1 324.0 324.4 325.0 325.25

S. Line of Polk Ave

Texas St.

S. Line of Polk Ave.

600'									
S. Line 322.25	323.0	323.1	324.0	324.4	325.0	325.9	326.8	327.7	328.6
575	323.08	322.83	322.98	323.83	324.23	324.83	325.43	326.03	326.63
550	322.92	322.67	322.77	323.67	324.07	324.67	325.27	325.87	326.47
525	322.75	322.50	322.60	323.50	323.90	324.50	325.10	325.70	326.30
500	322.58	322.33	322.43	323.33	323.73	324.33	324.93	325.53	326.13
475	322.42	322.17	322.27	323.17	323.57	324.17	324.77	325.37	325.97
450	322.25	322.0	322.10	323.0	323.40	324.0	324.60	325.20	325.80
425	322.08	321.83	321.93	322.83	323.23	323.83	324.43	325.03	325.63
400	321.92	321.67	321.77	322.67	323.07	323.67	324.27	324.87	325.47
375	321.75	321.50	321.60	322.50	322.90	323.50	324.10	324.70	325.30
350	321.58	321.33	321.43	322.33	322.73	323.33	323.93	324.53	325.13
325	321.42	321.17	321.27	322.17	322.57	323.17	323.77	324.37	324.97
300	321.25	321.0	321.10	322.0	322.40	323.0	323.60	324.20	324.80
275	321.08	320.83	320.93	321.83	322.23	322.83	323.43	324.03	324.63
250	320.92	320.67	320.77	321.67	322.07	322.67	323.27	323.87	324.47
225	320.75	320.50	320.60	321.50	321.90	322.50	323.10	323.70	324.30
200	320.58	320.33	320.43	321.33	321.73	322.33	322.93	323.53	324.13
175	320.42	320.17	320.27	321.17	321.57	322.17	322.77	323.37	323.97
150	320.25	320.0	320.10	321.0	321.40	322.0	322.60	323.20	323.80
125	320.08	320.83	320.93	321.83	322.23	322.83	323.43	324.03	324.63
100	320.92	320.67	320.77	321.67	322.07	322.67	323.27	323.87	324.47
75	320.75	320.50	320.60	321.50	321.90	322.50	323.10	323.70	324.30
50	320.58	320.33	320.43	321.33	321.73	322.33	322.93	323.53	324.13
25	320.42	320.17	320.27	321.17	321.57	322.17	322.77	323.37	323.97
N. Line 317.25	317.0	316.85	317.50	317.4	318.0	318.25	318.5	318.75	319.0

N. Line of Lincoln Ave.

327.23	327.23	327.23	327.23	327.23	327.23	327.23	327.23	327.23	327.23
17.25	18.25	19.05	17.92	18.58	19.92	20.70	19.25	17.92	22.23
9.48	9.78	8.15	9.31	8.65	7.31	6.48	7.98	7.81	5.65
11.0	9.5	9.0	9.5	9.1	7.4	5.8	9.4	5.2	4.9
3.0	+0.5	+0.2	-0.2	-0.4	-0.1	+0.6	-0.4	-1.0	+0.8

327.23	327.23	327.23	327.23	327.23	327.23	327.23	327.23	327.23	327.23
21.51	26.58	21.25	23.25	23.58	21.58	21.92	23.92	24.25	22.25
4.81	6.65	5.98	3.99	3.65	5.65	5.31	3.31	2.98	4.98
3.65	9.5	2.9	2.9	2.1	7.0	6.8	7.5	1.2	6.4
1.3	-0.2	-0.7	+1.2	+1.6	-1.3	-1.5	+1.8	+1.8	-1.4

327.23	327.23	327.23	327.23	327.23	327.23	327.23	327.23	327.23	327.23
21.51	25.00	24.67	22.67	22.83	24.33	24.00	22.00	21.67	23.67
4.51	2.57	2.94	4.84	5.19	3.18	3.57	5.51	5.84	3.84
327.51	327.51	327.51	327.51	327.51	327.51	327.51	327.51	327.51	327.51
23.33	21.83	21.00	23.00	22.7	20.33	19.67	21.33	20.50	19.00
4.19	6.19	6.07	4.07	5.34	7.18	7.84	6.19	7.01	9.51
7.18			7.18				7.09		

327.51	327.51	327.51	327.51	327.51	327.51	327.51	327.51	327.51	327.51
19.33	18.67	18.83	17.67	17.00	18.00				
9.13	7.54	9.64	9.84	10.51	9.51				

327.51	327.51	327.51	327.51	327.51	327.51	327.51	327.51	327.51	327.51
23.00	22.00	21.00	23.00	17.00	18.00				
4.89	1.39	5.00	3.35	5.00	4.00				

327.51	327.51	327.51	327.51	327.51	327.51	327.51	327.51	327.51	327.51
23.00	23.10	24.00	24.90	25.00	23.00	23.00	22.00	21.00	23.00
4.60	4.50	3.60	3.20	4.60			4.60	3.00	4.60
							2.60	2.00	2.60

Property line cannot be cut back & cleared up.
 app'd to 25' low from 320.05 to 320.00.
 Dorman, Miller, Mean, Sep 19-1913

Dorman, Bedford, Devine

Dorman, Bedford, Devine

Sidewalk, other on 13' affect.
 Dorman, Bedford, Devine

Checked and OK except E Cor of NE section at
 Lincoln is all low. Dorman, July July 2-1913.

Checked subgrade & cut stakes where needed
 Aug 25-1913 Dorman, Miller, Mean

Texas St.

N. Line of Lincoln Ave.

N. Line 317.25 317.0 316.85 317.50 317.40 318.0 317.5

51

N. Curb 317.0 317.0 316.67 317.32 317.22 318.0 317.0
316.0 317.0

51

55

N. 1/4 316.7 315.75 316.51 317.16 317.06 316.75 317.4

53

50

Center 316.50 315.50 316.35 317.0 316.90 316.50 317.5

47

45

S. 1/4 315.85 315.25 316.19 316.84 316.74 316.25 316.15

43

41

S. Curb 316.0 315.0 316.02 316.67 316.57 316.0 317.0
316.0 317.0

37

35

S. Line 316.25 316.0 315.85 316.50 316.4 317.0 317.25

33

30

S. Line of Lincoln Ave.

27

20

22

20

17

15

12

10

7

5

2

1

316.08
6.19
316.21

Texas St.

S. Line of Lincoln Ave.

600'							
S. Line 316.25	316.0	315.85	316.50	316.40	317.0	317.2	
575	316.12	315.87	315.72	316.35	316.24	316.87	
550	316.0	315.75	315.58	316.21	316.08	316.66	
525	316.87	315.62	315.44	316.06	315.92	316.50	
500	315.75	315.50	315.31	315.91	315.77	316.33	
475	315.62	315.37	315.17	315.77	315.61	316.17	
450	315.50	315.25	315.04	315.62	315.45	316.0	
425	315.37	315.12	314.90	315.48	315.29	315.83	
400	315.25	315.0	314.77	315.33	315.13	315.66	
375	315.12	314.87	314.63	315.19	314.97	315.50	
350	315.0	314.75	314.49	315.04	314.82	315.33	
325	314.87	314.62	314.36	314.90	314.66	315.17	
300	314.75	314.50	314.22	314.75	314.50	315.0	
275	314.62	314.37	314.09	314.60	314.34	314.83	
250	314.50	314.25	313.95	314.46	314.18	314.66	
225	314.37	314.12	313.82	314.31	314.02	314.50	
200	314.25	314.0	313.68	314.17	313.87	314.33	
175	314.12	313.87	313.55	314.02	313.71	314.17	
150	314.0	313.75	313.41	313.87	313.55	314.0	
125	313.87	313.62	313.28	313.73	313.39	313.83	
100	313.75	313.50	313.14	313.58	313.23	313.66	
75	313.62	313.37	313.0	313.44	313.07	313.50	
50	313.50	313.25	312.87	313.29	312.92	313.33	
25	313.37	313.12	312.73	313.14	312.76	313.17	
N. Line 313.25	313.0	312.6	313.0	312.6	313.0	313.25	

N. Line of University Ave.

317.75	317.75	317.75	317.75	317.75	317.75	317.75	317.75
13.25	13.25	13.50	13.50	13.71	13.71	14.00	14.25
6.00	6.4	5.0	3.9	3.6	3.6	4.0	3.7
+0.5	+0.1	+1.3	+2.3	+2.2	+1.9	+1.8	+2.3
319.80	319.80	319.80	319.80	319.80	319.80	319.80	319.80
14.00	14.91	15.25	14.75	15.00	15.89	15.91	15.25
5.00	4.97	4.85	5.05	4.80	4.82	3.97	4.55
2.1	2.6	3.0	2.1	4.3	3.6	3.5	4.5
+1.2	+2.3	+1.6	+1.0	0.2	+0.6	+0.9	-0.5

14 April 1913
Dorman, Bedford, Tennie

sidewalk finish stakes on E. off. 1913
Dorman, Tex. Deane

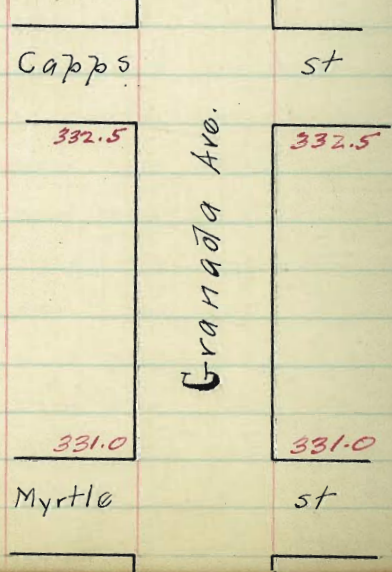
sidewalk stakes on E. off. June 20 - 1913
Dorman, Tex. Deane

Auto will average at least
auto off. uline shown in
sketch
Dorman, Miller, Williams
Sep. 13 - 1913
Property line must be
cut back 9 parking
cleared up.

Granada Ave.
S. Line of Capps St.

300'							
S. Line	332.75	332.5	332.10	332.5	332.10	332.5	332.75
275	332.62	332.37	331.97	332.37	331.97	332.37	332.62
250	332.50	332.25	331.85	332.25	331.85	332.25	332.50
225	332.37	332.12	331.72	332.12	331.72	332.12	332.37
200	332.25	332.0	331.60	332.0	331.60	332.0	332.25
175	332.12	331.87	331.47	331.87	331.47	331.87	332.12
150	332.0	331.75	331.35	331.75	331.35	331.75	332.0
125	331.87	331.62	331.22	331.62	331.22	331.62	331.87
100	331.75	331.50	331.10	331.50	331.10	331.50	331.75
75	331.62	331.37	330.97	331.37	330.97	331.37	331.62
50	331.50	331.25	330.85	331.25	330.85	331.25	331.50
25	331.37	331.12	330.72	331.12	330.72	331.12	331.37
N. Line	331.25	331.0	330.60	331.0	330.60	331.0	331.25

N. Line of Myrtle St.



B.M. 30 W & Capps.

336.76			6.22
4.56			331.10 J.P.
337.32	4.1		
332.75	332.5	332.1	
4.57	4.82	5.22	
332.1	332.25	331.85	
4.82	5.07	5.47	
332.25	332.0	331.60	
5.07	5.32	5.72	
332.0	331.75	331.35	
5.32	5.57	5.97	
331.75	331.50	331.10	
5.57	5.82	6.22	
331.50	331.25	330.85	
5.82	6.07	6.47	
331.25	331.0	330.60	
6.07	6.32	6.72	

Lehulds
Taper
attest
Sept. 30/12
Chk. O.K.

Dalbat St

♀ 11' from ♀

606 = EL Silver Gate

530	289.75	289.35
500	287.33	286.93
450	285.18	284.78
400	283.02	282.62
380	280.86	280.46
350	280.00	
300	278.99	278.59
250	277.32	276.92
200	275.63	275.23
150	273.96	273.56
100	272.28	271.88
50	270.61	270.21
0 = WL Barr St	268.93	268.53
St. Fork St	267.25	266.85
♀ Fork	267.75	(266.85)
	267.00	267.13
548 = NL Fork St	266.75	266.35
500	266.24	265.84
450	265.71	265.31
400	265.18	264.78
Sta 388, Book 47, p 38 160 N of fork =	265.05	264.65

lands

00 305.00

4.50 302.75

14.00 300.5

1+60 297.90

1+80 297.30

2+00 296.7

2+20 296.8

2+40 296.9

2+60 297.20

3+00 298.0

3+00

4+00

4+00

5+00

5+00

6+00

306.75
+0.49
307.24

307.24
90.50
6.74

307.24 307.24 307.24 307.24
97.80 96.80 97.80 96.80
9.94 10.44 9.94 10.44

307.24 307.24 307.24 307.24 307.24
97.80 96.80 96.80 96.80 96.80
9.94 10.50 10.44 11.34 10.84

307.24 307.24 307.24 307.24 307.24
96.80 96.80 96.40 95.50 95.90
10.34 10.84 10.84 11.74 11.34

307.24 307.24 307.24 307.24 307.24
96.80 96.20 96.80 95.40 95.80
10.44 11.04 10.90 11.84 11.44

307.24 307.24 307.24 307.24 307.24
97.20 96.20 96.70 97.80 96.20
10.00 10.60 10.54 11.44 11.04

307.24 307.24 307.24 307.24 307.24
97.80 97.40 97.80 96.60 97.40
9.24 9.84 9.74 10.64 10.24

9.94
.60
10.54

#81
E.N. 395.25 sph Pole Idaho & Adams.

73.09
588.33
-2.78
585.55
+1.430
586.98
-5.640
581.34 sph fence " Madison.
+1.625
582.96
-3.28
579.68
+3.86
583.54
-4.02
579.52

377.38 25' tie-rod for NW Cor Monroe & Idaho.

381.40
-3.68
377.72
+3.87
381.59
-5.39
376.20 = 378.73

71.94
68.95
2.

288.11
1.28
289.39
13.01
276.38
1.66
277.04
6.33
283.37

315.09
8.70
323.79
16.00
307.79

Order between Spruce & redwood.

315.05
12.77
327.82
5.76
322.06

338.90

Hamilton 381.78

311.07

Oregon 397.24

388.50

311.42

Alaska 385.81

347.60

361

301.81

164

74

18

71.19
39.50
 1.68
 397.02
 -3.04
 394.08
 +0.22
 394.30
 85.51
3.149

25.70
 4.79
 30.54
 75.10
4.24

11.10
 12.70

223.50
1.17

272.9
 3.77
 380.80
 76.00
4.46

4.2
 0.9
 3.4

288.90
3.05
 4.5

279.34
2.106
 274.77

27.39
3.10
 24.29

7.94
 6.66
 1.14

291.50
9.13
 291.11

4.77
 70
4.92

41.40
 76.60
4.80

341.47
 75.10
 6.45

291.11
8.42
 282.69

390.40
 4.18
 394.58
 390.40
 3.77
 394.17
 386.63

5.26
 87
2.8

10.00
 10.40
 7

158.24
 4.22
392.06
 39.00
3.04

3.48
 7.5
 4.80

82.48
 79.0
 4.18

382.22
 5.72
393.1
 89.00
 4.12

374.91
 2.88
378.17
 38.00
3.99

190.40
 4.04
394.45
 90.00
3.98

314
3.06.63
 84
 45

378.49
 73.60
4.99

252.84
 4.89
67.73
 52.00
1.70

71.56
71.61.2

22.14
 15.29
 327.03
 20.60
3.83

327.43
 24.60

