

67

667

667

100 20K. V. pipe Main 9 39 12.01

10.5

3974

ST

9.5

926 9.58 9.75 9.75 9.60

10.0

Main ST

7.26 7.58 7.75 7.75 7.60

4-2.30 18" Double strength pipe 6.13 2.80=0

8.37

53

526 5.58 5.75 5.75 5.60

6.0

Yarr 8

ST

6.0

6.5

Redwood hub 5' 30" x 13"
Ratite line of Main + Yarr
oil pipe at Cavematt

Light Pipe

57

Rigel

20

150

10

0.80

0.17

0.27

5.28

2.84 0.00
0.27 0.18 0.94

0.17

0.128

0.71

0.30

0.58

0.70

0.67

0.17

0.50

0.50

57

6.27

6.10

5.78

5.98

5.84

5.74

5.69

5.60

5.57

5.50

5.42

5.34

5.28

5.21

5.14

5.07

5.00

41.84
8.30
3.54
57.70
57.35
278.24

41.84
8.30
3.54

329.27
3.00
225.14

228.2

101551
2282
12080
11410
11700
11410
2900

1100
775

01551
352
322
7740
4653
445772

01551
1077

41840
076
41764
1546
41218
4557
40261
574
40087
887
39700
70
3830

01551
449
13959
7785
4680
556309

01551
07
10857
4680
47387

01551
522
3102
10257
7745
887172

01551
7
15910
1480

01551
578
13959
10857
7750
697202

3

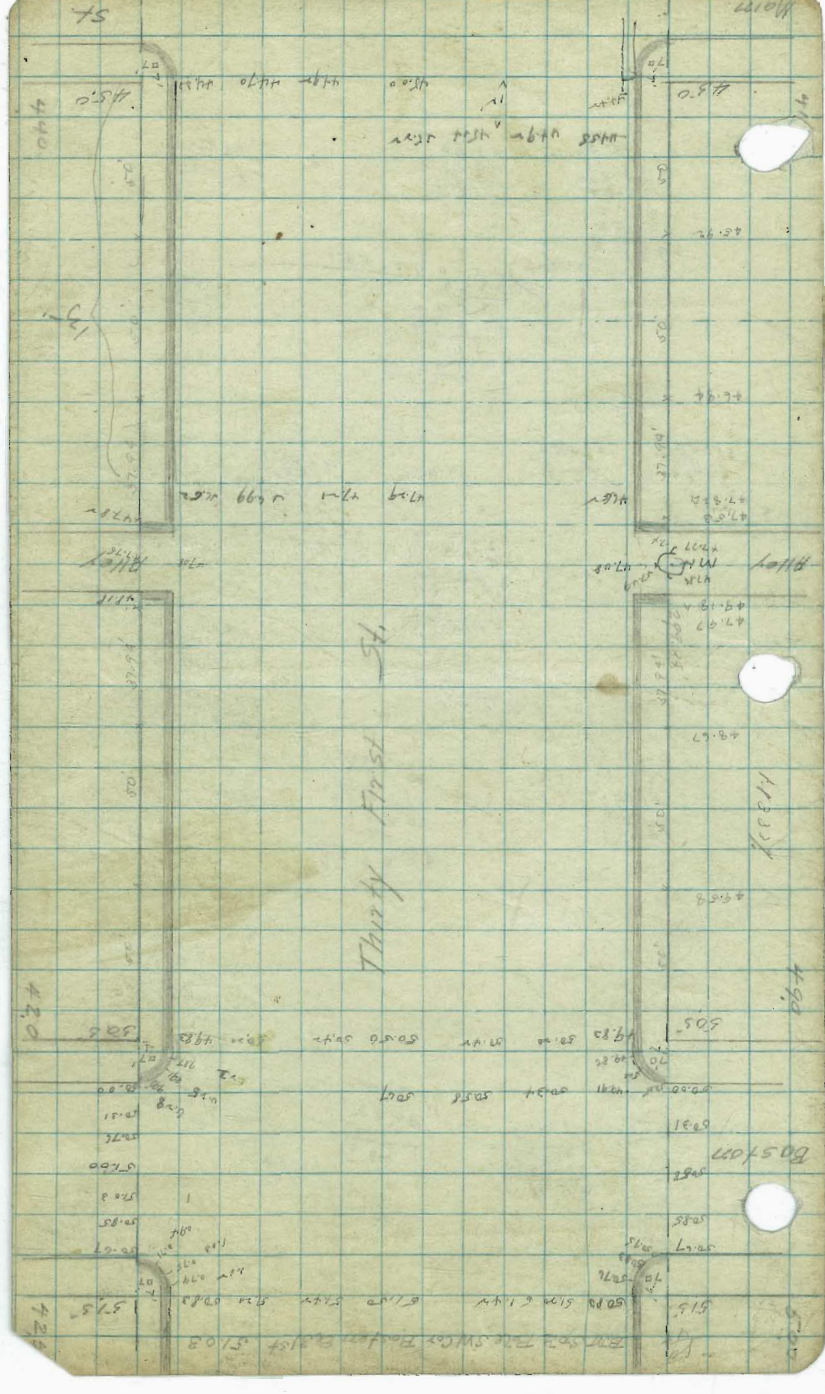
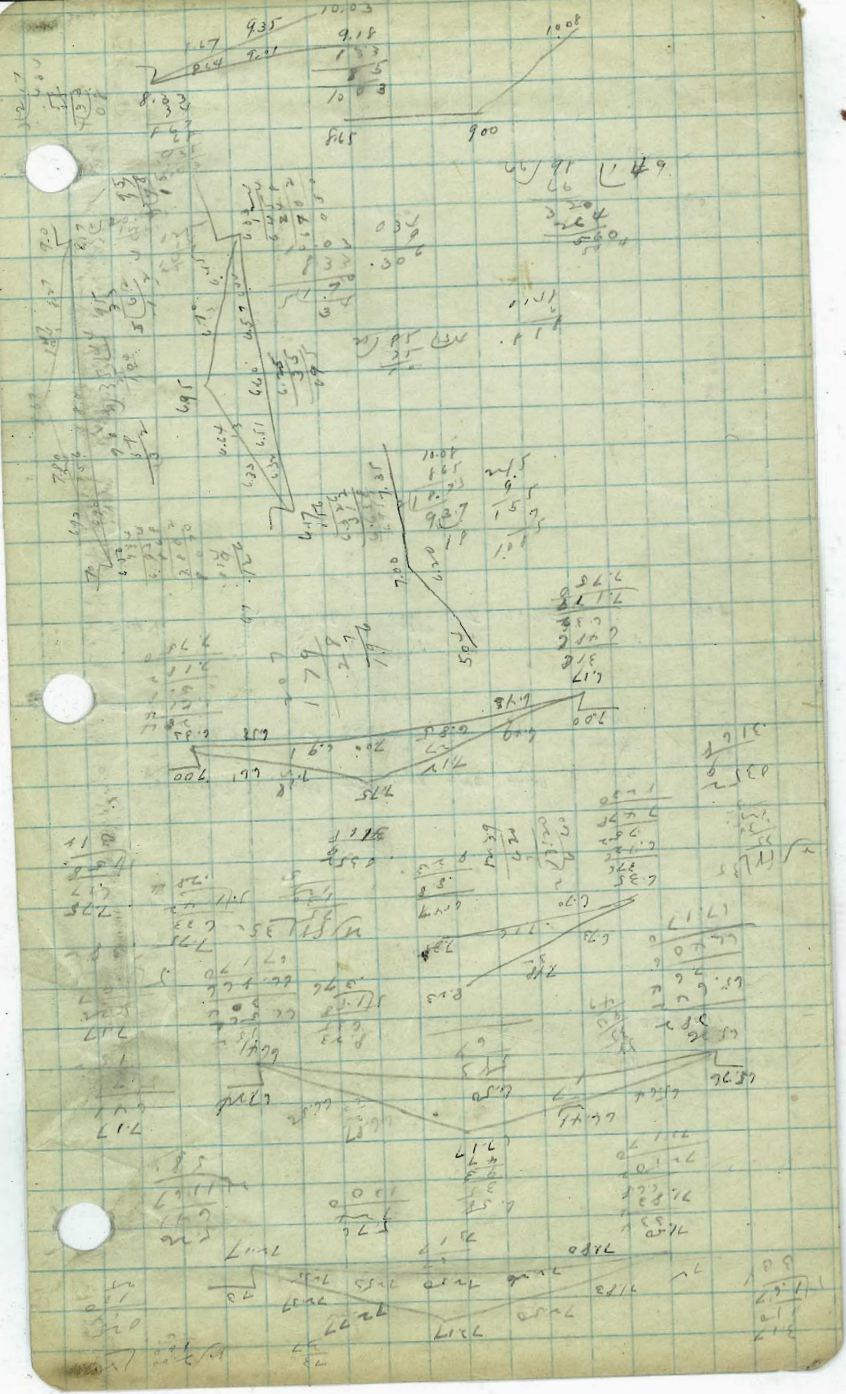
124
0020
1400
908
210

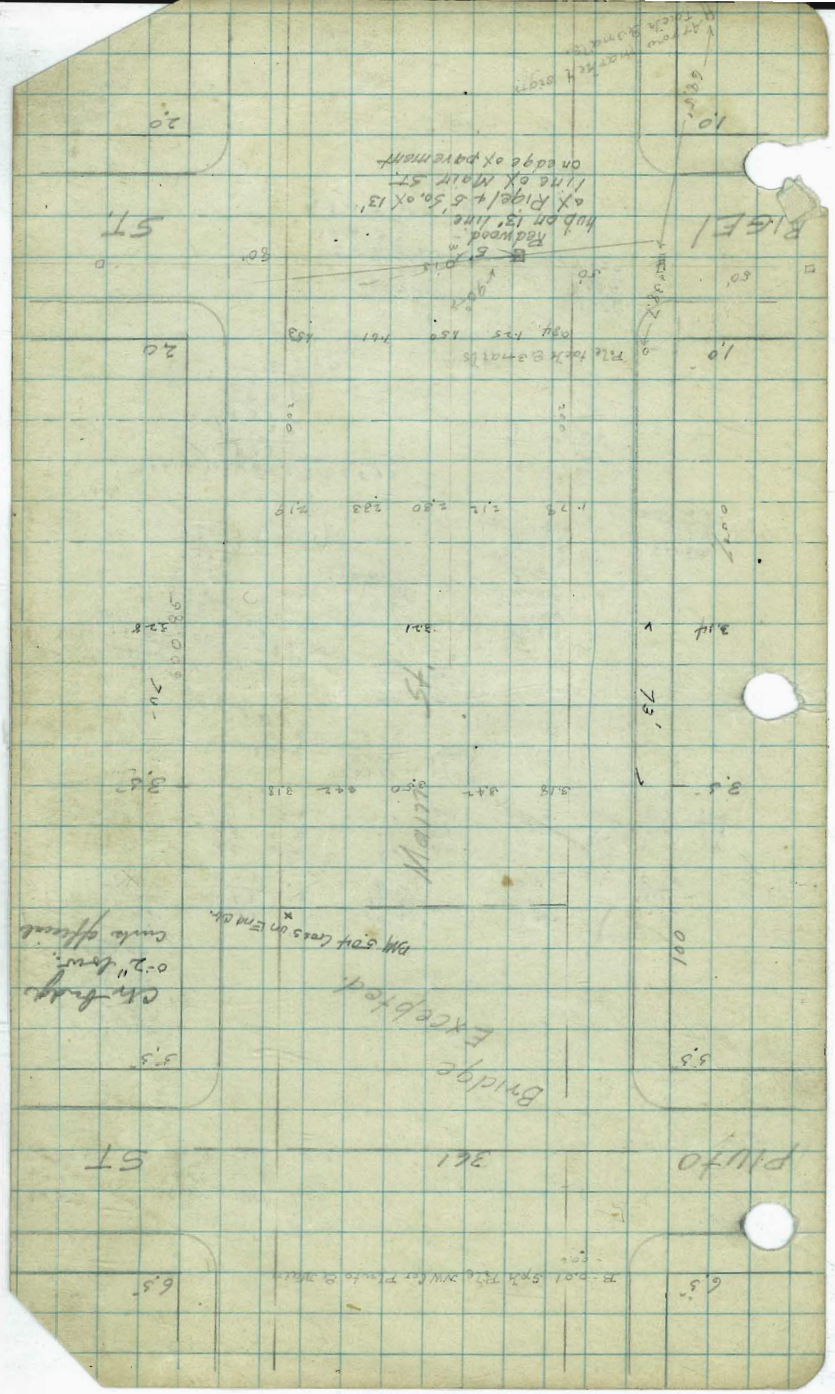
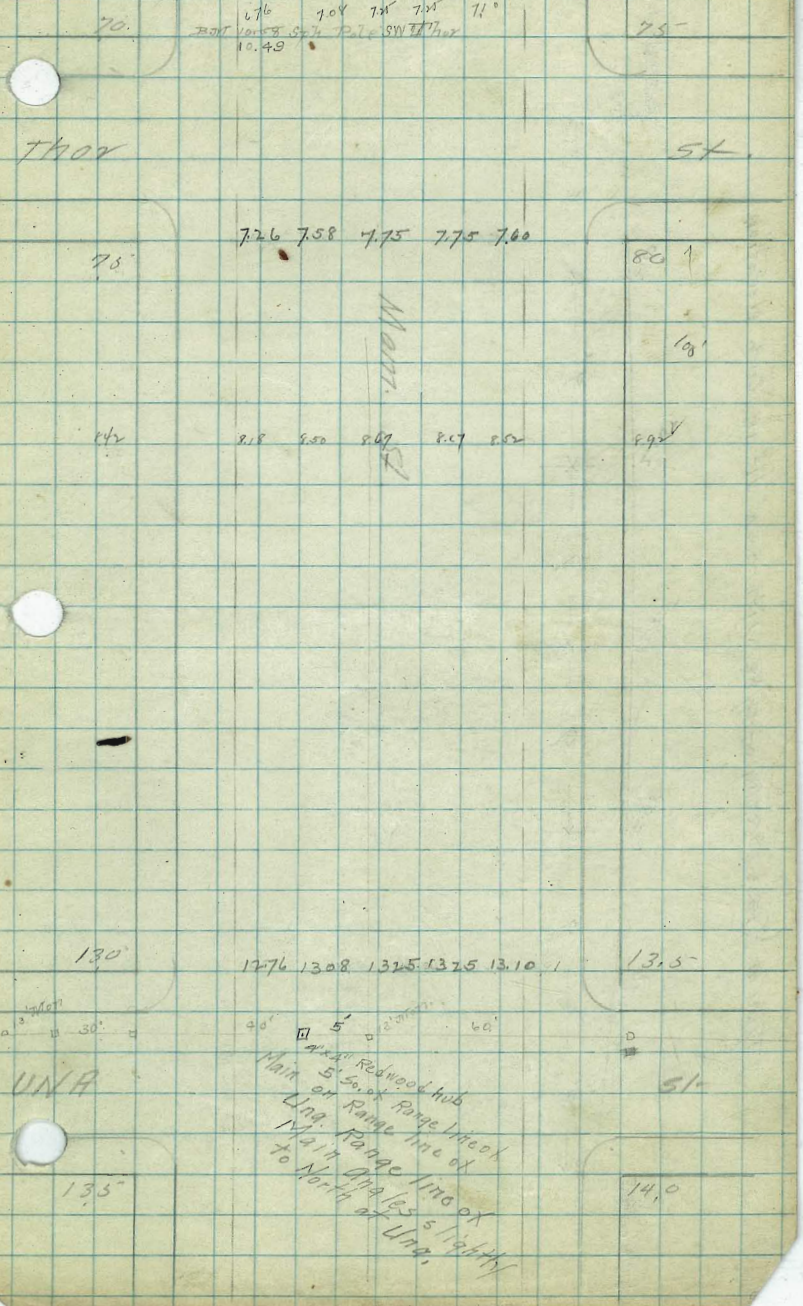
40.66
11
4055
25
0800

4009
39.88
23

2.5
2624
5.0
2.8
16.31
48.54

5.5
5.54
6.8
5.0
2.8
16.31
48.54





Handwritten title at the top of the right page, possibly "Handwritten Balance of Payments".

67.89

19.5

4.44
4.87
29.82
12.67

49.14
4.04
1.19

0.94
0.00
0.10

45.25
0.00
0.00

41.88
2.00
39.88

4.82
4.52
1.30

4.52
4.12
3.41

2.58
0.50
2.08

4.52
4.12
3.41

1.00
1.00
2.00

0.00
0.00
0.00

41.88
2.00
39.88

42.0
9.2
15.0

7.00
1.00
6.00

0.00
0.00
0.00

337.41
0.00
0.00

0.70
0.00
0.00

1.00
0.00
0.00

43.20
1.00
44.20

1.00
0.00
0.00

44.20
1.00
45.20

45.20
1.00
46.20

46.20
1.00
47.20

47.20
1.00
48.20

4778
 533
 61985
 67084

4777
 4672
 50.000
 .716
 49.584 + 0.0
 714
 48.669 1000
 1276
 47.873 200 A
 27
 47.537 3 A
 696
 46.130 2 + 0.0
 216

46
 8712
 21.2
 40.920
 4.0

54.11 54.11 54.11 54.11 54.11 54.11 54.11
 46.88 46.88 46.88 46.88 46.88 46.88 46.88
 50.76 50.76 50.76 50.76
 37.53 37.53 37.53 37.53
 37.3 37.2 47.9 57.7

64.12
 57.90
 6.27
 64.12
 59.77
 4.35

45533
 74103
 77720
 4777
 2474

22.5
 7.5
 64.12
 57.67
 6.45

64.12
 59.86
 4.26
 4.4

60.02
 4.10
 64.12 H.I.

60.17
 .67
 59.50

60.07
 .93
 59.14

64.12
 59.77
 4.35

61985
 67084
 + 3872

64.12
 57.77
 6.35
 59.05
 5.00
 59.50

59.05
 5.00
 59.50

59.05
 5.00
 59.50

64.12
 57.90
 6.27
 64.12
 59.77
 4.35

59.05
 5.00
 59.50

22.5
 7.5
 7.5

64.12
 57.67
 6.45

10.35
 1.75

59.00
 1.2
 58.88
 1.23
 57.165

64.12
 59.24
 4.88

64.12
 59.77
 4.35

31st & Main Sts
 Parking to Natl City

MICROFILMED

APR 6 1965

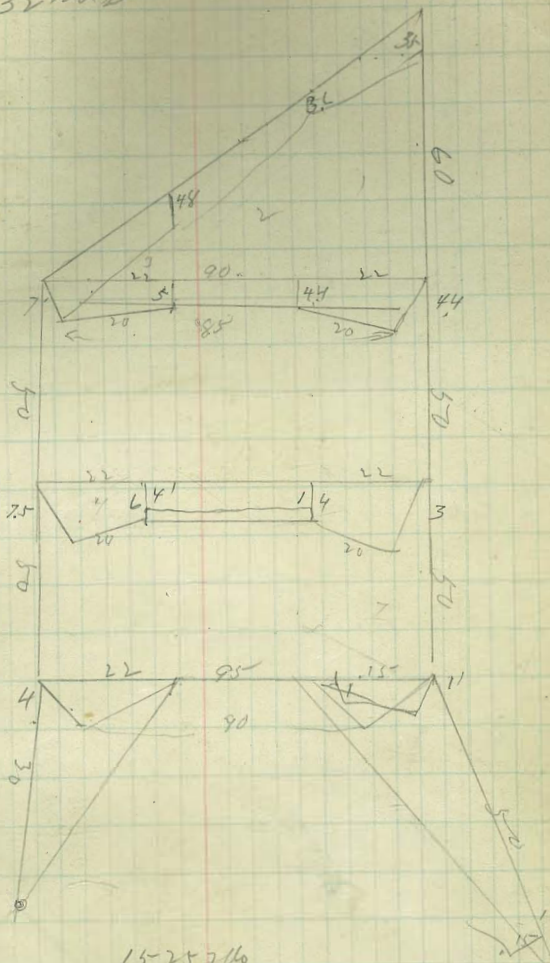
01085
JHLL
1648
12700

1000/1000/1000

Borrow Pit at Filbert St
for
3rd east

1

2



32nd

Sta 6+00 S. of
BAY AVE

6+85 S. BAY AVE

7+35 S. BAY AVE

8+25 S. BAY AVE

8+75 S. BAY AVE

16+138
SANTA FE TRACKS

THIRTY SECOND ST

26+103
SHORELINE OF BAY
26+181

16+076
16+138
16+1313
16+868
16+631
SANTA FE TRACKS

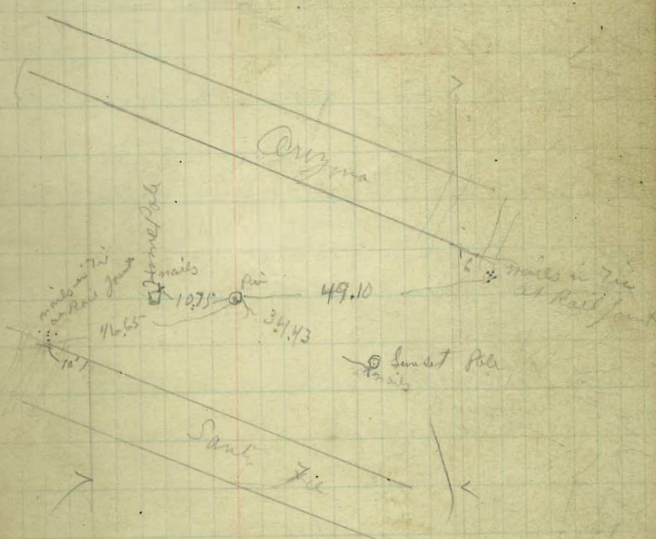
7 Donk.
1/2 of show
by Mon. 15' Buckler
CTM
Hub
Mud

1607.6
36.6
1571.0

128.0
700

5

54
130
-21
33
2nd 7 1/2' Slope 2 1/2'
Bridge
566
1280
700
60
173



	32nd Street							
W							E	
NL 3725	3200	36.40	36.00	35.10	35.00	35.25		
N Carb 3700	3700 36.00	36.05	35.65	34.75	34.65	35.90		
NL 23640	35.50	35.72	35.32	34.42	34.32	34.87		
Colton								
Center 23600	35.00	35.40	35.00	34.10	34.00	34.25		
Avenue								
S 235.105	34.50	34.08	34.68	33.78	33.68	33.93		
C Carb 35.00	34.00 35.00	33.75	34.35	33.45	33.35	33.60		
S line 35.25	35.00	34.40	34.00	33.10	33.00	33.25		

W Prop. line	E Prop. line
+1.0	+0.8
+0.6	+0.3
+1.5	+1.3
+1.4	+1.2
+1.4	+1.3
+0.9	+1.1
+0.7	+1.0

5

41.96 H.I.
 34.25
 7.71 ✓
 34.00 ✓
 7.96

236.00 ✓
 5.96 ✓

237.00 ✓
 4.96 ✓

235.00 ✓
 6.96 ✓

3934 36.00
 4.4

check OK 10-4.13

32nd street

W						E	
N. L Bay	2325	2300	22.40	22.47	21.80	21.93	22.18
N. Carb	2300	2300 2200	22.42	22.21	21.55	21.68 20.68	21.93
N. 1/4	2240	2162	21.89	21.97	21.31	21.45	21.70

W line E line

207843	+55	+7.1
32.03	+49	+66
21.50	+58	+70
10.53		

32.03 H.I.
 23.00 ✓
 9.03
 21.50 ✓
 10.53 ✓
 21.87
 35.2
 21.44

30.63 H.I.
 23.25 ✓
 7.38 ✓
 21.75
 8.88
 9.13
 21.22 ✓
 9.41 ✓
 22.25
 8.38
 20.50
 70.13 ✓
 20.75 ✓
 7.88

BAY AVENUE

Center	2225	2125	21.65	21.24	21.08	21.22	21.47
5/4	2147	2087	21.41	21.50	20.84	20.98	21.23
Slip	2150	2050 2150	21.16	21.26	20.60	20.75	21.00
Slime	2175	2150	20.90	21.00	20.35	20.50	20.75

+60	+69
+67	+58
+51	+60
+48	+51

304643
 10.01
 20.40
 1.38
 21.78
 8.09
 10.67 ✓
 1.07
 14.73 47

22.25 21.74 21.22
 8.21 8.72 9.24
 21.50 1.14 20.50
 8.96 9.96
 18.73
 19.33 20.18 18.89 18.72 18.45
 1.45 2.89 1.45 5.33
 15.54 1.25 1.45 1.45
 6.40 6.25 6.60

Check OK 10-4-13. Blough

32nd Street

SL Box 2170	2150	2050	2100	2035	2050	2075
50'	19.58	19.33	18.73	18.89	18.27	18.45
100'	17.41	17.16	16.56	16.78	16.20	16.41
136 ⁵	15.83	15.58	14.98	15.25	14.68	14.92
150	14.23	14.38	14.39	14.67	14.11	14.36
175	14.15	13.90	13.33	13.62	13.08	13.34
200	13.04	12.81	12.26	12.57	12.03	12.33
225	11.97	11.72	11.20	11.51	11.01	11.31
250	10.89	10.64	10.14	10.47	9.98	10.29
275	9.81	9.56	9.07	9.42	8.95	9.27
300	8.72	8.47	8.01	8.37	7.91	8.26
320	7.64	7.39	6.94	7.32	6.88	7.24
350	6.55	6.30	5.88	6.26	5.84	6.22
375	5.47	5.22	4.81	5.21	4.80	5.20
380	5.25	5.00	4.60	5.00	4.60	5.00
400	5.07	4.82	4.42	4.82	4.42	4.82
425	4.84	4.59	4.19	4.59	4.19	4.59
450	4.61	4.36	3.96	4.36	3.96	4.36
475	4.39	4.14	3.74	4.14	3.74	4.14
500	4.16	3.91	3.51	3.91	3.51	3.91
525	3.93	3.68	3.28	3.68	3.28	3.68
550	3.70	3.45	3.04	3.45	3.04	3.45
575	3.48	3.23	2.83	3.23	2.83	3.23
600	3.25	3.00	2.60	3.00	2.60	3.00

line	F	3078 45	3075	3072	3068	3064	3060	3056	3052	3048
+48	+51	7.80	7.7	7.5	7.4	7.2	7.1	6.9	6.8	6.6
+54	+57	4-15-13	847	blange						
+66	+60	2.98	2.3	2.5	2.8	3.2	3.6	4.0	4.4	4.8
+61	+71	2.77	2.8	3.0	3.2	3.4	3.6	3.8	4.0	4.2
+44	+80	1.07	1.2	1.4	1.6	1.8	2.0	2.2	2.4	2.6
+36	+67	1.24	1.0	1.0	1.0	1.0	1.0	1.0	1.0	1.0
+06	+12	2.75	2.5	2.5	2.5	2.5	2.5	2.5	2.5	2.5
-61	-67	4.5	4.3	4.1	3.9	3.7	3.5	3.3	3.1	2.9
-121	-116	8.50	8.10	7.70	7.30	6.90	6.50	6.10	5.70	5.30
-171	-115	3.20	3.0	2.8	2.6	2.4	2.2	2.0	1.8	1.6
-161	-155	19.33	19.33	19.33	19.33	19.33	19.33	19.33	19.33	19.33
-145	-146	12.70	12.70	12.70	12.70	12.70	12.70	12.70	12.70	12.70
-141	-135	5.82	5.82	5.82	5.82	5.82	5.82	5.82	5.82	5.82
-138	-126	14.50	14.50	14.50	14.50	14.50	14.50	14.50	14.50	14.50
-126	-122	13.68	13.68	13.68	13.68	13.68	13.68	13.68	13.68	13.68
-116	-108	19.50	19.50	19.50	19.50	19.50	19.50	19.50	19.50	19.50
-102	-100	17.41	17.41	17.41	17.41	17.41	17.41	17.41	17.41	17.41
-90	-88	13.68	13.68	13.68	13.68	13.68	13.68	13.68	13.68	13.68
-86	-85	13.69	13.69	13.69	13.69	13.69	13.69	13.69	13.69	13.69
-82	-79	7.14	7.14	7.14	7.14	7.14	7.14	7.14	7.14	7.14
-79	-80	13.68	13.68	13.68	13.68	13.68	13.68	13.68	13.68	13.68
-80	-75	16.30	16.30	16.30	16.30	16.30	16.30	16.30	16.30	16.30
-78	-72	8.47	8.47	8.47	8.47	8.47	8.47	8.47	8.47	8.47
-74	-68	14.75	14.75	14.75	14.75	14.75	14.75	14.75	14.75	14.75
-74	-75	7.73	7.73	7.73	7.73	7.73	7.73	7.73	7.73	7.73
-66	-72	6.55	6.55	6.55	6.55	6.55	6.55	6.55	6.55	6.55
-69	-66	7.14	7.14	7.14	7.14	7.14	7.14	7.14	7.14	7.14

check OK 10-4-13 blange

32nd street

1300	496	471	428	468	426	462	487	-85	-84
25	5.01	476	434	471	431	467	472	-86	-84
50	5.07	482	440	477	437	473	498	-88	-86
75	5.13	488	446	483	443	479	504	-88	-86
100	5.19	494	452	488	449	485	510	-87	-87
25			438	493	4.55	4.91	5.16	-89	-87
50	5.31	5.06	5.04		4.97	5.22		-116	-116
75									
1300	5.43	5.18			5.09	5.34			
25									
50									
75									
100									
25		5.70							
50					5.65				
75	6.01							+23	
1200	5.91	5.65	5.28	5.74	5.81	6.06		+28	
25	5.81	5.56	5.18	5.64	5.29	5.71	5.96	+32	-148
50	5.71	5.46	5.08	5.54	5.19	5.61	5.86	+35	+6.7
75	5.61	5.36	4.99	5.44	5.09	5.51	5.76	+4.7	+7.1
1200	5.51	5.26	4.89	5.34	4.99	5.42	5.67	+5.9	+8.4
25	5.41	5.16	4.79	5.24	4.90	5.32	5.57	+7.1	+9.8
50	5.31	5.06	4.69	5.14	4.80	5.22	5.47	+7.8	+10.6
75	5.21	4.96	4.59	5.04	4.70	5.12	5.37	+7.7	+11.1
1900	5.11	4.86	4.49	4.95	4.60	5.02	5.27	+7.8	+11.1
25	5.01	4.76	4.39	4.85	4.50	4.93	5.18	+8.2	+11.3
50	4.91	4.66	4.29	4.75	4.40	4.83	5.08	+8.8	+11.0

W line
E line

1060	118	117	124	117	117	117	117	117	117
828	828	828	828	828	828	828	828	828	828
1490	1490	1490	1490	1490	1490	1490	1490	1490	1490
1750	1750	1750	1750	1750	1750	1750	1750	1750	1750
1920	1920	1920	1920	1920	1920	1920	1920	1920	1920
2100	2100	2100	2100	2100	2100	2100	2100	2100	2100
2280	2280	2280	2280	2280	2280	2280	2280	2280	2280
2460	2460	2460	2460	2460	2460	2460	2460	2460	2460
2640	2640	2640	2640	2640	2640	2640	2640	2640	2640
2820	2820	2820	2820	2820	2820	2820	2820	2820	2820
3000	3000	3000	3000	3000	3000	3000	3000	3000	3000
3180	3180	3180	3180	3180	3180	3180	3180	3180	3180
3360	3360	3360	3360	3360	3360	3360	3360	3360	3360
3540	3540	3540	3540	3540	3540	3540	3540	3540	3540
3720	3720	3720	3720	3720	3720	3720	3720	3720	3720
3900	3900	3900	3900	3900	3900	3900	3900	3900	3900
4080	4080	4080	4080	4080	4080	4080	4080	4080	4080
4260	4260	4260	4260	4260	4260	4260	4260	4260	4260
4440	4440	4440	4440	4440	4440	4440	4440	4440	4440
4620	4620	4620	4620	4620	4620	4620	4620	4620	4620
4800	4800	4800	4800	4800	4800	4800	4800	4800	4800
4980	4980	4980	4980	4980	4980	4980	4980	4980	4980
5160	5160	5160	5160	5160	5160	5160	5160	5160	5160
5340	5340	5340	5340	5340	5340	5340	5340	5340	5340
5520	5520	5520	5520	5520	5520	5520	5520	5520	5520
5700	5700	5700	5700	5700	5700	5700	5700	5700	5700
5880	5880	5880	5880	5880	5880	5880	5880	5880	5880
6060	6060	6060	6060	6060	6060	6060	6060	6060	6060
6240	6240	6240	6240	6240	6240	6240	6240	6240	6240
6420	6420	6420	6420	6420	6420	6420	6420	6420	6420
6600	6600	6600	6600	6600	6600	6600	6600	6600	6600
6780	6780	6780	6780	6780	6780	6780	6780	6780	6780
6960	6960	6960	6960	6960	6960	6960	6960	6960	6960
7140	7140	7140	7140	7140	7140	7140	7140	7140	7140
7320	7320	7320	7320	7320	7320	7320	7320	7320	7320
7500	7500	7500	7500	7500	7500	7500	7500	7500	7500
7680	7680	7680	7680	7680	7680	7680	7680	7680	7680
7860	7860	7860	7860	7860	7860	7860	7860	7860	7860
8040	8040	8040	8040	8040	8040	8040	8040	8040	8040
8220	8220	8220	8220	8220	8220	8220	8220	8220	8220
8400	8400	8400	8400	8400	8400	8400	8400	8400	8400
8580	8580	8580	8580	8580	8580	8580	8580	8580	8580
8760	8760	8760	8760	8760	8760	8760	8760	8760	8760
8940	8940	8940	8940	8940	8940	8940	8940	8940	8940
9120	9120	9120	9120	9120	9120	9120	9120	9120	9120
9300	9300	9300	9300	9300	9300	9300	9300	9300	9300
9480	9480	9480	9480	9480	9480	9480	9480	9480	9480
9660	9660	9660	9660	9660	9660	9660	9660	9660	9660
9840	9840	9840	9840	9840	9840	9840	9840	9840	9840
10020	10020	10020	10020	10020	10020	10020	10020	10020	10020

Blanch
Bm 790. SS 70 Pal Bet

Set curb stakes R R to Bridge

Curb R R to Bridge

Bay Front Squat

Sheet OK 10-4-13 Blanch

32nd street

1995	4.81	4.36	4.19	4.63	4.30	4.73	4.98
2000	4.71	4.46	4.09	4.55	4.20	4.63	4.88
25	4.61	4.36	3.99	4.46	4.10	4.53	4.78
30	4.51	4.26	3.90	4.35	4.00	4.44	4.69
35	4.41	4.16	3.80	4.25	3.91	4.34	4.59
40	4.31	4.06	3.70	4.15	3.81	4.24	4.49
45	4.21	3.96	3.60	4.05	3.71	4.14	4.39
50	4.11	3.86	3.50	3.96	3.61	4.04	4.29
55	4.01	3.76	3.40	3.86	3.51	3.99	4.19
60	3.91	3.66	3.30	3.76	3.41	3.84	4.09
65	3.81	3.56	3.20	3.66	3.31	3.74	3.99
70	3.71	3.46	3.10	3.56	3.21	3.64	3.89
75	3.61	3.36	3.00	3.46	3.11	3.54	3.79
80	3.51	3.26	2.91	3.36	3.01	3.44	3.69
85	3.41	3.16	2.81	3.26	2.92	3.35	3.60
90	3.31	3.06	2.71	3.16	2.82	3.25	3.50
95	3.21	2.96	2.61	3.06	2.72	3.15	3.40
1000	3.11	2.86	2.51	2.96	2.62	3.05	3.30
25	3.01	2.76	2.41	2.87	2.52	2.96	3.21
30	2.91	2.66	2.31	2.77	2.42	2.86	3.11
35	2.81	2.56	2.21	2.67	2.32	2.76	3.01
3500	2.71	2.46	2.11	2.57	2.22	2.66	2.91
25	2.61	2.36	2.01	2.47	2.12	2.56	2.81
30	2.51	2.26	1.92	2.37	2.02	2.47	2.72
35	2.41	2.16	1.82	2.27	1.92	2.37	2.62
3600	2.31	2.06	1.72	2.17	1.82	2.27	2.52
26103			1.62	2.07	1.72	2.17	2.42
sect					1.62	2.02	2.32

W. line	R. line	1826	1826	1826	1826	1826	1826	1826	1826	1826	1826	1826	1826
+85	+104	13.2	13.2	13.2	13.2	13.2	13.2	13.2	13.2	13.2	13.2	13.2	13.2
+81	+102	13.2	13.2	13.2	13.2	13.2	13.2	13.2	13.2	13.2	13.2	13.2	13.2
+85	+101	13.2	13.2	13.2	13.2	13.2	13.2	13.2	13.2	13.2	13.2	13.2	13.2
+90	+99	13.2	13.2	13.2	13.2	13.2	13.2	13.2	13.2	13.2	13.2	13.2	13.2
+90	+101	13.2	13.2	13.2	13.2	13.2	13.2	13.2	13.2	13.2	13.2	13.2	13.2
+91	+93	13.2	13.2	13.2	13.2	13.2	13.2	13.2	13.2	13.2	13.2	13.2	13.2
+93	+85	13.2	13.2	13.2	13.2	13.2	13.2	13.2	13.2	13.2	13.2	13.2	13.2
+83	+81	13.2	13.2	13.2	13.2	13.2	13.2	13.2	13.2	13.2	13.2	13.2	13.2
+78	+80	13.2	13.2	13.2	13.2	13.2	13.2	13.2	13.2	13.2	13.2	13.2	13.2
+76	+81	13.2	13.2	13.2	13.2	13.2	13.2	13.2	13.2	13.2	13.2	13.2	13.2
+76	+77	13.2	13.2	13.2	13.2	13.2	13.2	13.2	13.2	13.2	13.2	13.2	13.2
+73	+77	13.2	13.2	13.2	13.2	13.2	13.2	13.2	13.2	13.2	13.2	13.2	13.2
+73	+75	13.2	13.2	13.2	13.2	13.2	13.2	13.2	13.2	13.2	13.2	13.2	13.2
+72	+73	13.2	13.2	13.2	13.2	13.2	13.2	13.2	13.2	13.2	13.2	13.2	13.2
+73	+75	13.2	13.2	13.2	13.2	13.2	13.2	13.2	13.2	13.2	13.2	13.2	13.2
+79	+78	13.2	13.2	13.2	13.2	13.2	13.2	13.2	13.2	13.2	13.2	13.2	13.2
+77	+78	13.2	13.2	13.2	13.2	13.2	13.2	13.2	13.2	13.2	13.2	13.2	13.2
+77	+79	13.2	13.2	13.2	13.2	13.2	13.2	13.2	13.2	13.2	13.2	13.2	13.2
+68	+63	13.2	13.2	13.2	13.2	13.2	13.2	13.2	13.2	13.2	13.2	13.2	13.2
+64	+66	13.2	13.2	13.2	13.2	13.2	13.2	13.2	13.2	13.2	13.2	13.2	13.2
+65	+65	13.2	13.2	13.2	13.2	13.2	13.2	13.2	13.2	13.2	13.2	13.2	13.2
+63	+65	13.2	13.2	13.2	13.2	13.2	13.2	13.2	13.2	13.2	13.2	13.2	13.2
+64	+67	13.2	13.2	13.2	13.2	13.2	13.2	13.2	13.2	13.2	13.2	13.2	13.2
+69	+59	13.2	13.2	13.2	13.2	13.2	13.2	13.2	13.2	13.2	13.2	13.2	13.2
+59	+54	13.2	13.2	13.2	13.2	13.2	13.2	13.2	13.2	13.2	13.2	13.2	13.2
+53	+50	13.2	13.2	13.2	13.2	13.2	13.2	13.2	13.2	13.2	13.2	13.2	13.2
+45		13.2	13.2	13.2	13.2	13.2	13.2	13.2	13.2	13.2	13.2	13.2	13.2

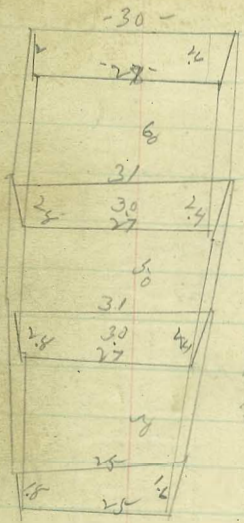
check out OK blough
 Bay to Santa Fe track 10-4-13

N. L. San Diego Bay

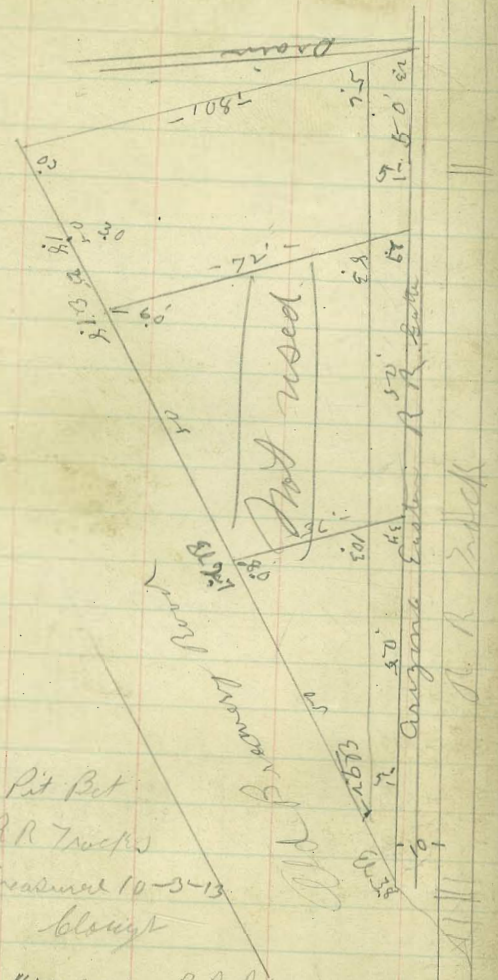
9
27
13

X See Burrow Pit

800 Br
425
1225



- Pit Pit
- RR Tracks
- measured 10-3-13
- blought
- 450 yards RRA way
- 430 Triangle at end of Street
- 1452.3 Bay on RR 7Pl
- 3287.7 Brewery Grounds
- 850.8 Slope opposite Brewery
- 1525.74 Filbert St
- 250 7/8 Slope Chest Bay
- 50 Slope Center Filbert



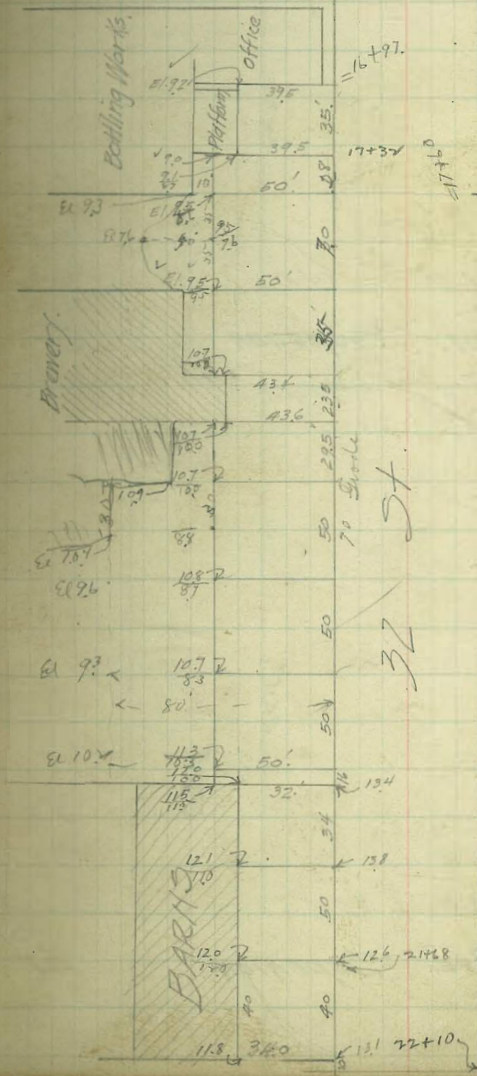
May 20 1913

West
Everts

Moore Cross Section, Borrow Pits
32nd Street.

3287.7 cu yds on W side
between Stas 17+32 and
21+68

Note: See Orig. Secs
for P.L. Elevs.



17+32
124-EL
146
165
167
160
155
151
140
141
135

850.8 cu yds.
on E. side
between Stas
17+60 and 22+10

West. So. Line @ St. East.

200	100.75	100.50	100.22	100.75	100.40	101.00	101.25
250	101.77	101.52	101.22	101.74	101.38	101.96	102.21
225	102.61	102.36	102.06	102.57	102.21	102.77	103.02
200	103.46	103.21	102.90	103.39	103.03	103.57	103.82
175	104.31	104.06	103.74	104.22	103.85	104.37	104.62
150	105.16	104.91	104.57	105.04	104.67	105.18	105.43
125	106.01	105.76	105.41	105.87	105.49	105.98	106.23
100	106.85	106.60	106.25	106.69	106.31	106.78	107.03
75	107.70	107.45	107.09	107.52	107.13	107.59	107.84
50	108.55	108.30	107.92	108.35	107.95	108.39	108.64
25	109.40	109.15	108.76	109.28	108.78	109.20	109.44
0	110.25	110.00	109.60	110.00	109.60	110.00	110.25

No. Line Woolman Ave.

100.65	110.87	110.87	110.87	110.87	110.87	110.87	110.87
10.21	7.7	10.7	8.6	5.1	2.7	6.2	4.3
11.87	10.3	10.2	10.2	10.2	10.2	10.2	10.2
2.1	101.77	101.3	101.3	101.3	101.3	101.3	101.3
109.77	21.4	71.5	21.4	22.3	23.0	109.3	107
11.10						8.1	2.9
11.10	11.10	11.10	11.10	11.10	11.10	11.10	11.10
4	3.7	5	3.7	3.7	3.7	3.7	3.7
11.10	11.10	11.10	11.10	11.10	11.10	11.10	11.10
0.43	1.86	1.28	1.10	1.10	1.10	1.10	1.10
110.22	11.5	2.8	11.5	11.4	11.0		
102.04	101.96	101.38	101.74	101.22	101.52	101.77	
8.01	8.26	8.84	8.48	9.00	8.70	8.45	
103.46	103.31	102.90	103.39	103.03	103.57	103.82	
6.76	7.41	7.32	7.83	7.19	6.65	6.40	
105.43	105.18	104.67	105.04	104.57	104.91	105.16	
4.79	5.00	5.55	5.18	5.65	5.31	5.06	
106.85	106.60	106.25	106.69	106.31	106.78	107.03	
3.37	3.62	3.97	3.53	3.91	3.44	3.19	
108.64	108.39	107.95	108.35	107.92	108.30	108.55	
1.58	1.83	2.27	1.87	2.30	1.92	1.67	
110.25	110.00	109.60					
0.03	0.22	0.62					

394 ST.

100.66 rails SW

16

West

EAST

104.66
4.16
104.92

104.62
88
96.0
100.0
92
4.22
X

104.82
4.5
100.4
101.2
102.2
9.8

104.82
4.2
100.6
101.2
104.4
7.4

104.62
3.7
101.1
100.7
C.4

100.75 100.50 100.22 100.75 100.40 101.00 101.25

110.22 H.S.

100.50 100.50 99.62 99.75 99.88 101.00 101.00
99.5 99.5 100.00 100.00

100.10 100.19 100.27 100.35 100.43 100.51 100.60

⊙

100.50 100.59 100.67 100.75 100.83 100.91 101.00

ST

100.10 100.19 100.27 100.35 100.43 100.51 101.60

100.50 99.5 100.50 99.62 99.75 99.88 100.00 101.00 101.00

100.75 100.50 100.22 100.75 100.40 101.00 101.25

West

EAS

So. Line Superior St

275	104.25	104.00	103.72	104.25	103.90	104.50	104.70
250	103.93	103.68	103.41	103.94	103.60	104.20	104.40
225	103.61	103.36	103.09	103.63	103.31	103.91	104.16
200	103.29	103.04	102.78	103.33	103.01	103.61	103.86
175	102.98	102.73	102.47	103.02	102.71	103.31	103.56
150	102.66	102.41	102.16	102.71	102.42	103.02	103.27
125	102.34	102.09	101.84	102.41	102.12	102.72	102.97
100	102.02	101.77	101.53	102.10	101.82	102.42	102.67
75	101.70	101.45	101.22	101.79	101.53	102.13	102.38
50	101.39	101.14	100.90	101.48	101.23	101.83	102.08
25	101.07	100.82	100.59	101.18	100.94	101.54	101.79
00	100.75	100.50	100.28	100.87	100.64	101.24	101.49
200	@ St 41 East		100.75	101.00	101.25		

112.65	112.63	112.63	112.63	112.63	112.63	112.63	112.63
107.1	109.3	101.1	104.3	109.1	107.6	109.4	102.66
CH.4	25.0	2.28	0.10	0.3	0.43	0.67	
112.63	112.6	112.63	112.63	112.63	112.63	112.63	112.63
4.0	0.6	5.0	8.6	10.0	10.4	10.6	
108.4	102.6	104.0	104.0	104.0	104.0	104.0	
10.4	10.6	10.4	10.4	10.4	10.4	10.4	
0.6	0.0	0.0	0.0	0.0	0.0	0.0	
110.22	11.5						
104.15	104.20	103.60	103.94	103.41	103.68	103.93	
5.77	6.02	6.62	6.28	6.81	6.54	6.29	
103.29	103.04	102.78	103.33	103.01	103.61	103.86	
6.93	7.18	7.44	6.89	7.21	6.61	6.36	
103.27	103.02	102.42	102.71	102.16	102.41	102.66	
6.94	7.20	7.50	7.51	8.06	7.81	7.56	
102.02	101.77	101.53	102.10	101.52	102.42	102.67	
8.30	8.45	8.69	8.12	8.40	7.80	7.56	
102.08	101.83	101.23	101.48	100.90	101.14	101.39	
8.74	8.39	8.99	8.74	9.32	9.08	8.83	
100.75	100.50	100.28	100.87	100.64	101.00	101.25	
9.47	9.72	9.94	9.35	9.58	9.22	8.97	

39th St.

10403 old road W.K.
SW

18

West

East

North Line

104.75 104.50 104.22 104.75 104.40 105.00 105.25

104.50 104.50 104.13 104.66 104.31 105.00 105.00

103.90 103.37 104.05 104.58 104.23 103.87 104.60

SUPERIOR

104.25 103.25 103.97 104.50 104.15 103.75 104.75

St.

103.72 103.12 103.89 104.42 104.07 103.62 104.22

104.00 104.00 103.81 104.34 103.99 104.50 104.50

104.25 104.00 103.72 104.25 103.90 104.50 104.75

South Line

11022 H.F.						
104.75	103.75	104.15	104.50	103.97	103.25	104.25
5.47	6.47	6.07	5.72	6.25	6.97	5.97

104.25	104.00	103.72	104.25	103.90	104.50	104.75
5.97	6.22	6.50	5.97	6.32	5.72	5.45

West. So. Lime. Superior St. East

265 114.25 114.00 113.40 113.25 113.22 113.50 113.75

5366 51904 5094 49924 481125

250 113.70 113.45 112.87 112.24 112.72 113.02 113.27

225 112.80 112.55 112.00 112.39 111.89 112.22 112.47

200 111.91 111.66 111.14 111.54 111.06 111.41 111.66

75 111.01 110.76 110.27 110.69 110.22 110.61 110.81

50 110.12 109.87 109.41 109.84 109.39 109.81 110.06

25 109.22 108.97 108.54 108.99 108.56 109.01 109.26

100 108.33 108.08 107.68 108.15 107.73 108.21 108.46

75 107.43 107.18 106.81 107.30 106.90 107.40 107.65

50 106.54 106.29 105.95 106.45 106.06 106.60 106.85

25 105.64 105.39 105.08 105.60 105.23 105.80 106.05

.895 86507 .849 .8321 1201875

40 104.75 104.50 104.22 104.75 104.40 105.00 105.25

No Lime Superior St.

1144	1144	1144	1144	1144	1144	1144	1144
30	40	38	36	47	36	39	32
1110	1105	1106	1101	1097	1095	1093	1091
1120	1113	1119	1101	1097	1095	1093	1091
2.21	2.17	2.13	2.13	2.13	2.13	2.13	2.13
1044	1040	1041	1038	1034	1032	1030	1028
34	34	38	38	38	38	38	38
1008	1002	1006	1002	1001	1001	1001	1001
2.25	2.4	2.1	2.1	2.1	2.1	2.1	2.1

119.90 112.

111.91	111.66	111.14	111.54	111.06	111.41	111.66
7.99	8.24	8.76	8.36	8.84	8.49	8.24
110.06	109.81	109.39	109.84	109.41	109.87	110.12
9.80	10.09	10.51	10.06	10.49	10.03	9.78
108.39	108.08	107.69	108.15	107.73	108.21	108.46
11.57	11.82	12.22	11.75	12.17	11.69	11.44
106.85	106.60	106.06	106.45	105.95	106.29	106.54
3.37	3.62	4.16	3.77	4.27	3.98	3.68
104.75	104.50	104.22	104.75	104.40	105.00	105.25
5.47	5.72	6.60	5.47	5.82	5.22	4.97

39th St.

Bm 111.9 on Max
Superba 20

West.

East.

North Line of Superba

114.25 114.00 113.40 113.75 113.22 113.50 113.75

114.00 114.00 112.87 112.75 112.62 112.50 113.50
113.0 112.5

113.60 113.51 113.43 113.35 113.27 113.19 113.10

Superba

114.00 113.91 113.83 113.75 113.67 113.59 113.50

St

113.60 113.51 113.43 113.35 113.27 113.19 113.10

114.00 114.00 112.87 112.75 112.62 112.50 113.50
113.0

114.25 114.00 113.40 113.75 113.22 113.50 113.75

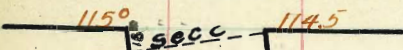
South Line of Superba

Sum 119.90
2315
1207
1015
111.55 Bm
1.67
113.09
9.55
104.03 End Sta
5.42
110.51
9.57
100.66 nwb - P.M.
11.22
112.25
8.95 Bm
113.50

119.90 N.E

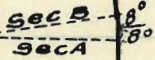
112.25
113.50
100.66
104.03

SIEGEL ST.



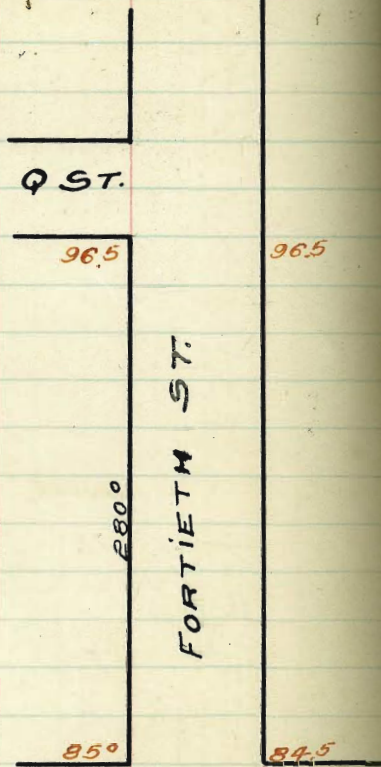
160° 153' Left

160°



7120

FORTIETH ST.



Q ST.

96.5

96.5

FORTIETH ST.

280°

85°

84.5

WOOLMAN AVE.

01972

02022

970

970

Q ST.

40°

96.5

96.5

W SOUTH LINE of SIFFELST E

500 115.25 113.50 114.60 114.25 114.10 114.5 114.75

18
500 C=160' N 114.64 114.24 114.67 114.10 114.50 114.75

125 114.18 113.93 113.53 113.87 113.41 113.81 114.24

100 113.67 113.42 113.02 113.37 112.92 113.32 113.57

75 113.17 112.92 112.52 112.88 112.43 112.83 113.08

50 112.66 112.41 112.01 112.38 112.94 112.34 112.59

25 112.16 111.91 111.51 111.88 111.45 111.85 112.10

Sec B 111.65 111.40 111.20 111.38 110.96 111.36 111.61

00

Sec A=252' N 116.5 111.40 111.00 111.21 110.63 111.03 111.28

725 111.10 110.85 110.45 110.68 110.11 110.57 110.76

700 110.50 109.75 109.25 109.14 109.62 110.02 110.27

675 110.09 109.84 109.44 109.68 109.12 109.52 109.77

650 109.48 109.23 108.83 109.13 108.63 109.03 109.28

625 109.07 108.82 108.42 108.68 108.14 108.54 108.79

Sec A - 752' N of Q 3T

25

600 108.57 108.32 107.92 108.18 107.64 108.04 108.29

575 108.06 107.80 107.41 107.68 107.16 107.55 107.80

550 107.56 107.31 106.91 107.19 106.66 107.06 107.31

525 107.05 106.80 106.40 106.68 106.16 106.56 106.81

500 106.55 106.30 105.90 106.19 105.67 106.07 106.32

475 106.04 105.79 105.39 105.69 105.18 105.58 105.83

450 105.53 105.28 104.88 105.19 104.69 105.09 105.34

425 105.02 104.77 104.37 104.68 104.19 104.59 104.84

400 104.52 104.27 103.87 104.19 103.70 104.10 104.35

375 104.01 103.76 103.36 103.69 103.21 103.61 103.86

350 103.51 103.26 102.86 103.19 102.71 103.11 103.36

325 103.00 102.75 102.35 102.69 102.22 102.62 102.87

300 102.50 102.25 101.85 102.19 101.73 102.13 102.38

275	101.99	101.74	101.34	101.69	101.23	101.63	101.88
220	101.99	101.74	100.84	101.19	100.74	101.14	101.39
238	101.24	100.99	100.54	100.95	100.51	100.91	101.16
230	101.08	100.83	100.42	100.79	100.35	100.75	101.00
225	100.98	100.73	100.33	100.69	100.25	100.65	100.90
200	100.48	100.23	99.83	100.20	99.76	100.16	100.41
175	99.97	99.72	99.32	99.69	99.26	99.66	99.91
150	99.47	99.22	98.82	99.20	98.77	99.17	99.42
125	98.96	98.71	98.31	98.70	98.28	98.68	98.93
100	98.46	98.21	97.81	98.20	97.78	98.18	98.43
75	97.95	97.70	97.30	97.70	97.29	97.69	97.94
50	97.45	97.20	96.80	97.20	96.80	97.20	97.45
140	97.25	97.00	96.60	97.00	96.60	97.00	97.25
630	97.00	97.00	96.47	96.87	96.47	96.87	97.12
25	96.87	96.87	96.41	96.81	96.41	96.81	97.06
670	96.75	96.75	96.35	96.75	96.35	96.75	97.00
13	96.58	96.58	96.26	96.66	96.26	96.66	96.91
610	96.50	96.50	96.22	96.62	96.22	96.62	96.87
569 270 96.75	96.50	96.50	96.10	96.50	96.10	96.50	96.75

S. LINE of A

280 96.95 96.50 96.10 96.50 96.10 96.50 96.95

250 95.52 95.27 94.85 95.24 94.83 95.21 95.46

225 94.49 94.24 93.81 94.19 93.77 94.14 94.39

200 93.47 93.22 92.76 93.14 92.71 93.07 93.32

175 92.44 92.19 91.72 92.09 91.65 92.00 92.25

150 91.41 91.16 90.69 91.04 90.58 90.93 91.18

125 90.39 90.14 89.63 90.00 89.52 89.86 90.11

100 89.36 89.11 88.58 88.95 88.46 88.79 89.04

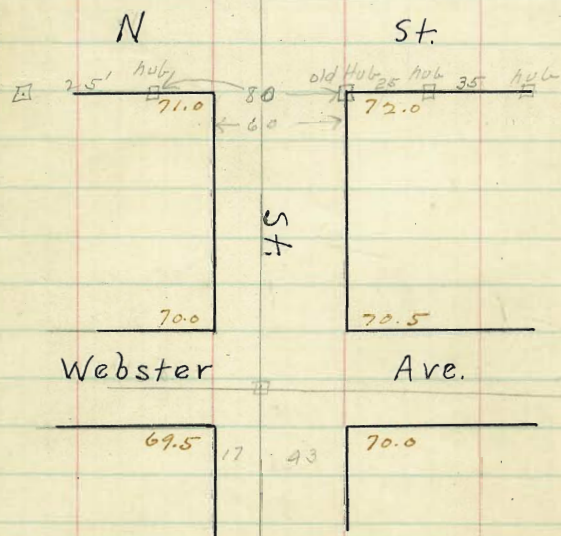
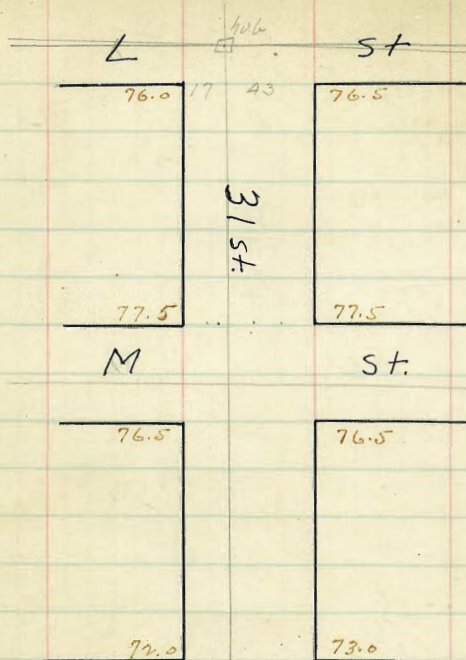
75 88.33 88.08 87.57 87.90 87.40 87.71 87.96

50 87.30 87.05 86.49 86.85 86.34 86.64 86.89

25 86.28 86.03 85.45 85.80 85.25 85.57 85.82

⁸⁵²⁵
N.L. Woolman 84.0 84.40 84.75 84.22 84.50 84.86

H		St.
102.0	17 43	101.0
	31st	
80.0		80.0
I	reset 40 60	St.
79.5		79.5
76.5		77.0
J	reset 40 60	St.
76.0		76.5
78.0		78.5
K		St.
78.0		78.0
	St.	
76.0	17 43	76.5
L		St.



31st St.

South Line of H St.

5 Line 102.25 107.0 101.4 101.50 100.85 101.0 101.25

75 100.42 100.17 99.58 99.70 99.08 99.25 99.50

50 98.58 98.33 97.76 97.91 97.31 97.50 97.75

75 96.75 96.50 95.94 96.12 95.54 95.75 96.00

100 94.91 94.66 94.13 94.33 93.76 94.0 94.25

125 93.08 92.83 92.31 92.54 91.90 92.25 92.50

150 91.25 91.0 90.50 90.75 90.22 90.50 90.75

175 89.41 89.16 88.68 88.95 88.45 88.75 89.00

200 87.58 87.33 86.86 87.16 86.68 87.0 87.25

225 85.75 85.50 85.05 85.37 84.91 85.25 85.50

250 83.91 83.66 83.23 83.58 83.10 83.50 83.75

275 82.08 81.83 81.42 81.79 81.37 81.75 82.00

300 80.25 80.0 79.60 80.0 79.60 80.0 80.25

N. Line I St.

N Line 80.25 80.0 79.60 80.0 79.60 80.0 80.25

N. Crb. 80.0 80.0 79.51 79.91 79.51 80.0 80.0

N 1/4 79.47 78.87 79.43 79.53 79.43 78.87 79.47

Center 79.75 78.75 79.35 79.75 79.35 78.75 79.75

S 1/4 79.22 78.62 79.27 79.47 79.27 78.62 79.22

S. Crb. 79.50 78.50 79.50 79.19 79.59 79.19 78.50 79.50

S. Line 79.75 79.50 79.10 79.50 79.10 79.5 79.75

91.80	91.80	91.50	91.4	91.4	91.6	91.6	91.8	91.8	91.9
1.25	1.0	2.0	2.1	2.2	2.4	2.5	2.4	2.3	2.1
91.24	91.8	91.24	91.27	91.26	91.19	91.1	91.4	91.5	91.8
10.95	10.1	10.2	10.0	10.2	10.3	10.3	10.7	10.7	10.6
101.19	101.2	101.2	101.2	101.2	101.2	101.2	101.2	101.2	101.2
1.95	2.0	1.6	1.1	1.1	1.1	1.1	1.1	1.1	1.1
91.24	91.2	91.2	91.2	91.2	91.2	91.2	91.2	91.2	91.2
1.25	1.0	2.0	2.1	2.2	2.4	2.5	2.4	2.3	2.1
91.24	91.8	91.24	91.27	91.26	91.19	91.1	91.4	91.5	91.8
10.95	10.1	10.2	10.0	10.2	10.3	10.3	10.7	10.7	10.6
101.19	101.2	101.2	101.2	101.2	101.2	101.2	101.2	101.2	101.2
1.95	2.0	1.6	1.1	1.1	1.1	1.1	1.1	1.1	1.1
91.24	91.2	91.2	91.2	91.2	91.2	91.2	91.2	91.2	91.2

bt 7 328-13 - blange

21.25	21.25	21.90	22.90	22.90	22.90	104.68	104.68	104.68
78.00	78.00	78.00	78.00	78.00	78.00	78.00	78.00	78.00
21.25	21.25	21.90	22.90	22.90	22.90	104.68	104.68	104.68
78.00	78.00	78.00	78.00	78.00	78.00	78.00	78.00	78.00

79.71	79.71	79.71	80.0	80.0	80.0	80.0	80.0	80.0
87.15	87.15	87.15	87.15	87.15	87.15	87.15	87.15	87.15
87.01	87.01	87.01	87.01	87.01	87.01	87.01	87.01	87.01
10.25	10.25	10.25	10.25	10.25	10.25	10.25	10.25	10.25

checked OK 4-29-13 blange

31st St.

South Line of Ist.

S	5. Line 79.75	79.50	79.10	79.50	79.10	79.50	79.75
	25	79.50	79.25	78.80	79.27	78.88	79.29
	50. ✓	79.25	79.00	78.62	79.04	78.65	79.08
	75	79.0	78.75	78.38	78.81	78.43	78.87
	100 ✓	78.75	78.50	78.14	78.58	78.21	78.66
	125	78.50	78.25	77.90	78.35	78.0	78.46
	150 ✓	78.25	78.00	77.66	78.14	77.78	78.25
	175	78.0	77.75	77.42	77.89	77.56	78.04
	200 ✓	77.75	77.50	77.18	77.67	77.35	77.83
	225	77.50	77.25	76.94	77.44	77.13	77.62
	250 ✓	77.25	77.00	76.70	77.21	76.91	77.42
	275	77.0	76.75	76.46	76.98	76.69	77.20
	300	76.75	76.5	76.22	76.75	76.47	77.0

N. Line of J St.

	N. Line 76.75	76.5	76.22	76.75	76.47	77.0	77.25
	N. Carb. 76.5	76.5	75.62	75.75	75.87	77.0	77.0
		75.5				76.0	
	N. 1/4 75.97	76.05	76.13	76.25	76.30	76.38	76.47
	Center 76.25	76.33	76.41	76.50	76.58	76.66	76.75
	5/4 75.72	75.80	75.88	75.97	76.05	76.13	76.22
	S. Carb. 76.0	75.0	75.12	75.25	75.37	75.5	76.5
		76.0				76.5	76.5
	S. Line 76.25	76.0	75.72	76.25	75.97	76.5	76.75

31

76.30	83.35	83.35	83.35	83.35	83.35	83.35	83.35
76.5	6.8	6.8	6.8	6.8	6.8	6.8	6.8
76.6	7.6	7.6	7.6	7.6	7.6	7.6	7.6
76.7	7.7	7.7	7.7	7.7	7.7	7.7	7.7
76.8	7.8	7.8	7.8	7.8	7.8	7.8	7.8
76.9	7.9	7.9	7.9	7.9	7.9	7.9	7.9
77.0	8.0	8.0	8.0	8.0	8.0	8.0	8.0
77.1	8.1	8.1	8.1	8.1	8.1	8.1	8.1
77.2	8.2	8.2	8.2	8.2	8.2	8.2	8.2
77.3	8.3	8.3	8.3	8.3	8.3	8.3	8.3
77.4	8.4	8.4	8.4	8.4	8.4	8.4	8.4
77.5	8.5	8.5	8.5	8.5	8.5	8.5	8.5
77.6	8.6	8.6	8.6	8.6	8.6	8.6	8.6
77.7	8.7	8.7	8.7	8.7	8.7	8.7	8.7
77.8	8.8	8.8	8.8	8.8	8.8	8.8	8.8
77.9	8.9	8.9	8.9	8.9	8.9	8.9	8.9
78.0	9.0	9.0	9.0	9.0	9.0	9.0	9.0

76.30	83.35	83.35	83.35	83.35	83.35	83.35	83.35
76.5	6.8	6.8	6.8	6.8	6.8	6.8	6.8
76.6	7.6	7.6	7.6	7.6	7.6	7.6	7.6
76.7	7.7	7.7	7.7	7.7	7.7	7.7	7.7
76.8	7.8	7.8	7.8	7.8	7.8	7.8	7.8
76.9	7.9	7.9	7.9	7.9	7.9	7.9	7.9
77.0	8.0	8.0	8.0	8.0	8.0	8.0	8.0
77.1	8.1	8.1	8.1	8.1	8.1	8.1	8.1
77.2	8.2	8.2	8.2	8.2	8.2	8.2	8.2
77.3	8.3	8.3	8.3	8.3	8.3	8.3	8.3
77.4	8.4	8.4	8.4	8.4	8.4	8.4	8.4
77.5	8.5	8.5	8.5	8.5	8.5	8.5	8.5
77.6	8.6	8.6	8.6	8.6	8.6	8.6	8.6
77.7	8.7	8.7	8.7	8.7	8.7	8.7	8.7
77.8	8.8	8.8	8.8	8.8	8.8	8.8	8.8
77.9	8.9	8.9	8.9	8.9	8.9	8.9	8.9
78.0	9.0	9.0	9.0	9.0	9.0	9.0	9.0

76.30	83.35	83.35	83.35	83.35	83.35	83.35	83.35
76.5	6.8	6.8	6.8	6.8	6.8	6.8	6.8
76.6	7.6	7.6	7.6	7.6	7.6	7.6	7.6
76.7	7.7	7.7	7.7	7.7	7.7	7.7	7.7
76.8	7.8	7.8	7.8	7.8	7.8	7.8	7.8
76.9	7.9	7.9	7.9	7.9	7.9	7.9	7.9
77.0	8.0	8.0	8.0	8.0	8.0	8.0	8.0
77.1	8.1	8.1	8.1	8.1	8.1	8.1	8.1
77.2	8.2	8.2	8.2	8.2	8.2	8.2	8.2
77.3	8.3	8.3	8.3	8.3	8.3	8.3	8.3
77.4	8.4	8.4	8.4	8.4	8.4	8.4	8.4
77.5	8.5	8.5	8.5	8.5	8.5	8.5	8.5
77.6	8.6	8.6	8.6	8.6	8.6	8.6	8.6
77.7	8.7	8.7	8.7	8.7	8.7	8.7	8.7
77.8	8.8	8.8	8.8	8.8	8.8	8.8	8.8
77.9	8.9	8.9	8.9	8.9	8.9	8.9	8.9
78.0	9.0	9.0	9.0	9.0	9.0	9.0	9.0

Sched. No. 4-29-30

31st St.

South Line of M. St.

S. Line	76.75	76.5	76.10	76.5	76.10	76.5	76.7
25	76.37	76.12	75.75	76.16	75.80	76.20	76.4
50	76.0	75.75	75.39	75.83	75.49	75.92	76.1
75	75.62	75.37	75.04	75.50	75.18	75.62	75.8
100	75.25	75.0	74.68	75.16	74.87	75.33	75.5
125	74.87	74.62	74.33	74.83	74.57	75.04	75.2
150	74.50	74.25	73.97	74.50	74.25	74.75	75.00
175	74.12	73.87	73.62	74.16	73.94	74.46	74.7
200	73.75	73.50	73.27	73.83	73.63	74.17	74.4
225	73.37	73.12	72.91	73.50	73.32	73.87	74.1
250	73.0	72.75	72.56	73.16	73.02	73.58	73.8
275	72.62	72.37	72.20	72.83	72.71	73.29	73.5
300	72.25	72.0	71.85	72.50	72.40	73.0	73.25

N. Line of N. St.

N. Line	72.25	72.0	71.85	72.50	72.40	73.0	73.25
N. Curb	72.0	72.0	71.69	72.34	72.24	73.0	73.0
N. 1/4	71.40	70.75	71.52	72.17	72.07	71.75	72.40
Center	71.50	70.50	71.35	72.0	71.90	71.50	72.50
S. 1/4	70.85	70.25	71.18	71.83	71.73	71.25	71.85
S. Curb	71.0	71.0	71.01	71.66	71.56	72.0	72.0
S. Line	71.25	71.0	70.85	71.50	71.40	72.0	72.25

N. Street 100' wide

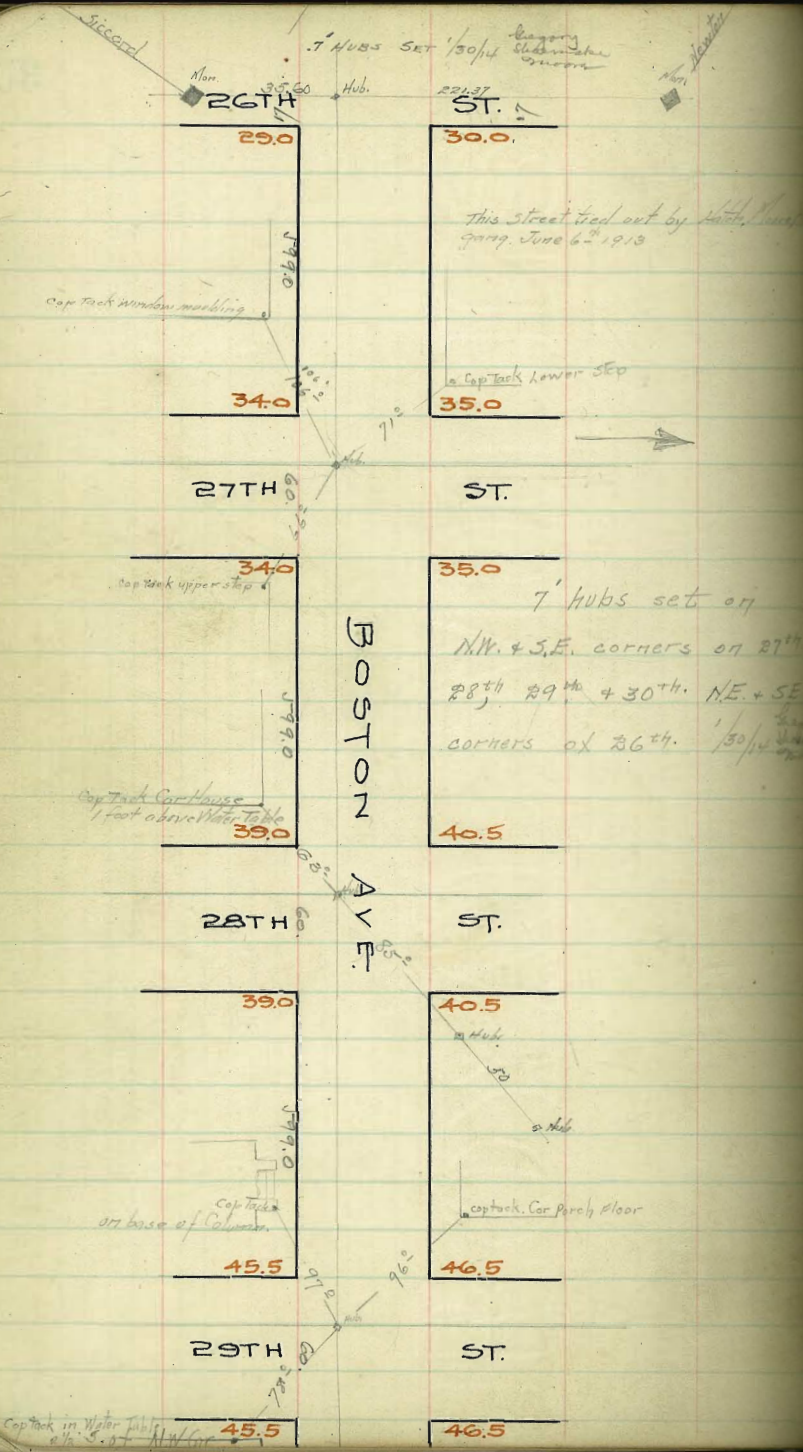
76.50	79.60	79.60	79.60	79.60	79.60	79.60
310	5.2	5.4	5.4	5.4	5.4	5.4
71.60	74.40	75.0	74.2	74.1	74.1	74.4
71.1	75.17	76.0	75.2	75.6	75.0	75.5
70.5	74.40	75.2	74.2	74.4	74.9	74.9
70.2	71.57	71.57	71.0	71.4	70.9	70.9
70.65	76.65	76.65	76.65	76.65	76.65	76.65
70.2	73.85	73.85	74.15	74.7	73.7	74.85
70.2	70.2	70.2	70.2	70.2	70.2	70.2

73.75	73.75	73.75	73.75	73.75	73.75	73.75
73.75	73.75	73.75	73.75	73.75	73.75	73.75
73.75	73.75	73.75	73.75	73.75	73.75	73.75
73.75	73.75	73.75	73.75	73.75	73.75	73.75

74.75	74.75	74.75	74.75	74.75	74.75	74.75
74.75	74.75	74.75	74.75	74.75	74.75	74.75
74.75	74.75	74.75	74.75	74.75	74.75	74.75
74.75	74.75	74.75	74.75	74.75	74.75	74.75

Checked OK 5-1-13

Intersect Subject to Street & lot



26 Boston RR Sp. Gcd. 29.033
 27 " " " " 35.534
 28 " " " " 39.592

This street tied out by H. H. H.
 June 6th 1913

7' hubs set on
 N.W. & S.E. corners on 27th
 28th 29th & 30th. N.E. & S.E.
 corners of 26th. 1/30/14

Cap Tank in Water Table
 1/30/14 NW Cor

BOSTON AVE

South

W 425	37.80	37.55	37.48	38.22	38.30	38.90	39.15
W 450	38.01	37.76	37.70	38.44	38.53	39.13	39.31
W 475	38.22	37.97	37.91	38.66	38.76	39.36	39.61
500	38.42	38.17	38.12	38.88	38.99	39.59	39.84
525	38.63	38.38	38.34	39.10	39.22	39.82	40.07
550	38.84	38.59	38.55	39.32	39.45	40.05	40.30
575	39.05	38.80	38.76	39.54	39.68	40.28	40.53
595	39.21	38.96	38.93	39.71	39.86	40.46	40.71
E 599.0	39.25	39.00	38.97	39.75	39.90	40.50	40.75

W. LINE 28TH STREET

W line	39.25	39.0	38.97	39.75	39.90	40.50	40.75
--------	-------	------	-------	-------	-------	-------	-------

W curb

W 1/4

Center

E 1/4

E curb

E line

39.0 40.5

E LINE 28TH STREET

40.72 H.T.	0.40	39.38	40.75	40.30	39.84
39.01	40.32 S.P.	7.34	6.89	7.34	7.80
2.71	7.82	2.3	5.29	3.34	5.1
1.3	47.64 H.T.	1.0	4.6	4.0	2.7
+1.4	38.42	38.84	39.26	2.16	B.M. SW cor. 28th
	9.22	8.80	8.39	40.48	3 nails in pole.
	6.52	4.7	7.29	7.93	
	+3.7	+4.1	11.1		

4197 H.T.	37.2	37.3	38.7	39.2	38.9	40.1	39.0	40.5
39.13	37.76	38.17	39.59	40.05	38.89	39.0	40.5	
2.84	4.21	3.80	2.38	1.92	3.38	2.97	1.47	

Boston Ave

W. LINE 29TH STREET

W line 4550 4650

W curb

W 1/4

Graded

Center

E 1/4

E curb

E line 4550 4650

E LINE 29TH STREET

BOSTON AVE

29th

46.47 SE cor. R.R. Spk pole.

44

E LINE 29TH STREET

V E Line	45.75	45.50	45.35	46.00	45.90	46.50	46.25
25	45.85	45.60	45.45	46.10	46.00	46.60	46.35
50	45.96	45.71	45.56	46.21	46.11	46.71	46.46
75	46.06	45.81	45.66	46.31	46.21	46.81	46.56
100	46.17	45.92	45.77	46.42	46.32	46.92	46.67
125	46.27	46.02	45.87	46.52	46.42	47.02	46.77
150	46.38	46.13	45.98	46.63	46.53	47.13	46.88
175	46.48	46.23	46.08	46.73	46.63	47.23	46.98
200	46.59	46.34	46.19	46.84	46.74	47.34	47.09
225	46.69	46.44	46.29	46.94	46.84	47.44	47.19
250	46.80	46.55	46.40	47.05	46.95	47.55	47.30
275	46.90	46.65	46.50	47.15	47.05	47.65	47.40
300	47.00	46.75	46.60	47.25	47.15	47.75	47.50
325	47.11	46.86	46.71	47.36	47.26	47.86	47.61
350	47.21	46.96	46.81	47.46	47.36	47.96	47.71
375	47.32	47.07	46.92	47.57	47.47	48.07	47.82
400	47.42	47.17	47.02	47.67	47.57	48.17	47.92
425	47.53	47.28	47.13	47.78	47.68	48.28	48.03
450	47.63	47.38	47.23	47.88	47.78	48.38	48.13
475	47.74	47.49	47.34	47.99	47.89	48.49	48.24
500	47.84	47.59	47.44	48.09	47.99	48.59	48.34
525	47.94	47.69	47.54	48.19	48.09	48.69	48.44
550	48.05	47.80	47.65	48.30	48.20	48.80	48.55
575	48.15	47.90	47.75	48.40	48.30	48.90	48.65
598.0	48.25	48.00	47.85	48.50	48.40	49.00	48.75

W LINE BOTH STREET

7.06	53.53	45.75	7.78	7.0	+0.8	47.21	6.32	5.42	+0.9	47.17	6.36	4.06	+2.3	47.63	4.47	7.17	-17.9
H.I.	45.96	7.57	6.47	+1.1	48.42	6.11	5.01	+1.1	46.96	6.57	4.37	+2.2	47.84	4.68	12.72	30.44	35.62
46.17	46.38	7.36	6.00	+1.4	48.21	5.11	5.01	+0.1	46.75	6.78	5.78	+1.0	48.05	4.89	9.16	34.00	29.00
46.59	46.80	7.15	5.55	+1.6	48.00	2.72	2.83	+2.6	48.25	5.28	3.08	+2.2	48.25	4.01	37.00	37.00	37.00
46.90	47.00	6.94	5.74	+1.2	47.80	2.83	3.83	+2.7	48.05	5.53	4.32	+2.2	48.05	3.08	37.00	37.00	37.00
47.00	47.00	6.73	5.63	+1.1	47.59	3.83	3.34	+2.6	48.34	5.73	5.94	+1.9	48.34	4.08	37.00	37.00	37.00
47.00	47.00	6.53	5.33	+1.2	47.38	3.34	3.65	+2.6	48.63	5.94	6.15	+1.9	48.63	4.08	37.00	37.00	37.00
47.00	47.00	6.33	5.13	+1.1	47.17	3.65	3.96	+2.6	48.92	6.15	6.36	+1.9	48.92	4.08	37.00	37.00	37.00
47.00	47.00	6.13	4.93	+1.0	46.96	3.96	4.27	+2.6	49.21	6.36	6.57	+1.9	49.21	4.08	37.00	37.00	37.00
47.00	47.00	5.93	4.73	+0.9	46.75	4.27	4.58	+2.6	49.50	6.57	6.78	+1.9	49.50	4.08	37.00	37.00	37.00
47.00	47.00	5.73	4.53	+0.8	46.54	4.58	4.89	+2.6	49.79	6.78	7.00	+1.9	49.79	4.08	37.00	37.00	37.00
47.00	47.00	5.53	4.33	+0.7	46.33	4.89	5.20	+2.6	50.08	7.00	7.21	+1.9	50.08	4.08	37.00	37.00	37.00
47.00	47.00	5.33	4.13	+0.6	46.12	5.20	5.51	+2.6	50.37	7.21	7.42	+1.9	50.37	4.08	37.00	37.00	37.00
47.00	47.00	5.13	3.93	+0.5	45.91	5.51	5.82	+2.6	50.66	7.42	7.63	+1.9	50.66	4.08	37.00	37.00	37.00
47.00	47.00	4.93	3.73	+0.4	45.70	5.82	6.13	+2.6	50.95	7.63	7.84	+1.9	50.95	4.08	37.00	37.00	37.00
47.00	47.00	4.73	3.53	+0.3	45.49	6.13	6.44	+2.6	51.24	7.84	8.05	+1.9	51.24	4.08	37.00	37.00	37.00
47.00	47.00	4.53	3.33	+0.2	45.28	6.44	6.75	+2.6	51.53	8.05	8.26	+1.9	51.53	4.08	37.00	37.00	37.00
47.00	47.00	4.33	3.13	+0.1	45.07	6.75	7.06	+2.6	51.82	8.26	8.47	+1.9	51.82	4.08	37.00	37.00	37.00
47.00	47.00	4.13	2.93	+0.0	44.86	7.06	7.37	+2.6	52.11	8.47	8.68	+1.9	52.11	4.08	37.00	37.00	37.00
47.00	47.00	3.93	2.73	-0.1	44.65	7.37	7.68	+2.6	52.40	8.68	8.89	+1.9	52.40	4.08	37.00	37.00	37.00
47.00	47.00	3.73	2.53	-0.2	44.44	7.68	7.99	+2.6	52.69	8.89	9.10	+1.9	52.69	4.08	37.00	37.00	37.00
47.00	47.00	3.53	2.33	-0.3	44.23	7.99	8.30	+2.6	52.98	9.10	9.31	+1.9	52.98	4.08	37.00	37.00	37.00
47.00	47.00	3.33	2.13	-0.4	44.02	8.30	8.61	+2.6	53.27	9.31	9.52	+1.9	53.27	4.08	37.00	37.00	37.00
47.00	47.00	3.13	1.93	-0.5	43.81	8.61	8.92	+2.6	53.56	9.52	9.73	+1.9	53.56	4.08	37.00	37.00	37.00
47.00	47.00	2.93	1.73	-0.6	43.60	8.92	9.23	+2.6	53.85	9.73	9.94	+1.9	53.85	4.08	37.00	37.00	37.00
47.00	47.00	2.73	1.53	-0.7	43.39	9.23	9.54	+2.6	54.14	9.94	10.15	+1.9	54.14	4.08	37.00	37.00	37.00
47.00	47.00	2.53	1.33	-0.8	43.18	9.54	9.85	+2.6	54.43	10.15	10.36	+1.9	54.43	4.08	37.00	37.00	37.00
47.00	47.00	2.33	1.13	-0.9	42.97	9.85	10.16	+2.6	54.72	10.36	10.57	+1.9	54.72	4.08	37.00	37.00	37.00
47.00	47.00	2.13	0.93	-1.0	42.76	10.16	10.47	+2.6	55.01	10.57	10.78	+1.9	55.01	4.08	37.00	37.00	37.00
47.00	47.00	1.93	0.73	-1.1	42.55	10.47	10.78	+2.6	55.30	10.78	10.99	+1.9	55.30	4.08	37.00	37.00	37.00
47.00	47.00	1.73	0.53	-1.2	42.34	10.78	11.09	+2.6	55.59	10.99	11.20	+1.9	55.59	4.08	37.00	37.00	37.00
47.00	47.00	1.53	0.33	-1.3	42.13	11.09	11.40	+2.6	55.88	11.20	11.41	+1.9	55.88	4.08	37.00	37.00	37.00
47.00	47.00	1.33	0.13	-1.4	41.92	11.40	11.71	+2.6	56.17	11.41	11.62	+1.9	56.17	4.08	37.00	37.00	37.00
47.00	47.00	1.13	-0.07	-1.5	41.71	11.71	12.02	+2.6	56.46	11.62	11.83	+1.9	56.46	4.08	37.00	37.00	37.00
47.00	47.00	0.93	-0.27	-1.6	41.50	12.02	12.33	+2.6	56.75	11.83	12.04	+1.9	56.75	4.08	37.00	37.00	37.00
47.00	47.00	0.73	-0.47	-1.7	41.29	12.33	12.64	+2.6	57.04	12.04	12.25	+1.9	57.04	4.08	37.00	37.00	37.00
47.00	47.00	0.53	-0.67	-1.8	41.08	12.64	12.95	+2.6	57.33	12.25	12.46	+1.9	57.33	4.08	37.00	37.00	37.00
47.00	47.00	0.33	-0.87	-1.9	40.87	12.95	13.26	+2.6	57.62	12.46	12.67	+1.9	57.62	4.08	37.00	37.00	37.00
47.00	47.00	0.13	-1.07	-2.0	40.66	13.26	13.57	+2.6	57.91	12.67	12.88	+1.9	57.91	4.08	37.00	37.00	37.00
47.00	47.00	-0.07	-1.27	-2.1	40.45	13.57	13.88	+2.6	58.20	12.88	13.09	+1.9	58.20	4.08	37.00	37.00	37.00
47.00	47.00	-0.27	-1.47	-2.2	40.24	13.88	14.19	+2.6	58.49	13.09	13.30	+1.9	58.49	4.08	37.00	37.00	37.00
47.00	47.00	-0.47	-1.67	-2.3	40.03	14.19	14.50	+2.6	58.78	13.30	13.51	+1.9	58.78	4.08	37.00	37.00	37.00
47.00	47.00	-0.67	-1.87	-2.4	39.82	14.50	14.81	+2.6	59.07	13.51	13.72	+1.9	59.07	4.08	37.00	37.00	37.00
47.00	47.00	-0.87	-2.07	-2.5	39.61	14.81	15.12	+2.6	59.36	13.72	13.93	+1.9	59.36	4.08	37.00	37.00	37.00
47.00	47.00	-1.07	-2.27	-2.6	39.40	15.12	15.43	+2.6	59.65	13.93	14.14	+1.9	59.65	4.08	37.00	37.00	37.00
47.00	47.00	-1.27	-2.47	-2.7	39.19	15.43	15.74	+2.6	59.94	14.14	14.35	+1.9	59.94	4.08	37.00	37.00	37.00
47.00	47.00	-1.47	-2.67	-2.8	38.98	15.74	16.05	+2.6	60.23	14.35	14.56	+1.9	60.23	4.08	37.00	37.00	37.00
47.00	47.00	-1.67	-2.87	-2.9	38.77	16.05	16.36	+2.6	60.52	14.56	14.77	+1.9	60.52	4.08	37.00	37.00	37.00
47.00	47.00	-1.87	-3.07	-3.0	38.56	16.36	16.67	+2.6	60.81	14.77	14.98	+1.9	60.81	4.08	37.00	37.00	37.00
47.00	47.00	-2.07	-3.27	-3.1	38.35	16.67	16.98	+2.6	61.10	14.98	15.19	+1.9	61.10	4.08	37.00	37.00	37.00
47.00	47.00	-2.27	-3.47</														

BOSTON AVE

South

North

W LINE 30TH STREET

W Line 48.25 48.0 47.85 48.50 48.40 49.0 49.25

W Curb ¹⁴ 48.00 48.00 47.25 47.50 47.75 49.0 49.00
 47.00 47.00 48.00 48.00

W ¹³ 1/4 47.60 47.78 47.94 48.10 48.26 48.42 48.60

Center ¹³ 48.00 48.18 48.34 48.50 48.66 48.82 49.00

E ¹³ 1/4 47.60 47.78 47.94 48.10 48.26 48.42 48.60

E Curb ¹³ 47.00 47.00 47.25 47.50 47.75 48.00 48.00
 48.00 48.00 49.00 49.00

E Line ¹⁴ 48.25 48.0 47.85 48.50 48.40 49.0 49.25

E LINE 30TH STREET

BOSTON AVE

South

E LINE 30TH STREET

E line	48.25	48.0	47.85	48.50	48.40	49.0	49.25
25	48.35	48.10	47.95	48.60	48.50	49.10	49.35
50	48.46	48.21	48.06	48.71	48.61	49.21	49.46
75	48.56	48.31	48.16	48.81	48.71	49.31	49.56
100	48.67	48.42	48.27	48.92	48.82	49.42	49.67
125	48.77	48.52	48.37	49.02	48.92	49.52	49.77
150	48.88	48.63	48.48	49.13	49.03	49.63	49.88
175	48.98	48.73	48.58	49.23	49.13	49.73	49.98
200	49.08	48.83	48.68	49.33	49.23	49.83	50.08
225	49.19	48.94	48.79	49.43	49.33	49.94	50.19
250	49.29	49.04	48.89	49.54	49.44	50.04	50.29
275	49.40	49.15	49.00	49.65	49.55	50.15	50.40
300	49.50	49.25	49.10	49.75	49.65	50.25	50.50
325	49.61	49.36	49.21	49.86	49.76	50.36	50.61
350	49.71	49.46	49.31	49.96	49.86	50.46	50.71
375	49.82	49.57	49.42	50.07	49.97	50.57	50.82
400	49.92	49.67	49.52	50.17	50.07	50.67	50.92
425	50.02	49.77	49.62	50.27	50.17	50.77	51.02
450	50.13	49.88	49.73	50.38	50.28	50.88	51.13
475	50.23	49.98	49.83	50.48	50.38	50.98	51.23
500	50.34	50.09	49.94	50.59	50.49	51.09	51.34
525	50.44	50.19	50.04	50.69	50.59	51.19	51.44
550	50.55	50.30	50.15	50.80	50.70	51.30	51.55
575	50.65	50.40	50.25	50.90	50.80	51.40	51.65
599.0	50.75	50.50	50.35	51.00	50.90	51.50	51.75

W LINE 31 ST ST.

2nd Street and 2nd step from bottom 72.00 31st (54.56)

53.53	48.46	49.25	49.46	2.03	51.50	J.P.
47.25	5.07	4.28	4.07	6.42		
5.28	1.87	2.38	2.8	57.92	H.I.	
3.28	1.87	4.1	4.1	48.67	48.88	49.08
+2.0	+3.2	34.2	34.2	9.25	9.04	8.84
		54.50	54.50	5.85	5.70	4.34
49.50	49.71	49.92	50.13	50.34	50.55	50.76
8.42	8.21	8.00	7.79	7.58	+3.4	+3.3
3.02	5.11	5.20	7.19	7.88		+4.5
+6.4	+8.1	+2.3	+0.6	-0.3		+6.3
50.55	50.75	51.75	51.55	51.30	51.13	50.92
7.37	7.17	6.17	6.37	6.58	6.79	7.00
7.97	7.67	5.87	5.97	6.49	6.59	6.20
-0.2	-0.5	+0.3	+0.4	+0.1	+0.2	+0.8
						+2.5
						+3.6
						+4.4
30.08	49.88	49.67	47.30			
7.34	8.04	8.26	6.71	H.I.	5.01	6.01
5.50	4.64	4.95	54.01		5.76	48.46
+3.6	+3.4	+3.3	49.28			5.80
			4.76	49.48	5.54	5.34
				4.59	5.34	48.88
4.38	4.13	50.08	4.18	5.18	4.97	3.97
		3.93				50.25
49.46			50.67	3.09	4.34	4.09
4.55	3.58	3.30	3.34			
49.88	3.59	3.13	2.88	51.09	2.67	3.92
4.13				2.92		3.67
50.30	3.46	2.71	2.46	51.50	2.26	
3.71				2.51		
50.52	50.70	50.35	50.00	50.90	51.50	
51.05	5.05	6.20	5.12	5.62	5.05	

46

Checked OK Belmont

1-12-14

BOSTON AVE

South

North

W LINE 31ST STREET

W line	50.75	50.50	50.35	51.00	50.90	51.50	51.75
W curb	50.50 49.50	50.50 49.50	49.75	50.00	50.25	51.50 50.5	51.50 50.50
W 1/4	50.10	50.28	50.44	50.60	50.76	50.92	51.10
center	50.50	50.68	50.84	51.00	51.16	51.32	51.50
E 1/4	50.10	50.28	50.44	50.60	50.76	50.92	51.10
E curb	49.50 50.50	49.50 50.50	49.75	50.00	50.25	50.50 51.50	50.50 51.50
E line	50.75	50.50	50.35	51.00	50.90	51.50	51.75

17440 ST.

West

East

949.5	340.75	340.50	340.49	341.28	341.45	342.05	342.30
975	340.62	340.37	340.36	341.15	341.33	341.93	342.18
1000	340.48	340.23	340.23	341.02	341.20	341.80	342.05
1025	340.35	340.10	340.10	340.89	341.08	341.68	341.93
1060	340.17	339.92	339.92	340.71	340.90	341.50	341.75
1074							
N Curb	340.10	339.85	339.84	340.63	340.82	341.50	341.50
1087						340.50	
N 1/4	340.03	339.78	339.77	340.55	340.73	340.37	340.75
1100							
Center	339.96	339.71	339.70	340.48	340.64	340.75	341.25
1113							
5/4	339.89	339.64	339.63	340.41	340.56	340.13	340.73
1126						340.00	
S Curb	339.81	339.57	339.55	340.33	340.48	341.00	341.00
1140	339.75	339.50	339.48	340.25	340.40	341.00	341.25
1175	339.37	339.12	339.06	339.80	339.88	340.48	340.73
1200	339.09	338.84	338.76	339.47	339.50	340.10	340.35
1225	338.81	338.57	338.46	339.15	339.13	339.73	339.98
1250	338.54	338.29	338.16	338.82	338.75	339.35	339.60
1275	338.27	338.02	337.86	338.50	338.38	338.98	339.23
1300	337.99	337.74	337.56	338.17	338.00	338.60	338.85
1325	337.71	337.47	337.26	337.85	337.63	338.23	338.48
1350	337.44	337.19	336.96	337.52	337.25	337.85	338.10
1375	337.17	336.92	336.66	337.20	336.88	337.42	337.73
1400	336.89	336.64	336.36	336.87	336.50	337.10	337.35
1410	336.45	336.20	335.88	336.35	335.90	336.50	336.75
1454							
N Curb	336.30	336.05	335.74	336.23	335.70	336.50	336.50
1467						335.50	
N 1/4	336.15	335.90	335.61	336.12	335.72	335.37	335.90
1480							
Center	336.01	335.76	335.49	336.01	335.56	335.25	336.25
1493							
5/4	335.87	335.62	335.36	335.89	335.40	335.12	335.73

curb

342.30	342.18	342.05	341.93	341.80	341.68	341.50	341.35	341.25	341.10	340.95	340.80	340.65	340.50	340.35	340.20	340.05	339.90	339.75	339.60	339.45	339.30	339.15	339.00	338.85	338.70	338.55	338.40	338.25	338.10	337.95	337.80	337.65	337.50	337.35	337.20	337.05	336.90	336.75	336.60	336.45	336.30	336.15	336.00	335.85	335.70	335.55	335.40	335.25	335.10	334.95	334.80	334.65	334.50	334.35	334.20	334.05	333.90	333.75	333.60	333.45	333.30	333.15	333.00	332.85	332.70	332.55	332.40	332.25	332.10	331.95	331.80	331.65	331.50	331.35	331.20	331.05	330.90	330.75	330.60	330.45	330.30	330.15	330.00	329.85	329.70	329.55	329.40	329.25	329.10	328.95	328.80	328.65	328.50	328.35	328.20	328.05	327.90	327.75	327.60	327.45	327.30	327.15	327.00	326.85	326.70	326.55	326.40	326.25	326.10	325.95	325.80	325.65	325.50	325.35	325.20	325.05	324.90	324.75	324.60	324.45	324.30	324.15	324.00	323.85	323.70	323.55	323.40	323.25	323.10	322.95	322.80	322.65	322.50	322.35	322.20	322.05	321.90	321.75	321.60	321.45	321.30	321.15	321.00	320.85	320.70	320.55	320.40	320.25	320.10	320.00	319.85	319.70	319.55	319.40	319.25	319.10	318.95	318.80	318.65	318.50	318.35	318.20	318.05	317.90	317.75	317.60	317.45	317.30	317.15	317.00	316.85	316.70	316.55	316.40	316.25	316.10	315.95	315.80	315.65	315.50	315.35	315.20	315.05	314.90	314.75	314.60	314.45	314.30	314.15	314.00	313.85	313.70	313.55	313.40	313.25	313.10	312.95	312.80	312.65	312.50	312.35	312.20	312.05	311.90	311.75	311.60	311.45	311.30	311.15	311.00	310.85	310.70	310.55	310.40	310.25	310.10	310.00	309.85	309.70	309.55	309.40	309.25	309.10	308.95	308.80	308.65	308.50	308.35	308.20	308.05	307.90	307.75	307.60	307.45	307.30	307.15	307.00	306.85	306.70	306.55	306.40	306.25	306.10	305.95	305.80	305.65	305.50	305.35	305.20	305.05	304.90	304.75	304.60	304.45	304.30	304.15	304.00	303.85	303.70	303.55	303.40	303.25	303.10	302.95	302.80	302.65	302.50	302.35	302.20	302.05	301.90	301.75	301.60	301.45	301.30	301.15	301.00	300.85	300.70	300.55	300.40	300.25	300.10	300.00	299.85	299.70	299.55	299.40	299.25	299.10	298.95	298.80	298.65	298.50	298.35	298.20	298.05	297.90	297.75	297.60	297.45	297.30	297.15	297.00	296.85	296.70	296.55	296.40	296.25	296.10	295.95	295.80	295.65	295.50	295.35	295.20	295.05	294.90	294.75	294.60	294.45	294.30	294.15	294.00	293.85	293.70	293.55	293.40	293.25	293.10	292.95	292.80	292.65	292.50	292.35	292.20	292.05	291.90	291.75	291.60	291.45	291.30	291.15	291.00	290.85	290.70	290.55	290.40	290.25	290.10	290.00	289.85	289.70	289.55	289.40	289.25	289.10	288.95	288.80	288.65	288.50	288.35	288.20	288.05	287.90	287.75	287.60	287.45	287.30	287.15	287.00	286.85	286.70	286.55	286.40	286.25	286.10	285.95	285.80	285.65	285.50	285.35	285.20	285.05	284.90	284.75	284.60	284.45	284.30	284.15	284.00	283.85	283.70	283.55	283.40	283.25	283.10	282.95	282.80	282.65	282.50	282.35	282.20	282.05	281.90	281.75	281.60	281.45	281.30	281.15	281.00	280.85	280.70	280.55	280.40	280.25	280.10	280.00	279.85	279.70	279.55	279.40	279.25	279.10	278.95	278.80	278.65	278.50	278.35	278.20	278.05	277.90	277.75	277.60	277.45	277.30	277.15	277.00	276.85	276.70	276.55	276.40	276.25	276.10	275.95	275.80	275.65	275.50	275.35	275.20	275.05	274.90	274.75	274.60	274.45	274.30	274.15	274.00	273.85	273.70	273.55	273.40	273.25	273.10	272.95	272.80	272.65	272.50	272.35	272.20	272.05	271.90	271.75	271.60	271.45	271.30	271.15	271.00	270.85	270.70	270.55	270.40	270.25	270.10	270.00	269.85	269.70	269.55	269.40	269.25	269.10	268.95	268.80	268.65	268.50	268.35	268.20	268.05	267.90	267.75	267.60	267.45	267.30	267.15	267.00	266.85	266.70	266.55	266.40	266.25	266.10	265.95	265.80	265.65	265.50	265.35	265.20	265.05	264.90	264.75	264.60	264.45	264.30	264.15	264.00	263.85	263.70	263.55	263.40	263.25	263.10	262.95	262.80	262.65	262.50	262.35	262.20	262.05	261.90	261.75	261.60	261.45	261.30	261.15	261.00	260.85	260.70	260.55	260.40	260.25	260.10	260.00	259.85	259.70	259.55	259.40	259.25	259.10	258.95	258.80	258.65	258.50	258.35	258.20	258.05	257.90	257.75	257.60	257.45	257.30	257.15	257.00	256.85	256.70	256.55	256.40	256.25	256.10	255.95	255.80	255.65	255.50	255.35	255.20	255.05	254.90	254.75	254.60	254.45	254.30	254.15	254.00	253.85	253.70	253.55	253.40	253.25	253.10	252.95	252.80	252.65	252.50	252.35	252.20	252.05	251.90	251.75	251.60	251.45	251.30	251.15	251.00	250.85	250.70	250.55	250.40	250.25	250.10	250.00	249.85	249.70	249.55	249.40	249.25	249.10	248.95	248.80	248.65	248.50	248.35	248.20	248.05	247.90	247.75	247.60	247.45	247.30	247.15	247.00	246.85	246.70	246.55	246.40	246.25	246.10	245.95	245.80	245.65	245.50	245.35	245.20	245.05	244.90	244.75	244.60	244.45	244.30	244.15	244.00	243.85	243.70	243.55	243.40	243.25	243.10	242.95	242.80	242.65	242.50	242.35	242.20	242.05	241.90	241.75	241.60	241.45	241.30	241.15	241.00	240.85	240.70	240.55	240.40	240.25	240.10	240.00	239.85	239.70	239.55	239.40	239.25	239.10	238.95	238.80	238.65	238.50	238.35	238.20	238.05	237.90	237.75	237.60	237.45	237.30	237.15	237.00	236.85	236.70	236.55	236.40	236.25	236.10	235.95	235.80	235.65	235.50	235.35	235.20	235.05	234.90	234.75	234.60	234.45	234.30	234.15	234.00	233.85	233.70	233.55	233.40	233.25	233.10	232.95	232.80	232.65	232.50	232.35	232.20	232.05	231.90	231.75	231.60	231.45	231.30	231.15	231.00	230.85	230.70	230.55	230.40	230.25	230.10	230.00	2
--------	--------	--------	--------	--------	--------	--------	--------	--------	--------	--------	--------	--------	--------	--------	--------	--------	--------	--------	--------	--------	--------	--------	--------	--------	--------	--------	--------	--------	--------	--------	--------	--------	--------	--------	--------	--------	--------	--------	--------	--------	--------	--------	--------	--------	--------	--------	--------	--------	--------	--------	--------	--------	--------	--------	--------	--------	--------	--------	--------	--------	--------	--------	--------	--------	--------	--------	--------	--------	--------	--------	--------	--------	--------	--------	--------	--------	--------	--------	--------	--------	--------	--------	--------	--------	--------	--------	--------	--------	--------	--------	--------	--------	--------	--------	--------	--------	--------	--------	--------	--------	--------	--------	--------	--------	--------	--------	--------	--------	--------	--------	--------	--------	--------	--------	--------	--------	--------	--------	--------	--------	--------	--------	--------	--------	--------	--------	--------	--------	--------	--------	--------	--------	--------	--------	--------	--------	--------	--------	--------	--------	--------	--------	--------	--------	--------	--------	--------	--------	--------	--------	--------	--------	--------	--------	--------	--------	--------	--------	--------	--------	--------	--------	--------	--------	--------	--------	--------	--------	--------	--------	--------	--------	--------	--------	--------	--------	--------	--------	--------	--------	--------	--------	--------	--------	--------	--------	--------	--------	--------	--------	--------	--------	--------	--------	--------	--------	--------	--------	--------	--------	--------	--------	--------	--------	--------	--------	--------	--------	--------	--------	--------	--------	--------	--------	--------	--------	--------	--------	--------	--------	--------	--------	--------	--------	--------	--------	--------	--------	--------	--------	--------	--------	--------	--------	--------	--------	--------	--------	--------	--------	--------	--------	--------	--------	--------	--------	--------	--------	--------	--------	--------	--------	--------	--------	--------	--------	--------	--------	--------	--------	--------	--------	--------	--------	--------	--------	--------	--------	--------	--------	--------	--------	--------	--------	--------	--------	--------	--------	--------	--------	--------	--------	--------	--------	--------	--------	--------	--------	--------	--------	--------	--------	--------	--------	--------	--------	--------	--------	--------	--------	--------	--------	--------	--------	--------	--------	--------	--------	--------	--------	--------	--------	--------	--------	--------	--------	--------	--------	--------	--------	--------	--------	--------	--------	--------	--------	--------	--------	--------	--------	--------	--------	--------	--------	--------	--------	--------	--------	--------	--------	--------	--------	--------	--------	--------	--------	--------	--------	--------	--------	--------	--------	--------	--------	--------	--------	--------	--------	--------	--------	--------	--------	--------	--------	--------	--------	--------	--------	--------	--------	--------	--------	--------	--------	--------	--------	--------	--------	--------	--------	--------	--------	--------	--------	--------	--------	--------	--------	--------	--------	--------	--------	--------	--------	--------	--------	--------	--------	--------	--------	--------	--------	--------	--------	--------	--------	--------	--------	--------	--------	--------	--------	--------	--------	--------	--------	--------	--------	--------	--------	--------	--------	--------	--------	--------	--------	--------	--------	--------	--------	--------	--------	--------	--------	--------	--------	--------	--------	--------	--------	--------	--------	--------	--------	--------	--------	--------	--------	--------	--------	--------	--------	--------	--------	--------	--------	--------	--------	--------	--------	--------	--------	--------	--------	--------	--------	--------	--------	--------	--------	--------	--------	--------	--------	--------	--------	--------	--------	--------	--------	--------	--------	--------	--------	--------	--------	--------	--------	--------	--------	--------	--------	--------	--------	--------	--------	--------	--------	--------	--------	--------	--------	--------	--------	--------	--------	--------	--------	--------	--------	--------	--------	--------	--------	--------	--------	--------	--------	--------	--------	--------	--------	--------	--------	--------	--------	--------	--------	--------	--------	--------	--------	--------	--------	--------	--------	--------	--------	--------	--------	--------	--------	--------	--------	--------	--------	--------	--------	--------	--------	--------	--------	--------	--------	--------	--------	--------	--------	--------	--------	--------	--------	--------	--------	--------	--------	--------	--------	--------	--------	--------	--------	--------	--------	--------	--------	--------	--------	--------	--------	--------	--------	--------	--------	--------	--------	--------	--------	--------	--------	--------	--------	--------	--------	--------	--------	--------	--------	--------	--------	--------	--------	--------	--------	--------	--------	--------	--------	--------	--------	--------	--------	--------	--------	--------	--------	--------	--------	--------	--------	--------	--------	--------	--------	--------	--------	--------	--------	--------	--------	--------	--------	--------	--------	--------	--------	--------	--------	--------	--------	--------	--------	--------	--------	--------	--------	--------	--------	--------	--------	--------	--------	--------	--------	--------	--------	--------	--------	--------	--------	--------	--------	--------	--------	--------	--------	--------	--------	--------	--------	--------	--------	--------	--------	--------	--------	--------	--------	--------	--------	--------	--------	--------	--------	--------	--------	--------	--------	--------	--------	--------	--------	--------	--------	--------	--------	--------	--------	--------	--------	--------	--------	--------	--------	--------	--------	--------	--------	--------	--------	--------	--------	--------	--------	--------	--------	--------	--------	--------	--------	--------	--------	--------	--------	--------	--------	--------	--------	--------	--------	--------	--------	--------	--------	--------	--------	--------	--------	--------	--------	--------	--------	--------	--------	--------	--------	--------	--------	--------	--------	--------	--------	--------	---

ADAMS

AVE

354.54 20 354.66 354.79

119.0'

NET GATED

100'

ALLEY

3.5'

469.0'

469.0'

BLOCK

26

North

352.78 20 352.75 352.72

20'

352.25

MADISON

AVE

X New back 828. p69

Campus

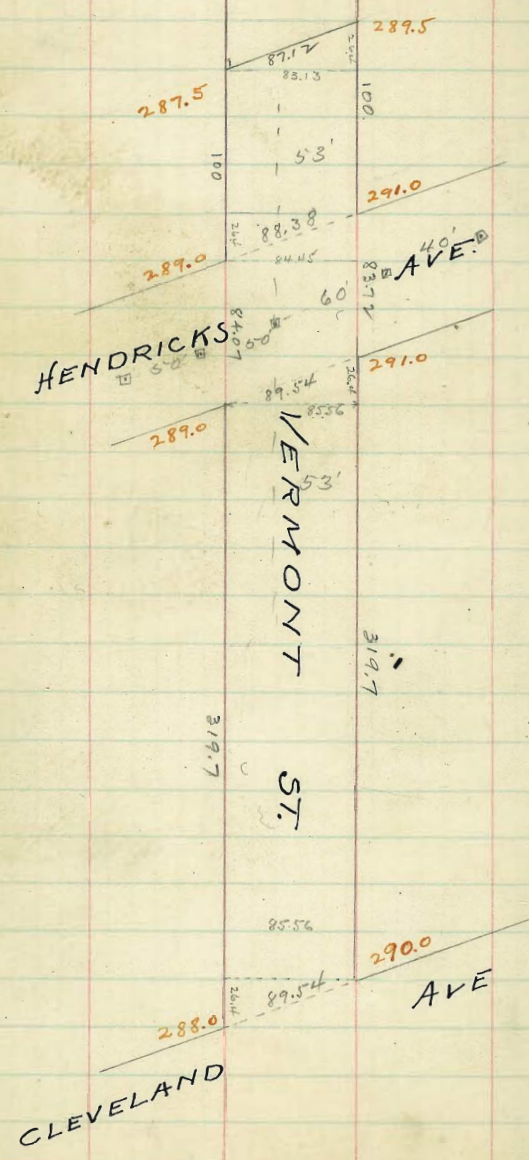
ALLEY IN BLOCK R HIGGINS ADD.

	SouthW	Center	North
0=W.L. 25th ST	199.17	198.85	199.38
25 W	199.53	199.25	199.77
✓ 50	199.44	199.65	200.15 199.65
75	200.35	200.05	200.54
✓ 100	199.77	200.45	200.93 199.93
125	201.18	200.85	201.31
✓ 150	201.59	201.24	201.70 201.20
175	202.00	201.64	202.09
✓ 200	202.41	202.04	202.47
225	202.82	202.44	202.86
✓ 250	203.24	202.84	203.75
✓ 260	203.40	203.00	203.40
✓ 280	203.60	203.20	203.60
✓ 300	203.50	203.10	203.50
✓ 370	202.70	202.30	202.70
✓ 350	200.94	200.54	200.94
375	199.47	199.07	199.47
✓ 400	198.00	197.60	198.00
425	195.62	195.18	195.57
✓ 450	193.23	192.75	193.15
475	190.85	190.33	190.72
✓ 500	188.46	187.90	188.29
525	186.08	185.48	185.86
✓ 550	183.69	183.05	183.44
575	181.31	180.63	181.01
600 =	178.92	178.20	178.58

EL. 24th ST

19912	19933	19974	20015	20077	20098	20109	20170
2.57	3.82	3.26	3.25	2.92	2.61	2.41	2.19
2.00	3.00	3.18	2.25	2.43	2.17	2.41	2.16
		-1.7	-2.2	-2.0	-1.9	-1.0	-1.4
20241	20247	20224	20225	20227	20224	20212	20216
0.25	0.22	0.50	0.50	0.39	0.33	0.12	0.19
0.20	0.22	0.20	0.23	0.22	0.20	0.19	0.16
1.95	1.85	1.85	1.26	1.10	1.18	1.06	1.16
202.6	202.8	202.7	202.7	200.04	200.94	198.0	198.0
3.09	3.24	4.09	2.00	5.95	5.45	1.79	2.10
2.77	3.55	3.69	3.79	5.40	5.60	8.05	7.29
1.05	1.26	1.50	1.21	1.04	1.25	1.74	1.19
13.22	13.15	13.46	13.29	13.69	13.24	13.92	13.58
7.77	7.95	1.52	1.71	6.31	6.56	11.25	11.42
5.32	7.68	2.94	3.51	5.80	6.22	11.26	11.31
12.55	12.2	-1.0	-1.6	1.05	-0.35		

20330 199.27 199.43
 20335 1.09 1.92
 20338 2.085
 199.77 1.53
 195.30
 3-29-73
 ← birds charged
 all set 3-29-73
 checked OK
 blough
 blough
 6/5/73
 Gregory
 Fletcher
 Moore



West

VERMONT ST

East

M.L. Hendricks	289.0	289.10	290.0	290.40	291.00	291.50
0=264 N. on W. side	288.60	288.80	289.80	290.40	291.00	291.50
25	288.73	288.43	289.43	290.03	290.63	290.81
50	287.85	288.05	289.05	289.65	290.25	290.60
73.6=100' N on W	287.50	287.70	288.70	289.30	289.90	290.50
100' N on E+W	287.50	287.60	288.50	288.90	289.50	289.75

294.13 N.E.

$$\begin{array}{r} 288.60 \\ 6.53 \\ \hline 297.75 \\ 6.28 \\ \hline 282.50 \\ 6.63 \\ \hline 638 \end{array}$$

$$\begin{array}{r} 282.75 \\ 4.38 \\ \hline 290.15 \\ 3.98 \\ \hline 290.50 \\ 3.63 \\ \hline 291.25 \\ 2.88 \end{array}$$

62

288.73

291.00

291.25

287.50 88.50

6.13 4.20

Zemel Steffen

Blange

6-19-13

288.73

$$\begin{array}{r} 94.20 \\ 2.22 \\ \hline 92.00 \\ 4.70 \end{array}$$

$$\begin{array}{r} 94.20 \\ 3.20 \\ \hline 87.20 \\ 4.70 \end{array}$$

7/11/13

Check O.K. Dunham,
Shaw,
Kerr.

94.20

94.20

2.22

3.20

6.44

5.80

94.20

94.20

2.22

3.20

5.44

5.70

94.20

94.20

2.22

7.60

4.44

6.60

94.20

94.20

0.00

7.50

3.70

6.70

3.70

6.40

PHIP ST.
80' wide, 14' walks, 13' 1/4"

El Cajon

AVA.

363.0

80

363.0

377.7

Xref book 865

364.5

364.0

Howard

80 Ave.

365.0

364.5

300

367.0

367.0

300

365.5

366.0

Polk

80 Ave

365.5

366.0

600

363.0

363.0

Lincoln

80 Ave.

362.5

362.5

600

355.34

80

355.90

University

Ave.



	W	Sub-grade 0.25' below finished grade.			E		
337.74 = S. El Cajon	363.25	363.00	362.60 362.35	363.00 362.75	362.60 362.35	363.00	363.25
325	363.31	363.06	362.40	362.80	362.39	363.04	363.27
300	363.42	363.17	362.50	362.89	362.48	363.11	363.36
275	363.53	363.28	362.59	362.98	362.56	363.19	363.44
250	363.64	363.39	362.69	363.08	362.64	363.26	363.51
225	363.75	363.50	362.78	363.17	362.73	363.33	363.58
200	363.84	363.61	362.88	363.26	362.81	363.41	363.66
175	363.97	363.72	362.98	363.35	362.89	363.48	363.73
150	364.08	363.83	363.07	363.45	362.98	363.56	363.81
125	364.19	363.94	363.17	363.54	363.06	363.63	363.88
100	364.31	364.06	363.27	363.63	363.14	363.70	363.95
75	364.42	364.17	363.36	363.72	363.23	363.78	364.03
50	364.53	364.28	363.46	363.82	363.31	363.85	364.10
25	364.64	364.39	363.55	363.91	363.40	363.93	364.18
0 = N. Howard	364.75	364.50	363.65 363.40	364.00 363.75	363.48 363.23	364.00	364.25

N. Howard	364.75	364.50	363.90 363.65	364.25 364.00	363.73 363.48	364.00	364.25
N Curb	364.50	364.50	363.74	364.09	363.57	364.00	364.00
N 1/4	363.25	363.25				363.75	362.75
N 1/4	363.98	363.38	363.82	364.17	363.65	362.88	363.48
Center	364.50	363.50	363.90	364.25	363.73	363.00	364.00
S 1/4	364.15	363.63	363.98	364.33	363.81	363.73	363.65
S Curb	363.75	363.75	364.06	364.41	363.89	363.25	363.25
	365.00	365.00				364.50	364.50
S. Howard	365.25	365.00	364.40 364.15	364.75 364.50	364.23 363.98	364.50	364.75

	Sub-grade 0.25 below finished grade						
	W						E
600 = St. Howard	365.25	365.00	364.40 364.15	364.75 364.50	364.25 363.98	364.50	364.75
575	365.45	365.17	364.33	364.68	364.18	364.71	364.96
550	365.58	365.33	364.52	364.88	364.38	364.92	365.17
525	365.75	365.50	364.70	365.06	364.57	365.13	365.38
500	365.92	365.67	364.88	365.25	364.70	365.33	365.58
475	366.08	365.83	365.07	365.44	364.97	365.54	365.79
450	366.25	366.00	365.25	365.63	365.17	365.75	366.00
425	366.42	366.17	365.43	365.81	365.36	365.96	366.21
400	366.58	366.33	365.62	366.00	365.56	366.17	366.42
375	366.75	366.50	365.80	366.19	365.76	366.38	366.63
350	366.92	366.67	365.98	366.38	365.96	366.58	366.83
325	367.08	366.83	366.17	366.56	366.15	366.79	367.04
300	367.25	367.00	366.35 366.60	366.75 367.00	366.35 366.60	367.00	367.25
275	367.13	366.88	366.72	366.65	366.25	366.92	367.17
250	367.00	366.75	366.72	366.52	366.15	366.83	367.08
225	366.88	366.63	366.01	366.44	366.05	366.75	367.00
200	366.75	366.50	365.89	366.33	365.95	366.67	366.92
175	366.63	366.38	365.78	366.23	365.85	366.58	366.83
150	366.50	366.25	365.67	366.13	365.75	366.50	366.75
125	366.38	366.13	365.55	366.02	365.65	366.42	366.67
100	366.25	366.00	365.44	365.92	365.55	366.33	366.58
75	366.13	365.88	365.32	365.81	365.45	366.25	366.50
50	366.00	365.75	365.21	365.71	365.35	366.17	366.42
25	365.88	365.63	365.09	365.60	365.25	366.08	366.33
0 = N.L. Polk	365.75	365.50	364.98 365.23	365.50 365.75	365.15 365.40	366.00	366.25

W

E

N.L. Polk	365.75	365.50	364.98 365.23	365.50 365.75	365.15 365.40	366.00	366.75
-----------	--------	--------	-----------------------------	-----------------------------	-----------------------------	--------	--------

N curb

N 1/4

Center

S 1/4

S curb

S.L. Polk	365.75	365.50	365.23 364.98	365.75 365.50	365.40 365.15	366.00	366.75
-----------	--------	--------	-----------------------------	-----------------------------	-----------------------------	--------	--------

	W				E		
600 = St. Polk	365.75	365.50	365.25	365.75	365.40	366.00	366.75
575						365.88	366.13
550						365.75	366.00
525						365.63	365.88
500						365.50	365.75
475						365.38	365.63
450						365.25	365.50
425						365.13	365.38
400						365.00	365.25
375						364.88	365.13
350						364.75	365.00
325						364.63	364.88
300						364.50	364.75
275						364.38	364.63
250						364.25	364.50
225						364.13	364.38
200						364.00	364.25
175						363.88	364.13
150						363.75	364.00
125						363.63	363.88
100						363.50	363.75
75						363.38	363.63
50						363.25	363.50
25						363.13	363.38
0 = H. Lincoln	363.25	363.00	362.60	363.00	362.60	363.00	363.25

W

E

N.L. Lincoln 363.25 363.00 362.60 363.00 362.60 363.00 363.25

N curb

N $\frac{1}{2}$

center

S $\frac{1}{4}$

S curb

S.L. Lincoln 362.75 362.50 362.10 362.50 362.10 362.50 362.75

W

E

600 = St. Lincoln 362.75 362.50 362.10 362.50 362.10 362.50 362.75

575

550

525

500

475

450

425

400

375

350

325

300

275

250

225

200

175

150

125

100

75

50

25

0 = HL Univ. Ave 355.59 355.34 355.08 355.62 355.30 355.90 356.15

69^{1/2}

7 Hub Bay #10

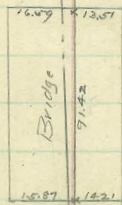
Bay Ave

Relocation of 32nd St bridge

10
9
13 } Dms
Fels
Sherrin

139.63
7.0' 0.0' 3.0'

751.88 to Ang pt
32nd St



18.41
88.57
24.28 27.42

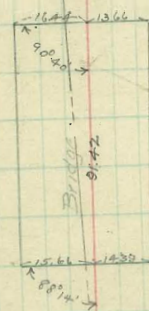
Bay Ave

Location of Bridge on 32nd St S of Bay Ave

10
8
18 } Dms
Fels
Sherrin

7.0' 0.0' 3.0'
Mag 3.0' 3.0'

751.88 to Ang pt
32nd St



18.41
34.1
Hub Ang pt

Note - Ang pt Changed
See P 69^{1/2}

38.59 B.M. SW 32nd + Main

0.33
 38.92
 12.61
 26.31
 0.84
 27.15
 18.02
 7.13
 0.81
 14.74
 9.52
 5.22
 3.62
 7.89

$\frac{5.25}{2.70}$ nails in pole SW Bay Ave + 32nd

3.08 below grade = cut-off =

$\frac{4.27}{3.62}$ = split in 1st pole So. X Bridge West Side

0.66 = 12"
 3 strappers = 15"
 1.65
 nail 46"
 = 37"

225.77 so. of break = So. end bridge

.00206 = rate per ft on grade

13.5462
 451.54
 4650862

3.47 = grade at 2 ends bridge

11 no. of so ends = 1st bent

20.6
 20.6
 0.08
 41.26

3.45 = grade at 1st bent

00206
 135
 1030
 206
 03070

3.42 = grade at 2nd bent from so end

3.39 = ✓ ✓ 3rd ✓

3.35 = ✓ ✓ 4th ✓

3.31 = ✓ ✓ 5th ✓

3.29 = ✓ ✓ 6th + North bent.

nails set on cut-off

7.89
 37
 7.52

$\frac{3.08}{0.37}$ = cut-off

56
 206
 326
 112
 11536

3.42

3.39

3.35

3.31

3.29

3.25

3.21

3.19

3.15

3.11

3.07

3.03

3.00

2.96

2.92

2.88

2.84

2.80

2.76

2.72

2.68

2.64

2.60

2.56

2.52

2.48

2.44

2.40

2.36

2.32

2.28

2.24

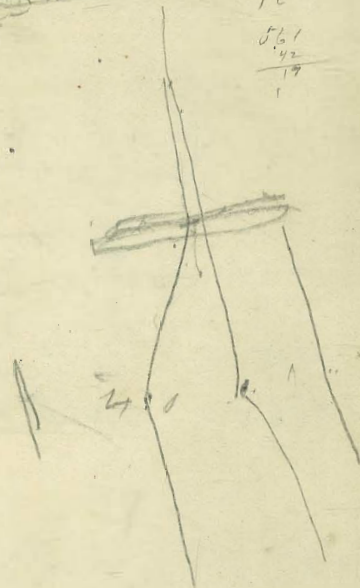
2.20

2.16

2.12

#380

3.785
111.260
115.051.243
108.30
6.75



487
85
12
492
5.09
494
482
12
494
12
486
12
561
42
19
1

393
526

4227

0029
600
17400

5200 299.73
514 299.27
248.81

1664
1459
1.95

8960
51036
3824

380
123
257
1.0234

126
0234
524
408
544
27024

350 16400
18200
13200
1200

21540
1560

1378
1003
875.1