

68

68

68

MICROFILMED

APR 6 1965

1001



GRAPE

270.0

ST

269.0

ST.

VOID

see page 61

FERN

262.0

FIR

260.0

ST.

W.

FERN ST.

E.

So. Line of GRAPE ST.

200 270.25 270.00 269.40 269.50 268.35 269.00 269.25

225 269.58 269.33 268.73 268.79 267.66 268.25 268.50

250 268.92 268.67 268.07 268.08 266.97 267.50 267.75

225 268.25 268.00 267.40 267.37 266.29 266.75 267.00

200 267.58 267.33 266.73 266.67 265.60 266.00 266.25

175 266.92 266.67 266.07 265.96 264.91 265.25 265.50

150 266.25 266.00 265.40 265.26 264.22 264.50 264.75

125 265.58 265.33 264.73 264.54 263.54 263.75 264.00

100 264.92 264.67 264.07 263.93 262.85 263.00 263.25

75 264.25 264.00 263.40 263.12 262.16 262.25 263.50

50 263.58 263.33 262.73 262.42 261.47 261.50 261.75

25 262.92 262.67 262.07 261.91 260.79 260.75 260.00

00 262.25 262.00 261.40 261.00 260.10 260.00 260.25

No. Line of FIB ST.

3

GRANADA AVE

2350

2380

HAWTHORN

ST

IYY

ST

2350

2380

2250

2280

GRANADA AVE

2270

2300

GRANADA AVE

GRANADA AVE

GRANADA AVE

2320

2330

2350

2380

GRAPE

ST

HAWTHORN

ST

2320

2330

2350

2380

West

## GRANADA AVE

East

North Line of Grape St

N. Li Grape	232.00	231.85	232.50	232.40	233.00	233.25
-------------	--------	--------	--------	--------	--------	--------

N. Curb 23200	232.00	231.25	231.50	231.25	233.00	233.00
	231.00				232.00	

N 1/4	231.60	231.67	231.83	232.10	232.27	232.43	232.60
-------	--------	--------	--------	--------	--------	--------	--------

Center 23200	231.17	231.33	232.50	232.67	232.83	233.00
--------------	--------	--------	--------	--------	--------	--------

S 1/4	231.60	231.77	231.93	232.10	232.27	232.43	232.60
-------	--------	--------	--------	--------	--------	--------	--------

S. Curb 23200	231.00				232.00	
	232.00	231.25	231.50	231.75	233.00	233.00

S. Line 23225	232.00	231.85	232.50	232.40	233.00	233.25
---------------	--------	--------	--------	--------	--------	--------

South Line of Grape St.

NORTH

West

GRANADA AVE East

South Line of HAWTHORN ST

300 235.25 235.00 235.36 236.50 237.40 238.00 239.25

275 235.00 234.25 235.06 236.17 236.98 237.58 237.83

250 234.75 234.50 234.77 235.83 236.57 237.17 237.42

225 234.50 234.25 234.48 235.60 236.15 236.75 237.00

200 234.25 234.00 234.15 235.17 235.73 236.33 236.58

175 234.00 233.75 233.89 234.83 235.32 235.92 236.17

150 233.75 233.50 233.60 234.50 234.90 235.50 235.75

125 233.50 233.25 233.31 234.17 234.48 235.08 235.33

100 233.25 233.00 233.02 233.83 234.07 234.67 234.92

75 233.00 232.75 232.93 233.60 233.65 234.25 234.50

50 232.75 232.50 232.43 233.17 233.23 233.83 234.05

25 232.50 232.25 232.14 232.83 232.82 233.42 233.67

00 232.25 232.00 231.85 232.50 232.40 233.00 233.25

North Line of Grape ST.

2917 3333 4167 4167

287 232.00 231.75 231.64 232.25 232.15 232.75 233.00 233.25

231.64	251.89	251.83	249.19	249.19	249.19	249.19	249.19	249.19	249.19
231.77	38.25	38.24	34.75	37.92	36.89	34.20	35.20	34.92	34.92
231.87	13.63	16.63	73.44	10.77	11.61	73.84	12.44	13.27	13.27
231.93	8.2	14.2	11.5	3.1	4.0	13.4	6.5	18.0	18.0
231.98 HI.	7.9	7.24	7.14	4.87	7.6	70.5	75.9	73.3	73.3

287 231.75 231.50 231.39 232.00 231.90 232.50 232.75

287 231.50 231.25 231.14 231.75 231.65 232.25 232.50

247.97 HI.	247.91	247.91	339.57	339.57	339.57	339.57	339.57	339.57	339.57
247.91 HI.	12.91	9.91	5.15	2.54	3.34	5.64	6.12	4.15	4.96
247.86 HI.	11.65	7.16							6.61

287 231.25 231.00 230.89 231.50 231.40 232.00 232.25

244.42 HI.	339.57	339.57	339.57	339.57	339.57	339.57	339.57	339.57	339.57
244.37 HI.	32.48	33.31	33.00	32.00					
244.32 HI.	7.09	5.76	6.52	7.57					

287 231.00 230.75 230.64 231.25 231.15 231.75 232.00

244.27 HI.	32.0	30.25	5.6	8.2	3.0	32.0	8.17	3.5	32.4
244.22 HI.	2.0	6.25	5.0	3.0	3.0	9.0	9.0	9.0	8.0

287 230.75 230.50 230.39 231.00 230.90 231.50 231.75

287 230.50 230.25 230.14 230.75 230.65 231.35 231.60

287 230.25 230.00 229.89 230.50 230.40 231.00 231.25

287 230.00 229.75 229.64 230.25 230.15 230.75 231.00

287 229.75 229.50 229.39 230.00 229.90 230.50 230.75

287 229.50 229.25 229.14 229.75 229.65 230.35 230.60

287 229.25 229.00 228.89 229.50 229.40 230.00 230.25

287 229.00 228.75 228.64 229.25 229.15 229.75 230.00

287 228.75 228.50 228.39 229.00 228.90 229.50 229.75

287 228.50 228.25 228.14 228.75 228.65 229.35 229.60

287 228.25 228.00 227.89 228.50 228.40 229.00 229.25

287 228.00 227.75 227.64 228.25 228.15 228.75 229.00

6

Share

Genie

Dean

April 17-1912

check 1/2% Nat. (very good)

7

7

7

7

7

7

7

7

7



West

GRANADA ST

East

North Line of Hawthorn ST

N.L. 235.25 235.00 235.35 236.50 237.40 238.00 238.25

N.Curb 23500 235.00 234.75 235.50 236.25 23800 23800  
23400 23700

N 1/4 23460 235.10 235.60 236.10 236.60 237.10 237.60

Center 23500 235.50 236.00 236.50 237.00 237.50 238.00

S 1/4 23460 235.10 235.60 236.10 236.60 237.10 237.60

S.Curb 23500 23400 23500 234.75 235.50 236.25 23700 23800  
23800

S Line 235.25 235.00 235.35 236.50 237.40 23800 238.25

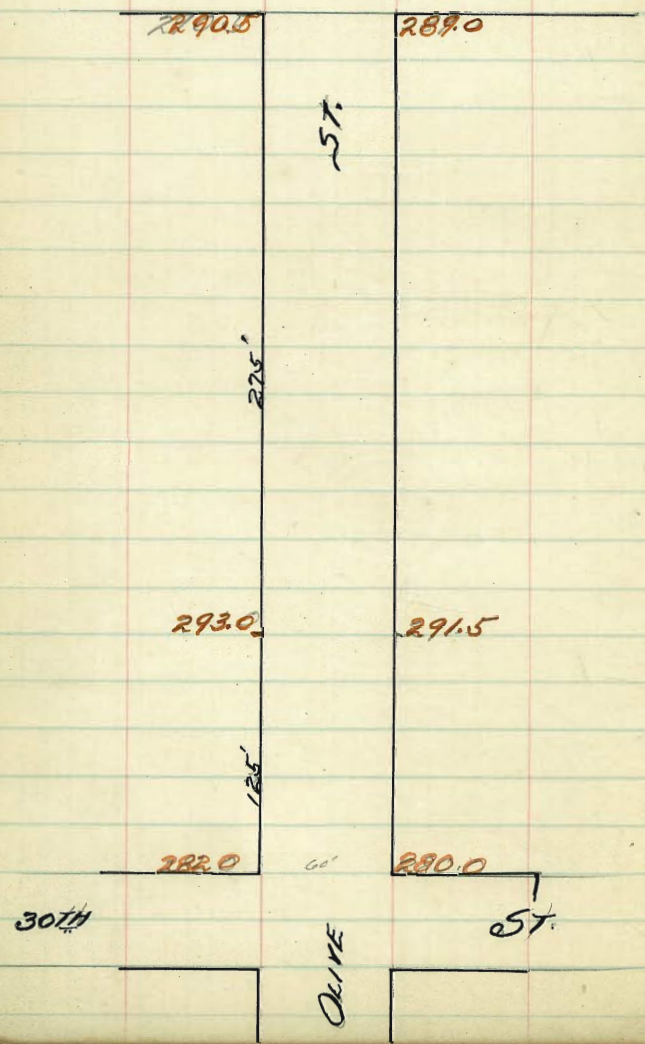
South Line of Hawthorn ST

West	GRANADA ST						East
South Line of IVY ST							
300	225.26	225.00	225.35	226.50	227.40	228.00	228.25
275	225.61	225.36	225.71	226.86	227.78	228.36	228.61
250	225.96	225.71	226.06	227.21	228.11	228.71	228.96
225	226.32	226.07	226.42	227.57	228.47	229.07	229.32
200	226.68	226.43	226.78	227.93	228.83	229.43	229.68
175	227.04	226.79	227.14	228.29	229.19	229.79	230.04
160	227.25	227.00	227.35	228.50	229.40	230.00	230.25
150	227.25	227.60	227.86	229.00	229.90	230.50	230.75
125	229.00	228.75	229.10	230.25	231.15	231.75	232.00
100	230.25	230.00	230.35	231.50	232.40	233.00	233.25
75	231.50	231.25	231.60	232.75	233.65	234.25	234.50
50	232.75	232.50	232.85	234.00	234.90	235.50	235.75
25	234.00	233.75	234.10	235.25	236.15	236.75	237.00
00	235.25	235.00	235.35	236.50	237.40	238.00	238.25

$\frac{.50}{125}$   
 North Line of HAWTHORN ST



Grade to 341 ft East of 30th St.  
10' Walks - (10' / 25')



North.

Olive St.

South.

400 290.75 290.50 289.90 289.75 288.97 289.00 289.25

350 291.20 290.95 290.35 290.20 289.42 289.45 289.70

341 291.24 291.03 290.43 290.28 289.50 289.53

300 291.66 291.41 290.81 290.66 289.88 289.91 290.16

250 292.11 291.86 291.26 291.11 290.33 290.36 290.61

200 292.57 292.32 291.72 291.57 290.79 290.82 291.07

150 293.02 292.77 292.17 292.02 291.24 291.27 291.52

125 293.25 293.00 292.40 292.25 291.47 291.50 291.75

100 291.05 290.80 290.20 290.00 289.20 289.20 289.45

288.85 288.60 288.0 287.75 286.90 286.90 287.15

50 286.65 286.40 285.80 285.50 284.65 284.60 284.85

284.45 284.20 283.60 283.25 282.35 282.30 282.55

00 282.25 282.00 281.40 281.00 280.10 280.00 280.25

East Line 30th St.

BN 290.25 Mon NE Cor Bridge.

283.67	283.67	283.67	286.77	286.77	286.77	286.77	286.77
86.64	86.64	86.64	86.64	86.64	86.64	86.64	86.64
7.02	8.82	4.25	5.75	3.12	3.12	5.02	5.02
1.00	3.17	1.6	3.22	3.12	3.12	5.00	5.00
286.77	286.77	286.77	286.77	286.77	286.77	286.77	286.77
C 4.00	C 5.11	C 2.6	C 2.11	C 0.1	C 0.1	C 0.1	C 0.1

11

286.77	286.77	286.77	286.77	286.77	286.77	286.77	286.77
89.08	92.57	91.07	88.61	92.11	91.66	91.16	91.70
3.75	6.70	6.70	6.16	4.65	5.14	6.61	7.07
3.11	6.70	7.2	8.2	3.8	6.7	13.00	8.15
C 0.7	6.0	F 1.0	F 1.0	C 1.15	C 1.8	F 0.1	F 2.8

286.77  
90.12  
6.02  
7.00  
F 1.0

at 4/11 11-25-12

Donnan  
Shaw  
Devine

289.75	289.75	289.75	289.75	289.75	289.75	289.75	289.75
81.10	81.10	81.10	81.10	81.10	81.10	81.10	81.10
1.75	1.75	1.75	1.75	1.75	1.75	1.75	1.75
289.75	289.75	289.75	289.75	289.75	289.75	289.75	289.75
1.75	1.75	1.75	1.75	1.75	1.75	1.75	1.75

289.75  
81.10  
1.75  
289.75  
81.10  
1.75

at 4/11 11-25-12

Donnan  
Shaw  
Devine

289.75	289.75	289.75	289.75	289.75	289.75	289.75	289.75
81.10	81.10	81.10	81.10	81.10	81.10	81.10	81.10
1.75	1.75	1.75	1.75	1.75	1.75	1.75	1.75
289.75	289.75	289.75	289.75	289.75	289.75	289.75	289.75
1.75	1.75	1.75	1.75	1.75	1.75	1.75	1.75

289.75  
81.10  
1.75  
289.75  
81.10  
1.75

at 4/11 11-25-12

Donnan  
Shaw  
Devine

289.75	289.75	289.75	289.75	289.75	289.75	289.75	289.75
81.10	81.10	81.10	81.10	81.10	81.10	81.10	81.10
1.75	1.75	1.75	1.75	1.75	1.75	1.75	1.75
289.75	289.75	289.75	289.75	289.75	289.75	289.75	289.75
1.75	1.75	1.75	1.75	1.75	1.75	1.75	1.75

289.75  
81.10  
1.75  
289.75  
81.10  
1.75

at 4/11 11-25-12

Donnan  
Shaw  
Devine

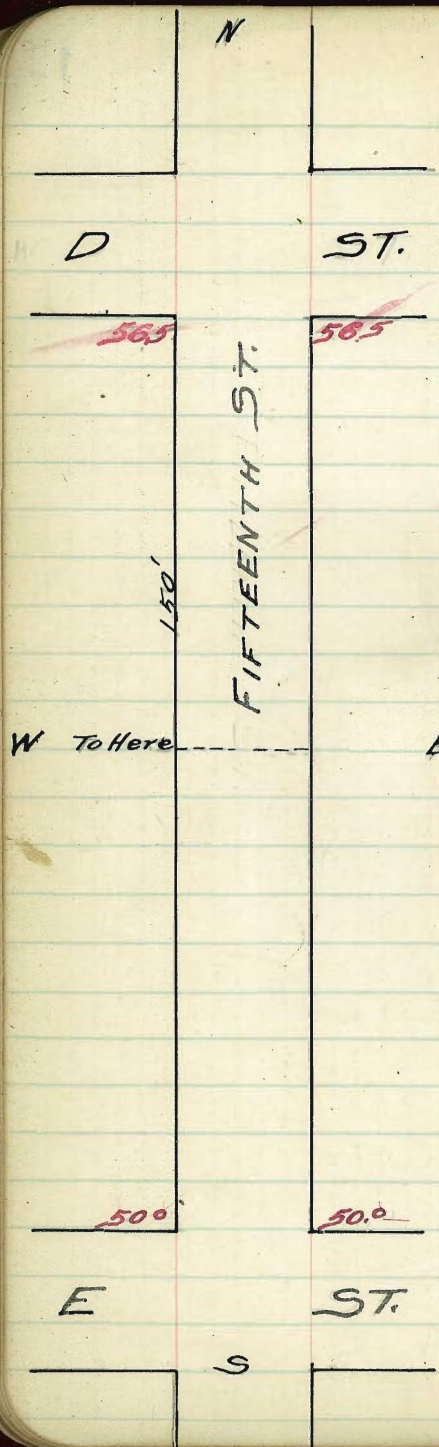
289.75	289.75	289.75	289.75	289.75	289.75	289.75	289.75
81.10	81.10	81.10	81.10	81.10	81.10	81.10	81.10
1.75	1.75	1.75	1.75	1.75	1.75	1.75	1.75
289.75	289.75	289.75	289.75	289.75	289.75	289.75	289.75
1.75	1.75	1.75	1.75	1.75	1.75	1.75	1.75

289.75  
81.10  
1.75  
289.75  
81.10  
1.75

at 4/11 11-25-12

Donnan  
Shaw  
Devine





FIFTEENTH STREET.

W D. STREET E

curb- $\frac{1}{4}$ -Crs. Dig Curb stake on Prof

5760 Curb at NW cor 15<sup>th</sup> D  
 55.27  
 20.93 H  
 55.12  
 5.71  
 54.33  
 6.60 L  
 7.00  
 53.46  
 54.7  
 7.87  
 $\frac{9}{32}$  H  
 52.4  
 2.2  
 + 4.92  
 4.85  
 3.32  
 10.00  
 7.22

00 56.95 56.50 56.10 56.50 56.10 56.50 56.95

25 56.21 55.96 55.56 55.96 55.56 55.96 56.21

50 55.67 55.42 55.02 55.42 55.02 55.42 55.67

75 55.12 54.87 54.47 54.87 54.47 54.87 55.12

100 54.58 54.33 53.93 54.33 53.93 54.33 54.58

125 54.04 53.79 53.39 53.79 53.39 53.79 54.04

140 53.24 53.26 53.06 53.46

160 53.50 53.25 52.85 53.25 52.85 53.25 53.50  
 to here Set 5 to here's to here

175

200

225

250

275

300 50.25 50.00 49.60 50.00 49.60 50.00 50.25

E STREET.





276.9784  
 0.97  
 276.57  
 10.0777  
 276.50  
 3.09  
 272.5977  
 11.53  
 277.31 B.M. sec 1/2

St

HAWTHORN ST

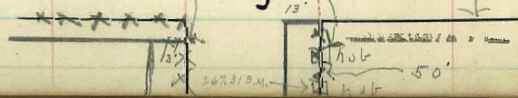
276.5      278.0

268.0      268.5

GRAPE

31.5'

St



31<sup>st</sup> St.

W.

So Line HAWTHORNE ST.

200 276.75 276.50 276.47 277.25 277.40 278.00 278.25

225 276.04 275.79 275.74 276.50 276.61 277.21 277.46

250 275.33 275.08 275.01 275.75 275.82 276.42 276.67

275 274.62 274.37 274.28 275.00 275.02 275.62 275.87

300 273.92 273.67 273.55 274.25 274.23 274.83 275.08

175 273.21 272.96 272.87 273.50 273.44 274.04 274.29

150 272.50 272.25 272.09 272.75 272.65 273.25 273.50

125 271.79 271.54 271.36 272.00 271.85 272.46 272.71

100 271.08 270.83 270.64 271.25 271.07 271.67 271.92

75 270.37 270.12 269.91 270.50 270.27 270.87 271.12

50 269.67 269.42 269.19 269.75 269.48 270.08 270.33

25 268.96 268.71 268.45 269.00 268.69 269.29 269.54

0 268.25 268.00 267.72 268.25 26 7.90 268.50 268.75

208.33 272.91 75 7416 7416

278.59 77.50 79.00 16

78.59	78.59	78.59	78.59	78.59	78.59	78.59
73.50	73.50	73.50	73.50	73.50	73.50	73.50
71.04	71.04	71.04	71.04	71.04	71.04	71.04
71.51	71.51	71.51	71.51	71.51	71.51	71.51
72.07	72.07	72.07	72.07	72.07	72.07	72.07
72.63	72.63	72.63	72.63	72.63	72.63	72.63
73.19	73.19	73.19	73.19	73.19	73.19	73.19
73.75	73.75	73.75	73.75	73.75	73.75	73.75
74.31	74.31	74.31	74.31	74.31	74.31	74.31
74.87	74.87	74.87	74.87	74.87	74.87	74.87
75.43	75.43	75.43	75.43	75.43	75.43	75.43
75.99	75.99	75.99	75.99	75.99	75.99	75.99
76.55	76.55	76.55	76.55	76.55	76.55	76.55
77.11	77.11	77.11	77.11	77.11	77.11	77.11
77.67	77.67	77.67	77.67	77.67	77.67	77.67
78.23	78.23	78.23	78.23	78.23	78.23	78.23
78.79	78.79	78.79	78.79	78.79	78.79	78.79
79.35	79.35	79.35	79.35	79.35	79.35	79.35
79.91	79.91	79.91	79.91	79.91	79.91	79.91
80.47	80.47	80.47	80.47	80.47	80.47	80.47
81.03	81.03	81.03	81.03	81.03	81.03	81.03
81.59	81.59	81.59	81.59	81.59	81.59	81.59
82.15	82.15	82.15	82.15	82.15	82.15	82.15
82.71	82.71	82.71	82.71	82.71	82.71	82.71
83.27	83.27	83.27	83.27	83.27	83.27	83.27
83.83	83.83	83.83	83.83	83.83	83.83	83.83
84.39	84.39	84.39	84.39	84.39	84.39	84.39
84.95	84.95	84.95	84.95	84.95	84.95	84.95
85.51	85.51	85.51	85.51	85.51	85.51	85.51
86.07	86.07	86.07	86.07	86.07	86.07	86.07
86.63	86.63	86.63	86.63	86.63	86.63	86.63
87.19	87.19	87.19	87.19	87.19	87.19	87.19
87.75	87.75	87.75	87.75	87.75	87.75	87.75
88.31	88.31	88.31	88.31	88.31	88.31	88.31
88.87	88.87	88.87	88.87	88.87	88.87	88.87
89.43	89.43	89.43	89.43	89.43	89.43	89.43
89.99	89.99	89.99	89.99	89.99	89.99	89.99
90.55	90.55	90.55	90.55	90.55	90.55	90.55
91.11	91.11	91.11	91.11	91.11	91.11	91.11
91.67	91.67	91.67	91.67	91.67	91.67	91.67
92.23	92.23	92.23	92.23	92.23	92.23	92.23
92.79	92.79	92.79	92.79	92.79	92.79	92.79
93.35	93.35	93.35	93.35	93.35	93.35	93.35
93.91	93.91	93.91	93.91	93.91	93.91	93.91
94.47	94.47	94.47	94.47	94.47	94.47	94.47
95.03	95.03	95.03	95.03	95.03	95.03	95.03
95.59	95.59	95.59	95.59	95.59	95.59	95.59
96.15	96.15	96.15	96.15	96.15	96.15	96.15
96.71	96.71	96.71	96.71	96.71	96.71	96.71
97.27	97.27	97.27	97.27	97.27	97.27	97.27
97.83	97.83	97.83	97.83	97.83	97.83	97.83
98.39	98.39	98.39	98.39	98.39	98.39	98.39
98.95	98.95	98.95	98.95	98.95	98.95	98.95
99.51	99.51	99.51	99.51	99.51	99.51	99.51
100.07	100.07	100.07	100.07	100.07	100.07	100.07

267.41 267.41 267.41 267.41 267.41 267.41 267.41

11.25 78.56 78.56 78.56 78.56 78.56 78.56

278.56 78.23 78.23 78.23 78.23 78.23 78.23

10.31 8.23 8.23 8.23 8.23 8.23 8.23

10.56 8.25 8.25 8.25 8.25 8.25 8.25

78.56 78.56 78.56 78.56 78.56 78.56 78.56

68.75 69.67 71.92 72.50 73.08 75.33 78.25

9.91 8.89 6.64 6.04 3.48 3.23 0.31

10.06 9.14 6.89 6.31 3.73 3.48 0.56

270.06 B.M. SPR 5.W. GRAPE 31<sup>st</sup> 7/2

78.60 78.60 78.60 78.60 78.60 78.60 78.60

78.60 78.60 78.60 78.60 78.60 78.60 78.60

78.60 78.60 78.60 78.60 78.60 78.60 78.60

78.60 78.60 78.60 78.60 78.60 78.60 78.60

78.60 78.60 78.60 78.60 78.60 78.60 78.60

78.60 78.60 78.60 78.60 78.60 78.60 78.60

78.60 78.60 78.60 78.60 78.60 78.60 78.60

78.60 78.60 78.60 78.60 78.60 78.60 78.60

78.60 78.60 78.60 78.60 78.60 78.60 78.60

78.60 78.60 78.60 78.60 78.60 78.60 78.60

78.60 78.60 78.60 78.60 78.60 78.60 78.60

78.60 78.60 78.60 78.60 78.60 78.60 78.60

78.60 78.60 78.60 78.60 78.60 78.60 78.60

78.60 78.60 78.60 78.60 78.60 78.60 78.60

78.60 78.60 78.60 78.60 78.60 78.60 78.60

78.60 78.60 78.60 78.60 78.60 78.60 78.60

78.60 78.60 78.60 78.60 78.60 78.60 78.60

78.60 78.60 78.60 78.60 78.60 78.60 78.60

78.60 78.60 78.60 78.60 78.60 78.60 78.60

78.60 78.60 78.60 78.60 78.60 78.60 78.60

78.60 78.60 78.60 78.60 78.60 78.60 78.60

78.60 78.60 78.60 78.60 78.60 78.60 78.60

78.60 78.60 78.60 78.60 78.60 78.60 78.60

78.60 78.60 78.60 78.60 78.60 78.60 78.60

78.60 78.60 78.60 78.60 78.60 78.60 78.60

78.60 78.60 78.60 78.60 78.60 78.60 78.60

78.60 78.60 78.60 78.60 78.60 78.60 78.60

78.60 78.60 78.60 78.60 78.60 78.60 78.60

78.60 78.60 78.60 78.60 78.60 78.60 78.60

78.60 78.60 78.60 78.60 78.60 78.60 78.60

78.60 78.60 78.60 78.60 78.60 78.60 78.60

78.60 78.60 78.60 78.60 78.60 78.60 78.60

78.60 78.60 78.60 78.60 78.60 78.60 78.60

78.60 78.60 78.60 78.60 78.60 78.60 78.60

78.60 78.60 78.60 78.60 78.60 78.60 78.60

10/ Bunkle  
11/ Evans  
12/ Kerr  
13/ curb & property.

17/ all stakes  
18/ Bunkle  
19/ Evans  
20/ Kerr

270.06 1/2  
8.54  
278.60 1/3  
check O.H. Bunkle



307.5  
272  
307.5

31ST

ST.

60'

277.5

278.5

*See by*

GRADE TO HERE

3056

304.5

PALM ST.

53400

150

3070

3060

3070

3060

125

3030

3010

30TH

ST.

60'

10' WALKS 10' QUARTERS

534' East of 30th St

600 279.75 279.50 278.90 279.00 278.30 278.50 278.75

GRADE to HERE

534.4 285.30 285.5 284.45 284.55 283.90 284.05 284.30

525 286.06 285.81 285.21 285.31 284.66 284.81 285.06

500 288.16 287.91 287.31 287.41 286.76 286.91 287.16

475 290.27 290.02 289.42 289.52 288.87 289.02 289.27

450 292.37 292.12 291.52 291.62 290.97 291.12 291.37

425 294.47 294.22 293.62 293.72 293.07 293.22 293.47

400 296.58 296.33 295.73 295.83 295.18 295.33 295.58

375 298.68 298.43 297.83 297.93 297.28 297.43 297.68

350 300.79 300.54 299.94 300.04 299.39 299.54 299.79

325 302.89 302.64 302.04 302.14 301.49 301.64 301.89

300 304.99 304.74 304.14 304.24 303.59 303.74 303.99

291 305.76 305.50 304.90 305.00 304.35 304.50 304.75

Break

275 305.91 305.66 305.06 305.16 304.51 304.66 304.91

250 306.16 305.91 305.31 305.41 304.76 304.91 305.16

225 306.41 306.16 305.56 305.66 305.01 305.16 305.41

200 306.66 306.41 305.81 305.91 305.26 305.41 305.66

175 306.91 306.66 306.06 306.16 305.51 305.66 305.91

150 307.16 306.91 306.31 306.41 305.76 305.91 306.16

141 307.25 307.00 306.40 306.50 305.85 306.00 306.25

Break

125 307.25 307.00 306.40 306.50 305.85 306.00 306.25

Break

100 306.45 306.20 305.60 305.70 304.90 305.00 305.25

75 305.65 305.40 304.80 304.90 303.95 304.00 304.25

50 304.85 304.60 304.00 303.80 303.00 303.00 303.25

25 304.05 303.80 303.20 302.90 302.05 302.00 302.25

00 303.25 303.00 302.40 302.00 301.10 301.00 301.25

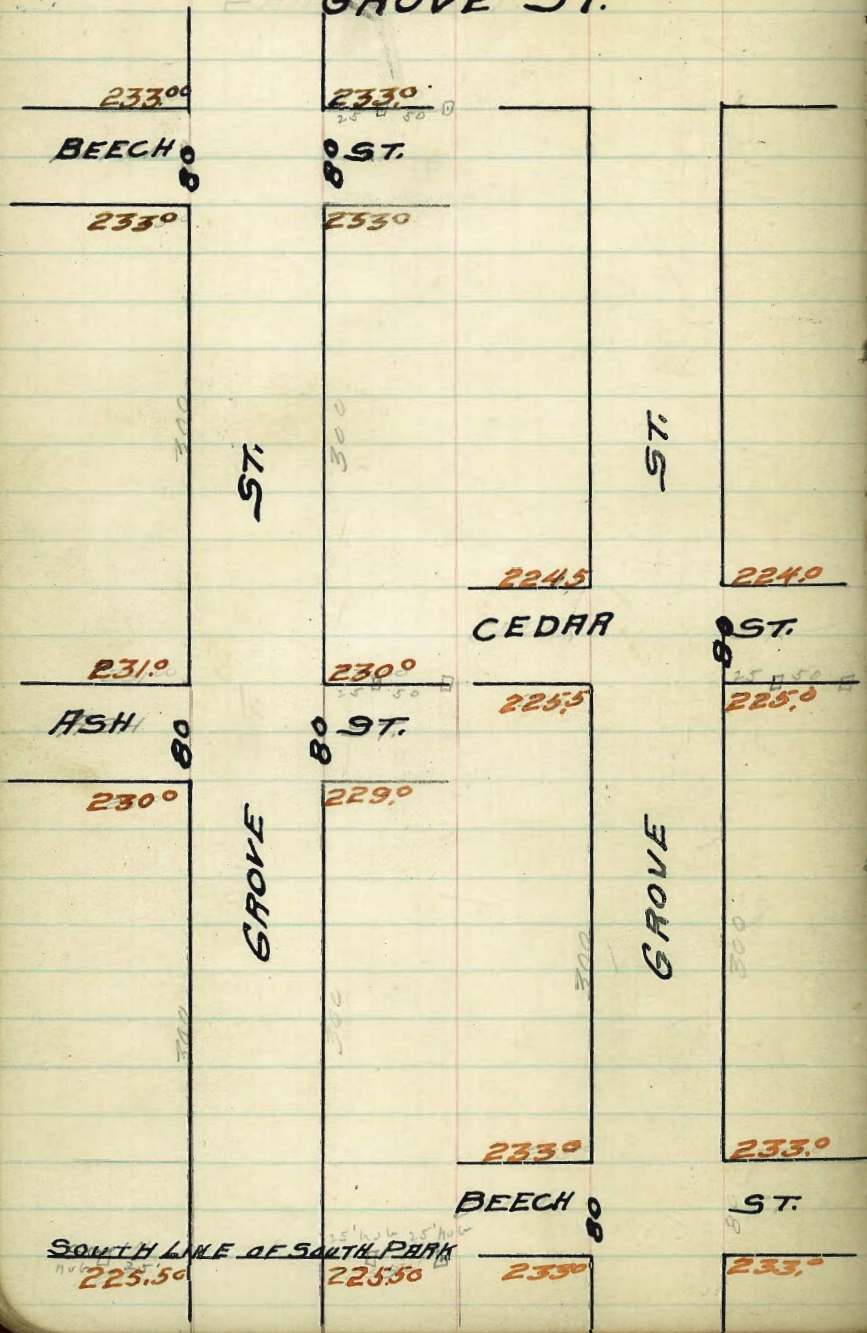
EAST LINE of 30th St

Handwritten notes and calculations on the right page, including a table with columns of numbers (e.g., 280.75, 281.20, 281.65) and various annotations like 'cut to fill', 'blow', and 'chuck'. Includes a large handwritten note '1 1/2 - 18 - 1 1/2' and 'blow'.



20' WALKS 10' QUARTERS 80' Wide

GROVE ST.



GROVE ST.



W	SOUTH LINE OF ASH							E
300	230.25	230.00	229.40	229.50	228.85	229.00	229.25	
275	229.88	229.63	229.04	229.17	228.54	228.71	228.91	
250	229.50	229.25	228.68	228.83	228.23	228.42	228.67	
225	229.13	228.88	228.33	228.50	227.91	228.13	228.38	
200	228.75	228.50	227.97	228.17	227.60	227.83	228.08	
175	228.38	228.13	227.61	227.83	227.29	227.54	227.79	
150	228.00	227.75	227.25	227.50	226.98	227.25	227.50	
125	227.63	227.38	226.89	227.17	226.66	226.96	227.21	
100	227.25	227.00	226.53	226.83	226.35	226.67	226.92	
75	226.88	226.63	226.18	226.50	226.04	226.38	226.63	
50	226.50	226.25	225.82	226.17	225.73	226.08	226.33	
25	226.13	225.88	225.46	225.83	225.41	225.79	226.04	
00	225.75	225.50	225.10	225.50	225.10	225.50	225.75	

SOUTH LINE OF SOUTH PARK

233.16 B. A. 13' ... pole N.E. Ash & Grove

237.00	237.35	237.58	237.58	237.35	237.38	237.38	237.38	5/ Double
237.38	237.50	237.50	237.50	237.50	237.50	237.50	237.50	28/ Errors
1.63E	10.88	10.44	9.38	9.30	7.88	8.18	8.18	12/ 7/20
12.90	11.00	10.80	9.08	11.10	7.80	8.43	8.43	20
-5.13	-0.1	-5.4	+0.3	-1.8	0.0	-0.3	-0.3	cut-off
237.38	237.38	237.38	237.38	237.38	237.38	237.38	237.38	
50.25	26.83	27.25	27.50	28.00	28.00	28.67	28.75	
1.63W	11.00	10.13	9.88	8.60	8.71	7.13	6.23	
11.90	17.15	10.03	12.88	2.53	9.71	6.23	6.23	
-0.3	-6.1	+0.1	-3.0	+0.1	-1.0	-0.9	-0.9	
30 29	411	511	482	542	530	2789	2735	2725
225	2608	25.8	267	268	268	268	268	268
7.86	7.03	3.61	3.61	3.61	3.61	3.61	3.61	3.61
30	290	290	288	290	290	290	290	290
285	549	589	603	681	643	620	605	660
285	2797	2817	276	2780	2775	2725	275	2688
788	691	671	725	704	740	725	735	790
270	2453	2630	2625	2667	2625	2582	2617	2573
788	830	805	803	819	803	792	871	715
255	2510	2510	2510	2510	2510	2510	2510	2510
788	777	777	777	777	777	777	777	777

curb-prop. 7/12 1900

## NORTH LINE of ASH

NL 231.25 231.00 230.46 230.50 229.85 230.00 230.75

Wp 231.00 231.00 230.15 230.25 229.60 230.00 230.00  
230.00 229.00

N/H 230.40 229.76 230.03 230.13 229.47 228.75 229.40

Center 230.50 229.50 229.90 230.00 229.35 228.50 229.50

S/H 230.85 229.25 229.77 229.87 229.28 228.25 228.85  
229.85

Sp 230.00 229.00 230.00 229.65 229.75 229.10 228.00 229.00  
229.00

SL 230.25 230.00 229.40 229.50 228.85 229.00 229.25

## SOUTH LINE of ASH ST.



## NORTH LINE of BEECH

NLB 23325 23300 23260 23300 23260 23300 23325

NLB 23300 23300 23260 23300 23260 23300 23300  
23200 23200

NH 23260 23260 23260 23300 23260 23260 23260

Center 23300 23300 233.00 23300 23300 233.00 23300

S 1/4 23260 23260 23260 23300 23260 23260 23260

SLB 23300 23200 23300 23260 23300 23260 23300 23300  
23200 23200

SILITE 23325 23300 23260 23300 23260 23300 23325

## SOUTH LINE of BEECH

SOUTH LINE of CEDAR

300 226.75 226.50 224.90 225.25 224.72 225.00 225.25  
 625 6417 6458 6567 6667

295 226.38 226.13 225.54 225.90 225.38 225.67 225.92

250 227.00 226.75 226.18 226.54 226.03 226.33 226.68

225 227.63 227.38 226.83 227.19 226.69 227.00 227.25

200 228.25 228.00 227.47 227.83 227.35 227.67 227.92

175 228.88 228.63 228.11 228.48 228.00 228.33 228.58

150 229.50 229.25 228.75 229.12 228.66 229.00 229.25

125 230.13 229.88 229.39 229.77 229.32 229.67 229.92

100 230.75 230.50 230.03 230.42 229.97 230.33 230.58

75 231.38 231.13 230.68 231.06 230.63 231.00 231.25

50 232.00 231.75 231.32 231.71 231.29 231.67 231.92

25 232.63 232.38 231.95 232.35 231.94 232.33 232.58

00 233.25 233.00 232.60 233.00 232.60 233.00 233.25

NORTH LINE of BEECH

11.70	22990	3170	3790	3890	33.33	33.33	33.33
328.10	3385	3171	3075	3735	28.25	26.58	35.75
5.23	644	478	475	10.65	5.08	6.70	7.58
333.33	3.3	22.5	2.5	41.4	5.88	4.35	2.58
					-0.8	42.9	0.0
	3890	3790	3790	3790	33.33	33.33	33.33
	30.58	32.00	30.58	29.50	27.92	27.00	25.25
	7.65	7.80	7.32	10.40	5.41	6.38	8.08
	4.38	10.80	7.42	11.80	3.51	6.53	5.28
	22.4	-2.9	4.7	-1.4	4.19	-0.2	7.28
	380	3170	3167	3050	3033	29.0	29.0
	328	473	454	892	815	729	748
	25.5	25.0	20.5	22.0	20.5	20.5	20.5
	516	566	616	616	616	616	616
	3170	3170	3170	3170	3170	3170	3170
	327	370	334	373	335	250	270
	492	227	2912	2866	290	250	270
	477	655	590	28	28	72	755
	2675	2615	2654	2603	2622	255	255
	927	854	885	900	873	952	1012

all stakes 7/12 Hatch

223384 / 233.33  
 24125 / 249.75  
 7.08 / 3.58  
 6.18 / 6.  
 2239 / 250 244 245 285 290 / 7.25 249 257 2436 245  
 22022 / 522 552 572 637 622 472 582 587 572  
 220 240 244 2475 2422 225 245 / 2372 2225 2290  
 127 547 6.00 672 572 6.50 247 632

all stakes 7/12  
 28

NORTH LINE CEDAR ST

3 low  
 NL 224.25 224.50 22390 224.25 22373 22400 224.25  
 2 low  
 NCB 224.50 224.50 224.15 224.50 223.98 22400 224.00  
 223.80 22300  
 2 low 2 low 2 low 3 low 2.3 low  
 N/4 22485 223.25 224.27 224.62 224.10 223.25 223.25  
 2 low  
 Center 22300 224.00 22440 224.25 224.23 223.50 224.50  
 4 low  
 S/4 22490 224.25 224.53 224.88 224.35 223.75 224.40  
 32  
 S/2 225.50 224.50 224.65 22500 224.47 224.00 225.00  
 225.50 224.65 22500 224.47 224.00 225.00  
 S/16 22505 225.50 224.90 225.25 224.72 225.00 225.25

SOUTH LINE OF CEDAR ST.



230°

GROVE

231.0

Ferties see Page 22

N.

ASH ST.

234.0

FERN

233.0

229.0

ST.

230.0

S

234.0

ST

233.0



ASH ST. 80' WIDE (20' WKS 10' 1/4)

31

EAST LINE OF FERN ST

EL. 234.25 234.00 233.60 234.00 233.60 234.00 234.25

E.C. 234.00 234.00 233.35 233.75 233.35 234.00 234.00  
233.00 233.00

E 1/4 233.40 232.75 233.23 233.63 233.23 232.75 233.40

CENTER 233.50 232.50 233.10 233.50 233.10 232.50 233.50

W 1/4 232.85 232.25 232.97 233.37 232.97 232.25 232.85

W.C. 233.00 232.00 232.85 233.25 232.85 232.00 233.00  
233.00 233.00

W.L. 233.75 233.00 232.60 233.00 232.60 233.00 233.75

WEST LINE OF FERN ST.

WEST LINE of GROVE ST

200	231.25	231.00	230.40	230.50	229.85	230.00	230.25
	375		4375	46875			
175	231.63	231.38	230.80	230.94	230.32	230.50	230.25
150	232.00	231.75	231.20	231.38	230.79	231.00	231.25
125	232.38	232.13	231.60	231.81	231.26	231.50	231.75
100	232.75	232.50	232.00	232.25	231.73	232.00	232.25
75	233.13	232.88	232.40	232.69	232.19	232.50	232.75
50	233.50	233.25	232.80	233.13	232.66	233.00	233.25
25	233.88	233.63	233.20	233.56	233.13	233.50	233.75
00	234.25	234.00	233.60	234.00	233.60	234.00	234.25

EAST LINE of FERN ST.

237.38	237.38	237.38	237.38	237.38	237.38	237.38	237.38
237.38	237.38	237.38	237.38	237.38	237.38	237.38	237.38
7.12	5.33	5.13	3.82	3.13	3.13	3.13	3.13
4.23	1.53	2.43	1.41				
70.9	3.8	42.6	2.7				
237.38	237.38	237.38	237.38	237.38	237.38	237.38	237.38
31.25	31.25	32.74	33.25	34.25	34.25	34.25	34.25
6.13	6.13	7.63	4.13	3.13	3.13	3.13	3.13
8.33	2.13	1.23	1.93				
	3.3	13.7	10.7				

2326 ROM  
237444

all stakes 7/12  
Hatch  
Halt

310	304	305	2915	300	3175	3120	3138	3079	310
694	754	744	734	774	679	674	654	774	674
325	320	3225	3173	320	3225	3270	3313	3266	320
544	594	669	631	594	469	514	431	523	444
340	306								
314	434								



BEECH ST.

For ties see Page 22

233°

233°

GROVE

ST.

233°

233°

BEECH ST.

N.

S

232°

232°

FERN

ST.

231°

231°

5

FAST LINE OF FERN ST

E.L. 23225 232.00 231.60 23200 231.60 23200 232.25

ECb 23200 232.00 231.35 231.75 231.35 232.00 232.00  
231.00 231.00

E/H 231.40 230.75 231.22 231.62 231.22 230.75 231.40

Center 231.50 230.50 231.10 231.50 231.10 230.50 231.50

W/H 230.85 230.25 230.98 231.38 230.98 230.25 230.85

W.Cb. 23100 <sup>230.00</sup> 231.00 230.85 231.25 230.85 <sup>230.00</sup> 231.00 231.00

W.L. 231.25 231.00 230.60 231.00 230.60 231.00 231.25

WEST LINE OF FERN ST.

N

WEST LINE OF GROVE ST

200 233.25 23300 232.60 23300 232.60 233.00 233.25

175 233.13 232.88 232.48 232.88 232.48 232.88 233.13

150 233.00 232.75 232.35 232.75 232.35 232.75 23300

125 232.88 232.63 232.23 232.63 232.23 232.63 232.88

100 232.75 232.50 232.10 232.50 232.10 232.50 232.75

75 232.63 232.38 231.98 232.38 231.98 232.38 232.63

50 232.50 232.25 231.85 232.25 231.85 232.25 232.50

25 232.38 232.13 231.73 232.13 231.73 232.13 232.38

00 232.25 232.00 231.60 232.00 231.60 232.00 232.25

EAST LINE of FERN ST

S

39.70	39.70	39.70	39.70	39.70
32.25	33.00	32.75	32.50	32.25
6.65	6.90	7.15	7.40	7.65
8.00	7.95	7.25	6.80	6.35
12.5	13.0	11.9	11.6	11.2
39.70	39.70	39.70	39.70	39.70
33.25	33.00	32.75	32.50	32.25
6.65	6.90	7.15	7.40	7.65
7.95	7.70	6.15	4.70	
8.0	0.8	1.0	1.7	

5/28  
1/2  
Dunkle  
Evans  
Johnson  
cut a gill  
36  
231.76  
232.84  
320  
227.5  
2260  
22.5  
4.53  
4.75  
803  
320  
cut a prop 4/12  
with  
with  
all stakes 7/12  
with  
Hall

33.0  
34.5  
34.65







N. E. Line of 27th St. S.

Table with 8 columns representing stationing from 198.50 to 198.75. Rows include 'E Line 27th St', 'E curb', 'E 1/4', 'Centre', 'W 1/4', 'W curb', and 'W Line 27th St'.

West Line 27th St.

Table with 8 columns representing stationing from 198.25 to 190.00. Rows include '600', '550', '500', '450', '400', '360', '380', '320', '300', '280', '260', '240', '220', '200', '150', '100', '50'.

East Line 195.25

East Line 26th St.

Technical survey notes and calculations, including stationing (e.g., 179.50, 172.95), elevations, and handwritten annotations.

Technical survey notes and calculations, including stationing (e.g., 192.34, 188.0), elevations, and handwritten annotations.

N.

S.

520	175.95	175.70	175.10	175.20	174.58	174.70	174.95
500	176.75	176.5	175.90	176.0	175.35	175.50	175.75
480	178.15	177.90	177.30	177.40	176.75	176.90	177.15
450	180.25	180.0	179.40	179.50	178.85	179.0	179.25
440	181.05	180.80	180.20	180.30	179.65	179.80	180.05
420	182.65	182.40	181.80	181.90	181.25	181.40	181.65
400	184.25	184.0	183.40	183.50	182.85	183.0	183.25
380	186.05	185.80	185.20	185.30	184.65	184.80	185.05
350	188.75	188.50	187.90	188.0	187.35	187.50	187.75
340	189.82	189.57	188.97	189.07	188.42	188.57	188.82
320	191.96	191.71	191.11	191.21	190.56	190.71	190.96
300	194.10	193.85	193.25	193.35	192.70	192.85	193.10
280	196.25	196.0	195.40	195.50	194.85	195.0	195.25
260	197.75	197.5	196.90	197.00	196.35	196.50	196.75
240	198.95	198.7	198.10	198.20	197.55	197.70	197.95
220	199.95	199.7	199.10	199.20	198.55	198.70	198.95
200	200.75	200.5	199.90	200.00	199.35	199.50	199.75
180	201.25	201.0	200.40	200.5	199.85	200.0	200.25
160	201.45	201.2	200.60	200.70	200.05	200.20	200.45
140	201.45	201.2	200.60	200.70	200.05	200.20	200.45
120	201.25	201.0	200.40	200.50	199.85	200.0	200.25
100	200.85	200.60	200.01	200.16	199.55	199.75	200.00
80	200.43	200.18	199.63	199.83	199.26	199.50	199.75
60	200.01	199.76	199.25	199.50	198.97	199.25	199.50
50	199.79	199.54	199.03	199.28	198.71	199.00	199.25
25	199.27	199.02	198.51	198.76	198.19	198.48	198.75
E Line	198.75	198.50	198.10	198.50	198.10	198.50	198.75

E Line of 27th St.

111.12	111.12	111.12	111.12	111.12	111.12	111.12	111.12
107.21	107.21	107.21	107.21	107.21	107.21	107.21	107.21
105.33	105.33	105.33	105.33	105.33	105.33	105.33	105.33
111.12	111.12	111.12	111.12	111.12	111.12	111.12	111.12
101.74	101.74	101.74	101.74	101.74	101.74	101.74	101.74

40

N.

S.

177.40 12.55 174.85 1.00 176.40 12.25 163.75	127.15 76.25 11.15 6.65 +9.5	157.45 75.25 12.18 3.85 +3.7	176.43 24.48 2.08 6.93 -4.8	176.43 75.25 7.58 3.58 -2.5	176.48 75.25 1.43 10.23 -9.4	176.45 24.25 2.48 14.53 -12.5	176.48 73.25 3.25 18.13 -19.7	176.48 24.25 2.25 11.55 -9.5
--	--	--	---	---	--	---	---	--

196.96 0.46 197.92 12.90 185.02 0.20 185.22 0.82 184.30 176.73	185.22 175.05 10.17 12.67 -2.5 11.12 14.77 -3.6 185.22 75.25 9.97 6.07 3.9	185.22 175.25 11.97 16.17 -4.2 10.97 13.77 -2.8 25.22 28.25 8.97 4.57 4.4	185.22 174.75 10.47 15.17 -4.7 11.47 17.47 -6.0	185.22 175.75 9.47 16.07 -6.6 8.47 14.77 -6.3	185.22 180.25 7.97 9.47 -1.5 5.97 7.17 -1.2
---	--	---	--	--	--

E Line of 28th St.

E Line 176.25 176.0 175.40 175.50 174.85 175.0 175.25

E Curb 176.0 176.0 175.0 175.0 175.0 175.0

E 11 175.40 174.40

W Curb 174.80 174.80 173.80 173.90 173.25 173.00 173.8

W. L. 28th St for 60' St. 175.05 174.80 173.80 174.05

W Line of 28th St.

600 174.25 174.0 173.40 173.50 172.85 173.0 173.25

585 174.40 174.15 173.55 173.65 173.00 173.15 173.40

575 174.50 174.25 173.65 173.75 173.10 173.25 173.50

550 174.75 174.50 173.90 174.0 173.35 173.50 173.75



N.V.

100	175.25	175.0	174.40	174.50	173.85	174.0	174.25
80	175.05	174.8	174.20	174.30	173.65	173.80	174.05
75	175.10	174.85	174.25	174.35	173.70	173.85	174.10
65	175.20	174.95	174.35	174.45	173.90	173.95	174.20
60	175.25	175.0	174.40	174.50	173.85	174.0	174.25
50	175.42	175.17	174.57	174.67	174.02	174.17	174.42
25	175.84	175.59	174.99	175.09	174.44	174.59	174.84

East Line of 29th St.

E Line	176.25	176.0	175.40	175.50	174.85	175.0	175.25
E Curb	176.00	176.00	175.57	175.67	175.02	175.0	175.0
E 1/4	175.85	175.25	175.73	175.83	175.19	174.25	174.85
Center	176.50	175.50	175.90	176.0	175.35	174.50	175.50
W 1/4	176.40	175.75	176.07	176.17	175.52	174.75	175.40
W Curb	177.0	177.0	176.23	176.33	175.68	175.0	176.00
W Line	177.25	177.0	176.40	176.50	175.85	176.0	176.25

West Line of 29th St.

560	177.25	177.0	176.40	176.50	175.85	176.0	176.25
540	179.25	179.00	178.40	179.50	177.85	178.0	178.25
520	181.25	181.00	180.40	180.50	179.85	180.00	180.25
500	183.25	183.00	182.40	182.50	181.85	182.00	182.25

N. 195.30

195.25	195.0	194.60	195.0	194.60	195.0	195.25
195.21	194.96	194.56	194.96	194.56	194.96	195.21
195.12	194.87	194.47	194.87	194.47	194.87	195.12
195.07	194.82	194.42	194.82	194.42	194.82	195.07
195.0	194.75	194.35	194.75	194.35	194.75	195.00
194.87	194.62	194.22	194.62	194.22	194.62	194.87
194.80	194.55	194.15	194.55	194.15	194.55	194.80
194.75	194.50	194.10	194.50	194.10	194.50	194.75
194.65	194.40	194.00	194.40	194.00	194.40	194.65
194.55	194.30	193.90	194.30	193.90	194.30	194.55
194.45	194.20	193.80	194.20	193.80	194.20	194.45
194.35	194.10	193.70	194.10	193.70	194.10	194.35
194.25	194.0	193.60	194.0	193.60	194.0	194.25
193.92	193.67	193.20	193.59	193.14	193.50	193.75
193.83	193.33	192.80	193.17	192.68	193.00	193.25
193.25	193.0	192.40	192.75	192.22	192.50	192.75
192.25	192.0	191.40	191.66	191.09	191.34	191.59
191.25	191.0	190.40	190.59	189.99	190.17	190.42
190.25	190.0	189.40	189.50	188.85	189.0	189.25
188.25	188.00	187.40	187.50	186.85	187.0	187.25
186.25	186.00	185.40	185.50	184.85	185.0	185.25
184.25	184.00	183.40	183.50	182.85	183.0	183.25
182.25	182.00	181.40	181.50	180.85	181.0	181.25
180.25	180.00	179.40	179.50	178.85	179.0	179.25
178.25	178.0	177.40	177.50	176.85	177.0	177.25
176.75	176.50	175.90	176.00	175.35	175.50	175.75
175.85	175.60	175.00	175.10	174.45	174.60	174.85

GRANADA Ave.

5  
50  
49  
40  
40  
4  
40  
3  
3  
3  
3  
2  
2  
2  
1  
0  
1  
0

Redwood

St.

317.0

318.0

400'

Ave.

311.0

312.0

200'

310.0

311.0

Palm

St.

309.5

310.5

200'

308.0

309.0

200'

304.0

305.0

200'

GRANADA

297.0

298.0

Cop tack top fence-post  
Nutmeg

St. NW Cor of 21<sup>st</sup> & Nutmeg

291.57

201' 1.50'



## N. Line Palm St.

6	N. Line	310.0	311.0
---	---------	-------	-------

5	N. Corb		
---	---------	--	--

4	N. 1/4		
---	--------	--	--

4	center		
---	--------	--	--

3	S 1/4		
---	-------	--	--

3	S. Corb		
---	---------	--	--

2	S line	309.5	310.5
---	--------	-------	-------

South Line of Palm St.



West

South Line of Palm St

East

600'	S. Line 309.75	309.5	309.35	310.0	309.9	310.5	310.75
575	309.56	309.31	309.16	309.81	309.71	310.31	310.81
550	309.37	309.12	308.97	309.62	309.52	310.12	310.52
525	309.19	308.94	308.79	309.44	309.34	309.94	310.19
500	309.0	308.75	308.60	309.25	309.15	309.75	310.00
475	308.81	308.56	308.41	309.06	308.96	309.56	309.81
450	308.62	308.37	308.22	308.87	308.77	309.37	309.62
425	308.44	308.19	308.04	308.69	308.59	309.19	309.44
400	308.25	308.0	307.85	308.50	308.40	309.0	309.25
375	307.75	307.5	307.35	308.0	307.90	308.5	308.75
350	307.25	307.0	306.85	307.50	307.40	308.0	308.25
325	306.75	306.5	306.35	307.0	306.90	307.5	307.75
300	306.25	306.0	305.85	306.50	306.40	307.0	307.25
275	305.75	305.5	305.35	306.0	305.90	306.5	306.75
250	305.25	305.0	304.85	305.50	305.40	306.0	306.25
225	304.75	304.5	304.35	305.0	304.90	305.5	305.75
200	304.25	304.0	303.85	304.50	304.40	305.0	305.25
175	303.87	303.62	303.47	304.12	304.02	304.62	304.87
150	303.50	303.25	303.10	303.75	303.65	304.25	304.50
125	303.12	302.87	302.72	303.37	303.27	303.87	304.12
100	302.75	302.50	302.35	303.0	302.90	303.50	303.75
75	299.87	299.62	299.47	300.12	300.02	300.62	300.87
50	299.0	298.75	298.60	299.25	299.15	299.75	300.0
25	298.12	297.87	297.72	298.37	298.27	298.87	299.12
N Line	297.25	297.0	296.85	297.50	297.40	298.0	298.25

North Line of Nutmeg St

Selling for NE Cor Granada & Palm

313.07	312.09	313.09	312.09	313.09	312.09	313.09	312.09	313.09	312.09
11.75	12.70	10.37	11.37	10.00	10.00	11.25	11.25	12.25	11.25
3.4	2.3	1.7	2.5	3.4	2.1	2.6	4.0	2.8	3.1
2.1	0.0	0.7	0.9	0.7	0.7	0.8	0.8	0.8	0.7
313.09	312.09	312.09	312.09	312.09	312.09	312.09	312.09	312.09	312.09
11.75	11.75	11.75	11.75	11.75	11.75	11.75	11.75	11.75	11.75
11.75	11.75	11.75	11.75	11.75	11.75	11.75	11.75	11.75	11.75
11.75	11.75	11.75	11.75	11.75	11.75	11.75	11.75	11.75	11.75

all notes Feb 1-12  
all notes Feb 1-12  
all notes Feb 1-12



30th

St.

330.5

329.5

Utah

St.

333.5

333.0

ST.

ST.

329.5

328.5

Kansas

St.

332.5

332.0

330.0

329.0

Idaho

St.

332.5

332.0

331.0

330.5

Granada

St.

327.0

327.0

331.0

330.5

Oregon

St.

326.0

326.0

MYRTLE

MYRTLE

333.5

333.0

Utah

St.

333.5

333.0

Myrtle St.

West Line of 30th St.

200'	330.75						
2 W. Line of 30th	330.50	329.90	330.00	329.35	329.5	329.75	
175	330.62	330.37	329.77	329.87	329.22	329.37	329.63
150	330.50	330.25	329.65	329.75	329.10	329.25	329.50
125	330.37	330.12	329.52	329.62	328.97	329.12	329.37
100	330.25	330.0	329.40	329.50	328.85	329.00	329.25
75	330.12	329.87	329.27	329.37	328.72	328.87	329.12
50	330.00	329.75	329.15	329.25	328.60	328.75	329.0
25	329.87	329.62	329.02	329.12	328.47	328.62	328.87

East Line of KANSAS

East Line	329.5	328.90	329.0	328.35	328.5	328.75	
E. Curb	329.5	329.5	328.25	328.0	327.75	328.5	328.5
		328.5				327.5	
E 1/4	329.22	329.05	328.88	328.72	328.55	328.39	328.22
Center	329.75	329.56	329.42	329.25	329.08	328.92	328.75
W 1/4	329.40	329.23	329.06	328.90	328.73	328.56	328.40
W. Curb	330.0	329.0	328.75	328.50	328.25	328.0	329.0
		330.0				329.0	
W. Line	330.25	330.0	329.40	329.50	328.85	329.0	329.25

West Line of KANSAS St

336.76 30th & Capps.  
5.13  
336.79 H.T.

330.75	330.50	329.90	330.0	329.35	329.5	329.75
6.04	6.29	6.89	6.79	7.44	7.29	7.04
329.50	329.25	329.10	329.75	329.65	330.25	330.50
7.29	7.54	7.69	7.04	7.14	6.54	6.29
330.25	330.0	329.40	329.50	328.85	329.00	329.25
6.54	6.79	7.39	7.29	7.94	7.79	7.54
329.0	328.75	328.60	329.25	329.15	329.75	330.0
7.79	8.04	8.19	7.54	7.64	7.04	6.79
329.75	329.50	328.90	329.0	328.35	328.50	328.75
7.04	7.29	7.89	7.79	8.44	8.29	8.04

334.88 H.T.

## Myrtle St.

## West Line of Kansas St.

2	200'	330.25	330.0	329.4	329.5	328.85	329.0	329.25
2	175	330.37	330.12	329.52	329.66	329.02	329.19	329.44
4	150	330.50	330.25	329.65	329.81	329.19	329.37	329.62
4	125	330.62	330.37	329.77	329.97	329.36	329.56	329.81
2	100	330.75	330.50	329.90	330.12	329.53	329.75	330.00
4	75	330.87	330.62	330.02	330.28	329.71	329.94	330.19
3	50	331.0	330.75	330.15	330.44	329.88	330.12	330.37
3	25	331.12	330.87	330.27	330.59	330.05	330.31	330.56

## East Line of Granada St.

E. Line 331.25 331.0 330.40 330.75 330.22 330.5 330.75

E. Curb. 331.0 331.0 329.87 329.75 329.62 330.5 330.50  
330.0 329.5

E 1/4 330.60 330.52 330.44 330.35 330.27 330.19 330.1

Center 331.0 330.92 330.84 330.75 330.67 330.59 330.5

W 1/4 330.60 330.52 330.44 330.35 330.27 330.19 330.1

W. Curb. 331.0 330.0 331.0 329.87 329.75 329.62 329.5 330.5  
330.5

W. Line 331.25 331.0 330.40 330.75 330.22 330.5 330.75

## West Line of Granada St.

336.79 H.F.

329.25	329.0	328.81	329.50	329.4	330.0	330.25
7.54	7.79	7.94	7.29	7.39	6.79	6.54
330.50	330.25	329.65	329.91	329.19	329.37	329.62
6.29	6.54	7.14	6.98	7.60	7.42	7.17
330.0	329.75	329.53	330.12	329.90	330.50	330.75
6.79	7.04	7.26	6.67	6.89	6.29	6.04
331.0	330.75	330.15	330.44	329.88	330.12	330.37
5.79	6.04	6.64	6.35	6.91	6.67	6.82
330.75	330.5	330.22	330.75	330.40	331.0	331.25
6.04	6.29	6.57	6.04	6.89	5.79	5.54

334.88 H.F. 330.50  
331.0 4.38  
3.88

Myrtle St

West Line of Granada St.

336.79

200' - 331.25 West Line 331.0 330.40 330.75 330.22 330.5 330.75

331.25 331.0 330.40 330.75 330.22 330.50 330.75  
5.54 5.79 6.39 6.04 6.57 6.29 6.04

175 331.56 331.31 330.71 331.06 330.53 330.81 331.06

331.37 331.12 330.84 331.37 331.02 331.62 331.87  
6.62 5.67 5.95 5.42 5.77 5.17 4.92

150 331.87 331.62 331.02 331.37 330.84 331.12 331.37

332.50 332.25 331.65 332.0 331.47 331.75 332.0  
4.29 4.54 5.14 4.79 5.32 5.04 4.79

125 332.19 331.94 331.34 331.69 331.14 331.44 331.69

332.62 332.37 332.09 332.62 332.27 332.87 333.12  
4.17 4.42 4.70 4.17 4.52 3.92 3.67

100 332.50 332.25 331.65 332.0 331.47 331.75 332.00

333.75 333.50 332.90 333.45 332.72 333.0 333.25  
3.04 3.29 3.89 3.54 4.07 3.79 3.54

75 332.81 332.56 331.96 332.31 331.78 332.06 332.31

331.10 J.P.

50 333.12 332.87 332.27 332.62 332.09 332.37 332.62

3.78

25 333.44 333.19 332.59 332.94 332.40 332.69 332.94

334.88 H.I.

East Line 333.75 333.5 332.90 333.25 332.72 333.0 333.25

East Line Utah St.

East Line 333.5 333.0

E. Curb.

E 1/4

Center.

W. 1/4

Graduated

W. Curb.

W. Line 333.5 333.0

West Line of Utah St.

# Myrtle St.

## West Line of Utah St.

200'	WLine 332.75	332.5	332.90	333.25	332.72	333.0	333.25
175	332.62	332.87	332.77	332.12	332.59	332.87	332.12
150	333.50	332.25	332.65	332.00	332.47	332.75	332.00
125	333.37	333.12	332.52	332.87	332.34	332.62	332.87
100	333.25	333.00	332.40	332.75	332.12	332.50	332.75
75	333.12	332.87	332.27	332.62	332.09	332.37	332.62
50	332.00	332.75	332.15	332.50	331.97	332.25	332.50
25	332.87	332.62	332.02	332.37	331.84	332.12	332.37
ELine	332.75	332.5	331.90	332.25	331.72	332.0	332.25

## East Line of Idaho St

## West Line of Idaho St.

265'	WLine 332.75	332.5	331.90	332.25	331.72	332.0	332.25
250	332.44	332.19	331.60	331.95	331.48	331.72	331.97
225	331.92	331.67	331.10	331.46	331.04	331.24	331.49
200	331.40	331.15	330.60	330.96	330.46	330.77	331.02
175	330.88	330.63	330.10	330.47	329.98	330.30	330.55
150	330.36	330.11	329.60	329.97	329.50	329.83	330.08
125	329.84	329.59	329.10	329.48	329.01	329.36	329.61
100	329.32	329.07	328.60	328.98	328.53	328.89	329.14
75	328.80	328.55	328.10	328.48	328.05	328.41	328.66
50	328.29	328.04	327.60	327.99	327.57	327.94	328.19
25	327.77	327.52	327.10	327.50	327.08	327.47	327.72
ELine	327.25	327.0	326.60	327.00	326.60	327.0	327.25

## East Line of Oregon St.

356  
333.23 J.P.  
3.21 H.I.  
336.44

53

333.25	333.0	332.72	333.25	332.90	333.0	333.75
3.19	3.44	3.72	3.19	3.54	2.94	2.69
333.00	333.25	332.65	333.00	332.47	332.75	333.00
2.94	3.19	3.79	3.44	3.97	3.69	3.44
332.75	332.50	332.22	332.75	332.40	333.00	332.25
3.69	3.94	4.22	3.69	4.04	3.44	3.19
332.00	332.75	332.15	332.50	331.97	332.25	332.50
3.44	3.69	4.29	3.94	4.47	4.19	3.94
332.25	332.0	331.72	332.25	331.90	332.50	332.75
4.19	4.44	4.72	4.19	4.54	3.94	3.69
332.44	332.19	331.60	331.95	331.43	331.72	331.97
4.00	4.25	4.84	4.49	5.01	4.72	4.47
331.02	330.77	330.46	330.96	330.60	331.15	331.40
5.42	5.67	5.99	5.48	5.84	5.29	5.04

330.36	330.11	329.60	329.97	329.50	329.83	330.08
6.08	6.33	6.84	6.47	6.94	6.61	6.36

329.14	328.89	328.53	328.98	328.60	329.07	329.32
7.30	7.55	7.91	7.46	7.84	7.37	7.12

328.29	328.04	327.60	327.99	327.57	327.94	328.19
8.15	8.40	8.84	8.45	8.87	8.50	8.25

327.25	327.0	326.60	327.0	326.60	327.0	327.25
9.19	9.44	9.84	9.44	9.84	9.44	9.19

chk. o.k. except where marked in book. Sept. 28/12

chk o.k. Sept. 30/12

Lehido  
Taylor  
Allen





NORTH	FIR ST.					SOUTH	
1+63.95= W.L. SIXTH	160.50	160.25	159.65	158.85	157.75	157.45	157.70
150	160.32	160.07	159.47	158.72	157.64	157.37	157.62
125	159.97	159.72				157.22	157.47
100	159.63	159.38	158.78	158.23	157.25	157.08	157.33
75	159.28	159.03				156.93	157.18
50	158.94	158.69	158.09	157.74	156.86	156.79	156.04
25	158.60	158.35	~			156.64	156.89
E.L. FIFTH	158.25	158.0	157.40	157.25	156.47	156.5	156.75

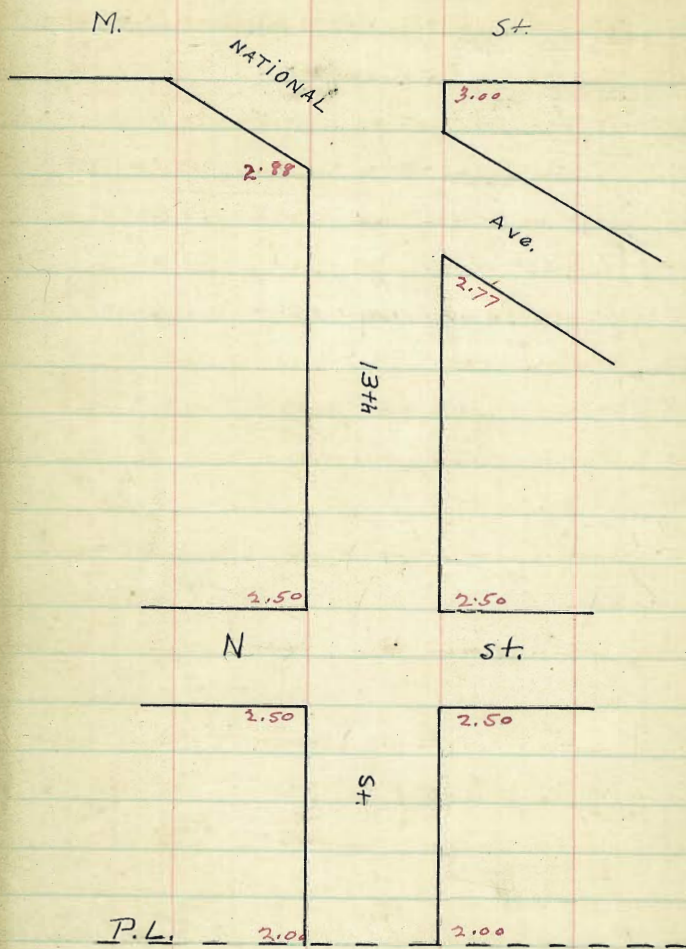
15.89 E  
161.57

161.57	161.57	61.87	61.87	61.87	61.87
56.75	57.09	59.83	57.42	60.50	
5.17	4.93	2.54	4.55	1.27	
5.87	5.08	2.49	4.00	1.02	
	61.87	61.87	61.87	61.87	
	58.76	58.39	57.04	59.65	
	5.01	3.27	4.23	2.22	
	61.87	61.87	61.87	61.87	
	57.74	58.72	58.72	58.85	
	4.13	3.64	3.15	3.02	
	61.87	61.87	61.87	61.87	
	58.27	57.25	59.47	57.75	
	3.78	4.62	2.40	4.17	
	61.87	61.87	61.87	61.87	
	58.04	57.23	60.32	57.70	
	2.93	1.54	1.55	4.17	
	3.15	4.79	1.80	4.42	

11/12 Dunkle  
Evans  
Kerr  
all states 55

158.00  
327  
161.57 E. same as above 14.1

11/12 Check O.K. Dunkle  
Evans  
Kerr



West	South Line of National Ave.						East
227' ✓							
S. Line 3.13	2.88	2.46	2.83	2.41	2.77	3.02	
161' ✓	3.00	2.78	2.38	2.77	2.87	3.02	
150	3.01	2.76	2.36	2.76	2.35	3.00	
125	2.97	2.72	2.32	2.72	2.31	2.96	
100	2.93	2.68	2.28	2.67	2.26	2.91	
75	2.88	2.63	2.23	2.62	2.22	2.87	
50	2.84	2.59	2.19	2.58	2.18	2.83	
25	2.79	2.54	2.14	2.54	2.14	2.79	
N. Line 2.75	2.50	2.10	2.50	2.10	2.50	2.75	
N. Line of N. St.							
N. Line 2.75	2.50	2.10	2.50	2.10	2.50	2.75	
N. Corb. 2.50	2.50	2.23	2.50	2.23	2.50	2.50	
N. 1/4 2.10	2.10	2.37	2.50	2.37	2.10	2.10	
Center 2.50	2.50	2.50	2.50	2.50	2.50	2.50	
S. 1/4 2.10	2.10	2.37	2.50	2.37	2.10	2.10	
S. Corb. 2.50	2.50	2.23	2.50	2.23	2.50	2.50	
S. Line 2.75	2.50	2.10	2.50	2.10	2.50	2.75	
S. Line of N. St.							

N. E. 18th St. N.

7.73	7.73	7.73	7.73	7.73	7.73
8.13	8.03	2.91	2.89	2.25	2.76
4.60	4.70	4.52	4.89	4.98	4.78
4.60	4.60	4.44	6.89	4.98	4.38
0.0	+0.1	+0.4	-2.1	+0.5	+0.6
7.73	7.73	7.73	7.73	7.73	7.73
3.02	2.93	2.83	2.75	2.75	2.75
4.97	4.80	4.90	4.98	4.98	4.98
4.57	6.00	4.15	6.28	6.28	6.28
+0.2	-1.12	+0.8	-1.3	-1.1	-1.1

cut & fill  
Scuttle  
Evans  
Kerr

57

---

3.00	7.67	7.67	7.67	7.67	7.67
4.67	3.13	3.02	2.93	2.83	2.75
7.67	4.57	4.25	4.44	4.84	4.92
4.77	4.90	4.99	5.07	5.17	5.17
2.67	5.30	5.39	5.47	5.57	5.57
2.96	7.67	7.67	7.67	7.67	7.67
5.01	2.91	2.91	2.91	2.91	2.91
7.67	4.76	4.76	4.76	4.76	4.76
2.83	5.21	5.21	5.21	5.21	5.21
4.82	7.53	7.53	7.53	7.53	7.53
2.67	3.13	3.02	2.93	2.83	2.75
3.00	4.40	4.40	4.40	4.40	4.40
4.67	4.60	4.76	4.85	4.94	5.03
7.67	5.16	5.16	5.16	5.16	5.16
3.00	7.53	7.53	7.53	7.53	7.53
4.53	2.91	2.91	2.91	2.91	2.91
7.53	5.07	5.07	5.07	5.07	5.07
4.53	2.83	2.83	2.83	2.83	2.83
4.65	4.70	4.70	4.70	4.70	4.70
4.90	4.83	4.83	4.83	4.83	4.83
4.65	4.70	4.70	4.70	4.70	4.70
4.90	4.83	4.83	4.83	4.83	4.83
4.65	4.70	4.70	4.70	4.70	4.70
4.90	4.83	4.83	4.83	4.83	4.83

Scuttle all stakes  
Evans  
Kerr

checked  
Evans  
Kerr

West	S. Line of N. St.				East	
S. Line 2.75	2.50	2.10	2.50	2.10	2.50	2.75
25's. 2.66	2.41	2.01	2.41	2.01	2.41	2.66
50 2.57	2.32	1.92	2.32	1.92	2.32	2.57
75 2.48	2.23	1.83	2.23	1.83	2.23	2.48
100 2.39	2.14	1.74	2.14	1.74	2.14	2.39
125 2.30	2.05	1.65	2.05	1.65	2.05	2.30
138.8 2.25	2.00	1.60	2.00	1.60	2.00	2.25

Pueblo Line

7.73	7.73	7.73
2.07	2.32	2.25
5.76	5.39	5.48
4.16	4.74	6.28
-1.0	+0.6	-0.8
7.73	7.73	7.73
2.07	2.32	2.25
5.76	5.39	5.48
4.16	6.14	5.48
+0.9	-0.8	0.0

1 1/2 cut a bill

Quirk  
Evans  
Kerr

58

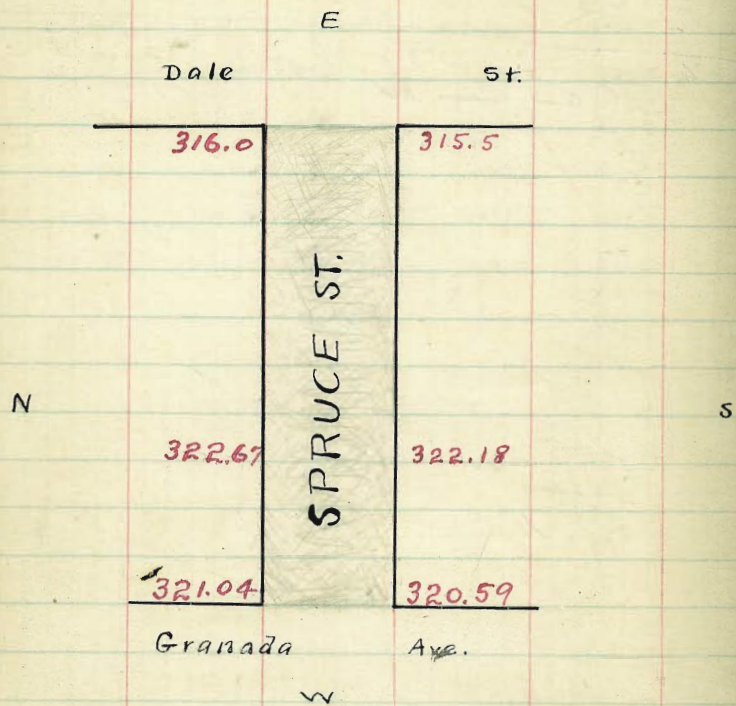
7.67	7.67	7.67
2.57	2.39	2.25
5.10	5.28	5.42
5.30	5.53	5.67
5.70	5.93	6.07

7.53	7.53	7.53	7.53
2.57	2.39	2.25	
4.96	5.14	5.28	
5.21	5.39	5.53	
5.61	5.79	5.93	

1 1/2 checked

Quirk  
Evans  
Kerr

SPRUCE ST.



4764  
SPRUCE ST.

N.

60' Wide

S.

W. Line of DALE

W. Line = 610	316.25	316.0	315.4	315.75	315.22	315.5	315.75
575	316.73	316.48	315.88	316.33	315.69	315.97	316.22
550	317.20	316.95	316.35	316.70	316.17	316.45	316.70
525	317.68	317.43	316.83	317.18	316.65	316.93	317.18
500	318.15	317.90	317.30	317.66	317.13	317.40	317.65
475	318.63	318.38	317.78	318.13	317.60	317.88	318.13
450	319.11	318.86	318.28	318.61	318.08	318.36	318.61
425	319.58	319.33	318.73	319.08	318.55	318.83	319.08
400	320.06	319.81	319.21	319.56	319.03	319.31	319.56
375	320.54	320.29	319.69	320.04	319.51	319.79	320.04
350	321.01	320.76	320.16	320.51	319.98	320.26	320.51
325	321.49	321.24	320.64	320.99	320.46	320.74	320.99
300	321.97	321.72	321.12	321.47	320.94	321.22	321.47
275	322.44	322.19	321.59	321.95	321.42	321.69	321.94
250	322.92	322.67	322.07	322.43	321.90	322.18	322.43
225	322.76	322.51	321.91	322.27	321.74	322.02	322.27
200	322.59	322.34	321.74	322.11	321.58	321.86	322.11
175	322.43	322.18	321.58	321.94	321.42	321.70	321.95
150	322.27	322.02	321.42	321.78	321.26	321.54	321.79
125	322.10	321.85	321.25	321.62	321.10	321.39	321.64
100	321.94	321.69	321.09	321.46	320.94	321.23	321.48
75	321.78	321.53	320.93	321.30	320.78	321.07	321.32
50	321.62	321.37	320.77	321.13	320.62	320.91	321.16
25	321.45	321.20	320.60	320.97	320.46	320.75	321.00
Elm St	321.29	321.04	320.44	320.81	320.30	320.59	320.84

Change of Grade

E. Line of Grand Ave.

W. Grape St. E

270.5 269.5

ST.

262.0 260.0

FIR

260.0  
ST.

FERN

The Pts set.  
1/24/12 H.East line Fern St is 58.35 East of  
Nem. on line of South Park.  
Street at this point is 53' wideElm.  
also Date

FERN ST.

S. Line of Grape St.

E

5	Line of Grape St.	270.75	270.5	269.90	279.00	269.35	269.50	269.75
25		270.06	269.81	269.23	269.31	268.66	268.80	269.05
50		269.38	269.13	268.56	268.62	267.96	268.10	268.35
75		268.70	268.45	267.90	267.92	267.27	267.40	267.65
100		268.02	267.77	267.23	267.23	266.57	266.70	266.95
125		267.33	267.08	266.56	266.54	265.88	266.00	266.25
150		266.65	266.40	265.89	265.85	265.18	265.30	265.55
175		265.97	265.72	265.23	265.16	264.49	264.60	264.85
200		265.28	265.03	264.56	264.47	263.79	263.90	264.15
225		264.60	264.35	263.89	263.78	263.10	263.20	263.45
250		263.92	263.67	263.22	263.09	262.40	262.50	262.75
275		263.23	262.98	262.56	262.40	261.70	261.80	262.05
300		262.55	262.30	261.89	261.70	261.10	261.10	261.35
311		262.25	262.0	261.59	261.40	260.70	260.80	261.05
340	N. Line of Fir St.			261.40	261.00	260.10	260.0	260.25

218.25  
215.50  
332.75  
340.0

at Stake  
1/2 Stake

69.35	68.37	68.0	66.97	66.63	65.57
1.73	2.71	3.08	4.11	4.45	5.01
0.72	2.26	1.8	2.0	3.25	5.6
1.13	2.43	1.2	1.0	1.0	6.2

at Stake 1/2 Stake

45.27	64.17	62.91	62.77	62.55	61.87
5.81	6.91	7.17	8.3	8.53	9.71
4.91	7.10	6.57	8.1	8.5	10.57
1.09	0.2	1.03	0.5	0.32	0.50

at Stake

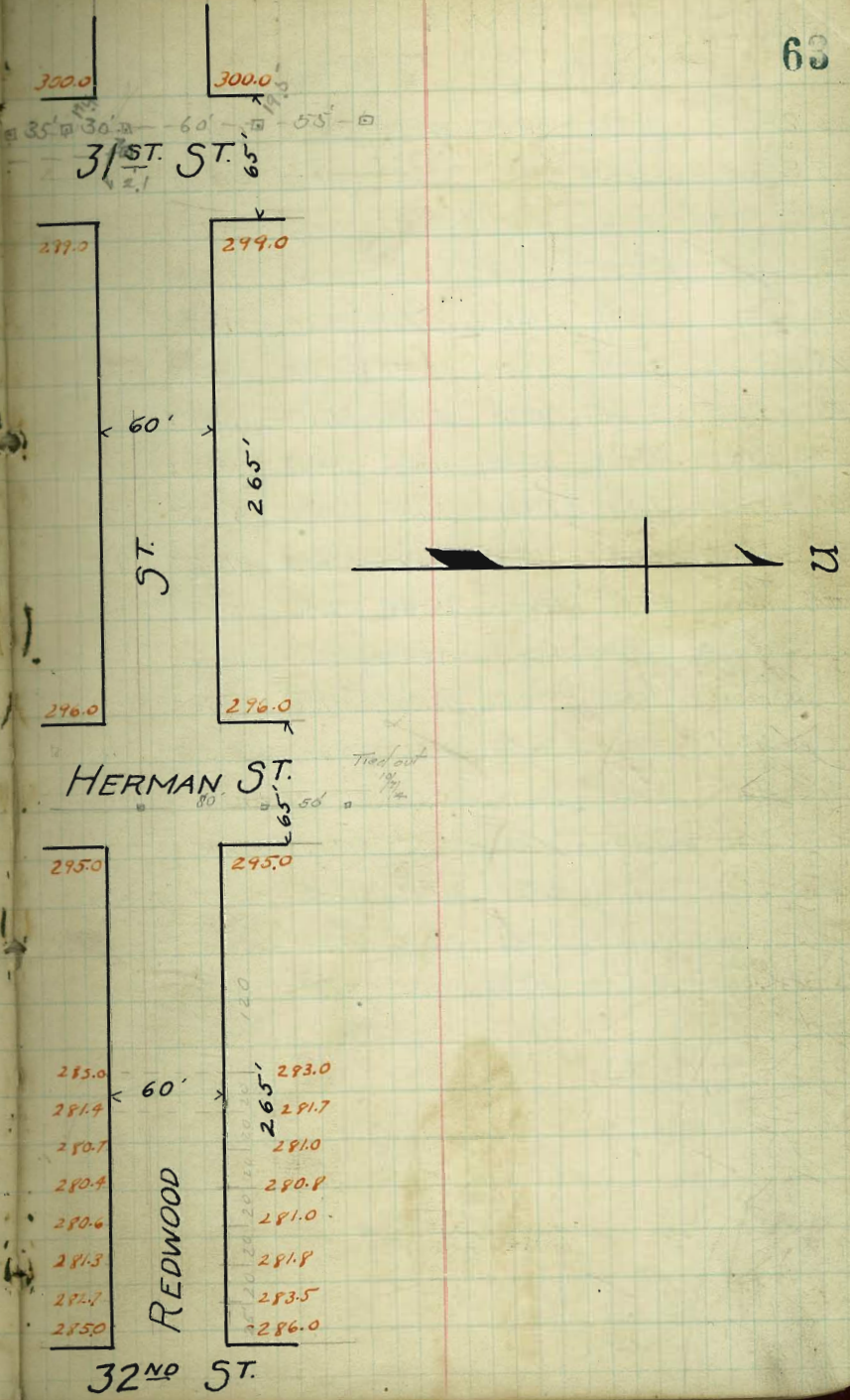
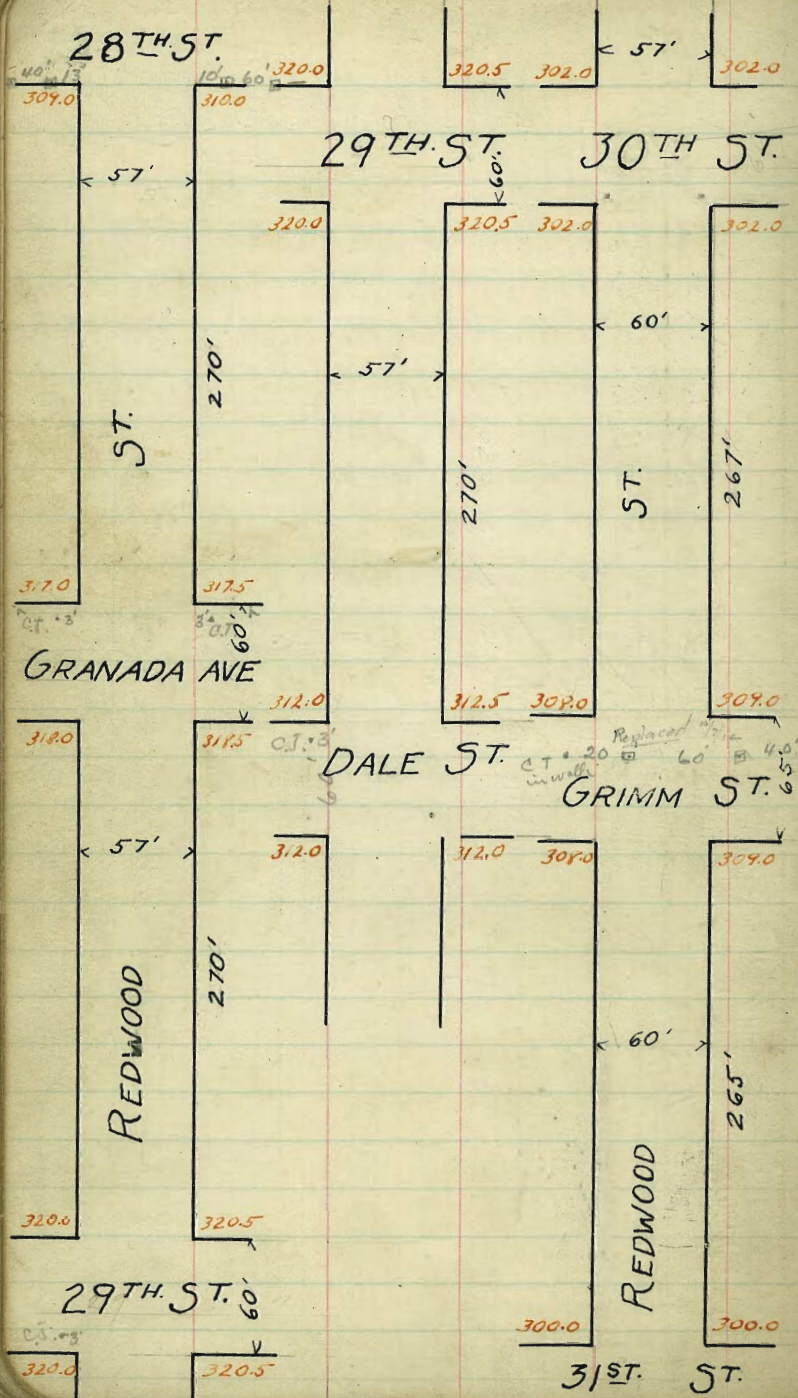
67.07	67.73	67.23	66.57	66.7	66.4	65.89	65.85	65.15	65.20
3.91	4.05	4.45	5.11	4.81	5.28	5.79	5.83	6.50	6.38
6.503	6.265	6.447	6.279	6.39	6.367	6.322	6.309	6.24	6.25
6.55	7.12	7.21	7.89	7.77	8.01	8.46	8.59	9.28	9.78

at Stake

62.0	61.59	61.4	60.7	60.8	61.4	61.0	60.1	60.0	
9.5	10.09	10.28	10.78	10.85	10.28	10.68	11.58	11.68	
7.25	7.89	7.80	8.35	8.45	8.83	8.62	8.796	8.80	
9.55	1.55	1.25	1.9	1.75	2.12	2.67	2.63	3.15	
6.777	6.723	6.723	6.657	6.67	6.64	6.589	6.585	6.518	6.530
3.45	4.02	4.02	4.6	4.57	4.83	5.36	5.40	6.07	6.15

2/13  
Census  
Kerr  
Cham O.H.





REDWOOD ST.

57' WIDE 28 <sup>TH</sup> TO 30 <sup>TH</sup>	28 <sup>TH</sup> TO GRANADA						10' WALKS
60' S.L.	30 <sup>TH</sup>	32 <sup>ND</sup>	E		1/4	1/4	9.25' / 1/4
309.25	CURB	1/4	1/4	1/4	1/4	1/4	1/4
E.L. 28 <sup>TH</sup> 309.00	309.85	309.50	309.40	310.00	310.25		
25' E 309.99	309.74	309.58	310.11	310.10	310.70	310.95	
50' " 310.73	310.48	310.31	310.71	310.79	311.39	311.64	
75' " 311.47	311.22	311.04	311.32	311.48	312.09	312.34	
100' 312.21	311.96	311.77	311.93	312.18	312.78	313.03	
125' 312.96	312.70	312.50	312.53	312.88	313.48	313.73	
150' 313.69	313.45	313.23	313.14	313.57	314.17	314.42	
175' 314.43	314.19	313.96	313.75	314.27	314.87	315.12	
200' 315.18	314.93	314.69	314.35	314.96	315.56	315.81	
225' 315.92	315.67	315.42	60666 315.96	69855 315.66	69855 316.26	69855 316.51	
275' 317.25							
W/L GRANADA	317.00	316.60	317.25	317.10	317.50	317.75	
GRANADA INTERSECTION 60'							
W/L GRANADA 317.25	317.00	316.60	317.25	317.10	317.50	317.75	
W Curb 317.00	317.00	316.77	317.42	317.27	317.50	317.50	
W 1/4 316.85	316.25	316.93	317.58	317.43	316.75	317.35	
E 317.50	316.50	317.10	317.75	317.60	317.00	317.00	
E 1/4 317.90	316.75	317.27	317.92	317.77	317.25	317.90	
E Curb 318.00	317.00	317.93	318.08	317.93	317.50	318.50	
E.L. GRANADA 318.25	318.00	317.60	318.25	318.10	318.50	318.75	

B.V.I. S.W. corner Redwood & Granada

beass plug. 316.96	317.25	316.68	315.18		
3.66	4.4	3.37	3.94	5.44	
313.64	320.62	2.87	2.14	3.64	
6.93	8.12	310.73	309.25	40.5	41.8
4.73	6.31	9.89	11.87	310.25	311.64
+2.2	4.21	9.39	11.87	70.37	8.98
		+0.6	11.87	11.07	8.58
			-0.5	-0.7	40.4
315.81	317.20	317.75			
4.81	3.42	2.87			
2.81	2.12	2.77			
15.0	41.3	40.1			

at 316.96 see above.

310.93	316.93	320.93	320.93	320.93	320.93	320.93	320.93	320.93	320.93
17.25	17.75	18.25	18.75	19.25	19.75	20.25	20.75	21.25	21.75
3.68	3.19	5.42	5.75	7.24	6.91	7.18	8.92	10.20	8.29
3.7	3.1	0.7	4.0	4.3	5.4	7.3	7.9	9.8	9.2
0.0	+0.1	+1.4	+1.6	+1.9	+1.1	+0.6	+1.3	+0.1	+0.1
								-0.7	-0.5

rest + a-stakes in this BLK Aug 31-1914 - Demann - Miller Staco.

316.96 - B.V.I.  
2.81

317.41	317.41	317.47	317.47	317.47	317.47	317.47	317.47
317.00	317.52	315.56	314.93	313.45	314.17	312.78	311.92
2.41	1.91	3.91	4.54	6.02	5.30	6.67	7.51

319.47	319.47	319.47	319.47	Finish curb stakes - 1/4	West
310.48	310.39	310.00	309.00		East
8.99	8.08	7.47	10.47		Center

316.96						
1.99						
318.95	H.E.	315.66	314.17	312.78	311.39	310.00
317.50		3.40	4.80	6.20	7.56	8.95
1.45						

Old OK - build  
Sept. 16/14  
more

REDWOOD ST. 57' WIDE  
 GRANADA TO 29TH 9.25' 1/4 S  
 S.L. S.Curb 1/4 E 1/4 N.Curb N.L.

E	FL GRANADA	318.25	318.00	317.60	318.25	318.10	318.50	318.75
2	25'E	318.44	318.19	317.79	318.44	318.29	318.69	318.93
5	50	318.62	318.37	317.97	318.62	318.47	318.87	319.12
7	75	318.81	318.56	318.16	318.81	318.66	319.06	319.31
10	100	318.99	318.74	318.34	318.99	318.84	319.25	319.60
12	125	319.18	318.93	318.53	319.18	319.03	319.44	319.68
15	150	319.36	319.11	318.71	319.36	319.21	319.62	319.86
17	175	319.54	319.29	318.90	319.53	319.40	319.81	320.05
20	200	319.73	319.48	319.08	319.73	319.58	320.00	320.23
22	225	319.92	319.67	319.27	319.92	319.77	320.17	320.42
2	270	320.25						
W	W.L. 29TH	320.00	319.60	320.25	320.10	320.50	320.75	

29TH ST INTERSECTION 60'

W	W.L. 29TH	320.25	320.00	319.60	320.25	320.10	320.50	320.75
E	W.Curb	320.00	320.00	319.60	320.25	320.10	320.50	320.50
E	W 1/4	319.60	319.00	319.60	320.25	320.10	319.50	320.10
E	E	320.00	319.00	319.60	320.25	320.10	319.50	320.50
E	E 1/4	319.60	319.00	319.60	320.25	320.10	319.50	320.10
E	E.Curb	320.00	320.00	319.60	320.25	320.10	320.50	320.50
E	FL 29TH	320.25	320.00	319.60	320.25	320.10	320.50	320.75

BM. S.E. cor. Redwood & 29th  
 brass plug. 319.95

322.83	H.I.	320.10	319.73	319.36	318.99	318.62
320.25		2.23	2.60	2.97	3.34	3.71
2.09		1.23	1.8	1.97	3.04	4.4
1.78		+1.0	+0.8	0.0	-0.6	-0.7
318.25		319.12	319.50	319.86	320.23	320.60
4.88		3.21	2.83	2.47	2.10	1.73
4.4		4.5	4.1	3.87	1.9	0.83
-0.3		-1.3	-1.3	-0.4	+0.2	+0.9
320.75						
1.58						
0.63						
40.9						

BM 319.95	29th Redwood	323.59	323.59	323.59	323.59
320.25		3.34	3.34	3.34	3.34
323.59		19.11	19.74	18.37	18.00
3.59		4.11	4.48	5.22	5.59
3.09		3.61	3.98	4.35	4.72
					5.09

Finish stakes on curb line Aug 31-1914 Hemman-Walker-Sharp

321.84	H.I.	320.0	319.62	319.25	318.87	318.50
320.50		1.84	2.22	2.60	3.00	3.34
1.34						

REDWOOD ST.

57' WIDE  
9.25' 1/4 S

S.L.	29 <sup>TH</sup> S Curb	TO 1/4	DALE	1/4	10' WALKS N.Curb	N.L.
EL. 29 <sup>TH</sup>	320.00	319.60	320.25	320.10	320.50	320.75
25'E	319.50	319.25	318.85	319.50	319.36	319.76
50	318.76	318.51	318.11	318.76	318.61	319.01
75	318.02	317.77	317.37	318.02	317.87	318.27
100	317.28	317.03	316.63	317.28	317.13	317.53
125	316.54	316.29	315.89	316.54	316.39	316.79
150	315.80	315.55	315.15	315.80	315.65	316.05
175	315.06	314.81	314.41	315.06	314.91	315.31
200	314.32	314.07	313.67	314.32	314.17	314.57
225	313.58	313.33	312.93	313.58	313.43	313.83
270' = 312.25						
W.L. DALE	312.00	311.60	312.25	312.10	312.50	312.75

7485

312.25

DALE INTERSECTION

W.L. DALE	312.00	311.60	312.25	312.10	312.50	312.75
-----------	--------	--------	--------	--------	--------	--------

W Curb

W 1/4

E

E 1/4

E Curb

E L DALE

(See Page 98)

BM. S.E. cor. Redwood + Dale

brass plug	311.82	1312.25	10.2
	10.5		
	322.33	H.I.	10.08
			9.98
			40.1
	318.76	320.25	
	317.28	318.76	2.08
	315.80	317.28	1.48
	314.32	315.80	1.48
	312.84	314.32	1.48
	9.49	8.01	6.53
	9.59	8.51	6.33
	0.1	-0.5	40.2
			+2.0
	319.26	317.78	316.30
	314.52	313.04	312.25
	312.25	312.25	312.25
	3.07	4.58	6.03
	7.27	3.13	5.93
	41.8	+1.4	40.1
			-0.3
			9.5
			9.08
			9.98
			+0.5
			+0.5
			+0.1

See Above:

320.37

320.37	320.37	320.37	320.37	320.37	320.37	320.37	320.37	320.37	320.37	320.37	320.37	320.37	320.37
11.00	11.50	14.07	14.07	15.55	16.05	17.03	18.51	19.06	20.50	21.00			
11.07	10.87	9.80	9.00	7.82	7.62	6.84	6.34	4.86	4.86	2.87	3.97		

Final stakes on Curb line August 1914 - Hanna, Miller & Shand.

311.82	312.50	314.57	316.05	317.53	319.01	320.50
10.02	9.34	7.27	5.80	4.31	2.83	1.34
321.84						

# REDWOOD

ST.

60' WIDE  
10' WALKS  
10' 1/2

See Page 71

30TH TO GRIMM

	S.L.	S CURB	S 1/4	E	N 1/4	N CURB	N.L.
EL 30TH	302.25	302.00	301.66	302.00	301.60	302.00	302.25
25 E	302.81	302.56	302.19	302.61	302.24	302.66	302.91
50	303.37	303.12	302.77	303.23	302.87	303.33	303.58
75	303.93	303.68	303.36	303.83	303.51	303.99	304.24
100	304.49	304.24	303.94	304.45	304.14	304.66	304.91
125	305.06	304.80	304.53	305.07	304.78	305.32	305.57
150	305.61	305.37	305.12	305.67	305.41	305.99	306.24
175	306.18	305.93	305.71	306.29	306.04	306.65	306.90
200	306.74	306.49	306.29	306.91	306.68	307.31	307.56
225	307.30	307.05	306.88	307.52	307.33	307.98	308.23
267 = W.L. GRIMM	308.25	308.00	307.85	308.50	308.40	309.00	309.25

15' Walk GRIMM INTERSECTION. 65'

W.L. GRIMM	308.25	308.00	307.85	308.50	308.40	309.00	309.25
W CURB	308.00	308.00	307.85	308.50	308.40	309.00	309.00
W 1/4	307.60	307.00	307.85	308.50	308.40	308.00	308.60
E	308.00	307.80	307.85	308.50	308.40	308.00	309.00
E 1/4	307.60	307.00	307.85	308.50	308.40	308.00	308.60
E CURB	308.00	307.00	307.85	308.50	308.40	308.00	309.00
EL GRIMM	308.25	308.00	307.85	308.50	308.40	309.00	309.25

BM. 10' W. of N.W. cor. of Redwood 67  
& Grim Spk in pole. 311.74

1.19	306.24	307.56	308.88	309.35	258
312.93	6.69	5.37	4.05	3.68	+1.1
312.95	307.24	3.59	2.27	1.85	3.28
10.68	10.68	+3.7	+2.1	+2.70	+0.4
10.9	11.3	308.25	307.28	306.74	13.07
-0.2	-0.6	5.54	4.68	5.05	6.19
	-0.9	4.38	5.95	6.89	299.56
		+0.3	-0.9	-0.7	299.94
304.91	303.37	13.01	308.58	304.49	13.02
5.0	3.43	286.93	4.9	16.86	17.57
2.7	2.7	-0.1	3.67	8.9	273.90
-7.7	-6.1	286.92	3.67	8.9	6.62
		279.2	-20.3	-26.5	280.52
					267.42
					273.31
					7.21

Finish stakes on the curb line August 1912 - Herman Miller Shaw.

311.49	307.31	306.0	304.66	303.33	302.0
309.00	4.18	5.49	6.33	8.16	9.49
2.49					

REDWOOD ST.

60' WIDE  
10' WALKS  
10' 1/4'S

31ST, TO HERMAN

	S.L.	S.CURB	S 1/4	±	N 1/4	N.CURB	N.L.
	299.25						
E.L. 31ST	299.00	298.60	299.00	298.60	299.00	299.00	299.25
25 E	298.97	298.71	298.31	298.71	298.31	298.71	298.97
50	298.68	298.43	298.03	298.43	298.03	298.43	298.68
75	298.39	298.15	297.75	298.15	297.75	298.15	298.40
100	298.12	297.87	297.47	297.87	297.47	297.87	298.12
125	297.83	297.58	297.18	297.58	297.18	297.58	297.83
150	297.55	297.30	296.90	297.30	296.90	297.30	297.55
175	297.27	297.02	296.62	297.02	296.62	297.02	297.27
200	296.98	296.73	296.33	296.73	296.33	296.73	296.98
225	296.70	296.45	296.05	296.45	296.05	296.45	296.70
265' E-296.25							
W.L. HERMAN	296.00	295.60	296.00	295.60	296.00	296.00	296.25

28312

HERMAN INTERSECTION 65'

	296.25						
W.L. HERMAN	296.00	295.60	296.00	295.60	296.00	296.00	296.25
W.CURB	296.00	295.93	295.83	295.43	296.00	296.00	296.00
	295.00				296.00		
W 1/4	295.40	294.75	295.26	295.67	295.26	294.75	295.40
±	295.50	294.50	295.10	295.50	295.10	294.50	295.50
E 1/4	294.85	294.25	294.93	295.33	294.93	294.25	294.85
E CURB	295.00	294.00	294.67	295.17	294.67	294.00	295.00
	295.00	295.00			295.00		
E.L. HERMAN	295.00	294.60	295.00	294.60	295.00	295.00	295.25

# REDWOOD ST.

60' WIDE:  
10' WALKS  
10'  $\frac{1}{4}$ 'S

HERMAN TO 32<sup>ND</sup>

70

S.L.	SCURB	S $\frac{1}{4}$	$\frac{1}{2}$	N $\frac{1}{4}$	N.CURB	N.L.	
295.25 E.L. HERMAN	295.00	294.60	295.00	294.60	295.00	295.25	+10 +37
25' E	292.74	292.10	292.60	292.60	292.60	292.74	
50'	290.54	289.60	290.00	289.60	290.00	290.54	+23 +60
75'	287.74	287.10	287.60	287.10	287.60	287.74	
100'	285.54	284.60	285.00	284.60	285.00	285.54	-30 -35
120'	283.25	283.00	282.60	283.00	282.60	283.25	
125'	282.85	282.60	282.60	282.60	282.60	282.85	-69 -11.8
140'	281.65	281.40	281.00	281.55	281.30	281.70	281.95
150'	281.30	281.05	280.65	281.20	280.95	281.34	281.60
160'	280.95	280.70	280.30	280.85	280.60	281.00	281.25
175'							
180'	280.65	280.40	280.00	280.60	280.40	280.80	281.05
200'	280.85	280.60	280.20	280.80	280.60	281.00	281.25
220'	281.55	281.30	280.90	281.55	281.40	281.80	282.05
225'							
240'	282.95	282.70	282.50	283.10	282.90	283.50	283.75
265'	285.25						
=WL 32 <sup>ND</sup>	285.00	284.85	285.50	285.10	286.00	286.25	

Redwood St. See Book 938

0 = E.L. 30th	30225	30200	30160	30200	30160	30200	30225
10	30247	30222	30182	30222	30185	30226	30251
20	30303	30278	30241	30282	30248	30291	30316
30	30358	30333	30299	30324	30311	30356	30381
40	30414	30389	30357	30405	30376	30420	30445
50	30472	30447	30428	30489	30462	30511	30536
60	30525	30500	30473	30525	30500	30550	30575
70	30581	30556	30520	30585	30562	30615	30640
80	30636	30611	30588	30625	30626	30680	30705
90	30747	30722	30704	30766	30752	30809	30834
100 = W.L. Grim	30825	30800	30785	30850	30840	30900	30926



Maple ST.  
60' wide 10' walks

S H

INDIA ST

78.0 60. 79.0

Cross Sec. book 874  
Lot. book 6

200.

MAPLE ST



92.0 60. 93.0

COLUMBIA ST

W. 7/4 Columbia St. Cen Maple  
H. 3 Cen & Cen  
1' & Cen

# MAPLE STREET

S.

EL India	78.25	78.00	77.85	78.50	78.40	79.00	79.50
2.0 E	78.39	78.14	77.99	78.64	78.54	79.14	79.34
25.	80.00	79.75	79.60	80.25	80.15	80.75	81.00
50	81.75	81.50	81.35	82.00	81.90	82.50	82.75
62.	82.59	82.34	82.19	82.84	82.74	83.34	83.59
75	83.50	83.25	83.10	83.75	83.65	84.25	84.50
86	84.27	84.02	83.87	84.52	84.42	85.02	85.27
100	85.25	85.00	84.85	85.50	85.40	86.00	86.25
125	87.00	86.75	86.60	87.25	87.15	87.75	88.00
150	88.75	88.50	88.35	89.00	88.90	89.50	89.75
175.	90.50	90.25	90.10	90.75	90.65	91.25	91.50
200=Wbl Columbia	92.25	92.00	91.85	92.50	92.40	93.00	93.25

SW cor of India & Maple. 76.09

76.09	76.10	76.15	76.20	76.25	76.30	76.35	76.40	76.45	76.50	76.55	76.60	76.65	76.70	76.75	76.80	76.85	76.90	76.95	77.00
76.09	76.10	76.15	76.20	76.25	76.30	76.35	76.40	76.45	76.50	76.55	76.60	76.65	76.70	76.75	76.80	76.85	76.90	76.95	77.00

10 - stakes on 2' offset. Daman, Vhav, Devine March 27-1910

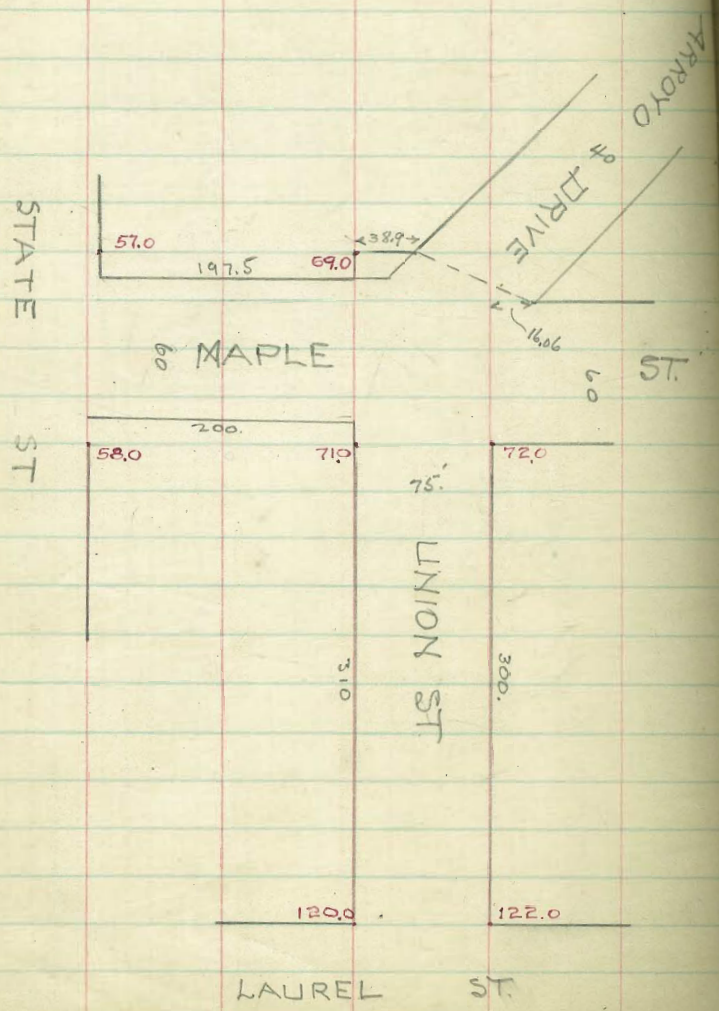
76.09	89.21	89.21	89.21	94.96	94.96
13.12	8.35	2.75	8.35	9.70	2.45
89.21	10.96	6.46	3.96	5.21	2.71
3.21	11.21	6.71	1.51	5.46	2.96
2.00	9.86	2.96	2.96	6.21	1.71
89.21	10.21	2.71	3.21	6.46	1.96

from the Daman

56.33	78.40	77.85	78.50	78.40	79.00
13.10	7.91	8.04	7.40	7.41	6.91
69.43	9.71	9.84	9.50	9.50	9.50
69.16	1.36	1.11	1.56	1.56	1.56
11.62					
20.76					
1.83					
78.96					
1.94					
89.90					
55.63					
59.3					
73.26					

Rattled Block  
checked not yet  
4-12-13  
check OR 4-13-13

73



UNION ST  
75' width  
12' walks

	W		¢		E		
NL Maple							
⊙ N curb							
⊗ N 1/4							
⊕							
S 1/4							
S curb							
0 = SL Maple	71.75	71.00	70.85	71.50	71.40	72.00	72.25
16	73.86	73.61	73.47	74.14	74.07	74.67	74.92
27	75.66	75.41	75.29	75.96	75.90	76.50	76.75
50	79.47	79.17	79.08	79.75	79.73	80.33	80.58
75	83.50	83.25	83.16	83.87	83.90	84.50	84.75
100	87.58	87.33	87.27	88.00	88.07	88.67	88.92
125	91.67	91.47	91.38	92.13	92.23	92.83	93.08
150	95.75	95.50	95.48	96.25	96.40	97.00	97.25
175	99.83	99.58	99.58	100.38	100.57	101.17	101.42
200	103.92	103.67	103.69	104.50	104.73	105.33	105.58
225	108.00	107.75	107.79	108.63	108.90	109.50	109.75
250	112.08	111.83	111.89	112.75	113.07	113.67	113.92
275	116.17	115.97	116.00	116.88	117.23	117.83	118.08
291	118.78	118.53	118.63	119.52	119.90	120.50	120.75
300 = 71L Laurel	120.75	120.00	120.10	121.00	121.40	122.00	122.25

MAPLE ST.

60' wide  
10' walks

76

	S				N			
0=EL State St	58.75	58.00	57.40	57.50	56.85	57.00	57.25	
25	59.88	59.63	59.03	59.00	58.29	58.37	58.62	
48	61.37	61.12	60.52	60.44	59.70	59.76	60.01	
56	61.89	61.64	61.04	60.94	60.20	60.25	60.50	
80	63.45	63.20	62.60	62.45	61.68	61.70	61.95	
100	64.75	64.50	63.90	63.71	62.92	62.92	63.17	
110	65.40	65.15	64.55	64.34	63.53	63.52	63.77	
125	66.37	66.12	65.52	65.28	64.46	64.43	64.68	
150	68.00	67.75	67.15	66.85	66.00	65.95	66.20	
175	69.63	69.38	68.78	68.43	67.55	67.47	67.72	
200=WT Union	71.75	71.00	70.40	70.00	69.10	69.00	69.25	



$$\begin{array}{r} 7.0 \\ 11.4 \\ \hline 8.5 \end{array}$$

$$\begin{array}{r} 0.0 \\ 1.0 \\ \hline \end{array}$$

52

+50

1+50

50

0+50

123

18.72

4389  
1872  
2517

302.06  
2517  
276.89

276.9

276.9  
276.9  
276.9

4123  
877  
302.42

311.92

312.80  
10.17  
302.43

287

19.5

191267.3

128

63

31) 30000 1.00967  
277  
210  
186  
240  
247  
90

.00967  
50  
.99350

1113  
50  
80650

967  
60  
58020 4

17613  
60  
96780

32.00

32.0000  
48.35

32.4835

4835

32.9670

4835

33.4505

48.35

33.9340

48.35

34.4175

58.02

34.9977

33.0000

90.60

310 = 35.00 38.00

215 = 39.42 37.03

240 = 33.93 36.23

145 = 38.45 36.92

140 = 32.96 34.61

45 = 32.49 33.91



8  
808 apts  
L = 6615

175 apts  
BB fill  
7

3.7 2.5  
5.0 5.0

70  
62

53

325  
63  
435  
570  
7.5

11.9

198.20  
2.50  
200.70  
5.00  
205.70

7  
3  
121

28 7.50

287  
19.5  
191267.5  
128  
63

137.5  
17.7  
112.7  
269.9

