

69

1/2 MANDALAY ST Perry to Military Line 5
 TINDS ST PROSPECT to STATE 17
 1/2 MANDALAY ST Perry to Military Line 25
 1/2 MANDALAY ST Perry to Military Line 30
 1/2 MANDALAY ST Perry to Military Line 50
 8TH ST Newton - Main 44
 13TH ST " " 47
 Prospect Main to Prospect 55
 CASE ST Prospect to Main 57

RICHMOND ST HENRICKS - LINCOLN 59
 " " PENN - BROOKES 60

Magnolia Place State - IOWA 65

WIGHTMAN ST Texas - AVILA 67

" " Idaho - ROY 68

CURRIER " JUNIPER - LAUREL 72

B ST. EL. 29 ST. TO 175th WEST OF WL 29-79

27th ST. N to M 76

Union Nerney - Henry 79

G 69

TRAVERSE TABLE FOR TRANSIT BOOK.

From 1° to 90° for a distance of 100.

Degrees.	DEGREES.		¼ DEGREE.		½ DEGREE.		¾ DEGREE.		Degrees.
	Lat.	Dep.	Lat.	Dep.	Lat.	Dep.	Lat.	Dep.	
0	99.98	1.75	100.00	0.44	100.00	0.87	99.99	1.31	89
1	99.98	3.49	99.98	2.18	99.97	2.62	99.95	3.05	88
2	99.94	5.23	99.92	3.93	99.91	4.36	99.88	4.80	87
3	99.86	6.98	99.84	5.67	99.81	6.10	99.79	6.54	86
4	99.76	8.72	99.73	7.41	99.69	7.85	99.66	8.28	85
5	99.62	10.45	99.58	9.15	99.54	9.58	99.50	10.02	84
6	99.45	12.19	99.41	10.89	99.36	11.32	99.31	11.75	83
7	99.25	13.92	99.20	12.62	99.14	13.05	99.09	13.49	82
8	99.03	15.64	98.97	14.35	98.90	14.78	98.84	15.21	81
9	98.77	17.36	98.70	16.07	98.63	16.50	98.56	16.93	80
10	98.48	19.08	98.40	17.79	98.33	18.22	98.25	18.65	79
11	98.16	20.79	98.08	19.51	97.99	19.94	97.90	20.36	78
12	97.81	22.50	97.72	21.22	97.63	21.64	97.53	22.07	77
13	97.44	24.21	97.34	22.92	97.24	23.34	97.13	23.77	76
14	97.03	25.92	96.92	24.62	96.81	25.04	96.70	25.46	75
15	96.59	27.63	96.48	26.30	96.36	26.72	96.25	27.14	74
16	96.13	29.34	96.00	27.98	95.88	28.40	95.76	28.82	73
17	95.63	31.05	95.50	29.65	95.37	30.07	95.24	30.49	72
18	95.11	32.76	94.97	31.32	94.83	31.73	94.69	32.14	71
19	94.55	34.47	94.41	32.97	94.26	33.38	94.12	33.79	70
20	93.97	36.18	93.82	34.61	93.67	35.02	93.51	35.43	69
21	93.36	37.88	93.20	36.24	93.04	36.65	92.88	37.06	68
22	92.72	39.59	92.55	37.86	92.39	38.27	92.22	38.67	67
23	92.05	41.29	91.88	39.47	91.71	39.87	91.53	40.27	66
24	91.35	43.00	91.18	41.07	91.00	41.47	90.81	41.87	65
25	90.63	44.70	90.45	42.66	90.26	43.05	90.07	43.44	64
26	89.88	46.40	89.69	44.23	89.49	44.62	89.30	45.01	63
27	89.10	48.10	88.90	45.79	88.70	46.17	88.50	46.56	62
28	88.29	49.80	88.09	47.33	87.88	47.72	87.67	48.10	61
29	87.46	51.50	87.25	48.86	87.04	49.24	86.82	49.62	60
30	86.60	53.20	86.38	50.38	86.16	50.75	85.94	51.13	59
31	85.72	54.90	85.49	51.88	85.26	52.25	85.04	52.62	58
32	84.80	56.60	84.57	53.36	84.34	53.73	84.10	54.10	57
33	83.87	58.30	83.63	54.83	83.39	55.19	83.15	55.56	56
34	82.90	60.00	82.66	56.28	82.41	56.64	82.16	57.00	55
35	81.92	61.70	81.66	57.71	81.41	58.07	81.16	58.42	54
36	80.90	63.40	80.64	59.13	80.39	59.48	80.13	59.83	53
37	79.86	65.10	79.60	60.53	79.34	60.88	79.07	61.22	52
38	78.80	66.80	78.53	61.91	78.26	62.25	77.99	62.59	51
39	77.71	68.50	77.44	63.27	77.16	63.61	76.88	63.94	50
40	76.60	70.20	76.32	64.61	76.04	64.94	75.76	65.28	49
41	75.47	71.90	75.18	65.93	74.90	66.26	74.61	66.59	48
42	74.31	73.60	74.02	67.24	73.73	67.56	73.43	67.88	47
43	73.14	75.30	72.84	68.52	72.54	68.84	72.24	69.15	46
44	71.93	77.00	71.63	69.78	71.33	70.09	71.02	70.40	45
45	70.71	78.70	70.41	71.00	70.10	71.25	69.79	71.60	44
Degrees.	Dep.	Lat.	Dep.	Lat.	Dep.	Lat.	Dep.	Lat.	Degrees.
	DEGREES.		¼ DEGREE.		½ DEGREE.		¾ DEGREE.		

Published by H. S. CROCKER COMPANY, Stationers, Drawing Materials, Mathematical Instruments, etc., San Francisco.

L. 99875

Crocker Quality
FIELD BOOK



No. _____

MANUFACTURED BY

H. S. CROCKER CO.

SAN FRANCISCO AND SACRAMENTO
CALIFORNIA

MICROFILMED

APR 6 1965

FROM
LORINGS BOOK STORE
San Diego, Cal.

23000 7.2
22351
6490

2829
364
3193

136.4
9548
12220

MILITARY		LIFE	
83.80	84.50		
E. 83.0	W. 83.50		
JENKINS	ST. LAWRENCE	ST. NICHOLS	ST.
82.5	83.0	88.5	89.5
ST.		ST.	
80.5	81.0	103.0	104.0
KELLOGUE	ST. McCALL	ST. OWENS	ST.
80.5	81.0	104.0	105.0
SAN FERNANDO		SAN FERNANDO	
88.0	89.0	120.0	121.0
LAWRENCE	ST. NICHOLS	ST. PERRY	ST.
88.0	89.5		

122.0

ST.

131.0

ST.

132.0

SAN FERNANDO

162.0

ST.

N. Line of JENKINS

N Line 8325 83.0 8240 8275 8222 8250 8275

N. Corb. 830 83.0 8250 8285 8232 8250 8250
81.0 81.50

N 1/4 8312 8212 8257 8292 8239 8162 8222

Center 8325 8225 8265 8300 8247 8175 8275

S 1/4 8290 8237 8272 8307 8254 8187 8240

S. Corb. 835 8250 8350 8280 8315 8262 8200 8300
82.00 82.00

S Line 8375 8250 8290 8325 8272 8300 8325

S Line of JENKINS St.

508 8448 8423 8363 8397 8344 8371 8396

8495 8450 8390 8415 8357 8380 8405

U.S. Military Reservation Line.

8678 7144 Junk 8745 SW 4 Jenkins

8804 2100 SW "

4

8920	8920	892	892	892
1.75	6.15	2.1	7.8	8.2
87.75	82.7	87.1	86.9	83.02
8920	832	832	842	842
88.04	705	3.4	21.7	7.15

83w	82w	83	825	8473	8370	8380	8454
630	6.90	5.8	5.07	5.6	5.70	4.8	
All in		2	26	14			
86,840	83w	8025	8320	8450	8380		
	2.98	3.44	2.44	2.48	3.19		

Checked OK 3-4-14 blough

So. Line Hellogue St.

200 81.25 81.00 80.40 80.75 80.22 80.50 80.75
 11666

25 81.42 81.17 80.57 80.92 80.39 80.67 80.92

50 81.58 81.33 80.73 81.08 80.55 80.83 81.08

25 81.75 81.50 80.90 81.25 80.72 81.00 81.25

200 81.92 81.67 81.07 81.42 80.89 81.17 81.42

25 82.08 81.83 81.23 81.58 81.05 81.33 81.58

50 82.25 82.00 81.40 81.75 81.22 81.50 81.75

25 82.42 82.17 81.57 81.92 81.37 81.67 81.92

100 82.58 82.33 81.73 82.08 81.55 81.83 82.08

25 82.75 82.50 81.90 82.25 81.72 82.00 82.25

50 82.92 82.67 82.07 82.42 81.89 82.17 82.42

25 83.08 82.83 82.23 82.58 82.05 82.33 82.58

200 83.25 83.00 82.40 82.75 82.32 82.50 82.75

No. Line Jenkins St.

8767 8767 8767 8767 8767 8767 8767 8767
 75 44 46 83 86 87 42 42
 804 803 830 774 790 847 850 42
 807 815 815 811 819 819 825 5767
 8275 821 814 824 824 818 825 24
 8767 8767 8767 8767 8767 8767 8767
 81 42 42 42 42 42 42
 796 802 817 817 821 821 821
 821 826 823 824 824 824 824
 822 824 819 824 824 824 824
 25 8767 8767 8767 8767 8767 8767
 822 822 822 822 822 822 822
 822 822 822 822 822 822 822
 4.97 4.97 6.63 7.13 8.00 8.10 6.35 6.80
 all dit. 2-26-14 blough

8740 8740 8740 8740 8740 8740 8740 8740
 4.41 4.41 4.41 4.41 4.41 4.41 4.41 4.41
 8100 8100 8100 8100 8100 8100 8100 8100
 7.71 7.71 7.71 7.71 7.71 7.71 7.71 7.71
 86.79 86.79 86.79 86.79 86.79 86.79 86.79 86.79
 80.75 80.75 80.75 80.75 80.75 80.75 80.75 80.75
 7.29 7.29 7.29 7.29 7.29 7.29 7.29 7.29
 88.04 H.I. 88.04 H.I. 88.04 H.I. 88.04 H.I.
 7.21 7.21 7.21 7.21 7.21 7.21 7.21 7.21
 80.83 80.83 80.83 80.83 80.83 80.83 80.83 80.83
 6.87 6.87 6.87 6.87 6.87 6.87 6.87 6.87
 81.17 H.I. 81.17 H.I. 81.17 H.I. 81.17 H.I.
 88.04 H.I. 88.04 H.I. 88.04 H.I. 88.04 H.I.
 80.67 80.67 80.67 80.67 80.67 80.67 80.67 80.67
 7.37 7.37 7.37 7.37 7.37 7.37 7.37 7.37
 83.34 83.34 83.34 83.34 83.34 83.34 83.34 83.34
 4.70 4.70 4.70 4.70 4.70 4.70 4.70 4.70
 8.00 8.00 8.00 8.00 8.00 8.00 8.00 8.00
 8.04 8.04 8.04 8.04 8.04 8.04 8.04 8.04
 81.67 81.67 81.67 81.67 81.67 81.67 81.67 81.67
 81.33 81.33 81.33 81.33 81.33 81.33 81.33 81.33
 81.0 81.0 81.0 81.0 81.0 81.0 81.0 81.0
 7.04 7.04 7.04 7.04 7.04 7.04 7.04 7.04
 Check OK 3-4-14 blough

W.

SAN FERNANDO ST

E.

No. Line Hellogue

81.25 81.00 80.40 80.75 80.22 80.50 80.75

81.00 81.00 79.87 79.75 79.62 80.50 80.50
80.0 79.5

80.60 80.50 80.43 80.35 80.27 80.20 80.10

Hellogue

81.00 80.90 80.83 80.75 80.67 80.60 80.50

St.

80.60 80.50 80.43 80.35 80.27 80.20 80.10

81.00 80.0 81.00 79.87 79.75 79.62 79.5 80.50 80.50

81.25 81.00 80.40 80.75 80.22 80.50 80.75

So. Line Hellogue St

6

W.

SAN FERNANDO ST. E.

So. Line LAWRENCE ST.

300 89.25 89.00 88.40 88.50 87.85 88.00 88.25

75 88.58 88.33 87.73 87.85 87.21 87.37 87.62

50 87.92 87.67 87.07 87.21 86.58 86.75 87.00

25 87.25 87.00 86.40 86.56 85.94 86.12 86.37

100 86.58 86.33 85.73 85.92 85.31 85.50 85.75

75 85.92 85.67 85.07 85.27 84.67 84.87 85.12

50 85.25 85.00 84.40 84.67 84.03 84.25 84.50

25 84.58 84.33 83.73 83.98 83.40 83.62 83.87

100 83.92 83.67 83.07 83.33 82.76 83.00 83.25

75 83.25 83.00 82.40 82.69 82.13 82.37 82.62

50 82.58 82.33 81.73 82.04 81.49 81.75 82.00

25 81.92 81.67 81.07 81.39 80.85 81.12 81.37

00 81.25 81.00 80.40 80.75 80.22 80.50 80.75

No. Line HENRIQUE ST.

66666

64583 63583 625

25

83.14 717 Post SE Kellyway

978.85

935
75.47
75.49
93.96
10.82
80.14
87.76

9774
11.07
91.67
7.50
87.17
86.66
89.51
923
85.48
1.75
87.40

974 976 978 974 974 9396 9396 9396 9396
58 76 874 501 18 68 70 904
89.25 87.2 92.1 97.1 87.0 87.5
87.2 87.2 87.2 87.2 87.2 87.2 87.2 87.2
9396 9396 9396 9396 9396 9396 9396 9396
42 94 112 63 84 80.9 81.
89.4 89.4 89.4 89.4 89.4 89.4 89.4 89.4
83.9 83.9 83.9 83.9 83.9 83.9 83.9 83.9
C5.55 C5.55 C5.55 C5.55 C5.55 C5.55 C5.55 C5.55

84.4 84.4 87.67 86.75 86.33 85.50 85.27 84.25 82.67 82.4
9.74 9.74 10.07 11.00 2.84 3.12 4.77 4.72 5.70 6.17
82.33 81.75 81.0 80.50 80.50 80.50 80.50 80.50
6.89 7.42 8.77 8.67
85.11 87.20 88.50 86.35 85.82 85.70 82.67 82.33 82.4
923 6.11 6.51 8.278 9.19 9.51 9.71 9.10 4.70
80.0 80.75 80.17 80.25
6.50 6.68 6.73 1.18

check OK 3-4-14 blough

3360 NE Kellyway + Rosecrans

88.04 HI 82.50 83.75 85.00 86.25 87.50
81.25 5.54 4.89 3.80 1.79 0.54
6.79
0.13
87.91 CLP
10.97
98.88 HI

SAN FERNANDO ST.

W.

E.

N. LINE LAWRENCE ST.

89.75 89.50 88.90 89.00 88.35 88.50 88.75

89.50 89.50 88.80 88.90 88.25 88.50 88.50
 88.50 87.5

88.90 88.37 88.72 88.82 88.17 87.37 87.90

LAWRENCE

89.25 88.25 88.65 88.75 88.10 87.25 88.75

ST.

89.72 88.12 88.58 88.68 88.03 87.12 87.72

89.00 89.00 88.50 88.60 87.95 88.00 88.00
 87.00

89.25 89.00 88.40 88.50 87.85 88.00 88.25

S. LINE LAWRENCE ST.

So. Line McCall St.

200	104.25	104.00	103.40	103.50	102.85	103.00	103.25
	103.04	102.79	102.19	102.29	101.64	101.79	102.04
	101.23	101.52	100.98	101.08	100.43	100.58	100.83
	100.62	100.37	99.77	99.87	99.22	99.37	99.62
200	99.42	99.17	98.57	98.67	98.02	98.17	98.42
	98.21	97.96	97.36	97.46	96.81	96.96	97.21
	97.00	96.75	96.15	96.25	95.60	95.75	96.00
	95.79	95.54	94.94	95.04	94.39	94.54	94.79
100	94.58	94.33	93.73	93.83	93.18	93.33	93.58
	93.37	93.12	92.52	92.62	91.97	92.12	92.37
	91.77	91.92	91.32	91.42	90.77	90.92	90.17
	90.96	90.71	90.11	90.21	89.56	89.71	89.96
	89.75	89.50	88.90	89.00	88.35	88.50	88.75

No. Line Lawrence St.

12085

106.66 Bm
20
106.86

103.25 100.53 98.42 92.00
5.61 6.03 8.44 10.86
Part 1st set for the second blough

106.66 Bm	106.7	106.7	106.7	106.7	116.7	106.7	97.8	97.8
106.69	106.7	106.7	106.7	106.7	106.7	106.7	97.8	97.8
105.00	97.8	97.8	97.8	97.8	97.8	97.8	97.8	97.8
106.25	97.8	97.8	97.8	97.8	97.8	97.8	97.8	97.8
95.71	97.8	97.8	97.8	97.8	97.8	97.8	97.8	97.8
97.14	97.8	97.8	97.8	97.8	97.8	97.8	97.8	97.8

104.00 Bm 104.00 103.50 103.00 99.17 98.17 98.17 94.33 93.93
105.10 11.22 91.52 91.42 89.56 89.56 89.56 89.56 89.56
93.35 3.19 3.69 89.56 89.56 89.56 89.56 89.56
95.71

check OK 3-4-14 blough

98.88 H.I.	90.42	92.83	95.26	97.67
89.0	8.46	6.05	3.63	1.21
10.55	10.26	7.60	7.60	7.60
	0.96	100.05	100.75	101.75
	97.92 J.S.	10.13	9.46	8.46
	12.29			
	110.21 H.I.			

W.

SAN FERNANDO ST.

E.

No. Line Mc CALL ST

105.25 105.00 104.40 104.50 103.85 104.00 104.25

105.00 105.00 104.22 104.32 103.57 104.00 104.00
104.00 103.0

104.40 103.75 104.06 104.16 103.41 102.75 103.40

McCALL

104.50 103.50 103.90 104.00 103.35 102.50 103.50

ST

103.85 103.25 103.74 103.94 103.19 102.25 102.85

104.00 103.00 103.58 103.68 103.03 102.0 103.00
104.00

104.25 104.00 103.40 103.50 102.85 103.00 103.25

No. Line Nichols St.

122.25 122.00 121.80 121.50 120.85 121.00 121.25

122.00 122.00 121.22 121.32 120.87 121.00 121.00
121.00 120.00

121.40 120.75 121.06 121.16 120.81 119.75 120.40

Nichols

121.50 120.50 120.90 121.00 120.35 119.50 120.50

St.

120.85 120.50 120.74 120.84 120.19 119.25 119.85

121.00 120.00 120.58 120.68 120.03 119.00 120.00
120.00 120.00

121.25 121.00 120.40 120.50 119.85 120.00 120.25

So. Line Nichols

So. Line Owens St.

200 131.25 131.00 130.40 130.50 129.85 130.00 130.25

75 130.50 130.25 129.65 129.75 129.10 129.25 129.50

50 129.75 129.50 128.90 129.00 128.35 128.50 128.75

25 129.00 128.75 128.15 128.25 127.60 127.75 128.00

200 128.25 128.00 127.40 127.50 126.85 127.00 127.25

75 127.50 127.25 126.65 126.75 126.10 126.25 126.50

50 126.75 126.50 125.90 126.00 125.35 125.50 125.75

25 126.00 125.75 125.15 125.25 124.60 124.75 125.00

100 125.25 125.00 124.40 124.50 123.85 124.00 124.25

25 124.50 124.25 123.65 123.75 123.10 123.25 123.50

50 123.75 123.50 122.90 123.00 122.35 122.50 122.75

25 123.00 122.75 122.15 122.25 121.60 121.75 122.00

200 122.25 122.00 121.40 121.50 120.85 121.00 121.25

No. Line Nichols

75

128.66 400 128.66 128.66 128.66 128.66 128.66 128.66 128.66 128.66
128.66 128.66 128.66 128.66 128.66 128.66 128.66 128.66 128.66 128.66

128.66 141.21 141.21 141.21 141.21 141.21 141.21 141.21 141.21 141.21
128.66 141.21 141.21 141.21 141.21 141.21 141.21 141.21 141.21 141.21

BHT 128.66 Splice fence-post SW Cor McCall & San Fernando.

128.66 128.66 128.66 128.66 128.66 128.66 128.66 128.66 128.66 128.66
128.66 128.66 128.66 128.66 128.66 128.66 128.66 128.66 128.66 128.66

128.66 128.66 128.66 128.66 128.66 128.66 128.66 128.66 128.66 128.66
128.66 128.66 128.66 128.66 128.66 128.66 128.66 128.66 128.66 128.66

All set 9-19-12 Colony

128.66 128.66 128.66 128.66 128.66 128.66 128.66 128.66 128.66 128.66
128.66 128.66 128.66 128.66 128.66 128.66 128.66 128.66 128.66 128.66

7-26-12 checked OK Colony 77.5

121.27 HI 120.5 0.17 122.0 123.5 125.0 126.5 128.0
0.77 121.10 11.20 9.70 8.2 6.7 5.2

W.

E.

No. Line Owens St.

132.25	132.00	131.40	131.50	130.85	131.00	131.25
--------	--------	--------	--------	--------	--------	--------

132.00	132.00 131.00	131.22	131.32	130.67	131.00 130.00	131.00
--------	------------------	--------	--------	--------	------------------	--------

130.40	130.75	131.06	131.16	130.51	129.75	130.40
--------	--------	--------	--------	--------	--------	--------

Owens

W. 130.50	130.50	130.90	131.00	130.35	129.50	130.50
-----------	--------	--------	--------	--------	--------	--------

St.

130.25	130.25	130.74	130.84	130.19	129.25	129.25
--------	--------	--------	--------	--------	--------	--------

131.00	130.00 131.00	130.58	130.68	130.03	129.00 130.00	130.00
--------	------------------	--------	--------	--------	------------------	--------

131.25	131.00	130.40	130.50	129.85	130.00	130.25
--------	--------	--------	--------	--------	--------	--------

So. Line PERRY ST.

162.25 162.00 161.40 161.50 160.85 161.00 161.25

159.75 159.50 158.90 159.00 158.35 158.50 158.75

157.25 157.00 156.40 156.50 155.85 156.00 156.25

154.75 154.50 153.90 154.00 153.35 153.50 153.75

152.25 152.00 151.40 151.50 150.85 151.00 151.25

149.75 149.50 148.90 149.00 148.35 148.50 148.75

147.25 147.00 146.40 146.50 145.85 146.00 146.25

144.75 144.50 143.90 144.00 143.35 143.50 143.75

142.25 142.00 141.40 141.50 140.85 141.00 141.25

139.75 139.50 138.90 139.00 138.35 138.50 138.75

137.25 137.00 136.40 136.50 135.85 136.00 136.25

134.75 134.50 133.90 134.00 133.35 133.50 133.75

132.25 132.00 131.40 131.50 130.85 131.00 131.25

No. Line DIVERS ST.

2.5

141.25 141.00 140.40 140.50 139.85 140.00 140.25
138.75 138.50 137.90 138.00 137.35 137.50 137.75
135.25 135.00 134.40 134.50 133.85 134.00 134.25
132.75 132.50 131.90 132.00 131.35 131.50 131.75

130.25 130.00 129.40 129.50 128.85 129.00 129.25
127.75 127.50 126.90 127.00 126.35 126.50 126.75
124.25 124.00 123.40 123.50 122.85 123.00 123.25
121.75 121.50 120.90 121.00 120.35 120.50 120.75

119.25 119.00 118.40 118.50 117.85 118.00 118.25
116.75 116.50 115.90 116.00 115.35 115.50 115.75
113.25 113.00 112.40 112.50 111.85 112.00 112.25
109.75 109.50 108.90 109.00 108.35 108.50 108.75

107.25 107.00 106.40 106.50 105.85 106.00 106.25
104.75 104.50 103.90 104.00 103.35 103.50 103.75
102.25 102.00 101.40 101.50 100.85 101.00 101.25
99.75 99.50 98.90 99.00 98.35 98.50 98.75

97.25 97.00 96.40 96.50 95.85 96.00 96.25
94.75 94.50 93.90 94.00 93.35 93.50 93.75
92.25 92.00 91.40 91.50 90.85 91.00 91.25
89.75 89.50 88.90 89.00 88.35 88.50 88.75

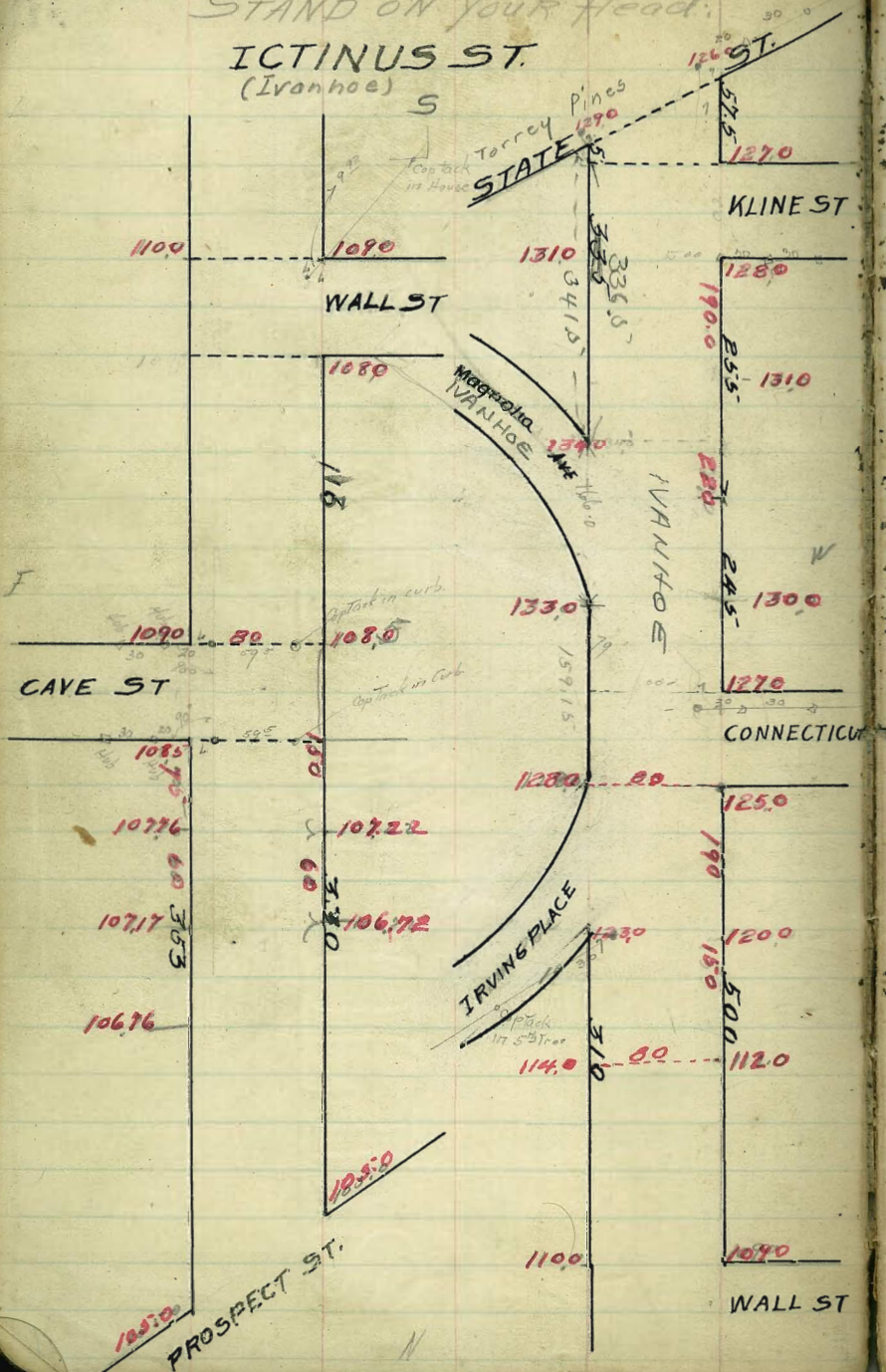
87.25 87.00 86.40 86.50 85.85 86.00 86.25
84.75 84.50 83.90 84.00 83.35 83.50 83.75
82.25 82.00 81.40 81.50 80.85 81.00 81.25
79.75 79.50 78.90 79.00 78.35 78.50 78.75

LA. JOLLA.

STAND ON YOUR HEAD.

ICTINUS ST.

(Ivanhoe)



133.259 State Ictinus Mon NW

ICTINUS ST

PROSPECT ST

W										
353										
330	105.25	105.0	104.60	105.00	104.60	103.9	103.25	✓		
				104.66	103.12	104.74	103.23	105.48	✓	
320	105.81	105.26	104.92	105.39	105.02	105.53	105.78	✓		
275	105.72	105.47	105.14	105.62	105.26	105.78	106.03			
250	105.94	105.69	105.38	105.86	105.49	106.03	106.28	✓		
225	106.15	105.90	105.60	106.09	105.73	106.28	106.53			
210										
200	106.37	106.12	105.82	106.33	105.96	106.53	106.78	✓		
175	106.58	106.33	106.04	106.56	106.20	106.78	107.03			
150	106.80	106.55	106.27	106.79	106.43	107.03	107.28	✓		
135						107.17	107.42			
120	106.97	106.72								
125	107.01	106.76	106.49	107.01	106.67	107.27	107.52			
100	107.22	106.97	106.71	107.24	106.92	107.52	107.77	✓		
75	107.43	107.18	106.93	107.49	107.16	107.76	108.01			
70	107.47	107.22								
50	107.65	107.40	107.15	107.70	107.40	108.00	108.25	✓		
25	107.86	107.61	107.37	107.93	107.65	108.25	108.50			
10										
McL. Cave	107.82	107.59	108.16	107.80	108.50	108.75				

108.19	0507	102.75	107.47	105.01	102.77	107.42	106.80	107.53		
425	512	425	572	515	544	497	661	613		
105.74		425	472	332	410	265	416	512		
367		+2.5	+1.9	+1.82	+1.5	+2.0	+1.42	720		
11241 M		106.37	106.75	105.99	106.28	105.51	105.78	106.25		18
725		606	563	647	613	690	668			cut stake 10/13
10508		450	363	477	403	500	462			
check m		+1.54	+2.0	+1.7	+2.1	+1.5	+2.0			
band										
1050 Comb.	105	46	46	51.2	47.4	52.3	52	49.2	63.9	60.2
657	657	657	657	657	657	657	657	657	657	657
11157 M		569	608	470	549	603	412	582	633	576
387		578	619	571	601	554	543	575	524	561
1080		565	627	679	643	703	697	67	702	692
11065 M		479	482	475	514	454	460	486	483	465
		740	715	770	740	80	782	759	816	790
		625	650	675	4.17	357	583	606	579	575
		600				322	558			
107 Red Stake NW Well		232	259	316	242	245				
566		242	207	550	576	516				
11826 M		46	50	46	51.2	47.4	52.3			
1050 Comb.		46	50	46	51.2	47.4	52.3			
11000 M		46	50	46	51.2	47.4	52.3			
108.00		13.31	13.31	13.31	13.31	13.31	13.31	13.31	13.31	13.31
531		8.06	8.06	8.06	8.06	8.06	8.06	8.06	8.06	8.06
113.3 M		13.31	13.31	13.31	13.31	13.31	13.31	13.31	13.31	13.31
700		13.31	13.31	13.31	13.31	13.31	13.31	13.31	13.31	13.31
571		13.31	13.31	13.31	13.31	13.31	13.31	13.31	13.31	13.31
132		13.31	13.31	13.31	13.31	13.31	13.31	13.31	13.31	13.31
520		13.31	13.31	13.31	13.31	13.31	13.31	13.31	13.31	13.31
581		13.31	13.31	13.31	13.31	13.31	13.31	13.31	13.31	13.31
531		13.31	13.31	13.31	13.31	13.31	13.31	13.31	13.31	13.31
460		13.31	13.31	13.31	13.31	13.31	13.31	13.31	13.31	13.31
871		13.31	13.31	13.31	13.31	13.31	13.31	13.31	13.31	13.31
✓		13.31	13.31	13.31	13.31	13.31	13.31	13.31	13.31	13.31
543		13.31	13.31	13.31	13.31	13.31	13.31	13.31	13.31	13.31
723		13.31	13.31	13.31	13.31	13.31	13.31	13.31	13.31	13.31
203		13.31	13.31	13.31	13.31	13.31	13.31	13.31	13.31	13.31
✓		13.31	13.31	13.31	13.31	13.31	13.31	13.31	13.31	13.31
1		13.31	13.31	13.31	13.31	13.31	13.31	13.31	13.31	13.31
108.00		12.57	12.57	12.57	12.57	12.57	12.57	12.57	12.57	12.57
4.57		5.51	6.23	6.37	7.22	7.2	8.26	8.07	8.75	
112.57 M		7.06	7.29	6.20	5.29	5.25	4.25	4.25	4.25	
		7.01	6.54	6.45	5.84	5.60	4.27	4.25	4.25	
12.57		12.57	12.57	12.57	12.57	12.57	12.57	12.57	12.57	12.57
672		5.94	5.98	6.80	7.77	7.65	8.75	9.25	5.51	
679		6.63	5.79	5.77	4.95	4.92	3.83	3.83	3.83	
704		6.88	6.04	6.02	5.05	5.17	4.07	4.07	4.07	
✓										
✓										
✓										
✓										
✓										

Checked O.K. Sample shown here

50' 8" 14' SW 12' 1/4

W N LINE OF CAVE STREET E

N 1/2 108.07 107.82 107.59 108.16 107.90 108.5 108.75

N.C. 108.19 107.94 107.70 108.26 107.99 108.50 108.50
107.50

N 1/4 108.30 108.05 107.81 108.36 108.07 107.62 108.22

Center 108.41 108.16 107.91 108.46 108.15 107.75 108.75

S 1/4 108.52 108.27 108.01 108.55 108.23 107.88 108.40

Slurb 108.63 108.38 108.12 108.65 108.31 108.00 109.00
109.00

St 108.75 108.50 108.23 108.75 108.40 109.0 109.25

St line of cave st

13.73
7.73
5.96
13.37
8.15
5.16
13.31
8.46
4.85
15.31
7.91
5.40
13.31
8.16
5.15

ICTINUS ST

W

Side of Cave

E

S Line 108.75 108.50 108.22 108.75 108.40 1090 109.25

25 108.64 108.39 108.17 108.76 108.53 109.13 109.38

30 108.53 108.28 108.13 108.77 108.65 109.25 109.50

25 108.43 108.18 108.08 108.78 108.78 109.38 109.63

100 108.32 108.07 108.03 108.79 108.91 109.51 109.76

NL Wall St

N.C. NL 108.25 108.00 108.00 108.80 108.99 109.59 109.84

N Curve 108.00 108.00 108.15 108.92 109.06 109.66 109.91

W 1/4 107.85 107.25 108.29 109.03 109.13 109.73 109.98

Wall St.

Center 108.5 107.50 108.42 109.15 109.20 109.7.9 110.04

S 1/4 108.40 107.75 108.56 109.27 109.26 109.86 110.11

S Curve 109.00 109.00 108.70 109.38 109.33 109.93 110.18

S Line 109.25 109.0 108.85 109.50 109.40 110.0 110.25

S Line of Wall St

108.25	109.24	107.53	109.50	103.75	109.25	Cal. date 7/20/13
4.91	3.35	4.56	5.69	4.82	3.72	Natal 20
5.40	4.85	5.26	4.85	4.22	4.22	
-2.86	-1.0	-2.9	-0.1		-1.26	

113.65 Hr	8.50	5.22	8.75	8.40	9.0	8.25	8.13	8.77	8.65	9.25
5.50	5.15	5.43	4.90	6.25	4.18	5.27	5.02	4.82	5.00	4.95
107.00	107	103	879	891	9.51	8.0	8.0	8.50	8.99	9.09
5.50	5.50	5.62	4.80	4.72	4.14	5.50	5.65	4.85	4.66	4.06
5.33					8.89	5.00				3.91

108.50	8.0	7.2	9.0	9.6	7.0	1.25	8.0	7.6	8.40	9.0
108.50	5.6	5.6	5.6	5.6	5.6	5.6	5.6	5.6	5.6	5.6

113.31 Hr	13.31	13.31	13.31	13.31	13.31	13.31	13.31	13.31	13.31	13.31
1.76	9.50	8.25	10.25	9.25	7.50	9.0	12.57	12.57	12.57	12.57
2.86	3.31	5.06	3.26	4.06	5.8	3.32	4.04	2.73	3.32	3.32
4.71	4.71	5.31	3.31	4.31		3.57	4.29	2.98	3.57	3.57
113.31	13.31	13.31	13.31	13.31	13.31	13.31	13.31	13.31	13.31	13.31
5.09	4.64	5.38	3.91	4.91		12.57	13.57	12.57	12.57	12.57
13.31	13.31	13.31	13.31	13.31	13.31	3.22	3.50	2.50	10.25	10.25
8.75	8.27	8.80	9.50	8.00		3.82	3.27	4.32	2.22	2.22
2.36	2.74	3.57	3.21	4.51		4.07	3.32	4.07	2.57	2.57
13.31	13.31	13.31	13.31	13.31	13.31					
5.00	5.00	5.00	5.00	5.00	5.00					
4.71	5.42	4.32	4.46	5.46						
13.31	13.31	13.31	13.31	13.31	13.31					
4.22	2.53	3.29	9.25	7.15						
4.06	4.78	3.48	4.06	5.06						
4.31	5.03	3.70	4.31	5.31						

checked by
Lynn
Shannon
Kerry

W

South Irving

E

SL 109.25	109.00	1078.5	109.50	109.40	110.00	110.23	V		
25	109.72	109.47	109.36	110.05	110.03	110.63	✓		
60	110.19	109.94	109.87	110.60	110.65	111.25	V		
76	110.66	110.41	110.33	111.15	111.28	111.88	✓		
100	111.14	110.89	110.90	111.70	111.90	112.50	✓		
130	111.69	111.44	111.50	112.35	112.65	113.25	V		
160	112.25	112.00	112.10	113.00	113.40	114.00	✓		
185	113.58	113.33	113.37	114.41	114.90	115.50	✓		
210	114.92	114.67	114.85	115.83	116.40	117.00	✓		
235	116.25	116.00	116.22	117.25	117.90	118.50	✓		
260	117.58	117.33	117.60	118.66	119.40	120.00	✓		
285	118.92	118.67	118.98	120.08	120.90	121.50	✓		
310	120.25	120.00	NL Irving	120.35	121.50	122.40	123.00	123.25	NL ✓
335	120.91	120.66		121.02	122.16	123.06	123.00	123.06	
360	121.57	121.32		121.67	122.82	123.72	123.00	123.68	✓
385	122.22	121.97		122.32	123.47	124.37	123.69	124.69	✓
410	122.88	122.63		122.98	124.13	125.03	124.70	125.90	✓
435	123.54	123.29		123.64	124.77	125.67	125.71	126.91	✓
460	124.20	123.95		124.30	125.45	126.35	126.72	127.72	✓
485	124.89	124.61		124.86	126.11	127.01	128.00	128.06	✓
500	125.25	125.00		125.35	126.50	127.40	128.00	128.25	✓

W. line of Connecticut ST - SL Irving 11

21

120.25	120.00	120.35	121.50	122.40	123.00	123.25	NL ✓
120.91	120.66	121.02	122.16	123.06	123.00	123.06	
121.57	121.32	121.67	122.82	123.72	123.00	123.68	✓
122.22	121.97	122.32	123.47	124.37	123.69	124.69	✓
122.88	122.63	122.98	124.13	125.03	124.70	125.90	✓
123.54	123.29	123.64	124.77	125.67	125.71	126.91	✓
124.20	123.95	124.30	125.45	126.35	126.72	127.72	✓
124.89	124.61	124.86	126.11	127.01	128.00	128.06	✓
125.25	125.00	125.35	126.50	127.40	128.00	128.25	✓

cutbacks 7 1/2% kept

cut - Prof 3 1/2% 11/13

chick O.K.

Druck

Shaw

Hur.

ICTINUS ST

N Line of Connecticut St E

N 1/4 128,25 125,00 125,35 126,50 127,40 128,00 128,25

N Curve 12500 125,00 125,72 126,89 127,83 128,43 128,68
12400

N 1/4 125,10 124,50 126,06 127,25 128,23 128,83 129,08

Center 12600 125,00 126,40 127,61 128,62 129,22 129,47

S 1/4 126,46 125,50 126,75 127,97 129,02 129,62 129,89

S Curve 12700 126,00 127,09 128,33 129,42 130,02 130,27
12700

S Line 12725 127,00 127,46 128,22 129,85 130,45 130,70

S Line of Connecticut St

35.22	35.25	29.91
0.70	2.20	5.25
7.25	7.25	4.66
7.77	7.85	4.71
		22.91
35.22	5.25	5.10
7.25	6.20	4.81
3.37	8.75	29.01
35.22	5.25	6.00
3.72	5.30	3.91
	9.90	29.91
		4.20
35.22		3.51
7.46		29.91
		7.25
		2.66
		2.91

ACTINUS 51
 128.11 Top Fence, N. Side. Nat. Camp.

S Line of Connection St. E

S Line	127.25	127.70	127.76	128.72	129.25	130.44	130.70
26	128.08	127.83	128.28	129.53	130.62	131.22	131.47
30	128.92	128.67	129.10	130.33	131.89	131.99	132.24
35	129.76	129.50	129.95	130.82	132.18	132.26	133.00
79		129.75	130.26	131.38	132.40	133.00	133.23
90	130.25	130.00	130.30	131.40	132.44	133.00	133.19
110	130.34	130.09	130.42	131.55	132.57	133.00	133.00
107.35						133.00	133.28
135	130.55	130.20	130.55	131.70	132.72	132.22	133.27
160	130.57	130.32	130.68	131.85	132.88	132.46	133.46
175	130.68	130.43	130.81	132.00	133.03	132.70	133.20
210	130.80	130.55	130.95	132.15	133.18	132.93	133.93
216.6	6	6	6	6	6	133.00	134.00
235	130.91	130.66	131.08	132.30	133.34	134.00	134.12
245	130.95	130.70	131.12	132.35	133.40	134.0	134.25
260	131.02	130.77	131.13	132.30	133.22	133.82	134.07
285	131.13	130.88	131.04	132.20	132.93	133.53	133.78
310	131.25	131.00	131.16	132.12	132.63	133.23	133.48
335	130.86	130.61	130.79	131.78	132.34	132.94	133.19
360	130.46	130.21	130.42	131.43	132.05	132.65	132.90
385	130.07	129.82	130.05	131.09	131.75	132.35	132.60
410	129.67	129.42	129.68	130.74	131.46	132.06	132.31
435	129.28	129.03	129.31	130.40	131.16	131.76	132.01
460	128.88	128.63	128.94	130.05	130.87	131.47	131.72
485	128.49	128.24	128.57	129.71	130.58	131.18	131.43
500	128.25	128.00	128.35	129.50	130.40	131.0	131.25

N. Line of Kline St

127.25	127.70	127.76	128.72	129.25	130.44	130.70
128.08	127.83	128.28	129.53	130.62	131.22	131.47
128.92	128.67	129.10	130.33	131.89	131.99	132.24
129.76	129.50	129.95	130.82	132.18	132.26	133.00
130.25	130.00	130.30	131.40	132.44	133.00	133.19
130.34	130.09	130.42	131.55	132.57	133.00	133.00
130.55	130.20	130.55	131.70	132.72	132.22	133.27
130.57	130.32	130.68	131.85	132.88	132.46	133.46
130.68	130.43	130.81	132.00	133.03	132.70	133.20
130.80	130.55	130.95	132.15	133.18	132.93	133.93
130.91	130.66	131.08	132.30	133.34	134.00	134.12
130.95	130.70	131.12	132.35	133.40	134.0	134.25
131.02	130.77	131.13	132.30	133.22	133.82	134.07
131.13	130.88	131.04	132.20	132.93	133.53	133.78
131.25	131.00	131.16	132.12	132.63	133.23	133.48
130.86	130.61	130.79	131.78	132.34	132.94	133.19
130.46	130.21	130.42	131.43	132.05	132.65	132.90
130.07	129.82	130.05	131.09	131.75	132.35	132.60
129.67	129.42	129.68	130.74	131.46	132.06	132.31
129.28	129.03	129.31	130.40	131.16	131.76	132.01
128.88	128.63	128.94	130.05	130.87	131.47	131.72
128.49	128.24	128.57	129.71	130.58	131.18	131.43
128.25	128.00	128.35	129.50	130.40	131.0	131.25

4/1 Check Off
 double
 chain
 Run

W N Line of N Line St E

N 1/4 12875 12880 12885 12950 130.60 1310 13125

N curb 12800 12800 12813 12925 130.27 130.67 130.92
127.00

N 1/4 12740 12775 126.75 12793 12901 12996 130.36 130.61

center 12750 126.50 12773 12878 12966 13006 130.31

S 1/4 12685 12725 126.25 12753 12854 12935 12975 130.00

S curb 12700 12600 12700 12733 12830 12905 12945 12970

S line of 12725 1270 12712 12805 12878 12918 12943

S 3/4 sec A 12717 12692 12704 12796 12840 12900 12925

30 sec B 12673 12648 12671 12774 12840

576 sec 12670 12600 12625 12750 12840

N Line of State

2826 871 12625 12717 12925 12725 12943
207 1141 1056 847 1025 930
127.23 1277 10 327 1130 430
1.0 10.66 +3.0 10.18 +3.0

1270 250 270 2918 2492 290 260
554 559 6541 4411 454 754
13859 6841 416 434 704

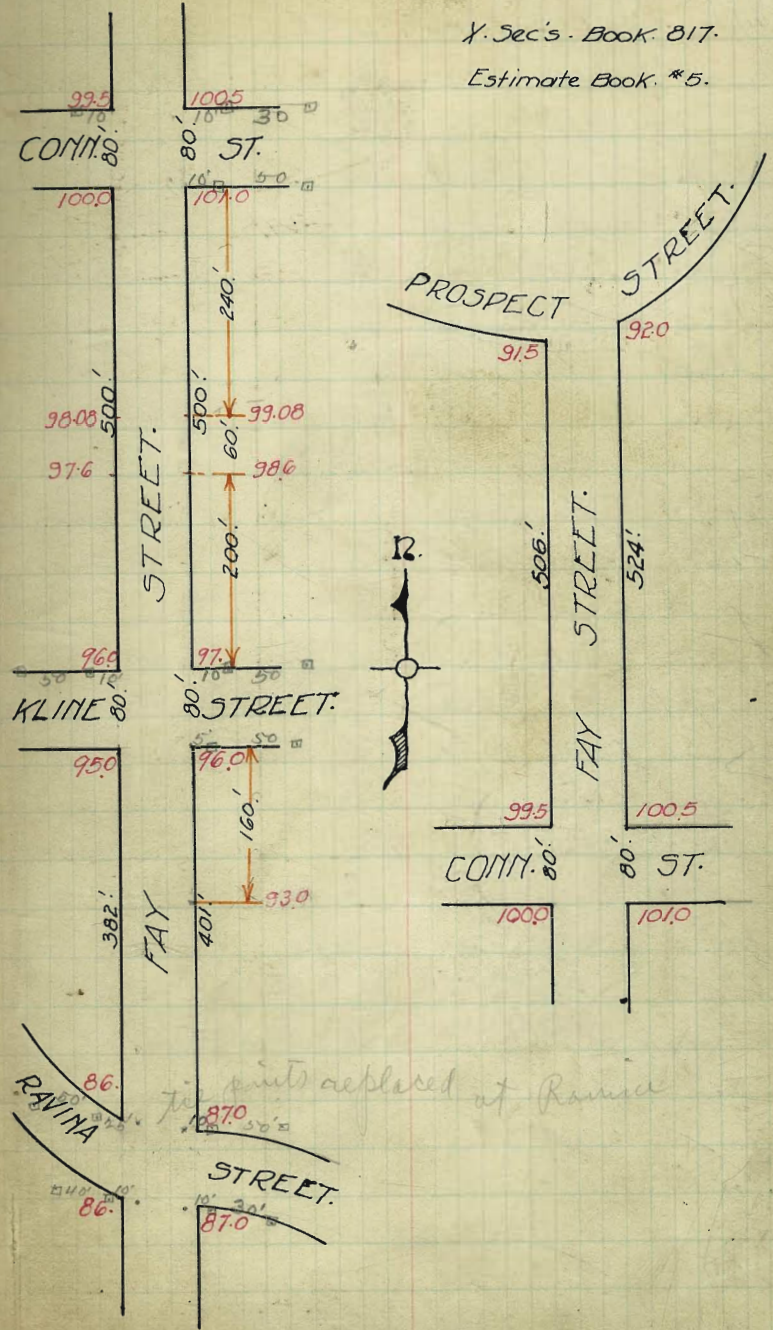
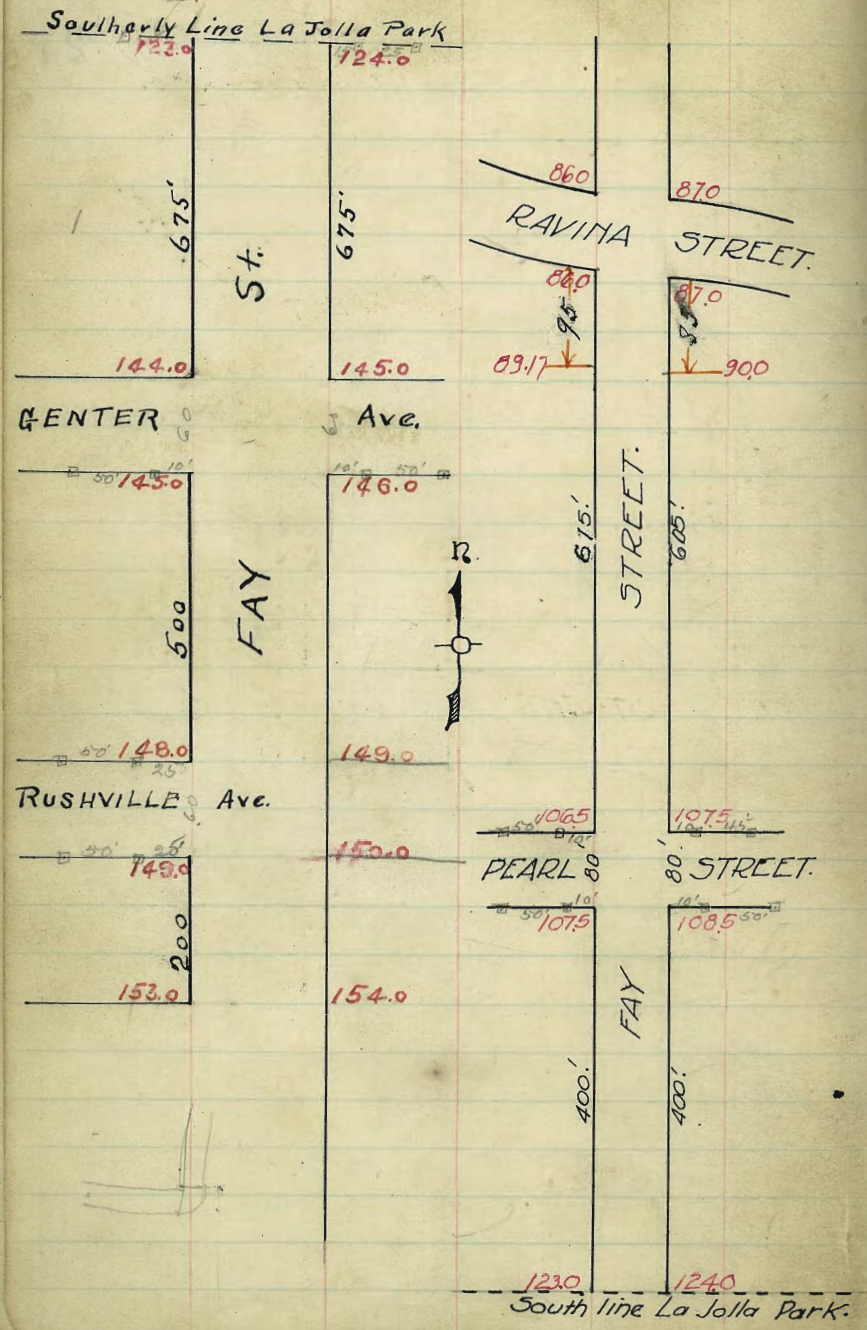
13320 2 check
3326
10514 3522 2522 3555 3555
225 225 225 725 725
697 797 597 620 620
722 722 622 345 345
3522 3522 3522 775 775
640 740 840 302 302
740 740 840 796 796
250 250 800 750 750
772 772 772 355 355
3522 3522 3522 704 704
685 278 635 85 85
837 434 897 355 355
3022 3022 3022 727 727
725 2 422 830 830
747 247 247 355 355
222 222 222

2/27/13 24
cut stakes 7/1/13

check O.K.
B
Bunker
Shane
Ken

NW Kline 1/4 3pk. Pole. grd = 95.419.
NE Girard + Conn. 3pk. pole. = 107.703

X. Sec's - Book 817.
Estimate Book #5.



The points replaced at Ravina

FAY ST.

	West	South Line La Jolla PARK					East
Slime	123.75	123.0	122.85	123.05	123.40	124.0	124.25
25	124.03	123.78	123.63	124.28	124.18	124.76	125.03
50	124.80	124.55	124.40	125.05	124.95	125.55	125.80
75	125.58	125.33	125.18	125.83	125.73	126.33	126.58
100	126.36	126.11	125.96	126.61	126.51	127.11	127.36
125	127.13	126.88	126.74	127.38	127.28	127.88	128.13
150	127.91	127.66	127.51	128.16	128.06	128.66	128.91
175	128.69	128.44	128.29	128.94	128.84	129.44	129.69
200	129.47	129.22	129.07	129.72	129.62	130.22	130.47
225	130.24	129.99	129.84	130.49	130.39	130.99	131.24
250	131.01	130.76	130.62	131.22	131.16	131.76	132.01
275	131.79	131.54	131.40	132.04	131.94	132.54	132.79
300	132.57	132.32	132.18	132.82	132.72	133.32	133.57
325	133.34	133.09	132.96	133.59	133.49	134.09	134.34
350	134.12	133.87	133.74	134.37	134.27	134.87	135.12
375	134.9	134.65	134.51	135.15	135.05	135.65	135.90
400	135.68	135.43	135.29	135.93	135.83	136.43	136.68
425	136.45	136.20	136.07	136.70	136.60	137.20	137.45
450	137.23	136.98	136.85	137.48	137.38	137.98	138.23
475	138.01	137.76	137.63	138.26	138.16	138.76	139.01
500	138.79	138.54	138.40	139.04	138.94	139.54	139.79
525	139.57	139.32	139.18	139.82	139.72	140.32	140.57
550	140.34	140.09	139.96	140.59	140.49	141.09	141.34
575	141.12	140.87	140.74	141.37	141.27	141.87	142.12
600	141.90	141.65	141.52	142.15	142.05	142.65	142.90
625	142.68	142.42	142.29	142.92	142.82	143.42	143.68

July 16 - 1913

West
Evans
Moore

12390	12391	12392	12393	12394	12395	12396	12397	12398	12399	12400	12401	12402	12403	12404	12405	12406	12407	12408	12409	12410
72.	516	410	356	1.50	463	245	0.35	0.62												
12539	12540	12541	12542	12543	12544	12545	12546	12547	12548	12549	12550	12551	12552	12553	12554	12555	12556	12557	12558	12559
13305	12424	12425	12426	12427	12428	12429	12430	12431	12432	12433	12434	12435	12436	12437	12438	12439	12440	12441	12442	12443
F.0.80	F.0.80	F.0.71	C.0.63	C.0.55	F.1.00	F.0.67	C.0.73	141.59	141.59	141.59	141.59	141.59	141.59	141.59	141.59	141.59	141.59	141.59	141.59	141.59

14281
447

14286 - 1446 W. of S.W. corner of Garden

13486	13487	13488	13489	13490	13491	13492	13493	13494	13495	13496	13497	13498	13499	13500	13501	13502	13503	13504	13505	13506
12988	12559	12458	12459	12460	12461	12462	12463	12464	12465	12466	12467	12468	12469	12470	12471	12472	12473	12474	12475	12476
400.0	11.31	12.34	12.0	10.55	10.75	9.75	7.5	7.75	8.20	9.20	8.75	7.37	7.64	7.64	7.64	7.64	7.64	7.64	7.64	7.64

130.00 - Top of 10" pipe
142
14052 - H.S.

14561	14562	14563	14564	14565	14566	14567	14568	14569	14570	14571	14572	14573	14574	14575	14576	14577	14578	14579	14580	14581
3512	3517	2057	2012	3563	3543	3640	3644	3723	3795	3078	3723	3795	3078	3723	3795	3078	3723	3795	3078	3723
16400	10.65	11.65	11.40	9.87	10.07	9.09	8.24	7.29	7.54	8.44	8.24	7.54	8.44	8.24	7.54	8.44	8.24	7.54	8.44	8.24

14581	14582	14583	14584	14585	14586	14587	14588	14589	14590	14591	14592	14593	14594	14595	14596	14597	14598	14599	14600	14601
3879	3854	3754	3779	4184	4129	4127	4024	4190	4125	4265	4290	4290	4290	4290	4290	4290	4290	4290	4290	4290
175	178	595	595	595	4.18	4.45	5.13	5.13	5.22	5.22	5.22	5.22	5.22	5.22	5.22	5.22	5.22	5.22	5.22	5.22

14591	14592	14593	14594	14595	14596	14597	14598	14599	14600	14601	14602	14603	14604	14605	14606	14607	14608	14609	14610	14611
4444	4421	4321	4316	4025	4000	4504	4526													
1024	1.31	2.01	2.40	1.27	1.52	1.52	1.27													

Finish stakes 8/20/13. West
Evans
Devine

14956	14957	14958	14959	14960	14961	14962	14963	14964	14965	14966	14967	14968	14969	14970	14971	14972	14973	14974	14975	14976
14956	14957	14958	14959	14960	14961	14962	14963	14964	14965	14966	14967	14968	14969	14970	14971	14972	14973	14974	14975	14976
6.04	5.64	5.46	5.01	4.86	4.46															

W 1/4 - N 100' ok balance from 1/2 to 2' low.
E 1/4 - N 100' - 10' low next 2' - 2' low next 100' - 2' low balance 3' low
E 1/4 - N 100' - 1/2 low middle 500' grade balance 1/2 to 3' low

West

EAST

650	143.46	143.21	143.07	143.71	143.61	144.21	144.46
675	144.25	144.0	143.88	144.56	144.4	145.0	145.25

N. Line Genter St.

60' Wide

N. Line	144.25	144.0	143.85	144.50	144.4	145.0	145.25
---------	--------	-------	--------	--------	-------	-------	--------

N. Curb	144.0	144.0	144.02	144.67	144.57	145.0	145.00
	143.06					144.00	

N. 1/4	144.85	143.25	144.19	144.83	144.74	144.25	144.85
--------	--------	--------	--------	--------	--------	--------	--------

Centre	144.50	143.50	144.35	145.0	144.90	144.50	145.50
--------	--------	--------	--------	-------	--------	--------	--------

S 1/4	144.4	143.75	144.52	145.16	145.07	144.75	145.4
-------	-------	--------	--------	--------	--------	--------	-------

S Curb	145.0	145.0	144.68	145.33	145.24	146.0	146.0
					145.0		

S Line	145.25	145.00	144.85	145.50	145.4	146.0	146.25
--------	--------	--------	--------	--------	-------	-------	--------

S Line Genter St.

144.48
E 54
150.02 = 75

15002	15002	15002	15002
145.00	146.00	144.00	145.00
5.02	4.02	6.02	5.02

FAY ST.

West	5 Line Genter St.						East
S. Line 145.25	145.0	144.85	145.50	145.4	146.0	146.25	
25	145.40	145.15	145.0	145.65	145.55	146.15	
50	145.55	145.30	145.15	145.80	145.70	146.30	
75	145.70	145.45	145.30	145.95	145.85	146.45	
100	145.85	145.60	145.45	146.10	146.0	146.60	
125	146.00	145.75	145.60	146.75	146.15	146.75	
150	146.15	145.90	145.75	146.40	146.30	146.90	
175	146.30	146.05	145.90	146.55	146.45	147.05	
200	146.45	146.20	146.05	146.70	146.60	147.20	
225	146.60	146.35	146.20	146.85	146.75	147.35	
250	146.75	146.50	146.35	147.0	146.90	147.50	
275	146.90	146.65	146.50	147.25	147.05	147.65	
300	147.05	146.80	146.65	147.30	147.20	147.80	
325	147.20	146.95	146.80	147.45	147.35	147.95	
350	147.35	147.10	146.95	147.60	147.50	148.10	
375	147.50	147.25	147.10	147.75	147.65	148.25	
400	147.65	147.40	147.25	147.90	147.80	148.40	
425	147.80	147.55	147.40	148.05	147.95	148.55	
450	147.95	147.70	147.55	148.20	148.10	148.70	
475	148.10	147.85	147.70	148.35	148.25	148.85	
500	148.25	148.0	147.85	148.50	148.40	149.0	

N. Line Rushville Ave.

14441 - Total to N of S.W. Corner of Fay.
12.00
157.48 - 70

15748	15748	15748	15748	15748	15748	15748	15748	15748	15748	15748	15748	15748	15748	15748	15748	15748	15748	15748	15748
1567	235	75	1224	1140	574	441	848	740	350	823	743	735	522						
1448	1475	1472	14624	14648	15124	15389	14900	15288	15278	15285	15000	14610	14786	14786	14786	14786	14786	14786	14786
14655	14655	14655	14655	14655	14655	14655	14655	14655	14655	14655	14655	14655	14655	14655	14655	14655	14655	14655	14655
F 0.37	C 1.88	C 3.37	P 0.31	C 0.63	C 1.77	C 5.85	C 2.80	C 3.63	C 6.53	C 6.70	C 3.25	C 1.70	C 3.81						

15748
3.10

164.38 TOTAL EAST

164.48
70
157.72 - 70

15212	15212	5212	5212	5212	5212	5212	5212	5212	5212	5212	5212	5212	5212	5212	5212	5212	5212	5212	5212
14525	14525	14600	14625	14655	14620	14520	14520	14520	14520	14520	14520	14520	14520	14520	14520	14520	14520	14520	14520
6.874	7.124	6.124	5.814	5.874	5.824	6.224	6.574	6.274	6.524	6.274	6.524	6.274	6.524	6.274	6.524	6.274	6.524	6.274	6.524

5212	5212	5212	5212	5212	5212	5212	5212	5212	5212	5212	5212	5212	5212	5212	5212	5212	5212	5212	5212
4715	4680	4620	4615	4645	4620	4720	4745	4735	4760	4620	4675	4675	4675	4675	4675	4675	4675	4675	4675
4.974	6.224	6.224	5.974	5.674	5.924	4.924	4.674	4.374	4.224	5.624	5.374	5.624	5.374	5.624	5.374	5.624	5.374	5.624	5.374

144.48
10.40
154.88 - 70
46.25
7.75

5458	5458	5458	5458	5458	5458	5458	5458	5458	5458	5458	5458	5458	5458	5458	5458	5458	5458	5458	5458
4705	4610	4785	4605	4895	4810	4710	4730	4765	4740	4850	4665	4665	4665	4665	4665	4665	4665	4665	4665
7.534	7.784	6.784	6.534	6.234	6.484	7.484	7.234	6.984	6.734	6.184	5.984	6.184	5.984	6.184	5.984	6.184	5.984	6.184	5.984

5458	5458	5458	5458	5458	5458	5458	5458	5458	5458	5458	5458	5458	5458	5458	5458	5458	5458	5458	5458
4895	4870	4770	4795	4825	4800	4900	4925	4825	4825	4825	4825	4825	4825	4825	4825	4825	4825	4825	4825
5.634	5.884	6.884	6.634	6.334	6.584	5.584	5.334	5.634	5.334	5.634	5.334	5.634	5.334	5.634	5.334	5.634	5.334	5.634	5.334

144.25
6.22
150.27 - 70. See P. 27.

5.38

Finish Stakes. 8/25/13. West - Evans.

FAY ST.

West	N. Line Rushville Ave.					East
N. Line 148.25	148.0	147.85	148.50	148.4	149.0	149.25
N. Corb 148.0	148.0	148.07	148.67	148.57	149.0	149.0
	147.0				148.0	
N. 1/4 147.95	147.25	148.19	148.84	148.74	148.25	148.85
Center 148.50	147.50	148.35	149.00	148.90	148.50	149.50
S. 1/4 148.40	147.75	148.52	149.17	149.07	148.75	149.4
S. Corb 149.0	149.0	148.68	149.34	149.74	149.0	150.0
S. Line 149.25	149.0	148.85	149.50	149.4	150.0	150.25

S. Line Rushville Ave.

149.25
4.94
154.19-41

154.19 154.19 154.19 154.19
149.00 148.80 149.00 150.25
5.19 6.19 5.19 4.19

West

FAY ST

East

5 Line Trushville Ave.

9 Line 149.25	149.0	148.85	149.65	149.40	150.0	150.25
25	149.75	149.50	149.35	150.0	149.9	150.75
50	150.25	150.0	149.85	150.5	150.4	151.0
75	150.75	150.5	150.35	151.0	150.9	151.50
100	151.25	151.0	150.85	151.5	151.4	152.25
125	151.75	151.5	151.35	152.0	151.9	152.75
150	152.25	152.0	151.85	152.50	152.4	153.0
175	152.75	152.5	152.35	153.0	152.9	153.50
200	153.25	153.0	152.85	153.50	153.4	154.0

154.31 - T.P.C. 144.50
 1.2.26
 167.24 - N)

167.24	167.24	167.24	167.24	167.24	167.24
6.5	5.9	2.23	2.87	5.15	9.80
160.74	163.54	165.01	164.87	162.07	157.44
149.28	150.25	151.25	152.25	152.25	154.25
C11.49	C13.29	C13.76	C12.62	C8.84	C3.19

154.31
 4.60
 158.91 - N)

158.98	158.98	158.98	158.98	158.98
10.82	9.20	9.01	8.60	9.13
149.06	149.78	149.98	150.38	149.85
149.25	150.25	151.25	152.25	153.25
F0.59	F0.87	F1.27	F1.87	F3.40

Finish stakes 8/25/13. West - Ewins.

5557	5557	5557	5557	5557	5557	5557	5557	5557	5557	5557	5557	5557	5557	5557	5557	5557	5557	5557	5557
50.25	50.00	49.80	49.75	50.25	50.00	51.00	51.25	52.25	52.00	51.44	51.25								
532.2	55.7	6.57	6.32	532.2	55.7	4.57	4.32	532.2	55.7	4.57	4.32								

5557	5557	5557	5557	5557	5557	5557	5557
52.25	52.00	53.00	53.25	54.25	54.00	53.00	53.25
532.2	3.57	2.57	2.32	1.22	1.57	2.57	2.32

WEST. FAY STREET. EAST.

80' Wide - 14' Walks - 13' Quarters.
 524' N. on E. Curb. 1/4 1/4 Curb P.L.
 506' N. on West

3. L. Prospect 91.75	91.50	91.10	91.75	91.60	92.00	92.25
500' N. 91.84	91.59	91.34	91.99	91.84	92.39	92.64
450' N. 92.63	92.38	92.14	92.79	92.64	93.20	93.45
400' N. 93.42	93.17	92.94	93.59	93.44	94.01	94.26
350' N. 94.21	93.96	93.74	94.39	94.24	94.82	95.07
300' N. 95.00	94.75	94.54	95.19	95.05	95.63	95.88
250' N. 95.79	95.54	95.34	95.99	95.86	96.44	96.69
200' N. 96.58	96.33	96.14	96.79	96.67	97.25	97.50
150' N. 97.37	97.12	96.94	97.59	97.48	98.06	98.31
100' N. 98.16	97.91	97.74	98.39	98.29	98.87	99.12
50' N. 98.95	98.70	98.55	99.19	99.09	99.68	99.93
N. L. Conn. 99.75	99.50	99.35	100.00	99.90	100.50	100.75

CONN. INTERSECTION.

80' Wide 14' Walks.

N. L. Conn. 99.75	99.50	99.35	100.00	99.90	100.50	100.75
N. Curb. 99.50	99.50 98.50	99.44	100.09	99.99	100.50 99.50	100.50
N. 1/4. 99.10	98.62	99.52	100.17	100.07	99.62	100.10
E. 99.75	98.75	99.60	100.25	100.15	99.75	100.75
3/4. 99.60	98.88	99.68	100.33	100.23	99.87	100.60
S. Curb. 100.00	99.00 100.00	99.76	100.41	100.31	101.00 100.00	101.00
3. L. Conn. 100.25	100.00	99.85	100.50	100.40	101.00	101.25

July 14 - 1913
 West
 E. 1/4
 1/4

X Sec Book. 817.

Estimate #5.

107.70 - 1/4 NE Cor. Fay & Conn.
 0.23
 107.73 - 1/4
 7.31
 107.71 - 1/4 NE Cor. Fay & Conn.
 1.53
 102.10 - 1/4

102.10	102.10	102.10	102.10	102.10	102.10	102.10	102.10
10.35	9.5	12.37	9.47	7.62	2.35	8.60	
91.75	91.25	91.73	92.63	94.42	95.75	95.5	
91.75	92.25	91.84	92.63	93.45	94.26	95.07	
0.00	0.00	0.11	0.00	0.49	0.47	0.08	

102.10	102.10	102.10	102.10	102.10	102.10	102.10	102.10
7.66	5.43	9.00	6.60	6.00	3.23	3.17	4.20
94.44	96.67	97.90	98.50	96.10	98.27	98.93	96.94
94.21	95.07	95.88	95.00	95.39	96.69	97.50	96.58
C. 2.23	C. 1.60	C. 2.02	C. 0.50	C. 0.31	C. 1.58	C. 1.43	C. 0.36

102.10	102.10	102.10	102.10	102.10	102.10
2.05	3.94	3.60	1.76	1.25	3.27
100.97	98.16	99.50	100.34	100.25	98.83
99.13	98.16	98.95	98.73	100.75	99.75
C. 0.93	0.00	0.45	0.24	0.20	0.92

100.57 - 1/4 West
 5.01
 105.98 - 1/4

107.70 - 3/4 NE Cor. Fay & Conn.

0.37
 107.73 - 1/4
 7.31

107.71 - 1/4 NE Cor. Fay & Conn.
 0.27

100.86	100.86	100.86	100.86	100.86	100.86	100.86	100.86
10.75	10.50	9.50	9.75	9.75	10.75	9.25	9.25
0.14	0.36	1.36	1.11	1.71	2.16	1.18	2.93

Finish
 stakes

8/14/13

West

more

Devin

100.86	100.86	100.86	100.86	100.86	100.86	100.86	100.86
9.73	9.72	9.80	9.50	9.76	3.81	4.55	4.28
3.94	3.74	2.80	2.50	3.36	3.81	4.55	4.28

100.86	100.86	100.86	100.86	100.86	100.86	100.86	100.86
9.28	9.23	9.45	9.50	9.24	9.29	9.20	9.15
4.94	5.23	6.11	5.81	6.65	6.94	6.94	5.94

100.86	100.86	100.86	100.86	100.86	100.86	100.86	100.86
9.23	8.48	7.66	7.41	8.20	8.40	8.61	9.36

100.57
 4.54

105.11	105.11	105.11	105.11
99.50	100.00	101.00	100.50
5.61	5.11	4.11	4.61

100.57
 4.30

104.87	104.87	104.87	104.87	104.87
99.90	100.00	99.75	99.50	99.75
4.97	4.87	5.52	4.37	5.37

100.57
 0.87

101.55	101.55	101.55	101.55	101.55	101.55
91.75	91.50	91.10	91.75	91.60	92.00
9.50	10.00	10.00	9.80	9.95	9.30

OK walk + W 1/4 but
 center 1/2 from
 2 to 4 low.

WEST FAY STREET EAST

Connecticut to Kline Street

P.L.	Curb	1/4	1/2	3/4	Curb	P.L.
S.L. Conn. 100.25	100.00	99.85	100.50	100.40	101.00	101.25
50'S.	99.85	99.60	99.45	100.10	100.00	100.60
100'S.	99.45	99.20	99.05	99.70	99.60	100.20
150'S.	99.05	98.80	98.65	99.30	99.20	99.80
200'S.	98.65	98.40	98.25	98.90	98.80	99.40
240'S.	98.33	98.08	97.93	98.58	98.48	99.08
250'S.	98.25	98.00	97.85	98.50	98.40	99.00
300'S.	97.85	97.60	97.45	98.10	98.00	98.60
350'S.	97.45	97.20	97.05	97.70	97.60	98.20
400'S.	97.05	96.80	96.65	97.30	97.20	97.80
430'S.	96.65	96.40	96.25	96.90	96.80	97.40
500'S.	96.25	96.00	95.85	96.50	96.40	97.00
N.L. Kline 96.25	96.00	95.85	96.50	96.40	97.00	97.25

KLINE INTERSECTION

N.L. Kline 96.25	80' Wide	14' Walls				
96.00	95.85	96.50	96.40	97.00	97.25	
N.Curb 96.00	96.00	95.67	96.32	96.22	97.00	97.00
	95.00			95.00		
N 1/4 95.40	94.75	95.51	96.16	96.06	95.75	96.40
1/2 95.50	94.50	95.35	96.00	95.90	95.50	96.50
S 1/4 94.85	94.25	95.17	95.84	95.74	95.25	95.85
	94.00			95.00		
S-Curb 95.00	95.00	95.01	95.68	95.58	96.00	96.00
S.L. Kline 95.25	95.00	94.85	95.50	95.40	96.00	96.25

July 14 - 1913

West
East
Moore

105.75 - 10' W. NW Cor. Conn + Fay
541
105.98 - 47'

105.98	105.98	105.98	105.98	105.98	105.98	105.98	105.98	105.98	105.98	105.98	105.98
560	4.35	6.45	5.27	4.11	6.63	5.60	4.02	4.07	8.43	5.95	
106.35	99.12	99.55	100.71	101.88	103.35	103.58	101.70	105.51	106.25	100.73	
101.25	100.25	99.85	100.85	102.45	99.25	99.85	100.85	99.85	96.65	98.33	
105.87	101.12	102.30	100.74	101.13	102.70	101.33	101.91	101.80	101.90	102.60	
105.91	105.91	105.91	105.91	105.91	105.91	105.91	105.91	105.91	105.91	105.91	
517	5.94	4.81	5.08	5.40	6.83	6.00	6.70	8.00	9.33	7.76	
106.51	102.84	101.17	100.70	100.88	99.15	99.98	99.28	97.73	96.85	97.22	
98.15	99.33	99.25	98.85	97.85	97.45	95.45	95.80	97.05	95.65	97.05	
105.98	105.98	105.98	105.98	105.98	105.98	105.98	105.98	105.98	105.98	105.98	
95.5	96.65		95.31	96.25		96.60					
105.98	105.98	105.98	105.98	105.98	105.98	105.98	105.98	105.98	105.98	105.98	
95.5	96.65		95.31	96.25		96.60					
97.25	96.25		95.31	96.25		96.60					
96.18	96.60										

105.98 - 42'
10.67
97.45 96.65
97.25 96.25
96.18 96.60

Finish stakes PL West line
7/14/13 west

105.51 - 10' W. NW Cor. Conn + Fay + Kline
355
100.72 - 47'

10412	10412	10412	10412	10412	10412	10412	10412	10412	10412	10412	10412
3.87	4.27	4.67	5.07	5.47	5.87	6.27	6.67	7.07	7.47	7.87	

10412
214
47.75 - Track
2.26
100.30 - 45
9.33
95.44 - 10' W. NW Cor. Kline

103.57
339
103.96 - 47'

103.96	103.96	103.96	103.96	103.96	103.96	103.96	103.96	103.96	103.96	103.96
102.5	101.00	100.20	99.60	100.20	100.20	100.45	100.20	99.20		
103.96	2.97	2.96	3.96	4.36	3.36	3.11	3.51	3.76	4.76	

103.96	103.96	103.96	103.96	103.96	103.96	103.96	103.96	103.96	103.96	103.96
98.80	99.80	100.85	99.65	99.40	98.40	98.00	99.00	99.25		
5.16	4.16	3.31	4.31	4.56	5.56	5.96	4.96	4.71		

103.96	103.96	103.96	103.96	103.96	103.96	103.96	103.96	103.96	103.96	103.96
98.80	98.60	97.60	97.20	98.20	98.45	98.05	97.50	96.50		
5.11	5.36	6.06	6.76	5.76	5.51	5.91	6.16	7.16		

103.96	103.96	103.96	103.96	103.96	103.96
96.40	97.40	97.65	97.25	97.00	96.00
7.56	6.56	6.31	6.71	6.96	7.96

Finish stakes 7/22/13

95.42					
47.0					
100.12	100.12	100.12	100.12		
96.00	95.00	96.00	97.00		
4.12	5.12	4.12	3.12		

100.57					
465					
105.22	105.22	105.22			
99.85	100.50	100.40			
5.37	4.72	4.82			

105.22	105.22	105.22			
95.55	96.80	96.40			
7.37	8.72	8.82			

Checks OK West 7/2/13

FAY STREET

WEST Ravina St. to Pearl St. EAST

PL	Curb	1/4	1/2	3/4	Curb	PL
615th N	86.25	86.00	85.85	86.50	86.40	87.00
570th N	87.75	87.50	87.19	87.84	87.74	88.24
520th N	89.42	89.17	88.87	89.52	89.42	90.00
500th N	90.09	89.84	89.54	90.19	90.09	90.68
450th N	91.75	91.50	91.22	91.87	91.77	92.36
400th N	93.41	93.16	92.90	93.55	93.45	94.04
350th N	95.08	94.83	94.58	95.23	95.13	95.72
300th N	96.75	96.50	96.26	96.91	96.81	97.40
250th N	98.41	98.16	97.94	98.59	98.49	99.09
200th N	100.08	99.83	99.62	100.27	100.17	100.77
150th N	101.74	101.49	101.30	101.95	101.85	102.45
100th N	103.41	103.16	102.98	103.63	103.53	104.13
50th N	105.08	104.83	104.67	105.31	105.22	105.81
N.L. Pearl	106.75	106.50	106.35	107.00	106.90	107.50

PEARL INTERSECTION.

N.L. Pearl	106.75	106.50	106.35	107.00	106.90	107.50	107.75
N Curb	106.50	106.50	106.53	107.18	107.08	107.50	107.50
N 1/4	106.35	105.75	106.69	107.34	107.24	106.75	107.95
1/2	107.00	106.00	106.85	107.50	107.40	107.00	108.00
3/4	106.90	106.25	107.01	107.66	107.56	107.25	107.90
5 Curb	107.50	107.50	107.18	107.82	107.72	108.50	108.50
S.L. Pearl	107.75	107.50	107.35	108.00	107.90	108.50	108.75

86.83 - Tie out N.E. 1/4 1/4 N.L. Rav. JUN 14 - 1913

11.35

91.50 - E

91.50	91.50	91.50	91.50	91.50	91.50	91.50	91.50	91.50	91.50	91.50	91.50	91.50	91.50	91.50	91.50	91.50	91.50
-------	-------	-------	-------	-------	-------	-------	-------	-------	-------	-------	-------	-------	-------	-------	-------	-------	-------

91.50	91.50	91.50	91.50	91.50	91.50	91.50	91.50	91.50	91.50	91.50	91.50	91.50	91.50	91.50	91.50	91.50	91.50
-------	-------	-------	-------	-------	-------	-------	-------	-------	-------	-------	-------	-------	-------	-------	-------	-------	-------

91.50	91.50	91.50	91.50	91.50	91.50	91.50	91.50	91.50	91.50	91.50	91.50	91.50	91.50	91.50	91.50	91.50	91.50
-------	-------	-------	-------	-------	-------	-------	-------	-------	-------	-------	-------	-------	-------	-------	-------	-------	-------

91.50	91.50	91.50	91.50	91.50	91.50	91.50	91.50	91.50	91.50	91.50	91.50	91.50	91.50	91.50	91.50	91.50	91.50
-------	-------	-------	-------	-------	-------	-------	-------	-------	-------	-------	-------	-------	-------	-------	-------	-------	-------

91.50	91.50	91.50	91.50	91.50	91.50	91.50	91.50	91.50	91.50	91.50	91.50	91.50	91.50	91.50	91.50	91.50	91.50
-------	-------	-------	-------	-------	-------	-------	-------	-------	-------	-------	-------	-------	-------	-------	-------	-------	-------

91.50	91.50	91.50	91.50	91.50	91.50	91.50	91.50	91.50	91.50	91.50	91.50	91.50	91.50	91.50	91.50	91.50	91.50
-------	-------	-------	-------	-------	-------	-------	-------	-------	-------	-------	-------	-------	-------	-------	-------	-------	-------

91.50	91.50	91.50	91.50	91.50	91.50	91.50	91.50	91.50	91.50	91.50	91.50	91.50	91.50	91.50	91.50	91.50	91.50
-------	-------	-------	-------	-------	-------	-------	-------	-------	-------	-------	-------	-------	-------	-------	-------	-------	-------

91.50	91.50	91.50	91.50	91.50	91.50	91.50	91.50	91.50	91.50	91.50	91.50	91.50	91.50	91.50	91.50	91.50	91.50
-------	-------	-------	-------	-------	-------	-------	-------	-------	-------	-------	-------	-------	-------	-------	-------	-------	-------

Checks OK. West 9/2/13.
Interest OK.

FAY STREET

WEST Pearl St to S.L. La Jolla Park. EAST

PL Curb 1/4 1/4 1/4 Curb PL

S.L. Pearl St	107.75	107.50	107.35	108.00	107.90	108.50	108.75
50'S.	109.69	109.44	109.29	109.94	109.84	110.44	110.69
100'S.	111.63	111.38	111.23	111.88	111.78	112.38	112.63
150'S.	113.57	113.32	113.17	113.81	113.71	114.32	114.57
200'S.	115.50	115.25	115.10	115.75	115.65	116.25	116.50
250'S.	117.44	117.19	117.04	117.69	117.59	118.19	118.44
300'S.	119.38	119.13	118.98	119.63	119.53	120.13	120.38
350'S.	121.32	121.07	120.92	121.57	121.47	122.07	122.32
S.L. La Jolla Park	123.25	123.00	122.85	123.50	123.40	124.00	124.25

10756 - 1st H.W. to E.N.C. or fay's part. July 16 - 1913

West
Everts
Moore

118.92	118.92	118.92	118.92	118.92	118.92	118.92	118.92	118.92	118.92	118.92	118.92	118.92	118.92	118.92	118.92	118.92
119.72	119.72	119.72	119.72	119.72	119.72	119.72	119.72	119.72	119.72	119.72	119.72	119.72	119.72	119.72	119.72	119.72
120.52	120.52	120.52	120.52	120.52	120.52	120.52	120.52	120.52	120.52	120.52	120.52	120.52	120.52	120.52	120.52	120.52

120.97 120.97 120.97 120.97 120.97 120.97 120.97 120.97 120.97 120.97 120.97 120.97 120.97 120.97 120.97 120.97 120.97

120.99	120.99	120.99	120.99	120.99	120.99	120.99	120.99
121.17	121.17	121.17	121.17	121.17	121.17	121.17	121.17
121.35	121.35	121.35	121.35	121.35	121.35	121.35	121.35
121.53	121.53	121.53	121.53	121.53	121.53	121.53	121.53
121.71	121.71	121.71	121.71	121.71	121.71	121.71	121.71

Cont'd Page 33

Property Grades, 8/16/13.

119.55	119.55	119.55	119.55	119.55	119.55	119.55	119.55	119.55	119.55	119.55	119.55	119.55	119.55	119.55	119.55	119.55
119.75	119.75	119.75	119.75	119.75	119.75	119.75	119.75	119.75	119.75	119.75	119.75	119.75	119.75	119.75	119.75	119.75
119.95	119.95	119.95	119.95	119.95	119.95	119.95	119.95	119.95	119.95	119.95	119.95	119.95	119.95	119.95	119.95	119.95

101.58 - 10 Tie in

120.14	120.14	120.14	120.14	120.14	120.14	120.14	120.14	120.14	120.14	120.14	120.14	120.14	120.14	120.14	120.14	120.14
120.32	120.32	120.32	120.32	120.32	120.32	120.32	120.32	120.32	120.32	120.32	120.32	120.32	120.32	120.32	120.32	120.32
120.50	120.50	120.50	120.50	120.50	120.50	120.50	120.50	120.50	120.50	120.50	120.50	120.50	120.50	120.50	120.50	120.50

120.14	120.14	120.14	120.14	120.14	120.14	120.14	120.14	120.14	120.14	120.14	120.14	120.14	120.14	120.14	120.14	120.14
117.19	117.19	117.19	117.19	117.19	117.19	117.19	117.19	117.19	117.19	117.19	117.19	117.19	117.19	117.19	117.19	117.19
2.15	2.15	2.15	2.15	2.15	2.15	2.15	2.15	2.15	2.15	2.15	2.15	2.15	2.15	2.15	2.15	2.15

128.47 - 4.47 127.25 127.10 TP
 128.47 H.S.
 4.47 127.25 127.10 TP
 128.56

107.55
130.7
120.65 - H.S.
119
121.16 TP
121.77 - H.S.

125.97	125.97	125.97	125.97	125.97	125.97	125.97	125.97	125.97	125.97	125.97	125.97	125.97	125.97	125.97	125.97	125.97
123.56	123.56	123.56	123.56	123.56	123.56	123.56	123.56	123.56	123.56	123.56	123.56	123.56	123.56	123.56	123.56	123.56
6.72	6.72	6.72	6.72	6.72	6.72	6.72	6.72	6.72	6.72	6.72	6.72	6.72	6.72	6.72	6.72	6.72

on W 1/4 1st 200' of Pearl - 3 low balance below.
 " E 200' with 100' x 2 1/2' low balance below. W 1/2 P. 20.
 " E 1/4 with 200' x 1/2' low balance below. 100' x 1/2' low balance below.
 further not regular. All other regular in hand with.

125.97
123.56
6.72

NEWTON

AVE

50.0 60 50.0

170

170

10' walks
10' quarters

ALLEY 20

20

28TH

170

170

40.5

40.5



BOSTON 20

80 AVE

39.0

39.0

170

170

ALLEY 50

20

ST.

170

170

27.5

60

27.5

MAIN

ST.

West

East

S.L. Newton	50.25	50.00	49.60	50.00	49.60	50.00	50.25
25	49.46	49.21	48.81	49.21	48.81	49.51	49.46
50	48.67	48.42	48.02	48.42	48.02	48.42	48.67
75	47.88	47.63	47.23	47.63	47.23	47.63	47.88
100	47.08	46.83	46.43	46.83	46.43	46.83	47.08
125	46.29	46.04	45.64	46.04	45.64	46.04	46.29
150	45.50	45.25	44.85	45.25	44.85	45.25	45.50
175	44.71	44.46	44.06	44.46	44.06	44.46	44.71
200	43.92	43.67	43.27	43.67	43.27	43.67	43.92
225	43.13	42.88	42.48	42.88	42.48	42.88	43.13
250	42.33	42.08	41.68	42.08	41.68	42.08	42.33
275	41.54	41.29	40.89	41.29	40.89	41.29	41.54
300 = NL BOSTON	40.75	40.50	40.10	40.50	40.10	40.50	40.75

51.00	51.00	51.00	51.00	51.00	51.00	51.00	51.00
50.25	50.00	49.60	50.00	49.60	50.00	50.00	50.25
49.46	49.21	48.81	49.21	48.81	49.51	49.46	
48.67	48.42	48.02	48.42	48.02	48.42	48.67	
47.88	47.63	47.23	47.63	47.23	47.63	47.88	
47.08	46.83	46.43	46.83	46.43	46.83	47.08	
46.29	46.04	45.64	46.04	45.64	46.04	46.29	
45.50	45.25	44.85	45.25	44.85	45.25	45.50	
44.71	44.46	44.06	44.46	44.06	44.46	44.71	
43.92	43.67	43.27	43.67	43.27	43.67	43.92	
43.13	42.88	42.48	42.88	42.48	42.88	43.13	
42.33	42.08	41.68	42.08	41.68	42.08	42.33	
41.54	41.29	40.89	41.29	40.89	41.29	41.54	
40.75	40.50	40.10	40.50	40.10	40.50	40.75	

NEW GRADES AS ORDERED BY W.M.R.

TO FIT WALK.

S.L. NEWTON	50.25	50.00	49.60	50.00	49.60	50.00	50.25
50	48.81	48.59	48.19	48.59	48.19	48.59	48.81
100	47.42	47.17	46.77	47.17	46.77	47.17	47.42
150	46.00	45.75	45.35	45.75	45.35	45.75	46.00
200	44.25	44.00	43.60	44.00	43.60	44.00	44.25
250	42.50	42.25	41.85	42.25	41.85	42.25	42.50
300 = NL BOSTON	40.75	40.50	40.10	40.50	40.10	40.50	40.75

NL BOSTON	40.75	40.50	40.10	40.50	40.10	40.50	40.75
N curb 1/4	40.50	40.50	39.84	40.24	39.84	40.50	40.50
N 1/4	39.90	39.14	39.59	39.99	39.59	39.14	39.90
Center	39.75	38.75	39.35	39.75	39.35	38.75	39.75
5/4	38.98	38.38	39.11	39.51	39.11	38.38	38.98
S curb	38.00	38.00	38.86	39.26	38.86	38.00	38.00
SL BOSTON	39.25	39.00	38.60	39.00	38.60	39.00	39.25

40.75	40.50	40.10	40.50	40.10	40.50	40.10	40.50	40.75
39.90	39.14	39.59	39.99	39.59	39.14	39.90	39.90	
39.75	38.75	39.35	39.75	39.35	38.75	39.75		
38.98	38.38	39.11	39.51	39.11	38.38	38.98		
38.00	38.00	38.86	39.26	38.86	38.00	38.00		
39.25	39.00	38.60	39.00	38.60	39.00	39.25		

Labelled 1-12-14

28th ST.

West

East

5L BOSTON	39.25	39.00	38.60	39.00	38.60	39.00	39.25
25	38.29	38.04	37.64	38.04	37.64	38.04	38.29
50	37.33	37.08	36.68	37.08	36.68	37.08	37.33
75	36.37	36.13	35.73	36.13	35.73	36.13	36.37
100	35.42	35.17	34.77	35.17	34.77	35.17	35.42
125	34.46	34.21	33.81	34.21	33.81	34.21	34.46
150	33.50	33.25	32.85	33.25	32.85	33.25	33.50
175	32.54	32.29	31.89	32.29	31.89	32.29	32.54
200	31.58	31.33	30.93	31.33	30.93	31.33	31.58
225	30.63	30.38	29.98	30.38	29.98	30.38	30.63
250	29.67	29.42	29.02	29.42	29.02	29.42	29.67
275	28.71	28.46	28.06	28.46	28.06	28.46	28.71
300 = H.L MAIN	27.75	27.50	27.10	27.50	27.10	27.50	27.75

40.48 B.M. N.W. cor Boston Square in pole - 46

40.48 B.M.	42.00	42.00	42.00	42.00	42.00	42.00	42.00
1.52	1.6	3.3	5.7	4.5	2.9	6.0	
42.00	40.4	38.7	39.3	37.3	35.4	36.0	
9.5	9.2	9.2	22.3	27.2	35.4	36.0	
34.48 T.P.	31.2	38.3	31.9	29	7.4	6.6	
3.22		7.5					
35.27	35.27	33.5	35.27	35.27	35.27	35.3	35.3
1.4	3.5	3.8	3.5	3.8	6.3	3.7	2.9
34.4	31.8	23.0	31.8	31.8	29.4	28.0	27.9
23	23	23.0	31.8	31.8	29.4	27.7	27.7
20.8	21.7		31.8	31.8	29.4	27.7	27.7
647	9-24	-13	7.1	7.7			

8M 40.48	54 Boston	36.48	35.12	34.50	33.50	31.53	31.33	29.67	29.25
41.22	41.8	41.8	41.8	41.8	41.8	41.8	41.8	41.8	41.8

40.48	39.00	35.17	31.33	27.50	Checked	1-12-14
41.1	4.10	5.93	9.77	5.23		
41.4						
30.00						
32.3						
32.73						

29th St.

47

NEWTON

AVE

53.0

60

53.0

140

140

10' WALKS
10' Quarters

ALLEY

20

29TH

20

140

140

46.5

46.5

BOSTON

80

AVE

45.5

45.5

140

140

ALLEY

20

ST

20

140

140

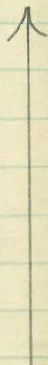
39.0

60

39.0

MAIN

ST.



	West			East			
S.L. NEWTON	53.25	53.00	52.60	53.00	52.60	53.00	53.25
25	52.71	52.46	52.06	52.46	52.06	52.46	52.71
50	52.17	51.92	51.52	51.92	51.52	51.92	52.17
75	51.63	51.38	50.98	51.38	50.98	51.38	51.63
100	51.08	50.83	50.43	50.83	50.43	50.83	51.08
125	50.54	50.29	49.89	50.29	49.89	50.29	50.54
150	50.00	49.75	49.35	49.75	49.35	49.75	50.00
175	49.46	49.21	48.81	49.21	48.81	49.21	49.46
200	48.92	48.67	48.27	48.67	48.27	48.67	48.92
225	48.38	48.13	47.73	48.13	47.73	48.13	48.38
250	47.83	47.58	47.18	47.58	47.18	47.58	47.83
275	47.29	47.04	46.64	47.04	46.64	47.04	47.29
300 = N.L. BOSTON	46.75	46.50	46.10	46.50	46.10	46.50	46.75
N.L. BOSTON	46.75	46.50	46.10	46.50	46.10	46.50	46.75
N. Curb	46.50	46.50	46.93	46.33	46.93	46.50	46.50
N 1/4	45.90	45.75	45.76	46.16	45.76	45.75	45.90
Center	46.00	45.00	45.60	46.00	45.60	45.00	46.00
S 1/4	45.35	44.75	45.44	45.84	45.44	44.75	45.35
S Curb	44.50	44.50	45.27	45.67	45.27	44.50	44.50
S.L. BOSTON	45.75	45.50	45.10	45.50	45.10	45.50	45.75

51.71	47.83	48.92	50.00	51.08	52.17	53.25
46.75	3.88	2.79	1.71	0.63	3.46	2.38
4.16	3.38	2.19	1.11	0.33	3.36	2.38
+0.8	+0.5	+0.6	+0.6	+0.3	+0.1	+0.0
4.96	3.88	2.79	1.71	0.63	3.46	2.38
3.96	3.08	2.19	0.81	0.0	2.96	2.38
4.0	+0.8	+0.6	+0.9	+0.3	+0.5	0.0

16.47 - 8N. Spk 1/2 SE 29 - Boston
 51.22 - 48.
 set French Stakes - PL + Curb - Newton to Merr
 11/13/14 - Curb - Hatch

56.72	56.22	56.22	56.22	56.22	56.22	56.22	56.22	56.22	56.22	56.22	56.22
43.35	53.00	53.00	53.35	52.17	51.92	51.08	50.83	50.00	49.75	48.92	48.67
3.97	3.22	3.22	2.77	4.05	4.30	5.17	5.37	6.22	6.47	7.30	7.54

56.22	56.22	56.22	56.22	56.22
41.83	47.58	46.75	46.50	4.75
5.37	8.27	7.47	7.72	46.47 - 8N. Spk 1/2 SE 29 - Boston

46.47 48.67 48.27 50.83 50.43
 52.47 3.80 1.64
 Check 1-12-14

29th St

West

East

S.L. Boston	45.75	45.50	45.10	45.50	45.10	45.50	45.75
25	45.21	44.96	44.56	44.96	44.56	44.96	45.21
50	44.67	44.42	44.02	44.42	44.02	44.42	44.67
75	44.13	43.88	43.48	43.88	43.48	43.88	44.13
100	43.58	43.33	42.93	43.33	42.93	43.33	43.58
125	43.04	42.79	42.39	42.79	42.39	42.79	43.04
150	42.50	42.25	41.85	42.25	41.85	42.25	42.50
175	41.96	41.71	41.31	41.71	41.31	41.71	41.96
200	41.42	41.17	40.77	41.17	40.77	41.17	41.42
225	40.88	40.63	40.23	40.63	40.23	40.63	40.88
250	40.33	40.08	39.68	40.08	39.68	40.08	40.33
275	39.79	39.54	39.14	39.54	39.14	39.54	39.79
300 = N.L. MAIN	39.25	39.00	38.60	39.00	38.60	39.00	39.25

46.47 B.M. N.E. cor. 29th + Boston R.R. Appl. in pole.

49

574							
51.71	H.E.	44.67	43.58	42.50	41.42	40.33	39.25
46.75		7.04	8.13	9.21	10.29	11.38	12.46
5.96		6.24	7.63	8.61	9.79	10.78	12.36
5.46		+0.8	+0.5	+0.6	+0.5	+0.6	+0.1
5.08		7.04	8.13	9.21	10.29	11.38	
5.96		6.44	7.53	8.61	10.09	11.18	
5.56		+0.6	+0.6	+0.6	+0.2	+0.2	
10.4		0.0					

44.47 - 2nd Pole SE 29th Boston.
1.45
47.92 = 11.5

3rd Perich's Station, both Cor. W. 29th.
11.13 West - Evans - Fletcher.

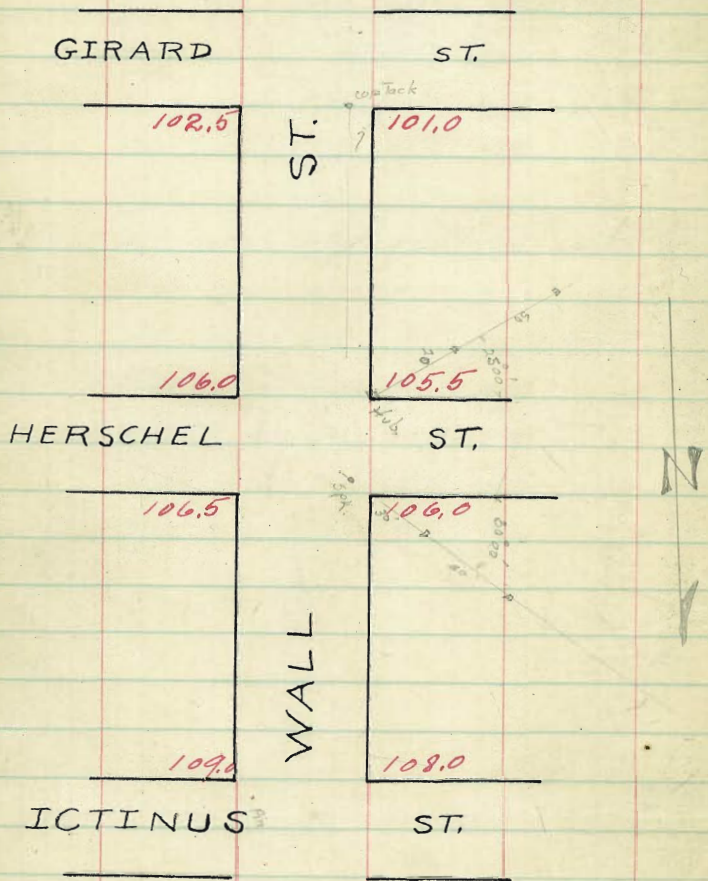
47.92	47.92	47.92	47.92	47.92	47.92	47.92	47.92	47.92	47.92	47.92	47.92
45.75	45.50	45.10	44.92	44.58	44.33	44.25	44.25	44.42	44.17	43.83	43.58
2.17	2.27	2.35	2.50	2.74	2.98	3.22	3.46	3.70	3.94	4.18	4.42

47.92 47.92 Rotted to check
47.25 47.25
8.67 8.72 H.

41.47 41.33 41.17 39.25
1.46 4.10 6.56 8.73
41.73

check 1-12-14

WALL ST.



NORTH LINE of Girard St

E.

W

N.L.	102.75	102.5	101.90	101.75	100.97	101.0	101.25
25	103.04	102.79	102.19	102.08	101.32	101.38	101.63
50	103.33	103.08	102.48	102.42	101.68	101.75	102.0
75	103.62	103.37	102.77	102.75	102.03	102.12	102.37
100	103.92	103.67	103.07	103.08	102.38	102.50	102.75
125	104.21	103.96	103.36	103.42	102.74	102.88	103.13
150	104.50	104.25	103.65	103.75	103.09	103.25	103.50
175	104.79	104.54	103.94	104.08	103.45	103.62	103.87
200	105.08	104.83	104.23	104.42	103.80	104.00	104.25
225	105.37	105.12	104.52	104.75	104.16	104.38	104.63
250	105.67	105.42	104.82	104.78	104.51	104.75	105.00
275	105.96	105.71	105.11	105.42	104.86	105.12	105.37
300 - street 106.25	106.0	105.40	105.75	105.22	105.5	105.75	

SOUTH LINE of HOESCHMID ST.

9126 1071 Brass Plug Prospect - Jenner

10.529	10175	10242	10303	10375	10442	10505	10570	10626	10685
10.529	2101	343	297	280	522	527	527	43	
112.05	10190	10218	10307	10365	10423	10482	10542	10602	
112.05	895	897	897	897	897	897	897	897	
113.10	10097	10168	10238	10309	10380	10451	10522	10593	
113.10	287	217	727	694	625	554	483		

Cut stakes 7/24/13 Hatch

110.56 10.56 10.56 10.56 10.56 10.56 10.56 10.56 10.56 10.56

2 2 2 2 2 2 2 2 2 2

2.75 2.00 3.92 3.50 5.03 5.00 6.25 6.25 7.50 7.50

2.01 2.76 6.64 7.06 5.48 5.86 4.31 4.31 5.91 5.91

2.06 2.71 6.89 7.31 5.73 5.91 4.56 4.56 5.71 5.71

10.56 10.56 10.56 10.56 10.56 10.56 10.56 10.56 10.56 10.56

4.70 4.48 3.03 3.02 4.23 4.51 5.00 5.00 5.16 5.16

2.66 2.78 7.49 7.97 5.33 6.20 5.16 5.16 5.16 5.16

10.56 10.56 10.56 10.56 10.56 10.56 10.56 10.56 10.56 10.56

1.75 2.43 3.08 3.75 4.42 4.73 5.75 5.75 4.81 4.81

2.97 2.43 2.39 3.45 3.00 4.32 4.32 4.32 4.32 4.32

7.59 2.08 2.13 6.91 6.6 5.24 5.24 5.24 5.24

10.56 10.56 10.56 10.56 10.56 10.56 10.56 10.56 10.56 10.56

1.20 2.33 2.75 2.50 4.35 5.67 5.75 5.75 4.81 4.81

4.31 7.23 7.81 4.06 6.81 4.89 4.89 4.89 5.14 5.14

7.33 7.48 3.06 0.01 6.56 5.14 5.14 5.14 5.06 5.06

51

7/13 checked O.K.
 Smith
 Shaw
 Kerr

10.56
5.25
5.31

East

West

South Line of Herschel St

S. Line 106.75 106.0 105.70 105.75 105.70 105.5 105.75

Car 8 106.00 106.00 105.79 105.84 105.81 105.5 105.50
105.00 104.15

S/W 105.70 105.12 105.69 105.92 105.89 104.62 105.22

Center 106.25 105.25 105.65 106.00 105.77 104.75 105.75

N. 105.90 105.87 105.73 106.08 105.55 104.82 106.40

N. Car 8 106.50 105.50 106.50 105.91 106.16 105.63 106.0 106.0
105.50 105.0

N. Line 106.75 106.5 105.9 106.25 105.7 106.0 106.25

N. Line of Herschel St.

East

West

North line of HERSCHEL ST.

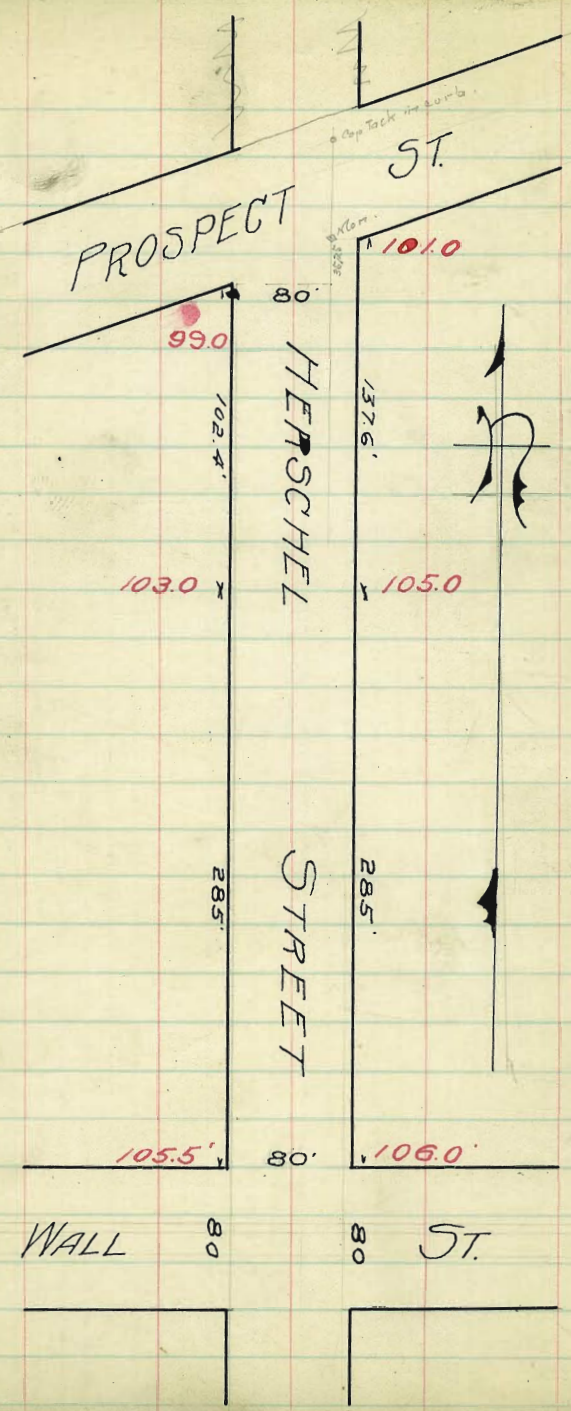
N. line	106.75	106.5	105.9	106.25	105.72	106.0	106.25
25	106.96	106.71	106.11	106.44	105.90	106.17	106.42
50	107.17	106.92	106.32	106.62	106.08	106.33	106.58
75	107.37	107.12	106.52	106.81	106.25	106.50	106.75
100	107.58	107.33	106.73	107.00	106.43	106.67	106.92
125	107.79	107.54	106.94	107.19	106.61	106.83	107.08
150	108.00	107.75	107.15	107.38	106.78	107.00	107.25
175	108.21	107.96	107.36	107.56	106.96	107.17	107.42
200	108.42	108.17	107.57	107.75	107.14	107.33	107.58
225	108.62	108.37	107.77	107.94	107.32	107.50	107.75
250	108.83	108.58	107.98	108.12	107.50	107.67	107.92
275	109.04	108.79	108.19	108.31	107.67	107.83	108.08
300 - Stone	109.25	109.0	108.40	108.50	107.85	108.0	108.25

S. LINE of IXTIUS ST.

1050 628 675 675 717 658 707 692 80 725 822 758 873 772
 456 506 414 473 373 437 331 406 257 378 275 319
 516 612 470 563 460 517 431 506 387 457 334 415
 117.87 8.6 124.06 -0.9 -0.8 7.3 -10 -10 -10 -0.84 -2.36 -0.66

cut stakes 3/24/13 Hatch
 925 825
 206 306
 290 360
 09 -0.84
 10.650 curb stakes
 677 106.5 106.0 106.92 106.23 107.23 106.67 107.75 107.97 108.17 107.30
 117.77 106.5 106.0 106.92 106.23 107.23 106.67 107.75 107.97 108.17 107.30
 108.58 107.57 109.0 115.0 curb - Prof. 3/24
 742 310 277 377
 1155 325 625 572 W 622 662 608 672 70 643 715 723 673 707 770 714
 1175 686 550 408 543 510 567 502 475 532 460 437 497 412 400 461
 792 812 750 740 850 785 all stakes 3/24/13
 377 363 425 335 390
 10200 10.56 10.56 10.56 10.56 10.56 10.56 10.56 10.56 10.56 10.56 10.56
 2.56 4.31 3.39 3.64 2.56 2.98 1.73 2.31
 110.56 4.56 3.64 3.39 2.31 3.23 1.73 2.56
 10.56 10.56 10.56 10.56 10.56 10.56 10.56 10.56
 573 622 643 715 714 719 715
 4.34 4.24 4.13 3.41 3.42 2.58 2.71
 10.56 10.56 10.56 10.56 10.56 10.56 10.56
 625 602 700 738 772 2.12 3.50
 4.31 3.94 3.56 3.18 2.87 2.44 2.04
 10.56 10.56 10.56 10.56 10.56 10.56 10.56
 590 608 673 678 2.57 7.50 8.40
 4.66 4.43 3.83 3.78 2.99 3.04 2.16
 10.56 10.56 10.56 10.56 10.56 10.56 10.56
 675 658 2.58 7.23 2.22 7.92 9.24
 3.81 3.98 2.98 3.31 2.74 2.64 1.31
 4.06 4.20 3.23 3.56 2.39 2.29 1.56

checked O.K.
 11/13
 Dwyer,
 Shaw,
 Kerr.



GRADES ON HERSCHEL
Wall to Prospect

105.51	5.81	110.64	5.52	5.81	5.74	4.53	4.72	4.0	5.05	2.52	6.87	5.21	7.08	5.54	4.90	6.92	6.17	5.0
106.44	7.89	2.66	0.54	0.3	0.34	0.26	0.01	0.0	0.01	0.1	0.1	0.16	0.0	0.0	0.0	0.0	0.0	0.0

55

South 1
00

North

N. Line of Wall

	105.75	105.5	105.12	105.75	105.4	106.0	106.25
+25	105.54	105.29	104.94	105.60	105.31	105.91	106.16
+50	105.32	105.07	104.77	105.44	105.22	105.82	106.07
+75	105.10	104.85	104.59	105.29	105.14	105.74	105.99
1	104.88	104.63	104.41	105.13	105.05	105.65	105.90
25	104.66	104.41	104.23	104.98	104.86	105.56	105.81
+50	104.44	104.19	104.06	104.83	104.89	105.47	105.72
+75	104.22	103.97	103.88	104.67	104.78	105.38	105.63
2	104.00	103.75	103.70	104.52	104.70	105.30	105.55
+25	103.78	103.53	103.52	104.37	104.61	105.21	105.46
+50	103.56	103.31	103.35	104.21	104.52	105.12	105.37
+75	103.34	103.09	103.17	104.06	104.44	105.04	105.29
+85	103.25	103.00	103.1	104.0	104.40	105.00	105.25
BREAK							
3	102.65	102.4	102.54	103.38	103.96	104.56	104.81
+25	101.65	101.4	101.66	102.51	103.21	103.81	104.06
+50	100.65	100.4	100.67	101.64	102.47	103.07	103.32
+75	99.65	99.4	99.73	100.77	101.72	102.32	102.57
+88	99.25	99.0	99.35	100.47	101.42	102.02	102.27

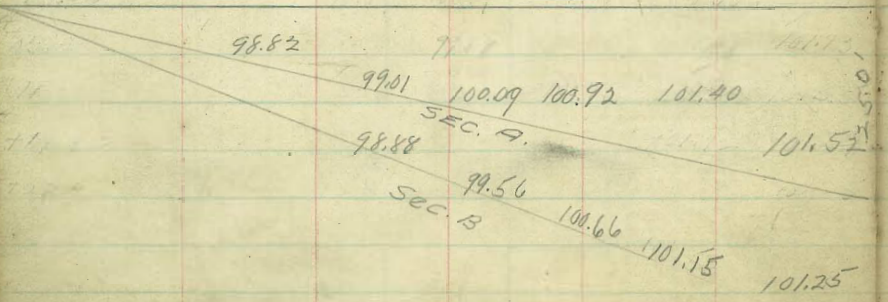
Cut stakes 1/24/13

105.55	106.0	106.75	107.50	108.25	109.00	109.75	110.50	111.25	112.00	112.75	113.50	114.25	115.00	115.75	116.50	117.25	118.00	118.75	119.50
3.72	3.84	3.96	4.08	4.20	4.32	4.44	4.56	4.68	4.80	4.92	5.04	5.16	5.28	5.40	5.52	5.64	5.76	5.88	6.00

curb - Proj. Cr. 3/11/13

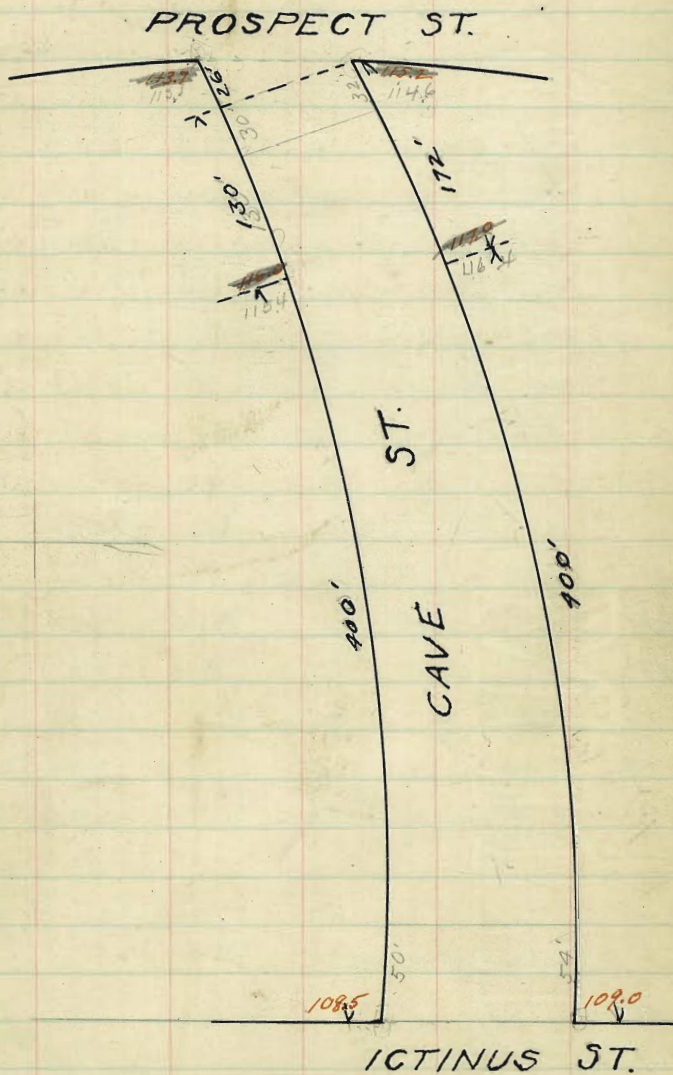
108.00	109.08	109.08	109.08	109.08	109.08	109.08	109.08	109.08	109.08	109.08	109.08	109.08	109.08	109.08	109.08	109.08	109.08	109.08	109.08
1.08	3.53	3.01	4.20	3.61	4.00	3.37	3.25	4.21	3.87	4.51	4.04	4.52	4.27	4.43	4.21	4.04	4.21	4.52	4.52

4/24/13 for check see opp page



4/23/13 Check D. H. Shanahan

4+23



CAVE ST. 16 WALKS
PROSPECT TO ICTINUS.

	N	N. CURB	N $\frac{1}{4}$	E	S $\frac{1}{4}$	S. CURB	S
556' E	113.95	113.70	113.68	114.45	114.60	115.20	115.45
W.L. PROSPECT							
530'	114.33	114.01	113.91	114.28	114.49	115.14	115.45
500'	114.77	114.47	114.34	114.68	114.87	115.47	115.72
450'	115.51	115.24	115.06	115.51	115.02	116.07	116.32
400'	116.25	116.00	115.77	116.34	116.17	116.67	116.92
brk.							
350'	115.81	115.06	114.81	115.40	115.22	116.58	116.83
300'	114.38	114.13	113.85	114.45	114.28	115.50	115.75
250'	113.44	113.19	112.89	113.50	113.33	114.41	114.66
200'	112.50	112.25	111.94	112.55	112.38	113.33	113.58
150'	111.56	111.31	110.98	111.60	111.44	112.25	112.50
100'	110.63	110.38	110.02	110.65	110.49	111.17	111.42
50' E	109.69	109.44	109.06	109.70	109.55	110.08	110.33
EL. ICTINUS	108.75	108.50	108.10	108.75	108.60	109.00	109.25

572' E

572' E

540' E

486'

432'

376'

324'

270'

216'

162'

108'

54'

EL. ICTINUS

16.10 = 5.11 Ex Fl. S. cor. hd. dpx. w. side braced pole.

57

50' on N.L. - 54' on S.L.

113' N. Curb Prospect & Cave.

123.30 (4)

123.30	123.30	123.30	123.30	123.30	123.30	123.30	123.30	123.30	123.30
8.3	7.3	7.65	6.70	5.40	4.70	4.10	3.50	2.80	2.20
115.00	116.50	116.65	116.80	117.90	117.80	118.14	117.9	117.50	117.10
115.82	115.72	115.32	114.77	115.51	115.32	116.72	116.23	115.31	114.53
F.45	C.23	C.23	C.1.83	C.2.31	C.1.08	C.1.22	C.1.64	C.2.19	C.2.7

123.30	123.30	123.30	123.30	123.30	123.30	118.6	118.60	118.6	118.60
117.4	117.4	117.4	117.4	117.4	117.4	118.6	118.60	118.6	118.60
C.74	F.20	C.1.02	F.23	C.2.27	118.60	118.60	C.0.90	C.0.90	F.80

118.6	118.6	118.6	118.6	118.6	118.6	118.6	118.6
8.91	7.60	4.68	7.67	8.40	8.70	7.1	
116.7	116.7	116.7	116.7	116.7	116.7	116.7	116.7
F.80	F.117	C.1.11	C.1.24	F.13	C.10	C.11	

108.75	108.75	108.75	108.75	108.75	108.75	108.75	108.75
9.43	11.25	11.25	11.25	11.25	11.25	11.25	11.25
116.13	116.13	116.13	116.13	116.13	116.13	116.13	116.13
10.00	10.33	10.65	11.00	11.33	11.65	12.00	12.33
116.10	116.10	116.10	116.10	116.10	116.10	116.10	116.10
10.4	5.72	6.60	5.6	7.2	8.69		

126.51	126.51	126.51	126.51	126.51	126.51	126.51	126.51
12.00	12.00	12.00	12.00	12.00	12.00	12.00	12.00
114.18	114.18	114.18	114.18	114.18	114.18	114.18	114.18
0.10	0.10	0.10	0.10	0.10	0.10	0.10	0.10

114.18 TP. keeled rock.
114.18
109.80 = TP. keeled rock. El. Ictinus.

N	156	157	1615	164	165	169	172
556E	113.35	113.10	113.08	113.85	114.00	114.60	114.85
530'	113.75	113.58	113.33	114.00	114.09	114.65	114.85
500'	114.19	113.96	113.76	114.40	114.45	114.92	115.17
450'	114.92	114.67	114.44	115.05	115.02	115.49	115.74
400'	115.65	115.30	115.12	115.70	115.59	116.05	116.31
350'	114.77	114.52	114.55	115.26	115.21	116.00	116.25
300'	113.91	113.66	113.66	114.33	114.24	115.00	115.25
250'	113.05	112.80	112.76	113.40	113.27	114.00	114.25
200'	112.19	111.94	111.86	112.47	112.38	113.00	113.25
150'	111.33	111.08	110.96	111.54	111.33	112.00	112.25
100'	110.47	110.22	110.05	110.61	110.36	111.00	111.25
50'	109.61	109.36	109.14	109.68	109.38	110.00	110.25
EL Ict	108.75	108.50	108.22	108.75	108.40	109.00	109.25

Checks OK. What
 Evans
 Devins

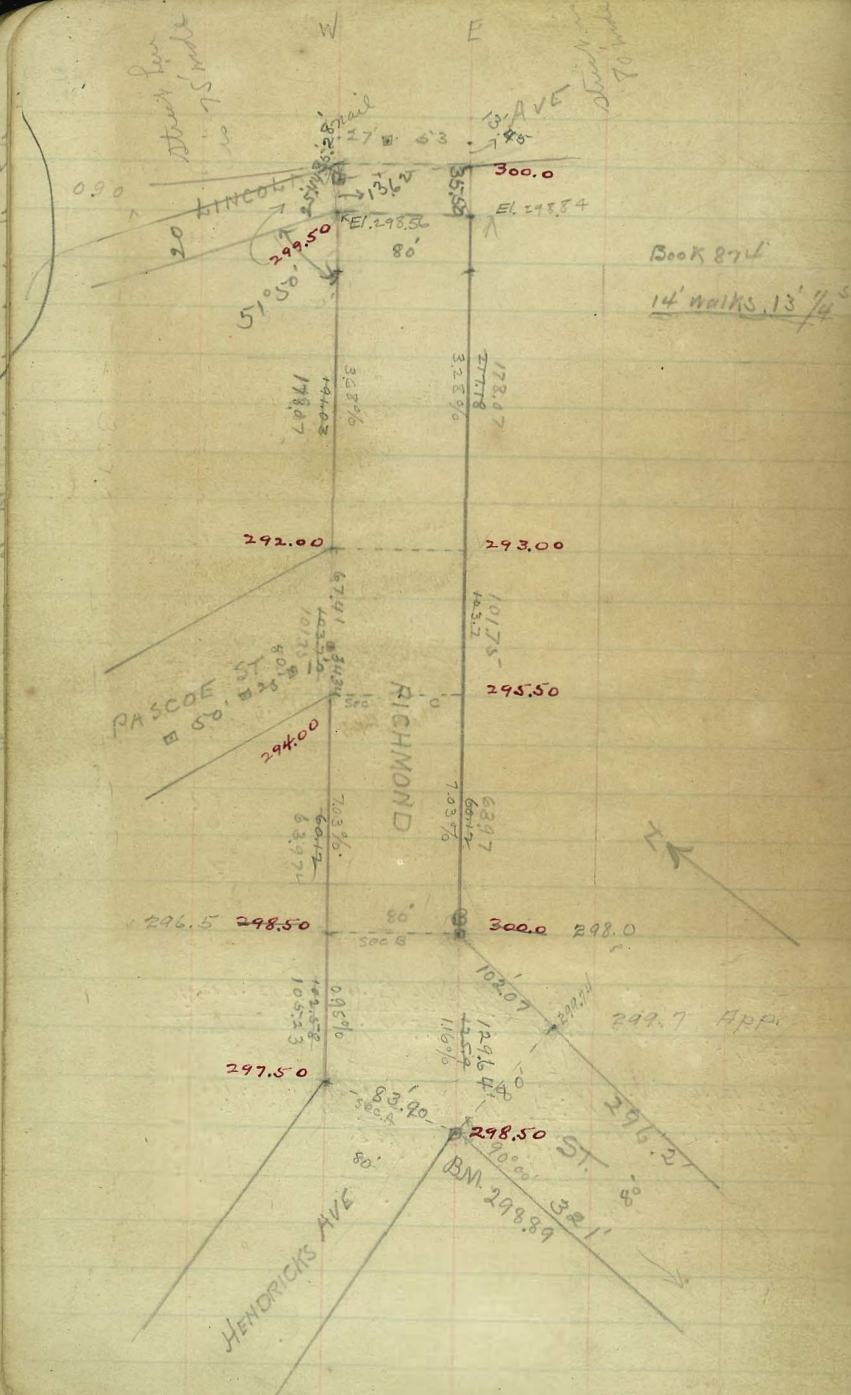
361

67110005

330
333

58

43	114	11605	1050
572'E	12137	12137	12137
570'E	12137	12137	12137
540'E	12137	12137	12137
486'E	12137	12137	12137
432'E	12137	12137	12137
378'E	12137	12137	12137
324'	12137	12137	12137
270'	12137	12137	12137
216	12137	12137	12137
162'	12137	12137	12137
108'	12137	12137	12137
54'	12137	12137	12137
EL Ictinus	12137	12137	12137



67.0
19.9
47.51

35.35
13.62
48.97
178.07
227.04
67.41
294.45

0.823
98.31
203.54

40°48'
53.68

RICHMOND ST

	W	curb	1/4	1/2	3/4	curb	E	W. line	E. line
NE. end Hendrix Sec. A	297.75	297.50	297.35	298.00	297.90	298.60	298.75	+0.7	00
00 W, 23.32 on E	297.75	297.50	297.43	298.13	298.10	297.74	297.50	+0.7	+1.2
21.05									
20.48 on W	297.55	297.5						+0.3	00
92.10									
40.96	297.35	297.1						-0.1	-0.7
63.15									
61.44	297.15	296.9						-0.1	-1.0
64.20									
81.97	296.95	296.7						-1.0	00
105.43									
142.58 = sec B	296.75	296.5	298.48	299.75	299.40	298.0	298.25	-1.3	-1.9
25' N. of sec B	295.75	295.53	NB			297.03	297.88	+0.1	-0.5
63.97									
61.77 = sec C	294.25	294.00	293.98	294.75	294.90	295.50	295.75	+1.4	+1.1
Sec C = St. Pascoe	294.25	294.00	293.98	294.75	294.90	295.50	295.75	+1.4	+1.1
S. curb	294.00	294.00	293.61	294.36	294.47	295.07	295.32	-1.9	+0.3
5/16	293.40	292.50	293.27	294.00	294.06	294.66	294.91	-6.7	-1.5
Center	293.00	292.00	292.92	293.63	293.65	294.25	294.50	-11.7	-3.6
N 1/4	292.10	291.50	292.58	293.26	293.24	293.84	294.4	-16.7	-6.4
N 1/4 + 6	291.71	291.32	292.45	293.13	293.10	293.70	293.95	-20.7	-8.6
N curb	291.00	291.00	292.22	292.89	292.83	293.43	293.68	-19.9	-10.5
N.L. Pascoe	292.25	292.00	291.85	292.50	292.40	293.00	293.25	-15.0	-16.7

297.16 BAA SW. Unit. + Richmond.

W. line	E. line				
303.60	H.I.	298.75	297.75	2.48	
4.71	J.P.	2.48	3.48	3.78	60
298.89	J.P.	2.38	2.78	-1.3	
2.34	H.I.	40.1	+0.7		
301.23	H.I.	291.25	300.0	300.25	298.49
296.99		1.23	1.00	2.74	
4.24		7.44	1.83	3.1	3.34
4.24		6.9	-0.6	-2.1	-0.6
2.0		+0.1			
2.88					
298.35		about 14' east of point B.			
295.75	0.97 H.I.	6.05			
5.48	199.34 H.I.	293.10 H.I.			
4.18	12.29 J.P.	12.58			
4.10	287.05 J.P.	13.6			
	1.86 H.I.	280.55 J.P.			
	288.41 H.I.	0.72			
	293.40	281.27 H.I.			
	5.3	292.35			
		17.0			

298.35	300	285.4	285.9	295.50	285.75	285.8	286.02	286.2	286.5
2.57	0.6	2.66	2.82	5.36	5.1	2.38	3.77	2.7	5.2
300.82	-1.8	-1.6		4.06	4.10	-7.1			
	2.2	2.225							
	8.6	8.61							
297.35	200.25	297.75	298.50	298.75	296.74	296.99	298		
2.86	0.96		2.71	2.86	4.47	4.82			
307.21									
295.44	295.48	295.50	295.15	294.1	294.25	295	292.25		
2.97	2.72	5.15	5.16	7.01	6.96	9.21	296		
297.85	297.74	297.92	298.22	298.12	295.25	297.25			
4.60	2.97	2.95	4.03	3.83	4.10				
308.92									
	296.65	295.75							
	6.50	7.17							

change distance
has not direction

C.B. 3/20

W RICHMOND ST E

W. line E. line

301.23 HI. 296.53 298.17 299.09
 2945.9 4.70 3.06 2.14
 6.34 5.70 2.36 1.54
 8.74 300.25 1.58 299.75
 -2.4 1.00 1.48
 1.1
 0.1
 11.62
 298.81 297.77 295.93 294.09 289.67 5-P.
 2.42 3.46 7.14 289.67 HI.
 1.92 3.16 5.30 10.04 291.93
 +0.5 4.3 6.30 292.25
 293.25
 1.32
 15.1
 16.5

	W	cut	1/4	±	1/4	cut	E		
N.W. Pascoe	292.25	292.00	291.85	292.50	292.40	292.00	292.25	-15.0	-16.7
13 N	292.76	292.51	292.34	292.96	292.83	292.46	292.67	-8.3	-16.4
25	293.23	292.98	292.80	293.39	293.23	293.81	294.06	-4.1	-11.3
50	294.09	293.84	293.64	294.24	294.09	294.64	294.89	-3.4	-4.4
75	295.19	294.94	294.70	295.18	294.90	295.47	295.67	-2.1	-2.1
100	295.93	295.68	295.43	295.98	295.65	296.28	296.53	-1.7	-1.3
125	296.18	295.93	295.68	296.08	295.73	296.32	296.47	-0.8	-0.1
150	297.16	296.91	296.69	296.97	296.56	297.03	297.28	-0.5	+0.5
175	297.71	297.52	297.27	297.71	297.32	297.92	298.17	-0.2	+0.6
191.03	298.14	297.89	297.54	297.86	297.39	297.83	298.08	+0.1	+0.7
191.03	298.51	298.26	297.93	298.70	298.24	298.54	298.89	+0.1	-0.1
191.03	299.14	298.89	298.49	298.76	298.23	298.64	298.89		
191.03	299.75	299.50	299.10	299.33	298.76	299.16	299.41		
191.03	299.75	299.50	299.42	299.80	299.34	300.00	300.25		
203.5100 W									
191.03 on W									
297.18 on E									
298.57 on E									
S.W. Lincoln									

300.86	295.19	294.00	295.33	296.53	296.33	296.64	294.79	298.25	298.25
1.22	1.22	6.47	4.43	4.33	4.68	6.27	5.83	7.61	7.61
2.56	298.02	293.54	295.43	295.45	297.77	297.82	299.50	300	291.92
301.81	7.13	1.32	5.29	5.49	4.45	2.60	1.71	1.21	3.29
298.17	296.88	296.53	297.34	294.50	292	292.25	292.25		
300	4.23	4.23	6.52	6.32	8.21	7.89			

Gregory's Steamship
 Moore
 curbs & steps

RICHMOND ST

80' wide
14' walks

290.0

291.0

Book 874

PENNSYLVANIA 8

AVE

75'

75'

288.0

0

289.0

286.0

50

287.2

283.2

100

284.7

279.4

150

281.0

273.2

200

275.4

269.8

220

272.2

266.6

240

269.3

264.3

260

267.3

262.8

280

265.8

262.0

300

265.0

N
↑

CYPRESS 8

AVE

25'

25'

75'

75'

100'

25'

25'

262.0

0

265.0

262.4

25

265.4

263.2

50

266.2

264.4

75

267.4

265.8

100

268.8

267.4

125

270.4

269.0

150

272.0

270.8

175

273.8

273.0

200

276.0

274.6

225

277.6

275.8

250

278.8

276.6

275

279.6

277.0

300

280.0

BROOKES

AVE

Surveyed by
3/10/14
4-10-14

RICHMOND ST

	W	Corb	1/4	1/2	3/4	Corb	E	W. line	E. line
N.L. Pennsylvania	290.25	290.00	290.10 289.85	291.00 290.50	291.50 290.40	292.00 291.00	292.50 291.75	+0.2	+1.1
N. curb	290.00	290.00	289.75 289.50	290.65 290.16	291.05 290.05	292.00 291.00	292.00 291.00	+0.2	+1.3
N 1/4	289.40	288.50	289.43 289.18	290.33 289.83	290.73 289.73	291.00 290.50	291.00 291.40	+1.0	+2.0
Center	289.00	288.00	289.10 288.85	290.00 289.50	290.40 289.40	290.00 289.00	291.00 289.50	+1.4	+2.3
S 1/4	288.10	287.50	288.71 288.57	289.67 289.17	290.07 289.07	289.50 289.50	290.10	+2.2	+3.1
S curb	287.00	287.00	288.45 288.20	289.35 288.85	289.75 288.75	289.00 288.00	289.00 288.00	+2.6	+2.7
S.L. Pennsylvania	288.25	288.00	288.10 287.85	289.00 288.50	289.90 288.40	290.00 289.00	290.5 289.25	+2.3	+1.8
S.L. Pennsylvania	288.25	288.00	288.10 287.85	289.00 288.50	289.90 288.40	290.00 289.00	290.25	+2.3	+1.8
S.S.	286.25	286.00	285.90 285.65	286.60 286.35	286.60 285.0	287.20 285.0	287.45	+3.2	+2.5
100	283.45	283.20	283.18 281.50	283.95 281.20	284.10 283.00	284.70 283.00	284.95	+5.0	+3.8
150	279.65	279.40	279.40	280.20	280.40	281.00	281.25	+6.6	+6.2
175	276.55	276.30	276.38	277.25	277.60	278.20	278.45	+2.7	+8.3
200	273.45	273.20	273.35	274.30	274.80	275.40	275.65	-3.5	+10.3
220	270.05	269.80	270.00	271.00	271.60	272.20	272.45	-8.5	+11.8
240	266.85	266.60	266.88	267.95	268.70	269.30	269.55	-9.8	+13.1
260	264.55	264.30	264.65	265.80	266.70	267.30	267.55	-12.6	+4.4
280	263.05	262.80	263.15	264.30	265.20	265.80	266.05	-16.4	-4.3
300 = S.L. Cypress	262.25	262.00	262.35	263.50	264.40	265.00	265.25	-20.8	-13.7

294.38 B.M. A.W. Robinson's Lpk. 63

103 N.L.

295.41 N.L.

3.39 V.P. hub. east of 13' hub. of Penn.

292.02

289.25 287.45 286.95 286.25 285.25 285.65

6.23 8.03 10.83 14.23 19.93

4.33 5.43 6.43 7.73 9.33

+1.9 +2.6 +3.9 +6.3 +10.4

272.45 269.55 268.25 266.25 263.45 262.65

23.03 25.93 4.83 5.73 6.93 9.23

11.83 13.03 4.83 5.73 +6.1 +8.6

+11.7 +12.9 +2.4 3.3 +6.1 +8.6

12.75 273.45 267.35 12.52 270.01 266.85

282.73 9.79 15.69 270.72 1.9 4.25

8.21 13.03 4.83 5.73 6.93 9.23

283.24 11.99 10.7 271.03 8.6 7.6

-2.2 +5.0 266.05 -7.6

13.05 5.0 9.4 18.24 248.26 0.80 249.06 262.20 13.19 7.5 -20.7

259.79 264.55 263.05 4.42 266.25 248.26 0.80 249.06 262.20 13.19 7.5 -20.7

6.82 6.05 4.35 6.76 6.96 249.06 262.20 13.19 7.5 -20.7

258.50 6.35 11.55 6.96 249.06 262.20 13.19 7.5 -20.7

8.85 1.65 -10.0 -12.5 -16.1 -13.7 13.19 7.5 -20.7

204.05 S.L. Robin + Rich.

277.55 276.55 275.55 274.55 273.55 272.55 271.55 270.55 269.55 268.55 267.55 266.55 265.55 264.55 263.55 262.55 261.55 260.55 259.55 258.55 257.55 256.55 255.55 254.55 253.55 252.55 251.55 250.55 249.55 248.55 247.55 246.55 245.55 244.55 243.55 242.55 241.55 240.55 239.55 238.55 237.55 236.55 235.55 234.55 233.55 232.55 231.55 230.55 229.55 228.55 227.55 226.55 225.55 224.55 223.55 222.55 221.55 220.55 219.55 218.55 217.55 216.55 215.55 214.55 213.55 212.55 211.55 210.55 209.55 208.55 207.55 206.55 205.55 204.55 203.55 202.55 201.55 200.55 199.55 198.55 197.55 196.55 195.55 194.55 193.55 192.55 191.55 190.55 189.55 188.55 187.55 186.55 185.55 184.55 183.55 182.55 181.55 180.55 179.55 178.55 177.55 176.55 175.55 174.55 173.55 172.55 171.55 170.55 169.55 168.55 167.55 166.55 165.55 164.55 163.55 162.55 161.55 160.55 159.55 158.55 157.55 156.55 155.55 154.55 153.55 152.55 151.55 150.55 149.55 148.55 147.55 146.55 145.55 144.55 143.55 142.55 141.55 140.55 139.55 138.55 137.55 136.55 135.55 134.55 133.55 132.55 131.55 130.55 129.55 128.55 127.55 126.55 125.55 124.55 123.55 122.55 121.55 120.55 119.55 118.55 117.55 116.55 115.55 114.55 113.55 112.55 111.55 110.55 109.55 108.55 107.55 106.55 105.55 104.55 103.55 102.55 101.55 100.55 99.55 98.55 97.55 96.55 95.55 94.55 93.55 92.55 91.55 90.55 89.55 88.55 87.55 86.55 85.55 84.55 83.55 82.55 81.55 80.55 79.55 78.55 77.55 76.55 75.55 74.55 73.55 72.55 71.55 70.55 69.55 68.55 67.55 66.55 65.55 64.55 63.55 62.55 61.55 60.55 59.55 58.55 57.55 56.55 55.55 54.55 53.55 52.55 51.55 50.55 49.55 48.55 47.55 46.55 45.55 44.55 43.55 42.55 41.55 40.55 39.55 38.55 37.55 36.55 35.55 34.55 33.55 32.55 31.55 30.55 29.55 28.55 27.55 26.55 25.55 24.55 23.55 22.55 21.55 20.55 19.55 18.55 17.55 16.55 15.55 14.55 13.55 12.55 11.55 10.55 9.55 8.55 7.55 6.55 5.55 4.55 3.55 2.55 1.55 0.55 0.00

Curbs + Props 11/6/14

Gregory's Shoemaker

RICHMOND ST.

	W							E	W. line	E. line
N.L. Cypress	262.25	262.00	262.35	263.50	264.40	265.00	265.25		- 20.8	- 13.7
N. curb	262.00	262.00	262.35	263.50	264.40	265.00	265.00		- 23.4	- 20.0
	261.00	261.00				264.00	264.00		- 22.4	- 19.0
N. 1/4	261.60	261.00	262.35	263.50	264.40	264.00	264.60		- 26.5	- 25.2
Center	262.00	261.00	262.35	263.50	264.40	264.00	265.00		- 29.2	- 30.4
S 1/4	261.60	261.00	262.35	263.50	264.40	264.00	264.60		- 31.3	- 33.4
S. curb	261.00	261.00	262.35	263.50	264.40	264.00	264.00		- 33.2	- 35.3
	262.00	262.00				265.00	265.00		- 34.2	- 36.3
S.L. Cypress	262.25	262.00	262.35	263.50	264.40	265.00	265.25		- 35.4	- 36.2

S.L. Cypress	262.25	262.00	262.35	263.50	264.40	265.00	265.25			
25	262.65	262.40	262.75	263.90	264.80	265.40	265.65			
50	263.45	263.20	263.55	264.70	265.60	266.20	266.45			
75	264.65	264.40	264.75	265.90	266.80	267.40	267.65			
100	266.05	265.80	266.15	267.30	268.20	268.80	269.05			
125	267.65	267.40	267.75	268.90	269.80	270.40	270.65			
150	269.25	269.00	269.35	270.50	271.40	272.00	272.25			
175	271.05	270.80	271.15	272.30	273.20	273.80	274.05			
200	273.25	273.00	273.35	274.50	275.40	276.00	276.25			
225	274.85	274.60	274.95	276.10	277.00	277.60	277.85			
250	276.05	275.80	276.15	277.30	278.20	278.80	279.05			
275	276.85	276.60	276.95	278.10	279.00	279.60	279.85			
298.4 = N.L. Brooks	277.25	277.00	277.35	278.50	279.40	280.00	280.25			

MAGNOLIA PLACE

151.81	151.81	151.81	151.81	151.81	151.81	151.81	151.81	151.81	151.81
148.85	148.85	148.85	148.85	148.85	148.85	148.85	148.85	148.85	148.85
145.89	145.89	145.89	145.89	145.89	145.89	145.89	145.89	145.89	145.89
142.93	142.93	142.93	142.93	142.93	142.93	142.93	142.93	142.93	142.93
139.97	139.97	139.97	139.97	139.97	139.97	139.97	139.97	139.97	139.97
137.01	137.01	137.01	137.01	137.01	137.01	137.01	137.01	137.01	137.01
134.05	134.05	134.05	134.05	134.05	134.05	134.05	134.05	134.05	134.05
131.09	131.09	131.09	131.09	131.09	131.09	131.09	131.09	131.09	131.09

66

Station Distances are on Center line

25' on ϕ_s = 22.77 on $N\phi_s$, 27.23 on $S\phi_s$

S N.

	S line							N line	
sec D	134.25	134.00	133.40	133.50	132.85	133.00	133.25	00	+0.1
294.25 = sec C	134.25	134.00	134.42	135.64	136.69	137.29	137.54	00	+50
275	135.21	134.96	135.22	136.49	137.43	138.07	138.27	+70	+50
250	136.45	136.20	136.49	137.58	138.40	138.97	139.22	+12	+50
225	137.69	137.44	137.66	138.67	139.37	139.92	140.17	+10	+51
200	138.93	138.68	138.83	139.77	140.33	140.87	141.12	+07	+46
175	140.17	139.92	140.00	140.86	141.30	141.82	142.07	+01	+34
150	141.41	141.16	141.18	141.96	142.26	142.77	143.02	-07	+25
125	142.65	142.40	142.35	143.05	143.23	143.71	143.96	-13	+12
100	143.89	143.64	143.52	144.15	144.20	144.66	144.91	-14	-11
75	145.13	144.88	144.69	145.24	145.16	145.61	145.86	-09	-29
50	146.37	146.12	145.86	146.34	146.13	146.56	146.81	-09	-24
25 W	147.61	147.36	147.03	147.43	147.09	147.51	147.76	-04	-17
sec B	148.85	148.60	148.20	148.53	148.06	148.46	148.71	-07	-18
sec A	148.85	148.60	149.05	150.30	151.40	152.00	152.25	-07	-16

151.81	151.81	151.81	151.81	151.81	151.81	151.81	151.81
148.85	148.85	148.85	148.85	148.85	148.85	148.85	148.85
145.89	145.89	145.89	145.89	145.89	145.89	145.89	145.89
142.93	142.93	142.93	142.93	142.93	142.93	142.93	142.93
139.97	139.97	139.97	139.97	139.97	139.97	139.97	139.97
137.01	137.01	137.01	137.01	137.01	137.01	137.01	137.01
134.05	134.05	134.05	134.05	134.05	134.05	134.05	134.05
131.09	131.09	131.09	131.09	131.09	131.09	131.09	131.09

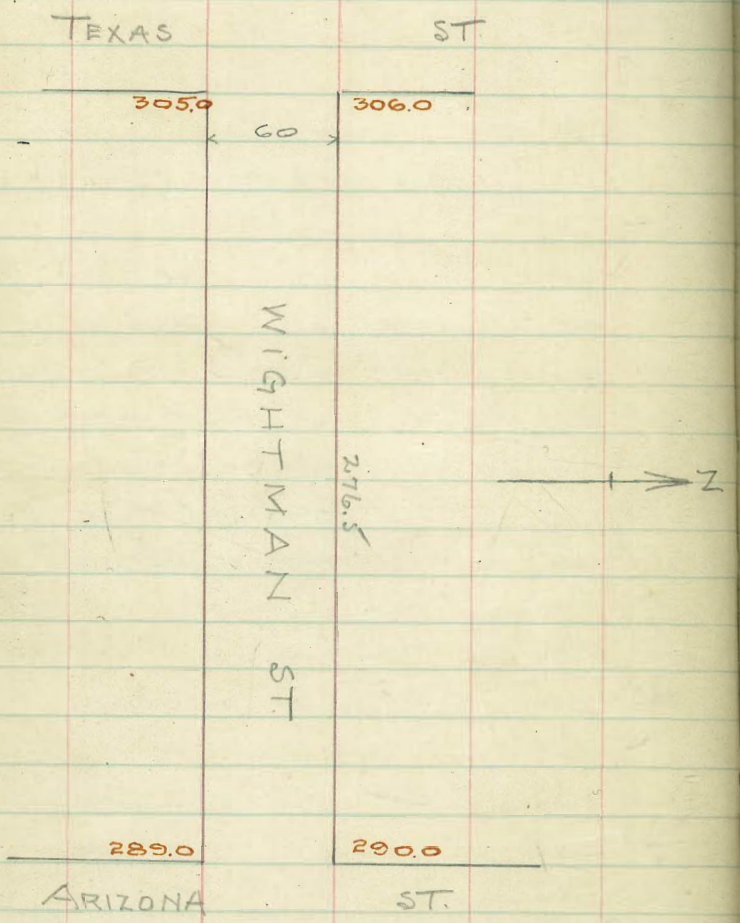
Checks OK West

Note: - The South return of Ictinus with Magnolia was not graded correctly for 10' Radius, but is beyond limits of Magnolia nest.

WIGHTMAN ST.
60' wide, 10' walks, 10' / 45

Signal NE Cor. Mex. Wightman & Arizona
305.72

66



WIGHTMAN ST.

	S	curb	1/4	C	1/4	curb	N
E.L. TEXAS ST.	305.25 ¹⁰	305.00 ¹⁰	304.85 ¹⁰	305.50 ¹⁰	305.40 ¹⁰	306.00 ¹⁰	306.75 ¹⁰
25' E	303.80	303.55	303.40	304.05	303.95	304.55	304.80
50	302.36	302.11	301.96	302.61	302.51	303.11	303.36
75	300.91	300.66	300.51	301.16	301.06	301.66	301.91
100	299.46	299.21	299.06	299.71	299.61	300.21	300.46
125	298.01	297.77	297.62	298.27	298.17	298.77	299.02
150	296.57	296.32	296.17	296.82	296.72	297.32	297.57
175	295.12	294.87	294.72	295.37	295.27	295.87	296.12
200	293.68	293.43	293.28	293.93	293.83	294.43	294.68
225	292.23	291.98	291.83	292.48	292.38	292.98	293.23
250	290.78	290.53	290.38	291.03	290.93	291.53	291.78
272.2 276.5 = W.L. Arizona St.	289.25	289.00	288.85	289.50	289.40	290.00	290.75

Original N.E. Cor. Hill of Wightman & Arizona

302.76	302.76	302.76	302.76	302.76	302.76	302.76	302.76	302.76	302.76
92.65	82.65	91.78	91.78	94.64	93.68	96.57	97.57	300.46	299.46
12.51	13.51	11.98	10.98	9.04	9.03	6.19	5.19	2.30	3.30
12.05	13.05	14.0	11.9	9.2	11.3	6.9	5.0	2.0	3.7
2.0	0.0	-2.0	-0.9	-1.1	-2.2	-0.7	4.0	10.3	-0.9

67

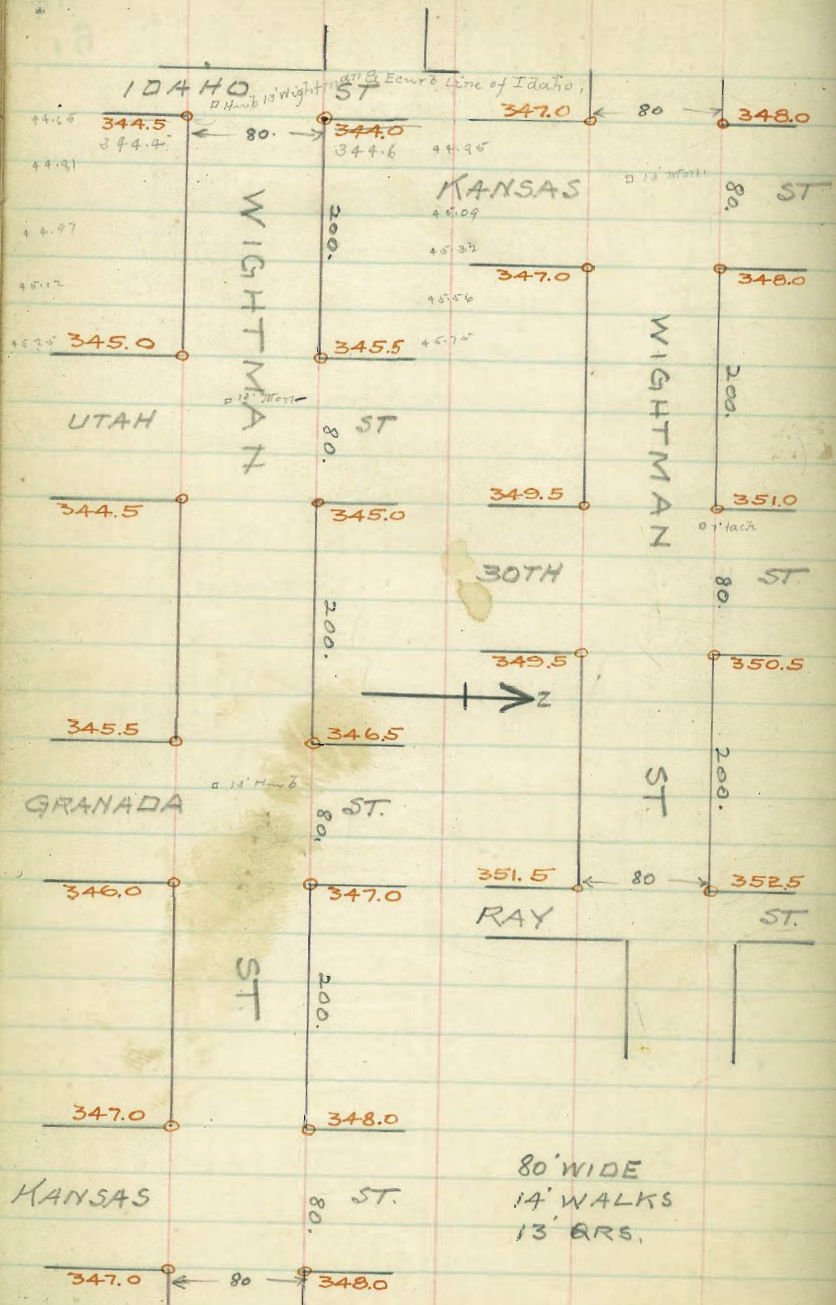
309.91	309.91	309.81	309.81	- May 1st 1913 1/4 - stake, Dorman, Bedford, Dennis					
302.36	302.36	06.25	05.25						
7.25	6.25	3.56	4.56						
7.4	5.6	3.56	4.6						
6.0	4.9	6.0	6.0						

Let ends to reach finish
curb & property, May 6-1913
Dorman, Bedford, Dennis

300.03	300.03	300.03	300.03	300.03	300.03	300.26	300.26	300.26	300.26	300.26
90.00	89.90	89.50	88.95	88.00	86.00	85.90	85.50	84.85	84.00	83.00
76.09	10.98	10.98	11.03	11.38	2.26	2.96	2.76	3.41	3.26	

Let end 27 1/2 May 12-1913 Dorman, Bedford, Dennis

WIGHTMAN ST



University Ave & Idaho Plg NW Cor 346.05
 " " " Utah Spz " " 350.32
 " " " Kansas Plg " " 352.96
 " " " 30th " SW " 355.01
 " " " Ohio " NW " 355.31
 Wightman & Idaho Plg NE 345.56

WIGHTMAN ST.

5.

N

FL Granada	346.25	346.00	345.85	346.50	346.40	347.00	347.25	-0.1	00
25' E	346.38	346.13	346.98	346.63	346.53	347.13	347.38	+0.5	+0.3
50	346.50	346.25	346.10	346.75	346.65	347.25	347.50	+0.2	+0.2
75	346.63	346.38	346.23	346.88	346.78	347.38	347.63	-0.1	-0.1
100	346.88	346.63	346.48	347.13	347.03	347.63	347.88	+0.3	-0.3
125	347.00	346.75	346.60	347.25	347.15	347.75	348.00	+0.2	-0.1
150	347.13	346.88	346.73	347.38	347.28	347.88	348.13	+0.4	00
175	347.25	347.00	346.85	347.50	347.40	348.00	348.25	+0.9	00
200 = W.L. Kansas								-0.5	+0.2
FL Kansas	347.25	347.00	346.85	347.50	347.40	348.00	348.25	-0.3	+0.2
5' E	347.31	347.06	346.93	347.57	347.48	348.08	348.33	+0.1	+0.1
25	347.56	347.31	347.23	347.84	347.78	348.38	348.63	+0.1	+0.1
50	347.88	347.63	347.61	348.19	348.15	348.75	349.00	+1.1	+0.1
75	348.19	347.94	347.99	348.53	348.53	349.13	349.38	+0.1	+0.1
100	348.50	348.25	348.27	348.88	348.90	349.50	349.75	+0.3	+0.3
125	348.81	348.56	348.74	349.22	349.28	349.88	350.13	+0.4	+0.4
150	349.13	348.88	349.12	349.56	349.65	350.25	350.50	+0.1	+0.1
175	349.44	349.19	349.50	349.91	350.03	350.63	350.88	+0.3	-0.2
200 = W.L. 20th	349.75	349.50	349.88	350.25	350.40	351.00	351.25	+0.4	-0.1
								00	00

346.25	346.00	345.85	346.50	346.40	347.00	347.25		
346.38	346.13	346.98	346.63	346.53	347.13	347.38		
346.50	346.25	346.10	346.75	346.65	347.25	347.50		
346.63	346.38	346.23	346.88	346.78	347.38	347.63		
346.88	346.63	346.48	347.13	347.03	347.63	347.88		
347.00	346.75	346.60	347.25	347.15	347.75	348.00		
347.13	346.88	346.73	347.38	347.28	347.88	348.13		
347.25	347.00	346.85	347.50	347.40	348.00	348.25		

70

S	N							
-0.1	00	19	19	19	19	19	19	19
		352.96	348.25	348.25	347.00	347.25	347.00	
		2.10 H.I.	4.02	4.27	5.57	5.22	5.27	
		35.06 H.I.	31.25					
		7.02	5.62					
		348.04 H.I.	300.25	347.00	347.25	347.50	346.75	
		4.23 H.I.	300.25	347.00	347.25	347.50	346.75	
		352.27 H.I.	4.52	4.27	4.52			
		347.50	347.25	6.02	5.77	346.75	6.27	5.77
		4.27	5.22					

Curves and Probs 1/44

351.0	349.5	348.88	350.25
4.06	5.56	6.18	4.81
349.5	348.25	347.63	348.75
5.56	6.81	7.43	6.31

348.0	347.0		
7.06	8.06		
347.75	346.75	346.50	347.50
7.31	8.31	8.56	7.56
347.25	346.25	346.0	347.0
7.81	8.81	9.06	8.06
		5.04	J.P.
		347.02	
		2.56	
		349.58 H.I.	

WIGHTMAN ST.

S

N

5L 30th ST	349.75	349.50	349.35	350.00	349.90	350.50	350.75	-0.1	+0.1
5' E	349.80	349.55	349.40	350.05	349.95	350.55	350.80	+0.5	+1.6
25	350.00	349.75	349.60	350.25	350.15	350.75	351.00	+1.5	+1.7
50	350.25	350.00	349.85	350.50	350.40	351.00	351.25	+1.2	+1.4
75	350.50	350.25	350.10	350.75	350.65	351.25	351.50	+0.9	+1.2
100	350.75	350.50	350.35	351.00	350.90	351.50	351.75	+1.1	+1.2
125	351.00	350.75	350.60	351.25	351.15	351.75	352.00	+1.0	+0.8
150	351.25	351.00	350.85	351.50	351.40	352.00	352.25	+0.7	+0.8
175	351.50	351.25	351.10	351.75	351.65	352.25	352.50	+0.3	+0.8
200=WL Ray	351.75	351.50	351.35	352.00	351.90	352.50	352.75	-0.2	-0.3

3 low 3 low 3 low

357.64	357.64	357.64	357.64	357.64	357.64	357.64	357.64
52.75	51.75	51.25	52.25	51.75	52.75	52.25	51.25
4.89	5.89	6.89	5.89	5.89	6.89	7.89	6.89
5.1	6.2	5.9	4.9	4.9	5.8	6.2	5.2
-0.2	-0.3	+0.15	+0.6	+1.1	+1.1	+1.2	+1.2

357.64 357.64 357.64 357.64 357.64 357.64 357.64 357.64
 50.75 49.75 49.25 50.25 49.75 50.75 50.25 49.25
 6.89 7.89 8.89 7.89 7.89 8.89 9.89 8.89
 6.8 8.0 8.0 7.0 7.0 8.0 8.0 7.0
 +0.1 -0.2

S N

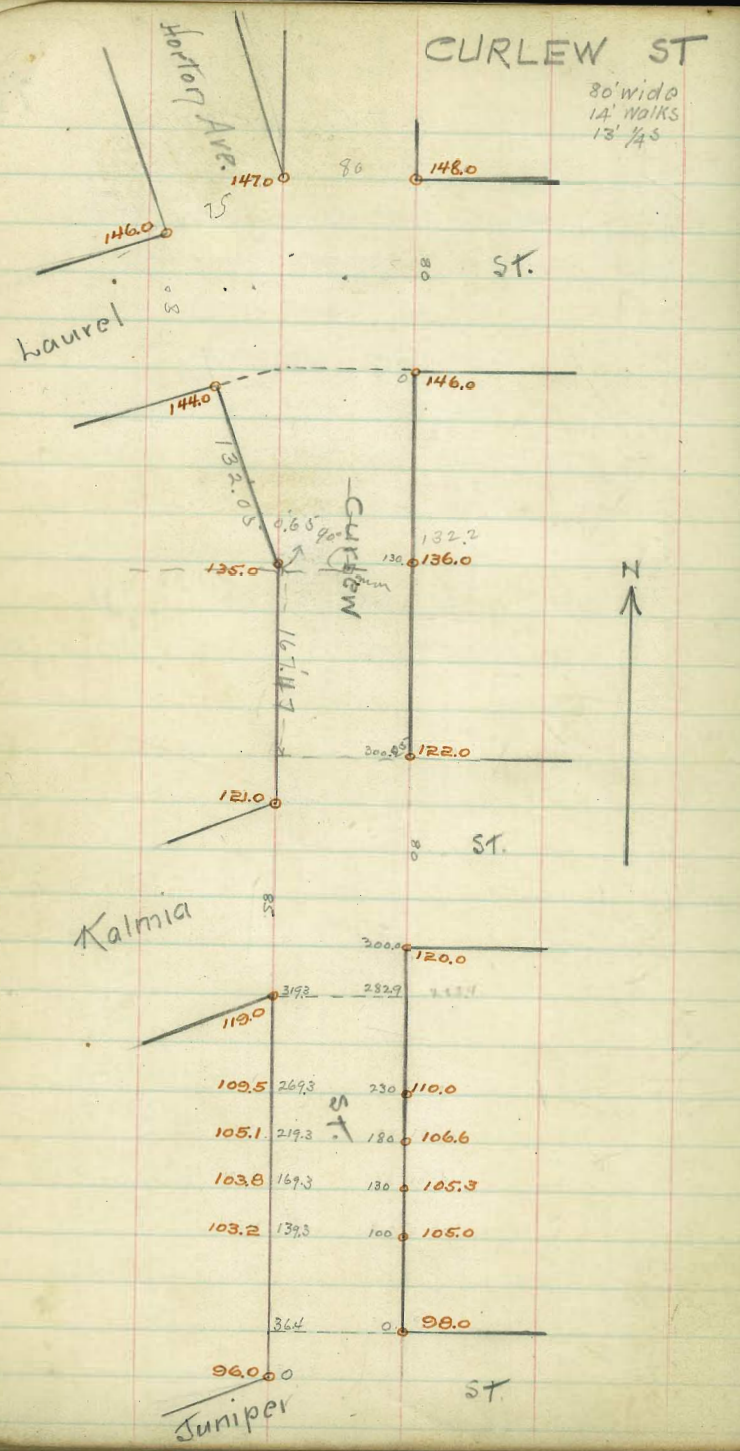
355.01	355.01	355.01	355.01	355.01	355.01	355.01	355.01
355.01	355.01	355.01	355.01	355.01	355.01	355.01	355.01
355.01	355.01	355.01	355.01	355.01	355.01	355.01	355.01
355.01	355.01	355.01	355.01	355.01	355.01	355.01	355.01
355.01	355.01	355.01	355.01	355.01	355.01	355.01	355.01
355.01	355.01	355.01	355.01	355.01	355.01	355.01	355.01
355.01	355.01	355.01	355.01	355.01	355.01	355.01	355.01
355.01	355.01	355.01	355.01	355.01	355.01	355.01	355.01
355.01	355.01	355.01	355.01	355.01	355.01	355.01	355.01
355.01	355.01	355.01	355.01	355.01	355.01	355.01	355.01

71

19 - stater, Nov 12-1913
 January, Miller, Shanti

Cubs + Peeps 1/10
 Curry, Shanti, Shanti

5.6
5'E
25
50
75
100
125
150
175
200=V



CURLEW ST

80' wide
14' walks
13 1/4 S

99.87 B.M.
9.51
109.38 H.I. 11.68
98.25 97.70
72

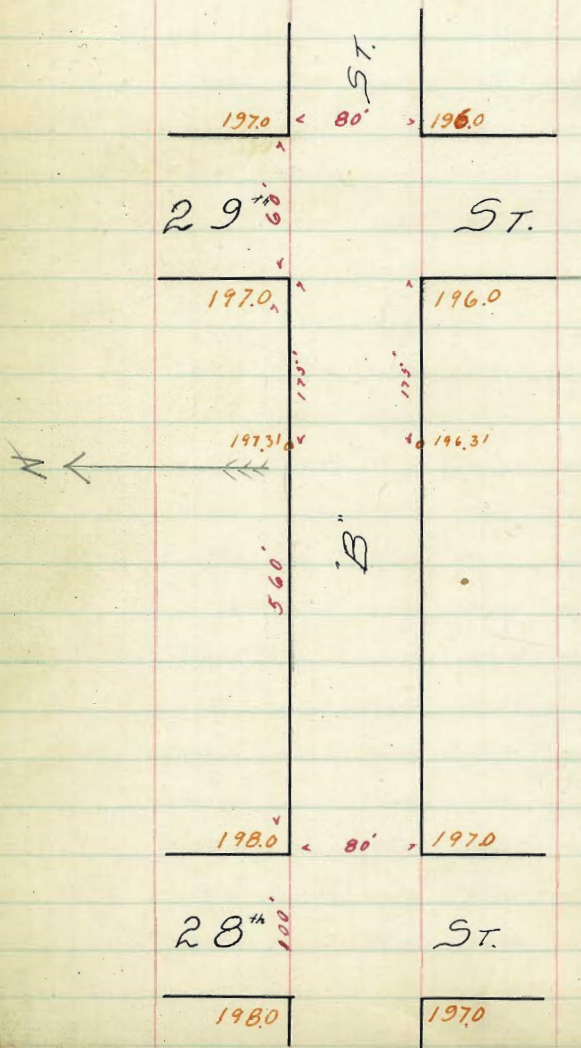
96.25	106.75	105.25	98.25	97.70
13.13	7.63	4.13	11.13	3.1
11.4	95.87	103.47	106.07	109.67
41.7	10.51	6.91	8.31	29
	10.1	6.5	3.0	2.1
	10.4	6.4	4.3	-2.4
95.87	112.75	109.00	116.87*	319.3
1.05	3.37	12.25	105.25	112.75
108.33 (P)	6.33	11.55	16.00	8.50
12.92	-9.7	40.7	11.2	3.73
121.25 H.I.		120.25	14.8	4.75
0.15		1.00		7.45
121.10 J.P.		2.7		2.00
12.83		1.7		2.3
133.93 H.I.				
121.05	122.26	-0.3		
12.68	11.67	130.61	162.47	14.400d 5.36
12.51	11.57	3.32	13.3976	151
10.1	12.644	137.99	135.25	60240836
0.02	7.49	0.86	1.32	50241670
133.91 S.P.	7.19	1.1	0.02	77990
12.64	10.3	-2.0	-1.3	20452
146.55 H.I.				
122.25	126.44	130.63	134.82	8.35
11.68	7.49	3.30	11.73	167.0
11.4	7.79	2.9	16.7	835
10.3	-0.3	40.4	140.53	101036
128.5	137.43	140.83	144.25	1336
133.70	9.12	5.72	7.30	640
	11.75	5.7	0.6	501
	2.1	3.79	11.7	6.51
	7.5	0.0	8.2	1390
146.25	142.46	138.67	136.2	132
.30	4.09	7.88	2043	900 (6.51)
1.1	4.69	8.08	21792	792
-0.8	-0.6	-0.2	1000	1080
	136.25		924	1056
	70.30		760	
	10.80		660	
	-0.5		1000	

CURLEW ST.

73

	W				E			
Sl. Kalmia	119.75	119.00	119.45	119.70	119.26	120.00	120.25	
2829 = Sl. Kalmia on W	119.25	119.00	118.40	118.28	117.52	117.56	117.81	↑ 117.00
275	117.75	117.50	116.97	116.97	116.31	116.43	116.68	
267	116.73	115.98	115.52	115.63	115.08	115.29	115.54	
250	113.00	112.75	112.43	112.81	112.47	112.86	113.11	
2329	109.75	109.50	109.33	109.96	109.85	110.41	110.66	
230	109.49	109.24	109.07	109.62	109.40	110.00	110.25	
225	109.05	108.80	108.67	109.23	109.06	109.66	109.91	
200	106.85	106.60	106.57	107.28	107.36	107.96	108.21	
1829	105.35	105.10	105.13	105.95	106.20	106.80	107.05	
180	105.27	105.02	105.05	105.81	106.00	106.60	106.85	
175	105.14	104.89	104.92	105.68	105.87	106.47	106.72	
150	104.49	104.24	104.25	105.03	105.22	105.82	106.07	
1329	104.05	103.80	103.80	104.59	104.78	105.38	105.63	
130	103.99	103.74	103.74	104.52	104.70	105.30	105.55	
125	103.89	103.64	103.65	104.45	104.65	105.25	105.50	
1029	103.45	103.20	103.22	104.12	104.43	105.03	105.28	
100	103.30	103.05	103.14	104.03	104.40	105.00	105.25	
75	102.01	101.76	101.73	102.51	102.70	103.25	103.50	
50	100.72	100.47	100.31	100.99	101.00	101.50	101.75	
25	99.42	99.17	98.90	99.46	99.30	99.75	100.00	
NL Juniper on E	98.13	97.88	97.48	97.94	97.60	98.00	98.25	
Juniper	96.25	96.00	96.12	96.83	96.76	98.00	98.25	↑ 98.00

"B" STREET EAST SIDE 29 STREET
TO 175' WEST OF WEST LINE 29 ST



"B." ST EL 29th ST TO 175' West
of West L 29th ST.

N. 147 137 137 137 137 137 147 $\$$

EL 29 ST.	197.25	197.00	196.40	196.50	195.85	196.00	196.20
E CURB	197.00 196.00	197.00 196.00	195.75	195.50	196.25	196.00 196.00	196.00 196.00
E 1/4	196.60	195.42	195.26	196.10	195.94	195.78	195.60
Φ	197.00	196.82	196.66	196.50	196.34	196.18	196.00
W 1/4	196.60	195.42	195.26	196.10	195.94	195.78	195.60
W CURB	196.00 197.00	196.00 197.00	195.75	195.50	195.25	195.75 196.00	195.00 196.00
W.L. 29 ST	197.25	197.00	196.40	196.50	195.85	196.00	196.20
W.L. 29 ST	197.25	197.00	196.40	196.50	195.85	196.00	196.20
+10' West	197.27	197.02	196.42	196.52	195.87	196.02	196.27
+25 "	197.29	197.04	196.44	196.54	195.89	196.04	196.29
45 "	197.33	197.08	196.46	196.58	195.93	196.08	196.33
50 "	197.34	197.09	196.49	196.59	195.94	196.09	196.34
75 "	197.35	197.13	196.53	196.63	195.98	196.13	196.38
91 "	197.41	197.16	196.56	196.66	196.01	196.16	196.41
100 "	197.43	197.18	196.58	196.68	196.03	196.18	196.43
125 "	197.47	197.22	196.62	196.72	196.07	196.22	196.47
141 "	197.50	197.25	196.65	196.75	196.10	196.25	196.50
142 "	197.50	197.25	196.65	196.75	196.10	196.25	196.50
150 "	197.52	197.27	196.67	196.77	196.12	196.27	196.52
175' West.	197.56	197.31	196.71	196.81	196.16	196.31	196.56

27th St

Book 352

76

M

ST

65.00

44.74

65.50

10' walks

140

27th

STREET

20

140

63.60

42.82

64.00

N

ST

65.69 NW 27th 4th
 41.78
 70.01
 65.50
 65.01
 3.91
 21.7

44.7	44.7	44.7	44.7	44.7	44.7	44.7
5.78	5.78	5.78	5.78	5.78	5.78	5.78
5.78	5.78	5.78	5.78	5.78	5.78	5.78
5.78	5.78	5.78	5.78	5.78	5.78	5.78
5.78	5.78	5.78	5.78	5.78	5.78	5.78
5.78	5.78	5.78	5.78	5.78	5.78	5.78
5.78	5.78	5.78	5.78	5.78	5.78	5.78
5.78	5.78	5.78	5.78	5.78	5.78	5.78
5.78	5.78	5.78	5.78	5.78	5.78	5.78
5.78	5.78	5.78	5.78	5.78	5.78	5.78

65.69 NW 27th 4th
 41.78
 70.01
 65.50
 65.01
 3.91
 21.7

65.69 NW 27th 4th
 41.78
 70.01
 65.50
 65.01
 3.91
 21.7

65.69 NW 27th 4th
 41.78
 70.01
 65.50
 65.01
 3.91
 21.7

65.69 NW 27th 4th
 41.78
 70.01
 65.50
 65.01
 3.91
 21.7

65.69 NW 27th 4th
 41.78
 70.01
 65.50
 65.01
 3.91
 21.7

65.69 NW 27th 4th
 41.78
 70.01
 65.50
 65.01
 3.91
 21.7

65.69 NW 27th 4th
 41.78
 70.01
 65.50
 65.01
 3.91
 21.7

65.69 NW 27th 4th
 41.78
 70.01
 65.50
 65.01
 3.91
 21.7

	WL	WC	WA	E	EA	EC	EL
300=SL M ST	65.25	65.00	64.60	65.25	65.10	65.50	65.75
297	65.74	64.99	64.59	65.24	65.09	65.49	65.74
295	65.13	64.88	64.48	65.13	64.98	65.38	65.63
250	65.02	64.77	64.37	65.01	64.85	65.25	65.50
225	64.90	64.65	64.25	64.89	64.73	65.13	65.38
200	64.78	64.53	64.13	64.77	64.60	65.00	65.25
175	64.67	64.42	64.02	64.65	64.48	64.88	65.13
150	64.55	64.30	63.90	64.53	64.35	64.75	65.00
125	64.43	64.18	63.78	64.40	64.23	64.63	64.88
100	64.32	64.07	63.67	64.28	64.10	64.50	64.75
75	64.20	63.95	63.55	64.16	63.98	64.38	64.63
50	64.08	63.83	63.43	64.04	63.85	64.25	64.50
25 N	63.97	63.72	63.32	63.92	63.73	64.13	64.38
0=N.L. N ST	63.85	63.60	63.20	63.80	63.60	64.00	64.25

Checked OK 6-24-14 Calawa

UNION ST.

10' walks
7.5' $\frac{1}{4}$

Book 851

Nearby
(Alameda)

ST.
Plaza

217.0

50.

218.0

150

UNION
(RIPPBY)

215.0

150

216.0

150

ST

205.0

50.

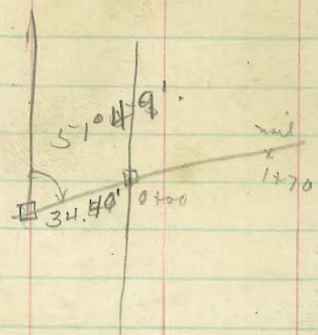
206.0

Henry

ST.

	SW.	C	N	E	N	C	NE.
0-S.E.L. Herney	217.25	217.00	216.85	217.50	217.40	218.00	218.25
25 S	216.92	216.67	216.52	217.17	217.07	217.67	217.92
50	216.58	216.33	216.18	216.83	216.73	217.33	217.58
75	216.25	216.00	215.85	216.50	216.40	217.00	217.25
100	215.92	215.67	215.52	216.17	216.07	216.67	216.92
125	215.58	215.33	215.18	215.83	215.73	216.33	216.58
150	215.25	215.00	214.85	215.50	215.40	216.00	216.25
175	213.58	213.33	213.18	213.83	213.73	214.33	214.58
200	211.92	211.67	211.52	212.17	212.07	212.67	212.92
225	210.25	210.00	209.85	210.50	210.40	211.00	211.25
250	208.58	208.33	208.18	208.83	208.73	209.33	209.58
275	206.92	206.67	206.52	207.17	207.07	207.67	207.92
300-N.W.L. Henry	205.25	205.00	204.85	205.50	205.40	206.00	206.25

#350



$$\begin{array}{r} 800 \\ 565 \\ \hline 235 \\ 7 \cdot 2350 \\ \hline 16150 \\ 2187 \\ \hline 1104.28 \end{array}$$

$$\begin{array}{r} 71 \\ 58 \\ \hline 129 \\ 92.6 \\ \hline 79 \\ \hline 300.6 \end{array}$$

$$\begin{array}{r} 129 \\ 79 \\ \hline 308 \\ .0376 \\ \hline 1040 \\ 1486 \\ \hline 624 \\ \hline .078000 \end{array}$$

Drawing
San Francisco.

80

R M Roberg
 570 L.A. Dist. City
 L.A.

$$\begin{array}{r} 1600 \\ .35 \\ \hline 48000 \\ 4800 \\ \hline \$ 56000 \end{array}$$

$$\begin{array}{r} 190 \overline{) 500} \\ 380 \\ \hline 1200 \\ 1140 \\ \hline 600 \\ 570 \\ \hline 300 \end{array}$$

$$\begin{array}{r} 190 \overline{) 1500} \\ 1330 \\ \hline 1700 \\ 1520 \\ \hline 1800 \\ 1710 \\ \hline 90 \end{array}$$

$$\begin{array}{r} 140 \overline{) 600} \\ 560 \\ \hline 400 \\ 320 \\ \hline 80 \end{array}$$

- 95
- 98
- 100
- 102
- 105
- 107
- 109
- 112
- 114
- 116
- 119
- 121
- 123
- 126
- 128
- 130
- 133
- 135
- 137
- 140

OPES.

le, the second the
opes. to make one

ANGLE	COR. IN LINKS	ANGLE	COR. IN LINKS	ANGLE	COR. IN LINKS	ANGLE	COR. IN LINKS
0		0		0		0	
4	0.24	11	1.88	18	5.14	25	10.54
5	0.38	12	2.24	19	5.76	26	11.26
6	0.55	13	2.63	20	6.42	27	12.24
7	0.76	14	3.06	21	7.11	28	13.37
8	0.98	15	3.53	22	7.85	29	14.34
9	1.24	16	4.02	23	8.64	30	15.47
10	1.55	17	4.56	24	9.47	35	22.07

Handwritten calculations on the left page of the notebook, including several long division problems and arithmetic operations. Some numbers are circled or underlined. The page is filled with dense, cursive handwriting.

Handwritten calculations on the bottom half of the left page, featuring a large table with columns and rows of numbers. The numbers are arranged in a grid-like pattern, possibly representing a data set or a series of calculations. Some numbers are underlined.

Published by H. S. CROCKER COMPANY, Stationers, Drawing Materials, and Mathematical Instruments, San Francisco.

Table showing the difference of latitude and departure in running 80 chains at any course from 1 to 60 minutes.

MINUTES.	LKS.	MINUTES.	LKS.	MINUTES.	LKS.
1	2½	21	49	41	95½
2	4½	22	51½	42	98
3	7	23	53½	43	100½
4	9½	24	56	44	102½
5	11½	25	58½	45	105
6	14	26	60½	46	107½
7	16½	27	63	47	109½
8	18½	28	65½	48	112
9	21	29	67½	49	114½
10	23½	30	70	50	116½
11	25½	31	72½	51	119
12	28	32	74½	52	121½
13	30½	33	77	53	123½
14	32½	34	79½	54	126
15	35	35	81½	55	128½
16	37½	36	84	56	130½
17	39½	37	86½	57	133
18	42	38	88½	58	135½
19	44½	39	91	59	137½
20	46½	40	93½	60	140

TABLE FOR RUNNING ON SLOPES.

In the following table the first column shows the angle, the second the number of links to be added to a chain on the slopes, to make one chain horizontal measurement.

ANGLE	COR. IN LINKS	ANGLE	COR. IN LINKS	ANGLE	COR. IN LINKS	ANGLE	COR. IN LINKS
°		°		°		°	
4	0.24	11	1.88	18	5.14	25	10.54
5	0.38	12	2.24	19	5.76	26	11.26
6	0.55	13	2.63	20	6.42	27	12.24
7	0.76	14	3.06	21	7.11	28	13.37
8	0.98	15	3.53	22	7.85	29	14.34
9	1.24	16	4.02	23	8.64	30	15.47
10	1.55	17	4.56	24	9.47	35	22.07