

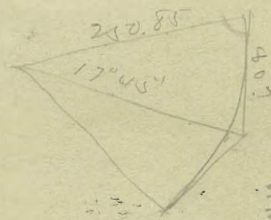
70

670



MICROFILMED

DEC 4 1964



3.1416
501.70
2199120
31416
157080
1576.14072
-0.987
110329849
126090856
141852663
155.56504709

35-30
17.45

35.5 36.0 } 3550.0987
3240
3100
2540
2600

.0987

250.85

250.75

125425

200680

125425

50170

629257225

3.1416

3775543350

629257225

2517028900

629257225

1587771675

197687.44985600

.0987

13838121486

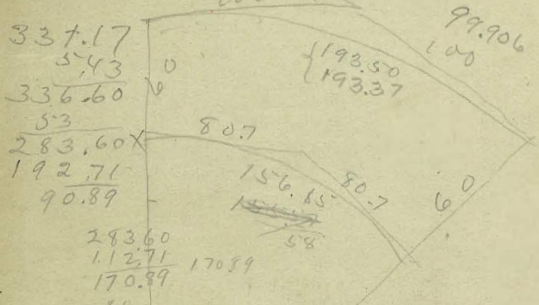
15844995984

17791870482

19571.75129526

Book # 70

337.17	47.03	366
54.83	25	30.77
276.34	72.03	46.27
	8.67	80.70
	80.70	



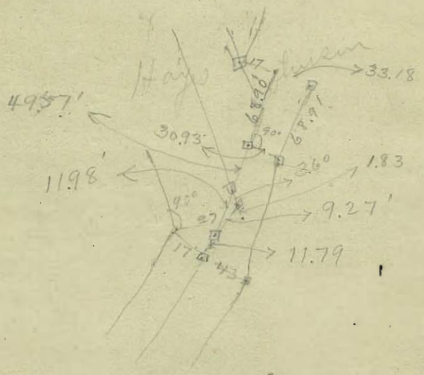
70.85
57.53
33.27
156.15

$$T = R \tan \frac{\Delta}{2}$$

112.71
80
192.71

276.34
192.71
83.63

13.98
61.62



Book # 70
pages at the end of the book

Crocker Quality

FIELD BOOK



No. _____

MANUFACTURED BY

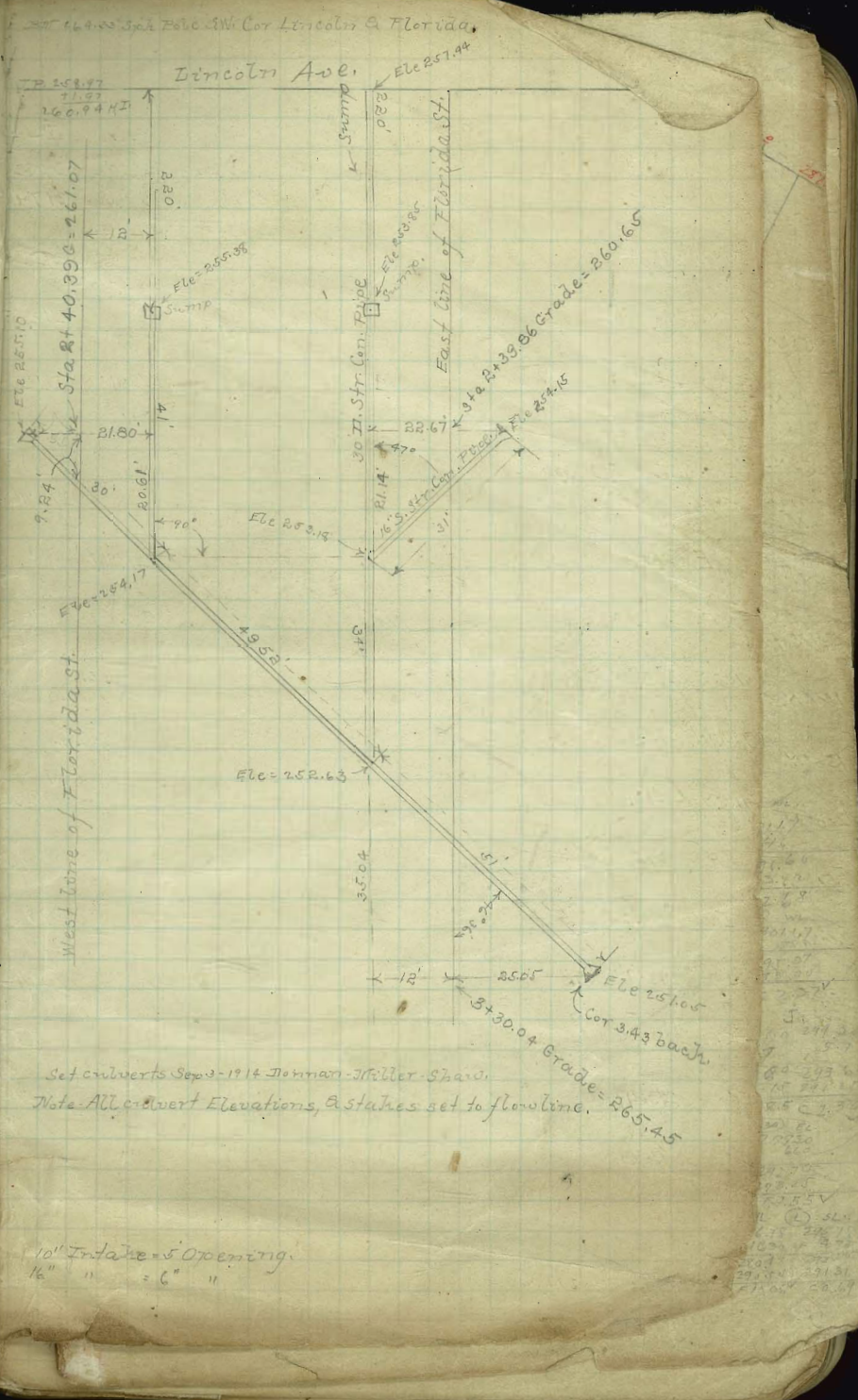
H. S. CROCKER CO.

SAN FRANCISCO AND SACRAMENTO
CALIFORNIA

IRON
BOOK STORE

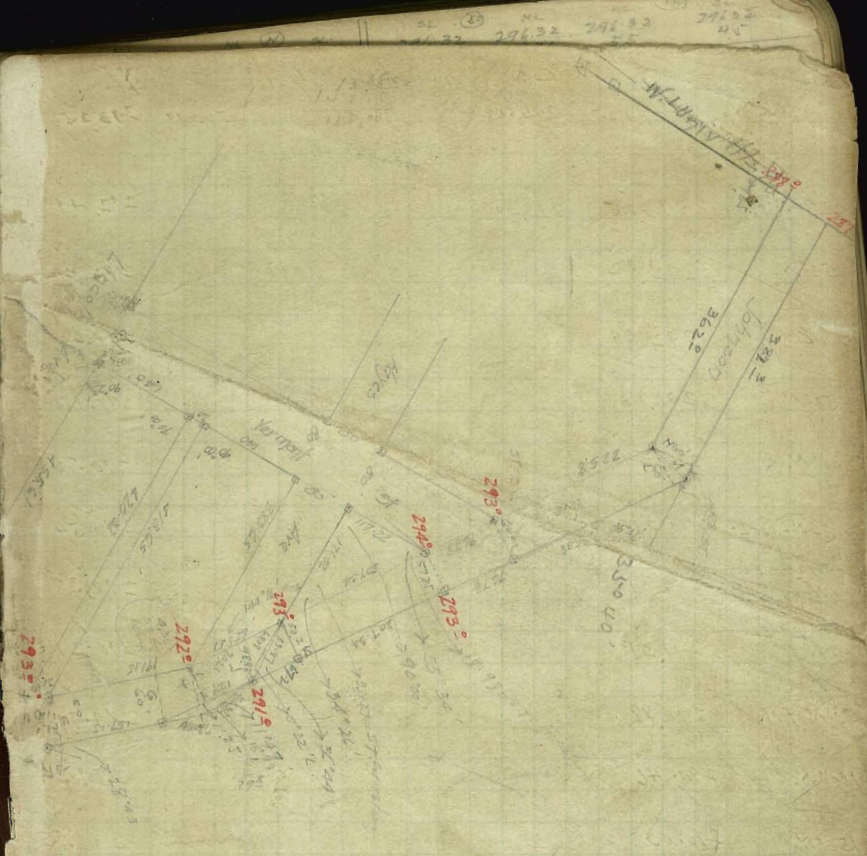
1
2
3
3
2
1
0
1
1
8
19

260.99 60.65 1	60.94 60.65 2.7 6.5 3.1 9.7	60.94 -6.79 354.115	60.94 5.84 255.110	65.45 60.95 -4.50
1.07 207	2/10	260.94 52.63 8.131	260.94 54.17 6.77	
29.60 26.86 730.24	14.6 7.3 27.9	29070.0 35.04 330.09	250.10 25.05 4.05	49.5 30 51 130.5
172657 30 2177710	21.80 12.00 9.80	16.40 7.2 28.6	250.10 25.05 4.05	49.5 30 51 130.5
72657 59.52 14532.4 36329.0 65421.3 29562.8 359806	168709	194565 3705 47282.4 66175.5 283675 350163.3	3103 495 10510 27927 12412 153598.5	3103 30 9309
194565 tangent.		7565200 649085 9,247,370	251.05 6.58 2524.3	3103 495 10510 27927 12412 153598.5
72657 51 72657 36328.5 3705507 12 25.06	21.80 51 2180 10900 1128	301,2180 3706101	37.06 30 191.78	3103 495 10510 27927 12412 153598.5



Johnson Ave.

W/L	±	1/4	±	1/4	C	EL
00	297.75	✓			298.00	298.25
1	297.75	✓				297.91
2	297.75	✓				297.51
3	296.31	✓				293.55
4	294.87	✓				292.25
5	293.72	✓				292.25
6	293.55	✓				292.23
7	293.20	✓				292.18
8	293.20	✓				292.15
9	293.20	✓				291.5
10	293.20	✓				291.07
11	293.00	✓				291.94
12	292.75	✓				291.78
13	292.50	✓				291.63
14	292.25	✓				291.53
15	292.25	✓				291.46
16	292.25	✓				291.25
17	292.25	✓				291.74
18	292.25	✓				292.10
19	292.25	✓				292.11
20	292.25	✓				292.11
21	292.25	✓				292.11
22	292.25	✓				292.11
23	292.25	✓				292.11
24	292.25	✓				292.11
25	292.25	✓				292.11
26	292.25	✓				292.11
27	292.25	✓				292.11
28	292.25	✓				292.11
29	292.25	✓				292.11
30	292.25	✓				292.11
31	292.25	✓				292.11
32	292.25	✓				292.11
33	292.25	✓				292.11
34	292.25	✓				292.11
35	292.25	✓				292.11
36	292.25	✓				292.11
37	292.25	✓				292.11
38	292.25	✓				292.11
39	292.25	✓				292.11
40	292.25	✓				292.11
41	292.25	✓				292.11
42	292.25	✓				292.11
43	292.25	✓				292.11
44	292.25	✓				292.11
45	292.25	✓				292.11
46	292.25	✓				292.11
47	292.25	✓				292.11
48	292.25	✓				292.11
49	292.25	✓				292.11
50	292.25	✓				292.11
51	292.25	✓				292.11
52	292.25	✓				292.11
53	292.25	✓				292.11
54	292.25	✓				292.11
55	292.25	✓				292.11
56	292.25	✓				292.11
57	292.25	✓				292.11
58	292.25	✓				292.11
59	292.25	✓				292.11
60	292.25	✓				292.11
61	292.25	✓				292.11
62	292.25	✓				292.11
63	292.25	✓				292.11
64	292.25	✓				292.11
65	292.25	✓				292.11
66	292.25	✓				292.11
67	292.25	✓				292.11
68	292.25	✓				292.11
69	292.25	✓				292.11
70	292.25	✓				292.11
71	292.25	✓				292.11
72	292.25	✓				292.11
73	292.25	✓				292.11
74	292.25	✓				292.11
75	292.25	✓				292.11
76	292.25	✓				292.11
77	292.25	✓				292.11
78	292.25	✓				292.11
79	292.25	✓				292.11
80	292.25	✓				292.11
81	292.25	✓				292.11
82	292.25	✓				292.11
83	292.25	✓				292.11
84	292.25	✓				292.11
85	292.25	✓				292.11
86	292.25	✓				292.11
87	292.25	✓				292.11
88	292.25	✓				292.11
89	292.25	✓				292.11
90	292.25	✓				292.11
91	292.25	✓				292.11
92	292.25	✓				292.11
93	292.25	✓				292.11
94	292.25	✓				292.11
95	292.25	✓				292.11
96	292.25	✓				292.11
97	292.25	✓				292.11
98	292.25	✓				292.11
99	292.25	✓				292.11
100	292.25	✓				292.11



BM NE Johnson Ave

W/L	±	1/4	±	1/4	C	EL
101	292.25	✓				292.11
102	292.25	✓				292.11
103	292.25	✓				292.11
104	292.25	✓				292.11
105	292.25	✓				292.11
106	292.25	✓				292.11
107	292.25	✓				292.11
108	292.25	✓				292.11
109	292.25	✓				292.11
110	292.25	✓				292.11
111	292.25	✓				292.11
112	292.25	✓				292.11
113	292.25	✓				292.11
114	292.25	✓				292.11
115	292.25	✓				292.11
116	292.25	✓				292.11
117	292.25	✓				292.11
118	292.25	✓				292.11
119	292.25	✓				292.11
120	292.25	✓				292.11
121	292.25	✓				292.11
122	292.25	✓				292.11
123	292.25	✓				292.11
124	292.25	✓				292.11
125	292.25	✓				292.11
126	292.25	✓				292.11
127	292.25	✓				292.11
128	292.25	✓				292.11
129	292.25	✓				292.11
130	292.25	✓				292.11
131	292.25	✓				292.11
132	292.25	✓				292.11
133	292.25	✓				292.11
134	292.25	✓				292.11
135	292.25	✓				292.11
136	292.25	✓				292.11
137	292.25	✓				292.11
138	292.25	✓				292.11
139	292.25	✓				292.11
140	292.25	✓				292.11
141	292.25	✓				292.11
142	292.25	✓				292.11
143	292.25	✓				292.11
144	292.25	✓				292.11
145	292.25	✓				292.11
146	292.25	✓				292.11
147	292.25	✓				292.11
148	292.25	✓				292.11
149	292.25	✓				292.11
150	292.25	✓				292.11

DL C 1/4 E 1/4 C XL

29201 N=EL 29425 29200
 29300 29325

00	1/4 St.	29325	29300	29249	29244
50'	N.	29282		29202	
100'	N.	29239		29160	
150'	N.	29196		29118	
200'	N.	29154		29076	
250'	N=SecL	29131		29054	
300'	MEL	29131		29038	
350'	MEL	29131		29021	
400'	Ed of N.	29088		28979	
450'	N.	29046		28937	
500'	N.	29003		28895	
550'	N.	28960		28854	
600'	N.	28917		28812	
650'	N.	28875		28770	
700'	N=Sec	28833		28725	

29058
 29055
 29052
 29049

005
 00550

	HI.	EL.	Gr.	Cut
0400	29654		29000	
420		520	291.36	28685
600		753	288.73	28635
780		94	287.2	
960		1375	282.81	

296.72	296.78	296.78	296.71	296.32	296.32	296.32	296.32
4.80	18.01	14.90	4.80	8.95	7.70	5.5	4.5
291.78	290.78	282.38	291.82	292.42	288.62	290.82	291.82
291.31	290.39	290.21	291.01	290.88	289.79	289.27	290.46
C0.67V	F1.60V	F7.80V	C0.87V	C1.54V	F1.17V	C1.45V	C1.36V

296.32	296.32	296.32	296.32	296.32	296.32	296.32	296.32
5.00	5.70	6.80	5.20	5.10	1.30	5.80	5.60
291.32	290.62	289.52	291.12	291.22	290.02	290.52	290.72
290.83	288.75	288.52	289.60	289.17	288.12	287.70	288.75
C1.22V	C1.67V	C0.98V	C1.52V	C2.05V	C1.90V	C2.82V	C1.97V

296.32	296.32	296.32	296.32	296.32	296.32	296.32	296.32
6.90	6.50	6.90	7.80	7.80	7.80	7.80	7.80
288.72	289.82	289.42	288.52	288.72	288.25	288.25	288.25
C0.92V	C2.57V	C2.17V	C1.27V				

298.41	298.41	298.41	298.41	298.41	298.41	298.41	298.41
293.25	291.74	292.70	293.49	293.73	292.46	292.53	293.77
5.16V	6.67V	6.31V	4.92V	4.68V	5.95V	5.58V	4.14V
5.41V	6.22V	6.56V	5.17V	4.73V	6.20V	5.83V	4.67V

297.30	297.30	297.30	297.30	297.30	297.30	297.30	297.30
4.80V	4.55V	4.30V	4.10V				

298.17	298.17	298.17	298.17	298.17	298.17	298.17	298.17
292.44	292.55	292.82	292.02	291.60	292.39		
5.92V	4.92V	5.73V	4.92V	6.35V	6.15V	6.57V	5.78V

295.12	295.12	295.12	295.12	295.12	295.12	295.12	295.12
291.76	291.18	290.76	291.54	291.31	290.54	290.58	290.21
3.16V	5.94V	4.30V	3.55V	3.81V	4.58V	4.74V	4.91V

295.12	295.12	295.12	295.12	295.12	295.12	295.12	295.12
289.79	290.88	290.46	289.27	288.95	290.03	289.60	288.54
5.35V	4.29V	4.66V	5.76V	6.17V	5.09V	5.52V	6.88V

298.57	298.57	298.57	298.57	298.57	298.57	298.57	298.57
300.37	300.37	300.37	300.37	300.37	300.37	300.37	300.37
298.25	297.75	297.47	296.31	295.97	293.55	294.37	293.55
3.12V	2.62V	2.90V	4.06V	4.88V	6.82V	6.00V	6.22V

292.25	292.25	292.25	292.25	292.25	292.25	292.25	292.25
292.25	292.25	292.25	292.25	292.25	292.25	292.25	292.25
7.17V	8.12V	8.26V					

295.00	295.50	295.50	295.50	295.50	295.50	295.50	295.50
292.04	292.02	292.52	292.39	291.60	291.18	291.96	291.59
2.28V	3.06V	3.48V	2.68V	3.70V	3.90V	4.32V	3.67V
2.90V	3.31V	3.73V	2.73V	3.06V	4.44V	4.57V	3.77V

295.50	295.50	295.50	295.50	295.50	295.50	295.50	295.50
292.54	292.01	291.21	289.99	290.39	290.46	289.87	288.95
4.76V	5.24V	4.14V	5.71V	4.62V	5.04V	6.13V	6.80V
5.24V	5.60V	4.44V	5.96V	4.87V	5.24V	6.85V	6.87V

293.29	293.29	293.29	293.29	293.29	293.29	293.29	293.29
289.11	288.70	288.70	288.70	288.70	288.70	288.70	288.70
4.12V	5.17V	5.57V	4.54V	5.54V	6.00V	6.00V	6.00V
4.37V	5.42V	5.82V	4.79V	5.79V	6.27V	6.27V	6.27V

La Paloma am

268.5

260 259.

235

Time

st

285.0

Madra

286.4

287.1

287.7

Remand

Point de vue

288.

60 20 20 20
118
118
118
118
118

15.0

278.5 277.5

135

250

Varona am

263.8

W

267.5

268.0

E

LA PALOMIA

AVE

268.0

268.5

DRIVE

285.0

285.0

286.4

286.4

287.2

287.2

287.7

287.7

288.0

288.0

VARONA

AVE

288.5

288.5

268.4 TP
 20.63
 278.10
 48
 278.6
 79.94
 289.54
 287.9
 290.92 H3
 1.40
 276.52
 7.84
 280.34
 11.62
 282.96
 4.89
 273.141

279.10 79.10
 65 2.40
 272.6 76.70

289.54 289.54
 1.92 1.88
 287.6 287.6

289.54 289.54 289.54 289.54
 8.74 4 3.6 2.47
 90.50 284.94 286.04 287.1

11.6
 2.4

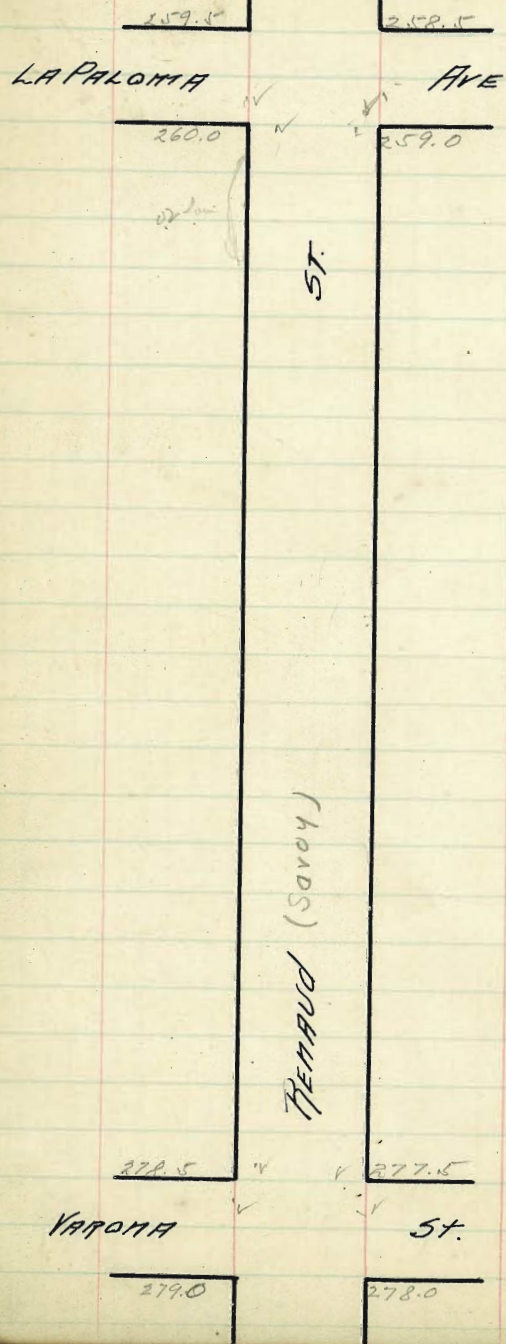
Grade 1.3

287.7 287.2 286.4 285.4 285.0
 3.1 3.7 4.1 5.9 7.6

Grade with fall

N. Line of La Poloma STREET.

N Line	262.50	268.00
N 1/2		
N 1/4		
Center		
S 1/4		
S 1/2		
600 SL	268.00	268.50
550		
500		
450		
400		
350		
300		
250		
200	285.0	285.00
150	286.40	286.40
100	287.20	287.20
50	287.20	287.20
N.L.	288.00	288.00
N 1/2		
N 1/4		
Center		
S 1/4		
S 1/2		
S Line	288.50	288.50



Rather bars in bit sub. all OK except 50'
 Grade will fall
 emb + walls

N.L. of La Polera St.

NL	259.50	258.50
----	--------	--------

Ncb

N/4

Center

5/4

5cb

600SL	260.00	259.00
-------	--------	--------

550

500

450

400

350

300

250

200

150

100

50

NL	278.50	277.50
----	--------	--------

Ncb

N/4

Center

5/4

5cb

SLime	279.00	278.00
-------	--------	--------

South Line of Varona

235.0	234.5
LA PALMOM	Ave
235.0	234.5
235.0	235.0
236.50	235.0
236.5	
238.5	240.1
239.64	
240.5	239.5
243.52	
246.5	
250.0	249.5
VARONA	St
250.5	250.0

AVE.

POINT LOMA

261.53 from landmarks + Pt Loma
 1.12
 26.52
 4.34
 257.18
 4.21
 252.97
 6.84
 259.81
 256.39
 2.48
 249.91 Bunk
 1.15
 250.06
 9.46
 240.60
 0.34
 240.94

250.05 250.05
 2.25 0.57
 246.80 245.50

240.60 240.60 240.60 240.60 240.60
 298.04 236.32 247.54 247.54

Bunker's Bill - 611
 664 walk - mill pass

N Line	23500	234.50
NC6		
N ^{1/4}		
Center		
S ^{1/4}		
SC6		
600 Sp	23500	234.50
550	23530	235.00
500		
450		
400		
350		
300	24050	239.50
250		
200		
150		
100		
50		
NL	25000	249.50
NC6		
N ^{1/4}		
Center		
S ^{1/4}		
SC6		
SL	250.50	250.0

S LINE of VAPOR HST

234.5
Point Loma Ave.

235.0
235.2

Ave

258.5
Renaud St.

259.5
260.0
260.9

267.2
268.1
268.6
268.8
268.8
268.5
268.0

LA PALOMA

MOANA DRIVE.

267.5
268.0

240.24 7.8
255.69
255.97
258.16
259.66

271.04
271.04
268.54
269.47

Grade is very bad

269.30
4.1

273.143
12.44
269.97
1.27
268.67

269.159
0.18

Grade will fall

walks next passing

It is low at 1 Return

Elmer	23480	23450
-------	-------	-------

ECB		
-----	--	--

E/4		
-----	--	--

Center		
--------	--	--

W/4		
-----	--	--

WCB		
-----	--	--

W/1	2350	2350
-----	------	------

120	2672	
-----	------	--

100	26820	2685
-----	-------	------

80	26860	26910
----	-------	-------

60	26880	2693
----	-------	------

40	26880	26930
----	-------	-------

20	26850	26900
----	-------	-------

N/1	26800	26850
-----	-------	-------

N/CB		
------	--	--

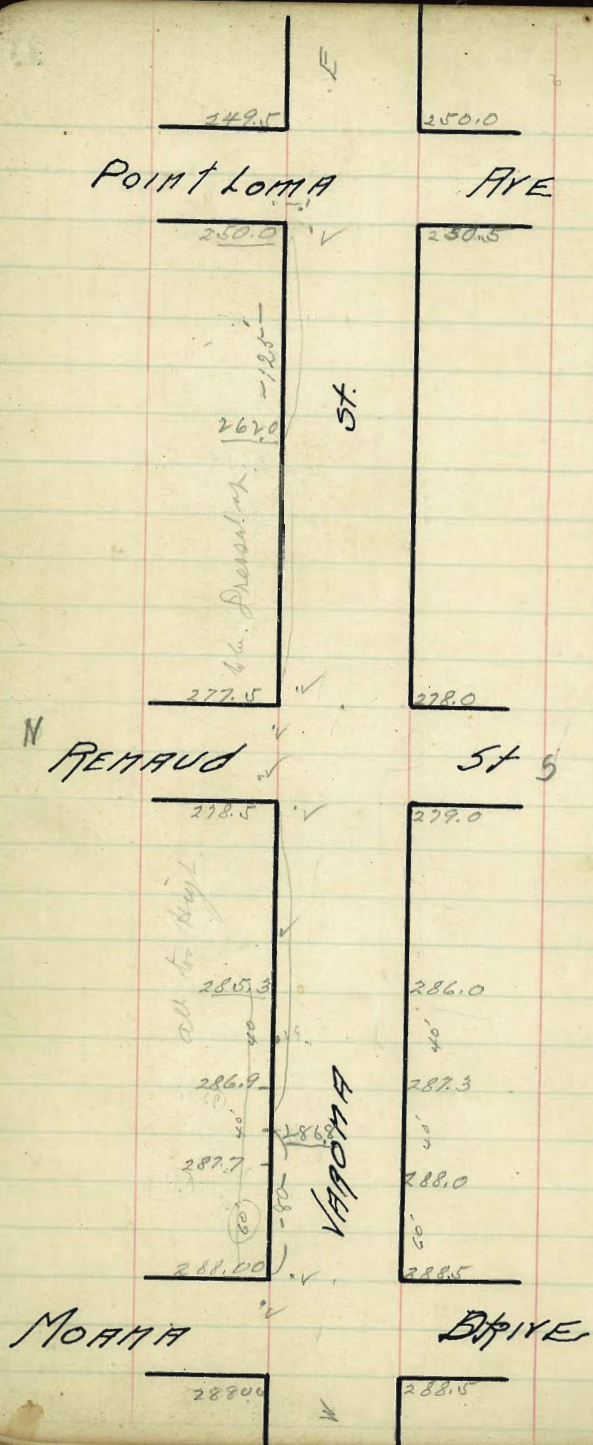
N/4		
-----	--	--

Center		
--------	--	--

W/4		
-----	--	--

WCB	2675	2680
-----	------	------

Westline		
----------	--	--



287.0 ✓ TP

$$\begin{array}{r} 287.0 \\ - 11.85 \\ \hline 275.15 \\ - 11.50 \\ \hline 263.65 \end{array}$$

$$\begin{array}{r} 247.91 \text{ TP 66} \\ - 13.01 \\ \hline 234.90 \\ - 9.91 \\ \hline 224.99 \end{array}$$

$$\begin{array}{r} 262.01 \\ - 13.85 \\ \hline 248.16 \\ - 21.45 \\ \hline 226.71 \\ - 8.49 \\ \hline 218.22 \\ - 7.42 \\ \hline 210.80 \end{array}$$

$$\begin{array}{r} 291.77 \\ - 3.71 \\ \hline 288.06 \text{ TP 66} \\ - 2.90 \\ \hline 285.16 \end{array}$$

$$\begin{array}{r} 292.17 \\ - 3.01 \\ \hline 289.16 \end{array}$$

$$\begin{array}{r} 282.14 \\ - 5.16 \\ \hline 276.98 \end{array}$$

$$\begin{array}{r} 280.00 \\ - 12.00 \\ \hline 268.00 \\ - 6.00 \\ \hline 262.00 \end{array}$$

$$\begin{array}{r} 290.17 \\ - 3.46 \\ \hline 286.71 \end{array}$$

$$\begin{array}{r} 288.14 \\ - 5.16 \\ \hline 282.98 \end{array}$$

$$\begin{array}{r} 286.14 \\ - 5.16 \\ \hline 280.98 \end{array}$$

$$\begin{array}{r} 290.17 \\ - 4.85 \\ \hline 285.32 \\ - 4.85 \\ \hline 280.47 \end{array}$$

$$\begin{array}{r} 290.17 \\ - 4.85 \\ \hline 285.32 \\ - 4.85 \\ \hline 280.47 \end{array}$$

Bank off line + Grade
Bank is out down

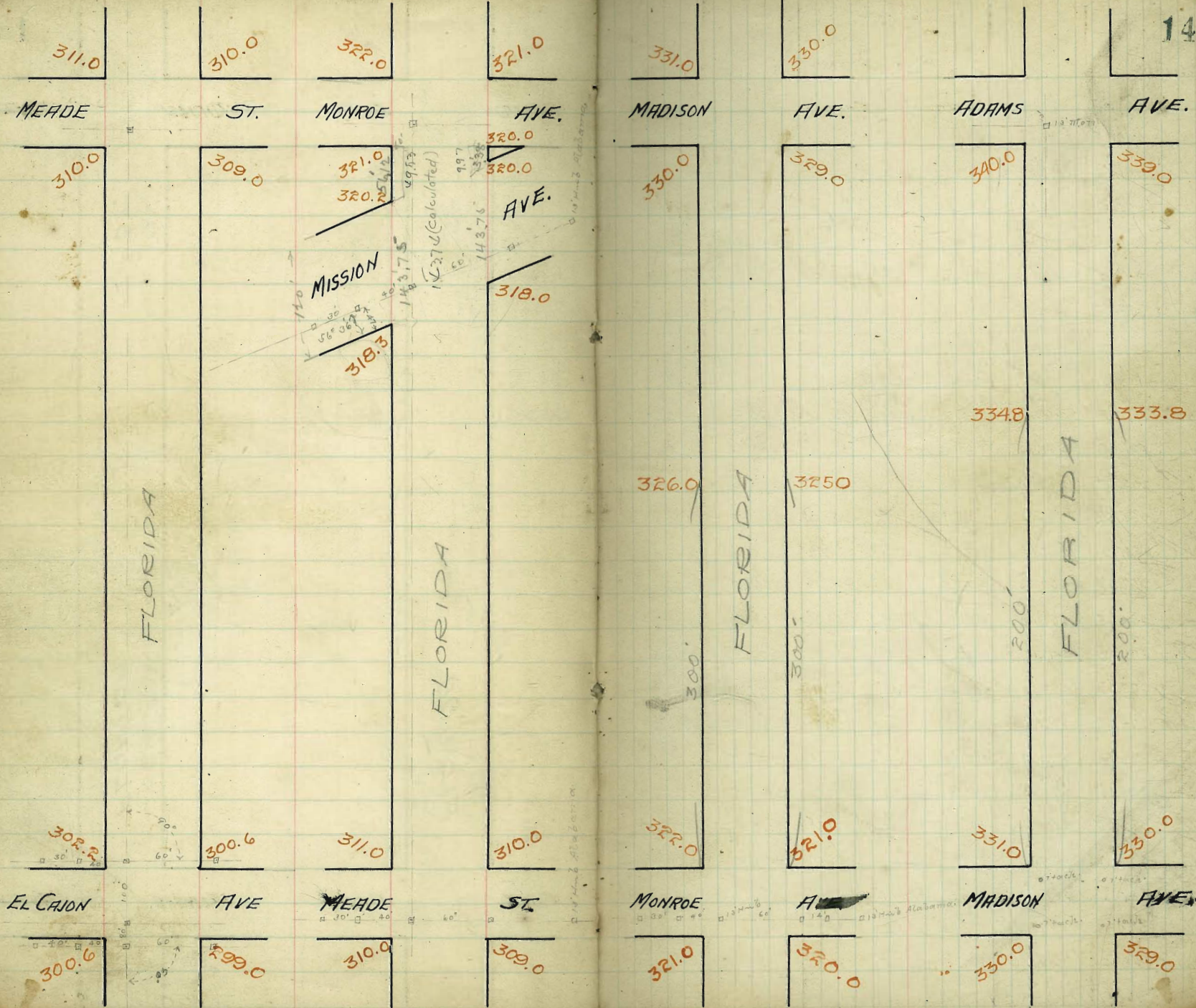
Side Walk is in Bad shape

Bank with loss

E Line	249.50	250.00
E 1/4		
Center		
W 1/4		
W 1/2		
270 WL	250.00	250.50
250		
200		
150		
100		
50		
E L.	277.50	278.00
E 1/4		
Center		
W 1/4		
W 1/2		
270 WL	278.50	279.00
250		
200		
140	285.30	286.00
100	286.90	287.30
60	287.70	288.00
E L.	288.00	288.50
E 1/4		
Center		
W 1/4		
W 1/2		
West Line	288.00	288.50
West Street MOANA AVE		

263.0	263.0	278.0	277.0
LINCOLN AVE.	POLK AVE.	FLORIDA ST.	FLORIDA ST.
262.0	262.0	271.0	276.0
260.4	260.4	266.4	266.2
260.3	260.3		
260.4	260.4		
260.8	260.8		
261.6	261.6		
263.2	263.0		
265.68	265.2		
288.0	285.0	263.0	263.0
UNIVERSITY AVE.	LINCOLN AVE.	FLORIDA ST.	FLORIDA ST.
	262.0	262.0	262.0

290.5	289.5	302.2	300.6
HOWARD AVE.	ELCAJON AVE.	FLORIDA ST.	FLORIDA ST.
289.5	288.5	299.0	299.0
285.67	284.67	297.69	296.26
278.0	277.0	290.5	289.5
POLK AVE.	HOWARD AVE.	FLORIDA ST.	FLORIDA ST.
277.0	276.0	288.5	288.5



Florida

WEST

EAST

No. 1ms. 263.25 263.20 262.6 263.0 263.6 263.0 263.25

No. Corb. 263.0 263.0 262.43 262.83 262.43 263.0 263.0

No. 4 262.4 261.75 262.26 262.66 262.26 261.75 262.4

L I N C O L N

Cor. 262.50 261.5 261.1 262.5 262.1 261.5 262.5

A V E.

So. 4 261.85 261.25 261.43 262.33 261.43 261.25 261.85

So. Corb. 262.0 262.0 261.77 262.17 261.77 262.0 262.0

S. L. LINCOLN 262.25 262.0 261.6 262.0 261.6 262.0 262.25

264.25 264.25 264.25 264.25 264.25 264.25
 264.25 264.25 264.25 264.25 264.25 264.25
 264.25 264.25 264.25 264.25 264.25 264.25

406-01

N of Lincoln W POLK AVE E

Table with columns for station numbers (600, 575, 550, 525, 500, 475, 450, 425, 400, 375, 350, 325, 300, 275, 250, 225, 200, 175, 150, 125, 100, 75, 50, 25) and corresponding measurements for 'W' and 'E' directions.

LINCOLN AVE

W E
270.89 270.89 270.89 270.89 270.89 270.89 270.89 270.89 270.89 270.89

Table with columns for station numbers (270.89, 270.89, 270.89, 270.89, 270.89, 270.89, 270.89, 270.89, 270.89, 270.89) and measurements.

9 stakes Sept 1914
Set 270.60 Sp 1/2 Pole J.W. Cor Polk & Florida

Table with columns for station numbers (270.89, 270.89, 270.89, 270.89, 270.89, 270.89, 270.89, 270.89, 270.89, 270.89) and measurements.

Table with columns for station numbers (270.89, 270.89, 270.89, 270.89, 270.89, 270.89, 270.89, 270.89, 270.89, 270.89) and measurements.

Table with columns for station numbers (270.89, 270.89, 270.89, 270.89, 270.89, 270.89, 270.89, 270.89, 270.89, 270.89) and measurements.

Table with columns for station numbers (270.89, 270.89, 270.89, 270.89, 270.89, 270.89, 270.89, 270.89, 270.89, 270.89) and measurements.

Table with columns for station numbers (270.89, 270.89, 270.89, 270.89, 270.89, 270.89, 270.89, 270.89, 270.89, 270.89) and measurements.

Table with columns for station numbers (270.89, 270.89, 270.89, 270.89, 270.89, 270.89, 270.89, 270.89, 270.89, 270.89) and measurements.

Table with columns for station numbers (270.89, 270.89, 270.89, 270.89, 270.89, 270.89, 270.89, 270.89, 270.89, 270.89) and measurements.

Table with columns for station numbers (270.89, 270.89, 270.89, 270.89, 270.89, 270.89, 270.89, 270.89, 270.89, 270.89) and measurements.

Checked in grade April 24th 1915 & found it OK for a distance of 200 ft. on W side of Polk Ave. & on E side of Lincoln Ave. except for a small hole in the sidewalk on Lincoln Ave. (Dannan, Miller, Shaw)

Dannan Miller Shaw

Dannan Miller Shaw

Dannan Miller Shaw

Dannan Miller Shaw

Dannan Miller Shaw

2811	2811	2811	2811	2811
2800	2790	2780	2770	2760
2811	2811	2811	2811	2811

Checked subgrade on this Intersection
found +0.7 for quantities, but rough.
Jennan McVet. Shad. April 21st 1915

N.L. 278.25 278.0 277.4 277.50 276.85 277.0 277.85

N.C. 278.0 278.0 277.23 277.33 276.88 277.0 277.0

N/4 277.4 276.75 277.07 277.16 276.52 275.75 276.4

POLK

ctr 277.5 276.5 276.90 277.0 276.35 275.5 276.5

AVE.

S/4 276.85 276.25 276.73 276.83 276.18 275.25 275.85

S.C. 277.0 277.0 276.57 276.67 276.05 276.0 276.0

S.L. 277.25 277.0 276.4 276.50 275.85 276.0 276.25

+10 -1.8

JL HOWARD
600 ft. of POLK

HOWARD AVE.

600'	289.75	289.5	288.9	289.0	288.35	288.5	289.75	+41	0.0
575'	289.97	289.02	288.42	288.52	287.37	288.02	288.27	+62	-06
550'	288.79	288.54	287.94	289.04	287.39	287.54	287.79	+60	+2.1
525'	288.31	288.06	287.46	287.56	286.91	287.06	287.31	+61	+2.3
500'	287.83	287.58	286.98	287.08	286.43	286.58	286.83	+76	+5.5
475'	287.35	287.10	286.50	286.60	285.95	286.10	286.35	+78	+5.7
450'	286.87	286.62	286.02	286.12	285.47	285.62	285.87	+67	+1.5
425'	286.4	286.15	285.55	285.65	285.0	285.15	285.4	+66	+6.8
400'	285.92	285.67	285.07	285.17	284.52	284.67	284.92	+50	+5.3
375'	285.44	285.19	284.59	284.69	284.04	284.19	284.44	+52	+5.5
350'	284.96	284.71	284.11	284.21	283.56	283.71	283.96	+06	+0.2
325'	284.48	284.23	283.63	283.73	283.08	283.23	283.48	+38	+2.6
300'	284.00	283.75	283.15	283.25	282.6	282.75	283.00	+25	+2.3
275'	283.52	283.27	282.67	282.77	282.12	282.27	282.52	+25	+2.3
250'	283.04	282.79	282.19	282.29	281.64	281.79	282.04	+12	+0.3
225'	282.56	282.31	281.71	281.81	281.16	281.31	281.56	+13	+0.5
200'	282.08	281.83	281.23	281.33	280.68	280.83	281.08	+06	-1.1
175'	281.60	281.35	280.75	280.85	280.2	280.35	280.6	+27	-2.0
150'	281.12	280.87	280.27	280.37	279.72	279.87	280.12	+07	-2.0
125'	280.65	280.4	279.8	279.9	279.25	279.4	279.65	+09	-3.2
100'	280.17	279.92	279.32	279.42	278.77	278.92	279.17	+11	-2.8
75'	279.69	279.44	278.84	278.94	278.29	278.44	278.69	+14	-2.9
50'	279.21	278.96	278.36	278.46	277.81	277.96	278.21	+20	-5.1
25'	278.73	278.48	277.88	277.98	277.33	277.48	277.73	+05	-1.6
0.0	278.25	278.0	277.4	277.5	276.85	277.0	277.25	+09	-4.8

POLK AVE.

287.01	287.01	287.01	287.01	287.01	287.01	287.01	287.01	287.01	287.01
78.05	77.25	78.21	79.21	80.17	79.17	80.12	81.12	82.08	83.08
6.05	5.24	6.10	6.10	7.14	8.19	9.19	10.19	11.19	12.19
8.0	10.7	11.7	12.7	13.7	14.7	15.7	16.7	17.7	18.7
+0.8	-2.8	-2.8	+1.6	+0.9	-3.2	-2.0	+2.7	7.05	-1.9

287.31	287.31	287.31	287.31	287.31	287.31	287.31	287.31	287.31	287.31
81.04	82.04	83.01	84.01	85.01	86.01	87.01	88.01	89.01	90.01
8.0	9.0	10.0	11.0	12.0	13.0	14.0	15.0	16.0	17.0
10.0	11.0	12.0	13.0	14.0	15.0	16.0	17.0	18.0	19.0
+0.3	+1.2	+2.0	+2.5	+3.7	+3.6	+5.0	+5.3	+6.7	+6.4

Set 10 stakes Sep 15 1914

Set 10 stakes Sep 15 1914

Set 10 stakes Sep 15 1914

Set 10 stakes Sep 15 1914

Set 10 stakes Sep 15 1914

Set 10 stakes Sep 15 1914

Set 10 stakes Sep 15 1914

Set 10 stakes Sep 15 1914

Set 10 stakes Sep 15 1914

Set 10 stakes Sep 15 1914

Set 10 stakes Sep 15 1914

Set 10 stakes Sep 15 1914

Set 10 stakes Sep 15 1914

Set 10 stakes Sep 15 1914

Set 10 stakes Sep 15 1914

Set 10 stakes Sep 15 1914

Set 10 stakes Sep 15 1914

Set 10 stakes Sep 15 1914

Set 10 stakes Sep 15 1914

Set 10 stakes Sep 15 1914

Set 10 stakes Sep 15 1914

Set 10 stakes Sep 15 1914

Set 10 stakes Sep 15 1914

Set 10 stakes Sep 15 1914

Set 10 stakes Sep 15 1914

Set 10 stakes Sep 15 1914

Checked subgrade on this Intersection April 22nd 1915 - & found it O.K. for quantities
but West property line needs cutting back & subgrade is rough.

Common
1/4" tier
3/8" tier

N.L. 290.75 290.5 289.9 290.0 289.35 289.5 289.75

AC. 290.5 290.5 289.73 289.83 289.17 289.5 289.5

W/4 289.9 289.85 289.56 289.66 289.0 289.25 289.9

HOWARD

City 290.0 289.0 289.4 289.5 288.84 289.0 289.00 +78+13

AVE.

S/4 289.85 288.75 289.23 289.34 288.68 289.75 288.35

S.C. 289.5 289.5 289.07 289.17 288.52 288.5 288.5

S.L. 289.75 289.5 288.9 289.0 288.35 288.5 288.75

336 ft of HOWARD EL CAJON AVE.

S.L.H.L. 300.85	300.6	300.0	299.8	299.0	299.0	299.25	-28-28
325	299.54	299.17	299.67	299.18	298.71	298.69	298.91
300	299.77	299.52	298.92	298.75	297.99	297.98	298.23
275	299.02	298.77	298.17	298.02	297.27	297.28	297.53
250	298.26	298.01	297.41	297.29	296.55	296.57	296.82
240	297.94	297.67	297.09	296.97	296.21	296.26	296.51
225	297.51	297.26	296.66	296.56	295.83	295.86	296.11
200	296.76	296.51	295.91	295.83	295.11	295.15	295.4
175	296.01	295.76	295.16	295.10	294.39	294.45	294.7
150	295.26	295.01	294.41	294.37	293.67	293.74	293.99
125	294.51	294.26	293.66	293.65	292.95	293.03	293.28
100	293.76	293.51	292.91	292.92	292.23	292.33	292.58
75	293.00	292.75	292.15	292.19	291.52	291.62	291.87
50	292.25	292.00	291.4	291.46	290.8	290.91	291.16
25	291.5	291.25	290.65	290.73	290.08	290.21	290.46
00	290.75	290.5	289.9	290.0	289.35	289.5	289.75

HOWARD AVE.

301.23	301.23	301.23	301.23	301.23	301.23	301.23	301.23	301.23	301.23
89.75	70.75	92.25	71.16	92.48	70.76	93.99	71.9	93.99	71.9
11.9	10.8	8.95	10.07	8.65	7.47	6.97	7.24	6.97	7.24
11.8	8.8	6.9	7.8	6.1	6.8	6.3	6.7	6.3	6.7
-0.3	+2.4	+2.2	+0.3	-0.4	+1.0	-0.3	-0.6	-0.3	-0.6

Set stakes Sept 1912 - Norman Miller Shand.

Set stakes in this E. on's offset April 9th 1915 - Norman Miller Shand.

Cur's checked O.K. for grade & line; April 21st 1915 - Norman Miller Shand.

Subgrad. O.K. for quantities but rough.

W

MEADE ST.

600	310.25	310.0	309.4	309.5	308.85	309.0	309.25	-0	-2.0
575	309.92	309.67	309.07	309.16	308.51	308.66	308.4		
550	309.6	309.35	308.75	308.52	308.16	308.90	308.55	-0.7	-2.5
525	309.27	309.02	308.42	308.49	307.82	307.95	308.20		
500	308.95	308.7	308.1	308.15	307.47	307.60	307.85	-1.3	-5.0
475	308.62	308.37	307.77	307.81	307.13	307.35	307.5		
450	308.3	308.05	307.45	307.47	306.79	306.90	307.15	-0.2	-5.5
425	307.97	307.72	307.12	307.14	306.44	306.55	306.8		
400	307.65	307.4	306.8	306.8	306.1	306.20	306.45	-1.9	-4.5
375	307.32	307.07	306.47	306.46	305.76	305.85	306.10		
350	307.0	306.75	306.15	306.12	305.41	305.50	305.75	-2.6	-4.2
325	306.67	306.42	305.82	305.79	305.07	305.15	305.4		
300	306.35	306.10	305.5	305.45	304.72	304.80	305.05	+0.5	-4.2
275	306.02	305.77	305.17	305.11	304.38	304.45	304.7		
250	305.7	305.45	304.85	304.77	304.04	304.10	304.35	+0.5	-1.4
225	305.37	305.12	304.52	304.44	303.69	303.75	304.00		
200	305.05	304.8	304.2	304.10	303.35	303.4	303.65	+3.0	+1.4
175	304.72	304.47	303.87	303.76	303.01	303.05	303.3		
150	304.4	304.15	303.55	303.42	302.66	302.70	302.95	+4.1	-1.3
125	304.07	303.82	303.22	303.09	302.32	302.35	302.6		
100	303.75	303.5	302.9	302.75	301.97	302.0	302.25	+4.0	-0.6
75	303.42	303.17	302.57	302.41	301.63	301.65	301.9		
50	303.1	302.85	302.25	302.07	301.29	301.30	301.55	+4.6	-0.3
25	302.77	302.52	301.92	301.74	300.94	300.95	301.20		
0	302.45	302.2	301.6	301.4	300.6	300.6	300.85	+3.6	+0.3

EL. CANYON AVE.

B.M. 302.87 S.W. cor El Canyon & Flor. Ave.

" 302.20

9.19 N.I.
311.39

300.85

10.54

10.54

6.44

-8.6

307.00

4.39

6.59

-2.3

301.55	302.95	304.35	305.75	307.15
9.84	8.44	7.04	5.64	4.24
10.14	9.84	8.44	7.04	5.64
-0.3	7.4	1.4	4.1	3.54
8.94	302.25	7.74	6.34	4.94
7.94	9.14	7.74	6.34	4.94
0.2	9.64	1.4	4.2	3.54
303.25	-0.5	304.4	305.6	306.8
303.1	303.25	7.04	5.64	4.24
3.29	4.94	3.84	2.44	1.04
3.09	+3.3	+3.8	+4.6	+0.5
3.09	308.30	2.44	1.79	1.14
3.29	308.25	3.84	2.44	1.64
-0.2	-1.7	-0.2	-0.7	-0.5

Est. 300.65 Flving Cor S.W. Cor El Canyon & Flor. Ave.

308.87 HI	308.87	308.87	308.87	308.87	308.87	308.87	308.87	308.87	308.87
308.10	308.10	308.10	308.10	308.10	308.10	308.10	308.10	308.10	308.10
307.95	307.95	307.95	307.95	307.95	307.95	307.95	307.95	307.95	307.95
307.84	307.84	307.84	307.84	307.84	307.84	307.84	307.84	307.84	307.84
317.84	317.84	317.84	317.84	317.84	317.84	317.84	317.84	317.84	317.84

Furnish Curbs on S. offset

306.66
11.12
306.44
306.84
307.24
307.64
308.04
308.44
308.84
309.24
309.64
310.04
310.44
310.84
311.24
311.64
312.04
312.44
312.84
313.24
313.64
314.04
314.44
314.84
315.24
315.64
316.04
316.44
316.84
317.24
317.64
318.04
318.44
318.84
319.24
319.64
320.04
320.44
320.84
321.24
321.64
322.04
322.44
322.84
323.24
323.64
324.04
324.44
324.84
325.24
325.64
326.04
326.44
326.84
327.24
327.64
328.04
328.44
328.84
329.24
329.64
330.04
330.44
330.84
331.24
331.64
332.04
332.44
332.84
333.24
333.64
334.04
334.44
334.84
335.24
335.64
336.04
336.44
336.84
337.24
337.64
338.04
338.44
338.84
339.24
339.64
340.04
340.44
340.84
341.24
341.64
342.04
342.44
342.84
343.24
343.64
344.04
344.44
344.84
345.24
345.64
346.04
346.44
346.84
347.24
347.64
348.04
348.44
348.84
349.24
349.64
350.04
350.44
350.84
351.24
351.64
352.04
352.44
352.84
353.24
353.64
354.04
354.44
354.84
355.24
355.64
356.04
356.44
356.84
357.24
357.64
358.04
358.44
358.84
359.24
359.64
360.04
360.44
360.84
361.24
361.64
362.04
362.44
362.84
363.24
363.64
364.04
364.44
364.84
365.24
365.64
366.04
366.44
366.84
367.24
367.64
368.04
368.44
368.84
369.24
369.64
370.04
370.44
370.84
371.24
371.64
372.04
372.44
372.84
373.24
373.64
374.04
374.44
374.84
375.24
375.64
376.04
376.44
376.84
377.24
377.64
378.04
378.44
378.84
379.24
379.64
380.04
380.44
380.84
381.24
381.64
382.04
382.44
382.84
383.24
383.64
384.04
384.44
384.84
385.24
385.64
386.04
386.44
386.84
387.24
387.64
388.04
388.44
388.84
389.24
389.64
390.04
390.44
390.84
391.24
391.64
392.04
392.44
392.84
393.24
393.64
394.04
394.44
394.84
395.24
395.64
396.04
396.44
396.84
397.24
397.64
398.04
398.44
398.84
399.24
399.64
400.04

Shannon
Heller
Share

Checked subgrade & found it O.K. April 11th 1915

Corbs " " " " " "

Shannon
Heller
Share

FLORIDA

Ingrade on this intersection checked O.K. April 14th 1918
Jerrison
Miller
Hard

N.L. 311.25 311.0 310.4 310.5 309.85 310.0 310.25

N.C. 311.0 311.0 310.23 310.33 309.68 310.0 310.0

N.W. 310.4 309.75 310.06 310.16 309.52 308.75 309.4

MEADE

Cr. 310.5 309.5 309.9 310.0 309.30 308.5 309.5 -02-18

ST.

S.W. 309.85 309.25 309.74 309.84 309.20 308.25 308.85

S.C. 310.0 310.0 309.57 309.67 309.02 309.0 309.0

S.L. 310.25 310.0 309.4 309.5 308.85 309.0 309.25

Florida

B.M. 320.35 SE. of Live Oak pole

311.39	+1.15	0.43	312.15	313.94	315.74	317.54	312.04
310.25	-0.20	10.76	311.94	313.74	315.54	317.34	11.57
1.14	2.44	12.61	11.46	9.67	7.87	6.07	14.17
3.54	2.22	323.67	10.86	7.27	6.17	5.17	-2.6
2.0	311.25	12.36	1313.66	314.84	316.64	318.53	
	11.36	10.82	9.77	7.0	5.06		
	4.25	3.66	4.87	4.3	1.16		
312.94	313.84	314.78	315.63	316.53	317.42	318.26	
10.67	7.77	8.86	8.00	7.02	6.19	5.36	
13.57	12.17	11.08	10.7	9.89	9.04	8.36	
2.4	2.4	2.2	3.7	1.9	1.4	1.0	

271.0725 - 70 West the hub for 10' the 3. Meade & T. Loriden

-1.0	310.47	310.97	312.07	313.07	313.87	314.67	315.26	315.86	316.86
310.47 HI	11.00	10.70	11.20	10.27	11.27	12.27	13.17	14.00	15.00
3.28	8.47	8.67	7.67	6.78	5.88	4.98	4.08	3.48	3.88
317.19	317.19	317.19	317.19	317.19	317.19	317.19	317.19	317.19	317.19

Finish stakes and offset the 2.910

Demary Miller Stand

271.3174

271.3174 HI
 + 0.22
 318.39 HI

Demary Miller Stand

271.3174 checked O.K. April 14/1915

Curves " " " " "

Demary Miller Stand

446.2				MISSION				
445			318.15	317.67	318.0		318.25	
			317.7	318.13	317.53	317.63	317.87	
406.4	318.55	318.3	317.47	317.79	317.19	317.28	317.53	
400 v	318.44	318.13	317.36	317.68	317.08	317.17	317.42	
375	317.44	317.4	316.92	317.23	316.62	316.72	316.97	
350 v	317.54	317.29	316.49	316.78	316.17	316.28	316.53	
325	317.09	316.54	316.05	316.33	315.72	315.83	316.08	
300	316.64	316.39	315.62	315.98	315.27	315.38	315.63	
275	316.19	315.94	315.18	315.43	314.82	314.93	315.18	
250	315.74	315.49	314.75	314.98	314.37	314.48	314.73	
225	315.29	315.04	314.31	314.53	313.91	314.03	314.28	
200 v	314.84	314.59	313.88	314.09	313.46	313.59	313.84	
175	314.39	314.14	313.44	313.64	313.04	313.14	313.39	
150	313.94	313.69	313.00	313.19	312.56	312.69	312.94	
125	313.5	313.25	312.57	312.75	312.11	312.24	312.49	
100	313.05	312.80	312.14	312.3	311.66	311.79	312.04	
75	312.6	312.35	311.70	311.85	311.20	311.35	311.6	
50	312.15	311.90	311.27	311.4	310.75	310.9	311.15	
25	311.7	311.45	310.83	310.95	310.30	310.45	310.7	
00	311.25	311.0	310.4	310.5	309.85	310.0	310.25	

MEADE ST.

Florida

4467
396
333.16 HI 320.45 321.25
12.71 11.91
320.25 9.91 9.51
133 12.91
-0.4 13.51 12.8
-0.6

324.76 Mon. W. Cr Florida 2 Mission Drive
+1.92
326.68 HI 324.60 324.40 324.40 324.40
18.32 18.00 20.00 21.00
8.30 9.60 6.40 5.60

MONROE AVE

Sl. Mon.	321.25	321.0	320.4	320.5	319.85	320.0	320.25
139.6	321.09	320.84	320.24	320.42	319.81	320.0	320.25
+19.8	320.77	320.52		320.1	319.65	320.0	
N.L.	320.45	320.2		319.6	319.32	320.0	
NC	320.2	320.2		319.28	318.58	318.5	319.4
N/W	319.6	318.72		318.97	319.45	318.0	319.0
Cr	319.25	318.25		318.65	319.12	318.66	318.1
5/4	318.37	317.77		318.33	318.81	318.33	317.5
5/8	318.3	318.3		318.01	318.48	318.0	318.0
Sl.	318.55	318.3		317.7	318.15	317.67	318.0

MISSION AVE

Finish stakes on 3' offset Nov 4th 1914 Hammann-Walker Share

327.27	327.23	327.23	327.23	327.23	327.23	327.23	327.23	327.23	327.23
12.71	12.71	12.71	12.71	12.71	12.71	12.71	12.71	12.71	12.71
327.23 HI	327.23	327.23	327.23	327.23	327.23	327.23	327.23	327.23	327.23

320 + 0.4
Finish stakes on 3' offset Mar 6th 1915 Hammann-Walker Share

327.27	327.23	327.23	327.23	327.23	327.23	327.23	327.23	327.23	327.23
12.71	12.71	12.71	12.71	12.71	12.71	12.71	12.71	12.71	12.71
327.23 HI	327.23	327.23	327.23	327.23	327.23	327.23	327.23	327.23	327.23

324.76 Mon. W. Cr Florida 2 Mission Drive
+1.92
326.68 HI 324.60 324.40 324.40 324.40
18.32 18.00 20.00 21.00
8.30 9.60 6.40 5.60
Finish stakes on 3' offset April 2nd 1915 Hammann-Walker Share

49.2 + 1.6
Curb checked A/E for grade & line April 16th 1915 Hammann-Walker Share

401 - 1.0

Florida

Grade of Intersection Checked Oct. April 16th 1915
Herman Miller
Shaw

NL 322.25 322.0 321.4 321.5 320.85 321.0 321.25 +2.0 -1.0

N.C. 322.0 322.0 321.28 321.33 320.67 321.0 321.0

N.H. 321.4 320.75 321.06 321.16 320.50 319.75 320.4

MONROE

Str 321.5 320.5 320.90 321.0 320.34 319.5 320.5 +1.2 +0.2

AVE.

S.H. 320.85 320.25 320.74 320.84 320.18 319.25 319.85

S.C. 321.0 321.0 320.57 320.67 320.02 320.0 320.0

S.L. 321.25 321.0 320.4 320.5 319.85 320.0 320.25 +2.7 -0.6

Florida

N.L.	331.25	331.0	330.4	330.5	329.85	330.0	330.25
------	--------	-------	-------	-------	--------	-------	--------

N.C.	331.0	331.0	330.83	330.33	329.68	330.0	330.0
------	-------	-------	--------	--------	--------	-------	-------

N.W.	330.4	329.75	330.06	330.16	329.51	328.75	329.4
------	-------	--------	--------	--------	--------	--------	-------

MADISON

Ct.	330.5	329.5	329.9	330.0	329.35	328.5	329.5
-----	-------	-------	-------	-------	--------	-------	-------

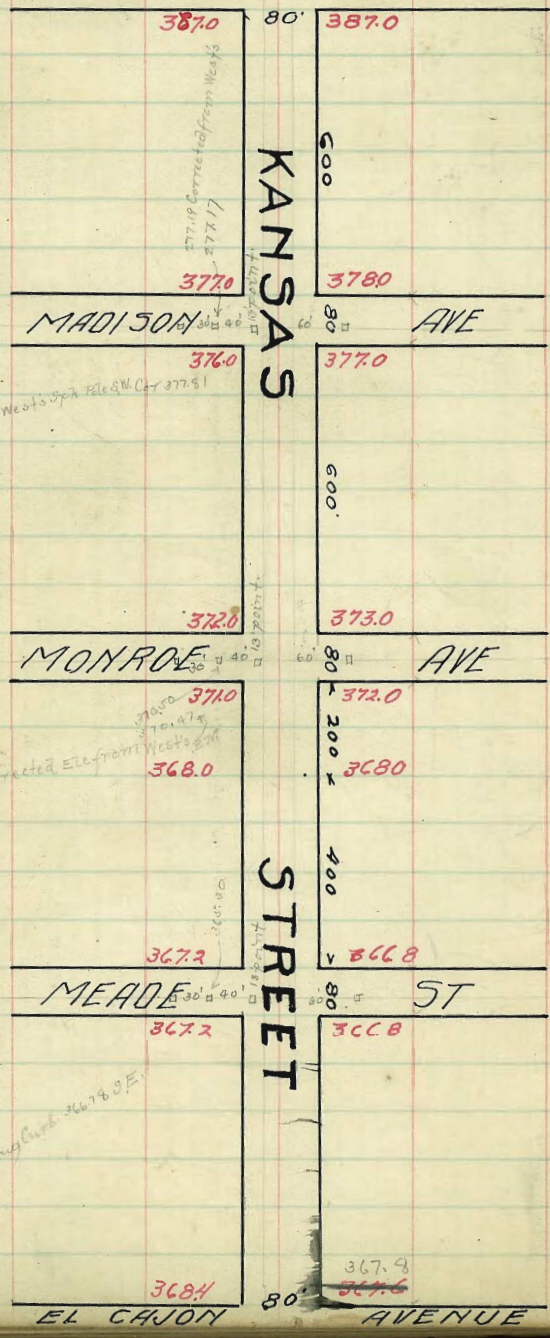
AVE.

S.W.	329.85	329.25	329.74	329.84	329.18	328.25	328.85
------	--------	--------	--------	--------	--------	--------	--------

S.E.	330.0	330.0	329.57	329.67	329.02	329.0	329.0
------	-------	-------	--------	--------	--------	-------	-------

S.L.	330.25	330.0	329.4	329.5	328.85	329.0	329.25
------	--------	-------	-------	-------	--------	-------	--------

ADAMS AVE. ^{277.18 corrected from West's}



$$\begin{array}{r} 309.67 \\ - 4.37 \\ \hline 314.04 \end{array}$$

$$\begin{array}{r} 329.67 \\ - 6.80 \\ \hline 322.87 \end{array}$$

$$\begin{array}{r} 372.03 \\ - 83.40 \\ \hline 288.63 \end{array}$$

$$\begin{array}{r} 372.03 \\ - 67.80 \\ \hline 304.23 \end{array}$$

KANSAS STREET

KANSAS STREET GRADES
EL CAJON AVE TO MEADE ST.
WEST MEADE STREET EAST

24 1/2 Sp. 1/2 NW Cor El Cajon & Kansas.
365.3077

6	367.45	367.2	366.4 ^{1W}	367.0 ^{1W}	366.4	366.8	367.05	-2.2	-2.2
75	367.5	367.25	366.46 ^{1W}	367.05 ^{1W}	366.45	366.84	367.09	-2.3	-1.9
50	367.55	367.30	366.52 ^{1W}	367.09 ^{1W}	366.50	366.88	367.13	-1.3	-1.9
25	367.6	367.35	366.57 ^{1W}	367.14 ^{1W}	366.54	366.93	367.18	-2.4	-2.1
5	367.65	367.40	366.63 ^{1W}	367.18 ^{1W}	366.59	366.97	367.22	-1.9	-2.1
75	367.7	367.45	366.69 ^{1W}	367.23 ^{1W}	366.64	367.01	367.26	-2.5	-2.3
50	367.75	367.50	366.75 ^{1W}	367.27 ^{1W}	366.69	367.05	367.30	-2.0	-2.0
25	367.8	367.55	366.81 ^{1W}	367.32 ^{1W}	366.74	367.09	367.34	-1.9	-2.1
4	367.85	367.60	366.87 ^{1W}	367.37 ^{1W}	366.78	367.13	367.38	-2.5	-1.6
75	367.9	367.65	366.92 ^{1W}	367.41 ^{1W}	366.83	367.18	367.43	-2.4	-2.4
50	367.95	367.70	366.98 ^{1W}	367.46 ^{1W}	366.88	367.22	367.47	-2.3	-2.4
25	368.0	367.75	367.04 ^{1W}	367.5 ^{1W}	366.93	367.26	367.51	-2.4	-2.4
5	368.05	367.80	367.11 ^{1W}	367.55 ^{1W}	366.98	367.30	367.55	-2.1	-2.1
75	368.1	367.85	367.16 ^{1W}	367.60 ^{1W}	367.02	367.34	367.59	-2.1	-2.2
50	368.15	367.90	367.21 ^{1W}	367.64 ^{1W}	367.07	367.38	367.63	-2.0	-2.3
25	368.2	367.95	367.27 ^{1W}	367.69 ^{1W}	367.12	367.43	367.68	-2.0	-2.5
2	368.25	368.00	367.33 ^{1W}	367.73 ^{1W}	367.17	367.47	367.72	-1.9	-1.9
75	368.30	368.05	367.39 ^{1W}	367.78 ^{1W}	367.21	367.51	367.76	-1.7	-1.7
50	368.35	368.1	367.45 ^{1W}	367.82 ^{1W}	367.26	367.55	367.80	-1.5	-1.4
25	368.4	368.15	367.51 ^{1W}	367.87 ^{1W}	367.31	367.59	367.84	-0.9	-1.0
1	368.45	368.20	367.56 ^{1W}	367.92 ^{1W}	367.36	367.63	367.88	-1.2	-0.8
75	368.5	368.25	367.62 ^{1W}	367.96 ^{1W}	367.41	367.68	367.93	-1.3	-0.8
50	368.55	368.3	367.68 ^{1W}	368.01 ^{1W}	367.45	367.72	367.97	-1.2	-0.8
25	368.6	368.35	367.74 ^{1W}	368.05 ^{1W}	367.5	367.76	368.01	-1.2	-1.0
0	368.65	368.4	367.8 ^{1W}	368.1 ^{1W}	367.55	367.8	368.05	-1.0	-0.9

EL CAJON AVENUE

370.55	370.55	370.55	370.55	370.55	370.55	370.55	370.55	370.55	370.55	370.55	370.55	370.55	370.55
67.63	68.15	68.05	67.97	68.55	68.95	67.89	67.80	68.35	68.25	67.72	68.25	67.72	68.25
2.9	2.5	2.5	2.5	3.2	3.2	2.6	2.7	2.9	2.9	2.9	2.9	2.9	2.9
2.9	3.5	3.6	3.2	3.2	3.3	3.4	3.7	3.1	3.1	3.1	3.1	3.1	3.1
-1.0	-1.0	-1.0	-1.2	-1.2	-1.2	-0.7	1.0	-0.9	-1.7	-1.8	-1.8	-1.8	-1.8
370.55	370.55	370.55	370.55	370.55	370.55	370.55	370.55	370.55	370.55	370.55	370.55	370.55	370.55
67.63	68.15	68.05	67.97	68.55	68.95	67.89	67.80	68.35	68.25	67.72	68.25	67.72	68.25
2.9	2.5	2.5	2.5	3.0	3.0	2.6	2.7	2.9	2.9	2.9	2.9	2.9	2.9
2.9	3.4	3.6	3.1	3.1	3.1	3.1	3.1	3.1	3.1	3.1	3.1	3.1	3.1
-2.5	-2.0	-2.1	-2.1	-2.5	-2.4	-2.4	-2.4	-2.4	-2.0	-2.0	-2.0	-2.0	-2.0

+e-stakes for 18-1913
Dorman, Bedford
Dorman
Wide walk stakes on S. of put Mar 20-1913 Miller, Dorman, Shant
Old for sub-grade 1/2" or except as shown
Ditch & walk good. Broadway good, Parkway much cleaning up which they are doing.
Mar 10-1914 Miller, Dorman, Shant

KANSAS STREET GRADES
MEADE STREET INTERSECTION

WEST

EAST

Intersection O.H. Mar 10-1914 Lerman, Miller, Shurt

NORTH LINE

367.45 367.2 366.4 367.0 366.4 366.8 367.05

NORTH CURB

367.2 367.2 366.8 366.8

366.2 366.2 366.1^{1W} 366.0^{1W} 365.9^{1W} 366.8³ 366.8

NORTH QUARTER

366.8 366.73 366.67 366.6 366.53 366.47 366.4

CENTER

367.2^{1W} 367.13^{1W} 367.07^{1W} 367.0^{1W} 366.93^{1W} 366.87^{1W} 366.8^{1W}

SOUTH QUARTER

366.8 366.73 366.67 366.6 366.53 366.47 366.4

SOUTH CURB

366.2^{1W} 366.2^{1W} 366.1^{1W} 366.0^{1W} 365.9^{1W} 366.8³ 366.8

367.2 367.2 366.8 366.8

SOUTH LINE

367.45 367.2 366.4 367.0 366.4 366.8 367.05

KANSAS STREET GRADES
MEADE ST. TO MONROE AVE.
WEST EAST.

MONROE AVENUE

6	3712.5	3710	370.85	371.5	3714	3720	372.25	-1.0	-1.0
75	370.88	370.63	370.44	371.86	370.93	371.5	371.75	-1.1	-0.2
50	370.50	370.25	370.04	370.63	371.45	371.0	371.25	-0.4	-0.7
25	370.13	369.88	369.63	370.19	369.98	370.5	370.75	-0.9	-0.4
5	369.75	369.50	369.22	369.75	369.5	370.0	370.25	-0.8	-0.6
75	369.38	369.13	368.81	369.31	369.03	369.5	369.75	-1.2	+0.4
50	369.0	368.75	368.41	368.88	368.55	369.0	369.25	-0.7	-0.2
25	368.63	368.38	368.0	368.44	368.08	368.5	368.75	-0	-0.4
Break.									
1	368.25	368.0	367.6	368.0	367.6	368.0	368.25	-1.2	+0.5
75	368.20	367.93	367.53	367.94	367.53	367.93	368.18	-0.9	-1.3
50	368.15	367.9	367.45	367.88	367.45	367.85	368.1	-1.4	-1.0
25	368.1	367.85	367.38	367.81	367.38	367.78	368.03	-1.6	-1.1
3	368.05	367.8	367.30	367.75	367.3	367.7	367.95	-1.8	-1.9
75	368.0	367.75	367.23	367.69	367.23	367.63	367.88	-2.3	-1.8
50	367.95	367.7	367.15	367.63	367.15	367.55	367.80	-1.9	-1.6
25	367.9	367.65	367.08	367.56	367.08	367.48	367.73	-2.1	-1.7
2	367.85	367.6	367.00	367.50	367.0	367.4	367.65	-2.1	-1.6
75	367.8	367.55	366.93	367.44	366.93	367.33	367.58	-2.3	-1.7
50	367.75	367.5	366.85	367.38	366.85	367.25	367.50	-2.4	-2.1
25	367.7	367.45	366.78	367.31	366.78	367.18	367.43	-2.1	-0.9
1	367.65	367.4	366.70	367.25	366.70	367.1	367.35	-2.2	-0.8
75	367.6	367.35	366.63	367.19	366.63	367.03	367.28	-2.5	-2.0
50	367.55	367.30	366.55	367.13	366.55	366.95	367.20	-2.2	-2.1
25	367.5	367.25	366.48	367.06	366.48	366.88	367.13	-2.3	-2.2
0	367.45	367.2	366.4	367.0	366.4	366.8	367.05	-2.1	-1.8

MEADE STREET

371.25	371.0	370.85	371.5	3714	3720	372.25	-1.0	-1.0
370.88	370.63	370.44	371.86	370.93	371.5	371.75	-1.1	-0.2
370.50	370.25	370.04	370.63	371.45	371.0	371.25	-0.5	-0.5
370.13	369.88	369.63	370.19	369.98	370.5	370.75	-0.4	-0.7
369.75	369.50	369.22	369.75	369.5	370.0	370.25	-0.9	-0.4
369.38	369.13	368.81	369.31	369.03	369.5	369.75	-0.7	-0.2
369.0	368.75	368.41	368.88	368.55	369.0	369.25	-0.9	-0.6
368.63	368.38	368.0	368.44	368.08	368.5	368.75	-0	-0.4
368.25	368.0	367.6	368.0	367.6	368.0	368.25	-1.2	+0.5
368.20	367.93	367.53	367.94	367.53	367.93	368.18	-0.9	-1.3
368.15	367.9	367.45	367.88	367.45	367.85	368.1	-1.4	-1.0
368.1	367.85	367.38	367.81	367.38	367.78	368.03	-1.6	-1.1
368.05	367.8	367.30	367.75	367.3	367.7	367.95	-1.8	-1.9
368.0	367.75	367.23	367.69	367.23	367.63	367.88	-2.3	-1.8
367.95	367.7	367.15	367.63	367.15	367.55	367.80	-1.9	-1.6
367.9	367.65	367.08	367.56	367.08	367.48	367.73	-2.1	-1.7
367.85	367.6	367.00	367.50	367.0	367.4	367.65	-2.1	-1.6
367.8	367.55	366.93	367.44	366.93	367.33	367.58	-2.3	-1.7
367.75	367.5	366.85	367.38	366.85	367.25	367.50	-2.4	-2.1
367.7	367.45	366.78	367.31	366.78	367.18	367.43	-2.1	-0.9
367.65	367.4	366.70	367.25	366.70	367.1	367.35	-2.2	-0.8
367.6	367.35	366.63	367.19	366.63	367.03	367.28	-2.5	-2.0
367.55	367.30	366.55	367.13	366.55	366.95	367.20	-2.2	-2.1
367.5	367.25	366.48	367.06	366.48	366.88	367.13	-2.3	-2.2
367.45	367.2	366.4	367.0	366.4	366.8	367.05	-2.1	-1.8

CHKD THIS BLK 1/11/11 OK. EXCEPT WHERE NOTED. Beyond 367.25

checked OK for grade, curbs & walks OK. parking in rough but in being fixed up. Mon 10-1914 Dorman, Miller, Howard.

14 - stable frame 8-1913 Dorman, Bedford, Devine

KANSAS STREET GRADES
 MONROE AVENUE INTERSECTION
 WEST EAST

NORTH LINE

372.25 372.0 371.85 372.5 372.4 373.0 373.25

NORTH CURB

372.0 372.0 371.68 373.0 373.0

371.0 371.0 371.68 372.33 372.23 372.0 372.0

NORTH QUARTER

371.4 370.75 371.52 371.77 372.07 371.75 372.4

CENTER

371.5 370.5 371.35 372.0 371.9 371.5 372.5

SOUTH QUARTER

370.85 370.25 371.18 371.83 371.73 371.25 371.15

SOUTH CURB

370.0 370.0 371.02 371.57 371.57 371.0 371.0

371.0 371.0 372.0 372.0

SOUTH LINE

371.25 371.0 371.85 371.5 371.4 372.0 372.25

Intersection of Kansas St. & Monroe Ave. May 10, 1916. Donnay, Shant, Midway

KANSAS STREET GRADES
MONROE AVE TO MADISON AVE

WEST

MADISON AVENUE EAST

EAST

6	376.25	376.0	375.85	376.6	376.4	377.0	377.25		
+75	376.08	375.13	375.18	376.23	376.23	376.83	377.08		
+50	375.92	376.71	375.52	376.17	376.07	376.67	376.92		
+25	377.75	376.5	375.35	376.0	375.9	376.5	376.75		
5	375.58	375.33	375.18	375.83	375.73	376.33	376.58		
+75	375.42	375.17	376.02	375.67	375.57	376.17	376.42		
+50	375.25	375.0	374.85	375.6	375.4	376.0	376.25		
+25	375.08	374.83	374.68	375.33	375.23	375.83	376.08		
4	374.92	374.67	374.52	375.17	375.07	375.67	375.92		
+75	374.75	374.5	374.35	375.0	374.9	375.5	375.75		
+50	374.58	374.33	374.18	374.83	374.73	375.33	375.58		
+25	374.42	374.17	374.02	374.67	374.57	375.17	375.42		
3	374.25	374.0	373.85	374.5	374.4	375.0	375.25		
+75	374.08	373.83	374.08	374.33	374.23	374.83	375.08		
+50	373.92	373.67	373.52	374.17	374.07	374.67	374.92		
+25	373.75	373.5	373.35	374.0	373.9	374.5	374.75		
2	373.58	373.33	373.18	373.83	373.73	374.33	374.58		
+75	373.42	373.17	373.02	373.67	373.57	374.17	374.42		
+50	373.25	373.0	372.85	373.5	373.4	374.0	374.25		
+25	373.08	372.83	372.68	373.33	373.23	373.83	374.08		
1	372.92	372.67	372.52	373.17	373.07	373.67	373.92		
+75	372.75	372.5	372.35	373.0	372.9	373.5	373.75		
+50	372.58	372.33	372.18	372.83	372.73	373.33	373.58		
+25	372.42	372.17	372.02	372.67	372.57	373.17	373.42		
0	372.25	372.0	371.85	372.5	372.4	373.0	373.25		

MONROE AVENUE

79.95	79.95	79.95	79.95	79.95	79.95	79.95	79.95	79.95	79.95	79.95	79.95	79.95	79.95
79.25	79.25	79.25	79.25	79.25	79.25	79.25	79.25	79.25	79.25	79.25	79.25	79.25	79.25
7.90	6.90	6.57	7.57	7.23	6.23	5.90	6.90	6.57	6.57	5.3	4.1	4.9	4.1
3.5	6.7	6.6	7.9	6.9	6.7	5.4	6.4	6.2	5.3				
27.177	-0.6	+0.2	0.0	-0.3	+0.4	-0.5	+0.4	-0.1	+0.2				

Checked subgrade & set +4-stakes where necessary.
 Put in all need cleaning out. Dorman, Miller, Shaw.
 7-10-1914 Carlz OTH.
 checked, roadway, curb & with OTH. paving is a little more to do in
 being fixed up. Mar 10-1914 Dorman, Miller, Shaw.

12-16-13
 5.81
 72.25 Raked & leveled blough

14-stakes from 3-1913
 Dorman, Belford, Devine

KANSAS STREET GRADES
MADISON AVENUE INTERSECTION
WEST EAST

checked intersection with fire grade from map, Miller, & Hand Mar 10-1912

NORTH LINE

377.25 377.0 376.85 377.5 377.7 378.0 378.25

NORTH CURB

377.0 377.0 377.33 377.23 376.0 378.0
376.0 376.0 376.68 377.0 377.0

NORTH QUARTER

376.4 375.75 376.52 377.17 377.87 376.75 377.4

CENTER

376.5 375.5 376.35 377.0 376.9 376.5 377.5

SOUTH QUARTER

375.85 375.25 376.18 376.83 376.73 376.85
376.25

SOUTH CURB

375.0 376.0 376.82 376.67 376.57 376.0 376.0
376.0 376.0 377.0 377.0

SOUTH LINE

376.25 376.0 375.85 376.5 376.4 377.0 377.25

KANSAS STREET GRADES
MADISON AVE TO ADAMS AVE
WEST ADAMS AVENUE EAST

Adams

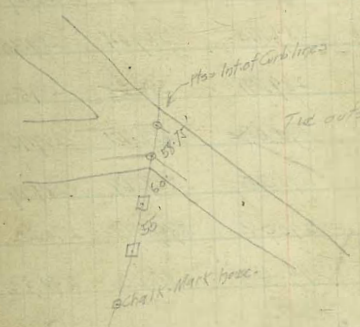
6	387.25	387.0	386.6	387.0	386.6	387.0	387.25
75	386.83	386.58	386.19	386.6	386.22	386.63	386.88
50	386.42	386.17	385.74	386.21	385.83	386.25	386.50
25	386.0	385.75	385.38	385.81	385.46	385.88	386.13
5	385.58	385.33	384.98	385.42	385.07	385.50	385.75
75	385.17	384.92	384.57	385.02	384.68	385.13	385.38
50	384.75	384.50	384.16	384.62	384.30	384.75	385.00
25	384.33	384.08	383.76	384.23	383.92	384.38	384.63
4	383.92	383.67	383.35	383.83	383.53	384.00	384.25
75	383.50	383.25	382.94	383.44	383.15	383.62	383.88
50	383.08	382.83	382.54	383.04	382.77	383.25	383.50
25	382.67	382.42	382.13	382.65	382.38	382.88	383.13
3	382.25	382.00	381.72	382.25	382.00	382.25	382.75
75	381.83	381.58	381.32	381.85	381.62	382.13	382.38
50	381.42	381.17	380.91	381.46	381.23	381.75	382.00
25	381.0	380.75	380.50	381.06	380.85	381.38	381.63
2	380.58	380.33	380.10	380.67	380.47	381.00	381.25
75	380.17	379.92	379.69	380.27	380.08	380.63	380.88
50	379.75	379.50	379.29	379.87	379.70	380.25	380.50
25	379.33	379.08	378.88	379.48	379.32	379.84	380.13
1	378.92	378.67	378.48	379.08	378.93	379.5	379.75
75	378.50	378.25	378.07	378.69	378.55	379.13	379.38
50	378.08	377.83	377.66	378.29	378.17	378.75	379.00
75	377.67	377.41	377.26	377.90	377.78	378.38	378.53
0	377.25	377.0	376.85	377.5	377.4	378.0	378.25

289.57	289.57	289.57	289.57	289.57	289.57	289.57	289.57	289.57	289.57
77.25	76.25	75.00	74.03	73.92	73.70	73.50	73.25	73.00	72.75
10.24	11.27	10.57	11.49	10.66	9.82	9.07	9.82	9.99	8.32
166	11.8	9.0	11.2	10.4	8.1	9.4	9.3	9.2	8.3
+0.7	+0.8	+1.1	+0.3	+0.3	+0.7	-0.3	+0.5	+0.8	+1.0
289.57	289.57	289.57	289.57	289.57	289.57	289.57	289.57	289.57	289.57
82.00	81.42	81.25	82.75	83.00	83.08	83.92	84.25	85.00	84.75
7.07	8.15	7.32	6.92	6.07	6.49	5.65	5.32	4.57	4.92
24	7.1	6.7	5.6	5.0	5.6	4.7	2.7	2.1	3.7
+0.2	+1.0	+0.6	+1.2	+2.1	+0.9	+1.0	+2.6	+2.0	+1.1
289.57	289.57	289.57	289.57	289.57	289.57	289.57	289.57	289.57	289.57
85.78	85.74	86.00	86.42	87.20	87.25				
3.97	3.92	3.07	3.15	2.32	2.32				
2.9	2.1	1.7	2.1	1.2	2.4				
+1.1	+1.7	+1.4	+1.1	+0.1	-0.1				
-0.1	-0.1								
+0.5	+0.7								
+0.8	+1.3								
+1.1	+1.4								
+1.1	+1.2								
+0.9	+1.4								
+1.1	+1.7								
+1.0	+1.5								
+0.8	+1.6								
+1.1	+2.5								
+1.0	+2.3								
-1.8	-2.0								
+1.0	+2.6								
+1.8	+2.4								
+1.6	-2.2								
+0.9	-2.1								
+0.8	+1.9								
+2.0	+1.0								
+0.6	+1.2								
+0.6	+1.1								
+0.9	+0.5								
+1.0	+0.2								
+1.0	-0.1								
+1.8	+0.6								
+0.9	+1.0								
+0.7	+1.4								
+0.5	+0.2								
+0.6	-0.3								
+0.4	+0.4								
+0.5	+0.2								
+0.3	+0.7								
+0.1	+0.5								
+0.3	+0.3								
+0.3	+1.1								
+0.3	+0.9								
+0.3	-0.1								
+0.7	0								
+0.6	-0.1								

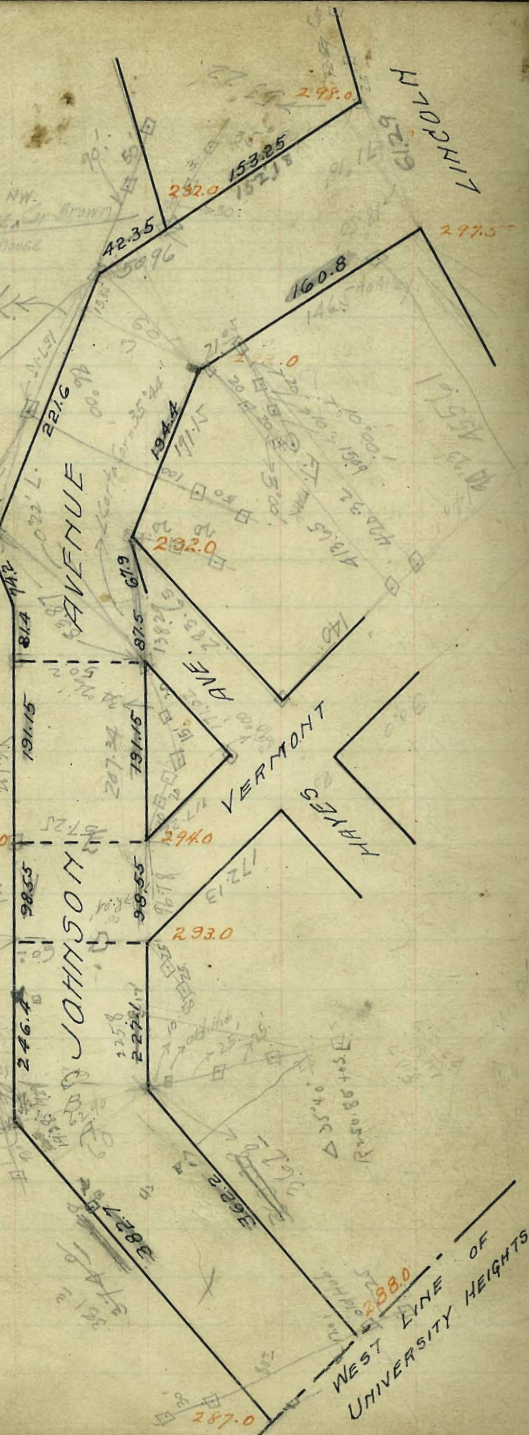
10 - Adams Ave. - 1913
 Thomas, Keffer, Devine
 Chas. C. O'Brien, Dawson, Miller, Deane,
 Feb 10 - 1914
 Broadway Centre & north checked O.K., parking a little rough in
 places, but not bad.
 Max 10-1914 Thomas, Miller, Khan.

Johnson - NE. of h. 278.52
Mount - SW 11 - 292.06 .OK.

Note See sketch at front of book.



3017 59.37
19.2 58.33



WEST LINE OF UNIVERSITY HEIGHTS

Handwritten notes on the left side of the map, including '291.0', '191.5', '293.0', '246.4', '287.0', and '288.0'. There are also some illegible notes and arrows pointing to specific locations on the map.

SOUTH

NORTH

WEST LINE OF UNIVERSITY HEIGHTS

0	288.25	288.0	287.4	287.5	286.85	287.0	287.25
25	288.46	288.21	287.61	287.72	287.07	287.23	287.48
50	288.67	288.42	287.81	287.93	287.29	287.46	287.71
75	288.88	288.63	288.02	288.14	287.51	287.69	287.94
1	289.08	288.83	288.23	288.36	287.72	287.92	288.17
25	289.29	289.04	288.43	288.57	287.94	288.15	288.40
50	289.50	289.25	288.64	288.79	288.16	288.38	288.63
75	289.71	289.46	288.84	289.01	288.38	288.61	288.86
2	289.92	289.67	289.05	289.23	288.60	288.84	289.09
25	290.03	289.88	289.26	289.44	288.81	289.07	289.32
50	290.34	290.09	289.46	289.65	289.04	289.30	289.55
75	290.59	290.29	289.67	289.87	289.25	289.53	289.78
3	290.75	290.50	289.88	290.09	289.47	289.76	290.01
25	290.96	290.71	290.08	290.30	289.69	289.99	290.24
50	291.18	290.92	290.29	290.52	289.91	290.22	290.47
62.2	291.30	291.02	290.40	290.63	290.02	290.33	290.58
165.2		291.05		215.715		218.57	
169.04		290.45		290.91			
172.15							
175.86				290.14			
179.28					290.38	290.63	
182.7						290.63	

SOUTH

NORTH

-20.50
-17.08
-13.66
-10.25
-6.84

290.38 290.63

"B" / 290.14

290.71

290.45

-3.02	291.3	291.05			290.54	290.77	
00-0	291.30	291.05	290.51	290.79	290.24	290.54	290.77
25	291.52	291.27	290.72	290.98	291.41	290.70	290.95
50	291.73	291.48	290.93	291.17	290.59	290.56	291.11
75	291.95	291.70	291.13	291.35	290.76	291.02	291.27
1	292.16	291.91	291.34	291.54	290.94	291.18	291.43
25	292.38	292.13	291.55	291.73	291.11	291.34	291.57
50	292.59	292.34	291.76	291.92	291.28	291.50	291.75
75	292.81	292.56	291.96	292.10	291.46	291.66	291.91
2	293.02	292.77	292.17	292.29	291.63	291.82	292.07
31-0	293.25	293.0	292.4	292.52	291.86	292.05	292.30
25	292.42	292.25	292.65	292.77	292.11	292.29	292.54
50	292.5	292.50	292.90	293.01	292.36	292.53	292.78
75	293.15	292.76	293.16	293.26	292.61	292.77	293.02
26.55	294.25	294.0	293.4	293.50	292.85	293.0	293.25

VERMONT ST
CROWN FOR

293.0 WEST CURB = +17.25
292.0

292.85 = WEST QUARTER +33.25

293.50 CENTER +49.27

293.4 EAST QUARTER +62.8

293.0 = EAST CURB = +81.30
294.0

VERMONT ST.
ON SOUTH

S.E.C.

	294.25	294.0	292.4	292.50	292.85	293.0	293.20
25	294.12	293.87	293.27	293.34	292.68	292.82	293.07
50	293.99	293.74	293.14	293.19	292.51	292.64	292.89
75	293.86	293.61	292.01	293.03	292.34	292.45	292.70
1	293.72	293.47	292.87	292.87	292.17	292.27	292.52
25	293.59	293.34	292.74	292.71	292.00	292.09	292.34
50	293.46	293.21	292.61	292.56	291.83	291.90	292.15
75	293.33	293.08	292.48	292.40	291.66	291.72	291.97
28	293.25	293.0	292.4	292.30	291.55	291.60	291.85
= F							
25	293.10	292.85	292.25	292.12	291.37	291.41	291.66
50	292.94	292.69	292.09	291.95	291.19	291.22	291.47
75	292.78	292.53	291.93	291.78	291.01	291.04	291.29
9	292.74	292.49	291.89	291.74	290.97	291.0	291.25
16.48			291.65	291.72	290.96		
48.75-H	292.70	292.45				291.0	291.25
= G							
I	292.66	292.41	291.81	291.70	290.95	291.0	291.25
25	292.57	292.32	291.64	291.65	290.96	291.07	291.32
50	292.36	292.11	291.47	291.60	290.97	291.14	291.39
75		292.0	291.4		290.98	291.18	291.43
11.2				291.59			
K	292.25	292.0	291.4	291.61	291.01	291.22	291.47
-12.4							
L 00		292.0	291.4	291.63	291.05	291.26	291.51

12.4
12.4

L = 00

	292.25	292.0	291.4	291.63	291.05	291.26	291.51
25	292.38	292.13	291.53	291.73	291.14	291.34	291.59
50	292.51	292.26	291.66	291.83	291.22	291.41	291.66
75	292.64	292.39	291.79	291.93	291.31	291.49	291.74
1	292.76	292.51	291.91	292.04	291.40	291.56	291.81
25	292.89	292.64	292.04	292.14	291.49	291.64	291.89
50	293.02	292.77	292.17	292.24	291.57	291.71	291.96
75	293.15	292.90	292.30	292.34	291.66	291.78	292.03
M							
198.4		293.0	292.4	292.42	291.73	291.84	292.09
N							
219.2	293.25	293.0	292.4	292.44	291.76	291.88	292.13
0							
212.0		293.0	292.4	292.46	291.77	291.92	292.17
12.5		293.68	293.08	292.84	292.62	291.99	292.24
130		293.82	293.22	292.91	292.06	292.0	292.25
BREAK							
50	294.63	294.38	293.78	293.19	292.22	292.68	292.93
75	295.33	295.08	294.64	294.23	293.40	293.77	294.02
1	296.04	295.79	295.30	295.27	294.57	294.86	295.11
35	296.75	296.50	295.96	296.31	295.75	295.95	296.20
50	297.45	297.20	296.82	297.35	296.92	297.04	297.29
P							
608	297.75	297.5	297.1	297.45	297.0	297.4	297.65
182.2				297.75		298.0	298.25

265
159.0
322
19.7

WASHINGTON STREET

330.

329.

AVENUE

265



331

330.5

NASH STREET

331

330.5

265

CITY BOUNDARY LINE

317.0

316.0

AVENUE

209'

226'

326

325.5

FRANKLIN ST.
(Felton)

315

314

31 ST

STREET

326

325.5

314

313

265
31 ST

327

326.5

322

321

31 ST

ST

327.5

327

WEBSTER ST.

323

322.5

GRIM STREET

327.5

327

262.5

329.5

328.5

WASHINGTON ST.

329

329

330.

329.0

RAY STREET

STREET

MYRTLE

265

Myrtle Avenue
Borough
Bade

MYRTLE AVENUE GRADES
RAY ST. TO GRIM ST.

NORTH

GRIM STREET

SOUTH

625	327.75	327.5	326.9	327.25	326.85	327.0	327.21
50	327.82	327.57	326.98	327.33	326.93	327.1	327.35
25	327.96	327.71	327.14	327.50	327.10	327.29	327.54
2	328.11	327.86	327.30	327.66	327.26	327.48	327.73
75	328.25	328.00	327.44	327.83	327.43	327.67	327.92
50	328.39	328.14	327.63	328.00	327.60	327.86	328.11
25	328.54	328.29	327.79	328.17	327.77	328.05	328.30
1	328.68	328.43	327.95	328.33	327.93	328.24	328.49
75	328.82	328.57	328.11	328.50	328.10	328.43	328.68
50	328.96	328.71	328.28	328.67	328.27	328.62	328.87
25	329.11	328.86	328.44	328.83	328.43	328.81	329.06
0	329.25	329.0	328.6	329.0	328.6	329.0	329.25

RAY STREET

GRIM STREET INTERSECTION

EAST LINE

327.25	327.0	326.75	326.22	326.5	326.75
--------	-------	--------	--------	-------	--------

EAST CURB

327.0	327.0	326.5	326.6
326.0	326.0	325.87	325.75
		325.62	325.5
		325.5	325.5

EAST QUARTER

326.72	326.64	326.56	326.47	326.38	326.30	326.22
--------	--------	--------	--------	--------	--------	--------

CENTER

327.25	327.17	327.09	327.0	327.91	327.83	326.75
--------	--------	--------	-------	--------	--------	--------

WEST QUARTER

326.9	326.65	326.48	326.4
-------	--------	--------	-------

WEST CURB

326.5	326.5	326.37	326.26	326.12	326.0	326.0
327.5	327.5				327.0	327.0

WEST LINE

327.75	327.5	326.9	327.25	326.85	327.0	327.25
--------	-------	-------	--------	--------	-------	--------

Bm 331.35 Zent 60 n Ray

Bm 331.35

336.72	336.60	336.50	336.40	336.30	336.20	336.10	336.00
15.4	4.2	5.4	5.3	4.3	6.7	9.1	9.5
336.30	336.3	336.6	336.7	336.8	336.9	337.0	337.1
6.25	19.2	29.0	28.9	20.1	18.8	28.1	26.5
35	21.0	11.1	2.8	0.7	1.1	10.8	21.1
331.0	331.0	336.0	336.43	336.43	336.43	336.43	336.43
4.6	11.1	11.1	27.8	17.2	5.6	6.7	10.1
335.78	335.78	336.0	336.0	336.0	336.0	336.0	336.0
10.67	18.1	32.47	2.1	1.7	1.7	1.7	1.7
331.31	331.31	331.31	331.31	331.31	331.31	331.31	331.31
2.43	2.9	2.9	2.9	2.9	2.9	2.9	2.9

647.10-19-13
Blair Taylor & Co

331.35	331.35	331.35	331.35	331.35	331.35	331.35	331.35
331.35	331.35	331.35	331.35	331.35	331.35	331.35	331.35

Curbs & Props 1/12/14
Blair Taylor & Co

331.35	331.35	331.35	331.35	331.35	331.35	331.35	331.35
331.35	331.35	331.35	331.35	331.35	331.35	331.35	331.35

Checked OK 3-26-14 Blair Taylor & Co

MYRTLE AVENUE GRADES
GRIM ST. TO 31ST ST
NORTH THIRTY-FIRST STREET SOUTH

45	327.75	327.15	326.9	327.25	326.72	327.0	327.25
50	327.72	327.47	326.87	327.22	326.69	326.77	327.22
25	327.67	327.42	326.82	327.17	326.64	326.92	327.17
20	327.63	327.38	326.78	327.13	326.60	326.88	327.13
75	327.58	327.33	326.73	327.08	326.55	326.83	327.08
50	327.53	327.28	326.68	327.03	326.50	326.78	327.03
25	327.49	327.24	326.64	326.99	326.46	326.74	326.99
1	327.44	327.19	326.59	326.94	326.41	326.69	326.94
75	327.39	327.14	326.54	326.89	326.36	326.64	326.89
50	327.34	327.09	326.49	326.84	326.31	326.59	326.84
25	327.30	327.05	326.45	326.80	326.27	326.55	326.80
0	327.25	327.0	326.4	326.75	326.22	326.5	326.75

GRIM STREET
31ST STREET INTERSECTION
EAST LINE

327.25	327.0	326.7	326.75	326.22	326.5	326.75
--------	-------	-------	--------	--------	-------	--------

EAST CURB

327.0	327.0				326.5	326.5
326.0	326.0	326.83	326.75	326.62	326.5	326.5

EAST QUARTER

326.72	326.64	326.56	326.47	326.38	326.30	326.22
--------	--------	--------	--------	--------	--------	--------

CENTER

327.25	327.17	327.09	327.0	327.91	327.83	326.75
--------	--------	--------	-------	--------	--------	--------

WEST QUARTER

326.9	326.82	326.74	326.65	326.56	326.48	326.4
-------	--------	--------	--------	--------	--------	-------

WEST CURB

326.5	326.5	26.38	26.25	26.12	326.0	326.0
327.5	327.5				327.0	327.0

WEST LINE

327.75	327.5	326.9	327.25	326.72	327.0	327.25
--------	-------	-------	--------	--------	-------	--------

33340 NS	33343	33345	33347	33348	33349	33350	33351
2.18	2.22	2.26	2.30	2.34	2.38	2.42	2.46
331.25	331.25	331.25	331.25	331.25	331.25	331.25	331.25

lot 7 10-19-13 blough

33054	33055	33056	33057	33058	33059	33060	33061
4.79	4.83	4.87	4.91	4.95	4.99	5.03	5.07
331.25	331.25	331.25	331.25	331.25	331.25	331.25	331.25

33140	33141	33142	33143	33144	33145	33146	33147
4.79	4.83	4.87	4.91	4.95	4.99	5.03	5.07
331.25	331.25	331.25	331.25	331.25	331.25	331.25	331.25

checked
3-26-14
blough

MYRTLE AVENUE GRADES
 31ST ST TO HERMAN AVE
 NORTH HERMAN AVENUE SOUTH

65	326.25	326.0	325.4	325.75	325.22	325.5	325.75
50	326.31	326.06	325.46	325.81	325.28	325.56	325.81
25	326.40	326.15	325.55	325.90	325.37	325.65	325.90
2	326.50	326.25	325.65	326.0	325.47	325.75	326.0
75	326.59	326.34	325.74	326.09	325.56	325.84	326.09
50	326.69	326.44	325.84	326.19	325.66	325.94	326.19
25	326.78	326.53	325.93	326.28	325.75	326.03	326.28
1	326.87	326.62	326.02	326.37	325.84	326.12	326.37
75	326.97	326.72	326.12	326.47	325.94	326.22	326.47
50	327.06	326.81	326.21	326.56	326.03	326.31	326.56
25	327.16	326.91	326.31	326.66	326.13	326.41	326.66
0	327.25	327.0	326.4	326.75	326.22	326.5	326.75

31ST STREET
 HERMAN AVENUE INTERSECTION
 EAST LINE Graded

326.25	326.0	325.4	325.75	325.22	325.5	325.75
--------	-------	-------	--------	--------	-------	--------

EAST CURB

326.0	326.0	325.0	324.87	324.75	324.62	324.5	324.5
-------	-------	-------	--------	--------	--------	-------	-------

EAST QUARTER

325.6	325.52	325.44	325.35	325.26	325.18	325.1
-------	--------	--------	--------	--------	--------	-------

CENTER

326.0	325.92	325.84	325.75	325.66	325.58	325.5
-------	--------	--------	--------	--------	--------	-------

WEST QUARTER

325.6	325.52	325.44	325.35	325.26	325.18	325.1
-------	--------	--------	--------	--------	--------	-------

WEST CURB

325.0	326.0	324.87	324.75	324.62	324.5	324.5
326.0	326.0				325.5	325.5

WEST LINE

326.25	326.0	325.4	325.75	325.22	325.5	325.75
--------	-------	-------	--------	--------	-------	--------

326.0	326.0	326.0	326.0	326.0	326.0	326.0
9.14	7.7	9.4	9.8	7.7	12.4	12.4
26.8	28.8	32.6	26.8	26.1	22.6	22.6
27	26.7	24.6	27.6	16.7	26.7	26.7
26.4	C.1.8	5.0	70.9	26.1	22.8	22.8
2.2						

lot 7 10-19-13 blough

326.0	326.0	326.0	326.0	326.0	326.0	326.0
26.6	25.5	26.2	25.7	26.4	25.2	26.1
5.33	5.35	5.14	5.44	4.7	5.43	4.7
7.7	2.4					
1.7	7.8					

320.5	321.5
324.37	6.82
320.5	
4.2	
326.0	
6.68	
324.99	

320.5	321.5
27.0	26.4
35.3	4.3
32.0	3.8
26.2	26.2
3.1	4.5
4.2	4.1
4.2	4.5
4.2	4.5
4.2	4.5
4.2	4.5
4.2	4.5

blough OK 3-26-14 blough

MYRTLE AVENUE GRADES
HERMAN AVE TO MISSOURI ST.
NORTH MISSOURI STREET SOUTH

65	331.25	331.0	330.4	330.75	330.22	330.5	330.75
50	330.97	330.72	330.12	330.47	329.94	330.22	330.47
25	330.50	330.25	329.65	330.00	329.47	329.75	330.00
2	330.03	329.78	329.18	329.53	329.00	329.28	329.53
75	329.55	329.30	328.70	329.05	328.52	328.80	329.05
51	329.08	328.83	328.23	328.58	328.05	328.33	328.58
25	328.61	328.36	327.76	328.11	327.58	327.86	328.11
1	328.14	327.89	327.29	327.64	327.11	327.39	327.64
75	327.67	327.42	326.82	327.17	326.64	326.92	327.17
50	327.19	326.94	326.34	326.69	326.16	326.44	326.69
25	326.72	326.47	325.87	326.22	325.69	325.97	326.22
0	326.25	326.0	325.4	325.75	325.22	325.5	325.75

HERMAN AVENUE
MISSOURI STREET INTERSECTION

EAST LINE

331.25	331.0	330.4	330.75	330.22	330.5	330.75
--------	-------	-------	--------	--------	-------	--------

EAST CURB

331.0	331.0				330.5	330.5
330.0	330.0	329.87	329.75	329.62	329.5	329.5

EAST QUARTER

330.6	330.52	330.44	330.35	330.26	330.18	330.1
-------	--------	--------	--------	--------	--------	-------

CENTER

331.0	330.92	330.84	330.75	330.66	330.58	330.5
-------	--------	--------	--------	--------	--------	-------

WEST QUARTER

330.6	330.52	330.44	330.35	330.26	330.18	330.1
-------	--------	--------	--------	--------	--------	-------

WEST CURB

330.0	330.0	329.87	329.75	329.62	329.5	329.6
331.0	331.0				330.5	330.5

WEST LINE

331.25	331.0	330.4	330.75	330.22	330.5	330.75
--------	-------	-------	--------	--------	-------	--------

REPORT TO CITY ENGINEER'S OFFICE
CITY HALL, SAN DIEGO, CALIF. 47

33140 (M)	33140	33140	33140	33140	33140	33140	33140
33140	33140	33140	33140	33140	33140	33140	33140
33140	33140	33140	33140	33140	33140	33140	33140
33140	33140	33140	33140	33140	33140	33140	33140
33140	33140	33140	33140	33140	33140	33140	33140
33140	33140	33140	33140	33140	33140	33140	33140
33140	33140	33140	33140	33140	33140	33140	33140
33140	33140	33140	33140	33140	33140	33140	33140
33140	33140	33140	33140	33140	33140	33140	33140
33140	33140	33140	33140	33140	33140	33140	33140

Checked @ K 3-26-74

MYRTLE AVENUE GRADES
 MISSOURI ST. TO WASHINGTON AVE
 NORTH WASHINGTON AVENUE SOUTH

15	330.25	330.0	329.4	329.5	328.85	329.0	329.25
50	330.31	330.06	329.46	329.57	328.92	329.08	329.33
25	330.40	330.14	329.56	329.69	329.06	329.22	329.47
2	330.50	330.25	329.65	329.81	329.19	329.36	329.61
15	330.59	330.34	329.74	329.92	329.32	329.51	329.76
50	330.69	330.44	329.84	330.04	329.45	329.65	329.90
25	330.78	330.53	329.93	330.16	329.58	329.79	330.04
1	330.87	330.62	330.02	330.24	329.70	329.93	330.18
15	330.97	330.72	330.12	330.40	329.83	330.07	330.32
50	331.06	330.81	330.21	330.51	329.96	330.22	330.47
25	331.16	330.91	330.31	330.63	330.09	330.36	330.61
0	331.25	331.0	330.4	330.75	330.22	330.5	330.75

**MISSOURI STREET
 WASHINGTON AVENUE INTERSECTION**

EAST LINE

329.75	329.6	328.9	329.0	328.35	328.5	328.75
--------	-------	-------	-------	--------	-------	--------

EAST CURB

327.6	328.5	328.25	328.0	327.75	328.5	328.0
-------	-------	--------	-------	--------	-------	-------

EAST QUARTER

329.22	329.06	328.89	328.72	328.55	328.38	328.22
--------	--------	--------	--------	--------	--------	--------

CENTER

329.75	329.59	329.42	329.25	329.08	328.91	328.75
--------	--------	--------	--------	--------	--------	--------

WEST QUARTER

329.4	329.23	329.06	328.9	328.73	328.56	328.4
-------	--------	--------	-------	--------	--------	-------

WEST CURB

329.0	329.0	328.75	328.5	328.25	328.0	328.0
330.0	330.0	328.75	328.5	328.25	329.0	329.0

WEST LINE

330.25	330.0	329.4	329.5	328.85	329.0	329.25
--------	-------	-------	-------	--------	-------	--------

329.48 134
 329.40 724 28 S 32
 329.67 " " " " No 48

329.48	329.40	329.67	329.48	329.40	329.67
329.48	329.40	329.67	329.48	329.40	329.67

329.48	329.40	329.67	329.48	329.40	329.67
329.48	329.40	329.67	329.48	329.40	329.67

Checked OK 3-26-14 blough

MYRTLE AVENUE GRADES
 WASHINGTON AVE. TO WEBSTER AVE.
 NORTH WEBSTER AVENUE SOUTH

+65	323.25	323.0	323.4	322.75	322.22	322.5	322.75
+50	323.62	323.37	323.77	323.10	322.67	322.85	323.10
+25	324.23	323.98	323.38	323.69	323.15	323.42	323.67
2	324.85	324.60	324.00	324.28	323.73	323.98	324.23
+75	325.46	325.21	324.61	324.87	324.30	324.55	324.80
+50	326.07	325.82	325.22	325.46	324.84	325.11	325.36
+25	326.69	326.44	325.84	326.05	325.46	325.68	325.93
1	327.30	327.05	326.45	326.64	326.04	326.24	326.49
+75	327.91	327.66	327.06	327.23	326.62	326.81	327.06
+50	328.52	328.27	327.67	327.82	327.19	327.37	327.62
+25	329.14	328.89	328.29	328.41	327.77	327.94	328.19
0	329.75	329.5	328.9	329.0	328.35	328.5	328.75

WASHINGTON AVENUE
 WEBSTER AVE. INTERSECTION
 EAST LINE

322.25	322.0	321.4	321.5	320.85	321.0	321.25
EAST CURB						
322.0	322.0				321.0	321.0
321.0	321.0	321.56	321.70	321.07	320.0	320.0
EAST QUARTER						
321.85	321.25	321.73	321.91	321.30	320.37	320.97
CENTER						
322.5	321.5	321.9	322.12	321.53	320.75	321.75
WEST QUARTER						
322.4	321.75	322.07	322.33	321.76	321.12	321.9
WEST CURB						
322.0	323.0				321.5	321.5
323.0	323.0	322.24	322.54	321.99	322.5	322.5
WEST LINE						
323.25	323.0	322.4	322.75	322.22	322.5	322.75

33441.42	33441	33441	3441	3441	3441	3441	3441	3441
672	37	49	29.5	39	48	56	64	72
27.49	30.7	39.5	29.6	30.5	29.6	28.8	28.2	29.1
1.53	29.7	28.7	27.6	28.1	27.3	26.5	25.4	26.1
	21.4	20.8	21.7	21.8	20.3	19.5	18.8	19.0
	11.4	10.8	11.7	11.8	10.3	9.5	8.8	9.0
	34.41	34.41	29.1	29.1				29.1
	6.5	7.2	2.7	2.6				4.2
	27.9	27.2	21.7	21.5				21.4
	1.53	2.4	2.7	2.7				2.7
	3.1	2.3	2.7	2.7				2.7

322.5	322.75	322.5	322.7	322.85	322.75	322.85	322.75	322.85	322.75	322.85
322.5	322.75	322.5	322.7	322.85	322.75	322.85	322.75	322.85	322.75	322.85
322.5	322.75	322.5	322.7	322.85	322.75	322.85	322.75	322.85	322.75	322.85

Check Props where possible 1/2" dia

Check OK 4-4-14 Blough

MYRTLE AVE. GRADES
WEBSTER AVE. TO FRANKLIN AVE.
NORTH FRANKLIN AVENUE SOUTH

65	314.25	314.0	313.4	313.5	312.85	313.0	313.25
50	314.70	314.45	313.85	313.95	313.30	313.45	313.70
25	315.46	315.21	314.61	314.71	314.06	314.21	314.46
2	316.21	315.96	315.36	315.46	314.80	314.96	315.21
75	316.97	316.72	316.12	316.22	315.57	315.72	315.97
50	317.72	317.47	316.87	316.97	316.32	316.47	316.72
25	318.48	318.23	317.63	317.73	317.08	317.23	317.48
1	319.23	318.98	318.38	318.48	317.83	317.98	318.23
75	319.99	319.74	319.14	319.24	318.59	318.74	318.99
50	320.74	320.49	319.89	319.99	319.34	319.49	319.74
25	321.50	321.25	320.65	320.75	320.10	320.25	320.50
0	322.25	322.0	321.4	321.5	320.85	321.0	321.25

WEBSTER AVENUE
FRANKLIN AVE. INTERSECTION
EAST LINE

315.25	315.0	314.4	314.5	313.85	314.0	314.25
EAST CURB						
315.0	315.0				314.0	314.0
314.0	314.0	313.75	313.5	313.25	313.0	313.0
EAST QUARTER						
314.4	314.24	314.07	313.9	313.73	313.56	313.4
→ CENTER →						
314.5	314.34	314.17	314.0	313.83	313.66	313.5
WEST QUARTER						
313.85	313.79	313.52	313.35	313.18	313.01	312.85
WEST CURB						
313.0	313.0				312.0	312.0
314.0	314.0	312.75	312.5	312.25	313.0	313.0
WEST LINE						
314.25	314.0	313.4	313.5	312.85	313.0	313.25

311.40	291.0	287.5	291.0	291.0	192.7	192.7	192.7	192.7
312.10	291.0	287.5	291.0	291.0	192.7	192.7	192.7	192.7
312.80	291.0	287.5	291.0	291.0	192.7	192.7	192.7	192.7
313.50	291.0	287.5	291.0	291.0	192.7	192.7	192.7	192.7
314.20	291.0	287.5	291.0	291.0	192.7	192.7	192.7	192.7
314.90	291.0	287.5	291.0	291.0	192.7	192.7	192.7	192.7
315.60	291.0	287.5	291.0	291.0	192.7	192.7	192.7	192.7
316.30	291.0	287.5	291.0	291.0	192.7	192.7	192.7	192.7
317.00	291.0	287.5	291.0	291.0	192.7	192.7	192.7	192.7
317.70	291.0	287.5	291.0	291.0	192.7	192.7	192.7	192.7
318.40	291.0	287.5	291.0	291.0	192.7	192.7	192.7	192.7
319.10	291.0	287.5	291.0	291.0	192.7	192.7	192.7	192.7
319.80	291.0	287.5	291.0	291.0	192.7	192.7	192.7	192.7
320.50	291.0	287.5	291.0	291.0	192.7	192.7	192.7	192.7
321.20	291.0	287.5	291.0	291.0	192.7	192.7	192.7	192.7
321.90	291.0	287.5	291.0	291.0	192.7	192.7	192.7	192.7
322.60	291.0	287.5	291.0	291.0	192.7	192.7	192.7	192.7
323.30	291.0	287.5	291.0	291.0	192.7	192.7	192.7	192.7

check 4-4-14
OK 4-6-14

MYRTLE AVE. GRADES
FRANKLIN AVE. TO CITY BOUNDARY
NORTH CITY BOUNDARY SOUTH

26	317.25	317.0	316.4	316.5	315.85	316.0	316.28
29	317.16	316.91	316.28	316.34	315.65	315.76	316.01
75	316.92	316.7	316.05	316.11	315.43	315.54	315.89
30	316.68	316.43	315.81	315.88	315.20	315.32	316.67
25	316.44	316.19	315.58	315.65	314.98	315.10	315.35
1	316.21	315.96	315.34	315.42	314.75	314.88	315.13
75	315.97	315.72	315.11	315.19	314.53	314.66	314.91
50	315.73	315.48	314.87	314.96	314.30	314.44	314.69
25	315.49	315.24	314.64	314.73	314.08	314.22	314.47
0	315.25	315.0	314.4	314.5	313.85	314.0	314.25

FRANKLIN AVENUE

mm #695 Boundary

2060	2061	2062	2063	2064	2065	2066	2067	2068	2069
13.5	15.9	15.7	13.8	14.9	15.5	16.2	16.2	16.2	16.2
14.2	15.2	15.7	14.7	15.1	16.5	16.6	16.6	16.6	16.6
2.7	0.7		1.8	1.9	1.5	2.3	2.3	2.3	2.3
20.60	21.8	21.8	21.8	21.8	21.8	21.8	21.8	21.8	21.8
16.4	17.2	16.9	16.9	16.9	16.9	16.9	16.9	16.9	16.9
16.1	17.2	16.9	16.9	16.9	16.9	16.9	16.9	16.9	16.9
2.3	0.7		1.8	1.9	1.5	2.3	2.3	2.3	2.3

6+7 10 - 22 - 13
Change

2146	2147	2148	2149	2150	2151	2152	2153	2154	2155	2156	2157	2158	2159	2160
11.2	11.2	11.2	10.54	10.27	9.87	9.87	10.25	10.25	10.25	10.25	10.25	10.25	10.25	10.25
11.2	11.2	11.2	10.54	10.27	9.87	9.87	10.25	10.25	10.25	10.25	10.25	10.25	10.25	10.25
11.2	11.2	11.2	10.54	10.27	9.87	9.87	10.25	10.25	10.25	10.25	10.25	10.25	10.25	10.25

Curbs + Props where possible 1/2 ft. Sagging

1548	1487	1426	1420	1444
5.42	4.03	3.94	4.60	4.46
15.34	15.34	15.22	14.75	14.88
2.24	2.15	3.28	4.15	4.02
16.43	15.81	15.84	15.20	15.32
4.77	5.04	5.02	5.30	5.88
17.20	16.40	16.10	15.85	16.20
5.90	4.80	4.40		4.20

check 4 - 4 - 14
OK 4 - 6 - 14 Change

29th St - Grades.

{ N.L. Woolman Ave } Ocean View
to
{ S.L. "K" St. }

60' Wide 12' Walks 9' C&S

W	Woolman to Franklin							E		
Woolman Ave	98.25	98.00	97.60	97.75	97.22	97.50	97.75	+0.5	+0.7	
25' N	98.09	97.84	97.24	97.59	97.06	97.34	97.59	+1.2	+2.0	
50' N	97.93	97.68	97.08	97.43	96.90	97.19	97.43	+1.7	+2.7	
75' N	97.77	97.52	96.92	97.27	96.75	97.02	97.27	+2.5	+3.4	
100' N	97.61	97.36	96.76	97.11	96.58	96.86	97.11	+2.9	+3.9	
110' N	97.55	97.30	96.70	97.05	96.52	96.80	97.05	+3.2	+4.1	
125' N	97.43	97.18	96.58	96.96	96.45	96.74	96.99	+3.9	+4.4	
135' N	97.35	97.10	96.50	96.90	96.40	96.70	96.95	+4.4	+4.5	
150' N	96.90	96.65	96.05	96.40	95.88	96.16	96.40	+5.5	+5.4	
160' N	96.60	96.35	95.75	96.08	95.44	95.80	96.05	+5.7	+5.7	
175' N	96.03	95.78	95.18	95.49	94.95	95.20	95.45	+6.1	+5.0	
185' N	95.65	95.40	94.80	95.10	94.55	94.80	95.05	+6.0	+5.0	
200' N	95.11	94.86	94.26	94.44	93.83	94.02	94.27	+5.6	+4.8	
210' N	94.75	94.50	93.90	94.00	93.35	93.50	93.75	+5.3	+4.8	
225' N	94.09	93.75	91.15	93.12	92.41	92.50	92.75	+5.1	+4.7	
250' N	92.75	92.50	91.90	91.75	90.97	91.05	91.30	+4.2	+4.3	
275' N	91.50	91.25	90.65	90.37	89.53	89.50	89.75	+	+3.3	
300' N or Franklin St	90.25	90.00	89.40	89.00	88.10	88.00	88.25	+0.6	+1.0	

801.75 12-m. off. 367
 714-11-22 " 644
 " 75 12-m. Hwy. 353

801.35 29+ Webster off. 72.00
 " 75 29+ clay. off. 77.70
 " 35 29+ L. Hwy. 76.92
 " 71. 30+ Webster Hwy. 71.00

18m. 24. 31. Franklin off. 85.04

9945 743 92.05 Top of front 24 29 1/2 Franklin	9948 853 90.25 90.25 90.25	9948 781 88.25 88.25 88.25	9948 730 85.75 85.75 85.75	9948 732 83.25 83.25 83.25	9948 662 75.75 75.75 75.75	10581 559 90.25 90.25 90.25	10581 559 87.75 87.75 87.75	10581 559 85.25 85.25 85.25	10581 559 82.75 82.75 82.75	10581 559 80.25 80.25 80.25	10581 559 77.75 77.75 77.75	10581 559 75.25 75.25 75.25	10581 559 72.75 72.75 72.75	10581 559 70.25 70.25 70.25	10581 559 67.75 67.75 67.75	10581 559 65.25 65.25 65.25	10581 559 62.75 62.75 62.75	10581 559 60.25 60.25 60.25	10581 559 57.75 57.75 57.75	10581 559 55.25 55.25 55.25	10581 559 52.75 52.75 52.75	10581 559 50.25 50.25 50.25	10581 559 47.75 47.75 47.75	10581 559 45.25 45.25 45.25	10581 559 42.75 42.75 42.75	10581 559 40.25 40.25 40.25	10581 559 37.75 37.75 37.75	10581 559 35.25 35.25 35.25	10581 559 32.75 32.75 32.75	10581 559 30.25 30.25 30.25	10581 559 27.75 27.75 27.75	10581 559 25.25 25.25 25.25	10581 559 22.75 22.75 22.75	10581 559 20.25 20.25 20.25	10581 559 17.75 17.75 17.75	10581 559 15.25 15.25 15.25	10581 559 12.75 12.75 12.75	10581 559 10.25 10.25 10.25	10581 559 7.75 7.75 7.75	10581 559 5.25 5.25 5.25	10581 559 2.75 2.75 2.75	10581 559 0.25 0.25 0.25
---	--	--	--	--	--	---	---	---	---	---	---	---	---	---	---	---	---	---	---	---	---	---	---	---	---	---	---	---	---	---	---	---	---	---	---	---	---	---	--------------------------------------	--------------------------------------	--------------------------------------	--------------------------------------

97.05 - 24m. NW. 27 1/2 Franklin
 102.13
 97.93
 7.62
 94.51 TP
 1.24
 97.75 W
 3.70
 92.05
 Top of front
 95.75
 92.75
 3.20
 97.05 - 24m. NW. 27 1/2 Franklin
 7.99
 70.04
 10.04
 19.75
 91.90
 8.14
 8.2
 10004
 8510
 8.94
 2.64
 10004
 9718
 2.84
 2.64
 10004
 7800
 2.04
 177

29th St. Grades

W	Franklin to Clay Ave.						E	W	E
N.L									
Franklin Ave	87.25	87.00	86.40	86.00	85.10	85.00	85.35	0.0	+0.5
25'N	86.50	86.25	85.65	85.33	84.27	84.42	84.67	0.0	+1.5
50'N	85.75	85.50	84.90	84.67	83.85	83.83	84.00	+0.3	+1.5
75'N	85.00	84.75	84.15	84.00	83.22	83.25	83.50	-0.3	+1.9
100'N	84.25	84.00	83.40	83.34	82.60	82.67	82.92	+0.3	+1.0
125'N	83.50	83.25	82.65	82.67	81.97	82.08	82.33	-0.2	+1.7
150'N	82.75	82.50	81.90	82.00	81.35	81.50	81.75	+1.0	+0.7
175'N	82.00	81.75	81.15	81.34	80.73	80.92	81.17	+0.4	+1.6
200'N	81.25	81.00	80.40	80.67	80.10	80.34	80.56	+0.6	+1.5
225'N	80.50	80.25	79.65	80.00	79.47	79.75	80.00	+1.0	+1.4
250'N	79.75	79.50	78.90	79.33	78.85	79.17	79.42	+1.0	+1.5
275'N	79.00	78.75	78.15	78.67	78.23	78.57	78.84	+0.9	+1.4
298'N	78.31	78.06	77.46	78.05	77.65	78.05	78.30	+1.1	+2.1
300' N of 3-L Clay St	78.25	78.00	77.40	78.00	77.60	78.00	78.25	+0.4	0.0

This intersection is on the beam. Returns are all high.
 gutter field 6 to 1 ft deep on W.E. on gutters is 1.7' deep covered.
 Open gutters should be cut across N.E. for drainage 1/8" W.E. West.

Clay St. intersection excepted.

7702
575
82.77

88.52	88.52	88.52	88.52	88.52	88.52
10.22	10.08	7.82	9.42	6.22	6.67
79.30	79.44	81.70	79.10	82.30	81.85
79.48	79.85	79.85	79.22	80.56	81.25
80.25	80.14	80.95	80.32	81.74	80.50
88.52	88.52	88.52	88.52	88.52	88.52
4.84	5.20	4.30	3.72	2.52	2.82
85.43	85.32	84.22	84.60	86.00	86.70
82.74	81.75	82.92	84.25	85.76	84.08
80.93	81.57	81.30	80.35	80.25	81.62
86.52	83.52	88.52			
2.87	1.20				
86.15	87.52				
87.5	87.25				
80.0	80.0				

cut - full stakes 1/16/19
 West - Lane - Dennis

Wood

88.67	88.67	88.67	88.67	88.67	88.67
7.825	10.67	7.825	10.67	11.65	
10.42	10.67	10.42	10.67	88.67	88.67
88.67	88.67	88.67	88.67	88.67	88.67
7.925	9.17	7.925	9.17	9.25	9.50
8.92		9.25	9.50		
88.67	88.67	88.67	88.67	88.67	88.67
81.25	7.67	80.56	8.11	8.36	
7.42	7.67	8.11	8.36		
88.67	88.67	88.67	88.67	88.67	88.67
82.75	6.17	81.75	6.92	7.17	
5.92	6.17	6.92	7.17		
88.67	88.67	88.67	88.67	88.67	88.67
84.25	4.67	82.92	5.75	6.00	
4.42	4.67	5.75	6.00		
88.67	88.67	88.67	88.67	88.67	88.67
85.25	3.17	84.08	4.59	4.84	
2.92	3.17	4.59	4.84		
88.67	88.67	88.67	88.67	88.67	88.67
87.25	1.67	85.25	3.42	3.67	
1.42	1.67	3.42	3.67		

7702
575
82.77

82.77	82.77	82.77	82.77	82.77	82.77
76.00	77.60	78.00	77.60	78.10	
4.77	5.17	4.77	5.17	4.77	
79.15	79.15	79.15	79.15	79.15	
87.00	86.40	86.00	85.10	85.00	
6.154	6.75	7.15	8.05	8.15	

Wander raised. Grades ok. but need additional
 a plenty of blank work 1/16" West - Lane - Dennis

74.76
72.55
1.21

77.25
75.04
2.21

29th St - Grades
Clay Ave to Webster Ave

W	Clay Ave to Webster Ave						E	W	E
Clayst	77.25	77.00	76.60	77.00	76.60	77.00	77.25	0.0	0.0
25'N	76.63	76.38	75.99	76.40	75.82	76.42	76.67	+0.1	+0.3
50'N	76.02	75.77	75.38	75.80	75.23	75.83	76.07	0.0	-0.2
75'N	75.40	75.15	74.77	75.20	74.65	75.25	75.50	-0.1	-0.3
100'N	74.78	74.53	74.17	74.60	74.07	74.67	74.92	+0.3	+0.1
125'N	74.17	73.92	73.56	74.00	73.48	74.08	74.33	+0.3	-0.4
150'N	73.55	73.30	72.95	73.40	72.90	73.50	73.75	+0.4	+0.1
175'N	72.93	72.68	72.34	72.80	72.32	72.92	73.17	+0.6	+0.1
200'N	72.31	72.06	71.73	72.20	71.74	72.34	72.59	+0.8	+0.4
225'N	71.70	71.45	71.12	71.60	71.15	71.75	72.00	+1.2	+0.7
250'N	71.08	70.83	70.51	71.00	70.57	71.17	71.42	+1.2	+0.8
275'N	70.46	70.21	69.90	70.60	69.99	70.59	70.84	+1.6	+1.2
298'N at S.W. Webster	69.90	69.65	69.35	69.85	69.45	70.05	70.30	+1.9	+1.3
300'N at S.W. Webster	69.85	69.60	69.30	69.80	69.40	70.00	70.25	+0.1	+0.4

Webster Ave intersection excepted.

74.92
73.75
1.17

77.25
76.07

77.25
72.57
4.68

77.84
76.66
1.18

77.25
75.94
1.31

69.58 - B.M. 310. 29 - Webster Ave.

W	Clay Ave to Webster Ave						E	W	E
78.72	78.72	78.72	78.72	78.72	78.72	78.72	78.72	78.72	78.72
8.71	7.82	6.52	6.42	5.66	5.79	4.32	4.68		
78.02	78.90	72.20	72.90	73.00	73.02	73.90	74.04		
69.85	70.25	71.42	71.68	72.31	72.47	73.41	74.05		
0.17	0.65	0.78	0.72	0.75	0.03	0.15	0.07		
78.72	78.72	78.72	78.72	78.72	78.72	78.72	78.72		
0.71	3.62	2.78	2.72	1.55	1.40	1.70			
75.02	75.10	75.94	76.00	77.17	77.32	77.02	77.02		
74.78	74.92	76.35	76.02	77.25	77.25	77.25	77.25		
0.23	0.18	0.41	0.00	0.08	0.07				
79.62		79.62		69.58 B.M. S.W. Webster					
69.85		79.62		10.02					
0.9.77		70.25		79.62					
0.1002		9.37							
P 79.62		9.62							
C 71.08		79.62							
P 8.54		8.20							
C 9.79		8.45							
79.62		79.62							
72.31		72.59							
P 7.31		7.03							
C 7.56		9.28							
79.62		79.62							
73.55		73.75							
P -6.07		5.87							
C 6.32		6.12							
79.62		79.62							
74.78		74.92							
P 4.84		4.70							
C 5.09		4.95							
79.62		79.62							
76.02		76.35							
P 3.60		3.27							
C 3.85		3.52							
79.62		79.62							
77.25		77.25							
P 2.37		2.37							
C 2.62		2.62							
82.77	82.77	82.77	82.77	82.77	82.77	82.77	82.77		
77.00	76.60	77.00	76.60	77.00	77.00	77.00	77.00		
577	627	577	627	577	627	577	627		
582									

82.77 82.77 82.77 82.77 82.77 1/4 in. east
77.00 76.60 77.00 76.60 77.00 77.00
577 627 577 627 577

Attends + subd. grades OK. Excav. two .3 box of pits in 1/4
gutter + curbs need trimming. Sides + drag need.
Copper line at Webster in hole + cut not trimmed.

29th St - Grades

W	Webster Ave to Valley Place						E	W	E	
N.L.	Webster Ave	69.25	69.00	68.72	69.25	68.90	69.50	69.75	+0.1	0.0
25'N		69.52	69.27	69.00	69.52	69.17	69.77	70.02	+1.1	+1.0
50'N		69.75	69.53	69.25	69.78	69.44	70.04	70.29	+0.5	+0.3
75'N		70.05	69.80	69.52	70.05	69.70	70.30	70.55	+0.9	-0.2
100'N		70.32	70.07	69.80	70.32	69.97	70.57	70.82	+0.7	-0.3
140'N of		70.75	70.50	70.22	70.75	70.40	71.00	71.25	-0.2	-1.0
S.L.	Valley Place									

75.58	75.58	75.58	75.58	75.58	75.58
598	528	528	422	525	598
7020	7030	7035	7136	7033	7050
7075	7125	7082	7032	6975	7029
69.65	69.75	69.52	0.04	0.08	0.21
75.58	75.58	75.58	cut, fills 1/2 m. West Webb's Driv.		
583	622	602			
6994	6936	6958			
6975	6925				
570	0.11				

S.L.	Valley Place Grades						E	W	E	
Valley Place	70.75	70.50	70.22	70.75	70.40	71.00	71.25	-0.2	-1.0	
P										
Curb	70.50	70.50	70.22	70.75	70.40	71.00	71.00	-0.2	-0.6	
	69.50	69.50								
5 1/2						70.00	70.00	+0.8	+0.4	
C	70.37	69.37	70.10	70.63	70.30	69.90	70.90	-0.3	-0.3	
N 1/2										
	69.25	69.25			69.80		70.80	+0.6	+0.7	
Curb	70.25	70.25	69.98	70.52	70.20	70.80	69.80	-0.4	-0.3	
N.L.	Valley Place	70.50	70.25	69.98	70.52	70.20	70.80	71.05	-0.5	-0.4

75.08	75.08	75.08	75.08	75.08
6925	6975	7032	7075	
3.83V	3.38V	4.76V	4.38V	
6.09V	5.58V	5.04V	4.58V	
75.08	75.08	75.08	75.08	
69.75	70.29	70.82	71.25	
5.33V	4.79V	4.26V	3.83V	
5.58V	5.04V	4.51V	4.08V	
69.58				
592				
73.50N	75.0	75.0	75.0	75.0
	66.72	69.25	68.74	69.58
	6.58	6.78	6.25	6.62
				6.20
	75.50	75.50	75.50	75.50
	70.50	70.22	70.75	70.70
	5.00V	5.28	4.75V	5.10V

intends staked.
 gaps on road
 blading and
 smoothing future
 run high
 1/2 m. out

29th St. Grades

W. Valley Place to "N" St. East West East

W. Valley Place 70.50	70.25	69.98	70.52	70.20	70.80	71.05	-0.5	-0.4
or Line B								
W. Valley Place	70.50	70.25	69.98	70.52	69.98	70.58	-0.7	-0.3
44.4' Non E								
or Line C								
58' N of Valley Place	70.25	70.00	69.68	70.16	69.73	70.33	-0.5	+0.4
74.4' Non E								
105.3' Non W								
149.7' ME	70.02	69.77	69.43	69.89	69.60	70.00	-0.1	0.0
or 5.1' N' St								
74' E of Line D								
124.6' Non West								
149.7' ME	69.93	69.68	69.36	69.84	69.40	70.00	+0.2	0.0
or 5.1' N' St on E								
= Line E								
S-L "N" St	69.85	69.60	69.30	69.80	69.40	70.00	+0.4	0.0

7558	7559	7559	7558	7558	7558	7558	7558
544	673	581	622	480	506	574	
70.14	69.65	69.77	69.36	70.09	70.52	69.64	
70.25	69.93	70.22	70.25	70.51	70.82	70.50	
70.11	70.29	70.25	70.87	70.24	70.29	70.86	
7558	7558	7558	7558	Cut + Fills	1/16 ft		
538	530	530					
70.20	70.28	70.30					
70.71	71.05	71.20					
70.55	70.77	70.95					
70.22	Finish the 1/16 ft. on E. D.						
510							
7532	7532	7532	7532	7532	7532	7532	7532
70.57	70.23	70.25	70.87	69.93	70.02	70.57	70.25
4.82	4.97	5.07	5.47	5.39	5.22	4.74	5.07
7533	7533	7533	7533	7533	7533	7533	7533
70.25	69.85	70.58	70.83	71.05	71.25	70.75	70.71
5.08	5.07	4.75	4.50	4.78	4.08	4.28	4.33
5.32	5.73	5.01	4.75	4.53	4.33	4.33	5.07
7533	7533	7533	7533	Finish Cuts			
70.25	70.02	69.93	69.85	1 1/2 ft. on E. D.			
5.09	5.31	5.40	5.48				
5.33	5.51	5.65	5.73				

Returns not made at Valley Place Intersection

29th St - Grades
N-St intersection

							West	East			
W											
NL	5" N St	69.85	69.60	69.30	69.80	69.40	70.00	70.25	+0.4	0.0	
01	2" N	69.85	69.60	69.30	69.50	69.40	70.00	70.25	+0.6	+0.1	
NL	of S L R R										
of	R of way										
44											
50											
50	Center 44.5'										
74	of M L of R R	69.85	69.60	69.70	69.80	69.90	70.00	70.25	-0.4	-0.3	
105	R of way										
149	N 1/4	69.20	69.20	69.30	69.40	69.50	69.60	69.60	0.0	0.0	
146	N Curb	69.60	69.60	69.30	69.80	69.40	70.00	70.00	+0.7	-0.5	
124	N L "N" St	69.85	69.60	69.30	69.80	69.40	70.00	70.25	+0.4	-0.3	
149											
019											

R. R. R of way

"N" St to "M" St

NL	N St -	69.85	69.60	69.30	69.80	69.40	70.00	70.25	+0.4	-0.3
	25 N	70.05	69.80	69.48	69.96	69.53	70.13	70.29		
	50 N -	70.26	70.01	69.67	70.14	69.66	70.26	70.51	+1.2	+1.1
	75 N	70.46	70.21	69.86	70.30	69.78	70.38	70.63		
	100 N -	70.67	70.42	70.04	70.47	69.91	70.51	70.76	-0.2	+1.0
	125 N	70.87	70.62	70.58	70.63	70.04	70.64	70.89		
	150 N -	71.08	70.83	70.23	70.80	70.38	70.77	71.02	-1.3	-0.1
	175 N	71.28	71.03	70.43	70.97	70.54	70.90	71.15		
	200 N -	71.48	71.23	70.63	71.12	70.67	71.02	71.27	-0.9	-0.2
	225 N	71.69	71.44	70.84	71.29	70.82	71.15	71.40		
	250 N -	71.89	71.64	71.04	71.46	70.97	71.28	71.53	+0.1	0.0
	275 N	72.09	71.84	71.24	71.62	71.11	71.41	71.66		
	300 N -	72.29	72.04	71.44	71.79	71.26	71.54	71.79	0.0	0.0

"M" St intersection excepted

76.92 - 404.29 - 2.58 (blue)
 76.92
 80.42
 8.47
 75.94 Rec'd Walk. Div. Curb 29th St.
 3.87
 75.92
 75.92 75.92 75.92 75.92 75.92 75.92
 3.28 4.15 4.50 3.85 5.25 4.87
 77.24 77.77 77.42 72.07 70.67 71.05
 70.22 72.24 71.77 71.23 71.89 71.48 71.27
 0.00 0.00 F 0.11 C 0.18 F 0.81 F 0.22

75.92 75.92 75.92 75.92 75.92 75.92
 5.03 5.16 4.28 4.41 4.71
 70.89 70.76 71.04 71.48 71.21
 71.03 70.67 70.76 72.04 70.36
 F 0.13 0.09 0.88 0.97 0.95
 75.92 75.92 75.92 Cut & Fills
 5.72 6.00 11/14/14 West
 70.20 69.72
 69.85 71.25
 C 0.55 F 0.33
 Dams

75.58 H.
 75.58 75.58 75.58 75.58
 5.82 6.06 5.21 5.32
 69.76 69.52 70.37 70.24
 70.25 69.65 69.85 70.35
 F 0.74 F 0.33 C 0.52 < 0.00

76.22 Handb. 10' E of 22nd St. 75'
 5.80
 76.52 H.
 4.90 76.02 76.02 76.02 76.02 76.02 76.02
 72.02 70.25 69.85 70.26 70.51 70.76 70.67
 5.77 6.77 5.76 5.51 5.26 5.35

76.02 76.02 76.02 76.02 76.02 76.02 76.02
 71.09 71.02 71.27 71.48 71.89 71.53 71.79 72.24
 49.44 50.00 49.54 49.13 49.77 49.23 3.75
 Finish stakes on 4th perfect 11/21/14 West Corner
 Dams

75.91
 75.91 75.91 75.91 75.91 75.91 75.91
 71.89 71.53 71.27 71.08 71.08 71.82
 70.25 H.
 4.02 4.08 4.04 4.05 4.89 4.89
 5.03 4.27 4.63 4.49 4.64 5.18 5.14
 75.33 H.
 75.91 75.91 75.71 75.91 75.91 75.91
 70.76 70.67 70.26 70.51 70.25 69.85
 5.15 5.24 5.65 5.40 5.66 6.06
 5.40 5.44 5.90 5.67 5.91 6.31

72.08 / 70.1
 76.04 76.04 76.04 76.04 76.04 76.04 76.04
 71.14 71.77 71.26 71.54 70.00 69.80 69.30 69.60
 71.01 4.60 4.25 4.78 4.50 6.04 6.24 6.74 6.40
 4.08 6.64

made from M.L. C 0.58
 Dams - 3 bars in gutter - black street light and

29th St - Grades
 "M" St. to "L" St.

								West	East
N.W. N.L. M. St.	73.29	73.04	77.44	72.79	72.26	72.52	72.79	+0.2	
0.25' N	73.70	73.45	72.85	73.18	72.64	72.91	73.16		
0.50' N	74.12	73.87	73.27	73.57	73.02	73.29	73.53	+0.3	
0.75' N	74.53	74.28	73.68	73.96	73.40	73.65	73.90		
1.00' N	75.25	74.70	74.10	74.36	73.79	74.02	74.27	+0.1	
1.25' N	75.36	75.11	74.51	74.75	74.18	74.40	74.65		
1.50' N	75.87	75.52	74.92	75.14	74.55	74.76	75.01		
1.75' N	76.19	75.94	75.34	75.53	74.93	75.13	75.38		
2.00' N	76.60	76.35	75.75	75.92	75.31	75.50	75.75		
2.25' N	77.02	76.77	76.17	76.32	75.70	75.88	76.13		
2.50' N	77.43	77.18	76.58	76.71	76.08	76.25	76.50		
2.75' N	77.84	77.59	76.99	77.10	76.41	76.62	76.87		
3.00' N S.L. L St	78.25	78.00	77.40	77.50	76.85	77.00	77.25		

L St intersection excepted

29th St Grades
 "L" St. to "K" St.

W								E		
N.L.										
L St	78.25	78.00	77.40	77.50	76.85	77.00	77.25	+0.1	0.0	
25' N	78.46	78.21	77.61	77.71	77.06	77.21	77.46	-1.2	+1.0	
40' N										
50' N	78.67	78.42	77.82	77.92	77.27	77.42	77.67			
75' N	78.87	78.62	78.02	78.12	77.47	77.62	77.87			
100' N	79.08	78.83	78.23	78.33	77.68	77.83	78.08			
125' N	79.29	79.04	78.44	78.54	77.89	78.04	78.29			
150' N	79.50	79.25	78.65	78.75	78.10	78.25	78.50			
175' N	79.71	79.46	78.86	78.96	78.31	78.46	78.71			
200' N	79.92	79.67	79.07	79.17	78.52	78.67	78.92			
225' N	80.12	79.87	79.27	79.37	78.72	78.87	79.12			
250' N	80.33	80.08	79.48	79.58	78.93	79.08	79.33			
275' N	80.54	80.29	79.69	79.79	79.14	79.29	79.54			
300' N	80.75	80.50	79.90	80.00	79.35	79.50	79.75			
S.L.										
K St										

Clay

Mon 12 2 1/2 d.

Ave



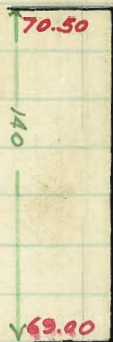
60'

ST



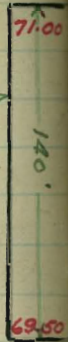
Valley

Place



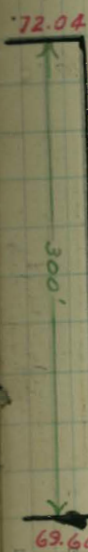
60'

ST



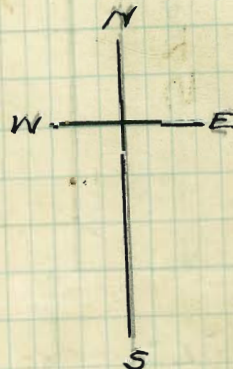
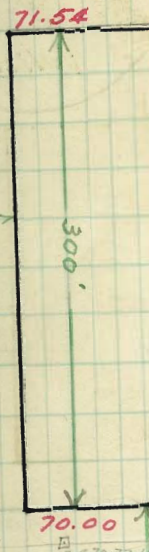
Mⁿ St

60



60'

ST



Franklin

Ave

Webster Ave

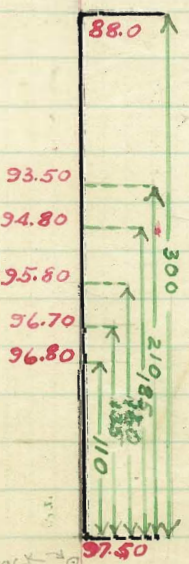
Nⁿ

St

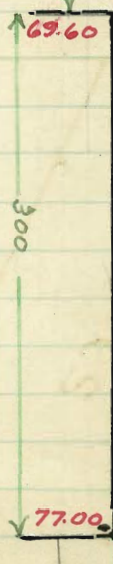


94.50
95.40
96.35
97.10
97.30

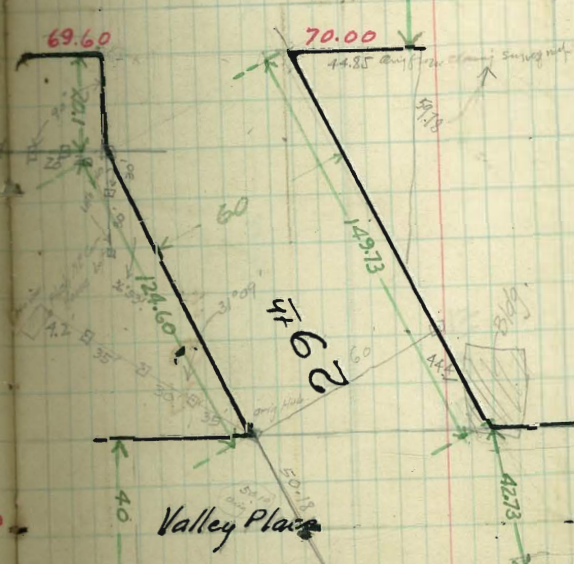
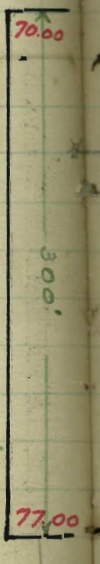
29th
29th



93.50
94.80
95.80
96.70
96.80



29th



Valley Place

Woolman Ave

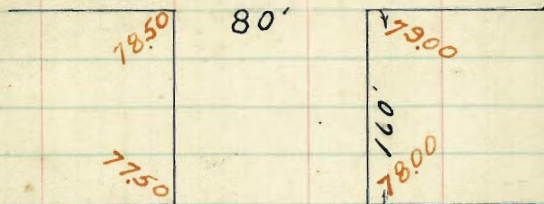
Clay Ave

RETURN TO CITY ENGINEER'S OFFICE
CITY HALL, SAN DIEGO, CALIF.

63

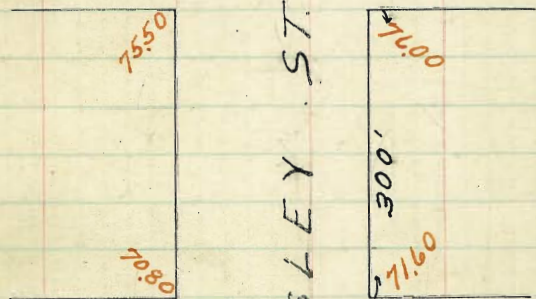
Hensley ST.

N



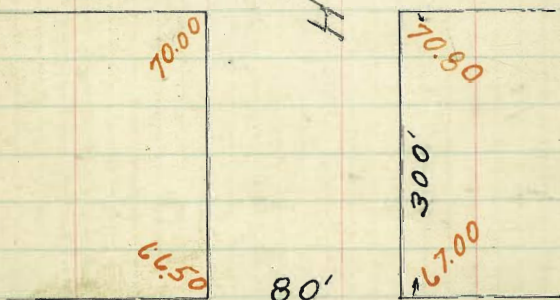
L 80'

ST



M 80'

ST



N

ST

HENSLEY ST.

S

W

E

Hensley St Grade

	W	N-ST	TO	M-ST	E	W	E
300	7025	70.0	69.8	70.40	70.2	70.8	71.05
+75	69.95	69.7	69.5	70.09	69.88	70.49	70.73
+50	69.66	69.41	69.2	69.78	69.57	70.14	70.41
+25	69.36	69.11	68.9	69.47	69.24	69.84	70.09
200	69.08	68.83	68.60	69.18	68.93	69.53	69.78
+75	68.79	68.54	68.30	68.87	68.61	69.21	69.46
+50	68.50	68.25	68.00	68.57	68.30	68.90	69.15
+25	68.21	67.96	67.70	68.27	67.98	68.58	68.83
100	67.92	67.67	67.40	67.97	67.67	68.27	68.52
+75	67.62	67.37	67.11	67.65	67.35	67.94	68.19
+50	67.33	67.08	66.81	67.35	67.03	67.63	67.88
+25	67.04	66.79	66.52	67.05	66.71	67.31	67.56
0+00	66.75	66.50	66.22	66.75	66.40	67.00	67.25

Hensley St. Grade W/E

West M. St. To L. St. East

Curb 1/4 & 1/4 Curb

±	West	1/4	&	1/4	East	Curb		
300	75.75	75.50	75.32	75.75	75.40	74.00	71.30	24.10
+75	75.35	75.10	74.83	74.37	75.03	75.63	75.00	
+50	74.96	74.71	74.55	74.99	74.66	75.24	75.00	24.19
+25	74.57	74.32	74.05	74.51	74.30	74.90	75.00	
200	74.18	73.93	73.68	74.23	73.93	74.53	74.00	27.11
+75	73.79	73.54	73.30	73.84	73.57	74.17	74.00	
+50	73.40	73.15	72.91	73.48	73.20	73.80	74.00	19.11
+25	73.01	72.76	72.53	73.10	72.84	73.44	73.00	
100	72.62	72.37	72.14	72.72	72.47	73.07	73.00	23.13
+75	72.22	71.97	71.75	72.34	72.10	72.70	72.00	
+50	71.83	71.58	71.37	71.96	71.73	72.33	72.00	17.10
+25	71.44	71.19	70.98	71.58	71.37	71.97	72.00	
0+00	71.05	70.80	70.50	71.20	71.00	71.60	71.00	11.10

Hensley St Grade

W E

West L St - To 160' North East

	R	ant	1/4	£	1/4	ant	2	
+40	7875	7850	7822	7875	7840	7900	7920	12.103
+50	7849	7844	7814	7849	7834	7894	7910	12.103
+25	7853	7828	7800	7853	7818	7878	7900	
+100	7838	7813	7785	7838	7803	7843	7880	12.100
+75	7822	7797	7769	7822	7787	7847	7880	
+50	7806	7781	7753	7806	7771	7831	7860	12.107
+25	7790	7765	7737	7790	7755	7815	7840	
0+00	7775	7750	7722	7775	7740	7800	7820	12.101

ARIZONA STREET

MADISON TO MONROE

	W	Curb	1/4	C	1/4	Curb	E
SL. Madison	366.25	366.00	366.25	367.50	368.70	369.00	369.25
			Break				
25'S	366.09	365.84	366.19	367.34	368.24	368.84	369.11
50'S	365.94	365.69	366.04	367.19	368.09	368.69	368.94
100'S	365.62	365.37	365.72	366.87	367.77	368.37	368.62
125'S	365.46	365.21	365.56	366.71	367.61	368.21	368.46
150'S	365.31	365.06	365.41	366.56	367.46	368.06	368.31
160'S	365.25	365.00	365.35	366.50	367.40	368.00	368.25
			Break				
200'S	364.25	364.00	364.35	365.50	366.40	367.00	367.25
250'S	363.00	362.75	363.10	364.25	365.15	365.75	366.00
300'S	361.75	361.50	361.85	363.00	363.90	364.50	364.75
350'S	360.50	360.25	360.60	361.75	362.65	363.25	363.50
360'S	360.25	360.00	360.35	361.50	362.40	363.00	363.25
			Break				
375'S	359.88	359.63	359.95	361.08	361.94	362.54	362.79
400'S	359.25	359.00	359.29	360.38	361.17	361.77	362.02
450'S	358.00	357.75	357.97	358.99	359.63	360.23	360.48
500'S	356.75	356.50	356.64	357.59	358.09	358.69	358.94
550'S	355.50	355.25	355.32	356.20	356.55	357.15	357.40
600'S	354.25	354.00	354.00	354.80	355.00	355.60	355.85

MONROE AVENUE INTERSECTION

TL. MONROE	354.25	354.00	354.00	354.80	355.00	355.60	355.85
			Break				
N. Curb	354.00	354.00	352.72	354.52	354.72	355.60	355.60
	353.80	353.80				354.60	354.20
N 1/4	353.40	352.60	353.46	354.26	354.46	354.20	355.00
Center	353.20	352.20	353.20	354.00	354.20	353.80	354.60
S 1/4	352.40	351.80	352.94	353.74	353.94	353.40	354.00
S Curb	352.40	351.40	352.68	353.48	353.68	354.00	354.00
	352.40	352.40				354.00	354.00
TL. MONROE	352.65	352.40	352.40	353.20	353.40	354.00	354.25

372.47 HI.

369.25	368.94	368.62	368.25	367.45	366.00	364.75	69
3.22	3.83	3.95	4.22	5.22	6.47	7.72	
2.22	0.93	1.15	1.16	1.52	2.57	3.02	
+1.0	+2.6	+2.7	+3.1	+3.4	+3.9	+4.7	
363.25	362.02	360.48	358.94	357.40	355.85	366.25	360.25
9.22	10.45	11.99	13.53	15.07	16.62	6.22	-2.29
4.52	6.35	7.49	8.73	10.37	13.12	7.12	-2.2
+0.7	+4.1	+4.5	+4.8	+4.7	+3.5	-0.9	3.58
361.75	363.00	364.25	365.25	365.62	365.94	366.25	366.25
10.72	9.47	8.22	7.22	6.85	6.53	0.28	2.04
16.92	10.27	8.98	7.82	6.75	6.43	360.04 HI.	4.24
-1.2	-0.8	-0.7	-0.6	+0.1	+0.1	355.50	-2.2
						4.54	5.79
						6.34	7.89
						1.8	-2.1

354.25 60' tie out on Monroe

354.25	354.00	353.75	353.50	353.25	353.00	352.75	352.50	352.25	352.00
3.22	3.83	3.95	4.22	5.22	6.47	7.72	8.97	10.22	11.47
2.22	0.93	1.15	1.16	1.52	2.57	3.02	3.57	4.12	4.67
+1.0	+2.6	+2.7	+3.1	+3.4	+3.9	+4.7	+5.2	+5.7	+6.2

351.75	351.50	351.25	351.00	350.75	350.50	350.25	350.00	349.75	349.50
3.22	3.83	3.95	4.22	5.22	6.47	7.72	8.97	10.22	11.47

Set out grade stakes on 1/4's & Curbs by orders from office.
 checked curbs Oct. Feb. 14-1910 Dominion Miller, Sheriff.
 drained upper 1/4 or in as to get drainage into gutter.

350.25	350.00	349.75	349.50	349.25	349.00	348.75	348.50	348.25	348.00
3.22	3.83	3.95	4.22	5.22	6.47	7.72	8.97	10.22	11.47

Valerach rough & high, strictly N. & set stakes, finish stakes all over

348.25	348.00	347.75	347.50	347.25	347.00	346.75	346.50	346.25	346.00
3.22	3.83	3.95	4.22	5.22	6.47	7.72	8.97	10.22	11.47

ARIZONA STREET
MOHROE TO MEADE

	W	Curb	1/4	C	1/4	Curb	E
SL. MOHROE	35265	35240	35240	35320	35340	35400	35425
			BREAK				
25'S	35199	35174	35175	35256	35278	35338	35363
50'S	35133	35108	35110	35192	35215	35275	35300
100'S	35061	34976	34980	35063	35090	35150	35175
150'S	34989	34844	34849	34935	34965	35025	35050
200'S	34936	34711	34718	34806	34840	34900	34925
250'S	34865	34580	34588	34677	34715	34775	34800
280'S	34825	34500	34510	34600	34640	34700	34725
			BREAK				
300'S	34806	34481	34490	34580	34618	34678	34703
350'S	34759	34434	34442	34528	34563	34623	34648
400'S	34712	34387	34394	34477	34508	34568	34593
450'S	34665	34340	34348	34427	34451	34514	34539
500'S	34618	34293	34294	34376	34399	34459	34484
550'S	34571	34246	34245	34325	34345	34405	34430
575'S	34528	34223	34221	34300	34318	34378	34403
600'S = Meade	34425	34200	34197	34275	34290	34350	34375

MEADE AVE. INTERSECTION

H.L. MEADE	34225	34200	34197	34275	34290	34350	34375
				BREAK			
H. Curb	34200	34200	34177	34253	34264	34350	34350
	34100	34100				34250	34250
H. 1/4	34140	34075	34159	34233	34239	34244	34240
Center	34150	34050	34142	34212	34215	34175	34175
S. 1/4	34085	34025	34123	34192	34191	34137	34137
	34000	34000				34100	34100
S. Curb	34100	34100	34109	34171	34166	34200	34200
	80						
S.L. Meade	34125	34100	34085	34150	34140	34200	34225

36004 HI	35733	35701	35425	3530	35175	35250	70
35265	8.71	10.03	5.79	7.04	8.29	9.54	
7.39	11.31	13.03	2.89	4.14	6.79	8.54	
10.09	-2.6	-3.0	+3.4	+2.9	+1.5	+1.0	
-2.7							

34925	3480	34725	34703	34648	34593	34539	1299
10.79	12.04	12.79	13.01	13.56	14.11	14.65	347.08
10.49	12.24	12.69	12.61	12.46	12.21	13.35	1.62
4.3	-0.2	7.04	7.04	7.1	7.19	7.13	348.67 HI.
							3.65
34484	34430	34375	34271	34318	34365		345.02 B.M.
3.23	4.37	4.92	6.42	5.96	5.49	5.02	
2.83	3.57	2.22	9.12	7.76	7.49	8.02	
+1.5	+1.5	+2.2	-2.7	-1.8	-2.0	-3.0	
34412	34359	34306	34251	34205	34159		
11.55	4.08	3.61	3.42	2.62	347.36	348.69	
6.85	5.74	6.01	5.42	5.82	7.31	6.00	
-1.3	-1.7	-2.4	6.22	-3.2	5.31	3.7	
			-2.8	-1.0	-3.7		

MEADE EAST TIE OUT ON MEADE

ST	325.75	345.0	345.0	345.0	345.0	345.0	345.0	345.0	345.0	345.0	345.0	345.0	345.0
325.75	9.09	10.19	11.29	11.49	10.89	11.23	8.29	7.29	7.85	7.10			
345.00	10.29	10.59	10.89	10.59	10.59	10.59	10.59	10.59	10.59	10.59	10.59	10.59	10.59
345.00	10.59	10.59	10.59	10.59	10.59	10.59	10.59	10.59	10.59	10.59	10.59	10.59	10.59
345.00	10.59	10.59	10.59	10.59	10.59	10.59	10.59	10.59	10.59	10.59	10.59	10.59	10.59
345.00	10.59	10.59	10.59	10.59	10.59	10.59	10.59	10.59	10.59	10.59	10.59	10.59	10.59

CORDS + P.C.S. where possible

at the S.E. Cor of Mohroe to the N.E. Cor of Meade the return in 120 4.23 high

See Bldg in Old road, but will probably be low after it is rolled on a subgrade.

Subs. 1014 Dominion, Shant, Miles.

ARIZONA STREET
MEADE TO EL CAJON

	W	Curb	1/4	C	1/4	Curb	E
31.25	341.25	341.00	340.85	341.50	341.40	342.90	342.25
50'S	340.97	340.72	340.58	341.24	341.17	341.77	341.25
100'S	340.68	340.43	340.30	340.98	340.93	341.53	341.00
150'S	340.70	340.15	340.03	340.72	340.70	341.80	341.25
200'S	340.14	339.87	339.76	340.46	340.47	341.07	340.50
250'S	339.84	339.59	339.50	340.22	340.24	340.84	340.25
275'S	339.70	339.45	339.37	340.09	340.12	340.72	340.10
300'S	339.55	339.30	339.22	339.95	340.00	340.60	340.00
325'S	339.41	339.16	339.09	339.32	339.38	340.18	340.00
350'S	339.27	339.02	338.76	339.69	339.76	340.36	340.00
375'S	339.13	338.88	338.82	339.56	339.64	340.24	340.00
400'S	338.98	338.73	338.68	339.43	339.53	340.13	340.00
425'S	338.84	338.59	338.54	339.30	339.41	340.01	340.00
450'S	338.70	338.45	338.40	339.17	339.29	339.87	340.14
470'S	338.59	338.34	338.30	339.07	339.21	339.81	340.16
500'S	338.42	338.17	338.14	338.92	339.07	339.67	339.80
525'S	338.28	338.03	338.01	338.79	338.95	339.55	339.80
550'S	338.14	337.89	337.87	338.66	338.83	339.43	339.80
600'S = ^{NL} El Cajon	337.85	337.60	337.60	338.40	338.60	339.20	339.45

348.67 N.L.

342.25	342.02	341.78	341.57	341.32	341.09	340.85
6.42	6.65	6.89	7.12	7.35	7.58	7.82
3.92	3.75	4.19	4.12	5.75	5.68	6.52
+2.4	+2.9	+2.7	+2.0	+1.6	+1.9	+1.3
340.61	340.28	339.42	339.68	339.45	339.18	339.15
8.29	8.53	8.75	9.02	9.22	9.49	9.75
7.76	7.43	8.45	7.4	8.52	9.57	10.62
-4.3	+1.7	+1.1	+1.6	+1.7	+1.9	+2.3
337.57	338.14	338.92	338.70	338.98	339.27	339.55
10.52	10.63	10.25	9.97	9.69	9.40	9.12
14.6	14.53	13.35	13.87	12.39	12.6	12.24
-3.7	-3.8	-3.1	-3.7	-2.7	-3.2	-3.1
340.40	340.65	340.97	341.25	341.57	341.85	342.15
8.27	10.3	10.24	9.42	8.68	8.01	7.34
2.7	-2.3	-2.5	-2.0	-1.6	-1.9	-1.3

Oct 27-1918
 Millard
 20' West of Meade to El Cajon.
 Millard
 at upper end of the valley on the East side of the Mt there is a bunch of badly eroded corals.

ARIZONA STREET
Field Book 876
Estimate Book 7

339.22	41.96
371.17	11.00
348.64	8.95
371.17	
339.22	
371.17	
348.64	
371.17	
339.22	
371.17	
348.64	
371.17	
339.22	
371.17	
348.64	
371.17	

371.17	371.17	371.17	371.17	371.17	371.17
348.64	348.64	348.64	348.64	348.64	348.64
339.22	339.22	339.22	339.22	339.22	339.22
371.17	371.17	371.17	371.17	371.17	371.17
348.64	348.64	348.64	348.64	348.64	348.64
339.22	339.22	339.22	339.22	339.22	339.22

ADAMS AVE.

366.4
180'
369.64
180'
372.64
420'
366.0
369.0

MADISON AVE.

366.0
160'
365.0
160'
368.0
220'
363.0
240'
354.0
355.6

MONROE AVE.

352.4
280'
315.0
280'
347.0
320'
343.5
320'
342.0
341.0
343.5

MEADE AVE.

341.0
80'
337.6
80'
339.2

EL CAJON AVE.

W

E

80' ST.
14' Walks
13' = 1/4'S

1" = 400' SWG

Re-grade

HAWTHORN STREET

FERN TO 31ST 80.5'

H Curb 1/4 C 1/4 Curb S

E.L. FERN 1525	275.00	274.50	274.00	274.25
50' E. W ^v 271.25	271.00	270.50	270.00	270.25
80' E. V 268.85	268.60	268.10	267.60	267.85
130' E. V 264.85	264.60	264.10	263.60	263.85
150' E. x 263.25	263.00	262.50	262.00	262.25
190' E. V 262.25	262.00	261.78	261.56	261.81
225' E. 262.60	262.35	261.76	261.17	261.42
240' E. V 262.75	262.50	261.75	261.00	261.25
290' E. V 263.25	263.00	262.50	262.00	262.25
330' E. v 266.45	266.20	265.70	265.20	265.45
350' E. x 268.05	267.80	267.30	266.80	267.05
390' E. v 271.25	271.00	270.50	270.00	270.25
450' E. x 274.25	274.00	273.50	273.00	273.25
500' E. v 278.13	275.18	274.68	274.18	274.43
550' E. v 276.62	276.37	275.87	275.37	275.62
591.5 E 277.15	277.50	277.00	276.50	276.75

13m Main & Fern. W 20 27704

27704	27710	27710	27711	27710	27710	27710	27711	74
19	19	19	19	19	19	19	19	
27710	27710	27710	27710	27710	27710	27710	27710	
708	708	708	708	708	708	708	708	
792	792	792	792	792	792	792	792	
770	770	770	770	770	770	770	770	
770	770	770	770	770	770	770	770	
770	770	770	770	770	770	770	770	

27704 NW Fern ...

27704 NW Fern ...

27704 NW Fern ...

27704 NW Fern ...

27704 NW Fern ...

27704 NW Fern ...

27704 NW Fern ...

27704 NW Fern ...

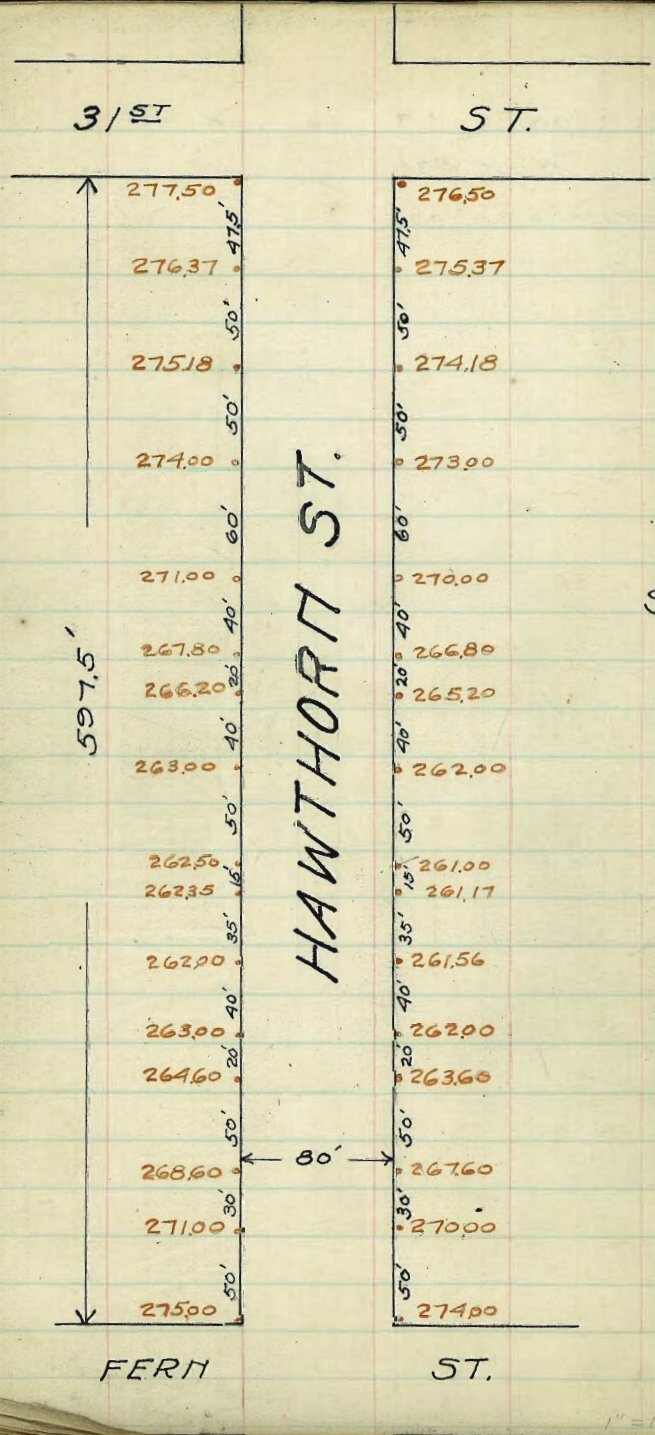
27704 NW Fern ...

27704 NW Fern ...

Checked OK 10/21/14 Legacy

HAWTHORN ST. Fern to 31st
FIELD BOOK 878
ESTIMATE BOOK

N



S

1"=100'

KANSAS ST.

80' wide
14' walks
13' / 4's

CORLEY

391.0

AVE

391.0

390.0

390.0

COLLIER
AVE.

389.5

389.5

KANSAS

WORKS AVE

ST

388.0

388.0

ADAMS

AVE.

Michael Grades with Profile Domain.

10' wide 1/2' deep.

Estimate Book 6 Page 348

27.97
54.94
82.96

76

Cas no of = 96524

96524 } 3000000 } 82.98

772192

Tax = 27076

81229

27076

54152

1427952

1036

11396

1036

5180

54708

11396

43012

2797

2978

1205

4286

1036

27

2252

2072

2797

11396

6076

9082.89 / 1000 = 9.08

80

288

240

480

480

KANSAS ST.

	W	Q	E
N.L. Collier	390.25	390.00	389.60
N curb	390.00	390.00	389.51
N 1/4	389.40	388.87	389.43
Center	389.75	388.75	389.35
S 1/4	389.23	388.63	389.26
S curb	388.50	388.50	389.18
S.L. Collier	389.75	389.50	389.10
270-St. Collier	389.75	389.50	389.10
250	389.70	389.45	389.05
225	389.64	389.39	388.99
200	389.58	389.33	388.93
175	389.51	389.26	388.86
150	389.45	389.20	388.80
125	389.39	389.14	388.74
100	389.33	389.08	388.68
75	389.26	389.01	388.61
50	389.20	388.95	388.55
25	389.14	388.89	388.49
WORKS	389.08	388.83	388.43

390.43	390.26	390.00	389.75	389.50	389.25
390.43	390.26	390.00	389.75	389.50	389.25

78

Station April 7-1914
 Danman, Miller, Sharo.
 checked with estimate of the

SW 3/4 Sec 29 N.W. Cor. Collier & Harrows (Note) I set these stakes when I set
 4 - stakes on Collier, so is a perfect check.

390.43	390.26	390.00	389.75	389.50	389.25
390.43	390.26	390.00	389.75	389.50	389.25

Stakes on S. offset, April 20-1914, Danman, Miller, Sharo

Stakes on Florida Robinson to University Ave.
 Subgrade on Curbs Off. June 2-1914
 Danman, Miller, Sharo.

Stakes on S. offset April 15th 1914
 See Page 15.

Curbs on Florida St from University Ave to Lincoln checked O.K.
 Subgrade from station 100+00 checked O.K. balance of P.K. was
 already covered with top dressing May 10-11 15.
 Danman, Miller, Sharo.

KANSAS ST

W

E

E

27	2524 = S.H. Copley on W	391.25	391.00	390.58	391.00	390.63	391.00	391.25
25	231 = S.H. Copley on E	391.17	390.92	390.52	390.76	390.60	391.00	391.25
22	200	391.04	390.79	390.29	390.83	390.47	390.87	391.25
200	175	390.94	390.69	390.29	390.73	390.36	390.76	391.00
175	150	390.84	390.59	390.19	390.62	390.25	390.65	390.90
150	125	390.75	390.50	390.10	390.52	390.14	390.54	390.77
125	100	390.65	390.40	390.00	390.42	390.03	390.43	390.68
100	75	390.55	390.30	389.90	390.31	389.92	390.32	390.57
75	50	390.45	390.20	389.80	390.21	389.82	390.22	390.47
50	25	390.35	390.10	389.70	390.11	389.71	390.11	390.36
25	0 = H.L. Collier	390.25	390.00	389.60	390.00	389.60	390.00	390.25

301.16
301.14
302.87 H.I.

E W
394.82 394.82 + 4 taken April 7-1914
91.25 91.25
395.8 395.8
397 397
397 -04
Dorman, Shand, Miller
checked with estimate book fairly well

H.L. Copley & Kansas
395.12 395.12 395.12 395.12 395.12 395.12 395.12 395.12 395.12 395.12
90.00 90.00 90.24 90.24 90.48 90.48 90.72 90.72 90.96 90.96
5.32 5.32 5.11 5.11 4.92 4.92 4.73 4.73 4.54 4.54
390.82 390.82 390.82 390.82 390.82 390.82 390.82 390.82 390.82 390.82
91.00 91.00 91.00 91.00 91.00 91.00 91.00 91.00 91.00 91.00
4.32 4.32 4.32 4.32 4.32 4.32 4.32 4.32 4.32 4.32
Siders with stakes on S offset, April 21-1914
May 16 & 18 & 27 1914

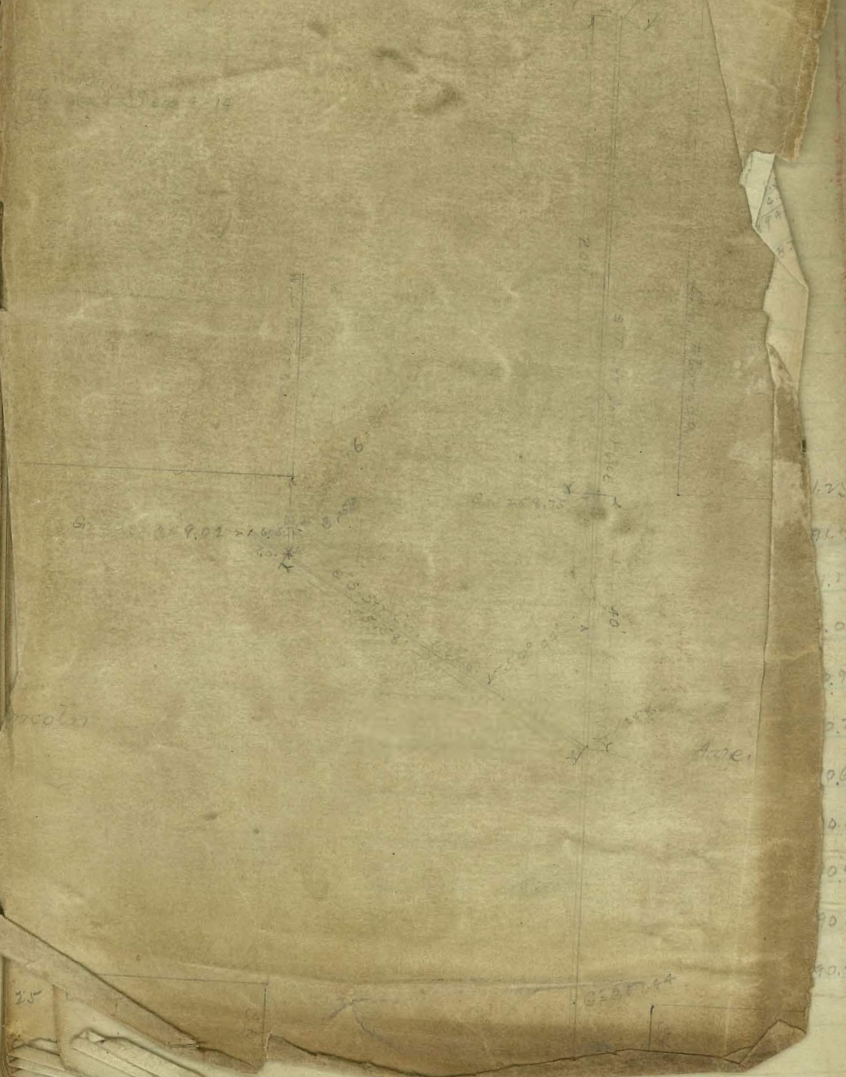
Dorman
Miller
Shand

396.74 396.74
91.00 91.00
397.74 397.74
394.67 394.67 394.67 394.67 394.67 394.67 394.67 394.67 394.67 394.67
91.00 91.00 91.00 91.00 91.00 91.00 91.00 91.00 91.00 91.00
3.69 3.69 3.69 3.69 3.69 3.69 3.69 3.69 3.69 3.69
Checked on ground June 2, 1914
Cours on
Siders with stakes necessary

51.07
 6.47
 6.37

448
 725
 773

551



1.25
 0.12
 0.12
 0.01
 0.90
 0.77
 0.68
 0.55
 0.47
 0.36
 0.25

20.16
 4.87
 25.03
 H.I.

20.57 20.57 20.57 20.57
 199.00 199.00 199.00 199.00
 3.57 3.57 3.57 3.57

27.08
 11.96
 29.04 H.I.
 49.00
 6.00

30.16
 7.55
 37.71
 7.00
 44.71

10.79 0.78
 707 1.63
 512 3.11
 61° 44'

400
 24.00
 60 8.17 (13)
 60
 2.17
 150
 10.53 13.50 + 20

5.10
 1.15
 4.26

110.9
 35

15.53 13.50 + 20

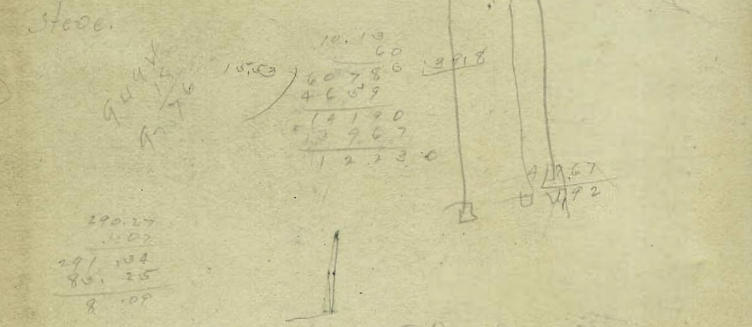
2.10
 0.20
 2.7

290.27
 8.11
 298.38
 89.00
 4.68

10.01
 60
 60 06.00 (+1.9)
 62 1.2
 27.30
 15.00
 13.80
 1.24

10.19
 60
 60 78.60
 46.09
 141.90
 12 26.7
 12 23.0

146
 1.20

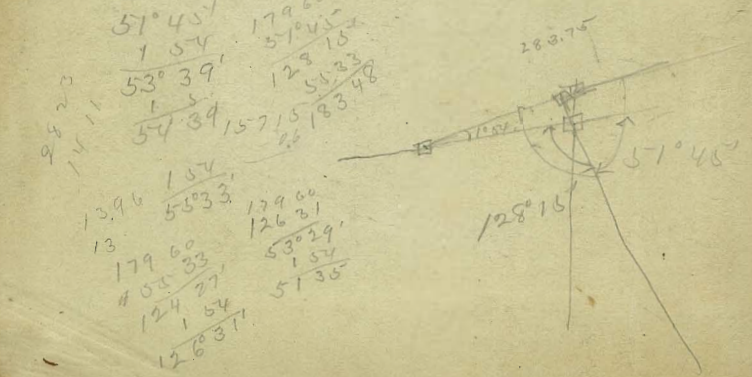


290.27
 8.11
 298.38
 89.00
 4.68

1.70
 4.04
 2.8

2508.5
 252.11

285.67
 1.72
 283.95



4.34 1.46, 4.58, 3.70

51° 45'
 1 54
 53° 39'
 1 54
 54° 39' 157 15 183 48

179 60
 4 55 33
 124 27
 1 54
 126° 31'

179 60
 126 21
 53° 29'
 1 54
 51 36

283.75
 57° 46'
 128° 15'

3.10
 3.40
 2.70

2.10
 1.00
 1.10

11.08 12.08
 10.10 9.50
 1.28 2.58

11.08 12.08
 10.10 9.50
 1.28 2.58

11.08 12.08
 10.10 9.50
 1.28 2.58

7.47
 8.5
 7.10

26.4.29
 0.84

26.5.13
 0.84

26.5.13
 0.84

26.5.13
 0.84

32.76
 1.07
 32.18.24
 21.00
 4.93

265.13
 59.80
 6.76 6.83

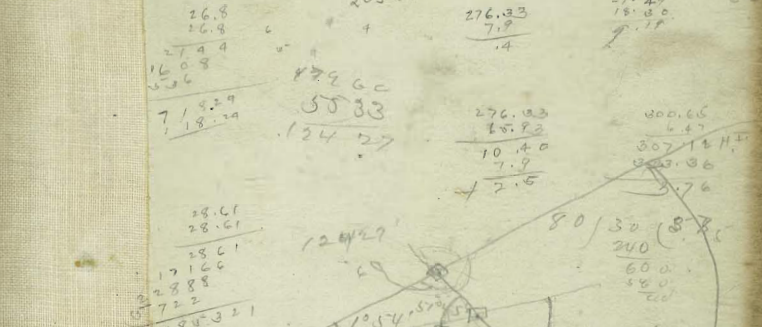
147.15
 45.06
 205.81

26.8
 26.8
 16.08
 5.36

7.829
 18.74

276.33
 7.9
 .4

27.40
 18.80
 7.17



28.61
 28.61
 17 166
 2888
 5722
 6185.321

12427
 5145
 184
 178.06 1580

29.22
 12.16
 41.32
 128015

148
 14
 58 0
 48
 1030

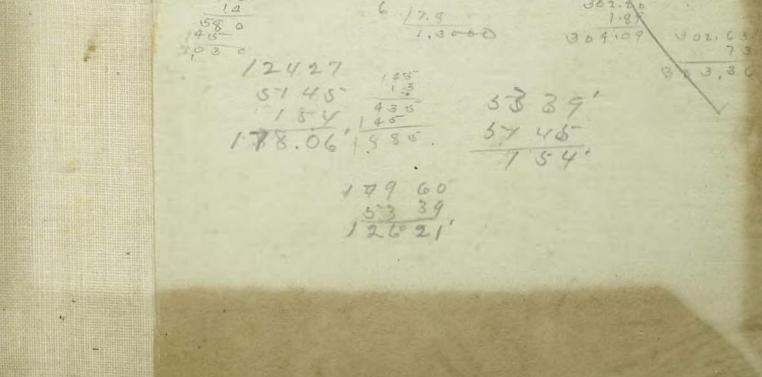
6.17.9
 1.3000

302.80
 1.87
 304.09

300.66
 6.47
 307.14
 500.86
 5.76

80/30 (8.7)
 240
 60
 50
 20

6.154
 53.88
 50
 146
 70



179 60
 53 39
 126 21

53 39
 57 46
 154

101.60
 73
 813.80