

71

G 71



MICROFILMED

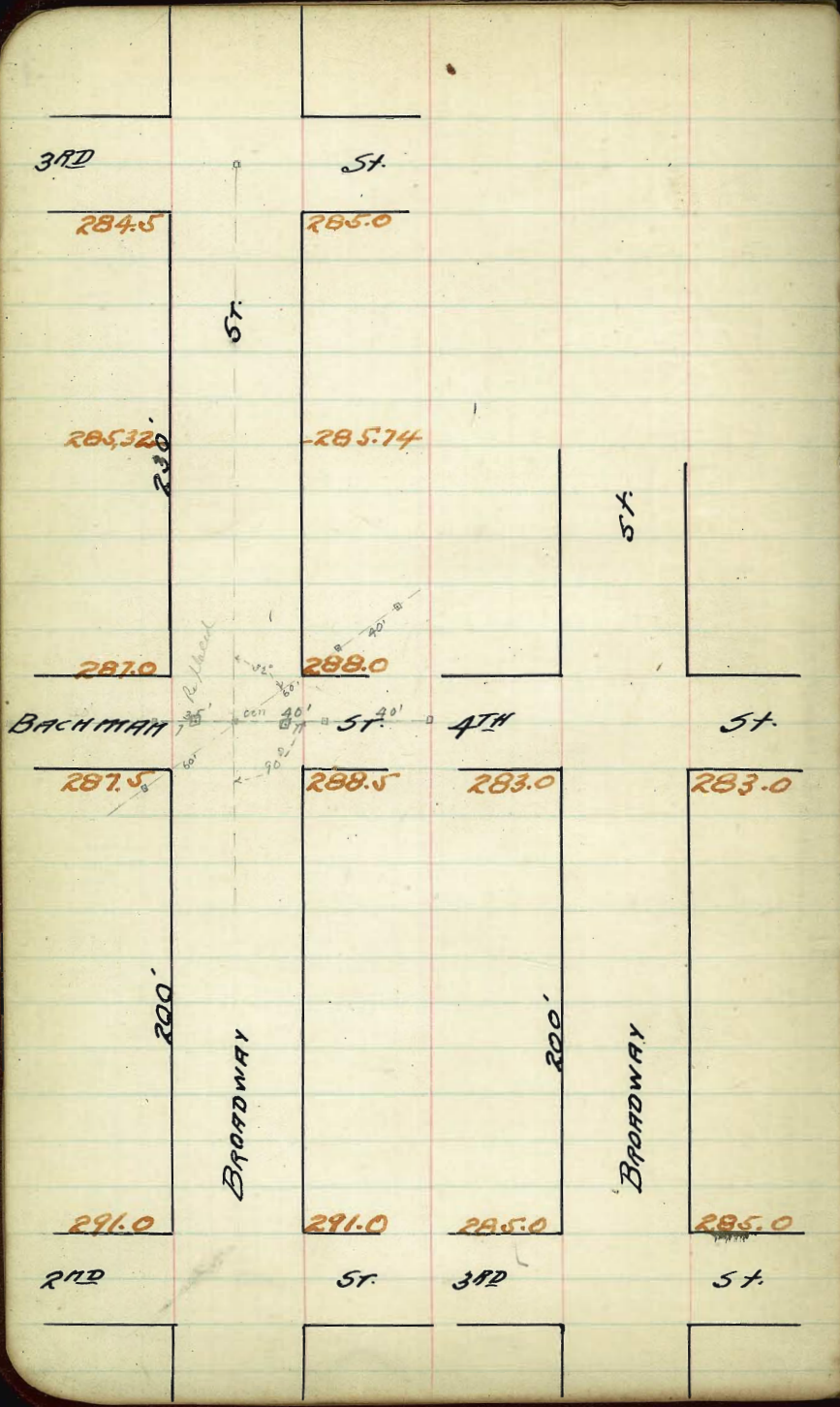
DEC 4 1964

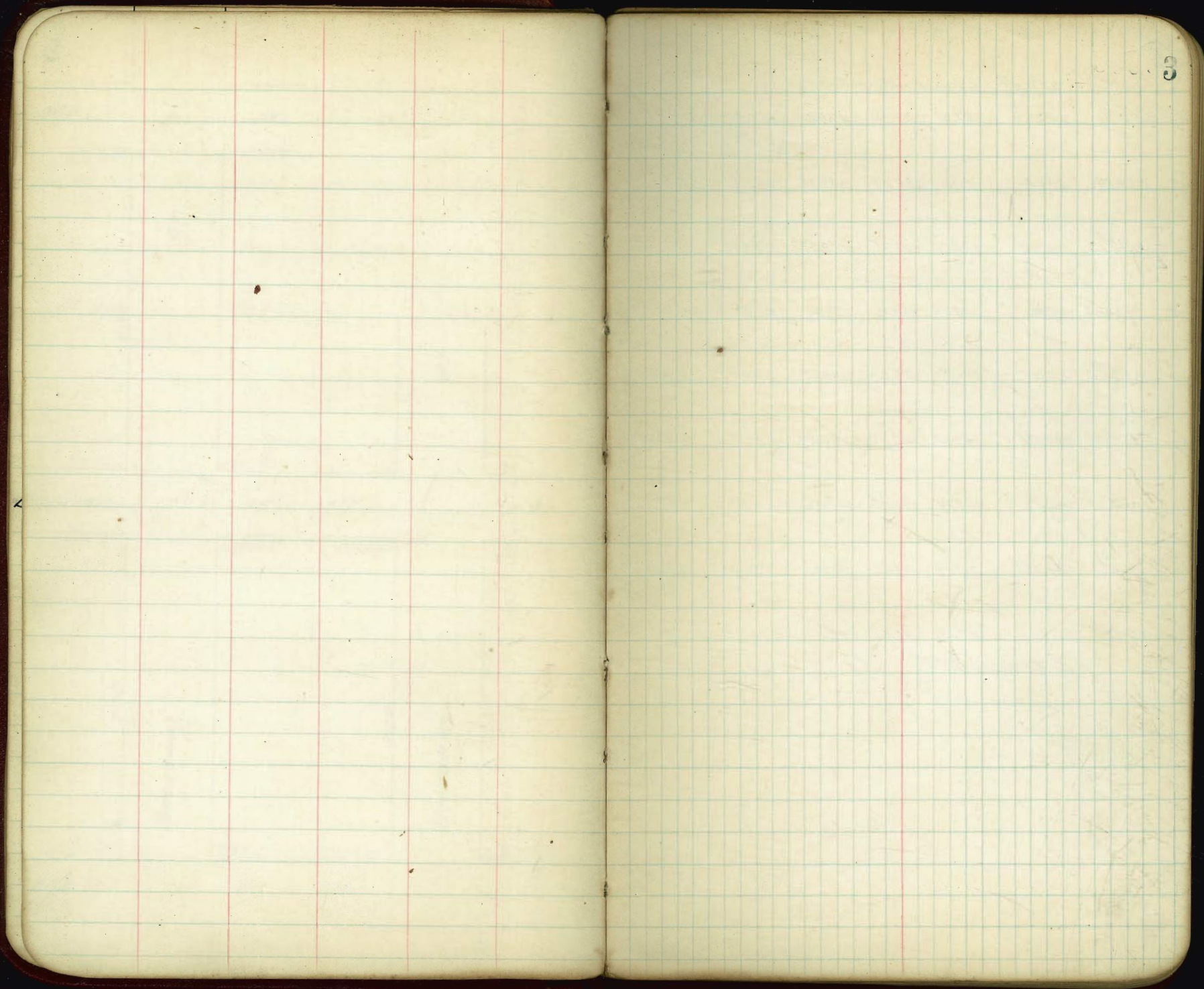
Book # 71



2

1





No.

BROADWAY St. 50.

E. L. BACHMAN St.

287.25 287.00 286.85 287.50 287.40 288.00 288.25

287.00 287.00
286.00 286.94 287.59 287.49 288.00 288.00
287.0

286.72 286.72 287.02 287.67 287.57 287.12 287.72

BACHMAN

N. 287.25 286.25 287.10 287.75 287.65 287.25 288.25

St.

286.90 286.38 287.18 287.83 287.73 287.38 287.90

287.50 287.50 287.26 287.91 287.81 288.50 288.50

287.75 287.50 287.35 288.00 287.90 288.50 288.75

No. Line BACHMAN

292.65

875

876

877

878

879

880

881

5.15

5.05

4.93

4.90

4.72

4.74

4.65

No.

So.

EAST LINE OF 3RD ST.

285.25 285.00 284.60 285.00 284.60 285.00 285.25

285.00 285.00 284.60 285.00 284.60 285.00 285.00
284.00 284.00

284.40 284.64 284.82 285.00 284.60 284.60 284.60

THIRD

N 284.75 284.85 284.92 285.00 285.00 285.00 285.00

5⁺

284.22 284.30 284.36 284.47 284.47 284.53 284.60

284.50 283.50 283.50 283.42 283.75 283.88 284.00 285.00
284.50 284.00284.75 284.50 284.22 284.75 284.40 285.00 285.25
G=84.00 G=84.00

W. LINE OF 3RD ST.

No.

50.

W. LINE OF 4th St

00	283.25	283.00	282.60	283.00	282.60	283.00	283.25
25	283.50	283.25	282.85	283.25	282.85	283.25	283.50
50	283.75	283.50	283.10	283.50	283.10	283.50	283.75
75	284.00	283.75	283.35	283.75	283.35	283.75	284.00
100	284.25	284.00	283.60	284.00	283.60	284.00	284.25
125	284.50	284.25	283.85	284.25	283.85	284.25	284.50
150	284.75	284.50	284.10	284.50	284.10	284.50	284.75
175	285.00	284.75	284.35	284.75	284.35	284.75	285.00
200	285.25	285.00	284.60	285.00	284.60	285.00	285.25

EAST LINE 3RD St.

Dist 283.14 Bling and refer to 4th St Lewis.

280.00	280.41	280.81	280.41	280.41	280.41	280.41	280.41
83.25	83.25	83.70	83.70	84.15	84.15	84.70	84.70
7.76	7.76	6.26	6.26	6.16	6.16	5.66	5.66
7.0	6.8	5.6	5.6	5.2	4.7	4.7	4.2
7.0	6.8	5.6	5.6	5.2	4.7	4.7	4.2

+ 28 - 5 - 4 - 12

283.00 Grad. 1/2 in 83.25 last part + blr 6-5-12
 283.25
 283.50
 283.75
 284.00

all in

657

Dist 283.14 See Above.

89.83	85.83	82.80	82.83	87.88	82.88	87.88	87.88	87.88	87.88	87.88
89.25	80.00	82.60	83.75	83.80	83.10	84.25	84.00	83.60	84.70	84.50
6.58	6.83	7.22	6.08	6.33	6.73	5.88	5.88	6.23	5.88	5.88
85.83	85.83	82.80								
84.25	83.80	84.60								
4.58	4.93	5.23								

Final part of project -
 550 14.6 / 845 14.1 / 840 83.6 / 83.5 83.1 / 830 82.6
 38 - 4.24 / 43 - 4.7 / 48 - 5.2 / 53 - 5.7 / 57 - 6.2

check 1/2 in Hatch
 1/2 in Hall

60

25

50

75

100

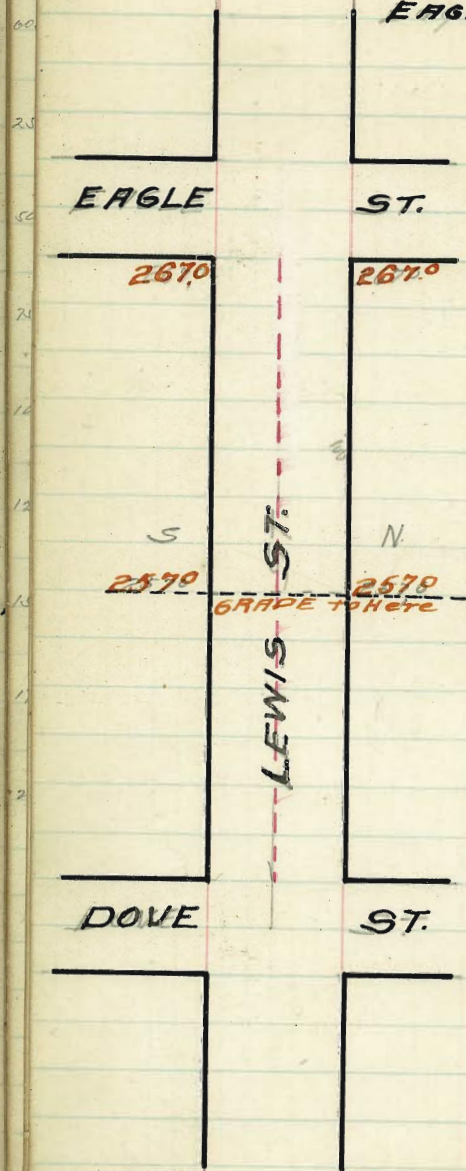
125

150

175

200

$N\frac{1}{2}$ of LEWIS ST.
EAGLE 100' EAST.



East Line of Eagle St 8

11782-87

Adm
Z
Sh

11

271.0
5.22
276.22

00 E.L. 267.25 267.00 266.60 267.00 267.25

0125 264.75 264.50 264.10 264.50 264.75

0150 262.25 262.00 261.60 262.00 262.25

0175 259.75 259.50 259.10 259.50 259.75

100 E 257.25 257.00 256.60 257.00 257.25

GRADE TO HERE.

267.00 Brn 20 Eagle Wash

267.00	271.70	272.20	272.70	273.20	273.70	274.20
5.50	5.00	5.00	5.00	5.00	5.00	5.00
272.50	276.70	277.20	277.70	278.20	278.70	279.20
5.00	5.00	5.00	5.00	5.00	5.00	5.00
277.50	281.70	282.20	282.70	283.20	283.70	284.20
5.00	5.00	5.00	5.00	5.00	5.00	5.00

370 Brass Flag N. & Cor Washington & Eagle

271.23	271.23	271.23	271.23	271.23	271.23	271.23	263.88	263.88	263.88
67.25	67.25	66.60	67.00	67.40	67.80	68.20	57.00	56.60	57.20
271.23	271.23	271.23	271.23	271.23	271.23	271.23	6.89	7.29	6.64

all stakes, May 21-12
 (Domani)
 (Shaw)
 (Stevine)
 6 1/2 Stake
 1/2 Stake
 1/2 Stake

267.00 N.E. Eagle Wash

267.00	267.25	267.25	267.25	257.25	257.25	257.00
1.56	1.56	1.56	1.56	1.56	1.56	1.56
268.56	268.81	268.81	268.81	258.81	258.81	258.56
1.56	1.56	1.56	1.56	1.56	1.56	1.56
267.00	267.00	267.00	267.00	267.00	267.00	267.00
1.56	1.56	1.56	1.56	1.56	1.56	1.56

cuts on So. half 4/3/12 Gregory Moore
 sidewalk .3 high for 35' east of Eagle next to P.L. Stakes left to mark places. Street not smoothed up in very good shape but the grades are O.K. Gregory 4/16/12

STOCKTON

ST.

PLACE.

GRADE TO HERE

285.0

284.5

287.5

287.0

BROADWAY

see page 2 for tree
A ST.

288.5

288.0

BACHMAN

292.00
292.5

292.00
292.0

LEWIS

ST.

11.

29166 30883 3125 32333 33333

So. Line BROADWAY ST

288.75 288.50 288.90 288.25 287.72 288.00 288.25

289.04 288.79 288.21 288.56 288.04 288.33 288.58

289.33 289.08 288.52 288.87 288.37 288.67 288.92

289.62 289.37 288.82 289.19 288.69 289.00 289.25

289.92 289.67 289.13 289.50 289.01 289.33 289.58

290.21 289.96 289.44 289.81 289.34 289.67 289.92

290.50 290.25 289.75 290.12 289.66 290.00 290.25

290.79 290.54 290.06 290.44 289.92 290.33 290.58

291.02 290.83 290.37 290.75 290.31 290.67 290.92

291.37 291.12 290.67 291.06 290.63 291.00 291.25

291.67 291.42 290.98 291.37 290.95 291.33 291.58

291.96 291.71 291.29 291.69 291.28 291.67 291.92

292.25 292.00 291.60 292.00 291.60 292.00 292.25

No. Line LEWIS ST

E.

29199 B. H. Lewis

4.63	296.22	296.22	296.62	296.62	296.62	296.62	296.62	296.62
296.62	296.22	296.22	296.62	296.62	296.62	296.62	296.62	296.62
4.37	5.09	5.70	6.37	7.04	7.69	8.33	8.92	9.57
3.30	4.09	5.00	5.67	6.34	7.01	7.68	8.35	9.02
1.01	1.10	1.07	1.07	1.04	1.04	1.04	1.04	1.04

288.75	288.50	288.90	288.25	287.72	288.00	288.25
289.04	288.79	288.21	288.56	288.04	288.33	288.58
289.33	289.08	288.52	288.87	288.37	288.67	288.92
289.62	289.37	288.82	289.19	288.69	289.00	289.25
289.92	289.67	289.13	289.50	289.01	289.33	289.58

See Page 6.

290.21	289.96	289.44	289.81	289.34	289.67	289.92
290.50	290.25	289.75	290.12	289.66	290.00	290.25
290.79	290.54	290.06	290.44	289.92	290.33	290.58
291.02	290.83	290.37	290.75	290.31	290.67	290.92
291.37	291.12	290.67	291.06	290.63	291.00	291.25
291.67	291.42	290.98	291.37	290.95	291.33	291.58
291.96	291.71	291.29	291.69	291.28	291.67	291.92
292.25	292.00	291.60	292.00	291.60	292.00	292.25

Checked as shown from 21-12

291.0	291.0	291.0	291.0	291.0	291.0	291.0	291.0	291.0	291.0
291.0	291.0	291.0	291.0	291.0	291.0	291.0	291.0	291.0	291.0

check 1/25/12 Hatch night Hall

W

F

76.62	76.62	76.62
87.75	80.20	85.25
88.7	10.12	11.37
7.07	10.12	10.97
7.12	70.5	70.4
7.12	96.12	96.62
87.25	86.50	89.75
9.87	10.12	11.87
9.87	8.22	13.27
70.5	+1.8	-0.7

2885 - 772

292	8750	8720	8680	8625	8622	
297.44	3.94	4.44	4.54	4.19	4.72	
	8625	8565	8620	8527	8577	all in
	5.19	5.79	5.20	5.97	5.69	
	8520	8440	8425	8421	8420	6-L-12
	6.44	7.01	6.69	7.22	6.94	

blongt

2890 H, See Page A.

82.90	82.60	82.75	82.85	82.90	82.95	82.95	82.95	82.95	82.95
83.00	84.40	84.75	84.22	84.00	86.75	86.47	86.00	86.60	86.20
7.95	8.55	8.20	8.73	8.45	7.20	7.48	6.75	8.30	6.70
			8.22			8.03	8.02	8.03	
82.95	82.95	82.95	82.95	82.95					
87.00	86.90	87.20	86.72	87.00					
5.45	6.05	5.70	6.33	5.95					

2925 H

87.5	86.9	87.25	86.72	87.0	86.25	85.65	86.0	85.47	85.75
8.15	8.75	8.40	8.93	8.65	8.20	7.9	8.65	8.15	8.70

85.0	84.4	84.75	84.22	84.5
7.65	8.25	7.90	8.43	8.15

check 4/25/12 Hatch
Higgins
Hall

625

100 ✓ 285.25 285.00 284.40 284.75 284.22 284.50 284.75 ✓
BACH

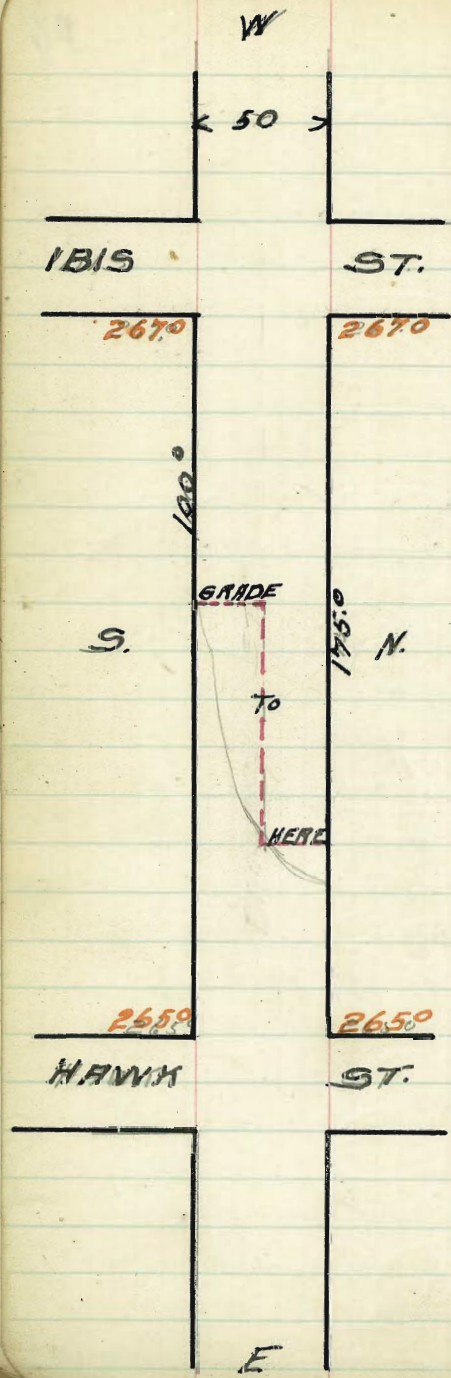
75 285.87 285.62 285.02 285.37 284.84 285.12 285.37

50 ✓ 286.50 286.25 285.65 286.00 285.47 285.75 286.00 ✓
CO.2

25 287.12 286.87 286.27 286.62 286.09 286.37 286.62

CO.1 287.75 287.50 286.90 287.25 286.72 287.00 287.25 ✓
CO.3

No. Line BROADWAY ST 28.25



50' ST. 10' WALKS

S East Little of IBIS ST N
 200 267.75 267.00 266.60 267.00 266.60 267.00 267.75

175 267.00 266.75 266.35 266.75 266.35 266.75 267.00

150 266.75 266.50 266.10 266.50 266.10 266.50 266.75

125 266.50 266.25 265.85 266.25 265.85 266.25 266.50

100 266.25 266.00 265.60 266.00 265.60 266.00 266.25
 GRADE TO HERE ON SOUTH 1/4

75 265.75 265.35 265.75 266.00

50 265.50 265.10 265.50 265.75

25 265.25 264.85 265.25 265.50
 GRADE TO HERE ON NORTH 1/4

00 265.75 265.00 264.60 265.00 264.60 265.00 265.75

270.36 sidewalk stake, S.E. Cor Ibis & Lewis,

26.47
 27.147
 4.24
 267.75
 + 2.11
 270.36

270.36	270.36	270.36	270.36	270.36	270.36	270.36	270.36	270.36	270.36
67.25	67.00	66.60	66.75	66.50	66.70	66.75	66.50	66.60	66.75
3.11	3.36	3.76	3.61	3.86	4.26	4.11	4.36	4.76	4.76
270.36	270.36	270.36	270.36	270.36	270.36	270.36	270.36	270.36	270.36
65.75	65.50	65.10	65.25	65.00	65.20	65.25	65.00	65.10	65.25
4.47	4.36	5.26	4.86	5.71	5.51				

All stakes May 17-12

{ Donna
 Thant,
 Devine }

Property stake S.E. return.

270.7671

270.76	270.76	270.76	270.76	270.76	270.76	270.76	270.76	270.76	270.76
67.25	67.00	66.60	66.75	66.50	66.70	66.75	66.50	66.60	66.75
3.51	3.76	4.16	4.01	4.26	4.66	4.51	4.76	5.16	5.16
270.76	270.76	270.76	270.76	270.76	270.76	270.76	270.76	270.76	270.76
65.75	65.50	65.10	65.25	65.00	65.20	65.25	65.00	65.10	65.25
5.26	5.51	5.91	5.01	5.26	5.66				

Checked O.H. May 27-12

{ Donna
 Thant,
 Devine }

	ST.	
STOCKTON (Arbor Drive)	ST.	
<u>279.0</u>	<u>279.0</u>	
<u>276.0</u>	<u>276.5</u>	
BROADWAY (Montecito)	ST.	
<u>276.0</u>	<u>276.5</u>	
<u>274.4</u>	<u>274.4</u>	
LEWIS	ST.	

CALHOUN
(Palmetto way)

W.

E.

23

No. Line BROADWAY

276.25 276.00 275.72 276.25 275.90 276.50 276.75

276.00 276.00 275.13 275.25 275.37 276.50 276.50
275.00 275.50

275.60 275.69 275.77 275.85 275.93 276.01 276.10

St.

276.00 276.09 276.17 276.25 276.33 276.41 276.50

BROADWAY

275.60 275.69 275.77 275.85 275.93 276.01 276.10

276.00 276.00 275.13 275.25 275.37 276.50 276.50
275.50

276.25 276.00 275.72 276.25 275.90 276.50 276.75

So. Line BROADWAY

So. Lime Stickton St.

200 279.25 279.00 278.60 279.00 278.60 279.00 279.25

75 279.00 278.75 278.36 278.77 278.38 278.79 279.04

50 278.75 278.50 278.12 278.54 278.15 278.58 278.83

25 278.50 278.25 277.88 278.31 277.93 278.37 278.62

200 278.25 278.00 277.64 278.08 277.70 278.17 278.42

175 278.00 277.75 277.40 277.85 277.48 277.96 278.21

150 277.75 277.50 277.16 277.62 277.25 277.75 278.00

125 277.50 277.25 276.92 277.40 277.03 277.54 277.79

100 277.25 277.00 276.68 277.17 276.80 277.33 277.58

75 277.00 276.75 276.44 276.94 276.58 277.12 277.37

50 276.75 276.50 276.20 276.71 276.35 276.92 277.17

25 276.50 276.25 275.96 276.48 276.13 276.71 276.96

276.25 276.00 275.72 276.25 275.90 276.50 276.75

No. Lime Broadway

28070	28075	28080	28085	28090	28095	28100	28105	28110	28115
76.20	76.75	77.17	76.74	77.22	77.58	77.20	77.20	77.20	77.20
8.95	8.45	8.03	8.45	7.95	7.62	7.10	7.45	7.45	7.45
5.8	7.9	7.5	7.9	8.6	6.6	5.7	8.6	8.6	8.6
C 0.1	C 0.5	C 0.5	C 0.5	C 1.3	C 1.3	C 1.3	C 1.3	C 1.3	C 1.3

28070 28075 28080 28085 28090 28095 28100 28105 28110 28115
 78.25 78.46 78.83 78.75 79.70 79.85
 6.95 6.78 6.37 6.45 5.95 5.95
 8.4 7.4 5.3 4.5 5.4 6.9
 C 1.5 C 1.4 C 1.1 C 2.0 C 0.5 0.0

Cut & fill May 22-12
 {Dorman
 {Shaw,
 {Boone

176.06 ENE. Corn SW. Cor. Stephens & Lewis.

282.23	282.23	282.23	282.23	282.23	282.23	282.23	282.23	282.23
76.50	76.00	75.00	76.92	77.33	77.00	77.50	78.00	77.75
5.73	6.23	5.73	5.87	4.98	5.73	4.73	4.23	4.48
C 2.3	C 2.3	C 2.3	C 2.3	C 2.3	C 2.3	C 2.3	C 2.3	C 2.3

282.23	282.23	282.23	282.23	282.23
78.17	78.00	78.00	78.00	78.00
4.06	4.23	3.73	3.69	3.20
C 1.07	C 1.07	C 1.07	C 1.07	C 1.07

76.00	76.00	76.00	76.00	76.00	76.00	76.00	76.00	76.00
7.00	6.50	6.50	6.50	6.00	5.71	5.50	5.29	4.97
78.50	78.50	78.50	78.50	78.50	78.50	78.50	78.50	78.50
4.54	4.46	4.00	4.00	3.69	3.69	3.69	3.69	3.69

Prop. Gt & East of New York
 blawyt

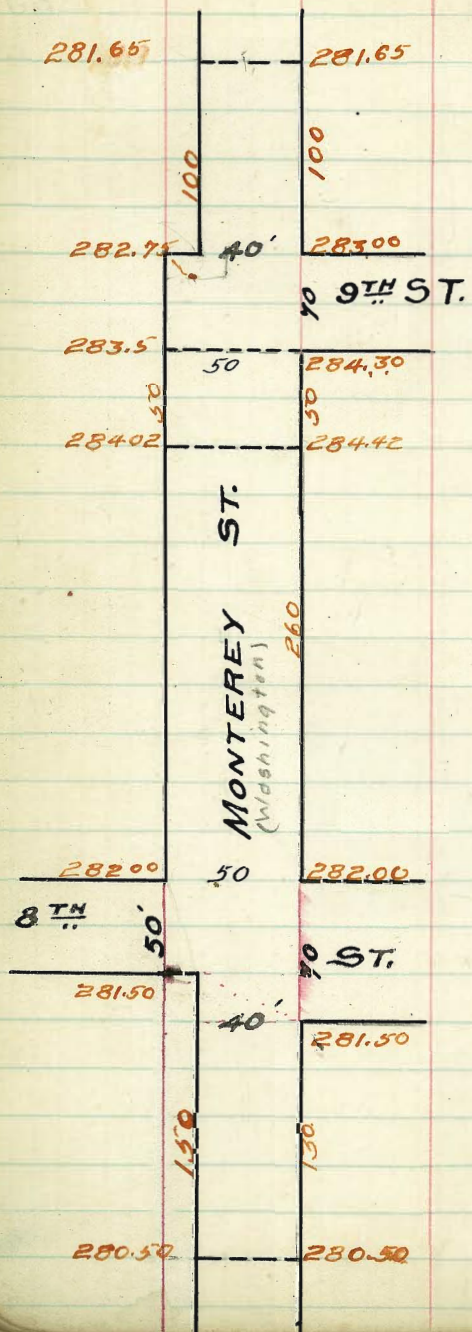
281.21	276.00	276.00	276.00	276.00	276.00	276.00	276.00	276.00
5.46	5.11	4.71	4.71	4.29	4.21	3.88	3.71	3.56
277.15	276.00	276.00	276.00	276.00	276.00	276.00	276.00	276.00
5.24	5.14	5.14	5.14	4.69	4.69	4.69	4.69	4.69

276.00	276.00	276.00	276.00	276.00	276.00	276.00	276.00	276.00
5.34	4.94	4.52	4.52	4.27	3.87	3.73	3.65	3.65
78.00	78.49	78.17	78.17	77.50	77.62	77.25	77.25	77.25
4.27	4.19	4.10	4.10	4.07	4.62	4.62	4.62	4.62

77.00	77.17	77.33	77.33	76.50	76.71	76.00	76.00	76.00
5.27	5.10	4.94	4.94	5.27	5.16	4.94	4.94	4.94
76.00	76.75	76.50	76.50	76.50	76.50	76.50	76.50	76.50
6.20	6.02	5.77	5.77	5.77	5.77	5.77	5.77	5.77

all Sit. 2001 1/4
 10-5-12 blawyt

10-19-12 checked not yet blawyt



West LINE BTH ST

0 281.75 281.50
 010 7
 010 20
 015 V
 0050B 281.60 281.37 280.97 281.43 281.06 281.10 281.10 281.10 281.10 281.50 281.73

0175 281.45 281.20 280.80 280.25 280.87 281.30 281.58

50 281.28 281.03 280.63 281.07 280.69 281.11 281.36

75 281.12 280.87 280.47 280.90 280.50 280.92 281.17

100 280.95 280.70 280.30 280.72 280.32 280.73 280.98

115 280.88 280.63 280.23 280.65 280.24 280.66 280.90

120 280.78 280.53 280.13 280.54 280.14 280.54 280.79

130 280.75 280.50 280.10 280.50 280.10 280.50 280.75

West of E1911

30' ST on NORTH

40' ST on South

EAST LINE BTH ST

East Line = STRAIGHT

E LINE 282.25 282.00 281.60 282.00 281.60 282.00 282.25

14

14

E CURB 282.00 282.00 281.52 281.92 281.52 282.00 282.00
281.00 281.00

95

135

E 1/4 281.40 280.87 281.23 281.83 281.23 280.87 281.40

95

135

Center 281.75 280.75 281.35 281.75 281.35 280.75 281.75

75

135

W 1/4 281.23 280.63 281.29 281.67 281.27 280.63 281.23

95

135

W CB 281.50 280.50 281.15 281.58 281.18 280.50 281.50
281.50 281.50

10

10

WEST LINE 281.75 281.50 281.10 281.50 281.10 281.50 281.75

West Line of BTH ST

West LINE of 9TH ST.

260 283.25 283.50 283.30 283.90 283.70 284.30 284.55

250 283.85 283.60 283.38 283.96 283.72 284.32 284.57

225 284.11 283.86 283.59 284.12 283.78 284.38 284.63

210 284.27 284.02 283.72 284.22 283.82 284.42 284.67

200 283.17 282.92 283.62 284.12 283.71 284.30 284.55

175 282.93 282.68 283.36 283.85 283.45 284.02 284.27

150 282.69 282.44 283.11 283.59 283.19 283.73 283.98

125 282.45 282.20 282.86 283.33 282.93 283.44 283.69

100 283.21 282.96 282.61 283.06 282.66 283.15 283.40

75 282.97 282.72 282.35 282.80 282.40 282.86 283.11

50 282.73 282.48 282.10 282.53 282.13 282.58 282.83

25 282.49 282.24 281.86 282.27 281.87 282.29 282.54

00 282.25 282.00 281.60 282.00 281.60 282.00 282.25

East LINE of EIGHT ST.

EAST LINE OF NINTH ST.

10' Walks 12 1/2 Quarters 20' ST

E LINE 28300 28300 ^{curb} 28275 28300 28260 28300 28325Ecb 28300 28275 28275 28313 28276 28300 28300
28200

E 1/4 28316 28291 28280 28329 28290 28233 28292

Center 28331 28306 28298 28345 28318 28265 28365

W 1/4 28345 28322 28309 28361 28334 28298 28320

W 1/2 28362 28337 28321 28377 28354 28330 28430
28430

West Line 28375 28350 28330 28390 28370 28430 28455

West LINE NINTH ST.

100' East of NINTH ST.

100 281.90 281.65 281.25 281.65 281.25 281.65 281.90

75 282.18 281.93 281.54 281.96 281.54 281.99 282.24

50 282.45 282.20 281.83 282.27 281.83 282.34 282.59

25 282.73 282.48 282.12 282.58 282.11 282.67 282.92

00 283.00 282.75 282.41 282.88 282.40 283.00 283.25

East Line of NINTH ST. 40' STREET

GRANADA AVE

met

S LINE LANDIS ST

S. Line	338.25	338.00	337.73	338.25	337.90	338.50	338.75
25	338.08	337.83	337.55	338.06	337.71	338.24	338.54
50	337.92	337.67	337.38	337.88	337.52	338.08	338.35
75	337.75	337.50	337.20	337.69	337.32	337.87	338.12
100	337.58	337.33	337.02	337.50	337.13	337.67	337.92
125	337.42	337.17	336.84	337.31	336.94	337.46	337.71
150	337.25	337.00	336.67	337.13	336.75	337.25	337.50
175	337.08	336.83	336.49	336.94	336.56	337.04	337.29
200	336.92	336.67	336.31	336.75	336.37	336.83	337.08
225	336.75	336.50	336.13	336.56	336.17	336.62	336.87
250	336.58	336.33	335.96	336.38	335.98	336.42	336.67
275	336.42	336.17	335.78	336.19	335.79	336.21	336.46
300	336.25	336.00	335.60	336.00	335.60	336.00	336.25

N LINE DWIGHT ST

647 10-21-12

met

34512.80	34517	34517	34517	34517	4517	4517	4517	4517
6.2	6.8	7.1	6.0	6.4	6.5	6.9	6.9	7.3
338.65	339.4	338.0	338.0	338.8	387	383	385	37.9
4.46	2.8	2.8	2.7	3.3	2.8	2.6	2.2	2.5
343.11	C.7	7.2	C.1.3	C.5	C.8	C.7		C.4
	34311	34311	34311	34311	34311	34311	34311	
	43	48	46	43	48	48		
338.8	338.8	338.5	338.5	338.8	336.3			
2.7	2.6	2.6	2.6	2.6				
C.1.7	C.1.4	C.1.9	C.1.1					

10TH STREET

	W				E				W line	E line
N.L. Essex St	280.25	280.00	279.85	280.50	280.40	281.00	281.25	+2.2	+1.1	
N curb	280.43	280.18	280.03	280.68	280.58	281.00	281.00	+2.3	+0.6	
N 1/4	280.59	280.34	280.19	280.84	280.74	280.25	280.85	+2.7	+1.1	
Center	280.75 ^{1/2W}	280.50 ^{1/2W}	280.35 ^{1/2W}	281.00 ^{1/2W}	280.90 ^{1/2W}	280.50 ^{1/2W}	281.50 ^{1/2W}	+2.7	+0.6	
5/4	280.91	280.66	280.51	281.16	281.06	280.75	281.40	+2.8	+0.7	
S curb	281.07	280.82	280.67	281.32	281.22	281.00	281.00	+2.6	+0.1	
S.L. Essex St	281.25	281.00	280.85	281.50	281.40	282.00	282.25	+2.4	+1.1	
S.L. Essex St	281.25	281.00	280.85 ^{1/2W}	281.50 ^{1/2W}	281.40 ^{1/2W}	282.00	282.25	+2.4	+1.1	
25	281.48	281.23	281.08	281.73	281.63	282.23	282.48	+2.3	+1.6	
50	281.70	281.45 ^{1/2W}	281.30 ^{1/2W}	281.95 ^{1/2W}	281.85 ^{1/2W}	282.45 ^{1/2W}	282.70	+2.0	+1.4	
75	281.93	281.68	281.53	282.18	282.08	282.68	282.93	+1.6	+1.2	
111.0-N.L. Cherokee Lane	282.25	282.00	281.85 ^{1/2W}	282.50	282.40	283.00	283.25	+1.4	+0.6	
N.L. Cherokee Lane	282.25	282.00	281.85	282.50	282.40	283.00	283.25	+1.4	+0.6	
N curb	282.00	282.00	281.85	282.50	282.40	283.00	283.25	+1.4	+0.6	
N 1/4	281.60	281.00	281.85	282.50	282.40	283.00	283.25	+1.8	+0.7	
Center	282.00	281.00 ^{1/2W}	281.85 ^{1/2W}	282.50	282.40	283.00	283.25	+1.7	+0.8	
5/4	281.60	281.00	281.85	282.50	282.40	283.00	283.25	+1.5	+0.8	
S curb	281.00	281.00	281.85	282.50	282.40	283.00	283.25	+1.8	+0.8	
S.L. Cher. Lane	282.25	282.00	281.85	282.50	282.40	283.00	283.25	+0.2	0.0	

282.68 N.L.	282.25	281.25	281.70	282.70	283.25	282.25
27.3	27.3	27.3	27.3	27.3	27.3	27.3
2.33	4.99	4.99	4.99	4.99	4.99	4.99
4.10	4.24	4.24	4.24	4.24	4.24	4.24

Center Area
 282.68 N.L. 282.25 281.25 281.70 282.70 283.25 282.25
 27.3 27.3 27.3 27.3 27.3 27.3 27.3
 4.99 4.99 4.99 4.99 4.99 4.99 4.99
 4.24 4.24 4.24 4.24 4.24 4.24 4.24

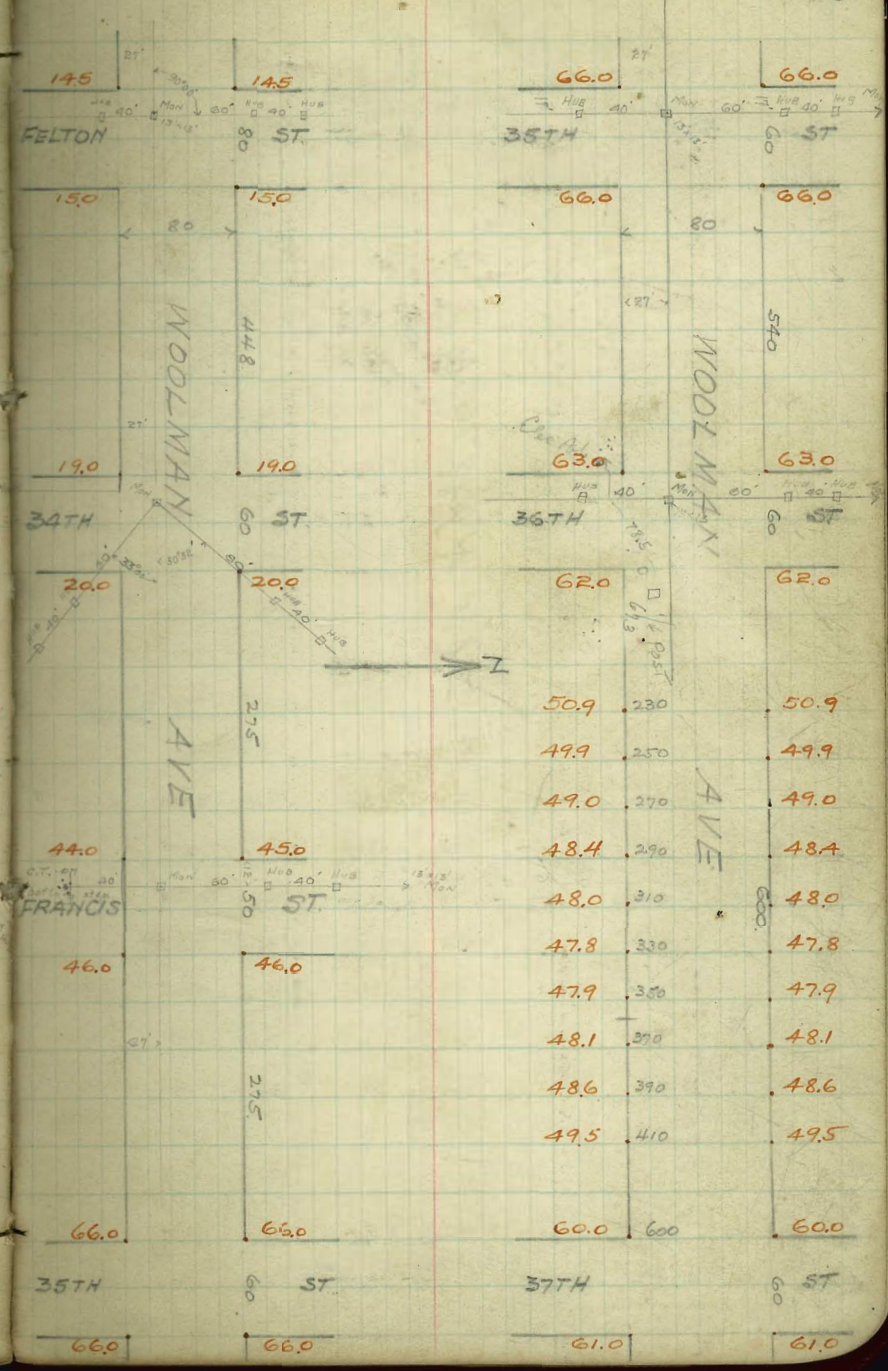
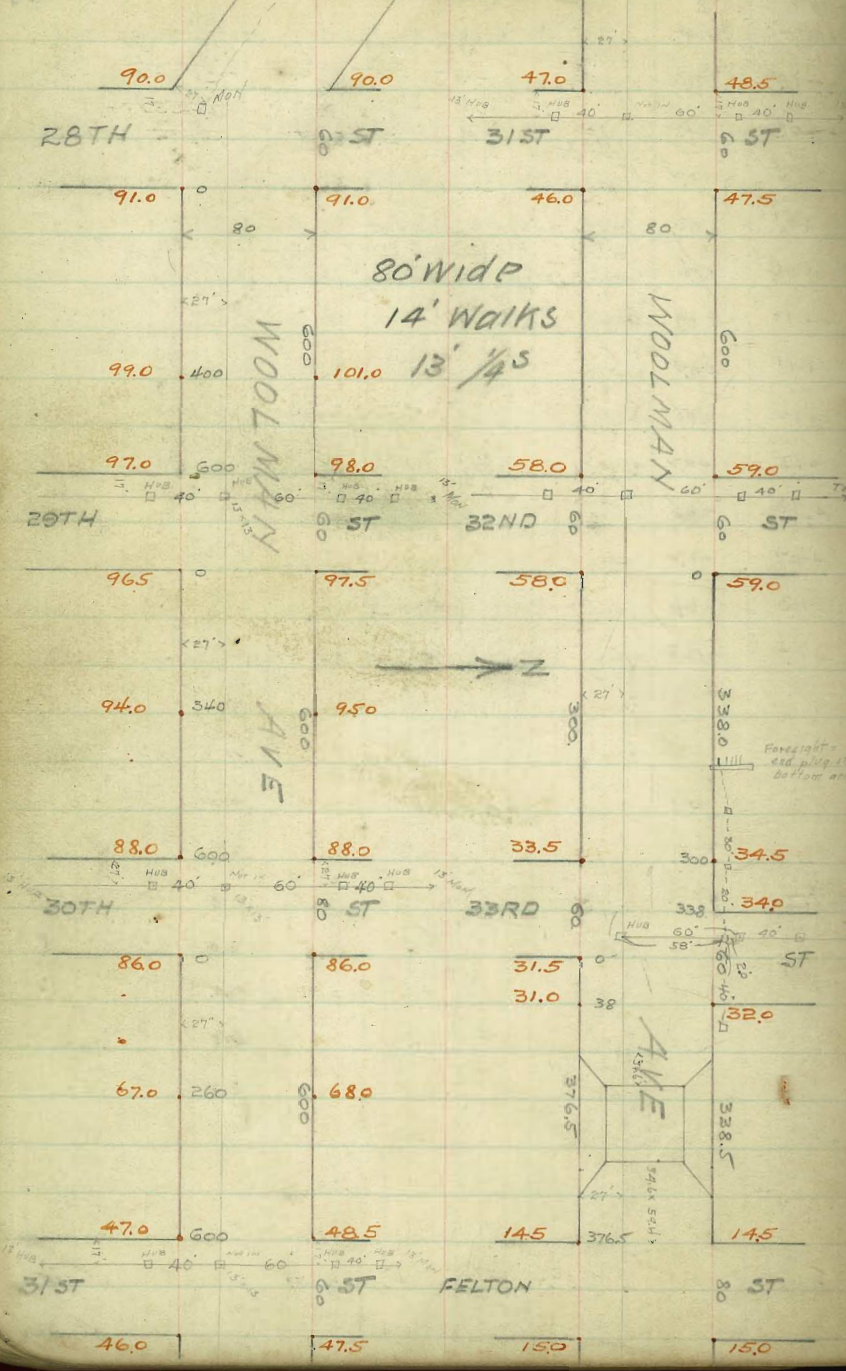
10TH STREET

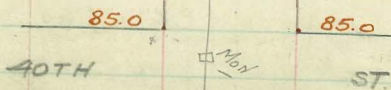
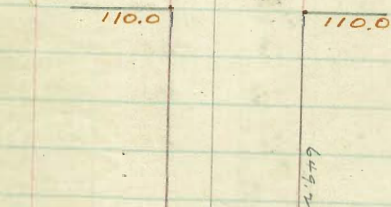
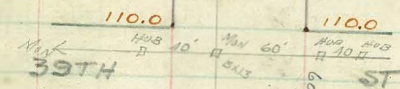
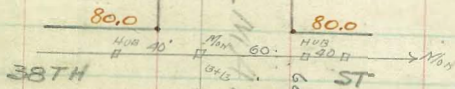
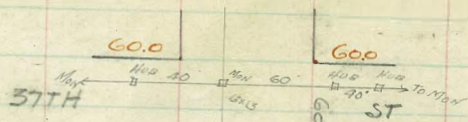
	W						E	W	E
	line						line	line	line
S. Robinson Ave	281.25	281.00	280.85	281.50	281.40	282.00	282.25	-1.0	0.0
0 on E, 196 on W.	281.15	280.90	280.77	281.44	281.37	282.00	282.25	-0.8	0.0
25' S. on E	281.03	280.78	280.63	281.29	281.19	281.83	282.08	-0.4	+0.4
50	280.90	280.65	280.49	281.14	281.02	281.65	281.90	+0.1	+0.3
75	280.78	280.53	280.36	280.99	280.84	281.47	281.72	+0.6	+0.6
100	280.65	280.40	280.22	280.84	280.66	281.29	281.54	+1.0	+0.7
125	280.53	280.28	280.08	280.69	280.49	281.11	281.36	+1.1	-0.2
150	280.40	280.15	279.94	280.54	280.31	280.93	281.18	+1.2	+0.5
175	280.28	280.03	279.81	280.34	280.14	280.75	281.00	+1.3	-0.2
200	280.15	279.90	279.67	280.23	279.96	280.57	280.82	+1.0	-0.5
225	280.03	279.78	279.53	280.08	279.79	280.39	280.64	+0.7	-1.2
250	279.90	279.65	279.39	279.93	279.61	280.21	280.46	-0.3	-6.6
280	279.75	279.50	279.23	279.75	279.40	280.00	280.25	-0.4	-16.3

281.25	281.00	280.85	281.50	281.40	282.00	282.25	-1.0	0.0
281.15	280.90	280.77	281.44	281.37	282.00	282.25	-0.8	0.0
281.03	280.78	280.63	281.29	281.19	281.83	282.08	-0.4	+0.4
280.90	280.65	280.49	281.14	281.02	281.65	281.90	+0.1	+0.3
280.78	280.53	280.36	280.99	280.84	281.47	281.72	+0.6	+0.6
280.65	280.40	280.22	280.84	280.66	281.29	281.54	+1.0	+0.7
280.53	280.28	280.08	280.69	280.49	281.11	281.36	+1.1	-0.2
280.40	280.15	279.94	280.54	280.31	280.93	281.18	+1.2	+0.5
280.28	280.03	279.81	280.34	280.14	280.75	281.00	+1.3	-0.2
280.15	279.90	279.67	280.23	279.96	280.57	280.82	+1.0	-0.5
280.03	279.78	279.53	280.08	279.79	280.39	280.64	+0.7	-1.2
279.90	279.65	279.39	279.93	279.61	280.21	280.46	-0.3	-6.6
279.75	279.50	279.23	279.75	279.40	280.00	280.25	-0.4	-16.3

WOOLMAN AVE
(Ocean View Blvd)

76.5 J num SE. av.
35th





57.26

74.10
 4.50
 78.60 H.I.
 12.35
 66.25 J.P.
 0.01
 66.26 H.I.
 11.71
 54.55 J.P.
 1.34 H.I.
 55.89 H.I.
 46.85
 8.84

47.9
 7.79

47.0

47.0
 8.69

46.20
 9.29

47.25
 8.29

46.85

61.46

5.57 H.I.

67.03

12.60

54.43 J.P.

1.11

55.54 H.I.

46.5

9.04

WOOLMAN AVE

N

E

S

90.97 0.2W Sample + Grand 50
 4.35
 90.32
 5.25
 90.07
 6.26
 96.83

									<u>N</u>	<u>S</u>
EL 28TH ST	91.25	91.00	90.60	91.00	90.60	91.00	91.25	+1.9	-0.3	
E curb	91.00 90.00	91.00 90.00	90.43	90.83	90.43	91.00 90.00	91.00 90.00	+1.9 +2.9	+0.2 +1.2	
E 1/4	90.40	89.75	90.26	90.66	90.26	89.75	90.40	+1.6	+0.5	
Center	90.50	89.50	90.10	90.50	90.10	89.50	90.50	+1.5	+0.2	
W 1/4	89.85	89.25	89.94	90.34	89.94	89.25	89.85	+0.6	+0.5	
W curb	89.00 90.00	89.00 90.00	89.77	90.17	89.77	89.00 90.00	89.00 90.00	+1.2 +0.2	+0.7 -0.3	
W. 28TH ST	90.25	90.00	89.60	90.00	89.60	90.00	90.25	+0.1	-0.2	

WOOLMAN AVE

N

Q

S

								N	S
FL. 29th ST.	97.75	97.50	96.90	97.00	96.35	96.50	96.75	+0.6	0.0
E curb	97.50	97.50	96.98	97.08	96.43	96.50	96.50		
	96.50	96.50				95.50	95.50		
E 1/4	97.23	96.63	97.06	97.16	96.57	95.63	96.23		
Center	97.75	96.75	97.15	97.25	96.60	95.75	96.75	+1.1	+0.9
W. 1/4	97.40	96.88	97.23	97.33	96.68	95.88	96.20		
W curb	97.00	97.00	97.31	97.41	96.76	96.00	96.00		
	98.00	98.00				97.00	97.00		
W.L. 29th ST.	98.25	98.00	97.40	97.50	96.85	97.00	97.25	+0.4	+0.4

WOOLMAN AVE

N

Q

5

53

								N.	S.
EL Both	86.25	86.00	85.60	86.00	85.60	86.00	86.25	+0.7	-1.7
E CURB	86.00 85.00	86.00 85.00	85.93	86.33	85.93	86.00 85.00	86.00 85.00		
E 1/4	86.10	85.50	86.27	86.67	86.27	85.50	86.10		
Center	87.00	86.00	86.60	87.00	86.60	86.00	87.00	+1.4	+0.3
W 1/4	87.40	86.50	86.93	87.33	86.93	86.50	87.40		
W CURB.	87.00 88.00	87.00 88.00	87.27	87.67	87.27	87.00 88.00	87.00 88.00		
W.L. 30th ST	88.25	88.00	87.60	88.00	87.60	88.00	88.25	+3.9	+2.0

Drains →

EL. 31ST ST.	47.75	47.50	46.90	46.75	45.98	46.00	46.25	-9.1	-3.4
E Curb	47.50 46.50	47.50 46.50	46.12	45.75	45.38	46.00 45.00	46.00 45.00		
E 1/4	47.35	47.09	46.84	46.60	46.35	46.11	45.85		
Center	48.00	47.74	47.49	47.25	47.01	46.76	46.50	+0.1	+0.3
W 1/4	47.90	47.64	47.39	47.15	46.91	46.66	46.40		
W Curb	47.50 48.50	47.50 48.50	47.12	46.75	46.38	46.00 47.00	46.00 47.00		
W.L. 31ST ST.	48.75	48.50	47.90	47.75	46.98	47.00	47.25	+1.4	+7.1

N S

WOOLMAN AVE

N

S

600 = W.L. 32nd	59.25	59.00	58.40	58.50	57.85	58.00	58.25		
575	58.77	58.52	57.92	58.01	57.36	57.50	57.75		
550	58.29	58.04	57.44	57.52	56.86	57.00	57.25	+1.9	+4.6
525	57.81	57.56	56.96	57.03	56.37	56.50	56.75		
500	57.33	57.08	56.48	56.54	55.87	56.00	56.25	+7.8	+6.3
475	56.85	56.60	56.00	56.05	55.38	55.50	55.75		
450	56.38	56.13	55.52	55.56	54.88	55.00	55.25	+9.7	+8.3
425	55.90	55.65	55.05	55.07	54.39	54.50	54.75		
400	55.42	55.17	54.57	54.58	53.89	54.00	54.25	+10.6	+14.9
375	54.94	54.69	54.09	54.09	53.40	53.50	53.75		
350	54.46	54.21	53.61	53.60	52.90	53.00	53.25	+9.0	+14.1
325	53.98	53.73	53.13	53.11	52.41	52.50	52.75		
300	53.50	53.25	52.65	52.63	51.92	52.00	52.25	+6.5	+12.0
275	53.02	52.77	52.17	52.14	51.42	51.50	51.75		
250	52.54	52.29	51.69	51.65	50.93	51.00	51.25	+4.7	+9.2
225	52.06	51.81	51.21	51.16	50.43	50.50	50.75		
200	51.58	51.33	50.73	50.67	49.94	50.00	50.25	+2.5	+2.9
175	51.10	50.85	50.25	50.18	49.44	49.50	49.75	-8.1	-3.0
150	50.63	50.38	49.78	49.69	48.95	49.00	49.25	-8.7	-9.2
125	50.15	49.90	49.30	49.20	48.45	48.50	48.75		
100	49.67	49.42	48.82	48.71	47.96	48.00	48.25	-9.3	-12.8
75	49.19	48.94	48.34	48.22	47.46	47.50	47.75		
50	48.71	48.46	47.86	47.73	46.97	47.00	47.25	-12.4	-13.7
25	48.23	47.98	47.38	47.24	46.47	46.50	46.75		
EL. 31ST ST	47.75	47.50	46.90	46.75	45.98	46.00	46.25	-9.1	-3.4

56

42.88	40.97	41.21	40.95	46.94	47.92	48.92		
43.85	41.26	41.37	41.25	47.87	48.88	49.82		
44.82	41.55	41.66	41.54	48.82	49.83	50.77		
45.79	41.84	41.95	41.82	49.77	50.78	51.72		
46.76	42.13	42.24	42.01	50.72	51.73	52.67		
47.73	42.42	42.53	42.29	51.67	52.68	53.62		
48.70	42.71	42.82	42.47	52.62	53.63	54.57		
49.67	43.00	43.11	42.72	53.57	54.58	55.52		
50.64	43.29	43.40	43.00	54.52	55.53	56.47		
51.61	43.58	43.69	43.17	55.47	56.48	57.42		
52.58	43.87	43.98	43.46	56.42	57.43	58.37		
53.55	44.16	44.27	43.75	57.37	58.38	59.32		
54.52	44.45	44.56	44.04	58.32	59.33	60.27		
55.49	44.74	44.85	44.33	59.27	60.28	61.21		
56.46	45.03	45.14	44.62	60.22	61.22	62.16		
57.43	45.32	45.43	44.91	61.17	62.17	63.11		
58.40	45.61	45.72	45.20	62.12	63.12	64.06		
59.37	45.90	46.01	45.49	63.07	64.07	65.01		
60.34	46.19	46.30	45.78	64.02	65.02	65.96		
61.31	46.48	46.59	46.07	64.97	65.97	66.91		
62.28	46.77	46.88	46.36	65.92	66.92	67.86		
63.25	47.06	47.17	46.65	66.87	67.87	68.81		
64.22	47.35	47.46	46.94	67.82	68.82	69.76		
65.19	47.64	47.75	47.23	68.77	69.77	70.71		
66.16	47.93	48.04	47.52	69.72	70.72	71.66		
67.13	48.22	48.33	47.81	70.67	71.67	72.61		
68.10	48.51	48.62	48.10	71.62	72.62	73.56		
69.07	48.80	48.91	48.39	72.57	73.57	74.51		
70.04	49.09	49.20	48.68	73.52	74.52	75.46		
71.01	49.38	49.49	48.97	74.47	75.47	76.41		
71.98	49.67	49.78	49.26	75.42	76.42	77.36		
72.95	49.96	50.07	49.55	76.37	77.37	78.31		
73.92	50.25	50.36	49.84	77.32	78.32	79.26		
74.89	50.54	50.65	50.13	78.27	79.27	80.21		
75.86	50.83	50.94	50.42	79.22	80.22	81.16		
76.83	51.12	51.23	50.71	80.17	81.17	82.11		
77.80	51.41	51.52	51.00	81.12	82.12	83.06		
78.77	51.70	51.81	51.29	82.07	83.07	84.01		
79.74	51.99	52.10	51.58	83.02	84.02	84.96		
80.71	52.28	52.39	51.87	83.97	84.97	85.91		
81.68	52.57	52.68	52.16	84.92	85.92	86.86		
82.65	52.86	52.97	52.45	85.87	86.87	87.81		
83.62	53.15	53.26	52.74	86.82	87.82	88.76		
84.59	53.44	53.55	53.03	87.77	88.77	89.71		
85.56	53.73	53.84	53.32	88.72	89.72	90.66		
86.53	54.02	54.13	53.61	89.67	90.67	91.61		
87.50	54.31	54.42	53.90	90.62	91.62	92.56		
88.47	54.60	54.71	54.19	91.57	92.57	93.51		
89.44	54.89	55.00	54.48	92.52	93.52	94.46		
90.41	55.18	55.29	54.77	93.47	94.47	95.41		
91.38	55.47	55.58	55.06	94.42	95.42	96.36		
92.35	55.76	55.87	55.35	95.37	96.37	97.31		
93.32	56.05	56.16	55.64	96.32	97.32	98.26		
94.29	56.34	56.45	55.93	97.27	98.27	99.21		
95.26	56.63	56.74	56.22	98.22	99.22	100.16		
96.23	56.92	57.03	56.51	99.17	100.17	101.11		
97.20	57.21	57.32	56.80	100.12	101.12	102.06		
98.17	57.50	57.61	57.09	101.07	102.07	103.01		
99.14	57.79	57.90	57.38	102.02	103.02	103.96		
100.11	58.08	58.19	57.67	102.97	103.97	104.91		
101.08	58.37	58.48	57.96	103.92	104.92	105.86		
102.05	58.66	58.77	58.25	104.87	105.87	106.81		
103.02	58.95	59.06	58.54	105.82	106.82	107.76		
103.99	59.24	59.35	58.83	106.77	107.77	108.71		
104.96	59.53	59.64	59.12	107.72	108.72	109.66		
105.93	59.82	59.93	59.41	108.67	109.67	110.61		
106.90	60.11	60.22	59.70	109.62	110.62	111.56		
107.87	60.40	60.51	60.00	110.57	111.57	112.51		
108.84	60.69	60.80	60.29	111.52	112.52	113.46		
109.81	60.98	61.09	60.58	112.47	113.47	114.41		
110.78	61.27	61.38	60.87	113.42	114.42	115.36		
111.75	61.56	61.67	61.16	114.37	115.37	116.31		
112.72	61.85	61.96	61.45	115.32	116.32	117.26		
113.69	62.14	62.25	61.74	116.27	117.27	118.21		
114.66	62.43	62.54	62.03	117.22	118.22	119.16		
115.63	62.72	62.83	62.32	118.17	119.17	120.11		
116.60	63.01	63.12	62.61	119.12	120.12	121.06		
117.57	63.30	63.41	62.90	120.07	121.07	122.01		
118.54	63.59	63.70	63.19	121.02	122.02	122.96		
119.51	63.88	63.99	63.48	121.97	122.97	123.91		
120.48	64.17	64.28	63.77	122.92	123.92	124.86		
121.45	64.46	64.57	64.06	123.87	124.87	125.81		
122.42	64.75	64.86	64.35	124.82	125.82	126.76		
123.39	65.04	65.15	64.64	125.77	126.77	127.71		
124.36	65.33	65.44	64.93	126.72	127.72	128.66		
125.33	65.62	65.73	65.22	127.67	128.67	129.61		
126.30	65.91	66.02	65.51	128.62	129.62	130.56		
127.27	66.20	66.31	65.80	129.57	130.57	131.51		
128.24	66.49	66.60	66.09	130.52	131.52	132.46		
129.21	66.78	66.89	66.38	131.47	132.47	133.41		
130.18	67.07	67.18	66.67	132.42	133.42	134.36		
131.15	67.36	67.47	66.96	133.37	134.37	135.31		
132.12	67.65	67.76	67.25	134.32	135.32	136.26		
133.09	67.94	68.05	67.54	135.27	136.27	137.21		
134.06	68.23	68.34	67.83	136.22	137.22	138.16		
135.03	68.52	68.63	68.12	137.17	138.17	139.11		
136.00	68.81	68.92	68.41	138.12	139.12	140.06		
136.97	69.10	69.21	68.70	139.07	140.07	141.01		
137.94	69.39	69.50	68.99	140.02	141.02	141.96		

WOOLMAN AVE

N

Q

S

61.46

bm 6136 7' 4.60 n 13' PA 32
61.46

57

Drains →

E.L. 32nd ST.	59.25	59.00	58.40	58.50	57.85	58.00	58.25	+6.1	-3.0
E curb	59.00	59.00	57.75	57.50	57.25	58.00	58.00		
E 1/4	58.60	58.42	58.26	58.10	57.94	57.78	57.60		
Center	59.00	58.82	58.66	58.50	58.34	58.18	58.00	+2.4	-2.7
W 1/4	58.60	58.42	58.26	58.10	57.94	57.78	57.60		
W Curb	58.00	58.00	57.75	57.50	57.25	57.00	57.00		
W.L. 32nd ST.	59.25	59.00	58.40	58.50	57.85	58.00	58.25	+0.2	-3.2

WOOLMAN AVE

N

℄

S

EL. Felton	15.25	15.00	14.60	15.00	14.60	15.00	15.25
E curb	15.00 14.00	15.00 14.00	14.51	14.91	14.51	15.00 14.00	15.00 14.00
E 1/4	14.40	13.88	14.43	14.83	14.43	13.88	14.40
℄	14.75	13.75	14.35 ²	14.75	14.35	13.75	14.75
W 1/4	14.23	13.63	14.27	14.67	14.27	13.63	14.23
W curb	13.50 14.50	13.50 14.50	14.19	14.59	14.19	13.50 14.50	13.50 14.50
W.L. Felton	14.75	14.50	14.10	14.50	14.10	14.50	14.75
338 S = W.L. Felton St	14.75	14.50	14.10	14.50	14.10	14.50	14.75
325	15.45	15.20	14.79	15.18	14.77	15.16	15.41
300	16.24 17.59	16.49 17.34	16.07	16.43	16.01	16.38 17.18	16.63 17.65
275	18.03	17.78	17.34	17.69	17.24	17.59	17.84
250	19.33	19.08	18.62	18.94	18.48	18.81	19.06
228	19.43	19.18	18.72	19.04	18.58	18.91	19.16
238	19.95	19.70	19.23	19.54	19.07	19.40	19.65
225	20.62	20.37	19.90	20.20	19.72	20.03	20.28
200	21.91	21.66	21.18	21.45	20.95	21.25	21.50
175	23.20	22.95	22.46	22.71	22.19	22.47	22.72
150	24.50 25.68	24.25 25.65	23.73	23.96	23.43	23.69 25.08	23.94 25.06
125	25.79	25.54	25.01	25.22	24.66	24.91	25.16
110	26.56	26.31	25.78	25.97	25.41	25.63	25.88
100	✓ 27.08	26.83	26.29	26.47	25.90	26.12	26.37
75	28.37	28.12	27.57	27.73	27.14	27.34	27.59
50	✓ 29.67	29.42	28.84	28.99	28.38	28.56	28.81
25	30.96 th	30.71 th	30.12	30.24	29.61	29.78	30.03
0 = EL 33rd St on N.	32.25	32.00	31.40	31.50	30.85	31.00	31.25

15.25
15.00
14.60
15.00
14.60
15.00

H S

-1.7 -1.7

1386

16.52

-1.5 -1.4

1786 TP

30.86

-1.2 -2.0

47.16

1843	1843	184	1844	1838
13.0	13.7	13.4	13.5	13.3
13.6	14.7	13.2	13.5	13.3
13.6	2.20	1.8	1.7	1.8

3086	3086	4316	4316	4316
28.7	27.0	31.6	32.5	32.0
27.1	28.4	31.6	32.7	32.2
27.1	27.8	27.6	27.8	27.8

14.52	5.04	19.56	14.7
13.50	6.06		
14.50	2.71	14.50	17.00
24.73	7.45	7.93	7.00
	6.77	7.15	

14.52	25.03	25.00	25.11	25.00	27.00	26.83	TP
14.50	21.2	21.5	21.8	21.5	24.2	24.2	
25.03	27.00	26.7	26.97	27.1	27.5	27.5	27.67
24.73	6.77	7.15	7.00	7.45	7.93	7.00	7.15
32.05	32.00						

Fill Banks at Bridge

30.6
17.0
13.6

-11.0 -15.5

+2.4 -15.5

+2.3 -2.4

+2.3 +2.5

WOOLMAN AVE

N

⊕

3

EL 35th ST.	66.25	66.00	65.60	66.00	65.60	66.00	66.25
E curb	66.00	66.00	65.60	66.00	65.60	66.00	66.00
E 1/4	65.60	65.00	65.60	66.00	65.60	65.00	65.60
⊕	66.00	65.00	65.60	66.00	65.60	65.00	65.60
W 1/4	65.60	65.00	65.60	66.00	65.60	65.00	65.60
W curb	65.00	65.00	65.60	66.00	65.60	65.00	65.00
W.L. 35th ST.	66.25	66.00	65.60	66.00	65.60	66.00	66.25

375=WL 35th ST	66.25	66.00	65.60	66.00	65.60	66.00	66.25
250	64.43	64.18	63.78	64.18	63.78	64.18	64.43
225	62.61	62.36	61.96	62.36	61.96	62.36	62.61
200	60.80	60.55	60.15	60.55	60.15	60.55	60.80
175	58.98	58.73	58.33	58.73	58.33	58.73	58.98
150	57.16	56.91	56.51	56.91	56.51	56.91	57.16
125	55.34	55.09	54.69	55.09	54.69	55.09	55.34
100	53.52	53.27	52.87	53.27	52.87	53.27	53.52
75	51.70	51.45	51.05	51.45	51.05	51.45	51.70
50	49.89	49.64	49.24	49.64	49.24	49.64	49.89
25	48.07	47.82	47.42	47.82	47.42	47.82	48.07
0=EL Francis	46.25	46.00	45.60	46.00	45.60	46.00	46.25

765 75.00
368
85.24
75.00

6857	6857	6857	78.94	7894	78.94	789
69	39	3	72	46	43	21
51.7	64.7	68.3	71.7	74.3	74.6	76.4
1.03	3.31	5.72	6.08	7.47	6.62	6.62
0.115	11.1	11.1	10.9	10.0	8.4	210.2

+- S. Mini Only 1-5-14

5	65.82	65.82	65.82	65.82	7687	7687	7687	7687
	1.44	11.5	3.8	7.9	14.8	27	22	22
	12.45	54.5	62.0	64.8	69.0	72.1	74.2	74.7
	76.87	7.9	4.2	11.3	37.2	6.85	7.4	6.6
	76.87					11.5	6.4	8.5

all set +- 1-5-14

66.24 T. Pien State
6.60
66.84

66.00 66.84 67.41 67.36 67.07 67.78 66.00 66.24
6.60 6.60 6.60 6.60 6.60 6.60 6.60 6.60

12.10
58.13
5.93

21.70 61.45 47.54 47.07 46.85 46.00
2.17 2.17 2.17 2.17 2.17 2.17

curb+preps Gregory/Cheney

Bank at 200 W. on 9th Side.
Curb OK 9/24/14 Gregory

WOOLMAN AVE

✓ SW 74.10 Elev. 50' on road 50'

63

540 = W.L. 36th ST	63.25	63.00	62.60	63.00	62.60	63.00	63.25
525	6333	63.08	62.68	63.08	62.68	63.08	6333
500	✓ 6347	63.22	62.82	63.22	62.82	63.22	6347
475	6361	63.36	62.96	63.36	62.96	63.36	6361
450	✓ 6375	62.50	63.10	63.50	63.10	63.50	6375 ✓
425	6389	63.64	63.24	63.64	63.24	63.64	6389
400	✓ 6403	63.78	63.38	63.78	63.38	63.78	6403 ✓
375	6417	63.92	63.52	63.92	63.52	63.92	6417
350	✓ 6431	64.06	63.66	64.06	63.66	64.06	6431 ✓
325	6444	64.19	63.79	64.19	63.79	64.19	6444
300	✓ 6458	64.33	63.93	64.33	63.93	64.33	6458 ✓
275	6472	64.47	64.07	64.47	64.07	64.47	6472
250	✓ 6486	64.61	64.21	64.61	64.21	64.61	6486 ✓
225	6500	64.75	64.35	64.75	64.35	64.75	6500
200	✓ 6514	64.89	64.49	64.89	64.49	64.89	6514 ✓
175	6528	65.03	64.63	65.03	64.63	65.03	6528
150	✓ 6542	65.17	64.77	65.17	64.77	65.17	6542 ✓
125	6556	65.31	64.91	65.31	64.91	65.31	6556
100	✓ 6569	65.44	65.04	65.44	65.04	65.44	6569 ✓
75	6583	65.58	65.18	65.58	65.18	65.58	6583
50	✓ 6597	65.72	65.32	65.72	65.32	65.72	6597 ✓
25	6611	65.86	65.46	65.86	65.46	65.86	6611
0 = EL 35th ST	66.25	66.00	65.60	66.00	65.60	66.00	66.25

8061	8061	8061	6920	6262	6262	6262
77.2	78.6	74.8	65.6	53.2	51.1	59.1
66	65.2	65.4	65.1	64.2	64.6	64.3
61.1	61.9	69.4	65.5	64.2	51.1	59.1
62.62	62.62	70.77	70.77	70.77	70.77	70.77
59.4	59.7	61.6	61.6	61.6	61.6	61.6
59.4	59.7	61.6	61.6	61.6	61.6	61.6
76.3	76.0	76.7	76.7	76.7	76.7	76.7

76.55	79.80	79.80	79.80	79.80	67.90	67.90	67.90
77.90	77.2	79.0	77.6	79.0	67.90	67.90	67.90
67.90	66.2	66.2	66.2	66.2	67.90	67.90	67.90
67.90	67.90	67.90	67.90	67.90	67.90	67.90	67.90
67.90	67.90	67.90	67.90	67.90	67.90	67.90	67.90
67.90	67.90	67.90	67.90	67.90	67.90	67.90	67.90

75.22	70.50	70.50	70.50	70.50	70.50	70.50	70.50
75.22	70.50	70.50	70.50	70.50	70.50	70.50	70.50
75.22	70.50	70.50	70.50	70.50	70.50	70.50	70.50
75.22	70.50	70.50	70.50	70.50	70.50	70.50	70.50

Bank on No. Side from 00 to 150' out in St.
 Check OK 9/24/14 Gregory

WATER BANK

WOOLMAN AVE

N

£

S

72.77

EL 36th ST	62.25	62.00	61.60	62.00	61.60	62.00	62.25	N	3
E curb	62.00	62.00	61.77	62.17	61.77	62.00	62.00	+11.8	+4.2
E 1/4	61.85	61.25	61.94	62.34	61.94	61.25	61.85		
£	62.50	61.50	62.10	62.50	62.10	61.50	62.50	+8.9	+3.8
W 1/4	62.40	61.75	62.26	62.66	62.26	61.75	62.40		
W curb	62.00	62.00	62.43	62.83	62.43	62.00	62.00		
WL 36th ST	63.25	63.00	62.60	63.00	62.60	63.00	63.25	+6.9	+0.7

	H						
600=WL 37th ST	60.25	60.00	59.60	60.00	59.60	60.00	60.25
575	58.87	58.62	58.22	58.62	58.22	58.62	58.87
550	57.49	57.24	56.84	57.24	56.84	57.24	57.49
525	56.11	55.86	55.46	55.86	55.46	55.86	56.11
500	54.72	54.47	54.07	54.47	54.07	54.47	54.72
475	53.34	53.09	52.69	53.09	52.69	53.09	53.34
450	51.96	51.71	51.31	51.71	51.31	51.71	51.96
425	50.58	50.33	49.93	50.33	49.93	50.33	50.58
410	49.75	49.50	49.10	49.50	49.10	49.50	49.75
390	48.85	48.60	48.20	48.60	48.20	48.60	48.85
370	48.35	48.10	47.70	48.10	47.70	48.10	48.35
350	48.15	47.90	47.50	47.90	47.50	47.90	48.15
330	48.05	47.80	47.40	47.80	47.40	47.80	48.05
310	48.25	48.00	47.60	48.00	47.60	48.00	48.25
290	48.65	48.40	48.00	48.40	48.00	48.40	48.65
270	49.25	49.00	48.60	49.00	48.60	49.00	49.25
250	50.15	49.90	49.50	49.90	49.50	49.90	50.15
230	51.15	50.90	50.50	50.90	50.50	50.90	51.15
200	52.60	52.35	51.95	52.35	51.95	52.35	52.60
175	53.80	53.55	53.15	53.55	53.15	53.55	53.80
150	55.01	54.76	54.36	54.76	54.36	54.76	55.01
125	56.22	55.97	55.57	55.97	55.57	55.97	56.22
100	57.42	57.17	56.77	57.17	56.77	57.17	57.42
75	58.63	58.38	57.98	58.38	57.98	58.38	58.63
50	59.84	59.59	59.19	59.59	59.19	59.59	59.84
25	61.04	60.79	60.39	60.79	60.39	60.79	61.04
0=EL 36th ST	62.25	62.00	61.60	62.00	61.60	62.00	62.25

	H							
	5	7077	7077	7077	5882	5880	5580	5580
	-4.8	+2.5						
	-1.0	+2.7						
	-3.7	+2.2						
	-5.7	+3.8						
	-6.2	+2.1						
	-5.7	-0.4						
	-3.5	-6.3						
	-3.6	-8.0						
	-1.2	-8.4						
	+2.1	-7.4						
	+7.2	-3.2						
	+13.5	+3.6						
	+13.4	+4.8						
	+11.8	+4.2						

SW 007
1600 ft on

So. Side

647 S. Main Ave

Called OK 1/14/14

6025 3075
 5855 T.A
 5801
 5800
 4760 NEAR
 4750 NEAR
 4740 NEAR
 4730 NEAR
 4720 NEAR
 4710 NEAR
 4700 NEAR
 4690 NEAR
 4680 NEAR
 4670 NEAR
 4660 NEAR
 4650 NEAR
 4640 NEAR
 4630 NEAR
 4620 NEAR
 4610 NEAR
 4600 NEAR
 4590 NEAR
 4580 NEAR
 4570 NEAR
 4560 NEAR
 4550 NEAR
 4540 NEAR
 4530 NEAR
 4520 NEAR
 4510 NEAR
 4500 NEAR
 4490 NEAR
 4480 NEAR
 4470 NEAR
 4460 NEAR
 4450 NEAR
 4440 NEAR
 4430 NEAR
 4420 NEAR
 4410 NEAR
 4400 NEAR
 4390 NEAR
 4380 NEAR
 4370 NEAR
 4360 NEAR
 4350 NEAR
 4340 NEAR
 4330 NEAR
 4320 NEAR
 4310 NEAR
 4300 NEAR
 4290 NEAR
 4280 NEAR
 4270 NEAR
 4260 NEAR
 4250 NEAR
 4240 NEAR
 4230 NEAR
 4220 NEAR
 4210 NEAR
 4200 NEAR
 4190 NEAR
 4180 NEAR
 4170 NEAR
 4160 NEAR
 4150 NEAR
 4140 NEAR
 4130 NEAR
 4120 NEAR
 4110 NEAR
 4100 NEAR
 4090 NEAR
 4080 NEAR
 4070 NEAR
 4060 NEAR
 4050 NEAR
 4040 NEAR
 4030 NEAR
 4020 NEAR
 4010 NEAR
 4000 NEAR
 3990 NEAR
 3980 NEAR
 3970 NEAR
 3960 NEAR
 3950 NEAR
 3940 NEAR
 3930 NEAR
 3920 NEAR
 3910 NEAR
 3900 NEAR
 3890 NEAR
 3880 NEAR
 3870 NEAR
 3860 NEAR
 3850 NEAR
 3840 NEAR
 3830 NEAR
 3820 NEAR
 3810 NEAR
 3800 NEAR
 3790 NEAR
 3780 NEAR
 3770 NEAR
 3760 NEAR
 3750 NEAR
 3740 NEAR
 3730 NEAR
 3720 NEAR
 3710 NEAR
 3700 NEAR
 3690 NEAR
 3680 NEAR
 3670 NEAR
 3660 NEAR
 3650 NEAR
 3640 NEAR
 3630 NEAR
 3620 NEAR
 3610 NEAR
 3600 NEAR
 3590 NEAR
 3580 NEAR
 3570 NEAR
 3560 NEAR
 3550 NEAR
 3540 NEAR
 3530 NEAR
 3520 NEAR
 3510 NEAR
 3500 NEAR
 3490 NEAR
 3480 NEAR
 3470 NEAR
 3460 NEAR
 3450 NEAR
 3440 NEAR
 3430 NEAR
 3420 NEAR
 3410 NEAR
 3400 NEAR
 3390 NEAR
 3380 NEAR
 3370 NEAR
 3360 NEAR
 3350 NEAR
 3340 NEAR
 3330 NEAR
 3320 NEAR
 3310 NEAR
 3300 NEAR
 3290 NEAR
 3280 NEAR
 3270 NEAR
 3260 NEAR
 3250 NEAR
 3240 NEAR
 3230 NEAR
 3220 NEAR
 3210 NEAR
 3200 NEAR
 3190 NEAR
 3180 NEAR
 3170 NEAR
 3160 NEAR
 3150 NEAR
 3140 NEAR
 3130 NEAR
 3120 NEAR
 3110 NEAR
 3100 NEAR
 3090 NEAR
 3080 NEAR
 3070 NEAR
 3060 NEAR
 3050 NEAR
 3040 NEAR
 3030 NEAR
 3020 NEAR
 3010 NEAR
 3000 NEAR
 2990 NEAR
 2980 NEAR
 2970 NEAR
 2960 NEAR
 2950 NEAR
 2940 NEAR
 2930 NEAR
 2920 NEAR
 2910 NEAR
 2900 NEAR
 2890 NEAR
 2880 NEAR
 2870 NEAR
 2860 NEAR
 2850 NEAR
 2840 NEAR
 2830 NEAR
 2820 NEAR
 2810 NEAR
 2800 NEAR
 2790 NEAR
 2780 NEAR
 2770 NEAR
 2760 NEAR
 2750 NEAR
 2740 NEAR
 2730 NEAR
 2720 NEAR
 2710 NEAR
 2700 NEAR
 2690 NEAR
 2680 NEAR
 2670 NEAR
 2660 NEAR
 2650 NEAR
 2640 NEAR
 2630 NEAR
 2620 NEAR
 2610 NEAR
 2600 NEAR
 2590 NEAR
 2580 NEAR
 2570 NEAR
 2560 NEAR
 2550 NEAR
 2540 NEAR
 2530 NEAR
 2520 NEAR
 2510 NEAR
 2500 NEAR
 2490 NEAR
 2480 NEAR
 2470 NEAR
 2460 NEAR
 2450 NEAR
 2440 NEAR
 2430 NEAR
 2420 NEAR
 2410 NEAR
 2400 NEAR
 2390 NEAR
 2380 NEAR
 2370 NEAR
 2360 NEAR
 2350 NEAR
 2340 NEAR
 2330 NEAR
 2320 NEAR
 2310 NEAR
 2300 NEAR
 2290 NEAR
 2280 NEAR
 2270 NEAR
 2260 NEAR
 2250 NEAR
 2240 NEAR
 2230 NEAR
 2220 NEAR
 2210 NEAR
 2200 NEAR
 2190 NEAR
 2180 NEAR
 2170 NEAR
 2160 NEAR
 2150 NEAR
 2140 NEAR
 2130 NEAR
 2120 NEAR
 2110 NEAR
 2100 NEAR
 2090 NEAR
 2080 NEAR
 2070 NEAR
 2060 NEAR
 2050 NEAR
 2040 NEAR
 2030 NEAR
 2020 NEAR
 2010 NEAR
 2000 NEAR
 1990 NEAR
 1980 NEAR
 1970 NEAR
 1960 NEAR
 1950 NEAR
 1940 NEAR
 1930 NEAR
 1920 NEAR
 1910 NEAR
 1900 NEAR
 1890 NEAR
 1880 NEAR
 1870 NEAR
 1860 NEAR
 1850 NEAR
 1840 NEAR
 1830 NEAR
 1820 NEAR
 1810 NEAR
 1800 NEAR
 1790 NEAR
 1780 NEAR
 1770 NEAR
 1760 NEAR
 1750 NEAR
 1740 NEAR
 1730 NEAR
 1720 NEAR
 1710 NEAR
 1700 NEAR
 1690 NEAR
 1680 NEAR
 1670 NEAR
 1660 NEAR
 1650 NEAR
 1640 NEAR
 1630 NEAR
 1620 NEAR
 1610 NEAR
 1600 NEAR
 1590 NEAR
 1580 NEAR
 1570 NEAR
 1560 NEAR
 1550 NEAR
 1540 NEAR
 1530 NEAR
 1520 NEAR
 1510 NEAR
 1500 NEAR
 1490 NEAR
 1480 NEAR
 1470 NEAR
 1460 NEAR
 1450 NEAR
 1440 NEAR
 1430 NEAR
 1420 NEAR
 1410 NEAR
 1400 NEAR
 1390 NEAR
 1380 NEAR
 1370 NEAR
 1360 NEAR
 1350 NEAR
 1340 NEAR
 1330 NEAR
 1320 NEAR
 1310 NEAR
 1300 NEAR
 1290 NEAR
 1280 NEAR
 1270 NEAR
 1260 NEAR
 1250 NEAR
 1240 NEAR
 1230 NEAR
 1220 NEAR
 1210 NEAR
 1200 NEAR
 1190 NEAR
 1180 NEAR
 1170 NEAR
 1160 NEAR
 1150 NEAR
 1140 NEAR
 1130 NEAR
 1120 NEAR
 1110 NEAR
 1100 NEAR
 1090 NEAR
 1080 NEAR
 1070 NEAR
 1060 NEAR
 1050 NEAR
 1040 NEAR
 1030 NEAR
 1020 NEAR
 1010 NEAR
 1000 NEAR
 990 NEAR
 980 NEAR
 970 NEAR
 960 NEAR
 950 NEAR
 940 NEAR
 930 NEAR
 920 NEAR
 910 NEAR
 900 NEAR
 890 NEAR
 880 NEAR
 870 NEAR
 860 NEAR
 850 NEAR
 840 NEAR
 830 NEAR
 820 NEAR
 810 NEAR
 800 NEAR
 790 NEAR
 780 NEAR
 770 NEAR
 760 NEAR
 750 NEAR
 740 NEAR
 730 NEAR
 720 NEAR
 710 NEAR
 700 NEAR
 690 NEAR
 680 NEAR
 670 NEAR
 660 NEAR
 650 NEAR
 640 NEAR
 630 NEAR
 620 NEAR
 610 NEAR
 600 NEAR
 590 NEAR
 580 NEAR
 570 NEAR
 560 NEAR
 550 NEAR
 540 NEAR
 530 NEAR
 520 NEAR
 510 NEAR
 500 NEAR
 490 NEAR
 480 NEAR
 470 NEAR
 460 NEAR
 450 NEAR
 440 NEAR
 430 NEAR
 420 NEAR
 410 NEAR
 400 NEAR
 390 NEAR
 380 NEAR
 370 NEAR
 360 NEAR
 350 NEAR
 340 NEAR
 330 NEAR
 320 NEAR
 310 NEAR
 300 NEAR
 290 NEAR
 280 NEAR
 270 NEAR
 260 NEAR
 250 NEAR
 240 NEAR
 230 NEAR
 220 NEAR
 210 NEAR
 200 NEAR
 190 NEAR
 180 NEAR
 170 NEAR
 160 NEAR
 150 NEAR
 140 NEAR
 130 NEAR
 120 NEAR
 110 NEAR
 100 NEAR
 90 NEAR
 80 NEAR
 70 NEAR
 60 NEAR
 50 NEAR
 40 NEAR
 30 NEAR
 20 NEAR
 10 NEAR
 0 NEAR

WOOLMAN AVE.

N

Q

S

EL 37th ST	6125	61.00	60.60	61.00	60.60	61.00	6125
E curb	61.00 60.00	61.00 60.00	60.43	60.83	60.43	61.00 60.00	61.00 60.00
E 1/4	60.40	59.75	60.26	60.66	60.26	59.75	60.40
Q	60.50	59.50	60.10	60.50	60.10	59.50	60.50
W 1/4	59.85	59.25	59.94	60.33	59.94	59.25	59.85
W curb	59.00 60.00	59.00 60.00	59.77	60.16	59.77	59.00 60.00	59.00 60.00
W.L. 37th ST	60.25	60.00	59.60	60.00	59.60	60.00	60.25

N S
-4.2 +5.6

-5.7 +3.3

-4.8 +2.5

How about returns on this later
Roadway not graded

WOOLMAN AVE

N

£

S

600=WL 38th ST	8025	8000	7960	8000	7960	8000	8025
575	7946	7921	7881	7921	7881	7921	7946
550	7867	7842	7802	7842	7802	7842	7867
525	7788	7763	7723	7763	7723	7763	7788
500	7708	7683	7643	7683	7643	7683	7708
475	7629	7604	7564	7604	7564	7604	7629
450	7550	7525	7485	7525	7485	7525	7550
425	7471	7446	7406	7446	7406	7446	7471
400	7392	7367	7327	7367	7327	7367	7392
375	7313	7288	7248	7288	7248	7288	7313
350	7233	7208	7168	7208	7168	7208	7233
325	7154	7129	7089	7129	7089	7129	7154
300	7075	7050	7010	7050	7010	7050	7075
275	6996	6971	6931	6971	6931	6971	6996
250	6917	6892	6852	6892	6852	6892	6917
225	6838	6813	6773	6813	6773	6813	6838
200	6758	6733	6693	6733	6693	6733	6758
175	6679	6654	6614	6654	6614	6654	6679
150	6600	6575	6535	6575	6535	6575	6600
125	6521	6496	6456	6496	6456	6496	6521
100	6442	6417	6377	6417	6377	6417	6442
75	6363	6338	6298	6338	6298	6338	6363
50	6283	6258	6218	6258	6218	6258	6283
25	6204	6179	6139	6179	6139	6179	6204
0=EL 37th ST	6125	6100	6060	6100	6060	6100	6125

5726 m - 2c 57

7775	7775	7775	7775	7775	7775
77	77	77	77	77	77
700	700	700	700	700	700
628	628	628	628	628	628
70	70	70	70	70	70
90.07	90.07	90.07	90.07	90.07	90.07
113	113	113	113	113	113
78.8	78.8	78.8	78.8	78.8	78.8
26.3	26.3	26.3	26.3	26.3	26.3
9.6	9.6	9.6	9.6	9.6	9.6

647 Sdim Only 1-5-14

8025	7867	7708	7550	7392	7233
7946	7788	7629	7471	7313	7154
7867	7708	7550	7392	7233	7075
7842	7683	7525	7367	7208	7050
7802	7643	7485	7327	7168	7010
7842	7604	7446	7288	7129	6971
7802	7564	7406	7248	7089	6931
7842	7525	7367	7208	7050	6892
7802	7485	7327	7168	7010	6852
7842	7446	7288	7129	6971	6813
7802	7406	7248	7089	6931	6773
7842	7367	7208	7050	6892	6733
7802	7327	7168	7010	6852	6693
7842	7288	7129	6971	6813	6654
7802	7248	7089	6931	6773	6614
7842	7208	7050	6892	6733	6575
7802	7168	7010	6852	6693	6535
7842	7129	6971	6813	6654	6496
7802	7089	6931	6773	6614	6456
7842	7050	6892	6733	6575	6417
7802	7010	6852	6693	6535	6377
7842	6971	6813	6654	6496	6338
7802	6931	6773	6614	6456	6298
7842	6892	6733	6575	6417	6258
7802	6852	6693	6535	6377	6218
7842	6813	6654	6496	6338	6179
7802	6773	6614	6456	6298	6139
7842	6733	6575	6417	6258	6099
7802	6693	6535	6377	6218	6060
7842	6654	6496	6338	6179	6020
7802	6614	6456	6298	6139	5980
7842	6575	6417	6258	6099	5940
7802	6535	6377	6218	6060	5920
7842	6496	6338	6179	6020	5880
7802	6456	6298	6099	5940	5800
7842	6417	6258	6060	5920	5760
7802	6377	6218	6020	5880	5740
7842	6338	6179	6020	5880	5740
7802	6298	6139	6020	5880	5740
7842	6258	6099	6020	5880	5740
7802	6218	6060	6020	5880	5740
7842	6179	6020	6020	5880	5740
7802	6139	6020	6020	5880	5740
7842	6099	6020	6020	5880	5740
7802	6060	6020	6020	5880	5740
7842	6020	6020	6020	5880	5740
7802	5980	6020	6020	5880	5740
7842	5940	6020	6020	5880	5740
7802	5900	6020	6020	5880	5740
7842	5860	6020	6020	5880	5740
7802	5820	6020	6020	5880	5740
7842	5780	6020	6020	5880	5740
7802	5740	6020	6020	5880	5740

Gregory Shoemaker Moore

OK'd OK 9/16/14 Gregory Shoemaker Moore

WOOLMAN AVE

N

Q

S

E.L. 38th ST.	81.25	81.00	8060	81.00	8060	81.00	81.25
E curb	81.00	81.00	8043	8083	8043	81.00	81.00
E/A	80.00	80.00				80.00	80.00
Q	80.40	79.75	8026	8066	8026	79.75	80.40
Q	80.50	79.50	8010	8050	8010	79.50	80.50
W/A	79.85	79.25	7994	8034	7994	79.25	79.85
W curb	79.00	79.00	7977	8017	7977	79.00	79.00
W.L. 38th ST	80.00	80.00				80.00	80.00
	80.25	80.00	7960	8000	7960	80.00	80.25

N S
-0.2 +5.1

Chkd OK. 9/16/14 Gregor

00 +5.8

-0.6 +4.6

WOOLMAN AVE.

N.

5

70

Fl. 39th ST	110.25	110.00	109.60	110.00	109.60	110.00	110.25
E curb	110.00 109.00	110.00 109.00	109.60	110.00	109.60	110.00 109.00	110.00 109.00
E 1/4	109.60	109.00	109.60	110.00	109.60	109.00	109.60
☐	110.00	109.00	109.60	110.00	109.60	109.00	110.00
W 1/4	109.60	109.00	109.60	110.00	109.60	109.00	109.60
W curb	109.00 110.00	109.00 110.00	109.60	110.00	109.60	109.00 110.00	109.00 110.00
W.L. 39th ST	110.25	110.00	109.60	110.00	109.60	110.00	110.25

71 5
+1.3 +0.2

Check OK. 9/24/14 Gregory

0.0 +0.3

+0.8 +0.9

0 = 5

25

50

75

100

125

150

175

200

225

250

275

300

325

350

375

400

425

450

475

500

525

550

575

600

625

650

675

700

725

750

BORDEN ST.

	W					E	
St. Prospect ST	69.25	69.00	68.60	69.00	68.60	69.00	68.60
Sec. B	69.25	69.00	68.60	69.10	68.91	69.21	69.46
C	67.48	67.23	67.35	68.26	68.69	69.29	69.54
D	65.70	65.45	65.78	66.90	67.74	68.34	68.59
E	63.92	63.67	63.90	64.92	65.57	66.17	66.42
F	63.92	63.67	63.64	64.41	64.55	65.15	65.60
G	62.90	62.65	62.59	63.33	63.40	64.00	64.25
G'	62.37	62.12	62.04	62.76	62.80	63.40	63.65
H	62.02	61.77	61.68	62.39	62.40	63.00	63.25
I	61.66	61.41	61.31	62.00	62.00	62.60	62.85
J	60.96	60.71	60.59	61.26	61.20	61.80	62.05
K	60.26	60.01	59.86	60.50	60.40	61.00	61.25
L	60.25	60.00	59.85	60.51	60.40	61.00	61.25
M	60.25	60.00	59.85	60.52	60.40	61.00	61.25
M'	60.25	60.00	59.85	60.55	60.40	61.00	61.25
N	60.25	60.00	59.85	60.57	60.40	61.00	61.25
O	60.25	60.00	59.92	60.64	60.70	61.30	61.55
P	60.25	60.00	59.95	60.69	60.77	61.37	61.62
Q	60.25	60.00	59.97	60.73	60.90	61.50	61.75
R	60.12	59.87	59.77	60.46	60.60	61.20	61.45
S	59.80	59.55	59.47	60.19	60.40	61.00	61.25
T	59.31	59.06	59.16	60.07	60.40	61.00	61.25
U	59.51	59.26	59.30	60.13	60.40	61.00	61.25
V	59.80	59.55	59.47	60.19	60.40	61.00	61.25
W	61.25	61.00		61.14		61.00	61.25
X	61.25	61.00	61.10	62.00	62.40	63.00	63.25
V'	60.47	60.22	60.29	61.16	61.50	62.10	62.35

W	E						
00	00	60.25	7.01	60.12	59.80	61.66	62.90
00	+0.5	7.51	10.41	7.64	7.96	6.10	4.86
+1.0	+0.3	13.11	3.4	10.24	14.56	5.4	2.56
+2.0	+0.2	3.40		0.26	-6.6	10.7	4.13
+1.9	-0.1	2.02	6.8102	6.425	6.57	6.743	6.925
+1.9	-1.1	6.574	1.34	3.51	7.33	5.55	3.78
+2.2	-3.8	7.27	0.5	6.01	5.78	4.25	3.2
+1.7	-1.0	73.03	14.2	10.8	2.5	11.9	11.1
+1.9	-1.1	3.78	6.946	6.954	6.859	3.78	7.10
+2.2	-3.8	4.02	2.57	3.0	4.44	0.0	65.93
+1.7	-1.0	6.593	10.7	10.5	4.14	0.0	57.02
+1.5	-8.1	10.8	5.931	58.15	3.78	7.10	4.43
+0.6	-1.27	67.01	6.166	0.23	4.44	0.0	65.93
-4.0	-7.32	4.71	5.35	5.1	4.14	0.0	57.02
-16.8	-7.3	2.1	5.15	5.1	6.66	6.125	62.85
-2.8		6.5	10.2	7.1	7.48	1.9	4.9
-1.94		6.838	4.5	6.166	6.942	5.00	4.3
-1.39		6.290	6.72	6.72	6.72	4.5	10.6
-5.7	-7.3	5.48	60.26	61.25	62.85	64.25	65.93
-5.7	+1.1	6.520	6.748	7.13	5.53	4.13	72.24
-3.5	+1.4	6.84	4.76	6.113	7.06	7.06	6.84
-2.5	+2.4	6.04	3.76	7.41	7.06	6.125	6.125
-2.5	-0.7	6.10	4.0	70.54	61.00	6.94	6.99
-6.5	-3.2	6.573	6.97	72.90	61.67	6.260	6.260
-8.4		6.958	3.42	6.834	6.900	6.617	6.400
-4.5	-3.2	3.32	6.929	4.56	3.90	6.78	8.90
-3.5	+1.4	6.367	3.61	6.593	4.89	6.723	6.545
-2.5	+2.4	9.23	6.265	10.25	70.82	3.59	5.37
-2.5	-0.7	6.593	6.141	5.987	5.987	5.906	8.17
-6.5	-3.2	7.25	4.18	10.95	11.27	11.26	6.100
-8.4		6.728	6.929	6.545	6.334	6.327	6.617
-4.5	-3.2	5.95	3.89	7.73	4.84	7.01	10.53
-4.5	-3.2	60.00	61.00			11.77	10.58
-4.5	-3.2	13.18	12.18	4.99	6.12	6.12	6.12
		6.57	5.12	8.18	5.95	5.95	5.95

chk. A.K. J. Childs
 better
 Brunker
 Nov. 13/14

PENNSYLVANIA AVE

80' wide

14' walks

13' 4"

Book 423

RICHMOND

ST

2900

2880

N ←

600.

PENNSYLVANIA AVE

285.0

80'

285.0

VERMONT

ST

PENNSYLVANIA AVE.

	N	curb	1/4	¢	1/4	curb	S
600=W. Richmond	290.25	290.00	289.40	289.00	288.10	288.00	288.25
575	290.04	289.79	289.20	288.83	287.95	287.88	288.13
550	289.83	289.58	289.00	288.67	287.81	287.75	288.00
525	289.63	289.38	288.80	288.50	287.66	287.63	287.88
500	289.42	289.17	288.60	288.33	287.52	287.50	287.75
475	289.21	288.96	288.40	288.17	287.37	287.38	287.63
450	289.00	288.75	288.20	288.00	287.23	287.25	287.50
425	288.79	288.54	288.00	287.83	287.08	287.13	287.38
400	288.58	288.33	287.80	287.67	286.93	287.00	287.25
375	288.38	288.13	287.60	287.50	286.79	286.88	287.13
350	288.17	287.92	287.40	287.33	286.64	286.75	287.00
325	287.96	287.71	287.20	287.17	286.50	286.63	286.88
300	287.75	287.50	287.00	287.00	286.35	286.50	286.75
275	287.54	287.29	286.80	286.83	286.20	286.38	286.63
250	287.33	287.08	286.60	286.67	286.06	286.25	286.50
225	287.13	286.88	286.40	286.50	285.91	286.13	286.38
200	286.92	286.67	286.20	286.33	285.77	286.00	286.25
175	286.71	286.46	286.00	286.17	285.62	285.88	286.13
150	286.50	286.25	285.80	286.00	285.48	285.75	286.00
125	286.29	286.04	285.60	285.83	285.33	285.63	285.88
100	286.08	285.83	285.40	285.67	285.18	285.50	285.75
75	285.88	285.63	285.20	285.50	285.04	285.38	285.63
50	285.67	285.42	285.00	285.33	284.89	285.25	285.50
25' E	285.46	285.21	284.80	285.17	284.75	285.13	285.38
E. Vermont	285.25	285.00	284.60	285.00	284.60	285.00	285.25

285.00 ... at N.E. Vermont Penn, 7/11

Sample
Shaw
Bumble-socks 18

	92.98	92.98	92.98	92.98	92.98	92.98	92.98	92.98	92.98
272.98	85.25	5.50	6.08	6.00	6.92	6.50	7.75	7.95	7.95
275.53	7.73	7.98	6.90	6.98	6.06	6.48	5.23	5.23	7.00
273	7.53	6.68	5.30	5.08	7.06	4.08	3.23	3.23	5.98
271.76	10.2	+0.8	+1.6	+1.9	+2.0	+2.4	+2.0	+2.0	3.55
272.44	92.98	92.98	92.98	92.98	92.98	92.98	92.98	92.98	92.98
273.6	85.25	5.47	5.75	6.50	6.25	7.33	6.25	8.17	
274.80	7.73	7.31	7.23	6.48	6.73	5.65	6.23	4.81	
2730	7.63	6.31	5.23	4.68	4.53	3.4	3.23	4.81	
270.50	-0.9	+1.0	+1.3	+1.8	+2.2	+2.2	+3.0	2.0	
272.70	92.98	91.76	91.76	91.76	91.76	91.76	294.80		
274	85.25	89.00	7.75	7.83	8.25	1.00	9.83		
272.34	7.40	2.76	4.01	1.93	3.51				
272.34	7.24	3.86	6.91	2.43	1.31	91.76	284.97		
272.98	92.98	-1.1	-2.9	-0.5	+2.2	1.25	5.47	5.47	
274.80	7.25	7.76	9.76	9.76	9.76	90.51	294.80		
270.8	3.5	5.73	7.50	9.42	8.00	90.25	90.25		
270.8	3.8	4.26	2.34	3.76	1.51		4.55		
274.80	7.25	3.24	3.16	294.80			283.10		
270.8	4.55	-0.9	-0.4	4.62			12.50		
274.80	12.27						07.30		
272.8	0.52						87.50		
273.40							1.22		

#30

89

600=W
 575
 550
 525
 500
 475
 450
 425
 400
 375
 350
 325
 300
 275
 250
 225
 200
 175
 150
 125
 100
 75
 50
 25 F
 E.L. Ver

Woolman Ave. Route

600=H
575
550
525
500
475
450
425
400
375
350
325
300
275
250
225
200
175
150
125
100
75
50
25' E
E.L. Ver

30th NW 1/4 71.00
31st NW " 52.56
32nd NE RR Spk 64.72
33rd NE " " 33.76
34th NE " " 18.41



172 / 260 (1.57)
172 77
380 105
860 105
26857
1.162

68.42

L-1 0.80
8.7 9.4
2.6

190.96
5.30
202.26
197.25
5.01

580 / 640
36
800 720

198.25
4.01
4.07
4.2
4.34

50

600 / 500

53757

¹⁰³
76 43 213

12° 47'

63° 56'

12 47

57° 09'

12 47

38° 22'

12 47

25° 35'

12 47

12 48