

73

MICROFILMED

DEC 4 1964

*Bottom of ... in ...
Course 10' east of center line
Hydriate 2' inside of ...*

398 P. 71

306.35
94.50
5 17.84
1.57

306.35
1.57
304.78
53

90.68

No. 299.00

306.35
299.00
5 17.84
1.57

306.35
1.57
304.78

Crocker Quality

FIELD BOOK



MANUFACTURED BY

H. S. CROCKER CO.

SAN FRANCISCO AND SACRAMENTO
CALIFORNIA

*177 ft N of Adams track
varies from 12.8 to 14
collected from grade to 0.5 high*

FROM
LORINGS BOOK STORE
San Diego, Cal.

295.70
 +10.58
 306.28 HI.

306.28
 296.40 = Bottom Catch Basin No. 4
 7.88

306.32
 296.40 = Bottom Catch Basin No. 5
 9.92

322.79
 315.50 " " " " " 3
 7.29

322.79
 316.70 " " " " " 2
 6.09

322.79
 318.35 at CB No. 8 + 49.25'
 4.44

343.58 BJI
 +1.37
 344.95 HI.

344.95
 335.30 = Bottom Catch Basin No. 1
 9.65

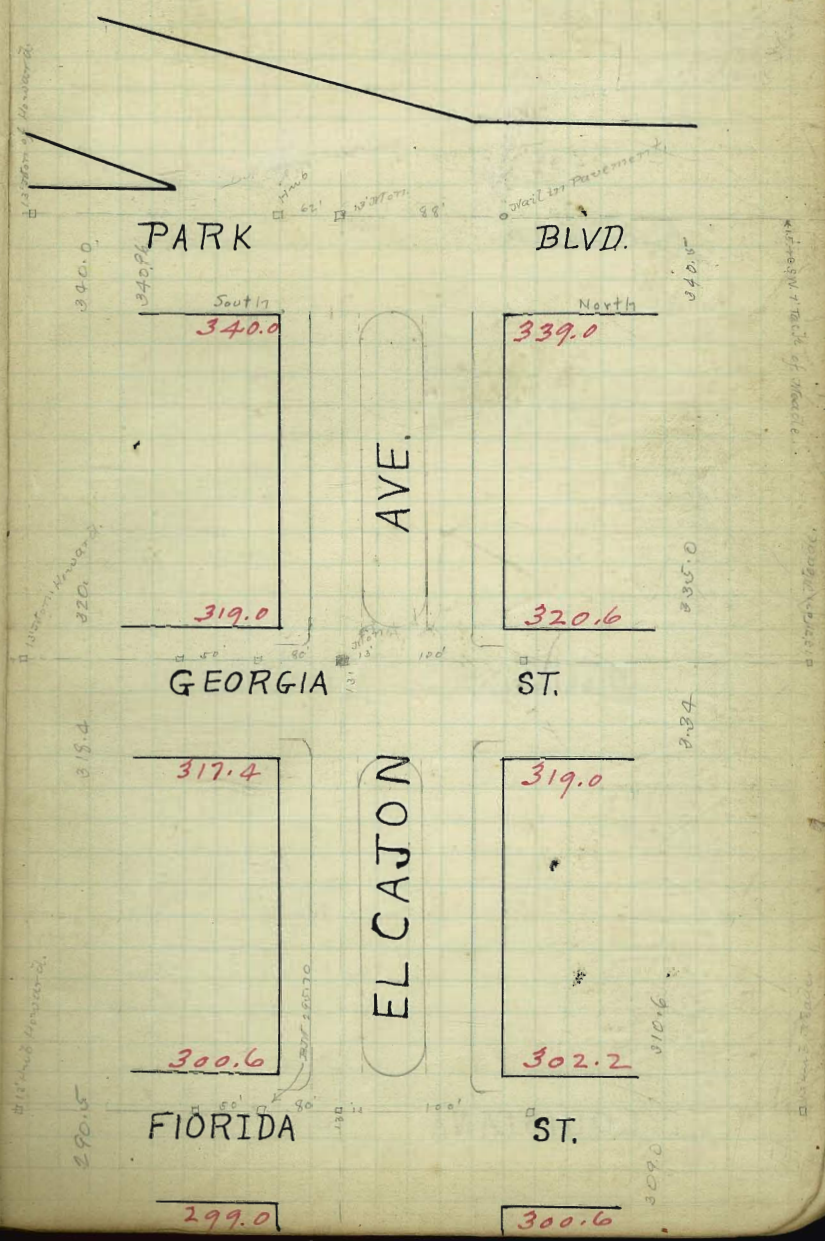
320.00
 316.70
 3.30

16.70
 1.65
 18.35

344.95
 42.84
 2.11

EL CAJON AVE. 1

13' Hubs reset 9/17/14 Hatch



2875
FLORIDA

ST.

299.0

300.6

303.4

305.0

ALABAMA

ST.

305.0

306.6

320.6

321.6

Mississippi

ST.

322.2

323.2

327.5

327.0

LOUISIANA

ST.

326.5

326.0

LOUISIANA

ST.

326.5

326.0

322.0

323.6

TEXAS

ST.

323.0

324.6

336.0

337.6

ARIZONA

ST.

337.6

339.2

365.8

366.8

HAMILTON

ST.

367.0

368.4

HAMILTON

ST.

367.4

368.4

374.0

374.4

374.4

OREGON.

ST.

375.0

375.0

374.0

378.0

376.0

376.0

IDAHO

ST.

375.0

375.0

379.0

374.0

373.0

372.0

UTAH

ST.

372.0

371.0

UTAH

ST.

372.0

371.0

370.5

369.0

368.40

KANSAS

ST.

368.4

367.80

367.4

364.6

364.6

30TH

ST.

364.2

364.2

369.0

363.0

363.6

OHIO

ST.

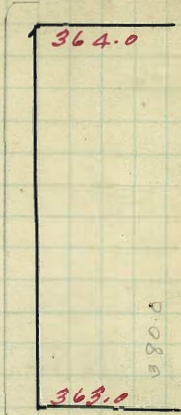
363.0

364.0

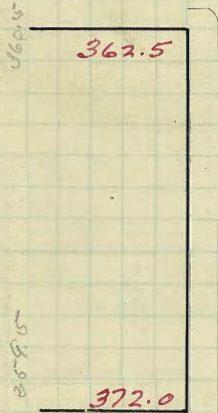
OHIO



ST.



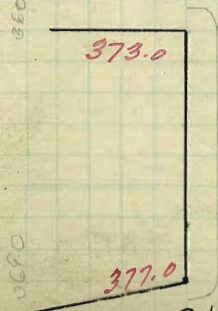
ILLINOIS



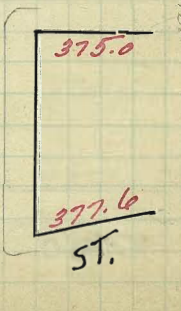
ST.



IOWA



ST.



BOUNDARY

377.8

378.0

Iowa

ST.

13' HUB

13' HUB

13' HUB

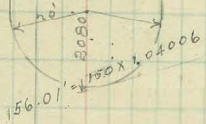
176.42'

301.35'

176.42'

160.70 Acres - 88.58 per foot
 or 18858 X 150 = 42.87
 42.87 + 160.70 = 809.57 opposite side of ST.

88 = 21.53 on diagonal
 62 = 44.48 "



Boundary

13' HUB (OK 9/17/12)

Century stand No
 4.88' west well corner

60'

60'

60'

60'

60'

60'

60'

60'

60'

60'

ELCAJON AVE.

South.

North

E. Lime Park Blvd.

DL	340.25	340.0	340.50	339.50	339.0	339.25
25	338.50	338.25	338.75	337.75	337.47	337.71
50	336.75	336.50	337.0	336.43	335.93	336.11
75	335.0	334.75	335.25	334.90	334.40	334.65
100	333.25	333.0	333.50	333.37	332.87	333.12
125	331.50	331.25	331.75	331.83	331.33	331.58
150	329.75	329.50	330.0	330.30	329.80	330.05
175	328.0	327.75	328.25	328.77	328.27	328.52
200	326.25	326.0	326.50	327.22	326.73	326.98
225	324.50	324.25	324.75	325.70	325.20	325.45
250	322.75	322.50	323.0	324.17	323.67	323.92
275	321.0	320.75	321.25	322.63	322.13	322.38
300-White St	319.25	319.0	319.50	321.10	320.60	320.85

West side of Georgia St.

0613 20
1.260 32.857

0613 14
11.82
6.3
8.82

207-11-24-3-2 SW Georgia & El Cajon

344.11	344.11	344.11	344.11	344.11	344.11	344.11	344.11	344.11	344.11
344.11	344.11	344.11	344.11	344.11	344.11	344.11	344.11	344.11	344.11
344.11	344.11	344.11	344.11	344.11	344.11	344.11	344.11	344.11	344.11

44-station Jan 10-1912
Donnan, Miller, Shaw.
checked with intimate work & graduate work.

207-11-24-3-2 SW Georgia & El Cajon (Note) Street sheets by '07

207-11-24-3-2 SW Georgia & El Cajon (Note) Street sheets by '07

344.11	344.11	344.11	344.11	344.11	344.11	344.11	344.11	344.11	344.11
344.11	344.11	344.11	344.11	344.11	344.11	344.11	344.11	344.11	344.11
344.11	344.11	344.11	344.11	344.11	344.11	344.11	344.11	344.11	344.11

checked with intimate work & graduate work.

207-11-24-3-2 SW Georgia & El Cajon (Note) Street sheets by '07

344.11	344.11	344.11	344.11	344.11	344.11	344.11	344.11	344.11	344.11
344.11	344.11	344.11	344.11	344.11	344.11	344.11	344.11	344.11	344.11
344.11	344.11	344.11	344.11	344.11	344.11	344.11	344.11	344.11	344.11

mid wall on side of cut.

207-11-24-3-2 SW Georgia & El Cajon (Note) Street sheets by '07

344.11	344.11	344.11	344.11	344.11	344.11	344.11	344.11	344.11	344.11
344.11	344.11	344.11	344.11	344.11	344.11	344.11	344.11	344.11	344.11
344.11	344.11	344.11	344.11	344.11	344.11	344.11	344.11	344.11	344.11

sidewalk stakes on curbs & parking on side of cut. May 25-1914

Set on-grade stakes June 26-1914 } Donnan
Checked curbs on for grade & line } Miller
Shard

Finish property in this block July 27-1914 } Donnan
Shard

343.58	336.98	332.91	328.10	324.61	321.0	318.0
343.58	336.98	332.91	328.10	324.61	321.0	318.0
343.58	336.98	332.91	328.10	324.61	321.0	318.0

South

North

East Line of Georgia St

5. Lite	317.65	317.6	317.90	319.50	319.0	319.25
25	316.29	316.04	316.54	318.14	317.64	317.89
50	314.94	314.69	315.19	316.79	316.29	316.54
75	313.59	313.34	313.84	315.44	314.94	315.19
100	312.23	311.98	312.48	314.08	313.58	313.83
125	310.87	310.62	311.12	312.72	312.22	312.47
150	309.52	309.27	309.77	311.37	310.87	311.12
175	308.17	307.92	308.42	310.02	309.52	309.77
200	306.81	306.56	307.06	308.66	308.16	308.41
225	305.46	305.21	305.71	307.31	306.81	307.06
250	304.10	303.85	304.35	305.95	305.45	305.70
275	302.75	302.50	303.00	304.60	304.10	304.35
300	301.39	301.14	301.64	303.24	302.74	302.99
310' w.l.	300.85	300.60	301.10	302.70	302.20	302.45

SW Cor Florida & El Cajon

017.07	007.07	007.07	007.07	019.51	018.51	018.51	018.51
008.5	010	015.1	016.5	01.45	05.70	08.41	11.12
055	0.77	01.6	02.5	4.6	13.1	10.0	7.09
006.17	0.5	0.2	2.1	0.4	1.0	2.4	4.1
018.21	3.0	2.9	6.8	6.8	13.6	45.7	43.6

+0. stakes from 1914
Dorman, Miller, Shand
Subd up on estimate book
on estimate sheet

SW Cor Georgia & El Cajon

South 80' tie-Hub for 13' Hub Florida & El Cajon

010.82	010.83	020.83	020.83	020.83	020.83	020.83	020.83
17.00	18.69	11.98	09.27	10.87	13.58	16.29	19.00
3.43	1.14	8.55	1.56	9.96	7.25	4.54	1.83
011.00	011.00	011.00	011.00	011.00	011.00	011.00	011.00
08.6	05.95	02.10	00.60	03.85	06.56		

1914-1916 Dorman, Miller, Shand
Subd up on estimate book
on estimate sheet

Checked Curbs C.H. for grade & line. (Dorman, Miller, Shand)
Checked subgrade & Set subgrade June 20-1914
Stakes on the North Roadway.

Finish property's on this B.M. July 28-14

914.91
11.66
308.07
209
310.16

W. Line of Florida St. (60')

W. Line ^{300.85}	300.6	^{60'} 301.10	302.7	302.2	302.45
		300.60	302.2		

W. Curb 300.6	300.6	300.83	301.93	302.2	302.2
---------------	-------	--------	--------	-------	-------

W. 1/4 300.0	300.2	300.67	301.67	301.8	301.6
--------------	-------	--------	--------	-------	-------

Center 299.8	299.8	299.80	301.40	301.4	301.6
--------------	-------	--------	--------	-------	-------

E 1/4 299.0	299.4	299.53	301.13	301.0	300.6
-------------	-------	--------	--------	-------	-------

E Curb 299.0	299.0	299.26	300.87	300.6	300.6
--------------	-------	--------	--------	-------	-------

E Line 299.25	299.0	^{299.0} 299.50	^{300.6} 301.10	300.6	300.85
---------------	-------	-------------------------	-------------------------	-------	--------

E Line of Florida St.

014193

East Line of Florida St.

E Line	299.25	299.0	299.50	301.10	300.60	300.85
25	299.60	299.35	299.60	301.45	300.95	301.20
50	299.96	299.71	300.21	301.81	301.31	301.56
75	300.31	300.06	300.56	302.16	301.66	301.91
100	300.67	300.42	300.92	302.52	302.02	302.27
125	301.02	300.77	301.27	302.87	302.37	302.62
150	301.38	301.13	301.63	303.23	302.73	302.98
175	301.73	301.48	301.98	303.58	303.08	303.33
200	302.09	301.84	302.34	303.94	303.44	303.69
225	302.44	302.19	302.69	304.29	303.79	304.04
250	302.80	302.55	303.05	304.65	304.15	304.40
275	303.15	302.90	303.40	305.00	304.50	304.75
300	303.51	303.26	303.76	305.36	304.86	305.11
310 W. Line	303.65	303.40	303.90	305.50	305.0	305.25

West Line of Alabama St.

Blk 30657 Plug NE Cor Alabama & E. (Cajon)

306.84 HI	306.84	306.84	306.84	306.84	306.84	306.84	306.84	306.84	306.84	306.84	306.84
302.87	1.57	2.44	3.15	3.86	4.67	5.28	5.99	7.59	6.88	6.27	12.0
302.87	1.6	4.0	5.6	7.2	9.4	11.5	5.7	11.4	14.9	12.0	6.7
	0.0	-2.1	-3.4	-3.3	-4.8	-6.2	+0.3	-3.2	-9.0	-6.7	

306.84 306.84 306.84 306.84
 306.84 306.84 306.84 306.84
 49 - stake Jan 12 1913
 Donnay, Miller, Shant
 checked with internal shut. O.K.

306.84 HI	306.84	306.84	306.84	306.84	306.84	306.84	306.84	306.84	306.84	306.84	306.84	
306.84	7.80	7.14	6.43	5.72	5.01	4.30	3.45	1.85	2.70	3.41	4.12	4.83
306.84	5.99	6.35										

306.84 306.84 306.84 306.84
 306.84 306.84 306.84 306.84
 Finish curb on S' offset Mar 13-1914
 Donnay, Miller, Shant

Set sidewalk stakes on S' offset June 11-1914 in Blk from Florida to Alabama - Donnay - Miller - Shant.

Set subgrade stakes on North Roadway.
 Checked subgrade found it fairly good June 29-1914
 Checked curbs O.K. for line & grade

Checked subgrade & set stakes where necessary, July 2-1914

Set Finish Property in this Blk July 28-14

310.16

{ Donnay
 Miller
 Shant
 { Donnay
 Miller
 Shant

W. Line of Alabama St.

W.L.	303.65	303.40	303.90 303.40	305.50 305.0	305.0	305.25
W.Curb	303.40	303.40 302.10	303.66	305.40	305.00 304.00	305.00
W/4	302.40	302.80	303.94	305.60	304.40	305.00
Center	304.30	303.20	304.20	305.80	304.80	305.85
E 1/4	304.40	303.60	304.46	306.00	305.20	306.00
E Curb	305.00	304.0 305.0	304.72	306.20	305.60 306.60	306.60
E Line	305.25	305.0	305.50 305.50	306.6 307.10	306.60	306.85

E Line of Alabama St.

Alabama St. 14' Walk on South
 " " 20' " " North

308.17
 308.17 H.T.

308.17	308.17	308.17	308.17
308.17	308.17	308.17	308.17
308.17	308.17	308.17	308.17
308.17	308.17	308.17	308.17

Final out for parking March 21
 Dorman, Miller, Shand.
 on 3' offset.

308.67 H.T.
 308.67 H.T.

308.67	308.67	308.67	308.67	308.67	308.67	308.67
308.67	308.67	308.67	308.67	308.67	308.67	308.67
308.67	308.67	308.67	308.67	308.67	308.67	308.67
308.67	308.67	308.67	308.67	308.67	308.67	308.67

Dorman
 Miller
 Shand.

Set sidewalk stakes in the BLK from Alabama to Mississippi
 on 3' offset June 10-1914.

Set subgrade stakes in all except South Roadway June 29-1914
 Dorman Miller Shand.

Set subgrade stakes July 2-1914 Dorman-Miller, Shand.

East Line of Alabama St

E Line	305.25	305.00	305.50	307.10	306.60	306.85
25	306.55	306.30	306.80	308.35	307.85	308.10
50	307.85	307.60	308.10	309.60	309.10	309.35
75	309.15	308.90	309.40	310.85	310.35	310.60
100	310.45	310.20	310.70	312.10	311.60	311.85
125	311.75	311.50	312.00	313.35	312.85	313.10
150	313.05	312.80	313.30	314.60	314.10	314.35
175	314.35	314.10	314.60	315.85	315.35	315.60
200	315.65	315.40	315.90	317.10	316.60	316.85
225	316.95	316.70	317.20	318.35	317.85	318.10
250	318.25	318.00	318.50	319.60	319.10	319.35
275	319.55	319.30	319.80	320.85	320.35	320.60
300	320.85	320.60	321.10	322.10	321.60	321.85

W. Line of Mississippi St

B.W. 324.86 Splice Fence Post N.E. Cor. Mississippi & E. Cajon

B.W. 321.71 " Foot of Eucalyptus tree NW "

321.71	321.95	321.95	321.95	321.95	321.95	321.95	321.95	321.95	321.95	321.95
21.85	19.35	16.85	14.35	11.85	9.35	6.85	4.35	1.85		
1.7	1.3	0.9	0.5	0.1						
0.6	0.3	0.0	-0.3	-0.6	-0.9	-1.2	-1.5	-1.8	-2.1	-2.4

Dec 27, 1913 + 6 - taken
 Domman, Miller, Shand

319.03	319.03	319.03	319.03	319.03	319.03	319.03	319.03	319.03	319.03	319.03
18.00	17.60	17.20	16.80	16.40	16.00	15.60	15.20	14.80	14.40	14.00
1.00	0.90	0.80	0.70	0.60	0.50	0.40	0.30	0.20	0.10	0.00

Think stake on offset Mar 23-14
 Domman, Shand, Seonit

Set subgrade on North Roadway June 30-1914
 Curbs check OK for grade & line
 North Roadway checked subgrade - it is fair

Checked subgrade Oct. July 2-1914 Domman-Miller-Shand

Set finish Property's on this B.W. July 28-14
 Domman, Miller, Shand

W. Line of Mississippi St.

W. Line	320.85	320.60	321.10 320.60	322.10 321.60	321.60	321.85
W. Curb	320.60	320.60 319.60	320.88	321.88 320.60	321.60	321.60
W. W.	320.60	320.0	321.14	322.14	321.0	321.60
Center	321.40	320.4	321.40	322.40	321.4	322.40
E. W.	321.60	320.8	321.66	322.66	321.8	322.60
E. Curb	322.2	321.2 322.2	321.92	322.92	322.20 322.20	320.20
E. Line	322.45	322.2	322.20 322.70	323.20 323.70	323.2	323.45

E. Line of Mississippi St.

Sidepath stakes on Park Ave. offset in
Dunham, Miller, Shaw.

320.44	320.44	320.44	320.44	320.44	320.44	320.44	320.44
320.44	320.44	320.44	320.44	320.44	320.44	320.44	320.44
320.44	320.44	320.44	320.44	320.44	320.44	320.44	320.44

321.71	321.71	321.71	321.71	321.71	321.71	321.71	321.71
321.71	321.71	321.71	321.71	321.71	321.71	321.71	321.71
321.71	321.71	321.71	321.71	321.71	321.71	321.71	321.71

Sidepath stakes on S. offset in the Blk from Mississippi to Louisiana July 16-1914.

Set on grade stakes in this intersection July 27-1914.

Dunham, Miller, Shaw.

FILED IN COR. EL CAJON & MISSISSIPPI
 1914

East Line of Mississippi St.

W.Li	E. Line	322.45	322.7	322.70	322.70	323.2	323.4
	25	322.89	322.64	323.14	324.02	323.52	323.77
W.L.	50	323.33	323.08	323.58	324.33	323.83	324.08
	75	323.77	323.52	324.02	324.65	324.15	324.4
W.L.	100	324.22	323.97	324.47	324.97	324.47	324.7
	125	324.66	324.41	324.91	325.28	324.78	325.0
Cen	150	325.10	324.85	325.35	325.60	325.10	325.35
	175	325.54	325.29	325.79	325.92	325.42	325.6
E.L.	200	325.98	325.73	326.23	326.73	325.73	325.98
	225	326.42	326.17	326.67	326.55	326.05	326.30
E.C.	250	326.87	326.62	327.12	326.87	326.37	326.62
	275	327.31	327.06	327.56	327.18	326.68	326.93
E.L.	300	327.75	327.50	328.00	327.50	327.00	327.25

W. Line of Louisiana St.

Aug 29-1914 Cor Louisiana & El Cajon

Set finish stakes on 3' offset July 6-1914 E. W. from Louisiana to Miller. Share.

Property finish stakes in this E.W. Aug 1-1914

Set finish stakes on North & South 1/2 width

Curbs in this E.W. checked O.K. for grade & line July 17th 1914

Property finish stakes in this E.W. Aug 1-1914

322.45	322.7	322.70	322.70	323.2	323.4
323.52	323.77	324.08	324.4	324.7	325.0
325.35	325.6	325.92	325.98	326.3	326.6
327.25	327.5	327.8	328.1	328.4	328.7
329.6	329.9	330.2	330.5	330.8	331.1

322.45	322.7	322.70	322.70	323.2	323.4
323.52	323.77	324.08	324.4	324.7	325.0
325.35	325.6	325.92	325.98	326.3	326.6
327.25	327.5	327.8	328.1	328.4	328.7
329.6	329.9	330.2	330.5	330.8	331.1

322.45	322.7	322.70	322.70	323.2	323.4
323.52	323.77	324.08	324.4	324.7	325.0
325.35	325.6	325.92	325.98	326.3	326.6
327.25	327.5	327.8	328.1	328.4	328.7
329.6	329.9	330.2	330.5	330.8	331.1

322.45	322.7	322.70	322.70	323.2	323.4
323.52	323.77	324.08	324.4	324.7	325.0
325.35	325.6	325.92	325.98	326.3	326.6
327.25	327.5	327.8	328.1	328.4	328.7
329.6	329.9	330.2	330.5	330.8	331.1

322.45	322.7	322.70	322.70	323.2	323.4
323.52	323.77	324.08	324.4	324.7	325.0
325.35	325.6	325.92	325.98	326.3	326.6
327.25	327.5	327.8	328.1	328.4	328.7
329.6	329.9	330.2	330.5	330.8	331.1

322.45	322.7	322.70	322.70	323.2	323.4
323.52	323.77	324.08	324.4	324.7	325.0
325.35	325.6	325.92	325.98	326.3	326.6
327.25	327.5	327.8	328.1	328.4	328.7
329.6	329.9	330.2	330.5	330.8	331.1

East Line of Louisiana St.

W.L.	EL.	326.75	326.50	327.0	326.50	326.0	326.25
	25	326.37	326.12	326.62	326.30	325.80	326.05
	50	326.00	325.75	326.25	326.10	325.60	325.85
W.	75	325.63	325.38	325.88	325.90	325.40	325.65
	100	325.25	325.00	325.50	325.70	325.20	325.45
W.	125	324.87	324.62	325.12	325.50	325.0	325.25
	150	324.50	324.25	324.75	325.80	324.80	325.05
Co	175	324.13	323.88	324.38	325.10	324.60	324.85
	200	323.75	323.50	324.0	324.90	324.40	324.65
E	225	323.37	323.12	323.62	324.70	324.20	324.45
	250	323.00	322.75	323.25	324.50	324.00	324.25
E	275	322.63	322.38	322.88	324.30	323.80	324.05
E	300 = W. LINE	322.25	322.0	322.50	324.10	323.60	323.85

W. Line of Texas St.

W. Line of Texas St. E. Line of Louisiana St.

326.75	326.50	327.0	326.50	326.0	326.25
326.37	326.12	326.62	326.30	325.80	326.05
326.00	325.75	326.25	326.10	325.60	325.85
325.63	325.38	325.88	325.90	325.40	325.65
325.25	325.00	325.50	325.70	325.20	325.45
324.87	324.62	325.12	325.50	325.0	325.25
324.50	324.25	324.75	325.80	324.80	325.05
324.13	323.88	324.38	325.10	324.60	324.85
323.75	323.50	324.0	324.90	324.40	324.65
323.37	323.12	323.62	324.70	324.20	324.45
323.00	322.75	323.25	324.50	324.00	324.25
322.63	322.38	322.88	324.30	323.80	324.05
322.25	322.0	322.50	324.10	323.60	323.85

Dec 25-1913 49 - stakes
 Domman, Shant, Miller
 checked with estimate sheet O.K.

Set stakes on S. of lot finish. Mon 27-14
 Domman, Miller, Shant

Carbide W.L. for grade & line June 28-1914
 Domman, Miller, Shant, Fletcher

Checked subgrade & found it fairly good set subgrade stakes where necessary
 July 3-1914. Domman Miller, Shant

Set finish Property in this Blk July 28-14
 Domman, Miller, Shant

Culverts

W. Line of Texas St.

Culvert

W.L.	322.25	322.0	322.50	324.10	323.60	323.85
			322.0	323.60		
W. Cord	322.0	322.0	322.17	323.77	323.60	323.60
Culvert						
W/U						
Center	322.50	322.50	322.50	324.10	324.10	324.10
E1/4						
Culvert						
E Cord	323.00	323.00	323.83	324.43	324.60	324.60
E.L.	323.25	323.0	323.0	324.60	324.60	324.85
			323.50	325.10		

E. Line of Texas St.

326.71 326.71 326.71 326.71
 22.00 22.90 23.42 23.60
 9.71 3.76 3.29 3.11
 2.76 2.76 2.29 2.11
 3' off pt. March 30-1914
 Donnan, Miller, Shaw

327.60	327.60	327.60	327.60	327.60	327.60	327.60	327.60	327.60	327.60	327.60	327.60
5.60	4.40	4.42	4.30	4.19	3.98	4.100					
327.60	327.60	327.60	327.60	327.60	327.60	327.60	327.60	327.60	327.60	327.60	327.60
4.60	2.78	3.33	3.30	3.10	2.91	3.00					
327.07	327.07	327.07	327.07	327.07	327.07	327.07	327.07	327.07	327.07	327.07	327.07
5.30	5.37	5.25	5.20	4.524	3.80	3.70	3.70	3.70	3.70	3.24	
327.07	327.07	327.07	327.07	327.07	327.07	327.07	327.07	327.07	327.07	327.07	327.07
3.70	6.30	6.39	6.20	5.66	4.80	4.70	4.24	4.70	4.43		

Culvert stakes June 24-1914 - Donnan - Miller - Shaw

W. Line of Arizona St.

WL 336.25 336.0 336.5 337.10 337.60 337.65

W.Curb 336.0 336.0 336.28 337.98 337.60 337.60

W/W 336.0

Center 336.80 335.8 336.80 338.40 337.40 338.40

E/W 337.0

E.Curb 337.60 336.60 337.32 338.92 339.20 339.20

E.Line 337.85 337.60 337.6 339.20 339.20 339.45

East Line of Arizona St.

3377 3385 3395 3398 3398
36.00 36.95 37.24 37.60
335 333 334 333
Finish stakes on parking curb on
offpt. March 31-1914 Tomman, Miller
Shard.

3377 33816 33916 33916 33916 33916 33916 33916 33916
+1.00 36.00 36.09 37.03 37.30 37.26 36.55 37.60
33916 HT 3.16 3.09 2.11 1.86 1.90 2.61 1.56

18
Tomman
Shard.
Miller

Set the PLW from Texas to Arizona June 15-1914 sidewalk stakes & offset

3377 343.06 343.06 343.06 343.06 343.06 343.06 343.06
+1.50 39.20 37.60 40.41 39.00 38.90 39.23 40.87
343.06 HT 3.86 5.44 2.64 4.06 4.76 3.83 2.19

Set subgrade stakes in this intersection July 13-14
Tomman
Miller
Shard.

294
East Line of Arizona St.

W	E Line	337.85	337.60	338.10	339.70	339.20	339.40
W	25	340.20	339.95	340.45	342.0	341.50	341.70
W	50	342.55	342.20	342.80	344.30	343.80	344.00
W	75	344.90	344.65	345.15	346.60	346.10	346.30
W	100	347.25	347.0	347.50	348.90	348.40	348.60
W	125	349.60	349.35	349.85	351.20	350.70	350.90
Co	150	351.95	351.70	352.20	353.50	353.0	353.20
E	175	354.30	354.05	354.55	355.80	355.30	355.50
E	200	356.65	356.40	356.90	358.10	357.60	357.80
EC	225	359.0	358.75	359.25	360.40	359.90	360.10
E	250	361.35	361.1	361.60	362.70	362.20	362.40
EL	275	363.70	363.45	363.95	365.0	364.50	364.70
E	300	366.05	365.8	366.30	367.30	366.8	367.00

West Line of Hamilton St.

292

37.00	37.15	37.30	37.45	37.60	37.75	37.90	38.05	38.20	38.35
37.85	38.00	38.15	38.30	38.45	38.60	38.75	38.90	39.05	39.20
38.70	38.85	39.00	39.15	39.30	39.45	39.60	39.75	39.90	40.05
39.55	39.70	39.85	40.00	40.15	40.30	40.45	40.60	40.75	40.90
40.40	40.55	40.70	40.85	41.00	41.15	41.30	41.45	41.60	41.75
41.25	41.40	41.55	41.70	41.85	42.00	42.15	42.30	42.45	42.60
42.10	42.25	42.40	42.55	42.70	42.85	43.00	43.15	43.30	43.45
43.00	43.15	43.30	43.45	43.60	43.75	43.90	44.05	44.20	44.35
44.20	44.35	44.50	44.65	44.80	44.95	45.10	45.25	45.40	45.55
45.40	45.55	45.70	45.85	46.00	46.15	46.30	46.45	46.60	46.75
46.60	46.75	46.90	47.05	47.20	47.35	47.50	47.65	47.80	47.95
47.95	48.10	48.25	48.40	48.55	48.70	48.85	49.00	49.15	49.30
49.30	49.45	49.60	49.75	49.90	50.05	50.20	50.35	50.50	50.65
50.65	50.80	50.95	51.10	51.25	51.40	51.55	51.70	51.85	52.00
52.00	52.15	52.30	52.45	52.60	52.75	52.90	53.05	53.20	53.35
53.35	53.50	53.65	53.80	53.95	54.10	54.25	54.40	54.55	54.70
54.70	54.85	55.00	55.15	55.30	55.45	55.60	55.75	55.90	56.05
56.05	56.20	56.35	56.50	56.65	56.80	56.95	57.10	57.25	57.40
57.40	57.55	57.70	57.85	58.00	58.15	58.30	58.45	58.60	58.75
58.75	58.90	59.05	59.20	59.35	59.50	59.65	59.80	59.95	60.10
60.10	60.25	60.40	60.55	60.70	60.85	61.00	61.15	61.30	61.45
61.45	61.60	61.75	61.90	62.05	62.20	62.35	62.50	62.65	62.80
62.80	62.95	63.10	63.25	63.40	63.55	63.70	63.85	64.00	64.15
64.15	64.30	64.45	64.60	64.75	64.90	65.05	65.20	65.35	65.50
65.50	65.65	65.80	65.95	66.10	66.25	66.40	66.55	66.70	66.85
66.85	67.00	67.15	67.30	67.45	67.60	67.75	67.90	68.05	68.20
68.20	68.35	68.50	68.65	68.80	68.95	69.10	69.25	69.40	69.55
69.55	69.70	69.85	70.00	70.15	70.30	70.45	70.60	70.75	70.90
70.90	71.05	71.20	71.35	71.50	71.65	71.80	71.95	72.10	72.25
72.25	72.40	72.55	72.70	72.85	73.00	73.15	73.30	73.45	73.60
73.60	73.75	73.90	74.05	74.20	74.35	74.50	74.65	74.80	74.95
74.95	75.10	75.25	75.40	75.55	75.70	75.85	76.00	76.15	76.30
76.30	76.45	76.60	76.75	76.90	77.05	77.20	77.35	77.50	77.65
77.65	77.80	77.95	78.10	78.25	78.40	78.55	78.70	78.85	79.00
79.00	79.15	79.30	79.45	79.60	79.75	79.90	80.05	80.20	80.35
80.35	80.50	80.65	80.80	80.95	81.10	81.25	81.40	81.55	81.70
81.70	81.85	82.00	82.15	82.30	82.45	82.60	82.75	82.90	83.05
83.05	83.20	83.35	83.50	83.65	83.80	83.95	84.10	84.25	84.40
84.40	84.55	84.70	84.85	85.00	85.15	85.30	85.45	85.60	85.75
85.75	85.90	86.05	86.20	86.35	86.50	86.65	86.80	86.95	87.10
87.10	87.25	87.40	87.55	87.70	87.85	88.00	88.15	88.30	88.45
88.45	88.60	88.75	88.90	89.05	89.20	89.35	89.50	89.65	89.80
89.80	89.95	90.10	90.25	90.40	90.55	90.70	90.85	91.00	91.15
91.15	91.30	91.45	91.60	91.75	91.90	92.05	92.20	92.35	92.50
92.50	92.65	92.80	92.95	93.10	93.25	93.40	93.55	93.70	93.85
93.85	94.00	94.15	94.30	94.45	94.60	94.75	94.90	95.05	95.20
95.20	95.35	95.50	95.65	95.80	95.95	96.10	96.25	96.40	96.55
96.55	96.70	96.85	97.00	97.15	97.30	97.45	97.60	97.75	97.90
97.90	98.05	98.20	98.35	98.50	98.65	98.80	98.95	99.10	99.25
99.25	99.40	99.55	99.70	99.85	100.00	100.15	100.30	100.45	100.60
100.60	100.75	100.90	101.05	101.20	101.35	101.50	101.65	101.80	101.95
101.95	102.10	102.25	102.40	102.55	102.70	102.85	103.00	103.15	103.30
103.30	103.45	103.60	103.75	103.90	104.05	104.20	104.35	104.50	104.65
104.65	104.80	104.95	105.10	105.25	105.40	105.55	105.70	105.85	106.00
106.00	106.15	106.30	106.45	106.60	106.75	106.90	107.05	107.20	107.35
107.35	107.50	107.65	107.80	107.95	108.10	108.25	108.40	108.55	108.70
108.70	108.85	109.00	109.15	109.30	109.45	109.60	109.75	109.90	110.05
110.05	110.20	110.35	110.50	110.65	110.80	110.95	111.10	111.25	111.40
111.40	111.55	111.70	111.85	112.00	112.15	112.30	112.45	112.60	112.75
112.75	112.90	113.05	113.20	113.35	113.50	113.65	113.80	113.95	114.10
114.10	114.25	114.40	114.55	114.70	114.85	115.00	115.15	115.30	115.45
115.45	115.60	115.75	115.90	116.05	116.20	116.35	116.50	116.65	116.80
116.80	116.95	117.10	117.25	117.40	117.55	117.70	117.85	118.00	118.15
118.15	118.30	118.45	118.60	118.75	118.90	119.05	119.20	119.35	119.50
119.50	119.65	119.80	119.95	120.10	120.25	120.40	120.55	120.70	120.85
120.85	121.00	121.15	121.30	121.45	121.60	121.75	121.90	122.05	122.20
122.20	122.35	122.50	122.65	122.80	122.95	123.10	123.25	123.40	123.55
123.55	123.70	123.85	124.00	124.15	124.30	124.45	124.60	124.75	124.90
124.90	125.05	125.20	125.35	125.50	125.65	125.80	125.95	126.10	126.25
126.25	126.40	126.55	126.70	126.85	127.00	127.15	127.30	127.45	127.60
127.60	127.75	127.90	128.05	128.20	128.35	128.50	128.65	128.80	128.95
128.95	129.10	129.25	129.40	129.55	129.70	129.85	130.00	130.15	130.30
130.30	130.45	130.60	130.75	130.90	131.05	131.20	131.35	131.50	131.65
131.65	131.80	131.95	132.10	132.25	132.40	132.55	132.70	132.85	133.00
133.00	133.15	133.30	133.45	133.60	133.75	133.90	134.05	134.20	134.35
134.35	134.50	134.65	134.80	134.95	135.10	135.25	135.40	135.55	135.70
135.70	135.85	136.00	136.15	136.30	136.45	136.60	136.75	136.90	137.05
137.05	137.20	137.35	137.50	137.65	137.80	137.95	138.10	138.25	138.40
138.40	138.55	138.70	138.85	139.00	139.15	139.30	139.45	139.60	139.75
139.75	139.90	140.05	140.20	140.35	140.50	140.65	140.80	140.95	141.10
141.10	141.25	141.40	141.55	141.70	141.85	142.00	142.15	142.30	142.45
142.45	142.60	142.75	142.90	143.05	143.20	143.35	143.50	143.65	143.80
143.80	143.95	144.10	144.25	144.40	144.55	144.70	144.85	145.00	145.15
145.15	145.30	145.45	145.60	145.75	145.90	146.05	146.20	146.35	146.50
146.50	146.65	146.80	146.95	147.10	147.25	147.40	147.55	147.70	147.85
147.85	148.00	148.15	148.30	148.45	148.60	148.75	148.90	149.05	149.20
149.20	149.35	149.50	149.65	149.80	149.95	150.10	150.25	150.40	150.55
150.55	150.70	150.85	151.00	151.15	151.30	151.45	151.60	151.75	151.90
151.90	152.05	152.20	152.35	152.50	152.65	152.80	152.95	153.10	153.25
153.25	153.40	153.55	153.70	153.85	154.00	154.15	154.30	154.45	154.60
154.60	154.75	154.90	155.05	1					

W. Line of Hamilton St.

W	E	W. Line	366.05	365.8	366.80 365.80	367.30 366.80	366.8	367.0
W	S	W. Curb	365.80	365.80 364.80	366.08	367.20	366.80 365.80	366.0
W	W	W. 14	365.80	365.20	366.34	367.40	366.20	
Co		Center	366.60	365.60	366.60	367.60	366.60	367.0
E		E. 14	366.80	366.0	366.86	367.80	367.0	367.0
E	Co	E. Curb	367.40	366.40 367.40	367.12	368.0	367.40 368.40	368.0
E	Co	E. Line	367.65	367.60	366.40 367.90	368.40 367.90	368.4	368.65

East Line of Hamilton St.

371.40	371.80	371.40	372.13	372.13	372.13	372.13
66.56	66.81	66.90	37.20	37.02	37.85	37.60
4.84	4.57	4.60	2.93	3.11	3.59	4.53

Finish stakes on the parking on 3' offset, April 16-1914

Dorman, Miller, Shaw. Hamilton to Arizona

376.19	376.19	376.19	376.19	376.19	376.19	376.19
67.90	68.57	69.73	70.90	72.07	73.23	74.40
2.29	2.12	6.96	5.79	4.62	3.46	2.29

Set sidewalk stakes in the B.W. from Arizona to Hamilton June 23-1914 on 3' offset.
(Dorman Miller Shaw)

371.63	371.63	371.63	371.63	371.63	371.63	371.63
68.20	67.90	68.60	68.37	68.40	68.99	68.84
3.00	2.23	3.00	3.24	3.20	3.14	2.79

Set drainage stakes in this intersection July 20, 14 (Dorman Miller Shaw)

3
2
1
0

D
N

East Line of Hamilton St.

V	E. Line	367.65	367.4	367.90	368.90	368.4	368.65
W	25	368.73	367.98	368.48	369.40	368.9	369.15
W	50	368.82	368.57	369.07	369.90	369.4	369.65
W	75	369.40	369.15	369.65	370.40	369.9	370.15
W	100	369.98	369.73	370.23	370.90	370.4	370.65
W	125	370.57	370.22	370.82	371.40	370.9	371.15
C	150	371.15	370.90	371.40	371.90	371.4	371.65
C	175	371.73	371.48	371.98	372.40	371.9	372.15
E	200	372.32	372.07	372.57	372.90	372.4	372.65
E	225	372.90	372.65	373.15	373.40	372.9	373.15
E	250	373.48	373.23	373.73	373.90	373.4	373.65
E	275	374.07	373.82	374.32	374.40	373.9	374.15
E	300	374.65	374.4	374.90	374.90	374.4	374.65

West Line of Oregon St.

Flag N.E. Cor Oregon & E. Cajon

+4-stakes from 20-1912

377.52	377.52	377.52	377.52	377.52	377.52	377.52	377.52
72.65	72.65	70.65	71.65	72.65	72.65	72.65	72.65
5.87	7.87	6.87	5.87	4.87	3.87	2.87	1.87
9.2	7.1	6.2	5.1	5.2	4.7	3.6	2.6
4.07	4.05	4.07	4.03	-0.3	-0.3	-0.7	-0.7

Donnan, Miller, Shaw

checked OK

377.52	377.52	377.52	377.52	377.52	377.52	377.52	377.52
74.65	73.65	72.65	71.65	69.65	68.65	67.65	66.65
2.87	3.87	3.6	4.0	3.8	5.8	7.0	7.0
0.0	4.07	4.16	4.4	4.37	4.9	4.9	4.9

with estimate sheet

376.69	376.69	376.69	376.69	376.69	376.69	376.69	376.69
68.40	67.40	70.40	71.40	72.40	73.40	74.40	74.40
3.19	7.29	6.29	5.29	4.29	3.29	2.29	2.29

378.05	378.20	378.20	378.20	378.20	378.20	378.20	378.20
74.05	74.20	74.05	74.81	74.90	74.81	74.36	74.36
3.84	3.84	3.84	3.39	3.39	3.39	3.84	3.84

Donnan Miller Shaw

Set of 100 stakes on offset corners 1914 in the ALA from Hamilton to Oregon

Checked OK for grade & line July 9-1914

Donnan Miller Shaw

Set finish property's Aug 21-1914 Donnan-Miller-Shaw-Fletcher

West Line of Oregon St.

W Line 374.65	374.4	374.90 374.40	374.90 374.4	374.4	374.65
W Curb 374.4	374.4 373.4	374.50	374.50 374.4	374.4	374.4
W 14 374.15	373.55	374.60	374.60	373.55	374.15
Center 374.7	373.70	374.70	374.70	373.7	374.70
E 14 374.40	373.85	374.80	374.80	373.85	374.40
E Curb 375.0	374.0 375.0	374.90	374.90	374.0 375.0	375.0
E Line 375.25	375.0	375.0 375.50	375.0 375.5	375.0	375.25

East Line of Oregon St.

375.05	374.75	374.75	374.75	371.29	371.29	371.29	371.29
74.00	74.79	74.79	74.80	68.40	68.41	68.10	68.00
375.05 H.I.	4.05	3.96	3.96	4.05	2.99	2.99	3.10 3.18

374.06
42.00
371.29 H.I.

Finish stakes on Parkway on S' side, Hamilton & Oregon
April 17, 1919. *Domian, Miller, Shaw,*

375.86
4.51
375.86 H.I.

375.86	375.86	375.86	375.86	375.86	375.86	375.86	375.86
75.00	75.46	75.46	75.50	75.49	75.46	75.00	
375.86 H.I.	3.96	3.90	3.38	3.36	3.38	3.40	3.96

Set subgrade stakes in this intersection July 20-19

*Domian
Miller
Shaw*

East Line of Oregon

E. line	375.25	375.0	375.50	375.50	375.0	375.25
25	375.33	375.08	375.58	375.58	375.08	375.33
50	375.42	375.17	375.67	375.67	375.17	375.42
75	375.50	375.25	375.75	375.75	375.25	375.50
100	375.58	375.33	375.83	375.83	375.33	375.58
125	375.67	375.42	375.92	375.92	375.42	375.67
150	375.75	375.50	376.00	376.00	375.50	375.75
175	375.84	375.59	376.09	376.08	375.58	375.83
200	375.92	375.67	376.17	376.17	375.67	375.92
225	376.00	375.75	376.25	376.25	375.75	376.00
250	376.08	375.83	376.33	376.33	375.83	376.08
275	376.17	375.92	376.42	376.42	375.92	376.17
300	376.25	376.0	376.50	376.50	376.0	376.25

West Line of Idaho St.

BL 374.97 Plug N.E. Cor Idaho & E. Cajon

374.97	375.00	375.03	375.06	375.09	375.12	375.15	375.18	375.21	375.24	375.27	375.30	375.33	375.36	375.39	375.42	375.45	375.48	375.51	375.54	375.57	375.60	375.63	375.66	375.69	375.72	375.75	375.78	375.81	375.84	375.87	375.90	375.93	375.96	375.99	376.02	376.05	376.08	376.11	376.14	376.17	376.20	376.23	376.26	376.29	376.32	376.35	376.38	376.41	376.44	376.47	376.50	376.53	376.56	376.59	376.62	376.65	376.68	376.71	376.74	376.77	376.80	376.83	376.86	376.89	376.92	376.95	376.98	377.01	377.04	377.07	377.10	377.13	377.16	377.19	377.22	377.25	377.28	377.31	377.34	377.37	377.40	377.43	377.46	377.49	377.52	377.55	377.58	377.61	377.64	377.67	377.70	377.73	377.76	377.79	377.82	377.85	377.88	377.91	377.94	377.97	378.00	378.03	378.06	378.09	378.12	378.15	378.18	378.21	378.24	378.27	378.30	378.33	378.36	378.39	378.42	378.45	378.48	378.51	378.54	378.57	378.60	378.63	378.66	378.69	378.72	378.75	378.78	378.81	378.84	378.87	378.90	378.93	378.96	378.99	379.02	379.05	379.08	379.11	379.14	379.17	379.20	379.23	379.26	379.29	379.32	379.35	379.38	379.41	379.44	379.47	379.50	379.53	379.56	379.59	379.62	379.65	379.68	379.71	379.74	379.77	379.80	379.83	379.86	379.89	379.92	379.95	379.98	380.01	380.04	380.07	380.10	380.13	380.16	380.19	380.22	380.25	380.28	380.31	380.34	380.37	380.40	380.43	380.46	380.49	380.52	380.55	380.58	380.61	380.64	380.67	380.70	380.73	380.76	380.79	380.82	380.85	380.88	380.91	380.94	380.97	381.00	381.03	381.06	381.09	381.12	381.15	381.18	381.21	381.24	381.27	381.30	381.33	381.36	381.39	381.42	381.45	381.48	381.51	381.54	381.57	381.60	381.63	381.66	381.69	381.72	381.75	381.78	381.81	381.84	381.87	381.90	381.93	381.96	381.99	382.02	382.05	382.08	382.11	382.14	382.17	382.20	382.23	382.26	382.29	382.32	382.35	382.38	382.41	382.44	382.47	382.50	382.53	382.56	382.59	382.62	382.65	382.68	382.71	382.74	382.77	382.80	382.83	382.86	382.89	382.92	382.95	382.98	383.01	383.04	383.07	383.10	383.13	383.16	383.19	383.22	383.25	383.28	383.31	383.34	383.37	383.40	383.43	383.46	383.49	383.52	383.55	383.58	383.61	383.64	383.67	383.70	383.73	383.76	383.79	383.82	383.85	383.88	383.91	383.94	383.97	384.00	384.03	384.06	384.09	384.12	384.15	384.18	384.21	384.24	384.27	384.30	384.33	384.36	384.39	384.42	384.45	384.48	384.51	384.54	384.57	384.60	384.63	384.66	384.69	384.72	384.75	384.78	384.81	384.84	384.87	384.90	384.93	384.96	384.99	385.02	385.05	385.08	385.11	385.14	385.17	385.20	385.23	385.26	385.29	385.32	385.35	385.38	385.41	385.44	385.47	385.50	385.53	385.56	385.59	385.62	385.65	385.68	385.71	385.74	385.77	385.80	385.83	385.86	385.89	385.92	385.95	385.98	386.01	386.04	386.07	386.10	386.13	386.16	386.19	386.22	386.25	386.28	386.31	386.34	386.37	386.40	386.43	386.46	386.49	386.52	386.55	386.58	386.61	386.64	386.67	386.70	386.73	386.76	386.79	386.82	386.85	386.88	386.91	386.94	386.97	387.00	387.03	387.06	387.09	387.12	387.15	387.18	387.21	387.24	387.27	387.30	387.33	387.36	387.39	387.42	387.45	387.48	387.51	387.54	387.57	387.60	387.63	387.66	387.69	387.72	387.75	387.78	387.81	387.84	387.87	387.90	387.93	387.96	387.99	388.02	388.05	388.08	388.11	388.14	388.17	388.20	388.23	388.26	388.29	388.32	388.35	388.38	388.41	388.44	388.47	388.50	388.53	388.56	388.59	388.62	388.65	388.68	388.71	388.74	388.77	388.80	388.83	388.86	388.89	388.92	388.95	388.98	389.01	389.04	389.07	389.10	389.13	389.16	389.19	389.22	389.25	389.28	389.31	389.34	389.37	389.40	389.43	389.46	389.49	389.52	389.55	389.58	389.61	389.64	389.67	389.70	389.73	389.76	389.79	389.82	389.85	389.88	389.91	389.94	389.97	390.00	390.03	390.06	390.09	390.12	390.15	390.18	390.21	390.24	390.27	390.30	390.33	390.36	390.39	390.42	390.45	390.48	390.51	390.54	390.57	390.60	390.63	390.66	390.69	390.72	390.75	390.78	390.81	390.84	390.87	390.90	390.93	390.96	390.99	391.02	391.05	391.08	391.11	391.14	391.17	391.20	391.23	391.26	391.29	391.32	391.35	391.38	391.41	391.44	391.47	391.50	391.53	391.56	391.59	391.62	391.65	391.68	391.71	391.74	391.77	391.80	391.83	391.86	391.89	391.92	391.95	391.98	392.01	392.04	392.07	392.10	392.13	392.16	392.19	392.22	392.25	392.28	392.31	392.34	392.37	392.40	392.43	392.46	392.49	392.52	392.55	392.58	392.61	392.64	392.67	392.70	392.73	392.76	392.79	392.82	392.85	392.88	392.91	392.94	392.97	393.00	393.03	393.06	393.09	393.12	393.15	393.18	393.21	393.24	393.27	393.30	393.33	393.36	393.39	393.42	393.45	393.48	393.51	393.54	393.57	393.60	393.63	393.66	393.69	393.72	393.75	393.78	393.81	393.84	393.87	393.90	393.93	393.96	393.99	394.02	394.05	394.08	394.11	394.14	394.17	394.20	394.23	394.26	394.29	394.32	394.35	394.38	394.41	394.44	394.47	394.50	394.53	394.56	394.59	394.62	394.65	394.68	394.71	394.74	394.77	394.80	394.83	394.86	394.89	394.92	394.95	394.98	395.01	395.04	395.07	395.10	395.13	395.16	395.19	395.22	395.25	395.28	395.31	395.34	395.37	395.40	395.43	395.46	395.49	395.52	395.55	395.58	395.61	395.64	395.67	395.70	395.73	395.76	395.79	395.82	395.85	395.88	395.91	395.94	395.97	396.00	396.03	396.06	396.09	396.12	396.15	396.18	396.21	396.24	396.27	396.30	396.33	396.36	396.39	396.42	396.45	396.48	396.51	396.54	396.57	396.60	396.63	396.66	396.69	396.72	396.75	396.78	396.81	396.84	396.87	396.90	396.93	396.96	396.99	397.02	397.05	397.08	397.11	397.14	397.17	397.20	397.23	397.26	397.29	397.32	397.35	397.38	397.41	397.44	397.47	397.50	397.53	397.56	397.59	397.62	397.65	397.68	397.71	397.74	397.77	397.80	397.83	397.86	397.89	397.92	397.95	397.98	398.01	398.04	398.07	398.10	398.13	398.16	398.19	398.22	398.25	398.28	398.31	398.34	398.37	398.40	398.43	398.46	398.49	398.52	398.55	398.58	398.61	398.64	398.67	398.70	398.73	398.76	398.79	398.82	398.85	398.88	398.91	398.94	398.97	399.00	399.03	399.06	399.09	399.12	399.15	399.18	399.21	399.24	399.27	399.30	399.33	399.36	399.39	399.42	399.45	399.48	399.51	399.54	399.57	399.60	399.63	399.66	399.69	399.72	399.75	399.78	399.81	399.84	399.87	399.90	399.93	399.96	399.99	400.02	400.05	400.08	400.11	400.14	400.17	400.20	400.23	400.26	400.29	400.32	400.35	400.38	400.41	400.44	400.47	400.50	400.53	400.56	400.59	400.62	400.65	400.68	400.71	400.74	400.77	400.80	400.83	400.86	400.89	400.92	400.95	400.98	401.01	401.04	401.07	401.10	401.13	401.16	401.19	401.22	401.25	401.28	401.31	401.34	401.37	401.40	401.43	401.46	401.49	401.52	401.55	401.58	401.61	401.64	401.67	401.70	401.73	401.76	401.79	401.82	401.85	401.88	401.91	401.94	401.97	402.00	402.03	402.06	402.09	402.12	402.15	402.18	402.21	402.24	402.27	402.30	402.33	402.36	402.39	402.42	402.45	402.48	402.51	402.54	402.57	402.
--------	--------	--------	--------	--------	--------	--------	--------	--------	--------	--------	--------	--------	--------	--------	--------	--------	--------	--------	--------	--------	--------	--------	--------	--------	--------	--------	--------	--------	--------	--------	--------	--------	--------	--------	--------	--------	--------	--------	--------	--------	--------	--------	--------	--------	--------	--------	--------	--------	--------	--------	--------	--------	--------	--------	--------	--------	--------	--------	--------	--------	--------	--------	--------	--------	--------	--------	--------	--------	--------	--------	--------	--------	--------	--------	--------	--------	--------	--------	--------	--------	--------	--------	--------	--------	--------	--------	--------	--------	--------	--------	--------	--------	--------	--------	--------	--------	--------	--------	--------	--------	--------	--------	--------	--------	--------	--------	--------	--------	--------	--------	--------	--------	--------	--------	--------	--------	--------	--------	--------	--------	--------	--------	--------	--------	--------	--------	--------	--------	--------	--------	--------	--------	--------	--------	--------	--------	--------	--------	--------	--------	--------	--------	--------	--------	--------	--------	--------	--------	--------	--------	--------	--------	--------	--------	--------	--------	--------	--------	--------	--------	--------	--------	--------	--------	--------	--------	--------	--------	--------	--------	--------	--------	--------	--------	--------	--------	--------	--------	--------	--------	--------	--------	--------	--------	--------	--------	--------	--------	--------	--------	--------	--------	--------	--------	--------	--------	--------	--------	--------	--------	--------	--------	--------	--------	--------	--------	--------	--------	--------	--------	--------	--------	--------	--------	--------	--------	--------	--------	--------	--------	--------	--------	--------	--------	--------	--------	--------	--------	--------	--------	--------	--------	--------	--------	--------	--------	--------	--------	--------	--------	--------	--------	--------	--------	--------	--------	--------	--------	--------	--------	--------	--------	--------	--------	--------	--------	--------	--------	--------	--------	--------	--------	--------	--------	--------	--------	--------	--------	--------	--------	--------	--------	--------	--------	--------	--------	--------	--------	--------	--------	--------	--------	--------	--------	--------	--------	--------	--------	--------	--------	--------	--------	--------	--------	--------	--------	--------	--------	--------	--------	--------	--------	--------	--------	--------	--------	--------	--------	--------	--------	--------	--------	--------	--------	--------	--------	--------	--------	--------	--------	--------	--------	--------	--------	--------	--------	--------	--------	--------	--------	--------	--------	--------	--------	--------	--------	--------	--------	--------	--------	--------	--------	--------	--------	--------	--------	--------	--------	--------	--------	--------	--------	--------	--------	--------	--------	--------	--------	--------	--------	--------	--------	--------	--------	--------	--------	--------	--------	--------	--------	--------	--------	--------	--------	--------	--------	--------	--------	--------	--------	--------	--------	--------	--------	--------	--------	--------	--------	--------	--------	--------	--------	--------	--------	--------	--------	--------	--------	--------	--------	--------	--------	--------	--------	--------	--------	--------	--------	--------	--------	--------	--------	--------	--------	--------	--------	--------	--------	--------	--------	--------	--------	--------	--------	--------	--------	--------	--------	--------	--------	--------	--------	--------	--------	--------	--------	--------	--------	--------	--------	--------	--------	--------	--------	--------	--------	--------	--------	--------	--------	--------	--------	--------	--------	--------	--------	--------	--------	--------	--------	--------	--------	--------	--------	--------	--------	--------	--------	--------	--------	--------	--------	--------	--------	--------	--------	--------	--------	--------	--------	--------	--------	--------	--------	--------	--------	--------	--------	--------	--------	--------	--------	--------	--------	--------	--------	--------	--------	--------	--------	--------	--------	--------	--------	--------	--------	--------	--------	--------	--------	--------	--------	--------	--------	--------	--------	--------	--------	--------	--------	--------	--------	--------	--------	--------	--------	--------	--------	--------	--------	--------	--------	--------	--------	--------	--------	--------	--------	--------	--------	--------	--------	--------	--------	--------	--------	--------	--------	--------	--------	--------	--------	--------	--------	--------	--------	--------	--------	--------	--------	--------	--------	--------	--------	--------	--------	--------	--------	--------	--------	--------	--------	--------	--------	--------	--------	--------	--------	--------	--------	--------	--------	--------	--------	--------	--------	--------	--------	--------	--------	--------	--------	--------	--------	--------	--------	--------	--------	--------	--------	--------	--------	--------	--------	--------	--------	--------	--------	--------	--------	--------	--------	--------	--------	--------	--------	--------	--------	--------	--------	--------	--------	--------	--------	--------	--------	--------	--------	--------	--------	--------	--------	--------	--------	--------	--------	--------	--------	--------	--------	--------	--------	--------	--------	--------	--------	--------	--------	--------	--------	--------	--------	--------	--------	--------	--------	--------	--------	--------	--------	--------	--------	--------	--------	--------	--------	--------	--------	--------	--------	--------	--------	--------	--------	--------	--------	--------	--------	--------	--------	--------	--------	--------	--------	--------	--------	--------	--------	--------	--------	--------	--------	--------	--------	--------	--------	--------	--------	--------	--------	--------	--------	--------	--------	--------	--------	--------	--------	--------	--------	--------	--------	--------	--------	--------	--------	--------	--------	--------	--------	--------	--------	--------	--------	--------	--------	--------	--------	--------	--------	--------	--------	--------	--------	--------	--------	--------	--------	--------	--------	--------	--------	--------	--------	--------	--------	--------	--------	--------	--------	--------	--------	--------	--------	--------	--------	--------	--------	--------	--------	--------	--------	--------	--------	--------	--------	--------	--------	--------	--------	--------	--------	--------	--------	--------	--------	--------	--------	--------	--------	--------	--------	--------	--------	--------	--------	--------	--------	--------	--------	--------	--------	--------	--------	--------	--------	--------	--------	--------	--------	--------	--------	--------	--------	--------	--------	--------	--------	--------	--------	--------	--------	--------	--------	--------	--------	--------	--------	--------	--------	--------	--------	--------	--------	--------	--------	--------	--------	--------	--------	--------	--------	--------	--------	--------	--------	--------	--------	--------	--------	--------	--------	--------	--------	--------	--------	--------	--------	--------	--------	--------	--------	--------	--------	--------	--------	--------	--------	--------	--------	--------	--------	--------	--------	--------	--------	--------	--------	--------	--------	--------	--------	--------	--------	--------	--------	--------	--------	--------	--------	--------	--------	--------	--------	--------	--------	--------	--------	--------	--------	--------	--------	--------	--------	--------	--------	--------	--------	--------	--------	--------	--------	--------	--------	--------	--------	--------	--------	--------	--------	--------	--------	--------	--------	--------	--------	--------	--------	--------	--------	------

West Line of Idaho St.

W Line	376.25	376.0	376.50	376.50	376.0	576.25
			376.00	376.00		
W Cor	376.0	376.0	375.82	375.75	376.0	376.0
		375.0		375.0		
W/4	375.40	375.75	375.66	375.62	374.75	375.40
Center	375.5	374.50	375.50	375.50	374.50	375.50
E/4	374.85	374.25	375.33	375.37	374.25	374.85
E Cor	375.0	374.0	375.17	375.25	374.0	375.0
		375.0		375.0		
E Line	375.25	375.0	375.0	375.0	375.0	375.25
		375.5	375.5			

East Line of Idaho St.

379.46	379.46	379.46	379.46	379.46	379.46	379.46
76.00	76.32	76.46	76.50	76.46	76.32	76.00
3.46	3.14	3.00	2.96	3.00	3.14	3.46

379.46	379.46	379.46	379.46	379.46	379.46	379.46
75.00	75.23	75.43	75.50	75.43	75.21	75.00
4.46	4.23	4.00	3.96	4.00	4.25	4.46

24

sidewalk stakes on offset from Oregon to Idaho June 16-1914

Set subgrade stakes in this intersection July 1914

(Norman
Miller
Shaw)

(Norman
Miller
Shaw)

101

East Line of Idaho St.

ELine	375.25	375.0	375.50	375.50	375.0	375.25
25	375.08	374.83	375.33	375.25	374.75	375.00
50	374.92	374.67	375.17	375.00	374.50	374.75
75	374.75	374.50	375.00	374.75	374.25	374.50
100	374.58	374.33	374.83	374.50	374.00	374.25
125	374.42	374.17	374.67	374.25	373.75	374.00
150	374.25	374.00	374.50	374.00	373.50	373.75
175	374.08	373.83	374.33	373.75	373.25	373.50
200	373.92	373.67	374.17	373.50	373.00	373.25
225	373.75	373.50	374.00	373.25	372.75	373.00
250	373.58	373.33	373.83	373.00	372.50	372.75
275	373.42	373.17	373.67	372.75	372.25	372.50
300	373.25	373.0	373.50	372.50	372.0	372.25

W. Line of Utah St.

BM 372.33 Sp. SW Cor Utah & El Cajon, See below.

375.10	375.20	375.20	375.20	375.10	375.10	375.20
73.25	73.05	73.92	74.25	74.58	74.90	75.25
2.90	3.4	3.90	4.45	4.95	5.45	5.95
3.2	3.7	4.2	4.7	5.2	5.7	6.2
0.4	-0.6	+0.5	+0.4	+0.7	+0.5	+0.2

10 - stake Jan 20, 1914
Dannan, Miller, Shaw

South side checked OK with estimate sheet.
North side not

25

375.10	375.20	375.20	375.20	375.20	375.20	375.20
73.25	73.05	73.92	74.25	74.58	74.90	75.25
2.90	3.4	3.90	4.45	4.95	5.45	5.95
3.2	3.7	4.2	4.7	5.2	5.7	6.2
0.4	-0.6	+0.5	+0.4	+0.7	+0.5	+0.2

Jan 23,
Rechecked & stakes on the ground & found them OK.
Dannan.

BM 371.67 80 South toe H. for 15' spec. 11' 1/2' Utah & El Cajon.

377.69	377.69	377.69	377.69	377.69	377.69	377.69
74.00	74.67	75.33	76.00	76.67	77.33	78.00
2.67	3.33	4.00	4.67	5.33	6.00	6.67
3.33	4.00	4.67	5.33	6.00	6.67	7.33
4.00	4.67	5.33	6.00	6.67	7.33	8.00

Similar stake was set April 1, 1914 Dannan, Miller, Shaw.

Checked curbs O.K. for grade & line July 8, 1914
Dannan, Miller, Shaw.

Checked subgrade O.K. Aug 17, 1914 Dannan, Miller, Shaw.

Set finish Property's Aug 21, 1914 - Dannan, Miller, Shaw, Fletcher.

South East Line of Utah St. North

Egst line	372.25	372.0	372.50	371.50	371.0	371.25
25	372.0	371.75	372.25	371.25	370.78	371.03
50	371.75	371.50	372.0	371.07	370.57	370.82
75	370.50	371.25	371.75	370.85	370.35	370.60
100	371.25	371.00	371.50	370.63	370.13	370.38
125	371.00	370.75	371.25	370.42	369.92	370.17
150	370.75	370.50	371.00	370.20	369.70	369.95
175	370.50	370.25	370.75	369.98	369.48	369.73
200	370.25	370.0	370.50	369.77	369.27	369.52
225	370.00	369.75	370.25	369.55	369.05	369.30
250	369.75	369.50	370.0	369.33	368.83	369.08
275	369.50	369.25	369.75	369.12	368.62	368.87
300	369.25	369.0	369.50	368.90	368.4	368.65

West Line of Kansas St.

370.69-51 Spk SW Cor Kansas & El Cajon. + 4-stakes from 20-1914
 Dorman, Miller, Shaw.
 370.11 370.11 370.11 370.11 370.11 370.11 370.11
 69.25 69.25 70.25 70.25 71.25 71.25 72.25
 71.84 71.84 72.84 72.84 73.84 73.84 74.84
 2.15 2.15 2.15 2.15 2.15 2.15 2.15
 -0.6 -1.0 -1.3 -1.7 -1.9 -1.4 +0.1

checked OK with estimate books

370.11 370.11 370.11 370.11 370.11 370.11 370.11
 69.25 69.25 70.25 70.25 71.25 71.25 72.25
 71.84 71.84 72.84 72.84 73.84 73.84 74.84
 2.15 2.15 2.15 2.15 2.15 2.15 2.15
 -0.6 -1.0 -1.3 -1.7 -1.9 -1.4 +0.1

370.11 370.11 370.11 370.11 370.11 370.11 370.11
 69.25 69.25 70.25 70.25 71.25 71.25 72.25
 71.84 71.84 72.84 72.84 73.84 73.84 74.84
 2.15 2.15 2.15 2.15 2.15 2.15 2.15
 -0.6 -1.0 -1.3 -1.7 -1.9 -1.4 +0.1

Checked curb OK for grade & line July 8-1914
 Dorman Miller Shaw

Checked subgrade OK Aug 17-1914 Dorman Miller Shaw.

Set finish properly Aug 21-1914 Dorman Miller Shaw, Fletcher.

West Line of Kansas St.

W Line	369.25	369.0	369.50 369.0	368.90 368.40	368.4	368.65
W Curb	369.0	369.0 368.0	368.89	368.29	368.40 367.40	368.40
W 1/4	368.40	367.85	368.80	368.20	367.25	367.8
Center	368.70	367.70	368.70	368.10	367.10	368.10
E 1/4	368.15	367.55	368.60	368.0	366.95	367.55
E Curb	368.40	367.40 368.40	368.51	367.91	366.8 367.8	367.8
E Line	368.65	368.40 368.40	368.90 368.90	367.80 368.30	367.8	368.05

E Line of Kansas St.

372.83 372.88 372.88 372.93 Finish stakes on Park on 3' offset
 49.13 49.04 48.99 48.93 May 12-1914
 370 379 439 430 Kansas to 30th. Dorman, Shad, Miller

28

371.94	371.94	371.94	371.94	371.94	372.21	372.21	372.21	372.21	372.21	372.21
68.80	67.80	69.00	68.40		69.32	69.22	69.20	69.17	69.22	
3.54	4.14	2.92	3.54		2.84	2.89	3.01	3.04	2.89	

Set wide-curb stakes on 3' offset in the Blk from Kansas to Nebraska June 19-1914
Dorman, Miller, Shad.

Set subgrade stakes in this intersection Aug. 17-1914 Dorman, Miller, Shad.

SL

ELINE of KANSAS

ELINE 368.65	368.4	368.90	368.20	367.8	368.05
25 368.33	368.08	368.58	368.03	367.53	367.71
50 368.02	367.77	368.27	367.77	367.27	367.52
75 367.70	367.45	367.95	367.50	367.00	367.25
100 367.38	367.13	367.63	367.23	366.73	366.91
125 367.07	366.82	367.32	366.97	366.47	366.72
150 366.75	366.5	367.00	366.70	366.20	366.45
175 366.43	366.18	366.68	366.48	365.92	366.18
200 366.12	365.87	366.37	366.17	365.67	365.92
225 365.80	365.55	366.05	365.90	365.40	365.65
250 365.48	365.23	365.73	365.63	365.13	365.31
275 365.17	364.92	365.42	365.37	364.87	365.12
300 364.85	364.60	365.10	364.10	364.60	364.85

W. Line of 30th St.

101266

01066

ML

W. Line of 30th St. Cor Nebraska & El Cajon

372.16

367.75	365.45	366.15	366.75	367.35	368.05	368.75	369.45	370.15	370.85	371.55	372.25
367.75	365.45	366.15	366.75	367.35	368.05	368.75	369.45	370.15	370.85	371.55	372.25

W. Line of 30th St. Cor Nebraska & El Cajon

367.75	365.45	366.15	366.75	367.35	368.05	368.75	369.45	370.15	370.85	371.55	372.25
367.75	365.45	366.15	366.75	367.35	368.05	368.75	369.45	370.15	370.85	371.55	372.25

W. Line of 30th St. Cor Nebraska & El Cajon

372.16	372.16	372.16	372.16	372.16	372.16	372.16	372.16	372.16	372.16	372.16	372.16
372.16	372.16	372.16	372.16	372.16	372.16	372.16	372.16	372.16	372.16	372.16	372.16

368.24	368.46	368.68	368.90	369.12	369.34	369.56	369.78	370.00	370.22	370.44	370.66
368.24	368.46	368.68	368.90	369.12	369.34	369.56	369.78	370.00	370.22	370.44	370.66

Checked cross O.K. for grade & line July 8-1914

(Donnan Miller Sharo)

Checked subgrade O.K. Aug 17-1914 Donnan Miller Sharo

Set finish Property's Aug 21-1914 Donnan Miller Sharo Fletcher

10/19/15

checked O.K. with estimate local

Finish curb at 372.16 3' back from curb

East Line of 30th St.

364.25	364.25	364.70	364.70	364.70	364.70	364.70	364.70
25	364.35	364.10	364.60	364.65	364.15	364.40	364.40
50	364.25	364.00	364.50	364.60	364.10	364.35	364.35
75	364.15	363.90	364.40	364.55	364.05	364.30	364.30
100	364.05	363.80	364.30	364.50	364.00	364.25	364.25
125	363.95	363.70	364.20	364.45	363.95	364.20	364.20
150	363.85	363.60	364.10	364.40	363.90	364.15	364.15
175	363.75	363.50	364.00	364.35	363.85	364.10	364.10
200	363.65	363.40	363.90	364.30	363.80	364.05	364.05
225	363.55	363.20	363.80	364.25	363.75	364.00	364.00
250	363.45	363.20	363.70	364.20	363.70	363.95	363.95
275	363.35	363.10	363.60	364.15	363.65	363.90	363.90
300	363.25	363.00	363.50	364.10	363.60	363.85	363.85

West Line of Ohio St.

30th St SW Cor Ohio & El Cajon.

300.10 Plug SE

30th St SW Cor Ohio & El Cajon

364.25	364.25	364.70	364.70	364.70	364.70	364.70	364.70
25	364.35	364.10	364.60	364.65	364.15	364.40	364.40
50	364.25	364.00	364.50	364.60	364.10	364.35	364.35
75	364.15	363.90	364.40	364.55	364.05	364.30	364.30
100	364.05	363.80	364.30	364.50	364.00	364.25	364.25
125	363.95	363.70	364.20	364.45	363.95	364.20	364.20
150	363.85	363.60	364.10	364.40	363.90	364.15	364.15
175	363.75	363.50	364.00	364.35	363.85	364.10	364.10
200	363.65	363.40	363.90	364.30	363.80	364.05	364.05
225	363.55	363.20	363.80	364.25	363.75	364.00	364.00
250	363.45	363.20	363.70	364.20	363.70	363.95	363.95
275	363.35	363.10	363.60	364.15	363.65	363.90	363.90
300	363.25	363.00	363.50	364.10	363.60	363.85	363.85

Cuts & Fills 12/13
 deduc O.K with estimate book

364.25	364.25	364.70	364.70	364.70	364.70	364.70	364.70
25	364.35	364.10	364.60	364.65	364.15	364.40	364.40
50	364.25	364.00	364.50	364.60	364.10	364.35	364.35
75	364.15	363.90	364.40	364.55	364.05	364.30	364.30
100	364.05	363.80	364.30	364.50	364.00	364.25	364.25
125	363.95	363.70	364.20	364.45	363.95	364.20	364.20
150	363.85	363.60	364.10	364.40	363.90	364.15	364.15
175	363.75	363.50	364.00	364.35	363.85	364.10	364.10
200	363.65	363.40	363.90	364.30	363.80	364.05	364.05
225	363.55	363.20	363.80	364.25	363.75	364.00	364.00
250	363.45	363.20	363.70	364.20	363.70	363.95	363.95
275	363.35	363.10	363.60	364.15	363.65	363.90	363.90
300	363.25	363.00	363.50	364.10	363.60	363.85	363.85

Cut & Fills 6/14 West - Evans - Deane

364.25	364.25	364.70	364.70	364.70	364.70	364.70	364.70
25	364.35	364.10	364.60	364.65	364.15	364.40	364.40
50	364.25	364.00	364.50	364.60	364.10	364.35	364.35
75	364.15	363.90	364.40	364.55	364.05	364.30	364.30
100	364.05	363.80	364.30	364.50	364.00	364.25	364.25
125	363.95	363.70	364.20	364.45	363.95	364.20	364.20
150	363.85	363.60	364.10	364.40	363.90	364.15	364.15
175	363.75	363.50	364.00	364.35	363.85	364.10	364.10
200	363.65	363.40	363.90	364.30	363.80	364.05	364.05
225	363.55	363.20	363.80	364.25	363.75	364.00	364.00
250	363.45	363.20	363.70	364.20	363.70	363.95	363.95
275	363.35	363.10	363.60	364.15	363.65	363.90	363.90
300	363.25	363.00	363.50	364.10	363.60	363.85	363.85

364.25	364.25	364.70	364.70	364.70	364.70	364.70	364.70
25	364.35	364.10	364.60	364.65	364.15	364.40	364.40
50	364.25	364.00	364.50	364.60	364.10	364.35	364.35
75	364.15	363.90	364.40	364.55	364.05	364.30	364.30
100	364.05	363.80	364.30	364.50	364.00	364.25	364.25
125	363.95	363.70	364.20	364.45	363.95	364.20	364.20
150	363.85	363.60	364.10	364.40	363.90	364.15	364.15
175	363.75	363.50	364.00	364.35	363.85	364.10	364.10
200	363.65	363.40	363.90	364.30	363.80	364.05	364.05
225	363.55	363.20	363.80	364.25	363.75	364.00	364.00
250	363.45	363.20	363.70	364.20	363.70	363.95	363.95
275	363.35	363.10	363.60	364.15	363.65	363.90	363.90
300	363.25	363.00	363.50	364.10	363.60	363.85	363.85

Checked curb O.K for grade & line July 30th 14

(Dornan Miller Shaw)

Checked subgrade O.K Aug 19-1914

(Dornan Miller Shaw)

Set finish Property's Aug 21-1914 Dornan Miller Shaw Fletcher

Culverts

W. Line of Ohio St.

W. Line 363.25 363.0 363.50 364.10 363.60 363.95

14'

W. Curb 363.0 363.0 363.20 363.70 363.60 363.60

W/W

Center 363.40 363.4 363.40 363.80 363.80 363.10

13'

10'

E/W

E. Curb 363.0 363.0 363.20 363.90 364.0 364.0

14'

E. Line 363.25 363.0 363.50 364.0 364.0 364.25

East Line of Ohio St.

366.27 366.27 367.10 367.10 Finish stakes on Parkling
68.64 63.73 64.01 63.76 on s' offset May 13-1914
2.73 2.64 3.09 3.34

367.28 367.28 367.28 367.28 367.28 367.28 367.28
63.60 63.79 63.90 63.50 63.75 63.71 64.00
3.68 3.48 3.48 3.48 3.53 3.57 3.28

Various stakes on s' offset in the E/W from
to Ohio St.
367.28 367.28 367.28 367.28 367.28
63.94 64.02 64.00 63.90 63.69
3.34 3.26 3.28 3.38 3.39

June 29th 1914

Dennan
Miller
Shard
Fletcher

Dennan
Miller
Shard

Set subgrade stakes in this intersection Aug 19-1914

Colverts

West Line of Illinois St.

W Line 362.25 362.0 362.50 363.50 363.0 363.25

362.00 363.0

W. Curb. 362.0 362.0 362.08 363.08 363.0 363.0

W. 1/4 362.16 363.16

Center 362.25 362.25 362.25 363.25 363.25 363.25

E 1/4 362.33 363.03

E Curb 362.50 362.50 362.91 363.41 363.50 363.50

E Line 362.75 362.50 362.5 363.5 363.5 363.75

East Line of Illinois St.

B.M. 362.45
+4.53
367.02 H.I. 367.02 367.02 367.02 367.02
62.76 63.01 63.51 63.26
4.26 4.01 3.51 3.76

Furnish stakes on parking on 3' offset.
May 13-1914

(Donnan)
(Miller)
(Sharo)

84

B.M. 362.45
+5.51
367.96 H.I. 368.00 368.00 372.93 B.M. 377.21 377.21
63.26 63.51 64.28
4.74 4.49 377.21 H.I.
2.13 3.52

June 18-1914
See pages 35.

362.49 B.M. 366.56 366.56 366.56 366.56 366.56 366.56 366.56 366.56 366.56 366.56
63.00 63.50 62.00 62.50 62.83 62.92 63.00 63.04 63.08
3.56 3.06 4.56 4.06 3.73 3.64 3.56 3.52 3.48

366.56 366.56 366.56 366.56 366.56
63.87 63.49 63.50 63.61 64.19
2.69 3.07 3.06 2.85 2.87

(Donnan)
(Miller)
(Sharo)

Set all sidewalk stakes in the B.M. from Ohio to Illinois on 3' offset - July 2, 1914

9150

East Line of Illinois St.

East Line 362.5	362.5	363.0	364.0	363.5	363.75
25	363.54	363.29	363.79	364.87	364.37
50	364.32	364.08	364.58	365.78	365.25
75	365.12	364.87	365.37	366.63	366.31
100	365.92	365.67	366.17	367.50	367.25
125	366.71	366.46	366.96	368.38	368.13
150	367.50	367.25	367.75	369.25	369.00
175	368.29	368.04	368.54	370.12	369.87
200	369.08	368.83	369.33	371.00	370.75
225	369.87	369.62	370.12	371.78	371.53
250	370.67	370.42	370.92	372.75	372.50
275	371.46	371.21	371.71	373.72	373.47
300	372.25	372.0	372.50	374.50	374.25

West Line of Iowa St.

ET 1778.93 S.E. Cot Plag Iowa & El Cajon + stakes from 22-1914

362.49	375.00	375.00	375.00	375.00	375.00	375.00	375.00
362.49	375.00	375.00	375.00	375.00	375.00	375.00	375.00
362.49	375.00	375.00	375.00	375.00	375.00	375.00	375.00
362.49	375.00	375.00	375.00	375.00	375.00	375.00	375.00
362.49	375.00	375.00	375.00	375.00	375.00	375.00	375.00
362.49	375.00	375.00	375.00	375.00	375.00	375.00	375.00
362.49	375.00	375.00	375.00	375.00	375.00	375.00	375.00
362.49	375.00	375.00	375.00	375.00	375.00	375.00	375.00
362.49	375.00	375.00	375.00	375.00	375.00	375.00	375.00
362.49	375.00	375.00	375.00	375.00	375.00	375.00	375.00

Donnan, Miller, Shand

Subid OK with estimate look.

362.49	376.37	376.37	376.37	376.37	376.37	376.37	376.37
362.49	376.37	376.37	376.37	376.37	376.37	376.37	376.37
362.49	376.37	376.37	376.37	376.37	376.37	376.37	376.37
362.49	376.37	376.37	376.37	376.37	376.37	376.37	376.37
362.49	376.37	376.37	376.37	376.37	376.37	376.37	376.37
362.49	376.37	376.37	376.37	376.37	376.37	376.37	376.37
362.49	376.37	376.37	376.37	376.37	376.37	376.37	376.37
362.49	376.37	376.37	376.37	376.37	376.37	376.37	376.37
362.49	376.37	376.37	376.37	376.37	376.37	376.37	376.37
362.49	376.37	376.37	376.37	376.37	376.37	376.37	376.37

Donnan Miller Shand

June 18-1914

Set sidewalk stakes on 3' offset in the Blk from Illinois to Iowa July 6-1914

Donnan Miller Shand

Curbs checked OK for grade & line July 20-14

Donnan Miller Shand

Checked subgrade; it will have to be dressed some. Aug 19-14

Donnan Miller Shand

Furnish Property's Aug 22-14 - Donnan Miller Shand.

South East Line of Iowa St. North

ELine	373.25	373.0	373.50	375.50	375.0	375.25
25	373.75	373.50	374.00	375.92	375.42	375.67
50	374.25	374.0	374.50	376.33	375.83	376.08
75	374.75	374.5	375.00	376.75	376.25	376.50
100	375.25	375.0	375.50	377.17	376.67	376.92
125	375.75	375.5	376.0	377.58	377.08	377.33
156.3	376.12	376.62	378.10	377.6	377.95	
199	377.25	377.0	377.18	378.26		

W. Line Boundary St.

W.L.	377.25	377.0	377.19	378.26	377.6	377.85
Card.	377.0	377.0	376.79	377.8	377.6	377.6
Center	377.2	376.2	377.04	377.88	376.8	377.8
E Curb	377.4	377.4	377.29	377.96	378.0	378.0
ELine	377.66	377.4	377.40	378.00	378.0	378.25

156.0

Point 376.57 Sp. N.W. Boundary of El Cajon, 42-stake June 22-1914

376.57	376.57	376.57	376.57	376.57	376.57
376.57	376.57	376.57	376.57	376.57	376.57

checked O.K. with estimate books

376.57	376.57	376.57	376.57	376.57	376.57
376.57	376.57	376.57	376.57	376.57	376.57

376.57	376.57	376.57	376.57	376.57	376.57
376.57	376.57	376.57	376.57	376.57	376.57

Finish stakes on Parking slab on North curb. Donnay, Miller, Shaw 3' offset, June 19-1914

Finish stakes on South curb line - June 29-1914 Donnay, Miller, Shaw - Fletcher

376.57	376.57	376.57	376.57	376.57	376.57
376.57	376.57	376.57	376.57	376.57	376.57

376.57	376.57	376.57	376.57	376.57	376.57
376.57	376.57	376.57	376.57	376.57	376.57

July 8-1914 Donnay, Miller, Shaw

Set sidewalk stakes in the Blk from Iowa to the Boundary one offset except South curb.

Set sidewalk stakes in the Blk from Iowa to the Boundary on 3' offset on South curb July 9-1914 Donnay, Miller, Shaw

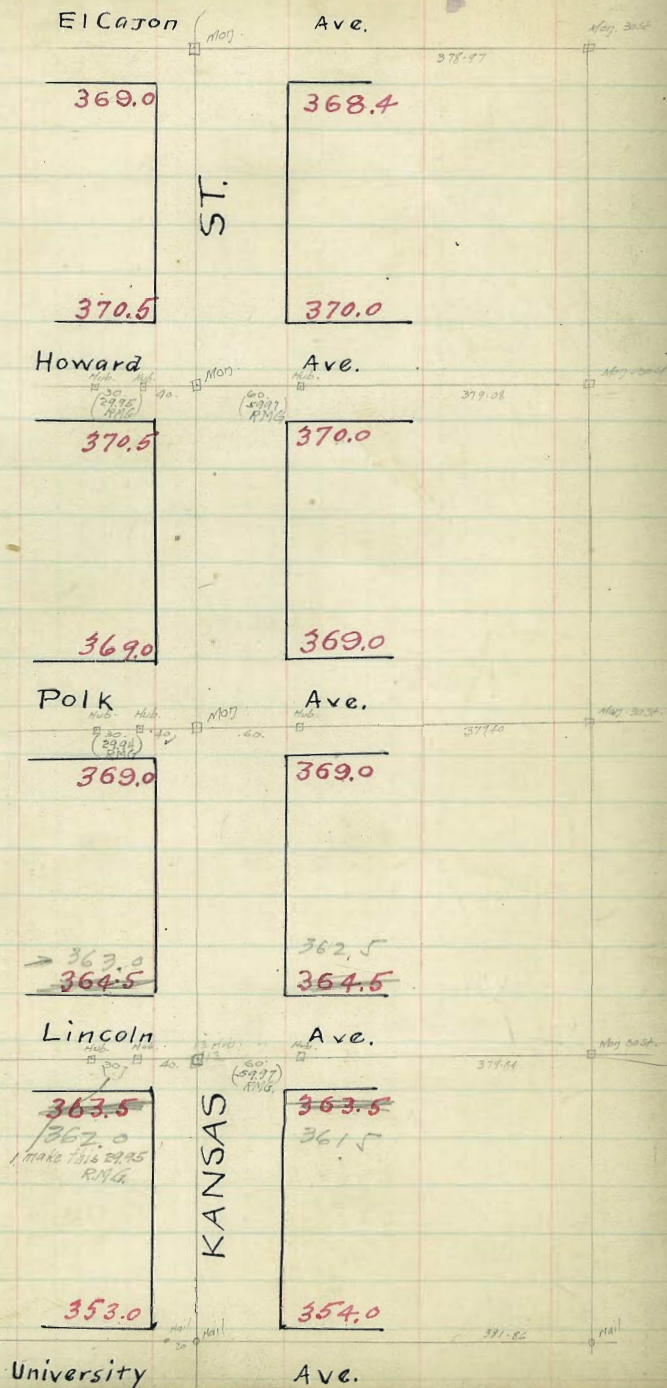
Checked O.K. for grade & line July 20-19

Donnay, Miller, Shaw

Set subgrade stakes in this intersection Aug 20-14 Donnay, Miller, Shaw

Set finish stakes on this Blk for Prop Aug 29-14 Donnay, Miller, Shaw

Set finish stakes on this Blk for Prop Aug 29-14 Donnay, Miller, Shaw



BM 379.0

The out-crops.
West
of the
Moore.

KANSAS ST.

W

South Line of Elcotom Ave

START	367.25	367.40	367.55	367.70	367.85	368.00	368.15	368.30	368.45
S. LINE	369.25	369.0	368.40	368.70	368.15	368.40	368.65	368.90	368.65
25	369.36	369.11	368.51	368.81	368.26	368.52	368.77	369.02	368.77
50	369.47	369.22	368.62	368.93	368.38	368.64	368.89	369.14	368.89
75	369.58	369.33	368.73	369.04	368.49	368.76	369.01	369.26	368.96
100	369.69	369.44	368.84	369.16	368.61	368.87	369.12	369.37	369.12
125	369.80	369.55	368.95	369.27	368.72	368.99	369.24	369.49	369.24
150	369.92	369.67	369.07	369.39	368.84	369.11	369.36	369.61	369.36
175	370.03	369.78	369.18	369.50	368.95	369.23	369.48	369.73	369.48
200	370.14	369.89	369.28	369.62	369.07	369.35	369.60	369.85	369.60
225	370.24	369.99	369.39	369.73	369.18	369.47	369.72	370.00	369.72
250	370.35	370.10	369.50	369.85	369.29	369.59	369.84	370.10	369.84
275	370.46	370.22	369.61	369.96	369.41	369.70	369.95	370.20	369.95
300	370.58	370.33	369.72	370.08	369.52	369.82	370.07	370.30	369.82
337-N. Line	370.75	370.5	369.90	370.25	369.72	370.0	370.25	370.5	370.25

N. Line of Howard Ave.

W. O. 98 N

371.59 N
368.22 no tie hub West of Howard
375.27

39

370.25	370.45	370.65	370.85	371.05	371.25	371.45	371.65	371.85
371.59	371.79	371.99	372.19	372.39	372.59	372.79	372.99	373.19
373.27	373.47	373.67	373.87	374.07	374.27	374.47	374.67	374.87

OUTSIDE FILLS 8/15
W.O. 98 N
Gregory Moore Miller

369.66 B.M.	375.01	375.01	375.01
535	368.40	368.70	368.15
375.01 H?	6.81	6.31	6.86
	2.5	2.5	2.5
369.66	6.86	6.56	7.11
535	374.91	374.91	374.91
374.91 H?	369.92	370.25	369.72
	5.01	4.66	5.19
	2.5	2.5	2.5
	5.26	4.71	5.44

(510) Sub gr. for granite
7/21/15.
West-Otter-Moore

374.91	374.91	374.91	374.91
370.10	371.50	369.60	370.00
7.81	4.41	5.31	4.91
2.5	2.5	2.5	2.5
5.06	4.66	5.56	5.12

Set out & Raked for sub grade - 7/22/15. West-Otter-Moore.

5 signs in curb East Side West

North Line of Howard Ave.

W. E

N. Line 370.75 370.50 369.90 370.25 369.72 370.0 370.25

N. Corb. 370.50 370.50 369.37 369.25 369.12 370.00 370.00
369.50 369.00

N. 1/4 370.10 370.01 369.93 369.85 369.77 369.69 369.60

Center 370.50 370.41 370.33 370.25 370.17 370.09 370.00

S. 1/4 370.10 370.01 369.93 369.85 369.77 369.69 369.60

S. Corb. 370.50 369.50 370.50 369.38 369.25 369.12 369.00 370.00
370.00 370.00

S. Line 370.75 370.50 369.90 370.25 369.72 370.0 370.25

S. Line of Howard Ave.

375.01	375.01	375.01
369.90	370.25	369.72
5.11	4.76	5.29
.25	.25	.25
5.36	5.01	5.54

3/11/15 OK in pole 1/4 N. Polk.
 N.G. Pole moved.

South Line of Howard Ave.

600'	575'	550'	525'	500'	475'	450'	425'	400'	375'	350'	325'	300'	275'	250'	225'	200'	175'	150'	125'	100'	75'	50'	25'	N. Line	
370.75	370.69	370.62	370.56	370.50	370.44	370.37	370.31	370.25	370.19	370.12	370.06	370.00	369.94	369.87	369.81	369.75	369.69	369.62	369.56	369.50	369.44	369.37	369.31	369.25	369.25
370.50	369.84	369.79	369.74	369.68	369.63	369.57	369.52	369.47	369.41	369.36	369.30	369.25	369.20	369.14	369.09	369.03	368.98	368.92	368.87	368.82	368.76	368.71	368.65	368.60	369.00
370.25	369.77	370.14	370.09	370.04	369.99	369.94	369.88	369.83	369.78	369.73	369.68	369.62	369.57	369.52	369.47	369.42	369.36	369.31	369.26	369.21	369.16	369.10	369.05	368.60	369.00
370.0	369.96	369.92	369.87	369.83	369.79	369.75	369.71	369.67	369.62	369.58	369.54	369.50	369.46	369.42	369.37	369.33	369.29	369.25	369.21	369.17	369.12	369.08	369.04	369.00	369.25
370.25	370.21	370.17	370.12	370.08	370.04	370.00	369.96	369.92	369.87	369.83	369.79	369.75	369.71	369.67	369.62	369.58	369.54	369.50	369.46	369.42	369.37	369.33	369.29	369.25	369.25

370.75	370.69	370.62	370.56	370.50	370.44	370.37	370.31	370.25	370.19	370.12	370.06	370.00	369.94	369.87	369.81	369.75	369.69	369.62	369.56	369.50	369.44	369.37	369.31	369.25	369.25
370.50	369.84	369.79	369.74	369.68	369.63	369.57	369.52	369.47	369.41	369.36	369.30	369.25	369.20	369.14	369.09	369.03	368.98	368.92	368.87	368.82	368.76	368.71	368.65	368.60	369.00
370.25	369.77	370.14	370.09	370.04	369.99	369.94	369.88	369.83	369.78	369.73	369.68	369.62	369.57	369.52	369.47	369.42	369.36	369.31	369.26	369.21	369.16	369.10	369.05	368.60	369.00
370.0	369.96	369.92	369.87	369.83	369.79	369.75	369.71	369.67	369.62	369.58	369.54	369.50	369.46	369.42	369.37	369.33	369.29	369.25	369.21	369.17	369.12	369.08	369.04	369.00	369.25

W 1/4 Runs 9 strong oil high - Blade off & Roll.

14 cracks in Curb on West Side 6 of them between markings
 19 cracks - East - bad ends
 1 CRACK - walk - 115' No. of Polk

N. Line of Polk Ave.

(478) (490) (518)

North Line of Polk Ave

N. Line 369.25 369.0 368.60 369.00 368.60 369.0 369.25

N. Curd. 369.00 369.00 368.60 369.00 368.60 369.00 369.00
368.00 368.00

N. 1/4 368.60 368.60 368.60 369.00 368.60 368.60 368.60

Center 369.00 369.00 369.00 369.00 369.00 369.00 369.00

S. 1/4 368.60 368.60 368.60 369.00 368.60 368.60 368.60

S. Curd. 369.00 368.00 369.00 368.60 368.60 368.00 369.00
369.00

S. Line 369.25 369.0 368.60 369.00 368.60 369.0 369.25

S. Line of Polk Ave.

E

369.00	369.00	373.55	373.55	373.55	373.31	373.31	42
4.55	4.55	368.60	369.00	368.60	368.60	369.00	368.60
373.55	373.55	4.75	4.55	4.95	4.75	4.31	4.71
		.25	.25	.25	.25	.25	.25
369.25	369.00	5.20	4.80	5.20	4.90	4.50	4.90

9/22/15
West Otter, Mo. Sub grades for granite - Set ends & Raked

W.

South Line of Polk Ave.

5. Line 600	369.25	369.0	368.60	369.00	368.60	369.0	369.25
	368.75	368.5			368.46	368.71	
550	368.75	368.62	368.42	368.62	368.42	368.62	368.75
	368.25	368.0			367.92	368.17	
600	368.50	368.25	367.85	368.25	367.85	368.25	368.50
	367.75	367.5			367.38	367.63	
450	367.75	367.88	367.48	367.88	367.48	367.88	367.75
	367.25	367.0			366.83	367.08	
400	367.25	367.50	367.10	367.50	367.10	367.50	367.25
	366.75	366.5			366.29	366.54	
350	367.25	367.12	366.72	367.12	366.72	367.12	367.25
	366.25	366.0			365.75	366.0	
300	366.25	366.75	366.35	366.75	366.35	366.75	366.25
	365.75	365.5			365.21	365.46	
250	365.75	366.38	365.98	366.38	365.98	366.38	365.75
	365.25	365.0			364.67	364.92	
200	365.25	366.00	365.60	366.00	365.60	366.00	365.25
	364.75	364.5			364.12	364.37	
150	364.75	365.62	365.22	365.62	365.22	365.62	364.75
	364.25	364.0			363.58	363.83	
100	364.25	365.25	364.85	365.25	364.85	365.25	364.25
	363.75	363.5			363.04	363.29	
50	363.75	364.88	364.48	364.88	364.48	364.88	363.75
	363.25	363.0	362.75	363.25	362.75	363.25	363.25
N. Line	364.75	364.5	364.10	364.50	364.10	364.5	364.75

North Line of Lincoln Ave

N. Line	364.75	364.5	364.10	364.50	364.10	364.5	364.75
	363.00	362.60	362.20	362.60	362.20	362.60	363.00
N. Cord.	363.00	363.50	363.93	364.33	363.93	364.50	364.50
	362.40	362.85			363.50	362.5	
N. 1/4	363.75	363.25	363.76	364.16	363.76	363.25	363.75
	362.00	362.00			363.00	362.00	362.00
Center	364.00	363.00	363.60	364.00	363.60	363.00	364.00
	361.85	362.75	363.43	363.83	363.43	362.75	361.35
S. 1/4	363.25	362.75	363.27	363.67	363.27	363.50	363.50
	362.00	362.00			362.50	361.50	361.50
S. Line	363.75	363.5	363.10	363.50	363.10	363.5	363.75

E

35501 SW 20th & Univ.
361.96 = End of Curb SW. Line + Kansas

35501	362.25	362.75	363.25	363.75	364.25	364.75	365.25	365.75	366.25	366.75	367.25	367.75	368.25	368.75
35502	362.25	362.75	363.25	363.75	364.25	364.75	365.25	365.75	366.25	366.75	367.25	367.75	368.25	368.75
35503	362.25	362.75	363.25	363.75	364.25	364.75	365.25	365.75	366.25	366.75	367.25	367.75	368.25	368.75
35504	362.25	362.75	363.25	363.75	364.25	364.75	365.25	365.75	366.25	366.75	367.25	367.75	368.25	368.75
35505	362.25	362.75	363.25	363.75	364.25	364.75	365.25	365.75	366.25	366.75	367.25	367.75	368.25	368.75

OUTSIDE WALLS 9/21/15 W.O. 98 N Gregory Moore Miller

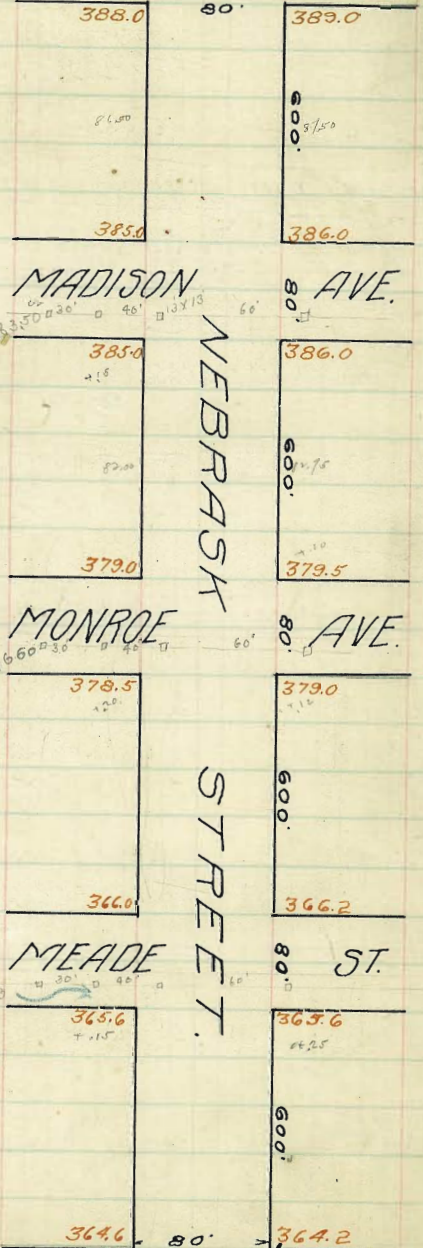
262.00	362.00	362.00	362.00	362.00	362.00	362.00	362.00	362.00	362.00	362.00	362.00	362.00	362.00	362.00
3.45	4.44	3.87	3.72	4.37	4.25	4.25	4.25	4.25	4.25	4.25	4.25	4.25	4.25	4.25
366.47	366.47	366.47	366.47	366.47	366.47	366.47	366.47	366.47	366.47	366.47	366.47	366.47	366.47	366.47
4.12	3.97	4.12	3.97	4.12	3.97	4.12	3.97	4.12	3.97	4.12	3.97	4.12	3.97	4.12
366.47	366.47	366.47	366.47	366.47	366.47	366.47	366.47	366.47	366.47	366.47	366.47	366.47	366.47	366.47
1.57	4.47	2.5	5.12	4.07	3.97	4.62	4.25	4.25	4.25	4.25	4.25	4.25	4.25	4.25
4.92	4.72	5.37	4.62	4.32	4.22	4.87	4.32	4.22	4.87	4.32	4.22	4.87	4.32	4.22

OK for subgr. except E 1/4 = 2 high most of way. Check again before allowing granite West 7/22/W.

Bad Crack in Return All Lincoln
Walk about 280' No. of Lincoln on west side
Curb 1' low from 280' S. of Howard to 250' -
2 Cracks 17' Comb West Side
3 Bad place walk East No. of Lincoln.
1 place broken at walk 33'
gutter on W side of Polk is low

369.25
369.00
368.75
368.50
368.25
368.00
367.75
367.50
367.25
367.00
366.75
366.50
366.25
366.00
365.75
365.50
365.25
365.00
364.75
364.50
364.25
364.00
363.75
363.50
363.25
363.00
362.75
362.50
362.25
362.00

South Line of Adams Ave.



388.0

80'

389.0

385.0

386.0

MADISON AVE.

385.0

386.0

379.0

379.5

MONROE AVE.

378.5

379.0

366.0

366.2

MEADE ST.

365.6

365.6

364.6

80'

364.2

North Line of El Cajon Ave.

14 1/2 ft. from sidewalk to center of road - Sidewalk grades.

66.33 BM	66.32	76.6 BM	79.00	79.00	82.00	82.50	85.00
4.25	4.41	7.06	4.66	6.01	3.41	4.11	3.16
76.57 M		83.66 M		85.41 M		88.16	91.16
4.25		7.06		6.01		4.11	3.16
79.00	79.50	82.00	82.75	83.50	84.25	85.00	85.75
4.47	3.97	3.75	3.00	3.67 M	3.27	3.07	2.75
73.47 M		85.75		88.17 M		90.57	92.97
4.25		7.06		6.01		4.11	3.16
83.50	85.00	86.50	88.00	89.50	91.00	92.50	94.00
5.71	4.27	3.52	4.78	3.67 M	3.27	3.07	2.75
89.27 M		92.97		96.67 M		100.37	104.07
5.71		3.52		3.67		3.07	2.75
95.98	86.50	87.50	88.50	89.50	90.50	91.50	92.50
70.71 M	4.21	3.21	4.19 M	3.69	2.69	2.70 M	1.71
3.69		4.19		3.69		2.70	1.71
99.60		95.00		90.00		85.00	80.00
88.91 M		91.19 M		93.38 M		95.57 M	97.76 M
3.69		4.19		3.69		2.70	1.71

Grades at Intersection of
Nebraska and Meade
S Line of Meade to N Line of Meade
S. Line of Meade

W.

E.

47

365.85 365.6 365.2 365.6 365.0 365.6 365.15

S Curb

365.6 365.6 365.27 365.68 365.1 365.6 365.6
364.6 364.6 364.6 364.6

S VA

365.3 364.7 365.35 365.77 365.2 364.75 365.35

Center

365.8 364.8 365.42 365.85 365.3 364.9 365.9

N VA

365.4 364.9 365.50 365.93 365.4 365.05 365.6

N Curb

365.0 365.0 365.57 366.02 365.5 365.2 365.2
366.0 366.0 366.2 366.2

N Line of Meade

366.25 366.0 365.65 366.1 365.6 366.2 366.45

Finish

grades on Nebraska Street
N. Line of Meade to S Line of Monroe

	W.P.L.	Curb	1/4	Center	1/4	Curb	E.P.L.
0	366.25	366.0	365.65	366.1	365.6	366.2	366.46
+26	366.77	366.52	366.17	366.63	366.13	366.73	366.98
150	367.29	367.04	366.70	367.15	366.67	367.27	367.52
175	367.59	367.54	367.22	367.68	367.20	367.80	368.05
1	368.22	368.07	367.75	368.21	367.63	368.33	368.58
+25	368.84	368.59	368.27	368.74	368.27	368.87	369.12
150	369.36	369.11	368.79	369.26	368.80	369.40	369.65
175	369.88	369.63	369.32	369.79	369.33	369.93	370.18
2	370.40	370.15	369.84	370.32	369.87	370.47	370.72
+25	370.92	370.67	370.37	370.84	370.40	371.0	371.25
150	371.45	371.20	370.89	371.37	370.93	371.53	371.78
175	371.96	371.71	371.41	371.90	371.47	372.07	372.32
3	372.48	372.23	371.94	372.42	372.00	372.60	372.85
125	373.0	372.75	372.46	372.95	372.53	373.13	373.38
150	373.52	373.27	372.99	373.48	373.07	373.67	373.92
175	374.05	373.80	373.51	374.01	373.60	374.20	374.45
4	374.57	374.32	374.03	374.53	374.13	374.73	374.98
+25	375.09	374.84	374.56	375.06	374.67	375.27	375.52
150	375.61	375.36	375.08	375.59	375.20	375.80	376.05
175	376.13	375.88	375.61	376.11	375.73	376.33	376.58
5	376.65	376.40	376.13	376.64	376.27	376.67	377.12
+25	377.18	376.93	376.65	377.17	376.80	377.40	377.65
150	377.70	377.45	377.18	377.70	377.33	377.93	378.18
175	378.22	377.97	377.70	378.22	377.86	378.46	378.71
6	378.75	378.50	378.22	378.75	378.40	379.0	379.25

W

E

379.13	379.13	379.13	379.13	379.13	379.13	379.13	379.13
66.25	66.95	67.52	67.29	69.32	68.58	69.65	69.36
12.99	12.69	11.61	11.84	10.81	10.55	9.48	9.77
12.5	9.5	9.9	11.3	10.7	9.4	9.6	9.3
70.3	+3.12	+1.7	+0.5	+0.1	+1.12	+0.9	+0.5
+0.7	+3.3	379.13	379.13	379.13	379.13	379.13	379.13
70.40	70.72	71.78	71.45	72.49	72.80	73.92	73.52
9.73	8.91	7.35	7.83	6.65	6.28	5.21	5.61
9.3	7.7	6.4	9.2	7.0	6.8	4.9	6.3
+0.4	+0.7	+1.6	+0.5	-0.3	+0.15	+0.3	-0.7
379.13	379.13	379.13	379.13	379.13	379.13	379.13	379.13
74.87	74.99	76.05	75.61	76.65	77.12	77.70	79.75
4.86	4.15	3.05	3.52	2.48	2.01	1.95	1.43
3.9	4.2	2.2	0.0	3.5	1.4	1.1	3.1
10.7	0.0	+0.9	-0.5	-1.3	+0.6	+0.9	-1.7
-0.3	-0.5	-0.5	-0.5	-1.7	-0.3	-2.0	-2.0
76.00	73.00	73.75	79.00	79.25	76.33	76.00	72.25
3.98	3.77	3.48	3.48	3.20	4.33	4.38	1.67
66.00	66.25	66.20	66.45	66.00	66.25	66.00	66.25
4.00	4.75	4.80	4.80	4.80	4.80	4.80	4.80
71.00	71.00	71.00	71.00	71.00	71.00	71.00	71.00
376.00	376.00	376.00	376.00	376.00	376.00	376.00	376.00
377.00	377.00	377.00	377.00	377.00	377.00	377.00	377.00
378.00	378.00	378.00	378.00	378.00	378.00	378.00	378.00
379.00	379.00	379.00	379.00	379.00	379.00	379.00	379.00
380.00	380.00	380.00	380.00	380.00	380.00	380.00	380.00
381.00	381.00	381.00	381.00	381.00	381.00	381.00	381.00
382.00	382.00	382.00	382.00	382.00	382.00	382.00	382.00
383.00	383.00	383.00	383.00	383.00	383.00	383.00	383.00
384.00	384.00	384.00	384.00	384.00	384.00	384.00	384.00
385.00	385.00	385.00	385.00	385.00	385.00	385.00	385.00
386.00	386.00	386.00	386.00	386.00	386.00	386.00	386.00
387.00	387.00	387.00	387.00	387.00	387.00	387.00	387.00
388.00	388.00	388.00	388.00	388.00	388.00	388.00	388.00
389.00	389.00	389.00	389.00	389.00	389.00	389.00	389.00
390.00	390.00	390.00	390.00	390.00	390.00	390.00	390.00

48

May 26 - 1913 - 46 - *Dorman, Bedford, Devine*
 76.00 73.00 73.75 79.00 79.25 66.33 66.00 72.25
 3.98 3.77 3.48 3.48 3.20 4.33 4.38 1.67
 66.00 66.25 66.20 66.45 66.00 66.25 66.00 66.25
 4.00 4.75 4.80 4.80 4.80 4.80 4.80 4.80
 71.00 71.00 71.00 71.00 71.00 71.00 71.00 71.00
 376.00 376.00 376.00 376.00 376.00 376.00 376.00 376.00
 377.00 377.00 377.00 377.00 377.00 377.00 377.00 377.00
 378.00 378.00 378.00 378.00 378.00 378.00 378.00 378.00
 379.00 379.00 379.00 379.00 379.00 379.00 379.00 379.00
 380.00 380.00 380.00 380.00 380.00 380.00 380.00 380.00
 381.00 381.00 381.00 381.00 381.00 381.00 381.00 381.00
 382.00 382.00 382.00 382.00 382.00 382.00 382.00 382.00
 383.00 383.00 383.00 383.00 383.00 383.00 383.00 383.00
 384.00 384.00 384.00 384.00 384.00 384.00 384.00 384.00
 385.00 385.00 385.00 385.00 385.00 385.00 385.00 385.00
 386.00 386.00 386.00 386.00 386.00 386.00 386.00 386.00
 387.00 387.00 387.00 387.00 387.00 387.00 387.00 387.00
 388.00 388.00 388.00 388.00 388.00 388.00 388.00 388.00
 389.00 389.00 389.00 389.00 389.00 389.00 389.00 389.00
 390.00 390.00 390.00 390.00 390.00 390.00 390.00 390.00

1/4 center 0.7, bed Meade in gutter
 for line to grade Dorman Miller, Shaul
 Sep. 11-1913

Grades on Nebraska
S Line of Monroe to N Line of Monroe

49

S Line of Monroe

378.75 378.50 378.225 378.75 378.40 379.0 379.25

Curb

378.50 378.50 378.51 378.83 378.48 379.0 379.0
377.50 377.50 378.0 378.0

1/4

378.23 377.62 378.39 378.92 378.57 376.12 378.72

Center

378.75 377.75 378.48 379.0 378.65 378.25 379.25

1/4

378.65 377.87 378.56 379.08 378.74 378.37 378.9

Curb

378.0 378.0 378.65 379.17 378.82 378.5 378.5
379.0 379.0 378.65 379.17 378.82 379.5 379.5

N Line of Monroe

379.25 378.0 379.0 378.73 379.25 378.90 378.5 379.5 379.75

Finish Grades

Grades on Nebraska Street
N. Line of Monroe to S Line of Madison

	N.P.L.	Curb	1/4	Center	1/4	Curb	E.P.L.
0	379.25	379.0	378.73	379.25	378.90	379.5	379.75
+25	379.50	379.25	378.98	379.51	379.37	379.77	380.02
+50	379.75	379.50	379.24	379.77	379.44	380.04	380.29
+75	380.0	379.75	379.49	380.03	379.71	380.31	380.56
1	380.25	380.0	379.75	380.29	379.98	380.58	380.83
+25	380.50	380.25	380.0	380.55	380.26	380.85	381.10
+50	380.75	380.5	380.26	380.81	380.52	381.12	381.37
+75	381.0	380.75	380.51	381.08	380.79	381.39	381.64
2	381.25	381.0	380.77	381.34	381.06	381.66	381.91
+25	381.50	381.25	381.02	381.60	381.33	381.93	382.18
+50	381.75	381.5	381.28	381.86	381.61	382.21	382.46
+75	382.0	381.75	381.53	382.12	381.88	382.48	382.73
3	382.25	382.0	381.79	382.38	382.14	382.75	383.0
+25	382.50	382.25	382.04	382.64	382.42	383.02	383.27
+50	382.75	382.5	382.30	382.90	382.69	383.29	383.54
+75	383.0	382.75	382.55	383.16	382.96	383.56	383.81
4	383.25	383.0	382.81	383.42	383.23	383.83	384.08
+25	383.50	383.25	383.06	383.68	383.50	384.10	384.35
+50	383.75	383.5	383.32	383.94	383.77	384.37	384.62
+75	384.0	383.75	383.57	384.21	384.04	384.64	384.89
5	384.25	384.0	383.83	384.47	384.31	384.91	385.16
+25	384.50	384.25	384.08	384.73	384.58	385.19	385.43
+50	384.75	384.5	384.34	384.99	384.85	385.45	385.70
+75	385.0	384.75	384.59	385.25	385.12	385.72	385.97
6	385.25	385.0	384.85	385.50	385.40	386.06	386.25

W

E

		286.79	286.79	286.79	286.79	286.79	286.79	286.79	286.79	286.79	286.79	286.79
-1.7	+0.7	70.7	-1.7	-0.5	+0.6	+0.2	-1.0	-1.5	-0.6			
-1.4	+1.0	78.91	81.25	81.75	82.9	83.00	82.25	82.75	83.54			
-1.1	-0.2	4.33	5.04	5.04	4.33	3.79	3.54	4.04	3.25			
-0.5	-0.6	5.7	7.0	6.7	4.7	4.5	4.3	6.1	4.6			
-0.1	+0.8	-0.8	-1.05	-1.7	-0.4	-0.7	+0.2	-2.11	-1.3			
-1.3	+0.1	84.08	85.25	83.75	84.67	85.16	84.25	84.75	85.70	86.25	85.25	
-1.0	+0.2	2.71	3.54	3.04	2.17	1.63	2.54	2.04	1.09	0.54	1.54	
-0.7	+0.5	3.9	5.5	5.0	3.2	3.0	3.0	2.4	2.2	1.8	2.3	
-1.3	-0.5	-1.1	-2.0	-2.0	-1.0	-1.4	-0.5	-0.4	-1.1	-1.3	-0.8	

Kind Book
73
50

May 26 - 1913 - 4 - *Dorman Bedford Deane*

76.00	79.00	79.25	79.50	79.75	80.00	80.25	80.50	80.75	81.00
81.25	81.50	81.75	82.00	82.25	82.50	82.75	83.00	83.25	83.50
83.75	84.00	84.25	84.50	84.75	85.00	85.25	85.50	85.75	86.00
86.25	86.50	86.75	87.00	87.25	87.50	87.75	88.00	88.25	88.50
88.75	89.00	89.25	89.50	89.75	90.00	90.25	90.50	90.75	91.00

376.10	376.40	376.70	377.00	377.30	377.60	377.90	378.20	378.50	378.80
379.10	379.40	379.70	380.00	380.30	380.60	380.90	381.20	381.50	381.80
382.80	383.10	383.40	383.70	384.00	384.30	384.60	384.90	385.20	385.50
388.80	389.10	389.40	389.70	390.00	390.30	390.60	390.90	391.20	391.50

with the exception of walls at property line
Dorman, Miller, Shaul, Sep 11-1913

Grades on Nebraska St.
S Line of Madison to N Line Mad.

385.25 386.0 384.85 385.50 385.40 386.0 386.25

Curb

385.0 385.0 384.85 385.5 385.4 386.0 386.0
384.70 384.10 386.70 386.0

1/4

384.4 384.0 384.85 385.5 385.4 385.0 385.4

Center

385.0 384.0 384.85 385.5 385.4 385.0 386.0

1/4

384.4 384.0 384.85 385.5 385.4 385.0 385.4

Curb

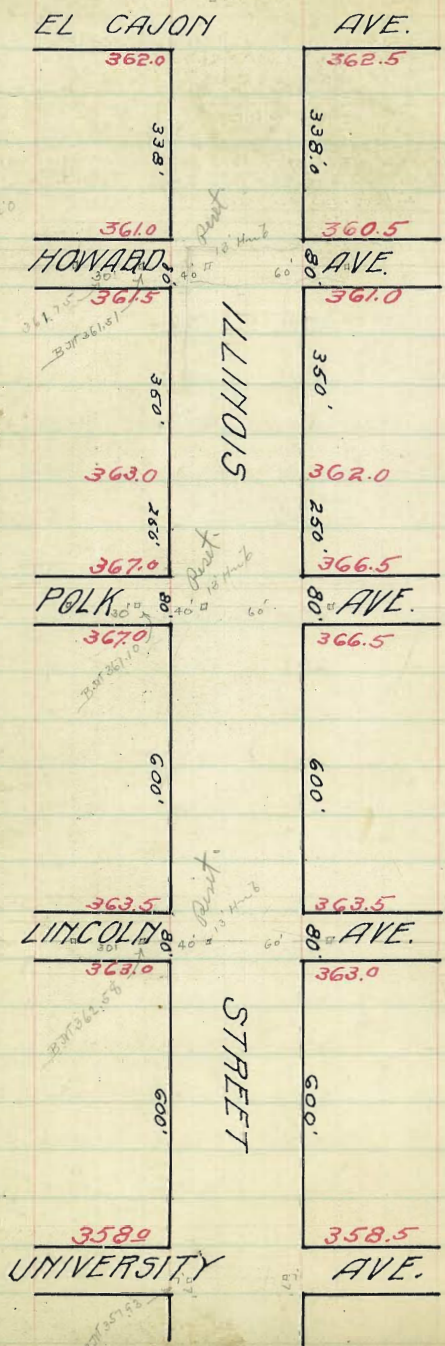
385.0 385.0 384.85 385.5 385.4 385.0 386.0
386.0 386.0

N. Line of Madison

385.25 386.0 384.85 385.50 385.40 386.0 386.25

Intersection cannot be fixed up for grade.

Donnan, Miller, Shaw, Sep. 10-1913



370.88	370.88	370.82	370.82
370.88	370.88	370.82	370.82
370.88	370.88	370.82	370.82
370.88	370.88	370.82	370.82

365.18	365.18	364.96	364.96
365.18	365.18	364.96	364.96
365.18	365.18	364.96	364.96
365.18	365.18	364.96	364.96

362.00
 362.77
 366.77
 61.50
 5.77
 Sidewalk stakes on 3' offset. Sep. 1913
 Dorman
 Miller
 Shaw

ILLINOIS STREET GRADES
 LINCOLN AVENUE INTERSECTION
 WEST EAST

80' Street 14 Walks 13 Quarters

Oil for grade *Dammann, Miller, Shand.*
 Oct 28-1913

55

NORTH LINE

363.75 363.5 363.10 363.5 363.10 363.5 363.75

NORTH CURB

363.5 363.5 363.01 363.01 363.5 363.5

363.5 362.5 363.41 362.5 362.5

NORTH QUARTER

362.90 362.67 362.93 362.33 362.93 362.67 362.9

CENTER

362.25 362.25 362.85 362.25 362.85 362.25 362.25

SOUTH QUARTER

362.72 362.12 362.77 363.17 362.77 362.12 362.72

SOUTH CURB

362.0 362.0 362.69 363.09 362.69 362.0 362.0

363.0 363.0 363.0 363.0

SOUTH LINE

363.25 363.0 362.6 363.0 362.6 363.0 363.25

ILLINOIS STREET GRADES
LINCOLN AVE. TO POLK AVE.

WEST

POLK AVENUE

EAST

6	367.25	367.0	366.40	366.75	366.22	366.6	366.75
75	367.10	366.85	366.26	366.61	366.09	366.38	366.63
50	366.96	366.71	366.12	366.47	365.96	366.25	366.50
25	366.81	366.56	365.99	366.34	365.83	366.13	366.38
5	366.67	366.42	365.85	366.21	365.70	366.00	366.25
75	366.52	366.27	365.71	366.07	365.87	365.88	366.13
30	366.37	366.12	365.58	365.94	365.44	365.75	366.0
25	366.23	365.98	365.44	365.80	365.31	365.63	365.88
4	366.08	365.83	365.30	365.67	365.18	365.55	365.75
75	365.94	365.69	365.16	365.53	365.05	365.38	365.63
50	365.79	365.54	365.03	365.40	364.92	365.25	365.50
25	365.65	365.40	364.89	365.26	364.79	365.13	365.38
3	365.50	365.25	364.75	365.12	364.66	365.0	365.25
75	365.35	365.10	364.71	364.99	364.53	364.88	365.13
50	365.21	364.96	364.48	364.83	364.40	364.75	365.00
25	365.06	364.81	364.34	364.72	364.27	364.63	364.88
2	364.92	364.67	364.20	364.58	364.14	364.5	364.75
75	364.77	364.52	364.06	364.45	364.01	364.38	364.63
50	364.62	364.37	363.93	364.31	363.88	364.25	364.50
25	364.48	364.23	363.79	364.18	363.75	364.13	364.38
1	364.33	364.08	363.65	364.04	363.62	364.0	364.25
75	364.19	363.94	363.51	363.91	363.49	363.88	364.13
50	364.04	363.79	363.38	363.77	363.36	363.75	364.00
25	363.90	363.65	363.24	363.64	363.23	363.63	363.88
0	363.75	363.5	363.10	363.5	363.1	363.5	363.75

LINCOLN AVENUE

80 Street 14 Walks 13 Quarters

WEST

EAST

50

-0.1	-0.6
+0.2	-0.6
-0.1	+0.1
+0.2	+0.5
+0.2	+0.3
-0.2	0.0
-0.3	+0.4
-0.3	+0.1
-0.1	+0.2
-0.1	+0.1
0.0	+0.2
0.0	+0.4
-0.3	-0.6
-0.6	-0.3
-0.9	-0.6
-1.0	-0.5
-1.2	-0.7
-0.9	-0.5
-1.0	-1.3
-0.9	-0.8
-0.7	-1.4
-0.6	-0.5
-0.8	-0.8
-1.2	-0.9
-1.0	-1.0
-0.4	-1.1

367.10	367.0	366.40	366.75	366.22	366.6	366.75
366.96	366.71	366.12	366.47	365.96	366.25	366.50
366.81	366.56	365.99	366.34	365.83	366.13	366.38
366.67	366.42	365.85	366.21	365.70	366.00	366.25
366.52	366.27	365.71	366.07	365.87	365.88	366.13
366.37	366.12	365.58	365.94	365.44	365.75	366.0
366.23	365.98	365.44	365.80	365.31	365.63	365.88
366.08	365.83	365.30	365.67	365.18	365.55	365.75
365.94	365.69	365.16	365.53	365.05	365.38	365.63
365.79	365.54	365.03	365.40	364.92	365.25	365.50
365.65	365.40	364.89	365.26	364.79	365.13	365.38
365.50	365.25	364.75	365.12	364.66	365.0	365.25
365.35	365.10	364.71	364.99	364.53	364.88	365.13
365.21	364.96	364.48	364.83	364.40	364.75	365.00
365.06	364.81	364.34	364.72	364.27	364.63	364.88
364.92	364.67	364.20	364.58	364.14	364.5	364.75
364.77	364.52	364.06	364.45	364.01	364.38	364.63
364.62	364.37	363.93	364.31	363.88	364.25	364.50
364.48	364.23	363.79	364.18	363.75	364.13	364.38
364.33	364.08	363.65	364.04	363.62	364.0	364.25
364.19	363.94	363.51	363.91	363.49	363.88	364.13
364.04	363.79	363.38	363.77	363.36	363.75	364.00
363.90	363.65	363.24	363.64	363.23	363.63	363.88
363.75	363.5	363.10	363.5	363.1	363.5	363.75

Notes:
 +4 - stationing Aug 22 - 1913
 Dominion, Miller, Shaw
 Note 1 - all curb stakes set by East side commission
 set PL curbs 7/11/12 West, East, Center, Center.

ILLINOIS STREET GRADES
POLK AVENUE INTERSECTION

WEST

EAST

NORTH LINE

367.25 367.0 366.40 366.75 366.22 366.5 366.75

NORTH CURB

367.0 367.0 366.5 366.5
366.0 366.0 365.87 365.75 365.63 365.5 365.5

NORTH QUARTER

366.6 366.51 366.43 366.35 366.27 366.19 366.1

CENTER

367.0 366.91 366.83 366.75 366.67 366.59 366.5

SOUTH QUARTER

366.6 366.51 366.43 366.35 366.27 366.19 366.1

SOUTH CURB

366.0 366.0 365.87 365.75 365.63 365.5 365.5
367.0 367.0 366.5 366.5

SOUTH LINE

367.25 367.0 366.40 366.75 366.22 366.5 366.75

367.10
1.59

368.99
367.00

368.77
366.50

368.99
367.00

368.99
366.50

57

Set 7/8/13 West Exam. Done

1.99 2.49 1.99 2.49

Curb returns set's back

There is a gutter across Illinois at North curb line of Polk, that could much better ^{have} been left out, otherwise the intersection is OK.

Donnan, Miller, Schaeff.
Oct 24-1913.

ILLINOIS STREET GRADES
HOWARD AVE. INTERSECTION
WEST EAST

NORTH LINE
361.25 361.0 360.4 360.75 360.22 360.5 360.75

NORTH CURB
361.0 361.0 360.5 360.5
360.0 360.0 359.87 359.75 359.62 359.5 359.5

NORTH QUARTER
360.72 360.63 360.53 360.47 360.38 360.30 360.22

CENTER
361.25 361.16 361.08 361.00 360.92 360.84 360.75

SOUTH QUARTER
360.9 360.81 360.73 360.65 360.57 360.49 360.4

SOUTH CURB
360.5 360.5 360.37 360.25 360.12 360.0 360.0
361.5 361.5 361.0 361.0

SOUTH LINE
361.75 361.5 360.9 361.25 360.72 361.0 361.25

361.00
5.02 H.I.
366.02
360.50
5.52

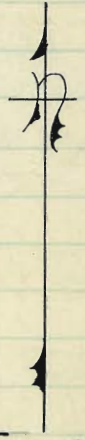
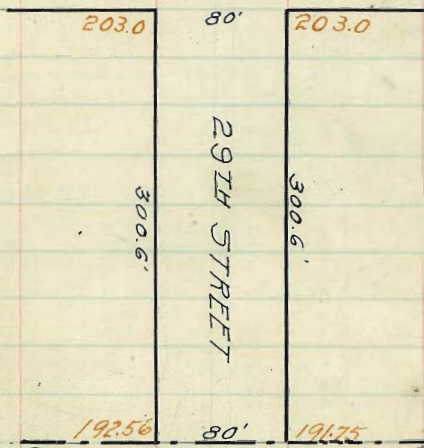
360.9 361.25 360.72 360.0
5.12 4.77 3.30 6.02
360.0 360.12 360.25 360.37 360.5
6.02 5.90 5.77 5.65 5.52

360.9 360.81 360.73 360.65 360.57 360.49
5.12 5.21 5.29 5.37 5.45 5.53
360.4 5.62
360.75 360.84 360.92 361.0 361.08 361.16 361.25
5.27 5.18 5.10 5.02 4.94 4.86 4.77
360.72 360.63 360.57 360.47 360.38 360.30 360.22
5.80 5.39 5.47 5.55 5.64 5.72 5.80
359.5 359.5 359.62 359.75 359.87 360.0
6.52 6.52 6.40 6.27 6.15 6.02
360.0 360.4 360.75 360.22 359.5
6.02 5.62 5.27 5.80 6.52

A. gutter graded wrong way.

Intersection O.H. for grade, Dorman, Miller, Shaul.
Oct 24-1913

ASH STREET



SOUTH LINE OF SOUTH PARK ADD.

GROVE ST.

ELM

231.0

ST.

228.0

219.0

217.0

GROVE

ST.

520

222.32 - 222.57
222.75

221.55 - 221.80
H.L. So. Park
221.65

223.35 - 223.10

222.22 - 222.47

223.88 - 223.63

222.96 - 222.89 - 223.14

224.41 - 224.16

223.59 - 223.57 - 223.82

224.75

CEDAR

224.0 - 224.25

ST.

223.90
224.25
223.72

25 50

22407 B.M. 0.00 M.F. 30.32 Cedar

30.32	30.32	30.32	30.32	30.32
4.75	3.82	3.88	2.47	2.82
5.87	6.50	6.44	7.23	7.50
5.82	6.74	6.69	7.10	7.75
30.32	30.32	30.32	30.32	30.32
4.25	4.91	3.14	3.35	1.80
6.17	5.91	7.12	6.97	2.52
6.32	6.16	7.43	7.22	2.77

4/29/13 curb & property
Dumple
Shaw
Mar. 63

22407
6.75
23082 M.F.

30.82	30.82	30.82	30.82	30.82
4.75	6.07	6.52	6.57	7.10
6.07	6.32	6.52	6.57	6.82
30.82	30.82	30.82	30.82	30.82
2.80	2.40	2.26	2.92	2.52
7.10	4.82	2.76	2.25	2.00
5.27				2.25

7/31/13 does not check
Dumple

MISSION AVENUE

PARK TO GEORGIA

H Curb 1/4 C 1/4 Curb S

9' N.E. of Park Curb 342.90									
P.L. = 0.00 on S.L. & Made	342.67	342.77	342.63	342.70	342.60	342.55			
50' N.E. on P.L.	343.25	343.90	342.60	342.96	342.53	342.93	343.15		
100' "	343.65	343.40	343.00	343.37	342.93	343.33	343.55		
150' "	344.06	343.81	343.41	343.77	343.34	343.74	343.94		
200' "	344.46	344.21	343.81	344.17	343.74	344.14	344.34		
250' "	344.88	344.61	344.21	344.58	344.15	344.55	344.70		
Go. St. on S.L. =									
281' N.E. on P.L.	345.11	344.86	344.46	344.83	344.40	344.80	345.15		
327' N.E. on S.									
359.8' " " P.L.	345.75	345.50	344.10	345.15	344.40	344.80	345.15		

143.5'

120' ST. 34' Walks 1/4" = 13'

Level Books 889 & 900

H S

	+0.1	+0.9
	+0.5	+1.8
	+0.6	+1.7
	+0.9	+1.5
	+1.2	+1.3
	+1.1	+1.2
	+1.1	+0.1
	+0.4	+0.1

MISSION AVENUE
 GEORGIA TO FLORIDA

	N. Curb	1/4 C	1/4 Curb	S			
E.L. Georgia	345.05	344.80	344.20	344.45	343.87	344.10	344.35
" " PL			Triangular Area				
78.8' on S.L.	345.05	344.80	344.20	344.15	343.44	343.50	343.75
50' NE on PL	340.91	340.66	340.06	339.93	339.16	339.20	339.45
100' " " "	336.77	336.52	335.94	335.71	334.91	334.91	335.16
150' " " "	332.64	332.37	331.77	331.49	330.65	330.61	330.86
160' " " "	331.79	331.54	330.94	330.64	329.79	329.75	330.00
200' " " "	328.48	328.23	327.63	327.27	326.40	326.32	326.57
250' " " "	324.34	324.09	323.49	323.05	322.18	322.02	322.27
N.L. Florida							
293.0 HE on PL	320.75	320.50	319.90	319.40	318.45	318.30	318.55
293.0 S } W.L. of			Break				
376.8 H } Florida	320.45	320.20	319.60	319.25	318.37	318.30	318.55

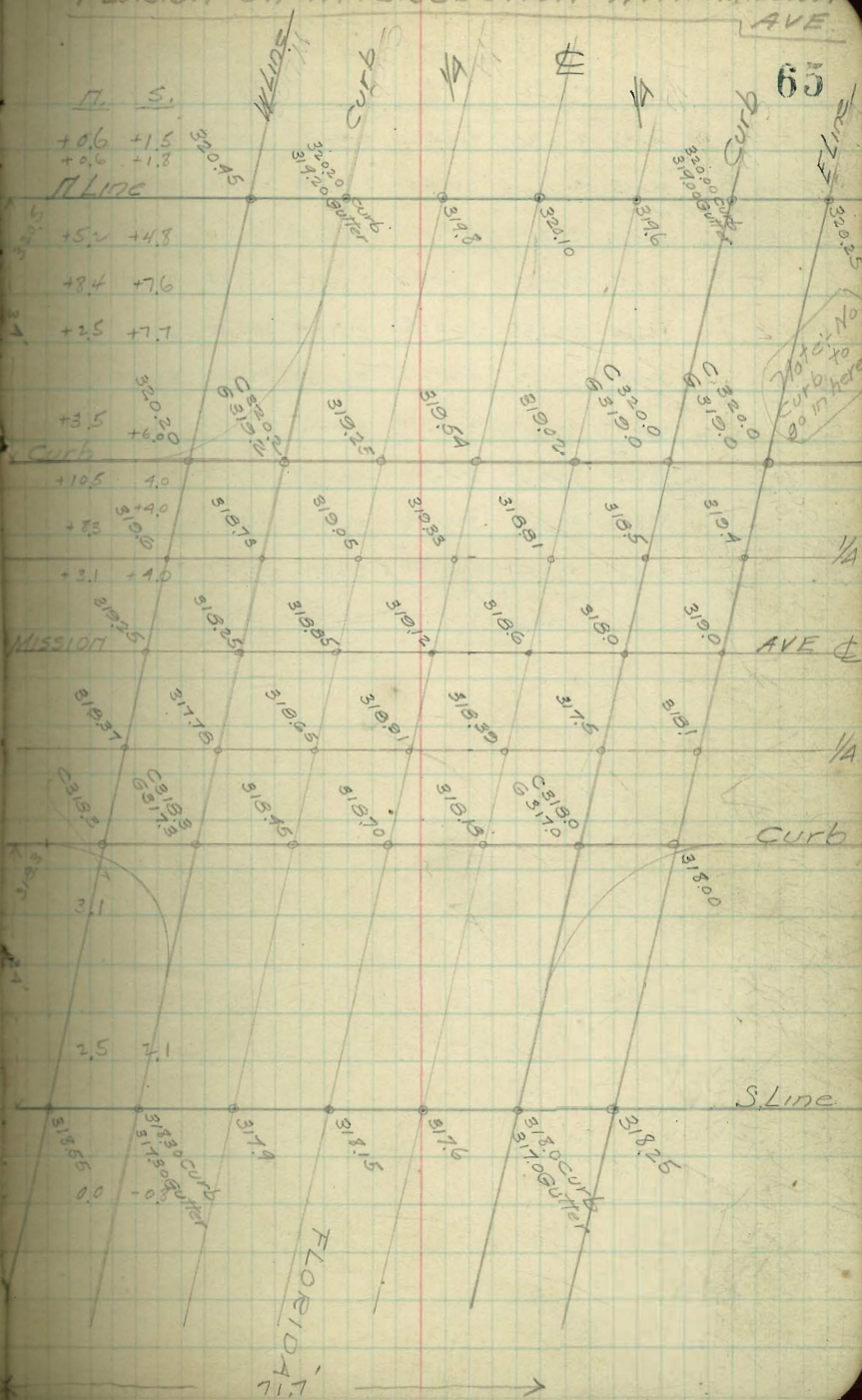
143.5'

FLORIDA ST. INTERSECTION

(Note: See Florida St. figures in Book 70, as Florida will be done before Mission)

W.L. FLORIDA	320.45	320.20	319.60	319.25	318.37	318.30	318.55
W. Curb	320.20	320.00	319.20	318.73	318.25	317.78	317.30
W. 1/4	319.80	319.25	319.05	318.85	318.65	318.45	317.90
Center	320.10	319.54	319.33	319.14	318.91	318.70	318.15
E. 1/4	319.60	319.02	318.81	318.60	318.39	318.18	317.60
E. Curb	320.00	320.00	319.00	318.50	318.00	317.50	317.00
E.L. FLORIDA	320.25	320.00	319.40	319.00	318.10	318.00	318.25

FLORIDA ST. INTERSECTION WITH MISSION AVE



MISSION AVENUE

FLORIDA TO ALABAMA

	π	Curb	$\frac{1}{4}$	C	$\frac{1}{4}$	Curb	S	π	S
E.L. Florida	320.25	320.00	319.40	143.5'	319.00	318.10	318.00	318.25	0.0 -0.8
" " H.L.									
78.8' on S.L.	320.25	320.00	319.40		319.64	319.07	319.29	319.84	0.0 -3.5
S.L. Monroe on π									
170' on π L.	320.25	320.00	319.60		319.79	319.19	319.59	319.84	← not used in estimating - no cross section notes taken
620' " " Break	320.88	320.63	320.43		320.47	319.91	320.31	320.56	-3.5 -5.2
1120' " "	321.60	321.35	320.95		321.24	320.73	321.13	321.38	-4.9 -7.2
1620' " "	322.34	322.07	321.67		322.01	321.55	321.95	322.20	-4.8 -5.9
S.L. Monroe on S									
200.8 on π L.	322.77	322.52	322.12		322.56	322.20	322.60	322.88	-3.9 -4.7
2120' " " Break	322.90	322.65	322.25		322.71	322.37	322.77	323.02	-2.6 -3.4
2620' " "	323.48	323.23	322.83		323.37	323.11	323.51	323.76	-1.7 -1.4
W.L. Alabama on S									
293.0 on π	323.84	323.59	323.19		323.78	323.57	323.97	324.22	-1.5 -1.1
293.0 on S = W.L. Alabama on π & S									
371.8 on π	324.75	324.50	324.10		324.24	323.57	323.97	324.22	+0.1 -1.1

143.5'

MISSION AVENUE

ALABAMA TO MISSISSIPPI

	N	Curb	1/4 C	1/4	Curb	S	E	W	
EL. Alabama	327.05	326.80	326.20	326.10	325.85	325.40	325.65	+0.1	+1.3
" " ^{N.L.}									
78.8 on S.L.	327.05	326.80	326.63	327.16	327.14	327.72	327.91	-0.3	+1.3
50.0 on N.L.	328.33	328.08	327.95	328.63	328.59	329.19	329.44	0.0	+1.6
100.0 " "	329.61	329.36	329.29	330.02	330.17	330.67	330.92	0.0	+0.7
150.0 " "	330.89	330.64	330.62	331.39	331.54	332.14	332.39	+0.5	+2.1
200.0 " "	332.17	331.92	331.94	332.77	333.02	333.62	333.87	+1.0	+1.6
250.0 " "	333.45	333.20	333.27	334.14	334.49	335.09	335.34	+1.0	+1.8
W.L. Miss. on S.									
281.0 on N	334.24	333.99	334.09	334.99	335.40	336.00	336.25	+1.1	+1.1
281 on S = W.L. Miss. on N & S.									
359.8 on N	336.25	336.00	335.70	336.00	335.40	336.00	336.25	0.0	+1.2

143.5'

MISSISSIPPI STREET INTERSECTION 80 ST

for 20' walks on Mississippi St

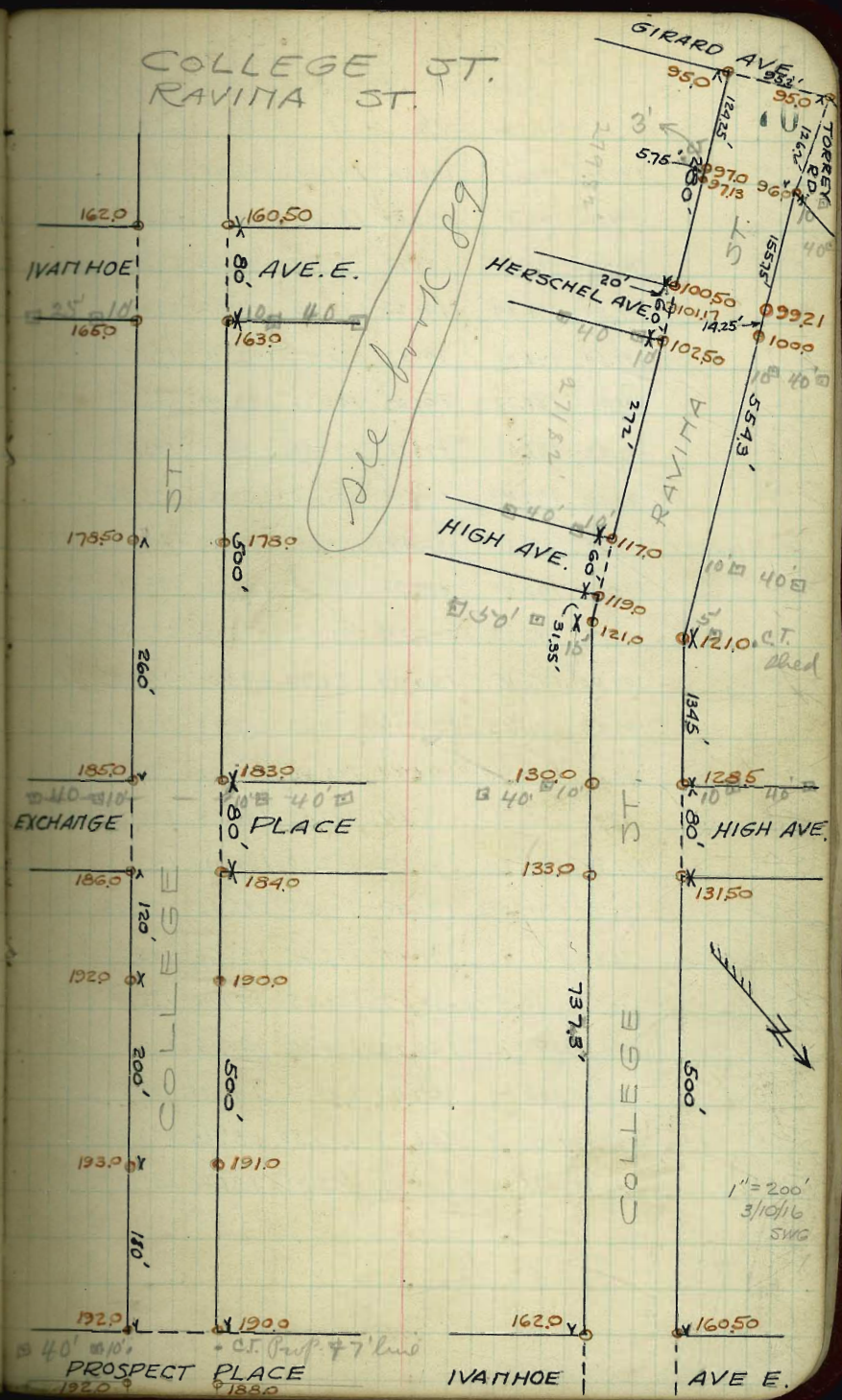
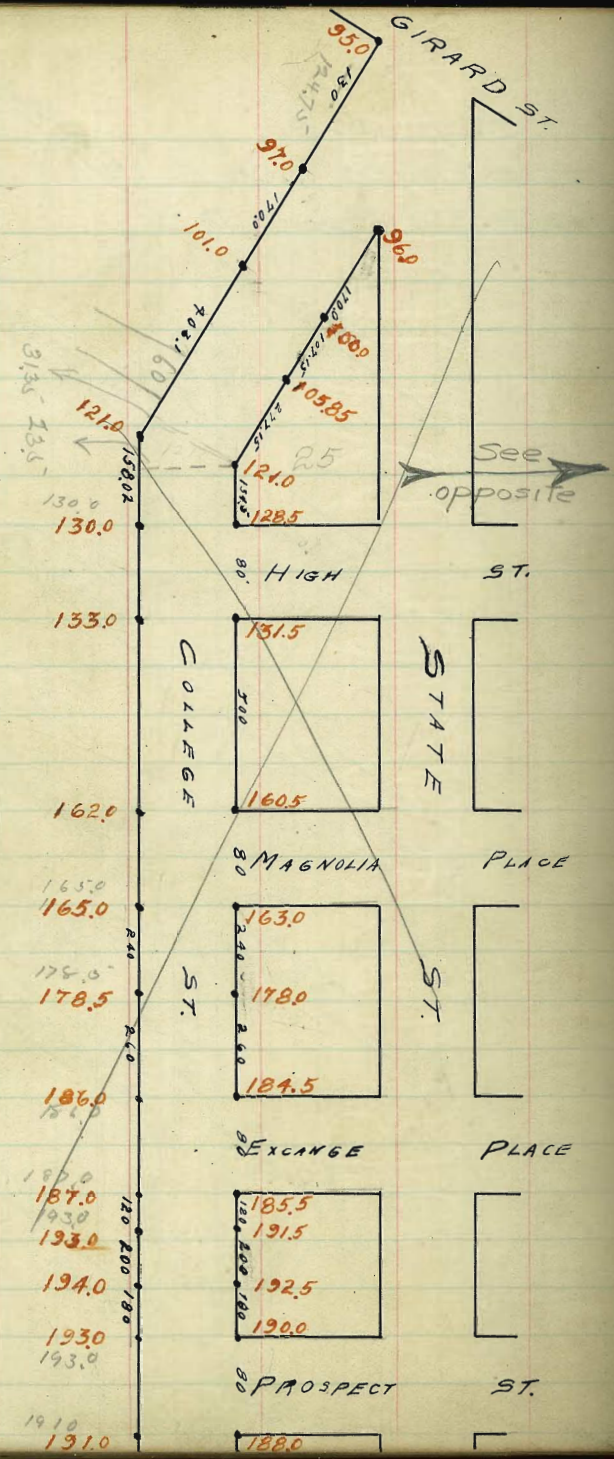
W.L. Miss.	336.25	336.00	335.60	336.00	335.60	336.00	336.25
W. Curb	336.00	336.00	336.10	336.50	336.25	336.00	336.00
W. 1/4	336.10	335.50	336.35	336.75	336.35	335.50	336.10
Center	337.00	336.00	336.60	337.00	336.60	336.00	337.00
E. 1/4	337.40	336.50	336.85	337.25	336.85	336.50	337.40
E. Curb	337.00	338.00	337.10	337.50	337.10	338.00	337.00
EL. Miss.	338.25	338.00	337.60	338.00	337.60	338.00	338.25

figured Dec 4

MISSION AVENUE

MISSISSIPPI TO LOUISIANA

	M	Curb	1/4	C	1/4	Curb	S	M	S
DEL. MISS.	33825	33800	33760	33800	33760	33800	33825	0.0	-1.0
" " P.L.									
78.8 on S.L.	33825	33800	33778	33837	33814	33874	33874	0.0	-1.2
50' on P.L.	33821	33856	33832	33889	33862	33922	33922	+2.1	-1.1
100' " "	33936	33911	33885	33940	33908	33968	33968	+0.3	+1.2
150' " "	33992	33967	33940	33992	33957	34017	34017	+1.0	+1.4
200' " "	34047	34022	33982	34047	34028	34063	34063	+0.7	+1.4
250' " "	34103	34078	34038	34094	34071	34111	34136	+1.6	+1.0
281' " "	34137	34112	34072	34126	34100	34140	34164	+1.1	-0.0
281 on S.L.									
3598' on P.L.	34225	34200	34160	34170	34100	34170	34160	0.0	0.0



COLLEGE ST

South Line Prospect to the North Line Exchange

71

	W	Curb	1/4	C	1/4	Curb	E
SL Prospect	190.25	190.00	190.35	191.50	192.40	193.00	193.25
25	190.60	190.35	190.64	191.74	192.54	193.14	193.39
50	190.94	190.69	190.98	191.98	192.68	193.28	193.53
75	191.29	191.04	191.23	192.23	192.82	193.42	193.67
100	191.64	191.39	191.53	192.47	192.96	193.55	193.80
125	191.99	191.74	191.82	192.71	193.09	193.69	193.94
150	192.33	192.09	192.11	192.96	193.23	193.83	194.18
175	192.68	192.43	192.41	193.20	193.37	193.96	194.27
180 Grade Pt	192.75	192.50	192.47	193.25	193.40	194.00	194.25
200	192.65	192.40	192.37	193.15	193.30	193.90	194.15
225	192.53	192.28	192.24	193.03	193.18	193.78	194.03
250	192.40	192.15	192.12	192.90	193.05	193.65	193.90
275	192.28	192.03	191.99	192.78	192.93	193.53	193.78
300	192.15	191.90	191.87	192.65	192.80	193.40	193.65
325	192.02	191.77	191.74	192.52	192.68	193.28	193.53
350	191.90	191.65	191.62	192.40	192.55	193.15	193.40
375	191.78	191.53	191.49	192.28	192.43	193.03	193.28
380 Grade Pt.	191.75	191.50	191.47	192.25	192.60	193.00	193.25
400	190.75	190.50	190.47	191.25	191.40	192.00	192.25
425	189.50	189.25	189.22	190.00	190.15	190.75	191.00
450	188.25	188.00	187.97	188.75	188.90	189.50	189.75
475	187.00	186.75	186.72	187.50	187.65	188.25	188.50
500 N.L. Exchange	185.75	185.50	185.47	186.25	186.40	187.00	187.25

COLLEGE ST.

INTERSECTION WITH EXCHANGE PLACE

W Curb 1/4 E 1/4 Curb E

N.L.	185.75	185.50	185.75	186.25	186.75	187.00	187.25
N-Curb	185.50	185.50	185.25	186.00	186.15	187.00	187.00
	184.50	184.50				186.00	186.00
N-1/4	184.90	184.25	185.57	185.87	186.02	185.75	186.00
E	185.00	184.00	184.95	185.75	185.90	185.50	186.00
S-1/4	184.35	183.75	184.82	185.62	185.77	185.25	185.25
S-Curb	183.5	183.50				185.00	185.00
	184.5	184.50	184.70	185.50	185.65	186.00	186.00
S-L.	184.75	184.50	184.95	185.25	185.40	186.00	186.25

COLLEGE STREET

SOUTH LINE EXCHANGE PLACE TO N.L. MAGNOLIA PL.

78

	W	Curb	1/4	1/2	3/4	Curb	E
SL. Exchange Pl.	184.75	184.50	184.97	185.25	185.40	186.00	186.25
25	184.12	183.87	183.91	184.58	184.69	185.27	185.52
50	183.50	183.25	183.15	183.90	183.99	184.55	184.80
75	182.87	182.62	182.49	183.23	183.28	183.82	184.07
100	182.25	182.00	181.83	182.55	183.58	183.10	183.35
150	181.00	180.75	180.51	181.21	181.18	181.66	181.91
200	179.75	179.50	179.19	179.86	179.78	180.22	180.47
250	178.50	178.25	177.86	178.51	178.38	178.74	179.03
260 G.P.	178.25	178.00	177.60	178.25	178.10	178.50	178.75
300	176.75	176.50	176.14	176.87	175.82	176.24	176.49
350	172.62	172.37	172.16	172.90	172.96	173.43	173.68
400	169.50	169.25	169.14	169.93	170.11	170.62	170.87
450	166.37	166.12	166.12	166.97	167.25	167.81	168.06
475	164.81	164.56	164.61	165.48	165.83	166.41	166.66
500 N.L. Magnolia	163.25	163.00	163.10	164.00	164.40	165.00	165.25

COLLEGE STREET
INTERSECTION WITH MAGNOLIA PLACE

W. Curb 1/4 ♀ 1/4 Curb E.

N-L	163.26	163.00	163.10	164.00	164.40	165.00	165.25
N-Curb 14' 13'	163.00	163.00	162.63	163.52	163.88	165.00	165.00
	162.00	162.00				164.00	164.00
N-1/4 13'	162.40	161.37	162.20	163.08	163.39	163.25	164.40
♀ 13'	161.75	160.75	161.74	162.63	162.90	162.50	163.50
S-1/4 13'	160.93	160.12	161.33	162.18	162.42	161.75	162.35
S-Curb 14'	159.50	159.50				161.00	161.00
	160.50	160.50	160.90	161.73	161.93	162.00	162.00
S-L	160.75	160.50	160.43	161.25	161.40	162.00	162.25

COLLAGE STREET

S.L. MAGNOLIA PL. TO N.L. HIGH ST.

	W.	Curb	1/4	1/2	3/4	Curb	E.
S.L. Magnolia Pl.	160.75	160.30	160.47	161.25	161.40	162.00	162.35
25	159.30	159.05	159.02	159.80	159.95	160.55	160.80
50	157.85	157.60	157.57	158.35	158.50	159.10	159.35
100	154.95	154.70	154.67	155.45	155.60	156.20	156.45
150	152.05	151.80	151.77	152.55	152.70	153.30	153.55
200	149.15	148.90	148.87	149.65	149.80	150.40	150.65
250	146.25	146.00	145.97	146.75	146.90	147.50	147.75
300	143.35	143.10	143.07	143.85	144.00	144.60	144.85
350	140.45	140.20	140.17	140.95	141.10	141.70	141.95
400	137.55	137.30	137.27	138.05	138.20	138.80	139.05
450	134.65	134.40	134.37	135.15	135.30	135.90	136.15
500 N.L. High ST	131.75	131.60	131.47	132.25	132.40	133.00	133.25

COLLEGE STREET
INTERSECTION WITH HIGH ST.

W. Curb 1/4 & 1/4 Curb E.

5

	W. Curb	1/4	&	1/4	Curb	E.
N.L.	131.75	131.50	131.48	132.25	132.40	133.00
N-Curb	131.50	131.50	130.99	131.73	131.88	132.44
	130.50	130.50				
N-1/4	130.99	129.75	130.46	131.24	131.39	131.97
&	130.00	129.00	129.97	130.75	130.90	131.50
S-1/4	128.85	128.25	129.44	130.26	130.91	131.01
	127.50	127.50				
S-Curb	128.50	128.50	128.99	129.78	129.92	130.53
S.L.	128.75	128.50	128.47	129.25	129.40	130.00

COLLEGE STREET
S.L. HIGH ST. TO N.L. HERMOSA ST

	W	curb	1/4	1/2	3/4	curb	E
S. L. High St	128.75	128.50	128.47	128.25	128.40	130.00	130.00
50	126.98	125.83	126.78	126.44	126.44	127.04	127.04
100	123.41	123.16	122.99	123.62	123.48	124.08	124.08
1345 S. A	121.28	121.82	120.92	121.68	121.65	122.05	122.05
Grade Pkts B	121.20	121.00	120.60	121.00	120.60	121.00	121.00
Sec C	120.28	120.69	120.29	120.40	119.71	120.11	120.11
Sec D	120.52	120.27	119.87	119.99	119.31	119.71	119.71

Grade Point.

COLLEGE STREET

60' wide
14' walks
8' 1/4

N.L. HERMOSA ST. TO S.L. HERMOSA ST.

	W	curb	1/4	⊕	1/4	curb	E
N.L.	120.62	120.27	119.87	119.99	119.31	119.71	119.31
10'							
N.C.	119.89	119.74	119.34	119.47	118.91	119.71	119.31
10'						118.71	119.31
N 1/4	119.46	119.21	118.91	118.95	118.30	117.96	118.30
10'							
⊕	118.92	118.67	118.27	118.43	117.80	117.20	118.20
10'							
S 1/4	118.39	118.14	117.74	117.92	117.30	116.44	117.30
10'						115.69	117.30
S Curb	117.85	117.60	117.20	117.40	116.79	116.69	116.69
10'							
S Lin.	117.32	117.07	116.67	116.88	116.29	116.69	116.69

COLLEGE STREET

S. L. HERMOSA ST TO N. L. VISTA

79

	W	Curb	1/4	¢	1/4	Curb	E
5 S. L. Hermosa	117.32	117.07	116.67	116.88	116.29	116.69	116.5
50	114.66	114.40	114.00	114.28	113.77	114.17	114.4
100	111.98	111.73	111.33	111.69	111.25	111.65	111.9
150	109.32	109.07	108.67	109.10	108.74	109.14	109.3
200	106.65	106.40	106.00	106.51	106.22	106.62	106.8
210.45	106.10	105.85	105.45	105.97	105.70	106.10	106.3
260.00	103.95	103.70	103.30	103.85	103.71	104.11	104.3
272 N. L. Vista	102.75	102.50	102.10	102.76	102.61	103.01	103.2

Grade Point on West Side

COLLEGE STREET
INTERSECTION WITH CHULA ST.

	W.	Corb	1/4	¢	1/4	Corb	E.
N.L.	102.76	102.50	102.10	102.78	102.61	103.01	103.20
N. Corb.	102.28	102.03	101.63	102.31	102.26	103.01	103.11
N. 1/4	101.80	101.55	101.15	101.86	101.78	101.39	102.20
¢	101.33	101.08	100.68	101.42	101.37	100.77	101.10
S 1/4	100.86	100.61	100.21	100.98	100.96	100.15	100.70
S Corb.	100.28	100.13	99.73	100.53	100.54	100.53	100.50
S.L.	99.91	99.66	99.26	100.09	100.13	100.53	100.70

4'7"
4'3"
4'3"

Grade Pts

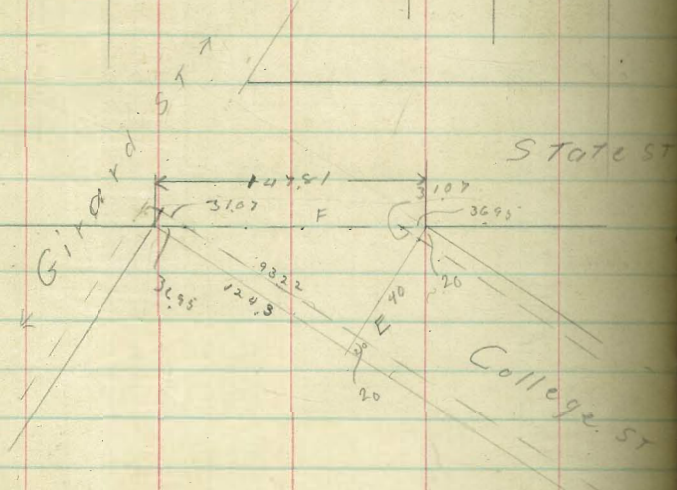
129.58	160.70		
1.55			
142.90			
142.90			
157.19			
157.19			
40.01	16.30	91.78	
3.34	15.72	77.45	
26.67	176.92	3.94	
40.01	11.43		
19.95	197.85		
6120.06	18.72		
3.54	203.57		
6121.00		39.76	
850		20.42	
		6119.84	
		3.27	
19.95			
19.02			
23.29			
6.14	30.50	36.67	36.54
5.60		35.93	
1.54			
	5.45	6.56	
			39.76
			3.27
			36.64
	22.50	23.29	23.64
	3.40	3.40	
	7.79	7.79	
	0.79	2.61	
			2.61
			1.35
			2.26

UV

COLLEGE STREET

S.L. CHULA TO EL. STATE ST.

	W	Curb	10	10	10	10	Curb	E
S.L. Chula St.	99.91	99.66	99.26	100.09	100.13	100.53	100.27	
25'	99.32	99.07	98.47	99.50	99.84	99.94	100.17	
50'	98.73	98.48	98.28	98.91	98.95	99.35	99.58	
75'	98.15	97.90	97.50	98.33	98.36	98.76	99.00	
100'	97.56	97.31	96.91	97.74	97.77	98.17	98.40	
16'0" East Side	96.35	96.13	95.73	96.56	96.50	97.00	97.20	
Sec E								
1337 West Side	96.26	96.06	95.60	96.46	96.52	96.92	97.10	
SELF								
24895 East Side	96.25	96.00	95.60	95.74	95.08	95.44	96.00	
280 Property Line						96.00	96.00	



295.70
9.22
304.92
20.19
317.8

9.5
304.92
20.23
316.9

81

304.92
21.8
326.72
4.14
4.18

9.57
1.8
4.76
1.47
5.23
9.0
6.77

9.61
1.8
3.79
1.47
4.26
7.0
6.21

Grade PT. East Side

Grade PT. West Side

Grade PT. East Side

321.90
18.71
18.18
316

24.38
321.50
2.88

320.00
23.60
343.60
100.8
24

8.19
7.19
89.71
9.18
9.19
99.61

$$8.68^2 = 75.52$$

$$8^2 = \frac{75.52}{9} = 8.392$$

$$8.392 \times 9 = 75.528$$

$$75.528 - 75.52 = 0.008$$

8.19
9.19
82.71
9.18
9.19
99.61

41337.11
 10.00
 32.9.11
 + 2.70
 326.96 HI
 - 0.71
 322.15

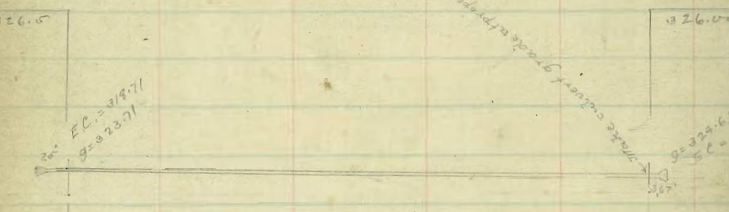
	EL Louisiana				WL Texas			
	00	250	1400	1450	2400	2450	3400	3450
322.15	327.11	327.11	326.86	326.86	326.86	326.96	326.96	326.96
327.0	26.25	25.00	24.75	24.60	24.50	24.50	24.50	24.50
0.27	10.11	10.136	1.16	2.41	2.86	3.61	4.36	4.36
322.23	11.9	10.0	8.9	3.9	5.8	5.6	4.4	4.4
15.40	1.7	-2.1	-2.7	-1.8	-2.9	2.0	0.0	0.0
322.83 HI	+2.5	+3.5	+4.5	+4.5	+4.5	+4.5	+4.5	+4.5
1.03	72.8	72.4	+1.9	+2.7	+1.6	+2.5	+4.5	+4.5

	EL Texas				WL Arizona			
	00	400	1400	1450	2400	2450	3400	3450
326.96	326.96	326.50	326.50	326.50	326.50	326.50	326.50	326.50
325.0	25.67	27.93	20.00	32.17	29.23	31.50	31.50	31.50
3.36	1.19	5.67	3.50	1.03	7.03	13.50	4.50	4.50
4.250	7.450	4.50	4.50	4.50	4.50	4.50	4.50	4.50
7.96	5.67	10.11	9.00	5.93	3.67	1.50	1.50	1.50
2.0	0.3	6.3	4.50	3.7	2.1	7.4	7.4	7.4
7.59	7.9.9	4.3.9	+3.0	+2.1	+1.6	+1.9	+1.9	+1.9

EL Arizona
 00 250 1400 1450 2400 2450 3400

	EL Arizona				WL Hamilton			
	00	250	1400	1450	2400	2450	3400	3450
326.83	326.83	326.62	326.62	326.62	326.62	326.62	326.62	326.62
35.10	32.88	47.50	52.50	51.50	61.60	61.60	61.60	61.60
7.70	3.83	6.11	6.42	14.67	19.97	5.17	5.17	5.17
4.550	4.50	9.50	9.50	4.0	4.0	4.0	4.0	4.0
12.23	7.153	15.62	10.7	19.07	14.87	9.67	9.67	9.67
7.0	0.0	10.9	4.0	10.7	2.12	4.0	4.0	4.0
7.5.2	+4.5	+4.7	+6.9	+8.4	+8.2	+5.6	+5.6	+5.6

Louisiana



BPT 321.92	328.65	329.60	329.55	328.55
+ 0.63	22.19	21.70	24.65	24.61
328.58 HI	6.36	6.69	3.90	3.94

322.0
 Texas
 323.6
 St.

67.10
 63.64
 37
 322.14
 11.29
 67.10 338.82
 63.73 20.02
 3.37 228.10
 112.49
 325.99
 14
 305.76

371.12
 371.21
 371.21
 371.21
 17.40
 92
 33.43
 42.49
 345.92
 0.13
 345.79
 340
 15.00
 395.80
 10.04
 358.55
 0.93
 359.42
 18.10
 371.52
 0.30
 371.77
 66.90
 4.37
 51340
 68
 17.40
 1.95
 18.35

371.47
 67.9
 3.6
 4.0
 9.1
 0.9
 +7.2
 365.0
 212
 156
 368
 212
 156
 368
 150
 100
 7500
 312.4
 1008
 77
 125
 2.70
 2.50
 2.40
 37
 323.19
 18.71
 76
 3.43
 1.02
 32
 28
 16
 120
 125
 4
 0282
 13
 996
 102
 3316

371.19
 0.28
 371.19
 372.93
 5.87
 378.80
 21.08
 4.72
 232.22
 4.81
 428.51
 6
 10.63
 22.19
 12.74
 1.42
 36.6
 212
 153
 365.0
 212
 153
 368
 212
 156
 368
 19.92
 5.0
 20.42
 20.92
 2.85
 7.8
 1.63
 0.67
 7.0
 22.19
 1.51
 21.67
 24.38
 21.67
 2.71

71.00
 85.00
 156.00
 127.7
 283.7 PC
 15.5
 299.12 PT
 65.7
 365.1

371.97
 0.28
 371.19
 372.93
 5.87
 378.80
 21.08
 4.72

371.47
 67.9
 3.6
 4.0
 9.1
 0.9
 +7.2
 365.0
 212
 156
 368
 212
 156
 368
 19.92
 5.0
 20.42
 20.92
 2.85
 7.8
 1.63
 0.67
 7.0
 22.19
 1.51
 21.67
 24.38
 21.67
 2.71



170.5
10
150.5

20.5
18.5
613
55.5
185
1110
11300.5

