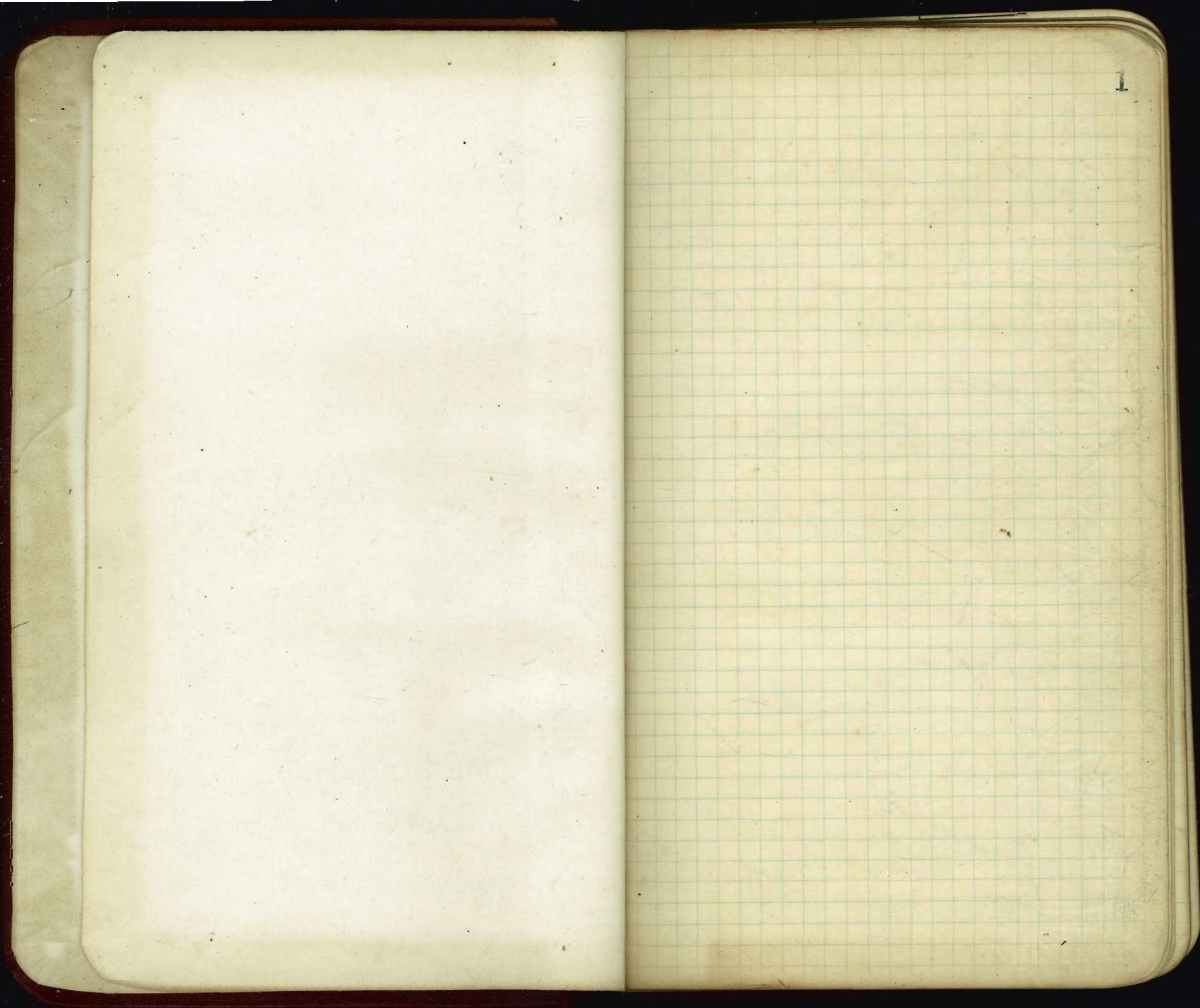


75

675

MICROFILMED

APR 6 1965



BRICK-YARD CAMOTT ROAD

6" Crown.

5

± Stations.

0+00 W.L. Front	241.4	241.2	241.0
+30		238.71	
+50		237.05	
+75		234.98	
+88.3		233.88	
175.0 AB		233.31	
17017 AC.		232.75	
1723.55 DE.		230.94	
+3159.0 F.		230.27	
+39.63 DG.		229.60	
+76.96 HI.		226.50	
+81.48 HJ		226.13	
+86.00 HK	0.3 1/2 Gr	225.75	
2+07.46 ML.		223.97	
+28.92 NO		222.19	
+31.50 NR		221.98	
+34.08 NQ.		221.77	
+57.53 RS AB		219.83	
<small>Box 043 P87.</small>			
+77.53 AB		218.17	
+81.48 AC.		217.84	
+85.43 AD.		217.51	
3+10.43		215.44	
+35.43		213.36	
+59.14 EF.		211.39	
+61.48 EG.		211.20	
+63.82 EH.		211.01	

3+88.82	20894
4+12.82	20686
42482	20595
4+3882	20479
4+63.82	20271
4+88.82	20064
5+13.82	19856
5+38.04+1.1	19655
4+0.30-1K	19637
+4256-1L	19618
+67.56	19411
+92.56	19203
6+17.56	18996
+42.56	18788
+63.96-MN	18610
+64.57 MO	18605
+65.18 MP	18600
7+0.18 155	18393
7+15.18 150's	18185
7+0.18 145's	17980
+65.18 100's	17865
+90.18 120's	17750
8+15.18 100's	17638
+40.18 175's	17525
+65.18 200's	17412
+90.18 225	17299
9+15.18 200	17186

83% - 67
 X
 4.5227% - 67

9 +40.18 ²¹¹	170.73
+59.18	169.87
+65.18 ³⁰⁰	169.66
+90.18 ²²⁵	168.47
10 +15.18 ³⁵⁰	167.31
+40.18 ³⁷⁵	166.21
+59.18 ³⁴⁴	165.35
+65.18 ⁴⁰⁰	165.08
+78.06 G.R.	164.50
+83.50 G.S.	164.25
+88.95 G.T.	164.01
11 +13.95	162.88
+38.95	161.75
+63.95	160.62
+81.51 UV.	159.83
+85.40 UW.	159.66
+89.29 UX.	159.49
12 +14.29	159.00
+39.29	158.20
+64.29	156.82
+89.29	155.45
13 +14.29	154.07
+22.20 AB.	152.70
+23.39 AC.	152.27
+24.59 AD.	152.20
+49.59	152.14
+74.59	150.77
+99.59	149.39
14 +24.59	148.02
	146.64

4.5% = G

5.5% = G

14134.59	146.09
14149.59	145.27
169.72 FE	144.16
+73.39 FG	143.96
+77.07 FH	143.76
15402.07	142.38
+27.07	141.61
+52.07	139.63
+77.07	138.26
16402.07	136.88
+27.07	135.51
+48.28 IJ	134.34
+53.39 IK	134.05
+58.51 IL	133.77
+83.51	132.40
17408.51	131.02
+33.51	129.65
+58.51	128.27
+83.51	126.90
18400	126.00
18408.51	126.49
+33.51	124.03
+58.51	122.57
+83.51	121.11
19408.51	119.66
+33.51	118.20
+58.51	716.74
+83.51	115.28
19491.47 NM	114.82

5.57 = 0.1

5.82476 = X

19+93.39 110	114 71
+ 95.32 HP.	114 60
20+20.32	113 14
+45.32	111 68
+70.32	110 22
+95.32	108 76
21+20.32	107 30
+45.32	105 85
+70.32	104 40
+95.32	102 74
22+20.32	101 48
+45.32	100 02
+50.32	99 74
+70.32	98 56
+91.20 GR.	97 34
+92.39 QS	97 27
+93.59 GT.	97 20
23+18.59	95 75
+43.59	94 29
+68.59	92 83
+93.59	91 37
24+00	91 00
24+18.59	90 52
+43.59	89 87
+68.59	89 22
+93.59	88 57
25+18.59	87 92
+43.59	87 27

26.700 X 5.834 70.50

25+68.59		86.62
+93.59		85.97
26+18.59		85.32
+43.59		84.67
+68.59		84.02
+93.59		83.37
27+18.59		82.72
+43.59		82.07
+68.59		81.42
+93.59		80.77
28+18.59	2.67 per Gr	80.12
+43.59		79.47
+68.59		78.82
+93.59		78.17
29+18.59	X	78.00
+43.59		77.89
+68.59		77.75
+93.59		77.61
30+18.59	.5747 Gr	77.47
+43.59		77.33
+68.59		77.19
+93.59		77.05
31+18.59		76.90
+43.59		76.76
+68.59		76.62
+93.59		76.47
32+18.59		76.32
		76.18

32+24870V.	76 16
+28.39 UW	76 12
+31.92 UX	76 10
+56.92	75 95
+81.92	75 81
33+06.92	75 67
+31.92	75 52
+56.92 ¹	75 38
+78.80 AB.	75 25
+86.09 AC	75 21
+93.38 AD.	75 17
34+18.38 ¹	75 02
+43.38	74 87
+68.38 ¹	74 73
+93.38 ¹	74 58
35+12.38 ¹¹⁹	74 48
+18.38 ¹²⁵	74 44
+26.38 ¹²⁸	74 41
+31.38 ¹³⁴	74 36
+42.38 ¹⁴⁹	74 29
+49.38 ¹⁵⁴	74 24
-68.38 ¹⁷⁵	74 15
+93.38 ²⁰⁰	74 01
+96.81 Int Union Produced to G.	74 00

574 To Gm

PALM STREET.

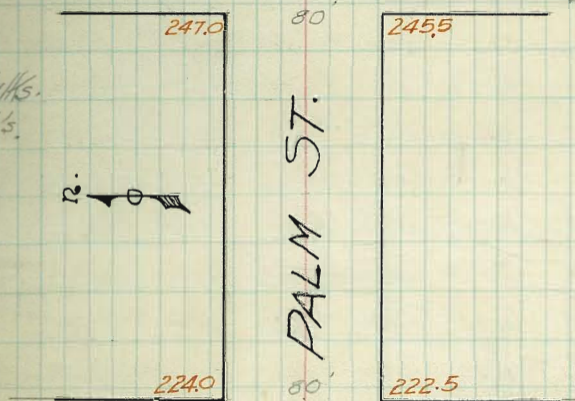
North	PL	Curb	1/4	1/2	3/4	Curb	South
	PL						PL
W.L. First	247.25	247.00	246.40	246.25	245.47	245.50	245.75
25' W.	244.37	244.12	243.52	243.38	242.60	242.62	242.87
50' "	241.50	241.25	240.65	240.50	239.72	239.75	240.00
75' "	238.62	238.38	237.78	237.62	236.84	236.87	237.12
100' "	235.75	235.50	234.90	234.75	233.97	234.00	234.25
125' "	232.87	232.62	232.03	231.87	231.16	231.12	231.37
150' "	230.00	229.75	229.15	229.00	228.22	228.25	228.50
175' "	227.12	226.87	226.27	226.12	225.34	225.37	225.62
E.L. Front	224.25	224.00	223.40	223.25	222.47	222.50	222.75

FIRST ST.

12

Book # 6,

14' Walks.
13' 1/4's.



FRONT ST.

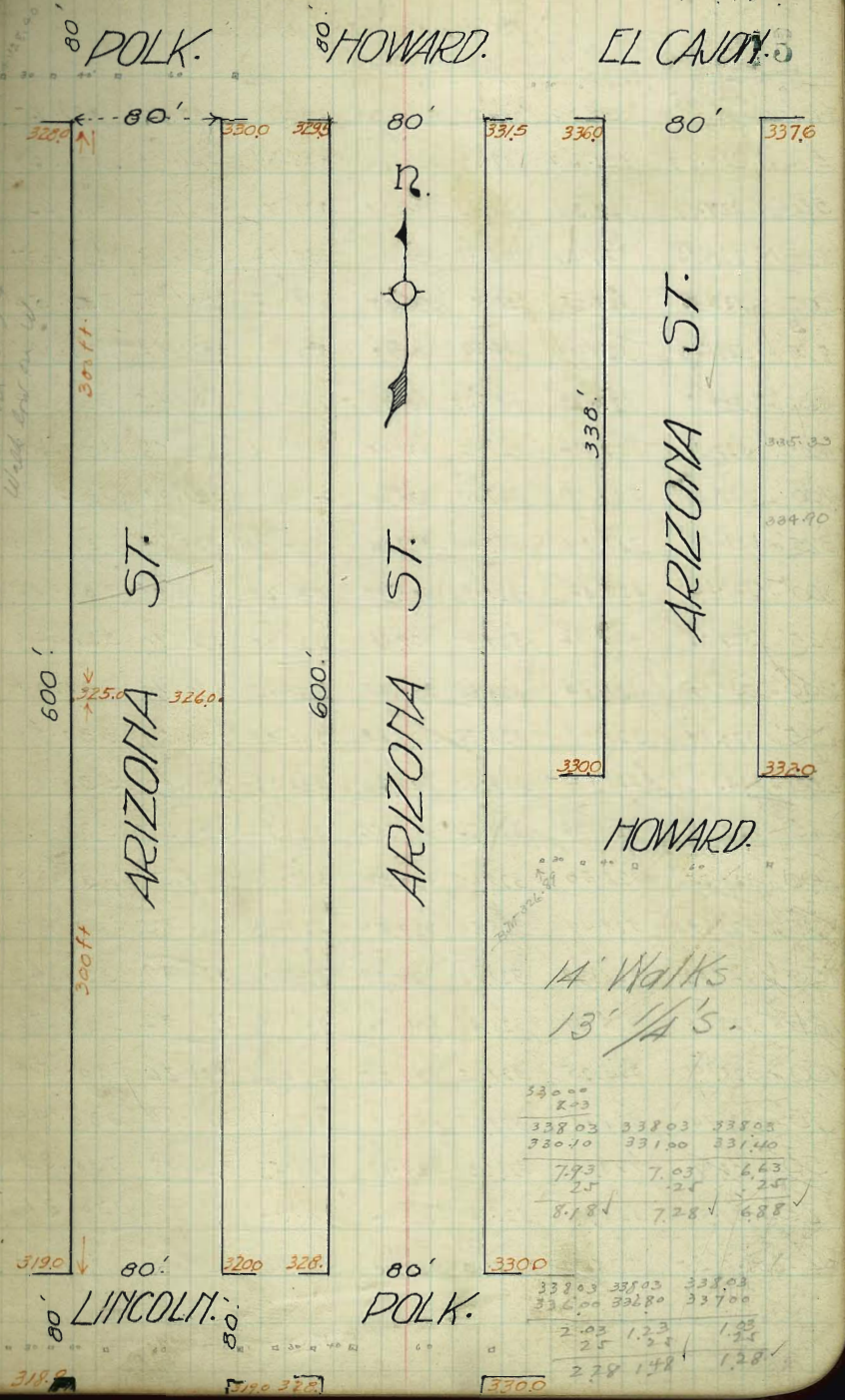
West

ARIZONA STREET

East

Book #6
P 198

	PL	S.L. Lincoln to S.L. El Cajon	East
	Curb	1/4	1/4 Curb
938 N	336.25	336.00	337.00
326 N	335.77	335.78	336.79
300 N	335.57	335.33	336.15
275 N	335.13	334.87	334.90
250 "	334.68	334.43	334.46
225 "	334.24	333.99	334.03
200 "	333.79	333.54	333.59
175 "	333.35	333.10	333.16
150 "	332.91	332.65	332.72
125 "	332.46	332.21	332.28
100 "	332.02	331.77	331.85
75 "	331.58	331.33	331.41
50 "	331.13	330.88	330.98
25 "	330.69	330.44	330.54
N.L. Howard	330.25	330.00	331.10
Howard St. Intersection			
N.L. Howard	330.25	330.00	330.10
Curb	330.00	330.00	330.91
1/4	329.40	328.87	329.93
1/2	329.75	328.75	329.85
3/4	329.22	328.62	329.77
Curb	329.50	329.50	329.64
S.L. Howard	329.75	329.50	329.60



ARIZONA ST.

14' Walks 13' 1/4s

PL.	amb.	1/4	1/2	3/4	Curb	PL.
N.L. Pk. ^{328.25}	328.00	328.10	327.00	329.40	330.00	330.25
Curb 328.00	328.00 327.00	328.00	329.00	329.33	330.00 329.50	330.00
1/4 327.60	328.00	328.47	329.00	329.35	329.47	329.60
1/2 328.00	328.35	328.67	329.00	329.33	329.65	330.00
3/4 327.60	328.00	328.47	329.00	329.33	329.48	329.60
Curb 328.00	327.00 328.00	328.00	329.00	329.33	329.50 330.00	330.00
S.L. Pk. ^{328.25}	328.00	328.10	329.00	329.40	330.00	330.25

Crowned.

Corrugated Culvert. to be built.

327.82 334.71 334.71 340.06 340.06
 76.27 30.00 32.00 36.00 37.60
 337.11 HI 4.71 2.71 4.06 2.96
 327.82 35' sp pole Arizona E. Co. 1907
 100.00
 300.00 HI

Intersection made filling in E. at property.
 otherwise OK. met 10/24/13

ARIZONA ST.

14 Walks - 13 1/4's

Lincoln Intersection.

^{319.25} NL Lincoln	319.00	318.85	319.50	319.40	320.00	320.25
Curb 319.00	319.00 318.00	318.67	319.32	319.22	320.00 319.00	320.00
1/4 318.40	317.75	318.51	319.16	319.06	318.75	319.40
2 318.50	317.50	318.35	319.00	318.90	318.50	319.50
3/4 317.85	317.25	318.19	318.84	318.72	318.25	318.85
Curb 318.00	317.00 318.00	318.03	318.68	318.56	319.00 318.00	319.00
^{318.25} SL Lincoln	318.00	317.85	318.50	318.40	319.00	319.25

17

Intersection low in E at PL.

Gutter high at S. curb West 11/24/13



267.96 Mon SW Trias + median
 7.93
 269.89
 16.52
 259.137
 261.63
 253.90

249.45 Bm SE Pole Chestnut + Trias
 249.45 on NE Myrtle + Trias

249.45	249.60	249.60	249.60
1.15	1.15	1.15	1.15
248.30	248.45	248.45	248.45

249.60	249.60	249.60	249.60
1.15	1.15	1.15	1.15
248.45	248.45	248.45	248.45

Grades on Trias
S. line of Chestnut to N. line of Whitman

	W. PL	Curb	1/2	Center			
0	253.25	253.0	252.40	253.00	252.40	253.0	253.25
+25	252.875	252.625	252.05	252.65	252.07	252.67	252.92
+50	252.50	252.25	251.70	252.30	251.73	252.33	252.58
+75	252.125	251.875	251.35	251.94	251.40	252.0	252.25
1	251.75	251.50	251.01	251.59	251.07	251.67	251.92
+25	251.375	251.125	250.66	251.23	250.73	251.33	251.58
+50	251.000	250.75	250.31	250.88	250.40	251.0	251.25
+75	250.625	250.375	249.96	250.52	250.07	250.67	250.92
2	250.25	250.00	249.62	250.17	249.73	250.33	250.58
+25	249.875	249.625	249.27	249.81	249.40	250.0	250.25
+50	249.50	249.25	248.92	249.46	249.07	249.67	249.92
+75	249.125	248.875	248.57	249.10	248.73	249.33	249.58
3	248.75	248.50	248.225	248.75	248.40	249.0	249.25

253.90 Bm
 256.07
 251.84
 254.83
 253.00
 3.97
 251.00
 3.83
 4.90
 3.80
 5.23
 3.74
 1.84
 3.91
 4.76
 3.09
 4.81
 6.23
 E 1/2 - checked
 through
 249.84 SW Trias Whit Part Low
 250.75 250.50 250.25 250.00
 4.67 3.97 3.17 2.47
 curb stakes West side
 249.84
 6.92
 256.76
 251.00 250.75
 5.76 6.01
 250.50 252.25 253.0
 5.76 4.51 3.76
 Sept. 14/14
 alik. o.k.
 Shields
 Allen
 (Bunker)

Grades on Trias

S line of Whitman to N. line of Boyd

0	246.25	246.00	247.125	246.25	247.90	248.50	246.75
25	246.08	245.83	245.57	246.10	245.775	246.375	246.625
50	243.92	243.67	243.41	243.96	243.65	244.25	244.50
	241.75	241.50	241.26	241.81	241.525	242.125	242.375
1	239.58	239.33	239.10	239.67	239.40	240.00	240.25
	237.43	237.17	236.94	237.52	237.275	237.875	238.125
10	235.25	235.00	234.79	235.37	235.15	235.75	236.00
	233.08	232.83	232.63	233.23	233.025	233.625	233.875
2	230.92	230.67	230.476	231.08	230.90	231.50	231.75
	228.75	228.50	228.32	228.94	228.775	229.375	231.625
10	226.58	226.33	226.16	226.79	226.65	227.25	227.50
	224.42	224.17	224.01	224.65	224.525	225.125	225.375
	222.25	222.00	221.85	222.50	222.40	223.00	223.25

Bin Post NE bar 24945

$$\begin{array}{r} 254.43 \\ 10.8 \\ \hline 243.63 \\ 11.95 \\ \hline 231.68 \\ 12.7 \\ \hline 218.98 \end{array}$$

$$\begin{array}{r} 46.22 \\ 1.33 \\ \hline 47.55 \\ 1.37 \\ \hline 48.92 \end{array}$$

$$\begin{array}{r} 44.25 \\ 10.58 \\ \hline 54.83 \\ 1.37 \\ \hline 56.20 \end{array}$$

$$\begin{array}{r} 21.00 \\ 14.75 \\ \hline 35.75 \\ 1.86 \\ \hline 37.61 \end{array}$$

$$\begin{array}{r} 37.61 \\ 1.50 \\ \hline 39.11 \\ 1.50 \\ \hline 40.61 \end{array}$$

$$\begin{array}{r} 230.67 \\ 8.29 \\ \hline 238.96 \\ 1.12 \\ \hline 240.08 \\ 3.96 \\ \hline 244.04 \end{array}$$

$$\begin{array}{r} 237.84 \\ 1.12 \\ \hline 238.96 \\ 3.96 \\ \hline 242.92 \end{array}$$

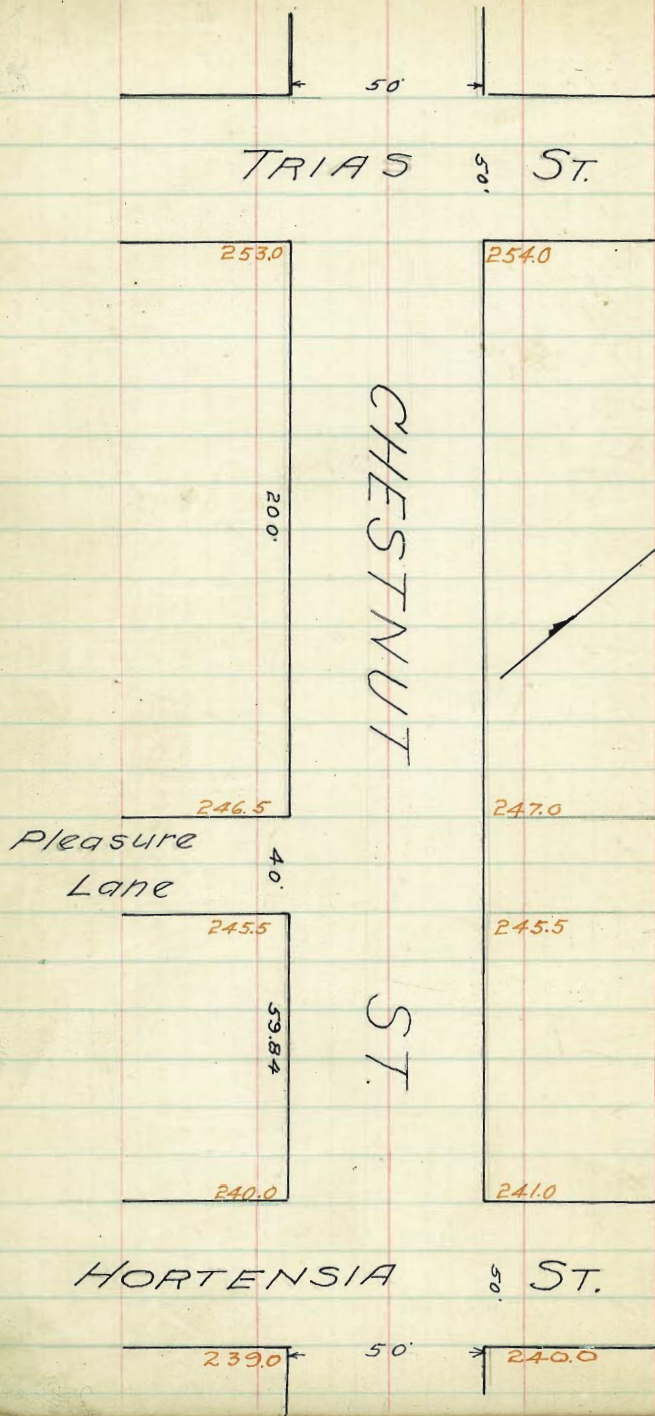
$$\begin{array}{r} 237.84 \\ 1.12 \\ \hline 238.96 \\ 3.96 \\ \hline 242.92 \end{array}$$

$$\begin{array}{r} 237.84 \\ 1.12 \\ \hline 238.96 \\ 3.96 \\ \hline 242.92 \end{array}$$

$$\begin{array}{r} 237.84 \\ 1.12 \\ \hline 238.96 \\ 3.96 \\ \hline 242.92 \end{array}$$

E k check N 9.00 OK
 243.67 239.33 12.33 230.67
 7.00 11.34 237.84 J.P. 8.29
 1.12 238.96 H.I. 226.33
 235.07 12.63
 3.96 12.59
 226.37 J.P.
 3.41
 229.78 H.I.
 224.17
 5.61

check OK.
 Sept. 13/14
 Shields
 letter
 Brinker



Chestnut St.

E. line of Trias to W. Pleasure Lane.

SL

NL

03700	253.25	253.00	252.85	253.50	253.40	254.00	254.25
+28775	252.94	252.19	252.02	252.66	253.525	253.225	253.375
+50210	251.625	251.375	251.19	251.81	251.65	252.28	252.50
+75775	250.81	250.56	250.36	250.97	250.715	251.375	251.625
12400	250.00	249.75	249.54	250.125	249.90	250.50	250.75
25115	249.89	248.94	248.71	249.28	249.025	249.625	249.875
501450	248.275	248.125	247.88	248.44	248.15	248.75	249.00
761425	247.50	247.31	247.05	247.59	247.275	247.875	248.125
21100	246.75	246.50	246.225	246.75	246.40	247.00	247.25

253.90 BM
2.12
256.07
253.00 253.50 257.37 257.61 4925 5012
3.00 2.77 4.70 4.24 6.52 5.95
4812 4840 4650 4675
9.92 7.0 9.27 7.27

5/2 Chestnut

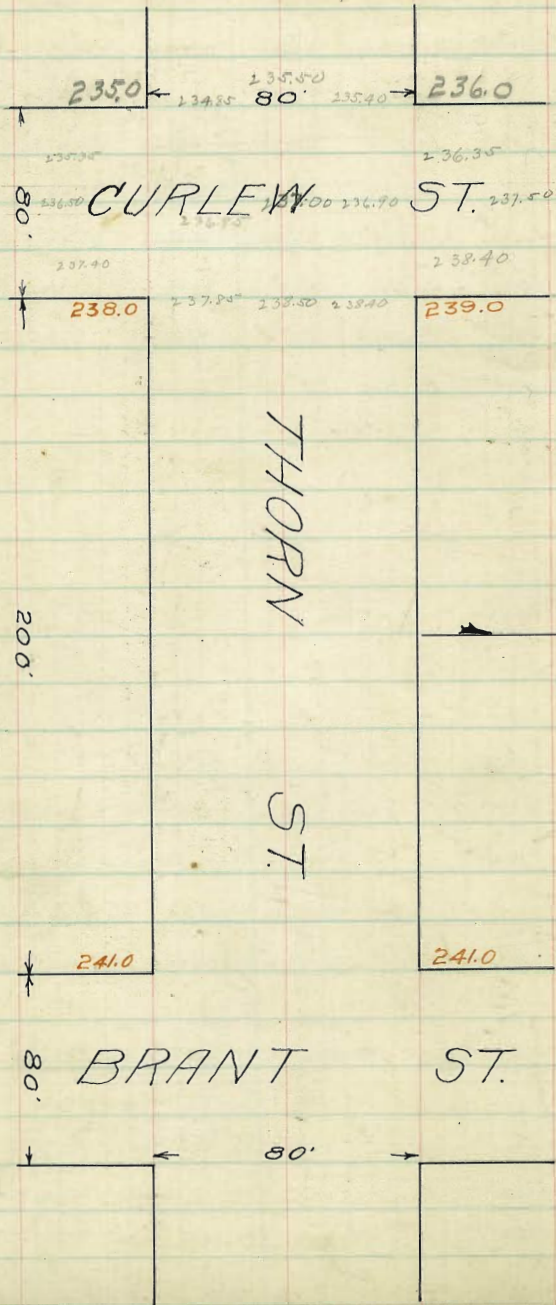
along

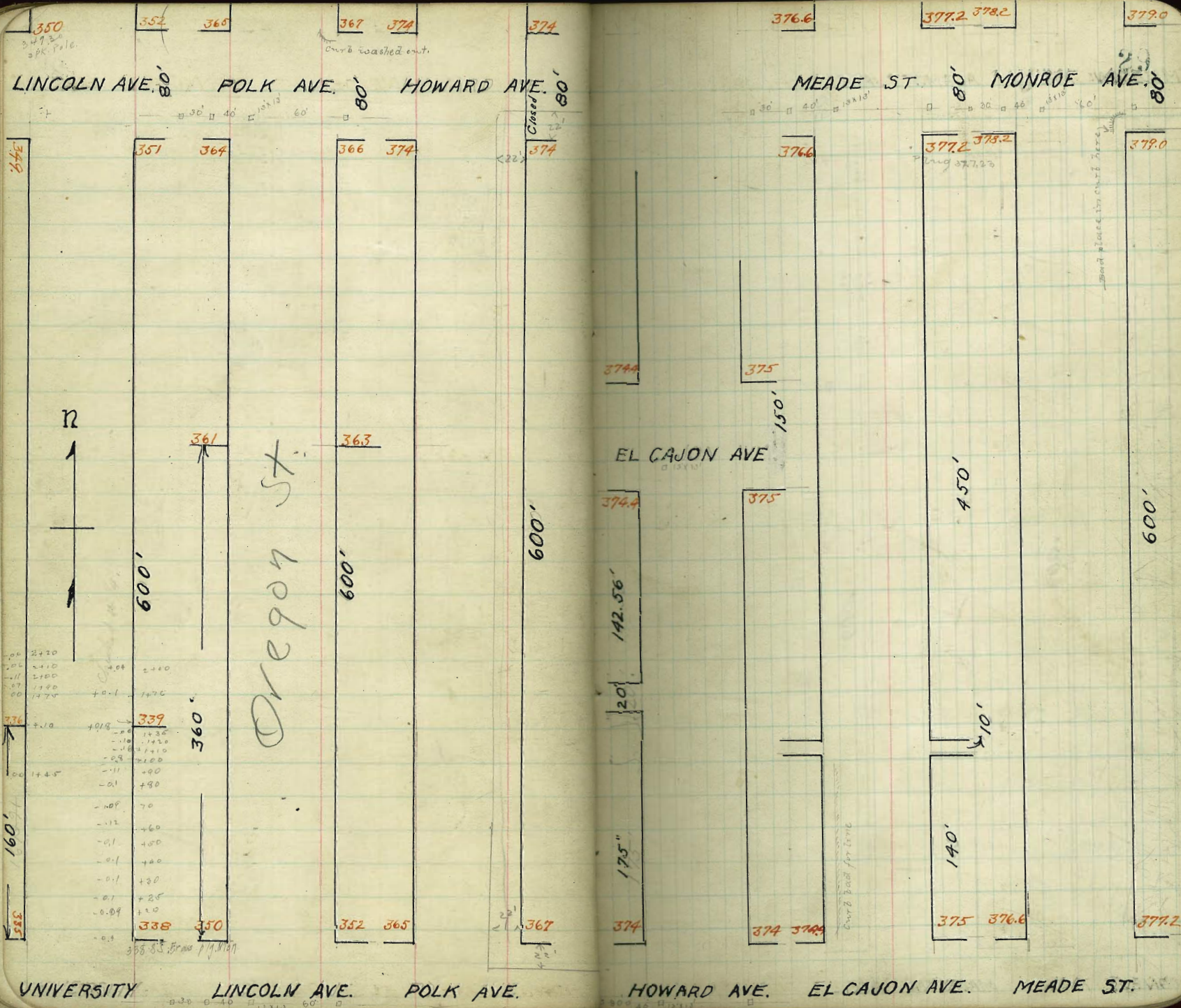
Chestnut St.

E. line of Pleasure Lane to W. line Hortensa

0	245.75	245.50	244.90	245.50	244.90	245.50	245.75
+30	243.00	242.75	242.375	243.00	242.65	243.25	243.50
+60	240.25	240.00	240.850	240.50	240.40	241.00	241.25

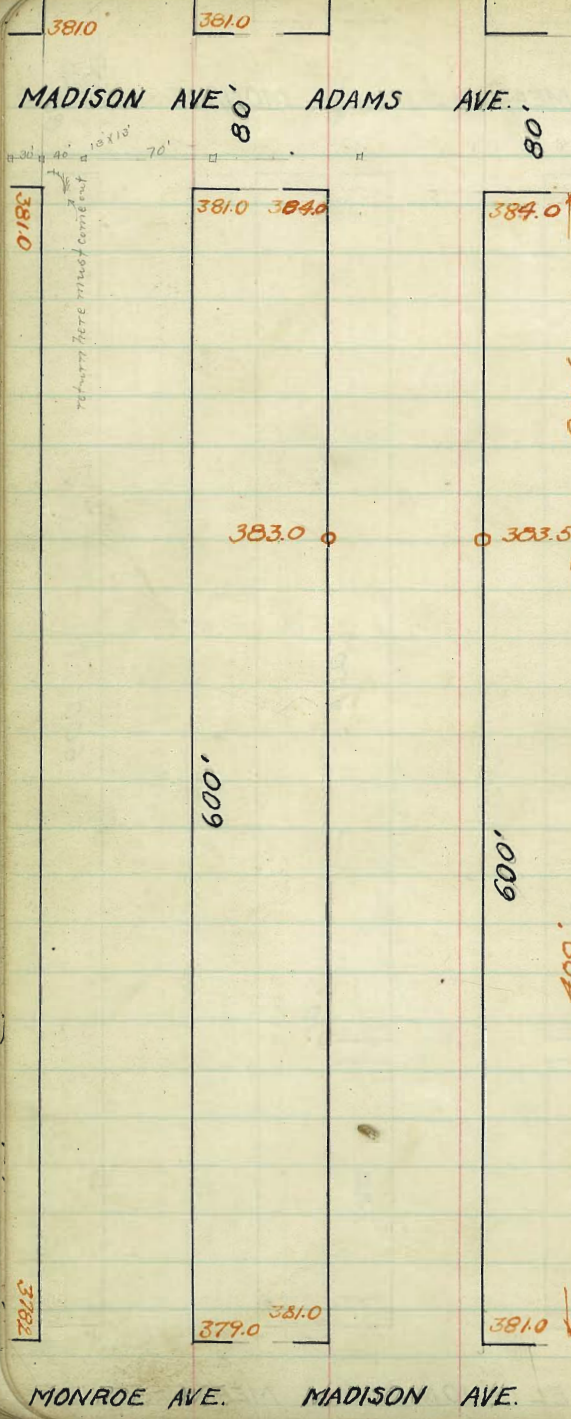
	SL	CB	1/2	1/4	1/8	CL	NL
W.L. Hortensa	240.25	240.00 239.00	239.85	240.50	240.40	241.00 240.00	241.25
W. CL 1/6	240.00 239.00	240.00 239.00	239.65	240.30	240.20	241.00 240.00	241.00
W. 1/4	239.40	238.75	239.50	240.15	240.05	239.75	240.40
Center	239.50	238.50	239.25	240.00	239.90	239.50	240.50
E 1/4	238.85	238.25	239.20	239.85	239.75	239.25	239.85
E Curb	239.00	239.00	239.05	239.70	239.60	240.00 239.00	240.00
E.L.	239.25	239.0	238.75	239.50	239.40	240.00 239.00	240.25





00	2420		
00	2410	0.08	2410
00	2400		
00	2390		
00	2380		
00	2370	+0.1	2370
00	2360		
00	2350		
00	2340		
00	2330		
00	2320		
00	2310		
00	2300		
00	2290		
00	2280		
00	2270		
00	2260		
00	2250		
00	2240		
00	2230		
00	2220		
00	2210		
00	2200		
00	2190		
00	2180		
00	2170		
00	2160		
00	2150		
00	2140		
00	2130		
00	2120		
00	2110		
00	2100		
00	2090		
00	2080		
00	2070		
00	2060		
00	2050		
00	2040		
00	2030		
00	2020		
00	2010		
00	2000		
00	1990		
00	1980		
00	1970		
00	1960		
00	1950		
00	1940		
00	1930		
00	1920		
00	1910		
00	1900		
00	1890		
00	1880		
00	1870		
00	1860		
00	1850		
00	1840		
00	1830		
00	1820		
00	1810		
00	1800		
00	1790		
00	1780		
00	1770		
00	1760		
00	1750		
00	1740		
00	1730		
00	1720		
00	1710		
00	1700		
00	1690		
00	1680		
00	1670		
00	1660		
00	1650		
00	1640		
00	1630		
00	1620		
00	1610		
00	1600		
00	1590		
00	1580		
00	1570		
00	1560		
00	1550		
00	1540		
00	1530		
00	1520		
00	1510		
00	1500		
00	1490		
00	1480		
00	1470		
00	1460		
00	1450		
00	1440		
00	1430		
00	1420		
00	1410		
00	1400		
00	1390		
00	1380		
00	1370		
00	1360		
00	1350		
00	1340		
00	1330		
00	1320		
00	1310		
00	1300		
00	1290		
00	1280		
00	1270		
00	1260		
00	1250		
00	1240		
00	1230		
00	1220		
00	1210		
00	1200		
00	1190		
00	1180		
00	1170		
00	1160		
00	1150		
00	1140		
00	1130		
00	1120		
00	1110		
00	1100		
00	1090		
00	1080		
00	1070		
00	1060		
00	1050		
00	1040		
00	1030		
00	1020		
00	1010		
00	1000		
00	990		
00	980		
00	970		
00	960		
00	950		
00	940		
00	930		
00	920		
00	910		
00	900		
00	890		
00	880		
00	870		
00	860		
00	850		
00	840		
00	830		
00	820		
00	810		
00	800		
00	790		
00	780		
00	770		
00	760		
00	750		
00	740		
00	730		
00	720		
00	710		
00	700		
00	690		
00	680		
00	670		
00	660		
00	650		
00	640		
00	630		
00	620		
00	610		
00	600		
00	590		
00	580		
00	570		
00	560		
00	550		
00	540		
00	530		
00	520		
00	510		
00	500		
00	490		
00	480		
00	470		
00	460		
00	450		
00	440		
00	430		
00	420		
00	410		
00	400		
00	390		
00	380		
00	370		
00	360		
00	350		
00	340		
00	330		
00	320		
00	310		
00	300		
00	290		
00	280		
00	270		
00	260		
00	250		
00	240		
00	230		
00	220		
00	210		
00	200		
00	190		
00	180		
00	170		
00	160		
00	150		
00	140		
00	130		
00	120		
00	110		
00	100		
00	90		
00	80		
00	70		
00	60		
00	50		
00	40		
00	30		
00	20		
00	10		
00	0		

358.83 Brno 7/19/1917



OREGON STREET

MADISON INTERSECTION

	W.P.L	Curb	1/4	2	1/4	Curb	E.P.L
N.L. Madison	381.25	381.00	380.60	381.00	380.60	381.00	381.25
N.Curb	381.00	381.00 380.00	380.60	381.00	380.60	381.00 380.00	381.00
1/4	380.60	380.00	380.60	381.00	380.60	380.00	380.60
2	381.00	380.00	380.60	381.00	380.60	380.00	381.00
3/4	380.60	380.00	380.60	381.00	380.60	380.00	380.60
S.Curb	381.00	380.00 381.00	380.60	381.00	380.60	380.00 381.00	381.00
S.L. Madison	381.25	381.00	380.60	381.00	380.60	381.00	381.25

Intersection needs a little touching up.

Curb at V.O.V. Cor. must be cut out & replaced.

Dorman, Miller, Street, Feb 10-1914. Not rolled.

Intersection not finished

March 5-1914
Miller - show

OREGON STREET.

MADISON TO N. MONROE N

	W.P.L	Curb	1/4	1/2	3/4	W.P.L	E.P.L
SL. Madison	381.25	381.00	380.60	381.00	380.60	381.00	381.25
25 S.	381.13	380.88	380.49	380.90	380.51	380.92	381.19
50 "	380.01	380.76	380.38	380.80	380.42	380.83	381.08
75 "	380.89	380.64	380.27	380.70	380.33	380.75	381.00
100 "	380.77	380.52	380.17	380.60	380.34	380.67	380.92
125 "	380.66	380.41	380.06	380.50	380.25	380.58	380.83
150 "	380.54	380.29	379.95	380.10	380.16	380.50	380.75
175 "	380.43	380.18	379.84	380.30	380.07	380.42	380.67
200 "	380.31	380.06	379.73	380.20	379.97	380.33	380.51
225 "	380.19	379.94	379.62	380.10	379.81	380.25	380.50
250 "	380.07	379.82	379.52	380.00	379.77	380.17	380.42
275 "	379.96	379.71	379.41	379.90	379.67	380.08	380.33
300 "	379.85	379.60	379.30	379.80	379.55	380.00	380.25
325 "	379.73	379.48	379.19	379.70	379.45	379.92	380.19
350 "	379.61	379.36	379.09	379.60	379.35	379.83	380.06
375 "	379.50	379.25	378.97	379.50	379.25	379.75	379.00
400 "	379.38	379.13	378.87	379.40	379.16	379.67	379.92
425 "	379.26	379.01	378.76	379.30	379.07	379.58	379.83
450 "	379.15	378.90	378.65	379.20	378.96	379.50	379.75
475 "	379.03	378.78	378.54	379.10	378.87	379.42	379.67
500 "	378.91	378.66	378.43	379.00	378.78	379.33	379.58
525 "	378.80	378.55	378.32	378.90	378.69	379.25	379.50
550 "	378.68	378.43	378.22	378.80	378.58	379.17	379.42
575 "	378.57	378.32	378.11	378.70	378.49	379.08	379.33
600 N. Monroe	378.45	378.20	378.00	378.60	378.40	379.00	379.25

384.45	384.45	384.45	384.45	384.45	384.45	384.45	384.45	384.45	384.45	384.45	384.45	384.45	384.45	384.45	384.45	384.45	384.45	384.45	384.45
79.45	79.25	79.42	78.68	79.91	79.58	79.75	78.15	79.38	79.92										
6.00	5.20	5.03	5.77	5.54	4.97	4.70	5.30	5.07	4.53										
6.19	4.8	5.5	6.0	5.2	5.7	5.3	5.1	5.0	5.0										
-0.8	+0.4	-0.5	-0.2	+0.3	-0.8	-0.4	+0.2	+0.1	-0.5										
384.45	384.45	384.45	384.45	384.45	384.45	384.45	384.45	384.45	384.45	384.45	384.45	384.45	384.45	384.45	384.45	384.45	384.45	384.45	384.45
80.08	79.61	79.85	80.25	80.42	80.27	80.31	80.58	80.75	80.59										
4.37	4.54	4.6	4.20	4.83	4.38	4.14	3.97	3.70	3.97										
4.9	4.5	4.6	4.1	4.3	4.2	4.0	3.8	4.2	3.9										
-0.4	+0.3	0.0	+0.1	-0.3	+0.2	+0.1	+0.1	-0.5	0.0										
384.45	384.45	384.45	384.45	384.45	384.45	384.45	384.45	384.45	384.45	384.45	384.45	384.45	384.45	384.45	384.45	384.45	384.45	384.45	384.45
80.77	80.92	81.08	81.01	81.25	81.25														
3.58	3.53	3.37	3.44	3.20	3.20														
3.7	4.0	3.1	3.7	4.2	3.6														
2.0	-1.5	+0.3	+0.3	-1.0	-0.4														

33

+C June 13-1913
Dorman, Shaw
Deane

200' x 40' fee for 15' point Oregon & Madison - limited 390.85

384.08	384.08	384.08	384.08	384.08	384.08	384.08	384.08	384.08	384.08	384.08	384.08	384.08	384.08	384.08	384.08	384.08	384.08	384.08	384.08
91.00	91.00	90.83	90.76	90.52	90.67	90.50	90.29	90.06	90.33										
3.04	3.04	3.25	3.32	3.56	3.91	3.58	3.79	4.02	3.75										
384.08	384.08	384.08	384.08	384.08	384.08	384.08	384.08	384.08	384.08	384.08	384.08	384.08	384.08	384.08	384.08	384.08	384.08	384.08	384.08
90.19	79.92	79.60	80.00	79.30	79.26	79.18	79.67	79.00	79.90										
3.0	4.2	4.3	4.05	4.25	4.72	4.75	4.41	4.58	5.18										

384.08 384.08 384.08 384.08 384.08 384.08 384.08 384.08 384.08 384.08
78.66 79.83 79.17 78.93 79.20 79.00
5.82 4.75 4.91 5.65 5.89 5.08

Dorman, Shaw, Shaw
Sept 1-1913
only a copy on effect.

80.65	80.65	81.00	80.60	81.00	81.00
3.88	3.88	4.18	4.18	4.18	4.18

Checked Sub Grades + Curbs at 11-8-13

200' x 40' Plug SE Cor Oregon & Madison.

384.58	384.58	384.58	384.58	384.58	384.58	384.58	384.58	384.58	384.58	384.58	384.58	384.58	384.58	384.58	384.58	384.58	384.58	384.58	384.58
91.00	80.65	81.00	80.60	81.00	81.00														
3.88	3.98	3.58	3.98	3.58	3.58														

curb in this block will pass
Roundway O.K.

Property lines & walls must be graded & cut back.

Dorman, Shaw, Miles, Feb 10 1914 Not rolled.

March 5-14 Property line and walk low in several places
Miller, Shaw

OREGON STREET.

MONROE INTERSECTION

W PL	Curb	1/4	1/4	1/4	Curb	EPL
378.45 N.L. Monroe	378.20	378.00	378.60	378.40	379.00	379.25
					378.00	
N Curb	378.20 377.20	378.00	378.60	378.40	379.00 378.00	379.00
N 1/4	377.80	377.20	378.00	378.60	378.40	378.00
E	378.20	377.20	378.00	378.60	378.40	378.00
S 1/4	377.80	377.20	378.00	378.60	378.40	378.00
S Curb	378.20 378.20	378.00	378.60	378.40	378.00 379.00	379.00
378.45 S.L. Monroe	378.20	378.00	378.60	378.40	379.00	379.25

A bad looking return at the S & Carmel.

Intersection needs more top dressing.

Dorman, Whipple Miller Feb 10-1914. Not rolled.

West side not up to grade March 5-14
Gutters not dressed Miller show
Not rolled

OREGON STREET

W.P.L.	MEADE		INTERSECTION		Curb	E.P.L.
	Curb	1/4	3/4	1/4		
NL Meade 376.85	376.60	376.35	376.90	376.60	377.20	377.45
NCurb 376.60	376.60 375.60	376.35	376.90	376.60	377.20 376.20	377.20
N 1/4 376.20	375.60	376.35	376.90	376.60	376.20	377.80
3/4 376.60	375.60	376.35	376.90	376.60	376.20	377.20
S 1/4 376.20	375.60	376.35	376.90	376.60	376.20	377.80
SCurb 376.60	375.60 376.60	376.35	376.90	376.60	376.20 377.20	377.20
SL Meade 376.85	376.60	376.35	376.90	376.60	377.20	377.45

This intersection needs filling in as shown on notes.

Feb. 10-1914, Dawson, Shaw, Miller. Not rolled.

Intersection not finished

Billie Shaw
of March 5-14

OREGON STREET

MEADELION TO EL CAJON.

Wk/Pl	Curb	1/4	1/2	3/4	Curb	EPL
SL Meade 376.85	376.60	376.35	376.90	376.60	377.20	377.45
25'S 376.76	376.51	376.26	376.81	376.51	377.11	377.36
50 " 376.67	376.42	376.17	376.72	376.42	377.02	377.27
75 " 376.57	376.32	376.07	376.62	376.33	376.92	377.17
100 " 376.48	376.23	375.98	376.53	376.24	376.83	377.08
125 " 376.39	376.14	375.89	376.44	376.14	376.74	376.99
150 " 376.30	376.05	375.80	376.35	376.05	376.65	376.90
175 " 376.21	375.96	375.71	376.26	375.96	376.56	376.81
200 " 376.12	375.87	375.62	376.17	375.87	376.47	376.72
225 " 376.02	375.77	375.52	376.08	375.78	376.37	376.62
250 " 375.93	375.68	375.43	375.98	375.68	376.28	376.53
275 " 375.84	375.59	375.34	375.89	375.59	376.19	376.44
300 " 375.75	375.50	375.25	375.80	375.50	376.10	376.35
325 " 375.66	375.41	375.16	375.71	375.41	376.01	376.26
350 " 375.57	375.32	375.07	375.62	375.32	375.92	376.17
375 " 375.47	375.22	374.97	375.52	375.22	375.82	376.07
400 " 375.38	375.13	374.88	375.43	375.13	375.73	375.98
425 " 375.29	375.04	374.79	375.34	375.04	375.64	375.89
450 " 375.20	374.95	374.70	375.25	374.95	375.55	375.80
475 " 375.11	374.86	374.61	375.16	374.86	375.46	375.71
500 " 375.02	374.77	374.52	375.07	374.77	375.37	375.62
525 " 374.92	374.67	374.42	374.97	374.67	375.27	375.52
550 " 374.83	374.58	374.33	374.88	374.58	375.18	375.43
575 " 374.74	374.49	374.24	374.79	374.49	375.09	375.34
600 " 374.65	374.40	374.15	374.70	374.40	375.00	375.25

El Cajon & La Jolla NW Cor

To El Cajon N.E. Cor El Cajon & Oregon.

Wk/Pl	Curb	1/4	1/2	3/4	Curb	EPL
376.54	376.54	376.54	376.54	376.54	376.54	376.54
75.25	74.65	74.83	75.43	75.62	75.02	75.20
4.29	4.89	4.71	4.11	3.92	4.52	4.34
5.11	5.7	4.9	4.0	4.7	5.5	5.6
-0.9	-0.8	-0.2	+0.1	-0.8	-1.0	-1.1
376.54	376.54	376.54	376.54	376.54	376.54	376.54
75.57	76.17	76.35	75.75	76.93	76.53	76.72
3.77	3.37	3.77	3.77	3.61	3.81	2.92
5.2	5.1	4.4	5.7	4.7	5.1	4.4
-1.6	-1.7	-1.2	-1.9	-1.7	-2.1	-1.6
376.54	376.54	376.54	376.54	376.54	376.54	376.54
77.09	76.48	76.67	77.27	77.48	76.85	76.95
2.84	3.06	2.87	2.27	2.89	2.69	2.69
3.11	3.9	3.1	2.1	3.4	3.5	3.5
-0.6	-0.8	-0.2	+0.2	-1.3	-0.8	-0.8

376.54 376.54 376.54 376.54 376.54 376.54 376.54
 77.09 76.48 76.67 77.27 77.48 76.85 76.95
 2.84 3.06 2.87 2.27 2.89 2.69 2.69
 3.11 3.9 3.1 2.1 3.4 3.5 3.5
 -0.6 -0.8 -0.2 +0.2 -1.3 -0.8 -0.8

376.54 376.54 376.54 376.54 376.54 376.54 376.54
 77.09 76.48 76.67 77.27 77.48 76.85 76.95
 2.84 3.06 2.87 2.27 2.89 2.69 2.69
 3.11 3.9 3.1 2.1 3.4 3.5 3.5
 -0.6 -0.8 -0.2 +0.2 -1.3 -0.8 -0.8

376.54 376.54 376.54 376.54 376.54 376.54 376.54
 77.09 76.48 76.67 77.27 77.48 76.85 76.95
 2.84 3.06 2.87 2.27 2.89 2.69 2.69
 3.11 3.9 3.1 2.1 3.4 3.5 3.5
 -0.6 -0.8 -0.2 +0.2 -1.3 -0.8 -0.8

376.54 376.54 376.54 376.54 376.54 376.54 376.54
 77.09 76.48 76.67 77.27 77.48 76.85 76.95
 2.84 3.06 2.87 2.27 2.89 2.69 2.69
 3.11 3.9 3.1 2.1 3.4 3.5 3.5
 -0.6 -0.8 -0.2 +0.2 -1.3 -0.8 -0.8

376.54 376.54 376.54 376.54 376.54 376.54 376.54
 77.09 76.48 76.67 77.27 77.48 76.85 76.95
 2.84 3.06 2.87 2.27 2.89 2.69 2.69
 3.11 3.9 3.1 2.1 3.4 3.5 3.5
 -0.6 -0.8 -0.2 +0.2 -1.3 -0.8 -0.8

376.54 376.54 376.54 376.54 376.54 376.54 376.54
 77.09 76.48 76.67 77.27 77.48 76.85 76.95
 2.84 3.06 2.87 2.27 2.89 2.69 2.69
 3.11 3.9 3.1 2.1 3.4 3.5 3.5
 -0.6 -0.8 -0.2 +0.2 -1.3 -0.8 -0.8

376.54 376.54 376.54 376.54 376.54 376.54 376.54
 77.09 76.48 76.67 77.27 77.48 76.85 76.95
 2.84 3.06 2.87 2.27 2.89 2.69 2.69
 3.11 3.9 3.1 2.1 3.4 3.5 3.5
 -0.6 -0.8 -0.2 +0.2 -1.3 -0.8 -0.8

376.54 376.54 376.54 376.54 376.54 376.54 376.54
 77.09 76.48 76.67 77.27 77.48 76.85 76.95
 2.84 3.06 2.87 2.27 2.89 2.69 2.69
 3.11 3.9 3.1 2.1 3.4 3.5 3.5
 -0.6 -0.8 -0.2 +0.2 -1.3 -0.8 -0.8

376.54 376.54 376.54 376.54 376.54 376.54 376.54
 77.09 76.48 76.67 77.27 77.48 76.85 76.95
 2.84 3.06 2.87 2.27 2.89 2.69 2.69
 3.11 3.9 3.1 2.1 3.4 3.5 3.5
 -0.6 -0.8 -0.2 +0.2 -1.3 -0.8 -0.8

376.54 376.54 376.54 376.54 376.54 376.54 376.54
 77.09 76.48 76.67 77.27 77.48 76.85 76.95
 2.84 3.06 2.87 2.27 2.89 2.69 2.69
 3.11 3.9 3.1 2.1 3.4 3.5 3.5
 -0.6 -0.8 -0.2 +0.2 -1.3 -0.8 -0.8

376.54 376.54 376.54 376.54 376.54 376.54 376.54
 77.09 76.48 76.67 77.27 77.48 76.85 76.95
 2.84 3.06 2.87 2.27 2.89 2.69 2.69
 3.11 3.9 3.1 2.1 3.4 3.5 3.5
 -0.6 -0.8 -0.2 +0.2 -1.3 -0.8 -0.8

OREGON STREET

EL CAJON TO HOWARD

W.P.L.	Curb	1/4	1/2	3/4	Curb	E.P.L.
388.0 N SL. El Cajon	374.65	374.40	374.15	374.70	374.40	375.00
300 N	374.60	374.35	374.11	374.63	374.39	374.99
275 N	374.50	374.31	374.07	374.58	374.32	374.91
250 N	374.54	374.28	374.03	374.53	374.26	374.88
225 N	374.51	374.25	373.99	374.47	374.19	374.74
200 N	374.48	374.22	373.94	374.42	374.13	374.66
175 N	374.45	374.19	373.90	374.37	374.06	374.58
150 N	374.42	374.16	373.86	374.32	374.09	374.50
125 N	374.39	374.13	373.82	374.26	373.99	374.41
100 N	374.36	374.10	373.77	374.21	373.86	374.33
75 N	374.33	374.07	373.73	374.16	373.80	374.25
50 N	374.30	374.04	373.68	374.11	373.73	374.17
25 N	374.27	374.02	373.64	374.05	373.67	374.08
N.L. Howard	374.25	374.100	373.60	374.00	373.60	374.25

El Cajon & Idaho

387.0 N	381.43	381.43	381.43	381.43	381.43	381.43	381.43	381.43	381.43	381.43
74.25	74.65	74.66	74.84	75.08	74.54	74.48	74.91	74.75	74.97	74.97
6.18	6.79	6.93	6.17	6.35	6.99	6.94	6.52	6.68	7.01	7.01
5.6	7.0	7.1	4.3	4.1	6.7	7.0	4.4	4.0	7.3	7.3
+0.6	-0.2	-0.3	+1.9	+2.3	+0.2	0.0	+2.1	+2.7	-0.3	-0.3

38

381.43	381.43	381.43	381.43	381.43	381.43
74.25	74.58	74.41	74.20	74.25	74.25
7.07	6.85	7.02	7.13	7.18	7.19
7.3	4.3	4.2	7.9	7.5	6.1
-0.2	+2.6	+2.8	-0.7	-0.3	+1.1

387.0 N El Cajon & Oregon. 378.85 378.85 378.85 378.85 378.85
 74.40 74.15 74.70 74.40 74.80
 4.45 4.72 4.75 4.45 3.85

387.0 N El Cajon & Oregon. 377.87 377.87 377.87 377.87 377.87
 74.00 74.60 74.00 74.60 74.00
 3.87 4.27 3.97 4.27 3.87

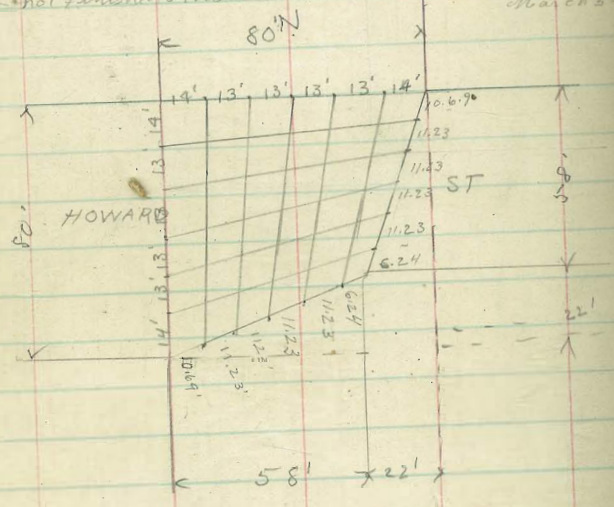
This det. was not checked for subgrade, the 1/4 cent. are in an average 0.2 high
 The gutters average about 8" deep. Side walks must be graded. Not rolled.
 Cut at O'Connor, Shaw, Miller, Feb 11-14.
 West Property and walk on S and low in places
 East " not out back and walk low
 West gutter in bad shape
 Miller - Shaw

OREGON STREET,

SEE SKETCH IN
LEVEL BOOK 662 P

	HOWARD		INTERSECTION				
W.P.L.	Curb	1/4	1/4	1/4	Curb	E.P.L.	
M.L. Howard	374.25	374.00	373.60	374.00	373.60	374.00	374.25
N CURB	374.00	374.00	373.60	374.00	373.60	374.00	374.00
N 1/4	373.60	373.00	373.60	374.00	373.60	373.00	373.60
E	374.00	373.00	373.60	374.00	373.60	373.00	374.00
S 1/4	373.60	373.00	373.60	374.00	373.60	373.00	373.60
S CURB	374.00	373.00	373.60	374.00	373.60	373.00	374.00
S L Howard	374.25	374.00	373.40	374.00	373.60	374.00	374.25

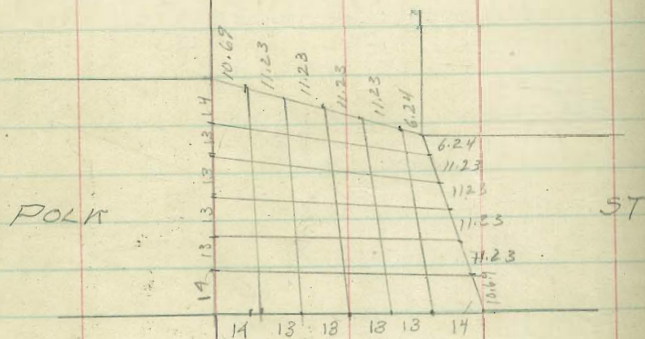
Intersection needs grading up. Donegan, Miller, Shaw
 Feb 11-14
 Miller, Shaw
 March 5-19
 center section not finished or rolled on west



OREGON STREET

	POLK		INTERSECTION			
WPL	Curb	1/4	1/2	3/4	Curb	EPL
385.25						
N.L. Polk	365.00	385.10	386.00	386.90	367.00	367.25
	365.00					
N Curb	365.00	364.83	365.83	366.23	367.00	367.00
	364.00				366.00	
N 1/4	364.40	363.75	364.77	365.67	365.75	366.40
1/2	364.80	363.50	364.60	365.50	365.90	366.50
S 1/4	363.85	363.25	364.43	365.33	365.73	365.85
	364.00	363.00			365.00	
S. Curb	364.00	364.27	365.17	365.57	366.00	366.00
	364.25					
S.L. Polk	364.00	364.10	365.00	365.40	366.00	366.25

*Intersection needs fixing of first grade. Stoman, Miller, Shaul. Feb. 11, 14
 Intersection not fixed. March 5-14 Miller show*



ST

OREGON ST.

LINCOLN INTERSECTION

	W.P.L.	Curb	1/4	⊕	1/4	Curb	F.P.L.
6	NLL Lincoln	350.25	350.00	350.10	351.00	351.60	352.00
57	N Curb	350.00	350.00	349.92	350.82	351.43	352.00
55	N 1/4	349.40	349.00	349.96	350.66	351.27	351.40
52	E 1/2	349.43	348.75	349.72	350.62	351.23	351.41
50	⊕	349.50	349.50	349.60	350.50	351.10	349.50
49	S 1/2	349.09	348.56	349.54	350.46	351.06	349.37
47	S 1/4	348.15	348.75	349.34	350.34	350.85	351.25
45	S Curb	349.0	349.0	349.28	350.18	350.77	351.00
44	SL Lincoln	349.25	349.00	349.10	350.00	350.60	351.00

Intersection needs filling in at West property line.
 Feb 11 - 1914 Donnan, Muller, Shaw.

FERN ST.

232.00

232.00

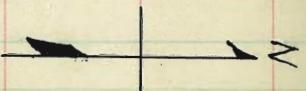
BEECH ST.

200'

233.00

233.00

GROVE ST.



233.00

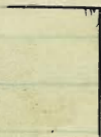
233.00

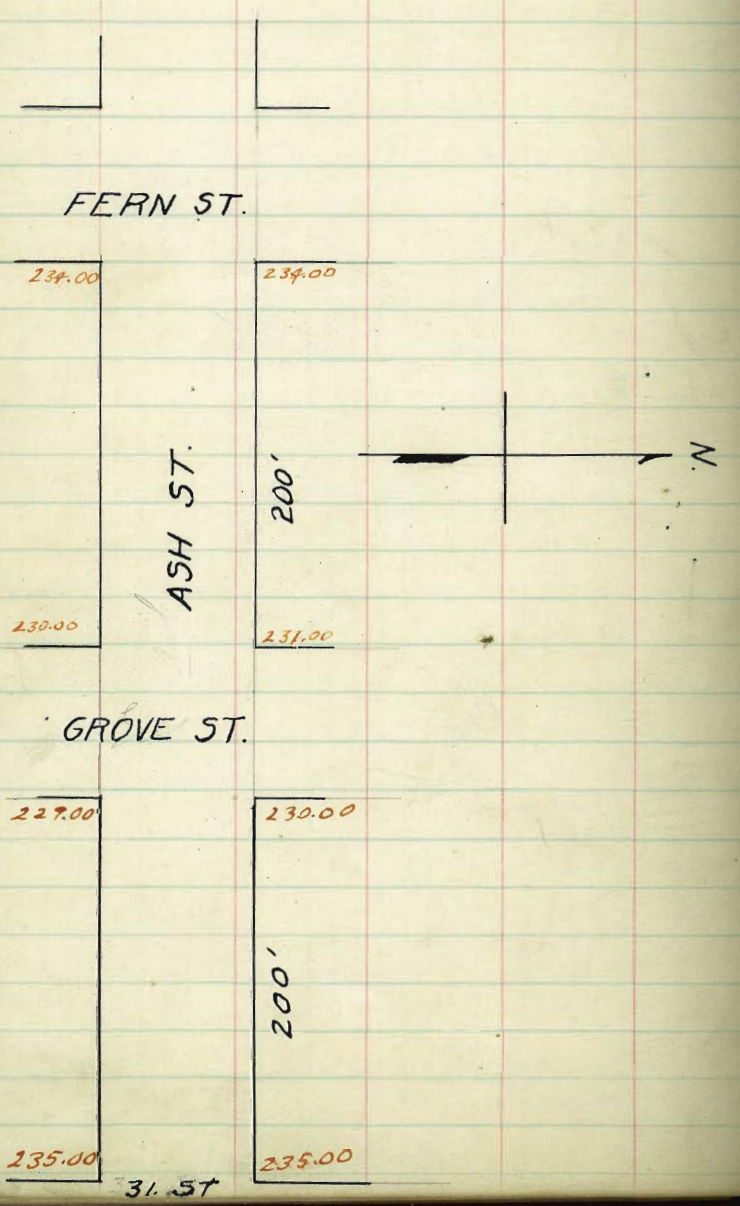
200'

231.0

231.00

THIRTY FIRST ST.





10' 1/4

THIRTY FIRST ST. 20' Walks

S.L. BEECH TO N.L. ASH.

W.P.L.	Curb	1/4	1/2	3/4	Curb	E.P.L.
231.25	231.00	230.60	230.75	230.10	230.50	230.75
25'S	231.58	231.33	230.93	231.10	230.44	230.88
50'S	231.92	231.66	231.27	231.46	230.85	231.25
75'S	232.25	232.00	231.60	231.81	231.23	231.63
100'S	232.58	232.33	231.93	232.17	231.60	232.00
125'	232.92	232.66	232.27	232.52	231.99	232.38
150''	233.25	233.00	232.60	232.88	232.35	232.75
175''	233.58	233.33	232.93	233.23	232.73	233.13
200''	233.92	233.66	233.27	233.58	233.10	233.50
225''	234.25	234.00	233.60	233.94	233.48	233.88
250''	234.58	234.33	233.93	234.29	233.85	234.25
275''	234.92	234.66	234.27	234.65	234.23	235.03
300''	235.25	235.00	234.60	235.00	234.60	235.00
N.L. Ash	235.25	235.00	234.60	235.00	234.60	235.00

✓ ✓ ✓ ✓ ✓

241.59	241.59	241.59	241.59	241.59	241.59
231.92	232.89	232.92	232.92	234.59	235.25
7.67	9.00	8.34	9.67	7.00	6.25
6.79	5.60	4.00	4.21	5.16	5.8
6.79	3.30	4.00	3.46	1.84	1.5

51

241.59	241.59	241.59	241.59	241.59	241.59
224.10	220.75	220	232.45	231.50	230.75
8.9	7.84	8.59	9.34	10.09	10.84
2.82	0.70	3.25	3.65	4.12	4.58
2.82	7.26	4.45	4.92	5.50	6.26

241.59
235.78

239.25	39.25	39.25	39.25	39.25	39.25	39.25	39.25
4.43	1.50	1.58	3.00	3.92	4.50	5.25	5.25
235.02	7.70	6.74	6.50	5.33	4.76	4.00	5.25
7.79	2.20	6.94	6.50	5.58	5.00	4.25	5.75
239.91	39.25	39.25	39.25	39.25	39.25	39.25	239.91
1.50	2.25	3.25	3.75	4.25	4.67	5.00	236.99
7.33	7.00	6.00	5.50	4.67	4.92	4.25	36.08
7.58	7.25	6.25	5.75	4.92	4.92	4.25	32.75

236.08	36.08	36.08	36.08	36.08	36.08	36.08	36.08
1.82	1.76	2.25	2.25	2.25	2.25	2.25	2.25
235.00	4.76	3.23	2.53	2.33	2.53	2.25	2.25
5.03	4.21	3.23	3.03	2.58	2.58	2.25	2.25
240.00	36.08	36.08	36.08	36.08	36.08	36.08	36.08
1.22	1.60	2.60	3.10	3.10	3.10	3.10	3.10
4.41	4.48	3.48	2.98	2.98	2.15	1.98	1.98
36.08	36.08	36.08	36.08	36.08	36.08	36.08	36.08
1.48	2.17	2.88	3.53	4.29	5.00	5.00	5.00
4.42	3.91	3.20	2.50	1.79	1.08	1.08	1.08
36.08	36.08	36.08	36.08	36.08	36.08	36.08	36.08
2.88	1.93	2.38	3.27	3.80	4.60	4.60	4.60
5.23	4.15	3.73	2.81	2.23	1.98	1.98	1.98
36.08	36.08	36.08	36.08	36.08	36.08	36.08	36.08
1.50	2.57	3.00	3.92	4.50	5.25	5.25	5.25
4.58	3.50	3.08	2.16	1.58	1.23	1.23	1.23
4.83	3.70	3.30	2.41	1.83	1.28	1.28	1.28

1/10
Kerr
D.K.
Dunlop
Shaw
Kerr

7.0
4.23

12' $\frac{1}{4}$ ' THIRTY FIRST ST. 16' Walks

ASH INTERSECTION PARK

W.P.L.	Curb	$\frac{1}{4}$	$\frac{1}{2}$	$\frac{3}{4}$	Curb	E.P.L.
N.L. Ash 235.25	235.00	234.60	235.00	234.60	235.00	235.25
N. Curb	235.00 234.00	234.60	235.00	234.60	235.00 234.00	235.00
N $\frac{1}{4}$	234.60	234.00	234.60	235.00	234.60	234.00
$\frac{1}{2}$	235.00	234.00	234.60	235.00	234.60	234.00
S $\frac{1}{4}$	234.60	234.00	234.60	235.00	234.60	234.00
S Curb	235.00 234.00 235.00	234.60	235.00	234.60	234.00	235.00
S.L. Ash 235.25	235.00	234.60	235.00	234.60	235.00	235.25

24008 40.03 40.03 40.03 40.03
 $\frac{35.25}{4.78}$
 $\frac{5.13}{5.43}$

10 1/2

THIRTY FIRST ST

20 Walks

SL. ASH TO SL. SOUTH PARK

W. P.L.	Curb	1/4	1/2	3/4	Curb	E. P.L.
235.25	235.00	234.60	235.00	234.60	235.00	235.25
25'S 234.43	234.18	233.79	234.22	233.82	234.29	234.49
50'S 233.60	233.35	232.98	233.43	233.05	233.48	233.73
75" 232.78	232.53	232.17	232.63	232.28	232.72	232.97
100" 231.95	231.70	231.37	231.84	231.50	231.97	232.22
125" 231.13	230.88	230.56	231.05	230.73	231.21	231.46
150" 230.30	230.05	229.75	230.26	229.95	230.45	230.70
175" 229.48	229.23	228.94	229.46	229.18	229.69	229.94
200" 228.65	228.40	228.13	228.67	228.40	228.93	229.18
225" 227.83	227.58	227.32	227.88	227.63	228.17	228.42
250" 227.00	226.75	226.52	227.09	226.85	227.42	227.67
275" 226.18	225.93	225.71	226.29	226.08	226.66	226.91
300" 225.35	225.10	224.90	225.50	225.30	225.90	226.15
SL. S. PARK						

238.45 K. 2

238.45	38.45	38.45	38.45	38.45	38.45	38.45	38.45
31.91	31.91	31.91	31.91	31.91	31.91	31.91	31.91
6.59	6.59	6.59	6.59	6.59	6.59	6.59	6.59
1.31	1.31	1.31	1.31	1.31	1.31	1.31	1.31
-0.55	-0.55	-0.55	-0.55	-0.55	-0.55	-0.55	-0.55

31.45	31.45	31.45	31.45	31.45	31.45	31.45	31.45
26.70	26.70	26.70	26.70	26.70	26.70	26.70	26.70
11.20	11.20	11.20	11.20	11.20	11.20	11.20	11.20
+1.1	+1.1	+1.1	+1.1	+1.1	+1.1	+1.1	+1.1

236.79	37.89	37.89	37.89	37.89	37.89	37.89	37.89
237.2944	2.64	4.29	5.67	7.59	8.71	10.89	11.74
	2.89	4.54	5.92	7.84	8.96	11.14	12.99
	3.73	5.94	7.19	8.25	10.22	12.54	
	4.16	6.19	7.44	8.49	10.47	12.79	

230.00	40.00	40.00	40.00	40.00	40.00	40.00	40.00
228.67	1.78	6.68	8.06	9.99	10.83	11.70	12.60
232.9044	5.43	4.03	4.03	4.03	4.03	4.03	4.03
235.10	7.05	8.53	10.28	11.63	13.28	14.98	16.73
230.84	3.23	6.60	8.19	9.77	11.36	13.01	14.70
	4.03	4.03	4.03	4.03	4.03	4.03	4.03
	3.03	1.22	2.93	3.13	3.84	4.90	6.24
	6.98	8.66	10.08	11.40	12.85	14.35	15.90
	4.03	4.03	4.03	4.03	4.03	4.03	4.03
	3.73	1.90	0.70	3.65	2.67	5.30	7.05
	6.30	8.03	9.53	11.03	12.53	14.03	15.53
	6.55	8.33	9.55	11.03	12.53	14.03	15.53

50

1/20/13

amb 2 prev.

checked O.K.
Dunkle
Shaw
Kerr

TRIAS ST.

Xreobook 354 B p62

Cherry

Q 261.0 Amoy

ST

262.5

50

262.0

300.

TRIAS ST.

270.0

Pine

Q 270.3-3m

ST.

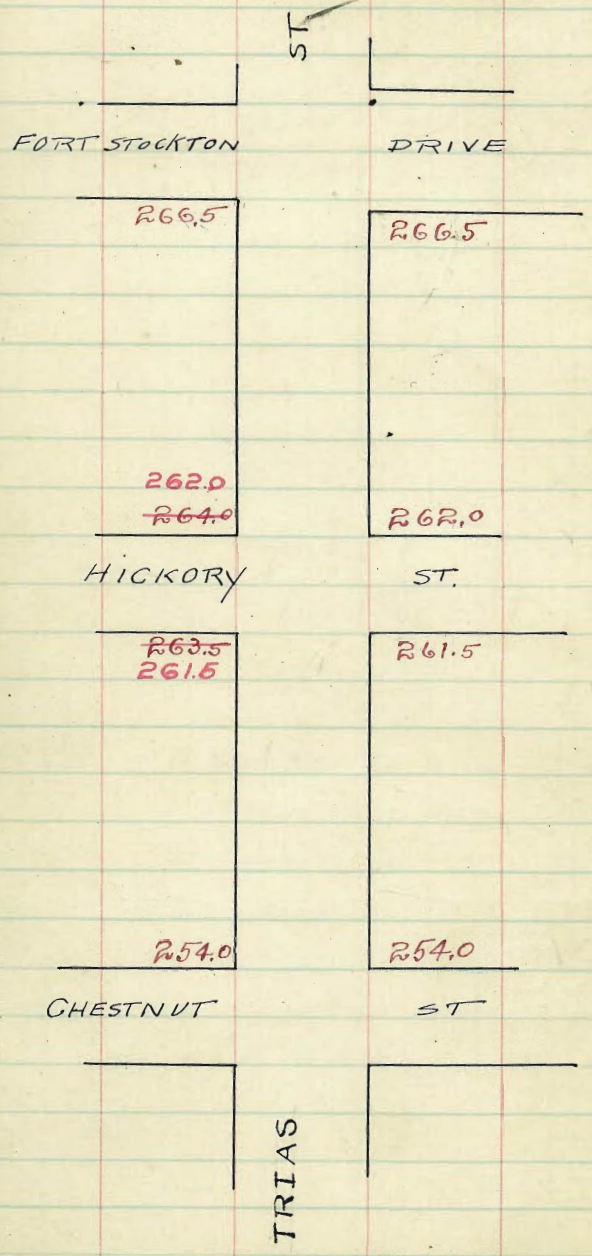
270.0



267.86 Mon SW Madras Trias

273.22

270.22 Upper Mon Trias Pine



N.W

S.E

N. Line of Fort Stockton Drive

N. Line 267.25 267.0 266.60 267.0 266.60 267.0 267.25

N. Curve 267.0 267.0 266.51 266.91 266.51 267.0 267.0
266.0 266.0

N. 1/4 266.40 265.87 266.43 266.13 266.43

Center 266.75 265.75 266.35 266.75 266.35 265.75 266.75

S 1/4 266.22 265.62 266.27 266.19 266.27 265.63 266.22

S Curve 266.5 265.5 266.19 266.89 266.19 266.5 266.5

S. Line 266.75 266.5 266.10 266.50 266.10 266.5 266.75

S. Line of Fort Stockton Drive

471.05	266.43	265.75	266.27	266.19	266.10	266.50	265.75	266.10	266.19	266.27	266.43	471.05
468.22	468.22	468.22	468.22	468.22	468.22	468.22	468.22	468.22	468.22	468.22	468.22	468.22

Linked OK 6/20/13
Eugene
Superior
Shaw

58

N.W

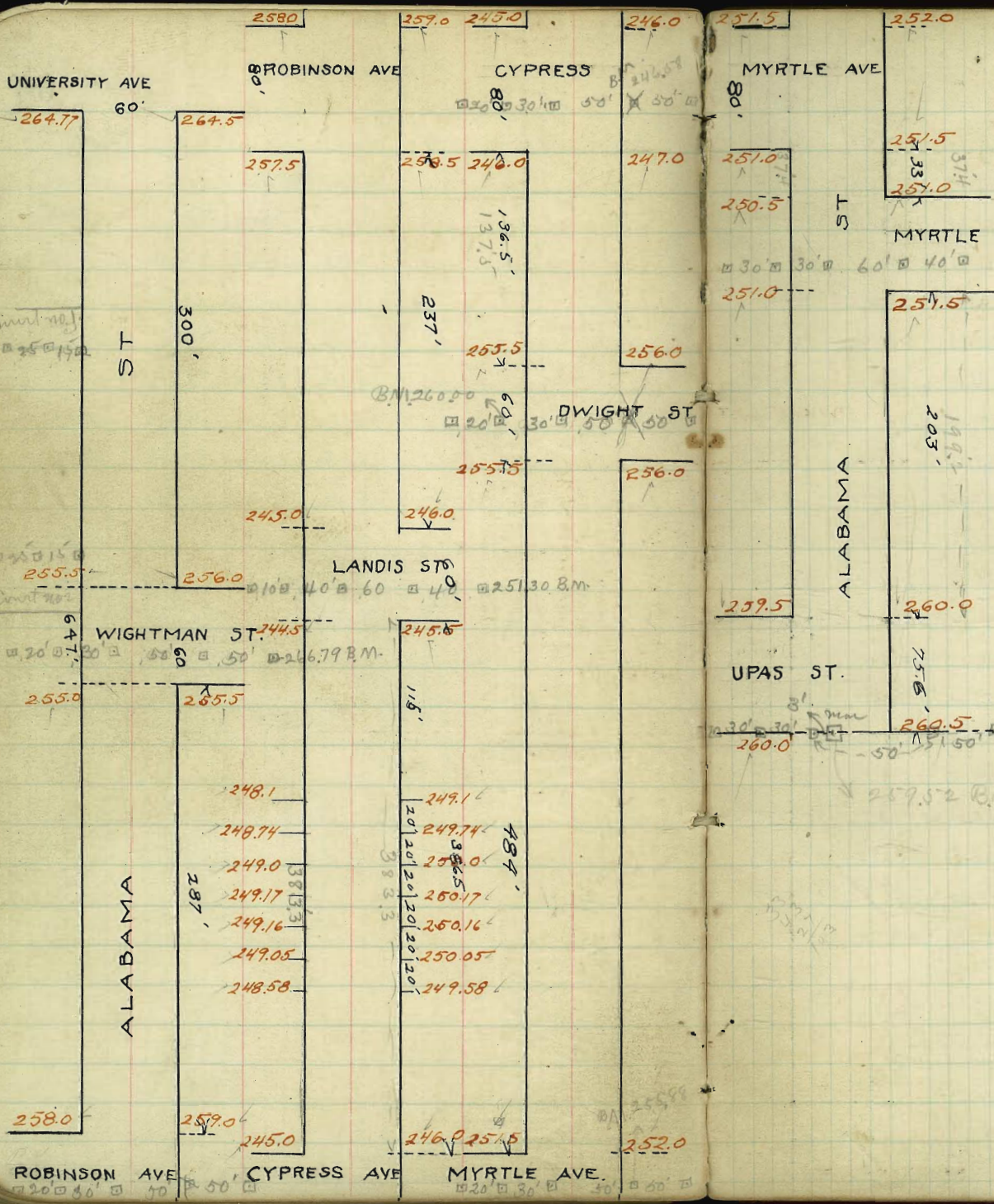
S Line of HICKORY ST. S.E

5 LINE 261.75	261.5	261.1	261.5	261.1	261.5	261.75
25	261.13	260.88	260.48	260.88		
50	260.50	260.25	259.85	260.25		
75	259.88	259.63	259.23	259.63		
100	259.25	259.00	258.60	259.00		
125	258.63	258.38	257.98	258.38		
150	258.00	257.75	257.35	257.75		
175	257.38	257.13	256.73	257.13		
200	256.75	256.50	256.10	256.50		
225	256.13	255.88	255.48	255.88		
250	255.50	255.25	254.85	255.25		
275	254.88	254.63	254.23	254.63		
300 = N Line	254.25	254.0	253.6	254.0	253.6	254.0

North line of CHESTNUT ST.

71.05
 70.50
 60.50 TP
 1.75
 68.0

60



GRADES CHKD. OK 6/20/14 Green
 12 CRACKS IN CURB
 BANKS OF CUTS NOT TAKEN
 BACK FAR ENOUGH IN PLACES.
 ARE SHY BETWEEN 1 AND 4

333
 149.2
 97.4
 296.6
 287
 80
 237
 604
 393.3
 80
 237.5
 600.83
 137.5
 60
 484
 681.5
 237
 60
 383.3
 680.3
 484
 80
 374
 601.4

ALABAMA ST. 60' WIDE
UNIVERSITY TO PARK

10' WALKS	W.P.L.	W. Curb	W/4	E/4	E Curb	E.P.L.
265.02	264.77	264.34	264.64	264.10	264.50	264.75
S.L. University						
25' S	264.24	263.99	263.57	263.89	263.39	263.79
50	263.47	263.22	262.80	263.16	262.68	263.08
75	262.99	262.45	262.03	262.42	261.97	262.37
100	261.93	261.68	261.26	261.68	261.27	261.92
125	261.15	260.91	260.49	260.94	260.59	260.96
150	260.38	260.14	259.72	260.19	259.85	260.24
175	259.61	259.36	258.95	259.45	259.14	259.54
200	258.84	258.59	258.18	258.71	258.43	258.83
225	258.07	257.82	257.42	257.97	257.72	258.12
250	257.30	257.05	256.64	257.23	257.02	257.42
275	256.52	256.27	255.87	256.49	256.31	256.71
255.75	255.5	255.10	255.75	255.60	256.00	256.25
N.L. WIGHTMAN						
7725						
WIGHTMAN INTERSECTION 60'						
255.75	255.50	255.10	255.75	255.60	256.00	256.25
N.L. WIGHTMAN						
10	N CURB	255.67	255.42	255.02	255.67	255.52
20					256.00	256.00
30	N/4	255.58	255.33	254.93	255.58	255.43
40	E	255.50	255.25	254.85	255.50	255.35
50	3/4	255.42	255.17	254.77	255.42	255.27
60	S CURB	255.33	255.08	254.68	255.33	255.18
					255.50	255.50
60	S.L. WIGHTMAN	255.00	254.60	255.25	255.10	255.50
					255.75	255.75

B.M. 718 Cor. R.R. Spk. pole Univ. ave

265.42	264.75	263.33	263.17	261.93	261.92	260.80
264.8	3.15	4.57	4.43	5.97	5.98	7.40
267.90	3.25	4.37	4.23	5.97	5.98	7.40
265.02	+0.1	+0.2	-10.8	-5.3	+3.4	+4.6
265.89						
267.61						
260.38	258.84	259.08	257.67	257.30	256.78	256.25
7.52	9.06	8.82	10.23	10.60	12.78	11.68
9.12	9.76	4.0	4.23	11.20	12.65	6.25
-0.6	-0.7	+4.8	+6.0	-0.6	-0.6	+5.4

265.42 Mon NE Univ.
267.61

263.33 263.17 261.93 261.92 260.80
4.43 4.43 5.97 5.97 7.40

260.38 258.84 259.08 257.67 257.30 256.78 256.25
7.52 9.06 8.82 10.23 10.60 12.78 11.68

265.42 267.61 260.38 258.84 259.08 257.67 257.30 256.78 256.25
7.52 9.06 8.82 10.23 10.60 12.78 11.68

10.60
265.42 T.P. 2660 2665
267.61

curbs + Props 5/6 3/4
Gregory
3/4 5/8
Mason

265.42	264.77	64.24	64.64	64.10	64.50	64.75
267.90	3.15	4.57	4.43	5.97	5.98	7.40
265.02	3.25	4.37	4.23	5.97	5.98	7.40
265.89	+0.1	+0.2	-10.8	-5.3	+3.4	+4.6
267.61						
260.38	258.84	259.08	257.67	257.30	256.78	256.25
7.52	9.06	8.82	10.23	10.60	12.78	11.68
9.12	9.76	4.0	4.23	11.20	12.65	6.25
-0.6	-0.7	+4.8	+6.0	-0.6	-0.6	+5.4

265.42 267.61 260.38 258.84 259.08 257.67 257.30 256.78 256.25
7.52 9.06 8.82 10.23 10.60 12.78 11.68

265.42 267.61 260.38 258.84 259.08 257.67 257.30 256.78 256.25
7.52 9.06 8.82 10.23 10.60 12.78 11.68

749

ALABAMA ST. 60' WIDE

	W	W CURB	X	♀	X	CURB	E
257.15							
S.L. ROBINSON	257.50	257.35	258.00	257.90	258.50	258.75	
25'S	256.43	256.16	256.03	256.69	256.58	257.18	257.43
50	255.11	254.85	254.71	255.36	255.26	255.86	256.11
75	253.79	253.53	253.39	254.04	253.94	254.54	254.79
100	252.47	252.21	252.07	252.72	252.62	253.22	253.47
125	251.16	250.90	250.76	251.41	251.31	251.91	252.16
150	249.84	249.58	249.44	250.09	249.99	250.59	250.84
165	249.04	248.79	248.65	249.32	249.20	249.79	250.05
175	248.51	248.26	248.12	248.79	248.67	249.26	249.52
200	247.20	246.95	246.80	247.45	247.35	247.95	248.20
237	245.25						
N.L. LANDIS	245.00	244.85	245.50	245.40	246.00	246.25	

1.31865

LANDIS INTERSECTION 60'

245.25							
N.L. LANDIS	245.00	244.85	245.50	245.40	246.00	246.25	
N CURB	245.16	244.92	244.76	245.42	245.31	246.00	246.00
N 1/4	245.08	244.83	244.68	245.33	245.23	244.87	245.60
E	245.00	244.75	244.60	245.25	245.15	244.75	245.75
S 1/4	244.91	244.66	244.51	245.16	245.06	244.62	245.10
S CURB	244.83	244.58	244.43	245.08	244.98	245.50	245.50
S.L. LANDIS	244.75	244.50	244.35	245.00	244.90	245.50	245.75

0.8333

267.90 H.C.	256.11	253.17	253.11	257.75	245.62
258.25	11.79	14.43	12.79	10.15	1.74
9.15	7.65	12.85	10.6	2.895	11.57
4.15	14.64	21.6	12.2	41.2	13.2
45.0					6.6
	13.10		4.63		25.0
243.98 H.C.	254.80 J.P.	249.84	250.84	251.30 J.P. hub	57' east of Prop
247.20	1.13	6.09	5.09		
3.82	255.73 H.C.	5.85	5.69		
9.12	252.47	-2.9	5.28		
12.4	3.46	251.30	250.84	251.347	
245.20	2.76	256.58 H.C.	5.744	3.11	
4.82	10.7	245.25	256.58	245.25	247.20
10.16	2.37	1.37	246.25	245.25	247.84
-14.3	8.15	11.56	10.33	255.11	252.47
	10.3	-12.9	248.20	256.5 H.C.	255.75
			8.88	260.76	256.11
255.11				257.75	4.66
1.47				3.21	

257.90 H.C.	256.11	253.17	253.11	257.75	245.62
258.25	11.79	14.43	12.79	10.15	1.74
9.15	7.65	12.85	10.6	2.895	11.57
4.15	14.64	21.6	12.2	41.2	13.2
45.0					6.6
	13.10		4.63		25.0
243.98 H.C.	254.80 J.P.	249.84	250.84	251.30 J.P. hub	57' east of Prop
247.20	1.13	6.09	5.09		
3.82	255.73 H.C.	5.85	5.69		
9.12	252.47	-2.9	5.28		
12.4	3.46	251.30	250.84	251.347	
245.20	2.76	256.58 H.C.	5.744	3.11	
4.82	10.7	245.25	256.58	245.25	247.20
10.16	2.37	1.37	246.25	245.25	247.84
-14.3	8.15	11.56	10.33	255.11	252.47
	10.3	-12.9	248.20	256.5 H.C.	255.75
			8.88	260.76	256.11
255.11				257.75	4.66
1.47				3.21	

257.90 H.C.	256.11	253.17	253.11	257.75	245.62
258.25	11.79	14.43	12.79	10.15	1.74
9.15	7.65	12.85	10.6	2.895	11.57
4.15	14.64	21.6	12.2	41.2	13.2
45.0					6.6
	13.10		4.63		25.0
243.98 H.C.	254.80 J.P.	249.84	250.84	251.30 J.P. hub	57' east of Prop
247.20	1.13	6.09	5.09		
3.82	255.73 H.C.	5.85	5.69		
9.12	252.47	-2.9	5.28		
12.4	3.46	251.30	250.84	251.347	
245.20	2.76	256.58 H.C.	5.744	3.11	
4.82	10.7	245.25	256.58	245.25	247.20
10.16	2.37	1.37	246.25	245.25	247.84
-14.3	8.15	11.56	10.33	255.11	252.47
	10.3	-12.9	248.20	256.5 H.C.	255.75
			8.88	260.76	256.11
255.11				257.75	4.66
1.47				3.21	

ALABAMA ST. 60' WIDE

	W	CURB	1/4	3/4	1/4	CURB	E
	246.25						
SL CYPRESS	246.00	245.85	246.50	246.40	247.00	247.25	
25'S	247.99	247.74	247.54	248.19	248.09	248.65	248.90
50	249.73	249.48	249.24	249.89	249.79	250.29	250.55
75	251.47	251.22	250.93	251.58	251.48	251.94	252.19
100	253.21	252.96	252.63	253.28	253.20	253.60	253.85
136.5	255.75						
NL DWIGHT	255.50	255.10	255.75	255.60	256.00	256.25	

DWIGHT INTERSECTION

NL DWIGHT	255.75	255.50	255.10	255.75	255.60	256.00	256.25
N CURB	255.75	255.50	255.10	255.75	255.60	256.00	256.00
N 1/4	255.75	255.50	255.10	255.75	255.60	255.00	255.60
3/4	255.75	255.50	255.10	255.75	255.60	255.00	256.00
S 1/4	255.75	255.50	255.10	255.75	255.60	255.00	255.60
S CURB	255.75	255.50	255.10	255.75	255.60	256.00	256.00
SL DWIGHT	255.75	255.50	255.10	255.75	255.60	256.00	256.25

258.98	258.21	260.00	206.25
249.73	5777	2.18	8.93
9.25	6.87	262.18	4.53
6.43	4.19	255.75	250.55
1.8		6.43	11.63
258.55	258.85	253.21	3.83
8.74	13.64	8.97	17.8
267.49	430	2.84	258.85
250.55	29.3	+6.4	8.33
16.84	254.25	249.73	2.53
9.25	17.24	12.46	+5.8
27.0	3.07	8.46	9.88
255.59	2.0	4.0	252.30
0.94	253.60	252.96	1.40
256.53	2.93	3.57	253.70
256.0		7.05	246.15
10.53			7.45
			250.29
			6.24
			247.0
			9.53

260.0	256	255.50	255.36	255.20	255.00	254.80	254.60	254.40	254.20	254.00
2.22	4.83	3.32	7.92	7.82	10.59	11.0	12.91	14.89	16.88	18.87
260.32							247.47	246.75	246.03	245.31

251.74	7.1
6.43	
251.34	7.0
6.57	
251.70	

ALABAMA ST. 60' WIDE

	W	CURB	1/4	S	1/4	CURB	E
9 ONW	251.75						
Nh. MYRTLE	251.50	251.10	251.75	251.60	252.00	252.25	
11							
8 N CURB	251.50	251.50	251.01	251.66	251.57	251.91	252.16
13		250.50					
5 N 1/4	251.10	250.37	250.92	251.58	251.43	251.83	252.08
13							
7 E	251.25	250.25	250.85	251.50	251.35	251.78	252.00
13							
10 S 1/4	250.60	250.12	250.76	251.41	251.26	251.66	251.91
13		250.00					
10 S CURB	251.00	251.00	250.68	251.33	251.18	251.58	251.83
14		251.25					
11 SL MYRTLE ONW	251.00	250.60	251.25	251.10	251.50	251.75	

.08333

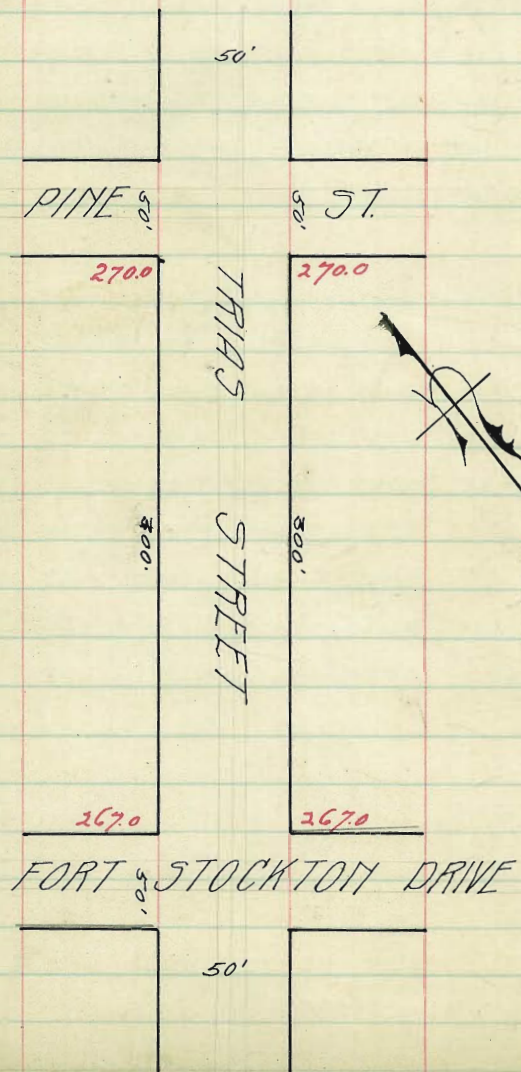
33'S	250.75						
2 Nh. MYRTLE ON E	250.50	250.10	250.75	250.60	251.00	251.25	
10							
2 N CURB	250.83	250.58	250.18	250.83	250.68	251.00	251.00
10						250.00	
2 N 1/4	250.91	250.66	250.26	250.91	250.76	250.12	250.60
10							
2 E	251.00	250.75	250.35	251.00	250.85	250.25	251.25
10							
2 S 1/4	251.88	250.83	250.43	251.08	250.93	250.37	251.10
10						250.50	
2 S CURB	251.16	250.91	250.51	251.16	251.01	251.50	251.50
10		251.25					
2 SL MYRTLE ON E	251.00	250.60	251.25	251.10	251.50	251.75	

.08333

68

249.97	257.25	13.07	
0.31	0.97		
250.28	13.9	147	237.21 JP
251.75	14.9	0.43	3.53
1.47		1.40	239.31 H.E.
0.53			8.20
2.30			247.53
	250.75	251.25	281.07 JP
	18.56	19.06	1.12
	8.14	4.14	232.19 H.E.
	26.70		
25.95 + 3.75			262.45 H.E.
40			251.0
163.54	10.75	5.25	11.45
	6.25	1.00	10.38
25.73043			252.07 J.P. road
1.14			
1.89			
250.5	257.25		
5.75			
251.0			
1.25			

Property Notes



TRIAS STREET GRADES
FORT STOCKTON TO PINE

NW

PINE ST

SE

3 370.25 370.0 369.6 370.0 369.6 370.0 370.25

.25 high

.25 low

7.5 370.0 369.75 369.35 369.75 369.35 369.75 370.0

15.0 369.75 369.50 369.10 369.50 369.10 369.5 369.75

22.5 369.50 369.25 368.85 369.25 368.85 369.25 369.50

30.0 369.25 369.0 368.60 369.0 368.60 369.0 369.25

37.5 369.0 368.75 368.35 368.75 368.35 368.75 369.0

45.0 368.75 368.50 368.10 368.50 368.10 368.50 368.75

52.5 368.50 368.25 367.85 368.25 367.85 368.25 368.50

60.0 368.25 368.0 367.60 368.0 367.60 368.0 368.25

67.5 368.0 367.75 367.35 367.75 367.35 367.75 368.0

75.0 367.75 367.50 367.10 367.50 367.10 367.50 367.75

82.5 367.50 367.25 366.85 367.25 366.85 367.25 367.50

90.0 367.25 367.0 366.6 367.0 366.6 367.0 367.25

FORT STOCKTON

267.07 N.W. Trias & Stockton
398 3596 2700
271.05 1.45 1.25
2.5 high 2.5 low
369.6 369.6
4.05 4.05

LINE OR 6/10/13
SUGGESTION
STOCKTON

267.25 267.0 266.6 267.0 266.6 267.0 267.25

267.0 267.0 267.0 267.0
266.0 266.0 266.31 266.91 266.0 266.0

265.87 266.43 266.83 265.87 266.44

265.75 266.35 266.75 266.35 265.75 266.75

6

265.5 266.6
266.5 266.5

266.75 266.5 266.1 266.5 266.1 266.5 266.75

April 15-13 Field-Book
C.A.V. Estimate 7.

"J" SE - 30th to 32nd

14' Walks - 13' = 14^s 80' Wide.

N	30 th	to	31 st	S	N	S
	Curb.			Curb.		
E.P.L.	77.25	77.00	76.40	76.00	75.1	75.00
25'E	76.85	76.63	76.03	75.69	74.82	74.75
50'E	76.50	76.25	75.65	75.37	74.53	74.50
75'E	76.13	75.88	75.28	75.06	74.25	74.25
100'E	75.75	75.50	74.90	74.75	73.97	74.00
125'E	75.37	75.12	74.52	74.43	73.69	73.75
150'E	75.00	74.75	74.15	74.12	73.41	73.50
175'E	74.63	74.38	73.78	73.81	73.13	73.25
200'E	74.25	74.00	73.40	73.50	72.85	73.00
225'E	74.35	74.10	73.50	73.61	72.96	73.12
250'E	74.46	74.21	73.61	73.75	73.10	73.25
275'E	74.56	74.31	73.71	73.84	73.20	73.37
300'E	74.67	74.42	73.82	73.96	73.33	73.50
325'E	74.77	74.52	73.92	74.07	73.44	73.62
350'E	74.88	74.63	74.03	74.19	73.57	73.75
375'E	74.98	74.73	74.13	74.30	73.68	73.87
400'E	75.09	74.84	74.24	74.42	73.81	74.00
425'E	75.19	74.94	74.34	74.54	73.93	74.12
450'E	75.29	75.04	74.44	74.65	74.05	74.25
475'E	75.40	75.15	74.55	74.76	74.16	74.37
500'E	75.50	75.25	74.65	74.87	74.28	74.50
525'E	75.60	75.35	74.75	74.98	74.40	74.62
550'E	75.71	75.46	74.86	75.10	74.52	74.75
575'E	75.81	75.56	74.96	75.21	74.64	74.87
600'E	75.92	75.67	74.97	75.33	74.77	75.00

37709 Station E. Cor 30th & J Sts.

75.62	80.71	80.71	80.71	80.71	80.71	80.71	80.71	80.71	80.71
75.25	77.25	76.50	74.75	74.25	75.75	75.00	73.75	73.25	74.25
5.96	3.46	4.21	5.96	6.46	4.96	5.71	6.96	7.46	6.46
0.0	0.2	5.3	6.3	6.6	0.0	6.2	5.4	6.4	5.6
0.0	0.3	-1.1	-0.3	-0.1	-1.0	-0.5	+0.6	+1.1	+0.9

80.13	80.13	80.13	80.13	80.13	80.13	80.13	80.13	80.13	80.13
75.71	75.00	75.25	75.92	75.71	75.00	75.25	75.92	75.71	75.00
4.42	5.14	4.83	4.21	4.71	4.71	4.71	3.5	4.71	4.04
4.71	4.71	4.71	3.5	4.71	4.04	4.04	4.04	4.04	4.04

all set 10 - 7 - 13 Blount

Curb OK except for about 50' on the north side at 32nd and DT. 1/2" & curbs are high will have to be gone over again. Set stakes where necessary Oct 20 - 1913

7867 Brn
79.32

77.00 76.40 76.00 75.1 75.00
75.25 74.90 74.45 73.97 73.00
75.25 74.90 74.45 73.97 73.00
75.25 74.90 74.45 73.97 73.00
75.25 74.90 74.45 73.97 73.00
75.25 74.90 74.45 73.97 73.00
75.25 74.90 74.45 73.97 73.00
75.25 74.90 74.45 73.97 73.00

checked OK 11-11-13 Blount Taylor & J Sts

13

J-St- 30th to 31st

N.P.L	14' Walks		13' = 14 ^S		80' Wide		N	S	
	Curb	5	5	5	Curb	S.P.L			
600'E	75.92	75.67	75.07	75.33	74.77	75.00	75.25	+0.4	+1.0
625'E	76.02	75.77	75.17	75.44	74.88	75.12	75.37	+0.4	+0.3
650'E	76.15	75.88	75.28	75.56	75.00	75.25	75.50	+0.3	0.0
675'E	76.23	75.98	75.38	75.68	75.13	75.38	75.62	+0.2	+0.1
700'E	76.34	76.09	75.49	75.80	75.25	75.51	75.76	+0.1	0.0
725'E	76.44	76.19	75.59	75.91	75.37	75.63	75.88	+0.1	-0.1
750'E	76.54	76.29	75.69	76.02	75.49	75.76	76.01	-0.4	-0.3
775'E	76.65	76.40	75.80	76.14	75.61	75.88	76.13	-0.3	-0.2
798'E	76.75	76.50	75.90	76.25	75.72	76.00	76.25	-0.2	-0.3

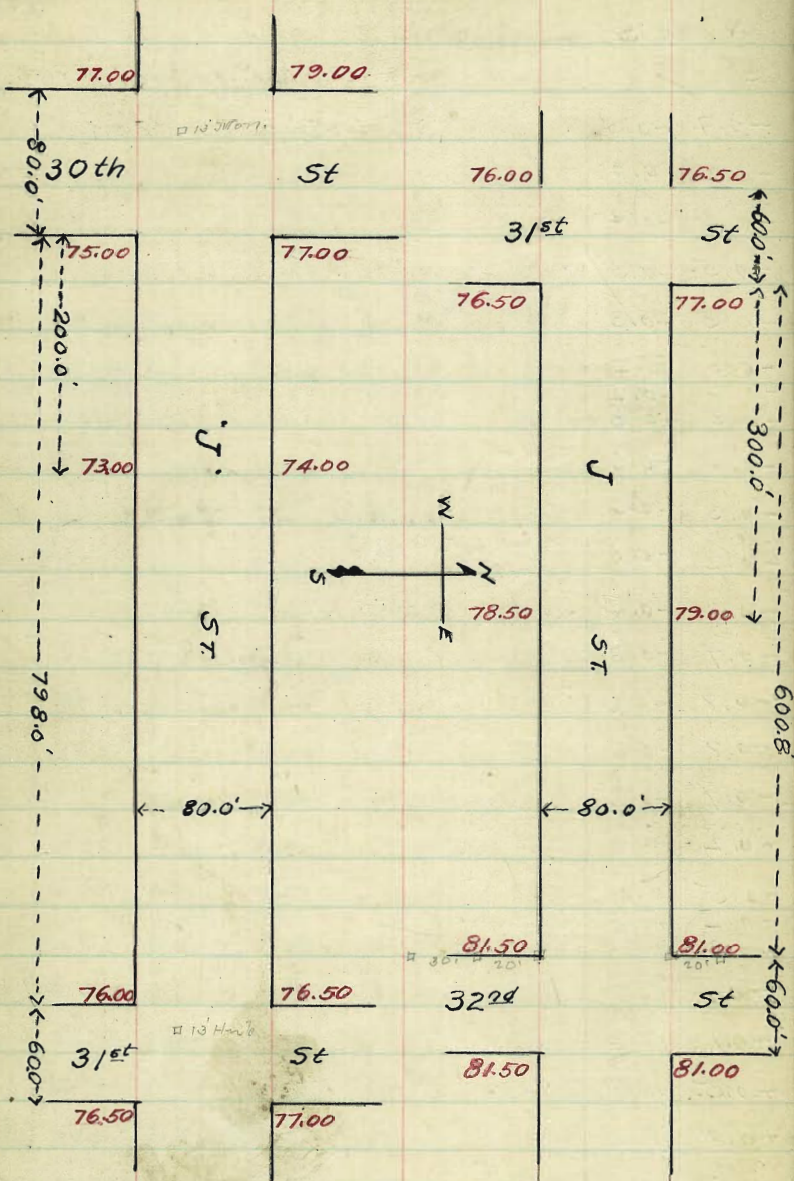
N.P.L. 31st

80.13	80.13	80.13	80.13	80.13	80.13	80.13	80.13	80.13	80.13	+9-stake	Ref 26-13
76.13	76.50	76.76	76.34	76.54	76.01	76.25	76.75	76.75	76.75	Dorman, Miller, Shovel.	
4.00	4.63	4.87	3.77	3.57	4.14	3.88	3.38	3.38	3.38		
0.4	4.5	4.4	3.6	4.0	4.0	3.8	3.4	3.4	3.4		
70.6	+0.1	0.0	70.2	-0.4	-0.4	+0.1	0.0	0.0	0.0		

76.45 Bm	76.45	76.20	76.29	75.76	76.09	75.57
3.80	4.35	3.75	3.98	4.40	4.12	4.24
80.25	75.84	75.58	75.67	75.50	75.50	75.50
	4.57	4.33	4.20			
	all set	10	6-13	blough		
7.99	7.29	7.54	7.58	7.55	7.57	7.57
3.40	3.83	4.43	4.12	4.67	4.41	4.41
76.97	76.70	76.50	76.25	75.92	76.00	76.00
	3.40	4.00	3.62	4.20	3.92	3.92

Checked OK 11-11-13

7 blough



14' Walks 13' = $\frac{1}{4}$ 80' Wide

87.16
 - 6.60
 97.29
 + 3.28
 86.21 H.I.
 81.36
 81.36 = 82.84 Old H.I. S.E. Cor 32nd & J.

Field Book 869
 Estimate Book 7

70.00
 70.12
 71.00
 70.97 High.

6897 Low + 1.1 = 6998. bottom of pipe lower catch basin

78.67 T.P. fence Post
 78.66 H.I. 78.68
 3.72
 67.94

69.73
 78.66 H.I. 73.66 78.66 70.40 center at bottom of pipe
 69.98 74.00 73.00 78.66
 8.68 7.66 5.66 70.43
 8.78

Notation for Culvert. Oct 23-1913

Dorman
 Miller
 Shant.

249.0 249.5 261.5 262.0
 50'

HORTENSIA-ST TRIAS ST

248.0 249.0 261.5 262.0

242.3

243.10

241.1

241.7

240.3

240.9

239.9

240.4

258.5

259.0x

239.8

240.3

240.3

240.6

242.0

242.3

HICKORY ST.

HICKORY ST.

300'

50'

150'

100'

251.0 251.0 249.0 249.5

WITHERBY-ST HORTENSIA ST.

2480

2490

50'

50' WIDE HICKORY ST L. BOON 822
10' WALK

WITHERBY TO TRIAS

NPL	Curb	1/4	¢	1/4	Curb	SPL	NPL	SPL	
251.25									
WL WITHERBY	251.00	250.60	251.00	250.60	251.00	251.25	+0.1	-0.6	
25	249.08	248.83	248.43	248.79	248.85	248.75	249.00	+0.4	-0.2
50	246.90	246.65	246.25	246.58	246.10	246.50	246.75	-0.6	-0.6
75	244.72	244.50	244.08	244.36	243.85	244.25	244.50	-2.7	-3.0
100	242.55	242.30	241.90	242.15	241.60	242.00	242.25	-8.3	-7.3
120	240.85	240.60	240.10	240.45	239.90	240.30	240.55	-4.0	-11.6
140	240.85	240.30	239.90	240.05	239.40	239.80	240.05	-4.5	-9.7
160	240.65	240.40	240.00	240.15	239.50	239.90	239.15	-8.3	-5.6
180	241.15	240.90	240.50	240.60	238.90	240.30	240.55	-1.7	-3.9
200	241.95	241.70	241.30	240.40	240.70	241.10	241.35	+2.8	+0.4
220	243.35	243.10	242.70	242.70	241.90	242.30	242.55	+2.3	+1.0
250	245.56	245.21	244.84	244.98	244.13	245.46	245.71	+2.0	+0.3
275	247.92	247.67	246.62	246.79	245.99	244.27	247.52	+1.4	+3.9
300	249.25								
EL HORTENSIA	249.00	248.40	248.50	247.85	248.00	248.25	248.25	+1.8	+1.5

HORTENSIA INTERSECTION

249.25									
EL HORTENSIA	249.00	248.40	248.50	247.85	248.00	248.25	248.25	+1.8	+1.5
249.00									
E CURB	249.00	248.41	248.62	247.77	248.00	248.00	248.00	+2.8	+2.5
1/4	248.60	248.13	248.53	248.75	248.10	247.25	247.85	+3.3	+3.3
¢	249.25	248.25	248.64	248.87	248.22	247.50	248.50	+3.5	+3.3
1/4	249.10	248.38	248.76	249.00	248.35	248.75	248.40	+3.9	+3.8
CURB	249.50	248.50	248.68	249.12	248.47	249.00	249.00	+4.3	+3.8
249.75									
WL HORTENSIA	249.50	249.10	249.25	248.60	249.00	249.25	249.25	+4.4	+4.1

HICKORY ST

	N	curb	1/4	1/2	3/4	curb	S	N	S
	249.75								
W.L. HORTENSIA	249.50	249.10	249.25	248.60	249.00	249.25	249.25	+4.4	+4.1
25	251.33	251.08	250.68	250.83	250.18	250.58	250.83	+4.4	+4.1
50	252.94	252.67	252.27	252.42	251.77	252.17	252.42	+4.6	+3.9
75	254.50	254.25	253.85	254.00	253.34	253.75	254.00	+4.8	+4.1
100	256.08	255.83	255.43	255.58	254.93	255.33	255.58	+5.1	+4.3
125	257.66	257.42	257.01	257.17	256.52	256.92	257.17	+5.1	+4.6
150	259.25	259.00	258.60	258.75	258.10	258.50	258.75	+4.6	+4.6
175	259.75	259.50	259.10	259.25	258.60	259.00	259.25	+4.5	+4.2
200	260.25	260.00	259.60	259.75	259.10	259.50	259.75	+4.1	+3.7
225	260.75	260.50	260.10	260.25	259.60	260.00	260.25	+3.7	+3.0
250	261.25	261.00	260.60	260.75	260.10	260.50	260.75	+3.0	+2.3
275	261.75	261.50	261.10	261.25	260.60	261.00	261.25	+2.4	+1.8
	262.25								
300 EL TRIAS	262.00	261.60	261.75	261.10	261.50	261.75	261.75	+2.0	+1.1

OREGON ST

	W		Φ		E	
300=SL Copley	389.25	389.00	388.85	389.50	389.40	390.00
275	389.13	388.88	388.71	389.35	389.23	389.83
250	389.00	388.75	388.58	389.21	389.07	389.67
225	388.88	388.63	388.44	389.06	388.90	389.50
200	388.75	388.50	388.31	388.92	388.73	389.33
175	388.62	388.37	388.17	388.77	388.57	389.17
150	388.50	388.25	388.04	388.63	388.46	389.00
125	388.38	388.13	387.90	388.48	388.23	388.83
100	388.25	388.00	387.77	388.33	388.07	388.67
75	388.13	387.88	387.63	388.19	387.90	388.50
50	388.00	387.75	387.50	388.04	387.73	388.33
25	387.88	387.63	387.36	387.90	387.57	388.17
0=NL Collier	387.75	387.50	387.23	387.75	387.40	388.00

TRIAS ST.

W.L. Trias	261.75	261.50	261.10	261.75	261.60	262.00	262.25
0+50	260.75	260.50	260.10	260.75	260.60	261.00	261.25
1+00	259.75	259.50	259.10	259.75	259.60	260.00	260.25
1+50	258.75	258.50	258.10	258.75	258.60	259.00	259.25
2+00	255.58	255.33	254.93	255.59	255.44	255.84	256.09
+50	252.41	252.16	251.76	252.42	252.27	252.67	252.92
W.L. Hortensia							
3+00	249.25	249.00	248.60	249.25	249.10	249.50	249.75

W.L. Hortensia 249.25 249.00 249.50 249.75

WC
1/4
E
1/4
EC

EL Hortensia 248.25 248.00 249.00 249.25

EL Hortensia	248.25	248.00	247.85	248.50	248.40	249.00	249.25
+80	242.55	242.30	242.10	242.70	242.50	243.10	243.35
1+00	241.35	241.10	240.85	241.40	241.20	241.70	241.95
+20	240.55	240.30	240.05	240.60	240.30	240.90	241.15
+40	240.15	239.90	239.50	240.15	240.00	240.40	240.65
+60	240.05	239.80	239.40	240.05	239.90	240.30	240.55
+80	240.55	240.30	239.90	240.45	240.20	240.60	240.85
2+00	242.25	242.00	241.60	242.15	241.90	242.30	242.55
+50	246.75	246.50	246.10	246.57	246.25	246.65	246.90
3+00	251.25	251.00	250.60	251.00	250.60	251.00	251.25

980
685
325

259.52 119.12
369 324
263.21 263.26

297
53
17
357

125
7
75

356

10
-6
5

