

Boric # 76

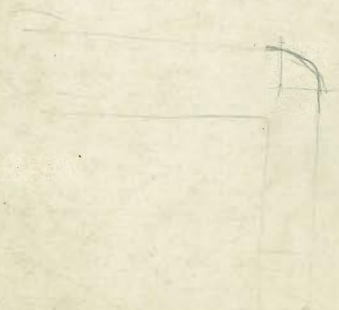
← MICROFILMED

APR 6 1965

127

3.1416
4/6.2832
1.571
8
23.71

292.29 = 4p



1

319.71
319.71

319.71

319.78

0.07

0.17

4.25 F = 6.5' out on East

319.71

317.99

2.72

3.17

6.69 = 10' out on West.

← 65' →

March 27-1913

(Thomson, Shand, Hecker)

St.

65'

Acce.

University

EC = Elev 310.807

EC = Elev 314.54

6.5'

Wightman

60'

St.

Villa Terrace

No. LINE. 362.25 362.0 361.4 361.5 360.85 361.0 361.25

No. CURB 362.0 362.0 360.75 360.5 360.25 361.0 361.0

No. 1/4 361.6 361.43 361.26 361.1 360.93 360.77 360.6

LINCOLN

CTR 362.0 361.83 361.66 361.5 361.33 361.17 361.0

AVE.

SO. 1/4 361.6 361.43 361.26 361.1 360.93 360.77 360.6

SO. CURB 362.0 362.0 360.75 360.5 360.25 361.0 361.0

S. L. LINE. 362.25 362.0 361.4 361.5 360.85 361.0 361.25

Checked OK 10-17-13 Blough

361.94 70
 2.65
 364.63
 4.87
 359.26
 1.85
 361.11

584	5740	1250	544	5700
17	4.11	700	9.06	450
570	570	476	2.25	2.25

Checked OK blough

10-17-13

No. L. 357.25 357.0 356.4 356.75 356.22 356.5 356.75

No. CURB 357.0 357.0 355.87 355.75 355.62 356.5 356.5

No. 1/4 356.85 356.74 356.64 356.54 356.44 356.33 356.22

POLK

CTR. 357.5 357.37 357.24 357.12 357.0 356.88 356.75

FIVE

So. 1/4 357.4 357.23 357.06 356.9 356.74 356.57 356.4

So. CURB 358.0 358.0 356.75 356.5 356.25 357.0 357.0

So. L. 358.25 358.0 357.4 357.5 356.85 357.0 357.25

HOWARD AVE.

800	359.25	359.0	358.85	359.5	359.4	360.0	360.25
875	359.17	359.92	358.75	359.38	359.27	359.86	360.11
950	359.08	358.83	358.65	359.87	359.14	359.72	359.97
1025	359.00	358.75	358.54	359.16	359.0	359.57	359.82
1100	358.92	358.67	358.44	359.04	358.87	359.43	359.68
1175	358.83	358.58	358.34	358.93	358.74	359.28	359.53
1250	358.75	358.50	358.24	358.81	358.60	359.13	359.38
1325	358.67	358.42	358.14	358.78	358.47	358.99	359.24
1400	358.58	358.33	358.03	358.58	358.34	358.83	359.08
1475	358.50	358.25	357.93	358.47	358.21	358.69	358.94
1550	358.42	358.17	357.83	358.35	358.08	358.54	358.79
1625	358.33	358.08	357.73	358.24	357.41	358.40	358.65
1700	358.25	357.4	357.62	358.13	357.81	358.25	357.50
1775	358.17	357.92	357.52	358.01	357.48	358.10	358.35
1850	358.08	357.83	357.42	357.90	357.55	357.96	358.21
1925	358.00	357.75	357.32	357.78	357.41	357.81	358.06
2000	357.92	357.67	357.22	357.67	357.28	357.67	357.92
2075	357.83	357.58	357.11	357.55	357.15	357.52	357.77
2150	357.75	357.50	357.01	357.44	357.01	357.37	357.62
2225	357.67	357.42	356.91	357.32	356.88	357.23	357.48
2300	357.58	357.33	356.81	357.21	356.75	357.08	357.33
2375	357.50	357.25	356.71	357.09	356.62	356.94	357.19
2450	357.42	357.17	356.60	356.98	356.49	356.79	357.04
2525	357.33	357.08	356.5	356.86	356.35	356.65	356.90
2600	357.25	357.0	356.4	356.75	356.22	356.5	356.75

POLK AVE

362.46	362.46	362.46	362.46	362.46	362.46	362.46	362.46	362.46	362.46	362.46	362.46
58.20	58.20	58.20	58.20	58.20	58.20	58.20	58.20	58.20	58.20	58.20	58.20
3.21	2.21	2.49	3.39	3.54	2.78	3.08	3.71	3.88	3.38	3.4	3.4
1.4	0.19	1.2	2.1	2.6	2.9	2.7	3.2	3.6	3.4	3.4	3.4
-1.9	+1.3	+0.7	+1.3	+0.9	0.0	+2.4	+0.5	+0.3	0.0	0.0	0.0
362.46	362.46	362.46	362.46	362.46	362.46	362.46	362.46	362.46	362.46	362.46	362.46
58.79	58.42	58.20	58.20	58.21	58.08	57.92	57.92	57.62	57.70	57.70	57.70
3.27	4.04	4.2	3.96	4.25	4.38	4.54	4.54	4.94	4.91	4.91	4.91
3.9	4.3	4.9	4.6	4.2	5.9	6.1	5.9	6.2	5.9	5.9	5.9
-0.1	-0.3	-0.6	-0.6	-1.0	-1.4	-1.6	-1.3	-1.4	-1.2	-1.2	-1.2
362.46	362.46	362.46	362.46	362.46	362.46	362.46	362.46	362.46	362.46	362.46	362.46
57.58	57.33	57.04	57.42	57.55	56.75	56.75	56.75	56.75	56.75	56.75	56.75
4.94	5.11	5.22	5.04	5.21	5.71	5.71	5.71	5.71	5.71	5.71	5.71
4.9	7.4	6.2	4.7	4.2	5.9	5.9	5.9	5.9	5.9	5.9	5.9
0.0	-2.3	-0.8	+0.3	+1.0	-0.1	-0.1	-0.1	-0.1	-0.1	-0.1	-0.1

Checked OK 10-17-13 *blayk*

14 - taken May 29-1913
Dorman, Redford, Tenn.

5900 5885 5950 5940 6000
 50 55 60 65 70

377.0
 55
 322.5
 332
 359.0
 360
 369.01

Checked Off. 10-19-13
 Blough

No. LINE 359.75 359.5 359.35 360.0 359.9 360.5 360.75

No. CURB 359.5 359.5 358.75 359.0 359.25 360.5 360.5

No. 1/4 358.9 359.07 359.24 359.4 359.56 359.73 359.9

HOWARD

CTR 359.25 359.42 359.59 359.75 359.95 360.05 360.25

AVE.

So. 1/2 358.72 358.89 359.06 359.22 359.38 359.55 359.72

So. CURB 359.0 359.0 358.25 358.5 358.75 360.0 360.0

So. L 359.25 359.0 358.85 359.5 359.4 360.0 360.25

EL CAJON AVE

338'	372.25	372.0	371.85	372.5	372.4	373.0	373.25
300	370.24	370.59	370.44	371.09	370.99	371.59	371.70
275	369.92	369.67	369.52	370.17	370.07	370.67	370.92
250	369.00	368.75	368.60	369.25	369.15	369.75	370.00
225	368.07	367.82	367.67	368.32	368.22	368.82	369.07
200	367.15	366.90	366.75	367.40	367.30	367.90	368.15
175	366.22	365.97	365.82	366.47	366.37	366.97	367.22
150	365.30	365.05	364.90	365.55	365.45	366.05	366.30
125	364.37	364.12	363.97	364.62	364.52	365.12	365.37
100	363.45	363.20	363.05	363.70	363.60	364.20	364.45
75	362.52	362.27	362.12	362.77	362.67	363.27	363.52
50	361.60	361.35	361.20	361.85	361.75	362.35	362.60
25	360.67	360.42	360.27	360.92	360.82	361.42	361.67
0	359.75	359.5	359.35	360.0	359.9	360.5	360.75

HOWARD AVE.

374.22	374.22	374.22	374.22	374.22	374.22	374.22	374.22
69.40	68.48	61.60	62.60	66.75	59.70		
9.77	10.77	12.62	11.62	13.47	14.47		
9.3	10.3	11.1	9.9	11.7	12.0		
70.0	70.5	71.0	71.7	71.8	72.5		
-1.2	+0.5	+1.0	-1.2	-0.5	+1.5	+1.2	-0.3
-0.3	-0.3	-0.3	-0.3	-0.3	-0.3	-0.3	-0.3

sd. taken, May 29, 1913, Downey, Bedford, Nevada.

72.2	72.0	72.2	62.1	57.0	59.75	61.0	61.5	61.2	60.0	58.2	73.0
72.7	72.7	72.7	66.19	6.6	2.4	5.19	4.92	6.22	5.31	7.18	7.18
72.7	72.7	72.7	66.19	6.6	2.4	5.19	4.92	6.22	5.31	7.18	7.18
72.7	72.7	72.7	66.19	6.6	2.4	5.19	4.92	6.22	5.31	7.18	7.18
72.7	72.7	72.7	66.19	6.6	2.4	5.19	4.92	6.22	5.31	7.18	7.18

Checked OK 10-19-13 Clough

MEADE ST.

600	382.85	382.6	382.43	383.07	382.95	382.39	
575	382.69	382.44	382.27	382.91	382.79	383.2	383.3
545	382.49	382.24	382.07	382.72	382.6	383.2	383.45
525	382.36	382.11	381.95	382.59	382.47	383.07	383.32
500	382.20	381.95	381.78	382.43	382.31	382.91	383.16
475	382.04	381.79	381.62	382.27	382.15	382.75	383.00
450	381.87	381.62	381.46	382.11	381.99	382.59	382.84
425	381.71	381.46	381.30	381.95	381.83	382.43	382.68
400	381.55	381.30	381.14	381.79	381.67	382.28	382.53
375	381.39	381.14	380.98	381.63	381.52	382.12	382.37
350	381.22	380.97	380.82	381.47	381.36	381.96	382.21
325	381.06	380.81	380.66	381.30	381.20	381.80	382.05
300	380.90	380.65	380.49	381.14	381.04	381.64	381.89
275	380.74	380.49	380.33	380.98	380.88	381.48	381.73
250	380.57	380.32	380.17	380.82	380.72	381.22	381.57
225	380.41	380.16	380.01	380.66	380.56	381.16	381.41
200	380.25 ^x	380.0	379.85	380.5	380.4	381.0	381.25
	Break						
175	379.50	379.25	379.10	379.75	379.65	380.25	380.50
150	378.75	378.50	378.35	379.0	378.90	379.5	379.75
125	378.00	377.75	377.60	378.25	378.15	378.75	379.0
100	377.25	377.00	376.85	377.5	377.4	378.0	378.25
75	376.50	376.25	376.10	376.75	376.65	377.25	377.50
50	375.75	375.50	375.35	376.0	375.9	376.5	376.75
25	375.00	374.75	374.60	375.25	375.15	375.75	376.0
00	374.25	374.0	373.85	374.5	374.4	375.0	375.25

EL CAJON AVE.

386.09	386.09	386.09	386.09	386.09	386.09	386.09	386.09	386.09	386.09
76.25	74.25	74.75	76.75	79.25	77.25	78.75	79.75	81.25	80.25
10.57	11.89	10.89	9.34	7.84	9.84	7.84	6.84	4.84	5.84
8.3	15.6	10.1	8.0	7.1	7.8	6.9	5.6	5.4	6.4
4.16	+1.2	+0.3	+1.3	+0.7	+0.9	+0.5	+0.7	-0.2	-0.6
386.09	386.09	386.09	386.09	386.09	386.09	386.09	386.09	386.09	386.09
80.57	81.57	81.57	80.90	81.22	82.2	82.53	81.55	81.87	82.34
5.52	4.52	4.20	5.19	4.97	3.98	3.56	4.54	4.22	3.25
5.7	4.6	4.9	4.3	4.5	4.6	3.3	3.7	2.5	4.5
2.2	-1.1	-0.7	+0.4	+0.4	-0.7	-0.6	+0.9	+1.7	-1.3
386.09	386.09	386.09	386.09	386.09	386.09	386.09	386.09	386.09	386.09
82.15	82.20	82.49	82.45	82.85	82.85	82.85	82.85	82.85	82.85
2.73	3.94	3.60	2.64	3.24	3.24	3.24	3.24	3.24	3.24
3.4	3.6	3.7	3.9	3.5	3.5	3.5	3.5	3.5	3.5
1.6	+0.3	-0.7	-1.3	-0.3	-0.3	-0.3	-0.3	-0.3	-0.3

10-stake May 29-1913
 Danman, Bedford, Deane

Checked OK 10-19-13 Blough

387.60	387.61	387.61	387.61	387.61
387.61	387.61	387.61	387.61	387.61
387.61	387.61	387.61	387.61	387.61
387.61	387.61	387.61	387.61	387.61
387.61	387.61	387.61	387.61	387.61

May 29 1913 Dorman, Bedford, Devine

387.60	387.61	387.61	387.61	387.61
387.61	387.61	387.61	387.61	387.61
387.61	387.61	387.61	387.61	387.61
387.61	387.61	387.61	387.61	387.61
387.61	387.61	387.61	387.61	387.61

387.60

387.61

387.61

black Kull CR 10-19-13

3.19

2.88

blough

N.L. MEADE 383.45 383.2 383.05 383.7 383.6

+27

No. CURB 383.2 383.2 383.94 383.59 383.39

+67

No. 1/4 382.6 382.05 382.81 383.41 383.19

+107

MEADE

CTR 382.9 381.9 382.74 383.39 383.13 383.08

+137

+17

ST.

So. 1/4 382.35 381.75 382.61 383.29 383.00 382.89

So. CURB 382.6 382.6 382.54 383.19 383.07 382.65

+6.57

S.L. MEADE 382.85 382.6 382.43 383.07 382.95 382.39

+10.57

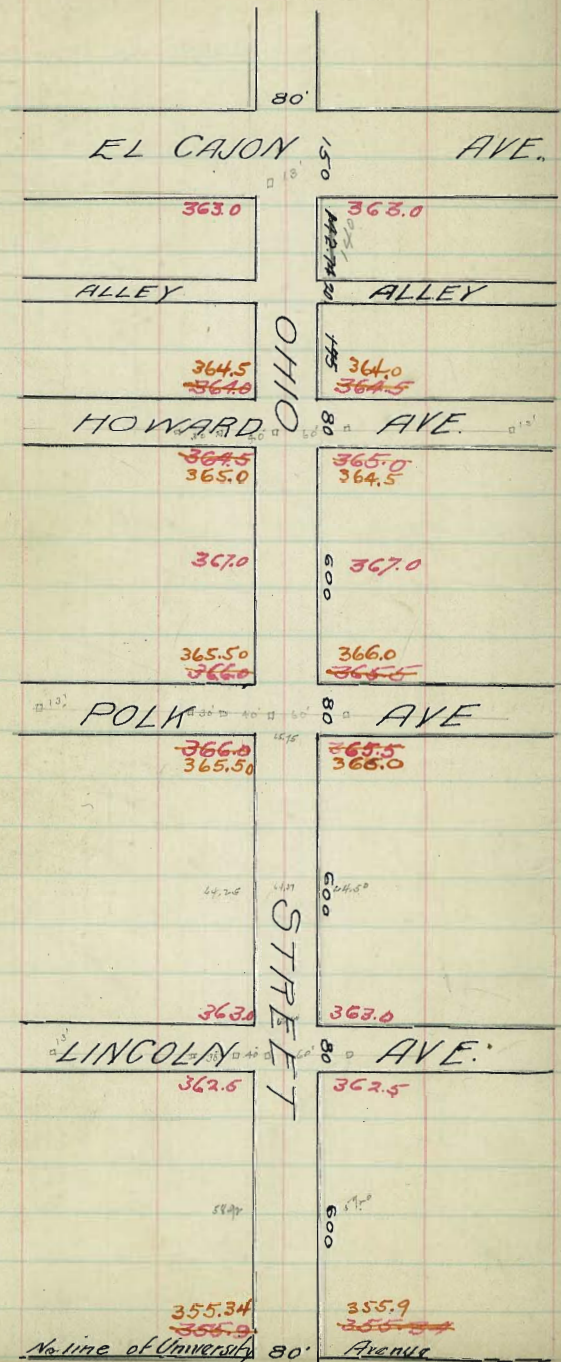
14
1437 354.25 354.0

+ 50 353.74 353.49 ^{<13>} 353.34

OK

ONL. MEADE 353.45 353.2 ⁺²⁷ 353.05 353.7 353.6

MEHDE ST.



4412	4575	4580	4575	4600	4625	4775	4950	4977	4925	4850	5200
363.0	363.0	363.0	363.0	363.0	363.0	363.0	363.0	363.0	363.0	363.0	363.0
364.5	364.5	364.5	364.5	364.5	364.5	364.5	364.5	364.5	364.5	364.5	364.5
365.0	365.0	365.0	365.0	365.0	365.0	365.0	365.0	365.0	365.0	365.0	365.0
366.0	366.0	366.0	366.0	366.0	366.0	366.0	366.0	366.0	366.0	366.0	366.0
367.0	367.0	367.0	367.0	367.0	367.0	367.0	367.0	367.0	367.0	367.0	367.0
368.0	368.0	368.0	368.0	368.0	368.0	368.0	368.0	368.0	368.0	368.0	368.0
369.0	369.0	369.0	369.0	369.0	369.0	369.0	369.0	369.0	369.0	369.0	369.0
370.0	370.0	370.0	370.0	370.0	370.0	370.0	370.0	370.0	370.0	370.0	370.0
371.0	371.0	371.0	371.0	371.0	371.0	371.0	371.0	371.0	371.0	371.0	371.0
372.0	372.0	372.0	372.0	372.0	372.0	372.0	372.0	372.0	372.0	372.0	372.0
373.0	373.0	373.0	373.0	373.0	373.0	373.0	373.0	373.0	373.0	373.0	373.0
374.0	374.0	374.0	374.0	374.0	374.0	374.0	374.0	374.0	374.0	374.0	374.0
375.0	375.0	375.0	375.0	375.0	375.0	375.0	375.0	375.0	375.0	375.0	375.0
376.0	376.0	376.0	376.0	376.0	376.0	376.0	376.0	376.0	376.0	376.0	376.0
377.0	377.0	377.0	377.0	377.0	377.0	377.0	377.0	377.0	377.0	377.0	377.0
378.0	378.0	378.0	378.0	378.0	378.0	378.0	378.0	378.0	378.0	378.0	378.0
379.0	379.0	379.0	379.0	379.0	379.0	379.0	379.0	379.0	379.0	379.0	379.0
380.0	380.0	380.0	380.0	380.0	380.0	380.0	380.0	380.0	380.0	380.0	380.0
381.0	381.0	381.0	381.0	381.0	381.0	381.0	381.0	381.0	381.0	381.0	381.0
382.0	382.0	382.0	382.0	382.0	382.0	382.0	382.0	382.0	382.0	382.0	382.0
383.0	383.0	383.0	383.0	383.0	383.0	383.0	383.0	383.0	383.0	383.0	383.0
384.0	384.0	384.0	384.0	384.0	384.0	384.0	384.0	384.0	384.0	384.0	384.0
385.0	385.0	385.0	385.0	385.0	385.0	385.0	385.0	385.0	385.0	385.0	385.0
386.0	386.0	386.0	386.0	386.0	386.0	386.0	386.0	386.0	386.0	386.0	386.0
387.0	387.0	387.0	387.0	387.0	387.0	387.0	387.0	387.0	387.0	387.0	387.0
388.0	388.0	388.0	388.0	388.0	388.0	388.0	388.0	388.0	388.0	388.0	388.0
389.0	389.0	389.0	389.0	389.0	389.0	389.0	389.0	389.0	389.0	389.0	389.0
390.0	390.0	390.0	390.0	390.0	390.0	390.0	390.0	390.0	390.0	390.0	390.0
391.0	391.0	391.0	391.0	391.0	391.0	391.0	391.0	391.0	391.0	391.0	391.0
392.0	392.0	392.0	392.0	392.0	392.0	392.0	392.0	392.0	392.0	392.0	392.0
393.0	393.0	393.0	393.0	393.0	393.0	393.0	393.0	393.0	393.0	393.0	393.0
394.0	394.0	394.0	394.0	394.0	394.0	394.0	394.0	394.0	394.0	394.0	394.0
395.0	395.0	395.0	395.0	395.0	395.0	395.0	395.0	395.0	395.0	395.0	395.0
396.0	396.0	396.0	396.0	396.0	396.0	396.0	396.0	396.0	396.0	396.0	396.0
397.0	397.0	397.0	397.0	397.0	397.0	397.0	397.0	397.0	397.0	397.0	397.0
398.0	398.0	398.0	398.0	398.0	398.0	398.0	398.0	398.0	398.0	398.0	398.0
399.0	399.0	399.0	399.0	399.0	399.0	399.0	399.0	399.0	399.0	399.0	399.0
400.0	400.0	400.0	400.0	400.0	400.0	400.0	400.0	400.0	400.0	400.0	400.0

12
 2 2 } Drive
 2 2 } House
 2 2 } Church

17

Rest idem with taken on p 28-1913
 Dorman, Miller, Shaul

OHIO ST. GRADES

Table NE Cor Ohio & University Ave.

1
NOV
18

EAST LINCOLN AVE WEST WEST EAST

6	362.75	362.5	362.1	362.5	362.10	362.50	362.75	-1.0	+1.9
+75	362.48	362.225	361.82	362.21	361.81	362.20	362.55	-1.0	-0.6
150	362.20	361.95	361.53	361.93	361.52	361.90	362.15	-0.7	-0.8
+25	361.73	361.675	361.25	361.64	361.22	361.60	361.85	-0.4	0.0
5	361.65	361.40	360.97	361.35	360.93	361.31	361.56	0.0	+0.1
+75	361.38	361.125	360.68	361.07	360.64	361.01	361.26	-0.7	+0.1
150	361.10	360.85	360.40	360.78	360.35	360.71	360.96	-0.7	-0.7
+25	360.83	360.575	360.12	360.44	360.06	360.41	360.66	-0.3	-0.5
4	360.55	360.30	359.83	360.21	359.76	360.11	360.36	-1.1	0.0
+75	360.28	360.025	359.55	359.92	359.47	359.81	360.06	-1.2	-0.3
150	360.00	359.75	359.27	359.63	359.18	359.52	359.77	-1.0	-0.5
+25	359.73	359.475	358.98	359.35	358.89	359.22	359.47	-0.9	-0.4
3	359.45	359.20	358.70	359.06	358.59	358.92	359.17	-0.8	-0.8
+75	359.18	358.925	358.42	358.77	358.30	358.62	358.87	-0.7	-0.9
150	358.90	358.65	358.13	358.44	358.01	358.32	358.57	-1.3	-1.0
+25	358.63	358.375	357.85	358.20	357.72	358.02	358.27	-1.2	+0.4
2	358.35	358.10	357.57	357.91	357.43	357.73	357.94	-1.2	-1.0
+75	358.08	357.825	357.28	357.63	357.13	357.43	357.64	-1.0	-1.1
150	357.80	357.55	357.00	357.34	356.84	357.13	357.34	-1.0	-1.0
+25	357.53	357.275	356.72	357.05	356.55	356.83	357.04	-1.2	-0.8
1	357.25	357.00	356.43	356.77	356.26	356.53	356.74	-1.3	-0.4
+75	356.98	356.725	356.15	356.48	355.97	356.23	356.44	-1.0	-0.3
150	356.70	356.45	355.87	356.19	355.67	355.94	356.19	-0.7	-0.3
+25	356.43	356.175	355.58	355.91	355.38	355.64	355.89	-0.4	+0.1
0	356.15	355.9	355.30	355.62	355.09	355.34	355.59	-0.3	-0.3

UNIVERSITY AVE

362.75	362.5	362.1	362.5	362.10	362.50	362.75	-1.0	+1.9
362.48	362.225	361.82	362.21	361.81	362.20	362.55	-1.0	-0.6
362.20	361.95	361.53	361.93	361.52	361.90	362.15	-0.7	-0.8
361.73	361.675	361.25	361.64	361.22	361.60	361.85	-0.4	0.0
361.65	361.40	360.97	361.35	360.93	361.31	361.56	0.0	+0.1
361.38	361.125	360.68	361.07	360.64	361.01	361.26	-0.7	+0.1
361.10	360.85	360.40	360.78	360.35	360.71	360.96	-0.7	-0.7
360.83	360.575	360.12	360.44	360.06	360.41	360.66	-0.3	-0.5
360.55	360.30	359.83	360.21	359.76	360.11	360.36	-1.1	0.0
360.28	360.025	359.55	359.92	359.47	359.81	360.06	-1.2	-0.3
360.00	359.75	359.27	359.63	359.18	359.52	359.77	-1.0	-0.5
359.73	359.475	358.98	359.35	358.89	359.22	359.47	-0.9	-0.4
359.45	359.20	358.70	359.06	358.59	358.92	359.17	-0.8	-0.8
359.18	358.925	358.42	358.77	358.30	358.62	358.87	-0.7	-0.9
358.90	358.65	358.13	358.44	358.01	358.32	358.57	-1.3	-1.0
358.63	358.375	357.85	358.20	357.72	358.02	358.27	-1.2	+0.4
358.35	358.10	357.57	357.91	357.43	357.73	357.94	-1.2	-1.0
358.08	357.825	357.28	357.63	357.13	357.43	357.64	-1.0	-1.1
357.80	357.55	357.00	357.34	356.84	357.13	357.34	-1.0	-1.0
357.53	357.275	356.72	357.05	356.55	356.83	357.04	-1.2	-0.8
357.25	357.00	356.43	356.77	356.26	356.53	356.74	-1.3	-0.4
356.98	356.725	356.15	356.48	355.97	356.23	356.44	-1.0	-0.3
356.70	356.45	355.87	356.19	355.67	355.94	356.19	-0.7	-0.3
356.43	356.175	355.58	355.91	355.38	355.64	355.89	-0.4	+0.1
356.15	355.9	355.30	355.62	355.09	355.34	355.59	-0.3	-0.3

Table NE Cor Ohio & University Ave.
 362.75 362.5 362.1 362.5 362.10 362.50 362.75
 362.48 362.225 361.82 362.21 361.81 362.20 362.55
 362.20 361.95 361.53 361.93 361.52 361.90 362.15
 361.73 361.675 361.25 361.64 361.22 361.60 361.85
 361.65 361.40 360.97 361.35 360.93 361.31 361.56
 361.38 361.125 360.68 361.07 360.64 361.01 361.26
 361.10 360.85 360.40 360.78 360.35 360.71 360.96
 360.83 360.575 360.12 360.44 360.06 360.41 360.66
 360.55 360.30 359.83 360.21 359.76 360.11 360.36
 360.28 360.025 359.55 359.92 359.47 359.81 360.06
 360.00 359.75 359.27 359.63 359.18 359.52 359.77
 359.73 359.475 358.98 359.35 358.89 359.22 359.47
 359.45 359.20 358.70 359.06 358.59 358.92 359.17
 359.18 358.925 358.42 358.77 358.30 358.62 358.87
 358.90 358.65 358.13 358.44 358.01 358.32 358.57
 358.63 358.375 357.85 358.20 357.72 358.02 358.27
 358.35 358.10 357.57 357.91 357.43 357.73 357.94
 358.08 357.825 357.28 357.63 357.13 357.43 357.64
 357.80 357.55 357.00 357.34 356.84 357.13 357.34
 357.53 357.275 356.72 357.05 356.55 356.83 357.04
 357.25 357.00 356.43 356.77 356.26 356.53 356.74
 356.98 356.725 356.15 356.48 355.97 356.23 356.44
 356.70 356.45 355.87 356.19 355.67 355.94 356.19
 356.43 356.175 355.58 355.91 355.38 355.64 355.89
 356.15 355.9 355.30 355.62 355.09 355.34 355.59

checked and grade
 a put in stake
 when necessary,
 Sep 15-1913
 Dorman, Miller

checked all 1/2 property under a little
 winding up Oct. 8-1913 Dorman, Miller, Illinois

OHIO ST. GRADES
LINCOLN AVE INTERSECTION

Subgrade on
roadway

362.01	362.01	362.01	362.01	362.01
63.00	62.40	62.75	62.22	62.40
3.81	3.91	3.56	4.09	3.81

14
19

NORTH LINE

West East

363.25	363.0	363.6	363.0	363.6	363.0	363.25	-0.5	-0.5
--------	-------	-------	-------	-------	-------	--------	------	------

NORTH CURB

363.0	363.0	363.53	362.92	362.52	363.0	363.0	-0.5	+0.6
362.0	362.0				362.0	362.0	+0.6	+1.8

NORTH QUARTER

362.4	361.87	362.43	362.83	362.43	361.87	362.4	0.0	+2.1
-------	--------	--------	--------	--------	--------	-------	-----	------

CENTER

363.75	361.75	362.35	362.75	362.35	361.75	363.75	0.0	+0.5
--------	--------	--------	--------	--------	--------	--------	-----	------

SOUTH QUARTER

362.22	361.37	362.27	362.67	362.27	361.37	362.22	+0.7	+0.1
--------	--------	--------	--------	--------	--------	--------	------	------

SOUTH CURB

361.5	361.5				361.5	361.5	+0.7	+2.7
362.5	362.5	362.18	362.58	362.18	362.5	362.5	-0.5	+1.5

SOUTH LINE

362.75	362.50	362.10	362.50	362.10	362.50	362.75	-1.0	+1.9
--------	--------	--------	--------	--------	--------	--------	------	------

OHIO STREET GRADES
 LINCOLN AVENUE TO POLK AVENUE
 POLK AVE

West - East

EAST

WEST

6	366.25	366.0	365.4	365.75	365.22	365.50	365.75	-1.2	-0.6
+75	366.12	365.87	365.29	365.63	365.11	365.40	365.65	-0.3	-0.7
+50	366.00	365.75	365.17	365.51	365.00	365.29	365.54	-0.6	-1.0
+25	365.87	365.62	365.05	365.40	364.89	365.19	365.44	-0.8	-1.0
5	365.75	365.50	364.94	365.29	364.77	365.08	365.33	-0.6	-1.0
+75	365.62	365.37	364.82	365.17	364.67	364.98	365.23	+0.8	-0.6
+50	365.50	365.25	364.70	365.06	364.56	364.87	365.12	-0.4	-0.8
+25	365.37	365.12	364.59	364.94	364.45	364.77	365.02	-0.3	-1.0
4	365.25	365.00	364.47	364.83	364.34	364.66	364.91	-0.6	-0.8
+75	365.12	364.87	364.35	364.71	364.24	364.56	364.81	-0.6	-0.6
+50	365.00	364.75	364.24	364.60	364.13	364.45	364.70	-0.5	-0.5
+25	364.87	364.62	364.12	364.48	364.02	364.35	364.60	+0.7	-0.4
3	364.75	364.50	364.00	364.37	363.91	364.25	364.50	+0.1	-0.3
+75	364.62	364.37	363.88	364.26	363.80	364.14	364.39	-0.4	-0.1
+50	364.50	364.26	363.77	364.14	363.69	364.04	364.29	-0.5	+0.1
+25	364.37	364.12	363.65	364.03	363.58	363.94	364.19	-0.5	-0.4
2	364.25	364.00	363.53	363.92	363.47	363.83	364.08	+0.5	-0.1
+75	364.12	363.87	363.44	363.80	363.36	363.73	363.98	-0.3	-0.4
+50	364.00	363.75	363.30	363.68	363.25	363.62	363.87	-0.5	0.0
+25	363.87	363.62	363.18	363.57	363.14	363.52	363.77	-0.4	0.0
1	363.75	363.50	363.07	363.46	363.03	363.42	363.67	-0.4	-0.2
+75	363.62	363.37	362.95	363.34	362.93	363.31	363.56	-1.0	-0.5
+50	363.50	363.25	362.83	363.23	362.82	363.21	363.46	-0.9	-0.8
+25	363.37	363.14	362.72	363.11	362.71	363.10	363.35	-0.9	+1.4
0	363.25	363.0	362.6	363.0	362.6	363.0	363.25	-0.4	-0.4

LINCOLN AVE

15
20

369.56	369.56	369.56	369.56	369.56	369.56	369.56	369.56	369.56	369.56
63.25	63.25	63.25	63.25	63.25	63.25	63.25	63.25	63.25	63.25
369.56	369.56	369.56	369.56	369.56	369.56	369.56	369.56	369.56	369.56
63.25	63.25	63.25	63.25	63.25	63.25	63.25	63.25	63.25	63.25
369.56	369.56	369.56	369.56	369.56	369.56	369.56	369.56	369.56	369.56
63.25	63.25	63.25	63.25	63.25	63.25	63.25	63.25	63.25	63.25

June 17, 1913
 Dorman, Tex
 Dorman

July 30, 1913
 Dorman, Tex
 Dorman

Property under a little landing up Oct 3-1913
 Dorman, Miller, & Shaw

check subgrade
 Oct 15 - 1913
 Dorman Miller

OHIO STREET GRADES
POLK AVENUE INTERSECTION

10

21

EAST	NORTH LINE					WEST	Reasons on railway mt east	
366.25	366.0	365.4	365.75	365.22	365.5	365.75	-0.8	+0.1

NORTH CURB

366.0	366.0	365.4	365.75	365.22	365.5	365.75	-0.5	+0.1
365.0	365.0				364.5	364.5	+0.7	+1.3

NORTH QUARTER

365.6	365.0	365.4	365.75	365.22	364.5	365.1	-0.7	+0.4
-------	-------	-------	--------	--------	-------	-------	------	------

CENTER

366.0	365.0	365.4	365.75	365.22	364.5	365.5	-1.2	+0.9
-------	-------	-------	--------	--------	-------	-------	------	------

SOUTH QUARTER

365.6	365.0	365.4	365.75	365.22	364.5	365.1	-0.3	+2.1
-------	-------	-------	--------	--------	-------	-------	------	------

SOUTH CURB

365.0	365.0	365.4	365.75	365.22	364.5	364.5	+0.5	+1.9
366.0	366.0				365.5	365.5	-0.7	+0.7

SOUTH LINE

366.25	366.0	365.4	365.75	365.22	365.5	365.75	-1.2	-0.6
--------	-------	-------	--------	--------	-------	--------	------	------

OHIO STREET GRADES
POLK AVENUE TO HOWARD AVENUE
EAST HOWARD AVENUE WEST

6	364.75	364.6	364.22	364.75	364.4	365.0	366.25	0.0	-1.8
+75	364.96	364.71	364.41	364.94	364.58	365.17	365.92	+0.5	-1.7
150	365.17	364.92	364.62	365.13	364.77	365.33	365.51	+1.3	-1.3
+25	365.37	365.12	364.81	365.31	364.95	365.50	365.75	+0.9	-1.1
5	365.58	365.33	365.01	365.50	365.13	365.67	365.92	+1.6	-0.7
+75	365.79	365.54	365.21	365.69	365.32	365.88	366.04	+1.7	+0.1
50	366.00	365.76	365.41	365.88	365.50	366.0	366.25	+1.6	+0.3
+25	366.20	365.95	365.61	366.07	365.68	366.17	366.42	+1.7	+0.7
4	366.41	366.16	365.81	366.25	365.87	366.33	366.58	+2.7	+0.8
+75	366.61	366.36	366.00	366.44	366.05	366.50	366.75	+1.6	+0.8
150	366.82	366.58	366.20	366.63	366.23	366.67	366.92	+0.8	+0.9
+25	367.04	366.79	366.40	366.82	366.42	366.83	367.08	+1.7	+0.9
3	367.25	367.0	366.6	367.0	366.6	367.0	367.25	+1.1	+0.8
+75	367.16	366.91	366.5	366.90	366.48	366.87	367.12	+0.9	+0.9
50	367.08	366.83	366.4	366.79	366.36	366.75	367.00	+0.9	+1.0
+25	367.0	366.75	366.3	366.68	366.25	366.62	366.87	+1.3	+1.0
20	366.91	366.66	366.2	366.58	366.13	366.50	366.75	+1.6	+1.3
+75	366.83	366.58	366.1	366.47	366.02	366.37	366.62	+0.9	+1.4
150	366.75	366.50	366.0	366.37	365.90	366.25	366.50	+0.9	+1.7
+25	366.66	366.41	365.9	366.27	365.79	366.12	366.37	+0.4	+0.6
1	366.58	366.33	365.8	366.16	365.67	366.00	366.25	+0.3	+1.4
+75	366.50	366.25	365.7	366.06	365.56	365.87	366.12	-0.6	+1.2
50	366.41	366.16	365.6	365.96	365.46	365.73	366.00	-0.7	+0.4
+25	366.33	366.08	365.5	365.85	365.33	365.62	365.87	-0.7	+0.3
0	366.25	366.0	365.4	365.75	365.22	365.50	365.75	-0.8	+0.1

POLK AVENUE

372.60	372.60	372.60	372.60	372.60	372.60	372.60	372.60	372.60	372.60
65.75	66.25	66.41	66.00	66.25	66.59	66.85	6.00	6.19	6.60
6.85	6.00	6.19	6.60	6.35	6.02	7.6	6.3	6.3	7.3
7.19	7.6	6.3	6.3	7.3	6.7	4.3	4.3	4.3	4.3
365.8	+1.7	0.0	+0.4	-0.7	-0.3	+1.2			
372.60	372.60	372.60	372.60	372.60	372.60	372.60	372.60	372.60	372.60
66.75	66.50	66.75	66.91	67.09	67.25	67.50	67.25	67.50	67.25
6.20	6.10	5.85	5.69	5.52	5.20	5.35	5.35	5.35	5.35
4.2	5.2	4.2	5.0	4.4	4.9	4.2	4.2	4.5	4.5
11.7	+0.8	+1.7	+0.7	+1.1	+0.8	+1.2	+0.7		
372.60	372.60	372.60	372.60	372.60	372.60	372.60	372.60	372.60	372.60
66.88	66.92	66.58	66.41	66.00	66.25	65.92	65.58	65.58	65.58
5.77	5.68	6.02	6.17	6.60	6.35	6.68	7.02	7.02	7.02
5.0	4.7	3.3	5.2	6.3	4.6	5.1	7.2	7.2	7.2
4.08	4.08	4.27	4.08	4.03	4.18	4.16	-0.2		
372.60	372.60	372.60	372.60	372.60	372.60	372.60	372.60	372.60	372.60
65.17	65.59	65.25	64.75	64.75	64.75	64.75	64.75	64.75	64.75
7.48	7.02	7.35	7.85	7.85	7.85	7.85	7.85	7.85	7.85
6.3	6.7	7.3	9.7	9.7	9.7	9.7	9.7	9.7	9.7
-1.4	+1.3	0.0	-1.9						

22

372.60 West toe for 12' point Howard & Ohio. Lot rec'd
3.78
369.84 H.T.
369.18 369.18
66.00 66.50
4.18 4.68

Side walk at later July 9-1913
Dorman, J. H. (Shaul)

372.60 +12' curb OTB, crushed subgrade & sit at stake where necessary.
Dorman, Millers Sep. 15-1913

Property needs a little trucking up Oct 2-1913
Dorman, Millers Shaul.

OHIO STREET GRADES
HOWARD AVENUE INTERSECTION

Subgrade
on roadway

WEST	NORTH LINE						EAST	W	E
364.75	364.5	363.9	364.25	363.72	364.0	364.2	-17	-19	

NORTH CURB

364.6	364.5	363.98	364.33	363.80	364.0	364.0	-10	-19
363.5	363.5				363.0	363.0	+02	-07

NORTH QUARTER

364.22	363.62	364.06	364.41	363.88	363.12	363.72	-05	-14
--------	--------	--------	--------	--------	--------	--------	-----	-----

CENTER

364.75	363.75	364.15	364.50	363.97	363.25	364.25	-03	-17
--------	--------	--------	--------	--------	--------	--------	-----	-----

SOUTH QUARTER

364.40	363.87	364.24	364.59	364.06	363.37	363.9	+07	-09
--------	--------	--------	--------	--------	--------	-------	-----	-----

SOUTH CURB

364.0	364.0				363.5	363.5	+18	-03
365.0	365.0	364.32	364.67	364.14	364.15	364.5	+06	-15

SOUTH LINE

365.25	365.0	364.4	364.75	364.22	364.5	364.75	00	-18
--------	-------	-------	--------	--------	-------	--------	----	-----

OHIO STREET GRADES
HOWARD AVENUE TO EL CAJON AVENUE
WEST EL CAJON AVE. EAST

367.89	367.89	367.89	367.89	367.89	367.89	367.89	367.89	367.89	367.89
64.25	64.25	64.25	64.25	64.25	64.25	64.25	64.25	64.25	64.25
3.14	3.14	3.77	3.36	3.58	3.73	4.08	3.80	4.03	4.23
4.7	4.6	5.4	4.9	5.2	5.3	5.2	4.9	4.9	3.2
-1.6	-2.0	-1.6	-1.05	-1.6	-1.4	-1.1	-1.0	-0.9	+1.0

367.89 to West tie for 13' point Ohio & Howard.
 367.89 H.I. 367.89 367.89 367.89 367.89 367.89 367.89 367.89
 64.25 64.25 64.25 64.25 64.25 64.25 64.25 64.25
 3.14 3.14 3.77 3.36 3.58 3.73 4.08 3.80 4.03 4.23
 4.7 4.6 5.4 4.9 5.2 5.3 5.2 4.9 4.9 3.2
 -1.6 -2.0 -1.6 -1.05 -1.6 -1.4 -1.1 -1.0 -0.9 +1.0

367.89	367.89	367.89	367.89	367.89	367.89	367.89	367.89
64.25	64.25	64.25	64.25	64.25	64.25	64.25	64.25
4.37	4.25	4.47	4.51	4.64	4.84	4.84	4.84
4.5	4.7	4.6	4.5	4.7	4.6	4.6	4.6
-0.1	-0.4	-0.4	0.10	+0.7	0.10		

W E
 367.89 367.89 367.89 367.89 367.89 367.89 367.89 367.89
 4.44 4.44 4.44 4.44 4.44 4.44 4.44 4.44
 367.89 H.I. 4.88 4.88 6.50 6.50
 367.89 H.I. 4.88 4.88 6.50 6.50

137.75	363.25	363.0	362.6	363.0	362.6	363.0	363.25
125	363.31	362.06	362.65	363.04	362.64	363.05	363.30
3	363.42	363.17	362.75	363.14	362.73	363.13	363.38
175	363.53	363.28	362.84	363.24	362.81	363.20	363.45
150	363.64	363.39	362.94	363.33	362.89	363.27	363.52
125	363.75	363.50	363.04	363.42	362.97	363.34	363.59
2	363.86	363.61	363.13	363.52	363.06	363.41	363.66
175	363.97	363.72	363.23	363.61	363.14	363.49	363.74
150	364.09	363.84	363.32	363.70	363.22	363.56	363.81
125	364.20	363.95	363.42	363.79	363.30	363.63	363.88
1	364.31	364.06	363.52	363.89	363.39	363.71	363.96
175	364.42	364.17	363.61	363.98	363.47	363.78	364.03
150	364.53	364.28	363.71	364.07	363.55	363.85	364.10
125	364.64	364.39	363.80	364.16	363.64	363.93	364.19
0	364.75	364.5	363.9	364.25	363.72	364.0	364.25

367.89 to West tie for 13' point Ohio & Howard.
 367.89 H.I. 367.89 367.89 367.89 367.89 367.89 367.89 367.89
 64.25 64.25 64.25 64.25 64.25 64.25 64.25 64.25
 3.14 3.14 3.77 3.36 3.58 3.73 4.08 3.80 4.03 4.23
 4.7 4.6 5.4 4.9 5.2 5.3 5.2 4.9 4.9 3.2
 -1.6 -2.0 -1.6 -1.05 -1.6 -1.4 -1.1 -1.0 -0.9 +1.0

W E
 367.89 367.89 367.89 367.89 367.89 367.89 367.89 367.89
 4.44 4.44 4.44 4.44 4.44 4.44 4.44 4.44
 367.89 H.I. 4.88 4.88 6.50 6.50
 367.89 H.I. 4.88 4.88 6.50 6.50

HOWARD AVE

29TH

60 ST.

263.0

263.5

HAWTHORNE STREET

210

210'

274.0

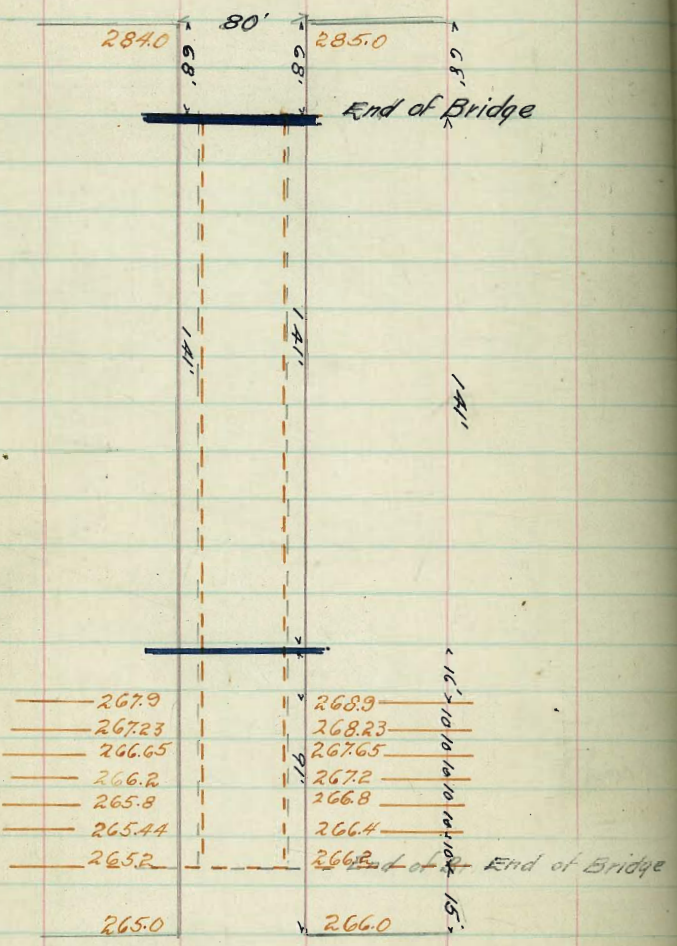
276.0

DALE

60 ST.

60'

FLORIDA ST.



UNIVERSITY AVE WIGHTMAN ST.

320.0 322.0

65'

96.0

317.0

65'

249.8'

TERRACE

5997'

2497'

316.0

317.0

WIGHTMAN ST.

320.2

321.2

320.4

321.4

320.5

321.5

320.6

321.6

320.5

321.5

320.4

321.4

320.2

321.2

20' 10' 20' 20'

VILLA

250'

65'

317.0

316.0

LANDIS ST.

315.0 317.0

316.0

7 buildings
Return
Replaced tie points
June 2/13

316.0

317.0

297.0

298.0

300.0

65'

301.0

LANDIS ST.

316.0

297.0

DWIGHT ST

MYRTLE ST.

28

315.0

316.0

297.0

298.0

300.0

50'

301.0

65'

65'

N

TERRACE

3514.4'

5997'

5990'

292.0 50' 293.0
North Line City Park

VILLA

297.0

298.0

300.0

301.0

DWIGHT ST

60'

MYRTLE ST

60'

297.0

298.0

300.0

301.0

VILLA TERRACE 65' Wide

LANDIS INTERSECTION
60'

10' Walks
1/2 1/4 S

	W	Curb	1/4	E	1/4	Curb	E
NL Landis	316.25 316.00	316.00	315.85	316.50	316.40	317.00	317.25
NCurb	316.00	316.00 315.00	315.68	316.33	316.23	317.00 316.00	317.00
N1/4	315.40	314.75	315.52	316.17	316.07	315.75	316.40
E	315.50	314.50	315.35	316.00	315.90	315.50	316.50
S1/4	314.85	314.25	315.18	315.83	315.73	315.25	315.85
SCurb	315.00	314.00 315.00	315.02	315.67	315.57	315.00 316.00	316.00
SL Landis	315.25 315.00	315.00	314.85	315.50	315.40	316.00	316.25

315.80 H 3 15.00 16.00 16.50
4.34 5.00 5.50

Checked OK 5-28-13
Glynn

10' Walks
1 1/4' 1/4'

VILLA TERRACE 65' wide

LANDIS TO DWIGHT

Sl. Landis	315.25	315.00	314.85	315.50	315.40	316.00	316.25
25'	314.50	314.25	314.10	314.75	314.65	315.25	315.50
50'	313.75	313.50	313.35	314.00	313.90	314.50	314.75
75'	313.00	312.75	312.60	313.25	313.15	313.75	314.00
100	312.25	312.00	311.85	312.50	312.40	313.00	313.25
125	311.50	311.25	311.10	311.75	311.65	312.25	312.50
150	310.75	310.50	310.35	311.00	310.90	311.50	311.75
175	310.00	309.75	309.60	310.25	310.15	310.75	311.00
200	309.25	309.00	308.85	309.50	309.40	310.00	310.25
225	308.50	308.25	308.10	308.75	308.65	309.25	309.50
250	307.75	307.50	307.35	308.00	307.90	308.50	308.75
275	307.00	306.75	306.60	307.25	307.15	307.75	308.00
300	306.25	306.00	305.85	306.50	306.40	307.00	307.25
325	305.50	305.25	305.10	305.75	305.65	306.25	306.50
350	304.75	304.50	304.35	305.00	304.90	305.50	305.75
375	304.00	303.75	303.60	304.25	304.15	304.75	305.00
400	303.25	303.00	302.85	303.50	303.40	304.00	304.25
425	302.50	302.25	302.10	302.75	302.65	303.25	303.50
450	301.75	301.50	301.35	302.00	301.90	302.50	302.75
475	301.00	300.75	300.60	301.25	301.15	301.75	302.00
500	300.25	300.00	299.85	300.50	300.40	301.00	301.25
525	299.50	299.25	299.10	299.75	299.65	300.25	300.50
550	298.75	298.50	298.35	299.00	298.90	299.50	299.75
575	298.00	297.75	297.60	298.25	298.15	298.75	299.00
597	297.25						
- NL DWIGHT	297.00	296.85	297.50	297.40	298.00	298.25	

.75 .75

320.19	320.19	320.19	320.19	320.19	320.19	320.19	320.19	320.19	320.19
15.25	16.25	17.25	18.25	19.25	20.25	21.25	22.25	23.25	24.25
4.74	3.94	5.44	6.44	7.94	6.94	8.44	9.44	10.94	9.94
9.1	0.3	1.7	10.5	12.5	4.2	5.4	14.2	14.6	5.3
-3.7	+3.6	+3.7	-4.7	-4.6	+2.7	+3.0	-4.8	-5.7	+1.6
312.55	312.85	312.85	312.85	312.85	312.85	312.85	312.85	312.85	312.85
08.25	07.75	06.25	07.25	05.75	04.75	03.25	04.25	02.25	01.75
8.10	5.10	6.60	5.60	7.10	8.10	9.60	8.60	10.10	11.10
6.9	7.6	8.6	1.0	0.5	9.1	10.4	2.3	4.4	11.7
+3.3	-2.5	-2.0	+4.6	+6.3	-1.0	-0.9	+8.3	+5.7	-0.6
312.85	312.85	312.85	312.85	312.85	312.85	312.85	312.85	312.85	312.85
00.25	01.25	02.75	03.75	04.75	05.75	06.75	07.75	08.75	09.75
10.60	11.60	13.10	14.10	15.10	16.10	17.10	18.10	19.10	20.10
13.2	6.9	7.2	5.1	6.1	3.9				
-4.6	+4.7	+3.9	-1.0	-0.5	+0.7				

Checked O.K.
5-28-13
Along 4 7/8 in 7 1/2

316.67	316.67	316.67	316.67	316.67	316.67	316.67	316.67	316.67	316.67
15.00	13.50	12.00	10.50	09.00	07.50	06.00	04.50	03.00	01.50
1.67	3.17	4.67	6.17	7.67	9.17	10.67	12.17	2.49	3.99
305.49	305.49	305.49	305.49	305.49	305.49	305.49	305.49	305.49	305.49
300.00	95.00	97.00							
5.99	6.99	3.99							
13.70	14.55	15.40	15.40	16.00					
9.50	4.91	0.00	4.00	3.81					
29.20	9.65	97.50	97.40	99.40					
4.91	5.26	4.1	4.51	3.91					

10' Waks
11 1/4 H^s

VILLA TERRACE 65' Wide

DWIGHT
INTERSECTION 60'

28
33

N.L. DWIGHT	297.25 297.00	296.85	297.50	297.40	298.00	298.25
N Curb	297.00 296.00	296.85	297.50	297.40	298.00 297.00	298.00
N 1/4	296.60	296.00	296.85	297.50	297.40	297.60
E	297.00	296.00	296.85	297.50	297.40	297.60
S 1/4	296.60	296.00	296.85	297.50	297.40	297.60
S Curb	297.00 297.25	296.00 297.00	296.85	297.50	297.40	297.60 298.00
SL DWIGHT	297.00	296.85	297.50	297.40	298.00	298.25

Checked OK 5-28-73

Blough

Taylor & Fritz

VILLA TERRACE

65' on N
50' on S

W

Myrtle
INTERSECTION

E

	300.25						
NL Myrtle	300.00	299.85	300.50	300.40	301.00	301.25	
N Curb	300.00	299.85	300.50	300.40	301.00	301.00	
N 1/4	299.60	299.00	299.85	300.50	300.40	300.00	300.60
S	300.00	299.00	299.85	300.50	300.40	300.00	301.00
S 1/4	299.60	299.00	299.85	300.50	300.40	300.00	300.60
S Curb	300.00	299.00	299.85	300.50	300.40	300.00	301.00
SK Myrtle	300.25	300.00	299.85	300.50	300.40	301.00	301.25

304.25
752
300.00
1.11
301.25

Checked coil 5-28-13
-Glang

14' Walks
13 = 1/4
W

80' Wide
both ways

Apr 8-13
Chas Lindberg,

Missouri Street

Lincoln St. intersection

E W E

240.6
126
357.4

44.24
7.21

see page 38

S.L. Lincoln	345.25	345.00	344.40	344.50	343.85	344.00	344.2	+0.3	-2.3
S. curb	345.00	345.00	344.40	344.50	343.85	344.00	344.0	-0.8	-2.2
S 1/4	344.60	344.00	344.40	344.50	343.85	343.00	343.0	-3.0	-0.9
4	345.00	344.00	344.40	344.50	343.85	343.00	344.0	-2.1	-0.5
N 1/4	344.60	344.00	344.40	344.50	343.85	343.00	343.0	-2.1	-0.2
N curb	345.00	345.00	344.40	344.50	343.85	344.00	344.0	-2.3	-0.6
N.L. Lincoln	345.25	345.00	344.40	344.50	343.85	344.00	344.2	-2.7	-0.1

357.50
349.00
7.50
HI
Allen

14' W
13 1/4 S

80' Wide
both ways

Apr 8-13
Chas Lindberg

36
41

Missouri St

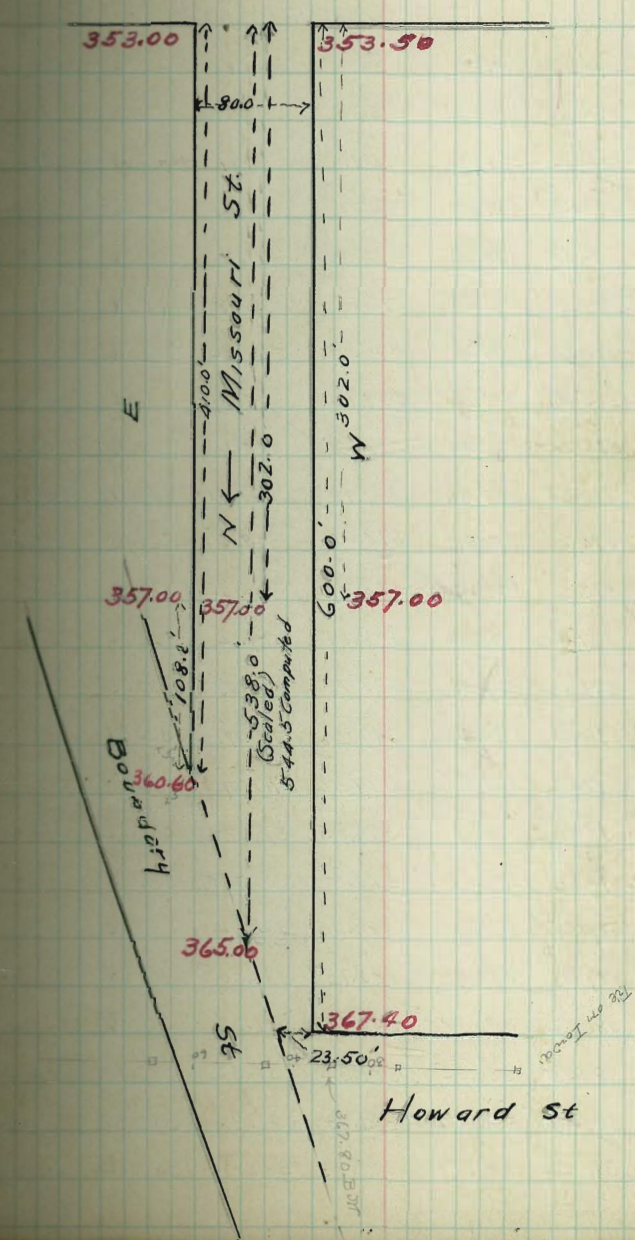
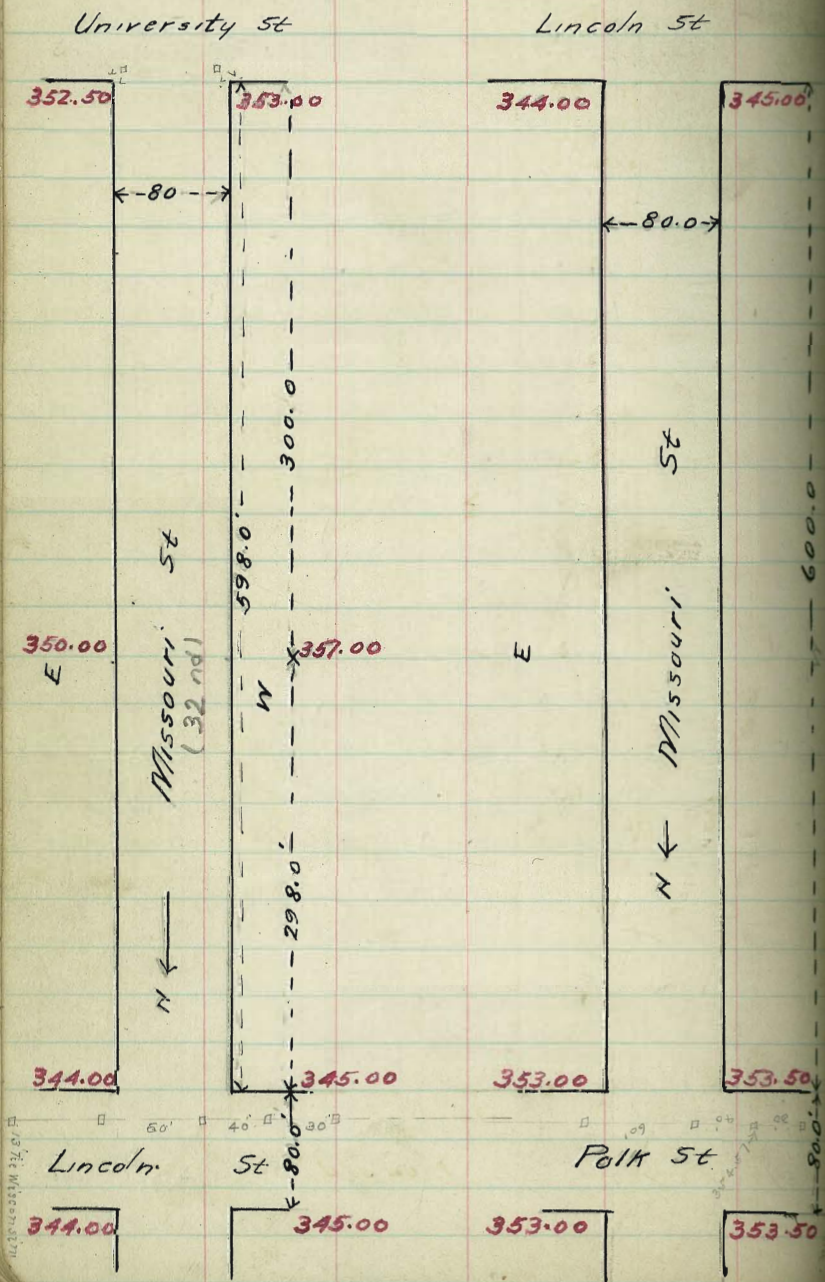
W E

see page 38

	W	Polk St. intersection					E		
E Polk	353.75	353.50	352.90	353.25	352.72	353.00	353.25	+1.1	+1.3
S curb	353.50	353.50	352.90	353.25	352.72	353.00	353.25	+1.3	+1.3
1/4 S	353.10	352.50	352.90	353.25	352.72	352.00	352.25	+2.5	+1.2
C	353.50	352.50	352.90	353.25	352.72	352.00	353.25	+1.4	+1.2
1/4 N	353.10	352.50	352.90	353.25	352.72	352.00	352.25	+0.7	+0.6
N curb	353.50	353.50	352.90	353.25	352.72	353.00	353.25	+2.1	+1.1
N Polk	353.75	353.50	352.90	353.25	352.72	353.00	353.25	+1.6	+0.8

Apr 8-13
Chas Lindberg.

SEE Field Book 475
April 22-13



Collier Ave - Adams to Kansas St

80' Wide 13' = 1/4^S 14 = Walks

(Adams to Hamilton)

W	Curb	W/2	E	E/2	Curb	E	W	E
6' Adams	374.45	374.20	374.55	375.70	376.60	377.20	377.45	+0.2 0.0
7' N	374.64	374.29	374.64	375.78	376.67	377.27	377.52	+2.1 +1.7
25' N	374.78	374.53	374.87	376.00	376.86	377.46	377.71	+5.9 +2.9
50' N	375.12	374.87	375.18	376.30	377.12	377.72	377.97	+5.3 +2.7
75' N	375.45	375.20	375.49	376.59	377.38	377.98	378.23	+5.1 +4.0
100' N	375.79	375.54	375.81	376.89	377.64	378.24	378.49	+4.6 +2.5
125' N	376.12	375.87	376.12	377.18	377.89	378.49	378.74	+4.3 +3.0
150' N	376.46	376.21	376.44	377.48	378.15	378.75	379.00	+3.7 +2.0
175' N	376.79	376.54	376.76	377.78	378.41	379.01	379.26	+2.8 +3.4
200' N	377.13	376.88	377.08	378.08	378.67	379.27	379.52	+2.6 +2.1
225' N	377.46	377.21	377.39	378.37	378.93	379.53	379.78	+1.9 +1.6
245' N	377.73	377.48	377.64	378.61	379.14	379.74	379.99	+0.5 +1.1
275' N	378.13	377.88	378.02	378.96	379.45	380.05	380.30	-15.2 +0.1
300' N	378.46	378.21	378.33	379.26	379.71	380.31	380.56	-17.3 +0.1
325' N	378.80	378.55	378.65	379.56	379.97	380.57	380.82	-15.5 0.0
350' N	379.13	378.88	378.98	379.85	380.22	380.82	381.07	-13.1 +2.0
375' N	379.47	379.22	379.28	380.15	380.48	381.08	381.33	-6.8 +0.7
400' N	379.80	379.55	379.60	380.45	380.74	381.34	381.59	-1.8 +1.5
425' N	380.14	379.89	379.92	380.75	381.00	381.60	381.85	-0.2 +0.8
450' N	380.47	380.22	380.18	380.94	381.26	381.86	382.11	+0.2 +0.7
475' N	380.80	380.55	380.55	381.34	381.52	382.12	382.37	+0.2 +0.6
500' N	381.14	380.89	380.86	381.63	381.78	382.38	382.63	0.0 +0.5
525' N	381.47	381.22	381.17	381.93	382.04	382.64	382.89	+0.3 +0.4

Adams to Kansas St
 374.45 374.20 374.55 375.70 376.60 377.20 377.45 +0.2 0.0
 374.64 374.29 374.64 375.78 376.67 377.27 377.52 +2.1 +1.7
 374.78 374.53 374.87 376.00 376.86 377.46 377.71 +5.9 +2.9
 375.12 374.87 375.18 376.30 377.12 377.72 377.97 +5.3 +2.7
 375.45 375.20 375.49 376.59 377.38 377.98 378.23 +5.1 +4.0
 375.79 375.54 375.81 376.89 377.64 378.24 378.49 +4.6 +2.5
 376.12 375.87 376.12 377.18 377.89 378.49 378.74 +4.3 +3.0
 376.46 376.21 376.44 377.48 378.15 378.75 379.00 +3.7 +2.0
 376.79 376.54 376.76 377.78 378.41 379.01 379.26 +2.8 +3.4
 377.13 376.88 377.08 378.08 378.67 379.27 379.52 +2.6 +2.1
 377.46 377.21 377.39 378.37 378.93 379.53 379.78 +1.9 +1.6
 377.73 377.48 377.64 378.61 379.14 379.74 379.99 +0.5 +1.1
 378.13 377.88 378.02 378.96 379.45 380.05 380.30 -15.2 +0.1
 378.46 378.21 378.33 379.26 379.71 380.31 380.56 -17.3 +0.1
 378.80 378.55 378.65 379.56 379.97 380.57 380.82 -15.5 0.0
 379.13 378.88 378.98 379.85 380.22 380.82 381.07 -13.1 +2.0
 379.47 379.22 379.28 380.15 380.48 381.08 381.33 -6.8 +0.7
 379.80 379.55 379.60 380.45 380.74 381.34 381.59 -1.8 +1.5
 380.14 379.89 379.92 380.75 381.00 381.60 381.85 -0.2 +0.8
 380.47 380.22 380.18 380.94 381.26 381.86 382.11 +0.2 +0.7
 380.80 380.55 380.55 381.34 381.52 382.12 382.37 +0.2 +0.6
 381.14 380.89 380.86 381.63 381.78 382.38 382.63 0.0 +0.5
 381.47 381.22 381.17 381.93 382.04 382.64 382.89 +0.3 +0.4

Final stakes and offset May 28-1914, Dennan, Miller, Shard.

Final stakes and offset June 6-1914, Dennan, Miller, Shard.

381.70 381.45 381.20 380.95 380.70 380.45 380.20 380.00 379.80 379.60 379.40 379.20 379.00 378.80 378.60 378.40 378.20 378.00 377.80 377.60 377.40 377.20 377.00 376.80 376.60 376.40 376.20 376.00 375.80 375.60 375.40 375.20 375.00 374.80 374.60 374.40 374.20 374.00 373.80 373.60 373.40 373.20 373.00 372.80 372.60 372.40 372.20 372.00 371.80 371.60 371.40 371.20 371.00 370.80 370.60 370.40 370.20 370.00 369.80 369.60 369.40 369.20 369.00 368.80 368.60 368.40 368.20 368.00 367.80 367.60 367.40 367.20 367.00 366.80 366.60 366.40 366.20 366.00 365.80 365.60 365.40 365.20 365.00 364.80 364.60 364.40 364.20 364.00 363.80 363.60 363.40 363.20 363.00 362.80 362.60 362.40 362.20 362.00 361.80 361.60 361.40 361.20 361.00 360.80 360.60 360.40 360.20 360.00 359.80 359.60 359.40 359.20 359.00 358.80 358.60 358.40 358.20 358.00 357.80 357.60 357.40 357.20 357.00 356.80 356.60 356.40 356.20 356.00 355.80 355.60 355.40 355.20 355.00 354.80 354.60 354.40 354.20 354.00 353.80 353.60 353.40 353.20 353.00 352.80 352.60 352.40 352.20 352.00 351.80 351.60 351.40 351.20 351.00 350.80 350.60 350.40 350.20 350.00 349.80 349.60 349.40 349.20 349.00 348.80 348.60 348.40 348.20 348.00 347.80 347.60 347.40 347.20 347.00 346.80 346.60 346.40 346.20 346.00 345.80 345.60 345.40 345.20 345.00 344.80 344.60 344.40 344.20 344.00 343.80 343.60 343.40 343.20 343.00 342.80 342.60 342.40 342.20 342.00 341.80 341.60 341.40 341.20 341.00 340.80 340.60 340.40 340.20 340.00 339.80 339.60 339.40 339.20 339.00 338.80 338.60 338.40 338.20 338.00 337.80 337.60 337.40 337.20 337.00 336.80 336.60 336.40 336.20 336.00 335.80 335.60 335.40 335.20 335.00 334.80 334.60 334.40 334.20 334.00 333.80 333.60 333.40 333.20 333.00 332.80 332.60 332.40 332.20 332.00 331.80 331.60 331.40 331.20 331.00 330.80 330.60 330.40 330.20 330.00 329.80 329.60 329.40 329.20 329.00 328.80 328.60 328.40 328.20 328.00 327.80 327.60 327.40 327.20 327.00 326.80 326.60 326.40 326.20 326.00 325.80 325.60 325.40 325.20 325.00 324.80 324.60 324.40 324.20 324.00 323.80 323.60 323.40 323.20 323.00 322.80 322.60 322.40 322.20 322.00 321.80 321.60 321.40 321.20 321.00 320.80 320.60 320.40 320.20 320.00 319.80 319.60 319.40 319.20 319.00 318.80 318.60 318.40 318.20 318.00 317.80 317.60 317.40 317.20 317.00 316.80 316.60 316.40 316.20 316.00 315.80 315.60 315.40 315.20 315.00 314.80 314.60 314.40 314.20 314.00 313.80 313.60 313.40 313.20 313.00 312.80 312.60 312.40 312.20 312.00 311.80 311.60 311.40 311.20 311.00 310.80 310.60 310.40 310.20 310.00 309.80 309.60 309.40 309.20 309.00 308.80 308.60 308.40 308.20 308.00 307.80 307.60 307.40 307.20 307.00 306.80 306.60 306.40 306.20 306.00 305.80 305.60 305.40 305.20 305.00 304.80 304.60 304.40 304.20 304.00 303.80 303.60 303.40 303.20 303.00 302.80 302.60 302.40 302.20 302.00 301.80 301.60 301.40 301.20 301.00 300.80 300.60 300.40 300.20 300.00 299.80 299.60 299.40 299.20 299.00 298.80 298.60 298.40 298.20 298.00 297.80 297.60 297.40 297.20 297.00 296.80 296.60 296.40 296.20 296.00 295.80 295.60 295.40 295.20 295.00 294.80 294.60 294.40 294.20 294.00 293.80 293.60 293.40 293.20 293.00 292.80 292.60 292.40 292.20 292.00 291.80 291.60 291.40 291.20 291.00 290.80 290.60 290.40 290.20 290.00 289.80 289.60 289.40 289.20 289.00 288.80 288.60 288.40 288.20 288.00 287.80 287.60 287.40 287.20 287.00 286.80 286.60 286.40 286.20 286.00 285.80 285.60 285.40 285.20 285.00 284.80 284.60 284.40 284.20 284.00 283.80 283.60 283.40 283.20 283.00 282.80 282.60 282.40 282.20 282.00 281.80 281.60 281.40 281.20 281.00 280.80 280.60 280.40 280.20 280.00 279.80 279.60 279.40 279.20 279.00 278.80 278.60 278.40 278.20 278.00 277.80 277.60 277.40 277.20 277.00 276.80 276.60 276.40 276.20 276.00 275.80 275.60 275.40 275.20 275.00 274.80 274.60 274.40 274.20 274.00 273.80 273.60 273.40 273.20 273.00 272.80 272.60 272.40 272.20 272.00 271.80 271.60 271.40 271.20 271.00 270.80 270.60 270.40 270.20 270.00 269.80 269.60 269.40 269.20 269.00 268.80 268.60 268.40 268.20 268.00 267.80 267.60 267.40 267.20 267.00 266.80 266.60 266.40 266.20 266.00 265.80 265.60 265.40 265.20 265.00 264.80 264.60 264.40 264.20 264.00 263.80 263.60 263.40 263.20 263.00 262.80 262.60 262.40 262.20 262.00 261.80 261.60 261.40 261.20 261.00 260.80 260.60 260.40 260.20 260.00 259.80 259.60 259.40 259.20 259.00 258.80 258.60 258.40 258.20 258.00 257.80 257.60 257.40 257.20 257.00 256.80 256.60 256.40 256.20 256.00 255.80 255.60 255.40 255.20 255.00 254.80 254.60 254.40 254.20 254.00 253.80 253.60 253.40 253.20 253.00 252.80 252.60 252.40 252.20 252.00 251.80 251.60 251.40 251.20 251.00 250.80 250.60 250.40 250.20 250.00 249.80 249.60 249.40 249.20 249.00 248.80 248.60 248.40 248.20 248.00 247.80 247.60 247.40 247.20 247.00 246.80 246.60 246.40 246.20 246.00 245.80 245.60 245.40 245.20 245.00 244.80 244.60 244.40 244.20 244.00 243.80 243.60 243.40 243.20 243.00 242.80 242.60 242.40 242.20 242.00 241.80 241.60 241.40 241.20 241.00 240.80 240.60 240.40 240.20 240.00 239.80 239.60 239.40 239.20 239.00 238.80 238.60 238.40 238.20 238.00 237.80 237.60 237.40 237.20 237.00 236.80 236.60 236.40 236.20 236.00 235.80 235.60 235.40 235.20 235.00 234.80 234.60 234.40 234.20 234.00 233.80 233.60 233.40 233.20 233.00 232.80 232.60 232.40 232.20 232.00 231.80 231.60 231.40 231.20 231.00 230.80 230.60 230.40 230.20 230.00 229.80 229.60 229.40 229.20 229.00 228.80 228.60 228.40 228.20 228.00 227.80 227.60 227.40 227.20 227.00 226.80 226.60 226.40 226.20 226.00 225.80 225.60 225.40 225.20 225.00 224.80 224.60 224.40 224.20 224.00 223.80 223.60 223.40 223.20 223.00 222.80 222.60 222.40 222.20 222.00 221.80 221.60 221.40 221.20 221.00 220.80 220.60 220.40 220.20 220.00 219.80 219.60 219.40 219.20 219.00 218.80 218.60 218.40 218.20 218.00 217.80 217.60 217.40 217.20 217.00 216.80 216.60 216.40 216.20 216.00 215.80 215.60 215.40 215.20 215.00 214.80 214.60 214.40 214.20 214.00 213.80 213.60 213.40 213.20 213.00 212.80 212.60 212.40 212.20 212.00 211.80 211.60 211.40 211.20 211.00 210.80 210.60 210.40 210.20 210.00 209.80 209.60 209.40 209.20 209.00 208.80 208.60 208.40 208.20 208.00 207.80 207.60 207.40 207.20 207.00 206.80 206.60 206.40 206.20 206.00 205.80 205.60 205.40 205.20 205.00 204.80 204.60 204.40 204.20 204.00 203.80 203.60 203.40 203.20 203.00 202.80 202.60 202.40 202.20 202.00 201.80 201.60 201.40 201.20 201.00 200.80 200.60 200.40 200.20 200.00 199.80 199.60 199.40 199.20 199.00 198.80 198.60 198.40 198.20 198.00 197.80 197.60 197.40 197.20 197.00 196.80 196.60 196.40 196.20 196.00 195.80 195.60 195.40 195.20 195.00 194.80 194.60 194.40 194.20 194.00 193.80 193.60 193.40 193.20 193.00 192.80 192.60 192.40 192.20 192.00 191.80 191.60 191.40 191.20 191.00 190.80 190.60 190.40 190.20 190.00 189.80 189.60 189.40 189.20 189.00 188.80 188.60 188.40 188.20 188.00 187.80 187.60 187.40 187.20 187.00 186.80 186.60 186.40 186.20 186.00 185.80 185.60 185.40 185.20 185.00 184.80 184.60 184.40 184.20 184.00 183.80 183.60 183.40 183.20 183.00 182.80 182.60 182.40 182.20 182.00 181.80 181.60 181.40 181.20 181.00 180.80 180.60 180.40 180.20 180.00 179.80 179.60 179.40 179.20 179.00 178.80 178.60 178.40 178.20 178.00 177.80 177.60 177.40 177.20 177.00 176.80 176.60 176.40 176.20 176.00 175.80 175.60 175.40 175.20 175.00 174.80 174.60 174.40 174.20 174.00 173.80 173.60 173.40 173.20 173.00 172.80 172.60 172.40 172.20 172.00 171.80 171.60 171.40 171.20 171.00 170.80 170.60 170.40 170.20 170.00 169.80 169.60 169.40 169.20 169.00 168.80 168.60 168.40 168.20 168.00 167.80 167.60 167.40 167.20 167.00 166.80 166.60 166.40 166.20 166.00 165.80 165.60 165.40 165.20 165.00 164.80 164.60 164.40 164.20 164.00 163.80 163.60 163.40 163.20 163.00 162.80 162.60 162.40 162.20 162.00 161.80 161.60 161.40 161.20 161.00 160.80 160.60 160.40 160.20 160.00 159.80 159.60 159.40 159.20 159.00 158.80 158.60 158.40 158.20 158.00 157.80 157.60 157.40 157.20 157.00 156.80 156.60

Curb 1/4 d 1/4 Curb

W ^{1/2} Seller Gro. - Adams to Hamilton E

560' N(H) 381.94 381.69 381.61 382.34 382.40 383.00 383.25

560' N(B) 382.75 382.50 382.22 382.75 382.40 383.00 383.25

= 6 + 20.25

(S) = 560' NC

= 680.5' 383.54 383.29 382.69 383.14 382.40 383.00 383.25

N 25'E 383.87 383.62 383.02 383.57 382.92 383.52 383.77

50'E 384.20 383.95 383.35 383.99 383.43 384.03 384.28

75'E 384.53 384.28 383.95 384.41 383.94 384.52 384.79

100'E 384.86 384.61 384.32 384.83 384.46 385.06 385.31

125'E 385.18 384.93 384.69 385.26 384.98 385.58 385.83

145.7E 385.46 385.21 385.00 385.60 385.40 386.00 386.25

145.7 on S =

156.7 on N 385.60 385.35 385.11 385.67 385.40 386.00 386.25

145.7' on S =

168.0 on N 385.75 385.50 385.62 385.75 385.40 386.00 386.25

on W.L. of

Hamilton Street

See page 44
40
45
See page 54

W E

-0.2 +0.6

-0.1 +0.6

-1.0 +0.5

-0.5 +0.5

-0.6 +0.5

-0.8 +0.2

-0.7 -0.2

-0.4 +0.3

+0.2 -0.8

-0.6 +1.0

-0.3 +1.0

See page 54

+ 8 - stakes April 7 - 1914

Dannan, Miller, Shand

Finish stakes on 3' offset May 28 - 1914

Dannan, Miller, Shand

Stake stakes on 3' offset June 5 - 1914

Dannan, Miller, Shand

Checked OK 6-11-14 [signature]

Collier Ave.

See page 346

Hamilton St intersection.

N.	Curb	N ¹ / ₂	2	S ¹ / ₂	Curb	E	N	S	
W Hamilton L St	385.75	385.50	385.62	385.75	385.40	386.00	386.25	-0.3	+1.0
VV Curb	385.84	385.59	385.30	385.80	385.40	386.00	386.00	+0.7	-0.4
W ¹ / ₂	385.92	385.67	385.42	385.96	385.65	385.75	385.85	+0.1	+0.3
C	385.75	385.75	385.54	386.12	385.90	385.50	386.50	+0.3	+0.2
E ¹ / ₂	386.08	385.83	385.66	386.28	386.15	385.75	386.40	-0.3	-0.2
E Curb	386.16	385.91	385.78	386.45	386.40	387.00	387.00	-0.4	-0.1
E Hamilton L St	386.25	386.00	385.85	386.50	386.40	387.00	387.25	0.0	+0.6

Collier Ave
Hamilton St to Oregon St

N	Corb	N/4	E	S/4	Corb	S	N	S
E.L. Hamilton	386.25	386.00	385.85	386.50	386.40	387.00	387.25	0.0
25'E	386.38	386.13	385.96	386.60	386.48	387.08	387.33	+0.4
50'E	386.50	386.25	386.08	386.71	386.57	387.17	387.42	+0.7
75'E	386.63	386.38	386.19	386.81	386.65	387.25	387.50	+0.7
100'E	386.75	386.50	386.31	386.91	386.73	387.33	387.58	+0.8
125'E	386.88	386.63	386.42	387.02	386.81	387.41	387.66	+1.4
150'E	387.00	386.75	386.54	387.12	386.90	387.50	387.75	+0.7
175'E	387.13	386.88	386.66	387.23	386.98	387.58	387.83	+0.5
200'E	387.25	387.00	386.77	387.33	387.07	387.67	387.92	+0.6
225'E	387.38	387.13	386.88	387.44	387.15	387.75	388.00	+0.8
250'E	387.50	387.25	387.00	387.54	387.23	387.83	388.08	+0.6
275'E	387.63	387.38	387.11	387.65	387.32	387.92	388.17	+1.0
300'E or	387.75	387.50	387.23	387.75	387.40	388.00	388.25	+0.2
W-L Oregon St								

42
 372.49 392.49 392.49 392.49 392.49 392.49 392.49 392.49 392.49 392.49
 87.25 86.25 86.50 87.42 87.58 86.75 87.00 87.75 87.92 87.25
 5.24 6.24 5.99 5.07 4.91 5.74 5.19 4.74 4.57 5.24
 5.8 6.3 5.8 5.9 5.5 5.0 4.9 4.2 3.6 4.8
 -0.11 -0.1 40.7 -0.8 -0.6 40.7 40.6 0.10 41.0 40.4
 392.47 392.47 392.47 392.47
 87.50 88.03 88.25 87.75
 4.97 4.39 4.22 4.77
 40.5 40.9 40.1 40.1
 +4 - stakes April 7-1914
 Donnan, Miller, Sharo.

BTW 388.13 391.15 391.15 391.15 391.15 391.15 391.15 391.15 391.15 391.15
 88.00 87.50 87.25 87.83 87.67 87.00 86.75 87.00
 391.15 HI 3.15 3.65 3.90 3.32 3.48 4.15 4.40 3.65
 385.17 391.15 391.15 391.15 391.15 391.15
 87.33 86.50 86.25 87.17 87.00 86.00
 392 4.65 4.90 3.98 4.15 5.15
 Finish stakes on 3' offset, May 5-1914.
 BTW 385.66 390.41 390.41 390.41 390.41 391.70 391.70
 4.75 87.00 86.20 85.00 86.00 87.50 88.00
 390.4 HI 3.41 4.41 4.91 4.41 4.20 3.70
 385.13 BTW 391.15 391.15 391.15 391.15 391.15 391.15
 391.70 HI 3.15 3.65 3.90 3.32 3.48 4.15 4.40 3.65
 Sets sidewalk stakes on 3' offset June 8-1914
 Donnan, Miller, Sharo.

BTW 385.66 390.31 390.31 390.31 390.31 390.31
 4.65 86.00 85.80 86.00 86.40 87.00
 390.31 HI 4.31 4.46 3.81 3.91 3.81
 Checked subgrade it was OK except for a few little
 bumps, set + stakes where necessary. June 8-1914
 Curbs OK for grade & line.
 Donnan
 Miller
 Sharo

see page 39

Collier Ave -
Oregon St - intersection

N	Curb	N ¹ / ₄	±	S ¹ / ₄	Curb	S	N	S	
W.L.	387.75	387.50	387.22	387.75	387.40	388.00	388.25	+0.2	+0.2
Oregon St									
W Curb	387.50	387.50	387.22	387.75	387.40	388.00	388.00	+0.5	+0.4
W ¹ / ₄	387.22	386.62	387.34	387.87	387.52	387.12	387.72	+0.7	+0.8
C	387.75	386.75	387.47	388.00	387.65	387.25	388.25	+1.1	+0.7
E ¹ / ₄	387.40	386.87	387.59	388.12	387.78	387.37	387.90	+0.7	+0.6
E Curb	388.00	388.00	387.72	388.25	387.90	388.50	388.50	+1.2	-0.3
E.L.	388.25	388.00	387.72	388.25	387.90	388.50	388.75	+0.2	-0.3
Oregon St									

June 8-1914 checked subgrade in the Bluffs but the intersections were not graded out. Miller, Donnari, Shaw.

Collier Ave

Oregon St to Idaho St

N	Curb	N ¹ / ₄	E	S ¹ / ₄	Curb	S	N	S
E.L. of								
Oregon St	388.25	388.00	387.72	388.25	387.90	388.50	388.75	+0.2
25'E	388.42	388.17	387.87	388.37	387.99	388.58	388.83	-0.2
50'E	388.58	388.33	388.02	388.50	388.07	388.67	388.92	-0.3
75'E	388.75	388.50	388.17	388.63	388.15	388.75	389.00	-0.2
100'E	388.92	388.67	388.31	388.75	388.23	388.83	389.08	0.0
125'E	389.09	388.84	388.46	388.88	388.32	388.92	389.17	-0.1
150'E	389.25	389.00	388.40	389.00	388.40	389.00	389.25	+2.2
175'E	389.42	389.17	388.57	389.13	388.71	389.08	389.33	+0.9
200'E	389.58	389.34	388.74	389.25	388.81	389.17	389.42	+0.9
225'E	389.75	389.50	388.90	389.37	388.91	389.25	389.50	+1.1
250'E	389.92	389.67	389.07	389.50	389.02	389.33	389.57	+1.3
275'E	389.09	389.84	389.24	389.63	389.13	389.42	389.67	+2.5
300'E or	390.25	390.00	389.40	389.75	389.23	389.50	389.75	+1.5
W.L. Idaho St								

Idaho St intersection excepted.

44
49
see page 39
+4 - taken April 7, 1914
Dorman, Miller, Shaud.

BM 281.87
+0.46
39.00 HI
-0.85
388.74
392.88 HI

393.00 393.03 393.02 393.03 393.03 393.03 393.03 393.03
39.50 39.60 39.67 39.73 39.77 39.84 39.90 39.90
39.50 HI 39.50 39.50 39.50 39.50 39.50 39.50 39.50
-0.85
393.03 393.03 393.03 393.03 393.03 393.03 393.03 393.03
39.00 39.50 39.67 39.73 39.77 39.84 39.90 39.90

Finish curbs on 3' offset May 5, 1914
Dorman, Miller, Shaud.

Set walkway stakes on 3' offset June 1st 1914

Collier Ave

Idaho to Utah St

N	curb	N/4	±	S/4	curb	S		
E.L. of								
Idaho St	390.25	390.00	389.40	389.75	389.22	389.50	389.75	+2.1 +1.4
25'E	390.38	390.13	389.53	389.88	389.36	389.63	389.88	+2.8 +1.1
50'E	390.50	390.25	389.65	390.00	389.48	389.75	390.00	+1.6 +1.3
75'E	390.62	390.37	389.77	390.12	389.60	389.87	390.12	+1.8 +1.5
100'E	390.75	390.50	389.90	390.25	389.72	390.00	390.25	+1.5 +1.5
125'E	390.88	390.63	390.03	390.37	389.25	390.13	390.38	+1.4 +1.4
150'E	391.00	390.75	390.15	390.50	389.97	390.25	390.50	+1.5 +1.3
175'E	391.12	390.87	390.27	390.62	390.09	390.37	390.62	+1.6 +1.3
200'E	391.25	391.00	390.40	390.75	390.22	390.50	390.75	+1.3 +1.0
225'E	391.37	391.12	390.52	390.87	390.36	390.63	390.88	+1.5 +0.8
250'E	391.50	391.25	390.65	391.00	390.48	390.75	391.00	+0.8 +1.7
275'E	391.62	391.37	390.77	391.12	390.60	390.87	391.12	+1.0 +0.8
300'E or	391.75	391.50	390.90	391.25	390.72	391.00	391.25	+0.7 +0.4

N.W.L. Utah St

Collier St

390.25	390.00	389.40	389.75	389.22	389.50	389.75	+2.1	+1.4
390.38	390.13	389.53	389.88	389.36	389.63	389.88	+2.8	+1.1
390.50	390.25	389.65	390.00	389.48	389.75	390.00	+1.6	+1.3
390.62	390.37	389.77	390.12	389.60	389.87	390.12	+1.8	+1.5
390.75	390.50	389.90	390.25	389.72	390.00	390.25	+1.5	+1.5
390.88	390.63	390.03	390.37	389.25	390.13	390.38	+1.4	+1.4
391.00	390.75	390.15	390.50	389.97	390.25	390.50	+1.5	+1.3
391.12	390.87	390.27	390.62	390.09	390.37	390.62	+1.6	+1.3
391.25	391.00	390.40	390.75	390.22	390.50	390.75	+1.3	+1.0
391.37	391.12	390.52	390.87	390.36	390.63	390.88	+1.5	+0.8
391.50	391.25	390.65	391.00	390.48	390.75	391.00	+0.8	+1.7
391.62	391.37	390.77	391.12	390.60	390.87	391.12	+1.0	+0.8
391.75	391.50	390.90	391.25	390.72	391.00	391.25	+0.7	+0.4

45
50

See page 39

at Idaho April 7-10 14
Dennan, Miller, Shaw.

390.25	390.00	389.40	389.75	389.22	389.50	389.75	+2.1	+1.4
390.38	390.13	389.53	389.88	389.36	389.63	389.88	+2.8	+1.1
390.50	390.25	389.65	390.00	389.48	389.75	390.00	+1.6	+1.3
390.62	390.37	389.77	390.12	389.60	389.87	390.12	+1.8	+1.5
390.75	390.50	389.90	390.25	389.72	390.00	390.25	+1.5	+1.5
390.88	390.63	390.03	390.37	389.25	390.13	390.38	+1.4	+1.4
391.00	390.75	390.15	390.50	389.97	390.25	390.50	+1.5	+1.3
391.12	390.87	390.27	390.62	390.09	390.37	390.62	+1.6	+1.3
391.25	391.00	390.40	390.75	390.22	390.50	390.75	+1.3	+1.0
391.37	391.12	390.52	390.87	390.36	390.63	390.88	+1.5	+0.8
391.50	391.25	390.65	391.00	390.48	390.75	391.00	+0.8	+1.7
391.62	391.37	390.77	391.12	390.60	390.87	391.12	+1.0	+0.8
391.75	391.50	390.90	391.25	390.72	391.00	391.25	+0.7	+0.4

Side walk towards N 1/4 offset
May 29-1914
Dennan, Miller, Shaw.

390.25	390.00	389.40	389.75	389.22	389.50	389.75	+2.1	+1.4
390.38	390.13	389.53	389.88	389.36	389.63	389.88	+2.8	+1.1
390.50	390.25	389.65	390.00	389.48	389.75	390.00	+1.6	+1.3
390.62	390.37	389.77	390.12	389.60	389.87	390.12	+1.8	+1.5
390.75	390.50	389.90	390.25	389.72	390.00	390.25	+1.5	+1.5
390.88	390.63	390.03	390.37	389.25	390.13	390.38	+1.4	+1.4
391.00	390.75	390.15	390.50	389.97	390.25	390.50	+1.5	+1.3
391.12	390.87	390.27	390.62	390.09	390.37	390.62	+1.6	+1.3
391.25	391.00	390.40	390.75	390.22	390.50	390.75	+1.3	+1.0
391.37	391.12	390.52	390.87	390.36	390.63	390.88	+1.5	+0.8
391.50	391.25	390.65	391.00	390.48	390.75	391.00	+0.8	+1.7
391.62	391.37	390.77	391.12	390.60	390.87	391.12	+1.0	+0.8
391.75	391.50	390.90	391.25	390.72	391.00	391.25	+0.7	+0.4

Checked subgrade in the Pile from Oregon to Idaho.
found it would average 10' high but in good shape.

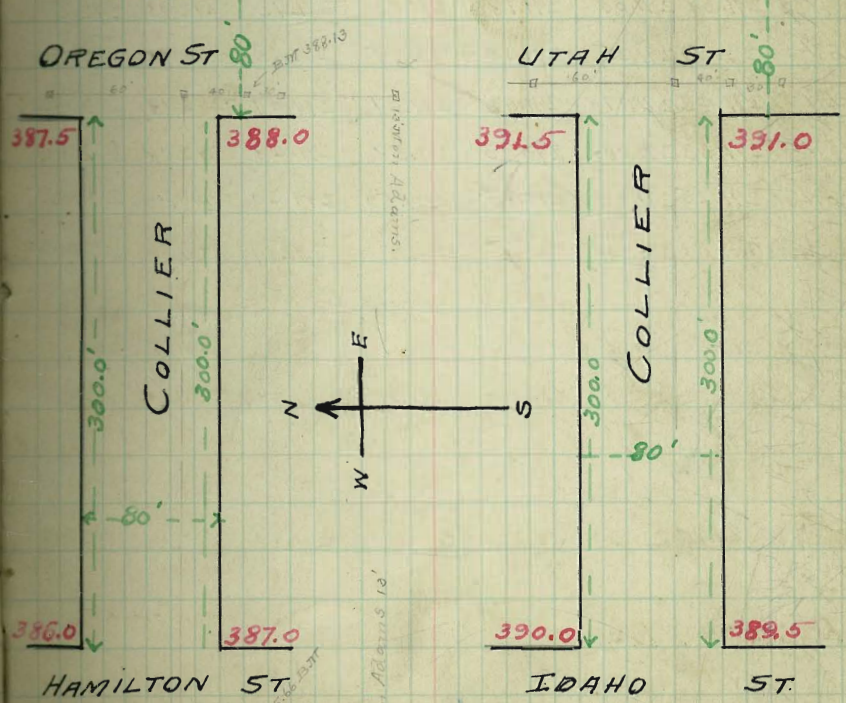
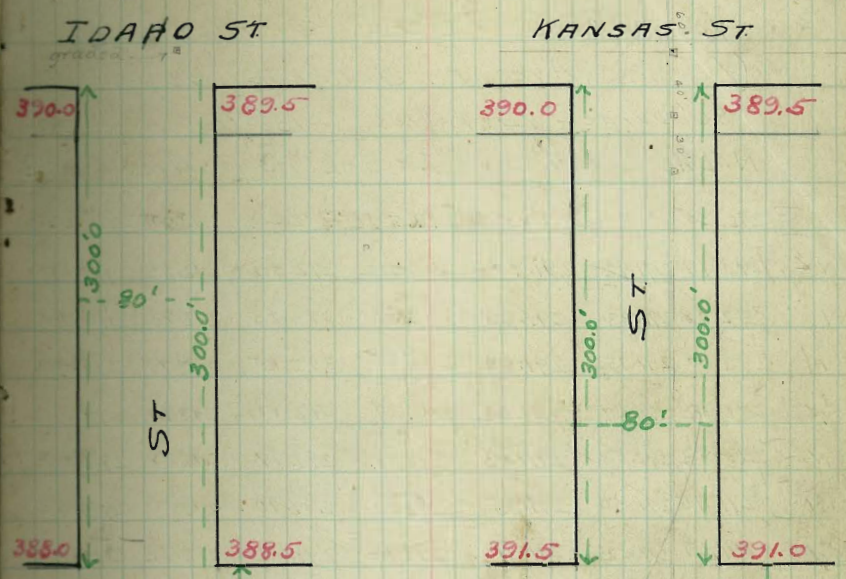
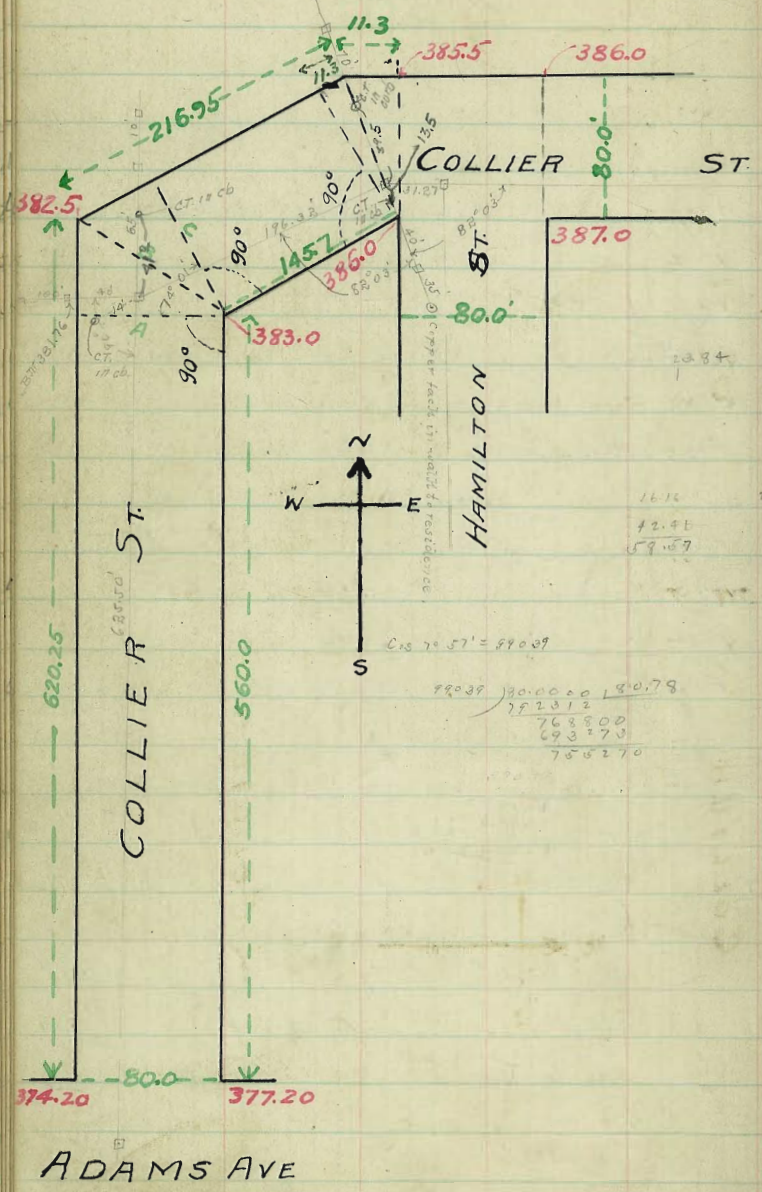
Sub-grade checked OK
6-10-14 Shyne

Tallier Arc

See page 39

Utah St intersection

N	Curb	N ¹ / ₄	±	S ¹ / ₄	Curb	S	N	S	
W.L	391.75	391.50	390.90	391.25	390.72	391.00	391.25	+0.7	+0.4
Utah St									
W									
Curb	391.50	391.50	390.90	391.25	390.72	391.00	391.00	+0.9	-0.8
W ¹ / ₄	391.10	390.50	390.90	391.25	390.72	390.00	390.60	+1.1	+1.0
C	391.50	390.50	390.90	391.25	390.72	390.00	391.00	+1.2	+1.5
E ¹ / ₄	391.10	390.50	390.90	391.25	390.72	390.00	390.60	+1.0	+1.0
E									
Curb	391.50	391.50	390.90	391.25	390.72	391.00	391.00	+0.6	+0.6
E.L. d	391.75	391.50	390.90	391.25	390.72	391.00	391.25	+0.4	+0.3
Utah St									



Vermont St - Grades
(Lincoln Ave to Johnson Ave)

80' Wide - 10' Walks 13' = 1/4 S.

See Field Book 833

Est. Book 7.

292.06 - BM. Spk SW Lincoln & Vermont.
538
297.74 +03

W	N. Line Lincoln Ave to S.L. Hayes Ave							E	W	E
Ri. Line										
Lincoln St	292.25	292.00	291.85	292.50	292.40	293.00	293.25	+0.4	-0.5	
25' N	292.17	291.92	291.77	292.42	292.32	292.92	293.17	+0.2	-0.6	
50' N	292.08	291.83	291.68	292.33	292.23	292.83	293.08	0.0	-0.3	
75' N	292.00	291.75	291.60	292.25	292.15	292.75	293.00	+0.2	-0.4	
100' N	291.92	291.67	291.52	292.17	292.07	292.67	292.92	+0.5	-0.1	
125' N	291.83	291.58	291.43	292.08	291.98	292.58	292.83	+0.5	+0.6	
150' N	291.75	291.50	291.35	292.00	291.90	292.50	292.75	+1.0	+1.2	
175' N	291.67	291.42	291.27	291.92	291.82	292.42	292.67	+0.3	+1.8	
200' N	291.58	291.33	291.18	291.83	291.73	292.33	292.58	+0.5	+1.9	
225' N	291.50	291.25	291.10	291.75	291.65	292.25	292.50	+0.2	+1.6	
250' N	291.42	291.17	291.02	291.67	291.57	292.17	292.42	+1.0	+2.4	
275' N	291.33	291.08	290.93	291.58	291.48	292.08	292.33	+1.7	+2.9	
300' N or	291.25	291.00	290.85	291.50	291.40	292.00	292.25	+1.3	+2.7	
S.L. Hayes Ave										

297.44	297.44	297.44	297.44	297.44	297.44	297.44	297.44		
5.19	4.63	4.56	5.30	5.02	4.28	3.70	5.52		
292.25	292.81	292.88	292.14	292.42	292.16	293.74	291.92		
292.25	293.25	293.28	292.08	291.92	293.72	292.75	291.75		
00	F0.44	F0.20	C0.06	C0.50	C0.24	C0.99	C0.17		
297.44	297.44	297.44	297.44	297.44	297.44	297.44	297.44		
5.58	2.92	2.60	5.67	5.25	2.63	2.83			
291.86	294.52	291.84	291.77	292.19	294.51	294.61	291.25		
291.51	292.58	292.42	291.42	291.25	292.25				
C0.28	C1.94	C2.42	C0.35	C0.94	C2.56				
7.15									
294.61	296.76	296.76	296.76	296.76	296.76	296.76	296.76		
2.15	292.25	291.25	291.42	292.42	292.58	291.58			
296.76	4.51	5.51	5.34	4.34	4.18	5.18			
296.76	296.76	296.76	296.76	296.76	296.76	296.76	296.76		
292.25	291.75	292.75	292.92	291.92	292.08	293.08			
3.51	5.01	4.01	3.81	4.81	4.68	3.68			
Finish P.L. Stakes 7/18/14 with same beam.									
294.61									
296.58	296.58	296.58	296.58	296.58	296.58	296.58	296.58		
292.00	291.00	291.17	292.17	292.33	291.33				
4.58	5.58	5.41	4.41	4.25	5.25				
296.58	296.58	296.58	296.58	296.58	296.58	296.58	296.58		
291.50	292.50	292.67	291.67	291.83	292.83	293.80	292.00		
5.08	4.08	3.74	4.74	4.75	3.75	5.58	4.58		
296.58	296.58								
5.54	291.09								
291.09	5.50								
290.30									
Finish Curbs - 7/25/14 with same beam.									

Vermont St - Grades
Hayes Ave intersection

W	Curb	N ¹ / ₄	C	S ¹ / ₂	Curb	E	W.	E	
S.L. Hayes Ave	291.25 291.00	290.85	291.50	291.40	292.00	292.25	+1.5	+2.7	
S Curb	291.00 290.00	290.25	290.50	290.75	292.00 291.00	292.00 291.00	+1.8 +2.8	+2.6 +3.6	
S ¹ / ₂	290.82	290.95	291.08	291.21	291.33	291.46	291.60	+2.2	+3.5
Center	291.25	291.38	291.50	291.62	291.75	291.87	292.00	+2.3	+3.0
N ¹ / ₄	290.90	291.03	291.14	291.25	291.37	291.48	291.60	+3.1	+3.7
	290.50	290.50			291.00			+3.7	+4.6
N Curb	291.50	291.50	290.62	290.75	290.87	292.00	292.00	+2.7	+3.6
N.L. Hayes Ave	291.75	291.50	291.22	291.75	291.40	292.00	292.25	+3.2	+3.7

See P-49

Vermont St-Grades
from N. L. Hayes Ave to

S. L. Lincoln Ave.

Hold Book over your head

294.10 N 20' To Hhd. SE Vermont & Hayes.
713
301.76

301.76	301.76	301.76	301.76	301.76	301.76
5.72	6.71	6.42	6.65	5.42	5.72
296.04	294.84	295.33	297.11	296.34	295.84
292.25	291.25	291.83	293.14	293.96	292.41
<3.77	<3.61	<3.80	<4.41	<2.58	<3.45

301.76	301.76	301.76	301.76
5.60	6.20	6.72	6.06
296.16	295.84	295.04	295.70
292.61	292.93	293.25	294.25
<3.55	<2.63	<1.79	<1.45

294.61	297.91	297.91	297.91	297.91
330				
297.91	292.00	292.85	292.71	294.00
	5.91	5.06	4.20	3.91

296.25	296.22	295.82	295.87	295.32	295.22	295.82
7.07						
296.32	291.00	291.35	292.16	292.36	292.87	293.00
	7.32	6.74	6.16	5.96	5.64	5.32

294.61	296.72	296.72	296.72	296.72	296.72
294.61	5.47	291.83	292.41	292.61	292.72
296.72	391.25	4.89	4.31	4.11	3.77

294.61	297.32	297.32	297.32	297.32	297.32
297.32	292.85	293.71	294.00	291.40	291.50
292.85	5.32	4.47	3.61	3.32	5.29

297.09	297.09	297.09	297.09	297.09	297.09
297.09	291.85	292.50	292.40	293.00	
5.09	5.24	4.59	4.67	4.77	

Note: - Permission given by Planning
to terrace & ft. adjoining PL on
the W. side of Hayes bet. Vermont & Lincoln
and 5 ft. adjoining PL on Vermont bet. Hayes & Lincoln making a break with
Vermont's slope. From cut to S. end. West.

297.22	297.22	297.22	297.22	297.22	297.22
297.22	291.83	291.50	292.22	292.25	293.10
5.34	5.77	5.05	6.02	4.12	4.42

297.22	297.22	297.22	297.22	297.22	297.22
297.22	293.11	292.64	292.00	292.41	
3.22	4.11	4.58	5.22	4.81	5.06

297.22	297.22	297.22	297.22	297.22	297.22
297.22	293.25	292.85	293.50	293.00	294.25
3.77	4.07	3.92	3.82	3.97	3.22

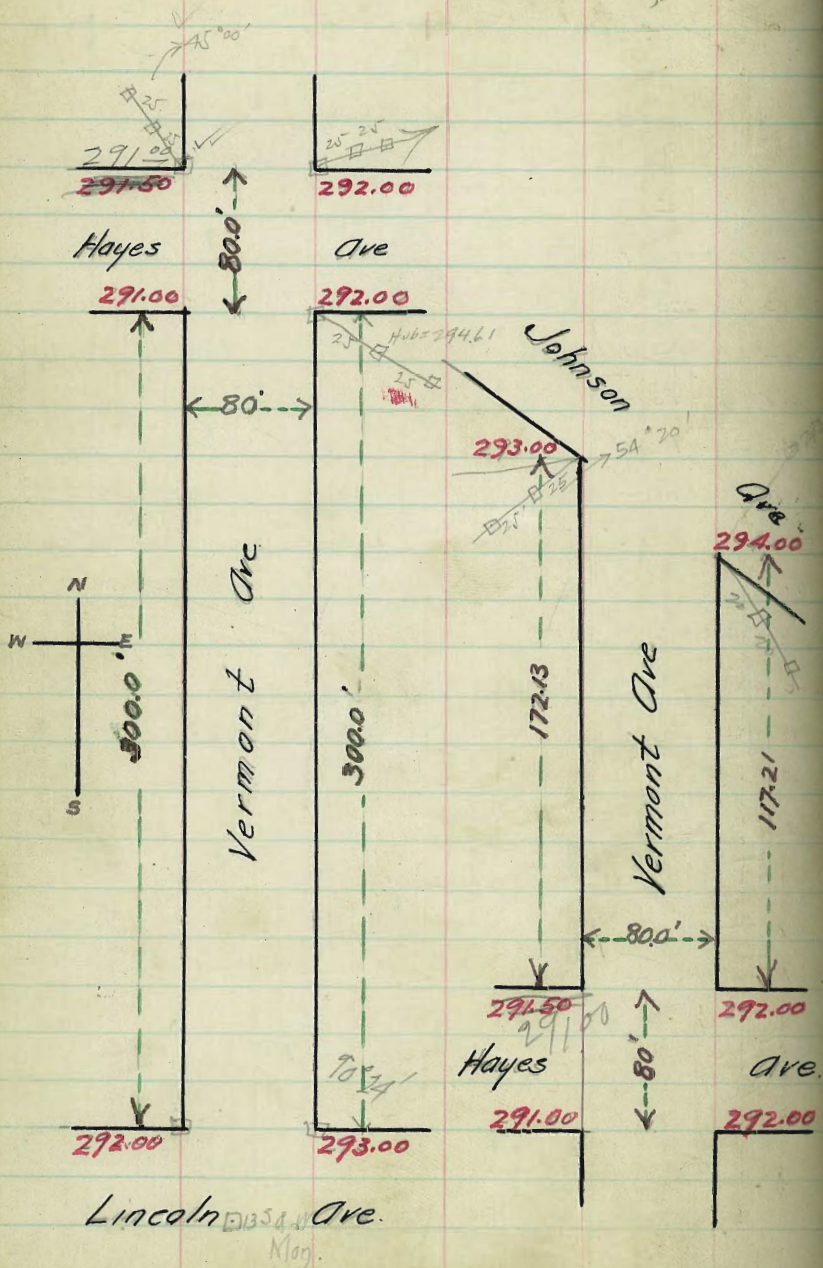
N.L.	Hayes St	291.75	291.50	291.22	291.75	291.40	292.00	292.25	+3.2	+3.7
25' N		291.97	291.72	291.49	292.05	291.83	292.43	292.61	+3.3	+3.9
50' N		292.19	291.94	291.74	292.35	292.25	292.85	293.10	+3.2	+4.0
75' N		292.41	292.16	292.01	292.66	292.68	293.28	293.53	+2.8	+3.4
100' N		292.63	292.38	292.27	292.96	293.11	293.71	293.96	+3.5	+2.4
117.21' N		292.78	292.53	292.45	293.17	293.40	294.00	294.25	+3.3	+1.4
144.67' N		293.02	292.77	292.73	293.50				+2.6	
172.13' N		293.25	293.00						+1.9	

N.L. Hayes - 0100	291.25	291.00	292.00	292.25
150	291.83	291.58	292.85	293.10
1400	292.41	292.16	293.71	293.96
St. John's 117.21	292.61	292.36	294.00	294.25
St. John's 172.13	293.25	293.00		

9030	SEW 088
9046	
9062	
9078	S Hayes 35
9100	nd a 55
9115	62
9130	52
9140	7 E 4 46

See P. 59. for Sewer
Grades, etc.

See P. 49



TENNYSON	YOUNGE ST	DUMAS ST
----------	-----------	----------

WILLOW

WILLOW

96.0

95.0

WILLOW

118.0

117.0

STERNE	XENOPHONE ST	CURTIS ST
--------	--------------	-----------

119.0

118.0

RUSSELL	WHITTIER	BROWNING ST
---------	----------	-------------

130.0

129.0

130.0

129.0

QUIMBY	VOLTAIRE	ALCOTT ST
--------	----------	-----------

STREET

112.0

113.0

OLYPHANT	UDAL	TOUCH ST
----------	------	----------

STREET

STREET

TENNYSON ST	YOUNGE ST
-------------	-----------

Vermont St. Sewer

Sta	Loc	Corr Gr	Est Gr	Cuts
	3' East of E. Corb.	294.51		
	1.97	296.58		
0+00	= E Alley N. of Lincoln Est.	290.30	290.30	
+50		292.33	291.81	1.8 ✓
1+00		292.17	290.62	1.6 ✓
+50	= SL Hayes.	292.00	290.73	1.2 ✓
2+20	= NL "	292.00	291.03	1.0 ✓
+80		292.85	291.19	1.7 ✓
3+30		293.71	291.35	2.3 ✓
+173	= MH.	294.00	291.40	2.6 ✓
4+22	= 3' W. of W. Corb & E Alley N. of Hayes Avenue. Top Pipe.	292.51	291.85	0.5

See below

3' W. of W. Corb - Pipe

0+00	= Flowing MH E Alley N. of Lin.	291.85	290.22	1.6
0+29	= E Alley - 3' W. of W. Corb.	291.50	290.36	1.2 ✓
0+79		291.33	290.41	0.9 ✓
1+29		291.17	290.50	0.7 ✓
1+54	= JE = 25' S. of SL Hayes.	291.53	290.55	1.0

1.76 296.37

0+00	= E Alley N. of Lincoln Top pipe.	291.80	290.30	2.0
+50		291.51	290.91	1.1 ✓
1+00		291.41	290.50	0.9 ✓
+50		291.17	290.61	0.6 ✓
2+00		291.50	290.51	0.8 ✓
+30		291.76	290.72	0.7 ✓
+80		292.81	290.24	1.0 ✓
3+30		293.55	290.23	1.2 ✓
+173	= MH.	293.00	291.04	1.0 ✓

4+22	= Top pipe	292.51	291.15	0.6
	= Bot.	291.81		

294.61	296.64	296.64	296.64	296.64
293	290.30	291.40	290.50	290.50
296.64	6.34	6.21	6.14	6.07
292.01	296.92	296.92	296.92	
291	290.30	290.55		
296.92	6.58	6.57		
290.34	6.62	6.57		
294.61	296.66	296.66	296.66	296.66
296.66	290.40	290.50	290.60	290.70
296.66	6.26	6.16	6.06	5.96
296.66	296.66	296.66	296.66	296.66
290.96	291.00	291.07	291.15	291.15
5.70	5.66	5.59	5.51	

BROWNING STREET

Graded

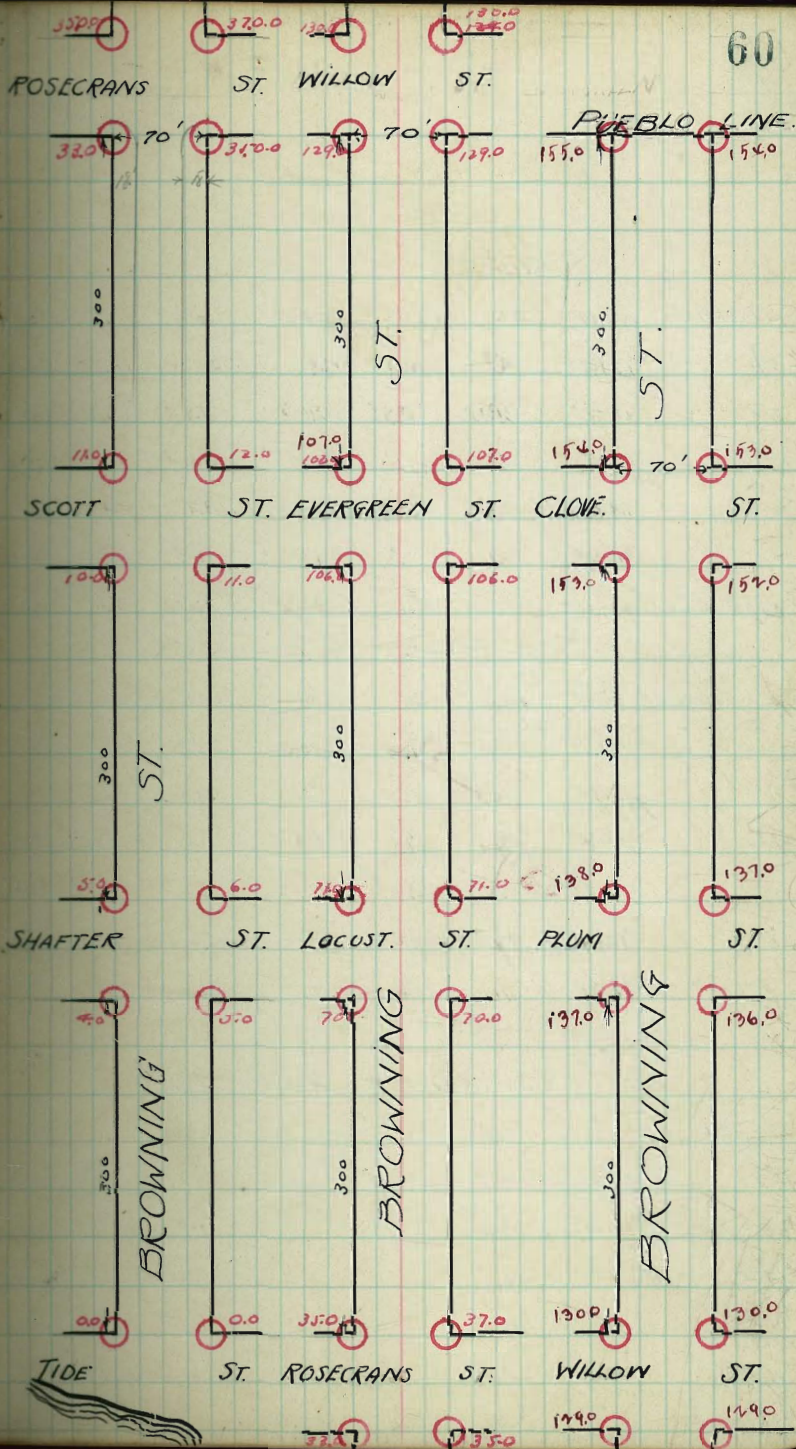
300 = E.L. Rosecrans	35.25	35.0	34.4	34.0	33.1	32.0	33.25
275	33.35	33.1	32.5	32.1	31.7	31.1	31.35
250	31.45	31.2	30.6	30.2	29.4	29.3	29.15
200	27.25	27.3	26.7	26.5	26.7	26.7	26.95
150	23.75	23.5	22.9	22.8	22.0	22.0	22.25
100	19.95	19.7	19.1	19.0	18.3	18.3	18.55
50	16.08	15.8	15.2	15.2	14.6	14.7	14.85
W.L. Scott	12.25	12.0	11.4	11.5	10.85	11.0	11.25

no notes

300 = E.L. Scott	11.25	11.0	10.4	10.5	9.85	10.0	10.25
250	10.45	10.2	9.5	9.7	9.0	9.2	9.45
200	9.55	9.3	8.7	8.8	8.2	8.3	8.55
150	8.25	8.5	7.9	8.0	7.3	7.5	7.75
100	7.95	7.7	7.1	7.2	6.5	6.7	6.95
50	7.05	6.8	6.2	6.3	5.7	5.8	6.05
W.L. Shafter	6.25	6.0	5.4	5.5	4.85	5.0	5.25

no notes

300 = E.L. Shafter	5.25	5.0	4.6	4.5	3.95	4.0	4.25
250	4.45	4.2	3.7	3.8	3.1	3.3	3.55
200	3.55	3.3	2.9	3.0	2.3	2.7	2.95
150	2.75	2.5	2.0	2.3	1.6	2.0	2.25
100	1.95	1.7	1.1	1.5	.84	1.3	1.55
50	1.05	.8	.3	.8	.1	.7	.95
W.L. Tidest	.25	.0	-.6	.0	-.6	.0	.25



TRADED

300 - EX WILLOW	129.25	129.0	128.6	129.0	128.6	129.0	129.25
250	125.55	125.3	124.9	125.3	124.9	125.3	125.55
200	121.95	121.7	121.3	121.7	121.3	121.7	121.95
150	118.25	118.0	117.6	118.0	117.6	118.0	118.25
100	114.55	114.3	113.9	114.3	113.9	114.3	114.55
50	110.85	110.7	110.3	110.7	110.3	110.7	110.85
W. EVERGREEN	107.25	107.0	106.6	107.0	106.6	107.0	107.25

See page 62

300 - E. EVERGREEN	106.25	106.0	105.6	106.0	105.6	106.0	106.25
250	100.45	100.2	99.8	100.2	99.8	100.2	100.45
200	96.55	96.3	95.9	96.3	95.9	96.3	96.55
150	88.25	88.0	88.1	88.5	88.1	88.5	88.25
100	82.95	82.7	82.3	82.7	82.3	82.7	82.95
50	77.05	76.8	76.4	76.8	76.4	76.8	77.05
W. LOCUST	70.25	70.0	70.6	71.0	70.6	71.0	70.25

See page 62

300 - E. LOCUST	70.25	70.0	69.6	70.0	69.6	70.0	70.25
250	64.75	64.5	64.1	64.3	63.9	64.2	64.75
200	59.25	59.0	58.5	58.7	58.1	58.3	59.25
150	53.75	53.5	53.0	53.0	52.4	52.5	53.75
100	48.25	48.0	47.5	47.3	46.6	46.7	48.25
50	42.75	42.5	41.9	41.7	40.9	40.8	42.75
W. ROSEGRASS	37.25	37.0	36.4	36.0	35.1	35.0	37.25

N

S

W.L. Plum.

Curb

 $\frac{1}{4}$

♀

 $\frac{1}{4}$

Curb

E.L. Plum

W.L. Evergreen

Curb

 $\frac{1}{4}$

♀

 $\frac{1}{4}$

Curb

E.L. Evergreen

W.L. Locust 71.25 71.0 70.6 71.0 70.6 71.0 71.25

Curb 71.0 71.0 71.0 71.0

 $\frac{1}{4}$

70.0

70.0

♀

69.5

70.5

 $\frac{1}{4}$

Curb

70.0

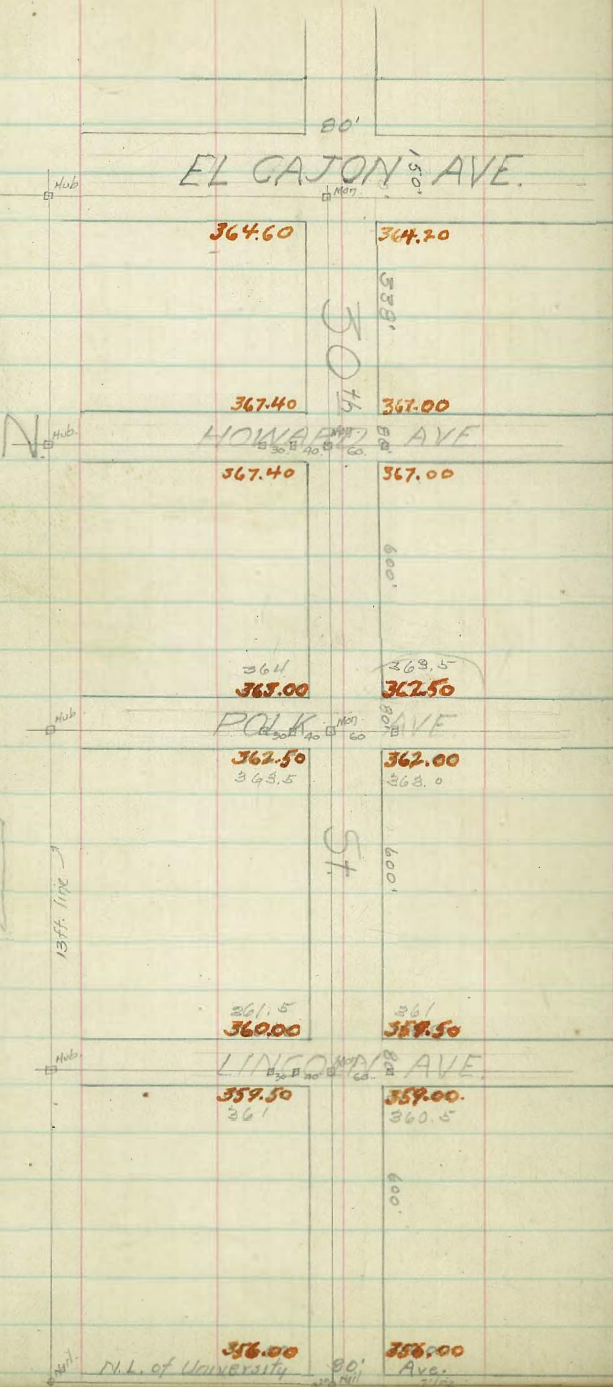
69.0

70.0

70.0

70.0

E.L. Locust 70.25 70.0 69.5 70.0 69.5 70.0 70.25



See Book 89-36 for ties + grades

W.	Curb.	W $\frac{1}{4}$	E	E $\frac{1}{4}$	Curb.	E.
5.6 Lincoln.						
600' N.	359.75	359.50	358.90	359.25	358.73	359.00
575' N.	359.60	359.35	358.76	359.11	358.59	358.87
550' N.	359.46	359.21	358.62	358.97	358.47	358.75
525' N.	359.31	359.06	358.48	358.84	358.34	358.62
500' N.	359.17	358.92	358.35	358.71	358.21	358.50
475' N.	359.03	358.77	358.21	358.57	358.09	358.37
450' N.	358.87	358.62	358.07	358.44	357.95	358.25
425' N.	358.73	358.48	357.93	358.30	357.82	358.12
400' N.	358.58	358.33	357.79	358.16	357.68	358.00
375' N.	358.44	358.19	357.65	358.03	357.55	357.87
350' N.	358.29	358.04	357.51	357.89	357.42	357.75
325' N.	358.14	357.89	357.37	357.76	357.29	357.62
300' N.	358.00	357.75	357.23	357.62	357.16	357.50
275' N.	357.85	357.60	357.11	357.49	357.03	357.37
250' N.	357.71	357.46	356.97	357.35	356.90	357.25
225' N.	357.56	357.31	356.84	357.22	356.77	357.12
200' N.	357.41	357.16	356.70	357.08	356.64	357.00
175' N.	357.27	357.02	356.56	356.95	356.51	356.87
150' N.	357.12	356.87	356.42	356.81	356.38	356.75
125' N.	356.98	356.73	356.29	356.69	356.25	356.62
100' N.	356.83	356.58	356.15	356.54	356.12	356.50
75' N.	356.69	356.44	356.02	356.41	355.99	356.37
50' N.	356.54	356.29	355.87	356.27	355.86	356.25
25' N.	356.39	356.14	355.74	356.13	355.73	356.12
62 N. University	356.25	356.00	355.60	356.00	355.60	356.00

W.	Curb.	W $\frac{1}{2}$.	E	E $\frac{1}{2}$	Curb.	E.
5.2.7011.						
600'N.	362.75	362.50	361.90	362.25	361.73	362.00
575'N.	362.64	362.39	361.79	362.14	361.62	361.99
550'N.	362.54	362.29	361.69	362.04	361.52	361.79
525'N.	362.43	362.18	361.59	361.94	361.42	361.69
500'N.	362.33	362.08	361.48	361.83	361.31	361.58
475'N.	362.22	361.97	361.38	361.73	361.21	361.48
450'N.	362.12	361.87	361.28	361.62	361.10	361.37
425'N.	362.03	361.78	361.17	361.52	361.00	361.27
400'N.	361.91	361.66	361.06	361.41	360.89	361.16
375'N.	361.81	361.56	360.96	361.31	360.79	361.06
350'N.	361.71	361.46	360.86	361.21	360.69	360.96
325'N.	361.60	361.35	360.75	361.10	360.58	360.85
300'N.	361.50	361.25	360.65	361.00	360.48	360.75
275'N.	361.39	361.14	360.55	360.89	360.37	360.64
250'N.	361.29	361.04	360.44	360.79	360.27	360.54
225'N.	361.19	360.94	360.33	360.68	360.17	360.44
200'N.	361.07	360.83	360.23	360.58	360.06	360.33
175'N.	360.98	360.73	360.12	360.48	359.95	360.23
150'N.	360.87	360.62	360.02	360.37	359.85	360.12
125'N.	360.77	360.52	359.92	360.27	359.75	360.02
100'N.	360.67	360.42	359.81	360.16	359.64	359.91
75'N.	360.56	360.31	359.71	360.06	359.54	359.81
50'N.	360.46	360.21	359.61	359.96	359.44	359.71
25'N.	360.35	360.10	359.50	359.85	359.33	359.60
0=H.L. Lincoln.	360.25	360.00	359.40	359.75	359.23	359.50

Intersection - Polk - 30th

W. Curb. W. 1/4 E E 1/4 Curb. E

3
6
5
5
5
5
4
4
4
4
3
3
3
3
2
2
2
1
1
1
1
7
8
2
6

4	N.L. Polk	363.25	363.00	362.40	362.75	362.23	362.50	362.75
		14						
4	W. Curb.	363.00	363.00	362.31	362.66	362.14	362.50	362.50
		13	362.00	362.00			361.50	361.50
3	W. 1/4	362.40	361.88	362.23	362.58	362.06	361.38	
		13						
3	E	362.75	361.75	362.11	362.50	361.98	361.25	362.25
		13						
2	S 1/4	362.23	361.63	361.07	362.42	361.90	361.13	360.73
		13						
2	S. Curb	361.50	361.50	361.99	362.34	361.82	361.00	361.00
		14	362.50	362.50			362.00	362.00
1	S.L. Polk	362.75	362.50	361.90	362.25	361.73	362.00	362.25

	W.	Curb.	W $\frac{1}{2}$.	Φ	E $\frac{1}{2}$	Curb.	E
5. L. Howard.							
6	600' N.	367.65	367.40	367.00	367.20	366.20	367.00 367.25
5	575' N.	367.46	367.21	366.80	367.01	366.41	366.81 367.06
5	550' N.	367.29	367.03	366.61	366.82	366.23	366.62 366.97
5	525' N.	367.10	366.85	366.42	366.64	366.05	366.43 366.69
5	500' N.	366.91	366.66	366.23	366.45	365.87	366.25 366.50
4	475' N.	366.73	366.48	366.04	366.27	365.68	366.06 366.31
4	450' N.	366.55	366.30	365.85	366.08	365.50	365.87 366.12
4	425' N.	366.36	366.11	365.65	365.90	365.32	365.69 365.93
4	400' N.	366.18	365.93	365.46	365.71	365.14	365.50 365.75
3	375' N.	366.00	365.75	365.27	365.53	364.96	365.31 365.56
3	350' N.	365.81	365.56	365.08	365.34	364.77	365.12 365.37
3	325' N.	365.63	365.38	364.99	365.16	364.59	364.93 365.18
3	300' N.	365.45	365.20	364.70	364.97	364.41	364.75 365.00
2	275' N.	365.26	365.01	364.52	364.78	364.23	364.56 364.81
2	250' N.	365.09	364.83	364.31	364.60	364.05	364.37 364.62
2	225' N.	364.90	364.65	364.12	364.41	363.86	364.18 364.43
2	200' N.	364.71	364.46	363.93	364.23	363.67	364.00 364.25
	175' N.	364.53	364.28	363.74	364.04	363.50	363.81 364.06
	150' N.	364.34	364.09	363.55	363.86	363.32	363.62 363.87
	125' N.	364.16	363.91	363.35	363.67	363.14	363.43 363.68
1	100' N.	363.98	363.73	363.16	363.49	362.95	363.25 363.50
7	75' N.	363.80	363.55	362.97	363.30	362.77	363.06 363.31
4	50' N.	363.61	363.36	362.79	363.12	362.59	362.87 363.12
2	25' N.	363.43	363.18	362.59	362.93	362.41	362.68 362.93
0	0 = N.E. of Polk.	363.25	363.00	362.40	362.75	362.23	362.50 362.75

Intersection - Howard - 30th

W. Curb W $\frac{1}{4}$ \pm E $\frac{1}{4}$ Curb. E.

14 13 13 13 13 14

N.L. Howard 367.65 367.40 367.00 367.20 366.80 367.00 367.25

N. Curb. 367.40 367.40
366.40 366.40 366.30 366.20 366.10 367.00 367.00
366.00 366.00

N. $\frac{1}{4}$. 367.00 366.94 366.80 366.80 366.73 366.67 366.60

E 367.40 366.40 366.30 367.20 366.10 366.00 367.00

S $\frac{1}{4}$ 367.00 366.94 366.80 366.80 366.73 366.67 366.60

S. Curb. 366.40 366.40 366.30 366.20 366.10 366.00 366.00
367.40 367.40 367.00 367.00

S.L. Howard 367.65 367.40 367.00 367.20 366.80 367.00 367.25

W. Curb. W $\frac{1}{4}$ \pm E $\frac{1}{4}$ Curb. F.

	W. Curb.	W $\frac{1}{4}$	\pm	E $\frac{1}{4}$ Curb.	F.
5	5.2. EL CAYON.				
6	600'N.	364.25	364.60	364.20	364.40
5	575'N.	364.96	364.71	364.11	364.51
5	550'N.	365.07	364.73	364.23	364.13
5	525'N.	365.19	364.94	364.34	364.74
5	500'N.	365.31	365.06	364.46	364.76
4	475'N.	365.43	365.18	364.58	364.98
4	450'N.	365.54	365.29	364.69	365.09
4	425'N.	365.66	365.41	364.81	365.21
4	400'N.	365.78	365.53	364.93	365.33
3	375'N.	365.89	365.64	365.04	365.44
3	350'N.	366.01	365.76	365.16	365.56
3	325'N.	366.13	365.88	365.28	365.68
3	300'N.	366.24	365.99	365.40	365.79
2	275'N.	366.36	366.11	365.51	365.91
2	250'N.	366.48	366.23	365.63	366.03
2	225'N.	366.59	366.34	365.74	366.14
2	200'N.	366.71	366.46	365.86	366.26
1	175'N.	366.83	366.58	365.98	366.38
1	150'N.	366.95	366.70	366.09	366.50
1	125'N.	367.06	366.81	366.21	366.61
1	100'N.	367.18	366.93	366.33	366.73
7	75'N.	367.29	367.04	366.44	366.84
5	50'N.	367.41	367.16	366.56	366.96
2	25'N.	367.53	367.28	366.68	367.08
6	0-N. L. Howard	367.65	367.40	366.80	367.20

10" Gutter

Browning Street.

For sketch see page 60.

10" Gutter

71

	S						N.		
300 = EL Scott	10.25	10.00	9.85	10.50	10.40	11.00	11.25	+0.1	+0.5
275	9.83	9.58	9.43	10.08	9.98	10.58	10.83		
250	9.42	9.17	9.02	9.67	9.57	10.17	10.42	-0.4	+0.1
200	8.58	8.33	8.18	8.83	8.73	9.33	9.58	-0.3	-0.4
150	7.75	7.50	7.35	8.00	7.90	8.50	8.75	-0.3	+0.5
100	6.92	6.67	6.52	7.17	7.07	7.67	7.92	+0.7	+1.1
50	6.08	5.83	5.68	6.33	6.23	6.83	7.08	+0.5	+1.0
25	5.25	5.00	4.85	5.50	5.40	6.00	6.25	+0.6	+1.0
0 = WL Shafter	5.25	5.00	4.85	5.50	5.40	6.00	6.25		
WL Shafter	5.25	5.00	4.85	5.50	5.40	6.00	6.25		
Curb	4.17	4.43	4.55	4.67	4.79	4.91	5.17		
1/4	4.40	4.66	4.78	4.90	5.02	5.14	5.40		
Center 0	4.50	4.76	4.88	5.00	5.12	5.24	5.50		
1/4	3.85	4.11	4.23	4.35	4.47	4.59	4.85		
Curb	3.17	3.43	3.55	3.67	3.79	3.91	4.17		
EL Shafter	4.25	4.00	3.85	4.50	4.40	5.00	5.25		
300 = EL Shafter	4.25	4.00	3.85	4.50	4.40	5.00	5.25	0.0	0.0
275	3.92	3.67	3.50	4.13	4.00	4.58	4.83		
250	3.58	3.33	3.14	3.75	3.60	4.17	4.42	-0.1	+0.1
200	2.92	2.67	2.43	3.00	2.80	3.33	3.58	-0.4	-0.2
150	2.25	2.00	1.73	2.25	2.00	2.50	2.75	-0.8	-0.4
100	1.58	1.33	1.04	1.50	1.20	1.67	1.92	-0.9	-0.2
50	0.92	0.67	0.31	0.75	0.40	0.83	1.08	-1.3	-0.5
25	0.58	0.33	-0.05	0.38	0.00	0.47	0.67		
0 = WL Tide	0.25	0.00	-0.40	0.00	-0.40	0.00	0.25	-1.3	-0.7

WL Rosecrans	35.25	35.00	35.10	36.00	36.40	37.00	37.25
Curb	34.17	34.69	34.93	35.17	35.41	35.65	36.17
1/4	34.40	34.92	35.16	35.40	35.64	35.88	36.40
Center 0	36.00	34.52	34.76	35.00	35.24	35.48	36.00
1/4	33.10	33.62	33.86	34.10	34.34	34.58	35.10
Curb	32.17	32.69	32.93	33.17	33.41	33.65	34.17
EL Rosecrans	33.25	33.00	33.10	34.00	34.40	35.00	35.25

300=EL Rosecrans	33.25	33.00	33.10	34.00	34.40	35.00	35.25	+0.1 +0.1
275	31.42	31.17	31.25	32.13	32.48	33.08	33.33	
250	29.58	29.33	29.29	30.25	30.57	31.17	31.42	-86 -102
200	25.92	25.67	25.68	26.50	26.73	27.33	27.58	-84 -100
150	22.25	22.00	21.98	22.75	22.90	23.50	23.75	-69 -80
100	18.58	18.33	18.27	19.00	19.07	19.67	19.92	-60 -52
50	14.92	14.67	14.56	15.25	15.23	15.83	16.08	-43 -49
25	13.08	12.83	12.70	13.28	13.32	13.92	14.17	
0=WL Scott	11.25	11.00	10.85	11.50	11.40	12.00	12.25	+13 +14

WL Scott	11.25	11.00	10.85	11.50	11.40	12.00	12.25
Curb	10.17	10.43	10.55	10.67	10.79	10.91	11.17
1/4	10.40	10.66	10.78	10.90	11.02	11.14	11.40
Center 0	10.50	10.76	10.88	11.00	11.12	11.24	11.50
1/4	9.85	10.11	10.23	10.35	10.47	10.59	10.85
Curb	9.17	9.43	9.55	9.67	9.79	9.91	10.17
EL Scott	10.25	10.00	9.85	10.50	10.40	11.00	11.25

S. Browning St. N.

73

300=EL Evergreen	106.25	106.00	105.60	106.00	105.60	106.00	106.25	00 +1.6
275	103.33	103.08	102.68	103.08	102.68	103.08	103.33	
250	100.42	100.17	99.77	100.17	99.77	100.17	100.42	+29 +28
200	94.58	94.33	93.93	94.33	93.93	94.33	94.58	+34 +20
150	88.75	88.50	88.10	88.50	88.10	88.50	88.75	+37 +26
100	82.92	82.67	82.27	82.67	82.27	82.67	82.92	+47 +4.3
50	77.08	76.83	76.43	76.83	76.43	76.83	77.08	+50 +5.4
25	74.17	73.92	73.52	73.92	73.52	73.92	74.17	
0=WL Locust	71.25	71.00	70.60	71.00	70.60	71.00	71.25	+56 +20
WL Locust	71.25	71.00	70.60	71.00	70.60	71.00	71.25	
Curb	81 70.17	69.91	70.34	70.74	70.34	69.91	70.17	
1/2	81 70.40	69.79	70.22	70.62	70.22	69.79	70.40	
Center	81 70.50	69.67	70.10	70.50	70.10	69.67	70.50	
1/2	81 69.85	69.55	69.98	70.38	69.98	69.55	69.85	
Curb	81 69.17	69.43	69.86	70.26	69.86	69.43	69.17	
EL Locust	81 70.25	70.00	69.60	70.00	69.60	70.00	70.25	
300=EL Locust	70.25	70.00	69.60	70.00	69.60	70.00	70.25	+03 +0.9
275	67.33	67.08	66.73	67.17	66.83	67.25	67.50	
250	64.42	64.17	63.85	64.33	64.07	64.50	64.75	+07 +2.0
200	58.58	58.33	58.10	58.67	58.53	59.00	59.25	+18 +3.9
150	52.75	52.50	52.35	52.00	52.00	52.50	52.75	+39 +4.6
100	46.92	46.67	46.60	47.33	47.47	48.00	48.35	+63 +6.6
50	41.08	40.83	40.85	41.67	41.93	42.50	42.75	+63 +7.1
25	38.17	37.92	37.98	38.83	39.17	39.75	40.00	
0=WL Rosecrans	35.25	35.00	35.10	36.00	36.40	37.00	37.25	+53 +6.9

S. Browning St. N.

WL Willow 13025 130.00 129.60 130.00 129.60 130.00 12925

Curb

1/2

Center

1/2

Curb

EL Willow 12925 129.00 128.60 129.00 128.60 129.00 12925

Graded

300=EL Willow 12925 129.00 128.60 129.00 128.60 129.00 12925 +14+27

275 12702 127.17 126.77 127.17 126.77 127.17 12702

250 12558 125.33 124.93 125.33 124.93 125.33 12558 +39+55

200 12192 121.67 121.27 121.67 121.27 121.67 12192 +45+57

150 11825 118.00 117.60 118.00 117.60 118.00 11825 +33+48

100 11458 114.33 113.93 114.33 113.93 114.33 11458 +21+39

50 11092 110.67 110.27 110.67 110.27 110.67 11092 +20+39

25 10908 108.83 108.43 108.83 108.43 108.83 10908

0=WL Evergreen 10725 107.00 106.60 107.00 106.60 107.00 10725 +32+39

WL Evergreen 10725 107.00 106.60 107.00 106.60 107.00 10725

Curb 10617 105.91 106.34 106.74 106.34 105.91 10617

1/2 10640 105.79 106.22 106.62 106.22 105.79 10640

Center 10650 105.67 106.10 106.50 106.10 105.67 10650

1/2 10585 105.55 105.98 106.38 105.98 105.55 10585

Curb 10517 105.43 105.86 106.26 105.86 105.43 10517

EL Evergreen 10625 106.00 105.60 106.00 105.60 106.00 10625

Browning St.

S.

£.

N.

300=ELClove	15325	153.00	152.40	152.50	151.85	152.00	152.25	+65+05
275	15200	151.75	151.15	151.25	150.60	150.75	151.00	
250	15075	150.50	149.90	150.00	149.35	149.50	149.75	+69+29
200	14825	148.00	147.40	147.50	146.85	147.00	147.25	+73-26
150	14575	145.50	144.90	145.00	144.35	144.50	144.75	+66-01
100	14325	143.00	142.40	142.50	141.85	142.00	142.25	+37-02
50	14075	140.50	139.90	140.00	139.35	139.50	139.75	+32-03
25	13950	139.25	138.65	138.75	138.10	138.25	138.50	
0=W.L.Plum	13825	138.00	137.40	137.50	136.85	137.00	137.25	+29+03

W.L.Plum	13825	138.00	137.40	137.50	136.85	137.00	137.25	
Curb	13717	136.91	137.14	137.24	136.59	135.91	136.17	
1/2	13740	136.79	137.02	137.12	136.47	135.79	136.40	
Center	13750	136.67	136.90	137.00	136.35	135.67	136.50	
1/4	13685	136.55	136.78	136.88	136.23	135.55	135.85	
Curb	13617	136.43	136.66	136.76	136.11	135.43	135.17	
ELPlum	13725	137.00	136.40	136.50	135.85	136.00	136.25	

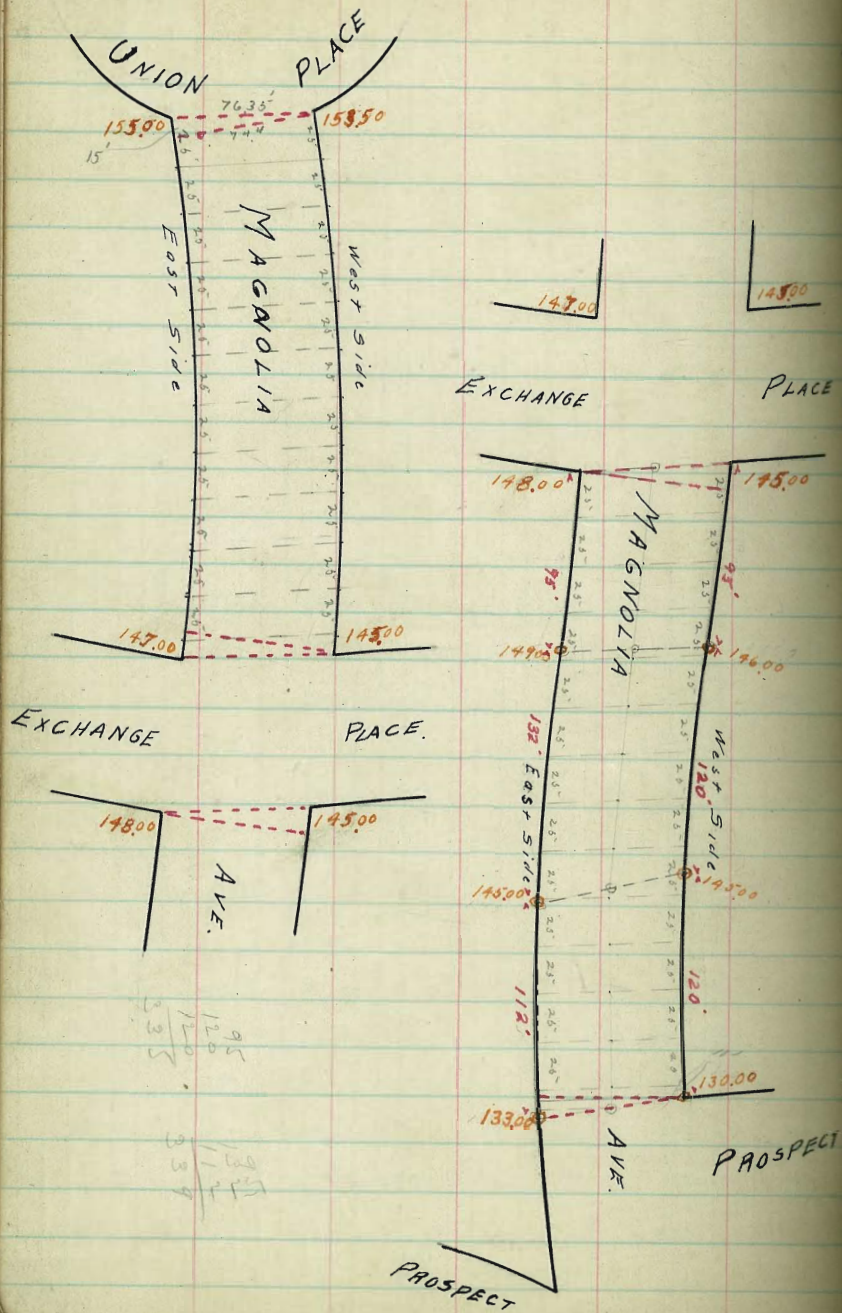
300=ELPlum	13725	137.00	136.40	136.50	135.85	136.00	136.25	+25-02
275	13667	136.42	135.83	135.96	135.32	135.50	135.75	
250	13618	135.83	135.27	135.42	134.81	135.00	135.25	+04-01
200	13492	134.67	134.13	134.23	133.77	134.00	134.25	+05-00
150	13375	133.50	133.00	133.25	132.73	133.00	133.25	+02-01
100	13258	132.33	131.87	132.17	131.68	132.00	132.25	+10+03
50	13142	131.17	130.73	131.08	130.64	131.00	131.25	+10+06
25	13083	130.58	130.17	130.54	130.12	130.50	130.75	
0=W.L.Willow	13025	130.00	129.60	130.00	129.60	130.00	130.25	+09+14

Roseville								
221=Pueblo Line	15425	155.00	154.40	154.50	153.85	154.00	154.25	220-4.0
200	155.15	154.90	154.30	154.40	153.75	153.90	154.15	225-4.3
150	154.93	154.68	154.08	154.18	153.52	153.68	153.93	215-5.0
100	154.70	154.45	153.85	153.95	153.30	153.45	153.70	210-4.3
50	154.48	154.23	153.63	153.72	153.08	153.23	153.48	205-3.9
25	154.26	154.11	153.51	153.61	152.96	153.11	153.26	
0=W.L.Clove	154.25	154.00	153.40	153.50	152.85	153.00	153.25	250-3.5
W.L.Clove	154.25	154.00	153.40	153.50	152.85	153.00	153.25	
Curb	152.17	152.91	152.79	152.67	152.55	152.43	152.17	
"	152.40	152.14	152.02	152.90	152.78	152.66	152.40	
Center	152.50	153.24	152.12	152.00	152.88	152.76	152.50	
"	152.85	152.59	152.47	152.35	152.23	152.11	151.85	
Curb	152.17	151.91	151.79	151.67	151.55	151.43	151.17	
EL.Clove	153.25	153.00	152.40	152.50	151.85	152.00	152.25	

MAGNOLIA AVE UNION PLACE TO PROSPECT ST.
 PARK ROW

77

MAGNOLIA AVE UNION PLACE TO PROSPECT ST



95
 120
 235

 130
 111
 239

MAGNOLIA AVE
 NORTH LINE UNION PLACE TO SOUTH LINE EXCHANGE

	E	Curb	1/4	1/2	3/4	Curb	W
NL Union Place	155.25	155.00	154.40	154.25	153.97	153.50	153.25
25	154.54	154.29	153.69	153.52	152.73	152.76	153.11
50	154.84	153.67	152.99	152.90	152.00	152.01	152.26
75	153.14	152.89	152.29	152.07	151.27	151.26	151.51
100	152.94	152.17	151.59	151.35	150.53	150.52	150.77
125	151.74	151.47	150.89	150.63	149.80	149.77	150.02
150	151.04	150.79	150.19	149.90	149.06	149.03	149.28
175	150.34	150.09	149.49	149.19	148.33	148.28	148.53
200	149.64	149.39	148.79	148.46	147.60	147.54	147.79
225	148.94	148.69	148.09	147.73	146.86	146.79	147.04
250	148.24	147.99	147.39	147.01	146.13	146.05	146.30
275	147.53	147.28	146.68	146.29	145.39	145.30	145.55
285 S.L. Exchange PL.	147.25	147.00	146.40	146.00	145.10	145.00	145.25

MAGNOLIA AVE. 80 W
 INTERSECTION EXCHANGE PL.

E 1/4 Curb 13' 4 13' 1/4 Curb W
 14' 13' 14'

S.L. EXCHANGE PL	147.25	147.00	146.40	146.00	145.10	145.00	145.00
1/4	147.00						145.00
S. CURB	147.00 146.00	147.00 146.00	145.50	145.00	144.50	145.00 144.00	145.00 144.00
S 1/4	146.55	146.45	146.09	145.72	145.36	144.99	144.50
80' 1/4	147.50	147.00	146.66	146.25	145.84	145.44	145.00
N 1/4	147.40	146.91	146.45	146.00	145.55	145.09	144.50
N CURB	147.00 148.00	147.00 146.00	146.25	145.50	144.75	144.00 145.00	144.00 145.00
W. Line	146.25	148.00	147.40	146.50	145.35	145.00	145.00

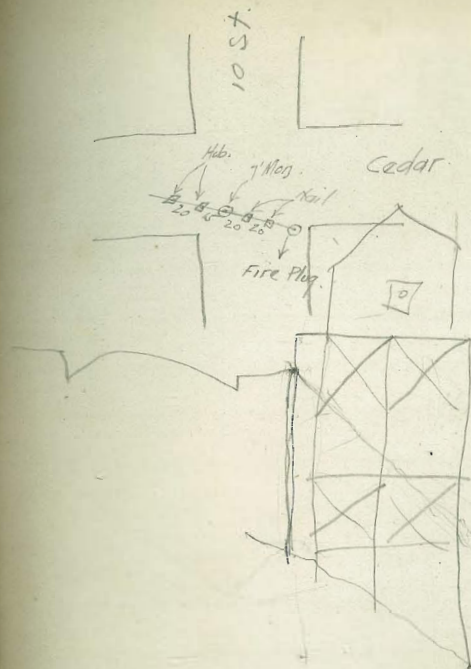
MAGNOLIA AVE
NORTHLINE EXCHANGE PL. TO SOUTHLINE PROSPECT ST

	E	Curb	1/4	1/2	Curb	W
NL Exchange Place	144.26	148.00		146.50	145.00	145.50
25	148.51	148.26		146.76	145.26	145.50
50	148.78	148.53		147.03	145.53	145.50
75	149.09	148.79		147.29	145.79	145.50
95 GP	149.25	149.00		147.50	146.00	146.50 GP
100	149.12	148.89		147.40	145.96	146.50
125	148.35	148.10		146.90	145.75	146.50
150	147.48	147.23		146.41	145.55	146.50
175	146.80	146.55		145.91	145.34	146.50
200	146.03	145.78		145.42	145.14	145.50
215 GP W Side						145.50
217 GP W Curb					145.00	145.50
221 GP 1/2				145.00		
225 GP E Curb	145.25	145.00		144.54	144.09	
227 GP E Side	145.25					
250	142.60	142.35		141.63	140.83	140.50
275	139.95	139.70		138.72	137.67	137.50
300	137.30	137.05		136.41	134.51	134.50
325	134.65	134.40		132.90	131.35	131.50
335 GP W Side						131.50
336 GP W Curb					130.00	
337 GP 1/2				131.50		
338 GP E Curb						
339 GP E Side	133.25					

Note: - See Sketch on Pg 77 this Book

N.L. Exc

	1	2	4	8	16	32
	3	3	5	9	17	33
	5	6	6	10	18	34
25	7	7	7	11	19	35
50	9	10	12	12	20	36
75	11	11	13	13	21	37
95	13	14	14	14	22	38
100	15	15	15	15	23	39
125	17	18	20	24 x	24	40
150	19	19	21	25	25	41
17	21	22	22	26	26	42
20	23	23	23	27	27	43
21	25	26	28	28	28	44
21	27	27	29	29	29	45
22	29	30	30	30	30	46
2	31	31	31	31	31	47
2	33	34	36	40	48	48
2	35	35	37	41	49	49
3	37	38	38	42	50	50
3	39	39	39	43		
3	41	42	44	44		
3	43	43	45	45		
3	45	46	46	46		
3	47	47	47	47		
	49	50				



5.87
383
2.04

4.74
20 J
2.73

14
18" 4' - 5' 4"

230
117
347.2

162
55
117
57

14) 210
110
100

385.62
196
189.62

7 172) 200 (116
172
280
172
1080
1032

53
12
37

7
4
11
10
21

11.2
11.6
12.7
1.5

53
20
20
19
20
20
20

67
36
104

20
20
30

1110
14
154

116
17
133

271.25
57
214.55

292.61

243.92

247.35

N J B
40 7 J
138 56 16
164 75 78
53 0 207

107 146 107
61 238 61
67 244 49
103 226 21



