

77

77

ST	New Main to Macaulay	
	Sheehan to Dumas	18
ST	X ST to H ST	"33
	Boyd to Chestnut	20
	Tries to Ampudia	28
ST	K TO "B" ST	"43"
	Washington to VSEN	67
	1000 of form to Duxbury	
	1000 of form to Duxbury	65
	1000 of form to Duxbury	

380

FIELD

G77

327) 4.57 (1.37
 327 20 3780
 1240 2740 4384
 981
 2590
 7 16
 959

137
 27
 959
 274
 3699

6282
 14
 4892

307) 4.24 (1.37 6272
 307 6252
 1170
 921
 2490

MICROFILMED

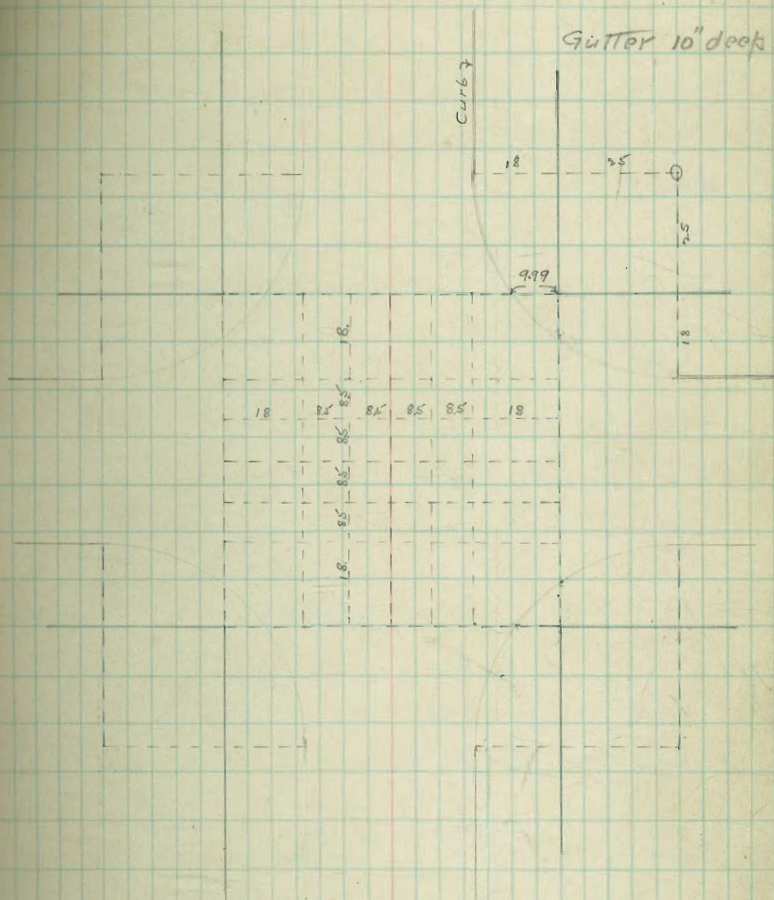
APR 6 1965

Benchs in Santa Barbara

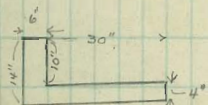
212.37 Spaulding June	214.90
1.45	14.16
213.82	211.74
4.40	6.76
209.42	213.58
12.96	12.77
222.38	200.61
26	6.2
212.02	201.23
12.88	11.05
234.90	190.18
57	7.84
234.33	198.07
12.77	4.01
247.10	194.01
1.17	1.75
245.93	196.76
9.75	15.84
235.68	189.92
3.68	6.8
252.00	183.58
end of curb	1.25
255.68	171.13
5.61	4.3
250.07	177.75
70	12.08
250.97	159.67
10.12	1.88
240.88	162.52
8.13	165.01
248.98	156.84
33	1.655
248.65	938
776	152.17
238.41	497
52	155.14
255.20	12.52
258.41	142.57
18.55	140.04
247.86	150.12
0.78	0.9
248.64	730.51
12.82	12.58
235.82	117.93
1.05	4.8
236.87	118.41
12.88	12.96
223.87	105.45
1.60	5.0
224.90	105.71
6.54	12.61
218.36	93.35
end of curb	1.10
	95.45
	4.1
	81.43
	3.86
	85.29
	6.24
	79.00
	79.01

Check Benches Miller St

2041	7	Jacke Smithman	
948		+ Macors	841.45
2042			1.45
2043			6.93
2044			1.43
2045			70.94
2046			2.04
2047			68.90
2048			20' WNW Emani
2049			70.98
2050			11.21
2051			59.08
2052			30' WSW Zenclo
2053			3.52
2054			62.60
2055			6.11
2056			56.59
2057			20' WSW Zenclo
2058			62.60
2059			5.69
2060			52.91
2061			20' NW own
2062			2.73
2063			59.64
2064			13.12
2065			42.52
2066			3.83
2067			62.60
2068			30.35
2069			4.40
2070			45.95
2071			50.35
2072			2.30
2073			43.05
2074			12.98
2075			56.03
2076			80
2077			55.03
2078			15.22
2079			64.37
2080			1.18
2081			65.55
2082			12.37
2083			53.19
2084			3.48
2085			56.56
2086			12.18
2087			44.12
2088			2.25
2089			46.83
2090			4.83
2091			42.00
2092			46.83
2093			11.85
2094			34.98
2095			1.00
2096			36.03
2097			16.84
2098			24.46
2099			20' WSW Zenclo
2100			102.23
2101			12.24
2102			89.99
2103			9.00
2104			90.90
2105			1.00
2106			79.98
2107			2.23
2108			82.48



Intersection on Willow St.



Curb and Gutter Willow St.

HT
July 1913

WILLOW ST

70' wide
18' walks
8.5' / 4s

	43.0	42.0	53.0	52.0
	30' 20'			
	Hugo	ST.	Lowell	ST.
	30' 20'			
74.0	44.0	43.0	52.0	51.0
Dickens				
	ST			
	45.0			
	30'			
75.0	51.0	50.0	47.0	46.0
	30'			
	Goethe	ST	Keats	ST
	51.0	50.0	46.0	45.0
	61'			
85.0	84.0			
Carleton	ST			
	50.0	49.0	38.0	37.0
	Fenelon	ST.	Jarris	ST.
	30' 20'	50.0	37.0	36.0
	51.0			
95.0	94.0	50.0		
Byron	ST →			
	56.0	55.0	41.0	40.0
	30'			
	Emerson	ST	Inglow	ST
	30' 30'	57.0	56.0	41.0
74.0	73.0			61.0
Addison	ST			60.0
	76.0			
	72.0			
	74.0	73.0	43.0	42.0
	70'			
Pueblo				53.0
S.L. Rosville				52.0
61.0	59.5	ST	Hugo	ST
	75.0	74.0	44.0	43.0
Canyon	ST			52.0
				51.0

ST

WILLOW MOTTIM

ST

WILLOW MOTTIM

ST

WILLOW MOTTIM

ST

WILLOW MOTTIM

91
463
947

7

WILLOW

5390 Ry SW Gault 5-690 H 20 NW 4
NW 3/4 + 2/4 11

	W	♀	E	W	E						
200=SL Hugo	44.25	44.00	43.40	43.50	42.85	43.00	43.25	+03	-28	58.44 4.54 58.44 1.54 56.89	58.44 58.44 58.44 5-8.44 58.44 58.44 58.44
175	45.13	44.88	44.28	44.32	43.73	43.88	44.13			58.44 1.54 56.90 TP 45.40 TP 5.94	58.44 58.44 58.44 58.44 58.44 58.44 58.44
150	46.00	45.75	45.15	45.25	44.60	44.75	45.00	+14	-25	49.38	58.44 58.44 49.38 49.38 49.38 49.38 49.38
125	46.88	46.63	46.03	46.13	45.48	45.63	45.88				58.44 58.44 49.38 49.38 49.38 49.38 49.38
100	47.75	47.50	46.90	47.00	46.35	46.50	46.75	+35	-18	53.90	58.44 58.44 49.38 49.38 49.38 49.38 49.38
75	48.63	48.38	47.78	47.88	47.23	47.38	47.63				58.44 58.44 49.38 49.38 49.38 49.38 49.38
50	49.50	49.25	48.65	48.75	48.10	48.25	48.50	+35	-17	53.90	58.44 58.44 49.38 49.38 49.38 49.38 49.38
25	50.38	50.13	49.53	49.63	48.98	49.13	49.38	+49	-20		58.44 58.44 49.38 49.38 49.38 49.38 49.38
N.L. Goethe	51.25	51.00	50.40	50.50	49.85	50.00	50.25	+49	-23	46.51	58.44 58.44 49.38 49.38 49.38 49.38 49.38
N.L. Goethe	51.25	51.00	50.40	50.50	49.85	50.00	50.25	+49	-23	46.51	58.44 58.44 49.38 49.38 49.38 49.38 49.38
N curb	51.00	50.17	50.40	50.50	49.85	49.17	50.00	+60	-18		58.44 58.44 49.38 49.38 49.38 49.38 49.38
N/A	50.60	50.17	50.40	50.50	49.85	49.17	49.60	+57	-09		58.44 58.44 49.38 49.38 49.38 49.38 49.38
Center	51.00	50.17	50.40	50.50	49.85	49.17	50.00	+40	-14		58.44 58.44 49.38 49.38 49.38 49.38 49.38
S/A	50.60	50.17	50.40	50.50	49.85	49.17	49.60	+38	-09		58.44 58.44 49.38 49.38 49.38 49.38 49.38
S curb	50.17	50.17	50.40	50.50	49.85	49.17	49.17	+25	-16		58.44 58.44 49.38 49.38 49.38 49.38 49.38
SL Goethe	51.25	51.00	50.40	50.50	49.85	50.00	50.25	+06	-16		58.44 58.44 49.38 49.38 49.38 49.38 49.38
200=SL Goethe	51.25	51.00	50.40	50.50	49.85	50.00	50.25	+06	-16		58.44 58.44 49.38 49.38 49.38 49.38 49.38
175	51.13	50.88	50.28	50.38	49.73	49.88	50.13				58.44 58.44 49.38 49.38 49.38 49.38 49.38
150	51.00	50.75	50.15	50.25	49.60	49.75	50.00	+42	-11		58.44 58.44 49.38 49.38 49.38 49.38 49.38
125	50.88	50.63	50.03	50.13	49.48	49.63	49.88	+35	-11		58.44 58.44 49.38 49.38 49.38 49.38 49.38
100	50.75	50.50	49.90	50.00	49.35	49.50	49.75	+30	-13		58.44 58.44 49.38 49.38 49.38 49.38 49.38
75	50.63	50.38	49.78	49.88	49.23	49.38	49.63	+28	-18		58.44 58.44 49.38 49.38 49.38 49.38 49.38
50	50.50	50.25	49.65	49.75	49.10	49.25	49.50	+28	-26		58.44 58.44 49.38 49.38 49.38 49.38 49.38
25	50.38	50.13	49.53	49.63	48.98	49.13	49.38	+3.1	-26		58.44 58.44 49.38 49.38 49.38 49.38 49.38
N.L. Fenelon	50.25	50.00	49.40	49.50	48.85	49.00	49.25	+3.3	-26		58.44 58.44 49.38 49.38 49.38 49.38 49.38

check Red blough

Sub Curb 81K 81K

Curb No. 9-24-14

WILLOW

Bm 4657 7m row of NW
4594 7m row of NW 12

	W	♀	E	N	E				
NL Ingelow	41.25	41.00 4017	4040	4050	39.85 39.17	4025	+37	+1.2	
N curb	41.00 4017	4043	4066	4076	4011 39.17	4000	+39	+1.7	
N 1/4	40.85	4055	4078	4088	4023	39.55	39.85	+40	+2.3
Center	4150	4067	4090	4100	4035	39.67	40.50	+47	+2.0
3/4	4140	4079	4102	4112	4047	39.79	40.40	+51	+2.3
S curb	4117 42.00	4091	4114	4124	4059	39.91	40.17 41.00	+43	+1.1
SL Ingelow	42.25	41.17 42.00	4140	4150	40.85	40.17 41.00	41.25	+40	+0.1
200 = St. Ingelow	42.25	42.00 41.07	4140	4150	40.85	41.00	41.25	+40	+0.1
175	4238	42.13	4153	4163	4098	41.13	41.38	+36	+0.1
150	4250	42.25	4165	4175	4110	41.25	41.50	+30	+0.1
125	4263	42.38	4178	4188	4123	41.38	4163	+16	+1.4
100	4275	42.50	4190	4200	4135	4150	41.75	+14	-10
75	42.88	42.63	4203	4213	41.48	4163	41.88	+10	-1.1
50	43.00	42.75	4215	4225	41.60	41.75	42.00	+10	-1.6
25	43.13	42.88	4228	4238	41.73	41.88	42.13	+10	-1.1
NL Hugo	43.25	43.00 42.94	4240	4250	41.85	42.00	42.25	+10	-0.7
NL Hugo	43.25	43.00 42.17	4240	4250	41.85	42.00 41.17	42.25	+0.2	-3.1
N curb	43.00 42.17	4243	4266	4276	4211	41.43 41.17	42.00	+0.1	-2.8
N 1/4	42.85	42.55	4278	4288	4223	41.55	41.85	+0.1	-2.3
Center	4350	4267	4290	4300	4235	41.67	42.50	0.0	-2.8
3/4	4340	42.79	4302	4312	4247	41.75	4240	+1.1	-2.1
S. Curb	4317 4400	4291	4314	4324	4259	41.91	41.17 4300	+0.1	-2.8
SL Hugo	4425	43.17 44.00	4340	4350	42.85	42.17 43.00	43.25	+0.3	-2.8

4934 4938 4936 5231 5231 523 523
 2.85 10 6.1 94 118 114 5.0
 46.50 27.3 433 43.2 40.8 40.9 4.0
 5.81 29.3 432 43 420 417 4.2
 52.31 7.30 CWL CW 40.5 40.9 51.6
 7.15 2.30 21.5 2.8
 45.16 523 523 523 523
 7.2 108 103 58
 5231 41.5 41.5 420 46.2
 6.39 42.5 0.0 21.2 42.2
 45.92 CV.6 0.8 4.3

4224 Bm 4220 4223 4225 4210 4225 4228 4230
 3.15 240 272 272 870 1000 423
 40 Pupt. Curb 7-6-14
 8.92
 57.7
 45.0 42.13 4207 4254 4254
 3.77 3.83 3.77
 4657 4671 4159
 20 47.00
 46.71 47.00
 4657 Bm
 1.6
 4715 4213 4250 4258 4258
 3.11 4.65 4.37 4.15
 4450
 9.65
 51.55

checked along

WILLOW

STREET

70' wide
18' Walks
85' 1/4'S

173.0 Sterne 70	1740 ST.	1650 Whittier 70	1640 ST.	1140 Alcott 70	1130		
1720 200	1730	1660 200	1650	1130 200	1120		
1600 Russell 70	1600 ST.	1680 Voltaire 70	1670 ST.	1370 Zauch 70	1360 ST.	Dumas	ST.
1610 200	1610	1690 200	1680	1380 200	1370	960 200	950
1720 Quimby 70	1710 ST.	1860 Udd 70	1850 ST.	1360 Young 70	1350 ST.	1180	1170
1730 200	1720	1870 200	1860	1350 200	1340	1190 200	1180
1790 1000	1800	1940 200	1950	1530 200	1520 200	1300 200	1290
1780 WILLOW	1790 ST.	1940 Tennyson 70	1950 ST.	1540 Xenophon 70	1530 ST.	1300 Browning 70	1290 ST.
1520 Olyphant 70	1530 ST.	1730 Sterne 70	1740 ST.	1650 Whittier 70	1640 ST.	1140 Alcott 70	1130 ST.
1510	1520	1720	1730	1660	1650	1130	1120

ST.

ST.

ST.

ST.

WILLOW

WILLOW

WILLOW

WILLOW

W. P. Street - 5' long and 49' 1/2'

WILLOW

Bm 173.2m Feit 20. W of SW Voltaire
 19353 70 x 20W 0 SW 90
 21

	W	E	W	E																	
NL Voltaire	168.25	168.00	167.40	167.50	166.85	167.00	167.25	-93	-17.3	163.843	163.9	175.62	175.58	185.58	185.58	185.58	185.58	185.58	185.58	185.58	185.58
N curb	167.17	167.43	167.66	167.76	167.11	166.43	166.17			162.6	162.6	171.4	171.4	174.4	174.4	174.4	174.4	174.4	174.4	174.4	174.4
N 1/4	167.85	167.55	167.78	167.88	167.23	166.55	166.85			175.62	175.62	175.62	175.62	175.62	175.62	175.62	175.62	175.62	175.62	175.62	175.62
Center	168.50	167.67	167.90	168.00	167.35	166.67	167.50	-20	-106	184.39	184.39	184.39	184.39	184.39	184.39	184.39	184.39	184.39	184.39	184.39	184.39
S 1/4	168.40	167.79	168.02	168.12	167.47	166.79	167.40			193.53	193.53	193.53	193.53	193.53	193.53	193.53	193.53	193.53	193.53	193.53	193.53
S curb	168.17	167.91	168.14	168.24	167.59	166.91	167.17			184.39	184.39	184.39	184.39	184.39	184.39	184.39	184.39	184.39	184.39	184.39	184.39
SL Voltaire	169.25	169.00	168.40	168.50	167.85	168.00	168.25	+21	-56	175.62	175.62	175.62	175.62	175.62	175.62	175.62	175.62	175.62	175.62	175.62	175.62
200=SL Voltaire	169.25	169.00	168.40	168.50	167.85	168.00	168.25	+21	-56	193.53	193.53	193.53	193.53	193.53	193.53	193.53	193.53	193.53	193.53	193.53	193.53
175	171.38	171.13	170.53	170.63	169.98	170.13	170.38	+35	-42	184.39	184.39	184.39	184.39	184.39	184.39	184.39	184.39	184.39	184.39	184.39	184.39
150	173.50	173.25	172.65	172.75	172.10	172.25	172.50	+44	-32	184.39	184.39	184.39	184.39	184.39	184.39	184.39	184.39	184.39	184.39	184.39	184.39
125	175.63	175.38	174.78	174.88	174.23	174.38	174.63	+50	-22	184.39	184.39	184.39	184.39	184.39	184.39	184.39	184.39	184.39	184.39	184.39	184.39
100	177.75	177.50	176.90	177.00	176.35	176.50	176.75	+43	-23	184.39	184.39	184.39	184.39	184.39	184.39	184.39	184.39	184.39	184.39	184.39	184.39
75	179.88	179.63	179.03	179.13	178.48	178.63	178.88	+47	-03	184.39	184.39	184.39	184.39	184.39	184.39	184.39	184.39	184.39	184.39	184.39	184.39
50	182.00	181.75	181.15	181.25	180.60	180.75	181.00	+41	+02	184.39	184.39	184.39	184.39	184.39	184.39	184.39	184.39	184.39	184.39	184.39	184.39
25	184.13	183.88	183.28	183.38	182.73	182.88	183.13	+31	+08	184.39	184.39	184.39	184.39	184.39	184.39	184.39	184.39	184.39	184.39	184.39	184.39
0=NL Udal	186.25	186.00	185.40	185.50	184.85	185.00	185.25	+18	+09	184.39	184.39	184.39	184.39	184.39	184.39	184.39	184.39	184.39	184.39	184.39	184.39
NL Udal	186.25	186.00	185.40	185.50	184.85	185.00	185.25	+18	+09	184.39	184.39	184.39	184.39	184.39	184.39	184.39	184.39	184.39	184.39	184.39	184.39
N curb	185.17	185.43	185.66	185.76	185.11	184.43	184.17			184.39	184.39	184.39	184.39	184.39	184.39	184.39	184.39	184.39	184.39	184.39	184.39
N 1/4	185.85	185.55	185.78	185.88	185.23	184.55	184.85			184.39	184.39	184.39	184.39	184.39	184.39	184.39	184.39	184.39	184.39	184.39	184.39
Center	186.50	185.67	185.90	186.00	185.35	184.67	185.50	+119	+47	184.39	184.39	184.39	184.39	184.39	184.39	184.39	184.39	184.39	184.39	184.39	184.39
S 1/4	186.40	185.79	186.02	186.12	185.47	184.79	185.40			184.39	184.39	184.39	184.39	184.39	184.39	184.39	184.39	184.39	184.39	184.39	184.39
S curb	186.17	185.91	186.14	186.24	185.59	184.91	185.17			184.39	184.39	184.39	184.39	184.39	184.39	184.39	184.39	184.39	184.39	184.39	184.39
SL Udal	187.25	187.00	186.40	186.50	185.85	186.00	186.25	+46	+58	184.39	184.39	184.39	184.39	184.39	184.39	184.39	184.39	184.39	184.39	184.39	184.39

Checked Sub Road OK
 11-8-14
 George

WILLOW

1711/1 Brown Play & Curb
S. W. of 1st Ave. Browning

Bm 112.64 Tu 4 20' w n n - 20' 25
90.75 Rock of
Bm 131.66 Tu 4 20' w n n - 20'

	W						E												
NL Browning	130.25	130.00	129.40	129.50	128.85	129.00	129.25	+1.7	+2.6	104.31	123.31	104.31	123.31	104.31	123.31	104.31	123.31	104.31	123.31
N curb	129.17	129.17	129.40	129.50	128.85	128.17	128.17			116.62	116.62	116.62	116.62	116.62	116.62	116.62	116.62	116.62	116.62
N 1/4	129.60	129.17	129.40	129.50	128.85	128.17	128.60			116.62	116.62	116.62	116.62	116.62	116.62	116.62	116.62	116.62	116.62
Center	130.00	129.17	129.40	129.50	128.85	128.17	129.00	+2.0	+3.0	125.72	136.14	125.72	136.14	125.72	136.14	125.72	136.14	125.72	136.14
S 1/4	129.60	129.17	129.40	129.50	128.85	128.17	128.60			125.72	136.14	125.72	136.14	125.72	136.14	125.72	136.14	125.72	136.14
S curb	129.17	129.17	129.40	129.50	128.85	128.17	128.17			125.72	136.14	125.72	136.14	125.72	136.14	125.72	136.14	125.72	136.14
SL Browning	130.25	130.00	129.40	129.50	128.85	129.00	129.25	+0.7	+1.7	131.66	131.66	131.66	131.66	131.66	131.66	131.66	131.66	131.66	131.66
200 = SL Browning	130.25	130.00	129.40	129.50	128.85	129.00	129.25	+0.7	+1.7	131.66	131.66	131.66	131.66	131.66	131.66	131.66	131.66	131.66	131.66
175	128.75	128.00	127.40	127.50	126.85	127.00	127.25	+1.9	+1.6	131.66	131.66	131.66	131.66	131.66	131.66	131.66	131.66	131.66	131.66
150	126.75	126.00	125.40	125.50	124.85	125.00	125.25	+3.4	+2.0	131.66	131.66	131.66	131.66	131.66	131.66	131.66	131.66	131.66	131.66
125	124.75	124.00	123.40	123.50	122.85	123.00	123.25			131.66	131.66	131.66	131.66	131.66	131.66	131.66	131.66	131.66	131.66
100	122.75	122.00	121.40	121.50	120.85	121.00	121.25	+2.6	+0.5	131.66	131.66	131.66	131.66	131.66	131.66	131.66	131.66	131.66	131.66
75	120.75	120.00	119.40	119.50	118.85	119.00	119.25	+2.7	-1.0	131.66	131.66	131.66	131.66	131.66	131.66	131.66	131.66	131.66	131.66
50	118.75	118.00	117.40	117.50	116.85	117.00	117.25	+1.4	-2.6	131.66	131.66	131.66	131.66	131.66	131.66	131.66	131.66	131.66	131.66
25	116.75	116.00	115.40	115.50	114.85	115.00	115.25	+0.8	-5.1	131.66	131.66	131.66	131.66	131.66	131.66	131.66	131.66	131.66	131.66
0 = NL Alcott	114.25	114.00	113.40	113.50	112.85	113.00	113.25	-0.4	-9.1	131.66	131.66	131.66	131.66	131.66	131.66	131.66	131.66	131.66	131.66
NL Alcott	114.25	114.00	113.40	113.50	112.85	113.00	113.25	-0.4	-9.1	131.66	131.66	131.66	131.66	131.66	131.66	131.66	131.66	131.66	131.66
N curb	113.17	112.91	113.14	113.24	112.59	111.91	112.17			131.66	131.66	131.66	131.66	131.66	131.66	131.66	131.66	131.66	131.66
N 1/4	113.40	112.79	113.02	113.12	112.47	111.79	112.40			131.66	131.66	131.66	131.66	131.66	131.66	131.66	131.66	131.66	131.66
Center	113.50	112.67	112.90	113.00	112.35	111.67	112.50	-6.4	-21.2	131.66	131.66	131.66	131.66	131.66	131.66	131.66	131.66	131.66	131.66
S 1/4	112.85	112.55	112.78	112.88	112.23	111.55	111.85			131.66	131.66	131.66	131.66	131.66	131.66	131.66	131.66	131.66	131.66
S curb	112.17	112.43	112.66	112.76	112.11	111.43	111.17			131.66	131.66	131.66	131.66	131.66	131.66	131.66	131.66	131.66	131.66
SL Alcott	113.25	113.00	112.40	112.50	111.85	112.00	112.25	-1.0	-19.5	131.66	131.66	131.66	131.66	131.66	131.66	131.66	131.66	131.66	131.66

Bm Road

N E of SW

93.75	100.77	100.77	100.77	116.62	116.62
13.00	13.00	13.00	13.00	13.00	13.00
104.31	104.31	104.31	104.31	104.31	104.31
116.62	116.62	116.62	116.62	116.62	116.62
125.72	125.72	125.72	125.72	125.72	125.72
136.14	136.14	136.14	136.14	136.14	136.14

131.66	131.66	131.66	131.66	131.66	131.66
131.66	131.66	131.66	131.66	131.66	131.66
131.66	131.66	131.66	131.66	131.66	131.66
131.66	131.66	131.66	131.66	131.66	131.66
131.66	131.66	131.66	131.66	131.66	131.66

check out grade 4-3-14

Transfer Bm to play

WHITMAN ST.

$\square 25 \times 50$ \rightarrow
 Ampudia St.

222.0 50' 223.0

300'

248.0 248.5

Trias St.

Whitman St.

S

E

N.

300 = EL Ampudia St.	222.25	222.00	221.85	222.50	222.40	222.00	222.25	+6.3	+8.3
275	224.42	224.17	224.01	224.65	224.54	225.12	225.38		
250	226.59	226.34	226.16	226.79	226.68	227.25	227.50	+1.6	+2.1
225	228.75	228.50	228.32	228.94	228.83	229.38	229.63		
200	230.92	230.67	230.48	231.08	230.97	231.50	231.75	-22.1	-2.9
175	232.09	232.84	232.63	233.23	233.11	233.63	233.88		
160	233.96	233.71	233.49	234.09	233.97	234.48	234.73		-11.8
150	235.25	235.00	234.79	235.37	235.25	235.75	236.00	+1.2	-10.1
+45							236.45		
125	237.42	237.17	236.95	237.52	237.39	237.88	238.13		
100	239.59	239.34	239.10	239.67	239.53	240.00	240.25	+3.7	+4.4
75	241.75	241.50	241.26	241.81	241.68	242.13	242.38		
50	243.92	243.67	243.42	243.96	243.82	244.25	244.50	+4.3	+3.5
25	246.08	245.84	245.57	246.10	245.96	246.38	246.63		
0 = WL Trias St.	248.25	248.00	247.77	248.25	248.10	248.50	248.75	+1.8	+2.3

Trias St.

50' Chestnut St.

50'

2530

2530

300'

2485

2490

50' Whitman St.

2480

2485

300'

2220

2230

50' Boyd St.

Trias St. 50' wide

W.

☉

E.

N.L. Whitman	248.75	248.50	248.25	248.75	248.40	249.00	249.25		
Curb	10	248.50	247.60	247.68	247.75	247.83	247.90	249.00	
N. 1/2	7.5	247.90	248.00	248.08	248.15	248.23	248.30	248.40	
Center	5.0	248.25	248.35	248.43	248.50	248.58	248.65	248.75	
S 1/2	7.5	247.75	247.83	247.91	247.98	248.06	248.13	248.23	
Curb	7.5	248.00	247.10	247.18	247.25	247.33	247.40	248.50	
S.L. Whitman	0	248.25	248.00	247.73	248.25	247.90	248.50	248.75	

300 = S.L. Whitman	248.25	248.00	247.73	248.25	247.90	248.50	248.75	+1.8	+2.1
275	246.08	245.83	245.57	246.10	245.78	246.38	246.63		
250	243.92	243.66	243.42	243.96	243.65	244.25	244.50	+2.3	+2.9
225	241.75	241.50	241.26	241.81	241.53	242.13	242.38		
200	239.58	239.33	239.10	239.67	239.40	240.00	240.25	+1.8	+2.6
175	237.41	237.16	236.95	237.52	237.28	237.88	238.13		
150	235.25	235.00	234.79	235.37	235.15	235.75	236.00	+0.9	+2.3
125	233.08	232.83	232.63	233.23	233.03	233.63	233.88		
100	230.91	230.66	230.48	231.08	230.90	231.50	231.75	-1.4	+3.2
75	228.75	228.50	228.34	228.94	228.78	229.38	229.63		
50	226.58	226.33	226.16	226.79	226.65	227.25	227.50	-2.6	+3.5
25	224.28	224.03	223.89	224.51	224.38	224.98	225.23		
0	224.1	224.16	224.01	224.65	224.53	225.13	225.38		
0 = N.L. Boyd	222.25	222.00	221.85	222.50	222.40	223.00	223.25	-1.6	-1.9

Trias St.

	W.	Q.	E.		
300=SL Chestnut	25225	25200 25260	25200 25260 25200 25225	+08	+0.9
275	25288	25263 25227	25264 25225 25266 25291		
250	25250	25225 25187	25229 25190 25233 25258	+07	+1.0
225	25212	25188 25151	25194 25155 25200 25225		
200	25175	25150 25114	25158 25120 25166 25191	+05	+1.2
175	25138	25113 25078	25123 25085 25133 25158		
150	25100	25075 25041	25087 25050 25100 25125	+05	+1.9
125	25062	25038 25005	25052 25015 25066 25091		
100	25025	25000 24969	25017 24980 25033 25058	+07	+3.4
75	24988	24963 24932	24981 24945 25000 25025		
50	24950	24925 24896	24946 24910 24966 24991	+2.1	+4.9
25	24912	24888 24859	24910 24875 24933 24958		
0=N Whitman	24875	24850 24822	24875 24840 24900 24925	+2.8	+4.4

Cut & Fills on West Line 3/30/14

249.34 Mon

256.27	244.50	250.85	251.0	251.75	252.50	253.25
247.75	244.50	250.85	251.0	251.75	252.50	253.25
1.32	6.97	6.02	5.27	4.52	3.77	3.02
3.32	6.57	5.72	5.77	5.72	5.27	4.52
+2.2	-1.2	-4.10	-0.5	+0.3	+0.5	+0.5

249.54	248.75	248.50	248.25	247.50	246.75	246.00
4.73	3.32	6.07	5.27	5.07	4.32	3.57
254.17						

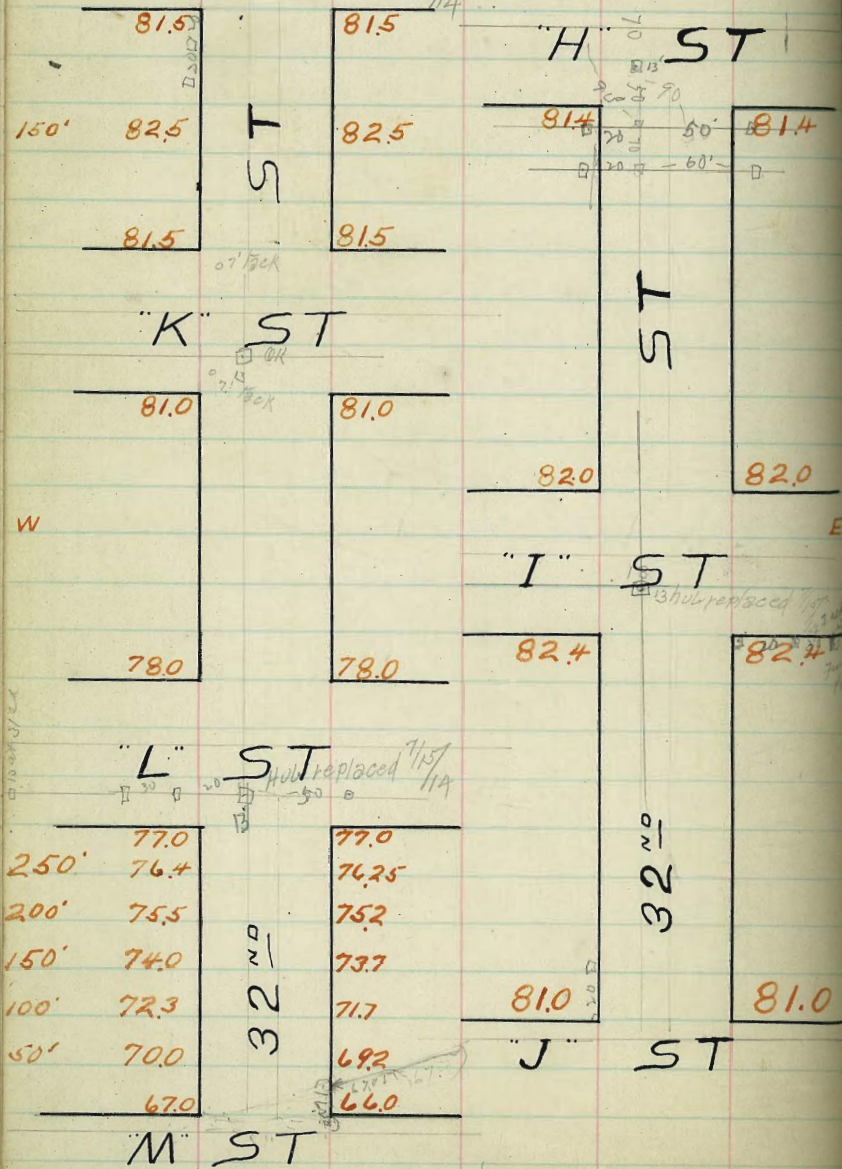
Curbs & Propp on West

32

60' ST 10' Walk 10' Quarters

32ND ST "M" To H ST

JST replaced 11/14



Benehu

35

- H SW corner 83.23
- J NW " 82.26
- J SW " 81.70
- K NW corner 81.52
- L SW O 77.00
- M NW corner 67.08

GRADES

32ND ST

Whitaker Rd

"L" ST INTERSECTION

7825
N-1/2 "L" ST 7800 7740 7800 7740 7800 7825

N-CURB 7800 7800 7742 7782 7742 7800 7800
7700 7700 7700 7700

N-1/4 7740 7675 7726 7756 7726 7675 7740

CENTER 7750 7650 7710 7750 7710 7650 7750

S-1/4 7685 7635 7694 7734 7694 7635 7685

7600 7600
S-CURB 7700 7700 7678 7718 7678 7600 7600
7700 7700

7725
S-1/2 "L" ST 7700 7660 7700 7660 7700 7725

GRADES

32ND ST. "L" TO "K" ST

815-20 HWK

86.78 80.50
81.4 81.5

36

300' 81.75	81.00	80.60	81.00	80.60	81.00	81.75
275' 81.00	80.75	80.35	80.75	80.35	80.75	81.00
250' 80.75	80.50	80.10	80.50	80.10	80.50	80.75
225' 80.50	80.25	79.85	80.25	79.85	80.25	80.50
200' 80.25	80.00	79.60	80.00	79.60	80.00	80.25
175' 80.00	79.75	79.35	79.75	79.35	79.75	80.00
150' 79.75	79.50	79.10	79.50	79.10	79.50	79.75
125' 79.50	79.25	78.85	79.25	78.85	79.25	79.50
100' 79.25	79.00	78.60	79.00	78.60	79.00	79.25
75' 79.00	78.75	78.35	78.75	78.35	78.75	79.00
50' 78.75	78.50	78.10	78.50	78.10	78.50	78.75
25' 78.50	78.25	77.85	78.25	77.85	78.25	78.50
N.L. "L" ST	78.00	77.60	78.00	77.60	78.00	78.25

8380	8380	8380	8380	8380	8380	8380	8380	8380	8380	8380	8380	8380	8380	8380
4.16	6.1	5.1	4.5	3.4	5.4	4.4	3.7	4.4	4.2	3.6	3.1	3.1	3.1	3.1
77.7	78.7	78.7	79.00	78.4	78.7	79.1	80.1	79.7	79.7	80.4	80.7	80.7	80.7	80.7
77.7	78.7	78.7	79.00	78.4	78.7	79.1	80.1	79.7	79.7	80.4	80.7	80.7	80.7	80.7
77.7	78.7	78.7	79.00	78.4	78.7	79.1	80.1	79.7	79.7	80.4	80.7	80.7	80.7	80.7
				5	5	14								

815-20 HWK
81.50
81.50
81.50
81.50
81.50
81.50
81.50
81.50
81.50
81.50
81.50
81.50
81.50
81.50
81.50

815-20 HWK
81.50
81.50
81.50
81.50
81.50
81.50
81.50
81.50
81.50
81.50
81.50
81.50
81.50
81.50
81.50

Checked OK 6-24-14

GRADES

32ND ST. "K" ST Intersection

Checked OK

N-1/4 8175
N-1/4 K-ST 8150 8110 8150 8110 8150 8175

N-CURB 8150 8150
8050 818 1018 1418 1018 8101 8150 818

N-1/4 8110 8037 8093 8133 8093 8037 8110

8125
CENTER 8025 8085 8125 8085 8025 8125

S-1/4 8060 8013 8077 8117 8077 8013 8060

8000 8000
S-CURB 8018 8018 8069 8109 8069 8018 8000

8125
S-1/4 K ST 8100 8060 8100 8060 8100 8125

GRADES

32ND ST J ST Intersection

N-1/2" 8125 8100 8040 8100 8040 8100 8125

Checked OK

N-CURB 8100 8100 8040 8040 8040 8100 8100
 8008 8008 8008 8008

N-1/4" 8040 8013 8077 8117 8077 8013 8040

CENTER 8125 8025 8085 8125 8085 8025 8125

S-1/2" 8110 8037 8093 8133 8093 8037 8110

S-CURB 8050 8050 8101 8141 8101 8050 8050
 8150 8150 8150 8150

S-L J ST 8125 8150 8110 8150 8110 8150 8125

32ND ST I ST Intersection

Checked OK

N-1/4 "I" 8225 820 8110 8200 8110 820 8225

N-CURB 8200 8200 8117 8207 8117 8200 8200
8100 8100 8100 8100

N-1/4 8140 8110 8173 8213 8173 8110 8140

CENTER 8220 8120 8180 8220 8180 8120 8220

S-1/4 8200 8130 8184 8224 8184 8130 8200

S-CURB 8240 8240 8193 8233 8193 8240 8240
8140 8140 8140 8140

S-1/4 "I" ST 8225 8224 8200 8240 8200 824 8225

GRADES

W	28 th ST "K" TO "J" ST							E
51. "J"								
399.76	87.25	87.00	86.85	87.50	87.40	88.00	88.25	
275	87.17	86.91	86.74	87.37	87.25	87.84	88.09	
250	87.08	86.83	86.63	87.25	87.10	87.77	87.92	
225	87.00	86.71	86.53	87.12	86.95	87.50	87.75	
200	86.91	86.66	86.42	87.00	86.80	87.34	87.59	
175	86.83	86.58	86.32	86.87	86.65	87.17	87.42	
150	86.75	86.50	86.22	86.75	86.50	87.00	87.25	
125	86.66	86.41	86.11	86.62	86.35	86.84	87.09	
100	86.58	86.33	86.01	86.50	86.20	86.77	87.02	
75	86.50	86.25	85.91	86.37	86.05	86.50	86.75	
50	86.41	86.16	85.80	86.25	85.90	86.34	86.59	
25	86.33	86.08	85.70	86.12	85.75	86.17	86.42	
N.L.K. ST	86.25	86.00	85.60	86.00	85.60	86.00	86.25	

B.M.S 28th ST.
 C ST. S.E. plugman
 K " N.E. " curb
 H " S.E. " from.
 S " " " "
 J " " " "
 E " " " "
 20 " " " "
 G " " " curb

102.67
 85.955
 109.20
 123.79
 136.36
 157.35
 163.62
 196.96

85.955	86.25	86.50	86.75	87.00	87.25	87.50	87.75	88.00	88.25	88.50	88.75	89.00
5.37	5.09	4.75	4.42	4.09	3.75	3.42	3.09	2.75	2.42	2.09	1.75	1.42
91.34	91.01	90.68	90.35	90.02	89.69	89.36	89.03	88.70	88.37	88.04	87.71	87.38
86.01	86.75	86.58	86.41	86.25	85.95							
4.43	4.57	4.76	4.93	5.09	5.26							
4.63	5.38	5.16	5.33	4.99	91.61							
-0.2	-0.8	-0.4	0.4	1.1	86.25	86.23	86.50	87.0	87.34			
56.66	86.83	87.67	88.0	87.0	5.36	5.28	5.11	4.61	4.27			
4.95	4.78	3.94	3.61	4.61	85.95	5.47						
					91.42	HI.	79.43	80.35	79.77			
					80.92	81.50	79.21	77.99	77.07	77.65		
					4.24	4.32	4.74	4.62	4.39	4.63		
					46.26	4.60	4.74	4.37	4.77	4.02		

85.96 ON NE TRAK Plug
 92.91 92.91 92.91 92.91
 86.88 86.87 86.84
 5.83 6.04 6.05 ✓
 4.91 ✓
 Catch Boring Stakes set 3' back from
 Curb & Curb Grade S.E. 1/4th only bearing
 1/4th West - Evanson Machine

85.96	86.00	86.16	86.34	86.67	86.33	86.50	87.00
5.70							
91.66	HI.	6.66	5.50	5.32	4.99	5.33	5.76
87.34	86.66	86.83	87.67	88.00	87.00		
4.32	5.00	4.53	3.99	3.66	4.66		
85.96	86.0	86.16	86.34	86.67	86.33	86.50	87.0
5.78							
91.84	HI.	5.84	5.68	5.50	5.17	5.51	5.34
86.66	86.83	87.67	88.00	87.0			
5.12	5.01	4.17	3.84	4.34			

check field
 later
 Kern

GRADES

E

W

28TH ST "J" ST ^{Going East}
Intersect
80' ST

91.84 ^{H.I.}
88.50
3.34
4.34

N 1/4 "J" 8825 8800 87.85 8850 8840 8900 8925

N-CURB 8807 87.82 87.7 8833 8822 8900 8900
8800 8800

N-1/4 8791 87.66 87.57 8816 8806 87.75 8840

Center 8775 87.50 87.35 8800 87.90 87.50 8850

S 1/4 8759 87.34 87.19 87.84 87.74 87.25 87.85

S-CURB 8743 87.18 87.03 87.8 87.58 8700 8700
8718 8718 8718 8718

S 1/4 "J" 8725 87.00 86.85 8750 8740 8800 8825

W GRADES E

28TH ST "J" TO "I" ST

5-1 "I"								
300.34	98.25	98.00	97.85	98.50	98.40	99.00	99.25	
275	97.11	97.16	97.02	97.66	97.56	98.16	98.41	
264	97.04	96.79	96.64	97.29	97.19	97.79	98.04	
250	96.58	96.33	96.18	96.83	96.73	97.33	97.58	
225	95.75	95.50	95.35	96.00	95.90	96.50	96.75	
200	94.91	94.66	94.51	95.16	95.06	95.66	95.91	
175	94.08	93.83	93.68	94.33	94.23	94.83	95.08	
150	93.25	93.00	92.85	93.50	93.40	94.00	94.25	
125	92.41	92.16	92.01	92.66	92.56	93.16	93.41	
100	91.58	91.33	91.18	91.83	91.73	92.33	92.58	
75	90.75	90.50	90.35	91.00	90.90	91.50	91.75	
50	89.91	89.66	89.51	90.16	90.06	90.66	90.91	
25	89.08	88.83	88.68	89.33	89.23	89.83	90.08	
N-2 "J"	88.25	88.00	87.85	88.50	88.40	89.00	89.25	

91.34	90.91	89.91	88.25	91.58	90.54	94.25	95.91	
89.25	0.43	1.43	3.09	24	101.56	7.31	5.66	46
2.09	1.83	2.93	4.69	2.66	92.68	8.61	6.15	
3.19	-1.4	-1.5	-1.6	-2.9	5.98	-1.2	-0.5	
-1.1	97.58	98.25	96.58	94.91	93.25			
	3.98	3.31	4.98	6.64	8.31			
91.64	3.28	0.48	7.25	9.41	91.33	94.0	93.0	
89.00	2.61	0.95	1.95	0.28	0.37	8.56	5.89	6.89
87.00					91.24	7.56		
12.24	88.00	89.00	90.66	99.89	94.66	95.66	97.33	
99.24	11.24	10.24	8.58	9.66	91.33	92.33	94.0	93.0
94.66	95.66	97.33	96.33	98.0	99.0	102.67	5.24	6.24
4.58	8.58	1.91	2.91	1.24	0.24	0.52		
91.84	88.0	89.66	90.66			103.19		
89.0	3.84	2.18	1.78	0.63		98.00		
2.54				91.21	JP	3.19		
92.33	91.33	93.00	94.00	104.3	101.54	95.66	94.66	96.33
9.37	10.31	8.64	7.64			3.98	6.98	5.81
97.33	99.0	98.0						
4.31	2.64	3.64						

W GRADES E

28TH ST "I" ST. Intersect

10164 H.P.
 $\frac{98.50}{3.14} \quad \frac{99.50}{2.14}$

99.25
 N. 1/2 "I" ST 99.00 98.85 99.50 99.40 100.0 100.25

14'
 N-Curb 99.00 98.00 98.67 99.33 99.25 100.00 100.00
 98.00 98.00 99.00 99.00

13'
 N-1/4 98.40 97.75 98.51 99.17 99.06 98.75 99.40

13'
 center 98.50 98.50 98.35 99.01 98.90 98.50 99.50

13'
 S-1/4 98.85 97.25 98.19 98.85 98.74 98.25 98.85

13'
 S-Curb 97.00 98.00 98.03 98.68 98.58 98.00 98.00
 98.00 98.00 99.00 99.00

14'
 S. 1/2 "I" 98.25 98.00 98.85 98.50 98.40 99.00 99.25

W

GRADES
28TH ST "I" TO "H" ST

E

102.67 8.42 111.09 101.25	102.25 8.84 2.94 +5.9	103.25 7.84 1.64 +6.2	104.25 6.84 0.84 +5.0	105.25 5.84 0.84 +5.0	106.25 4.84 3.84 +1.0
9.84 1.94 +7.9	4.84 5.24 -3.4	10.84 6.02 9.92 -3.9	10.84 7.18 10.48 -3.3	10.84 8.35 12.85 -4.5	10.84 9.57 14.5 -5.0

48

52. "H"	300.04	106.25	106.00	105.60	106.00	105.60	106.00	106.25
275	105.66	105.41	105.03	105.46	105.09	105.50	105.75	
250	105.07	104.82	104.47	104.92	104.57	105.00	105.25	
225	104.49	104.24	103.91	104.38	104.06	104.50	104.75	
200	103.91	103.66	103.35	103.84	103.54	104.00	104.25	
175	103.32	103.07	102.78	103.29	103.03	103.50	103.75	
150	102.74	102.49	102.24	102.75	102.51	103.00	103.25	
125	102.16	101.91	101.66	102.21	101.99	102.50	102.75	
100	101.58	101.33	101.10	101.67	101.47	102.00	102.25	
75	100.99	100.74	100.53	101.12	100.96	101.50	101.75	
50	100.41	100.16	99.97	100.58	100.44	101.00	101.25	
25	99.83	99.58	99.41	100.04	99.91	100.50	100.75	
N.L. "I"	99.25	99.0	98.85	99.50	99.40	100.0	100.25	

95.26 9.14 6.53 +2.61	118 96.34 13.54 12.00 +1.54	98.02 12.36 9.73 +2.63	99.20 11.18 9.22 +1.96
93.27 11.15 5.26 +6.87	91.45 12.93 5.33 +7.62	90.23 14.17 8.10 +6.07	89.05 15.36 9.50 +6.85
87.88 16.52 10.67 +5.85	86.70 18.36 4.78 +3.68	85.53 9.53 4.58 +4.95	84.38 10.72 6.68 +4.04

109.20
1.18
110.38
10.00
100.38
51.50
801 18.88 2.35
16.02
2860
Culvert grades 24.03
10.70
4008
5700

103.19 99 4.19	102.16 3.03	101.33 1.86	102.44 0.70	103.1 10.24 109.22 102.24	103.66 5.86	104.82 4.40	106.0 3.22
116.18 10.17 108.29 3.23 109.27	106.00 3.27	105.0 4.27	104.0 4.27	6.78 6.37 7.27	103.0 7.25	102.0 7.27	
101.64	100.0 1.64	99.0 2.64	100.16 1.48	101.0 0.64	101.00 7.25	102.0 6.25	101.83 6.92
102.49 5.76	103.0 3.25	104.0 4.25	103.66 4.59	104.82 3.43	105.0 3.25	106.0 2.25	106.0

W

GRADES

E

28TH ST "H" TO "G" ST

161.8 W S2.6"	122.00	121.85	122.50	122.40	123.00	123.25
156.5 E	120.98	120.23	120.06	120.71	121.32	121.51
100	119.28	119.03	118.83	119.51	120.00	120.25
75	118.08	117.83	117.60	118.25	118.15	118.68
50	116.88	116.63	116.37	116.99	116.54	117.6
25	115.68	115.43	115.15	115.73	115.54	116.03
120.6 W = 00 146.2 E	114.48	114.23	113.93	114.41	114.23	114.71
135	113.25	113.00	112.70	113.30	113.13	113.61
100	112.05	111.80	111.48	112.04	111.82	112.51
75	110.85	110.60	110.26	110.78	110.52	111.22
50	109.65	109.40	109.04	109.52	109.21	109.81
25	108.45	108.20	107.82	108.26	107.91	108.51
N. 2. H ST	107.25	107.00	106.60	107.00	106.60	107.25

109.20	109.89	112.54	114.96	117.60	82.9	109.65
6.34	5.66	3.00	0.58	2.06	10.49	5.99
115.54	7.65	6.6	4.68	0.64	-2.2	3.89
107.25	-2.0	-8.6	-4.1	-2.7		-2.9
8.29	112.05	114.48	116.88	119.28	122.28	0.58
7.99	3.49	1.02	7.84	3.74	6.71	114.96
+0.3	8.79	9.96	8.76	4.56	4.22	117.6
	-5.3	-8.9	-10.1	-8.6	-10.9	126.72
						120.25
						8.47
						6.57
						-0.1
						123.25
						3.47
						8.77
						-0.3

Revised on page 76

GRADES

28TH ST "G" ST Intersection

13445-H.I.

For H.L. of "G"
Use Elev. on next Page
for estimating

124.0 122.50
10.45 11.95

N.L. "G" 123.25 123.00 123.10 124.00 124.40 125.00 125.25

N-CURB ^{123.00} ^{122.00} 123.00 122.59 123.95 124.06 125.00 125.00
122.00 124.00 124.00

N-1/4 124.0 121.75 122.68 123.50 123.73 123.50 124.43

center ^{122.50} 121.50 122.47 123.25 123.90 123.00 124.00

S-1/4 121.85 121.25 122.27 123.00 123.07 122.50 124.10

S-CURB ^{121.00} ^{122.00} 121.00 122.06 122.75 122.74 122.00 122.00
122.00 123.00 123.00

S.L. "G" 122.25 122.00 121.85 122.50 122.40 123.00 123.25

W

GRADES

E

"28TH" ST "G" TO "F" ST

S. "F" E. ST

300'	134.25	134.00	133.85	134.50	134.40	135.00	135.25
275	133.37	133.12	132.97	133.64	133.56	134.16	134.41
250	132.49	132.24	132.09	132.78	132.72	133.32	133.57
225	131.60	131.35	131.22	131.92	131.84	132.49	132.74
200	130.71	130.46	130.35	131.06	131.06	131.66	131.91
175	129.83	129.58	129.47	130.20	130.22	130.82	131.07
150	128.94	128.69	128.60	129.34	129.39	129.99	130.24
125	128.05	127.80	127.73	128.48	128.56	129.16	129.41
100	127.16	126.91	126.86	127.62	127.73	128.33	128.57
75	126.28	126.03	125.98	126.76	126.89	127.49	127.74
50	125.39	125.14	125.11	125.90	126.06	126.66	126.91
25	124.50	124.25	124.24	125.04	125.23	125.83	126.08
11.1 "G" (on E Side)	123.61						
123.25	123.36	123.37	124.18	124.40	125.00	125.25	
11.1 "G" (on W Side)	123.00						

123.79	123.75	123.39	127.16	128.94			
2.21	2.75	0.61	1.86	2.94			
126.00	13.15	14.31	7.14	1.36			
123.25	-11.4	-9.7	-8.3	4.30			
0.75	0.62	12.69	12.54	15.20	3.07	132.49	134.25
0.45	12.66	11.13	9.46	7.86	7.33	5.65	3.79
+6.3	138.04	7.83	2.26	0.0	10.63	9.54	7.79
152.86	135.57	135.25	11.69	126.66	125.14	128.33	126.91
131.01	17.29	18.61	12.79	8.72	10.24	7.05	8.47
13.94	11.79	16.31	13.38	129.99	128.69	130.46	131.66
10.03	+8.5	7.03	120.00	5.39	6.69	4.92	3.72
45.9	132.24	134.00	133.0	0.89			
	3.74	1.38	0.89				
	123.79		123.79				
	5.22		10.66				
	129.01	H.I.	134.45	H.I.	128.0	126.66	125.14
	123.00		125.00		11.45	7.79	9.31
	6.00		9.45				
	130.46	131.66	133.32	132.24	134.0	0.47	
	3.99	2.79	1.13	2.21	0.45	133.98	
						12.60	
						146.58	H.I.
						135.0	
						11.58	

51

W

GRADES

E

"28TH" ST "F" ST ^{Going East} Intersection

N-1/4 "F"	136.25	136.00	135.85	136.50	136.10	137.00	137.25
-----------	--------	--------	--------	--------	--------	--------	--------

N-CURB	135.90	135.65	135.50	136.15	136.06	137.00 134.00	137.00 136.00
--------	--------	--------	--------	--------	--------	------------------	------------------

N-1/4	135.57	135.32	135.17	135.82	135.73	135.50	136.10
-------	--------	--------	--------	--------	--------	--------	--------

CENTER	135.25	135.00	134.85	135.50	135.10	135.00	136.00
--------	--------	--------	--------	--------	--------	--------	--------

S-1/4	134.92	134.67	134.52	135.17	135.07	134.50	135.10
-------	--------	--------	--------	--------	--------	--------	--------

S-CURB	134.60	134.35	134.20	134.85	134.74	134.00 135.00	134.00 135.00
--------	--------	--------	--------	--------	--------	------------------	------------------

S-1/4 "F"	134.25	134.00	133.85	134.50	134.40	135.00	135.25
-----------	--------	--------	--------	--------	--------	--------	--------

130.25

- 5.89

141.14 H.I.

137.25

4.14

146.58 H.I. 135.00

136.00

10.58

52

GRADES

"28TH" ST "F" TO TREAT

147.25							
148.5	147.00	146.90	147.00	146.90	147.00	147.25	
125	145.66	145.41	144.88	145.48	144.95	145.55	145.60
100	143.77	143.52	143.07	143.68	143.24	143.84	144.09
75	141.89	141.64	141.17	141.88	141.53	142.13	142.38
50	140.01	139.76	139.46	140.09	139.82	140.42	140.67
25	138.13	137.88	137.66	138.30	138.11	138.71	138.96
N.E. ST	136.25	136.00	135.85	136.50	136.40	137.00	137.25

138.04 H.I.	0.19	1400	14377	14705	14409
136.25	137.85 J.P.	10.85	7.09	3.61	23.91
1.79	13.01	10.85	5.49	4.51	6.61
5.19	150.86 H.I.	-0.1	+1.6	-0.9	+7.3
-3.1	137.85	0.29	0.01		147.25
	13.61	150.57 J.P.	156.76 J.P.	14067	20.70
		6.20	11.24	6.33	2.25
		158.77 H.I.	168.00 H.I.	12.73	+17.5
158.46 H.I.				+14.6	
144.09	12.30		14067	137.25	
14.37	146.16 J.P.		6.4	9.81	
10.07	0.90		0.7	7.57	
	147.06 H.I.		15.7	+2.3	
135.25 H.I.		137.0	136.0	13976	14042
12.25 H.I.		10.50	7.50	7.74	7.08
147.50 H.I.				3.66	3.98
		136.0	137.0	14042	139.76
146.58 H.I.		10.58	9.58	6.16	6.82
				3.06	2.74
0.44 J.P.		147.0			
146.14 J.P.		12.01			
12.87 H.I.					
159.01 H.I.					

GRADES

W

E

28TH ST Treat ST Intersect
54' ST

159.01 H.L. 148.50
148.00
11.01
10.51

^{149.25}
N.S. Treat 149.00 148.85 149.50 149.40 150.00 150.25

¹⁰
N-Curb ^{149.00} 149.00 148.43 149.03 148.88 149.44 149.69
^{148.00} 148.00

^{8 1/2}
N-1/4 148.90 147.50 148.07 148.64 148.44 148.97 149.22
^{7 1/2}

^{8 1/2}
Center 148.00 147.00 147.72 148.25 148.00 148.50 148.75
^{7 1/2}

^{8 1/2}
S-1/4 147.10 146.50 147.36 147.85 147.56 148.03 148.28
^{7 1/2}

^{146.00}
S-Curb 147.00 147.00 147.01 147.46 147.12 147.56 147.81
^{146.00}

¹⁰
^{147.25}
S-S. Treat 147.0 146.60 147.00 146.60 147.00 147.25

W

GRADES

E

28TH ST TREAT TO "E" ST - EAST

157.05 EOST 100 = S-L. EAST	147.80	156.70	157.40	157.40	148.00	158.25
75	155.10	154.85	154.73	155.42	155.31	156.00
50	153.15	152.90	152.77	153.45	153.32	154.00
25	151.20 149.25	150.95	150.81	151.47	151.33	152.00
A-L-TREAT	149.00	148.85	149.50	149.40	150.00	150.25

157.77 H.I.	153.35	157.05	163.00 H.I.	150.25	158.25
149.25	3.62	0.28	150.25	13.74	9.75
7.63	14.42	16.2	17.75	7.87	11.75
11.32	-10.8	-16.5	3.25	+6.2	-2.0
3.77			+14.5		
157.35 B.M.	158.25	154.25	150.25	147.25	
11.1	0.21	4.21	8.21	11.21	
158.46 H.I.	2.81	2.41	3.61	8.91	
	-2.6	+1.8	+4.6	+2.3	
157.35	2.19				
4.66					
152.01 H.I.	159.54 H.I.	149.00	150.0	156.0	
147.40	147.00	10.54	9.54	5.54	
158.2	12.54		152.90	156.80	
1.34			6.64	2.74	
159.01 H.I.	150.0	149.0	152.90	156.0	156.70
	9.01	10.01	6.11	5.01	1.01
					2.31

55

W

GRADES

E

28TH ST EST Intersection

56

80' ST

EAST 157.55

N-L.E. ST

157.30 157.20 157.90 157.90 158.50 158.75

14'

157.46

N-CURB

157.21 157.11 157.81 157.81 158.50 158.50
157.50 157.50

15'

N-1/4

157.38 157.13 157.03 157.73 157.73 157.37 157.90

15'

157.30

Center

157.05 156.95 157.65 157.65 157.25 158.00

15'

S-1/4

157.22 156.97 156.87 157.57 157.57 157.12 157.40

15'

157.14

S-CURB

156.89 156.79 157.49 157.49 157.00 157.00
158.00 158.00

14'

EAST

157.05

S.E. ST

157.80 156.70 157.40 157.40 158.00 158.75

159.01 HI

157.25

158.50

157.20

129

157.05

0.76

0.57

1.31

1.96

W

GRADES

E

28TH ST ^{EAST} TO ^{WEST} "E" ST
 & West "E" ST Intersection
 60' STREET

157.99						
N-1/2 "E" WEST	157.74	157.64	158.34	158.34	158.94	159.19
10'						
157.74 156.74	157.74	157.59	158.29	158.29	158.89	159.14
N-CURB	156.74					
10'						
N-1/4	157.34	156.66	157.54	158.24	158.84	159.08
10'						
157.59	156.59	157.49	158.19	158.19	158.79	159.04
CENTER						
10'						
S-1/4	157.04	156.51	157.44	158.14	158.74	158.99
10'						
156.44 157.44	156.44	157.44	158.09	158.09	158.69	158.94
S-CURB	157.44					
10'						
157.69	157.44	157.34	158.04	158.04	158.64	158.89
28' S-1/2 "E" WEST						
10'						
157.55	157.30	157.20	157.90	157.90	158.50	158.75
N-1/2 "E" EAST						

156.77 H.I.	157.69	168.00 H.I.	158.89	157.69
157.55	0.92	158.25	9.11	10.31
0.78	1.34	9.24	0.57	159.54 H.I.
6.62	2.2	5.25	+8.6	158.50
-7.40	157.30	4.0	157.30	1.04
	6.73		2.24	
	164.08 H.I.			
	155.64	157.44	157.74	158.94
	5.44	6.64	6.34	3.14

129					
157.72	157.44	158.64	158.74	157.59	157.74
11.63	11.94	10.71	10.56	11.76	11.61
129.35 H.I.					10.41

57

W

GRADES

E

"28TH" ST "E" TO "D" ST

159.05							
21 ² S-1.0"	158.80	158.70	159.40	159.40	160.00	160.25	
17 ⁵	158.86	158.61	158.51	159.21	159.21	159.81	160.06
15 ⁰	158.74	158.49	158.39	159.09	159.09	159.69	159.94
12 ⁵	158.61	158.36	158.26	158.96	158.96	159.56	159.81
100	158.49	158.24	158.14	158.84	158.84	159.44	159.69
7 ⁵	158.36	158.11	158.01	158.71	158.71	159.31	159.56
5 ⁰	158.24	157.99	157.89	158.59	158.59	159.19	159.44
2 ⁵	158.11	157.86	157.76	158.46	158.46	159.06	159.31
157.99							
N-1/2" E west	157.74	157.64	158.34	158.34	158.94	159.19	

174.89 H.2 159.69 159.44 159.19 12.99 J.P.
 159.94 15.20 15.45 15.70 161.90
 14.95 2.50 1.15 1.5 1.22 H.F.
 9.15 +12.4 +14.3 +10.2 163.12
 +5.8 157.37

159.05 160.20 158.74 158.49 158.24 157.99
 4.67 2.87 4.38 4.63 4.88 5.13
 4.17 2.97 11.68 6.13 4.38 5.03
 -4.1 -0.1 -7.3 -1.5 +0.5 +0.1
 164.08 H.T. 159.19 157.99 158.24 159.44 159.69 158.49
 4.89 6.09 5.84 4.64 4.39 5.59
 158.80 160.0
 5.28 4.08
 169.3 H.T. 159.19 157.99 158.24 159.44 159.69 158.49
 10.16 11.36 11.11 9.91 9.66 10.86
 158.80 160.0
 10.55 9.35

-W

GRADES

E

28TH ST "C" TO "D" ST

174.05							
300-5.1 "C"	173.80	173.70	174.40	174.40	175.00	175.25	
275	172.89	172.64	172.54	173.24	173.84	174.09	
250	171.73	171.48	171.38	172.08	172.08	172.68	
225	170.56	170.31	170.21	170.91	170.91	171.51	
200	169.39	169.14	169.04	169.74	169.74	170.34	
175	168.22	167.97	167.87	168.57	168.57	169.17	
150	167.05	166.80	166.70	167.40	167.40	168.00	
125	165.89	165.64	165.54	166.24	166.24	166.84	
100	164.73	164.48	164.38	165.08	165.08	165.68	
75	163.56	163.31	163.21	163.91	163.91	164.51	
50	162.39	162.14	162.04	162.74	162.74	163.34	
25	161.22	160.97	160.87	161.57	161.57	162.17	
161 "D"	160.05	159.80	159.70	160.40	160.40	161.00	161.25

175.38 H.F. 172.93 170.59 174.05 1805
 175.25 12.45 14.79 11.33 172.33 J.P. 171.73
 10.13 8.55 13.29 11.63 2.56 H.F. 9.06
 9.43 13.9 11.5 0.3 174.89 H.F. -5.9
 40.2

59

163.25 161.25 163.12 K.I. 165.93 163.59 160.05 12.55
 6.64 13.64 16.34 16.705 2.81 0.47 3.07 150.87 J.P.
 10.24 13.84 6.27 3.93 6.69 0.33 3.47 150.88 K.I.
 -3.6 10.8 -11.5 11.77 -9.5 -5.8 162.89
 155.9 H.F. 175.00 13.05 J.P. 164.73 8.51
 173.80 10.91 172.86 10.83 6.75
 12.11 0.73 9.18 -15.3
 166.80 164.48 173.69 H.F. 171.48 -20.00 170.34 165.00
 6.79 9.11 172.68 2.11 169.14 3.25 5.59
 0.91 4.46
 165.68 163.34 162.14 159.80 12.20 159.80 161.00
 7.91 10.25 11.45 3.79 161.39 J.P. 3.38 4.18
 169.38 H.F. 165.18 H.F.
 161.0 159.80 162.14 163.34 165.68 164.08
 8.35 9.55 7.21 6.01 3.67 4.87
 166.80 168.0 170.34 169.14 171.48 172.68
 2.55 1.35 11.47 12.67 10.33 9.13
 0.40 173.80
 163.95 J.P. 6.81 8.01
 12.86
 187.81 K.I.

W

GRADES

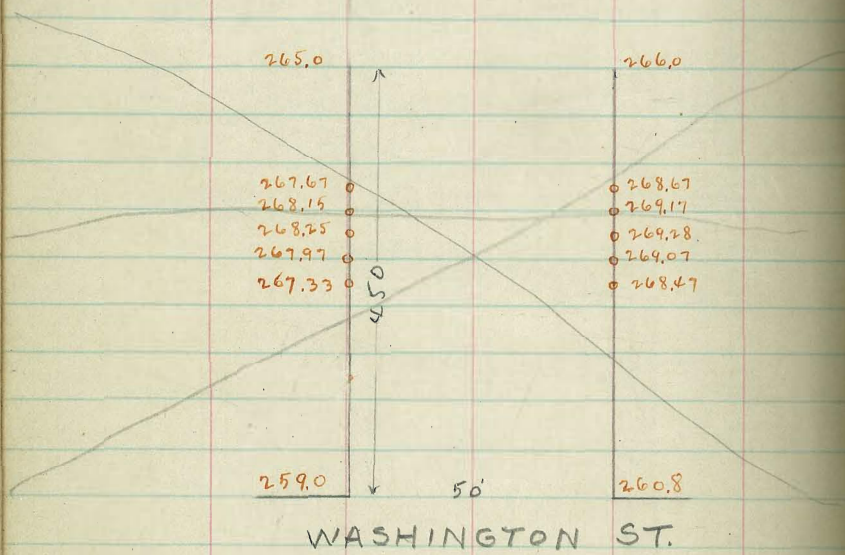
E

"28TH" ST "C" TO "B" ST

	1917.05	1920.00	1922.00	1924.00	1926.00	1928.00	1930.00
300 S.L. "B"	197.00	196.60	197.00	196.60	197.00	197.25	
275	195.40	195.15	194.77	195.20	194.84	195.25	195.50
250	193.55	193.36	192.95	193.40	193.08	193.50	193.75
225	191.70	191.45	191.12	191.60	191.31	191.75	192.00
200	189.85	189.66	189.30	189.80	189.54	190.00	190.25
175	188.00	187.75	187.47	188.00	187.77	188.25	188.50
150	186.15	185.90	185.65	186.20	186.00	186.50	186.75
125	184.30	184.05	183.82	184.40	184.24	184.75	185.00
100	182.45	182.20	182.00	182.60	182.48	183.00	183.25
75	180.60	180.35	180.17	180.80	180.71	181.25	181.50
50	178.75	178.50	178.35	179.00	178.94	179.50	179.75
25	176.90	176.65	176.52	177.20	177.17	177.75	178.00
N.L. "C"	175.05	174.80	174.70	175.40	175.40	176.00	176.25

196.96	193.53	189.82	173.75	190.25	186.75
1.82	4.73	8.43	4.53	8.03	60
198.28 H.L.	4.93	11.33	2.23	3.23	11.53
197.25	-0.2	-2.9	+2.3	+4.8	5.03
1.03					+6.5
183.25	179.75	182.94 JP	186.15	182.45	178.75
15.03	18.53	185.34	.73	2.89	6.63
7.03	11.23	185.38 H.L.	3.23	5.39	15.13
+8.0	+7.3		-4.0	-5.5	-8.5
176.95	196.96 B.N.	197.0	193.50	190.0	186.50
7.73	0.73	0.69	4.19	7.69	11.19
8.63	197.69 H.L.	193.35	189.60	185.90	182.0
10.5	178.30	4.34	8.09	11.79	184.97 H.L.
	7.41	6.41	9.91	17.11	185.91 H.L.
	181.81 H.L.				182.20
174.80	176.0	179.50	178.50	0.31	
7.01	5.81	2.81	3.31	181.50 JP	
				11.95	
182.20	183.0	186.50	185.90	193.45 H.L.	
11.20	70.40	6.95	7.55	3.85	3.45
0.10					
193.35 JP	193.50	193.30	197.0	196.96	
8.60 H.L.	8.00	8.70	5.00	5.04	
202.00					

28th Chk. o.k. from K to B
 April 12/15
 Lechardt
 Atter
 Kerr



BRANT ST.

	W		€		E			
450	265.25	265.00	264.85	265.50	265.40	266.00	266.25	-0.5 +5.7
425	265.92	265.67	265.52	266.17	266.07	266.67	266.92	+0.7 +8.8
400	266.59	266.34	266.19	266.84	266.74	267.34	267.59	
375	267.25	267.00	266.85	267.50	267.40	268.00	268.25	+2.4 +9.6
350	267.92	267.67	267.52	268.17	268.07	268.67	268.92	
325	268.40	268.15	268.01	268.66	268.57	269.17	269.42	+5.9 +5.3
300	268.50	268.25	268.11	268.77	268.68	269.28	269.53	
275	268.22	267.97	267.85	268.52	268.47	269.07	269.32	+5.3 +7.0
250	267.58	267.33	267.22	267.90	267.87	268.47	268.72	
225	266.75	266.50	266.40	267.10	267.10	267.70	267.95	+5.6 +7.3
200	265.91	265.66	265.59	266.30	266.30	266.90	267.19	
175	265.08	264.83	264.77	265.50	265.59	266.17	266.42	+2.8 +7.9
150	264.25	264.00	263.85	264.70	264.80	265.40	265.65	+0.1 +6.7
125	263.42	263.17	262.94	263.90	264.00	264.60	264.89	
100	262.58	262.33	262.22	263.10	263.27	263.87	264.12	-2.9 -0.8
75	261.75	261.50	261.50	262.30	262.50	263.10	263.35	
50	260.92	260.67	260.68	261.50	261.73	262.33	262.58	-11.2 -9.8
25	260.08	259.83	259.87	260.70	260.97	261.57	261.82	
0=N.W. Washington	259.25	259.00	259.05	259.90	260.20	260.80	261.25	+0.6 -0.3

WINDER STREET.

261.00 50' 262.00

BOONE ST.

262.00 263.00

200'

267.00 267.00

NEALE ST.

266.00 266.00

200'

255.50 254.00

TORRENCE ST.

254.50 50' 253.00

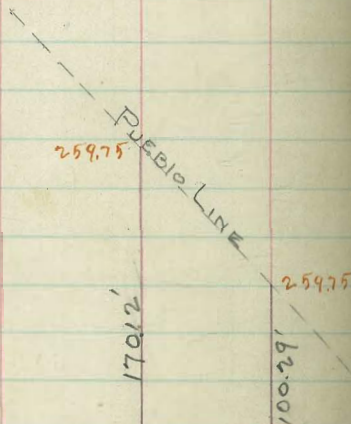
70'

244.00 243.00

261.00 262.00

BOONE ST.

262.00 50' 262.00



0=SL NEALE	26625	266.0	265.60	26600	265.60	26600	26625	+43	+25
25	26494	264.69	26426	26459	264.15	26450	26475		
50	26363	26338	26293	26319	26270	26300	26325	+53	+26
75	26231	26206	26159	26178	26124	26150	26175		
100	26100	26075	26025	26038	25979	26000	26025	+54	+19
125	25969	25944	25891	25897	25834	25850	25875		
150	25838	25813	25758	25756	25689	25700	25725	+66	+23
175	25706	25681	25624	25616	25543	25550	25575		
200=NL TORRENCE	25575	255.50	25490	25475	25398	25400	25425	+60	+26

NL TORRENCE	25575	255.50	25490	25475	25398	25400	25425		
CURB	25450	25420	25397	25375	25353	25330	25300		
N. 1/4	25490	25460	25437	25415	25393	25370	25340		
CENTER	25500	25470	25447	25425	25403	25380	25350	+31	-0.1
S 1/4	25435	25405	25382	25360	25338	25315	25285		
CURB	25350	25320	25297	25275	25253	25230	25200		
SL TORRENCE	25475	254.50	25390	25375	25298	25300	25325		

0=SL TORRENCE	25475	254.50	25390	25375	25298	25300	25325	+16	+77
25	25100	25075	25015	25009	24936	24943	24968		
50	24725	24700	24640	24643	24574	24585	24610	+31	-0.3
70	24425	24400	24340	24350	24285	24300	24325	+36	-0.1

NLBOONE	261.25	261.00	260.85	261.50	261.40	262.00	262.25
CURB	260.00	260.70	261.05	261.70	261.60	261.20	261.00
N $\frac{1}{4}$	260.85	260.35	261.20	261.85	261.75	261.35	261.85
CENTER	261.50	260.50	261.35	262.00	261.90	261.50	262.50
S $\frac{1}{4}$	261.40	260.65	261.50	262.15	262.05	261.65	262.40
CURB	261.00	260.80	261.65	262.30	262.20	261.80	262.00
SLBOONE	262.25	262.00	261.85	262.50	262.40	263.00	263.25

-08 +19

0=SLBOONE	262.25	262.00	261.85	262.50	262.40	263.00	263.25
25	262.88	262.63	262.44	263.06	262.93	263.50	263.75
50	263.50	263.25	263.04	263.63	263.45	264.00	264.25
75	264.13	263.88	263.63	264.19	263.98	264.50	264.75
100	264.75	264.50	264.23	264.75	264.50	265.00	265.25
125	265.38	265.13	264.82	265.31	265.03	265.50	265.75
150	266.00	265.75	265.41	265.88	265.55	266.00	266.25
175	266.63	266.38	266.01	266.44	266.08	266.50	266.75
200=NLNEALE	267.25	267.00	266.60	267.00	266.60	267.00	267.25

-1.3 +1.8

-0.3 +2.9

+2.6 +3.7

+4.1 +3.9

+3.9 +2.6

NLINEALE	267.25	267.00	266.60	267.00	266.60	267.00	267.25
CURB	266.00	265.80	266.40	266.80	266.40	265.80	266.00
N $\frac{1}{4}$	266.40	265.65	266.25	266.65	266.25	265.65	265.40
CENTER	266.50	265.50	266.10	266.50	266.10	265.50	266.50
S $\frac{1}{4}$	265.85	265.35	265.95	266.35	265.95	265.35	264.85
CURB	265.00	265.20	265.80	266.20	265.80	265.20	265.00
SLNEALE	266.25	266.00	265.60	266.00	265.60	266.00	266.25

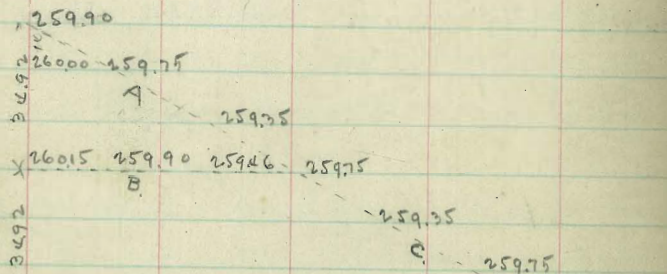
+4.1 +3.1

WINDER ST.

W

E

E



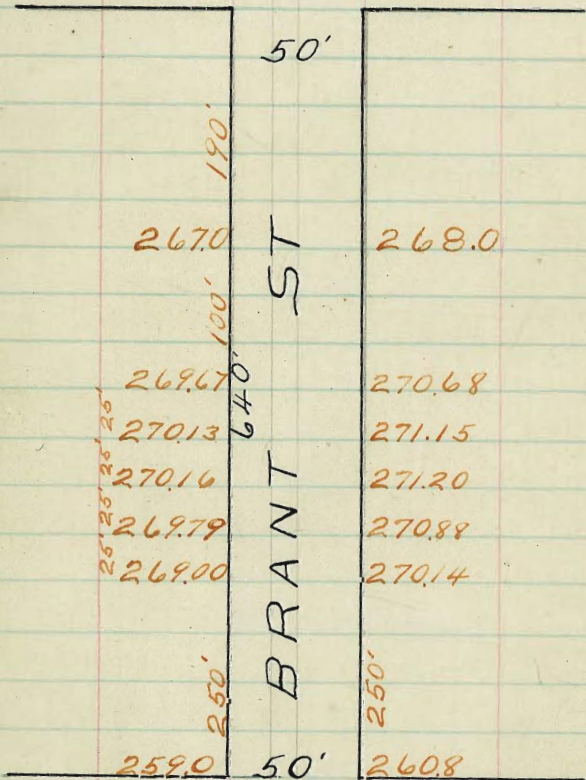
-300
-117
-62 +21
-23 +21
-1.1 +19

0 = PUEBLO LINE	260.44	260.19	259.82	260.20	259.75	260.02	260.27	
25	260.64	260.39	260.07	260.53	260.16	260.51	260.76	
50	260.84	260.59	260.33	260.85	260.57	261.00	261.25	
75	261.04	260.79	260.59	261.17	260.99	261.50	261.75	
100.28 = NL BOONE	261.75	261.00	260.85	261.50	261.40	262.00	262.25	

50' ST 10' WALKS 7.5' QUARTER
 GRADES
 BRANT ST
 WASHINGTON TO LEWIS

N

LEWIS ST



WASHINGTON ST

S

S + SEC BOOK 902

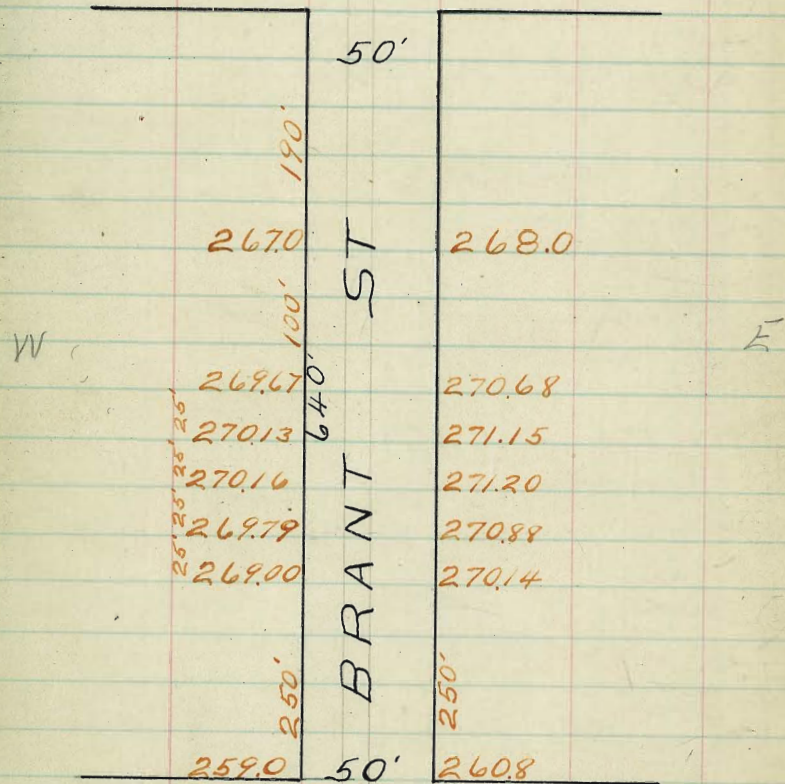
ESTIMATE " 8"

50' ST 10' WALKS 7.5' QUARTER
GRADES

BRANT ST.
WASHINGTON TO LEWIS

N

LEWIS ST



WASHINGTON ST

S

S + SEC BOOK 902

ESTIMATE " " 8

67

MACAULAY ST.

	34.50	34.50
10.00	10.00	

	210	210
ROSECRANS ST.		

	29.50	29.50
8.00	8.00	
	EVERGREEN ST.	

	28.00	28.00
3.00	3.00	

	300	300
3.00	3.00	

SCOTT ST.

	19.00	19.00
2.50	2.50	
	LOCUST ST.	

	17.00	17.00
3.00	3.00	

	300	300
1.50	1.50	

SHAFTER ST.

	10.00	10.00
1.00	1.00	

	150	ROSECRANS ST.
--	-----	---------------

	8.00	8.00
0.50	0.50	

W

MACAULAY ST.

S.

Φ.

N.

300-ELSCOTT	275	250	210	250	210	250	275	-16	-14
275	267	242	202	242	202	242	267		
250	258	233	193	233	193	233	258	-21	-20
200	242	217	177	217	177	217	242	-30	-29
150	225	200	160	200	160	200	225	-34	-32
100	208	183	143	183	143	183	208	-40	-36
50	192	167	127	167	127	167	192	-44	-40
25	183	158	118	158	118	158	183		
W 0=WLSHAFTER	175	150	110	150	110	150	175	-38	-45
WLSHAFTER	175	150	110	150	110	150	175		
CURB	0.67	0.54	0.97	1.37	0.97	0.54	0.67		
1/2	0.90	0.48	0.91	1.31	0.91	0.48	0.90		
CENTER	1.35	0.42	0.85	1.25	0.85	0.42	1.25	-37	-41
1/2	0.73	0.36	0.79	1.19	0.79	0.36	0.73		
CURB	0.17	0.30	0.73	1.13	0.73	0.30	0.17		
ELSHAFTER	1.25	1.00	0.60	1.00	0.60	1.00	1.25		
0=ELSHAFTER	1.25	1.00	0.60	1.00	0.60	1.00	1.25	-41	-49
25	1.17	0.92	0.52	0.92	0.52	0.92	1.17		
50	1.08	0.83	0.43	0.83	0.43	0.83	1.08	-41	-49
100	0.92	0.67	0.27	0.67	0.27	0.67	0.92	-38	-45
150 E OF SHAFTER	0.75	0.50	0.10	0.50	0.10	0.50	0.75	-35	-46

MACAULAY ST.

300=EL LOCUST	17.25	17.00	16.60	17.00	16.60	17.00	17.25	+0.4	+0.6
275	16.67	16.42	16.02	16.42	16.02	16.42	16.67		
250	16.08	15.83	15.43	15.83	15.43	15.83	16.08	-1.9	+0.9
225	15.50	15.25	14.85	15.25	14.85	15.25	15.50		
200	14.92	14.67	14.27	14.67	14.27	14.67	14.92	+0.5	-0.6
175	14.33	14.08	13.68	14.08	13.68	14.08	14.33		
150	13.75	13.50	13.10	13.50	13.10	13.50	13.75	+0.2	-0.7
125	13.17	12.91	12.51	12.91	12.51	12.91	13.17		
100	12.58	12.33	11.93	12.33	11.93	12.33	12.58	+0.2	-0.6
75	12.00	11.75	11.35	11.75	11.35	11.75	12.00		
50	11.42	11.17	10.77	11.17	10.77	11.17	11.42	-1.5	-2.0
25	10.83	10.58	10.18	10.58	10.18	10.58	10.83		
0=WLRoseCRANS	10.25	10.00	9.60	10.00	9.60	10.00	10.25	-1.5	-1.7

ROSECRANS EXCEPTED.

300=EL ROSECRANS	8.25	8.00	7.60	8.00	7.60	8.00	8.25	-0.6	-1.9
275	7.83	7.58	7.18	7.58	7.18	7.58	7.83		
250	7.42	7.17	6.77	7.17	6.77	7.17	7.42	-0.4	-1.8
200	6.83	6.33	5.93	6.33	5.93	6.33	6.83	-1.0	-1.3
150	5.75	5.50	5.10	5.50	5.10	5.50	5.75	-0.6	-1.2
100	4.92	4.67	4.27	4.67	4.27	4.67	4.92	-0.6	-1.2
50	4.08	3.83	3.43	3.83	3.43	3.83	4.08	-1.0	-1.2
25	3.67	3.42	3.02	3.42	3.02	3.42	3.67		
0=WLScott	3.25	3.00	2.60	3.00	2.60	3.00	3.25	-1.1	-1.2

WLScott	3.25	3.00	2.60	3.00	2.60	3.00	3.25		
CURB	2.17	2.04	1.87	2.04	1.87	2.04	2.17		
1/4	2.40	1.98	2.41	2.81	2.41	1.98	2.40		
CENTER	2.75	1.92	2.75	2.75	2.35	1.92	2.75	-0.5	-0.5
1/4	2.23	1.86	2.29	2.69	2.29	1.86	2.23		
CURB	1.67	1.80	2.23	2.63	2.23	1.80	1.67		
ELScott	2.75	2.50	2.10	2.50	2.10	2.50	2.75		

300=ELEVERGREEN	28.25	28.00	27.60	28.00	27.60	28.00	28.25	-1.9	-0.8
275	27.50	27.25	26.85	27.25	26.85	27.25	27.50		
250	26.75	26.50	26.10	26.50	26.10	26.50	26.75	-1.3	-1.5
225	26.00	25.75	25.35	25.75	25.35	25.75	26.00		
200	25.25	25.00	24.60	25.00	24.60	25.00	25.25	-1.1	-1.1
175	24.50	24.25	23.85	24.25	23.85	24.25	24.50		
150	23.75	23.50	23.10	23.50	23.10	23.50	23.75	-1.0	-1.0
125	23.00	22.75	22.35	22.75	22.35	22.75	23.00		
100	22.25	22.00	21.60	22.00	21.60	22.00	22.25	-0.5	-0.3
75	21.50	21.25	20.85	21.25	20.85	21.25	21.50		
50	20.75	20.50	20.10	20.50	20.10	20.50	20.75	-0.2	+0.1
25	20.00	19.75	19.35	19.75	19.35	19.75	20.00		
0=W.L.LOCUST	19.25	19.00	18.60	19.00	18.60	19.00	19.25	+0.1	+1.0

W.L.LOCUST	19.25	19.00	18.60	19.00	18.60	19.00	19.25		
CURB	18.17	17.65	18.08	18.48	18.08	17.65	18.17		
1/4	18.26	17.41	17.84	18.54	17.84	17.41	18.26		
CENTER	18.00	17.17	17.60	18.00	17.60	17.17	18.00	+1.1	+1.2
1/4	17.10	16.93	17.36	17.76	17.36	16.93	17.10		
CURB	16.17	16.69	17.12	17.52	17.12	16.69	16.17		
EL.LOCUST	17.25	17.00	16.60	17.00	16.60	17.00	17.25		

210 W. OF EVERG.	3475	3450	3410	3450	3410	3450	3475	+53	-21
200	3451	3426	3386	3426	3386	3426	3451	+25	-39
175	3392	3367	3327	3367	3327	3367	3392		
150	3322	3307	3267	3307	3267	3307	3322	-26	-17
125	3273	3248	3208	3248	3208	3248	3273		
100	3213	3188	3148	3188	3148	3188	3213	-35	-67
75	3154	3129	3089	3129	3089	3129	3154		
50	3094	3069	3029	3069	3029	3069	3094	-30	-10
25	3035	3010	2970	3010	2970	3010	3035		
0=WL EVERG.	2975	2950	2910	2950	2910	2950	2975	-21	-11

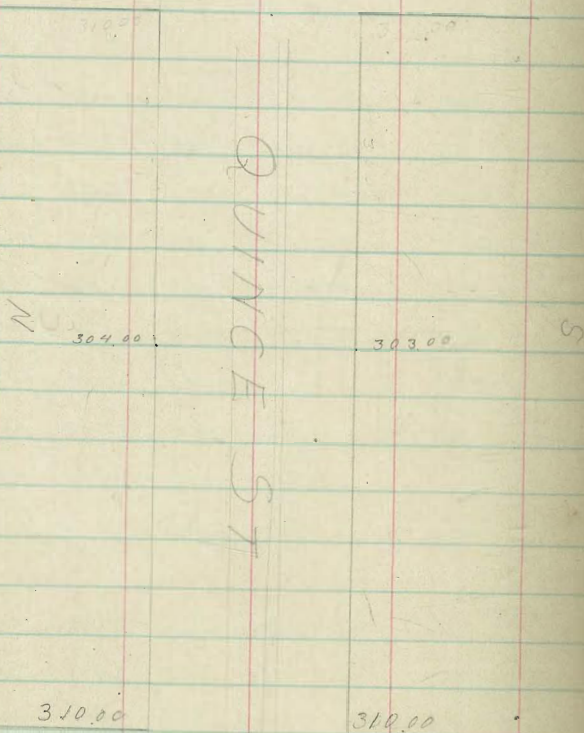
WLEVERGREEN	2975	2950	2910	2950	2910	2950	2975		
CURB	2867	2828	2871	2911	2871	2828	2867		
1/4	2890	2810	2853	2893	2853	2810	2890		
CENTER	2875	2792	2835	2875	2835	2792	2875	-13	-0.4
1/4	2798	2774	2817	2857	2817	2774	2798		
CURB	2717	2756	2799	2839	2799	2756	2717		
ELEVERGREEN	2825	2800	2760	2800	2760	2800	2825		

QUINCE ST

30TH ST TO 300 FT EAST OF 30TH ST
60' WIDE 10' WALKS 10' 1/4 S

31ST

ST



30TH

ST

QUINCE ST

N.L. CL 1/4 1/4 CL SL

3+00	303.20	303.00	302.90	303.50	303.70	304.00	304.20
2+75	303.83	303.58	303.41	304.04	303.92	304.50	304.70
2+50	304.42	304.17	303.98	304.58	304.43	305.00	305.20
2+25	305.00	304.75	304.54	305.13	304.98	305.50	305.70
2+00	305.59	305.34	305.10	305.67	305.47	306.00	306.20
1+75	306.17	305.92	305.66	306.21	305.98	306.50	306.70
1+50	306.75	306.50	306.23	306.78	306.50	307.00	307.20
1+25	307.34	307.09	306.79	307.30	307.02	307.50	307.70
1+00	307.92	307.67	307.35	307.84	307.53	308.00	308.20
+75	308.51	308.26	307.91	308.38	308.05	308.50	308.70
+50	309.09	308.84	308.48	308.92	308.57	309.00	309.20
+25	309.67	309.42	309.04	309.47	309.08	309.50	309.70
East Line 30 th ST	310.25	310.00	309.60	310.00	309.60	310.00	310.20

