

79

Goethe St From Reservoirs to
Pueblo Line

PLUM ST. - BYRON TO HUGO. P. 12

PLUM ST. - JARVIS TO NEWELL

ROSECRANS ROAD ROSECRANS TO F. ST.

CARLETON ST. SHATTER ST. TO WESTLINE

Page 28

BYRON ST. 12 TO SHATTER TO PLUM ST P. 33

380

Evergreen St. N.L. Canyon Road to N.L. Olyphant 48

FIELD

ACCUST ST. S.L. Johnson to N.L. Olyphant 60

BRACE - W.L. Grand to E.L. Jenner St 68

THIRTIETH - S.L.M. ST. to H.L. Cookman St 72

SIXTH ST. BRIDGE TO PEARL --- 77

27TH H to I 85

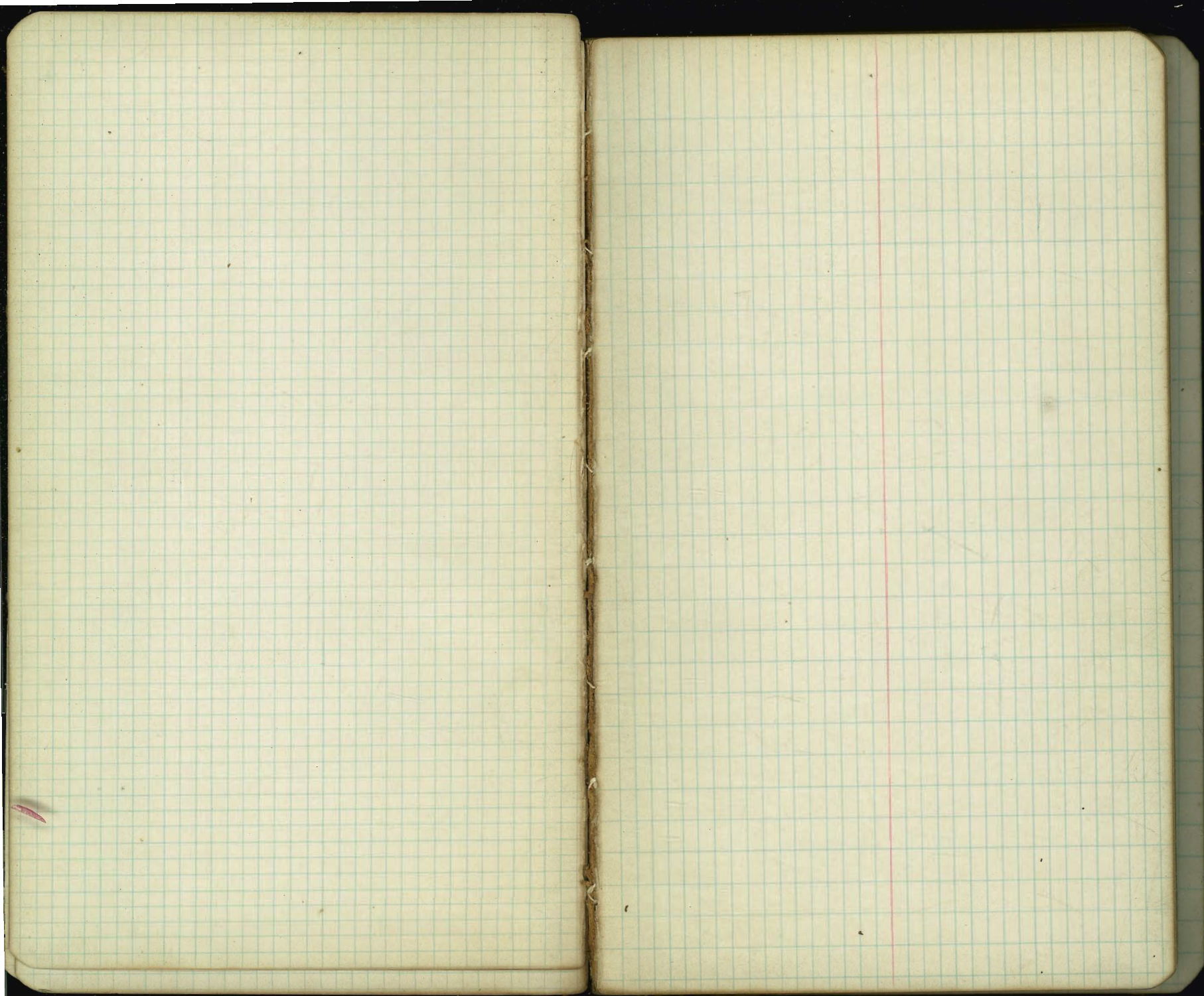
G79

Cooker Quality

MICROFILMED
DEC 7 1964

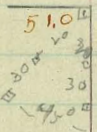
3000
2000

00003



ESTIMATE BOOK 9

GOETHE ST.
10" GUTTERS

27.0	27.0	70' wide	
Evergreen	ST.	18' walks	
28.5	28.0	85 1/4 S	
	ST.		
		0.0	0.0
50.0	50.0		
Willow	ST	Rosecrans	ST.
51.0	51.0	1.0	1.0
	51.0	1.0	1.0
	ST.		
85.0	86.0	10.0	10.0
Plum	ST	Locust	ST
86.0	87.0	11.0	11.0
	GOETHE (Garrison)	GOETHE	
125.0	123.0	27.0	27.0
Clove	ST	Evergreen	ST
126.0	125.0	28.0	28.0
134.0	133.0		
Pueblo line			

20x 208
210
240
6.35
6.35
1241
15.11
631
1280 Bm
19.11
19.02
19.02
12.54
31.26
1.85
29.71
12.89
42.60
62
47.98
12.79
54.77
82
53.99
1.14
58.49

2155
4.23
4.33
2.02
SW

1280
419
16.99
4.79
12.20
2971
560
55.31
4.62
27.31

2102 Bm Shale in Pile SW
Goethe + Rosecrans. 5
1280 H NW Locust + G
2971 H NW Evergreen + G
2931 7/2 NW Willow
5390 Pys SW Willow
1220 7/2 H 20S + SW

Goethe St.

H

E

S

300 = W.L. Plum.	86.25	86.00	85.85	86.50	86.40	87.00	87.25	-23 +49
275	89.50	89.25	89.06	89.63	89.46	90.00	90.25	
250	92.75	92.50	92.28	92.75	92.50	93.00	93.25	-138 -61
225	96.00	95.75	95.49	95.88	95.58	96.00	96.25	
200	99.25	99.00	98.70	99.00	98.63	99.00	99.25	-67 -92
175	102.50	102.25	101.91	102.13	101.69	102.00	102.25	
150	105.75	105.50	105.13	105.25	104.75	105.00	105.25	-70 -167
125	109.00	108.75	108.34	108.38	107.81	108.00	108.25	
100	112.25	112.00	111.55	111.50	110.87	111.00	111.25	-63 -199
75	115.50	115.25	114.76	114.63	113.93	114.00	114.25	
50	118.75	118.50	117.98	117.75	116.98	117.00	117.25	-52 -123
25	122.00	121.75	121.19	120.88	120.04	120.00	120.25	
EL. Clove	125.25	125.00	124.40	124.00	123.10	123.00	123.25	-30 -167
EL. Clove	125.75	125.00	124.40	124.00	123.10	123.00	123.25	
E Carb	124.17	124.43	124.66	124.39	123.56	124.69	124.17	
5/4	124.85	124.55	124.28	124.57	123.77	124.93	124.10	
4	125.50	124.67	124.90	124.75	123.98	123.17	124.00	
W/4	125.40	124.79	125.04	124.93	124.19	123.41	124.40	
W Carb	125.17	124.91	125.24	125.11	124.40	123.65	124.17	
W.L. Clove	126.25	126.00	125.60	125.50	124.85	125.00	125.25	
70 = W.L. Clove	126.25	126.00	125.60	125.50	124.85	125.00	125.25	+8.7 -7.8
20'E	128.54	128.29	127.69	127.79	127.14	127.29	127.54	+139 +29
Richtline	132.25	132.00	132.40	132.50	132.85	133.00	133.25	+112 -5.0

9227 SW to Plum
13750 Nixon NW Clove

6

9700	9702	9702	9702	9702	9702	9702	10742	10742
4.75	48	7.2	130	45	6.5	7.2	9.4	106.0
92.5	92.5	89.8	840	92.5	90.8	89.7	98.0	106.0
87.5	87.5	93.2	85.0	92.5	99.2	89.7	100.0	112.0
85.0	85.0	89.4	90.0	92.5	96.8	105.2	98.0	112.0
82.5	82.5	89.4	90.0	92.5	96.8	105.2	98.0	112.0
80.0	80.0	89.4	90.0	92.5	96.8	105.2	98.0	112.0
77.5	77.5	89.4	90.0	92.5	96.8	105.2	98.0	112.0
75.0	75.0	89.4	90.0	92.5	96.8	105.2	98.0	112.0
72.5	72.5	89.4	90.0	92.5	96.8	105.2	98.0	112.0
70.0	70.0	89.4	90.0	92.5	96.8	105.2	98.0	112.0
67.5	67.5	89.4	90.0	92.5	96.8	105.2	98.0	112.0
65.0	65.0	89.4	90.0	92.5	96.8	105.2	98.0	112.0
62.5	62.5	89.4	90.0	92.5	96.8	105.2	98.0	112.0
60.0	60.0	89.4	90.0	92.5	96.8	105.2	98.0	112.0
57.5	57.5	89.4	90.0	92.5	96.8	105.2	98.0	112.0
55.0	55.0	89.4	90.0	92.5	96.8	105.2	98.0	112.0
52.5	52.5	89.4	90.0	92.5	96.8	105.2	98.0	112.0
50.0	50.0	89.4	90.0	92.5	96.8	105.2	98.0	112.0
47.5	47.5	89.4	90.0	92.5	96.8	105.2	98.0	112.0
45.0	45.0	89.4	90.0	92.5	96.8	105.2	98.0	112.0
42.5	42.5	89.4	90.0	92.5	96.8	105.2	98.0	112.0
40.0	40.0	89.4	90.0	92.5	96.8	105.2	98.0	112.0
37.5	37.5	89.4	90.0	92.5	96.8	105.2	98.0	112.0
35.0	35.0	89.4	90.0	92.5	96.8	105.2	98.0	112.0
32.5	32.5	89.4	90.0	92.5	96.8	105.2	98.0	112.0
30.0	30.0	89.4	90.0	92.5	96.8	105.2	98.0	112.0
27.5	27.5	89.4	90.0	92.5	96.8	105.2	98.0	112.0
25.0	25.0	89.4	90.0	92.5	96.8	105.2	98.0	112.0
22.5	22.5	89.4	90.0	92.5	96.8	105.2	98.0	112.0
20.0	20.0	89.4	90.0	92.5	96.8	105.2	98.0	112.0
17.5	17.5	89.4	90.0	92.5	96.8	105.2	98.0	112.0
15.0	15.0	89.4	90.0	92.5	96.8	105.2	98.0	112.0
12.5	12.5	89.4	90.0	92.5	96.8	105.2	98.0	112.0
10.0	10.0	89.4	90.0	92.5	96.8	105.2	98.0	112.0
7.5	7.5	89.4	90.0	92.5	96.8	105.2	98.0	112.0
5.0	5.0	89.4	90.0	92.5	96.8	105.2	98.0	112.0
2.5	2.5	89.4	90.0	92.5	96.8	105.2	98.0	112.0
0.0	0.0	89.4	90.0	92.5	96.8	105.2	98.0	112.0

Check OK 11-6-14

647 4-14-14

Goethe St.

N

e

S

56.89 to 20 NW of NW Willow

300=Willow	51.25	51.00	50.60	51.00	50.60	51.00	51.25
275	54.18	53.83	53.45	53.88	53.50	53.92	54.19
250	56.92	56.67	56.31	56.75	56.40	56.83	57.08
225	59.75	59.50	59.16	59.63	59.30	59.75	60.00
200	62.58	62.33	62.02	62.50	62.20	62.67	62.92
175	65.42	65.17	64.81	65.38	65.10	65.58	65.83
150	68.25	68.00	67.73	68.25	68.00	68.50	68.75
125	71.18	70.83	70.58	71.13	70.90	71.42	71.67
100	73.92	73.67	73.43	74.00	73.80	74.32	74.58
75	76.75	76.50	76.29	76.88	76.70	77.25	77.50
50	79.58	79.33	79.14	79.75	79.60	80.17	80.42
25	82.42	82.17	82.00	82.63	82.50	83.08	83.33
E.L. Plum	85.25	85.00	84.85	85.50	85.40	86.00	86.25
E.L. Plum	85.25	85.00	84.85	85.50	85.40	86.00	86.25
E. Curb	84.17	84.43	85.11	85.76	85.66	85.43	85.17
E 1/4	84.85	84.55	85.23	85.88	85.78	85.55	85.85
e	85.50	84.67	85.35	86.00	85.90	85.67	86.50
W 1/4	85.40	84.79	85.49	86.12	86.02	85.79	86.60
W. Curb	85.17	84.91	85.59	86.24	86.14	85.91	86.17
W.L. Plum	86.25	86.00	85.85	86.50	86.40	87.00	87.25

5390 8m	6630	6630	663	6630	7733	7733	7733	7733
1240	86	22	42	25	104	95	111	11
6630	57.7	59.1	62.1	62.8	67.0	67.8	67.2	76.7
161	57.1	56.9	62.4	62.9	68.7	68.2	67.2	76.2
14.69 TP	C.6	C.14	7.5	7.5	7.7	7.4	7.3	C.20
1264	89.55	97.02	18	36	647	4-14-14		
77.33	87.7	93.4						
76.72 TP	88.7	86.2						
1263	87.3	7.2						
89.55 4	54.90	56.83	53.92	53.63	52.46	52.41		
44	3100	307	5.98	6.07	7.44	7.49		

8911	723-990	65.84	51.67	56.83	62.33	62.67	68.20	68.50
971	97200	44	9.17	9.01	2.51	2.17	10.00	9.14
cd	65.40 TP	12.30	73.67	74.33	79.63	80.17	84.7	81
23	78.24	37	437	271	9.2	878	878	88
05	77.47	120	8017	85.24	86.00	86.17	79.33	82.8
05	11.48	58.75	1.20	5.83	4.82	8.26	11.00	7.25
06	81.37	85.00	82.04	82.17	82.52	82.52	84.54	
17	80.73	378	5.20	6.44	5.20	378	4.24	
20	10.20	88.78	86	82.00	82.52			
83	90.83	80.12	485	7.61	8.11			
		10.23	52.83	82.04	82.17	82.52	90.04	
		90.85	11.87	6.41	7.30			

5689
1881
65.70
65.20
12.02
77.22
77.22
77.22
89.17
89.17
107.35

check OK blaugt
11-6-14

N Goethe St. S
E

300=WL Evergreen	28.00	27.60	28.00	27.60	28.00	28.25	+1.4 +1.6
275	30.08	29.83	29.43	29.83	29.43	29.83	30.08
250	31.92	31.67	31.27	31.67	31.27	31.67	31.92
225	32.75	32.50	32.10	32.50	32.10	32.50	32.75
200	35.58	35.33	34.93	35.33	34.93	35.33	35.58
175	37.42	37.17	36.77	37.17	36.77	37.17	37.42
150	39.25	39.00	38.60	39.00	38.60	39.00	39.25
125	41.08	40.83	40.43	40.83	40.43	40.83	41.08
100	42.92	42.67	42.27	42.67	42.27	42.67	42.92
75	44.75	44.50	44.10	44.50	44.10	44.50	44.75
50	46.58	46.33	45.93	46.33	45.93	46.33	46.58
25	48.42	48.17	47.77	48.17	47.77	48.17	48.42
E.L Willow	50.25	50.00	49.60	50.00	49.60	50.00	50.25
E.L Willow	50.25	50.00	49.60	50.00	49.60	50.00	50.25
E.Curb	49.17	49.43	49.86	50.26	49.86	49.43	49.17
E 1/4	49.85	49.55	49.98	50.38	49.98	49.55	49.85
E	50.50	49.67	50.10	50.50	50.10	49.67	50.50
W 1/4	50.40	49.79	50.22	50.62	50.22	49.79	50.40
W.Curb	50.17	49.91	50.34	50.74	50.34	49.91	50.17
WL Willow	51.25	51.00	50.60	51.00	50.60	51.00	51.25

2971 NW 1/4
29.31 20' NW 1/4
Bm 5689 20' NW 1/4
51.45 SW
53.70 SW Ry

5390 Bm	54.15	54.55	43.50	43.50	42.50	43.50	42.50
54.55	87	10	32	41	47	90	23
12.29	41.9	44.55	40.50	39.4	39.8	38.5	36.1
47.26	46.6	46.2	44.7	39.2	39.2	38.2	35.2
1.20	7.5	7.2	7.24	2.14	2.14	2.11	2.1
48.50	93.60	43.00	31.40	21.40	647	4423-14	
13.40	115	115	115	115			
30.40	20.80	20.80	29.68				
1.00	3.9	3.9	3.9				
21.40	C 1.4	3.9	3.9				
29.2	28.9	31.7	28.3	25.33	29.00	42.7	31.67
7.60	8.91	5.24	7.08	1.29	8.46	43.79	2.47
36.81	34.44	35.44	35.44	35.44	35.44	35.44	35.44
35.36	35.36	35.36	35.36	35.36	35.36	35.36	35.36
12.10	12.10	12.10	12.10	12.10	12.10	12.10	12.10
47.46	47.46	47.46	47.46	47.46	47.46	47.46	47.46
42.50	42.50	42.50	42.50	42.50	42.50	42.50	42.50
50.13	50.13	50.13	50.13	50.13	50.13	50.13	50.13
2.80	2.80	2.80	2.80	2.80	2.80	2.80	2.80
52.47	52.47	52.47	52.47	52.47	52.47	52.47	52.47
29.31	29.31	29.31	29.31	29.31	29.31	29.31	29.31
4.00	4.00	4.00	4.00	4.00	4.00	4.00	4.00
34.2	34.2	34.2	34.2	34.2	34.2	34.2	34.2
56.89	57.44	29.31	29.31	29.31	29.31	29.31	29.31
12.38	1.92	59.27	59.27	59.27	59.27	59.27	59.27
67.27	53.27	31.7	31.7	31.7	31.7	31.7	31.7
7.9	12.27	51.45	51.45	51.45	51.45	51.45	51.45
68.48	41.00	16.45	16.45	16.45	16.45	16.45	16.45
12.59	41.60	61.94	61.94	61.94	61.94	61.94	61.94
81.37	2.3	10.20	10.20	10.20	10.20	10.20	10.20
5.45	5.45	5.45	5.45	5.45	5.45	5.45	5.45
3.3	3.3	3.3	3.3	3.3	3.3	3.3	3.3
50.81	50.81	50.81	50.81	50.81	50.81	50.81	50.81
4.20	4.20	4.20	4.20	4.20	4.20	4.20	4.20
50.11	50.11	50.11	50.11	50.11	50.11	50.11	50.11
1.20	1.20	1.20	1.20	1.20	1.20	1.20	1.20
57.26	57.26	57.26	57.26	57.26	57.26	57.26	57.26

look at blough
11-6-14

N Goethe St. S

29.31 10' n n w Evergreen
 12.80 n w H Locust
 12.20 n w 70 S sw down

31.40	31.40	31.40	31.40	31.40	31.40	31.40	31.40	31.40	31.40
12.20	5.1	8.0	7.9	8	9.9	10.5	12.7	12.9	12.9
18.61	26.3	25.8	20.5	23.7	21.5	20.9	18.5	19.2	19.2
2.48	27.3	27.8	24.6	24.6	24.9	23.9	19.2	19.2	19.2
21.09	26.3	27.8	24.6	24.6	24.9	23.9	19.2	19.2	19.2
8.34	21.0	21.1	21.1	21.2	20.4	21.0	21.0	21.0	21.0
12.20	21.0	21.1	21.1	21.2	20.4	21.0	21.0	21.0	21.0
12.20	21.0	21.1	21.1	21.2	20.4	21.0	21.0	21.0	21.0
12.20	21.0	21.1	21.1	21.2	20.4	21.0	21.0	21.0	21.0

677 4-13-14

300=WL Locust	12.25	11.00	10.60	11.00	10.60	11.00	11.25	+11 +09	11.09
275	12.58	11.93	11.93	12.33	11.93	12.33	12.58		
250	13.92	13.67	13.27	13.67	13.27	13.67	13.92	+08	
225	15.25	15.00	14.60	15.00	14.60	15.00	15.25		
200	16.58	16.33	15.93	16.33	15.93	16.33	16.58	+04 +02	
175	17.92	17.67	17.27	17.67	17.27	17.67	17.92		
150	19.25	19.00	18.60	19.00	18.60	19.00	19.25	-07 -04	
125	20.58	20.33	19.93	20.33	19.93	20.33	20.58		
100	21.92	21.67	21.27	21.67	21.27	21.67	21.92	-09 -03	
75	23.25	23.00	22.60	23.00	22.60	23.00	23.25		
50	24.58	24.33	23.93	24.33	23.93	24.33	24.58	-13 -12	
25	25.92	25.67	25.27	25.67	25.27	25.67	25.92		
E. Evergreen	27.25	27.00	26.60	27.00	26.60	27.00	27.25	-16 -11	

12.20	16.33	18.00	21.67	24.33	27.00	28.67	19.00
10.25	6.12	3.48	7.78	6.65	3.91	1.31	7.00
21.45	16.70	18.00	15.67	16.33	21.47	24.33	27.00
21.71	18.85	17.99	20.33	9.87	4.33	1.67	7.14
30.96	17.74	19.31	27.00	25.37			
29.31	26.80	25.00	21.11	16.33	22.33		
27.31	24.60	12.20	8.33	6.17	10.17		
25.31	10.20	24.50					
23.31	12.20	27.50	27.00	25.67	12.33	11.00	10.50
21.31	13.20	34.32	4.11	6.00	7.11	10.30	10.80
19.31	13.20						
17.31	13.20						
15.31	13.20						
13.31	13.20						
11.31	13.20						
9.31	13.20						
7.31	13.20						
5.31	13.20						
3.31	13.20						
1.31	13.20						

check OK Clough
 11-6-14

E. Evergreen	27.25	27.00	26.60	27.00	26.60	27.00	27.25	
E. Curb	27.00	26.43	26.86	27.26	26.86	26.43	27.00	
E 1/4	26.85	26.55	26.98	27.38	26.98	26.55	26.85	
☐	27.50	26.67	27.10	27.50	27.10	26.67	27.50	
W 1/4	27.40	26.79	27.22	27.62	27.22	26.79	27.40	
W. Curb	27.27	26.91	27.24	27.74	27.34	26.91	27.27	
WL Evergreen	28.25	28.00	27.60	28.00	27.60	28.00	28.25	

Goethe St.

N

☉

S

20V Bm SW Russians 500

12804 NW Locust

1220 704 205 SW Locust

20V	832	832	832	832	832	832	832	832	832
67	67	67	67	67	67	67	67	67	67
158	158	158	158	158	158	158	158	158	158
674	674	674	674	674	674	674	674	674	674
836	836	836	836	836	836	836	836	836	836
1510	1510	1510	1510	1510	1510	1510	1510	1510	1510
230	230	230	230	230	230	230	230	230	230
1250V	1250V	1250V	1250V	1250V	1250V	1250V	1250V	1250V	1250V

300-WL Roscerans	1.00	0.60	1.00	0.60	1.00	1.25	+0.240.5
275	2.00	1.75	1.35	1.75	1.35	1.75	2.00
250	2.75	2.50	2.10	2.50	2.10	2.50	2.75
225	3.50	3.25	2.85	3.25	2.85	3.25	3.50
200	4.25	4.00	3.60	4.00	3.60	4.00	4.25 ✓
175	5.00	4.75	4.35	4.75	4.35	4.75	5.00
150	5.75	5.50	5.10	5.50	5.10	5.50	5.75
125	6.50	6.25	5.85	6.25	5.85	6.25	6.50
100	7.25	7.00	6.60	7.00	6.60	7.00	7.25 ✓
75	8.00	7.75	7.35	7.75	7.35	7.75	8.00
50	8.75	8.50	8.10	8.50	8.10	8.50	8.75 ✓
25	9.50	9.25	8.85	9.25	8.85	9.25	9.50
EL Locust	10.25	10.00	9.60	10.00	9.60	10.00	10.25
EL Locust	10.25	9.97	9.60	10.00	9.60	10.00	10.25
E. Curb	10.00	9.63	9.26	10.26	9.86	9.43	10.00
E 1/4	9.85	9.55	9.18	10.38	9.98	9.55	9.85
☉	10.50	9.67	10.10	10.50	10.10	9.67	10.50
W 1/4	10.20	9.79	10.22	10.62	10.22	9.79	10.20
WCurb	10.17	9.91	10.34	10.74	10.34	9.91	10.17
WL Locust	11.25	11.00	10.60	11.00	10.60	11.00	11.25

20V	104	1.81	250	402	550	700	850	1000	1150
832	832	832	832	832	832	832	832	832	832
1022	1022	1022	1022	1022	1022	1022	1022	1022	1022
1220	1220	1220	1220	1220	1220	1220	1220	1220	1220
20V	20V	20V	20V	20V	20V	20V	20V	20V	20V
832	832	832	832	832	832	832	832	832	832
16.70	16.70	16.70	16.70	16.70	16.70	16.70	16.70	16.70	16.70
1220	1220	1220	1220	1220	1220	1220	1220	1220	1220
270	270	270	270	270	270	270	270	270	270
24.60	24.60	24.60	24.60	24.60	24.60	24.60	24.60	24.60	24.60
20V	20V	20V	20V	20V	20V	20V	20V	20V	20V
3.98	3.98	3.98	3.98	3.98	3.98	3.98	3.98	3.98	3.98
6.00	6.00	6.00	6.00	6.00	6.00	6.00	6.00	6.00	6.00
2130	2130	2130	2130	2130	2130	2130	2130	2130	2130
7.28	7.28	7.28	7.28	7.28	7.28	7.28	7.28	7.28	7.28
7.10	7.10	7.10	7.10	7.10	7.10	7.10	7.10	7.10	7.10
7.15	7.15	7.15	7.15	7.15	7.15	7.15	7.15	7.15	7.15

64 7 11-12-14
blough

825 56
535 478
150 140
420 410

check OK blough
11-6-14

PLUM ST.

W.

£

E.

NL CARLETON	13425	13400	13340	13350	13285	13200	13225
CURB	13217	13291	13279	13267	13255	13243	13217
1/4	13360	13334	13322	13310	13298	13286	13260
CENTER	13400	13374	13362	13350	13338	13326	13300
1/4	13260	13234	13222	13210	13198	13186	13260
CURB	13217	13291	13279	13267	13255	13243	13217
SL CARLETON	13425	13400	13340	13350	13285	13200	13225

700=SL CARLETON	13425	13400	13340	13350	13285	13200	13225	+52+0.4
175	13375	13350	13290	13200	13235	13250	13275	
150	13325	13300	13240	13250	13185	13200	13225	+82+32
125	13275	13250	13190	13200	13135	13150	13175	
100	13225	13200	13140	13150	13085	13100	13125	+111+40
75	13175	13150	13090	13100	13035	13050	13075	
50	13125	13100	13040	13050	12985	13000	13025	+109+50
25	13075	13050	12990	13000	12935	12950	12975	
0=NL BYRON	13025	13000	12940	12950	12885	12900	12925	+62+29

NL BYRON	13025	13000	12940	12950	12885	12900	12925
CURB	12817	12891	12879	12867	12855	12843	12817
1/4	12940	12879	12867	12855	12843	12831	12840
CENTER	12950	12867	12890	12900	12835	12767	12850
1/4	12885	12855	12878	12888	12843	12755	12785
CURB	12817	12843	12866	12876	12811	12743	12717
SL BYRON	12925	12900	12840	12850	12785	12800	12825

PLUM ST.

	W.		Φ.				E.		
200=	SLEMERSON	111.25	111.00	112.20	110.50	109.85	110.00	110.25	+62 +40
175		112.88	112.63	112.03	112.13	111.48	111.63	111.88	
150		114.50	114.25	113.65	113.75	113.10	113.25	113.50	+96 +65
125		116.13	115.88	115.28	115.38	114.73	114.88	115.13	
100		117.75	117.50	116.90	117.00	116.35	116.50	116.75	+101 +66
75		119.38	119.13	118.53	118.63	117.98	118.13	118.38	
50		121.00	120.75	120.15	120.25	119.60	119.75	120.00	+91 +23
25		122.63	122.38	121.78	121.88	121.23	121.38	121.63	
0=	NLDICKENS	124.25	124.00	123.40	123.50	122.85	123.00	123.25	+37 -76
NLDICKENS		124.25	124.00	123.40	123.50	122.85	123.00	123.25	
CURB		123.17	123.43	123.66	123.76	123.11	122.43	122.17	
1/2		123.85	123.55	123.78	123.88	123.23	122.55	122.85	
CENTER		124.50	123.67	123.90	124.00	123.35	122.67	123.50	
1/4		124.20	123.79	124.02	124.12	123.47	122.79	123.20	
CURB		124.17	123.91	124.14	124.24	123.59	122.91	123.17	
SLDICKENS		125.25	125.00	124.40	124.50	123.85	124.00	124.25	
200=	SLDICKENS	125.25	125.00	124.40	124.50	123.85	124.00	124.25	-5.5 -4.5
175		126.38	126.13	125.53	125.63	124.98	125.13	125.38	
150		127.50	127.25	126.65	126.75	126.10	126.25	126.50	+29 +33
125		128.63	128.38	127.78	127.88	127.23	127.38	127.63	
100		129.75	129.50	128.90	129.00	128.35	128.50	128.75	+68 +42
75		130.88	130.63	130.03	130.13	129.48	129.63	129.88	
50		132.00	131.75	131.15	131.25	130.60	130.75	131.00	+56 +15
25		133.13	132.88	132.28	132.38	131.73	131.88	132.13	
0=	NL CARLETON	134.25	134.00	133.40	133.50	132.85	133.00	133.25	+38 -06

W.

PLUM ST.
E.

E.

14

NL FENELON	9825	98.00	97.40	97.50	96.85	97.00	97.25
CURB	97.17	97.43	97.66	97.76	97.11	96.43	96.17
1/2	97.85	97.55	97.78	97.88	97.23	96.55	96.85
CENTER	98.50	97.67	97.90	98.00	97.35	96.67	97.50
1/2	98.40	97.79	98.02	98.12	97.27	96.79	97.40
CURB	98.17	97.91	98.14	98.24	97.59	96.91	97.17
SL FENELON	9925	99.00	98.40	98.50	97.85	98.00	98.25

200=SL FENELON	9925	99.00	98.40	98.50	97.85	98.00	98.25	+44-28
175	100.63	100.38	99.78	99.88	99.23	99.38	99.63	
150	102.00	101.75	101.15	101.25	100.60	100.75	101.00	+51-22
125	103.38	103.13	102.53	102.63	101.98	102.13	102.38	
100	104.75	104.50	103.90	104.00	103.35	103.50	103.75	+14-52
75	106.13	105.88	105.28	105.38	104.73	104.88	105.13	
50	107.50	107.25	106.65	106.75	106.10	106.25	106.50	-105-162
25	108.88	108.63	108.03	108.13	107.48	107.63	107.88	
0=NLEMERSON	11025	110.00	109.40	109.50	108.85	109.00	109.25	-84-127

NLEMERSON	11025	110.00	109.40	109.50	108.85	109.00	109.25
CURB	109.17	109.43	109.66	109.76	109.11	108.43	108.17
1/2	109.85	109.55	109.78	109.88	109.23	108.55	108.85
CENTER	110.50	109.67	109.90	110.00	109.35	108.67	109.50
1/2	110.40	109.79	110.02	110.12	109.47	108.79	109.40
CURB	110.17	109.91	110.14	110.24	109.59	108.91	109.17
SL EMERSON	11125	111.00	110.40	110.50	109.85	110.00	110.25

PLUM ST.

W. E

NL HUGO	106.25	106.00	105.40	105.50	104.85	105.00	105.25
CURB	105.17	104.91	104.79	104.67	104.55	104.43	104.17
1/4	105.60	105.34	105.22	105.10	104.98	104.86	104.60
CENTER	106.00	105.74	105.62	105.50	105.38	105.26	105.00
1/4	105.60	105.34	105.22	105.10	104.98	104.86	104.60
CURB	105.17	104.91	104.79	104.67	104.55	104.43	104.17
SL. HUGO	106.25	106.00	105.40	105.50	104.85	105.00	105.25

200=SL. HUGO	106.25	106.00	105.40	105.50	104.85	105.00	105.25	+5.4	+5.5
175	103.75	103.50	102.90	103.00	102.35	102.50	102.75		
150	101.25	101.00	100.40	100.50	99.85	100.00	100.25	+9.5	+9.1
125	98.75	98.50	97.90	98.00	97.35	97.50	97.75		
100	96.25	96.00	95.40	95.50	94.85	95.00	95.25	+12.0	+10.4
75	93.75	93.50	92.90	93.00	92.35	92.50	92.75		
50	91.25	91.00	90.40	90.50	89.85	90.00	90.25	+9.8	+7.9
25	88.75	88.50	87.90	88.00	87.35	87.50	87.75		
0=NL. GOETHE	86.25	86.00	85.40	85.50	84.85	85.00	85.25	-2.1	-12.2

GOETHE EXCEPTED.

200=SL. GOETHE	87.25	87.00	86.40	86.50	85.85	86.00	86.25	+5.0	+6.5
175	88.62	88.38	87.78	87.88	87.23	87.38	87.63		
150	90.00	89.75	89.15	89.25	88.60	88.75	89.00	+12.8	+12.8
125	91.38	91.13	90.53	90.63	89.98	90.13	90.38		
100	92.75	92.50	91.90	92.00	91.35	91.50	91.75	+12.0	+8.1
75	94.13	93.88	93.28	93.38	92.73	92.88	93.13		
50	95.50	95.25	94.65	94.75	94.10	94.25	94.50	+8.0	-1.7
25	96.88	96.63	96.03	96.13	95.48	95.63	95.88		
0=NL. FENELON	98.25	98.00	97.40	97.50	96.85	97.00	97.25	+6.0	-5.0

See P. 19

PLUM STREET

NEWELL ST.

86.0	70'	85.0
	200'	
94.0		93.0

MACAULAY ST.

93.0	70'	92.0
	200'	
84.0		82.0

LOWELL ST.

OMITTED

84.0	70'	83.0
	200'	
102.5		101.5

KEATS ST.

103.5	70'	102.5
	200'	
105.0		119.0

JARVIS ST.

(Newell)

10" CURBS

PLUM STREET

	W	18' 70' Wide						E
		85'	85'	85'	85'	85'	18'	
200 SL LOWELL	84.25	84.00	83.40	83.00	82.85	83.00	83.25	
175	86.56	86.31	85.71	85.51	85.16	85.31	85.56	
150	88.87	88.62	88.02	88.12	87.47	87.62	87.87	
125	91.18	90.93	90.33	90.43	89.78	89.93	90.18	
100	93.50	93.25	92.65	92.75	92.10	92.25	92.50	
75	95.81	95.56	94.96	95.06	94.41	94.56	94.81	
50	98.12	97.87	97.27	97.37	96.72	96.87	97.12	
25	100.43	100.18	99.58	99.68	99.03	99.18	99.43	
0-NL HEATS ST	102.75	102.50	101.90	102.00	101.35	101.50	101.75	

See Note on opposite Pg.

	W	18' 70' Wide						E
		85'	85'	85'	85'	85'	18'	
NL HEATS ST	102.75	102.50	101.90	102.00	101.35	101.50	101.75	
CURB	102.67	101.67	102.16	102.26	101.61	100.93	100.67	
1/4	102.35	102.05	102.28	102.38	101.73	101.05	101.35	
1/4	103.00	102.17	102.40	102.50	101.85	101.17	102.00	
1/4	102.90	102.29	102.52	102.62	101.97	101.29	101.90	
CURB	102.67	102.41	102.64	102.74	102.07	101.41	101.67	
SL HEATS ST	103.75	103.50	102.90	103.00	102.35	102.50	102.75	

	W	18' 70' Wide						E
		85'	85'	85'	85'	85'	18'	
200 SL HEATS ST	103.75	103.50	102.90	103.00	102.35	102.50	102.75	
175	105.19	104.94	104.34	104.44	103.79	103.94	104.19	
150	106.63	106.38	105.78	105.88	105.23	105.38	105.63	
125	108.06	107.81	107.21	107.31	106.66	106.81	107.06	
100	109.50	109.25	108.65	108.75	108.10	108.25	108.50	
75	110.94	110.69	110.09	110.19	109.54	109.69	109.94	
50	112.38	112.13	111.53	111.63	110.98	111.13	111.38	
25	113.81	113.56	112.96	113.06	112.41	112.56	112.81	
0-NL JARVIS ST	114.25	114.00	113.40	113.50	112.85	113.00	113.25	

See p. 19 for diagram of Street intersections

17

PLUM STREET

	W 18' 05" 17' 85"	85' 85"	85' 85"	85' 85"	85' 85"	85' 85"	85' 85"
200-SL. NEWELL	86.25	86.00	85.40	85.50	84.85	85.00	85.25
175	87.25	87.00	86.40	86.50	85.85	86.00	86.25
150	88.25	88.00	87.40	87.50	86.85	87.00	87.25
125	89.25	89.00	88.40	88.50	87.85	88.00	88.25
100	90.25	90.00	89.40	89.50	88.85	89.00	89.25
75	91.25	91.00	90.40	90.50	89.85	90.00	90.25
50	92.25	92.00	91.40	91.50	90.85	91.00	91.25
25	93.25	93.00	92.40	92.50	91.85	92.00	92.25
N.L. MACAULAY	94.25	94.00	93.40	93.50	92.85	93.00	93.25

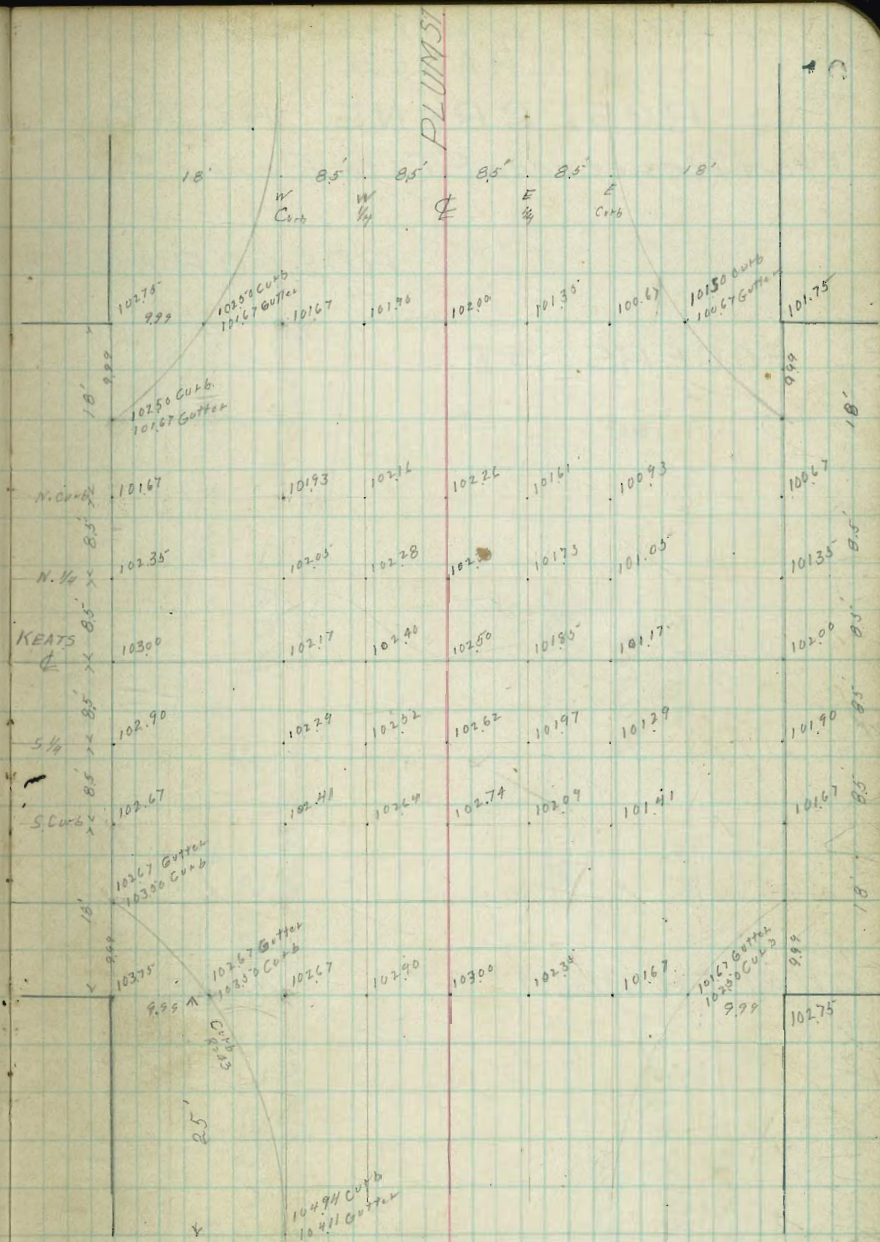
N.L. MACAULAY	94.25	94.00	93.40	93.50	92.85	93.00	93.25
CURB	94.10	93.17	93.14	93.24	92.59	91.91	92.17
1/4	93.40	92.79	93.02	93.12	92.47	91.79	92.40
1/4	93.50	92.67	92.90	93.00	92.35	91.67	92.50
1/4	92.85	92.55	92.78	92.88	92.23	91.55	91.85
CURB	92.17	92.43	92.66	92.76	92.11	91.43	91.17
SL. MACAULAY	93.00	92.17	92.40	92.50	91.85	92.00	92.25

200-SL. MACAULAY	93.25	93.00	92.40	92.50	91.85	92.00	92.25
175	92.13	91.88	91.28	91.31	90.64	90.75	91.00
150	91.00	90.75	90.15	90.13	89.42	89.50	89.75
125	89.88	89.63	89.03	89.94	89.20	89.25	89.50
100	88.75	88.50	87.90	87.75	86.99	87.00	87.25
75	87.63	87.38	86.78	86.56	85.76	85.75	86.00
50	86.50	86.25	85.65	85.39	84.54	84.50	84.75
25	85.38	85.13	84.53	84.19	83.32	83.25	83.50
O-NL LOWELL ST	84.25	84.00	83.40	83.00	82.10	82.00	82.25

LOWELL STREET EXCEPTED

Plum St.

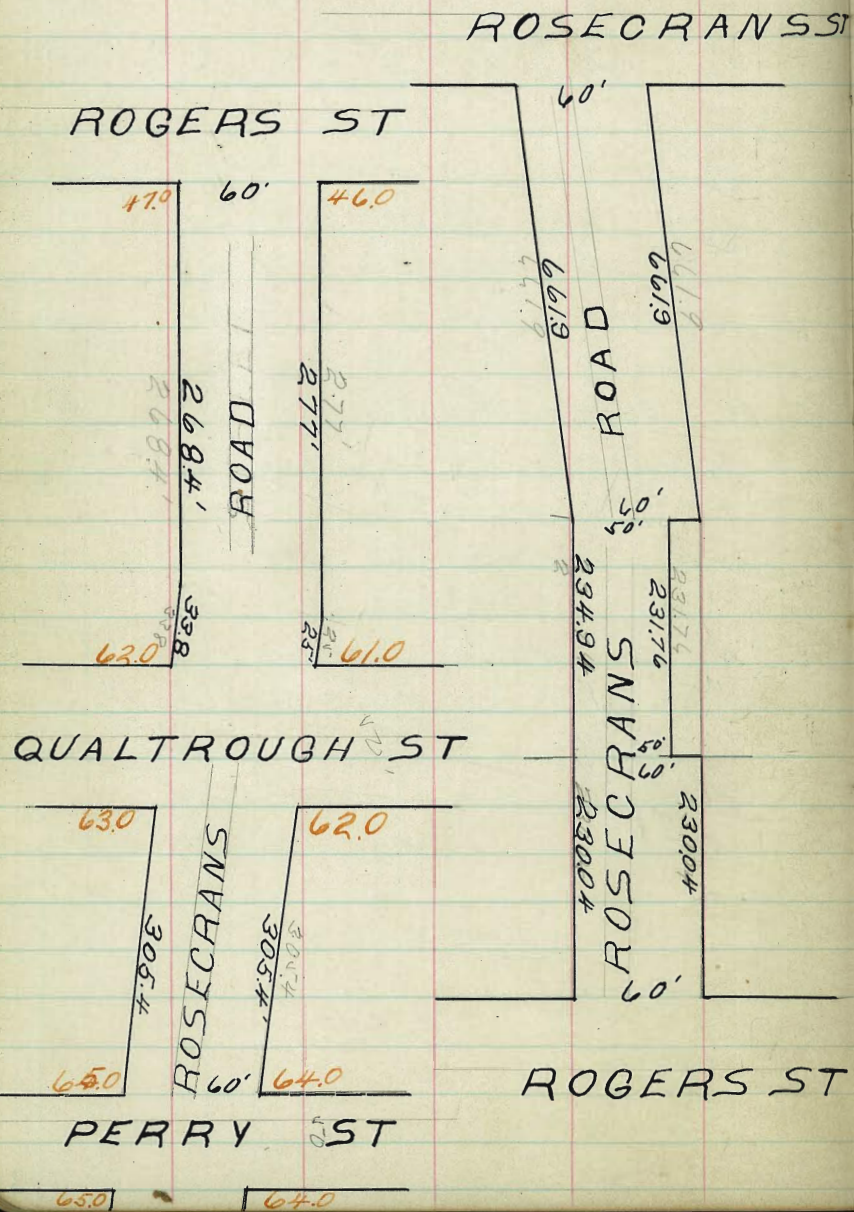
200 = SL Goethe	8725	8700	8640	8650	8586	8600	8626
175	8975	8960	8890	8900	8826	8850	8875
160	9126	9100	9040	9050	8985	9000	9026
150	9218	9193	9133	9143	9078	9093	9118
140	9319	9286	9226	9236	9170	9186	9210
125	9426	9401	9341	9351	9286	9301	9326
120	9466	9440	9380	9390	9326	9340	9366
100	9590	9566	9506	9516	9450	9466	9490
80	9686	9660	9600	9590	9526	9560	9586
75	9701	9676	9616	9606	9541	9576	9601
60	9760	9725	9665	9676	9610	9625	9650
50	9768	9743	9683	9693	9628	9643	9668
40	9786	9760	9700	9710	9646	9660	9686
25	9800	9776	9716	9726	9660	9676	9700
0 = NL Fenelon	9826	9800	9740	9750	9686	9700	9726



60' & 50' ST 10' WALKS 10' & 7 1/2' QUARTER GRADES

ROSECRANS ROAD

From Rosecrans ST to Perry ST.



24

CARLETON ST. SHAFTER ST TO
WEST LINE OF ROSEVILLE.

70' Wide
18 Walks 8.5/45

30' 26.00 20'	25.00 30'	70'	
EVERGREEN ST.		WEST LINE OF ROSEVILLE 154.00 70' 153.00	
25.00	24.00		
30' 22.00 20'	21.00 30'	30' 150.00 149.00	30' 150.00 149.00
LOCUST ST.		CLOVE ST.	
21.00	20.00	147.00 149.00	147.00 150.00
17.50	13.50	134.00	134.00
ROSECRANES ST.		PLUM ST.	
13.50	12.50	133.00	133.00
30' 6.50 20'	6.98 30'	86.00	85.00
SCOTT ST.		WILLOW ST.	
5.50	5.00	85.00	84.00
30' 1.00 20'	1.00 30'	26.00	25.00
SHAFTER ST		EVERGREEN ST.	
70'	25.00 70'	24.00	

~~96.15~~
~~12.00~~
~~108.18~~
~~83~~
~~107.05~~
~~12.65~~
~~119.97~~
~~111.12~~
~~11.37~~
~~12.14~~
~~131.46~~
~~13.46~~
~~121.00~~
~~12.68~~
~~143.34~~
~~2.44~~
~~136.20~~
~~143.64~~
~~3.66~~
~~143.12~~
~~12.92~~
~~154.04~~
~~1.11~~
~~154.95~~

86.39
 12.92
 99.31
 84
 98.47
 12.65
 111.12
 2.8
 110.83
 13.70
 123.93
 123.92
 12.74
 136.64
 4.0
 136.26

154.95 sub 6.00

CARLTON ST

S 16' CURB 8 1/4 8 1/4 8 1/4 8 1/4 8 1/4 8 1/4 8 1/4

W. SCOTT ST	6.75	6.50	6.10	6.25	6.60	6.00	6.25
W. CURB	5.67	5.41	5.84	5.99	5.34	4.98	5.17
W. 1/4	5.90	5.29	5.72	5.87	5.22	4.79	5.40
Φ	6.00	5.17	5.60	5.75	5.10	4.67	5.50
E. 1/4	5.35	5.05	5.48	5.63	4.98	4.55	4.85
E. CURB	4.67	4.93	5.36	5.51	4.86	4.43	4.18
E.L. SCOTT	5.75	5.50	5.10	5.25	4.60	5.00	5.25
300 E.L. SCOTT	5.75	5.50	5.10	5.25	4.60	5.00	5.25
275	5.38	5.13	4.73	4.90	4.27	4.67	4.92
250	5.00	4.75	4.35	4.54	3.93	4.33	4.58
225	4.63	4.38	3.98	4.19	3.60	4.00	4.25
200	4.25	4.00	3.60	3.83	3.27	3.67	3.92
175	3.88	3.63	3.23	3.48	2.93	3.33	3.58
150	3.50	3.25	2.85	3.12	2.60	3.00	3.25
125	3.13	2.88	2.48	2.77	2.27	2.67	2.92
100	2.75	2.50	2.10	2.41	1.93	2.33	2.58
75	2.38	2.13	1.73	2.04	1.60	2.00	2.25
50	2.00	1.75	1.35	1.71	1.27	1.67	1.92
25	1.63	1.38	0.98	1.35	0.93	1.33	1.58
W.L. 0100 SHAFER	1.25	1.19	0.60	1.00	0.60	1.00	1.25

Wm 8.00 50'S SW Sect
 On - W 41'S SW Sect

11.25	11.00	11.00	11.00	11.00	463	463	463	463	5.50	5.60	2.00	6.60
11.00	10.75	10.50	10.25	10.00	463	463	463	463	5.50	5.60	2.00	6.60
10.75	10.50	10.25	10.00	9.75	463	463	463	463	5.50	5.60	2.00	6.60
10.50	10.25	10.00	9.75	9.50	463	463	463	463	5.50	5.60	2.00	6.60
10.25	10.00	9.75	9.50	9.25	463	463	463	463	5.50	5.60	2.00	6.60
10.00	9.75	9.50	9.25	9.00	463	463	463	463	5.50	5.60	2.00	6.60
9.75	9.50	9.25	9.00	8.75	463	463	463	463	5.50	5.60	2.00	6.60
9.50	9.25	9.00	8.75	8.50	463	463	463	463	5.50	5.60	2.00	6.60
9.25	9.00	8.75	8.50	8.25	463	463	463	463	5.50	5.60	2.00	6.60
9.00	8.75	8.50	8.25	8.00	463	463	463	463	5.50	5.60	2.00	6.60
8.75	8.50	8.25	8.00	7.75	463	463	463	463	5.50	5.60	2.00	6.60
8.50	8.25	8.00	7.75	7.50	463	463	463	463	5.50	5.60	2.00	6.60
8.25	8.00	7.75	7.50	7.25	463	463	463	463	5.50	5.60	2.00	6.60
8.00	7.75	7.50	7.25	7.00	463	463	463	463	5.50	5.60	2.00	6.60
7.75	7.50	7.25	7.00	6.75	463	463	463	463	5.50	5.60	2.00	6.60
7.50	7.25	7.00	6.75	6.50	463	463	463	463	5.50	5.60	2.00	6.60
7.25	7.00	6.75	6.50	6.25	463	463	463	463	5.50	5.60	2.00	6.60
7.00	6.75	6.50	6.25	6.00	463	463	463	463	5.50	5.60	2.00	6.60
6.75	6.50	6.25	6.00	5.75	463	463	463	463	5.50	5.60	2.00	6.60
6.50	6.25	6.00	5.75	5.50	463	463	463	463	5.50	5.60	2.00	6.60
6.25	6.00	5.75	5.50	5.25	463	463	463	463	5.50	5.60	2.00	6.60
6.00	5.75	5.50	5.25	5.00	463	463	463	463	5.50	5.60	2.00	6.60
5.75	5.50	5.25	5.00	4.75	463	463	463	463	5.50	5.60	2.00	6.60
5.50	5.25	5.00	4.75	4.50	463	463	463	463	5.50	5.60	2.00	6.60
5.25	5.00	4.75	4.50	4.25	463	463	463	463	5.50	5.60	2.00	6.60
5.00	4.75	4.50	4.25	4.00	463	463	463	463	5.50	5.60	2.00	6.60
4.75	4.50	4.25	4.00	3.75	463	463	463	463	5.50	5.60	2.00	6.60
4.50	4.25	4.00	3.75	3.50	463	463	463	463	5.50	5.60	2.00	6.60
4.25	4.00	3.75	3.50	3.25	463	463	463	463	5.50	5.60	2.00	6.60
4.00	3.75	3.50	3.25	3.00	463	463	463	463	5.50	5.60	2.00	6.60
3.75	3.50	3.25	3.00	2.75	463	463	463	463	5.50	5.60	2.00	6.60
3.50	3.25	3.00	2.75	2.50	463	463	463	463	5.50	5.60	2.00	6.60
3.25	3.00	2.75	2.50	2.25	463	463	463	463	5.50	5.60	2.00	6.60
3.00	2.75	2.50	2.25	2.00	463	463	463	463	5.50	5.60	2.00	6.60
2.75	2.50	2.25	2.00	1.75	463	463	463	463	5.50	5.60	2.00	6.60
2.50	2.25	2.00	1.75	1.50	463	463	463	463	5.50	5.60	2.00	6.60
2.25	2.00	1.75	1.50	1.25	463	463	463	463	5.50	5.60	2.00	6.60
2.00	1.75	1.50	1.25	1.00	463	463	463	463	5.50	5.60	2.00	6.60
1.75	1.50	1.25	1.00	0.75	463	463	463	463	5.50	5.60	2.00	6.60
1.50	1.25	1.00	0.75	0.50	463	463	463	463	5.50	5.60	2.00	6.60
1.25	1.00	0.75	0.50	0.25	463	463	463	463	5.50	5.60	2.00	6.60
1.00	0.75	0.50	0.25	0.00	463	463	463	463	5.50	5.60	2.00	6.60

Check OK 12-22-14

CARLETON ST

S 18' CURB 95° 1/4 85° 1/4 80° CURB 10' N

W.L. ROSECRANE 1476	1460	1390	1400	1335	1350	1375
W. CURB	1450	1450			1350	1350
W. 1/4						
1/4	1400				1350	1300
E. 1/4						
E. CURB	1360	1350			1250	1260
E. ROSECRANE 1375	1350	1290	1300	1235	1250	1275
300 EL ROSECRANE 1375	1360	1290	1300	1235	1260	1275
270	1317	1292	1233	1244	1179	1195
250	1258	1233	1177	1188	1123	1141
225	1200	1175	1120	1132	1066	1087
200	1142	1117	1063	1076	1010	1033
175	1083	1058	1007	1019	954	979
150	1025	1000	950	963	898	920
125	967	942	893	907	841	870
100	908	883	837	850	785	816
75	850	825	780	794	729	762
50	792	767	723	738	673	708
25	733	708	667	681	616	654
W. L. SCOTT	675	650	610	625	560	600

1488 Bm SW Carleton St

1670 Bm SW Bym	1720	1720	1720	1720	1720	1720	1720	1720	1720
450	3.4	4.8	1.0	4.7	5.0	6.6	10.0	11.0	12.0
1720	12.8	12.5	11.0	12.0	11.9	10.6	10.0	11.0	12.0
620	13.2	12.0	11.7	12.0	11.5	10.4	10.0	11.0	12.0
14.58 Bm R.R. St	7.1	7.1	7.1	7.1	7.1	7.1	7.1	7.1	7.1
1720 SW Carleton	1720	1720	1720	1720	1720	1720	1720	1720	1720
1720	7.8	9.1	8.1	8.9	4.8	6.0	6.4	6.4	11.0
270	9.4	9.1	9.1	8.9	4.8	6.0	6.4	6.4	11.0
270	8.4	7.2	7.2	6.8	6.6	5.2	5.7	5.7	11.0
9.84	8.0	6.8	6.8	6.2	6.6	5.2	5.7	5.7	11.0
11.1	8.0	6.8	6.8	6.2	6.6	5.2	5.7	5.7	11.0
11.0	8.0	6.8	6.8	6.2	6.6	5.2	5.7	5.7	11.0

1488 Bm	1350	1200	1200	1107	1023	1070	1000	950	920
260	4.00	4.59	5.19	6.34	7.18	1.35	7.51	7.88	8.20
17.51	8.50	8.11	7.67	7.20	6.08	6.54	6.00	5.50	5.00
15.63	8.69	7.31	3.04	3.40	3.13	4.17	4.71	4.42	4.00
8.83	12.88	11.91	7.08	6.54	6.79	6.50			
1.88	5.25	6.24	5.00	6.04	3.79	4.04			
10.71	1.32	1.35	1.91	1.20	1.20	1.20			
14.88	14.88	14.88	14.88	14.88	14.88	14.88			
3.4	3.4	3.4	3.4	3.4	3.4	3.4			
18.13	17.80	17.80	17.80	17.80	17.80	17.80			
2.28	14.88	14.88	14.88	14.88	14.88	14.88			
9.85	14.88	14.88	14.88	14.88	14.88	14.88			
1.75	1.90	1.90	1.90	1.90	1.90	1.90			
10.58	16.78	16.78	16.78	16.78	16.78	16.78			

check OK in in - 14 blough

S 16' CURB 85 1/4 85 1/4 20 1/4 85 CURB 16' N

W.L. LOCUST	2225	2200	2140	2150	2085	2100	2125
W. CURB	2117	2099	2114	2124	2059	1991	2017
W 1/4	2140	2079	2102	2112	2047	1979	2040
1/4	2150	2067	2090	2100	2035	1967	2000
E 1/4	2085	2055	2078	2088	2023	1955	1995
E CURB	2017	2043	2066	2076	2011	1943	1917
E.L. LOCUST	2100	2017	2040	2050	1985	2000	2025
	2125	2100	2040	2050	1985	2000	2025

300 E.L. LOCUST	2125	2100	2040	2050	1985	2000	2025
275	2070	2045	1985	1995	1930	1945	1970
250	2016	1991	1931	1941	1876	1891	1916
225	1962	1937	1877	1887	1822	1837	1862
200	1908	1883	1823	1833	1768	1783	1808
175	1854	1829	1769	1779	1714	1729	1754
150	1800	1775	1715	1725	1660	1675	1700
125	1745	1720	1660	1670	1605	1620	1645
100	1691	1666	1606	1616	1551	1566	1591
75	1637	1612	1552	1562	1497	1512	1537
50	1583	1558	1498	1508	1443	1458	1483
25	1529	1504	1444	1454	1389	1404	1429
0100 W.L. ROSECRANS	1475	1450	1390	1400	1335	1350	1375

1488 RR	2340	2340	2340	2340	2340	2340	2340	2340	2340	2340	2340	2340	2340	2340	2340	2340	2340	2340	2340
807	840	82	17.6	17.2	17.6	17.2	17.6	17.2	17.6	17.2	17.6	17.2	17.6	17.2	17.6	17.2	17.6	17.2	17.6
20.37	18.0	14.1	15.2	14.8	15.4	15.0	15.6	15.2	15.8	15.4	16.0	15.6	16.2	15.8	16.4	16.0	16.6	16.2	16.8
2.05	1.07	1.57	1.48	1.54	1.44	1.50	1.40	1.46	1.36	1.42	1.32	1.38	1.28	1.34	1.24	1.30	1.20	1.26	1.16
2.74	0.3	0.9	0.8	0.8	0.7	0.7	0.7	0.7	0.7	0.7	0.7	0.7	0.7	0.7	0.7	0.7	0.7	0.7	0.7
28.09	2340	2807	2807	2807	2807	2807	2807	2807	2807	2807	2807	2807	2807	2807	2807	2807	2807	2807	2807
208043	208043	208043	208043	208043	208043	208043	208043	208043	208043	208043	208043	208043	208043	208043	208043	208043	208043	208043	208043
18.13	14.13	24.13	21.13	20.45	19.21	18.83	17.85	16.66	15.58	15.04	14.50	14.04	13.50	13.04	12.50	12.04	11.50	11.04	10.50
25.16	13.5	13.5	13.5	13.5	13.5	13.5	13.5	13.5	13.5	13.5	13.5	13.5	13.5	13.5	13.5	13.5	13.5	13.5	13.5
16.09	16.09	16.09	16.09	16.09	16.09	16.09	16.09	16.09	16.09	16.09	16.09	16.09	16.09	16.09	16.09	16.09	16.09	16.09	16.09
14.88	14.88	14.88	14.88	14.88	14.88	14.88	14.88	14.88	14.88	14.88	14.88	14.88	14.88	14.88	14.88	14.88	14.88	14.88	14.88
4.13	4.13	4.13	4.13	4.13	4.13	4.13	4.13	4.13	4.13	4.13	4.13	4.13	4.13	4.13	4.13	4.13	4.13	4.13	4.13
19.43	19.43	19.43	19.43	19.43	19.43	19.43	19.43	19.43	19.43	19.43	19.43	19.43	19.43	19.43	19.43	19.43	19.43	19.43	19.43

check OK brought
12-22-14

CARLETON ST.

86.09 OSW Willow

27.71 205 SW Energy

S 18' CORB 25' 1/4 25' 1/4 25' 1/4 18' 11

W.L. WILLOW	86.25	86.00	86.40	85.50	84.85	85.00	85.25
W. CORB							
W 1/4							
E 1/4							
E CORB							
EL WILLOW	85.25	85.00	84.40	84.50	83.80	84.00	84.25

OMITTED

300 EL WILLOW	85.25	85.00	84.40	84.50	83.80	84.00	84.25
275	80.33	80.08	79.48	79.58	78.93	79.04	79.33
250	75.42	75.17	74.57	74.67	74.02	74.17	74.42
225	70.50	70.25	69.65	69.75	69.10	69.25	69.50
200	65.58	65.33	64.73	64.83	64.18	64.33	64.58
175	60.67	60.42	59.82	59.92	59.27	59.42	59.67
150	55.75	55.50	54.90	55.00	54.35	54.50	54.75
125	50.83	50.58	49.98	50.08	49.44	49.59	49.84
100	45.92	45.67	45.07	45.17	44.52	44.67	44.92
75	41.00	40.75	40.15	40.25	39.60	39.75	40.00
50	36.08	35.83	35.23	35.33	34.68	34.83	35.08
25	31.17	30.92	30.32	30.42	29.77	29.92	30.17
WL EVERGREEN	26.25	26.00	25.40	25.50	24.85	25.00	25.25

40.22	40.22	40.22	40.22	40.22	52.64	52.64	65.00	65.00	34
31.6	31.6	31.6	31.6	31.6	47.9	47.9	57.4	57.4	
31.8	31.8	31.8	31.8	31.8	47.9	47.9	57.4	57.4	
74.15	74.15	74.15	74.15	74.15	77.8	77.8	77.2	77.2	
101.12	101.12	84.01	25.00	79.08	29.92	25.00	46.00	46.00	
278	278	7.00	10.53	8.09	4.92	274	8.74	8.74	
103.90	103.90	2771	84.00	2771					
13.05	13.05	80	311	703					
76.70	76.70	90.45	35.73	87.16	34.74				all set
76.15	76.15	35							
87.05	87.05	91.20	79.04	80.08	52.93	29.92	34.71	34.71	
87.05	87.05	86390 SW Willow	6.77	5.77					
100.00	100.00	27.71	29.92	30.92	86.39	80.08	11.46	11.46	
96.00	96.00	89.22	8.36	6.15	5.15				
		10.67	36.00		91.54				
		79.05	7.0	27.71	28.46	26.00			
		6.80	27.71	27.71	7.00	9.46			
		85.85	25.42		27.46	25.00			
			27.71		7.18				
			703						
			34.74						

check OK 12-22-14 through

CARLETON ST.

S 18 CURB 80' 1/4 85' ± 85' 1/4 85' CURB 15' N.

W.L. PLUM	13425	13400	133.60	13400	133.60	13400	13400	13425
W CURB	13400	13400					13400	13400
W 1/4								
±								
E 1/4								
E CURB	13300	13300					13300	13300
E.L. PLUM	13300	13300	132.60	133.00	132.60	133.00	13300	13300
300 E.L. PLUM	13325	13300	132.60	13300	132.60	13300	13325	
275	12933	12908	128.67	129.04	128.62	129.00	12925	
250	12592	12517	124.73	125.08	124.64	125.00	12525	
225	12150	12126	120.80	120.13	120.66	121.00	12125	
200	11754	11733	116.87	117.17	116.64	117.00	11725	
175	11367	11342	112.93	113.21	112.70	113.00	11325	
150	10975	10950	109.00	109.26	108.72	109.00	10925	
125	10583	10558	105.07	105.29	104.75	105.00	10525	
100	10192	10167	101.13	101.33	100.57	101.00	10125	
75	9800	9775	97.20	97.38	96.79	97.00	9725	
50	9405	9383	93.27	93.42	92.81	93.00	9325	
25	9017	8992	89.33	89.46	88.83	89.00	8925	
W.L. WILLOW	8625	8600	85.40	85.50	84.85	85.00	8525	

LIMITED

9615-20 W NW Willow	10614	25 N of 50 W NW							
9615-20	10857	10857	120.39	120.39	120.39	120.39	120.39	120.39	120.39
10614	10857	10857	120.39	120.39	120.39	120.39	120.39	120.39	120.39
10614	10857	10857	120.39	120.39	120.39	120.39	120.39	120.39	120.39

8639	8639	29.08	29.08	31.04	all	all
8639	8639	29.08	29.08	31.04	all	all
94.99	94.14	7.58	7.66	5.62		
13666.45						
91.54	89.92		89.00			

check OK along h
- 12 - 22 - 14

13677 Min Plum

S 150 CURB 25' 1/4 25' 1/4 25' 1/4 25' 1/4 CURB 150' X

W.L. CLOVE	150.25	150.00	149.85	150.50	149.40	151.00	151.25
W CURB	149.17	148.91	149.59	150.24	149.14	149.91	150.17
W 1/4	149.40	148.79	149.47	150.12	149.02	149.79	149.40
Φ	149.50	148.67	149.35	150.00	149.90	149.67	150.50
E 1/4	148.85	148.55	149.23	149.84	149.78	149.55	149.85
E CURB	148.17	148.43	149.11	149.76	149.66	149.43	149.17
EL CLOVE	149.25	149.00	148.85	149.50	149.40	150.00	150.25
300 EL CLOVE	149.25	149.00	148.85	149.50	149.40	150.00	150.25
275	146.00	147.75	147.58	149.20	148.08	148.67	148.92
250	146.75	146.50	146.31	146.91	146.77	147.33	147.58
225	145.50	145.25	145.03	145.62	145.45	146.00	146.25
200	144.25	144.00	143.76	144.33	144.13	144.67	144.92
175	143.00	142.75	142.49	143.04	142.82	143.33	143.58
150	141.75	141.50	141.22	141.76	141.50	142.00	142.25
125	140.50	140.25	139.95	140.46	140.14	140.67	140.92
100	139.25	139.00	138.68	139.16	138.87	139.33	139.58
75	138.00	137.75	137.41	137.87	137.55	138.00	138.25
50	136.75	136.50	136.14	136.58	136.23	136.67	136.92
25	135.50	135.25	134.87	135.29	134.92	135.33	135.58
W.L. PLUM	134.25	134.00	133.60	134.00	133.60	134.00	134.25

145.26	145.26	145.26	150.99	151.00	156.0	156.0	156.0	156.0	156.0
147.31	147.31	147.31	147.31	147.31	147.31	147.31	147.31	147.31	147.31
148.79	148.79	148.79	148.79	148.79	148.79	148.79	148.79	148.79	148.79
149.17	149.17	149.17	149.17	149.17	149.17	149.17	149.17	149.17	149.17
149.40	149.40	149.40	149.40	149.40	149.40	149.40	149.40	149.40	149.40
149.50	149.50	149.50	149.50	149.50	149.50	149.50	149.50	149.50	149.50
148.85	148.85	148.85	148.85	148.85	148.85	148.85	148.85	148.85	148.85
148.17	148.17	148.17	148.17	148.17	148.17	148.17	148.17	148.17	148.17
149.25	149.25	149.25	149.25	149.25	149.25	149.25	149.25	149.25	149.25
149.00	149.00	149.00	149.00	149.00	149.00	149.00	149.00	149.00	149.00
147.75	147.75	147.75	147.75	147.75	147.75	147.75	147.75	147.75	147.75
146.50	146.50	146.50	146.50	146.50	146.50	146.50	146.50	146.50	146.50
145.25	145.25	145.25	145.25	145.25	145.25	145.25	145.25	145.25	145.25
144.00	144.00	144.00	144.00	144.00	144.00	144.00	144.00	144.00	144.00
142.75	142.75	142.75	142.75	142.75	142.75	142.75	142.75	142.75	142.75
141.50	141.50	141.50	141.50	141.50	141.50	141.50	141.50	141.50	141.50
140.25	140.25	140.25	140.25	140.25	140.25	140.25	140.25	140.25	140.25
139.00	139.00	139.00	139.00	139.00	139.00	139.00	139.00	139.00	139.00
137.75	137.75	137.75	137.75	137.75	137.75	137.75	137.75	137.75	137.75
136.50	136.50	136.50	136.50	136.50	136.50	136.50	136.50	136.50	136.50
135.25	135.25	135.25	135.25	135.25	135.25	135.25	135.25	135.25	135.25
134.00	134.00	134.00	134.00	134.00	134.00	134.00	134.00	134.00	134.00

check OK 12-22-14

CARLETON ST

S 18' 00" 85' 1/4 85' 1/4 85' 1/4 85' 1/4 18' N

5.27	51.63	47.75	50.62	48.38	48.00	34.60	37
2.33	3.00	6.91	4.03	6.38	5.16	1.04	
J.H.L.	151.10	152.27					
	2.33	2.46					
	154.73						

79 W.E. ROSEVILLE	154.25	154.00	153.85	154.50	154.40	155.00	155.25
75	154.05	153.80	153.65	154.30	154.20	154.80	155.05
50	152.79	152.54	152.39	153.04	152.94	153.54	153.79
25	151.52	151.27	151.12	151.77	151.67	152.27	152.52
W.L. Clark ST	150.25	150.00	149.85	150.50	149.40	151.00	151.25

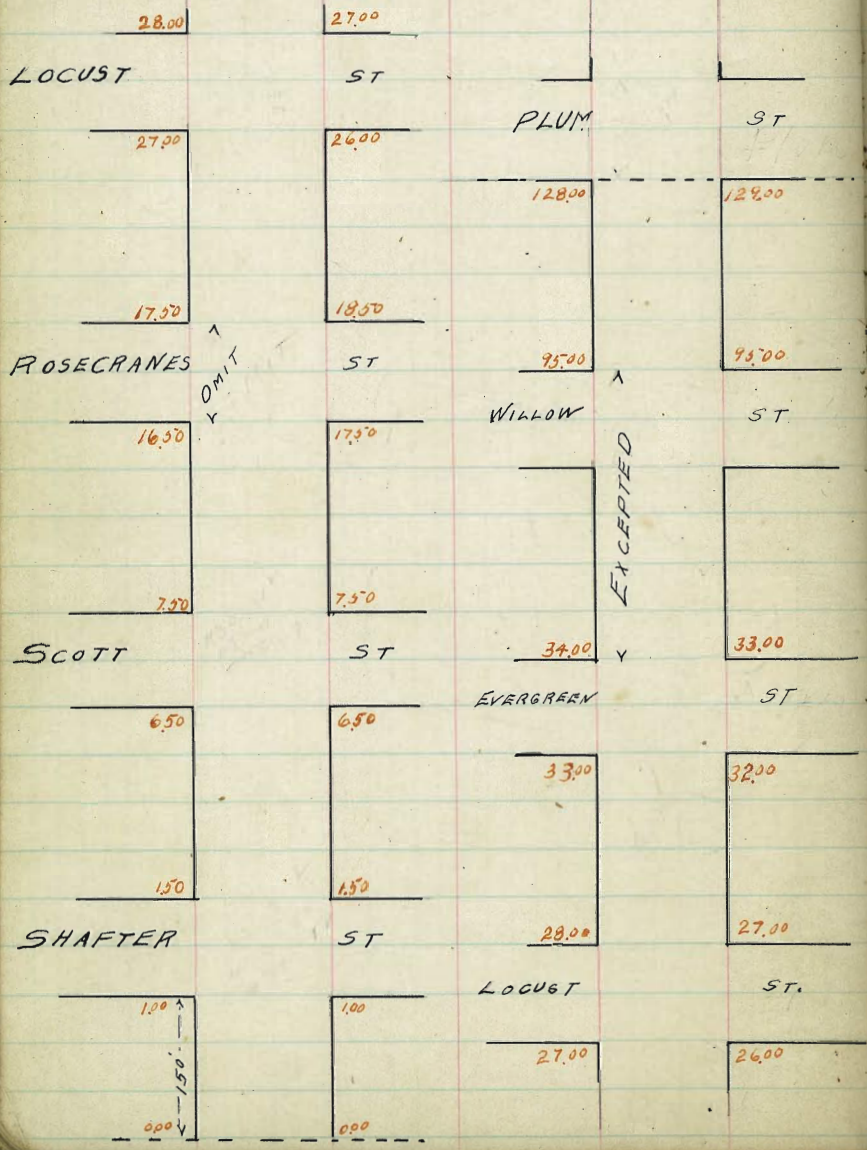
27	154.85	154.25	154.00	154.00
	2.50	3.00	2.21	2.26
	154.85	154.25	154.00	154.00
	2.50	3.00	2.21	2.26
	158.86			

A. K. Clough

BYRON ST

20

BYRON STREET FROM 150'
EAST OF SHAFTER ST TO EAST LINE PLUMS



BYRON STREET

S Curb ¼ £ ¼ Curb N

W.L. SHAFER	1.75	1.50	1.10	1.50	1.10	1.50	1.75
	1.50	0.67				0.67	1.50
W. Curb	0.67	0.54	0.97	1.37	0.97	0.54	0.67
W. ¼	1.10	0.48	0.91	1.31	0.91	0.48	1.10
£	1.25	0.42	0.95	1.25	0.95	0.42	1.20
E. ¼	0.60	0.36	0.79	1.19	0.79	0.36	0.60
E. Curb	0.17	0.30	0.73	1.13	0.73	0.30	0.17
	1.00	0.17				0.17	1.00
E.L. SHAFER	1.25	1.00	0.60	1.00	0.60	1.00	1.25
150 E.L. SHAFER	1.25	1.00	0.60	1.00	0.60	1.00	1.25
125	1.00	0.83	0.43	0.83	0.43	0.83	1.00
100	0.92	0.67	0.27	0.67	0.27	0.67	0.92
75	0.75	0.50	0.10	0.50	0.10	0.50	0.75
50	0.58	0.33	-0.07	0.33	-0.07	0.33	0.58
25	0.42	0.17	-0.23	0.17	-0.23	0.17	0.42
0+00 East of SHAFER	0.25	0.00	-0.40	0.00	-0.40	0.00	0.25

BYRON STREET

S

±

N

W.L. SCOTT	7.75 7.50	7.50 6.67	7.10	7.50	7.10	7.50 6.67	7.75 7.00
W CURB	6.67	6.41	5.84	7.24	5.84	6.41	6.67
W. 1/4	6.90	6.29	5.72	7.12	5.72	6.29	6.90
±	7.00	6.17	5.60	7.00	5.60	6.17	7.00
E. 1/4.	6.35	6.05	5.48	6.88	5.48	6.05	6.35
E CURB	5.67	5.93	5.36	6.76	5.36	5.93	5.67
E.L. SCOTT	6.50 6.75	5.67 6.50	5.10	6.50	5.10	5.67 6.50	6.50 6.75
300 E.L. SCOTT	6.75	6.50	6.10	6.50	6.10	6.50	6.75
275	6.33	6.08	5.68	6.08	5.68	6.08	6.33
250	5.92	5.67	5.27	5.67	5.27	5.67	5.92
225	5.50	5.25	4.85	5.25	4.85	5.25	5.50
200	5.08	4.83	4.43	4.83	4.43	4.83	5.08
175	4.67	4.42	4.02	4.42	4.02	4.42	4.67
150	4.25	4.00	3.60	4.00	3.60	4.00	4.25
125	3.83	3.58	3.18	3.58	3.18	3.58	3.83
100	3.42	3.17	2.77	3.17	2.77	3.17	3.42
75	3.00	2.75	2.35	2.75	2.35	2.75	3.00
50	2.58	2.33	1.93	2.33	1.93	2.33	2.58
25	2.17	1.92	1.52	1.92	1.52	1.92	2.17
W.L. SHAFER	1.75	1.50	1.10	1.50	1.10	1.50	1.75

BYRON STREET

42

	S		£		N		
300 EL. LOCUST.	27.25	27.00	26.40	26.50	25.85	26.00	26.21
275	26.45	26.20	25.65	25.80	25.19	25.37	25.62
250	25.66	25.41	24.89	25.09	24.52	24.75	25.00
225	24.97	24.62	24.13	24.38	23.86	24.12	24.37
200	24.08	23.83	23.38	23.67	23.20	23.50	23.75
175	23.29	23.04	22.63	22.91	22.54	22.87	23.17
150	22.50	22.25	21.87	22.25	21.87	22.25	22.50
125	21.70	21.45	21.12	21.55	21.21	21.62	21.97
100	20.91	20.66	20.37	20.84	20.55	21.00	21.25
75	20.12	19.87	19.61	20.13	19.84	20.37	20.62
50	19.33	19.09	18.86	19.42	19.22	19.75	20.00
25	18.54	18.29	18.10	18.71	18.56	19.12	19.37
W.L. ROSECRANES	17.75	17.50	17.35	18.00	17.90	18.55	18.75

ROSECRANES OMITED

300 EL. ROSECRANES	16.75	16.50	16.35	17.00	16.90	17.50	17.75
275	16.00	15.75	15.57	16.20	16.08	16.68	16.94
250	15.25	15.00	14.80	15.41	15.27	15.83	16.08
225	14.50	14.25	14.03	14.62	14.48	15.00	15.25
200	13.75	13.50	13.26	13.83	13.63	14.17	14.42
175	13.00	12.75	12.49	13.04	12.82	13.33	13.58
150	12.25	12.00	11.72	12.25	12.00	12.50	12.75
125	11.50	11.25	10.96	11.46	11.18	11.66	11.91
100	10.75	10.50	10.19	10.66	10.37	10.83	11.08
75	10.00	9.75	9.41	9.87	9.58	10.00	10.25
50	9.25	9.00	8.64	9.08	8.73	9.17	9.42
25	8.50	8.25	7.87	8.29	7.92	8.33	8.58
W.L. SCOTT ST.	7.75	7.50	7.10	7.50	7.10	7.50	7.75

BYRON STREET:

S

±

N

300 E.L. EVERGREEN	33.25	33.00	32.40	32.50	31.85	32.00	32.25
275	32.83	32.58	31.94	32.08	31.43	31.58	31.93
250	32.42	32.17	31.57	31.67	31.02	31.17	31.42
225	32.00	31.75	31.15	31.25	30.60	30.75	31.00
200	31.58	31.33	30.73	30.83	30.18	30.33	30.58
175	31.17	30.92	30.32	30.42	29.77	29.92	30.17
150	30.75	30.50	29.90	30.00	29.35	29.50	29.75
125	30.33	30.08	29.48	29.58	28.93	29.08	29.33
100	29.92	29.67	29.07	29.17	28.52	28.67	28.92
75	29.50	29.25	28.65	28.75	28.10	28.25	28.50
50	29.08	28.83	28.23	28.33	27.68	27.83	28.08
25	28.67	28.42	27.82	27.92	27.27	27.42	27.67
W.L. LOCUST	28.25	28.00	27.40	27.50	26.85	27.00	27.25
W.L. LOCUST	28.25	28.00	27.40	27.50	26.85	27.00	27.25
	28.00	27.17				26.17	27.00
W CURB	27.17	26.91	27.14	27.24	26.59	25.91	26.17
W 1/4	27.40	26.79	27.02	27.12	26.47	25.79	26.40
±	27.50	26.67	26.90	27.00	26.35	25.67	26.50
E 1/4	26.85	26.55	26.74	26.88	26.23	25.55	25.85
E CURB	26.17	26.43	26.66	26.76	26.11	25.43	26.17
	27.00	26.17				25.17	26.00
E.L. LOCUST	27.25	27.00	26.40	26.50	25.85	26.00	26.25

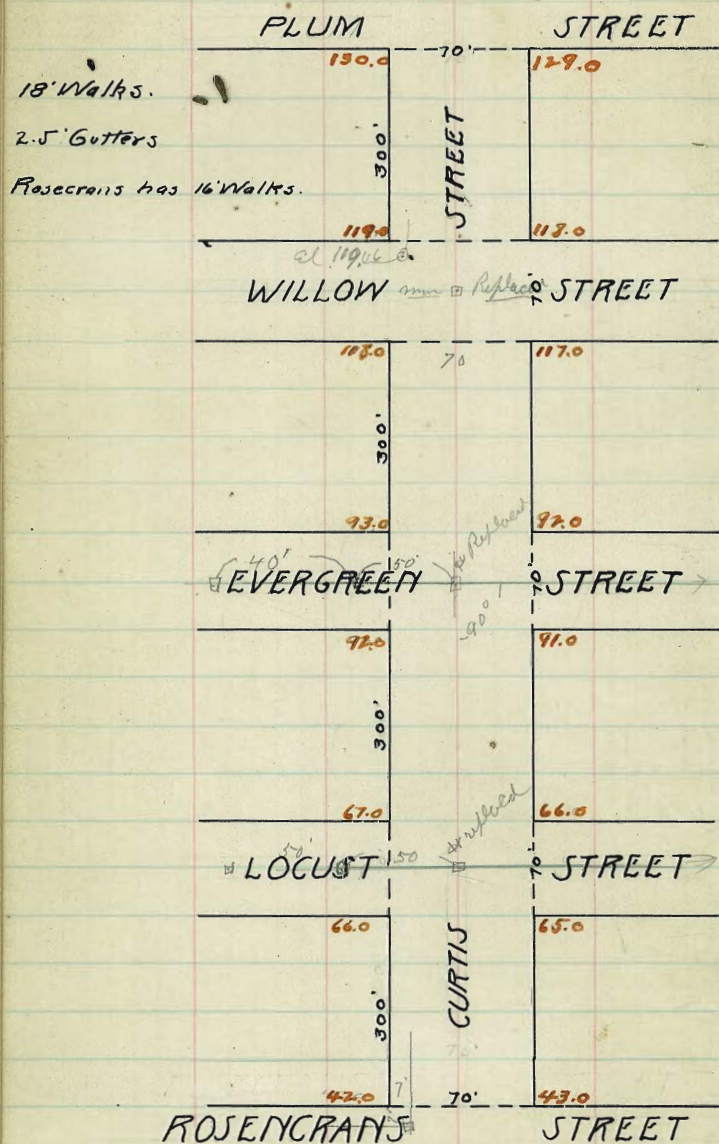
BYRON STREET

S

£

N

300 E.L. PLUM	128.25	128.00	127.85	128.50	128.40	129.00	129.25
275 E. PLUM	126.50	125.25	125.07	125.70	125.38	126.17	126.92
250	122.75	122.50	122.30	122.91	122.77	123.33	123.88
225	120.00	119.75	119.53	120.12	119.95	120.50	120.75
200	117.25	117.00	116.76	117.33	117.13	117.67	117.92
175	114.50	114.25	113.99	114.54	114.32	114.83	115.08
150	111.75	111.50	111.22	111.75	111.50	112.00	112.25
125	109.00	108.75	108.45	108.95	108.68	109.17	109.42
100	106.25	106.00	105.68	106.16	105.87	106.33	106.58
75	103.50	103.25	102.91	103.37	103.05	103.50	103.75
50	100.75	100.50	100.14	100.58	100.23	100.67	100.92
25	98.00	97.75	97.37	97.79	97.42	97.83	98.08
W.L. WILLOW	95.25	95.00	94.60	95.00	94.60	95.00	95.25
BLOCK between EVERGREEN & WILLOW EXCEPTED							
W.L. EVERGREEN	34.25	34.00	33.40	33.50	32.85	33.00	33.25
	34.00	33.17				32.17	33.00
W CURB	33.17	32.91	33.14	33.24	32.59	31.91	32.17
W. 1/4	33.40	32.75	33.02	33.12	32.47	31.79	32.40
£	33.50	32.67	32.90	33.00	32.35	31.67	32.50
E. 1/4	32.50	32.55	32.28	32.58	32.23	31.55	31.55
E. CURB	32.17	32.43	32.66	32.76	32.11	31.43	31.17
	33.00	32.17				31.17	32.00
E.L. EVERGREEN	33.25	33.00	32.40	32.50	31.85	32.00	32.25



18 C 80 4 5 4 85 C 18 10

300	✓	82.25	82.00	81.40	81.50	80.55	81.00	81.15
250	✓	88.08	87.83	87.23	87.33	86.68	86.53	87.04
200	✓	83.91	83.66	83.06	83.16	82.51	82.46	82.91
150	✓	79.75	79.50	78.90	79.00	78.34	78.50	78.85
100	✓	75.58	75.33	74.73	74.83	74.17	74.33	74.58
50	✓	71.41	71.16	70.56	70.66	70.01	70.16	70.41
25	✓	67.25	67.00	66.40	66.50	65.85	66.00	66.25

W.C. Locust	67.25	67.00	66.40	66.50	65.85	66.00	66.25
W.C. Locust	67.00	66.00	66.26	66.36	65.71	65.00	66.00
W.C. Locust	66.40	65.53	66.08	66.18	65.53	64.83	65.40
E. Locust	66.50	65.67	65.90	66.00	65.35	64.67	65.50
E. Locust	65.85	65.50	65.72	65.82	65.17	64.50	64.85
L.C. Locust	66.00	65.33	65.54	65.64	64.99	64.53	65.00
E. Locust	66.25	66.00	65.40	65.50	64.85	65.00	65.25

300 = E.L. Locust

300	✓	66.25	66.00	65.40	65.50	64.85	65.00	65.25
275		64.00	63.43	63.58	62.97	63.10	63.00	63.00
250	✓	62.25	62.00	61.47	61.66	61.10	61.33	61.58
200	✓	58.25	58.00	57.55	57.83	57.36	57.66	57.91
150	✓	54.25	54.00	53.67	53.99	53.62	54.00	54.25
100	✓	50.25	50.00	49.70	50.16	49.83	50.33	50.58
50	✓	46.25	46.00	45.77	46.33	46.14	46.66	46.91
25	✓	42.25	42.00	41.85	42.50	42.40	43.00	43.25

42007 m m - Curtis

68.97 East Max Locust
70.62 10 S Cent of St
67.20 O SW "46"

92.25	92.00	91.40	91.50	90.55	91.00	91.15
88.08	87.83	87.23	87.33	86.68	86.53	87.04
83.91	83.66	83.06	83.16	82.51	82.46	82.91
79.75	79.50	78.90	79.00	78.34	78.50	78.85
75.58	75.33	74.73	74.83	74.17	74.33	74.58
71.41	71.16	70.56	70.66	70.01	70.16	70.41
67.25	67.00	66.40	66.50	65.85	66.00	66.25

6-7-3-18-14
6-15-14

67.25	67.00	66.40	66.50	65.85	66.00	66.25
67.00	66.00	66.26	66.36	65.71	65.00	66.00
66.40	65.53	66.08	66.18	65.53	64.83	65.40
66.50	65.67	65.90	66.00	65.35	64.67	65.50
65.85	65.50	65.72	65.82	65.17	64.50	64.85
66.00	65.33	65.54	65.64	64.99	64.53	65.00
66.25	66.00	65.40	65.50	64.85	65.00	65.25

Checked OK 8-4-14

S. C. 4 E 4 C 11

300- L. Plum	130.25	130.00	129.40	129.50	128.85	129.00	129.25
275'		129.08	128.45	128.58	127.98	128.08	
250'	✓	128.41	128.16	127.56	127.66	127.01	127.16
200'	✓	126.58	126.33	125.73	125.83	125.18	125.58
150'	✓	125.25	125.00	124.90	124.00	123.35	123.75
100'	✓	122.91	122.66	122.06	122.16	121.51	121.91
50'	✓	121.08	120.83	120.23	120.33	119.68	120.08
25'	✓	119.22	118.97	118.37	118.47	117.82	
00- SW L. Willow	119.25	119.00	118.40	118.50	117.85	118.00	118.25

300- L. Willow	118.25	118.00	117.40	117.50	116.85	117.00	117.25
250'		115.91	115.31	115.41	114.76	114.91	
200'	✓	114.08	113.83	113.23	112.68	112.83	113.08
150'	✓	109.91	109.66	109.06	109.16	108.51	108.91
100'	✓	105.75	105.50	104.89	105.00	104.34	105.75
50'	✓	101.58	101.33	100.73	100.83	100.18	100.58
25'	✓	97.41	97.16	96.56	96.66	96.01	96.41
00- L. Evergreen	93.25	93.00	92.40	92.50	91.85	92.00	92.25

W. Evergreen	92.25	92.00	91.40	91.50	91.85	92.00	92.25
W.C. Evergreen	92.00	92.00	92.26	92.36	91.71	92.00	92.00
W. E. Evergreen	92.40	91.83	92.08	92.18	91.53	92.83	91.40
E. Evergreen	92.50	91.67	91.90	92.00	91.35	92.50	91.50
E. E. Evergreen	91.85	91.50	91.72	91.82	91.17	91.50	92.85
E. C. Evergreen	92.00	91.83	91.54	91.64	92.99	92.83	91.00
E. L. Evergreen	92.25	92.00	91.40	91.50	92.85	91.00	91.25

11916 SW Willow 131.50 end of curb Plum
 100.17 to 490's Cent Evergreen

47

134.25	134.35	134.35	134.35	134.35	134.35	134.35	134.35
134.25	134.35	134.35	134.35	134.35	134.35	134.35	134.35
11923	11923	11923	11923	11923	11923	11923	11923
11924	11924	11924	11924	11924	11924	11924	11924
11925	11925	11925	11925	11925	11925	11925	11925
11926	11926	11926	11926	11926	11926	11926	11926
11927	11927	11927	11927	11927	11927	11927	11927
11928	11928	11928	11928	11928	11928	11928	11928
11929	11929	11929	11929	11929	11929	11929	11929
11930	11930	11930	11930	11930	11930	11930	11930
11931	11931	11931	11931	11931	11931	11931	11931
11932	11932	11932	11932	11932	11932	11932	11932
11933	11933	11933	11933	11933	11933	11933	11933
11934	11934	11934	11934	11934	11934	11934	11934
11935	11935	11935	11935	11935	11935	11935	11935
11936	11936	11936	11936	11936	11936	11936	11936
11937	11937	11937	11937	11937	11937	11937	11937
11938	11938	11938	11938	11938	11938	11938	11938
11939	11939	11939	11939	11939	11939	11939	11939
11940	11940	11940	11940	11940	11940	11940	11940
11941	11941	11941	11941	11941	11941	11941	11941
11942	11942	11942	11942	11942	11942	11942	11942
11943	11943	11943	11943	11943	11943	11943	11943
11944	11944	11944	11944	11944	11944	11944	11944
11945	11945	11945	11945	11945	11945	11945	11945
11946	11946	11946	11946	11946	11946	11946	11946
11947	11947	11947	11947	11947	11947	11947	11947
11948	11948	11948	11948	11948	11948	11948	11948
11949	11949	11949	11949	11949	11949	11949	11949
11950	11950	11950	11950	11950	11950	11950	11950
11951	11951	11951	11951	11951	11951	11951	11951
11952	11952	11952	11952	11952	11952	11952	11952
11953	11953	11953	11953	11953	11953	11953	11953
11954	11954	11954	11954	11954	11954	11954	11954
11955	11955	11955	11955	11955	11955	11955	11955
11956	11956	11956	11956	11956	11956	11956	11956
11957	11957	11957	11957	11957	11957	11957	11957
11958	11958	11958	11958	11958	11958	11958	11958
11959	11959	11959	11959	11959	11959	11959	11959
11960	11960	11960	11960	11960	11960	11960	11960
11961	11961	11961	11961	11961	11961	11961	11961
11962	11962	11962	11962	11962	11962	11962	11962
11963	11963	11963	11963	11963	11963	11963	11963
11964	11964	11964	11964	11964	11964	11964	11964
11965	11965	11965	11965	11965	11965	11965	11965
11966	11966	11966	11966	11966	11966	11966	11966
11967	11967	11967	11967	11967	11967	11967	11967
11968	11968	11968	11968	11968	11968	11968	11968
11969	11969	11969	11969	11969	11969	11969	11969
11970	11970	11970	11970	11970	11970	11970	11970
11971	11971	11971	11971	11971	11971	11971	11971
11972	11972	11972	11972	11972	11972	11972	11972
11973	11973	11973	11973	11973	11973	11973	11973
11974	11974	11974	11974	11974	11974	11974	11974
11975	11975	11975	11975	11975	11975	11975	11975
11976	11976	11976	11976	11976	11976	11976	11976
11977	11977	11977	11977	11977	11977	11977	11977
11978	11978	11978	11978	11978	11978	11978	11978
11979	11979	11979	11979	11979	11979	11979	11979
11980	11980	11980	11980	11980	11980	11980	11980
11981	11981	11981	11981	11981	11981	11981	11981
11982	11982	11982	11982	11982	11982	11982	11982
11983	11983	11983	11983	11983	11983	11983	11983
11984	11984	11984	11984	11984	11984	11984	11984
11985	11985	11985	11985	11985	11985	11985	11985
11986	11986	11986	11986	11986	11986	11986	11986
11987	11987	11987	11987	11987	11987	11987	11987
11988	11988	11988	11988	11988	11988	11988	11988
11989	11989	11989	11989	11989	11989	11989	11989
11990	11990	11990	11990	11990	11990	11990	11990
11991	11991	11991	11991	11991	11991	11991	11991
11992	11992	11992	11992	11992	11992	11992	11992
11993	11993	11993	11993	11993	11993	11993	11993
11994	11994	11994	11994	11994	11994	11994	11994
11995	11995	11995	11995	11995	11995	11995	11995
11996	11996	11996	11996	11996	11996	11996	11996
11997	11997	11997	11997	11997	11997	11997	11997
11998	11998	11998	11998	11998	11998	11998	11998
11999	11999	11999	11999	11999	11999	11999	11999
12000	12000	12000	12000	12000	12000	12000	12000

Silt back of curb
 Check OK

Checked OK 8-4 14

Emerson St.			
20.00	70	19.00	70
2.00		25.00	24.00
Dickens St.		Ingelow St.	
21.00	20.00	25.00	24.00
2.00		2.00	
Carleton St.		Hugo St.	
22.00	21.00	26.00	25.00
2.00		2.00	
Byron St.		Goethe St.	
25.00	24.00	26.00	25.00
2.00		2.00	
Addison St.		Fenelon St.	
26.00	25.00	28.00	27.00
2.00	2.00	2.00	
Emerson St.		Jarvis St.	
33.00	32.00	28.00	27.00
2.00		2.00	
Ingelow St.		Macaulay St.	
34.00	33.00	26.00	25.00
2.00	2.00	2.00	
Macaulay St.		Ingelow St.	
42.00	41.00	25.00	24.00
2.00		2.00	
Ingelow St.		Macaulay St.	
43.00	70	21.00	20.00
123		2.00	
Canyon Road		Macaulay St.	
46.00	125	20.00	70
123		19.00	
44.00	571		

Macaulay St.			
29.50	70	28.00	70
2.00		29.50	28.00
Lowell St.		Olyphant St.	
27.00	26.00	27.00	26.00
2.00		2.00	
Keats St.		Olyphant St.	
25.00	24.00	77.00	76.00
2.00		2.00	
Newell St.		Olyphant St.	
23.00	22.00	76.00	75.00
2.00		2.00	
Jarvis St.		Newell St.	
24.00	23.00	46.00	45.00
2.00		2.00	
Ingelow St.		Newell St.	
25.00	70	45.00	44.00
2.00		2.00	
Macaulay St.		Newell St.	
24.00	70	29.50	70
2.00		28.00	
Macaulay St.		Newell St.	
24.00	70		
2.00			

W.

Evergreen St.

E.

NL Byron

Curb

1/4

Center

1/4

Curb

SL Byron

200=SL Byron	3425	34.00	34.40	3350	3285	33.00	3325	+13	+16
175	3525	35.00	34.40	3450	3385	34.00	3425		
150	3625	36.00	35.40	3550	3485	35.00	3525	+19	+07
100	3825	38.00	37.40	3750	3685	37.00	3725		
50	4025	40.00	39.40	3950	3885	39.00	3925	+25	+02
25	4125	41.00	40.40	4050	3985	40.00	4025		
0=NL Addison	4225	42.00	41.40	4150	4085	41.00	4125	+16	+02

NL Addison

Curb

1/4

Center

1/4

Curb

SL Addison

0=SL Addison	4325	43.00	42.40	4250	4185	42.00	4225	+22	+04
25	4386	43.61	43.01	4298	4227	42.35	4260		
45	4435	44.10	43.50	4336	4261	42.62	4287	+07	-09
95S	4555	45.30	44.70	4430	4345	43.31	4356	-15	-27
NL Canyon Road	4625	46.00	45.40	4500	4410	44.00	4425	-04	-23

49

W.

Evergreen St.
E.

E.

50

200=SL Dickens	2225	2200	2140	2150	2085	2100	2125	-0.2	-1.4
175	2263	2238	2178	2188	2123	2138	2163		
150	2300	2275	2215	2225	2160	2175	2200	-0.3	-1.5
100	2375	2350	2290	2300	2235	2250	2275	-0.5	-1.4
50	2450	2425	2365	2375	2310	2325	2350	0.0	-0.8
25	2488	2463	2403	2413	2348	2363	2388		
0=N.L. Carleton	2525	2500	2440	2450	2385	2400	2425	+0.1	-0.2

N.L. Carleton

Curb

1/4

Center

1/4

Curb

S.L. Carleton

200=SL Carleton	2625	2600	2540	2550	2485	2500	2525	+0.9	+1.5
175	2713	2688	2628	2638	2573	2588	2613		
150	2800	2775	2715	2725	2660	2675	2700	+0.6	+0.8
100	2975	2950	2890	2900	2835	2850	2875	+0.1	+0.4
50	3150	3125	3065	3075	3010	3025	3050	-0.6	+1.3
25	3238	3213	3153	3163	3098	3113	3138		
0=N.L. Byron	3325	3300	3240	3250	3185	3200	3225	-0.7	-5.1

W.

Evergreen St.
E.

E.

51

NL. Emerson	2125	21.00	2060	2050	19.85	20.00	2025	
Curb	2017	19.91	1979	1967	19.55	19.43	1917	
1/2	2060	2014	2002	1990	19.78	19.66	1940	
Center	2050	2024	2012	2000	19.88	19.76	1950	+1.1 -0.3
1/2	1985	1959	1947	1935	19.23	19.11	1885	
Curb	1917	1891	1879	1867	18.55	18.43	1817	
SL. Emerson	2025	20.00	1940	1950	18.85	19.00	1925	
²⁰⁰ SL. Emerson	2025	20.00	1940	1950	18.85	19.00	1925	+0.9 -0.4
175	2038	2013	1953	1963	18.98	19.13	1938	
150	2050	2025	19.65	1975	19.10	19.25	1950	+1.1 -1.2
100	2075	2050	1990	2000	19.35	19.50	1975	+1.0 -1.3
50	2100	2075	2015	2025	19.60	19.75	2000	+1.2 -1.2
25	2113	20.88	2028	2038	19.73	19.88	2013	
0 = NL. Dickens	2125	21.00	2040	2050	19.85	20.00	2025	+1.0 -1.2
NL. Dickens	2125	21.00	2040	2050	19.85	20.00	2025	
Curb	2017	19.91	1979	1967	19.55	19.43	1917	
1/2	2085	2059	2047	2035	20.23	20.11	1985	
Center	2150	21.24	21.12	2100	20.88	20.76	2050	+0.8 -1.1
1/2	2140	21.14	2102	2090	20.78	20.66	2040	
Curb	2117	20.91	20.79	2067	20.55	20.43	2017	
SL. Dickens	2125	22.00	2140	2150	20.85	21.00	2125	

W.

Evergreen St.
E.

E.

52

¹⁰⁰ S.L. Goetha	2825	28.00	27.40	27.50	26.85	27.00	27.25	+20	-1.1
175	28.00	27.75	27.15	27.25	26.60	26.75	27.00		
150	27.75	27.50	26.90	27.00	26.35	26.50	26.75	+1.1	-0.7
100	27.25	27.00	26.40	26.50	25.85	26.00	26.25	+2.9	-0.2
50	26.75	26.50	25.90	26.00	25.35	25.50	25.75	+3.2	+0.3
25	26.50	26.25	25.65	25.75	25.10	25.25	25.50		
N.L. Fenelon	26.25	26.00	25.40	25.50	24.85	25.00	25.25	+2.5	-0.2

N.L. Fenelon

Curb

1/4

Center

1/4

Curb

S.L. Fenelon

E.

¹⁰⁰ S.L. Fenelon	25.25	25.00	24.40	24.50	23.85	24.00	24.25	+1.8	-0.2
175	24.75	24.50	23.90	24.00	23.35	23.50	23.75		
150	24.25	24.00	23.40	23.50	22.85	23.00	23.25	+1.8	-0.2
100	23.75	23.00	22.40	22.50	21.85	22.00	22.25	+0.8	-0.7
50	23.25	22.00	21.40	21.50	20.85	21.00	21.25	+0.6	-0.6
25	21.75	21.50	20.90	21.00	20.35	20.50	20.75		
N.L. Emerson	21.25	21.00	20.40	20.50	19.85	20.00	20.25	+0.9	-0.6

NL. Hugo	2625	2600	2540	2550	2485	2500	2525	
Curb	2517	2491	2479	2467	2455	2443	2417	
1/4	2560	2534	2522	2510	2498	2486	2460	
Center	2600	2574	2562	2550	2538	2526	2500	+19 to.1
1/4	2560	2534	2522	2510	2498	2486	2460	
Curb	2517	2491	2479	2467	2455	2443	2417	
S.L. Hugo	2625	2600	2540	2550	2485	2500	2525	

¹⁰⁰ S.L. Hugo	2625	2600	2540	2550	2485	2500	2525	+17 -0.5
175	2650	2625	2565	2575	2510	2525	2550	
150	2675	2650	2590	2600	2535	2550	2575	+11 -1.0
100	2725	2700	2640	2650	2585	2600	2625	+17 -1.5
50	2775	2750	2690	2700	2635	2650	2675	+09 -1.5
25	2800	2775	2715	2725	2660	2675	2700	
NL. Goethe	2825	2800	2740	2750	2685	2700	2725	+13 -1.7

NL. Goethe
 Curb
 1/4
 Center
 1/4
 Curb
 S.L. Goethe

ET

W. Evergreen St. E.

¹⁰⁰ SL Jarvis 2425 2400 2360 2350 2285 2300 2325 +14 -0.3

175 2438 2413 2353 2363 2298 2313 2338

150 2450 2425 2365 2375 2310 2325 2350 +19 -0.2

100 2475 2450 2390 2400 2335 2350 2375 +22 +0.9

50 2500 2475 2415 2425 2360 2375 2400 +27 +0.9

25 2513 2488 2428 2438 2373 2388 2413

NL Ingelow 2525 2500 2440 2450 2385 2400 2425 +26 +0.4

NL Ingelow 2525 2500 2440 2450 2385 2400 2425

Curb 2417 2391 2379 2367 2355 2343 2317

1/2 2440 2414 2402 2390 2378 2366 2340

Center 2500 2474 2462 2450 2438 2426 2400 +17 +0.4

1/2 2440 2414 2402 2390 2378 2366 2340

Curb 2417 2391 2379 2367 2355 2343 2317

SL Ingelow 2525 2500 2440 2450 2385 2400 2425

¹⁰⁰ SL Ingelow 2525 2500 2440 2450 2385 2400 2425 +26 +0.4

175 2538 2513 2453 2463 2398 2413 2438

150 2550 2525 2465 2475 2410 2425 2450 +27 +0.9

100 2575 2550 2490 2500 2435 2450 2475 +27 +0.6

50 2600 2575 2515 2525 2460 2475 2500 +19 +0.6

25 2613 2588 2528 2538 2473 2488 2513

NL Hugo 2625 2600 2540 2550 2485 2500 2525 +16 -0.1

N.L. Keats	2525	2500	2440	2450	2385	2400	2425	
Curb	2417	2391	2379	2367	2355	2343	2317	
1/4	2440	2414	2402	2390	2378	2366	2340	
Center	2450	2424	2412	2400	2388	2376	2350	+0.1 -7.0
1/4	2385	2359	2347	2335	2323	2311	2285	
Curb	2317	2291	2279	2267	2255	2243	2217	
S.L. Keats	2425	2400	2340	2350	2285	2300	2325	
S.L. Keats	2425	2400	2340	2350	2285	2300	2325	-0.4 -2.5
175	2413	2388	2328	2338	2273	2288	2313	
150	2400	2375	2315	2325	2260	2275	2300	+0.9 -3.7
100	2375	2350	2290	2300	2235	2250	2275	+0.7 -4.1
50	2350	2325	2265	2275	2210	2225	2250	+0.6 -3.4
25	2338	2313	2253	2263	2198	2213	2238	
N.L. Jarvis	2325	2300	2240	2250	2185	2200	2225	+1.2 -0.8
N.L. Jarvis	2325	2300	2240	2250	2185	2200	2225	
Curb	2217	2191	2179	2167	2155	2143	2117	
1/4	2285	2259	2247	2235	2223	2211	2185	
Center	2350	2324	2312	2300	2288	2276	2250	+1.6 -0.3
1/4	2340	2314	2302	2290	2278	2266	2240	
Curb	2317	2291	2279	2267	2255	2243	2217	
S.L. Jarvis	2425	2400	2340	2350	2285	2300	2325	

W. Evergreen St.
E.

E.

56

SL Macaulay	2975	2950	2890	2875	2798	2800	2825	271	-1.9
175	2944	2919	2859	2847	2771	2775	2800		
150	2913	2888	2828	2819	2745	2750	2775	-24	-2.1
100	2850	2825	2765	2763	2692	2700	2725	-21	-2.1
50	2788	2763	2703	2706	2638	2650	2675	-09	-1.3
25	2756	2731	2671	2678	2612	2625	2650		
NL Lowell	2725	2700	2640	2650	2585	2600	2625	+13	-0.4

NL Lowell

Curb

1/4

Center

1/4

Curb

SL Lowell

SL Lowell	2725	2700	2640	2650	2585	2600	2625	+19	+0.6
175	2700	2675	2615	2625	2560	2575	2600		
150	2675	2650	2590	2600	2535	2550	2575	+14	-1.0
100	2625	2600	2540	2550	2485	2500	2525	+20	0.0
50	2575	2550	2490	2500	2435	2450	2475	+11	-0.3
25	2550	2525	2465	2475	2410	2425	2450		
NL Keats	2525	2500	2440	2450	2385	2400	2425	+05	-1.2

N.L. Olyphant	77.25	77.00	76.40	76.50	75.85	76.00	76.25	+130 -6.7
Curb	76.17	75.91	75.79	75.67	75.55	75.43	75.17	
1/4	76.40	76.14	76.02	75.90	75.78	75.66	75.40	
Center	76.50	76.24	76.12	76.00	75.88	75.76	75.50	+116 -6.7
1/4	75.85	75.59	75.47	75.35	75.23	75.11	74.85	
Curb	75.17	74.91	74.79	74.67	74.55	74.43	74.17	
S.L. Olyphant	76.25	76.00	75.40	75.50	74.85	75.00	75.25	

S.L. Olyphant	76.25	76.00	75.40	75.50	74.85	75.00	75.25	+98 -9.7
175	72.50	72.25	71.65	71.75	71.10	71.25	71.50	
150	68.75	68.50	67.90	68.00	67.35	67.50	67.75	+125 -9.8
125	65.00	64.75	64.15	64.25	63.60	63.75	64.00	
100	61.25	61.00	60.40	60.50	59.85	60.00	60.25	+124 -8.7
75	57.50	57.25	56.65	56.75	56.10	56.25	56.50	
50	53.75	53.50	52.90	53.00	52.35	52.50	52.75	+117 -7.6
25	50.00	49.75	49.15	49.25	48.60	48.75	49.00	
N.L. Newell	46.25	46.00	45.40	45.50	44.85	45.00	45.25	+97 -7.1

11.0	70'	10.0			
INGELOW		70' ST.			
11.0		10.0			
10.0		9.0			
HUGO		70' ST.			
10.0		9.0			
11.0		10.0	14.0	70'	13.0
GOETHE		70' ST.	OLYPHANT		70' ST.
11.0		10.0	14.5		13.5
17.0		11.0	16.0		15.0
FENLON		70' ST.	NEWELL		70' ST.
17.0		11.0	16.0		15.0
11.0		10.0	19.0		17.0
EMERSON		70' ST.	MACAULAY		70' ST.
17.0		11.0	19.0		17.0
14.0		13.0	17.0		16.0
DICKENS		70' ST.	LOWELL		70' ST.
15.0		14.0	16.5		15.5
21.0		20.0	13.0		17.0
CARLETON		70' ST.	KEATS		70' ST.
22.0		21.0	19.0		11.0
27.0		26.0	10.0		9.0
BYRON		70' ST.	JARVIS		70' ST.
28.0		27.0	10.0		9.0
30.5		29.5	11.0		10.0
ADDISON		70' ST.	INGELOW		70' ST.
30.5	70'	29.5	11.0	70'	10.0

EXCEPTED TREE

STREET

EXCEPTED LOCUST

LOCUST

	15.	16.	17.	18.	19.	20.	21.
200 = S.L. Dickens St.	14.25	15.00	14.40	14.50	13.85	14.00	14.25
175	16.00	15.75	15.15	15.25	14.60	14.75	15.00
150	16.75	16.50	15.90	16.00	15.35	15.50	15.75
100	18.75	18.00	17.40	17.50	16.85	17.00	17.25
50	19.75	19.50	18.90	19.00	18.35	18.50	18.75
25	20.50	20.25	19.65	19.75	19.10	19.25	19.50
00 = N.L. Carlton St.	20.25	21.00	20.40	20.50	19.85	20.00	20.25
200 = S.L. Carlton St.	22.25	22.00	21.40	21.50	20.85	21.00	21.25
175	22.87	22.62	22.02	22.12	21.47	21.62	21.87
150	23.50	23.25	22.65	22.75	22.10	22.25	22.50
110	24.75	24.50	23.90	24.00	23.35	23.50	23.75
50	26.00	25.75	25.15	25.25	24.60	24.75	25.00
25	26.62	26.37	25.77	25.87	25.22	25.37	25.62
00 = N.L. Byron St.	27.25	27.00	26.40	26.50	25.85	26.00	26.25
200 = S.L. Byron St.	28.25	28.00	27.40	27.50	26.85	27.00	27.25
175	28.56	28.31	27.71	27.81	27.16	27.31	27.56
150	28.87	28.62	28.02	28.12	27.47	27.62	27.87
100	29.50	29.25	28.65	28.75	28.10	28.25	28.50
50	30.12	29.87	29.27	29.37	28.72	28.87	29.12
25	30.40	30.18	29.58	29.68	29.03	29.18	29.40
00 = N.L. Addison St.	30.75	30.50	29.90	30.00	29.35	29.50	29.75

20
 W. C $\frac{1}{4}$ E $\frac{1}{4}$ C E

OK

N.L. Emerson	11.25	11.00	10.40	10.50	10.85	10.00	10.25
N.C. Emerson	11.00	10.00	9.84	9.67	9.49	9.31	10.00
N $\frac{1}{2}$ Emerson	10.85	10.70	10.52	10.35	10.17	9.99	9.85
E Emerson	11.50	11.35	11.18	11.00	10.82	10.64	10.50
S $\frac{1}{2}$ Emerson	11.40	11.25	11.08	10.90	10.72	10.54	10.40
S.C. Emerson	12.00	11.00	10.84	10.67	10.49	10.31	11.00
St. Emerson	12.25	12.00	11.40	11.50	10.85	11.00	11.25

200 = St. Emerson	12.25	12.00	11.40	11.50	10.85	11.00	11.25
175	12.50	12.25	11.65	11.75	11.10	11.25	11.50
150	12.75	12.50	11.90	12.00	11.35	11.50	11.75
100	13.25	13.00	12.40	12.50	11.85	12.00	12.25
50	13.75	13.50	12.90	13.00	12.35	12.50	12.75
25	14.00	13.75	13.15	13.25	12.60	12.75	13.00
00 = H.L. Dickens	14.25	14.00	13.40	13.50	12.85	13.00	13.25

OK

H.L. Dickens	14.25	14.00	13.40	13.50	12.85	13.00	13.25
N.C. Dickens	14.00	13.00	12.84	12.67	12.49	12.31	13.00
N $\frac{1}{2}$ Dickens	13.85	13.70	13.52	13.35	13.17	12.99	12.85
E Dickens	14.50	14.35	14.17	14.00	13.82	13.64	13.50
S $\frac{1}{2}$ Dickens	14.40	14.25	14.07	13.90	13.72	13.54	13.40
S.C. Dickens	15.00	14.00	13.84	13.67	13.49	13.31	14.00
S.L. Dickens	15.25	15.00	14.40	14.50	13.85	14.00	14.25

	W		F		S		S		F
200 = S.L. Hugo	10.25	10.00	9.40	9.50	9.85	9.00	9.25		
175	10.37	10.12	9.52	9.62	9.97	9.12	9.37		
150	10.50	10.25	9.65	9.75	9.10	9.25	9.50		
100	10.75	10.50	9.90	10.00	9.35	9.50	9.75		
50	11.00	10.75	10.15	10.25	9.60	9.75	10.00		
25	11.12	10.87	10.27	10.37	9.72	9.87	10.12		
200 = M.L. Goethe	11.25	11.00	10.40	10.50	9.85	10.00	10.25		

200 = S.L. Goethe	11.25	11.00	10.40	10.50	9.85	10.00	10.25		
175	11.37	11.12	10.52	10.62	9.97	10.12	10.37		
150	11.50	11.25	10.65	10.75	10.10	10.25	10.50		
100	11.75	11.50	10.90	11.00	10.22	10.50	10.75		
50	12.00	11.75	11.15	11.25	10.35	10.75	11.00		
25	12.12	11.87	11.27	11.37	10.60	10.87	11.12		
200 = M.L. Fenelon	12.25	12.00	11.40	11.50	10.85	11.00	11.25		

200 = S.L. Fenelon	12.25	12.00	11.40	11.50	10.85	11.00	11.25		
175	12.37	12.12	11.52	11.62	10.60	10.87	11.12		
150	12.50	12.25	11.65	11.75	10.35	10.75	11.00		
100	12.75	12.50	11.90	12.00	10.22	10.50	10.75		
50	13.00	12.75	12.15	12.25	10.10	10.25	10.50		
25	13.12	12.87	12.27	12.37	9.97	10.12	10.37		
200 = M.L. Emerson	13.25	13.00	12.40	12.50	9.85	10.00	10.25		

	m.	£	£	£	£	£	£
of							
H.L. Ingelen	11.25	11.00	10.40	10.50	9.85	10.00	10.25
H.C. Ingelen	11.00 ¹⁹¹⁷	10.03	9.84	9.67	9.49	9.31 ¹⁹¹⁷	10.00
H.½ Ingelen	10.60	10.45	10.27	10.10	9.92	9.74	9.60
£ Ingelen	11.00	10.85	10.67	10.50	10.32	10.14	10.00
S.½ Ingelen	10.60	10.45	10.27	10.10	9.92	9.74	9.60
S.C. Ingelen	11.00 ¹⁹¹⁷	10.03	9.84	9.67	9.49	9.31 ¹⁹¹⁷	10.00
S.L. Ingelen	11.25	11.00	10.40	10.50	9.85	10.00	10.25
200 = S.L. Ingelen	11.25	11.00	10.40	10.50	9.85	10.00	10.25
425	11.12	10.87	10.27	10.37	9.72	9.87	10.12
150	11.00	10.75	10.15	10.25	9.60	9.75	10.00
100	10.75	10.50	9.90	10.00	9.35	9.50	9.75
50	10.50	10.25	9.65	9.75	9.10	9.25	9.50
25	10.37	10.12	9.52	9.62	8.97	9.12	9.37
00 H.L. Hugo	10.25	10.00	9.40	9.50	8.85	9.00	9.25
M.L. Hugo	10.25	10.00	9.40	9.50	8.85	9.00	9.25
H.C. Hugo	10.00 ¹⁹¹⁷	9.03	8.84	8.67	8.49	8.31 ¹⁹¹⁷	9.00
H.½ Hugo	9.60	9.45	9.27	9.10	8.92	8.74	8.60
£ Hugo	10.00	9.85	9.67	9.50	9.32	9.14	9.00
S.½ Hugo	9.60	9.45	9.27	9.10	8.92	8.74	8.60
S.C. Hugo	10.00 ¹⁹¹⁷	9.03	8.84	8.67	8.49	8.31 ¹⁹¹⁷	9.00
S.L. Hugo	10.25	10.00	9.40	9.50	8.85	9.00	9.25

	17	18	19	20	21	22	23
near St. Meats	11.25	11.00	11.40	11.50	10.85	11.00	11.25
175	11.00	11.75	11.75	11.25	10.60	10.75	11.00
150	11.75	11.50	10.20	11.00	10.35	10.50	10.75
100	11.25	11.00	10.40	10.50	9.85	10.00	10.25
50	10.75	10.50	9.90	10.00	9.35	9.50	9.75
25	10.50	10.25	9.65	9.75	9.10	9.25	9.50
00 - H.L. Jarvis	10.25	10.00	9.40	9.50	8.85	9.00	9.25

H.L. Jarvis	10.25	10.00	9.40	9.50	8.85	9.00	9.25
H.C. Jarvis	10.00 ^{1/2}	9.02	8.84	8.67	8.49	8.31	9.00 ^{5/8}
H.L. Jarvis	9.60	9.45	9.27	9.10	8.92	8.74	8.60
H. Jarvis	10.00	9.85	9.67	9.50	9.32	9.14	9.00
H.L. Jarvis	9.60	9.45	9.27	9.10	8.92	8.74	8.60
H.C. Jarvis St	10.00 ^{1/2}	9.02	8.84	8.67	8.49	8.31	9.00 ^{5/8}
H.L. Jarvis St	10.25	10.00	9.40	9.50	8.85	9.00	9.25

near St. Jarvis St	10.75	10.00	9.40	9.50	8.85	9.00	9.25
175	10.37	10.12	9.52	9.62	8.97	9.12	9.37
150	10.50	10.25	9.65	9.75	9.10	9.25	9.50
100	10.75	10.50	9.90	10.00	9.35	9.50	9.75
50	11.00	10.75	10.15	10.25	9.60	9.75	10.00
25	11.12	10.87	10.27	10.37	9.72	9.87	10.12
00 - H.L. Ingleton	11.25	11.00	10.40	10.50	9.85	10.00	10.25

	W.		£.		F.		
200 = S.L. Macaulay	19.25	19.00	18.40	18.00	17.10	17.00	17.25
175	19.00	18.75	18.15	17.81	16.94	16.87	17.12
150	18.75	18.50	17.90	17.62	16.78	16.75	17.00
140	18.65	18.40	17.80	17.55	16.72	16.70	16.95
100	18.25	18.00	17.40	17.25	16.47	16.50	16.75
50	17.75	17.50	16.90	16.87	16.16	16.25	16.50
25	17.50	17.25	16.65	16.65	16.00	16.12	16.37
00 = H.L. Howell	17.25	17.00	16.40	16.50	15.85	16.00	16.25
200 = S.L. Howell	16.75	16.50	15.90	16.00	15.35	15.50	15.75
175	16.31	16.06	15.46	15.56	14.91	15.06	15.31
150	15.87	15.62	15.02	15.12	14.47	14.62	14.87
100	15.00	14.75	14.15	14.25	13.60	13.75	14.00
50	14.12	13.87	13.27	13.37	12.72	12.87	13.12
25	13.68	13.43	12.83	12.93	12.28	12.43	12.68
00 = H.L. Keats	13.25	13.00	12.40	12.50	11.85	12.00	12.25
H.L. Keats	13.25	13.00	12.40	12.50	11.85	12.00	12.25
H.C. Keats	13.00	12.83	12.24	11.67	11.31	11.31	12.00
H.V. Keats	12.40	12.25	12.07	11.90	11.72	11.54	11.40
K. Keats	12.50	12.35	12.17	12.00	11.82	11.64	11.50
S.V. Keats	11.85	11.70	11.52	11.35	11.17	10.99	10.8
S.C. Keats	12.00	11.83	10.84	10.67	10.49	10.31	11.0
S.L. Keats	12.25	12.00	11.40	11.50	10.85	11.00	11.25

W. E. E

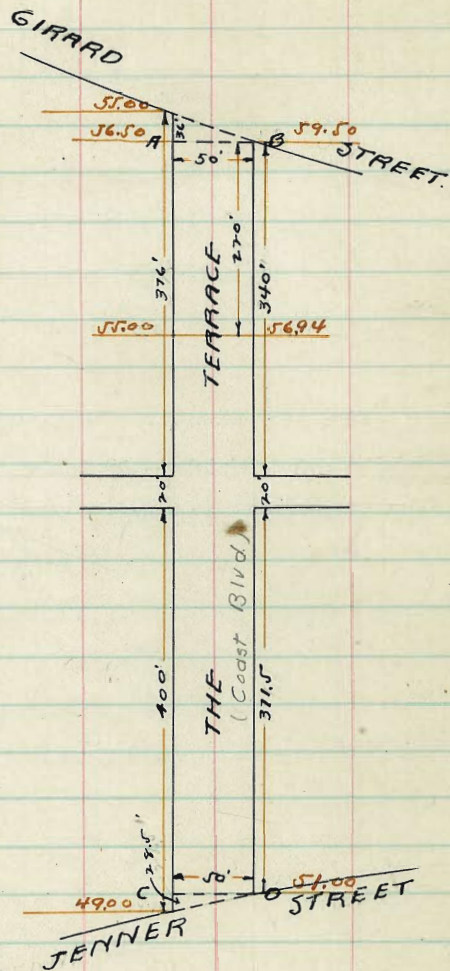
200 = Sh. Elephant	14.75	14.50	13.90	14.00	13.35	13.50	13.75
175	14.93	14.68	14.08	14.18	13.53	13.68	13.93
150	15.12	14.87	14.27	14.37	13.72	13.87	14.12
100	15.50	15.25	14.65	14.75	14.10	14.25	14.50
50	15.87	15.62	15.02	15.12	14.47	14.62	14.87
25	16.06	15.81	15.21	15.31	14.66	14.81	15.06
200 = N. L. Newell	16.25	16.00	15.40	15.50	14.85	15.00	15.25

N. L. Newell	16.25	16.00	15.40	15.50	14.85	15.00	15.25
N. C. Newell	16.00 ^{1/2}	15.02	14.84	14.67	14.49	14.31	15.00 ^{1/2}
N. W. Newell	15.60	15.45	15.27	15.10	14.92	14.74	14.60
E. Newell	16.00	15.85	15.67	15.50	15.32	15.14	15.00
S. W. Newell	15.60	15.45	15.27	15.10	14.92	14.74	14.60
S. E. Newell	16.00 ^{1/2}	15.02	14.84	14.67	14.49	14.31	15.00 ^{1/2}
S. L. Newell	16.25	16.00	15.40	15.50	14.85	15.00	15.25

200 = S. L. Newell	16.25	16.00	15.40	15.50	14.85	15.00	15.25
175	16.52	16.37	15.77	15.81	15.13	15.25	15.50
150	17.00	16.75	16.15	16.12	15.41	15.50	15.75
100	17.75	17.50	16.90	16.75	15.97	16.00	16.25
50	18.50	18.25	17.65	17.37	16.53	16.50	16.75
25	18.87	18.62	18.02	17.68	16.81	16.75	17.00
200 = M. Macaulay	19.25	19.00	18.40	18.00	17.10	17.00	17.25

THE TERRACE.

7500 1
7



N. ————— E. ————— S.

W.L. Girard	55.70	55.70	55.72	57.25	58.90	59.50	59.75
300' W.	56.75	56.50	56.85	58.00	58.90	59.50	59.75
25' W.	56.58	56.37	56.63	57.74	58.56	59.15	59.40
50' W.	56.40	56.15	56.41	57.48	58.21	58.81	59.06
75' W.	56.23	55.98	56.19	57.22	57.87	58.47	58.72
100' W.	56.06	55.81	55.97	56.97	57.53	58.13	58.38
125' W.	55.89	55.64	55.74	56.71	57.19	57.78	58.03
150' W.	55.82	55.47	55.53	56.45	56.84	57.44	57.69
175' W.	55.55	55.30	55.81	56.20	56.50	57.01	57.26
200' W.	55.38	55.13	55.09	55.94	56.16	56.76	57.01
220' W.	55.25	55.00	54.92	55.74	55.89	56.49	56.74
225' W.	55.19	54.94	54.86	55.68	55.83	56.43	56.68
250' W.	54.91	54.66	54.61	55.41	55.56	56.16	56.41
275' W.	54.63	54.38	54.36	55.13	55.29	55.89	56.14
300' W.	54.35	54.10	54.10	54.86	55.03	55.63	55.88
325' W.	54.07	53.82	53.85	54.59	54.76	55.36	55.61
340' E.L. Alley	53.91	53.66	53.70	54.43	54.60	55.20	55.45
360' W.L. Alley	53.68	53.43	53.49	54.20	54.38	54.98	55.23

	IV.		£		S.	
360' W = N. L. Alley	53.68	53.43	53.49	54.20	54.38 54.98	55.23
375' W	53.52	53.27	53.34	54.04	54.22 54.82	55.07
400' W	53.24	52.99	53.09	53.77	53.95 54.55	54.80
425' W	52.96	52.71	52.84	53.49	53.68 54.28	54.53
450' W	52.69	52.44	52.58	53.23	53.42 54.02	54.27
475' W	52.41	52.16	52.33	52.95	53.15 53.75	54.00
500' W	52.13	51.88	52.07	52.68	52.88 53.48	53.73
525' W	51.85	51.60	51.82	52.40	52.61 53.21	53.46
550' W	51.58	51.33	51.57	52.13	52.34 52.94	53.19
575' W	51.30	51.05	51.31	51.86	52.05 52.68	52.93
600' W	51.02	50.77	51.06	51.59	51.81 52.41	52.66
625' W	50.74	50.49	50.81	51.31	51.54 52.14	52.39
650' W	50.46	50.21	50.55	51.04	51.27 51.87	52.12
675' W	50.18	49.93	50.30	50.76	51.00 51.60	51.85
700' W	49.91	49.66	50.05	50.50	50.74 51.34	51.59
731.5' W	49.56	49.31	49.73	50.15	50.40 51.00	51.25
E. L. Jenner St	49.25	49.00	49.10	50.00	50.40 51.00	51.25

M ST.

75.00

60'

75.50

CLAY

AVE.

300'

73.00

80'

74.00

300'

74.00

60'

74.00

N

100'

ST.

74.00

80'

74.00

84.00

84.00

FRANKLIN

80' AVE.

80'

74.58

84.00

84.00

240'

300'

71.00

71.50

WEBSTER

80' AVE.

88.00

80'

86.00

71.00

71.00

WOOLMAN

AVE.

300'

73.00

72.00

CLAY

80' AVE.

73.00

74.00

80'

	W	30th	St.	E				
			£					
300=SL.Mst	7575	7500	7473	7575	7490	7550	7575	-0.2 -0.2
250	7475	7450	7471	7471	7435	7492	7517	+0.2 +0.5
200	7475	7400	7369	7477	7380	7433	7458	+0.6 +0.3
150	7475	7350	7377	7363	7275	7375	7400	+1.3 -0.2
100	7475	7300	7266	7208	7170	7217	7242	-0.1 -0.3
50	7475	7250	7207	7154	7115	7168	7183	-0.1 -0.1
0=NL.Nst	7475	7200	7160	7100	7160	7100	7125	-0.3 -0.2
N.L.N.	7475	7200	7160	7100	7160	7100	7125	
Curb	7100	7200	7100	7100	7100	7100	7100	
N.W.	7160	7160	7160	7160	7160	7160	7160	+0.2 0.0
Center	7100	7200	7100	7100	7100	7100	7100	
S.W.	7160	7160	7160	7160	7160	7160	7160	-0.7 -0.6
Curb	7100	7100	7100	7100	7100	7100	7100	
SL.N.	7125	7200	7160	7100	7160	7100	7125	
300=SLN	7125	7200	7160	7100	7160	7100	7125	-0.2 -0.5
250	7125	7183	7156	7100	7186	7136	7161	+0.2 -0.8
200	7198	7173	7154	7106	7198	7158	7183	
150	7192	7167	7147	7108	7188	7148	7173	+0.3 -0.6
100	7175	7150	7129	7187	7166	7127	7152	+0.7 -0.3
50	7158	7133	7110	7166	7139	7199	7124	+0.9 +0.2
0	7125	7107	7092	7146	7107	7175	7100	+0.9 +1.0
0=NL Webster	7125	7100	7077	7107	7090	7150	7175	0.0 0.0

100
 75
 50
 25
 0
 25
 50
 75
 100
 125
 150
 175
 200
 225
 250
 275
 300
 325
 350
 375
 400
 425
 450
 475
 500
 525
 550
 575
 600
 625
 650
 675
 700
 725
 750
 775
 800
 825
 850
 875
 900
 925
 950
 975
 1000

F
 100
 75
 50
 25
 0
 25
 50
 75
 100
 125
 150
 175
 200
 225
 250
 275
 300
 325
 350
 375
 400
 425
 450
 475
 500
 525
 550
 575
 600
 625
 650
 675
 700
 725
 750
 775
 800
 825
 850
 875
 900
 925
 950
 975
 1000

2000
175
150
100
50
25
00=17
N.L.I
H.C.I
N.H.I
E.H.I
S.H.I
S.C.I
S.L.I
2000
175
150
100
50
25
00=17

[Faint handwritten notes and numbers, possibly bleed-through from the reverse side of the page]

[Vertical handwritten notes or markings along the gutter of the notebook]

2000

175

150

100

50

25

00 = N

N.L.

N.C.

N.E.

S.W.

S.E.

S.N.

S.W.

200

175

150

100

50

25

00 N.L. 19.25 19.00 18.40 18.00 17.10 17.00 17.25

6TH STREET
From the Bridge to Anderson Place

W. Curb 1/4 \pm 1/4 Curb E

N. of Brookes	272.00			272.00			
(N. End of Bridge)							
73' N. of Brookes	275.70	275.45	275.14	275.58	275.24	275.71	275.96
75' N. of Brookes	275.19	275.54	275.24	275.63	275.34	275.84	276.07
100'	276.98	276.73	276.44	276.91	276.60	277.09	277.34
125'	278.16	277.91	277.63	278.13	277.86	278.36	278.61
150'	279.34	279.09	278.83	279.36	279.14	279.64	279.89
200'	281.70	281.45	281.24	281.81	281.62	282.18	282.43
250'	284.06	283.81	283.65	284.27	284.14	284.74	284.94
S. of Anderson Place							
75' N. of Brookes	285.25	285.00	284.85	285.50	285.30	286.00	286.25

Field Book 362
Office Book 10

a-stakes July 10-1914
Shaw 77

289.79	289.79	289.79	289.79	289.79	289.79	289.79	289.79	289.79	289.79
86.15	86.15	84.97	83.06	81.70	80.83	79.87	79.34	79.04	78.62
8.54	8.54	4.82	6.73	9.109	7.36	8.90	10.45	11.75	11.27
6.9	3.12	3.09	6.6	9.2	4.9	7.0	16.5	12.8	9.2
-0.7	10.8	20.9	10.1	-1.1	14.5	42.9	-0.3	-0.7	4.31

288.57 = 4.1 P. 75

288.57	288.57	288.57	288.57	288.57	288.57	288.57	288.57
286.00	285.00	283.81	284.72	282.18	281.45	279.09	279.64
2.57	3.57	4.76	3.85	6.39	7.12	9.48	8.93

288.57 288.57 288.57 288.57
278.76 277.82 275.45 275.71

11.31 10.75 13.12 12.86

Finish Stakes 8/5/14
West Evans - Devine

288.77

285.00	85.10	84.00	84.27	84.72
3.11	2.7	1.1	3.9	3.41
8.41	8.81	8.74	7.90	7.36
6.72	6.3	6	9.1	8.18
7.71	7.12	7.35	9.3	8.53
10.26				

check 8-14-14 OR

ANDERSON PLACE INTERSECTION 50' ST.

S. of Anderson	285.25	285.00	284.85	285.50	285.30	286.00	286.25
S. Curb	285.00	285.00	284.89	285.54	285.47	286.00	286.00
S 1/4	284.60	284.00	284.87	285.55	285.49	285.96	285.66
Center	285.00	284.00	284.88	285.56	285.52	285.12	286.12
N 1/4	284.60	284.00	284.89	285.57	285.54	285.13	285.77
N Curb	285.00	284.00	284.89	285.58	285.56	286.23	286.23
N. Line	285.25	285.00	284.91	285.62	285.63	286.23	286.78

6TH STREET

W Curb 1/4 Φ 1/4 Curb E

N.L. of Anderson	285.25	285.00	284.91	285.62	285.63	286.23	286.48
50'	285.61	285.36	285.23	285.91	285.86	286.46	286.71
100'	285.98	285.73	285.57	286.21	286.09	286.69	286.94
150'	286.34	286.09	285.89	286.50	286.32	286.92	287.17
200'	286.70	286.45	286.22	286.80	286.55	287.15	287.40
250'	287.07	286.82	286.56	287.10	286.78	287.38	287.63
Sl. of Penn.							
275' North	287.25	287.00	286.72	287.25	286.90	287.50	287.75

ANDERSON PLACE TO PENN. 78
 14 - stakes July 10/1914
 Morrison
 J. Miller
 Sharo

287.25 287.25 287.25 287.25 287.25 287.25 287.25 287.25

287.25	287.25	287.25	287.25	287.25	287.25	287.25	287.25
2.00	2.00	2.00	2.00	2.00	2.00	2.00	2.00
0.0	0.0	0.0	0.0	0.0	0.0	0.0	0.0
287.25	287.25	287.25	287.25	287.25	287.25	287.25	287.25
2.00	2.00	2.00	2.00	2.00	2.00	2.00	2.00
0.0	0.0	0.0	0.0	0.0	0.0	0.0	0.0

286.86 - BM NW 6 - Penn.
 292.15 292.15 292.15 292.15 292.15 292.15 292.15 292.15
 287.00 287.00 287.38 286.82 286.45 287.10 286.92 286.09
 5.45 4.65 4.77 5.53 5.70 5.00 5.23 6.06

292.15 292.15 292.15 292.15 292.15 292.15 292.15
 285.73 286.69 286.46 285.86 285.00 286.23
 6.42 5.46 5.69 6.79 7.15 5.92 286.27 - TP
 286.23
 288.57 M

Finish stakes 8/5/14
 West - Evans - Devine.

286.86 BM 287.25 286.86 287.00 287.38 286.09 286.50 287.25
 5.18 5.80 5.2 4.9 4.6 6.9 5.0
 292.04 85.73 86.21 86.69 85.36 85.91 86.46
 6.85 6.3 5.8 5.85 6.7 6.1 5.8
 295.09 85.00 86.61 86.23
 3.85 7.00 6.5 5.8
 298.17 checked OK 8-14-14 blough

54' STREET
12' WALKS
7/4' QUARTERS

SIXTH STREET

79

PENN AVE.

287.00 7° 27.31' 287.50

275.5'
STREET

285.00 286.23

ANDERSON PLACE

285.00 286.20

202'
6TH

Note - 6th St narrows to
width of 32' at N. End of Bridge

LINE OF NORTH 275.45 END OF BRIDGE 275.71

BRIDGE
32'

JUNE 10 - 1914

1" = 100'

SW6

27TH ST.

H	St.
129.00	50'
129.00	
128.50	
128.00	
127.50	
127.00	
126.50	
126.00	
125.50	
125.00	
124.50	
124.00	
123.50	
123.00	
122.50	
122.00	
121.50	
121.00	
120.50	
120.00	

W.	I	St.	E.
0=SL.H St.	129.00	128.60	129.00
25	128.75	128.00	128.25
50	127.75	126.60	127.75
75	126.75	125.60	126.75
100	125.75	124.60	125.75
125	124.75	124.10	124.75
140	125.05	124.40	124.74
150	124.75	124.00	124.77
175	126.75	126.10	126.71
200	129.75	128.60	128.67
225	132.75	131.55	131.75
250	135.75	134.50	134.77
275	138.75	137.45	137.77
300=NL.I St.	141.75	140.40	140.75

142.11 = E 26 - I	125.05	124.75	125.24	125.85	126.25
3.00	8.00	8.30	7.80	5.70	3.80
145.20	7.60	7.90	8.10	6.70	3.80
12.61					
137.59	10.2	10.4	10.3	10.9	10.0
19.33	12.400	12.500	12.600	12.700	12.800
135.07	3.80	12.478	3.10	5.10	4.80
19.33	2.70	8.60	11.20	5.60	4.10
135.42	2.40	11.00	11.20	5.60	4.10
12.61		13.00	14.00	10.80	10.00
132.15		13.00	14.00	10.80	10.00

3/15 Gregory
Morse
Miller
OUTER FILLS FROM H 140' SOUTH

-18.3	-20.9
-9.5	-18.5
-1.8	-13.7
+0.6	-11.0
+1.7	-9.7
0.0	-9.7
-1.9	-11.5
-0.7	-9.6
-0.1	-0.3

$$\begin{array}{r} 1280 \\ 5522 \\ 1310 \\ 6802 \\ 67.72 \\ 1209 \\ 8000 \\ 103 \\ 78.97 \\ 77 \\ 86.68 \\ 320 \\ 3.48 \\ 82.50 \\ 8668 \\ 511 \\ 81.37 \end{array}$$

$$\begin{array}{r} 2771 \\ 488 \\ 3256 \\ 2621 \\ 131 \end{array}$$

$$\begin{array}{r} 87 \\ 40790 \\ 7798 \\ 131 \\ 4787 \\ 133 \\ 6620 \\ 5384 \\ 5407 \\ 1202 \\ 250 \\ 279 \\ 300 \\ 22 \\ 200 \\ 8100 \\ 15 \\ 54 \\ 7 \\ 124 \\ 583 \\ 5392 \\ 2192 \\ 5684 \\ 5246 \\ 196 \\ 5892 \end{array}$$

$$\begin{array}{r} 98 \\ 27 \\ 4 \\ 9 \\ 89.91 \\ 106 \\ 90098 \\ 2400 \\ 16 \\ 112 \\ 2528 \\ 303 \\ 8 \\ 2424 \\ 112 \\ 2336 \\ 2891 \\ 2902 \\ 2000 \\ 1945 \\ 35 \\ 1973 \\ 27 \\ 648 \\ 45 \\ 27 \\ 205 \\ 2075 \\ 720 \\ 88.20 \\ 85-25 \end{array}$$