

3000
 HINGFON Ave.
 Street - J. L. Brooks
 Street - J. L. Bes - Ed. Hawk
 Street - J. L. Pellow - M. E. L. Horton Ave.
 Street - W. L. Horton - L. Redwood, St.
 Street - J. L. Horton Ave - M. E. L. Horton St
 Ave - EL Albert - V. L. George
 ST - Palm - Quince - Los Ber
 ST - El Cajon to St. L. ...
 El Grove T. V. L. Filler
 Adams to El Cajon
 actin to Grove

380

FIELD

Indiana St. - Los Park - ...
 FT - ...
 Ave - ...
 FT - ...
 DIA - ...
 back 13rd to ...

682

Country Quality

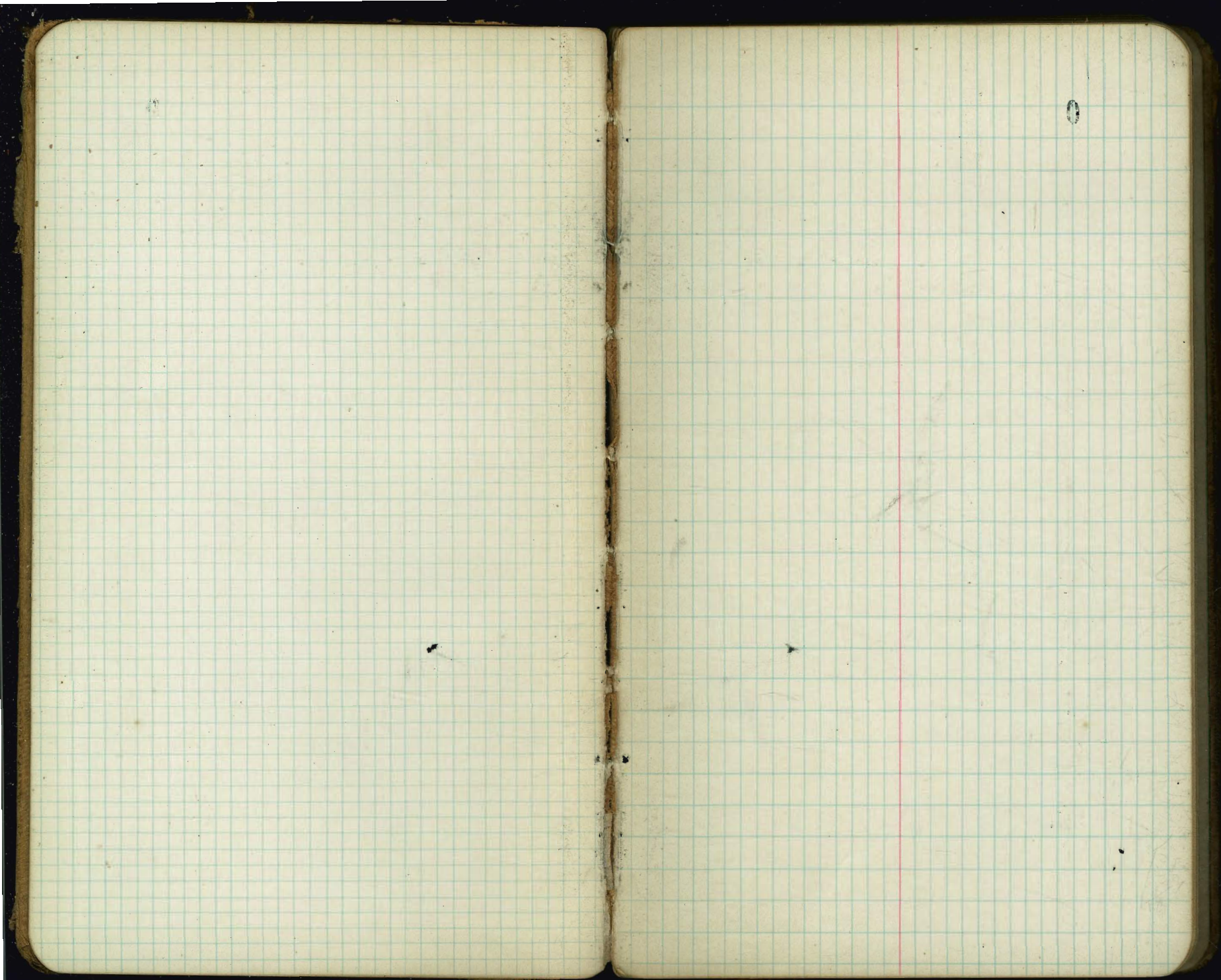
MICROFILMED
DEC 7 1964

7587
13
19.27

Book no 82

name

date



WASHINGTON AVE.

UNIVERSITY AVE.

10' Walks Book 87

337.75 ← 65' → 335.40
 336.50 ← 65' → 336.50

120
 342.80
 343.60²⁵
 344.20²⁵
 344.70²⁵
 344.80¹⁵

120
 342.00
 342.90²⁵
 343.60²⁵
 344.20²⁵
 344.40¹⁵

115
 345.50
 345.50

600
 600

Wightman

345.00
 345.00

331.50
 330.00

Dwight

600
 332.00
 330.50

250
 334.00
 333.00

600
 337.00
 337.00

Landis

60
 336.50
 336.50

350
 350

330.00 ← 65' → 329.50

Myrtle

0

330.00
 329.50

Myrtle

329.00
 328.50

300'

321.00
 65
 320.50

Upas

Washington Ave.

	W.		¢.		E.			
0=SL University	33800	337.75	337.15	336.58	335.59	335.40	335.65	+0.2 +0.1
25	33905	338.80	338.20	337.79	336.88	336.78	337.03	
50	34010	339.85	339.25	339.01	338.18	338.15	338.40	+3.7 +0.3
75	34116	340.91	340.31	340.22	339.47	339.53	339.78	
100	34221	341.96	341.36	341.43	340.77	340.90	341.15	+3.3 +0.0
120	34305	342.80	342.20	342.40	341.80	342.00	342.25	
125	34371	342.96	342.36	342.57	341.98	342.18	342.43	
145	34385	343.60	343.00	343.25	342.68	342.90	343.15	
150	34397	343.72	343.12	343.38	342.81	343.04	343.29	+2.7 +0.3
170	34445	344.20	343.60	343.90	343.35	343.60	343.85	
175	34455	344.30	343.70	344.01	343.47	343.72	343.97	
195	34495	344.70	344.10	344.45	343.93	344.20	344.45	
200	34498	344.73	344.10	344.50	343.94	344.27	344.52	+2.3 +1.0
210	34505	344.80	344.20	344.60	344.00	344.40	344.65	
225	34514	344.89	344.29	344.72	344.14	344.54	344.79	
250	34529	345.04	344.44	344.91	344.38	344.78	345.03	+1.8 +1.0
275	34545	345.20	344.60	345.11	344.67	345.02	345.27	
300	34560	345.35	344.75	345.31	344.86	345.26	345.51	+1.0 +0.6
325=NL Wightman	34575	345.50	344.90	345.50	345.10	345.50	345.75	+0.5 +0.4
NL Wightman	34575	345.50	344.90	345.50	345.10	345.50	345.75	
Curb	34450	344.41	345.01	345.21	345.01	344.41	344.50	
N 1/4	34490	344.33	344.93	345.33	344.93	344.33	344.90	
Center	34525	344.25	344.85	345.25	344.85	344.25	345.25	+1.0 +1.1
S 1/4	34473	344.17	344.77	345.17	344.77	344.17	344.73	
Curb	34400	344.09	344.69	345.09	344.69	344.09	344.00	
SL Wightman	34525	345.00	344.60	345.00	344.60	345.00	345.25	

See Book
 87 pages
 Changed
 to 133

Washington Ave.

W.

C.

E.

2

0=SL. Wightman	345.25	345.00	344.60	345.00	344.60	345.00	345.25	+0.5	+0.6
25	344.97	344.67	344.27	344.67	344.27	344.67	344.92		
50	344.58	344.33	343.93	344.33	343.93	344.33	344.58	+0.9	+0.8
75	344.25	344.00	343.60	344.00	343.60	344.00	344.25		
100	343.92	343.67	343.27	343.67	343.27	343.67	343.92	+0.8	+0.9
125	343.58	343.33	342.93	343.33	342.93	343.33	343.58		
150	343.25	343.00	342.60	343.00	342.60	343.00	343.25	+1.1	+1.1
175	342.92	342.67	342.27	342.67	342.27	342.67	342.92		
200	342.58	342.33	341.93	342.33	341.93	342.33	342.58	+1.2	+1.0
225	342.25	342.00	341.60	342.00	341.60	342.00	342.25		
250	341.92	341.67	341.27	341.67	341.27	341.67	341.92	+1.4	+1.3
275	341.58	341.33	340.93	341.33	340.93	341.33	341.58		
300	341.25	341.00	340.60	341.00	340.60	341.00	341.25	+1.3	+1.3
325	340.92	340.67	340.27	340.67	340.27	340.67	340.92		
350	340.58	340.33	339.93	340.33	339.93	340.33	340.58	+1.0	+1.0
375	340.25	340.00	339.60	340.00	339.60	340.00	340.25		
400	339.92	339.67	339.27	339.67	339.27	339.67	339.92	+0.6	+0.9
425	339.58	339.33	338.93	339.33	338.93	339.33	339.58		
450	339.25	339.00	338.60	339.00	338.60	339.00	339.25	+0.2	+1.0
475	338.92	338.67	338.27	338.67	338.27	338.67	338.92		
500	338.58	338.33	337.93	338.33	337.93	338.33	338.58	+0.4	+0.5
525	338.25	338.00	337.60	338.00	337.60	338.00	338.25		
550	337.92	337.67	337.27	337.67	337.27	337.67	337.92	+0.9	+0.8
575	337.58	337.33	336.93	337.33	336.93	337.33	337.58		
600=NL. Landis	337.25	337.00	336.60	337.00	336.60	337.00	337.25	+1.4	+1.2

Washington Ave.

W.

£.

E.

N.L.Landis	33725	33700	33660	33700	33660	33700	33725
Curb	33600	33591	33651	33691	33651	33591	33600
N ^{1/2}	33640	33583	33643	33687	33643	33583	33640
Center	33675	33575	33625	33675	33625	33575	33675
S ^{1/2}	33623	33567	33627	33667	33627	33567	33623
Curb	33550	33559	33619	33659	33619	33559	33550
S.L.Landis	33675	33650	33610	33650	33610	33650	33675

+1.2 +1.7

W.

Washington Ave.
E.

E.

43

0=SLLandis	33675	33650	33610	33650	33610	33650	33675	+0.7	+1.0
25	33654	33629	33588	33626	33585	33623	33648		
50	33633	33608	33567	33602	33559	33596	33621	+0.7	+1.0
75	33613	33588	33545	33578	33534	33569	33594		
100	33592	33567	33523	33554	33508	33542	33567	+0.8	+1.0
125	33571	33546	33502	33530	33483	33515	33540		
150	33550	33525	33480	33506	33457	33488	33513	+0.5	+1.2
175	33529	33504	33458	33482	33432	33460	33485		
200	33508	33483	33437	33458	33406	33433	33458	-0.1	+0.4
225	33488	33463	33415	33434	33381	33406	33431		
250	33467	33442	33393	33410	33355	33379	33404	-0.4	-0.4
275	33446	33421	33372	33386	33330	33352	33377		
300	33425	33400	33350	33363	33304	33325	33350	-0.4	-0.1
325	33404	33379	33328	33339	33279	33298	33323		
350	33383	33358	33307	33315	33253	33271	33296	-0.2	-0.2
375	33363	33338	33285	33291	33228	33244	33269		
400	33342	33317	33263	33267	33202	33217	33242	-0.2	-0.3
425	33321	33296	33242	33243	33177	33180	33215		
450	33300	33275	33220	33219	33151	33163	33188	-0.5	-0.5
475	33279	33254	33198	33195	33126	33135	33160		
500	33258	33233	33177	33171	33100	33108	33133	-0.5	-1.1
525	33238	33213	33155	33147	33076	33081	33106		
550	33217	33192	33133	33123	33049	33054	33079	0.0	-0.8
575	33196	33171	33112	33099	33024	33027	33052		
600=NLDwright	33175	33150	33090	33075	32998	33000	33025	+1.0	-0.3

Washington Ave.
E.

W.

E.

N.L. Dwight	331.75	331.50	330.90	330.75	329.98	330.00	330.25	
Curb	330.50	330.27	330.01	329.75	329.49	329.23	329.00	
N ¹ / ₄	331.23	331.00	330.74	330.48	330.22	329.96	329.73	
Center	331.75	331.52	331.26	331.00	330.74	330.48	330.25	+1.3 +0.2
S ¹ / ₄	331.40	331.17	330.91	330.65	330.39	330.13	329.90	
Curb	331.00	330.77	330.51	330.25	329.99	329.73	329.50	
S.L. Dwight	332.25	332.00	331.40	331.25	330.48	330.50	330.75	

Washington Ave.
E.

W.	Washington Ave. E.							E.
0=SL. Dwight	33225	33200	33140	33125	33048	33050	33075	+1.0 00
25	33245	33220	33160	33148	33072	33075	33100	
50	33265	33240	33180	33170	33095	33100	33125	+1.3 00
75	33285	33260	33200	33193	33119	33125	33150	
100	33305	33280	33220	33215	33143	33150	33175	+1.1 +0.7
125	33325	33300	33240	33238	33167	33175	33200	
150	33345	33320	33260	33260	33190	33200	33225	+1.1 +0.7
175	33365	33340	33280	33283	33214	33225	33250	
200	33385	33360	33300	33305	33238	33250	33275	+0.9 +0.3
225	33405	33380	33320	33328	33261	33275	33300	
250	33425	33400	33340	33350	33285	33300	33325	+0.7 -0.2
275	33396	33371	33311	33323	33259	33275	33300	
300	33368	33343	33283	33296	33233	33250	33275	+0.5 +0.7
325	33339	33314	33254	33270	33207	33225	33250	
350	33311	33286	33226	33242	33182	33200	33225	+0.5 +0.9
375	33282	33257	33197	33216	33156	33175	33200	
400	33254	33229	33169	33189	33130	33150	33175	+0.9 +1.4
425	33225	33200	33140	33163	33104	33125	33150	
450	33196	33171	33111	33136	33078	33100	33125	+0.8 +1.3
475	33168	33143	33083	33109	33052	33075	33100	
500	33139	33114	33054	33082	33026	33050	33075	+1.7 +0.9
525	33111	33086	33026	33055	33001	33025	33050	
550	33082	33057	32997	33029	32975	33000	33025	+0.8 +1.3
575	33054	33029	32969	33002	32949	32975	33000	
600=NL Myrtle	33025	33000	32940	32975	32923	32950	32975	+0.7 +0.9

Washington Ave.
E.

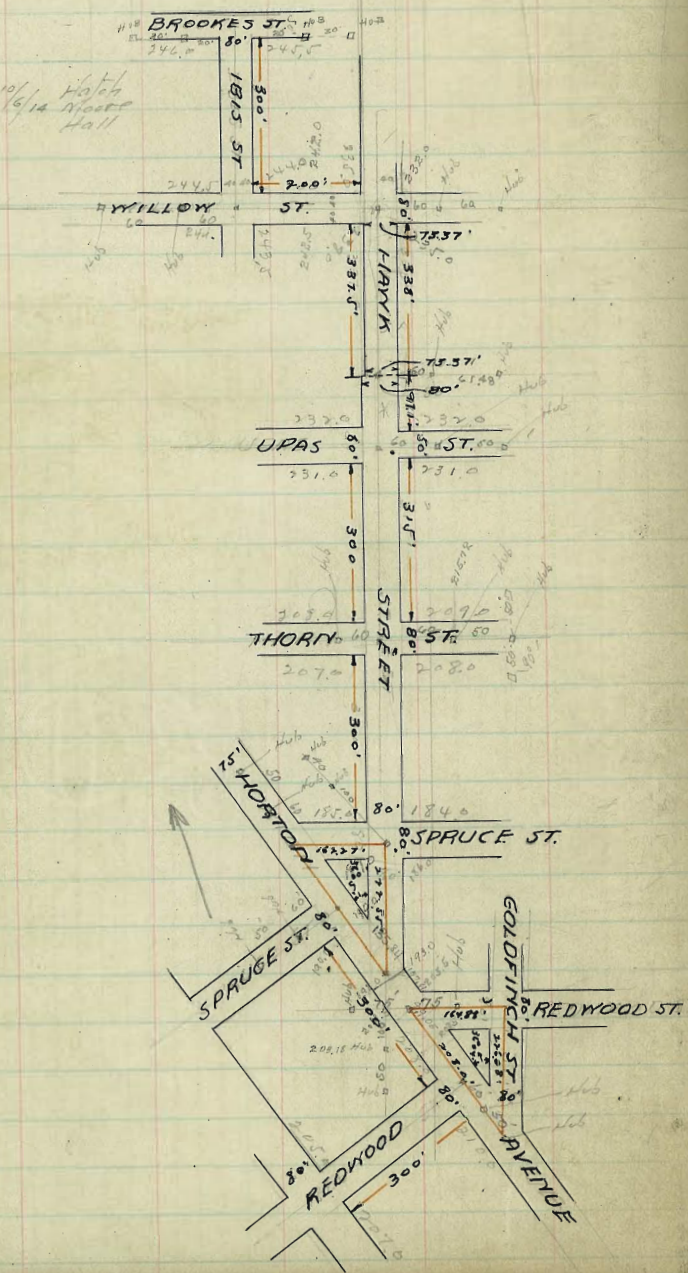
W.

E.

N.L Myrtle	32075	33000	32940	32975	32923	32950	32975
Curb	32900	32884	32924	32959	32907	32834	32850
N 1/2	32940	32867	32907	32942	32890	32917	32890
Center	32950	32850	32890	32925	32873	32800	32900
S 1/2	32885	32833	32873	32908	32856	32783	32875
Curb	32800	32816	32856	32891	32839	32766	32750
S.L Myrtle	32925	32900	32840	32875	32823	32850	32875

0 = S.L Myrtle	32925	32900	32840	32875	32823	32850	32875
25	32858	32833	32773	32808	32756	32783	32808
50	32792	32767	32707	32742	32690	32717	32742
75	32725	32700	32640	32675	32623	32650	32675
100	32658	32633	32573	32608	32556	32583	32608
125	32592	32567	32507	32542	32490	32517	32542
150	32525	32500	32440	32475	32423	32450	32475
175	32458	32433	32373	32408	32356	32383	32408
200	32392	32367	32307	32342	32290	32317	32342
225	32325	32300	32240	32275	32223	32250	32275
250	32258	32233	32173	32208	32156	32183	32208
275	32192	32167	32107	32142	32090	32117	32142
300 = N.L Upas = p. 1349	32125	32100	32040	32075	32023	32050	32075

Tie outs 10/14 Hatch
Hall



W

IBES ST.

E

N.

Z.

S. L. Brooks	246.25	246.00	245.40	245.75	245.23	245.50	245.75
25	246.12	245.87	245.25	245.62	245.10	245.57	245.67
50	246.00	245.75	245.10	245.50	244.98	245.25	245.50
75	244.87	245.67	244.95	245.37	244.85	245.12	245.37
100	245.75	245.50	244.80	245.25	244.73	245.00	245.75
125	245.67	245.37	244.65	245.12	244.60	244.87	245.12
150	245.50	245.25	244.50	245.00	244.48	244.75	245.00
175	245.37	245.12	244.35	244.87	244.35	244.67	244.87
200	245.25	245.00	244.20	244.75	244.23	244.50	244.75
225	245.12	244.87	244.05	244.67	244.10	244.37	244.67
250	245.00	244.75	243.90	244.50	243.98	244.25	244.50
275	244.87	244.67	243.75	244.37	243.85	244.12	244.37
300	244.75	244.50	243.60	244.25	243.73	244.00	244.25

NL Walnut	244.75	244.50 243.50	243.90	244.25	243.72	244.00 243.00	244.25
N Curb	244.50 243.50	244.50 243.50	243.81	244.16	243.63	244.00 243.00	244.00 243.00
N $\frac{1}{2}$	243.92	243.27	243.73	244.08	243.55	244.87	243.40
E	244.25	243.25	243.65	244.00	243.47	243.75	243.75
S $\frac{1}{4}$	243.72	243.12	243.57	243.92	243.39	243.67	243.22
S Curb	244.00	243.00 242.50	243.49	243.84	243.31	243.50 242.50	243.50 242.50
SL Walnut	244.25	244.00	243.40	243.75	243.22	243.50	243.95

9

266.75 Top Wall 1/4 Kitar Terrace

0.37	246.25	246.00	245.40	245.75	245.23	245.50	245.75
1.00	246.12	245.87	245.25	245.62	245.10	245.57	245.67
2.00	246.00	245.75	245.10	245.50	244.98	245.25	245.50
3.00	244.87	245.67	244.95	245.37	244.85	245.12	245.37
4.00	245.75	245.50	244.80	245.25	244.73	245.00	245.75
5.00	245.67	245.37	244.65	245.12	244.60	244.87	245.12
6.00	245.50	245.25	244.50	245.00	244.48	244.75	245.00
7.00	245.37	245.12	244.35	244.87	244.35	244.67	244.87
8.00	245.25	245.00	244.20	244.75	244.23	244.50	244.75
9.00	245.12	244.87	244.05	244.67	244.10	244.37	244.67
10.00	245.00	244.75	243.90	244.50	243.98	244.25	244.50
11.00	244.87	244.67	243.75	244.37	243.85	244.12	244.37
12.00	244.75	244.50	243.60	244.25	243.73	244.00	244.25

Curb + Probs 2/5/5

Curb OK 2/5/5 Gregory

Gregory
Shoemaker
More

Fl.

Willow St

5.

200' = W.L. Hawk	232.25	235.00	235.75	236.50	237.40	238.00	238.75
175' E	237.00	237.75	237.24	237.94	238.57	239.17	239.37
150' E	238.75	238.50	238.74	239.37	239.65	240.25	240.50
125' E	240.50	240.25	240.23	240.81	240.77	241.37	241.62
100' E	242.25	242.50	241.73	242.25	241.90	242.50	242.75
75' E	242.75	242.50	242.15	242.67	242.23	242.75	243.00
50' E	243.25	243.00	242.56	243.00	242.56	243.00	243.25
25' E	243.75	243.50	242.98	243.31	242.89	243.25	243.50
00' = E.L. 1611	244.25	244.00	243.40	243.75	243.23	243.50	243.75

W.L Hawk	235.25	235.00	235.35	236.50	237.40	238.00	238.25
W Curb	235.00	235.00				238.00	238.00
W 1/4	234.40	233.25				236.25	237.40
C	233.50	232.50		235.00		235.50	236.50
E 1/4	232.35	231.75				234.75	235.35
E Curb	232.00	232.00				234.00	235.00
EL Hawk	232.25	232.00	232.35	233.50	234.40	235.00	235.25

238.05 Top of Wall SE, Hawk + Willow

10

200.47	201.17	201.87	202.57	203.27	203.97	204.67	205.37
206.07	206.77	207.47	208.17	208.87	209.57	210.27	210.97
216.57	217.27	217.97	218.67	219.37	220.07	220.77	221.47
231.07	231.77	232.47	233.17	233.87	234.57	235.27	235.97
246.07	246.77	247.47	248.17	248.87	249.57	250.27	250.97
261.07	261.77	262.47	263.17	263.87	264.57	265.27	265.97
276.07	276.77	277.47	278.17	278.87	279.57	280.27	280.97
291.07	291.77	292.47	293.17	293.87	294.57	295.27	295.97
306.07	306.77	307.47	308.17	308.87	309.57	310.27	310.97
321.07	321.77	322.47	323.17	323.87	324.57	325.27	325.97
336.07	336.77	337.47	338.17	338.87	339.57	340.27	340.97
351.07	351.77	352.47	353.17	353.87	354.57	355.27	355.97
366.07	366.77	367.47	368.17	368.87	369.57	370.27	370.97
381.07	381.77	382.47	383.17	383.87	384.57	385.27	385.97
396.07	396.77	397.47	398.17	398.87	399.57	400.27	400.97
411.07	411.77	412.47	413.17	413.87	414.57	415.27	415.97
426.07	426.77	427.47	428.17	428.87	429.57	430.27	430.97
441.07	441.77	442.47	443.17	443.87	444.57	445.27	445.97
456.07	456.77	457.47	458.17	458.87	459.57	460.27	460.97
471.07	471.77	472.47	473.17	473.87	474.57	475.27	475.97
486.07	486.77	487.47	488.17	488.87	489.57	490.27	490.97
501.07	501.77	502.47	503.17	503.87	504.57	505.27	505.97
516.07	516.77	517.47	518.17	518.87	519.57	520.27	520.97
531.07	531.77	532.47	533.17	533.87	534.57	535.27	535.97
546.07	546.77	547.47	548.17	548.87	549.57	550.27	550.97
561.07	561.77	562.47	563.17	563.87	564.57	565.27	565.97
576.07	576.77	577.47	578.17	578.87	579.57	580.27	580.97
591.07	591.77	592.47	593.17	593.87	594.57	595.27	595.97
606.07	606.77	607.47	608.17	608.87	609.57	610.27	610.97
621.07	621.77	622.47	623.17	623.87	624.57	625.27	625.97
636.07	636.77	637.47	638.17	638.87	639.57	640.27	640.97
651.07	651.77	652.47	653.17	653.87	654.57	655.27	655.97
666.07	666.77	667.47	668.17	668.87	669.57	670.27	670.97
681.07	681.77	682.47	683.17	683.87	684.57	685.27	685.97
696.07	696.77	697.47	698.17	698.87	699.57	700.27	700.97
711.07	711.77	712.47	713.17	713.87	714.57	715.27	715.97
726.07	726.77	727.47	728.17	728.87	729.57	730.27	730.97
741.07	741.77	742.47	743.17	743.87	744.57	745.27	745.97
756.07	756.77	757.47	758.17	758.87	759.57	760.27	760.97
771.07	771.77	772.47	773.17	773.87	774.57	775.27	775.97
786.07	786.77	787.47	788.17	788.87	789.57	790.27	790.97
801.07	801.77	802.47	803.17	803.87	804.57	805.27	805.97
816.07	816.77	817.47	818.17	818.87	819.57	820.27	820.97
831.07	831.77	832.47	833.17	833.87	834.57	835.27	835.97
846.07	846.77	847.47	848.17	848.87	849.57	850.27	850.97
861.07	861.77	862.47	863.17	863.87	864.57	865.27	865.97
876.07	876.77	877.47	878.17	878.87	879.57	880.27	880.97
891.07	891.77	892.47	893.17	893.87	894.57	895.27	895.97
906.07	906.77	907.47	908.17	908.87	909.57	910.27	910.97
921.07	921.77	922.47	923.17	923.87	924.57	925.27	925.97
936.07	936.77	937.47	938.17	938.87	939.57	940.27	940.97
951.07	951.77	952.47	953.17	953.87	954.57	955.27	955.97
966.07	966.77	967.47	968.17	968.87	969.57	970.27	970.97
981.07	981.77	982.47	983.17	983.87	984.57	985.27	985.97
996.07	996.77	997.47	998.17	998.87	999.57	1000.27	1000.97

Checked OK 3/14/15 Gregory

HAYK ST.

W E

St. Miller	238.70	238.00	237.40	236.50	235.35	235.00	235.25
25'	237.91	237.06	236.73	236.73	234.74	234.82	235.07
50	237.53	237.28	236.70	236.57	234.86	234.65	234.90
75	237.19	236.94	236.34	235.10	234.70	234.50	234.75
100	236.81	236.56	235.99	235.44	234.47	234.31	234.56
125	236.48	236.23	235.63	235.17	234.25	234.14	234.39
150	236.10	235.85	235.28	234.91	234.03	233.96	234.21
175	235.77	235.52	234.97	234.64	233.81	233.79	234.04
200	235.39	235.14	234.56	234.38	233.60	233.62	233.87
225	235.06	234.81	234.21	234.12	233.38	233.45	233.70
250	234.67	234.42	233.85	233.85	233.16	233.27	233.52
275	234.34	234.09	233.49	233.59	232.94	233.10	233.35
300	233.96	233.71	233.14	233.32	232.72	232.93	233.18
325	233.63	233.38	232.78	233.06	232.15	232.75	233.00
350	233.44	233.19	232.59	232.92	231.39	232.66	232.91
375	233.25	233.00	232.60	232.72	231.15	232.52	232.83
400	232.90	232.65	232.15	232.53	230.01	232.41	232.66
425	232.54	232.29	231.89	232.76	231.84	232.24	232.49
450	232.25	232.00	231.60	232.05	231.69	232.09	232.34
475	232.00	231.75	231.40	231.75	231.40	231.75	232.00
500	231.75	231.50	231.15	231.50	231.15	231.50	231.75
525	231.50	231.25	230.90	231.25	230.90	231.25	231.50
550	231.25	231.00	230.65	231.00	230.65	231.00	231.25
575	231.00	230.75	230.40	230.75	230.40	230.75	231.00
600	230.75	230.50	230.15	230.50	230.15	230.50	230.75
625	230.50	230.25	229.90	230.25	229.90	230.25	230.50
650	230.25	230.00	229.65	230.00	229.65	230.00	230.25
675	230.00	229.75	229.40	229.75	229.40	229.75	230.00
700	229.75	229.50	229.15	229.50	229.15	229.50	229.75
725	229.50	229.25	228.90	229.25	228.90	229.25	229.50
750	229.25	229.00	228.65	229.00	228.65	229.00	229.25
775	229.00	228.75	228.40	228.75	228.40	228.75	229.00
800	228.75	228.50	228.15	228.50	228.15	228.50	228.75
825	228.50	228.25	227.90	228.25	227.90	228.25	228.50
850	228.25	228.00	227.65	228.00	227.65	228.00	228.25
875	228.00	227.75	227.40	227.75	227.40	227.75	228.00
900	227.75	227.50	227.15	227.50	227.15	227.50	227.75
925	227.50	227.25	226.90	227.25	226.90	227.25	227.50
950	227.25	227.00	226.65	227.00	226.65	227.00	227.25
975	227.00	226.75	226.40	226.75	226.40	226.75	227.00
1000	226.75	226.50	226.15	226.50	226.15	226.50	226.75

Handwritten notes and calculations at the top of the right page, including a table with columns for 'W', 'Wb', 'Wz', 'L', 'Ez', 'ELb', 'E' and various numerical values.

	W	Wb	Wz	L	Ez	ELb	E
0100 SL Walnut	238.75	238.00	237.40	236.50	235.35	235.00	235.25
0125	237.90	237.65	237.05	236.43	235.14	234.82	235.07
0150	237.20	236.95	236.36	235.70	234.71	234.47	234.72
1100	236.85	236.60	236.01	235.23	234.49	234.30	234.55
1125	236.49	236.24	235.66	235.16	234.27	234.13	234.38
1150	236.13	235.88	235.32	234.89	234.05	233.96	234.21
1175	235.77	235.52	234.98	234.63	233.83	233.79	234.04
1185	235.63	235.38	234.85	234.53	233.75	233.72	233.97
2100	235.42	235.17	234.65	234.37	233.62	233.61	233.86
2125	235.06	234.81	234.31	234.11	233.40	233.44	233.69
2150	234.70	234.45	233.97	233.85	233.18	233.27	233.52
2175	234.34	234.09	233.63	233.59	232.94	233.10	233.35
3100	233.98	233.73	233.29	233.33	232.74	232.93	233.18
3137	233.45	233.20	232.78	232.94	232.42	232.67	232.92
0125	233.09	232.84	232.44	232.62	232.20	232.50	232.75
0150	232.73	232.48	232.10	232.27	231.98	232.33	232.58
0185	232.25	232.00	231.60	231.80	231.60	232.00	232.25

Handwritten signature: CURTIS

Handwritten notes on the right margin, including 'Curber Props' and 'Curtis'.

	W.	E	E
N.L. UPAS	232.45	232.00	232.00
No. CURB	232.00	131.42	231.41
1/4	231.40	230.75	230.75
CTR	231.50	230.50	231.50
30 1/4	230.85	230.95	230.85
30. CURB	230.00	230.00	230.00
50 LINE	231.25	231.00	231.00
00=S.L. Upas			231.00
115	231.75	230.40	230.40
25	230.48	229.63	229.63
50	228.56	227.71	227.71
75	226.64	225.79	225.79
100	224.73	223.88	223.88
125	222.81	221.96	221.96
150	220.90	219.05	219.05
175	218.98	217.13	217.13
200	217.06	215.21	215.21
225	215.15	213.29	213.29
250	213.23	211.37	211.37
275	211.31	209.45	209.45
300	209.40	207.53	207.53
315=N.L. THOR	207.55	205.60	205.60

227.95	227.95	227.95	227.95	227.95	227.95	227.95	227.95	227.95	227.95	227.95
227.95	227.95	227.95	227.95	227.95	227.95	227.95	227.95	227.95	227.95	227.95

	W	WCK	N ₂₁	E	E 1/2	FCB	E
S.L. Upas	231.75	231.00	230.60	231.00	230.60	231.00	231.25
S.L. B. find	231.75	231.00	230.87	230.46	229.78	230.00	230.75
S.L. B. 0+00	229.33	229.08	228.44	228.63	228.00	228.75	228.50
0+25	227.41	227.15	226.56	226.80	226.22	226.50	226.75
0+75	225.58	225.33	224.81	225.14	224.65	225.00	225.25
1+00	223.66	223.41	222.94	223.31	222.87	223.25	223.50
1+25	221.74	221.49	221.07	221.48	221.09	221.50	221.75
1+50	219.83	219.58	219.20	219.65	219.31	219.75	220.00
1+75	217.91	217.66	217.33	217.82	217.53	218.00	218.25
2+00	216.00	215.75	215.46	215.99	215.75	216.25	216.50
2+25	214.08	213.83	213.59	214.16	213.97	214.50	214.75
2+75	212.15	211.90	211.85	212.50	212.40	212.90	213.15

Cited OK 3/22/15 Gregory

HAWK ST

	W.	cb	$\frac{1}{4}$	$\frac{1}{2}$	$\frac{3}{4}$	cb	E
NL Thorn	208.25	208.00 207.00	207.85 17	208.50 17	208.40 17	209.00 208.00	209.25
N Cb	208.00 207.00	208.00 207.00	207.68 16	208.33 16	208.73 16	209.00 208.00	209.00
N $\frac{1}{4}$	207.40	206.75	207.57 16	208.17 16	208.07 17	207.75	208.40
C	207.50	206.50	207.35 17	208.00 17	207.90 17	207.50	208.50
S $\frac{1}{4}$	206.85	206.25	207.18 16	207.83 16	207.73 16	207.25	207.85
Scb.	206.00 207.00	206.00 207.00	207.02 16	207.67 16	207.57 16	207.00 208.00	207.00 208.00
SL Thorn	207.25	207.00 200.00	206.85 17	207.50 17	207.40 17	208.00	208.25

00: S.L. Thorn	207.25	207.00	206.85	207.50	207.40	208.00	208.25
25	204.41	205.16	204.47	205.58	205.40	206.00	206.75
50	203.53	203.33	203.10	203.66	203.47	204.00	204.25
75	201.75	201.50	201.27	201.74	201.40	202.00	202.25
100	199.91	199.66	199.36	199.83	199.55	200.00	200.25
125	198.05	197.83	197.43	197.91	197.60	198.00	198.25
150	196.25	196.00	195.67	196.00	195.67	196.00	196.25
175	194.41	194.16	193.76	194.28	193.60	194.00	194.25
200	192.58	192.33	191.88	192.16	191.70	192.00	192.25
225	190.75	190.50	189.90	190.25	189.77	190.00	190.25
250	188.91	188.66	188.14	188.33	187.77	188.00	188.25
275	187.08	186.83	186.23	186.41	185.80	186.00	186.25
300: N.L. Spruce	185.25	185.00	184.40	184.50	183.85	184.00	184.25

B.M. 215.24 = 110' h06 at Thorn
B.M. 192.41 = 105' / Spruce

13

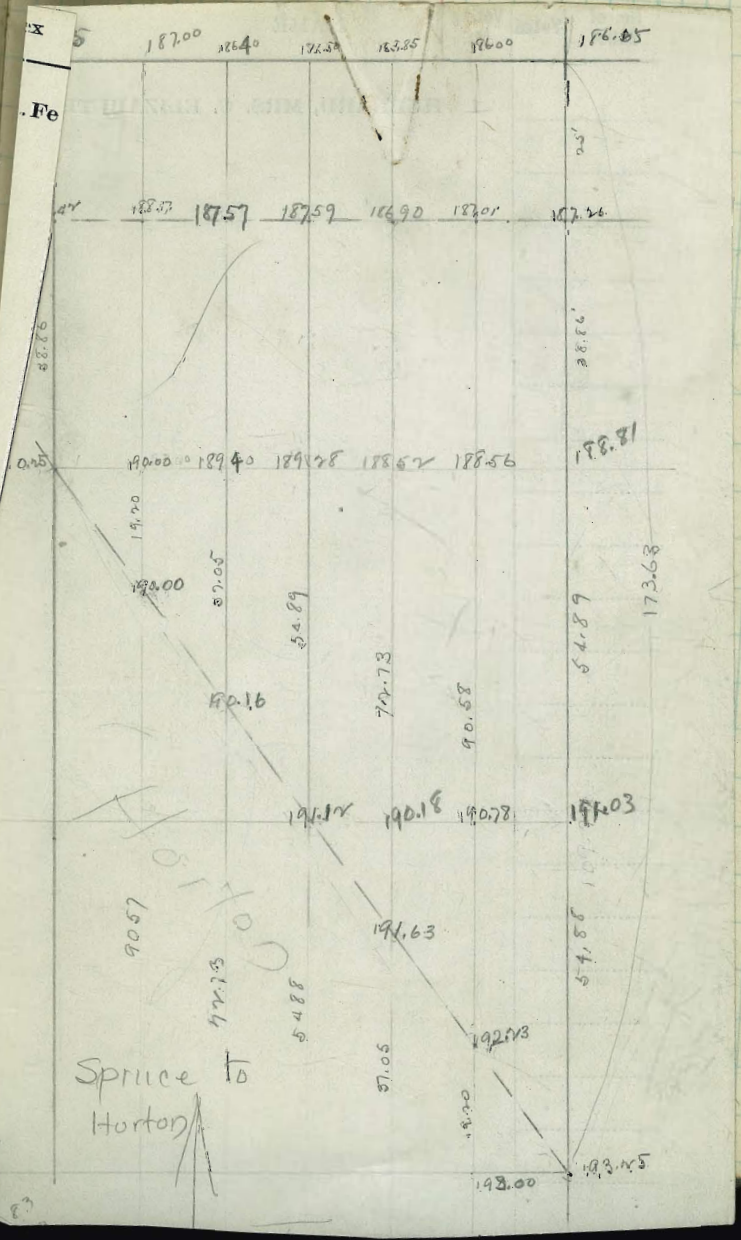
185	192.41	194	200	204	205
186	192.41	194	200	204	205
187	192.41	194	200	204	205
188	192.41	194	200	204	205
189	192.41	194	200	204	205
190	192.41	194	200	204	205
191	192.41	194	200	204	205
192	192.41	194	200	204	205
193	192.41	194	200	204	205
194	192.41	194	200	204	205
195	192.41	194	200	204	205
196	192.41	194	200	204	205
197	192.41	194	200	204	205
198	192.41	194	200	204	205
199	192.41	194	200	204	205
200	192.41	194	200	204	205
201	192.41	194	200	204	205
202	192.41	194	200	204	205
203	192.41	194	200	204	205
204	192.41	194	200	204	205
205	192.41	194	200	204	205
206	192.41	194	200	204	205
207	192.41	194	200	204	205
208	192.41	194	200	204	205
209	192.41	194	200	204	205
210	192.41	194	200	204	205
211	192.41	194	200	204	205
212	192.41	194	200	204	205
213	192.41	194	200	204	205
214	192.41	194	200	204	205
215	192.41	194	200	204	205
216	192.41	194	200	204	205
217	192.41	194	200	204	205
218	192.41	194	200	204	205
219	192.41	194	200	204	205
220	192.41	194	200	204	205
221	192.41	194	200	204	205
222	192.41	194	200	204	205
223	192.41	194	200	204	205
224	192.41	194	200	204	205
225	192.41	194	200	204	205
226	192.41	194	200	204	205
227	192.41	194	200	204	205
228	192.41	194	200	204	205
229	192.41	194	200	204	205
230	192.41	194	200	204	205
231	192.41	194	200	204	205
232	192.41	194	200	204	205
233	192.41	194	200	204	205
234	192.41	194	200	204	205
235	192.41	194	200	204	205
236	192.41	194	200	204	205
237	192.41	194	200	204	205
238	192.41	194	200	204	205
239	192.41	194	200	204	205
240	192.41	194	200	204	205
241	192.41	194	200	204	205
242	192.41	194	200	204	205
243	192.41	194	200	204	205
244	192.41	194	200	204	205
245	192.41	194	200	204	205
246	192.41	194	200	204	205
247	192.41	194	200	204	205
248	192.41	194	200	204	205
249	192.41	194	200	204	205
250	192.41	194	200	204	205

check OK. 3/20/15 Begon

	W	WCB	1/2	3/4	4	cb	E
N. Spruce	185.85	185.00 184.00	184.00	184.50	183.85	184.00 183.00	184.75
No. CURB	185.00 184.00	185.00 184.00	184.75	184.85	184.40	184.00 183.00	184.00 183.00
1/4	185.10	184.50	185.08	185.18	184.53	183.50	184.10
CTR	186.00	185.00	185.40	185.50	184.55	184.00	185.00
So. 1/4	186.40	185.50	185.77	185.82	185.18	184.50	185.40
So. CURB	186.00 187.00	186.00 187.00	186.05	186.15	185.50	185.00 186.00 185.00 186.00	186.00 186.00
S.L.	187.25	186.00 187.00	186.40	186.50	185.85	185.00 186.00 185.00 186.00	186.00 186.00

6386 So. 190.25 190.

	0100	0125	0150	0200	0225	0250	0300
SL Spruce	187.25	187.00	186.40	186.50	185.85	186.00	186.75
0125	187.40	187.17	187.57	187.59	186.90	187.01	187.76
0150	190.25	190.00	189.40	189.25	188.57	188.56	188.51



Spruce to Horton

HAWK HORTON AVE.

S S_{CB} S_{1/2} E N_{1/2} NW_{1/4} NCB N

W/L Hawk	190.75	190.9	190.83	191.56	191.63	192.23	193.25
W CB							
W 1/2							
CL							
E 1/4							
E CB							
EL Hawk							

BET. Hawk + Redwood.

PH's to NW cor E.L. of Hawk + NE. C. of Horton	192.25	192.0	192.0	193.25
50' So.	196.21	195.96	196.96	197.21
100' So.	200.18	199.23	200.93	201.18
157.61' So. = Pt 1/2 to NW Redwood East.	204.75	204.5	202.5	205.15

PH's to S.L. Redwood
on East.

202.5 202.5

S.L. Redwood 07 W

210.25

209.25

201.25 = 100' So. of Horton + Hawk

15

204.30	195.01	204.10	202.15	204.75	215.25
190.75	190.9	190.83	191.56	191.63	192.23
193.25	190.75	190.9	190.83	191.56	191.63
192.23	190.75	190.9	190.83	191.56	191.63
191.63	190.75	190.9	190.83	191.56	191.63
191.56	190.75	190.9	190.83	191.56	191.63
191.63	190.75	190.9	190.83	191.56	191.63
191.56	190.75	190.9	190.83	191.56	191.63
191.63	190.75	190.9	190.83	191.56	191.63
191.56	190.75	190.9	190.83	191.56	191.63
191.63	190.75	190.9	190.83	191.56	191.63
191.56	190.75	190.9	190.83	191.56	191.63
191.63	190.75	190.9	190.83	191.56	191.63
191.56	190.75	190.9	190.83	191.56	191.63
191.63	190.75	190.9	190.83	191.56	191.63
191.56	190.75	190.9	190.83	191.56	191.63
191.63	190.75	190.9	190.83	191.56	191.63
191.56	190.75	190.9	190.83	191.56	191.63
191.63	190.75	190.9	190.83	191.56	191.63
191.56	190.75	190.9	190.83	191.56	191.63
191.63	190.75	190.9	190.83	191.56	191.63

HAWK

	W	Curb	1/4	E	1/4	Curb	E
S.L. Walnut	238.25	238.00	237.40	236.50	235.35	235.00	235.25
25'	237.89	237.64	237.04	236.23	235.12	234.82	235.07
75'	237.18	236.93	236.33	235.70	234.69	234.48	234.73
100'	236.82	236.57	235.97	235.44	234.47	234.31	234.56
125'	236.47	236.22	235.62	235.18	234.26	234.13	234.38
150'	236.11	235.86	235.26	234.91	234.04	233.96	234.21
175'	235.75	235.50	234.90	234.64	233.82	233.79	234.04
185'	235.61	235.36	234.76	234.54	233.73	233.72	233.97
200'	235.40	235.15	234.55	234.38	233.60	233.62	233.87
225'	235.04	234.79	234.19	234.12	233.38	233.45	233.70
250'	234.68	234.43	233.83	233.85	233.16	233.27	233.52
275'	234.33	234.08	233.48	233.59	232.94	233.10	233.35
300'	233.98	233.72	233.12	233.32	232.72	232.93	233.18
337.0' on W.							
337.5' on E.	233.45	233.20	232.60	232.94	232.41	232.68	232.93

Curb OK 3/18/15 Gregory

809 3/18/15

REDWOOD ST.

N E S

01 = SW L. Horton	205.50	205.50	205.50	208.10	209.00	209.40	210.00	210.75
25 = 21	207.87	207.67	207.77	208.67	209.07	209.67	209.87	
50	207.50	207.25	207.35	208.25	208.65	209.25	209.50	
75	207.17	206.87	206.97	207.87	208.27	208.87	209.17	
100	206.75	206.50	206.60	207.50	207.90	208.50	208.75	
125	206.37	206.17	206.27	207.17	207.57	208.17	208.37	
150	206.00	205.75	205.85	206.75	207.15	207.75	208.00	
175	205.67	205.37	205.47	206.37	206.77	207.37	207.67	
200 = N.E.L. Union	205.00	205.10	206.00	206.40	207.00	207.25		

CROSS-SECTION

2/15 Gregory Shoemaker Moore

REDWOOD ST 80' WIDE

From E.L. UNION ST To W.L. HORTON #4E

B.M.	517	211.94	209.77
		60	
		E.L. UNION ST	
S		6.9	208.0
1/4		7.0	207.9
0		7.4	207.5
1/4		7.8	207.1
1/2		8.4	206.5
3/4		9.4	205.5
N		10.3	204.6
		50' EAST	
N		7.0	207.9
1/4		6.3	208.6
1/2		6.2	208.7
3/4		5.7	209.2
1/2		5.5	209.4
1/4		5.1	209.8
S		4.0	210.9
		100' EAST	
S		1.3	212.6
1/4		1.8	212.1
1/2		2.6	212.3
3/4		2.9	212.0

209.77 Top Nfd S.E. Red Union.

212.77	205.25	207.0	207.25	206	205.25	212.30
212.77	215	210	210.25	210	210.25	212.30
	215	210	210.25	210	210.25	212.30
	215	210	210.25	210	210.25	212.30
	215	210	210.25	210	210.25	212.30
	215	210	210.25	210	210.25	212.30
	215	210	210.25	210	210.25	212.30
	215	210	210.25	210	210.25	212.30
	215	210	210.25	210	210.25	212.30
	215	210	210.25	210	210.25	212.30

Checked OK 3/22/15 Gregory

REDWOOD ST (continued)

1/2		2.9	212.0
1/4		3.2	211.7
0		3.1	212.5
T.P.	211	216.94	210.
		150' EAST	
N		2.0	214.9
1/4		2.6	214.3
1/2		2.5	214.6
3/4		2.3	214.6
1/2		2.6	214.3
1/4		2.8	214.1
S		2.3	214.6
		400' E = W.L. HORTON	
1/4		1.7	215.7
1/2		1.5	215.4
3/4		1.4	215.5
1/2		1.4	215.5
1/4		1.5	215.4
1/2		1.5	215.4
3/4		1.7	215.7

CYPRESS AVE.

1/2 walks.

Albert St.

281.00 80' 280.00

210

289.50 289.50

o Herbert St.

290.50 290.50

417.0

296.50 297.00

150' Park Boulevard

298.50 299.00

78.5

300.50 301.00

o Indiana St.

300.50 301.00

Indiana St.

300.50 80' 301.00

100

299.50 299.66

298.99 299.08

298.00 298.00

296.48 296.41

294.47 294.32

310

284.50 284.00

110

o Georgia St.

283.50 283.00

320

236.00 237.00

Florida

See Book 88 p 10.
Has been narrowed to 6.8 ft

S. Cypress Ave. N.

0=EL Albert	28125	28100	28040	28050	27985	28000	28025	+79	-81
25	28226	28201	28144	28157	28095	28113	28138		
50	28327	28302	28247	28264	28205	28226	28251	+64	-18
75	28429	28404	28351	28371	28315	28339	28364		
100	28530	28505	28454	28479	28425	28452	28477	+12	-152
125	28631	28606	28558	28586	28536	28565	28590		
150	28732	28707	28661	28693	28646	28679	28704	-34	-114
175	28833	28808	28765	28800	28756	28792	28817		
200	28935	28910	28869	28907	28866	28905	28930	00	+16
210=WL Herbert	28975	28950	28910	28950	28910	28950	28975	+04	+03

NY
 See B 88 B10

WL Herbert	28975	28950	28910	28950	28910	28950	28975		
Curb	28850	28867	28927	28967	28927	28867	28850		
W. 1/4	28935	28883	28943	28983	28943	28883	28935		
Center	29000	28900	28960	29000	28960	28900	29000	+15	+23
E. 1/4	28990	28917	28977	29017	28977	28917	28990		
Curb	28950	28933	28993	29033	28993	28933	28950		
EL Herbert	29075	29050	29010	29050	29010	29050	29075		

0=EL Herbert	29075	29050	29010	29050	29010	29050	29075	+27	+40
10	29089	9064	9025	9065	9026	9066	9091	+35	+41
35	29125	9100	9061	9102	9063	9105	9130		
50	29147	9122	9083	9125	9085	9128	9153		
60	29161	9136	9098	9140	9101	9143	9168	+36	+31
85	29197	9172	9135	9177	9138	9182	9207		
100	29219	9194	9157	9200	9161	9206	9231		
110	29233	9208	9172	9215	9176	9221	9246	+10	+15
135	29269	9244	9208	9252	9214	9260	9285		
150	29291	9266	9230	9275	9236	9284	9309		
160	29305	9280	9245	9290	9251	9299	9324	+03	+10
185	29341	9316	9282	9327	9289	9339	9364		
200	29362	9337	9304	9349	9312	9361	9386		
210	29377	9352	9318	9364	9327	9377	9402	+03	-11
235	29413	9388	9355	9402	9365	9416	9441		
250	29434	9409	9377	9424	9387	9439	9464		
260	29449	9424	9392	9439	9402	9455	9480	+13	-14
285	29485	9460	9429	9477	9440	9494	9519		
300	29506	9481	9451	9500	9463	9517	9542		
310	29521	9496	9465	9514	9478	9533	9558	+13	-23
335	29557	9532	9502	9552	9516	9572	9597		
250	29578	9553	9524	9574	9538	9595	9620		
360	29592	9567	9539	9589	9553	9611	9636	-05	-09
385	29628	9603	9575	9626	9591	9650	9675		
400	29650	9625	9597	9649	9614	9673	9698		
417.4=872 Park Blvd	29675	29650	29623	29675	29640	29700	29725	+10	+07

See Barla 88 p 10.

S. Cypress Ave. N.

0=EL.Park Blvd	298.75	298.50	298.25	298.75	298.40	299.00	299.25	+49	+22
25	9892	9867	9840	9892	9857	9917	9942		
50	9909	9880	9857	9909	9870	9933	9958	+42	+49
75	9925	9900	9873	9925	9890	9950	9975		
100	9942	9917	9890	9942	9907	9967	9992	+45	+59
125	9959	9934	9907	9959	9924	9984	0009		
150	9976	9951	9924	9976	9941	0001	0026	+50	+50
175	9992	9967	9940	9992	9957	0017	0042		
200	0009	9980	9957	0009	9970	0030	0059	+30	+25
225	0026	0001	9970	0026	9991	0051	0076		
250	0043	0018	9991	0043	0008	0068	0093	+28	+24
275	0059	0034	0007	0059	0020	0080	0109		
298.4=WL.Indiana	300.75	300.50	300.25	300.75	300.40	301.00	301.25	+13	+14

n.g. See B 88 @ 10

0=EL.Indiana	300.75	300.50	300.25	300.75	300.40	301.00	301.25	+37	+32
25	0050	0025	9995	0046	0012	0067	0092		
50	0025	0000	9967	0017	9983	0033	0058	+60	+55
75	0000	9975	9928	9987	9955	0000	0025		
100	29975	29950	29910	29958	29926	29966	29991	+81	+83
125	29924	29899	29858	29904	29868	29908	29933		
150	29825	29800	29760	29800	29760	29800	29825	+102	+108
175	29673	29648	29608	29644	29601	29641	29666		
200	29472	29447	29407	29440	29392	29432	29457	+113	+115
225	9245	9220	9175	9209	9160	9197	9222		
250	9019	8994	8945	8979	8929	8963	8988	+93	+83
275	8792	8767	8714	8749	8697	8728	8753		
300	8566	8541	8482	8517	8466	8494	8519	+41	+35
310=WL.Georgia	284.75	284.50	283.90	284.25	283.73	284.00	284.25	+35	+18

Cypress Ave.

3.

E.

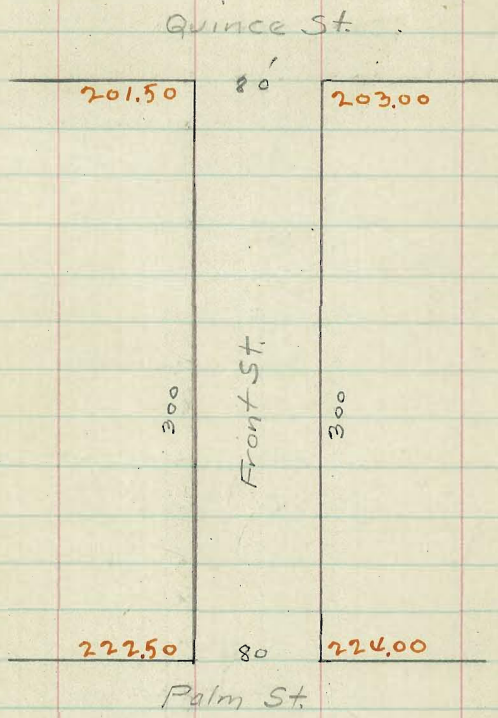
N.

21

0=EL Georgia	28275	28250	28250	28225	28275	28300	28225	-52	-9.8
10	8227	8202	8143	8179	8128	8156	8181	-56	-10.3
25	7855	7820	7775	7816	7766	7797	7822		
50	7633	7608	7555	7595	7549	7581	7606		
60	7484	7459	7408	7448	7404	7438	7463	-34	-10.6
85	7113	7088	7040	7083	7042	7078	7103		
100	6891	6866	6820	6864	6825	6863	6888		
110	6742	6717	6673	6718	6680	6719	6744	-39	-12.1
135	6271	6246	6205	6253	6218	6259	6284		
150	6148	6123	6085	6134	6101	6144	6169		
160	6000	5975	5938	5988	5957	6000	6025	-48	-13.2
185	5629	5604	5570	5622	5595	5641	5666		
200	5406	5381	5349	5403	5377	5425	5450		
210	5258	5233	5202	5257	5233	5281	5306	-49	-10.8
225	4887	4862	4829	4892	4871	4922	4947		
250	4664	4639	4614	4673	4653	4706	4731		
260	4516	4491	4467	4527	4509	4563	4588	-16	-11.4
285	4145	4120	4100	4161	4147	4203	4228		
300	3922	3897	3879	3942	3930	3988	4013		
310	3773	3748	3732	3796	3785	3844	3869	+13	-8.0
320=W. Florida	23625	23600	23585	23650	23640	23700	23725	+23	-6.0

N.Y. Sec B 88 B. 10

Front St.
14' walks.



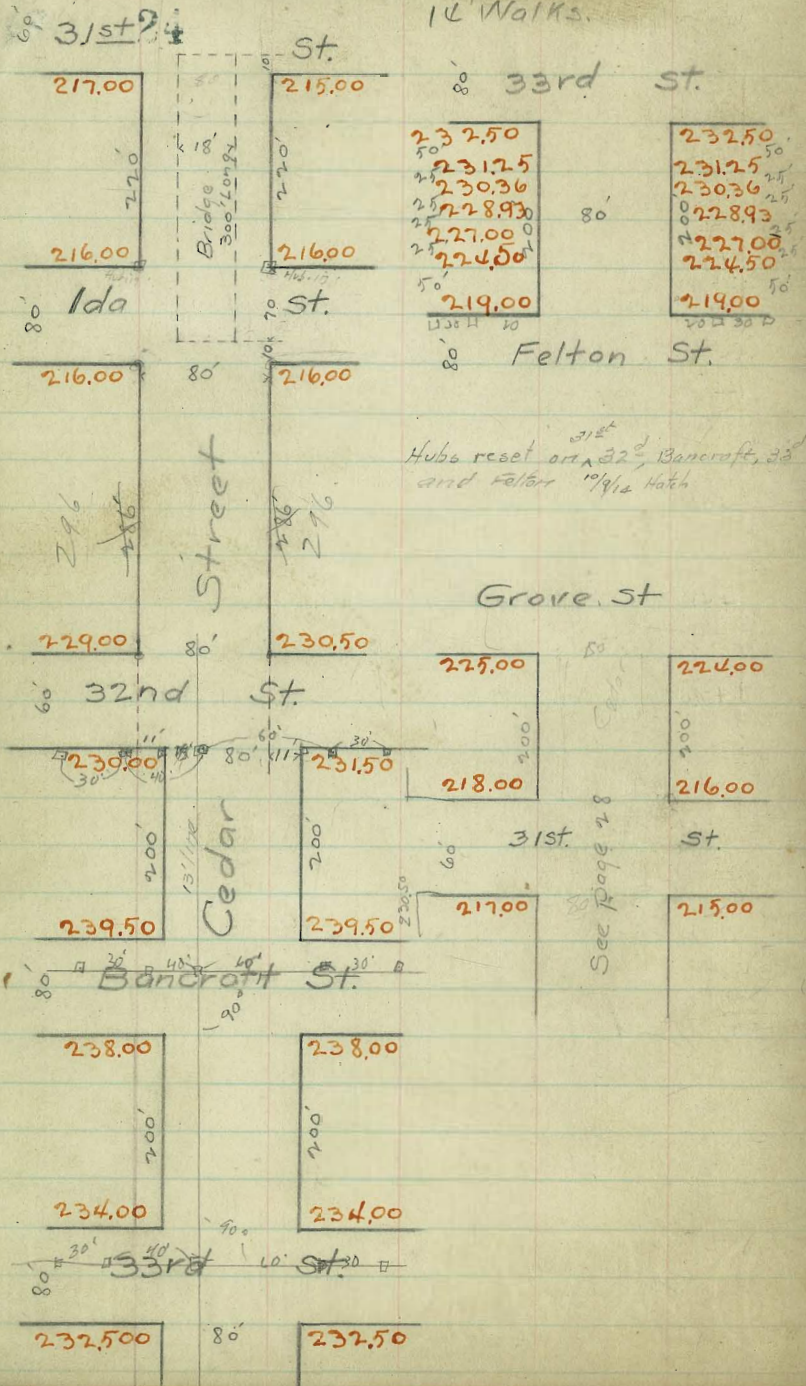
Front St

W.

E.

300 = SL Quince	20175	20150	20148	20225	20240	20300	20325	
275	20250	20225	20222	20400	20415	20475	20500	
260	20455	20430	20428	20505	20520	20580	20605	+10
250	20525	20500	20498	20575	20590	20650	20675	
225	20700	20675	20673	20750	20765	20825	20850	+22
200	20875	20850	20848	20925	20940	21000	21025	+70
175	21050	21025	21023	21100	21115	21175	21200	
150	21225	21200	21198	21275	21290	21350	21375	+70
125	21400	21375	21373	21450	21465	21525	21550	
100	21575	21550	21548	21625	21640	21700	21725	+72
75	21750	21725	21723	21800	21815	21875	21900	
50	21925	21900	21898	21975	21990	22050	22075	+44
25	22100	22075	22073	22150	22165	22225	22250	
0 = NL Palm	22275	22250	22248	22325	22340	22400	22425	+20

CEDAR STREET
10' Walks.



3rd St int.

Adaption of 1.32 & W.C. Felton

3rd Cedar + 4th Felton = 225.47

2nd Mark bridge alignment = 215.72

4th E 32 + Cedar, Mark = 210.26

5th W. 4th + Cedar - 225.47

5th E 33 + Cedar, Mark = 224.70

11th W Felton + Cedar, Mark = 225.39

215.00	218.00			
215.00	275			215.92
200.75	270.75	220.75	215.92	9.53
200.00	270.00		225.45	225.45
100.00	10.5		216.22	216.35
80	4.15		7.46	7.32 ✓
4.00	4.13			
7.3				

230.50			
216.2			
216.2	483		
216.2	3		
2506	1449		
700			
2300	7666		
2700	5		
2000	3833		
1000	12999		
3000	4332		
1000	26		
1000	21665		

216.00

216.22

216.35

211.80

WL 32nd	22925	22900	22898	22975	22990	23050	23075	
Curb	22800	22817	22915	22992	23007	22967	22950	
W. 1/4	22885	22834	22922	23009	23024	22984	23035	
Center	22950	22850	22948	23025	23040	23000	23100	
E. 1/4	22940	22866	22964	23041	23056	23016	23090	
Curb	22900	22887	22981	23058	23073	23033	23050	
E.L. 32nd	23025	23000	22998	23075	23090	23150	23175	
o=EL. 32nd	23025	23000	22998	23075	23090	23150	23175	+2.7 +8.4
25	23014	23119	23112	23184	23193	23250	23275	
50	23267	23238	23226	23294	23295	23250	23275	+4.8 +8.2
75	23281	23256	23240	23403	23298	23450	23475	
100	23250	23475	23454	23513	23500	23550	23575	+5.8 +8.9
125	23619	23594	23568	23622	23603	23650	23675	
150	23728	23713	23682	23731	23705	23750	23775	+6.0 +7.5
175	23856	23831	23796	23841	23808	23850	23875	
200=WL Bancroft	23975	23950	23910	23950	23910	23950	23975	+2.8 +2.7
WL Bancroft	23975	23950	23910	23950	23910	23950	23975	
Curb	23850	23877	23883	23923	23883	23823	23850	
W. 1/4	23890	23799	23859	23899	23859	23799	23890	
Center	23876	23775	23835	23875	23835	23775	23875	+0.7 +0.9
E. 1/4	23798	23751	23811	23851	23811	23751	23798	
Curb	23700	23727	23787	23827	23787	23727	23700	
E.L. Bancroft	23845	23800	23760	23800	23760	23800	23845	

40.26
6.60
246.86
9.25
237.41
30.00
207.41

246.86 246.86 246.86 246.86 246.86 246.86 246.86
 237.41 237.41 237.41 237.41 237.41 237.41 237.41
 30.00 30.00 30.00 30.00 30.00 30.00 30.00
 207.41 207.41 207.41 207.41 207.41 207.41 207.41

240.26 B.M. Map NE 3/8 Cedar
 2.52 Finish Curb - 7/21/14 West Evans. Devine
 244.78 HI.

244.78	244.78	244.78	244.78	244.78	244.78
239.50	237.13	237.50	235.50	234.75	244.78
5.28	7.65	7.28	9.28	10.03	24.75 TP
237.75	237.12	237.12	237.12	237.12	237.12
237.12 HI	232.38	233.50	231.50	230.00	237.12
	4.74	3.62	5.62	7.12	

checked OK 8-7-14 Blough

Cedar Street

S.

225-40mm Felton
234.90 " 33V.

0=EL. Bancroft	228.25	228.00	227.60	228.00	227.60	228.00	228.25		
25	227.75	227.50	227.10	227.50	227.10	227.50	227.75		
50	227.25	227.00	226.60	227.00	226.60	227.00	227.25		
75	226.75	226.50	226.10	226.50	226.10	226.50	226.75		
100	226.25	226.00	225.60	226.00	225.60	226.00	226.25		
125	225.75	225.50	225.10	225.50	225.10	225.50	225.75		
150	225.25	225.00	224.60	225.00	224.60	225.00	225.25		
175	224.75	224.50	224.10	224.50	224.10	224.50	224.75		
200=N.L. 33rd	224.25	224.00	223.60	224.00	223.60	224.00	224.25		
W.L. 33rd	224.25	224.00	223.60	224.00	223.60	224.00	224.25		
Curb	223.75	223.50	223.10	223.50	223.10	223.50	223.75		
W. 1/2	223.25	222.99	222.59	222.99	222.59	222.99	223.25		
Center	222.75	222.50	222.10	222.50	222.10	222.50	222.75		
E. 1/2	222.25	222.00	221.60	222.00	221.60	222.00	222.25		
Curb	221.75	221.50	221.10	221.50	221.10	221.50	221.75		
EL. 33rd	221.25	221.00	220.60	221.00	220.60	221.00	221.25		
0=EL. 33rd	221.25	221.50	222.10	221.50	222.10	221.50	221.25		
25	221.75	221.88	221.48	221.88	221.48	221.88	221.75		
50	222.25	221.25	220.85	221.25	220.85	221.25	222.25		
75	222.75	220.36	219.96	220.36	219.96	220.36	222.75		
100	223.25	228.93	228.53	228.93	228.53	228.93	223.25		
125	223.75	227.00	226.60	227.00	226.60	227.00	223.75		
150	224.25	224.50	224.10	224.50	224.10	224.50	224.25		
175	224.75	221.25	221.35	221.25	221.35	221.25	224.75		
200=N.L. Felton	219.25	219.00	218.60	219.00	218.60	219.00	219.25		

Vertical curve

240.65	240.65	240.65	240.65	240.65	240.65	240.65	240.65
237.85	237.85	237.85	237.85	237.85	237.85	237.85	237.85
235.05	235.05	235.05	235.05	235.05	235.05	235.05	235.05
232.25	232.25	232.25	232.25	232.25	232.25	232.25	232.25

240.26 = Max NE corner 152.
241.17-42.

244.19 244.19 244.19 244.19 244.19 244.19 244.19 244.19
238.25 238.00 237.25 236.50 236.25 236.00 235.25 234.50
5.94V 6.19V 6.74V 7.19V 7.94V 8.19V 8.74V 9.19V

Final stakes - 7 1/4 - West - Everts - Denick.

225.39	225.39	225.39	225.39	225.39	225.39	225.39	225.39
221.93	221.93	221.93	221.93	221.93	221.93	221.93	221.93
219.90	219.90	219.90	219.90	219.90	219.90	219.90	219.90
12.93	12.93	12.93	12.93	12.93	12.93	12.93	12.93

Final cut stakes - 7 1/2 - 1/4 - West - Evans - Denick.

Checked OK 8-7-14 blough

28s Cedar Street.

N.

0=EL.Grove	2245	22500	2240	22450	22385	22400	22425	+2.5	+30
25	22438	22413	22457	22356	22288	22300	22295		
50	22350	22325	22465	22263	22191	22200	22295	+7.3	+6.9
75	22263	22238	22177	22169	22096	22100	22195		
100	22175	22150	22090	22075	21998	22000	22095	+8.7	+8.6
125	22088	22063	22003	21981	21901	21900	21995		
150	22000	21975	21915	21888	21804	21800	21895	+7.7	+6.7
175	21913	21888	21828	21796	21707	21700	21795		
200=WL 31st	21825	21800	21740	21700	21610	21600	21695	+4.1	-2.0
WL 31st	21825	21800	21740	21700	21610	21600	21695		
Curb	21700	21683	21723	21683	21593	21483	21500		
W.U	21740	21666	21706	21666	21576	21466	21540		
Center	21750	21650	21690	21650	21560	21450	21550	-2.1	-9.9
E"U	21685	21636	21676	21636	21546	21436	21485		
Curb	21600	21617	21657	21617	21527	21417	21400	-6.4	-12.9
EL 31st	21725	21700	21640	21600	21510	21500	21595		

22547 Bon Osurom

234.04	234.04	234.04	234.04	234.04	234.04	234.04
14.44	14.44	14.44	14.44	14.44	14.44	14.44
223.60	223.60	223.60	223.60	223.60	223.60	223.60
223.64	223.64	223.64	223.64	223.64	223.64	223.64
223.40	223.40	223.40	223.40	223.40	223.40	223.40

225.47	226.91	226.91	226.91	226.91	226.91	226.91	226.91	226.91
1.91	291	291	291	291	291	291	291	291
226.91	226.91	226.91	226.91	226.91	226.91	226.91	226.91	226.91
218.00	216.00	216.00	216.00	216.00	216.00	216.00	216.00	216.00
8.91	10.91	10.91	10.91	10.91	10.91	10.91	10.91	10.91

22547 Bn

25.00	24.40	24.50	23.80	24.00
6.77	3.37	5.27	2.95	5.37
21.50	21.03	20.23	19.85	20.00
6.27		7.00		7.77
11.60	17.40	14.00	11.00	11.60
7.77	4.07	1.87	1.63	1.77
11.20				11.5
10.77				10.77

Checked OK 8-7-14 Blough

28

UTAH ST.

14' Walks

Adams Ave.

80'

371.0

371.0

ME

29

386.0

80'

386.0

Monroe Ave.

370.5

370.5

600'

600'

378.0

378.0

Madison Ave.

368.4

368.0

Excepted

Meade Ave.

378.0

378.0

368.0

368.0

600'

600'

371.0

371.0

Monroe Ave.

372.0

371.0

El Cajon

For ties at El Cajon See Page at this Book.

0 = S.L. Adams	386.25	386.00	385.60	386.00	385.60	386.00	386.25	-0.6	-0.5
25	385.92	385.67	385.27	385.67	385.27	385.67	385.92		
50	385.58	385.33	384.93	385.33	384.93	385.33	385.58	-1.9	-2.1
75	385.25	385.00	384.60	385.00	384.60	385.00	385.25		
100	384.92	384.67	384.27	384.67	384.27	384.67	384.92	-1.7	-2.1
125	384.58	384.33	383.93	384.33	383.93	384.33	384.58		
150	384.25	384.00	383.60	384.00	383.60	384.00	384.25	-0.9	-2.4
175	383.92	383.67	383.27	383.67	383.27	383.67	383.92		
200	383.58	383.33	382.93	383.33	382.93	383.33	383.58	-0.9	-2.5
225	383.25	383.00	382.60	383.00	382.60	383.00	383.25		
250	382.92	382.67	382.27	382.67	382.27	382.67	382.92	-2.0	-2.5
275	382.58	382.33	381.93	382.33	381.93	382.33	382.58		
300	382.25	382.00	381.60	382.00	381.60	382.00	382.25	-1.6	-2.5
325	381.92	381.67	381.27	381.67	381.27	381.67	381.92		
350	381.58	381.33	380.93	381.33	380.93	381.33	381.58	-2.9	-2.7
375	381.25	381.00	380.60	381.00	380.60	381.00	381.25		
400	380.92	380.67	380.27	380.67	380.27	380.67	380.92	-2.8	-2.4
425	380.58	380.33	379.93	380.33	379.93	380.33	380.58		
450	380.25	380.00	379.60	380.00	379.60	380.00	380.25	-2.1	-2.0
475	379.92	379.67	379.27	379.67	379.27	379.67	379.92		
500	379.58	379.33	378.93	379.33	378.93	379.33	379.58	-1.6	-1.4
525	379.25	379.00	378.60	379.00	378.60	379.00	379.25		
550	378.92	378.67	378.27	378.67	378.27	378.67	378.92	-0.7	-0.8
575	378.58	378.33	377.93	378.33	377.93	378.33	378.58		
600 = N.L. Madison	378.25	378.00	377.60	378.00	377.60	378.00	378.25	-0.2	-0.7

385.70	385.25	384.80	384.35	383.90	383.45	383.00	382.55	382.10	381.65	381.20	380.75	380.30	379.85	379.40	378.95	378.50	378.05	377.60
382.77	382.32	381.87	381.42	380.97	380.52	380.07	379.62	379.17	378.72	378.27	377.82	377.37	376.92	376.47	376.02	375.57	375.12	374.67

384.00	383.55	383.10	382.65	382.20	381.75	381.30	380.85	380.40	379.95	379.50	379.05	378.60	378.15	377.70	377.25	376.80	376.35	375.90
381.07	380.62	380.17	379.72	379.27	378.82	378.37	377.92	377.47	377.02	376.57	376.12	375.67	375.22	374.77	374.32	373.87	373.42	372.97

OUTSIDE FILLS
 217.22 375.54
 1.55 1.78
 0.09 -0.8

EXPT. 1861. S. Pole S.W. Cor. Adams & Utah
 296.23 HI 370.13 370.23 370.33 370.43 370.53 370.63 370.73 370.83 370.93 371.03 371.13 371.23 371.33 371.43 371.53 371.63 371.73 371.83 371.93 372.03
 1.55 1.78 1.98 2.18 2.38 2.58 2.78 2.98 3.18 3.38 3.58 3.78 3.98 4.18 4.38 4.58 4.78 4.98 5.18 5.38 5.58
 372.46 HI 372.54 372.62 372.70 372.78 372.86 372.94 373.02 373.10 373.18 373.26 373.34 373.42 373.50 373.58 373.66 373.74 373.82 373.90 373.98 374.06 374.14 374.22 374.30 374.38 374.46 374.54 374.62 374.70 374.78 374.86 374.94 375.02 375.10 375.18 375.26 375.34 375.42 375.50 375.58 375.66 375.74 375.82 375.90 375.98 376.06 376.14 376.22 376.30 376.38 376.46 376.54 376.62 376.70 376.78 376.86 376.94 377.02 377.10 377.18 377.26 377.34 377.42 377.50 377.58 377.66 377.74 377.82 377.90 377.98 378.06 378.14 378.22 378.30 378.38 378.46 378.54 378.62 378.70 378.78 378.86 378.94 379.02 379.10 379.18 379.26 379.34 379.42 379.50 379.58 379.66 379.74 379.82 379.90 380.00

Checked on road. Checked subgrade & found it fairly good setting states where necessary.

Universal states on effect Jan 8th 1913
 Checked on road. Checked subgrade & found it fairly good setting states where necessary.

UTAH ST.

W.

£.

E.

0=SL Madison	278.25	278.00	277.60	278.00	277.60	278.00	278.25	-0.3	-16
25	277.96	277.71	277.31	277.71	277.31	277.71	277.96		
50	277.67	277.42	277.02	277.42	277.02	277.42	277.67	-1.6	-0.9
75	277.38	277.13	276.73	277.13	276.73	277.13	277.38		
100	277.08	276.83	276.43	276.83	276.43	276.83	277.08	-0.5	-0.8
125	276.79	276.54	276.14	276.54	276.14	276.54	276.79		
150	276.50	276.25	275.85	276.25	275.85	276.25	276.50	-0.1	-0.5
175	276.21	275.96	275.56	275.96	275.56	275.96	276.21		
200	275.92	275.67	275.27	275.67	275.27	275.67	275.92	+0.1	-0.3
225	275.62	275.38	274.98	275.38	274.98	275.38	275.62		
250	275.33	275.08	274.68	275.08	274.68	275.08	275.33	+0.5	+0.6
275	275.04	274.79	274.39	274.79	274.39	274.79	275.04		
300	274.75	274.50	274.10	274.50	274.10	274.50	274.75	+0.6	-0.3
325	274.46	274.21	273.81	274.21	273.81	274.21	274.46		
350	274.17	273.92	273.52	273.92	273.52	273.92	274.17	+0.9	+0.5
375	273.88	273.63	273.23	273.63	273.23	273.63	273.88		
400	273.58	273.33	272.93	273.33	272.93	273.33	273.58	+1.0	+0.4
425	273.29	273.04	272.64	273.04	272.64	273.04	273.29		
450	273.00	272.75	272.35	272.75	272.35	272.75	273.00	+0.4	+1.7
475	272.71	272.46	272.06	272.46	272.06	272.46	272.71		
500	272.42	272.17	271.77	272.17	271.77	272.17	272.42	-0.8	+0.2
525	272.13	271.88	271.48	271.88	271.48	271.88	272.13		
550	271.83	271.58	271.18	271.58	271.18	271.58	271.83	+0.4	+0.2
575	271.54	271.29	270.89	271.29	270.89	271.29	271.54		
600=NL Monroe	271.25	271.00	270.60	271.00	270.60	271.00	271.25	-0.7	+0.1

331 1/2 Sec Plat
378 1/2 E
378 1/2 W Sec Plat

Final stakes set offset Dec 10 1914

William Miller Shard

8832

278.25	278.00	277.60	278.00	277.60	278.00	278.25	-0.3	-16
278.00	277.71	277.31	277.71	277.31	277.71	278.00		
277.71	277.42	277.02	277.42	277.02	277.42	277.71	-1.6	-0.9
277.42	277.13	276.73	277.13	276.73	277.13	277.42		
277.13	276.83	276.43	276.83	276.43	276.83	277.13	-0.5	-0.8
276.83	276.54	276.14	276.54	276.14	276.54	276.83		
276.54	276.25	275.85	276.25	275.85	276.25	276.54	-0.1	-0.5
276.25	275.96	275.56	275.96	275.56	275.96	276.25		
275.96	275.67	275.27	275.67	275.27	275.67	275.96	+0.1	-0.3
275.67	275.38	274.98	275.38	274.98	275.38	275.67		
275.38	275.08	274.68	275.08	274.68	275.08	275.38	+0.5	+0.6
275.08	274.79	274.39	274.79	274.39	274.79	275.08		
274.79	274.50	274.10	274.50	274.10	274.50	274.79	+0.6	-0.3
274.50	274.21	273.81	274.21	273.81	274.21	274.50		
274.21	273.92	273.52	273.92	273.52	273.92	274.21	+0.9	+0.5
273.92	273.63	273.23	273.63	273.23	273.63	273.92		
273.63	273.33	272.93	273.33	272.93	273.33	273.63	+1.0	+0.4
273.33	273.04	272.64	273.04	272.64	273.04	273.33		
273.04	272.75	272.35	272.75	272.35	272.75	273.04	+0.4	+1.7
272.75	272.46	272.06	272.46	272.06	272.46	272.75		
272.46	272.17	271.77	272.17	271.77	272.17	272.46	-0.8	+0.2
272.17	271.88	271.48	271.88	271.48	271.88	272.17		
271.88	271.58	271.18	271.58	271.18	271.58	271.88	+0.4	+0.2
271.58	271.29	270.89	271.29	270.89	271.29	271.58		
271.29	271.00	270.60	271.00	270.60	271.00	271.29	-0.7	+0.1

Checked subgrade & found it fairly good, setting stakes where necessary. Curves O.K.
 sidewalk stakes and offset Jan 11 1915
 William Miller Shard

0 = S.L. Monroe	37076	37060	37010	37050	37010	37050	37076
25	37066	37041	37001	37040	37000	37040	37066
50	37058	37032	36992	37031	36989	37029	37054
75	37049	37024	36984	37021	36979	37019	37044
100	37040	37015	36975	37012	36968	37008	37033
125	37031	37006	36966	37002	36958	36998	37023
150	37022	36998	36958	36992	36948	36988	37013
175	37014	36989	36949	36982	36937	36977	37002
200	37005	36980	36940	36973	36927	36967	36992
225	36996	36971	36931	36964	36916	36956	36981
250	36988	36963	36923	36956	36906	36946	36971
275	36979	36954	36914	36947	36896	36936	36960
300	36970	36945	36905	36938	36885	36925	36950
325	36961	36936	36896	36928	36875	36915	36940
350	36952	36928	36888	36916	36864	36904	36929
375	36944	36919	36879	36906	36854	36894	36919
400	36935	36910	36870	36897	36843	36883	36908
425	36926	36901	36861	36887	36833	36873	36898
450	36918	36893	36853	36878	36823	36863	36888
475	36909	36884	36844	36868	36812	36852	36877
500	36900	36875	36835	36858	36802	36842	36867
525	36891	36866	36826	36849	36791	36831	36856
550	36882	36858	36818	36842	36781	36821	36846
575	36874	36849	36809	36830	36770	36810	36835
600 = N.L. Meade	36865	36840	36800	36820	36760	36800	36825

-1.2	-0.7	37076	37058	37040	37022	37005	36988	36971	36954	36937	36920	36903	36886	36869	36852	36835	36818	36801
------	------	-------	-------	-------	-------	-------	-------	-------	-------	-------	-------	-------	-------	-------	-------	-------	-------	-------

37076 to west tie for is point Utah St Monroe.
 37058 to west tie for is point Utah St Meade.

-2.0	-1.9	37076	37058	37040	37022	37005	36988	36971	36954	36937	36920	36903	36886	36869	36852	36835	36818	36801
------	------	-------	-------	-------	-------	-------	-------	-------	-------	-------	-------	-------	-------	-------	-------	-------	-------	-------

Found stakes on effect Dec 10 1914
 Sherman
 Miller
 Shawd.

Checked stakes on this line for line & grade Jan 15 1915
 Checked subgrade & found it fairly good setting stakes where necessary. Curb & O.K.
 March 12 1915
 Sherman
 Miller
 Shawd.

-2.0	-2.0	37076	37058	37040	37022	37005	36988	36971	36954	36937	36920	36903	36886	36869	36852	36835	36818	36801
------	------	-------	-------	-------	-------	-------	-------	-------	-------	-------	-------	-------	-------	-------	-------	-------	-------	-------

-2.1	-2.1	37076	37058	37040	37022	37005	36988	36971	36954	36937	36920	36903	36886	36869	36852	36835	36818	36801
------	------	-------	-------	-------	-------	-------	-------	-------	-------	-------	-------	-------	-------	-------	-------	-------	-------	-------

-2.2	-2.2	37076	37058	37040	37022	37005	36988	36971	36954	36937	36920	36903	36886	36869	36852	36835	36818	36801
------	------	-------	-------	-------	-------	-------	-------	-------	-------	-------	-------	-------	-------	-------	-------	-------	-------	-------

-1.8	-1.8	37076	37058	37040	37022	37005	36988	36971	36954	36937	36920	36903	36886	36869	36852	36835	36818	36801
------	------	-------	-------	-------	-------	-------	-------	-------	-------	-------	-------	-------	-------	-------	-------	-------	-------	-------

-1.5	-1.5	37076	37058	37040	37022	37005	36988	36971	36954	36937	36920	36903	36886	36869	36852	36835	36818	36801
------	------	-------	-------	-------	-------	-------	-------	-------	-------	-------	-------	-------	-------	-------	-------	-------	-------	-------

-1.4	-1.4	37076	37058	37040	37022	37005	36988	36971	36954	36937	36920	36903	36886	36869	36852	36835	36818	36801
------	------	-------	-------	-------	-------	-------	-------	-------	-------	-------	-------	-------	-------	-------	-------	-------	-------	-------

-1.4	-1.3	37076	37058	37040	37022	37005	36988	36971	36954	36937	36920	36903	36886	36869	36852	36835	36818	36801
------	------	-------	-------	-------	-------	-------	-------	-------	-------	-------	-------	-------	-------	-------	-------	-------	-------	-------

85

W.

UTAH ST.

☉

E.

N.L. Meade	36865	36840	36800	36820	36760	36800	36825
Curb	36740	36733	36726	36720	36714	36707	36700
N. 1/2	36800	36793	36786	36780	36774	36767	36760
Center	36840	36833	36826	36820	36814	36807	36800
S. 1/2	36800	36793	36786	36780	36774	36767	36760
Curb	36740	36733	36726	36720	36714	36707	36700
S.L. Meade	36865	36840	36800	36820	36760	36800	36825

S.L. Meade & Utah
 472.32 876.32
 68.00 68.39
 1.32 3.72

Sidewalk stakes on offset
 Jan 12th 1915

Herman Miller Shaw

85

+01 -0.8

UTAH ST.

38 36 W.

E.

E.

0 = S.L. Meade	36865	36860	36800	36820	36760	36800	36825
25	36880	36855	36814	36826	36774	36812	36828
50	36895	36870	36828	36848	36787	36825	36850
75	36910	36885	36843	36861	36801	36838	36862
100	36925	36900	36857	36875	36814	36850	36875
125	36940	36915	36871	36889	36828	36863	36898
150	36955	36930	36885	36903	36841	36875	36920
175	36970	36945	36899	36916	36855	36888	36943
200	36985	36960	36913	36930	36868	36900	36965
225	37000	36975	36928	36944	36882	36912	36988
250	37015	36990	36942	36958	36896	36925	37010
275	37030	37005	36956	36971	36909	36938	37032
300	37045	37020	36970	36985	36922	36950	37055
325	37060	37035	36984	36999	36936	36962	37078
350	37075	37050	36998	37013	36950	36975	37100
375	37090	37065	37012	37026	36963	36988	37123
400	37105	37080	37027	37040	36977	37000	37146
425	37120	37095	37041	37054	36990	37012	37168
450	37135	37110	37055	37068	37004	37025	37190
475	37150	37125	37069	37081	37017	37038	37212
500	37165	37140	37082	37094	37031	37050	37235
525	37180	37155	37096	37109	37044	37062	37258
550	37195	37170	37112	37122	37058	37075	37280
575	37210	37185	37126	37136	37071	37088	37303
600 = N.L. El Cajon	37225	37200	37140	37150	37085	37100	37325

36755 Tie hub 50' N. of Meade

36755

38 36

-0.4 -1.8

36755	36750	36700	36720	36740	36760	36780	36795
36800	36795	36745	36765	36785	36805	36825	36840
36850	36845	36795	36815	36835	36855	36875	36890

-0.1 -1.0

36900 Brass Plug S.W. Cor. E. El Cajon Co. Utah.

-0.6 -1.9

36900	36895	36845	36865	36885	36905	36925	36940
36950	36945	36895	36915	36935	36955	36975	36990
37000	36995	36945	36965	36985	37005	37025	37040

-0.5 -1.7

set french stakes on offset Dec 12-1916

-1.0 -2.2

37000 B.P.S.W. Cor. of Utah B. El Cajon.

37000	36995	36945	36965	36985	37005	37025	37040
37050	37045	36995	37015	37035	37055	37075	37090
37100	37095	37045	37065	37085	37105	37125	37140

-1.0 -2.0

Checked subgrade & found it fairly good setting stakes where necessary of Cur 83.0 R.

-0.8 -2.0

-0.6 -1.3

+0.6 +1.4

-0.1 -1.2

-0.1 -1.3

+0.1 -0.7

Jennett Miller Shaw

ELM ST.

10' W 91/4 S

30th St

80
256.00
256.16
256.32
256.05
255.55
255.00
253.91
252.93
251.40

60'
Elm

257.00
257.22
257.44
257.47
256.90
256.34
255.43
254.48
253.04

266.00

248.00

60 Fern St

244.00

60'
St

246.00

202.7

228.9

231.00

231.50

80 Grove St

60'

0 = EL. 30th	25625	25600	25585	25650	25640	25700	25725	-01	-01
20	25621	25616	25603	25669	25664	25722	25747		
40	25645	25640	25607	25674	25668	25728	25753	+17	+23
60	25657	25632	25620	25688	25684	25744	25769		
80	25644	25619	25610	25681	25683	25743	25768	+15	+20
100	25630	25605	25600	25674	25682	25742	25767		
120	25593	25568	25564	25636	25643	25703	25728	+19	+29
140	25550	25555	25549	25623	25630	25690	25715		
160	25545	25500	25494	25567	25574	25634	25659	+24	+33
180	25416	25391	25389	25467	25482	25543	25568		
200	25391	25366	25365	25443	25459	25519	25544	+39	+45
220	25318	25293	25292	25371	25388	25448	25473		
240	25247	25217	25217	25297	25316	25376	25401	+49	+51
260	25165	25140	25141	25222	25244	25304	25329		
280	25096	25001	25005	25058	25116	25175	25200		
300	24795	24770	24777	24834	24899	24959	24984	+54	+72
318.4 = W.L. Fern	24665	24600	24610	24700	24740	24800	24825	+42	+17
W.L. Fern	24625	24600	24610	24700	24740	24800	24825		
Curb	24500	24666	24576	24666	24706	24666	24700		
W. 1/4	24540	24433	24543	24633	24673	24633	24740		
Center	24500	24400	24510	24600	24640	24600	24700	+24	-07
E. 1/4	24410	24367	24479	24567	24607	24567	24610		
Curb	24300	24334	24444	24534	24574	24534	24500		
EL. Fern	24245	24400	24410	24500	24540	24600	24625		

Vertical Curve

0=EL Fern	2424	24400	24410	24500	24540	24600	24624
25	24266	24241	24251	24262	24282	24442	24467
50	24107	24082	24092	24183	24222	24283	24208
75	23949	23924	23934	24025	24065	24125	24150
100	23790	23765	23776	23866	23907	23967	23992
125	23631	23606	23617	23707	23748	23808	23833
150	23472	23447	23458	23549	23590	23650	23675
175	23313	23289	23290	23390	23431	23491	23516
200=WL Grove	23144	23100	23111	23202	23243	23303	23328
WL Grove	23124	23100	23072	23125	23148	23150	23175

KANSAS STREET

14' Walks

1140

150' E 140' Cajon Ave.

369.00	80'	368.40
370.50		370.00

80' Polk Ave.

369.00	369.00
363.00	367.50

80' Howard Ave.

370.50	370.00
369.00	369.00

80' Lincoln Ave.

367.00	361.50
--------	--------

80' Polk Ave.

369.00	369.00
--------	--------

Kansas Street Sidewalks

36966 40' tie knob at Howard

	W	E
0 = SL El Cajon	36925 36900 36840 36870 36815 36840 36865	
25	36936 36911 36851 36881 36827 36851 36876	
50	36947 36922 36862 36892 36838 36862 36889	
75	36958 36933 36873 36902 36848 36876 36901	
100	36970 36945 36885 36916 36862 36887 36912	
125 132 = NL Hiller	36981 36956 36896 36927 36872 36899 36924	
150 155 = SL Hiller	36992 36967 36907 36937 36882 36911 36936	
175 187	37003 36978 36918 36948 36893 36922 36948	
200	37012 36989 36929 36959 36904 36933 36960	
225 237	37025 37000 36940 36970 36915 36944 36970	
250	37036 37011 36951 36981 36926 36955 36982	
275 287	37047 37022 36962 36992 36937 36966 36992	
300	37059 37034 36974 37004 36949 36978 37004	
325 = NL Howard	37075 37050 36990 37025 36970 37000 37025	

36925	36931	36937	36943	36949	36955	36961	36967	36973	36979	36985	36991	36997	37003	37009	37015	37021	37027	37033	37039	37045	37051	37057	37063	37069	37075	37081	37087	37093	37099	37105	37111	37117	37123	37129	37135	37141	37147	37153	37159	37165	37171	37177	37183	37189	37195	37201	37207	37213	37219	37225	37231	37237	37243	37249	37255	37261	37267	37273	37279	37285	37291	37297	37303	37309	37315	37321	37327	37333	37339	37345	37351	37357	37363	37369	37375	37381	37387	37393	37399	37405	37411	37417	37423	37429	37435	37441	37447	37453	37459	37465	37471	37477	37483	37489	37495	37501	37507	37513	37519	37525	37531	37537	37543	37549	37555	37561	37567	37573	37579	37585	37591	37597	37603	37609	37615	37621	37627	37633	37639	37645	37651	37657	37663	37669	37675	37681	37687	37693	37699	37705	37711	37717	37723	37729	37735	37741	37747	37753	37759	37765	37771	37777	37783	37789	37795	37801	37807	37813	37819	37825	37831	37837	37843	37849	37855	37861	37867	37873	37879	37885	37891	37897	37903	37909	37915	37921	37927	37933	37939	37945	37951	37957	37963	37969	37975	37981	37987	37993	37999
-------	-------	-------	-------	-------	-------	-------	-------	-------	-------	-------	-------	-------	-------	-------	-------	-------	-------	-------	-------	-------	-------	-------	-------	-------	-------	-------	-------	-------	-------	-------	-------	-------	-------	-------	-------	-------	-------	-------	-------	-------	-------	-------	-------	-------	-------	-------	-------	-------	-------	-------	-------	-------	-------	-------	-------	-------	-------	-------	-------	-------	-------	-------	-------	-------	-------	-------	-------	-------	-------	-------	-------	-------	-------	-------	-------	-------	-------	-------	-------	-------	-------	-------	-------	-------	-------	-------	-------	-------	-------	-------	-------	-------	-------	-------	-------	-------	-------	-------	-------	-------	-------	-------	-------	-------	-------	-------	-------	-------	-------	-------	-------	-------	-------	-------	-------	-------	-------	-------	-------	-------	-------	-------	-------	-------	-------	-------	-------	-------	-------	-------	-------	-------	-------	-------	-------	-------	-------	-------	-------	-------	-------	-------	-------	-------	-------	-------	-------	-------	-------	-------	-------	-------	-------	-------	-------	-------	-------	-------	-------	-------	-------	-------	-------	-------	-------	-------	-------	-------	-------	-------	-------	-------	-------	-------	-------	-------	-------	-------	-------

NL Howard	37075 37050 36990 37025 36970 37000 37025
Curb	36950 36941 36932 36923 36914 36905 36900
"	37010 37001 36992 36983 36974 36965 36960
Center	37050 37041 37032 37023 37014 37005 37000
"	37010 37001 36992 36983 36974 36965 36960
Curb	36950 36941 36932 36923 36914 36905 36900
SL Howard	37075 37050 36990 37025 36970 37000 37025

+0.7 -1.0

37061
37062

36900 36903 36905 36907 36909 36911 36913 36915 36917 36919 36921 36923 36925 36927 36929 36931 36933 36935 36937 36939 36941 36943 36945 36947 36949 36951 36953 36955 36957 36959 36961 36963 36965 36967 36969 36971 36973 36975 36977 36979 36981 36983 36985 36987 36989 36991 36993 36995 36997 36999

36900 36903 36905 36907 36909 36911 36913 36915 36917 36919 36921 36923 36925 36927 36929 36931 36933 36935 36937 36939 36941 36943 36945 36947 36949 36951 36953 36955 36957 36959 36961 36963 36965 36967 36969 36971 36973 36975 36977 36979 36981 36983 36985 36987 36989 36991 36993 36995 36997 36999

(For notes on extra fills see book 73 p 39) sidewalk + curb stakes 1/2 mile

Gravel
17000
17161

0=SL Howard	37075	37060	36990	37025	36975	37000	37035	-1.0	-1.6
25	37069	37044	36985	37020	36968	36996	37021		
50	37063	37028	36979	37015	36963	36992	37017	-1.0	-1.0
75	37056	37021	36974	37009	36958	36988	37013		
100	37050	37025	36968	37004	36954	36982	37008	-1.0	-1.3
125	37044	37019	36963	36999	36949	36979	37004		
150	37038	37013	36958	36994	36944	36975	37000	-0.6	-0.7
175	37031	37006	36953	36989	36940	36971	36996		
200	37025	37000	36947	36983	36935	36967	36992	-0.6	-0.8
225	37019	36994	36941	36978	36930	36963	36988		
250	37013	36988	36936	36973	36926	36958	36983	+0.5	-0.4
275	37006	36981	36930	36968	36921	36954	36979		
300	37000	36975	36925	36963	36916	36950	36975	+1.0	-0.7
325	36994	36969	36920	36957	36912	36946	36971		
350	36988	36963	36914	36952	36907	36942	36967	0.0	-1.3
375	36981	36956	36909	36947	36902	36938	36963		
400	36975	36950	36903	36942	36898	36932	36958	-0.3	-0.5
425	36969	36944	36898	36936	36893	36929	36954		
450	36963	36938	36893	36931	36888	36925	36950	+0.1	-0.8
475	36956	36931	36887	36926	36883	36921	36946		
500	36950	36925	36881	36921	36879	36917	36942	+0.4	-0.9
525	36944	36919	36876	36916	36874	36913	36938		
550	36938	36913	36871	36910	36869	36908	36932	+1.2	-1.1
575	36931	36906	36865	36905	36863	36904	36929		
600=NL Polk	36925	36900	36860	36900	36860	36900	36925	+0.2	-0.6

Kansas Street.

43

W.

¢.

E.

N.L. Polk Ave	36925	36900	36860	36900	36860	36900	36925
Curb	36800	36800	36860	36900	36860	36800	36800
1/4	36800	36800	36860	36900	36860	36800	36860
Center	36900	36800	36860	36900	36860	36800	36900
1/4	36860	36800	36860	36900	36860	36800	36860
Curb	36800	36800	36860	36900	36860	36800	36800
S.L. Polk	36925	36900	36860	36900	36860	36900	36925

0=SL. Polk	36925	36900	36860	36900	36860	36900	36925	-0.3	-1.1
50	36875	36850	36808	36848	36807	36846	36871	-0.2	-0.1
100	36825	36800	36757	36796	36754	36792	36817	+0.3	+0.4
150	36775	36750	36705	36744	36701	36738	36763	-0.1	+0.7
200	36725	36700	36653	36692	36648	36683	36708	+0.9	+1.0
250	36675	36650	36602	36640	36594	36629	36654	+0.7	+1.2
300	36625	36600	36550	36588	36541	36575	36600	+0.9	+0.9
350	36575	36550	36498	36535	36488	36521	36546	+1.0	+1.4
400	36525	36500	36449	36483	36435	36467	36492	+0.8	+1.3
450	36475	36450	36395	36431	36382	36413	36438	+0.7	+1.3
500	36425	36400	36343	36379	36329	36358	36383	+0.9	+1.2
550	36375	36350	36292	36327	36276	36304	36329	+1.0	+1.4
600=N.L. Lincoln	36325	36300	36240	36275	36223	36250	36275	+0.8	+1.8

3616 End of Curb Lincoln

843

36196	367	368	36800	3640	3640	3650	3650	3660	3665	367	3670	368	3685	369
37018	3615	3625	3630	3635	3640	3645	3650	3655	3660	3665	3670	3675	3680	3685
	3615	3625	3630	3635	3640	3645	3650	3655	3660	3665	3670	3675	3680	3685

Cement Curb Status 2 1/2 ft. Groovy Moore Miller.

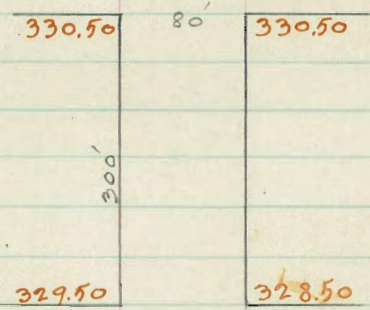
Kansas St.
E.

N.L. Lincoln	36225	36200	36240	36275	36225	36250	36275	
Curb	36200	36182	36222	36257	36205	36132	36150	
1/4	36240	36166	36206	36241	36189	36116	36190	
Center	36250	36150	36190	36225	36173	36100	36200	-1.5 0.0
1/4	36185	36134	36174	36209	36157	36084	36135	
Curb	36100	36118	36158	36193	36141	36068	36050	
S.L. Lincoln	36225	36200	36140	36175	36123	36150	36175	

LINCOLN ST. INTERSECTION - 80' ST.

N.L. Lincoln	36225	36200	36240	36275	36225	36250	36275
Curb	36200	36200	36222	36258	36205	36250	36250
1/4	36240	36175	36206	36241	36188	36125	36190
Center	36250	36150	36190	36225	36172	36100	36200
1/4	36185	36125	36174	36209	36156	36075	36135
Curb	36100	36100	36157	36192	36139	36050	36050
S.L. Lincoln	36225	36200	36140	36175	36122	36150	36175

Myrtle Ave



Upas St.

Granada Ave.

0 = S.L. Myrtle	33075	33080	33010	33050	33010	33050	33075
50	33058	33033	32990	33045	32981	33017	33047
100	33042	33017	32970	33000	32952	32982	33008
150	33025	33000	32950	32975	32922	32950	32975
200	33008	32983	32930	32950	32892	32917	32942
250	32992	32967	32910	32925	32864	32882	32908
300 = NL. Upas	32975	32950	32890	32900	32825	32850	32875

B.M. N.W. cor. Upas. flk. pole. 329.76 ⁴⁶

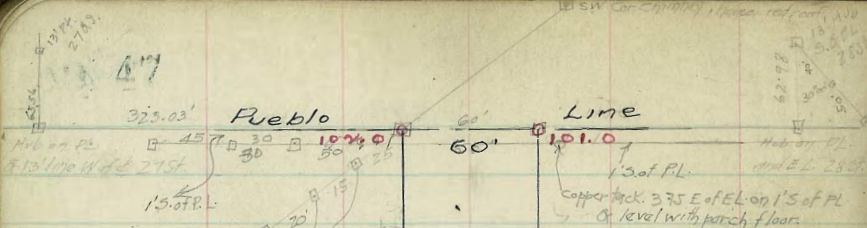
329.67	329.83	329.17	329.83	333.25	4.1
<u>3.58</u>	<u>4.42</u>	<u>4.08</u>	<u>3.42</u>	329.50	329.10
330.00	329.50	329.83	330.17	<u>3.75</u>	<u>4.75</u>
<u>3.25</u>	<u>3.75</u>	<u>3.42</u>	<u>2.08</u>		
330.33	330.17	330.50	330.50		
<u>2.92</u>	<u>3.08</u>	<u>2.75</u>	<u>2.75</u>		

chk. ok.

Feb 26/14

Schields
Allen
Herrick

67

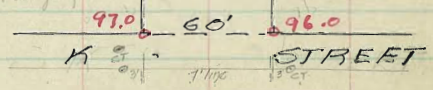


WL

137.6	131.6
134.8	133.8
135.6	134.6
135.8	134.8
135.7	134.7
135.0	134.0
133.6	132.6

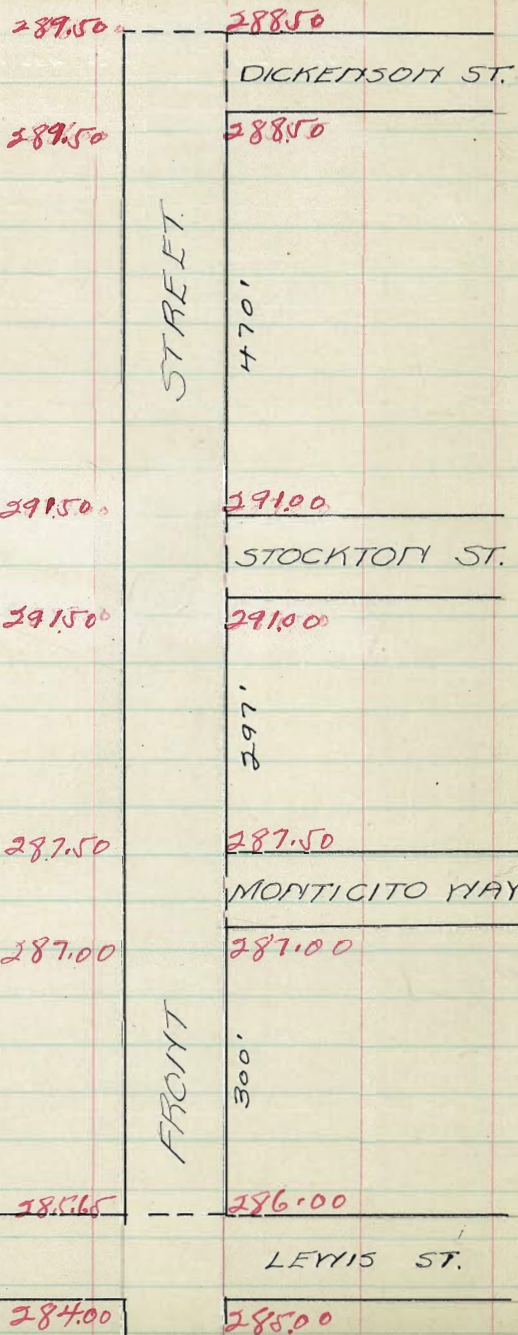
STREET
LANGLEY

7 ft pt. ENT level but 30 ft PL
see the file W of Langley



BM NW. Hog Court - 102.97
 BM NE. 280K - Fly - 85.96
 BM SE. 27 & I. Pion - 142.11
 " SE. 28 & I. Moj. - 102.67

47



E.

E.

N.

S.A. Lewis	57	285.50	285.50	285.40	284.50	283.85	284.00	284.25
S.C.	"	285.00	285.00	285.61	284.80	284.10	284.00	284.00
			284.00				283.00	
S.H.	"	284.85	284.75	285.81	285.07	284.33	283.42	284.01
B.	"	285.50	284.50	286.00	285.33	284.55	283.87	284.27
H.A.	"	285.40	284.75	286.19	285.60	284.77	284.24	285.05
H.C.	"	286.00	285.00	286.38	285.88	285.00	284.88	285.65
			285.00				284.88	
H.L.	"	286.75	286.00	286.60	286.17	285.25	285.65	285.90

H.L. Lewis	57	286.25	286.00	285.60	286.17	285.25	285.65	285.90
50' N.		286.41	286.16	285.76	286.30	285.47	285.87	286.17
100' N.		286.58	286.33	285.93	286.44	285.70	286.10	286.35
150' N.		286.72	286.50	286.10	286.58	285.92	286.37	286.57
200' N.		286.91	286.66	286.26	286.72	286.15	286.55	286.80
225' N.		287.00	286.75	286.35	286.79	286.26	286.66	286.91
250' N.		287.08	286.83	286.43	286.86	286.37	286.77	287.07
275' N.		287.16	286.91	286.51	286.93	286.49	286.88	287.13
300' N. - S.L.		287.25	287.00	286.60	287.00	286.60	287.00	287.25
at Broadway								

S.L. of Monticeto May	287.85	287.00	286.60	287.00	286.60	287.00	287.75
S.C. "	287.00	287.00	286.70	287.10	286.70	287.00	287.00
		286.00				286.00	
S. 1/4 "	286.73	286.13	286.77	287.17	286.77	286.13	286.73
E " "	287.25	286.25	286.85	287.25	286.85	286.25	287.25
N. 1/4 "	286.90	286.38	286.92	287.32	286.92	286.38	286.90
N.C. "	287.50	287.50	287.00	287.40	287.00	287.50	287.50
		286.50				286.50	
N.L. "	287.25	287.50	287.10	287.50	287.10	287.50	287.75

N.L. Monticeto May	287.25	287.50	287.10	287.50	287.10	287.50	287.75
S. 1/4 "	288.35	288.10	287.60	288.13	287.74	288.17	288.42
75' N.	288.63	288.38	287.85	288.44	288.06	288.50	288.75
100' N.	288.92	288.67	288.10	288.76	288.38	288.84	289.09
150' N.	289.51	289.26	288.60	289.40	289.02	289.52	289.77
200' N.	290.10	289.85	289.10	289.80	289.65	290.19	290.44
250' N.	290.69	290.44	289.60	290.65	290.30	290.86	291.11
297' N-S.L.	291.25	291.00	290.73	291.25	290.90	291.50	291.75
Stockton St.							

S.L. Stockton	291.25	291.00	290.73	291.25	290.90	291.50	291.75
S.C. "	291.00	290.00	290.13	290.25	290.38	290.50	291.50
S. 1/4 "	290.60	290.70	290.77	290.85	290.92	291.00	291.10
E " "	291.00	291.10	291.17	291.25	291.32	291.40	291.50
N. 1/4 "	290.60	290.70	290.77	290.85	290.92	291.00	291.10
N.C. "	291.00	290.00	290.13	290.25	290.38	290.50	291.50
N.L. "	291.25	291.00	290.73	291.25	290.90	291.50	291.75

11. Stockton	291.25	291.00	290.73	291.17	290.90	290.50	291.75
25' N.	291.12	290.87	290.60	291.13	290.84	291.39	291.64
50' N.	291.00	290.75	290.47	291.01	290.79	291.28	291.53
75' N.	290.87	290.62	290.35	290.89	290.74	291.18	291.43
100' N.	290.74	290.49	290.22	290.77	290.68	291.07	291.32
125' N.	290.61	290.36	290.09	290.65	290.63	290.96	291.21
150' N.	290.49	290.24	289.97	290.53	290.58	290.86	291.11
175' N.	290.36	290.11	289.84	290.41	290.53	290.75	291.00
200' N.	290.23	289.98	289.71	290.29	290.47	290.65	290.90
225' N.	290.10	289.85	289.59	290.17	290.42	290.54	290.79
250' N.	289.87	289.62	289.46	290.05	290.36	290.43	290.68
275' N.	289.74	289.49	289.33	289.93	290.31	290.33	290.58
300' N.	289.62	289.37	289.21	289.81	290.26	290.22	290.47
325' N.	289.49	289.24	289.09	289.69	290.21	290.11	290.36
350' N.	289.36	289.11	288.95	289.57	290.15	290.01	290.26
375' N.	289.23	288.98	288.83	289.45	290.10	289.90	290.15
400' N.	289.11	288.86	288.70	289.33	290.05	289.79	290.04
425' N.	288.98	288.73	288.57	289.21	290.00	289.69	289.94
450' N.	288.85	288.60	288.45	289.09	289.94	289.58	289.83
470' N. = S.L. of Dickenson St.	288.75	288.50	288.35	289.00	289.90	289.50	289.75

S. A. Dickerson	289.25	288.50	288.35	289.00	288.90	289.50	289.75
S. C. "	288.50	287.50	287.25	288.00	288.75	288.50	289.50
S. H. "	288.10	288.76	288.43	288.60	288.76	288.93	289.10
E. "	288.50	288.66	288.83	289.00	289.16	289.33	289.50
H. H. "	288.10	288.76	288.43	288.60	288.76	288.93	289.10
H. C. "	288.50	287.50	287.75	288.00	288.75	288.50	289.50
H. L. "	288.75	288.50	288.35	289.00	288.90	289.50	289.75

El Cajon Ave.

373.00

372.00

Copley Ave.

393.50

80'

393.50

300

St.

374.00

373.00

Howard Ave.

374.00

373.00

391.50

391.50

Collier Ave.

Ave.

391.00

391.00

Utah

600

368.50

368.50

Polk Ave.

387.00

80'

387.00

Adams Ave.

ST. W. Adams + High	3775	3775	3775	3775	3775	3775	3775	3775	3775	3775	3775	3775	3775	3775	3775	3775	3775	3775	3775	3775	3775
3775	3775	3775	3775	3775	3775	3775	3775	3775	3775	3775	3775	3775	3775	3775	3775	3775	3775	3775	3775	3775	3775

BT 38907 Brass Plug in corner of Collier & Idaho.

38907	38907	38907	38907	38907	38907	38907	38907	38907	38907	38907	38907	38907	38907	38907	38907	38907	38907	38907	38907	38907	38907
-------	-------	-------	-------	-------	-------	-------	-------	-------	-------	-------	-------	-------	-------	-------	-------	-------	-------	-------	-------	-------	-------

Finish stakes on offset.

Utah. Record - 1914

700=SL Copley	39275	39275	39275	39275	39275	39275	39275	-1.0	-1.1												
750	39287	39287	39287	39287	39287	39287	39287	1.07	-0.7												
700	39208	39208	39208	39208	39208	39208	39208	+0.1	9.0												
150	39276	39276	39276	39276	39276	39276	39276	+0.7	+0.1												
100	39247	39247	39247	39247	39247	39247	39247	+0.8	+0.7												
50	39208	39208	39208	39208	39208	39208	39208	+0.8	+0.8												
0=NL Collier	39175	39175	39175	39175	39175	39175	39175	+0.7	+0.7												

38907	38907	38907	38907	38907	38907	38907	38907	38907	38907	38907	38907	38907	38907	38907	38907	38907	38907	38907	38907	38907	38907
-------	-------	-------	-------	-------	-------	-------	-------	-------	-------	-------	-------	-------	-------	-------	-------	-------	-------	-------	-------	-------	-------

Checked across side & found uniformity high setting stakes where necessary.

Curbs on N. side of Collier

Cannot accept subgrade

March 23rd 1915

600=SL Collier	39075	39075	39075	39075	39075	39075	39075	+0.8	+0.8												
550	39097	39097	39097	39097	39097	39097	39097	+0.6	+0.6												
500	39058	39058	39058	39058	39058	39058	39058	+0.9	+0.5												
450	39008	39008	39008	39008	39008	39008	39008	+0.8	+0.7												
400	38997	38997	38997	38997	38997	38997	38997	+0.9	+0.6												
350	38918	38918	38918	38918	38918	38918	38918	+0.7	+0.7												
300	38925	38925	38925	38925	38925	38925	38925	+0.6	+0.8												
250	38897	38897	38897	38897	38897	38897	38897	+1.1	4.1												
200	38858	38858	38858	38858	38858	38858	38858	-0.7	+0.6												
150	38825	38825	38825	38825	38825	38825	38825	-0.9	-0.2												
100	38797	38797	38797	38797	38797	38797	38797	-0.8	-0.7												
50	38758	38758	38758	38758	38758	38758	38758	-0.6	-0.8												
0=NL Adams	38725	38725	38725	38725	38725	38725	38725	-0.9	-0.6												

Subgrade on the Blk from Collier to Copley Q. for quantity but on on curb Q. on the E. side of St. On the West side there is a bump in the curb 7' south of Copley 12' high. At 47' south of Copley there is bad work the curb runs into the St. about 20'

Mar 20 1915

Donnan Miller - Shaw

37144.44		37285	37310	37228	37281	37261	37281	37281	OUTS + FILLS	9/25/14	Gregory Sundmaker Moore
4.00		4.00	4.00	4.00	4.00	4.00	4.00	4.00			
3721	40	20	20	20	20	20	20	20			
3721	40	20	20	20	20	20	20	20			

Set 37217.0 E. Cor. of El Cajon & Idaho Brass Plug
+ 3.10
37217
- 2.14
37214.86 SW " " " " Flat, "
+ 1.07
37215.93 HI
- 0.14
37215.79 = 3714 West tie for 13' point of Utah & Howard

37210	37210	37210	37210	37210	37210	37210	37210	37210	37210	37210	37210	37210	37210	37210	37210
2200	2200	2211	2211	2226	2226	2241	2241	2256	2256	2270	2270	2285	2285	2299	2299
510	410	397	497	494	494	479	479	464	464	449	449	434	434	419	419
37214	73.00	4.10	Finish Stakes on offset Dec 10-14												

Set 37215.93 HI
+ 2.01
37217.94
37215.93 = 3714 West tie for 13' point of Utah & Howard
+ 3.01
37218.94

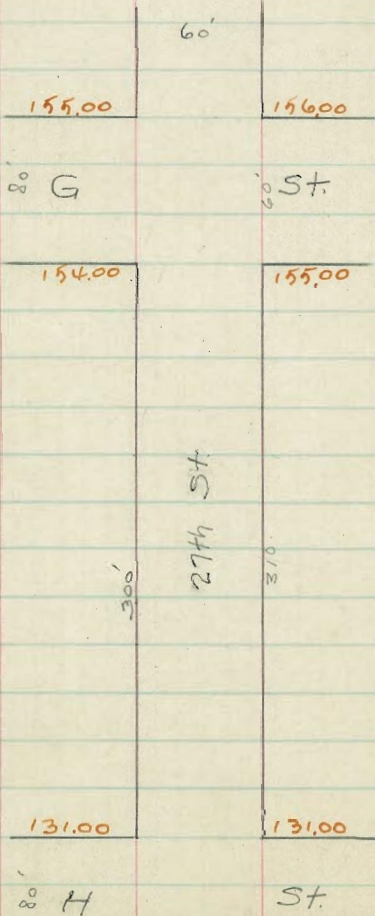
Set 37215.93 HI
+ 2.01
37217.94
37215.93 = 3714 West tie for 13' point of Utah & Howard
+ 3.01
37218.94

Set and stake on offset
March 1st 1915
Shard.

Mar 30-15
Shard.

On 25 O.K. Subgrade fair. Had to set a few + stakes at high spots.

37264 = SLEI / Cajon	37244	37300	37260	37250	37188	37200	37225	-0.5	-0.5
300	37236	37311	37276	37266	37196	37211	37236	-0.7	-0.2
250	37251	37326	37286	37276	37211	37226	37251	-0.1	-0.9
200	37266	37341	37301	37291	37226	37241	37266	-0.7	+0.5
150	37281	37356	37316	37306	37241	37256	37281	-0.9	+0.4
100	37296	37370	37330	37320	37256	37270	37296	-0.7	+0.6
50	37310	37385	37345	37335	37270	37285	37310	-0.7	-0.1
0 = NL Howard	37325	37400	37360	37350	37285	37300	37325	-0.1	+0.3



W.

27th St. E.

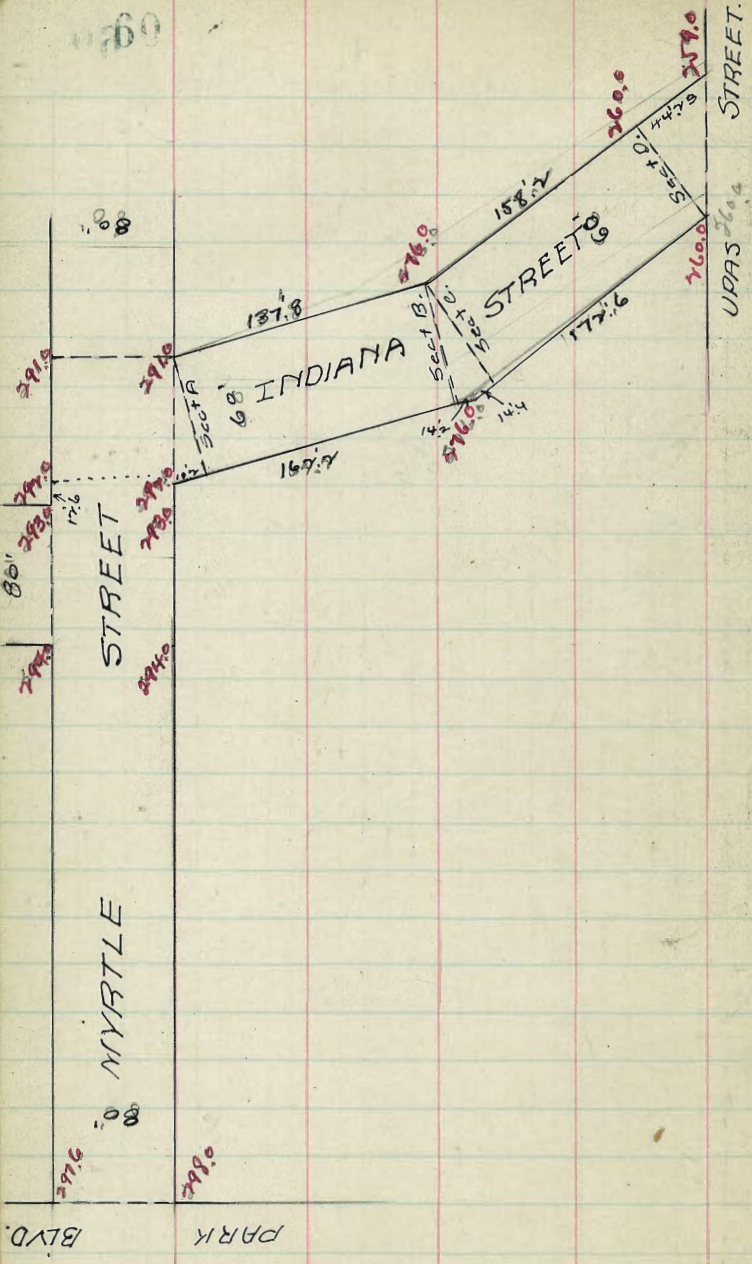
E.

N.L.G St	15525	15500	15485	15550	15540	15600	15625
Curb	15400	15384	15467	15537	15597	15684	15500
"	15460	15366	15451	15516	15506	15466	15500
Center	15450	15350	15435	15500	15490	15450	15550
"	15385	15330	15419	15484	15474	15434	15485
Curb	15300	15318	15407	15468	15458	15418	15400
S.L.G	15445	15400	15385	15450	15440	15500	15525

0 = S.L.G.	15445	15400	15385	15450	15440	15500	15525
25	15233	15208	15191	15250	15242	15300	15275
50	15047	15017	14998	15058	15043	15100	15125
75	14850	14825	14806	14863	14849	14900	14925
100	14658	14633	14610	14667	14647	14700	14725
125	14467	14442	14416	14471	14448	14500	14525
150	14279	14253	14229	14293	14269	14320	14345
175	14083	14058	14034	14099	14074	14120	14145
200	13897	13867	13835	13883	13853	13900	13925
225	13700	13675	13641	13688	13654	13700	13725
250	13508	13483	13448	13494	13457	13500	13525
275	13317	13294	13250	13296	13258	13300	13325
300 = N.L.H	13125	13100	13060	13100	13060	13100	13125

FIGURED FOR 300'

-09 +60
-48 +60
-63 +0.7
-59 +2.4
-76 -1.7
-186 -11.9
-70.0 -8.4
-20.8 -8.2
-206 -8.9



5.

E.L. Park Baul.	297.75	298.00	297.60	297.80	297.70	297.60	297.85
25'E	297.91	297.66	297.56	297.46	296.90	297.30	297.55
50'E	297.55	297.33	296.93	297.15	296.60	297.00	297.25
75'E	297.25	297.00	296.60	296.83	296.30	296.70	296.95
100'E	296.91	296.66	296.26	296.58	296.00	296.40	296.65
125'E	296.58	296.33	295.93	296.70	296.15	296.10	296.35
150'E	296.25	296.00	295.60	295.89	295.40	295.80	296.05
175'E	295.91	295.66	295.26	295.57	295.10	295.50	295.75
200'E	295.58	295.33	294.90	295.26	294.80	295.20	295.45
225'E	295.25	295.00	294.60	294.94	294.50	294.90	295.15
250'E	294.91	294.66	294.26	294.63	294.20	294.60	294.85
275'E	294.58	294.33	293.90	294.31	293.90	294.30	294.55
300 E 31.1. Indiana.	294.25	294.00	293.60	294.00	293.60	294.00	294.25

294.00

S.E. Indiana	294.25	294.00	293.60	294.00	293.60	294.00	294.25
S.C.	294.07	293.82	293.42	293.82	293.42	293.82	294.07
N.W.	293.91	293.66	293.26	293.66	293.26	293.66	293.91
E.	293.75	293.50	293.10	293.50	293.10	293.50	293.75
E.W.	293.59	293.34	292.93	293.34	292.93	293.34	293.59
E.C.	293.43	293.17	292.77	293.17	292.77	293.17	293.43
E.L.	293.25	293.00	292.60	293.00	292.60	293.00	293.25
N.W. Indiana	292.25	292.00	291.60	292.00	291.60	292.00	292.25

N.L. Indiana	292.25	292.00	291.60	292.00	291.60	292.00	292.25
W.C.	292.00	292.00	291.43	291.83	291.43	292.00	292.00
W.F.	291.40	290.75	291.26	291.66	291.26	290.75	291.40
F.	291.50	290.50	291.10	291.50	291.10	290.50	291.50
E.F.	290.85	290.25	290.92	291.33	290.92	290.25	290.85
E.C.	291.00	291.00	290.76	291.46	290.76	291.00	291.00
E.L.	291.25	291.00	290.60	291.00	290.60	291.00	291.25

Indiana St.

W.

E.

S.L. Mistle.	292.25	292.00	291.40	291.50	290.85	291.00	291.25
Sect. A.	291.39	291.14	290.74	291.07	290.60	291.00	291.25
25'S.	288.86	288.61	288.71	288.44	287.87	288.27	288.52
50'S.	286.33	286.08	285.48	285.81	285.28	285.55	285.80
75'S.	283.79	283.54	282.94	283.18	282.60	282.83	283.08
100'S.	281.26	281.00	280.41	280.56	279.93	280.11	280.36
137.85 Sect. B.	277.44	277.19	276.59	276.54	275.87	276.00	276.25
Sect. C.	275.12	274.87	274.25	274.43	273.40	273.60	273.25
25'S.	272.77	272.52	271.95	272.19	271.27	271.47	271.72
50'S.	270.42	270.17	269.76	270.55	270.34	270.94	271.19
75'S.	268.07	267.82	267.56	268.11	267.81	268.41	268.66
100'S.	265.72	265.47	265.07	265.67	265.48	265.88	266.13
125'S.	263.47	263.22	262.77	263.23	262.95	263.35	263.60
158.25 Sect. D.	260.25	260.00	259.60	260.00	259.60	260.00	260.25
N.L. Upas.	260.25	260.00	259.40	259.50	258.85	259.00	259.25

2.6th

ST.

188.0

189.0

STREET.

300	⁴³ 143.8	144.43
325	140.2	141.70
350	140.05	141.05
375	141.44	142.46
400	144.8	145.80

E

180.0

181.0

27th

ST.

S.

M.

187.75	188.00	187.85	188.50	188.40	189.00	189.75
25'W.	184.55	184.78	184.13	184.78	184.68	185.50
50'W.	180.82	180.57	180.42	181.07	180.97	181.57
75'W.	177.10	176.85	176.70	177.35	177.25	177.85
100'W.	173.39	173.14	173.00	173.64	173.54	174.14
125'W.	169.68	169.43	169.28	169.92	169.82	170.43
150'W.	165.96	165.71	165.56	166.20	166.11	166.71
175'W.	162.25	162.00	161.85	162.50	162.40	163.00
200'W.	158.53	158.28	158.13	158.78	158.68	159.28
225'W.	154.82	154.57	154.42	155.07	154.97	155.57
250'W.	151.10	150.85	150.70	151.36	151.26	151.86
275'W.	147.39	147.14	146.99	147.64	147.54	148.14
300'W.	143.68	143.43	143.28	143.93	143.83	144.43
325'W.	140.95	140.70	140.55	141.20	141.10	141.70
350'W.	140.30	140.05	139.90	140.55	140.45	141.05
375'W.	141.65	141.40	141.25	141.90	141.80	142.40
400'W.	145.05	144.80	144.65	145.30	145.20	145.80
425'W.	149.65	149.40	149.25	149.90	149.80	150.40
450'W.	153.85	153.60	153.45	154.10	154.00	154.60
475'W.	158.25	158.00	157.85	158.50	158.40	159.00
500'W.	162.65	162.40	162.25	162.90	162.80	163.40
525'W.	167.05	166.80	166.65	167.30	167.20	167.80
550'W.	171.45	171.20	171.05	171.70	171.60	172.20
575'W.	175.85	175.60	175.45	176.10	176.00	176.60
600'W.	180.25	180.00	179.85	180.50	180.40	181.00

18801 B.M. NW. Cr 26 to x 2

1.71	12.92
189.82 H.I.	181.57
188.82	180.0
1.82	8.25
174.14	12.96
3.56	164.74 J.P.
1.63.71	171.20
12.00	0.17
16.240	164.71 H.I.
2.51	152.60
	12.78
	152.13 J.P.
	0.51
	152.94 H.I.
144.70	143.43
71.24	9.51
	151.86
	1.08

Feb. 9/15

Johnston
Kerr

PARK

BOULEVARD.

795.00

80'

795.00

Not correct

408.75

AVENUE.

789.50

789.00

HERBERT

80'

STREET

788.50

BROOKES

788.00

700'

787.00

80'

786.00

ALBERT

STREET.

W.L. Park Bowl	295.35	295.00	294.60	295.00	294.60	295.00	295.25
25 W.	294.91	294.66	294.26	294.64	294.24	294.63	294.88
50 W.	294.57	294.32	293.91	294.29	293.88	294.26	294.51
75 W.	294.24	293.99	293.56	293.94	293.54	293.90	294.15
100 W.	293.90	293.65	293.21	293.59	293.16	293.53	293.78
125 W.	293.56	293.31	292.87	293.24	292.80	293.16	293.41
150 W.	293.23	292.98	292.52	292.88	292.45	292.80	293.05
175 W.	292.89	292.64	292.16	292.53	292.08	292.43	292.68
200 W.	292.55	292.30	291.81	292.19	291.73	292.06	292.31
225 W.	292.22	291.97	291.47	291.83	291.37	291.70	291.95
250 W.	291.88	291.63	291.12	291.50	291.01	291.33	291.58
275 W.	291.55	291.30	290.77	291.13	290.65	290.96	291.21
300 W.	291.21	290.96	290.42	290.78	290.29	290.59	290.84
325 W.	290.87	290.62	290.07	290.43	289.93	290.23	290.48
350 W.	290.54	290.29	289.72	290.07	289.57	289.86	290.11
375 W.	290.20	289.95	289.37	289.72	289.21	289.49	289.74
400 W.	289.85	289.60	289.00	289.35	288.83	289.00	289.25

E.L. Herbert St.

E.L. Herbert St.	289.75	289.50	288.90	289.25	288.73	289.00	289.25
E.C.	289.50	289.25	288.72	289.08	288.55	289.00	289.00
E.H.	288.90	288.75	288.56	288.91	288.39	288.75	288.40
E.	288.00	288.00	288.40	288.75	288.23	288.50	288.50
W. 1/2	288.35	287.75	288.24	288.60	288.06	287.75	287.85
W.C.	288.50	288.50	288.08	288.42	287.91	288.00	288.00
W.L.	288.75	288.50	287.90	288.25	287.73	288.00	288.25

W. L. Herbert	788.75	788.50	787.90	788.75	787.73	788.00	788.45
25 W.	788.56	788.31	787.71	789.03	787.49	787.75	788.00
50 W.	788.38	788.13	787.52	788.81	787.76	787.50	787.75
75 W.	788.19	787.94	787.34	788.57	787.03	787.25	787.50
100 W.	788.00	787.75	787.15	788.38	786.79	787.00	787.25
125 W.	787.81	787.56	786.96	788.15	786.55	786.75	787.00
150 W.	787.62	787.37	786.78	787.94	786.32	786.50	786.75
175 W.	787.43	787.18	786.59	787.72	786.09	786.25	786.50
200 W. E. L. Albert St.	787.25	787.00	786.40	786.50	785.85	786.00	786.25

Myrtle

Ave.

327.0

65'

328.5

300'

ST.

BANCROFT

321.0

65'

320.5

Upas

ST.

N.L. Z. E.L.

00-S.L. Middle Riv.	377.75	379.00	378.40	378.75	378.75	378.50	378.75
35'S.	378.58	378.33	377.73	378.08	377.56	377.83	378.08
50'S.	377.91	377.66	377.06	377.41	376.89	377.16	377.41
75'S.	377.25	377.00	376.40	376.75	376.23	376.50	376.75
100'S.	376.58	376.33	375.73	376.08	375.56	375.83	376.08
125'S.	375.91	375.66	375.06	375.41	374.89	375.16	375.41
150'S.	375.25	375.00	374.40	374.75	374.23	374.50	374.75
175'S.	374.58	374.33	373.73	374.08	373.56	373.83	374.08
200'S.	373.91	373.66	373.06	373.41	372.89	373.16	373.41
225'S.	373.25	373.00	372.40	372.75	372.23	372.50	372.75
250'S.	372.58	372.33	371.73	372.08	371.56	371.83	372.08
275'S.	371.91	371.66	371.06	371.41	370.89	371.16	371.41
300'S.	371.25	371.00	370.40	370.75	370.23	370.50	370.75
N.L. Upas St.							

AMPUDIA ST.

0 Mon

246.00	50'	246.50	
		247.00	
234.50		235.25	
223.00		224.00	

W. 50' E.

o = S.L. Chestnut

0	246.00	246.50	247.00	247.50	248.00
25		244.35	244.03	244.63	244.88
50	242.42	242.16	242.15	242.30	
75		240.56	240.78	240.88	241.13
100	238.59	238.67	238.40	239.00	239.54
125		236.77	236.53	237.13	237.38
150	234.75	234.88	234.65	235.25	235.50
175		232.98	232.78	233.38	233.63
200	230.92	231.08	230.90	231.50	231.76
225		229.19	229.03	229.63	229.88
250	227.08	227.29	227.15	227.75	228.00
275		225.40	225.28	225.88	226.13
300 = N.L. White	223.00	223.00	223.00	223.00	223.00

247.11 Mon BM
 0.46
 255.16
 13.02
 237.09
 16
 247.24

244.25
 3.00
 4.4
 +6.6

228
 9.24
 5.24
 +4.0

231.75
 5.49
 3.69
 +1.8

235.50
 1.74
 +0.19
 +2.6

CUTS HILLS 1/2/1/2 Gregory
 Shoemaker
 Moore

242.21
 5.46
 200.30
 15.34
 237.37
 12.33
 224.15
 15.22
 245.77

224 244.85 247.75 228 231.50 231.75 235.45 235.00
 11.37 11.83 8.93 7.1 1.15 4.05 0.83 .28

cut & Props 1/2/1/2 Gregory
 Shoemaker
 Moore

OK for grade & line 1/2/1/2 Gregory

249.84	247.26	246.55	244.48	237.89	247.27	244.75	239.92	227.05
0.77	247.27	2.08	8.85	67	11.28	2.20	6.72	8.92
252.33		2.22	8.85	0.18	236.77	2.27	4.52	10.26
247.22		-0.2	-65	-10.55	252.04	-0.7	-0.5	-1.5

CUTS HILLS 1/2 side
 1 floor.
 Gregory
 Shoemaker
 Moore

+26
 +18
 +38
 +72

Park

131rd.

795.5

794.0

109.84

791.0

HERBERT ST.

STREET

790.0

788.0

ALBERT ST.

787.0

785.0

RICHMOND ST.

783.0

784.0

784.0

UPAS

778.0

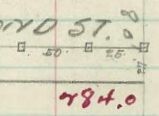
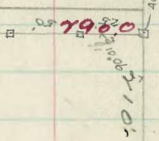
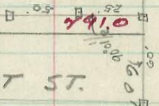
VERMONT

ST.

13' hub at Myrtle

13' hub at Myrtle

13' hub at Myrtle



W.L. Park Bldg 295.75 295.50 294.90 294.75 293.97 294.00 294.25
 25' N. 295.55 295.30 294.69 294.54 293.76 293.62 293.87
 50' N. 295.01 294.76 294.16 294.00 293.21 293.35 293.60
 100' N. 294.47 294.22 293.62 293.45 292.67 292.81 293.06
 150' N. 293.95 293.70 293.08 292.90 292.12 292.27 292.52
 200' N. 293.40 293.15 292.55 292.36 291.57 291.73 291.98
 250' N. 292.86 292.61 292.01 291.81 291.02 291.19 291.44
 300' N. 292.32 292.07 291.47 291.27 290.47 290.65 290.90
 350' N. 291.79 291.54 290.93 290.72 289.93 290.11 290.36
 400' N. 291.25 291.00 290.40 290.20 289.40 289.57 289.82
 418.65: E.L. Herbert 291.00 291.00 290.40 290.18 289.38 289.37 289.62

E.L. Herbert St 291.25 291.00 290.40 290.18 289.38 289.37 289.62
 E.C. " " 291.00 291.00 290.23 290.04 289.25 289.26 289.51
 290.00
 E.H. " " 290.40 289.75 290.06 289.90 289.13 289.16 289.41
 F. " " 290.50 289.50 289.90 289.77 289.01 289.05 289.30
 W.H. " " 289.85 289.25 289.73 289.63 288.88 288.94 289.19
 W.C. " " 290.00 289.00 289.56 289.46 288.76 288.83 289.08
 289.00
 W.L. " " 290.25 290.00 289.40 289.36 288.64 288.72 288.97

W.L. Herbert St 290.25 290.00 289.40 289.36 288.64 288.72 288.97
 50' N. 289.77 289.52 288.92 288.85 288.11 288.18 288.43
 100' N. 289.30 289.05 288.45 288.34 287.59 287.64 287.89
 150' N. 288.82 288.57 287.97 287.83 287.07 287.10 287.35
 210' N: E.L. 288.25 288.00 287.40 287.33 286.44 286.46 286.71
 Albert St.

E.L. Albert 57888.5 789.00 787.40 787.43 786.44 786.46 786.71
 E.C. " " 788.00 788.00 787.22 787.07 786.30 786.31 786.50
^{787.00}
 E.H. " " 787.40 786.75 787.06 786.93 786.18 786.17 786.44
 E. " " 787.50 786.50 786.90 786.79 786.05 786.03 786.28
 W. 1/2 " " 786.85 786.25 786.73 786.64 785.93 785.89 786.14
 W.C. " " 786.80 786.80 786.57 786.50 785.80 785.85 786.10
^{786.80}
 W.L. " " 787.25 787.00 786.40 786.35 785.67 785.70 785.95

W.L. Albert 7787.25 787.00 786.40 786.35 785.67 785.70 785.95
 50' W. 786.85 786.60 786.00 785.88 785.16 785.16 785.41
 100' W. 786.45 786.20 785.60 785.41 784.64 784.62 784.87
 150' W. 786.05 785.80 785.20 784.74 784.13 784.08 784.33
 200' W. 785.65 785.40 784.80 784.47 783.61 783.54 783.79
 250' W. = E.L. 785.25 785.00 784.40 784.00 783.10 783.00 783.00
 Richmond St.

E.L. Richmond 785.25 785.00 784.40 784.00 783.10 783.00 783.25
 E.C. " 785.00 785.00 784.22 783.82 783.72 783.00 783.00
^{784.00} ^{784.00}
 E.H. " 784.40 783.75 784.06 783.66 782.76 781.75 782.25
 E. " 784.50 783.50 783.90 783.50 782.60 781.50 782.50
 W. 1/2 " 783.85 783.25 783.70 783.34 782.44 781.25 782.25
 W.C. " 784.00 783.00 783.58 783.17 782.27 781.00 782.00
^{784.00} ^{781.00}
 W.L. " 784.25 784.00 783.40 783.00 782.10 782.00 782.25

N.L. Richmond 784.75 x 84.0 = 783.40 x 83.0 = 787.10 x 82.00 = 782.25
 50' W. 783.75 x 83.50 = 782.90 x 82.53 = 781.66 = 781.58 x 81.83
 100' W. 783.75 x 83.00 = 782.40 x 82.08 = 781.72 = 781.16 = 781.41
 150' W. 782.75 x 82.50 = 781.90 x 81.62 = 780.78 = 780.75 = 781.00
 200' W. 782.75 x 82.00 = 781.40 x 81.16 = 780.35 = 780.33 = 780.58
 250' W. 781.75 x 81.50 = 780.92 = 780.70 = 779.91 = 779.91 = 780.16
 300' W. 781.75 x 81.00 = 780.40 = 780.25 = 779.47 = 779.50 = 779.75
 350' W. 780.75 x 80.50 = 779.90 = 779.79 = 779.04 = 779.08 = 779.33
 400' W. 780.75 x 80.00 = 779.40 = 779.33 = 778.60 = 778.67 = 778.92
 450' W. 779.75 x 79.50 = 778.90 = 778.87 = 778.16 = 778.25 = 778.50
 500' W. 779.75 x 79.00 = 778.40 = 778.41 = 777.72 = 777.83 = 778.08
 550' W. 778.75 x 78.50 = 777.90 = 777.95 = 777.28 = 777.41 = 777.66
 600' W. = E.L. Vermont St. 778.75 x 78.00 = 777.40 = 777.50 = 776.85 = 777.00 = 777.25

6.24

0.73

46.76

13.76

A

Ash

Bush
3.76

33' Cedar

2.16

2.60

east 7 lines
9.60' street

15.48'

lobes

2.16

2/26 14

38.2

1.7.6

144.8

8.8

14

180

176

162.4

8.8

153.6

276

216

1.6

295

19

293.1

265

1.75

100

291.95

30

366.4
+ 0.84
367.24
- 3.08
364.16 + 3 p. 12

373
30
12.75

2937

17°

214.54
400 | 600

7.35
8.35
20

8143

01423
20
2574
281
17450
7450

306

6.24
1.3
7.74

306
286
216
283.84

46.8
24.8
31.2

4248
273
315.48
50
263.48

89012

Handwritten notes and calculations on the right page, including various numbers and a diagram of a triangle with lines extending from its vertices. The text is faint and partially obscured by bleed-through from the reverse side.