

84

8TH STREET

9TH ST

10TH ST

STURTON ST.

WISCONSIN ST

STATE ST. LA VILLE

1ST

MISSISSIPPI ST

PALE ST

CALIFORNIA ST.

EMERY ST

ITUS ST.

PARK ROW

WYDAH PLACE

44

46

48

49

43

45

56

58

59

62

69

FIELD

MICHIGAN ST. - Cheyenne Falls

CALL - San Antonio to Docks road

ENELOW - Rosemead to PL

1ST - Woodward to Myrtle

71

72

74

65

G84

MICROFILMED

DEC 7 1964

158
85

28TH STREET

NUTMEG TO PALM

80' WIDE

W. Curb 1/4 C 1/4 Curb E

1/4 NUTMEG	290.25	290.00	290.75	290.50	290.25	291.00	291.25
50' W	291.12	290.87	290.72	291.57	291.27	291.87	292.12
100'	292.00	291.75	291.60	292.75	292.45	292.75	293.00
150	292.87	292.62	292.47	293.12	292.82	293.62	293.87
200	293.75	293.50	293.35	294.00	293.70	294.50	294.75
250	294.62	294.37	294.22	294.87	294.57	295.37	295.62
300	295.50	295.25	295.10	295.75	295.45	296.25	296.50
350	296.37	296.12	295.97	296.62	296.32	297.12	297.37
400	297.25	297.00	296.85	297.50	297.20	298.00	298.25
450	298.12	297.87	297.72	298.00	297.70	298.50	298.75
500	299.00	298.75	298.60	299.00	298.70	299.50	299.75
550	299.87	299.62	299.47	299.50	299.20	299.75	299.50
SL. OF PALM ST.	298.15	295.00	294.55	295.50	295.20	296.00	296.25

Break

Note: - East half of St. is already graded.

NUTMEG To UPAS

Field Book 905

Estimate Book 10

West East

-5.6	0.0
-4.9	+0.1
-4.9	0.0
-5.3	0.0
-4.4	0.0
-4.9	0.0
-5.4	0.0
-6.1	0.0
-6.2	0.0
-4.6	0.0
-3.3	0.0
-2.9	+0.4
-4.8	+0.3

10' Walks
10' Quarters

PALM ST INTERSECTION

PALM ST. 60'

SL. OF PALM	295.25	295.00	294.85	295.50	295.20	296.00	296.25	-4.8	+0.3
S. CURB	295.08	294.83	294.68	295.33	295.24	296.00	296.00	-5.9	-0.4
1/4	294.91	294.66	294.51	295.16	295.07	294.75	295.40	-6.8	+0.2
CENTER	294.75	294.50	294.35	295.00	294.90	294.50	295.50	-7.7	+0.1
1/4	294.58	294.33	294.18	294.83	294.73	294.25	294.85	-9.5	+0.5
N. CURB	294.41	294.16	294.01	294.66	294.56	294.00	294.00	-10.8	+0.3
M.L. PALM	294.25	294.00	293.85	294.50	294.40	295.00	295.25	-14.0	-0.2

Note - Street closed on West Side

28TH STREET

PALM TO REDWOOD

W. Curb $\frac{1}{4}$ C $\frac{1}{4}$ Curb E

								West	East
N.L. PALM	29425	29400	29385	29450	29440	29500	29525	-14.0	-0.2
25'	29375	29350	29335	29400	29370	29450	29475	-28.4	-13.4
35'	29355	29330	29315	29380	29370	29430	29455	-23.1	-14.9
40'	29325	29320	29305	29370	29360	29420	29445	-22.4	-17.5
50'	29325	29300	29285	29350	29340	29400	29425	-16.7	-14.5
			Break						
60'	29350	29327	29312	29377	29367	29427	29452	-12.7	-12.3
75'	29393	29368	29353	29418	29408	29468	29493	-9.1	-7.8
100	29461	29436	29421	29486	29476	29536	29561	-6.1	-4.1
125	29529	29504	29489	29554	29544	29604	29629	-2.6	-2.5
150	29598	29573	29558	29623	29613	29673	29698	+0.5	+0.7
175	29666	29641	29626	29691	29681	29741	29766	+1.4	+0.7
200	29734	29709	29694	29759	29749	29809	29834	+1.6	+1.8
250	29870	29845	29830	29895	29885	29945	29970	+1.3	+2.8
300	30007	29982	29967	30032	30022	30082	30107	+0.7	+2.9
350	30143	30118	30103	30168	30158	30218	30243	00	+3.7
400	30279	30254	30239	30304	30294	30354	30379	-1.2	+2.8
450	30415	30390	30375	30440	30430	30490	30515	-1.5	+1.9
500	30551	30527	30512	30577	30567	30627	30652	-1.7	+0.4
550	30687	30663	30648	30713	30703	30763	30788	-2.8	+0.4
S.L. REDWOOD									
59815	30825	30800	30785	30850	30840	30900	30925	-3.2	-0.2

28TH STREET

3

REDWOOD ST INTERSECTION

10' WAIRS 10' Quarters	REDWOOD ST. = 60'							West	East
W.	CURB	1/4	C	1/4	CURB	E			
SL. OF REDWOOD	308.25	308.00	307.85	308.50	308.40	309.00	309.25	-3.2	-0.2
S. CURB	308.42	308.17	308.02	308.67	308.57	309.00 308.00	309.00 308.00	-3.8	-2.0
1/4	308.59	308.34	308.19	308.84	308.74	308.25	308.75	-4.2	+0.4
CENTER	309.15	308.50	308.35	309.00	308.90	308.50	309.50	-4.3	-0.2
1/4	308.92	308.67	308.52	309.17	309.07	308.75	309.40	-3.6	-0.2
N. CURB	309.09	308.84	308.69	309.34	309.24	309.00 310.00	309.00 310.00	-3.1	-0.4
N.L. REDWOOD	309.25	309.00	308.85	309.50	309.40	310.00	310.25	-3.3	-0.5

Note:- Street closed on West Side

28TH STREET

REDWOOD TO THORN

4

	W.	CURB	1/4	C	1/4	CURB	E	West	East
77 L REDWOOD	309.25	309.00	308.85	309.50	309.40	310.00	310.25	-3.3	-0.5
25' W	308.94	308.69	308.54	309.19	309.09	309.69	309.94	-2.8	0.0
50'	308.63	308.38	308.23	308.88	308.78	309.38	309.63	-3.1	+0.4
75'	308.32	308.07	307.92	308.57	308.47	309.07	309.32	-3.7	+0.7
100'	308.00	307.75	307.60	308.25	308.15	308.75	309.00	-6.3	+1.1
125'	307.69	307.44	307.29	307.94	307.84	308.44	308.69	-10.9	+0.6
140'	307.50	307.25	307.10	307.75	307.65	308.25	308.50	-13.6	-0.1
150'	307.38	307.13	306.98	307.63	307.53	308.13	308.38	-18.1	-3.6
165'	307.19	306.94	306.79	307.44	307.34	307.94	308.19	-25.2	-7.8
175'	307.06	306.81	306.66	307.31	307.21	307.81	308.06	-23.3	-9.8
200'	306.75	306.50	306.35	307.00	306.90	307.50	307.75	-10.6	-18.0
225'	307.53	307.28	307.13	307.78	307.68	308.28	308.53	-2.6	-18.2
250'	308.31	308.06	307.91	308.56	308.46	309.06	309.31	-2.6	-15.5
275'	309.09	308.84	308.69	309.34	309.24	309.84	310.09	-1.5	-9.3
300'	309.87	309.62	309.47	310.12	310.02	310.62	310.87	-1.5	-4.7
325'	310.65	310.40	310.25	310.90	310.80	311.40	311.65	-1.8	-0.7
350'	311.43	311.18	311.03	311.68	311.58	312.18	312.43	-1.0	+0.7
400'	313.20	312.95	312.80	313.25	313.15	313.75	314.00	-1.2	+1.1
450'	314.56	314.31	314.16	314.81	314.71	315.31	315.56	-0.2	+1.4
500'	316.12	315.87	315.72	316.37	316.27	316.87	317.12	+0.5	+1.1
550'	317.69	317.44	317.29	317.94	317.84	318.44	318.69	+0.1	+1.2
S.L. OF THORN 600'	319.25	319.00	318.85	319.50	319.40	320.00	320.25	.00	+0.2

28TH STREET.10' Walks.
10' Quarters

THORN ST INTERSECTION

THORN ST. = 60'

5

	W.	CURB.	1/4	C	1/4	CURB	E	West	East
SLOF THORN	319.25	319.00	318.85	319.50	319.40	320.00	320.25	0.0	+0.2
S CURB	319.33	319.08	318.93	319.58	319.49	320.00 319.00	320.00 319.00	-0.1	+1.3
S 1/4	319.41	319.16	319.01	319.66	319.57	319.12	319.60	+0.2	+1.1
CENTER	319.50	319.25	319.10	319.75	319.65	319.25	320.25	+1.0	+1.3
N 1/4	319.58	319.33	319.18	319.83	319.73	319.37	320.10	+1.4	+1.8
N CURB	319.66	319.41	319.26	319.91	319.81	319.50 320.50	319.50 320.50	+1.4	+1.9
NL THORN	319.75	319.50	319.35	320.00	319.90	320.50	320.75	+1.2	+1.9

Note - Street closed on West

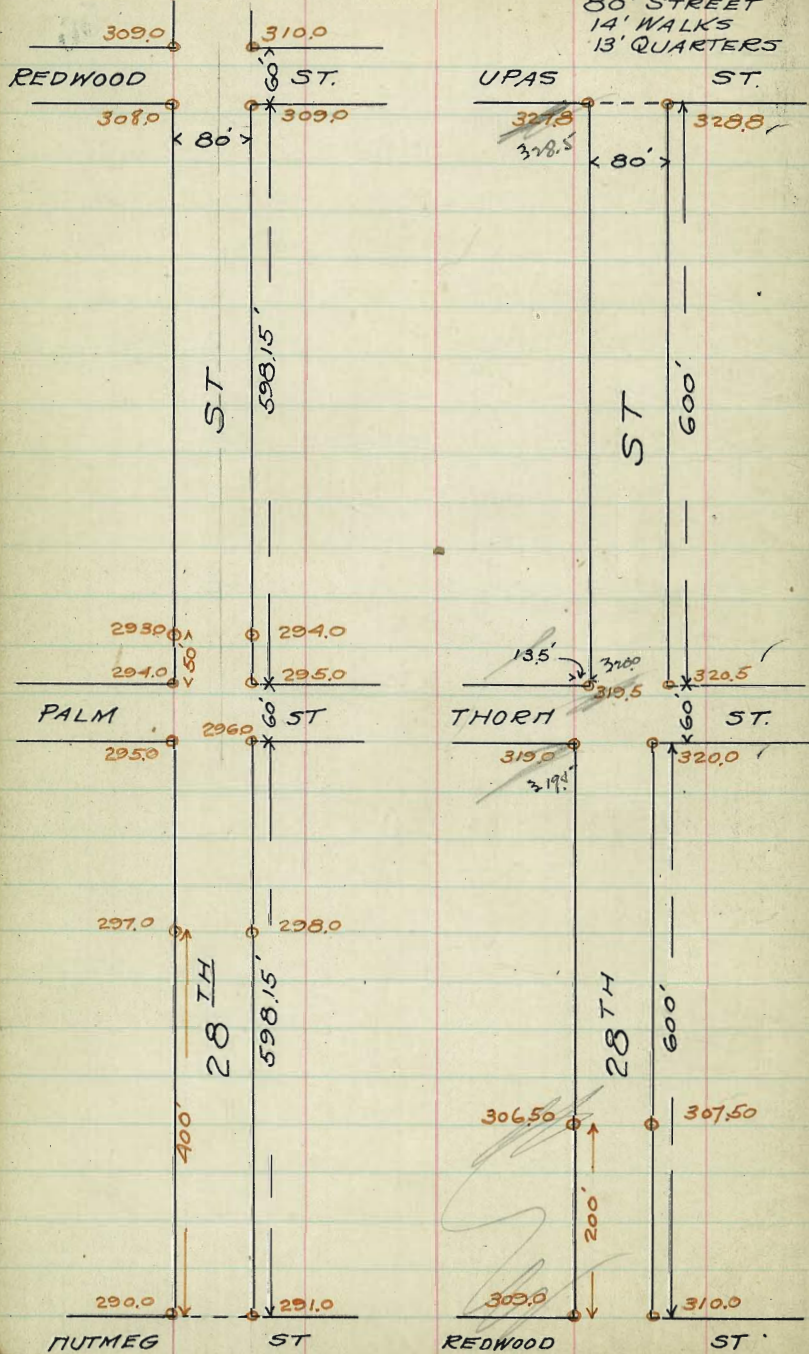
THORN ST TO UPAS STREET

NL OF THORN	319.75	319.50	319.35	320.00	319.90	320.50	320.75	+1.2	+1.9
50'	320.44	320.19	320.04	320.69	320.59	321.19	321.44	+2.4	+2.0
100'	321.13	320.88	320.73	321.38	321.28	321.88	322.13	+2.7	+2.2
150	321.82	321.57	321.42	322.07	321.97	322.57	322.82	+3.4	+2.1
200	322.51	322.26	322.11	322.76	322.66	323.26	323.51	+3.4	+1.5
250	323.20	322.95	322.80	323.45	323.35	323.95	324.20	+3.1	+2.2
300	323.90	323.65	323.50	324.15	324.05	324.65	324.90	+2.4	0.0
350	324.59	324.34	324.19	324.84	324.74	325.34	325.59	+1.4	+0.7
400	325.28	325.03	324.88	325.53	325.43	326.03	326.28	+1.0	-0.3
450	325.97	325.72	325.57	326.22	326.12	326.72	326.97	+1.2	-0.2
500	326.66	326.41	326.26	326.91	326.81	327.41	327.66	+0.6	-0.4
550	327.36	327.11	326.96	327.61	327.51	328.11	328.36	+0.9	+0.4
575	327.71	327.46	327.31	327.96	327.86	328.46	328.71	+0.9	+0.7
SLOF UPAS	328.05	327.80	327.65	328.30	328.20	328.80	329.05	+0.5	0.0

28TH ST. PUTMEG TO UPAS

80' STREET
14' WALKS
13' QUARTERS

Field Book 905
Estimate " 10

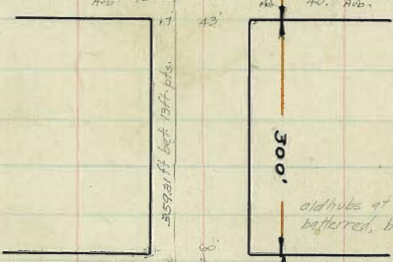


560
1/10/15

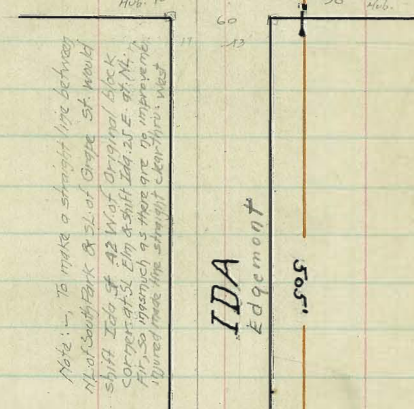
GRAPE STREET



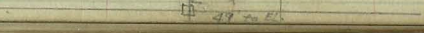
FIR STREET



ELM STREET



CEDAR STREET



IDA Edgmont

Note: - To make a straight line between
N. of South Fork & S. of Grape St. would
shift Job # 42 W. of Original block
corner of S. Elm & shift Job # 41 E. of N. of
Fir Street. This means the 100' distance
measured from the straight line between N. of
South Fork & S. of Grape St. would be

To be graded 60' wide straight through

Hub & E. of EL
Hub. 50 50
Hub. = 3 ft. of force post
13' Pt = 3' W of 2nd concrete block
W of 2 ends of bridge + 3' S.

See plans for Cedar at bridge connection

Tie outs - 1/2" / 15.
West
of
floor.

For grade see book 89
86-831

7

W C F G H E

H.L. of
South Park.
179 233.04 232.79 232.12 233.26 233.07 233.67 233.94

150 232.04 231.82 231.73 232.45 232.48 233.08 233.33

125 230.98 230.73 230.57 231.21 231.10 231.70 231.95

100 229.23 228.98 228.76 229.34 229.11 229.71 229.96

75 226.84 226.59 226.32 226.84 226.49 227.09 227.34

50 223.78 223.53 223.13 223.69 223.45 223.85 224.10

25 220.08 219.83 219.43 219.91 219.60 220.00 220.25

00 215.25 215.00 214.60 215.00 214.60 215.00 215.25

H.L. of
Cedar St.

n.g. In Profile Edgemont. on 3rd St.

W.	C	1/4	2	3/4	C	E
S. L. Elm St.						
505'	218.25	218.00	217.60	218.00	217.60	218.00
475'	213.55	213.30	212.91	213.41	213.13	217.24
456'	210.58	210.53	209.93	210.50	210.28	210.69
450'	209.75	209.50	209.10	209.69	209.49	209.89
425'	206.59	206.34	206.07	206.60	206.26	206.86
400'	204.33	204.09	203.84	204.41	204.14	204.74
375'	202.99	202.74	202.53	203.12	202.90	203.50
350'	202.63	202.38	202.17	202.76	202.55	203.15
325'	202.98	202.73	202.56	203.20	203.07	203.67
300'	204.35	204.10	203.95	204.60	204.51	205.11
275'	206.72	206.47	206.29	206.91	206.76	207.36
250'	208.86	208.61	208.46	209.11	209.01	209.61
250'	209.69	209.44	209.67	209.94	209.84	210.44
225'	213.09	212.84	212.95	213.34	213.24	213.84
200'	216.49	216.24	216.29	216.74	216.64	217.24
175'	219.89	219.64	219.60	220.14	220.04	220.64
150'	223.29	223.04	222.91	223.54	223.44	224.04
140'	223.83	223.58	223.43	224.08	223.98	224.58
125'	227.40	227.15	227.00	227.66	227.57	228.17
100'	229.72	229.47	229.33	230.00	229.94	230.54
75'	231.39	231.14	231.02	231.71	231.69	232.29
50'	232.40	232.15	232.06	232.77	232.79	233.39
25'	232.76	232.51	232.46	233.22	233.24	233.84
0 =	233.04	232.79	232.61	233.23	233.17	233.77

N. E. of
South Park.

In Book # 89 P 31

INTERSECTION

of

ELM and IDA STREETS

10

W. C ¼ E ¼ C E.
 220.25 220.00 219.60 220.00 219.60 220.00 220.25

C 220.00 220.00 219.27 219.67 219.27 220.00 220.00
 219.00 219.00

¼ 219.40 218.50 218.93 219.33 218.93 218.50 219.40

E 219.00 218.00 218.60 219.00 218.60 218.00 219.00

¾ 218.40 217.50 218.26 218.66 216.26 217.50 218.10

C 218.00 217.00 217.93 218.33 217.93 217.00 218.00
 218.00 218.00

218.25 218.00 217.60 218.00 217.60 218.00 218.25

W. of Elm St.	C.	$\frac{1}{4}$	E.	$\frac{1}{2}$	C.	E.
300'	254.75	254.50	254.47	255.25	255.40	256.00 256.75
275'	253.62	253.37	253.31	254.06	254.15	254.75 255.00
250'	252.49	252.24	252.15	252.87	252.90	253.50 253.75
225'	251.35	251.12	251.00	251.65	251.65	252.25 252.50
200'	249.69	249.39	249.19	249.84	249.74	250.39 250.69
175'	246.50	246.25	246.06	246.68	246.52	247.10 247.35
150'	242.75	242.50	242.28	242.86	242.67	243.24 243.49
125'	239.00	238.75	238.50	239.05	238.82	239.37 239.62
100'	235.25	235.00	234.72	235.24	234.99	235.49 235.74
75'	231.50	231.25	230.94	231.43	231.13	231.62 231.87
50'	227.75	227.50	227.16	227.62	227.29	227.74 227.99
25'	224.00	223.75	223.38	223.81	223.44	223.87 224.12
00'	220.25	220.00	219.60	220.00	219.60	220.00 220.25

Du Book 89
86 P.31

11

INTERSECTION

of

FIR and IDA STREETS

W	C	$\frac{1}{4}$	$\frac{1}{2}$	C	E		
255.75	255.50	255.47	256.25	256.40	257.00	257.25	
C	255.50 254.5	255.30	256.08	256.23	257.00 256.00	257.00	
$\frac{1}{4}$	254.90	254.25	254.14	255.91	256.06	255.75	256.40
$\frac{1}{2}$	255.00	254.00	254.97	255.75	255.90	255.50	256.50
$\frac{3}{4}$	254.35	253.75	254.80	255.58	255.73	255.25	255.85
C	254.50 254.50	253.50	254.63	255.41	255.56	255.00 256.00	256.00
E	254.75	254.5	254.47	255.25	255.40	256.00	256.25

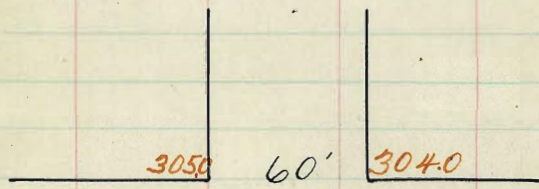
89
Sun. Book 86 P. 31

	W.	C.	1/4	1/2	3/4	C	E.
J. L. Grape St.							
365.6'	272.25	272.00	271.85	272.50	272.40	273.00	273.25
350'	271.81	271.56	271.43	272.09	272.00	272.60	272.85
325'	271.13	270.88	270.77	271.45	271.40	272.00	272.25
300'	270.46	270.21	270.11	270.81	270.80	271.40	271.65
W 275'	269.78	269.53	269.45	270.17	270.20	270.80	271.05
250'	269.10	268.85	268.79	269.53	269.60	270.20	270.45
C 225'	268.42	268.17	268.13	268.89	269.00	269.60	269.85
200'	267.75	267.50	267.47	268.25	268.40	269.00	269.25
175'	266.25	266.00	265.97	266.75	266.90	267.50	267.75
1/4 150'	264.75	264.50	264.47	265.25	265.40	266.00	266.25
125'	263.25	263.00	262.97	263.75	263.90	264.50	264.75
1/4 100'	261.75	261.50	261.47	262.25	262.40	263.00	263.25
75'	260.25	260.00	259.97	260.75	260.90	261.50	261.75
50'	258.75	258.50	258.47	259.25	259.40	260.00	260.25
25'	257.25	257.00	256.97	257.75	257.90	258.50	258.75
C 00'	255.75	255.50	255.47	256.25	256.40	257.00	257.25
N. A. Fir St.							

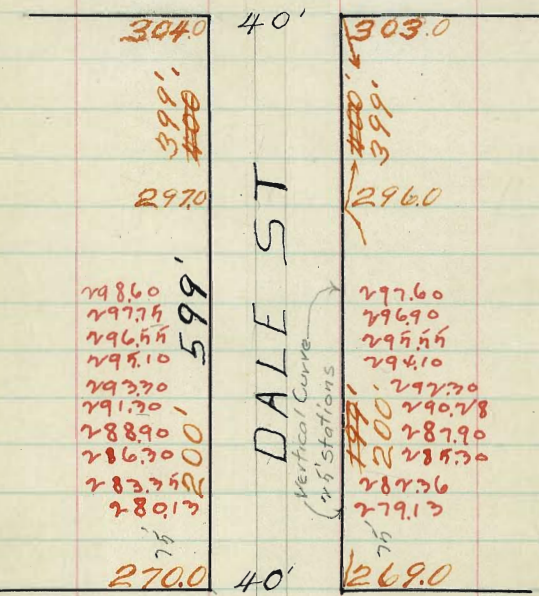
40' ST 10' WALKS ⁵ 7.5' QUARTERS
 + SEC BOOK 856
 EST. " " 8"

DALE ST
 PALM TO NUTMEG

N



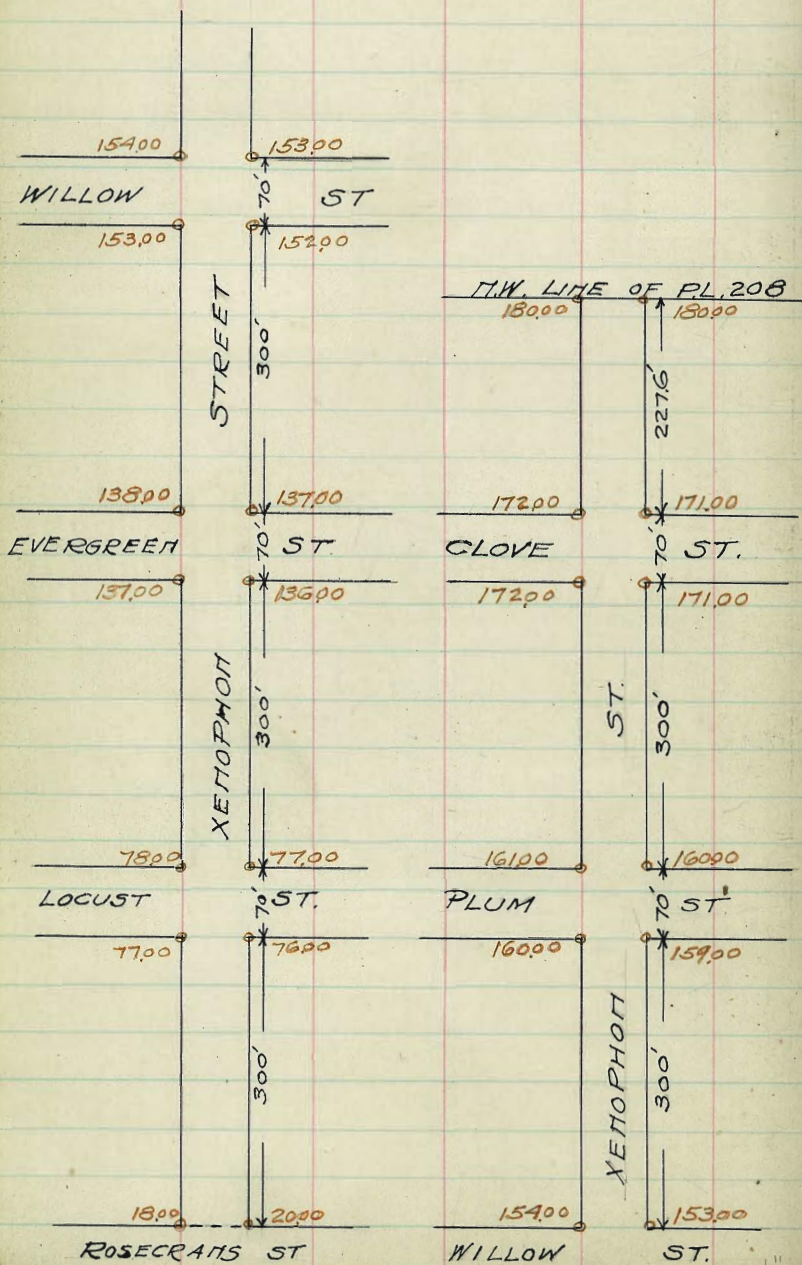
PALM ST



NUTMEG ST

ΧΕΠΟΡΗΟΝ ST.

ROSECRANS TO N.W. Line of P.L. 208
70' STREET
18' WALKS
8 1/2 QUARTERS



XENOPHON ST

S Curb 1/4 & 1/4 Curb H

Rosecrans to Locust

	18.25	18.00	18.10	19.00	19.40	20.00	20.25
W.L. ROSECRANS	18.25	18.00	18.10	19.00	19.40	20.00	20.25
50' W	28.08	27.83	27.82	28.58	28.81	29.33	29.58
100' W	37.92	37.67	37.53	38.17	38.22	38.67	38.92
150	47.75	47.50	47.25	47.75	47.63	48.00	48.25
175	52.67	52.42	52.11	52.54	52.34	52.67	52.92
200	57.59	57.34	56.96	57.34	57.04	57.34	57.59
250	67.42	67.17	66.68	67.42	66.95	66.67	66.92
EL. LOCUST 300 W of Rosec	71.25	71.00	70.40	70.50	70.85	70.00	70.25

ROSECRANS TO W.L. OF ROSEVILLE = HW. Line of PL. 208
FIELD BOOK 441
ESTIMATE BOOK 10

17

South North

South	North
+2.7	+2.6
-2.7	-3.5
-7.1	-7.6
-10.3	-12.2
-11.0	-10.6
-8.9	-6.4
-6.9	-5.3
-5.8	-4.6

(Note: These quantities do not include cuts and fills for paving.)

LOCUST ST INTERSECTION 70'

EL. LOCUST	71.25	71.00	70.40	70.50	70.85	70.00	70.25	-5.8	-4.6
ECURB	71.00 76.00	71.00 76.00	70.65	70.75	70.10	70.00 75.00	70.00 75.00		
1/4	76.85	76.25	76.78	76.88	76.22	75.25	75.85		
CENTER	77.50	76.50	76.90	77.00	76.35	75.50	76.50	+2.7	+4.3
1/4	77.40	76.75	77.03	77.13	76.48	75.75	76.40		
W. CURB	77.00 78.00	77.00 78.00	77.15	77.25	76.60	76.00 77.00	76.00 77.00		
W.L. LOCUST	78.25	78.00	77.40	77.50	76.85	77.00	77.25	+7.7	+10.2

XENOPHON ST.

18

S Curb 1/4 E 1/4 Curb N

Locust to Evergreen

S. N.

W/Locust 78x5	7800	7740	7750	7685	7700	7725	+7.7	+10.2
50' W of "	88.08	87.83	87.23	87.33	86.61	86.83	+8.9	+10.6
100'	91.92	91.61	91.07	91.17	90.52	90.67	+9.2	+10.5
150	107.75	107.50	106.90	107.00	106.35	106.50	+7.8	+8.4
200	117.59	117.34	116.74	116.84	116.19	116.34	+4.6	+4.7
250	127.42	127.17	126.57	127.67	126.02	126.17	+1.6	+1.2
E.L. EVERGREEN 300' W. of LOCUST	137.25	137.00	136.40	136.50	135.85	136.00	-2.4	-3.3

EVERGREEN ST. INTERSECTION 70'

E.L. EVERGREEN	137.25	137.00	136.40	136.50	135.85	136.00	136.25	-2.4	-3.3
E CURB	137.00	137.00	136.65	136.75	136.10	136.00	136.00		
1/4	136.85	136.25	136.78	136.88	136.22	135.25	135.85		
CENTER	137.50	136.50	136.90	137.00	136.35	135.50	136.50	+0.8	-0.3
1/4	137.40	136.75	137.03	137.13	136.48	135.75	136.40		
W. CURB	138.00	138.00	137.15	137.25	136.60	137.00	137.00		
W.L. EVERGREEN	138.25	138.00	137.40	137.50	136.85	137.00	137.25	+3.8	+2.1

S Curb $\frac{1}{4}$ $\frac{1}{2}$ $\frac{1}{4}$ Curb N

Evergreen to Willow

S N

W.L. EVERGREEN	138.25	138.00	137.40	137.50	136.85	137.00	137.25	+3.8	+2.1
50' W. of "	140.75	140.50	139.90	140.00	139.35	139.50	139.75	+6.2	+3.7
100' "	143.25	143.00	142.40	142.50	141.85	142.00	142.25	+7.2	+4.7
150'	145.75	145.50	144.90	145.00	144.35	144.50	144.75	+7.7	+4.2
200	148.25	148.00	147.40	147.50	146.85	147.00	147.25	+7.8	+3.1
250	150.75	150.50	149.90	150.00	149.35	149.50	149.75	+5.7	+2.1
E.L. WILLOW									
300 W. of EVERG.	153.25	153.00	152.40	152.50	151.85	152.00	152.25	+4.0	+0.8

Willow to Plum

W.L. of WILLOW	154.25	154.00	153.40	153.50	152.85	153.00	153.25	+5.3	+2.9
50' W. of "	155.25	155.00	154.40	154.50	153.85	154.00	154.25	+7.6	+1.1
100' "	156.25	156.00	155.40	155.50	154.85	155.00	155.25	+8.2	+2.8
150'	157.25	157.00	156.40	156.50	155.85	156.00	156.25	+8.1	+1.6
200	158.25	158.00	157.40	157.50	156.85	157.00	157.25	+5.8	+0.4
250	159.25	159.00	158.40	158.50	157.85	158.00	158.25	+3.8	-1.1
E.L. PLUM									
300 W. of WILLOW	160.25	160.00	159.40	159.50	158.85	159.00	159.25	+3.2	-1.0

XENOPHON ST.

S CURB 1/4 Φ 1/4 CURB Π

PLUM TO CLOVE

S. Π

W.L. PLUM	161.25	161.00	160.90	160.50	159.85	160.00	160.25	+4.1	0.0
50' W. of "	163.08	162.83	162.23	162.33	161.68	161.83	162.08	+2.9	-1.1
100' "	164.92	164.67	164.07	164.17	163.51	163.67	163.92	+2.3	-1.8
150'	166.75	166.50	165.90	166.00	165.34	165.50	165.75	+0.7	-2.1
200	168.59	168.34	167.73	167.84	167.18	167.34	167.59	+0.3	-2.1
250	170.42	170.17	169.56	169.67	169.01	169.17	169.42	+1.4	-1.8
EL. CLOVE									
300 W. of PLUM	172.25	172.00	171.40	171.50	170.85	171.00	171.25	+2.4	+0.1

CLOVE ST. INTERSECTION 70'

EL. CLOVE	172.25	172.00	171.40	171.50	170.85	171.00	171.25	+2.4	+0.1
E CURB	172.00	172.00	170.75	170.50	170.25	171.00	171.00		
1/4	171.60	171.35	171.22	171.10	170.91	170.85	170.60		
CENTER	172.00	171.75	171.62	171.50	171.37	171.25	171.00	+5.9	+1.3
1/4	171.60	171.35	171.22	171.10	170.97	170.85	170.60		
W CURB	171.00	171.00	170.75	170.50	170.25	171.00	171.00		
W.L. CLOVE	172.25	172.00	171.40	171.50	170.85	171.00	171.25	+9.3	+5.0

W.L. CLOVE	172.25	172.00	171.40	171.50	170.85	171.00	171.25	+9.3	+5.0
50' W. "	174.00	173.75	173.20	173.36	172.71	172.97	173.23	+10.1	+6.5
100' "	175.76	175.51	175.00	175.23	174.70	174.95	175.20	+9.1	+6.5
150' "	177.51	177.26	176.80	177.09	176.62	176.92	177.17	+6.7	+3.3
200 "	179.27	179.02	178.61	178.96	178.55	178.90	179.15	+1.7	+1.1
W.L. OF ROSEVILLE									
227.6 W. CLOVE	180.25	180.00	179.60	180.00	179.60	180.00	180.25	-1.1	+0.2

Fenlon St.

	S	C	1/4	E	1/4	C	W
00 = W.A. Reservoirs	2.25	2.00	1.40	1.75	1.23	1.50	1.75
25	2.91	2.75	2.10	2.47	1.99	2.29	2.54
50	3.58	3.50	2.80	3.20	2.75	3.08	3.33
100	4.91	5.00	4.21	4.66	4.28	4.66	4.91
150	6.25	6.50	5.62	6.12	5.81	6.24	6.49
200	7.58	8.00	7.03	7.58	7.34	7.83	8.08
250	8.91	9.50	8.44	9.04	8.87	9.41	9.66
275	9.58	10.25	9.14	9.77	9.63	10.20	10.45
300 = E.L. Locust	10.25	10.00	9.85	10.50	10.40	11.00	11.25
E.L. Locust	10.25	11.00	9.85	10.00	10.40	11.00	11.25
EC	10.00	9.68	10.30	10.88	10.70	10.42	11.00
E.S.	10.10	9.92	10.51	11.07	10.85	10.54	10.85
E	11.50	10.17	10.72	11.58	11.00	10.67	11.50
W. 1/4	11.40	10.41	10.93	11.44	11.14	10.79	11.40
W.C	11.17	12.00	11.15	11.62	11.29	10.91	11.17
W.A. Locust	12.25	12.00	11.60	12.00	11.60	12.00	12.25

SW - 02 1/2 SW Gault
 SW 237 SW Fenlon

1/4	1/4	1/4	1/4	1/4	1/4	1/4	1/4
840	840	840	840	840	840	840	840
2.60	4.40	3.50	4.40	5.20	5.20	4.40	5.20
2.70	3.6	3.7	3.7	3.7	3.7	3.7	3.7
2.0	C.4	C.2					
2.00	2.00	1.50	2.29	2.75	3.50	3.12	5.44
2.37	2.37	2.37	2.37	2.37	2.37	2.37	2.37
2.81	2.81	2.44	2.81	2.81	2.81	2.81	2.81
3.76	4.14		4.25				
10.25	10.62	10.20	10.25	10.62	10.20	10.20	10.20
11.85	11.85	11.85	11.85	11.85	11.85	11.85	11.85
12.87	12.87	12.87	12.87	12.87	12.87	12.87	12.87
15.30	15.30	15.30	15.30	15.30	15.30	15.30	15.30
17.50	17.50	17.50	17.50	17.50	17.50	17.50	17.50
10.25	10.25	10.25	10.25	10.25	10.25	10.25	10.25
8.09	8.09	8.09	8.09	8.09	8.09	8.09	8.09
7.29	7.29	7.29	7.29	7.29	7.29	7.29	7.29
6.99	6.99	6.99	6.99	6.99	6.99	6.99	6.99

Choked OK blough
 1-18-15

Fenton St.

	S.	C	1/4	E	1/4	C	N.
00 W.L. Plum	99.25	99.00	98.40	98.50	97.85	98.00	98.25
25	112.41	102.16	101.36	101.66	101.01	101.16	101.41
50	115.59	105.33	104.73	104.83	104.18	104.33	104.58
100	111.91	111.66	111.06	111.16	110.51	110.66	110.91
150	118.24	117.99	117.39	117.49	116.84	116.99	117.24
200	124.58	124.33	123.73	123.83	123.18	123.33	123.58
250	130.91	130.66	130.06	130.16	129.51	129.66	129.91
300	137.25	137.00	136.40	136.50	135.85	136.00	136.25
E.L. Clark	187.25	137.00	136.40	136.5	135.85	136.00	136.25
E.C.	137.00	136.42	136.65	136.75	136.10	135.42	136.00
E.A.	136.85	136.54	136.77	136.87	136.22	135.54	135.85
E.	137.50	136.67	136.90	137.00	136.35	135.67	136.50
W.S.	137.40	136.79	137.02	137.12	136.47	135.79	136.40
W.C.	137.17	136.91	137.14	137.25	136.59	135.91	137.00
W.L. Clark	138.25	138.00	137.40	137.50	136.85	137.00	137.25

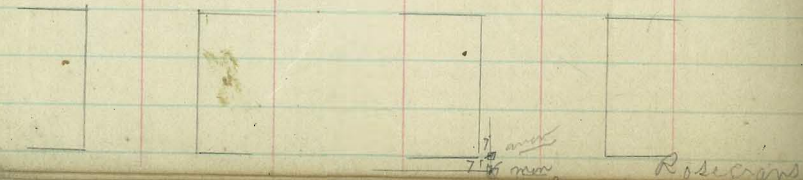
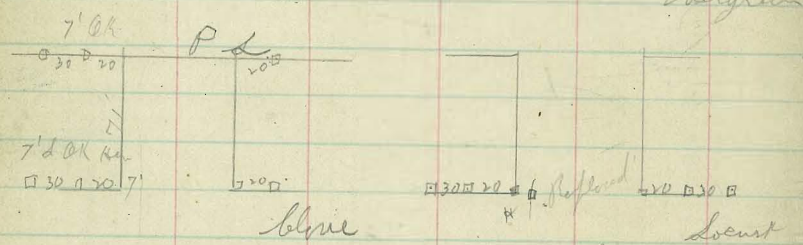
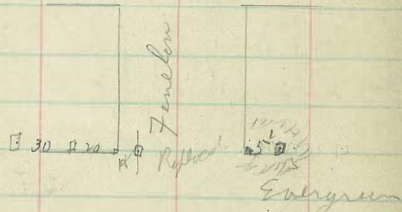
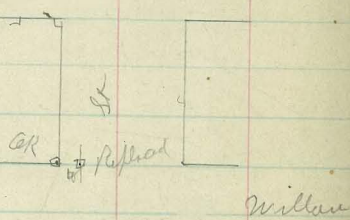
105 364 205 SW Plum
145 204 205 SW Plum

	1146	1146	1146	1146	1266	1266	1266	1386	1386	1386
1146	1146	1146	1146	1146	1266	1266	1266	1386	1386	1386
1266	1266	1266	1266	1266	1386	1386	1386	1506	1506	1506
1386	1386	1386	1386	1386	1506	1506	1506	1626	1626	1626
1506	1506	1506	1506	1506	1626	1626	1626	1746	1746	1746
1626	1626	1626	1626	1626	1746	1746	1746	1866	1866	1866
1746	1746	1746	1746	1746	1866	1866	1866	1986	1986	1986
1866	1866	1866	1866	1866	1986	1986	1986	2106	2106	2106
1986	1986	1986	1986	1986	2106	2106	2106	2226	2226	2226
2106	2106	2106	2106	2106	2226	2226	2226	2346	2346	2346
2226	2226	2226	2226	2226	2346	2346	2346	2466	2466	2466
2346	2346	2346	2346	2346	2466	2466	2466	2586	2586	2586
2466	2466	2466	2466	2466	2586	2586	2586	2706	2706	2706
2586	2586	2586	2586	2586	2706	2706	2706	2826	2826	2826
2706	2706	2706	2706	2706	2826	2826	2826	2946	2946	2946
2826	2826	2826	2826	2826	2946	2946	2946	3066	3066	3066
2946	2946	2946	2946	2946	3066	3066	3066	3186	3186	3186
3066	3066	3066	3066	3066	3186	3186	3186	3306	3306	3306
3186	3186	3186	3186	3186	3306	3306	3306	3426	3426	3426
3306	3306	3306	3306	3306	3426	3426	3426	3546	3546	3546
3426	3426	3426	3426	3426	3546	3546	3546	3666	3666	3666
3546	3546	3546	3546	3546	3666	3666	3666	3786	3786	3786
3666	3666	3666	3666	3666	3786	3786	3786	3906	3906	3906
3786	3786	3786	3786	3786	3906	3906	3906	4026	4026	4026
3906	3906	3906	3906	3906	4026	4026	4026	4146	4146	4146
4026	4026	4026	4026	4026	4146	4146	4146	4266	4266	4266
4146	4146	4146	4146	4146	4266	4266	4266	4386	4386	4386
4266	4266	4266	4266	4266	4386	4386	4386	4506	4506	4506
4386	4386	4386	4386	4386	4506	4506	4506	4626	4626	4626
4506	4506	4506	4506	4506	4626	4626	4626	4746	4746	4746
4626	4626	4626	4626	4626	4746	4746	4746	4866	4866	4866
4746	4746	4746	4746	4746	4866	4866	4866	4986	4986	4986
4866	4866	4866	4866	4866	4986	4986	4986	5106	5106	5106
4986	4986	4986	4986	4986	5106	5106	5106	5226	5226	5226
5106	5106	5106	5106	5106	5226	5226	5226	5346	5346	5346
5226	5226	5226	5226	5226	5346	5346	5346	5466	5466	5466
5346	5346	5346	5346	5346	5466	5466	5466	5586	5586	5586
5466	5466	5466	5466	5466	5586	5586	5586	5706	5706	5706
5586	5586	5586	5586	5586	5706	5706	5706	5826	5826	5826
5706	5706	5706	5706	5706	5826	5826	5826	5946	5946	5946
5826	5826	5826	5826	5826	5946	5946	5946	6066	6066	6066
5946	5946	5946	5946	5946	6066	6066	6066	6186	6186	6186
6066	6066	6066	6066	6066	6186	6186	6186	6306	6306	6306
6186	6186	6186	6186	6186	6306	6306	6306	6426	6426	6426
6306	6306	6306	6306	6306	6426	6426	6426	6546	6546	6546
6426	6426	6426	6426	6426	6546	6546	6546	6666	6666	6666
6546	6546	6546	6546	6546	6666	6666	6666	6786	6786	6786
6666	6666	6666	6666	6666	6786	6786	6786	6906	6906	6906
6786	6786	6786	6786	6786	6906	6906	6906	7026	7026	7026
6906	6906	6906	6906	6906	7026	7026	7026	7146	7146	7146
7026	7026	7026	7026	7026	7146	7146	7146	7266	7266	7266
7146	7146	7146	7146	7146	7266	7266	7266	7386	7386	7386
7266	7266	7266	7266	7266	7386	7386	7386	7506	7506	7506
7386	7386	7386	7386	7386	7506	7506	7506	7626	7626	7626
7506	7506	7506	7506	7506	7626	7626	7626	7746	7746	7746
7626	7626	7626	7626	7626	7746	7746	7746	7866	7866	7866
7746	7746	7746	7746	7746	7866	7866	7866	7986	7986	7986
7866	7866	7866	7866	7866	7986	7986	7986	8106	8106	8106
7986	7986	7986	7986	7986	8106	8106	8106	8226	8226	8226
8106	8106	8106	8106	8106	8226	8226	8226	8346	8346	8346
8226	8226	8226	8226	8226	8346	8346	8346	8466	8466	8466
8346	8346	8346	8346	8346	8466	8466	8466	8586	8586	8586
8466	8466	8466	8466	8466	8586	8586	8586	8706	8706	8706
8586	8586	8586	8586	8586	8706	8706	8706	8826	8826	8826
8706	8706	8706	8706	8706	8826	8826	8826	8946	8946	8946
8826	8826	8826	8826	8826	8946	8946	8946	9066	9066	9066
8946	8946	8946	8946	8946	9066	9066	9066	9186	9186	9186
9066	9066	9066	9066	9066	9186	9186	9186	9306	9306	9306
9186	9186	9186	9186	9186	9306	9306	9306	9426	9426	9426
9306	9306	9306	9306	9306	9426	9426	9426	9546	9546	9546
9426	9426	9426	9426	9426	9546	9546	9546	9666	9666	9666
9546	9546	9546	9546	9546	9666	9666	9666	9786	9786	9786
9666	9666	9666	9666	9666	9786	9786	9786	9906	9906	9906
9786	9786	9786	9786	9786	9906	9906	9906	10026	10026	10026
9906	9906	9906	9906	9906	10026	10026	10026	10146	10146	10146
10026	10026	10026	10026	10026	10146	10146	10146	10266	10266	10266
10146	10146	10146	10146	10146	10266	10266	10266	10386	10386	10386
10266	10266	10266	10266	10266	10386	10386	10386	10506	10506	10506
10386	10386	10386	10386	10386	10506	10506	10506	10626	10626	10626
10506	10506	10506	10506	10506	10626	10626	10626	10746	10746	10746
10626	10626	10626	10626	10626	10746	10746	10746	10866	10866	10866
10746	10746	10746	10746	10746	10866	10866	10866	10986	10986	10986
10866	10866	10866	10866	10866	10986	10986	10986	11106	11106	11106
10986	10986	10986	10986	10986	11106	11106	11106	11226	11226	11226
11106	11106	11106	11106	11106	11226	11226	11226	11346	11346	11346
11226	11226	11226	11226	11226	11346	11346	11346	11466	11466	11466
11346	11346	11346	11346	11346	11466	11466	11466	11586	11586	11586
11466	11466	11466	11466	11466	11586	11586	11586	11706	11706	11706
11586	11586	11586	11586	11586	11706	11706	11706	11826	11826	11826
11706	11706	1								

Fenton St.

S. C 1/4 E 1/4 C. N.

200' W. Clare	138.25	138.00	137.40	137.50	136.85	137.00	137.25
25'	140.75	140.50	139.90	140.00	139.35	139.50	139.75
50'	143.25	143.00	142.40	142.50	141.85	142.00	142.25
70' W. Roseville Pueblo Line	145.25	145.00	144.40	144.50	143.85	144.00	144.25



1575 1433 202 m w blm

150.30	154.62	154.62	154.6	154.6
280	27	27	3	105
146.87	145	152.5	154.1	159.1
775	142	143.5	145.2	140
54.62	2.5	29.3	28.9	
11.22				
140.22				
1.75				
140.07				
132.27				
157.27				

Checked CR Blough 1-18-15

PLUM	STREET
89.00	90.00
73.00	74.00
WILLOW	STREET
72.00	73.00
43.00	42.00
EVERGREEN	STREET
47.00	41.00
30.50	30.50
LOCUST	STREET
29.50	29.50
19.50	19.50
ROSECRAYS	STREET
18.50	18.50
10.50	9.50
SCOTT	STREET
9.50	8.50
7.00	7.00
SHAPTER	STREET
1.50	1.50
0.0	0.0

EXCEPTED
STREET

EXCEPTED

ADDISON



	11.	11.	C	4	5	4	C	55.
150R Shafter St	0.25	0.00	-0.60	0.00	-0.60	0.00	0.25	
100	0.75	0.50	0.10	0.50	0.10	0.50	0.75	
50	1.25	1.00	0.60	1.00	0.60	1.00	1.25	
25	1.50	1.25	0.55	1.25	0.85	1.25	1.50	
E.L. Shafter St	1.75	1.50	1.10	1.50	1.10	1.50	1.75	

E.L. Shafter St	1.75	1.50	1.10	1.50	1.10	1.50	1.75	
E.C. Shafter St	1.50	0.74	1.17	1.57	1.17	0.74	1.50	
E. Shafter St	1.23	0.83	1.26	1.66	1.26	0.83	1.23	
E. Shafter St	1.75	0.92	1.35	1.75	1.35	0.92	1.75	
W. Shafter St	1.40	1.01	1.44	1.84	1.44	1.01	1.40	
W.C. Shafter St	2.00	1.10	1.53	1.93	1.53	1.10	2.00	
W.L. Shafter St	2.25	1.17	1.60	2.00	1.60	1.17	2.25	

W.L. Shafter St	2.25	2.00	1.60	2.00	1.60	2.00	2.25	
25' W.	2.79	2.54	2.16	2.58	2.20	2.62	2.87	
50' W.	3.33	3.08	2.72	3.16	2.81	3.25	3.50	
100' W.	4.41	4.16	3.85	4.33	4.03	4.50	4.75	
150' W.	5.50	5.25	4.97	5.50	5.24	5.75	6.00	
200' W.	6.68	6.33	6.10	6.66	6.46	7.00	7.25	
250' W.	7.66	7.41	7.25	7.83	7.68	8.25	8.50	
275' W.	8.20	7.95	7.78	8.41	8.29	8.87	9.12	
300' E.L. Scott St.	8.75	8.00	8.35	9.00	8.90	9.50	9.75	

	N.	C	$\frac{1}{4}$	$\frac{1}{2}$	$\frac{3}{4}$	C	S.
E.L. Scott St 8.15	8.500	8.35	7.00	8.90	9.50	9.75	
	7.67				8.67		
E.C. Scott St. 8.50	7.81	8.49	9.14	9.04	8.87	9.50	
E. 1/4 Scott St. 8.35	8.00	8.67	9.32	9.22	9.00	9.35	
E. Scott St. 9.00	8.17	8.85	9.50	9.40	9.17	10.00	
W. 1/4 Scott St 8.90	8.35	9.03	9.68	9.58	9.35	9.90	
W.C. Scott St. 9.50	8.53	9.21	9.86	9.76	9.53	10.50	
W.L. Scott St 8.75	$\frac{8.67}{9.50}$	9.35	10.00	9.90	$\frac{9.67}{10.50}$	10.75	

W.H. Scott St 9.75	9.50	9.35	10.00	9.90	10.50	10.75	
25' W.	10.50	10.25	10.07	10.70	10.58	11.16	11.41
50' W.	11.25	11.00	10.80	11.41	11.26	11.83	12.08
100' W.	12.75	12.50	12.26	12.83	12.63	13.16	13.41
150' W.	14.25	14.00	13.72	14.25	14.00	14.50	14.75
200' W.	15.75	15.50	15.18	15.66	15.36	15.83	16.08
250' W.	17.25	17.00	16.64	17.09	16.73	17.16	17.41
275' W.	18.00	17.75	17.37	17.79	17.41	17.83	18.08
300' W. E.L. Rosecrans St	18.75	18.50	18.10	18.50	18.10	18.50	18.75

N. C 1/4 E 1/4 C S.

W.L. Rosejans St	19.75	19.50	19.10	19.50	19.10	19.50	19.75
25' W	20.88	20.33	19.93	20.33	19.93	20.33	20.88
50' W	21.41	21.16	20.76	21.16	20.76	21.16	21.41
100' W	22.08	22.83	22.43	22.83	22.43	22.83	23.08
150' W	24.15	24.50	24.09	24.50	24.09	24.50	24.75
200' W	26.41	26.16	25.76	26.16	25.76	26.16	26.41
250' W	28.05	27.83	27.43	27.83	27.43	27.83	28.08
275' W	28.91	28.66	28.26	28.66	28.26	28.66	28.91
300' W = E.L. Locust St.	29.75	29.50	29.10	29.50	29.10	29.50	29.75

E.L. Locust St	29.75	29.50	29.10	29.50	29.10	29.50	29.75
	28.67			28.67			
E.C. Locust St	29.50	28.81	29.24	29.64	29.24	28.81	29.50
E 1/4 Locust St	29.35	28.99	29.42	29.82	29.42	28.99	29.35
E Locust St	30.00	29.17	29.60	30.00	29.60	29.17	30.00
W 1/4 Locust St	29.90	29.35	29.78	30.18	29.78	29.35	29.90
W.C. Locust St	30.50	29.53	29.96	30.36	29.96	29.53	30.50
	29.67			29.67			
W.L. Locust St	30.75	30.50	30.10	30.50	30.10	30.50	30.75

	N.	C.	$\frac{1}{4}$	E	$\frac{1}{4}$	C	S.
W.L. Locust St.	30.75	30.50	30.10	30.50	30.10	30.50	30.75
25' W.	31.62	31.37	30.99	31.41	31.04	31.45	31.70
50' W.	32.50	32.25	31.89	32.33	31.98	32.41	32.66
100' W.	34.25	34.00	33.68	34.16	33.86	34.33	34.58
150' W.	36.00	35.75	35.47	36.00	35.74	36.24	36.49
200' W.	37.75	37.50	37.26	37.83	37.63	38.16	38.41
250' W.	39.50	39.25	39.05	39.66	39.51	40.08	40.33
275' W.	40.37	40.12	39.95	40.58	40.45	41.04	41.29
300' W. = E.L. Evergreen St.	41.25	41.00	40.85	41.50	41.40	42.00	42.25

E.L. Evergreen St.	41.25	41.00	40.85	41.50	41.40	42.00	42.25
		40.17				41.17	
E.C. Evergreen St.	41.00	40.31	40.99	41.64	41.54	41.31	42.00
E. $\frac{1}{4}$ Evergreen St.	41.85	40.49	41.17	41.82	41.72	41.19	41.85
E. Evergreen St.	41.50	40.67	41.35	42.00	41.90	41.67	42.50
W. $\frac{1}{4}$ Evergreen St.	41.40	40.85	41.53	42.18	42.08	41.85	42.40
W.C. Evergreen St.	42.00	41.03	41.71	42.36	42.26	42.03	43.00
		41.17				42.17	
W.L. Evergreen St.	42.25	42.00	41.85	42.50	42.60	43.00	43.25

N: C 1/4 1/2 C S.

N.L. Ericsson St.	42.25	42.0	41.85	42.50	42.40	43.0	43.25
25' W.	44.83	44.58	44.39	45.00	44.85	45.41	45.66
50' W.	47.41	47.16	46.94	47.50	47.30	47.83	48.08
100' W.	52.58	52.33	52.03	52.50	52.21	52.66	52.91
150' W.	53.74	53.49	53.13	53.50	53.20	53.64	53.89
175' W.	53.91	53.66	53.24	53.50	53.20	53.62	53.87
200' W.	57.75	57.50	57.17	57.50	57.12	57.50	57.75
250' W.	62.91	62.66	62.21	62.50	62.03	62.33	62.58
275' W.	68.08	67.83	67.30	67.50	66.94	67.16	67.41
275' W.	70.66	70.41	69.85	70.00	69.39	69.58	69.83
300' W. = E.L. W. Hill St.	73.25	73.0	72.40	72.50	71.85	72.0	72.25

N.L. Hill St.	74.25	74.00	73.40	73.50	72.85	73.00	73.25
25' W.	75.58	75.33	74.73	74.83	74.18	74.33	74.58
50' W.	76.91	76.66	76.06	76.16	75.51	75.66	75.91
100' W.	79.58	79.33	78.73	78.83	78.16	78.33	78.58
150' W.	82.24	81.99	81.40	81.50	80.85	81.00	81.25
175' W.	84.10	83.85	83.26	83.36	82.71	82.86	83.11
200' W.	84.91	84.66	84.06	84.16	83.51	83.66	83.91
250' W.	87.58	87.33	86.73	86.83	86.18	86.33	86.58
275' W.	88.91	88.66	88.06	88.16	87.51	87.66	87.91
300' W. E.L. Plan St.	90.25	90.00	89.40	89.50	88.85	89.00	89.25

Prospect Ave to Exchange Place 80' wide

Field Book 880
Estimate " 10

W CURB 1/4 C 1/4 CURB E

S.L. Prospect	150.25	150.00	150.10	151.00	151.40	152.00	152.25
2'S. of "	150.30	150.05	150.15	151.05	151.46	152.06	152.31
25'S	150.93	150.68	150.78	151.69	152.10	152.70	152.95
50'	151.61	151.36	151.47	152.38	152.80	153.40	153.65
75	152.28	152.03	152.15	153.07	153.50	154.10	154.35
100	152.95	152.70	152.82	153.75	154.20	154.80	155.05
125	153.63	153.38	153.51	154.44	154.90	155.50	155.75
150	154.31	154.06	154.20	155.13	155.60	156.20	156.45
175	154.98	154.73	154.88	155.82	156.30	156.90	157.15
200	155.65	155.40			157.60	158.20	158.45
225	156.33	156.08	156.23	157.19	157.70	158.30	158.55
250	157.00	156.75			159.20	159.80	160.05
275	157.68	157.43	157.60	158.57	159.10	159.70	159.95
300	158.35	158.10			160.40	161.00	161.25
325	159.03	158.78	158.96	159.94	160.50	161.10	161.35
350	159.70	159.45			161.80	162.40	162.65
375	160.38	160.13	160.32	161.32	161.90	162.50	162.75
400	161.05	160.80			163.20	163.80	164.05
425	161.73	161.48	161.68	162.69	163.30	163.90	164.15
450	162.41	162.16	162.37	163.38	164.00	164.60	164.85
481	163.25	163.00	163.21	164.23	164.87	165.47	165.72
481' on W. = 500' on E.							
M.L. of Exchange	163.25	163.00	163.35	164.50	165.40	166.00	166.25

West East

0.0	0.0	153.65	153.85	152.45	157.85	157.00	157.00	159.70
+1.9	+1.8	7.75	6.80	4.95	3.55	160.84	159.25	160.65
+1.9	+5.1	2.15	0.95	2.15	1.05	158.80	159.35	160.65
+2.0	+5.3	4.21	3.85	4.28	2.85	158.80	159.35	160.65
+1.5	+5.4	11.15	8.35	8.35	6.15	158.80	159.35	160.65
+0.8	+5.4	0.0	0.8	0.8	0.8	158.80	159.35	160.65
+0.4	+5.3	163.43	164.85	166.25	162.41	168.25	160.00	162.05
-0.8	+3.0	8.90	4.70	2.70	6.54	5.70	9.70	8.30
-1.0	+2.7	11.6	7.7		6.94		14.97	6.190
-0.7	+2.1				0.4		159.44	157.80
-0.7	+3.2				3.85	152.70	151.36	152.80
-1.1	+2.4				153.59	8.74	8.08	4.64
-1.2	+1.7				7.48	156.20	157.60	158.20
-0.4	+1.5				163.07	6.87	5.47	153.40
-0.5	+1.6				154.06	9.01	156.75	159.00
+0.4	+1.6				9.01	156.75	159.00	160.40
+0.4	+1.4				161.80	7.83	6.32	4.07
					7.27	162.20	163.20	160.80
					169.88	6.68	9.08	162.16
					166.00	3.88	166.72	165.86
					163.0	166.0	162.50	161.50
					8.72	0.72	4.22	1.22
					160.80	163.20	162.50	161.50
					6.78	4.38	3.42	167.58
					159.45	161.80	158.10	160.40
					8.13	5.78	9.48	7.18
					157.40	157.60	11.84	156.20
					12.18	7.98	153.34	153.34
					157.36	153.40	158.33	152.70
					7.00	4.73	4.27	5.63
					150.0	152.0	167.16	165.86
					8.33	6.33	2.32	2.32
					162.50	2.18	168.00	168.00
					5.68	165.50	5.78	5.78

chk. OK - Nov/13/14
J. Schmidt
atten
Bunker

Exchange Place Intersection 80' on W 80' E

M.L. of Exchange	163.25	163.00	163.35	164.50	165.40	166.00	166.25
W. curb	163.00	162.80	163.19	164.34	165.24	166.00	166.00
W 1/4	162.40	161.75	163.02	164.17	165.07	164.75	165.40
Center	162.50	161.50	162.85	164.00	164.90	164.50	165.50
S 1/4	161.85	161.25	162.69	163.84	164.74	164.25	164.85
S curb	161.00	161.00	162.54	163.67	164.57	164.00	164.00
S.L. of Exchange	162.25	162.00	162.35	163.50	164.40	165.00	165.25

TORREY ROAD
STATE ST. IN LA JOLLA

Exchange Place to Park Row

W Curb 1/4 C 1/4 Curb E

SL of Exchange	16225	16200	16235	16350	16440	16500	16525
50'S	161.16	160.91	161.22	162.33	163.16	163.76	164.01
100'	160.06	159.81	160.08	161.16	161.91	162.51	162.76
150	158.97	158.72	158.96	160.00	160.67	161.27	161.52
200	157.87	157.62	157.82	158.82	159.43	160.03	160.28
250	156.78	156.53	156.69	157.66	158.19	158.79	159.04
300	155.67	155.42	155.55	156.48	156.94	157.54	157.79
350	154.58	154.33	154.42	155.32	155.70	156.30	156.55
365' M.L.PARK	154.25	154.00	154.10	155.00	155.40	156.00	156.25

West East

+0.3	+0.6
-0.2	-0.1
-0.9	-0.3
-0.3	-0.8
+0.1	-0.4
-0.2	-0.2
-0.4	+0.1
-0.2	+0.2
-0.3	+0.5

168.95	164.01	162.76	161.52	160.28	159.04
165.25	156.53	152.25	142.25	131.16	120.06
8.70	4.94	6.49	7.73	8.67	9.91
4.01	4.01	2.84	2.84	2.84	2.84
11.26	11.90	12.40	12.70	13.00	13.29
4.01	4.01	4.01	4.01	4.01	4.01
157.87	156.78	155.67	154.58	153.49	152.40
11.08	12.17	13.26	14.35	15.44	16.53
10.82	10.17	9.52	8.87	8.22	7.57
4.02	0.0	-0.3	-0.7	-1.1	-1.5
152.83	157.62	156.23	157.53	157.23	157.93
2.43	1.34	2.71	2.41	1.19	0.70
160.38	161.52	163.76	164.01	164.26	164.51
4.55	3.91	2.07	0.92	0.0	0.0
158.97	160.06	161.16	162.25	163.34	164.43
5.16	4.77	3.67	2.57	1.47	0.37
154.0	156.0	158.0	160.0	162.0	164.0
3.66	1.66	0.0	0.0	0.0	0.0
156.53	158.79	161.05	163.31	165.57	167.83
10.19	7.93	5.67	3.41	1.15	0.0
158.72	161.27	163.81	166.35	168.89	171.43
8.00	5.05	2.91	0.76	-1.40	-3.55
162.0	165.70	169.40	173.10	176.80	180.50
4.72	1.72	0.0	0.0	0.0	0.0

PARK ROW INTERSECTION 84'ST.

M.L. OF PARK	154.25	154.00	154.10	155.00	155.40	156.00	156.25	-0.3	+0.5
M. CURB	154.00	154.00	153.90	154.80	155.20	155.80	156.05	-0.1	-0.1
M. 1/4	153.40	152.70	153.70	154.60	155.00	155.60	155.85	+0.5	-0.2
CENTER	153.40	152.40	153.50	154.40	154.80	155.40	155.65	+0.5	+0.2
S. 1/4	152.70	152.10	153.30	154.20	154.60	155.20	155.45	+1.1	-0.1
S. CURB	151.80	151.80	152.80	153.10	154.00	154.40	155.25	+0.8	-0.2
SL. OF PARK	153.05	152.80	152.90	153.80	154.20	154.80	155.05	-0.4	0.0

Note - Street closed on E. Side.

159.66 HT
2.10 J.P.
107.56 J.P.
9.60
167.16 HT.

TORREY AVE
STATE ST - LA JOLLA

W Curb 1/4 C 1/4 Curb E
IVANHOE AVE
ICTINUS ST INTERSECTION 95.14'

P.L. OF ICTINUS	12925	12900	12860	12832	12824	12864	12889
N. Curb	12900 12800	12900 12800	12807	12817	12748	12788	12813
N 1/4	12840	12725	12759	12759	12678	12718	12743
Center	12750	12650	12710	12700	12609	12649	12674
S 1/4	12635	12575	12661	12641	12540	12530	12605
S. Curb	12500 12600	12500 12600	12613	12582	12471	12511	12536
S.L. OF ICTINUS	12625	12600	12560	12517	12395	12435	12460

Note: ST. closed on E. Side

IVANHOE AVE.
ICTINUS TO HIGH 30.1 ft.

S.L. OF ICTINUS	12625	12600	12560	12517	12395	12435	12460
P.L. OF HIGH	12520	12495	12435	12397	12308	12300	12325

HIGH AVE
HIGH ST. INTERSECTION 80' ST

P.L. OF HIGH	12520	12440	12435	12397	12308	12300	12325
N. Curb	12471	12446	12386	12339	12253	12200	12200
N 1/4	12425	12400	12340	12285	12201	12125	12240
Center	12371	12350	12290	12231	12150	12050	12150
S 1/4	12325	12300	12240	12177	12099	11975	12035
S. Curb	12260	12235	12175	12117	12041	11900	11900
S.L. OF HIGH	12154	12129	12069	12064	11994	12000	12025

Note - ST. closed on W. Side

131.30	126.25	124.05	123.25	122.21
0.70	6.75	7.95	8.75	9.75
132.00	6.25	10.45	11.65	12.75
129.25	-0.5	-2.5	-2.9	-3.0
2.75	1361	124.50	123.25	122.07
2.05	11899	7.40	8.75	110
70.7	172	7.50	9.75	127.17
120.71	120.71	-0.1	-1.0	126.07
				1.17
				3.37
+3.4	3.0	123.00	122.00	120.07
		4.17	5.17	7.17
+0.2	+2.1		12.90	8.87
			6.94	134.94
+0.4	+2.2	135.2		223.00
				11.94
+0.4	+2.5			128.64
				6.30
		134	124.35	123.00
		126.07	3.66	4.41
		127.41		3.01
		126.07	122.20	121.50
		119.4	5.21	5.91
+0.4	+1.4	138.01	127.50	126.49
			141	129.0
			10.91	11.52
				9.01
				9.37
+0.1	+0.1	126.07		
		2.25		
		128.32	121.50	120.0
			6.82	6.32
				0.82

West	East
+3.4	3.0
+0.2	+2.1
+0.4	+2.2
+0.4	+2.5
0.0	+2.4
+0.4	+1.4
+0.1	+0.1
+0.1	+0.1
-2.1	-1.1
-2.1	-1.6
-2.5	-1.9
-2.8	-1.7
-2.8	-1.3
-2.8	-1.4
-2.4	-2.3

C ST.

1-16-14

Green Grade Line

89

S Curb 1/4 C 1/4 Curb A

420' E of 30 th	197.26	197.01	196.70	197.19	196.77	197.37	197.62
460 "	192.95	192.70	192.41	192.95	192.60	193.20	193.45
560 "	182.16	181.91	181.72	182.34	182.17	182.77	183.02
580 "	180.00	179.75	179.58	180.22	180.08	180.68	180.93
W.L. of 31 st							
600	177.85	177.60	177.45	178.10	178.00	178.60	178.85

31st ST INTERSECTION

W.L. of 31 st	177.85	177.60	177.45	178.10	178.00	178.60	178.85
W Curb	177.60	177.60	177.52	178.17	178.07	178.60	178.60
W 1/4	177.20	176.70	177.59	178.24	178.14	177.70	178.20
Center	177.80	176.80	177.65	178.30	178.20	177.80	178.50
E 1/4	177.60	176.90	177.72	178.37	178.27	177.90	178.60
E Curb	178.00	178.00	177.79	178.44	178.34	178.00	178.00
EL of 31 st	178.25	178.00	177.85	178.50	178.40	179.00	179.25

EL of 31 st	178.25	178.00	177.85	178.50	178.40	179.00	179.25
20' E of 31 st	179.90	179.65	179.53	180.22	180.20	180.80	181.05
75' "	184.42	184.17	184.15	184.94	185.12	185.72	185.91

C ST.
Blue Grade Line

S Curb 1/4 C 1/4 Curb M

460' E of 30th	191.95	191.70	191.30	191.70	191.30	191.70	191.95
560' "	177.25	177.00	176.60	177.50	177.60	178.00	178.25
580' "	176.95	176.70	176.30	177.20	177.30	177.70	177.95
W.L. of 31st	176.65	176.40	176.00	176.90	177.00	177.40	177.65

31ST ST INTERSECTION

W.L. of 31 ST	176.65	176.40	176.25	176.96	177.80	177.40	177.65
W. Curb	176.40	176.40	176.52	177.17	177.07	177.40	177.40
W. 1/4	176.40	175.80	176.79	177.44	177.34	176.80	177.40
Center	177.20	176.20	177.05	177.70	177.60	177.20	178.20
E 1/4	177.40	176.60	177.32	177.97	177.87	177.60	178.40
E Curb	177.00	177.00	177.59	178.24	178.14	178.00	178.00
EL. of 31 ST	178.25	178.00	177.85	178.50	178.40	179.00	179.25

EL. of 31 ST	178.25	178.00	177.85	178.50	178.40	179.00	179.25
20' E of 31 ST	180.34	180.09	179.97	180.65	180.61	181.21	181.46
90' "	187.6	187.4	187.4	188.2	188.4	189.0	189.2
100' "	188.72	188.47	188.47	189.27	189.47	190.07	190.32

C ST.

Brown Grade Line

S Curb $\frac{1}{4}$ C $\frac{1}{4}$ Curb π

41

440' E of 30 th	193.45	193.20	192.95	193.50	193.20	193.80	194.05
460' "	191.50	191.25	191.01	191.57	191.30	191.90	192.15
560'	181.75	181.50	181.32	181.95	181.80	182.40	182.65
580' WL of 31 st	179.80	179.55	179.38	180.02	179.90	180.50	180.75
600'	177.85	177.60	177.45	178.10	178.00	178.60	178.85

31st ST INTERSECTION

Same as Green Line

Beyond 31st St. follow either
Blue or Green line.

Red Grade Line

S Curb 1/4 Φ 1/4 Curb Π

420' E of 31 st	197.62	197.37	196.97	197.37	196.97	197.37	197.62
440'	194.79	194.54	194.14	194.54	194.14	194.54	194.79
460'	191.95	191.70	191.30	191.70	191.30	191.70	191.95
560'	170.25	170.00	169.85	170.50	170.40	171.00	171.25
580'	168.45	168.20	168.05	168.70	168.60	169.20	169.45
W.L. of 31 st 600	168.25	168.00	167.85	168.50	168.40	169.00	169.25

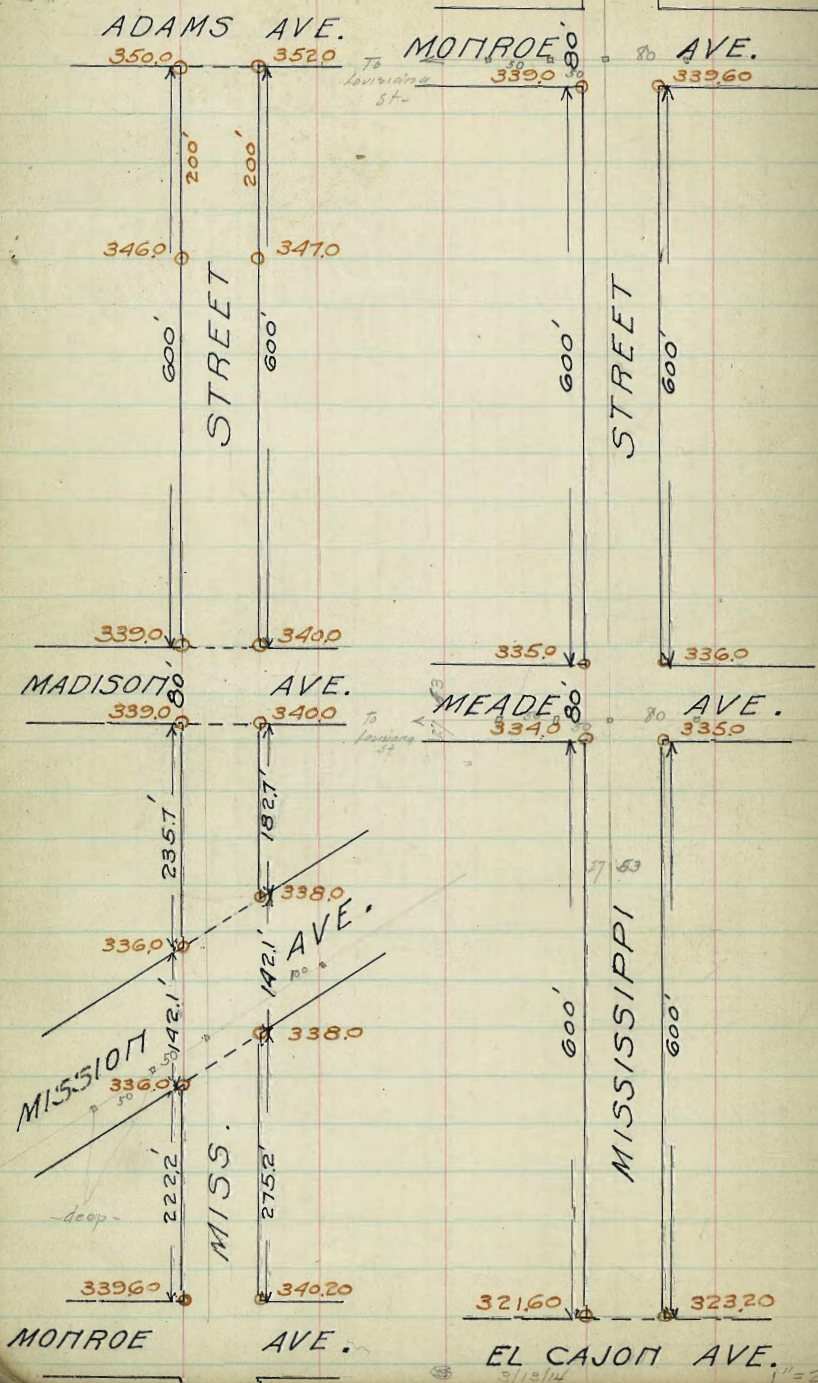
31st ST INTERSECTION 60th ST.

W.L. of 31 st	168.25	168.00	167.85	168.50	168.40	169.00	169.25
W. Curb	168.00	168.00	168.18	168.83	168.73	169.00	169.00
W 1/4	168.10	167.50	168.51	169.16	169.06	168.50	169.10
Φ	169.00	168.00	168.85	169.50	169.40	169.00	170.00
E 1/4	169.40	168.50	169.18	169.83	169.73	169.50	170.40
E. Curb	169.00	169.00	169.51	170.16	170.06	170.00	170.00
E.L. of 31 st	170.25	170.00	169.85	170.50	170.40	171.00	171.25

E.L. of 31 st	170.25	170.00	169.85	170.50	170.40	171.00	171.25
20' E. of 31 st	173.25	173.00	172.85	173.50	173.40	174.00	174.25
75' E	184.94	184.69	184.54	185.00	185.12	185.72	185.97
90' E							
100' E	190.25	190.00	189.85	190.50	190.40	191.00	191.25

80' STREET
20' WALKS
10' QUARTERS

Note - Distances shown on this sketch are taken from field notes in book 932.



MISSISSIPPI STREET

ADAMS TO MADISON

	W	Curb	1/4	C	1/4	Curb	E
S.L. of ADAMS	350.25	350.00	350.10	351.00	351.40	352.00	352.25
3'S	350.19	349.94	350.04	350.93	351.33	351.93	352.18
25'S	349.75	349.50	349.57	350.44	350.76	351.38	351.63
50'	349.25	349.00	349.04	349.87	350.15	350.75	351.00
75'	348.75	348.50	348.50 ^{5'}	349.31	349.53	350.13	350.38
100'	348.25	348.00	347.97 ^{9'}	348.75	348.90	349.50	349.75
125'	347.75	347.50	347.44	348.19	348.28	348.88	349.13
150'	347.25	347.00	346.91	347.63	347.65	348.25	348.50
175'	346.75	346.50	346.38	347.06	347.03	347.63	347.88
200'	346.25	346.00	345.85	346.50	346.40	347.00	347.25
225'	345.81	345.56	345.41	346.06	345.96	346.56	346.81
250'	345.37	345.12	344.97	345.62	345.52	346.12	346.37
275'	344.93	344.68	344.53	345.18	345.08	345.68	345.93
300	344.50	344.25	344.10	344.75	344.65	345.25	345.50
325	344.06	343.81	343.66	344.31	344.21	344.81	345.06
350	343.62	343.37	343.22	343.87	343.77	344.37	344.62
375	343.18	342.93	342.78	343.43	343.34	343.93	344.18
400	342.75	342.50	342.35	343.00	342.90	343.50	343.75
425	342.31	342.06	341.91	342.56	342.46	343.06	343.31
450	341.87	341.62	341.47	342.12	342.02	342.62	342.87
475	341.43	341.18	341.04	341.68	341.59	342.18	342.43
500	341.00	340.75	340.60	341.25	341.15	341.75	342.00
525	340.56	340.31	340.16	340.81	340.71	341.31	341.56
550	340.12	339.87	339.72	340.37	340.27	340.87	341.12
575	339.68	339.43	339.28	339.93	339.84	340.43	340.68
T.L. MADISON 600 S	339.25	339.00	338.85	339.50	339.40	340.00	340.25

ADAMS TO EL CAJON

FIELD BOOK 932

ESTIMATE BOOK 10

West East

West	East
-0.4	-0.2
-18	-0.6
-23	-1.9
-1.8	-0.9
-1.6	-0.4
-1.3	+0.6
-1.1	+0.6
-1.0	+0.4
-0.6	+0.1
-0.5	-0.2
-0.5	-0.4
-0.5	-0.1
-0.3	+0.3
0.0	+0.2

MISSISSIPPI STREET

MADISON TO MISSION TO MOHROE

	W	Curb	1/4	±	1/4	Curb	E	West	East
SL. MADISON	339.25	339.00	338.85	339.50	339.40	340.00	340.25	0.0	0.0
25' S	338.93	338.68	338.54	339.20	339.13	339.73	339.98		
50'	338.61	338.36	338.23	338.90	338.85	339.45	339.70	-0.3	0.0
75'	338.29	338.04	337.91	338.61	338.58	339.18	339.43		
100'	337.97	337.72	337.62	338.31	338.30	338.90	339.15	-1.2	0.2
125'	337.65	337.40	337.30	338.01	338.03	338.63	338.75		
150'	337.34	337.09	337.00	337.72	337.75	338.35	338.60	-0.7	+0.2
Mission Ave. on E									
182.7' S	336.92	336.67	336.60	337.33	337.40	338.00	338.25		
235.7' S on W.									
182.7' S on E.	336.25	336.00	336.10	337.00	337.40	338.00	338.25	0.0	-0.2
377.8' S on W.									
324.8' S on E.	336.25	336.00	336.10	337.00	337.40	338.00	338.25	+1.4	-0.8
377.8' S on W.									
357.8' S on E.	336.25	336.00	336.16	337.13	337.86	338.26	338.51		
377.8' S on E & M.	336.25	336.00	336.20	337.21	337.82	338.42	338.67	+1.4	+0.3
400' S	336.61	336.36	336.52	337.48	338.00	338.60	338.85	+1.2	-1.4
425'	337.01	336.76	336.87	337.78	338.30	338.80	339.00		
450'	337.42	337.17	337.22	338.08	338.40	339.00	339.25	+1.2	-0.6
475'	337.82	337.57	337.57	338.38	338.60	339.20	339.45		
500'	338.23	337.98	337.93	338.69	338.80	339.40	339.65	+0.7	-1.8
510'	338.39	338.14	338.07	338.81	338.83	339.48	339.73		
525'	338.63	338.38	338.28	338.99	339.00	339.60	339.85		
545'	338.95	338.70	338.56	339.23	339.16	339.76	340.01		
550'	339.03	338.78	338.63	339.29	339.20	339.80	340.05	+0.4	-1.2
575'	339.43	339.18	338.98	339.59	339.40	340.00	340.25		
711.1' of MOHROE									
600' S	339.85	339.60	339.35	339.90	339.60	340.20	340.45	-0.1	-0.8

MISSISSIPPI STREET

MONROE AVE. INTERSECTION 80' ST

	W	Curb	1/4	C	1/4	Curb	E	West	East
N.L. of MONROE	339.55	339.60	339.35	339.90	339.60	340.20	340.45	-0.1	-0.8
N. CURB	339.60	339.60	339.25	339.80	339.50	340.20	340.20		
N 1/4	339.00	338.45	339.15	339.70	339.40	339.05	339.60		
CENTER	339.30	338.80	339.05	339.60	339.30	338.90	339.90	+0.9	+0.4
S 1/4	338.75	338.15	338.95	339.50	339.20	338.75	339.35		
S CURB	339.00	339.00	338.75	339.40	339.10	339.60	339.60		
S.L. of MONROE	339.25	339.00	338.75	339.30	339.00	339.60	339.75	0.0	+0.2

MONROE TO MEADE

S.L. of MONROE	339.25	339.00	338.75	339.30	339.00	339.60	339.85	0.0	+0.2
25' S	339.09	338.84	338.59	339.14	338.85	339.45	339.70		
50'	338.92	338.67	338.42	338.98	338.70	339.30	339.55	+0.1	+0.7
75'	338.76	338.51	338.26	338.82	338.55	339.15	339.40		
100'	338.59	338.34	338.10	338.67	338.40	339.00	339.25	0.0	+0.6
125'	338.42	338.17	337.94	338.51	338.25	338.85	339.10		
150'	338.25	338.00	337.77	338.35	338.10	338.70	338.95	-0.3	+0.4
175'	338.09	337.84	337.61	338.19	337.95	338.55	338.80		
200'	337.92	337.67	337.45	338.03	337.80	338.40	338.65	-1.6	-0.2
225'	337.76	337.51	337.29	337.87	337.65	338.25	338.50		
250'	337.59	337.34	337.12	337.72	337.50	338.10	338.35	-3.2	-1.5
275'	337.42	337.17	336.96	337.56	337.35	337.95	338.20		
300'	337.25	337.00	336.80	337.40	337.20	337.80	338.05	-4.0	-2.8
325'	337.09	336.84	336.64	337.24	337.05	337.65	337.90		
350'	336.92	336.67	336.47	337.08	336.90	337.50	337.75	-3.7	-3.2
375'	336.75	336.50	336.31	336.92	336.75	337.35	337.60		
400'	336.59	336.34	336.15	336.77	336.60	337.20	337.45	-3.6	-3.3

MISSISSIPPI STREET

MONROE TO MEADE CORNER

	W	Curb	1/4	C	1/4	Curb	E	West	East
425' S of Monroe	336.44	336.17	335.99	336.61	336.45	337.05	337.30		
450' S	336.25	336.00	335.84	336.45	336.30	336.90	337.15	1.4	3.4
475'	336.09	335.84	335.66	336.29	336.15	336.75	337.00		
500'	335.94	335.67	335.50	336.13	336.00	336.60	336.85	0.3	2.4
525'	335.78	335.50	335.34	335.97	335.85	336.45	336.70		
550'	335.58	335.33	335.17	335.82	335.70	336.30	336.55	+0.8	-1.6
575'	335.44	335.17	335.01	335.66	335.65	336.15	336.40		
N.L. of MEADE									
600' S	335.25	335.00	334.85	335.50	335.40	336.00	336.25	+0.4	-0.4

MEADE AVE. INTERSECTION 80' ST.

N.L. of MEADE	335.25	335.00	334.85	335.50	335.40	336.00	336.25	+0.4	-0.4
N CURB	335.00	335.00	334.66	335.33	335.23	336.00	336.00		
N 1/4	334.40	333.75	334.51	335.16	335.06	334.75	335.40		
CENTER	334.50	333.50	334.35	335.00	334.90	334.50	335.50	+1.0	-0.4
S 1/4	333.85	333.25	334.19	334.84	334.74	334.25	334.85		
S CURB	334.00	334.00	334.02	334.67	334.57	335.00	335.00		
S.L. of MEADE	334.25	334.00	333.85	334.50	334.40	335.00	335.25	+0.9	+1.0

See Field Book 940

Mission Ave. Intersection

9/22/14

	1672	1555	1555	1555	1555	1573		
N.L. Mission	336.25	336.00	336.10	337.00	337.40	338.00	338.25	
N CURB	336.00	336.00	335.50	336.00	336.50	337.00	337.00	
N 1/4	335.50	335.95	336.27	336.60	336.92	337.25	337.60	
Center	336.00	336.35	336.67	337.00	337.32	337.65	338.00	
S 1/4	335.50	335.95	336.27	336.60	336.92	337.25	337.60	
S CURB	336.00	336.00	335.50	336.00	336.50	337.00	337.00	
S.L. Mission	336.25	336.00	336.10	337.00	337.40	338.00	338.25	

MISSISSIPPI STREET

MEADE TO EL CAJON

	W	CURB	1/4	C	1/2	CURB	E	West	East
S. Lot MEADE	33425	33400	33385	33450	33440	33500	33525	+09	+1.0
25' S	333.74	333.49	333.34	334.00	333.92	334.50	334.77		
50'	333.22	332.97	332.83	333.49	333.42	334.02	334.27	+7.5	+2.0
75'	332.71	332.46	332.32	332.99	332.93	333.53	333.78		
100'	332.19	331.94	331.81	332.48	332.44	333.04	333.29	+1.3	+2.5
125'	331.67	331.42	331.30	331.98	331.95	332.55	332.80		
150'	331.16	330.91	330.79	331.48	331.46	332.06	332.31	+1.5	+2.9
175'	330.64	330.39	330.28	330.97	330.96	331.56	331.81		
200'	330.12	329.87	329.77	330.47	330.47	331.07	331.32	+2.1	+3.0
225'	329.61	329.36	329.26	329.96	329.98	330.58	330.83		
250'	329.09	328.84	328.75	329.46	329.49	330.09	330.34	+2.3	+3.4
275'	328.57	328.32	328.24	328.95	329.00	329.60	329.85		
300'	328.05	327.80	327.72	328.45	328.50	329.10	329.35	+1.7	+2.7
325'	327.54	327.29	327.21	327.95	328.01	328.61	328.86		
350'	327.02	326.77	326.70	327.44	327.52	328.12	328.37	+0.3	+1.4
375'	326.50	326.25	326.19	326.94	327.03	327.63	327.88		
400'	325.99	325.74	325.68	326.43	326.54	327.14	327.39	-0.4	+0.9
425'	325.47	325.22	325.17	325.93	326.04	326.64	326.89		
450'	324.95	324.70	324.66	325.43	325.55	326.15	326.40	-1.2	+1.0
475'	324.43	324.18	324.15	324.92	325.06	325.66	325.91		
500'	323.92	323.67	323.64	324.42	324.57	325.17	325.42	-1.0	+1.0
525'	323.40	323.15	323.13	323.91	324.08	324.68	324.93		
550'	322.88	322.63	322.62	323.41	323.58	324.18	324.43	-0.5	+2.0
575'	322.37	322.12	322.11	322.90	323.09	323.69	323.94		
N.L. of EL CAJON									
600'	321.85	321.60	321.60	322.40	322.60	323.20	323.45	-0.4	+2.2

DALE STREET

W. Half of St. = 30'

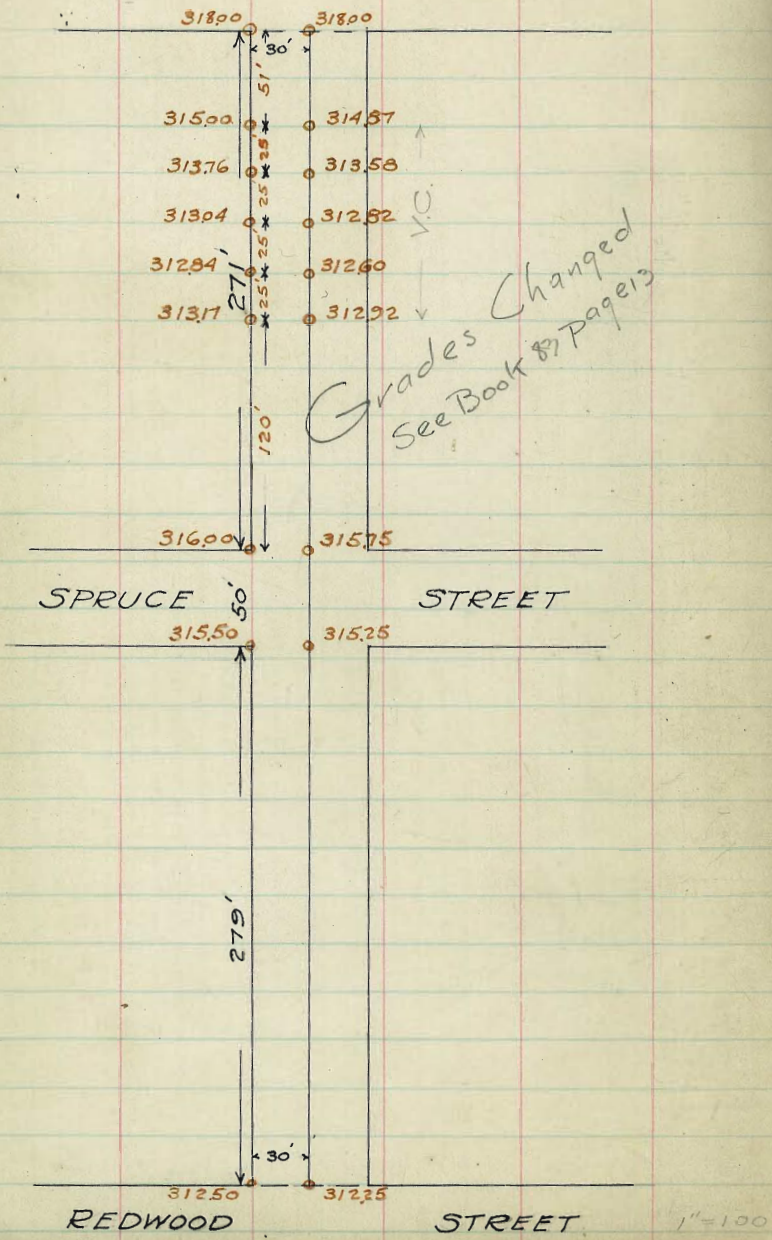
Walk = 10'

Quarters = 10'

Field Book 921
Estimate " 10

THORN STREET

STREET



SPRUCE STREET

STREET

REDWOOD STREET

STREET

1" = 100'

DALE STREET
REDWOOD TO SPRUCE

West Half of Street only = 30'

W Curb 1/4 C 1/4 Curb E

N.L. of Redwood	312.75	312.50	312.10	312.25	312.00
25' N	313.04	312.77	312.37	312.54	
50' N	313.29	313.04	312.64	312.79	
75'	313.56	313.31	312.91	313.06	
100'	313.84	313.57	313.17	313.32	
125'	314.09	313.84	313.44	313.59	
150'	314.36	314.11	313.71	313.86	
175'	314.63	314.38	313.98	314.13	
200'	314.89	314.64	314.24	314.39	
225'	315.16	314.91	314.51	314.66	
250'	315.43	315.18	314.78	314.93	
S.L. of Spruce	315.75	315.50	315.10	315.25	315.00

SPRUCE ST. INTERSECTION 50' ST.

S.L. of Spruce	315.75	315.50	315.10	315.25	315.00
S. Curb 10'	315.50	315.50	315.20	315.35	
S 1/4 7 1/2'	314.50	314.50			
S 1/4 7 1/2'	315.10	314.64	315.27	315.43	
Center 7 1/2'	315.75	314.75	315.35	315.50	
N 1/4 7 1/2'	315.60	314.87	315.43	315.58	
N Curb 7 1/2'	315.20	315.00			
N Curb 10'	316.00	316.00	315.50	315.65	
N.L. of Spruce	316.25	316.00	315.60	315.75	315.50

REDWOOD TO THORN
Field Book 221 Estimate Book 10.

W E = center of Street.

+0.6	+2.2
+0.8	+2.0
+1.3	+2.3
+1.5	+2.2
+1.5	+1.9
+1.5	+1.6
+1.0	+0.8
+1.0	+0.8
+0.2	+0.3
+0.2	-0.0

DALE STREET

SPRUCE TO THORN

	W	Curb	1/4	C	1/4	Curb	E
TL of SPRUCE	31625	31600	31560	31575		31550	
25' T	31566	31541	31501	31516			
50' T	31507	31482	31442	31457			
75'	31448	31423	31383	31398			
100'	31389	31364	31324	31340			
121, P.V.C.	31342	31317	31277	31292			
125'	31325	31310	31270	31286			
140'	31316	31291	31251	31266			
150'	31313	31288	31248	31264			
158'	31319	31294	31254	31271			
175'	31343	31318	31278	31294			
200'	31426	31401	31361	31374			
221, P.V.C.	31525	31500	31460	31477			
225'	31555	31530	31490	31516			
250'							
SL. of THORN	31705	31680	31640	31674			
271' T	31825	31800	31760	31800			

Vertical Curve

REDWOOD TO THORN

W	E (center of st)
+0.2	0.0
+1.9	+0.8
+1.8	-0.1
-8.5	-10.8
-11.5	-10.8
-3.3	-0.6
-1.8	-0.3
-0.4	-0.6

MYRTLE AVENUE.

	S.	E.	N.
0	298.25	298.00	297.60
25	297.91	297.66	297.41
50	297.58	297.33	297.08
75	297.25	297.00	296.75
100	296.91	296.66	296.41
125	296.58	296.33	296.08
150	296.25	296.00	295.75
175	295.91	295.66	295.41
200	295.58	295.33	295.08
225	295.25	295.00	294.75
250	294.91	294.66	294.41
275	294.58	294.33	294.08
300	294.25	294.00	293.75

N.W. Indiana	294.25	294.00	293.60
N.E. "	294.00	294.00	293.83
S.W. "	293.40	293.75	293.66
S.E. "	293.50	293.50	293.10
E.C. "	293.85	293.25	292.93
E.L. "	293.00	293.00	292.60
+12.54	292.25	293.00	291.60

N.L. Myrtle	292.25	297.00	291.75	291.50	291.25	291.00	291.25
H.C. "	292.00	291.82	291.66	291.50	291.34	291.17	291.00
N. 1/2 "	291.60	291.42	291.26	291.10	290.93	290.77	290.60
E. "	292.00	291.82	291.66	291.50	291.34	291.17	291.00
S. 1/2 "	291.60	291.42	291.26	291.10	290.93	290.77	290.60
S.C. "	292.00	291.00	290.75	290.50	290.25	290.00	291.00
S.L. Myrtle	292.25	297.00	291.40	291.50	290.85	291.00	291.25
S.L. Myrtle	292.25	297.00	291.40	291.50	290.85	291.00	291.25
Sect. A.	291.23	290.98	290.58	290.99	290.60	291.00	291.25
25'S.	288.77	288.52	288.12	288.40	287.87	288.77	288.52
50'S.	286.30	286.05	285.45	285.80	285.52	285.52	285.80
75'S.	283.84	283.59	282.99	283.2	282.62	282.83	283.08
100'S.	281.37	281.12	280.52	280.61	279.96	280.11	280.36
1378 Sect. B.	277.65	277.40	276.80	276.70	275.75	276.00	267.25
1520		276.00					
Sect. C.	274.90	274.65	274.58	275.32	275.40	276.00	267.25
25'S.	272.92	272.34	272.22	272.90	272.87	273.47	273.72
50'S.	270.27	270.12	269.85	270.48	270.34	270.94	271.19
75'S.	267.95	267.70	267.47	268.05	267.81	268.41	268.66
100'S.	265.63	265.38	265.11	265.63	265.28	265.88	266.13
125'S.	263.34	263.07	262.67	263.21	262.95	263.35	263.60
158' = Sect. D.	260.25	260.00	259.60	260.00	259.60	260.00	260.25
N.L. Ups.	260.75	260.00	259.40	259.50	258.85	259.00	259.25

D.L. Upas St.

H.C. "

H. " "

F. "

S. " "

S.C. "

S.L. Upas St.

CALIFORNIA STREET

W. Curb 1/4 C 1/4 Curb E

S.L. of Henry St. extended, on West Line of Calif.
5790 14703 14678 14675 14753 14768 14828 14853
6024 1100 E = S.L. of Henry St. extended
5790 1100 W 14703 14678 14756 14914 15090 15150 15175

HENRY ST. INTERSECTION ^{526 skewed}
50' square

SL of Henry 14903 14678 14756 14914 15090 15150 15175 -6.9 +1.9
S Curb 14783 14758 14820 149.63 151.10 151.50 151.50
5 1/4 14841 1487W 1487V 150.03 151.25 150.75 151.35
C 149.11 14886 1492A 15043 151.40 15100 15200 -6.3 +3.8
A 1/4 14975 14950 14976 15083 15155 15135 15190
A Curb 15039 15014 15028 15123 15170 15250 15250
N.L. of Henry 15125 15100 15077 15175 15190 15250 15275 -5.8 +5.2

10.5
79
79
81

128.37 Tie rod
27.6 151 1472.6 1227 13634 1362 14725
159.14 8.14 10.35 146.27 11.31 1215
Int St Noel with N Cal 263 10.11 115
11237 9.3 90 1849
121 320 7.14 1585
42.50 TP 245 = N1 Stone on E 2356 - 24 Stone 7.33
9.47 245 1.77
245 5.74

Curb at 5th Cal & Jexl. ok high
- NW + Noel OK
- SW - OK
Break at bottom of Cal. on East side not at
stakes about 7.7 too far north
Curb 40' so. of W.L. Stone on W = 22 high
at N.L. Stone 2000 = 1 low
50' so. of Henry = 1 low
75' " " = 1 low
30' Ho " Stone = 2 off ker line.
75' " " = 1 low
75' so " " = 1 low
75' " " = 1 low
Ret at Cal & LaJolla W = 1 high
On Curb otherwise line + grade OK

HENRY STREET 50 ST

RIPPEY TO CALIFORNIA

	N	Curb 1/4	C	1/4	Curb S	S
W.L. of Rippey	206.25	206.00	205.40	205.50	204.85	205.00 205.25
25 W.	202.50	202.25	201.65	201.75	201.10	201.25 201.50
50	198.75	198.50	197.90	198.00	197.35	197.50 197.75
75	195.00	194.75	194.15	194.25	193.60	193.75 194.00
100	191.25	191.00	190.40	190.50	189.85	190.00 190.25
125	187.50	187.25	186.65	186.75	186.10	186.25 186.50
150	183.75	183.50	182.90	183.00	182.35	182.50 182.75
175	180.00	179.75	179.15	179.25	178.60	178.75 179.00
EL. of Titus (Columbia) 200 W.	176.25	176.00	175.40	175.50	174.85	175.00 175.25

(See Columbia St. for Intersection)

W.L. of Titus	174.75	174.50	173.90	174.00	173.35	173.50 173.75
25 W.	170.25	170.00	169.40	169.50	168.85	169.00 169.25
50	165.81	165.56	164.96	165.05	164.40	164.55 164.80
75	161.34	161.09	160.49	160.58	160.00	160.15 160.40
100	156.87	156.62	156.02	156.11	155.50	155.65 155.90

{ 132.2 = Int. Cal. 152.75 152.50
of NL Henry.

{ 139.4 = Int. Cal. 151.50 151.75
of SL Henry

	NL	C	C	SL
W.L. Titus = 00	174.75	174.50	173.50	173.75
+ 50	166.43	166.18	165.20	165.85
+ 100	158.12	157.87	157.70	157.95
NL + 32.2	152.75	152.50	152.60	152.85
SL + 39.4			151.50	151.75

N	S	162.78	162.78	162.78	162.78	162.78	162.78	162.78	175.18
-2.4	-1.0	0.55	9.53	8.88	6.50	0.50	3.04	7.60	
		162.237	153.25	154.70	156.28	162.28	157.74	165.58	
		17.95	151.74	152.85	152.75	158.12	157.75	165.85	
		186.91	151.12	152.85	152.75	158.12	157.75	165.85	
		3.81	174.09 TP	175.18	175.18	186.91	186.91	186.91	
		183.10	12.82	5.34	2.38	1.11	2.48	2.22	
			169.84	172.80	176.80	182.43	178.01	184.69	
			186.91 (11)	166.43	173.95	174.74	176.28	175.25	
			0.33	3.41	4.05	2.35	4.18	2.76	
			181.58 TP	12.57	186.91	199.17	199.17	199.17	
			177.17 (1)	1.24	7.52	6.30	0.62	1.32	
			0.58	185.65	191.65	192.87	192.65	197.85	
			198.57 TP	183.75	191.25	192.25	197.75	199.75	
			9.33	1.90	0.70	2.62	0.90	0.90	
			20.792 H.						
			3.12						
			204.80 = BM 13.5' W. Van for Henry & Rippey.						
			204.80 = Cut 87.16 - 3/4 E. West Evans Curve						

			206.0	205.0	198.5	197.5	191.0	190.0	
			151.87	157.70	152.5	151.5	147.7	146.2	
			183.5	182.5	176.0	175.0	174.5	173.5	
			11.42	12.13	7.83	8.93	9.02	10.43	
			153.08 BM	157.87	157.70	152.5	151.5	147.7	
			0.82	157.87	157.70	152.5	151.5	147.7	
			183.93 H	50.3	8.72	9.72			
			12.82	159.43					
			171.67	179					
			171.65 H	161.22 H					
			157.43						

			152.22	-1.0	152.22 BM on hub at 524.16. = W.L. Middle Hdd
			157.20	165.60	172.00
			165.60	172.00	182.80
			172.00	182.80	193.60
			182.80	193.60	204.40
			193.60	204.40	215.20
			204.40	215.20	226.00
			215.20	226.00	236.80
			226.00	236.80	247.60
			236.80	247.60	258.40

+5.2 +1.9

C

Curb on So Side from 50. W. of Titus to Cal. is from 1 to 12 in at. No 45' W. of Titus .12 high otherwise grader fine. OK 6/14/5 Gregory

COLUMBIA (TITUS) STREET 50'

Hold over your head

W Curb 1/4 C 1/4 Curb E

ML of CLARK	151.25	151.00	150.85	151.50	151.40	152.00	152.25
25'	153.14	152.87	152.73	153.39	153.32	153.92	154.17
50'	155.00	154.75	154.62	155.29	155.23	155.83	156.07
75'	156.87	156.62	156.50	157.18	157.14	157.75	158.00
100'	158.75	158.50	158.39	159.08	159.06	159.67	159.92
125'	160.62	160.37	160.27	160.97	160.98	161.58	161.83
150'	162.50	162.25	162.16	162.87	162.90	163.50	163.75
175'	164.37	164.12	164.04	164.77	164.81	165.42	165.67
200'	166.25	166.00	165.93	166.67	166.73	167.34	167.59
225'	168.12	167.87	167.81	168.56	168.64	169.25	169.50
250'	170.00	169.75	169.70	170.46	170.56	171.17	171.42
275'	171.87	171.62	171.58	172.36	172.48	173.09	173.34
SL of HENRY	173.75	173.50	173.41	174.25	174.40	175.00	175.25

50' ST. HENRY ST. INTERSECTION

SL of HENRY	173.75	173.50	173.41	174.25	174.40	175.00	175.25
S CURB	173.50	173.50	173.67	174.45	174.60	175.00	175.00
S 1/4	173.35	173.25	173.82	174.60	174.75	174.25	174.85
C	174.00	173.00	173.97	174.75	174.90	174.50	175.50
N 1/4	173.90	173.25	174.12	174.90	175.05	174.75	175.40
N CURB	174.50	174.50	174.21	175.05	175.20	176.00	176.00
ML HENRY	174.75	174.50	174.41	175.25	175.40	176.00	176.25

CLARK TO HENRY

18310 BM TS Tie Hub, N of 12' Pk for Titus & Henry.

N	E	18310 BM TS Tie Hub, N of 12' Pk for Titus & Henry.
+0.5	+6.6	184.50 184.50 184.50 184.50 173.34 173.34 173.34 173.34
00	+6.4	172.28 176.45 169.60 173.08 166.46 161.47 176.24 176.24
+0.3	+6.1	171.41 170.00 167.59 166.25 162.50 163.75 163.75 163.75
-1.0	+6.5	173.34 173.34 173.34 173.34 162.34 163.34 163.34 163.34
+0.3	+5.8	166.76 162.54 159.00 158.94 155.00 151.27 151.27 151.27

Cut & Fills - 3/6/15 - West - Evans - Irvine

183.10	183.36	183.36	172.91	172.91	172.91	172.91
175.00	175.30	169.75	171.17	167.34	166.00	
180.36	8.36	7.82	3.76	1.74	5.37	6.91
172.60	172.91	172.91	164.02	164.02	164.02	164.02
170.76	162.35	163.50	159.67	158.50	154.35	155.83
173.91	10.64	9.41	4.35	5.62	9.27	8.19
168.50	164.00	144.02	182.00	151.00	12.02	13.02
162.02	12.02	13.02				

185.09 from P60

173.75	171.17	169.75	166.46	163.34	163.34	163.34
173.75	171.17	169.75	166.46	163.34	163.34	163.34
173.75	171.17	169.75	166.46	163.34	163.34	163.34

finish curb stakes 6/15 Gregory Moore Miller.

Grade + Line OK. 6/15 Gregory

COLUMBIA (TITUS) STREET

Hold over your head

W CURB 1/4 C 1/4 CURB E

Table with 8 columns of elevation data for Columbia Street, ranging from 174.75 to 176.25.

HENRY ST. TO 260 NORTH

W +1.2 E +4.2

+0.1 +4.3

-0.8 +3.6

-0.1 +5.0

+1.6 +9.2

+1.1 +11.3

-0.5 +10.8

-3.8 +8.7

-8.9 +4.7

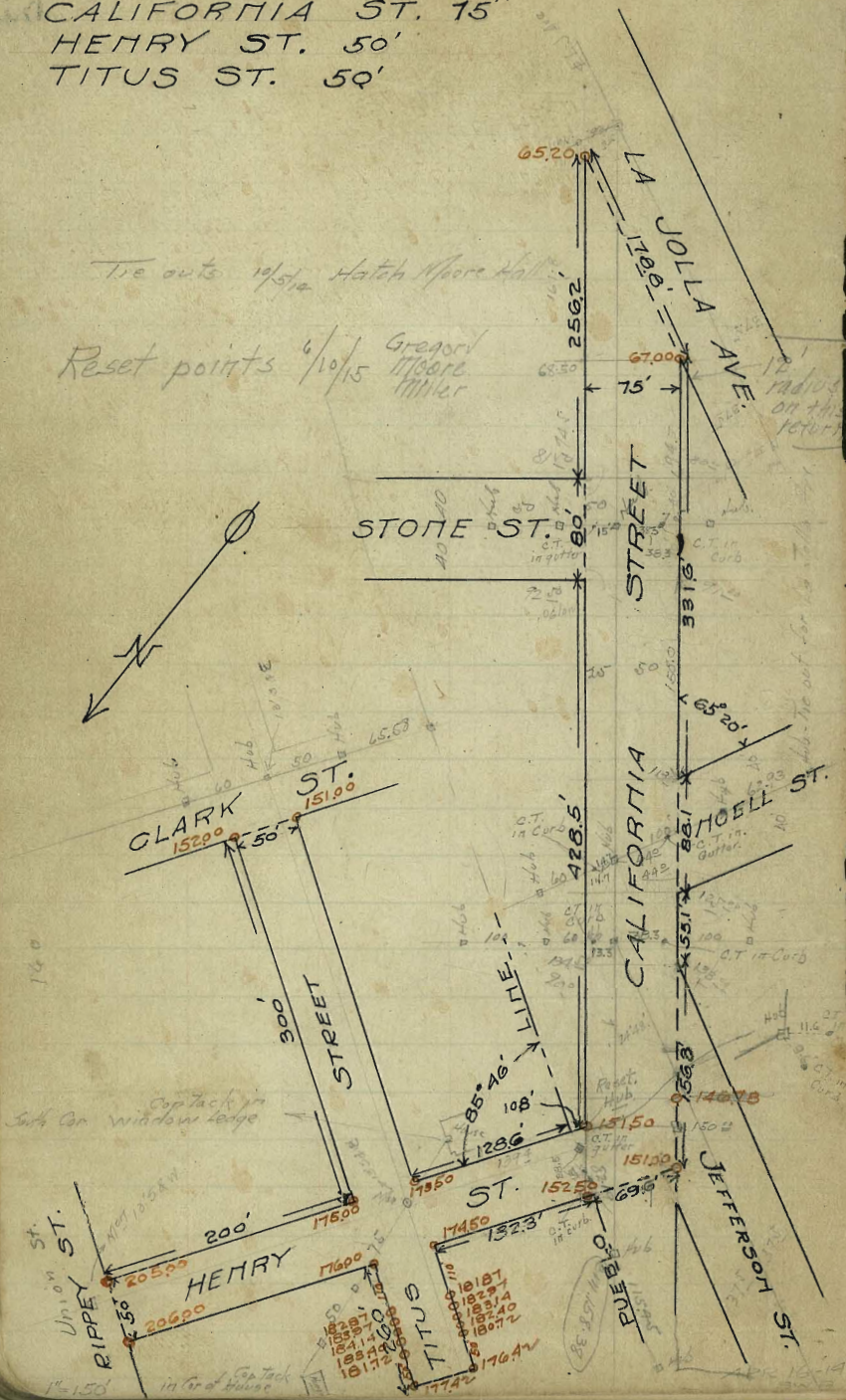
Table with multiple columns of elevation data and small annotations.

Table with multiple columns of elevation data and annotations like 'Curb File - 3/4 West-Evera-Drive'.

Table with multiple columns of elevation data and annotations.

Grade + Line OK 6/11/15 Gregory Moore Miller

CALIFORNIA ST. 15'
HENRY ST. 50'
TITUS ST. 50'

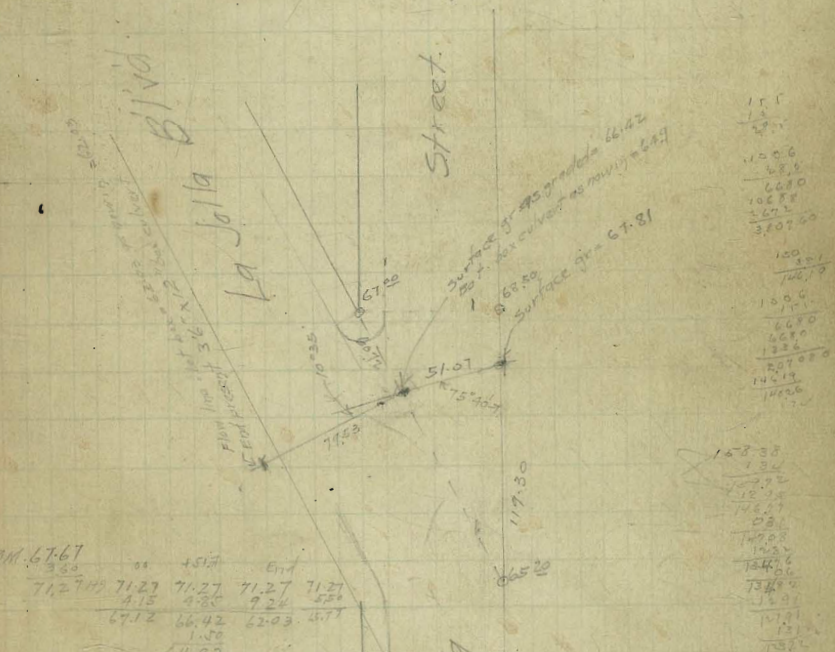


Field Books 493, 870, 897, 918 and 938 61
Estimate Book 10

BM. NE L. J. & Stone 67.67
" " " " Neill. " 71.67
" 55 " " Estadilla " 77.40
" NW Cal/FF Moore " 52.79

$$\begin{array}{r} 100.6 \\ 65.0 \\ 62.0 \\ 102.78 \\ 24.08 \\ 188.46 \\ 14.67 \\ \hline 749.27 \end{array}$$

Sketch showing proposed 18" C.P. Culvert.



$$\begin{array}{r} 151.1 \\ 151.1 \\ 152.6 \\ 152.6 \\ 102.78 \\ 24.08 \\ 188.46 \\ 14.67 \\ \hline 749.27 \end{array}$$

BM. 67.67	3.50	45.07	614
71.27	71.27	71.27	71.27
4.15	4.26	7.24	5.71
67.12	66.42	67.03	67.11
1.50			
64.92			
67.12	64.92	67.03	
63.50	63.00	62.00	
3.62	1.92		

$$\begin{array}{r} 152.6 \\ 152.6 \\ 102.78 \\ 24.08 \\ 188.46 \\ 14.67 \\ \hline 749.27 \end{array}$$

PARK ROW

UNION PLACE TO EXCHANGE PL.

E curb 1/4 E 1/4 curb W.

111' N. of Union Place	15525	15500	15470	15425	15347	15350	15375
15' S. of E. 00' 00' W.							
Section AB	15478	15453	15393	15402	15336	15350	15375
289' N. of W.							
25' N. of AB 00' E.	15399	15374	15314	15314	15244	15255	15280
50' N. of E. 50' S. W.	15320	15295	15235	15221	15154	15160	15185
75' N. of E. 75' S. W.	15241	15216	15156	15140	15062	15065	15090
100' N. of E. 100' S. W.	15162	15137	15077	15053	14972	14970	14995
125' N. of E. 125' S. W.	15083	15058	14998	14966	14880	14875	14900
150' N. of E. 150' S. W.	15004	14979	14919	14879	14789	14780	14805
175' N. of E. 175' S. W.	14925	14900	14840	14792	14698	14685	14710
200' N. of E. 200' S. W.	14846	14821	14761	14705	14607	14590	14615
225' N. of E. 225' S. W.	14767	14742	14682	14618	14516	14495	14520
250' N. of E. 250' S. W.	14688	14663	14603	14532	14410	14400	14425
S. L. of Exchange Place							
275' N. of E. 275' S. W.	14625	14600	14540	14500	14410	14400	14425

Note - See Book 275 for street widths.

Exchange Place Intersection excepted

See Book 81

all points not marked are 5' int.

E.	W.	154.95	153.20	152.41	151.62	150.83	150.04
+1.5	-0.8	157.78	158.20	157.37	156.56	155.75	154.94
+1.8	-0.8	149.25	148.46	147.67	146.88	146.09	145.30
+1.4	-0.7	147.10	148.05	149.00	150.90	152.80	154.70
10' curb +1.8	-0.8	154.95	153.20	152.41	151.62	150.83	150.04
18' curb +7.0	-1.2	147.50	146.85	152.16	151.37	150.58	149.79
+1.9	-2.6	144.95	145.90	154.95	154.37	154.25	154.25
+2.1	-2.3	154.53	151.6	151.37	147.50	148.21	148.21
+1.7	-2.3	144.10	143.22	143.22	143.22	143.22	143.22

stake
shk no. 15
Bunker

PARK ROW

EXCHANGE PLACE TO PROSPECT ST.

E Curb 1/4 E 1/4 Curb W

11.1 ft	Exchange Pl.	14625	14600	14590	80.1	14500	14410	14400	14425	+2.1	-0.9
15' S. 00	15' S on W = 00 E				80'						
Sec	Section AB	14625	14600	14570	77.8	14508	14421	14416	14441	+2.1	-1.6
23.1 ft	from sec. AB										
25' N	25' on E = 26.7 W	14678	14653	14598	76.5	14598	14456	14444	14469		
50' N	50' E = 53.4 W	14730	14705	14645	76.5	14588	14490	14472	14497	+2.7	-0.9
75' N	75' E = 80 W	14783	14758	14698	76.5	14629	14524	14500	14525		
100' N	95' E = 100 W	14825	14800	14740	76.5	14674	14572	14483	14508	+3.0	+1.6
125' N	120' E = 120.6 W	14767	14742	14682	76.5	14604	14495	14466	14491		
150' N	145 E = 141.2 W	14709	14684	14624	76.5	14566	14468	14449	14474	+3.6	+3.7
175' N	170 E = 161.8 W	14651	14626	14566	76.5	14524	14428	14416	14441		
200' N	195 E 182.9 W	14574	14549	14489	76.7	14478	14358	14346	14373	+2.6	+4.2
225' N	215 E = 200 W	14473	14448	14388	76.8	14353	14266	14259	14284		
250' N	241 E = 210 W	14401	14376	14316	77.0	14278	14189	14181	14206		
275' N	252 E = 238 W	14198	14173	14113	77.0	14068	13976	13964	13989	+0.8	+5.1
300' N	277 E = 260 W	13962	13937	13877	77.5	13818	13719	13700	13725		
	305 E = 285 W	13724	13699	13639	77.7	13558	13440	13408	13433	-0.5	+6.6
	327 E = 310 W	13485	13460	13400	77.8	13288	13162	13116	13141		
	336.7 E = 319.7 W	13393	13368	13308	78.0	13184	13052	13000	13025	-2.1	7.4
	S.L. Prospect St										
	343.7 E = 319.7 W	13325	13300	13240		13150	13035	13000	13025	-1.4	+7.4

16.5
36
167.4

167.8

141.2
1.5
156.2

PROSPECT ST. E

130.00

133.90

138.16

68.7

140.63

139.55

142.59

141.92

143.86

143.92

144.92

145.32

ROW

145.90

146.15

144.90

80

148.90

146.90

EXCHANGE PLACE

144.90

146.90

284.6'

PARK

285.0'

153.50

155.00

UNION PL

Apr. 28-14
SWG

Field Book 275
Estimate Book 10

64

65' ST.

THIRTY-FIRST STREET

THORN TO UPAS

W Curb $\frac{1}{4}$ \pm $\frac{1}{4}$ Curb E

N.L. of THORN	319.25	319.00	318.85	319.50	319.40	320.00	320.25
15' S. of Sec 239' 2 25' N	25' N of "	319.67	319.42	319.26	319.90	319.78	320.37
50' N	320.08	319.83	319.66	320.29	320.17	320.75	321.00
50' N	75'	320.50	320.25	320.07	320.69	320.55	321.12
75' N	100'	320.91	320.66	320.47	321.08	320.93	321.50
100' N	125'	321.33	321.08	320.88	321.48	321.32	321.87
125' N	150'	321.75	321.50	321.29	321.88	321.70	322.25
150' N	175'	322.16	321.91	321.69	322.27	322.08	322.62
175' N	200'	322.58	322.33	322.10	322.67	322.47	323.00
200' N	225'	322.99	322.74	322.50	323.06	322.85	323.37
225' N	250'	323.41	323.16	322.91	323.46	323.23	323.75
250' N	275'	323.83	323.58	323.32	323.86	323.61	324.12
275' N	300'	324.24	323.99	323.72	324.25	324.00	324.50
300' N	325'	324.66	324.41	324.13	324.65	324.38	324.87
325' N	350'	325.07	324.82	324.53	325.04	324.77	325.25
350' N	375'	325.49	325.24	324.94	325.43	325.15	325.62
375' N	400'	325.91	325.66	325.35	325.83	325.53	326.00
400' N	425'	326.32	326.07	325.75	326.22	325.92	326.37
425' N	450'	326.74	326.49	326.16	326.62	326.30	326.75
450' N	475'	327.15	326.90	326.56	327.01	326.68	327.12
475' N	500'	327.57	327.32	326.97	327.41	327.07	327.50
500' N	525'	327.99	327.74	327.38	327.81	327.45	327.87
525' N	550'	328.41	328.16	327.78	328.21	327.83	328.25
550' N	575'	328.83	328.58	328.19	328.62	328.22	328.62
S.L. OF UPAS.	600' N of THORN	329.25	329.00	328.60	329.40	329.00	329.00

REDWOOD TO MYRTLE
Field Books 837 and 867
ESTIMATE BOOK 10

65

THIRTY-FIRST STREET
THORN TO REDWOOD

REDWOOD TO MYRTLE

W Curb 1/4 ¢ 1/4 Curb E

15	SL of THORN	318.75	318.50	318.35	319.00	318.90	319.50	319.75
2	25' S of "	317.75	317.50	317.35	318.00	317.90	318.50	318.75
5	50' "	316.75	316.50	316.35	317.00	316.90	317.50	317.75
7	75' "	315.75	315.50	315.35	316.00	315.90	316.50	316.75
10	100'	314.75	314.50	314.35	315.00	314.90	315.50	315.75
100	125'	313.75	313.50	313.35	314.00	313.90	314.50	314.75
150	150'	312.75	312.50	312.35	313.00	312.90	313.50	313.75
175	175'	311.75	311.50	311.35	312.00	311.90	312.50	312.75
200	200'	310.75	310.50	310.35	311.00	310.90	311.50	311.75
225	225'	309.75	309.50	309.35	310.00	309.90	310.50	310.75
250	250'	308.75	308.50	308.35	309.00	308.90	309.50	309.75
270	275'	307.75	307.50	307.35	308.00	307.90	308.50	308.75
	300'	306.75	306.50	306.35	307.00	306.90	307.50	307.75
	325'	306.21	305.96	305.78	306.37	306.21	306.79	307.04
	350'	305.67	305.41	305.20	305.75	305.55	306.08	306.33
	375'	305.13	304.88	304.62	305.17	304.98	305.37	305.62
	400'	304.59	304.34	304.04	304.50	304.31	304.66	304.91
	425'	304.04	303.79	303.46	303.87	303.54	303.96	304.21
	450'	303.50	303.25	302.88	303.25	302.87	303.25	303.50
	458'	303.33	303.08	302.69	303.05	302.66	303.02	303.27
	475'	302.96	302.71	302.30	302.62	302.20	302.54	302.79
	500'	302.41	302.17	301.72	302.00	301.53	301.83	302.08
	525'	301.88	301.63	301.14	301.37	300.86	301.12	301.37
	540'	301.56	301.31	300.79	301.00	300.46	300.69	300.94
	550'	301.33	301.08	300.56	300.75	300.19	300.41	300.67
	575'	300.79	300.54	299.98	300.12	299.54	299.71	299.96
	600' S of THORN	300.25	300.00	299.40	299.50	298.85	299.00	299.25

THIRTY-FIRST STREET
UPAS TO MYRTLE

W Curb 1/4 E 1/4 Curb E

15'	ML of UPAS	329.00	329.00	328.60	329.00	328.60	329.00	329.00
25'	25' H.	329.09	328.84	328.42	328.81	328.40	328.19	328.04
50'	50'	328.92	328.67	328.29	328.62	328.20	328.58	328.83
75'	75'	328.75	328.50	328.07	328.43	328.00	328.37	328.62
100'	100'	328.59	328.34	327.89	328.25	327.80	328.16	328.41
125'	125'	328.42	328.17	327.71	328.07	327.61	327.96	328.21
150'	150'	328.25	328.00	327.53	327.87	327.41	327.75	328.00
175'	175'	328.08	327.83	327.36	327.68	327.21	327.54	327.79
200'	200'	327.92	327.67	327.18	327.50	327.01	327.33	327.58
225'	225'	327.75	327.50	327.00	327.31	326.81	327.12	327.37
250'	250'	327.58	327.33	326.82	327.12	326.62	326.92	327.17
275'	275'	327.42	327.17	326.65	326.94	326.42	326.71	326.96
300'	SL of MYRTLE 300' H of UPAS	327.25	327.00	326.47	326.75	326.22	326.50	326.75

UPAS ST. INTERSECTION 30' LANE

S.L. UPAS	329.00	329.00	328.60	329.00	328.60	329.00	329.00
Center	329.00	328.00	328.60	329.00	328.60	328.00	329.00
N.L. UPAS	328.00	328.00	328.60	329.00	328.60	328.00	328.00

THORN ST INTERSECTION 60' ST.

S.L. THORN	318.75	318.50	318.35	319.00	318.90	319.50	319.75
S. CURB	318.50	318.50	318.43	319.08	318.98	319.50	319.50
S 1/4	317.50	317.50				318.50	318.50
1/4	318.22	317.62	318.51	319.16	319.06	318.62	319.22
1/4	318.75	317.75	318.60	319.25	319.15	318.75	319.75
N 1/4	318.40	317.81	318.68	319.33	319.23	318.87	319.40
N. CURB	318.00	318.00				319.00	319.00
N.L. THORN	319.00	319.00	318.76	319.41	319.31	320.00	320.00
	319.25	319.00	318.85	319.50	319.40	320.00	320.25

REDWOOD TO MYRTLE

11.4
15.5
See
27.9
25.1
50.1
75.1
100.1
125.1
150.1
175.1
200.1
225.1
250.1
S.L. of
270.1

HL 17.2. Capley.

15'

S 50' N.

20'

25' 100' N.

50'

150' N.

75'

100'

125'

150'

175'

200'

225'

250'

275'

300'

325'

350'

375'

400'

425'

450'

475'

500'

525'

550'

575'

600'

625'

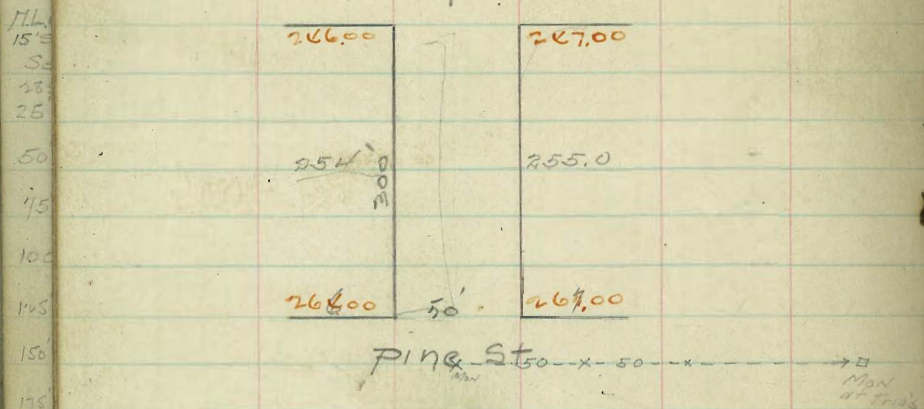
650'

675'

700'

AMPUDIA ST.

Cherry St.



220	o=SL.Cherry	266.00	266.88	266.80	266.00	267.00	267.00	-28 +37
225	267.00	267.50	267.00	268.00	267.90	268.50	268.75	
250	50	248.67	249.17	249.67	250.00	250.00	250.00	-12 +26
270	75	251.33	251.53	252.23	253.00	254.00	254.00	-27 +27
100	125	254.00	254.50	255.00	255.00	256.00	256.00	
150	150	258.00	258.00	257.88	258.00	259.00	259.00	+18 +5.9
200	200	262.00	262.50	263.00	263.00	264.00	264.00	+29 +6.2
250	250	266.00	266.00	266.00	267.00	267.00	267.00	+18 +17

N.G.
See Chg. grade

NE 1/4 - FT Stock

267.00	267.00	267.00	267.00	267.00	267.00	267.00	267.00	267.00	267.00
267.00	267.00	267.00	267.00	267.00	267.00	267.00	267.00	267.00	267.00
267.00	267.00	267.00	267.00	267.00	267.00	267.00	267.00	267.00	267.00
267.00	267.00	267.00	267.00	267.00	267.00	267.00	267.00	267.00	267.00
267.00	267.00	267.00	267.00	267.00	267.00	267.00	267.00	267.00	267.00

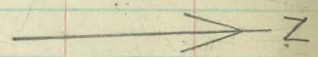
West Half, Ampudia Pine to Cherry
110. N.W. 1/4 117.00 Pine OK 3/25/15 Gregory

McCALL STREET.

50' San Fernando St.
103.00 50' 104.00

200
64.00 64.00

50' San Elijo St.
63.00 64.00



50' Rosecrans St. Excepted
37.50 38.00

36.50 37.00

5.00 50' 5.00

San Antonio Ave.

174
15
50
25
60
75
100
125
150
175
200
225
250
275

McCarr St.

S E N

11.1
15
20
25
30
35
40
45
50
55
60
65
70
75
80
85
90
95
100
105
110
115
120
125
130
135
140
145
150
155
160
165
170
175
180
185
190
195
200
205
210
215
220
225
230
235
240
245
250
255
260
265
270
275
280
285
290
295
300

WLSanElijo	6425	6400	6385	6450	6440	6400	6525
WCurb	6300	6280	6265	6270	6270	6280	6400
W'le	6340	6265	6250	6415	6405	6265	6440
Center	6350	6250	6225	6400	6390	6250	6450
E'le	6285	6275	6240	6285	6275	6275	6285
E.Curb	6100	6090	6205	6270	6260	6270	6200
ELSanElijo	6225	6200	6285	6350	6240	6400	6225
200=ELSanElijo	6225	6200	6285	6250	6240	6400	6225
250	5900	5875	5858	5921	5907	5967	5992
300	5475	5450	5431	5492	5472	5533	5558
150	5050	5025	5006	5063	5040	5100	5125
100	4625	4600	4577	4632	4607	4667	4692
50	4200	4175	4150	4206	4172	4233	4258
0=VLRosecrans	3775	3750	3722	3775	3740	3800	3825
200=ELRosecrans	3675	3650	3622	3675	3640	3700	3725
250	3150	3125	3097	3146	3110	3167	3192
300	2625	2600	2568	2617	2580	2633	2658
150	2100	2075	2041	2088	2050	2100	2125
100	1575	1550	1514	1558	1520	1567	1592
50	1265	1240	1202	1247	1208	1252	1278
50	1050	1025	987	1029	990	1033	1058
0=VLSanAntonio	525	500	460	500	460	500	525

McCall St.

S

E

N

7.5
15
20
25
50
75
100
125
150
175
200
225
250
275

EL San

300-Fernando	103.25	103.00	102.85	103.50	103.60	104.00	104.25
250	96.75	96.50	96.25	97.00	96.90	97.50	97.75
200	90.25	90.00	89.85	90.50	90.40	91.00	91.25
150	83.75	83.50	83.25	84.00	83.90	84.50	84.75
100	77.25	77.00	76.85	77.50	77.40	78.00	78.25
50	70.75	70.50	70.25	71.00	70.90	71.50	71.75
0-W. San Elijo	64.25	64.00	63.85	64.50	64.40	65.00	65.25

28th St

		1	2	3	4	5	6	7
11.6	328.15	328.50	328.32	328.65	328.47	328.80	328.10	328.10
15	328.45	328.15	328.47	328.30	328.12	328.45	328.15	328.15
20	328.00	327.79	327.62	327.95	327.77	328.11	327.79	327.79
25	327.69	327.44	327.26	327.60	327.43	327.76	327.44	327.44
30	327.33	327.03 ⁴⁴	326.91	327.25	327.03	327.42	327.03	327.03
35	326.78	326.73 ⁴⁴	326.56	326.90	326.73	327.07	326.73	326.73
40	326.62	326.37	326.21	326.55	326.38	326.72	326.37	326.37
45	326.43	326.18	326.01	326.35	326.19	326.53	326.18	326.18
50	326.09	325.84	325.67	326.02	325.85	326.20	325.84	325.84
55	325.85	325.60	325.43	325.78	325.62	325.96	325.60	325.60
60	325.56	325.31	325.15	325.50	325.34	325.69	325.31	325.31
65	325.21	324.96	324.80	325.15	324.99	325.34	324.96	324.96
70	324.85	324.60	324.45	324.80	324.64	325.00	324.60	324.60
75	324.46	324.21	324.05	324.41	324.25	324.61	324.21	324.21
80	324.03	323.78	323.63	323.99	323.84	324.19	323.78	323.78
85	323.72	323.47	323.32	323.68	323.53	323.89	323.47	323.47
90	323.08	322.83	322.69	323.05	322.90	323.27	322.83	322.83
95	322.59	322.34	322.19	322.56	322.42	322.78	322.34	322.34
100	322.16	321.91	321.77	322.14	322.00	322.37	321.91	321.91
105	321.74	321.49	321.35	321.72	321.58	321.95	321.49	321.49
110	321.45	321.20	321.07	321.44	321.30	321.68	321.20	321.20
115	321.0	320.85	320.71	321.09	320.95	321.32	320.85	320.85
120	320.89	320.66	320.50	320.88	320.75	321.12	320.66	320.66
125	320.60	320.35	320.22	320.60	320.47	320.85	320.35	320.35
130	320.15	320.00	319.87	320.25	320.12	320.50	320.00	320.00

600 = NL Total 320.15 320.00 319.87 320.25 320.12 320.50 320.00