

88

Street	From	To	Dist.
Coast Blvd. S.	Jenney	Girard	1
Hawk St.	Wash.	NL-PL 1122	5
Tougas	Goldfinch	Tbis.	7
Cypress Ave.	Albert	Indiana	10
H St.	Pascoe	1183 E.	11
Palm	India	Uston	19
Miss	Madison	El Cajon	22
Florida	Univ	Upas	27
Draper	Kline	Silver	34
Hawk	Upas	Walnut	35
H St.	Merritt	Pascoe	36
Tyler	Campus	Maryland	38
Guizot	Newport		41
Fiske	M	Sullivan	49
REYHARD WAY			48
TORRENCE ST			63
WELLBORN ST			72

FIELD

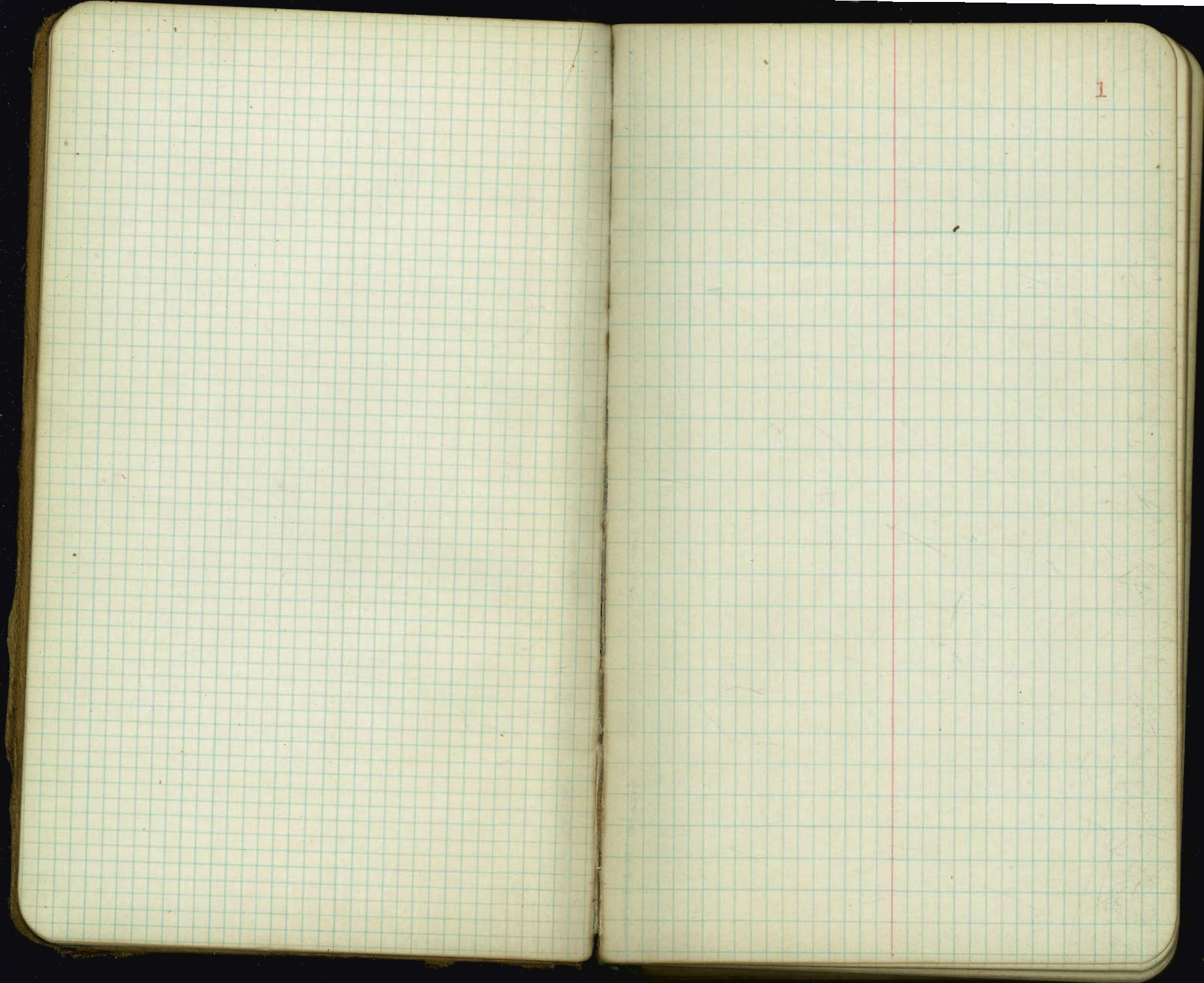
G 88

MICROFILMED

APR 7 1965

*[Faint, illegible handwritten text]*

*[Faint, illegible handwritten notes and numbers, possibly a ledger or list of items]*



50' Street  
10' Walks  
1 1/2' Quarts.

COAST BOULEVARD SOUTH

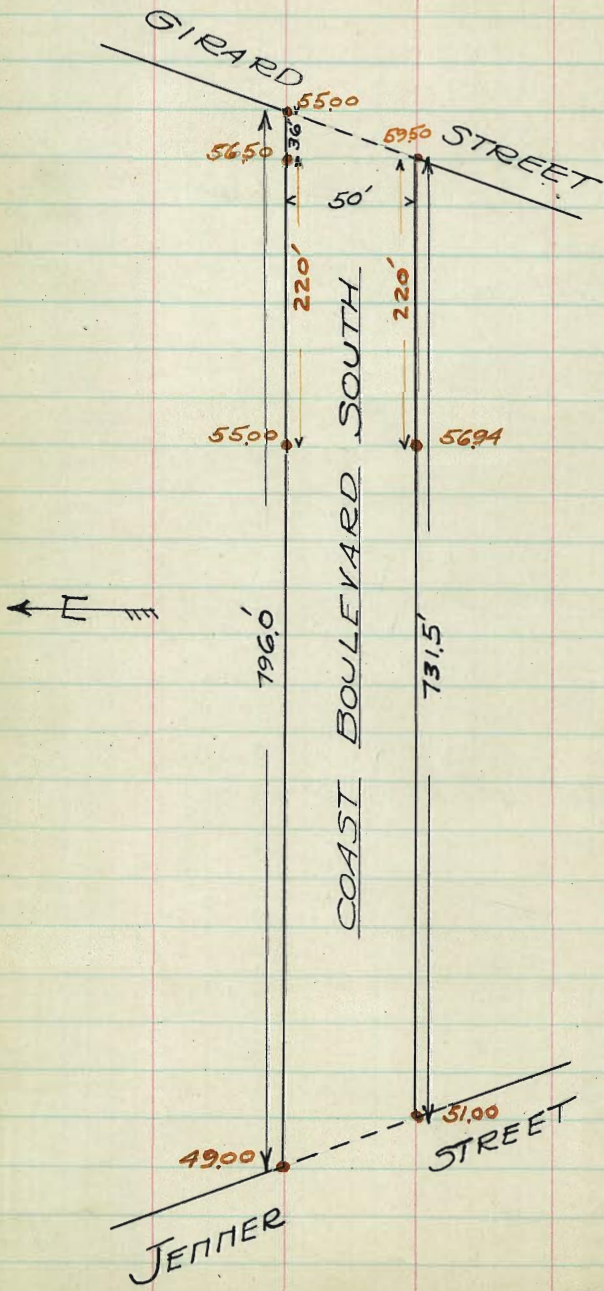
	N	Curb	1/4	1/2	3/4	Curb	S
0.0 (this section 616' long)							
W. Girard	55.25	55.00	55.22	57.25	58.90	59.50	59.75
Sec. AB	56.75	56.50	56.85	58.00	58.90	59.50	59.75
25' N. of AB	56.58	56.33	56.65	57.77	58.61	59.21	59.46
50' W	56.41	56.16	56.45	57.54	58.32	58.91	59.17
75'	56.24	55.99	56.25	57.31	58.03	58.63	58.88
100'	56.07	55.82	56.05	57.08	57.79	58.34	58.59
125'	55.90	55.65	55.85	56.85	57.45	58.05	58.30
150'	55.73	55.48	55.65	56.62	57.16	57.76	58.01
175'	55.56	55.31	55.44	56.38	56.86	57.46	57.71
200'	55.39	55.14	55.25	56.16	56.57	57.17	57.42
220'	55.25	55.00	55.08	55.97	56.34	56.94	57.19
250'	54.92	54.67	54.75	55.63	56.00	56.59	56.84
275'	54.64	54.39	54.47	55.35	55.70	56.30	56.55
300'	54.36	54.11	54.18	55.06	55.41	56.01	56.26
325'	54.08	53.83	53.90	54.77	55.12	55.72	55.97
350'	53.80	53.55	53.62	54.49	54.83	55.43	55.68
375'	53.52	53.27	53.33	54.20	54.54	55.14	55.39
400'	53.25	53.00	53.06	53.92	54.25	54.85	55.10
425'	52.97	52.72	52.78	53.64	53.96	54.56	54.81
450'	52.69	52.44	52.49	53.35	53.67	54.27	54.52
475'	52.41	52.16	52.22	53.07	53.38	53.98	54.23
500'	52.13	51.88	51.93	52.78	53.09	53.69	53.94
525'	51.86	51.61	51.66	52.50	52.80	53.40	53.65
550'	51.58	51.33	51.37	52.22	52.51	53.11	53.36
575'	51.30	51.05	51.09	51.94	52.22	52.82	53.07
600'	51.02	50.77	50.81	51.65	51.93	52.53	52.78

Field Book #823  
Office Book #10

No.	Sc.
-0.1	00
-0.8	00
-1.0	+0.4
-1.1	+3.0
+1.4	+10.1
+1.0	+9.6
+1.8	+8.2
+1.4	+7.2
+0.9	+5.8
+1.6	+5.9
+1.6	+4.7
+1.4	+4.2
+0.1	+4.2
-0.5	+2.1



COAST BOULEVARD SOUTH



SMG Jan 1915

60' st.  
10' walks  
10' Quarters

HAWK STREET

	W Curb	1/4	1/2	3/4	Curb E		
275' N. of Douglas	261.25	261.00	260.85	261.50	261.40	262.00	262.25
S.L. Washington	261.35	261.07	260.95	261.57	261.47	262.07	262.32
265' N. of Douglas	261.43	261.18	261.03	261.68	261.58	262.18	262.43
250' "	261.61	261.36	261.21	261.86	261.76	262.36	262.61
225' "	261.79	261.54	VOID		261.94	262.54	262.79
200' "	261.91	261.66	SEE PAGE		262.66	263.26	263.51
185' "	261.98	261.73	FOR		262.73	263.33	263.58
175' "	262.16	261.91	261.76	262.41	262.31	262.91	263.16
150' "	262.34	262.09	NEW GRHOES		262.49	263.09	263.34
125' "	262.52	262.27	262.12	262.77	262.67	263.27	263.52
100' "	262.70	262.45	262.30	262.95	262.85	263.45	263.70
75' "	262.89	262.64	262.49	263.14	263.04	263.64	263.89
50' "	263.07	262.82	262.67	263.32	263.22	263.82	264.07
N.L. Douglas	263.25	263.00	262.85	263.50	263.40	264.00	264.25

Intersection of Douglas St. 50' st.

N.L. Douglas	263.25	263.00	262.85	263.50	263.40	264.00	264.25	+1.3	-1.4
N. Curb	263.00	263.00	262.85	263.50	263.40	264.00	264.00		
N 1/4	262.60	262.00	262.85	263.50	263.40	263.00	263.60		
Center	263.00	262.00	262.85	263.50	263.40	263.00	264.00	+2.5	-0.6
S 1/4	262.60	262.00	262.85	263.50	263.40	263.00	263.60		
S. Curb	263.00	263.00	262.85	263.50	263.40	264.00	264.00		
S.L. Douglas	263.25	263.00	262.85	263.50	263.40	264.00	264.25	+2.4	0.0

Field Book 999  
Office Book 10

26370 NE Hawk - Douglas

5

262.01 NE Washington + Hawk.

corner 1/16 1/16

262.25	262.43	262.79	263.16	263.52	263.89	264.25
5.9	8.5	11.1	13.7	16.3	18.9	21.5
5.1	7.5	9.9	12.3	14.7	17.1	19.5
2.8	5.2	7.6	10.0	12.4	14.8	17.2
261.43	261.79	262.16	262.52	262.89	263.25	263.61
13.7	16.3	18.9	21.5	24.1	26.7	29.3
2.8	5.2	7.6	10.0	12.4	14.8	17.2

26300  
267.52  
chkd OK 4/26/16 Gregory

# HAWK STREET

	W. Curb	A	E	1/4 Curb	E	W.	E.
S.L. Douglas 26225	26300	26285	26350	26390	26400	26415	+2.4
25' So.	26399	26324	26396	26352	26412	26437	0.0
50' "	26374	26349	26327	26386	26424	26449	+1.5
75'	26398	26373	26348	26404	26380	26436	+0.8
100'	26422	26397	26369	26422	26395	26448	+1.3
125'	26447	26422	26391	26441	26410	26460	+0.9
150'	26471	26446	26412	26459	26425	26472	+1.5
175'	26495	26470	26433	26477	26440	26484	+0.5
205' S.P.O.W.L. 207' S." EL. PL. PL. 1122	26525	26500	26460	26500	26460	26500	+1.0

W.	E.
+2.4	0.0
+1.5	+0.8
+1.3	+0.9
+1.5	+0.5
+1.0	+0.6

CUTS & FILLS  
3/10/6 Gregory  
Miller

Chkd OK 10/6/6 Gregory









60' Street  
10' Walks  
10' Quarters

# CYPRESS AVENUE

S Curb 1/4  $\frac{1}{4}$   $\frac{1}{4}$  Curb N

EL Albert	281.25	281.00	280.50	279.85	280.00	280.25		
25' E	282.26	282.01	281.39	281.57	280.95	281.13	281.38	
50' "	283.27	283.01	282.43	282.64	282.05	282.26	282.51	
75'	284.29	284.04	283.48	283.72	283.15	283.39	283.64	
100'	285.30	285.05	284.52	284.78	284.15	284.52	284.77	
125'	286.31	286.06	285.56	285.86	285.36	285.66	285.91	
150'	287.32	287.07	286.60	286.93	286.46	286.79	287.04	
175'	288.33	288.08	287.64	288.00	287.56	287.92	288.17	
W.L. Herbert	289.34	289.09	288.67	289.05	288.62	288.99	289.24	
209.75 E.	289.75	289.50	289.10	289.50	289.10	289.50	289.75	
442.37 W. of Park	290.75	290.50	290.10	290.50	290.10	290.50	290.75	
EL Herbert	291.33	291.08	290.69	291.10	290.72	291.13	291.38	
400' W. of Park	292.01	291.76	291.38	291.81	291.44	291.86	292.11	
350' W	292.69	292.44	292.08	292.52	292.16	292.60	292.85	
300' "	293.36	293.11	292.76	293.22	292.87	293.32	293.58	
250'	294.04	293.79	293.46	293.93	293.60	294.07	294.32	
200'	294.72	294.47	294.15	294.63	294.32	294.80	295.05	
150'	295.40	295.15	294.84	295.34	295.04	295.54	295.79	
100'	296.08	295.83	295.54	296.06	295.77	296.28	296.53	
75'	296.76	296.51	296.24	296.90	296.60	297.10	297.36	
50'	297.44	297.19	296.94	297.68	297.38	297.88	298.14	
25'	298.12	297.87	297.64	298.30	298.00	298.50	298.76	
W.L. Park Blvd.	298.75	298.50	298.20	298.75	298.40	298.90	299.15	

Book #10  
" 958

S M

301.65 HS	7.44							
292.79	301.65	301.65	301.65	301.65	301.65	301.65	301.65	
3.87	4.47	6.31	5.57	6.42	7.98	7.98	7.98	
297.83	297.18	294.90	296.08	295.28	295.72	295.72	295.72	
296.75	296.08	295.40	296.32	294.04	294.36	294.36	294.36	
12.12	11.10	10.50	11.26	11.21	11.21	11.21	11.21	
301.65	301.65	301.65	301.65	301.65	301.65	301.65	301.65	
8.33	7.93	8.00	8.00	8.00	8.00	8.00	8.00	
293.26	293.32	294.31	293.33	294.63	294.53	294.53	294.53	
292.69	292.01	291.33	290.75	291.23	291.63	291.63	291.63	
11.70	11.31	11.44	11.60	11.60	11.60	11.60	11.60	
294.77	294.15	294.05	293.25	293.21	294.10	294.10	294.10	
295.75	295.05	294.32	293.58	293.58	294.51	294.51	294.51	
13.03	11.64	11.00	11.07	11.37	11.75	11.75	11.75	
283.38 TP	1.73							
285.71 HS	301.65	301.65	296.41	296.41	296.41	296.41	296.41	
7.00	7.00	4.25	5.71	12.20	13.61	13.61	13.61	
294.55	294.65	290.19	296.50	283.51	282.90	282.90	282.90	
291.36	290.70	289.77	289.75	287.32	285.20	285.20	285.20	
11.70	11.70	11.70	11.70	11.70	11.70	11.70	11.70	
285.11	296.41	296.41	285.11	285.11	285.11	285.11	285.11	
10.25	7.50	7.00	10.81	1.31	0.80	0.80	0.80	
294.83	289.91	288.91	291.11	270.00	283.13	284.31	284.31	
280.25	283.27	281.25	287.00	284.77	282.41	281.58	281.58	
15.42	15.64	17.66	17.12	14.47	10.62	12.93	12.93	

Cuts & Fills - 12/1/15 - West - Otter - Moore

2977 TP	300.88	300.88	300.88	300.88	300.88	300.88	300.88	
8.11	296.50	295.83	295.15	294.47	293.79	293.11	292.43	
300.88 HS	4.35	5.00	5.75	6.50	7.25	8.00	8.75	
295.00 TP	4.13	4.80	5.45	6.10	6.85	7.60	8.35	
297.76	297.18	296.59	296.01	295.42	294.84	294.25	293.67	
12.12	11.70	11.30	10.90	10.50	10.10	9.70	9.30	
300.88	300.88	300.88	300.88	300.88	300.88	300.88	300.88	
297.76	297.18	296.59	296.01	295.42	294.84	294.25	293.67	
12.12	11.70	11.30	10.90	10.50	10.10	9.70	9.30	
297.76	297.18	296.59	296.01	295.42	294.84	294.25	293.67	
12.12	11.70	11.30	10.90	10.50	10.10	9.70	9.30	
297.76	297.18	296.59	296.01	295.42	294.84	294.25	293.67	
12.12	11.70	11.30	10.90	10.50	10.10	9.70	9.30	
297.76	297.18	296.59	296.01	295.42	294.84	294.25	293.67	
12.12	11.70	11.30	10.90	10.50	10.10	9.70	9.30	

Side work stakes  
West Otter - Moore  
12/1/15



CYPRESS AVENUE

	S	1/4	1/4	1/4	1/4	1/4	1/4	S	1/4
EL Georgia	283.75	283.50	283.10	283.25	283.25	283.00	283.25	-0.1	-1.8
20' E	280.78	280.53	280.02	280.32	279.82	280.12	280.37		
50' "	276.33	276.08	275.61	275.94	275.47	275.81	276.06	-5.7	-9.3
75'	272.62	272.37	271.93	272.29	271.85	272.22	272.47		
100'	268.91	268.66	268.25	268.64	268.24	268.63	268.88	-5.1	-12.3
125'	265.20	264.95	264.57	264.99	264.61	265.03	265.28	-5.5	-13.4
150'	261.49	261.23	260.88	261.33	260.98	261.48	261.69	-5.8	-12.2
175'	257.77	257.52	257.20	257.68	257.36	257.84	258.09		
200'	254.06	253.80	253.52	254.03	253.74	254.28	254.50	-5.9	-11.1
225'	250.35	250.10	249.84	250.38	250.12	250.66	250.91		
250'	246.64	246.38	246.16	246.72	246.49	247.06	247.31	-2.8	-11.0
275'	242.93	242.68	242.47	243.07	242.87	243.47	243.72		
300'	239.22	238.97	238.79	239.42	239.24	239.84	240.12	+0.3	-11.6
317'	236.70	236.45	236.29	236.94	236.78	237.43	237.68	+1.8	-1.7
W.L. Florida								0.0	0.0
317 1/2 E.	236.25	236.00	235.85	236.50	236.35	237.00	237.25		

S	1/4
-0.1	-1.8
-5.7	-9.3
-5.1	-12.3
-5.5	-13.4
-5.8	-12.2
-5.9	-11.1
-2.8	-11.0
+0.3	-11.6
+1.8	-1.7
0.0	0.0

282.02 - 2nd NW Sec 31 & 32, T28S, R10E, S1E, P100.

282.02	281.13	285.13	272.75	272.75
12.11	3.83	3.26	8.94	4.30
285.13 H3	281.30	281.87	270.70	268.81
12.86	0.48	283.35	276.93	268.45
272.75 H3	F1.75	F1.88	F5.63	F5.70
13.02				F7.61
259.75 TP	260.33	260.33	260.33	260.33
0.60	3.78	10.80	4.77	248.62
260.33 H3	256.55	249.53	255.53	248.77
12.27	268.53	261.67	261.48	254.06
247.75 TP	F12.33	F12.16	F5.90	F5.87
11.16				F11.22
248.62 H3	248.62	248.62	248.62	248.62
12.54	4.82	4.82	17.71	5.24
236.08 - Curb	243.80	239.60	237.85	238.10
SW Florida	246.64	239.22	240.12	247.81
	F2.84	0.03	F10.10	F11.25

Cuts & Fills 12/1/15.

West Otter - Moore.

284.02 BN	285.74	285.74	285.74	273.70	273.70	273.70	273.70
17.5	283.01	283.50	276.08	270.81	268.62	268.65	261.23
	2.74	2.24	7.66	4.93	2.08	5.50	12.47
285.74 H3	261.77	261.77	248.73	248.93	248.93	248.93	248.93
12.36	252.21	253.80	246.35	247.04	239.34	236.74	232.11
273.39 TP	7.54	7.97	2.55	1.84	7.04	7.71	12.70
0.32							11.80
243.70 H3							
12.29							
261.41 TP							
0.38							
241.79 H3	248.93						
12.95	11.57						
248.91 TP	37.00 curb						
0.12							
248.93 H3							
12.87							
246.09 curb							
11.87							

sidewalk stakes - 3/4 offset.

3/4 W. West Otter - Moore

Georgia intersection filed over at 4' leaving across for full 4' gutters cut from 6 & 7 for 4' gutters.

5' gutters cut from 4 & 6 clear across.

Return to W. street up.

at Florida st. returns cut out and 4' gutters made in W. curb line.

at Florida - Georgia both curbs will face for line and grade.

although at name from 0.6 high to 0.5 low in place.

1/4 = 0.4 high at W.L. Florida - same as 0.3 high all way in block.

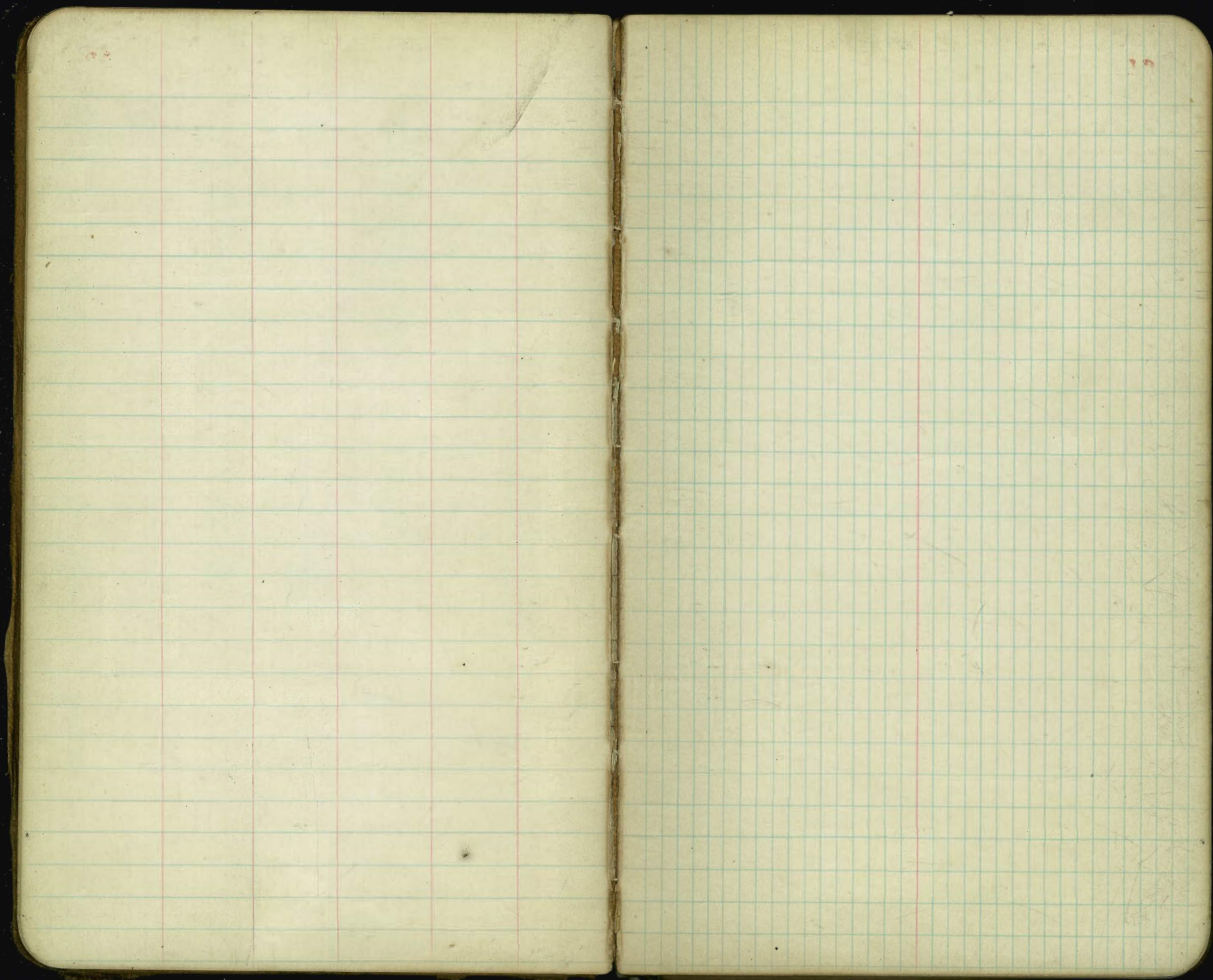
1/2 = 0.2 " " " " " " 0.2 " " " "

3/4 = 0.1 " " " " " " 0.3 " " " "

Intersection with Herbert 60' St.

	S	1/4	1/4	1/4	1/4	1/4	1/4
W.L. Herbert	289.75	289.50	289.10	289.50	289.10	289.50	289.75
W. Curb	289.50	289.50	289.27	289.67	289.27	289.50	289.50
W 1/4	288.50	288.50				288.50	288.50
Center	289.35	288.75	289.44	289.84	289.44	288.75	289.35
E 1/4	290.00	289.00	289.60	290.00	289.60	289.00	290.00
E Curb	289.90	289.25	289.76	290.16	289.76	289.25	289.90
EL Herbert	289.50	289.50	289.93	290.33	289.93	290.50	290.50
	290.50	290.50				289.50	
	290.75	290.50	290.10	290.50	290.10	290.50	290.75

only  
May 28, 15



30 ft. Roadway H STREET

BOOK 951

" 10

14

	S	E	N
W.L. PASCOE	124.75	125.25	124.75
E.L. "	125.30	125.80	125.30
30' East	125.20	125.70	125.20
50' "	124.95	125.45	124.95
75' "	124.63	125.13	124.63
100'	124.32	124.82	124.32
125'	124.00	124.50	124.00
150'	123.69	124.19	123.69
175'	123.37	123.87	123.37
200'	123.06	123.56	123.06
206'	122.98	123.48	122.98
211'	122.92	123.42	122.92
220'	122.81	123.31	122.81
250'	122.43	122.93	122.43
275'	122.11	122.61	122.11
300'	121.80	122.30	121.80
325'	121.48	121.98	121.48
350'	121.17	121.67	121.17
375'	120.86	121.36	120.86
400'	120.54	121.04	120.54
425'	120.22	120.72	120.22
450'	119.91	120.41	119.91
475'	119.59	120.09	119.59
500'	119.28	119.78	119.28
525'	118.96	119.46	118.96
550'	118.65	119.15	118.65

should  
be 124.50should be 125.15 acct. of correction  
with 30' street here.

126.70



H STREET

	S	E	N
575' E. of PASCOE	11833	11883	11833
600' E	1180 <sup>v</sup>	1185 <sup>v</sup>	1180 <sup>v</sup>
625' "	117.70	118.20	117.70
650'	117.39	117.81	117.39
675'	117.08	117.58	117.08
700'	116.76	117.26	116.76
710'	116.63	117.13	116.63
730'	116.50	117.00	116.50
73 <sup>v</sup>	116.50	117.00	116.50
735'	116.50	117.00	116.50
750'	116.50	117.00	116.50
760'	116.52	117.0 <sup>v</sup>	116.5 <sup>v</sup>
775'	116.60	117.10	116.60
800'	116.90	117.40	116.90
810'	117.09	117.59	117.09
825'	117.42	117.9 <sup>v</sup>	117.4 <sup>v</sup>
850'	117.91	118.41	117.91
875'	118.5 <sup>v</sup>	119.0 <sup>v</sup>	118.5 <sup>v</sup>
900'	119.07	119.57	119.07
920'	119.50	120.00	119.50
925'	119.65	120.15	119.65
950'	120.50	121.00	120.50
966'	121.14	121.64	121.14
975'	121.50	122.00	121.50
987'	122.10	122.60	122.10
1000'	122.80	123.30	122.80
1020'	124.0 <sup>v</sup>	124.5 <sup>v</sup>	124.0 <sup>v</sup>
1025'	124.36	124.86	124.36
1050'	126.07	126.57	126.07
1075'	127.78	128.28	127.78

1.26%

V.C.

2.19%

U

6.844%

118.33  
11.81

1180' E. of Pascoe  
11833 11883 11833  
1180<sup>v</sup> 1185<sup>v</sup> 1180<sup>v</sup>  
117.70 118.20 117.70  
117.39 117.81 117.39  
117.08 117.58 117.08  
116.76 117.26 116.76  
116.63 117.13 116.63  
116.50 117.00 116.50  
116.50 117.00 116.50  
116.50 117.00 116.50  
116.52 117.0<sup>v</sup> 116.5<sup>v</sup>  
116.60 117.10 116.60  
116.90 117.40 116.90  
117.09 117.59 117.09  
117.42 117.9<sup>v</sup> 117.4<sup>v</sup>  
117.91 118.41 117.91  
118.5<sup>v</sup> 119.0<sup>v</sup> 118.5<sup>v</sup>  
119.07 119.57 119.07  
119.50 120.00 119.50  
119.65 120.15 119.65  
120.50 121.00 120.50  
121.14 121.64 121.14  
121.50 122.00 121.50  
122.10 122.60 122.10  
122.80 123.30 122.80  
124.0<sup>v</sup> 124.5<sup>v</sup> 124.0<sup>v</sup>  
124.36 124.86 124.36  
126.07 126.57 126.07  
127.78 128.28 127.78

11833 11883 11833  
1180<sup>v</sup> 1185<sup>v</sup> 1180<sup>v</sup>  
117.70 118.20 117.70  
117.39 117.81 117.39  
117.08 117.58 117.08  
116.76 117.26 116.76  
116.63 117.13 116.63  
116.50 117.00 116.50  
116.50 117.00 116.50  
116.50 117.00 116.50  
116.52 117.0<sup>v</sup> 116.5<sup>v</sup>  
116.60 117.10 116.60  
116.90 117.40 116.90  
117.09 117.59 117.09  
117.42 117.9<sup>v</sup> 117.4<sup>v</sup>  
117.91 118.41 117.91  
118.5<sup>v</sup> 119.0<sup>v</sup> 118.5<sup>v</sup>  
119.07 119.57 119.07  
119.50 120.00 119.50  
119.65 120.15 119.65  
120.50 121.00 120.50  
121.14 121.64 121.14  
121.50 122.00 121.50  
122.10 122.60 122.10  
122.80 123.30 122.80  
124.0<sup>v</sup> 124.5<sup>v</sup> 124.0<sup>v</sup>  
124.36 124.86 124.36  
126.07 126.57 126.07  
127.78 128.28 127.78

OUTER MILLS  
7/1/5 Gregory Moore Miller

H STREET

	S.	E.	N.
1100' E. of PASCOE	129.99	129.99	129.99
1125'	131.20	131.70	131.20
1150'	132.91	133.41	132.91
1175'	134.62	135.12	134.62
1200'	136.33	136.83	136.33
1210'	137.02	137.52	137.02
1225'	138.00	138.50	138.00
1250'	139.40	139.90	139.40
1275'	140.60	141.10	140.60
1300'	141.62	142.12	141.62
1325'	142.40	142.90	142.40
1350'	142.80	143.30	142.80
1370'	143.13	143.63	143.13
1375'	143.17	143.67	143.17
1400'	143.37	143.87	143.37
1425'	143.56	144.06	143.56
1450'	143.76	144.26	143.76
1475'	143.96	144.46	143.96
1500'	144.16	144.66	144.16
1525'	144.26	144.76	144.26
1550'	144.55	145.05	144.55
1575'	144.75	145.25	144.75
1600'	144.95	145.45	144.95
1620'	145.10	145.60	145.10
1625'	145.10	145.60	145.10
1650'	145.08	145.58	145.08
1675'	144.92	145.42	144.92
1700'	144.60	145.10	144.60
1720'	144.22	144.72	144.22
1725'	144.09	144.59	144.09

See opposite page for revised grades from here East

New Grades 6/30/15

16

	S.	N.
1210'	137.02	137.52
1240'	139.07	139.57
1260'	140.36	140.86
1280'	141.57	142.07
1300'	142.49	142.99
1320'	143.33	143.83
1340'	143.98	144.48
1360'	144.48	144.98
1380'	144.84	145.34
1400'	145.04	145.54
1425	145.20	145.70
1450	145.35	145.85
1475	145.51	146.01
1500	145.67	146.17
1525	145.83	146.33
1550	145.98	146.48
1575	146.14	146.64
1600	146.30	146.80
1625	146.46	146.96
1660	146.68	147.18
1680	146.72	147.22
1700	146.59	147.09

Dist. from Pascoe St.

0.63%

V.C.

1211.43

S.	N.
129.99	129.99
131.20	131.70
132.91	133.41
134.62	135.12
136.33	136.83
137.02	137.52
138.00	138.50
139.40	139.90
140.60	141.10
141.62	142.12
142.40	142.90
142.80	143.30
143.13	143.63
143.17	143.67
143.37	143.87
143.56	144.06
143.76	144.26
143.96	144.46
144.16	144.66
144.26	144.76
144.55	145.05
144.75	145.25
144.95	145.45
145.10	145.60
145.10	145.60
145.08	145.58
144.92	145.42
144.60	145.10
144.22	144.72
144.09	144.59

OUTAKRILLS 7/11 Gregory Miller





PALM STREET

	S	Curb	1/4	¢	1/4	Curb	N
EL. INDIA	10025	10000	9960	10000	9960	10000	10025
15' East	10250	10225	10183	10221	10180	10218	10243
50' E	10775	10750	10703	10737	10691	10725	10750
100'	11525	11500	11447	11475	11422	11450	11475
150'	12275	12250	12191	12214	12153	12175	12200
200' E = W.L. COLUMBIA	13025	13000	12935	12950	12885	12900	12925

W.L. COLUMBIA	13025	13000	12935	12950	12885	12900	12925
W. Curb	13000	13000	12967	12982	12917	12900	12900
W 1/4	13010	12950	13001	13016	12951	12850	12910
Center	13100	13000	13035	13050	12985	12900	13000
E 1/4	13140	13050	13069	13084	13019	12950	13040
E Curb	13100	13100	13103	13118	13053	13100	13100
EL. COLUMBIA	13025	13200	13135	13150	13085	13100	13125

EL. COLUMBIA	13025	13200	13135	13150	13085	13100	13125
25' East	13614	13587	13527	13537	13474	13487	13514
50' "	14000	13975	13915	13925	13860	13875	13900
75'	14387	14362	14302	14312	14247	14262	14287
100'	14775	14750	14690	14700	14635	14650	14675
125'	15162	15137	15077	15087	15022	15037	15062
150'	15550	15525	15465	15475	15410	15425	15450
175'	15937	15912	15852	15862	15797	15812	15837
200' E = W.L. STATE	16325	16300	16240	16250	16185	16200	16225

50' ST.

## PALM STREET

20

	S	Curb	1/4	±	1/4	Curb	N
WL STATE	16325	16300	16290	16250	16185	16200	16225
W. Curb	16300	16300	16270	16280	16217	16200	16200
W 1/4	16310	16250	16306	16316	16251	16150	16210
Center	16400	16300	16340	16350	16285	16200	16300
E 1/4	16440	16350	16374	16384	16319	16250	16340
E Curb	16400	16400	16408	16418	16353	16400	16400
EL STATE	16525	16500	16435	16450	16385	16400	16425

EL STATE	16525	16500	16435	16450	16385	16400	16425
25' East	16900	16875	16816	16837	16778	16800	16825
50' "	17275	17250	17197	17225	17170	17200	17225
100'	18025	18000	17960	18000	17960	18000	18025
150'	18775	18750	18700	18775	18747	18800	18825
200' E = W.L. 1104	19525	19500	19485	19550	19535	19600	19625

Feb 1915 SW5









MISSISSIPPI STREET

W Curb 1/4 ± 1/4 Curb E

Table with columns for stationing (e.g., SL. MONROE, 25' So., 50', 75', 100', 125', 150', 175', 200', 225', 250', 275', 300', 325', 350', 375', 400', 425', 450', 475', 500', 525', 550', 575') and corresponding values for W and E curbs. Includes notes like 'M.L. Meade' and '600 So.' at the bottom.

Handwritten calculations and notes on the right page, including a series of numbers and small arithmetic operations (e.g., 333.97, 333.95, 333.96, 333.94, etc.).

crack in walk on W side 153' S of Monroe

cracks in curb in this blk on W side

Roadway is very good for grade few holes & humps, which rain disclosed

MISSISSIPPI STREET

35

W Curb 1/4 E 1/4 Curb E

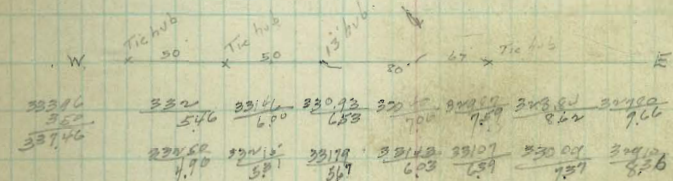
P.L. MEADE	33275	33250	33223	33275	33248	33300	33325
M. Curb	33250	33250	33213	33266	33238	33300	33300
M 1/4	33197	33137	33205	33258	33228	33187	33247
Center	33225	33125	33197	33250	33219	33175	33275
S 1/4	33172	33112	33189	33242	33210	33162	33212
S Curb	33200	33200	33181	33234	33200	33250	33250
S.L. MEADE	33225	33200	33172	33225	33190	33250	33275

MEADE TO EL CAJON

S.L. MEADE	33225	33200	33172	33225	33190	33250	33275
25' 50'	33198	33173	33148	33203	33173	33233	33258
50'	33171	33146	33123	33180	33155	33215	33240
75'	33144	33119	33098	33158	33137	33197	33222
100'	33118	33093	33074	33136	33119	33179	33204
125'	33091	33066	33050	33114	33101	33161	33186
150'	33065	33040	33026	33092	33083	33143	33168
175'	33038	33013	33002	33070	33065	33125	33150
200'	33012	32987	32977	33047	33047	33107	33132
225'	32986	32966	32956	32996	32998	33058	33083
250'	32959	32934	32925	32966	32969	33029	33054
275'	32932	32907	32898	32938	32940	32999	33024
300'	32905	32880	32872	32912	32915	32974	33000
325'	32878	32853	32846	32886	32889	32948	32974
350'	32851	32826	32820	32860	32863	32922	32948
375'	32824	32800	32794	32834	32837	32896	32922
400'	32797	32774	32770	32810	32813	32872	32898
425'	32770	32748	32744	32784	32787	32846	32872

25

32803	32737	32657	32584	32522	32472	32428	32390	32350	32315
082	112	102	91	80	70	60	50	40	30
32717	32649	32570	32495	32422	32352	32288	32230	32177	32128
112	102	91	80	70	60	50	40	30	20
32631	32564	32485	32410	32338	32268	32204	32146	32093	32044
102	91	80	70	60	50	40	30	20	10



32910	32812	32714	32616	32518	32420	32322	32224	32126	32028
148	146	144	142	140	138	136	134	132	130
32824	32726	32628	32530	32432	32334	32236	32138	32040	31942
138	136	134	132	130	128	126	124	122	120
32738	32640	32542	32444	32346	32248	32150	32052	31954	31856
128	126	124	122	120	118	116	114	112	110

32976  
160  
32916  
32856

Dirt not taken off block W. of Miss on Meade.  
Meade Intersection not finished

Blk bet Meade & El Cajon O.K. for grade

MISSISSIPPI STREET

W Corb 1/4 E 1/4 Corb E

450 S. of MEADE	32475	32470	32466	32543	32555	32615	32640
475	32443	32418	32415	32492	32506	32566	32591
500	32392 <sup>0</sup>	32367	32364	32442	32457 <sup>0</sup>	32517	32542
525	32340 <sup>0</sup>	32315	32313	32391	32408 <sup>0</sup>	32468	32493
550	32288	32263	32262	32341	32358	32418	32443
575	32237	32212	32211	32290	32309	32369	32394
600 S. = HL	32185	32160	32160	32240	32260	32320	32345

32599	32315	32413	32512	32610
2.04	2.68	3.40	4.21	5.03
323.03	4.03	4.18	4.09	4.09
	323.11	323.15	323.00	323.12
	1.18	5.75	4.17	3.05
	-0.2	-0.4	-1.3	-0.0
32356	32415	32517	32618	
	4.13	5.41	6.10	
			32263	
			7.75	
32263	32470	32567		
7.20	5.86	6.88		
320.43				
32559	32615	32717	32818	
	9.74	10.72	11.42	
	32470	32567	32663	
	11.39	12.22	13.26	

60' ST.  
10' Walks  
10' 1/4's

FLORIDA STREET

Note: Deduct 19.10 elev from these curb elevs. for roadway

W Curb A C 1/4 A Curb E

S.L. Univ. Ave	287.25	287.00	286.40	285.50	284.35	284.00	283.25
25' So.		286.57	285.97	285.11	283.98	283.65	283.90
50' "		286.14	285.54	284.72	283.61	283.30	283.55
75'		285.72	285.12	284.33	283.24	282.95	283.20
100'		285.29	284.69	283.94	282.87	282.60	282.85
125'		284.86	284.26	283.56	282.50	282.25	282.50
150'		284.44	283.84	283.17	282.13	281.90	282.15
175'		284.01	283.41	282.78	281.76	281.55	281.80
200'		283.58	282.98	282.39	281.39	281.20	281.45
225'		283.16	282.56	282.00	281.02	280.85	281.10
250'		282.73	282.13	281.61	280.66	280.50	280.75
275'		282.30	281.70	281.23	280.29	280.15	280.40
300'		281.87	281.27	280.84	279.72	279.80	280.05
325'		281.45	280.85	280.45	279.55	279.45	279.70
350'		281.02	280.42	280.06	279.18	279.10	279.35
375'		280.59	279.99	279.67	278.81	278.75	279.00
400'		280.17	279.57	279.29	278.44	278.40	278.65
425'		279.74	279.14	278.90	278.08	278.06	278.31
450'		279.31	278.71	278.51	277.71	277.71	277.96
475'		278.88	278.28	278.12	277.34	277.36	277.61
500'		278.46	277.86	277.73	276.96	277.00	277.25
525'		278.03	277.43	277.34	276.60	276.66	276.91
550'		277.60	277.00	276.96	276.23	276.31	276.56
575'		277.18	276.58	276.57	275.86	275.96	276.21
600'		276.75	276.15	276.18	275.49	275.61	275.86
625'		276.32	275.72	275.79	275.12	275.26	275.51
645 So. =		276.25	275.90	275.50	274.85	275.00	275.25

Note - Sidewalk here to be built with a different grade. See opposite page.

170896

Book 825

27

Note: The West walk has a grade apart from the remainder of the street

W Line Curb

	287.25	287.00
	288.50	288.25
	289.75	289.50
	291.00	290.75
100'	292.25	292.00
	293.49	293.24
	294.62	294.37
	295.57	295.32
200'	296.35	296.10
	296.95	296.70
	297.42	297.17
	297.63	297.38 Summit
300'	297.58	297.33
	297.26	297.01
	296.75	296.50
	296.07	295.82
400'	295.34	295.09
	294.61	294.36
	293.88	293.63
	293.15	292.90
500'	292.25	292.00
	290.65	290.40
	288.45	288.20
	285.65	285.40
600'	282.25	282.00
	280.00	279.75
	276.25	276.00

FLORIDA STREET

25

W Curb 1/4 C 1/4 Curb E

ROBINSON AVE INTERSECTION 80 ST

N.L. ROBINSON	276.25	276.00	275.40	275.50	274.85	275.00	275.25
N. Curb	276.00	276.00	275.05	275.15	274.50	275.00	275.00
N 1/4	275.00	275.00				274.00	274.00
	275.40	274.50	274.72	274.82	274.17	273.50	274.40
Center	275.00	274.00	274.40	274.50	273.85	273.00	274.00
S 1/4	274.10	273.50	274.08	274.18	273.53	272.50	273.10
S Curb	273.00	273.00				272.00	272.00
	274.00	274.00	273.75	273.85	273.20	273.00	273.00
S.L. ROBINSON	274.25	274.00	273.40	273.50	272.85	273.00	273.25

28

W Curb 1/4 C 1/4 Curb E

S.L. ROBITSON	27425	27400	27370	27350	27285	27300	27325
25' So.	272.88	272.63	272.03	272.13	271.48	271.63	271.88
50' "	271.52	271.27	270.67	270.77	270.12	270.27	270.52
75'	270.16	269.91	269.31	269.41	268.76	268.91	269.16
100'	268.80	268.55	267.95	268.05	267.40	267.55	267.80
125'	267.44	267.19	266.59	266.69	266.04	266.19	266.44
135'	266.90	266.65	266.05	266.15	265.50	265.65	265.90
150'	266.08	265.83	265.23	265.33	264.68	264.83	265.08
160'	265.54	265.29	264.69	264.79	264.14	264.29	264.54
175'	264.72	264.47	263.87	263.97	263.32	263.47	263.72
200'	263.36	263.11	262.51	262.61	261.96	262.11	262.36
225'	262.00	261.75	261.15	261.25	260.60	260.75	261.00
250'	260.64	260.39	259.79	259.89	259.24	259.39	259.64
275'	259.28	259.03	258.43	258.53	257.88	258.03	258.28
300'	257.92	257.67	257.07	257.17	256.52	256.67	256.92
325'	256.56	256.31	255.71	255.81	255.16	255.31	255.56
350'	255.20	254.95	254.35	254.45	253.80	253.95	254.20
375'	253.84	253.59	252.99	253.09	252.44	252.59	252.84
400'	252.48	252.23	251.63	251.73	251.08	251.23	251.48
425'	251.12	250.87	250.27	250.37	249.72	249.87	250.12
450'	249.76	249.51	248.91	249.01	248.36	248.51	248.76
475'	248.40	248.15	247.55	247.65	247.00	247.15	247.40
500'	247.04	246.79	246.19	246.29	245.64	245.79	246.04
525'	245.68	245.43	244.83	244.93	244.28	244.43	244.68
550'	244.32	244.07	243.47	243.57	242.92	243.07	243.32
575'	242.96	242.71	242.11	242.21	241.56	241.71	241.96
600'	241.60	241.35	240.75	240.85	240.20	240.35	240.60
625'	239.24	239.99	239.39	239.49	238.84	238.99	239.24
650'	237.88	238.63	238.03	238.13	237.48	237.63	237.88
680' = H.L. CYPRESS	237.25	237.00	236.40	236.50	235.85	236.00	236.25

## FLORIDA STREET

W Curb  $\frac{1}{4}$  C  $\frac{1}{4}$  Curb E

80' ST. CYPRESS AVENUE INTERSECTION

NL CYPRESS	23725	23700	23670	23650	23585	23600	23625
N Curb	23700	23700	23624	23632	23567	23600	23600
	23600	23600				23500	23500
N $\frac{1}{4}$	23640	23575	23606	23616	23551	23475	23540
Center	23650	23550	23570	23600	23535	23450	23550
S $\frac{1}{4}$	23585	23525	23574	23584	23519	23425	23485
S Curb	23500	23500				23400	23400
	23600	23600	23558	23568	23503	23500	23500
SL CYPRESS	23615	23600	23540	23550	23485	23500	23525



FLORIDA STREET

	W. Curb	1/4 C	1/4 Curb	E
SL. CYPRESS	23625	23600	23540	23550 23485 23500 23525
25' 50'	23425	23400	23370	23350 23285 23300 23325
50'	23226	23201	23171	23151 23086 23101 23126
75'	23027	23002	22972	22952 22887 22902 22927
100'	22828	22803	22773	22753 22688 22703 22728
125'	22628	22603	22573	22553 22488 22503 22528
150'	22429	22404	22374	22354 22289 22304 22329
175'	22230	22205	22175	22155 22090 22105 22130
200'	22031	22006	21976	21956 21891 21906 21931
225'	21832	21807	21777	21757 21692 21707 21732
240'	21632	21607	21577	21557 21492 21507 21532
250'	21632	21607	21577	21557 21492 21507 21532
275'	21433	21408	21378	21358 21293 21308 21333
300'	21234	21209	21179	21159 21094 21109 21134
320'	21035	21050	20990	21000 20935 20950 20975
325'	21035	21034	20974	20985 20920 20935 20960
350'	20936	20959	20891	20908 20845 20863 20888
375'	20837	20874	20813	20832 20771 20790 20815
400'	20838	20794	20735	20756 20696 20717 20742
425'	20740	20715	20657	20679 20619 20644 20669
450'	20640	20635	20579	20693 20547 20571 20596
475'	20580	20555	20501	20526 20472 20498 20523
500'	20500	20475	20422	20450 20398 20426 20451
525'	20420	20395	20344	20374 20324 20353 20378
550'	20340	20315	20266	20297 20248 20280 20305
575'	20261	20236	20189	20222 20175 20207 20232
600'	20181	20156	20110	20145 20100 20134 20159
625'	20101	20076	20032	20068 20024 20061 20086
650'	20021	19996	19954	19992 19950 19988 20013
680' 50' = H.L. MYTLE	19925	19900	19860	19900 19860 19900 19925

FLORIDA STREET

SE

32

W Curb 1/4 C 1/4 Curb E

80' ST MYRTLE AVE. INTERSECTION

N.L. MYRTLE 19925 19900 19860 19900 19860 19900 19925

N. Curb 14' 19900 19900 19842 19882 19842 19900 19900  
19800 19800 19800 19800

N 1/4 15' 19820 19775 19820 19866 19826 19775 19840

Center 13' 19850 19750 19810 19850 19810 19750 19850

S 1/4 13' 19785 19725 19794 19834 19794 19725 19785  
19700 19700 19700 19700

S. Curb 13' 19800 19800 19778 19818 19778 19800 19800

S.L. MYRTLE 14' 19825 19800 19760 19800 19760 19800 19825

S.L. MYRTLE 19825 19800 19760 19800 19760 19800 19825

25' S. 19800 19775 19735 19775 19735 19775 19800

50' " 19775 19750 19710 19750 19710 19750 19775

75' 19750 19725 19685 19725 19685 19725 19750

85' 19740 19715 19675 19715 19675 19715 19740

100' 19724 19699 19659 19699 19659 19699 19724

125' 19699 19674 19634 19674 19634 19674 19699

150' 19674 19649 19609 19649 19609 19649 19674

175' 19649 19624 19584 19624 19584 19624 19649

200' 19623 19598 19558 19598 19558 19598 19623

225' 19598 19573 19533 19573 19533 19573 19598

250' 19573 19548 19508 19548 19508 19548 19573

275' 19549 19524 19484 19524 19484 19524 19549

N.L. UP 75 ST 19525 19500 19460 19500 19460 19500 19525

297' 19525 19500 19460 19500 19460 19500 19525

## FLORIDA STREET

W Curb  $\frac{1}{4}$  C  $\frac{1}{4}$  Curb E76<sup>th</sup> ST. UPAS ST. INTERSECTION

N. L. UPAS	19525	19500	19460	19500	19460	19500	19525
N. Curb	19500 19400	19500 19400	19442	19482	19442	19500 19400	19500 19400
$\frac{1}{4}$	19440	19375	19426	19466	19426	19375	19440
Center	19450	19350	19410	19450	19410	19350	19450
$\frac{3}{4}$	19385 19300	19325 19300	19394	19434	19394	19325 19300	19385 19300
S. Curb	19400	19400	19378	19418	19378	19400	19400
S. L. UPAS	19425	19400	19360	19400	19360	19400	19425

Del. Point 86!  
Page 77

80' ST.  
14' Walks  
13' 1/4'S

DRAPER STREET

Book 958

" 7

Note - These figures are for  
checking on estimate figures  
by Bedford

34

8mg 4/12/15

	W	Curb	1/4	E	1/4	Curb	E
S.L. KLIME	89.75	84.50	84.27	85.25	85.40	86.00	86.25
50' So.	82.49	82.24	82.15	82.86	82.88	83.48	83.73
100' "	80.24	79.99	79.83	80.47	80.36	80.96	81.21
150'	77.98	77.73	77.50	78.08	77.84	78.44	78.69
175'	76.85	76.60	76.34	76.88	76.58	77.18	77.43
200'	75.72	75.47	75.18	75.69	75.32	75.92	76.17
225'	74.59	74.34	74.02	74.50	74.06	74.66	74.91
250'	73.47	73.22	72.86	73.31	72.80	73.40	73.65
M.L. Ravina on East	277.50	71.77	71.58	71.98	71.90	72.00	72.25
288.0 on W. and 277.7 on East	M.L. Ravina St.	71.75	71.50	71.22	71.75	71.90	72.00

RAVINA TO SILVER

S.L. Ravida	71.75	71.50	71.22	71.75	71.90	72.00	72.25
S.L. Ravida on W.	125 ft. of Silver	71.75	71.50	71.34	71.98	71.87	72.47
100' H. "	72.45	72.20	72.04	72.69	72.58	73.18	73.43
50' H. "	73.85	73.60	73.45	74.10	73.99	74.59	74.84
M.L. Silver St.	75.15	75.00	74.85	75.50	75.40	76.00	76.25

SILVER ST. INTERSECTION

M.L. SILVER	75.25	75.00	74.85	75.50	75.40	76.00	76.25
H. Curb	75.51	75.26	75.11	75.76	75.66	76.00	76.00
H. 1/4	75.76	75.51	75.36	76.01	75.91	75.77	75.97
Center	76.00	75.75	75.60	76.25	76.15	75.75	76.75
S. 1/4	76.24	75.99	75.84	76.49	76.39	76.12	76.90
S. Curb	76.49	76.24	76.09	76.74	76.64	77.50	77.50
S.L. SILVER	76.75	76.50	76.35	77.00	76.90	77.50	77.75

HAWK STREET

	W	Corb	±	¼	Corb	E
PL UPAS		23200	23200	23160	23200	23225
25' PL		23236	23227	23183	23218	23243
50' "		23271	23259	23205	23236	23261
75' "		23307	23280	23227	23254	23279
83' PL = Pub. Line = 325' S. of Walnut		23318	23288	23233	23259	23284
13' PL of P.L.		23327	23300	23245	23268	23293
300' So. Walnut		23373	23329	23268	23286	23311
275' "		23408	23356	23290	23304	23329
250' "		23444	23383	23310	23322	23347
225' "		23480	23410	23335	23340	23365
200' "		23515	23436	23357	23357	23382
175' "		23551	23463	23379	23375	23400
150' "		23586	23489	23401	23393	23418
125' "		23622	23516	23423	23411	23436
100'		23658	23543	23446	23429	23454
75'		23694	23570	23468	23447	23472
50'		23730	23597	23491	23465	23490
25'		23765	23624	23513	23483	23508
SL Walnut		23800	23650	23535	23500	23525

Figuring up as street 80 ft. wide on  
both sides of same.

Note: These notes are used for  
estimating yardage of material  
removed about 4 yrs ago from  
this part of same st (on E.  
side only) 8/14/15

80' St  
14' Walks  
13' Quarters

H STREET

Field Notes in Book 224

	S. Curb	1/4	1/2	3/4	Curb	M.
EL. 35 <sup>th</sup> (MERRITT)	84.25	84.00	83.85	84.50	84.90	85.00 85.25
25' E	86.00	85.75	85.60	86.25	86.15	86.75 87.00
50' "	87.75	87.50	87.35	88.00	87.90	88.50 88.75
75'	89.50	89.25	89.10	89.75	89.65	90.25 90.50
100'	91.25	91.00	90.85	91.50	91.40	92.00 92.25
125'	93.00	92.75	92.60	93.25	93.15	93.75 94.00
150'	94.75	94.50	94.35	95.00	94.90	95.50 95.75
175'	96.50	96.25	96.10	96.75	96.65	97.25 97.50
200'	98.25	98.00	97.85	98.50	98.40	99.00 99.25
210'	98.95	98.70	98.55	99.20	99.10	99.70 99.95
225'	100.00	99.75	99.60	100.25	100.15	100.75 101.00
250'	101.75	101.50	101.35	102.00	101.90	102.50 102.75
275'	103.50	103.25	103.10	103.75	103.65	104.25 104.50
300'	105.25	105.00	104.85	105.50	105.40	106.00 106.25
325'	107.00	106.75	106.60	107.25	107.15	107.75 108.00
350'	108.75	108.50	108.35	109.00	108.90	109.50 109.75
375'	110.50	110.25	110.10	110.75	110.65	111.25 111.50
400'	112.25	112.00	111.85	112.50	112.40	113.00 113.25
425'	114.00	113.75	113.60	114.25	114.15	114.75 115.00
450'	115.75	115.50	115.35	116.00	115.90	116.50 116.75
475'	117.50	117.25	117.10	117.75	117.65	118.25 118.50
500'	119.25	119.00	118.85	119.50	119.40	120.00 120.25
525'	121.00	120.75	120.60	121.25	121.15	121.75 122.00
540'	122.05	121.80	121.65	122.30	122.20	122.80 123.05
550'	122.65	122.40	122.25	122.90	122.80	123.40 123.65
570'	123.85	123.60	123.45	124.10	124.00	124.60 124.85
575'	124.04	123.79	123.64	124.29	124.19	124.79 125.04
600' E = W. PASCOE	125.00	124.75	124.60	125.25	125.15	125.75 126.00

819. 4/22/15



55' Street  
10' Walks  
8.75' Quarters

TYLER AVENUE

Field Book 932

38

	N	Curb	1/4	+	1/4	Curb	S
WL CAMPUS	340.85	340.60	340.00	341.00	340.80	341.40	341.65
<sup>33'</sup> <sup>2.7' W of S</sup> Sec. AB	340.48	340.23	339.63	339.54	338.80	338.86	339.11
50' W. of Sec. AB	334.81	334.56	333.96	333.91	333.18	333.26	333.51
75' W.	331.98	331.73	331.13	331.10	330.38	330.47	330.72
100' "	329.14	328.89	328.29	328.28	327.57	327.67	327.92
125'	326.31	326.06	325.46	325.46	324.76	324.87	325.12
133'	325.40	325.15	324.55	324.57	323.88	323.99	324.24
139'	324.72	324.47	323.87	323.90	323.22	323.33	323.58
150'	323.47	323.22	322.62	322.66	321.98	322.10	322.35
175'	320.64	320.39	319.79	319.84	319.17	319.30	319.55
200'	317.80	317.55	316.95	317.02	316.36	316.50	316.75
225'	314.97	314.72	314.12	314.21	313.56	313.71	313.96
<sup>237' W. = Sec. CD</sup> <sup>120' W. of Sec. CD part</sup>	313.61	313.36	312.76	312.85	312.20	312.35	312.60
<sup>30'</sup> EL. CLEVELAND	312.25	312.00	311.40	312.00	311.60	312.00	312.25

Cleveland Ave. is graded.



TYLER AVENUE

N curb 1/4 E 1/4 curb S

W. CLEVELAND	31025	31000	30940	31000	30960	31000	31025
22' W. of N. Side 12' W. of S Section EF	31014	30989	30929	30960	30905	30930	30955
25' W. of Sec. EF	30910	30885	30825	30853	30797	30821	30846
50' W. "	30807	30782	30722	30747	30690	30713	30738
75' "	30703	30678	30618	30641	30582	30604	30629
100' "	30599	30574	30514	30535	30476	30496	30521
125'	30495	30470	30410	30428	30368 <sup>0</sup>	30387	30412
150'	30392 <sup>0</sup>	30367	30307	30322	30260 <sup>0</sup>	30278	30303
175'	30288 <sup>0</sup>	30263	30203	30216	30153 <sup>0</sup>	30170	30195
200'	30184	30159	30100	30110	30046	30061	30086
210'	30143	30118	30158	30068	30003	30018	30043
225'	30081	30056	29996	30004	29938	29953	29978
250'	29977	29952	29892	29898	29831	29844	29869
275'	29873	29848	29788	29792	29723	29735	29760
290' W. = Sec. GH	29800	29775	29715	29716	29647	29658	29683
57' W. of GH on N. E. MARYLAND	29775	29750	29690	29700	29635	29650	29675



60' ST.  
10' Ctr  
10' Walks

GUIZOT STREET

W Curb 1/4  $\Phi$  1/4 Curb E

P.L. NEWPORT	16425	16400	16360	16400	16360	16400	16425
50' $\Gamma$	161.09	16084	16044	16092	16060	16100	16125
100' "	157.93	15768	15728	15784	15760	15800	15825
140' "	155.90	15515	15475	15537	15520	15560	15585
160' "	154.13	15388	15361	15414	15380	15440	15465
200'	151.60	15135	15111	15167	15140	15200	15225
250'	148.43	14818	14778	14819	14840	14900	14925
SANTA MONICA 300' $\Gamma$ = S.L. of	145.25	14500	14485	14550	14540	14600	14625

SANTA MONICA INTERSECTION 80'

S.L. SANTA MON.	145.25	14500	14485	14550	14540	14600	14625
S Curb	14500	14500	14467	14532	14522	14600	14600
S 1/4	14440	14400	14451	14516	14506	14500	14500
Center	14450	14375	14451	14516	14506	14475	14540
$\Gamma$ 1/4	14385	14350	14435	14500	14490	14450	14550
$\Gamma$ Curb	14385	14325	14419	14484	14474	14425	14485
P.L. SANTA MON.	14425	14400	14385	14450	14440	14500	14525

12'  
13'  
13'  
13'  
13'  
14'

GUIZOT STREET

W Curb ¼ E ¼ Curb E

P.L. SANTA MONICA 14425 14400 14385 14450 14490 14500 14525

- 25' "
- 50' "
- 75' "
- 100' "
- 125'







60' Street  
10' Marks  
10 Quarters

FISKE STREET

Book 835  
" 10

	W	Curb	1/4	1/2	3/4	Curb	E
S.L. of M. St.	97.75	97.50	97.10	97.75	97.60	98.00	98.25
25' So.	97.25	97.00	96.60	97.16	96.92	97.22	97.57
50'	96.75	96.50	96.10	96.56	96.23	96.63	96.88
75'	96.25	96.00	95.60	95.97	95.54	95.94	96.19
100'	95.75	95.50	95.10	95.38	94.85	95.25	95.50
125'	95.25	95.00	94.60	94.78	94.16	94.56	94.81
150'	94.75	94.50	93.90	94.19	93.63	93.88	94.13
175'	94.25	94.00	93.40	93.59	93.00	93.19	93.44
200'	93.75	93.50	92.90	93.00	92.35	92.50	92.75
225'	93.59	93.39	92.74	92.85	92.20	92.36	92.61
250'	93.12	92.97	92.57	92.70	92.06	92.22	92.47
275'	92.66	92.51	92.11	92.55	91.92	92.09	92.34
300'	92.09	92.84	92.24	92.70	91.78	91.96	92.21
325'	92.92	92.67	92.07	92.25	91.64	91.83	92.08
350'	92.76	92.51	91.91	92.10	91.50	91.70	91.95
375'	92.59	92.34	91.74	91.95	91.36	91.56	91.81
400'	92.43	92.18	91.58	91.80	91.22	91.43	91.68
425'	92.26	92.01	91.41	91.66	91.08	91.30	91.55
450'	92.09	91.84	91.24	91.51	90.93	91.17	91.42
475'	91.93	91.68	91.08	91.36	90.79	91.04	91.29
500'	91.76	91.51	90.91	91.21	90.65	90.90	91.15
525'	91.60	91.35	90.75	91.06	90.51	90.77	91.02
550'	91.43	91.18	90.58	90.91	90.37	90.64	90.89
GILLMORE 577' So. = N.L. of	91.25	91.00	90.40	90.75	90.22	90.50	90.75

8/10/15





## STATE ST.

BANK 986

48

	W	Curb	1/4	¢	1/4	Curb	E
S.L. MAPLE	59.25	59.00	58.80	58.50	57.85	58.00	58.25
25' So.	60.42	60.17	59.57	59.80	59.21	59.42	59.67
50' "	61.58	61.33	60.93	61.08	60.93	60.83	61.08
56' "	61.86	61.61	61.21	61.39	60.77	61.17	61.42
75'	62.75	62.50	62.10	62.37	61.85	62.25	62.50
84'	63.17	62.92	62.52	62.84	62.36	62.76	63.01
100'	63.92	63.67	63.27	63.67	63.27	63.67	63.92
110'	64.39	64.14	63.74	64.19	63.84	64.24	64.49
125'	65.09	64.84	64.44	64.96	64.68	65.08	65.33
150'	66.25	66.00	65.60	66.25	66.10	66.50	66.75
157'	66.58	66.33	65.93	66.62	66.50	66.90	67.15
175'	67.42	67.17	66.95	67.54	67.32	67.92	68.17
180'	67.65	67.40	67.20	67.80	67.60	68.20	68.45
190'	68.12	67.87	67.69	68.32	68.17	68.77	69.02
200'	68.59	68.34	68.04	68.54	68.74	69.34	69.59
208'	68.96	68.71	68.58	69.25	69.20	69.80	70.05
225'	69.75	69.50	69.41	70.12	70.15	70.75	71.00
240'	70.45	70.20	70.15	70.90	71.00	71.60	71.85
245'	70.68	70.43	70.39	71.16	71.28	71.88	72.13
250'	70.92	70.67	70.65	71.42	71.57	72.17	72.42
266'	71.67	71.42	71.43	72.25	72.48	73.08	73.33
280'	72.32	72.07	72.12	72.97	73.27	73.87	74.12
300' S. = H.L. LAUREL	73.25	73.00	73.10	74.00	74.40	75.00	75.25

10' WALKS  
Varying Quarters

STATE ST.

MAPLE STREET  
INTERSECTION

	W	Curb	1/4	€	1/4	Curb	E
H.L. MAPLE	58.25	58.00	57.40	57.50	56.85	57.00	57.25
H. Curb	58.00	58.00	57.58	57.68	57.03	57.00	57.00
H 1/4	57.85	57.25	57.74	57.84	57.19	56.25	56.00
Center	58.50	57.50	57.90	58.00	57.35	56.50	57.50
S 1/4	58.40	57.75	58.06	58.16	57.51	56.75	57.40
S. Curb	58.00	58.00				57.00	57.00
	59.00	59.00	58.22	58.32	57.67	58.00	58.00
S.L. MAPLE	59.25	59.00	58.40	58.50	57.85	58.00	58.25

REYHARD WAY

	W.	Curb	1/4	€	1/4	Curb	E.
Sec. 1K	5644	5639	5659	5692	5665	5645	5670
" 1L	5664	5639	5659	5685	5650	5630	5655
16' So. of 1L	5644	5617	5637	5662	5628	5608	5633
32' "	5620	5595	5615	5640	5606	5586	5611
40' "	5609	5584	5604	5630	5595	5575	5600
567' S. = EL. of Union on W.	5585	5560	5580	5607	5573	5553	5578
67' So.	5571	5546	5566	5591	5559	5539	5564
75' "	5560	5535	5555	5582	5548	5528	5553
85'	5546	5521	5541	5567	5534	5514	5539
100'	5525	5500	5520	5547	5514	5494	5519
125'	5490	5465	5485	5512	5480	5460	5485
150'	5455	5430	5450	5478	5446	5426	5451
170' Union on W.	5427	5402	5422	5451	5420	5400	5425
186' S. = W. L.	5405	5380	5400	5428	5397	5377	5402
195' So.	5393	5368	5388	5416	5385	5365	5390
200' "	5386	5361	5381	5410	5378	5358	5383
225'	5351	5326	5346	5375	5343	5323	5348
250'	5316	5291	5311	5340	5309	5289	5314
270'	5288	5263	5283	5312	5282	5262	5287
275'	5283	5258	5278	5307	5275	5255	5280
300'	5247	5222	5242	5271	5240	5220	5245
315' S. = N. L. of Hutney on W.	5225	5200	5220	5250	5220	5200	5225
330' So.	5246	5221	5223	5256	5223	5221	5246
350' "	5275	5250	5227	5264	5227	5250	5275
364' S. = S. L. of Hutney on W.	5295	5270	5230	5270	5230	5269	5294
375' So.	5311	5286	5246	5285	5244	5284	5309
400' "	5349	5324	5284	5322	5279	5319	5344

Note: € elev. is 0.5' above curbs from here North  
 Increase elevations of quarters proportionally to distance

Note: € elev. average of curbs from here South

REYNARD WAY

	W	Curb	1/4	±	1/4	Curb	EL.
425' So. of IL	5387	5362	5322	5357	5318	5354	5379
450' "	5425	5400	5360	5394	5348	5388	5413
455' "	5433	5408	5368	5402	5355	5395	5420
475' "	5463	5438	5398	5430	5383	5423	5448
500' "	5501	5476	5436	5467	5418	5458	5483
515' "	5526	5499	5459	5489	5439	5479	5504
STATE ST 52966'S. = EL.	5546	5520	5480	5510	5460	5500	5525
550' So.	5573	5548	5508	5538	5488	5528	5553
575' "	5608	5583	5543	5573	5523	5563	5588
600' "	5643	5618	5578	5608	5557	5597	5622
625' S. of IL	5678	5653	5613	5643	5592	5632	5657
Sec. MP = 638.5 of MP on W.	5676	5671	5631	5660	5610	5650	5675
Sec. MO = 2068 S. of MO on W.	5725	5700	5650	5675	5620	5650	5675
Sec. MP = 2906 S. S. of MP	5774	5749	5689	5700	5635	5650	5675
IL Maple = 3058'	5825	5800	5740	5750	5685	5700	5725

REYHARD WAY

	W	Curb	1/4	¢	1/4	Curb	E
Section EG	67.30	67.05	67.25	67.62	67.39	67.19	67.44
1429 So. 50 EL.							
Section EH	67.30	67.05	67.25	67.47	67.09	66.89	67.14
So. Line of DALM							
3288 So. of EH	66.75	66.50	66.70	66.85	66.40	66.20	66.45
50'	66.43	66.18	66.38	66.54	66.10	65.90	66.15
75'	65.97	65.72	65.92	66.08	65.65	65.45	65.70
100'	65.50	65.25	65.45	65.63	65.21	65.01	65.26
HORTON on W.							
10239 = EL. of	65.35	65.10	65.30	65.48	65.07	64.87	65.12
125' S. of EH	65.04	64.79	64.99	65.18	64.77	64.57	64.82
150'	64.57	64.32	64.52	64.72	64.32	64.12	64.37
175'	64.10	63.85	64.05	64.26	63.88	63.68	63.93
200'	63.63	63.38	63.58	63.81	63.44	63.24	63.49
HORTON on E.							
21819 So. = EL.	63.28	63.03	63.23	63.46	63.10	62.90	63.15
HORTON on W.							
23573 So. = WL.	62.95	62.70	62.90	63.14	62.79	62.59	62.84
250' So.	62.69	62.44	62.64	62.89	62.54	62.34	62.59
275'	62.23	61.98	62.18	62.44	62.10	61.90	62.15
300'	61.77	61.52	61.72	61.99	61.66	61.46	61.71
325'	61.31	61.06	61.26	61.54	61.22	61.02	61.27
3288A	61.25	61.00	61.20	61.49	61.15	60.95	61.20
350'	60.86	60.61	60.81	61.10	60.78	60.58	60.83
of OLIVE on W.							
38001 So. = NL.	60.25	60.00	60.20	60.50	60.20	60.00	60.25
OLIVE on E							
406 1/2 So. = SL	59.80	59.55	59.75	60.07	59.80	59.60	59.85
432' So. of EH	59.29	59.04	59.24	59.65	59.45	59.25	59.50
OLIVE on W.							
435 1/2 So. = SL of	59.25	59.00	59.20	59.60	59.40	59.20	59.40
450' So. of EH	59.05	58.80	59.00	59.40	59.20	59.00	59.25
475'	58.72	58.47	58.67	59.06	58.86	58.66	58.91
500'	58.38	58.13	58.33	58.72	58.52	58.32	58.57
525'	58.04	57.79	57.99	58.39	58.18	57.98	58.23

1.854%

1.882%

1.853%

1.882%

1.882%

1.874%

REYNARD WAY

	W	Curb	1/4	☉	1/4	Curb	E
533' So. of EH	57.93	57.68	57.88	58.28	58.07	57.87	58.12
550' "	57.69	57.44	57.64	58.04	57.84	57.64	57.89
561' "	57.54	57.29	57.49	57.89	57.69	57.49	57.74
575'	57.35	57.10	57.30	57.70	57.50	57.30	57.55
600'	57.01	56.76	56.96	57.36	57.16	56.96	57.21
626.71 So. = I & J 10.95' S on E	56.64	56.39	56.59	57.00	56.80	56.60	56.85
Sec. 1 K angle Pt.	56.64	56.39	56.59	56.92	56.65	56.45	56.70

REYNARD WAY

	W	Curb	1/4	1/2	3/4	Curb	E
Section AC	7620	7595	7615	7649	7674	7694	7629
" AD	75.89	7564	7589	7634	7694	7604	7629
7 1/2' So. of AD	75.72	7547	7572	7618	7590	7590	7615
7.6 "		7546		7618		7590	
20.56 "	7542	7517	7542	7589	7561	7561	7586
25' "	7532	7507	7532	7589	7553	7553	7578
50' "	7478	7453	7478	7525	7498	7498	7523
50.22 "		7451		7523		7496	
75'	7423	7398	7423	7469	7440	7440	7465
100'	7368	7343	7368	7413	7384	7384	7409
125'	7313	7288	7313	7358	7329	7329	7354
133'	7295	7270	7295	7342	7313	7313	7338
150'	7258	7233	7258	7303	7273	7273	7298
174.4' WLEAGLE	7205	7180	7205	7250	7220	7220	7245
175'	7203	7178	7203	7248	7218	7218	7243
193'	7163	7138	7163	7208	7178	7178	7203
200'	7148	7123	7148	7193	7163	7163	7188
218'	7108	7083	7108	7153	7124	7124	7149
220'	7104	7079	7104	7149	7120	7120	7145
225'	7093	7068	7093	7138	7109	7109	7134
pt. on E line 233.54 S. = tan	7074	7049	7074	7119	7090	7090	7115
250'	7038	7013	7038	7084	7055	7055	7080
275'	6983	6958	6983	7030	7002	7002	7027
300'	6928	6903	6928	6975	6948	6948	6973
325'	6873	6848	6873	6921	6894	6894	6919
340.25'		6814				6861	
350'	6819	6794	6819	6867	6840	6840	6865
375'	6764	6739	6764	6812	6786	6786	6811
PALM ST. 383.57 So. = 1/4 of	6745	6720	6745	6794	6768	6768	6793
Section EF							
391.16 So. of AD =	6730	6705	6730	6778	6752	6752	6777
So. on E.L.							
Sec. EG = 1/4 A	6730	6705	6730	6767	6739	6739	6764

Note: AC, AD and AB are each 80' in length.  
AC to AD = 13.9' on West.

change 1/4 S

SL of Quince

SL of Quince

SL of Quince

Note: For difference of .05' in curb elevation  
on high side make quarter same elev. as curb  
on low side " " " .05' above curb.

change 1/4 S



REYNARD WAY

	W	Curb	1/4 - E	1/4	Curb	E
Section UW	914.	9116	9136	9160	9125	9105 9130
10945 So. of UW =	9125	9100	9120	9155	9125	9105 9130
" UX	9097	9072	9097	9138	9115	9105 9130
= P.C.						
10945 So. of UX	9070	9045	9070	9115	9085	9085 9110
SL SPRUCE						
2906 So. of UX =	9025	9000	9025	9075	9050	9050 9075
50'S. of UX	8985	8960	8985	9033	9007	9007 9032
75' "	8937	8912	8937	8989	8956	8956 8981
90' "	8902	8883	8908	8959	8925	8925 8950
100	8889	8864	8889	8934	8905	8905 8930
125	8841	8816	8841	8885	8854	8854 8879
147	8799	8774	8799	8842	8809	8809 8834
150	8793	8768	8793	8836	8803	8803 8828
175	8745	8720	8745	8786	8752	8752 8777
200	8696	8671	8696	8736	8702	8702 8727
225	8648	8623	8648	8687	8651	8651 8676
250	8600	8575	8595	8637	8620	8600 8625
275	8551	8526	8546	8587	8569	8549 8574
300	8502	8477	8497	8538	8519	8499 8524
309'	8485	8460	8480	8520	8501	8481 8506
ML REDWOOD						
32906 So. =	8445	8420	8440	8480	8460	8440 8465
350'	8406	8381	8401	8439	8418	8398 8423
367'	8374	8349	8369	8406	8384	8364 8389
375'	8359	8334	8354	8391	8368	8348 8373
385'	8340	8315	8335	8372	8348	8328 8353
395'	8321	8296	8316	8352	8328	8308 8333
400'	8311	8286	8306	8342	8318	8298 8323
SL REDWOOD						
40926 So. =	8295	8270	8290	8325	8300	8280 8305

UX UW and UV are each 80' long

UW to UX is 31.08' on west.

made elev. for E quarter 91.15 in order to average up.

change 1/4s

change 1/4s

REYNARD WAY

	W	Curb	1/4	E	1/4	Curb	E
425 So. of UX	8264	8289	8259	8293	8267	8247	8272
450 "	8215	8190	8210	8243	8216	8196	8221
463'	8189	8164	8184	8217	8190	8170	8195
475'	8165	8140	8160	8193	8166	8146	8171
480'	8155	8130	8150	8183	8156	8136	8161
500'	8117	8092	8112	8143	8114	8094	8119
525'	8068	8043	8063	8093	8063	8043	8068
550'	8019	7994	8014	8043	8012	7992	8017
565'	7989	7964	7984	8013	7982	7962	7987
575'	7970	7945	7965	7993	7961	7941	7966
600'	7920	7895	7915	7943	7911	7891	7916
625'	7871	7846	7866	7893	7860	7840	7865
650'	7822	7797	7817	7843	7809	7789	7814
675'	7773	7748	7768	7793	7758	7738	7763
700'	7724	7699	7719	7743	7708	7688	7713
HL QUINCE							
710 So. of UX	7705	7680	7700	7725	7690	7670	7695
7364V So. = FC	7660	7635	7655	7677	7640	7620	7645
Sec. AB							
74354 So. =	7647	7622	7642	7663	7624	7604	7629
750665 = 5L QUINCE	7635	7610	7630	7657	7624	7604	7629
Sec. AC =	7620	7595	7615	7644	7624	7604	7629

Sec. AC is 14.24' So. of Sec. AB on the West

REYNARD WAY

	W	Curb	1/4	1/2	3/4	Curb	E.
Section QS	103.30	103.05	103.28	103.52	103.70	103.00	103.26
" QT:	102.70	103.05	103.28	103.34	102.85	102.63	102.88
156.4 So.	102.86	102.61	102.61	102.90	102.45	102.30	102.45
20.0' S. of QT	102.74	102.49	102.49	102.78	102.33	102.08	102.33
50' So. of QT	101.91	101.66	101.66	101.96	101.52	101.27	101.52
THORN on W.							
62.81 So. = SL	101.55	101.30	101.30	101.62	101.19	100.94	101.17
75' So. of QT	101.23	100.98	100.98	101.30	100.86	100.61	100.86
100' "	100.58	100.33	100.33	100.63	100.18	99.93	100.18
112'	100.27	100.02	100.02	100.32	100.86	99.61	99.86
130'	99.80	99.55	99.55	99.84	99.37	99.12	99.37
136'	99.64	99.39	99.39	99.67	99.21	98.96	99.21
140'	99.53	99.28	99.28	99.56	99.09	98.84	99.09
EAGLE ST. on E.							
148.3 So. = EL of	99.28	99.03	99.03	99.31	98.85	98.60	98.85
169.87 So.	98.75	98.50	98.50	98.76	98.27	98.02	98.27
175 So. of QT	98.62	98.37	98.37	98.62	98.13	97.88	98.13
185' "	98.36	98.11	98.11	98.36	97.85	97.60	97.85
200'	97.97	97.72	97.72	97.95	97.48	97.23	97.48
225'	97.31	97.06	97.06	97.27	96.74	96.49	96.74
243'	96.84	96.59	96.59	96.79	96.25	96.00	96.25
250'	96.65	96.40	96.40	96.60	96.06	95.81	96.06
253'	96.57	96.32	96.32	96.52	95.98	95.73	95.98
275'	95.99	95.74	95.74	95.92	95.36	95.11	95.36
RE on E.							
282.32 So. =	95.79	95.54	95.54	95.72	95.15	94.90	95.15
300 So.	95.35	95.10	95.10	95.29	94.73	94.48	94.73
306.07 So.	95.19	94.94	94.94	95.14	94.57	94.34	94.57
325' "	94.69	94.44	94.44	94.61	94.03	93.78	94.03
335'	94.43	94.18	94.18	94.83	93.73	93.48	93.73
350'	94.03	93.78	93.78	93.91	93.29	93.04	93.29
352'	93.98	93.73	93.73	93.85	93.23	92.98	93.23

SL THORN ST. on E.

(Change)

REYHARD WAY

W Curb 1/4 E 1/4 Curb E

354' So. of QT	93.93	93.68	93.68	93.80	93.17	92.92	93.17
360' "	93.77	93.52	93.52	93.63	93.99	92.74	92.99
369.8'	93.64	93.39	93.39	93.50	92.85	92.60	92.85
375'	93.38	93.13	93.13	93.22	92.57	92.32	92.57
400'	92.72	92.47	92.47	92.54	91.87	91.62	91.87
(71.5' SPRUCE on E. 411.30 So. =	92.42	92.17	92.17	92.23	91.55	91.30	91.55
413.04 So. = PT.	92.38	92.13	92.13	92.19	91.51	91.26	91.51
= Section UV							
423.98 So. of QT	92.03	91.78	91.78	91.92	91.30	91.05	91.30
Section UW	91.91	91.16	91.25	91.60	91.25	91.05	91.30

Change 1/4 S.

REYHARD WAY

	W	curb	1/4	±	1/4	curb	E
Section 110	114.28	114.03	114.28	114.77	114.54	114.54	114.79
Section 11P	114.28	114.03	114.23	114.37	113.71	113.71	113.96
5L UPAS on W.					26%		
0.96' So. of 11P =	114.25	114.00	114.20	114.34	113.88	113.68	113.93
15' So. of 11P	113.83	113.58	113.78	113.94	113.49	113.29	113.54
UPAS on E							
29.54' So. = 5L	113.95	113.20	113.40	113.60	113.20	113.00	113.25
40' So. of 11P	113.07	112.82	113.02	113.22	112.83	112.63	112.87
40.51' So. of UPAS on W.	113.95	112.80	113.00	113.20	112.81	112.61	112.86
11.57' So. of 11P							
50' " " "	112.77	112.52	112.72	112.94	112.56	112.36	112.61
75'	112.03	111.78	111.98	112.22	111.87	111.67	111.92
90'	111.59	111.34	111.54	111.79	111.45	111.25	111.50
100'	111.30	111.05	111.25	111.52	111.18	110.98	111.23
112'	110.97	110.72	110.92	111.18	110.85	110.65	110.90
125'	110.56	110.31	110.51	110.80	110.49	110.29	110.54
139'	110.15	109.90	110.10	110.40	110.10	109.90	110.15
143'	110.02	109.77	109.97	110.28	109.99	109.79	110.04
150'	109.82	109.57	109.77	110.08	109.80	109.60	109.85
175'	109.09	108.84	109.04	109.37	109.11	108.91	109.16
186'	108.77	108.52	108.72	109.06	108.80	108.60	108.85
200'	108.35	108.10	108.30	108.65	108.40	108.20	108.45
215'	107.91	107.66	107.86	108.22	107.98	107.78	108.03
225'	107.62	107.37	107.57	107.94	107.71	107.51	107.76
250'	106.88	106.63	106.83	107.22	107.01	106.81	107.06
275'	106.15	105.90	106.10	106.51	106.32	106.12	106.37
300'	105.41	105.16	105.36	105.79	105.62	105.42	105.67
325'	104.67	104.42	104.62	105.07	104.92	104.72	104.97
THORN on W.	104.46	104.21	104.41	104.86	104.72	104.52	104.77
347.26' So. = P.L.	104.05	103.80	104.00	104.46	104.33	104.13	104.38
353.36' So. = P.C.	103.25	103.02	103.22	104.29	104.16	103.96	104.17
373.36' So. = Sec. QR	103.30	103.05	103.25	103.72	103.60	103.40	103.65
Sec. QS	103.20	102.95	103.25	103.52	103.40	103.20	103.25

change 1/4 S

27.75%

BEYHARD WAY

	W	Curb	1/4	E	1/4	Curb	E
Section IK	151.95	151.70	151.90	152.30	152.09	151.89	152.14
" IL	151.10	150.85	151.15	151.87	151.69	151.87	152.14
25' 50"	149.50	149.25	149.55	150.23	150.02	150.22	150.47
53' "	147.71	147.46	147.76	148.40	148.15	148.35	148.60
55' "	147.58	147.33	147.63	148.27	148.02	148.22	148.47
72' "	146.50	146.25	146.55	147.17	146.89	147.09	147.34
81'	145.93	145.68	145.98	146.58	146.29	146.49	146.74
83 3/8'	145.77	145.52	145.82	146.43	146.13	146.33	146.58
86'	145.61	145.36	145.66	146.26	145.96	146.16	146.41
95'	145.04	144.79	145.09	145.67	145.35	145.55	145.80
100'	144.71	144.46	144.76	145.33	145.01	145.21	145.46
for return for Falcon St on E.							
104.57' So. = PC.	144.42	144.17	144.47	145.03	144.70	144.90	145.15
125' "	142.11	141.86	142.11	142.72	142.58	142.58	142.83
143'	141.96	141.71	141.96	142.56	142.41	142.41	142.66
146'	141.77	141.52	141.77	142.37	142.22	142.22	142.47
150'	141.51	141.26	141.51	142.11	141.96	141.96	142.21
160'	140.87	140.62	140.87	141.46	141.31	141.31	141.56
167'	140.42	140.17	140.42	141.02	140.86	140.86	141.11
172'	140.10	139.85	140.10	140.69	140.53	140.53	140.78
return for N. Walnut on W.							
179.41' So. = PC. for	139.65	139.40	139.65	140.24	140.07	140.07	140.32
195'	138.70	138.45	138.70	139.25	139.05	139.05	139.30
200'	138.40	138.15	138.40	138.94	138.72	138.72	138.97
St. on E.							
210.75' So. = EL Falcon.	137.74	137.49	137.74	138.24	138.00	138.00	138.25
217'	137.37	137.12	137.37	137.86	137.61	137.61	137.86
225'	136.89	136.64	136.89	137.37	137.11	137.11	137.36
Walnut St. on E.							
234.45' So. = TL of	136.31	136.06	136.31	136.78	136.50	136.50	136.75
250' "	135.39	135.14	135.39	135.91	135.68	135.68	135.93

REYNARD WAY

W Curb 1/4 E 1/4 Curb E

275' So. of Sec II	13389	13364	13389	13448	13432	13432	13457
(Return for SL WALNUT on W.)							
290.56' So. = PC. for	13295	13270	13295	13358	13347	13347	13372
300' So. of IL	13265	13240	13265	13319	13298	13298	13323
(Return for SL WALNUT on E.)							
317.43' So. = PC. for	13182	13202	13182	13241	13220	13200	13225
325' So.	13182	13157	13177	13216	13196	13176	13201
350' "	13100	13075	13100	13138	13101	13101	13126
375'	13018	12993	13018	13059	13025	13025	13050
375'	12953	12928	12953	13012	12995	12995	13020
400'	12936	12911	12936	12980	12949	12949	12974
412'	12897	12872	12897	12942	12913	12913	12938
425'	12854	12829	12854	12901	12873	12873	12898
440'	12805	12780	12805	12853	12827	12827	12852
450'	12772	12747	12772	12822	12797	12797	12822
475'	12690	12665	12690	12743	12721	12721	12746
482'	12667	12642	12667	12721	12700	12700	12725
492'	12635	12610	12635	12690	12670	12670	12695
500'	12609	12584	12609	12664	12645	12645	12670
530'	12511	12486	12511	12570	12554	12554	12579
550'	12445	12420	12445	12506	12493	12493	12518
575'	12363	12338	12363	12427	12417	12417	12442
600'	12282	12257	12282	12348	12321	12321	12366
618'	12233	12208	12233	12294	12266	12266	12311
625'	12200	12175	12200	12270	12245	12245	12290
650'	12118	12093	12118	12191	12169	12169	12214
675'	12036	12011	12036	12112	12093	12093	12138
679'	12023	11998	12023	12099	12081	12101	12126

2/2/15

REYNARD WAY

W Curb 1/4 E 1/4 Curb E

691' So. of Sec. 14	119.84	119.59	119.89	120.62	120.44	120.64	120.89
700' "	119.56	119.31	119.61	120.34	120.17	120.37	120.62
718' "	118.97	118.72	119.02	119.77	119.62	119.82	120.07
725'	118.74	118.49	118.79	119.55	119.41	119.61	119.86
736'	118.38	118.13	118.43	119.20	119.08	119.28	119.53
750'	117.92	117.67	117.97	118.76	118.65	118.85	119.10
775'	117.10	116.85	117.15	117.97	117.89	118.09	118.34
800'	116.30	116.05	116.35	117.19	117.12	117.33	117.58
UPAS on W. 813.09 So. = TL of	115.95	115.70	116.00	116.85	116.80	117.00	117.25
825' So. of TL	115.49	115.24	115.54	116.40	116.37	116.57	116.82
850' "	114.66	114.41	114.71	115.61	115.61	115.81	116.06
863.23 So. of Section M17	114.25	114.00	114.30	115.20	115.21	115.41	115.66
220' N. of 110 on E. TL UPAS 200 E. =	114.28	114.03	114.33	115.00	114.80	115.00	115.25
Section 110	114.28	114.03	114.28	114.77	114.54	114.54	114.79

(7)



REYNARD WAY

	W	Curb	1/4	±	1/4	Curb	E
Point of Curve	19623	19598	19628	19721	19724	19744	19769
SL TORRENCE on W.							
2618' So. of PC	19425	19400	19450	19519	19514	19539	19564
TORRENCE on E.							
3875' So. = SL.	19327	19322	19352	19421	19415	19440	19465
50' So. of PC	19247	19222	19268	19327	19329	19353	19378
75' "	19060	19035	19077	19145	19122	19155	19180
87' "	18970	18945	18985	19052	19038	19060	19085
100'	18873	18848	18886	18952	18936	18956	18981
115'	18761	18736	18771	18826	18819	18837	18862
125'	18687	18662	18695	18760	18740	18758	18783
134'	18620	18595	18626	18691	18670	18687	18712
GOLDFINCH on W.							
15293' So. = W.L.	18425	18400	18490	18553	18527	18547	18572
165' So. of PC	18326	18301	18391	18450	18426	18440	18465
175' "	18210	18185	18214	18273	18248	18261	18286
195'	18157	18132	18161	18217	18192	18202	18227
200'	18119	18094	18123	18178	18153	18163	18188
225'	17928	17903	17931	17983	17959	17964	17989
233'	17867	17842	17870	17922	17897	17901	17926
250'	17738	17713	17740	17789	17764	17766	17791
255'	17700	17675	17702	17750	17725	17726	17751
268'	17690	17595	17692	17649	17623	17624	17649
275'	17547	17522	17548	17595	17569	17568	17593
288'	17448	17423	17448	17494	17467	17464	17489
300'	17356	17331	17356	17400	17374	17369	17394
325'	17166	17141	17165	17206	17179	17171	17196
350'	16975	16950	16973	17012	16985	16973	16998
360'	16899	16874	16896	16934	16907	16894	16919

107.11' So. of Sec EH

119.90'

232.95'

quarters are 0.5' above curb  
and 0.25' below curb for diff  
in elev. of curbs of 1.5' approx

REYHARD WAY

	W	Curb	1/4	1/2	3/4	Curb	E
375' So. of PC.	167.84	167.59	167.27	168.16	167.90	167.74	167.99
389' "	166.77	166.52	166.74	167.07	166.81	166.63	166.88
400'	165.93	165.68	165.90	166.22	165.95	165.76	166.01
(BROOKES on E. 405.83' So. = TL)	165.50	165.35	165.45	165.78	165.50	165.30	165.55
411' So.	165.09	164.84	165.05	165.37	165.11	164.91	165.16
425' "	164.02	163.77	163.98	164.32	164.07	163.86	164.11
(BROOKES on W. 429.93' So. = SL)	163.65	163.40	163.60	163.93	163.67	163.47	163.72
444' So.	162.76	162.51	162.69	162.96	162.64	162.42	162.67
450' "	162.38	162.13	162.30	162.55	162.19	161.97	162.22
(BROOKES on E. 458.98' So. = SL)	161.81	161.56	161.66	161.93	161.52	161.30	161.55
475' So. of PC.	160.79	160.54	160.65	160.88	160.46	160.23	160.48
493' "	159.63	159.38	159.50	159.70	159.26	159.03	159.28
500'	159.18	158.93	159.05	159.24	158.80	158.56	158.81
518'	158.04	157.79	157.87	158.08	157.60	157.37	157.62
525'	157.59	157.34	157.42	157.62	157.14	156.90	157.15
550'	155.99	155.74	155.80	155.98	155.48	155.23	155.48
575'	154.40	154.15	154.17	154.36	153.82	153.56	153.81
(So. of PC. Sec. IJ = 599.77)	152.80	152.55	152.55	152.72	152.14	151.89	152.14
Section IK	151.95	151.70	151.70	152.30	152.09	151.89	152.14

4866.8 No. of E.H.

539.82

IS No 680.84 No. of E.H.

REYNARD WAY

W Curb 1/4 @ 1/4 Curb E

Section AC. 22872 22847 22877 22953 22939 22959 22924

" AD 22872 22847 22867 22912 22896 22876 22901

7/16 PENN. 00 W. 512 S. of AD. 22825 22800 22870 22950 22970 23000 23025 (don't consider)

16' So. of AD 22745 22720 22745 22785 22770 22750 22775

25' " 22680 22655 22676 22715 22698 22676 22701

PENN 00 W. 46.55' So. = SL. 22525 22500 22513 22552 22528 22504 22529 ←

75' So. of AD 22310 22285 22295 22332 22302 22279 22304

87.92' " " 22182 22157 22166 22200 22167 22144 22169

92' " 22121 22096 22105 22138 22103 22081 22106

100' 22030 22005 22014 22045 22008 21986 22011

112' 21962 21937 21945 21976 21937 21915 21940

125' 21932 21907 21914 21945 21905 21883 21908

135' 21856 21831 21838 21868 21826 21804 21829

150' 21743 21718 21724 21752 21717 21685 21710

175' 21554 21529 21533 21558 21509 21487 21512

200' 21365 21340 21343 21364 21310 21288 21313

215' 21252 21227 21229 21248 21192 21170 21195

225' 21176 21151 21153 21170 21113 21090 21115

231.43' So. = PT. 21128 21103 21103 21120 21062 21037 21062

7/8 of Arc 20939 20914 20919 20944 20894 20875 20900

6/8 20752 20727 20734 20770 20724 20714 20739

5/8 20564 20539 20550 20595 20560 20552 20577

4/8 20375 20350 20365 20420 20393 20390 20415

3/8 20187 20162 20181 20245 20226 20229 20254

2/8 19999 19974 19997 20070 20058 20067 20092

1/8 19811 19786 19812 19895 19891 19905 19930

PC. 19623 19598 19628 19721 19724 19744 19769

Note - for quarter elevations, sum between the elevations at AD and the P.S. on acct. of the warped surface

From here to Page 63.

## REYHARD WAY

	W	Curb	1/4	±	1/4	Curb	E
31.5 SUTTER	255.25	255.00	255.20	255.50	255.20	255.00	255.25
1'50"	255.15	254.90	255.11	255.40	255.12	254.90	255.15
25'	253.00	252.75	253.00	253.33	253.08	252.92	253.17
Culvert 483'50" = end of	250.90	250.65	250.93	251.22	251.10	250.98	251.23
683' " = point where curb turns out	249.10	248.85	249.16	249.58	249.40	249.32	249.57
75'50"	248.50	248.25	248.58	249.00	248.83	248.76	249.01
100' "	246.25	246.00	246.37	246.83	246.70	246.67	246.92
125'	244.00	243.75	244.16	244.67	244.58	244.59	244.84
150'	241.75	241.50	241.95	242.50	242.45	242.57	242.76
163'	240.58	240.33	240.80	241.38	241.35	241.43	241.68
175'	239.50	239.25	239.74	240.33	240.33	240.42	240.67
200'	237.25	237.00	237.54	238.16	238.20	238.33	238.58
212'	236.17	235.92	236.48	237.12	237.18	237.33	237.58
225'	235.00	234.75	235.33	236.00	236.08	236.25	236.50
250'	232.75	232.50	233.12	233.83	233.95	234.17	234.42
275'	230.50	230.25	230.91	231.67	231.83	232.09	232.34
Sec. AB 244.82'50" =	228.22	228.01	228.17	229.97	230.17	230.47	230.72
518' H. of Sec. AC (E) 300'50" = N.L. PEH (E)	228.25	228.00	228.70	229.50	229.70	230.00	230.25
Section AC	228.22	228.01	228.17	229.53	229.39	229.59	229.84

Note - Quarter elevations figured to grade and  
of warped surface.



43' ST.  
8' WALKS

TORRENCE STREET

Book 964

	S	Curb	1/4	¢	1/4	Curb	IT
EL. MIDDLETOWN ADD.							
Sec. A =	263.75	263.50	263.25	263.75	263.40	264.00	264.25
Sec. B	263.25	263.00	262.85	263.50	263.40	264.00	264.25
2974' W. of Sec. B 16008	259.83	259.68		260.33	260.23	260.83	261.08
5184' W. of Sec. B 257.44	257.17	257.02		257.67	257.57	258.17	258.42
FREMONT ST.							
7984' W. = EL.	254.75	254.50	254.25	255.00	254.90	255.50	255.75

FREMONT ST. INTERSECTION 50' ST.

EL. FREMONT	254.75	254.50	254.25	255.00	254.90	255.50	255.75	50' long
E. Curb	254.50	254.50	254.05	254.70	254.60	255.50	255.50	
	253.50	253.50				254.50	254.50	
E 1/4	253.90	253.13	253.83	254.48	254.38	254.13	254.90	
Center	253.75	252.75	253.60	254.25	254.15	253.75	254.75	
W 1/4	252.98	252.38	253.37	254.02	253.92	253.38	253.98	
	252.00	252.00				253.00	253.00	
W. Curb	253.00	253.00	253.15	253.80	253.70	254.00	254.00	
W.L. FREMONT	253.25	253.00	252.85	253.50	253.40	254.00	254.25	43' long

TORRENCE STREET

	S	Curb	1/4	Center	1/4	Curb	N
W.L. FREMONT	253.25	253.00	252.85	253.50	253.40	254.00	254.25
50' W.	250.25	250.00	249.85	250.50	250.40	251.00	251.25
100'	247.25	247.00	246.85	247.50	247.40	248.00	248.25
115'	246.59	246.34	246.19	246.84	246.74	247.34	247.59
125'	246.15	245.90	245.75	246.40	246.30	246.90	247.15
140'	245.91	245.66	245.51	246.16	246.06	246.66	246.91
150'	245.75	245.50	245.35	246.00	245.90	246.50	246.75
165'	245.99	245.74	245.59	246.24	246.14	246.74	246.99
175'	246.15	245.90	245.75	246.40	246.30	246.90	247.15
185'	246.59	246.34	246.19	246.84	246.74	247.34	247.59
200'	247.25	247.00	246.85	247.50	247.40	248.00	248.25
225'	249.13	248.88	248.73	249.38	249.28	249.88	250.13
250'	251.00	250.75	250.60	251.25	251.15	251.75	252.00
WELLBORN 300' W. = E.L. of	254.75	254.50	254.35	255.00	254.90	255.50	255.75

WELLBORN ST. INTERSECTION 50' ST.

EL. WELLBORN	254.75	254.50	254.35	255.00	254.90	255.50	255.75
E. Curb	254.50	254.50	254.55	255.20	255.10	255.50	255.50
E 1/4	253.50	253.50				254.50	254.50
Center	254.35	253.75	254.70	255.35	255.25	254.75	255.35
W 1/4	255.00	254.00	254.85	255.50	255.40	255.00	256.00
W. Curb	254.90	254.25	255.00	255.65	255.55	255.25	255.90
W.L. WELLBORN	254.50	254.50				255.50	255.50
	255.50	255.50	255.15	255.80	255.70	256.50	256.50
	255.75	255.50	255.35	256.00	255.90	256.50	256.75

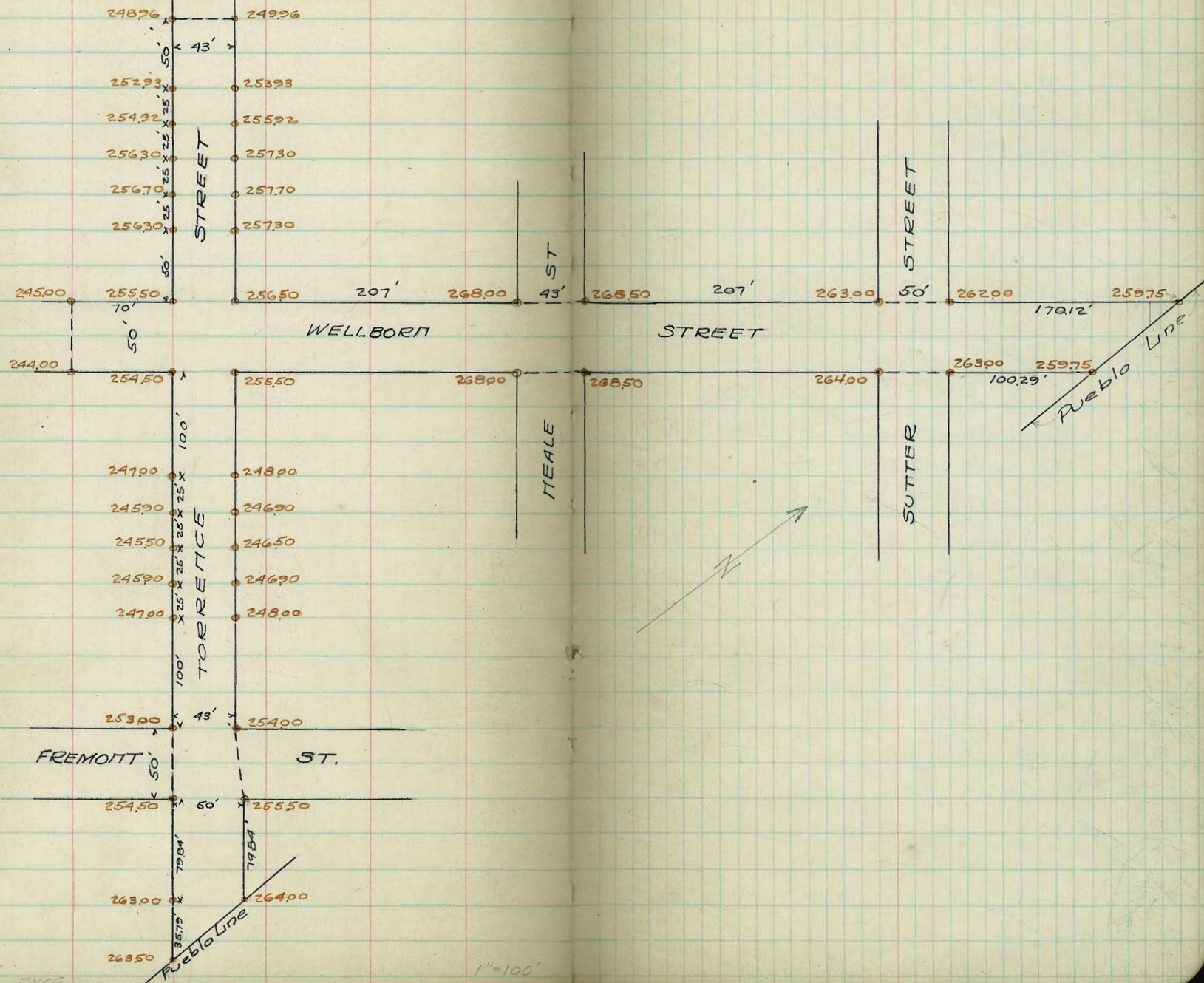
## TORRENCE STREET

3 Curb 1/4 Center 1/4 Curb 11

WL. WELLBORN	255.75	255.50	255.25	256.00	255.90	256.50	256.75
50' W.	256.55	256.30	256.15	256.80	256.70	257.30	257.55
75' "	256.95	256.70	256.55	257.20	257.10	257.70	257.95
100'	256.55	256.30	256.15	256.80	256.70	257.30	257.55
125'	255.17	254.92	254.77	255.42	255.32	255.92	256.17
150'	253.18	252.93	252.78	253.43	253.33	253.93	254.18
200'	249.21	248.96	248.81	249.46	249.36	249.96	250.21
250'	245.25	245.00	244.85	245.50	245.40	246.00	246.25
265'							
275'							

9/7/15





2/1/15 SWG

1" = 100'

## WELLBORN STREET

Book 964

72

W Curb ¼ E ¼ Curb E

70' W. of TORRENCE	244.25	245.00	244.40	244.50	243.85	244.00	244.25
50' "	248.25	249.00	247.40	247.50	246.85	247.00	247.25
25'	252.00	251.75	251.15	251.25	250.60	250.75	250.75
SL. of TORRENCE	255.75	255.50	254.90	255.00	254.35	254.50	254.75

For Street Intersection see page 69.

N.L. of TORRENCE	256.75	256.50	255.90	256.00	255.35	255.50	255.75
25' W.	258.14	257.89	257.31	257.45	256.83	257.01	257.26
50'	259.53	259.28	258.72	258.90	258.31	258.52	258.77
75'	260.92	260.67	260.13	260.35	259.79	260.03	260.28
100'	262.31	262.06	261.54	261.80	261.27	261.54	260.79
125'	263.70	263.45	262.95	263.25	262.75	263.05	263.30
150'	265.09	264.84	264.37	264.70	264.23	264.56	264.81
175'	266.48	266.23	265.78	266.15	265.71	266.07	266.32
HEALE ST.							
207' W. = S.L. of	268.25	268.00	267.60	268.00	267.60	268.00	268.25

## HEALE ST. INTERSECTION

S.L. HEALE ST.	268.25	268.00	267.60	268.00	267.60	268.00	268.25
5' Curb	268.00	268.00	267.69	268.09	267.69	268.00	268.00
	267.00	267.00				267.00	267.00
5 ¼	267.72	267.72	267.77	268.17	267.77	267.72	267.72
Center	268.25	267.25	267.85	268.25	267.85	267.25	268.25
1 ¼	267.90	267.37	267.93	268.33	267.93	267.37	267.90
	267.50	267.50				267.50	267.50
1 ½ Curb	268.50	268.50	268.01	268.41	268.01	268.50	268.50
N.L. HEALE	268.75	268.50	268.10	268.50	268.10	268.50	268.75

WELLBORN ST.

	W	Curb	1/4	+	1/4	Curb	E
ML MEALE ST	268.75	268.50	268.10	268.50	268.10	268.50	268.75
25' H.	268.12	267.84	267.46	267.89	267.54	267.94	268.20
50' "	267.45	267.18	266.83	267.30	266.96	267.40	267.65
75'	266.78	266.51	266.20	266.69	266.38	266.86	267.10
100'	266.11	265.84	265.56	266.08	265.81	266.32	266.56
125'	265.44	265.18	264.93	265.48	265.24	265.78	266.02
150'	264.77	264.52	264.29	264.88	264.66	265.23	265.48
175'	264.10	263.85	263.66	264.27	264.09	264.69	264.94
207' H. = S.L. of SUTTER ST.	263.25	263.00	262.85	263.50	263.35	264.00	264.25

SUTTER ST. INTERSECTION

S.L. of SUTTER	263.25	263.00	262.85	263.50	263.40	264.00	264.25
S. Curb	263.00	263.00	262.65	263.30	263.20	264.00	264.00
5/4	262.40	261.75	262.50	263.15	263.05	262.75	263.40
+	262.50	261.50	262.25	263.00	262.90	262.50	263.50
H/4	261.85	261.25	262.00	262.85	262.75	262.25	262.85
N. Curb	261.00	262.00	262.85	262.70	262.60	263.00	263.00
ML SUTTER	262.25	262.00	261.85	262.50	262.40	263.00	263.25
ML SUTTER	261.25	262.00	261.85	262.50	262.40	263.00	263.25
25' Ho.	261.92	261.67	261.40	261.93	261.59	262.19	262.44
50' "	261.59	261.34	260.94	261.26	260.98	261.38	261.63
75'	261.26	261.01	260.61	260.79	260.17	260.57	260.82
100.28' H. = Sec A	260.93	260.68	260.08	260.22	259.58	259.75	260.00
114.25' " = " B	260.74	260.49	259.97	260.25	259.72	260.00	-
124.73' " = " C	260.60	260.35	259.70	259.86	259.60	-	-
135.20' " = " D	260.46	260.21	259.58	259.55	-	-	-

Note: Wellborn St connects with Bush St, and elevations are figured accordingly.

9/17/15

WELLBORN ST

W Curb 1/4 E 1/4 Curb E

145.68' = Sec. E 26022 26007 25965

148.90' = " F 26028 26009 (S) 25975

X 26000

Monroe Ave

	S	Curb	1/4	1/2	3/4	Curb	71
EL, GEORGIA	347.25	347.00	346.75	347.30	347.00	347.60	347.85
25'	345.16	344.91	344.66	345.22	344.93	345.53	345.78
50'	343.06	342.81	342.58	343.14	342.87	343.47	343.72
75'	340.96	340.71	340.48	341.06	340.81	341.41	341.66
100'	338.87	338.62	338.40	338.98	338.74	339.34	339.59
125'	336.77	336.52	336.31	336.90	336.68	337.28	337.53
150'	334.67	334.42	334.23	334.83	334.61	335.21	335.46
175'	332.57	332.32	332.12	332.73	332.55	333.15	333.40
200'	330.48	330.23	330.04	330.66	330.49	331.09	331.34
225'	328.38	328.13	327.95	328.58	328.42	329.02	329.27
250'	326.28	326.03	325.86	326.50	326.36	326.96	327.21
275'	324.19	323.94	323.78	324.42	324.29	324.89	325.14
300'	322.09	321.84	321.69	322.34	322.23	322.83	323.08
310' E-WL FLORIDA	321.25	321.00	320.85	321.50	321.40	322.00	322.25

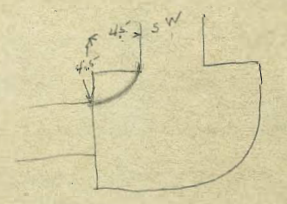


$1848270$   
~~ST.~~  
 $70.55$   
 $1.61$

$36 = \sin 30^\circ 36'$   
 $\log 36 = 1.556303$   
 $\log \sin 30^\circ 36' = 9.706753$   
 $1.849550$   
 $70.72$

$\Delta$  - fault 18  
 TR  
 $0.437667$   
 $0.845097$   
 $0.282165$   
 $19.15$

$10.72$   
 $19.72$   
 $72.64$   
 $10.55$   
 $10.4$   
 $8.273$   
 $10.3$   
 $5.4$   
 $3.50$



$3197$   
 $2600$   
 $3197$   
 $14383$   
 $7194$   
 $14030$   
 $14788$   
 $12420$   
 $7591$   
 $28290$   
 $28276$   
 $2714$   
 $283$   
 $287$   
 $28300.46$   
 $719$   
 $27531$   
 $719$   
 $76543$   
 $719$   
 $26143$   
 $124$   
 $244.23$   
 $719$   
 $107.00$   
 $107.00$   
 $13.50$   
 $727$   
 $276.23$   
 $28350$   
 $742$   
 $27608$   
 $742$   
 $265.65$   
 $742$   
 $261.23$   
 $742$   
 $553.80$   
 $742$   
 $246.38$   
 $742$   
 $238.92$   
 $2.93$   
 $1439$   
 $197$   
 $10073$   
 $12951$   
 $1437$   
 $283483$   
 $83.5$   
 $36.0$   
 $3197$   
 $26500$   
 $3197$   
 $14383$   
 $7194$   
 $14530$   
 $12788$   
 $17420$   
 $20985$   
 $14350$   
 $3197$   
 $27500$   
 $3197$   
 $14383$   
 $7194$   
 $15524$   
 $12788$   
 $27420$   
 $25524$   
 $18420$   
 $14.85$   
 $497$   
 $103.95$   
 $13365$   
 $1485$   
 $292.545$