

F. ST 8th To 25th
ST sheet grades 28 55
ION ST GRADES P. 53
T FROM 29th TO 25th

369

TRANSIT

690

giving the difference of latitude and departure in running 80 chains at any course from 1 to 60 minutes.

Minutes.	Links.	Minutes.	Links.	Minutes.	Links.
1	2 1/2	21	49	41	95 1/2
2	4 1/2	22	51 1/2	42	98
3	7	23	53 1/2	43	100 1/2
4	9 1/2	24	56	44	102 1/2
5	11 1/2	25	58 1/2	45	105
6	14	26	60 1/2	46	107 1/2
7	16 1/2	27	63	47	109 1/2
8	18 1/2	28	65 1/2	48	112
9	21	29	67 1/2	49	114 1/2
10	23 1/2	30	70	50	116 1/2
11	25 1/2	31	72 1/2	51	119
12	28	32	74 1/2	52	121 1/2
13	30 1/2	33	77	53	123 1/2
14	32 1/2	34	79 1/2	54	126
15	35	35	81 1/2	55	128 1/2
16	37 1/2	36	84	56	130 1/2
17	39 1/2	37	86 1/2	57	133
18	42	38	88 1/2	58	135 1/2
19	44 1/2	39	91	59	137 1/2
20	46 1/2	40	93 1/2	60	140

Return to City Engineers Office

PUBLISHED BY City E. & S. Co., San Diego, Cal.

H. S. CROCKER CO.

Drawing Paper and Material, Mathematical Instruments, etc.

STATIONERS AND PRINTERS

215-217-219 BUSH STREET,

SAN FRANCISCO, CAL.

TABLE FOR RUNNING ON SLOPES.

In the following table the first column shows the angle; the second, the number of links to be added to a chain on the slopes, to make one chain—horizontal measurement.

Angle.	Cor. in Links.	Angle.	Cor. in Links.	Angle.	Cor. in Links.	Angle.	Cor. in Links.
0		0		0		0	
4	0.24	11	1.88	18	5.14	25	10.54
5	0.38	12	2.24	19	5.76	26	11.26
6	0.55	13	2.63	20	6.42	27	12.24
7	0.76	14	3.06	21	7.11	28	13.37
8	0.98	15	3.53	22	7.85	29	14.34
9	1.24	16	4.02	23	8.64	30	15.47
10	1.55	17	4.56	24	9.47	35	22.07

5875-
527
10645-
53.22
2
10644

1075-
105-4
2129
106.4
15.00
74
224
245-
1995-

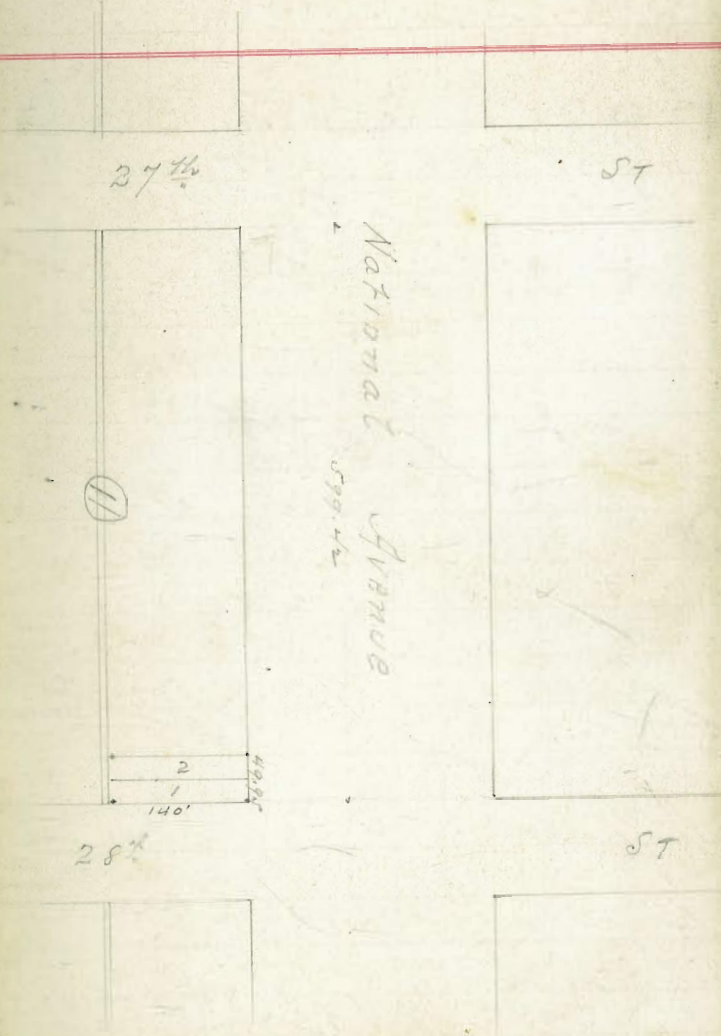
53.22
32
2122
53
14
39

Return to City Engineers Office
City Hall, San Diego, Cal.

MICROFILMED

APR 7 1965

Survey of Lots 1 and 2 Blk 11 Pth H. Ave.
for Dr. R. G. Hulbert



2
27 63.13

0.23

63.36

52.17

11.19

57.72

8.6

49.12

63.36

10.02

53.34

4.38

57.72

8.54

49.18

8.12

45.63

TR

10.35

55.55

0.43

37.61

45.20

6.49

49.06

8.18

47.37

5.55

50.00

4.47

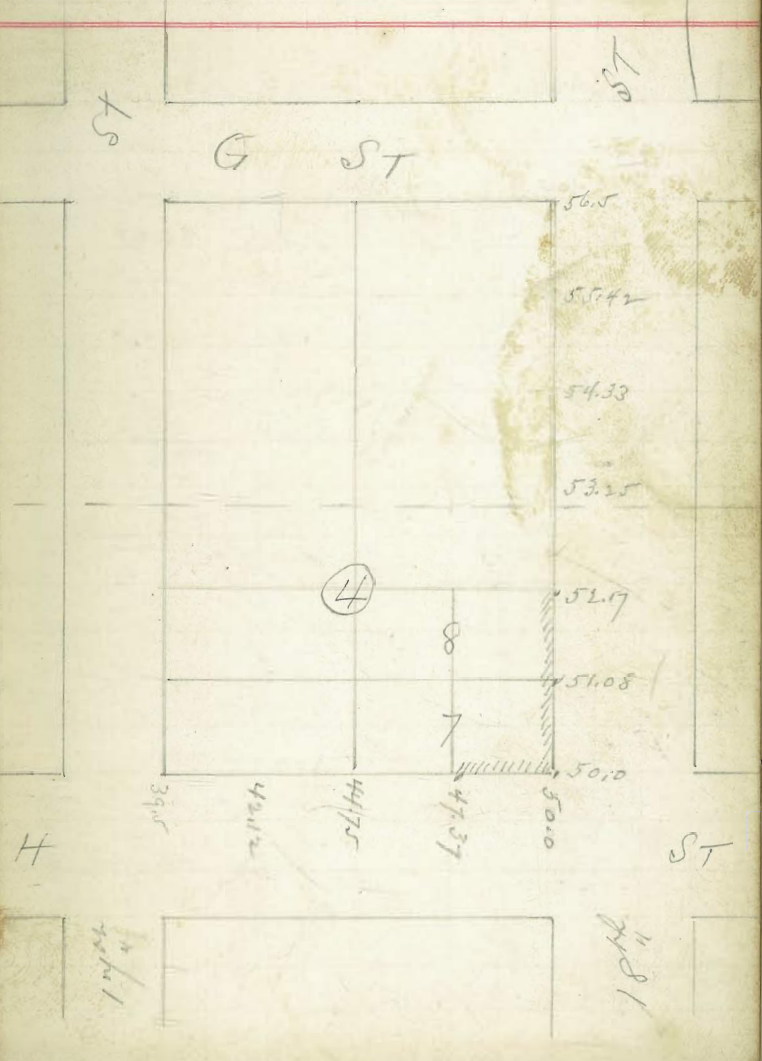
51.08

3.38

52.17

49.06
~~5.63~~
 54.71 54.71
 50.00 47.37
 4.71 7.34
 duck

54.71
 11.84
 42.87
 1.89
 44.26
 37.61
 6.65



Curt Grade for Mrs Felhman

1.38	66.74	65.36
		4.31
		62.43
		4.87
		61.87
	6.00	60.74
58.60		
4.20		
62.76	62.76	62.76
56.93	55.51	57.87
6.83	6.95	6.39
		69.03
		65.6
		66.68
		0.13
		66.35

46.74
~~45.74~~
 61.87
 1.13
 56
 43.1
 48.7
 11.20

63
 61.87
 10.487
 62.43

	48.00	49.00	
St 24			ST
48	48.50	49.50	1
47	49.62	50.62	2
46			3
45	50.75	51.75	4
44			5
43	51.87	52.87	6
42			7
41	53.00	54.00	8
40			9
39	54.12	55.12	10
38			11
37	55.25	56.25	12
36	55.31		13
35	56.37	57.37	14
Rocky 34	56.93		15
33	57.50	58.50	16
32			17
31	58.62	59.62	18
30			19
29	59.75	60.74	20
28			21
27	60.87	61.87	22
26			23
25	62.00	63.00	24
	62.00	63.00	

St 23

62.00

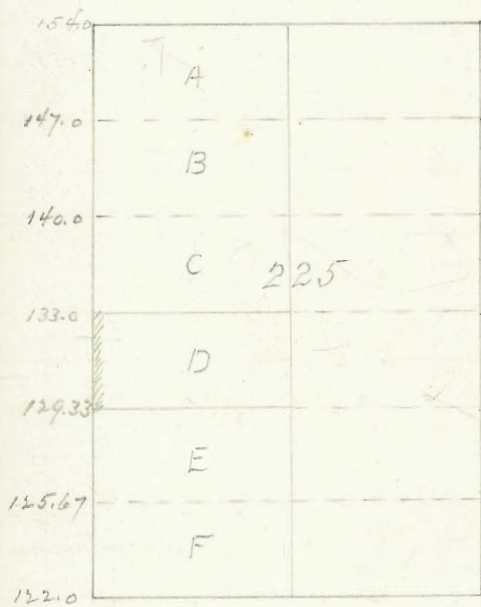
63.00

Order #664 L.A. Withersell
 0.49 139.03 1734 - 3rd
 9.70 129.33 1311
 6.03 133.00 34 Elm

ST

ST

Fit ST



Estm ST

2nd3rd

Survey of Lot 6 Blk 239
 Land T Add - R. Vandenberg

209

135.77

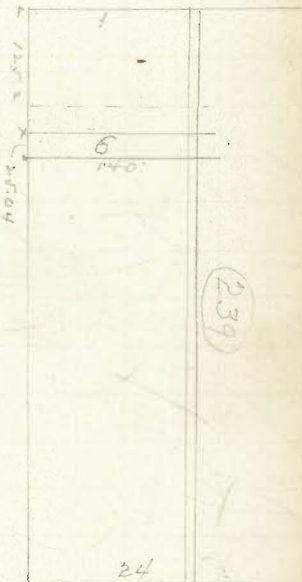
133.68

S 23rd

ST

Irving Avenue

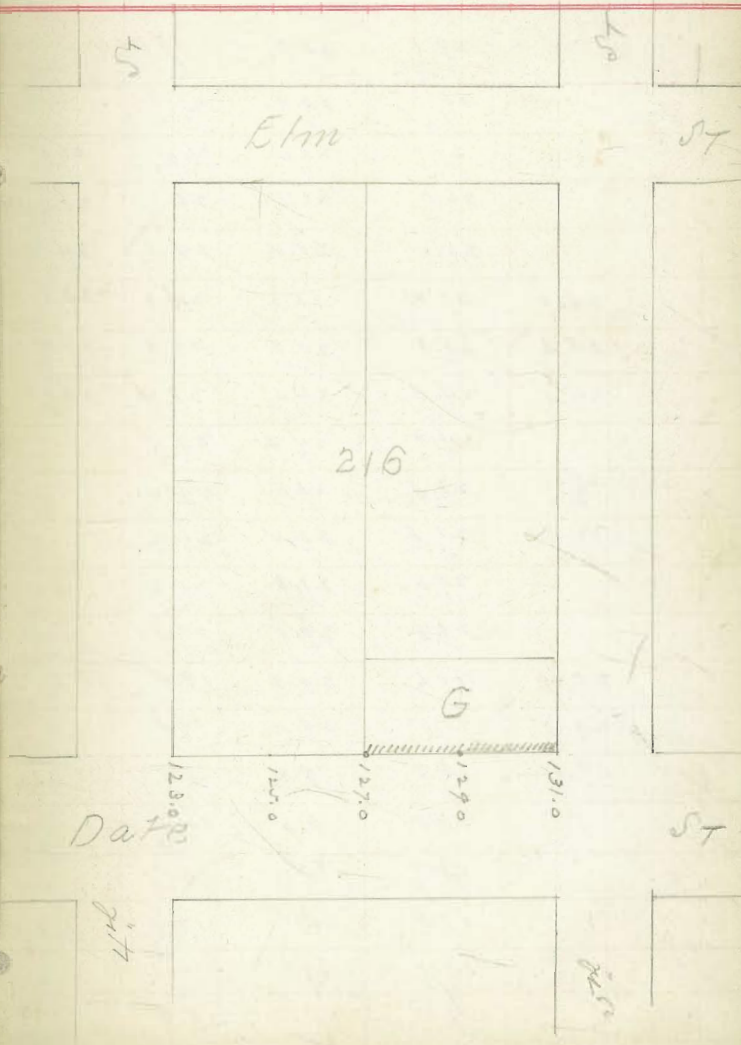
600'

S 24th

ST

Clark Rockfellow Granite Co.
2 Stakes

2.09	135.77	133.68
	6.77	129.00
	8.77	127.00



North

South

Sta	P. line	Cur's	Centre	Cur's	P. line
	(32.4)	29.1	28.8	28.5	
		3.3	3.6	3.9	
+50		28.1	28.3	27.1	
		4.3	4.1	5.3	
1	cut	27.1	27.4	26.1	26.6
		5.3	5.0	6.3	5.8
+50		26.0	26.5	26.1	25.6
		6.4	5.9	6.3	6.8
2	✓	25.1	25.4	24.3	24.4
		7.3	7.0	8.1	8.0
+14	25.0	25.0	25.2	24.2	23.6
	7.4	7.4	7.2	8.2	8.8
+40	25.6	25.3	25.0	24.5	24.3
	6.8	7.1	7.4	7.9	8.1
+66	24.5	24.3	24.6	23.4	23.1
	7.9	8.1	7.8	9.0	9.3
0		24.1	24.3	23.2	
		8.3	8.1	9.3	
(27.5)	24.1	23.3	23.5	22.4	
+50	3.4	4.2	4.0	5.1	
1	22.4	21.8	22.4	21.2	
	5.1	5.7	5.1	6.3	
+50		20.6	21.3	20.2	
		6.9	6.2	7.3	
2		19.8	20.5	19.4	
		7.7	7.0	8.1	
+14	20.0	19.6	20.3	19.0	18.8
	7.5	7.9	7.2	8.5	8.7
+40	20.3	19.5	20.1	19.4	19.3
	7.2	8.0	7.4	8.1	8.2
+66	19.1	18.8	18.8	18.5	18.3
	8.4	8.7	7.7	9.0	9.2
0		18.8	19.6	18.4	
		8.7	7.9	9.1	
+50		18.1	19.1	18.1	
		9.4	8.4	9.4	
1		17.8	18.5	17.3	
		9.7	9.0	10.2	
+50		17.7	18.2	16.7	
		9.8	9.3	10.8	
2		17.3	17.7	16.8	
		10.2	9.8	11.0	

West line 4th

3rd

2nd

31.05
6.37
32.42

25.55
11.97
27.52
10.23
17.09
2.59
24.65
4.63
20.02

FST

2533
220
18132533
682
185120.77
4.6
20.33
5.32
20.09

North

South

	P. line	Curb	Center	Curb	P. line	
(24.7)	17.4	17.3	17.5	16.5	16.5	
+14	7.3	7.4	7.2	8.2	8.2	✓
+40	17.9	17.6	17.2	16.9	16.8	
+66	6.8	7.1	7.5	7.8	7.9	157
0	16.9	16.9	17.2	16.0	16.0	
	7.8	7.8	7.5	8.7	8.7	✓
0	17.7	16.9	17.2	16.5	8.2	
	7.0	7.8	7.5	8.2	8.2	✓
+50		17.4	17.9	16.7	16.7	
		7.3	6.8	8.0	8.0	
1		17.7	19.0	17.4	17.4	
		7.0	5.7	7.3	7.3	
+50		18.4	19.6	18.1	18.1	
		6.3	5.1	6.6	6.6	
2		18.9	20.0	19.0	19.0	
		5.8	4.7	5.7	5.7	✓
+14	19.3	19.0	20.1	19.5	19.2	
	5.4	5.7	4.6	5.2	5.5	
+40	20.3	19.2	20.2	20.1	20.0	
	4.4	5.5	4.5	4.6	4.7	Front
(25.3)	20.0	19.2	20.2	18.9	18.6	
+66	5.3	6.1	5.1	6.4	6.7	
0	19.8	19.3	20.2	18.5	18.5	✓
	5.5	6.0	5.1	6.8	6.8	
+50		19.6	20.3	19.0	19.0	
		5.7	5.2	6.3	6.3	
1		19.5	20.5	19.2	19.2	
		5.8	4.8	6.1	6.1	
+50		19.8	20.5	19.2	19.8	
		5.5	4.8	6.1	5.5	
2		20.1	20.7	19.5	19.7	
		5.2	4.6	5.8	5.6	
+14	20.3	20.3	20.6	19.6	19.6	
	5.0	5.0	4.7	5.7	5.7	
+37.5	21.0	21.0	20.6	20.4	20.4	
	4.3	4.3	4.7	4.9	4.9	Union
+63	20.0	20.2	20.6	19.5	19.7	
	5.3	5.1	4.7	5.8	5.6	
0		19.9	20.4	19.5	19.7	
		5.4	4.9	5.8	5.6	✓
+50		19.2	19.8	18.8	19.4	
		6.1	5.5	6.5	5.9	

	North			South		
Sta	P/ino	Curb	Centre	Curb	P/ino	
(25.3)						
1	18.7 6.6	18.3 7.0	19.2 6.1	18.2 7.1	18.2 7.1	
+50		17.4 7.0	18.4 6.9	17.3 8.0	17.9 7.4	
2		16.8 8.5	17.5 7.8	16.7 8.6	16.7 8.6	
(20.0)	16.7	16.7	17.2	16.4	16.4	
+12	3.3	3.3	3.8	3.6	3.6	
+37.5	17.1 2.9	16.3 3.7	17.1 2.9	16.9 3.1	16.9 3.1	State
+63	15.7 4.3	15.7 4.3	16.6 3.4	15.7 4.3	15.7 4.3	
0		15.7 4.3	16.5 3.5	15.7 4.3		
+50		15.0 5.0	16.4 3.9	14.9 5.1		
1		14.2 5.8	15.7 4.3	14.3 5.7		
+50		13.6 6.4	15.2 4.8	14.1 5.9		
2		13.8 6.7	14.5 5.5	13.6 6.4		
+12	13.3 6.7	13.1 6.9	14.4 5.6	13.3 6.7	13.5 6.5	
+37.5	13.3 6.7	13.3 6.7	14.1 5.9	13.0 7.0	13.6 6.4	Columbian
+63	12.1 7.7	11.9 8.1	13.4 6.6	12.4 7.6	12.6 7.6	
0		11.8 8.2	13.2 6.8	12.2 7.8	12.4 7.6	
+50		10.7 9.3	12.1 7.9	10.7 9.3	11.3 8.7	
1	10.4 9.6	9.6 10.0	10.8 9.2	9.7 10.3	10.1 9.9	
+50	9.6 10.4	8.9 11.1	9.8 10.2	8.6 11.4	8.8 11.2	
(11.20)	8.4	8.2	9.1	7.9	8.1	
2	2.8	3.0	2.1	3.3	3.1	
+12	8.2 3.0	8.2 3.0	9.0 2.2	7.8 3.4	7.8 3.4	
+37.5	8.1 3.1	7.9 3.3	8.6 2.6	8.0 3.2	8.0 3.2	Irish

Sta	North			South		
	P. line	Curb	Center	Curb	P. line	
(11.20)						
+63	7.2 4.0	7.2 4.0	8.1 3.1	6.8 4.4	6.8 4.4	India
0		7.1 4.1	7.8 3.4	2.6 4.6		✓
+50		6.5 4.7	7.0 4.2	6.1 5.1		
1		6.2 5.0	6.3 4.9	5.7 5.5		
+50		5.9 5.3	6.1 5.1	5.0 6.2		
2		5.6 5.6	6.1 5.1	5.3 5.9		
+12	5.6 5.6	5.6 5.6	5.9 5.3	5.7 5.5	5.3 5.9	
+37.5	5.7 5.5	5.7 5.5	5.5 5.7	5.5 5.7	5.6 5.6	Arctic
+63	5.1 6.1	5.1 6.1	5.5 5.7	5.1 6.1	5.1 6.1	
0		5.1 6.1	5.3 5.9	5.1 6.1	5.5 5.7	✓
+50		4.6 6.6	5.3 5.9	4.9 6.3	5.3 5.9	
1		4.4 6.8	4.7 6.5	4.8 6.4	5.2 6.0	
Path	5.95				6.05	
+50	3.3 7.9	3.7 7.5	4.4 6.8	4.0 7.2	4.0 7.2	
2	3.4 7.8	3.0 8.2	3.5 7.7	3.1 8.1		
+12	3.7 7.5	3.3 7.9	3.4 7.8	3.0 8.2	3.0 8.2	
+37.5	3.7 7.5	3.5 7.7	3.2 8.0	3.2 8.0	3.4 7.8	California
+63	2.5 8.7	2.5 8.7	2.6 8.4	2.2 9.0	2.2 9.0	
0	2.6 8.6	2.4 8.8	2.5 9.7	2.1 9.1	2.1 9.1	✓
+50		1.3 9.9	1.9 9.3	1.6 9.6		
1		0.5 10.7	1.5 9.7	0.9 10.3		

FST

12

N

S

Sta	P/mo	sub	Centre	Cent	P/mo
(112)					
1450		0.4	1.2	0.5	
		10.8	10.0	10.7	
2		0.2	0.7	-0.1	
		11.0	10.5	11.3	

10.66

94.67

84.01

4.67

90.00

D

890

900

1945

1.95

52.56

50.61

4.02 48.54

4.49 48.08

S

23rd

43.5

43.96

44.42

44.87

45.33

45.79

46.25

46.71

47.17

47.62

48.08

48.54

49.0

21

22

24

S

24th

First

East line 5th St. to 25th St

14

Sta.	South	Curb	Center	Curb	North
(53.8)		44.2	45.2	44.4	
0		9.6	8.6	9.4	
+50		45.2	46.4	45.6	
		8.6	7.4	8.2	
1		46.4	47.7	46.8	
		7.4	6.1	7.0	
+50		47.6	48.7	48.2	
		6.2	5.1	5.6	
2		48.7	49.9	49.5	
		5.1	3.9	4.3	
+100	48.8	48.8	50.1	49.6	49.6
	5.0	5.0	3.7	4.2	4.2
+40	50.4	50.4	50.8	50.7	51.1
	3.8	3.4	3.0	3.1	2.7
+66	49.7	50.1	50.9	50.2	50.2
	4.1	3.7	2.9	3.6	3.6
0		50.3	50.8	50.3	
		3.5	3.0	3.5	
+50		50.6	51.4	50.9	
		3.2	2.4	2.9	
1		51.2	52.1	51.1	
		2.6	1.7	2.7	
+50		51.3	52.6	51.8	
		2.5	1.2	2.0	
2		51.5	52.8	52.5	
		2.3	1.0	1.3	
(62.5)	51.2	51.6	52.8	52.5	52.7
+14	11.3	10.9	9.7	10.0	9.8
+40	51.9	52.3	52.9	53.4	53.6
	10.6	10.2	9.6	9.1	8.9
+66	51.8	52.2	53.1	52.9	52.7
	10.7	10.3	9.4	9.6	9.8
0		51.8	52.9	52.8	
		10.7	9.6	9.7	
+50		52.2	53.4	53.1	
		10.3	9.1	9.4	
1		52.9	53.9	53.5	
		9.6	8.6	9.0	
+50		53.5	54.5	54.1	
		9.0	8.0	8.4	
2		54.1	55.2	54.6	
		8.4	7.3	7.9	

50.26
3.56
53.8254.13
8.42
62.559th St

Sta.	South	Curve	Centre	Curve	North
(62.0)		55.7	57.1	56.7	
0		6.8	5.4	5.8	
+50		56.2	57.9	57.2	
		6.3	4.6	5.3	
1		56.8	58.2	57.7	
		5.7	4.3	4.8	
+50		57.3	58.7	58.1	
		5.2	3.8	4.4	
2		58.5	59.5	58.9	
		4.0	3.0	3.6	
+14	58.5	58.5	59.6	59.0	59.0
	4.0	4.0	2.9	3.5	3.5
+40	59.5	59.7	60.1	59.9	60.1
	3.0	2.8	2.4	2.6	2.4
+66	59.1	59.3	60.2	59.8	59.6
	3.4	3.2	2.3	2.7	2.9
0	59.7	59.7	60.3	59.8	60.4
	2.8	2.8	2.2	2.7	3.1
+50	60.1	59.7	60.5	59.8	60.6
	2.4	2.8	2.0	2.7	1.9
1	60.40	60.00	60.90	60.00	60.80
	2.1	2.5	1.6	2.5	1.7
+50	60.60	59.90	60.90	60.00	60.80
	2.2	2.6	1.6	2.5	1.7
2	60.60	60.40	60.90	60.10	61.30
	1.9	2.1	1.6	2.4	1.2
+14	60.50	60.10	61.10	60.10	61.0
	2.0	2.4	1.4	2.4	1.4
+40	60.20	60.40	60.90	59.80	61.40
	2.3	2.1	1.6	2.7	1.1
+66	59.20	59.00	60.00	59.10	59.90
	3.3	3.5	2.5	3.4	2.6
(60.7)	58.90	58.70	59.50	58.80	60.00
0	1.8	2.0	1.2	1.9	0.7
+50	56.50	56.70	57.10	56.60	57.30
	3.2	4.0	3.6	4.2	3.4
1	55.10	54.50	54.80	54.10	54.70
	5.6	6.2	5.9	6.6	6.0
+50	52.40	52.00	52.30	51.90	52.10
	8.3	8.7	8.4	8.8	8.6
2	50.30	49.70	50.20	49.50	49.90
	10.4	11.0	10.5	11.2	10.8

E line 11th ST

62.55
 3.98
 58.57
 2.05
 60.62
 2.13
 51.52
 1.07
 52.59

Sta.	South	Curb	Centre	Curb	North
(52.6)					
+14	49.60 3.0	49.40 3.2	49.80 2.8	49.00 3.6	49.80 2.8
+40	48.90 3.7	49.30 3.3	49.40 3.2	48.80 3.8	49.50 2.8
+66	47.70 4.9	47.70 4.9	48.90 3.7	48.30 4.3	48.90 3.7
0	48.10 4.5	48.30 3.3	48.20 4.4	47.90 5.2	48.20 4.4
+50	45.40 7.2	45.00 7.6	45.40 7.2	44.60 8.1	45.10 7.5
1	42.30 10.3	41.90 10.7	42.40 10.2	41.60 11.2	42.40 10.2
(44.3)					
+50	39.80 4.5	40.00 4.3	40.30 4.0	39.80 4.5	39.20 5.1
2	38.90 5.4	39.30 5.0	40.00 4.3	39.20 5.1	38.80 5.5
+50	39.00 5.3	39.20 5.1	39.50 4.8	38.90 5.4	38.70 5.6
3	38.80 5.8	38.80 5.5	39.20 5.1	38.70 5.6	38.50 5.8
+50	38.80 5.5	38.80 5.5	39.20 5.1	38.50 5.8	38.70 5.6
4	38.80 4.5	40.20 4.1	40.00 4.3	39.80 4.5	39.20 5.1
+14	40.70 3.6	40.90 3.4	40.50 3.8	40.80 3.5	40.40 3.9
+40	40.40 3.9		Centre of Bridge		40.40 3.9
+66	40.50 3.8	40.50 3.8	40.50 3.8	40.70 3.6	40.90 3.4
0	40.10 4.2	40.70 3.6	40.70 3.6	40.90 3.4	41.10 3.2
+50	42.30 5.0	42.50 1.8	42.60 1.7	42.00 2.3	42.40 1.9
(54.8)					
1	44.40 10.4	44.40 10.4	44.80 9.9	44.80 10.0	45.30 9.5
+50	46.60 8.2	47.00 7.8	47.80 7.0	47.40 7.4	48.20 6.6
0	49.40 5.4	49.80 5.5	50.80 3.9	50.30 4.5	50.80 4.0
+14	49.80 5.0	50.40 4.4	51.60 3.2	51.10 3.7	51.40 3.4

44.28
1.28
48.00
37.10
51.87

52.50
11.96
40.60
3.65
48.25
13.27
40.41
44.28
1.28
48.00
11.83
54.83

Sta	South	Curb	Centre	Curb	North
(54.8)	51.60	52.10	53.00	53.10	52.90
+ 40	3.2	2.7	1.8	1.7	1.9
+ 66	52.90	53.80	54.40	54.50	54.00
(65.7)	1.9	1.5	0.4	0.3	0.8
0	53.60	53.80	55.00	55.00	55.20
	12.1	11.9	10.7	10.7	10.5
+ 50	60.00	59.20	58.20	60.00	61.00
(76.8)	5.7	6.5	7.5	5.7	6.0
1	67.10	66.00	65.20	66.70	67.40
	9.7	10.8	11.6	10.1	10.6
+ 50	73.30	72.80	71.40	72.10	71.90
(81.3)	3.5	4.0	5.4	4.7	74.10
2	78.40	77.80	76.10	76.70	75.20
	2.9	3.5	5.2	4.6	77.50
+ 14	79.60	78.80	77.40	77.50	79.60
	1.7	2.5	3.9	3.8	80.50
+ 40	79.60	79.50	78.90	79.30	80.60
	1.7	1.8	2.4	2.0	81.80
+ 66	79.50	79.40	79.40	79.80	80.90
	1.8	1.9	1.9	1.5	81.80
0	78.90	78.80	79.00	78.90	80.30
(78.1)	2.4	2.5	2.3	2.4	81.80
+ 50	78.40	78.20	76.20	76.90	77.30
1	71.10	71.10	72.50	72.70	73.60
	7.0	7.0	5.6	5.4	74.00
+ 50	66.80	66.70	68.40	68.60	69.60
(72.1)	11.3	11.4	9.7	9.5	8.5
2	61.80	62.50	64.50	64.90	65.40
	10.9	9.6	7.6	7.2	6.7
+ 14	61.70	61.80	63.90	64.20	65.10
	10.4	10.3	8.2	7.5	7.0
+ 40	62.50	63.10	64.00	64.50	64.90
	9.6	7.0	5.1	7.6	7.2
+ 66	62.60	62.80	63.80	63.70	63.90
	9.5	7.3	8.3	8.4	8.2
0	62.40	62.80	64.00	63.80	64.00
	7.7	9.3	8.1	8.3	8.1
+ 50	65.40	65.10	66.50	66.50	66.50
	6.7	7.0	5.6	5.6	5.6
1	69.40	69.10	70.00	69.70	70.10
	2.7	3.0	2.7	2.4	2.0

54.83
 54.19
 11.57
 65.70
 67.0
 65.00
 11.70
 76.76
 9.94
 78.02
 5.30
 87.32
 6.53
 74.79
 3.34
 78.13
 11.93
 66.20
 5.87
 72.07
 0.03
 72.04
 11.82
 83.86

Sta	South	Cur's	Centre	Cur's	North
(83.0)					
1+50	72.30 10.7	72.30 10.7	72.90 10.1	72.40 10.6	72.70 10.3
2	76.40 6.6	76.20 6.8	76.50 6.5	75.60 7.4	75.80 7.2
+14	77.30 5.7	76.80 6.2	77.30 5.7	76.40 6.6	76.40 6.6
+40	79.50 3.5	79.50 3.5	79.10 3.9	78.70 4.3	78.50 4.5
+66	80.30 2.7	80.40 2.6	80.60 2.4	79.90 3.1	79.70 3.3
0	80.90 2.1	80.60 2.4	81.20 1.8	80.50 2.5	79.90 3.1
(93.9)					
+50	85.70 8.2	85.00 8.9	86.00 7.9	84.70 9.2	84.90 9.3
1	90.40 3.5	90.10 3.8	90.20 3.7	89.60 4.3	90.20 3.7
(105.1)					
+50	94.8 10.3	94.4 10.7	94.7 10.4	94.2 10.9	94.5 10.6
2	98.2 6.9	97.9 7.2	98.7 6.4	97.9 7.2	98.4 6.7
+14	98.4 6.7	99.1 6.0	99.8 5.8	98.6 6.5	98.4 6.7
+40	100.0 5.1	100.6 4.5	101.1 4.0	100.9 4.2	100.3 4.8
+66	100.4 4.7	101.2 3.9	101.9 3.2	101.5 3.5	100.3 4.9
0	102.0 3.1	101.8 3.3	102.6 2.5	102.2 2.9	102.6 2.5
(116.1)					
+50	105.7 10.4	105.7 10.4	106.6 9.5	105.9 10.2	106.6 9.5
1	109.4 6.7	109.7 6.4	110.8 5.3	109.9 6.2	110.2 5.9
+50	113.7 2.4	113.8 2.3	114.9 1.2	113.9 2.2	114.2 1.9
(125.1)					
2	117.9 7.2	117.7 7.4	118.2 6.9	117.3 7.8	117.8 7.3
+14	118.1 7.0	118.1 7.0	119.2 5.9	117.9 7.2	117.6 7.5
+40	120.4 4.7	120.6 4.5	120.8 4.3	120.6 4.5	120.3 4.8
+66	120.8 4.3	120.9 4.2	121.8 3.3	121.2 3.9	121.7 4.4

83.86
0.83
83.03
10.84
93.87
0.32
93.55
10.20
103.75
2.72
100.96

125.48
1.85
127.33

NW 20+ F

101.01
+ 14.09
105.10
- 0.90
104.20
+ 11.86
116.06
- 0.85
115.21
+ 9.37
124.58

Sta	South	East	Centre	West	North
(125.1)	122.0	121.5	122.1	121.7	121.9
0	3.1	3.6	3.0	3.4	3.2
(135.9)	126.3	126.1	126.9	126.2	126.8
+50	9.0	9.2	8.4	9.1	8.5
1	130.8	130.5	131.5	130.7	131.6
0	4.5	4.8	3.8	4.6	3.7
(145.9)	135.5	135.4	136.4	135.8	136.6
+50	10.4	10.5	9.5	10.1	9.3
2	139.8	139.7	140.5	140.2	140.5
0	6.1	6.2	5.4	5.7	5.4
1	139.9	140.2	140.9	140.8	140.4
+14	6.0	5.7	5.0	5.1	5.5
2	142.0	142.5	142.7	142.8	142.5
+40	3.9	3.4	3.2	3.1	3.4
3	141.9	142.3	143.5	143.1	143.4
+66	4.0	3.6	2.4	2.8	2.5
4	142.8	142.8	143.0	143.3	144.3
0	3.1	3.1	2.9	2.2	1.6
(157.1)	145.7	145.4	146.9	146.9	147.7
+50	11.4	11.7	10.2	10.2	9.4
1	148.7	148.5	149.7	149.3	150.9
0	8.4	8.6	7.4	7.8	6.2
2	151.2	151.1	152.6	152.5	153.4
+50	5.9	6.0	4.5	4.6	3.7
3	153.1	153.5	155.0	155.2	156.2
0	4.0	3.6	1.9	1.9	0.9
1	153.5	153.6	155.3	155.6	156.2
+10	3.6	3.5	1.8	1.5	0.9
2	154.0	154.4	155.6	156.5	157.0
+25	3.1	2.7	1.5	0.6	0.1
3	153.5	153.7	155.5	156.4	157.1
+40	3.6	3.4	1.6	0.7	0.0
4	153.8	154.2	155.6	156.1	157.1
0	3.3	2.9	1.5	1.0	1.0
1	154.5	154.5	155.9	156.2	157.1
+50	2.6	2.6	1.2	0.9	0.0
(161.2)	154.7	154.9	156.2	156.7	157.1
1	6.5	6.3	5.0	4.5	4.1
2	155.6	155.8	156.9	157.1	157.5
+50	5.6	5.4	4.3	4.1	3.7
3	156.0	155.8	157.0	157.1	157.5
+10	5.2	5.4	4.2	4.1	3.7

125.08
 - 0.42
 124.66
 + 10.65
 135.31
 - 0.23
 135.08
 + 10.78
 145.86
 - 0.86
 145.00
 + 12.11
 157.11
 - 0.76
 156.35
 + 4.85
 161.20

Sta	North	West	Centre	West	North
(161.2)	156.7	156.2	157.0	157.6	157.7
+30	4.5	5.0	4.2	3.6	3.5
	156.7	156.8	157.6	157.7	158.0
+50	4.5	4.4	3.6	3.5	3.2
	157.1	157.2	158.1	158.2	158.3
0	4.1	4.0	3.1	3.0	2.9
	159.4	159.5	160.8	160.7	160.7
+50	1.8	1.7	0.4	0.5	0.5
(172.1)	162.4	162.2	163.4	163.2	164.3
1	10.1	10.3	9.1	9.3	8.2
	165.1	164.7	166.5	166.0	167.0
+50	7.4	7.8	6.0	6.5	5.5
	167.7	167.7	169.4	168.9	170.0
2	4.8	4.8	3.1	3.6	2.5
	170.7	170.1	171.7	171.6	172.4
+50	1.8	2.4	0.8	0.9	0.1
(181.9)	173.4	173.1	174.1	174.2	175.0
3	8.5	8.8	7.8	7.7	6.9
	174.6	174.6	175.3	175.2	176.0
+50	7.3	7.3	6.6	6.7	5.8
	175.6	175.8	176.6	176.5	177.4
4	6.3	6.1	5.3	5.4	4.5
	175.0	176.8	177.7	177.8	
+50	4.9	5.1	4.2	4.1	
	178.4	178.2	178.9	178.7	
5	3.5	3.7	3.0	3.2	
	179.9	179.6	180.4	179.7	
+50	2.0	2.3	1.5	2.2	
	181.9	181.7	181.8	180.5	
6	0.0	0.2	0.1	1.4	

158.35
 + 2.50
 161.15
 - 0.51
 160.64
 + 11.90
 172.54
 - 0.84
 171.70
 - 10.17
 181.87

Sta	South	CurB	Centre	CurB	North
	9.08	147.62		132.54	
			8.12	139.50	
			4.12	143.50	
7.12	11.25	158.75	0.12	147.50	
			7.25	151.50	
	10.67	166.17	3.25	155.50	
			6.67	159.50	
			2.67	163.50	

Fir

ST

163.50

A

159.50

B

155.50

C

151.50

(226)

D

147.50

E

143.50

F

139.50

Elm

ST

Curb grades W. J. Wetzell

Apr. 9th 1896

8.93

72.32

63.89

Natural
and
29"

3.72 68.50

3.51 68.71

3.30 68.92

SW cor Logan + 28" 65.0 29" 67.5 30" 70.0
 NW " " " 66.0 " 68.5 " 71.0
 SE " " " 65.0 " 67.5 " 70.0
 NE " " " 66.0 " 68.5 " 71.0

29th

ST



68.5

68.71

68.92



71.0

30th

ST

Watt P. Moore
 Survey of Grades
 Lots 14-15 Bks 8 Brooks-

Apr 16-96.

3.25	285.82	282.57
	5.65	280.17
	5.49	280.33
	5.32	280.50

Order No 860
 Mrs Schwarz
 Survey of Lot 13 Bks 8 Brooks-

Montrose ave

1	24	282.00	282.00
2	23	281.82	
3	22	281.66	
4	21	281.49	
5	20	281.33	
6	19	281.16	
7	18	281.00	280.60
8	17	280.83	Place
9	16	280.66	280.4
10	15	280.50	
11	14	280.33	
12	13	280.17	
		280.00	279.00

135' 135' 49.50' 89.50'

Brooks

4th

5th

SPK

SPK

GOOD TRACK

W. D. Hazel April 16-96
 Surrey Lot B. Beck 1913

ash

A	L.
B	K
C	D
D	1913
E	H
F	G

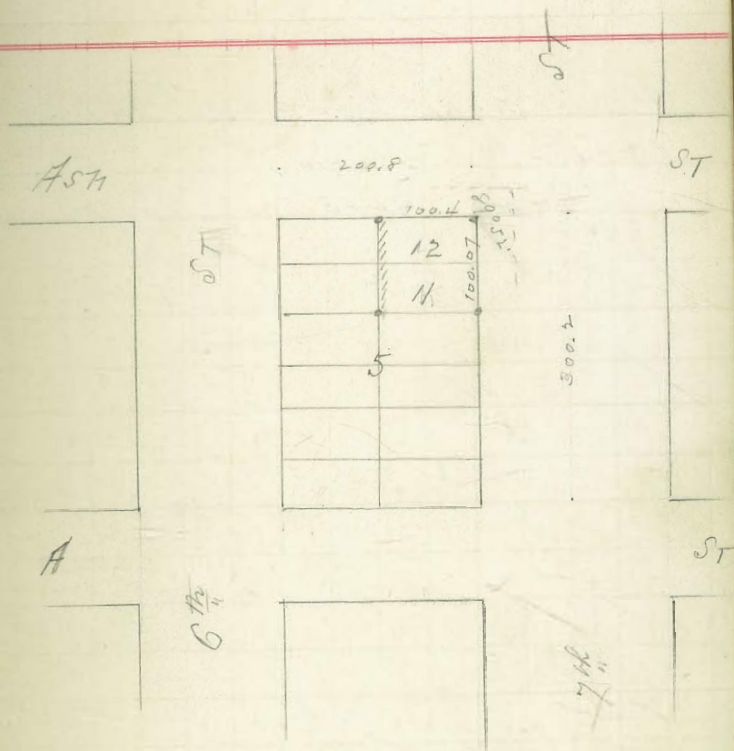
A.

3rd

H to

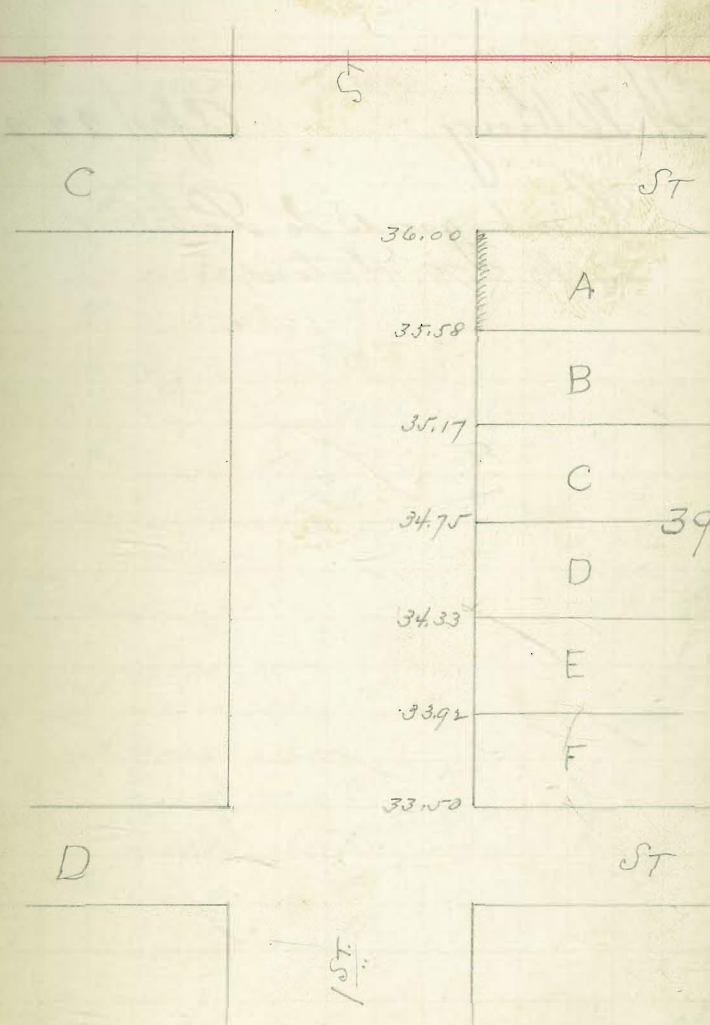
April 16th 1896

Survey for James E. Wadham
 Lots 11 and 12 Blk 5 Carruthers
 Addition (4 Points)



Curb Grades Lot A Blk 39 HA
Robert Campion

7.55	40.24	32.69
	4.24	36.00
	4.66	35.58



H. W. King

Apr 22-96.

Count grad to Lot C. F.
Bek 278. Hatou,

212.26 r.m			
6 73			
218.99	219.99	218.99	218.99
218.00	214.66	216.32	211.60
6.99	4.33	2.67	7.49

202.57 r.m

8 05			
210.62	210.62	210.62	210.62
209.60	208.08	206.67	206.67
1.02	2.54	3.95	

210.62
209.60
6.37

5.99
1.66
4.33
1.66
2.67

222.00 224.00

Laural

L.	221.00	223.00	223.00	L.
K	219.41	221.32	A	K
J	217.83	219.66	B	J
277 I	216.25	218.00	C	278 I
H	214.17	216.32	D	H
G	213.08	214.66	E	G
F	211.50	213.00	F	F
		213.00		

Kalmia

L	209.5	211.0	211.0	L
K	208.08	209.47	A	K
J	206.67	208.33	B	J
260 I	205.25	207.00	C	265 I
H	203.83	205.17	D	H
G	202.42	204.33	E	G
F	201.00	203.00	F	F
		203.00		

Juniper

199.00 206.0

st

st

265

1st sheet Grades

29

201.00

203.00

Juniper st-

	199.0	201.00	
L	197.17	199.33	A
K	195.33	197.67	B
J	192.50	196.00	C
I	191.67	194.33	D
H	189.83	192.67	E
G	188.00	191.00	F
		191.0	

Joy st-

	186.0	189.0	189.0
L	182.42	185.42	A
K	178.83	181.83	B
J	175.25	178.25	C
I	171.67	174.67	D
H	168.08	171.08	E
G	164.50	167.50	F

Hawthorn st-

164.50
1st

164.50

205.55
203
2.55

190.49	13.72	
6.21		
196.70	196.70	196.70
191.00	192.67	194.33
5.70	4.03	2.37

202.57 B.72
2.98

205.55	205.55	205.55	205.55
201.00	199.33	197.67	196.00
4.55	6.22	7.88	9.55

202.57 B.72
1.43

208.99	203.99	203.99	203.99
201	199.33	197.67	196.00
2.99	4.66	6.32	7.99

205.55 - 2.55
194.33
1122

249

248

1st Street Grades

164.50

167.50

Hatchwood st

	161.50	164.50	167.50	
L	157.58	160.58		A
K	153.17	156.17		B
J	149.75	152.75		C
I	145.83	148.83		D
H	141.92	144.92		E
G	138.00	141.00		F
			141.0	

Gravel

141.0	141.00	144.0	144.0
141.5	139.83	142.83	144.5
142.00	138.67	141.67	145.00
142.0	137.50	140.50	145.0
139.33	136.33	139.33	142.33
136.67	135.17	138.17	139.67
134.0	134.00	137.0	137.0

Fin

131.0

137.00

1st

137.84 B m
11.84

148.68	148.66	148.66
144	144.30	145.00
4.64	4.16	3.66

3.16 on top mark
15.0 on top mark

148.66 148.66
144
4.66

Ordw 942 Oct 20 97
Grades to Lots D, E, F, Bek 239
Horton Add

165.62 B m

0.12	
165.74	165.74
156.67	111.80
9.07	153.94
	6.67

154.61	154.61	154.61
152.75	148.83	144.92
1.86	5.78	9.69

148.60	148.60
141.00	144
7.60	4.60

14560234

1st Street-Grades

31

134.00

107.00

Geo

	131.0	134.0	134.00	
L	127.5	130.5		A
K	124.0	127.0		B
J	120.5	123.5		C
I	117.0	120.0		D
H	113.5	116.5		E
G	110.0	113.0		F
			113.00	

Elm

	107.0	110.00	110.00	
L	103.17	106.16		A
K	99.33	102.32		B
J	95.50	98.49		C
I	91.67	94.66		D
H	87.83	90.83		E
G	84.00	87.00		F
			87.0	

Date

82.00

84.0

111.91
6.65
118.56
110.1
8.66
118.56
113
7.66

111.91 B.M.
0.28
112.16
107.44
4.72
111.91 B.M.
0.63
112.54
102.82
1.52

112.16
102.82
9.84
4.10

98.49
62
99.11
94.66
4.45

88.14
5.61
93.75
84
9.75

93.75
87.83
5.92

88.14 B.M.
3.69

status ect. 1 ft high
B.M. 111.91
1.5 R.R.
113.41 H. I.
8.25 R.R.
105.16 H.T.P.
2.12 R.R.
107.28 H.I.
99.33
7.95

91.83
84
4.83
7.53

107.28
95.30
11.78

part of Grades

32

88.14 B. 77			
1.29			
89.43	89.43	89.43	
84.00	81.64	79.33	
5.43	77.9	101.0	
60.05 B. 77			
5.19			
68.24	68.24		
68	68.83		
5.24	7.97		
71.90			
1.07			
72.97	72.97	72.97	72.97
68	67.17	66.33	70
4.97	5.80	6.67	2.97

84.00

57.00

Date

		82.50	81.00	84.00	
209	R.	80.08	81.04	} Mc Near A B C D E F	
	K	77.47	79.33		
	J	75.25	77.00		210
	I	72.83	74.66		
	H	70.42	72.33		
	G	68.00	70.00		

Cedar

		68.00	70.00	70.00	
Massiv	R.	67.17	69.00	} Mc Near A B C D E F	
	K	66.33	68.00		
208	J	65.50	67.00		207
	I	64.67	66.00		
	H	63.83	65.00		
Mc Near	G	63.00	64.00		

Beech.

62.00

63.00

part

net at Grades

33

63.00

64.00

58.00

66

58.15

61

67.32

68

64.00

67

60.67

66

61.33

67

62.00

198

Beech

62.00 63.00 63.00

L

61.30 62.42

A

M

60.67 61.83

B

197

D

60.00 61.25

C

O

59.02 60.67

D

H

58.66 60.08

E

G

58.00 59.50

F

59.50

ash

57.00 58.50 58.50

L

55.75 57.08

A

M

54.50 55.67

B

196

J

53.25 54.25

C

I

52.00 52.83

D

H

50.75 51.42

E

G

49.50 50.00

F

50.00

195

A.

48.00

48.00

net

1st of Grades

40.36			
278			
43.69	43.09	43.09	
37.50	37.26	37.00	
5.59	5.84	6.09	
40.36			
312			
43.48	43.48	43.48	43.48
37.60	37.00	38.83	40.67
5.98	6.48	4.65	2.51
50.13			
286			
52.99	52.99	52.99	52.99
4.81	4.67	4.43	
4.99	6.52	8.66	

49.56

50.00

A

Messner

		48.00	48.00	48.00	
Messner	{	L.	46.17	46.33	A
		K.	44.33	44.67	B
		J.	42.50	43.00	C
Over	{	I.	40.67	41.33	D
		H.	38.83	39.67	E
		G.	37.00	38.00	F
					38.0

B.

H.

		37.00	37.50	37.50	
H.	{	L.	36.17	37.25	A
		K.	36.33	37.00	B
		J.	36.00	36.75	C
		I.	35.67	36.50	D
		H.	35.33	36.25	E
G.	35.00	36.00	F		
					36.00

C

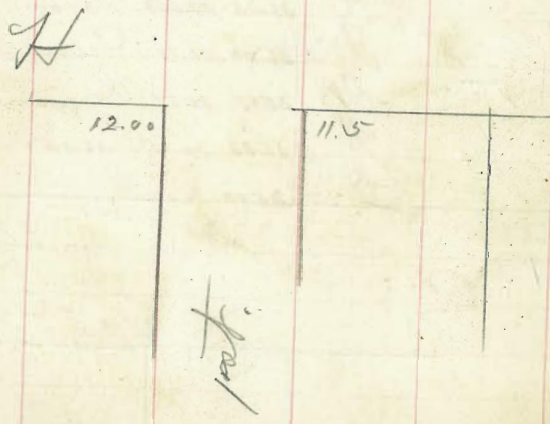
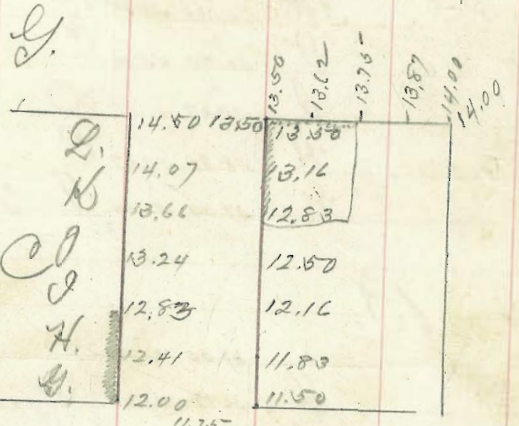
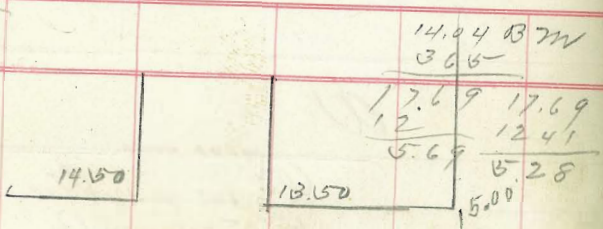
35.00

36.00

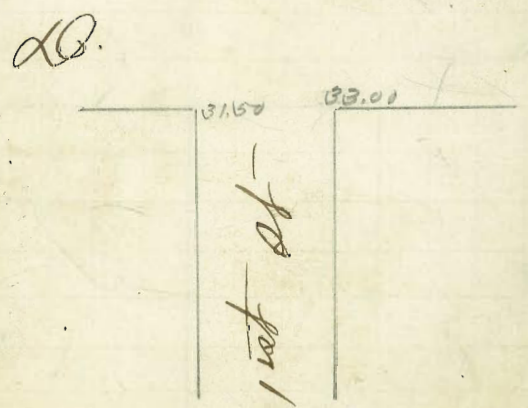
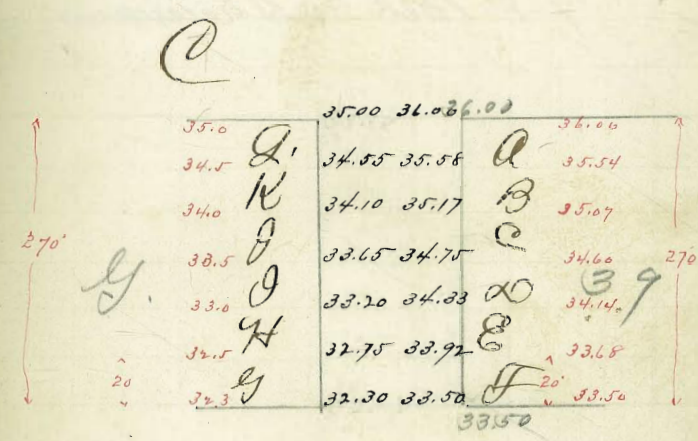
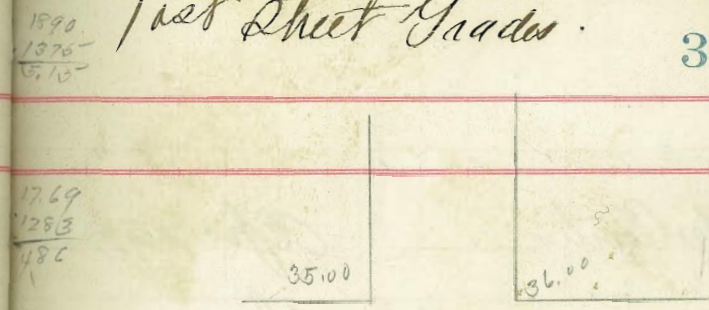
1st of Grades

17.69
 11.75
 18900
 1250
 6.40

14.04
 486
 1890 18.90 18.90 18.90
 1360 10.16 12.83 1362
 5.40 5.74 6.07 6.28



1st sheet Grads



48 48
473

Mr Curtis

Apr 22, 98

7-8 Bek 30 Shermans

J

PL 9 sf-

1	12
2	11
3	10
4	9
5	8
6	7

↑

300.30

←

K

← 200' →

sf

20' etc

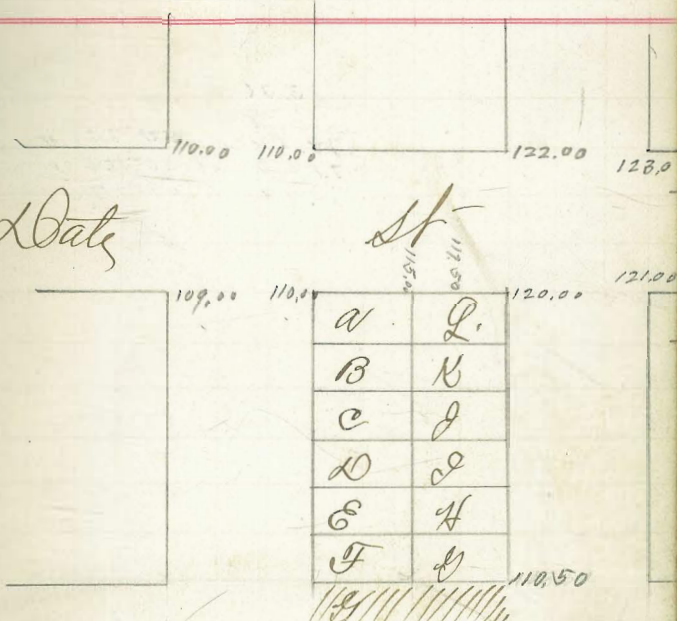
21' etc

122.18	B m	
<u>302</u>		
125.15	125.15	125.15
<u>120.00</u>	<u>117.60</u>	<u>115.00</u>
5.15	7.60	10.15

115
 120
 235
 117.6

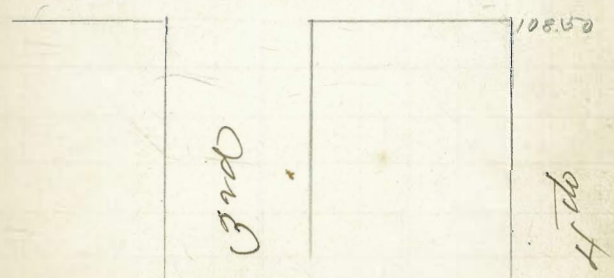
L. Bate

st



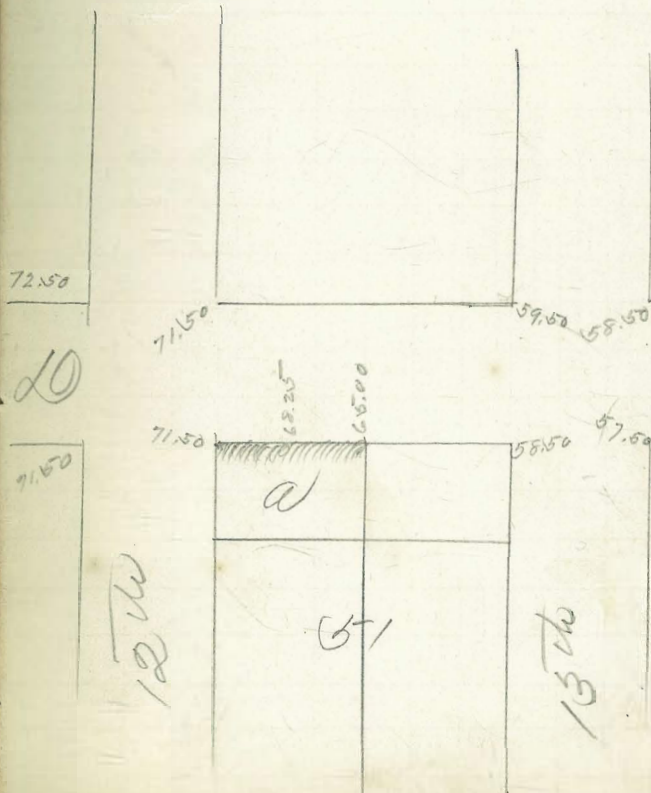
L. Cedar

st



73.31		
<u>1.18</u>		
74.49	74.54	74.54
<u>71.50</u>	<u>68.25</u>	<u>65.00</u>
3.04	6.29	9.54

71.50	
<u>58.50</u>	<u>58.50</u>
13.00	6.50
6.50	<u>6.50</u>



4.94	13.7M				
226					
7.20	7.20	7.20	7.20	7.20	7.20
3	2.87	1.76	1.12	0.60	
4.20	4.88	5.46	6.08	6.70	North

1.12
379

4.91
4.60
4.41

	0.50	grade peg		
	309			
3.67	3.57	3.67	3.57	3.57
	1.13	1.25	1.35	1.50
2.67	2.44	2.32	2.19	2.07
		South		

0.50

G

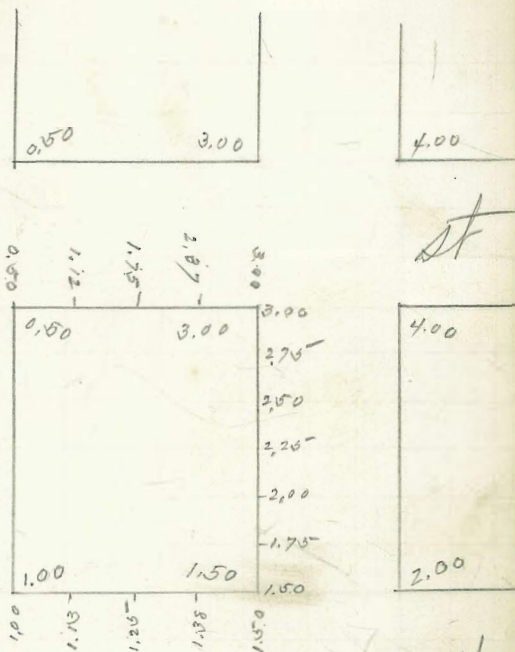
0.50

1.00

H.

1.00

California



4.00

4.00

2.00

2.00

Arctic

Ash

st

a	q.
B	K
C	o
L	o
E	H
F	G

A

st

A

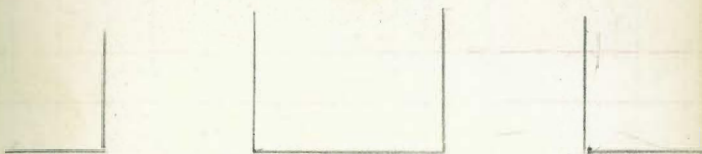
st

Miss Geo Geddes

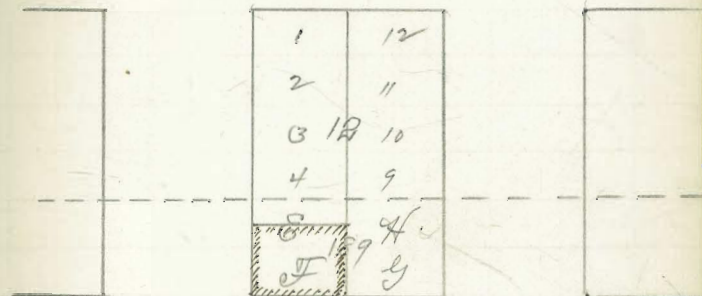
May 4 96.

Survey of Lot F of South
1/2 of Lot B. P. Bek 189 Hinton

Order No 714

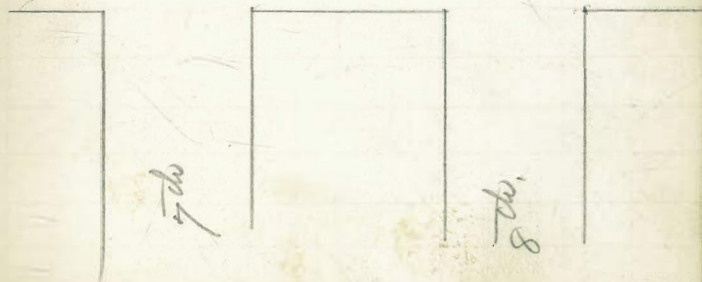


Asw



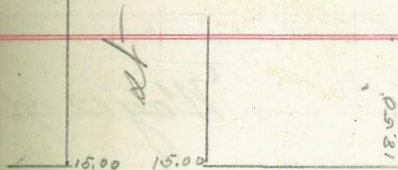
A

← 199.80' →

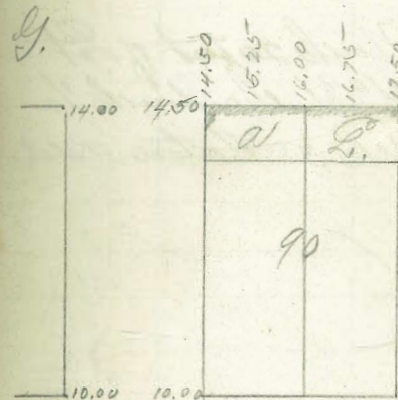


19.68
 14
 5.68

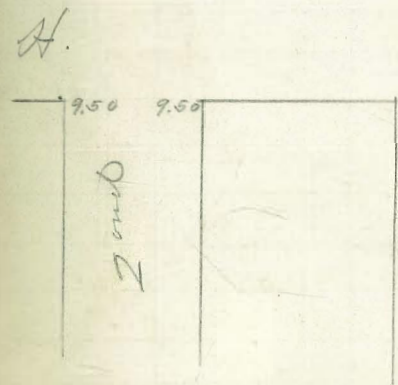
16.88.8772
 280
 19.68 19.68 19.68 19.68 19.68
 14.50 15.25 16.00 16.75 17.50
 5.18 1.43 0.68 2.93 2.18



0.981



0.981



0.981

$$\begin{array}{r} 15,748 \\ 416 \\ \hline 16,164 \\ 416 \\ \hline 16,580 \\ 416 \\ \hline 16,996 \end{array}$$

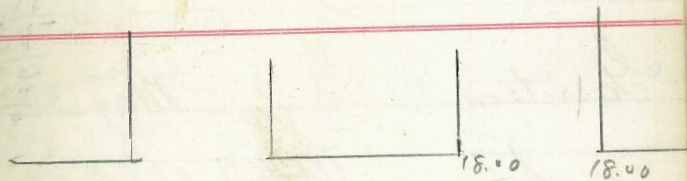
$$\begin{array}{r} 14.04 \\ 576 \\ \hline 19.79 \\ 14.92 \\ \hline 4.87 \end{array}$$

$$\begin{array}{r} 17.01 \\ 14.60 \\ \hline 6) 2.60(416 \\ 24 \\ \hline 20 \\ 6 \\ \hline 40 \\ 66 \end{array}$$

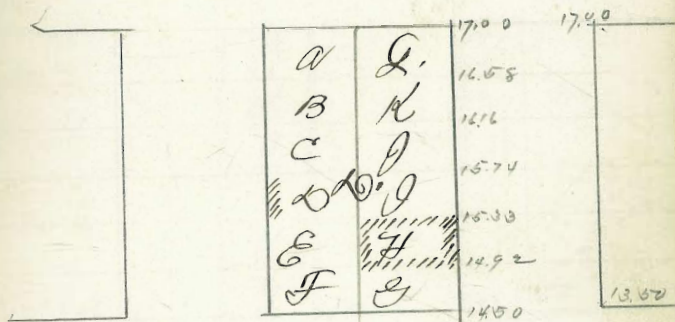
$$\begin{array}{r} 19.79 \\ 17 \\ \hline 2.79 \end{array}$$

$$\begin{array}{r} 416 \\ 2 \\ \hline 832 \\ 148 \\ \hline 1533 \end{array}$$

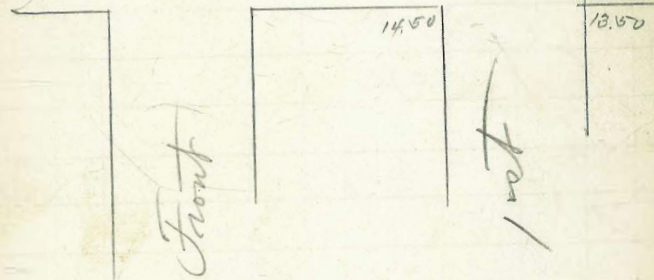
$$\begin{array}{r} 15.03 \\ 416 \\ \hline 14.914 \end{array}$$



F



G



Front

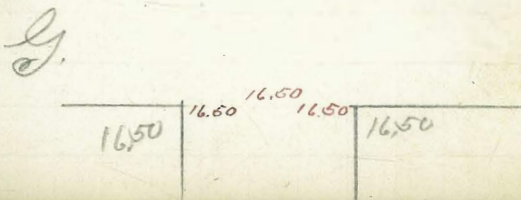
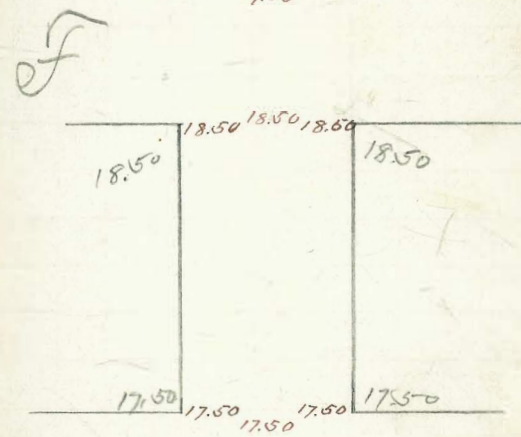
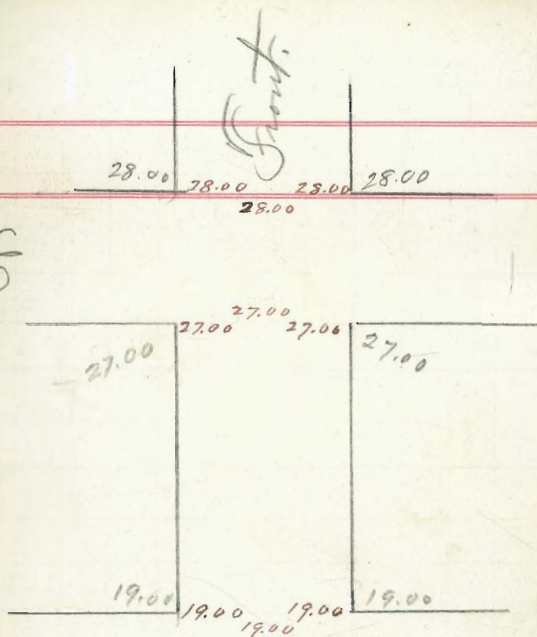
ret

Water

D
 N
 208
 2
 4
 8

Cedar

24.46	24.41	27.51	18.7m
18.50	19	32.08	32.08
6.96	5.41	5.08	
		19.08	
		375	
		2288	
		17150	
		538	



48.46
 57.76
 4271 13m Spk NW of Union - Oct -

48.46	48.46	48.46	48.46	48.46	48.46
43.00	42.00	46.00	45.00	41.00	39.00
5.46	6.46	2.46	3.46	7.46	9.46
48.46	48.46	48.46	48.46	48.46	48.46
42.00	40.00	46.00	45.00	41.00	39.00
6.46	8.46	2.46	3.46	7.46	9.46
			(52.93 13m)		
		56.13	56.13	56.13	56.13
		51	49		
		5.13	7.13		
	57.00				
	6.33				
	57.33	52.00			
	58	11.78			
	4.33	64.78	64.78		
		64.00	63		
		78	1.78		
		52.93	13m		
		0.44			
		53.37			
		7.91			
		45.46			
		2.98			
		48.44	48.44	48.44	
		43.84	42.42	41.00	
		4.60	6.02	7.44	

59 64.00 65.00 60

Cedar

57	12	63.20	64.00	1	53
	11			2	59
	10			3	
	24	53.00	54.00	4	23
	9			5	
	8			6	
	7				
46		49.50	51.00		57.0

ST

Beech

44	12	49.50	51.00	1	55
	11	48.10		2	
	10	46.68		3	22
	21	45.26		4	
	9	43.84		5	
	8	42.42		6	
38	7	41.00	42.50		50

Ash

36	12	41.00	42.50	1	50
	11			2	
	10	43.50	44.50	3	12
	9			4	
	8			5	
37.5	7	42.50	43.00	6	48

UNION

42.20 42.20

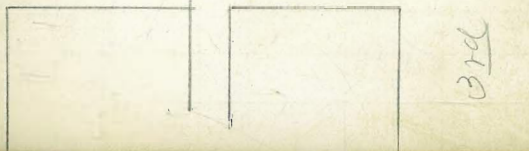
Ordson

June 15-

Survey lots 27-28 Beck,
North

1	32	70'
2	31	
3	30	
4	29	
5	28	
6	27	
7	26	
8	25	
9	24	4'6"
10	23	
11	22	
12	21	
13	20	
14	19	
15	18	
16	17	70'
130'	135'	135'

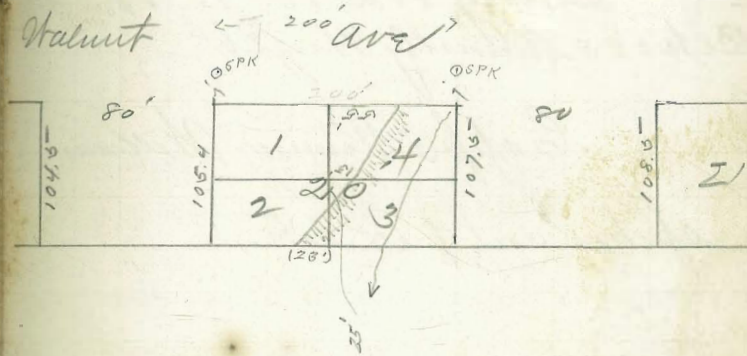
Robinson



60'

60'

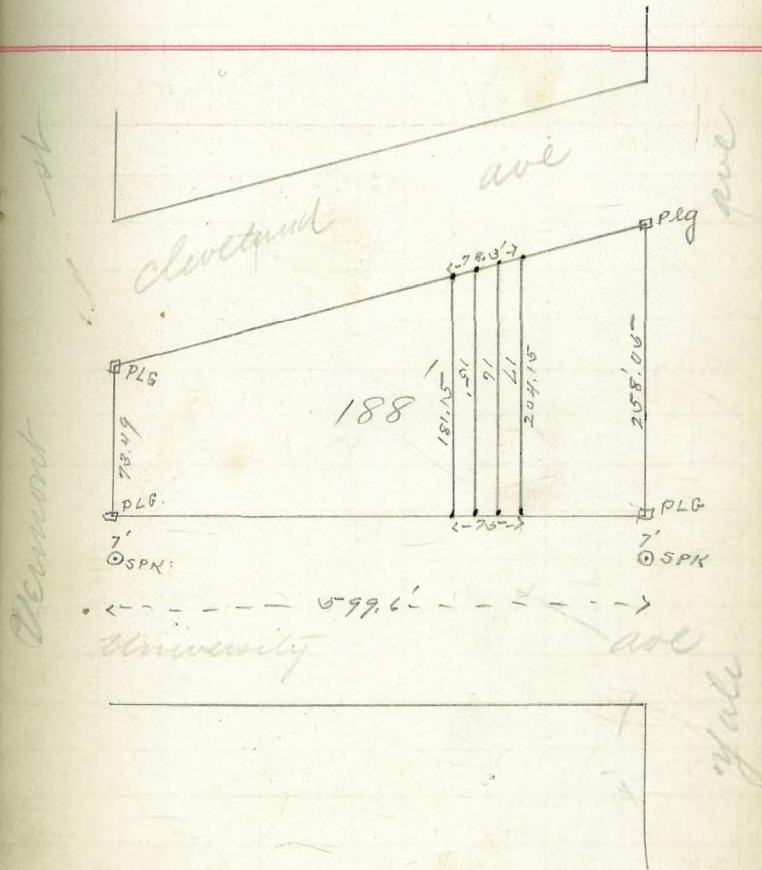
J. G. Tucker June 15-
 Survey of Lots 1-2-3-4 Block
 20 Cleveland Heights



MW J. Watkins, July 5th 96

Survey Lots 15-16-17
 Bet 188 University Heights

Capps Ramsey Watkins
 spikes cor of all lots



40.68	B M	
7.10		
47.78	47.78	47.78
4.3	45.48	39
4.78	2.78	8.78

46.00

46.50

M.

44.50

45.00

44.00

43.00

42.00

41.00

40.00

38.00

39.00

A

B

C

D

E

F

82

H.

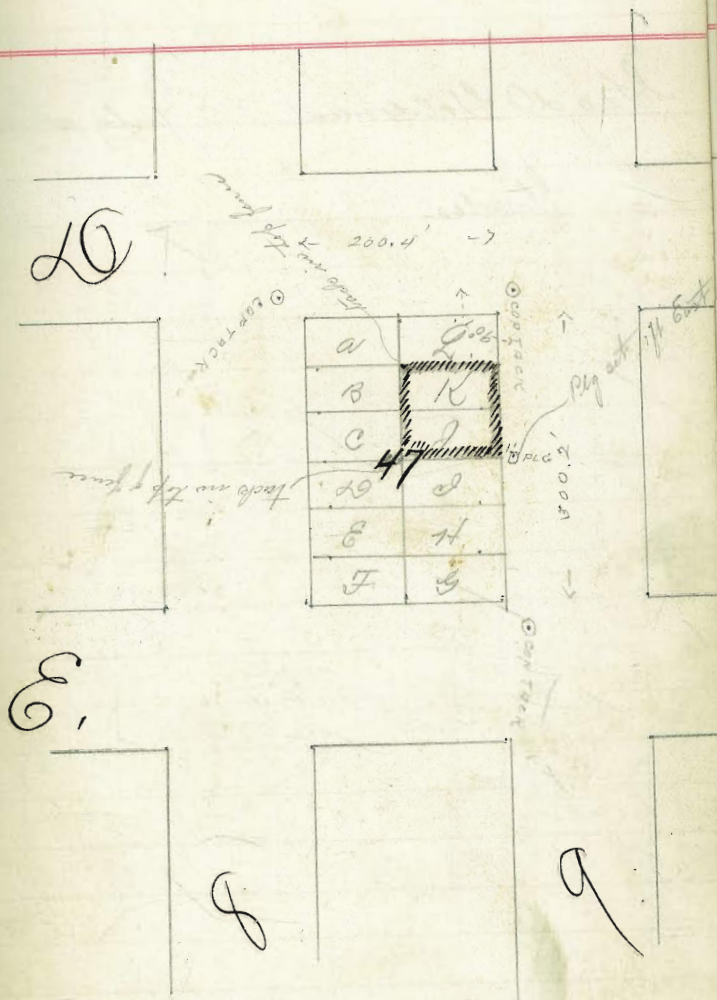
37.50

38.50

10 lbs

Mr C F Kessler July 9-96.

Survey of Lots J. K. Betts
47 Hinton's add.



71.
70.
146
73.

Geo D Goldman July 14-96

Grades

	69.11	
	6.98	
76.04	76.04	76.04
71	71.87	72.75
<u>5.04</u>	<u>4.17</u>	<u>3.29</u>

65.74 B.M.
815

73.89	73.89	73.89
<u>2.90</u>		

70.99
744

78.43	78.43	78.43
<u>5.43</u>	<u>4.20</u>	<u>5.10</u>

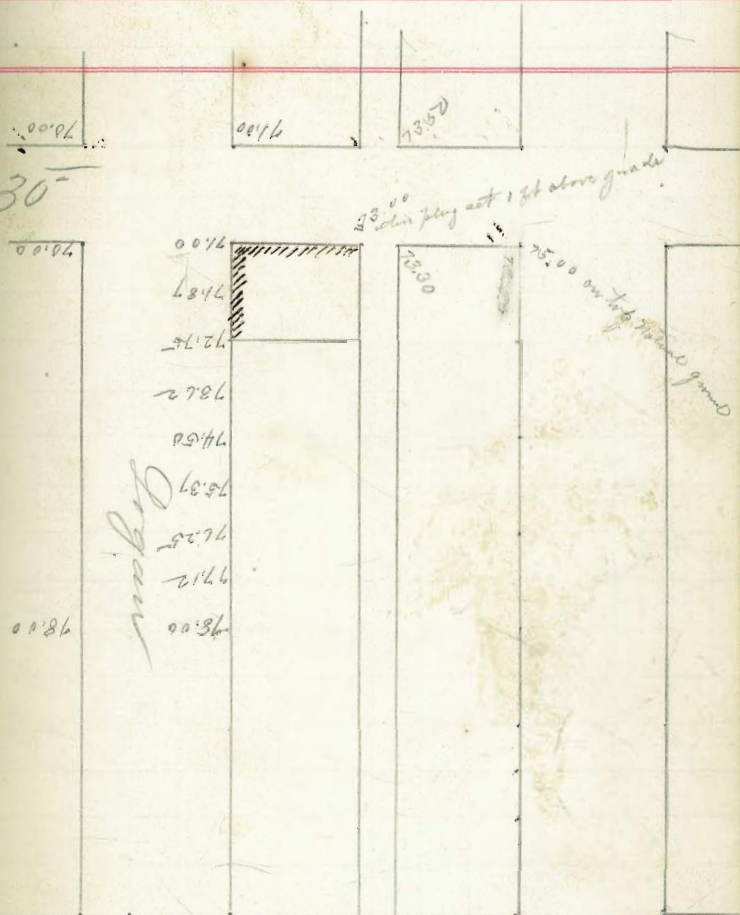
73.00	74.23	73.33
Elev end Gold cont.	Purple line East side 30	Purple line West side 30

76.04

13

74.7

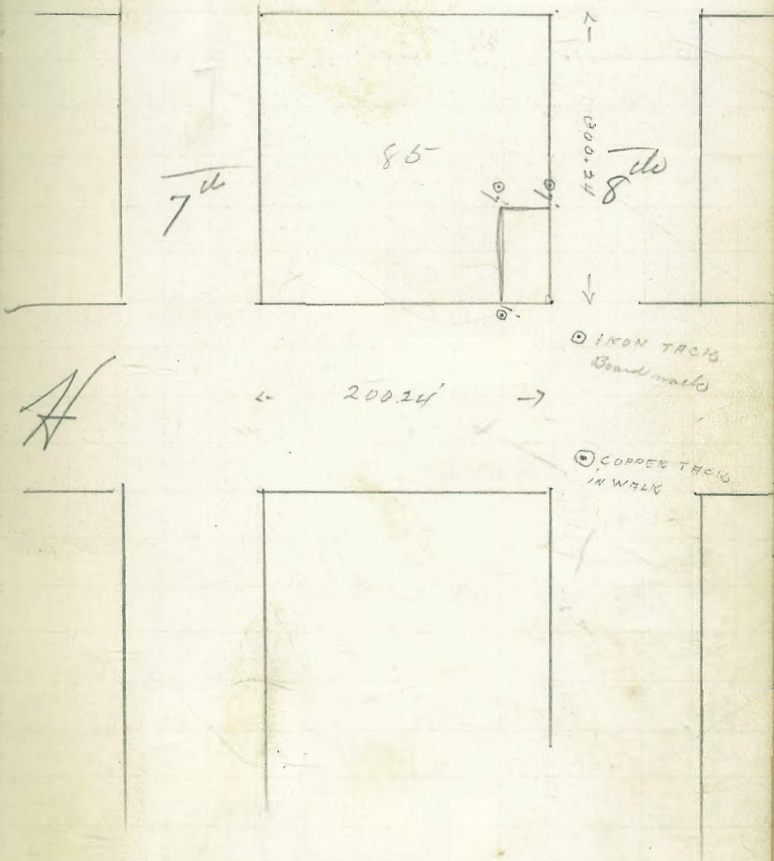
30'



31'

July 18th 1896Survey of NW cor 8th St. A.

G. A.



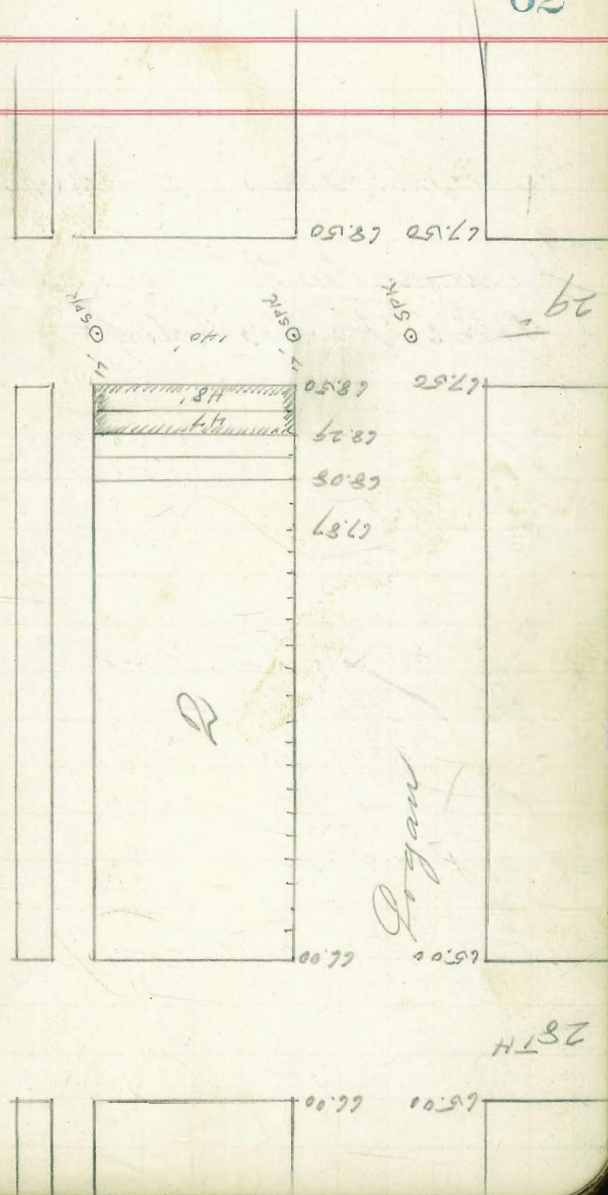
Mr. Stizall,

July 31st 96

Survey of Cut grades to 47-48

Blk 2 Reed. Hobbles add

63,891.37m	
862	
72.51	72.51
68.50	68.29
4.01	4.22



Woodward-Son's July 31 96

Curb grades to Lots 29, 30-31-32 Beh

8 Reed-Hubbles Add

12/3.00
24
60

63.89 13.7m.
212
66.01 66.01 66.01
62.60 62.75 63.00
3.41 3.26 3.01

63.00
62.25
J. S. White

May 25-97

Grades to Lots 21-22 Beh

9 Reed-Hubbles

63.89 13.7m.
255
66.44 66.44 66.44
61.25 61.50
5.19 4.94

633 National Ave

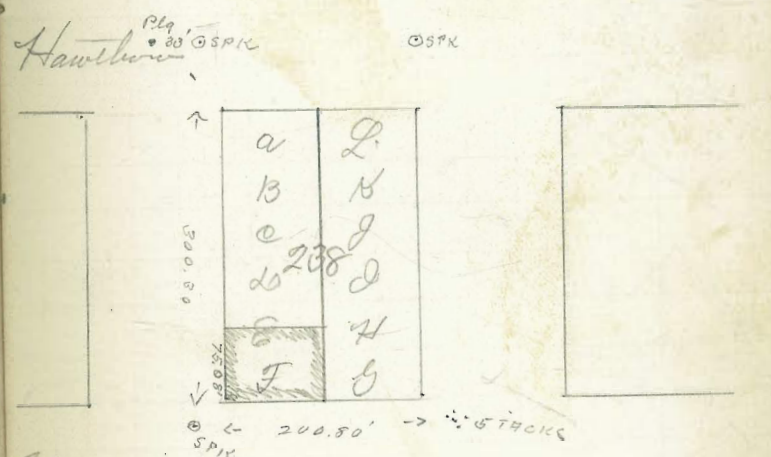
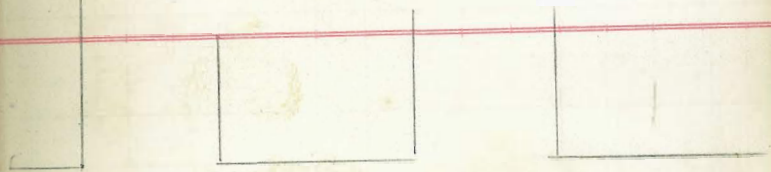
Lot	Grade	Grade	Grade
37	65.00	64.00	1
37	64.75	63.75	2
37	64.50	63.50	3
37	64.25	63.25	4
37	64.00	63.00	5
37	63.75	62.75	6
37	63.50	62.50	7
37	63.25	62.25	8
37	63.00	62.00	9
37	62.75	61.75	10
37	62.50	61.50	11
37	62.25	61.25	12
37	62.00	61.00	13
37	61.75	60.75	14
37	61.50	60.50	15
37	61.25	60.25	16
37	61.00	60.00	17
37	60.75	59.75	18
37	60.50	59.50	19
37	60.25	59.25	20
37	60.00	59.00	21
37	59.75	58.75	22
37	59.50	58.50	23
37	59.25	58.25	24
37	59.00	58.00	25
37	58.75	57.75	26
37	58.50	57.50	27
37	58.25	57.25	28
37	58.00	57.00	29
37	57.75	56.75	30
37	57.50	56.50	31
37	57.25	56.25	32
37	57.00	56.00	33
37	56.75	55.75	34
37	56.50	55.50	35
37	56.25	55.25	36
37	56.00	55.00	37
37	55.75	54.75	38
37	55.50	54.50	39
37	55.25	54.25	40
37	55.00	54.00	41
37	54.75	53.75	42
37	54.50	53.50	43
37	54.25	53.25	44
37	54.00	53.00	45
37	53.75	52.75	46
37	53.50	52.50	47
37	53.25	52.25	48
37	53.00	52.00	49
37	52.75	51.75	50
37	52.50	51.50	51
37	52.25	51.25	52
37	52.00	51.00	53
37	51.75	50.75	54
37	51.50	50.50	55
37	51.25	50.25	56
37	51.00	50.00	57
37	50.75	49.75	58
37	50.50	49.50	59
37	50.25	49.25	60
37	50.00	49.00	61
37	49.75	48.75	62
37	49.50	48.50	63
37	49.25	48.25	64
37	49.00	48.00	65
37	48.75	47.75	66
37	48.50	47.50	67
37	48.25	47.25	68
37	48.00	47.00	69
37	47.75	46.75	70
37	47.50	46.50	71
37	47.25	46.25	72
37	47.00	46.00	73
37	46.75	45.75	74
37	46.50	45.50	75
37	46.25	45.25	76
37	46.00	45.00	77
37	45.75	44.75	78
37	45.50	44.50	79
37	45.25	44.25	80
37	45.00	44.00	81
37	44.75	43.75	82
37	44.50	43.50	83
37	44.25	43.25	84
37	44.00	43.00	85
37	43.75	42.75	86
37	43.50	42.50	87
37	43.25	42.25	88
37	43.00	42.00	89
37	42.75	41.75	90
37	42.50	41.50	91
37	42.25	41.25	92
37	42.00	41.00	93
37	41.75	40.75	94
37	41.50	40.50	95
37	41.25	40.25	96
37	41.00	40.00	97
37	40.75	39.75	98
37	40.50	39.50	99
37	40.25	39.25	100
37	40.00	39.00	101
37	39.75	38.75	102
37	39.50	38.50	103
37	39.25	38.25	104
37	39.00	38.00	105
37	38.75	37.75	106
37	38.50	37.50	107
37	38.25	37.25	108
37	38.00	37.00	109
37	37.75	36.75	110
37	37.50	36.50	111
37	37.25	36.25	112
37	37.00	36.00	113
37	36.75	35.75	114
37	36.50	35.50	115
37	36.25	35.25	116
37	36.00	35.00	117
37	35.75	34.75	118
37	35.50	34.50	119
37	35.25	34.25	120
37	35.00	34.00	121
37	34.75	33.75	122
37	34.50	33.50	123
37	34.25	33.25	124
37	34.00	33.00	125
37	33.75	32.75	126
37	33.50	32.50	127
37	33.25	32.25	128
37	33.00	32.00	129
37	32.75	31.75	130
37	32.50	31.50	131
37	32.25	31.25	132
37	32.00	31.00	133
37	31.75	30.75	134
37	31.50	30.50	135
37	31.25	30.25	136
37	31.00	30.00	137
37	30.75	29.75	138
37	30.50	29.50	139
37	30.25	29.25	140
37	30.00	29.00	141
37	29.75	28.75	142
37	29.50	28.50	143
37	29.25	28.25	144
37	29.00	28.00	145
37	28.75	27.75	146
37	28.50	27.50	147
37	28.25	27.25	148
37	28.00	27.00	149
37	27.75	26.75	150
37	27.50	26.50	151
37	27.25	26.25	152
37	27.00	26.00	153
37	26.75	25.75	154
37	26.50	25.50	155
37	26.25	25.25	156
37	26.00	25.00	157
37	25.75	24.75	158
37	25.50	24.50	159
37	25.25	24.25	160
37	25.00	24.00	161
37	24.75	23.75	162
37	24.50	23.50	163
37	24.25	23.25	164
37	24.00	23.00	165
37	23.75	22.75	166
37	23.50	22.50	167
37	23.25	22.25	168
37	23.00	22.00	169
37	22.75	21.75	170
37	22.50	21.50	171
37	22.25	21.25	172
37	22.00	21.00	173
37	21.75	20.75	174
37	21.50	20.50	175
37	21.25	20.25	176
37	21.00	20.00	177
37	20.75	19.75	178
37	20.50	19.50	179
37	20.25	19.25	180
37	20.00	19.00	181
37	19.75	18.75	182
37	19.50	18.50	183
37	19.25	18.25	184
37	19.00	18.00	185
37	18.75	17.75	186
37	18.50	17.50	187
37	18.25	17.25	188
37	18.00	17.00	189
37	17.75	16.75	190
37	17.50	16.50	191
37	17.25	16.25	192
37	17.00	16.00	193
37	16.75	15.75	194
37	16.50	15.50	195
37	16.25	15.25	196
37	16.00	15.00	197
37	15.75	14.75	198
37	15.50	14.50	199
37	15.25	14.25	200
37	15.00	14.00	201
37	14.75	13.75	202
37	14.50	13.50	203
37	14.25	13.25	204
37	14.00	13.00	205
37	13.75	12.75	206
37	13.50	12.50	207
37	13.25	12.25	208
37	13.00	12.00	209
37	12.75	11.75	210
37	12.50	11.50	211
37	12.25	11.25	212
37	12.00	11.00	213
37	11.75	10.75	214
37	11.50	10.50	215
37	11.25	10.25	216
37	11.00	10.00	217
37	10.75	9.75	218
37	10.50	9.50	219
37	10.25	9.25	220
37	10.00	9.00	221
37	9.75	8.75	222
37	9.50	8.50	223
37	9.25	8.25	224
37	9.00	8.00	225
37	8.75	7.75	226
37	8.50	7.50	227
37	8.25	7.25	228
37	8.00	7.00	229
37	7.75	6.75	230
37	7.50	6.50	231
37	7.25	6.25	232
37	7.00	6.00	233
37	6.75	5.75	234
37	6.50	5.50	235
37	6.25	5.25	236
37	6.00	5.00	237
37	5.75	4.75	238
37	5.50	4.50	239
37	5.25	4.25	240
37	5.00	4.00	241
37	4.75	3.75	242
37	4.50	3.50	243
37	4.25	3.25	244
37	4.00	3.00	245
37	3.75	2.75	246
37	3.50	2.50	247
37	3.25	2.25	248
37	3.00	2.00	249
37	2.75	1.75	250
37	2.50	1.50	251
37	2.25	1.25	252
37	2.00	1.00	253
37	1.75	0.75	254
37	1.50	0.50	255
37	1.25	0.25	256
37	1.00	0.00	257
37	0.75	-0.25	258
37	0.50	-0.50	259
37	0.25	-0.75	260
37	0.00	-1.00	261
37	-0.25	-1.25	262
37	-0.50	-1.50	263
37	-0.75	-1.75	264
37	-1.00	-2.00	265
37	-1.25	-2.25	266
37	-1.50	-2.50	267
37	-1.75	-2.75	268
37	-2.00	-3.00	269
37	-2.25	-3.25	270
37	-2.50	-3.50	271
37	-2.75	-3.75	272
37	-3.00	-4.00	273
37	-3.25	-4.25	274
37	-3.50	-4.50	275
37	-3.75	-4.75	276
37	-4.00	-5.00	277
37	-4.25	-5.25	278
37	-4.50	-5.50	279
37	-4.75	-5.75	280
37	-5.00	-6.00	281
37	-5.25	-6.25	282
37	-5.50	-6.50	283
37	-5.75	-6.75	284
37	-6.00	-7.00	285
37	-6.25	-7.25	286
37	-6.50	-7.50	287
37	-6.75	-7.75	288
37	-7.00	-8.00	289
37	-7.25	-8.25	290
37	-7.50	-8.50	291
37	-7.75	-8.75	292
37	-8.00	-9.00	293
37	-8.25	-9.25	294
37	-8.50	-9.50	295
37	-8.75	-9.75	296
37	-9.00	-10.00	297
37	-9.25	-10.	

340
73
413

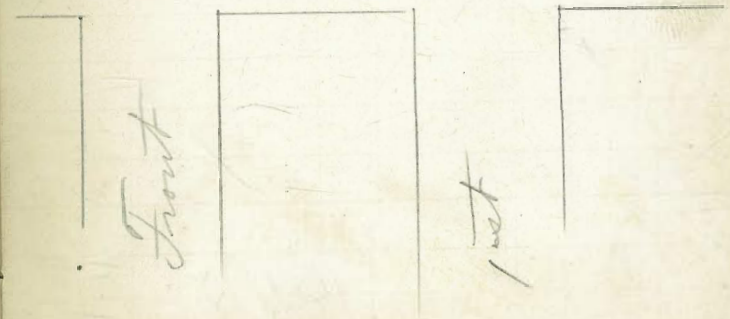
340
73
417

9

Mrs Knapp Aug 1-96
Survey of Lot F - S 1/2 Lot G
Bks 238 Horton



Escape



68.12	BM
<u>1.68</u>	
69.77	69.77
<u>68-</u>	64.25
4.77	5.52

65.00	66.80
-------	-------

C T

	65.00	66.00
	64.25-	
	63.50	
32	62.75-	
	62.00	
	61.25-	
	60.50	61.50

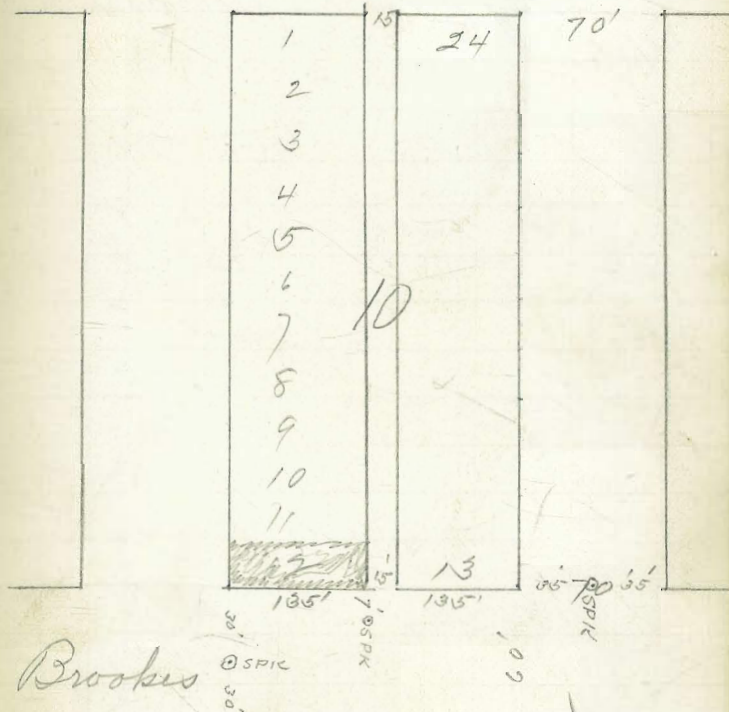
20.

60.00	61.50
-------	-------

9TH

On Luscomb Aug 8-96
 Survey of Lot 12 Block 10
 Brooks add

Thornton



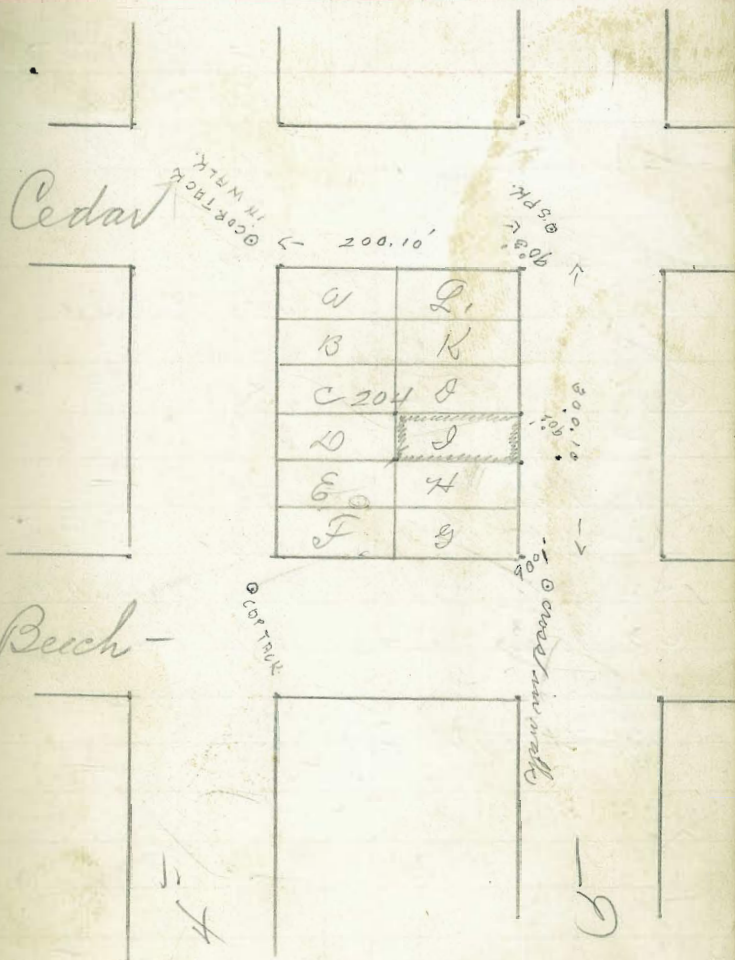
Brooks

Land

add

Mary Brown

Aug 13 96.

Survey of Lot J. Bek 204
Horton

130.83 B.M.
 11.90
 142.73
 181
 140.92
 8.00
 149.02

149.02
 368
 146.34 B.M. on Naggle
 Hydrant SW cor 24-8.

D. Care
 E 1/224
 on South

Aug 17-96
 SEC of G. to alley.

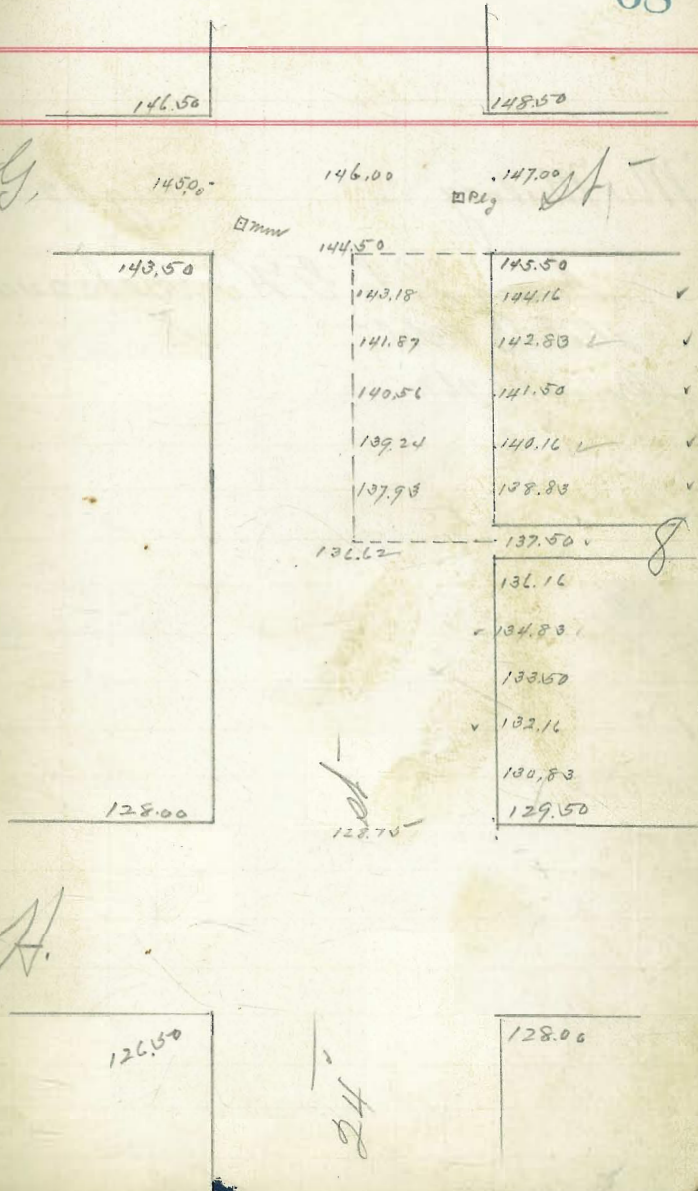
Cross Section

Stat	East	Gutter	Center
	145.6	145.4	144.5
0+0	3.40	3.60	4.50
25-	145.0	144.1	143.1
	4.00	4.90	5.90
50	144.0	143.3	142.0
	5.00	5.70	7.00
75-	142.8	142.1	141.0
	6.70	6.90	8.00
1+00	142.1	141.4	140.3
	6.90	7.60	8.70
25-	140.9	139.9	138.4
	8.10	9.10	10.60
40	139.1	138.4	137.5
	9.90	10.60	11.50
50	138.4	138.2	137.0
	10.40	10.80	12.00
	149.02	149.02	149.02
	145.50	142.83	137.50
	3.52	6.19	8.52
			11.52

Slimy G.

W. line Alley
 Center Alley

G.



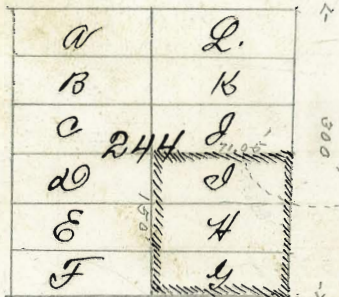
Mr Mulvey

Aug 22nd 96.

Survey Lots G. H. D. Beck 244
Hawthorn's add
Order No 761

Joy

17216¹ st. P.L.C.



Hawthorn's

574

PARK LINE

5800 15 180
 72.6- 17960
 896 90.24
 1421 8936
 71.05- 1793-
 7
 17216

Mr Messig

Aug 26-96

65.933.77

508					
71.01	71.01	71.01	71.01	71.01	71.01
66.50	68.00	70.16	67.87	69.25	
4.51	2.68	.84	3.14	1.76	

70.16 can pay

7.13			
77.29	77.29	77.29	
75.66	1.30		
1.63	75.99		
1.93	40.9		

81.08	81.08	81.08	81.08	81.08	81.08
343	7760	75.66	72.00	70.16	
77.65	35.8	5.42	9.08	10.92	
		6.71	8.78	10.52	
		6.52	.30	40	
		.29			

86-	
183	
2.68	
451	
168	
2.68	
183	
84-	

66.50	72.00
183	7.53
68.33	73.83
183	1.83
70.16	75.66
183	1.84
71.99	77.50

70

75.00

78.00

Beech

74.50

-0.4 77.50

-0.37 76.66

73.83

+0.3 72.00

+0.4 70.16

68.33

64.50

66.50

a	Q
B	K
c	J
D	I
E	H
F	G

Ash

63.50

64.50

70.50

good

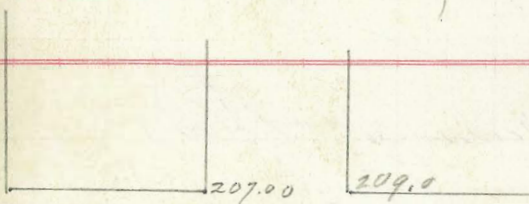
222.59 B.M.

0.54
<u>221.05</u>
11.86
<u>211.27</u>
15.2
<u>212.79</u>

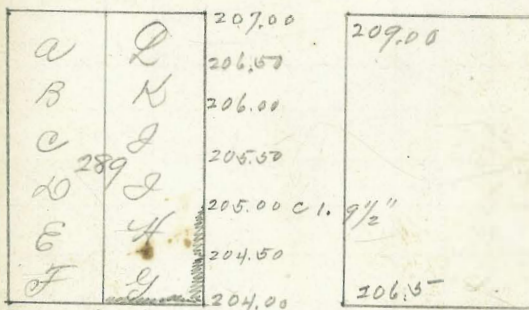
J. a. Allison

212.79	212.79	212.79
<u>204</u>	<u>205</u>	<u>193.00</u>
8.79	7.79	19.79
<u>6.95</u>	<u>6.00</u>	<u>13.23</u>
1.84	1.79	6.56
= 1'10"	= 1.9 1/2"	= 6.6 3/4"

56	79	12
<u>12</u>	<u>158</u>	<u>84</u>
112	79	48
<u>68</u>	<u>9.48</u>	<u>96</u>
6.7		<u>10.08</u>

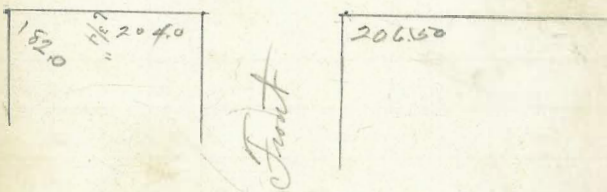


Maple



182.0
193.00 c. 1. 1 1/2"
198.50
204.00
c. 1.84 = 1.15"

Laurel

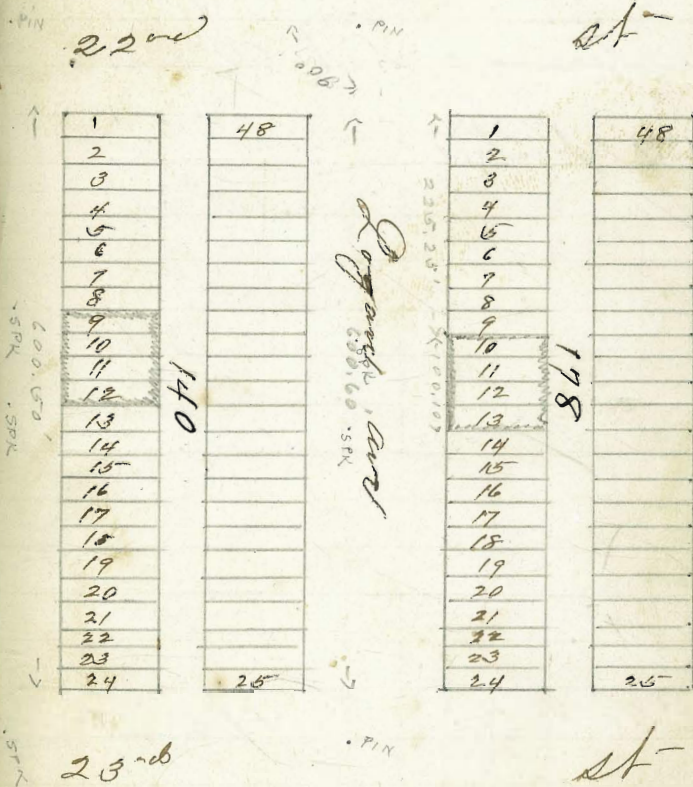


Soda Works (Gardka)

Survey Lots 10-11-12-13 Beks 178

My King

Survey of Lots 9-10-11-12 Beks 140

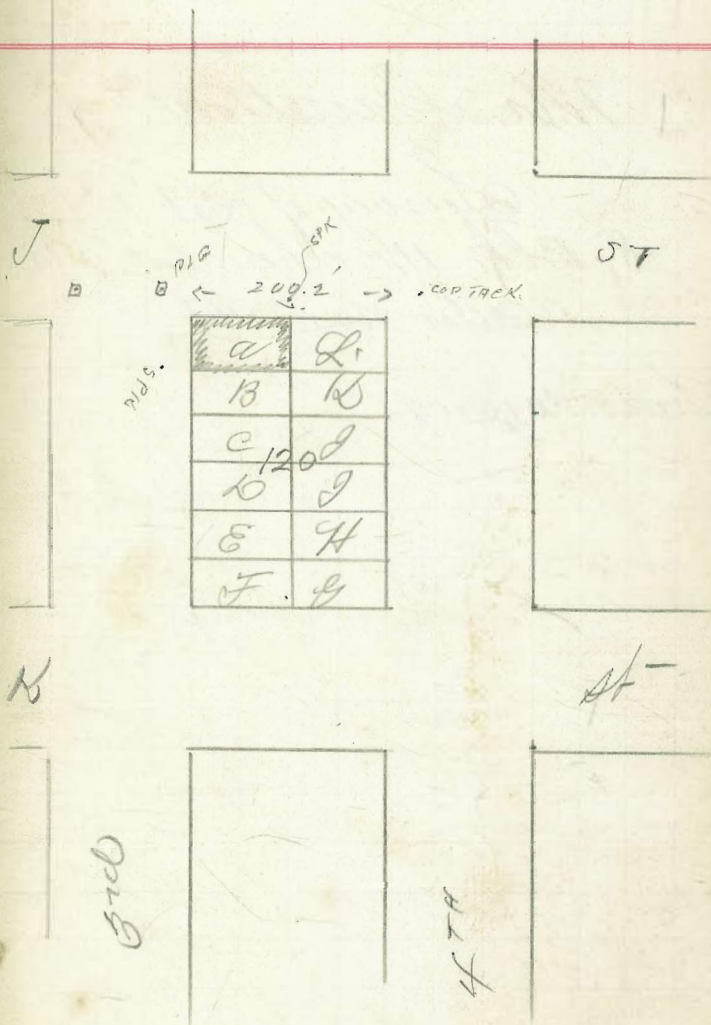


Al Quinn

Aug 31-

Survey of Lot a Bek

120 Feet



Mr. Garretson

Survey of Lot 7, ^{and} S¹/₂
E, Blk. 11, Sherman's add.
Order No. 1047

Order No 1047.

6) 4.7 (8
4.8

40
75
1.2
116.4

6) 5.7 (90
5.4 47
30 142
75
76.42

74

40
75
115

ST

ST

H

Reg-

Reg

ST

1	12
2	11
3	10
4	9
5	8
6	7

394.7
OSP

396.7
OSP

1

PLG

200°

OSP

ST

21.11

22.11

6) 5.7 (90
5.4 47
30 142
75
76.42

W. J. Rount Sept 7

10.60
1080
2.70

184.62 10 m
401
188.63
11.07
177.56
8.22
186.28 186.28 186.28
175.50 177.00 177.00
10.78 9.28 9.28
13.20 8.60 9.40
10.78 6.8
2.42

186.30 186.30 186.30 186.30
180.05 183.10 186.15

6.25 3.20 1.5 186.28
5.80 2.1 0.41 TP
1.45 1.1 11.89

197.70 197.70 197.70 197.70 197.76
186.15 189.20 192.25 195.30 192
1.10 8.50 5.45 2.40 196.84
18 7.00 4.00 0.9 8.70
1.55 1.50 1.50 1.5 205.64
11.05 8.50 5.45 2.40
11.20 8.40 5.00 2.30
3.5 0.10 4.5 0.10

205.50 205.50 205.50 205.50 205.50 205.50
199.00 199.04 199.76 200.17 200.59 201.00
6.50 6.16 5.74 5.33 4.91 4.50
7.00 5.30 5.40 6.30 6.70
0.5 0.86 1.34 1.00 4.5

205.50 205.50 205.50 205.50 205.50 205.50
202.00 201.02 200.69 200.07 199.44 199.00
3.50 4.18 4.81 5.43 6.06 6.50
4.70 5.1 5.00 7.00 8.50
3 4.0 1.41 1.00

24 TH

-2.40 175.50 175.50 -2.7

↑	-0.1	172.00	177.00	+0.7
	+0.50	200.31	200.81	+1.85
	+1.15	01.831	01.821	+1.80
560	+0.4	51.75	51.781	+1.55
	+0.7	189.20	189.20	27.50
	+0.5	192.25	192.25	+1.50
	+0.7	195.30	195.30	+1.50
↓	-0.5	199.00	199.00	+1.00
	+0.9	199.04	199.44	+1.40
	+0.3	199.76	200.07	+0.4
	-1.0	200.17	200.69	-0.3
	-1.80	200.59	201.32	-25.0
		201.00	202.00	↓

25 TH

201.00 202.00

$$\begin{array}{r} 21.10 \\ 14.5 \\ \hline 6.6 \end{array}$$

$$\begin{array}{r} 16.00 \\ 75 \\ \hline 15.25 \\ 75 \\ \hline 16.50 \end{array}$$

R. Campion
 Grades Lots 6, 7, 8, 9, 10, 11, 12, 13, 14, 15, 16, 17, 18, 19, 20, 21, 22, 23, 24, 25, 26, 27, 28, 29, 30, 31, 32, 33, 34, 35, 36, 37, 38, 39, 40, 41, 42, 43, 44, 45, 46, 47, 48, 49, 50, 51, 52, 53, 54, 55, 56, 57, 58, 59, 60, 61, 62, 63, 64, 65, 66, 67, 68, 69, 70, 71, 72, 73, 74, 75, 76, 77, 78, 79, 80, 81, 82, 83, 84, 85, 86, 87, 88, 89, 90, 91, 92, 93, 94, 95, 96, 97, 98, 99, 100
 Horton

Sept 8 '96

16.88 B.M.

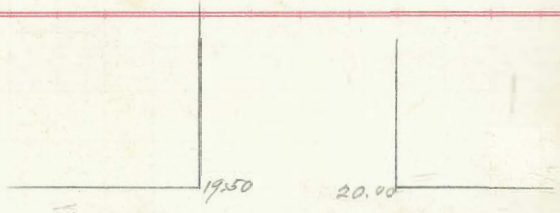
$$\begin{array}{r} 21.10 \\ 15.00 \\ \hline 6.10 \end{array}$$

$$\begin{array}{r} 21.10 \\ 18 \\ \hline 3.10 \end{array}$$

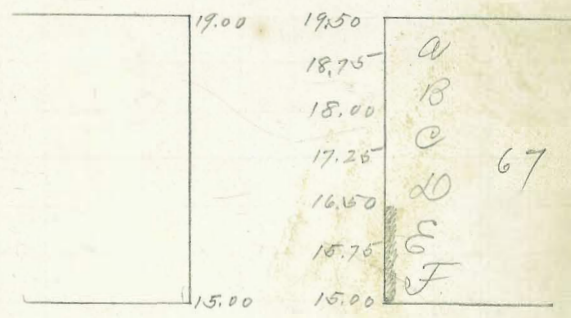
$$\begin{array}{r} 21.10 \\ 19.5 \\ \hline 1.6 \end{array}$$

$$\begin{array}{r} 21.10 \\ 15.75 \\ \hline 5.35 \end{array}$$

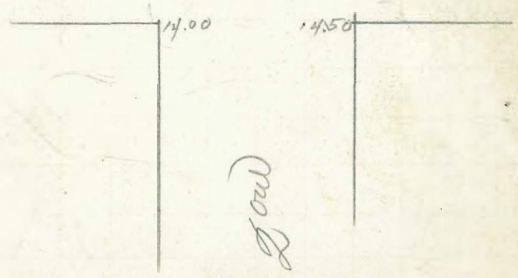
$$\begin{array}{r} 21.10 \\ 16.80 \\ \hline 4.30 \end{array}$$



F



G

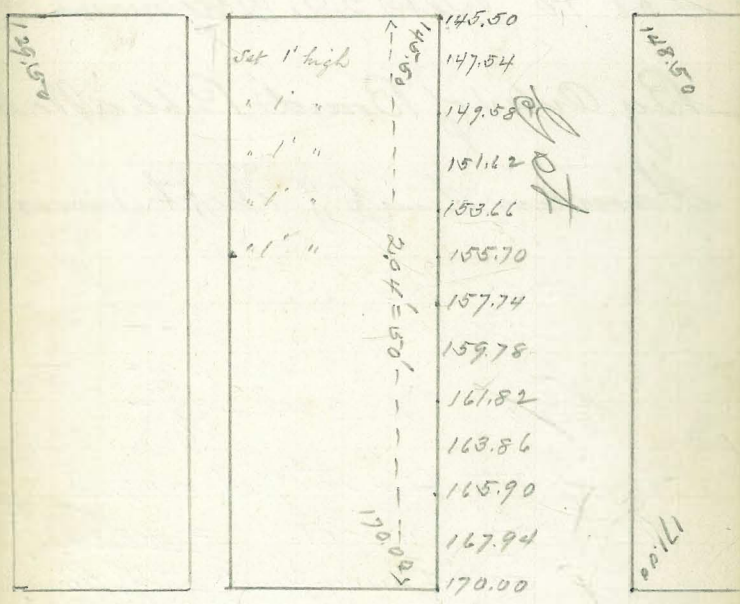


Low

145.34	153.82	153.82	153.82	Hyd Muggle 24" g.
8.48	147.54	149.58	151.62	
153.82	6.28	4.24	2.20	145.34
145.34				
8.32				
152.62	160.84			
8.22	155.70			
160.84	5.14			
153.66				
7.18				

153.82

24TH



25TH

170.00

171.80

Jan 10 - 97

Checking Lateral sewer
Lot 10 Bks 22 Sherman's

By Order of Board Public Works.
Hamilton temp of Supt Sewers

53.31 Bm
8.83

61.64
52.74

8.90

61.64

12.80 Rod on Y-

48.84 Elev of Y-

Elev of bottom sewer at Curb = 49.74

" " " " at Y = 48.84

Fall of sewer from Curb to Y = .90

8.90
3
11.90

12.8
1.7

11.1
8.9
2.2

3.5-
2.2
1.3

78

52.00

54.00

J.

12	52.00	54.00
	52.33	
11	52.67	52.74
10	53.00	
2R 9	53.33	
8	53.67	
7	54.00	56.00

J.

54.00 56.00

18.00

1.2
7.2

1.0
1.2
6.5

11.10
89
3.2

12.80
11.10
1.70

12.80
89
9.679

$$\begin{array}{r} 6 \overline{) 30142} \\ \underline{18} \\ 121 \\ \underline{12} \\ 102 \\ \underline{102} \\ 0 \end{array}$$

$$\begin{array}{r} 16 \\ \underline{76} \\ 76,42 \end{array}$$

$$51.35$$

$$235$$

$$\begin{array}{r} 53.73 \\ \underline{45.60} \\ 8.23 \end{array}$$

$$\begin{array}{r} 53.73 \\ \underline{44.60} \\ 9.23 \end{array}$$

44.5

B

44.5

45.5

44.5

372

4013

32.69

7.44

				NET 12 1/2 6 P
	1.53	101.28		99.75
T.P.	1.11	90.71	11.68	89.60
NW cor 1/4 1/4 Sec 10	7.58			83.02
	7.80	-90.93		
			1.06	89.97
			8	
	3.53	86.66		83.17
			8.81	77.85

11.73

1.47

9.80

84.50

82.50

2.00

101.01

99.32

2.69

40.47

11.43

51.94

0.49

51.41

7.00

52.41

4.15

54.26

72.19

8.34

75.53

11.93

68.60

3.87

69.47

0.13

69.44

69.54

11.82

81.26

0.83

80.43

10.54

91.27

13.84

0.32

90.95

10.20

101.15

T.P. 500 ft to Edge Creek -
 950 " opposite Edge Creek -
 T.P. 1050 connect with old road

Degrees.

39

38

37

36

35

34

33

32

31

30

29

28

27

26

25

24

23

22

21

20

19

18

17

16

15

14

13

12

11

10

9

8

7

6

5

4

3

2

1

0

