

G-91

Street	From	To	
ST.	MAPLE	OLIVE	2
ROVE	SL. BROOKLYN HTS. - 275' 110.		6
OVE	SL. SOUTH PARK - 174' ST.		7
LBRAE	WABASH	Q	8
SORGOPTO			10
	M	WOOLMAN	16
	EL. of 27 <sup>th</sup>	1695' W	22
ELLOGG ST.			24
VRENCE ST.			27
CALL			30
CHOLS			33
EP			36
th	ASH	A	50

# FIELD

RATOBA	QUIZOT - VERNICE	52
ITA BARBARA		54
TICE		53
MPORT		55
ITA MONICA		
PE MAY		
IGHTON		58
FERNANDO		
tecito Way		64

G91



Grade 91

MICROFILMED

APR 7 1965







80' Street

1ST ST.

	E	Curb	1/4	€	1/4	Curb	W
M.L. MAPLE	22625	22600	22540	22500	22410	22400	22425
25' To.	22598	22573	22513	22473	22383	22373	22398
50' "	22570	22545	22485	22445	22355	22345	22370
75' "	22543	22518	22458	22418	22328	22318	22343
100'	22515	22490	22430	22390	22300	22290	22315
125'	22488	22463	22403	22363	22273	22263	22288
135'	22477	22452	22392	22352	22262	22252	22277
145'	22466	22441	22381	22341	22251	22241	22266
150'	22460	22435	22375	22335	22245	22235	22260
158'	22451	22426	22366	22326	22236	22226	22251
159	22450	22425	22365	22325	22235	22225	22250
167'	22442	22417	22357	22317	22227	22217	22242
168	22441	22416	22356	22316	22226	22216	22241
175'	22433	22408	22348	22308	22218	22208	22233
180'	22427	22402	22342	22302	22212	22202	22227
190'	22416	22391	22331	22291	22201	22191	22216
200'	22405	22380	22320	22280	22190	22180	22205
210	22410	22385	22325	22285	22195	22185	22210
220'	22415	22390	22330	22290	22200	22190	22215
225'	22427	22402	22342	22302	22212	22202	22227
235	22432	22407	22347	22307	22217	22207	22232
240	22505	22480	22420	22380	22290	22280	22305
250'	22575	22550	22490	22450	22360	22350	22375
254	22589	22564	22504	22464	22374	22364	22389
275	22750	22725	22665	22625	22535	22525	22550
MUTUALS							
300' To. = S.L. of	22925	22900	22840	22800	22710	22700	22725

262	22659	22634	22574	22534	22444	22434	22459
278	22771	22746	22686	22646	22556	22546	22571
293	22875	22850	22790	22750	22660	22650	22675

Field Book 985

2 2

April, 1917 - See Book 1008, p. 42.

730.03 - Cr. N.E. Nutmeg.

Start grading here

Use grades on p. 60



E Curb 1/4 E 1/4 Curb W

POTMEG ST. INTERSECTION 80' ST.

230.03 - Ct. NE Nutmeg  
 4.29  
 234.32 47  
 228.52 228.20 227.75  
 5.87 0.14 6.57 = 1.8

SoL. POTMEG	229.25	229.00	228.40	228.00	227.10	227.00	227.25
7' P.O.	229.14	229.00	228.49	228.09	227.19	227.00	227.14
S. Curb	229.00	229.00	228.52	228.18	227.18	227.00	227.00
1/4	228.00	228.00				226.00	226.00
	228.35	228.25	228.74	228.34	227.44	226.25	226.85
Center	228.50	228.50	228.90	228.50	227.60	226.50	227.50
1/4	228.40	228.75	229.06	228.66	227.76	226.75	227.40
	228.00	229.00				227.00	227.00
N. Curb	230.00	230.00	229.22	228.82	227.92	228.00	228.00
P.L.	230.25	230.00	229.40	229.00	228.10	228.00	228.25
<hr/>							
P.L. POTMEG	230.25	230.00	229.40	229.00	228.10	228.00	228.25
25' P.O.	230.75	230.50	229.90	229.50	228.60	228.50	228.75
50' "	231.25	231.00	230.40	230.00	229.10	229.00	229.25
75'	231.50	231.25	230.65	230.25	229.15	229.25	229.50
100'	231.75	231.50	230.90	230.50	229.60	229.50	229.75
125'	231.50	231.25	230.65	230.25	229.35	229.25	229.50
150'	231.25	231.00	230.40	230.00	229.10	229.00	229.25
175'	230.75	230.50	229.90	229.37	228.41	228.25	228.50
185'	230.55	230.30	229.70	229.14	228.14	227.95	228.20
200'	230.25	230.00	229.40	228.75	227.72	227.50	227.75
220'	229.25	229.00	228.40	227.80	226.80	226.60	226.85
225'	229.00	228.75	228.15	227.56	226.57	226.38	226.63
2305'	228.75	228.48	227.88	227.30	226.32	226.13	226.38
250'	227.75	227.50	226.90	226.37	225.41	225.25	225.50
275'	226.50	226.25	225.65	225.18	224.25	224.12	224.37
of OLIVE							
301' P. = S.L.	225.25	225.00	224.40	224.00	223.10	223.00	223.25

Use grades on p 60



carb 4 E 14 carb

44



60' Street  
10' Walks  
10' Quarters

GROVE STREET

	W	Curb	1/4	☉	1/4	Curb	E
ML CEDAR	224.50	224.50	223.90	224.12	223.66	224.00	224.25
25' 1/10	224.48	224.23	223.63	223.94	223.39	223.65	223.90
50' "	224.21	223.96	223.36	223.64	223.08	223.32	223.57
75'	223.95	223.70	223.10	223.34	222.76	222.98	223.23
100'	223.68	223.43	222.83	223.04	222.45	222.65	222.90
125	223.42	223.17	222.57	222.74	222.12	222.31	222.56
150	223.15	222.90	222.30	222.44	221.81	221.98	222.23
175	222.89	222.64	222.04	222.14	221.49	221.64	221.89
180 <sup>Park</sup> ML of South	222.80	222.57	221.97	222.06	221.40	221.55	221.80
200	222.63	222.38	221.78	221.84	221.17	221.30	221.55
225	222.36	222.11	221.51	221.54	220.86	220.97	221.22
250	222.10	221.85	221.25	221.24	220.53	220.63	220.88
275	221.83	221.58	220.98	220.94	220.22	220.30	220.55
300	221.57	221.32	220.72	220.64	219.90	219.96	220.21
325	221.31	221.06	220.46	220.34	219.58	219.62	219.87
350	221.04	220.79	220.19	220.04	219.26	219.29	219.54
375	220.78	220.53	219.93	219.74	218.95	218.95	219.20
400	220.51	220.26	219.66	219.44	218.63	218.62	218.87
425	220.25	220.00	219.40	219.14	218.31	218.28	218.53
430 <sup>Lot 30</sup> = ML of	220.18	219.93	219.33	219.06	218.22	218.19	218.44
450	219.99	219.74	219.14	218.84	218.00	217.94	218.19

225.47  
226.47  
227.47  
228.47  
229.47  
230.47  
231.47  
232.47

see next page







80' ST.  
20' Walks  
10' Quarters

GROVE STREET

S.L. of So. PARK

Book 886

to  
H.L. of A ST.

W. Curb 1/4  $\pm$  1/4 Curb E

S.L. of So. Park	2575	2550	2510	2550	2510	2550	2575
20' So.	2590	2565	2525	2557	2510	2550	2575
30' "	2597	2572	2532	2561	2510	2550	2575
45' "	2609	2584	2544	2567	2510	2550	2575
50' "	2618	2588	2548	2569	2510	2550	2575
55' "	2617	2592	2552	2571	2510	2550	2575
670' 5.00 W.							
653' 5" E.	2625	2600	2540	2575	2510	2550	2575

11/22/15  
SMB.



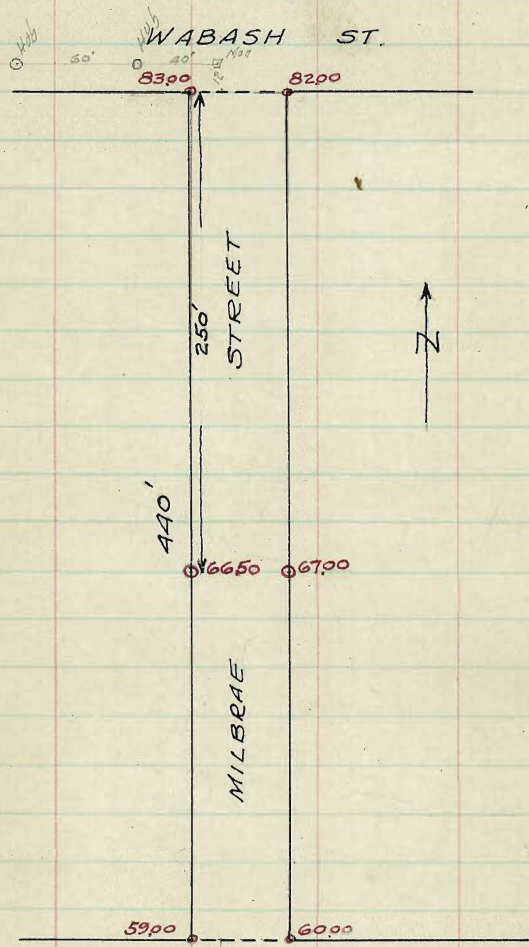




MILBRAE ST.

9

To Mon  
at 57th



Q 38  
Hub B. 40' ST. 60'  
Hub B. 60'

To Mon  
at 57th



SAN GORGONIO ST.

W Curb  $\frac{1}{4}$  E  $\frac{1}{4}$  Curb E

45' N. of QUALT-	236.75	236.50	236.10	236.50	236.10	236.50	236.75
38' "	236.51	236.16	235.86	236.26	235.86	236.26	236.51
30' "	236.25	236.00	235.60	236.00	235.60	236.00	236.25
20' "	235.92	235.67	235.27	235.67	235.27	235.67	235.92

AL. QUALTROUGH	235.25	235.00	234.60	235.00	234.60	235.00	235.25
Curb $\frac{1}{4}$	235.05	234.80	234.40	234.80	234.40	235.00	235.00
street closed 6'	$\frac{1}{4}$	234.90	234.65	234.25	234.65	234.25	234.70
		E	234.75	234.50	234.10	234.50	234.10
street closed 6'	$\frac{1}{4}$	234.60	234.35	233.95	234.35	233.95	234.35
		E	234.60	234.35	233.95	234.35	233.95
Curb $\frac{1}{4}$	234.45	234.20	233.80	234.20	233.80	234.00	234.00
SL. QUALTROUGH	234.25	234.00	233.60	234.00	233.60	234.00	234.25



SAN GORGONIO ST.

	W.	Curb	1/4	1/2	3/4	Curb	E
S.L. QUALTROUGH	234.25	234.00	233.60	234.00	233.60	234.00	234.25
25' So.	231.75	231.50	231.09	231.46	231.03	231.42	231.67
50'	229.25	229.00	228.57	228.92	228.47	228.84	229.09
75	226.75	226.50	226.05	226.38	225.91	226.26	226.51
100	224.25	224.00	223.54	223.83	223.35	223.67	223.92
125	221.75	221.50	221.02	221.30	220.78	221.10	221.35
150	219.25	219.00	218.50	218.76	218.24	218.52	218.77
175	216.75	216.50	215.98	216.22	215.67	215.94	216.19
200	214.25	214.00	213.47	213.67	213.10	213.34	213.59
225	211.75	211.50	210.95	211.13	210.54	210.76	211.01
250	209.25	209.00	208.43	208.59	207.97	208.18	208.43
275	206.75	206.50	205.92	206.04	205.41	205.59	205.84
PERRY ST.							
300' So. = N.L. of	204.25	204.00	203.90	203.50	202.85	203.00	203.25

N.L. PERRY	204.25	204.00	203.70	203.50	202.85	203.00	203.25
Street closed on West							
CB 10'	204.05	203.80	203.70	203.30	202.65	203.00	203.00
1/4 7 1/2'	203.90	203.65	203.05	203.15	202.50	202.75	202.60
1/2 7 1/2'	203.75	203.50	202.90	203.00	202.35	201.50	202.50
3/4 7 1/2'	203.60	203.35	202.75	202.85	202.20	201.25	201.85
CB 10'	203.45	203.20	202.60	202.70	202.05	202.00	202.00
S.L. PERRY	203.25	203.00	202.70	202.50	201.85	202.00	202.25



W. Curb 1/4 E 1/4 Curb E

3L PERRY	20325	20300	20240	20250	20185	20200	20225
25' So.	20217	20192	20134	20176	20082	20100	20125
50' "	20109	20084	20027	20092	19980	20000	20025
75	20001	19976	19920	19938	19878	19900	19925
100	19893	19868	19814	19834	19776	19800	19825
125	19784	19759	19707	19730	19674	19700	19725
150	19675	19650	19600	19625	19572	19600	19625
175	19567	19542	19494	19521	19470	19500	19525
200	19459	19434	19387	19417	19368	19400	19425
225	19351	19326	19280	19313	19266	19300	19325
250	19243	19218	19173	19209	19164	19200	19225
275	19134	19109	19067	19105	19062	19100	19125
of OWENS							
300' So = M.L.	19025	19000	18960	19000	18960	19000	19025

M.L. OWEN	19025	19000	18960	19000	18960	19000	19025
Curb	19005	18980	18940	18980	18940	19000	19000
1/4	18990	18965	18925	18965	18925	18985	18940
E	18975	18950	18910	18950	18910	18950	18950
1/4	18960	18935	18895	18935	18895	18925	18855
6' curb	18945	18920	18880	18920	18880	18900	18900
3L OWEN	18925	18900	18860	18900	18860	18900	18925

Street closed  
the next  
10' 7 1/2 7 1/2 7 1/2 7 1/2 10'



SAN GORGONIO ST.

	W. curb	1/4	€	1/4	curb E		
SLOWEN	189.25	189.00	188.60	189.00	188.60	189.00	189.25
25' So.	187.66	187.41	187.01	187.41	187.01	187.41	187.66
50 "	186.07	185.82	185.42	185.82	185.42	185.82	186.07
75'	184.49	184.24	183.84	184.24	183.84	184.24	184.49
100	182.91	182.66	182.26	182.66	182.26	182.66	182.91
125	181.32	181.07	180.67	181.07	180.67	181.07	181.32
150	179.74	179.49	179.09	179.49	179.09	179.49	179.74
175	178.16	177.91	177.51	177.91	177.51	177.91	178.16
200	176.58	176.33	175.93	176.33	175.93	176.33	176.58
225	175.00	174.75	174.35	174.75	174.35	174.75	175.00
250	173.41	173.16	172.76	173.16	172.76	173.16	173.41
275	171.83	171.58	171.18	171.58	171.18	171.58	171.83
300' So. = P.L.	170.25	170.00	169.60	170.00	169.60	170.00	170.25

P.L. NICHOLS	170.25	170.00	169.60	170.00	169.60	170.00	170.25
cb.	170.05	169.80	169.40	169.80	169.40	169.80	170.00
1/4	169.90	169.65	169.25	169.65	169.25	169.65	169.90
€	169.75	169.50	169.10	169.50	169.10	169.50	169.75
1/4	169.60	169.35	168.95	169.35	168.95	169.35	169.60
cb.	169.45	169.20	168.80	169.20	168.80	169.20	169.45
S.L. NICHOLS	169.25	169.00	168.60	169.00	168.60	169.00	169.25

Street closed  
 on the  
 west



SAN GORGONIO ST

	W	curb	1/4	E	1/4	curb	E
S.L. NICHOLS	169.25	169.00	168.60	169.00	168.60	169.00	169.25
25' 50"	167.66	167.41	167.01	167.41	167.01	167.41	167.66
50' "	166.07	165.82	165.42	165.82	165.42	165.82	166.07
75'	164.49	164.24	163.84	164.24	163.84	164.24	164.49
100	162.91	162.66	162.26	162.66	162.26	162.66	162.91
125	161.32	161.07	160.67	161.07	160.67	161.07	161.32
150	159.74	159.49	159.09	159.49	159.09	159.49	159.74
175	158.16	157.91	157.51	157.91	157.51	157.91	158.16
200	156.58	156.33	155.93	156.33	155.93	156.33	156.58
225	155.00	154.75	154.35	154.75	154.35	154.75	155.00
250	153.41	153.16	152.76	153.16	152.76	153.16	153.41
275	151.83	151.58	151.18	151.58	151.18	151.58	151.83
TL. of McCALL							
300 So. =	150.25	150.00	149.60	150.00	149.60	150.00	150.25

TL. McCALL	150.25	150.00	149.60	150.00	149.60	150.00	150.25
cb.	150.05	149.80	149.40	149.80	149.40	150.00	150.00
1/4	149.90	149.65	149.25	149.65	149.25	149.85	149.40
Center	149.75	149.50	149.10	149.50	149.10	149.50	149.50
1/4	149.60	149.35	148.95	149.35	148.95	149.25	149.85
cb.	149.45	149.20	148.80	149.20	148.80	149.00	148.00
S.L. McCALL	149.25	149.00	148.60	149.00	148.60	149.00	149.25

12/13/15 8:12







60' St.  
10' Walks  
10' Quarters

30th ST.

	W	Curb	1/4	€	1/4	Curb	E.
S.L. M St.	75.25	7500	7400	75.25	75.10	75.50	75.75
15' So.	75.10	7485	7445	75.08	74.94	75.34	75.57
50' So.	74.95	7450	74.10	74.71	74.52	74.92	75.17
100'	74.25	7400	7360	74.17	73.94	74.34	74.59
136'	73.85	73.64			73.92	74.12	
150'	73.75	73.50	73.10	73.62	73.35	73.75	74.00
176'	73.65	73.36			73.59	73.89	
200'	73.15	7300	7260	73.08	72.77	73.17	73.42
250'	72.75	7250	72.10	72.54	72.18	72.58	72.83
M St. 300' S. = M.L. of	72.25	7200	7160	7200	7160	7200	72.25

M.L. of M St.	W	Curb	1/4	€	1/4	Curb	E.
M.L. of M St.	72.25	7200	7160	7200	7160	7200	72.25
Curb	72.00	7200	7100	7100	7100	7200	72.00
1/4	71.00	7100			7100	71.00	
+2.6'	71.60	7160	7160	7160	7160	7160	7160
€	71.67	7167	7167	7167	7167	7167	7167
1/4	72.00	7200	7200	7200	7200	7200	7200
+6.8'	71.60	7160	7160	7160	7160	7160	7160
Curb	71.35	7135	7135	7135	7135	7135	7135
	71.00	7100	7100	7100	7100	7100	7100
	72.00	7200	7100	7100	7200	7200	72.00
S.L. of M St.	72.25	7200	7160	7200	7160	7200	72.25

BOOK 989  
Office Book #9

74.97	75.00	75.05	75.10	75.15	75.20	75.25	75.30	75.35	75.40	75.45	75.50	75.55	75.60	75.65	75.70	75.75	75.80	75.85	75.90	75.95	76.00
74.97	75.00	75.05	75.10	75.15	75.20	75.25	75.30	75.35	75.40	75.45	75.50	75.55	75.60	75.65	75.70	75.75	75.80	75.85	75.90	75.95	76.00

74.97 NW 30th + M St	W 1/4	€	1/4	€	W 1/4	€	N 1/2	€	W 1/4	€	N 1/2	€
74.97 NW 30th + M St	74.97	75.00	75.05	75.10	75.15	75.20	75.25	75.30	75.35	75.40	75.45	75.50

Both gutters on N. N. ground returns are 0.5 high & filled with soft spongy material. Open gutter across N. curb on N. of too high.  
west-off - Moore - 3/24/16







	W	Curb	1/4	1/2	3/4	Curb	E
SL WEBSTER	7125	7100 <sup>.02</sup>	7060 <sup>.34</sup>	7100	7060	7100 <sup>.06</sup>	7125
5' So.	7128	7103	7063	7102	7062	7102	7127
50' So.	7158	7133	7090	7125	7081	7116	7141
100' "	7192	7167	7120	7150	7102	7133	7158
120' "	7218	7191	7150	7175	7122	7150	7175
150' "	7225	7200	7150	7175	7122	7150	7175
180' "	7231	7209	7165	7187	7132	7158	7183
175'	7229	7217	7165	7187	7132	7158	7183
200'	7258	7233	7180	7200	7143	7167	7192
230'	7278	7253	7198	7215	7155	7177	7202
250'	7292	7267	7210	7225	7167	7183	7208
275'	7308	7283	7225	7237	7175	7192	7217
300' So. = M.L.	7325	7300	7240	7250	7185	7200	7225
M.L. of CLAY	7325	7300	7240	7250	7185	7200	7225
Curb	7300	7300	7175	7150	7125	7200	7200
1/4	7200	7200	7175	7150	7125	7150	7150
1/2	7260	7244	7227	7210	7194	7177	7160
3/4	7300	7283	7266	7250	7234	7217	7200
Curb	7260	7243	7226	7210	7194	7177	7160
M.L. of CLAY	7325	7300	7240	7250	7185	7200	7225

7112	7125	7158	7187	7215	7243	7270	7298	7325
4.81	4.89	4.97	5.05	5.13	5.21	5.29	5.37	5.45
4.81	4.89	4.97	5.05	5.13	5.21	5.29	5.37	5.45

7206 1/2" of clay

72	72.47	72.53	72.59	72.65	72.71	72.77	72.83	72.89
4.81	4.89	4.97	5.05	5.13	5.21	5.29	5.37	5.45

72.66	72.72	72.78	72.84	72.90	72.96	73.02	73.08
4.81	4.89	4.97	5.05	5.13	5.21	5.29	5.37

72.55	72.61	72.67	72.73	72.79	72.85	72.91	72.97
4.81	4.89	4.97	5.05	5.13	5.21	5.29	5.37

72.00	72.00	72.00	72.00	72.00	72.00	72.00	72.00
4.81	4.89	4.97	5.05	5.13	5.21	5.29	5.37

curb. Stake states 1/4" stake set 4 feet from curb line

walk + curb checks OK for line + grade

72.00	72.00	72.00	72.00	72.00	72.00	72.00	72.00
4.81	4.89	4.97	5.05	5.13	5.21	5.29	5.37

West-ster. More - 9/24/16















80' ST.  
14' MARKS  
13' QUARTERS

B STREET

BOOK 380

20

	11.	Curb	1/4	€	1/4	Curb	S
E.L. of 29 <sup>th</sup> of Bridge)	19725	19700	19640	19650	19585	19600	19625
85' W. = E. End	19700	19700	19690	19650	19585	19600	19600
E.C.B.	19700 19600	19700 19600	19640	19650	19585	19600 19500	19600 19500
1/4	19660	19600	19690	19650	19585	19500	19560
€	19700	19600	19640	19650	19585	19500	19600
1/4	19660 19600	19600 19600	19640	19650	19585	19500 19500	19560 19500
W.C.B.	19700 19700	19700 19700	19640	19650	19585	19600	19600
W.L. of 29 <sup>th</sup>	19725	19700	19640	19650	19585	19600	19625
W.L. of 29 <sup>th</sup>	19725	19700	19640	19650	19585	19600	19625
9' W.	19727	19702	19692	19652	19587	19602	19627
25' W.	19730	19705	19645	19655	19590	19605	19630
50' "	19734	19709	19649	19659	19594	19609	19634
75'	19738	19713	19653	19663	19598	19613	19638
93'	19741	19716	19656	19666	19601	19616	19641
100'	19743	19718	19658	19668	19603	19618	19643
125'	19748	19723	19663	19673	19608	19623	19648
150'	19752	19727	19667	19677	19612	19627	19652
157'	19753	19728	19668	19678	19613	19628	19653
of Br. 169.5' W. = W. End	19755	19730	19670	19680	19615	19630	19655

12/31/15







50' Street  
12 1/2 Walks  
6 1/4 Quarters

KELLOGG ST. LA PLAYA

	S	Curb	1/4	€	1/4	Curb	N
E.L. San Fernando	80.75	80.50	80.10	80.50	80.10	80.50	80.75
10'	80.65	79.80	79.40	79.81	79.42	79.82	80.67
25 E	79.00	78.75	78.35	78.77	78.39	78.79	79.04
33'	78.44	78.19	77.79	78.22	77.85	78.25	78.50
50 "	77.25	77.00	76.60	77.04	76.68	77.08	77.33
75'	75.50	75.25	74.85	75.31	74.97	75.37	75.62
90'	74.45	74.20	73.80	74.27	73.95	74.35	74.60
100	73.75	73.50	73.10	73.58	73.27	73.67	73.92
111'	72.98	72.73	72.33	72.82	72.52	72.92	73.17
125	72.00	71.75	71.35	71.85	71.56	71.96	72.21
136	71.23	70.98	70.58	71.09	70.81	71.21	71.46
150	70.25	70.00	69.60	70.12	69.85	70.25	70.50
165	69.20	68.95	68.55	69.09	68.82	69.22	69.47
175	68.50	68.25	67.85	68.40	68.14	68.54	68.79
200	66.75	66.50	66.10	66.67	66.44	66.84	67.09
211'	65.98	65.73	65.33	65.91	65.69	66.09	66.34
225	65.00	64.75	64.35	64.94	64.73	65.13	65.38
250	63.25	63.00	62.60	63.21	63.02	63.42	63.67
268	61.99	61.74	61.34	61.96	61.79	62.19	62.44
275	61.50	61.25	60.85	61.48	61.31	61.71	61.96
328 E / 527 E / 110	60.80	60.55	60.15	60.79	60.63	61.03	61.28
300 E = W.L. of	59.75	59.50	59.10	59.75	59.60	60.00	60.25

SAN ELIJO INTERSECTION 50' ST.

W.L. of San Elijo	59.75	59.50	59.10	59.75	59.60	60.00	60.25
W. Curb	59.50	59.50	58.90	59.55	59.40	60.00	60.00
1/4	58.90	58.25	58.75	59.40	59.25	58.75	59.40
€	59.00	58.00	58.60	59.25	59.10	58.50	59.50
1/4	58.35	59.75	58.45	59.10	58.95	58.25	58.85
E. Curb	58.50	58.50	58.30	58.95	58.80	59.00	59.00
E.L. San Elijo	58.75	58.50	58.10	58.75	58.60	59.00	59.25

Book 987 Sr. 45 Hyd. bolt N.E. Kellogg & San Fernando

Pr. 45	80.75	77.33	73.92	70.50	67.75	77.25	73.75
0.28							
Pr. 73 M	1.98	6.40	8.41	12.23	1.98	5.48	8.28
12.47	4.01	4.01	4.01	4.01	4.01	4.01	4.01
70.26 TP	70.25	62.75	62.25	59.75	67.09	63.67	60.25
36	13.48	3.87	7.22	10.87	3.53	4.95	10.57
20.62 M	1.05	41.37	41.7	41.97	41.1	40.6	40.67
Pr. 45	80.50	62.81	62.81	59.25	67.50	63.50	60.25
2.78		5.20		5.07	5.51	4.51	4.01
FS. 23 M	4.73	64.01	64				







50' ST  
12 1/2 Walks  
6 1/4 Quarters

LAWRENCE ST.

	S	Curb	1/4	¢	1/4	Curb	N
E. San Fernando	8825	8809	8760	8825	8810	8850	8875
25' E.	8604	8579	8539	8604	8589	8629	8654
50'	8383	8358	8318	8383	8368	8408	8433
75	8162	8137	8097	8162	8147	8187	8212
100	7941	7916	7876	7941	7926	7966	7991
125	7721	7696	7656	7721	7706	7746	7771
150	7500	7475	7435	7500	7485	7525	7550
175	7279	7254	7214	7279	7264	7304	7329
200	7058	7033	6993	7058	7043	7083	7108
210	6970	6945	6905	6970	6955	6995	7020
225	6837	6812	6772	6837	6822	6862	6887
240	6652	6627	6587	6652	6637	6677	6702
250	6617	6592	6552	6617	6602	6642	6667
261	6520	6495	6455	6520	6505	6545	6570
275	6396	6371	6331	6396	6381	6421	6446
San Elino							
300' E = WL of	6175	6150	6110	6175	6160	6200	6225

SAN ELIJO INTERSECTION 50' ST.

WL of San Elino	6175	6150	6110	6175	6160	6200	6225
Curb	6150	6150	6090	6155	6140	6200	6200
1/4	6050	6050				6100	6100
1/4	6090	6025	6075	6140	6125	6075	6140
¢	6100	6000	6060	6125	6110	6050	6150
1/4	6035	5975	6045	6110	6075	6025	6085
Curb	5950	5950				6000	6000
1/4	6050	6050	6030	6095	6080	6100	6100
EL of San Elino	6075	6050	6010	6075	6060	6100	6125

BOOK 987  
NE BP Lawrence + Rosecrans 35.09

90.07 Spk pole S.W. Lawrence & San Fernando

87	8825	8875	8925	8971	8983	79.41	79.52	79.53	62.7
90.95	8825	8875	8925	8971	8983	79.41	79.52	79.53	62.7
77.97	8825	8875	8925	8971	8983	79.41	79.52	79.53	62.7
70.85	8825	8875	8925	8971	8983	79.41	79.52	79.53	62.7
65.77	8825	8875	8925	8971	8983	79.41	79.52	79.53	62.7
65.92	8825	8875	8925	8971	8983	79.41	79.52	79.53	62.7
11.31	61.00	61.50	62.00	62.50	63.00	63.50	64.00	64.50	65.00
61.00	10.81	10.31	6.39	5.89	1.98	7.48			
79.16	72.31	H.I.	12.21	75.25	79.66	79.16	74.76		
10.06	83.54	83.00	83.04	7.79	3.38	3.88	8.29		
41.22	7.64	3.22	1.18	84.08					
			90.07	91.78	91.58	91.58	91.58		
			67						











N.W. BP McCalla Rosacrans 38.14  
SW nail in Electric pole McCalla San Fernando 104.40  
N.E. Hyd. Pole McCalla San Fernando 104.65

	S	Curb	1/4	±	1/4	Curb	N
EL San Fernando	101.25	101.00	100.85	101.50	101.40	102.00	102.25
11'E	99.89	99.64	99.49	100.14	100.04	100.64	100.89
25'E	98.16	97.91	97.76	98.41	98.31	98.91	99.16
47"	95.44	95.19	95.04	95.69	95.59	96.19	96.44
50"	95.07	94.82	94.67	95.32	95.22	95.82	96.07
60'	93.85	93.60	93.45	94.10	94.00	94.60	94.85
75'	91.99	91.74	91.59	92.24	92.14	92.74	92.99
90'	90.14	89.89	89.74	90.39	90.29	90.89	91.14
100'	88.91	88.66	88.51	89.16	89.06	89.66	89.91
110'	87.68	87.43	87.28	87.93	87.83	88.43	88.68
125'	85.82	85.57	85.42	86.07	85.97	86.57	86.82
135'	84.59	84.34	84.19	84.84	84.74	85.34	85.59
150'	82.74	82.49	82.34	82.99	82.89	83.49	83.74
157'	81.88	81.63	81.48	82.13	82.03	82.63	82.88
175'	79.66	79.41	79.26	79.91	79.81	80.41	80.66
200'	76.58	76.33	76.18	76.83	76.73	77.33	77.58
225'	73.50	73.25	73.10	73.75	73.65	74.25	74.50
250'	70.41	70.16	70.01	70.66	70.56	71.16	71.41
275'	67.33	67.08	66.93	67.58	67.48	68.08	68.33
San Elino 300'E = W.L. of	64.25	64.00	63.85	64.50	64.40	65.00	65.25

104.65	102.25	86.07	101.25	96.07	70.91	82.74	87.91	103.74
104.86 H.I.	2.81	8.79	3.51	10.79	5.23	10.00	2.83	11.00
112'	+1.7	-0.6	-1.2	-1.1	-1.7	0.0	+0.5	7.74
92.57 TP	77.33	71.41	65.25	76.58	70.41	64.25		
92.57 H.I.	2.47	5.64	1.080	7.43	9.64	15.80		
92.57	7.20	7.9	43.7	7.1	73.2	43.7		
79.27 TP		64.00						
79.27 H.I.	12.70	71.16	64.00	70.16	76.33	130.9	88.66	12.97
64.57 H.I.	76.70	5.64	12.70	6.54	6.37	89.42	0.76	101.63
67.33 TP	65.00					82.49	83.49	89.66
67.33 H.I.	11.70					6.93	6.93	71.97
		6.04				101.00	94.82	95.82
		107.04 H.I.				0.63	6.81	3.81
		2.64						
						10.20		
						5.04		

38.14  
4.27  
+ 2.41  
37.02  
5.41

Note - San Fernando Intersection on page 32

SAN ELINO INTERSECTION 50'ST.

W.L. San Elino	64.25	64.00	63.85	64.50	64.40	65.00	65.25
Curb	64.00	64.00	63.65	64.30	64.20	65.00	65.00
1/4	63.00	63.00				64.00	64.00
1/4	62.40	62.15	63.50	64.15	64.05	62.75	64.40
±	63.50	62.50	63.35	64.00	63.90	63.50	64.50
1/4	62.85	62.25	63.20	63.85	63.75	63.25	63.85
Curb	62.00	62.00				63.00	63.00
EL. San Elino	63.00	63.00	63.05	63.70	63.60	64.00	64.00
10'	63.25	63.00	62.85	63.50	63.40	64.00	64.25



MCCALL STREET

S. Curb 1/4 E 1/4 Curb 1/4

E. EL San Elivo	62.25	6300	62.85	62.50	6340	6400	64.50
12'E	62.23	6198	61.82	62.47	62.36	62.96	63.21
25'E	61.12	6087	60.72	61.34	61.24	61.84	62.07
50'	59.00	5875	58.58	59.20	5907	5967	59.92
75'	56.87	5662	56.44	57.06	5690	5750	57.75
100'	54.75	5450	54.31	54.91	5474	5534	55.59
125'	52.62	5237	52.17	52.76	52.57	53.17	53.42
150'	50.50	5025	50.04	50.62	5040	5100	51.25
175'	48.37	4812	47.90	48.47	4824	4884	49.09
200'	46.25	4600	45.76	46.33	4607	4667	46.92
225'	44.12	4387	43.63	44.18	4390	4450	44.75
250'	42.00	4175	41.49	42.04	4173	4233	42.58
275'	39.87	3962	39.36	39.89	39.57	4017	40.42
Rosecrans	38.74	38.24	37.56	38.07	37.74	38.34	38.57
300'E = W.L. of	37.75	37.50	37.12	37.75	37.40	38.00	38.25

ROSECRANS ST. IS graded

E.L. Rosecrans	36.75	3650	36.10	36.75	3660	3700	37.25
25'E	34.21	3404	33.64	34.25	3406	3446	34.71
50'	31.83	3158	31.18	31.75	31.52	31.92	32.17
75'	29.37	2912	28.72	29.25	2898	2938	29.63
100'	26.91	2666	26.26	26.75	2644	2684	27.09
125'	24.45	2420	23.80	24.25	2390	2430	24.55
150'	21.98	2173	21.33	21.75	2137	2177	22.02
175'	19.52	1927	18.87	19.25	1883	1923	19.48
200'	17.06	1681	16.41	16.75	1629	1669	16.94
225'	14.60	1435	13.95	14.25	1375	1415	14.40
250'	12.13	1188	1148	11.75	1121	1161	11.86
275'	9.67	942	9.02	9.25	8.68	9.08	9.33
300'	7.21	696	6.56	6.75	6.14	6.54	6.79
325' = W.L. of	4.75	450	4.10	4.25	3.60	4.00	4.25

33.7	2.81	28.4	19.0	10.0	9.1
4.4	7.6	14.5	19.4	11.0	16.9
2.7	6.5	9.7	12.6	8.2	9.3
12.45	43.7	4.7	16.8	47.8	47.6
25.78 TP	6.42	2.92	55.57	16.75	57.00
13.22 TP	3.25	7.58	11.91	4.25	8.00
13.33 TP	3.1	2.58	12.7	4.37	8.8
13.33 TP	0.47	0.4	0.6	-0.1	-0.3
13.33 TP	50.5	46.25	47.00	51.15	49.2
13.33 TP	4.00	5.25	12.68	3.25	4.58
13.33 TP	4.90	7.05	15.2	4.20	7.8
13.33 TP	-0.9	-0.6	40.50	-0.8	-0.2
13.33 TP	3.17	31.83	22.91	22.17	27.09
13.33 TP	38.11	9.90	14.52	9.56	14.64
13.33 TP	10.47	13.5	8.3	14.64	17
13.33 TP	-0.6	41.1	4.1	4.2	4.5
13.33 TP	11.86	21.88	12.04	12.20	7.21
13.33 TP	16.98	6.88	11.75	16.64	4.75
13.33 TP	10.0	7.2	7.26	9.00	11.45
13.33 TP	4.73	46.8	44.4	43.6	4.7
13.33 TP	12.9	7.3	4.4	43.6	-0.7
13.33 TP	2.75	4.21	6.79	3.6	4.02
13.33 TP	0.29	11.95	9.41	4.02	4.7
13.33 TP	12.84	11.8	-2.4	36.80	4.46
13.33 TP	15.90	3.9	37.29	3.22	36.75
13.33 TP	10.42	16	8.5	3.22	41.24
13.33 TP	12.14	34.44	26.84	3.02	38.31
13.33 TP	38.14	26.84	4.8	3.02	2.93
13.33 TP	30.28	76.5	42.5	6.26	38.81
13.33 TP	36.50	80.75	80.75	5.76	2.48
13.33 TP	4.74	3.06	13.7	38.00	3.98
13.33 TP	3.02	6.80	2.0	32.46	37.26
13.33 TP	7.76	18.7	27.40	34.67	34.17
13.33 TP	9.85	18	9.85	30.56	5.68
13.33 TP	7.865	49.25	9.85	2.79	3.09
13.33 TP	33.42	83.65	93.576	27	34.66
13.33 TP	37	150	34.52	34.67	3.26
13.33 TP	38.15	376	36.15	34.47	34.82
13.33 TP	38.45	37	36.15	34.47	34.23
13.33 TP	33.11	9.85	16.8	33.11	38.14
13.33 TP	33.11	17	34.52	1.71	0.81
13.33 TP	33.11	68.95	34.52	34.52	38.93
13.33 TP	33.11	48.5	34.23	34.52	35.38
13.33 TP	33.11	16.745	8	34.52	35.57
13.33 TP	33.60	50.31	38.82	8	41.76
13.33 TP	6.28	28.54	11.49	9.5	46.00
13.33 TP	70.38	38.79	11.49	8.57	4.32
13.33 TP	3.16	867	46.67	4.25	11.87
13.33 TP	37.22	4.5	3.62	7.65	62.20
13.33 TP	13.07	4.5	3.62	5.00	5.95
13.33 TP	50.82	43.35	63.98	11.20	5.67
13.33 TP	42.33	78.03	7.98	6.81	2.33
13.33 TP	7.99	823.65	3.62	8.96	7.70
13.33 TP	3.66	34.38	37.0	31.92	26.80
13.33 TP	38.14	36.04	37.0	7.03	12.11
13.33 TP	41.20	5.16	4.20	0.59	2.177
13.33 TP	38.80	33.98	13.02	27.23	5.48
13.33 TP	47.0	7.22	14.23	21.73	16.81
13.33 TP	4.70	0.14	0.14	5.52	10.44
13.33 TP	5.64	12.37	11.88	12.37	6.54
13.33 TP	5.64	11.61	2.76	6.96	4.50
13.33 TP	5.64	11.61	2.76	7.83	7.41
13.33 TP	5.64	11.61	2.76	9.87	4.00
13.33 TP	5.64	11.61	2.76	10.37	10.37



MCCALL STREET.

	S	Curb	1/4	ϕ	1/4	Curb	π
W.L. San Antonio	475	450	410	425	360	400	425
Curb	450	450	390	405	340	400	400
1/4	3.50	3.50				3.00	3.00
	3.90	3.25	3.75	3.90	3.25	2.75	3.75
Center	400	300	360	375	310	250	350
1/4	3.25	2.75	3.45	360	2.95	2.25	3.25
Curb	2.50	2.50				2.00	2.00
	3.50	3.50	3.30	3.45	2.80	3.00	3.00
EL. San Antonio	3.75	3.50	3.10	3.25	2.60	3.00	3.25
EL. San Antonio	3.75	3.50	3.10	3.25	2.60	3.00	3.25
25' E.	2.86	2.61	2.21	2.44	1.88	2.18	2.53
50' "	1.97	1.72	1.32	1.64	1.16	1.56	1.81
70' "	1.25	1.00	0.60	1.00	0.60	1.00	1.25

SAN FERNANDO INTERSECTION 50' ST.

W.L. San Fern	103.25	103.00	102.85	103.50	103.40	104.00	104.25
Cb.	103.00	103.00	102.45	103.10	103.00	104.00	104.00
1/4	102.40	101.50	102.15	102.80	102.70	102.50	103.40
Center	102.00	101.00	101.85	102.50	102.40	102.00	103.00
1/4	101.10	100.50	101.55	102.20	102.10	101.50	102.10
cb	100.00	100.00				101.00	101.00
	101.00	101.00	101.25	101.90	101.80	102.00	102.00
EL. San Fern	101.25	101.00	100.85	101.50	101.40	102.00	102.25

38.13 H.I.	17.06	4.75
12.70 S.P.	8.84	9.09
25.43		
0.47	11.56	8.52
25.90 H.I.	1.98	5.32
12.45	4.25	
13.45 S.P.	9.59	3.00
0.39		
13.84 H.I.	14.37	10.87
12.13	3.00	
1.71	11.37	

B.M. 1/4 in front of W. San Antonio



NICHOLS STREET

S Curb 1/4  $\text{\textcircled{E}}$  1/4 Curb N

EL. San Fernando 120.25 120.00 119.85 120.50 120.40 121.00 121.25

25'E

50''

75'

100

125

150

175

200

225

250

275

San ELIJO  
300'E. = W.L. of 74.25 • 74.00 73.85 74.50 74.40 75.00 75.25

SAN ELIJO INTERSECTION 50ft.

W.L. of SAN ELIJO 74.25 74.00 73.85 74.50 74.40 75.00 75.25

Curb 10' 74.00 74.00 73.65 74.30 74.10 75.00 75.00

73.00 73.00 74.00 74.00

1/4 7 1/2' 73.40 72.75 73.50 74.15 74.05 73.75 74.10

$\text{\textcircled{E}}$  7 1/2' 73.50 72.50 73.35 74.00 73.90 73.50 74.50

1/4 7 1/2' 72.85 72.25 73.20 73.85 73.75 73.25 73.85

72.00 72.00 73.00 73.00

Curb 10' 73.00 73.00 73.05 73.70 73.60 74.00 74.00

EL. of SAN ELIJO 73.25 73.00 72.85 73.50 73.40 74.00 74.25

*San Elijo and Nichols*



NICHOLS STREET

35



50' Street  
12 1/2' Walks.

OWEN STREET

For SAN FERNANDO  
Intersection, see p38

BOOK 991

	S.	Curb	1/4	⊕	1/4	Curb	N.
EL SAN FERNANDO	13025	13000	12985	13050	13070	13100	13125
25'E.	12741	12716	12701	12766	12786	12816	12841
50'	12458	12433	12418	12483	12503	12533	12558
75'	12175	12150	12135	12200	12220	12250	12275
100	11891	11866	11851	11916	11936	11966	11991
125	11608	11583	11568	11633	11653	11683	11708
150	11325	11300	11285	11350	11370	11400	11425
175	11041	11016	11001	11066	11086	11116	11141
200	10758	10733	10718	10783	10803	10833	10858
225	10475	10450	10435	10500	10520	10550	10575
250	10395	10370	10355	10420	10440	10470	10495
275	10195	10167	10152	10217	10237	10267	10292
300	9908	9883	9868	9933	9953	9983	10008
ELIJO 300'E=WLSan	9625	9600	9585	9650	9670	9700	9725

SAN ELIJO INTERSECTION 50 ft. St.

WLSAN ELIJO	9625	9600	9585	9650	9670	9700	9725
Curb	9600	9600	9565	9630	9650	9700	9700
1/4	9570	9575	9550	9615	9635	9675	9690
⊕	9550	9550	9535	9600	9590	9550	9650
1/4	9485	9485	9520	9585	9575	9525	9585
Curb	9400	9400	9505	9570	9560	9500	9500
EL SAN ELIJO	9525	9500	9485	9550	9570	9600	9625

See page 39







OWEN STREET

SAN ANTONIO STREET INTERSECTION

	S	Curb	1/4	1/2	3/4	Curb	T
W. SAN ANTONIO	1125	1100	1060	1100	1060	1100	1125
Curb	1100	1100	1040	1080	1040	1100	1100
1/4	1090	1090	1025	1065	1025	1090	1090
1/2	1050	950	1010	1050	1010	950	1050
3/4	985	925	995	1035	995	925	985
Curb	1000	1000	980	1020	980	1000	1000
EL. SAN ANTONIO	1025	1000	960	1000	960	1000	1025

EL. SAN ANT.	1025	1000	960	1000	960	1000	1025
20' E.	785	760	720	760	720	760	785
25' "	725	700	660	700	660	700	725
45' "	485	460	420	460	420	460	485
Starting Line 25' at SPL							
56' at T.P.L.	725	694	522	514	426	424	353

INTERSECTION AT SAN FERNANDO ST. 50' ST.

W. San Fernando	13125	13100	13085	13150	13140	13200	13225
Curb	13100	13100	13065	13130	13120	13200	13200
1/4	13090	12975	13050	13115	13105	13075	13140
1/2	13050	12950	13035	13100	13090	13050	13150
3/4	12985	12925	13020	13085	13075	13025	13085
Curb	13000	13000	13005	13070	13060	13100	13100
EL. San Fernando	13025	13000	12985	13050	13040	13100	13125

$$\begin{array}{r} 7.2 \\ 5.7 \\ +2.0 \\ \hline 14.9 \end{array}$$

$$\begin{array}{r} 5.7 \\ 9.5 \\ -4.1 \\ \hline 11.1 \end{array}$$

$$\begin{array}{r} 6.0 \\ 6.0 \\ +2.0 \\ \hline 14.0 \end{array}$$

15.95 Hgt vs 'A' W.L. Dixon of San Antonio  
 12.2  
 17.17 Hgt. 6.04 4.24  
 11.00 11.13 12.93  
 6.17



50' ST.  
12 1/2' Walks  
6 1/4' Quarters

OWEN STREET

	S.	Curb	1/4	⊕	1/4	Curb	N
W.L. San Fernando	131.25	131.00	130.85	131.50	131.40	132.00	132.25
Curb 10'	131.00	131.00	130.95	131.10	131.00	132.00	132.00
1/4 7 1/2'	130.90	130.90				131.00	131.00
1/4 7 1/2'	130.40	129.50	130.15	130.80	130.70	130.50	131.40
Center 7 1/2'	130.00	129.00	129.85	130.50	130.40	130.00	131.00
1/4 7 1/2'	129.10	128.50	129.55	130.20	130.10	129.50	130.10
Curb 7 1/2'	128.00	128.00				129.00	129.00
1/4 7 1/2'	129.00	129.00	129.25	129.90	129.80	130.00	130.00
EL. San Fernando	129.25	129.00	128.85	129.50	129.40	130.00	130.25
EL. San Fern.	129.25	129.00	128.85	129.50	129.40	130.00	130.25
25' E	126.00	125.75	125.60	126.25	126.15	126.75	127.00
50' "	122.75	122.50	122.35	123.00	122.90	123.50	123.75
75'	119.50	119.25	119.10	119.75	119.65	120.25	120.50
100	116.25	116.00	115.85	116.50	116.40	117.00	117.25
125	113.00	112.75	112.60	113.25	113.15	113.75	114.00
150	109.75	109.50	109.35	110.00	109.90	110.50	110.75
175	106.50	106.25	106.10	106.75	106.65	107.25	107.50
200	103.25	103.00	102.85	103.50	103.40	104.00	104.25
225	100.00	99.75	99.60	100.25	100.15	100.75	101.00
232	99.09	98.84	98.69	99.34	99.24	99.84	100.09
250	96.75	96.50	96.35	97.00	96.90	97.50	97.75
275	93.50	93.25	93.10	93.75	93.65	94.25	94.50
Sup El. 110 300 E = W.L. of	90.25	90.00	89.85	90.50	90.40	91.00	91.25

Book 991  
SE. Rosecrans + Owen BP 48.07  
Mr. Hub Owen + San Fernando 130.97

109.55 H	5.7	3.9	4.6	5.1	0.8	7.8	9.5
31							
119.24 TP	103.2	105.7	105.9	106.2	108.8	114.6	112.9
1377	+12.7	+7.45	+8.5	+3.0	-0.7	+16.7	+10.4
	11.8	5.4	10.3	5.1	5.8	3.8	4.8
122.35 H	11.8	17.0	112.6	117.3	129.0	131.0	130.0
12.11 TP	11.8	17.0	112.6	117.3	129.0	131.0	130.0
12.72	-0.1	-0.2	-4.1	122.7	23.7	30.2	29.0
134.23 H		2.53	2.76	-5.4	+5.3	40.8	40.8
3 H							
130.97	130.97	132.30	132.07				
				0.20	7.35	TP. The hub 25'	
		48.17 BM.		39.82 TP	15.95	TP. The hub 25'	
	33.60	0.03					
	6.78						
	40.38 H.						
	46.10 H.						
	12.65						
	35.42 J.P.						
	0.21						
	35.63 H.						
	12.49						
	23.14 J.P.						
	0.16						
	53.80 K.T.						
	12.62						
	10.68 J.P.						
	0.13						
	10.81 K.T.						
	4.13						
	6.63						
				3.53			
				7.28	6.07	7.25	12.08
				4.21	4.74	3.82	8.50
				6.60			2.36

no. of lines on center San Antonio

8.45 - 4.75 7.25 4.13  
3.53 - 3.53 6.27  
7.79 4.21  
- 8.07 3.53



OWEN STREET

	S	Curb	1/4	1/2	3/4	Curb	W
ELIJO ST.							
W.L. of Jan	90.25	90.00	89.85	90.50	90.40	91.00	91.25
Curb 10'	90.00	90.00	89.45	90.10	90.00	91.00	91.00
1/4 7 1/2'	89.00	89.00			90.00	90.00	
1/4 7 1/2'	89.40	88.50	89.15	89.80	89.70	89.50	90.50
Center 7 1/2'	89.00	88.00	88.85	89.50	89.40	89.00	90.00
1/4 7 1/2'	88.10	87.50	88.55	89.20	89.10	88.50	89.10
Curb 7 1/2'	87.00	87.00				88.00	88.00
ELIJO ST. 10'							
E.L. of Jan	88.25	88.00	87.85	88.50	88.40	89.00	89.25
ELIJO							
E.L. of JAN	88.25	88.00	87.85	88.50	88.40	89.00	89.25
25' E	85.00	84.75	84.60	85.25	85.15	85.75	86.00
50' "	81.75	81.50	81.35	82.00	81.90	82.50	82.75
75'	78.50	78.25	78.10	78.75	78.65	79.25	79.50
100	75.25	75.00	74.85	75.50	75.40	76.00	76.25
125	72.00	71.75	71.60	72.25	72.15	72.75	73.00
150	68.75	68.50	68.35	69.00	68.90	69.50	69.75
175	65.50	65.25	65.10	65.75	65.65	66.25	66.50
200	62.25	62.00	61.85	62.50	62.40	63.00	63.25
225	59.00	58.75	58.60	59.25	59.15	59.75	60.00
250	55.75	55.50	55.35	56.00	55.90	56.50	56.75
275	52.50	52.25	52.10	52.75	52.65	53.25	53.50
ROSECRANS	49.25	49.00	48.85	49.50	49.40	50.00	50.25
300' E = W.L. of	49.25	49.00	48.85	49.50	49.40	50.00	50.25

Continued on p. 37.

48.07. Plg S.E. Rosecrans

51.24							
48.07							
11.23							
59.76 M							
17.88 T.P							
72.73 M	5.50	5.7	5.0	71.7	6.3	11.6	4.9
72.44 T.P	54.16	54.3	55.0	61.5	63.4	61.1	67.8
75.28 M	-1.8	-2.3	-3.2	-0.7	66.7	69.7	76.2
85.17 T.P	12.2	9.4	10.4			-8.6	-8.7
97.32 M	23.9	25.9	27.4	9.5	9.6		
109.53 M	1.2	1.7	1.7	8.3	10.8		
		-2.8	45.7	8.3	10.8		
				-1.0	11.7		
				28.07			
				7.09			
				53.76	H.I.		
				33.25	2.74		
				1.91			







SAN FERNANDO ST.

W Curb 1/4 Center 1/4 Curb E

W	SL. NICHOLS	121.25	121.00	120.40	120.50	119.85	120.00	120.25
	25' So.							
	50' "	118.58	118.33	117.73	117.83	117.18	117.33	117.58
	75'							
	100	115.92	115.67	115.07	115.17	114.52	114.67	114.92
	125							
E	150	113.25	113.00	112.40	112.50	111.85	112.00	112.25
	175							
E	200	110.58	110.33	109.73	109.83	109.18	109.33	109.58
	225							
	250	107.92	107.67	107.07	107.16	106.51	106.66	106.91
	280	106.32	106.07	105.47	105.56	104.91	105.06	105.31
	of McCall							
	300' So. = ML	104.25	104.00	103.40	103.50	102.85	103.00	103.25

SL. McCALL 103.00 101.00

25' So.

30

50' "

75'

100'

125

150

175

200

225

250

275

of LAWRENCE  
300' So. = ML

102.55

100.58

99.17

4833%

96.75

94.34

91.92

89.50

101.00

100.58

98.17

4833%

95.75

93.34

90.92

88.50

50'	10.86	97.60	91.92	94.34	107.68	13.11 on Hyde N.E. Cor	42
75'	97.86 MI	10.36	7.92	5.52	San Fernando & McCall		
100'	99.07 TP	94.24	96.75	99.17	102.57	102.57	102.00
125'	103.00	10.56	8.15	5.73	9.32	2.35	1.70
150'	104.68	20.30	27.7	104.00	124.09 Top brick wall S.W. Cor Nichols		
175'	104.68	5.13	104.38	7.92			
200'	104.68	9.27	124.09	103.00	103.00	103.00	103.00
225'	104.68	113.75 MI	124.09	6.01	6.01	6.01	6.01
250'	104.68	113.75 TP	124.09	104.68	104.68	104.68	104.68
275'	104.68	125.65 MI	124.09	2.68	2.68	2.68	2.68
300'	104.68	125.65 TP	124.09	107.36	107.36	107.36	107.36



SAN FERNANDO ST.

W Curb 1/4 Center 1/4 Curb E

WL	SL LAWRENCE	89.00		88.00
	25' So.			
	50' "	87.67		
	75'			
	100	86.33		
	125			
ELS	150	85.00		
	175			
EL	200	83.67		
	225			
	250	82.33		
	275			
	KELLOGG ST.			
	300' So. = J.L.	81.00		80.50
	SL KELLOGG	81.00		80.50
	25' So.			
	50' "	81.33		
	75'			
	100	81.67		
WLS	125			
	150	82.00		
	175			
	200	82.33		
	225			
	250	82.67		
ELS	275			
	of JENKINS			
	300' So. = J.L.	83.00		82.50

86.16 MI    81.00    81.33    81.67    82.00    82.33    82.67  
 5.16    4.83    4.49    4.15    3.83  
 82.33    82.67    83.00    82.45 HHT Holtz NE Kellogg San F.  
 82.07 MI    5.40    5.07    10.07. 5pk SW Lawrence & San Fernando  
 82.45    81.00    82.33    83.67    85.00    86.33    87.67    89.00  
 7.73    9.23    7.90    6.56    5.23    3.90    2.56    1.23  
 90.23 MI    0.16  
 89.00    90.07.



SAN FERNANDO ST.

W Curb 1/4 Center 1/4 Curb E

W L. L. JENKINS 8300 8250

Curb

1/4

Center

1/4

Curb

E S. L. JENKINS 8350 8300

E S. L. JENKINS 8350 8300

25' 50.

50' " 84.50

68' " on West. 81.50 8380

Curb figures 8964 on west.

Jenkins Street closed on West

8200 W 4.57 8250 3.57 8300 3.57 8350 3.57



SAN FERNANDO ST.

W Curb 1/4 Center 1/4 Curb E

W	S.L. PERRY	16225	16100	16140	16150	16085	16100	16125
	25'50"							
	50'	15725	15700	15640	15642	15573	15584	15609
	75							
	100	15225	15200	15140	15133	15060	15067	15092
	125							
EL	150	14725	14700	14640	14626	14548	14551	14576
	175							
E	200	14225	14200	14140	14117	14036	14034	14059
	225							
	250	13725	13700	13640	13608	13522	13517	13542
	275							
W	of OWEN							
	300' So. = M.L.	13225	13200	13140	13100	13010	13000	13025

132.22 S.W. Spk pole Owen & Son Fernando.  
 165.67 Nail in fence post S.L. Perry & San Fernando  
 103.92 M 182.00 37.45 42.44 47.33 52.22 56.71 142.00  
 12.80 12.80 7.85 2.36 10.12 6.23 6.74 8.43  
 144.80 M 326  
 140.68 M 165.07  
 157.77  
 157.43 M  
 156.62 M  
 145.43 M

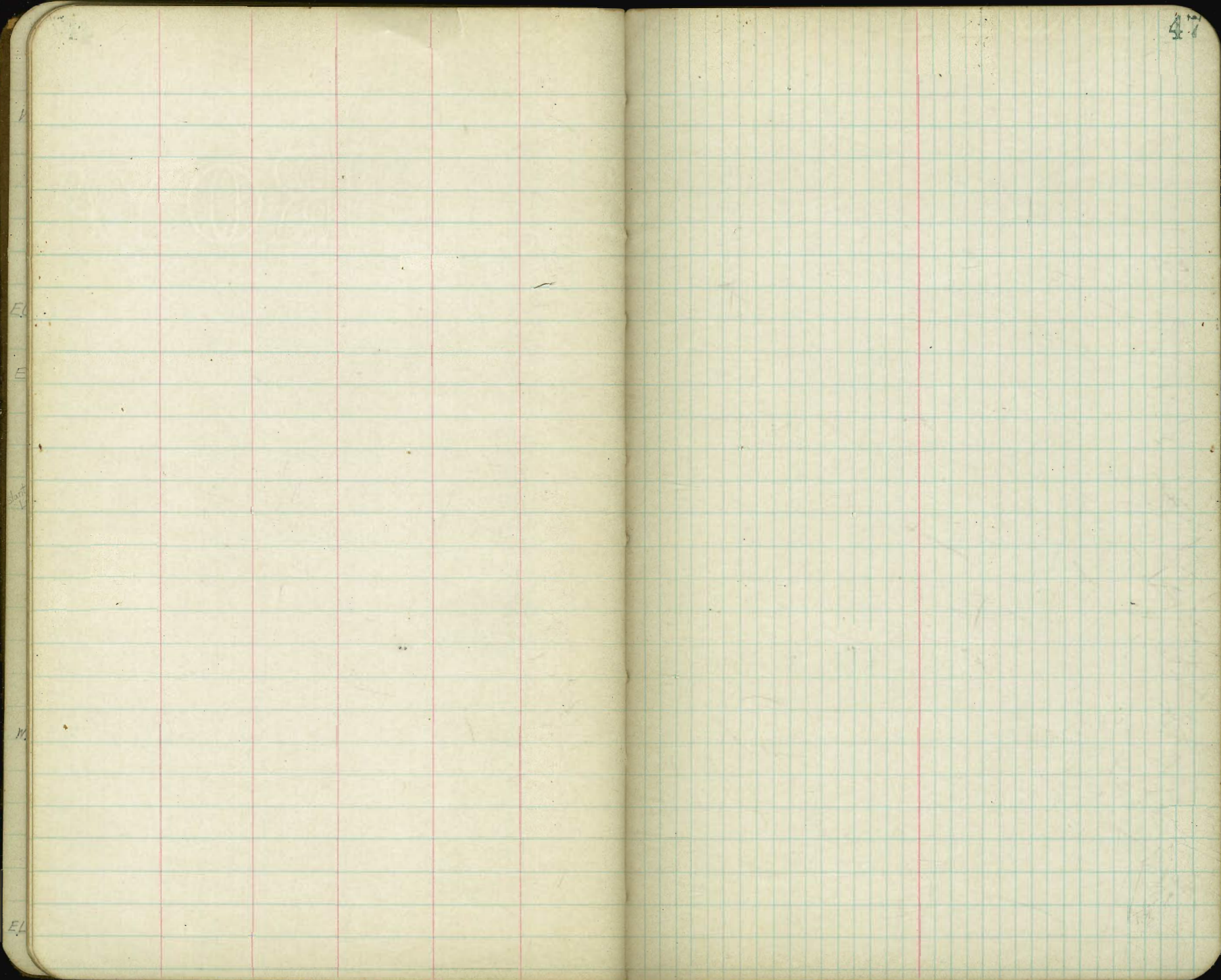
ML

EL









V

E

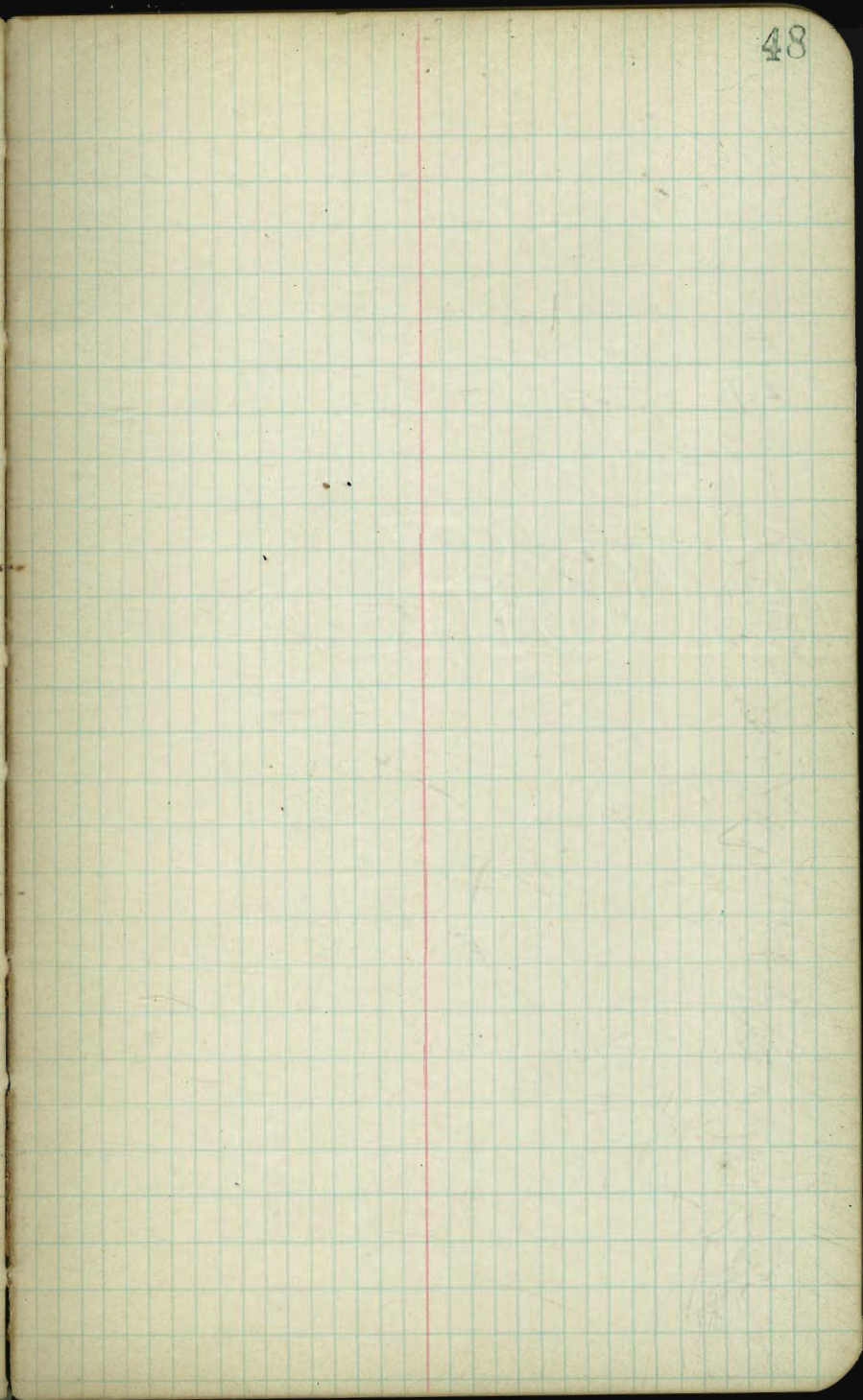
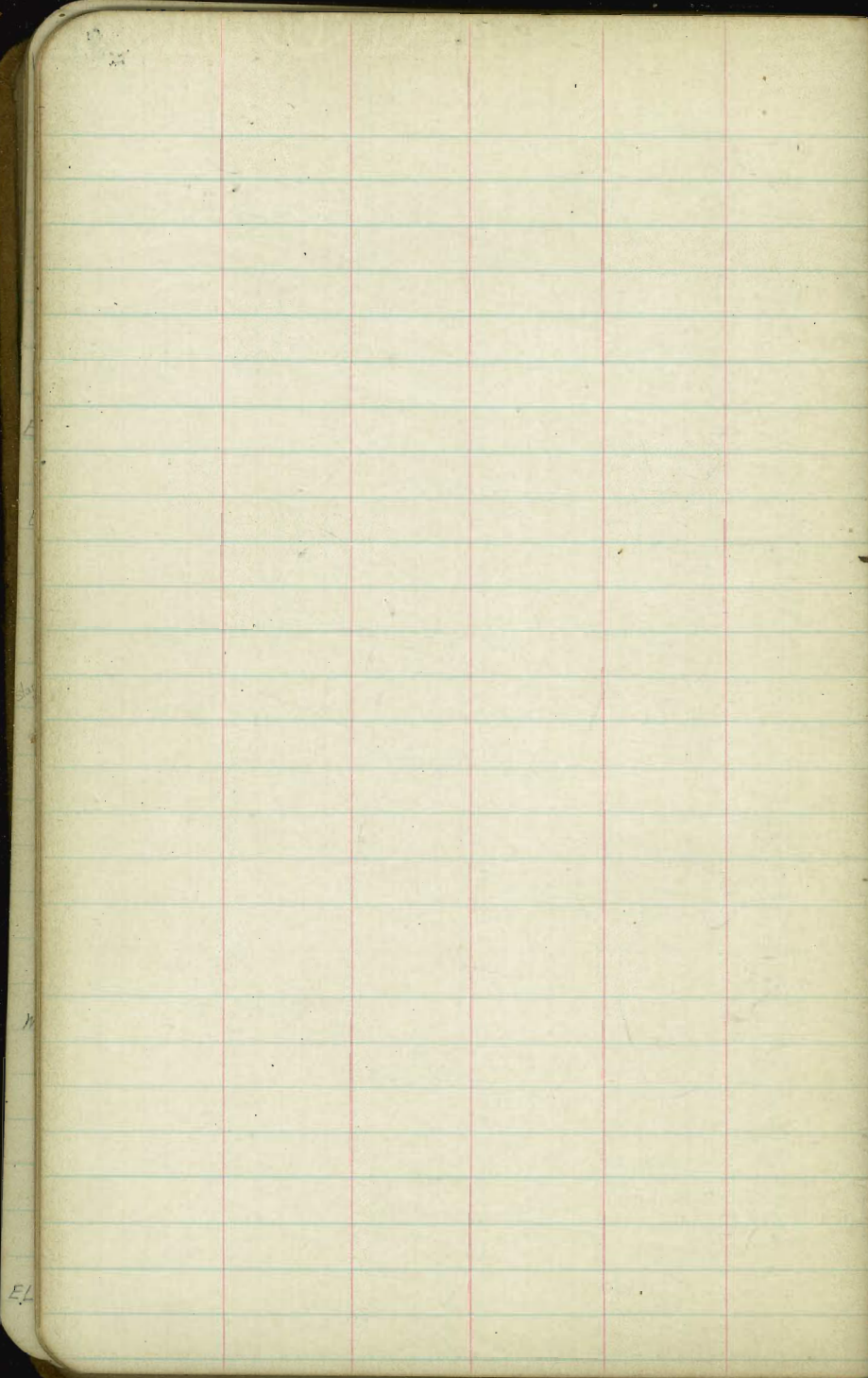
E

M

M

EL











80' ST.  
20' Walks  
10' Quarters

29<sup>TH</sup> ST.

BOOK 989  
" 917

	W.	Curb	1/4	€	1/4	Curb	E
SLASH	203.25	203.00	202.60	203.00	202.60	203.00	203.25
25' 30	202.38	202.13	201.71	202.09	201.68	202.06	202.31
37'	201.96	201.71	201.28	201.66	201.24	201.61	201.86
50'	201.51	201.26	200.82	201.19	200.76	201.12	201.37
60'	201.16	200.91	200.46	200.82	200.40	200.74	200.99
74	200.67	200.42	199.96	200.32	199.88	200.22	200.77
85	200.29	200.04	199.57	199.92	199.48	199.81	200.06
100	199.77	199.52	199.05	199.38	198.92	199.25	199.50
115	199.25	199.00	198.52	198.83	198.37	198.67	198.92
123	198.77	198.52	198.04	198.34	197.88	198.17	198.42
136	198.25	198.00	197.52	197.82	197.36	197.65	197.90
145	198.24	197.96	197.46	197.76	197.30	197.59	197.84
150	198.03	197.78	197.27	197.58	197.12	197.41	197.66
157	197.77	197.50	197.02	197.30	196.82	197.09	197.34
160	197.67	197.42	196.91	197.20	196.71	196.98	197.23
165	197.49	197.24	196.73	197.02	196.52	196.80	197.05
180	196.97	196.72	196.20	196.48	195.99	196.24	196.49
195	196.46	196.21	195.67	195.94	195.43	195.68	195.93
200	196.29	196.04	195.50	195.77	195.24	195.50	195.75
210	195.94	195.69	195.14	195.41	194.87	195.13	195.38
220	195.59	195.34	194.79	195.04	194.51	194.75	195.00
225	195.41	195.16	194.61	194.86	194.33	194.57	194.82
240	194.90	194.65	194.08	194.33	193.78	194.01	194.26
245	194.73	194.48	193.90	194.15	193.59	193.82	194.07
250	194.55	194.30	193.73	193.96	193.40	193.63	193.88
260	194.20	193.95	193.37	193.60	193.04	193.26	193.51
265	194.03	193.78	193.20	193.42	192.86	193.07	193.32
274	193.71	193.46	192.88	193.09	192.53	192.73	192.98
283	193.40	193.15	192.56	192.77	192.21	192.39	192.64
292	193.09	192.84	192.24	192.49	191.85	192.05	192.30
300	192.81	192.56	191.96	192.16	191.55	191.75	192.00

Copied into Book 917  
S/S 9/15/16

added in E 1/2

BR 917

BR 917

BR 917

E



60' ST.  
10' Walks  
10' Quarters

29<sup>th</sup> street

Book 917

	W	Curb	1/4	±	1/4	Curb	E
N. of A ST.	19095	19020	18960	18942	18863	18864	18889
25' Ho.	19112	19087	19027	19020	18947	18954	18979
32' "	19131	19106	19046	19042	18970	18979	19004
40' "	19150	19127	19067	19067	18998	19008	19033
63' "	19214	19189	19129	19139	19074	19090	19115
75'	19246	19221	19161	19177	19115	19133	19158
87.23' on E. ] 88.37' " W.]	19281	19256	19196	19216	19155	19175	19200

copied into Annex



80<sup>th</sup> St.

## SARATOGA AVENUE

Graded by private contract in 1913

52

	S	Curb	1/4	+	1/4	Curb	W
E.L. of Guizot	141.25	141.00	140.90	140.50	139.85	140.00	140.25
240' East	168.85	168.60	168.00	168.10	167.45	167.60	167.85
260' "	170.95	170.70	170.10	170.21	169.56	169.72	169.91
280'	172.75	172.50	171.90	171.98	171.32	171.47	171.72
300'	174.15	173.90	173.30	173.38	172.72	172.85	173.10
320'	175.15	174.90	174.30	174.38	173.72	173.87	174.12
340'	175.75	175.50	174.90	175.01	174.36	174.52	174.77
360'	176.05	175.80	175.20	175.30	174.65	174.80	175.05
380'	176.18	175.90	175.30	175.40	174.75	174.90	175.15
400'	176.25	176.00	175.40	175.50	174.85	175.00	175.25
600' East? W.L. Santa Barbara	177.25	177.00	176.40	176.50	175.85	176.00	176.25

## SANTA BARBARA INTERSECTION

W.L. Santa B.	177.25	177.00	176.40	176.50	175.85	176.00	176.25
Curb	177.00	177.00 176.00	175.75	175.50	175.25	176.00 175.00	176.00
1/4	176.60	176.44	176.27	176.10	175.93	175.76	175.60
+	177.00	176.84	176.67	176.50	176.33	176.16	176.00
1/4	176.60	176.44	176.27	176.10	175.93	175.76	175.60
Curb	177.00	177.00 176.00	175.75	175.50	175.25	176.00 175.00	176.00
E.L. Santa B.	177.25	177.00	176.40	176.50	175.85	176.00	176.25
E.L. Santa B.	177.25	177.00	176.40	176.50	175.85	176.00	176.25
W.L. Venice	180.25	180.00	179.40	179.00	178.10	178.00	178.25



60' ST.

## VENICE STREET

	W	Curb	1/4	¢	1/4	Curb	E
SL BRIGHTON	151.25	151.00	150.85	151.50	151.40	152.00	152.25
	154.25	154.00	153.60	154.00	153.60	154.00	154.25
	44.00 on W.						
	43.36 " E						
NL CAPE MAY	155.25	155.00	154.60	155.00	154.60	155.00	155.25
NL CAPE MAY	155.25	155.00	154.60	155.00	154.60	155.00	155.25
cb.	155.00	155.00	154.76	155.16	154.76	155.00	155.00
	154.00	154.00				154.00	154.00
1/4	154.85	154.25	154.93	155.33	154.76	154.25	154.85
¢	155.50	154.50	155.10	155.50	155.10	154.50	155.50
1/4	155.40	154.75	155.27	155.67	155.27	154.75	155.40
	155.00	155.00				155.00	155.00
cb.	156.00	156.00	155.44	155.84	155.44	156.00	156.00
SL CAPE MAY	156.25	156.00	155.60	156.00	155.60	156.00	156.25
SL CAPE MAY	156.25	156.00	155.60	156.00	155.60	156.00	156.25
27.25' So. on West	157.25	157.00	156.40	156.50	155.85	156.00	156.25
				At rt. angles			
NL SARATOGA	178.25	178.00	177.40	177.50	176.85	177.00	177.25
				At rt. angles			
SL "	180.25	180.00	179.40	179.50	178.85	179.00	179.25
				At rt. angles			
SL SARATOGA	180.25	180.00	179.40	179.50	178.85	179.00	179.25
				At rt. angles			
NL SANTA MONICA	200.25	200.00	199.40	199.50	198.85	199.00	199.25
				At rt. angles			
NL SANTA MONICA	200.25	200.00	199.40	199.50	198.85	199.00	199.25
				At rt. angles			
SL "	201.25	201.00	200.60	201.00	200.60	201.00	201.25
1609' N. of NEWPORT on E.						228.70	
NL NEWPORT	230.25	230.00	229.40	229.50	228.85	229.00	229.25



SANTA BARBARA JT

	W	curb	1/4	¢	1/4	curb	E
SL CAPE MAY 15778	15750	15710	15725	15660	15700	15725	
PL SARATOGA 17625	17600	17560	17600	17560	17600	17625	
PL SARATOGA 17625	17600	17560	17600	17560	17600	17625	
E	17650	17550	17610	17650	17610	17550	17650
SL "	17725	17700	17660	17700	17660	17700	17725
SL SARATOGA 17725	17700	17660	17700	17660	17700	17725	
100' 50.	18725	18700	18660	18700	18660	18700	18725
150'	191.16	19091	19051	19095	19060	19100	19125
200'	192.92	19267	19227	19283	19260	19300	19325
PL SANTA MONICA 19425	19400	19385	19450	19440	19500	19525	
PL SANTA MONICA 19425	19400	19385	19450	19440	19500	19525	
E	19400	19416	19403	19450	19467	19484	19500
SL " "	19425	19400	19385	19450	19440	19500	19525
	19425						
SL SANTA MONICA	19400	19385	19450	19440	19500	19525	
PL HEWDORT 19025	19000	19385	19050	19040	19100	19125	



## NEWPORT AVENUE

55

	S	Curb	1/4	+	1/4	Curb	N
E.L. SANTA BARBARA	19125	19100	19060	19100	19060	19100	19125
100' East	20055	20030	19990	20030	19990	20030	20055
120' "	20235	20210	20170	20210	20170	20210	20235
140' "	20385	20360	20320	20360	20320	20360	20385
160' "	20525	20500	20460	20500	20460	20500	20525
180'	20655	20630	20590	20630	20590	20630	20655
W.L. VEHICE	23025	23000	22960	23000	22960	23000	23025



	S	curb	1/4	€	1/4	curb	1/4
EL GUIZOT	14825	14800	14740	14750	14685	14700	14725
220' E.	17245	17220	17160	17170	17105	17120	17145
240' "	17455	17430	17370	17380	17315	17330	17325
260'	17655	17630	17570	17580	17515	17530	17555
280'	17835	17810	17750	17760	17695	17710	17735
300'	17995	17970	17910	17920	17855	17870	17895
320'	18135	18110	18050	18065	18000	18020	18045
340'	18265	18240	18180	18195	18130	18150	18175
360'	18375	18350	18290	18310	18250	18270	18295
380'	18475	18450	18390	18410	18350	18370	18395
400'	18555	18530	18470	18500	18445	18470	18495
BARBARA W.L. SANTA	17425	17400	17360	17400	17360	17400	17425
BARBARA W.L. SANTA	19425	19400	19360	19400	19360	19400	19425
cb.	19400 19300	19400 19300	19376	19416	19376	19400 19300	19400 19300
1/4	19385	19365	19393	19423	19393	19365	19385
€	19450	19350	19410	19450	19410	19350	19450
1/4	19490 19400	19275 19400	19427	19467	19427	19375 19400	19440 19400
cb.	19500	19500	19444	19484	19444	19500	19500
BARBARA EL. SANTA	19525	19500	19460	19500	19460	19500	19525



CAPE MAY AVENUE old grades

	S	Curb	1/4	¢	1/4	Curb	N
E.L. SUIZOT	128.25	128.00	127.40	127.50	126.85	127.00	127.25
200' East	151.25	151.00	150.40	150.50	149.85	150.00	150.25
240'	155.25	155.00	154.40	154.50	153.85	154.00	154.25
260'	157.10	156.85	156.25	156.35	155.70	155.85	156.10
280'	158.64	158.39	157.79	157.90	157.25	157.41	157.66
300'	159.88	159.63	159.03	159.14	158.50	158.65	158.90
320'	160.82	160.57	159.97	160.10	159.47	159.64	159.89
340'	161.95	161.20	160.60	160.74	160.12	160.29	160.54
360'	161.78	161.53	160.93	161.11	160.50	160.69	160.94
380'	161.81	161.56	160.96	161.16	160.56	160.77	161.02
400'	161.53	161.28	160.68	160.92	160.34	160.56	160.81
SANTA BARBARA 600' E. = W.L.	157.25	157.00	156.60	157.00	156.60	157.00	157.25
BARBARA W.L. of SANTA	157.25	157.00	156.60	157.00	156.60	157.00	157.25
¢ BARBARA EL. of SANTA	157.25	157.00	156.40	156.50	155.85	156.00	156.25
BARBARA EL. of SANTA	157.25	157.00	156.40	156.50	155.85	156.00	156.25
VEHICE on N. 681.5' E. = W.L. of	156.75	156.50	155.90	156.25	155.72	156.00	156.25
W.L. of VEHICE	156.25	156.00	155.40	155.50	154.85	155.00	155.25



29.2' ST.

BRIGHTON AVENUE

Note: These notes taken from tracing paper from office of F. Rhodes. 6/20/16

	S	Curb	1/4	1/2	3/4	Curb	N
EL. GUIZOT	107.25	107.00	106.60	107.00	106.60	107.00	107.25
108.15' East	116.53	116.28	115.88	116.28	115.88	116.28	116.53
128.15' "	118.14	117.89	117.49	117.89	117.49	117.89	118.14
148.15' "	119.53	119.28	118.88	119.28	118.88	119.28	119.53
588.15' "	147.69	147.44	147.04	147.44	147.04	147.44	147.69
608.15'	148.83	148.58	148.18	148.58	148.18	148.58	148.83
628.15'	149.71	149.46	149.06	149.46	149.06	149.46	149.71
648.15'	150.31	150.06	149.66	150.06	149.66	150.06	150.31
668.15'	150.65	150.40	150.00	150.40	150.00	150.40	150.65
(of VENTICE 728.15 = WL	151.25	151.00	150.60	151.00	150.60	151.00	151.25



# Levels and Grades in Bancroft

Aug. 28/17 <sup>Lehilds</sup> Evans <sup>59</sup>  
moore

Sta.	Grade 13' west grade	Red	Ground	Cut	Grade 17' East grade	273.57	Red	Ground	Cut
10' line Grape	267.00	3.6	269.9	+2.9	266.00		9.3	264.2	-1.8
50' do	262.67	6.2	267.3	+3.6	262.67		10.6	262.9	+0.2
100' do	260.33	8.7	264.7	+4.4	259.33		15.4	258.1	-1.2
150' "	257.00	11.5	262.0	+5.0	256.00		7.8	253.5	-2.5
200' "	253.67	2.2	269.1	+5.4	252.67		12.6	248.7	-4.0
250' "	250.33	4.8	256.5	+6.2	249.33		12.9	248.4	-0.9
300' do. 70' in Fin	247.00	0.1	253.9	+6.9	246.00		11.2	242.8	-3.2
40' do	245.50	2.7	251.3	+5.8	244.50		9.9	244.1	-0.4
80' do. 10' in Fin	244.00	5.2	248.8	+4.8	243.00		10.2	243.8	+0.8
50' do	242.00	7.1	246.9	+4.9	241.00		11.0	243.0	+2.0
100' "	240.00	9.4	244.6	+4.6	239.00		12.9	241.1	+2.1
150' "	238.00	11.9	242.1	+4.1	237.00		13.6	240.4	+3.4
200' "	236.00	2.7	238.6	+2.6	235.00		3.3	238.0	+3.0
250' "	231.50	6.3	235.0	+3.5	230.50		9.4	231.9	+1.4
300' do. 70' in Elm	227.00	11.5	229.8	+2.8	226.00		5.6	224.6	-1.4
40' do. 20' in Elm	226.00	3.9	226.3	+0.3	225.00		7.6	222.6	-2.4

J.P. 13' hub Bancroft & Fin 11.05 <sup>B.N.</sup> 200.28

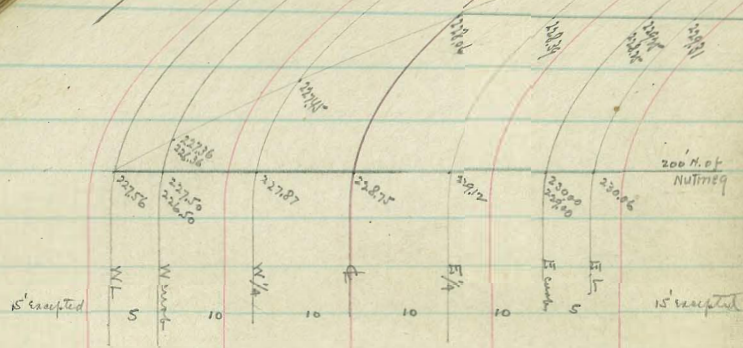
7.3  
3.6



See diagrams p 62

7 L. Nutmeg	228.06	228.00	228.25	229.00	229.25	230.00	230.25
W. Nutmeg	228.00 227.00	228.00 227.00	228.18	228.82	229.07	230.00	230.00
N/4	227.50	227.62	228.12	228.66	228.91	229.75	229.50
Q	227.50	227.60	228.05	228.50	228.75	229.50	229.50
S/4		27.67	227.87	228.34	228.59	229.25	229.00
S. Nutmeg			27.84	228.18	228.43	229.00	229.00
7' north				228.09	228.34	229.00	229.13
300=51. Nutmeg	227.00		228.00	228.25	229.00	229.25	
275		228.25		228.25	228.50	229.25	229.50
250		223.50		224.50	224.75	225.50	225.75
240		222.80		223.80	224.05	224.80	225.05
225		222.13		223.13	223.38	224.13	224.38
220		221.90		222.90	223.15	223.90	224.15
200		221.80		222.80	223.05	223.80	224.05
175				223.08	223.33	224.08	224.33
167				223.16	223.41	224.16	224.41
158				223.26	223.51	224.26	
150				223.35	223.60	224.35	
125		222.63	222.88	223.63	223.88	224.63	
100		222.90	223.15	223.90	224.15	224.90	
75		223.17	223.42	224.17	224.42	225.17	
50		223.45	223.70	224.45	224.70	225.45	
25' N		223.73	223.98	224.73	224.98	225.73	
N. h. Maple	224.00	224.25	225.00	225.25	226.00		
	W	Curve	Q	Q	Q	Curve	E



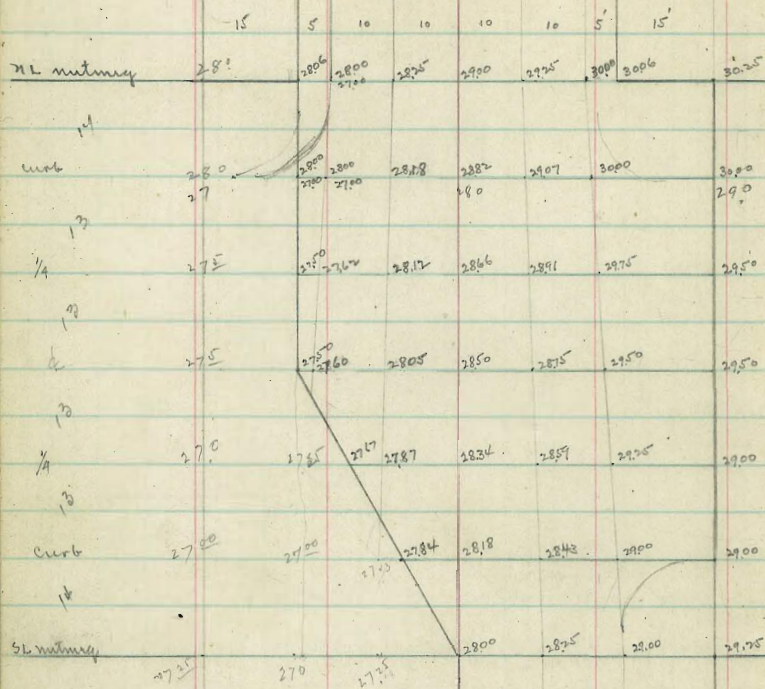


215 E, 230 E				228.04	228.10	228.65	228.56
215				228.04	228.39	229.25	229.31
200	227.56	227.50	227.87	228.75	229.12	230.00	230.06
175	228.01	228.75	228.56	229.37	229.68	230.50	230.56
150	229.06	229.00	229.25	230.00	230.25	231.00	231.06
125	229.31	229.75	229.50	230.25	230.50	231.25	231.31
100	229.56	229.50	229.75	230.50	230.75	231.50	231.56
75	229.31	229.25	229.50	230.25	230.50	231.25	231.31
50	229.06	229.00	229.25	230.00	230.25	231.00	231.06
25	228.56	228.50	228.75	229.50	229.75	230.50	230.56
0 = 1/4 Nutmeg	228.06	228.00	228.75	229.00	229.25	230.00	230.06
	W	cut	1/4	1/4	1/4	cut	E







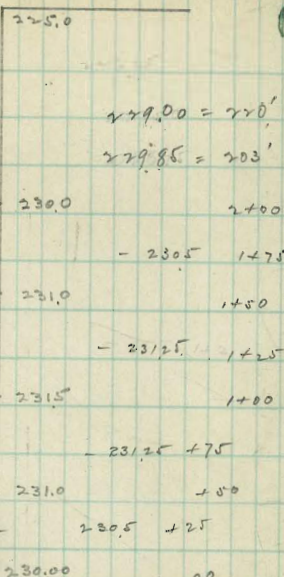
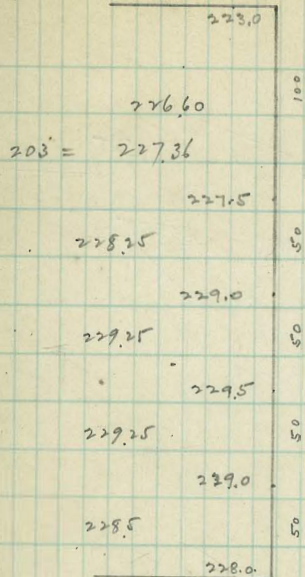


13 13 14

Olive

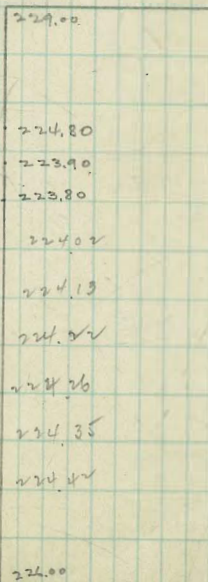
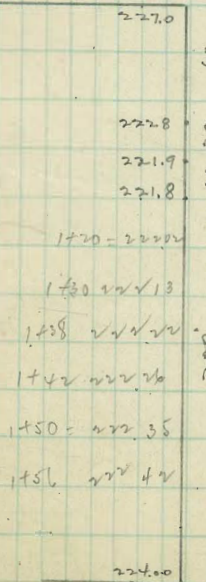
St

62



nutmeg

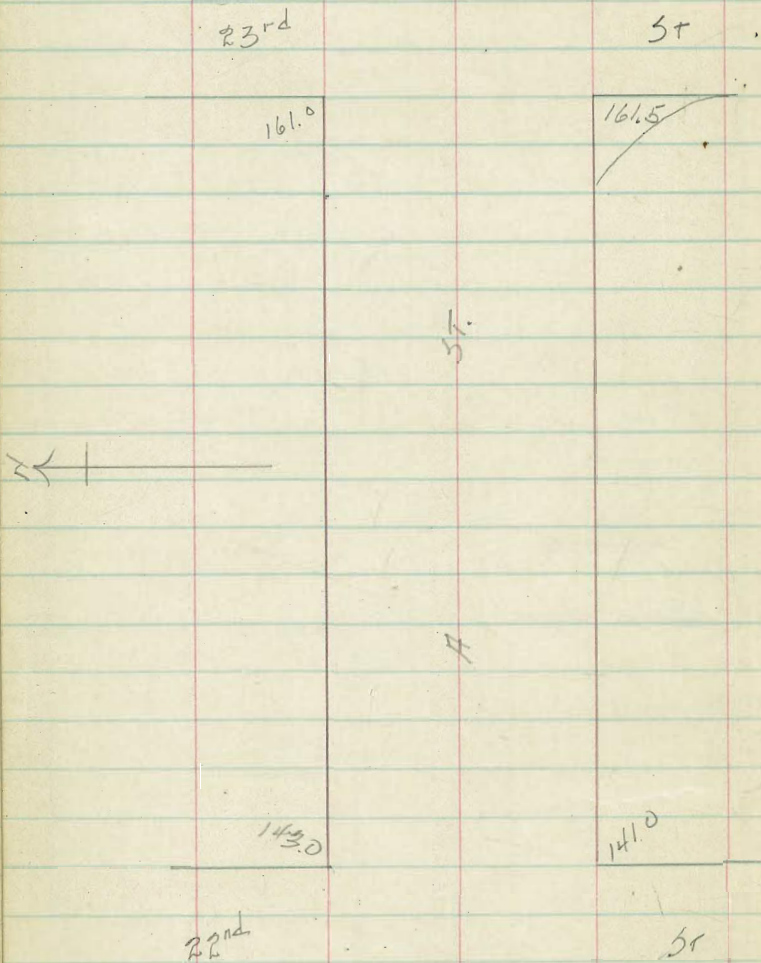
St.



maple

St.



Grades on A St 22<sup>nd</sup> to 23<sup>rd</sup>.

1st 23	161.25	161.0	161.5	161.75
50 W		156.5	156.37	
100 W		152.0	151.25	
150 W		147.5	146.13	
200 W	143.25	143.0	141.0	141.25

Lot stakes set at the above grades which are provisional only R.M.G.



274.0

274.0

Randolph

274.5

274.5



way

276.5

276.5

Calhoun  
Palmitto

way

276.0

276.0

Monticello

273.5

273.5

Stephens



# Montevito Wray

	N.L.	Numb	N/A	¢	¢/4	Scrub	S.L.
WL Randolph	274.75	274.50	274.25	274.50	274.25	274.50	274.75
25 W	275.00	274.75	274.50	274.75	274.50	274.75	275.00
50	275.25	275.00	274.75	275.00	274.75	275.00	275.25
75	275.50	275.25	275.00	275.25	275.00	275.25	275.50
100	275.75	275.50	275.25	275.50	275.25	275.50	275.75
125	276.00	275.75	275.50	275.75	275.50	275.75	276.00
150	276.25	276.00	275.75	276.00	275.75	276.00	276.25
175	276.50	276.25	276.00	276.25	276.00	276.25	276.50
200 = EL Palm, Wray	276.75	276.50	276.25	276.50	276.25	276.50	276.75
E scrub	276.50	276.50	276.17	276.42	276.17	276.50	276.50
E 1/4	276.12	275.88	276.08	276.33	276.08	275.88	276.12
¢	276.25	275.25	276.00	276.25	276.00	275.25	276.25
W 1/4	275.87	275.13	275.92	276.17	275.92	275.13	275.87
W scrub	275.00	275.00	275.83	276.08	275.83	275.00	275.00
WL Palmitte Wray	276.25	276.00	275.75	276.00	275.75	276.00	276.25
25 W	275.94	275.69	275.44	275.69	275.44	275.69	275.94
50	275.63	275.38	275.13	275.38	275.13	275.38	275.63
75	275.31	275.06	274.81	275.06	274.81	275.06	275.31
100	275.00	274.75	274.50	274.75	274.50	274.75	275.00
125	274.69	274.44	274.19	274.44	274.19	274.44	274.69
150	274.38	274.13	273.88	274.13	273.88	274.13	274.38
175	274.06	273.81	273.56	273.81	273.56	273.81	274.06
200 = EL Stephens	273.75	273.50	273.25	273.50	273.25	273.50	273.75

275.78 BM S.E. Lewis & Stephens.

275.51 BM S.W. " " Randolph.

276.50	276.25	276.00	275.75	275.50	275.25	275.00	274.75	274.50	274.25	274.00	273.75	273.50	273.25	273.00	272.75	272.50	272.25	272.00	271.75	271.50	271.25	271.00	270.75	270.50	270.25	270.00
276.50	276.25	276.00	275.75	275.50	275.25	275.00	274.75	274.50	274.25	274.00	273.75	273.50	273.25	273.00	272.75	272.50	272.25	272.00	271.75	271.50	271.25	271.00	270.75	270.50	270.25	270.00

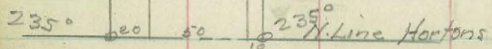
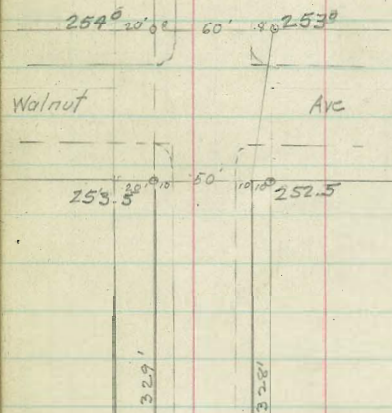
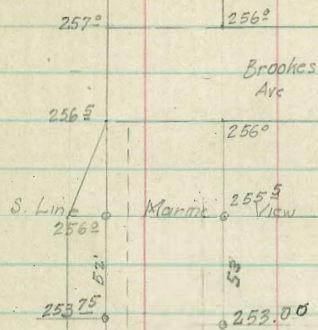
Cut stakes bet Randolph & Palmitte long - very st. Davis 1/18

276.25	276.00	275.75	275.50	275.25	275.00	274.75	274.50	274.25	274.00	273.75	273.50	273.25	273.00	272.75	272.50	272.25	272.00	271.75	271.50	271.25	271.00	270.75	270.50	270.25	270.00
276.25	276.00	275.75	275.50	275.25	275.00	274.75	274.50	274.25	274.00	273.75	273.50	273.25	273.00	272.75	272.50	272.25	272.00	271.75	271.50	271.25	271.00	270.75	270.50	270.25	270.00

275.51	275.24	274.97	274.70	274.43	274.16	273.89	273.62	273.35	273.08	272.81	272.54	272.27	272.00	271.73	271.46	271.19	270.92	270.65	270.38	270.11	269.84	269.57	269.30	269.03	268.76	268.49	268.22	267.95	267.68	267.41	267.14	266.87	266.60	266.33	266.06	265.79	265.52	265.25	264.98	264.71	264.44	264.17	263.90	263.63	263.36	263.09	262.82	262.55	262.28	262.01	261.74	261.47	261.20	260.93	260.66	260.39	260.12	259.85	259.58	259.31	259.04	258.77	258.50	258.23	257.96	257.69	257.42	257.15	256.88	256.61	256.34	256.07	255.80	255.53	255.26	254.99	254.72	254.45	254.18	253.91	253.64	253.37	253.10	252.83	252.56	252.29	252.02	251.75	251.48	251.21	250.94	250.67	250.40	250.13	249.86	249.59	249.32	249.05	248.78	248.51	248.24	247.97	247.70	247.43	247.16	246.89	246.62	246.35	246.08	245.81	245.54	245.27	245.00	244.73	244.46	244.19	243.92	243.65	243.38	243.11	242.84	242.57	242.30	242.03	241.76	241.49	241.22	240.95	240.68	240.41	240.14	239.87	239.60	239.33	239.06	238.79	238.52	238.25	237.98	237.71	237.44	237.17	236.90	236.63	236.36	236.09	235.82	235.55	235.28	235.01	234.74	234.47	234.20	233.93	233.66	233.39	233.12	232.85	232.58	232.31	232.04	231.77	231.50	231.23	230.96	230.69	230.42	230.15	229.88	229.61	229.34	229.07	228.80	228.53	228.26	227.99	227.72	227.45	227.18	226.91	226.64	226.37	226.10	225.83	225.56	225.29	225.02	224.75	224.48	224.21	223.94	223.67	223.40	223.13	222.86	222.59	222.32	222.05	221.78	221.51	221.24	220.97	220.70	220.43	220.16	219.89	219.62	219.35	219.08	218.81	218.54	218.27	218.00	217.73	217.46	217.19	216.92	216.65	216.38	216.11	215.84	215.57	215.30	215.03	214.76	214.49	214.22	213.95	213.68	213.41	213.14	212.87	212.60	212.33	212.06	211.79	211.52	211.25	210.98	210.71	210.44	210.17	209.90	209.63	209.36	209.09	208.82	208.55	208.28	208.01	207.74	207.47	207.20	206.93	206.66	206.39	206.12	205.85	205.58	205.31	205.04	204.77	204.50	204.23	203.96	203.69	203.42	203.15	202.88	202.61	202.34	202.07	201.80	201.53	201.26	200.99	200.72	200.45	200.18	199.91	199.64	199.37	199.10	198.83	198.56	198.29	198.02	197.75	197.48	197.21	196.94	196.67	196.40	196.13	195.86	195.59	195.32	195.05	194.78	194.51	194.24	193.97	193.70	193.43	193.16	192.89	192.62	192.35	192.08	191.81	191.54	191.27	191.00	190.73	190.46	190.19	189.92	189.65	189.38	189.11	188.84	188.57	188.30	188.03	187.76	187.49	187.22	186.95	186.68	186.41	186.14	185.87	185.60	185.33	185.06	184.79	184.52	184.25	183.98	183.71	183.44	183.17	182.90	182.63	182.36	182.09	181.82	181.55	181.28	181.01	180.74	180.47	180.20	179.93	179.66	179.39	179.12	178.85	178.58	178.31	178.04	177.77	177.50	177.23	176.96	176.69	176.42	176.15	175.88	175.61	175.34	175.07	174.80	174.53	174.26	173.99	173.72	173.45	173.18	172.91	172.64	172.37	172.10	171.83	171.56	171.29	171.02	170.75	170.48	170.21	169.94	169.67	169.40	169.13	168.86	168.59	168.32	168.05	167.78	167.51	167.24	166.97	166.70	166.43	166.16	165.89	165.62	165.35	165.08	164.81	164.54	164.27	164.00	163.73	163.46	163.19	162.92	162.65	162.38	162.11	161.84	161.57	161.30	161.03	160.76	160.49	160.22	159.95	159.68	159.41	159.14	158.87	158.60	158.33	158.06	157.79	157.52	157.25	156.98	156.71	156.44	156.17	155.90	155.63	155.36	155.09	154.82	154.55	154.28	154.01	153.74	153.47	153.20	152.93	152.66	152.39	152.12	151.85	151.58	151.31	151.04	150.77	150.50	150.23	149.96	149.69	149.42	149.15	148.88	148.61	148.34	148.07	147.80	147.53	147.26	146.99	146.72	146.45	146.18	145.91	145.64	145.37	145.10	144.83	144.56	144.29	144.02	143.75	143.48	143.21	142.94	142.67	142.40	142.13	141.86	141.59	141.32	141.05	140.78	140.51	140.24	139.97	139.70	139.43	139.16	138.89	138.62	138.35	138.08	137.81	137.54	137.27	137.00	136.73	136.46	136.19	135.92	135.65	135.38	135.11	134.84	134.57	134.30	134.03	133.76	133.49	133.22	132.95	132.68	132.41	132.14	131.87	131.60	131.33	131.06	130.79	130.52	130.25	130.00
--------	--------	--------	--------	--------	--------	--------	--------	--------	--------	--------	--------	--------	--------	--------	--------	--------	--------	--------	--------	--------	--------	--------	--------	--------	--------	--------	--------	--------	--------	--------	--------	--------	--------	--------	--------	--------	--------	--------	--------	--------	--------	--------	--------	--------	--------	--------	--------	--------	--------	--------	--------	--------	--------	--------	--------	--------	--------	--------	--------	--------	--------	--------	--------	--------	--------	--------	--------	--------	--------	--------	--------	--------	--------	--------	--------	--------	--------	--------	--------	--------	--------	--------	--------	--------	--------	--------	--------	--------	--------	--------	--------	--------	--------	--------	--------	--------	--------	--------	--------	--------	--------	--------	--------	--------	--------	--------	--------	--------	--------	--------	--------	--------	--------	--------	--------	--------	--------	--------	--------	--------	--------	--------	--------	--------	--------	--------	--------	--------	--------	--------	--------	--------	--------	--------	--------	--------	--------	--------	--------	--------	--------	--------	--------	--------	--------	--------	--------	--------	--------	--------	--------	--------	--------	--------	--------	--------	--------	--------	--------	--------	--------	--------	--------	--------	--------	--------	--------	--------	--------	--------	--------	--------	--------	--------	--------	--------	--------	--------	--------	--------	--------	--------	--------	--------	--------	--------	--------	--------	--------	--------	--------	--------	--------	--------	--------	--------	--------	--------	--------	--------	--------	--------	--------	--------	--------	--------	--------	--------	--------	--------	--------	--------	--------	--------	--------	--------	--------	--------	--------	--------	--------	--------	--------	--------	--------	--------	--------	--------	--------	--------	--------	--------	--------	--------	--------	--------	--------	--------	--------	--------	--------	--------	--------	--------	--------	--------	--------	--------	--------	--------	--------	--------	--------	--------	--------	--------	--------	--------	--------	--------	--------	--------	--------	--------	--------	--------	--------	--------	--------	--------	--------	--------	--------	--------	--------	--------	--------	--------	--------	--------	--------	--------	--------	--------	--------	--------	--------	--------	--------	--------	--------	--------	--------	--------	--------	--------	--------	--------	--------	--------	--------	--------	--------	--------	--------	--------	--------	--------	--------	--------	--------	--------	--------	--------	--------	--------	--------	--------	--------	--------	--------	--------	--------	--------	--------	--------	--------	--------	--------	--------	--------	--------	--------	--------	--------	--------	--------	--------	--------	--------	--------	--------	--------	--------	--------	--------	--------	--------	--------	--------	--------	--------	--------	--------	--------	--------	--------	--------	--------	--------	--------	--------	--------	--------	--------	--------	--------	--------	--------	--------	--------	--------	--------	--------	--------	--------	--------	--------	--------	--------	--------	--------	--------	--------	--------	--------	--------	--------	--------	--------	--------	--------	--------	--------	--------	--------	--------	--------	--------	--------	--------	--------	--------	--------	--------	--------	--------	--------	--------	--------	--------	--------	--------	--------	--------	--------	--------	--------	--------	--------	--------	--------	--------	--------	--------	--------	--------	--------	--------	--------	--------	--------	--------	--------	--------	--------	--------	--------	--------	--------	--------	--------	--------	--------	--------	--------	--------	--------	--------	--------	--------	--------	--------	--------	--------	--------	--------	--------	--------	--------	--------	--------	--------	--------	--------	--------	--------	--------	--------	--------	--------	--------	--------	--------	--------	--------	--------	--------	--------	--------	--------	--------	--------	--------	--------	--------	--------	--------	--------	--------	--------	--------	--------	--------	--------	--------	--------	--------	--------	--------	--------	--------	--------	--------	--------	--------	--------	--------	--------	--------	--------	--------	--------	--------	--------	--------	--------	--------	--------	--------	--------	--------	--------	--------	--------	--------	--------	--------	--------	--------	--------	--------	--------	--------	--------	--------	--------	--------	--------

1/14/19 checked - Dunkle







	W	C6	1/4	2	1/2	C6	E
S. line Marine View	256.25	256.00	255.62	255.75	254.37	255.50	
53' S.	254.00	253.75	253.44	253.38	252.93	253.00	253.25
75	52.22	52.63	52.30	52.24	51.78	51.84	52.09
100	51.61	51.36	51.00	50.90	50.47	50.52	50.77
125	50.33	50.08	49.70	49.66	49.16	49.20	49.45
150	49.06	48.81	48.40	48.36	47.85	47.88	48.13
175	47.78	47.53	47.10	47.06	46.54	46.56	46.81
200	46.51	46.26	45.80	45.76	45.23	45.24	45.49
225	45.23	44.98	44.51	44.45	43.92	43.92	44.17
254 W N. line							
252.5E Walnut	243.75	243.50	243.00	243.00	242.50	242.50	242.75
N Curb	242.50	242.50	42.82	42.82	42.32	242.50	242.50
1/4 13'	242.00	42.84	42.84	42.84	42.36	242.00	242.00
2 13'	242.50	42.00	42.50	42.50	42.00	41.0	242.00
1/4 13'	242.50	41.75	42.34	42.34	41.84	40.75	241.50
S. Curb 13'	242.50	242.50	42.18	42.18	41.66	241.50	241.50
S. L. Walnut 14'	242.75	242.50	242.00	242.00	241.50	241.50	241.75
57 25'S	42.18	41.93	41.45	41.47	40.99	41.01	41.26
50	41.61	41.36	40.95	40.94	40.48	40.52	40.77
75	41.06	40.81	40.35	40.41	39.97	40.03	40.28
100	40.49	40.24	39.80	39.88	39.46	39.53	39.78
125	39.92	39.67	39.25	39.35	38.95	39.04	39.29
150	39.35	39.10	38.70	38.82	38.44	38.55	38.80
175	38.78	38.53	38.15	38.24	37.86	38.05	38.30
200	38.21	37.96	37.60	37.76	37.42	37.56	37.81
225	37.64	37.39	37.05	37.23	36.91	37.07	37.32
250	37.07	36.82	36.50	36.70	36.40	36.57	36.82
281.32 PC. 47.31 on W	36.35	36.10	35.87	36.03	35.76	35.95	36.20
48.35 - E - Horton	235.25	235.00	234.75	235.00	234.75	235.00	235.25

68 + 69



## KITE ST

68

	W	cb	1/4	2	1/4	C6	E
S. line Marine View	256.25	256.00	255.62	255.75	255.37	255.50	255.75
33'S	54.00	53.75	53.33	53.38	52.93	53.00	53.25
75	52.91	52.56	52.10	52.15	51.75	52.01	52.26
100	51.82	51.27	51.25	51.29	50.83	50.88	51.13
125	50.73	50.42	50.13	50.18	49.72	49.72	50.21
150	49.63	49.31	49.09	49.07	48.60	48.64	48.87
175	48.54	48.39	48.24	47.96	47.48	47.51	47.76
200	47.45	47.20	46.84	46.95	46.37	46.39	46.64
225	46.36	46.11	45.73	45.74	45.25	45.26	45.51
254W N. Line							
262-5E Walnut	45.25	45.00	44.50	44.50	44.00	44.00	44.25
N. Curb	45.00	45.00	44.25	44.25	44.00	44.00	44.00
N 1/4	44.37	43.63	44.00	44.00	43.63	42.63	43.37
2	44.29	43.25	43.75	43.75	43.25	42.25	43.50
S 1/4	43.62	42.28	43.50	43.50	42.21	41.88	42.62
S Curb	43.50	43.50	43.25	43.25	41.50	42.50	42.50
S. line Walnut	43.75	43.50	43.00	43.00	42.50	42.50	42.75
25'S	43.11	42.86	42.37	42.39	41.91	41.93	42.18
50	42.46	42.21	41.74	41.78	41.32	41.36	41.61
75	41.82	41.57	41.11	41.17	40.73	40.77	41.04
100	41.17	40.92	40.48	40.56	40.14	40.22	40.47
125	40.52	40.27	39.85	39.96	39.56	39.65	39.90
150	40.28	40.03	39.22	39.35	38.97	39.08	39.33
175	39.74	39.49	38.59	38.74	38.38	38.51	38.76
200	38.59	38.34	37.96	38.13	37.77	37.94	38.17
225	37.95	37.70	37.33	37.53	37.20	37.37	37.62
250	37.30	37.05	36.90	36.92	36.61	36.80	37.05
281.32=PC	36.50	36.25	35.92	36.16	35.88	36.09	36.34
4731 on W N. L	35.25	35.00	34.75	35.00	34.75	35.00	35.25
4832 E Horton							



## KITE ST

69

	W	06	1/4	1/2	3/4	C6	E
3 Line Marine V.	256.25	256.00	255.62	255.75	255.37	255.50	255.75
53'S	54.00	53.75	53.33	53.38	52.83	53.00	53.25
75	52.92	52.67	52.25	52.29	51.84	51.90	52.15
100	51.71	51.46	51.02	51.06	50.60	50.65	50.90
125	50.49	50.24	49.79	49.82	49.36	49.40	49.65
150	49.27	49.02	48.56	48.59	48.11	48.15	48.40
175	48.05	47.80	47.33	47.35	46.87	46.90	47.15
200	46.83	46.58	46.10	46.12	45.63	45.65	45.90
225	45.61	45.36	44.88	44.88	44.39	44.40	44.65
25'W N. Line							
252'E Walnut	44.25	44.00	43.50	43.50	43.00	43.00	43.25
N. Curb	44.00	44.00	43.42	43.42	42.92	43.00	43.00
N 1/4	43.62	42.88	43.33	43.33	42.83	41.98	42.62
1/2	43.75	42.75	43.25	43.25	42.75	41.95	42.75
5/8	43.37	42.63	43.17	43.17	42.67	41.63	42.37
S. Curb	43.50	43.50	43.08	43.08	42.58	42.50	42.50
5 Line Walnut	43.75	43.50	43.00	43.00	42.50	42.50	42.75



65<sup>th</sup> St.  
20' in center of Street.

70

E      ♀      W

0+00 N.L. Imperial Ave	
0+50.5 ♀ SD+A.P.Y.	217.1
1+00	13.5
1+50	13.45
1+90 = S. end Bridge	13.4
2+38.5 N " "	13.5
3+00	15.04
3+30	16.5
3+37	17.5
3+50	19.36
3+55	19.67
4+00	26.5
4+50	30.88
5+00	35.25 <sup>17.5</sup>
5+50	39.63
6+00	44.0
6+50	47.88
7+00	51.75 <sup>15.5</sup>
7+50	55.63
8+00	59.50
8+50	62.60
9+12.85 = S.L. Brooklyn	66.5
9+42.85 ♀ " "	67.25
9+72.85 N.L. " "	68.0
10+00	69.20
10+50	71.40



	¢
11+00	73.60
11+50	75.81
12+00	278.0
12+50	80.40
13+00	82.81
13+50	85.21
14+08.52 S.L. Wunderlin	88.0
14+38.52 ¢ "	89.0
14+68.52 NL. "	90.0
15+00 <sup>31.48</sup>	91.32
15+50	94.17
16+00	95.5
16+50	98.66
17+00	301.82
17+50	04.97
18+00	08.12
18+50	11.28
19+03.91 S.L. Bach	114.69
19+55 <sup>62</sup> Δ 39°17'R	318.0
20+00.	20.79
20+50	23.93
21+00	27.07
21+50	30.22
22+00	33.36
22+50	36.50
23+00	40.60
23+50	44.70



KLAUBER AVE

20' Roadway

£

24+00

48.80

24+50

52.90

25+00

357.00

25+50

26+00







Carima

11/29/15

74

	H.	Corb	1/4	⊕	1/4	Corb	⊖
EL. GIRARD	9525	9500	9460	9520	9460	9520	9525
W. Cl. Torrey Rd	9500	9500	9480	9527	9490	9536	9561
1/4	9400	9400					
	9425	9425	9500	9551	9521	9548	9593
⊕	9550	9450	9522	9575	9550	9600	9625
1/4	9540	9475	9540	9599	9579	9630	9657
	9500	9500					
CB	9600	9600	9560	9620	9608	9644	9689
EL. Torrey Rd	9625	9600	9585	9650	9640	9700	9725

08

08



W Curb 1/4 E 1/4 Curb E

HL. HIGH	13175	13150	13148	13225	13240	13300	13325
25' Ho.		13295			13385	13445	
50'		13440			13530	13590	
75'		13585			13675	13735	
100		13730			13820	13880	
125		13875			13965	14025	
150		14020			14110	14170	
175		14165			14255	14315	
200		14310			14400 <sup>0</sup>	14460	
225	5.8%	14455			14545 <sup>38</sup>	14605	
250		14600			14690	14750	
275		14745			14835	14895	
300		14890			14980	15040	
325		15035			15125	15185	
350		15180			15270	15330	
375		15325			15415	15475	
400		15470			15560	15620	
425		15615			15705	15765	
450		15760			15850	15910	
475		15905			15995	16055	
IVANHOE E. 500' Ho. = SL	16075	16050	16047	16125	16140	16200	16225



SILVERADO STREET

	17'	Curb	1/4	€	1/4	Curb	S
EL. HERSCHEL	11425	11400	11360	11400	11360	11400	11425
E. Curb	11400	11400	11334	11374	11334	11400	11400
1/4	11300	11300	11310	11350	11310	11300	11300
	11340	11263	11310	11350	11310	11263	11340
Center	11225	11225	11285	11325	11285	11225	11225
1/4	11247	11187	11260	11300	11260	11187	11247
	11150	11150				11150	11150
W. Curb	11250	11250	11236	11276	11236	11250	11250
W.L. HERSCHEL	11275	11250	11210	11250	11210	11250	11275
50' W.	11175	11150	11110	11155	11120	11160	11185
100' W.	11075	11050	11010	11060	11030	11070	11095
150' W.	10975	10950	10910	10965	10940	10980	11005



26.8.57 M.E. car number 812

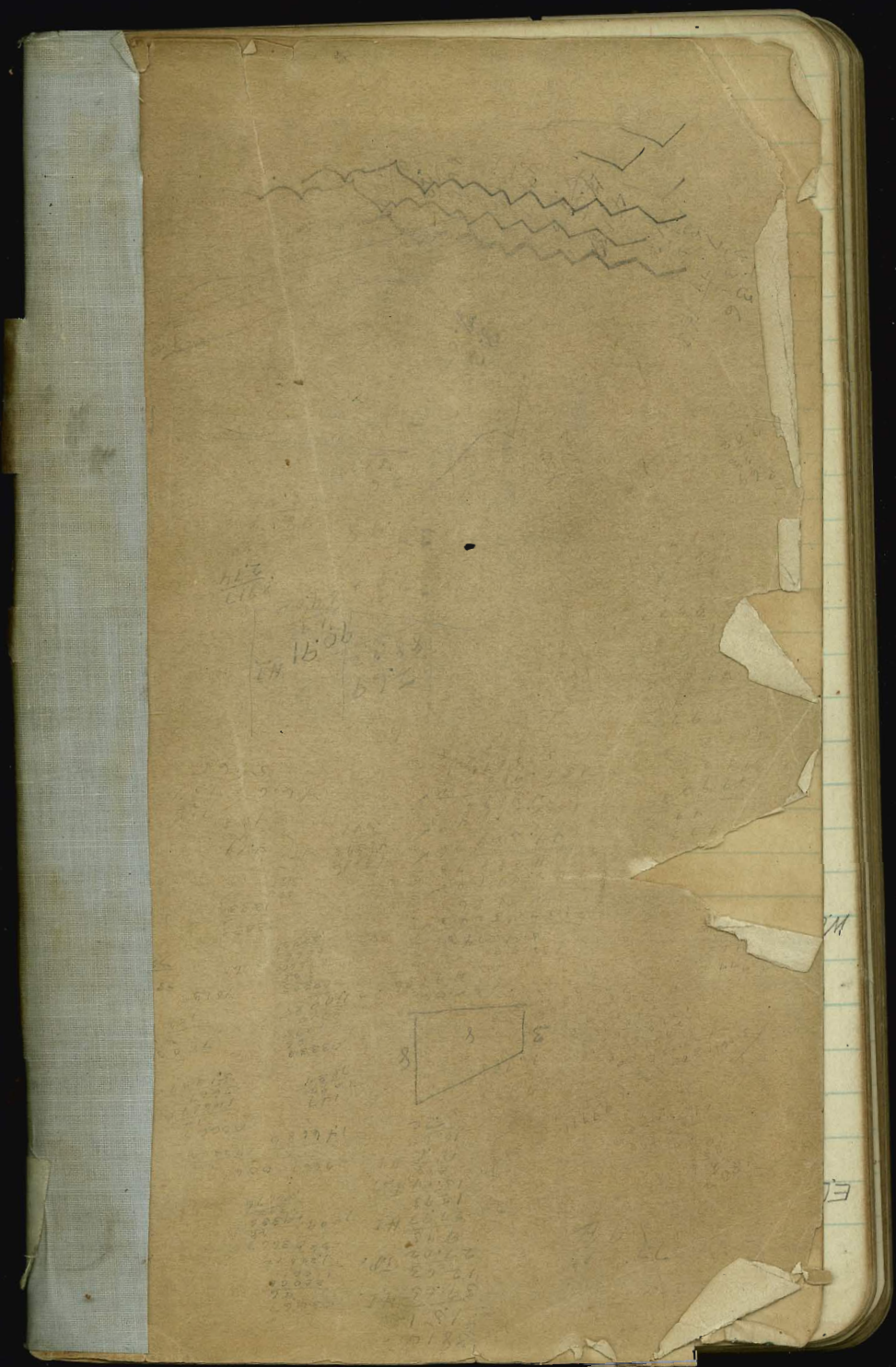
18  
95  
68  
117  
123.5

Clear bottom -1.0

Do. top slope 3.5  
no " " 3.0  
Do. f. wing mass 7' M.T. 6.6  
no " " 6' " " and 0.657

ELHER  
EG  
M  
Cent  
M  
W.C.M  
M.L.H.E.R  
50'  
100'  
150'





15.06

15.06



M

E