

Gr. Book 92

Street	End	To	Page
A	30th	Granada	2
B	B	A	5
ATLANTIC			8
VOLTAIRE ST			16
ALLEY			17

LA JOLLA BOULEVARD	312	1983	
22nd		21	
LANDIS	307	ARNOLD	23
MORROE AVENUE			25
VOLTAIRE STREET	348		26

692

# KEUFFEL & ESSER CO.

DRAWING MATERIALS  
AND  
SURVEYING INSTRUMENTS.  
NEW YORK.

CHICAGO. ST. LOUIS. - SAN FRANCISCO. MONTREAL.

## TABLES FOR EXCAVATIONS AND EMBANKMENTS.

DISTANCES FROM CENTER OF ROADWAY FOR CROSS-SECTIONING.  
ROADWAY 18 FEET WIDE SIDE SLOPES 1 TO 1.  
FOR SINGLE TRACK EXCAVATION.

"Copyright, 1895, by Keuffel & Esser Co."

	0	.1	.2	.3	.4	.5	.6	.7	.8	.9	
0	9.0	9.1	9.2	9.3	9.4	9.5	9.6	9.7	9.8	9.9	0
1	10.0	10.1	10.2	10.3	10.4	10.5	10.6	10.7	10.8	10.9	1
2	11.0	11.1	11.2	11.3	11.4	11.5	11.6	11.7	11.8	11.9	2
3	12.0	12.1	12.2	12.3	12.4	12.5	12.6	12.7	12.8	12.9	3
4	13.0	13.1	13.2	13.3	13.4	13.5	13.6	13.7	13.8	13.9	4
5	14.0	14.1	14.2	14.3	14.4	14.5	14.6	14.7	14.8	14.9	5
6	15.0	15.1	15.2	15.3	15.4	15.5	15.6	15.7	15.8	15.9	6
7	16.0	16.1	16.2	16.3	16.4	16.5	16.6	16.7	16.8	16.9	7
8	17.0	17.1	17.2	17.3	17.4	17.5	17.6	17.7	17.8	17.9	8
9	18.0	18.1	18.2	18.3	18.4	18.5	18.6	18.7	18.8	18.9	9
10	19.0	19.1	19.2	19.3	19.4	19.5	19.6	19.7	19.8	19.9	10
11	20.0	20.1	20.2	20.3	20.4	20.5	20.6	20.7	20.8	20.9	11
12	21.0	21.1	21.2	21.3	21.4	21.5	21.6	21.7	21.8	21.9	12
13	22.0	22.1	22.2	22.3	22.4	22.5	22.6	22.7	22.8	22.9	13
14	23.0	23.1	23.2	23.3	23.4	23.5	23.6	23.7	23.8	23.9	14
15	24.0	24.1	24.2	24.3	24.4	24.5	24.6	24.7	24.8	24.9	15
16	25.0	25.1	25.2	25.3	25.4	25.5	25.6	25.7	25.8	25.9	16
17	26.0	26.1	26.2	26.3	26.4	26.5	26.6	26.7	26.8	26.9	17
18	27.0	27.1	27.2	27.3	27.4	27.5	27.6	27.7	27.8	27.9	18
19	28.0	28.1	28.2	28.3	28.4	28.5	28.6	28.7	28.8	28.9	19
20	29.0	29.1	29.2	29.3	29.4	29.5	29.6	29.7	29.8	29.9	20
21	30.0	30.1	30.2	30.3	30.4	30.5	30.6	30.7	30.8	30.9	21
22	31.0	31.1	31.2	31.3	31.4	31.5	31.6	31.7	31.8	31.9	22
23	32.0	32.1	32.2	32.3	32.4	32.5	32.6	32.7	32.8	32.9	23
24	33.0	33.1	33.2	33.3	33.4	33.5	33.6	33.7	33.8	33.9	24
25	34.0	34.1	34.2	34.3	34.4	34.5	34.6	34.7	34.8	34.9	25
26	35.0	35.1	35.2	35.3	35.4	35.5	35.6	35.7	35.8	35.9	26
27	36.0	36.1	36.2	36.3	36.4	36.5	36.6	36.7	36.8	36.9	27
28	37.0	37.1	37.2	37.3	37.4	37.5	37.6	37.7	37.8	37.9	28
29	38.0	38.1	38.2	38.3	38.4	38.5	38.6	38.7	38.8	38.9	29
30	39.0	39.1	39.2	39.3	39.4	39.5	39.6	39.7	39.8	39.9	30
31	40.0	40.1	40.2	40.3	40.4	40.5	40.6	40.7	40.8	40.9	31
32	41.0	41.1	41.2	41.3	41.4	41.5	41.6	41.7	41.8	41.9	32
33	42.0	42.1	42.2	42.3	42.4	42.5	42.6	42.7	42.8	42.9	33
34	43.0	43.1	43.2	43.3	43.4	43.5	43.6	43.7	43.8	43.9	34
35	44.0	44.1	44.2	44.3	44.4	44.5	44.6	44.7	44.8	44.9	35
36	45.0	45.1	45.2	45.3	45.4	45.5	45.6	45.7	45.8	45.9	36

Calculated by Julien A. Hall, M. Am. Soc. C. E.

For Keith's Railroad Curve Tables see end of book.

960  $\int$  4.500  $\overline{10057}$   
3840  
6600

12.18  
211.5  $\int$  30.00  
211.5  
88.50  
84.60  
39.00  
211.5  
 $\overline{172.50}$

4/7.09

11.25  
211.5  $\int$  30.00  
211.5  
88.50  
84.60  
39.00  
211.5  
 $\overline{109.00}$

4/7.09  
1.77

114.59  
1.77  
 $\overline{112.62}$   
14  
 $\overline{112.76}$

210.5  $\int$  29.75  
210.5  
87.00  
84.20  
25.00  
210.5  
 $\overline{67.50}$

14.25  
 $\overline{71.250}$

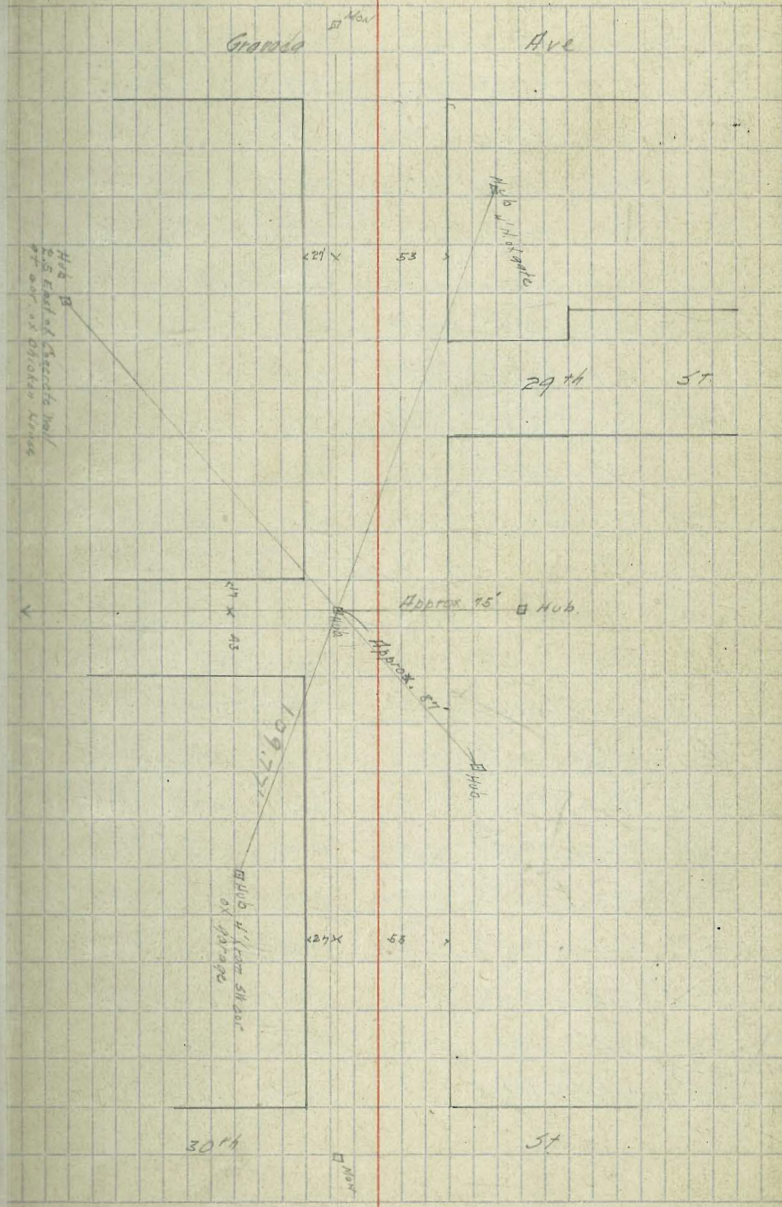
RETURN TO CITY ENGINEER'S OFFICE  
CITY HALL, SAN FRANCISCO, CAL.

11.407  
211.5  $\int$  29.75  
211.5  
87.00  
84.60  
 $\overline{14.000}$

17.03  
17.6  
 $\overline{1.62}$

MICROFILMED

APR 7 1965





# A STREET

M Curb 1/4 E 1/4 Curb S

29th St. open on South, closed on North

EL of 29th	188.25	188.00	187.40	187.50	186.85	187.00	187.25
Curb	188.25	188.00	187.40	187.50	186.85	187.00	187.00
1/4	188.25	188.00	187.40	187.50	186.85	186.00	186.90
E	188.25	188.00	187.40	187.50	186.85	186.00	189.00
1/4	188.25	188.00	187.40	187.50	186.85	186.00	186.90
Curb	188.25	188.00	187.40	187.50	186.85	187.00	187.00
W.L. 29th	188.25	188.00	187.40	187.50	186.85	187.00	187.25

on the South

W.L. 29th	188.25	188.00	187.40	187.50	186.85	187.00	187.25
29th on the North							
27th W. = EL. of	188.89	188.64	188.04	188.14	187.99	187.64	187.89

29th St. open on North, closed on South

the North

EL. 29th on	188.89	188.64	188.04	188.14	187.99	187.64	187.89
Curb	188.64	188.64	188.30	188.40	187.75	187.90	188.15
1/4	188.63	188.03	188.56	188.66	188.01	188.16	188.41
E	189.42	188.42	188.82	188.92	188.27	188.42	188.67
1/4	189.40	188.81	189.08	189.18	188.53	188.68	188.93
Curb	189.20	189.20	189.34	189.44	188.79	188.94	189.19
on North							
W.L. 29th	190.45	190.20	189.60	189.70	189.25	189.20	189.45

19128  
19083 page

1986 TP page 5

19128	187.25	187.25	187.25	187.25	187.25	187.25	187.25
19128	187.25	187.25	187.25	187.25	187.25	187.25	187.25
19128	187.25	187.25	187.25	187.25	187.25	187.25	187.25

19509 H.D.

19509 H.D.	187.25	187.25	187.25	187.25	187.25	187.25	187.25
19509 H.D.	187.25	187.25	187.25	187.25	187.25	187.25	187.25

19519

19519	187.25	187.25	187.25	187.25	187.25	187.25	187.25
-------	--------	--------	--------	--------	--------	--------	--------

curbs + props 1/4 1/4  
Checked OK 1/23/17 Gregory

A STREET

	M	Curb	1/4	1/2	3/4	Curb	S
W.L. 29 <sup>TH</sup>	190.95	190.20	189.60	189.70	189.05	189.20	189.45
20' W.	191.79	191.54	190.94	191.00	190.33	190.46	190.71
40' "	193.13	192.88	192.28	192.30	191.61	191.72	191.97
55' "	194.14	193.89	193.29	193.27	192.56	192.66	192.91
70'	195.15	194.90	194.30	194.25	193.52	193.60	193.85
90'	196.50	196.25	195.65	195.56	194.81	194.86	195.11
100'	197.17	196.92	196.32	196.20	195.44	195.48	195.73
125'	198.85	198.60	198.00	197.82	197.04	197.05	197.30
150'	200.53	200.28	199.68	199.45	198.64	198.62	198.87
175'	202.21	201.96	201.36	201.08	200.23	200.19	200.44
190'	203.22	202.97	202.37	202.05	201.19	201.13	201.38
210'	204.57	204.32	203.72	203.35	202.46	202.38	202.63
of GRANADA							
220' W. = E.L.	205.25	205.00	204.40	204.00	203.10	203.00	203.25

3/28/16

1917 A. 1917 B. 1917 C. 1917 D. 1917 E. 1917 F. 1917 G. 1917 H. 1917 I. 1917 J. 1917 K. 1917 L. 1917 M. 1917 N. 1917 O. 1917 P. 1917 Q. 1917 R. 1917 S. 1917 T. 1917 U. 1917 V. 1917 W. 1917 X. 1917 Y. 1917 Z.
1917 A. 1917 B. 1917 C. 1917 D. 1917 E. 1917 F. 1917 G. 1917 H. 1917 I. 1917 J. 1917 K. 1917 L. 1917 M. 1917 N. 1917 O. 1917 P. 1917 Q. 1917 R. 1917 S. 1917 T. 1917 U. 1917 V. 1917 W. 1917 X. 1917 Y. 1917 Z.

Gregory  
Miller  
OK 1/23/17 Gregory

	W Curb	1/4	±	1/4	Curb E	
PLB ST	19725	19700	19660	19700	19660	19700 19725
25' Ho.	19641	19616	19576	19616	19576	19616 19641
50'	19558	19533	19493	19533	19493	19533 19558
75'	19475	19450	19410	19450	19410	19450 19475
100'	19391	19366	19326	19366	19326	19366 19391
125'	19308	19283	19243	19283	19243	19283 19308
150'	19225	19200	19160	19200	19160	19200 19225
175'	19141	19116	19076	19116	19076	19116 19141
200'	19058	19033	18993	19033	18993	19033 19058
225'	18975	18950	18910	18950	18910	18950 18975
250'	18891	18867	18827	18867	18827	18867 18891
260'	18858	18833	18793	18833	18793	18833 18858
275'	18808	18783	18743	18783	18743	18783 18808
285'	18775	18750	18710	18750	18710	18750 18775
290'	18758	18733	18693	18733	18693	18733 18758
294'	18745	18720	18680	18720	18680	18720 18745
300' H = SLA	18725	18700	18660	18700	18660	18700 18725

Continuation of 29th St grades on page 21

1925 End of Curb SE 29th B

N	19725	19700	19660	19700	19660	19700	19725	CUTS + FILLS
19725	19725	19700	19660	19700	19660	19700	19725	Gregory
19641	19641	19616	19576	19616	19576	19616	19641	Gregory
19558	19558	19533	19493	19533	19493	19533	19558	Gregory
19475	19475	19450	19410	19450	19410	19450	19475	Gregory
19391	19391	19366	19326	19366	19326	19366	19391	Gregory
19308	19308	19283	19243	19283	19243	19283	19308	Gregory
19225	19225	19200	19160	19200	19160	19200	19225	Gregory
19141	19141	19116	19076	19116	19076	19116	19141	Gregory
19058	19058	19033	18993	19033	18993	19033	19058	Gregory
18975	18975	18950	18910	18950	18910	18950	18975	Gregory
18891	18891	18867	18827	18867	18827	18867	18891	Gregory
18858	18858	18833	18793	18833	18793	18833	18858	Gregory
18808	18808	18783	18743	18783	18743	18783	18808	Gregory
18775	18775	18750	18710	18750	18710	18750	18775	Gregory
18758	18758	18733	18693	18733	18693	18733	18758	Gregory
18745	18745	18720	18680	18720	18680	18720	18745	Gregory
18725	18725	18700	18660	18700	18660	18700	18725	Gregory

Checked OK 1/23/17 Gregory

20401 NE 24th Ash  
20401  
20401

201.84	200.24	198.70	197.05	195.40	204.97	193.37	192.10
4.98	4.63	4.24	3.92	3.57	18.65	1.40	1.77
3.62	4.73	7.3	10.4	14.87	174.97	10.81	13.33
-0.70	-0.2	-11	-1.5	-3.8	30	-17.20	-12.6
		196.23	194.46	192.24	190.75	187.33	
		86.6	16.5	12.37	14.42		
		86.5	7.7	12.37	11.15		
		08	10.1	08	13.1		

E 387.43							
W 378.37	SL Ash	203.25	203.0	203.0	203.25		
350		201.99			201.89		
300		200.34			200.03		
250		198.70			198.18		
200		197.05			196.32		
150		195.40			194.46		
100		193.74			192.60		
E 37.23		193.84					
W 38.37							
50		192.10			190.75		
N.L.H		190.45	192.00	188.64	188.89		

Sie page 21



80' ST.

## ATLANTIC STREET

	W.	Curb	1/4	1/2	3/4	Curb	E
N.L. CEDAR	7.25	7.00	6.60	7.00	6.60	7.00	7.25
1754 No. on E. Section A	7.25	7.00	6.60	6.77	6.54	6.74	7.19
50' N. of Sec A	7.19	6.88	6.48	6.82	6.36	6.76	7.01
100' No.	7.00	6.75	6.35	6.66	6.18	6.58	6.83
150' "	6.88	6.63	6.23	6.52	6.01	6.41	6.66
172.5' on E							
200'	6.75	6.50	6.10	6.37	5.83	6.25	6.50
202' N. on W	6.75	6.50	6.10	6.37	5.83	6.23	6.48
250'	6.63	6.38	5.98	6.22	5.65	6.05	6.30
300'	6.50	6.25	5.85	6.06	5.47	5.87	6.12
350'	6.38	6.13	5.73	5.92	5.30	5.70	5.95
370'	6.23	6.08	5.68	5.86	5.24	5.64	5.89
S.L. ELM							
403.21 No. =	6.25	6.00	5.60	5.75	5.10	5.50	5.75
S.L. ELM	6.25	6.00	5.60	5.75	5.10	5.50	5.75
Curb	6.00	6.00	5.51	5.66	5.01	5.50	5.50
1/4	5.00	5.00				4.50	4.50
1/2	5.60	4.88	5.43	5.58	4.93	4.37	5.10
3/4	5.75	4.75	5.35	5.50	4.85	4.25	5.25
Curb	5.10	4.62	5.27	5.42	4.77	4.12	4.60
1/4	4.50	4.50				4.00	4.00
Curb	5.50	5.50	5.19	5.34	4.69	5.00	5.00
N.L. ELM	5.75	5.50	5.10	5.25	4.60	5.00	5.25

BOOK 1002

Note: These notes are for old grade line of Ord. 6306 and

Res. 20531

→ This equals 210' No. of N.L. of Cedar St. on E.

ATLANTIC ST.

	W	Curb	1/4	1/2	3/4	Curb	E
M.L. ELM	575	550	510	525	460	500	525
50' N.	553	528	488	504	441	481	506
100' "	531	506	466	484	422	462	487
150'	509	484	444	464	403	443	468
200'	488	463	423	444	384	424	449
202' N. on West		462					
210' " East		441				420	
250'	466	441	401	423	365	405	430
300'	445	420	380	403	346	386	411
350'	423	398	358	382	327	367	392
Section B							
400' S. N. =	400	375	335	362	308	348	373
400' N. on W. =							
181' " " E. =	400	375	335	358	300	340	365

0.435%

0.38%



	16'	17'	17'	17'	17'	16'	
S.L. CEDAR	600	575	535	562	510	550	575
Curb	575	575	530	555	501	550	550
1/4	475	475				450	450
1/4	535	488	526	549	493	487	510
1/4	562	462	522	543	485	425	525
1/4	510	456	518	539	477	412	460
Curb	450	450				400	400
1/4	550	550	514	531	469	500	500
M.L. CEDAR	575	550	510	525	460	500	525

ATLANTIC ST.

Book 1002

Note: - These notes are for new grade line of July, 1916.

	W	curb	1/4	¢	1/4	curb	E
N.L. CEDAR	575	550	510	525	460	500	525
1154' No. on E. Section A	575	550	510	522	454	494	519
50' N. of Sec A	557	532	492	504	436	476	501
100' N.	538	513	473	486	418	458	483
150' "	520	495	455	468	401	441	466
192.5' on E.		475	436	450	383	423	448
200' N.	501	476	436	450	383	423	448
202' N. on W.		475					
250' N.	482	457	417	431	365	405	430
300' "	463	438	398	412	347	387	412
350'	444	419	379	394	330	370	395
370'	437	412	372	388	324	364	389
S.L. of ELM 4032' No. "	425	400	360	375	310	350	375

This equals 210' N. of N.L. of Cedar St. on E.

S.L. ELM	425	400	360	375	310	350	375
curb	400	400	287	275	262	350	350
1/4	300	300				250	250
¢	360	351	343	335	327	319	310
1/4	400	391	383	375	367	359	350
1/4	360	351	343	335	327	319	310
curb	300	300				250	250
	400	400	287	275	262	350	350
N.L. ELM	425	400	360	375	310	350	375

	W	Curb	1/4	±	1/4	Curb	E
PL.ELM	425	400	380	375	310	350	375
50' Π.	441	4.16	3.76	391	326	366	391
100' "	456	4.31	3.91	407	343	383	408
150'	472	4.47	4.07	424	360	400	425
200'	486	4.61	4.21	438	376	416	441
202' N. on W.		4.62					
210' N. on E.						420	445
250'	466	441	401	423	365	405	430
300'	445	420	380	403	346	386	411
350'	423	398	358	382	327	367	392
Section B							
400.65' N. on	400	375	335	362	308	348	373
207' N. on W.	SL GRAPE						
1812' " E	400	375	335	358	300	340	365
SL GRAPE	400	375	335	358	300	340	365
Curb	375	375	266	258	149	340	340
1/4	335	329	324	318	312	306	300
±	387	380	372	364	355	347	340
1/4	360	350	340	330	320	310	300
Curb	300	300				240	240
	400	400	285	270	255	340	340
PL. GRAPE	425	400	340	370	315	340	365

6/30/16

ATLANTIC ST.

Book 1002

W. Curb 1/4 E 1/4 Curb E

ML of B	365	340	300	340	300	340	365
25' N.	377	352	312	352	312	352	377
50' "	389	364	324	364	324	364	389
75'	401	376	336	376	336	376	401
100'	412	387	347	387	347	387	412
125'	423	398	358	398	358	398	423
150'	435	410	370	410	370	410	435
175'	425	400	360	396	352	392	417
200'	415	390	350	382	334	374	399
225'	405	380	340	367	315	355	380
250'	395	370	330	353	297	337	362
275'	385	360	320	339	279	319	344
300' N. - SL A ST.	375	350	310	325	260	300	325

SLA ST. 375 350 310 325 260 300 325

J.C.B. 350 350 237 225 212 300 300

1/4 250 250 200 200  
3.10 3.02 294 385 276 268 260

E 375 367 359 350 341 333 325

1/4 310 302 294 285 276 268 260

250 250 200 200  
N.C.B. 350 350 237 225 212 300 300

ML A ST. 375 350 310 325 260 300 325

ATLANTIC ST.

	W	Curb	1/4	¢	1/4	Curb	E
ML of A	375	3.50	3.10	3.25	2.60	3.00	3.25
25' Ho.	379	3.54	3.14	3.30	2.66	3.06	3.31
50' "	383	3.58	3.18	3.35	2.72	3.12	3.37
75'	387	3.62	3.22	3.40	2.78	3.18	3.43
100'	392	3.67	3.27	3.46	2.85	3.25	3.50
125'	396	3.71	3.31	3.51	2.91	3.31	3.56
150'	400	3.75	3.35	3.56	2.98	3.38	3.63
175'	4.04	3.79	3.39	3.61	3.04	3.44	3.69
200'	4.08	3.83	3.43	3.66	3.10	3.50	3.75
225'	4.12	3.87	3.47	3.71	3.16	3.56	3.81
250'	4.16	3.91	3.51	3.77	3.22	3.62	3.87
275'	4.20	3.95	3.55	3.82	3.28	3.68	3.93
300' = SLASH	4.25	4.00	3.60	3.87	3.35	3.75	4.00

ASH ST. INTERSECTION 80' ST.

SLASH ST.	4.25	4.00	3.60	3.87	3.35	3.75	4.00
Curb	4.00	4.00	3.69	3.94	3.39	3.75	3.75
1/4	3.00	3.00				2.75	2.75
¢	3.60	3.12	3.77	4.00	3.43	2.81	3.35
1/4	4.25	3.25	3.85	4.06	3.47	3.87	3.87
Curb	4.10	3.37	3.93	4.12	3.51	2.93	3.60
1/4	3.50	3.50				3.00	3.00
MLASH	4.50	4.50	4.01	4.18	3.55	4.00	4.00
1/4	4.75	4.50	4.10	4.25	3.60	4.00	4.25

ATLANTIC ST.

	W	curb	1/4	¢	1/4	curb	E
N.L. ASH	475	450	410	425	360	400	425
50' No.	483	458	418	435	372	412	437
100' "	492	467	427	446	385	425	450
150'	500	475	435	456	398	438	462
200'	508	483	443	467	410	450	475
250'	517	492	452	477	422	462	487
300' No. = 3L	525	500	460	487	435	475	500

BEECH ST. INTERSECTION 80' ST.

S.L. BEECH	525	500	460	487	435	475	500
curb	500	500	469	494	439	475	475
1/4	460	412	477	500	443	381	435
¢	525	425	488	506	447	387	487
1/4	510	437	493	512	451	393	460
curb	550	550	500	518	455	500	500
N.L. BEECH	575	550	510	525	460	500	525

N.L. BEECH	575	550	510	525	460	500	525
50' No.	600	575	535	554	493	533	558
100'	625	600	560	584	527	567	592
150'	650	625	585	612	560	600	625
175'	642	617	577	605	552	592	617
190'	637	612	572	600	547	587	612
210'	630	605	565	592	540	580	605
250'	617	592	552	580	527	567	592
S.L. CEDAR	600	575	535	562	510	550	575

7/7/16

This page is a ledger-style sheet with horizontal blue lines and four vertical red margin lines. The margins are located at approximately 10%, 18%, 26%, and 34% from the left edge of the page.

This page is a ledger-style sheet with horizontal blue lines and a vertical red margin line at approximately 10% from the left edge. The right portion of the page is filled with a grid of small squares, typical of a graph or accounting ledger.



70' ST.  
10' Walks  
12 1/2' Quads

VOLTAIRE STREET

See Book 990

W.L. Chatsworth

	W	Curb	1/4	1/2	3/4	Curb	E
Section B	117.25	117.00	116.40	116.50	115.85	116.00	116.25
" C	116.85	116.60	116.00	116.30	115.75	116.00	116.25
25' West	115.16	114.91	114.31	114.59	114.03	114.27	114.00
50' "	113.46	113.21	112.61	112.88	112.32	112.55	112.30
75' "	111.77	111.52	110.92	111.17	110.60	110.82	111.07
100'	110.07	109.82	109.22	109.46	108.88	109.10	109.35
125'	108.38	108.13	107.53	107.75	107.16	107.37	107.62
150'	106.69	106.44	105.84	106.04	105.44	105.64	105.87
175'	104.99	104.74	104.14	104.33	103.72	103.92	104.17
200'	103.30	103.05	102.45	102.62	102.00	102.19	102.44
225'	101.60	101.35	100.75	100.91	100.29	100.47	100.72
250'	99.91	99.66	99.06	99.20	98.57	98.74	98.99
275'	98.22	97.97	97.37	97.49	96.85	97.01	97.26
296.87' W. - Sec. D	96.75	96.50	95.90	96.00	95.35	95.50	95.75
Section E	95.75	95.50	95.10	95.50	95.10	95.50	95.75

*W.L. Chatsworth*

ALLEY - BLOCK 9 - MISSION HILLS

	N	E	S
E LINE ARGUELLA	269 66	269 47	269 27
SEC. A. B. =	269 41	269 22	269 02
00' ON No. 93 ON SO	269 58		269 19
50' E OF SEC. A. B.	270 30	269 84	270 04
75'	270 62	270 16	270 36
100'	270 93	270 48	270 69
SEC. D. C. PT.			
125 88	271 26	270 82	270 03
25' 4' N E ON S E LINE	271 53	271 12	271 36
50' 8'	271 81	271 42	271 69
76.2' " " "	272 08	271 72	272 02
SEC. F. F.			
101.61' " " "	272 36	272 03	272 35
25' N OF SEC. F. F.	272 68	272 35	272 67
50' " " " GH (GRADE)	273 00	272 67	273 00
25' N SEC. G. H. ON E LINE	273 21	272 88	273 21
50' " " " "	273 41	273 08	273 41
75' " " " (GRADE)	273 62	273 29	273 62
100' " " " "	273 99	273 66	273 99
125' " " " "	274 37	274 04	274 36
128.09' " " " (GRADE)	274 41	274 08	274 41
148.09' " " " (GRADE)	274 71	274 38	274 71
168.09' " " " (GRADE)	274 60	274 27	274 60
188.09' " " " (GRADE)	274 00	273 67	274 00
200' " " " "	273 28	272 93	273 24
220.09' " " " "	272 07	271 67	271 92
225' " " " "			
231-25' SEC. I. J.	271 41	270 97	271 19
529' N ONE LINE AND 00' ON W. S. LINE HICKORY	271 41	270 87	270 85

269.44 B.M.	270.04	269.84	270.30	270.62	270.16	270.36	16
6.40	4.80	5.00	4.54	4.22	4.68	4.48	
274.84 H.I.	270.04	271.26	270.82	271.03	271.36	271.12	271.53
270.48	4.16	3.58	4.02	3.81	3.48	3.72	3.31
4.36	270.93	271.69	272.02	271.72	272.08	272.36	272.03
272.35	3.91	3.42	3.16	2.82	3.72	2.76	2.48
2.49	5.77	272.67	272.35	272.68	273.00	273.21	273.61
272.80	H.I.	5.45	5.77	5.44	3.12	4.91	4.71
273.72		273.99	274.41	274.71	274.60	274.00	4.50
		4.13	3.71	3.41	3.52	4.42	
W.H.	273.96	148	273.24	272.93	273.28	272.07	271.67
		175.48	2.24	2.53	2.30	3.41	3.81
6.46		271.92	270.81	271.41	4.61		
274.90 H.I.	270.16	3.56	4.63	4.07	270.87		
269.84	4.74	270.48	270.82	271.12	271.42	271.72	272.03
5.06	5.78	4.42	4.08	3.78	3.48	3.18	2.87
272.02	H.I.	272.35	272.67	272.88	273.09	273.29	273.60
272.73		3.38	3.06	4.85	4.65	4.44	4.07
274.28		274.27	273.62	272.73	271.67		
3.35		3.46	4.06	4.80	6.06		

6.25 4.91 20.46 121.8 20.46

1116

5.27 6.35 4.91 20.09 11.91 4.875

15' alley

## ALLEY between WALNUT &amp; BROOKES

	W	E	
N.L. Walnut	285.64	285.50	285.85
50' N.	286.22	285.95	286.33
85 "	286.63	286.26	286.66
100	286.80	286.40	286.80
129	287.00	286.60	287.00
140	287.07	286.67	287.07
150	287.13		
162A	287.22	286.82	287.22
188	287.39	287.00	287.39
200	287.48	287.08	287.48
350	287.82	287.42	287.82
274	287.98	287.58	287.98
299.5	288.15	287.75	288.15
308	288.20	287.80	288.20
350	288.49	288.09	288.49
389	288.75	288.35	288.75
400	288.82	288.42	288.82
440	289.10	288.70	289.10
460 459	289.08	288.68	289.09
480	288.76	288.38	288.80
500	288.18	287.85	288.32
520	287.29	286.93	287.37
535	286.40	286.05	286.50
540	286.10	285.75	286.21
550	285.36	285.02	285.49
553A	285.12	284.78	285.25
SL of Brookes 560	284.63	284.30	284.77
599.7	281.38	281.50	281.62

and 3RD and 4TH STS.

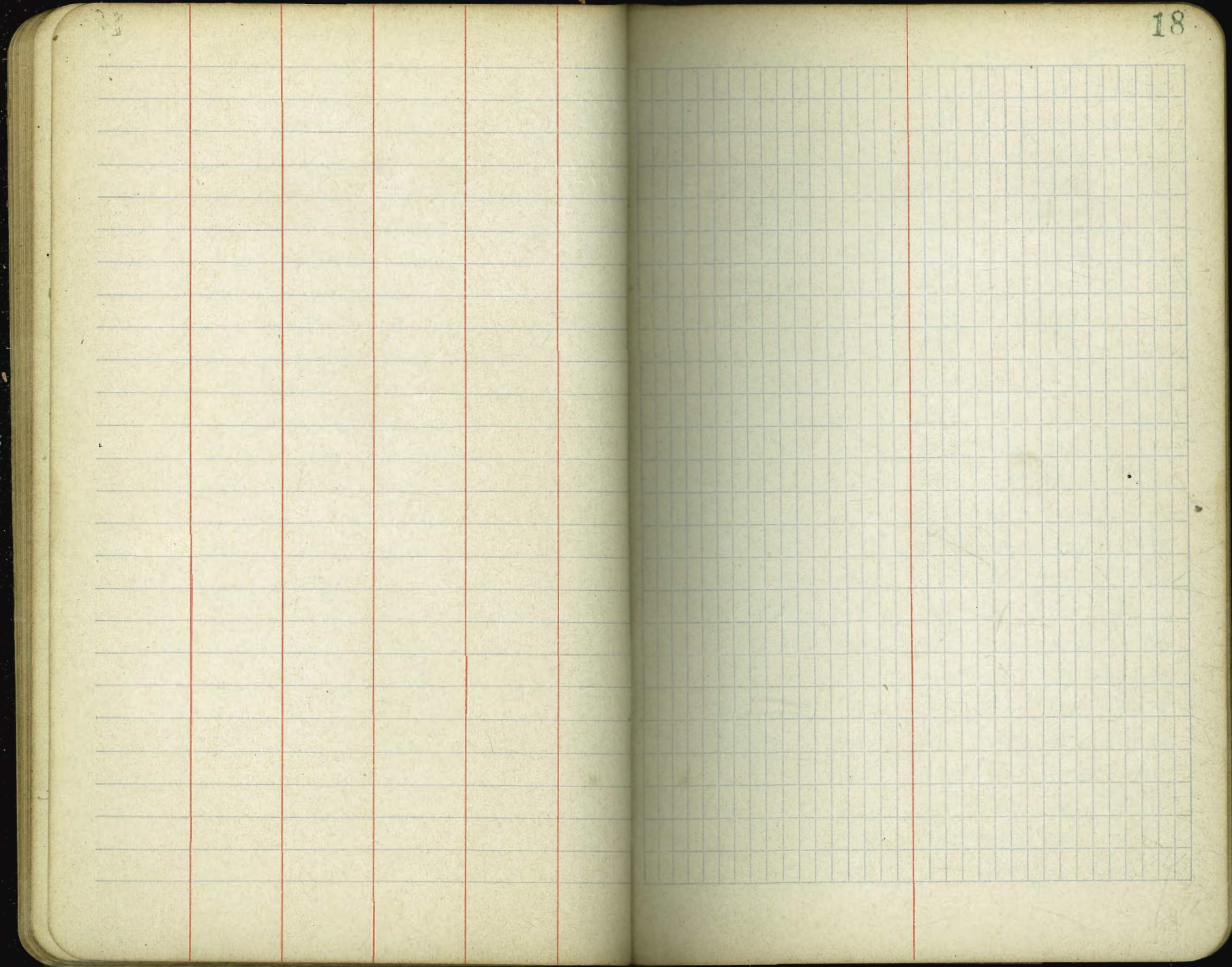
287.39 NW Walnut & 4th  
283.32 NW Brookes

17

Book 840

	P. 21	P. 30	P. 40	P. 49	P. 57	P. 67
11.22	5.21	5.10	4.63	4.30	3.95	3.61
21.43	87.12	88.15	89.29	88.82	89.10	89.08
41.10	5.06	4.73	4.39	4.04	3.78	3.50
57.33	89.27	89.32	89.18	89.20	89.00	89.00
72.88	2.77	4.51	4.70	6.44	6.38	11.76
116.7	812.1	85.86	81.31	87.22	4.88	81.12
157.33	5.73	7.32	7.52	1.50		
172.88	36.6	4.13				
187.33	13.28	12.00	13.00	13.00		

SWS  
8/22/16



80' ST.  
14' Walks  
13' Quarters

LA. JOLLA BOULEVARD

BOOK 1101

	W	Corb	1/4	€	1/4	Corb	E
Section BC	58.75	58.50	58.72	59.75	60.40	61.00	61.25
" AB	58.75	58.50	58.63	59.56	60.02	60.62	60.87
22' N. of AB	58.11 <sup>0</sup>	57.86	57.94	58.82	59.17	59.77	60.02
25' to.	58.02 <sup>0</sup>	57.77	57.84	58.72	59.06	59.66	59.91
50' "	57.29 <sup>0</sup>	57.04	57.06	57.87	58.10	58.70	59.05
75'	56.56	56.31	56.26	57.02	57.13	57.73	57.98
79'	56.45	56.20	56.14	56.89	56.98	57.58	57.83
90'	56.23	55.98	55.90	56.62	56.66	57.26	57.51
100'	56.03	55.78	55.68	56.38	56.38	56.98	57.23
117'	56.05	55.80	55.67	56.34	56.28	56.88	57.13
125'	56.15	55.90	55.76	56.41	56.22	56.92	57.17
135'	56.35	56.10	55.94	56.58	56.46	57.06	57.31
138'	56.42	56.17	56.00	56.64	56.51	57.11	57.36
150'	56.87	56.62	56.44	57.06	56.90	57.50	57.75
160'	57.28	57.03	56.84	57.44	57.26	57.86	58.11
175'	58.04	57.79	57.58	58.18	57.96	58.56	58.81
200'	59.31	59.06	58.82	59.39	59.12	59.72	59.97
225'	60.57	60.32	60.06	60.60	60.29	60.89	61.14
250'	61.84 <sup>0</sup>	61.59	61.19	61.82	61.65	62.05	62.30
275'	63.10 <sup>0</sup>	62.85	62.45	63.03	62.81	63.21	63.46
300'	64.37	64.12	63.72	64.35	63.98	64.38	64.63
325'	65.64	65.39	64.99	65.46	65.14	65.54	65.79
350'	66.90	66.65	66.25	66.67	66.30	66.70	66.95
DE = 376.6, 0.01 W. = PC.	68.25	68.00	67.60	68.00	67.60	68.00	68.25
centers of curves	Sec. GF	68.75	68.50	68.10	68.56	68.22	68.87
North ends of curves	Sec. H1 =	69.25	69.00	68.60	69.12	68.82	69.50

Sept. 8, 1916

W.G.

# LA JOLLA BOULEVARD

	W	curb	¼	¼	curb	E
Section AB	58.75	<sup>59.00</sup> 58.50	58.75	59.75	60.40	61.00 61.25
.. CB	58.25	<sup>58.45</sup> 58.00	58.35	59.50	60.40	61.00 61.25
.. DE	57.32	<sup>57.87</sup> 57.07	57.38	58.50	59.33	59.93 60.18
.. FG	56.81	<sup>57.57</sup> 56.56	56.66	57.55	57.94	58.54 58.79
.. HI	56.31	<sup>57.27</sup> 56.06	55.94	56.61	56.56	57.16 57.41
10' 7/16 of HI	56.15	<sup>57.12</sup> 55.90	55.77	56.44	56.37	56.97 57.22
25" ..	56.00	55.75	55.60	56.26	56.18	56.78 57.03
+30		<sup>56.40</sup> 56.00				
4'	56.07	<sup>55.82</sup> 55.82	55.67	56.32	56.22	56.82 57.07
50'	56.29	<sup>56.80</sup> 56.04	55.88	56.52	56.40	57.00 57.25
+70		<sup>57.56</sup> 56.59				
67'	56.84	<sup>56.84</sup> 56.59	56.42	57.04	56.87	57.49 57.74
75	57.19	<sup>56.94</sup> 56.74	56.76	57.38	57.21	57.81 58.06
+90		<sup>58.53</sup> 57.32				
83'	57.57	<sup>57.32</sup> 57.32	57.13	57.74	57.57	58.17 58.42
100.	58.49	<sup>58.04</sup> 58.24	58.04	58.63	58.43	59.03 59.28
125	59.84	<sup>59.57</sup> 59.59	59.36	59.74	59.70	60.30 60.55
150	61.19	<sup>61.57</sup> 60.94	60.70	61.26	60.97	61.57 61.82
175	62.54	<sup>63.04</sup> 62.29	62.02	62.56	62.23	62.83 63.08
200	63.89	<sup>64.11</sup> 63.64	63.24	63.87	63.70	64.10 64.35
225	65.25	<sup>65.57</sup> 65.00	64.60	65.18	64.97	65.37 65.62
250	66.60	<sup>66.65</sup> 66.35	65.95	66.50	66.24	66.64 66.89
7769' = Sec JK	68.04	<sup>68.00</sup> 67.79	67.39	67.90	67.60	68.00 68.25
Sec LK	68.25	<sup>68.20</sup> 68.00	67.60	68.00	67.60	68.00 68.25
.. MM	68.75	<sup>68.60</sup> 68.50	68.10	68.56	68.22	68.62 68.87
.. OP	69.25	69.00	68.60	69.12	68.85	69.25 69.50

See page 24 for corrected notes

10/3/16

67.07 68.75 68.77  
 5.18 4.00 3.38  
 4.18 4.1 4.05 6.125  
 4.0 4.1 4.05 6.125  
 68.75 66.90 162 1.93 57.85  
 3.40 5.35 10.69 1.93 3.33  
 3.30 2.95 72.23 2.93 3.83  
 +0.1 +1.4 61.82 1.94 40.9  
 69.45 69.25 10.95 60.60 49.07  
 3.00 4.00 8.95 +2.7 4.11  
 69.65 3.6 64.36 4.27 5.1  
 9.60 +0.4 7.99 2.97 2.98  
 5.90 68.40 5.09 +1.4 41.5  
 48.7 3.86 12.8  
 64.96 3.5  
 1.39 +0.3 68.9  
 6.17 57.5  
 1.2

61.20  
 19.1  
 63.11 H.E.  
 61.78 57.27  
 4.33 5.63  
 1.3  
 226.7 / 10.500 4.63  
 9.068  
 14320  
 13602  
 7180  
 6801

61.20  
 19.1  
 63.11 H.E.  
 61.78 57.27  
 4.33 5.63  
 1.3  
 226.7 / 9.000 3.97  
 68.01  
 21990  
 20403  
 15870  
 15869

change method of figuring  
 indicates elevation  
 61.20 62.38  
 20.6 2.22  
 63.26 H.E. 7.11  
 59.25 58.92  
 401 4.34  
 58.57  
 4.69  
 61.25 61.39  
 2.01 4.87  
 58.21  
 6.08

61.20 B.M.  
 1.98  
 6.3.18 H.E.  
 5.8.75  
 4.43 58.85  
 4.33 57.4  
 58.15 57.96  
 5.03 5.43 57.36  
 58.65 59.25 60.01 60.45 57.83  
 4.53 3.93 8.17 2.78 59.29  
 4.73 2.53 2.07 1.73 3.89  
 +1.2 +1.4 +1.1 +8.0 1.49  
 12.4  
 61.20  
 19.1  
 63.11 H.E.  
 61.78 57.27  
 4.33 5.63  
 1.3  
 39  
 199 59.0  
 60.99  
 1 62.97  
 64.96  
 2 - 66.94  
 E  
 397  
 4.63 W.  
 234  
 3.17  
 5  
 57.75 68.62 6.6  
 5.36 3.50 6 4  
 2.31 7  
 39.25  
 59.92  
 61.20 58.57  
 60.85 58.39  
 60.33 58.21  
 59.80  
 59.25



29TH STREET

W Curb 1/4 E 1/4 Curb E

260' So. of Ash	19420	19395	19337	19360	19304	19326	19351
265' So.	19403	19378	19320	19342	19286	19307	19332
274 "	19371	19346	19288	19309	19253	19273	19298
275.6	1.5 Low	19343				19272.69	
283	19390	19315	19256	19277	19219	19239	19264
292	19309	19284	19224	19244	19185	19205	19230
300.6 S.L. of SOUTH PARK	19281	19256	19196	19216	19155	19175	19200

NOT OUT TO LINE

60' Street  
10' Walks  
10' Quarters

29TH STREET

W Curb 1/4 E 1/4 Curb E

N.L. of A ST.	19095	19020	18960	18942	18863	18864	18889
25' No.	19112	19087	19027	19020	18941	18954	18979
32 "	19131	19106	19046	19042	18970	18979	19004
40'	19152	19127	19067	19067	18998	19008	19033
63'	19214	19189	19129	19139	19074	19090	19115
75'	19246	19221	19161	19177	19115	19133	19158
87.2' on E S.L. of South Park							
88.37' " W	19281	19256	19196	19216	19155	19175	19200

Handwritten notes and calculations on the right page, including:

- 19177, 19033, 192, 19177, 19033, 192
- 1334, 767, 587
- 48, 428
- 2935, 728
- CUTS & FILLS
- 9/18/16
- Gregory Miller
- Need
- 19177, 19033, 192
- 1334, 767, 587
- 48, 428
- 2935, 728
- 19177, 19033, 192
- 1334, 767, 587
- 48, 428
- 2935, 728
- 19177, 19033, 192
- 1334, 767, 587
- 48, 428
- 2935, 728
- Burden peeps
- Gregory Miller



20' Street  
10' Walks  
10' Quarters

LANDIS STREET

Book 873

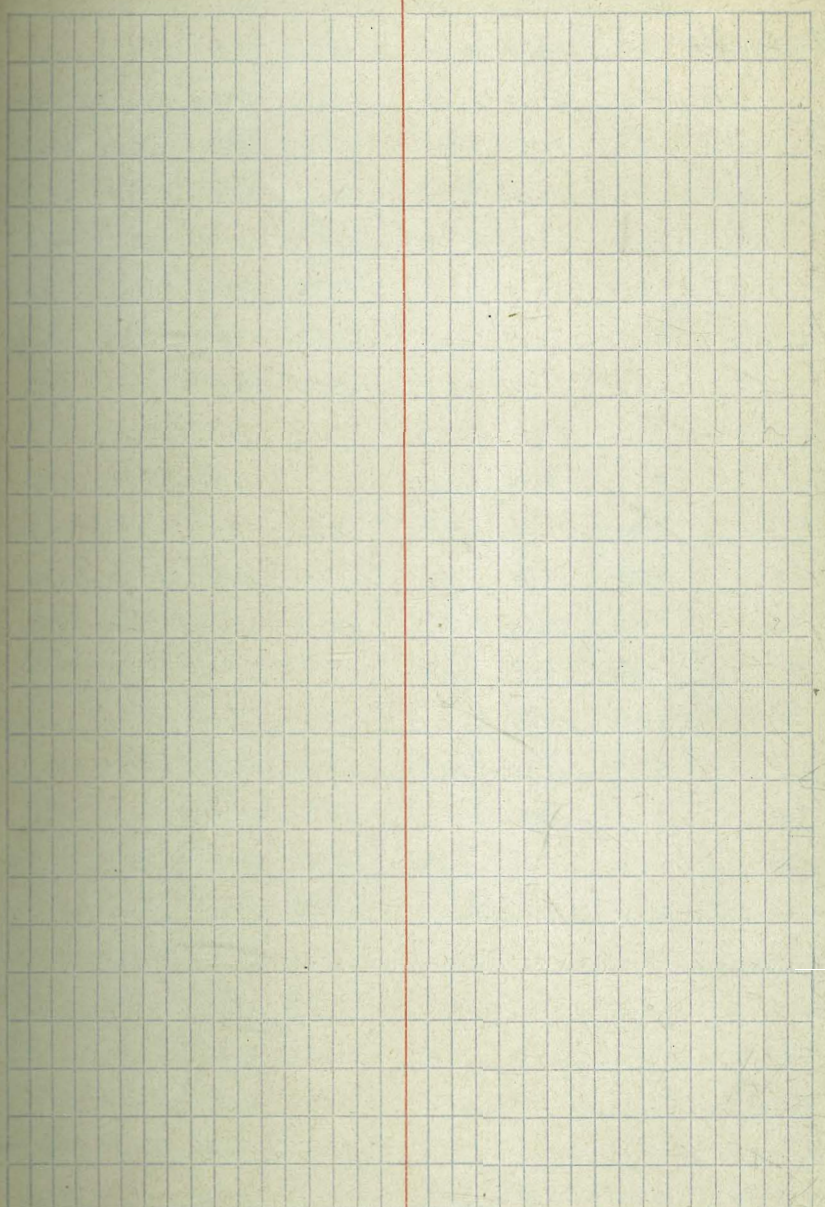
23

	1/4	Curb	1/4	Center	1/4	Curb	S.
W.L. of OREGON	338.25	338.00	337.40	337.75	337.25	337.50	337.75
5' West	337.85	337.60	337.00	337.35	336.85	337.09	337.34
25 "	336.27	336.02	335.42	335.74	335.20	335.47	335.72
50'	334.19	334.04	333.44	333.74	333.19	333.44	333.69
75	332.31	332.06	331.46	331.74	331.18	331.42	331.67
100	330.33	330.08	329.48	329.73	329.16	329.39	329.64
125	328.35	328.10	327.50	327.73	327.14	327.36	327.61
150	326.36	326.11	325.51	325.72	325.12	325.33	325.58
175	324.38	324.13	323.53	323.72	323.11	323.30	323.55
200	322.40	322.15	321.55	321.72	321.10	321.28	321.53
225	320.42	320.17	319.57	319.71	319.08	319.25	319.50
263	317.91	317.16	316.56	316.66	316.01	316.16	316.41
VILLA TERRACE 265' W. = E.L. of	317.25	317.00	316.40	316.50	315.85	316.00	316.25

Note: Villa Terrace is graded.

W.L. VILLA TERRACE	316.25	316.00	315.40	315.50	314.85	315.00	315.25
7' West	315.63	315.38	314.78	314.88	314.23	314.39	314.64
25 "	314.03	313.78	313.18	313.30	312.66	312.83	313.08
50'	311.82	311.57	310.97	311.12	310.49	310.66	310.91
75	309.60	309.35	308.75	308.92	308.30	308.49	308.74
100	307.38	307.13	306.53	306.72	306.10	306.32	306.57
125	305.17	304.92	304.32	304.53	303.94	304.15	304.40
150	302.95	302.70	302.10	302.34	301.76	301.98	302.23
175	300.73	300.48	299.88	300.14	299.58	299.81	300.06
200	298.51	298.26	297.66	297.95	297.40	297.64	297.89
225	296.30	296.05	295.45	295.76	295.22	295.47	295.72
263	292.93	292.68	292.08	292.42	291.90	292.17	292.42
ARNOLD ST. 265' W. = E.L. of	292.25	292.50	291.90	292.25	291.72	292.00	292.25

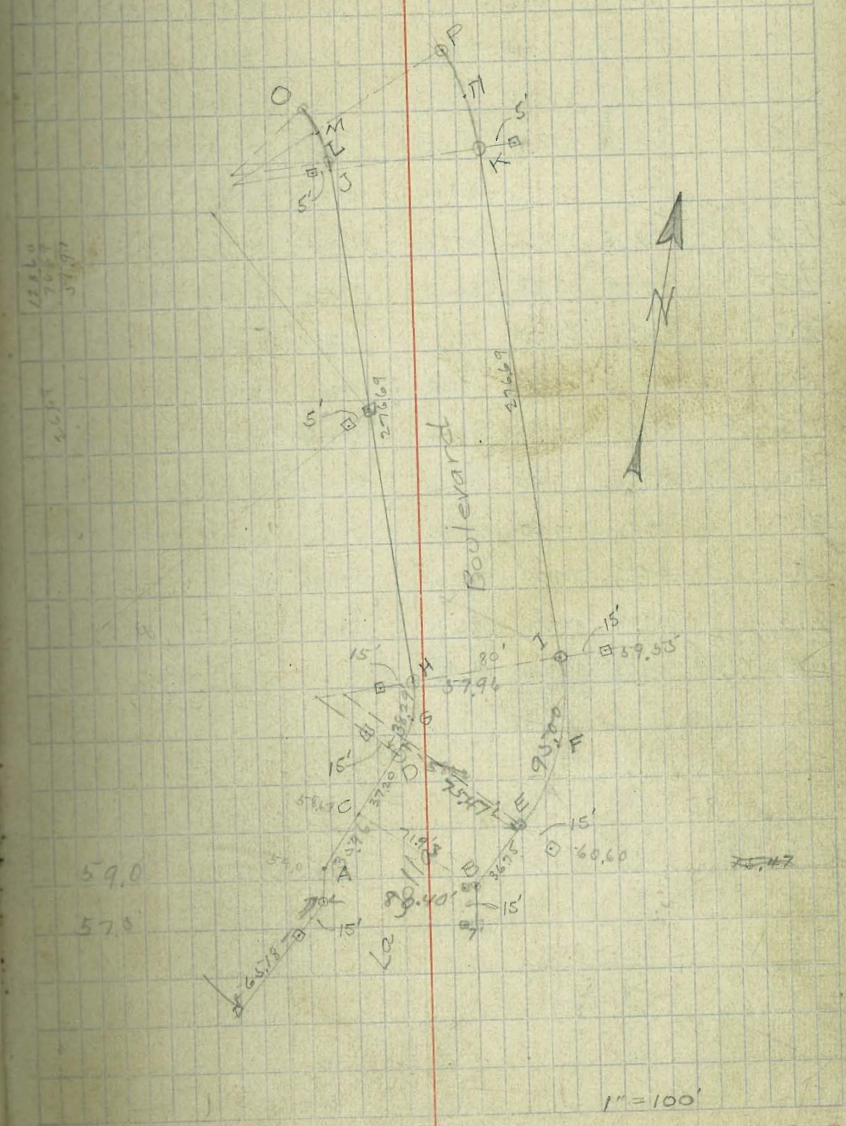
S.W.G. 9/21/16



Final grades for LA JOLLA BOULEVARD  
see page 32

	W	Curb	1/4	1/2	3/4	Curb	E
Section AB	59.25	59.00	59.10	60.00	60.40	61.00	61.25
" CB	58.69	58.44	58.68	59.72	60.40	61.00	61.25
" DE	58.11	57.86	58.10	59.13	59.80	60.40	60.65
" GF	57.81	57.56	57.67	58.58	59.01	59.61	59.76
" H.I.	57.52	57.27	57.26	58.04	58.22	58.82	59.07
10' No. of H.I.	57.37	57.12	57.10	57.89	58.06	58.66	58.91
25' No. "	57.27	57.02	57.00	57.77	57.92	58.52	58.77
30' "	57.23	56.98	56.95	57.73	57.88	58.48	58.73
41'	57.32	57.07	57.04	57.80	57.94	58.54	58.79
50'	57.41	57.16	57.12	57.88	58.00	58.60	58.85
67'	57.85	57.60	57.54	58.28	58.37	58.97	59.22
70'	57.93	57.68	57.62	58.36	58.43	59.03	59.28
75'	58.14	57.89	57.82	58.55	58.61	59.21	59.46
83'	58.48	58.23	58.15	58.87	58.91	59.51	59.76
90'	58.78	58.53	58.44	59.14	59.16	59.76	60.01
100'	59.29	59.04	58.93	59.62	59.60	60.20	60.45
125'	60.56	60.31	60.16	60.80	60.70	61.30	61.55
150'	61.23	60.98	60.83	61.99	61.80	62.40	62.65
175'	63.10	62.85	62.60	63.38	63.20	63.80	64.05
200'	64.37	64.12	63.72	64.36	64.21	64.81	65.06
225'	65.64	65.39	64.99	65.55	65.31	65.91	66.16
250'	66.91	66.66	66.26	66.73	66.41	67.01	67.26
276.49' Sec JK	68.25	68.00	67.60	68.00	67.60	68.00	68.25
Sec LK	68.36	68.11	67.71	68.05	67.60	68.00	68.25
" MT	68.80	68.55	68.15	68.58	68.22	68.62	68.87
" OP	69.25	69.00	68.60	69.12	68.85	69.25	69.50

Tie outs for La Jolla Blvd. points  
Tied out by Childs 10/6/16



See page 32

1" = 100'  
OCT. 11, 1916 SWS

80' ST.  
14' Walks  
13' Quarters

MORROE AVENUE

Book 966

	S	Curb	1/4	+	1/4	Curb	W
E.L. OREGON	37925	37900	37860	37900	37860	37900	37925
5' East	37921	37896	37856	37896	37856	37896	37921
25'	37905	37880	37840	37880	37840	37880	37905
50'	37885	37860	37820	37860	37820	37860	37885
65	37873	37848	37808	37848	37808	37848	37873
80	37861	37836	37796	37836	37796	37836	37861
100	37845	37820	37780	37820	37780	37820	37845
115	37833 <sup>NO</sup>	37808	37768	37808	37768	37808	37833
125	37825 <sup>NO</sup>	37800	37760	37800	37760	37800	37825
150	37805	37780	37740	37780	37740	37780	37805
175	37785	37760	37720	37760	37720	37760	37785
200	37765	37740	37700	37740	37700	37740	37765
225	37745	37720	37680	37720	37680	37720	37745
250	37725	37700	37660	37700	37660	37700	37725
275	37705	37680	37640	37680	37640	37680	37705
IDAHO ST. 300' E = W.L. of	37685	37660	37620	37660	37620	37660	37685

25739 N.W. 4th & Walnut p/g rt.  
25337 N.W. 4th & Brooks p/g rt.

10/10/16

SMH

70' street 10' Walks 12 1/2' Quarters		VOLTAIRE STREET					
W.L. CHATSWORTH or Section A	S	Curb	1/4	1/2	3/4	Curb	N
	118.25	118.00	117.85	118.50	118.40	119.00	119.25
" B	117.25	117.00	116.85	117.50	117.40	118.00	118.25
" C	117.25	117.00	116.79	117.38	117.17	117.77	118.02
35' West	116.22	115.97	115.78	116.38	116.20	116.80	117.05
50' "	115.19	114.94	114.76	115.38	115.23	115.83	116.08
75'	114.16	113.91	113.74	114.38	114.26	114.86	115.11
96.9	113.25	113.00	112.85	113.50	113.40	114.00	114.25
100	113.01	112.76	112.61	113.26	113.16	113.76	114.01
125	111.01	110.76	110.62	111.27	111.18	111.78	112.03
150	109.01	108.76	108.62	109.28	109.20	109.80	110.05
175	107.01	106.76	106.62	107.29	107.22	107.82	108.07
200	105.01	104.76	104.63	105.30	105.25	105.85	106.10
225	103.01	102.76	102.64	103.32	103.27	103.87	104.12
250	101.01	100.76	100.64	101.32	101.29	101.89	102.14
275	99.01	98.76	98.65	99.34	99.31	99.91	100.16
296.9 W. - Sec D	97.25	97.00	96.89	97.58	97.57	98.17	98.42
Sec E	97.25	97.00	96.60	97.00	96.60	97.00	97.35
E.L. VILLA DR.	96.52	96.27	95.87	96.33	96.00	96.39	96.64
E.L. VILLA DR.	96.52	96.27	95.87	96.33	96.00	96.39	96.64
Curb	96.27	96.27	95.57	96.03	95.72	96.39	96.37
1/4	95.27	95.27		95.68	95.37	95.97	95.97
1/2	95.67	94.90	95.20	95.68	95.37	94.96	95.79
3/4	95.14	94.44	94.82	95.33	95.02	94.52	95.35
Curb	94.18	93.58	94.44	94.98	94.67	94.08	94.61
1/4	93.02	93.02		94.63	94.32	93.64	94.24
1/2	94.02	94.02	94.07	94.63	94.32	94.64	94.64
3/4	94.27	94.02	93.77	94.33	94.04	94.64	94.89

Note: Revised and final notes begin on page 34

VOLTAIRE STREET

	S	Curb	1/4	1/2	3/4	Curb	1/4
W. L. VILLA DR	9427	9402	9377	9433	9404	9464	9488
Section F	9350	9325	9304	9362	9340	9400	9425
" G	9283	9258	9304	9329	9340	9400	9425
25' West	9108	9083	9078	9152	9162	9222	9247
50' West	8933	8908	8902	8975	8983	9043	9068
75' "	8758	8733	8726	8798	8804	8864	8889
100'	8583	8558	8550	8622	8626	8686	8711
110'	8513	8488	8480	8552	8555	8615	8640
125'	8408	8383	8374	8445	8448	8508	8533
PT. LOMA VILLAS 160.2 W. = W.L.	8164	8139	8128	8198	8198	8258	8283
5' West	8129	8104	8094	8163	8162	8222	8247
20' "	8025	8000	7988	8057	8054	8114	8139
25' "	7995	7970	7958	8027	8023	8083	8108
45'	7872	7847	7834	7902	7897	7957	7982
58	7815	7790	7778	7845	7840	7900	7925
64	7787	7764	7751	7818	7813	7873	7898
70	7763	7738	7725	7792	7785	7845	7870
73	7755	7730	7717	7784	7777	7837	7862
85	7725	7700	7686	7752	7743	7803	7828
95	7698	7673	7658	7724	7715	7775	7800
100	7693	7668	7654	7719	7711	7771	7796
120	7675	7650	7636	7702	7694	7754	7779
125	7680	7655	7641	7707	7698	7758	7783
145	7698	7673	7658	7723	7713	7773	7798
150	7711	7686	7671	7736	7726	7786	7811
170	7763	7738	7723	7788	7778	7838	7863
175	7785	7760	7745	7810	7800	7860	7885
195	7872	7847	7832	7897	7887	7947	7972
200	7903	7878	7863	7928	7918	7978	8003
220	8025	8000	7985	8050	8040	8100	8125



VOLTAIRE STREET

	S	Curb	1/4	1/2	3/4	Curb	1/4
EL. Worden St.	9475	9450	9410	9450	9410	9450	9475
Curb	9450	9450	9380	9420	9380	9450	9450
1/4	9350	9350				9350	9350
1/2	9390	9312	9358	9398	9358	9312	9390
3/4	9375	9275	9335	9375	9335	9275	9375
1/4	9297	9237	9312	9352	9312	9237	9297
Curb	9200	9200				9200	9200
1/2	9300	9300	9290	9330	9290	9300	9300
W.L. Worden St.	9325	9300	9260	9300	9260	9300	9325
W.L. Worden St.	9325	9300	9260	9300	9260	9300	9325
25' W.	9125	9100	9060	9100	9060	9100	9125
50' "	8925	8900	8860	8900	8860	8900	8925
75'	8725	8700	8660	8700	8660	8700	8725
100'	8525	8500	8460	8500	8460	8500	8525
125	8325	8300	8260	8300	8260	8300	8325
150	8125	8100	8060	8100	8060	8100	8125
175	7925	7900	7860	7900	7860	7900	7925
200	7725	7700	7660	7700	7660	7700	7725
225	7525	7500	7460	7500	7460	7500	7525
250	7325	7300	7260	7300	7260	7300	7325
275	7125	7100	7060	7100	7060	7100	7125
Wells St.							
300' W. = E.L.	6925	6900	6860	6900	6860	6900	6925

8m  
10/24/16

VOLTAIRE STREET

	S	Curb	1/4	±	1/4	Curb	N
EL. Wells St.	69.25	69.00	68.60	69.00	68.60	69.00	69.25
Curb	69.00	69.00	68.40	68.80	68.40	69.00	69.00
1/4	68.00	68.00				68.00	68.00
±	68.40	67.75	68.25	68.65	68.25	67.75	68.40
1/4	68.50	67.50	68.10	68.50	68.10	67.50	68.50
Curb	67.85	67.25	67.95	68.35	67.95	67.25	67.85
1/4	67.00	67.00				67.00	67.00
±	68.00	69.00	67.80	68.20	67.80	68.00	68.00
W.L. Wells	68.25	68.00	67.60	68.00	67.60	68.00	68.25
W.L. Wells St	68.25	68.00	67.60	68.00	67.60	68.00	68.25
10' W.	68.40	68.15	67.75	68.15	67.75	68.15	68.40
25'	68.63	68.38	67.98	68.38	67.98	68.38	68.63
50'	69.00	68.75	68.35	68.75	68.35	68.75	69.00
60'	69.15	68.90	68.50	68.90	68.50	68.90	69.15
75'	69.37	69.12	68.70	69.12	68.70	69.12	69.37
85'	69.50	69.27	68.87	69.27	68.87	69.27	69.50
110'	69.90	69.65	69.25	69.65	69.25	69.65	69.90
150'	70.20	69.95	69.55	69.95	69.55	69.95	70.20
150'	70.50	70.25	69.85	70.25	69.85	70.25	70.50
185'	71.03	70.78	70.38	70.78	70.38	70.78	71.03
200'	71.25	71.00	70.60	71.00	70.60	71.00	71.25
225'	71.63	71.38	70.98	71.38	70.98	71.38	71.63
240'	71.85	71.60	71.20	71.60	71.20	71.60	71.85
250'	72.03	71.78	71.38	71.78	71.38	71.78	72.03
275'	72.37	72.12	71.72	72.12	71.72	72.12	72.37
280'	72.45	72.20	71.80	72.20	71.80	72.20	72.45
300'	72.33	72.08	71.68	72.08	71.68	72.08	72.33
325'	72.19	71.94	71.54	71.94	71.54	71.94	72.19
350'	72.04	71.79	71.39	71.79	71.39	71.79	72.04
375'	71.90	71.65	71.25	71.65	71.25	71.65	71.90
San Clemente St. 400 N - EL. of.	71.75	71.50	71.10	71.50	71.10	71.50	71.75

Turn to page 34 for reverse  
grades



A ledger page with horizontal blue lines and four vertical red lines creating five columns. The columns are of varying widths, with the two inner columns being the narrowest. The page is otherwise blank.

A ledger page with horizontal blue lines, a vertical red line, and a large grid area. The grid is formed by light blue lines and occupies most of the page's width. The page is otherwise blank.



70' St.  
10' Walks  
1 1/2 Quarters

ALBATROSS STREET

Book 766

	W	Curb	1/4	E	1/4	Curb	E
N.L. ROBINSON	266.25	266.00	265.85	266.50	266.40	267.00	267.25
25' 170	266.51	266.26	266.10	266.75	266.64	267.24	267.49
50'	266.77	266.52	266.36	267.00	266.87	267.47	267.72
75'	267.03	266.78	266.61	267.24	267.11	267.71	267.96
100	267.28	267.03	266.86	267.49	267.35	267.95	268.20
116	267.45	267.20	267.02	267.65	267.50	268.10	268.35
125	267.54	267.29	267.12	267.74	267.59	268.19	268.44
136	267.63	267.40	267.20	267.80	267.60	268.20	268.45
150	267.65	267.40	267.20	267.80	267.60	268.20	268.45
156	267.65	267.40	267.20	267.80	267.60	268.20	268.45
175	267.55	267.30	267.07	267.65	267.40	268.00	268.25
176	267.55	267.30	267.07	267.65	267.40	268.00	268.25
196	267.25	267.00	266.75	267.30	267.00	267.50	267.75
200	267.17	266.92	266.66	267.21	266.90	267.50	267.75
216	266.85	266.60	266.35	266.85	266.50	267.10	267.35
225	266.54	266.29	266.01	266.54	266.19	266.79	267.04
230	266.36	266.11	265.84	266.36	266.01	266.61	266.86
250	265.66	265.41	265.13	265.66	265.31	265.91	266.16
275	264.79	264.54	264.26	264.79	264.44	265.04	265.29
290	264.27	264.02	263.74	264.27	263.92	264.52	264.77

407.06 NE Robt  
5.20  
27.26

Set 10' max d. For Gas Co. 11/21 Gregory

267.06	267.30	268.26	268.45	267.85	267.36	268.05
5.20	4.86	2.91	3.81	4.41	3.91	7.01
27.26	+0.6	+1.2	+1.8	+1.6	+2.1	+1.9
266.85	267.45	267.65	267.05	269.05	268.45	268.15
5.41	4.81	4.61	4.61	3.91	4.11	4.51
+0.9	+1.0	+0.5	-0.5	-0.5	-12.0	

8.24  
11/2/16

WL WC WG WA E FA EG EC EL

N.L. ROBINSON	266.25	266.00	265.00	266.00	266.50	266.50	266.00	267.00	267.25
25 N	266.51	266.26	265.26	266.25	266.75	266.74	266.24	267.24	267.49
50	266.77	266.52	265.52	266.50	267.00	266.98	266.47	267.47	267.72
75	267.03	266.78	265.78	266.76	267.24	267.22	266.71	267.71	267.96
100	267.28	267.03	266.03	267.01	267.49	267.47	266.95	267.95	268.20
116	267.45	267.20	266.20	267.17	267.65	267.62	267.10	268.10	268.35
125	267.54	267.29	266.29	267.25	267.72	267.68	267.15	268.15	268.40
136	267.65	267.40	266.40	267.35	267.80	267.75	267.20	268.20	268.45
150	267.65	267.40	266.40	267.35	267.80	267.75	267.20	268.20	268.45
156	267.65	267.40	266.40	267.35	267.80	267.75	267.20	268.20	268.45
175	267.55	267.30	266.30	267.21	267.61	267.51	266.91	267.91	268.16
176	267.55	267.30	266.30	267.20	267.60	267.50	266.90	267.90	268.15
196	267.25	267.00	266.00	266.90	267.30	267.20	266.60	267.60	267.85
200	267.17	266.92	265.92	266.81	267.21	267.10	266.50	267.50	267.75
216	266.85	266.60	265.60	266.47	266.85	266.72	266.10	267.10	267.35
225	266.53	266.28	265.28	266.15	266.53	266.40	265.78	266.78	267.03
230	266.35	266.10	265.10	265.97	266.35	266.22	265.60	266.60	266.85
250	265.64	265.39	264.39	265.26	265.64	265.51	264.89	265.89	266.14
275	264.75	264.50	263.50	264.37	264.75	264.62	264.00	265.00	265.25
290	264.22	263.97	262.97	263.84	264.22	264.09	263.47	264.47	264.72

SEE PAGE 39 for grades as set. These grades are not figured correctly

Vertical curve  
+ 11' max

VOLTAIRE STREET

Book 990

	S	Curb	1/4	⊕	1/4	Curb	1/4
W.L. Chatsworth or Section A	118.25	118.10	118.10	119.00	119.40	120.00	120.25
Section C	117.25	117.00	117.00	117.83	118.05	118.65	118.90
25' West	116.25	115.97	116.00	116.82	117.06	117.66	117.91
41.65'	115.53	115.28	115.31	116.14	116.40	117.00	117.25
50'	115.19	114.94	114.94	115.74	115.94	116.54	116.79
75	114.15	113.90	113.82	114.54	114.58	115.18	115.43
96.9	113.25	113.00	112.85	113.50	113.40	114.00	114.25
100	113.01	112.76	112.61	113.26	113.15	113.75	114.00
125	111.01	110.76	110.61	111.26	111.17	111.77	112.02
150	109.01	108.76	108.61	109.27	109.19	109.79	110.04
175	107.01	106.76	106.62	107.29	107.22	107.82	108.07
200	105.01	104.76	104.63	105.30	105.24	105.84	106.09
225	103.01	102.76	102.63	103.31	103.26	103.86	104.11
250	101.01	100.76	100.64	101.32	101.28	101.88	102.13
275	99.01	98.76	98.64	99.33	99.30	99.90	100.15
296.9 W. - Sec. D	97.25	97.00	96.89	97.58	97.57	98.17	98.42
Sec. E		97.00		97.00		97.00	97.25
EL Villa Drive	95.25	95.00	94.60	95.00	94.60	95.00	95.25
EL Villa Drive	95.25	95.00	94.60	95.00	94.60	95.00	95.25
Curb	95.00	95.00	94.31	94.71	94.31	95.00	95.00
1/4	94.00	94.00				94.00	94.00
1/4	94.40	93.50	93.96	94.36	93.96	93.50	94.40
⊕	94.00	93.00	93.60	94.00	93.60	93.00	94.00
1/4	93.10	92.50	93.24	93.64	93.24	92.50	93.10
Curb	92.00	92.00				92.00	92.00
1/4	93.00	93.00	92.89	93.29	92.89	93.00	93.00
W.L. Villa Drive	93.25	93.00	92.60	93.00	92.60	93.00	93.25

VOLTAIRE STREET

	S	Curb	1/4	£	1/4	Curb	1/4
W.L. VILLA DR.	93.25	93.00	92.60	93.00	92.60	93.00	93.25
Section F	91.75	91.50	91.10	91.50	91.10	91.50	91.75
" G	91.14	90.89	90.49	91.20	91.10	91.50	91.75
25' West	89.55	89.30	88.90	89.58	89.45	89.85	90.10
50' "	87.95	87.70	87.30	87.95	87.80	88.20	88.45
75' "	86.36	86.11	85.71	86.33	86.15	86.55	86.80
100' "	84.76	84.51	84.11	84.70	84.50	84.90	85.15
110' "	84.13	83.88	83.48	84.06	83.84	84.24	84.41
125' "	83.17	82.92	82.52	83.08	82.84	83.24	83.49
of PT. LOMA VILLAS 160 <sup>23</sup> W-W.L.	80.93	80.68	80.28	80.80	80.52	80.92	81.17
5' West	80.61	80.36	79.96	80.48	80.19	80.59	80.84
20' "	79.65	79.40	79.00	79.50	79.20	79.60	79.85
25' "	79.37	79.12	78.72	79.22	78.91	79.31	79.56
45' "	78.26	78.01	77.61	78.07	77.76	78.16	78.41
58' "	77.76	77.51	77.11	77.57	77.23	77.63	77.88
64' "	77.53	77.28	76.88	77.34	77.00	77.39	77.64
70' "	77.29	77.04	76.64	77.10	76.75	77.15	77.40
73' "	77.22	76.97	76.57	77.02	76.68	77.08	77.33
85' "	76.95	76.70	76.30	76.75	76.40	76.80	77.05
95' "	76.73	76.48	76.08	76.52	76.16	76.56	76.81
100' "	76.70	76.45	76.05	76.49	76.13	76.53	76.78
120' "	76.60	76.35	75.95	76.37	76.00	76.40	76.65
125' "	76.64	76.39	76.00	76.42	76.05	76.45	76.70
145' "	76.78	76.53	76.13	76.60	76.26	76.66	76.91
150' "	76.94	76.69	76.29	76.75	76.40	76.80	77.05
170' "	77.59	77.34	76.94	77.34	76.95	77.35	77.60
175' "	77.81	77.56	77.16	77.56	77.17	77.57	77.82
195' "	78.71	78.46	78.06	78.46	78.06	78.46	78.71
200' "	79.02	78.77	78.37	78.77	78.37	78.77	79.02
220' "	80.25	80.00	79.60	80.00	79.60	80.00	80.25
225' "	80.60	80.35	79.95	80.35	79.95	80.35	80.60
250' "	82.35	82.10	81.70	82.10	81.70	82.10	82.35
260' "	83.05	82.80	82.40	82.80	82.40	82.80	83.05
Warrington St. 270 W-W.L. of	83.75	83.50	83.10	83.50	83.10	83.50	83.75

VOLTAIRE STREET

	S.	Curb	1/4	€	1/4	Curb	M.
EL. Warrington	83.75	83.50	83.10	83.50	83.10	83.50	83.75
Curb	83.50	83.50	83.30	83.70	83.30	83.50	83.50
1/4	82.50	82.50				82.50	82.50
	83.35	82.75	83.45	83.85	83.45	82.75	83.35
Center	84.00	83.00	83.60	84.00	83.60	83.00	84.00
1/4	83.90	83.25	83.75	84.15	83.75	83.25	83.90
	83.50	83.50				83.50	83.50
Curb	84.50	84.50	83.90	84.30	83.90	84.50	84.50
W.L. Warrington	84.75	84.50	84.10	84.50	84.10	84.50	84.75
W.L. Warrington	84.75	84.50	84.10	84.50	84.10	84.50	84.75
25' W.	86.12	85.87	85.47	86.00	85.72	86.12	86.37
50' "	87.50	87.25	86.98	87.50	87.15	87.75	88.00
75'	88.87	88.62	88.41	89.00	88.78	89.38	89.63
100	90.25	90.00	89.85	90.50	90.40	91.00	91.25
125	91.50	91.25	91.16	91.86	91.88	92.48	92.73
150	92.97	92.72	92.20	92.99	93.06	93.66	93.91
175	93.18	92.93	92.94	93.74	93.94	94.54	94.79
200	93.62	93.37	93.40	94.24	94.52	95.12	95.37
225	93.80	93.55	93.62	94.48	94.81	95.41	95.66
250	93.72	93.47	93.56	94.44	94.81	95.41	95.66
275	93.37	93.12	93.22	94.11	94.50	95.10	95.35
300' W. = E. of	92.75	92.50	92.60	93.50	93.90	94.50	94.75

VOLTAIRE STREET

	S	Curb	1/4	1/2	3/4	Curb	N
E.L. Worden	92.75	92.50	92.60	93.50	93.90	94.50	94.75
Curb	92.50	92.50	92.30	93.20	93.60	94.50	94.50
1/4	91.50	91.50				93.50	93.50
	91.90	91.90	92.08	92.98	93.38	93.12	93.90
Center	91.75	90.75	91.85	92.75	93.15	92.75	93.75
1/4	90.98	90.38	91.62	92.52	92.92	92.38	92.98
	90.00	90.00				92.00	92.00
Curb	91.00	91.00	91.40	92.30	92.70	93.00	93.00
W.L. Worden	91.25	91.00	91.10	92.00	92.40	93.00	93.25

W.L. Worden	91.25	91.00	91.10	92.00	92.40	93.00	93.25
25' W.	89.25	89.00	89.10	90.00	90.40	91.00	91.25
50'	87.25	87.00	87.10	88.00	88.40	89.00	89.25
75'	85.25	85.00	85.10	86.00	86.40	87.00	87.25
100	83.25	83.00	83.10	84.00	84.40	85.00	85.25
125	81.25	81.00	81.10	82.00	82.40	83.00	83.25
150	79.25	79.00	79.10	80.00	80.40	81.00	81.25
175	77.25	77.00	77.10	78.00	78.40	79.00	79.25
200	75.25	75.00	75.10	76.00	76.40	77.00	77.25
225	73.25	73.00	73.10	74.00	74.40	75.00	75.25
250	71.25	71.00	71.10	72.00	72.40	73.00	73.25
275	69.25	69.00	69.10	70.00	70.40	71.00	71.25
Wells St.							
300' W. = E.L. of	67.25	67.00	67.10	68.00	68.40	69.00	69.25

VOLTAIRE STREET

	S.	Curb	1/4	¢	1/4	Curb	N.
EL of Wells St.	67.25	67.00	67.10	68.00	68.40	69.00	69.25
Curb	67.00	67.00	66.90	67.80	68.20	69.00	69.00
1/4	66.00	66.50				68.00	68.00
1/4	66.40	65.75	66.75	67.65	67.95	67.75	68.40
¢	66.50	65.50	66.60	67.50	67.80	67.50	68.50
1/4	65.85	65.25	66.45	67.35	67.75	67.25	67.85
1/4	65.00	65.00				67.00	67.00
Curb	66.00	66.00	66.30	67.20	67.60	68.00	68.00
W.L. Wells St.	66.25	66.00	66.10	67.00	67.40	68.00	68.25
W.L. Wells St.	66.25	66.00	66.10	67.00	67.40	68.00	68.25
10' W.	66.47	66.22	66.30	67.18	67.55	68.15	68.40
25 "	66.80	66.55	66.60	67.46	67.78	68.38	68.63
50'	67.35	67.10	67.11	67.92	68.15	68.75	69.00
60	67.57	67.32	67.32	68.11	68.30	68.90	69.15
75	67.91	67.66	67.62	68.39	68.52	69.12	69.37
85	68.13	67.88	67.83	68.58	68.67	69.27	69.52
110	68.68	68.43	68.33	69.04	69.05	69.65	69.90
130	69.12	68.87	68.74	69.41	69.35	69.95	70.20
150	69.56	69.31	69.14	69.78	69.65	70.25	70.50
185	70.34	70.09	69.86	70.43	70.18	70.78	71.03
200	70.68	70.43	70.18	70.72	70.40	71.00	71.25
225	71.23	70.98	70.58	71.18	70.98	71.38	71.63
240	71.56	71.31	70.91	71.45	71.20	71.60	71.85
252	71.83	71.58	71.18	71.68	71.38	71.78	72.03
275	72.34	72.09	71.69	72.10	71.72	72.12	72.37
280	72.45	72.20	71.80	72.20	71.80	72.20	72.45
300	72.33	72.08	71.68	72.08	71.68	72.08	72.33
325	72.19	71.94	71.54	71.94	71.54	71.94	72.19
350	72.04	71.79	71.39	71.79	71.39	71.79	72.04
375	71.90	71.65	71.25	71.65	71.25	71.65	71.90
400' W. = EL of	71.75	71.50	71.10	71.50	71.10	71.50	71.75

change



	Grades on Albatross N. of Robinson		70' St 15' C65
	West.		East.
275 N.	264.52		265.02
455 N.	265.21		265.71
245 N	265.56		266.06
215 N	266.60		267.10
195	267.16		267.69
175	267.53		268.06
155	267.65		268.22
135	267.54		268.16
100	267.20 267.14		267.86
50	266.70 266.57		267.43
N. of Robinson	266.20 Top of old bb 266.2		267.0

267.06								
267.06	267.43	267.86	268.16	268.22	268.06	267.69	267.10	
	4.24	4.24	3.74	3.88	4.04	4.41	5.00	
266.51	266.57	267.14	267.54	267.85	267.53	267.18	266.6	
	5.53	4.96	4.56	4.43	4.57	4.92	5.5	
						265.71	265.02	
						6.39	7.08	

Levels on Albatross St. N. of Rob't for regrade.

3.76      290.82      267.06 B.M.

215' N. of Rob't

W.L. of Albatross	4.5	366.3
11'E	4.2	66.6
15'E	5.4	65.4

228' N. of Rob't

25'E of W.L.	4.5	66.3
15'E	4.7	66.1
W.L.	5.4	65.3

232' N. of Rob't

W.L.	9.7	61.1
11'E	5.4	65.4
15'E	4.8	66.0
25'E	4.5	66.3

244' N. of Rob't

25'E of W.L.	4.8	66.0
15' - - -	5.6	65.2
5' - - -	10.0	60.8
W.L.	10.8	60.0

259' N. of Rob't

32'E of W.L.	5.2	65.6
27' - - -	6.0	64.8
15' - - -	8.9	61.9
9' - - -	12.7	58.1
W.L.	14.1	56.7

275' N. of Rob't

W.L.	16.2	54.6
15'E of W.L.	13.7	57.1
10' - - -	12.5	58.3
3' - - -	7.9	62.9
25' - - -	7.3	63.5

QUINCE STREET

	S	Curb	1/4	¢	1/4	Curb	N
W.L. Union St.	203.25	203.60	203.90	204.00	203.80	204.40	204.65
20' W.	200.99	200.74	200.51	201.08	200.85	201.42	201.67
35'	198.85	198.60	198.34	198.90	198.67	199.19	199.44
45'	197.42	197.17	196.90	197.44	197.17	197.70	197.95
50	196.70	196.45	196.18	196.70	196.44	196.96	197.21
60	195.27	195.02	194.74	195.34	194.97	195.47	195.72
65	194.55	194.30	194.02	194.51	194.23	194.73	194.98
95	190.25	190.00	189.68	190.13	189.81	190.26	190.51
120	186.67	186.42	186.07	186.78	186.42	186.54	186.77
137	184.25	184.00	183.60	184.00	183.60	184.00	184.25
145	183.86	183.61	183.21	183.61	183.21	183.61	183.86
170	182.65	182.40	182.00	182.40	182.00	182.40	182.65
193	181.54	181.29	180.89	181.29	180.89	181.29	181.54
205	180.96	180.71	180.31	180.71	180.31	180.71	180.96
220 = EL STATE	180.25	180.00	179.60	180.00	179.60	180.00	180.25
¢ STATE	179.75	179.50	179.10	179.50	179.10	179.50	179.75
W.L. STATE	179.25	179.00	178.60	179.00	178.60	179.00	179.25
23' W.	176.79	176.54	176.14	176.57	176.20	176.60	176.85
25'	176.58	176.33	175.93	176.36	176.00	176.39	176.64
35'	175.51	175.26	174.86	175.30	174.94	175.34	175.59
37'	175.30	175.05	174.65	175.09	174.73	175.13	175.38
45	174.45	174.20	173.80	174.24	173.89	174.29	174.54
70	171.78	171.53	171.13	171.60	171.28	171.68	171.93
98	168.79	168.54	168.14	168.64	168.35	168.75	169.00
98.5	168.74	168.49	168.09	168.60	168.30	168.70	168.95

Box 1001

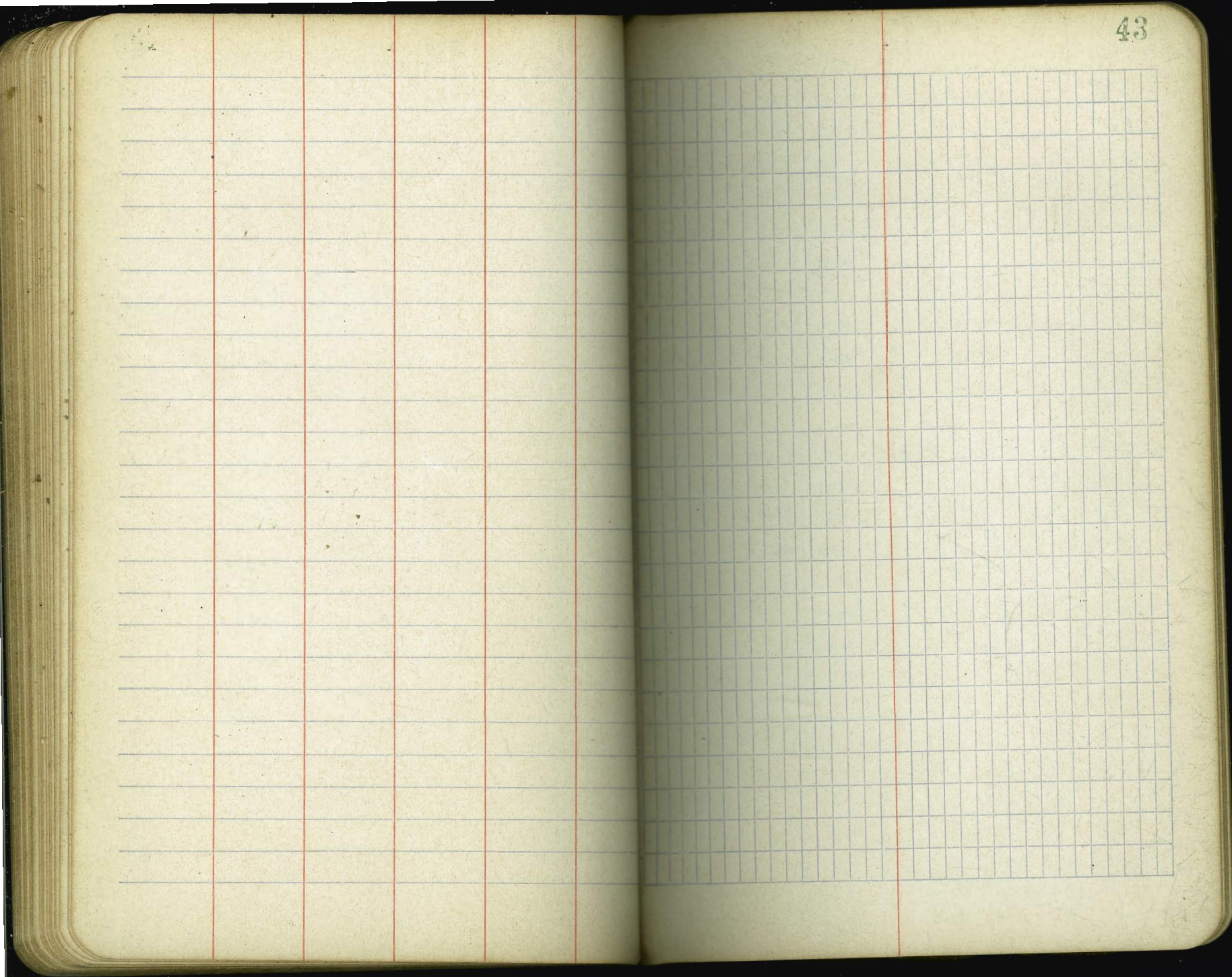
QUINCE STREET

	S	Curb.	1/4	1/2	3/4	Curb	N
102 W. of STATE	168.37	168.12	167.72	168.23	167.93	168.33	168.58
103 W.	168.76	168.01	167.61	168.12	167.83	168.23	168.48
116'	166.87	166.52	166.22	166.74	166.47	166.87	167.12
126	165.80	165.55	165.15	165.69	165.43	165.83	166.08
145	163.77	163.52	163.12	163.68	163.44	163.84	14.08
170	161.10	160.85	160.45	161.04	160.83	161.23	161.48
195	158.43	158.18	157.78	158.40	158.22	158.62	158.87
210	156.83	156.58	156.18	156.82	156.66	157.05	157.30
215	156.20	156.05	155.65	156.29	156.13	156.53	156.78
COLUMBIA } 220 W. = E.L. of	155.75	155.50	155.10	155.75	155.60	156.00	156.25

165.14

8th 2/14/17

The image shows a blank ledger page with a grid of horizontal and vertical lines. The page is divided into columns by vertical red lines and rows by horizontal blue lines. The right side of the page features a dense grid of small squares, typical of a ledger or account book. The page is numbered '42' in the top right corner.



Notes - will need notes for the intersections

FORWARD STREET North Side

Book 983 60

	±	¼	Curb	M
(Linda Rosa) W.L. Sun Ave	15372	15436	15440	15500 15525
25' W.	15207	15282	15304	15357 15382
50' "	15042	15127	15168	15213 15231
64	14980	15041		15123
75'		15000	15032	15070 15095
100		14900	14896	14926 14951
125		14802	14760	14783 14802
130 G	14800	14767		14734
150	14726	14683	14624	14640 14665
175	14614	14555	14488	14496 14521
200	14502	14427	14352	14353 14378
EL TAFT 2354 W =	14342	14246	14158	14150 14175

EL TAFT	14342	14282	14246	14158	14150	14175
Curb 10'			14211	14128	14150	14150
¼ 104'			14175	14098	14050	14050
± 104'			14139	14067	13975	14075
¼ 104'			14104	14036	13937	13994
Curb 10'			14068	14006	13900	13900
W.L. TAFT	14066	14006	14033	13976	14000	14025

61.7

076

FORWARD STREET North Side

	€	¼	Curb	π
W. TAFT 140.91 140.66 140.06	140.33	139.76	140.00	140.25
25' W.	139.54	139.37	138.88	139.20 139.45
50' "	138.42	138.41	138.00	138.40 138.65
75'	137.30	137.45	137.13	137.60 137.85
100	136.18	136.49	136.25 <sup>10</sup>	136.81 137.00
104	134.00	136.34	136.11 <sup>10</sup>	136.69 136.94
125		135.93	135.57 <sup>m</sup>	136.01 136.26
150		135.44	134.92	135.21 135.46
173.5	135.50	134.98	134.32	134.47 134.72
175	135.44	134.92	134.26	134.41 134.66
200	134.41	134.02	133.42	133.62 133.87
E.L. BELLEVUE 235.4 W. =	133.20	132.95	132.35	132.72 132.75
E.L. BELLEVUE	133.20	132.95	132.35	132.72 132.75
Curb		132.39	131.91	132.50 132.50
¼				131.50 131.50
€		132.05	131.60	131.13 131.92
¼		131.71	131.30	130.75 131.75
€		131.37	131.00	130.58 130.98
Curb		131.03	130.70	130.00 130.00
W.L. BELLEVUE	130.66	130.41	130.15	130.70 131.25

← 070

117

10' 104' 104' 104' 104' 10'

FORWARD STREET North 30

	€	¼	Curb	∩		
WL BELLEVUE 130.66	130.41	130.15	130.70	130.40	131.00	131.25
25' W.	129.38		129.63	129.34	129.88	130.13
50' "	128.35		128.56	128.28	128.77	128.98
75'	127.33		127.50	127.21	127.66	127.91
100	126.30		126.42	126.15	126.54	126.79
125	125.27		125.34	125.09	125.42	125.67
145.8	124.50		124.54	124.59	124.58	124.53
150			124.34	124.03	124.31	124.56
175			123.52	122.97	123.20	123.45
200			122.70	121.90	122.08	122.88
EL. WAVERLY	123.00		122.24	121.48	121.48	121.48
235.9 W =	121.97	121.72	121.14	121.11	120.40	120.50

EL. WAVERLY	121.97	121.72	121.12	121.11	120.40	120.50	120.75
Curb 10'				120.70	120.08	120.50	120.50
¼ 10.4'				120.27	119.74	119.50	119.50
€ 10.4'				119.84	119.40	119.13	119.25
¼ 10.4'				119.41	119.06	118.38	118.27
Curb 10'				118.98	118.72	118.50	118.00
WL WAVERLY	118.39	118.14	117.95	118.57	118.40	119.00	119.25

61.7

4.14%

4.48%

4.46%

0.50%



FORWARD STREET North 3rd

± ¼ Curb M

W.L. WAVERLY	11839	11814	11795	11857	11840	11900	11820
25' W		11669		11713	11697	11757	11710
50' "		11524		11568	11553	11613	11620
75'	5796%	11379		11424	11410	11470	11450
100		11234		11280	11266	11326	11320
125		11089		11136	11123	11183	11210
150		10944		10992	10980	11040	11050
175	5785%	10800		10848	10836	10896	10920
183.7		10750		10798	10786	10846	10870
184.29						10843	10860
209.85						10697	10730
(E.L. BEAUMONT 23542 W. =						10550	

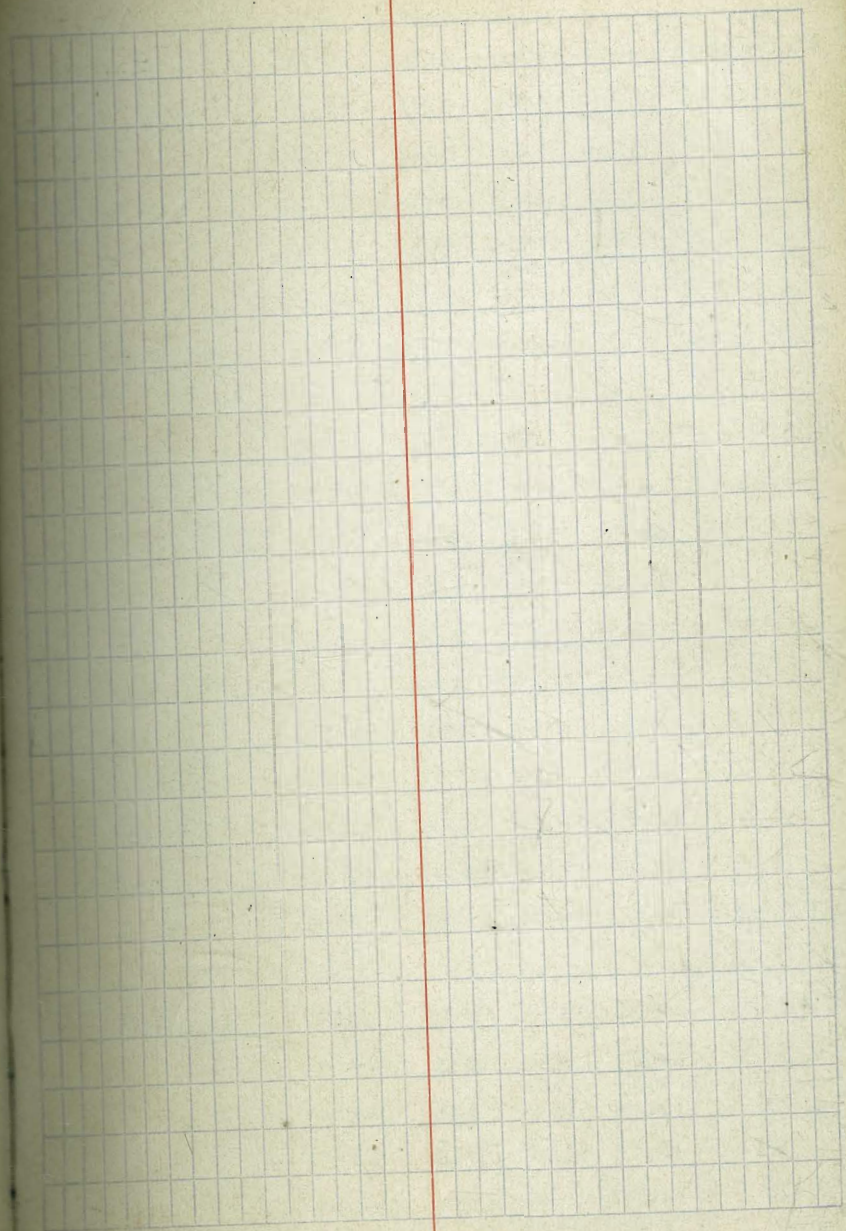
South Side FORWARD STREET

	S	Curb	¼	½	
and Alley W. Lot of Sun Ave	15775				
30.4' W.					
60.9' "	153.97	153.72	153.64	154.36	
75' "	153.05	152.80	152.75	153.50	
100'	151.40	151.15	151.16	151.96	
of TAFT Ave. 125' W. = EL.	149.75	149.50	149.56	150.42	151.33
 EL TAFT.	149.75	149.50	149.56	150.42	151.33
cb.	149.50	149.50	149.25	150.02	
¼	148.90	148.80	148.86	149.54	
½	148.78	147.75	148.48	149.05	
cb	148.00	148.00	147.71	148.07	
W.L. TAFT.	148.25	148.00	147.40	147.67	147.34
 W.L. TAFT.	148.25	148.00	147.40	147.67	147.34
25' W.	147.13	146.88	146.31	146.40	145.91
50' "	146.01	145.76	145.22	145.12	144.48
75'	144.89	144.64	144.13	143.84	143.05
100'	143.76	143.51	143.05	142.56	141.62
107.8		143.42			141.50
125'	142.64	142.39	141.96	142.46	140.94
150'	141.52	141.27	140.87	140.80	140.34
163.5		140.66		140.33	140.00
175'	140.40	140.15	139.78	139.89	139.63
200'	139.27	139.02	138.70	138.98	138.83
225'	138.15	137.90	137.61	137.96	138.03
BELLEVEUE 267.4' W. = EL.	136.25	136.00	135.77	136.34	136.69

69

5.735%

3.186



	S	curb	1/4	3/4	curb
EL. Bellevue	136.25	136.00	135.60	136.34	136.29
cb	136.00	136.00	135.53	136.14	
1/4	135.60	134.87	135.44	136.90	
3/4	135.75	134.75	135.35	135.66	
1/4	135.10	134.62	135.26	135.42	
cb	134.50	134.50			
	135.50	135.50	135.17	135.18	
WL Bellevue	135.75	135.50	135.10	134.98	134.97
WL Bellevue	135.75	135.50	135.10	134.98	134.97
25' W.	134.72	134.97	134.07	134.07	133.67
50'	133.69	133.94	133.04	133.15	132.87
61.9'		132.75			132.50
75'	132.66	132.41	132.01	132.30	132.19
100'	131.64	131.39	131.00	131.49	131.58
123.6'		130.41			131.00
125'	130.61	129.36	129.96	130.65	130.94
150'	129.58	129.33	128.93	129.58	129.82
175'	128.55	128.30	127.90	128.50	128.70
200'	127.52	127.27	126.87	127.42	127.58
225'	126.49	126.24	125.84	126.35	126.47
WAVERLY					126.47
26' ± W. = EL.	124.75	124.50	124.10	124.54	124.58
EL. WAVERLY	124.75	124.50	124.10	124.54	124.58
cb.	124.50	124.50	123.85	124.21	
1/4	123.50	123.50			
	123.90	123.12	123.55	123.80	
3/4	123.75	122.75	123.25	123.39	
1/4	122.97	122.38	122.95	122.98	
cb.	122.00	122.00			
	123.00	123.00	122.65	122.57	
WL WAVERLY	123.25	123.00	122.40	122.24	121.48

69.6'

3.06%

1.16%

69.6'

	S	curb	1/4	☉		curb
W.L. Waverly	12225	12300	12240	12224		12148
		12172				12050
25' W.	12180	12155	12099	12099		12043
50' "	12035	12010	11959	11996		11983
75'	11900	11865	11818	11894		11923
83.7						11900
100	11746	11721	11677	11764		11807
125	11601	11576	11536	11620		11643
150	11456	11431	11395	11475		11519
175	11311	11286	11255	11331		11376
200	11166	11141	11114	11186		11232
225	11021	10996	10973	11042		11089
Beaumont						
267 3/4 W. = E.L.	10775	10750	10734	10798		10846

Beaumont

Started

E.L. Beaumont	10775	10750	10690	10650	10560	10550	10525
curb	10750	10750	10668	10628	10538	10550	10538
	10650	10650				10450	10450
1/4	10690	10690	10642	10601	10511	10412	10438
☉	10675	10575	10615	10575	10485	10375	10475
1/4	10598	10538	10589	10548	10458	10338	10347
	10500	10500				10300	10300
curb	10600	10600	10562	10522	10432	10400	10450
W.L. Beaumont	10625	10600	10540	10500	10410	10400	10425

69.6 on curb

87.6 #12/17

1449

FORWARD STREET.

S Curb 1/4 E 1/4 Curb N

W.L. Beaumont	10600						
21.6 W. on S.	10439						
0.0 on N.							
43.2 W. on S. =	10302	10277	10268	10338	10340	10400	10425
+25	10115	10090	10082	10155	10160	10220	10235
50	9928	9903	9898	9972	9980	10040	10055
75	9741	9716	9712	9788	9800	9860	9875
100	9555	9530	9528	9605	9620	9680	9705
125	9368	9343	9342	9422	9440	9500	9525
150	9181	9156	9157	9238	9260	9320	9345
Electric on S.							
+ 184.2 W. = EL.	8925	8900	8903	8987	9014	9074	9099
E.L. Electric	8925	8900	8860	8900	8860	8900	8925
E.L. Electric Ave	8925	8900	8860	8900	8860	8900	8925
cb.	8900	8900	8843	8883	8843	8900	8900
8' W.	8825	8787	8835	8875	8835	8887	8825
1/4	8840	8780	8829	8869	8829	8780	8840
2' E. of E. Rail	8846	8762	8816	8856	8816	8762	8846
2' W. " "	8859	8750	8810	8850	8810	8750	8859
1/4	8785	8722	8772	8832	8792	8722	8785
6' W. of 1/4	8746	8712	8785	8825	8785	8712	8746
cb.	8800	8800	8777	8817	8777	8800	8800
W.L. Electric Ave	8825	8800	8760	8800	8760	8800	8825

200 = 200 ft. from Forward

FORWARD STREET

Street	S	Curb	1/4	Φ	1/4	Curb	N
W.L. Electric Ave	8825	8800	8760	8800	8760	8800	8825
224 W on SL - 00	8699	8674	8666	8737	8740	8800	8825
25 W	8559	8534	8526	8597	8600	8659	8674
50 "	8419	8394	8385	8456	8458	8518	8533
75	8279	8254	8245	8316	8317	8377	8402
100	8138	8113	8104	8174	8176	8236	8261
125	7998	7973	7964	8034	8035	8095	8120
150	7858	7833	7824	7894	7894	7954	7979
175	7718	7693	7683	7753	7753	7813	7838
200	7577	7552	7542	7612	7612	7672	7697
LA Jolla on So.							
2273 W - EL	7425	7400	7390	7459	7458	7518	7543
EL LA Jolla Blvd.	7425	7400	7360	7400	7360	7400	7425
EL LA Jolla	7425	7400	7360	7400	7360	7400	7425
Curb	7400	7400	7345	7385	7345	7400	7400
1/4	7340	7275	7327	7367	7327	7275	7340
Φ	7350	7250	7310	7350	7310	7250	7350
1/4	7285	7225	7291	7332	7291	7225	7285
Curb	7300	7300	7275	7315	7275	7300	7300
W LA Jolla	7325	7300	7260	7300	7260	7300	7325

orange with  
= 1040

5607

5659

FORWARD STREET

	S	Curb	1/4	☉	1/4	Curb	E
W.L.A. Jolla	73.25	7300	7280	7300	7280	7300	7325
18' W. of S.L. = 0.0.	72.55	7230	7207	7265	7240	7300	7325
25' W.	71.57	7132	7109	7166	7140	7200	7225
50' "	70.59	7034	7010	7067	7040	7100	7125
75'	69.61	6936	6912	6968	6940	7000	7025
100	68.62	6837	6812	6868	6839	6899	6924
125	67.64	6739	6714	6769	6739	6799	6824
150	66.66	6641	6615	6670	6639	6699	6724
175	65.68	6543	6517	6571	6539	6599	6624
Beulah Ave. 211' on S. = E.L. of	64.25	6400	6373	6427	6394	6454	6479
of Beulah 224.5' on E. = E.L.	64.25	6400	6360	6400	6360	6400	6425
E.L. of Beulah	64.25	6400	6360	6400	6360	6400	6425
E. Curb	6400	6400	6344	6384	6344	6400	6400
1/4	6340	6275	6327	6367	6327	6275	6340
☉	6350	6250	6310	6350	6310	6250	6350
1/4	6285	6225	6293	6333	6293	6225	6285
W. Curb	6300	6300	6276	6316	6276	6300	6300
W.L. Beulah	6325	6300	6260	6300	6260	6300	6325

64.7

FORWARD STREET

	S	Curb	1/4	1/2	3/4	Curb	1/4
WL BEULAH	63.25	63.00	62.60	62.00	62.60	63.00	63.25
115' W. on S. = WL	61.57	61.82	60.92	62.16	62.40	63.00	63.25
25' W. of "	57.91	57.66	57.26	58.32	58.43	58.99	59.25
50' "	54.25	54.00	53.60	54.49	54.46	54.98	55.25
75' "	50.59	50.34	49.94	50.66	50.49	50.97	51.25
100'	46.94	46.69	46.29	46.82	46.52	46.96	47.25
CALUMET AVE							
118' W. = EL. of	44.25	44.00	43.60	44.00	43.60	44.00	44.25
EL. CALUMET	44.25	44.00	43.60	44.00	43.60	44.00	44.25
E. CB	44.00	44.00	43.36	43.76	43.36	43.76	44.01
1/4	43.00	43.00					
1/2	43.60	42.75	43.23	43.63	43.23	43.63	43.81
3/4	43.50	42.50	43.10	43.50	43.10	43.50	43.75
1/4	42.85	42.85	42.97	43.37	42.97	43.37	43.62
1/2	42.00	42.00					
W. CB.	43.00	43.00	42.84	43.24	42.84	43.24	43.49
WL. CALUMET	43.25	43.00	42.60	43.00	42.60	43.00	43.25
WL. CALUMET	43.25	43.00	42.60	43.00	42.60	43.00	43.25
25' W.	41.58	41.33	40.93	41.38	41.04	41.44	41.69
50' "	39.91	39.66	39.26	39.77	39.48	39.88	40.13
75' "	38.25	38.00	37.60	38.16	37.92	38.32	38.57
Street on S.							
105' W. = End of	36.25	36.00	35.60	36.12	36.05	36.45	36.70
on N. = W. End of St.							
105' W. on S. & 144' E. W.	36.25	36.00	35.40	35.00	34.10	34.00	34.25



Vine + Rob. house

Mon

12.5'

5'

12.5'

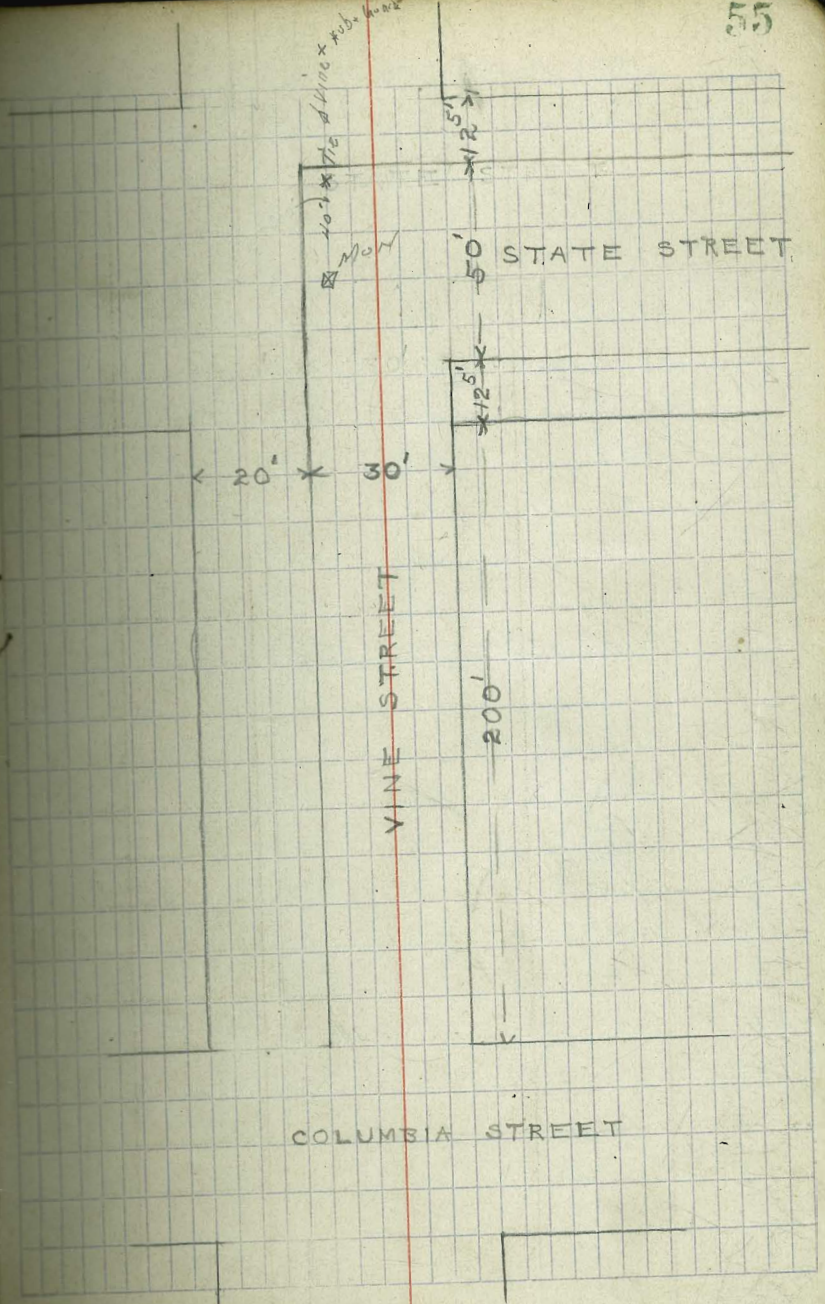
200'

< 20' > 30' >

VINE STREET

STATE STREET

COLUMBIA STREET



VINE STREET

In. Cont. with St.

Book 1001

4 227  
1497 645  
2226

OUTS 5/2 Col. 545c

	S 10' Curb	10' 1/4	10' 1/4	10' 1/4	Curb T
EL. Columbia	112.75	112.50	111.90	112.25	112.00
			112.20		112.30
50	120.25		115.65	119.68	115.69
			119.40		119.38
100	127.75		120.90	127.12	120.85
			121.95		121.88
			123.15		123.06
150	135.25		126.90	134.55	126.75
			130.65		130.44
180	139.45	139.5	134.40	139.03	134.13
			138.15		137.61
200	141.67	141.72	141.90	142.00	141.50

	S CURB	1/4	1/4	1/4	CURB N
W L STATE ST	142.75	142.50	141.90	142.00	
		141.15			
CURB	142.50	142.50	141.90	142.00	
		141.50			
1/4	142.35	141.75	142.15	142.25	
1/4	143.00	142.00	142.40	142.58	
1/4	142.90	142.25	142.65	142.75	
	142.50	142.50			
CURB	143.50	143.50	142.90	143.00	
		142.50			
EL. STATE ST	143.75	143.50	142.90	143.00	

OMIT ALL RES.  
#22536

(SEE PAGE 60)

70.06 SW. Cor. Willow + India St.

57.26 SW. Cor. Vine + India St.

	112.75	112.25	120.91	121.48	127.94	128.57
	7.47	8.0	11.31	11.34	4.88	15.68
	+0.8	+1.9	-0.5	+5.6	+3.4	+6.1
	135.86	134.97	142.2	142.75		
	8.6	9.3	2.25	1.50		
	+5.1	+0.4	-4.6	+2.4		

Spk Srt. Cor. Vine + Olive St.

	112.75	112.25	119.35	120.25
	11.90	2.20	1.99	4.44
			+3.2	+4.1
	127.25	120.02	134.75	135.7
	9.39	10.02	8.6	1.9
	+3.9	+3.8	+0.5	
	135.2	139.72	139.22	142.14
	9.94	5.24	6.16	3.9
	+3.2	+3.7	-1.9	-2.7
				+0.7

	127.5	127.5	126.8	127.5
	12.18	10.68	5.25	4.12
	127.12	127.5	127.25	126.75
	10.50	9.97	9.67	2.19
	127.22	127.20	126.1	127.25
	3.2	5.28	1.06	0.73
	127.22	127.25	126.1	127.25
	3.2	5.28	1.06	0.73

	127.25	127.25	126.8	127.5
	12.18	10.68	5.25	4.12
	127.12	127.5	127.25	126.75
	10.50	9.97	9.67	2.19
	127.22	127.20	126.1	127.25
	3.2	5.28	1.06	0.73
	127.22	127.25	126.1	127.25
	3.2	5.28	1.06	0.73

Blank lined page with four vertical red margin lines.

Blank grid page with a vertical red margin line on the left side.

53' 5"  
10' Walks

CURLEW STREET

Book 966A

	W	Curb	1/4	3/4	1/4	Curb	E
Sec. A - N.L. Palm	155.25	155.00	154.60	155.00	154.60	155.00	155.25
Sec. B	155.25	155.00	154.60	155.18	154.97	155.37	155.60
10' No.	156.00	155.75	155.35	155.93	155.71	156.11	156.30
20' "	156.75	156.50	156.10	156.67	156.45	156.85	157.00
32'	157.65	157.40	157.00	157.57	157.34	157.74	157.90
45	158.62	158.37	157.97	158.54	158.31	158.71	158.85
60	159.74	159.49	159.09	159.65	159.42	159.82	160.00
100	162.73	162.48	162.08	162.64	162.40	162.80	163.00
130	164.97	164.72	164.32	164.87	164.63	165.03	165.20
150	166.47	166.22	165.82	166.37	166.13	166.52	166.70
175	168.34	168.09	167.69	168.23	167.98	168.38	168.55
200	170.21	169.96	169.56	170.10	169.83	170.23	170.40
215	171.33	171.08	170.68	171.21	170.94	171.34	171.50
225	172.08	171.83	171.43	171.96	171.69	172.09	172.25
235	172.83	172.58	172.18	172.70	172.43	172.83	173.00
245	173.58	173.33	172.93	173.45	173.17	173.57	173.75
275	175.83	175.58	175.18	175.69	175.40	175.80	176.05
300	177.70	177.45	177.05	177.55	177.25	177.65	177.90
302	177.85	177.60	177.20	177.70	177.40	177.80	178.05
St. Quince on W. 315	178.82	178.57	178.17	178.67	178.36	178.76	179.01
325		179.32		179.40	179.09	179.49	179.74
335.6 Mo. = St. Quince on E.					179.86	180.26	180.5

87  
May, 1917

Blank lined page with three vertical red margin lines.

Blank grid page with a vertical red margin line on the left side.

STATE STREET

BETWEEN VINE  
LAND UTAS

	W	CURB	1/4	¢	1/4	CURB	E
S. LINE VINE ST.	142.75	142.5 141.5	142.35	143.00	142.90	143.50 142.50	143.25
25' S "	143.22	142.97	142.62	143.471	143.37	143.97	144.22
50' "	143.69	143.44	143.29	143.94	143.84	144.44	144.69
75' "	144.16	143.91	143.76	144.41	144.31	144.91	145.16
100' "	144.63	144.38	144.23	144.88	144.78	145.38	145.63
125' "	145.11	144.86	144.71	145.36	145.26	145.86	146.11
150'	145.58	145.33	145.18	145.83	145.73	146.33	146.58
175'	146.05	145.80	145.65	146.30	146.20	146.80	147.05
200'	146.52	146.27	146.12	146.77	146.67	147.27	147.52
225'	146.99	146.74	146.59	147.24	147.14	147.74	147.99
250'	147.45	147.20	147.06	147.71	147.61	148.21	148.45
275'	147.92	147.67	147.53	148.18	148.08	148.68	148.92
300'	148.39	148.14	148.00	148.65	148.55	149.15	149.39
325'	148.86	148.61	148.47	149.12	149.02	149.62	149.86
N.L. UPAS = 345'	149.25	148.00 149.00	148.85	149.50	149.40	150.0 149.00	150.25

12' ON N 1/2 OF UPAS

	W	CURB	1/4	¢	1/4	CURB	E
N.L. UPAS ST	149.25	149.00 148.00	148.85	149.50	149.40	150.00 149.00	150.25
CURB	149.00	149.00 148.00	148.85	149.50	149.40	150.00 149.00	150.25
1/4	148.85	148.25	149.10	149.75	149.65	149.25	149.50
¢	149.50	148.50	149.35	150.00	149.90	149.50	150.25
1/4	149.40	148.75	149.60	150.25	150.15	149.75	150.25
CURB	149.60	149.00 150.00	149.85	150.50	150.40	151.00 150.00	151.25
S.L. UPAS ST.	150.25	150.00	149.85	150.50	150.40	151.00	151.25

N	CURB	1/4	¢	
147.32	147.67	146.92	147.57	12' W OF WL STATE
148.25	149.00	148.85	149.50	W.L. STATE

SE Dwight BP	286.40	SW Myrtle spk	333.16
SW Capps spk	325.65	NE Upas BP	331.04
321.0	320.6	322.9	322.1
5.8	6.7	4.4	5.7
327.57		326.6	326.6
		2.77	
324.6	325.0	326.6	327.1
7.9	7.3	5.8	6.3
342.43			

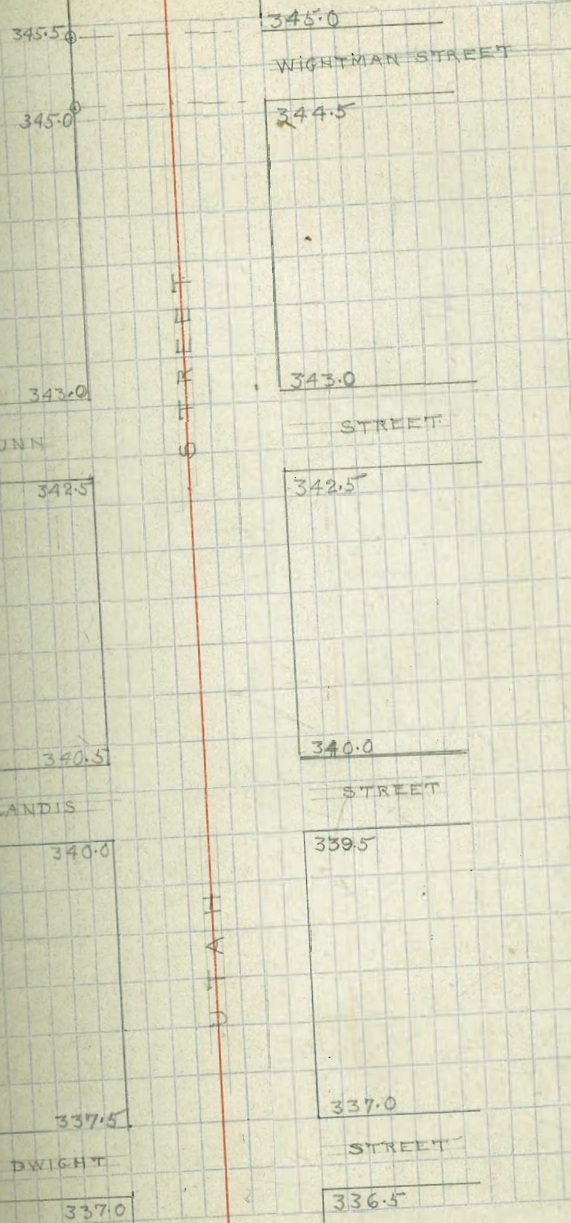
337.5	337.0
DWIGHT	STREET
337.0	336.5
335.5	335.0
CAPPS	STREET
335.0	334.5
333.5	333.5
MYRTLE	AVENUE
333.0	333.0
330.5	331.0
UPAS	STREET

H  
L  
L  
K  
H  
D

SW Gunn BP 342.54  
 SW Landis BP 340.49

342.43    339.6    340.1    342.4  
           2.83        1.83        6.85

342.98    342.9    344.6  
 342.25    6.36    4.65



345.0

WIGHTMAN STREET

344.5

343.0

STREET

342.5

343.0

GUNN

342.5

340.5

LANDIS

340.0

340.0

STREET

339.5

337.5

DWIGHT

337.0

337.0

STREET

336.5



NE Wightman spr 345.31  
349.00

345.1 2450  
8.15 0.80

UNIVERSITY

348.0

AVENUE

349.0

345.50

345.0

345.0

WIGHTMAN STREET

344.5

No. 1 MARKET TO S. LEVEL 800' 1013 AND 274

ATLANTIC STREET LINE CEDAR

	W	CURB	1/4	1/2	3/4	CURB	E
No. LINE MARKET	3.65	3.40	3.00	3.40	3.00	3.40	3.65
8' No.	3.67	3.42	3.02	3.43	3.04	3.44	3.67
50' "	3.75	3.50	3.10	3.57	3.23	3.63	3.75
100' "	3.85	3.60	3.20	3.74	3.46	3.86	4.10
150' "	3.95	3.70	3.30	3.90	3.70	4.10	4.25
200' "	4.05	3.80	3.33	3.84	3.51	3.86	4.25
250' "	4.15	3.90	3.36	3.77	3.33	3.63	3.85
250' G No. S. LINE G	4.25	4.00	3.40	3.70	3.15	3.40	3.65
So. LINE G ST	4.25	4.00	3.40	3.70	3.15	3.40	3.65
So. CURB	4.00	4.00	2.85	2.70	2.55	3.40	3.65
" QUARTER	3.80	3.57	3.45	3.33	3.21	3.09	3.65
75' CENTER	4.00	3.97	3.85	3.73	3.61	3.49	3.65
No. QUARTER	3.60	3.57	3.45	3.33	3.21	3.09	3.65
" CURB	4.00	4.00	2.85	2.70	2.55	3.40	3.65
" LINE G ST	4.25	4.00	3.40	3.70	3.15	3.40	3.65
No. LINE G ST	4.25	4.00	3.40	3.70	3.15	3.40	3.65
50' No.	4.33	4.08	3.55	3.88	3.38	3.68	3.92
100' No.	4.41	4.16	3.70	4.06	3.61	3.96	4.21
150' "	4.50	4.25	3.85	4.25	3.85	4.25	4.50
200' "	4.42	4.17	3.77	4.13	3.69	4.03	4.14

ATLANTIC STREET

	W	CURB	1/4	3/4	1/4	CURB	E
218' - No.	4.39	4.14	3.74	4.09	3.63	4.03	
231.2' No.	4.37	4.12	3.72	4.05	3.59	3.99	
257.5' "	4.32	4.07	3.67	3.99	3.50	3.90	
300.4' No. - S.L. FST	4.25	4.00	3.60	3.88	3.35	3.75	

" S. LINE FST	4.25	4.00	3.60	3.88	3.35	3.75	
" S. CURB	4.00	4.00	2.94	2.88	2.81	3.75	
" QUARTER	3.60	3.59	3.54	3.49	3.44	3.39	
" CENTER	4.25	4.23	4.16	4.09	4.02	3.95	
" No. QUARTER	4.10	4.07	3.97	3.87	3.77	3.67	
" CURB	3.50	3.50	3.38	3.25	3.12	3.00	
" LINE FST	4.75	4.50	4.10	4.25	3.60	4.00	

No. LINE FST	4.75	4.50	4.10	4.25	3.60	4.00	4.05
50' - No.	4.83	4.58	4.18	4.38	3.77	4.17	4.41
100' - "	4.91	4.66	4.26	4.51	3.94	4.34	4.58
150' - "	5.00	4.75	4.35	4.63	4.10	4.50	4.75
200' - "	5.08	4.83	4.43	4.75	4.27	4.67	4.91
250' - "	5.16	4.91	4.51	4.87	4.44	4.84	5.08
300' - No. - S.L. FST	5.25	5.00	4.60	5.00	4.60	5.00	5.25

ATLANTIC STREET

	W	CURB	1/4	E	1/4	CURB	E
Sq. LINE EST	5.25	5.00	4.60	5.00	4.60	5.00	
SO. CURB	5.00	5.00	4.60	5.00	4.60	5.00	
"	4.00	4.00				4.00	
" QUARTER	4.60	4.60	4.80	5.00	4.80	4.60	
75' CENTER	5.00	5.00	5.00	5.00	5.00	5.00	
NO. QUARTER	4.60	4.60	4.80	5.00	4.80	4.60	
"	4.00	4.00				4.00	
" CURB	5.00	5.00	4.60	5.00	4.60	5.00	
" LINE EST	5.25	5.00	4.60	5.00	4.60	5.00	
NO. LINE EST	5.25	5.00	4.60	5.00	4.60	5.00	
50' - NO.	5.10	4.85	4.44	4.85	4.44	4.85	
100' - "	4.95	4.70	4.29	4.70	4.29	4.70	
150' - "	4.80	4.55	4.14	4.55	4.14	4.55	
200' - "	4.65	4.40	4.00	4.40	4.00	4.40	
250' - "	4.50	4.25	3.85	4.25	3.85	4.25	
300' - NO. S.L. BRIDGE	4.35	4.10	3.70	4.10	3.70	4.10	
NO. LINE BRIDGE	4.35	4.10	3.50	3.75	3.18	3.40	
50' - NO.	4.39	4.14	3.61	3.90	3.37	3.66	
100' - "	4.43	4.18	3.72	4.05	3.56	3.92	
135' NO. - 2' 50" PIER TRACK	4.45	4.20	3.80	4.15	3.90	4.10	
151' NO. - 2' NO. PIER TRACK	4.46	4.21	3.81	4.15	3.70	4.10	
200' - NO.	4.47	4.22	3.82	4.16	3.70	4.10	
250' - "	4.49	4.24	3.84	4.17	3.70	4.10	
270' - "	4.50	4.25	3.85	4.18	3.70	4.10	

ATLANTIC STREET

	W	CURB	¼	½	¾	CURB	E
300' - No.	4.52	4.27	3.87	4.19	3.70	4.10	4.52
350' - "	4.55	4.30	3.90	4.20	3.70	4.10	4.55
400' - "	4.62	4.37	3.97	4.23	3.70	4.10	4.62
450' - "	4.69	4.44	4.04	4.26	3.70	4.10	4.69
500' - "	4.75	4.50	4.10	4.30	3.70	4.10	4.75
550' - "	4.45	4.20	3.80	4.00	3.47	3.87	4.45
600' - "	4.05	3.80	3.40	3.70	3.24	3.64	4.05
629.2' - "	3.85	3.60	3.20	3.50	3.11	3.51	3.85
649' No. = So. LINE B ON EAST	3.65	3.40	3.00	3.40	3.00	3.40	3.65
657.2' - No.	3.65	3.40	3.00	3.40	3.00	3.40	3.65
691' No. = So. LINE B GOING W.	3.65	3.40	3.00	3.40	3.00	3.40	3.65
Sp. LINE B. GOING WEST	3.65	3.40	3.00	3.40	3.00	3.40	3.65
So. CURB	3.40	3.40	3.00	3.40	3.00	3.40	3.40
" QUARTER	3.00	3.00	3.20	3.40	3.20	3.00	3.00
CENTER	3.40	3.40	3.40	3.40	3.40	3.40	3.40
No. QUARTER	3.00	3.00	3.20	3.40	3.20	3.00	3.00
" CURB	3.40	3.40	3.00	3.40	3.00	3.40	3.40
No. LINE B ON WEST	3.65	3.40	3.00	3.40	3.00	3.40	3.65
No. LINE B ON WEST	3.65	3.40	3.00	3.40	3.00	3.40	3.65
8' No. = No. LINE B ON EAST	3.65	3.40	3.00	3.40	3.00	3.40	3.65
50' No. B. ON EAST LINE	3.89	3.64	3.24	3.64	3.24	3.64	3.89

ATLANTIC STREET

	W	CURB	¼	¢	¼	CURB	E
100'-No.	4.12	3.87	3.47	3.87	3.47	3.87	4.12
150'-"	4.35	4.10	3.70	4.10	3.70	4.10	4.35
200'-"	4.15	3.90	3.50	3.82	3.34	3.74	3.92
250'-"	3.95	3.70	3.30	3.53	2.97	3.37	3.62
300' No.=So. L. Ast	3.75	3.50	3.10	3.25	2.60	3.00	3.25
So. LINE A. ST.	3.75	3.50	3.10	3.25	2.60	3.00	3.25
SO. CURB	3.50	3.50	2.38	2.25	2.12	3.00	3.00
" QUARTER	3.10	3.07	2.97	2.87	2.77	2.67	2.67
80' CENTER	3.50	3.47	3.37	3.27	3.17	3.07	3.07
NO. QUARTER	3.10	3.07	2.97	2.87	2.77	2.67	2.67
" CURB	3.50	3.50	2.38	2.25	2.12	3.00	3.00
NO. LINE AST	3.75	3.50	3.10	3.25	2.60	3.00	3.25
NO. LINE AST	3.75	3.50	3.10	3.25	2.60	3.00	3.25
50'-No.	3.83	3.58	3.18	3.36	2.93	3.13	3.32
100'-"	3.91	3.66	3.26	3.47	2.86	3.26	3.51
150'-"	4.00	3.75	3.35	3.57	2.98	3.38	3.62
200'-"	4.08	3.83	3.43	3.67	3.10	3.50	3.75
250'-"	4.16	3.91	3.51	3.77	3.22	3.62	3.87
300' No.=S. L. Ast	4.25	4.00	3.60	3.88	3.35	3.75	4.00

ATLANTIC STREET

	W	CURB	1/4	±	1/4	CURB	
SO. LINE ASH	4.25	4.00	3.60	3.88	3.35	3.75	4.00
SO. CURB	4.00 3.00	4.00 3.00	3.60	3.94	3.39	3.75 3.75	4.00
" QUARTER	3.73	3.13	3.77	4.00	3.43	2.82	3.50
P CENTER	4.25	3.25	3.85	4.07	3.48	2.88	3.50
NO. QUARTER	3.90 3.50	3.37 3.50	3.93	4.13	3.52	2.94 3.00	3.50
" CURB	4.50	4.50	4.01	4.19	3.56	4.00	4.00
" LINE ASH	4.75	4.50	4.10	4.25	3.60	4.00	4.25
NO. LINE ASH	4.75	4.50	4.10	4.25	3.60	4.00	4.25
50'-NO	4.83	4.58	4.18	4.36	3.73	4.13	4.25
100-"	4.91	4.66	4.26	4.47	3.86	4.26	4.25
150"	5.00	4.75	4.35	4.57	3.98	4.38	4.25
200"	5.00	4.83	4.43	4.67	4.10	4.50	4.25
250"	5.16	4.91	4.51	4.77	4.22	4.62	4.25
300-NO-S.L. BEECH	5.25	5.00	4.60	4.88	4.35	4.75	5.00
↑ S. LINE BEECH	5.25	5.00	4.60	4.88	4.35	4.75	5.00
SO. CURB	5.00 4.00	5.00 4.00	4.60	4.94	4.39	4.75 3.75	4.75
" QUARTER	4.60	4.13	4.77	5.00	4.43	3.81	4.35
00 CENTER	5.25	4.25	4.85	5.07	4.48	3.88	4.35
NO. QUARTER	5.10 4.50	4.37 4.50	4.93	5.13	4.52	3.94 4.00	4.35
" CURB	5.50	5.50	5.01	5.19	4.56	5.00	5.00
NO. LINE BEECH	5.75	5.50	5.10	5.25	4.60	5.00	5.25

ATLANTIC STREET

	W	CURB	1/4	1/2	3/4	CURB	E
No. LINE BEECH	5.75	5.50	5.10	5.25	4.60	5.00	5.25
50' - No.	6.00	5.75	5.35	5.54	4.93	5.33	5.83
100' - "	6.25	6.00	5.60	5.83	5.26	5.66	6.16
150' - "	6.50	6.25	5.85	6.13	5.60	6.00	6.45
200' - "	6.34	6.69	5.69	5.97	5.44	5.84	6.41
250'	6.17	5.92	5.52	5.80	5.27	5.67	6.12
300' No. - So. L CEDAR	6.00	5.75	5.35	5.63	5.10	5.50	5.95
50' LINE CEDAR	6.00	5.75	5.35	5.63	5.10	5.50	5.95
50' CURB	5.75	5.75	5.31	5.56	5.01	5.50	5.95
	4.75	4.75				4.50	4.95
" QUARTER	5.35	4.69	5.27	5.50	4.93	4.37	5.15
80' CENTER	5.63	4.63	5.23	5.44	4.85	4.25	5.25
No. QUARTER	5.10	4.56	5.19	5.38	4.77	4.13	4.65
	4.50	4.50				4.00	4.45
" CURB	5.50	5.50	5.15	5.32	4.69	5.00	5.00
No. LINE CEDAR	5.75	5.50	5.10	5.25	4.60	5.00	5.25





UTAS ST. - WEST - INTERSECT. OF UTAS ST. & WESTLINE - SECT. 36

NOTE	S	CURB	1/4	E	1/4	CURB	N
W. LINE INDIANA	29412	293 57	293.60	294.00	293.60	293 53	294.00
50' - W	29446	294 21	293.75	294.19	293.83	294 09	294.19
100' - "	29480	294 33	293.90	294.38	294.06	294 34	294.38
150' - "	29514	294 45	294.06	294.57	294.29	294 58	294.57
200' - "	29548	295 13	294.21	294.76	294.52	294 86	294.76
250' - "	29582	295 25	294.36	294.95	294.75	295 16	294.95
300' - "	29616	295 37	294.52	295.13	294.98	295 36	295.13

E. LINE	S	CURB	1/4	E	1/4	CURB	N
PARK BLVD	29525	295 00	294.60	295.25	295.10	295 50	295.25
F. CURB	295.00	295 00	294.13	294.25	294.37	295 50	295.00
F. QUARTER	294.40	294 54	294.64	294.75	294.85	294 96	294.75
CENTER	294.50	294 70	294.85	295.00	295.15	295 30	295.00
W. QUARTER	293.83	294 05	294.20	294.47	294.68	294 89	294.47
CURB	293.0	293 0	293.38	293.75	294.13	295 30	293.75

W. LINE	S	CURB	1/4	E	1/4	CURB	N
PARK BLVD	29635	296 10	295.48	294.75	294.90	295 50	295.48
50' - W	29566	295 41	293.51	294.29	294.39	294 99	294.29
100' - "	29497	294 72	293.04	293.79	293.88	294 48	293.79
150' - "	29428	294 03	292.57	293.31	293.27	293 97	293.31
200' - "	29360	293 35	292.10	292.83	292.80	293 46	292.83

W. LINE	S	CURB	1/4	E	1/4	CURB	N
PARK BLVD	29425	294 0	293.98	294.75	294.70	295 50	294.75
50' - W	29356	293 31	293.44	294.21	294.31	294 91	294.21
100' - "	29287	293 02	292.97	293.74	293.84	294 44	293.74
150' - "	29218	292 33	292.50	293.27	293.37	293 97	293.27
200' - "	29150	292 04	292.03	292.80	292.90	293 50	292.80

2944 = Connell at Indiana

NOTE	S	CURB	1/4	E	1/4	CURB	N
29444	294 00	293 50	293.60	294.00	293.60	293 53	294.00
29445	294 10	294 00	293.75	294.19	293.83	294 09	294.19
29446	294 20	294 10	293.90	294.38	294.06	294 18	294.38
29447	294 30	294 20	294.06	294.57	294.29	294 27	294.57
29448	294 40	294 30	294.21	294.76	294.52	294 36	294.76
29449	294 50	294 40	294.36	294.95	294.75	294 45	294.95
29450	295 00	294 50	294.52	295.13	294.98	294 54	295.13

NOTE	S	CURB	1/4	E	1/4	CURB	N
29451	295 10	295 00	294.60	295.25	295.10	295 50	295.25
29452	295 20	295 10	294.75	295.44	295.34	296 00	295.44
29453	295 30	295 20	294.90	295.63	295.53	296 10	295.63
29454	295 40	295 30	295.06	295.82	295.72	296 20	295.82
29455	295 50	295 40	295.21	296.01	295.91	296 30	296.01
29456	296 00	295 50	295.36	296.20	295.96	296 40	296.20

UTAS ST. - WEST - INTERSECT. OF UTAS ST. & WESTLINE - SECT. 36

NOTE	S	CURB	1/4	E	1/4	CURB	N
29457	296 10	296 00	295.52	296.39	296.29	296 50	296.39
29458	296 20	296 10	295.67	296.58	296.48	297 00	296.58
29459	296 30	296 20	295.82	296.77	296.67	297 10	296.77
29460	296 40	296 30	295.97	296.96	296.86	297 20	296.96
29461	296 50	296 40	296.12	297.15	297.05	297 30	297.15
29462	297 00	296 50	296.27	297.34	297.24	297 40	297.34



	S	CURB	¼	±	¼	CURB	N
E. LINE ALBERT	287.25	287.00	286.85 <sup>OK</sup>	287.50 <sup>OK</sup>	287.40 <sup>1.60W</sup>	288.00	288.00
E. CURB	287.00	287.00	286.67	287.32	287.22	288.00	288.00
QUARTER	286.40	285.75	286.51	287.16	287.06	286.75	286.75
CENTER	286.50	285.50	286.35	287.00	286.90	286.50	286.50
W. QUARTER	285.85	285.75	286.19	286.84	286.74	286.25	286.25
CURB	286.00	286.00	286.03	286.68	286.58	287.00	287.00
W. LINE ALBERT	286.25	286.00	285.85	286.50	286.40	287.00	287.00

	S	CURB	¼	±	¼	CURB	N
W. LINE ALBERT	286.25	286.00	285.85	286.50	286.40	287.00	287.00
50' - W.	285.65	285.40	285.30	286.00	286.00	286.60	286.60
100' "	285.05	284.80	284.75	285.50	285.60	286.20	286.20
150' "	284.45	284.20	284.20	285.00	285.20	285.80	285.80
200' "	283.85	283.60	283.65	284.50	284.50	285.40	285.40
249.1 W. E.L. RICHMOND	283.25	283.00	283.10	284.00	284.40	285.00	285.00

	S	CURB	¼	±	¼	CURB	N
E. RICHMOND	283.25	283.00	283.10 <sup>10</sup>	284.00 <sup>OK</sup>	284.40 <sup>10</sup>	285.00	285.00
E. CURB	283.00	283.00	282.92	283.82	284.22	285.00	285.00
E. QUARTER	282.75	281.75	282.76	283.66	284.06	283.75	283.75
CENTER	282.50	281.50	282.60	283.50	283.90	283.50	283.50
W. QUARTER	282.25	281.25	282.44	283.34	283.74	283.25	283.25
CURB	282.00	282.00	282.28	283.18	283.58	284.00	284.00
W. LINE RICHMOND	282.25	282.00	282.10 <sup>OK</sup>	283.00 <sup>OK</sup>	283.40 <sup>10</sup>	284.00	284.00

286.25	286.68	285.00	284.48	283.82	283.26	282.66	282.06
7.20	7.8	8.2	8.6	9.0	9.4	9.8	10.2
8.0	8.2	8.4	8.6	8.8	9.0	9.2	9.4
8.2	8.4	8.6	8.8	9.0	9.2	9.4	9.6
8.4	8.6	8.8	9.0	9.2	9.4	9.6	9.8
8.6	8.8	9.0	9.2	9.4	9.6	9.8	10.0
8.8	9.0	9.2	9.4	9.6	9.8	10.0	10.2
9.0	9.2	9.4	9.6	9.8	10.0	10.2	10.4
9.2	9.4	9.6	9.8	10.0	10.2	10.4	10.6
9.4	9.6	9.8	10.0	10.2	10.4	10.6	10.8
9.6	9.8	10.0	10.2	10.4	10.6	10.8	11.0
9.8	10.0	10.2	10.4	10.6	10.8	11.0	11.2
10.0	10.2	10.4	10.6	10.8	11.0	11.2	11.4
10.2	10.4	10.6	10.8	11.0	11.2	11.4	11.6
10.4	10.6	10.8	11.0	11.2	11.4	11.6	11.8
10.6	10.8	11.0	11.2	11.4	11.6	11.8	12.0
10.8	11.0	11.2	11.4	11.6	11.8	12.0	12.2
11.0	11.2	11.4	11.6	11.8	12.0	12.2	12.4
11.2	11.4	11.6	11.8	12.0	12.2	12.4	12.6
11.4	11.6	11.8	12.0	12.2	12.4	12.6	12.8
11.6	11.8	12.0	12.2	12.4	12.6	12.8	13.0
11.8	12.0	12.2	12.4	12.6	12.8	13.0	13.2
12.0	12.2	12.4	12.6	12.8	13.0	13.2	13.4
12.2	12.4	12.6	12.8	13.0	13.2	13.4	13.6
12.4	12.6	12.8	13.0	13.2	13.4	13.6	13.8
12.6	12.8	13.0	13.2	13.4	13.6	13.8	14.0
12.8	13.0	13.2	13.4	13.6	13.8	14.0	14.2
13.0	13.2	13.4	13.6	13.8	14.0	14.2	14.4
13.2	13.4	13.6	13.8	14.0	14.2	14.4	14.6
13.4	13.6	13.8	14.0	14.2	14.4	14.6	14.8
13.6	13.8	14.0	14.2	14.4	14.6	14.8	15.0
13.8	14.0	14.2	14.4	14.6	14.8	15.0	15.2
14.0	14.2	14.4	14.6	14.8	15.0	15.2	15.4
14.2	14.4	14.6	14.8	15.0	15.2	15.4	15.6
14.4	14.6	14.8	15.0	15.2	15.4	15.6	15.8
14.6	14.8	15.0	15.2	15.4	15.6	15.8	16.0
14.8	15.0	15.2	15.4	15.6	15.8	16.0	16.2
15.0	15.2	15.4	15.6	15.8	16.0	16.2	16.4
15.2	15.4	15.6	15.8	16.0	16.2	16.4	16.6
15.4	15.6	15.8	16.0	16.2	16.4	16.6	16.8
15.6	15.8	16.0	16.2	16.4	16.6	16.8	17.0
15.8	16.0	16.2	16.4	16.6	16.8	17.0	17.2
16.0	16.2	16.4	16.6	16.8	17.0	17.2	17.4
16.2	16.4	16.6	16.8	17.0	17.2	17.4	17.6
16.4	16.6	16.8	17.0	17.2	17.4	17.6	17.8
16.6	16.8	17.0	17.2	17.4	17.6	17.8	18.0
16.8	17.0	17.2	17.4	17.6	17.8	18.0	18.2
17.0	17.2	17.4	17.6	17.8	18.0	18.2	18.4
17.2	17.4	17.6	17.8	18.0	18.2	18.4	18.6
17.4	17.6	17.8	18.0	18.2	18.4	18.6	18.8
17.6	17.8	18.0	18.2	18.4	18.6	18.8	19.0
17.8	18.0	18.2	18.4	18.6	18.8	19.0	19.2
18.0	18.2	18.4	18.6	18.8	19.0	19.2	19.4
18.2	18.4	18.6	18.8	19.0	19.2	19.4	19.6
18.4	18.6	18.8	19.0	19.2	19.4	19.6	19.8
18.6	18.8	19.0	19.2	19.4	19.6	19.8	20.0
18.8	19.0	19.2	19.4	19.6	19.8	20.0	20.2
19.0	19.2	19.4	19.6	19.8	20.0	20.2	20.4
19.2	19.4	19.6	19.8	20.0	20.2	20.4	20.6
19.4	19.6	19.8	20.0	20.2	20.4	20.6	20.8
19.6	19.8	20.0	20.2	20.4	20.6	20.8	21.0
19.8	20.0	20.2	20.4	20.6	20.8	21.0	21.2
20.0	20.2	20.4	20.6	20.8	21.0	21.2	21.4
20.2	20.4	20.6	20.8	21.0	21.2	21.4	21.6
20.4	20.6	20.8	21.0	21.2	21.4	21.6	21.8
20.6	20.8	21.0	21.2	21.4	21.6	21.8	22.0
20.8	21.0	21.2	21.4	21.6	21.8	22.0	22.2
21.0	21.2	21.4	21.6	21.8	22.0	22.2	22.4
21.2	21.4	21.6	21.8	22.0	22.2	22.4	22.6
21.4	21.6	21.8	22.0	22.2	22.4	22.6	22.8
21.6	21.8	22.0	22.2	22.4	22.6	22.8	23.0
21.8	22.0	22.2	22.4	22.6	22.8	23.0	23.2
22.0	22.2	22.4	22.6	22.8	23.0	23.2	23.4
22.2	22.4	22.6	22.8	23.0	23.2	23.4	23.6
22.4	22.6	22.8	23.0	23.2	23.4	23.6	23.8
22.6	22.8	23.0	23.2	23.4	23.6	23.8	24.0
22.8	23.0	23.2	23.4	23.6	23.8	24.0	24.2
23.0	23.2	23.4	23.6	23.8	24.0	24.2	24.4
23.2	23.4	23.6	23.8	24.0	24.2	24.4	24.6
23.4	23.6	23.8	24.0	24.2	24.4	24.6	24.8
23.6	23.8	24.0	24.2	24.4	24.6	24.8	25.0
23.8	24.0	24.2	24.4	24.6	24.8	25.0	25.2
24.0	24.2	24.4	24.6	24.8	25.0	25.2	25.4
24.2	24.4	24.6	24.8	25.0	25.2	25.4	25.6
24.4	24.6	24.8	25.0	25.2	25.4	25.6	25.8
24.6	24.8	25.0	25.2	25.4	25.6	25.8	26.0
24.8	25.0	25.2	25.4	25.6	25.8	26.0	26.2
25.0	25.2	25.4	25.6	25.8	26.0	26.2	26.4
25.2	25.4	25.6	25.8	26.0	26.2	26.4	26.6
25.4	25.6	25.8	26.0	26.2	26.4	26.6	26.8
25.6	25.8	26.0	26.2	26.4	26.6	26.8	27.0
25.8	26.0	26.2	26.4	26.6	26.8	27.0	27.2
26.0	26.2	26.4	26.6	26.8	27.0	27.2	27.4
26.2	26.4	26.6	26.8	27.0	27.2	27.4	27.6
26.4	26.6	26.8	27.0	27.2	27.4	27.6	27.8
26.6	26.8	27.0	27.2	27.4	27.6	27.8	28.0
26.8	27.0	27.2	27.4	27.6	27.8	28.0	28.2
27.0	27.2	27.4	27.6	27.8	28.0	28.2	28.4
27.2	27.4	27.6	27.8	28.0	28.2	28.4	28.6
27.4	27.6	27.8	28.0	28.2	28.4	28.6	28.8
27.6	27.8	28.0	28.2	28.4	28.6	28.8	29.0
27.8	28.0	28.2	28.4	28.6	28.8	29.0	29.2
28.0	28.2	28.4	28.6	28.8	29.0	29.2	29.4
28.2	28.4	28.6	28.8	29.0	29.2	29.4	29.6
28.4	28.6	28.8	29.0	29.2	29.4	29.6	29.8
28.6	28.8	29.0	29.2	29.4	29.6	29.8	30.0
28.8	29.0	29.2	29.4	29.6	29.8	30.0	30.2
29.0	29.2	29.4	29.6	29.8	30.0	30.2	30.4
29.2	29.4	29.6	29.8	30.0	30.2	30.4	30.6
29.4	29.6	29.8	30.0	30.2	30.4	30.6	30.8
29.6	29.8	30.0	30.2	30.4	30.6	30.8	31.0
29.8	30.0	30.2	30.4	30.6	30.8	31.0	31.2
30.0	30.2	30.4	30.6	30.8	31.0	31.2	31.4
30.2	30.4	3					

	S	CURB	1/4	E	1/4	CURB	N
W. LINE RICHMOND	282.25	282.0	282.10	283.00	283.40	284.0	284.25
50' - W	281.84	281.59	281.67	282.54	282.90	283.50	283.75
100' - W	281.42	281.17	281.23	282.08	282.40	283.00	283.25
150' - "	281.00	280.75	280.79	281.62	281.90	282.50	282.75
200' "	280.59	280.34	280.35	281.16	281.40	282.00	282.25
250' "	280.17	279.92	279.92	280.71	280.90	281.50	281.75
300' "	279.75	279.50	279.48	280.25	280.40	281.00	281.25
350' "	279.34	279.09	279.04	279.79	279.90	280.50	280.75
400' "	278.92	278.67	278.60	279.33	279.40	280.00	280.25
450' "	278.50	278.25	278.16	278.87	278.90	279.50	279.75
500' "	278.07	277.83	277.73	278.42	278.40	279.00	279.25
550' "	277.64	277.42	277.29	277.96	277.90	278.50	278.75
E LINE							
600' W = VERMONT	277.25	277.00	276.85	277.50	277.40	278.00	278.25

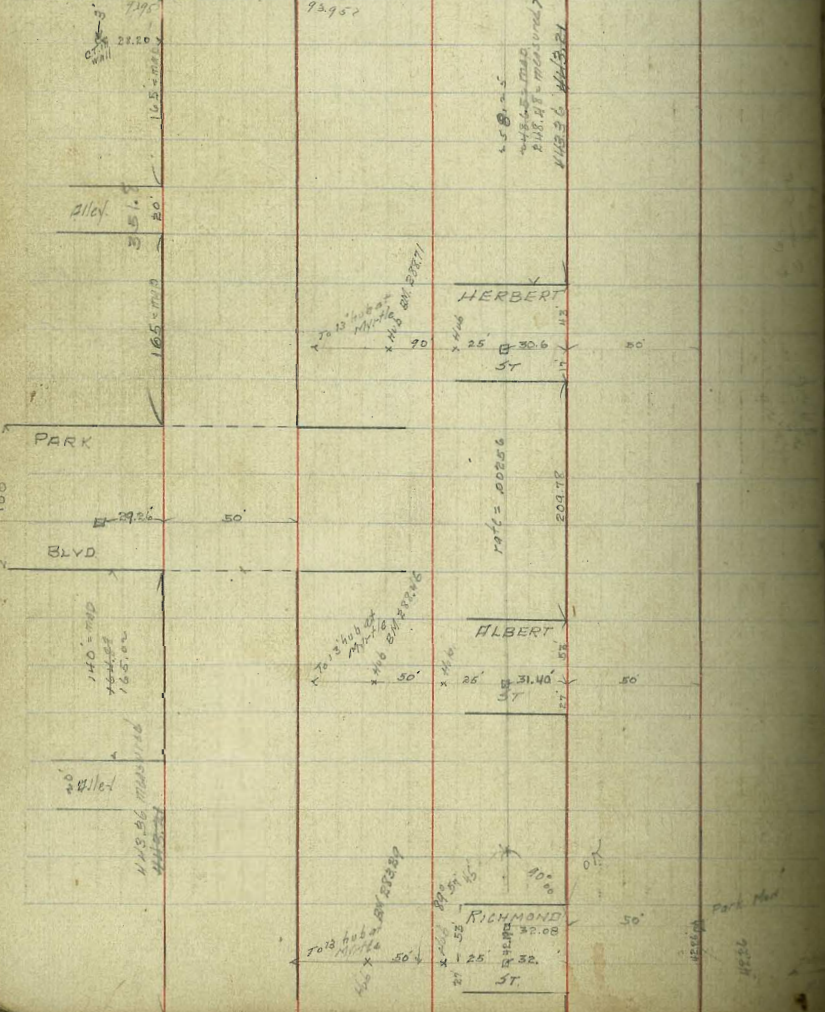
	S	CURB	1/4	E	1/4	CURB	N
E. LINE VERMONT	277.25	277.00	276.85	277.50	277.40	278.00	278.25
E. CURB	277.20	277.00	276.67	277.32	277.22	277.00	277.00
" QUARTER	276.40	275.75	276.51	277.16	277.06	276.75	276.75
" CENTER	276.60	275.50	276.35	277.00	276.90	276.50	276.50
	275.00	275.00		276.00	276.00		
	276.00	276.00		277.00	277.00		
W. LINE VERMONT	276.25	276.00	275.85	276.50	276.40	277.00	277.25

282.25	282.0	282.10	283.00	283.40	284.0	284.25	284.50	284.75	285.00	285.25	285.50	285.75	286.00	286.25	286.50	286.75	287.00	287.25	287.50	287.75	288.00	288.25	288.50	288.75	289.00	289.25	289.50	289.75	290.00	290.25	290.50	290.75	291.00	291.25	291.50	291.75	292.00	292.25	292.50	292.75	293.00	293.25	293.50	293.75	294.00	294.25	294.50	294.75	295.00	295.25	295.50	295.75	296.00	296.25	296.50	296.75	297.00	297.25	297.50	297.75	298.00	298.25	298.50	298.75	299.00	299.25	299.50	299.75	300.00	300.25	300.50	300.75	301.00	301.25	301.50	301.75	302.00	302.25	302.50	302.75	303.00	303.25	303.50	303.75	304.00	304.25	304.50	304.75	305.00	305.25	305.50	305.75	306.00	306.25	306.50	306.75	307.00	307.25	307.50	307.75	308.00	308.25	308.50	308.75	309.00	309.25	309.50	309.75	310.00	310.25	310.50	310.75	311.00	311.25	311.50	311.75	312.00	312.25	312.50	312.75	313.00	313.25	313.50	313.75	314.00	314.25	314.50	314.75	315.00	315.25	315.50	315.75	316.00	316.25	316.50	316.75	317.00	317.25	317.50	317.75	318.00	318.25	318.50	318.75	319.00	319.25	319.50	319.75	320.00	320.25	320.50	320.75	321.00	321.25	321.50	321.75	322.00	322.25	322.50	322.75	323.00	323.25	323.50	323.75	324.00	324.25	324.50	324.75	325.00	325.25	325.50	325.75	326.00	326.25	326.50	326.75	327.00	327.25	327.50	327.75	328.00	328.25	328.50	328.75	329.00	329.25	329.50	329.75	330.00	330.25	330.50	330.75	331.00	331.25	331.50	331.75	332.00	332.25	332.50	332.75	333.00	333.25	333.50	333.75	334.00	334.25	334.50	334.75	335.00	335.25	335.50	335.75	336.00	336.25	336.50	336.75	337.00	337.25	337.50	337.75	338.00	338.25	338.50	338.75	339.00	339.25	339.50	339.75	340.00	340.25	340.50	340.75	341.00	341.25	341.50	341.75	342.00	342.25	342.50	342.75	343.00	343.25	343.50	343.75	344.00	344.25	344.50	344.75	345.00	345.25	345.50	345.75	346.00	346.25	346.50	346.75	347.00	347.25	347.50	347.75	348.00	348.25	348.50	348.75	349.00	349.25	349.50	349.75	350.00	350.25	350.50	350.75	351.00	351.25	351.50	351.75	352.00	352.25	352.50	352.75	353.00	353.25	353.50	353.75	354.00	354.25	354.50	354.75	355.00	355.25	355.50	355.75	356.00	356.25	356.50	356.75	357.00	357.25	357.50	357.75	358.00	358.25	358.50	358.75	359.00	359.25	359.50	359.75	360.00	360.25	360.50	360.75	361.00	361.25	361.50	361.75	362.00	362.25	362.50	362.75	363.00	363.25	363.50	363.75	364.00	364.25	364.50	364.75	365.00	365.25	365.50	365.75	366.00	366.25	366.50	366.75	367.00	367.25	367.50	367.75	368.00	368.25	368.50	368.75	369.00	369.25	369.50	369.75	370.00	370.25	370.50	370.75	371.00	371.25	371.50	371.75	372.00	372.25	372.50	372.75	373.00	373.25	373.50	373.75	374.00	374.25	374.50	374.75	375.00	375.25	375.50	375.75	376.00	376.25	376.50	376.75	377.00	377.25	377.50	377.75	378.00	378.25	378.50	378.75	379.00	379.25	379.50	379.75	380.00	380.25	380.50	380.75	381.00	381.25	381.50	381.75	382.00	382.25	382.50	382.75	383.00	383.25	383.50	383.75	384.00	384.25	384.50	384.75	385.00	385.25	385.50	385.75	386.00	386.25	386.50	386.75	387.00	387.25	387.50	387.75	388.00	388.25	388.50	388.75	389.00	389.25	389.50	389.75	390.00	390.25	390.50	390.75	391.00	391.25	391.50	391.75	392.00	392.25	392.50	392.75	393.00	393.25	393.50	393.75	394.00	394.25	394.50	394.75	395.00	395.25	395.50	395.75	396.00	396.25	396.50	396.75	397.00	397.25	397.50	397.75	398.00	398.25	398.50	398.75	399.00	399.25	399.50	399.75	400.00	400.25	400.50	400.75	401.00	401.25	401.50	401.75	402.00	402.25	402.50	402.75	403.00	403.25	403.50	403.75	404.00	404.25	404.50	404.75	405.00	405.25	405.50	405.75	406.00	406.25	406.50	406.75	407.00	407.25	407.50	407.75	408.00	408.25	408.50	408.75	409.00	409.25	409.50	409.75	410.00	410.25	410.50	410.75	411.00	411.25	411.50	411.75	412.00	412.25	412.50	412.75	413.00	413.25	413.50	413.75	414.00	414.25	414.50	414.75	415.00	415.25	415.50	415.75	416.00	416.25	416.50	416.75	417.00	417.25	417.50	417.75	418.00	418.25	418.50	418.75	419.00	419.25	419.50	419.75	420.00	420.25	420.50	420.75	421.00	421.25	421.50	421.75	422.00	422.25	422.50	422.75	423.00	423.25	423.50	423.75	424.00	424.25	424.50	424.75	425.00	425.25	425.50	425.75	426.00	426.25	426.50	426.75	427.00	427.25	427.50	427.75	428.00	428.25	428.50	428.75	429.00	429.25	429.50	429.75	430.00	430.25	430.50	430.75	431.00	431.25	431.50	431.75	432.00	432.25	432.50	432.75	433.00	433.25	433.50	433.75	434.00	434.25	434.50	434.75	435.00	435.25	435.50	435.75	436.00	436.25	436.50	436.75	437.00	437.25	437.50	437.75	438.00	438.25	438.50	438.75	439.00	439.25	439.50	439.75	440.00	440.25	440.50	440.75	441.00	441.25	441.50	441.75	442.00	442.25	442.50	442.75	443.00	443.25	443.50	443.75	444.00	444.25	444.50	444.75	445.00	445.25	445.50	445.75	446.00	446.25	446.50	446.75	447.00	447.25	447.50	447.75	448.00	448.25	448.50	448.75	449.00	449.25	449.50	449.75	450.00	450.25	450.50	450.75	451.00	451.25	451.50	451.75	452.00	452.25	452.50	452.75	453.00	453.25	453.50	453.75	454.00	454.25	454.50	454.75	455.00	455.25	455.50	455.75	456.00	456.25	456.50	456.75	457.00	457.25	457.50	457.75	458.00	458.25	458.50	458.75	459.00	459.25	459.50	459.75	460.00	460.25	460.50	460.75	461.00	461.25	461.50	461.75	462.00	462.25	462.50	462.75	463.00	463.25	463.50	463.75	464.00	464.25	464.50	464.75	465.00	465.25	465.50	465.75	466.00	466.25	466.50	466.75	467.00	467.25	467.50	467.75	468.00	468.25	468.50	468.75	469.00	469.25	469.50	469.75	470.00	470.25	470.50	470.75	471.00	471.25	471.50	471.75	472.00	472.25	472.50	472.75	473.00	473.25	473.50	473.75	474.00	474.25	474.50	474.75	475.00	475.25	475.50	475.75	476.00	476.25	476.50	476.75	477.00	477.25	477.50	477.75	478.00	478.25	478.50	478.75	479.00	479.25	479.50	479.75	480.00	480.25	480.50	480.75	481.00	481.25	481.50	481.75	482.00	482.25	482.50	482.75	483.00	483.25	483.50	483.75	484.00	484.25	484.50	484.75	485.00	485.25	485.50	485.75	486.00	486.25	486.50	486.75	487.00	487.25	487.50	487.75	488.00	488.25	488.50	488.75	489.00	489.25	489.50	489.75	490.00	490.25	490.50	490.75	491.00	491.25	491.50	491.75	492.00	492.25	492.50	492.75	493.00	493.25	493.50	493.75	494.00	494.25	494.50	494.75	495.00	495.25	495.50	495.75	496.00	496.25	496.50	496.75	497.00	497.25	497.50	497.75	498.00	498.25	498.50	498.75	499.00	499.25	499.50	499.75	500.00	500.25	500.50	500.75	501.00	501.25	501.50	501.75	502.00	502.25	502.50	502.75	503.00	503.25	503.50	503.75	504.00	504.25	504.50	504.75	505.00	505.25	505.50	505.75	506.00	506.25	506.50	506.75	507.00	507.25	507.50	507.75	508.00	508.25	508.50	508.75	509.00	509.25	509.50	509.75	510.00	510.25	510.50	510.75	511
--------	-------	--------	--------	--------	-------	--------	--------	--------	--------	--------	--------	--------	--------	--------	--------	--------	--------	--------	--------	--------	--------	--------	--------	--------	--------	--------	--------	--------	--------	--------	--------	--------	--------	--------	--------	--------	--------	--------	--------	--------	--------	--------	--------	--------	--------	--------	--------	--------	--------	--------	--------	--------	--------	--------	--------	--------	--------	--------	--------	--------	--------	--------	--------	--------	--------	--------	--------	--------	--------	--------	--------	--------	--------	--------	--------	--------	--------	--------	--------	--------	--------	--------	--------	--------	--------	--------	--------	--------	--------	--------	--------	--------	--------	--------	--------	--------	--------	--------	--------	--------	--------	--------	--------	--------	--------	--------	--------	--------	--------	--------	--------	--------	--------	--------	--------	--------	--------	--------	--------	--------	--------	--------	--------	--------	--------	--------	--------	--------	--------	--------	--------	--------	--------	--------	--------	--------	--------	--------	--------	--------	--------	--------	--------	--------	--------	--------	--------	--------	--------	--------	--------	--------	--------	--------	--------	--------	--------	--------	--------	--------	--------	--------	--------	--------	--------	--------	--------	--------	--------	--------	--------	--------	--------	--------	--------	--------	--------	--------	--------	--------	--------	--------	--------	--------	--------	--------	--------	--------	--------	--------	--------	--------	--------	--------	--------	--------	--------	--------	--------	--------	--------	--------	--------	--------	--------	--------	--------	--------	--------	--------	--------	--------	--------	--------	--------	--------	--------	--------	--------	--------	--------	--------	--------	--------	--------	--------	--------	--------	--------	--------	--------	--------	--------	--------	--------	--------	--------	--------	--------	--------	--------	--------	--------	--------	--------	--------	--------	--------	--------	--------	--------	--------	--------	--------	--------	--------	--------	--------	--------	--------	--------	--------	--------	--------	--------	--------	--------	--------	--------	--------	--------	--------	--------	--------	--------	--------	--------	--------	--------	--------	--------	--------	--------	--------	--------	--------	--------	--------	--------	--------	--------	--------	--------	--------	--------	--------	--------	--------	--------	--------	--------	--------	--------	--------	--------	--------	--------	--------	--------	--------	--------	--------	--------	--------	--------	--------	--------	--------	--------	--------	--------	--------	--------	--------	--------	--------	--------	--------	--------	--------	--------	--------	--------	--------	--------	--------	--------	--------	--------	--------	--------	--------	--------	--------	--------	--------	--------	--------	--------	--------	--------	--------	--------	--------	--------	--------	--------	--------	--------	--------	--------	--------	--------	--------	--------	--------	--------	--------	--------	--------	--------	--------	--------	--------	--------	--------	--------	--------	--------	--------	--------	--------	--------	--------	--------	--------	--------	--------	--------	--------	--------	--------	--------	--------	--------	--------	--------	--------	--------	--------	--------	--------	--------	--------	--------	--------	--------	--------	--------	--------	--------	--------	--------	--------	--------	--------	--------	--------	--------	--------	--------	--------	--------	--------	--------	--------	--------	--------	--------	--------	--------	--------	--------	--------	--------	--------	--------	--------	--------	--------	--------	--------	--------	--------	--------	--------	--------	--------	--------	--------	--------	--------	--------	--------	--------	--------	--------	--------	--------	--------	--------	--------	--------	--------	--------	--------	--------	--------	--------	--------	--------	--------	--------	--------	--------	--------	--------	--------	--------	--------	--------	--------	--------	--------	--------	--------	--------	--------	--------	--------	--------	--------	--------	--------	--------	--------	--------	--------	--------	--------	--------	--------	--------	--------	--------	--------	--------	--------	--------	--------	--------	--------	--------	--------	--------	--------	--------	--------	--------	--------	--------	--------	--------	--------	--------	--------	--------	--------	--------	--------	--------	--------	--------	--------	--------	--------	--------	--------	--------	--------	--------	--------	--------	--------	--------	--------	--------	--------	--------	--------	--------	--------	--------	--------	--------	--------	--------	--------	--------	--------	--------	--------	--------	--------	--------	--------	--------	--------	--------	--------	--------	--------	--------	--------	--------	--------	--------	--------	--------	--------	--------	--------	--------	--------	--------	--------	--------	--------	--------	--------	--------	--------	--------	--------	--------	--------	--------	--------	--------	--------	--------	--------	--------	--------	--------	--------	--------	--------	--------	--------	--------	--------	--------	--------	--------	--------	--------	--------	--------	--------	--------	--------	--------	--------	--------	--------	--------	--------	--------	--------	--------	--------	--------	--------	--------	--------	--------	--------	--------	--------	--------	--------	--------	--------	--------	--------	--------	--------	--------	--------	--------	--------	--------	--------	--------	--------	--------	--------	--------	--------	--------	--------	--------	--------	--------	--------	--------	--------	--------	--------	--------	--------	--------	--------	--------	--------	--------	--------	--------	--------	--------	--------	--------	--------	--------	--------	--------	--------	--------	--------	--------	--------	--------	--------	--------	--------	--------	--------	--------	--------	--------	--------	--------	--------	--------	--------	--------	--------	--------	--------	--------	--------	--------	--------	--------	--------	--------	--------	--------	--------	--------	--------	--------	--------	--------	--------	--------	--------	--------	--------	--------	--------	--------	--------	--------	--------	--------	--------	--------	--------	--------	--------	--------	--------	--------	--------	--------	--------	--------	--------	--------	--------	--------	--------	--------	--------	--------	--------	--------	--------	--------	--------	--------	--------	--------	--------	--------	--------	--------	--------	--------	--------	--------	--------	--------	--------	--------	--------	--------	--------	--------	--------	--------	--------	--------	--------	--------	--------	--------	--------	--------	--------	--------	--------	--------	--------	--------	--------	--------	--------	--------	--------	--------	--------	--------	--------	--------	--------	--------	--------	--------	--------	--------	--------	--------	--------	--------	--------	--------	--------	--------	--------	--------	--------	--------	--------	--------	--------	--------	--------	--------	--------	--------	--------	--------	--------	--------	--------	--------	--------	--------	--------	--------	--------	--------	--------	--------	--------	--------	--------	--------	--------	--------	--------	--------	--------	--------	--------	--------	--------	--------	--------	--------	--------	--------	--------	--------	--------	--------	--------	--------	--------	--------	--------	--------	--------	--------	--------	--------	--------	--------	--------	--------	--------	--------	--------	--------	--------	--------	--------	--------	--------	--------	--------	--------	--------	--------	--------	--------	--------	--------	--------	--------	--------	--------	--------	--------	--------	--------	--------	--------	--------	-----

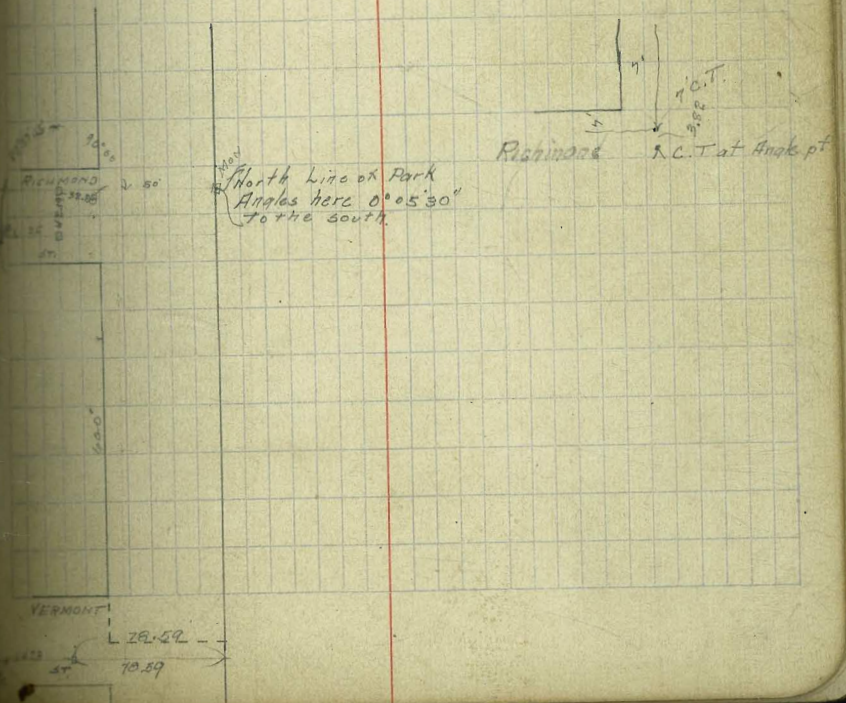
INDIANA ST. FROM OLD W.L. OF INDIANA TO NEW W. LINE OF

	N	CURB	1/4	1/2	3/4	CURB	S
OLD W.L. INDIANA	294.08	293.83				293.97	294.12
	294.43	294.00	293.60	294.00	293.60	294.00	294.43
0+11 ON S.L.	294.11	293.86	293.46	293.86	293.46	293.86	294.11
0+12 ON N.L.							
0+22 ON N.L.							
0+23 ON S.L.	293.91	293.72	293.32	293.72	293.32	293.72	293.91
W LINE							
2443 E. S.D.E. R.O.W.	293.95	293.70	293.30	293.70	293.30	293.70	293.95

0+31.3 WEST  
 This is 27' E of W.L. of  
 S.D.E. R.O.W. of 21' E of W.L. of R.O.W.  
 S.D.E. R.O.W.



298.64			
4.10			
302.74	293.70	294.00	11
293.95	9.94	8.74	30
8.79	293.66		0330
	8.88		



	W	CURB	1/4	1/2	3/4	CURB	E
S LINE CEDAR	6.00	5.75				5.50	5.25
" CURB	5.75	5.75				5.50	5.25
" 1/4	4.75	4.75				4.50	4.25
" 1/2							
" 3/4							
N CURB	4.50	4.50				4.00	3.75
"	5.50	5.50				5.00	4.75
N LINE CEDAR	5.75	5.50				5.00	4.75
N LINE CEDAR		5.50				5.00	
SEC. A.							
50' N.							
100 "							
150 "							
200 "							
202 - GRAD EST W		4.75					
218 - " " E						4.25	
250 "							
300 "							
350 "							
370 "							
403.21 No S Line		4.00				3.50	





	W	CURB	1/4	1/2	3/4	CURB	E
S. LINE ELM	225.25	225.00	224.58	224.50	224.08	224.00	224.00
" CURB	225.00 224.83	225.00 224.83	225.19	225.11	224.64	224.00 223.83	224.00
" 1/4	225.33	225.09	225.77	225.66	225.17	224.98	224.98
" 1/2	226.00	225.86	226.35	226.21	225.70	224.63	224.63
N 1/4	226.33	226.62	226.93	226.76	226.23	225.28	225.28
" CURB	226.33 227.00	227.33 228.00	227.51	227.31	226.76	225.93 226.00	225.93 226.00
N LINE ELM	229.12	228.67	228.57	228.12	228.04		
N. LINE ELM	229.12	228.67	228.57	228.12	228.04		
25 N.	230.93	230.49	230.39	229.95	229.87		
50 "	232.75	232.31	232.21	231.77	231.69		
75 "	234.56	234.12	234.03	233.60	233.52		
100 "	236.37	235.94	235.86	235.43	235.35		
125 "	238.19	237.76	237.68	237.25	237.17		
150 "	240.00	239.58	239.50	239.08	239.00		
175 "	240.83	240.41	240.33	239.91	239.83		
200 "	241.66	241.24	241.16	240.74	240.66		
225 "	242.50	242.08	242.00	241.58	241.50		
250 "	243.33	242.91	242.83	242.41	242.33		
275 "	244.16	243.74	243.66	243.24	243.16		
300 = S. LINE FIR	245.00	244.58	244.50	244.08	244.00		
20 Noe SLER	246.50	246.08	246.00	245.58	245.50		
40 " " "	248.00	247.58	247.50	247.08	247.00		
60 " " "	249.50	249.08	249.00	248.58	248.50		
80 = N. LINE FIR	251.00	250.58	250.50	250.08	250.00		

	W	CURB	1/4	E	1/4	CURB	E
N. LINE EIR		251.00	251.58	250.50	250.08	250.00	
25' N		252.67	252.25	252.17	251.75	251.67	
50'		254.34	253.92	253.84	253.42	253.34	
75'		256.00	255.58	255.50	255.08	255.00	
100'		256.99	256.57	256.50	256.09	256.01	
125'		257.98	257.57	257.50	257.10	257.02	
150'		258.97	258.56	258.50	258.11	258.03	
175'		259.96	259.56	259.50	259.12	259.04	
200'		260.95	260.55	260.50	260.13	260.05	
225'		261.94	261.55	261.50	261.14	261.06	
250'		262.93	262.54	262.50	262.15	262.07	
275'		263.92	263.54	263.50	263.15	263.08	
300' - S/L OF GRADE		264.92	264.55	264.52	264.15	264.08	
S. LINE GRADE		264.92	264.55	264.52	264.15	264.08	
1/4 CURB		267.00	265.36	265.46	265.31	264.81	264.67
1/4		267.33	266.05	266.07	265.94	265.45	264.83
1/4		268.00	266.81	266.68	266.57	266.09	265.66
1/4		268.33	267.57	267.29	267.20	266.73	266.43
1/4 CURB		269.00	268.33	267.90	267.83	267.37	267.33
N. LINE GRADE		269.25	269.00	268.58	268.50	268.08	268.00

See # 734  
 Res # 24372  
 3/24/19  
 Changing grade

New Grades  
 G.H. Bk. 97  
 Pgs 25

# KEITH'S RAILROAD CURVE TABLE

Published by KEUFFEL & ESSER CO., New York.

Entered according to Act of Congress in the year 1883,  
by W. Keuffel & H. Esser, in the office of the Librarian of Congress,  
in Washington, D.C.

Copyright, 1902, by Keuffel & Esser Co.

## HOW TO USE KEITH'S TABLES.

### EXAMPLE.

Wanted a Curve with an Ext. of about 12 ft. Angle  
of Intersection or I. P.=23° 20' to the R. at Station  
542+72.

Ext. in Tab. IV opposite 23° 20'=120.87  
120.87+12=132.87. Say a 10° Curve.

Tan. in Tab. IV opp. 23° 20'=1183.1  
1183.1+10=1193.1.

Tab. V. correction for A. 23° 20' for a 10° Cur.=0.16  
1193.1+0.16=1193.26=corrected Tangent.

(If corrected Ext. is required find in same way)  
Ang. 23° 20'=23.33°+10=2.3333=L. C.

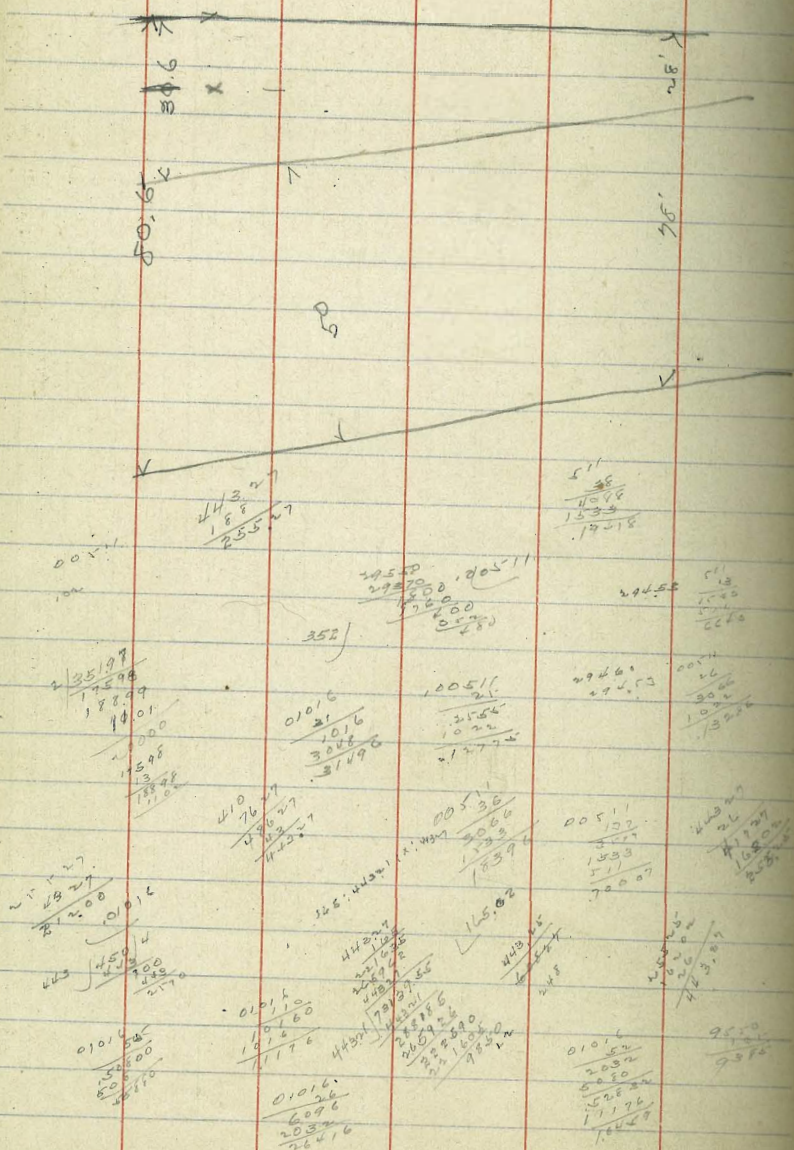
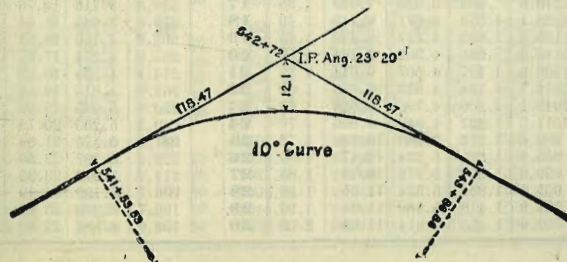
2° 19½'	=def. for sta.	542	I. P.=sta.	542+72
4° 49½'	" " "	+50	Tan.=	1.18.47
7° 19½'	" " "	543	B. C.=sta.	541+53.53
9° 49½'	" " "	+50	L. C.=	2.33.33
11° 40'	" " "	543+	E. C.=sta.	543+86.86
		86.86		

100-53.53=46.47×3'(def. for 1 ft. of 10° Cur.)=139.41'=  
2° 19½''=def. for sta. 542.

Def. for 50 ft.=2° 30' for a 10° Curve.

Def. for 86.86 ft.=1° 50½' for a 10° Curve

(These tables are published in Field Books of  
KEUFFEL & ESSER Co., New York, N. Y.)



X

Natural Tangents

deg.	0'	10'	20'	30'	40'	50'	deg.	0'	10'	20'	30'	40'	50'	deg.	
0	0000	0029	0058	0087	0116	0145	89	40	8301	8441	8491	8541	8591	8642	49
1	0175	0204	0233	0262	0291	0320	88	41	8693	8744	8796	8847	8899	8952	48
2	0349	0378	0407	0437	0466	0495	87	42	9004	9057	9110	9163	9217	9271	47
3	0524	0553	0582	0612	0641	0670	86	43	9325	9380	9435	9490	9545	9601	46
4	0699	0729	0758	0787	0816	0846	85	44	9657	9713	9770	9827	9884	9942	45
5	0875	0904	0934	0963	0992	1022	84	45	1.0000	1.0058	1.0117	1.0176	1.0235	1.0295	44
6	1051	1080	1110	1139	1169	1198	83	46	1.0355	1.0416	1.0477	1.0533	1.0599	1.0661	43
7	1228	1257	1287	1317	1346	1376	82	47	1.0724	1.0786	1.0850	1.0913	1.0977	1.1041	42
8	1405	1435	1465	1495	1524	1554	81	48	1.1106	1.1171	1.1237	1.1303	1.1369	1.1436	41
9	1584	1614	1644	1673	1703	1733	80	49	1.1504	1.1571	1.1640	1.1708	1.1778	1.1847	40
10	1763	1793	1823	1853	1883	1914	79	50	1.1918	1.1988	1.2059	1.2131	1.2203	1.2276	39
11	1944	1974	2004	2035	2065	2095	78	51	1.2349	1.2423	1.2497	1.2572	1.2647	1.2723	38
12	2126	2156	2186	2217	2247	2278	77	52	1.2799	1.2876	1.2954	1.3032	1.3111	1.3190	37
13	2309	2339	2370	2401	2432	2462	76	53	1.3270	1.3351	1.3432	1.3514	1.3597	1.3680	36
14	2493	2524	2555	2586	2617	2648	75	54	1.3764	1.3848	1.3934	1.4019	1.4106	1.4193	35
15	2679	2711	2742	2773	2805	2836	74	55	1.4281	1.4370	1.4460	1.4550	1.4641	1.4733	34
16	2867	2899	2931	2962	2994	3026	73	56	1.4826	1.4919	1.5013	1.5108	1.5204	1.5301	33
17	3057	3089	3121	3153	3185	3217	72	57	1.5399	1.5497	1.5597	1.5697	1.5798	1.5900	32
18	3249	3281	3314	3346	3378	3411	71	58	1.6003	1.6107	1.6212	1.6319	1.6426	1.6534	31
19	3443	3476	3508	3541	3574	3607	70	59	1.6643	1.6753	1.6864	1.6977	1.7090	1.7205	30
20	3640	3673	3706	3739	3772	3805	69	60	1.7321	1.7437	1.7556	1.7675	1.7797	1.7917	29
21	3839	3872	3906	3939	3973	4006	68	61	1.8040	1.8165	1.8291	1.8418	1.8546	1.8676	28
22	4040	4074	4108	4142	4176	4210	67	62	1.8807	1.8940	1.9074	1.9210	1.9347	1.9486	27
23	4245	4279	4314	4348	4383	4417	66	63	1.9626	1.9768	1.9912	2.0057	2.0204	2.0353	26
24	4452	4487	4522	4557	4592	4628	65	64	2.0503	2.0655	2.0809	2.0965	2.1123	2.1283	25
25	4663	4699	4734	4770	4806	4841	64	65	2.1445	2.1609	2.1775	2.1943	2.2113	2.2286	24
26	4877	4913	4950	4986	5022	5059	63	66	2.2460	2.2637	2.2817	2.2998	2.3183	2.3369	23
27	5095	5132	5169	5206	5243	5280	62	67	2.3559	2.3750	2.3945	2.4142	2.4342	2.4545	22
28	5317	5354	5392	5430	5467	5505	61	68	2.4751	2.4960	2.5172	2.5386	2.5605	2.5826	21
29	5543	5581	5619	5658	5696	5735	60	69	2.6051	2.6279	2.6511	2.6746	2.6985	2.7228	20
30	5774	5812	5851	5890	5930	5969	59	70	2.7475	2.7725	2.7980	2.8239	2.8502	2.8770	19
31	6009	6048	6088	6128	6168	6208	58	71	2.9042	2.9319	2.9600	2.9887	3.0178	3.0475	18
32	6249	6289	6330	6371	6412	6453	57	72	3.0777	3.1084	3.1397	3.1716	3.2041	3.2371	17
33	6494	6536	6577	6619	6661	6703	56	73	3.2709	3.3052	3.3402	3.3759	3.4124	3.4495	16
34	6745	6787	6830	6873	6916	6959	55	74	3.4874	3.5261	3.5656	3.6059	3.6470	3.6891	15
35	7002	7046	7089	7133	7177	7221	54	75	3.7321	3.7700	3.8208	3.8657	3.9136	3.9617	14
36	7265	7310	7355	7400	7445	7490	53	76	4.0108	4.0611	4.1126	4.1653	4.2193	4.2747	13
37	7536	7581	7627	7673	7720	7766	52	77	4.3315	4.3897	4.4494	4.5107	4.5736	4.6382	12
38	7813	7860	7907	7954	8002	8050	51	78	4.7046	4.7729	4.8430	4.9152	4.9894	5.0658	11
39	8098	8146	8195	8243	8292	8342	50	79	5.1446	5.2257	5.3093	5.3955	5.4845	5.5764	10

deg.	60'	50'	40'	30'	20'	10'	deg.
80	5.6713	5.7694	5.8708	5.9758	6.0844	6.1970	9
81	6.3138	6.4348	6.5606	6.6912	6.8269	6.9682	8
82	7.1154	7.2687	7.4287	7.5958	7.7704	7.9530	7
83	8.1443	8.3450	8.5555	8.7769	9.0098	9.2553	6
84	9.5144	9.7882	10.078	10.385	10.7111	11.059	5
85	11.430	11.826	12.250	12.706	13.197	13.727	4
86	14.300	14.924	15.605	16.350	17.169	18.075	3
87	19.081	20.206	21.470	22.903	24.542	26.432	2
88	28.636	31.242	34.368	38.180	42.964	49.104	1
89	57.290	68.750	85.940	114.588	171.885	343.770	0

Natural Cotangents

Handwritten notes and calculations on the left page, including:

- Top left:  $10000 \div 23460 = 0.426$
- Top center:  $20145 \div 435 = 46.3$
- Top right:  $345 \div 191 = 1.806$
- Bottom left:  $9755 \div 9615 = 1.015$
- Bottom center:  $355 \div 1116 = 0.318$
- Bottom right:  $355 \div 1116 = 0.318$

Handwritten notes and calculations on the right page, including:

- Top left:  $345 \div 191 = 1.806$
- Top center:  $20145 \div 435 = 46.3$
- Top right:  $355 \div 1116 = 0.318$
- Middle left:  $4845 \div 29075 = 0.167$
- Middle center:  $24300 \div 24225 = 1.003$
- Middle right:  $306 \div 1329 = 0.230$
- Bottom left:  $339 \div 275 = 1.233$
- Bottom center:  $2055 \div 598 = 3.436$
- Bottom right:  $42500 \div 38970 = 1.090$

12.52 NE 1/4  
13.17

8.73  
4.44 = West End

10.75 10.68  
8.01 8.08  
East End E. End  
No. 10. 20. 30. Open.

314  
20  
106280

140 540 36  
420  
800  
700  
1000

71.84  
2188  
74.02 HI  
314  
45.5  
320 53  
1570  
1256  
10000  
5  
75.74 HI  
68.97  
6.77  
69.02  
6.72  
69.19  
6.56  
69.34  
6.40  
69.50  
6.24  
5.4

71.84  
390  
75.74 HI  
70.21  
5.53  
70.03  
5.71  
70.18  
5.56  
70.34  
5.40  
70.50  
5.24

89 51  
140 59' 30"  
290 59' 00"  
440 58' 30"  
590 58'  
740 57' 30"  
890 57'  
69.82  
6.39  
69.96  
6.25

76.21 HI  
70.88  
5.83  
70.75  
5.46  
70.33  
5.88  
69.92  
6.29  
69.50  
6.71  
69.56  
6.63  
69.61  
6.60  
69.66  
6.53

69.50  
1.38  
70.88  
70.75 P.C.  
70.33  
69.92  
69.50  
69.56  
69.61  
30.00  
1.14 18

14118  
705900  
490  
11451  
8750  
8500  
2500  
4250  
250  
2122  
2720

10077 21665  
4063.07  
55.4 86.660 62.96  
2770  
1108  
13850

DISTANCES FROM CENTER OF ROADWAY FOR CROSS-SECTIONING.

ROADWAY 14 FEET WIDE. SIDE SLOPES 1 1/2 TO 1.

FOR SINGLE TRACK EMBANKMENT.

	0	.1	.2	.3	.4	.5	.6	.7	.8	.9	
0	7.0	7.2	7.3	7.5	7.6	7.8	7.9	8.1	8.2	8.4	0
1	8.5	8.7	8.8	9.0	9.1	9.3	9.4	9.6	9.7	9.9	1
2	10.0	10.2	10.3	10.5	10.6	10.8	10.9	11.1	11.2	11.4	2
3	11.5	11.7	11.8	12.0	12.1	12.3	12.4	12.6	12.7	12.9	3
4	13.0	13.2	13.3	13.5	13.6	13.8	13.9	14.1	14.2	14.4	4
5	14.5	14.7	14.8	15.0	15.1	15.3	15.4	15.6	15.7	15.9	5
6	16.0	16.2	16.3	16.5	16.6	16.8	16.9	17.1	17.2	17.4	6
7	17.5	17.7	17.8	18.0	18.1	18.3	18.4	18.6	18.7	18.9	7
8	19.0	19.2	19.3	19.5	19.6	19.8	19.9	20.1	20.2	20.4	8
9	20.5	20.7	20.8	21.0	21.1	21.3	21.4	21.6	21.7	21.9	9
10	22.0	22.2	22.3	22.5	22.6	22.8	22.9	23.1	23.2	23.4	10
11	23.5	23.7	23.8	24.0	24.1	24.3	24.4	24.6	24.7	24.9	11
12	25.0	25.2	25.3	25.5	25.6	25.8	25.9	26.1	26.2	26.4	12
13	26.5	26.7	26.8	27.0	27.1	27.3	27.4	27.6	27.7	27.9	13
14	28.0	28.2	28.3	28.5	28.6	28.8	28.9	29.1	29.2	29.4	14
15	29.5	29.7	29.8	30.0	30.1	30.3	30.4	30.6	30.7	30.9	15
16	31.0	31.2	31.3	31.5	31.6	31.8	31.9	32.1	32.2	32.4	16
17	32.5	32.7	32.8	33.0	33.1	33.3	33.4	33.6	33.7	33.9	17
18	34.0	34.2	34.3	34.5	34.6	34.8	34.9	35.1	35.2	35.4	18
19	35.5	35.7	35.8	36.0	36.1	36.3	36.4	36.6	36.7	36.9	19
20	37.0	37.2	37.3	37.5	37.6	37.8	37.9	38.1	38.2	38.4	20
21	38.5	38.7	38.8	39.0	39.1	39.3	39.4	39.6	39.7	39.9	21
22	40.0	40.2	40.3	40.5	40.6	40.8	40.9	41.1	41.2	41.4	22
23	41.5	41.7	41.8	42.0	42.1	42.3	42.4	42.6	42.7	42.9	23
24	43.0	43.2	43.3	43.5	43.6	43.8	43.9	44.1	44.2	44.4	24
25	44.5	44.7	44.8	45.0	45.1	45.3	45.4	45.6	45.7	45.9	25
26	46.0	46.2	46.3	46.5	46.6	46.8	46.9	47.1	47.2	47.4	26
27	47.5	47.7	47.8	48.0	48.1	48.3	48.4	48.6	48.7	48.9	27
28	49.0	49.2	49.3	49.5	49.6	49.8	49.9	50.1	50.2	50.4	28
29	50.5	50.7	50.8	51.0	51.1	51.3	51.4	51.6	51.7	51.9	29
30	52.0	52.2	52.3	52.5	52.6	52.8	52.9	53.1	53.2	53.4	30
31	53.5	53.7	53.8	54.0	54.1	54.3	54.4	54.6	54.7	54.9	31
32	55.0	55.2	55.3	55.5	55.6	55.8	55.9	56.1	56.2	56.4	32
33	56.5	56.7	56.8	57.0	57.1	57.3	57.4	57.6	57.7	57.9	33
34	58.0	58.2	58.3	58.5	58.6	58.8	58.9	59.1	59.2	59.4	34
35	59.5	59.7	59.8	60.0	60.1	60.3	60.4	60.6	60.7	60.9	35
36	61.0	61.2	61.3	61.5	61.6	61.8	61.9	62.1	62.2	62.4	36

Calculated by Julien A. Hall, M. Am. Soc. C. E.

MADE IN GERMANY.