

94 A

A.

G 94 A

DIETZGEN
NEW YORK

ENGINEERS

FIELD BOOK

No. 404

EUGENE DIETZGEN CO.

DRAWING MATERIALS, MATHEMATICAL and SURVEYING INSTRUMENTS

Chicago New York San Francisco New Orleans Pittsburgh

Distances from Center of Roadway for Cross-Sectioning
Roadway 16 feet wide. Side Slopes 1 on 1.
For Single Track Embankment.

H	0	.1	.2	.3	.4	.5	.6	.7	.8	.9	H
0	8.0	8.1	8.2	8.3	8.4	8.5	8.6	8.7	8.8	8.9	0
1	9.0	9.1	9.2	9.3	9.4	9.5	9.6	9.7	9.8	9.9	1
2	10.0	10.1	10.2	10.3	10.4	10.5	10.6	10.7	10.8	10.9	2
3	11.0	11.1	11.2	11.3	11.4	11.5	11.6	11.7	11.8	11.9	3
4	12.0	12.1	12.2	12.3	12.4	12.5	12.6	12.7	12.8	12.9	4
5	13.0	13.1	13.2	13.3	13.4	13.5	13.6	13.7	13.8	13.9	5
6	14.0	14.1	14.2	14.3	14.4	14.5	14.6	14.7	14.8	14.9	6
7	15.0	15.1	15.2	15.3	15.4	15.5	15.6	15.7	15.8	15.9	7
8	16.0	16.1	16.2	16.3	16.4	16.5	16.6	16.7	16.8	16.9	8
9	17.0	17.1	17.2	17.3	17.4	17.5	17.6	17.7	17.8	17.9	9
10	18.0	18.1	18.2	18.3	18.4	18.5	18.6	18.7	18.8	18.9	10
11	19.0	19.1	19.2	19.3	19.4	19.5	19.6	19.7	19.8	19.9	11
12	20.0	20.1	20.2	20.3	20.4	20.5	20.6	20.7	20.8	20.9	12
13	21.0	21.1	21.2	21.3	21.4	21.5	21.6	21.7	21.8	21.9	13
14	22.0	22.1	22.2	22.3	22.4	22.5	22.6	22.7	22.8	22.9	14
15	23.0	23.1	23.2	23.3	23.4	23.5	23.6	23.7	23.8	23.9	15
16	24.0	24.1	24.2	24.3	24.4	24.5	24.6	24.7	24.8	24.9	16
17	25.0	25.1	25.2	25.3	25.4	25.5	25.6	25.7	25.8	25.9	17
18	26.0	26.1	26.2	26.3	26.4	26.5	26.6	26.7	26.8	26.9	18
19	27.0	27.1	27.2	27.3	27.4	27.5	27.6	27.7	27.8	27.9	19
20	28.0	28.1	28.2	28.3	28.4	28.5	28.6	28.7	28.8	28.9	20
21	29.0	29.1	29.2	29.3	29.4	29.5	29.6	29.7	29.8	29.9	21
22	30.0	30.1	30.2	30.3	30.4	30.5	30.6	30.7	30.8	30.9	22
23	31.0	31.1	31.2	31.3	31.4	31.5	31.6	31.7	31.8	31.9	23
24	32.0	32.1	32.2	32.3	32.4	32.5	32.6	32.7	32.8	32.9	24
25	33.0	33.1	33.2	33.3	33.4	33.5	33.6	33.7	33.8	33.9	25
26	34.0	34.1	34.2	34.3	34.4	34.5	34.6	34.7	34.8	34.9	26
27	35.0	35.1	35.2	35.3	35.4	35.5	35.6	35.7	35.8	35.9	27
28	36.0	36.1	36.2	36.3	36.4	36.5	36.6	36.7	36.8	36.9	28
29	37.0	37.1	37.2	37.3	37.4	37.5	37.6	37.7	37.8	37.9	29
30	38.0	38.1	38.2	38.3	38.4	38.5	38.6	38.7	38.8	38.9	30
31	39.0	39.1	39.2	39.3	39.4	39.5	39.6	39.7	39.8	39.9	31
32	40.0	40.1	40.2	40.3	40.4	40.5	40.6	40.7	40.8	40.9	32
33	41.0	41.1	41.2	41.3	41.4	41.5	41.6	41.7	41.8	41.9	33
34	42.0	42.1	42.2	42.3	42.4	42.5	42.6	42.7	42.8	42.9	34
35	43.0	43.1	43.2	43.3	43.4	43.5	43.6	43.7	43.8	43.9	35
36	44.0	44.1	44.2	44.3	44.4	44.5	44.6	44.7	44.8	44.9	36
37	45.0	45.1	45.2	45.3	45.4	45.5	45.6	45.7	45.8	45.9	37
38	46.0	46.1	46.2	46.3	46.4	46.5	46.6	46.7	46.8	46.9	38
39	47.0	47.1	47.2	47.3	47.4	47.5	47.6	47.7	47.8	47.9	39
40	48.0	48.1	48.2	48.3	48.4	48.5	48.6	48.7	48.8	48.9	40

Example—If point is 22.6 ft. above grade, how far should it be from center line to be a slope stake point. Ans. from Table 30.6. For same slopes but other widths of roadbed, correct above figures by one-half difference in width of roadbed; thus in example above, for 20 ft. roadbed distance will be $30.6 + (20 - 16) \times 2$ or 2 ft. added to $30.6 = 32.6$. For slopes of 1 on $1\frac{1}{2}$ see inside of back cover.

Copyright, 1914, by Eugene Dietzgen Co.

537
541
547
552
560
Grade
Book #96 A

MICROFILMED

APR 7 1965

ADAMS AVE PAVING

354.58
 5.44
 360.02

5390
 5.44
 5534

532
 425

538
 52

BP
 304.55

5395 5550

5390

5395 5330

5395 5341
 Edge

69

5458 5374

530 1

5330 5375
 5348 5399
 5348

↑
 5374

GEORGIA ST.

540 5325
 541 530
 5415 530

5439 5309
 paving.

160

5462 5520

ADAMS AVE PAVING.

340
258
342.58

340
258
342.58

140 | .0078
140 | 140
480
1200

150 | 1100.073
150 | 150
500

0078
140
4380

340

CB
37.23

38.13 37.30

38.28 37.60

39.05 38.40

CB
38.94

264
37.94

10' 4012 39.50
4038 39.74

172
766

2

37.30 37.83

Alle.

37.65 38.26

38.25 38.93

38.93 38.30

ST

FLORIDA

39.70 39.80
39.93
39.95 40.00

ADAMS AVE PAVING

3503.2
489
3549.1

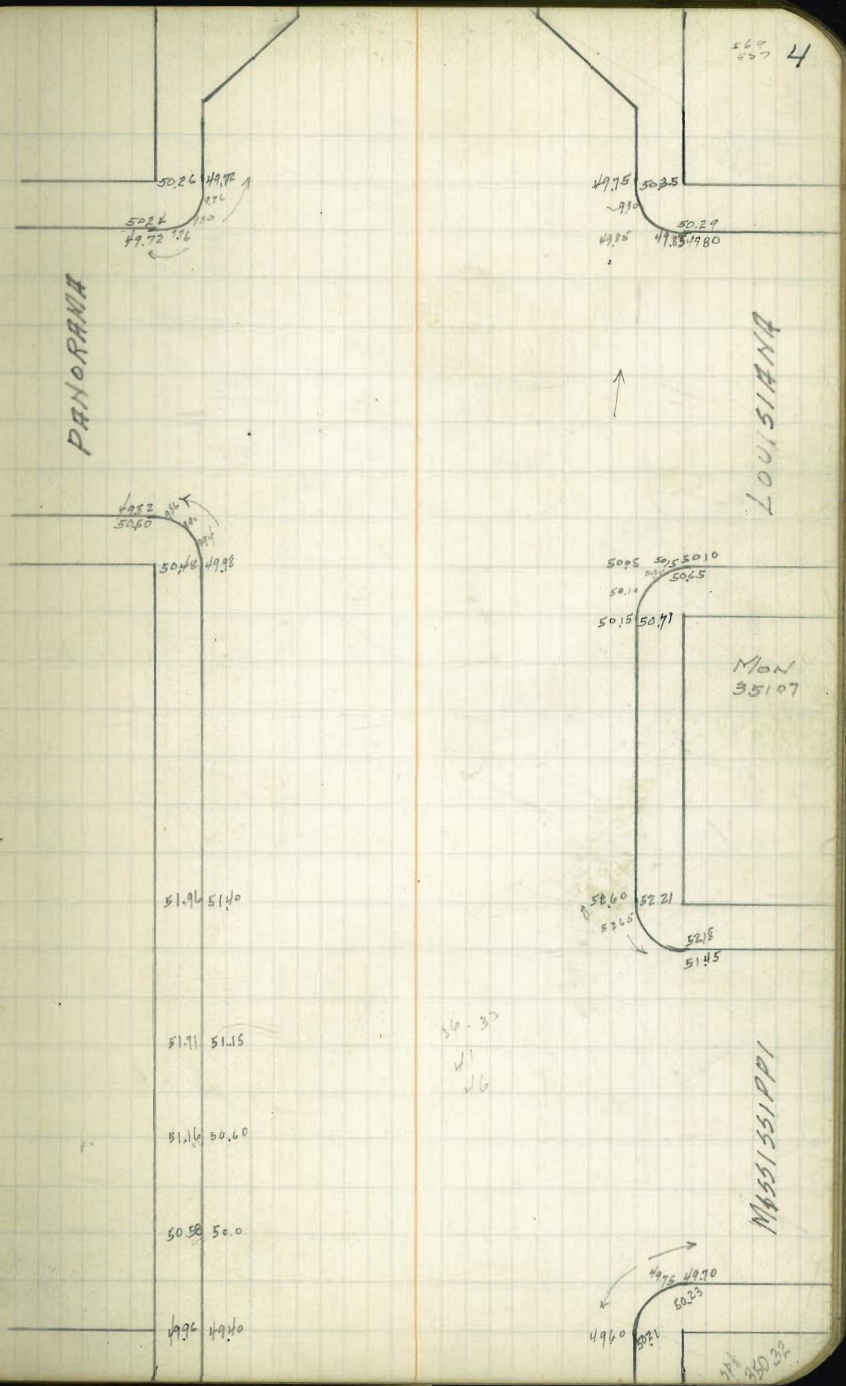
35107
411
35517

500 1.000
1.000

50 1.00
1.00

20

2.11



267
407 4

Mon
35107

No. 30
35032

36680
357
37734

50
660

66.17
448
7665

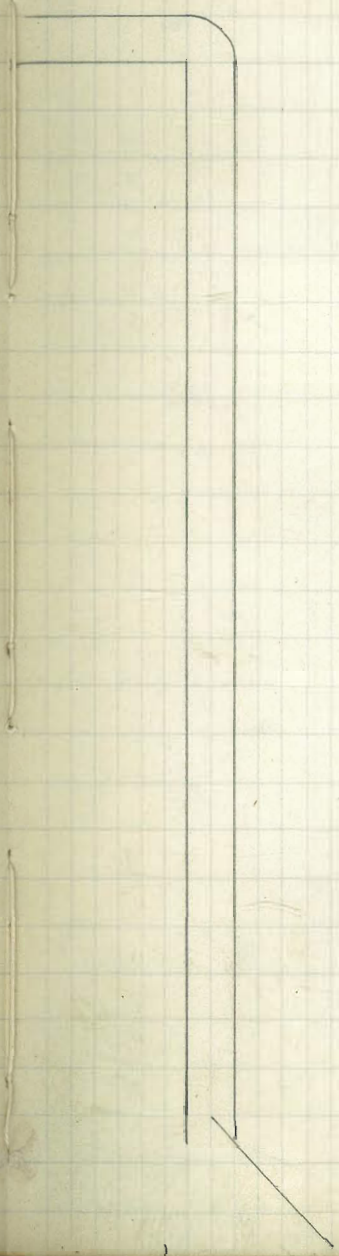
278

6657 1.7 68.86
 6671 68.85
 68.20 6857 6901
 6617 6668 6755 6754 6886 6890
 20 272 36
 1620

23.10
17.30

5

53



6945700

6890 6901
 1715 6890

6896

1711

6864

1711

6855

310

6868

397

ARIZONA ST.

6780 6820
 275 278

6755

310

6868

397

6609 6617
 6606 6657
 6595 6602

6603690

6834

ADAMS AVE PAVING

384
551
389.51

37.97

8517
523
708

6.5
14.97

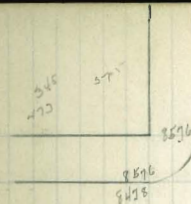
32.95

34.7

34.7

$$\begin{array}{r} 2.6 \\ 2.6 \\ \hline 5.2 \\ 2.6 \\ \hline 7.8 \\ 2.6 \\ \hline 10.4 \end{array}$$

$$\begin{array}{r} 1003 \\ 1024 \end{array}$$



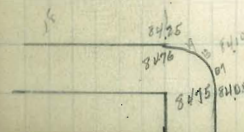
7

IDAHO



57

OREGON



57

BP 3240

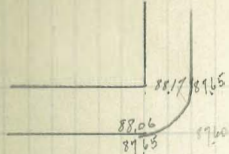
ADAMS AVE PAVING

38796
303
39037

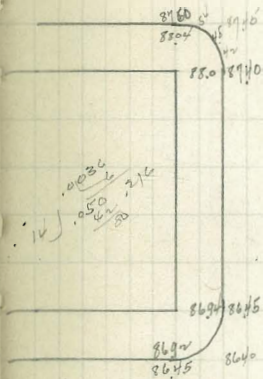
8641
503
91.35

540/5

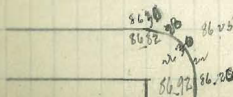
14
50
50
50



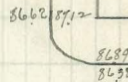
KANSAS



UTAH



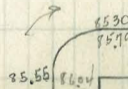
8



51



51



ADAMS AVE PAVING

8996
460
97.26

857
88.99

8899
416
93.07

8904
510
94.74

8850
501
93.51

16
255

71

8910
8895
8894

30TH
8910

8895

8850
8906
8917
8865

907
822
907
9

8985
8904
8927
8960

5T

OHIO

8962
8962
8962
8962
8962
8962
8962
8962

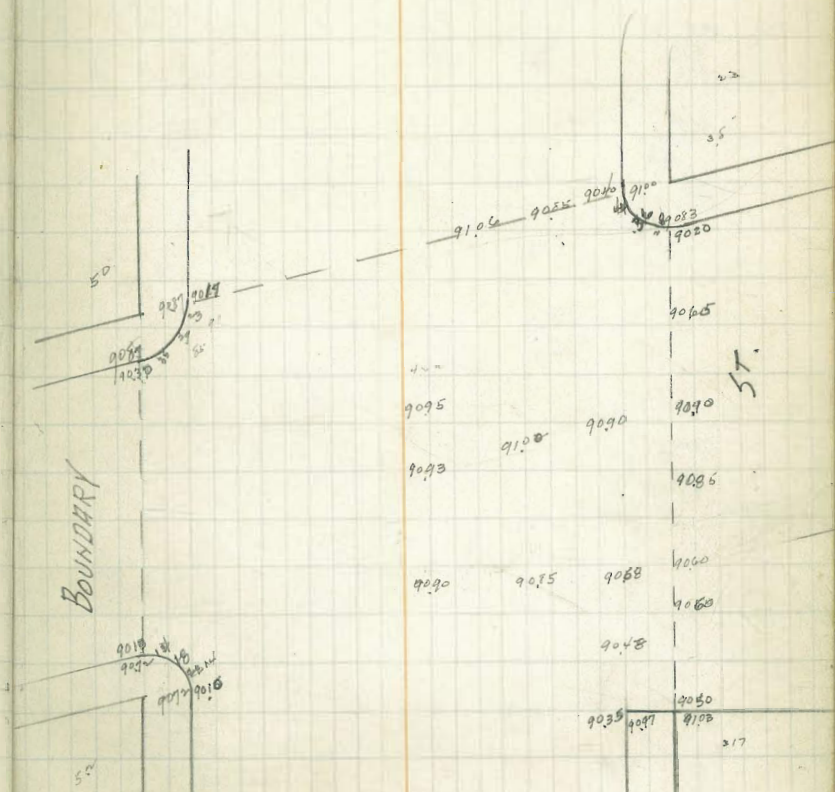
8962

5T

8970
8920
8936
8944

ADAMS AVE PAVING

874
9
94.14
90.10
477
95.17



89.04
2.52
91.57

85.7
4.0
3.7
91.1

87.0
5.12
92.17

87.05
4.45
91.5

6.58

4.3

86.94
7.30

86.74

86.86

86.66

86.15
86.79
86.05

86.84
86.20

11

86.68

86.25

86.65
86.37

86.72

5T

86.9

86.2

85.65

86.50
85.77

85.67

85.65
86.80
86.52

85.51

85.75
86.47

86.17
85.80
85.7

85.4

85.37

85.84

85.57
.4 low

85.77
.4 low

86.87

87.5

86.96

87.50

87.01

87.91

85.1
85.3
85.3
85.3

87.05
86.57

87.05

87.30

87.22

86.85
87.25

86.95

87.51
87.0

87.55
87.34

87.23

87.50

87.46

87.10

87.60
87.50

30+5 5T

87.70
87.51

87.26

87.35
87.03

87.37
86.15

87.39

87.70

87.69

87.35
87.47

87.5
88.05

87.5
88.5

87.6

87.7

87.45
87.45

5/8/23

GRADES FOR HARBOR ST PAVING.

W. Edge Paving

Q.

Gutter

Curb Grade

#150 E. Edge Paving

5 L Broadway	-0.53	5.40	4.90	5.40	+0.00
75' S	-0.53	5.26	4.76	5.26	+0.15
150' S	-0.45	5.12	4.62	5.12	+0.16
225' S	-0.22	4.98	4.48	4.98	-0.40
300' S = HL F	+0.19	4.84	4.34	4.84	-0.53
5 L F	+0.4	4.70	4.20	4.70	+0.60
75' S	+0.59	4.56	4.06	4.56	+0.92
150' S	+0.46	4.42	3.92	4.42	+1.07
225' S	+0.76	4.28	3.78	4.28	+1.14
300' S = HL Fsr	+0.46	4.14	3.64	4.14	+0.66
5 L F ST	+0.100	4.00	3.50	4.00	+0.28
0+18.07' S = P.C.	+0.20	3.97	3.54	4.04	+0.25
+46.25	-0.09	3.92	3.60		+0.56
+74.43	-0.32	3.87	3.66		+0.42
1+02.62	-0.4	3.82	3.72		+0.52
1+30.80 = P.C.C.	+0.06	3.77	3.77		+0.06
1+62.53	+0.02	3.84	3.83		+0.59
1+94.27	+0.14	3.91	3.90		+0.34
2+26.00	-0.07	3.98	3.96		-0.39
2+57.74	-0.11	4.05	4.03		-0.07
2+89.47	-0.21	4.12	4.10		-0.56
3+21.01	-0.04	4.18	4.16		-0.49
3+54.94	-0.11	4.16	4.16		-0.54
3+84.68	+0.37	4.11	4.11		-0.97
4+16.41	+0.34	4.06	4.06		-0.89

3.75

4.02

4.42

4.41

on East End of Return

on East End of Return

Curb Ends

$$\begin{array}{r} 5.41 \\ 3.95 \\ \hline 9.36 \\ 5.50 \\ \hline 5.86 \\ \text{BM on post.} \end{array}$$

$$\begin{array}{r} 1.1 \\ 1.5 \\ \hline 2.6 \\ 1.9 \\ \hline 0.7 \end{array}$$

$$\begin{array}{r} 4.45 \\ 4.38 \\ \hline 0.07 \\ \text{N Stake} \end{array}$$

$$\begin{array}{r} 5.12 \\ 4.24 \\ \hline 4.15 \\ 4.67 \\ \hline 5.0 \end{array}$$

$$\begin{array}{r} 5.12 \\ 4.47 \\ \hline 4.69 \\ 15.7 \end{array}$$

$$\begin{array}{r} 5.07 \\ 4.29 \\ \hline 4.55 \\ -0.29 \end{array}$$

4.39	4.04	3.60	3.66	3.72	3.77	3.83	3.90	3.96	4.03	4.10
1.13	2.57	2.51	2.46	2.40	2.34	2.27	2.21	2.14	2.07	2.00
1.88	2.01	2.09	1.93	1.87	1.77	1.73	1.58	1.51	1.44	1.37
2.025	+0.56	+0.42	+0.52	+0.06	+0.57	+0.34	+0.39	+0.07	+0.02	+0.02
3.97	3.92	3.87	3.82	3.77	3.84	3.91	3.98	4.05	4.12	4.19
2.20	2.25	2.30	2.35	2.40	2.33	2.26	2.19	2.12	2.05	1.98
1.77	2.94	2.12	2.17	2.24	2.31	2.38	2.45	2.52	2.59	2.66
0.43	-0.69	0.82	0.42	+0.06	+0.08	0.14	0.07	0.11	0.21	0.21
4.16	4.16	4.11	4.06	4.06	4.06	4.06	4.06	4.06	4.06	4.06
2.01	2.01	2.06	2.11	2.11	2.11	2.11	2.11	2.11	2.11	2.11
2.50	2.51	2.03	2.03	2.00	2.00	2.00	2.00	2.00	2.00	2.00
0.29	0.21	-0.97	0.89	0.89	0.89	0.89	0.89	0.89	0.89	0.89
4.15	4.16	4.11	4.06	4.06	4.06	4.06	4.06	4.06	4.06	4.06
1.99	2.01	2.06	2.11	2.11	2.11	2.11	2.11	2.11	2.11	2.11
1.97	2.01	2.03	2.03	2.00	2.00	2.00	2.00	2.00	2.00	2.00
0.21	0.21	-0.37	0.23	0.23	0.23	0.23	0.23	0.23	0.23	0.23
4.15	4.16	4.11	4.06	4.06	4.06	4.06	4.06	4.06	4.06	4.06
2.01	2.01	2.06	2.11	2.11	2.11	2.11	2.11	2.11	2.11	2.11
2.50	2.51	2.03	2.03	2.00	2.00	2.00	2.00	2.00	2.00	2.00
0.21	0.21	-0.37	0.23	0.23	0.23	0.23	0.23	0.23	0.23	0.23

W. Edge Paving

Q

E. Edge Paving

14

4+48.15 +009 1.00

4+79.88 +059 3.94

5+11.62 EC. +069 3.88

5+65.64 003 78

6+19.67 -043 369

6+73.69 -076 360

7+27.72 -072 3.51

7+81.74 -063 3.42

8+35.77 PG. -062 3.33

8+61.97 -063 3.28

8+88.17 -013 3.24

9+14.37 -013 3.19

9+40.57 EC. +009 3.15

W. Atlantic -021

4.13

3.58

3.40

4.00 -056

3.94 +0.14

3.88 -057

3.78 -025

3.69 -1.27

3.60 -1.12

3.51 -1.29

3.42 -086

3.33 -046

3.28 -027

3.24 -030

3.19 -045

3.15 -029

6.17
3.64
2.48
5.29
7.774.00
2.17
2.48
0.563.94
2.23
2.54
0.143.88
2.29
2.86
0.543.78
2.29
2.64
0.253.69
2.48
3.76
-1.273.60
2.57
3.69
-1.123.51
4.26
5.55
-1.273.42
4.35
5.21
-0.863.33
4.44
4.92
-0.462.17
2.10
0.072.23
1.66
0.572.29
1.60
+0.692.39
2.40
0.002.48
2.91
0.432.57
3.33
-0.764.26
4.95
0.724.35
4.98
-0.634.44
5.08
0.623.28
4.19
4.76
0.813.24
4.53
4.83
-0.303.19
4.58
5.03
0.453.15
4.62
4.90
-0.284.19
4.75
0.264.53
4.66
-0.134.58
4.91
0.334.62
4.51
0.07

56.87 BP NE 18th + C
 $\frac{1235}{67.27}$

9494 B.P. SW 20th Broadway
 $\frac{144}{9628}$
 $\frac{914}{8714}$
 $\frac{573}{9287}$

$\frac{6465}{502}$ $\frac{6511}{69.61}$

$\frac{6493}{4.74}$ $\frac{6545}{4.12}$ $\frac{66}{867}$ $\frac{6627}{3.40}$ $\frac{6635}{3.29}$

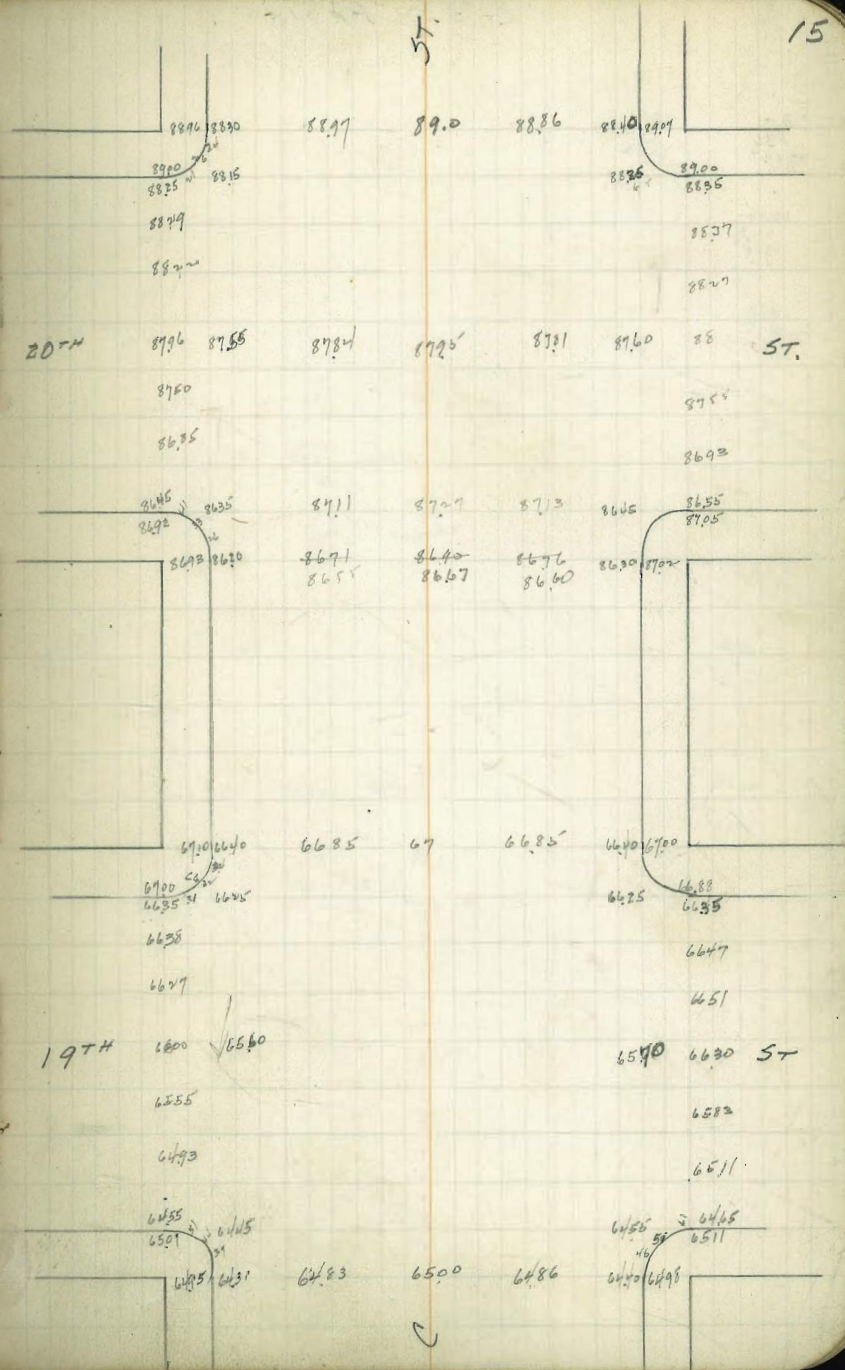
$\frac{8630}{282}$
 $\frac{8924}{89.24}$

$\frac{8676}{248}$

$\frac{8671}{253}$

9250

Handwritten notes and scribbles at the bottom of the left page.



5/22/3

GRADES IN ALLEY
BLOCK 205 UNIV HIGHTS

	W.L.	E.L.	
5L Lincoln	362.79	362.72	+0.12
50'S +1.0	361.46	361.42	+1.0
100'S +0.34	360.14	360.12	+1.0
150'S +1.0	358.82	358.81	+1.0
200'S +1.0	357.5	357.5	+1.0
250'S +1.0	356.72	356.72	+1.0
300'S 0.0	355.95	355.95	+1.0
350'S +1.0	355.17	355.17	+1.0
400'S +1.0	354.4	354.4	+0.10
450'S +1.0	53.84	53.87	+1.0
500'S +0.13	53.27	53.34	+1.0
550'S +1.0	52.70	52.82	00 state
600'S =	52.19	52.30	
N.L. UNIV.	52.13	52.30	

355.01

514

360.00

26.72

353.88

5.85

359.48

2.36

367.07

10.42

367.49

5.82

361.66

B.P. SW 30th UNIV

5210

6.73

5.73

5327

6.16

53.84

5.54

5482

6.61

6.61

5384

6.09

5387

5.56

548

5.03

5517

4.20

5546

3.48

5672

2.71

545

55

4.25

7.2

57.5

7.99

58.81

8.68

60.22

7.87

61.42

6.07

62.72

4.77

5882

8.67

60.12

7.85

61.46

6.03

62.74

4.70

52.30

5.62

57.72

5584

34

58.79

5387

4.92

5384

5.11

58.79

5387

4.92

5384

4.88

5387

4.05

5384

4.08

5387

4.65

4.75

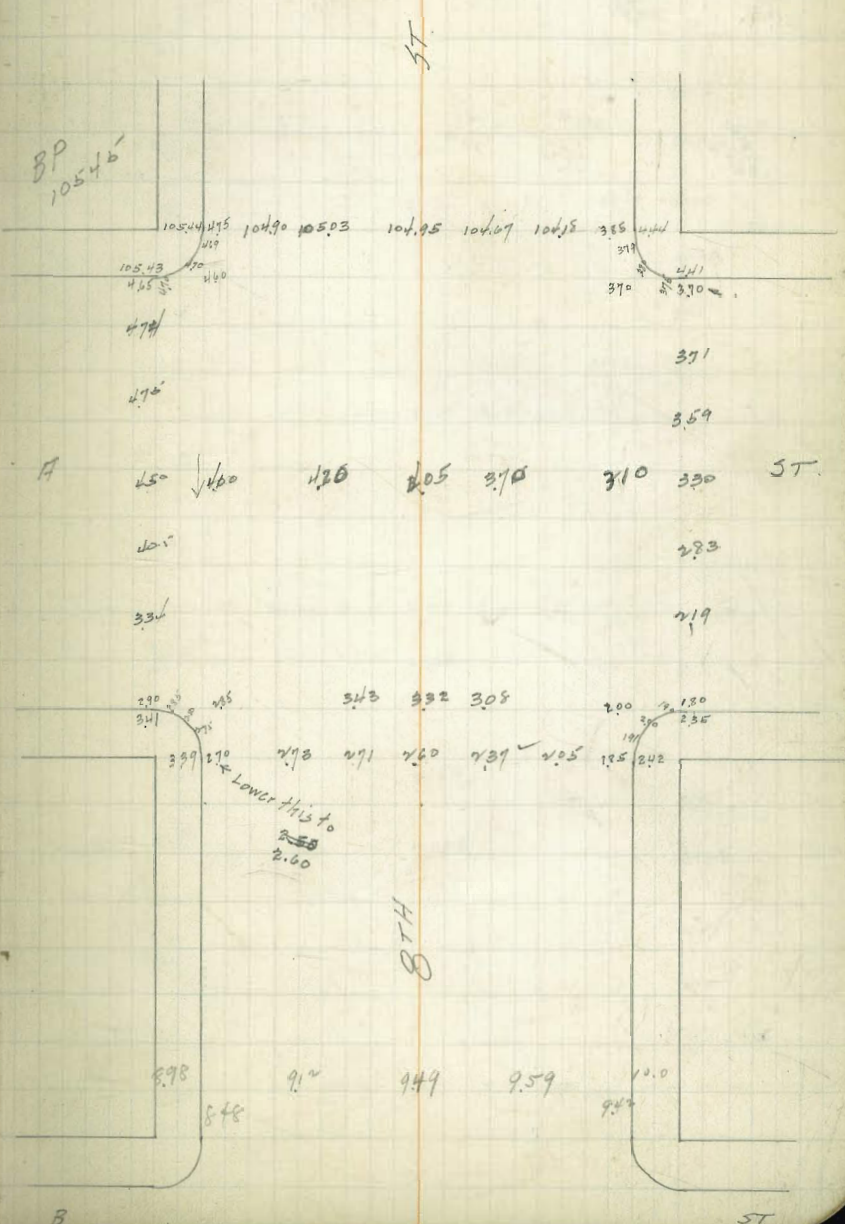
-0.12

$$\begin{array}{r} 4529 \\ 132 \\ 264 \\ \hline 4529 \\ 13 \\ \hline 4529 \end{array}$$

18

105.45	4.66							
3.20	1.40							
108.65	6.11							
105.45	8.68	4.60						
3.23	4.08							
108.68								
4.90	5.03	4.95	4.67	4.18	3.70	3.71	3.59	
3.78	.65	.73	.01	.50	.99	.97	.09	
3.30	2.85	2.19	2.00	2.05	2.37	2.60		
.38	.85	.49	.68	.63	.31	.08		
2.71	2.73	2.60	2.85	3.43	3.32	3.08		
.97	.95	.08	.83	.25	.36	.60		
3.10	3.70	4.05	4.20	4.00				
.58	.98	.63	.48	.68				

18.68 4.56 7.9 4.09



EIGHTH ST PAVING

~~13097~~
~~1376~~

13892
45
13847

13892
583
14475

3160
510
3670

3515
355
4170

3757
283

31.60

44.75

BEECH

4090 3990 3824 3700 3725 ST
4002 3663
3902 3581

BP 13092
3897 3840 3815 3811 3789 3740 3671 3579 3535 3577
3301 3225 3236 3234 3210 3160 3087 3040 3095
3241 3235 3215 3160 3090 3096 3080 3080

A3H 3257 3180 3057
3282 3180 3057
3286 3175 3060 ST
3262 3045
3221 3012

402 3190 3234 3220 3160 3170 3172 3150 3104 302 3020 3047
3290 3246 3246 3246

H18

450 20

157 4188 4110 4099 4081 4060 3977 3891 3840 3872
4125 4105 4095 3815 3873 3815

4110

3905

4106

3776

ST

3581

BP 13097

3012

3090

3046

EIGHTH ST PAVING

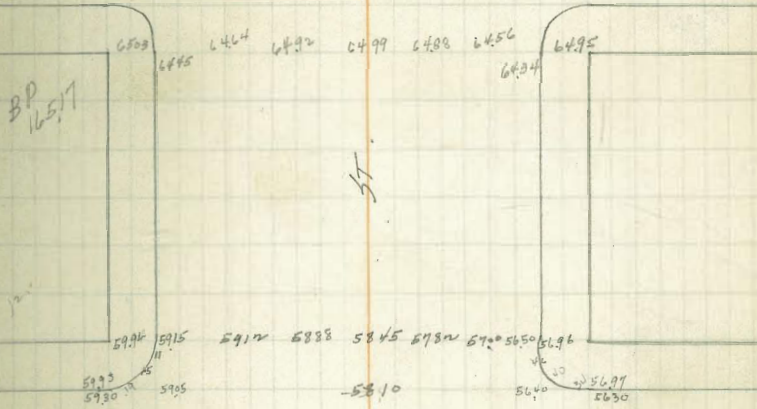
15998
 $\frac{30}{1637}$

15998
 $\frac{5.19}{165.17}$

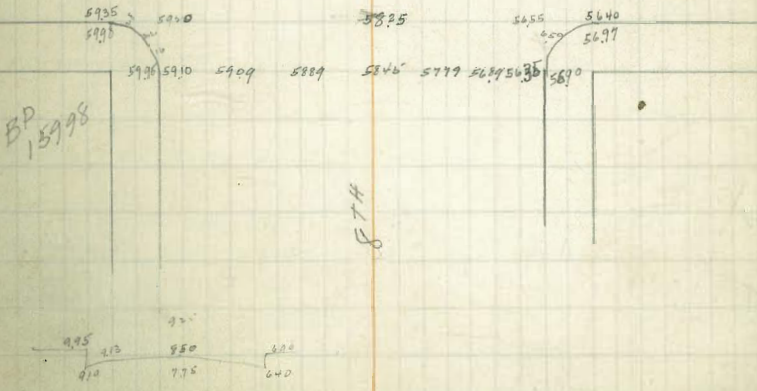
DATE

ST

21



CEDAR 600
 5991
 5959
 5835
 5846
 5840
 5690
 5692
 5669



BP 15998

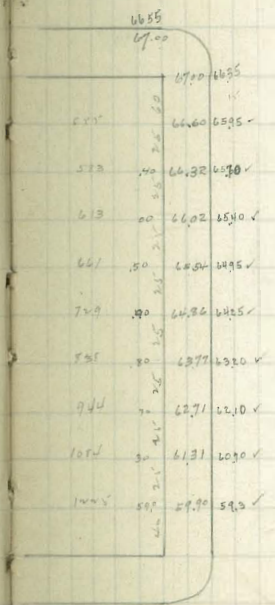
9.25
 173
 970
 7.75
 640

FORT STOCKTON
and
AMPUDIA PAVING

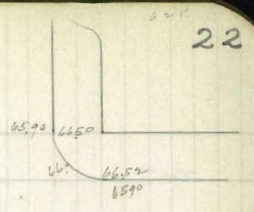
26706
509
27013
1274
2594
634
221

505
620

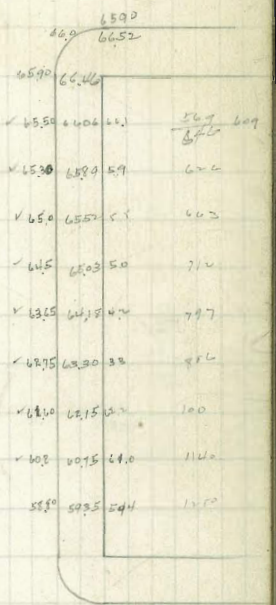
Trials



Ampudia



5T



Paving

FORT STOCKTON
&
AMPUDIA PAVING

765.79

23

PINE

ST

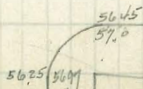
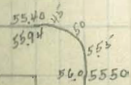


AMPUDIA



FORT

STOCKTON



CURLEW ST PAVING.

50.70
 0.40
 51.10
 12.36
 38.74
 39.58
 12.98
 26.60
 11.20
 14.62
 15.08
 11.97
 31.11

50.70
 11.83
 62.63
 12.38
 50.25

50.25
 0.20
 50.45
 12.40
 37.55
 0.63
 38.18

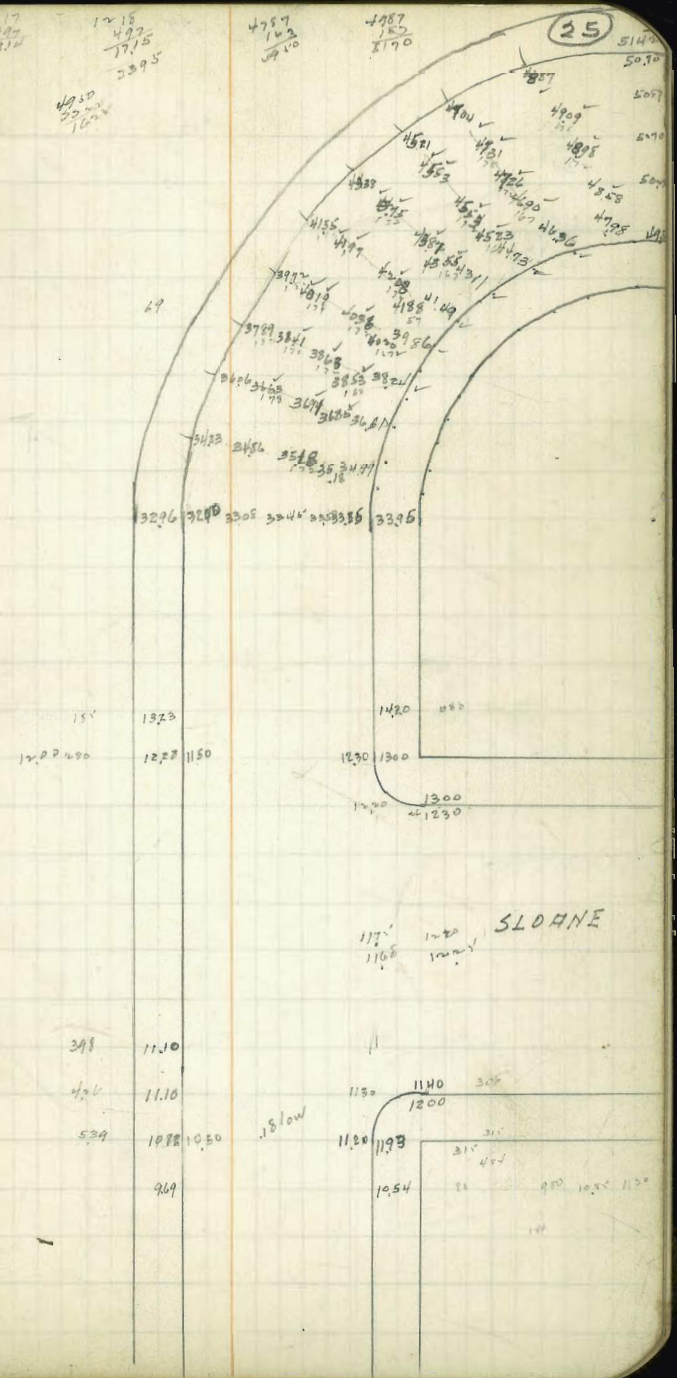
12.30
 4.01
 16.31

5070

5070
 3.17
 497
 1775
 3395

4957
 103
 5060

25
 5142
 5070

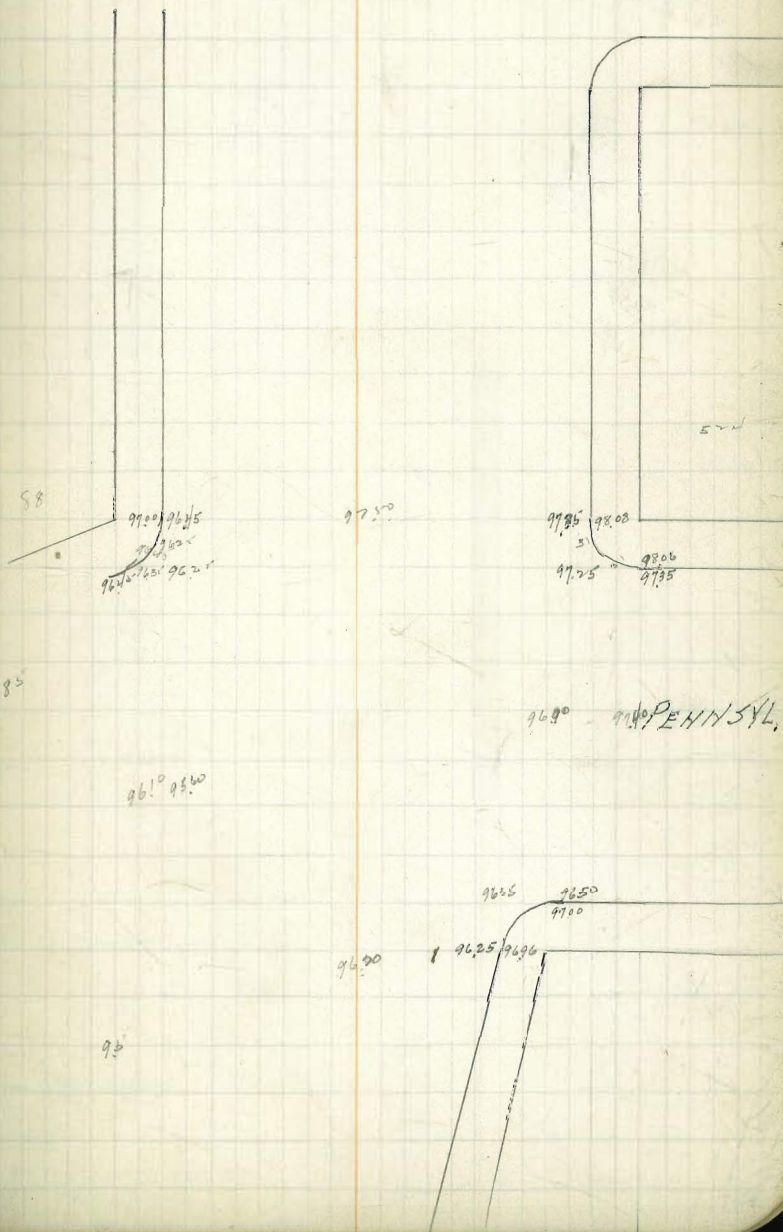


311
0.22
3.33

96.45
5.90
102.15

6.00
4.71
1.58
5.50
5.77

40
10
50



HAWK 1813 and 1815 COURT
PAYING

$\frac{262}{266.40}$

$\frac{499}{1153}$ $\frac{559}{1081}$

64.0

$\frac{6169}{1034}$
 $\frac{7774}{1195}$
 $\frac{5999}{205}$
 $\frac{6204}{6204}$

1376

$\frac{1146}{5494}$
 $\frac{307}{307}$

$\frac{6385}{1035}$
 $\frac{1035}{1035}$

$\frac{103}{1028}$
 $\frac{103}{1028}$

59.70 53.0

54.40

54.27 54.94

ST.

60.81 60.50

61.20 62.06
61.28 62.01
61.50

DOUGLASS
ST.

61.53 61.00

61.52 61.60
61.60 62.02

BP
4620.00

1815

579
5675
5635

577
5827
5729

1813

6975 6500
6915 643 644 68.0 68.05

COURT

587 176

6012 4144
5817 6106
6008 6184
181 6184 6184
2052 2052

6966 6530 669 6850
6975 699 6925 7020
6910 699 695 7020

69.70 69.34

69.80 70.28

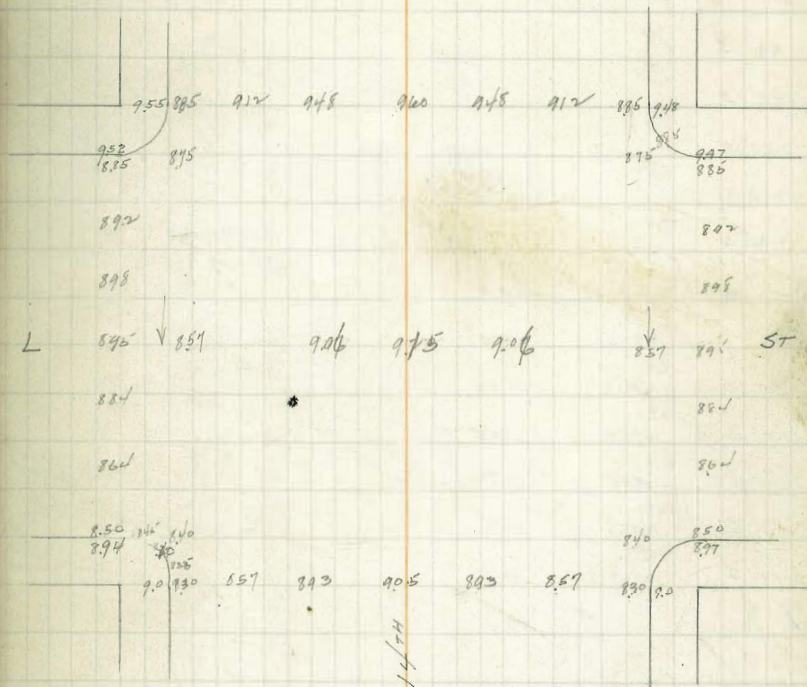
PAVING
INT. 14th + L.

13.95
2.23
16.18

830
44
1.27

89 1600 LTH
500 300
20

29-a



KETTNER BLVD

GRADES

WCB

E66

H.L. Kalmia

S.L. ✓

50' S

100' S

150' S

200' S

250' S

N.L. Juniper

S.L. ✓

50' S

100' S

150' S

200' S

250' S

N.L. Kalmia

29.0

29.05

29.08

28.92

28.75

28.58

28.42

28.0

31.0

31.0

31.02

30.92

30.75

30.58

30.42

30.0

NE Juniper 30.97

30.97

450

3547

3067

Elev. Capretson Cedar Cove

235' N. of Juniper Wd. 30.27

30.

30.97

450

3547

30.97

450

3547

30.97

450

3547

30.97

450

3547

30.97

450

3547

30.97

450

3547

30.97

450

3547

30.97

450

3547

30.97

450

3547

30.97

450

3547

30.97

450

3547

30.97

450

3547

30.97

450

3547

30.97

450

3547

30.97

450

3547

30.97

450

3547

30.97

450

3547

30.97

450

3547

30.97

450

3547

30.97

450

3547

30.97

450

3547

30.97

450

3547

30.97

450

3547

30.97

450

3547

30.97

450

3547

30.97

450

3547

30.97

450

3547

30.97

450

3547

30.97

450

3547

30.97

450

3547

30.97

450

3547

30.97

450

3547

30.97

450

3547

30.97

450

3547

30.97

450

3547

30.97

450

3547

30.97

450

3547

30.97

450

3547

30.97

450

3547

30.97

450

3547

30.97

450

3547

30.97

450

3547

30.97

450

3547

30.97

450

3547

30.97

450

3547

30.97

450

3547

30.97

450

3547

30.97

450

3547

30.97

450

3547

30.97

450

3547

30.97

450

3547

30.97

450

3547

30.97

450

3547

30.97

450

3547

30.97

450

3547

30.97

450

3547

30.97

450

3547

30.97

450

3547

30.97

450

3547

30.97

450

3547

30.97

450

3547

30.97

450

3547

30.97

450

3547

30.97

450

3547

30.97

450

3547

30.97

450

3547

30.97

450

3547

30.97

450

3547

30.97

450

3547

30.97

450

3547

30.97

450

3547

30.97

450

3547

30.97

450

3547

30.97

450

3547

30.97

450

3547

30.97

450

3547

30.97

450

3547

30.97

450

3547

30.97

450

3547

30.97

450

3547

30.97

450

3547

30.97

450

3547

30.97

450

3547

30.97

450

3547

30.97

450

3547

30.97

450

3547

30.97

230mW
239 SE OLIVE

200' N	51.75	52.75
150' N	51.08	51.90
100' N	49.95	50.81
50' N	48.92	49.71
50' N	47.69	48.61
NL Nutmeg	46.56	47.51
3L	44.75	45.75
50' S	43.77	44.77
100' S	42.79	43.79
150' S	41.80	42.80
200' S	40.81	41.81
250' S	39.82	40.82
300' S 2 NL Maple	38.83	39.83
3L	37.25	38.25
50' S	36.56	37.56
100' S	35.92	36.92
150' S	35.25	36.25
200' S	34.58	35.58
250' S	33.92	34.92
300' S 2 NL Laurel	33.25	34.25
3L	32.25	33.25
50' S	31.95	32.95
100' S	31.66	32.66
150' S	31.37	32.37
200' S	31.08	32.08
250' S	30.79	31.79
	30.50	31.50

77.87 SE Maple India

31

77.87 +0.63 78.50 -1.47 65.53 +0.82 66.35 -1.47 54.88 +0.30 55.18 -0.32 54.86	66.57 -1.02 65.55 +0.82 66.37 -1.47 54.90 +0.30 55.20 -0.32 54.88	E	34.25 6.29 4.3 +2.0	24.22 5.6 0.6 +5.0	35.55 5.0 6.2 +4.2	24.25 4.3 2.7 +1.6	36.72 3.6 3.9 -0.3	37.55 3.0 4.1 -1.1	38.25 2.3 3.0 -0.7
40.54 +0.02 40.56 -1.45 39.11 +0.23 39.34 -0.23 39.11 +0.23 39.34	40.54 +0.02 40.56 -1.45 39.11 +0.23 39.34 -0.23 39.11 +0.23 39.34	W	39.25 7.3 7.1 +0.2	33.92 6.6 7.4 -0.8	34.85 6.0 6.7 -0.7	35.45 5.3 5.9 -0.6	35.92 4.6 5.2 -0.6	36.55 4.0 4.7 -0.7	37.05 3.3 4.0 -0.7
52.57 +0.23 52.34 -1.12 51.22 +0.31 51.53	52.57 +0.23 52.34 -1.12 51.22 +0.31 51.53	E	39.73 0.7 1.5 -0.8	40.92 11.7 12.1 -0.4	41.81 10.8 9.1 +1.7	42.50 9.3 10.4 -0.6	43.79 8.8 9.7 -0.9	44.77 7.8 8.3 -0.5	45.75 6.8 7.6 -0.8
53.25 -0.65	53.25 -0.65		38.83 1.7 1.3 +0.4	39.82 12.7 13.2 -0.5	40.81 11.8 11.0 +0.8	41.80 10.5 10.8 +0.3	42.79 9.8 9.4 +0.4	43.77 8.8 8.5 +0.3	44.75 7.8 8.0 -0.2

47.51 5.1 42.41 +0.7 43.11 6.0 37.11 0.2	48.61 1.3 47.31 +0.7 48.01 4.9 43.11 0.0	49.71 1.2 48.51 +0.7 49.21 3.8 45.41 -1.9	50.81 1.1 49.71 +0.7 50.41 2.6 47.81 -0.5	51.90 1.0 50.90 +0.7 51.60 1.5 50.10 -0.7	52.75 1.2 51.55 +0.6 52.15 0.8 51.35 -0.8	310	7.00 6.00 5.00 4.00 3.00 2.00 1.00
---	---	--	--	--	--	-----	--

0.018 d
380 } 7.00
3.000
30.000
0.15 } 8.00
1.000
10.000
6.67
0.197
380 } 7.50
3.000
30.000
0.197
1.000
10.000
0.197
380 } 7.50
3.000
30.000
0.197
1.000
10.000
0.197
380 } 7.50
3.000
30.000
0.197
1.000
10.000
0.197

62.94 MS

E	5425	5481	5555	5628	5702	5775
	8.69	8.13	7.39	6.66	5.92	5.19
	7.19	8.13	7.39	6.66	5.92	5.19
	+1.0	0.0	0.0	0.0	0.0	0.0

W	5325	5369	5445	5522	5598	5675
	9.69	9.25	8.49	7.72	6.96	6.19
	9.69	9.25	8.49	7.72	6.96	6.19
	0.0	0.0	0.0	-1.13	+1.27	+2.81

E	5825	5860	5875	590	5925	5950	5975
	4.69	4.44	4.19	3.94	3.69	3.44	3.19
	4.69	4.44	4.19	3.94	3.69	3.44	3.19
	+0.0	0.0	0.0	+1.0	0.0	0.0	0.0

	5725	5750	5775	58	5825	5850	5875
	5.69	5.44	5.19	4.94	4.69	4.44	4.19
	5.69	5.44	5.19	4.94	4.69	4.44	4.19
	+1.45	0.0	0.0	0.0	0.0	0.0	0.0

58.75
 SL Quince 58.75
 250 58.50
 200 58.25
 150 58.0
 100 57.75
 50 57.50
 NL Palm 57.25
 SL Palm 56.75
 50 55.98
 100 55.22
 150 54.45
 200 53.69
 228 on V
 228/1
 H.L. OLIVE 53.25

59.75
 59.75
 59.50
 59.25
 59.0
 58.75
 58.50
 58.25
 57.75
 57.02
 56.28
 55.55
 54.81
 54.25

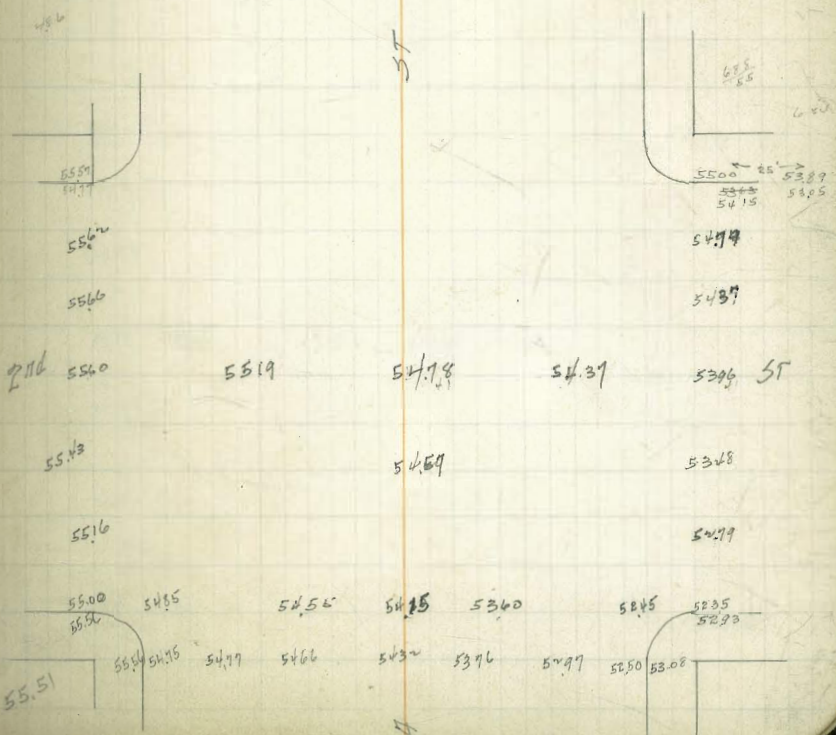
5551
492
6043

487
5566

5475
117
5592

3.23
77

5551
492
57.91



6/16/23

11 34

GRADES ON Columbia St.

W. L.

E. L.

3 L. Winder -1.35 101.25

104.25 +7.50

10339

40'S -0.93 100.75
100.75

10669

107.25 +5.29

80'S 00 nail 100.25

10950

br.
110.25 +7.86

100'S 100.25

11030

br.
111.0 +3.96

120'S 000 nail 100.05

110.7

br.
111.25 +6.05

140'S 99.95

br.
111.35

160'S 0.00 nail 99.65

1105

br.
111.25 +6.13

180'S 99.25

110.0

br.
110.75 +6.42

200'S 1.00 nail break. 99.25

108.5

br.
109.25 +7.13

250'S 1.00 nail 96.75
96.46

10325 +8.20

97.45 = 3 E corner

300'S = NL. Col. 00 nail 94.25

97.25 +4.45

10980

0.52

10940

1.60

117.40

12.74

105.66

110.61

10085

9.05

9.28

-0.93

107.05

1.15

4.95

5.27

10045

9.45

9.24

00

110.25

71.5

2.28

73.6

10005

9.38

9.85

111.0

6.40

2.44

3.96

9965

10.25

10.24

111.25

6.15

0.07

6.08

9925

10.65

9.85

+1.00

111.25

6.15

-0.00

6.15

9675

9.64

5.69

10.19

110.75

6.25

0.23

6.42

9425

10.14

10.19

0.0

109.25

8.75

1.02

7.13

10325

14.15

6.24

8.21

10444

11281

5.17

9945

15.36

15.21

+0.15

103.02

9.79

9.09

+0.70

83.8

1085

4.31

4.47

-0.16

110

2.81

3.01

-0.80

110.5

2.31

3.04

-0.73

110.7

2.11

4.53

-2.42

110.3

2.51

4.53

-2.94

10950

3.31

5.24

-1.94

10669

6.12

6.10

+0.02

10389

8.92

7.30

+1.62

11079

7.76

10303

0.28

10331

W

10050

1029

1003

+0.26

10000

1079

1038

+0.41

9950

99

1051

+0.78

99

1179

1145

+0.31

9650

6.51

6.01

+0.84

94

9.31

8.72

+0.59

104

6.79

5.08

+1.71

107

3.74

3.32

+0.46

110.0

0.79

1.16

-0.37

110.75

0.04

0.70

-0.95

111.0

-0.21

0.76

-0.77

111.15

-0.26

0.04

0.40

111.0

-0.21

0.08

-0.29

110.50

0.29

0.63

-0.34

109

1.79

4.09

-0.30

103

7.79

7.76

+0.03

EAGLE ST PAVING

263.60
883
272.43

MONTECITO



LEWIS



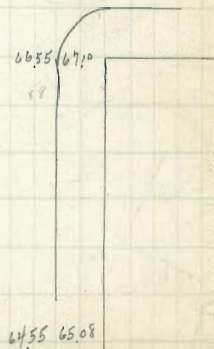
ST

EAGLE

38



ST



EAGLE ST PAVING

263.06
 0.97
 264.03
 570
 258.23
 6.04
 264.27

WASH.



40
 ST.



DOUGLAS



ST.



$$\begin{array}{r} 4.68 \\ 366.25 \end{array}$$

300 = W.L. 30 th	361.75	361.75
250	361.91	361.33
200	362.08	361.41
150	362.25	361.50
100	362.41	361.58
50	362.58	361.66
EL Kansas	362.75	361.75
300 = W.L. Kansas	363.25	362.25
250	363.42	362.42
200	363.58	362.58
150	363.75	362.75
100	363.92	362.92
50	364.08	363.08
EL Utah	364.25	363.25
300 = W.L. Utah	364.25	363.25
250 x0.8	363.92	362.92
200	363.58	362.58
150	363.25	362.25
100	362.92	361.92
50	362.58	361.58
EL Idaho	362.25	361.25

S	361.66	6153	6150	6141	6133
	46	47	48	484	49
	25	25	28	284	47
	+2.1	+2.2	+2.0	2.0	+0.2

N	6258	6241	6225	6208	6191
	37	38	400	42	434
	17	20	30	33	234
	4.0	1.8	1.0	0.9	+2.0

N	362.58	362.58	6292	6325	6358	6392
	54	54	54	472	441	41
	5.8	5.8	5.4	372	313	53
	362.99	362.99	-0.3	+1.0	1.28	+0.8
	-0.8	-0.8	-0.7			

6308	6292	6295	6258	6242	62
49	51	52	54	56	5.99
34	48	52	51	53	
+1.5	+0.3	0.0	+0.3	+0.1	

6405	6302	6375	6358	6342	63
39	41	424	441	457	4.99
32	33	222	241	257	
+0.7	+0.8	+2.0	+2.0	+2.0	
		0.1	0.1	1.1	

36.38
3.53
 36.85
4.47
 36.732

S 6188 6141 6182
 53 50 55
51 57
 0.2 -0.7

N 6158 6191 6225 6258 6291
 48 54 51 47 44
 38 46 43 42 39
+1.0 +0.8 +0.8 +0.5 +0.5

362.44 SE Ohio
4.97
 367.41
3.99
 363.42

S 364.83 6291 63 6308 6316
 46 45 44 48 43
 41 45 49 46 43
+0.5 0.0 -0.5 -0.2 0.0

N 6333 6341 6350 6358 6366
 41 40 39 38 37
 53 40 39 46 40
+0.8 0.0 0.0 -0.8 -0.3

230
 36572

S 6308 629 6275 6258 6241
 26 28 30 32 33
31 30 32 30 31
 -0.5 -0.2 -0.2 +0.2 +0.2

N 6358 6325 6300 6275 6250
 22 25 27 30 32
24 22 17 25 26
 -0.2 +0.2 +1.0 +0.5 +0.6

300 - Wt. Iowa	362.75	362.75
250	362.50	362.41
200	362.75	362.58
150	363.00	362.75
100	363.25	362.91
50	363.50	363.08
EL Illinois	363.75	363.25
300 - Wt. Illinois	363.75	363.25
250	363.66	363.16
200	363.58	363.08
150	363.50	363.0
100	363.41	362.91
50	363.33	362.83
EL Ohio	363.25	362.75
300 - Wt. Ohio	363.25	362.75
250	362.91	362.41
200	362.58	362.08
150	362.25	361.75
100	361.91	361.41
50	361.58	361.08
EL 30th	361.25	360.75

365.72	S	6075	6025	5725	5275	49	4525
12.51		5.0	5.5	8.5	13.0	48.9	8.5
353.21		5.1	5.5	6.5	10.2	8.5	8.2
0.68		0.0	0.0	+1.7	+2.5	+2.4	+0.3
353.89							
	N	6075	6025	5725	5275	49	4525
		5.0	5.5	8.4	13.0	48.9	8.5
		5.0	5.4	6.4	12.1	48.1	8.5
		+2.0	+4.0	+2.0	+0.3	+2.7	+0.5

345.95 3/4 SW 32nd

345.95	S	4408	4391	4375	4358	4341	4325
1.50		9.6	9.9	10.0	10.2	10.4	10.5
353.77		10.7	10.1	9.2	8.3	8.6	
		-1.0	-0.2	+0.8	+1.9	+1.8	
	N	4408	4391	4375	4358	4341	4325
		9.6	9.9	10.0	10.2	10.4	10.5
		9.9	7.9	7.0	7.2	7.5	9.7
		+1.8	+2.9	+3.0	+2.9	+2.9	+0.8

345.95
11.70
357.65

83	4.9	6.5	9.3
86	6.4	5.5	

345.95
7.32
348.27

45.95
16.42
62.37

59.00
1.22

75.0
22.50

8.50
59.40
60.32
60.95
9.5

59.40
59.99
60.35
59.81
2.25
60.06
59.71
2.56

310 on S
300 on N = WL Bancroft

250	343.41	343.25
200	343.58	343.58
150	343.75	343.75
100	343.91	343.91
50	344.08	344.08
E.L. 32nd	344.25	344.25
300 = WL 32nd	345.25	345.25
250	349.0	349.00
200	352.75	352.75
150	57.25	57.25
100 break	360.25	360.25
50	360.75	360.75
E.L. Iowa	361.25	361.25

SILVERADO and
TORREY ROAD

45

Prospect.

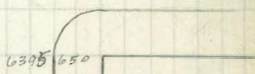
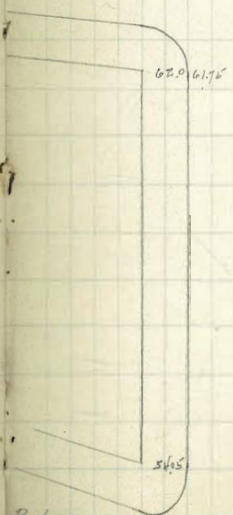
Place



Exchange

Torrey

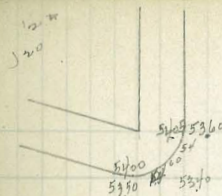
PL.



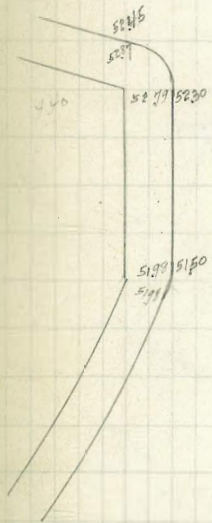
Park Row

15719

SE
576 541



PARK Row



Torrey

46

5530 560

5530 5405
5515 5330

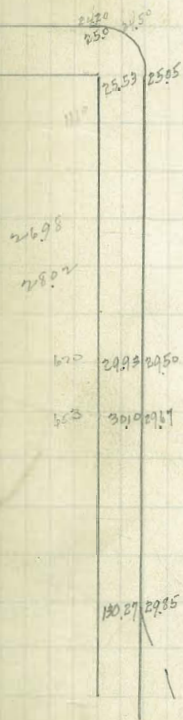
IVANHOE
AVE
East

5125 520
5120 5160

13643

M. E. Cook
 Lagoon Area - Silverado
 Ted 84-1

SILVERADO
 ST.



N ↑

AVE

48

2490 2507 255

2493

2553

2695 - 2753 210

2975 - 3059 600

0294
 40 44
 300
 210
 220
 0294
 40 44
 300
 210
 220
 1024
 1024
 1024
 1024

YANHOE

Handwritten notes on a piece of aged paper, including a diagram with two horizontal lines and several circles, and the number 1981.

94 A

94A

G94A

8490
504
8994

512
8419

840
246
8646

100 523
800
33
322

52
514
833
11000658

1280
1280
1280
1280
1280

7730

8490
293
8783

840
502
9010

9069
5520

592
338

15.17 8500 8467 8503 8514 8503 8467 8440 8491

8502 8445 8499

8501 8485

8463

8491 8506 8495

847- 8451

1874 8465 8420 8470 8490 845- 8471 8460 3T

8451 8460 8449

8420 8404 8459 8475 8460 8427 8420

842 840 8450 8467 8450 8442 8422

843 8449 843

841 8427 841

834 8329 8407 839 832 8419

8295 8345 8295

8240 8229 8240

8175 8202 8175

810 815- 810

8017 8067 8017

7925 7992 7925

7825 8187 7825

7675 7745 7675

7525 7595 7525

7345 7395 7412 7345

8490BP

8575
518
9143

9391
556
9947

4391
649
10040

8521
492
9020

8575
462
9067

8575

8540
630
9158

934
635
9978

27
1100
1100
1100

9595 9585
9527
9520 9510

9582 96 9579

9520 9586
9505 9590
9515

9574
9518

2074 9490 9450
9450
9486
9388

9519
9511

9445 9485 ST
9441
9379

9380 9340

9383 94- 9380

9385 934
9385 9374

BP 9391

ST

8678 8690
8628 8630

8685 8700 8674 8690 8681

8610 8684
8615

8627
8621

8645 8659 8634 8624
8630

1974 8630 8590

8630 8645 8620 8580 8620 ST

8605
8565

8616 8631 8606 8592
8545

8590 8535

8579 8585 8549 8581

8590 8545 8580

8590 8590
8575

BP 8595

111

15743
571
70320
125
161.92
1992
181.84

7655
581
8236

770
531
8234

7700
1204
89.04
121
87.80
742
95.23

772
7151
81

5671
637
6312

5743
567
6310

118.
377
43

5889
121
107

7625
7335
7973

57
56

5743
551
6294

7740
572
8362

8633
780
7353

NW 25th
SP 18449

9151	9075	9093	9114	9105	9076	9021	8985	9046
9205	9140	9169	9207	9220	9201	9169	9150	9205
8703	8693	8662	8701	8715	8701	8652	8633	8700
7854	7790	7842	7857	7834	7784	7834	7784	7834
7852	7790	7815	7852	7811	7785	7831	7785	771.60

7783 77.66

24/74 7765 7725 7765 7782 7755 7715 7750 ST

7720 7711

7655	7650	7712	7732	7712	7650	7650
7700	7710	7635	7690	7707	7687	7697
		7650	7674	7678	7690	7696
			7631			

5895	5830	5900	5920	5902	5840	5906
5897	5820	5889	5910	5892	5840	5906
5820	5820	5861	5877	5861	5800	5806

23rd 5840 5820 5827 5814 5810 5811 ST

5776 5771

5670	5700	5763	5798	5762	5700	5695
5735	5670	5705	5715	5728	5675	5740
		5711	5730	5716		

BP 15743

8791

11739

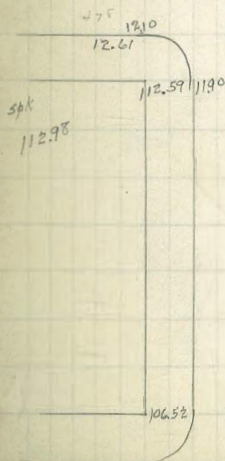
1095

112.98
4.90
117.88

IVANHOE



HERSCHEL



GIRARD

1027 1140

53.

ST

ST.



AVE



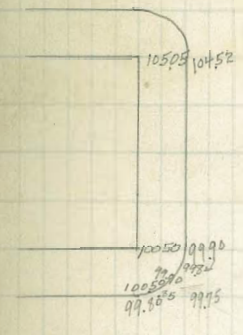
AVE

SILVERADO

8791	9954
829	4.85
9620	107.39
1030	
9590	91.89
10115	6.48
10105	98.37
10050	
10000	91.69
1174	1.70
1139	93.9

6.5
99.20

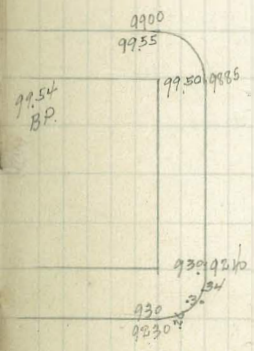
GIRARD



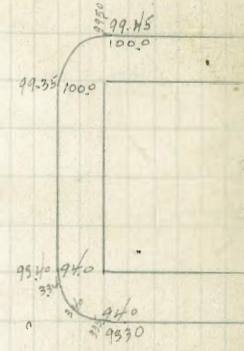
AVE



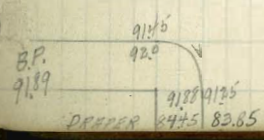
FAY



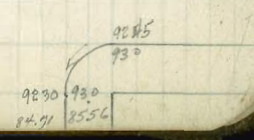
AVE



ENDS



AVE



26602
179
27081

6533
549
7082

6565
517

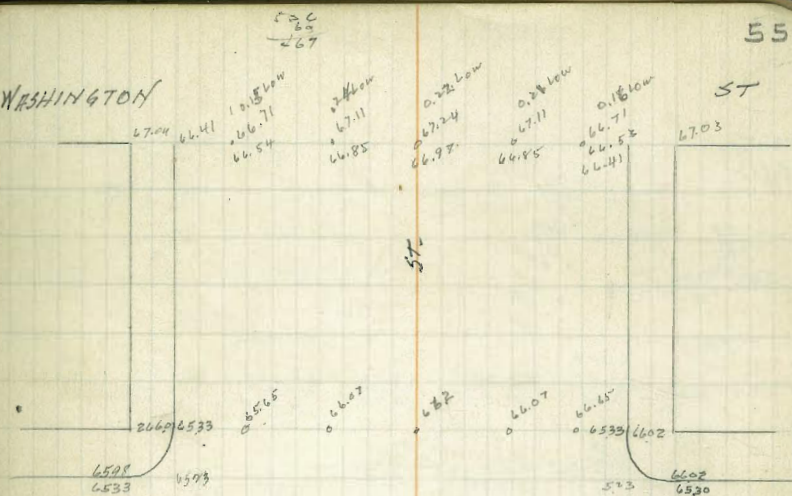
6600
415

662
462

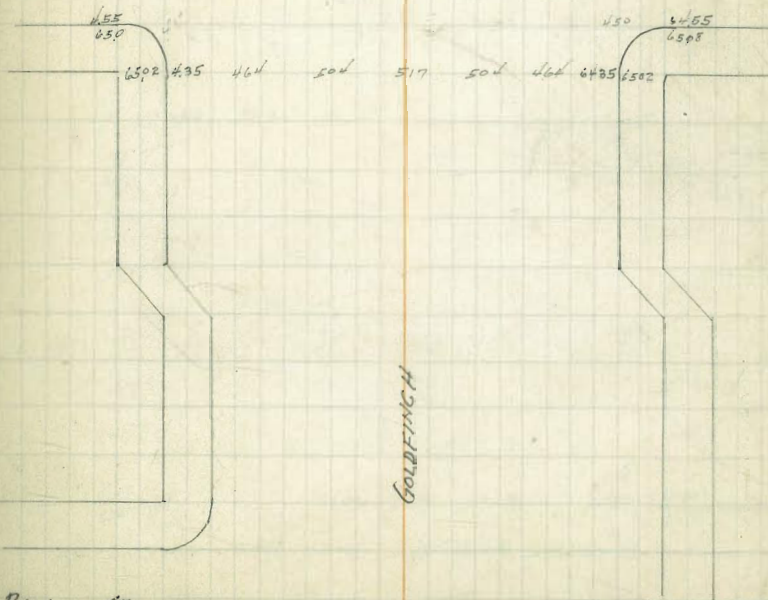
507
5555

626
50

WASHINGTON



DOUGLAS



BUSH ST.

GOLDFINCH

6520-6505 6566 6597 6601 6575 6648

6534-6497 6595 6589 6576 6553 6643 KITE

6516 6456 6609 6480 6503 6545 6549 6530 6600

6496 6439 6499 6524 6534 6516 6535

6476 6422 6499 6472 6510 6520 6503 6572

6459 6407 6472 6495 6505 6489 6534

6440 6391 6466 6497 6475 6546

6422 6375 6411 6480 6499 6475 6546

6400 6350 6405 6480 6499 6475 6546

6380 6325 6405 6480 6499 6475 6546

6360 6305 6405 6480 6499 6475 6546

6340 6285 6405 6480 6499 6475 6546

6320 6265 6405 6480 6499 6475 6546

6503
622
71.29

6476
513
19.88
61.

6471
520
70.09
457
69.52

LARK ST.

6271 6274 6274 6303 6306

6263-6202 6220 6288 6289 6260 6225

6246-6190 6220 6273 6272 6241 6281

6231-6198 6232 6257 6255 6223 6242

6227 6165 6218 6212 6238 6285 6266

6215 6147 6197 6220 6214 6182 6243

6183 6099 6074 6049

6089 6025 6072 6090 6080 6042 6110

6075 6011 6055 6050 6060 6028

6054 5996 6039 6050 6041 6001

6049 5987 6023 6037 6022 5980

6028 5959 6053 6017 6055 5962

5980 5937 5982 5977 5914 5943

5958 5915 5961 5977 5965 5924 59.05 59.93

8°26'32.3
437
267.60

LARK ST

6182
385
6567

6205
54
6746

DISTANCES FROM CENTER OF ROADWAY FOR
CROSS-SECTIONING.

Roadway 16 feet wide. Side Slopes 1 on 1 1/2.
For Single Track Embankment.

H	0	.1	.2	.3	.4	.5	.6	.7	.8	.9	H
0	8.0	8.2	8.3	8.5	8.6	8.8	8.9	9.1	9.2	9.4	0
1	9.5	9.7	9.8	10.0	10.1	10.3	10.4	10.6	10.7	10.9	1
2	11.0	11.2	11.3	11.5	11.6	11.8	11.9	12.1	12.2	12.4	2
3	12.5	12.7	12.8	13.0	13.1	13.3	13.4	13.6	13.7	13.9	3
4	14.0	14.2	14.3	14.5	14.6	14.8	14.9	15.1	15.2	15.4	4
5	15.5	15.7	15.8	16.0	16.1	16.3	16.4	16.6	16.7	16.9	5
6	17.0	17.2	17.3	17.5	17.6	17.8	17.9	18.1	18.2	18.4	6
7	18.5	18.7	18.8	19.0	19.1	19.3	19.4	19.6	19.7	19.9	7
8	20.0	20.2	20.3	20.5	20.6	20.8	20.9	21.1	21.2	21.4	8
9	21.5	21.7	21.8	22.0	22.1	22.3	22.4	22.6	22.7	22.9	9
10	23.0	23.2	23.3	23.5	23.6	23.8	23.9	24.1	24.2	24.4	10
11	24.5	24.7	24.8	25.0	25.1	25.3	25.4	25.6	25.7	25.9	11
12	26.0	26.2	26.3	26.5	26.6	26.8	26.9	27.1	27.2	27.4	12
13	27.5	27.7	27.8	28.0	28.1	28.3	28.4	28.6	28.7	28.9	13
14	29.0	29.2	29.3	29.5	29.6	29.8	29.9	30.1	30.2	30.4	14
15	30.5	30.7	30.8	31.0	31.1	31.3	31.4	31.6	31.7	31.9	15
16	32.0	32.2	32.3	32.5	32.6	32.8	32.9	33.1	33.2	33.4	16
17	33.5	33.7	33.8	34.0	34.1	34.3	34.4	34.6	34.7	34.9	17
18	35.0	35.2	35.3	35.5	35.6	35.8	35.9	36.1	36.2	36.4	18
19	36.5	36.7	36.8	37.0	37.1	37.3	37.4	37.6	37.7	37.9	19
20	38.0	38.2	38.3	38.5	38.6	38.8	38.9	39.1	39.2	39.4	20
21	39.5	39.7	39.8	40.0	40.1	40.3	40.4	40.6	40.7	40.9	21
22	41.0	41.2	41.3	41.5	41.6	41.8	41.9	42.1	42.2	42.4	22
23	42.5	42.7	42.8	43.0	43.1	43.3	43.4	43.6	43.7	43.9	23
24	44.0	44.2	44.3	44.5	44.6	44.8	44.9	45.1	45.2	45.4	24
25	45.5	45.7	45.8	46.0	46.1	46.3	46.4	46.6	46.7	46.9	25
26	47.0	47.2	47.3	47.5	47.6	47.8	47.9	48.1	48.2	48.4	26
27	48.5	48.7	48.8	49.0	49.1	49.3	49.4	49.6	49.7	49.9	27
28	50.0	50.2	50.3	50.5	50.6	50.8	50.9	51.1	51.2	51.4	28
29	51.5	51.7	51.8	52.0	52.1	52.3	52.4	52.6	52.7	52.9	29
30	53.0	53.2	53.3	53.5	53.6	53.8	53.9	54.1	54.2	54.4	30
31	54.5	54.7	54.8	55.0	55.1	55.3	55.4	55.6	55.7	55.9	31
32	56.0	56.2	56.3	56.5	56.6	56.8	56.9	57.1	57.2	57.4	32
33	57.5	57.7	57.8	58.0	58.1	58.3	58.4	58.6	58.7	58.9	33
34	59.0	59.2	59.3	59.5	59.6	59.8	59.9	60.1	60.2	60.4	34
35	60.5	60.7	60.8	61.0	61.1	61.3	61.4	61.6	61.7	61.9	35
36	62.0	62.2	62.3	62.5	62.6	62.8	62.9	63.1	63.2	63.4	36
37	63.5	63.7	63.8	64.0	64.1	64.3	64.4	64.6	64.7	64.9	37
38	65.0	65.2	65.3	65.5	65.6	65.8	65.9	66.1	66.2	66.4	38
39	66.5	66.7	66.8	67.0	67.1	67.3	67.4	67.6	67.7	67.9	39
40	68.0	68.2	68.3	68.5	68.6	68.8	68.9	69.1	69.2	69.4	40

Example—If point is 22.6 ft. above grade, how far should it be from center line to be a slope stake point? Ans. from Table 41.9. For same slopes but other widths of roadbed correct above figures by one-half difference in width of roadbed; thus in example above for 20 ft. roadbed distance will be $41.9 + (20 - 16) \div 2$ or 2 ft. added to 41.9 = 43.9. For slopes of 1 on 1 see inside of front cover.

Copyright, 1914, by Eugene Dietzgen Co.

