

GRADE BOOK 99

DIETZGEN

ENGINEERS

FIELD BOOK

No. 403

EUGENE DIETZGEN CO.

DRAWING MATERIALS, MATHEMATICAL and
SURVEYING INSTRUMENTS

Chicago New York San Francisco New Orleans Pittsburg Toronto

Distances from Center of Roadway for Cross-Sectioning
Roadway 16 feet wide. Side Slopes 1 on 1.
For Single Track Embankment.

H	0	.1	.2	.3	.4	.5	.6	.7	.8	.9	H
0	8.0	8.1	8.2	8.3	8.4	8.5	8.6	8.7	8.8	8.9	0
1	9.0	9.1	9.2	9.3	9.4	9.5	9.6	9.7	9.8	9.9	1
2	10.0	10.1	10.2	10.3	10.4	10.5	10.6	10.7	10.8	10.9	2
3	11.0	11.1	11.2	11.3	11.4	11.5	11.6	11.7	11.8	11.9	3
4	12.0	12.1	12.2	12.3	12.4	12.5	12.6	12.7	12.8	12.9	4
5	13.0	13.1	13.2	13.3	13.4	13.5	13.6	13.7	13.8	13.9	5
6	14.0	14.1	14.2	14.3	14.4	14.5	14.6	14.7	14.8	14.9	6
7	15.0	15.1	15.2	15.3	15.4	15.5	15.6	15.7	15.8	15.9	7
8	16.0	16.1	16.2	16.3	16.4	16.5	16.6	16.7	16.8	16.9	8
9	17.0	17.1	17.2	17.3	17.4	17.5	17.6	17.7	17.8	17.9	9
10	18.0	18.1	18.2	18.3	18.4	18.5	18.6	18.7	18.8	18.9	10
11	19.0	19.1	19.2	19.3	19.4	19.5	19.6	19.7	19.8	19.9	11
12	20.0	20.1	20.2	20.3	20.4	20.5	20.6	20.7	20.8	20.9	12
13	21.0	21.1	21.2	21.3	21.4	21.5	21.6	21.7	21.8	21.9	13
14	22.0	22.1	22.2	22.3	22.4	22.5	22.6	22.7	22.8	22.9	14
15	23.0	23.1	23.2	23.3	23.4	23.5	23.6	23.7	23.8	23.9	15
16	24.0	24.1	24.2	24.3	24.4	24.5	24.6	24.7	24.8	24.9	16
17	25.0	25.1	25.2	25.3	25.4	25.5	25.6	25.7	25.8	25.9	17
18	26.0	26.1	26.2	26.3	26.4	26.5	26.6	26.7	26.8	26.9	18
19	27.0	27.1	27.2	27.3	27.4	27.5	27.6	27.7	27.8	27.9	19
20	28.0	28.1	28.2	28.3	28.4	28.5	28.6	28.7	28.8	28.9	20
21	29.0	29.1	29.2	29.3	29.4	29.5	29.6	29.7	29.8	29.9	21
22	30.0	30.1	30.2	30.3	30.4	30.5	30.6	30.7	30.8	30.9	22
23	31.0	31.1	31.2	31.3	31.4	31.5	31.6	31.7	31.8	31.9	23
24	32.0	32.1	32.2	32.3	32.4	32.5	32.6	32.7	32.8	32.9	24
25	33.0	33.1	33.2	33.3	33.4	33.5	33.6	33.7	33.8	33.9	25
26	34.0	34.1	34.2	34.3	34.4	34.5	34.6	34.7	34.8	34.9	26
27	35.0	35.1	35.2	35.3	35.4	35.5	35.6	35.7	35.8	35.9	27
28	36.0	36.1	36.2	36.3	36.4	36.5	36.6	36.7	36.8	36.9	28
29	37.0	37.1	37.2	37.3	37.4	37.5	37.6	37.7	37.8	37.9	29
30	38.0	38.1	38.2	38.3	38.4	38.5	38.6	38.7	38.8	38.9	30
31	39.0	39.1	39.2	39.3	39.4	39.5	39.6	39.7	39.8	39.9	31
32	40.0	40.1	40.2	40.3	40.4	40.5	40.6	40.7	40.8	40.9	32
33	41.0	41.1	41.2	41.3	41.4	41.5	41.6	41.7	41.8	41.9	33
34	42.0	42.1	42.2	42.3	42.4	42.5	42.6	42.7	42.8	42.9	34
35	43.0	43.1	43.2	43.3	43.4	43.5	43.6	43.7	43.8	43.9	35
36	44.0	44.1	44.2	44.3	44.4	44.5	44.6	44.7	44.8	44.9	36
37	45.0	45.1	45.2	45.3	45.4	45.5	45.6	45.7	45.8	45.9	37
38	46.0	46.1	46.2	46.3	46.4	46.5	46.6	46.7	46.8	46.9	38
39	47.0	47.1	47.2	47.3	47.4	47.5	47.6	47.7	47.8	47.9	39
40	48.0	48.1	48.2	48.3	48.4	48.5	48.6	48.7	48.8	48.9	40

Example—If point is 22.6 ft. above grade, how far should it be from center line to be a slope stake point? Ans. from Table 30.6. For same slopes but other widths of roadbed, correct above figures by one-half difference in width of roadbed; thus in example above, for 20 ft. roadbed distance will be 30.6 + (20-16) ÷ 2 or 2 ft. added to 30.6 = 32.6. For slopes of 1 on 1 1/2 see inside of back cover.

Copyright, 1914, by Eugene Dietzgen Co.

262.74
250.4
250.5

56
37
110
50
110

.0173

37
8
35

500
720
300

0173
50
.1650

262.74 SE Wetherby St. H St.

1.46

263.24

5.38

268.62

7.22

267.48

WL H St

SL Nick 43

25.5 = 25.5

50.5 = 264.2

268.0

40' W. of H St / L St

SL Nick 75

25.5 = 260.0

50.5 = 267.6

75.5 = 264.2

100.5 = 261.7

75' W. of Alley = E.L. House Found

SL Nick 99

25.5 = 260.3

50.5 = 267.8 SNE cor House

75.5 = 264.3

100.5 = 261.7

MICROFILMED

APR 7 1965

10000 Wetherby St.

Chic

H

0
1
2
3
4
5
6
7
8
9
10
11
12
13
14
15
16
17
18
19
20
21
22
23
24
25
26
27
28
29
30
31
32
33
34
35
36
37
38
39
40

to be
of ro
exan
30.6

290.0

80

291.0

Alabama

St

289.0

290.0

281.0

281.0

279.0

279.0

FIVE

277.0

276.0



60

60

Florida

St

278.0

277.0

FOLK

370

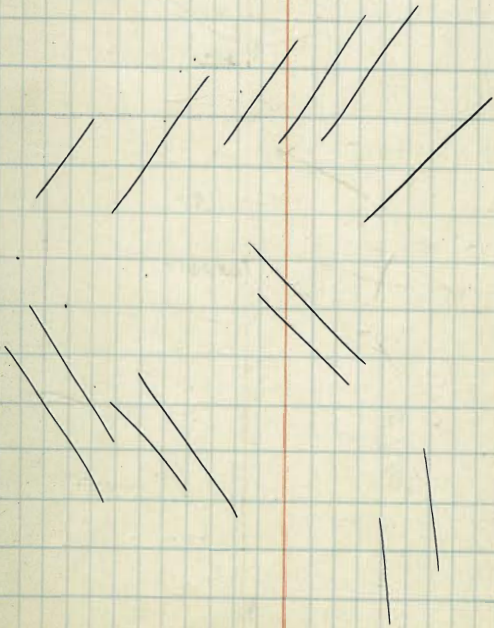
370

335.0

335.0

Georgia

St



302.0

80'

301.5

Louisiana

St.

302.0

301.5

AVE

309.0

307.0

311.0

310.0

311.0

310.0

Mississippi

St

309.0

308.0

POLK

299.0

299.0

290.0

291.0

Alabama

St

330.0

80'

330.0

Arizona

St.

328.0

328.0

AVE.

325.0

325.0

N

Texas

St.

323.0

323.0

POLK

302.0

301.5

Louisiana

St.

310 = WL Florida	278.25	278.00	277.50	277.50	277.00	277.00	277.25
304	279.35	279.11	278.63	278.62	278.10	278.12	278.37
296	280.82	280.57	280.07	280.10	279.59	279.62	279.87
290	285.61	285.36	284.89	284.92	284.43	284.48	284.73
287	291.67	291.42	290.98	291.04	289.58	290.66	290.91
205	297.56	297.31	296.87	296.98	296.55	296.64	296.89
180	302.15	301.90	301.51	301.61	301.20	301.32	301.57
156	306.57	306.32	305.94	306.07	305.68	305.81	306.06
142	309.15	308.90	308.53	308.66	308.29	308.43	308.68
136	310.25	310.00	309.64	309.78	309.40	309.55	309.80
129	311.53	311.28	310.93	311.07	310.71	310.86	311.11
92	318.34	318.09	317.76	317.94	317.60	317.79	318.04
89	318.89	318.64	318.32	318.49	318.17	318.35	318.60
68	322.75	322.50	322.19	322.39	322.08	322.28	322.53
55	325.14	324.89	324.59	324.80	324.50	324.71	324.96
25	330.65	330.40	330.13	330.36	330.09	330.28	330.53
13	332.86	332.61	332.35	332.59	332.33	332.57	332.82
7	333.96	333.71	333.46	333.70	333.44	333.69	333.94
3' E	334.70	334.45	334.20	334.44	334.19	334.44	334.69
0100 = E.L.							
* Georgia.	335.25	335.00	334.75	335.00	334.75	335.00	335.25
NL		Co					SL

309.5- Y L
Hobama.

	289.25	289.00	289.00	289.50	289.50	290.00	290.25
300E	288.66	288.41	288.24	288.88	288.86	289.33	289.60
290E	288.04	287.79	287.76	288.22	288.18	288.65	288.80
260E	286.19	285.94	285.85	286.25	286.15	286.57	286.82
245E	285.27	285.02	284.99	285.27	285.14	285.52	285.77
225E	284.03	283.78	283.62	283.95	283.79	284.13	284.38
190E	281.87	281.62	281.39	281.66	281.43	281.70	281.95
A 180E	281.25	281.00	280.75	281.00	280.75	281.00	281.25
175E	281.00	280.75	280.50	280.75	280.50	280.75	281.00
160E	280.25	280.00	279.75	280.00	279.75	280.00	280.25
150E	279.25	279.50	279.25	279.50	279.25	279.50	279.75
A 140E	279.25	279.00	278.75	279.00	278.75	279.00	279.25
135E	279.18	278.93	278.67	278.91	278.67	278.89	279.14
130E	279.11	278.86	278.59	278.82	278.55	278.79	279.04
120E	278.96	278.71	278.43	278.64	278.36	278.57	278.82
110E	278.82	278.57	278.27	278.46	278.16	278.36	278.61
85E	278.46	278.21	277.89	278.02	277.67	277.82	278.07
68E	278.22	277.97	277.59	277.71	277.34	277.46	277.71
59E	278.09	277.84	277.45	277.55	277.16	277.26	277.51
55E	278.04	277.79	277.38	277.48	277.08	277.18	277.43
48E	277.94	277.69	277.27	277.36	276.94	277.03	277.28
35E	277.75	277.50	277.06	277.13	276.69	276.75	277.00
25E	277.61	277.36	276.90	276.95	276.49	276.54	276.79
20E	277.54	277.29	276.82	276.86	276.39	276.43	276.68
8E	277.36	277.11	276.63	276.64	276.16	276.17	276.42
4E	277.31	277.06	276.56	276.57	276.08	276.09	276.34
0+00-EL Flonda	277.25	277.00	276.50	276.50	276.00	276.00	276.25
NL			2				52

WL

2

SL

WL MISSISSIPPI.

2997E	309.25	309.00	308.50	308.50	308.00	308.00	308.25
296E	309.06	308.81	308.32	308.32	307.83	307.95	308.20
285E	308.57	308.26	307.78	307.80	307.32	307.45	307.69
265E	307.51	307.26	306.81	306.85	306.39	306.54	306.79
240E	306.26	306.01	305.58	305.66	305.23	305.39	305.64
225E	305.57	305.26	304.85	304.94	304.54	304.71	304.96
195E	304.01	303.76	303.39	303.52	303.10	303.34	303.59
175E	303.01	302.76	302.41	302.57	302.22	302.43	302.68
160E	302.25	302.00	301.68	301.85	301.53	301.74	301.99
143E	301.40	301.15	300.85	301.04	300.74	300.96	301.21
137E	301.10	300.85	300.56	300.76	300.46	300.69	300.94
128E	300.65	300.40	300.12	300.33	300.05	300.28	300.53
100E	299.25	299.00	298.75	299.00	298.75	299.00	299.25
80E	297.45	297.20	297.00	298.10	297.10	297.40	297.65
60E	295.65	295.40	295.25	296.20	295.45	295.80	296.05
31E	293.04	292.79	292.71	293.44	293.05	293.48	293.73
12E	291.33	291.08	291.05	291.64	291.49	291.96	292.21
3E	290.52	290.27	290.27	290.98	290.74	291.24	291.49
2 of 00 = EL Mobanja.	290.25	290.00	290.00	290.50	290.50	291.00	291.25

C

N.L. LA.	299.7E	302.25	302.00	301.61	301.75	301.87	301.50	301.75
	275 E	303.50	303.25	302.80	302.86	302.42	302.48	302.73
	250 E	304.75	304.50	303.98	303.98	303.47	303.46	303.71
	234 E	305.75	305.50	304.73	304.69	304.14	304.09	304.34
	215 E	306.50	306.25	305.63	305.54	304.94	304.84	305.09
	200 E	307.25	307.00	306.34	306.21	305.57	305.43	305.68
	175 E	308.50	308.25	307.52	307.33	306.62	306.41	306.66
	160 E	309.25	309.00	308.25	308.0	307.25	307.00	307.25
	150 E	309.43	309.18	308.45	308.22	307.50	307.27	307.52
	132 E	309.77	309.52	308.91	308.64	307.95	307.76	308.01
	116 E	310.06	309.81	309.12	309.00	308.35	308.20	308.45
	100 E	310.35	310.10	309.44	309.27	308.75	308.64	308.89
	90 E	310.63	310.28	309.64	309.59	309.00	308.91	309.16
	76 E	310.78	310.53	309.92	309.91	309.35	309.29	309.54
	65 E	310.98	310.73	310.14	310.16	309.60	309.59	309.84
	50 E	311.25	311.00	310.50	310.50	310.00	310.00	310.25
	47 E	311.25	311.00	310.50	310.50	310.00	310.00	310.25
	30 E	311.25	311.00	310.50	310.50	310.00	310.00	310.25
	10 E	311.25	311.00	310.50	310.50	310.00	310.00	310.25
E.L. Mississippi	311.25	311.00	310.50	309.50	310.00	310.00	310.00	310.25

WL Tex	300 E	323.25	323.00	323.00	323.00	323.25
	295 E	322.90	322.65	322.64	322.67	322.97
	275 E	321.50	321.25	321.22	321.19	321.44
	265 E	320.80	320.55	320.52	320.48	320.73
	250 E	319.75	319.50	319.46	319.41	319.66
	240 E	319.05	318.80	318.75	318.70	318.95
	228 E	318.21	317.96	317.90	317.84	318.09
	222 E	317.79	317.54	317.48	317.41	317.66
	190 E	315.55	315.30	315.21	315.12	315.37
	175 E	314.50	314.25	314.15	314.04	314.29
	160 E	313.45	313.20	313.09	312.97	313.22
	153 E	312.96	312.71	312.58	312.44	312.71
	145 E	312.40	312.15	312.02	311.89	312.14
	138 E	311.91	311.66	311.53	311.39	311.64
	120 E	310.65	310.40	310.25	310.10	310.35
	105 E	309.60	309.35	309.19	309.03	309.28
	90 E	308.55	308.30	308.13	307.95	308.20
	73 E	307.36	307.11	306.92	306.73	306.98
	60 E	306.45	306.20	306.00	305.80	306.05
	45 E	305.40	305.15	304.95	304.72	304.97
	15 E	303.30	303.05	302.82	302.58	302.83
	5' E	302.60	302.35	302.10	301.86	302.11
EL Louisiana		302.25	302.00	301.75	301.50	301.75

100'E	331.25	331.60	330.75	331.00	330.75	331.00	331.25
90 E	331.15	330.90	330.65	330.90	330.65	330.90	330.15
75 E	331.00	330.75	330.50	330.75	330.50	330.75	331.00
60 E	330.85	330.60	330.35	330.60	330.35	330.60	330.85
45 E	330.70	330.45	330.20	330.45	330.20	330.45	330.70
28 E	330.53	330.28	330.03	330.28	330.03	330.28	330.53
13 E	330.38	330.13	329.88	330.13	329.88	330.13	330.38
5 E	330.30	330.05	329.80	330.05	329.80	330.05	330.30
EL Arizona	330.25	330.00	329.75	330.00	329.75	330.00	330.25

WL Ariz	299.7	326.25	328.00			328.00	328.25
289	328.14	327.89	327.64	327.89	327.64	327.89	328.14
275	328.00	327.75	327.50	327.75	327.50	327.75	328.00
250	327.75	327.50	327.25	327.50	327.25	327.50	327.75
200	327.25	327.00	326.75	327.00	326.75	327.00	327.25
175	327.00	326.75	326.50	326.75	326.50	326.75	327.00
150	326.75	326.50	326.25	326.50	326.25	326.50	326.75
135	326.60	326.35	326.10	326.35	326.10	326.35	326.60
100	326.25	326.00	325.75	326.00	325.75	326.00	326.25
85	326.10	325.85	325.60	325.85	325.60	325.85	326.10
70	325.95	325.70	325.45	325.70	325.45	325.70	325.95
50	325.75	325.50	325.25	325.50	325.25	325.50	325.75
25	325.50	325.25	325.00	325.25	325.00	325.25	325.50
5 E	325.30	325.05	324.80	325.05	324.80	325.05	325.30
EL Texas	325.25	325.00	324.75	325.00	324.75	325.00	325.25

EL Hamilton	347.75	347.50	347.00	347.00	346.50	346.50	346.75
ECb	347.50	347.50	346.48	346.48	346.50	346.50	346.50
Gutter	346.50	x x	x	x x		x x	345.5
EL A							
E 1/4	346.5	346.49	345.99	345.99	345.49	345.49	344.5
80' Q	346.0	346.00	345.50	345.50	345.00	345.00	344.00
W 1/4	346.00	345.55	344.95	344.95	344.55	344.55	344.0
WL A							
Gutter	343.00	x x	x x	x x		x x	342.50
W cb	344.50	344.50	344.56	344.56		343.50	342.50
WL Hamilton 300 E	344.75	344.50	344.00	344.00	343.50	343.50	343.75
275 E	342.38	342.13	341.63	341.63	341.13	341.13	341.38
260 E	340.0	339.75	339.25	339.25	338.75	338.75	339.00
225 E	337.62	337.37	336.87	336.87	336.37	336.37	336.62
210 E	336.20	335.95	335.45	335.45	334.95	334.95	335.20
200 E	335.25	335.00	334.50	334.50	334.00	334.00	334.25
175 E	334.25	334.00	333.56	333.63	333.19	333.25	333.50
155 E	333.45	333.20	332.81	332.92	332.54	332.65	332.90
135 E	332.65	332.40	332.06	331.88	331.89	332.05	332.30
120 E	332.05	331.80	331.50	331.70	331.40	331.60	331.85
105 E	331.29	331.04	330.79	331.04	330.78	331.03	331.28
100 E of Arig.	331.25	331.00	330.75	331.00	330.75	331.00	331.25

EL

W.L. Oregon	300	365.25	365.00	364.50	364.50	364.00	364.00	364.25
	295	365.08	364.83	364.33	364.33	363.83	363.83	364.08
	265	364.08	363.83	363.33	363.33	362.83	362.83	363.08
	250	363.58	363.33	362.83	362.83	362.33	362.33	362.58
	225	362.75	362.50	362.00	362.00	361.50	361.50	361.75
	200	361.92	361.67	361.17	361.17	360.67	360.67	360.92
	180	361.25	361.00	360.50	360.50	360.00	360.00	360.25
	175	361.00	360.75	360.25	360.25	359.75	359.75	360.00
	150	359.75	359.50	359.00	359.00	358.50	358.50	359.75
	125	358.50	358.25	357.75	357.75	357.25	357.25	357.50
	100	357.25	357.00	356.50	356.50	356.00	356.00	356.25
	80	356.25	356.00	355.50	355.50	355.00	355.00	355.25
	75	356.03	355.78	355.28	355.28	354.78	354.78	355.03
	50	353.26	352.81	352.31	352.31	351.81	351.81	352.06
	25	350.47	350.22	349.67	349.67	349.22	349.22	349.47
	10	348.81	348.56	348.06	348.06	347.56	347.56	347.81
El. Hamilton		347.75	347.50	347.00	347.00	346.50	346.50	346.75

Not taken

E. L. Oregon

W.L. Kansas 299.8	369.25	369.00	368.75	369.00	368.75	369.00	369.25
293	369.23	368.98	368.73	368.98	368.73	368.97	369.22
275	369.17	368.92	368.70	368.94	368.69	368.92	369.17
225	369.13	368.88	368.59	368.81	368.54	368.75	369.00
200	369.09	368.84	368.54	368.75	368.47	368.67	368.92
165	369.01	368.76	368.47	368.66	368.37	368.55	368.80
150	368.99	368.74	368.43	368.62	368.31	368.50	368.75
135	368.97	368.72	368.40	368.59	368.27	368.45	368.70
105	368.92	368.67	368.34	368.51	368.18	368.35	368.60
70	368.82	368.59	368.27	368.43	368.10	368.23	368.48
55	368.81	368.56	368.24	368.40	368.03	368.18	368.40
30	368.79	368.54	368.18	368.32	367.96	368.10	368.35
8	368.76	368.51	368.14	368.27	367.89	368.06	368.31

EL UTAH

300	368.75	368.50	368.12	368.25	367.87	368.00	368.25
294	368.78	368.53	368.15	368.29	367.90	368.04	368.29
250	369.00	368.75	368.40	368.54	368.03	368.33	368.51
225	369.13	368.88	368.53	368.69	368.18	368.50	368.75
200	369.25	369.00	368.67	368.83	368.34	368.47	368.92
175	369.38	369.13	368.81	368.98	368.50	368.83	369.08
150	369.50	369.25	368.94	369.13	368.65	369.00	369.25
125	369.63	369.38	369.08	369.27	368.81	369.17	369.42
100	369.75	369.50	369.24	369.45	368.96	369.33	369.59
75	369.88	369.63	369.35	369.56	369.12	369.50	369.75
50	370.0	369.75	369.48	369.71	369.28	369.67	369.92
25	370.13	369.88	369.62	369.85	369.44	369.83	370.08

EL IDAHO

370.25	370.00	369.75	370.00	369.75	370.00	370.25
--------	--------	--------	--------	--------	--------	--------

367.0	28
8	4

Oregon

14	366.0
	±

St.

10	
365.0	14
80	

361.0

100

356.0

2

347.5

Avg.

	±
14	364.0
100	

360.0

100

355.0

100

346.5

Hamilton

St.

344.5	
100	

335

331

330

Polk

343.5

100

334.

100

331.

100

330

Arizona

St.

368.5

368.0

Utah

St.

368.5

368.0

AVE

370.0

14

14

370.0

14

Idaho

St.

25

370.0

14

370.0

14

28

POLE

367.0

366.0

Oregon

14

St.

363.5

363.0

30th

St

364.0

363.5

Ave

369.0

369.0

Kansas

St.

369.0

369.0

Polk

368.5

368.0

14th

St.

366.5

Illinois

366.5

St

367.0

Ark

367.0

366.0

Ohio

366.0

St.

365.5

Polk

365.5

365.5

30th

365.0

St

353.0

353.0

32nd

St.

353.5

353.5

Ave

356.5

357.0

Iowa

St

357.0

358.0

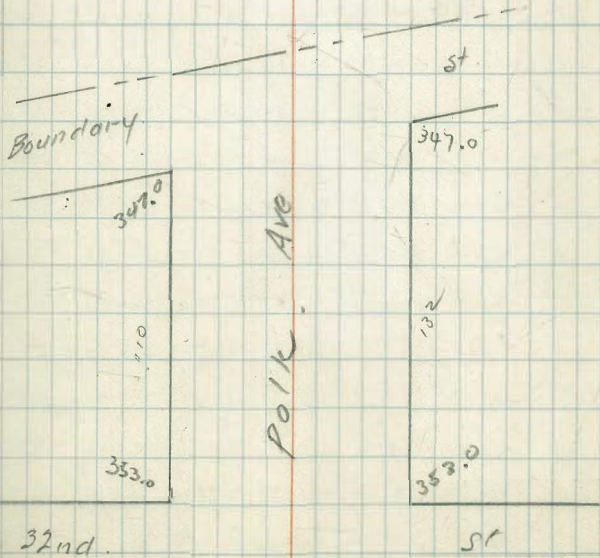
Polk Ave

366.5

366.5

Illinois

St



WL 30th. 199.7	364.25	364.00	363.62	363.75	363.37	363.50	363.75
295	364.34	364.09	363.70	363.84	363.46	363.59	363.84
280	364.59	364.34	363.96	364.10	363.73	363.87	364.12
270	364.75	364.50	364.13	364.28	363.91	364.05	364.30
245	365.17	364.92	364.55	364.71	364.37	364.50	364.75
225	365.50	365.25	364.90	365.06	364.72	364.88	365.13
205	365.83	365.58	365.23	365.41	365.08	365.24	365.49
195	366.00	365.75	365.40	365.59	365.26	365.42	365.67
175	366.33	366.08	365.75	365.93	365.62	365.79	366.04
160	366.59	366.34	366.00	366.20	365.89	366.07	366.32
145	366.83	366.58	366.25	366.46	366.16	366.34	366.59
105	367.50	367.25	366.98	367.16	366.88	367.07	367.32
85	367.83	367.58	367.27	367.57	367.24	367.44	367.69
65	368.16	367.91	367.62	367.86	367.60	367.81	368.06
40	368.59	368.34	368.04	368.30	368.05	368.27	368.52
10 E	369.09	368.84	368.55	368.83	368.59	368.82	369.07
FL Kansas	369.25	369.00	368.75	369.00	368.75	369.00	369.25

W.L. III.	300.2	367.25	367.00	366.75	367.00	366.75	367.00	367.25
	296	367.23	366.98	366.73	366.98	366.73	366.98	367.23
	280	367.17	366.92	366.67	366.92	366.67	366.92	367.17
	260	367.11	366.86	366.61	366.86	366.61	366.86	367.11
	235	367.02	366.77	366.52	366.77	366.52	366.77	367.02
	220	366.98	366.73	366.48	366.73	366.48	366.73	366.98
	200	366.92	366.67	366.42	366.67	366.42	366.67	366.92
	165	366.79	366.54	366.29	366.54	366.29	366.54	366.79
	150	366.75	366.50	366.25	366.50	366.25	366.50	366.75
	125	366.69	366.44	366.19	366.44	366.19	366.44	366.69
	100	366.58	366.33	366.08	366.33	366.08	366.33	366.58
	55	366.43	366.18	365.93	366.18	365.93	366.18	366.43
	38	366.37	366.12	365.87	366.12	365.87	366.12	366.37
	15	366.30	366.05	365.80	366.05	365.80	366.05	366.30
	5	366.27	366.02	365.77	366.02	365.77	366.02	366.27
EL Ohio		366.25	366.00	365.75	366.00	365.75	366.00	366.25
W.L. Ohio	299.8	365.75	365.50	365.25	365.50	365.25	365.50	365.75
	295	365.71	365.46	364.21	365.46	365.23	365.46	365.71
	255	365.45	365.20	364.93	365.15	364.91	365.12	365.37
	210	365.15	364.90	364.61	364.82	364.55	364.75	365.00
	170	365.89	364.64	364.33	364.52	364.23	364.47	364.67
	140	364.69	364.44	364.11	364.30	364.00	364.17	364.42
	90	364.35	364.10	363.76	363.92	363.60	363.73	363.98
	40	364.01	363.76	363.46	363.55	363.19	363.33	363.58
	20	363.89	363.64	363.26	363.40	363.03	363.17	363.42
	5	363.79	363.54	363.15	363.29	362.91	363.04	363.27
EL South St		363.75	363.50	363.12	363.25	362.87	363.00	363.25

200	354.75	354.50	354.29	354.58	354.37	354.67	354.97
170	355.05	354.80	354.60	354.90	354.71	355.02	355.27
145	355.30	355.05	354.86	355.18	354.99	355.31	355.56
140	355.35	355.10	354.79	355.23	355.04	355.37	355.62
125	355.50	355.25	355.07	355.39	355.21	355.52	355.77
100	355.75	355.50	355.33	355.67	355.50	355.83	356.08
70	356.05	355.80	355.64	356.00	355.84	356.18	356.43
63	356.12	355.87	355.70	356.07	355.92	356.26	356.51
42	356.33	356.08	355.93	356.30	356.15	356.51	356.76
8	356.67	356.42	356.29	356.67	356.53	356.91	357.16
EL Iowa.	356.75	356.50	356.37	356.75	356.62	357.00	357.25
WL Iowa 300	357.25	357.00	357.00	357.50	357.50	358.00	358.25
297	357.35	357.10	357.09	357.59	357.59	358.08	358.33
280	357.88	357.63	357.62	358.10	358.08	358.57	358.82
260	358.52	358.27	358.23	358.60	358.67	359.13	359.38
225	359.62	359.37	359.31	359.25	359.69	360.12	360.37
180	361.11	360.86	360.70	361.10	361.00	361.43	361.68
145	362.16	361.91	361.78	362.15	362.02	362.39	362.64
130	362.63	362.38	362.24	362.60	362.46	362.82	363.07
105	363.42	363.17	363.01	363.35	362.98	363.33	363.78
80	364.14	363.89	363.78	364.10	363.92	364.23	364.48
45	365.28	365.03	364.86	365.15	364.94	365.22	365.47
13	366.34	366.09	365.85	366.11	365.87	366.13	366.38
5	366.59	366.34	366.10	366.35	366.10	366.36	366.61
EL Illinois.	366.75	366.50	366.25	366.50	366.25	366.50	366.75

EL. 32nd 353.00 352.75 353.00 352.75 353.00

H.L. 32nd. 299.2 353.75 353.50 353.25 353.00 353.25 353.50 353.75

295 353.80 353.55 353.30 353.55 353.31 353.56 353.81

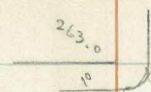
280 353.95 353.70 353.46 353.72 353.47 353.79 354.04

255 354.20 353.95 353.72 353.99 353.75 354.02 354.27

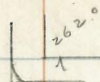
235 354.40 354.15 353.93 354.20 353.98 354.25 354.50

200 E. Iowa. 354.75 354.50 354.24 354.58 354.37 354.67 354.92

Lincoln.



Florida



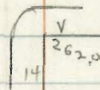
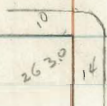
St.

287.0

Mississippi

286.0

St.



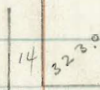
Ave.

286.0

285.0

Ave

323.0



St.

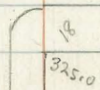
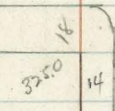
289.0

Alabama

287.0

St.

Georgia



285.0

283.0

Lincoln

331.34

332.70

333.35

333.90

333.80

332.4

330.66

331.90

332.60

332.90

332.74

331.2

310

263.0

262.0

LINCOLN

Park

Bld.

Florida

St.

318.0

317.0

327.0

326.0

Texas

St

Hamilton

St

317.0

316.0

325.0

324.0

AVE

AVE

299.0

300.0

320.0

319.0

140

140

321.0

320.0

Louisiana

St

Arizona

St

298.0

299.0

319.0

318.0

LINCOLN

LINCOLN

288.0

289.0

318.0

80

80

317.0

287.0

296.0

Miss

St

Texas

St

362.0

Idaho

361.0

358.0

352.0

Oregon

350.0

327.0

Hamilton

AVE

LINCOLN

361.0

St.

360.0

357.0

351.0

St

349.0

326.0

St.

~~362.5~~
~~364.5~~

Kansas

~~362.5~~
~~364.5~~

364.0

Utah

364.0

362.0

Idaho

AVE

LINCOLN

~~362.5~~
361.5

St

~~362.5~~
362.

363.0

St

363.0

361.0

St

363.0

362.5

361.0

361.0

Ohio

St.

Iowa

St.

363.0

362.5

362.0

362.0

AVE

AVE

~~361.0~~
359.5

~~359.0~~
360.5

363.5

362.0

364.0

St.

Illinois

St.

~~360.0~~
361.5

~~359.5~~
361.0

362.5

363.0

LINCOLN

LINCOLN

~~361.5~~
364.5

~~363.5~~
361.5

363.0

362.5

Kansas

St.

Ohio

St.

Boundary St

Wisconsin St

342.0

342.0

300.0

310.5

344.0

344.0

32nd

St.

345.0

345.0

360.0

360.0

100

100

361.0

361.0

Iowa

St.

LINCOLN

Not to be Graded.

	N	cb	1/4	1/2	3/4	cb	S
W.L. Georgia 300	325.25	325.00	324.75	325.00	324.75	325.00	325.25
290	325.88	325.63		325.60		325.57	325.82
289	325.95	325.70		325.66		325.62	325.87
270	327.15	326.90		326.80		326.70	326.95
247	328.61	328.36		328.18		328.00	328.25
211	330.88	330.63		330.34		330.04	330.29
209	330.80	330.55		330.46		330.15	330.40
203	331.85	331.60		330.82		330.55	330.80
200	331.59	331.34		331.00		330.66	330.91
175	332.95	332.70		332.30		331.90	332.15
150	333.60	333.35	33	332.98		332.60	332.95
125	334.15	333.90	333.40	333.40	332.90	332.90	333.75
100	334.05	333.80	333.29	333.27	332.72	332.74	332.99 ✓
50	333.35	333.10	332.59	332.53	332.00	331.97	332.22
H F	332.71	332.46	331.95	331.86	331.31	331.26	331.51
E.L. Park Bnd	332.65	332.40	331.89	331.80	331.25	331.20	331.45

Florida	310	263.00	262.50	262.00
	305	263.97	263.47	262.98
	285	267.84	267.38	266.92
	277	269.38	268.94	268.49
	273	270.15	269.72	269.27
	250	274.60	274.20	273.80
	225	279.43	279.08	278.70
	200	284.30	283.97	283.61
	185	287.22	286.89	286.56
	175	288.75	288.85	288.53
	155	293.00	290.80	292.46
	140	295.90	295.67	295.41
	122	299.38	299.17	298.94
	100	303.63	303.50	303.26
	87	306.92	306.04	305.82
	75	308.47	308.38	308.18
	70	309.44	309.25	309.16
	65	310.40	310.33	310.14
	68	311.75	311.69	311.52
	62	312.91	312.86	312.70
	37	315.82	315.79	316.14
	25	318.13	318.12	318.00
	8	321.46	321.43	321.35
Et. Georgia		323.00	323.00	323.00

Linnæus

31

	No. 6		$\frac{1}{4}$	$\frac{1}{2}$	$\frac{3}{4}$	Sch.	S
Alabama. 310	285.25	285.00	284.25	284.00	283.75	283.00	283.25
308	285.11	284.86	284.11	283.86	283.11	282.86	283.11
280	283.12	282.87	282.14	281.88	281.19	280.87	281.22
250	280.99	280.74	280.04	279.84	279.14	278.94	279.19
225	279.22	278.97	278.29	278.11	277.48	277.24	277.49
200	277.44	277.19	276.53	276.37	275.71	275.55	275.80
175	275.67	275.42	274.78	274.64	274.00	273.86	274.11
170	275.31	275.06	274.43	274.29	273.65	273.52	273.77
135	272.83	272.58	271.97	271.84	271.25	271.15	271.40
115	271.41	271.16	270.57	270.48	269.88	269.79	270.04
108	270.92	270.67	270.08	269.99	269.40	269.32	269.57
100	270.35	270.10	269.52	269.44	268.86	268.77	269.02
75	268.57	268.32	267.76	267.71	267.14	267.08	267.33
50	266.80	266.55	266.01	265.97	265.43	265.39	265.64
25	265.12	264.77	264.25	264.23	263.71	263.69	263.94
10	263.96	263.71	263.20	263.19	262.69	262.68	262.93
EL Florida.	263.25	263.00	262.50	262.50	262.0	262.00	262.25

		$\frac{1}{6}$	$\frac{1}{4}$	$\frac{1}{2}$	$\frac{3}{4}$	$\frac{5}{6}$	
Mississippi	300	286.25	286.00	285.50	285.50	285.00	285.25
	295	286.24	286.09	285.59	285.58	285.07	285.31
	275	286.72	286.47	285.93	285.89	285.35	285.56
	258	287.04	286.79	286.22	286.15	285.59	285.78
	242	287.32	287.07	286.48	286.39	285.80	285.96
	218	287.79	287.54	286.91	286.77	286.15	286.28
	200	288.13	287.88	287.22	287.06	286.40	286.50
	180	288.50	288.25	287.56	287.37	286.69	286.75
	155	288.97	288.72	287.99	287.76	287.04	287.06
	140	289.25	289.00	288.25	288.00	287.25	287.25
	130	289.03	288.78	288.03	287.78	287.03	287.03
	115	288.71	288.46	287.71	287.46	286.71	286.71
	100	288.45	288.20	287.45	287.20	286.45	286.45
	75	287.86	287.61	286.86	286.61	285.86	285.86
	58	287.49	287.24	286.49	286.54	285.49	285.49
	25	286.79	286.54	285.79	285.54	284.79	284.79
	5	286.36	286.11	285.36	285.11	284.36	284.36
Alabama		286.25	286.00	285.25	285.00	284.25	284.25

		N. 06	$\frac{1}{4}$	2	$\frac{1}{2}$	3.06		
Louisiana	300	298.25	298.00	298.00	298.50	298.50	299.00	299.25
	295	298.03	297.78	297.87	298.26	298.20	298.40	298.65
	250	295.98	295.73	295.77	296.11	296.06	296.15	296.40
	212	294.25	294.00	294.00	294.30	294.20	294.25	294.50
	185	293.02	292.77	292.74	293.01	292.87	292.90	293.15
	150	291.43	291.18	291.11	291.34	291.17	291.50	291.75
	125	290.50	290.25	289.85	290.15	289.95	290.25	290.50
	111	289.66	289.41	289.19	289.48	289.26	289.55	289.80
	103	289.30	289.05	288.82	289.10	288.85	289.15	289.40
	84	288.43	288.18	287.94	288.19	287.95	288.20	288.45
	81	288.30	288.05	287.80	288.05	287.80	288.05	288.30
	80	288.25	288.00	287.75	288.00	287.75	288.00	288.25
	58	287.98	287.73	287.45	287.59	287.27	287.45	287.70
	50	287.88	287.63	287.30	287.44	287.09	287.25	287.50
	40	287.75	287.50	287.12	287.25	286.88	287.00	287.25
	25	287.56	287.31	286.89	286.97	286.55	286.63	286.88
	17	287.46	287.21	286.77	286.82	286.37	286.43	286.68
	16	287.45	287.20	286.75	286.80	286.35	286.40	286.65
	10	287.38	287.13	286.65	286.69	286.22	286.25	286.50
Mississippi		287.25	287.00	286.50	286.50	286.00	286.00	286.25

Lincoln

		N Carb	1/4	L	1/4	S Carb		
Texas	300	317.25	317.00	316.50	316.50	316.00	316.00	316.25
	290	316.65	316.40	315.93	315.94	315.45	315.47	315.72
	275	315.75	315.50	315.57	315.08	314.72	314.67	315.92
	225	312.75	312.50	312.14	312.25	311.87	312.00	312.25
	200	311.25	311.00	310.68	310.83	310.50	310.67	310.92
	165	309.15	308.90	308.65	308.85	308.57	308.80	309.05
	150	308.25	308.00	307.81	308.00	308.00	308.00	308.25
	100	305.25	305.00	304.58	305.17	305.00	305.34	305.59
	75	303.75	303.50	303.39	303.75	303.62	304.00	304.25
	50	302.25	302.00	301.93	302.53	302.25	302.67	302.92
	18	300.15	299.90	300.15	300.52	300.49	300.96	301.21
	3	299.43	299.18	299.18	299.67	299.46	300.16	300.41
Louisiana		299.25	299.00	299.00	299.50	299.50	300.00	300.25

	NL	N Curb	N 1/4	E	S 1/4	S Curb	S 1
WL Hamilton 300	325.25	325.00	324.50	324.50	324.00	324.00	324.25
275	324.63	324.38	323.95	324.03	323.61	323.38	324.63
250	324.00	323.75	323.41	323.56	323.22	322.75	323.00
225	323.38	323.13	322.86	323.10	322.83	322.13	322.38
200	322.75	322.50	322.31	322.63	322.44	321.50	321.75
175	322.13	321.88	321.76	322.16	322.05	320.88	321.03
150	321.50	321.25	321.22	321.69	321.66	320.25	320.50
140	321.25	321.00	321.00	321.50	321.50	320.00	320.25
125	321.15	320.90	321.84	321.29	321.23	319.70	320.15
100	320.97	320.72	320.57	320.93	320.78	319.72	319.97
75	320.79	320.54	320.30	320.57	320.34	319.54	319.79
50	320.61	320.36	320.04	320.21	319.89	319.36	319.61
25	320.43	320.18	319.77	319.86	319.45	319.18	319.43
10	320.33	320.08	319.61	319.64	319.18	319.08	319.33
EL Arizona	320.25	320.00	319.50	319.50	319.00	319.00	319.25
WL Arizona 300	319.25	319.00	318.50	318.5	318.00	318.00	318.25
275	319.17	318.92	318.42	318.42	317.92	317.92	318.17
225	319.01	318.76	318.26	318.26	317.76	317.76	318.01
200	318.92	318.67	318.17	318.17	317.67	317.67	317.92
175	318.84	318.59	318.09	318.09	317.59	317.59	317.84
125	318.68	318.43	317.93	317.93	317.43	317.43	317.68
100	318.60	318.35	317.85	317.85	317.35	317.35	317.60
50	318.43	318.18	317.68	317.68	317.18	317.18	317.43
25	318.35	318.10	317.60	317.60	317.10	317.10	317.35
4	318.26	318.01	317.51	317.51	317.01	317.01	317.26
Texas	318.25	318.00	317.50	317.50	317.00	317.00	317.25

		300 Z	$\frac{1}{2}$	#	$\frac{1}{4}$	S	Scrub	
Oregon	300	350.25	350.00	349.50	349.50	349.00	349.00	349.25
	290	349.48	349.23	348.73	348.73	348.23	348.23	348.48
	275	348.33	348.08	347.58	347.58	347.08	347.08	347.33
	260	347.18	346.93	346.43	346.43	345.93	345.93	346.18
	250	346.42	346.17	345.67	345.67	345.17	345.17	345.42
	225	344.50	344.25	343.75	343.75	343.25	343.25	343.50
	200	342.58	342.33	341.83	341.83	341.33	341.33	341.58
	165	339.90	339.65	339.15	339.15	338.65	338.65	341.90
	152	338.90	338.65	338.15	338.15	337.65	337.65	337.90
	140	337.98	337.73	337.23	337.23	336.73	336.73	336.98
	130	337.21	336.96	336.46	336.46	335.96	335.96	336.21
	119	336.37	336.12	335.62	335.62	335.12	335.12	335.37
	100	334.92	334.67	334.17	334.17	333.67	333.67	333.92
	78	333.23	332.98	332.48	332.48	331.98	331.98	332.23
	72	332.57	332.52	332.02	332.02	331.52	331.52	331.77
	40	330.32	330.07	329.57	329.57	329.07	329.07	329.32
	36	330.01	329.76	329.26	329.26	328.76	328.76	329.01
^{30' 37'} E.L. Hamilton		327.75	327.00	326.50	326.50	326.00	326.00	326.75
E curb	¹⁴	327.00	327.00	326.15	326.15	325.65	326.00	326.00
		326.00	326.00				325.00	325.00
E $\frac{1}{4}$	¹³	326.25	325.50	326.82	326.82	325.32	324.50	325.05
$\frac{1}{2}$	¹³	326.00	325.00	326.50	326.50	325.00	324.00	325.00
W $\frac{1}{4}$	¹³	325.75	324.50	325.17	325.17	324.67	323.50	324.25
W curb	¹³	324.00	324.00	324.85	324.85	324.35	323.00	323.00
		325.00	325.00				324.00	324.00
W.L. Hamilton	¹⁴	325.25	325.00	324.50	324.50	324.00	324.00	324.25

Lincoln

		N curb	N 1/4	41	5/4	S curb	
Utah	300	364.25	364.00	363.50	363.50	363.00	363.25
	275	364.08	363.83	.33	.33	362.83	362.83
	225	363.75	.50	363.00	363.00	.50	.50
	200	363.58	.33	362.83	362.83	.33	.33
	160	363.32	.07	.57	.57	.07	362.07
	150	363.25	363.00	.50	.50	362.00	362.00
	140	363.18	362.93	.43	.43	361.93	361.93
	100	362.92	.67	.17	.17	.67	.67
	75	362.75	.50	362.00	362.00	.50	.50
	50	362.58	.33	361.83	361.83	.33	.33
	25	362.42	.17	.67	.67	.17	.17
Idaho		362.25	362.00	361.50	361.50	361.00	361.25

Idaho	300	361.25	361.00	360.50	360.50	360.00	360.25
	275	360.78	360.53	360.03	360.03	359.53	359.78
	250	360.31	360.06	359.56	359.56	359.06	359.31
	225	359.84	359.59	359.09	359.09	358.59	358.84
	200	359.38	359.13	358.63	358.63	358.13	358.38
	168	358.78	358.53	358.03	358.03	357.53	357.78
	150	358.44	358.19	357.69	357.69	357.19	357.44
	140	358.25	358.00	357.50	357.50	357.00	357.25
	100	356.54	356.29	355.79	355.79	355.29	355.54
	75	355.46	355.21	354.71	354.71	354.21	354.46
	25	353.32	353.07	352.57	352.57	352.07	352.32
Oregon		352.25	352.00	351.50	351.50	351.00	351.25

61.9
62.1
64.4
65.

Lincoln

N curb

N 1/4

E

S 1/4

S curb

38

	N	Ch	1/4	E	1/4	Ch	S	
Kansas	300	363.25	363.00	362.50	362.50	362.00	362.00	362.25
	296	363.26	.01	.51	.51	.01	.01	362.26
	275	363.33	.08	.58	.58	.08	.08	362.33
	250	363.42	.17	.67	.67	.17	.17	362.42
	225	363.50	.25	.75	.75	.25	.25	362.50
	200	363.58	.33	.83	.83	.33	.33	362.58
	175	363.67	.42	362.92	362.92	.42	.42	362.67
	150	363.75	.50	363.00	363.00	.50	.50	362.75
	125	363.83	.58	.08	.08	.58	.58	362.83
	112	363.88	.63	.13	.13	.63	.63	362.88
	75	364.10	.75	.25	.25	.75	.75	363.00
	25	364.17	363.92	.42	.42	.92	.92	363.17
Utah.	364.25	864	.00	363.50	363.50	363.00	363.00	363.25

	7	7	7	7	7	7	7	7
	curb		1/4	1/2	3/4	1	5/4	5 curb
W.L. 30th 300	361.75	361.50	361.12	361.75	360.87	361.00	361.25	
280	361.82	.57	.18	.30	.91	.03	361.28	
268	361.86	.61	.21	.33	.94	.05	361.30	
265	361.87	.62	.22	.34	.94	.06	361.31	
253	361.91	.66	.26	.37	.97	.08	361.33	
245	361.93	.68	.28	.39	360.99	.09	361.34	
225	362.00	.75	.34	.44	361.03	.17	361.37	
200	362.08	.83	.41	.50	.08	.17	361.42	
183	362.14	.89	.46	.54	.12	.19	361.44	
175	362.17	.97	.49	.56	.13	.21	361.46	
162	362.21	361.96	.52	.59	.16	.23	361.48	
150	362.25	362.00	.56	.62	.18	.25	361.50	
125	362.33	.08	.63	.69	.24	.29	361.54	
100	362.42	.17	.71	.75	.29	.33	361.58	
75	362.50	.25	.78	.81	.34	.37	361.62	
50	362.59	.33	.85	.87	.39	.42	361.67	
35	362.63	.38	.90	.91	.43	.44	361.69	
18	362.69	.44	361.95	361.95	.46	.47	361.72	
E.L. Kansas	362.75	362.50	362.00	362.00	361.50	361.50	361.75	

	N curb	N $\frac{1}{4}$	E $\frac{1}{4}$	S $\frac{1}{4}$	S curb		
WL Ohio 298.5	363.25	363.00	362.67	362.75	362.37	362.50	362.75
285	363.16	362.91	362.53	362.66	362.28	362.41	362.61
270	363.06	.81	.43	.56	.18	.31	362.55
262	362.91	.76	.38	.51	.13	.26	362.51
250	362.93	362.68	362.30	362.43	362.05	362.18	362.43
242	362.87	362.62	362.24	362.37	361.99	362.12	362.37
210	362.66	362.41	362.03	362.16	361.78	361.91	362.16
193	362.54	362.29	361.91	362.04	361.66	361.79	362.04
175	362.42	362.17	361.79	361.92	361.54	361.67	361.92
161	362.33	.08	.70	.83	.45	.58	361.83
150	362.26	362.01	361.63	361.76	361.38	361.51	361.76
137	362.17	361.92	361.54	361.67	361.29	361.42	361.67
125	362.09	.84	.46	.59	.21	.34	361.59
100	362.92	.67	.29	.42	361.04	361.17	361.42
85	362.82	361.57	361.19	361.32	360.94	361.07	361.32
75	362.75	361.50	361.12	361.25	360.87	361.00	361.25
50	361.59	361.34	360.96	361.09	360.71	360.84	361.09
20	361.38	361.13	360.75	360.88	360.50	360.63	360.88
4	361.28	.03	.65	.78	.40	.53	360.78
IL 30th	361.25	361.00	360.62	360.75	360.37	360.50	360.75

Lincoln

	N curb	N. 1/4	4	S. 1/4	S curb		
Illinois	300	363.75	363.50	363.17	363.75	362.87	363.00
	297	363.75	.50	.12	.25	.87	363.00
	292	363.74	.49	.11	.24	.86	362.99
	280	363.72	.47	.09	.22	.84	.97
	265	363.69	.44	.06	.19	.81	.94
	253	363.67	.42	.04	.17	.79	.92
	239	363.65	.40	.02	.15	.77	.90
	225	363.63	.38	363.00	.13	.75	.88
	202	363.59	.34	362.96	.09	.71	.84
	191	363.57	.32	.94	.07	.69	.82
	181	363.55	.30	.92	.05	.67	.80
	164	363.52	.27	.89	.02	.64	.77
	154	363.51	.26	.88	363.01	.63	.76
	120	363.45	.20	.82	362.95	.57	.70
	105	363.43	.18	.80	.93	.55	.68
	90	363.40	.15	.77	.90	.52	.65
	76	363.38	.13	.75	.88	.50	.63
	67	363.36	.11	.73	.86	.48	.61
	58	363.35	.10	.72	.85	.47	.60
	43	363.32	.07	.69	.82	.44	.57
	27	363.30	.05	.67	.80	.42	.55
	12	363.27	.02	.15	.77	.39	.52
	6	363.26	363.01	.63	.76	.38	.51
Ohio		363.25	363.00	362.62	362.75	362.37	362.50

Lincoln

		N	scrb	N 1/4	+	3/4	scrb	
Wt. Iowa	300	362.25	362.00	361.75	362.00	361.75	362.00	362.25
	275	362.28	362.13	361.86	362.10	361.84	362.08	362.33
	250	362.50	362.25	361.98	362.21	361.94	362.17	362.42
	230	362.60	362.35	362.09	362.29	362.01	362.23	362.48
	220	362.65	362.40	362.17	362.33	362.05	362.27	362.52
	200	362.75	362.50	362.21	362.42	362.12	362.33	362.58
	175	362.88	362.63	362.32	362.52	362.22	362.42	362.67
	150	363.00	362.75	362.44	362.63	362.31	362.50	362.75
	140	363.05	362.80	362.48	362.67	362.35	362.53	362.78
	125	363.13	362.88	362.55	362.73	362.40	362.58	362.83
	110	363.20	362.95	362.62	362.79	362.46	362.63	362.88
	100	363.25	363.00	362.66	362.83	362.50	362.67	362.92
	75	363.38	363.13	362.78	362.94	362.59	362.75	363.00
	50	363.50	363.25	362.89	363.04	362.68	362.83	363.05
	33	363.59	363.34	362.97	363.11	362.75	362.89	363.14
	25	363.63	363.38	363.01	363.15	362.78	362.92	363.17
Illinois		363.75	363.50	363.12	363.25	362.87	363.00	363.25

Finsch

		1/2 curb	3/4	1	1 1/4	1 1/2	1 3/4	2 curb
WL 32nd.	300	345.25	345.00	344.75	345.00	344.75	345.00	345.25
	294	345.70	345.45	345.20	345.45	345.20	345.45	345.70
	290	346.00	345.75	345.50	345.75	345.50	345.75	346.00
	275	347.12	346.87	346.62	346.87	346.62	346.87	347.12
	250	349.00	348.75	348.50	348.75	348.50	348.75	349.00
	240	349.75	349.50	349.25	349.50	349.25	349.50	349.75
	225	350.87	350.62	350.37	350.62	350.37	350.62	350.87
	200	352.75	352.50	352.25	352.50	352.25	352.50	352.75
	175	354.62	354.37	354.12	354.37	354.12	354.37	354.62
	155	356.12	355.87	355.62	355.87	355.62	355.87	356.12
	125	358.37	358.12	357.87	358.12	357.87	358.12	358.37
	100	360.25	360.00	359.75	360.00	359.75	360.00	360.25
	75	360.50	360.25	360.00	360.25	360.00	360.25	360.50
	50	360.75	360.50	360.25	360.50	360.25	360.50	360.75
	25	361.00	360.75	360.50	360.75	360.50	360.75	361.00
	12	361.13	360.88	360.63	360.88	360.63	360.88	361.13
	4	361.21	360.96	360.71	360.96	360.71	360.96	361.21
EL Iowa.		361.75	361.00	360.75	361.00	360.75	361.00	361.25

	NC6	4	2	1/2	Sc6		
3115 = WL Wagoner on S					343.00	343.25	
301.5 WL Wagoner on N	343.25	343.00	342.76	343.02	342.77	343.03	343.28
275	343.34	343.09	342.85	343.11	342.86	343.12	343.37
250	343.42	343.17	342.93	343.19	342.94	343.20	343.45
225	343.50	343.25	343.01	343.27	343.02	343.28	343.53
200	343.57	343.34	343.09	343.35	343.10	343.36	343.61
175	343.67	343.42	343.17	343.43	343.18	343.44	343.69
150	343.75	343.50	343.25	343.51	343.26	343.52	343.77
125	343.84	343.59	343.34	343.59	343.34	343.60	343.85
75	344.00	343.75	343.50	343.76	343.51	343.76	344.01
60	344.05	343.80	343.55	343.80	343.55	343.81	344.06
40	344.12	343.87	343.62	343.87	343.62	343.87	344.12
25	344.17	343.92	343.67	343.92	343.67	343.92	344.17
FL 32nd	344.25	344.00	343.75	344.00	343.75	344.00	344.25

Howard

289.5

288.5

319.0

318.0

Florida St.

60 St.

Mississippi

St.

290.5

289.5

317.0

316.0

110

110

298.0

299.0

AVE

AVE

307.0

308.0

100

100

318.4

319.4

293.0

291.0

Georgia

St.

Alabama

St.

320.0

321.0

292.0

290.0

HOWARD

HOWARD

341.0

341.0

289.5

289.5

Park

Brd.

Florida

St.

318.0

318.0

366.0

364.0

TEXAS

ST

Hamilton

ST

316.0

316.0

363.0

361.0

100

100

AVE.

317.0

317.00

AVE

318.0

318.00

320.0

320.00

321.5

321.50

331.0

330.0

332.0

331.5

Louisiana

ST

Arizona

ST

331.0

331.0

330.0

329.5

HOWARD

HOWARD

319.0

318.0

318.0

318.0

Mississippi

ST

Texas

ST

373.0
 Idaho SF
 373.0

370.0
 Kansas ST
 370.0

373.0
 373.0
 AVE
 closed.
 374.0
 374.0

370.5
 370.5
 AVE
 373.0
 373.0

Oregon SF

Utah ST

374.0
 374.0
 HOWARD
 369.0
 368.0
 366.0
 364.0

374.0
 374.0
 HOWARD
 373.0
 373.0

Hamilton ST

Idaho ST

364.0

Ohio

364.5

St

360.5

Iowa

360.0

St.

364.5

367.0

30th St.

367.4

370.0

Kansas

365.0

367.0

St

367.4

370.0

St

359.5

360.5

Illinois

361.0

364.0

Ohio

359.0

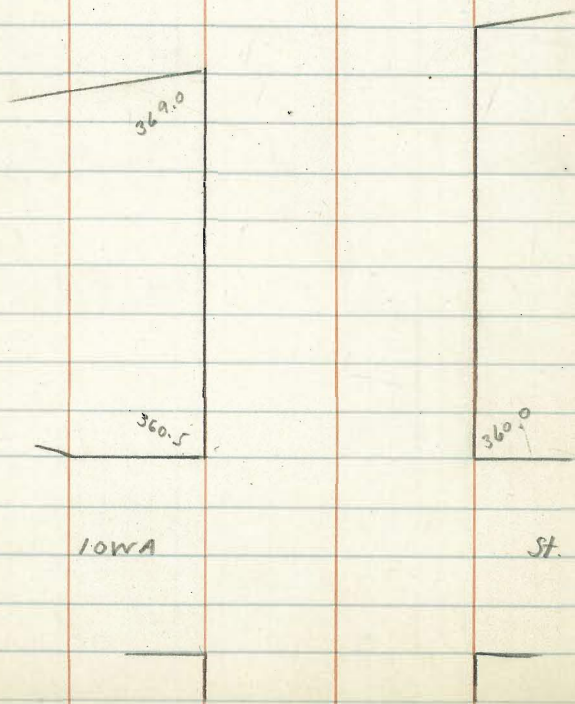
361.0

St

361.5

362.5

St.



plotted.

	N ^o	1/4	2	3/4	S	
Georgia 380	320.25	320.00	320.50	320.5	321.00	321.25
297	320.46	320.21	320.70	321.71	321.20	321.45
275	322.00	321.75	322.19	322.28	322.65	322.92 ✓
250	323.75	323.50	323.88	323.92	324.29	324.58
225	325.50	325.25	325.56	325.63	325.99	326.25
200	327.25	327.00	327.25	327.33	327.58	327.92
175	329.00	328.75	328.99	329.04	329.23	329.58
150	330.75	330.50	330.63	330.75	330.88	331.00
125	332.50	332.25	332.31	332.46	332.52	332.67
100	334.25	334.00	334.00	334.17	334.16	334.34
75	336.00	335.75	335.69	335.88	335.44	336.00
50	337.75	337.50	337.38	337.58	337.46	337.67
25	339.50	339.25	339.06	339.29	339.10	339.33
El. Park Blvd	341.25	341.00	340.75	341.00	340.75	341.00

plotted

	N	6	4	2	4	4	S
Florida	310	290.75	290.50	290.00	290.00	289.50	289.75
	307	290.96	290.71	290.22	290.24	289.75	289.79
	275	293.14	292.89	292.55	292.70	292.36	292.94
	250	294.84	294.59	294.36	294.64	294.41	295.23
	225	296.55	296.30	296.18	296.57	296.45	297.61
	200	298.25	298.00	298.00	298.50	298.50	299.25
X	175	300.50	300.25	300.25	300.75	300.75	301.25
	150	302.75	302.50	302.50	303.00	303.00	303.75
	125	305.00	304.75	304.75	305.25	305.25	305.75
	100	307.25	307.00	307.00	307.50	307.50	308.25
	75	310.10	309.85	309.85	310.35	310.35	310.85
	50	312.95	312.70	312.70	313.20	313.20	313.75
	25	315.80	315.55	315.55	316.05	316.05	316.80
	11	317.40	317.15	317.15	317.65	317.65	318.40
FL Georgia		318.65	318.40	318.40	318.90	318.90	319.40

Platte

	N	Ch	1/4	1/2	3/4	5/8	S
Alabama	310	292.25	292.00	291.25	291.00	290.25	290.00
	300	292.16	291.92	291.18	290.94	290.20	289.95
	275	291.97	291.72	291.00	290.77	290.05	289.83
	250	291.76	291.51	290.81	290.61	289.91	289.71
	225	291.56	291.31	290.63	290.46	289.63	289.59
	200	291.36	291.11	290.45	290.29	289.60	289.47
	175	291.16	290.91	290.27	290.13	289.49	289.35
	165	291.07	290.82	290.20	290.06	289.43	289.30
	164	291.07	290.82	290.19	290.06	289.43	289.29
	156	291.01	290.76	290.13	290.00	289.39	289.26
	150	290.96	290.71	290.10	289.97	289.35	289.23
+	125	290.76	290.51	289.91	289.81	289.21	289.10
	100	290.56	290.31	289.72	289.65	289.06	288.98
	93	290.50	290.25	289.68	289.60	289.03	288.95
	90	290.47	290.22	289.65	289.58	289.01	288.94
	82	290.41	290.16	289.59	289.53	288.96	288.90
	75	290.35	290.10	289.52	289.48	288.92	288.86
	50	290.15	289.90	289.36	289.32	288.78	288.74
	25	289.95	289.70	289.18	289.16	288.64	288.62
Florida St.		289.75	289.50	289.00	289.00	288.50	288.50

	N 06	1/4	1/2	3/4	06	06
Louisiana 300	331.25	331.00	330.75	331.00	330.75	331.00
275	330.25	330.00	329.73	330.96	329.69	329.91
1 250	329.25	329.00	328.71	329.92	328.63	328.83
225	328.25	328.00	327.69	327.88	327.57	327.75
200	327.25	327.00	326.67	326.83	326.50	326.66
175	326.25	326.00	325.66	325.79	325.44	325.58
150	325.25	325.00	324.64	324.75	324.38	324.50
125	324.25	324.00	323.62	323.71	323.31	323.41
100	323.25	323.00	322.59	322.67	322.25	322.33
75	322.25	322.00	321.56	321.63	321.19	321.25
50	321.25	321.00	320.54	320.58	320.12	320.16
25	320.25	320.00	319.52	319.54	319.06	319.08
Mississippi	319.25	319.00	318.50	318.50	318.00	318.00
Mississippi 300	317.25	317.00	316.50	316.50	316.00	316.00
275	316.25	316.00	314.48	314.46	313.93	313.92
250	315.25	315.00	312.45	312.42	311.87	311.83
225	314.25	314.00	310.43	310.38	309.81	309.75
200	313.25	313.00	308.41	308.32	307.75	307.66
175	312.25	312.00	306.39	306.28	305.68	305.58
150	311.25	311.00	304.37	304.24	303.62	303.50
125	310.25	310.00	302.35	302.20	301.56	301.42
100	309.25	309.00	300.33	300.16	299.50	299.33
75	308.25	308.00	298.31	298.12	297.43	297.25
50	307.25	307.00	296.29	296.08	295.37	295.16
25	306.25	306.00	294.27	294.04	293.31	293.08
Alabama	293.25	293.00	292.25	292.00	291.25	291.00

	N	ob	1/4	2	1/4	ob	S
NL Texas	300	316.25	316.00	316.75	316.00	315.75	316.00 316.25
	295	316.45	316.20	315.95	316.20	315.95	316.20 316.45
	275	316.65	316.40	316.15	316.40	316.15	316.40 316.65
	250	316.85	316.60	316.35	316.60	316.35	316.60 316.85
	225	317.05	316.80	316.55	316.80	316.75	316.80 317.05
	200	317.25	317.00	316.75	317.00	316.75	317.00 317.25
	175	317.87	317.62	317.37	317.62	317.37	317.62 317.87
St. here	165	318.12	317.87	317.62	317.87	317.62	317.87 318.12
	160	318.25	318.00	317.75	318.00	317.75	318.00 318.25
	150	318.75	318.50	318.25	318.50	318.25	318.50 318.75
	144	319.25	319.00	318.75	319.00	318.75	319.00 319.25
	125	319.75	319.50	319.25	319.50	319.25	319.50 319.75
	120	320.25	320.00	319.75	320.00	319.75	320.00 320.25
	100	321.75	321.50	321.25	321.50	321.25	321.50 321.75
	75	324.12	323.87	323.75	324.12	324.00	323.62 323.87
J	50	327.00	326.75	326.25	326.75	326.75	325.75 326.00
	25	328.87	328.62	328.75	329.37	329.50	327.87 328.12
EL Louisiana		331.25	331.00	331.25	332.10	332.25	330.00 332.25

~~300~~

	No	N	E	S	300			
Arizona	300	331.25	331.00	330.75	331.00	330.75	331.00	331.25
	293	330.95	330.70	330.45	330.70	330.45	330.70	330.95
	275	329.17	329.92	329.67	329.92	329.67	329.92	329.17
	250	327.08	328.83	328.58	328.83	328.58	328.83	328.08
	225	328.00	327.75	327.50	327.75	327.50	327.75	328.00
	200	326.91	326.66	326.41	326.66	326.41	326.66	326.91
	175	325.83	325.58	325.33	325.58	325.33	325.58	325.83
	150	324.75	324.50	324.25	324.50	324.25	324.50	324.75
	125	323.67	323.42	323.16	323.42	323.16	323.42	323.67
	100	322.58	322.33	322.08	322.33	322.08	322.33	322.58
	75	321.50	321.25	321.00	321.25	321.00	321.25	321.50
	50	320.42	320.17	319.91	320.17	319.91	320.17	320.42
	25	319.33	319.08	318.83	319.08	318.83	319.08	319.33
	6	318.51	318.26	318.01	318.26	318.01	318.26	318.51
Texas		318.25	318.00	317.75	318.00	317.75	318.00	318.25

	N	NCD	1/4	2'	1/4	Sch	S
EL Hamilton	366.25	366.00 365.00	365.25	365.00	364.25	364.00 363.00	364.25
E Curb Gutter	366.00 365.00	364.47	364.72	364.47	363.72	362.47	364.00 363.00
E 1/4	365.00	363.99	364.24	363.99	363.24	361.99	363.00
☒	364.50	363.50	363.75	363.50	362.75	361.50	362.50
W 1/4	363.50	363.01	363.26	363.01	362.26	361.01	361.50
Gutter W Curb	✓ 362.00 363.00	362.52	362.77	362.52	361.77	360.52	360.00 361.00
Hamilton	300	363.25	363.00 362.00	362.25	362.00	361.25	360.00 361.00
	275	360.67	360.42	359.79	359.48	358.76	358.53
	250	358.08	357.83	357.23	356.96	356.27	356.07
	225	355.50	355.25	354.68	354.43	353.79	353.61
	200	352.92	352.67	352.13	351.91	351.29	351.15
	175	350.33	350.08	349.58	349.39	348.80	348.69
	150	347.75	347.50	347.03	346.87	346.31	346.23
	125	345.17	344.92	344.47	344.35	343.82	343.77
	100	342.59	342.34	341.92	341.83	341.33	341.32
	75	340.0	339.75	339.39	339.31	338.84	338.86
	50	337.42	337.17	336.72	336.79	336.38	336.40
	25	334.83	334.58	334.19	334.27	333.86	333.75
Arizona		332.25	332.00	331.62	331.75	331.37	331.50

	N	C	W	E	W	C	S
Oregon	300	374.25	374.00	373.75	374.00	373.75	374.00
	275	372.60	373.35	373.09	373.31	373.05	373.30
	250	372.98	372.73	372.44	372.63	372.35	372.50
	235	372.60	372.35	372.04	372.31	371.89	372.05
	225	372.35	372.10	371.74	371.94	371.59	371.75
	212	372.03	371.78	371.44	371.58	371.22	371.36
	200	371.73	371.48	371.13	371.25	370.88	371.00
	190	371.48	371.23	370.89	370.98	370.59	370.70
	175	371.11	370.86	370.48	370.57	370.16	370.25
	150	370.49	370.24	369.82	369.88	369.44	369.50
	125	369.87	369.62	369.16	369.19	368.72	368.75
	100	369.25	369.00	368.50	368.50	368.00	368.25
	75	368.56	368.25	367.69	367.63	367.06	367.00
	50	367.75	367.50	366.88	366.75	366.18	366.00
	25	367.00	366.75	366.06	365.88	365.19	365.00
El. Hamilton		366.25	366.00	365.25	365.00	364.25	364.00

	N	C	1/2	E	1/2	C	S	
Utah.	300	374.25	374.00	373.75	374.00	373.75	374.00	374.25
	290	374.22	373.97	373.72	373.97	373.72	373.97	374.22
	275	374.17	373.92	373.67	373.92	373.67	373.92	374.17
	250	374.08	373.83	373.78	373.83	373.78	373.83	374.08
	225	374.00	373.75	373.50	373.75	373.50	373.75	374.00
	200	373.92	373.67	373.42	373.67	373.42	373.67	373.92
	175	373.83	373.58	373.33	373.58	373.33	373.58	373.83
	165	373.80	373.55	373.30	373.55	373.30	373.55	373.80
	150	373.75	373.50	373.25	373.50	373.25	373.50	373.75
	125	373.67	373.42	373.17	373.42	373.17	373.42	373.67
	100	373.58	373.33	373.08	373.33	373.08	373.33	373.58
	75	373.50	373.25	373.00	373.25	373.00	373.25	373.50
	65	373.47	373.22	372.97	373.22	372.97	373.22	373.47
	50	373.42	373.17	372.92	373.17	372.92	373.17	373.42
	25	373.33	373.08	372.83	373.08	372.83	373.08	373.33
El Idoro.		373.25	373.00	372.75	373.00	372.75	373.00	373.25

	N	C	W	CL	W	C	S	
<u>Kansas</u>	300	370.75	370.50	370.25	370.50	370.25	370.50	370.75
	294	370.90	370.55	370.30	370.55	370.20	370.55	370.80
	275	371.46	370.71	370.46	370.71	370.46	370.71	371.46
	250	371.17	370.92	370.67	370.92	370.67	370.92	371.17
	225	371.38	371.13	370.88	371.13	370.88	371.13	371.38
	210	371.56	371.25	371.00	371.25	371.00	371.25	371.50
	200	371.58	371.23	371.08	371.23	371.08	371.23	371.58
	175	371.79	371.54	371.29	371.54	371.29	371.54	371.79
	160	371.91	371.66	371.42	371.66	371.42	371.66	371.91
	150	372.00	371.75	371.50	371.75	371.50	371.75	372.00
	140	372.08	371.83	371.58	371.83	371.58	371.83	372.08
	125	372.17	371.92	371.71	371.92	371.71	371.92	372.17
	100	372.42	372.17	371.92	372.17	371.92	372.17	372.42
	88	372.52	372.27	372.02	372.27	372.02	372.27	372.52
	75	372.63	372.38	372.13	372.38	372.13	372.38	372.63
	59	372.76	372.51	372.26	372.51	372.26	372.51	372.76
	50	372.83	372.58	372.33	372.58	372.33	372.58	372.83
	40	372.91	372.66	372.42	372.66	372.42	372.66	372.91
	25	373.04	372.79	372.54	372.79	372.54	372.79	373.04
<u>Utah</u>		373.25	373.00	372.75	373.00	372.75	373.00	373.25

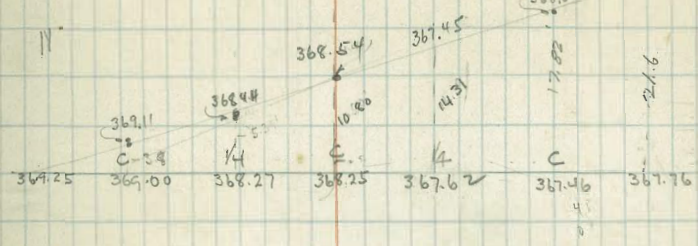
	N	C	1/4	1/4	E	S		
W.L. 30ft	300	367.65	367.49	367.15	367.40	367.15	367.40	367.65
	275	367.97	367.67	367.37	367.62	367.37	367.62	367.87
	250	368.08	367.83	367.59	367.83	367.58	367.83	368.08
	225	368.30	368.05	367.80	368.05	367.80	368.05	368.30
	200	368.52	368.27	368.02	368.27	368.02	368.27	368.52
	175	368.73	368.48	368.23	368.48	368.23	368.48	368.73
	150	368.95	368.70	368.45	368.70	368.45	368.70	368.95
	125	369.17	368.92	368.67	368.92	368.67	368.92	369.17
	112	369.28	369.03	368.78	369.03	368.78	369.03	369.28
	100	369.38	369.13	368.88	369.13	368.88	369.13	369.38
	90	369.49	369.24	368.99	369.24	368.99	369.24	369.49
	75	369.60	369.35	369.11	369.35	369.11	369.35	369.60
	50	369.82	369.57	369.32	369.57	369.32	369.57	369.82
	25	370.03	369.78	369.53	369.78	369.53	369.78	370.03
Kansas		370.25	370.00	369.75	370.00	369.75	370.00	370.25

	N	C	114	114	114	C	S	
Illinois	300	361.25	361.00	360.87	361.25	361.25	361.50	361.75
	275	361.50	361.25	361.12	361.50	361.50	361.75	362.00
	250	361.75	361.50	361.57	361.75	361.75	362.00	362.25
	225	362.00	361.75	361.62	362.00	362.00	362.25	362.50
	200	362.25	362.00	361.87	362.25	362.25	362.50	362.75
	175	362.50	362.25	362.13	362.50	362.50	362.75	363.00
	150	362.75	362.50	362.38	362.75	362.75	363.00	363.25
	125	363.00	362.75	362.63	363.00	363.00	363.25	363.50
	100	363.25	363.00	362.88	363.25	363.25	363.50	363.75
	75	363.50	363.25	363.13	363.50	363.50	363.75	364.00
	50	363.75	363.50	363.38	363.75	363.75	364.00	364.25
	25	364.00	363.75	363.63	364.00	364.00	364.25	364.50
EL Ohio		364.25	364.00	363.97	364.25	364.25	364.50	364.75
WL Ohio	300	364.75	364.50	364.27	364.75	364.75	365.00	365.25
	275	364.96	364.71	364.48	364.94	364.94	365.17	365.42
	250	365.17	364.92	364.69	365.12	365.12	365.33	365.58
	225	365.38	365.13	364.89	365.21	365.21	365.50	365.75
	200	365.58	365.33	365.10	365.50	365.50	365.77	365.92
	175	365.79	365.54	365.30	365.89	365.89	365.84	366.09
	150	366.00	365.75	365.51	365.97	365.97	366.00	366.25
	140	366.09	365.84	365.59	365.90	365.90	366.07	366.32
	125	366.24	365.96	365.72	365.96	365.96	366.17	366.42
	112	366.32	366.07	365.82	366.16	366.16	366.25	366.50
	100	366.42	366.17	365.92	366.25	366.25	366.33	366.58
	75	366.63	366.38	366.13	366.44	366.44	366.50	366.75
	50	366.83	366.58	366.33	366.62	366.62	366.67	366.92
	25	367.04	366.79	366.54	366.81	366.81	366.83	367.08
EL 30th St		367.25	367.00	366.75	367.00	367.00	367.25	367.50

00923
 00924
 00925
 00926
 00927
 00928
 00929
 00930
 00931
 00932
 00933
 00934
 00935
 00936
 00937
 00938
 00939
 00940

	N	C	14	2	14	C	5
296	369.25	369.00	368.27	368.25	367.62	367.46	367.71
275	368.74	368.89	367.70	367.67	367.07	366.93	367.18
250	367.93	367.68	367.02	367.00	366.42	366.30	366.55
225	366.21	366.96	366.35	366.33	365.74	365.67	365.92
200	366.49	366.24	365.67	365.65	365.11	365.04	365.29
175	365.77	365.52	364.99	364.97	364.45	364.41	364.66
150	365.05	364.90	364.39	364.29	363.90	363.78	364.02
125	364.13	364.08	363.69	363.62	363.15	363.15	363.40
100	363.62	363.37	362.96	362.95	362.49	362.52	362.77
75	362.90	362.65	362.09	362.28	361.84	361.89	362.14
50	362.19	361.94	361.66	361.60	361.18	361.26	361.51
25	361.47	361.22	360.93	360.93	360.53	360.63	360.88
EL Iowa	360.75	360.50	360.25	360.25	359.87	360.00	360.25
Iowa St	359.75	359.50	359.25	359.25	358.87	360.00	359.25
275	359.83	359.58	359.20	359.28	358.94	359.17	359.42
250	359.92	359.67	359.44	359.50	359.02	359.33	359.58
225	360.00	359.75	359.53	359.63	359.09	359.50	359.75
200	360.08	359.83	359.62	359.75	359.16	359.67	359.92
175	360.17	359.92	359.72	359.87	359.24	359.93	360.00
150	360.25	360.00	359.81	360.00	359.31	360.00	360.25
125	360.33	360.08	359.90	360.12	359.38	360.17	360.42
100	360.42	360.17	360.00	360.25	359.46	360.33	360.58
75	360.50	360.25	360.09	360.37	359.53	360.50	360.75
50	360.58	360.33	360.19	360.50	359.65	360.67	360.92
25	360.67	360.42	360.28	360.62	359.69	360.83	361.08
5	360.74	360.49	360.35	360.72	359.74	360.97	361.22
EL Illinois	360.75	360.50	360.37	360.75	359.75	361.00	361.25

296



	cb.	L	Cor Tracks
39	x 2.09	209	204
	x 2.06		201
40	x 2.03	203	198
	x		125
41	x 1.97	197	192
	x		189
42	x 1.91	191	186
	x		183
43	x 1.85		180
	x		177
44	x 1.79		174
	x		
45	x 1.73		168
	x		
46	x 1.67		162
	x		
47	x 1.61		156
	x		
48	x 1.55		150 Not Stated
	x 1.50		
+76.4 =	1.5	1.5	

2.24
 0.000
 01884
 76.4
 0.0564

132 = BM opp Sta 39+60
 502
 634
 159
 475

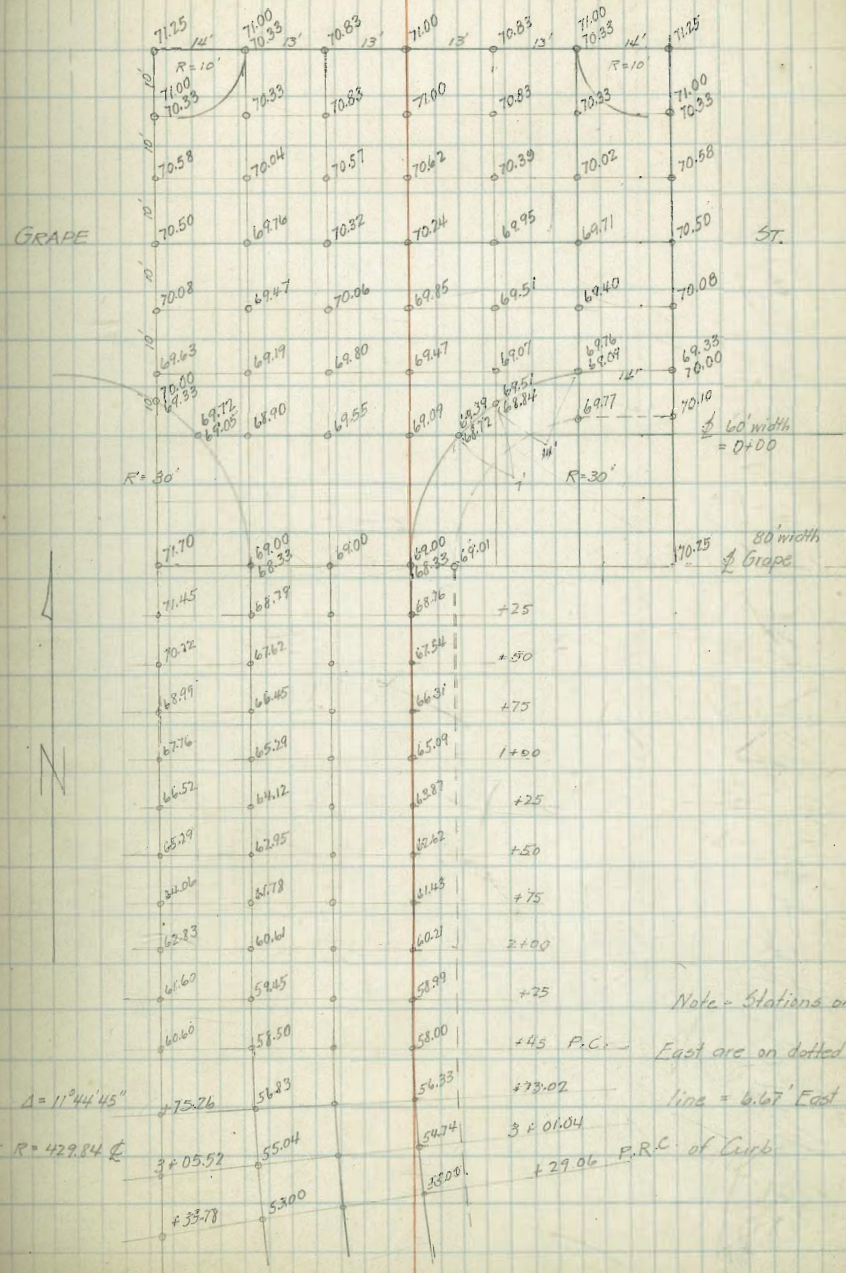
132 125 126 127 128 129 130 131 132 133 134 135 136 137 138 139 140 141 142 143 144 145 146 147 148 149 150 151 152 153 154 155 156 157 158 159 160 161 162 163 164 165 166 167 168 169 170 171 172 173 174 175 176 177 178 179 180 181 182 183 184 185 186 187 188 189 190 191 192 193 194 195 196 197 198 199 200 201 202 203 204 205 206 207 208 209 210 211 212 213 214 215 216 217 218 219 220 221 222 223 224 225 226 227 228 229 230 231 232 233 234 235 236 237 238 239 240 241 242 243 244 245 246 247 248 249 250 251 252 253 254 255 256 257 258 259 260 261 262 263 264 265 266 267 268 269 270 271 272 273 274 275 276 277 278 279 280 281 282 283 284 285 286 287 288 289 290 291 292 293 294 295 296 297 298 299 300 301 302 303 304 305 306 307 308 309 310 311 312 313 314 315 316 317 318 319 320 321 322 323 324 325 326 327 328 329 330 331 332 333 334 335 336 337 338 339 340 341 342 343 344 345 346 347 348 349 350 351 352 353 354 355 356 357 358 359 360 361 362 363 364 365 366 367 368 369 370 371 372 373 374 375 376 377 378 379 380 381 382 383 384 385 386 387 388 389 390 391 392 393 394 395 396 397 398 399 400 401 402 403 404 405 406 407 408 409 410 411 412 413 414 415 416 417 418 419 420 421 422 423 424 425 426 427 428 429 430 431 432 433 434 435 436 437 438 439 440 441 442 443 444 445 446 447 448 449 450 451 452 453 454 455 456 457 458 459 460 461 462 463 464 465 466 467 468 469 470 471 472 473 474 475 476 477 478 479 480 481 482 483 484 485 486 487 488 489 490 491 492 493 494 495 496 497 498 499 500 501 502 503 504 505 506 507 508 509 510 511 512 513 514 515 516 517 518 519 520 521 522 523 524 525 526 527 528 529 530 531 532 533 534 535 536 537 538 539 540 541 542 543 544 545 546 547 548 549 550 551 552 553 554 555 556 557 558 559 560 561 562 563 564 565 566 567 568 569 570 571 572 573 574 575 576 577 578 579 580 581 582 583 584 585 586 587 588 589 590 591 592 593 594 595 596 597 598 599 600 601 602 603 604 605 606 607 608 609 610 611 612 613 614 615 616 617 618 619 620 621 622 623 624 625 626 627 628 629 630 631 632 633 634 635 636 637 638 639 640 641 642 643 644 645 646 647 648 649 650 651 652 653 654 655 656 657 658 659 660 661 662 663 664 665 666 667 668 669 670 671 672 673 674 675 676 677 678 679 680 681 682 683 684 685 686 687 688 689 690 691 692 693 694 695 696 697 698 699 700 701 702 703 704 705 706 707 708 709 710 711 712 713 714 715 716 717 718 719 720 721 722 723 724 725 726 727 728 729 730 731 732 733 734 735 736 737 738 739 740 741 742 743 744 745 746 747 748 749 750 751 752 753 754 755 756 757 758 759 760 761 762 763 764 765 766 767 768 769 770 771 772 773 774 775 776 777 778 779 780 781 782 783 784 785 786 787 788 789 790 791 792 793 794 795 796 797 798 799 800 801 802 803 804 805 806 807 808 809 810 811 812 813 814 815 816 817 818 819 820 821 822 823 824 825 826 827 828 829 830 831 832 833 834 835 836 837 838 839 840 841 842 843 844 845 846 847 848 849 850 851 852 853 854 855 856 857 858 859 860 861 862 863 864 865 866 867 868 869 870 871 872 873 874 875 876 877 878 879 880 881 882 883 884 885 886 887 888 889 890 891 892 893 894 895 896 897 898 899 900 901 902 903 904 905 906 907 908 909 910 911 912 913 914 915 916 917 918 919 920 921 922 923 924 925 926 927 928 929 930 931 932 933 934 935 936 937 938 939 940 941 942 943 944 945 946 947 948 949 950 951 952 953 954 955 956 957 958 959 960 961 962 963 964 965 966 967 968 969 970 971 972 973 974 975 976 977 978 979 980 981 982 983 984 985 986 987 988 989 990 991 992 993 994 995 996 997 998 999 1000

	S.C.		E		N.C.		
200 = E.L. Lark	267.75	267.50	267.12	267.75	266.87	267.00	267.75
175	267.87	267.12	266.72	266.82	266.42	266.50	267.15
165	267.23	266.98	266.55	266.63	266.20	266.30	266.55
137.5	266.81	266.56	266.11	266.16	265.71	265.75	266.00
125	266.63	266.38	265.90	265.93	265.45	265.50	265.75
100	266.25	266.00	265.50	265.50	265.00	265.00	265.25
75	267.25	267.00	266.50	266.50	266.00	266.00	266.25
50	268.25	268.00	267.50	267.50	267.00	267.00	267.25
25	269.25	269.00	268.50	268.50	268.00	268.00	268.25
0 = W.L. Ingalls	270.25	270.00	269.50	269.50	269.00	269.00	269.25

1-23-20

Bancroft St. W Grape to E Elm

N	W Curb	W 1/4	Q	E 1/4	F Curb	N
Grape	271.75	271.00	270.83	271.00	270.83	271.75
N Curb	71.00	71.00				
N 1/4						
60' width						
3/4						
3 Curb						
60' width						
0+25						
+50						
+75						
1+00						
+25						
+50						
+75						
2+00						
+25						
F.C.						
+45						
W E						
+75.26 +73.92						
3+05.52 3+01.04						
P.R.C.						
+35.25 +29.26						



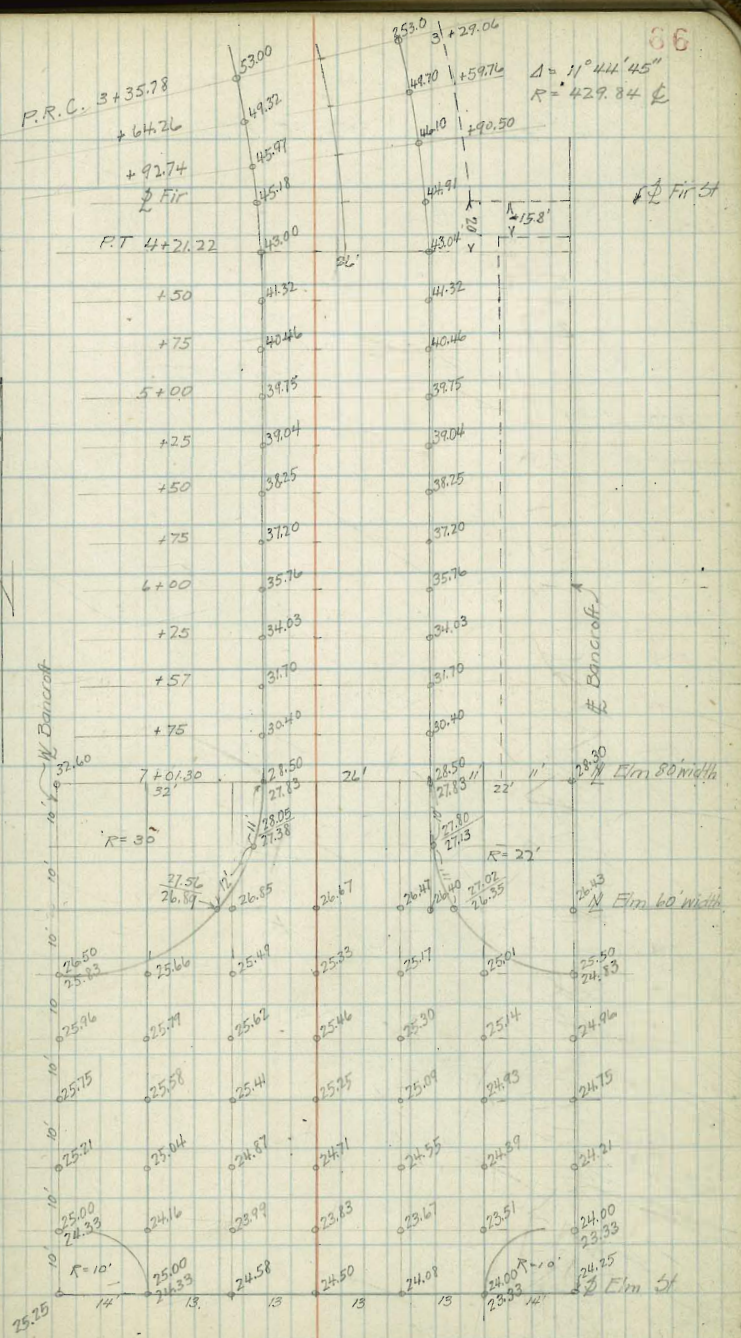
$\Delta = 11^\circ 44' 45''$

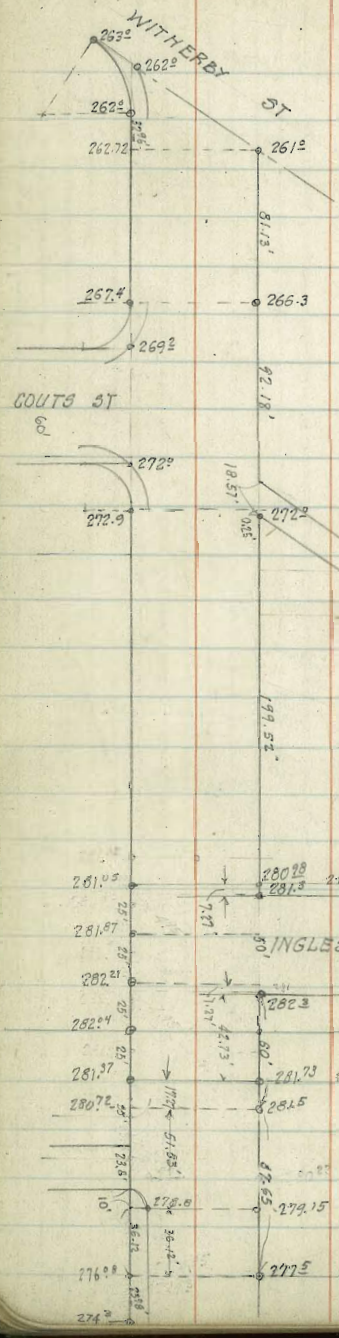
$R = 429.84'$

3 + 01.04
+ 29.06 P.R.C. of Curb

Bancroft St. N. Grape to Elm.

West prop. line	W Curb	℄	E Curb	E prop. line
P.R.C.				
3+35.78	3+29.06			
+64.26	+59.78			
+92.74	+90.50			
℄ Fir				
P.T.				
4+21.22				
+50				
+75				
5+00				
+25				
+50				
+75				
6+00				
+25				
+57				
+75				
80' width				
N Elm 70' width				
60' width				
N Elm				
N Curb				
N 1/4				
℄				
3/4				
S Curb				
℄ Elm				





SUNSET BLVD.

ST

COURT ST

SINGLEBIDE AVE

0+60

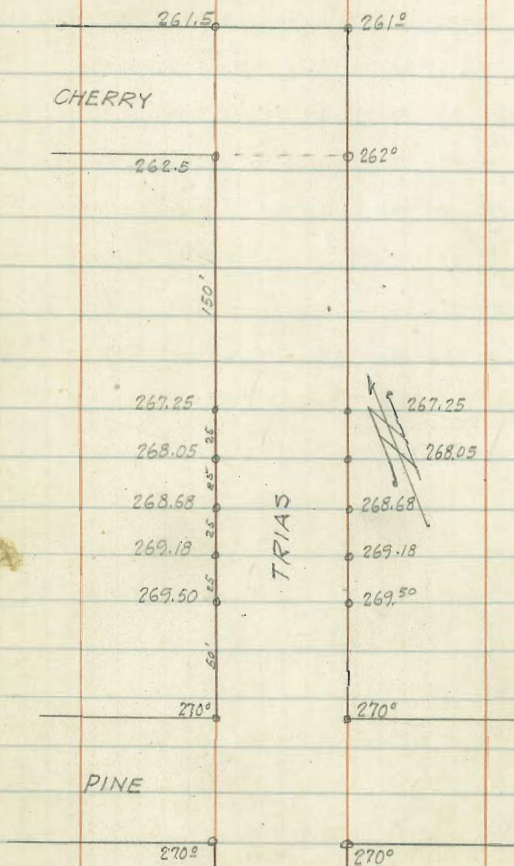
SUNSET BLVD 8" Gutters.

Station	B	cb	1/4	1/4	2	4	6	N
1 = 0.0								
147.65 E of Ingle side	276.93	276.08	276.28	276.79	276.98	277.50	277.75	
+10	277.18	276.83	276.97	277.39	277.52	277.96	278.21	
+36.12	279.05	278.80	278.68	278.98	278.88	279.15	279.40	
+40	279.19	278.94	278.86	279.14	279.06	279.33	279.58	
+50	279.57	279.32	279.24	279.55	279.49	279.78	280.03	
+80	280.68	280.43	280.46	280.79	280.69	281.15	281.40	
+87.65	280.97	280.72	280.73	281.11	281.13	281.50	281.75	
1+00								
B.V.C.								
1+04.92	281.62	281.37	281.26	281.55	281.46	281.73	281.98	
1+29.92	282.29	282.04	281.87	282.05	281.88	282.06	282.31	
E.L. Ingle side								
1+47.65						282.3	282.55	
1+54.32	282.46	282.21	282.02	282.18	281.91	282.15	282.4	
1+79.92	282.12	281.87	281.35	281.69	280.65	280.50	280.80	
W.L. Ingle side								
1+97.65						281.3	281.55	
E.V.C. = W.L. 1+97.65								
2+04.92	281.30	281.05	280.86	281.02	280.81	280.98	281.23	

SUNSET BLVD.

	S	Ch	1/4	1/2	3/4	Ch	N
0.0							
W.L. Ingle side							
E.V.C.							
0+7.27	281.30	281.05	280.86	281.02	280.81	280.98	281.23
+ 50	279.50	279.25	279.01	279.12	278.86	278.99	279.24
+ 100	277.39	277.14	276.85	276.90	276.60	276.67	276.92
+ 150	275.33	275.08	274.74	274.68	274.39	274.34	274.59
P.C. E. Couts 00							
+ 200 ²⁷	273.15	272.90	272.51	272.45	272.06	272.00	272.25
Int. Ch + PL ²⁸							
+ 28.27 ²⁹	272.0	270.25	270.23	270.40	270.33	270.55	270.80
E. Couts ³⁰	270.6	269.65	269.36	269.70	269.11	269.16	269.41
Int. Ch ³¹	268.2	268.05	268.10	268.28	267.76	267.77	268.02
0+00							
E.C. W Couts ³²	267.65	267.4	266.96	266.87	266.41	266.30	266.55
+ 40	265.32	265.07	264.53	264.33	263.78	263.61	263.86
EL. Witherby N							
+ 81.13 ³³	262.97	262.72	262.13	261.86	261.28	261.00	261.25
P.C.				261.50	261.08		
EL. Witherby S. ³⁴	263.0	262.00	261.58				

TRIAS ST.



	TRIAS ST Finished Grade				50' Wide 10' Walks		E
	3" Gutters W W	cb	¼	£	¼	cb	
N. Line Cherry	261.75	261.50	261.37	261.25	261.13	261.0	261.25
N. Curb	261.50 <small>260.84</small>	261.50 <small>260.84</small>	261.37	261.25	261.13	261.0	261.25
N ¼	261.66	261.09	261.58	261.50	261.34	261.25	261.50
£	262.0	261.34	261.79	261.75	261.85	261.50	261.75
5/4	261.42	261.59	262.00	262.00	261.76	261.75	262.00
S. Curb	261.84 262.50	261.84 262.50	262.21	262.25	261.96	262.0	262.25
S. Line Cherry	262.75	262.50	262.21	262.25	261.96	262.0	262.25
25' S	263.54	263.29	263.02	263.08	262.81	262.88	263.13
50	264.33	264.08	263.83	263.91	263.66	263.75	264.00
75	265.12	264.87	264.64	264.75	264.52	264.63	264.88
100	265.91	265.66	265.46	265.58	265.37	265.50	265.75
125	266.70	266.45	266.26	266.41	266.22	266.38	266.63
150	267.50	267.25	267.08	267.25	267.08	267.25	267.50
175	268.30	268.05	267.88	268.05	267.88	268.05	268.30
200	268.85	268.68	268.51	268.68	268.51	268.68	268.83
225	269.43	269.18	269.01	269.18	269.01	269.18	269.43
250	269.75	269.50	269.33	269.50	269.33	269.50	269.75
275	270.00	269.75	269.58	269.75	269.58	269.75	270.00
300 N. Line Pine	270.25	270.00	269.83	270.0	269.83	270.0	270.25
N. Curb	270.00	270.00 <small>269.33</small>	269.83	270.00	269.83	270.00	270.00
N ¼	269.83	269.33	269.83	270.00	269.83	269.33	269.83
£	270.00	269.33	269.83	270.00	269.83	269.33	270.00
3/4	269.83	269.33	269.83	270.00	269.83	269.33	269.83
S. Curb	270.00	270.00	269.83	270.00	269.83	270.00	270.00
S.L. Pine	270.25	270.00	269.83	270.00	269.83	270.00	270.25

MOORE ST.

	W. C6		E C6
Q South 3+00	46.50	46.90	45.50
S C6	46.41		
S 1/4	46.33		
Q	46.25	46.65	
N 1/4	46.17		
N C6	46.09		
N South - 0+00	46.00	46.3	45.00
+30	45.60		
+43	45.43		
+50	45.34	45.94	
+80	44.94		
1+00	44.67	45.07	
105	44.61	45	
+50	44.00	44.40	
+75	43.68	44.06	
2+00	43.34	43.74	
+50	42.68	43.08	
Q Noell 3+01.4	42.00		42.00
S C6			
S 1/4			
Q			
N 1/4			
N C6			
Q Noell	42.00		42.00

39.8 = grade at outlet
of 7' pipe

56.53	45.5	45.14	44.7	43.8	43.14	42.45	41.8
57.4	7.4	8.06	8.73	9.4	10.02	10.72	11.4
50.77	E + 50	+2.1	+3.5	+6.9	+8.1	+8.6	+3.4
42.4	+14	+1.0	+0.6	-4.1	-2.1	-3.1	-3.2
33.20							
150.4	43.05	43.74					
	49.0	45.0					
43.74	44.40	45.07	45.74	46.3	46.65		
7.10	2.4	5.77	5.10	4.54	4.19		
50.84							
	46.90						
	39.4						

MOORE ST.

44.12 Y.TIE Estudillo

46.21 NW 30K Wright

74

44.12
44.13
44.14
44.15
44.16
44.17
44.18
44.19
44.20
44.21
44.22
44.23
44.24
44.25
44.26

	W. Cb		E. Cb
N Noell = 0+00	42.00	43.0	42.00
+50	42.6		
+80	42.96		
1+00	43.20	43.6	
+30	43.56		
+50	43.80	44.4	
+90	44.28		
2+00	44.40	44.8	
+10	44.52		
+50	45.0	45.4	
+84	45.41		
Est. 3+01.6	45.62	46.0	
6 Cb	45.79		
5 1/4	45.94		
Q	46.10	46.5	
N 1/4	46.26		
N Cb	46.41		
N Est 0+00	46.58	46.95	
+50	47.18	47.6	
1+00	47.78	48.26	
+50	48.20	48.90	
+60	48.58	49.02	
+85	48.78	49.29	P.C.
2+00	48.78	49.29	
2+10	48.77	49.25	
2+35	47.99	49.50	
+50		49.45	
50302+60 Apex		49.45	
Wright 3+02.2	47.34	49.4	
+85		49.4	
3+10		49.03	

53.20	41.8	42.4	43.0	43.6	44.0	44.8	45.4
53.7	11.2	10.8	10.2	9.6	9.0	8.4	7.6
49.23	+0.8	-1.1	+1.0	+1.6	+2.1	+2.5	+2.8
7.1		-4.5	-4.5	-3.6	-3.3	-2.8	+0.4
57.04	-5.7						
44.12	44.28	44.45	44.58	44.80	44.95	44.79	44.4
12.99	10.73	10.12	9.53	9.1	9.02	9.32	10.0
57.11	+5.8	+5.8	+5.6	+4.8	+5.1	+6.9	+6.9
	+0.2	+0.6	+0.5	-0.2	-0.8	+0.7	+0.6
50.57	44.74	44.45	44.50	44.45			
	1.30	1.14	1.09	1.14			
44.21	44.20	44.02	43.26	42.42	41.68	40.85	40.02
6.04	2.96	3.78	3.99	4.63	5.27	5.75	6.85
55.25							6.23
44.12	44.80	44.4	44.6	43.0	42.4	5.97	
3.04	3.2	3.8	4.4	5.0	5.4		
48.04							

	W. Cb	
Wright = 3102.2	47.34	47.70
3 Cb 3+10	47.10	49.03
3 1/4 3+35	46.89	48.66
Q 3+60	46.67	48.18
N 1/4	46.45	
N Cb	46.24	
Wright = 0+00	46.00	47.16
+50	45.17	46.70
1+00	44.34	45.64
+50	43.51	44.58
2+00	42.67	43.52
+50	41.84	42.46
Band = 3+00.5	41.00	41.40
3 Cb	40.74	
3 1/4	40.49	
Q +50	40.44	40.84
Q ↑	40.25	40.05
N 1/4	40.01	
N Cb	39.76	
Band = 0+00	39.50	39.90
+50	38.40	38.80
1+00	37.32	37.72
+50	36.74	36.64
2+00	35.16	35.56
+50	34.08	34.48
Counts 3+06.1	33.00	33.40

FC6

41.0

39.5

33.0

47.11	45.8	44.97	44.14	43.21	42.47	41.64	40.8
	11.8	8.0	9.4	10.3	11.1	11.9	12.6
46.21	+6.4	+7.0	+6.9	+4.6	+3.4	+5.2	+6.4
7.35	+0.3	-0.7	+0.4	-1.6	-2.0	-1.0	0.0
43.56							
42.72	3.93	3.82	3.77	3.64	3.49	3.38	3.28
40.74	3.7	4.27	5.3	6.4	7.5	8.6	9.67
1.73	+5.4	+3.4	+4.5	+3.4	+3.7	+2.5	+3.5
42.47	-0.5	-2.2	-4.2	-4.1	-4.0	-4.3	-3.6
41.77	50.68	35.56	30.64	27.72	25.80	24.22	
	7.31	6.23	5.14	4.07	2.99	1.89	
46.71	44.75	44.70	45.64	44.58	43.52	42.46	41.40
44.6	2.92	3.97	5.02	6.07	7.12	8.21	9.27
50.87							10.34
46.21	40.13	45.66	40.03	40.75	41.60		
432	2.41	1.93	1.56	2.34	3.17		
50.57							

MOORE ST.

	W Cb	¢	FCb
1/2 Cents 30.11	33.00	33.40	33.0
5 Cb	32.56		
5 1/4	32.16		
¢	31.75	32.56	
N 1/4	31.34		
N Cb	30.94		
W. Cents = 0100	31.32	31.73	
+ 50	30.77	30.67	
1+00	29.23	29.62	
+ 50	28.17	28.51	28.17
2+00	26.89	27.18	27.17 27.93 27.35
2+46.6 = PC. 07W	25.69	26.18 26.75 26.65	26.52
3+00	24.34	24.71 25.02 25.45	25.62
# 3+18.89		24.30 = PC. 07E 25.40	25.65
¢ With 1/2 3+28.52	23.75	24.237 24.50	

42.47	3112	3007	2902	2747	2722	2639	2509
9.23	112	6.9	7.9	9.0	9.6	10.1	11.2
3324	+ 5.1	+ 5.1	+ 4.9	+ 5.4	+ 6.0	- .03	- 2.4
371	- 22	- 1.9	- 2.1	- 0.9			
34.95							
	2.65	2.55					
	1.04	1.16					
	+ 4.9	+ 4.0					
10.54							
11.25							
22.47	26.65	26.65	27.73	27.65	28.57	29.62	30.67
34	7.63	7.10	6.08	6.33	5.24	4.19	3.14
22.13							
11.63							
33.31							
22.12	25.40	24.65	24.18	23.41	22.73	22.57	22.62
10.15	6.88	5.43	6.10	4.88	4.56	3.71	2.60
32.28							
	30.67	31.20	29.56	28.40			
	1.17	1.07	1.23	1.39			
	4.79						

S edge
N edge

1.62 spk N.W. Kurtz.

27 77

0+00	1.0	1.5		
0+50	1.05	1.55		
0+60	1.33	1.74		5/4
0+60	2.09	2.24		E 1/2
0+80	2.85	3.13	2.95	4 1/2
0+97.70 E-Kurtz	4.00			8"
1+50	6.17	6.52		8"
2+00		8.93		15"
2+20		9.90		00
2+40		10.30		01 1/2"
2+60		10.30		
3+00	10.00	9.91 10.10	9.50	25" 240
3+60	8.95	9.26	9.30	9.26

Hand

1.62	390	642	883	100	1020	920	92
974	750	504	26	156	126	21	6.2
776	-1.8	-1.5	-0.9	-0.1	204	-0.6	+0.5
144		217	353	975	125	915	895
1004		53	34	1.7	15	3.2	6.5
1541		-4.3	-4.8	-5.0	-34	-0.9	+3.2
1543			-2.1				

on face of Side

1186	375	642	883	1020	162	303
	795	470	302	206	164	374
	-18	-1.5	-0.5	-0.3	-0.1	554
						251
						576

120 NE Kurtz + Tide 20.2
494 373 351

1020	385	105	154	137	174	209	224
387	159	481	389	407	370	335	320

162	390	642	883	100	1020	920	92
974	750	504	26	156	126	21	6.2
776	-1.8	-1.5	-0.9	-0.1	204	-0.6	+0.5
144		217	353	975	125	915	895
1004		53	34	1.7	15	3.2	6.5
1541		-4.3	-4.8	-5.0	-34	-0.9	+3.2
1543			-2.1				

162	390	642	883	100	1020	920	92
974	750	504	26	156	126	21	6.2
776	-1.8	-1.5	-0.9	-0.1	204	-0.6	+0.5

1020	390	410	925
370	400	974	465
1390			

Hand

4+00	9.22	sedge pork 2.14 9.16	4. 9.57	edges para. 9.49 9.36
4+40	9.48		9.73	9.83
4+80			10.28	10.10
5+00				10.36
5+50	12.10			12.75
6+00		14.54 10.7	14.64	14.54
6+50	15.98		16.23	16.69
6+77.18 = PC. of Paramat. 17.5	16.80		17.15	17.56
7+20.81 = PC. ✓ ✓	18.99		19.19	19.75
	+ 0.8			5.1
	+ 1.6			+ 1.6
	+ 2.7			2.1 + 2.7 2.1 + 6.9

1543	947	973	100	126	1454	1669	1786	1975
250	60	57	5.15	2.8	0.9	8.54	7.2	5.3
12.93	+ 2.6	+ 0.7	- 0.7	- 1.4	- 1.3	- 0.3	- 0.2	+ 0.3
10.10	9.22	9.48	9.75	10.1	10.29	15.26	16.80	18.09
25.03	6.2	6.0	5.9	3.0	1.1	9.05	8.2	6.9
17.8	+ 1.3	- 0.7	- 2.5	- 3.0	- 1.6	- 0.8	- 0.6	+ 0.2
23.26								
9.61								
32.86								
10.54				3.0				
12.22				0.7				
22.83				14.35				
4.45	3.86							
18.38	23.07							
1.58								
26.93	13.40	2.36	2.73	10.1	10.28	10.76	12.65	
		4.97	7.62	4.85	4.07	3.59	1.70	
1.35	14.54	16.47	16.23					
17.1	15.8	2.23	2.67					
12.64								
6.28								
18.72								
10.54	17.15	17.86	2.65	1.78	2.88			
10.14	3.58	2.87						
20.73								
20.75	6.55	5.65	4.75	3.85	11.95	20.1		
7.45						26.12		
25.20								
18.95	19.75	19.75	7.18	6.37	5.56	4.46	3.95	3.14
18.1	6.11							
26.52	24.74							

9 out

13+00	189	184	437	2 3/4
13+50	186	181	440	2 3/4
14+00	1835	178	443	2 3/4
14+50	1805	175	430	2 3/4
15+00	1780	173	432	4"
	1936	170	435	3"
15+00	1946	167	438	1 1/2"
	170	165	440	7/8"
17+00	167	162	443	3/4"
	164	159	446	3/4"
18+00	1613	156	449	2"
	154	154	451	3 7/8"
19+00	156	150	455	1 3/8"
20	153			
	15			
	151			
21	150	151	439	1 3/4"
		1515	435	3 1/4"
22	163	156	432	1 1/2"
		161	429	00
23	167	162	424	00
	1945	167.5	422.5	2 1/2"
24	176	171	419	1 3/4"
	179	164	416	1 1/2"
25	182	177	414	7/8"
	185	180	411	1/2"

6.23	126	132	137	142	147	152	157	162	167	172	177	182	187	192	197	202	207	212	217	222	227	232	237	242	247	252	257	262	267	272	277	282	287	292	297	302	307	312	317	322	327	332	337	342	347	352	357	362	367	372	377	382	387	392	397	402	407	412	417	422	427	432	437	442	447	452	457	462	467	472	477	482	487	492	497	502	507	512	517	522	527	532	537	542	547	552	557	562	567	572	577	582	587	592	597	602	607	612	617	622	627	632	637	642	647	652	657	662	667	672	677	682	687	692	697	702	707	712	717	722	727	732	737	742	747	752	757	762	767	772	777	782	787	792	797	802	807	812	817	822	827	832	837	842	847	852	857	862	867	872	877	882	887	892	897	902	907	912	917	922	927	932	937	942	947	952	957	962	967	972	977	982	987	992	997	1002	1007	1012	1017	1022	1027	1032	1037	1042	1047	1052	1057	1062	1067	1072	1077	1082	1087	1092	1097	1102	1107	1112	1117	1122	1127	1132	1137	1142	1147	1152	1157	1162	1167	1172	1177	1182	1187	1192	1197	1202	1207	1212	1217	1222	1227	1232	1237	1242	1247	1252	1257	1262	1267	1272	1277	1282	1287	1292	1297	1302	1307	1312	1317	1322	1327	1332	1337	1342	1347	1352	1357	1362	1367	1372	1377	1382	1387	1392	1397	1402	1407	1412	1417	1422	1427	1432	1437	1442	1447	1452	1457	1462	1467	1472	1477	1482	1487	1492	1497	1502	1507	1512	1517	1522	1527	1532	1537	1542	1547	1552	1557	1562	1567	1572	1577	1582	1587	1592	1597	1602	1607	1612	1617	1622	1627	1632	1637	1642	1647	1652	1657	1662	1667	1672	1677	1682	1687	1692	1697	1702	1707	1712	1717	1722	1727	1732	1737	1742	1747	1752	1757	1762	1767	1772	1777	1782	1787	1792	1797	1802	1807	1812	1817	1822	1827	1832	1837	1842	1847	1852	1857	1862	1867	1872	1877	1882	1887	1892	1897	1902	1907	1912	1917	1922	1927	1932	1937	1942	1947	1952	1957	1962	1967	1972	1977	1982	1987	1992	1997	2002	2007	2012	2017	2022	2027	2032	2037	2042	2047	2052	2057	2062	2067	2072	2077	2082	2087	2092	2097	2102	2107	2112	2117	2122	2127	2132	2137	2142	2147	2152	2157	2162	2167	2172	2177	2182	2187	2192	2197	2202	2207	2212	2217	2222	2227	2232	2237	2242	2247	2252	2257	2262	2267	2272	2277	2282	2287	2292	2297	2302	2307	2312	2317	2322	2327	2332	2337	2342	2347	2352	2357	2362	2367	2372	2377	2382	2387	2392	2397	2402	2407	2412	2417	2422	2427	2432	2437	2442	2447	2452	2457	2462	2467	2472	2477	2482	2487	2492	2497	2502	2507	2512	2517	2522	2527	2532	2537	2542	2547	2552	2557	2562	2567	2572	2577	2582	2587	2592	2597	2602	2607	2612	2617	2622	2627	2632	2637	2642	2647	2652	2657	2662	2667	2672	2677	2682	2687	2692	2697	2702	2707	2712	2717	2722	2727	2732	2737	2742	2747	2752	2757	2762	2767	2772	2777	2782	2787	2792	2797	2802	2807	2812	2817	2822	2827	2832	2837	2842	2847	2852	2857	2862	2867	2872	2877	2882	2887	2892	2897	2902	2907	2912	2917	2922	2927	2932	2937	2942	2947	2952	2957	2962	2967	2972	2977	2982	2987	2992	2997	3002	3007	3012	3017	3022	3027	3032	3037	3042	3047	3052	3057	3062	3067	3072	3077	3082	3087	3092	3097	3102	3107	3112	3117	3122	3127	3132	3137	3142	3147	3152	3157	3162	3167	3172	3177	3182	3187	3192	3197	3202	3207	3212	3217	3222	3227	3232	3237	3242	3247	3252	3257	3262	3267	3272	3277	3282	3287	3292	3297	3302	3307	3312	3317	3322	3327	3332	3337	3342	3347	3352	3357	3362	3367	3372	3377	3382	3387	3392	3397	3402	3407	3412	3417	3422	3427	3432	3437	3442	3447	3452	3457	3462	3467	3472	3477	3482	3487	3492	3497	3502	3507	3512	3517	3522	3527	3532	3537	3542	3547	3552	3557	3562	3567	3572	3577	3582	3587	3592	3597	3602	3607	3612	3617	3622	3627	3632	3637	3642	3647	3652	3657	3662	3667	3672	3677	3682	3687	3692	3697	3702	3707	3712	3717	3722	3727	3732	3737	3742	3747	3752	3757	3762	3767	3772	3777	3782	3787	3792	3797	3802	3807	3812	3817	3822	3827	3832	3837	3842	3847	3852	3857	3862	3867	3872	3877	3882	3887	3892	3897	3902	3907	3912	3917	3922	3927	3932	3937	3942	3947	3952	3957	3962	3967	3972	3977	3982	3987	3992	3997	4002	4007	4012	4017	4022	4027	4032	4037	4042	4047	4052	4057	4062	4067	4072	4077	4082	4087	4092	4097	4102	4107	4112	4117	4122	4127	4132	4137	4142	4147	4152	4157	4162	4167	4172	4177	4182	4187	4192	4197	4202	4207	4212	4217	4222	4227	4232	4237	4242	4247	4252	4257	4262	4267	4272	4277	4282	4287	4292	4297	4302	4307	4312	4317	4322	4327	4332	4337	4342	4347	4352	4357	4362	4367	4372	4377	4382	4387	4392	4397	4402	4407	4412	4417	4422	4427	4432	4437	4442	4447	4452	4457	4462	4467	4472	4477	4482	4487	4492	4497	4502	4507	4512	4517	4522	4527	4532	4537	4542	4547	4552	4557	4562	4567	4572	4577	4582	4587	4592	4597	4602	4607	4612	4617	4622	4627	4632	4637	4642	4647	4652	4657	4662	4667	4672	4677	4682	4687	4692	4697	4702	4707	4712	4717	4722	4727	4732	4737	4742	4747	4752	4757	4762	4767	4772	4777	4782	4787	4792	4797	4802	4807	4812	4817	4822	4827	4832	4837	4842	4847	4852	4857	4862	4867	4872	4877	4882	4887	4892	4897	4902	4907	4912	4917	4922	4927	4932	4937	4942	4947	4952	4957	4962	4967	4972	4977	4982	4987	4992	4997	5002	5007	5012	5017	5022	5027	5032	5037	5042	5047	5052	5057	5062	5067	5072	5077	5082	5087	5092	5097	5102	5107	5112	5117	5122	5127	5132	5137	5142	5147	5152	5157	5162	5167	5172	5177	5182	5187	5192	5197	5202	5207	5212	5217	5222	5227	5232	5237	5242	5247	5252	5257	5262	5267	5272	5277	5282	5287	5292	5297	5302	5307	5312	5317	5322	5327	5332	5337	5342	5347	5352	5357	5362	5367	5372	5377	5382	5387	5392	5397	5402	5407	5412	5417	5422	5427	5432	5437	5442	5447	5452	5457	5462	5467	5472	5477	5482	5487	5492	5497	5502	5507	5512	5517	5522	5527	5532	5537	5542	5547	5552	5557	5562	5567	5572	5577	5582	5587	5592	5597	5602	5607	5612	5617	5622	5627	5632	5637	5642	5647	5652	5657	5662	5667	5672	5677	5682	5687	5692	5697	5702	5707	5712	5717	5722	5727	5732	5737	5742	5747	5752	5757	5762	5767	5772	5777	5782	5787	5792	5797	5802	5807	5812	5817	5822	5827	5832	5837	5842	5847	5852	5857	5862	5867	5872	5877	5882	5887	5892	5897	5902	5907	5912	5917	5922	5927	5932	5937	5942	5947	5952	5957	5962	5967	5972	5977	5982	5987	5992	5997	6002	6007	6012	6017	6022	6027	6032	6037	6042	6047	6052	6057	6062	6067	6072	6077	6082	6087	6092	6097	6102	6107	6112	6117	6122	6127	6132	6137	6142	6147	6152	6157	6162	6167	6172	6177	6182	6187	6192	6197	6202	6207	6212	6217	6222	6227	6232	6237	6242	6247	6252	6257	6262	6267	6272	6277	6282	6287	6292	6297	6302	6307	6312	6317	6322	6327	6332	63
------	-----	-----	-----	-----	-----	-----	-----	-----	-----	-----	-----	-----	-----	-----	-----	-----	-----	-----	-----	-----	-----	-----	-----	-----	-----	-----	-----	-----	-----	-----	-----	-----	-----	-----	-----	-----	-----	-----	-----	-----	-----	-----	-----	-----	-----	-----	-----	-----	-----	-----	-----	-----	-----	-----	-----	-----	-----	-----	-----	-----	-----	-----	-----	-----	-----	-----	-----	-----	-----	-----	-----	-----	-----	-----	-----	-----	-----	-----	-----	-----	-----	-----	-----	-----	-----	-----	-----	-----	-----	-----	-----	-----	-----	-----	-----	-----	-----	-----	-----	-----	-----	-----	-----	-----	-----	-----	-----	-----	-----	-----	-----	-----	-----	-----	-----	-----	-----	-----	-----	-----	-----	-----	-----	-----	-----	-----	-----	-----	-----	-----	-----	-----	-----	-----	-----	-----	-----	-----	-----	-----	-----	-----	-----	-----	-----	-----	-----	-----	-----	-----	-----	-----	-----	-----	-----	-----	-----	-----	-----	-----	-----	-----	-----	-----	-----	-----	-----	-----	-----	-----	-----	-----	-----	-----	-----	------	------	------	------	------	------	------	------	------	------	------	------	------	------	------	------	------	------	------	------	------	------	------	------	------	------	------	------	------	------	------	------	------	------	------	------	------	------	------	------	------	------	------	------	------	------	------	------	------	------	------	------	------	------	------	------	------	------	------	------	------	------	------	------	------	------	------	------	------	------	------	------	------	------	------	------	------	------	------	------	------	------	------	------	------	------	------	------	------	------	------	------	------	------	------	------	------	------	------	------	------	------	------	------	------	------	------	------	------	------	------	------	------	------	------	------	------	------	------	------	------	------	------	------	------	------	------	------	------	------	------	------	------	------	------	------	------	------	------	------	------	------	------	------	------	------	------	------	------	------	------	------	------	------	------	------	------	------	------	------	------	------	------	------	------	------	------	------	------	------	------	------	------	------	------	------	------	------	------	------	------	------	------	------	------	------	------	------	------	------	------	------	------	------	------	------	------	------	------	------	------	------	------	------	------	------	------	------	------	------	------	------	------	------	------	------	------	------	------	------	------	------	------	------	------	------	------	------	------	------	------	------	------	------	------	------	------	------	------	------	------	------	------	------	------	------	------	------	------	------	------	------	------	------	------	------	------	------	------	------	------	------	------	------	------	------	------	------	------	------	------	------	------	------	------	------	------	------	------	------	------	------	------	------	------	------	------	------	------	------	------	------	------	------	------	------	------	------	------	------	------	------	------	------	------	------	------	------	------	------	------	------	------	------	------	------	------	------	------	------	------	------	------	------	------	------	------	------	------	------	------	------	------	------	------	------	------	------	------	------	------	------	------	------	------	------	------	------	------	------	------	------	------	------	------	------	------	------	------	------	------	------	------	------	------	------	------	------	------	------	------	------	------	------	------	------	------	------	------	------	------	------	------	------	------	------	------	------	------	------	------	------	------	------	------	------	------	------	------	------	------	------	------	------	------	------	------	------	------	------	------	------	------	------	------	------	------	------	------	------	------	------	------	------	------	------	------	------	------	------	------	------	------	------	------	------	------	------	------	------	------	------	------	------	------	------	------	------	------	------	------	------	------	------	------	------	------	------	------	------	------	------	------	------	------	------	------	------	------	------	------	------	------	------	------	------	------	------	------	------	------	------	------	------	------	------	------	------	------	------	------	------	------	------	------	------	------	------	------	------	------	------	------	------	------	------	------	------	------	------	------	------	------	------	------	------	------	------	------	------	------	------	------	------	------	------	------	------	------	------	------	------	------	------	------	------	------	------	------	------	------	------	------	------	------	------	------	------	------	------	------	------	------	------	------	------	------	------	------	------	------	------	------	------	------	------	------	------	------	------	------	------	------	------	------	------	------	------	------	------	------	------	------	------	------	------	------	------	------	------	------	------	------	------	------	------	------	------	------	------	------	------	------	------	------	------	------	------	------	------	------	------	------	------	------	------	------	------	------	------	------	------	------	------	------	------	------	------	------	------	------	------	------	------	------	------	------	------	------	------	------	------	------	------	------	------	------	------	------	------	------	------	------	------	------	------	------	------	------	------	------	------	------	------	------	------	------	------	------	------	------	------	------	------	------	------	------	------	------	------	------	------	------	------	------	------	------	------	------	------	------	------	------	------	------	------	------	------	------	------	------	------	------	------	------	------	------	------	------	------	------	------	------	------	------	------	------	------	------	------	------	------	------	------	------	------	------	------	------	------	------	------	------	------	------	------	------	------	------	------	------	------	------	------	------	------	------	------	------	------	------	------	------	------	------	------	------	------	------	------	------	------	------	------	------	------	------	------	------	------	------	------	------	------	------	------	------	------	------	------	------	------	------	------	------	------	------	------	------	------	------	------	------	------	------	------	------	------	------	------	------	------	------	------	------	------	------	------	------	------	------	------	------	------	------	------	------	------	------	------	------	------	------	------	------	------	------	------	------	------	------	------	------	------	------	------	------	------	------	------	------	------	------	------	------	------	------	------	------	------	------	------	------	------	------	------	------	------	------	------	------	------	------	------	------	------	------	------	------	------	------	------	------	------	------	------	------	------	------	------	------	------	------	------	------	------	------	------	------	------	------	------	------	------	------	------	------	------	------	------	------	------	------	------	------	------	------	------	------	------	------	------	------	------	------	------	------	------	------	------	------	------	------	------	------	------	------	------	------	------	------	------	------	------	------	------	------	------	------	------	------	------	------	------	------	------	------	------	------	------	------	------	------	------	------	------	------	------	------	------	------	------	------	------	------	------	------	------	------	------	------	------	------	------	------	------	------	------	------	------	------	------	------	------	------	------	------	------	------	------	------	------	------	------	------	------	------	------	------	------	------	------	------	------	------	------	------	------	------	------	------	------	------	------	------	------	------	------	------	------	------	------	------	------	------	------	------	------	------	------	------	------	------	------	------	------	------	------	------	------	------	------	------	------	------	------	------	------	------	------	------	------	------	------	------	------	------	------	------	------	------	------	------	------	------	------	------	----

Sta.	Dist.	Curve	Radius	Tangent	Middle ordinate	External	Long Chord
26	1.38	114	180	434.07	6.23	4.35	3 1/4
27	1.94	144	186	435	4.79	4.32	00
28	2.01	144	192.5	438.5	6.21	4.25	1/2
29	2.07	144	199	439	6.23	4.22	5/8
30	2.14	144	205	441.5	6.23	4.21	1/2
31	2.20	144	212	444	6.23	4.18	1 1/2
32	2.27	144	215	445	6.23	4.15	2
33	2.33	144	218	446	6.23	4.12	2 1/2
34	2.4	144	225	449	6.23	4.09	3 1/4
35	2.43	144	231	451	6.23	4.11	2 1/2
36	2.49	144	235	452	6.23	4.12	3/8
37	2.51	144	235	452	6.23	4.12	1/4
38	2.5	144	239	453	6.23	4.12	1/2
39	2.51	144	240	453	6.23	4.12	00
40	2.5	144	249	455	6.23	4.12	1/4

continued Page 60

13 133 146 147 148 149 150 151 152 153 154 155 156 157 158 159 160 161 162 163 164 165 166 167 168 169 170 171 172 173 174 175 176 177 178 179 180 181 182 183 184 185 186 187 188 189 190 191 192 193 194 195 196 197 198 199 200 201 202 203 204 205 206 207 208 209 210 211 212 213 214 215 216 217 218 219 220 221 222 223 224 225 226 227 228 229 230 231 232 233 234 235 236 237 238 239 240 241 242 243 244 245 246 247 248 249 250 251 252 253 254 255 256 257 258 259 260 261 262 263 264 265 266 267 268 269 270 271 272 273 274 275 276 277 278 279 280 281 282 283 284 285 286 287 288 289 290 291 292 293 294 295 296 297 298 299 300 301 302 303 304 305 306 307 308 309 310 311 312 313 314 315 316 317 318 319 320 321 322 323 324 325 326 327 328 329 330 331 332 333 334 335 336 337 338 339 340 341 342 343 344 345 346 347 348 349 350 351 352 353 354 355 356 357 358 359 360 361 362 363 364 365 366 367 368 369 370 371 372 373 374 375 376 377 378 379 380 381 382 383 384 385 386 387 388 389 390 391 392 393 394 395 396 397 398 399 400 401 402 403 404 405 406 407 408 409 410 411 412 413 414 415 416 417 418 419 420 421 422 423 424 425 426 427 428 429 430 431 432 433 434 435 436 437 438 439 440 441 442 443 444 445 446 447 448 449 450 451 452 453 454 455 456 457 458 459 460 461 462 463 464 465 466 467 468 469 470 471 472 473 474 475 476 477 478 479 480 481 482 483 484 485 486 487 488 489 490 491 492 493 494 495 496 497 498 499 500 501 502 503 504 505 506 507 508 509 510 511 512 513 514 515 516 517 518 519 520 521 522 523 524 525 526 527 528 529 530 531 532 533 534 535 536 537 538 539 540 541 542 543 544 545 546 547 548 549 550 551 552 553 554 555 556 557 558 559 560 561 562 563 564 565 566 567 568 569 570 571 572 573 574 575 576 577 578 579 580 581 582 583 584 585 586 587 588 589 590 591 592 593 594 595 596 597 598 599 600 601 602 603 604 605 606 607 608 609 610 611 612 613 614 615 616 617 618 619 620 621 622 623 624 625 626 627 628 629 630 631 632 633 634 635 636 637 638 639 640 641 642 643 644 645 646 647 648 649 650 651 652 653 654 655 656 657 658 659 660 661 662 663 664 665 666 667 668 669 670 671 672 673 674 675 676 677 678 679 680 681 682 683 684 685 686 687 688 689 690 691 692 693 694 695 696 697 698 699 700 701 702 703 704 705 706 707 708 709 710 711 712 713 714 715 716 717 718 719 720 721 722 723 724 725 726 727 728 729 730 731 732 733 734 735 736 737 738 739 740 741 742 743 744 745 746 747 748 749 750 751 752 753 754 755 756 757 758 759 760 761 762 763 764 765 766 767 768 769 770 771 772 773 774 775 776 777 778 779 780 781 782 783 784 785 786 787 788 789 790 791 792 793 794 795 796 797 798 799 800 801 802 803 804 805 806 807 808 809 810 811 812 813 814 815 816 817 818 819 820 821 822 823 824 825 826 827 828 829 830 831 832 833 834 835 836 837 838 839 840 841 842 843 844 845 846 847 848 849 850 851 852 853 854 855 856 857 858 859 860 861 862 863 864 865 866 867 868 869 870 871 872 873 874 875 876 877 878 879 880 881 882 883 884 885 886 887 888 889 890 891 892 893 894 895 896 897 898 899 900 901 902 903 904 905 906 907 908 909 910 911 912 913 914 915 916 917 918 919 920 921 922 923 924 925 926 927 928 929 930 931 932 933 934 935 936 937 938 939 940 941 942 943 944 945 946 947 948 949 950 951 952 953 954 955 956 957 958 959 960 961 962 963 964 965 966 967 968 969 970 971 972 973 974 975 976 977 978 979 980 981 982 983 984 985 986 987 988 989 990 991 992 993 994 995 996 997 998 999 1000

DIETZGEN'S RAILROAD CURVE AND REDUCTION TABLES

Copyright, 1914, by Eugene Dietzgen Co., New York City

The diagram illustrates a circular curve with center R. Key points include the Point of Curvature (P.C.), Tangent point (T), Point of Intersection (P.I.), Middle ordinate (M), External distance (E), and Point of Tangency (P.T.). The long chord is labeled C, and the central angle is Δ.

CURVE FORMULAS

Radius= $R = \frac{50}{\sin \frac{D}{2}}$ (1) Degree of Curve= D and $\sin \frac{D}{2} = \frac{50}{R}$ (2) 196
504
 Tangent= $T = R \tan \frac{\Delta}{2}$ (3) Length of Curve= $L = 100 \frac{\Delta}{D}$ (4)
 Middle ordinate= $M = R(1 - \cos \frac{\Delta}{2})$ (5) = $R \text{vers} \frac{\Delta}{2}$ (6)
 External= $E = T \tan \frac{\Delta}{4} = R \div \cos \frac{\Delta}{2} - R$ (8) = $R \text{exsec} \frac{\Delta}{2}$ (9)
 Long Chord= $C = 2 R \sin \frac{\Delta}{2}$ (10) Δ =Central Angle

EXPLANATION AND USE OF TABLES

Stations.—Given P. I.=Sta. 161+60.35 to find Sta. of P. C. and P. T. $\Delta=62^\circ 10'$ $D=8^\circ 20'$. From Table IV for 1° curve $T=3454.1$ and $\div 8\frac{1}{2}=414.49$ ft. From Table V correction=.36 or $T=414.85$ ft. P. C.=Sta. P. I.— $T=157+45.50$. Also from (4) $L=746.00$ and P. T.=Sta. P. C. + $L=164+91.50$.

Offsets.—Tangent offsets vary (approximately) directly with D and with square of the distance. Thus tangent offset for Sta. 158 on above curve is 2.16 ft. found as follows. From Table III tangent offset for 100 ft.=7.27 ft. Distance= 158 —Sta. P. C.= 54.50 , hence offset= $7.27 (54.50 \div 100)^2 = 2.16$ ft. Also square of any distance divided by twice the radius equals (approximately) the distance from tangent to curve. Thus $(54.50)^2 \div (2 \times 688.26) = 2.16$ ft.

Deflections.—Deflection angle= $\frac{1}{2} D$ for 100 ft., $\frac{1}{4} D$ for 50 ft., etc. For c ft.=(in minutes) $.3 \times C \times D^\circ$ or=defl. for 1 ft. from Table III $\times C$. For Sta. 158 of above curve= $.3 \times 54.5 \times 8\frac{1}{2}=136.2'$ or $2^\circ 16.2'$, or= $2.50 \times 54.5=136.2'$ from Table III. For Sta. 159 deflection angle= $2^\circ 16.2' + 8^\circ 20' \div 2 = 6^\circ 26.2'$, etc.

Externals.—May be found in similar manner to tangents. Thus E for curve above is 115.37 For from Table IV for 1° curve $E=960.6$ for $8^\circ 20' = 960.6 \div 8\frac{1}{2} = 115.27$ and from Table V correction=.10 or $E=115.37$ Or suppose $\Delta=32^\circ$ and E is measured and found to be 42 ft. What is D ? From Table IV $E=230.9$ and $\div 42=5.5$ or $D=5^\circ 30'$.

TABLE I.—MINUTES IN DECIMALS OF A DEGREE.

1'	.0167	11'	.1833	21'	.3500	31'	.5167	41'	.6833	51'	.8500
2	.0333	12	.2000	22	.3667	32	.5333	42	.7000	52	.8667
3	.0500	13	.2167	23	.3833	33	.5500	43	.7167	53	.8833
4	.0667	14	.2333	24	.4000	34	.5667	44	.7333	54	.9000
5	.0833	15	.2500	25	.4167	35	.5833	45	.7500	55	.9167
6	.1000	16	.2667	26	.4333	36	.6000	46	.7667	56	.9333
7	.1167	17	.2833	27	.4500	37	.6167	47	.7833	57	.9500
8	.1333	18	.3000	28	.4667	38	.6333	48	.8000	58	.9667
9	.1500	19	.3167	29	.4833	39	.6500	49	.8167	59	.9833
10	.1667	20	.3333	30	.5000	40	.6667	50	.8333	60	1.0000

TABLE II.—INCHES IN DECIMALS OF A FOOT.

1-16	3-32	1/8	3-16	1/4	5-16	3/8	1/2	5/8	3/4	7/8
.0052	.0078	.0104	.0156	.0208	.0260	.0313	.0417	.0521	.0625	.0729
1	2	3	4	5	6	7	8	9	10	11
.0833	.1667	.2500	.3333	.4167	.5000	.5833	.6667	.7500	.8333	.9167

TABLE III.—RADI, ORDINATES AND DEFLECTIONS.

Deg.	Radius	Mid. Ord.	Tan. Offset	Def. for 1 Foot	Deg.	Radius	Mid. Ord.	Tan. Offset	Def. for 1 Foot
0° 10'	34377.5	.036	.145	0.05	7°	819.02	1.528	6.105	2.10
20	17188.8	.073	.291	0.10	20'	781.84	1.600	6.395	2.20
30	11459.2	.109	.436	0.15	30	764.49	1.637	6.540	2.25
40	8594.42	.145	.582	0.20	40	747.89	1.673	6.685	2.30
50	6875.55	.182	.727	0.25					
1	5729.65	.218	.873	0.30	8	716.78	1.746	6.976	2.40
10	4911.15	.255	1.018	0.35	20	688.16	1.819	7.266	2.50
20	4297.28	.291	1.164	0.40	30	674.69	1.855	7.411	2.55
30	3819.83	.327	1.309	0.45	40	661.74	1.892	7.556	2.60
40	3437.87	.364	1.454	0.50	9	637.28	1.965	7.846	2.70
50	3125.36	.400	1.600	0.55	20	614.56	2.037	8.136	2.80
2	2864.93	.436	1.745	0.60	30	603.80	2.074	8.281	2.85
10	2644.58	.473	1.891	0.65	40	593.42	2.110	8.426	2.90
20	2455.70	.509	2.036	0.70	10	573.69	2.183	8.716	3.00
30	2292.01	.545	2.181	0.75	30	546.44	2.292	9.150	3.15
40	2148.79	.582	2.327	0.80	11	521.67	2.402	9.585	3.30
50	2022.41	.618	2.472	0.85	30	499.06	2.511	10.02	3.45
3	1910.08	.655	2.618	0.90	12	478.34	2.620	10.45	3.60
10	1809.57	.691	2.763	0.95	30	459.28	2.730	10.89	3.75
20	1719.12	.727	2.908	1.00	13	441.68	2.839	11.32	3.90
30	1637.28	.764	3.054	1.05	30	425.40	2.949	11.75	4.05
40	1562.88	.800	3.199	1.10	14	410.28	3.058	12.18	4.20
50	1494.95	.836	3.345	1.15	30	396.20	3.168	12.62	4.35
4	1432.69	.873	3.490	1.20	15	383.07	3.277	13.05	4.50
10	1375.40	.909	3.635	1.25	30	370.78	3.387	13.49	4.65
20	1322.53	.945	3.718	1.30	16	359.27	3.496	13.92	4.80
30	1273.57	.982	3.926	1.35	30	348.45	3.606	14.35	4.95
40	1228.11	1.018	4.071	1.40	17	338.27	3.716	14.78	5.10
50	1185.78	1.055	4.217	1.45	18	319.62	3.935	15.64	5.40
5	1146.28	1.091	4.362	1.50	19	302.94	4.155	16.51	5.70
10	1109.33	1.127	4.507	1.55	20	287.94	4.374	17.37	6.00
20	1074.68	1.164	4.653	1.60	21	274.37	4.594	18.22	6.30
30	1042.14	1.200	4.798	1.65	22	262.04	4.814	19.08	6.60
40	1011.51	1.237	4.943	1.70	23	250.79	5.035	19.94	6.90
50	982.64	1.273	5.088	1.75	24	240.49	5.255	20.79	7.20
6	955.87	1.309	5.234	1.80	25	231.01	5.476	21.64	7.50
10	929.57	1.346	5.379	1.85	26	222.27	5.697	22.50	7.80
20	905.13	1.382	5.524	1.90	27	214.18	5.918	23.35	8.10
30	881.95	1.418	5.669	1.95	28	206.68	6.139	24.19	8.40
40	859.92	1.455	5.814	2.00	29	199.70	6.360	25.04	8.70
					30	193.18	6.583	25.88	9.00

Note. Chord Deflection=2 times tangent deflection.

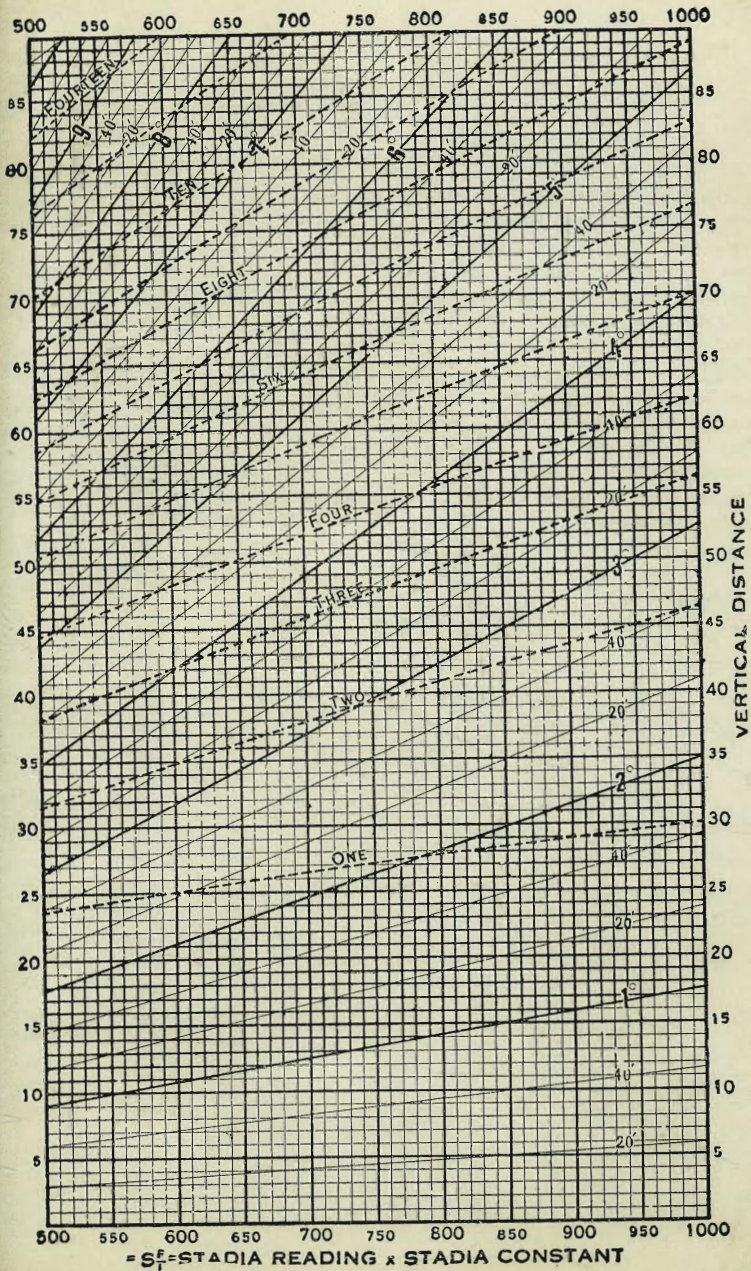
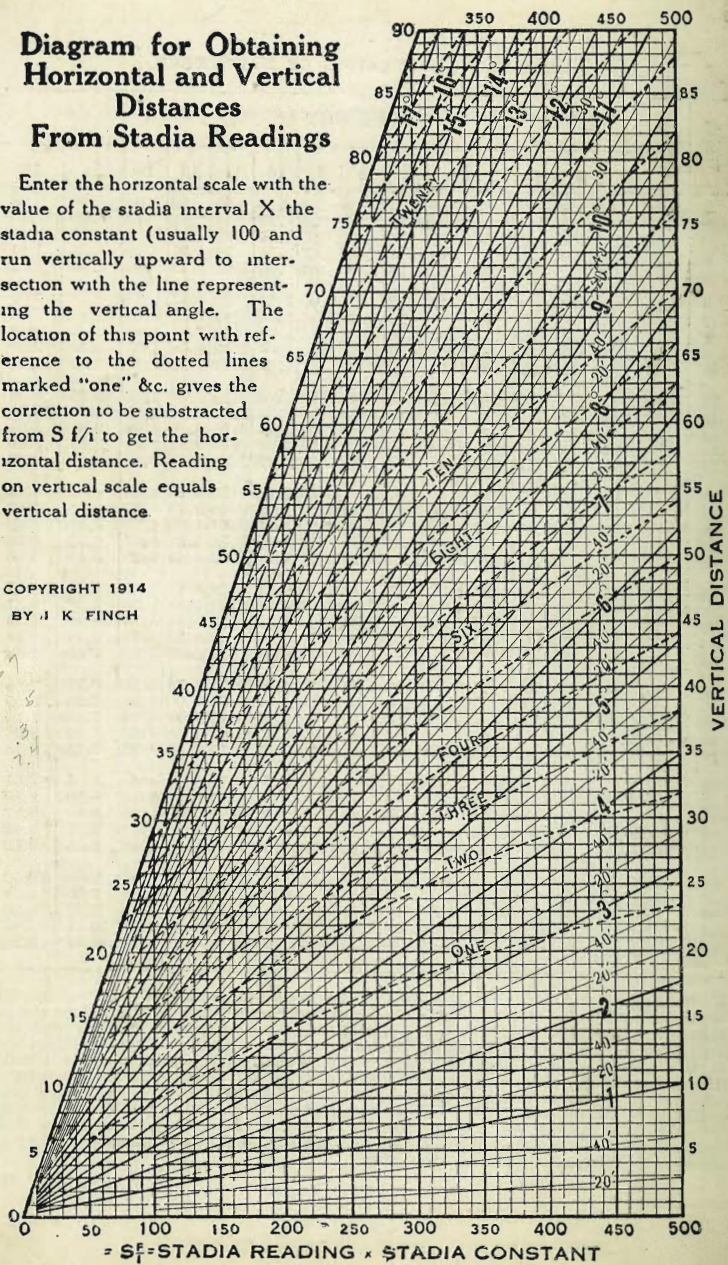
TABLE IV.—TANGENTS AND EXTERNALS TO A 1° CURVE.

Central Angle	Tangent	External	Central Angle	Tangent	External	Central Angle	Tangent	External
1°	50.00	.22	11°	551.70	26.50	21°	1061.9	97.57
10'	58.34	.30	10'	560.11	27.31	10'	1070.6	99.16
20	66.67	.39	20	568.53	28.14	20	1079.2	100.75
30	75.01	.49	30	576.95	28.97	30	1087.8	102.35
40	83.34	.61	40	585.36	29.82	40	1096.4	103.97
50	91.68	.73	50	593.79	30.68	50	1105.1	105.60
2	100.01	.87	12	602.21	31.56	22	1113.7	107.24
10	108.35	1.02	10	610.64	32.45	10	1122.4	108.90
20	116.68	1.19	20	619.07	33.35	20	1131.0	110.57
30	125.02	1.36	30	627.50	34.26	30	1139.7	112.25
40	133.36	1.55	40	635.93	35.18	40	1148.4	113.95
50	141.70	1.75	50	644.37	36.12	50	1157.0	115.66
3	150.04	1.96	13	652.81	37.07	23	1165.7	117.38
10	158.38	2.19	10	661.25	38.03	10	1174.4	119.12
20	166.72	2.43	20	669.70	39.01	20	1183.1	120.87
30	175.06	2.67	30	678.15	39.99	30	1191.8	122.63
40	183.40	2.93	40	686.60	40.99	40	1200.5	124.41
50	191.74	3.21	50	695.06	42.00	50	1209.2	126.20
4	200.08	3.49	14	703.51	43.03	24	1217.9	128.00
10	208.43	3.79	10	711.97	44.07	10	1226.6	129.82
20	216.77	4.10	20	720.44	45.12	20	1235.3	131.65
30	225.12	4.42	30	728.90	46.18	30	1244.0	133.50
40	233.47	4.76	40	737.37	47.25	40	1252.8	135.35
50	241.81	5.10	50	745.85	48.34	50	1261.5	137.23
5	250.16	5.46	15	754.32	49.44	25	1270.2	139.11
10	258.51	5.83	10	762.80	50.55	10	1279.0	141.01
20	266.86	6.21	20	771.29	51.68	20	1287.7	142.93
30	275.21	6.61	30	779.77	52.89	30	1296.5	144.85
40	283.57	7.01	40	788.26	53.97	40	1305.3	146.79
50	291.92	7.43	50	796.75	55.18	50	1314.0	148.75
6	300.28	7.86	16	805.25	56.31	26	1322.8	150.71
10	308.64	8.31	10	813.75	57.50	10	1331.6	152.69
20	316.99	8.76	20	822.25	58.70	20	1340.4	154.69
30	325.35	9.23	30	830.76	59.91	30	1349.2	156.70
40	333.71	9.71	40	839.27	61.14	40	1358.0	158.72
50	342.08	10.20	50	847.78	62.38	50	1366.8	160.76
7	350.44	10.71	17	856.30	63.63	27	1375.6	162.81
10	358.81	11.22	10	864.82	64.90	10	1384.4	164.86
20	367.17	11.75	20	873.35	66.18	20	1393.2	166.95
30	375.54	12.29	30	881.88	67.47	30	1402.0	169.04
40	383.91	12.85	40	890.41	68.77	40	1410.9	171.15
50	392.28	13.41	50	898.95	70.09	50	1419.7	173.27
8	400.66	13.99	18	907.49	71.42	28	1428.6	175.41
10	409.03	14.58	10	916.03	72.76	10	1437.4	177.55
20	417.41	15.18	20	924.58	74.12	20	1446.3	179.72
30	425.79	15.80	30	933.13	75.49	30	1455.1	181.89
40	434.17	16.43	40	941.69	76.86	40	1464.0	184.08
50	442.55	17.07	50	950.25	78.26	50	1472.9	186.29
9	450.93	17.72	19	958.81	79.67	29	1481.8	188.51
10	459.32	18.38	10	967.38	81.09	10	1490.7	190.74
20	467.71	19.06	20	975.96	82.53	20	1499.6	192.99
30	476.10	19.75	30	984.53	83.97	30	1508.5	195.25
40	484.49	20.45	40	993.12	85.43	40	1517.4	197.53
50	492.88	21.16	50	1001.7	86.90	50	1526.3	199.82
10	501.28	21.89	20	1010.3	88.39	30	1535.3	202.12
10	509.68	22.62	10	1018.9	89.89	10	1544.2	204.44
20	518.08	23.38	20	1027.5	91.40	20	1553.1	206.77
30	526.48	24.14	30	1036.1	92.92	30	1562.1	209.12
40	534.89	24.91	40	1044.7	94.46	40	1571.0	211.48
50	543.29	25.70	50	1053.3	96.01	50	1580.0	213.80

Diagram for Obtaining Horizontal and Vertical Distances From Stadia Readings

Enter the horizontal scale with the value of the stadia interval X the stadia constant (usually 100 and run vertically upward to intersection with the line representing the vertical angle. The location of this point with reference to the dotted lines marked "one" &c. gives the correction to be subtracted from $S f/i$ to get the horizontal distance. Reading on vertical scale equals vertical distance.

COPYRIGHT 1914
BY J. K. FINCH



DISTANCES FROM CENTER OF ROADWAY FOR
CROSS-SECTIONING.

Roadway 16 feet wide. Side Slopes 1 on 1 1/2.
For Single Track Embankment.

H	0	.1	.2	.3	.4	.5	.6	.7	.8	.9	H
0	8.0	8.2	8.3	8.5	8.6	8.8	8.9	9.1	9.2	9.4	0
1	9.5	9.7	9.8	10.0	10.1	10.3	10.4	10.6	10.7	10.9	1
2	11.0	11.2	11.3	11.5	11.6	11.8	11.9	12.1	12.2	12.4	2
3	12.5	12.7	12.8	13.0	13.1	13.3	13.4	13.6	13.7	13.9	3
4	14.0	14.2	14.3	14.5	14.6	14.8	14.9	15.1	15.2	15.4	4
5	15.5	15.7	15.8	16.0	16.1	16.3	16.4	16.6	16.7	16.9	5
6	17.0	17.2	17.3	17.5	17.6	17.8	17.9	18.1	18.2	18.4	6
7	18.5	18.7	18.8	19.0	19.1	19.3	19.4	19.6	19.7	19.9	7
8	20.0	20.2	20.3	20.5	20.6	20.8	20.9	21.1	21.2	21.4	8
9	21.5	21.7	21.8	22.0	22.1	22.3	22.4	22.6	22.7	22.9	9
10	23.0	23.2	23.3	23.5	23.6	23.8	23.9	24.1	24.2	24.4	10
11	24.5	24.7	24.8	25.0	25.1	25.3	25.4	25.6	25.7	25.9	11
12	26.0	26.2	26.3	26.5	26.6	26.8	26.9	27.1	27.2	27.4	12
13	27.5	27.7	27.8	28.0	28.1	28.3	28.4	28.6	28.7	28.9	13
14	29.0	29.2	29.3	29.5	29.6	29.8	29.9	30.1	30.2	30.4	14
15	30.5	30.7	30.8	31.0	31.1	31.3	31.4	31.6	31.7	31.9	15
16	32.0	32.2	32.3	32.5	32.6	32.8	32.9	33.1	33.2	33.4	16
17	33.5	33.7	33.8	34.0	34.1	34.3	34.4	34.6	34.7	34.9	17
18	35.0	35.2	35.3	35.5	35.6	35.8	35.9	36.1	36.2	36.4	18
19	36.5	36.7	36.8	37.0	37.1	37.3	37.4	37.6	37.7	37.9	19
20	38.0	38.2	38.3	38.5	38.6	38.8	38.9	39.1	39.2	39.4	20
21	39.5	39.7	39.8	40.0	40.1	40.3	40.4	40.6	40.7	40.9	21
22	41.0	41.2	41.3	41.5	41.6	41.8	41.9	42.1	42.2	42.4	22
23	42.5	42.7	42.8	43.0	43.1	43.3	43.4	43.6	43.7	43.9	23
24	44.0	44.2	44.3	44.5	44.6	44.8	44.9	45.1	45.2	45.4	24
25	45.5	45.7	45.8	46.0	46.1	46.3	46.4	46.6	46.7	46.9	25
26	47.0	47.2	47.3	47.5	47.6	47.8	47.9	48.1	48.2	48.4	26
27	48.5	48.7	48.8	49.0	49.1	49.3	49.4	49.6	49.7	49.9	27
28	50.0	50.2	50.3	50.5	50.6	50.8	50.9	51.1	51.2	51.4	28
29	51.5	51.7	51.8	52.0	52.1	52.3	52.4	52.6	52.7	52.9	29
30	53.0	53.2	53.3	53.5	53.6	53.8	53.9	54.1	54.2	54.4	30
31	54.5	54.7	54.8	55.0	55.1	55.3	55.4	55.6	55.7	55.9	31
32	56.0	56.2	56.3	56.5	56.6	56.8	56.9	57.1	57.2	57.4	32
33	57.5	57.7	57.8	58.0	58.1	58.3	58.4	58.6	58.7	58.9	33
34	59.0	59.2	59.3	59.5	59.6	59.8	59.9	60.1	60.2	60.4	34
35	60.5	60.7	60.8	61.0	61.1	61.3	61.4	61.6	61.7	61.9	35
36	62.0	62.2	62.3	62.5	62.6	62.8	62.9	63.1	63.2	63.4	36
37	63.5	63.7	63.8	64.0	64.1	64.3	64.4	64.6	64.7	64.9	37
38	65.0	65.2	65.3	65.5	65.6	65.8	65.9	66.1	66.2	66.4	38
39	66.5	66.7	66.8	67.0	67.1	67.3	67.4	67.6	67.7	67.9	39
40	68.0	68.2	68.3	68.5	68.6	68.8	68.9	69.1	69.2	69.4	40

Example—If point is 22.6 ft. above grade, how far should it be from center line to be a slope stake point? Ans. from Table 41.9. For same slopes but other widths of roadbed correct above figures by one-half difference in width of roadbed; thus in example above for 20 ft. roadbed distance will be 41.9 + (20 - 16) * 2 or 2 ft. added to 41.9 = 43.9. For slopes of 1 on 1 see inside of front cover.

Copyright, 1914, by Eugene Dietzgen Co.

Handwritten calculations and diagrams on the left page of the notebook. The page is filled with various mathematical problems, including long division, multiplication, and subtraction. Some calculations involve large numbers like 1000, 10000, and 100000. There are also several diagrams, including a circle with a diameter of 16 feet and a square with an 'X' inside. The text is written in cursive and includes various annotations and numbers.

Key elements on the page include:

- Top left: $\frac{377}{507} \times 18$
- Top center: $109 \frac{1}{2} = 9 \text{ rods } 00 \text{ ft.}$
- Top right: $M 1705$
- Center: A circle with diameter 16 ft.
- Bottom left: A square with an 'X' inside.
- Bottom center: $\frac{1000}{10000}$
- Bottom right: $\frac{10000}{100000}$