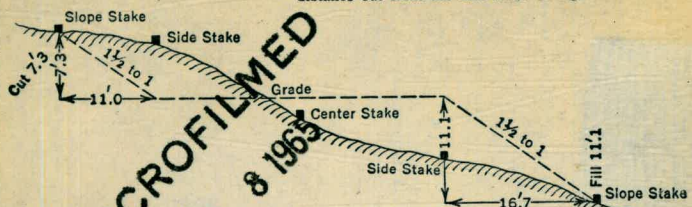


MB 114

**DISTANCES FROM SIDE STAKES FOR CROSS-SECTIONING**  
**Roadway of any Width. Side Slopes  $1\frac{1}{2}$  to 1.**

In the figure below: opposite 7 under "Cut or Fill" and under .3 read 11.0, the distance out from the side stake at left. Also, opposite 11 under "Cut or Fill" and under .1 read 16.7, the distance out from the side stake at right.



MICROFILMED  
 JAN 8 1963

M.B. 114

Cut or Fill	Distance out from Side or Shoulder Stake									Cut or Fill	
	.1	.2	.3	.4	.5	.6	.7	.8	.9		
0	0.0	0.2	0.3	0.5	0.6	0.8	0.9	1.1	1.2	1.4	0
1	1.5	1.7	1.8	2.0	2.1	2.3	2.4	2.6	2.7	2.9	1
2	3.0	3.2	3.3	3.5	3.6	3.8	3.9	4.1	4.2	4.4	2
3	4.5	4.7	4.8	5.0	5.1	5.3	5.4	5.6	5.7	5.9	3
4	6.0	6.2	6.3	6.5	6.6	6.8	6.9	7.1	7.2	7.4	4
5	7.5	7.7	7.8	8.0	8.1	8.3	8.4	8.6	8.7	8.9	5
6	9.0	9.2	9.3	9.5	9.6	9.8	9.9	10.1	10.2	10.4	6
7	10.5	10.7	10.8	11.0	11.1	11.3	11.4	11.6	11.7	11.9	7
8	12.0	12.2	12.3	12.5	12.6	12.8	12.9	13.1	13.2	13.4	8
9	13.5	13.7	13.8	14.0	14.1	14.3	14.4	14.6	14.7	14.9	9
10	15.0	15.2	15.3	15.5	15.6	15.8	15.9	16.1	16.2	16.4	10
11	16.5	16.7	16.8	17.0	17.1	17.3	17.4	17.6	17.7	17.9	11
12	18.0	18.2	18.3	18.5	18.6	18.8	18.9	19.1	19.2	19.4	12
13	19.5	19.7	19.8	20.0	20.1	20.3	20.4	20.6	20.7	20.9	13
14	21.0	21.2	21.3	21.5	21.6	21.8	21.9	22.1	22.2	22.4	14
15	22.5	22.7	22.8	23.0	23.1	23.3	23.4	23.6	23.7	23.9	15
16	24.0	24.2	24.3	24.5	24.6	24.8	24.9	25.1	25.2	25.4	16
17	25.5	25.7	25.8	26.0	26.1	26.3	26.4	26.6	26.7	26.9	17
18	27.0	27.2	27.3	27.5	27.6	27.8	27.9	28.1	28.2	28.4	18
19	28.5	28.7	28.8	29.0	29.1	29.3	29.4	29.6	29.7	29.9	19
20	30.0	30.2	30.3	30.5	30.6	30.8	30.9	31.1	31.2	31.4	20
21	31.5	31.7	31.8	32.0	32.1	32.3	32.4	32.6	32.7	32.9	21
22	33.0	33.2	33.3	33.5	33.6	33.8	33.9	34.1	34.2	34.4	22
23	34.5	34.7	34.8	35.0	35.1	35.3	35.4	35.6	35.7	35.9	23
24	36.0	36.2	36.3	36.5	36.6	36.8	36.9	37.1	37.2	37.4	24
25	37.5	37.7	37.8	38.0	38.1	38.3	38.4	38.6	38.7	38.9	25
26	39.0	39.2	39.3	39.5	39.6	39.8	39.9	40.1	40.2	40.4	26
27	40.5	40.7	40.8	41.0	41.1	41.3	41.4	41.6	41.7	41.9	27
28	42.0	42.2	42.3	42.5	42.6	42.8	42.9	43.1	43.2	43.4	28
29	43.5	43.7	43.8	44.0	44.1	44.3	44.4	44.6	44.7	44.9	29
30	45.0	45.2	45.3	45.5	45.6	45.8	45.9	46.1	46.2	46.4	30
31	46.5	46.7	46.8	47.0	47.1	47.3	47.4	47.6	47.7	47.9	31
32	48.0	48.2	48.3	48.5	48.6	48.8	48.9	49.1	49.2	49.4	32
33	49.5	49.7	49.8	50.0	50.1	50.3	50.4	50.6	50.7	50.9	33
34	51.0	51.2	51.3	51.5	51.6	51.8	51.9	52.1	52.2	52.4	34
35	52.5	52.7	52.8	53.0	53.1	53.3	53.4	53.6	53.7	53.9	35
36	54.0	54.2	54.3	54.5	54.6	54.8	54.9	55.1	55.2	55.4	36
37	55.5	55.7	55.8	56.0	56.1	56.3	56.4	56.6	56.7	56.9	37
38	57.0	57.2	57.3	57.5	57.6	57.8	57.9	58.1	58.2	58.4	38
39	58.5	58.7	58.8	59.0	59.1	59.3	59.4	59.6	59.7	59.9	39
40	60.0	60.2	60.3	60.5	60.6	60.8	60.9	61.1	61.2	61.4	40

The paper in this book No. 373 A  
 is made of 50% high grade rag stock  
 with a WATER RESISTING surface sizing.

6-22-58

STA. N 118+00; 0+00 = N 18+00; SOUND WEST

			N 118+00; WEST					
DIST	Sound	Elev	DIST	Sound	Elev	DIST	Sound	Elev
			(33)	3.5	0.2	(33)	7.1	3.8
0+00	2.3	+0.8	(32)	3.1	+0.1		10.0	6.7
(3)	2.4	+0.7	2+00	3.1	+0.1	4+00	3.6	0.3
<u>9:11</u>	2.3	+0.8		3.6	0.4		3.5	0.2
	2.6	+0.5		3.5	0.3		3.6	0.3
	2.6	}		3.5	0.3		3.6	0.3
50	2.6	}	<u>9:15</u>	3.6	0.4		3.5	0.2
	2.6	+0.5	50	3.5	0.3	50	3.4	0.1
	2.7	+0.4		3.4	0.2		3.4	0.1
	2.8	+0.3		3.6	0.4		3.4	0.1
	2.8	+0.3		3.4	0.2		3.2	+0.1
+00	3.1	0.0		3.3	0.1		3.1	+0.2
	3.1	0.0	3+00	3.4	0.2	5+00	3.1	+0.2
	3.0	+0.1		3.3	0.1	<u>9:20</u>	3.1	+0.2
	3.0	}		3.3	0.1		3.1	+0.2
	3.0	}		3.2	0.0		3.1	+0.2
50	3.0	}		3.2	0.0		3.3	0.0
	3.0	+0.1	50	3.4	0.2	50	3.5	0.2
	3.1	0.0		3.5	0.3		4.0	0.7
	3.1	0.0		3.5	0.3		5.0	1.7

①

CONT'D FROM MB. N 9107

N118+00; SOUND EAST			6-22-59		
Dist	Sound	Elev	Dist	Sound	Elev
0+10	2.7	+0.7	(35)	3.3	+0.2
(34)	2.7	+0.7	<u>9:30</u>	3.3	+0.2
<u>9:27</u>	2.7	+0.7		3.2	+0.3
	2.7	+0.7		3.1	+0.4
50	2.7	+0.7	50	3.0	+0.5
	2.7	+0.7		3.0	+0.5
	2.8	+0.6		3.1	+0.4
	2.6	+0.8		3.1	+0.4
	2.6	+0.8		3.1	+0.4
1+00	2.6	+0.8	3+00	3.1	+0.4
	2.6	+0.8		3.1	+0.4
	2.6	+0.8		3.0	+0.5
	2.8	+0.6		3.0	+0.5
	2.9	+0.5		3.1	+0.4
50	2.9	+0.5	50	3.1	+0.4
	3.1	+0.3		3.0	+0.5
	3.1	+0.3		3.0	+0.5
	3.2	+0.2		3.0	+0.5
	3.3	+0.1		3.0	+0.5
2+00	3.3	+0.1	4+00	3.0	+0.5

N118+00 CONT'D EAST			(2)		
Dist	Sound	Elev	Dist	Sound	Elev
(35)	2.9	+0.6	(36)	2.7	+0.9
	2.9	+0.6	<u>9:35</u>	2.5	+1.0
	2.9	+0.6		2.4	+1.2
	2.9	+0.6		2.4	+1.2
50	3.0	+0.5	50	2.4	+1.2
	3.0	+0.5		2.5	+1.1
	2.9	+0.6		2.5	+1.1
	2.9	+0.6		2.4	+1.2
	2.9	+0.6		2.4	+1.2
5+00	3.0	+0.5	7+00	2.4	+1.2
	3.0	+0.5		2.4	+1.2
	2.9	+0.6		2.5	+1.1
	2.9	+0.6		2.4	+1.2
	2.8	+0.7		2.3	+1.3
50	2.6	+0.9	50	2.3	+1.3
	2.7	+0.8		2.3	+1.3
	2.7	+0.8		2.3	+1.3
	2.6	+0.9		2.2	+1.4
	2.6	+0.9		2.3	+1.3
6+00	2.7	+0.8	8+00	2.4	+1.2

N118+00 CONTD EAST 6-22-59  
 Dist Sound Elev Dist Sound Elev

(37)	2.5	+1.2	(37)	3.6	+0.1
9:37	3.0	+0.7		3.9	0.2
<u>    </u>	3.2	+0.5		4.0	0.3
	3.5	+0.2		4.2	0.5
50	3.7	0.0	50	4.3	0.6
	3.5	+0.2		4.4	0.7
	3.8	0.1		4.5	0.8
	3.7	0.0	9:40	4.5	0.8
	3.5	+0.2	<u>    </u>	4.3	0.6
9+00	3.2	+0.5	11+00	4.4	0.7
	3.0	+0.7		4.3	0.6
	3.0	+0.7		4.9	1.2
	3.0	+0.7		5.2	1.5
	3.0	+0.7		5.2	1.5
50	3.0	+0.7	50	5.2	1.5
	3.1	+0.6		5.1	1.4
	3.2	+0.5		4.9	1.2
	3.2	+0.5		4.5	0.8
	3.4	+0.3		4.6	0.9
10+00	3.5	+0.2	12+00	4.5	0.8

N118+00 EAST <sup>3</sup>  
 Dist Sound Elev Dist Sound Elev

(38)	4.7	0.9			
	4.7	0.9			
	4.5	0.7			
	4.2	0.4			
50	4.1	0.3			
	4.1	0.3			
	4.5	0.7			
	5.9	2.1			
	6.4	2.6			
13+00	7.5	3.7			
	9.0	5.2			
	9.45	6.7			
<u>    </u>	10.9	7.1			
	10.4	6.6			
50	10.2	6.4			
	9.2	5.4			
	8.7	4.9			
	7.3	3.5			
	5.6	1.8			
14+00	5.6	1.8			

6-22-59

N116+00; 0+00=W.18000; SOUND WEST

N116+00			WEST			WEST		
Dist	Sound	Elev	Dist	Sound	Elev	Dist	Sound	Elev
(41)	3.8	+0.3	(42)	12.8	8.6			
0+00	3.1	+0.9	(41)	3.8	+0.3	10:05	12.8	8.6
(40)	3.1	+0.9	2+00	3.5	+0.6	4+00	4.0	+0.1
9:57	3.2	+0.8		3.6	+0.5	6+00	12.5	8.3
	3.2	+0.8	10:00	3.8	+0.3		12.7	8.5
	3.3	+0.7		3.7	+0.4		12.5	8.3
50	3.2	+0.8		3.7	+0.4		12.3	8.1
	3.2	+0.8	50	3.9	+0.2		12.4	8.2
	3.2	+0.8		3.9	+0.2	50	3.9	+0.2
	3.3	+0.7		3.9	+0.2		50	12.3
	3.4	+0.6		3.9	+0.2		12.3	8.1
1+00	3.6	+0.4		3.9	+0.2		4.0	+0.1
	3.5	+0.5	3+00	4.0	+0.1		4.3	0.2
	3.6	+0.4		4.0	+0.1		5.5	1.4
	3.9	+0.1		3.9	+0.2		8.1	4.0
	3.6	+0.4		3.9	+0.2		12.2	8.0
50	3.7	+0.3		3.9	+0.2	5+00	11.0	6.9
	3.8	+0.2	50	3.9	+0.2	7+00	12.2	8.0
	3.8	+0.2		4.0	+0.1		12.0	7.9
	3.7	+0.3		3.8	+0.3		12.0	7.9
							12.1	8.0
							12.2	8.1
							12.1	8.0
							12.4	8.3
							12.8	8.7

N. 116+00; SOUND EAST 6-22-59

Dist	Sound	Elev	Dist	Sound	Elev
0+10	3.3	+1.0	(43)	3.6	+0.7
(43)	3.3	+1.0		3.9	+0.4
10+10	3.7	+0.6		3.9	+0.4
	3.5	+0.8		3.8	+0.5
50	3.4	+0.9	50	3.8	+0.5
	3.4	+0.9		3.9	+0.4
	3.6	+0.7		3.9	+0.4
	3.5	+0.8		4.0	+0.3
	3.5	+0.8		4.0	+0.3
1+00	3.5	+0.8	3+00	4.0	+0.3
	3.5	+0.8		4.1	+0.2
	3.5	+0.8		4.5	0.2
	3.5	+0.8		4.5	0.2
	3.5	+0.8		4.5	0.2
50	3.5	+0.8	50	4.5	0.2
	3.5	+0.8		4.7	0.4
	3.5	+0.8		4.7	0.4
	3.6	+0.7		4.7	0.4
	3.6	+0.7		4.7	0.4
2+00	3.7	+0.6	4+00	4.7	0.4

N. 116+00 CONTD EAST (5)

Dist	Sound	Elev	Dist	Sound	Elev
(43)	4.9	0.6	(43)	4.5	0.2
	4.9	0.6		4.2	+0.1
	4.9	0.6		4.0	+0.3
10+15	4.9	0.6		4.0	+0.3
50	4.9	0.6	50	3.9	+0.4
	5.0	0.7		3.8	+0.5
	4.8	0.5		3.7	+0.6
	4.8	0.5		3.7	+0.6
	4.9	0.6		3.8	+0.5
5+00	4.9	0.6	7+00	3.8	+0.5
	5.0	0.7		3.7	+0.6
	4.9	0.6		3.6	+0.7
	4.8	0.5		3.6	+0.7
	4.8	0.5		3.5	+0.8
50	4.8	0.5	50	3.4	+0.9
	4.8	0.5		3.2	+1.1
	4.8	0.5		3.2	+1.1
	4.5	0.2		3.2	+1.1
	4.5	0.2		3.2	+1.1
6+00	4.5	0.2	8+00	3.2	+1.1

N116+00 CONTD EAST 6-22-59  
 DIST SOURCE ELEV DIST SOURCE ELEV

(44)	3.2	+1.2	(44)	3.4	+1.0
	3.2	+1.2		3.4	+1.0
	3.2	+1.2		3.4	+1.0
	3.1	+1.3		3.5	+0.9
50	3.1	+1.3	50	3.6	+0.8
	3.1	+1.3		3.6	+0.8
<u>10:20</u>	3.1	+1.3		3.6	+0.8
	3.2	+1.2		3.6	+0.8
	3.2	+1.2		3.5	+0.9
9+00	3.2	+1.2	11+00	3.4	+1.0
	3.2	+1.2		3.6	+0.8
	3.2	+1.2		3.6	+0.8
	3.2	+1.2		3.5	+0.9
	3.2	+1.2		3.5	+0.9
50	3.3	+1.1	50	3.5	+0.9
	3.3	+1.1		3.5	+0.9
	3.3	+1.1		3.5	+0.9
	3.4	+1.0		3.5	+0.9
	3.5	+0.9		3.4	+1.0
10+00	3.5	+0.9	12+00	3.5	+0.9

N116+00 EAST  
 DIST SOURCE ELEV

(43)	3.7	+0.8
	3.5	+1.0
	3.6	+0.9
	3.6	+0.9
50	3.6	+0.9
	3.7	+0.8
	7.5	3.0
	10.3	5.8
	11.1	6.6
13+00	11.2	6.7
	11.6	7.1
<u>10:25</u>	12.0	7.5
	12.0	7.5
	12.2	7.7
50	12.6	8.1
	12.6	8.1
	12.4	7.9
	12.4	7.9
	12.5	8.0
14+00	12.5	8.0



6-22-59  
 STA. N. 114+00; 0+00=W. 18000; SOUND WEST.

N 114+00 WEST  
 DIST SOUND ELEV DIST SOUND ELEV

DIST	SOUND	ELEV	DIST	SOUND	ELEV	DIST	SOUND	ELEV			
(46)	3.4	+1.2	(46)	3.9	+0.5	(47)	5.0	0.3	(47)	13.0	8.3
0+00	3.4	+1.2	(46)	3.9	+0.5	10+00	5.3	0.6		12.9	8.2
(46)	3.6	+1.0	2+00	4.0	+0.6	4+00	7.5	2.8	6+00	12.8	8.1
10+35	3.7	+0.9		3.9	+0.7		9.8	5.1			
<u>2</u>	3.7	+0.9		4.0	+0.6		11.0	6.3			
	3.7	+0.9		3.9	+0.7		12.7	8.0			
50	3.6	+1.0		4.0	+0.6		13.1	8.4			
	3.7	+0.9	50	4.0	+0.6	50	13.5	8.8	50		
	3.6	+1.0		3.9	+0.7		13.3	8.6			
	3.8	+0.8		4.0	+0.6		13.9	9.2			
	3.7	+0.9		3.9	+0.7		14.0	9.3			
1+00	3.7	+0.9		3.9	+0.7		13.8	9.1			
	3.7	+0.9	3+00	3.8	+0.8	5+00	13.7	9.0	7+00		
	3.8	+0.8		4.0	+0.6		13.7	9.0			
	3.9	+0.7		4.0	+0.6		13.8	9.1			
	3.9	+0.7		3.9	+0.7		13.5	8.8			
50	4.0	+0.6		3.8	+0.8		13.8	9.1			
	3.9	+0.7	50	3.9	+0.7	50	13.4	8.7			
	3.8	+0.8		4.0	+0.6		13.5	8.8			
	3.9	+0.7		4.3	+0.3		13.2	8.5			

STA. N. 114+00; SOUND EAST 6-22-59			N 114+00			EAST					
Dist	Sound	Elev	Dist	Sound	Elev	Dist	Sound	Elev			
0+10	3.7	+1.0	(47)	4.2	+0.5	(48)	4.0	+0.8	(48)	4.1	+0.7
(47)	3.9	+0.8		4.0	+0.7	1050	3.9	+0.9		4.1	+0.7
10:47	3.9	+0.8		4.0			3.8	+1.0		4.0	+0.8
	3.9	+0.8		4.0			3.8	+1.0		4.0	+0.8
50	3.8	+0.9	50	4.0		50	3.8	+1.0	50	4.0	+0.8
	3.9	+0.8		4.0	+0.7		3.9	+0.9		3.9	+0.9
	3.9	+0.8		3.9	+0.8		3.8	+1.0		3.8	+1.0
	3.8	+0.9		4.0	+0.7		3.9	+0.9		3.6	+1.2
	3.8	+0.9		3.9	+0.8		3.9	+0.9		3.7	+1.1
1+00	3.8	+0.9	3+00	3.9		5+00	4.1	+0.7	7+00	3.7	
	4.0	+0.7		3.9	+0.8		4.3	+0.5		3.7	
	4.0	+0.7		4.1	+0.6		4.5	+0.3		3.7	+1.1
	3.9	+0.8		3.9	+0.8		4.6	+0.2		3.6	+1.2
	4.0	+0.7		3.9	+0.4		4.7	+0.1		3.5	+1.3
50	3.8	+0.9	50	4.1	+0.6	50	4.7	+0.1	50	3.4	+1.4
	3.9	+0.8		4.0	+0.7		4.5	+0.3		3.5	+1.3
	4.1	+0.6		4.0			4.3	+0.5		3.6	+1.3
	4.1	+0.6		4.0			4.3	+0.5		3.6	+1.2
	3.9	+0.8		4.0			4.3	+0.5		3.5	+1.3
2+00	3.9	+0.8	4+00	4.0	+0.7	6+00	4.2	+0.6	8+00	3.6	+1.3

STA. N. 114+00 CONTD EAST 6-22-59			N 114+00 EAST		
Dist	Sound	Elev	Dist	Sound	Elev
(48)	3.5	+1.3	(49)	3.3	+1.6
	3.4	+1.4	1055	3.2	+1.7
	3.4	+1.4		3.5	+1.4
	3.4	+1.4		3.3	+1.4
50	3.3	+1.5	50	3.3	+1.6
	3.2	+1.6		3.3	+1.6
	3.4	+1.4		3.3	+1.6
	3.3	+1.5		3.5	+1.4
	3.3	+1.5		3.3	+1.6
9+00	3.1	+1.7	11+00	3.5	+1.4
	3.2	+1.6		3.4	+1.5
	3.2	+1.6		3.4	+1.5
	3.3	+1.5		3.3	+1.6
	3.4	+1.4		3.5	+1.4
50	3.2	+1.6	50	3.4	+1.5
	3.2	+1.6		3.3	+1.6
	3.3	+1.5		3.3	+1.6
	3.3	+1.5		3.2	+1.7
	3.3	+1.5		3.2	+1.7
10+00	3.2	+1.6	12+00	3.3	+1.6

N 114+00 EAST		
Dist	Sound	Elev
(49)	3.3	+1.6
	3.2	+1.7
	3.2	+1.7
	3.2	+1.7
50	3.5	+1.4
	3.3	+1.6
	3.3	+1.6
	3.3	+1.6
	3.2	+1.7
	3.1	+1.8
13+00	3.1	+1.8
	10.8	5.9
	14.0	9.1
	14.1	9.2
	14.0	9.1
50	12.8	7.9
	13.1	8.2
	12.6	7.7
	12.2	7.3
	12.3	7.4
14+00	12.8	7.9

6-22-59

N. 112+00; WEST

STA. N. 112+00; 0+00 = W. 18000; SOUND WEST

Dist	Sound	Elev	Dist	Sound	Elev	Dist	Sound	Elev
			(50)			12.0		7.0
0+00	3.3	+1.7	(50)	3.4	+1.6	11.9		6.9
(50)	3.3	}	2+00	3.5	+1.5	4+00	11.5	6.5
<u>11.15</u>	3.3			3.5	+1.5		12.1	7.1
	3.3			3.5	+1.5		12.5	7.5
	3.3	+1.7		3.5	+1.5		12.4	7.4
50	3.4	+1.6		3.6	+1.4		12.4	7.4
	3.5	+1.5	50	3.7	+1.3	50	12.8	7.8
	3.4	+1.6		3.6	+1.4		12.8	7.8
	3.4	+1.6		3.8	+1.2		12.5	7.5
	3.5	+1.5		3.8	+1.2		12.8	7.8
1+00	3.5	+1.5		4.2	+0.8		12.9	7.9
	3.6	+1.4	3+00	4.7	+0.3	5+00	13.2	8.2
	3.5	+1.5		6.0	1.0			
	3.4	+1.6		7.8	2.8			
	3.5	+1.5		10.4	5.4			
50	3.4	+1.6		11.4	6.4			
	3.4	+1.6	50	11.8	6.8	50		
	3.5	+1.5		12.0	7.0			
	3.5	+1.5		12.0	7.0			

N112+00; SOUND EAST 6-22-59						N112+00; EAST <span style="float: right;">①</span>					
Dist	Sound	Elev	Dist	Sound	Elev	Dist	Sound	Elev	Dist	Sound	Elev
0+10	3.3	+1.7	(50)	3.3	+1.7	(50)	3.6	+1.4	(50)	4.2	+0.8
(50)	3.3	}		3.5	+1.5	11:30	3.5	+1.5		4.5	+0.5
11:25	3.3			3.4	+1.6		3.7	+1.3		4.7	+0.3
	3.3	+1.7		3.4	+1.6		3.7	+1.3		4.8	+0.2
50	3.4	+1.6	50	3.5	+1.5	50	3.5	+1.5	50	4.9	+0.1
	3.3	+1.7		3.4	+1.6		3.5	}		4.8	+0.2
	3.3	+1.7		3.5	+1.5		3.5		}		4.8
	3.3	+1.7		3.4	+1.6		3.5	}			4.7
	3.4	+1.6		3.5	+1.5		3.5		+1.5		4.8
1+00	3.2	+1.8	3+00	3.4	+1.6	5+00	3.7	+1.3	7+00	4.9	+0.1
	3.2	+1.8		3.4	+1.6		3.7	+1.3		4.9	+0.1
	3.2	+1.8		3.6	+1.4		3.8	+1.2		4.7	+0.3
	3.3	+1.7		3.5	+1.5		3.7	+1.3		4.5	+0.5
	3.3	}		3.5	}		3.7	+1.3		4.5	+0.5
50	3.3			50		3.5		50	3.7	+1.3	50
	3.3	}		3.5	}		3.9	+1.1		4.3	+0.7
	3.3		+1.7			3.5	+1.5		3.8	+1.2	
	3.5	+1.5		3.4	+1.6		3.9	+1.1		4.0	+1.0
	3.4	+1.6		3.4	+1.6		4.0	+1.0		4.1	+0.9
2+00	3.3	+1.7	4+00	3.6	+1.4	6+00	4.4	+0.6	8+00	4.1	+0.9

N. 112+00 CONTD EAST 6-22-59 N. 112+00 EAST

Dist Sound Elev Dist Sound Elev Dist Sound Elev

Dist	Sound	Elev	Dist	Sound	Elev	Dist	Sound	Elev
(50)	4.0	+1.0	(50)	3.7	+1.3	(50)	3.5	+1.5
	3.9	+1.1		3.9	+1.1		3.6	+1.4
	3.9	+1.1		3.7	+1.3		3.5	+1.5
	4.0	+1.0		3.6	+1.4		3.7	+1.3
50	3.9	+1.1	50	3.6	+1.4	50	3.5	+1.5
	3.9	}		3.7	+1.3		3.8	+1.2
	3.9	+1.1		3.7	+1.3		3.7	+1.3
	3.8	+1.2		3.5	+1.5		3.7	+1.3
	3.9	+1.1		3.8	+1.2		3.5	+1.5
9+00	4.0	+1.0	11+00	3.7	+1.3	13+00	3.4	+1.6
	3.8	+1.2		3.7	+1.3		3.8	+1.2
<u>11:35</u>	3.8	}		3.8	+1.2		3.7	+1.3
	3.8	+1.2		3.7	+1.3		3.7	+1.3
	3.9	+1.1		3.7	+1.3	<u>11:40</u>	3.7	+1.3
50	4.0	+1.0	50	3.7	+1.3	50	3.5	+1.5
	3.8	+1.2		3.6	+1.4		9.0	4.0
	3.8	+1.2		3.5	+1.5		12.0	7.0
	3.8	+1.2		3.6	+1.4		12.1	7.1
	3.9	+1.1		3.7	+1.3		12.9	7.9
10+00	3.8	+1.2	12+00	3.6	+1.4	14+00	13.2	8.2

6-22-59

STA. N. 110+00; 0+00 = N. 18000; SOUND WEST

N 110+00 WEST  
Dist Sound Elev Dist Sound Elev

Dist	Sound	Elev	Dist	Sound	Elev
1115 0+00	2.7	+1.8		3.5	+1.0
(4.5)	2.7	+1.8	2+00	4.1	+0.4
	2.7	+1.8		5.0	0.5
	2.6	+1.9		6.6	2.1
	2.6	}		10.3	5.8
50	2.6		(4.4)	11.1	6.7
	2.6	}	1120 50	11.7	7.3
	2.6		+1.9		11.8
	2.7	+1.8		12.0	7.6
	2.7	+1.8		12.0	7.6
1+00	2.6	+1.9		11.6	7.2
	2.6	+1.9	3+00	11.7	7.3
	2.5	+2.0		11.8	7.4
	2.7	+1.8		11.7	7.3
	2.8	+1.7		12.0	7.6
50	2.7	+1.8		12.0	}
	2.7	+1.8	50	12.0	
	2.8	+1.7		12.0	7.6
	3.2	+1.3		11.4	7.0

11.2 6.8

1123 11.2 6.8

4+00 11.5 7.1

12.0 7.6

12.0 }

12.0 }

12.0 7.6

50 11.9 7.5

11.7 7.3

11.5 7.1

11.7 7.3

(4.4)  
1125 12.0 7.6

5+00 12.2 7.8

12.2 7.8

N. 110 + 00; SOUND EAST - 6 - 22 - 59			N. 110 + 00; EAST		
DIST	SOUND	Elev	DIST	SOUND	Elev
1:25 0+10	2.5	+1.9		2.3	+2.1
(4.4)	2.5	}		2.3	+2.1
	2.5			2.4	+2.0
	2.5		(4.4)	2.4	+2.0
	2.5		1:30	2.5	+1.9
50	2.5		50	2.6	+1.8
	2.5			2.5	+1.9
	2.5			2.5	+1.9
	2.5		2.5	+1.9	
1+00	2.5	+1.9	3+00	2.4	+2.0
	2.4	+2.0		2.4	+2.0
	2.5	+1.9		2.3	+2.1
	2.3	+2.1		2.3	+2.1
	2.3	+2.1		2.3	+2.1
50	2.4	+2.0	50	2.4	+2.0
	2.3	+2.1		2.3	+2.1
	2.3	+2.1		2.3	
	2.5	+1.9		2.3	
	2.3	+2.1		2.3	+2.1
2+00	2.3	+2.1	4+00	2.5	+1.9

N. 110 + 00; EAST			N. 110 + 00; EAST		
DIST	SOUND	Elev	DIST	SOUND	Elev
	2.4	+2.0		3.0	+1.4
	2.5	+1.9		3.0	}
	2.5	}		3.0	
	2.5			2.5	+1.4
50	2.5		50	3.1	+1.3
	2.5			3.1	+1.3
	2.5			3.0	+1.4
	2.5			3.0	+1.4
	2.5	+1.9	(4.4)	3.4	+1.0
5+00	2.6	+1.8	1:30 7+00	3.2	+1.2
	2.7	+1.7		3.0	+1.4
	2.8	+1.6		3.1	+1.3
	2.8	+1.6		3.0	+1.4
	3.0	+1.4		3.0	}
50	3.0		50	3.0	
	3.0			3.0	}
	3.0			3.0	
	3.0			3.0	}
	3.0	+1.4		3.0	
6+00	2.9	+1.5	8+00	3.1	+1.3



N. 110+00 CONTD EAST.

N. 110+00 EAST

Dist	Sound	Elev	Dist	Sound	Elev	Dist	Sound	Elev
	3.0	+1.4		3.2	+1.1		3.0	+1.2
	3.0	+1.4		3.2	+1.1		3.0	+1.2
	3.0	+1.4	(4.2)	3.1	+1.1		2.7	+1.5
	3.2	+1.2	1:45	3.2	+1.0		2.8	+1.4
50	3.2	}	50	3.1	+1.1	50	2.7	+1.5
	3.2				3.2	+1.0		2.7
	3.2	+1.2		3.1	+1.1		2.8	+1.4
	3.0	+1.4		3.1	}		2.7	+1.5
	3.5	+0.9		3.1				2.7
9+00	3.2	+1.2	11+00	3.1	}	13+00	2.7	}
	3.2	+1.2		3.1			2.7	
	3.0	+1.4		3.1	+1.1	stake	2.6	+1.6
	3.1	+1.3		3.3	+0.9		2.5	+1.7
(4.3)	3.0	+1.3		3.1	+1.1		2.6	+1.6
1:40	50	3.2	50	3.2	+1.0	50	2.6	+1.4
	3.1	+1.2		3.0	+1.2		2.6	+1.4
	3.1	+1.2		3.0	}		2.6	+1.6
	3.2	+1.1		3.0		(4.2)	2.6	+1.6
	3.2	+1.1	W16810 Stake	3.0	}	150	2.5	+1.7
10+00	3.2	+1.1	12+00	3.0	+1.2	14+00	3.2	+1.0

6-22-59

STAN 108400; 0400 = W 18000 - Sound WEST

STAN 108400 CONT WEST

(16)

DIST	Sound	ELEV	DIST	Sound	ELEV
2:00					
0400	1.3	+2.7		11.2	7.3
(4.0)	1.2	+2.7	2400	11.2	}
	1.3	+2.7		11.2	
	1.3	+2.7		11.2	
	1.5	+2.5		11.2	7.3
50	1.6	+2.4		11.4	7.5
	2.0	+2.0	50	11.8	7.8
	2.0	+2.0		12.0	8.1
(3.9)	2.0	+2.0		12.1	8.2
2:05	2.2	+1.8	(3.8)	12.1	8.3
1400	2.6	+1.4	2:10	12.2	8.4
	2.8	+1.2	3500	12.2	8.4
	3.2	+0.8		12.1	8.3
	4.8	0.8		12.0	8.2
	7.8	3.8		12.0	}
50	9.2	5.2		12.0	
	10.2	6.2	50	12.0	8.2
	10.8	6.8		11.8	8.0
	11.2	7.2		12.0	8.2

DIST	Sound	ELEV
	12.0	8.2
	12.0	8.2
4400	12.0	8.2

50

5400

6-2-59

STAN 108400; 0+00 = W 18000 - SOUND EAST

DIST	Sound	ELEV	DIST	Sound	ELEV
2.15	1.3	+2.5	2+00	1.3	+2.5
(3.8)	1.3	+2.5		1.3	+2.5
	1.3	+2.5		1.4	+2.4
	1.2	+2.6		1.4	+2.4
50	1.2		50	1.5	+2.3
	1.2			1.6	+2.2
	1.2			1.7	+2.1
	1.2	+2.6		1.6	+2.2
	1.1	+2.7		1.6	+2.2
1+00	1.2	+2.6	3+00	1.7	+2.1
1+00	1.2	+2.6		1.8	+2.0
	1.2	+2.6		1.8	
	1.1	+2.7		1.8	
	1.1	+2.7		1.8	
50	1.2	+2.6	50	1.8	
	1.1	+2.7		1.8	
	1.2	+2.6		1.8	
	1.2	+2.6		1.8	+2.0
	1.3	+2.5		1.9	+1.9

STAN 108400 CONT EAST

(17)

DIST	Sound	ELEV	DIST	Sound	ELEV
2.20	1.9	+1.9	2.25	2.0	+1.8
4+00	1.9	+1.9	6+00	2.0	+1.8
(3.8)	1.9	+1.9		2.0	+1.8
	1.9	+1.9		2.1	+1.7
	2.0	+1.8		2.1	+1.7
	2.0	+1.8		2.1	+1.7
50	1.9	+1.9	50	2.0	+1.8
	1.9	+1.9		2.1	+1.7
	1.8	+2.0		2.0	+1.8
	2.0	+1.8		2.1	+1.7
	2.0			2.1	+1.7
5+00	2.0		7+00	2.2	+1.6
	2.0			2.1	+1.7
	2.0			2.0	+1.8
	2.0			2.1	+1.7
	2.0			2.1	+1.7
50	2.0		50	2.0	+1.8
	2.0			2.0	+1.8
	2.0			2.0	+1.8
	2.0			2.1	+1.7
	2.0	+1.8		2.0	+1.8

STA N108+00 Cont EAST

STA N108+00 Cont EAST

DIST	Sound	elev	DIST	Sound	ELEV	DIST	Sound	ELEV
8+00	2.1	+1.7	10+00	2.0	+1.6	12+00	2.2	+1.4
	2.0	+1.8		2.0	+1.6	14+00	1.8	+1.7
	2.1	+1.7		2.0	+1.6			
	2.1	+1.7		2.1	+1.5			
	2.0	+1.8		2.0	+1.6			
50	2.0	}	50	2.1	+1.5	50	2.0	}
	2.0			2.0	+1.6		2.0	
	2.0			2.0	}		2.0	
	2.0			2.0	}		2.0	
	2.0			2.0	+1.6	(3.5)	2.0	+1.6
9+00	2.0	}	11+00	2.1	+1.5	2+35	2.0	+1.5
	2.0			2.1	+1.5	13+00	2.0	+1.5
	2.0			2.1	+1.5		1.9	+1.6
(3.6)	2.0	+1.8		2.2	+1.4		1.9	}
2+30	2.0	+1.6		2.2	+1.4		1.9	+1.6
50	2.0	}	50	2.1	+1.5	50	1.8	+1.7
	2.0			2.2	+1.4		2.0	+1.5
	2.0			2.1	+1.5		1.8	+1.7
	2.0			2.2	+1.4		1.9	+1.6
	2.0	+1.6		2.2	+1.4		1.9	+1.6

will be 770  
see page 21

6-22-59

(19)

STAN 107+00; 0+00 = W 18.000 - Sound West

STAW 180+00; 0+00 = N 10700 - Sound South

DIST	SOUND	ELEV	DIST	SOUND	ELEV
0+00	2.8	+0.5		12.1	8.8
(3.3)	2.8	+0.5	2+00	12.2	8.9
	3.0	+0.3		12.1	8.8
	3.1	+0.2		12.1	
	3.5	0.2	(3.3)	12.1	
50	3.8	0.5	2:55	12.1	8.8
	4.8	1.5	50	12.0	8.7
	5.2	1.9			
	6.8	3.5			
	7.7	4.4			
1+00	8.8	5.5			
	8.2	4.9	3+00		
	11.8	8.5			
	12.2	8.9			
	12.8	9.5			
50	12.2	8.9			
	12.0	8.7	50		
	12.1	8.8			
	12.1	8.8			

DIST	SOUND	ELEV	DIST	ELEV
0+00	2.7	+0.6	(3.2)	11.0
(3.3)	3.0	+0.3	3:00	11.0
	3.8	0.5	2+00	7.7
	6.7	3.4		
	9.0	5.7		
50	10.8	7.5		
	10.8	7.5		
	10.8	7.5		
	10.8	7.5		
	11.1	7.8		
1+00	11.1	7.8		
	11.1			
	11.1			
	11.1	7.8		
	11.2	7.9		
50	11.2	7.9		
	11.1	7.8		
	11.1	7.8		
	11.1	7.8		

See page 15 - 6-23-59  
 To show DREDGE OUT  
 STAN 110+00; 0+00 = W 16680 - Sound EAST

STAN 110+00 CONT EAST (20)

DIST	Sound	FLEV	DIST	Sound	ELEV	DIST	Sound	FLEV
						10.0	4.9	
12,50						9.9	4.8	
0+00	3.3	+1.8		13.7	8.6			
(5.1)	3.6	+1.5	2+00	13.9	8.8	4+00	9.0	3.9
	3.5	+1.6		14.0	8.9		8.0	2.9
	3.4	+1.7		14.0	8.9		6.0	0.9
	3.5	+1.6		14.0	8.9		4.2	+0.9
50	3.5	+1.6		14.0	8.9		4.2	+0.9
	3.4	+1.7	50	14.0	8.9	50	4.0	+1.1
	3.5	+1.6		14.0	8.9	(5.1)	4.0	+1.1
	4.1	+1.0		14.0	8.9	1+00	2.0	+3.1
	9.0	+3.9	(5.1)	14.0	8.9			
1+00	11.7	+6.6	12,55	14.0	8.9		† Shore	
	12.5	+7.4	3+00	13.9	8.8	5+00		
	12.7	+7.6		13.9	8.8			
	13.2	+8.1		14.0	8.9			
	13.3	+8.2		14.0	8.9			
50	13.3	+8.2		14.0	8.9			
	13.4	+8.3	50	13.9	8.8			
	13.5	+8.4		10.3	5.2			
	13.6	+8.5		10.3	5.2			

See page 18 6-23-59

STAN 108700, 0+00 = W 16770 - Sound EAST

STA N108700 CANT EAST (2)

DIST	Sound	ELEV	DIST	Sound	ELEV	DIST	Sound	ELEV	DIST	Sound	ELEV
1:00						14.1	9.0		6.1	1.0	
0+00	3.3	+1.8		3.4	1.7	14.1	9.0		4.9	+0.2	
(5.1)	3.2	+1.9	2+00	3.4	1.7	4+00	14.4	9.3	6+00	3.8	+1.3
	3.2	+1.9		4.3	0.8		14.4	9.3		3.1	+2.0
	3.3	+1.8		9.5	4.4		14.5	9.4		2.6	+2.5
	3.2	+1.9		13.0	7.9		14.4	9.3		2.1	+3.0
50	3.2	+1.9		14.0	8.9		14.4	9.3		2.0	+3.4
	3.2	+1.9	50	14.2	9.1	50	14.4	9.3	50	1.5	+3.6
	3.2	+1.9		14.3	9.2		14.4	9.3			
	3.2	+1.9		14.4	9.3		14.4	9.3			
	3.2	+1.9		14.2	9.1		14.4	9.3			
1+00	3.2	+1.9		14.0	8.9	(5.1)	14.1	9.0			
	3.2	+1.9	3+00	14.1	9.0	5+00	14.0	8.9			
	3.2	+1.9		14.1	9.0	1:10	10.1	5.0			
(5.1)	3.2	+1.9		14.3	9.2		9.9	4.8			
1:05	3.2	+1.9		14.2	9.1		9.4	4.3			
50	3.2	+1.9		14.0	8.9		9.1	4.0			
	3.2	+1.9	50	14.1	9.0	50	8.3	3.2			
	3.2	+1.9		14.2	9.1		7.5	2.4			
	3.2	+1.9		14.2	9.1		6.9	1.8			

6-23-59

STATION 178+00; 0+00 = N10700 - Sound South

<sup>1:20</sup> DIST	Sound	ELEV	DIST	Sound	ELEV
0+00	2.5	+2.5		12.0	7.0
1:20	2.5	+2.5	2+00	12.0	7.0
(5.0)	2.5	+2.5		12.2	7.2
	2.4	+2.6		12.0	7.0
	2.8	+2.2		12.2	7.2
50	3.0	+2.0		12.2	7.2
	3.2	+1.8	50	12.1	7.1
	4.0	+1.0		12.0	7.0
	4.5	+0.5		12.1	7.1
	5.1	0.1	(5.0)	12.0	7.0
1+00	8.2	3.2	1:25	12.0	7.0
	11.0	6.0	3+00	12.1	7.1
	11.3	6.3			
	11.5	6.5			
	12.0	7.0			
50	12.0	7.0			
	12.0	7.0			
	12.0	7.0			
	12.0	7.0			

6-23-59

STATION 176+00; 0+00 = N10700 - Sound South

<sup>1:30</sup> DIST	Sound	ELEV	DIST	Sound	ELEV
0+00	2.9	+2.1		12.0	7.0
(5.0)	2.9	+2.1	2+00	12.2	7.2
	2.7	+2.3		12.8	7.8
	2.7	+2.3		13.0	8.0
	2.8	+2.2		13.3	8.3
50	2.8	+2.2		13.0	8.0
	2.7	+2.3	50	13.1	8.1
	2.6	+2.4		13.0	8.0
	2.5	+2.5		13.0	8.0
	2.5	+2.5		12.9	7.9
1+00	2.6	+2.4	(4.9)	13.1	8.2
	3.1	+1.9	<sup>1:35</sup> 3+00	12.9	8.0
	3.2	+1.8			
	3.9	+1.1			
	4.1	+0.9			
50	4.9	+0.1			
	6.2	1.2	50		
	9.8	4.8			
	11.4	6.4			

(22)



6-27-59

STAW 174 + 100 = N 10700 - Sound South

DIST	Sound	ELEV	DIST	Sound	ELEV
1.40	3.1	+1.8	4.8	3.0	+1.8
0+00			1.45	3.3	+1.5
4.9	3.0	+1.9	2+00		
	3.0	+1.9		4.0	+0.8
	3.0	+1.9		4.2	+0.6
	3.0	+1.9		4.8	+0.0
50	2.9	+2.0		9.0	4.2
	3.0	+1.9	50	11.0	6.2
	3.0	+1.9		11.5	6.7
	2.8	+2.1		12.0	7.2
	3.0	+1.9		12.0	7.2
1+00	2.9	+2.0		12.1	7.3
	3.0	+1.9	3+00	12.2	7.4
	2.9	+2.0		12.0	7.2
	2.9	+2.0		12.2	7.4
	2.8	+2.1	4.8	12.1	7.3
50	2.8	+2.1	1.50	12.1	7.3
	2.8	+2.1	50	12.0	7.2
	2.8	+2.1			
	2.7	+2.2			

6-23-59

(23)

STAW 172 + 100; 0+00 = N 10700 - Sound South

DIST	Sound	ELEV	DIST	Sound	ELEV
1.55	2.7	+2.1		2.4	+2.4
0+00			4.8	2.8	+2.0
			2+00	2.3	+2.5
	2.7	+2.1		2.4	+2.4
	2.7	+2.1		2.3	+2.5
	2.8	+2.0		2.3	+2.5
50	2.8	+2.0		2.3	+2.5
	2.6	+2.2	50	2.3	+2.5
	2.6	+2.2		2.3	+2.5
	2.7	+2.1		2.3	+2.5
	2.7	+2.1		2.3	+2.5
1+00	2.7	+2.1		2.3	+2.5
	2.5	+2.3	3+00	2.3	+2.5
	2.4	+2.4		2.3	+2.5
	2.5	+2.3		2.2	+2.6
	2.5	+2.3	4.7	2.1	+2.6
50	2.5	+2.3	2+00	2.2	+2.5
	2.5	+2.3	50	2.1	+2.6
	2.5	+2.3		2.2	+2.5
	2.5	+2.3		2.1	+2.6

STAW 172+00					
DIST	Sound	ELEV	DIST	Sound	elev
	2.3	+2.4	(4.7)	12.2	7.5
	2.6	+2.1	2'05	12.5	7.8
4+00	2.6	+2.1	6+00	12.6	7.9
	2.7	+2.0			
	2.8	+1.9			
	3.0	+1.7			
	3.0	+1.7			
50	3.3	+1.4	50		
	3.9	+0.8			
	4.3	+0.4			
	5.0	0.3			
	6.8	2.1			
5+00	8.9	4.2			
	12.0	7.3			
	12.8	8.1			
	12.8	8.1			
	12.7	8.0			
50	12.5	7.8			
	12.5	7.8			
	12.6	7.9			

NORTH of <sup>6-23-59</sup> SANTA CRUZ Point (24)					
STAW 188+00; 0+00 = N12400 - Sound South.					
DIST	Sound	ELEV	DIST	Sound	ELEV
<sup>2:55</sup> 0+00	6.0	1.9	(4.1)	12.2	8.1
(4.1)	6.1	2.0	2'57	12.2	8.1
	6.2	2.2	2+00		
	6.8	2.7			
	7.6	3.5			
50	8.9	4.8			
	9.0	4.9	50		
	6.3	2.2			
	6.9	2.8			
	7.8	3.7			
1+00	9.0	4.9			
	9.9	5.8	3+00		
	11.3	7.2			
	12.0	7.9			
	12.2	8.1			
50	12.3	8.2			
	12.6	8.5	50		
	12.4	8.3			
	12.3	8.2			

6-23-57

STAW 190+00; 0+00 = N12400 Sound South

DIST	Sound	ELEV	DIST	Sound	ELEV
3:00					
0+00	4.2	0.2			
(4.0)	4.5	0.5	2+00		
	4.3	0.3			
	4.8	0.8			
	6.6	2.6			
50	10.0	6.0			
	12.0	8.0	50		
	12.2	8.2			
	12.2	8.2			
	12.3	8.3			
1+00	12.4	8.4			
	12.4	8.4	3+00		
	12.4	8.4			
	12.6	8.6			
	12.7	8.7			
50	12.9	8.9			
	12.9	8.9			

(25)

STAW 192+00; 0+00 = N12400 Sound South

DIST	Sound	ELEV	DIST	Sound	ELEV
3:00					
0+00	3.8	+0.2		12.9	8.9
(4.0)	3.5	+0.5	2+00	13.0	9.0
	3.7	+0.3		12.7	8.7
	4.2	1.0			
	6.1	2.1			
50	9.8	5.8			
	11.2	7.2			
	11.8	7.8			
	12.1	8.1			
	12.0	8.0			
1+00	12.1	8.1			
	12.0	8.0			
	12.0	8.0			
	12.0	8.0			
	12.0	8.0			
50	12.2	8.2			
	12.6	8.6			
	12.7	8.7			
	12.8	8.8			

6-23-59

STAW 194+00' 0700 = N12400 - Sound South

DIST	Sound	FLEV	DIST	Sound	FLEV
3:15 0700	3.4	+0.5		12.0	8.1
(3.9)	3.4	+0.5	2700	11.9	8.0
	3.5	+0.4			
	4.0	10.1			
	4.9	1.0			
50	8.5	4.6			
	10.0	6.1	50		
	10.5	6.6			
	11.5	7.6			
	12.0	8.1			
1400	12.0	8.1			
	12.0	8.1	3700		
	12.0	8.1			
	12.0	8.1			
	12.1	8.2			
50	12.0	8.1			
	12.1	8.2			
	12.0	8.1			
	12.0	8.1			

6-23-59

(26)

STAW 196+00' 0700 = N12400 - Sound South

DIST	Sound	FLEV	DIST	Sound	FLEV
3:20 0700	3.0	+0.8		11.5	7.7
(3.8)	3.0	+0.8	2700	11.5	7.7
	3.0	+0.8		11.4	7.6
	3.5	+0.3		11.2	7.4
	5.0	1.2		11.0	7.2
50	7.2	3.4		10.8	7.0
	10.0	6.2	50	10.8	7.0
	10.5	6.7		10.8	7.0
	11.0	7.2		10.8	7.0
	11.2	7.4		11.0	7.2
1400	11.5	7.7		11.0	7.2
	11.4	7.6	3700	11.2	7.4
	11.5	7.7		11.5	7.7
	11.8	8.0		11.4	7.6
	12.0	8.2		11.2	7.4
50	12.0	8.2	50	11.2	7.4
	11.5	7.7			
	11.5	7.7			
	11.5	7.7			

6-23-59

STAW 197+00; 0+00 = N12400 - Sound South

DIST	Sound	ELEV	DIST	Sound	ELEV
3,30					
0+00	2.5	+1.2		12.3	8.6
(3.7)	3.1	+0.6	2+00	12.2	8.5
	5.2	1.5			
	7.0	3.3			
	9.5	5.8			
50	10.8	7.1			
	11.2	7.5	50		
	11.8	8.1			
	11.8	8.1			
	11.8	8.1			
1+00	11.8	8.1			
	11.8	8.1	3+00		
	11.8	8.1			
	11.8	8.1			
	12.0	8.3			
50	12.0	8.3			
	12.2	8.5			
	12.3	8.6			
	12.4	8.7			

North Crescent Bay 6-24-59

STAW 194+00; 0+00 = N14000 - Sound North

DIST	Sound	ELEV	DIST	Sound	ELEV
1,15					
0+00	6.5	1.4		6.2	1.1
(5.1)	6.4	1.3	2+00	6.1	1.0
	6.5	1.4		6.0	0.9
(5.1)	6.5	1.4		6.0	0.9
1:20	6.6	1.5		5.9	0.8
50	6.6			5.9	0.8
	6.6	1.5	50	5.9	0.8
	6.4	1.3		5.7	0.6
	6.4	1.3		5.5	0.4
	6.5	1.4		5.5	0.4
1+00	6.4	1.3		5.5	0.4
	6.4	1.3	3+00	5.4	0.3
	6.7	1.6		5.4	0.3
	6.4	1.3		5.4	0.3
	6.4	1.3		5.3	0.2
50	6.3	1.2		5.0	+0.1
	6.3	1.2	50	5.0	+0.1
	6.3	1.2		4.9	+0.2
	6.4	1.3		4.9	+0.2

## STAW 194 + 00 CENT NORTH

6-24-59

(28)

DIST	Sound	ELEV	DIST	Sound	ELEV	STAW 192 + 00; 0 + 00 = N14000	Sound	NORTH	ELEV		
	4.9	+0.2		6.4	1.3						
	4.9	+0.2		6.2	1.1						
4 + 00	4.6	+0.5	6 + 00	6.3	1.2	(5.2)	6.1	0.9	2 + 00	6.2	1.0
	4.4	+0.7		6.5	1.4		6.5	1.3		6.0	0.8
	4.5	+0.6		6.4	1.3		6.3	1.1		6.0	}
	4.4	+0.7		6.0	0.9		6.3	}		6.0	}
	4.4	+0.7		6.3	1.2	50	6.3	}		6.0	0.8
50	4.9	+0.2	50	6.2	1.1		6.3	}	50	6.1	0.9
	5.4	0.3		6.2	}		6.3	1.1		6.0	0.8
	6.0	0.9		6.2	1.1		6.2	1.0		5.9	0.7
(5.1)	6.0	0.9		6.0	0.9		6.2	}		5.9	0.7
1/25	6.1	1.0		6.2	1.1	1 + 00	6.2	}		5.9	0.7
5 + 00	6.3	1.2	7 + 00	5.8	0.7		6.2	}	3 + 00	5.8	0.6
	6.4	1.3		4.8	+0.3		6.2	}		5.8	0.6
	6.4	1.3		3.4	+1.7		6.2	}		5.6	0.4
	6.3	1.2	(5.2)	3.0	+2.2		6.2	1.0		5.5	0.3
	6.4	1.3	1/30	2.4	+2.8		6.3	1.1		5.3	0.1
50	6.3	1.2	50	1.7	+3.5	50	6.3	}	50	5.3	0.1
	6.3	1.2					6.3	}		5.3	0.1
	6.2	1.1					6.3	1.1		5.1	+0.1

STA W/192+00 CONT NORTH

DIST	Sound	ELEV	DIST	Sound	ELEV
(5.2)	5.2	0.0		5.8	0.4
1:40	5.0	+0.2		5.8	0.6
4+00	5.0	+0.2	6+00	6.0	0.8
	5.0	+0.2		6.0	
	4.8	+0.4		6.0	
	4.8	+0.4		6.0	
	4.6	+0.6		6.0	
50	4.6	+0.6	50	6.0	
	4.5	+0.7		6.0	
	4.5	+0.7		6.0	
	4.3	+0.9	(5.1)	6.0	
	4.2	+1.0	1:45	6.0	0.8
5+00	4.0	+1.2	7+00	5.0	+0.1
	4.0	+1.2		3.5	+1.6
	4.0	+1.2		3.0	+2.1
	3.9	+1.3		2.0	+3.1
	4.0	+1.2	TRUCK HEAD	1.3	+3.8
50	4.0	+1.2	50		
	4.5	+0.7			
	5.5	0.3			

6-24-59

(29)

STA W/190+00; 0+00=N/4000-SOUND NORTH

DIST	Sound	ELEV	DIST	Sound	ELEV
1:50	7.1	2.0		6.4	1.3
0+00	7.1	2.0		6.4	1.3
(5.1)	6.5	1.4	2+00	6.3	1.2
	6.5	1.4		6.4	1.3
	6.5	1.4		6.5	1.4
	6.6	1.5		6.2	1.1
50	6.6	1.5		6.3	1.2
	6.8	1.7	50	6.1	1.0
	6.4	1.3		6.3	1.2
	6.8	1.7		5.9	0.8
	6.5	1.4		5.9	0.8
1+00	6.5	1.4		5.7	0.6
	6.5	1.4	3+00	5.7	0.6
	6.8	1.7		5.5	0.4
	6.6	1.5		5.4	0.3
	6.5	1.4	(5.1)	5.3	0.2
50	6.7	1.6	1:55	5.3	0.2
	6.4	1.3	50	5.3	0.2
	6.5	1.4		5.3	0.2
	6.4	1.3		5.4	0.3

STAW 190+00 CANT NORTH

DIST	Sound	ELEV	DIST	Sound	ELEV
	5.4	0.3		3.7	+1.4
	5.4	0.3		3.4	+1.7
4+00	5.3	0.2	6+00	3.3	+1.8
	5.1	0.0		3.3	+1.8
	5.0	+0.1		3.3	+1.8
	5.0	+0.1		3.8	+1.3
	4.9	+0.2		4.8	+0.3
50	4.8	+0.3	50	5.2	0.1
	4.7	+0.4		5.3	0.2
	4.7	+0.4		5.7	0.6
	4.5	+0.6		5.2	0.1
	4.5	+0.6		4.4	+0.7
5+00	4.4	+0.7	7+00	4.3	+0.8
	4.3	+0.8		4.7	+0.4
	4.0	+1.1		4.8	+0.3
	4.2	+0.9		4.5	+0.6
	3.9	+1.2	(5.1)	4.7	+0.4
			2+00		
50	4.0	+1.1	50	4.7	+0.4
	3.9	+1.2		4.0	+1.1
	3.8	+1.3		2.9	+2.2
				2.3	+2.8

STAW 188+00; 0+00 = N 14000 - Sound NORTH

DIST	Sound	ELEV	DIST	Sound	ELEV
	6.6	1.6		6.5	1.5
2+10 0+00	6.6	1.6	2+00	6.5	
(5.0)	6.6	1.6		6.5	
	6.6	1.6		6.5	1.5
	6.6	1.6		6.6	1.6
50	6.8	1.8		6.3	1.3
	6.8	1.8	50	6.2	1.2
	6.6	1.6		6.2	1.2
	6.6	1.6		6.2	1.2
	6.6	1.6		6.0	1.0
1+00	6.8	1.8		6.0	
	6.6	1.6	3+00	6.0	
	6.6	1.6		6.0	
	6.6	1.6		6.0	1.0
	6.8	1.8		5.9	0.9
50	6.8	1.8		5.8	0.8
	6.7	1.7	50	5.6	0.6
	6.5	1.5		5.5	0.5
	6.5	1.5		5.3	0.3



STAW 188700 cont NORTH					
DIST	Sound	ELEV	DIST	Sound	ELEV
	5.2	0.2		4.1	+0.9
	5.2	}		4.0	+1.0
4+00	5.2		6+00	3.9	+1.1
	5.2			4.0	+1.0
	5.2			3.9	+1.1
(5.0)	5.2		0.2	3.6	+1.4
2:15	5.1	0.1		3.6	+1.4
50	5.0	0.0	50	3.5	+1.5
	5.0	0.0		3.4	+1.6
	5.0	0.0		3.3	+1.7
	4.8	+0.2		3.2	+1.8
	4.8	+0.2		3.1	+1.9
5+00	4.8	+0.2	7+00	3.2	+1.8
	4.7	+0.3		4.4	+0.6
	4.7	+0.3		5.4	0.4
	4.5	+0.5	(5.0)	5.8	0.8
	4.3	+0.7	2:20	6.0	1.0
50	4.2	+0.8	50	6.0	1.0
	4.0	+1.0	60	5.5	0.5
	4.1	+0.9	70	4.0	+1.0
			80	3.0	+2.0
			90	2.5	+2.5

NORTH CRESENT BAY 6-24-59 - (31)					
STAW 186700; 0700 = N 14000 - Sound NORTH					
DIST	Sound	ELEV	DIST	Sound	ELEV
2:25	6.4	1.5		6.3	1.4
0+00	6.5	1.6	2+00	6.3	1.4
(4.9)	6.5	}		6.3	1.4
	6.5			6.4	1.5
	6.5			6.3	1.4
	6.5			6.0	1.1
50	6.5		1.6		6.0
	6.7	1.8	50	6.0	}
	6.4	1.5		6.0	
	6.6	1.7		6.0	
	6.6	1.7		5.9	1.0
	6.5	1.6	(4.9)	5.9	}
1+00	6.8	1.9	2:30	5.9	
	6.5	1.6	3+00	5.9	1.0
	6.5	1.6		5.7	0.8
	6.5	1.6		5.8	0.9
	6.4	1.5		5.5	0.6
50	6.5	1.6		5.5	0.6
	6.5	1.6	50	5.4	0.5
	6.4	1.5		5.3	0.4
	6.4	1.5		5.3	0.4

## STAW 186+00 CONT NORTH

DIST	Sound	ELEV	DIST	Sound	ELEV
	5.4	0.5		4.0	+0.9
	5.2	0.3		3.9	+1.0
4+00	5.1	0.2	6+00	3.8	+1.1
	5.1	0.2		3.8	+1.1
	5.0	0.1		3.7	+1.2
	5.0	}	(4.8)	3.5	+1.4
	5.0		2:35	3.5	+1.3
50	5.0		50	3.4	+1.4
	5.0	0.1		3.4	+1.4
	4.7	+0.2		3.2	+1.6
	4.7	+0.2		3.1	+1.7
	4.7	+0.2		3.2	+1.6
5+00	4.7	+0.2	7+00	3.2	+1.6
	4.5	+0.4		3.2	+1.6
	4.3	+0.6		3.6	+1.2
	4.2	+0.7		5.0	0.2
	4.2	+0.7		5.7	0.9
50	4.2	+0.7	50	5.9	1.1
	4.2	+0.7		5.8	1.0
	4.0	+0.9		6.1	1.3

## STAW 186+00 CONT NORTH

(32)

DIST	Sound	ELEV
	5.0	0.2
	3.2	+1.6
8+00	2.6	+2.2
	1.9	+2.9

STA W184+00; 0+00 = N14000 - Sound NORTH

STA W184+00 CONT NORTH

DIST	Sound	ELEV	DIST	Sound	ELEV
2145	6.3	1.5		6.0	1.2
0+00	6.2	1.4	2+00	5.9	1.1
(4.8)	6.2	}		5.9	1.1
	6.2	}		6.0	1.2
	6.2	1.4		5.9	1.1
50	6.3	1.5		5.9	1.1
	6.4	1.6	50	5.7	0.9
	6.3	1.5		5.3	0.5
	6.3	}		5.2	0.4
	6.3	}		5.2	}
1+00	6.3	}		5.2	}
	6.3	}	3+00	5.2	}
	6.3	}		5.2	0.4
	6.3	}		5.3	0.5
	6.3	1.5		5.3	0.5
50	6.2	1.4		5.2	0.4
	6.2	1.4	50	5.2	0.4
	6.2	1.4		5.1	0.3
	6.1	1.3		5.1	0.3

DIST	Sound	ELEV	DIST	Sound	ELEV
	5.0	0.2		3.4	+1.4
	4.9	0.1		3.3	+1.5
4+00	4.8	0.0	6+00	3.3	+1.5
	4.7	+0.1		3.2	+1.6
	4.7	+0.1		3.2	}
	4.7	+0.1		3.2	}
	4.8	0.0	(4.8)	3.2	+1.6
	4.8	0.0	2:50	3.1	+1.7
50	4.8	0.0	50	3.1	+1.7
	4.5	+0.3		3.1	+1.7
	4.4	+0.4		2.9	+1.9
	4.3	+0.5		2.9	+1.9
	4.2	+0.6		2.8	+2.0
5+00	4.2	+0.6	7+00	2.7	+2.1
	4.1	+0.7		2.6	+2.2
	4.1	+0.7		3.0	+1.8
	4.0	+0.8		4.3	+0.5
	3.9	+0.9		5.4	0.6
50	3.8	+1.0	50	5.7	0.9
	3.8	+1.0		5.8	1.0
	3.7	+1.1		5.7	0.9

STA W 184+00 CONT NORTH

DIST	Sound	ELEV
	5.2	0.4
	2.6	+2.2
8+00	2.0	+2.8
	1.5	+3.3

STA W 182+00; 0+00 = N 14000 - Sound North.

DIST	Sound	ELEV	DIST	SOUND	ELEV
3:00 0+00	6.3	1.6		5.9	1.2
(4.7)	6.2	1.5	2+00	5.9	1.2
	6.2	}		5.8	1.1
	6.2	}		5.8	1.1
	6.2	}		5.7	1.0
50	6.2	}		5.4	0.7
	6.2	}	50	5.3	0.6
	6.2	1.5		5.3	}
	6.1	1.4		5.3	}
	6.1	1.4		5.3	0.6
1+00	6.2	1.5		5.2	0.5
	6.1	1.4	3+00	5.2	}
	6.2	1.5		5.2	}
	6.0	1.3		5.2	0.5
	6.0	1.3		5.0	0.3
50	6.1	1.4		5.0	0.3
	6.0	1.3	50	4.9	+0.2
	6.0	1.3		4.8	+0.1
	6.0	1.3		4.7	0.0

STAW 182+00 CONT NORTH

STAW 182+00 CONT NORTH					STAW 180+00, 10+00 = N14000 Sound North						
DIST	SOUND	ELEV	DIST	SOUND	ELEV	DIST	SOUND	ELEV	DIST	SOUND	ELEV
	4.6	+0.1		3.4	+1.3						
	4.5	+0.2		3.4	+1.3						
4+00	4.5	+0.2	6+00	3.3	+1.4	<sup>3/10</sup> 0+00 (4.6)	6.3	1.7		5.5	0.9
	4.5	+0.2		3.2	+1.5		6.2	1.6	2+00	5.5	
	4.6	+0.1		3.1	+1.6		6.2			5.5	0.9
	4.6	+0.1		3.1	+1.6		6.2			5.2	0.6
	4.5	+0.2		3.0	+1.7	50	6.2	1.6		5.2	0.6
50	4.4	+0.3	50	3.0	+1.7		6.1	1.5	50	5.0	0.4
	4.3	+0.4		3.0	+1.7		6.1	1.5		5.0	0.4
	4.2	+0.5		2.9	+1.8		6.0	1.4		5.0	0.4
	4.2	+0.5		2.8	+1.9		6.0			4.9	0.3
	4.1	+0.6		2.7	+2.0		6.0			4.9	0.3
5+00	4.1	+0.6	7+00	3.3	+1.4	1+00	6.0	1.4		4.8	0.2
	4.0	+0.7		4.8	0.1		6.1	1.5	3+00	4.8	0.2
	4.0	+0.7		5.3	0.6		6.0	1.4		4.8	0.2
	3.9	+0.8	(4.6)	5.6	1.0		6.0			4.7	0.1
	3.9	+0.8	3:05	5.6	1.0	50	6.0			4.6	0.0
50	3.8	+0.9	50	5.5	0.9		6.0	1.4	50	4.5	+0.1
	3.7	+1.0	60	4.8	0.2		6.0	1.4		4.6	0.0
	3.5	+1.2	70	2.5	+2.1		5.9	1.3		4.6	0.0
			80	1.8	+2.8		5.8	1.2		4.7	0.1
			90	1.2	+3.4						

## STAW 180+00 CONT NORTH

DIST	Sound	ELEV	DIST	Sound	ELEV
	4.6	0.0		3.0	+1.5
	4.7	0.1		3.0	}
4+00	4.6	0.0	6+00	3.0	}
	4.6	0.0		3.0	}
	4.0	+0.6		3.0	+1.5
	4.0	}		2.8	+1.7
	4.0	}		2.6	+1.9
50	4.0	+0.6	50	2.5	+2.0
	3.9	+0.7		2.6	+1.9
	3.9	+0.7		3.6	+0.9
(4.5)	3.8	+0.8		5.0	0.5
3:15	3.8	+0.7		5.1	0.6
54m	3.8	}	7+00	5.2	0.7
	3.8	+0.7		5.0	0.5
	3.6	+0.9		4.5	0.0
	3.5	+1.0		3.6	+0.9
	3.2	+1.3		2.0	+2.5
50	3.2	+1.3	50	1.5	+3.0
	3.2	+1.3			
	3.1	+1.4			

6-25-59

(36)

STA. N. 78+00; 0+00-N. 14,000; SOUND NORTH					
DIST	Sound	Elev	DIST	Sound	Elev
0+00	6.8	1.7	(51)	5.8	0.7
(51)	6.7	1.6	2+00	5.8	0.7
2:15	6.5	1.4		5.7	0.6
	6.6	1.5		5.8	0.7
	6.4	1.3		5.4	0.3
50	6.5	1.4		5.4	0.3
	6.6	1.5	50	5.4	0.3
	6.4	1.3		5.5	0.4
	6.5	1.4		5.4	0.3
	6.4	1.3		5.3	0.2
1+00	6.3	1.2		5.1	0.0
	6.4	1.3	3+00	5.1	0.0
	6.2	1.1		5.0	+0.1
	6.2	1.1		5.0	+0.1
	6.1	1.0		5.0	+0.1
50	6.1	1.0		5.0	+0.1
	6.0	0.9	50	5.0	+0.1
	6.0	0.9		5.0	+0.1
	5.8	0.7		4.8	+0.3

STA. W. 178+00 CONTD NORTH

Dist	Sound	Elev	Dist	Sound	Elev
(5.2)	4.7	+0.5	(5.2)	3.3	+1.9
<u>2:20</u>	4.6	+0.6		3.2	+2.0
4+00	4.6	+0.6	6+00	3.4	+1.8
	4.6	+0.6		3.7	+1.5
	4.5	+0.7		3.9	+1.3
	4.5	+0.7		3.8	+1.4
	4.4	+0.8		3.5	+1.7
50	4.4	+0.8	50	3.2	+2.0
	4.3	+0.9		2.7	+2.5
	4.2	+1.0		2.2	+3.0
	4.0	+1.2		1.9	+3.3
	4.0	+1.2		1.8	+3.4
5+00	3.9	+1.3	7+00	1.6	+3.6
	3.9	+1.3		1.5	+3.7
	3.9	+1.3			
	3.9	+1.3			
	3.7	+1.5			
50	3.6	+1.6			
	3.4	+1.8			
	3.4	+1.8			

6-25-59

(3)

STA. W. 176+00; D+00 = N. 14000; SOUND NORTH

Dist	Sound	Elev	Dist	Sound	Elev
D+00	6.0	0.8	(3.2)	5.1	+0.1
(5.2)	5.9	0.7	2+00	5.2	0.0
<u>2:23</u>	5.9	0.7	<u>2:30</u>	5.0	+0.2
	5.9	0.7		5.1	+0.1
	5.9	0.7		5.2	0.0
50	5.6	0.4		5.1	+0.1
	5.6	0.4	50	5.0	+0.2
	5.7	0.5		4.9	+0.3
	5.4	0.2		4.9	+0.3
	5.5	0.3		4.9	+0.3
1+00	5.4	0.2		4.8	+0.4
	5.3	0.1	3+00	4.7	+0.5
	5.4	0.2		4.7	+0.5
	5.2	0.0		4.6	+0.6
	5.2	0.0		4.6	+0.6
50	5.0	+0.2		4.5	+0.7
	5.1	+0.1	50	4.5	+0.7
	5.1	+0.1		4.2	+1.0
	5.1	0.0		4.3	+0.9

W. 176+00 CONTD NORTH 6-25-59

Dist Sound Elev Dist Sound Elev

Dist	Sound	Elev	Dist	Sound	Elev
(52)	4.3	+0.9	(53)	3.4	+1.9
<u>2132</u>	4.3	+0.9	<u>2135</u>	2.7	+2.6
4+00	4.0	+1.2	6+00	2.3	+3.0
	4.1	+1.1		1.5	+3.8
	4.0	+1.2			
	3.9	+1.3			
	3.9	+1.3			
50	3.9	+1.3			
	3.9	+1.3			
	3.9	+1.3			
	3.7	+1.5			
	3.8	+1.4			
5+00	4.8	+0.4			
	5.8	0.6			
	6.3	1.1			
	6.7	1.5			
	6.2	1.0			
50	6.0	0.8			
	5.5	0.3			
	4.7	+0.5			

(38)

STA. W. 174+00, 0+00=N/14000; SOUND NORTH

Dist	Sound	Elev	Dist	Sound	Elev
0+00	5.0	+0.3	(53)	4.1	+1.2
(53)	5.0	+0.3	2+00	3.9	+1.4
<u>2140</u>	5.0	+0.3		3.9	+1.4
	4.8	+0.5		4.0	+1.3
	4.9	+0.4		3.9	+1.4
50	4.7	+0.6		3.8	+1.5
	4.7	+0.6	50	3.8	+1.5
	4.7	+0.6		3.8	+1.5
	4.7	+0.6		3.7	+1.6
	4.7	+0.6		3.7	+1.6
1+00	4.5	+0.8		3.6	+1.7
	4.5	+0.8	3+00	3.4	+1.9
	4.4	+0.9		3.4	+1.9
	4.4	+0.9		3.3	+2.0
	4.3	+1.0		3.5	+1.8
50	4.1	+1.2		4.0	+1.3
	4.0	+1.3	50	5.0	+0.3
	4.2	+1.1		6.0	0.7
	4.1	+1.2		6.4	1.1



STA. W. 174+00 CONTD NORTH 6-25-59

Dist Sound Elev Dist Sound Elev

(33)	6.9	1.6			
<u>244</u>	7.1	1.8			
4+00	7.0	1.7	6+00		
	6.6	1.3			
	5.9	0.6			
	4.4	+0.9			
	3.2	+2.1			
50	2.8	+2.5			
	2.1	+3.2			
	1.5	+3.8			
	1.0	+4.3			

5+00

50

6-25-59

(39)

STA. W. 172+00; 0+00 = N 14000; SOUND NORTH

Dist Sound Elev Dist Sound Elev

0+00	3.7	+1.6	(53)	4.5	+0.8
(53)	3.9	+1.4	2+00	5.5	0.2
<u>248</u>	4.0	+1.3	<u>2.50</u>	5.9	0.6
	3.7	+1.6		4.8	+0.5
	3.6	+1.7		4.2	+1.1
50	3.7	+1.6		4.0	+1.3
	3.6	+1.7	50	4.4	+0.9
	3.5	+1.8		4.0	+1.3
	3.5	+1.8		3.7	+1.6
	3.5	+1.8		2.9	+2.4
1+00	3.4	+1.9		2.5	+2.8
	3.4	+1.9	3+00	2.3	+3.0
	3.6	+1.7		1.9	+3.4
	3.2	+2.1		1.3	+4.0
	3.4	+1.9		1.0	+4.3
50	3.2	+2.1			
	3.2	+2.1	50		
	3.2	+2.1			
	3.7	+1.6			

PROGRESS CROSS SECTION'S LEVEE  
 AREA ELY MISSION BAY WD 64501  
 STA. No 1 (See Sketch)

STA.	Elev.
TBM.	15.21
0	15.2
W/4 15	14.8
W/4 31	14.6
W/4 97	5.8

STA. No 2

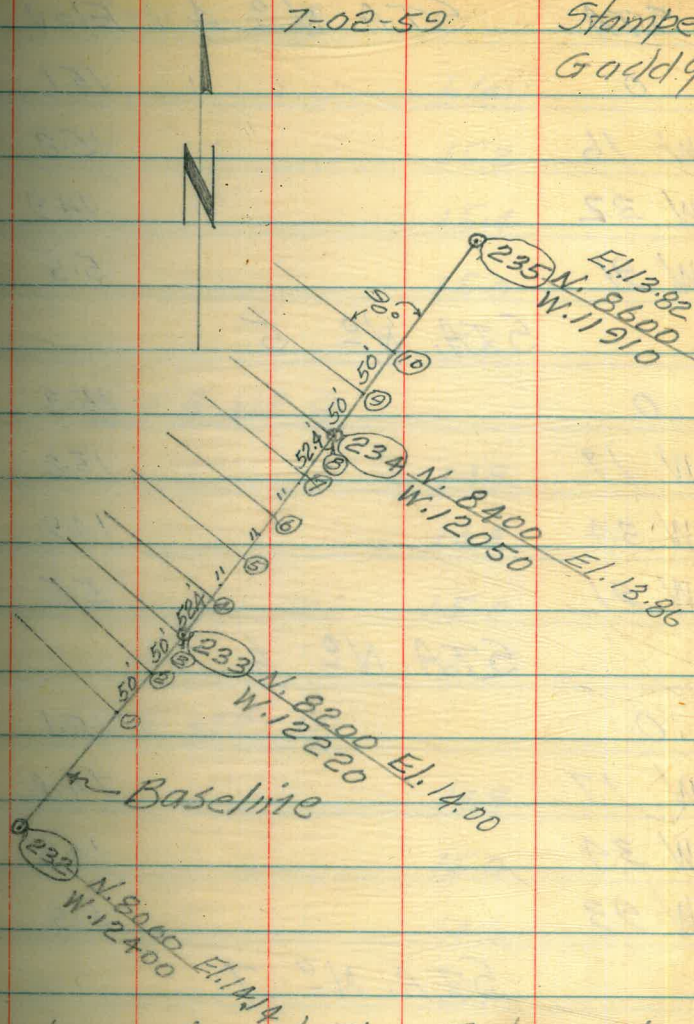
0	15.0
W 15	14.8
W 31	14.5
W 95	5.6

STA No 3

0	15.0
W 15	14.6
W 31	14.4
W 92	5.7

7-02-59

Stampex  
 Goddy



NOTE: Direct Elev Rod used  
 Sec's Taken @ 90° To Levee

STA.	STA. N <sup>o</sup> 4	Elev
0		15.1
W 16		15.2
W 32		14.9
W 91		5.5

STA. N<sup>o</sup> 5

0		15.3
W 17		15.2
W 34		14.9
W 91		5.5

STA. N<sup>o</sup> 6

0		15.1
W 17		14.8
W 34		14.6
W 93		5.5

STA. N<sup>o</sup> 7

0		15.3
W 18		15.1
W 37		14.9
W 94		5.5

STA. N<sup>o</sup> 8

STA.	Elev
0	15.2
W 19	15.4
W 38	15.0
W 96	5.4

STA. N<sup>o</sup> 9

0	14.9
W 19	14.8
W 38	15.0
W 98	5.5

STA. N<sup>o</sup> 10

0	14.9
W 19	15.0
W 38	14.6
W 100	5.4

CHECK ON TOPOF SHOULDER REVISED

7-02-59

STA. N<sup>o</sup> 1



Sta.	Elev
0	12.2
W 22	11.3
W 47	12.0
W 62	7.0

STA. N<sup>o</sup> 2

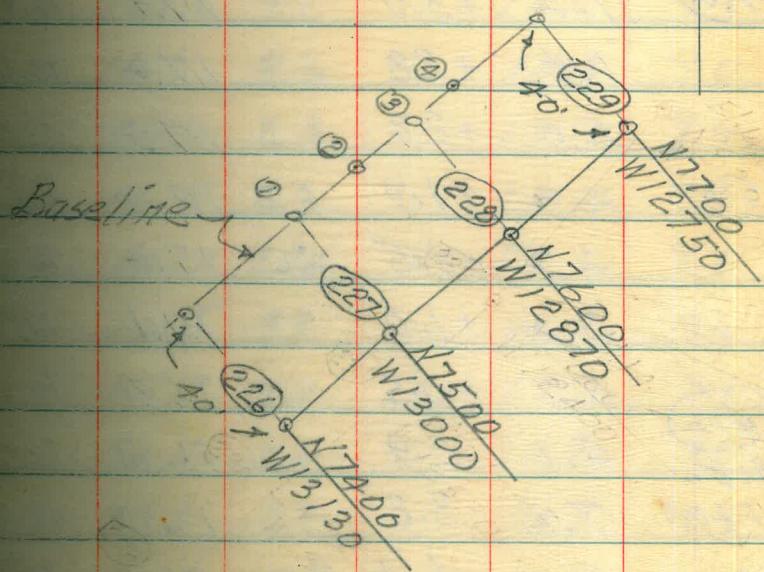
0	11.8
W 22	11.8
W 47	11.2
W 57	7.0

STA. N<sup>o</sup> 3

0	11.5
W 18	11.4
W 33	11.2
W 40	7.3

STA. N<sup>o</sup> 4

0	11.6
W 20	11.8
W 32	11.8
W 42	6.6



7-6-59.

STAN 96 + 00 CONT WEST

(43)

STAN 96 + 00; 0 + 00 = W 12000						STAN 96 + 00 CONT WEST					
DIST	SOUND	ELEV	DIST	SOUND	ELEV	DIST	SOUND	ELEV	DIST	SOUND	ELEV
							12.5	8.2		14.4	10.1
0 + 00				16.8	12.6	(4.3)	12.4	8.1		14.3	10.0
9:45	0.7	+3.5	2 + 00	17.1	12.9	9:55	12.3	8.0	4 + 00	13.7	9.4
(4.2)	1.2	+3.0		17.1	12.9		12.3	8.0		13.6	9.3
	1.4	+2.8		17.2	13.0		12.6	8.3		13.3	9.0
	2.0	+2.2		17.2	13.0		12.6	8.3		13.7	9.4
50	2.3	+1.9		17.2	13.0		12.5	8.2		13.2	8.9
	2.7	+1.5	50	17.2	13.0	50	12.7	8.4	50	13.1	8.8
	3.2	+1.0		17.1	12.9		12.5	8.2		12.9	8.6
	3.7	+0.5		16.9	12.7		12.7	8.4		13.0	8.7
(4.2)	5.1	0.9		16.7	12.5		12.7	8.4		12.8	8.5
9:50	7.4	3.2		16.3	12.1		13.1	8.8		12.8	8.5
1400	10.3	6.1	3 + 00	16.3	12.1	5 + 00	12.9	8.6	7 + 00	12.8	8.5
	11.7	7.5		16.2	12.0		13.0	8.7		12.8	8.5
	13.4	9.2		15.8	11.6		13.5	9.2		12.8	8.5
	14.3	10.1		15.2	11.0		13.4	9.1		12.8	8.5
50	15.0	10.8		14.1	9.9		13.3	9.0		12.7	8.4
	15.4	11.2	50	12.9	8.7	50	14.2	9.9	50	12.6	8.3
	16.1	11.9		12.4	8.2		15.0	10.7		12.6	8.3
	16.5	12.3		12.4	8.2		14.7	10.4		13.0	8.7

STAN 96 to cont West

7-6-59

(44)

DIST Sound elev DIST Sound ELEV

STAN 98 to 0700 = W/2000 - SOUND EAST

13.7 9.4

13.4 9.1

10:25

DIST Sound ELEV DIST Sound ELEV

14.4 10.1

13.5 9.2

0700

800 13.9 9.6

1000 13.3 9.0

(4.5)

4.0 +0.5 200

13.8 9.5

11.0 6.7

3.7 +0.8

13.7 9.4

9.4 5.1

3.1 +1.4

13.6 9.3

5.3 1.0

2.9 +1.6

13.6 9.3

4.4 0.1

50

2.8 +1.7

50 13.4 9.1

50 3.7 +0.6

2.3 +2.2 50

13.2 8.9

3.0 +1.3

4.0 +0.5

13.1 8.8

2.7 +1.6

2.2 +2.3

(4.3) 13.1 8.8

2.2 +2.1

1.9 +2.6

10:00 13.2 8.9

2.0 +2.3

1400

1.3 +3.2

900 13.3 9.0

1100 1.9 +2.4

0.9 +3.6 300

13.6 9.3

1.5 +2.5

0.2 +4.3

13.5 9.2

1.4 +2.9

ISLAND

13.6 9.3

1.4 +2.9

13.7 9.4

1.4 +2.9

50

50 13.7 9.4

50 1.3 +3.0

50

13.4 9.1

1.3 +3.0

13.5 9.2

10:03 1.3 +3.0

7-6-59

STAN 98400; 0700 = W 12000 - Sound West

DIST	SOUND	ELEV	DIST	SOUND	ELEV
10:30					
0700	4.8	0.3	15.9	11.4	
(4.5)	6.7	2.2	2700	15.3	10.8
	8.0	3.5			
	9.1	4.6			
	10.2	5.7			
50	10.6	6.1			
	11.3	6.8			
	12.3	7.8			
	13.2	8.7			
	13.7	9.2			
1700	13.9	9.4			
	13.7	9.2			
	13.5	9.0			
	13.4	8.9			
	12.4	8.9			
50	14.0	9.5			
	14.6	10.1			
	15.2	10.7			
	15.7	11.2			

7-6-59

(45)

STAN 100400; 0400 = W 12000 - Sound EAST

DIST	SOUND	ELEV	DIST	SOUND	ELEV
10:35					
0700	10.0	5.5	1.9	+2.6	
(4.5)	10.0	5.5	2700	1.3	+3.2
	9.8	5.3		1.0	+3.5
	9.3	4.8		0.9	+3.6
	9.1	4.6		0.7	+3.8
50	8.7	4.2		0.7	+3.8
	7.2	2.7	50	0.8	+3.7
	6.8	2.3		0.8	+3.7
	6.3	1.8		0.8	+3.7
	5.6	1.1		1.0	+3.5
1700	5.2	0.9		1.0	+3.5
	4.6	0.1	3700	1.0	+3.5
	4.2	+0.3		1.0	+3.5
	4.0	+0.5		1.2	+3.3
	3.7	+0.8		1.1	+3.4
50	3.2	+1.3		1.1	+3.4
	3.0	+1.5	50	1.2	+3.3
	2.5	+2.0		1.1	+3.4
	2.3	+2.2		1.1	+3.4

STAN/100+00 Cont EAST

DIST SOUND Elev

(4.5) 1.1 +3.4

10:40 1.2 +3.3

4+00 1.1 +3.4

1.1 +3.4

1.2 +3.3

1.2 +3.3

1.1 +3.4

50 1.1 +3.4

1.1 }

1.1 }

1.1 +3.4

1.3 +3.2

5+00 1.2 +3.3

1.4 +3.1

1.5 +3.0

1.3 +3.2

1.1 +3.4

50 1.1 +3.4

STAN/100+00; 0+00=W/12000 - SOUND WEST

10:45

DIST SOUND ELEV DIST SOUND ELEV

0+00

13.1 8.6

(4.5) 10.0 5.5 2+00 13.3 8.8

10.1 5.6 13.1 8.6

10.9 6.4 13.2 8.7

12.6 8.1 13.2 8.7

50 13.1 8.6 13.3 8.8

13.1 8.6 50 13.2 8.7

13.0 8.5 13.1 8.6

12.9 8.4 13.9 9.4

12.9 } (4.5) 14.3 9.8

1+00 12.9 } 10:50 14.6 10.1

12.9 8.4 3+00 15.0 10.5

13.0 8.5

13.0 8.5

13.1 8.6

50 13.0 8.5

13.0 8.5 50

13.0 8.5

12.9 8.4



7-6-59-

STAN 102700 CONT EAST

(47)

STAN 102700; 0700 = W 12000 - SOUND EAST						STAN 102700 CONT EAST					
DIST	SOUND	ELEV	DIST	SOUND	ELEV	DIST	SOUND	ELEV	DIST	SOUND	ELEV
10.55							4.6	+0.1		2.4	+2.1
0700	10.1	5.6		7.0	2.5		4.2	+0.3		2.2	+2.3
(4.5)	10.2	5.7	2700	6.8	2.3	4700	4.2	+0.3	6700	2.3	+2.2
	10.2			6.2	1.7		4.1	+0.4		2.3	
	10.2			6.0	1.5		4.0	+0.5		2.3	
	10.2			5.2	0.7		3.8	+0.7		2.3	
50	10.2	5.7		5.4	0.9		3.5	+1.0	(4.5)	2.3	
	10.0	5.5	50	5.3	0.8	50	3.5	+1.0	50	2.3	+2.2
	10.1	5.6		5.0	0.5		3.8	+0.7			
	9.8	5.3		4.8	0.3		4.0	+0.5			
	9.8	5.3		4.8	0.3		3.5	+1.0			
1400	9.1	4.6	(4.5)	4.8	0.3		3.3	+1.2			
	9.2	4.7	11,000	5.0	0.5	5700	3.0	+1.5	7700		
	9.2	4.7	3700	5.0	0.5		2.8	+1.7			
	9.0	4.5		5.2	0.7		2.8	+1.7			
	8.7	4.2		5.0	0.5		2.6	+1.9			
50	8.0	3.5		5.0			2.2	+2.3			
	7.8	3.3	50	5.0		50	2.2	+2.3	50		
	8.0	3.5		5.0			2.2	+2.3			
	7.5	3.0		5.0	0.5		2.4	+2.1			

7-6-59

STAN/102+00; 0+00=W 12 000-SOUND WEST

DIST	SOUND	ELEV	DIST	SOUND	ELEV
0+00	10.2	5.7		14.5	10.0
(4.5)	10.2	5.7	2+00	14.8	10.3
	10.0	5.5		15.0	10.5
	9.8	5.3		15.0	
	9.6	5.1	(4.5)	15.0	
50	9.1	4.6	11110	15.0	
	9.0	4.5	50	15.0	10.5
	8.7	4.2			
	8.3	3.8			
	8.6	4.1			
1400	9.0	4.5			
	10.5	6.0	3+00		
	11.7	7.2			
	13.0	8.5			
	13.8	9.3			
50	14.0	9.5			
	14.2	9.7	50		
	14.4	9.9			
	14.4	9.9			

7-6-59

(46)

STAN/104+00; 0+00=W 12 000-SOUND EAST

DIST	SOUND	ELEV	DIST	SOUND	ELEV
0+00	7.2	2.7		8.0	3.5
(4.5)	7.5	3.0	2+00	8.0	3.5
	8.0	3.5		7.5	3.0
	8.0	3.5		7.0	2.5
	8.3	3.8		6.0	1.5
50	8.0	3.5		5.9	1.4
	8.0	3.5	50	5.9	1.4
	7.8	3.3		6.0	1.5
	8.0	3.5		6.0	1.5
	8.5	4.0		6.8	2.3
1400	9.2	4.7		7.0	2.5
	9.8	5.3	3+00	7.0	2.5
	10.0	5.5		7.2	2.7
	10.5	6.0		7.2	2.7
	10.5	6.0		7.0	2.5
50	10.5	6.0		6.1	1.6
	10.0	5.5	50	6.0	1.5
	8.2	3.7		5.8	1.3
	8.2	3.7		5.7	1.2

STA N104 +00 CONT EAST

DIST	Sound	ELEV	DIST	Sound	ELEV
	5.7	1.2		2.2	+2.3
	5.2	0.7		1.9	+2.6
4+00	4.5	0.0	6+00	1.5	+3.0
	4.5	0.0		1.3	+3.2
	4.2	+0.3		1.0	+3.5
	4.2	+0.3		1.0	
	4.0	+0.5		1.0	
50	3.3	+1.2	50	1.0	
(4.5)	3.0	+1.5		1.0	
11'20	2.8	+1.7		1.0	
	2.2	+2.3	(4.5)	1.0	
	2.0	+2.5	11'25	1.0	
5+00	2.5	+2.0	7+00	1.0	+3.5
	2.0	+2.5			
	2.0	+2.5			
	2.5	+2.0			
	2.5	+2.0			
50	2.0	+2.5			
	2.5	+2.0			
	2.3	+2.2			

STA N104 +00; 0+00 - N120 - Sound West

DIST	Sound	ELEV	DIST	Sound	ELEV
				5.0	0.5
			(4.5)	7.1	2.6
			2+00	7.5	3.0
				7.3	2.8
				7.9	3.4
				7.5	3.0
			50	7.0	2.5
				7.0	2.5
			50	7.0	2.5
				7.0	2.5
				7.2	2.7
				7.0	2.5
			1+00	7.5	3.0
				7.1	2.6
			3+00	13.7	9.2
				6.0	1.5
				14.0	9.5
				5.5	1.0
				14.2	9.7
				4.3	+0.2
			(4.5)	14.0	9.5
			80	4.0	+0.5
			11'25	14.0	9.5
			50	4.0	+0.5
				14.0	9.5
				4.0	+0.5
				4.2	+0.3

7-6-59

STAN 106+00 COUNT EAST

(50)

STAN 106+00; 0+00 = W/12000 - SOUND EAST						STAN 106+00 COUNT EAST					
DIST	SOUND	FLEV	DIST	SOUND	FLEV	DIST	SOUND	FLEV	DIST	SOUND	FLEV
						6.5	2.9		9.0	5.5	
1/30 0+00				7.0	3.4	7.1	3.5	(3.5)	8.7	5.2	
(3.6)	5.3	1.7	2+00	7.0	3.4	4+00	7.2	3.6	6+00	8.5	5.0
	5.9	2.3		7.0	3.4		7.2	3.6		8.3	4.8
	6.4	2.8		6.8	3.2		7.8	4.2		8.3	4.8
	6.9	3.3		6.5	2.9		7.8	4.2		8.2	4.7
50	7.2	3.6		6.4	2.8		8.2	4.6		8.1	4.6
	7.2	3.6	50	6.1	2.5	50	8.5	4.9	50	8.2	4.7
	7.2	3.6		6.1	2.5		8.6	5.0		8.2	4.7
	7.1	3.5		5.2	1.6		8.7	5.1		8.0	4.5
	7.0	3.4		5.2	1.6		8.8	5.2		7.7	4.2
1+00	7.6	4.0		5.2	1.6		9.0	5.4		7.4	3.9
	7.6	4.0	3+00	5.0	1.4	5+00	9.0	5.4	7+00	7.3	3.8
	7.4	3.8		3.4	1.0.2		9.0	5.4		7.2	3.7
	7.0	3.4		4.0	0.4		9.1	5.5		7.2	3.7
	7.0	3.4		4.2	0.6		9.3	5.7		7.3	3.8
50	6.9	3.3		4.9	1.3		9.5	5.9		7.2	3.7
	6.4	2.8	50	5.5	1.9	50	9.9	6.3	50	7.2	3.7
	6.5	2.9		5.6	2.0		9.0	5.4		7.0	3.5
	7.0	3.4		6.2	2.6		8.7	5.1		6.8	3.3

STAN 106 +00 CONT EAST

DIST	SOUND	ELEV
	6.6	3.1
	6.0	2.5
8 +00	5.3	1.8
	5.3	1.8
	5.5	2.0
	5.9	2.4
	5.9	2.4
SD	5.6	2.1
	5.4	1.9
	5.3	1.8
	5.5	2.0
	5.0	1.5
9 +00	4.6	1.1
	4.3	0.8
	4.0	0.5
(3.4)	3.4	0.0
1.40	2.8	+0.6
SD		

7-6-59

151

STAN 106 +00; 0 +00 - W | 2000 - SOUND WEST

DIST	SOUND	ELEV	DIST	SOUND	ELEV
1.75	0 +00	5.0	1.6	0.1	+3.3
(3.4)		4.5	1.1	2 +00	0.2 +3.2
		4.1	0.7		0.6 +2.8
		3.5	0.1		1.0 +2.4
		3.0	+0.4	(3.3)	1.1 +2.2
SD		2.3	+1.1	1.55	1.3 +2.0
		1.5	+1.9	SD	1.7 +1.6
		1.0	+2.4		2.0 +1.3
(3.4)		1.0	+2.4		2.8 +0.5
1.50		0.9	+2.5		3.3 0.0
1 +00		1.3	+2.1		7.5 4.2
		1.4	+2.0	3 +00	10.0 6.7
		1.4	+2.0		11.1 7.8
		0.9	+2.5		11.1 7.8
		0.5	+2.9		11.4 8.1
SD		0.2	+3.2		12.0 8.7
		0.1	+3.1	SD	12.3 9.0
		0.2	+3.2		12.5 9.2
		0.0	+3.4		11.8 8.5

STAN 106 from Cont West

52  
Sound  
Elev

DIST	Sound	ELEV	DIST	Sound	ELEV	STAN 108 to 0+00 = W 12 000	DIST	Sound	ELEV	DIST	Sound	ELEV
	12.0	8.7		11.5	8.2							
	12.0	8.7		11.5	8.2		215 0+00	0.0	+3.2		8.2	5.0
4+00	12.1	8.8	6+00	12.0	8.7		(3.7)	0.1	+3.1	2+00	8.1	4.9
	13.0	9.7		12.0	8.7			0.5	+2.7		8.0	4.8
	13.0	9.7		12.1	8.8			0.6	+2.6		7.9	4.7
	13.0	9.7		12.1	8.8			0.7	+2.5		7.6	4.4
	12.5	9.2		12.2	8.9		50	1.3	+1.9		7.2	4.0
50	12.5	9.2	50	12.2	8.9			1.7	+1.5	50	7.1	3.9
	13.0	9.7		12.1	8.8			2.3	+0.9		7.0	3.8
	12.5	9.2		12.1	8.8			3.3	+0.9		7.0	3.8
(3.3)	12.3	9.0		12.0	8.7			3.9	0.7		6.4	3.2
2+00	12.5	9.2		12.0	8.7		1+00	4.5	1.3		6.0	2.8
5+00	12.2	8.9	7+00	12.1	8.8			5.2	2.0	3+00	5.4	2.2
	12.0	8.7						6.2	3.0		5.0	1.8
	12.0							6.9	3.7		4.6	1.4
	12.0							7.1	3.9		4.5	1.3
	12.0	8.7					50	7.3	4.1		4.2	1.0
50	11.5	8.2						8.1	4.9	50	4.1	0.9
	11.3	8.0						8.1	4.9		2.9	0.7
	11.3	8.0						8.2	5.0		3.8	0.6

## STAN 108 +00 CONT EAST

DIST	Sound	ELEV
	3.8	0.6
	3.7	0.5
4+00	3.3	0.1
	2.7	+0.5
(3.1)	1.9	+1.2
	1.2	+1.9
2:20	0.5	+2.6
to island		

7-6-59

V

53  
SOUND  
EAST

STAN 110+00; 0+00=VV 11900					
DIST	Sound	ELEV	DIST	Sound	ELEV
0+00				7.8	4.8
	0		2+00	7.9	4.9
	1.0			8.0	5.0
	1.0			7.8	4.8
	1.0			7.7	4.7
2:30				7.2	4.2
50	0.2	+2.8		6.7	3.7
(3.0)	1.0	+2.0	50	6.8	3.8
	1.6	+1.4		6.5	3.5
	2.6	+0.4		5.5	2.5
	3.9	0.9		4.2	1.2
1+00	4.6	1.6		4.0	1.0
	5.2	2.2	3+00	4.0	1.0
	6.1	3.1		3.5	0.5
	6.5	3.5		3.0	0.0
	6.7	3.7		2.3	+0.7
50	7.2	4.2		1.7	+1.3
	7.5	4.5	50	1.3	+1.7
	7.7	4.7		0.3	+2.7
	7.6	4.6			

STAN 112+00; 0+00 = W 11770 - Sound EAST

DIST	Sound	ELEV	DIST	Sound	ELEV
0+00				8.3	5.3
			2+00	8.0	5.0
				7.5	4.5
2:40	0.3	+2.7		7.3	4.3
(3:0)	1.0	+2.0		6.0	3.0
50	2.0	+1.0		5.0	2.0
	2.7	+0.3	50	3.0	0.0
	4.0	1.0		1.7	+1.3
	5.0	2.0	(2.9) W 11450	1.3	+1.6
	6.8	3.8	2:45	0.2	+2.7
1+00	7.8	4.8	See Page 60		
	8.8	5.8	3+00		
	9.0	6.0			
	9.5	6.5			
	10.0	7.0			
50	9.7	6.7			
	9.3	6.3	50		
	9.1	6.1			
	8.7	5.7			

STAN 114+00; 0+00 = W 11660 - <sup>54</sup> Sound EAST

DIST	Sound	ELEV	DIST	Sound	ELEV
0+00				7.0	4.1
			(2.9)		
			2+00	6.3	3.4
	0.1	+2.8		4.0	1.1
	1.1	+1.8		3.0	0.1
	1.3	+1.6		2.0	+0.9
50	4.2	1.3		1.1	+1.8
	6.0	3.1	50	0.2	+2.7
	7.8	4.9	Stake W 11400		
	8.5	5.6	See Page 56-		
	9.0	6.1			
1+00	9.5	6.6			
	9.7	6.8	3+00		
	9.9	7.0			
	9.9	7.0			
	10.0	7.1			
50	9.5	6.6			
	8.9	6.0			
	8.5	5.6			
	8.0	5.1			



7-6-59

STAN 108+00; 0+00 = W 12300. Sound WEST

DIST	Sound	ELEV	DIST	Sound	ELEV
3:05 0+00	0.5	+2.4		11.6	8.7
(2.9)	1.0	+1.9	2+00	11.5	8.6
	1.4	+1.5		11.6	8.7
	2.0	+0.9		12.0	9.1
	2.3	+0.6		12.0	9.1
50	3.9	1.0		12.0	9.1
	8.5	5.6	50	11.8	8.8
	11.0	8.1		11.5	8.6
	12.0	9.1		11.3	8.4
	11.8	8.9		11.2	8.3
1+00	11.6	8.7		11.1	8.2
	11.6	8.7	3+00	11.0	8.1
	11.8	8.9		11.0	8.1
(2.8)	12.0	9.1		11.0	8.1
	12.0			11.2	8.3
3:10 50	12.0			11.4	8.5
	12.0	9.1	50	11.5	8.6
	11.8	8.9		11.7	8.8
	11.5	8.6		11.9	9.0

STAN 110+00; 0+00 = W 12400. Sound WEST

DIST	Sound	ELEV	DIST	Sound	ELEV
3:20 0+00				12.2	9.4
(2.8)	0.2	+2.6	2+00	12.3	9.5
	0.6	+2.2		12.5	9.7
	1.2	+1.6		12.3	9.5
	1.5	+1.3		12.3	9.5
50	2.0	+0.8		12.0	9.2
	2.3	+0.5	50	12.0	
	3.5	0.7		12.0	
	7.5	4.7		12.0	
	10.0	7.2		12.0	
1+00	10.5	7.7		12.0	
	11.0	8.2	3+00	12.0	9.2
	11.2	8.4			
	11.2	8.4			
	11.2	8.7			
50	11.5	8.7			
	12.0	9.2	50		
	12.0	9.2			
	12.0	9.2			

See page 7-7-59

STAN 114+00; 0+00 = W 11400 - EAST

SOUND

STAN 114+00 CONT EAST

37

DIST	SOUND	ELEV	DIST	SOUND	ELEV	DIST	SOUND	ELEV	DIST	SOUND	ELEV
							2.3	+2.0		3.1	+1.2
10:30											
0+00	1.0	+3.3		1.2	+3.1		2.3	+2.0		3.1	+1.2
(4.3)	0.5	+3.8	2+00	1.2	}	4+00	2.2	+2.1	6+00	3.0	+1.3
	0.5	+3.8		1.2			2.1	+2.2		2.8	+1.5
	0.7	+3.6		1.2	+3.1		2.2	+2.1		2.3	+2.0
	0.5	+3.8		1.1	+3.2		2.2	}	(4.3)	2.2	+2.1
50	0.5	+3.8		1.2	+3.1		2.2			10:35	2.1
	0.5	+3.8	50	1.2	+3.1	50	2.2	+2.1	50	2.1	+2.2
	0.6	+3.7		1.5	+2.8		2.3	+2.0			
	0.6	+3.7		1.6	+2.7		2.2	+2.1			
	0.6	+3.7		1.6	+2.7		2.2	}			
1400	0.8	+3.5		1.7	+2.6		2.2				
	0.9	+3.4	3+00	1.7	+2.6	5+00	2.2	+2.1	7+00		
	0.9	}		1.7	+2.6		2.6	+1.7			
	0.9			1.8	+2.5		2.9	+1.4			
	0.9			1.9	+2.4		2.8	+1.5			
50	0.9			1.9	+2.4		2.9	+1.4			
	0.9		+3.4	50	2.0	+2.3	50	3.0	+1.3		
	1.0	+3.3		2.2	+2.1		3.0	+1.3			
	1.1	+3.2		2.3	+2.0		3.1	+1.2			

7-7-59

STAN 116+00; 0+00 = W 11640 EAST

	DIST	Sound	ELEV	DIST	Sound	ELEV
	10:45	0.0	+4.4		11.1	6.7
	(4.4)	0.3	+4.1	2+00	11.0	6.6
		0.5	+3.9		10.4	6.0
		0.9	+3.5		10.0	5.6
		1.0	+3.4		9.7	5.3
50		1.2	+3.2		9.0	4.6
		1.5	+2.9	50	8.0	3.6
		2.1	+2.3		6.8	2.4
		4.0	+0.4		5.6	1.2
		5.1	0.7		4.6	0.2
1+00		8.3	3.9		3.4	+1.0
		9.8	5.4	3+00	2.4	+2.0
		10.2	5.8		1.9	+2.5
		10.7	6.3		1.4	+3.0
		11.1	6.7	(4.4)	1.2	+3.2
50		11.2	6.8	10:50	1.3	+3.1
		11.1	6.7	50	1.3	+3.1
		11.2	6.8		1.2	+3.2
		11.2	6.8		1.1	+3.3

STAN 116 +00 COAST EAST

57

DIST	Sound	ELEV	DIST	Sound	ELEV
	1.1	+3.3		1.7	+2.7
	1.0	+3.4		1.8	+2.6
4+00	1.1	+3.3	6+00	2.0	+2.4
	1.2	+3.2		2.3	+2.1
	1.2	+3.2		3.7	+0.7
	1.1	+3.3		2.8	+1.6
	1.2	+3.2		3.1	+1.3
+50	1.4	+3.0	50	3.1	+1.3
	1.5	+2.9		3.0	+1.4
	1.6	+2.8		2.7	+1.7
	1.5	+2.9		2.9	+1.5
	1.4	+3.0		2.6	+1.8
5+00	1.4	+3.0	7+00	2.6	
	1.3	+3.1		2.6	
	1.3	+3.1		2.6	
	1.4	+3.0		2.6	
	1.4			2.6	
50	1.4		50	2.6	
	1.4	+3.0		2.6	
	1.5	+2.9		2.6	+1.8

DIST	Sound	Elev	DIST	Sound	Elev	STAN 118+00, 0+00=W	11840-	Sound	EAST		
						DIST	SOUND	ELEV	DIST	SOUND	ELEV
	2.6	+1.8	(4.4)	2.9	+1.5	11105	0.2	+4.3		3.2	+1.3
	2.6		10:55	2.9	+1.5	0+00	0.3	+4.2	2+00	3.1	+1.4
8+00	2.6		10+00	2.9	+1.5	(4.5)	0.4	+4.1		3.0	+1.5
	2.6						0.5	+4.0		3.0	+1.5
	2.6						0.7	+3.8		2.9	+1.6
	2.6					50	0.7	+3.8		2.7	+1.8
50	2.6						0.7	+3.8	50	2.4	+2.1
	2.6	+1.8					0.8	+3.7		2.3	+2.2
	2.7	+1.7					0.9	+3.6		2.3	+2.2
	2.7						1.0	+3.5		2.3	+2.2
	2.7					1+00	1.0	+3.5		2.2	+2.3
9+00	2.7	+1.7					1.4	+3.1	3+00	2.2	+2.3
	2.9	+1.5					1.3	+3.2		2.1	+2.4
	2.8	+1.6					1.5	+3.0		2.0	+2.5
	2.6	+1.8					1.6	+2.9	(4.5)	2.3	+2.2
	2.8	+1.6				50	2.0	+2.5	11110	3.3	+1.2
50	2.9	+1.5					2.2	+2.3	50	4.6	0.1
	3.0	+1.4					2.6	+1.9		6.2	1.7
	2.9	+1.5					3.0	+1.5		7.8	3.3

## STAN 118 to CONT EAST.

DIST	Sound	ELEV	DIST	Sound	ELEV
	9.0	4.5		2.9	+1.6
	9.5	5.0		2.2	+2.3
4+00	9.8	5.3	6+00	1.9	+2.6
	9.9	5.4		1.9	}
	9.8	5.3		1.9	}
	9.5	5.0		1.9	+2.6
	9.6	5.1		1.8	+2.7
50	9.4	4.9	50	1.7	+2.8
	9.4	4.9		1.7	}
	9.2	4.7		1.7	+2.8
	9.1	4.6		1.8	+2.7
	9.0	4.5		1.7	+2.8
5+00	9.0	4.5	7+00	1.6	+2.9
	8.7	4.2		1.6	}
	8.3	3.8		1.6	}
	7.7	3.2		1.6	}
	6.1	1.6		1.6	+2.9
50	5.2	0.7	50	1.4	+3.1
	4.3	+0.2		1.4	+3.1
	3.7	+0.8		1.4	+3.1

## STA N118 to CONT EAST 59

DIST	Sound	ELEV	DIST	Sound	ELEV
(4.5)	1.3	+3.2		3.0	+1.5
11:10	1.4	+3.1		4.1	+0.4
8+00	1.3	+3.2	10+00	2.5	+2.0
	1.3	}		2.6	+1.9
	1.3	}		2.6	+1.9
	1.3	}		2.6	+1.9
	1.3	}		2.7	+1.8
50	1.3	+3.2	50	2.7	+1.8
	1.5	+3.0		2.8	+1.7
	1.4	+3.1		2.9	+1.6
	1.5	+3.0		2.9	+1.6
	1.8	+2.7		3.0	+1.5
9+00	1.9	+2.6	11+00	3.0	+1.5
	1.9	+2.6		3.1	+1.4
	2.1	+2.4		3.0	+1.5
	2.1	+2.4		3.0	}
	2.2	+2.3		3.0	}
50	2.7	+1.8	50	3.0	+1.5
	3.1	+1.4		2.9	+1.6
	2.9	+1.6		2.9	+1.6

## STAN 118700 CONT EAST

DIST SOUND ELEV

DIST	SOUND	ELEV
	2.9	+1.6
	2.9	}
12700	2.9	
	2.9	
	2.9	+1.6
	2.8	+1.7
	2.8	+1.7
50	2.7	+1.8
	2.8	+1.7
	2.5	+2.0
	2.7	+1.8

See page 54-

7-7-59

60

STAN 112700; 0700 = W 11490 - SOUND EAST

DIST SOUND ELEV DIST SOUND ELEV

DIST	SOUND	ELEV	DIST	SOUND	ELEV
0700				1.0	+3.6
1135	1.5	+3.1	2700	1.0	+3.6
(4.6)	1.0	+3.6		1.1	+3.5
	1.0	}		1.0	+3.6
	1.0				
	1.0				
50	1.0	}		1.0	}
	1.0				
	1.0				
50	1.0				
	1.0				
	1.0				
	1.0				
	1.0				
1700	1.0				
	1.0				
	1.0		3700	1.2	+3.4
	1.0			1.0	+3.6
	1.0			1.1	+3.5
	1.0			1.1	+3.5
50	1.0			1.2	+3.4
	1.0		50	1.2	+3.4
	1.0			1.5	+3.1
	1.0	+3.6		1.4	+3.2

STAN 112 +00 CONT EAST

DIST	SOUND	ELEV	DIST	SOUND	ELEV
	1.3	+3.3		2.0	+2.6
	1.3	+3.3		2.0	+2.6
4+00	1.4	+3.2	6+00	2.0	+2.6
	1.5	+3.1		2.1	+2.5
	1.5	+3.1		2.0	+2.6
	1.6	+3.0	(4.5)	2.0	+2.5
	1.6	+3.0	11:40	1.9	+2.6
50	1.8	+2.8	50	1.9	+2.6
	1.7	+2.9			
	1.7	+2.9			
	1.8	+2.8			
	1.8	+2.8			
5+00	2.0	+2.6			
	2.0	+2.6			
	2.0	+2.6			
	2.1	+2.5			
	2.0	+2.6			
50	2.0				
	2.0				
	2.0	+2.6			

7-7-59

61

STAN 120 +00; 0+00 = W 12000 - SOUND EAST

DIST	SOUND	ELEV	DIST	SOUND	ELEV
	2.8	+0.7		2.5	+1.0
2:10 0+00	2.8	+0.7	(2.5)	2.8	+0.7
	2.8	+0.7	2+00	2.3	+1.2
	2.8	+0.7		2.3	+1.2
	2.6	+0.9		2.5	+1.0
	2.5	+1.0		2.5	+1.0
50	2.5			2.5	+1.0
	2.5		50	2.6	+0.9
	2.5			2.6	+0.9
	2.5	+1.0		2.5	+1.0
	2.4	+1.1		2.4	+1.1
1+00	2.3	+1.2		2.4	+1.1
	2.4	+1.1	3+00	2.5	+1.0
	2.4	+1.1		2.4	+1.1
	2.4	+1.1		2.5	+1.0
	2.5	+1.0		2.5	
50	2.5	+1.0		2.5	
	2.4	+1.1	50	2.5	
	2.5	+1.0		2.5	+1.0
	2.5	+1.0		2.4	+1.1

STATION 120+00 CONT EAST

DIST	Sound	ELEV	DIST	Sound	ELEV
	2.4	+1.1		4.2	0.7
	2.5	+1.0		5.8	2.3
4+00	2.4	+1.1	6+00	6.2	2.7
	2.5	+1.0		7.0	3.5
	2.4	+1.1		7.2	3.7
	2.0	+1.5		7.8	4.3
	2.0	+1.5		7.8	4.3
50	2.0	+1.5	50	7.5	4.0
	1.9	+1.6		7.4	3.9
	1.9	+1.6		7.4	
	1.9	+1.6		7.4	
	2.0	+1.5		7.4	3.9
5+00	1.8	+1.7	7+00	7.5	4.0
	2.0	+1.5		7.5	4.0
	1.8	+1.7		7.2	3.7
(3.5)	1.8	+1.7		6.9	3.4
2:15	1.8	+1.7		6.0	2.5
50	2.0	+1.5	50	5.0	1.5
	3.2	+0.3		4.0	0.5
	3.5	0.0		4.0	0.5

STATION 120+00 CONT EAST 62

DIST	Sound	ELEV	DIST	Sound	ELEV
	3.8	0.3		0.2	+3.2
	3.8			0.2	
	3.8		10+00	0.2	
	3.8	0.3		0.2	
	3.5	0.0		0.2	
	(3.4)	+0.4		0.2	+3.2
2:20	2.8	+0.6		0.3	+3.1
50	2.5	+0.9	50	0.3	+3.1
	2.0	+1.4		0.5	+2.9
	1.8	+1.6		0.5	+2.9
	1.1	+2.3	(3.4)	0.8	+2.6
	1.0	+2.4	2:25	1.0	+2.4
	0.5	+2.9	11+00	1.0	+2.4
	0.4	+3.0		2.8	+0.6
	0.3	+3.1		2.8	+0.6
	0.3	+3.1		3.2	+0.2
	0.3	+3.1		2.8	+0.6
	0.2	+3.2	50	3.0	+0.4
	0.2	+3.2		3.0	+0.4
	0.2	+3.2		2.1	+1.3



STAN 120+00 CONT EAST

DIST	Sound	ELEV	DIST	Sound
	2.0	+1.4		1.0 +2.4
(3.4)	1.8	+1.6		1.0 +2.4
2:30 12+00	1.5	+1.9	14+00	0.8 +2.6
	0.5	+2.9		1.0 +2.4
	0.5	}		1.0 +2.4
	0.5			1.8 +1.6
	0.5	+2.9	(3.3) 2:35	3.0 +0.3
50	0.6	+2.8	50	3.8 0.5
	0.7	+2.7		4.2 0.9
	0.7	}		4.8 1.5
	0.7			4.8 1.5
	0.7	+2.7		4.2 0.9
13+00	0.8	+2.6	15+00	3.8 0.5
	1.0	+2.4		3.5 0.2
	1.2	+2.2		3.0 +0.3
	1.2	}		
	1.2			
50	1.2	+2.2		
	1.2	+1.9		
	1.1	+2.3		

See 7-7

STA 120+00		0+00 = VV 12000		Sound WEST	
DIST	Sound	ELEV	DIST	Sound	ELEV
0+00				5.0	1.8
2:45	2.0	+1.2	2+00	6.2	3.0
(3.2)	2.0	}		7.5	4.3
	2.0			8.6	5.4
	2.0			9.6	6.4
50	2.0			9.8	6.6
	2.0		+1.2	50	10.0
	1.8	+1.4		9.5	6.3
	1.8	+1.4		9.5	6.3
	1.8	+1.4		8.5	5.3
1+00	2.0	+1.2		7.5	4.3
	2.0	+1.2	3+00	5.2	2.0
	2.2	+1.0		4.2	1.0
	2.8	+0.4	(3.2)	3.0	+0.2
	3.0	+0.2	2:50	2.0	+1.2
50	2.8	+0.4		0.6	+1.6
	2.8	+0.4			
	2.8	+0.4			
	3.2	0.0			

- Island -  
See Page 73-

7-7-57

STAN 112+00; 0+00 = W 12470 -

Sound  
West

DIST	SOUND	ELEV	DIST	SOUND	ELEV
<sup>3:00</sup> 0+00	0.0	+3.1		12.5	9.4
(3.1)	0.2	+2.9	2+00	12.5	9.4
	0.6	+2.5		12.5	9.4
	1.0	+2.1		12.6	9.5
	1.1	+2.0		12.6	9.5
50	2.0	+1.1		12.8	9.7
	2.0	+1.1	50	12.8	9.7
	2.3	+0.8		12.6	9.5
	3.2	0.1		12.6	9.5
	7.0	3.9	(3.1)	12.2	9.1
1+00	9.8	6.7	3:05	12.2	9.1
	10.8	7.7	3+00	12.2	9.1
	11.2	8.1			
	11.8	8.7			
	12.0	8.9			
50	12.0	8.9			
	12.0	8.9			
	12.2	9.1			
	12.2	9.1			

64

SOUND  
West

STA 114+00; 0+00 = W 12550 -

DIST	SOUND	ELEV	DIST	SOUND	ELEV
<sup>3:10</sup> 0+00	0.0	+3.0		12.7	9.7
(3.0)	0.2	+2.8	2+00	12.7	9.7
	0.6	+2.4		12.7	9.7
	0.9	+2.1		12.6	9.6
	1.2	+1.8		12.5	9.5
50	1.3	+1.7		12.6	9.6
	1.8	+1.2	50	12.7	9.7
	2.2	+0.8		12.7	9.7
	2.7	+0.3		12.8	9.8
	3.3	0.3	(3.0)	12.0	9.0
1+00	5.9	2.9	3:15	11.8	8.8
	10.0	7.0	3+00	11.4	8.4
	11.3	8.3		11.0	8.0
	12.2	9.2		11.0	8.0
	12.5	9.5		11.2	8.2
50	12.6	9.6			
	12.6	9.6	50		
	12.7	9.7			
	12.7	9.7			

7-8-59

STAN 116+00; 0+00 = 12400 - SOUND WEST

DIST	Sound	ELEV	DIST	Sound	ELEV
0+00	0.1	+4.5		11.3	6.7
11:15	0.2	+4.4	2+00	11.5	6.9
(4.6)	0.5	+4.1		11.3	6.7
	0.5	+4.1		11.2	6.6
	0.6	+4.0	(4.6)	11.1	6.5
50	1.5	+3.1	11:20	10.8	6.2
	1.5	+3.1	50	10.1	5.5
	1.9	+2.7		9.9	5.3
	2.0	+2.6		9.3	4.7
	2.3	+2.3		9.0	4.4
1+00	3.0	+1.6		7.3	2.7
	3.2	+1.4	3+00	6.3	1.7
	4.2	+0.4		6.0	1.4
	5.6	1.0		6.0	1.4
	7.0	2.4		8.9	4.3
50	9.5	4.9		11.0	6.4
	10.5	5.9	50	12.3	7.7
	11.1	6.5		12.9	8.3
	11.3	6.7		12.6	8.0

STA N116+00 Cont WEST

65

DIST	Sound	ELEV	DIST	Sound	ELEV
	12.7	8.1			
	12.5	7.9			
4+00	12.7	8.1			
	12.9	8.3			
	13.0	8.4			
	13.0	8.4			
50	13.0				
	13.0				
	13.0	8.4			
	13.2	8.6			
	13.2	8.6			
	13.4	8.8			
5+00	13.5	8.9			
	13.5	8.9			
	13.5	8.9			
(4.7)	13.5	8.8			
11:25	14.0	9.3			
50	14.0	9.3			

STA  
N118+00; 0+10 = W/2 290 - Sound West

7-8-59

DIST	Sound	ELEV	DIST	Sound	ELEV
0+00	0.2	+4.4	4.5	2.5	+2.0
4.6	1.5	+3.1	1110 2+00	1.5	+3.0
	2.0	+2.6		0.6	+3.9
	3.0	+1.6		0.2	+4.3
	3.2	+1.4	ISLAND		
50	4.2	+0.4	See page 72		
	8.0	3.4	50		
	9.0	4.4			
	10.5	5.9			
	11.5	6.9			
1+00	12.0	7.4			
	12.0		3+00		
	12.0				
	12.0				
	12.0	7.4			
50	11.0	6.4			
	10.0	5.4	50		
	7.0	2.4			
	5.0	0.4			

7-8-59

STAN 122+00; 0+00 = W/2 2000 -

Sound EAST

DIST	Sound	ELEV	DIST	Sound	ELEV
1115 0+00	2.2	+2.2		3.0	+1.4
4.4	2.2		2+00	3.0	
	2.2			3.0	
	2.2			3.0	
	2.2	+2.2		3.0	
50	2.4	+2.0		3.0	
	2.4	+2.0	50	3.0	
	2.5	+1.9		3.0	
	2.5	+1.9		3.0	
	2.6	+1.8		3.0	+1.4
1+00	2.6	+1.8		2.6	+1.8
	2.8	+1.6	3+00	2.6	+1.8
	3.0	+1.4		2.6	+1.8
	3.0			2.5	+1.9
	3.0			2.5	
50	3.0			2.5	
	3.0		50	2.5	
	3.0			2.5	
	3.0	+1.4		2.5	+1.9

## STAN 12200 CONT EAST

## STAN 12200 CONT EAST

67

DIST	Sound	ELEV	DIST	Sound	ELEV	DIST	Sound	ELEV	DIST	Sound	
(4.4)	2.2	+2.2		1.8	+2.6	(4.3)	8.2	3.9		2.6	+1.7
1120	2.0	+2.4		1.8		1125	8.2	3.9		2.6	+1.7
4+00	2.0	+2.4	6+00	1.8		8+00	8.5	4.2	10+00	2.4	+1.9
	2.0	+2.4		1.8			8.5	4.2		2.5	+1.8
	1.8	+2.6		1.8			7.5	3.2		3.0	+1.3
	1.8	+2.6		1.8			7.0	2.7		2.0	+2.3
	1.8	+2.6		1.8	+2.6		6.5	2.2		1.8	+2.5
50	2.0	+2.4	50	2.0	+2.4	50	6.5	2.2	50	2.0	+2.3
	1.8	+2.6		2.8	+2.6		6.0	1.7		1.6	+2.7
	1.8			3.8	+0.6		5.5	1.2		1.6	
	1.8			5.0	0.6		5.0	0.7		1.6	
	1.8			6.0	1.6		5.0	0.7	(4.3)	1.6	+2.7
5+00	1.8		7+00	6.8	2.4	9+00	4.0	+0.3	11+00	2.0	+2.3
	1.8			7.2	2.8		3.5	+0.8		1.8	+2.5
	1.8			8.0	3.6		3.5	+0.8		1.8	+2.5
	1.8			8.2	3.8		3.5	+0.8		2.0	+2.3
	1.8			8.2	3.8		3.0	+1.3		1.8	+2.5
50	1.8	+2.6	50	8.0	3.6	50	3.0	+1.3	50	1.8	+2.5
	1.6	+2.8		8.0	3.6		3.0	+1.3		1.8	+2.5
	1.8	+2.6		8.0	3.6		2.6	+1.7		1.5	+2.8

## STAN 122+00 CONT EAST

## STAN 122+00-CONT EAST

68

DIST	Sound	ELEV	DIST	Sound	ELEV	DIST	Sound	ELEV
	1.5	+2.8		1.5	+2.8		3.0	+1.2
	1.5	+2.8		1.5			2.8	+1.4
12+00	1.4	+2.9	14+00	1.5		16+00	2.5	+1.7
	1.4	+2.9		1.5			2.5	+1.7
	1.5	+2.8		1.5			3.0	+1.2
	1.5	+2.8		1.5		(4.2)	3.5	+0.7
	2.5	+1.8		1.5		1+45	3.8	+0.4
50	3.8	+0.5	50	1.5	+2.8	50	3.0	+1.2
	4.8	0.5		1.6	+2.7			
	5.8	1.5		1.5	+2.8			
(4.3)	7.0	2.7		1.5				
1135	5.5	1.2		1.5				
13+00	5.5	1.2	15+00	1.5				
	4.8	0.5		1.5	+2.8			
	4.0	+0.3		2.0	+2.3			
	4.0	+0.3	(4.2)	2.8	+1.4			
	4.8	0.5	1140	3.5	+0.7			
50	4.8	0.5	50	4.0	+0.2			
	4.2	+0.1		4.0	+0.2			
	3.0	+1.3		3.8	+0.4			

STAN 122+00; 0+00 = W 12000 WEST

Sound

DIST	Sound	ELEV	DIST	Sound	ELEV
0+00				8.0	3.8
1:50	2.0	+2.2	2+00	7.2	3.0
(4.2)	2.0	+2.2		6.5	2.3
	2.0	+2.2		5.6	1.4
	2.0	+2.2		5.0	0.8
50	2.0	+2.2		4.0	+0.2
	2.0	+2.2	50	3.2	+1.0
	2.5	+1.7		2.2	+2.0
	2.5	+1.7		1.4	+2.8
	2.8	+1.4		0.8	+3.4
1+00	3.1	+1.1	(4.1)	0.4	+3.7
	4.0	+0.2	1:55	0.1	+4.0
	5.0	0.8	3+00		
	6.0	1.8	Island		
	7.3	3.1	See page 74		
50	8.0	3.8			
	8.5	4.3	50		
	8.7	4.5			
	8.0	3.8			

See FB 115 Page 3-  
STAN 124+00; 0+00 = W 12000

69  
Sound  
EAST

DIST	Sound	ELEV	DIST	Sound	ELEV
2:00					
0+00	2.6	+1.5		1.1	+2.9
(4.1)	1.5	+2.6	2:05		
			2+00	1.1	+2.9
	1.7	+2.4	(4.0)	1.0	+3.0
	1.8	+2.3		0.8	+3.2
	1.7	+2.4		0.5	+3.5
50	1.9	+2.2		0.5	+3.5
	1.9	+2.2	50	0.5	+3.5
	1.9	+2.2		0.5	+3.5
	1.9	+2.2		0.5	+3.5
	1.7	+2.4		0.2	+3.8
1+00	1.6	+2.5	Island		
	1.5	+2.6	3+00		
	1.5	+2.6			
	1.4	+2.7			
	1.4	+2.7			
50	1.3	+2.8			
	1.4	+2.7	50		
	1.3	+2.8			
	1.3	+2.8			

67-8-59

STAN/24+00; 0+00 = W 12000 Sound West

DIST	Sound	ELEV	DIST	Sound	ELEV
0+00				9.0	5.0
2:10	1.7	+2.3	2+00	8.3	4.3
(4.0)	1.6	+2.4		7.2	3.2
	1.8	+2.2		6.3	2.3
	1.8	+2.2		5.2	1.2
250	1.9	+2.1		3.5	+0.5
	2.0	+2.0	50	2.9	+1.1
	2.0	+2.0		1.5	+2.5
	2.1	+1.9		0.6	+3.4
	2.5	+1.5		0.2	+3.8
1+00	3.3	+0.7	ISLAND -		
	4.9	0.9	3+00		
	7.0	3.0	See page 74		
	8.2	4.2			
	9.0	5.0			
500	9.3	5.3			
	9.8	5.8	50		
	9.7	5.7			
	9.5	5.5			

7-8-59

70

STAN/26+00; 0+00 = W 12000 - SOUND EAST

DIST	Sound	ELEV	DIST	Sound	ELEV
2:20					
0+00	1.5	+2.4			
(3.9)	1.5	+2.4			
	1.5	+2.4			
	1.5	+2.4			
	1.5	+2.4			
50	1.3	+2.6			
	1.3	+2.6			
	1.0	+2.9			
	1.0	+2.9			
	0.8	+3.1			
1+00	0.6	+3.3			
	0.5	+3.4			
	0.4	+3.5			
	0.3	+3.6			
	0.1	+3.8			
50	ISLAND -				



Sec FD 7-8-59  
MB115-5

STAN (26+00) 0+00 = W 12000 - Sound West

DIST	Sound	ELEV	DIST	Sound	ELEV
0+00				7.2	3.3
2:25	1.5	+2.4	2+00	6.8	2.9
(3.9)	1.6	+2.3		5.9	2.0
	1.6	+2.3		5.0	1.1
	1.7	+2.2		4.2	0.3
50	1.8	+2.1		3.0	+0.9
	1.9	+2.0	50	1.7	+2.2
	2.0	+1.9		0.5	+3.4
	2.0	+1.9		ISLAND	
	2.2	+1.7		See Page 75	
1+00	3.0	+0.9	2:30		
	4.0	0.1	3+00		
	5.9	2.0			
	6.7	2.8			
	7.6	3.7			
50	8.3	4.4			
	8.5	4.6	50		
	8.2	4.3			
	7.7	3.6			

Sec FB 115 - Page 6 -

71

STAN (28+00) 0+00 = W 12000 - Sound West

DIST	Sound	ELEV	DIST	Sound	ELEV
2:35					
0+00	0.8	+3.0		6.0	2.2
(3.8)	1.0	+2.8	2+00	8.0	1.2
	1.2	+2.6		4.5	0.7
	1.5	+2.3		4.0	0.2
	1.5	+2.3	(3.7)	3.0	+0.7
50	1.5	+2.3	2:40	2.5	+1.2
	1.6	+2.2	50	2.0	+1.7
	2.0	+1.8		1.5	+2.2
	2.0	+1.8		1.6	+2.1
	2.1	+1.7		0.4	+3.3
1+00	2.5	+1.3		0.2	+3.5
	3.0	+0.8	3+00	0.1	+3.6
	4.0	0.2		ISLAND	
	5.2	1.4		See Page 76	
	6.5	2.7			
50	7.0	3.2			
	7.0	3.2	50		
	7.0	3.2			
	6.5	2.7			

STAN 130+00; 0+00=W12000-Sound WEST

DIST	SOUND	ELEV	DIST	SOUND	ELEV
0+00			6.2	2.6	
			2+00	5.5	1.9
2:50	0.1	+3.5	5.1	1.5	
(3.6)	0.2	+3.4	4.5	0.9	
	0.8	+3.1	(3.4)	4.0	0.4
50	1.1	+2.5	(2.55)	3.2	+0.4
	1.2	+2.4	50	2.7	+0.9
	1.6	+2.0		1.5	+2.1
	2.0	+1.6		1.2	+2.4
	2.0	+1.6		0.5	+3.1
1+00	2.5	+1.1	3:00	0.3	+3.3
	3.1	+0.5	3+00	0.1	+3.5
	4.0	0.4	See Page 77		
	4.5	0.9			
	5.2	1.6			
50	5.9	2.3			
	6.5	2.9	50		
	7.0	3.4			
	6.8	3.2			

STAN 132+00; 0+00=W12000 SOUND WEST

DIST	SOUND	ELEV.	DIST	SOUND	ELEV.
0+00	0.5	+2.9		6.7	3.3
(3:05)	0.6	+2.8	2+00	6.0	2.6
(3.4)	0.7	+2.7		5.0	1.6
	0.8	+2.6	(3.4)	4.5	1.1
	1.0	+2.4	(3.10)	4.0	0.6
50	1.2	+2.2		3.5	0.1
	1.6	+1.8	50	3.5	0.1
	2.1	+1.3		3.0	+0.4
	3.1	+0.3		2.0	+1.4
	3.5	0.1		1.5	+1.9
1+00	4.0	0.6		1.0	+2.4
	4.2	0.8	3+00	0.5	+2.9
	5.0	1.6		0.5	+2.9
	6.0	2.6		0.4	+3.0
	6.6	3.2			
50	7.0	3.6			
	7.3	3.9	50		
	7.2	3.8	stake at See Page		
	7.0	3.6	W 123480 on island 78.		

7-9-59  
See page 66

STAN 118+00; 0+00 = W 12720 - Sound WEST

DIST	Sound	ELEV	DIST	Sound	ELEV
11:00 0+00	0.0	+4.1		14.0	9.9
(4.1)	1.3	+2.8	2+00	13.3	9.2
	1.5	+2.6		13.3	9.2
	2.0	+2.1		13.2	9.1
	2.2	+1.9		13.0	8.9
50	2.7	+1.4		12.9	8.8
	3.1	+1.0	50	12.9	8.8
	3.3	+0.8		12.9	8.8
	4.1	0.0		12.7	8.6
	5.1	1.0	(4.2)	12.3	8.1
1+00	9.8	5.7	11:05	12.3	8.1
	12.1	8.0	3+00	12.2	8.0
	13.2	9.1			
	13.9	9.8			
	14.1	10.0			
80	14.2	10.1			
	14.4	10.3	50		
	14.4	10.3			
	14.3	10.2			

7-9-59  
See page 63

Sta N 120+00; 0+00 = W 12750

73  
Sound  
WEST

DIST	Sound	ELEV	DIST	Sound	ELEV
11:10 0+00	0.1	+4.1		13.3	9.0
(4.2)	0.3	+3.9	2+00	13.6	9.3
	0.8	+3.4		13.9	9.6
	0.9	+3.3		14.2	9.9
	1.1	+3.1		14.3	10.0
50	1.2	+3.0		14.4	10.1
	1.3	+2.9	50	14.3	10.0
	1.1	+3.1		14.0	9.7
	1.1	+3.1		13.8	9.5
(4.3)	1.5	+2.7		13.5	9.2
11:15 1+00	1.9	+2.4		13.6	9.3
	2.2	+2.1	3+00	13.5	9.2
	2.8	+1.5			
	3.1	+1.2			
	3.5	+0.8			
50	4.2	+0.1			
	7.8	3.5	50		
	10.7	6.4			
	12.4	8.1			

7-9-59  
See page 69

SOUND

See page 70

74

STAN 122+00; 0+00 W 12770 -

WEST

STAN 124+00; 0+00 W 12700 -

SOUND  
WEST

DIST	SOUND	ELEV	DIST	SOUND	ELEV	DIST	SOUND	ELEV	DIST	SOUND	ELEV
11:25 0+00	0.3	+4.1	11:30	3.1	+1.3	11:35 0+00				1.8	+2.7
(4.4)	0.5	+3.9	2+00	3.9	+0.5	(4.5)			2+00	1.9	+2.6
	0.6	+3.8	(4.4)	4.0	+0.4	11:35	0.0	+4.5		2.0	+2.5
	0.9	+3.5		5.1	0.7		0.1	+4.4		2.0	+2.5
	0.9	+3.5		9.1	4.7		0.3	+4.2		2.1	+2.4
50	1.0	+3.4		11.3	6.9	50	0.4	+4.1		2.1	+2.4
	1.1	+3.3	50	12.6	8.2		0.6	+3.9	50	2.2	+2.3
	1.1	+3.3		13.0	8.6		0.7	+3.8	(4.5)	2.2	+2.3
	1.2	+3.2		13.2	8.8		0.7	+3.8		2.4	+2.1
	1.2	+3.2		13.2	8.8		1.1	+3.4		2.6	+1.9
1+00	1.3	+3.1		13.3	8.9	1+00	1.2	+3.3		2.9	+1.6
	1.4	+3.0	3+00	13.3	8.9		1.3	+3.2	11:40 3+00	2.9	}
	1.4	}		13.3	8.9		1.3	}		2.9	}
	1.4	}		13.4	9.0		1.3	}		2.9	+1.6
	1.4	+3.0		13.6	9.2		1.3	+3.2		3.2	+1.3
50	1.8	+2.6		13.8	9.4	50	1.4	+3.1		3.9	+0.6
	2.0	+2.4	50	13.9	9.5		1.7	+2.8		4.1	+0.4
	2.3	+2.1					1.6	+2.9		5.0	0.5
	2.8	+1.6					1.7	+2.8		7.8	3.3

STAN 124+00 CONT WEST

DIST SOUND ELEV

10.1 5.6

12.0 7.5

4+00 12.5 8.0

13.0 8.5

13.0 }

13.0 }

13.0 }

20 13.0 8.5

13.1 8.6

13.2 8.7

(4.6) 13.3 8.7

11.45 13.3 8.7

5+00 13.3 8.7

7-9-59

See Page 71.

75

STAN 126+00; 0+00=W/2720

SOUND WEST

DIST SOUND ELEV DIST SOUND ELEV

1.20  
0+00

2.8 +2.0

(4.8) 0.0 +4.8 2+00 2.8 }

0.2 +4.6 2.8 +2.0

0.5 +4.3 2.9 +1.9

0.6 +4.2 3.0 +1.8

50 0.8 +4.0 3.1 +1.7

0.9 +3.9 50 3.1 +1.7

1.2 +3.6 3.3 +1.5

1.2 +3.6 3.3 +1.5

1.5 +3.3 3.4 +1.4

7+00 1.7 +3.1 (4.8) 3.4 +1.4

1.7 +3.1 1.25 3+00 3.4 +1.4

1.9 +2.9 3.5 +1.3

2.0 +2.8 3.5 +1.3

2.2 +2.6 3.6 +1.2

50 2.5 +2.3 3.9 +0.9

2.4 +2.4 50 3.9 +0.9

2.4 +2.4 3.9 +0.9

2.9 +1.9 4.1 +0.7

STAN 126+00 CONT WEST

DIST	SOUND	ELEV	DIST	SOUND	ELEV
	4.1	+0.7	(4.7)	13.4	8.7
	4.0	+0.8	11.30	13.2	8.5
4+00	4.2	+0.6	6+00	13.2	8.5
	4.5	+0.3			
	4.9	0.1			
	5.5	0.7			
	7.1	2.3			
50	10.5	5.7			
	11.7	6.9			
	13.1	8.3			
	13.5	8.7			
	13.3	8.5			
5+00	13.5	8.7			
	13.2	8.4			
	13.2	8.4			
	13.0	8.2			
	13.0	8.2			
50	13.1	8.3			
	13.1	8.3			
	13.2	8.4			

See Page 71

STAN 128+00; 0+00-W/2630 - Sound WEST					
DIST	SOUND	ELEV	DIST	SOUND	ELEV
0+00				2.4	+2.2
1.40	0.0	+4.6	2+00	2.5	+2.1
(4.6)	0.3	+4.3		2.7	+1.9
	0.4	+4.2		2.9	+1.7
	0.4	+4.2		2.9	
50	0.7	+3.9		2.9	
	0.9	+3.7	80	2.9	+1.7
	1.0	+3.6		3.0	+1.6
	1.0	+3.6		3.1	+1.5
	1.1	+3.5		3.3	+1.3
1+00	1.3	+3.3		3.4	+1.2
	1.6	+3.0	3+00	3.7	+0.9
	1.7	+2.9		3.8	+0.8
	1.8	+2.8		4.0	+0.6
	2.0	+2.6		4.2	+0.4
50	2.0	+2.6		4.2	+0.4
	2.2	+2.4	50	4.3	+0.3
	2.3	+2.3		4.3	+0.3
	2.5	+2.1		4.3	+0.3

STATION 128700 014T WEST					
DIST	Sound	FLEV	DIST	Sound	FLEV
	4.3	+0.3		7.2	2.6
	4.3	}		10.0	5.4
4+00	4.3		+0.3	6+00	11.7
	4.2	+0.4		13.0	8.4
	4.2	+0.4		13.3	8.7
	4.3	+0.3		13.3	8.7
	4.3	+0.3		13.1	8.5
50	4.1	+0.5	50	13.1	8.5
	4.5	+0.1		13.0	8.4
	4.4	+0.2		13.0	8.4
(4.6)	4.4	+0.2		12.9	8.3
1.45	4.2	+0.4		12.9	}
5+00	4.4	+0.2	7+00	12.9	
	4.4	+0.2		12.9	8.3
	4.2	+0.4		12.8	8.2
	4.2	+0.4		12.8	8.2
	4.1	+0.5		12.5	7.9
50	4.4	+0.2	50	12.7	8.1
	4.7	0.1		12.6	8.0
	4.9	0.3		12.4	7.8

See Page 72

STATION 130+00; 0700=W 12500						77 SOUND WEST
DIST	Sound	FLEV	DIST	Sound	FLEV	
0+00						2.2 +2.3
			2+00			2.3 +2.2
(4.5)						2.3 +2.2
1.55	0.0	+4.5				2.3 +2.2
	0.3	+4.2				2.4 +2.1
50	0.8	+3.7				2.7 +1.8
	1.2	+3.3	58			2.8 +1.7
	1.3	+3.2				3.0 +1.5
	1.5	+3.0				3.1 +1.4
	1.6	+2.9				3.2 +1.3
1+00	1.5	+3.0				3.3 +1.2
	1.3	+3.2	3+00			3.4 +1.1
	1.3	+3.2				3.6 +0.9
	1.4	+3.1				3.8 +0.7
	1.8	+2.7				3.8 +0.7
50	1.9	+2.6				3.9 +0.6
	2.0	+2.5	50			4.1 +0.4
	2.0	+2.5				4.2 +0.3
	2.1	+2.4				4.2 +0.3

## STAN 130 +00 CONT WEST

DIST	Sound	ELEV	DIST	Sound	ELEV
2:00	4.2	+0.3		4.4	+0.1
(4.5)	4.2	+0.3		5.0	0.5
4:00	4.1	+0.4	6:00	8.2	3.7
	4.1	+0.4		10.2	5.7
	4.2	+0.3		11.6	7.1
	4.2			12.3	7.8
	4.2			12.3	7.8
50	4.2		50	12.4	7.9
	4.2			12.3	7.8
	4.2			12.4	7.9
	4.2			12.5	8.0
	4.2	+0.3		12.6	8.1
5:00	4.3	+0.2	7:00	12.7	8.2
	4.3			12.7	8.2
	4.3			13.0	8.5
	4.3			13.0	
	4.3			13.0	
50	4.3	+0.2	50	13.0	8.5
	4.2	+0.3	(4.4)	12.4	8.0
	4.2	+0.3	2:05	12.6	8.2

See page 72

78

STAN 132 +00 - 0 +00 = W 12380 - Sound West					
DIST	Sound	ELEV	DIST	Sound	elev.
2:10 0:00	0.2	+4.2		4.2	+0.2
(4.4)	0.3	+4.1	2:00	4.5	0.1
	0.5	+3.9		4.9	0.5
	0.5	+3.9		4.8	0.4
	0.6	+3.8		4.9	0.5
50	0.8	+3.6		4.9	0.5
	1.2	+3.2	50	4.7	0.3
	1.4	+3.0		4.7	0.3
	1.6	+2.8		4.8	0.4
	1.9	+2.5		4.7	0.3
1:00	2.1	+2.3	(4.3)	4.9	0.6
	2.3	+2.1	2:15 3:00	4.7	0.4
	2.7	+1.7		4.7	0.4
	3.0	+1.4		4.8	0.5
	3.1	+1.3		4.8	
50	3.1	+1.3		4.8	
	3.3	+1.1	50	4.8	0.5
	3.6	+0.8		4.9	0.6
	3.9	+0.5		5.1	0.8



STAN 132700 Cont West

DIST	Sound	ELEV	DNT	Sound	ELEV
	5.1	0.8		5.0	0.7
	5.1	0.8		7.0	2.7
4+00	5.1	0.8	6+00	9.6	5.3
	5.2	0.9		11.9	7.6
	5.3	1.0		12.4	8.1
	5.5	1.2	(4.3)	12.6	8.3
	5.4	1.1	2,20	12.6	8.3
20	5.4	1.1	50	12.2	7.9
	5.5	1.2		12.2	7.9
	5.8	1.5		12.2	7.9
	6.0	1.7		12.3	8.0
	6.2	1.9		12.3	
5+00	6.6	2.3	7+00	12.3	
	6.7	2.4		12.3	
	6.2	1.9		12.3	
	5.3	1.0		12.3	8.0
	5.2	0.9		12.2	7.9
50	5.1	0.8	50	12.4	8.1
	5.0	0.7		12.8	8.5
	5.0	0.7		12.4	8.1

STAN 132700 Cont West

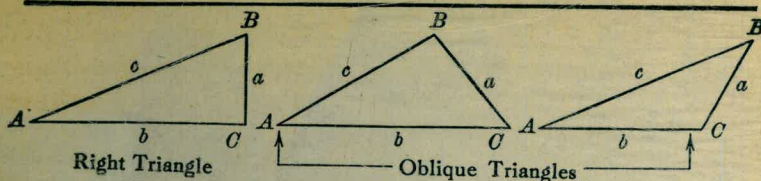
DIST	Sound	ELEV
	12.3	8.0
	12.4	8.1
8+00	12.3	8.0
	12.1	7.8
	11.9	7.6

50

CONT in BOOK 115

9+00

TRIGONOMETRIC FORMULÆ



Right Triangle

Oblique Triangles

Solution of Right Triangles

For Angle A.  $\sin = \frac{a}{c}$ ,  $\cos = \frac{b}{c}$ ,  $\tan = \frac{a}{b}$ ,  $\cot = \frac{b}{a}$ ,  $\sec = \frac{c}{b}$ ,  $\text{cosec} = \frac{c}{a}$

Given	Required	Formulas
$a, b$	$A, B, c$	$\tan A = \frac{a}{b} = \cot B, c = \sqrt{a^2 + b^2} = a \sqrt{1 + \frac{b^2}{a^2}}$
$a, c$	$A, B, b$	$\sin A = \frac{a}{c} = \cos B, b = \sqrt{(c+a)(c-a)} = c \sqrt{1 - \frac{a^2}{c^2}}$
$A, a$	$B, b, c$	$B = 90^\circ - A, b = a \cot A, c = \frac{a}{\sin A}$
$A, b$	$B, a, c$	$B = 90^\circ - A, a = b \tan A, c = \frac{b}{\cos A}$
$A, c$	$B, a, b$	$B = 90^\circ - A, a = c \sin A, b = c \cos A$

Solution of Oblique Triangles

Given	Required	Formulas
$A, B, c$	$b, a, C$	$b = \frac{a \sin B}{\sin A}, C = 180^\circ - (A + B), c = \frac{a \sin C}{\sin A}$
$A, a, b$	$B, c, C$	$\sin B = \frac{b \sin A}{a}, C = 180^\circ - (A + B), c = \frac{a \sin C}{\sin A}$
$a, b, C$	$A, B, c$	$A + B = 180^\circ - C, \tan \frac{1}{2}(A - B) = \frac{(a - b) \tan \frac{1}{2}(A + B)}{a + b}$ $c = \frac{a \sin C}{\sin A}$
$a, b, c$	$A, B, C$	$s = \frac{a + b + c}{2}, \sin \frac{1}{2}A = \sqrt{\frac{(s - b)(s - c)}{bc}}$ $\sin \frac{1}{2}B = \sqrt{\frac{(s - a)(s - c)}{ac}}, C = 180^\circ - (A + B)$
$a, b, c$	Area	$s = \frac{a + b + c}{2}, \text{area} = \sqrt{s(s - a)(s - b)(s - c)}$
$A, b, c$	Area	$\text{area} = \frac{bc \sin A}{2}$
$A, B, C, a$	Area	$\text{area} = \frac{a^2 \sin B \sin C}{2 \sin A}$

REDUCTION TO HORIZONTAL



Horizontal distance = Slope distance multiplied by the cosine of the vertical angle. Thus: slope distance = 319.4 ft. Vert. angle =  $5^\circ 10'$ . From Table, Page IX,  $\cos 5^\circ 10' = .9959$ . Horizontal distance =  $319.4 \times .9959 = 318.09$  ft. Horizontal distance also = Slope distance minus slope distance times (1 - cosine of vertical angle) With the same figures as in the preceding example, the following result is obtained.  $\text{Cosine } 5^\circ 10' = .9959, 1 - .9959 = .0041, 319.4 \times .0041 = 1.31, 319.4 - 1.31 = 318.09$  ft.

When the rise is known, the horizontal distance is approximately: - the slope distance less the square of the rise divided by twice the slope distance. Thus: rise = 14 ft., slope distance = 302.6 ft. Horizontal distance =  $302.6 - \frac{14 \times 14}{2 \times 302.6} = 302.6 - 0.32 = 302.28$  ft.