

MB 117



MICROFILMED

JAN 8 1965

16 368

18100  
16370  

---

1730

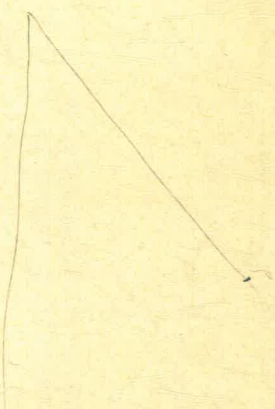
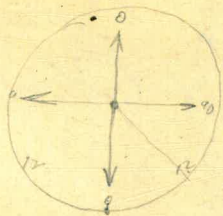
16526  
16527  

---

16528  
16529

MB N<sup>o</sup> 117

THIS BOOK INDEXED 2/9/62



CONT'D. FROM MB. 116

9-02-59

STA. N. 122+00; 0+00 = W 16470; SOUND WEST

DIST	SOUND	ELEV	DIST	SOUND	ELEV
0+00	1.9	+3.8	(57)	14.0	8.3
(57)	2.4	+3.3	50	14.1	8.4
<u>9:24</u>	3.0	+2.7	<u>9:27</u>	14.1	8.4
	3.3	+2.4		14.2	8.5
	3.6	+2.1		14.2	8.5
50	4.3	+1.4		14.5	8.8
	5.6	+0.1	3+00	14.5	8.8
	6.5	0.8		14.4	8.7
	7.2	1.5		14.3	8.6
	7.5	1.8		14.3	8.6
1+00	7.9	2.2		14.3	8.6
	7.7	2.0	50	14.3	8.6
	7.5	1.8		14.3	8.6
	7.4	1.7		14.3	8.6
	7.2	1.5		14.3	8.6
50	9.0	3.3		14.2	8.5
	13.0	7.3	4+00	14.3	8.6
	13.5	7.8		15.0	9.3
	13.7	8.0		14.8	9.1
	13.8	8.1		14.5	8.8
2+00	14.0	8.3		13.2	7.5
	14.0		50	13.2	7.5
	14.0			13.0	7.3
	14.0	8.3		13.2	7.5

STA. N. 122+00 - WEST

DIST	SOUND	ELEV	DIST	SOUND	ELEV
	13.2	7.4	(58)	13.4	7.6
(58)	13.2	7.4		13.7	7.9
5+00	13.4	7.6	50	13.8	8.0
<u>9:30</u>	13.4	7.6	<u>9:33</u>	14.0	8.2
	13.7	7.9		14.0	8.2
	13.6	7.8		14.0	8.2
	13.3	7.5		14.1	8.3
50	13.3	7.5	8+00	14.2	8.4
	13.4	7.6		14.3	8.5
	13.3	7.5		14.2	8.4
	13.4	7.6		14.3	8.5
	13.3	7.5		14.3	8.5
6+00	13.3	7.5	50	14.3	8.5
	13.5	7.7		14.3	8.5
	14.2	8.4		14.1	8.3
	15.2	9.4		13.7	7.9
	15.2	9.4		13.5	7.7
50	15.2	9.4	9+00	13.5	7.7
	15.1	9.3		13.3	7.5
	14.0	8.2		13.0	7.2
	13.6	7.8		12.8	7.0
	13.1	7.3		13.7	7.9
7+00	13.1	7.3	50	14.2	8.4
	13.2	7.4		14.5	8.7
	13.3	7.5		14.5	8.7

STA. N. 122+00 CONTO WEST 9-02-59			STA. N. 122+00 WEST		
DIST	Sound	Elev	DIST	Sound	Elev
(58)	14.0	8.2	(58)	13.4	7.6
	13.9	8.1		13.5	7.7
10+00	13.5	7.7	50	13.2	7.4
<u>936</u>	13.8	8.0		13.0	7.2
	13.3	7.5		14.0	8.2
	14.2	8.4		14.2	8.4
	14.6	8.8		14.3	8.5
50	14.7	8.9	13+00	14.3	8.5
	15.0	9.2		14.4	8.6
	15.0	9.2	<u>9190</u>	14.6	8.8
	15.0	9.2		14.9	9.1
	14.5	8.7		15.0	9.2
11+00	13.9	8.1	50	15.1	9.3
	13.7	7.9		15.0	9.2
	13.4	7.6		15.1	9.3
	13.0	7.2		15.1	9.3
	12.9	7.1		15.0	9.2
50	12.9	7.1	14+00	15.2	9.4
	13.1	7.3		15.3	9.5
	13.4	7.6		15.4	9.6
	13.3	7.5		16.0	10.2
	13.2	7.4		15.6	9.8
12+00	13.2	7.4	50	17.0	11.2
	13.2	7.4		16.9	11.1
	13.3	7.5		16.0	10.2

STA. N. 122+00 - WEST			STA. N. 122+00 - WEST		
DIST	Sound	Elev	DIST	Sound	Elev
(58)	15.8	10.0	(58)	14.8	9.0
	15.4	9.6		14.9	9.1
15+00	15.2	9.4	50	14.4	8.6
<u>9143</u>	15.2	9.4		14.1	8.3
	15.2	9.4	<u>9146</u>	14.1	8.3
	14.9	9.1		14.0	8.2
	14.7	8.9		13.9	8.1
50	14.5	8.7	18+00	13.9	8.1
	14.6	8.8		14.0	8.2
	14.3	8.5		13.8	8.0
	14.2	8.4		14.0	8.2
	14.1	8.3		14.2	8.4
16+00	15.1	9.3	50	14.4	8.6
	15.0	9.2		14.6	8.8
	14.5	8.7		14.0	8.2
	14.9	9.1		14.0	8.2
	14.0	8.2		13.8	8.0
50	14.9	9.1	19+00	13.9	8.1
	15.0	9.2		14.1	8.3
	15.0	9.2		14.0	8.2
	14.9	9.1		13.9	8.1
	14.6	8.8		13.9	8.1
17+00	14.6	8.8	50	13.9	8.1
	14.8	9.0		13.8	8.0
	14.7	8.9		13.9	8.1

STA. N. 122+00 CONTD. WEST 9-02-59

Dist	Sound	Elev	Dist	Sound	Elev
(58)	14.0	8.2	(58)	14.6	8.8
	14.1	8.3		15.0	9.2
20+00	14.2	8.4	50	15.3	9.5
<u>9.38</u>	14.1	8.3	<u>9.40</u>	15.4	9.6
	14.2	8.4		16.1	10.3
	14.3	8.5		16.7	10.9
	14.3	8.5		12.0	6.2
50	14.6	8.8	23+00	8.8	3.0
	14.7	8.9		13.0	7.2
	14.6	8.8		13.9	8.1
	14.1	8.3		14.0	8.2
	14.1	8.3		14.0	8.2
21+00	14.2	8.4	50	14.0	8.2
	13.8	8.0		14.4	8.6
	13.9	8.1		13.2	7.4
	14.1	8.3		13.0	7.2
	14.2	8.4		12.8	7.0
50	14.1	8.3	24+00	12.1	6.3
	14.2	8.4			
	14.0	8.2			
	14.0	8.2			
	14.1	8.3			
22+00	14.1	8.3	50		
	14.3	8.5			
	14.5	8.7			

9-02-59

STA. N. 122+50; 0+00=W. 16470; SOUND WEST

Dist	Sound	Elev	Dist	Sound	Elev
0+00	1.9		(5.7)	13.6	
(57)	2.4		50	13.7	
	2.9			13.0	7.3
<u>10.15</u>	3.2			13.1	
	3.8			13.2	
50	4.7			13.2	
	6.4		3+00	13.2	
	7.4			13.3	
	8.2		<u>10.20</u>	13.3	
	8.2			13.4	
1+00	8.1			13.4	
	7.4		50	13.8	
	7.3			14.1	
	7.1			14.2	
	6.8			14.3	
50	6.8			14.4	
	11.9	6.2	4+00	14.3	
	13.2			14.3	
	13.8			14.2	
	13.4			13.0	7.3
2+00	13.4			13.0	
	13.4		50	13.1	
	13.6			13.2	
	13.4			13.4	

STA. N. 122+50 - CONTO WEST. 9-02-59

Dist	Sound	Elev	Dist	Sound	Elev
(5.7)	13.5		(5.7)	13.2	7.5
	13.4		10:27	13.3	
5+00	13.4		50	13.9	
10:23	13.5			14.0	
	13.5			14.7	
	13.4			14.6	
	13.4			14.9	
50	13.5		8+00	14.9	
	13.7			14.9	
	13.8			14.9	
	13.7			14.9	
	13.7			14.8	
6+00	13.9		50	14.6	
	15.0			14.2	
	15.7			14.1	
	15.6			14.0	
	15.1			14.0	
50	15.2		9+00	13.3	
	15.2			13.4	
	13.2			13.8	
	13.8			14.0	
	13.8			13.4	
7+00	13.7		50	13.5	
	13.2			13.2	
	13.1	7.4		13.2	

STA. N. 122+50 - WEST

Dist	Sound	Elev	Dist	Sound	Elev
(5.7)	12.2	6.5	(5.6)	13.0	
	13.6			13.2	
10+00	13.5		50	14.2	
10:32	14.0		10:34	14.1	
	14.1			14.2	
	14.1			14.3	
	14.1			14.5	
50	14.0		13+00	14.6	
	13.4			14.7	
	13.1			14.8	
	12.3	6.6		14.9	
	12.0	6.3		15.0	
11+00	12.1	6.4	50	15.1	
	12.1			15.2	
	12.1			15.3	
	12.1			14.7	
	12.1			15.0	
50	12.1		14+00	15.6	
	12.1	6.4		16.1	
	12.4	6.7		16.2	
	12.5	6.8		16.2	
	12.8	7.1		16.1	
12+00	13.0		50	15.9	
	13.1			15.4	
	13.1			15.4	

STA. N. 122+50 - CONTD WEST

Dist	Sound	Elev	Dist	Sound	Elev
(5.6)	15.1		(5.6)	14.4	
	15.1			14.9	
15+00	14.9		50	14.4	
<u>10.36</u>	14.8		<u>10.38</u>	14.1	
	14.5			13.9	
	14.4			13.5	
	14.6			13.9	
50	14.2		18+00	13.9	
	14.1			13.9	
	14.0			13.8	
	14.2			14.1	
	14.4			14.2	
16+00	14.9		50	14.2	
	14.9			14.2	
	14.9			14.1	
	15.0			14.0	
	15.0			14.1	
50	14.8		19+00	14.2	
	14.7			14.3	
	14.7			14.2	
	14.7			14.2	
	14.6			14.0	
17+00	14.3		50	14.0	
	14.4			14.0	
	14.4			14.2	

STA. N. 122+50 - WEST 9-02-59 <sup>5</sup>

Dist	Sound	Elev	Dist	Sound	Elev
(5.6)	14.3		(5.6)	15.1	
	14.2			15.2	
20+00	14.3		50	16.5	
<u>10.40</u>	14.3		<u>10.43</u>	14.1	
	14.2			14.1	
	14.2			13.7	
	14.7			12.7	
50	14.7		23+00	12.3	
	14.2			11.9	
	14.1			6.4	0.8
	14.0			14.4	
	13.9			15.0	
21+00	14.0		50	10.0	4.4
	13.9			14.0	
	13.9			15.5	
	13.9			13.2	
	13.7			13.2	
50	13.7		24+00	15.0	
	13.8			14.9	
	13.7			14.4	
	13.9			13.7	
	14.2			13.8	
22+00	14.2		50	14.7	
	14.2				
	14.8				



9-02-59

STA. N. 123+00; 0+00=N. 16470; SOUND WEST

Dist	Sound	Elev	Dist	Sound	Elev
0+00	1.1		(5.2)	12.8	
(5.3)	2.0		50	12.7	
	2.5			12.8	
<u>11:10</u>	3.1		<u>11:13</u>	12.8	
	3.7			13.0	
50	5.3			13.3	
	7.4		3+00	13.2	
	8.4			13.5	
	8.4			13.5	
	8.3			13.5	
1+00	7.5			13.4	
	6.8		50	13.4	
	6.5			13.1	
	6.1			13.7	
	6.1			14.0	
50	6.2			14.2	
	5.9		4+00	14.0	
	6.8			14.0	
	11.5	6.2		13.9	
	12.0	6.7		13.9	
2+00	11.2	5.9		13.8	
	12.0	6.7	50	13.9	
	12.4	7.1		14.2	
	12.4	7.1		13.8	

STA. N. 123+00 - WEST

Dist Sound Elev Dist Sound Elev

Dist	Sound	Elev	Dist	Sound	Elev
(5.2)	14.0		(5.2)	14.0	
	14.0			14.0	
5+00	14.0		50	14.3	
<u>11:15</u>	13.8		<u>11:20</u>	14.3	
	14.1			14.8	
	14.0			15.0	
	14.1			13.1	
50	13.9		8+00	15.2	
	13.7			14.3	
	13.7			13.4	
	13.1			14.8	
	13.1			14.5	
6+00	12.9		50	14.0	
	13.0			14.1	
	13.1			13.5	
	14.1			13.8	
	14.0			13.9	
50	13.7		9+00	13.6	
	13.9			13.1	
	13.4			13.3	
	13.5			13.3	
	13.1			13.2	
7+00	13.0		50	13.0	
	13.1			12.7	
	13.6			11.3	6.1

## STA. N. 123+00 CONTD WEST 9-02-59

Dist	Sound	Elev	Dist	Sound	Elev
(5.1)	12.0	6.9	(5.1)	13.3	
	13.0			13.2	
10+00	13.3		50	13.5	
<u>11:25</u>	13.5			13.4	
	13.5		<u>11:30</u>	13.7	
	13.4			13.9	
	13.1			13.9	
50	12.9		13+00	13.8	
	12.6			13.9	
	11.7	6.6		14.0	
	10.5	5.4		14.1	
	10.4	5.3		14.3	
11+00	10.4	5.3	50	14.1	
	10.9	5.8		14.1	
	11.0	5.9		14.3	
	11.1	6.0		13.9	
	11.5	6.4		15.1	
50	11.8	6.7	14+00	15.0	
	11.8	6.7		15.8	
	11.9	6.8		15.5	
	12.0	6.9		15.3	
	12.4			15.1	
12+00	12.5		50	14.8	
	12.3			14.8	
	13.0			14.4	

## STA. N. 123+00 - WEST

Dist	Sound	Elev	Dist	Sound	Elev
(5.0)	14.0		(5.0)	13.3	
	13.9			13.3	
15+00	14.0		50	13.1	
<u>11:33</u>	14.0		<u>11:37</u>	13.4	
	13.8			13.2	
	13.5			13.1	
	13.5			13.8	
50	13.6		18+00	13.6	
	14.8			13.7	
	14.7			13.4	
	14.9			13.2	
	15.1			13.3	
16+00	15.0		50	13.1	
	14.8			13.1	
	14.3			13.0	
	14.0			13.3	
	14.0			13.9	
50	14.0		19+00	13.7	
	14.3			13.3	
	14.1			13.4	
	14.1			13.3	
	14.1			13.0	
17+00	14.0		50	13.0	
	13.9			13.1	
	13.9			13.1	

STA. N. 123+00 CONTD 9-02-59

Dist Sound Elev Dist Sound Elev

(50)	13.8	(48)	14.9		
	13.7		15.0		
20+00	13.0	50	15.5		
11:40	14.0	11:50	10.0	5.2	
<u>11:40</u>	14.1	<u>11:50</u>	9.0	4.2	
	14.0		5.0	0.2	
	13.5		5.0	0.2	
50	13.1	23+00	5.3	0.5	
	13.0		5.5	0.7	
	13.1		7.4	2.6	
	13.1		10.7	5.9	
	13.1		11.9	7.1	
21+00	13.1	50	12.4		
(49)	13.1		13.0		
	13.2		13.0		
	12.9		13.0		
	13.0		13.0		
50	12.9	24+00	13.0		
	13.0				
	13.3				
	13.8				
	13.7				
22+00	14.0	50			
	14.4				
	14.4				

STA. N. 123+50; 0+00 = W/6470; SOUND WEST

Dist Sound Elev Dist Sound Elev

0+00		(32)	10.9		
(33)		50	10.9		
	0.5		11.1		
1:20	1.0	1:23	11.1		
<u>1:20</u>	1.7	<u>1:23</u>	11.1		
50	3.1		11.0		
	5.4	3+00	11.1		
	6.3		11.1		
	6.9		11.1		
	6.8		11.1		
1+00	5.9		11.3		
	5.5	50	11.3		
	3.8		11.7		
	3.5		11.6		
	3.3		11.9		
50	3.7		12.2		
	3.6	4+00	12.9		
	4.1		13.3		
	4.1		13.1		
	9.4	6.1	12.5		
2+00	9.8	6.5	12.8		
	10.4	7.1	12.4	50	
	10.7		11.4		
	10.8		11.8		

STA. N. 123+50 CONTO WEST 9-02-59

Dist	Sound	Elev	Dist	Sound	Elev
(32)	11.3		(31)	10.8	
	11.0			10.3	
5+00	11.1		50	10.3	
<u>1:25</u>	11.1		<u>1:28</u>	10.7	
	11.1			11.0	
	11.2			10.9	
	11.0			10.9	
50	11.1		8+00	11.1	
	11.1			11.2	
	11.1			11.2	
	11.2			11.2	
	11.2			11.1	
6+00	11.8		50	11.1	
	12.0			11.1	
	12.0			11.2	
	11.9			11.2	
	11.9			11.2	
50	11.9		9+00	10.8	
	12.0			10.4	
	12.0			9.2	6.1
	12.1			9.1	6.0
	12.1			9.8	6.7
7+00	11.9		50	9.2	6.1
	10.9			8.8	5.7
	11.0			8.6	5.5

STA. N. 123+50 - WEST

Dist	Sound	Elev	Dist	Sound	Elev
(31)	9.3	6.2	(31)	11.2	
	9.4	6.3		11.2	
10+00	9.4	6.3	50	11.3	
<u>1:31</u>	9.4	6.3		11.4	
	9.2	6.1	<u>1:33</u>	12.0	
	9.9	6.8		12.0	
	10.9			12.0	
50	11.0		13+00	11.4	
	10.7			11.3	
	10.1	7.0		10.6	
	9.4	6.3		10.9	
	8.6	5.5		10.1	
11+00	8.6	5.5	50	10.1	
	9.0	5.9		10.2	
	8.9	5.8		10.8	
	8.5	5.4		9.8	6.7
	8.6	5.5		10.2	
50	9.3	6.2	14+00	10.1	
	9.4	6.3		10.6	
	9.6	6.5		11.2	
	9.8	6.7		11.2	
	10.2	7.1		11.0	
12+00	10.3		50	11.1	
	10.2			11.1	
	11.2			11.7	

STA. N. 123+50 CONTD WEST 9-02-58

STA. N. 123+50 - WEST ⑩

Dist	Sound	Elev	Dist	Sound	Elev
(3.1)	11.7		(3.0)	10.9	
	11.3			10.9	
15+00	11.3		50	10.9	
<u>11.35</u>	11.6			10.9	
	11.9			10.3	
	11.9			10.6	
	10.8			11.0	
50	10.8		18+00	10.8	
	10.9		<u>11.38</u>	10.7	
	10.9			10.2	
	11.2			10.3	
	11.2			10.7	
16+00	11.0		50	10.2	
	10.8			10.1	
	11.1			10.2	
	11.2			11.0	
	10.3			11.7	
50	10.4		19+00	11.5	
	10.4			11.1	
	10.7			11.6	
	10.8			11.5	
	10.8			11.6	
17+00	10.3		50	11.3	
	10.2			10.2	
	10.9			11.1	

Dist	Sound	Elev	Dist	Sound	Elev
(3.0)	11.1		(2.9)	14.9	
	11.0			14.8	
20+00	11.0		50	10.9	
<u>11.40</u>	10.8		<u>11.43</u>	5.0	2.1
	10.8			3.2	0.3
	10.9			3.2	0.3
	10.9			3.2	0.3
50	10.1		23+00	3.4	0.5
	10.1			3.6	0.7
	10.6			4.0	1.1
	10.8			4.7	1.8
	11.0			7.3	4.4
21+00	11.0		50	12.2	9.3
	11.1			10.8	
	11.0			10.6	
	10.6			10.9	
	10.5			11.7	
50	10.9		24+00	12.5	
	10.6			11.0	
	11.2			10.8	
	11.5			10.7	
	11.5			10.8	
22+00	11.9		50	10.8	
	12.2				
	12.7				

9-02-59

STA. N. 124+50; 0+00 = W. 16470: SOUND WEST

Dist	Sound	Elev	Dist	Sound	Elev
0+00			(26)	9.3	6.7
(2.6)			50	9.3	6.7
<u>2:05</u>			<u>2:10</u>	9.6	7.0
	0.2			9.6	7.0
	0.6			9.7	7.1
50	1.2			9.8	7.2
	2.9		3+00	10.0	
	5.1			10.1	
	6.2			10.2	
	7.0			10.2	
1+00	6.7			10.3	
	6.7		50	10.3	
	6.5			10.1	
	5.1			10.3	
	4.5			10.4	
50	4.1			10.6	
	4.0		4+00	11.0	
	3.8			10.8	
	3.1			11.0	
	5.3			11.2	
2+00	8.9	6.3		12.0	
	9.0	6.4	50	11.9	
	9.2	6.6		11.3	
	9.2	6.6		11.1	

STA. N. 124+50 - WEST

Dist Sound Elev Dist Sound Elev

Dist	Sound	Elev	Dist	Sound	Elev
(25)	10.9		(2.5)	10.5	
	10.6			10.4	
5+00	10.5		50	10.2	
	10.3			10.3	
	10.5			10.5	
	10.4			10.6	
	10.2			10.7	
50	10.4		8+00	10.8	
	10.5			10.5	
	10.6			10.8	
	10.8			11.0	
	10.6			10.7	
6+00	10.7		50	10.7	
	11.0		2:18	10.7	
<u>2:15</u>	10.9		<u>      </u>	10.5	
	10.8			10.9	
	10.5			10.8	
50	10.5		9+00	10.9	
	10.7			10.8	
	11.3			11.0	
	12.0			10.7	
	11.7			10.6	
7+00	11.0		50	10.8	
	11.0			11.0	
	10.5			11.0	

STA. N. 124+50 CONTD. WEST 9-02-59

Dist	Sound	Elev	Dist	Sound	Elev
(23)	10.9		(24)	10.2	
	11.0			10.2	
10+00	11.0		50	10.2	
<u>2:20</u>	11.0			10.1	
	10.7			10.1	
	10.2			10.2	
	10.1			10.2	
50	10.1		13+00	10.4	
	10.0			10.2	
	10.0		<u>2:23</u>	10.0	
	9.8			10.3	
	9.8			10.8	
11+00	9.8		50	10.7	
	10.0			11.0	
	10.0			11.2	
	10.2			11.2	
	10.3			11.2	
50	10.5		14+00	11.2	
	10.6			11.0	
	10.5			11.0	
	10.5			10.8	
	10.6			10.6	
12+00	10.3		50	10.7	
	10.4			11.0	
	10.5			11.0	

STA. N. 124+50 - WEST

Dist	Sound	Elev	Dist	Sound	Elev
(2A)	11.1		(2A)	10.3	
	11.2			10.4	
15+00	11.8		50	10.3	
<u>2:27</u>	11.5		<u>2:30</u>	10.1	
	11.6			10.0	
	11.6			10.1	
	10.9			10.3	
50	10.3		18+00	10.4	
	10.4			10.5	
	10.3			10.5	
	10.2			10.6	
	10.0			10.6	
16+00	10.1		50	10.5	
	10.1			10.7	
	10.1			10.6	
	10.2			10.0	
	10.2			10.4	
50	10.0		19+00	10.9	
	10.0			10.8	
	10.1			10.7	
	10.1			10.8	
	10.3			10.9	
17+00	10.9		50	10.8	
	10.4			10.8	
	10.3			10.7	

STA. N. 124+50 CONTD WEST 9-02-59

DIST	Sound	Elev	DIST	Sound	Elev
(23)	10.7		(23)	11.1	
	10.7			11.0	
20+00	10.5		50	11.2	
	10.7			11.2	
	10.6			11.2	
	11.5			11.3	
<del>2:33</del>	9.9			11.6	
50	9.7		23+00	11.5	
	10.0			11.2	
	10.0			10.7	
	9.9		<u>2:37</u>	10.5	
	10.5			10.1	
21+00	10.0		50	10.0	
	10.0			10.1	
	10.0			10.1	
	10.0			10.0	
	10.0			9.9	
50	10.2		24+00	9.8	
	10.2			9.8	
	10.5			9.9	
	10.8			10.0	
	11.0			10.0	
22+00	11.1		50	10.0	
	11.3			10.0	
	11.2			10.0	

STA. N. 124+50 - WEST (13)

DIST	Sound	Elev	DIST	Sound	Elev
(23)	10.0				
	10.1				
25+00	10.5				
<u>2:40</u>	10.3				
	10.2				
	4.1	1.8			
	2.1	+0.2			
50	2.0	+0.3			
	2.2	+0.1			
	2.1	+0.2			
	2.0	+0.3			
	2.0	+0.3			
26+00	1.9	+0.4			



9-03-59

STA. 125+50. 0+00=W/6500; SOUND WEST

Dist	Sound	Elev	Dist	Sound	Elev
0+00	2.2		(59)	12.4	
(59)	2.6		50	12.9	7.0
	3.1		<u>10:06</u>	13.0	
<u>10:02</u>	3.1		<u>      </u>	13.2	
	3.2			13.3	
50	3.4			13.4	
	3.9		3+00	13.7	
	4.2			13.8	
	5.0			14.0	
	6.1			14.1	
1+00	6.5			13.8	
	7.4		50	13.9	
	7.5			14.0	
	7.9			14.1	
	8.4			14.1	
50	8.7			14.1	
<u>10:04</u>	9.1		4+00	14.1	
	9.2			14.2	
	9.2			14.3	
	9.3			14.6	
2+00	9.4			15.0	
	10.5		50	15.1	
	11.6			15.2	
	11.8			15.0	

5 STA. N. 125+50 - WEST

Dist	Sound	Elev	Dist	Sound	Elev
(59)	14.8		(59)	14.4	
	14.7			14.3	
5+00	14.2		50	14.2	
<u>10:08</u>	14.1		<u>10:11</u>	14.5	
<u>      </u>	14.0		<u>      </u>	14.9	
	14.0			15.1	
	14.0			12.8	
50	13.6		8+00	13.2	
	13.4			13.1	
	13.5			13.0	
	13.6			13.1	
	13.6			13.1	
6+00	13.4		50	13.2	
	13.4			13.6	
	13.3			13.9	
	13.8			13.8	
	15.3			13.8	
50	15.3		9+00	13.8	
	15.6			13.9	
	15.7			14.2	
	15.7			14.7	
	15.6			14.8	
7+00	15.2		50	14.8	
	15.1			14.9	
	14.5			14.1	

STA. N. 125+50 CONTD WEST 9-03-59

Dist	Sound	Elev	Dist	Sound	Elev
(39)	13.6		(5.9)	14.8	
	13.9			14.8	
10+00	13.9		50	15.0	
<u>10+14</u>	14.0		<u>10+16</u>	14.8	
	14.0			14.4	
	13.9			14.7	
	13.9			14.2	
50	13.9		13+00	14.6	
	13.9			14.9	
	13.9			14.9	
	14.0			15.1	
	14.1			15.1	
11+00	14.6		50	15.1	
	14.9			15.1	
	14.9			14.9	
	14.9			14.8	
	14.9			14.7	
50	14.8		14+00	14.9	
	14.8			15.0	
	14.9			15.1	
	14.9			15.1	
	15.0			15.2	
12+00	14.9		50	15.4	
	14.8			15.7	
	14.8			15.8	

STA. N. 125+50 - WEST

Dist	Sound	Elev	Dist	Sound	Elev
(5.9)	16.0		(5.9)	14.5	
	15.7			15.0	
15+00	15.1		50	15.1	
<u>10+18</u>	14.9		<u>10+21</u>	14.9	
	15.0			15.0	
	14.8			15.0	
	14.4			14.8	
50	14.7		18+00	14.8	
	14.7			14.4	
	14.5			14.3	
	14.6			14.6	
	15.0			15.0	
16+00	14.2		50	15.1	
	14.4			15.0	
	14.8			14.9	
	14.7			15.1	
	14.9			15.2	
50	15.1		19+00	15.2	
	14.9			14.8	
	15.1			15.1	
	15.0			15.1	
	15.1			14.9	
17+00	15.6		50	15.0	
	15.1			14.9	
	15.1			14.8	

STA. N. 125+50 CONTO WEST 9-03-59

Dist	Sound	Elev	Dist	Sound	Elev
(5.9)	14.9		(5.9)	16.0	
	15.0			16.2	
20+00	15.1		50	16.2	
10.23	15.1		10.26	16.0	
	14.3			15.9	
	14.7			15.3	
	14.6			15.1	
50	14.6		23+00	15.0	
	14.7			14.8	
	14.7			14.8	
	14.3			15.0	
	14.4			14.2	
21+00	14.3		50	14.4	
	14.6			14.1	
	14.9			14.2	
	14.8			14.1	
	14.8			14.1	
50	15.1		24+00	14.0	
	15.1			14.0	
	15.0			14.2	
	15.2			14.2	
	15.3			14.2	
22+00	15.9		50	14.9	
	15.2			14.8	
	15.6			14.8	

STA. N. 125+50- WEST

(15)

Dist	Sound	Elev
(5.9)	7.1	1.2
	6.1	0.2
25+00	6.1	0.2
10.28	6.0	0.1
	6.1	0.2
	6.1	0.2
	5.9	0.0
50	6.1	0.2
	6.0	0.1
	5.9	0.0
	5.8	+0.1
	5.8	+0.1
26+00	5.8	+0.1

9-03-59

STA. N. 126+50; 0+00 = W/6510; SOUND WEST

Dist	Sound	Elev	Dist	Sound	Elev
0+00	1.7		(5.9)	11.5	
(5.9)	2.2		50	11.5	
	2.8			12.0	6.1
<u>10:50</u>	3.0			12.0	6.1
	3.2		10:55	12.2	6.3
	3.4		<del>10:55</del>	12.5	6.6
50	3.5		3+00	12.5	6.6
	3.9			12.6	6.7
	4.1			12.8	6.9
	4.2			13.0	7.1
1+00	4.3			13.1	
	4.4		50	13.2	
	4.5			13.3	
	4.6			13.4	
	4.6			13.3	
50	4.7			13.2	
	5.0		4+00	13.4	
	5.2			15.2	
	6.8			16.3	
	6.5			16.7	
2+00	6.9			16.5	
	9.8		50	16.5	
	11.2			16.5	
	11.5			16.6	

STA. N. 126+50 - WEST

Dist	Sound	Elev	Dist	Sound	Elev
(58)	16.6		(58)	13.4	
	16.0			13.4	
5+00	16.0		50	13.5	
<u>11:00</u>	15.9			13.5	
	15.9			13.6	
	15.9			13.6	
	15.4			13.5	
50	15.1		8+00	13.7	
	15.2			13.8	
	15.0			13.9	
	15.0			14.0	
	15.1			13.9	
6+00	15.0		50	13.7	
	14.9			13.5	
	15.3		<u>11:03</u>	13.5	
	15.0			13.6	
	15.0			13.7	
50	15.2		9+00	13.5	
	15.1			13.5	
	15.2			13.6	
	14.8			13.4	
	13.4			13.5	
7+00	13.2		50	13.6	
	13.0	7.2		13.7	
	13.3			13.8	

STA. N. 126+50 - CONTD WEST 9-03-59

Dist	Sound	Elev	Dist	Sound	Elev
(58)	13.6		(57)	14.1	
	13.6			14.0	
10+00	13.5		50	14.0	
11:05	13.4			14.1	
	13.5		11:08	14.2	
	13.6			13.9	
	13.8			13.6	
50	13.6		13+00	13.7	
	13.7			13.9	
	13.8			14.1	
	13.9			14.0	
	14.0			13.5	
11+00	13.9		50	13.5	
	13.8			13.5	
	13.9			14.0	
	14.0			13.8	
	14.1			13.6	
50	14.0		14+00	13.5	
	14.0			13.3	
	13.8			13.3	
	13.9			13.1	
	13.9			13.2	
12+00	14.1		50	13.5	
	14.1			13.7	
	14.2			13.7	

STA. N. 126+50 - WEST

(18)

Dist	Sound	Elev	Dist	Sound	Elev
(57)	13.6		(57)	14.2	
	13.2			14.5	
15+00	13.2		50	14.2	
11:10	13.3			14.1	
	13.4		11:13	14.1	
	13.6			14.1	
	13.9			14.2	
50	14.3		18+00	14.2	
	14.0			14.1	
	13.9			14.3	
	13.9			14.1	
	13.9			14.0	
16+00	13.9		50	14.2	
	14.1			14.3	
	14.1			14.4	
	14.2			14.3	
	14.2			14.7	
50	14.2		19+00	15.0	
	14.2			15.2	
	14.3			15.0	
	14.5			15.0	
	14.5			16.0	
17+00	14.5		50	14.7	
	14.5			15.2	
	14.4			15.5	

STA. N. 126+50 CONTD WEST 9-03-59

Dist	Sound	Elev	Dist	Sound	Elev
(57)	15.2		(56)	15.2	
	15.3			15.3	
20+00	14.5		50	15.5	
<u>11:17</u>	14.6		<u>11:20</u>	15.2	
	15.0			14.6	
	15.2			14.7	
	14.9			14.8	
50	14.8		23+00	14.0	
	14.5			13.5	
	14.5			13.6	
	15.0			13.7	
	14.3			13.6	
21+00	13.5		50	14.0	
	14.0			13.2	
	13.3			13.7	
	14.0			11.0	5.4
	14.2			6.1	0.5
50	13.8		24+00	6.0	0.4
	15.2			6.1	0.5
	15.5			6.1	0.5
	15.4			6.0	0.4
	15.3			6.1	0.5
22+00	15.1		50	6.1	0.5
	15.2			6.0	0.4
	15.1			6.2	0.6

STA. N. 126+50 - WEST

Dist	Sound	Elev
(56)	6.3	0.7
	6.2	0.6
25+00	5.9	0.3
<u>11:25</u>	5.9	0.3
	5.8	0.2
	5.7	0.1
	5.8	0.2
50	5.6	0.0
	5.6	}
	5.6	}
	5.6	0.0
	5.5	+0.1
26+00	5.5	+0.1

9-03-59

STA. N. 127+50; 0+00 = W. 16530; SOUND WEST

Dist Sound Elev Dist Sound Elev

0+00

(34)

(34)

50

9.2

9.1

9.2

9.2

9.7

9.9

50

0.1

3+00

10.0

1:30

0.3

10.1

—

0.5

10.3

0.7

10.4

1+00

0.9

10.6

1.2

50

10.7

1.5

11.0

1.7

1:33

10.8

1.9

—

10.6

7.2

50

2.1

10.3

7.1

2.9

4+00

10.3

7.1

3.5

10.9

7.5

4.1

10.9

4.5

10.9

2+00

5.1

10.9

5.1

50

12.1

6.8

12.5

8.1

12.3

STA. N. 127+50 - WEST

Dist Sound Elev Dist Sound Elev

(34)

12.3

(34)

10.2

6.8

12.1

10.5

7.1

5+00

12.1

50

10.6

12.0

10.7

11.9

10.7

11.6

10.7

11.5

10.8

50

11.6

8+00

10.8

1:35

11.7

10.6

—

11.6

1:38

10.6

11.6

10.4

11.5

10.3

6.9

6+00

11.5

50

10.2

6.8

11.4

10.2

6.8

11.2

10.3

6.9

11.2

10.6

7.2

11.2

10.8

50

11.3

9+00

10.9

11.2

11.0

11.1

11.0

11.0

10.9

11.0

10.6

7+00

10.9

50

10.7

10.4

7.0

10.7

10.2

6.8

10.7

STA. N. 127+50 CONT'D WEST 9-03-59

Dist	Sound	Elev	Dist	Sound	Elev
(34)	10.8		(33)	10.8	
	10.8			10.8	
10+00	10.8		50	10.8	
<u>11.40</u>	10.7		<u>11.43</u>	10.8	
	10.8			10.8	
	10.8			10.8	
	10.6			10.9	
50	10.7		13+00	11.0	
	10.8			11.1	
	10.8			11.0	
	11.0			10.9	
	11.0			10.6	
11+00	11.1		50	10.5	
	11.1			10.6	
	11.1			10.6	
	11.1			10.3	7.0
	10.9			10.2	6.9
50	10.9		14+00	10.2	6.9
	10.8			10.2	6.9
	10.8			10.0	6.7
	10.8			10.0	6.7
	10.8			10.0	6.7
12+00	10.8		50	10.0	6.7
	10.8			10.0	6.7
	10.8			9.9	6.6

STA. N. 127+50 - WEST

(2)

Dist	Sound	Elev	Dist	Sound	Elev
(33)	10.2	6.9	(32)	12.0	
	10.2	6.9		12.0	
15+00	10.0	6.7	50	12.0	
<u>11.47</u>	10.0	6.7	<u>11.50</u>	12.0	
	10.2	6.9		10.9	
	10.3	7.0		10.7	
	10.4	7.1		11.2	
50	10.4	7.1	18+00	11.2	
	10.5			11.8	
	10.5			12.0	
	10.6			11.9	
	10.9			11.7	
16+00	11.1		50	11.6	
	11.1			12.1	
	11.1			12.0	
	11.8			12.0	
	12.1			12.0	
50	12.0		19+00	12.1	
	12.1			12.8	
	11.9			12.8	
	12.0			12.9	
	11.9			13.0	
17+00	11.6		50	13.1	
	11.6			12.6	
	11.6			12.1	



STA. N. 127+50 CONTD WEST 9-03-59

Dist	Sound	Elev	Dist	Sound	Elev
(31)	11.8		(31)	13.3	
	10.6			12.8	
20+00	11.1		50	12.3	
11.53	11.1		11.57	12.9	
<u>11.1</u>	11.1		<u>11.9</u>	11.9	
	11.6			11.8	
	11.6			11.5	
50	11.1		23+00	11.8	
	11.7			11.2	
	11.3			10.9	
	11.4			10.9	
	11.3			3.9	0.8
21+00	11.9		50	3.8	
	12.1			3.7	
	12.8			3.8	
	12.6			3.7	
	12.0			3.7	
50	12.2		24+00	3.7	
	12.1			3.7	
	12.5			3.6	
	12.5			3.5	
	12.2			3.5	
22+00	12.8		50	3.6	
	13.1			3.6	
	13.1			3.6	

STA. N. 127+50-WEST 9-03-59 (22)

Dist	Sound	Elev	Dist	Sound	Elev
(30)	3.5				
	3.4				
25+00	3.3				
21.00	3.3				
<u>3.2</u>	3.2				
	3.2				
	3.3				
50	3.3				
	3.2				
	3.2				
	3.3				
	3.2				
26+00	3.2				

9-03-59

STA. N. 128+50; 0+00 = W. 16,560; SOUND WEST

Dist	Sound	Elev	Dist	Sound	Elev
0+00			(26)	8.7	
			50	8.8	
(26)			<u>2:30</u>	8.7	
				9.0	
				9.0	
50				9.1	
			3+00	9.3	
				9.4	
				9.6	7.0
	0.1			9.7	
1+00	0.2			9.8	
	0.4		50	9.8	
<u>2:28</u>	0.5			9.6	
	0.7			9.7	
	0.8			9.8	
50	1.3			9.9	
	2.4		4+00	9.9	
	3.3			9.8	
	3.6			9.8	
	3.6			9.8	
2+00	3.2			9.8	
	2.7		50	10.1	
	3.1			10.6	
	7.3			10.7	

STA. N. 128+50 - WEST

Dist	Sound	Elev	Dist	Sound	Elev
(25)	10.8		(25)	9.0	6.5
	10.6			8.9	6.4
5+00	10.3		50	8.7	6.2
	10.3		<u>2:37</u>	9.0	6.5
<u>2:33</u>	10.0			8.9	6.4
	9.9			9.1	6.6
	9.8			9.2	6.7
50	9.8		8+00	9.3	6.8
	9.8			9.4	6.9
	9.7			9.3	6.8
	9.8			9.4	6.9
	10.0			9.2	6.7
6+00	10.2		50	9.3	6.8
	10.2			9.3	6.8
	10.3			9.5	7.0
	10.6			9.6	7.1
	10.9			9.5	7.0
50	10.6		9+00	9.5	7.0
	10.8			9.3	6.8
	10.9			9.3	6.8
	10.9			9.4	6.9
	10.9			9.3	6.8
7+00	10.8		50	9.4	6.9
	9.3	6.8		9.5	7.0
	9.2	6.7		9.5	7.0

## STA. N. 128+50 CONTD WEST 9-03-59

Dist	Sound	Elev	Dist	Sound	Elev
(2A)	9.3	6.9	(2A)	9.8	
	9.1	6.7		9.7	
10+00	9.2	6.8	50	9.7	
<u>238</u>	9.1	6.7		9.9	
	9.2	6.8		9.9	
	9.5	7.1		9.8	
	9.4	7.0		9.8	
50	9.5	7.1	13+00	9.8	
	9.4	7.0	<u>2:42</u>	9.7	
	9.3	6.9		9.6	
	9.5	7.1		9.6	
	9.4	7.0		9.7	
11+00	9.3	6.9	50	9.6	
	9.3	6.9		9.6	
	9.4	7.0		9.5	7.1
	9.3	6.9		9.5	7.1
	9.4	7.0		9.7	
50	9.4	7.0	14+00	9.6	
	9.5	7.1		9.6	
	10.0			9.7	
	9.8			9.7	
	10.0			9.7	
12+00	10.0		50	9.5	
	10.1			9.6	
	9.9			9.4	7.0

## STA. N. 128+50 - WEST

Dist	Sound	Elev	Dist	Sound	Elev
(2A)	9.3	6.9	(23)	9.9	
	9.2	6.8		9.9	
15+00	9.3	6.9	50	10.1	
	9.4	7.0		9.9	
<u>245</u>	9.5	7.1		9.8	
<u>F</u>	9.5	7.1		9.8	
	9.4	7.0		9.9	
50	9.4	7.0	18+00	9.9	
	9.6	7.2		9.8	
	9.4	7.0		9.8	
	9.5	7.1	<u>2:48</u>	9.8	
	9.5	7.1		9.7	
16+00	9.5	7.1	50	9.7	
	9.7			9.9	
	9.7			9.0	6.7
	9.7			9.2	6.9
	9.6			9.3	7.0
50	9.6		19+00	9.8	
	9.6			10.1	
	9.5	7.1		10.2	
	9.5	7.1		10.1	
	9.6			9.3	7.0
17+00	9.7		50	9.1	6.8
	10.0			9.2	6.9
	9.9			9.5	7.2

STA. N. 128+50 CONTD WEST 9-03-59

Dist	Sound	Elev	Dist	Sound	Elev
(23)	9.6		(23)	9.9	
	9.7			9.9	
20+00	9.9		50	9.9	
<u>2:50</u>	10.0			9.9	
	10.9		<u>2:55</u>	10.0	
	10.0			10.0	
	10.0			10.0	
50	10.1		23+00	11.3	
	10.1			8.9	6.6
	10.3			2.9	0.6
	10.2			3.0	
	10.1			3.0	
21+00	10.0		50	3.0	
	10.1			3.0	
	10.2			2.9	
	10.3			2.9	
	10.8			2.9	
50	10.3		24+00	2.8	
	10.3			2.8	
	10.4			2.8	
	10.4			2.8	
	10.5			2.7	
22+00	10.7		50	2.7	
	10.3			2.7	
	10.1			2.7	

STA. N. 128+50-WEST 9-03-59 (25)

Dist	Sound	Elev
(23)	2.7	
	2.6	
25+00	2.6	
	2.7	
	2.7	
	2.6	
	2.6	
50	2.5	
	2.6	
	2.5	
	2.5	
	2.5	
26+00	2.5	

STA. N. 129+50, 0+00 = W/16 600 SOUND WEST  
Dist Sound Elev Dist Sound Elev  
0+00

50

50

3+00

1+00

50

50

4+00

2+00

50

STA. N. 129+50 - WEST

Dist Sound Elev Dist Sound Elev

5+00

50

50

8+00

6+00

50

50

9+00

7+00

50

(26)

STA. N. 129+50 CONTD WEST

Dist Sound Elev Dist Sound Elev

10+00 50

50 13+00

11+00 50

50 14+00

12+00 50

STA. N. 129+50 - WEST

(27)

Dist Sound Elev Dist Sound Elev

15+00 50

50 18+00

16+00 50

50 19+00

17+00 50

STA. N. 129+50 CONTD WEST

Dist Sound Elev

Dist Sound Elev

20+00

50

50

23+00

21+00

50

50

24+00

22+00

50

STA. N. 129+50 - WEST

Dist Sound Elev

25+00

50

26+00

(28)

9-10-59

STA. N. 118+00; 0+00=W/19910; SOUND EAST

Dist	Sound	Elev	Dist	Sound	Elev
0+00			(47)	3.3	+1.4
(47)			50	3.0	+1.7
<u>1:25</u>				2.2	+2.5
	0.7	+4.0		1.8	+2.9
	2.1	+2.6		1.1	+3.6
50	2.6	+2.1			
	3.2	+1.5	3+00		
	3.9	+0.8			
	4.2	+0.5			
	4.3	+0.4			
1+00	4.3	+0.4			
	5.1	0.4	50		
	6.2	1.5			
	6.1	1.4			
	5.8	1.1			
50	5.2	0.5			
	4.8	0.1	4+00		
	4.6	+0.1			
	4.7	0.0			
	4.4	+0.3			
2+00	4.4	+0.3			
	4.2	+0.5	50		
	4.0	+0.7			
	3.9	+0.8			

9-10-59

STA. N. 118+50; 0+00=W/19920; SOUND EAST

Dist	Sound	Elev	Dist	Sound	Elev
0+00			(48)	9.0	4.2
(48)			50	7.9	3.1
	0.5	+4.3	<u>1:35</u>	6.9	2.1
<u>1:33</u>	1.8	+3.0		5.9	1.1
	3.1	+1.7		5.0	0.2
50	3.9	+0.9		4.7	+0.1
	4.9	0.1	3+00	4.0	+0.8
	6.5	1.7		3.4	+1.4
	7.3	2.5		2.8	+2.0
	7.4	2.6		1.4	+3.4
1+00	7.8	3.0		0.5	+4.3
	9.2	4.4	50		
	9.4	4.6			
	10.0	5.2			
	10.4	5.6			
50	10.7	5.9			
	10.6	5.8	4+00		
	10.2	5.4			
	10.2	5.4			
	10.3	5.5			
2+00	10.6	5.8			
	10.7	5.9			
	10.6	5.8			
	10.2	5.4			

(29)



9-10-59

STA. N. 119+00; 0+00=W. 19930; SOUND EAST

Dist	Sound	Elev	Dist	Sound	Elev
0+00			(49)	11.8	6.9
(49)			50	11.2	6.3
	1.1	+3.8	1:42	11.1	6.2
1:38	2.2	+2.7		10.8	5.9
	3.3	+1.6		10.6	5.7
50	4.6	+0.3		10.0	5.1
	6.7	1.8	3+00	9.0	4.1
	8.4	3.5		7.9	3.0
	9.2	4.3		6.2	1.3
	10.1	5.2		5.4	0.5
1+00	10.4	5.5		5.0	0.1
	10.9	6.0	50	4.1	+0.8
	11.1	6.2		3.2	+1.7
	11.1	6.2		2.2	+2.7
	11.0	6.1		1.1	+3.8
50	11.2	6.2			
	12.2	7.3	4+00		
	12.1	7.2			
	12.2	7.3			
	12.2				
2+00	12.2				
	12.2	7.3	50		
	12.1	7.2			
	11.8	6.9			

9-10-59

STA. N. 119+50; 0+00=W. 19940; SOUND EAST

Dist	Sound	Elev	Dist	Sound	Elev
0+00			(49)	13.1	8.2
(49)			50	12.7	7.8
	1.2	+3.7		13.4	8.5
1:48	2.4	+2.5		12.7	7.8
	3.6	+1.3		12.7	7.8
50	4.7	+0.2		12.6	7.7
	7.6	2.7	3+00	12.6	7.7
	8.9	4.0		12.2	7.3
	9.7	4.8	1:52	12.2	7.3
	10.2	5.3		11.2	6.3
1+00	11.3	6.4		10.0	5.1
	11.6	6.7	50	8.3	3.4
	11.9	7.0		7.2	2.3
	12.1	7.2		5.5	0.6
	12.1	7.2		5.0	0.1
50	11.9	7.0		4.1	+0.8
	12.1	7.2	4+00	3.4	+1.5
1:50	12.1	7.2		3.0	+1.9
	12.2	7.3		2.5	+2.4
	12.3	7.4		1.8	+3.1
2+00	12.6	7.7		1.1	+3.8
	12.2	7.3	50		
	12.7	7.8			
	12.7	7.8			

9-10-59

STA. N. 120+00; 0+00 = W. 19950; SOUND EAST

Dist	Sound	Elev	Dist	Sound	Elev
0+00			(5.1)	13.0	7.9
(5.0)			50	13.1	8.0
	1.5	+3.5		13.1	8.0
<u>13.57</u>	2.3	+2.7	<u>2.00</u>	13.0	7.9
	3.2	+1.8		13.0	7.9
50	3.8	+1.2		12.9	7.8
	4.4	+0.6	3+00	11.7	6.6
	5.2	0.2		13.1	8.0
	7.9	2.9		12.2	7.1
	10.8	5.8		12.0	6.9
1+00	11.9	6.9		11.8	6.7
	12.2	7.2	50	11.3	6.2
	12.1	7.1		10.1	5.0
	11.8	6.8		8.8	3.7
	11.8	6.8		7.1	2.0
50	11.7	6.7		6.2	1.1
	11.8	6.8	4+00	5.1	0.0
	12.0	7.0		4.5	+0.6
	12.1	7.1		4.0	+1.1
	12.2	7.2		3.6	+1.5
2+00	12.3	7.3		3.1	+2.0
	12.6	7.6	50	3.0	+2.1
	13.1	8.1		2.7	+2.4
	13.0	8.0		2.2	+2.9
				1.9	+3.2
				1.5	+3.6
			5+00	1.1	+4.0

9-10-59

STA. N. 120+50; 0+00 = W. 19960; SOUND EAST

Dist	Sound	Elev	Dist	Sound	Elev
0+00			(5.3)	13.2	7.9
			50	13.3	8.0
	0.6	+4.7		13.3	8.0
	2.0	+3.3		13.3	8.0
<u>2.12</u>	3.0	+2.3	<u>2.15</u>	13.3	8.0
	3.6	+1.7		13.2	7.9
50	4.7	+0.6		13.1	7.8
	6.7	1.4	3+00	13.0	7.7
	9.0	3.6		12.9	7.6
	10.9	5.6		12.9	7.6
	11.5	6.2	50	12.9	7.6
1+00	12.0	6.7		12.9	7.6
	12.1	6.8		12.8	7.5
	12.1	6.8		12.3	7.0
	12.1	6.8	4+00	12.0	6.7
	12.0	6.7		11.1	5.8
	12.3	7.0		10.0	4.7
	12.4	7.1		8.9	3.6
	12.5	7.3		7.5	2.2
	12.8	7.5		7.3	2.0
	12.7	7.4	50	6.9	1.6
2+00	12.9	7.6		6.5	1.2
	12.9	7.6		5.8	0.5
	12.9	7.6		5.3	0.0
	13.0	7.7		5.0	+0.3
			5+00	4.4	+0.9
				4.0	+1.3
				3.9	+1.4
				3.5	+1.8
				3.2	+2.1
			50	3.1	+2.2
				3.0	+2.3
				3.0	+2.3
				3.1	+2.2
			6+00	3.1	+2.2
				3.0	+2.3
				3.0	+2.3

9-10-59

STA. N. 121+00; 0+00 = W19970; SOUND EAST

Dist	Sound	Elev	Dist	Sound	Elev
0+00			(54)	12.6	7.2
(54)	0.9	+4.5	50	12.9	7.5
	2.4	+3.0		12.9	7.5
2:25	3.1	+2.3		13.0	7.6
	3.8	+1.6		12.9	7.5
50	4.3	+1.1		12.9	7.5
	5.2	+0.2	3+00	12.7	7.3
	7.3	1.9		12.7	7.3
	9.6	4.2	2:28	12.7	7.3
	11.1	5.7		12.8	7.4
1+00	11.5	6.1		12.9	7.5
	11.7	6.3	50	13.0	7.6
	12.0	6.6		13.0	
	12.0	6.6		13.0	
	12.1	6.7		13.0	
50	12.2	6.8		13.0	
	12.3	6.9	4+00	13.0	7.6
	12.3	6.9		13.1	7.7
	12.3	6.9		13.2	7.8
	12.4	7.0		13.3	7.9
2+00	12.3	6.9		13.1	7.7
	12.3	6.9	50	12.8	7.4
	12.4	7.0		12.3	6.9
	12.7	7.3		12.2	6.8

STA. N. 121+00 EAST

Dist	Sound	Elev	Dist	Sound	Elev
(54)	11.4	6.0	(54)	11.0	5.6
	11.2	5.8		11.3	5.9
5+00	8.9	3.5	50	13.0	7.6
2:30	8.0	2.6		13.4	8.0
	8.2	2.8		13.3	7.9
	8.3	2.9		13.3	7.9
	8.2	2.8		13.5	8.1
50	8.1	2.7	8+00	13.5	8.1
	7.9	2.5			
	8.3	2.9			
	7.7	2.3			
	7.0	1.6			
6+00	7.1	1.7			
	7.2	1.8			
	7.3	1.9			
	7.5	2.1			
	7.3	1.9			
50	6.8	1.4			
	5.6	0.2			
	8.9	3.5			
	8.5	3.1			
	7.5	2.1			
7+00	8.4	2.9			
	8.1	2.7			
	10.0	4.6			

9-10-59

STA. N. 121+50; 0+00 = W 19980; SOUND EAST

Dist	Sound	Elev	Dist	Sound	Elev
0+00	0.6	+4.9	(5.5)	12.7	7.2
(5.5)	1.9	+3.6	50	12.9	7.4
	2.9	+2.6		12.9	7.4
<u>2:42</u>	3.4	+2.1		12.9	7.4
	4.1	+1.4		12.8	7.3
50	5.0	+0.5		12.8	}
	6.1	0.6	3+00	12.8	
	8.8	3.3		12.8	}
	10.8	5.3	<u>2:45</u>	12.8	
	11.3	5.8		12.9	7.4
1+00	11.9	6.4		12.9	7.4
	12.2	6.7	50	12.9	7.4
	12.4	6.9		12.4	6.9
	12.8	7.3		12.3	6.8
	13.2	7.7		12.3	6.8
50	13.1	7.6		12.3	6.8
	13.0	7.5	4+00	12.7	7.2
	13.2	7.7		12.4	6.9
	13.1	7.6		12.5	7.0
	13.1	7.6		12.8	7.3
2+00	13.1	7.6		13.1	7.6
	12.8	7.3	50	13.1	7.6
	12.7	7.2		13.1	7.6
	12.7	7.2		13.2	7.7

STA. N 121+50 - EAST

Dist	Sound	Elev	Dist	Sound	Elev
(5.6)	13.2	7.6			
	13.3	7.7			
5+00	13.2	7.6			
	13.1	7.5			
<u>2:48</u>	13.1	7.5			
	13.0	7.4			
	12.9	7.3			
50	12.7	7.1			
	12.6	7.0			
	12.6	7.0			
	12.1	6.5			
	12.1	6.5			
6+00	12.8	7.2			
	12.5	6.9			
	12.4	6.8			
	13.1	7.5			
	12.9	7.3			
50	13.1	7.5			
	13.1	7.5			
<u>2:50</u>	13.2	7.6			
	13.5	7.9			
	13.7	8.1			
7+00	13.6	8.0			

33

9-10-59

STA. N. 122+00; 0+00 = W. 20,000; SOUND EAST

Dist	Sound	Elev	Dist	Sound	Elev
0+00			(58)	13.5	7.7
(5.7)	1.2	+4.5	50	13.3	7.5
	2.3	+3.4		13.3	7.5
<u>2:55</u>	3.1	+2.6	<u>2:58</u>	13.3	7.5
	3.9	+1.8		13.6	7.8
50	4.3	+1.4		13.9	8.1
	5.1	+0.6	3+00	14.0	8.2
	6.1	0.4		13.7	7.9
	7.2	1.5		13.4	7.6
	7.9	2.2		13.3	7.5
1+00	8.7	3.0		13.2	7.4
	10.0	4.3	50	13.2	7.4
	12.2	6.5		13.2	7.4
	14.1	8.4		13.1	7.3
	14.9	9.2		13.1	
50	15.1	9.4		13.1	
	15.2	9.5	4+00	13.1	7.3
	15.1	9.4		13.2	7.4
	15.1	9.4		13.4	7.6
	15.1	9.4		13.4	7.6
2+00	15.0	9.3		13.4	7.6
	14.9	9.2	50	13.7	7.9
	14.1	8.4		13.8	8.0
	13.7	8.0		14.0	8.2

STA. N. 122+00 - EAST

(34)

Dist	Sound	Elev	Dist	Sound	Elev
(58)	13.8	8.0			
	13.8	8.0			
5+00	13.9	8.1			
	13.7	7.9			
<u>3:02</u>	13.6	7.8			
	13.5	7.7			
	13.5	7.7			
50	13.5	7.7			
	13.6	7.8			
	13.4	7.6			
	13.3	7.5			
	13.8	8.0			
6+00	13.8	8.0			
	13.7	7.9			
	13.6	7.8			
	13.4	7.6			
	13.5	7.7			
50	13.6	7.8			
	13.5	7.7			
	13.7	7.9			
	13.4	7.6			
	13.4	7.6			
7+00	13.7	7.9			

9-14-59

STA. N. 123+00; 0+00 = W. 20030; SOUND EAST

Dist	Sound	Elev	Dist	Sound	Elev
0+00			(4.9)	13.7	8.8
(4.9)	0.0	+4.9	50	13.7	8.8
	1.3	+3.6		13.4	8.5
10:32	2.2	+2.7	10:35	13.3	8.4
	2.8	+2.1		13.3	8.4
50	3.3	+1.6		13.2	8.3
	4.2	+0.7	3+00	12.8	7.9
	5.2	0.3		12.8	7.9
	6.2	1.3		12.8	7.9
	7.2	2.3		13.1	8.2
1+00	8.6	3.7		13.1	8.2
	9.4	4.5	50	13.0	8.1
	10.0	5.1		13.0	8.1
	11.2	6.3		13.0	8.1
	12.1	7.2		12.8	7.9
50	13.2	8.3		12.1	7.2
	13.6	8.7	4+00	12.4	7.5
	14.2	9.3		12.3	7.4
	14.2	9.3		12.4	7.5
	14.0	9.1		12.2	7.3
2+00	13.8	8.9		12.3	7.4
	13.6	8.7	50	12.5	7.6
	13.5	8.6		12.6	7.7
	13.6	8.7		12.8	7.9

STA. N. 122+50 - EAST

Dist	Sound	Elev
(48)	12.8	8.0
	12.8	8.0
5+00	12.8	8.0
	13.0	8.2
	12.9	8.1
	12.8	8.0
	12.8	8.0
50	12.5	7.7
	12.4	7.6
	12.5	7.7
	12.4	7.6
	12.5	7.7
6+00	12.8	8.0
	13.1	8.3
10:38	13.0	8.2
	13.1	8.3
	12.6	7.8
50	13.0	8.2
	13.3	8.5
	13.2	8.4
	13.3	8.5
	13.4	8.6
7+00	13.2	8.4

9-14-59

STA. N. 122+50; 0+00 = W. 20010; SOUND EAST

Dist	Sound	Elev	Dist	Sound	Elev
0+00			(46)	13.6	9.0
(46)	0.7	+3.9	50	13.2	8.6
	1.9	+2.7		13.0	8.4
<u>10:48</u>	2.2	+2.4	<u>1052</u>	12.9	8.3
	3.0	+1.6		12.9	8.3
50	3.8	+0.8		12.9	8.3
	4.6	0.0	3+00	13.0	8.4
	5.7	1.1		13.0	
	6.3	1.7		13.0	
	7.3	2.7		13.0	8.4
1+00	8.1	3.5		12.8	8.2
	9.2	4.6	50	12.4	7.8
	10.9	6.3		12.4	7.8
	12.6	8.0		12.4	7.8
	13.2	8.6		12.5	7.9
50	13.6	9.0		12.5	7.9
	14.0	9.4	4+00	12.4	7.8
	14.0	9.4		12.4	7.8
	13.9	9.3		12.5	7.9
	13.6	9.0		12.6	8.0
2+00	13.7	9.1		12.7	8.1
	13.5	8.9	50	12.8	8.2
	13.6	9.0		12.9	8.3
	13.7	9.1		13.0	8.4

STA. N. 122+50 - EAST

Dist Sound Elev Dist Sound Elev

Dist	Sound	Elev	Dist	Sound	Elev
(45)	13.1	8.6			
	13.1				
5+00	13.1				
	13.1	8.6			
	12.8	8.3			
	12.7	8.2			
	12.5	8.0			
50	12.4	7.9			
	12.3	7.8			
	12.5	8.0			
	12.7	8.2			
	12.8	8.3			
6+00	12.5	8.0			
<u>10:55</u>	12.7	8.2			
	12.7				
	12.7	8.2			
	13.1	8.6			
50	13.4	8.9			
	13.6	9.1			
	13.6	9.1			
	13.4	8.9			
	13.1	8.6			
7+00	13.2	8.7			

(36)

9-14-59

STA. N. 123+50; 0+00=W. 20,040; SOUND EAST

Dist	Sound	Elev	Dist	Sound	Elev
0+00			(4.4)	14.3	9.9
(4.5)			50	14.3	9.9
	1.0	+3.5		14.3	9.9
<u>11:02</u>	1.8	+2.7		14.3	9.9
	2.2	+2.3		14.2	9.8
50	3.0	+1.5		14.2	
	3.4	+1.1	3+00	14.2	
	4.2	+0.3	<u>11:05</u>	14.2	9.8
	5.7	1.2		13.9	9.5
	7.8	3.3		12.7	8.3
1+00	8.7	4.2		11.4	7.0
	10.7	6.2	50	11.1	6.7
	11.2	6.7		11.0	6.6
	12.0	7.5		10.4	6.0
	12.0	7.5		10.1	5.7
50	12.2	7.7		9.8	5.4
	12.6	8.1	4+00	9.2	4.8
	12.9	8.4		9.1	4.7
	13.1	8.6		8.9	4.5
	13.2	8.7		8.3	3.9
2+00	13.2	8.7		7.7	3.3
	13.5	9.0	50	7.4	3.0
	13.9	9.4		7.0	2.6
	14.1	9.6		6.6	2.2

37

STA. N. 123+50 - EAST

Dist	Sound	Elev	Dist	Sound	Elev
(4.3)	7.3	3.0	(4.3)	7.1	2.8
	8.2	3.9		7.9	3.6
5+00	7.8	3.5	50	8.3	4.0
	7.2	2.9		9.4	5.1
<u>11:08</u>	7.1	2.8	<u>11:10</u>	9.0	4.7
	7.2	2.9		9.0	4.7
	7.9	3.6		9.3	5.0
50	7.9	3.6	8+00	9.8	5.5
	8.1	3.8		9.3	5.0
	8.0	3.7		9.3	5.0
	8.0	3.7		8.7	4.4
	7.2	2.9		8.3	4.0
6+00	7.3	3.0	50	7.0	2.7
	7.4	3.1		6.3	2.0
	8.0	3.7		5.7	1.4
	7.9	3.6		4.9	0.6
	8.1	3.8		5.2	0.9
50	7.1	2.8	9+00	5.2	0.9
	7.1	2.8		5.2	0.9
	7.2	2.9		5.3	1.0
	7.3	3.0		5.7	1.4
	7.5	3.2		5.9	1.6
7+00	7.4	3.1	50	5.9	1.6
	7.1	2.8			
	7.1	2.8			



9-14-59

STA. N. 124+00; 0+00=W. 20060; SOUND EAST

Dist	Sound	Elev	Dist	Sound	Elev
0+00			(4.1)	12.1	8.0
(4.2)			50	12.2	8.1
				12.1	8.0
<u>11:22</u>	0.6	+3.6	<u>11:25</u>	11.9	7.8
	1.2	+3.0		11.9	7.8
50	1.7	+2.5		12.1	8.0
	2.2	+2.0	3+00	11.8	7.7
	3.0	+1.2		11.1	7.0
	4.1	+0.1		8.1	4.0
	5.6	1.4		5.4	1.1
1+00	7.3	3.1		4.2	0.1
	9.1	4.9	50	3.4	+0.7
	10.4	6.2		3.0	+1.1
	11.2	7.0		2.8	+1.3
	11.8	7.6		2.9	+1.2
50	11.9	7.7		2.9	
	12.1	7.9	4+00	2.9	
	12.3	8.1		2.9	+1.2
	12.7	8.5		2.7	+1.4
	12.8	8.6		2.7	+1.4
2+00	12.7	8.5		2.9	+1.2
	12.4	8.2	50	2.8	+1.3
	12.2	8.0		3.0	+1.1
	12.2	8.0		3.1	+1.0

STA. N. 124+00 - EAST

(38)

Dist	Sound	Elev	Dist	Sound	Elev
(4.0)	3.3	+0.7	(4.0)	3.3	+0.7
	3.4	+0.6		3.3	
5+00	3.4	+0.6	50	3.3	
	3.5	+0.5		3.3	+0.7
	3.6	+0.4		3.2	+0.8
	3.6	+0.4		3.2	+0.8
	3.8	+0.2		3.9	+0.1
50	4.1	0.1	8+00	4.0	0.0
<u>11:28</u>	3.9	+0.1		3.9	+0.1
	4.1	0.1	<u>11:30</u>	3.9	+0.1
	4.0	0.0		3.8	+0.2
	4.0	0.0		3.8	+0.2
6+00	4.0	0.0	50	3.7	+0.3
	3.8	+0.2		3.4	+0.6
	3.8	+0.2		3.6	+0.4
	3.7	+0.3		3.7	+0.3
	3.4	+0.6		4.0	0.0
50	3.6	+0.4	9+00	3.8	+0.2
	3.5	+0.5		3.5	+0.5
	3.4	+0.6		3.2	+0.8
	3.6	+0.4		3.2	+0.8
	3.3	+0.7		3.2	+0.8
7+00	3.3		50	3.1	+0.9
	3.3				
	3.3	+0.7			

9-14-59

STA. N. 124+50; 0+00 = W20080; SOUND EAST

Dist Sound Elev Dist Sound Elev

0+00

(39)

11.37

0.3 +3.6

1.0 +2.9

50 1.6 +2.3

2.1 +1.8

2.9 +1.0

3.7 +0.2

5.3 1.4

1+00 7.1 3.2

9.6 5.7

11.0 7.1

11.7 7.8

11.6 7.7

50 11.6 7.7

11.5 7.6

11.4 7.5

12.0 8.1

12.1 8.2

2+00 12.6 8.7

12.2 8.3

12.2 8.3

12.2 8.3

(38)

12.1 8.3

50 12.0 8.2

11.40 11.9 8.1

11.5 7.7

10.9 7.1

10.0 6.2

3+00 6.7 2.9

3.9 0.1

3.3 +0.5

3.5 +0.3

2.6 +1.2

50 2.2 +1.6

2.4 +1.4

2.3 +1.5

2.4 +1.4

2.5 +1.3

4+00 2.4 +1.4

2.3 +1.5

2.3 +1.5

2.6 +1.2

2.5 +1.3

50 2.5 +1.3

2.5 +1.3

2.6 +1.2

STA. N. 124+50-EAST

Dist Sound Elev Dist Sound Elev

(37)

2.7 +1.0

2.7 +1.0

5+00 3.1 +0.6

11.44 3.2 +0.5

11.44 3.4 +0.3

3.5 +0.2

3.4 +0.3

50 3.4 +0.3

3.6 +0.1

3.5 +0.2

3.7 0.0

3.8 0.1

6+00 3.9 0.2

3.9 0.2

3.8 0.1

3.7 0.0

3.6 +0.1

50 3.5 +0.2

3.4 +0.3

3.4 +0.3

3.5 +0.2

3.4 +0.3

7+00 3.3 +0.4

9-14-59

STA. N. 125+00; 0+00 = W. 20, 100; SOUND EAST

Dist	Sound	Elev	Dist	Sound	Elev
0+00			(36)	11.9	8.3
(36)			50	11.8	8.2
	0.0	+3.6	11.55	11.1	7.5
<u>11.53</u>	0.7	+2.9	<u>    </u>	11.0	7.4
	1.3	+2.3		10.6	7.0
50	2.0	+1.6		9.1	5.5
	2.8	+0.8	3+00	6.0	2.4
	3.7	0.1		3.2	+
	4.6	1.0		2.4	+
	5.7	2.1		3.7	0.1
1+00	7.3	3.7		2.0	+1.6
	8.9	5.3	50	1.5	+2.1
	10.4	6.8		1.3	+2.3
	11.5	7.9		1.5	+2.1
	12.0	8.4		1.7	+1.9
50	12.1	8.5		2.0	+1.6
	12.2	8.6	4+00	2.0	
	12.1	8.5		2.0	
	12.0	8.4		2.0	+1.6
	12.2	8.6		2.1	+1.5
2+00	12.2	8.6		2.2	+1.4
	12.1	8.5	50	2.3	+1.3
	12.1	8.5		2.4	+1.2
	12.0	8.4		2.5	+1.1

STA. N. 125+00 - EAST

Dist	Sound	Elev	Dist	Sound	Elev
(35)	2.5	+1.0			
	2.5				
5+00	2.5				
	2.5	+1.0			
	2.6	+0.9			
<u>12.00</u>	2.7	+0.8			
<u>    </u>	3.0	+0.5			
50	3.0	+0.5			
	3.1	+0.4			
	3.5	0.0			
	3.5	0.0			
	3.4	+0.1			
6+00	3.4	+0.1			
	3.5	0.0			
	3.4	+0.1			
	3.3	+0.2			
	3.3	+0.2			
50	3.5	0.0			
	4.0	0.5			
	3.2	+0.3			
	3.2	+			
	3.2	+			
7+00	3.2	+0.3			

9-15-59  
 STA. N. 125+50; 0+00 = W 20/130; SOUND EAST

Dist	Sound	Elev	Dist	Sound	Elev
0+00			(50)	13.5	8.5
(50)			50	13.3	8.3
	1.0	+4.0		13.1	8.1
<u>10:58</u>	2.0	+3.0		13.0	8.0
	2.8	+2.2		12.8	7.8
50	3.3	+1.7		12.3	7.3
	4.2	+0.8	3+00	11.5	6.5
	5.1	0.1		9.1	4.1
	6.9	1.9	<u>11:02</u>	5.2	0.2
	9.1	4.1		4.3	+0.7
1+00	10.3	5.3		3.5	+1.5
	11.1	6.1	50	3.2	+1.8
	11.5	6.5		2.8	+2.2
	12.0	7.0		2.9	+2.1
	13.1	8.1		3.0	+2.0
50	13.4	8.4		3.3	+1.7
	13.4	8.4	4+00	3.6	+1.4
	13.4	8.4		4.1	+0.9
	13.5	8.5		4.4	+0.6
	13.8	8.8		4.3	+0.7
2+00	14.0	9.0		4.6	+0.4
	13.9	8.9	50	4.8	+0.2
	13.7	8.7		4.9	+0.1
	13.6	8.6		4.8	+0.2

STA. N. 125+50 (41)

Dist	Sound	Elev	Dist	Sound	Elev
(49)	5.0	0.1			
	4.9	0.0			
5+00	5.0	0.1			
	4.9	0.0			
	5.0	0.1			
	4.8	+0.1			
	4.9	0.0			
	5.4	0.5	50		
	5.0	0.1			
	5.2	0.3	<u>11:05</u>		
	5.2	0.3			
	4.9	0.0			
	4.9	0.0	6+00		
	4.9	0.0			
	5.2	0.3			
	5.1	0.2			
	5.1				
	5.1		50		
	5.1	0.2			
	4.9	0.0			
	5.0	0.1			
	4.8	+0.1			
	4.7	+0.2	7+00		

9-15-59

STA. N. 126+00; 0+00 = W. 20, 150; SOUND EAST

	Dist	Sound	Elev	Dist	Sound	Elev
0+00				(4.8)	12.9	8.1
(4.8)	0.2	+4.6		50	12.9	8.1
	1.3	+3.5			12.8	8.0
<u>11:10</u>	2.2	+2.6		<u>11:13</u>	12.4	7.6
	3.0	+1.8			12.2	7.4
50	3.6	+1.2			12.0	7.2
	4.6	+0.2		3+00	11.0	6.2
	5.5	0.7			7.8	3.0
	6.2	1.4			4.5	+0.3
	6.5	1.7			4.0	+0.8
1+00	6.6	1.8			3.2	+1.6
	8.1	3.3		50	3.0	+1.8
	9.6	4.8			2.9	+1.9
	11.3	6.5			3.0	+1.8
	12.1	7.3			3.0	+1.8
50	12.3	7.5			3.2	+1.6
	12.6	7.8		4+00	3.3	+1.5
	12.8	8.0			3.6	+1.2
	13.1	8.3			4.0	+0.8
	13.1	8.3			4.1	+0.7
2+00	13.2	8.4			4.3	+0.5
	13.2	8.4		50	4.2	+0.6
	13.2	8.4			4.3	+0.5
	13.0	8.2			4.5	+0.3

57A. N. 126+00 - EAST

	Dist	Sound	Elev	Dist	Sound	Elev
	(4.8)	4.4	+0.4	(4.6)	5.0	0.4
		4.6	+0.2		5.0	0.4
5+00	4.7	+0.1		50	5.0	0.4
	4.6	+0.2			4.9	0.3
<u>11:17</u>	4.5	+0.3			4.6	0.0
	4.4	+0.4			4.9	0.3
	4.6	+0.2			4.8	0.2
50	4.4	+0.4		8+00	4.8	0.2
	4.7	+0.1			4.7	0.1
	4.7	+0.1			4.7	0.1
	4.6	+0.2			4.7	0.1
	4.4	+0.4			4.6	0.0
6+00	4.4	+0.4		50	4.7	0.1
	4.5	+0.3			4.7	0.1
	4.6	+0.2		<u>11:20</u>	4.6	0.0
	4.6	+0.2			4.5	+0.1
	4.7	+0.1			4.5	+0.1
50	4.7	+0.1		9+00	4.5	+0.1
	4.7	+0.1			4.7	0.1
	4.8	0.0			4.6	0.0
	4.8	0.0			5.0	0.4
	4.7	+0.1			4.7	0.1
7+00	4.7	+0.1		50	4.7	0.1
	5.1	0.3				
	4.9	0.1				

9-15-59

STA. N. 126+50; 0+00 = W. 20, 170; SOUND EAST

Dist Sound Elev Dist Sound Elev

0+00

(44) 12.9 8.5

(45)

0.1 +4.4

50 12.9 8.5

1.1 +3.4

12.7 8.3

11:25

2.2 +2.3

12.3 7.9

50

3.0 +1.5

11:28 12.3 7.9

50

3.8 +0.7

50 11.7 7.3

5.0 0.5

3+00 11.0 6.6

6.2 1.7

9.0 4.6

6.8 2.3

5.0 0.6

6.5 2.0

4.0 +0.4

1+00

6.8 2.3

3.2 +1.2

8.1 3.6

50 3.1 +1.3

9.8 5.3

3.0 +1.4

10.7 6.2

3.3 +1.1

11.5 7.0

3.3 +1.1

50

12.0 7.5

3.6 +0.8

12.0 7.5

4+00 3.7 +0.7

12.5 8.0

3.7 +0.7

12.7 8.2

3.9 +0.5

13.0 8.5

3.9 +0.5

2+00

13.1 8.6

4.1 +0.3

13.2 8.7

50 4.1 +0.3

13.2 8.7

4.1 +0.3

13.0 8.5

4.2 +0.2

STA. N. 126+50 - EAST

(43)

Dist Sound Elev Dist Sound Elev

(4.4) 4.3 +0.1

4.4 0.0

5+00 4.7 0.3

4.3 +0.1

11:35 4.3 +0.150 4.4 0.0

4.3 +0.1

50 4.3 +0.1

4.2 +0.2

4.1 +0.3

4.2 +0.2

4.3 +0.1

6+00 4.5 0.1

4.3 +0.1

4.3 +0.1

4.2 +0.2

4.3 +0.1

50 4.3 +0.1

4.3 +0.1

4.2 +0.2

4.6 0.2

4.6 0.2

7+00 4.6 0.2

9-15-59

STA. N. 127+00; 0+00=W, 20, 190; SOUND EAST

Dist Sound Elev Dist Sound Elev

0+00

(42) 12.6 8.4

(43)

50 12.4 8.2

0.9 +3.4 12.2 8.0

11:401.9 +2.4 11:43 12.1 7.9

2.5 +1.8 12.0 7.8

50

3.1 +1.2 11.7 7.5

4.1 +0.2 3+00 11.2 7.0

6.2 1.9 10.0 5.8

7.3 3.0 5.7 1.5

7.3 3.0 3.8 +0.4

1+00

7.3 3.0 3.2 +1.0

7.4 3.1 50 3.0 +1.2

8.5 4.2 3.0 +1.2

10.0 5.7 3.1 +1.1

11.0 6.7 3.3 +0.9

50 11.3 7.0 3.5 +0.7

11.6 7.3 4+00 3.5 +0.7

12.0 7.7 3.6 +0.6

12.3 8.0 3.7 +0.5

12.7 8.4 3.8 +0.4

2+00

12.8 8.5 3.7 +0.5

12.8 8.5 50 3.7 +0.5

12.8 8.5 3.8 +0.4

12.7 8.4 3.9 +0.3

STA. N. 127+00 - EAST

Dist Sound Elev Dist Sound Elev

(42) 3.9 +0.3

4.1 +0.1

5+00 4.0 +0.2

4.0 +0.2

11:46

4.1 +0.1

4.0 +0.2

4.0 }

50 4.0 }

4.0 }

4.0 +0.2

4.1 +0.1

4.0 +0.2

6+00 4.0 +0.2

4.1 +0.1

4.1 +0.1

4.1 +0.1

4.2 +0.0

50 4.1 +0.1

4.1 }

4.1 }

4.1 +0.1

4.3 0.1

7+00 4.6 0.4

9-15-59

STA. N. 127+50; 0+00 = W. 20, 210; SOUND EAST

Dist	Sound	Elev	Dist	Sound	Elev
0+00			(4.0)	12.2	8.2
(4.0)			50	12.1	8.1
	0.8	+3.2		12.1	8.1
<u>11:53</u>	1.5	+2.5		12.0	8.0
	2.1	+1.9		11.9	7.9
50	2.8	+1.2		11.6	7.6
	3.9	+0.1	3+00	11.0	7.0
	5.9	1.9		7.6	3.6
	7.3	3.3	<u>11:55</u>	4.7	0.7
	7.8	3.8		3.9	+0.1
1+00	7.9	3.9		3.3	+0.7
	7.8	3.8	50	3.2	+0.8
	8.1	4.1		3.1	+0.9
	9.4	5.4		3.1	+0.9
	10.7	6.7		3.2	+0.8
50	11.1	7.1		3.3	+0.7
	11.3	7.3	4+00	3.4	+0.6
	11.6	7.6		3.6	+0.4
	11.7	7.7		3.7	+0.3
	11.9	7.9		3.7	+0.3
2+00	12.1	8.1		3.6	+0.4
	12.1	8.1	50	3.5	+0.5
	12.2	8.2		3.7	+0.3
	12.2	8.2		3.9	+0.1

STA. N. 127+50 - EAST

(45)

Dist Sound Elev Dist Sound Elev

(4.0)	4.1	0.1			
	4.0	0.0			
5+00	4.0	0.0			
	4.0	0.0			
	4.1	0.1			
	4.1	0.1			
	4.1	0.1			
50	4.0	0.0			
	3.9	+0.1			
<u>11:57</u>	3.8	+0.2			
	3.7	+0.3			
	3.8	+0.2			
6+00	3.9	+0.1			
	3.9	}			
	3.9	}			
	3.9	+0.1			
	4.0	0.0			
50	4.0	0.0			
	4.0	0.0			
	3.9	+0.1			
	3.9	+0.1			
	3.9	+0.1			
7+00	4.0	0.0			



9-15-59

STA. N. 128+00; 0+00 = W. 20, 230; SOUND EAST

DIST	SOUND	ELEV	DIST	SOUND	ELEV
0+00			(38)	11.7	7.9
(38)			50	11.7	7.9
	0.5	+3.3	<u>1206</u>	11.8	8.0
<u>1203</u>	1.5	+2.3		11.7	7.9
	2.1	+1.7		11.4	7.6
50	2.8	+1.0		11.2	7.4
	4.2	0.4	3+00	10.9	7.1
	5.6	1.8		10.0	6.2
	7.0	3.2		6.3	2.5
	7.2	3.4		4.3	0.5
1+00	7.4	3.6		3.9	0.1
	8.1	4.3	50	3.5	+0.3
	8.2	4.4		3.5	+0.3
	9.2	5.4		3.7	+0.1
	10.8	7.0		3.4	+0.4
50	11.1	7.3		3.2	+0.6
	11.2	7.4	4+00	3.3	+0.5
	11.2	7.4		3.4	+0.4
	11.2	7.4		3.4	+0.4
	11.5	7.7		3.8	+0.0
2+00	11.7	7.9		3.7	+0.1
	11.7	7.9	50	3.6	+0.2
	11.8	8.0		3.7	+0.1
	11.9	8.1		3.7	+0.1

STA. N. 128+00 - EAST

(46)

DIST	SOUND	ELEV	DIST	SOUND	ELEV
(37)	3.8	0.1	(37)	3.8	0.1
	3.8			3.9	0.2
5+00	3.8		50	3.9	0.2
	3.8			4.0	0.3
	3.8		<u>1210</u>	3.9	0.2
<u>1208</u>	3.8			3.9	
	3.8			3.9	
50	3.8		8+00	3.9	
	3.8			3.9	0.2
	3.8			4.0	0.3
	3.8			4.0	0.3
	3.8			3.9	0.2
6+00	3.8		50	3.9	
	3.8			3.9	
	3.8			3.9	0.2
	3.8			4.0	0.3
	3.8	0.1		4.1	0.4
50	3.7	0.0	9+00	4.1	0.4
	3.7	0.0		4.0	0.3
	3.9	0.2		4.1	0.4
	3.8	0.1		4.0	0.3
	3.8		50	4.0	0.3
	3.8			4.1	0.4
	3.8			4.1	0.4
7+00	3.8			4.1	0.4
	3.8		10+00	4.0	0.3
	3.8			4.0	0.3
	3.8	0.1		4.0	0.3
			50	4.0	0.3

9-15-59

STA. N. 128+50; 0+00 = W. 20,250; SOUND EAST

Dist	Sound	Elev	Dist	Sound	Elev
0+00			(36)	11.7	8.1
(3.6)			50	11.9	8.3
	0.3	+3.3		11.9	8.3
12:18	1.1	+2.5		11.8	8.2
	1.7	+1.9		11.4	7.8
50	2.3	+1.3		11.1	7.5
	3.1	+0.5	3+00	10.6	7.0
	4.6	1.0		8.8	5.2
	6.1	2.5	12:22	6.9	3.3
	7.2	3.6		4.0	0.4
1+00	8.2	4.6		3.8	0.2
	8.2	4.6	50	3.3	+0.3
	8.3	4.7		3.3	+0.3
	9.2	5.6		3.4	+0.2
	10.1	6.5		3.4	
50	10.5	6.9		3.4	
	10.9	7.3	4+00	3.4	+0.2
	11.1	7.5		3.5	+0.1
	11.1	7.5		3.5	+0.1
	11.1	7.5		3.6	0.0
2+00	11.3	7.7		3.5	+0.1
	11.3	7.7	50	3.4	+0.2
	11.7	8.1		3.4	+0.2
	11.7	8.1		3.4	+0.2

STA. N. 128+50 - EAST

Dist Sound Elev Dist Sound Elev

Dist	Sound	Elev	Dist	Sound	Elev
(35)	3.4	+0.1			
	3.7	0.2			
5+00	3.5	0.0			
	3.6	0.1			
	3.6	0.1			
	3.7	0.2			
	3.3	+0.2			
50	3.4	+0.1			
	3.4				
	3.4				
	3.4				
	3.4	+0.1			
6+00	3.5	0.0			
	3.5	0.0			
	3.4	+0.1			
	3.5	0.0			
	3.5	0.0			
50	3.4	+0.1			
	3.5	0.0			
	3.5	0.0			
12:25	3.8	0.3			
	3.7	0.2			
	3.4	+0.1			
7+00	3.5	0.0			

9-15-59

STA. N. 129+00. 0+00 = W. 20, 270; SOUND EAST

Dist	Sound	Elev	Dist	Sound	Elev
0+00			(33)	11.3	8.0
(3.4)			50	11.6	8.3
	0.1	+3.3		11.7	8.4
<u>12.31</u>	1.0	+2.4		11.5	8.2
	1.7	+1.7	<u>12.33</u>	11.2	7.9
50	2.1	+1.3		11.1	7.8
	2.9	+0.5	3+00	10.5	7.2
	4.0	0.6		8.1	4.8
	5.1	1.7		6.1	2.8
	6.3	2.9		3.9	0.6
1+00	7.5	4.1		3.8	0.5
	8.2	4.8	50	3.3	0.0
	8.8	5.4		3.2	+0.1
	9.7	6.3		3.2	
	10.2	6.8		3.2	
50	10.9	7.5		3.2	+0.1
	10.9		4+00	3.3	0.0
	10.9			3.3	
	10.9			3.3	
	10.9			3.3	
2+00	10.9	7.5		3.3	
	11.1	7.7	50	3.3	
	11.1	7.7		3.3	
	11.2	7.8		3.3	0.0

STA. N. 129+00-EAST

DIST SOUND ELEV DIST SOUND ELEV

DIST	SOUND	ELEV	DIST	SOUND	ELEV
(33)	3.3	0.0			
	3.3				
5+00	3.3				
<u>12.35</u>	3.3	0.0			
	3.2	+0.1			
	3.2				
	3.2				
50	3.2				
	3.2	+0.1			
	3.5	0.2			
	3.4	0.1			
	3.3	0.0			
6+00	3.3	0.0			
	3.3	0.0			
	3.2	+0.1			
	3.2	+0.1			
	3.2	+0.1			
50	3.3	0.0			
	3.3				
	3.3				
	3.3				
	3.3				
7+00	3.3	0.0			

9-16-59 Plotted  
 STA. N. 154+00; 0+00 = W. 7130; SOUND WEST

DIST	SOUND	ELEV	DIST	SOUND	ELEV
0+00			(6.1)	8.3	2.2
(6.1)			50	8.4	2.3
	1.2	+4.9		8.5	2.4
9:53	1.8	+4.3		8.6	2.5
	2.1	+4.0		8.9	2.8
50	2.4	+3.7		9.1	3.0
	2.7	+3.4	3+00	9.1	3.0
	2.7	+3.4	9:55	9.3	3.2
	2.6	+3.5		9.7	3.6
	3.0	+3.1		10.1	4.0
1+00	3.6	+2.5		10.4	4.3
	3.6	+2.5	50	10.4	4.3
	4.0	+2.1		10.5	4.4
	4.5	+1.6		10.5	4.4
	4.7	+1.4		10.4	4.3
50	5.2	+0.9		10.4	
	5.7	+0.4	4+00	10.4	
	6.1	0.0		10.4	4.3
	6.5	0.4		10.5	4.4
	7.0	0.9		10.6	4.5
2+00	7.2	1.1		10.6	4.5
	7.2	1.1	50	10.7	4.6
	7.9	1.8		10.7	4.6
	8.2	2.1		10.7	4.6

(49)

STA. N. 154+00 - WEST

DIST	SOUND	ELEV	DIST	SOUND	ELEV
(6.1)	10.8	4.7	(6.1)	10.1	4.0
	10.9	4.8		10.0	3.9
5+00	11.0	4.9	50	9.6	3.5
	11.0	4.9		9.3	3.2
9:57	11.0	4.9	10:00	9.1	3.0
	11.0	4.9		8.9	2.8
	11.1	5.0		8.5	2.4
50	11.0	4.9	8+00	8.3	2.2
	11.1	5.0		8.0	1.9
	11.0	4.9		7.3	1.2
	11.0	4.9		6.6	0.5
	11.0	4.9		6.3	0.2
6+00	10.9	4.8	50	6.2	0.1
	10.9	4.8		6.0	+0.1
	11.0	4.9		5.8	+0.3
	11.0	4.9		5.5	+0.6
	11.0	4.9		5.4	+0.7
50	10.9	4.8	9+00	5.2	+0.9
	10.9			5.0	+1.1
	10.9			4.6	+1.5
	10.9			4.3	+1.8
	10.9	4.8		4.0	+2.1
7+00	10.7	4.6	50	3.9	+2.2
	10.5	4.4		3.7	+2.4
	10.4	4.3		3.4	+2.7

STA. N. 154+00 - WEST

DIST Sound Elev DIST Sound Elev

(6.1) 3.2 +2.9

3.1 +3.0

10+00 3.0 +3.1

2.9 +3.2

2.7 +3.4

2.3 +3.8

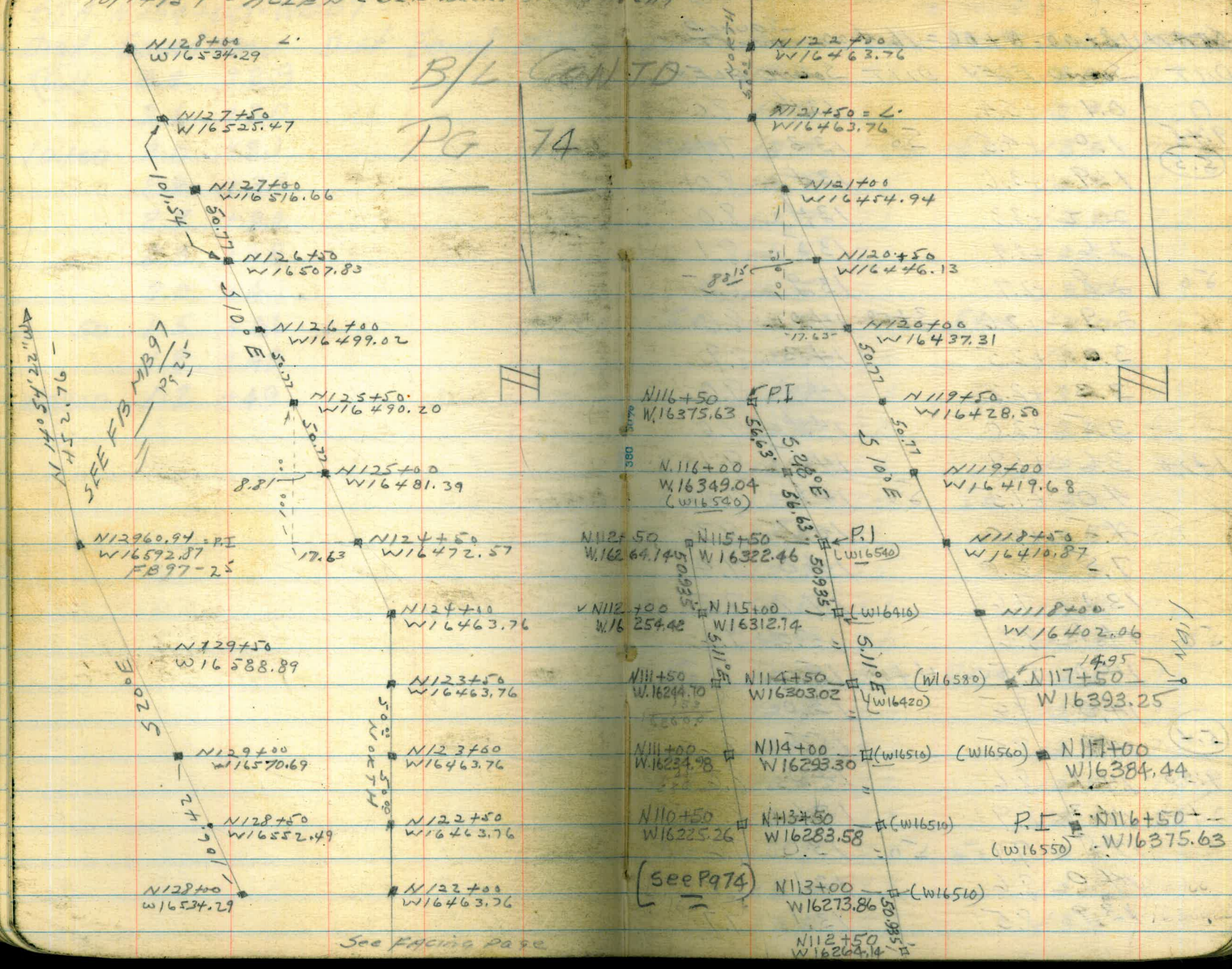
2.0 +4.1

50 1.5 +4.6

1.2 +4.9

W8200 1.2 +4.9

B/L CONTD  
PG 74



See facing page

10/15/59 - ALLEN

STAN 118+00 - 0+00 = 16400 - Sound West

DIST	SOUND	ELEV	DIST	SOUND	ELEV
0	0.1	+5.4		13.4	8.0
9:45	1.0	+4.5	50	13.3	7.9
(5.5)	1.9	+3.6		13.4	8.0
	2.2	+3.3		13.4	8.0
	2.6	+2.9		13.5	8.1
50	2.8	+2.7		13.9	8.5
	2.9	+2.6	3+00	14.0	8.6
	3.0	+2.5		14.3	8.9
	3.3	+2.2		14.4	9.0
	3.5	+2.0		14.4	9.0
1+00	3.6	+1.9		14.5	9.1
	4.0	+1.5	50	14.6	9.2
	4.5	+1.0		14.7	9.3
	7.5	2.0		14.8	9.4
	13.1	7.6		14.9	9.5
50	14.1	8.6		15.0	9.6
	14.0	8.5	4+00	15.0	}
	14.0	8.5		15.0	}
(5.4)	14.0	8.5		15.0	9.6
9:50	14.1	8.6		14.0	8.6
2+00	14.3	8.9		13.6	8.2
	14.5	9.1	50	13.0	7.6
	14.0	8.6		13.1	7.7
	13.9	8.5		13.1	7.7

STA N118+00 CONT WEST 52  
10/15/59-

DIST	SOUND	ELEV	DIST	SOUND	ELEV
	13.2	7.8		12.0	7.7
	13.2	7.8		12.9	7.6
5+00	13.0	7.6	+50	13.0	7.7
	12.9	7.5		12.9	7.6
	12.7	7.3		13.0	7.7
	12.5	7.1		13.1	7.8
	12.5	7.1		13.0	7.7
50	12.7	7.2	8+00	13.0	}
	12.8	7.4		13.0	}
	12.8	7.4		13.0	7.7
	12.6	7.2		12.9	7.6
	12.8	7.4		12.9	7.6
6+00	13.0	7.6	50	13.0	7.7
	13.0	7.6		12.5	7.2
	12.9	7.5		12.7	7.4
	12.5	7.1		12.9	7.6
	12.4	7.0		12.8	7.5
50	12.3	6.9	9+00	12.8	7.5
	12.4	7.0		12.9	7.6
	12.5	7.1		12.8	7.5
(5.3)	12.5	7.2		12.9	7.6
9:55	12.5	7.2		12.9	7.6
7+00	12.5	7.2	50	12.9	7.6
	13.0	7.7		12.8	7.5
	13.0	7.7		13.0	7.7

## STA N 118+00 CONT WEST

DIST	Sound	ELEV	DIST	Sound	ELEV
	13.0	7.7		13.2	8.0
	12.9	7.6		13.3	8.1
10+00	12.9	7.6	50	13.3	8.1
	13.2	7.9		13.2	8.0
	13.2	7.9		13.2	}
	13.0	7.7		13.2	}
	13.1	7.8		13.2	8.0
50	13.2	7.9	13+00	13.3	8.1
	13.1	7.8		13.4	8.2
	13.0	7.7		13.4	8.2
(5.2)	13.1	7.8		13.2	8.0
10+00	13.2	8.0		13.3	8.1
11+00	13.2	}	50	13.5	8.3
	13.2	}		13.5	8.3
	13.2	8.0		13.3	8.1
	13.1	7.9		13.5	8.3
	13.2	8.0		13.5	8.3
50	13.3	8.1	14+00	13.5	8.3
	13.4	8.2		13.3	8.1
	13.3	8.1		13.2	8.0
	13.2	8.0		13.3	8.1
	13.3	8.1		13.3	}
12+00	13.3	8.1	50	13.3	}
	13.2	8.0		13.3	}
	13.3	8.1		13.3	8.1

## STA N 118+00 CONT WEST

53

DIST	Sound	ELEV	DIST	Sound	ELEV
	13.2	8.1		13.2	8.0
	13.5	8.3		13.2	8.0
15+00	13.3	8.1	50	13.3	8.1
	13.2	8.0		13.5	8.3
	13.2	8.0		13.4	8.2
	13.0	7.8		13.6	8.4
	13.0	}		13.6	8.4
50	13.0	}	18+00	13.5	8.3
	13.0	7.8		13.5	}
	12.9	7.7		13.5	}
	12.8	7.6	(5.1)	13.5	8.3
	12.7	7.5	10+05	13.6	8.5
16+00	12.7	7.5	50	13.5	8.4
	12.5	7.3		13.5	8.4
	12.4	7.2		13.5	8.4
	12.4	7.2		13.7	8.6
	12.5	7.3		13.7	8.6
50	12.6	7.4	19+00	13.6	8.5
	12.5	7.3		13.8	8.7
	12.5	7.3		13.9	8.8
	12.7	7.5		14.0	8.9
	13.0	7.8		14.2	9.1
17+00	13.0	7.8	50	14.5	9.4
	13.0	7.8		14.5	9.4
	13.1	7.9		14.5	9.4



STAN 118400 CONT WEST  
10/15/59

DIST	Sound	ELEV	DIST	Sound	ELEV
	14.2	9.1	(5.0)	16.0	11.0
	13.9	8.8	10/10	16.2	11.2
20+00	13.0	7.9	50	16.3	11.3
	13.0	7.9		16.3	11.3
	12.7	7.6		16.6	11.6
	12.9	7.8		16.8	11.8
	13.4	8.3		17.0	12.0
50	13.5	8.4	23+00	13.5	8.5
	14.0	8.9		13.0	8.0
	14.0	}		12.9	7.9
	14.0	}		12.9	7.9
	14.0	}		13.0	8.0
21+00	14.0	8.9	50	13.0	8.0
	13.7	8.6		13.1	8.1
	13.4	8.3		13.1	8.1
	13.4	8.3		13.2	8.2
	13.5	8.4		13.2	8.2
50	13.9	8.8	24+00	13.3	8.3
	14.0	8.9		13.2	8.2
	14.0	8.9		13.2	8.2
	14.0	8.9		12.9	7.9
	14.3	9.2		12.5	7.5
22+00	14.7	9.6	50	12.5	7.5
	15.0	9.9		12.5	7.5
	15.3	10.2		13.0	8.0

STAN 118400 CONT WEST  
10/15/59

154

DIST	Sound	ELEV	DIST	Sound	ELEV
	12.8	7.8			
	12.9	7.9			
25+00	12.8	7.8			
	12.9	7.9			
	12.9	7.9			
	13.0	8.0			
	13.0	8.0			
50	13.1	8.1			
	13.3	8.3			
	13.5	8.5			
	(4.9)	13.5	8.6		
10/15	13.0	8.1			
26+00	13.0	8.1			

10/15/59

Sound  
WestSTA N 118 + 50 CONT WEST  
10/15/59

55

STA N 118 + 50; 0 + 100 = W 164 10.0						STA N 118 + 50 CONT WEST					
DIST	SOUND	ELEV	DINT	SOUND	ELEV	DIST	SOUND	ELEV	DINT	SOUND	ELEV
0				7.2	2.6	10:35	13.0			12.2	
10:30	0.1	+4.5	50	12.3	7.7	5+00	12.8		50	12.1	
(4.6)	1.0	+3.6		13.0	8.4		12.7			12.0	
	2.0	+2.6		13.2			12.5			12.2	
	2.3	+2.3		13.2			12.3			12.0	
50	2.8	+1.8		13.8			12.2			12.0	
	3.2	+1.4	3+00	13.8		50	12.3		8+00	12.0	
	3.0	+1.6		13.5			12.5			11.8	
	3.1	+1.5		13.6			12.6			12.0	
	3.0	+1.6		13.8			12.7			11.6	
1+00	3.0	+1.6		14.0			12.7			12.0	
	3.2	+1.4	50	14.0		6+00	12.7		50	12.0	
	3.4	+1.2		13.0			11.3	6.8		11.8	
	3.8	+0.8		13.0			11.3	6.8		11.9	
	4.0	+0.6		13.0			11.4	6.9		12.0	
50	4.8	0.2		13.0			11.5	7.0		12.1	
	5.0	0.4	4+00	14.2		50	12.0	7.5	9+00	11.8	
	5.8	1.2		14.2			12.0			12.0	
	6.0	1.4		12.7			12.0			12.0	
2+00	6.0	1.4		12.4			12.0		(4.4)	12.0	
2+00	6.2	1.6		12.4			12.0		10:40	12.0	
	7.0	2.4	50	12.5		7+00	12.0		50	12.0	
	6.8	2.2		12.8			12.0			12.0	
	7.0	2.4		13.0			12.0			12.2	

STAN 118+50 CONT WEST  
10/15/59-

DIST	Sound	ELEV	DIST	Sound	ELEV
	12.2			12.2	
	12.2			12.4	
10+00	12.4		50	12.2	
	12.3			12.0	
	12.4			12.1	
	12.5			12.0	
	12.2			12.2	
50	12.2		13+00	12.4	
	12.1			12.4	
	12.2			12.2	
	12.0			12.2	
	12.0			12.4	
11+00	12.1		50	12.5	
	12.0			12.3	
	12.0			12.2	
	12.2		(4.3)	12.0	
	12.2		10+45	12.4	
50	12.3		14+00	12.0	
	12.3			12.0	
	12.2			12.0	
	12.2			12.0	
	12.3			12.0	
12+00	12.1		50	11.8	
	12.0			11.5	
	12.0			11.5	

STAN 118+50 CONT WEST 66

DIST	Sound	ELEV	DIST	Sound	ELEV
	11.5			12.2	
	11.4			12.1	
15+00	11.4		50	12.2	
	11.2	6.9		12.0	
	11.2	6.9		12.0	
	11.0	6.7		12.0	
	11.2	6.9		12.2	
50	11.4	7.1	18+00	12.0	
	11.0	6.7		12.2	
	11.4	7.1		12.0	
	11.8			12.0	
	11.8			12.2	
16+00	11.4		50	12.0	
	11.0	6.7		11.8	
	11.1	6.8		12.2	
	11.0	6.7		12.2	
	11.8			12.2	
50	12.8		19+00	12.2	
	12.0			12.4	
	11.8			13.0	
	11.8			13.2	
	11.8			13.1	
17+00	11.8		50	13.0	
	11.8			12.8	
	12.0			13.2	

STAN 118+50 Cont West  
10/15/59

DIST	Sound	ELEV	DIST	Sound	elev
	13.0			16.2	
	13.1			16.5	
20400	13.0		50	16.5	
	13.2			13.2	
	13.8			13.2	
(4.2)	13.5		(4.1)	13.2	
10150	13.5		10:55	12.7	
50	13.4		23400	12.8	
	13.4			13.0	
	13.2			12.2	
	13.2			12.2	
	14.0			12.5	
21400	14.0		50	12.2	
	15.0			12.2	
	15.2			12.5	
	16.0			12.5	
	16.8			12.5	
50	14.0		24400	12.2	
	14.0			11.7	
	14.8			11.0	6.9
	15.0			11.2	
	15.8			11.2	
22400	16.0		50	11.5	
	16.2			11.2	
	16.0			11.2	

STAN 118+50 Cont West  
10/15/59

57

DIST	Sound	ELEV
	11.5	
	12.0	
25400	11.8	
	12.2	
	12.2	
	12.0	
	12.0	
50	12.2	
	12.0	
	11.8	
(4.0)	12.0	
11100	11.5	
26400	11.2	

10/15/59

SOUND

L STAN 119+00 ; 0+00 = W 16420.0 WEST

DIST SOUND ELEV DIST SOUND ELEV

0 6.1 2.4

(3.7) 50 6.0 2.3

11/15 0.1 +3.6 6.0 2.3

0.2 +3.5 8.9 5.2

1.0 +2.7 11.2 7.5

50 1.2 +2.5 11.5

1.4 +2.3 3+ 11.5

1.6 +2.1 11.5

1.7 +2.0 11.6

2.0 +1.7 12.1

1+00 2.3 +1.4 12.6

2.5 +1.2 50 12.8

2.9 +0.8 13.0

3.4 +0.3 13.0

3.7 0.0 13.1

50 4.2 0.5 13.2

5.0 1.3 4+ 13.7

5.1 1.4 13.8

6.0 2.3 13.7

5.5 1.8 13.8

2+00 5.6 1.9 13.5

5.8 2.1 50 12.9

6.0 2.3 12.8

5.7 2.0 12.5

STA N 119+00 CONT WEST

(58)

DIST SOUND ELEV DIST SOUND ELEV

12.4 11.7

12.3 12.0

5+ 12.2 50 12.0

12.1 11.9

12.3 12.0

12.2 12.0

12.0 11.9

50 12.0 8+00 11.7

11.7 11.5

11.5 11.5

(3.6) 11.5 11.5

11/20 11.3 11.5

6+00 11.0 50 11.5

10.8 11.5

10.5 6.9 11.5

10.4 6.8 11.5

10.7 7.1 11.1

50 11.0 9+00 11.3

11.0 11.5

11.1 11.5

11.2 11.5

11.1 11.5

7+00 11.3 50 11.5

11.4 11.6

11.5 12.0

## STAN 119400 CONT WEST

DIST	SOUND	ELEV	DIST	SOUND	ELEV
	12.1			12.0	
	12.0			11.8	
10400	12.0	50	1200	12.0	
	12.0			12.0	
	12.0			11.9	
	12.2			11.8	
	12.0			11.5	
50	11.9	13400	11.7		
	11.9		11.8		
	11.9		11.9		
	11.3		12.0		
	11.5		12.0		
11400	11.7	50	12.0		
	12.0		12.0		
	12.1		12.0		
	11.7		11.7		
	11.8		11.6		
50	11.8	14400	11.4		
	11.7		11.2		
	11.7		11.5		
(3.4)	11.6		11.3		
11:25	11.5		11.4		
12400	12.0	50	11.5		
	12.0		11.5		
	12.0		11.8		

## STAN 119400 CONT WEST

(59)

DIST	SOUND	ELEV	DIST	SOUND	ELEV
	11.6			11.2	
	11.5			11.5	
15400	11.5	50	11.5		
	11.4			11.8	
	11.5			11.8	
	11.4		(3.3)	11.9	
	11.2		11:30	11.8	
50	11.2	18400	11.7		
	11.2		11.6		
	11.2		11.8		
	11.2		11.7		
	11.0		11.6		
16400	10.9	50	11.8		
	10.5		11.8		
	10.5		11.8		
	10.8		11.6		
	10.7		11.6		
50	10.6	19400	12.0		
	11.0		12.0		
	11.0		12.2		
	11.1		12.3		
	11.2		12.5		
17400	11.3	50	12.7		
	11.5		12.6		
	11.2		12.1		

STAN 119700 CONT WEST  
OCT 15, 59

DIST	SOUND	ELEV	DIST	SOUND	ELEV
	11.7			14.7	
	11.2			14.8	
20400	11.0		50	15.0	
	10.9			15.3	
	11.3			15.0	
	11.5		(3.2)	11.6	
	11.8		11.35	10.7	
50	12.0		23400	11.0	
	12.1			11.0	
	12.1			10.8	
	12.1			10.8	
	12.1			11.0	
21400	11.9		50	11.0	
	11.8			11.0	
	12.0			11.1	
	12.0			11.3	
	12.0			11.7	
50	12.3		24400	11.4	
	12.2			11.2	
	12.5			11.0	
	12.7			10.5	
	13.2			10.5	
22400	13.4		50	10.5	
	14.0			10.5	
	14.3			10.6	

STAN 119700 CONT WEST 60

DIST	SOUND	ELEV
	11.0	
	11.0	
25400	11.3	
	11.0	
	11.1	
	11.2	
	11.5	
50	11.5	
	11.4	
	11.3	
	(3.1)	
	11.1	
	11.37	10.7
	26400	10.6

SOUNDING 9 along ELY SHORE  
OCT 19, 1959

STATION 119+50; 0+00=W/1430.0 WEST		SOUND	
DIST	SOUND ELEV	DIST	SOUND ELEV
0	1.2		16.2
10:15	2.0	50	16.5
(6.3)	2.5		17.0
	3.2		17.2
	3.5		17.5
50	4.0		17.8
	3.8	3+00	18.0
	3.8		18.0
	4.2		18.0
	4.8		18.0
1+00	9.7		18.0
	13.2	6.9	50 18.0
	15.2		17.2
	15.2		16.0
	15.0		15.5
50	15.0		15.8
	15.2	4+00	16.0
	15.3		16.0
	15.8		15.5
10:20	16.0		14.5
2+00	15.8		14.5
(6.3)	16.2	50	14.5
	14.4		14.6
	16.0		14.8

CRESENT BAY OCT 19, 1959 (61)  
ALLEY  
STATION 119+50 CONT WEST

STATION 119+50		CONT WEST	
DIST	SOUND ELEV	DIST	SOUND ELEV
(6.2)	14.8		14.2
10:25	14.8		14.3
5+00	14.5	50	14.7
	14.5		14.7
	14.0		14.5
	14.0		14.4
	13.9		14.2
50	13.8	8+00	14.2
	13.5		14.0
	13.5		14.0
	13.5		14.0
6+00	13.5	50	14.0
	13.4		14.0
	13.3		14.0
	13.3	(6.2)	13.8
	13.5	10:30	13.8
50	13.8	9+00	13.8
	14.0		13.8
	14.0		14.0
	13.8		14.0
	13.8		13.8
7+00	14.0	50	14.0
	14.2		14.0
	14.2		14.2



10-19-59  
STAN 119458 CONT WEST

DIST	SOUND	ELEV	DIST	SOUND	ELEV
	14.2			14.0	
	14.4			14.2	
10400	14.2		750	14.2	
	14.4			14.2	
	14.4			14.2	
	14.4			14.4	
	14.4			14.2	
50	14.2		13700	14.6	
	14.4			14.5	
	14.2			14.0	
	14.3		(6.2)	14.2	
	14.5		10:35	14.4	
11400	14.5		50	14.2	
	14.5			14.1	
	14.3			14.0	
	14.4			13.7	
	14.4			13.7	
50	14.3		14400	13.8	7.3
	14.2			13.6	
	14.2			13.6	
	14.2			13.6	
	14.2			13.8	
12700	14.2		50	13.8	
	14.0			13.9	
	13.8			14.0	

STAN 119458 CONT WEST  
10-19-59

DIST	SOUND	ELEV	DIST	SOUND	ELEV
	14.0			15.0	
	14.0			15.0	
18700	13.5		50	14.8	
	13.6			14.8	
	13.7			14.8	
	14.0			14.6	
	14.0			14.1	
50	13.6		18700	14.2	
	13.8			14.5	
	13.8			14.2	
	13.8			14.2	
	13.6			14.2	
16700	13.5		50	14.6	
	13.2	7.0		14.6	
	13.5			14.7	
	13.5		(6.1)	14.5	
	13.5		10:40	14.7	
50	13.7		19700	14.8	
	14.0			14.8	
	14.2			15.2	
	14.5			15.5	
	14.7			15.5	
17700	14.8		50	15.6	
	15.0			15.2	
	15.0			14.5	

STAN 119450 CONT WEST  
10-19-59

DIST	SOUND	ELEV	DIST	SOUND	ELEV
	13.8			15.2	
	13.8			15.2	
20400	14.0		50	15.5	
	14.5			15.4	
	14.8			16.8	
	15.0			14.5	
	15.0			14.5	
50	15.0		23400	14.0	
	15.0			14.0	
	14.8			14.0	
	14.5			14.0	
	14.5			14.0	
21400	15.0		50	14.2	
	15.0			14.3	
	15.0			14.4	
(6.1)	14.8			14.2	
10145	14.8			14.2	
50	15.0		24400	14.2	
	15.1			14.0	
	15.2			13.8	
	15.1			13.5	
	15.1			13.2	
22400	15.1		50	13.2	
	15.2			13.2	
	15.2			13.0	

STAN 119450 CONT WEST  
10-19-59

(6.3)

DIST	SOUND	ELEV
(6.0)	13.0	7.0
10150	13.0	7.0
25400	13.2	
	13.2	
	13.2	
	13.2	
	13.5	
50	13.6	
	14.0	
	14.0	
	13.8	
	13.8	
26400	13.8	

ELYSHORE CRESENT BAY  
10-19-59-

STAN 120+00; 0+00 = W/6 440.0					
DIST	SOUND	ELEV	DIST	SOUND	ELEV
0	0.5	+5.3		15.2	9.4
11/15	1.5	+4.3	50	15.3	9.5
(5.8)	2.0	+3.8		14.8	9.0
	2.8	+3.0		15.0	9.2
	3.0	+2.8		15.2	9.4
50	3.1	+2.7		15.8	10.0
	3.2	+2.6	3+00	15.5	9.7
	3.5	+2.3		15.2	9.4
	3.6	+2.2		15.5	9.7
	4.0	+1.8	(5.7)	15.2	9.4
1+00	5.0	+0.8	11/20	16.0	10.3
	10.2	4.4	50	16.8	11.1
	14.5	8.7		16.8	11.1
	14.5	8.7		16.5	10.8
	14.5	8.7		15.0	9.3
50	14.7	8.9		15.0	
	14.8	9.0	4+00	15.0	
	14.2	8.4		15.0	
	14.0	8.2		15.0	9.3
	14.1	8.3		14.2	8.5
2+00	14.5	8.7		13.2	7.5
	14.5	8.7	50	13.0	7.3
	14.8	9.0		13.4	7.7
	15.0	9.2		13.4	7.7

SOUND  
WEST

STAN 120+00 CONT WEST 64					
DIST	SOUND	ELEV	DIST	SOUND	ELEV
	13.4	7.7		14.0	8.3
	13.4			14.0	
5+00	13.4		50	14.0	
	13.4			14.0	
	13.4			14.0	8.3
	13.4	7.7		13.8	8.1
	13.0	7.3		13.8	8.1
50	13.0	7.3	8+00	13.0	7.3
	13.0	7.3		13.2	7.5
	13.0	7.3		13.2	7.5
	12.8	7.1		13.2	7.5
	12.8	7.1		13.5	7.8
6+00	12.5	6.8	50	13.5	
	13.2	7.5		13.5	
	13.5	7.8		13.5	7.8
(5.7)	13.5	7.8		13.2	7.5
11/25	13.5	7.8		13.2	7.5
50	13.2	7.5	9+00	13.0	7.3
	13.2	7.5		13.0	
	13.2	7.5		13.0	
	13.5	7.8		13.0	
	13.6	7.9		13.0	7.3
7+00	13.6	7.9	50	13.3	7.6
	13.8	8.1		13.3	7.6
	14.0	8.3		13.3	7.6

STANIZO 400 CONT WEST

DIST	SOUND	ELEV	DIST	SOUND	ELEV
	13.3	7.6		14.0	8.4
	13.5	7.8		14.0	
10+00	13.5		50	14.0	
	13.5			14.0	
	13.5			14.0	
	13.5			14.0	
	13.5			14.0	8.4
20	13.5		13+00	14.5	8.9
	13.5	7.8		14.5	
	13.8	8.1		14.5	
	13.8	8.1		14.5	8.9
	14.0	8.3		14.0	8.4
11+00	14.0		50	14.0	
	14.0			14.0	
	14.0			14.0	
(5.6)	14.0	8.3		14.0	8.4
11:30	14.0	8.4		13.8	8.2
50	14.0	8.4	14+00	13.8	8.2
	13.5	7.9		13.6	8.0
	13.5	7.9		13.6	8.0
	13.5	7.9		13.4	7.8
	13.6	8.0		13.4	7.8
12+00	13.5	7.9	50	13.4	7.8
	13.8	8.2		13.6	8.0
	13.8	8.2		13.8	8.2

STANIZO 400 CONT WEST (6)

DIST	SOUND	ELEV	DIST	SOUND	ELEV
(5.6)	13.8	8.2		14.2	8.6
11:35	13.8	8.2		14.2	8.6
15+00	13.5	7.9	50	14.2	8.6
	13.4	7.8		14.2	8.6
	13.2	7.6		14.2	8.6
	13.2			14.0	8.4
	13.2			14.0	
50	13.2		18+00	14.0	
	13.2	7.6		14.0	
	13.4	7.8		14.0	
	13.4	7.8		14.0	
	13.2	7.6		14.0	
16+00	13.2	7.6	50	14.0	
	13.0	7.4		14.0	8.4
	13.0			14.0	8.4
	13.0			14.2	8.6
	13.0			14.2	
50	13.0	7.4	19+00	14.2	
	13.2	7.6		14.2	8.6
	13.4	7.8		14.4	8.8
	13.8	8.2	(5.5)	14.4	8.9
	13.9	8.3	11:40	15.0	9.5
17+00	14.0	8.4	50	15.0	9.5
	14.2	8.6		15.0	9.5
	14.2	8.6		14.8	9.3

## STAN 120700 CONT WEST

DIST	SOUND	ELEV	DIST	SOUND	ELEV
	14.0	8.5		14.8	9.3
	13.2	7.7		15.0	9.5
20400	13.2	7.7	50	15.0	9.5
	13.2	7.7		15.5	10.0
	13.5	8.0		15.5	10.0
	14.0	8.5		12.2	6.7
	14.0	8.5		13.0	7.5
50	14.2	8.7	23400	13.0	
	14.0	8.5		13.0	
	14.0	8.5		13.0	
	14.0	8.5	(5.3)	13.0	
	13.6	8.1	11145	13.0	7.5
21400	13.8	8.3	50	13.2	7.7
	14.0	8.5		13.2	
	14.0	8.5		13.2	
	14.2	8.7		13.2	
	14.0	8.5		13.2	
50	14.0	8.5	24400	13.2	7.7
	14.5	9.0		13.0	7.5
	14.8	9.3		13.0	7.5
	14.8	9.3		13.0	7.5
	14.5	9.0		13.2	7.7
22400	14.0	8.5	50	13.2	7.7
	14.0	8.5		13.2	7.7
	14.0	8.5		13.0	7.5

## STAN 120710 CONT WEST 66

DIST	SOUND	ELEV
	12.0	6.5
	12.1	6.6
25400	12.4	6.9
	12.5	7.0
	13.0	7.5
	13.0	
	13.0	
50	13.0	
	13.0	
	13.0	7.5
(5.4)	13.0	7.6
11150	13.0	7.6
26400	12.8	7.4

FLYSHORE CRESENT BAY -  
10-17-59

SOUND

STAN 120+50, 0+00 = W 16450.0 WEST			SOUND		
DIST	SOUND	ELEV	DIST	SOUND	ELEV
0				12.2	
			50	12.2	
				13.1	
				12.2	
(3.0)	0.2			12.2	
50	0.5			12.2	
55	0.7		3400	12.2	
1	1.0			12.2	
	1.6			12.2	
	2.2			12.2	
1400	3.2			12.2	
	3.9		50	12.2	
	4.5		(3.0)	12.2	
	8.1	5.1	2:00	12.2	
	11.5	8.5		12.5	
50				11.1	
	12.0		4400	11.1	
	11.5			11.2	
	11.5			11.2	
	11.2			10.2	
2400	11.3			10.2	
	11.2		50	11.2	
	12.1			11.0	
	12.2			11.0	

STAN 120+50 CONT WEST (67)

DIST	SOUND	ELEV	DIST	SOUND	ELEV
	11.0			10.2	7.3
	10.2			10.4	7.5
5400	10.5		50	10.0	7.1
	10.2			10.2	7.3
	10.2			10.1	7.2
	10.2			10.2	7.3
	10.2			10.5	7.6
50	10.2		8400	10.6	
	10.2	7.2		10.2	
	10.2	7.2		10.2	
	10.0	7.0		10.2	
	10.0	7.0		10.2	
6400	9.2	6.9	50	10.2	
	9.2	6.9		10.2	
	10.2	7.9		10.2	
(2.9)	9.2	6.3		10.2	
2:05	10.0	7.1		10.2	
50	10.5		9400	10.4	
	10.2			10.2	
	10.2			10.2	
	11.0			10.5	
	11.0			10.1	7.2
7400	10.2		50	10.0	7.1
	10.1			10.2	7.1
	9.2	7.0		10.2	7.1

STAN 120+50 CONT WEST

DIST	SOUND	ELEV	DIST	SOUND	ELEV
	10 <sup>1</sup>	7.1		10 <sup>0</sup>	7.2
	10 <sup>2</sup>	7.4		10 <sup>0</sup>	7.2
10+00	10 <sup>3</sup>	7.4	50	10 <sup>2</sup>	7.4
	10 <sup>5</sup>	7.6		10 <sup>4</sup>	7.6
	10 <sup>1</sup>	7.2		10 <sup>1</sup>	7.3
	10 <sup>1</sup>	7.2		10 <sup>2</sup>	
	10 <sup>0</sup>	7.1		10 <sup>2</sup>	
50	10 <sup>0</sup>	7.1	13+00	10 <sup>3</sup>	
	10 <sup>2</sup>	7.3		10 <sup>2</sup>	
2+00	10 <sup>2</sup>			11 <sup>1</sup>	
(2.8)	10 <sup>0</sup>			11 <sup>1</sup>	
	11 <sup>0</sup>			11 <sup>1</sup>	
11+00	11 <sup>0</sup>		50	11 <sup>2</sup>	
	11 <sup>0</sup>			11 <sup>0</sup>	
	11 <sup>0</sup>			11 <sup>0</sup>	
	10 <sup>9</sup>			11 <sup>0</sup>	
	10 <sup>1</sup>	7.3		12 <sup>1</sup>	
50	10 <sup>0</sup>	7.2	14+00	12 <sup>0</sup>	
	10 <sup>0</sup>	7.2		11 <sup>0</sup>	
	10 <sup>0</sup>	7.2		11 <sup>0</sup>	
	10 <sup>1</sup>	7.3		11 <sup>0</sup>	
	9 <sup>2</sup>	7.1		12 <sup>0</sup>	
12+00	10 <sup>0</sup>	7.2	50	12 <sup>1</sup>	
	9 <sup>2</sup>	7.1		12 <sup>1</sup>	
	10 <sup>0</sup>	7.2		12 <sup>0</sup>	

STA N 120+50 CONT WEST (68)

DIST	SOUND	ELEV	DIST	SOUND	ELEV
	12 <sup>0</sup>			11 <sup>0</sup>	
	13 <sup>0</sup>			11 <sup>0</sup>	
15+00	13 <sup>1</sup>		50	11 <sup>2</sup>	
	13 <sup>0</sup>			11 <sup>2</sup>	
	13 <sup>0</sup>			11 <sup>2</sup>	
	12 <sup>0</sup>			11 <sup>0</sup>	
(2.6)	12 <sup>5</sup>			11 <sup>2</sup>	
50	12 <sup>5</sup>		18+00	11 <sup>0</sup>	
1	12 <sup>2</sup>			11 <sup>0</sup>	
15	12 <sup>0</sup>			11 <sup>0</sup>	
N	11 <sup>4</sup>			10 <sup>0</sup>	
	11 <sup>4</sup>			10 <sup>0</sup>	
16+00	11 <sup>3</sup>		+50	10 <sup>0</sup>	
	11 <sup>5</sup>			10 <sup>0</sup>	7.4
	11 <sup>0</sup>			11 <sup>0</sup>	
	11 <sup>0</sup>			11 <sup>0</sup>	
	11 <sup>5</sup>			11 <sup>1</sup>	
50	11 <sup>2</sup>		19+00	11 <sup>1</sup>	
	11 <sup>0</sup>			11 <sup>1</sup>	
	11 <sup>0</sup>			11 <sup>1</sup>	
	11 <sup>0</sup>			11 <sup>0</sup>	
	11 <sup>2</sup>			11 <sup>0</sup>	
17+00	11 <sup>2</sup>		+50	11 <sup>0</sup>	
	11 <sup>0</sup>			11 <sup>1</sup>	
	11 <sup>0</sup>			11 <sup>0</sup>	

## STAN 120+50 CONT WEST

DIST SOUND FLEY DIST SOUND FLEY

DIST	SOUND	FLEY	DIST	SOUND	FLEY
	10 <sup>2</sup>			11 <sup>0</sup>	
	11 <sup>0</sup>			11 <sup>5</sup>	
20	100		+50	11 <sup>2</sup>	
	11 <sup>0</sup>			11 <sup>0</sup>	
	11 <sup>1</sup>			12 <sup>0</sup>	
	11 <sup>3</sup>			12 <sup>0</sup>	
	11 <sup>5</sup>			12 <sup>2</sup>	
20+50	11 <sup>5</sup>		23+00	12 <sup>7</sup>	
	11 <sup>2</sup>		(2.5)	13 <sup>2</sup>	
2.2 <sup>0</sup>	11 <sup>1</sup>		5	13 <sup>0</sup>	
	11 <sup>2</sup>		2.2	7 <sup>0</sup>	4.5
(2.2)	11 <sup>2</sup>			4 <sup>0</sup>	1.5
21+00	11 <sup>0</sup>		+50	4 <sup>5</sup>	2.0
	11 <sup>1</sup>			7 <sup>1</sup>	4.6
	11 <sup>1</sup>			9 <sup>0</sup>	6.5
	11 <sup>1</sup>			9 <sup>5</sup>	7.0
	11 <sup>0</sup>			10 <sup>0</sup>	
750	11 <sup>0</sup>		24+00	10 <sup>1</sup>	
	11 <sup>0</sup>			10 <sup>5</sup>	
	11 <sup>0</sup>			10 <sup>5</sup>	
	11 <sup>1</sup>			10 <sup>0</sup>	
	11 <sup>1</sup>				
22+00	11 <sup>0</sup>		+50		
	11 <sup>0</sup>				
	11 <sup>0</sup>				

DREDGE  
PIPE IN  
WAY

## STAN 120+50 CONT WEST (69)

DIST SOUND FLEY



FLY SHORE CRESCENT BAY  
OCT 19 59

SOUND  
WEST

STAN 121+00; 0+00 = W/16460.0

DIST SOUND ELEV DIST SOUND ELEV

0			50	12.8	
				12.8	
				12.8	
				12.6	
50				12.8	
2:50	0.1		3+00	12.8	
(2.4)	1.0			12.6	
	2.0			12.6	
	2.5			12.6	
1+00	3.0			12.6	
	3.2		50	12.6	
	3.4			12.8	
	7.0	4.6		12.8	
	11.5			12.0	
50	11.5			10.2	
2:55	11.5		4+00	10.5	
(2.2)	11.4			10.5	
	11.4			10.0	
	12.0			10.0	
2+00	12.2			10.0	
	12.4		50	9.5	
	12.4			9.5	
	12.4			9.5	7.3

STAN 121+00 CONT WEST (70)  
10-19-59

DNT SOUND ELEV DNT SOUND ELEV

	9.2	7.0		9.2	7.1
	9.2	7.0		10.0	
5+00	9.3	7.1	50	10.0	
	9.3	7.1		9.8	
	9.3	7.1		9.8	
	9.3	7.1		9.8	
	9.2	7.0		9.8	
50	9.1	6.9	8+00	10.0	
	9.2	7.0		10.0	
	9.2	7.0		10.0	
	9.2	7.0		10.0	
	9.2	7.0		10.0	
6+00	9.2	7.0	50	9.8	
	9.0	6.8		9.5	
	9.0	6.8		9.5	
	9.4	7.2		9.5	
	10.2			9.0	6.9
50	10.5		9+00	9.0	6.9
	10.7			9.0	6.9
	10.5			9.0	6.9
(2.1)	9.5	7.4		8.8	6.7
3+00	9.0	6.9		9.0	6.9
7+00	9.5	7.4	50	11.2	
	9.2	7.1		11.0	
	9.2	7.1		10.8	

## STAN 121400 CONT WEST

DIST	SOUND	ELEV	DIST	SOUND	ELEV
	11.0			10.8	
	11.0			11.0	
10400	11.0		50	11.0	
	11.0			11.0	
	11.0			11.2	
(2.1)	10.8			10.5	
3:05	10.0			11.2	
50	10.0		13400	11.0	
	10.0			11.0	
	10.5			11.2	
	10.2			11.2	
	11.0			11.4	
11400	11.0		50	11.2	
	10.8			11.0	
	10.2			10.8	
	10.2			10.5	
	10.2			10.5	
50	10.2		14400	10.8	
	10.2			11.0	
	10.2			11.0	
	10.4			11.0	
	10.4			11.2	
12400	10.4		50	11.5	
	10.4			11.8	
	10.5			11.9	

## STAN 121400 CONT WEST (71)

DIST	SOUND	ELEV	DIST	SOUND	ELEV
	11.9			11.0	
	12.0			11.0	
15400	12.0		50	10.8	
	11.5			10.6	
	11.0			10.5	
(2.0)	11.0			10.2	
3:10	11.0			10.2	
50	11.0		18400	10.2	
	10.5			10.2	
	10.2			10.2	
	10.0			10.2	
	10.1			10.5	
16400	10.2		50	10.4	
	10.5			10.4	
	11.0			10.4	
	11.2			10.0	
	11.2			10.2	
50	11.2		19400	10.2	
	11.2			10.5	
	11.2			10.5	
	11.0			10.5	
	11.0			10.2	
17400	11.0		50	10.2	
	11.0			10.5	
	11.0			10.5	

STAN 121+00 - CONT WEST  
10-19-59

DIST	SOUND	ELEV	DIST	SOUND	ELEV
	10.5			11.2	
	10.5			11.4	
20+00	10.5		50	12.0	
	10.2			13.2	
	10.5			10.5	
	10.2			10.2	
	10.5			10.2	
50	10.8		23+00	10.5	
	10.8			10.8	
	10.5			11.0	
(1.9)	10.2			11.0	
3:15	10.1			11.0	
21+00	10.2		50	11.2	
	10.2			11.2	
	10.2				
	10.2				
	10.0				
50	10.0		24+00		
	10.2				
	10.2				
	10.2				
	10.2				
22+00	10.4		50		
	10.5				
	11.0				

etc

BRIDGE  
Pipe

NEBY CEMENT 13 AY.  
Nov 3, 59  
SEE PAGE 49 PB 118

STAN 134+00; 0+00 = W 16746.0						SOUND WEST
DIST	SOUND	ELEV	DIST	SOUND	ELEV	
	0			10.8	6.5	
11.5	0.2	+4.2	50	10.8	6.5	
(4.4)	0.8	+3.6		10.9	6.6	
	0.2	+4.2		10.9	6.6	
	0.6	+3.8		11.0	6.7	
50	2.3	+2.1		11.1	6.8	
	4.9	0.5	3+00	11.2	6.9	
	5.3	0.9		11.2	6.9	
	5.2	0.8		11.1	6.8	
	5.0	0.6		11.0	6.7	
1+00	4.3	+0.1		11.1	6.8	
	3.3	+1.1	50	11.1	6.8	
	2.3	+2.1		11.0	6.7	
	2.2	+2.2		11.0		
	2.2	+2.2		11.0		
50	2.3	+2.1		11.0		
	2.3	+2.1	4+00	10.8	6.5	
	2.3	+2.1		10.5	6.2	
(4.3)	2.9	+1.5		10.3	6.0	
11.20	5.3	1.0		10.3	6.0	
2+00	9.3	5.0		10.6	6.3	
	10.1	5.8	50	10.8	6.5	
	10.3	6.0		10.8	6.5	
	10.8	6.5		10.7	6.4	

STAN 13400 CONT WEST  
11-3-59

DIST	SOUND	ELEV	DIST	SOUND	ELEV
	10.8	6.5		11.3	7.1
	10.9	6.6		11.2	7.0
5000	11.0	6.7	50	11.3	7.1
	11.2	6.9		11.3	7.1
	11.1	6.8		11.3	}
	11.0	6.7		11.3	}
	10.9	6.6		11.3	}
50	10.9	6.6	8000	11.3	}
	11.0	6.7		11.4	7.2
	11.1	6.8		11.6	7.4
	11.7	7.4		11.7	7.5
	11.6	7.3		11.6	7.4
6000	11.8	7.5	50	11.6	7.4
	11.9	7.6		11.7	7.5
	11.9	}		11.7	}
	11.9	}		11.7	}
	12.0	7.7		11.7	}
50	12.7	8.4	9000	11.8	7.6
	12.0	7.7		11.7	7.5
	12.9	8.6		11.7	7.5
(4.2)	12.8	8.5		11.9	7.7
1125	12.1	7.9		11.9	}
7000	11.8	7.6	50	11.9	}
	11.6	7.4		11.8	7.6
	11.6	7.4		11.5	7.3

STAN 13400 CONT WEST  
11-3-59

73

DIST	SOUND	ELEV	DIST	SOUND	ELEV
	11.7	7.5		12.0	7.8
	11.7	7.5		12.1	7.9
10000	11.9	7.7	50	11.6	7.4
	11.9	7.7		12.0	7.8
	11.8	7.6		11.9	7.7
	11.5	7.3	(4.0)	11.9	7.7
	11.5	7.3	1130	12.0	8.0
50	11.8	7.6	13000	12.0	8.0
	11.9	7.7		11.8	7.8
	11.8	7.6		11.6	7.6
	11.8	7.6		11.8	7.8
	11.7	7.5		11.8	7.8
11000	11.6	7.4	50	11.6	7.6
	11.7	7.5		11.6	7.6
	11.7	7.5		11.9	7.9
	11.6	7.4		11.9	}
	11.6	7.4		11.9	}
50	11.7	7.5	14000	11.9	}
	11.7	7.5		12.0	8.0
	11.4	7.2		12.1	8.1
	11.5	7.3		12.0	8.0
	11.8	7.6		12.0	}
12000	11.9	7.7	50	12.0	}
	12.0	7.8		12.0	}
	12.0	7.8		12.0	}

STAN 134400 CONT West  
11-3-59

DIST	Sound	elev	DIST	Sound	ELEV
	12.1	8.1		12.1	8.2
	12.0	8.0		12.1	}
15400	12.0	}	50	12.1	
	12.0			12.1	}
	12.0		12.2	8.3	
	11.9	7.9		12.2	8.3
	11.8	7.8		12.1	8.2
50	11.5	7.5	18400	12.1	8.2
	11.2	7.2		12.0	8.1
	11.4	7.4		12.0	8.1
	11.4	7.4			
	11.7	7.7			
16400	11.4	7.4			
	11.2	7.5			
(3.9)	11.3	7.3			
	11.3	7.4			
	11.3	7.4			
50	11.7	7.8			
	11.6	7.7			
	11.8	7.9			
	11.8	7.9			
	11.9	8.0			
17400	12.0	8.1			
	12.1	8.2			
	12.1	8.2			

# RESOUND

N121 W18720 To W18750  
 N119+50 W18850 To W18900  
 N119 W17030 To W17080  
 N118+50 W17000 To W17350 & W18810 To W18870  
 N117+50 W16770 To W16960  
 N117 W16870 To W16960  
 N116+50 W16810 To W17000  
 N116 W16930 To W16970  
 N115+50 W16720 To W17020 & W18600 To W18800  
 N115 W16780 To W16970 & W18500 To W18800  
 N114+50 W16860 To W17000 & W18400 To W18700  
 N114 W16880 To W17010 & W18300 To W18600  
 N113+50 W17400 To W17470 & W18350 To W18460  
 N113 W16820 To W16870 & W17410 To W17460 & W18360 To W18410  
 N112+50 W16740 To W16790 & W17380 To W17440 & W18380 To W18410  
 N112 W18330 To W18390  
 N111+50 W18330 To W18410, DRAG W17090 To W17150 & W17330 To W17400  
 N111 W18340 To W18400 & DRAG W17550 To W17600  
 N110+50 W18330 To W18390  
 N110 W18120 To W18300 & DRAG W17330 To W17360  
 N106 - W16 To W17000  
 N105+50 D110  
 N102+00 "

74

N111+00 W18360  
 N110+50 See Pg. 51 W18320  
 W16225.26  
 N110+00 W18280  
 W16184.77  
 N109+50 W18210  
 W16144.28 W16140  
 N109+00 W16170  
 W16103.79  
 N108+50 W18170  
 W16063.30 W16140  
 N108+00 W18140  
 W16022.81 (18170) TO (18100)  
 N107+50 W18000  
 W15982.32 W16060  
 N107+00 W17900  
 W15941.83 W16020  
 W15950  
 N106+50 W17900  
 W15901.34 W15980  
 N106+00 W15880 W17800  
 W15860.85

TRIANGULATION ELY, CABRILLO ISLAND  
FOR SHORE CONTROL W.O. 64501

9-19-60

REF. F.B. N.B. N°106

(75)  
Stampel  
Wentworth  
Elmore  
Hecht

STA.	OBJECT	ANGLES
	N. 12.895.43	1. 29° 14' 30"
E.C. DEANZA	R ↘	2. 58° 28' 50"
	FRAN. ECC.	6. 175° 25' 20"
		AV. 29° 14' 13"
	FRAN. ECC.	1. 31° 17' 30"
N. 12895.43	R ↘	2. 62° 35' 00"
	E.C. DEANZA	6. 187° 45' 20"
		AV. 31° 17' 33"
	E.C. DEANZA	1. 119° 28' 20"
FRAN. ECC.	R ↘	2. 238° 57' 00"
	N. 12895.43	6. 716° 51' 10"
		AV. 119° 28' 32"
	N. 10486.23	1. 52° 56' 00"
N. 12895.43	R ↘	2. 105° 52' 00"
	DEL. ECC.	6. 317° 36' 00"
		AV. 52° 56' 00"
	PAT. ECC.	1. 44° 39' 30"
N. 12895.43	R ↘	2. 89° 18' 40"
	DEL. ECC.	6. 267° 56' 40"
		AV. 44° 39' 27"
	DEL. ECC.	1. 55° 25' 40"
N. 10486.23	R ↘	2. 110° 51' 20"
	N. 12895.43	6. 332° 34' 20"
		AV. 55° 25' 43"

△ ELY. CABRILLO ISLAND CONTD

STA.	OBJECT	ANGLES
	DEL. ECC.	1. 43°48'40"
PAT ECC.	R ↘	2. 87°37'40"
	N. 12895.43	6. 262°52'20"
		AV. 43°48'43"
	N. 12895.43	1. 71°38'20"
DEL ECC.	R ↘	2. 143°16'40"
	N. 10486.23	6. 429°50'20"
		AV. 71°38'23"
	N. 12895.43	1. 91°32'20"
DEL. ECC.	R ↘	2. 183°04'20"
	PAT ECC.	6. 549°13'00"
		AV. 91°32'10"
	PAT ECC.	1. 143°03'00"
N. 10486.23	R ↘	2. 286°06'10"
	N. 12895.43	6. 858°19'42"
		AV. 143°03'17"
	PAT ECC.	1. 87°37'40"
N. 10486.23	R ↘	2. 175°15'20"
	DEL ECC.	6. 525°45'30"
		AV. 87°37'35"
	PAT	1. 48°45'00"
N. 128400	R ↘	2. 97°30'00"
	DEL	6. 292°29'00"
		AV. 48°44'50"

(26)  
70

STA	OBJECT	ANGLES
	N. 128400	1. 102°16'20"
DEL.	R ↘	2. 208°32'10"
	PAT	6. 613°35'18"
		AV. 102°15'53"
	DEL	1. 29°00'00"
	R ↘	2. 58°00'00"
	N. 128400	6. 173°58'00"
		AV. 28°59'40"



26

17

IMPROVED TABLES

INFORMATION

TABLE OF CONTENTS

Page	Page	Page	Page
1	2	3	4
5	6	7	8
9	10	11	12
13	14	15	16
17	18	19	20
21	22	23	24
25	26	27	28
29	30	31	32
33	34	35	36
37	38	39	40
41	42	43	44
45	46	47	48
49	50	51	52
53	54	55	56
57	58	59	60
61	62	63	64
65	66	67	68
69	70	71	72
73	74	75	76
77	78	79	80
81	82	83	84
85	86	87	88
89	90	91	92
93	94	95	96
97	98	99	100

Page	Page	Page	Page
101	102	103	104
105	106	107	108
109	110	111	112
113	114	115	116
117	118	119	120
121	122	123	124
125	126	127	128
129	130	131	132
133	134	135	136
137	138	139	140
141	142	143	144
145	146	147	148
149	150	151	152
153	154	155	156
157	158	159	160
161	162	163	164
165	166	167	168
169	170	171	172
173	174	175	176
177	178	179	180
181	182	183	184
185	186	187	188
189	190	191	192
193	194	195	196
197	198	199	200

# IMPROVED TABLES AND INFORMATION

## HORIZONTAL STADIA CORRECTIONS

2°-00' — 0.1	21°-00' — 12.8	33°-00' — 29.7
3°-00' — 0.3	21°-30' — 13.4	33°-15' — 30.1
4°-00' — 0.5	22°-00' — 14.0	33°-30' — 30.5
5°-00' — 0.8	22°-30' — 14.7	33°-45' — 30.9
6°-00' — 1.1	23°-00' — 15.3	34°-00' — 31.3
7°-00' — 1.5	23°-30' — 15.9	34°-15' — 31.7
8°-00' — 1.9	24°-00' — 16.5	34°-30' — 32.1
9°-00' — 2.5	24°-30' — 17.2	34°-45' — 32.5
10°-00' — 3.0	25°-00' — 17.9	35°-00' — 32.9
10°-30' — 3.3	25°-30' — 18.6	35°-15' — 33.3
11°-00' — 3.6	26°-00' — 19.2	35°-30' — 33.7
11°-30' — 4.0	26°-30' — 19.9	35°-45' — 34.1
12°-00' — 4.3	27°-00' — 20.6	36°-00' — 34.6
12°-30' — 4.7	27°-30' — 21.3	36°-15' — 35.0
13°-00' — 5.1	28°-00' — 22.0	36°-30' — 35.4
13°-30' — 5.5	28°-30' — 22.8	36°-45' — 35.8
14°-00' — 5.9	29°-00' — 23.5	37°-00' — 36.2
14°-30' — 6.3	29°-30' — 24.3	37°-15' — 36.6
15°-00' — 6.7	30°-00' — 25.0	37°-30' — 37.1
15°-30' — 7.2	30°-15' — 25.4	37°-45' — 37.5
16°-00' — 7.6	30°-30' — 25.8	38°-00' — 37.9
16°-30' — 8.1	30°-45' — 26.2	38°-15' — 38.3
17°-00' — 8.5	31°-00' — 26.5	38°-30' — 38.7
17°-30' — 9.0	31°-15' — 26.9	38°-45' — 39.1
18°-00' — 9.5	31°-30' — 27.3	39°-00' — 39.6
18°-30' — 10.1	31°-45' — 27.7	39°-15' — 40.0
19°-00' — 10.6	32°-00' — 28.1	39°-30' — 40.5
19°-30' — 11.2	32°-15' — 28.5	
20°-00' — 11.7	32°-30' — 28.9	
20°-30' — 12.3	32°-45' — 29.3	

### Chains to Feet

1 .....	66
2 .....	132
3 .....	198
4 .....	264
5 .....	330
6 .....	396
7 .....	462
8 .....	528
9 .....	594
10 .....	660

### Feet to Chains

100 .....	1.515
200 .....	3.030
300 .....	4.545
400 .....	6.060
500 .....	7.575
600 .....	9.090
700 .....	10.606
800 .....	12.121
900 .....	13.636
1,000 .....	15.151

See N122+00 ANC=470-  
W16463.76

N123+50 ANC=W470  
W16463.76

N123+00 ANC=W470  
W16463.76

N122+50 ANC  
W16463.76 W470

N128+00  
W16534.29

N127+50  
W16525.47

N127+00  
W16516.66

N126+50  
W16507.83

N126+00  
W16499.02

N125+50  
W16490.20

N125+00  
W16481.39

N124+50 ANC=  
W16472.57 W480

N124+00 ANC=  
W16463.76 W470-

N128+00  
W16534.29

N124+00  
W16463.76

N123+00  
W16463.76

N122+00  
W16463.76

N121+50 } PI  
W16463.76

N121+00  
W=16454.95

N128+50 N120+50  
W16552.49 W=16446.13

N129+00 N120+00  
W16570.69 W=16437.01

N129+50 N119  
W16588.89 W=

### W. SHORE

N118 - W19916

N118+50 - W19920

N119+00 - W19930

N119+50 - W19940

N120 - W19950

N120+50 - W19960

N121 - W19970

N121+50 - W19980

N122 - W20,000

N122+50 - W20010

N123 - W20030

N123+50 - W20040

N124 - W20060

N124+50 - W20080

N125 - W20100

N125+50 W20130

N126 - W20150

N126+50 W20170

N127 - W20190

N127+50 - W20210

N128 - W20230

N128+50 - W20250

N129 - W20270

### E. SHORE CRESCENT BAY

N134+00 W16709.79

N133+98.47 W16709.34

N133+50 W16696.44

N.133+00 W16683.13

N132+50 W16669.82

N132+00 W16656.51

N131+00 W16629.89

N130+50 W16616.58

N130+00 W16603.27

N129+60.94 W16592.87

N14°54'22"W

See page 5

NORTH ↑

50.77  
50.77