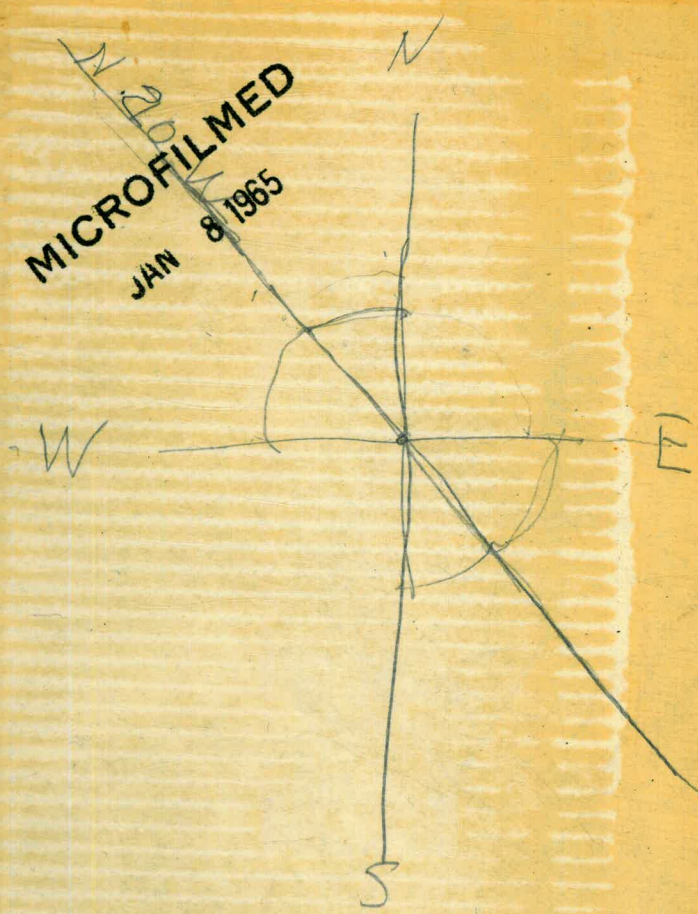


MB 124

MICROFILMED  
JAN 8 1965

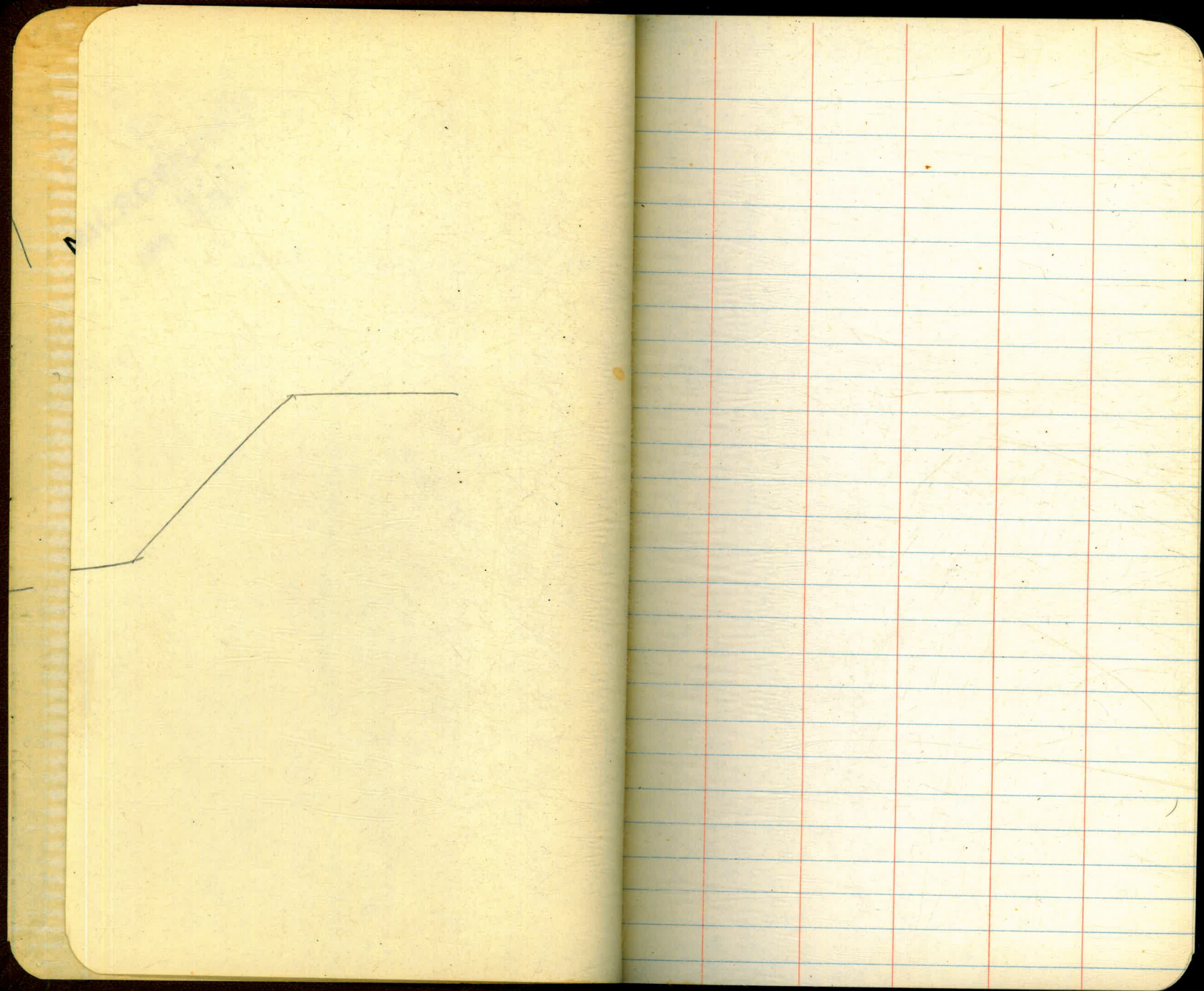


N 13650 E + W

MB 124

THIS BOOK INDEXED

2/9/62



1-08-60

STA. N. 121+00; 0+00=W. 14,200; SOUND EAST

Dist	Sound	Elev	Dist	Sound	Elev
0+00	1.6	+0.1	(1.7)	10.1	8.4
(1.7)	1.6	}	50	10.1	}
	1.6	}		10.1	}
<u>11.25</u>	1.3	+0.4		10.2	8.5
	1.7	0.0		10.2	}
50	2.1	0.4		10.2	}
	2.2	0.5	3+00	10.2	}
	3.1	1.4		10.2	}
	5.8	4.1		10.3	8.6
	9.0	7.3		10.3	}
1+00	9.9	8.2		10.3	}
	10.2	8.5	50	10.2	8.5
	10.1	8.4		10.2	}
	10.1	8.4		10.2	}
	10.0	8.3		10.2	}
50	9.8	8.1		10.2	}
	9.6	7.9	4+00	10.0	8.3
	10.0	8.3		9.7	8.0
	10.0	8.3		9.5	7.8
	9.9	8.2		9.4	7.7
2+00	9.7	8.0		9.3	7.6
	9.4	7.7	50	9.3	7.6
	9.4	7.7		9.4	7.7
	9.9	8.2		9.6	7.9

STA. N. 121+00-EAST

Dist	Sound	Elev	Dist	Sound	Elev
(1.6)	9.7	8.1	(1.6)	9.2	7.6
	9.6	8.0		9.1	7.5
5+00	9.5	7.9	50	9.0	7.4
	9.4	7.8		9.0	}
	9.5	7.9		9.0	}
	9.5	7.9		9.1	7.5
	9.8	8.2		9.0	7.4
50	9.6	8.0	8+00	9.5	7.9
<u>11.30</u>	9.5	7.9		9.3	7.7
	9.2	7.6		9.6	8.0
	9.0	7.4		10.0	8.4
	9.0	7.4		10.0	}
6+00	8.4	6.8	50	10.0	}
	8.7	7.1		10.1	8.5
	9.1	7.5		10.1	}
	9.2	7.6		10.1	}
	9.1	7.5		10.2	8.6
50	9.2	7.6	9+00	10.2	8.6
	9.1	7.5		11.0	9.4
	8.9	7.3		10.4	8.8
	9.0	7.4		10.4	8.8
	9.1	7.5		10.6	9.0
7+00	9.3	7.7	50	10.5	8.9
	9.2	7.6		10.4	8.8
	9.2	7.6		10.3	8.7

STA. N. 121+00 - EAST 1-08-60

Dist	Sound	Elev	Dist	Sound	Elev
(1.6)	10.2	8.6	(1.6)	9.8	8.2
	10.1	8.5		6.1	4.5
10+00	10.1	8.5	50	2.2	0.6
	10.2	8.6	<u>1135</u>	1.3	+0.3
	10.3	8.7			
	10.3	8.7	SOUND WEST		
	10.4	8.8	0+10	1.4	+0.2
50	10.4	}	(1.6)	1.3	+0.3
	10.4			1.3	
	10.4		<u>1140</u>	1.3	
	10.3	8.7	50	1.3	
	10.2	8.6		1.6	0.0
11+00	10.2	}		1.3	+0.3
	10.2			1.3	+0.3
	10.3	8.7		1.4	+0.2
	11.0	9.4	1+00	1.5	+0.1
	11.3	9.7		1.5	}
50	11.3	9.7	<u>1140</u>	1.5	
	11.2	9.6		1.6	0.0
	11.1	9.5		1.7	0.1
	11.1	9.5	50	2.0	0.4
	11.2	9.6		2.0	0.4
12+00	11.3	9.7		2.2	0.6
	11.4	9.8		2.7	1.1
	11.0	9.4		3.2	1.6

STA. N. 121+00 - WEST (2)

Dist	Sound	Elev	Dist	Sound	Elev
2+00	4.0	2.4			
(1.6)	4.4	2.8			
	4.7	3.1			
	5.0	3.4			
	5.2	3.6			
50	5.3	3.7			
	5.7	4.1			
	5.9	4.3			
	5.9	4.3			
	6.0	4.4			
3+00	6.1	4.5			
	6.2	4.6			
	6.2	4.6			
	6.1	4.5			
	5.9	4.3			
50	5.4	3.8			
	4.6	3.0			
	3.7	2.1			
	2.2	0.6			
	0.9	+0.7			
4+00					

1-08-60

STA. N. 126+00; 0+00 = W14,200 SOUND EAST

Dist	Sound	Elev	Dist	Sound	Elev
0+00	1.8	+1.4	(32)	10.0	6.8
(32)	1.7	+1.5	50	10.4	7.2
	1.7	+1.5		10.6	7.4
<u>9:28</u>	1.4	+1.8		10.6	7.4
	1.5	+1.7		10.8	7.6
50	1.5	+1.7		10.9	7.7
	1.4	+1.8	3+00	11.0	7.8
	1.5	+1.7		11.2	8.0
	1.4	+1.8		11.2	8.0
	1.4	+ {		11.5	8.3
1+00	1.4	+ {	<u>9:30</u>	11.6	8.4
	1.2	+2.0	50	11.7	8.5
	1.3	+1.9		11.8	8.6
	1.3	+ {		11.9	8.7
	1.3	+ {		11.6	8.4
50	1.3	+ {		11.4	8.2
	1.2	+2.0	4+00	11.3	8.1
	1.2	+2.0		11.2	8.0
	1.6	+1.6		11.3	8.1
	2.1	+1.1		11.3	{
2+00	2.9	+0.3		11.3	{
	3.4	0.2	50	11.5	8.3
	5.5	2.3		11.5	8.3
	8.7	5.5		11.5	8.3

STA. N. 126+00-EAST

(3)

Dist	Sound	Elev	Dist	Sound	Elev
(32)	11.0	7.8	(3.1)	10.7	7.6
	10.7	7.5		10.5	7.4
5+00	10.7	7.5	50	10.5	7.4
	10.5	7.3		10.4	7.3
	10.2	7.0		10.3	7.2
	10.3	7.1		10.5	7.4
	10.2	7.0		11.0	7.9
50	10.2	7.0	8+00	11.3	8.2
	10.1	6.9	<u>9:35</u>	11.2	8.1
	10.4	7.2		11.3	8.2
	10.9	7.7		11.3	8.2
	11.0	7.8		11.5	8.4
6+00	11.1	7.9	50	11.5	8.4
	11.1	{		11.8	8.7
	11.1	{		11.8	8.7
	11.0	7.8		12.0	8.9
	11.1	7.9		12.1	9.0
50	11.0	7.8	9+00	12.1	{
	11.0	7.8		12.1	{
	10.9	7.7		12.0	8.9
	10.9	7.7		12.0	8.9
	10.8	7.6		11.8	8.7
7+00	10.9	7.7	50	11.8	8.7
	10.9	7.7		11.7	8.6
	10.7	7.5		11.8	8.7

STA. N. 126+00 - EAST 1-08-60

Dist	Sound	Elev	Dist	Sound	Elev
(31)	12.0	8.9	(30)	1.6	+1.4
	12.0	8.9		1.5	+1.5
10+00	12.1	9.0	50	1.5	+1.5
	12.1	9.0		1.4	+1.6
	11.9	8.8		1.2	+1.8
	10.5	7.4	SOUND WEST		
	5.4	2.3	0+10	1.2	+1.8
50	3.6	0.5	(30)	1.2	
	2.9	+0.2		1.2	
	2.8	+0.3	<u>9.45</u>	1.3	+1.7
	2.8	+0.3	50	1.3	
	2.3	+0.8		1.3	
11+00	2.4	+0.7	50	1.5	+1.5
	2.5	+0.6		1.5	+1.5
	2.4	+0.7		1.6	+1.4
	2.3	+0.8	1+00	1.7	+1.3
	2.3	+0.8		1.7	+1.3
50	2.2	+0.9	1+00	1.8	+1.2
	2.1	+1.0		1.8	+1.2
	2.1	+1.0		1.9	+1.1
	2.0	+1.1	50	1.9	
	1.9	+1.2		1.9	
12+00	1.8	+1.3		1.9	
	1.8	+1.3		1.9	
	1.7	+1.4		2.0	+1.0

STA. N. 126+00 - WEST ④

Dist	Sound	Elev	Dist	Sound	Elev
2+00	2.2	+0.8	50		
(30)	2.4	+0.6			
	2.5	+0.5			
	2.8	+0.2			
	3.0	+0.0			
50	3.2	0.2	5+00		
	3.4	0.4			
	3.9	0.9			
	4.9	1.9			
	6.4	3.4			
3+00	8.1	5.1			
	9.2	6.2			
	9.8	6.8			
	10.0	7.0			
	10.3	7.3			
50	10.2	7.2			
	10.0	7.0			
	10.0	7.0			
	9.7	6.7			
	9.3	6.3			
4+00	8.2	5.2			
	7.4	4.4			
	5.8	2.8			
	3.3	0.3			
	1.5	+1.5			

1-08-60

STA. N. 125+00; 0+00 = W. 14,200; SOUND EAST

Dist	Sound	Elev	Dist	Sound	Elev
0+00	2.1	+0.7	(28)	9.8	7.0
(28)	2.1	+0.7	50	10.0	7.2
	1.7	+1.1		10.2	7.4
<u>9.55</u>	1.4	+1.4		10.8	8.0
	1.2	+1.6		10.4	7.6
50	1.1	+1.7		10.6	7.8
	1.1		3+00	10.9	8.1
	1.1			10.9	8.1
	1.1			11.1	8.3
	1.1			11.7	8.9
1+00	1.0	+1.8		11.3	8.5
	1.0	+1.8	50	11.3	8.5
	1.1	+1.7		11.5	8.7
	1.0	+1.8		11.6	8.8
	1.0	+1.8		11.7	8.9
50	1.1	+1.7		11.7	
	1.6	+1.2	4+00	11.7	
	2.3	+0.5		11.7	
	2.5	+0.3		11.7	
	3.3	0.5		11.3	8.5
2+00	7.0	4.2		11.2	8.4
	9.0	6.2	50	11.2	8.4
	9.3	6.5		10.8	8.0
	9.6	6.7		10.4	7.6

STA. N. 125+00-EAST

Dist	Sound	Elev	Dist	Sound	Elev
(27)	10.9	8.2	(27)	10.1	7.4
	11.0	8.3		10.0	7.3
5+00	10.6	7.9	50	10.1	7.4
	10.6	7.9		10.1	
	11.3	8.6		10.1	
	10.4	7.7		10.0	7.3
	10.2	7.5		10.1	7.4
50	10.0	7.3	8+00	9.9	7.2
	9.8	7.1		9.9	
<u>10.00</u>	9.3	6.6		9.9	
	9.0	6.3		10.0	7.3
	8.5	5.8		10.2	7.5
6+00	8.5	5.8	50	10.7	8.0
	9.0	6.3		10.8	8.1
	9.5	6.8		10.9	8.2
	9.3	6.6		11.0	8.3
	9.2	6.5		11.1	8.4
50	9.3	6.6	9+00	11.1	8.4
	9.7	7.0		11.2	8.5
	9.7			11.1	8.4
	9.7			11.1	
	9.8	7.1		11.1	
7+00	10.0	7.3	50	11.3	8.6
	10.2	7.5		11.4	8.7
	10.1	7.4		11.3	8.6



STA. N. 125+00 - EAST 1-08-60

DIST	Sound	Elev	DIST	Sound	Elev
(2.6)	11.3	8.7	SOUND WEST		
	11.3	8.7	0+10	1.5	+1.0
10+00	11.2	8.6	(2.5)	1.9	+0.6
	11.2	{	<u>10+10</u>	1.9	+0.6
	11.2	{		1.9	+0.6
	11.4	8.8	50	2.0	+0.5
	11.6	9.0		2.0	{
50	11.8	9.2		2.0	{
	11.3	8.7		2.1	+0.4
	9.2	6.6		2.3	+0.2
	6.0	3.4	1+00	2.4	+0.1
	3.4	0.8		2.4	+0.1
11+00	2.8	0.2		2.5	0.0
	2.3	+0.3		2.6	0.1
	2.2	+0.4		2.6	0.1
	1.7	+0.9	50	2.7	0.2
	1.6	+1.0		2.7	0.2
50	1.6	+1.0		2.8	0.3
	1.4	+1.2		2.9	0.4
	1.4	+1.2		2.9	0.4
	1.3	+1.3	2+00	2.8	0.3
	1.2	+1.4		2.9	0.4
12+00	1.1	+1.5		2.9	0.4
				3.0	0.5
				3.1	0.6

STA. N. 125+00 - WEST

DIST	Sound	Elev	DIST	Sound	Elev
50	3.6	0.6			
(2.5)	5.1	2.6			
	6.8	4.3			
	8.0	5.5			
	8.2	5.7			
3+00	8.6	6.1			
	9.0	6.5			
	9.0	{			
	9.0	{			
	8.9	6.4			
50	8.8	6.3			
	8.5	6.6			
	8.2	5.7			
	7.3	4.8			
	6.1	3.6			
4+00	4.8	6.3			
	2.6	0.1			
	1.0	+1.5			

(6)

1-08-60

STA. N. 124+00; 0+00 = W. 14,200; SOUND EAST			DIST SOUND ELEV		
DIST	SOUND	ELEV	DIST	SOUND	ELEV
0+00	1.9	+0.5	(24)	11.3	8.9
(24)	2.0	+0.4	50	11.2	8.8
	2.0	+0.4	10.20	11.7	9.3
<u>10.18</u>	2.2	+0.2	<u>      </u>	11.9	9.5
	2.1	+0.3		11.8	9.4
50	2.2	+0.2		11.4	9.0
	2.2	+0.2	3+00	11.3	8.9
	2.1	+0.3		10.7	8.3
	1.9	+0.5		10.5	8.1
	2.0	+0.4		10.8	8.4
1+00	2.1	+0.3		10.8	8.4
	2.3	+0.1	50	11.0	8.6
	2.4	+0.0		11.0	8.6
	2.5	0.1		11.1	8.7
	2.9	0.5		11.1	8.7
50	3.3	0.9		11.2	8.8
	5.4	3.0	4+00	11.3	8.9
	8.2	5.8		11.2	8.8
	10.6	8.2		11.3	8.9
	11.7	9.3		11.5	9.1
2+00	12.3	9.9		11.4	9.0
	12.1	9.7	50	11.2	8.8
	11.9	9.5		11.0	8.6
	11.3	8.9		10.8	8.4

STA. N. 124+00 - EAST

DIST SOUND ELEV			DIST SOUND ELEV		
(24)	10.7	8.3	(23)	9.3	7.0
	11.0	8.6		9.4	7.1
5+00	11.0		50	9.5	7.2
	11.0		<u>10.25</u>	9.6	7.3
	11.0		<u>      </u>	9.9	7.6
	10.9	8.5		10.0	7.7
	10.7	8.3		10.0	7.7
50	10.2	7.8	8+00	10.1	7.8
	10.0	7.6		10.1	7.8
	9.9	7.5		10.0	7.7
	9.5	7.1		10.0	7.7
	9.2	6.8		9.9	7.6
6+00	9.1	6.7	50	9.8	7.5
	9.0	6.6		9.9	7.6
	8.7	6.3		10.1	7.8
	8.2	5.8		10.2	7.9
	8.5	6.1		10.3	8.0
50	8.3	5.9	9+00	10.7	8.4
	8.4	6.0		10.9	8.6
	8.5	6.1		11.0	8.7
	8.5	6.1		11.2	8.9
	8.6	6.2		11.1	8.8
7+00	9.0	6.6	50	11.2	8.9
	9.1	6.7		11.1	8.8
	9.2	6.8		11.1	8.8

STA. N. 124+00-EAST 1-08-60

STA. N. 124+00-EAST

(8)

	Dist	Sound	Elev	Dist	Sound	Elev	Dist	Sound	Elev	Dist	Sound	Elev
	(22)	11.1	8.9	50	1.9	+0.3	3+00	7.4	5.2			
		11.2	9.0	(22)	1.9	+0.3	(22)	7.4	5.2			
1	10+00	11.3	9.1		2.0	+0.2		7.5	5.3			
	<u>1030</u>	11.2	9.0	<u>1034</u>	2.0	+0.2		7.4	5.2			
		11.2	9.0		2.1	+0.1		7.3	5.1			
		11.1	8.9	1+00	2.2	+0.0	50	6.8	4.6			
		11.1	{		2.3	0.1		5.8	3.6			
	50	11.1	{		2.4	0.2		4.2	2.0			
		11.0	8.8		2.4	{		2.7	0.5			
		11.0	8.8		2.4	{		1.0	+1.2			
		10.9	8.7	50	2.4	{	4+00					
		10.9	8.7		2.4	{						
1	11+00	10.5	8.3		2.6	0.4						
		9.1	6.9		2.7	0.5						
		5.9	3.7		3.1	0.9						
		3.1	0.9	2+00	3.5	1.3	50					
		2.5	0.3		4.0	1.8						
	50	2.1	+0.1		5.1	2.9						
		1.5	+0.7		5.7	3.5						
		1.1	+1.1		6.2	4.0						
	SOUND WEST			50	6.5	4.3						
	0+10	2.0	+0.2		6.9	4.7						
1		1.9	+0.3		7.0	4.8						
		1.9	+0.3		7.0	4.8						
		1.9	+0.3		7.1	4.9						

1-08-60

STA. N. 123+00			0+00 = W. 14200 SOUND EAST		
Dist	Sound	Elev	Dist	Sound	Elev
0+00	1.8	+0.3	(2)	11.1	9.0
(2)	1.8	+0.3	50	11.7	9.6
	1.8	+0.3		11.6	9.5
<u>10+00</u>	1.9	+0.2		11.5	9.4
	1.6	+0.5		11.3	9.2
50	1.6	+0.5		11.2	9.1
	1.7	+0.4	3+00	11.0	8.9
	1.6	+0.5		11.0	8.9
	1.5	+0.6		10.8	8.7
	1.5	+0.6		10.4	8.3
1+00	1.7	+0.4		10.4	8.3
	2.0	+0.1	50	10.6	8.5
	2.1	0.0		10.6	8.5
	2.4	0.3		10.7	8.6
	4.0	1.9		10.8	8.7
50	8.1	6.0		11.2	9.1
	9.9	7.8	4+00	10.8	8.7
	10.4	8.3		10.6	8.5
	10.8	8.7		10.7	8.6
	10.8	{		10.7	8.6
2+00	10.8	{		10.7	{
	10.6	8.5	50	10.7	{
	10.3	8.2		10.6	8.5
	10.6	8.5		10.3	8.2

STA. N. 123+00 - EAST

(9)

Dist	Sound	Elev	Dist	Sound	Elev
(2)	10.3	8.2	(2)	8.7	6.6
	10.2	8.1		8.9	6.8
5+00	10.2	8.1	50	9.1	7.0
	10.5	8.4		9.2	7.1
<u>10+05</u>	10.3	8.2		9.3	7.2
	10.4	8.3		9.7	7.6
	10.4	8.3		9.7	{
50	10.3	8.2	8+00	9.7	{
	10.1	8.0		9.7	{
	9.9	7.8		9.6	7.5
	9.5	7.4		9.7	7.6
	9.2	7.1		9.8	7.7
6+00	9.1	7.0	50	9.8	7.7
	8.9	6.8		9.9	7.8
	8.4	6.3		9.5	7.4
	8.3	6.2		9.3	7.2
	8.1	6.0		9.5	7.4
50	8.1	{	9+00	9.6	7.5
	8.1	{		10.2	8.1
	8.2	6.1		10.2	{
	8.1	6.0		10.2	{
	8.1	6.0		10.2	{
7+00	8.3	6.2	50	10.3	8.2
	8.3	6.2		10.6	8.5
	8.4	6.3		10.7	8.6

STA. N. 123+00 - EAST - 1-08-60

DIST	SOUND	ELEV	DIST	SOUND	ELEV
(2.0)	10.7	8.7	50	1.7	+0.3
	10.8	8.8	(2.0)	1.9	+0.1
10+00	10.9	8.9	<u>10.55</u>	1.9	+0.1
	11.0	9.0		2.0	0.0
<u>10.50</u>	11.0	9.0		2.0	0.0
	11.0	9.0	1+00	2.1	0.1
	10.8	8.8		2.2	0.2
50	10.5	8.5		2.2	}
	10.5	8.5		2.2	}
	10.6	8.6		2.2	}
	10.4	8.4	50	2.3	0.3
	10.4	8.4		2.5	0.5
11+00	10.3	8.3		2.6	0.6
	10.3	8.3		3.0	1.0
	10.2	8.2		3.8	1.8
	9.1	7.1	2+00	4.4	2.4
	6.9	4.9		4.7	2.7
50	2.9	0.9		5.2	3.2
	2.2	0.2		5.2	3.2
	1.6	+0.4		5.4	3.4
SOUND WEST			50	6.0	4.0
0+10	2.0	0.0		5.9	3.9
	1.8	+0.2		6.0	4.0
	1.8	+0.2		6.0	4.0
	1.7	+0.3		6.1	4.1

STA. N. 123+00 - WEST

(10)

DIST	SOUND	ELEV
3+00	6.2	4.2
(2.0)	6.2	4.2
	6.1	4.1
	5.6	3.6
	4.6	2.6
50	3.3	1.3
	2.3	0.3
	1.3	+0.7
	0.6	+1.4

1-08-60

STA. N. 122+00; 0+00=W. 14200; SOUND EAST

Dist	Sound	Elev	Dist	Sound	Elev
0+00	2.0	0.1	(19)	11.1	9.2
(19)	1.9	0.0	50	11.1	}
	1.9	0.0		11.1	}
<u>11:02</u>	1.8	+0.2		11.0	9.1
	1.6	+0.3	<u>11:05</u>	11.0	9.1
50	1.5	+0.4		10.9	9.0
	1.5	+0.4	3+00	11.1	9.2
	1.7	+0.2		11.2	9.3
	2.2	0.3		11.3	9.4
	2.2	0.3		11.3	9.4
1+00	3.3	1.4		11.2	9.3
	5.2	3.3	50	11.0	9.1
	7.4	5.5		10.5	8.6
	9.3	7.4		10.2	8.3
	10.2	8.3		10.2	}
50	10.2	8.3		10.2	}
	10.0	8.1	4+00	10.3	8.4
	10.2	8.3		10.2	8.3
	10.5	8.6		10.2	8.3
	10.7	8.8		10.3	8.4
2+00	10.9	9.0		10.2	8.3
	10.8	8.9	50	10.2	}
	11.1	9.2		10.2	}
	11.0	9.1		10.1	8.2

STA. N. 122+00 - EAST

(11)

Dist	Sound	Elev	Dist	Sound	Elev
(7.9)	10.1	8.2	(18)	9.1	7.3
	10.1	8.2		9.7	7.9
5+00	10.0	8.1	50	10.0	8.2
	10.0	8.1		10.2	8.4
	9.9	8.0		10.4	8.6
	9.9	8.0		11.1	9.3
	9.8	7.9		11.3	9.5
50	9.7	7.8	8+00	11.5	9.7
	9.5	7.6	<u>11:10</u>	11.4	9.6
	9.5	7.6		11.8	10.0
	9.3	7.4		12.0	10.2
	9.3	7.4		12.0	}
6+00	9.5	7.6	50	12.0	}
	9.7	7.8		11.5	9.7
	9.8	7.9		11.0	9.2
	9.2	7.3		10.8	9.0
	8.9	7.0		10.9	9.1
50	8.9	7.0	9+00	11.1	9.3
	8.9	}		11.1	}
	8.9	}		11.1	}
	9.0	7.1		11.2	9.4
	9.0	7.1		11.3	9.5
7+00	8.9	7.0	50	11.5	9.7
	8.8	6.9		11.5	9.7
	8.7	6.8		12.0	10.2

STA. N. 122+00-EAST 1-08-60

Dist	Sound	Elev	Dist	Sound	Elev
(1.8)	12.1	10.3	SOUND WEST		
	12.2	10.4	0+10	1.8	0.1
10+00	12.4	10.6	(1.7)	1.5	+0.2
	12.3	10.5		1.5	}
	12.0	10.2	<u>11.8</u>	1.5	}
	11.7	9.9	50	1.6	+0.1
	11.5	9.7		1.6	+0.1
50	11.3	9.5		1.8	0.1
	11.3	9.5		1.8	}
	11.2	9.4		1.8	}
	11.2	9.4	1+00	1.8	}
	11.1	9.3		1.8	}
11+00	11.1	}		1.9	0.2
	11.1	}		1.9	0.2
	10.9	9.1		2.0	0.3
	10.9	9.1	50	2.1	0.4
	10.8	9.0		2.1	0.4
50	10.4	8.6		2.3	0.6
	10.4	8.6		2.5	0.8
	10.3	8.5		3.0	1.3
	10.2	8.4	2+00	3.5	1.8
	9.8	8.0		4.2	2.5
12+00	8.5	6.3		4.8	3.1
	4.2	2.4		5.3	3.6
	2.3	0.5		5.5	3.8
	1.5	+0.3			

STA. N. 122+00-WEST

Dist	Sound	Elev
50	5.6	3.9
(1.7)	5.9	4.2
	6.2	4.5
	6.5	4.8
	6.5	4.8
3+00	6.9	5.2
	7.0	5.3
	6.8	5.1
	6.0	4.3
	6.0	4.3
50	5.3	3.6
	4.0	2.3
	1.8	0.1

4+00

(12)

1-13-60

STA. N. 131+00; 0+00 = W. 14,200; SOUND EAST

Dist	Sound	Elev	Dist	Sound	Elev
0+00	5.2	+0.4	(5.4)	5.0	+0.4
(5.6)	5.2	+0.4	50	5.0	+0.4
	5.3	+0.3		5.1	+0.3
<u>10.15</u>	5.3	}		5.1	+0.3
	5.3	}		5.0	+0.4
50	5.3	}		5.0	{
	5.3	}	3+00	5.0	{
	5.3	}		4.8	+0.6
	5.2	+0.4		4.2	+1.2
	5.2	+0.4		4.2	}
1+00	5.1	+0.5		4.2	}
	5.1	+0.5	50	4.3	+1.1
	5.0	+0.6		4.2	+1.2
	4.9	+0.7		4.2	{
	4.8	+0.8	<u>10.20</u>	4.2	}
50	4.7	+0.9	<u>—</u>	4.3	+1.1
	4.7	}	4+00	4.6	+0.8
	4.7	}		5.0	+0.4
	4.7	}		5.3	+0.1
	4.7	}		5.7	0.3
2+00	4.8	+0.8		7.0	1.6
	4.9	+0.7	50	10.4	5.0
	5.0	+0.6		12.0	6.6
	5.0	+0.6		13.1	7.7

STA. N. 131+00-EAST

(13)

Dist	Sound	Elev	Dist	Sound	Elev
(5.4)	13.8	8.4	(5.3)	13.3	8.0
	14.0	8.6		13.3	{
5+00	13.4	8.0	50	13.3	}
	13.1	7.7		13.2	7.9
	12.5	7.1		13.1	7.8
	12.7	7.3		12.9	7.6
	13.2	7.8		12.8	7.5
50	12.8	7.4	8+00	12.7	7.4
	12.8	7.4		12.5	7.2
	13.1	7.7		12.3	7.0
	13.2	7.8		12.1	6.8
	12.9	7.5		12.0	6.7
6+00	12.8	7.4	50	12.0	6.7
	12.3	6.9	<u>10.25</u>	12.1	6.8
	12.2	6.8	<u>—</u>	12.0	6.7
	12.3	6.9		12.1	6.8
	12.3	{		12.3	7.0
50	12.3	}	9+00	12.3	{
	13.3	7.9		12.3	}
	13.3	{		12.5	7.2
	13.3	}		12.8	7.5
	13.5	8.1		12.9	7.6
7+00	13.4	8.0	50	13.0	7.7
	13.5	8.1		13.3	8.0
	13.4	8.0		13.2	7.9



STA. N. 131400-EAST 1-13-60

DIST	Sound	Elev	DIST	Sound	Elev
(53)	13.3	8.0	(52)	5.2	0.0
	13.6	8.3		5.2	
10+00	13.3	8.0	50	5.2	
	13.5	8.2		5.2	
	13.2	7.9		5.2	
	13.3	8.0		5.2	
	13.1	7.8		5.2	
50	13.1	7.8	13+00	5.2	
	13.0	7.7		5.2	
	13.0			5.2	
	13.0			5.2	
	13.0			5.2	
11+00	13.0		50	5.2	
	13.0			5.2	
	13.0		1030	5.2	
	12.6	7.3		5.2	
	11.4	6.1		5.2	
50	10.3	5.0	14+00	5.1	+0.1
	7.9	2.3		5.1	
	6.0	0.7		5.1	
	5.3	0.0		5.2	0.0
	5.2	+0.1		5.1	+0.1
12+00	5.2		50	5.1	
	5.2			5.1	
	5.2			5.0	+0.2

STA. N. 131400-EAST (14)

DIST	Sound	Elev	DIST	Sound	Elev
(52)	4.4	+0.8			
	4.1	+1.1	0+10	4.8	+0.3
15+00	3.9	+1.3	(51)	4.8	
	3.8	+1.4		4.8	
	3.4	+1.8	1037	4.8	
	3.4		50	4.8	
	3.4			4.8	
50	3.4			4.8	
	3.3	+1.9		4.7	+0.4
	3.3	+1.9		4.6	+0.5
	3.2	+2.0	1+00	4.5	+0.6
	3.1	+2.1		4.5	+0.6
16+00	3.2	+2.0		4.6	+0.5
	3.1	+2.1		4.8	+0.3
	3.1			4.9	+0.2
	3.1		50	5.0	+0.1
	3.1			5.1	0.0
50	3.1			5.2	0.1
	3.0	+2.2		5.2	0.1
	2.8	+2.4		5.3	0.2
	2.4	+2.8	2+00	5.3	0.2
	2.3	+2.9		5.2	0.1
17+00	2.0	+3.2		5.2	0.1
	1.5	+3.7		4.9	+0.2
	1.0	+4.2		4.7	+0.4

STAN. 131+00 - WEST 1-13-60

Dist	Sound	Elev	Dist	Sound	Elev
50	4.4	+0.6	4+00	9.9	4.9
(50)	4.1	+0.9	<del>4+00</del>	(50)	9.9
	4.1		(50)	8.1	3.1
	4.1			6.3	1.3
	4.1			4.8	+0.2
2+00	4.0	+1.0	50	3.6	+1.4
	4.1	+0.9		2.3	+2.7
	4.2	+0.8		0.9	+4.1
<u>10+00</u>	4.3	+0.7			
	4.7	+0.3			
50	5.1	0.1			
	5.3	0.3			
	5.6	0.6			
	5.7	0.7			
	6.2	1.2			
3+00	7.1	2.1			
	7.9	2.9			
	8.9	3.9			
	9.3	4.3			
	10.0	5.0			
50	10.1	5.1			
	10.2	5.2			
	10.3	5.3			
	10.3				
	10.3				

1-13-60

(15)

STAN. 132+00; 0+00 = N. 14,200; SOUND EAST

Dist	Sound	Elev	Dist	Sound	Elev
0+00	3.6	+1.3	(48)	3.6	+1.2
(49)	3.6	+1.3	50	3.6	+1.2
	3.7	+1.2		3.7	+1.1
<u>10+00</u>	3.7			3.8	+1.0
	3.7			3.7	+1.1
50	3.6	+1.3		3.8	+1.0
	3.4	+1.5	3+00	3.9	+0.9
	3.4			4.1	+0.7
	3.4			4.1	
	3.5	+1.4	<u>10+50</u>	4.1	
1+00	3.5			4.2	+0.6
	3.5		50	4.5	+0.3
	3.7	+1.2		4.6	+0.2
	3.7	+1.2		5.3	0.5
	3.8	+1.1		5.0	0.2
50	3.8			5.0	0.2
	3.8		4+00	5.3	0.5
	3.8			5.9	1.1
	3.8			6.8	2.0
	3.9	+1.0		7.5	2.3
2+00	4.0	+0.9		8.1	3.3
	3.7	+1.2	50	8.9	4.1
	3.6	+1.3		10.0	5.2
	3.7	+1.2		10.5	5.7

STA. N.132+00-EAST 1-13-60						
	Dist	Sound	Elev	Dist	Sound	Elev
	(48)	10.8	6.0	(47)	12.8	8.1
		10.9	6.1		12.9	8.2
5+00		11.2	6.4	50	12.9	8.2
		11.6	6.8		13.0	8.3
		12.8	8.0		13.1	8.4
		13.5	8.7		13.2	8.5
		13.4	8.6		13.1	8.4
50		13.2	8.4	8+00	13.0	8.3
		12.9	8.1		13.0	8.3
		13.0	8.2	10+55	12.9	8.2
		13.2	8.4		12.5	7.8
		13.1	8.3		12.5	7.8
6+00		13.1	8.3	50	12.4	7.7
		13.0	8.2		12.5	7.8
		12.9	8.1		12.4	7.7
		12.7	7.9		12.1	7.4
		12.2	7.4		12.0	7.3
50		12.5	7.7	9+00	12.0	7.3
		12.6	7.8		11.9	7.2
		12.3	7.5		12.0	7.3
		12.3	7.5		11.9	7.2
		13.0	8.2		11.8	7.1
7+00		12.4	7.6	50	11.9	7.2
		12.5	7.7		11.9	7.2
		12.6	7.8		12.0	7.3

STA. N.132+00-EAST (76)						
	Dist	Sound	Elev	Dist	Sound	Elev
	(47)	12.1	7.4	(4.6)	7.2	2.6
		12.1	7.4		5.9	1.3
10+00		12.3	7.6	50	5.2	0.6
		12.4	7.7		5.2	0.6
		12.5	7.8	11+00	5.5	0.9
		12.5	7.8		5.4	0.8
		12.5	7.8		5.5	0.9
50		12.7	8.0	13+00	5.7	1.1
		12.7	8.0		5.8	1.2
		12.8	8.1		6.0	1.4
		12.5	7.8		6.0	1.4
		12.5	7.8		5.9	1.3
11+00		12.3	7.6	50	5.9	
		12.2	7.5		5.9	
		12.1	7.4		5.8	1.2
		12.2	7.5		5.5	0.9
		12.3	7.6		5.8	1.2
50		12.3	7.6	14+00	5.7	1.1
		12.4	7.7		5.5	0.9
		12.9	8.2		5.5	0.9
		12.9			5.4	0.8
		12.9			5.4	0.8
12+00		12.9		50	5.3	0.7
		12.1	7.4		5.2	0.6
		8.9	4.2		5.2	0.6

STA. N. 132+00 - EAST. 1-13-60

Dist	Sound	Elev	Dist	Sound	Elev
(46)	5.1	0.5	(45)	2.0	+2.5
	5.0	0.4		1.8	+2.7
15+00	5.0	0.4	50	1.6	+2.9
	5.1	0.5		1.3	+3.2
	5.0	0.4	SOUND WEST		
	5.1	0.5	0+10	3.1	+1.3
	5.1	}	(44)	3.1	+1.3
50	5.1	}		3.2	+1.2
	5.0	0.4	11+0	3.3	+1.1
	4.8	0.2	50	3.3	}
	4.6	0.0		3.3	}
	4.7	0.1		3.3	}
16+00	4.7	0.1		3.4	+1.0
	4.9	0.3		3.3	+1.1
	4.8	0.2	1+00	3.3	+1.1
	4.6	0.0		3.1	+1.3
	4.0	+0.6		3.1	+1.3
50	3.7	+0.9		3.0	+1.4
	3.5	+1.1		3.0	+1.4
	3.3	+1.3	50	2.8	+1.6
	3.0	+1.6		2.8	+1.6
	2.7	+1.9		2.8	+1.6
17+00	2.7	+1.9		2.7	+1.7
	2.5	+2.1		2.5	+1.9
	2.2	+2.4	2+00	2.5	+1.9

STA. N. 132+00 - WEST

Dist	Sound	Elev	Dist	Sound	Elev
(44)	2.4	+2.0	(43)	9.1	4.8
	2.5	+1.9		9.4	5.1
	2.5	}		9.8	5.5
	2.5	}		9.8	5.5
50	2.5	}	5+00	10.0	5.7
	2.6	+1.8	11+15	9.9	5.6
	2.7	+1.7		9.3	5.0
	2.7	}		7.7	3.4
	2.7	}		6.0	1.7
3+00	2.7	}	50	4.1	+0.2
	2.9	+1.5		3.0	+1.3
	2.9	}		2.1	+2.2
	2.9	}		0.9	+3.4
	3.1	+1.3			
50	3.4	+1.0			
	3.6	+0.8			
	4.1	+0.3			
	4.3	+0.1			
	4.5	0.1			
4+00	4.9	0.5			
	5.3	0.9			
	6.0	1.6			
	6.9	2.5			
	7.7	3.3			
50	8.4	4.0			

1-13-60

STA. N. 133+00; 0+00-W. 14,200; SOUND EAST

Dist	Sound	Elev	Dist	Sound	Elev
0+00	2.4	+1.8	(42)	2.8	+1.4
(42)	2.5	+1.7	50	2.8	+1.4
	2.4	+1.8		3.0	+1.2
11:20	2.4	+1.8		3.0	
	2.6	+1.6		3.0	
50	2.6	+1.6		3.0	
	2.5	+1.7	3+00	3.1	+1.1
	2.6	+1.6		3.6	+0.6
	2.8	+1.4		4.3	0.1
	2.5	+1.7		6.1	1.9
1+00	2.5	+1.7		8.6	4.4
	2.5	+1.7	50	11.6	7.4
	2.6	+1.6		12.6	8.4
	2.7	+1.5		12.9	8.7
	2.7	+1.5		12.8	8.6
50	2.6	+1.6		12.7	8.5
	2.7	+1.5	4+00	12.6	8.4
	2.7			12.6	8.4
	2.7			12.7	8.5
	2.7			13.0	8.8
2+00	2.7			13.1	8.9
	2.6	+1.6	50	13.3	9.1
	2.7	+1.5		13.5	9.3
	2.8	+1.4		14.1	9.9

STA. N. 133+00 - EAST

(18)

Dist	Sound	Elev	Dist	Sound	Elev
(41)	14.2	10.1	(41)	11.8	7.7
	14.7	10.6		11.5	7.4
5+00	14.9	10.8	50	11.8	7.7
11:25	15.4	11.3		12.0	7.9
	16.1	12.0		11.8	7.7
	16.4	12.3		12.1	8.0
	16.5	12.4		12.1	8.0
50	16.3	12.2	8+00	12.2	8.1
	16.2	12.1		12.3	8.2
	16.1	12.0		12.4	8.3
	15.1	11.0		12.3	8.2
	12.0	7.9		12.3	8.2
6+00	12.0	7.9	50	12.2	8.1
	11.8	7.7		12.2	
	11.2	7.1		12.2	
	11.1	7.0		12.2	
	11.2	7.1		12.2	
50	11.2	7.1	9+00	12.2	
	11.1	7.0		12.1	8.0
	11.3	7.2		12.1	
	11.7	7.6		12.1	
	11.6	7.5		12.0	7.9
7+00	11.3	7.2	50	12.0	7.9
	11.7	7.6		11.8	7.7
	11.6	7.5		11.7	7.6

STA. N. 133+00 - EAST 1-13-60

Dist	Sound	Elev	Dist	Sound	Elev
(40)	11.4	7.4	(40)	13.9	9.9
	11.3	7.3		10.2	6.2
10+00	11.2	7.2	50	9.0	5.0
<u>1130</u>	11.2	7.2		10.1	6.1
	11.2	7.2		12.4	8.4
	11.5	7.5		13.5	9.5
	12.0	8.0		14.2	10.2
50	12.0	8.0	13+00	14.5	10.5
	12.1	8.1		14.5	10.5
	12.3	8.3	)	14.5	}
	13.0	9.0		14.5	}
	13.1	9.1		14.5	}
11+00	13.1	9.1	50	14.5	}
	13.2	9.2		14.6	10.6
	13.2	9.2		14.7	10.3
	13.3	9.3		14.8	10.8
	13.3	9.3		14.7	10.7
50	13.4	9.4	14+00	14.5	10.5
	13.6	9.6		14.2	10.2
	13.9	9.9		14.3	10.3
	13.9	9.9		14.1	10.1
	14.0	10.0		12.6	8.6
12+00	14.1	10.1	50	11.4	7.4
	14.1	}		13.5	9.5
	14.1	}		14.2	10.2

STA. N. 133+00 - EAST

(19)

Dist	Sound	Elev	Dist	Sound	Elev
(39)	15.2	11.3		2.7	+1.2
	15.4	11.5		2.3	+1.6
15+00	15.6	11.7	50	2.1	+1.8
<u>1135</u>	15.7	11.8		2.1	+1.8
	15.8	11.9	SOUND WEST		
	15.8	}	0+10	1.9	+1.8
	15.8	}	(3.7)	1.9	+1.8
50	15.9	12.0		2.0	+1.7
	15.7	11.8	<u>1147</u>	1.8	+1.9
	15.7	11.8	50	1.9	+1.8
	15.3	11.4		1.8	+1.9
	15.2	11.3		1.8	+1.9
16+00	15.2	11.3		1.7	+2.0
	15.1	11.2		1.7	+
	15.0	11.1	1+00	1.7	+
	14.6	10.7		1.6	+2.1
	14.2	10.3		1.5	+2.2
50	13.4	9.5		1.4	+2.3
	11.7	7.8		1.5	+2.2
	7.2	3.3	50	1.6	+2.1
	4.3	0.4		1.6	+2.1
	4.1	0.2		1.7	+2.0
17+00	3.9	0.0		1.6	+2.1
	3.4	+0.5		1.6	+2.1
	3.1	+0.8	2+00	1.5	+2.2

STA. N. 133+00 - WEST 1-13-60

Dist	Sound	Elev	Dist	Sound	Elev
(3.5)	1.5	+2.0	(35)	7.7	4.2
	1.5	+2.0		8.2	4.7
	1.6	+1.9	1150	8.7	5.2
	1.6	+1.9		9.1	5.6
50	1.4	+2.1	5+00	9.2	5.7
	1.5	+2.0		9.2	5.7
	1.8	+1.7		9.0	5.5
	1.7	+1.8		8.2	4.7
	1.6	+1.9		7.1	3.6
3+00	1.6	+1.9	50	4.2	0.7
	1.6	+1.9		2.7	+0.8
	1.7	+1.8		1.4	+2.1
	1.7	+1.8		0.7	+2.8
	1.8	+1.7			
56	2.0	+1.5			
	2.2	+1.3			
	2.7	+0.8			
	3.1	+0.4			
	3.2	+0.3			
4+00	3.6	0.1			
	4.0	0.5			
	4.2	0.7			
	5.0	1.5			
	5.9	1.4			
50	6.7	3.2			

1-13-60

(20)

STA. N. 134+00; 0+00 - W. 14200, SOUND EAST

Dist	Sound	Elev	Dist	Sound	Elev
0+00	1.6	+1.6	(32)	1.9	+1.3
(32)	1.7	+1.5	50	2.1	+1.1
	1.8	+1.4		2.1	
12:00	1.7	+1.5		2.1	
	1.7	+1.5		2.2	+1.0
50	1.6	+1.6		2.6	+0.6
	1.7	+1.5	3+00	3.0	+0.2
	1.6	+1.6		4.1	0.9
	1.5	+1.7		6.0	2.8
	1.6	+1.6		7.5	4.3
1+00	1.7	+1.5		10.5	7.3
	1.7		50	11.4	8.2
	1.7			12.5	9.3
	1.7			13.0	9.8
	1.7			13.4	10.2
50	1.6	+1.6		14.2	11.0
	1.7	+1.5	4+00	14.5	11.3
	1.8	+1.4		14.5	11.3
	1.8			14.3	11.1
	1.8			14.0	10.8
2+00	1.8			13.6	10.4
	1.9	+1.3	50	13.5	10.3
	1.9			13.2	10.0
	1.9			13.2	10.0

STAN. 134+00 - EAST 1-13-60

DIST Sound Elev DIST Sound Elev

DIST	Sound	Elev	DIST	Sound	Elev
(31)	13.0	9.9	(31)	10.7	7.6
	13.1	10.0		11.0	7.9
5+00	13.3	10.2	50	10.9	7.8
	13.4	10.3		10.7	7.6
	13.4	10.3		10.6	7.5
	13.5	10.4		10.8	7.7
	13.5	10.4		11.0	7.9
50	13.6	10.5	8+00	11.2	8.1
	14.0	10.9		11.3	8.2
<u>1205</u>	14.3	11.2		11.6	8.5
	14.5	11.4		11.9	8.8
	15.0	11.9		12.0	8.9
6+00	15.2	12.1	50	12.0	8.9
	15.2	12.1		12.2	9.1
	15.3	12.2		12.3	9.2
	15.3	12.2		12.6	9.5
	15.2	12.1		13.0	9.9
50	15.2	12.1	9+00	13.1	10.0
	14.7	11.6		13.2	10.1
	13.2	10.1		13.8	10.7
	11.1	8.0		13.7	10.6
	10.6	7.5		13.6	10.5
7+00	10.5	7.4	50	13.5	10.4
	10.5	7.4		13.3	10.2
	10.7	7.6		13.2	10.1

STA. N. 134+00 - EAST

(2)

DIST Sound Elev DIST Sound Elev

DIST	Sound	Elev	DIST	Sound	Elev
(30)	13.2	10.2	(30)	13.8	10.8
	13.0	10.0		14.0	11.0
10+00	13.2	10.2	50	14.0	{
	13.2	10.2		14.0	{
	13.3	10.3		14.0	{
	13.3	{		13.7	10.7
	13.3	{		13.5	10.5
50	13.3	{	13+00	13.2	10.2
	13.4	10.4		13.0	10.0
<u>1210</u>	13.2	10.2		13.0	10.0
	13.3	10.3		12.9	9.9
	13.4	10.4		12.9	{
11+00	13.4	{	50	12.9	{
	13.4	{		13.0	10.0
	13.3	10.3		13.0	{
	13.3	{		13.0	{
	13.3	{		13.0	{
50	13.4	10.4	14+00	13.0	{
	13.0	10.0		13.0	{
	13.4	10.4		13.2	10.2
	13.5	10.5		14.1	11.1
	13.5	10.5		15.2	12.2
12+00	13.9	10.9	50	15.3	12.3
	13.9	10.9		15.3	12.3
	13.8	10.8		15.5	12.5



STA. N. 134+00 - EAST. 1-13-60

Dist	Sound	Elev	Dist	Sound	Elev
(29)	15.3	12.4	(29)	3.2	0.3
	15.1	12.2		3.1	0.2
15+00	14.9	12.0	50	3.3	0.3
	14.9	12.0		3.3	{
	14.8	11.9		3.3	{
1215	14.7	11.8		3.3	{
	14.6	11.7		3.2	0.2
50	14.7	11.8	18+00	3.2	0.2
	14.8	11.9	SOUND WEST		
	14.9	12.0	0+10	1.0	+1.7
	14.8	11.9	(27)	1.0	+1.7
	15.0	12.1		0.9	+1.8
16+00	15.0	{	1223	0.9	+1.8
	15.0	{	50	1.0	11.7
	15.2	12.3		0.9	+1.8
	15.5	12.6		1.0	+1.7
	15.4	12.5		0.8	+1.9
50	15.5	12.6		0.8	+1.9
	15.3	12.4	1+00	1.0	+1.7
	15.0	12.1		0.9	+1.8
	10.7	7.8		0.9	+1.8
	8.0	5.1		1.0	+1.7
17+00	6.9	4.0		1.0	{
	3.7	0.8	50	1.0	{
	3.2	0.3		0.9	+1.8

STA. N. 134+00 - WEST

(22)

Dist	Sound	Elev	Dist	Sound	Elev
(26)	0.7	+1.9	(26)	3.1	0.5
	0.8	+1.8		3.9	1.3
	0.8	+1.8		5.0	2.4
2+00	0.7	+1.9	50	5.9	3.3
	0.7	{		7.1	4.5
1227	0.7	{		7.9	4.3
	0.6	+2.0		8.5	5.9
	0.6	{		8.9	6.3
50	0.6	{	5+00	9.0	6.4
	0.7	+1.9		8.5	5.9
	0.6	+2.0		7.6	5.0
	0.6	{		6.8	4.2
	0.6	{		5.0	2.4
3+00	0.5	+2.1	50	3.0	0.4
	0.5	+2.1		1.4	+1.2
	0.6	+2.0		0.5	+2.1
1230	0.6	{			
	0.6	{			
50	0.8	+1.8	6+00		
	1.1	+1.5			
	1.3	+1.3			
	1.9	+0.7			
	2.2	+0.4			
4+00	2.4	+0.2	50		
	2.7	0.1			

1-14-60

STA. N. 135+00 - EAST

STA. N. 135+00; 0+00 = W. 14,200; SOUND EAST

Dist	Sound	Elev	Dist	Sound	Elev
0+00	4.7	+1.4	(6.1)	17.5	11.4
(6.1)	4.7	+1.4	50	17.4	11.3
	4.8	+1.3	<u>9.45</u>	17.4	
<u>9.43</u>	4.8			17.4	
	4.8			17.3	11.2
50	4.9	+1.2		17.0	10.9
	5.0	+1.1	3+00	17.0	
	5.0	+1.1		17.0	
	4.9	+1.2		16.9	10.8
	5.0	+1.1		16.5	10.4
1+00	4.9	+1.2		16.5	
	5.0	+1.1	50	16.5	
	5.0			16.4	10.3
	5.0			16.3	10.2
	5.0			16.0	9.9
50	5.3	+0.8		15.9	9.8
	5.9	+0.2	4+00	16.0	9.9
	6.7	0.6		16.1	10.0
	9.3	3.2		16.0	9.9
	12.6	6.5		15.9	9.8
2+00	15.5	9.4		15.8	9.7
	17.3	11.2	50	15.8	
	17.5	11.4		15.8	
	17.5	11.4		15.8	

Dist	Sound	Elev	Dist	Sound	Elev
(6.1)	15.5	9.4	(6.1)	16.0	9.9
	15.5	9.4		13.5	7.4
5+00	15.3	9.2	50	13.4	7.3
	15.4	9.3		13.5	7.4
	15.2	9.1		13.5	7.4
	15.3	9.2		13.7	7.6
	15.3	9.2		13.8	7.7
50	15.4	9.3	8+00	13.8	
	15.5	9.4		13.8	
	15.6	9.5		13.8	
	15.6	9.5		13.8	
<del>5+00</del>	15.9	9.8	<del>50</del>	13.7	7.6
6+00	16.0	9.9	50	13.7	7.6
	16.1	10.0		13.9	7.8
9:50	16.3	10.2		14.0	7.9
<u>      </u>	16.6	10.5		14.6	8.5
	16.6	10.5		15.2	9.1
50	16.9	10.8	9+00	16.0	9.9
	17.0	10.9		17.3	11.2
	17.2	11.1		18.2	12.1
	17.2	11.1		19.0	12.9
	17.6	11.5		19.2	13.1
7+00	17.8	11.7	50	18.7	12.6
	17.8	11.7		18.0	11.9
	17.1	11.0		18.0	11.9

STA. N. 135+00 - EAST			1-14-60		
Dist	Sound	Elev	Dist	Sound	Elev
(16.0)	17.9	11.9	(6.0)	16.5	10.5
	17.5	11.5		16.5	10.5
10+00	17.0	11.0	50	16.4	10.4
	16.9	10.9		16.2	10.2
	16.9	10.9		15.9	9.9
<u>9.55</u>	16.5	10.5		15.7	9.7
	16.5	10.5		15.4	9.4
50	16.2	10.2	13+00	15.3	9.3
	16.2	10.2		15.3	}
	16.1	10.1		15.3	}
	16.0	10.0		15.3	}
	15.7	9.7		15.5	9.5
11+00	15.5	9.5	50	15.3	9.3
	15.5	9.5		15.2	9.2
	15.4	9.4		15.3	9.3
	15.4	9.4		15.1	9.1
	15.2	9.2		15.3	9.3
50	15.2	9.2	14+00	15.8	9.8
	15.3	9.3		16.5	10.5
	15.3	9.3		17.0	11.0
	15.5	9.5		17.0	11.0
	16.0	10.0		17.1	11.1
12+00	16.1	10.1	50	17.2	11.2
	16.2	10.2		17.2	}
	16.5	10.5		17.2	}

STA. N. 135+00 - EAST			(24)		
Dist	Sound	Elev	Dist	Sound	Elev
(6.0)	17.2	11.2	(5.0)	7.5	1.6
	17.0	11.0		7.4	1.5
15+00	17.0	}	50	7.9	2.0
	17.0	}		7.9	}
<u>10.00</u>	17.0	}		7.9	}
	16.9	10.9		7.5	1.6
	17.0	11.0		7.5	1.6
50	17.1	11.1	18+00	8.0	2.1
	17.0	11.0		8.0	}
	17.2	11.2		8.0	}
	17.2	11.2		8.0	}
	17.1	11.1		7.7	1.8
16+00	17.1	11.1	50	7.7	1.8
	17.0	11.0		7.5	1.6
	16.6	10.6	10.05	7.4	1.5
	16.2	10.2		7.4	1.5
	15.9	9.9		7.3	1.4
50	15.2	9.2	19+00	7.2	1.3
	14.3	8.3		7.0	1.1
	10.4	4.4		7.0	}
	8.0	2.0		7.0	}
	7.9	1.9		7.0	}
17+00	7.8	1.8	50	7.0	}
	7.8	1.8		6.9	1.0
	7.6	1.6		7.0	1.1

## STA. N. 135+00 - EAST 1-14-60

Dist	Sound	Elev	Dist	Sound	Elev
(5.9)	7.1	1.2	(5.7)	4.3	+1.4
	7.0	1.1	"	4.5	+1.2
20+00	7.0	1.1		4.4	+1.3
	6.9	1.0	50	4.2	+1.5
	7.0	1.1	10/15	4.3	+1.4
	6.9	1.0	<u>      </u>	4.3	+1.4
	6.8	0.9		4.2	+1.5
50	6.8	0.9		4.3	+1.4
	6.9	1.0	1+00	4.3	+1.4
	7.1	1.2		4.1	+1.6
	6.7	0.8		4.1	}
	6.5	0.6		4.1	}
21+00	7.0	1.1		4.1	}
	7.3	1.4	50	4.2	+1.5
	7.9	2.0		4.2	}
	8.1	2.2		4.2	}
	8.1	}		4.1	+1.6
50	8.1	}		4.1	+1.6
	8.0	2.1	2+00	4.0	+1.7
	7.7	1.8		4.0	}
	7.6	1.7		4.0	}
	7.4	1.5		4.0	}
22+00	7.3	1.4		3.9	+1.8
SOUND WEST			50	4.0	+1.7
0+10	4.5	+1.4		4.0	+1.7

 STA. N. 135+00 - WEST (25)

Dist	Sound	Elev	Dist	Sound	Elev
(5.7)	4.0	+1.7	(5.6)	10.8	5.2
	4.0	}		9.3	3.7
	4.0	}		7.4	1.8
3+00	4.0	}	50	5.3	+0.3
	4.0	}	10/20	3.8	+1.8
	3.9	+1.8	<u>      </u>	2.7	+2.9
	4.0	+1.7		1.5	+4.1
	4.1	+1.6		0.8	+4.8
50	4.2	+1.5	6+00		
	4.3	+1.4			
	4.5	+1.2			
	5.1	+0.6			
	5.4	+0.3			
4+00	6.0	0.3			
	6.3	0.6			
	7.0	1.3			
	7.6	1.9			
	8.4	2.7			
50	9.5	3.8			
	10.6	4.9			
	11.5	5.8			
	12.1	6.9			
	12.2	6.5			
5+00	12.3	6.6			
	12.0	6.3			

1-15-60

STA. N. 136+00; 0+00 = W. 14,200; SOUND EAST

Dist	Sound	Elev	Dist	Sound	Elev
0+00	5.2	+1.0	(62)	19.0	12.8
(62)	5.2	+1.0	50	19.0	12.8
	5.3	+0.9		19.0	12.8
<u>9:50</u>	5.4	+0.8		18.7	12.5
	5.5	+0.7		18.3	12.1
50	5.6	+0.6		18.1	11.9
	5.7	+0.5	3+00	18.1	11.9
	5.7	+0.5	<u>9:55</u>	18.0	11.8
	5.8	+0.4	-	17.9	11.7
	5.8	}		17.8	11.6
1+00	5.8	}		17.4	11.2
	5.8	}	50	17.2	11.0
	5.9	+0.3		17.1	10.9
	5.9	}		17.0	10.8
	5.9	}		16.9	10.7
50	6.1	+0.1		16.9	10.7
	6.8	0.6	4+00	16.8	10.6
	7.9	1.7		16.8	10.6
	10.6	4.4		16.7	10.5
	15.0	8.8		16.5	10.4
2+00	19.0	12.8		16.6	10.4
	19.3	13.1	50	16.8	10.6
	19.2	13.0		16.9	10.7
	19.2	13.0		16.9	10.7

STA. N. 136+00-EAST

(26)

Dist	Sound	Elev	Dist	Sound	Elev
(62)	16.9	10.7	(6.1)	17.3	11.2
	16.9	}		17.7	11.6
5+00	16.9	}	50	18.0	11.9
	17.0	10.8		18.6	12.5
	17.2	11.0	<u>10:00</u>	18.0	11.9
	17.4	11.2	-	17.0	10.9
	17.5	11.3		14.1	8.0
50	17.5	11.3	8+00	13.9	7.8
	17.0	10.8		14.1	8.0
	16.9	10.7		15.0	8.9
	16.3	10.1		16.5	10.4
	16.2	10.0		17.8	11.7
6+00	16.2	10.0	50	18.2	12.1
	16.3	10.1		18.9	12.8
	16.4	10.2		19.0	12.9
	16.5	10.3		19.0	12.9
	16.7	10.5		18.9	12.8
50	16.7	10.5	9+00	18.9	12.8
	17.0	10.8		19.0	12.9
	16.9	10.7		19.2	13.1
	17.1	10.9		19.2	13.1
	17.2	11.0		19.4	13.3
7+00	17.2	11.0	50	19.7	13.6
	17.3	11.1		20.0	13.9
	17.2	11.0		20.5	14.4

STA. N. 136+00 - EAST 1-15-60

Dist	Sound	Elev	Dist	Sound	Elev
(6)	21.0	14.9	(6)	16.1	10.0
	21.0	}		16.1	10.0
10+00	21.0	}	50	16.4	10.3
	20.9	14.8		17.2	11.1
	20.7	14.6		17.2	11.1
	20.1	14.0		17.0	10.9
	20.2	14.1		16.3	10.2
50	20.0	13.9	13+00	16.1	10.0
	19.4	13.3		16.2	10.1
	19.0	12.9		16.1	10.0
	18.9	12.8		16.2	10.1
	18.5	12.4		16.2	}
11+00	17.9	11.8	50	16.2	}
	17.8	11.7		16.2	}
<u>1005</u>	17.5	11.4		16.3	10.2
	17.2	11.1		16.5	10.4
	17.1	11.0		16.5	}
50	17.0	10.9	14+00	16.5	}
	17.0	}		16.6	10.5
	17.0	}		16.8	10.7
	16.8	10.7		16.9	10.8
	16.5	10.4		16.9	10.8
12+00	16.5	10.4	50	16.8	10.7
	16.4	10.3		16.8	10.7
	16.3	10.2		16.7	10.6

STA. N. 136+00 - EAST (2)

Dist	Sound	Elev	Dist	Sound	Elev
(6)	16.8	10.7	(6)	9.0	2.9
	16.9	10.8		9.0	}
15+00	16.8	10.7	50	9.0	}
	16.7	10.6		9.0	}
	16.2	10.1		9.0	}
	16.1	10.0		9.0	}
	16.0	9.9		9.0	}
50	16.1	10.0	18+00	9.0	}
	16.1	10.0		9.0	}
	16.0	9.9		9.3	3.2
	16.0	}		9.3	}
	16.0	}		9.3	}
16+00	16.1	10.0	50	9.1	3.0
	16.0	9.9		9.0	2.9
	15.9	9.8		8.9	2.8
<u>1010</u>	15.5	9.4		8.9	2.8
	11.4	5.3		8.4	2.3
50	10.3	4.2	19+00	8.6	2.5
	9.8	3.7		8.2	2.1
	9.6	3.5		8.2	2.1
	9.3	3.2		8.3	2.2
	9.1	3.0		8.1	2.0
17+00	9.2	3.1	50	8.0	1.9
	9.1	3.0		8.0	}
	9.1	3.0		8.0	}

STA. N136+00			1-15-60		
Dist	Sound	Elev	Dist	Sound	Elev
(6.0)	7.9	1.9	SOUND WEST		
	7.9	1.9	0+10	5.0	+0.9
20+00	7.6	1.4	(50)	5.0	
<u>10.15</u>	7.6	1.4		5.0	
	7.5	1.5		5.0	
	7.3	1.3	50	5.0	
	7.2	1.2	<u>10.25</u>	5.0	
50	7.1	1.1		5.0	
	7.1	1.1		5.0	
	7.0	1.0		5.0	
	7.0	1.0	1+00	5.0	
	6.9	0.9		5.0	
21+00	6.9	}		5.0	
	6.9	}		5.0	
	6.8	0.8		5.0	
	6.7	0.7	50	5.0	
	7.0	1.0		5.0	
50	7.0	1.0		4.8	+1.1
	7.1	1.1		4.7	+1.2
	7.2	1.2		4.6	+1.3
	7.3	1.3	2+00	4.6	+1.3
	7.3	1.3		4.5	+1.4
22+00	7.2	1.2		4.5	+1.4
				4.4	+1.5
				4.3	+1.6

STA. N136+00 - WEST			(28)		
Dist	Sound	Elev	Dist	Sound	Elev
50	4.3	+1.6	5+00	13.9	8.0
(50)	4.4	+1.5	(50)	13.5	7.6
	4.4	+1.5		12.6	6.7
	4.5	+1.4		11.2	5.3
	4.3	+1.6		9.4	3.5
3+00	4.3	}	50	6.1	0.2
	4.3	}		4.3	+1.6
	4.3	}		3.2	+2.7
	4.5	+1.4		2.0	+3.9
	4.7	+1.2		1.0	+4.9
50	5.0	+0.9	6+00		
	5.2	+0.7			
	5.5	+0.4			
	6.0	0.1			
	6.3	0.4			
4+00	6.4	0.5			
	7.0	1.1			
	7.4	1.5			
	8.1	2.2			
	9.1	3.2			
50	10.8	4.9			
	12.0	6.1			
	12.9	7.0			
	13.7	7.8			
	13.8	7.9			

1-15-60

STA. N. 137+00; 0+00 = W. 14,200; SOUND EAST

Dist	Sound	Elev	Dist	Sound	Elev
0+00	5.2		(59)	7.8	
(5.9)	5.2		50	10.2	
	5.2			11.3	
<u>10.35</u>	5.6			13.2	
	5.5			15.2	
50	5.5			16.5	
	5.5		3+00	17.0	
	5.7			17.0	
	5.7			17.0	
	5.7			16.5	
1+00	5.8			16.3	
	6.0		50	16.0	
	6.0			16.0	
	6.0			15.9	
	6.0			15.5	
50	5.7			15.4	
	5.5		4+00	15.3	
	5.4			15.2	
	5.3			15.2	
	5.3			15.2	
2+00	5.4			15.2	
	6.0		50	15.2	
	6.1			15.2	
	6.6			15.2	

STA N 137+00 - EAST

(29)

Dist	Sound	Elev	Dist	Sound	Elev
(58)	15.2		(53)	16.7	
	15.2			16.6	
5+00	15.2		50	16.9	
	15.6			17.0	
<u>10.40</u>	16.2			17.2	
	16.8			16.5	
	17.2			17.9	
50	17.3		8+00	18.0	
	17.3			18.2	
	17.1			18.3	
	16.9			18.4	
	16.8			18.7	
6+00	16.9		50	19.0	
	17.3			18.6	
	17.6			18.7	
	17.2			18.9	
	17.1			18.9	
50	17.1		9+00	18.9	
	17.0			19.0	
	17.0			18.7	
	17.0			18.6	
	16.7			18.5	
7+00	16.5		50	18.4	
	16.5			18.6	
	16.7			19.0	



STA. N. 137+00 - EAST 1-15-60

Dist	Sound	Elev	Dist	Sound	Elev
(57)	19.2		(57)	17.6	
	19.6			17.2	
10+00	19.9		50	17.1	
	20.0			16.9	
<u>1045</u>	19.9			16.6	
	19.9			16.5	
	19.9			16.3	
50	19.7		13+00	16.3	
	19.5			16.2	
	19.6			16.2	
	19.7			16.0	
	20.0			16.0	
11+00	20.0		50	16.0	
	20.0			16.0	
	20.2			16.2	
	20.2			16.4	
	20.2			16.4	
50	19.9		14+00	16.6	
	19.3			16.4	
	19.1			16.3	
	18.5			16.2	
	18.2			16.2	
12+00	18.2		50	16.2	
	18.1			16.1	
	18.1			16.1	

STA. N. 137+00 - EAST (30)

Dist	Sound	Elev	Dist	Sound	Elev
(56)	16.0		(55)	4.8	
	16.0			4.8	
15+00	16.0			4.8	
	15.9		50	4.7	
	15.6		<u>10:57</u>	4.7	
<u>10:50</u>	15.3			4.6	
	15.4			4.5	
50	15.3			4.4	
	15.2		1+00	4.3	
	15.1			4.3	
	15.1			4.2	
	15.2			4.2	
16+00	15.2			4.2	
	14.0		50	4.2	
	10.0			4.2	
	9.2			4.2	
	8.1			4.2	
50	7.2			4.2	
	6.8		2+00	4.2	
	6.1			4.1	
	6.1			4.0	
	5.4			4.0	
17+00	5.3			4.0	
SOUND WEST			50	4.0	
0+10	4.8			4.0	

STA. N. 137+00 - WEST 1-15-60

Dist	Sound	Elev	Dist	Sound	Elev
(59)	4.0		(54)	5.0	
	4.2			3.8	
	4.2			3.1	
3+00	4.3		50	2.3	
	4.5			1.1	
	4.7				
	5.0				
	5.3				
50	5.6		6+00		
	6.1				
11:00	6.2				
	7.2				
	8.4				
4+00	9.6				
	11.1				
	11.9				
	12.3				
	12.4				
50	12.5				
	12.6				
	12.4				
	12.0				
	11.3				
5+00	9.9				
	7.1				

1-15-60 (31)

STA. N. 138+00; 0+00 = W. 14,200'SOUND EAST

Dist	Sound	Elev	Dist	Sound	Elev
0+00	5.0	+0.3	(32)	5.7	0.5
(33)	5.1	+0.2	50	5.9	0.7
	5.1	+0.2		5.8	0.6
	5.5	0.2		6.0	0.8
11:05	5.5	0.2		6.0	}
50	5.4	0.1		6.0	}
	5.4	0.1	3+00	6.2	1.0
	5.3	0.0		6.9	1.7
	5.3	0.0		7.7	2.5
	5.2	+0.1		9.7	4.5
1+00	5.1	+0.2		12.5	7.3
	5.1	}	50	13.0	7.8
	5.1	}		13.0	7.8
	5.2	+0.1		12.1	6.9
	5.1	+0.2		10.1	4.9
50	5.1	}		9.7	4.5
	5.1	}	4+00	8.3	3.1
	5.2	+0.1		8.1	2.9
	5.2	+0.1	11:10	7.5	2.3
	5.3	0.0		7.4	2.2
2+00	5.4	0.1		7.1	1.9
	5.5	0.2	50	7.3	2.1
	5.7	0.4		7.8	2.6
	5.8	0.5		7.9	2.7

STA. N. 138+00 - EAST 1-15-60

Dist	Sound	Elev	Dist	Sound	Elev
(51)	8.2	3.1	(51)	16.3	11.2
	8.8	3.7		16.2	11.1
5+00	9.1	4.0	50	16.3	11.2
	9.3	4.2		16.3	11.2
	9.5	4.4		16.1	11.0
	9.8	4.7		16.1	11.0
	9.9	4.8		16.2	11.1
50	10.1	5.0	8+00	16.2	11.1
	10.2	5.1		16.1	11.0
	10.4	5.3		15.9	10.8
	11.5	6.4		15.7	10.6
	13.7	8.6		15.9	10.8
6+00	15.9	10.8	50	16.0	10.9
	17.2	12.1		16.1	11.0
	17.7	12.6		16.3	11.2
11.5	17.2	12.1		16.4	11.3
	17.1	12.0		16.3	11.2
50	17.2	12.1	9+00	16.4	11.3
	17.0	11.9		16.6	11.5
	16.9	11.8		17.0	11.9
	16.9	11.8		16.9	11.8
	16.8	11.7		16.9	11.8
7+00	16.7	11.6	50	16.8	11.7
	16.7	11.6		17.0	11.9
	16.6	11.5		16.8	11.7

STA. N. 138+00 - EAST

(32)

Dist	Sound	Elev	Dist	Sound	Elev
(50)	16.8	11.8	(50)	19.2	14.2
	16.7	11.7		19.2	14.2
10+00	16.4	11.4	50	18.8	13.8
	16.1	11.1		18.7	13.7
	16.9	11.9		18.1	13.1
	16.2	11.2		18.3	13.3
	15.9	10.9		18.3	13.3
50	16.3	11.3	13+00	18.2	13.2
	16.2	11.2		18.1	13.1
11.20	16.0	11.0		18.0	13.0
	16.0	11.0		17.9	12.9
	16.2	11.2		17.8	12.8
11+00	15.9	10.9	50	17.8	12.8
	16.2	11.2		17.9	12.9
	16.0	11.0		17.7	12.7
	16.1	11.1		17.6	12.6
	16.8	11.8		17.4	12.4
50	17.0	12.0	14+00	17.4	12.4
	17.0			17.3	12.3
	17.0			17.0	12.0
	17.3	12.3		16.7	11.7
	18.1	13.1		16.1	11.1
12+00	18.8	13.8	50	15.8	10.8
	19.5	14.5		15.3	10.3
	19.3	14.2		15.0	10.0

STA. N. 138+00 - EAST 1-15-60

Dist Sound Elev Dist Sound Elev

Dist	Sound	Elev	Dist	Sound	Elev
(50)	15.0	10.0	SOUND WEST		
	14.5	9.5	0+10	6.7	
15+00	14.1	9.1	(7.2)	6.7	
	13.9	8.9		6.8	
<u>1125</u>	13.8	8.8	<u>8:18</u>	6.5	
	13.6	8.6	50	6.5	
	13.4	8.4		6.4	
50	13.4	8.4		6.4	
	13.3	8.3		6.4	
	13.1	8.1		6.4	
	11.9	6.9	1+00	6.4	
	10.3	5.3		6.4	
16+00	7.3	2.3		6.4	
	5.5	0.5		6.4	
	5.0	0.0		6.4	
	4.7	+0.3	50	6.4	
	4.4	+0.6		6.3	
50	4.2	+0.8	<u>8:20</u>	6.2	
	4.3	+0.7		6.2	
	4.3	+0.7		6.3	
	4.2	+0.8	2+00	6.3	
	4.3	+0.7		6.2	
17+00	4.2	+0.8		6.2	
				6.2	
				6.3	

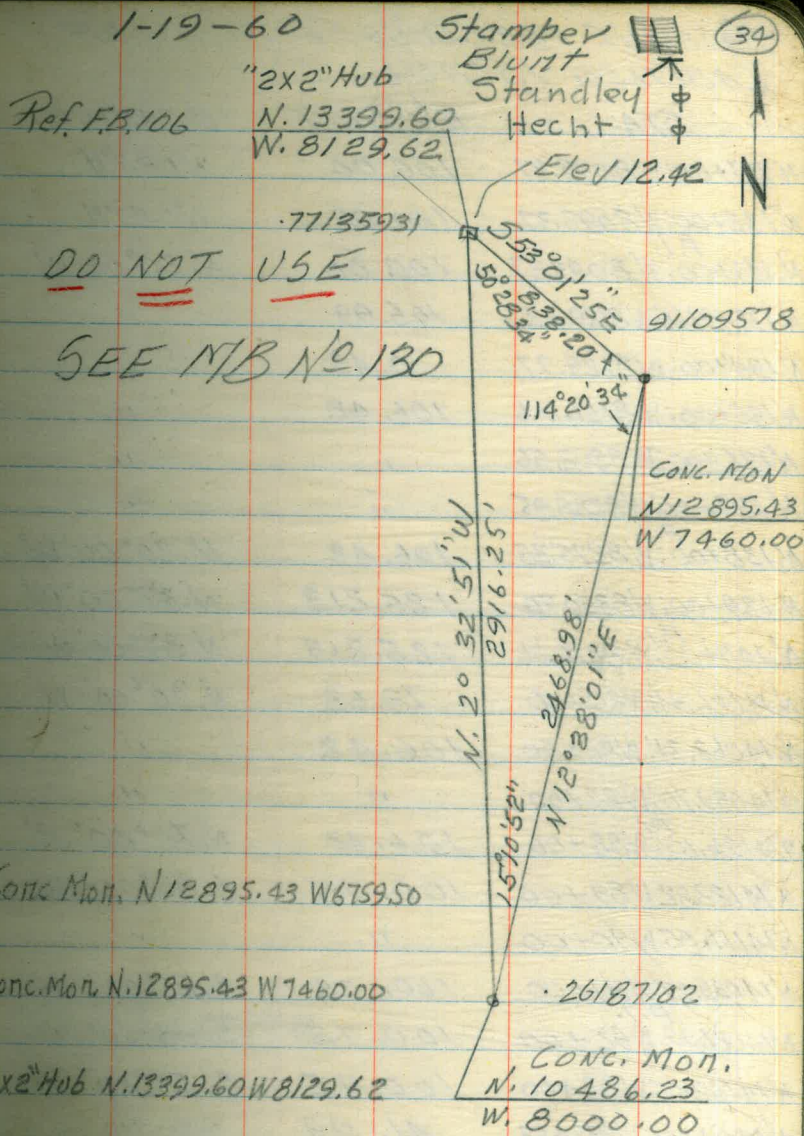
STA. N. 138+00 - WEST 1-27-60 (33)

Dist Sound Elev Dist Sound Elev

Dist	Sound	Elev	Dist	Sound	Elev
50	6.6		5+00	3.0	
(7.2)	7.0		(7.2)	2.1	
	7.3			1.0	
	8.1				
	8.9				
3+00	9.3		50		
	10.2				
	11.5				
	12.6				
	13.4				
50	14.0		6+00		
	14.0				
	14.0				
	13.8				
	13.5				
4+00	12.5				
	10.5				
	10.0				
	9.6				
	7.6				
50	6.8				
	5.7				
	5.0				
	4.4				
	3.8				

TRIANGULATION OF CONTROL POINT  
CABRILLO ISLAND W.O. 64501

Sta	Object	Angles
	CROWN	1. 52° 49' 50"
N. 12895.43	R ↓	2. 105° 39' 40"
W. 7460.00	Hub N7400 ±	6. 316° 58' 24"
		AV. 52° 49' 44"
	CROWN	1. 85° 31' 15"
N. 10486.23	R ↓	2. 171° 02' 40"
W. 8000.00	Hub. N7400 ±	6. 513° 07' 24"
		AV. 85° 31' 14"
	N. 12895.43	1. 50° 28' 35"
	W. 7460.00	2. 100° 57' 25"
Hub N13400 ±	R ↓	
	N. 10486.23	6. 302° 51' 48"
	W. 8000.00	AV. 50° 28' 38"
B.M.		12.92
	5.21 18.13	
B.M.		7.38 10.75
	2.67 13.42	
F. B.M.		1.00 12.42
B.M.		10.75
	7.10 17.85	
B.M.		4.93 12.92 ~ 12.92



BASELINE FOR CROSS SECTIONS OF CABILLO ISLAND

1-19-60

STA.	B/L DIST	BEARING
N.131+00; W8093.37	100.00	NORTH
N.132+00; W8093.37	100.00	NORTH
<sup>P.I.</sup> N.133+00; W8093.37	100.00	N.20°00' W
N.133+99.66; W8129.62	105.99	"
N.134+00; W8129.77	0.43	"
N.135+00; W8166.16	106.42	"
N.136+00; W8202.56	"	"
N.137+00; W8238.95	"	"
<sup>P.I.</sup> N.138+00; W8275.35	106.42	N.20°00' W
N.139+00; W8350.70	125.213	N.37°00' W
<sup>P.I.</sup> N.140+00; W8426.06	125.213	N.37°00' W
N.14026.91; W85+00	78.68	N.70°00' W
N.14063.31; W86+00	106.42	"
N.14099.70; W87+00	"	"
<sup>P.I.</sup> N.14136.10; W88+00	106.42	N.70°00' W
N.14123.82; W89+00	100.75	5.83°00' W
N.14114.55; W90+00	"	"
N.14099.27; W91+00	100.75	5.83°00' W
<sup>P.I.</sup> N.14086.99; W92+00	100.75	5.83°00' W
N.14022.05; W93+00	100.75	5.57°00' W
N.140+00; W9334.63	41.29	"
N.139+00; W9488.51	183.61	"
<sup>P.I.</sup> N.138+00; W9626.89	165.00	5.57°00' W
N.138+00; W9632.05	11.37	5.27°00' W
N.137+00; W9683.00	112.232	5.27°00' W

Set RP. W.84+00

Set RP. N.14110 }  
Set RP. N.14040 } W92+00

Set RP. W.94+00

BASELINE FOR CROSS SECTIONS OF  
CABRILLO ISLAND CONT'D.

36

STA.	B/L DIST	BEARING
N137+00; W9683.00	112.232	N. 27°00' E
N136+00; W9733.95	"	
N135+00; W9784.91	"	
N134+00; W9835.86	"	
N133+00; W9886.81	"	
N132+00; W9937.76	"	
N131+00; W9988.71		
N130+00; W10039.66	112.232	N27°00' E
		38°48'21"
↳ To Crown		5.65°48'21" W

1-20-60

1-20-60

STA. N. 131+00; 0+00 = W. 8093.37

Sta	+	H.I.	-	Elev.	*2x2" Hub N 13399.60 W 8129.62
TBM	5.57	17.99		12.42	
0			5.6	12.4	
E 18			5.8	12.2	
E 94			15.0	3.0	
E 106			16.3	1.7	
E 111			14.0	4.0	
E 150			14.5	3.5	
E 200			14.5	3.5	
E 250			14.6	3.4	
E 300			16.3	1.7	
E 325			17.1	0.9	
W 50			5.8	12.2	
W 75			5.3	12.7	
W 95			9.4	8.6	
W 150			10.2	7.8	
W 200			9.3	8.7	
W 250			8.9	9.1	
W 300			10.8	7.2	
W 350			11.4	6.6	
W 400			12.0	6.0	
W 450			12.8	5.2	
W 500			13.2	4.8	

(37)

STA. N. 132+00; 0+00 = W. 8093.37

Sta	+	H.I.	-	Elev
0		17.99	6.2	11.8
E 25			6.2	11.8
E 100			14.2	3.8
E 110			14.9	3.1
E 120			14.0	4.0
E 150			14.0	4.0
E 200			14.2	3.8
E 225			14.1	3.9
E 250			15.3	2.7
E 300			16.3	1.7
E 325			17.0	1.0
W 50			5.2	12.8
W 70			5.0	13.0
W 80			8.0	10.0
W 100			8.3	9.7
W 150			9.0	9.0
W 200			9.8	8.2
W 250			10.6	7.4
W 300			11.4	6.6
W 350			11.9	6.1
W 400			12.3	5.7
W 450			12.9	5.1
W 500			13.3	4.7



1-20-60

STA. N. 133+00; 0+00 = 8093.37

Sta	+	H.I.	-	Elev
0		17.99	6.4	12.6
E 20			6.4	12.6
E 90			13.9	4.1
E 100			13.4	4.6
E 150			13.6	4.4
E 185			13.6	4.4
E 200			14.3	3.7
E 250			15.7	2.3
E 300			16.9	1.1
W 50			4.2	13.8
W 85			4.1	13.9
W 95			8.0	10.0
Sta. N. 134+00; 0+00 = W 812.9.77				
0			5.8	12.2
E 35			6.2	11.8
E 100			13.4	4.6
E 120			14.2	3.8
E 125			13.1	4.9
E 150			13.2	4.8
E 185			13.6	4.4
E 200			14.3	3.7
E 250			15.3	2.7
W 50			4.0	14.0
W 75			3.6	14.4

(38)

STA. N. 134+00 CONTD.

Sta	+	H.I.	-	Elev
W 90		17.99	9.2	8.8
W 150			10.0	8.0
W 200			10.4	7.6
W 300			11.6	6.4
W 400			12.5	5.5
W 500			13.4	4.6

STA. N. 135+00; 0+00 = W 8166.16

0			4.0	14.0
E 40			6.2	11.8
E 100			12.6	5.4
E 125			14.8	3.2
E 135			14.9	3.1
E 145			13.5	4.5
E 190			13.6	4.4
E 250			15.2	2.8
W 50			2.4	15.6
W 70			1.8	16.2
W 80			7.2	10.8

1-20-60

STA. N. 136+00; 0+00 = W 8202.56

Sta.	+	H.I.	-	Elev
0		17.99	3.6	14.4
E 43			5.6	12.4
E 100			11.0	7.0
E 140			13.9	4.1
E 145			13.2	4.8
E 200			14.4	3.6
E 250			15.5	2.5
W 50			3.1	14.9
W 85			2.5	15.5
W 95			7.1	10.9
W 200			9.6	8.4
W 300			10.9	7.1
W 400			12.0	6.0
W 500			13.9	4.1

STA. N. 137+00; 0+00 = W 8238.95

0			5.1	12.9
E 35			5.5	12.5
E 100			10.7	7.3
E 128			12.7	5.3
E 140			11.6	6.4
E 177			12.2	5.8
E 200			12.8	5.2
E 250			14.8	3.2
W 50			4.2	13.8

(39)

STA. N. 137+00 CONTD.

Sta.	+	H.I.	-	Elev
W 100			17.99	3.8
W 116				4.0
W 125				7.9

STA. N. 138+00; 0+00 = W 8275.35

0			4.7	13.3
E 20			4.8	13.2
E 100			12.7	5.3
E 115			11.8	6.2
E 120			11.2	6.8
E 150			11.5	6.5
E 190			12.2	5.8
E 200			13.1	4.9
E 250			14.0	4.0
W 50			4.8	13.2
W 100			4.7	13.3
W 150			4.1	13.9
W 170			6.9	11.1
W 200			9.0	9.0
W 300			11.4	6.6
W 400			11.9	6.1
W 500			13.2	4.8

1-20-60

STAN 139+00; 0+00 = W 8350.70

Sta	+	H.I.	-	Elev
0		17.99	3.9	14.1
E 30			4.0	14.0
E 100			8.6	9.4
E 140			10.8	7.2
E 165			11.9	6.1
E 175			11.0	7.0
E 200			12.6	5.9
E 250			12.9	5.1
E 300			14.1	3.9
W 50			4.3	14.7
W 100			4.0	14.0
W 160			4.3	13.7
W 170			9.1	8.9

STAN 140+00; 0+00 = W 8426.06

Sta	TP	H.I.	-	Elev
0		3.34	14.66	2 <sup>1/2</sup> Hub
E 15			3.5	14.5
E 100			10.2	7.8
E 125			11.2	6.8
E 155			10.2	7.8
E 200			11.9	6.1
E 250			12.2	5.8
E 300			13.0	5.0
W 50			3.9	14.1
W 100			4.6	13.4

STA. N. 140+00 CONTD

(40)

Sta	+	H.I.	-	Elev
W 150			17.99	4.4
W 195				3.9
W 210				8.5
W 300				10.3
W 400				11.4
W 500				11.6

STA. W 8400; 0+00 = N 14000

Sta	TP	H.I.	-	Elev
0		2.74	17.40	14.66
N 100				4.7
N 110				11.5
N 165				9.5
N 200				10.3
N 250				12.6
N 300				12.8
5 10				14.2
5 10				3.2
5 10				2.6

2<sup>1/2</sup> Hub  
N 14000

STA. W. 83+00; 0+00 = N. 14,000

0				10.3	7.1
N 25				10.7	6.7
N 35				10.0	7.4
N 100				11.4	6.0
N 150				12.8	4.6
N 200				13.6	3.8

1-20-60

STA. W. 82+00; 0+00 = N. 14,000

Sta + H.1 - Elev

0 17.40 11.3 6.1

N 50 12.3 5.1

N 100 12.4 5.0

N 150 13.8 3.6

STA. W. 85+00; 0+00 = N. 14026.9)

0 3.5 13.8

N 45 2.6 14.8

N 100 8.9 8.5

N 135 12.0 5.4

N 153 10.2 7.2

N 175 10.5 6.9

N 200 11.7 5.7

N 250 13.2 4.2

N 300 13.9 3.5

S 30 3.5 13.9

STA. W. 86+00; 0+00 = N. 14063.3)

0 4.3 13.1

N 57 3.5 13.9

N 100 7.8 9.6

N 143 11.7 5.7

N 158 10.9 6.6

N 200 12.3 5.1

N 225 12.1 5.3

N 300 14.6 2.8

STA. W. 86+00 CONTD,

Sta + H.1 - Elev

S 65 17.40 3.7 13.7

STA. W. 87+00; 0+00 = N. 14,100

0 4.6 12.8

N 56 4.8 12.6

N 100 9.4 8.0

N 141 12.9 4.5

N 155 12.3 5.1

N 200 12.7 4.7

N 250 15.1 2.3

S 59 4.0 13.7

S 75 8.8 8.6

S 100 8.7 8.7

STA. W. 88+00; 0+00 = N. 14136.10

0 5.1 12.3

N 30 5.5 11.9

N 100 12.9 4.5

N 115 13.9 3.5

N 125 12.7 4.7

N 150 12.8 4.6

N 200 14.8 2.6

S 50 5.5 11.9

S 80 4.8 12.6

S 88 10.6 6.8

S 100 11.3 6.1

S 140 11.1 6.3

1-20-60

STA. W. 89+00; 0+00 = N/14123.82

Sta	+	H.I.	-	Elev
0		17.40	6.1	11.3
N 40			5.6	11.8
N 100			12.5	4.9
N 125			15.0	2.4
N 135			12.2	5.2
N 180			12.5	4.9
N 200			13.3	4.1
N 225			14.8	2.6
S 50			5.5	11.9
S 70			5.4	12.0
S 86			11.3	6.1
S 100			11.4	6.0
S 125			11.0	6.4

STA. W. 90+00; 0+00 = N/14111.55

0		6.2	11.2
N 45		5.6	11.8
N 100		12.5	4.9
N 110		13.9	3.5
S 50		6.7	10.7
S 67		6.0	11.4
S 75		10.1	7.3
S 100		10.6	6.8
S 112		10.9	6.6

STA. W. 91+00; 0+00 = N/14099.27

Sta	+	H.I.	-	Elev
0		17.40	6.1	
N 35			5.9	11.5
N 100			13.9	3.5
S 50			5.9	11.5
S 93			5.7	11.7
S 110			11.1	6.3

STA. W. 92+00; 0+00 = N/14087

0		6.4	11.0
N 20		6.4	11.0
N 95		14.7	2.7
S 50		6.6	10.8
S 90		6.2	11.2
TP		6.32	11.08

3.82 14.90

STA. W. 93+00; 0+00 = N/14022.05

0		4.0	10.9
N 40		3.5	11.4
N 100		11.3	3.6
N 110		12.3	2.6
S 25		4.1	10.8

1-20-60

43

STA. W. 94+00; 0+00 = N. 14,000

Sta	+	H.I	-	Elev
0		14.90	3.4	11.5
N 6			3.3	11.6
N 70			9.0	5.9
N 95			12.3	2.6
N 105			12.2	2.7
N 115			10.3	4.6
N 140			9.9	5.0
N 200			12.2	2.7
STA. W. 95+00; 0+00 = N. 14,000				
0			9.3	5.6
N 40			13.1	1.8
N 55			10.4	4.5
N 100			12.1	2.8
S 70			3.4	11.5
STA. W. 96+00; 0+00 = N. 14,000				
0			10.2	4.7
N 65			12.6	2.3
S 19			10.1	4.8
S 30			14.3	0.6
S 40			13.0	1.9
S 100			8.4	6.5
S 160			2.8	12.1

STA. N. 140+00; 0+00 = W. 9334.63

Sta	+	H.I	-	Elev
0		14.90	4.1	10.8
W 75			3.4	11.5
W 100			5.1	9.8
W 150			8.3	6.6
W 200			12.0	2.9
W 220			13.2	1.7
W 236			9.8	5.1
W 265			10.2	4.7
W 300			11.5	3.4
W 325			12.0	2.9
STA. N. 139+00; 0+00 = W. 9488.51				
0			3.4	11.5
W 50			3.3	11.6
W 100			7.7	7.2
W 162			12.1	2.8
W 185			12.3	2.6
W 195			10.5	4.4
W 200			10.5	4.4
W 300			12.7	2.2

9335

325

9660

1-20-60

STA. N. 138+00; 0+00 = W 9632.05

Sta	+ H.I	-	Elev
0	14.90	2.8	12.1
W 6		2.9	12.0
W 100		12.0	2.9
W 110		12.4	2.5
W 115		9.7	5.2
W 150		10.6	4.3
W 200		12.7	2.2

STA. N. 137+00; 0+00 = W 9683

0		2.8	12.1
W 12		2.7	12.2
W 100		12.3	2.6
W 110		12.8	2.1
W 120		10.1	4.8
W 150		10.6	4.3
W 200		12.2	2.7

STA. N. 136+00; 0+00 = W 9733.95

0		2.5	12.4
W 10		2.3	12.6
W 80		10.4	4.5
W 100		12.8	2.1
W 110		13.6	1.3
W 120		11.6	3.3
W 200		12.5	2.4
TBM,		2.34	12.56

 ON HUB  
 N. 13500  
 W 9784.91

1-21-60

STA. N. 135+00; 0+00 = W. 9784.91

Sta	+ H.I	-	Elev	on Hub
TBM,		14.90	3.68	11.22
TBM,	3.34	15.90		12.56
0			3.8	12.1
W 18			3.0	12.9
N 24			5.9	10.0
W 50			8.6	7.3
W 100			10.8	5.1
W 150			11.7	4.2
W 200			12.6	3.3
W 250			14.6	1.3

STA. N. 134+00; 0+00 = W 9835.86

0		3.3	12.6
W 22		2.7	13.2
W 32		8.6	7.3
W 50		9.5	6.4
W 100		11.0	4.9
W 150		12.4	3.5
W 200		13.5	2.4

1-21-60

STA. N.133+00; 0+00 = W 9886.81

Sta	+ H.I	-	Elev
0	15.90	3.7	12.2
W 21		3.2	12.7
W 43		8.6	7.3
W 60		9.1	6.8
W 100		13.2	2.7
W 125		15.3	10.6
W 130		12.7	3.2
W 200		14.2	1.7

STA. N.132+00; 0+00 = W 9937.76

0		3.6	12.3
W 14		3.7	12.2
W 20		6.3	9.6
W 40		8.6	7.3
W 100		11.7	4.2
W 150		12.2	3.7
W 200		13.5	2.4

45

STA. N.131+00; 0+00 = W 9988.71

Sta	+ H.I	-	Elev
0	15.90	3.3	12.6
W 9		2.9	13.0
W 17		5.1	10.8
W 35		8.2	7.7
W 50		9.4	6.5
W 100		11.3	4.6
W 150		12.8	3.1

STA. N.130+00; 0+00 = W 10039.67

0		3.4	12.5
W 8		3.1	12.8
W 23		6.7	9.2
W 35		8.4	7.5
W 50		9.7	6.2
W 100		11.8	4.1
W 150		12.7	3.2

TBM

3.10	12.80	N13000 W10039.67
------	-------	---------------------



1-21-60

STA. N. 130+00; 0+00=W/10039.67  
SEC. @ N 63° W.

Sta	+	H.I.	-	Elev
0		15.90	3.4	12.5
W 7			3.1	12.8
W 22			6.3	9.6
W 30			8.4	7.5
W 50			10.2	5.7
W 100			12.4	3.5
W 150			14.0	1.9
E 50			3.4	12.5
E 94			2.7	13.2
E 107			6.4	9.5

STA. N. 134+00; 0+00=W 9835.86 SEC. N 63° W

0		3.3	12.6
W 11		2.4	13.5
W 27		8.2	7.7
W 50		9.3	6.6
W 100		10.7	5.2
W 150		12.2	3.7
W 200		13.6	2.3
E 50		3.0	12.9
E 90		2.2	13.7
E 108		7.4	8.5

E

(300)

(46)

STA. N. 138+00; 0+00=W 9632.05; SEC. @ N 63° W

Sta	+	H.I.	-	Elev
0		15.90	3.8	12.1
W 5			3.9	12.0
W 50			9.4	6.5
W 90			13.2	2.7
W 97			11.0	4.9
W 150			12.6	3.3
W 200			14.4	1.5
E 50			3.7	12.2
E 100			3.6	12.3
E 150			3.8	12.1
E 196			2.3	13.6
E 210			5.7	10.2
TP			3.66	12.24

STA. N. 140+00; 0+00=W 9334.63; SEC. N 32° W

0	4.46	16.70	5.9	10.8
W 38			5.1	11.6
W 100			12.0	4.7
W 125			14.4	2.3
W 131			12.0	4.7
W 150			12.0	4.7
W 200			13.7	3.0
S 50			5.5	11.2
S 90			5.0	11.7
S 98			8.2	8.5

1-21-60

STA. W. 90+00; 0+00=N/1411.55 SEC. N13°W

Sta	+	H.I.	-	Elev
0		16.70	5.6	11.1
N. 43			4.8	11.9
N. 100			11.9	4.8
N. 125			15.0	1.7
N 133			14.5	2.2
N140			14.0	2.7
N200			14.6	2.1
S 50			5.7	11.0
S 65			5.2	11.5
S 75			9.4	7.3
STA. W. 86+00; 0+00=N/1406331 SEC. N30°E				
0			3.6	13.1
N 55			2.5	14.2
N100			7.7	9.0
N140			10.9	5.8
N144			9.4	7.3
N200			11.4	5.3
N250			12.5	4.2
N300			13.5	3.2
S 50			3.3	13.4
S 72			2.4	14.3
S 85			7.3	9.4
TP			3.21	13.49
4.41		17.90		

N/1406331  
W8600

(47)

N/140+00; 0+00=W/8426.06; SEC. N. 32°E

Sta	+	H.I.	-	Elev
0		17.90	3.6	14.3
N11			3.3	14.6
N 93			12.7	5.2
N100			10.5	7.4
N150			11.5	6.4
N160			11.5	6.4
N200			13.5	4.4
N250			14.2	3.7
S 50			4.0	13.9
S100			4.4	13.5
S135			4.6	13.3
S142			9.3	8.6
STA. N. 136+00; 0+00=W/8093.37 SEC. N63°E				
0			3.6	14.3
E 43			4.7	13.2
E100			10.9	7.0
E129			13.3	4.6
E134			12.2	5.7
E200			13.3	4.6
E280			16.6	1.3
W 79			3.0	14.9
W 88			8.1	9.8
TP			5.52	12.38
3.25		15.63		

1-21-60

STA. N. 132+00; 0+00 = W 8093.37 SEC. N 88° E

Sta	+	H.I.	-	Elev
0		15.63	3.9	11.7
E 27			3.8	11.8
E 84			11.1	4.5
E 100			11.7	3.9
E 150			11.8	3.8
E 225			12.0	3.6
E 300			14.1	1.5
W 75			2.6	13.0
W 85			5.9	9.7

TBM.

3.25 12.38 ~ 12.42

Starting  
Bench

1-21-60

STA. W 81+00; 0+00 = N. 14.000; SOUND NORTH

Dist	Sound	Elev	Dist	Sound	Elev
0+00			35		2.3
35			50		2.4
					2.5
2.45	0.2				2.5
	1.2				2.5
50	2.3				2.6
	2.2		3+00		2.6
	2.3				2.6
	2.5				2.5
	2.6				2.6
1+00	2.8				2.5
	2.6		50		2.5
	1.5				2.5
	2.0				2.5
	2.4				2.5
50	2.4				2.5
	2.5		4+00		2.5
	2.5				
	2.5				
2+00	2.4				
	2.5		50		
	2.5				
	2.5				

(40)

1-21-60

(49)

STA. W. 80+00; 0+00 = N. 14,000; SOUND NORTH

STA. W. 82+00; 0+00 = N. 14,150; SOUND NORTH

Dist	Sound	Elev	Dist	Sound	Elev	Dist	Sound	Elev	Dist	Sound	Elev
0+00	2.2	+1.3		2.2	+1.3	A+00				2.8	+0.7
<u>35</u>	2.2	+1.3	50	2.2	+1.3	<u>35</u>	0.4	+3.1	50	2.8	+0.7
	2.1	+1.4		2.2	+1.3		0.6	+2.9		2.9	+0.6
<u>2:32</u>	2.2	+1.3		2.1	+1.4	<u>2:53</u>	1.4	+2.1		2.8	+0.7
	2.2	+1.3		2.1	{		1.9	+1.6		2.8	+0.7
50	2.2	+1.3		2.1	}	50	2.5	+1.0		2.9	+0.6
	2.2	+1.3	3+00	2.1	}		2.6	+0.9	3+00	3.0	+0.5
	2.3	+1.2		2.0	+1.5		2.6	{			
	2.2	+1.3		2.1	+1.4		2.6	}			
	2.2	+1.3		2.0	+1.5		2.9	+0.6			
1+00	2.3	+1.2		2.0	{	1+00	2.6	+0.9			
	2.3	+1.2	50	2.0	}		2.7	+0.8	50		
	2.4	+1.1		2.0	}		2.8	+0.7			
	2.5	+1.0		2.0	}		2.8	{			
	3.0	+0.5		2.0	}		2.8	}			
50	3.2	+0.3		2.0	}	50	2.8	}			
	3.6	0.1	4+00	2.0	}		2.9	+0.6	4+00		
	3.3	+0.2					2.9	{			
<u>3:40</u>	3.5	0.0					2.9	}			
	2.3	+1.2					2.9	}			
2+00	2.3	+1.2				2+00	2.8	+0.7			
	2.3	+1.2	50				2.8	+0.7	50		
	2.2	+1.3					2.9	+0.6			
	2.2	+1.3					2.8	+0.7			

1-21-60

(50)

STA W83+00; 0+00=N/14,300; SOUND NORTH

STA. W. 84+00; 0+00=N/14,300; SOUND NORTH

Dist	Sound	Elev	Dist	Sound	Elev	Dist	Sound	Elev	Dist	Sound	Elev
0+00	1.2			2.3		0+00			(24)	2.0	+0.4
(35)	1.9		50	3.3		(24)			50	2.0	
	2.9			3.5						2.0	
	3.0			3.4			0.2	+2.2		2.0	
<u>3:02</u>	3.0			3.3		<u>1:45</u>	0.7	+1.7		2.0	
	3.0			3.2		50	0.8	+1.6		2.0	
50	3.1		3+00	3.2			0.9	+1.5	3+00	2.0	
	3.1						1.0	+1.4			
	3.1						1.1	+1.3			
	3.1						1.1	+1.3			
1+00	3.1					1+00	1.1	+1.3			
	3.1						1.0	+1.4			
	3.2						0.8	+1.6			
	3.2						0.7	+1.7			
	3.3						0.8	+1.6			
50	3.3					50	0.9	+1.5			
	3.2						1.0	+1.4			
	3.3						1.2	+1.2			
	3.3						1.2	+1.2			
	3.3						1.3	+1.1			
2+00	3.3					2+00	1.5	+0.9			
	3.3						1.9	+0.5			
	3.4						1.9	+0.5			
	3.4						2.0	+0.4			

1-26-60

STA. W 85+00; 0+00 = N. 14, 330 ; SOUND NORTH

Dist Sound Elev Dist Sound Elev

0+00

50

50

3+00

1+00

50

2+00

STA. W 86+00; 0+00 = N. 14, 370 ; SOUND NORTH

Dist Sound Elev Dist Sound Elev

0+00

4.2 + 2.3

65

4.4 + 2.1

50

4.5 + 2.0

8:30

4.5 + 2.0

4.6 + 1.9

50

4.7 + 1.8

4.8 + 1.7

3+00

4.8 + 1.7

5.0 + 1.5

5.2 + 1.3

1+00

5.3 + 1.2

5.5 + 1.0

5.7 + 0.8

5.9 + 0.6

6.0 + 0.5

50

6.0 + 0.5

5.9 + 0.6

6.0 + 0.5

6.0 + 0.5

6.0 + 0.5

2+00

6.0 + 0.5

W87+00; 0+00 = N14350; SOUND NORTH  
Dist Sound Elev Dist Sound Elev  
0+00

50

50

3+00

1+00

50

2+00

1-26-60

(62)

W88+00; 0+00 = N14340; SOUND NORTH  
Dist Sound Elev Dist Sound Elev

0+00 4.1 +2.3

(64) 4.5 +1.9 50

4.7 +1.7

8:40 5.1 +1.3

5.2 +1.2

50 5.2 +1.2

5.3 +1.1 3+00

5.4 +1.0

5.5 +0.9

5.7 +0.7

1+00 6.0 +0.4

6.1 +0.3

6.1 +0.3

6.0 +0.4

6.0 +0.4

50 6.1 +0.3

6.2 +0.2

6.3 +0.1

6.3 +0.1

6.3 +0.1

2+00 6.5 0.1

1-26-60

(53)

STA. W 89+00; 0+00 = N 14,360; SOUND NORTH

Dist Sound Elev Dist Sound Elev

0+00

50

50

3+00

1+00

50

2+00

STA. W 90+00; 0+00 = N 14,230; SOUND NORTH

Dist Sound Elev Dist Sound Elev

0+00

(63)

8.45

50

1+00

50

2+00

3.9 +2.4

4.1 +2.2

4.0 +2.3

2.9 +3.4

3.0 +3.3

3.2 +3.1

3.4 +2.9

3.5 +2.8

3.7 +2.6

4.0 +2.3

4.1 +2.2

4.2 +2.1

4.9 +1.4

5.3 +1.0

5.6 +0.7

5.9 +0.4

6.1 +0.2

6.2 +0.1

6.2 +0.1

6.3 0.0

6.3 0.0

6.3 0.0

6.3 0.0

6.5 0.2

6.5 0.2

50 6.4 0.1

6.5 0.2

6.5

6.5

6.5

3+00 6.5

}



STA. W. 91+00; 0+00 = N 14, 200; SOUND NORTH  
Dist Sound Elev Dist Sound Elev

0+00

50

50

3+00

1+00

50

2+00

1-26-60 (54)  
STA. W. 92+00; 0+00 = N 14, 190; SOUND NORTH  
Dist Sound Elev Dist Sound Elev

0+00

4.5 +1.6

(6)

3.0 +3.1

50

2.3 +3.8

8:55

3.0 +3.1

3.5 +2.6

50

4.0 +2.1

4.3 +1.8

3+00

4.7 +1.4

5.0 +1.1

5.3 +0.8

1+00

5.5 +0.6

5.7 +0.4

6.0 +0.1

6.1 0.0

6.1 0.0

50

6.1 {

6.1 {

6.1 {

6.2 0.1

6.3 0.2

2+00

6.4 0.3

1-25-60

STA. W. 93+00; 0+00=N/4, 130; SOUND NORTH

Dist Sound Elev Dist Sound Elev

0+00

1.2

1.7

2.2

2.6

50

50

3+00

1+00

50

2+00

1-22-60

(53)

STA. W. 94+00; 0+00=N/4, 150; SOUND NORTH

Dist Sound Elev Dist Sound Elev

0+00

(2.3)

(2.3)

50

2.5 0.2

2.5 0.2

2.6 0.3

2.7 0.4

2.7 0.4

2.8 0.5

50

3+00

2.8 0.5

1:25

0.3 +2.0

0.5 +1.8

1+00

1.1 +1.2

1.3 +1.0

1.5 +0.8

1.5 +0.8

1.7 +0.6

50

2.0 +0.3

2.1 +0.2

2.2 +0.1

2.3 0.0

2.3 0.0

2+00

2.5 0.2

2.4 0.1

2.4 0.1

2.5 0.2



1-22-60

W 97+00; 0+00 = N 14 000; SOUND NORTH

Dist Sound Elev Dist Sound Elev

0+00

(20) 2.6

50 2.7

2.8

2.8

2.7

2.7

50 0.2

0.4

3+00 2.7

12:45 0.5

0.6

1.0

1+00 1.1

1.4

1.5

1.5

1.6

50 1.7

1.8

1.9

2.0

2.1

2+00 2.2

2.3

2.6

2.6

(57)

STA W 98+00; 0+00 = N 14 000; SOUND NORTH

Dist Sound Elev Dist Sound Elev

0+00 1.0 +1.0 (20) 3.0 1.0

(20) 1.0 } 50 3.0 }

1.0 } 3.0 }

12:50 1.1 +0.9 3.0 }

1.3 +0.7 3.0 }

50 1.3 +0.7 2.8 0.8

1.4 +0.6 3+00 2.7 0.7

1.4 +0.6 2.5 0.5

1.5 +0.5 2.4 0.4

1.5 } 2.4 0.4

1+00 1.5 } 2.5 0.5

1.6 +0.4 50 2.4 0.4

1.8 +0.2 2.3 0.3

1.9 +0.1 2.3 }

2.0 0.0 2.3 }

50 2.1 0.1 2.4 0.4

2.3 0.3 4+00 2.3 0.3

2.5 0.5

2.5 }

2.5 }

2+00 2.6 0.6

2.7 0.7

2.8 0.8

3.0 1.0

1-22-60

STA. W99+00.50+00-N/4000; SOUND NORTH

Dist Sound Elev Dist Sound Elev

Dist	Sound	Elev	Dist	Sound	Elev
0+00	1.2		(20)	2.9	
(20)	1.3		50	2.9	
	1.3			2.9	
<u>12157</u>	1.3			3.0	
	1.3			3.1	
50	1.4			3.1	
	1.6		3+00	3.0	
	1.9				
	2.0				
	2.1				
1+00	2.2				
	2.2				
	2.2				
	2.3				
	2.3				
50	2.4				
	2.5				
	2.5				
	2.6				
	2.8				
2+00	2.8				
	2.4				
	2.3				
	2.5				

(58)

STA. W100+00.0+00-N/4000; SOUND NORTH

Dist Sound Elev Dist Sound Elev

Dist	Sound	Elev	Dist	Sound	Elev
0+00	2.3	0.2	(21)	3.0	0.9
(21)	2.3	0.2	50	3.0	
	2.5	0.4		3.0	
<u>1102</u>	2.5			3.0	
	2.5		<u>1105</u>	3.0	
50	2.6	0.5		3.1	1.0
	2.5	0.4	3+00	3.1	
	2.5			3.1	
	2.5			3.1	
	2.5			3.0	0.9
1+00	2.5			3.0	0.9
	2.6	0.5	50	2.9	0.8
	2.6			2.7	0.6
	2.6			2.5	0.4
	2.6			2.5	
50	2.6			2.5	
	2.7	0.6	4+00	2.6	0.5
	2.8	0.7		2.7	0.6
	3.0	0.9		2.7	0.6
	3.1	1.0		2.8	0.7
2+00	3.1			3.1	1.0
	3.1		50	3.2	1.1
	3.0	0.9		3.4	1.3
	3.0	0.9		3.5	1.4

STA. W100+00 - NORTH. 1-22-60

Dist	Sound	Elev	Dist	Sound	Elev
(21)	3.0	0.9	(21)	4.6	2.5
	2.7	0.6		3.9	1.8
5+00	2.3	0.2	50	2.8	0.7
	2.4	0.3		2.1	0.0
	2.6	0.5		1.0	+1.1
	2.9	0.8			
	3.2	1.1			
50	4.0	1.9	8+00		
	4.6	2.5			
	6.2	4.1			
	6.4	4.3			
	6.5	4.4			
6+00	6.2	4.1	50		
	6.0	3.9			
	6.0	3.9			
	5.8	3.7			
	5.2	3.1			
50	5.1	3.0	9+00		
	4.9	2.8			
	6.9	4.8			
	7.2	5.1			
	6.9	4.8			
7+00	6.3	4.2	50		
	5.5	3.4			
	5.2	3.1			

1-26-60

STA. N135+00; 0+00=W8,166.2; SOUND EAST					
Dist	Sound	Elev	Dist	Sound	Elev
2+50	3.2	+2.6		4.5	+1.3
(58)	3.7	+2.1	5+00	3.4	+2.4
	3.9	+1.9			
<u>9'07</u>	4.1	+1.7			
	4.3	+1.5			
3+00	4.5	+1.3			
	4.8	+1.0			
	5.2	+0.6			
	5.1	+0.7			
	5.1	+0.7			
50	5.0	+0.8			
	4.9	+0.9			
	5.0	+0.8			
	5.2	+0.6			
	5.1	+0.7			
4+00	5.1	+0.7			
	5.1	+0.7			
	5.4	+0.4			
	6.1	0.3			
	6.3	0.5			
50	6.0	0.2			
	5.7	+0.1			
	5.6	+0.2			
	5.1	+0.7			

1-26-60

STA. N. 136400; 0+00 = W 82026 SOUND EAST

Dist Sound Elev Dist Sound Elev

2+50 3.3 +2.3

(5.6) 3.5 +2.1 5+00

3.7 +1.9

9:15 4.1 +1.5

4.4 +1.2

3+00 5.1 +0.5

5.2 +0.4

5.3 +0.3

5.3 +0.3

5.2 +0.4

50 5.2 {

5.2 }

5.2 }

4.9 +0.7

4.4 +1.2

4+00 5.2 +0.4

5.1 +0.5

5.1 +0.5

5.3 +0.3

5.5 +0.1

50 5.6 0.0

(60)

STA. N. 138400; 0+00 = W 82753 SOUND EAST

Dist Sound Elev Dist Sound Elev

2+50 1.5 +3.8

(53) 2.0 +3.3 5+00

2.2 +3.1

9:25 2.7 +2.6

3.4 +1.9

3+00 4.7 +0.6

4.8 +0.5

5.0 +0.3

4.8 +0.5

4.8 +0.5

50 4.9 +0.4

4.9 +0.4

4.8 +0.5

4.7 +0.6

4.6 +0.7

4+00 4.6 +0.7

50

1-26-60

STA. N. 140+00; O+00 = W 8200; SOUND EAST

Dist Sound Elev Dist Sound Elev

0+50

(5.1) 0.1 +5.0

0.3 +4.8

9:33 0.6 +4.5

1.0 +4.1

1+00 1.2 +3.9

2.1 +3.0

3.6 +1.5

4.0 +1.1

4.1 +1.0

50 4.1 +1.0

4.3 +0.8

4.2 +0.9

4.2 {

4.2 {

2+00 4.2 {

4.1 +1.0

4.1 {

4.1 {

4.2 +0.9

50 4.3 +0.8

1-26-60

(61)

STA. N. 135+00; O+00 = W 9,785; SOUND WEST

Dist Sound Elev Dist Sound Elev

2+50 3.0 +1.2

(4.2) 3.1 +1.1

3.1 {

10:10 3.1 {

3.2 +1.0

3+00 3.2 +1.0

2.8 +1.4

3.0 +1.2

3.0 +1.2

2.9 +1.3

50 2.9 +1.3

2.8 +1.4

2.6 +1.6

2.8 +1.4

2.7 +1.5

4+00 2.7 {

2.7 {

2.6 +1.6

2.5 +1.7

2.4 +1.8

50 2.6 +1.6

2.5 +1.7

2.5 {

2.5 {



1-26-60

STA. N. 136+00; O.D. = W 9, 734; SOUND WEST

Dist Sound Elev Dist Sound Elev

2+00 2.2 +2.2

(4.4) 2.5 +1.9

2.8 +1.6

10+00 3.1 +1.3

3.5 +0.9

50 3.6 +0.8

3.7 +0.7

3.7 {

3.7 {

3.8 +0.6

3+00 3.6 +0.8

3.7 +0.7

3.7 +0.7

3.6 +0.8

3.4 +1.0

50 3.3 +1.1

3.2 +1.2

3.2 {

3.2 {

3.2 {

4+00 3.1 +1.3

1-26-60

(62)

STA. N. 138+00; O.D. = W 9, 632; SOUND WEST

Dist Sound Elev Dist Sound Elev

2+00 2.6 +2.0

(4.6) 2.9 +1.7

3.2 +1.4

9.55 3.5 +1.1

3.5 +1.1

50 3.6 +1.0

3.8 +0.8

3.9 +0.7

3.8 +0.8

3.8 +0.8

3+00 3.9 +0.7

3.9 +0.7

3.9 +0.7

3.9 +0.7

4.0 +0.6

50 4.1 +0.5

4.1 +0.5

4.2 +0.4

4.2 +0.4

4.2 +0.4

4+00 4.3 +0.3

1-26-60

STA. N. 140+00; 0+00 = W. 9600; SOUND WEST

Dist Sound Elev Dist Sound Elev

0+50 1.9 +2.9

(48) 1.8 +3.0

2.3 +2.5

9:50 2.4 +2.4

2.4 +2.4

1+00 2.5 +2.3

2.3 +2.5

2.3 +2.5

2.6 +2.2

2.7 +2.1

50 2.8 +2.0

3.1 +1.7

3.2 +1.6

3.5 +1.3

3.8 +1.0

2+00 4.0 +0.8

4.1 +0.7

4.1 {

4.1 {

4.1 {

50 4.1 |

1-26-60

(63)

STA. N. 130+00; 0+00 = W. 10040; SOUND WEST

Dist Sound Elev Dist Sound Elev

1+50 0.7 +3.3 2.5 +1.5

(40) 1.0 +3.0 4+00 2.5 +1.5

1.2 +2.8

10:15 1.6 +2.4

1.8 +2.2

2+00 2.0 +2.0

2.1 +1.9

2.1 {

2.1 {

2.2 +1.8

50 2.3 +1.7

2.3 {

2.3 {

2.3 {

2.4 +1.6

3+00 2.5 +1.5

2.6 +1.4

2.6 +1.4

2.5 +1.5

2.5 +1.5

50 2.6 +1.4

2.6 {

2.6 {

2.6 {

1-27-60

STA. N. 139+00; 0+00 = W/4, 200, SOUND EAST

Dist	Sound	Elev	Dist	Sound	Elev
0+00	6.6		(7.1)	7.6	
(7.1)	6.7		50	7.9	
	6.8			8.1	
<u>8:28</u>	6.9		<u>8:30</u>	8.1	
	7.0			8.2	
50	7.1			8.4	
	7.1		3+00	8.7	
	7.2			9.2	
	7.2			9.8	
	7.2			10.1	
1+00	7.2			10.5	
	7.3		50	11.1	
	7.3			11.2	
	7.3			11.4	
	7.3			11.6	
50	7.3			11.7	
	7.3		4+00	11.7	
	7.3			11.7	
	7.4			11.3	
	7.4			11.0	
2+00	7.5			10.6	
	7.8		50	10.2	
	7.7			9.9	
	7.6			9.4	

(64)

STA. N. 139+00 - EAST

Dist	Sound	Elev	Dist	Sound	Elev
(7.0)	9.0		(7.0)	17.0	
	8.6			16.9	
5+00	8.3		50	16.9	
*	7.9		<u>8:35</u>	16.7	
	7.6			16.8	
	7.3			16.5	
	7.3			16.5	
50	7.1		8+00	16.5	
	7.2			16.4	
	7.6			16.4	
	8.2			16.7	
	11.1			17.1	
6+00	14.1		50	17.1	
	17.0		50	17.2	
	17.8			17.3	
	18.2			17.5	
	18.2			17.3	
50	18.2		9+00	17.3	
	18.0			17.3	
	17.9			17.3	
	17.6			17.3	
	17.3			17.6	
7+00	17.2		50	17.8	
	17.1			18.0	
	17.0			18.0	

STA. N. 139+00 - EAST 1-27-60

Dist	Sound	Elev	Dist	Sound	Elev
(70)	17.8		(70)	17.1	
	17.4			17.2	
10+00	17.0		50	17.2	
	16.9			18.0	
	16.9			18.0	
	17.0			18.1	
	17.2			18.2	
50	17.3		13+00	18.3	
	17.4			18.7	
	17.5			18.8	
	17.6		8:40	18.8	
	17.2			18.8	
11+00	17.2		50	18.8	
	17.0			19.0	
	16.9			18.9	
	16.8			18.7	
	16.8			18.4	
50	16.8		14+00	18.1	
	16.9			17.8	
	16.9			18.1	
	16.7			17.7	
	16.8			17.8	
12+00	16.6		50	17.6	
	16.8			17.5	
	17.0			17.5	

STA. N. 139+00 - EAST

Dist	Sound	Elev	Dist	Sound	Elev
(6.9)	17.4		(6.9)	9.7	
	17.4			9.2	
15+00	17.3		50	8.4	
	17.2			7.7	
	17.2			7.9	
	17.1			7.9	
	17.0			8.1	
50	16.9		18+00	8.1	
	16.7		SOUND WEST		
	16.4		0+10	6.4	
	16.4		(6.9)	6.4	
	16.3		8:50	6.3	
16+00	16.2			6.2	
	16.1		50	6.2	
	16.1			6.2	
	16.1			6.2	
	16.1			6.1	
50	15.9			6.1	
	15.2		1+00	6.1	
	14.4			6.1	
	13.4			6.2	
	12.4			6.4	
17+00	11.6			6.6	
	10.8		50	6.9	
	10.2			7.2	

STA. N139+00 - WEST 1-27-60

DIST	Sound	Elev	DIST	Sound	Elev
(69)	7.8		(69)	2.2	
	8.4			1.2	
	9.6				
2+00	10.7		50		
	11.7				
	12.2				
	12.4				
	12.6				
50	12.8		5+00		
	12.7				
	12.4				
	11.8				
	9.9				
3+00	6.9				
	6.1				
	5.7				
	5.4				
	4.7				
50	6.3				
	4.4				
	4.2				
	4.0				
	3.7				
4+00	3.3				
	2.8				

STA. N. 140+00; 0+00 - W. 14,200; SOUND EAST

DIST	Sound	Elev	DIST	Sound	Elev
0+00	7.3	0.5	(68)	12.1	5.3
(68)	7.3		50	12.1	5.3
	7.3			12.0	5.2
9:00	7.3			11.7	4.9
	7.3			11.4	4.6
50	7.3			11.1	4.3
	7.3		3+00	10.9	4.1
	7.3			10.4	3.6
	7.4	0.6		9.7	2.9
	7.5	0.7		9.2	2.4
1+00	7.6	0.8		8.6	1.8
	7.8	1.0	50	8.3	1.5
	8.0	1.2		7.7	0.9
	8.3	1.5		7.2	0.4
	8.6	1.8		6.9	0.1
50	9.0	2.2		6.7	+0.1
	9.4	2.6	4+00	6.4	+0.4
	9.8	3.0		6.3	+0.5
	10.1	3.3		6.2	+0.6
	10.5	3.7		6.0	+0.8
2+00	11.0	4.2		5.9	+0.9
	11.6	4.8	50	5.8	+1.0
	11.8	5.0		5.6	+1.2
	12.0	5.2		5.5	+1.3

STA. N. 140+00 - EAST 1-27-60

Dist	Sound	Elev	Dist	Sound	Elev
(6.8)	5.5	+1.3	(6.7)	16.4	9.7
	5.5	+1.3		16.4	9.7
5+00	5.4	+1.4	50	16.3	9.6
	5.3	+1.5	<u>9+05</u>	16.5	9.8
	5.4	+1.4		16.5	9.8
	5.3	+1.5		16.4	9.7
	5.5	+1.3		16.3	9.6
50	5.3	+1.5	8+00	16.2	9.5
	5.9	+0.9		16.2	9.5
	6.5	+0.3		16.3	9.6
	7.4	0.6		16.5	9.8
	11.9	5.1		16.3	9.6
6+00	15.3	8.5	50	16.4	9.7
	17.0	10.2		16.3	9.6
	17.2	10.4		16.2	9.5
	17.1	10.3		16.3	9.6
	17.0	10.2		16.4	9.7
50	17.0	}	9+00	16.5	9.8
	17.0	}		16.6	9.9
	16.9	10.1		16.7	10.0
	17.0	10.2		16.8	10.1
	16.8	10.0		17.0	10.3
7+00	16.8	10.0	50	17.2	10.5
	16.7	9.9		17.3	10.6
	16.5	9.7		17.2	10.5

STA. N. 140+00 - EAST

Dist	Sound	Elev	Dist	Sound	Elev
(6.6)	17.2	10.6	(6.6)	17.7	11.1
	17.2	10.6		18.0	11.4
10+00	17.4	10.8	50	17.9	11.3
	17.4	10.8		17.9	}
	17.3	10.7		17.9	}
	17.2	10.6	<u>9+10</u>	17.9	}
	17.3	10.7		17.7	11.1
50	17.7	11.1	13+00	17.7	11.1
	17.7	11.1		17.8	11.2
	17.5	10.9		17.8	11.2
	17.2	10.6		17.7	11.1
	16.9	10.3		17.5	10.9
11+00	16.8	10.2	50	17.5	10.9
	16.5	9.9		18.0	11.4
	16.3	9.7		18.0	}
	16.3	9.7		18.0	}
	16.4	9.8		18.2	11.6
50	16.4	9.8	14+00	18.4	11.8
	16.2	9.6		18.5	11.9
	16.3	9.7		18.6	12.0
	16.5	9.9		18.8	12.2
	16.5	9.9		18.4	<del>11.8</del>
12+00	16.5	9.9	50	17.7	11.1
	16.8	10.2		17.8	11.2
	17.0	10.4		17.7	11.1

STA. N. 140+00 - EAST 1-27-60			STA. N. 140+00 - EAST		
Dist	Sound	Elev	Dist	Sound	Elev
(63)	17.6	11.1	(65)	16.6	10.1
	17.7	11.2		17.0	10.5
15+00	18.0	11.5	50	17.0	10.5
	18.0	11.5		16.9	10.4
	18.3	11.8		16.9	}
	19.0	12.5		16.9	}
	18.7	12.2		16.9	}
50	16.0	9.5	18+00	16.9	}
	15.5	9.0		17.0	10.5
	16.0	9.5		17.1	10.6
	16.0	9.5		17.0	10.5
	16.1	9.6		17.2	10.7
16+00	16.2	9.7	50	17.3	10.8
	16.2	}		17.5	11.0
	16.2	}		17.5	}
	16.2	}		17.5	}
	16.2	}		17.4	10.9
50	16.2	}	19+00	17.3	10.8
9:15	16.0	9.5		16.8	10.3
	16.2	9.7		16.4	9.9
	16.2	9.7		16.4	9.9
	16.3	9.8		16.3	9.8
17+00	16.3	9.8	50	16.2	9.7
	16.4	9.9		15.9	9.4
	16.5	10.0		15.6	9.1

STA. N. 140+00 - EAST			STA. N. 140+00 - EAST (68)		
Dist	Sound	Elev	Dist	Sound	Elev
(64)	15.7	9.3	(63)	9.0	2.7
9:18	15.5	9.1		7.2	0.9
20+00	15.3	8.9		5.9	+0.4
SOUND WEST			50	5.0	+1.3
0+10	7.2	0.9		4.1	+2.2
(63)	7.3	0.9		3.5	+2.8
9:25	7.7	1.4		2.9	+3.4
	8.0	1.7		2.5	+3.8
50	8.4	2.1	3+00	2.0	+4.3
	9.0	2.7		1.4	+4.9
	10.0	3.7			
	11.0	4.7			
	12.1	5.8			
1+00	12.5	6.2	50		
	13.2	6.9			
	13.9	7.6			
	14.0	7.7			
	14.0	}			
50	14.0	}	4+00		
	14.0	}			
	13.7	7.4			
	13.1	6.8			
	12.9	6.6			
2+00	12.0	5.7			
	10.5	4.2			

1-27-60

STA. N. 141+00; 0+00 = W. 14200; SOUND EAST

Dist Sound Elev Dist Sound Elev

Dist	Sound	Elev	Dist	Sound	Elev
0+00	12.2		(6.2)	6.0	
(6.2)	12.3		50	5.7	
	12.4			5.5	
<u>9:30</u>	12.3			5.3	
	12.2			5.2	
50	12.2			5.0	
	12.2		3+00	5.1	
	12.2			5.0	
	12.1			4.8	
	12.0			4.6	
1+00	12.0			4.6	
	11.6		50	4.6	
	11.1			4.4	
	10.5			4.3	
	10.2			4.2	
50	9.8			4.2	
	9.3		4+00	4.1	
	9.2			4.1	
	8.5			4.0	
	7.9			4.0	
2+00	7.3			4.0	
	6.8		50	4.1	
	6.3			4.1	
	6.2			4.1	

69

STA. N. 141+00 - EAST

Dist Sound Elev Dist Sound Elev

Dist	Sound	Elev	Dist	Sound	Elev
(6.1)	4.6		(6.1)	9.4	
	4.3			10.2	
5+00	4.3		50	11.1	
<u>9:35</u>	4.2			11.8	
	4.3			12.8	
	4.2			14.0	
	4.2			14.9	
50	4.3		8+00	15.4	
	4.3			15.8	
	4.4			15.7	
	4.4			15.3	
	4.4			15.4	
6+00	4.4		50	15.8	
	5.2				
	5.6				
	6.0				
	6.3				
50	6.3				
	6.3				
	6.6				
	6.8				
	7.1				
7+00	7.6				
	8.0				
	8.8				

SOUND WEST

0+10 11.1

(6.0) 11.1

9:42 11.6

= 11.7

50 11.3

10.6

9.5

8.6

8.0

1+00 7.3

6.8



STA. N. 141+00 - WEST 1-27-60

Dist Sound Elev

(60) 6.2  
5.2  
4.4  
50 3.9  
3.3  
2.8  
2.1  
1.3

2+00

50

3+00

STA. N. 142+00; 0+00 = N. 14200; SOUND EAST

Dist Sound Elev Dist Sound Elev

0+00 4.8 (60) 3.7  
(60) 4.9 50 3.5  
4.7 3.6  
9:48 4.6 3.5  
4.6 3.5  
50 4.6 3.5  
4.6 3+00 3.2  
4.6 3.3  
4.6 3.2  
4.7 3.2  
1+00 4.7 3.2  
4.7 50 3.1  
4.7 3.2  
4.7 9:50 3.4  
4.3 3.4  
50 4.4 3.4  
4.3 4+00 3.4  
4.2 3.3  
4.1 3.3  
4.1 3.4  
2+00 4.0 3.4  
4.0 50 3.3  
3.9 3.4  
3.9 3.5

STA. N. 142+00 - EAST 1-27-60

Dist	Sound	Elev	Dist	Sound	Elev
(59)	3.6		(59)	4.4	
	3.6			4.5	
5+00	3.7		50	4.5	
	3.7			4.5	
	3.8			4.5	
	4.0			4.5	
	4.1			4.5	
50	4.5		8+00	4.5	
	4.6			4.7	
	4.6			5.2	
	4.0			5.3	
	4.1			4.9	
6+00	4.2		50	4.7	
	4.3			4.7	
	4.4		9.55	4.8	
	4.4		<del>9.55</del>	4.8	
	4.5			4.7	
50	4.5		9+00	4.8	
	4.5			4.8	
	4.5			4.8	
	4.6			4.9	
	4.6			4.9	
7+00	4.6		50	4.9	
	4.5			4.9	
	4.5			5.0	

STA. N. 142+00 - EAST

(11)

Dist	Sound	Elev	Dist	Sound	Elev
(59)	5.1				
	5.6				
10+00	6.3				
	8.2				
	11.3				
	14.1				
	15.6				
50	16.3				
SOUND WEST					
0+10	4.5				
(5.7)	5.3				
	4.9				
10+00	4.5				
50	4.2				
	4.0				
	3.5				
	3.0				
	2.5				
1+00	1.9				
	1.0				

50

1-27-60

STA. N. 143+00; 0+00 = W. 14200; SOUND EAST

Dist	Sound	Elev	Dist	Sound	Elev
0+00	3.9		(53)	3.2	
(55)	3.9		50	3.2	
	4.0			3.2	
10:05	4.0			3.1	
	4.0			3.1	
50	4.1			3.0	
	4.5		3+00	3.0	
	4.1		SOUND WEST		
	4.1		0+10	3.4	
	4.0		(54)	3.3	
1+00	3.9		10+0	3.0	
	3.8			2.8	
	3.9		50	2.4	
	3.8			2.0	
	3.7			1.2	
50	3.5			0.4	
	3.4				
	3.3		1+00		
	3.3				
	3.3				
2+00	3.3				
	3.2				
	3.2				
	3.2				

(72)

STA. N. 144+00; 0+00 = W. 14,200; SOUND EAST

Dist	Sound	Elev	Dist	Sound	Elev
0+00	1.3				
(53)	1.8				
	2.1				
10:12	2.4				
	3.0				
50	3.2				
	3.3				
	3.3				
	3.3				
1+00	3.3				
	3.3				
	3.3				
	3.4				
	3.5				
50	3.5				
	3.6				
	3.6				
	3.6				
	3.6				
2+00	3.6				

1-27-60

STA. W/142+00; 0+00=N.14400; SOUND SOUTH			STA. W/141+00; 0+00=N.14400; SOUND NORTH		
Dist	Sound	Elev	Dist	Sound	Elev
0+00			(53)	4.7	
(53)	1.5		50	4.9	
	2.2			5.0	
<u>10:15</u>	2.6			5.8	
	2.8			6.9	
50	2.9			9.0	
	3.0		3+00	11.0	
	3.1			11.5	
	3.2			11.3	
	3.4			11.6	
1+00	3.4			11.5	
	3.5		50	11.3	
	3.7			10.3	
	3.9			8.6	
	4.1			7.4	
50	4.2			6.5	
	4.5		4+00	5.8	
	4.1			5.4	
	4.1			5.3	
	4.1			5.2	
2+00	4.0			5.1	
	4.0		50	5.0	
	4.1				
	4.5				

(73)

STA. W/141+00; 0+00=N.14400; SOUND NORTH			STA. W/142+00; 0+00=N.14400; SOUND SOUTH		
Dist	Sound	Elev	Dist	Sound	Elev
0+00	3.2		(50)	3.3	
(51)	3.0			3.2	
	2.8		50	3.2	
<u>10:25</u>	2.5			3.2	
	2.3			3.2	
50	2.1			3.5	
	1.7			3.5	
	1.1		2+00	3.6	
				3.7	
				3.9	
1+00				4.0	
				4.2	
SOUND SOUTH			50	4.5	
0+10	3.1			5.2	
(50)	3.2			5.7	
	3.3			7.1	
<u>10:27</u>	3.3			8.9	
50	3.3			9.9	
	3.5		3+00	10.7	
	3.5			10.8	
	3.5			10.9	
	3.3			10.6	
1+00	3.2			10.4	
	3.2		50	10.3	
	3.3				

STA. W. 141+00 - SOUTH

DIST	SOUND	ELEV	DIST	SOUND	ELEV
(4.9)	9.4				
	7.6				
	6.4				
4+00	6.0				
	5.4				
<u>1030</u>	5.4				
	5.2				
	5.2				
50	5.2				
	5.2				
	5.0				
	5.0				
	5.1				
5+00	5.0				

(7A)

STA. W. 140+00; 0+00 = N. 14,400; SOUND NORTH

DIST	SOUND	ELEV	DIST	SOUND	ELEV
0+00	3.0	+1.7	(4.6)	2.5	+2.1
(4.7)	3.0	+1.7		2.3	+2.3
	2.9	+1.8	1+00	2.3	
<u>1035</u>	2.9	+1.8		2.3	
	2.9	+1.8		2.3	
50	2.7	+2.0		2.4	+2.2
	2.6	+2.1		2.4	
	2.3	+2.4	50	2.4	
	2.3	+2.4		2.4	
	2.1	+2.6		2.4	
1+00	2.2	+2.5		2.4	
	2.1	+2.6		2.4	
	1.8	+2.9	2+00	2.4	
	1.6	+3.1		2.8	+1.8
	1.3	+3.4		2.9	+1.7
50				3.0	+1.6
				3.1	+1.5
SOUND SOUTH				3.1	+1.5
0+10	2.9	+1.7	50	3.2	+1.4
(4.6)	2.8	+1.8	1040	3.3	+1.3
<u>1038</u>	2.8			3.8	+0.8
	2.8			4.2	+0.4
50	2.7	+1.9		4.6	+0.2
	2.6	+2.0	3+00	5.2	0.6
	2.6	+2.0		6.3	1.7



STA. W. 139+00 - SOUTH. 1-27-60

Dist	Sound	Elev	Dist	Sound	Elev
(4.1)	2.0		(4.1)	6.9	
50	2.0		5+00	6.2	
	2.2			5.5	
	2.5			5.3	
10:55	2.7			5.0	
<u>    </u>	3.1			5.0	
3+00	3.1		50	4.8	
	3.1			4.8	
	3.1			4.7	
	3.6			4.5	
	4.0			4.6	
50	4.2		6+00	4.9	
	4.5			4.9	
	5.3			5.0	
	6.1			5.5	
	6.9			6.0	
4+00	7.5		50	6.5	
	8.0			7.0	
	8.5			8.5	
	8.7			10.1	
	8.9			12.9	
50	9.0		7+00	14.6	
	8.5			15.3	
	8.1			16.1	
	7.3			16.4	

1-28-60

(76)

STA. W. 138+00; 0+00 = N. 14,400; SOUND NORTH						
Dist	Sound	Elev	Dist	Sound	Elev	
0+00	4.9	+2.1	(70)	4.3	+2.7	
(70)	4.9		50	4.3		
	4.9			4.3		
9:10	4.8	+2.2		4.2	+2.8	
<u>    </u>	4.8			4.4	+2.6	
50	4.8			4.3	+2.7	
	4.8		3+00	4.2	+2.8	
	4.8			4.0	+3.0	
	4.9	+2.1		3.3	+3.7	
	4.8	+2.2		3.0	+4.0	
1+00	4.7	+2.3		2.3	+4.7	
	4.6	+2.4	50	2.2	+4.8	
	4.6		SOUND SOUTH			
	4.6		0+10	4.7	+2.2	
	4.6		(60)	4.6	+2.3	
50	4.6			4.6	+2.3	
	4.6		9:15	4.6	+2.3	
	4.6		<u>    </u>	50	4.5	+2.4
	4.5	+2.5		4.5		
	4.4	+2.6		4.5		
2+00	4.4	+2.6		4.5		
	4.3	+2.7		4.5		
	4.3	+2.7	1+00	4.3	+2.6	
	4.2	+2.8		4.3	+2.6	

STA. W. 138+00 - SOUTH. 1-28-60

DIST	Sound	Elev	DIST	Sound	Elev
(69)	4.4	+2.5	(69)	5.5	+1.4
	4.3	+2.6		6.0	+0.9
	4.3	+2.6		6.3	+0.6
50	4.4	+2.5	4+00	6.6	+0.3
	4.3	+2.6		6.9	+0.3
	4.3	}		7.1	0.2
	4.3			7.5	0.6
	4.3			7.8	0.9
2+00	4.3		50	8.3	1.4
	4.4	+2.5		8.0	1.1
	4.5	+2.4	<u>920</u>	9.8	2.9
	4.5	+2.4		10.4	
	4.6	+2.3		11.1	
50	4.7	+2.2	5+00	11.3	
	4.7	+2.2		11.6	
	4.8	+2.1		12.0	
	4.8	+2.1		11.5	
	4.7	+2.2		11.3	
3+00	4.8	+2.1	50	10.1	
	4.9	+2.0		9.2	
	5.0	+1.9		8.6	
	5.3	+1.6		8.4	
	5.5	+1.4		8.5	
50	5.5	+1.4	6+00	10.2	
	5.9	+1.0		11.4	

STA. W. 138+00 - SOUTH (77)

DIST	Sound	Elev	DIST	Sound	Elev
(69)				14.0	
				15.2	
				16.0	
50			50	16.1	
				16.1	
				16.0	
				16.0	
				16.2	
			7+00	16.5	



1-28-60

STA. W. 137+00; 0+00 = N14400; SOUND NORTH

DIST	SOUND	ELEV	DIST	SOUND	ELEV
0+00	4.4		(68)	4.3	
(68)	4.4		50	4.4	
	4.4			4.4	
9:25	4.3			4.4	
<u>    </u>	4.3			4.4	
50	4.3			4.3	
	4.4		3+00	4.3	
	4.4			4.3	
	4.4			4.3	
	4.4			4.2	
1+00	4.4			4.2	
	4.4		50	4.2	
	4.4			4.1	
	4.4			4.1	
	4.4			4.1	
50	4.4			4.1	
	4.4		4+00	4.0	
	4.4			4.0	
	4.4			4.0	
2+00	4.4		50	4.0	
	4.3		50	3.7	
	4.4			3.0	
	4.3			3.5	

STA. W 137+00 - SOUTH

(78)

DIST SOUND ELEV DIST SOUND ELEV

DIST	SOUND	ELEV	DIST	SOUND	ELEV
(68)	3.3		(67)	4.4	
	3.0			4.6	
5+00	3.8			4.6	
SOUND SOUTH			50	4.6	
0+10	4.4			4.6	
(67)	4.4			4.8	
9:32	4.3			4.7	
<u>    </u>	4.3			4.8	
50	4.3		3+00	4.8	
	4.3			5.1	
	4.3			5.1	
	4.3			4.8	
	4.3			5.1	
1+00	4.3		50	4.9	
	4.3			4.8	
	4.2			5.0	
	4.2		9:35	4.9	
	4.2		<u>    </u>	5.1	
50	4.3		4+00	5.2	
	4.4			5.1	
	4.5			5.2	
	4.4			5.5	
	4.4			5.7	
2+00	4.3		50	5.7	
	4.4			5.9	

(79)  
 STA. W. 137+00 - SOUTH. 1-28-60  
 Dist Sound Elev Dist Sound Elev

(6.7) 6.2

6.4

6.8

5+00 7.3

8.2

8.8

9.3

10.2

50 11.1

11.3

11.3

11.2

11.1

6+00 10.7

10.1

9.6

9.8

10.2

50 11.0

12.4

14.3

15.8

16.3

7+00 16.6

CONTD IN MB 125

36

## IMPROVED TABLES AND INFORMATION

### HORIZONTAL STADIA CORRECTIONS

2°-00'	— 0.1	21°-00'	— 12.8	33°-00'	— 29.7
3°-00'	— 0.3	21°-30'	— 13.4	33°-15'	— 30.1
4°-00'	— 0.5	22°-00'	— 14.0	33°-30'	— 30.5
5°-00'	— 0.8	22°-30'	— 14.7	33°-45'	— 30.9
6°-00'	— 1.1	23°-00'	— 15.3	34°-00'	— 31.3
7°-00'	— 1.5	23°-30'	— 15.9	34°-15'	— 31.7
8°-00'	— 1.9	24°-00'	— 16.5	34°-30'	— 32.1
9°-00'	— 2.5	24°-30'	— 17.2	34°-45'	— 32.5
10°-00'	— 3.0	25°-00'	— 17.9	35°-00'	— 32.9
10°-30'	— 3.3	25°-30'	— 18.6	35°-15'	— 33.3
11°-00'	— 3.6	26°-00'	— 19.2	35°-30'	— 33.7
11°-30'	— 4.0	26°-30'	— 19.9	35°-45'	— 34.1
12°-00'	— 4.3	27°-00'	— 20.6	36°-00'	— 34.6
12°-30'	— 4.7	27°-30'	— 21.3	36°-15'	— 35.0
13°-00'	— 5.1	28°-00'	— 22.0	36°-30'	— 35.4
13°-30'	— 5.5	28°-30'	— 22.8	36°-45'	— 35.8
14°-00'	— 5.9	29°-00'	— 23.5	37°-00'	— 36.2
14°-30'	— 6.3	29°-30'	— 24.3	37°-15'	— 36.6
15°-00'	— 6.7	30°-00'	— 25.0	37°-30'	— 37.1
15°-30'	— 7.2	30°-15'	— 25.4	37°-45'	— 37.5
16°-00'	— 7.6	30°-30'	— 25.8	38°-00'	— 37.9
16°-30'	— 8.1	30°-45'	— 26.2	38°-15'	— 38.3
17°-00'	— 8.5	31°-00'	— 26.5	38°-30'	— 38.7
17°-30'	— 9.0	31°-15'	— 26.9	38°-45'	— 39.1
18°-00'	— 9.5	31°-30'	— 27.3	39°-00'	— 39.6
18°-30'	— 10.1	31°-45'	— 27.7	39°-15'	— 40.0
19°-00'	— 10.6	32°-00'	— 28.1	39°-30'	— 40.5
19°-30'	— 11.2	32°-15'	— 28.5		
20°-00'	— 11.7	32°-30'	— 28.9		
20°-30'	— 12.3	32°-45'	— 29.3		

#### Chains to Feet

1	.....	66
2	.....	132
3	.....	198
4	.....	264
5	.....	330
6	.....	396
7	.....	462
8	.....	528
9	.....	594
10	.....	660

#### Feet to Chains

100	....	1.515
200	....	3.030
300	....	4.545
400	....	6.060
500	....	7.575
600	....	9.090
700	....	10.606
800	....	12.121
900	....	13.636
1,000	....	15.151



87 14350  
88 14340  
89 14360  
90 14230  
91 14200  
92 14190  
93 14130  
94 14150  
95 14100