

MB 128



MICROFILMED

JHI

MB No 128

THIS Book INDEXED 2/9/62

1420 - 0.1
1430 - 0.2
1435 - 0.3

6718.4
145 61.6
6780.0

89-60
3256

57.04 6741.1

145+50 - 589

68000

N60-0400 = W14,140

14110
7
040

6672.8
144 37.2
6710.0

146 - 67639 13960
46.1
6810.0

14015
55

6695.6
14450 344
6730.0

146150 6786.7
533
68400

W132 = N6066

W132+50 = N6030

W133 = N6000

W133+50 = N5970

W134+00 = N5920

W134+50 = N5890

W135 = N5880

W135+50 = N5840

6763.9
761

68400

89 59-60
30-02-50

59-52 10

2-12-60

TOP OF SHOULDER NO 222; 0+00 =
TOP OF SHOULDER, SEC'S WLY

Sta.	+	H.I.	-	Elev	
B.M.	2.17	19.20		17.03	Mott. Dusty
0			2.0	17.2	
W 27			2.3	16.9	
W 65			8.7	10.5	
W 67			13.0	6.2	
W 70			13.4	5.8	set 2x2 Sounding

NO 223; 0+00 = TOP OF SHOULDER,
SEC'S WLY

0			2.1	17.1	
W 32			2.5	16.7	
W 75			9.5	9.7	
W 76			12.9	6.3	
W 80			13.7	5.5	set 2x2 Sounding

NO 224; 0+00 = TOP OF SHOULDER
SEC'S WLY

0			2.9	16.3	
W 28			3.1	16.1	
W 62			7.4	11.8	
W 63			12.8	6.4	
W 70			13.5	5.7	set 2x2 Sounding
W 80			14.4	4.8	

2-12-60

TOP OF SHOULDER NO 225; 0+00 =
TOP OF SHOULDER, SEC'S WLY

Sta	+	H.I.	-	Elev	
		19.20			
0			2.6	16.6	
W 33			2.8	16.4	
W 69			7.6	11.6	
W 69			12.7	6.5	
W 80			13.4	5.8	set 2x2 Sounding
W 90			14.4	4.8	

NO 226; 0+00 = TOP OF SHOULDER
SEC'S WLY

0			3.2	16.0	
W 23			3.1	16.1	
W 56			7.3	11.9	
W 56			12.5	6.7	
W 70			14.0	5.2	set 2x2 Sounding
W 80			15.0	4.2	

NO 227; 0+00 = TOP OF SHOULDER
SEC'S WLY

0			3.5	15.7	
W 25			2.8	16.4	
W 57			7.1	12.1	
W 57			12.7	6.5	
W 70			13.7	5.5	set 2x2 Sounding
W 80			14.6	4.6	

2-12-60

SOUND
WLY.SOUNDINGS TOP SHLDR SEC'S CABRILLO
ISLAND No 222; 0+00 = 70' WLY. TOP SHLDR.

Dist Sound Elev Dist Sound Elev

0+00

(0.6)

1:35

50 0.5 0.1

5.6 5.0

6.6 6.0

7.0 6.4

7.0 6.4

1+00 7.3 6.7

7.3 6.7

7.2 6.6

7.8 7.2

8.0 7.4

50 8.2 7.6

8.1 7.5

8.1 7.5

8.2 7.6

7.9 7.3

2+00 8.0 7.4

No 223; 0+00 = 80' WLY. TOP SHLDR; SOUND WLY.

Dist Sound Elev Dist Sound Elev

0+00

(0.5)

1:40

50 1.2 0.7

5.4 4.9

7.1 6.6

7.3 6.8

7.6 7.1

1+00 7.7 7.2

7.7 7.2

7.8 7.3

7.9 7.4

8.1 7.6

50 8.1 }

8.1 }

8.1 }

8.2 7.7

8.2 }

2+00 8.2 }

2-12-60

N^o 224; 0+00=70' WLY TOP SHLDR; SOUND WLY

Dist Sound Elev

0+00

(0.4)

11:45

50

2.1 1.7

5.9 5.5

7.0 6.6

1+00 7.3 6.9

7.6 7.2

7.6 }

7.6 }

7.5 7.1

50 7.7 7.3

7.9 7.5

7.9 7.5

7.7 7.3

7.7 7.3

2+00 7.9 7.5

(3)

N^o 225; 0+00=80' WLY TOP SHLDR; SOUND WLY

Dist Sound Elev

0+00

(0.4)

11:50

50

Break

0+72 0.2 +0.2

3.0 2.6

7.1 6.7

1+00 7.6 6.2

8.1 7.7

8.4 8.0

8.4 8.0

8.1 7.7

50 7.7 7.3

7.5 7.1

7.7 7.3

7.6 7.2

7.8 7.4

2+00 7.7 7.3

2-12-60

No 226: 0+00=70 WLY. TOP SHLDR.; SOUND WLY.

Dist Sound Elev

0+00

(0.3)

11.55

50

0.5 0.2

4.6 4.3

5.9 5.6

1+00 6.5 6.2

6.9 6.6

6.8 6.5

6.7 6.4

6.8 6.5

50 7.0 6.7

7.2 6.9

7.0 6.7

7.0 6.7

7.1 6.8

2+00 7.1 6.8

(4)

No 227: 0+00=70' NWLY.; TOP SHLDR.; SOUND NWLY.

Dist Sound Elev

0+00

(0.0)

2:15

50

0+52 ^{TO TIDE} +1.3 + 1.3

0+60 → 2.8 2.8

0+80 8.0 8.0

9.0 9.0

1+00 9.0 9.0

8.5 8.5

7.6 7.6

7.6 7.6

7.8 7.8

50 7.8 7.8

7.7 7.7

7.6 7.6

7.6 7.6

7.6 7.6

2+00 7.5 7.5

2-19-60

SOUNDINGS TOPOF SHLDR SECS SOUND
CABRILLO ISLAND; No 222; 0+00=70' WLY WLY.

Dist Sound Elev Dist Sound Elev

0+00

(1.9)

1.0 +0.9

50 2.7 0.8

10:45 7.0 5.1

7.9 6.0

8.1 6.2

8.3 6.4

1+00 8.5 6.6

9.0 7.1

9.1 7.2

9.4 7.5

9.8 7.9

50 9.7 7.8

9.8 7.9

10.0 8.1

9.9 8.0

10.0 8.1

2+00 10.0 8.1

⑤

No 223, 0+00=80' WLY. OF TOP SHLDR SOUND WLY.

Dist Sound Elev Dist Sound Elev

0+00

(2.0)

1.0 +1.0

50 2.0 0.0

10:55 6.6 4.6

~ 8.4 6.4

9.2 7.2

9.3 7.3

1+00 9.6 7.6

9.5 7.5

9.9 7.9

9.9 7.9

10.0 8.0

50 10.0 }

10.0 }

10.0 }

9.9 7.9

10.0 8.0

2+00 10.0 8.0

2-19-60

No 224; 0+00 = 70' WLY. OF TOP OF SHLDR; SOUND WLY.

Dist Sound Elev Dist Sound Elev

0+00

(2.0)

50

11:00 1.0 +1.0

3.9 1.9

7.5 5.5

8.4 6.4

1+00 9.0 7.0

9.3 7.3

9.2 7.2

9.3 7.3

9.3 7.3

50 9.5 7.5

9.5 7.5

9.7 7.7

9.9 7.9

9.8 7.8

2+00 9.7 7.7

⑥

No 225; 0+00 = 80' WLY. OF TOP OF SHLDR; SOUND WLY.

Dist Sound Elev Dist Sound Elev

0+00

(2.0)

50

11:05 0.6 +1.4

1.3 +0.7

3.7 1.7

8.4 6.4

1+00 9.9 7.9

10.0 8.0

10.4 8.4

10.4 {

10.4 }

50 10.1 8.1

10.2 8.2

10.0 8.0

9.9 7.9

9.9 {

2+00 9.9 }

2-19-60

No 226; 0+00 = 70 WLY. OF TOPOF SHLDR; SOUND WLY.
Dist Sound Elev. Dist Sound Elev.

0+00

(2.1)

	0.6	+1.5
50	1.0	+1.1
11:10	2.4	0.3
<u>2</u>	2.9	0.8
	7.0	4.9
	8.5	6.4
1+00	8.4	6.3
	9.2	7.1
	9.0	6.9
	8.8	6.7
	8.9	6.8
50	9.5	7.4
	10.0	7.9
	9.9	7.8
	9.5	7.4
	9.3	7.2
2+00	9.9	7.8

⑦

No 227; 0+00 = 70 WLY. OF TOPOF SHLDR; SOUND WLY.
Dist Sound Elev Dist Sound Elev

0+00

(2.1)

50	0.5	+1.6
11:20	2.3	0.2
<u>2</u>	7.2	5.1
	10.0	7.9
	11.0	8.9
1+00	11.5	9.4
	10.8	8.7
	10.0	7.9
	10.2	8.1
	10.2	8.1
50	10.5	8.4
	10.2	8.1
	10.1	8.0
	10.1	8.0
	10.3	8.2
2+00	10.1	8.0

Ref. F.B. 126
43 2-19-60

CROSS SECTION 5 CABRILLO ISLAND; SEC'S
WLY FROM TOP OF SHLDR N° 222

NOTE: There is NO Apparent Change in

Top of Shldr. Connect Shots

Taken With Original Sec's

Sta	+	H.1.	-	Elev	
B.M.	2.07	19.10		17.03	Mon. Dusty

W 64		8.4		10.7	
------	--	-----	--	------	--

W 64		13.2		5.9	
------	--	------	--	-----	--

W 100		17.2		1.9	
-------	--	------	--	-----	--

W 110		18.0		1.1	
-------	--	------	--	-----	--

N° 223; 0+00 = TOP OF SHLDR; SEC. WLY.

W 70		8.7		10.4	
------	--	-----	--	------	--

W 70		13.3		5.8	
------	--	------	--	-----	--

W 100		17.0		2.1	
-------	--	------	--	-----	--

W 110		17.5		1.6	
-------	--	------	--	-----	--

N° 224; 0+00 = TOP OF SHLDR; SEC. WLY.

W 60		7.0		12.1	
------	--	-----	--	------	--

W 60		13.1		6.0	
------	--	------	--	-----	--

W 100		16.3		2.8	
-------	--	------	--	-----	--

W 130		18.3		0.8	
-------	--	------	--	-----	--

N° 225; 0+00 = TOP OF SHLDR; SEC'S WLY.

Sta	+	H.1.	-	Elev	
W 68		19.10		7.4	11.7
W 68				13.0	6.1
W 145				18.1	1.0

N° 226; 0+00 = TOP OF SHLDR; SEC'S WLY.

W 55		7.0		12.1
------	--	-----	--	------

W 55		13.3		5.8
------	--	------	--	-----

W 100		17.2		2.1
-------	--	------	--	-----

N° 227; 0+00 = TOP OF SHLDR; SEC'S WLY.

W 55		6.7		12.4
------	--	-----	--	------

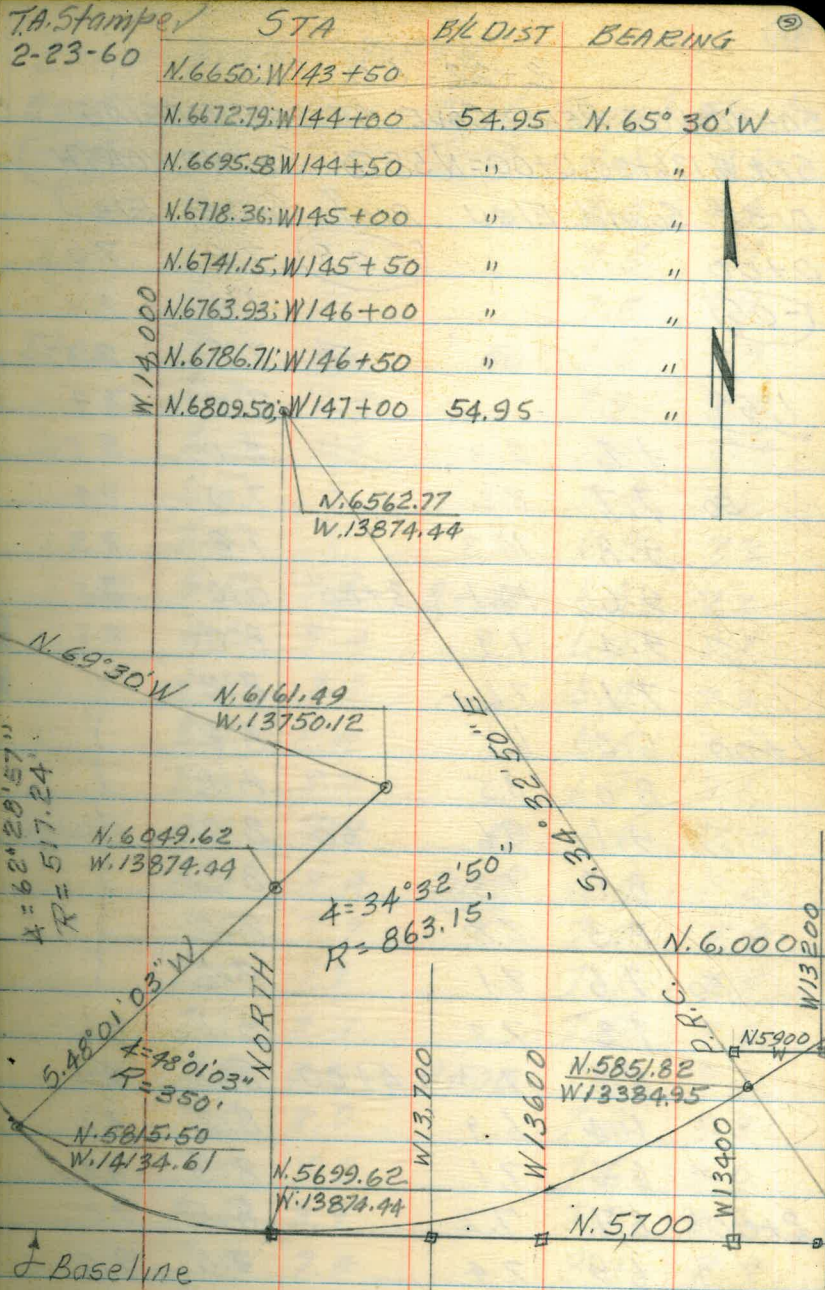
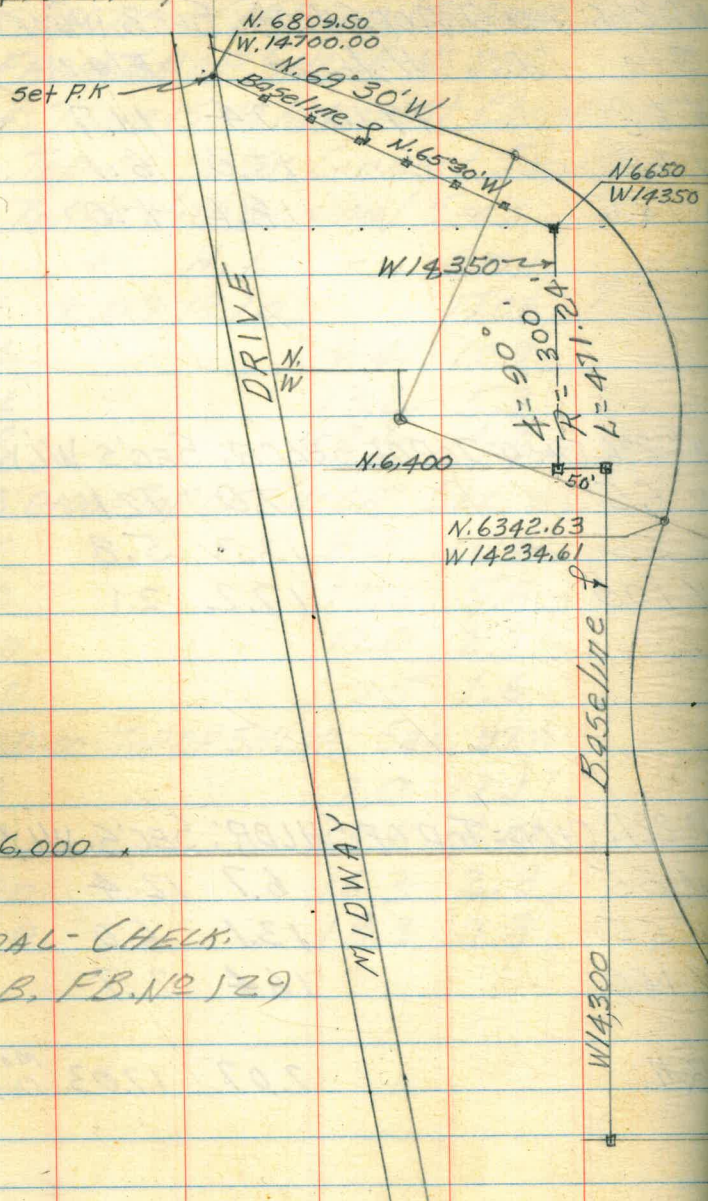
W 55		13.1		6.0
------	--	------	--	-----

W 100		16.4		2.7
-------	--	------	--	-----

B.M.	2.07	17.03			Mon. Dusty
------	------	-------	--	--	---------------

8

SOUNDING BASELINE PEREZ COVE
& VICINITY
W.O. 64501



TA. Stamp	STA	B/L DIST	BEARING
2-23-60	N. 6650.00; W143+50		
	N. 6672.79; W144+00	54.95	N. 65° 30' W
	N. 6695.58; W144+50	"	"
	N. 6718.36; W145+00	"	"
	N. 6741.15; W145+50	"	"
	N. 6763.93; W146+00	"	"
	N. 6786.71; W146+50	"	"
	N. 6809.50; W147+00	54.95	"

N. 6,000
SHOAL-CHECK
M.B. FB. NO 129

Baseline

2-22-60

A SOUNDINGS PEREZ COVE, AFTER DREDGING

STA. W. 136+00; 0+00 = N 5850; SOUND NORTH

DIST Sound Elev DIST Sound Elev

0+00

(-0.5) 7.2 7.7

(-0.5)

7.8 8.3

50 7.8 8.3

1.55

7.9 8.4

1.8 2.3 8.0 8.5

50 7.7 8.2 7.9 8.4

9.8 10.3 7.8 8.3

9.6 10.1 3+00 8.0 8.5

9.4 9.9 8.2 8.7

7.1 7.6 8.2

1+00 6.0 6.5 8.2

8.0 8.5 8.2

9.1 9.6 50 8.2

8.8 9.3 8.2

8.3 8.8 8.2

50 7.6 8.1 8.2

7.3 7.8 8.1 8.6

6.8 7.3 4+00 8.2 8.7

6.4 6.9 8.2 8.7

6.6 7.1 8.3 8.8

2+00 6.7 7.2 8.5 9.0

6.9 7.4 9.0 9.5

7.2 7.7 50 9.0 9.5

STA. W. 136+00 - NORTH

(10)

DIST Sound Elev DIST Sound Elev

(-0.4) 9.0 9.4 (-0.4) 8.2 8.6

9.5 9.9 8.0 8.4

2.00 9.0 9.4 7.5 7.9

8.5 8.9 7.5 7.9

5+00 8.5 8.9 50 7.5 7.9

9.0 9.4 7.9 8.3

8.5 8.9 7.9 8.3

8.5 } 7.4 7.6

8.5 } 6.8 7.2

50 9.5 9.9 8+00 6.8 7.2

9.0 9.4 6.7 7.1

8.5 8.9 6.8 7.2

8.0 8.4 6.8 7.2

8.5 8.9 6.7 7.1

6+00 9.0 9.4 50 6.8 7.2

8.0 8.4 2+05 6.8 7.2

7.5 7.9 7.0 7.4

7.5 7.9 7.1 7.5

7.7 8.1 7.5 7.9

50 7.8 8.2 9+00 7.7 8.1

7.6 8.0 7.9 8.3

7.9 8.3 7.6 8.0

8.5 8.9 7.8 8.2

7.0 7.4 8.0 8.4

7+00 7.2 7.6 50 8.0 8.4

STA. W. 136+00; NORTH, 2-22-60
 DIST SOUND Elev DIST SOUND Elev

20+00

50

21+00

2-29-60

(12)

STA. W. 138+00; 0+00 = N. 5760; SOUND NORTH

DIST SOUND Elev DIST SOUND Elev

0+00

(23)

2:23

50

1+00

50

2+00

			(23)	9.8	7.5
			50	9.4	7.1
				10.2	7.9
	0.4	+1.9		10.5	8.2
	0.6	+1.7		10.8	8.5
	1.1	+1.2		10.8	{
	4.1	1.8	3+00	10.8	{
	8.3	6.0		10.7	8.4
	12.2	9.9	<u>2:25</u>	10.5	8.2
	12.6	10.3		10.8	8.5
	13.3	11.0		11.9	9.6
	13.2	10.9	50	12.0	9.7
	13.2	10.9		12.1	9.8
	12.7	10.4		12.1	{
	12.4	10.1		12.1	{
	11.3	9.0		12.0	9.7
	10.5	8.2	4+00	11.5	9.2
	9.9	7.6		11.6	9.3
	9.3	7.0		10.3	8.0
	9.2	6.9		10.0	7.7
	9.8	7.5		10.5	8.2
	9.8	{	50	11.0	8.7
	9.8	{		11.0	{
	9.8	{		11.0	{

STA. W. 138+00 - NORTH 2-29-60

Dist	Sound	Elev	Dist	Sound	Elev
(22)	10.8	8.6	(22)	11.3	9.1
	10.9	8.7		11.2	9.0
5+00	10.8	8.6	50	11.2	}
	10.7	8.5		11.2	}
	10.3	8.1		11.1	8.9
	10.4	8.2		11.1	}
	10.5	8.3		11.1	}
50	10.6	8.4	8+00	11.1	}
	10.6	8.4		11.1	}
	10.5	8.3	2:30	11.1	}
	10.5	8.3		11.1	}
	10.3	8.1		11.1	}
6+00	10.3	8.1	50	11.1	}
	10.3	8.1		11.0	8.8
	10.2	8.0		9.9	7.7
	10.2	}		10.0	7.8
	10.2	}		10.3	8.1
50	10.3	8.1	9+00	10.3	}
	10.6	8.4		10.3	}
	10.7	8.5		10.3	}
	11.0	8.8		10.3	}
	11.2	9.0		10.6	8.4
7+00	11.2	9.0	50	10.9	8.7
	11.2	9.0		10.9	}
	11.3	9.1		10.9	}

STA. W. 138+00 - NORTH (13)

Dist	Sound	Elev	Dist	Sound	Elev
(22)	10.9	8.7	(21)	10.7	8.6
	11.0	8.8		11.0	8.9
10+00	10.9	8.7	50	10.9	8.8
	10.9	}		10.6	8.5
	10.9	}	2:35	10.5	8.4
	10.9	}		10.5	}
	10.8	8.6		10.5	}
50	10.7	8.5	13+00	10.4	8.3
	10.8	8.6		8.6	6.5
	11.0	8.8		8.1	6.0
	11.0	}		8.3	6.2
	11.0	}		8.5	6.4
11+00	11.2	9.0	50	8.6	6.5
	11.2	}		8.7	6.6
	11.2	}		9.0	6.9
	10.6	8.4		8.9	6.8
	10.7	8.5		9.2	7.1
50	10.2	8.0	14+00	9.2	}
	10.3	8.1		9.2	}
	10.5	8.3		9.3	7.2
	10.6	8.4		9.3	}
	10.7	8.5		9.3	}
12+00	10.8	8.6	50	9.3	}
	10.7	8.5		9.4	7.3
	10.7	8.5		9.5	7.4

STA. W. 138+00 - NORTH 2-29-60

STA. W. 138+00 - NORTH

(14)

DIST	Sound	Elev	DIST	Sound	Elev
(121)	9.5	7.4	(120)	9.3	7.3
	9.6	7.5		9.5	7.5
15+00	9.9	7.8	50	9.6	7.6
	9.9	}		9.7	7.7
	9.9			9.9	7.9
	10.1	8.0	<u>240</u>	10.0	8.0
	9.9	7.8		10.0	}
50	9.7	7.6	18+00	10.0	
	9.9	7.8		10.0	}
	9.9	}		9.9	
	9.9				9.9
	9.9	}		9.1	7.1
16+00	9.9			50	8.4
	9.9	}		8.7	6.7
	9.9				9.3
	9.8	7.7		9.5	7.5
	9.5	7.4		9.6	7.6
50	9.4	7.3	19+00	9.7	7.7
	9.2	7.1		9.9	7.9
	9.3	7.2		10.0	8.0
	9.2	7.1		10.3	8.3
	9.2	}		10.8	8.8
17+00	9.2			50	10.8
	9.2	}		10.2	8.2
	9.2				10.9

DIST	Sound	Elev	DIST	Sound	Elev
(20)	11.2	9.2			
	11.5	9.5			
20+00	11.6	9.6			
	11.6	9.6			
	11.6	9.6			
	10.9	8.9			
	10.7	8.7			
50	11.0	9.0			
	11.5	9.5			
	11.9	9.9			
	11.8	9.8			
	11.9	9.9			
21+00	12.2	10.2			

STA. W. 138+50 - NORTH 2-29-60

Dist	Sound	Elev	Dist	Sound	Elev
(17)	10.5		(17)	10.5	
	10.6			10.6	
10+00	10.8		50	10.9	
	11.0			10.8	
<u>3:05</u>	10.9			10.8	
	10.6			10.7	
	10.5			10.4	
50	10.5		13+00	10.3	
	10.3			10.2	
	10.3			10.1	
	10.6			10.2	
	10.8			10.1	
11+00	10.8	0.5	50	10.2	
	10.9			10.2	
	10.9			10.2	
	10.9			10.0	
	10.8			10.0	
50	10.5		14+00	10.2	
	10.0			10.0	
	10.1			9.9	
	10.1			9.8	
	10.2			9.5	
12+00	10.3		50	9.4	
	10.3			9.1	
	10.4			8.6	6.9

STA. W. 138+50 - NORTH

(16)

Dist	Sound	Elev	Dist	Sound	Elev
(16)	8.2	6.6	(16)	9.5	
	9.1			9.5	
15+00	9.3		50	9.6	
	9.0			9.8	
	8.9			9.6	
	8.9			9.4	
	8.8			9.4	
50	8.8		18+00	9.5	
	8.7			9.3	
<u>3:10</u>	9.0			9.2	
	9.1			9.5	
16+00	9.1		50	9.3	
16+00	9.0		50	9.2	
	9.0			9.1	
	8.9			9.2	
	9.0			9.5	
	9.0			9.8	
50	8.8		19+00	10.0	
	9.0			10.3	
	9.0			10.6	
	9.3			11.0	
	9.3			11.2	
17+00	9.3		50	11.5	
	9.5			11.6	
	9.5			11.8	

STA. W. 138+50 - WEST 2-29-60

Dist Sound Elev Dist Sound Elev

(15)	11.9	}	OK
	10.4		
20+00	10.0		
	10.2		
	10.2		
<u>315</u>	10.3		
	11.0		
50	11.2		
	11.6		
	12.0		
	12.1		
	12.2		
21+00	12.2		

NLY,
(contd pg. 22)

2-23-60

STA. N. 58+50, 0+00 = W. 14, 110; SOUND EAST

Dist Sound Elev Dist Sound Elev

0+00		(-0.3)	9.6	}	OK
(-0.3)		50	9.8		
			10.0		
			10.3		
			10.5		
50			10.6		
		3+00	10.8		
<u>2130</u>	0.4		10.9		
	0.4		10.7		
	0.6		10.3		
1+00	3.1		9.1		
	6.7	50	8.7		
	8.4		9.2		
	9.5		6.0		
	9.4		2.1		
50	9.3				
	9.0	4+00			
	8.5				
	8.3				
	8.3				
2+00	8.4				
	8.6	50			
	9.0				
	9.3				

2-23-60

STAN. 59+00; 0+00=W. 14, 120; SOUND EAST

STAN. 59+00 - EAST

(18)

Dist Sound Elev Dist Sound Elev

Dist Sound Elev Dist Sound Elev

(-0.2) 10.2 10.4

0+00 (F0.2) 8.1 8.3 10.4 10.6

(F0.2) 50 8.0 8.2 5+00 10.2 10.4 50

0.5 0.7 7.9 8.1 9.3 9.5

2.45 2.0 2.2 8.0 8.2 7.0 7.2

2.4 2.6 8.1 8.3 4.0 4.2

50 2.5 2.7 8.4 8.6 0.5 0.7

3.4 3.6 3+00 9.0 9.2 50 8+00

3.8 4.0 9.2 9.4

4.5 4.7 9.3 9.5

8.2 8.4 9.6 9.8

1+00 9.1 9.3 10.2 10.4

8.9 9.1 50 10.9 11.1 6+00 50

8.8 9.0 9.9 10.1

8.9 9.1 7.6 7.8

8.9 9.1 7.9 8.1

50 8.9 9.1 7.9 8.1

8.8 9.0 4+00 7.9 8.1 50 9+00

8.5 8.7 7.8 8.0

8.3 8.5 8.6 8.8

8.3 8.5 9.1 9.3

2+00 8.3 8.5 9.4 9.6

8.2 8.4 50 10.2 10.4 7+00 50

8.2 8.4 10.2 10.4

8.1 8.3 10.3 10.5

2-23-60

STAN. 59+50; 0+00 = W. 14, 130; SOUND EAST

DIST	SOUND	ELEV	DIST	SOUND	ELEV
0+00			(0.1)	8.2	
(0.1)	0.8		50	8.3	
	2.8			8.4	
2:55	2.9			8.5	
<u>3.1</u>				8.6	
50	5.0			8.6	
	9.1		3+00	8.5	
	10.0			8.3	
	10.0			8.2	
	10.0			7.4	
1+00	9.9			7.0	6.9
	9.8		50	7.0	6.9
	9.8			7.3	
	9.7			7.6	
	9.6			8.0	
50	9.6			8.2	
	9.7		4+00	8.4	
	9.4			8.8	
	9.2			9.0	
	9.0			9.2	
2+00	8.6			9.4	
	8.4		50	9.3	
	8.2			9.0	
	8.2			8.5	

STA. N. 59+50 - EAST

DIST SOUND ELEV DIST SOUND ELEV

DIST	SOUND	ELEV	DIST	SOUND	ELEV
(0.2)	9.1			9.9	
	9.9			10.0	
5+00	9.9			9.5	
	10.0			6.4	6.2
	7.4			7.4	
50	9.2			9.2	
	10.5			10.5	
	11.1			11.1	
	11.3			11.3	
	10.9			10.9	
6+00	7.2			7.2	
	0.8			0.8	

50

7+00

(19)

2-23-60

STA. N. 60+00; 0+00=W. 10, 140; SOUND EAST

Dist	Sound	Elev	Dist	Sound	Elev
0+00	0.1	+0.2	(0.3)	9.3	9.0
(0.3)	1.6	1.3	50	9.3	9.0
	3.0	2.7		9.2	8.9
<u>3.05</u>	6.9	6.6		9.1	8.8
	9.8	9.5		8.7	7.8
50	10.7	10.4		8.2	7.9
	10.7	10.4	3+00	8.2	7.9
	10.8	10.5		8.1	7.8
	11.0	10.7		8.0	7.7
	10.9	10.6		7.9	7.6
1+00	10.9	10.6		7.9	7.6
	10.9	10.6	50	7.9	7.6
	11.0	10.7		8.2	7.9
	11.0	{		8.3	8.0
	11.0	{		8.4	8.1
50	11.0	{		9.0	8.7
	11.1	10.8	4+00	9.0	8.7
	11.1	{		9.3	9.0
	11.1	{		9.6	9.3
	11.0	10.7		9.6	9.3
2+00	10.8	10.5		9.8	9.5
	10.6	10.3	50	10.0	9.7
	10.2	9.9		10.0	9.7
	9.7	9.4		9.9	9.6

STA. N. 60+00 - EAST

(20)

Dist Sound Elev Dist Sound Elev

Dist	Sound	Elev	Dist	Sound	Elev
(0.3)	9.8	9.5			
	9.3	9.0			
5+00	9.0	8.7	50		
	8.9	8.6			
<u>3.10</u>	9.5	9.2			
	9.3	9.0			
	9.6	9.3			
50	9.4	9.1	8+00		
	9.3	9.0			
	10.3	10.0			
	10.9	10.6			
	10.6	10.3			
6+00	9.5	9.2			
	8.9	8.6			
	9.1	8.8			
	9.3	9.0			
	9.7	9.4			
50	9.7	9.4			
	9.9	9.6			
	9.7	9.4			
	7.2	6.9			
	1.0	0.7			

7+00

3-02-60

STA. N. 60+50: 0+00 = W. 14,200; SOUND EAST

Dist Sound Elev Dist Sound Elev

~~0+00~~

(37)

(37)

15.0

50

14.9

14.9

15.0

11:35

0.4

1.8

50

3.7

9.2

12.1

13.3

13.9

1+00

13.9

14.2

14.5

14.7

15.0

50

15.0

15.0

14.9

14.9

14.3

2+00

14.5

14.3

14.8

14.9

11:40

14.8

14.5

3+00

14.6

14.3

14.3

14.1

14.1

50

12.1

12.0

11.9

12.2

12.1

4+00

12.1

STA. N. 60+50 - EAST

Dist Sound Elev Dist Sound Elev

5+00

50

50

8+00

6+00

50

50

9+00

7+00

(21)

3-02-60

STA. W. 139+00; 0+00 = N. 5,770; SOUND NORTH

Dist	Sound	Elev	Dist	Sound	Elev
0+00			(27)	12.2	
(27)			50	12.7	
	0.2			13.2	
<u>9:25</u>	1.2			13.3	
	7.4			13.3	
50	11.6			13.2	
	13.5		3+00	13.5	
	12.9			13.8	
	12.4			13.9	
	11.2			13.9	
1+00	10.8			13.9	
	10.2	OK	50	14.0	OK
	10.5			14.0	
	10.7			13.9	
	11.1			13.7	
50	11.0			11.9	
	11.0		4+00	11.6	
	11.0			12.0	
	10.8			12.0	
	10.9			12.1	
2+00	11.2			12.1	
	11.6		50	12.2	
	11.8			12.3	
	12.0			12.3	

STA. W. 139+00 - NORTH

(22)

Dist	Sound	Elev	Dist	Sound	Elev
(28)	12.2		(28)	12.1	
	11.9			12.1	
5+00	11.8		50	12.1	
	11.9			12.0	
<u>9:30</u>	11.9			12.0	
	11.9			12.0	
	11.5			12.0	
50	11.5		8+00	12.0	
	11.6			12.0	
	11.6			11.9	
	11.5			12.0	
	11.4			11.9	
6+00	11.5	OK	50	12.0	OK
	11.5			11.9	
	11.7			12.0	
	11.9			12.1	
	12.0			12.1	
50	12.0		9+00	12.1	
	12.1			12.3	
	12.0			12.3	
	12.0			12.0	
	12.0			12.0	
7+00	12.1		50	12.0	
	12.0			12.0	
	12.1			12.0	

STA. W. 139+00 - NORTH 3-02-60

DIST	Sound	Elev	DIST	Sound	Elev
(28)	12.0		(28)	11.7	
	11.9			11.6	
10+00	11.9		50	11.6	
<u>9:35</u>	11.9			11.5	
	12.0			11.4	
	11.8			11.3	
	11.9			11.2	
50	12.0		13+00	11.5	
	12.0			11.5	
	12.0			11.5	
	11.8			11.4	
	11.8			11.5	
11+00	11.5	0.4	50	11.5	0.4
	11.4			11.6	
	11.3			11.7	
	11.2			11.5	
	11.0			11.5	
50	11.0		14+00	11.3	
	11.0			11.2	
	11.1			10.9	
	11.2			10.9	
	11.3			11.0	
12+00	11.5		50	11.2	
	11.6			11.2	
	11.8			11.2	

STA. W. 139+00 - NORTH

(23)

DIST	Sound	Elev	DIST	Sound	Elev
(29)	11.2		(29)	10.8	
	11.0			10.8	
15+00	10.3		50	10.5	
	10.3	0.4		10.8	
<u>9:40</u>	10.4			10.8	
	10.6			10.8	
	10.0			10.6	
50	9.8	6.9	18+00	10.7	
	10.0			10.6	
	10.1			10.5	
	10.5	0.4		10.5	
	9.9			10.6	
16+00	9.4	6.5	50	10.6	0.4
	9.5	6.6		10.7	
	9.0	6.1		10.8	
	9.2	6.3		11.1	
	9.3	6.4		11.4	
50	9.6	6.7	19+00	12.0	
	9.5	6.6		12.7	
	9.7	6.8		12.8	
	10.0			12.8	
	10.0			12.9	
17+00	10.2	0.4	50	12.8	
	10.5			12.7	
	10.7			12.6	
				11.9	
				11.0	
			20+00	10.9	

3-02-60

STA. W. 139+50			0+00 = N. 5780			SOUND NORTH		
DIST	SOUND	ELEV	DIST	SOUND	ELEV	DIST	SOUND	ELEV
0+00			(32)	13.6				
(32)			50	13.9				
	0.6			14.0				
<u>10+03</u>	3.6		<u>10+05</u>	14.2				
	9.6			14.1				
50	12.8			14.0				
	13.4		3+00	14.1				
	12.3			14.3				
	11.9			14.3				
	11.4			14.2				
1+00	11.3		50	14.1				
	11.4		50	13.8				
	11.7			13.6				
	11.7			14.1				
	11.8	O.K.		14.1				
50	11.8			13.6				
	11.8		4+00	13.7				
	11.9			13.9				
	12.9			13.7				
	13.1			13.6				
2+00	13.2			13.5				
	13.2		50	13.6				
	13.7			14.2				
	13.7			13.3				

STA. W. 139+50 - NORTH

(24)

DIST	SOUND	ELEV	DIST	SOUND	ELEV
(32)	13.6		(32)	12.3	
	13.6			12.2	
5+00	13.1		50	12.1	
	13.0			12.0	
	12.9			12.0	
	12.5			12.0	
	12.1			12.0	
50	12.1		8+00	12.0	
	12.1			12.1	
	12.1			12.2	
	12.1			12.3	
	12.2			12.4	
6+00	12.3	O.K.	50	12.5	O.K.
	12.3			13.0	
	12.3			13.0	
	12.2			13.0	
	12.3			13.0	
50	12.5		9+00	13.2	
	13.0			13.3	
	13.0		<u>10+10</u>	13.3	
	12.9			12.9	
	12.8			13.0	
7+00	12.3		50	13.0	
	12.3		(3.5' SOUP)	13.0	
	12.3			13.0	

STA. W. 139+50 - NORTH 3-02-60

DIST	Sound Elev	DIST	Sound Elev
(32)	13.0	(32)	11.5
	13.0		11.5
10+00	13.0	50	11.5
	13.0		11.5
<u>10.15</u>	13.0		11.5
	13.0		11.5
	13.0		11.5
50	13.0	13+00	11.5
	13.0		11.5
	13.0		11.5
	12.5		11.5
	12.5		11.5
11+00	12.0	50	11.5
	12.0		11.5
	12.0		11.5
	10.5		11.5
	11.0		11.5
50	11.0	14+00	11.0
	11.0		11.0
	11.0		11.5
	11.0		11.5
	11.0		11.5
12+00	11.0	50	11.5
	11.0		12.0
	11.0		12.0

STA. W. 139+50 - NORTH

(25)

DIST	Sound Elev	DIST	Sound Elev
(33)	12.0	(33)	10.7
	12.0		10.4
15+00	12.0	50	10.3
<u>10.20</u>	12.0		10.3
	12.0		10.3
	12.0		10.3
	12.0		10.2
50	12.0	18+00	10.1
	12.0		10.2
	12.0		10.3
	11.5		10.9
	11.5		10.9
16+00	11.5	50	10.9
	11.2		11.2
	11.1		12.4
	11.0		13.0
	11.1		13.2
50	11.2	19+00	13.4
(Hard)	11.0		13.2
bottom	10.1	6.8	<u>10.25</u>
	11.1		12.2
	11.3		11.4
17+00	11.3	50	11.4
	11.2		11.9
	11.0		12.2
			12.2
			12.2
			12.5
		20+00	12.5

3-02-60

STA. W. 140+00; 0+00 = N. 5,800; SOUND NORTH

	Dist	Sound	Elev	Dist	Sound	Elev
0+00				(3A)	13.9	10.5
(3A)				50	13.9	10.5
	1.9	+1.5			13.9	10.5
<u>10:35</u>	6.8	3.4			14.1	10.7
	10.0	6.6			14.2	10.8
50	10.9	7.5			14.6	11.2
	11.2	7.8	3+00		14.6	11.2
	11.5	8.1			14.7	11.3
	11.9	8.5			14.1	10.7
	12.0	8.6			13.9	10.5
1+00	12.1	8.7			13.8	10.4
	12.4	9.0	50		13.9	10.5
	12.3	8.9			14.0	10.6
	12.4	9.0			13.8	10.4
	12.5	9.1			13.9	10.5
50	12.7	9.3			14.0	10.6
	13.0	9.6	4+00		13.9	10.5
	13.1	9.7			14.0	10.6
	13.3	9.9			14.0	10.6
	13.8	10.4	<u>10+00</u>		13.9	10.5
2+00	13.9	10.5			13.8	10.4
	13.9	10.5	50		13.9	10.5
	14.0	10.6			14.0	10.6
	13.9	10.5			14.1	10.7

STA. W. 140+00 - NORTH

(26)

	Dist	Sound	Elev	Dist	Sound	Elev
Begin →	14.8	11.4		(3A)	12.9	9.5
Soft. Mat.	14.5	11.1		(3A)	12.9	9.5
5+00	14.5	11.1		50	12.8	9.4
Penetrate	14.3	10.9			12.7	9.3
3.5'	14.2	10.8			12.8	9.4
(3A)	14.0	10.6			12.6	9.2
	13.9	10.5			12.5	9.1
Hard →	13.2	9.8	50	8+00	12.4	9.0
	13.1	9.7			12.5	9.1
	12.8	9.4			12.7	9.3
	13.0	9.6		<u>10+00</u>	12.8	9.4
Soft →	12.9	9.5			12.9	9.5
6+00	13.3	9.9	50		13.0	9.6
	12.9	9.5			13.2	9.8
	12.9				13.3	9.9
	12.9			Soft →	13.3	9.9
	13.0	9.6		1.5'	13.4	10.0
50	13.2	9.8		9+00	13.6	10.2
	13.0	9.6			13.5	10.1
	12.9	9.5			13.5	10.1
	12.8	9.4			13.3	9.9
	12.8	9.4			13.2	9.8
7+00	12.9	9.5	50		13.3	9.9
	12.9	9.5			13.4	10.0
	12.8	9.4			13.6	10.2

STA. W. 140+00 - NORTH 3-02-60

DIST	Sound	Elev	DIST	Sound	Elev
(24)	13.7	10.3	(35)	11.9	8.4
	13.7	}		11.9	8.4
10+00	13.7	}	50	11.9	8.4
	13.8	10.4	1050	11.8	8.3
	13.7	10.3		11.8	8.3
	13.6	10.2		11.7	8.2
	13.5	10.1		11.9	8.4
50	13.5	10.1	13+00	11.9	}
	13.6	10.2		11.9	}
	13.2	9.8		11.9	}
	13.1	9.7		11.8	8.3
	13.0	9.6		11.8	8.3
11+00	12.9	9.5	50	11.5	8.0
	12.8	9.4		11.1	7.6
	12.7	9.3		11.2	7.7
	12.7	9.3		11.3	7.8
	12.8	9.4	Hard-	11.6	8.1
50	12.9	9.5	14+00	11.9	8.4
	12.9	9.5		11.9	8.4
	13.0	9.6		12.2	8.7
	13.0	9.6		12.2	8.7
	13.1	9.7		12.3	8.8
12+00	12.0	8.6	50	12.2	8.7
	12.5	9.1		12.2	8.7
	12.1	8.7		12.3	8.8

STA. W. 140+00 - NORTH

(27)

DIST	Sound	Elev	DIST	Sound	Elev
(35)	12.4	8.9	(35)	11.1	7.6
	12.4	8.9		10.9	7.4
15+00	12.3	8.8	50	10.5	7.0
	12.2	8.7	1055	10.0	6.5
	12.0	8.5		9.7	6.2
	12.0	8.5		9.7	6.2
	12.1	8.6		9.8	6.3
50	12.0	8.5	18+00	10.6	7.1
	12.0	8.5		12.8	9.3
	12.1	8.6		13.0	9.5
	12.0	8.5		13.0	9.5
	12.2	8.7		13.1	9.6
16+00	12.2	8.7	50	13.2	9.7
	12.1	8.6		13.0	9.5
	12.2	8.7		13.0	9.5
	12.3	8.8		12.6	9.1
	12.5	9.0		12.0	8.5
50	12.5	9.0	19+00	12.2	8.7
	12.4	8.9		12.2	8.7
	12.6	9.1		12.6	9.1
	12.7	9.2		13.1	9.6
	12.3	8.8		13.2	9.7
17+00	12.0	8.5	50	13.2	9.7
	11.5	8.0			
	11.0	7.5			

3-02-60

STA. N. 6/1+00; 0+00 = W/14,200; SOUND EAST

Dist	Sound	Elev	Dist	Sound	Elev
0+00			(37)	14.8	11.1
(37)			50	14.4	10.7
	1.2	+2.5		14.7	11.0
11:45	2.2	+1.5		15.0	11.3
	5.5	1.8		15.0	
50	11.0	7.3		15.0	
	12.1	8.4	3+00	15.2	11.5
	12.8	9.1		15.3	11.6
	13.5	9.8	11:50	15.0	11.3
	14.4	10.7		14.5	10.8
1+00	14.8	11.1		14.5	10.8
	15.1	11.4	50	13.9	10.2
	15.2	11.5		13.6	9.9
	15.3	11.6		13.6	9.9
	15.3			13.0	9.3
50	15.3			13.7	10.0
	15.3		4+00	13.9	10.2
	15.1	11.4			
	15.0	11.3			
	15.1	11.4			
2+00	15.0	11.3			
	15.1	11.4	50		
	15.4	11.7			
	15.2	11.5			

(28)

STA. N. 6/1+50; 0+00 = W/14,200; SOUND EAST

Dist	Sound	Elev	Dist	Sound	Elev
0+00			(37)	14.2	
(37)			50	14.4	
	0.6			14.6	
	1.2			14.6	
11:53	4.1			14.5	
	9.3			14.9	
50	12.0			15.0	
	12.7		3+00	14.4	
	13.1			13.1	
	13.3			12.5	
	13.9			12.3	
1+00	13.8			12.1	
	14.0		50	12.1	
	14.0			11.9	
	14.0			12.2	
	14.1			12.8	
50	14.2			13.0	
	14.4		4+00	13.3	
11:55	14.6				
	14.7				
	14.8				
2+00	14.8				
	15.0		50		
	14.8				
	14.8				

3-02-60

STA. N. 62+00; 0+00 = W. 14200; SOUND EAST

DIST	SOUND	ELEV	DIST	SOUND	ELEV
0+00			(37)	14.1	10.9
(37)	0.2	+3.5	50	14.3	10.6
	3.0	+0.7		14.4	10.7
12102	7.0	3.3		13.3	9.6
	11.0	7.3		13.2	9.5
50	12.0	8.3		13.1	9.4
	12.1	8.4	3+00	13.2	9.5
	13.1	9.4	1205	13.3	9.6
	12.3	8.6		13.2	9.5
	12.7	9.0		13.1	9.4
1+00	13.6	9.9		13.2	9.5
	13.9	10.2	50	13.1	9.4
	14.1	10.4		13.1	9.4
	14.3	10.6		13.3	9.6
	14.5	10.8		13.4	9.7
50	14.4	10.7		12.9	9.2
	14.3	10.6	4+00	12.7	9.0
	14.0	10.3			
	14.3	10.6			
	14.2	10.5			
2+00	14.2	{			
	14.2	{	50		
	14.4	10.7			
	14.2	10.5			

3-02-60

STA. W. 140+50; 0+00 = N. 5,800; SOUND NORTH

DIST	SOUND	ELEV	DIST	SOUND	ELEV
0+00			(35)	14.4	
(35)	0.5		50	14.5	
	1.1			14.7	
1107	1.6			14.9	
	3.1			14.8	
50	3.5			15.0	
	4.5		3+00	15.0	
	6.3		1110	15.0	
	7.0			14.7	
	8.1			14.1	
1+00	7.7			14.2	
	9.2		50	14.0	
	12.0			14.3	
	13.3			14.3	
	13.2			14.2	
50	13.1			14.3	
	12.9		4+00	14.3	
	12.9			14.2	
	12.9			14.1	
	13.5			14.1	
2+00	14.2			14.1	
	14.1		50	14.0	
	14.2			14.0	
	14.3			14.1	

LSM

3-02-60

STA N. 63+50; 0+00=W. 14,200; SOUND EAST

Dist	Sound	Elev	Dist	Sound	Elev
0+00			(33)	12.6	
(33)	0.2		50	12.5	
	1.7			12.3	
<u>2:10</u>	3.2			12.4	
	5.2			12.1	
50	6.1			11.9	
	7.1		3+00	12.0	
	7.1			11.9	
	7.5			11.7	
	7.9			11.5	
1+00	10.9			11.4	
	12.4		50	11.5	
	12.9		<u>2:15</u>	11.3	
	12.8			11.4	
	12.7			11.5	
50	13.0			11.3	
	13.2		4+00	11.4	
	13.8				
	14.0				
	13.9				
2+00	13.3				
	13.1				
	13.1				
	12.8				

NOTE: L.S.M. 177 Way
for Sta's N62+50 &
N63+00

(30)

STA N. 64+00; 0+00=W. 14,200; SOUND EAST

Dist	Sound	Elev	Dist	Sound	Elev
0+00			(32)	12.4	9.2
(32)	1.8	+1.4	50	12.7	9.5
	4.9	1.7		12.5	9.3
<u>2:17</u>	6.1	2.9	<u>2:20</u>	12.6	9.4
	8.0	4.8		12.6	9.4
50	8.5	5.3		12.5	9.3
	8.7	5.5	3+00	12.2	9.0
	8.9	5.7		12.2	9.0
	9.7	6.5		12.1	8.9
	9.3	6.1		12.3	9.1
1+00	10.0	6.8		12.3	9.1
	10.5	7.3	50	12.0	8.8
	12.3	9.1		11.8	8.6
	13.2	10.0		11.3	8.1
	13.2	10.0		11.4	8.2
50	13.1	9.9		11.2	8.0
	13.1	9.9	4+00	11.1	7.9
	13.0	9.8			
	13.0	9.8			
	12.9	9.7			
2+00	12.8	9.6			
	13.0	9.8			
	12.8	9.6			
	12.5	9.3			

3-02-60

STA. N. 64+50; 0+00=W/4,190; SOUND EAST

Dist	Sound	Elev	Dist	Sound	Elev
0+00			(31)	12.7	
(31)	1.7		50	12.5	
	2.0			12.5	
<u>2:30</u>	4.3			12.3	
	4.7			12.2	
50	5.8			12.2	
	6.9		3+00	12.2	
	7.7			12.2	
	8.6			12.2	
	9.4			12.2	
1+00	10.6			12.1	
	12.0		50	12.1	
	13.2			12.1	
	13.0			12.1	
	12.8			12.0	
50	12.5			11.8	
	12.5		4+00	11.7	
	12.4	x		11.5	
	12.5	0			
	12.8				
2+00	13.0				
	12.9		50		
	12.8				
	12.8				

OK.

(31)

STA. N. 65+00; 0+00=W/4,200; SOUND EAST

Dist	Sound	Elev	Dist	Sound	Elev
0+00			(30)	12.4	9.4
(30)			50	12.3	9.3
	0.8	+2.2		12.2	9.2
	2.3	+1.5		12.2	9.2
<u>2:40</u>	4.0	1.0		12.3	9.3
50	5.7	2.7		12.3	9.3
	6.3	3.3	3+00	12.3	9.3
	6.3	3.3		12.3	9.3
	6.6	3.6		12.7	9.7
	7.1	4.1		12.8	9.8
1+00	8.5	5.5		12.9	9.9
	11.1	8.1	50	13.0	10.0
	11.5	8.5		12.9	9.9
	12.0	9.0		12.7	9.7
	12.0	9.0		12.7	9.7
50	12.3	9.3		12.6	9.6
	12.6	9.6	4+00	12.8	9.8
	12.5	9.5			
	12.7	9.7			
	12.7	9.7			
2+00	12.7	9.7			
	12.4	9.4	50		
	12.5	9.5			
	12.6	9.6			

3-02-60

STA. N. 65+50; 0+00 = W. 14,200, SOUND EAST

Dist	Sound	Elev	Dist	Sound	Elev
0+00			(29)	12.0	
(29)	0.2		50	11.5	
	1.3			11.4	
<u>2:45</u>	2.3			11.2	
	3.5			11.5	
50	5.2			11.6	
	6.1		3+00	11.8	
	7.1			11.8	
	7.1			11.8	
	7.8			11.7	
1+00	11.3			11.7	
	12.1		50	11.8	
	12.0			11.5	
	12.0			11.5	
	12.0			11.6	
50	12.0			11.5	
	12.2		4+00	11.6	
	12.3				
	12.3				
	12.3				
2+00	12.5				
	12.2		50		
	12.0				
	12.0				

(32)

STA. N. 66+00; 0+00 = W. 14,230, SOUND EAST

Dist	Sound	Elev	Dist	Sound	Elev
0+00			(28)	12.8	10.0
(28)	0.2	+2.6	50	12.7	9.9
	1.5	+1.3		12.7	9.9
<u>2:55</u>	1.7	+1.1		12.6	9.8
	3.8	1.0		12.5	9.7
50	5.0	2.2		12.3	9.5
	5.6	2.8	3+00	12.5	9.7
	6.2	3.4		12.3	9.5
	6.2	3.4		12.1	9.3
	6.3	3.5		12.1	9.3
1+00	7.3	4.5		12.2	9.4
	12.0	9.2	50	12.3	9.5
	12.0	9.2		12.4	9.6
	12.4	9.6		12.3	9.5
	12.8	10.0		12.3	9.5
50	12.9	10.1		12.1	9.3
	13.0	10.2	4+00	12.4	9.6
	12.7	9.9		12.5	9.7
	12.6	9.8		12.3	9.5
	12.9	10.1		12.3	9.5
2+00	12.7	9.9			
	12.7	9.9	50		
	12.6	9.8			
	12.8	10.0			

3-02-60

STA. N. 6, 6450; 0+00 = W. 14270; SOUND EAST

Dist	Sound	Elev	Dist	Sound	Elev
0+00			50	12.5	
(28)	0.5		50	12.6	
	1.2		(28)	12.7	
<u>3:00</u>	2.6			12.5	
	3.5			12.4	
50	4.5			12.3	
	4.8		3+00	12.3	
	5.2			12.9	
	5.6			12.9	
	7.0			12.9	
1+00	7.3			13.0	
	8.1		50	13.0	
	10.6			13.0	
	12.1			13.0	
	12.3			13.0	
50	12.5			12.9	
	12.9		4+00	12.0	
	12.9			11.5	
	12.8			11.0	
	12.7			10.9	
2+00	12.8			10.9	
	12.8		50	10.9	
	12.7			10.9	
	12.6			10.8	
				10.7	

OK

3-03-60

STA. W. 140+50; 0+00 = N. 6500; SOUND NORTH

Dist	Sound	Elev	Dist	Sound	Elev
0+00	12.3		(30)	12.3	
(30)	12.1		50	12.2	
	12.1			12.2	
<u>1:45</u>	12.1			12.3	
	12.0			12.2	
50	12.1			12.2	
	12.1		3+00	12.0	
	12.5			12.1	
	12.1			12.1	
	12.1			12.1	
1+00	12.2			12.0	
	12.3		50	12.0	
	12.2			12.0	
	12.3			12.0	
	12.3			12.0	
50	12.3			12.0	
	12.4		4+00	12.0	
	12.6			12.1	
	12.6			12.2	
	12.6			12.2	
2+00	12.6			12.3	
	12.5		50	12.3	
	12.4			12.4	
	12.4			12.3	

OK

OK

(33)

STA. W. 140+50 - NORTH 3-03-60

Dist	Sound	Elev	Dist	Sound	Elev
(30)	12.5	}	(30)	11.2	}
	12.5			11.2	
5+00	12.6		50	11.6	
	12.6			11.8	
	12.6			11.9	
11.50	12.6			11.8	
11.50	12.6			11.8	
50	12.1		8+00	11.2	
	12.0			11.3	
	12.0			11.1	
	12.0		11.7		
	11.4		11.9		
6+00	11.3	} O.K.	50	11.3	} O.K.
	10.9			11.2	
	10.8			11.1	
	10.7			11.2	
	10.3			11.6	
50	10.6		9+00	11.6	
	10.8			12.0	
	10.5			12.0	
	10.6			12.0	
	10.7			12.0	
7+00	10.8	}	50	11.3	
	10.8			11.0	
	11.0			10.3	

STA. W. 140+50 - NORTH

Dist	Sound	Elev	Dist	Sound	Elev
(30)	9.7	6.7			
	10.1				
10+00	10.0	}			
	10.1				
	10.1				
	10.6				
	10.8				
50	11.5				
11.55	12.4				
11.55	12.5				
	12.0				
	12.3				
11+00	12.9				

3-03-60

STA. W/141+00; 0+00=N/6500; SOUND NORTH					
Dist	Sound	Elev	Dist	Sound	Elev
0+00	8.4	5.5	(29)	12.3	9.4
(29)	9.7	6.8	50	12.2	9.3
	10.3	7.4		12.2	9.3
11:27	11.0	8.1		12.2	9.3
	11.5	8.6		12.1	9.2
50	12.1	9.2		12.1	9.2
	12.1	{	3+00	12.2	9.3
	12.1	}		12.3	9.4
	12.1	}		12.2	9.3
	12.2	9.3		12.2	9.3
1+00	12.2	{		12.0	9.1
	12.2	}	50	12.0	9.1
	12.3	9.4		12.0	9.1
	12.4	9.5		12.1	9.2
	12.5	9.6	11:30	12.2	9.3
50	12.4	9.5		12.3	9.4
	12.4	9.5	4+00	12.4	9.5
	12.5	9.6		12.4	{
	12.6	9.7		12.4	}
	12.6	9.7		12.4	}
2+00	12.8	9.9		12.4	}
	12.9	10.0	50	12.4	}
	12.9	10.0		12.4	}
	12.5	9.6		12.4	}

STA. W/141+00 - NORTH

(35)

Dist	Sound	Elev	Dist	Sound	Elev
(29)	12.4	9.5	(29)	11.3	8.4
	12.5	9.6		11.7	8.8
5+00	12.5	9.6	50	11.8	8.9
	12.5	9.6		12.0	9.1
	12.3	9.4		12.0	9.1
	12.4	9.5		11.6	8.7
	12.5	9.6		11.2	8.3
50	12.3	9.4	8+00	12.2	9.3
	12.3	9.4		11.9	8.0
	12.4	9.5		11.1	8.2
	12.5	9.6		11.0	8.1
	12.6	9.7		11.1	8.2
6+00	12.8	9.9	50	11.1	{
	12.8	9.9		11.1	}
	12.7	9.8		11.5	8.6
	12.8	9.9		12.2	9.3
	12.8	9.9		12.1	9.2
50	12.8	9.9	9+00	12.1	{
	10.1	7.2		12.1	}
	10.1	7.2		12.1	}
	10.7	7.8		12.2	9.3
	10.8	7.9		11.7	8.8
7+00	10.8	7.9	50	10.7	7.8
	10.8	7.9		10.0	7.1
	11.3	8.4		9.9	7.0

STA. W 141+00-NORTH 3-03-60

DIST SOUND ELEV DIST SOUND ELEV

DIST	SOUND	ELEV	DIST	SOUND	ELEV
(29)	10.1	7.2			
	10.0	7.1			
10+00	10.0	7.1	50		
	10.9	8.0			
<u>11.35</u>	11.3	8.4			
	12.2	9.3			
	13.0	10.1			
50	12.8	9.9			
	12.8	9.9			
	13.1	10.2			
	12.8	9.9			
	12.2	9.3			
11+00	11.1	8.2			
	11.2	8.3			
	11.2	8.3			
	11.4	8.5			
	11.5	8.6			
50	11.8	8.9			

3-03-60

(56)

STA. W 141+50; 0+00=N. 6500; SOUND NORTH

DIST SOUND ELEV DIST SOUND ELEV

DIST	SOUND	ELEV	DIST	SOUND	ELEV
0+00	5.1		(28)	12.6	
(28)	5.1		50	12.8	
	5.0		<u>11.10</u>	12.4	
<u>11.07</u>	5.1			12.5	
	5.2			12.6	
50	5.1			12.7	
	5.4		3+00	13.0	
	5.5			12.9	
	5.2			12.8	
	6.1			12.6	
1+00	6.2			12.5	
	6.8		50	12.6	
	6.4			12.5	
	7.1			12.6	
	10.5			12.7	
50	11.4			12.6	
	12.2		4+00	12.7	
	12.6			12.5	
Soft →	12.8			12.4	
	12.5			12.5	
2+00	12.5			12.6	
	12.5		50	12.5	
	12.5			12.4	
	12.6			12.3	

OK.

STA. W. 141+50 - NORTH 3-03-60

Dist Sound Elev Dist Sound Elev

(28)	12.4	}	(28)	12.1	}
	12.3			12.3	
5+00	12.4	}	50	12.5	}
	12.3			12.6	
	12.4	}		12.8	}
	12.5			13.0	
	12.4	}		13.1	}
50	12.5			8+00 12.9	
	12.4	}		10.9	}
	12.4			11.8	
11:15	12.3	}		11.5	}
	12.3			11.9	
6+00	12.4	}	50	11.9	}
	12.3			12.0	
	12.4	}		12.0	}
	12.3			12.0	
	12.2	}		12.1	}
50	12.4			9+00 12.3	
	12.2	}		12.3	}
	12.1			11.9	
	12.0	}		10.6	}
	11.5			10.7	
7+00	11.4	}	50	11.0	}
	11.6			11.4	
	12.0	}		12.5	}

O.K.

O.K.

STA. W. 141+50 - NORTH

(37)

Dist Sound Elev

(28)	13.0	}
	12.9	
10+00	13.0	}
	12.8	
11:20	12.6	}
	12.6	
	12.7	}
50	12.6	
	11.9	}
	11.9	
	12.1	}
	12.3	
11+00	13.0	}

O.K.

3-03-60

STA. W. 142+00; 0+00 = N 6600; SOUND NORTH

DIST	SOUND	ELEV	DIST	SOUND	ELEV
0+00	3.1	16.2	(33)	13.3	10.0
(33)	4.9	1.6	50	13.5	10.2
	4.9	1.6		13.3	10.0
<u>11.05</u>	5.3	2.0		13.5	10.2
	5.6	2.3		13.5	10.2
50	6.0	2.7		13.3	10.0
	6.2	2.9	3+00	13.3	10.0
	6.3	3.0		13.2	9.9
	6.7	3.4		13.0	9.7
	7.0	3.7		12.9	9.6
1+00	7.0	3.7		12.8	9.5
	7.9	4.6	50	12.6	9.3
	10.5	7.2		12.5	9.2
	12.4	9.1		12.6	9.3
	12.7	9.4		12.8	9.5
50	13.0	9.7		12.8	9.5
	13.2	9.9	4+00	13.0	9.7
	13.3	10.0		12.9	9.6
	13.4	10.1		13.0	9.7
	13.3	10.0		13.0	}
2+00	13.3	10.0		13.0	}
	13.0	9.7	50	13.0	}
	13.0	9.7		13.0	}
	13.2	9.9		13.1	9.8

STA. W. 142+00 - NORTH.

DIST	SOUND	ELEV	DIST	SOUND	ELEV
(33)	13.1	9.8	(33)	11.7	8.4
	13.0	9.7		12.2	8.9
5+00	13.3	10.0	50	12.3	9.0
	13.4	10.1		12.3	9.0
<u>11.0</u>	13.3	10.0		12.5	9.2
	13.3	10.0		12.8	9.5
	13.2	9.9		12.7	9.4
50	13.3	10.0	8+00	12.9	9.6
	12.9	9.6		12.9	9.6
	12.7	9.4		12.6	9.3
	12.8	9.5		12.1	8.8
	12.8	9.5		12.9	9.6
6+00	12.9	9.6	50	13.0	9.7
	13.0	9.7		13.1	9.8
	13.0	}		13.4	10.1
	13.0	}		14.0	10.7
	13.0	}		13.9	10.6
50	12.9	9.6	9+00	13.4	10.1
	13.1	9.8		13.2	9.9
	13.2	9.9	<u>11.15</u>	13.1	9.8
	13.2	}		13.4	10.1
	13.2	}		13.5	10.2
7+00	13.1	9.8	50	13.1	9.8
	13.1	9.8		12.9	9.6
	11.5	8.2		13.2	9.9
				13.3	10.0
				13.7	10.4
			10+00	13.7	10.4

3-03-60

STA. N. 67+00; 0+00 = W 14350; SOUND EAST

Dist	Sound	Elev	Dist	Sound	Elev
0+00			<u>33</u>	13.5	
<u>33</u>			50	13.2	
	1.1			13.0	
<u>2:18</u>	1.8		<u>2:20</u>	13.1	
	2.1			13.0	
50	2.5			13.0	
	3.6		3+00	13.1	
	4.1			13.2	
	6.4			13.0	
	7.1			13.0	
1+00	7.1			13.0	
	6.5		50	13.1	
	6.4			13.1	
	6.6		<u>2.5</u>	13.2	
	6.9		<u>Soft</u>	13.4	
50	6.9			13.5	
	7.2		4+00	13.8	
	10.3			13.0	
	12.3			13.0	
	13.1			12.9	
2+00	13.2			13.0	
	13.2		50	12.5	
	13.0			12.2	
	13.2			11.9	

STA. N. 67+00 - EAST

Dist Sound Elev

Dist	Sound	Elev
<u>33</u>	11.8	
	11.5	
5+00	11.5	
	11.4	
<u>2:25</u>	11.7	
<u>5</u>	11.7	
	11.8	
50	11.6	

(39)

3-03-60

STA. W. 142+50; 0+00 = N. 6,650; SOUND NORTH

Dist	Sound	Elev	Dist	Sound	Elev
0+00	2.0		(33)	14.0	
(33)	3.9		50	14.1	
	5.0			14.0	
<u>1,25</u>	6.0			14.1	
	6.6			14.0	
50	7.3			13.7	
	6.8		3+00	13.8	
	7.3			13.8	
	7.5			13.3	
	8.4			12.7	
1+00	8.5			12.6	
	8.9		50	12.7	
	8.9			12.9	
	9.2			13.0	
	10.6			13.0	
50	12.0			13.5	
	12.1		4+00	13.8	
	12.2			12.9	
	12.5			13.2	
	13.3			13.2	
2+00	13.1			13.3	
	14.1		50	13.7	
	13.7			13.5	
	14.0			13.4	

STA. W. 142+50 - NORTH

Dist	Sound	Elev	Dist	Sound	Elev
(33)	13.3		(33)	12.2	
	12.5			12.4	
5+00	13.0		50	12.6	
<u>1,30</u>	13.0			12.6	
	13.0			12.7	
	13.3			12.5	
	13.3			12.4	
50	14.1		8+00	12.3	
	13.5			12.5	
	13.4			12.3	
	13.3		<u>1,35</u>	11.8	
	13.1			12.5	
6+00	13.1		50	13.0	
	13.0			13.0	
	12.3			13.0	
	11.8			13.0	
	11.7			13.3	
50	11.8		9+00	13.5	
	11.9			13.4	
	12.2			13.3	
	12.2			13.2	
	12.3			13.7	
7+00	12.1		50	13.3	
	12.3				
	12.3				

(40)

3-03-60

STA. W. 143+00; 0+00 = N. 6650; SOUND NORTH

DIST	SOUND	ELEV	DIST	SOUND	ELEV
0+00			(32)	13.3	10.1
(32)			50	13.3	10.1
	0.5	+2.7		13.3	10.1
<u>11.45</u>	1.0	+2.2		13.2	10.0
	2.7	+0.5		13.1	9.9
50	3.4	0.2		13.4	10.2
	4.5	1.3	3+00	13.6	10.4
	5.6	2.4		13.8	10.6
	7.3	4.1		13.8	10.6
	8.2	5.0		13.8	10.6
1+00	8.2	5.0		13.8	10.6
	8.5	5.3	50	13.7	10.5
	8.3	5.1		13.4	10.2
	8.9	5.7		13.3	10.1
	9.1	5.9		13.3	10.1
50	9.2	6.0		13.3	10.1
	9.2	6.0	4+00	13.3	10.1
	9.1	5.9		13.3	10.1
	13.0	9.8		13.2	10.0
	13.1	9.9		13.5	10.3
2+00	13.3	10.1		13.5	10.3
	13.4	10.2	50	13.5	10.3
	13.4	10.2		13.4	10.2
	13.3	10.1		13.0	9.8

STA. W. 143+00 - NORTH

DIST	SOUND	ELEV	DIST	SOUND	ELEV
(32)	12.7	9.5	(32)	12.3	
	12.5	9.3		12.4	
5+00	12.0		50	12.2	
	12.7			12.3	
<u>11.50</u>	13.1			12.3	
	13.2			12.4	
	13.1			12.4	
50	13.2		8+00	12.7	
	13.3			12.8	
	12.8			12.8	
	12.5		11.55	13.0	
	12.4		<u> </u>	13.0	
6+00	11.9		50	13.7	
	11.3			13.4	
	11.4			13.4	
	11.3			13.5	
	12.0			13.2	
50	12.0		9+00	13.3	
	12.0				
	11.9				
	12.1				
	12.2				
7+00	12.3		50		
	12.2				
	12.2				

OK

3-03-60

STA. W. 143+50; 0+00 = N6,700; SOUND NORTH

Dist	Sound	Elev	Dist	Sound	Elev
0+00			<u>32</u>	13.3	
<u>32</u>	0.2		50	13.8	
	1.3			13.5	
<u>21.05</u>	3.5			13.7	
	4.0			13.6	
50	5.0			13.8	
	6.9		3+00	14.0	
	7.7			13.3	
	8.1			12.7	
	8.3			10.8	
1+00	8.8			11.5	
	8.9		50	12.4	
	8.8			13.3	
	9.1			12.8	
	9.1			14.0	
50	12.1			14.0	
	13.4		4+00	14.0	
	13.7			13.9	
	13.9			12.5	
	13.9			12.0	
2+00	13.3			12.8	
	13.4		50	12.1	
	13.7			12.0	
	13.7			11.4	

STA. W. 143+50 - NORTH

Dist Sound Elev Dist Sound Elev

Dist	Sound	Elev	Dist	Sound	Elev
<u>32</u>	11.3		<u>32</u>	13.1	
	11.5			13.0	
5+00	11.4		50	13.2	
	11.7			14.2	
	11.7		<u>21.10</u>	13.3	
	11.7			13.3	
	11.8			13.2	
50	11.9		8+00	13.0	
	11.9			13.0	
	11.9			12.9	
	11.6			12.6	
	11.8			12.7	
6+00	12.2		50	12.5	
	12.1			12.7	
	12.7			12.9	
	12.6			12.9	
	12.7			12.9	
50	12.5		9+00	12.9	
	12.2			12.8	
	12.3			12.8	
	12.9			12.8	
	12.4			12.7	
7+00	12.9		50	12.3	
	13.0				
	12.9				

3-03-60

STA. W. 144+00-NORTH

(43)

STA. W. 144+00; 0+00=N. 6710; SOUND NORTH

Dist	Sound	Elev	Dist	Sound	Elev
0+00			(3)	13.5	10.4
(3)			50	13.4	10.3
	0.5	+2.6		13.2	10.1
2.55	0.9	+2.2		13.2	10.1
	1.4	+1.7		13.1	10.0
50	3.1	0.0		13.0	9.9
	5.2	2.1	3+00	13.0	9.9
	7.0	3.9		11.0	7.9
	8.2	5.1		11.1	8.0
	8.7	5.6		11.4	8.3
1+00	8.7	5.6		11.5	8.4
	9.2	6.1	50	11.7	8.6
	9.4	6.3		11.7	8.6
	9.6	6.5		11.9	8.8
	9.7	6.6		11.6	8.5
50	9.8	6.7		11.5	8.4
	10.2	7.1	4+00	11.5	
	13.2	10.1		11.5	
	13.3	10.2		11.6	8.5
	13.4	10.3		11.7	8.6
2+00	13.4	10.3		11.6	8.5
	13.5	10.4	50	11.6	8.5
	13.5	10.4		11.7	8.6
	13.2	10.1		11.4	8.3

Dist Sound Elev Dist Sound Elev

(3)	11.6	8.5	(3)	13.2	10.1
	12.6	9.5		13.1	10.0
5+00	12.2	9.1	50	13.0	9.9
	12.7	9.6		12.8	9.7
	12.2	9.1		12.7	9.6
	12.2			13.0	9.9
	12.2			12.8	9.7
50	12.2		8+00	12.5	9.4
	12.0	8.9		12.6	9.5
3+00	12.0	8.9		12.4	9.3
	11.8	8.7		12.4	9.3
	11.9	8.8		12.4	9.3
6+00	12.0	8.9	50	12.5	9.4
	12.1	9.0		12.6	9.5
	12.1	9.0		12.8	9.7
	12.2	9.1		13.0	9.9
	12.3	9.2		12.8	9.7
50	12.3	9.2	9+00	12.4	9.3
	12.5	9.4			
	12.5	9.4			
	12.8	9.7			
	12.8				
7+00	12.8				
	13.2	10.1			
	13.2	10.1			

3-03-60

STA. W. 144+50; D+00=N. 6730; SOUND NORTH

DIST	SOUND	ELEV	DIST	SOUND	ELEV
0+00			(3)	11.0	
(3)			50	11.2	
	1.2		<u>3:10</u>	11.5	
<u>3:08</u>	1.3			11.8	
	1.7			11.6	
50	2.7			12.0	
	6.0		3+00	11.9	
	7.9			11.7	
	8.6			11.8	
	9.2			11.9	
1+00	10.1			12.0	
	10.3		50	12.0	
	10.5			12.0	
	10.6			11.9	
	10.8			11.9	
50	10.6			12.0	
	10.7		4+00	11.9	
	11.4			11.9	
	13.9			11.9	
	13.5			11.9	
2+00	13.4			12.0	
	13.6		50	12.0	
	12.9			12.0	
	11.8			12.1	

STA. W. 144+50-NORTH

DIST	SOUND	ELEV	DIST	SOUND	ELEV
(3)	12.0		(3)	13.0	
	12.1			12.6	
5+00	12.1		50	12.8	
	12.0			12.6	
	11.9		<u>3:15</u>	12.5	
	11.7			12.6	
	11.7			12.5	
50	11.9		8+00	12.8	
	12.0			13.0	
	12.3			13.0	
	12.4			13.0	
	12.5			13.0	
6+00	12.6		50	13.0	
	12.5			12.8	
	12.5			12.9	
	12.6			12.6	
	12.8			12.2	
50	12.9		9+00	12.1	
	12.8				
	12.9				
	13.0				
	12.9				
7+00	12.9				
	12.8				
	12.9				

OK

3-08-60

STA. W. 145+00; 0+00 = N 6780; SOUND NORTH

Dist Sound Elev Dist Sound Elev

Dist	Sound	Elev	Dist	Sound	Elev
0+00			(1.7)	10.2	
(1.7)	0.2		50	10.3	
	1.2		<u>1040</u>	10.3	
<u>10:38</u>	4.3			10.5	
	5.5			10.3	
50	7.3			10.2	
	8.2		3+00	10.2	
	8.6			10.1	
	9.0			10.1	
	9.2			10.1	
1+00	9.4			10.2	
	9.5		50	10.3	
	9.3			10.3	
	9.6			10.4	
	9.4			10.4	
50	9.4			10.1	
	9.6		4+00	10.0	
	9.7			9.9	
	10.0			9.9	
	10.3			9.9	
2+00	10.3			10.0	
	10.2		50	10.0	
	10.0			10.1	
	10.2			9.9	

O.K.

O.K.

STA. W. 145+00 - NORTH

(45)

Dist Sound Elev Dist Sound Elev

Dist	Sound	Elev	Dist	Sound	Elev
(1.6)	10.0				
	10.0				
5+00	10.1				
	10.4				
	10.7				
	10.7				
	10.8				
50	10.8				
	11.0				
	11.1				
<u>10:45</u>	11.2				
	11.3				
6+00	11.2				

O.K.

3-08-60

STA. W/45+50; 0+00 = N6800; SOUND NORTH

Dist Sound Elev Dist Sound Elev

Dist	Sound	Elev	Dist	Sound	Elev
0+00			(15)	10.3	
(15)			50	10.5	
				10.7	
10:50	1.0			10.8	
	4.3			10.7	
50	6.5			10.5	
	8.1		3+00	10.2	
	9.0			10.0	
	9.9			10.1	
	10.0			10.2	
1+00	10.3			9.9	
	10.3		50	9.9	
	10.4			9.9	
	10.6			9.9	
	10.5			9.5	
50	10.4			9.5	
	10.0		4+00	10.1	
	9.9			10.2	
	10.0			10.1	
	10.0			10.1	
2+00	10.0			10.0	
	10.1		50	9.9	
	10.0			10.0	
	10.1			10.4	

STA. W/145+50-NORTH

Dist Sound Elev Dist Sound Elev

Dist	Sound	Elev	Dist	Sound	Elev
(15)	10.3				
	10.3				
5+00	10.3				
	10.6				
	10.9				
	11.1				
	11.2				
50	11.1				
	11.1				
	11.1				
	11.3				
	11.3				
6+00	11.1				

(46)

3-08-60

STA. W. 146+00; 0+00 = N. 6840; SOUND NORTH

DIST	Sound	Elev	DIST	Sound	Elev
0+00			(13)	10.0	8.7
11:07	0.0	+1.3	50	9.9	8.6
	4.8	3.5	11:10	9.6	8.3
(13)	7.7	6.4		9.5	8.2
	8.9	7.6		9.7	8.4
50	9.9	8.6		9.7	{
	10.3	9.0	3+00	9.7	{
	10.7	9.4		9.4	8.1
	10.7	{		9.3	8.0
	10.7	{		9.2	7.9
1+00	11.0	9.7		9.5	8.2
	11.0	9.7	50	9.4	8.1
	11.2	9.9		9.6	8.3
	11.8	10.5		9.5	8.2
	11.4	10.1		10.0	8.7
50	11.5	10.2		9.9	8.6
	11.5	10.2	4+00	9.9	8.6
	11.3	10.0		10.1	8.8
	11.1	9.8		10.1	{
	10.6	9.3		10.1	{
2+00	10.8	9.5		10.2	8.9
	11.1	9.8	50	10.5	9.2
	10.9	9.6		10.6	9.3
	10.7	9.4		11.1	9.8

(47)

STA. W. 146+50; 0+00 = N. 6840; SOUND NORTH

DIST	Sound	Elev	DIST	Sound	Elev
0+00			(11)	10.3	
11:16			50	9.4	
				9.6	
(11)	0.2			9.7	
	4.4			9.7	
50	7.0			9.3	
	8.1		3+00	9.5	
	9.2			9.6	
	10.2			9.8	
	10.8			9.5	
1+00	10.9			9.7	
	11.1		50	9.9	
	11.0			10.0	
11:20	11.1			10.0	
	11.1			10.5	
50	11.1			10.3	
	10.9		4+00	10.0	
	10.3			10.1	
	10.1			10.3	
	10.1			10.5	
2+00	9.8			10.7	
	9.9		50	11.1	
	10.9				
	10.7				

OK

OK

3-08-60

STA. W. 147+00, 0+00 = N. 6840; SOUND NORTH

Dist	Sound	Elev	Dist	Sound	Elev
0+00			(11)	10.2	
(11)			50	10.2	
				10.0	
<u>11:30</u>				10.1	
	0.2			10.3	
50	0.9			10.8	
	4.4		3+00	10.6	
	8.2			10.5	
	9.9			10.7	
	10.3			10.8	
1+00	10.7			10.4	OK
	10.8		50	10.2	
	11.8			10.2	
	12.7			10.2	
	13.1			10.0	
50	12.2			10.3	
	12.2		4+00	10.8	
	12.8			10.7	
	12.8			11.0	
	11.0			10.8	
2+00	10.5			11.6	
	11.4		50	11.7	
	10.3				
	10.1				

(48)

STA. W. 132+00, 0+00 = N. 6060; SOUND NORTH

Dist	Sound	Elev	Dist	Sound	Elev
0+00			(05)	11.7	11.2
(05)			50	10.9	10.4
	3.6	3.1		10.8	10.3
<u>12:45</u>	7.1	6.6	<u>12:50</u>	10.6	10.1
	10.8	10.3		10.1	9.6
50	11.2	10.7		10.0	9.5
	10.7	10.2	3+00	9.9	9.4
	10.3	9.8		9.8	9.3
	9.7	9.2		9.7	9.2
	9.0	8.5		9.8	9.3
1+00	10.2	9.7		9.8	9.3
	11.1	10.6	50	9.7	9.2
	11.8	11.3		9.4	8.9
	11.7	11.2		9.2	8.7
	11.5	11.0		9.1	8.6
50	11.9	11.4		9.0	8.5
	12.0	11.5	4+00	8.8	8.3
	12.0			8.6	8.1
Soft.	12.0			8.3	7.8
	12.8	12.3		8.3	7.8
2+00	12.8	12.3		8.4	7.9
	12.7	12.2	50	8.7	8.2
	12.3	11.8		8.7	8.2
	12.0	11.5		8.4	7.9

STA. W. 132+00-NORTH 3-08-60

DIST	Sound	Elev	DIST	Sound	Elev
(0.5)	8.9	8.4	(0.5)	9.6	9.1
	9.0	8.5		9.3	8.8
5+00	9.1	8.6	50	9.1	8.6
	9.0	8.5		8.9	8.4
	9.0	8.5		8.4	7.9
	8.8	8.3		8.3	7.8
	8.1	7.6		8.3	7.8
50	8.1	7.6	8+00	8.4	7.7
	8.1	7.6		8.7	8.2
	8.2	7.7		8.6	8.1
	8.2	7.7		8.8	8.3
	7.9	7.4		8.5	8.0
6+00	7.8	7.3	50	8.3	7.8
	7.5	7.0		8.5	8.0
	7.5	7.0		8.3	7.8
12:55	7.7	7.2		8.3	7.8
	7.3	6.8		8.3	7.8
50	7.3	6.8	9+00	8.7	8.2
	7.2	6.7		9.1	8.6
	7.2	6.7		9.1	8.6
	7.1	6.6		8.0	7.5
	8.6	8.1		5.0	4.5
7+00	8.9	8.4	50	0.5	0.0
	9.0	8.5			
	9.2	8.7			

STA. W. 132+50; 0+00=N. 6030 ; Sound NORTH

DIST	Sound	Elev	DIST	Sound	Elev
0+00			(0.5)	10.2	
(0.5)			50	12.0	
	0.7			12.0	
	6.5			12.3	
11:08	9.0		11:0	12.4	
50	10.0		3+00	12.4	
	10.8			12.3	
	9.1			11.7	
	9.0			11.3	
	9.3			11.0	
1+00	9.0			10.8	
	9.1		50	10.1	
	9.2			9.6	
	9.3			9.6	
	9.4			9.5	
50	9.2			9.5	
	8.7		4+00	9.2	
	8.2			9.1	
	8.2			9.0	
	8.4			8.6	
2+00	8.8			8.3	
	8.4		50	8.2	
	8.3			8.2	
	9.4			8.2	

OK

OK

STA. W. 132+50 - NORTH 3-08-60

Dist	Sound	Elev	Dist	Sound	Elev
(0.5)	8.2		(0.5)	6.8	6.3
	8.5			7.1	6.6
5+00	8.7		50	7.6	
	8.7		<u>1.15</u>	7.7	
	8.7			7.8	0.1
	8.8			7.8	
	8.5			7.4	6.9
50	8.1		8+00	7.3	6.8
	8.0			7.3	6.8
	8.0			7.5	
	8.1	o.k.		7.9	
	8.2			8.1	
6+00	8.0		50	8.1	
	8.1			8.2	o.k.
	8.1			8.1	
	8.1			7.9	
	8.2			7.6	
50	8.2		9+00	7.7	
	8.0			7.4	6.9
	7.9			7.3	6.8
	7.6			7.2	6.7
	6.9	6.4		7.2	6.7
7+00	6.3	5.8	50	7.2	6.7
	6.4	5.9		7.3	6.8
	6.8	6.3		7.3	6.8
				6.4	5.9

STA. W. 133+00; 0+00 = N6,000; SOUND NORTH

Dist	Sound	Elev	Dist	Sound	Elev
0+00			(0.5)	7.9	
(0.5)			50	8.2	
	1.0			8.3	
<u>1.23</u>	4.8		<u>1.25</u>	8.4	
	8.8			8.4	
50	8.5			8.4	
	8.3		3+00	8.0	
	8.3			7.9	
	8.8			8.6	
	9.0			9.1	
1+00	9.0			8.4	
	9.5		50	8.7	
	9.3			10.2	
	9.7	o.k.		11.0	
	10.0			11.3	
50	9.4			11.3	
	9.9		4+00	10.9	
	9.3			10.2	
	9.1			10.1	
	9.1			10.1	
2+00	9.0			10.3	
	9.0		50	10.8	
	8.8			10.8	
	7.9			10.4	

STA. W. 133+00 - NORTH 3 - 08-60

Dist	Sound	Elev
(05)	9.7	
	9.0	
5+00	8.9	
	8.6	
	8.5	
	8.9	
	8.9	
50	9.0	
	9.0	
	8.6	
	8.3	
	8.7	OK
6+00	8.7	
	8.5	
<u>11.30</u>	8.2	
	8.2	
	8.8	
50	8.8	
	8.8	
	8.2	
	7.8	
	8.0	
7+00	7.9	
	7.3	6.8
	7.5	7.0

STA. W. 133+00 - NORTH

(5)

Dist	Sound	Elev
(05)	7.6	7.1
	7.2	6.9
50	7.9	7.4
	8.2	
	8.5	
	8.6	
	8.8	
8+00	8.8	
	8.9	
	8.9	
	8.8	
	8.8	
50	8.7	
	8.7	
	8.9	
	8.9	
	9.1	
9+00	9.0	
	8.9	
	8.8	
	8.5	
	8.3	
50	8.3	
	8.6	
	8.4	

Dist	Sound	Elev
(06)	8.1	7.5
	7.7	7.1
10+00	7.5	6.9
	7.0	6.4
	7.1	6.5
<u>11.35</u>	6.9	6.3
	3.7	3.1
50	2.9	2.3

11+00

50

12+00

3-08-60

STA. W. 133+50; 0+00 = N. 5970; SOUND NORTH

Dist	Sound	Elev	Dist	Sound	Elev
0+00			(06)	8.6	
(06)			50	8.1	
	2.3			8.2	
<u>1142</u>	7.4			8.5	
	9.1		<u>1145</u>	8.7	
50	9.0			8.8	
	9.0		3+00	8.7	
	9.0			8.7	
	9.3			8.5	
	8.9			9.0	
1+00	8.5			8.9	
	8.6		50	8.7	
	9.1			8.6	
	9.1			9.0	
	9.4			9.1	
50	9.2			9.2	
	9.3		4+00	9.5	
	9.2			9.7	
	9.1			10.0	
	9.0			9.7	
2+00	9.1			9.2	
	9.1		50	8.9	
	9.3			8.5	
	9.0			8.1	

OK

OK

STA. W. 133+50-NORTH

(52)

Dist	Sound	Elev	Dist	Sound	Elev
(06)	7.9	7.3	(06)	7.2	6.6
	7.6	7.0		7.3	6.7
5+00	7.5	6.9	50	7.5	6.9
	7.5	4.9		7.4	6.8
	7.7	7.1	<u>1150</u>	7.7	7.1
	8.0			8.0	
	8.2			8.2	
50	8.4		8+00	8.3	
	8.3			8.5	
	7.9			8.6	
	7.9			8.6	
	7.7			8.5	
6+00	7.9		50	8.6	
	8.0			8.8	
	7.9			9.0	
	8.0			9.0	
	8.0			9.3	
50	8.0		9+00	9.3	
	8.1			9.3	
	8.1			9.2	
	8.2			9.2	
	8.3			9.2	
7+00	8.3		50	9.1	
	8.0			9.0	
	7.4	6.8		8.9	

OK

OK

STA. W. 133+50 - NORTH 3-08-60

Dist	Sound	Elev	Dist	Sound	Elev
(0.7)	8.8	}	30		
	8.5				
10+00	7.9		OK		
	8.0				
	7.8				
	7.2	6.5			
	7.2	6.5			
50	7.2	6.5			
	7.0	6.3			
	6.8	6.1			
<u>1155</u>	6.8	6.1			
	6.9	6.2			
11+00	6.2	5.5			
	6.0	5.3			
	5.7	5.0			
	5.3	4.6			
	4.0	3.3			
50	2.1	1.4			
	1.0	0.3			
	0.4	+0.3			

12+00

(53)

STA. W. 134+00; 0+00 = N 5920; SOUND NORTH

Dist	Sound	Elev	Dist	Sound	Elev
0+00			(0.7)	9.3	8.6
			50	9.3	8.6
				9.2	8.5
				9.2	8.5
				9.2	8.5
50	1.1	0.4		9.1	8.4
	7.2	6.5	3+00	9.0	8.3
	9.0	8.3		9.0	8.3
	8.3	7.6		9.0	
	7.9	7.2	<u>2105</u>	9.0	
1+00	8.2	7.5		9.0	
	8.3	7.6	50	9.0	
	9.6	8.9		9.0	
	9.6	8.9		9.0	
	9.6	8.9		9.0	
50	9.3	8.6		8.8	8.1
	9.2	8.5	4+00	8.8	8.1
	9.2	8.5		9.0	8.3
	9.3	8.6		9.6	8.9
	9.6	8.9		9.6	8.9
2+00	10.0	9.3		9.8	9.1
	10.1	9.4	50	9.8	9.1
	10.0	9.3		10.0	9.3
	9.5	8.8		9.8	9.1

STA-W. 134+00 - NORTH. 3-08-60

Dist	Sound	Elev	Dist	Sound	Elev
(07)	9.1	8.4	(08)	6.7	5.9
	8.5	7.8		6.9	6.1
5+00	8.5	7.8	50	6.1	5.3
	8.6	7.9		6.8	6.0
	9.0	8.3		6.9	6.1
	8.6	7.9		7.0	6.2
	8.3	7.6		7.0	6.2
50	8.2	7.5	8+00	7.2	6.4
	8.1	7.4		7.2	6.4
	8.1	7.4		7.4	6.6
	8.0	7.3		8.0	7.2
	8.0	}		8.2	7.4
6+00	8.0	}	50	8.3	7.5
	8.0	}		8.4	7.6
	8.2	7.5		8.5	7.7
	8.2	}		8.6	7.8
	8.2	}		8.7	7.9
50	8.2	}	9+00	8.8	8.0
	8.0	7.3		8.9	8.1
	7.4	6.7		9.0	8.2
	7.3	6.6		9.1	8.3
	7.2	6.5		9.3	8.5
7+00	7.0	6.3	50	9.4	8.6
	6.9	6.2		9.5	8.7
	6.8	6.1		9.6	8.8

STA-W. 134+00 - NORTH (54)

Dist	Sound	Elev	Dist	Sound	Elev
(08)	9.5	8.7	(08)	7.7	6.9
	9.3	8.5		7.8	7.0
10+00	9.2	8.4	50	7.8	7.0
	9.2	8.4		8.0	7.2
2+10	9.2	8.4		8.1	7.3
	9.0	8.2	80	8.0	7.2
	8.3	7.5			
50	8.0	7.2			
	7.8	7.0			
	7.7	6.9			
	7.8	7.0			
	7.9	7.1			
11+00	7.9	7.1			
	7.9	7.1			
	8.0	7.2			
	8.0	7.2			
	8.0	7.2			
50	7.8	7.0			
	7.7	6.9			
	7.3	6.5			
	7.2	6.4			
	7.2	6.4			
12+00	7.2	6.4			
	7.3	6.5			
	7.6	6.8			

3-08-60

STA. W134+50; 0+00 = N 5890; SOUND NORTH

Dist Sound Elev Dist Sound Elev

Dist	Sound	Elev	Dist	Sound	Elev
0+00			(0.8)	9.4	
(0.8)			50	9.5	
				9.4	
				9.4	
				9.6	
50				9.8	
2+00			3+00	9.8	
	0.8			9.8	
	6.7			9.7	
	9.0			9.6	
1+00	9.0		50	9.5	
	9.0		50	9.5	
	9.1			9.4	
	9.1			9.6	
	9.0			9.6	
50	9.0			9.4	
	9.0		4+00	9.4	
	8.9			9.5	
	9.0			9.6	
	9.0			9.3	
2+00	9.1		50	9.4	
	9.2		50	9.7	
	9.2			10.2	
	9.3			10.1	

STA. W134+50 - NORTH

(55)

Dist Sound Elev Dist Sound Elev

Dist	Sound	Elev	Dist	Sound	Elev
(0.9)	10.0		(0.9)	7.3	6.4
	9.9			7.1	6.2
5+00	9.8		50	7.2	6.3
	9.7			7.3	6.4
	9.8			7.3	6.4
	9.8			7.3	6.4
	9.7			7.3	6.4
50	9.2		8+00	7.2	6.3
	8.8			7.1	6.2
	8.6			7.2	6.3
	8.5			7.3	6.4
6+00	8.6		50	7.4	6.5
6+00	8.7		50	7.4	6.5
	8.8			7.3	6.4
	9.0			7.5	6.6
2+25	9.3			8.0	7.1
	9.3			8.1	7.2
50	9.3		9+00	8.2	7.3
	9.2			8.1	7.2
	9.1			7.8	6.9
	9.0			7.6	6.7
	8.9		50	7.3	6.4
7+00	8.2		50	8.1	7.2
	8.1			8.3	7.4
	8.0			8.4	7.5

STA. W/134+50-NORTH 3-08-60

Dist	Sound	Elev	Dist	Sound	Elev
(0.9)	8.7		(1.0)	8.6	
	9.0			8.8	
10+00	9.2		50	8.8	
	9.2		2,35	8.8	
	9.2			8.8	
	8.7	0.1		8.7	
	8.5			8.8	
50	8.6		13+00	8.8	
	8.8		10	8.9	
	8.0				
	7.7	6.8			
	7.6	6.7			
11+00	7.7	6.8			
	8.1				
	8.0				
	8.0				
	8.1				
50	8.2				
	8.2				
	8.2				
	8.2				
	8.3				
12+00	8.3				
	8.3				
	8.4				

3-08-60

(56)

STA. W. 135+00; 0+00=N 5880; SOUND NORTH

Dist	Sound	Elev	Dist	Sound	Elev
0+00			(1.0)	9.1	
(1.0)			50	9.2	
				9.3	
			2,40	9.2	
				9.1	
50	1.2			9.2	
	1.9		3+00	9.8	
2,37	3.0			9.7	
	2.0			9.7	
	9.0			9.9	
1+00	9.0			9.9	
	9.0		50	10.0	
	8.9			10.1	
	9.7			10.3	
	9.7			10.7	
50	9.5			10.7	
	9.3		4+00	10.9	
	9.2			11.0	
	9.4			10.9	
	9.4			11.1	
2+00	9.3			11.0	
	9.1		50	11.0	
	8.8			11.0	
	8.9			10.8	

STA. W. 135+00 - NORTH - 3-08-60

Dist	Sound	Elev	Dist	Sound	Elev
(10)	10.9		(11)	8.9	
	10.6			9.0	
5+00	10.5		50	9.0	
	10.5			9.1	
	10.6			8.9	
	10.7			8.8	
	10.4			8.7	
50	10.1		8+00	8.5	
	9.9			8.7	
	9.7		<u>2.45</u>	8.8	
	9.4			8.8	
	9.2			8.9	
6+00	9.0		50	9.1	
	9.2			9.0	
	10.0			8.7	
	10.1			9.1	
	10.1			9.8	
50	10.1		9+00	9.8	
	10.1			9.5	
	9.5			9.6	
	9.8			9.7	
	9.9			9.7	
7+00	9.7		50	9.6	
	8.8			9.6	
	8.9			9.3	

STA. W. 135+00 - NORTH

(57)

Dist	Sound	Elev	Dist	Sound	Elev
(11)	9.4		(12)	9.2	
	9.7			9.2	
10+00	9.5		50	9.3	
	9.3			9.4	
	9.1			9.3	
	9.0		<u>2.50</u>	9.4	
	8.9			9.4	
50	8.2		13+00	9.8	
	7.5	6.4		9.2	
	7.8	6.7	20	8.9	
	7.4	6.3			
	7.3	6.2			
11+00	7.3	6.2			
	7.4	6.3			
	7.9	6.8			
	8.0	6.9			
	8.0	6.9			
50	8.1	7.0			
	8.3				
	8.3				
	8.6				
	8.7				
12+00	8.8				
	8.9				
	9.0				

3-08-60

STA. W. 135+50; 0+00 = N 5840; SOUND NORTH

Dist	Sound	Elev	Dist	Sound	Elev
0+00			(15)	9.4	
(11.4)			50	9.5	
				9.5	
			<u>3:15</u>	9.6	
				9.8	
50	0.2			9.9	
<u>3:12</u>	1.0		3+00	10.0	
	2.1			9.9	
	3.0			9.9	
	10.5			9.8	
1+00	11.3			10.0	
	11.5		50	10.0	
	11.6			10.0	
	11.2			10.0	
	10.0			10.0	
50	10.0			10.1	
	10.1		4+00	10.0	
	10.0			9.9	
	9.9			9.4	
	9.4			9.5	
2+00	9.3			9.7	
	9.5		50	10.0	
	9.6			10.1	
	9.4			10.3	

STA. W. 135+50-NORTH

Dist	Sound	Elev	Dist	Sound	Elev
(15)	10.6		(15)	9.9	
	10.7			9.7	
5+00	10.8		50	9.5	
	10.3			9.3	
	10.2			9.3	
	10.0			9.2	
	10.0			9.1	
50	10.1		8+00	9.1	
	10.3			9.0	
	10.4			8.8	
	10.6			8.6	
	11.0			8.8	
6+00	11.0		50	9.0	
	10.9			9.0	
	10.8			8.7	
	10.5			9.0	
	10.3			9.0	
50	10.2		9+00	9.1	
	10.2			9.3	
	10.2			9.5	
	10.2			9.7	
	10.2			9.8	
7+00	10.0		50	9.8	
	10.0			9.7	
	10.0			9.5	

STA. W. 135+50-NORTH. 3-08-60

(Ref. F.B. 125-101) 3-10-60

(59)

DIST	SOUND	ELEV	DIST	SOUND	ELEV	
(13)	9.3	}	(13)	9.8	} ok	
	9.4			8.8		
10+00	9.6		50	8.0		6.5
<u>3:20</u>	9.5			8.0		6.5
	9.4			8.6		7.1
	9.3			8.8		
	9.2			9.0		
50	9.2		13+00	9.0		
	9.4			9.2		} ok
	9.7			9.2		
	9.8		9.3			
	9.8		9.2			
11+00	10.0	} ok	50	9.0	}	
	9.8		60	9.0		
	9.7					
	9.6					
	9.4					
50	9.3					
	9.5					
	9.6					
	9.7					
	9.7					
12+00	9.8					
	10.0					
	10.0					

CHECK SOUNDINGS FOR SHOAL REMOVAL
 STA. N. 78+00; 0+00 = W. 14,700; SOUND EAST

DIST	SOUND	ELEV	DIST	SOUND	ELEV
0+00			(1.9)	11.9	10.0
				11.1	9.2
			50	11.6	9.7
				11.7	9.8
				11.5	9.6
			50	11.2	9.3
			<u>11.23</u>	11.3	9.4
				11.3	9.4
				11.6	9.7
			20	11.6	9.7
			1+00	3.9	2.0
				8.0	6.1
				11.4	9.5
				11.4	9.5
				11.0	9.1
			50	11.0	9.1
				11.1	9.2
				10.8	8.9
				10.7	8.8
				10.8	8.9
			2+00	11.2	9.3
				11.1	9.2
				11.3	9.4

3-10-60

STA. N. 78+50; 0+00 = W. 14670; SOUND EAST

DIST	Sound	Elev	DIST	Sound	Elev
0+00			(18)	13.3	11.5
(18)			50	13.1	11.3
				12.7	10.9
<u>11.32</u>	0.4	+1.4		12.2	10.4
	0.9	+0.9		10.8	9.0
50	1.2	+0.6		10.8	9.0
	1.4	+0.4	3+00	11.0	9.2
	1.6	+0.2		11.1	9.3
	1.6	+0.2		11.1	9.3
	1.9	0.1		11.2	9.4
1+00	2.1	0.3		11.3	9.5
	2.9	1.1	50	11.7	9.9
	8.0	6.2		11.5	9.7
	11.3	9.5		11.8	10.0
	11.3	9.5		11.6	9.8
50	11.3	9.5		11.7	9.9
	11.8	10.0	4+00	11.8	10.0
	11.4	9.6			
	11.3	9.5			
	11.2	9.4			
2+00	11.3	9.5			
	12.7	10.9			
	13.2	11.4			
	13.1	11.3			

60

STA. N. 79+00; 0+00 = W. 14580; SOUND EAST

DIST	Sound	Elev	DIST	Sound	Elev
0+00	0.2	+1.4	(16)	11.2	9.6
(16)	0.9	+0.7	50	11.3	9.7
	0.9	+0.7		11.4	9.8
<u>11.42</u>	1.2	+0.4		11.2	9.6
	1.4	+0.2		11.2	9.6
50	1.8	0.2		11.3	9.7
	6.8	5.2	3+00	11.4	9.8
	7.7	6.1		11.7	10.1
	7.8	6.2		11.8	10.2
	7.8	6.2		11.8	10.2
1+00	12.3	10.7		11.8	10.2
	12.7	11.1	50	11.8	10.2
	12.8	11.2			
	12.2	10.6			
	12.3	10.7			
50	11.6	10.0			
	12.4	10.8			
	12.0	10.4			
	12.1	10.5			
	12.2	10.6			
2+00	12.9	11.3			
	12.4	10.8			
	11.0	9.4			
	11.1	9.5			

3-10-60

STA. N. 80+00; 0+00 = W/4.500; SOUND EAST

DIST SOUND ELEV DIST SOUND ELEV

0+00

15	0.4	+1.1
	0.8	+0.7

11.50

	2.2	0.7
	2.7	1.2

50

	2.8	1.3
--	-----	-----

	6.9	5.4
--	-----	-----

	8.5	7.0
--	-----	-----

	8.8	7.3
--	-----	-----

	9.2	7.7
--	-----	-----

1+00

	10.3	8.8
--	------	-----

	10.4	8.9
--	------	-----

	11.0	9.5
--	------	-----

	11.5	10.0
--	------	------

	12.0	10.5
--	------	------

50

	12.0	10.5
--	------	------

3-10-60

STA. N. 90+00; 0+00 = W/4.370; SOUND EAST

DIST SOUND ELEV DIST SOUND ELEV

15+20 10.2 9.7

05	10.3	9.8
----	------	-----

11.10	10.3	9.8
-------	------	-----

50	10.4	9.9
----	------	-----

	10.6	10.1
--	------	------

	11.3	10.8
--	------	------

	11.3	
--	------	--

	11.3	
--	------	--

16+00 11.3

10	11.3	
----	------	--

3-10-60

STA. N. 90+50; 0+00 = W/4370; SOUND EAST

Dist	Sound	Elev	Dist	Sound	Elev
15+50	9.7				
(0.4)	9.7				
	9.8				
<u>11.20</u>	9.9				
	9.9				
16+00	10.0				
	10.2				
	10.2				
	10.2				
	10.3				
50	10.5				
	10.8				
	11.0				
	11.2				
	11.2				
17+00	11.0				

OK

RE-SOUND

(62)

STA. N. 91+00; 0+00 = W/4370; SOUND EAST

Dist	Sound	Elev	Dist	Sound	Elev
3+30	8.1	7.7		7.9	7.5
(0.4)	6.5	6.1		8.1	7.7
50	6.6	6.2		8.1	7.7
<u>11.30</u>	6.6	6.2		8.1	7.7
	6.8	6.4	50	8.2	7.8
80	7.3	6.9			
	7.5	7.1			
4+00	7.8	7.4			
^{To Deep H₂O}					
15+50	9.6	9.3			
(0.3)	9.4	9.1			
	9.5	9.2			
	9.3	9.0			
	9.1	8.8			
16+00	8.9	8.6			
<u>11.35</u>	9.0	8.7			
	9.0	8.7			
	9.1	8.8			
	9.4	9.1			
50	9.8	9.5			
	10.0	9.7			
	10.1	9.8			
	10.2	9.9			
	10.1	9.8			
17+00	10.1	9.8			

3-10-60

STA. N. 91+50; 0+00 = W. 14,370; SOUND EAST

Dist	Sound	Elev	Dist	Sound	Elev
15+00	8.9	} O.K.			
(03)	9.3				
	9.4				
<u>11.50</u>	9.6				
	9.8				
50	9.6				
	9.4				
	9.5				
<u>14.00</u>	9.3				
	9.1				
16+00	8.8				
	8.7				
	8.7				
	8.9				
	8.9				
50	9.0				
	9.2				
	9.5				
	9.4				
	9.4				
17+00	9.4				

(63)

STA. N. 92+00; 0+00 = W. 14,360; SOUND EAST

Dist	Sound	Elev	Dist	Sound	Elev
14+80	10.2	9.6	20	8.9	8.3
	10.5	9.9	(06)	9.3	8.7
15+00	10.3	9.7		9.7	9.1
(06)	10.4	9.8	50	10.1	9.5
	10.1	9.5		10.1	9.5
<u>21.50</u>	10.0	9.4			
	9.9	9.3			
50	9.9	9.3			
	9.8	9.2			
	9.7	9.1			
16+00	9.5	8.9			
	9.5	8.9			
16+00	9.4	8.8			
	9.4	8.8			
	9.4	8.8			
50	9.4	8.8			
	9.6	9.0			
50	9.8	9.2			
	10.0	9.4			
	10.0	9.4			
17+00	10.4	9.8			
	11.2	10.6			
17+00	11.2	10.6			
	10.9	10.3			

3-10-60

STA. N. 92+50; 0+00 = W. 14.360; SOUND EAST

Dist Sound Elev Dist Sound Elev

14+90 11.2

15+00 11.2

10.7 11.0

10.9

3:00 10.9

10.9

50 10.8

10.9

10.9

10.9

10.9

16+00 11.0

11.1

11.3

11.4

12.0

50 12.3

3-11-60

STA. N. 93+00; 0+00 = W. 14.350; SOUND EAST

Dist Sound Elev Dist Sound Elev

14+90 15.0 9.6

15+00 14.9 9.5

5.4 14.8

14.8

9:02 14.7

14.5

50 14.8

14.7

15.1

15.1

16+00 15.2

16+00^v 15.7

64

3-11-60

STA. N. 93+50: 0+100 = W. 14,370 ; SOUND EAST

Dist	Sound	Elev	Dist	Sound	Elev
14+90	14.3	}			
15+00	14.3				
(51)	14.3				
	14.2				
<u>9:15</u>	14.2				
15+30	14.0				
50	14.3				
	14.5				
	15.0				
	15.2				
16+60	15.0				
16+00	15.2				
10	15.3				
30					

K.
0.

(65)

STA. N. 94+00: 0+100 = W. 14,310 ; SOUND EAST

Dist	Sound	Elev	Dist	Sound	Elev
14+30	14.1	9.3			
(4.8)	14.1	9.3			
50	14.1	9.3			
	14.0	9.2			
	13.9	9.1			
<u>9:30</u>	14.0	9.2			
	14.0	9.2			
15+00	14.0	9.2			
	13.9	9.1			
	13.8	9.0			
	13.7	8.9			
	13.6	8.8			
50	13.7	8.9			
	14.0	9.2			
	14.7	9.9			
	14.8	10.0			
	15.1	10.3			
16+00	15.1	{			
	15.1	}			
	15.1	}			
30	15.0	10.2			

3-11-60

STA. N. 94+50; 0+100 = W. 14,310 ; SOUND EAST

Dist Sound Elev Dist Sound Elev

14+40 14.6

50 14.3

4.7 14.2

14.3

9:40 14.6

14.2

15+00 14.0

13.9

13.9

13.9

14.0

50 14.1

K'
0'

66

STA. N. 95+00; 0+100 = W. 14,280 ; SOUND EAST

Dist Sound Elev Dist Sound Elev

14+00 14.1

4.5 14.1

14.2

14.3

9:50 14.2

50 14.2

14.1

14.0

13.8

13.6

15+00 13.6

13.8

14.0

14.0

40 14.1

K'
0'

3-11-60

STA. N. 97+50; 0+00 = W. 14,180; SOUND EAST

Dist Sound Elev Dist Sound Elev

11+00^v 10.8 6.8

(4.0) 10.9 6.9

11.1 7.1

10.15 11.3 7.3

11.6 7.6

50^v 12.0 8.0

(67)

STA. N. 99+50; 0+00 = W. 14,100; SOUND EAST

Dist Sound Elev Dist Sound Elev

6+90^v 11.3

7+00 11.6

(3.8) 11.0

11.2

10.25 10.9

10.8

50 10.5

11.0

11.8

12.0

12.0

8+00 12.0

11.6

11.3

11.3

40^v 11.3

OK

7.1

7.0

6.7

7.2

9.0

OK

3-11-60

STA. N. 100+00; 0400 = W. 14,070; SOUND EAST

Dist Sound Elev Dist Sound Elev

5+10 11.1 7.5 50 10.3 6.7

(36) 11.6 8.0 (36) 10.6 7.0

11.3 7.7 10.9 7.3

11.2 7.6 10.9 7.3

50 11.1 7.5 10.9 7.3

1032 11.2 7.6 8+00 11.0 7.4

11.1 7.5 1035 11.0 7.4

10.9 7.3 11.0 7.4

10.9 7.3 10.9 7.3

6+00 10.9 7.3 11.2 7.6

10.9 7.3 50 11.2 7.6

10.9 7.3 11.3 7.7

11.1 7.5 11.1 7.5

11.1 7.5 10.8 7.2

50 11.0 7.4 10.6 7.0

11.1 7.5 9+00 10.6 7.0

11.0 7.4 10.5 6.9

10.7 7.1 10.6 7.0

10.7 7.1 11.0 7.4

7+00 10.2 6.6 10.7 7.1

10.4 6.8 50 10.9 7.3

10.4 6.8 10.4 6.8

10.5 6.9 10.3 6.7

10.4 6.8 10.3 6.7

9+90 10.7 7.1

STA. N. 100+00 - EAST

Dist Sound Elev

10+00 10.8 7.2

(36) 10.8 7.2

11.1 7.5

11.4 7.8

11.4 7.8

50 11.8 8.2

12.0 8.4

NLY CABRILLO ISLAND

STADIA LOCATION OF INSHORE
STABLE FILL MATERIAL W064501

4-04-60

Stampen
Blunt
Hecht

NOTE: Zero Azimuth = NORTH
Sta Dist Azimuth Rod Elev
X @ N140+00; W. 8426.06

Ref. F.B.M.B. No 124

T.B.M. +4.84 19.50 = H.I. 14.66

"2x2" Hub. N14000; W8426.06

1.	478'	161° 15'	4.6	14.9
2	391'	163° 45'	5.2	14.3
3	300'	172° 30'	5.9	13.6
4	215'	180° 45'	6.6	12.9
5	143'	206° 35'	6.5	13.0
6	155'	244° 10'	5.8	13.7
7	209'	268° 30'	6.1	13.4
8	289'	277° 25'	6.8	12.7
9	370'	278° 40'	7.7	11.8
10	457'	276° 40'	7.6	11.9
11	553'	274° 55'	8.1	11.4
12	636'	271° 35'	8.1	11.4
13	718'	267° 50'	8.0	11.5

T.B.M. 4.84 14.66 ~ 14.66

T.B.M. +4.78 16.00 = H.I. 11.22

"2x2" Hub N14000; W 9334.63

X @ N. 140+00; W 9334.63; Zero Azim = North

14	148'	122° 45'	5.5	10.5
15	193'	157° 25'	4.9	11.1
16	241'	179° 35'	4.5	11.5
17	292'	196° 15'	3.6	12.4

INSHORE STABLE FILL LOCATION CONTD

H.I. = 16.00

STA	DIST	AZIMUTH	ROD	ELEV
18	367'	211° 45'	3.6	12.4
19	464'	208° 35'	3.3	12.7
20	558'	213° 05'	4.0	12.0
21	658'	212° 45'	3.0	13.0

NOT FOR YOU FRANK
To P.I. N° 3-5.3540 11° W
N 12400, W 14110 (19)

SOUNDINGS ELY CROWN (70)
POINT AFTER DREDGING
5-26-60

STA. N. 124+00; 0+00 = W. 14040; SOUND EAST

DIST	SOUND	ELEV	DIST	SOUND	ELEV
0+00			(36)	11.0	7.4
(36)			50	9.9	6.3
19	0.6	+3.0		10.3	6.7
	1.2	+2.4		10.9	7.3
9:50	1.8	+1.8	9:55	11.0	7.4
50	2.4	+1.2		10.9	7.3
	3.0	+0.6	3+00	10.9	7.3
	3.9	0.3		10.8	7.2
	4.5	0.9		11.0	7.4
	5.7	2.1		11.1	7.5
1+00	5.7	2.1		11.0	7.4
	6.6	3.0	50	11.0	7.4
	6.6	3.0		10.9	7.3
	7.0	3.4		11.0	7.4
	7.6	4.0		11.0	7.4
50	8.5	4.9		10.5	6.9
	8.0	4.4	4+00	10.8	7.2
	8.2	4.6		10.5	6.9
	8.8	5.2		10.2	6.6
	9.2	5.6		10.3	6.7
2+00	9.5	5.9		10.3	6.7
	10.0	6.4	50	10.2	6.6
	9.3	5.7		10.0	6.4
	9.7	6.1		10.0	6.4
				10.1	6.5
				10.1	6.5
			5+00	10.1	6.5

CONTD. M.B. N. 13/19

50 FT

(21)
To P.I.N. 3, 5.32°56'W
N 12600; W 14049

5-26-60

STA. N. 126+00; 0+00 = W. 14,000' SOUND EAST

Dist Sound Elev Dist Sound Elev

0+00

(37)

(37)

9.3 5.6

50 10.1 6.4

10.1 6.4

10:05 0.6 +3.1

2.6 +1.1

50 3.5 +0.2

3.8 0.1

3.9 0.2

4.4 0.7

4.9 1.2

1+00 5.3 1.6

5.8 2.1

6.0 2.3

6.2 2.5

7.0 3.3

50 7.1 3.4

7.8 4.1

8.0 4.3

8.7 5.0

9.0 5.3

2+00 8.8 5.1

8.8 5.1

9.0 5.3

9.2 5.5

3+00

50

4+00

50

50

5+00

10.0 6.3

10.0 6.3

10.0 6.3

10.0 6.3

10.0 6.3

9.8 6.1

10.0 6.3

9.9 6.2

50 10.0 6.3

10.1 6.4

10.3 6.6

10.5 6.8

10.6 6.9

10.6 6.9

10.7 7.0

10.7 7.0

10.6 6.9

10.7 7.0

10.9 7.2

10.8 7.1

10.7 7.0

10.8 7.1

10.9 7.2

To P.I.N. 3, 5.30°02'51"W
N 12800; W 14015 (23)

(7)

STA. N. 128+00; 0+00 = W. 13,960' SOUND EAST

Dist Sound Elev Dist Sound Elev Dist Sound Elev

0+00

(37)

(37)

10.8 7.1

50 10.7 7.0

11.0 7.3

10:15 0.7 +3.0

2.0 +1.7

50 3.1 +0.6

4.9 1.2

6.2 2.5

6.9 3.2

7.0 3.3

1+00 7.0 3.3

7.8 4.1

8.0 4.3

8.3 4.6

9.0 5.3

50 9.0 5.3

9.1 5.4

9.3 5.6

9.5 5.8

9.6 5.9

2+00 10.0 6.3

10.1 6.4

10.3 6.6

10.8 7.1

3+00

50

4+00

50

5+00

10.8 7.1

11.0 7.3

11.1 7.4

10.9 7.2

11.0 7.3

11.0 7.3

11.2 7.5

11.1 7.4

50 11.1 7.4

11.2 7.5

10:20 11.0 7.3

11.0 7.3

11.3 7.6

11.2 7.5

11.0 7.3

11.1 7.4

11.0 7.3

11.0 7.3

11.2 7.5

11.5 7.8

11.7 7.4

11.1 7.4

11.1 7.5

5-26-60

STA. N. 135+00; 0+00 = W. 14,000; SOUND EAST

Dist Sound Elev Dist Sound Elev

0+00			(38)	10.3	6.5		
(38)			50	10.7	6.9		
	1.4	+2.4		11.1	7.3		
1035	2.8	+1.0		11.1	7.3		
	2.2	+1.6		11.1	7.3		
50	2.6	+1.2		11.2	7.4		
	4.2	0.4	3+00	11.3	7.5		
	6.7	2.9		11.4	7.6		
	4.8	1.0	^	12.0	8.2		
	4.9	1.1	50	11.8	8.0		
1+00	6.8	3.0		12.0	8.2		
	7.7	3.9	50	12.0	8.2		
	8.0	4.2		12.0	8.2		
	8.7	4.9		12.0	8.2		
	9.4	5.6		12.0	8.2		
50	10.1	6.3		12.5	8.7		
	10.1	6.3	4+00	12.5	8.7		
	10.2	6.4		12.5	8.7		
	10.2	6.4		13.0	9.2		
	10.1	6.3		13.0	9.2		
2+00	10.1	6.3		13.0	9.2		
	10.3	6.5	50	13.0	9.2		
	10.1	6.3		13.0	9.2		
	10.2	6.4		13.0	9.2		
				13.5	9.7		
			5+00	13.5	9.7		

72

STA. N. 135+50; 0+00 = W. 13,990; SOUND EAST

Dist Sound Elev Dist Sound Elev

0+00			(38)	10.5	6.7		
(38)			50	10.5	6.7		
	0.8	+3.0		11.0	7.2		
1045	1.1	+2.7		11.5	7.7		
	2.1	+1.7		11.5	7.7		
50	3.1	+0.7		11.3	7.5		
	4.2	0.4	3+00	11.5	7.7		
	4.8	1.0		11.8	8.0		
	4.7	0.9		12.0	8.2		
	5.2	1.4		12.0	8.2		
1+00	6.8	3.0		12.0	8.2		
	7.2	3.4	50	12.0	8.2		
	7.2	3.4		12.0	8.2		
	7.8	4.0		12.0	8.2		
	8.1	4.3		12.5	8.7		
50	9.1	5.3		12.5	8.7		
	9.0	5.2	4+00	12.5	8.7		
	9.2	5.4		12.5	8.7		
	9.6	5.8	^	12.8	9.0		
	10.0	6.2	50	12.8	9.0		
2+00	10.0	6.2		12.8	9.0		
	10.0	6.2	50	13.0	9.2		
				13.0	9.2		
	10.2	6.4		13.0	9.2		
				13.0	9.2		
	10.4	6.6		13.0	9.2		
			5+00	13.0	9.2		

NOTE FOR YOU FROM
P.I. N. 8, N. 32° 19' 39" N
N 13600; W 14076

5-26-60

STA. N. 136+00; 0+00 = N. 13,990; SOUND SOUTH

STA. N. 136+50; 0+00 = W. 13,990; SOUND EAST

DIST	SOUND	ELEV	DIST	SOUND	ELEV
0+00			(39)	9.8	5.9
(38)			50	10.0	6.1
	0.4	+3.4		10.1	6.2
10:50	0.8	+3.0		10.2	6.3
	1.4	+2.4		10.6	6.7
50	3.3	+0.5		10.8	6.9
	5.6	1.8	3+00	11.0	7.1
	5.0	1.2		11.1	7.2
	3.1	+0.7		11.2	7.3
	5.0	1.2		11.3	7.4
1+00	6.2	2.4		11.7	7.8
	8.1	4.3	50	11.8	7.9
	8.2	4.4		12.0	8.1
	5.9	2.1		11.5	7.6
	6.0	2.3		11.5	7.6
50	7.8	4.0	50	12.0	8.1
	8.2	4.4	4+00	12.0	8.1
	8.8	5.0	10:55	12.0	8.1
	8.8	5.0		12.0	8.1
	8.7	4.9		12.0	8.1
2+00	9.5	5.7		12.0	8.1
	9.4	5.6	50	12.0	8.1
	9.2	5.4		12.5	8.6
	9.8	6.0		12.5	8.6
				12.5	8.6
				12.5	8.6
			5+00	12.5	8.6

DIST	SOUND	ELEV	DIST	SOUND	ELEV
0+00			(39)	9.2	5.3
			50	9.5	5.6
				9.8	5.9
				9.7	5.8
11:00	1.0	+2.9		10.0	6.1
50	2.1	+1.8		10.0	6.1
	3.2	+0.7	3+00	10.1	6.2
	3.5	+0.4		10.2	6.3
	4.2	0.3		10.6	6.7
	5.1	1.2		10.7	6.8
1+00	7.0	3.1		10.5	6.6
	6.1	2.2	50	10.7	6.8
	7.9	4.0		11.0	7.1
	7.8	3.9		11.0	7.1
	7.7	3.8		11.0	7.1
50	8.2	4.3		11.0	7.1
	8.1	4.2	4+00	11.0	7.1
	8.0	4.1		11.5	7.6
	8.1	4.2		11.3	7.4
	8.5	4.6		11.6	7.7
2+00	8.4	4.5		11.8	7.9
	8.6	4.7	50	12.0	8.1
	8.8	4.9		12.0	8.1
	9.2	5.3		11.7	7.8
				12.0	8.1
				12.0	8.1
			5+00	12.0	8.1

5-26-60

STA. N. 137+00; 0+00 = W. 13,990; SOUND EAST

Dist	Sound	Elev	Dist	Sound	Elev
0+00			(39)	8.1	4.2
(39)			50	8.1	4.2
				8.1	4.2
				8.0	4.1
<u>11/13</u>	0.0	+3.9		7.9	4.0
50	0.9	+3.0		7.8	3.9
	2.3	+1.6	3+00	9.2	5.3
	4.2	0.3		9.5	5.6
	5.3	1.4		9.1	5.2
	5.9	2.0		9.1	5.2
1+00	6.1	2.2		9.5	5.6
	6.1	2.2	50	10.0	6.1
	6.6	2.7		10.2	6.3
	6.8	2.9		10.1	6.2
	6.9	3.0		10.1	6.2
50	6.9	3.0		10.1	6.2
	7.0	3.1	4+00	10.1	6.2
	7.2	3.3		10.3	6.4
	7.7	3.8		10.4	6.5
	8.0	4.1		10.3	6.4
2+00	8.0	4.1		10.2	6.3
	8.0	4.1	50	10.3	6.4
	8.0	4.1		10.5	6.6
	8.0	4.1		10.6	6.7
	8.1	4.2		10.8	6.9
				10.8	6.9
			5+00	11.0	7.1

STA. N. 137+50 - EAST

Dist	Sound	Elev
(39)	11.0	7.1
	11.1	7.2
	11.3	7.4
	11.3	7.4
50	11.4	7.5
<u>11/20</u>	12.0	8.1
	12.3	8.6
	12.5	8.6
	12.3	8.6
6+00	13.0	9.1

7-06-60

RE-SOUND STA. N. 91+00 AFTER
DRAGGING. (See Pg. 62) 0+00=W. 14,380

Dist	Sound	Elev
3+40	11.7	8.1
50	11.2	7.6
(36)	11.1	7.5
	11.1	7.5
<u>10:25</u>	11.1	7.5
	11.0	7.4
4+00	10.9	7.3
	10.9	7.3
	11.4	7.8
	11.6	8.0
	11.9	8.3
50	11.9	8.3

CHECK SOUNDINGS FOR SHOALING ⁷⁻¹¹⁻⁶⁰ (75)
DISCHARGE FROM SEWAGE PUMP STA.
ELY. TIERRA-DEL-FUEGO ISLAND

STA. N. 91+65; 0+00=W. 14,400; SOUND EAST

Dist	Sound	Elev	Dist	Sound	Elev
0+00				12.9	9.2
(37)				12.9	9.2
			50	12.9	9.2
<u>11:20</u>	0.8	+2.9		13.0	9.3
	1.5	+2.2		13.0	9.3
50	2.0	+1.7		12.9	9.2
	2.6	+1.1		12.9	9.2
	3.3	+0.4	3+00	12.9	9.2
	3.9	0.2			
	4.2	0.5			
1+00	7.4	3.7			
	9.9	6.2			
	11.0	7.3			
	11.5	7.8			
	11.9	8.2			
50	12.0	8.3			
	12.4	8.7			
	12.4	8.7			
	12.6	8.9			
	12.8	9.1			
2+00	12.8	9.1			
	12.9	9.2			
	12.9	9.2			

7-11-60

STA. N. 91+75; 0+00 = W. 14,400; SOUND EAST

Dist	Sound	Elev	Dist	Sound	Elev
0+00			13.1	9.5	
(36)			50	12.8	9.2
	0.1	+3.5		12.8	9.2
<u>11:30</u>	1.0	+2.6		12.8	9.2
	1.6	+2.0		12.6	9.0
50	2.1	+1.5		12.5	8.9
	2.9	+0.7	3+00	12.1	8.5
	3.1	+0.5			
	3.5	+0.1			
	4.1	0.5			
1+00	5.3	1.7			
	8.8	5.2			
	10.7	7.1			
	11.3	7.7			
	12.0	8.4			
50	12.2	8.6			
	12.8	9.2			
	12.8	9.2			
	12.8	9.2			
	12.9	9.3			
2+00	12.8	9.2			
	12.8	9.2			
	13.0	9.4			
	12.9	9.3			

76

STA. N. 91+85; 0+00 = W. 14,400; SOUND EAST

Dist	Sound	Elev	Dist	Sound	Elev
0+00			13.1	9.6	
(35)			50	12.6	9.1
	0.2	+3.3		12.4	8.9
<u>11:35</u>	1.4	+2.1		12.8	9.3
	2.0	+1.5		12.6	9.1
50	2.2	+1.3		12.6	9.1
	2.8	+0.7	3+00	12.6	9.1
	3.5	0.0			
	3.6	0.1			
	4.0	0.5			
1+00	4.2	0.7			
	6.1	2.6			
	10.0	6.5			
	11.4	7.9			
	12.0	8.5			
50	12.4	8.9			
	12.5	9.0			
	12.5	9.0			
	12.5	9.0			
	12.8	9.3			
2+00	12.8	9.3			
	12.9	9.4			
	13.0	9.5			
	12.9	9.4			

7-11-60

STA. N. 91+95; 0+00 = W. 14,400; SOUND EAST

DIST SOUND ELEV DIST SOUND ELEV

0+00			12.8	9.3	
(3.5)		50	12.6	9.1	
	0.2	+3.3	12.2	8.7	
<u>11:40</u>	1.2	+2.3	12.6	9.1	
	2.2	+1.3	12.6	9.1	
50	2.4	+1.1	12.6	9.1	
	2.9	+0.6	3+00	12.8	9.3
	3.4	+0.1			
	3.6	0.1			
	3.9	0.4			
1+00	4.0	0.5			
	5.8	2.3			
	10.0	6.5			
	11.8	8.3			
	12.0	8.5			
50	12.2	8.7			
	12.6	9.1			
	12.6	9.1			
	12.8	9.3			
	12.9	9.4			
2+00	12.6	9.1			
	12.3	8.8			
	12.8	9.3			
	12.8	9.3			

77

STA. N. 92+05; 0+00 = W. 14,400; SOUND EAST

DIST SOUND ELEV DIST SOUND ELEV

0+00			12.1	8.8	
(3.3)		50	12.7	9.4	
			12.1	8.8	
	1.1	+2.2	12.0	8.7	
	1.8	+1.5	12.1	8.8	
50	2.5	+0.8	12.3	9.0	
	3.0	+0.3	3+00	12.5	9.2
11:50	3.3	0.0			
	3.6	0.3			
	3.9	0.6			
1+00	4.0	0.7			
	5.6	2.3			
	10.9	7.6			
	12.0	8.7			
	12.0	8.7			
50	12.2	8.9			
	12.5	9.2			
	12.8	9.5			
	12.5	9.2			
	12.1	8.8			
2+00	12.0	8.7			
	12.0	8.7			
	12.1	8.8			
	12.3	9.0			

7-11-60

STA. N. 92+15; 0+00 = W. 14,400; SOUND EAST

Dist Sound Elev Dist Sound Elev

0+00				12.3	9.1
(32)			50	12.5	9.3
				12.7	9.5
12500	0.5	+2.7		12.3	9.1
	1.5	+1.7		12.3	9.1
50	2.1	+1.1		12.5	9.3
	3.0	+0.2	3+00	12.6	9.4
	3.1	+0.1			
	3.3	0.1			
	3.7	0.5			
1+00	4.0	0.8			
	6.2	3.0			
	11.0	7.8			
	11.9	8.7			
	12.0	8.8			
50	12.5	9.3			
	12.0	8.8			
	12.1	8.9			
	12.1	8.9			
	12.2	9.0			
2+00	12.2	9.0			
	12.2	9.0			
	12.2	9.0			
	12.5	9.3			

78

IMPROVED TABLES
AND
INFORMATION

Bob - Walters

DISTANCE FROM ONE STATION TO NEXT STATION

TABLE NO. 1. FOR USE OF THE SURVEYOR

1	2	3	4	5	6	7	8	9	10	11	12	13	14	15	16	17	18	19	20	21	22	23	24	25	26	27	28	29	30	31	32	33	34	35	36	37	38	39	40	41	42	43	44	45	46	47	48	49	50	51	52	53	54	55	56	57	58	59	60	61	62	63	64	65	66	67	68	69	70	71	72	73	74	75	76	77	78	79	80	81	82	83	84	85	86	87	88	89	90	91	92	93	94	95	96	97	98	99	100	
0.00	0.01	0.02	0.03	0.04	0.05	0.06	0.07	0.08	0.09	0.10	0.11	0.12	0.13	0.14	0.15	0.16	0.17	0.18	0.19	0.20	0.21	0.22	0.23	0.24	0.25	0.26	0.27	0.28	0.29	0.30	0.31	0.32	0.33	0.34	0.35	0.36	0.37	0.38	0.39	0.40	0.41	0.42	0.43	0.44	0.45	0.46	0.47	0.48	0.49	0.50	0.51	0.52	0.53	0.54	0.55	0.56	0.57	0.58	0.59	0.60	0.61	0.62	0.63	0.64	0.65	0.66	0.67	0.68	0.69	0.70	0.71	0.72	0.73	0.74	0.75	0.76	0.77	0.78	0.79	0.80	0.81	0.82	0.83	0.84	0.85	0.86	0.87	0.88	0.89	0.90	0.91	0.92	0.93	0.94	0.95	0.96	0.97	0.98	0.99	1.00

$$\frac{122}{44}$$

$$\frac{127}{65}$$

$$\frac{138}{69}$$