

MB 130



9488.  
MICROFILMED

139 - 9590

9528.4  
MICROFILMED

138+50-9640.0

9568.8

101.2

138 - 9670.0

9609.3

90.7

137+50 9700 0

9649.7

70.3

137 - 9720.0

9674.6

75.4

136+50 - 9750.0

9411.

99

9518

M.B. No 130

THIS BOOK INDEXED 2/12/62

12000  
9450  
2550

8220.7  
707

81500

8238.9  
599

137- 8180.2

+50- 8210

138- 8220

+50- 8240

139- 8280

+50- 8310

140- 8380

W8350- N14,000

W84- "

+50- N14,090

W85- N14,120

+50- N14,130

W86- N14,150

+50- N14,170

W87- N14,180

+50

90- 14111.6  
78.4

14190.0

14099.3

707

1700

14055.5

64.5

120.0

8257.1

471

82100

8275.3

553

2200

8313.

73

8240

8350.7

70.7

82800

8388.4

78.4

83100

8426.

46

(8380)

14008.7

81.5

90.0

14026.9

93.1

141200

14123.8

762

200.0

14117.7

723

1900

14087

83

140.

14045.1

84.9

141300

14063.3

86.7

141500

14081.5

88.5

141700

14099.7

80.3

1800

14117.9

92.1

2100

14136.1

73.9

2100

14150

70

200

14105.4

74.6

1800

14093.1

66.9

141600

14022

68

14090.

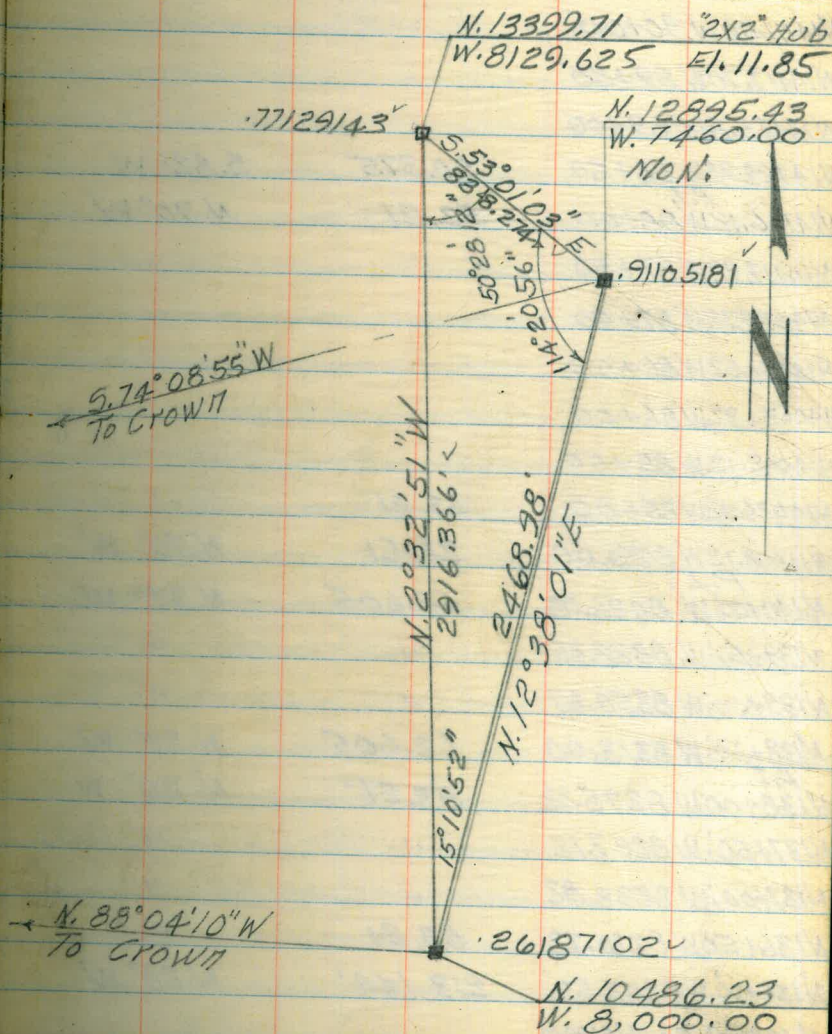
TRIANGULATION OF CONTROL POINT  
CABRILLO ISLAND W.O. 64501

STA	OBJECT	ANGLES
N. 10486.23 W. 8000.00		1. 114° 21' 10"
N. 12895.43 W. 7460.00	R ↘	2. 228° 42' 05"
	HUB N7400 ±	6. 686° 05' 54"
N. 12895.43 W. 7460.00	AV.	1. 114° 20' 59"
N. 10486.23 W. 8000.00	L ↘	2. 30° 22' 00"
	HUB N7400 ±	6. 91° 05' 24"
N. 12895.43 W. 7460.00	AV.	1. 50° 28' 25"
HUB N. 7400 ±	R ↘	2. 100° 56' 20"
N. 10486.23 W. 8000.00		6. 302° 49' 24"
	AV.	5. 50° 28' 14"

Ref FB 124  
" " 106

5-02-60

Stamper  
Blunt  
Standley  
Hecht



BASELINE FOR CROSS SECTION 54 SOUNDINGS  
OF CABRILLO ISLAND W.O. 64501

STA.	B/L DIST	BEARING
N14105.42W 90+50	50.375	S. 83° W
N14111.56W 90+00		
N14117.70W 89+50		
N14123.84W 89+00		
N14129.98W 88+50	50.375	S. 83° W
<sup>P.I.</sup> N14136.12W 88+00	53.21	N. 70° W
N14117.92W 87+50		
N14099.72W 87+00		
N14081.52W 86+50		
N14063.32W 86+00		
N14045.12W 85+50		
N14026.92W 85+00	53.21	
N14008.72W 84+50.00	25.51	N. 70° W
<sup>P.I.</sup> N140+00; W 8426.03	62.605	N. 37° W
N139+50; W 8388.35	"	"
N139+00; W 8350.67	"	"
N138+50; W 8313.00	62.605	N. 37° W
<sup>P.I.</sup> N138+00; W 8275.32	53.21'	N. 20° W
N137+50; W 8257.12	"	"
N137+00; W 8238.92	"	"
N136+50; W 8220.72	53.21	"
N136+00; W 8202.52	213.144'	N 20° W
N. 13399.71; W 8129.62		

STA	B/L DIST	BEARING
		5.26°26'10"W
N132+00W/9898.31	55.839	
N132+50W/9873.45	"	
N133+00 W/9848.59	"	
N133+50 W/9823.73	"	
N134+00 W/9798.87	"	
N134+50 W/9774.01	"	
X.135+00W/9749.16	"	
N135+50W/9724.30	"	
N136+00W/9699.44	"	
N136+50W/9674.58	55.839	5.26°26'10"W
<sup>P.I.</sup> N137+00W/9649.72	64.308	5.38°58'04"W
N137+50 W/9609.28	"	
N138+00 W/9568.83	"	
N138+50 W/9528.39	64.308	5.38°58'04"W
<sup>P.I.</sup> N139+00 W/9487.95	91.803	5.57° W
N139+50 W/9410.96	91.803	"
N140+00 W/9333.97	40.50	"
N14022.06W/93+00	59.618	"
N14055.53W/92+50	59.618	5.57° W
<sup>P.I.</sup> N14087.00W/92+00	50.375	5.83° W
N14093.14W/91+50		
N14099.28W/91+00	50.375	5.83° W

89-59-60

26-26-10

63-33-50

5-09-60

CROSS SECTIONS NLY. END OF CABRILLO  
ISLAND AFTER DREDGING. W.O. 64501

STA. N. 136+50; 0+00 = W. 8220.72

Sta	+	H.I.	-	Elev	Top Hub N13390.71 W8129.62
TBM.	3.95	15.80		11.85	
0			2.9	12.9	
E 44			4.1	11.7	
E 69			6.0	9.8	
E 83			12.3	3.5	
E 100			14.4	1.4	

STA. N. 137+00; 0+00 = W. 8238.92

0		3.7	12.1	
E 38		5.0	10.8	
E 45		6.1	9.7	
E 63		6.5	9.3	
E 64		9.6	6.2	
E 70		11.6	4.2	
E 97		14.2	1.6	

STA. N. 137+50; 0+00 = W. 8257.12

Sta	+	H.I.	-	Elev
0		15.80	4.0	11.8
E 30			4.3	11.5
E 33			5.6	10.2
E 53			6.4	9.4
E 57			10.3	5.5
E 65			11.7	4.1
E 88			14.2	4.6

STA. N. 138+00; 0+00 = W. 8275.32

0		3.5	12.3	
E 34		4.4	11.4	
E 44		9.6	6.2	
E 54		9.5	6.3	
E 73		12.7	3.1	
E 92		14.4	1.4	

5-09-60

STA. N. 138+50; 0+100 = W 8313.00

Sta	+	H.I.	-	Elev
0		15.80	3.2	12.6
E 36			2.8	13.0
E 49			10.1	5.7
E 73			10.4	5.4
E 86			12.7	3.1
E 100			14.4	1.4

STA. N. 139+00; 0+100 = W. 8350.67

0		2.6	13.2
E 31		2.8	13.0
E 54		6.2	9.6
E 71		9.5	6.3
E 81		11.5	4.3
E 109		14.5	1.3

STA. N. 139+50; 0+100 = W 8388.35

Sta	+	H.I.	-	Elev
0		15.80	2.6	13.2
E 28			1.5	14.3
E 47			4.4	11.4
E 60			7.2	8.6
E 68			9.4	6.4
E 82			9.3	6.5
E 92			11.1	4.7
E 112			14.2	1.6

STA. N. 140+00; 0+100 = W. 8426.03

0		2.1	13.7
E 17		2.1	13.7
E 45		5.8	10.0
E 56		9.7	6.1
E 70		11.3	4.5
E 100		14.3	1.5



STA. W. 83+50; 0+00 = N. 14,000

Sta	+	H.I.	-	Elev
0		15.80	11.9	3.9
58			10.9	4.9
518			8.9	6.9
533			5.1	10.7
552			2.5	13.3
565			2.0	13.8
N12			14.6	1.2

STA. W. 84+00; 0+00 = N. 14,000

0			3.5	12.3
59			2.0	13.8
N15			5.1	10.7
N28			6.8	9.0
N36			9.9	5.9
N46			10.5	5.3
N72			13.9	1.9

5-23-60  
STA. W. 84+50; 0+00 = N. 14008.72 (3)

Sta	+	H.I.	-	Elev
0		15.80	2.6	13.2
N25			2.1	13.7
N36			3.8	12.0
N76			6.4	9.4
N79			9.6	6.2
N92			11.4	4.4
N110			14.4	1.4

TP.

1.67 14.13 Hub  
W. 85+00  
0.64 14.77

STA. W. 85+00; 0+00 = N. 14,026.92

0			1.5	13.3
N48			0.9	13.9
N100			6.6	8.2
N102			8.6	6.2
N110			10.5	4.3

5-23-60

5 STA. W. 85+50; 0+00 = N. 14,045.12

Sta	+	H.I.	-	Elev
0		14.77	1.6	13.2
S N 34			1.8	13.0
S N 57			0.7	14.1
S N 65			2.4	12.4
S N 95			5.9	8.9
S N 97			8.6	6.2
N N 110			11.6	3.2

STA. W. 86+50; 0+00 = N. 14,081.52

Sta	+	H.I.	-	Elev
0		14.77	2.5	12.3
N 27			2.4	12.4
N 61			2.0	12.8
N 94			5.2	9.6
N 96			8.6	6.2
N 105			11.2	3.6

5 STA. W. 86+00; 0+00 = N. 14,063.32

0		2.1	12.7
S N 61		1.4	13.4
N N 101		6.1	8.7
N N 102		8.5	6.3
N N 110		12.2	2.6

STA. W. 87+00; 0+00 = N. 14,099.72

0		2.7	12.1
N 56		2.5	12.3
N 86		5.7	9.1
N 88		8.8	6.0
N 95		10.2	4.6

5-23-60

STA. W. 87+50; 0+00 = N. 14, 117.92

Sta	+	H. I.	-	Elev
0		14.77	3.3	11.5
5			3.6	11.2
S 1	N 48		6.6	8.2
S 3	N 79		10.1	4.7
S 5	N 79			
S 6	N			
N 1				

575

STA. W. 88+00; 0+00 = N. 14, 136.12

0		3.2	11.6
S 1	N	3.1	11.7
N 1	N 27	7.4	7.4
N 2	N 59	9.7	5.1
N 3	N 61		
N 4			
N 5			

STA. W. 88+50; 0+00 = N. 14, 130

Sta	+	H. I.	-	Elev
0		14.77	4.0	10.8
N 34			3.8	11.0
N 64			7.1	7.7
N 66			9.7	5.1

STA. W. 89+00; 0+00 = N. 14, 123.84

0		4.2	10.6
N 18		4.2	10.6
N 40		3.5	11.3
N 68		6.8	8.0
N 69		8.5	6.3
N 71		9.1	5.7
N 73		10.4	4.4

5-23-60

STA. W. 80+50; 0+00 = N. 14, 117.70

Sta	+	H.I.	-	Elev
0		14.77	4.4	10.4
S N 23			4.2	10.6
S N 43			3.4	11.4
S N 71			6.9	7.9
S N 72			9.9	4.9
S N 76			10.9	3.9
N				

S STA. W. 90+00; 0+00 = N. 14, 111.56

0			4.1	10.7
S N 37			4.5	10.3
N N 46			3.9	10.9
N N 71			6.8	8.0
N N 73			9.9	4.9
N N 79			11.2	3.6
N				

STA. W. 90+50; 0+00 = N. 14, 105.42

Sta	+	H.I.	-	Elev
0		14.77	4.3	10.5
N 34			4.1	10.7
N 42			3.5	11.3
N 69			7.1	7.7
N 70			8.7	6.1
N 79			11.1	3.7

STA. W. 91+00; 0+00 = N. 14, 099.28

0			4.0	10.8
N 36			3.7	11.1
N 66			7.5	7.3
N 71			9.0	5.8
N 74			10.7	4.1
TP			4.0	10.77

4.72 15.49

5-23-60

STA. W. 91+50; 0+00 = N. 14, 093.14

Sta.	+	H.I.	-	Elev
0		15.49	5.1	10.4
N 30			4.9	10.6
N 59			8.4	7.1
N 59			9.6	5.9
N 69			11.5	4.0

STA. W. 92+50; 0+00 = N. 14, 055.53

Sta.	+	H.I.	-	Elev
0		15.49	5.2	10.3
N 29			5.3	10.2
N 59			8.3	7.2
N 59			9.5	6.0
N 71			11.5	4.0

(20)

STA. W. 92+00; 0+00 = N. 14, 087.00

0		5.7	9.8
N 18		5.2	10.3
N 49		8.2	7.3
N 49		9.4	6.1
N 63		11.6	3.9

STA. W. 93+00; 0+00 = N. 14, 022.06

0		5.1	10.4
N 40		5.0	10.5
N 68		8.1	7.4
N 68		9.5	6.0
N 80		11.6	3.9

5-23-60

STA. W. 93+50; 0+00 = N. 14,000

Sta	+	H. I.	-	Elev
0		15.49	5.1	10.4
S N 25			4.5	11.0
S N 31			4.4	11.1
S N 66			8.2	7.3
S N 67			9.3	6.2
S N 81			11.7	3.8

S STA. W. 94+00; 0+00 = N. 14,000

0			4.4	11.1
S N 8			4.5	11.0
N N 42			7.5	8.0
N N 42			9.4	6.1
N N 58			12.0	3.5

STA. W. 94+50; 0+00 = N. 14,000

Sta	+	H. I.	-	Elev
0		15.49	7.2	8.3
N 4			7.4	8.1
N 4			9.5	6.0
N 20			11.8	3.7
S 32			4.8	10.7
S 50			5.0	10.5
S 75			4.2	11.3

STA. W. 95+00; 0+00 = N. 14,000

5-23-60

STA. N. 140+00; 0+00 = W 9333.97

Sta	+	H.I.	-	Elev
0		15.49	5.2	10.3
S	W 32		4.8	10.7
S	N 76		4.5	11.0
S	W 122		7.4	8.1
S	W 122		9.4	6.1
S	W 153		12.8	2.7

S STA. N. 139+50; 0+00 = W. 9410.96

0		4.8	10.7
S	W 34	5.0	10.5
N	W 65	4.5	11.0
N	W 110	7.8	7.7
N	W 110	9.4	6.1
N	W 146	13.4	2.1

STA. N. 139+00; 0+00 = W 9487.95

Sta	+	H.I.	-	Elev
0		15.49	4.7	10.8
W 51			4.1	11.4
W 91			7.8	7.7
W 91			9.3	6.2
W 124			13.1	2.4

STA. N. 138+50; 0+00 = W. 9528.39

0		3.6	11.9
W 62		3.9	11.6
W 98		6.7	8.8
W 99		9.5	6.0
W 129		13.8	1.7

5-23-60

STA. N. 138+00; 0+00 = W. 9568.83

Sta	+	H.I.	-	Elev
0		15.49	3.9	11.6
S W 71			4.2	11.3
S W 93			6.7	8.8
S W 94			9.5	6.0
S W 131			13.9	1.6

STA. N. 137+00; 0+00 = W. 9649.72

(13)

Sta	+	H.I.	-	Elev
0		15.49	2.8	12.7
W 47			4.0	11.5
W 64			4.8	10.7
W 65			9.3	6.2
W 95			13.7	1.8

STA. N. 137+50; 0+00 = W. 9609.28

0		4.0	11.5
S W 70		4.0	11.5
N W 81		5.5	10.0
N W 85		9.5	6.0
N W 114		14.0	1.5

STA. N. 136+50; 0+00 = N. 9674.58

0		3.3	12.2
W 48		4.1	11.4
W 69		5.7	9.8
W 70		9.5	6.0
W 97		12.9	2.6
T.B.M.		4.27	11.22 ~ 11.22

(IN OIL DRUM)  
 NEWLY HUB  
 DITCH REPAIRS  
 "2X2" HUB



5-10-60

SOUNDINGS ONLY CABRILLO ISLAND AFTER  
DREDGING W.O. 64501

	Dist	Sound	Elev	Dist	Sound	Elev
S	0+00			(2.1)	12.2	10.1
S	(2.1)				12.2	10.1
S					12.2	10.1
N	1:30	0.6	+1.5	50	12.0	9.9
		3.1	1.0		6.5	4.4
	50	8.2	6.1		2.0	+0.1
		10.1	8.0			
		10.9	8.8			
S		11.0	8.9	3+00		
		10.9	8.8			
S	1+00	11.0	8.9			
N		11.0	8.9			
N		11.0	8.9			
N		10.9	8.8	50		
N		11.3	9.2			
N	50	11.4	9.3			
		11.1	9.0			
		11.1	9.0			
		11.2	9.1	4+00		
		11.5	9.4			
	2+00	12.0	9.9			
		12.1	10.0			

(14)

STAN. 137+00; 0+00=W. 8180; SOUND EAST  
Dist Sound Elev Dist Sound Elev

Dist	Sound	Elev	Dist	Sound	Elev
0+00			(2.0)	10.9	8.9
			50	10.9	8.9
				10.9	8.9
			11.35	10.9	8.9
				0.7	+1.3
			50	1.1	+0.9
				3.2	1.2
			3+00	10.6	8.6
				7.3	5.3
				9.9	7.9
				10.1	8.1
			1+00	10.3	8.3
				10.3	8.3
			50	9.4	7.4
				10.4	8.4
				10.6	8.6
				10.7	8.7
			50	10.6	8.6
				10.8	8.8
			4+00	9.1	7.1
				11.0	9.0
				10.7	8.7
				10.5	8.5
			2+00	10.7	8.7
				10.8	8.8
			50	10.1	8.1
				10.1	8.1
				8.8	6.8
				4.2	2.2

5-10-60

STA. N. 137450; 0+00 = W. 8,210 SOUND EAST

Dist	Sound	Elev	Dist	Sound	Elev
0+00			(19)	10.4	
(19)			50	10.4	
				10.3	
				10.2	
<u>11.45</u>				10.2	
	0.4			10.2	
50	2.3			10.2	
	6.4		3+00	10.2	
	7.7			10.1	
	8.4			10.1	
	9.1			10.1	
1+00	9.3			10.2	
	9.4		50	10.2	
	9.8			10.2	
	9.9			10.0	
	9.9			10.0	
50	9.9			9.9	
	9.9		0.5 4+00	10.1	
	9.9			10.1	
	10.0			10.1	
	10.1			10.1	
2+00	10.2			10.1	
	10.2		50	10.0	
	10.4			9.9	
	10.4			9.8	

STA. N. 137450 - EAST

(15)

Dist	Sound	Elev	Dist	Sound	Elev
(19)	9.6				
	9.3				
5+00	9.3				
	9.2				
	5.9				
	0.0				

5-10-60

STA. N. 138+00 - W. 8,220 - SOUND EAST

STA. N. 138+00 - EAST

(16)

Dist	Sound	Elev	Dist	Sound	Elev	Dist	Sound	Elev
0+00			(1.8)	10.3	8.5	(1.8)	9.8	8.0
(1.8)			50	10.8	9.0	5+00	9.9	8.1
				10.2	8.4		9.5	7.7
<u>1.53</u>			<u>1.55</u>	10.1	8.3		9.3	7.5
	2.0	0.2		10.3	8.5		5.0	3.2
50	6.5	4.7		10.0	8.2			
	8.9	7.1	3+00	10.0	8.2	50		
	9.0	7.2		10.0	8.2			
	9.4	7.6		10.5	8.7			
	9.8	8.0		10.8	9.0			
1+00	9.6	7.8		10.6	8.8			
	9.8	8.0	50	10.3	8.5			
	9.8	8.0		10.2	8.4			
	9.9	8.1		10.1	8.3			
	10.0	8.2		10.1	8.3			
50	9.4	7.6		10.1	8.3			
	9.4	7.6	4+00	10.0	8.2			
	9.8	8.0		10.2	8.4			
	9.8	8.0		10.3	8.5			
	10.0	8.2		10.1	8.3			
2+00	10.0	8.2		10.1	8.3			
	10.0	8.2	50	10.1	8.3			
	10.1	8.3		10.0	8.2			
	10.1	8.3		9.8	8.0			

5-10-60

STA. N. 138+50 - EAST

17

STA. N. 138+50 0400 = W. 8200' SOUND EAST

DIST SOUND ELEV

DIST SOUND ELEV DIST SOUND ELEV

0400

(1.7) 10.0

(17) 9.7

(18)

50 9.8

5+00 9.7

10.9

9.3

2:00 0.7

11.0

9.1

5.0

10.8

9.0

50

9.2

10.0

7.2

9.6

3+00 9.8

50 1.7

9.6

10.2

9.7

10.1

9.8

10.2

1+00 9.9

10.2

9.9

50 10.3

10.0

2:05 10.2

10.0

10.0

10.1

9.8

50 10.0

9.8

9.9

4+00 9.9

10.0

9.9

10.1

9.7

10.0

9.8

2+00 10.4

9.9

9.7

50 10.0

9.9

10.0

10.0

10.0

5-10-60

STA. N. 139+00 0+00 = W 8280' SOUND EAST

Dist Sound Elev Dist Sound Elev

0+00

(1.7)

2:10

1.0

50

3.2

7.0

9.0

9.1

9.3

1+00

9.3

9.5

9.5

9.5

9.5

50

9.6

9.7

9.8

10.0

10.1

2+00

10.1

10.2

10.2

10.1

5-10-60

W 8280' SOUND EAST

Dist Sound Elev Dist Sound Elev

(1.7)

9.7

50

9.8

10.0

10.2

10.2

10.0

3+00

10.0

10.6

10.9

11.0

10.9

50

10.8

10.2

10.1

10.2

10.1

4+00

10.2

10.2

10.0

2:15

10.0

10.0

50

10.0

9.9

10.0

STA. N. 139+00 - EAST

(18)

Dist Sound Elev Dist Sound Elev

(1.7) 9.9

9.9

5+00 9.9

9.8

9.5

9.3

9.2

50 9.1

9.0

9.0

4.9

6+00

9.9

9.9

9.9

9.9

9.9

9.9

9.9

9.9

9.9

9.9

9.9

9.9

9.9

9.9

9.9

9.9

9.9

9.9

9.9

5-10-60

STA. N. 139+50 TO 0+100 - WB310, SOUND EAST

Dist Sound Elev Dist Sound Elev

0+00

(1.6)

2:20

0.9

50

3.2

5.5

8.1

8.7

9.0

1+00

9.0

9.0

9.1

9.1

9.0

50

9.2

9.4

9.4

9.9

9.9

2+00

9.9

10.0

10.0

10.0

(1.6)

10.1

10.3

10.6

10.9

11.0

11.0

3+00

10.9

11.1

11.0

11.3

12.0

50

11.9

11.2

11.1

2:25

11.0

11.1

4+00

10.9

11.0

10.9

10.9

10.8

50

10.7

10.7

10.7

STA. N. 139+50 - EAST

(19)

Dist Sound Elev Dist Sound Elev

(1.6)

10.4

10.1

5+00

10.0

10.3

10.2

9.9

10.0

50

10.4

10.3

10.3

10.2

10.0

6+00

9.8

6.0

K  
0K  
0

5-10-60

STA. N. 140+00-0+00 - W. 8350 SOUND EAST

Dist Sound Elev Dist Sound Elev

0+00

13

13

9.1 7.6

50 9.2 7.7

9.2 7.7

9.3 7.8

9.4 7.9

9.5 8.0

3+00 9.7 8.2

9.9 8.4

10.0 8.5

10.0 8.5

10.1 8.6

50 10.2 8.7

2:35 10.8 9.3

11.0 9.5

11.0 9.5

11.2 9.7

4+00 11.2 9.7

10.4 8.9

10.5 9.0

10.5 9.0

10.5 9.0

50 10.5 9.0

10.3 8.8

10.2 8.7

STA. N. 140+00-EAST

Dist Sound Elev

15 10.1 8.6

10.2 8.7

5+00 10.3 8.8

10.3 8.8

10.5 9.0

10.5 9.0

10.3 8.8

50 10.2 8.7

10.3 8.8

10.1 8.6

10.0 8.5

9.8 8.3

6+00 10.1 8.6

10.1 8.6

10.1 8.6

9.7 8.2

9.5 8.0

50 7.4 5.9

1.3 10.2

5-10-60

STA. W. 83+50 0+00 = N. 14000 SOUND NORTH

Dist	Sound Elev	Dist	Sound Elev
0+00		(15)	10.0
(15)		50	9.9
	2.9	<u>2150</u>	9.7
<u>2145</u>	7.0		9.5
	8.8		9.5
50	9.0		9.3
	8.9	3+00	9.3
	9.0		9.3
	9.3		9.6
	9.3		9.7
1+00	9.2		10.0
	9.5	50	10.0
	9.8		10.0
	10.0		10.0
	9.9		10.0
50	10.0		9.9
	10.0	4+00	10.0
	10.0		10.0
	10.0		10.0
	10.0		10.0
2+00	10.0		10.0
	10.0	50	10.0
	10.0		10.0
	10.0		10.0

STA. W. 83+50 - NORTH

Dist Sound Elev

(15)	9.8	OK
	5.4	
5+00	1.7	
	1.4	



5-10-60

STA. W. 84+00; 0+00 = N. 14,000; SOUND NORTH

Dist Sound Elev Dist Sound Elev

0+00 (1.5) 8.6 7.1

(1.5) 50 9.1 7.6

9.4 7.9

9.6 8.1

9.7 8.2

9.8 8.3

3+00 9.7 8.2

10.0 8.5

10.1 8.6

10.1 8.6

10.2 8.7

50 10.3 8.8

10.4 8.9

10.3 8.8

10.3 8.8

50 8.2 6.7 10.2 8.7

8.4 6.9 4+00 10.2 8.7

9.0 7.5 10.1 8.6

9.2 7.7 10.1 8.6

9.2 7.7 9.9 8.4

2+00 9.2 7.7 9.8 8.3

9.0 7.5 50 9.9 8.4

8.8 7.3 9.9 8.4

8.8 7.3 9.9 8.4

8.8 7.3 9.7 8.2

4.0 3.3

5+00 - 1.5 0.0

5-11-60

(22)

STA. W. 84+50; 0+00 = N. 14,090; SOUND NORTH

Dist Sound Elev Dist Sound Elev

0+00 (4.5) 13.1

(4.5) 50 13.2

0.2 13.1

1.8 13.1

3.4 13.1

11/40 6.6 12.9

50 9.5 12.8

12.0 3+00 13.0

12.0 13.0

12.0 13.1

12.0 13.0

1+00 12.1 12.9

12.1 50 12.8

12.2 12.7

12.4 12.8

12.5 12.9

50 12.7 11.7

12.7 4+00 5.6

12.8 4.2

13.0

13.0

2+00 13.0

13.0 50

13.0

13.1

D.K.

5-11-60

STA. W. 85+00; 0+00 = N. 14, 120; SOUND NORTH

Dist Sound Elev Dist Sound Elev

0+00

(44)

1.2

1148

4.5

9.3

50

11.9

12.4

12.5

12.4

12.4

1+00

12.5

12.0

12.0

12.1

12.0

50

12.1

12.1

12.0

12.1

12.1

2+00

12.3

12.1

12.1

12.1

D.K.

(44)

12.2

50

12.3

12.4

1150

12.7

12.8

12.9

3+00

13.0

13.0

12.9

12.8

12.7

50

12.5

12.2

8.4

4.4

4+00

50

(23)

STA. W. 85+50; 0+00 = N. 14, 130; SOUND NORTH

Dist Sound Elev Dist Sound Elev

0+00

(32)

(32)

11.0

50

11.0

11.1

1105

0.6

5.0

50

10.4

10.0

10.2

10.2

10.4

1+00

10.3

10.3

10.3

10.5

10.6

50

10.5

10.7

10.5

10.5

10.7

2+00

10.7

11.0

10.9

10.9

3+00

11.1

11.3

11.5

11.5

11.4

50

11.3

10.5

6.3

2.9

4+00

50

D.K.

D.K.

5-11-60

STA. W. 86+00; O+00 = N. 14, 150; SOUND NORTH

Dist	Sound	Elev	Dist	Sound	Elev
0+00			(32)	11.0	7.8
(32)			50	11.1	7.9
				11.3	8.1
<u>1+10</u>	0.2	+3.0		11.2	8.0
	3.7	0.5		11.2	8.0
50	8.0	4.8		11.3	8.1
	9.3	6.1	3+00	11.3	8.1
	9.5	6.3		11.2	8.0
	10.0	6.8		11.2	8.0
	10.1	6.9		11.1	7.9
1+00	10.1	6.9		7.7	4.5
	10.5	7.3	50	4.0	0.8
	10.4	7.2			
	10.3	7.1			
	10.5	7.3			
50	10.5	7.3			
	10.6	7.4	4+00		
	10.8	7.6			
	11.0	7.8			
	10.9	7.7			
2+00	10.9	7.7			
	10.8	7.6	50		
	10.7	7.5			
	10.7	7.5			

(24)

STA. W. 86+50; O+00 = N. 14, 170; SOUND NORTH

Dist	Sound	Elev	Dist	Sound	Elev
0+00			(30)	11.1	
(30)			50	11.2	
				11.2	
<u>1+18</u>	0.8			11.4	
	4.9			11.8	
50	9.2			11.8	
	10.3		3+00	11.9	
	10.2			11.9	
	10.1			11.7	
	10.3			6.0	
1+00	10.6			3.0	
	10.7		50		
	10.7				
	10.9				
	10.9				
50	11.0				
	11.0		4+00		
	10.9				
	11.0				
	10.8				
2+00	11.0				
	11.3				
	11.3				
	11.1				

5-11-60

STA. W. 87+00; 0+00 = N. 14, 180; SOUND NORTH

Dist Sound Elev Dist Sound Elev

0+00

29

11.4

29

50

11.3

11.3

11.27

0.7

11.4

50

5.4

11.4

50

9.2

11.3

9.9

3+00

11.3

10.1

11.1

10.1

10.5

10.2

3.3

1+00

10.6

10.9

50

10.9

10.9

10.9

10.9

50

11.0

11.0

11.1

10.9

10.8

2+00

11.0

11.1

11.3

11.3

5-16-60

(25)

STA. W. 87+50; 0+00 = N. 14, 210; SOUND NORTH

Dist Sound Elev Dist Sound Elev

0+00

32

11.2

32

1.5

50

11.3

5.9

11.3

11.05

9.3

11.2

10.0

9.2

50

10.0

6.5

9.9

3+00

4.3

10.1

10.4

10.5

1+00

10.6

10.7

50

11.0

11.1

11.1

50

11.3

11.4

4+00

11.7

11.8

11.7

2+00

11.3

11.3

11.2

11.2

5-16-60

STA. W. 88+00; 0+00=N. 14,210; SOUND NORTH

Dist Sound Elev Dist Sound Elev

0+00 0.1 +3.1 (32) 11.5 8.3

(32) 2.7 +0.5 50 11.8 8.6

8.7 5.5 11.3 8.1

1110 9.9 6.7 11.3 8.1

10.0 6.8 10.9 7.7

50 9.8 6.6 5.1 1.9

9.9 6.7 3+00 3.3 0.1

10.3 7.1

10.4 7.2

10.4 7.2

1+00 10.7 7.5

10.8 7.6 50

10.9 7.7

11.1 7.9

11.3 8.1

50 12.0 8.8

11.9 8.7 4+00

11.8 8.6

11.8 8.6

11.7 8.5

2+00 12.0 8.8

11.9 8.7

11.8 8.6

11.5 8.3

(26)

STA. W. 88+50; 0+00=N. 14,200; SOUND NORTH

Dist Sound Elev Dist Sound Elev

0+00 (33) 11.6

(33) 0.3 50 11.7

3.1 11.8

8.7 12.0

1115 9.9 11.7

50 10.2 11.4

10.1 3+00 9.0

10.5 3.5

10.7

10.9

1+00 11.0

11.0 50

10.7

11.0

11.0

50 11.3

11.4 4+00

11.9

11.8

11.8

2+00 11.8

11.5

11.9

11.9

O.K.

O.K.

5-16-60

STA. W. 89+00: 0+00 = N. 14, 200 ; SOUND NORTH

Dist	Sound	Elev	Dist	Sound	Elev
0+00			(3A)	12.1	
(3A)	1.2		50	12.1	
	5.0			12.0	
<u>11.20</u>	10.2			12.0	
	11.0			11.9	
50	11.2			11.7	
	11.0		3+00	6.9	
	11.1			3.9	
	11.2				
	11.5				
1+00	11.6				
	11.7		50		
	11.7				
	11.8				
	11.8				
50	11.9				
	11.9		4+00		
	12.0				
	11.9				
	12.0				
2+00	12.0				
	12.1				
	12.2				
	12.0				

O.K.

(27)

STA. W. 89+50: 0+00 = N. 14, 190 ; SOUND NORTH

Dist	Sound	Elev	Dist	Sound	Elev
0+00			(3B)	11.9	
(3B)			50	12.0	
	1.8			11.7	
	6.9			11.7	
<u>11.27</u>	10.4			11.6	
	11.0		50	11.5	
	11.0			10.4	
	11.2		3+00	5.2	
	11.4			4.0	
	11.4				
1+00	11.3				
	11.4		50		
	11.5				
	11.5				
	11.6				
50	11.7				
	11.7		4+00		
	11.8				
	12.0				
	11.9				
2+00	11.9				
	11.5				
	11.6				
	11.7				

O.K.

O.K.

5-16-60

W 90+00; 0+00 = N 14190; SOUND NORTH

Dist South Elev Dist South Elev

0+00			(36)	12.2	8.6
(36)	1.3	2.3	50	12.0	8.4
	4.2	0.6		12.0	8.4
<u>1135</u>	9.9	6.3		12.1	8.5
	10.7	7.1		11.9	8.3
50	10.9	7.3		11.6	8.0
	10.9	7.3	3+00	9.0	5.4
	10.9	7.3		4.2	0.6
	11.0	7.4		3.8	0.2
	11.0	7.4			
1+00	11.2	7.6			
	11.2	7.6	50		
	11.3	7.7			
	11.3	7.7			
	11.4	7.8			
50	11.5	7.9			
	11.4	7.8	4+00		
	11.8	8.2			
	11.9	8.3			
	12.0	8.4			
2+00	12.1	8.5			
	12.4	8.8			
	12.3	8.7			
	12.2	8.6			

(28)

STA. W. 90+50; 0+00 = N 14180; SOUND NORTH

Dist South Elev Dist South Elev

0+00			(37)	12.7	
(37)	1.0		50	12.9	
	3.0			13.0	
<u>1140</u>	8.1			12.8	
	10.0			12.6	
50	10.6			12.4	
	10.8		3+00	12.5	
	11.0			12.0	
	11.1			5.6	
	11.2			3.7	
1+00	11.2				
	11.2		50		
	11.3				
	11.4				
	11.6				
50	11.8				
	12.1		4+00		
	12.2				
	12.2				
	12.3				
2+00	12.5				
	12.9				
	12.7				
	12.6				

5-16-60

STA. W. 91400: 0+00 = N. 14, 170; SOUND NORTH

Dist	Sound	Elev	Dist	Sound	Elev
0+00			(37)	12.7	
(37)	0.0		50	12.8	
	2.7			12.9	
<u>11.45</u>	6.4			12.8	
	10.0			12.7	
50	10.8			12.8	
	11.0		3+00	13.0	
	11.1			12.8	
	11.1			9.6	
	11.2			5.2	
1+00	11.3			4.2	
	11.5		50		
	11.9				
	11.9				
	12.0				
50	12.1				
	12.3		4+00		
	12.4				
	12.0				
	12.0				
2+00	12.2				
	12.6				
	12.7				
	12.6				

STA. W. 91450: 0+00 = N. 14, 160; SOUND NORTH

Dist	Sound	Elev	Dist	Sound	Elev
0+00			(39)	12.6	
(39)	0.5		50	12.7	
	2.3			12.5	
<u>11.53</u>	6.2			12.4	
	10.4			12.4	
50	11.3			12.4	
	11.2		3+00	12.4	
	11.3			12.3	
	11.5			11.7	
	11.7			9.6	
1+00	12.0			4.5	
	12.3		50	4.3	
	12.5				
	12.6				
	12.4				
50	12.3				
	12.2		4+00		
	12.0				
	12.0				
	12.2				
2+00	12.3				
	12.4				
	12.4				
	12.6				



5-16-60

STA. W. 92+00 S 0+00 = N. 14, 140; SOUND NORTH

Dist	Sound	Elev	Dist	Sound	Elev
0+00			(39)	12.9	9.0
(39)	0.1	+3.8	50	13.0	9.1
	1.6	+2.3		13.0	9.1
2:00	4.2	0.3		13.0	9.1
	10.8	6.9		13.1	9.2
50	12.0	8.1		13.0	9.1
	12.0	8.1	3+00	12.9	9.0
	12.0	8.1		13.0	9.1
	12.0	8.1		12.9	9.0
	12.0	8.1		12.8	8.9
1+00	12.1	8.2		11.4	7.5
	12.1	8.2	50	6.7	2.8
	12.4	8.5		4.9	1.0
	12.7	8.8		4.1	0.2
	12.8	8.9			
50	12.7	8.8			
	12.6	8.7	4+00		
	12.5	8.6			
	12.8	8.9			
	12.9	9.0			
2+00	12.9	9.0			
	12.9	9.0			
	12.9	9.0			
	13.0	9.1			

(30)

STA. W. 92+50 S 0+00 = N. 14, 120; SOUND NORTH

Dist	Sound	Elev	Dist	Sound	Elev
0+00			(4.1)	13.3	
(41)	0.5		50	13.3	
	1.7			13.3	
2:07	2.9			13.4	
	8.3			13.5	
50	11.8			13.6	
	11.8		3+00	13.6	
	12.0		2:10	13.1	
	12.1			12.8	
	13.0			12.9	
1+00	13.2			13.0	
	13.2		50	7.3	
	13.2			6.2	
	13.2				
	13.2				
50	13.3				
	13.3		4+00		
	13.3				
	13.4				
	13.6				
2+00	13.7				
	13.6				
	13.5				
	13.4				

5-16-66

STA. W. 93+00; 0+00 = N. 14, 090; SOUND NORTH

DIST SOUND ELEV DIST SOUND ELEV

0+00

(A1)

0.0

1.4

2:15

2.9

7.4

50

12.2

13.3

13.2

13.1

13.2

1+00

13.3

13.1

13.1

13.3

12.9

50

12.7

13.0

13.5

13.6

13.7

2+00

13.8

13.8

13.5

13.4

(A1)

13.8

50

13.8

13.9

14.0

14.2

13.9

3+00

13.8

13.9

13.5

13.2

13.6

50

13.7

13.7

11.0

5.0

5.0

4+00

OK

OK

(31)

STA. W. 93+50; 0+00 = N. 14, 070; SOUND NORTH

DIST SOUND ELEV DIST SOUND ELEV

0+00

(A2)

0.2

1.3

2:20

3.2

9.2

50

11.2

11.8

13.1

13.2

13.2

1+00

13.2

11.9

12.4

13.0

13.1

50

13.0

13.0

13.0

13.1

13.2

2+00

13.3

13.3

13.4

13.5

(A2)

13.6

50

13.7

13.7

13.6

13.6

13.7

3+00

13.7

13.7

14.0

14.0

50

13.8

13.7

13.3

13.3

13.3

12.7

4+00

8.2

4.9

OK

OK

5-16-60

STA. W. 94+00; 0+00 = N. 14,040 SOUND NORTH

Dist Sound Elev Dist Sound Elev

0+00

(A.2)

0.9 +3.3

2:30 2.3 +1.9

5.9 1.7

50 11.6 7.4

12.0 7.8

12.0 7.8

11.9 7.7

12.2 8.0

1+00 13.0 8.8

13.3 9.1

13.0 8.8

11.0 6.8

12.2 8.0

50 12.7 8.5

11.8 7.6

11.9 7.7

12.0 7.8

12.2 8.0

2+00 12.3 8.1

12.3 8.1

12.7 8.5

12.7 8.5

(A.2)

12.8 8.6

50 12.7 8.5

12.8 8.6

12.8 8.6

12.7 8.5

12.9 8.7

3+00 13.0 8.8

13.1 8.9

13.1 8.9

13.1 8.9

13.1 8.9

50 12.8 8.6

12.8 8.6

12.9 8.7

13.0 8.8

13.0 8.8

4+00 13.0 8.8

12.9 8.7

12.7 8.5

9.7 5.5

5.2 1.0

50 5.2 1.0

(32)

STA. W. 94+50; 0+00 = N. 14,000; SOUND NORTH

Dist Sound Elev Dist Sound Elev

0+00

(A.3)

0.6

1.4

2:40

2.5

50 6.3

10.3

12.2

12.1

12.1

1+00 12.2

12.3

12.4

12.6

12.7

50 13.2

13.3

12.0

11.9

11.7

2+00 11.7

11.6

11.7

12.1

(A.3)

12.3

50 12.6

12.5

12.7

12.7

12.7

3+00 12.9

12.7

12.8

13.0

13.1

50 13.1

13.1

13.2

13.0

12.6

4+00 12.9

12.8

12.6

12.8

50 12.8

9.0

5.2

4+80 5.1

0.1

0.1

5-17-60

STA. N. 140+00; 0+00 = W. 9,450; SOUND WEST

DIST	SOUND	ELEV	DIST	SOUND	ELEV
			(26)	11.0	8.4
0+00			50	10.9	8.3
(26)				10.9	8.3
				10.9	8.3
1.10				11.2	8.6
				11.9	9.3
50	1.0	+1.6		12.1	9.5
	4.3	1.7	3+00	12.4	9.8
	7.4	4.8		12.0	9.4
	9.5	6.9		11.7	9.1
	10.0	7.4		11.7	9.1
1+00	10.3	7.7		11.6	9.0
	10.9	8.3	50	11.4	8.8
	11.1	8.5		11.2	8.6
	10.3	7.7		10.8	8.0
	10.2	7.6		10.2	7.6
50	10.3	7.7		10.3	7.7
	11.0	8.4	4+00	10.3	7.7
	11.0	8.4		10.3	7.7
	11.3	8.7		10.3	7.7
	11.0	8.4		10.4	7.8
2+00	10.4	7.8		10.6	8.0
	10.0	7.4	50	10.5	7.9
	11.3	8.7		10.6	8.0
	10.7	8.1		10.4	7.8

STA. N. 140+00 - WEST

DIST	SOUND	ELEV	DIST	SOUND	ELEV
(27)	10.1	7.4	(27)	11.2	8.5
	10.5	7.8		11.1	8.4
5+00	10.6	7.9	50	11.0	8.3
	10.8	8.1		11.0	8.3
	10.8	8.1		11.1	8.4
11.15	10.7	8.0		11.0	8.3
	10.9	8.2		11.2	8.5
50	11.2	8.5	8+00	11.3	8.6
	11.3	8.6		12.0	9.3
	11.2	8.5		11.9	9.2
	11.2	8.5		12.0	9.3
	11.1	8.4		11.9	9.2
6+00	11.1	8.4	50	11.9	9.2
	11.1	8.4		11.9	9.2
	11.2	8.5		11.8	9.1
	11.6	8.9		11.7	9.0
	11.6	8.9		11.6	8.9
50	11.4	8.7	9+00	11.5	8.8
	11.3	8.6		11.4	8.7
	11.2	8.5		11.3	8.6
	11.0	8.3		11.4	8.7
	10.9	8.2		11.1	8.4
7+00	11.2	8.5	50	11.1	8.4
	11.3	8.6		11.2	8.5
	11.3	8.6		11.1	8.4

## STA. N. 140+00 - WEST 5-17-60

Dist	Sound	Elev	Dist	Sound	Elev
(27)	11.1	8.4	(27)	11.4	8.7
	11.0	8.3		11.3	8.6
10+00	11.1	8.4	50	11.0	8.3
	11.2	8.5		11.2	8.5
	11.2	8.5		11.2	8.5
	11.1	8.4		11.1	8.4
	11.3	8.6		11.1	8.4
50	11.8	9.1	13+00	11.2	8.5
11.20	11.6	8.9		11.4	8.7
<u>11.6</u>	11.6	8.9		11.7	9.0
	11.4	8.7		11.6	8.9
	11.4	8.7		11.1	8.4
11+00	11.4	8.7	50	11.1	8.4
	11.2	8.5		11.1	8.4
	11.2	8.5		11.0	8.3
	11.4	8.7		11.0	8.3
	11.4	8.7		11.0	8.3
50	11.7	9.0	14+00	11.0	8.3
	11.7	9.0		10.9	8.2
	11.5	8.8		10.8	8.1
	11.6	8.9		10.9	8.2
	11.6	8.9		10.9	8.2
12+00	11.6	8.9	50	10.9	8.2
	11.5	8.8		10.8	8.1
	11.3	8.6		10.7	8.0

## STA. N. 140+00 - WEST

(34)

Dist	Sound	Elev	Dist	Sound	Elev
(28)	10.6	7.8	(28)	11.2	8.4
	10.6	7.8		11.2	8.4
15+00	10.7	7.9	50	11.3	8.5
	10.9	8.1		11.5	8.7
	10.8	8.0		11.2	8.4
	10.7	7.9		11.0	8.2
	10.1	7.3		11.0	8.2
50	10.1	7.3	18+00	11.0	8.2
	11.2	8.4		11.4	8.6
	11.2	8.4		11.1	8.3
	11.2	8.4		11.0	8.2
	11.1	8.3		11.0	8.2
16+00	11.2	8.4	50	11.1	8.3
	11.2	8.4		11.1	8.3
11.25	11.3	8.5		11.2	8.4
<u>11.8</u>	11.8	9.0		11.2	8.4
	12.0	9.2		11.2	8.4
50	11.9	9.1	19+00	11.2	8.4
	11.9	9.1		11.1	8.3
	11.9	9.1		11.1	8.3
	11.8	9.0		11.1	8.3
	11.7	8.9		11.1	8.3
17+00	11.5	8.7	50	11.1	8.3
	11.3	8.5		11.1	8.3
	11.3	8.5		11.2	8.4

STA. N. 140+00 - WEST 5-17-60

STA. N. 140+00 - WEST

	DIST	Sound	Elev		DIST	Sound	Elev
(28)	11.5	8.7		(29)	11.7	8.8	
	11.5	8.7			11.8	8.9	
20+00	11.6	8.8		50	11.8	8.9	
	11.6	8.8			12.2	9.3	
	11.8	9.0		11.30	12.2	9.3	
	12.0	9.2		<del>11.30</del>	12.1	9.2	
	11.9	9.1			12.1	9.2	
50	12.2	9.4		23+00	12.3	9.4	
	12.2	9.4			13.1	10.2	
	12.1	9.3			13.0	10.1	
	12.2	9.4			12.7	9.8	
	12.2	9.4			12.3	9.4	
21+00	12.2	9.4		50	12.6	9.7	
	12.1	9.3			12.3	9.4	
	12.1	9.3			12.2	9.3	
	12.1	9.3			11.9	9.0	
	12.1	9.3			11.7	8.8	
50	12.1	9.3		24+00	12.0	9.1	
	12.0	9.2			11.9	9.0	
	12.1	9.3			12.0	9.1	
	12.2	9.4			11.8	8.9	
	11.8	9.0			12.2	9.3	
22+00	11.3	8.5		50	12.3	9.4	
	11.4	8.6			12.6	9.7	
	11.4	8.6			12.3	9.4	

	DIST	Sound	Elev
(29)	12.4	9.5	
	12.8	9.9	
25+00	12.9	10.0	
	12.9	10.1	
	12.7	9.8	
	12.5	9.6	
	12.8	9.9	
50	13.0	10.1	
	13.0	10.1	
	12.6	9.7	
	12.3	9.4	
	12.0	9.1	
26+00	12.1	9.2	

5-17-60

STA. N. 139+50; 0+00=W. 9510; SOUND WEST

Dist Sound Elev Dist Sound Elev

0+00

(3)

1,47

0.2

50

1.4

3.9

7.6

8.7

10.0

1+00

10.7

11.0

10.9

10.9

10.7

50

10.7

10.8

10.7

10.8

11.3

2+00

11.5

11.5

11.8

12.0

(3)

12.1

50

12.7

13.0

1,50

13.0

12.9

12.5

3+00

11.4

11.6

11.8

11.4

11.1

50

11.4

11.1

11.2

11.3

11.4

4+00

11.4

11.4

11.3

11.2

11.1

50

11.3

11.5

11.6

STA. N. 139+50-WEST

Dist Sound Elev Dist Sound Elev

(3)

11.6

11.5

5+00

11.6

11.8

11.9

11.8

11.8

50

12.0

11.8

11.6

12.0

12.1

6+00

12.2

12.3

12.1

11.9

11.7

50

11.8

12.2

12.1

11.9

11.6

7+00

11.5

11.5

11.7

(32)

11.9

12.0

50

12.1

12.1

1,55

12.5

12.4

12.3

8+00

12.4

12.3

12.2

12.3

12.2

50

12.3

12.1

12.1

12.1

12.1

9+00

12.0

12.0

12.0

12.0

12.0

50

12.0

12.0

11.9

(36)

STA. N. 139+50 - WEST 5-17-60

Dist	Sound	Elev	Dist	Sound	Elev
(32)	11.9		(33)	11.6	
	11.8			11.6	
10+00	12.0		50	11.8	
	12.1		2500	11.8	
	12.0		=	12.0	
	11.8			11.9	
	11.7			11.8	
50	11.7		13+00	11.9	
	11.8			11.9	
	11.6			11.9	
	11.6			12.0	
	11.9			11.9	
11+00	12.0		50	11.8	
	12.1			11.7	
	12.1			11.8	
	12.1			11.9	
	12.1			11.8	
50	12.3		14+00	11.7	
	12.2			11.7	
	12.1			11.5	
	12.1			11.6	
	12.0			11.7	
12+00	12.0		50	11.8	
	12.0			11.8	
	11.8			11.7	

STA. N. 139+50 - WEST (37)

Dist	Sound	Elev	Dist	Sound	Elev
(33)	11.4		(34)	11.8	
	11.3			11.6	
15+00	11.5		50	11.9	
	11.6			12.2	
	11.7		2105	12.0	
	11.8		=	12.1	
	11.8			12.1	
50	12.0		18+00	12.0	
	12.1			11.9	
	12.2			12.1	
	12.3			12.3	
	12.2			12.4	
16+00	12.3		50	12.5	
	12.3			12.3	
	12.2			12.3	
	12.2			12.4	
	12.2			12.5	
50	12.3		19+00	12.3	
	12.3			12.3	
	12.3			12.3	
	12.2			12.3	
	12.4			12.2	
17+00	12.1		50	12.3	
	12.0			12.4	
	11.9			12.5	



STA. N. 139+50 - WEST 5-17-60

DIST	Sound	Elev	DIST	Sound	Elev
(34)	12.6		(35)	13.0	
	12.9			12.9	
20+00	12.9		50	12.9	
	12.8			12.8	
	12.8		21+00	13.0	
	12.8			12.8	
	13.0			12.5	
50	13.1		23+00	12.4	
	13.2			12.5	
	13.1			12.6	
	13.0			12.5	
	13.0			12.5	
21+00	13.0	OK	50	12.6	OK
	12.9			12.5	
	12.7			12.7	
	12.5			12.8	
	12.4			13.1	
50	12.5		24+00	13.5	
	12.4			13.8	
	12.5			13.7	
	12.4			13.7	
	12.3			13.5	
22+00	12.5		50	13.6	
	12.6			13.7	
	12.7			13.6	

STA. N. 139+50 - WEST (38)

DIST	Sound	Elev
(35)	13.6	
	13.6	
25+00	13.6	
	13.3	
	12.9	
	12.8	
	13.1	
50	13.2	OK
	13.3	
	13.5	
	13.5	
	13.5	
26+00	13.5	

5-17-60

STA. N. 139+00. 0+00 = W. 9590 ; SOUND WEST

Dist	Sound	Elev	Dist	Sound	Elev
0+00			(37)	12.4	
(37)	0.1		50	12.8	
	1.1			12.9	
	2.8			12.4	
<u>2:25</u>	5.1			12.1	
50	8.4			12.0	
	11.0		3+00	12.0	
	11.1			11.9	
	11.9			12.0	
	12.9			12.1	
1+00	12.1			12.4	
	12.1		50	12.7	
	12.2			12.8	
	12.1			12.8	
	12.1			12.5	
50	12.3			12.8	
	12.2		4+00	12.9	
	12.1			12.8	
	12.1			12.7	
	12.5			12.5	
2+00	13.6			12.5	
	13.9		50	12.6	
	13.6			12.6	
	12.6			12.7	

STA. N. 139+00 - WEST

Dist Sound Elev Dist Sound Elev

Dist	Sound	Elev	Dist	Sound	Elev
(38)	12.7		(38)	13.1	
	12.7			13.2	
5+00	12.8		50	13.1	
	12.7			13.1	
2:30	12.9			13.1	
<u>5</u>	12.9			13.0	
	13.0			13.0	
50	13.0		8+00	12.9	
	13.1			12.9	
	13.0			12.7	
	12.3			12.8	
	12.3			12.7	
6+00	12.5		50	12.3	
	12.9			12.3	
	13.0			12.2	
	13.0			12.0	
	12.9			12.4	
50	12.8		9+00	12.8	
	12.6			12.6	
	12.8			12.7	
	12.8			12.5	
	12.9			12.6	
7+00	12.9		50	12.8	
	13.0			12.7	
	13.2			12.7	

STA. N. 139+00 - WEST 5-17-60

Dist	Sound	Elev	Dist	Sound	Elev
(39)	12.7		(39)	12.8	
	12.8			12.9	
10+00	12.9		50	13.0	
2:35	12.9			13.0	
	12.8			13.0	
	12.7			12.9	
	12.8			12.9	
50	12.9		13+00	12.8	
	13.0			12.7	
	12.9			12.7	
	12.9		2:40	12.8	
	12.8			12.7	
11+00	12.8	OK	50	12.6	OK
	13.0			12.8	
	13.0			12.9	
	12.7			12.9	
	12.7			12.9	
50	12.7		14+00	12.7	
	12.5			12.6	
	12.8			12.4	
	12.8			12.5	
	12.9			12.7	
12+00	12.9		50	12.8	
	12.9			13.0	
	12.8			12.8	

STA. N. 139+00 - WEST

Dist	Sound	Elev	Dist	Sound	Elev
(40)	12.9		(40)	12.9	
	13.0			13.0	
15+00	13.2		50	13.5	
	13.4		2:45	13.3	
	13.3			13.3	
	13.2			13.3	
	13.2			13.1	
50	13.1		18+00	13.1	
	13.1			13.0	
	13.3			12.9	
	13.2			12.8	
	13.1			12.7	
16+00	13.0	OK	50	12.4	OK
	13.0			12.8	
	13.0			13.0	
	13.2			13.0	
	13.2			13.0	
50	13.0		19+00	13.0	
	13.0			13.3	
	13.0			13.4	
	12.9			13.3	
	13.0			13.6	
17+00	13.1		50	13.8	
	13.0			13.7	
	12.9			13.5	

STAN. 139+00 - WEST 5-17-60

Dist	Sound	Elev	Dist	Sound	Elev
(41)	13.6		(41)	12.9	
	13.8		2350	12.9	
20+00	13.9		50	13.1	
	13.7			12.9	
	13.6			13.2	
	13.2			13.1	
	13.2			13.0	
50	13.1		23+00	13.2	
	13.3			13.8	
	13.5			14.0	
	13.5			14.1	
	13.2			14.1	
21+00	13.1		50	14.3	
	13.1			14.0	
	13.2			14.0	
	13.4			13.9	
	13.5			14.0	
50	13.3		24+00	14.2	
	13.2			14.0	
	13.3			14.0	
	13.4			14.0	
	13.4			13.8	
22+00	13.7		50	13.7	
	13.5			13.5	
	13.0			13.9	

STA. N. 139+00 - WEST

Dist	Sound	Elev
(42)	14.0	
	14.1	
25+00	14.0	
	14.1	
2555	14.1	
	13.9	
	14.0	
50	14.0	
	14.0	
	14.0	
	14.2	
	14.8	
26+00	14.7	

OK

OK

OK

5-18-60

STA. N. 138+50; 0+00=W 9640; SOUND WEST

Dist Sound Elev Dist Sound Elev

0+00

(23)

11.4

(23)

50

11.4

0.3

11.3

11.37

4.0

11.3

8.3

11.5

50

9.2

11.6

9.3

3+00

11.8

9.5

11.8

9.6

11.40

11.8

9.7

=

11.6

1+00

9.7

50

11.4

9.8

50

11.1

10.0

11.0

10.5

10.7

10.8

10.5

50

10.7

10.6

10.4

4+00

10.8

10.3

11.0

10.4

11.0

10.7

11.0

2+00

11.0

50

11.0

11.1

50

11.0

11.3

11.0

11.5

11.0

STA. N. 138+50 - WEST

Dist Sound Elev Dist Sound Elev

(23)

11.1

(23)

10.8

11.1

10.9

5+00

11.2

50

10.9

11.2

10.8

11.3

10.7

11.2

10.6

11.2

10.6

50

11.2

8+00

10.6

11.0

11.45

10.7

11.1

10.7

11.0

10.9

11.0

11.0

6+00

11.0

50

11.0

11.0

11.3

11.0

11.4

11.1

11.3

11.0

11.2

50

11.0

9+00

11.2

11.1

11.1

11.0

11.1

11.2

11.0

11.1

11.0

7+00

11.0

50

11.0

10.9

11.2

10.9

11.2

STA. N. 138+50-WEST 5-18-60

Dist	Sound	Elev	Dist	Sound	Elev
(23)	11.0		(24)	10.2	
	11.0			10.5	
10+00	10.7		50	10.7	
	10.7			10.9	
	10.6			10.7	
	10.7			10.3	
	10.8			10.4	
50	10.5		13+00	10.5	
	10.6			10.7	
	10.6			10.3	
	10.4		1,50	10.0	
	10.3		<u>    </u>	9.9	
11+00	10.3		50	10.5	
	10.3			10.7	
	10.0			11.1	
	10.1			11.2	
	10.3			11.1	
50	10.4		14+00	11.1	
	10.4			11.2	
	10.5			11.1	
	10.6			11.2	
	10.5			11.2	
12+00	10.5		50	11.2	
	10.3			11.2	
	10.2			11.1	

O.K.

O.K.

STA. N. 138+50-WEST

Dist	Sound	Elev	Dist	Sound	Elev
(24)	11.3		(25)	11.5	
	11.5			11.8	
15+00	11.9		50	11.9	
	11.8			11.8	
	11.6			11.8	
	11.5			12.0	
	11.5			11.8	
50	11.5		18+00	11.4	
	11.5			11.5	
	11.6			11.3	
	11.8			11.5	
	11.8			11.4	
16+00	11.9		50	11.6	
	11.8		1,55	11.7	
	11.6		<u>    </u>	11.5	
	11.6			11.6	
	11.5			11.7	
50	11.5		19+00	11.8	
	11.5			11.8	
	11.5			11.8	
	11.5			11.9	
	11.4			11.8	
17+00	11.4		50	11.8	
	11.5			12.0	
	11.4			12.0	

O.K.

O.K.

STA. N. 138+50 - WEST 5-18-60  
Dist Sound Elev Dist Sound Elev

Dist	Sound	Elev	Dist	Sound	Elev
23	12.1		23	12.3	
	12.1			12.5	
20+00	12.2		50	12.5	
	12.3			12.6	
	12.4			12.8	
	12.5			13.0	
	12.6			13.0	
50	12.6		23+00	13.0	
	12.5			12.9	
	12.5			12.8	
	12.5			12.6	
	12.4	OK		12.5	OK
21+00	12.5		50	12.7	
	12.7		21+00	13.0	
	12.9			13.0	
	12.8			13.0	
	12.8			13.0	
50	13.0		24+00	13.0	
	13.0			12.7	
	13.0			12.6	
	13.0			12.6	
	12.8			12.4	
22+00	12.5		50	12.4	
	12.3			12.5	
	12.2			12.6	

STA. N. 138+50 - WEST  
Dist Sound Elev

Dist	Sound	Elev
25	12.7	
	12.8	
25+00	12.9	
	13.0	
	12.8	
	12.9	
	13.0	
50	12.6	
	12.7	
	12.6	
	12.2	
	12.0	
26+00	12.0	

OK

5-18-60

STA. N. 138+00; 0+00 = W. 9670; SOUND WEST					
Dist	Sound	Elev	Dist	Sound	Elev
0+00			(29)	12.4	9.5
(2.9)			50	12.2	9.3
	0.4	+2.5		12.2	9.3
<u>2:12</u>	2.1	+0.8		12.3	9.4
	8.0	5.1		12.3	9.4
50	8.7	5.8		12.4	9.5
	9.5	6.6	3+00	12.4	9.5
	10.1	7.2		11.9	9.0
	10.7	7.8		11.5	8.6
	10.9	8.0		11.8	8.9
1+00	10.5	7.6		11.9	9.0
	10.3	7.4	50	11.9	9.0
	10.1	7.2	2:15	11.9	9.0
	10.3	7.4		11.9	9.0
	10.6	7.7		11.9	9.0
50	11.1	8.2		11.8	8.9
	11.3	8.4	4+00	11.6	8.7
	11.7	8.8		11.7	8.8
	12.1	9.2		11.6	8.7
	12.1	9.2		11.6	8.7
2+00	12.1	9.2		11.6	8.7
	12.4	9.5	50	11.8	8.9
	12.3	9.4		11.8	8.9
	12.6	9.7		12.0	9.1

STA. N. 138+00 - WEST					
Dist	Sound	Elev	Dist	Sound	Elev
(29)	11.9	9.0	(29)	11.4	8.5
	12.0	9.1		11.2	8.3
5+00	12.0	9.1	50	11.4	8.5
	12.0	9.1		11.9	9.0
	11.9	9.0		11.8	8.9
	12.2	9.3		12.0	9.1
	11.9	9.0		12.2	9.3
50	11.5	8.6	8+00	12.1	9.2
	11.6	8.7		12.1	9.2
	11.8	8.9		12.1	9.2
	12.0	9.1		11.9	9.0
	12.6	9.7		11.7	8.8
6+00	12.0	9.1	50	11.7	8.8
	11.6	8.7		12.0	9.1
	11.5	8.6		12.0	9.1
	11.7	8.8		12.0	9.1
	11.6	8.7		12.0	9.1
50	11.8	8.9	9+00	12.0	9.1
	11.6	8.7		12.0	9.1
	11.8	8.9		11.8	8.9
	11.7	8.8		11.6	8.7
	11.4	8.5		11.4	8.5
7+00	11.3	8.4	50	11.3	8.4
	11.3	8.4		11.1	8.2
	11.5	8.6		11.2	8.3



STA. N. 138+00 - WEST 5-18-60

Dist	Sound	Elev	Dist	Sound	Elev
(29)	11.2	8.3	(30)	11.3	8.3
	11.2	8.3		11.1	8.1
10+00	11.2	8.3	50	11.2	8.2
	11.2	8.3		11.2	8.2
2:20	11.2	8.3		11.1	8.1
	11.3	8.4		11.2	8.2
	11.3	8.4		11.2	8.2
50	11.2	8.3	13+00	11.3	8.3
	11.3	8.4		11.8	8.8
	11.0	8.1		11.7	8.7
	11.0	8.1		11.5	8.5
	11.8	8.9		12.0	9.0
11+00	11.7	8.8	50	12.0	9.0
	11.3	8.4		12.0	9.0
	11.1	8.2		12.0	9.0
	11.2	8.3		11.9	8.9
	11.2	8.3		11.7	8.7
50	11.3	8.4	14+00	11.5	8.5
	11.4	8.5		11.3	8.3
	11.4	8.5		11.7	8.7
	11.4	8.5		12.2	9.2
	11.6	8.7		12.2	9.2
12+00	11.4	8.5	50	12.1	9.1
	11.3	8.4		12.1	9.1
	11.2	8.3		12.2	9.2

STA. N. 138+00 - WEST

Dist	Sound	Elev	Dist	Sound	Elev
(30)	12.2	9.2	(30)	12.3	9.3
	12.3	9.3		12.3	9.3
15+00	12.3	9.3	50	12.2	9.2
	12.5	9.5		12.2	9.2
	12.3	9.3		12.2	9.2
2:25	12.3	9.3		12.1	9.1
	12.3	9.3		12.1	9.1
50	12.3	9.3	14+00	12.1	9.1
	12.2	9.2		12.2	9.2
	12.1	9.1		12.1	9.1
	12.2	9.2		12.2	9.2
	12.2	9.2		12.2	9.2
16+00	12.3	9.3	50	12.2	9.2
	12.4	9.4		12.2	9.2
	12.4	9.4		12.2	9.2
	12.3	9.3		12.0	9.0
	12.1	9.1		12.1	9.1
50	12.0	9.0	19+00	12.4	9.4
	12.3	9.3		12.1	9.1
	12.2	9.2		12.2	9.2
	12.2	9.2		12.2	9.2
	12.3	9.3		12.3	9.3
17+00	12.3	9.3	50	12.5	9.5
	12.3	9.3		12.6	9.6
	12.3	9.3		12.9	9.9

STA. N. 138+00 - WEST 5-18-60

Dist	Sound	Elev	Dist	Sound	Elev
(31)	12.9	9.8	(31)	13.1	10.0
	12.8	9.7		13.2	10.1
20+00	12.7	9.6	50	13.2	10.1
	12.7	9.6		13.1	10.0
2130	12.8	9.7		13.0	9.9
<u>    </u>	12.9	9.8		12.7	9.6
	12.9	9.8		12.8	9.7
50	12.9	9.8	23+00	12.9	9.8
	13.0	9.9		13.0	9.9
	13.0	9.9		13.1	10.0
	12.9	9.8		13.2	10.1
	12.9	9.8		13.1	10.0
21+00	12.9	9.8	50	13.0	9.9
	12.9	9.8		13.2	10.1
	12.9	9.8		13.1	10.0
	13.0	9.9		12.9	9.8
	13.0	9.9		12.9	9.8
50	12.9	9.8	24+00	12.9	9.8
	12.9	9.8		13.0	9.9
	12.7	9.6		13.0	9.9
	12.8	9.7		13.0	9.9
	12.9	9.8		12.9	9.8
22+00	12.9	9.8	50	12.2	9.1
	12.9	9.8		13.0	9.9
	12.9	9.8		13.0	9.9

STA. N. 138+00 - WEST

Dist	Sound	Elev
(32)	13.1	9.9
	13.1	9.9
25+00	13.2	10.0
	12.9	9.7
2135	12.8	9.6
<u>    </u>	13.1	9.9
	13.3	10.1
50	13.1	9.9
	12.2	9.0
	12.4	9.2
	12.6	9.4
	12.7	9.5
26+00	12.3	9.1

5-19-60

STA. N. 137+50; 0+00 = W. 9700; SOUND WEST

Dist	Sound	Elev	Dist	Sound	Elev
0+00			(23)	11.7	
(23)			50	11.2	
	0.5			10.9	
9:27	4.7			10.5	
	8.2			10.6	
50	9.2			10.6	
	9.6		3+00	11.2	
	9.5			11.1	
	9.4			10.7	
	9.8			10.8	
1+00	9.8		50	10.8	
	9.8		50	11.0	
	10.2			10.8	
	10.3			10.9	
	10.4			10.9	
50	10.2			11.1	
	10.3		4+00	11.1	
	10.9			11.0	
	11.2			11.0	
	11.3			11.1	
2+00	11.6			11.1	
	11.3		50	11.2	
	11.5			11.2	
	12.0			11.3	

STA. N. 137+50-WEST

Dist Sound Elev Dist Sound Elev

Dist	Sound	Elev	Dist	Sound	Elev
(23)	11.3		(23)	10.0	
	11.3			10.1	
5+00	11.3		50	10.1	
	11.3			10.6	
	11.2			10.8	
9:30	11.2			10.9	
	11.2			11.0	
50	11.2		8+00	11.0	
	11.2			11.0	
	11.2			11.0	
	11.0			10.8	
	11.1			10.6	
6+00	11.1		50	10.7	
	10.9			10.8	
	10.6			11.0	
	10.6			11.0	
	10.7			11.1	
50	10.5		9+00	11.1	
	10.6			10.9	
	10.6			10.4	
	10.2			10.3	
	10.2			10.2	
7+00	10.2		50	10.3	
	10.1			10.3	
	10.2			10.3	

STA. N. 137+50 - WEST 5-19-60

DIST	Sound	Elev	DIST	Sound	Elev
(22)	10.6		(22)	10.2	
	10.6			10.1	
10+00	10.6		50	10.1	
	10.5			10.1	
<u>9:35</u>	10.4			10.3	
	10.3			10.7	
	10.2			10.8	
50	10.4		13+00	10.8	
	10.4			10.8	
	10.4			10.7	
	10.4			10.6	
	10.5			10.6	
11+00	10.5		50	10.3	
	10.3			10.2	
	10.2			10.2	
	10.2			10.2	
	10.1			10.2	
50	10.1		14+00	10.2	
	10.2			10.3	
	10.6			10.4	
	10.6			10.6	
	10.3			10.7	
12+00	10.4		50	10.8	
	10.4			11.0	
	10.3			11.1	

STA. N. 137+50 - WEST

(49)

DIST	Sound	Elev	DIST	Sound	Elev
(22)	11.1		(22)	11.1	
	11.0			11.2	
15+00	11.0		50	11.2	
	11.0			11.2	
	10.9			11.1	
	10.9			11.0	
	10.8			11.0	
50	10.8		18+00	11.0	
	10.8			11.0	
	10.8			11.0	
	10.8			11.0	
	10.9			11.0	
	10.8			11.0	
16+00	10.3		50	11.0	
	10.3			11.2	
<u>9:40</u>	10.9			11.1	
	10.9			11.0	
	10.9			11.0	
50	10.9		19+00	11.1	
	11.0			10.9	
	11.1			10.9	
	11.2			11.0	
	11.2			11.0	
17+00	11.2		50	11.1	
	11.2			10.8	
	11.1			10.8	

STA. N. 137+50 - WEST 5-19-60

Dist	Sound	Elev	Dist	Sound	Elev
(21)	10.8		(21)	11.0	
	10.8			10.7	
20+00	11.0		50	10.6	
	11.5			10.3	
	11.4			10.2	
	11.4		9:45	10.2	
	11.4		<u>    </u>	10.2	
50	11.3		23+00	10.7	
	11.4			11.1	
	11.5			11.0	
	11.6			11.0	
	11.7			11.1	
21+00	11.5	± 0'	50	11.1	± 0'
	11.4			11.1	
	10.9			11.0	
	10.7			11.1	
	10.5			11.1	
50	10.4		24+00	11.1	
	10.3			11.1	
	10.3			11.1	
	10.4			11.1	
	10.5			11.1	
22+00	10.9		50	11.1	
	11.0			11.1	
	11.0			11.1	

STA. N. 137+50 - WEST

(50)

Dist	Sound	Elev
(21)	11.1	
	11.1	
25+00	11.1	
	11.1	
	11.1	
	11.1	
	11.1	
50	11.1	
	11.1	
	11.1	
	11.1	
	11.1	
26+00	11.1	

5-19-60

STA. N. 137+00: 0+00 = W 9720' SOUND WEST

	Dist	Sound	Elev	Dist	Sound	Elev
				(18)	10.9	
0+00				50	10.9	
(18)					10.8	
					10.5	
<u>1003</u>	1.2			<u>1005</u>	10.4	
	7.5				10.4	
50	9.2			3+00	10.5	
	9.4				10.6	
	9.0				10.7	
	9.2				10.8	
	9.5				10.7	
1+00	9.7				10.8	
	9.9			50	10.8	
	9.9				10.7	
	9.8				10.6	
	9.8				10.6	
50	9.8				10.5	
	10.0			4+00	10.5	
	10.1				10.5	
	10.1				10.6	
	10.5				10.5	
2+00	10.7				10.7	
	10.9			50	10.5	
	10.7				10.5	
	10.5				10.5	

STA. N. 137+00 - WEST

(5)

Dist	Sound	Elev	Dist	Sound	Elev
(18)	10.5		(17)	10.3	
	10.6			10.4	
5+00	10.7		50	10.5	
	11.0			10.5	
	11.1			10.6	
	11.0			10.6	
	10.9			10.5	
50	10.8		8+00	10.6	
	10.5			10.7	
	10.5			10.4	
	10.5			10.3	
	10.3			10.4	
6+00	10.0		50	10.5	
	10.1			10.6	
	10.0			10.7	
	10.1			10.5	
	10.2			10.5	
50	10.3		9+00	10.4	
	10.3			10.3	
	10.1			10.2	
	10.1			10.0	
	10.0			10.0	
7+00	10.0		50	10.0	
	10.1			10.0	
	10.2			10.1	

STA. N. 137+00 - WEST 5-19-60

Dist	Sound	Elev	Dist	Sound	Elev
(1.7)	10.1		(1.7)	9.8	
	10.1			10.0	
10+00	10.2		50	10.1	
	10.1			10.1	
10+10	10.0			10.2	
	10.0			10.3	
	10.0			10.4	
50	10.1		13+00	10.5	
	10.0			10.5	
	10.0			10.3	
	10.1			10.2	
	10.0			10.2	
11+00	10.0		50	10.3	
	10.1			10.3	
	10.1			10.3	
	10.2			10.2	
	10.3			10.3	
50	10.3		14+00	10.3	
	10.3			10.4	
	10.2			10.3	
	10.0			10.5	
	10.0			10.6	
12+00	10.0		50	10.7	
	10.0			10.8	
	9.9			10.9	

STA. N. 137+00 - WEST

Dist	Sound	Elev	Dist	Sound	Elev
(1.7)	10.8		(1.7)	10.5	
	10.7			10.5	
15+00	10.5		50	10.5	
	10.5			10.5	
	10.3			10.4	
10+15	10.3			10.3	
	10.3			10.3	
50	10.3		18+00	10.4	
	10.2			10.4	
	10.2			10.5	
	10.3			10.5	
	10.4			10.5	
16+00	10.5		50	10.3	
	10.3			10.5	
	10.2			10.3	
	10.4			10.2	
	10.8			10.1	
50	10.9		19+00	10.1	
	10.8			10.3	
	10.7			10.5	
	10.7			10.5	
	10.6			10.3	
17+00	10.6		50	10.0	
	10.5			9.9	
	10.5			9.8	

STA. N. 137+00 - WEST 5-19-60

Dist	Sound	Elev	Dist	Sound	Elev
(1.6)	10.2		(1.6)	10.0	
	10.5			10.0	
20+00	11.0		50	10.0	
	10.9			9.9	
	10.8			9.9	
	10.7			10.0	
	10.7			10.1	
50	11.0		23+00	10.3	
	11.0			10.3	
	11.0			10.3	
	11.0			10.2	✓
	10.6	✓		10.2	0
21+00	10.1	0'	50	10.2	
	10.0			10.5	
	9.9			10.7	
	9.5			10.8	
	9.3			10.7	
50	9.5		24+00	10.5	
1020	9.5			10.4	
→	9.5			10.3	
	9.5			10.3	
	10.0			10.2	
22+00	10.1		50	10.3	
	10.1			10.3	
	10.0			10.3	

STA. N. 137+00 - WEST

Dist	Sound	Elev
(1.6)	10.3	
	10.4	
25+00	10.4	
	10.2	
	10.2	
1025	10.3	
✓	10.4	
50	10.4	
	10.3	
	10.3	
	10.2	
	10.0	
26+00	10.0	

✓  
0'



5-19-60

STA. N. 136+50; 0+00 = W. 9750; SOUND WEST

Dist	Sound	Elev	Dist	Sound	Elev
0+00			(1.4)	10.0	
(1.4)			50	9.9	
	0.9			9.9	
	6.7			10.0	
50	7.5			10.0	
<u>1037</u>	8.4		3+00	9.9	
	8.9			9.9	
	9.3		<u>10.00</u>	9.8	
	9.5			9.9	
1+00	9.3		4	10.0	K'
	9.2		50	9.9	0'
	9.3			9.9	
	9.3	K'		10.0	
	9.4	0'		10.0	
50	9.4			10.1	
	9.7		4+00	10.0	
	9.9			10.1	
	10.0			10.0	
	10.1			10.1	
2+00	10.0			10.0	
	10.1		50	10.1	
	10.0			10.0	
	10.0			10.2	

STA. N. 136+50 - WEST

(54)

Dist	Sound	Elev	Dist	Sound	Elev
(7.4)	10.2		(1.4)	10.1	
	10.4			10.0	
5+00	10.4		50	10.2	
	10.3			10.3	
	10.3			10.1	
	10.2			10.3	
	10.1			10.2	
50	10.0		8+00	10.1	
	9.8			10.0	
	9.5			10.1	
	9.3			10.1	
	9.4	K'		10.3	
6+00	9.7	0'	50	10.3	0'
	9.8			10.1	
	9.7			10.0	
	9.7			9.9	
	9.9			9.8	
50	9.5		9+00	9.9	
	9.6			9.9	
	9.6			9.7	
	9.4			9.8	
	9.5			9.6	
7+00	9.2		50	9.4	
	10.0			9.7	
	10.5			9.6	

STA. N. 136+50 - WEST 5-19-60

Dist	Sound	Elev	Dist	Sound	Elev
(13)	9.7		(13)	9.5	
	9.5			9.7	
10+00	9.4		50	9.9	
	9.7			10.0	
	9.7			10.0	
10+45	9.8			9.8	
	9.4			9.9	
50	9.6		13+00	9.8	
	9.5			9.9	
	9.3			9.9	
	9.3			9.8	
	9.1			9.7	
11+00	9.2		50	9.9	
	9.3			9.9	
	9.4			10.1	
	9.4			10.1	
	9.5			10.3	
50	9.6		14+00	10.6	
	9.7			10.4	
	9.7			10.4	
	9.8			10.3	
	9.7			10.5	
12+00	9.6		50	10.5	
	9.2			10.3	
	9.2			10.0	

O.K.

O.K.

STA. N. 136+50 - WEST

(55)

Dist	Sound	Elev	Dist	Sound	Elev
(13)	10.1		(13)	9.8	
	9.9			9.8	
15+00	9.5		50	9.8	
	9.4			9.6	
	9.4			9.9	
10+50	9.5			9.7	
	9.6			9.8	
50	9.7		18+00	9.9	
	9.3			9.9	
	9.5			9.7	
	9.6			9.5	
	9.7			9.3	
16+00	9.8		50	9.2	
	9.8			9.1	
	10.1			9.0	
	10.2			9.0	
	10.2			9.0	
50	10.2		19+00	9.0	
	10.1			9.0	
	10.1			8.9	
	10.0			8.9	
	10.0			8.8	
17+00	10.0		50	8.8	
	9.9			9.0	
	9.9			9.4	

O.K.

O.K.

STA. N. 136+50 - WEST 5-19-60

STA. N. 136+50 - WEST

DIST	Sound	Elev	DIST	Sound	Elev
(12)	9.8		(12)	8.8	
	9.9			8.7	
20+00	9.7		50	8.7	
	9.8			8.9	
10,55	9.7			9.3	
<u>7</u>	9.8			9.4	
	9.8			9.5	
50	9.9		23+00	9.0	
	10.0			9.0	
	9.8			9.1	
	9.4			9.3	
	9.0			9.4	
21+00	9.0		50	9.4	
	9.0			9.9	
	8.9			10.2	
	8.9			10.0	
	8.8			10.0	
50	8.8		24+00	10.0	
	8.9			10.1	
	9.1			10.1	
	9.1			9.8	
	9.1			9.6	
22+00	9.0		50	9.3	
	8.9			9.3	
	8.9			9.3	

DIST	Sound	Elev
(1.2)	9.0	
	9.0	
25+00	9.1	
	9.2	
1100	9.6	
<u>7</u>	9.4	
	9.8	
50	9.7	
	9.1	
	9.0	
	9.1	
	9.2	
26+00	9.0	

K.  
0

K.  
0

O.K.

5-19-60

STA. W. 99+00; 0+00 = N. 13,600; SOUND NORTH

Dist	Sound	Elev	Dist	Sound	Elev
0+00			(11)	10.3	
(11)	8.9		50	10.3	
	9.0			10.2	
<u>11:16</u>	9.0			10.1	
	9.1			10.0	
50	9.2			10.0	
	9.2		3+00	9.8	
	9.3			9.3	
	9.3			9.1	
	9.3			9.2	
1+00	9.4			9.2	
	9.6	0.4	50	9.2	0.4
	9.7		<u>11:20</u>	9.2	
	9.6			9.0	
	10.0			9.0	
50	10.3			9.0	
	10.4		4+00	9.0	
	10.5			9.0	
	10.6			9.0	
	10.7			9.0	
2+00	10.8			9.0	
	10.7		50	9.1	
	10.6			9.2	
	10.2			9.2	

STA. W. 99+00 - NORTH

(57)

Dist	Sound	Elev	Dist	Sound	Elev
(11)	9.3		(11)	9.3	
	9.4			9.2	
5+00	9.5		50	9.3	
	9.7			9.4	
	9.7			9.3	
	9.6			9.3	
	9.4			9.5	
50	9.6		8+00	9.8	
	9.8			10.0	0.4
	9.8			9.4	0
	9.9			9.0	
	9.7			9.3	
6+00	9.6	0.4	50	9.4	
	9.4		<u>11:25</u>	9.6	
	9.6			9.6	
	9.8			9.3	
	9.9			8.9	
50	10.0		9+00	8.2	
	9.9			7.6	6.5
	9.8			7.5	6.4
	9.8			7.8	6.7
	9.6			7.9	6.8
7+00	9.3		50	7.9	6.8
	9.3			8.6	6.5
	9.3			9.3	0



STA. W. 99+50 - NORTH 5-19-60

Dist	Sound	Elev.	Dist	Sound	Elev.
(13)	9.8		(13)	9.8	
	10.1			10.0	
5+00	10.2		50	9.7	
	10.2			8.6	
	10.2		110	8.4	
	10.1		<u>      </u>	8.4	
	9.6			8.9	
50	9.7		8+00	9.7	
	9.9			10.0	
	10.0			10.2	
	10.1	0.4		10.4	
	10.1			10.8	
6+00	10.1		50	10.9	
	10.1			11.0	
	10.1			11.0	
	9.7			11.0	
	9.3			10.9	
50	9.2		9+00	10.8	
	9.2			10.4	
	9.1			10.4	
	9.1			10.3	
	9.3			10.3	
7+00	9.0		50	10.2	
	8.7			10.2	
	9.2			10.2	

STA. W. 99+50 - NORTH

Dist	Sound	Elev.	Dist	Sound	Elev.
(13)	10.3				
	10.2				
10+00	10.1		50	10.0	13+00
	10.1			10.0	
	10.0			10.0	
	10.0		50	10.0	0.
	10.0			9.8	
	9.8			8.4	
	8.3			8.3	
11+00	9.5		50	8.6	
	9.2			8.6	
	10.0		50	6.3	5.0 14+00
	10.2			1.4	0.1
	10.2				
	8.6				
	6.3				
	1.4				
			12+00		

5-19-60

STA. W. 100+00; 0+00=N. 14000; SOUND NORTH

	DIST	SOUND	ELEV	DIST	SOUND	ELEV
	0+00	9.8	8.4	14	10.5	9.1
	1.4	9.9	8.5	50	10.5	9.1
		9.8	8.4		10.4	9.0
	1.25	9.8	8.4		10.3	8.9
		9.8	8.4		10.4	9.0
	50	10.0	8.6		10.3	8.9
		9.9	8.5	3+00	10.3	8.9
		9.9	8.5		9.9	8.5
		9.9	8.5		9.8	8.4
		10.0	8.6		9.9	8.5
	1+00	9.9	8.5		9.9	
		10.0	8.6	50	9.9	
		10.1	8.7		9.9	
		10.2	8.8		9.9	
		10.1	8.7		9.9	
	50	10.1	8.7		9.9	
		9.8	8.4	4+00	9.9	
		10.1	8.7		9.9	
		10.3	8.9		10.0	8.6
		10.3	8.9		10.1	8.7
	2+00	10.5	9.1		10.3	8.9
		10.4	9.0	50	10.6	9.2
		10.4	9.0		10.7	9.5
		10.3	8.9		10.4	9.0

STA. W. 100+00-NORTH

(60)

	DIST	SOUND	ELEV	DIST	SOUND	ELEV
	15	9.9	8.4	15	8.9	7.4
		10.0	8.5		9.0	7.5
	5+00	10.1	8.6	50	9.2	7.7
		10.2	8.7		9.5	8.0
		10.3	8.8		9.0	7.5
		10.4	8.9		9.0	
		10.5	9.0		9.0	
	50	10.1	8.6	8+00	9.3	7.8
		10.0	8.5		9.6	8.1
		10.0	8.5		10.1	8.6
		10.0	8.5		10.5	9.0
		9.9	8.4		10.8	9.3
	6+00	9.9	8.4	50	10.9	9.4
		10.0	8.5		11.0	9.5
	11.30	9.9	8.4		11.1	9.6
		9.8	8.3		11.1	9.6
		10.0	8.5		11.0	9.5
	50	9.9	8.4	9+00	11.1	9.6
		10.0	8.5		11.1	9.6
		10.0			10.8	9.3
		10.0			10.6	9.1
		10.0			10.5	9.0
	7+00	9.9	8.4	50	10.5	9.0
		9.8	8.3		10.2	8.7
		9.5	8.0		10.1	8.6

STA. W. 100+00-NORTH 5-19-60

Dist	Sound	Elev	Dist	Sound	Elev
15	10.3	8.8			
	10.6	9.1			
10+00	10.7	9.2	50		
	10.6	9.1			
	10.6	9.1			
	10.7	9.2			
	10.7	9.2			
50	10.8	9.3	13+00		
	11.0	9.5			
	11.0	9.5			
	11.0	9.5			
	11.1	9.6			
11+00	11.1	9.6	50		
	11.0	9.5			
	10.9	9.4			
11:35	10.0	8.5			
	9.6	8.1			
50	10.0	8.5	14+00		
	10.0	8.5			
	12.8	11.3			
	9.5	8.0			
	8.4	6.9			
12+00	1.8	0.3	50		

STA. W. 100+50; 0+00=N. 14,000; SOUND NORTH

Dist	Sound	Elev	Dist	Sound	Elev
0+00	9.9		17	10.7	
1.7	10.1		50	10.7	
	10.0			10.4	
11.46	10.0			10.5	
	9.9			10.4	
50	10.0			10.3	
	10.0		3+00	10.2	
	10.2			10.1	
	10.2			10.1	
	10.4			10.2	
1+00	10.3			10.3	F'
	10.3		50	10.3	0.
	10.4			10.1	
	10.6			10.1	
	10.8			10.0	
50	10.8			10.0	
	10.8		4+00	10.0	
	10.9			10.1	
	10.9			10.0	
	10.9			9.9	
2+00	10.7			10.5	
	10.7		50	11.0	
	11.0			10.8	
	10.9			10.5	



STA. W 100+50 - NORTH 5-19-60

Dist	Sound	Elev	Dist	Sound	Elev
(17)	10.2		(18)	9.6	
	10.7			10.3	
5+00	11.0		50	10.9	
11.50	11.1			10.5	
	11.0			9.7	
	11.0			9.3	
	11.1			9.4	
50	10.8		8+00	9.8	
	10.5			10.0	
	10.4			10.2	
	10.1			10.7	
	10.2			10.9	
6+00	10.3	0.1	50	10.6	0.1
	10.2			10.9	
	10.5			10.9	
	11.1		11.55	10.9	
	11.1			11.1	
50	10.8		9+00	11.0	
	10.8			10.6	
	10.6			10.7	
	10.5			11.0	
	10.3			10.3	
7+00	10.1		50	10.2	
	10.0			10.0	
	9.8			10.9	

STA. W 100+50 - WEST

(62)

Dist	Sound	Elev	Dist	Sound	Elev
(18)	11.2				
	11.5				
10+00	11.7		50		
	11.7				
	11.7				
	11.7				
50	11.8		13+00		
	11.8				
	11.9				
	11.9				
	11.8				
11+00	12.1		50		
	11.9				
	11.8				
	11.3				
	11.8				
50	12.3		14+00		
	12.5				
	12.6				
	12.6				
	12.9				
12+00	13.0		50		

5-19-60

(63)

STA. W. 101+00			D100=N/14000, SOUND NORTH		
Dist	Sound	Elev	Dist	Sound	Elev
0+00	10.4		(20)	10.9	
(20)	10.6		50	10.9	
	10.6			10.8	
<u>2:10</u>	10.8			10.5	
	10.8			10.4	
50	10.8			10.3	
	10.9		3+00	10.3	
	10.9			10.2	
	10.9			10.1	
	11.0			10.0	
1+00	11.0	F		9.9	
	10.9	0	50	10.1	OK
	10.9			10.3	
	11.0			10.4	
	10.9			10.4	
50	11.0			10.4	
	10.8		4+00	10.5	
	10.9			10.5	
	10.9			10.4	
	11.0			10.9	
2+00	11.0			10.9	
	11.0		50	11.0	
	10.9			11.0	
	10.9			11.0	

STA. W. 10400-NORTH

STA. W. 10400-NORTH			D100=N/14000, SOUND NORTH		
Dist	Sound	Elev	Dist	Sound	Elev
(21)	10.8		(21)	11.0	
	11.0			11.5	
5+00	11.0		50	11.5	
	11.0			11.4	
<u>2:15</u>	11.0			11.3	
	11.1			11.0	
	11.1			10.8	
50	11.1		8+00	10.6	
	11.1			10.6	
	11.1			10.9	
	11.0			11.4	
	11.2			11.5	
6+00	11.3	F	50	11.5	OK
	11.3	0		11.6	
	11.3			12.0	
	11.2			11.8	
	11.0			11.5	
50	11.0		9+00	11.3	
	10.9			11.2	
	10.8			11.0	
	10.5			11.0	
	10.4			10.9	
7+00	10.3		50	10.9	
	10.3			10.8	
	10.2			10.9	

STA. W. 101+00-NORTH 5-19-60

Dist Sound Elev Dist Sound Elev

Dist	Sound	Elev	Dist	Sound	Elev
(21)	11.0	}			
	10.9				
10+00	11.2	}	50		
	11.3				
2:20	11.4				
	11.3	}			
	11.3				
50	11.3		13+00		
	11.5	}			
	12.0				
	12.1				
	12.1				
11+00	12.0	}	50		
	12.0				
	12.3				
	12.7				
	13.4				
50	13.6	}	14+00		
	13.2				
	12.8				
	12.8	}			
	12.8				
12+00	12.5		50		

(62)

STA W. 101+50; 0+00=N. 14 000; SOUND NORTH

Dist Sound Elev Dist Sound Elev

Dist	Sound	Elev	Dist	Sound	Elev
0+00	10.9	}	(23)	11.0	}
(23)	11.0		50	11.0	
	10.9	}		11.0	}
2:35	11.0			10.9	
	10.8			10.9	
50	10.8	}	3+00	10.7	}
	11.0			10.9	
	10.8			10.9	
	10.8			10.7	
	10.8	}		10.6	}
1+00	10.9			10.9	
	10.7			11.0	
	10.4			11.1	
	10.7			10.9	
	10.8	}		10.7	}
50	10.8			10.7	
	10.9			10.8	
	11.1	}	4+00	10.8	}
	11.3			11.0	
	11.1			12.0	
2+00	11.0			12.0	
	11.0	}		11.7	}
	11.1			11.6	
	11.1		50	11.6	
	11.1	}		11.6	}
	11.1			12.1	

STA. W. 101+50 - NORTH 5-19-60

Dist	Sound	Elev	Dist	Sound	Elev
(2A)	12.2		(2A)	12.0	
	12.8			11.8	
5+00	12.9		50	11.8	
	12.0			11.8	
	11.9			11.7	
	11.8			11.8	
	11.4			11.8	
50	11.5		8+00	12.0	
	11.8			12.0	
	11.9			11.9	
	11.2			12.1	
	11.2			12.1	
6+00	11.1		50	12.0	
2:40	11.5			11.9	
	11.3			11.7	
	11.1			11.5	
	11.0			11.2	
50	11.1		9+00	11.2	
	11.2			11.5	
	11.3			11.6	
	11.5			11.7	
	11.9			11.6	
7+00	11.9		50	11.7	
	11.9			11.8	
	11.9			12.1	

STA. W. 101+50 - NORTH

(65)

Dist	Sound	Elev	Dist	Sound	Elev
(2A)	12.1				
	12.2				
10+00	12.1		50		
	12.5				
	12.7				
	12.5				
	12.6				
50	12.6		13+00		
	12.8				
2:45	12.8				
	12.7				
	12.7				
11+00	12.7		50		
	12.0				
	11.7				
	11.8				
	14.0				
50	13.9		14+00		
	15.3				
	14.9				
	13.9				
	13.9				
12+00	13.9		50		

STA. W. 101+50 - NORTH. 5-19-60

Dist Sound Elev Dist Sound Elev

15+00

50

50

16+00

5-20-60

(66)

STA. W. 102+00 DIST = N. 14000; SOUND NORTH

Dist Sound Elev Dist Sound Elev

0+00 11.0 8.0 (30) 11.6 8.6

(30) 11.1 8.1 50 11.7 8.7

11.1 8.1 11.7 8.7

9:37 11.1 8.1 11.8 8.8

11.4 8.4 11.8 8.8

50 11.3 8.3 11.8 8.8

11.6 8.6 3+00 11.8 8.8

11.3 8.3 11.6 8.6

11.3 8.3 9:40 11.3 8.3

11.2 8.2 11.3 8.3

1+00 11.2 8.2 11.3 8.3

11.3 8.3 50 11.3 8.3

11.3 8.3 11.7 8.7

11.4 8.4 11.9 8.9

11.3 8.3 11.8 8.8

50 11.1 8.1 11.9 8.9

11.1 8.1 4+00 11.7 8.7

11.3 8.3 11.6 8.6

11.9 8.9 11.3 8.3

11.9 8.9 12.2 9.2

2+00 11.9 8.9 12.1 9.1

11.8 8.8 50 11.3 8.3

11.7 8.7 11.1 8.1

11.7 8.7 12.0 9.0

STA. W. 102+00-NORTH 5-20-60

DIST	Sound	Elev	DIST	Sound	Elev
(30)	11.9	8.9	(29)	12.3	9.4
	11.5	8.5		12.2	9.3
5+00	12.0	9.0	50	12.0	9.1
	12.3	9.3		11.8	8.9
	13.0	10.0		11.6	8.7
	13.0	10.0		11.5	8.6
	12.9	9.9		11.8	8.9
50	12.5	9.5	8+00	11.8	8.9
	12.0	9.0		11.9	9.0
	11.8	8.8		12.0	9.1
	11.9	8.9		12.1	9.2
	11.8	8.8		12.3	9.4
6+00	11.9	8.9	50	12.2	9.3
	12.1	9.1		12.0	9.1
	12.0	9.0		11.9	9.0
	11.8	8.8		11.9	9.0
	11.8	8.8		11.7	8.8
50	11.6	8.6	9+00	11.2	8.3
	11.3	8.3		11.2	8.3
	11.2	8.2		11.3	8.4
	11.3	8.3		11.3	8.4
	11.9	8.9		11.3	8.4
7+00	12.0	9.0	50	11.3	8.4
	12.0	9.0		11.4	8.3
	12.1	9.1		12.1	9.2

STA. W. 102+00-NORTH

DIST	Sound	Elev	DIST	Sound	Elev
(29)	12.3	9.4			
	12.4	9.5			
10+00	12.6	9.7	50		
	12.6	9.7			
	12.4	9.5			
	12.7	9.8			
	12.4	9.5			
50	12.5	9.6	13+00		
	12.6	9.7			
	12.6	9.7			
	12.8	9.9			
	12.8	9.9			
11+00	12.8	9.9			
	12.8	9.9			
	12.7	9.8			
	12.3	9.4			
	12.1	9.2			
50	12.1	9.2	14+00		
	13.4	10.5			
	13.9	11.0			
	13.8	10.9			
	14.0	11.1			
12+00	14.0	11.1	50		

5-20-60

STA. W. 102+50; 0+00=N. 14000; SOUND NORTH

Dist	Sound	Elev	Dist	Sound	Elev
0+00	11.3		(2.7)	11.6	
(2.7)	11.3		50	11.4	
	11.4			11.3	
<u>9.57</u>	11.5			11.3	
	11.7			11.2	
50	11.6			11.2	
	11.9		3+00	11.0	
	11.9			10.8	
	11.8			10.7	
	11.9			10.9	
1+00	11.8			10.9	
	11.7		50	11.2	
	11.6			11.1	
	11.5			11.3	
	11.4		1000	11.3	
50	11.3			11.4	
	11.2		4+00	11.8	
	11.5			11.6	
	11.8			11.5	
	11.7			11.3	
2+00	11.5			11.4	
	11.7		50	11.7	
	11.4			11.5	
	11.4			11.8	

(38)

STA. W. 102+50-NORTH

Dist	Sound	Elev	Dist	Sound	Elev
(2.7)	11.4		(2.7)	12.1	
	11.0			12.1	
5+00	10.2		50	12.0	
	11.2			11.4	
	12.0			11.1	
	12.2			11.1	
	12.3			11.1	
50	12.7		8+00	11.2	
	12.2			11.2	
	11.5			11.3	
	11.4			11.3	
	11.3			11.7	
6+00	11.7		50	11.7	
	11.5			11.6	
	12.1			11.5	
	11.8			11.4	
	11.3			11.3	
50	11.3		9+00	11.2	
	11.4			10.9	
	11.2			10.8	
	11.0			10.8	
	11.0			11.0	
7+00	11.0		50	11.1	
	11.2			11.2	
	11.7			11.3	

STA. W. 102+50 - NORTH. 5-20-60

Dist Sound Elev Dist Sound Elev

Dist	Sound	Elev	Dist	Sound	Elev
(2.6)	11.7	}			
	11.9				
10+00	11.8		50		
	12.0				
1005	12.0				
<u>      </u>	12.0				
	12.2				
50	12.3		OK		
	12.0				
	11.9				
	12.0				
	12.0				
11+00	12.1				
	12.2				
	12.2				
	12.2				
	12.1				
50	11.5	8.9			
	11.8	}			
	13.0				
	13.3		OK		
	13.4				
12+00	13.4				

STA. W. 103+00, 0+00 = N. 14,000; SOUND NORTH

Dist Sound Elev Dist Sound Elev

Dist	Sound	Elev	Dist	Sound	Elev	
0+00	11.5	}	(2.5)	10.9	}	
(2.5)	11.8		50	11.0		
	11.6			11.2		
10:15	11.3			11.5		
<u>      </u>	11.3			11.7		
50	11.1			11.2		
	11.1			3+00		11.2
	11.1			-		11.1
	11.1					11.1
	11.1					11.3
1+00	11.2	}		11.5	OK	
	11.1		50	11.4	OK	
	11.2			11.8		
	11.2			11.7		
	11.1			11.7		
50	11.0			11.5		
	11.0			4+00	11.3	
	10.9			10:20	11.9	
	11.1			<u>      </u>	11.6	
	10.9				11.3	
2+00	10.8			11.2		
	10.8		50	11.9		
	10.8			11.8		
	11.0			11.7		



STA. W. 103+00 - NORTH 5-20-60

DIST	Sound	Elev	DIST	Sound	Elev
(23)	11.3		(24)	11.1	
	10.2			11.2	
5+00	9.9		50	11.1	
	9.9			11.0	
	10.7			11.2	
	11.0			11.0	
	11.1			10.5	
50	11.5		8+00	10.6	
	11.3			10.7	
	11.1			10.8	
	11.2		1025	10.9	
	11.2			11.0	
6+00	11.3		50	11.1	
	11.1			11.0	
	11.2			11.1	
	11.2			10.9	
	11.0			10.9	
50	10.9		9+00	11.0	
	11.3			10.9	
	11.2			10.4	
	11.1			10.3	
	10.9			10.4	
7+00	10.8		50	10.7	
	10.8			11.0	
	11.0			11.0	

O.K. ↓

STA. W. 103+00 - NORTH (20)

DIST	Sound	Elev	DIST	Sound	Elev
(24)	11.2				
	11.8				
10+00	11.9				
	12.0				
	11.8				
	11.8				
	11.9				
50	11.8				
	11.8				
	11.9				
	11.8				
	11.8				
11+00	12.0				
	12.0				
	12.2				
	12.2				
	11.8				
50	11.5				
	11.5				
	12.0				
	13.0				
	13.0				
12+00	13.0				

↓

5-20-60

STA. W. 103+50; 0+100 = N. 14,000; SOUND NORTH

Dist	Sound	Elev	Dist	Sound	Elev
0+00	11.1		(23)	11.4	
(23)	11.0		50	11.3	
	11.1			11.3	
10:35	11.2			11.2	
	11.1			11.2	
50	10.8			11.2	
	11.0		3+00	11.1	
	11.0			11.2	
	11.1			11.2	
	11.1			11.3	
1+00	11.0	OK	50	11.4	
	11.0		50	11.4	OK
	11.0			11.3	
	11.1			11.3	
	11.1			11.5	
50	11.1			11.3	
	11.1		4+00	11.2	
	11.1			11.1	
	11.1			11.1	
	11.1			10.8	
2+00	11.1		50	10.9	
	11.1		50	11.1	
	11.2			11.2	
	11.3			11.2	

STA. W. 103+50-NORTH

(21)

Dist	Sound	Elev	Dist	Sound	Elev
(22)	11.2		(22)	10.9	
	10.9			10.9	
5+00	10.3		50	10.9	
	10.2			11.2	
	10.2			10.8	
10:40	10.4			10.5	
	10.9			10.2	
50	11.3		8+00	10.3	
	11.2			10.4	
	11.1			10.5	
	11.1			10.8	
<del>7+00</del>	11.0	OK	50	10.8	OK
6+00	10.9		50	11.2	
	10.9			11.2	
	11.0			11.0	
	11.0			11.0	
	10.9			11.0	
50	11.0		9+00	10.7	
	10.9			10.5	
	11.0			9.8	
	11.0			10.2	
	10.8			10.3	
7+00	10.7		50	10.7	
	10.7			11.1	
	10.9			11.1	

STA. W. 103+50-NORTH 5-20-60

Dist Sound Elev

Dist	Sound	Elev
(21)	11.1	
	11.1	
10+00	11.6	
	11.3	
	11.2	
<u>10+5</u>	11.5	
	11.5	
50	11.2	
	11.4	
	11.4	
	11.3	
	11.3	
11+00	11.5	
	12.0	
	12.1	
	12.2	
	11.6	
50	11.2	
	11.0	8.9
	11.7	
	12.7	
	12.4	
12+00	12.3	

4.0'

0.5'

(22)

STA. W. 104+00: 0+00 = N/A, 000. SOUND NORTH

Dist Sound Elev Dist Sound Elev

Dist	Sound	Elev	Dist	Sound	Elev
0+00	10.2	8.2	(20)	11.0	9.0
(20)	10.2	8.2	50	11.1	9.1
	10.2	8.2		11.1	9.1
<u>10:53</u>	9.9	7.9		11.1	9.1
	9.8	7.8		11.0	9.0
50	9.7	7.7		11.0	9.0
	9.9	7.9	3+00	11.0	9.0
	10.3	8.3		11.0	9.0
	10.6	8.6		11.5	9.5
	10.6	8.6		11.7	9.7
1+00	10.6	8.6		11.7	9.7
	10.6	8.6	50	11.8	9.8
	10.7	8.7		11.6	9.6
	10.7	8.7		11.4	9.4
	10.9	8.9		11.1	9.1
50	11.0	9.0		10.8	8.8
	11.0	9.0	4+00	10.6	8.6
	11.1	9.1		10.7	8.7
<u>10:55</u>	11.0	9.0		10.8	8.8
	11.0	9.0		10.2	8.2
2+00	11.1	9.1		10.6	8.6
	11.0	9.0	50	10.1	8.1
	11.1	9.1		10.1	8.1
	11.0	9.0		10.4	8.4

STA. W. 104+00 - NORTH 5-20-60

Dist	Sound	Elev	Dist	Sound	Elev
(19)	10.7	8.8	(19)	10.5	8.6
	10.1	8.2		10.6	8.7
5+00	10.1	8.2	50	10.3	8.4
	10.5	8.6		10.0	8.1
	10.9	9.0		9.9	8.0
	10.8	8.9		10.0	8.1
	10.8	8.9		10.3	8.4
50	10.7	8.8	8+00	11.0	9.1
	10.6	8.7		10.8	8.9
	10.4	8.5		10.9	9.0
	10.5	8.6		11.0	9.1
	10.5	8.6		11.1	9.2
6+00	10.9	9.0	50	10.9	9.0
	10.7	8.8		10.7	8.8
	10.7	8.8		10.6	8.7
11+00	10.3	8.4		10.6	8.7
<u>      </u>	10.7	8.8		10.3	8.4
50	10.4	8.5	9+00	10.4	8.5
	10.4	8.5		10.2	8.3
	10.4	8.5		10.1	8.2
	10.4	8.5		10.3	8.4
	10.3	8.4		10.8	8.9
7+00	10.6	8.7	50	10.5	8.6
	10.5	8.6		10.7	8.8
	10.5	8.6		11.1	9.2

STA. W. 104+00 - NORTH

Dist	Sound	Elev
(18)	11.3	9.5
	11.3	9.5
10+00	11.2	9.4
	11.0	9.2
	11.0	9.2
	11.1	9.3
	11.0	9.2
50	11.0	9.2
	10.9	9.1
	12.0	10.2
	12.0	10.2
	12.2	10.4
11+00	11.4	10.1
	11.5	9.7
	11.1	9.3
11+05	10.9	9.1
<u>      </u>	10.8	9.0
50	12.0	10.2
	12.5	10.7
	12.5	10.7
	11.9	10.1
	12.0	10.2
12+00	12.0	10.2

5-20-60

STA. W. 104+50			0+00-N. 14,000			SOUND NORTH		
Dist	Sound	Elev	Dist	Sound	Elev	Dist	Sound	Elev
<del>0+00</del>	9.3		(13)	10.4				
(13)	9.3		50	10.3				
	9.3			10.4				
1+12	9.3			10.3				
<u>    </u>	9.3			10.1				
50	9.2			10.0				
	9.1		3+00	10.0				
	9.3			9.9				
	9.7			9.8				
	9.8		<u>1+15</u>	9.8				
1+00	9.6			10.1				
	9.6		50	10.3				
	9.6			10.2				
	9.5			10.2				
	10.0			10.1				
50	9.8			10.0				
	9.9		4+00	9.9				
	9.9			10.0				
	10.3			10.1				
	10.8			10.1				
2+00	10.7		50	10.1				
	10.7		50	10.2				
	10.8			9.5				
	10.6			9.4				

STA. W. 104+50-NORTH			(74)		
Dist	Sound	Elev	Dist	Sound	Elev
(13)	10.4		(13)	10.3	
	10.2			10.3	
5+00	9.3		50	10.3	
	9.8			10.2	
	8.9			10.3	
	9.3			10.3	
	9.6			10.2	
50	9.7		8+00	10.1	
	9.7			10.2	
	9.6			10.3	
	10.6			10.8	
	10.9			10.5	
6+00	10.8		50	10.5	
	10.8			10.5	
	10.8			10.6	
	10.8			10.7	
	10.7			10.8	
50	10.3		9+00	10.8	
	10.2			10.8	
	10.2			11.6	
	10.3			12.0	
	10.3			12.2	
7+00	10.2		50	12.2	
	10.2			12.1	
	10.1			12.1	

STA. W. 104+50 - NORTH 5-20-60

Dist Sound Elev

(13)	12.0
	12.0
10+00	11.8
	11.3
	11.2
1:20	11.4
	11.8
50	11.9
	11.8
	11.8
	11.8
	11.8
11+00	11.8
	11.8
	11.8
	11.8
	11.8
50	12.2
	12.6
	12.4
	12.3
	12.3
12+00	12.3

OK

75

STA. W. 105+00; 0+00 = N. 14,000; SOUND NORTH

Dist Sound Elev Dist Sound Elev

0+00	9.9	(1.4)	10.3
(13)	9.8	50	10.2
	10.0		10.3
1:30	10.0		10.1
	9.8		10.2
50	9.8		10.0
	9.9	3+00	10.0
	9.9		9.9
	10.5		9.6
	10.0		10.0
1+00	9.9		10.0
	9.8		10.2
	9.8	50	10.2
	9.9	1:35	10.5
	9.7		10.4
	9.7		10.2
50	9.8		10.0
	9.7	4+00	10.0
	10.0		10.0
	10.8		10.8
	10.7		10.1
2+00	10.0		10.3
	10.4	50	10.5
	10.1		10.4
	10.2		10.3

OK

OK

STA W.105+00-NORTH 5-20-60

Dist	Sound	Elev	Dist	Sound	Elev
(14)	10.4		(14)	10.0	
	9.5			10.0	
5+00	9.4		50	10.7	
	9.8		11.40	10.5	
	9.6			10.5	
	9.6			10.3	
	9.6			10.3	
50	9.6		8+00	10.1	
	9.5			9.9	
	9.7			9.9	
	9.6			10.2	
	9.7			10.1	
6+00	9.7		50	10.5	
	10.7			10.7	
	10.9			10.6	
	11.0			10.7	
	11.0			10.5	
50	11.0		9+00	10.5	
	10.9			10.9	
	10.7			10.2	
	10.7			10.3	
	10.2			11.6	
7+00	10.0		50	12.0	
	10.1			11.8	
	10.1			11.7	

STA W.105+00-NORTH (26)

Dist	Sound	Elev
(14)	12.3	
	11.5	
10+00	11.8	
	11.9	
	11.8	
	11.5	
	11.6	
50	11.6	
	11.8	
	11.7	
11.45	11.7	
	11.7	
11+00	11.7	
	11.8	
	11.9	
	11.7	
	11.6	
50	11.7	
	11.9	
	12.7	
	12.5	
	12.1	
12+00	12.4	

5-20-60

STA. W. 105+50; 0+00 = N. 14,000; SOUND NORTH

Dist	Sound	Elev	Dist	Sound	Elev
0+00	10.1		(15)	10.9	
(1.5)	9.9		50	10.7	
	9.8			10.8	
<u>11.55.</u>	9.9			10.7	
	10.0			10.6	
50	9.9			10.6	
	9.9		3+00	10.3	
	10.0			10.3	
	10.1			10.3	
	10.2			10.3	
1+00	10.2	OK		10.3	OK
	10.3	0.	50	10.3	
	10.3			10.6	
	10.3			11.1	
	10.2			11.0	
50	10.1			11.1	
	10.2		4+00	11.1	
	10.1			10.7	
	10.2			10.6	
	10.9			10.2	
2+00	10.7			10.2	
	10.8		50	10.0	
	10.8			10.1	
	10.9			10.1	

STA. W. 105+50-NORTH

(77)

Dist	Sound	Elev	Dist	Sound	Elev
(1.5)	10.1		(15)	10.2	
	10.0			10.2	
5+00	9.6		50	10.2	
	9.3			10.1	
	9.7			10.2	
	10.0			10.5	
	10.0			10.6	
50	10.0		8+00	10.8	
	9.8			10.7	
	9.6			10.6	
	9.7			10.1	
	9.7	OK		10.1	OK
6+00	9.8		50	10.1	
	9.8			10.1	
<u>2+00</u>	9.5			10.4	
	10.3			10.5	
	10.9			10.6	
50	10.9		9+00	10.3	
	10.9			10.2	
	10.9			10.3	
	10.8			10.5	
	10.3			10.4	
7+00	10.1		50	9.9	
	10.0			11.3	
	10.0			11.5	



STA. W. 105+50 - NORTH 5-20-60

Dist Sound Elev Dist Sound Elev

(15) 12.2

12.1

10400 11.5

11.2

11.6

11.8

11.8

50 11.7

11.3

2:05 11.3

11.3

11.3

11400 11.6

11.4

11.2

11.3

11.2

50 11.3

11.3

11.2

11.2

11.7

12400 12.1

OK

CONTD. IN M.B.  
F.B. No 131, P. 96

IMPROVED TABLES  
AND  
INFORMATION

STANDARD TONNAGE TABLE FOR TROLL-SHIPMENTS

TABLE No. 1. Maximum and Minimum

Weight	Volume	Weight	Volume	Weight	Volume	Weight	Volume	Weight	Volume
100	1.0	200	2.0	300	3.0	400	4.0	500	5.0
600	6.0	700	7.0	800	8.0	900	9.0	1000	10.0
1100	11.0	1200	12.0	1300	13.0	1400	14.0	1500	15.0
1600	16.0	1700	17.0	1800	18.0	1900	19.0	2000	20.0
2100	21.0	2200	22.0	2300	23.0	2400	24.0	2500	25.0
2600	26.0	2700	27.0	2800	28.0	2900	29.0	3000	30.0
3100	31.0	3200	32.0	3300	33.0	3400	34.0	3500	35.0
3600	36.0	3700	37.0	3800	38.0	3900	39.0	4000	40.0
4100	41.0	4200	42.0	4300	43.0	4400	44.0	4500	45.0
4600	46.0	4700	47.0	4800	48.0	4900	49.0	5000	50.0
5100	51.0	5200	52.0	5300	53.0	5400	54.0	5500	55.0
5600	56.0	5700	57.0	5800	58.0	5900	59.0	6000	60.0
6100	61.0	6200	62.0	6300	63.0	6400	64.0	6500	65.0
6600	66.0	6700	67.0	6800	68.0	6900	69.0	7000	70.0
7100	71.0	7200	72.0	7300	73.0	7400	74.0	7500	75.0
7600	76.0	7700	77.0	7800	78.0	7900	79.0	8000	80.0
8100	81.0	8200	82.0	8300	83.0	8400	84.0	8500	85.0
8600	86.0	8700	87.0	8800	88.0	8900	89.0	9000	90.0
9100	91.0	9200	92.0	9300	93.0	9400	94.0	9500	95.0
9600	96.0	9700	97.0	9800	98.0	9900	99.0	10000	100.0