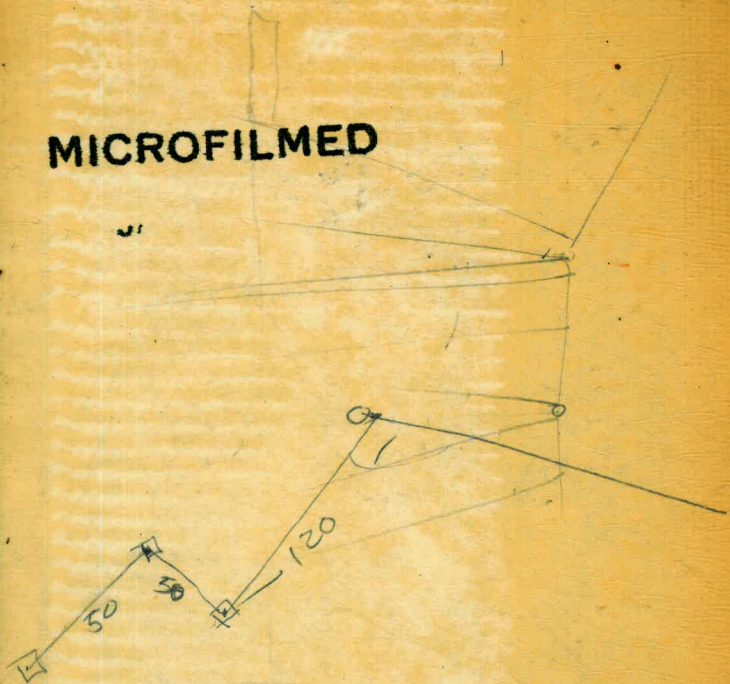


MB 132



1880

MICROFILMED



MB N<sup>o</sup> 132

89 59 60

19-17-24

70-42-36

THIS BOOK INDEXED

2/12/62

RIP-RAP STAKES SET OUT  
FROM ANCHOR STAKES SHOWN

0-50 - 130V ON X-SEC'S OR

0+00 - 155V SOUNDINGS

+50 - 185V (PGS 55-62)

1+ - 200V

50 - 165V

2+ - ~~195~~<sup>205</sup>V

50 - 235V

3+ - 295V

50 - 295V

4+ - 210V

50 - 80V

PAGES

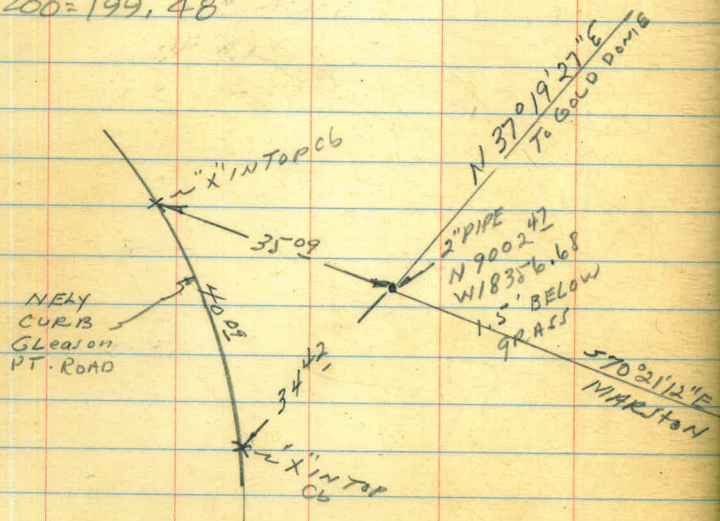
INDEX

DATE

CROSS SECTIONS & SOUNDINGS GLEASON  
POINT VICINITY OF SANTA BARBARA COVE

STA.	Def $\theta$	Chord
0+00 = P.C.C. Lt	0° 00'	
1+00	3° 34' 52"	99.94
2+00	7° 09' 43"	"
3+00	10° 44' 35"	"
4+00	14° 19' 26"	"
5+00	17° 54' 18"	"
6+00	21° 29' 10"	"
7+00	25° 04' 00"	"
8+00	28° 38' 52"	99.94
8+16.23 = P.C.C.	29° 13' 45"	16.23 (34.5)

C = 298.25  
C = 507.31  
C = 200 = 199.48'



SEE PLANNING DEPT DWG # 2125.9

W.O. 64501 5-09-60 T.A. Stamber

Ref. F.B. No 82; (SEE Old Mileage)

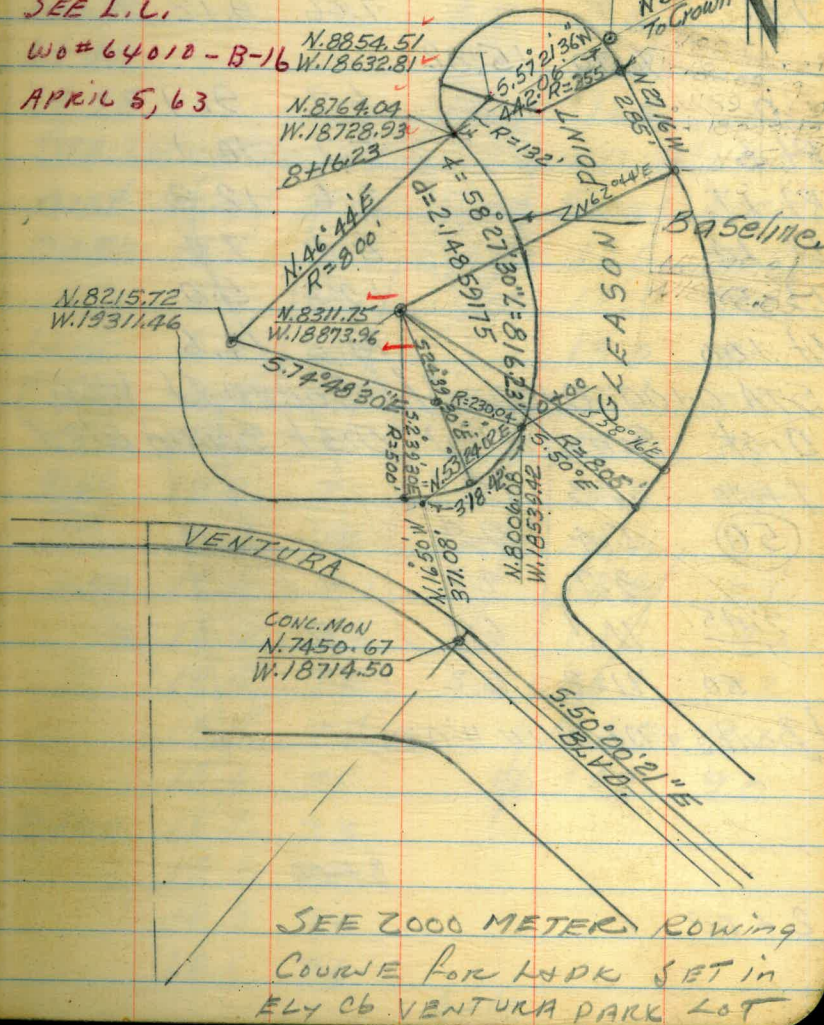
NOTE: Sections Taken Radially

SEE Facing PAGE } 2" Pipe - N.9002.47  
W.18356.68

SEE L.I.

WO # 64010 - B-16

APRIL 5, 63



NOTE: (See Revised X-Sec's P. 7)  
 STA. 0+00; = B/L. (See Sketch)

Sta	+	H.I.	-	Elev	
B.M.				11.19	V.5. STGS Coaster
	4.99	16.18			
TP			7.06	9.12	*2x2 Hub Sta. 0+00
	6.70	15.82			
0			6.7	9.1	
Rt 6			5.7	10.1	
Rt 17			3.6	12.2	
Lt. 14			8.4	7.4	
Lt 50			10.8	5.0	
Lt. 100			14.2	1.6	

STA. 0+00; 0+00 = B/L SOUND Lt WLY.  
 Dist Sound Elev Dist Sound Elev

1+10	4.3	+0.7		
(50)	5.4	0.4		
	9.7	7.7		
9:45	11.1	6.1	50	
50	11.2	6.2		

(Boats + Dock in Way)

2+00

5-09-60

(2)

STA. 1+00; 0+00 = B/L.

Sta	+	H.I.	-	Elev
0		15.82	7.6	8.2
Rt 8			6.3	9.5
Rt 19			3.9	11.9
Lt 7			8.2	7.6
Lt 40			11.1	4.7
Lt 72			14.4	1.4

STA. 1+00; 0+00 = B/L; SOUND WLY.

Dist	Sound	Elev	Dist	Sound	Elev
0+80	4.1	+0.8	(49)	12.6	7.7
	5.0	0.1	50	12.7	7.8
1+00	6.8	1.9		13.0	8.1
(49)	10.9	6.0		13.1	8.2
	12.0	7.1		13.2	8.3
9:50	12.2	7.3		13.3	8.4
	12.2	7.3	3+00	13.4	8.5
50	12.6	7.7		13.8	8.9
	12.6	7.7		14.1	9.2
	12.5	7.6		14.1	9.2
	12.5	7.6		14.0	9.1
	12.4	7.5	50	13.9	9.0
2+00	12.2	7.3			
	12.2	7.3			
	12.3	7.4			
	12.5	7.6			

4+00

STA. 2+00; 0+00 = B/L

Sta	+	H.I.	-	Elev
0		15.82	7.9	7.9
Rt 4			7.3	8.6
Rt 15			3.8	12.0
Lt 11			9.8	6.0
Lt. 50			12.5	3.3
Lt. 74			14.3	1.5

STA. 2+00; 0+00 = B/L; SOUND W/LY.

Dist	Sound	Elev	Dist	Sound	Elev
0+80	3.9	+1.0	(49)	13.1	8.2
(49)	4.8	+0.1	50	13.2	8.3
1+00	7.3	2.4		13.1	8.2
	10.3	5.4		12.7	7.8
10+00	11.1	6.2		12.6	7.7
	11.6	6.7		12.6	7.7
	12.1	7.2	3+00	12.8	7.9
50	12.2	7.3			
	12.1	7.2			
	12.1	7.2			
	12.2	7.3			
	12.3	7.4	50		
2+00	12.6	7.7			
	12.7	7.8			
	12.7	7.8			
	13.0	8.1			

5-09-60

(3)

STA. 3+00; 0+00 = B/L

Sta	+	H.I.	-	Elev
0		15.82	8.6	7.2
Rt 10			7.0	8.8
Rt 22			4.0	11.8
Lt 5			9.5	6.3
Lt 37			11.7	4.1
Lt. 67			14.4	1.4

STA. 3+00; 0+00 = B/L; SOUND W/LY.

Dist	Sound	Elev	Dist	Sound	Elev
0+70	3.5	+1.3	(28)	13.0	8.2
(28)	4.4	+0.4		13.2	8.4
	5.6	0.8	50	13.2	8.4
1+00	9.3	4.5		13.2	8.4
10+05	11.2	6.4		13.2	8.4
	12.2	7.4		13.2	8.4
	12.3	7.5		12.9	8.1
	12.7	7.9	3+00	12.7	7.9
50	13.0	8.2			
	13.1	8.3			
	13.2	8.4			
	13.2	8.4			
	13.1	8.3	50		
2+00	13.0	8.2			
	13.0	8.2			
	13.0	8.2			

STA. 4+00; 0+00 = B/L

Sta	+	H.I.	-	Elev
0		15.82	8.6	7.2
Rt 10			6.9	8.9
Rt 23			3.5	12.3
Lt 5			6.6	9.2
Lt 18			11.1	4.7
Lt 58			14.5	1.3

STA. 4+00; 0+00 = B/L; SOUND W/LY.

Dist	Sound	Elev	Dist	Sound	Elev
0+60	3.6	+1.2	(48)	12.9	8.1
(48)	4.2	+0.6		13.0	8.2
	5.1	0.3		13.1	8.3
	6.9	2.1	50	13.2	8.4
1+00	10.6	5.8		13.2	8.4
10:10	11.3	6.5		13.3	8.5
	12.2	7.4		13.4	8.6
	12.2	7.4		13.2	8.4
	12.8	8.0	3+00	13.0	8.2
50	12.9	8.1			
	12.9	8.1			
	13.0	8.2			
	12.9	8.1			
	12.8	8.0	50		
2+00	12.7	7.9			
	12.8	8.0			

5-09-60

STA. 5+00; 0+00 = B/L

Sta	+	H.I.	-	Elev
0		15.82	9.9	6.9
Rt 4			9.3	6.5
Rt 25			3.6	12.2
Lt 28			11.8	4.0
Lt 63			14.4	1.4

STA 5+00; 0+00 = B/L; SOUND W/LY.

Dist	Sound	Elev	Dist	Sound	Elev
0+70	3.9	+0.9	(48)	13.2	8.4
(48)	4.8	0.0	50	13.3	8.5
	7.3	2.5		13.6	8.8
1+00	9.3	4.5		13.4	8.6
10:15	11.1	6.3		13.3	8.5
	11.8	7.0		13.3	8.5
	12.0	7.2	3+00	13.1	8.3
	12.1	7.3			
50	12.4	7.6			
	12.3	7.5			
	12.4	7.6			
	12.3	7.5	50		
	12.6	7.8			
2+00	12.5	7.7			
	12.5	7.7			
	12.7	7.9			
	13.0	8.2	4+00		



STA. 6+00; 0+00 = B/L

Sta	+	H.I.	-	Elev
0		15.82	8.4	7.4
R+12			3.8	12.0
L+10			9.4	6.4
L+45			12.5	3.3
L+67			14.5	1.3

STA. 6+00; 0+00 = B/L; SOUND WLY.

Dist	Sound	Elev	Dist	Sound	Elev
0+70	3.6	+1.1	(4.7)	12.9	8.2
(4.7)	4.3	+0.4	50	12.9	8.2
	6.0	1.3		13.0	8.3
1+00	9.2	4.5		13.1	8.4
10:20	11.1	6.4		13.1	8.4
	11.6	6.9		13.1	8.4
	12.0	7.3	3+00	13.0	8.3
	12.2	7.5			
50	12.3	7.6			
	12.4	7.7			
	12.9	8.2			
	12.9	8.2	50		
	12.9	8.2			
2+00	12.7	8.0			
	12.9	8.2			
	12.9	8.2			
	12.9	8.2	4+00		

5-09-60

(5)

STA. 7+00; 0+00 = B/L

Sta	+	H.I.	-	Elev
0		15.82	8.5	7.3
R+3			8.4	7.4
R+16			3.4	12.4
L+6			9.5	6.3
L+29			10.8	5.0
L+68			14.6	1.2

STA. 7+00; 0+00 = B/L; SOUND WLY.

Dist	Sound	Elev	Dist	Sound	Elev
0+70	3.4	+1.3	(4.7)	12.9	8.2
(4.7)	4.3	+0.4		12.9	8.2
	7.1	2.4	50	12.9	8.2
1+00	10.2	5.5		12.8	8.1
	12.0	7.3		13.0	8.3
10:28	12.1	7.4		13.0	8.3
	12.2	7.5		12.7	8.0
	12.2	7.5	3+00	12.4	7.7
50	12.3	7.6			
	12.3	7.6			
	12.3	7.6			
	12.4	7.7			
	12.5	7.8	50		
2+00	12.5	7.8			
	12.8	8.1			
	12.9	8.2			

5-09-60

STA. 8+00; 0+00 = B/L

Sta	+	H.I.	-	Elev
0		15.82	10.2	5.6
Rt 7			9.5	6.3
Rt 21			6.8	9.0
Rt 50			4.7	11.1
Lt 26			12.1	3.7
Lt 59			14.6	1.2
TP			6.70	9.12

7.0 16.12

B.M.

A. 93 11.19 ~ 11.19

Coaster

STA. 8+00; 0+00 = B/L; SOUND WLY.

Dist	Sound	Elev	Dist	Sound	Elev
0+60	3.3	+1.3	(46)	12.7	8.1
(46)	4.2	+0.4	2+00	12.6	8.0
	5.2	0.6		12.4	7.8
	8.4	3.8		12.4	7.8
1+00	10.9	6.3		12.5	7.9
1035	12.1	7.5		12.8	8.2
~	12.4	7.8	50	13.2	8.6
	12.4	7.8		13.1	8.5
	12.5	7.9		13.2	8.6
50	12.5	7.9		13.2	8.6
	12.6	8.0		12.8	8.2
	12.8	8.2	3+00	12.4	7.8
	12.9	8.3			

5-13-60

## CROSS SECTIONS GLEASON COVE

STA. 0+00; 0+00 = B/L (See Sketch P. 1.)

Sta	+ H.1	- Elev.	(See P. 1.)
T.B.M.	5.78	14.90	9.12 "2x2" H.1
0		2.7	12.2
L. 13		3.1	11.8
L. 22		5.4	9.5
L. 41		7.5	7.4
L. 50		8.5	6.4
L. 65		9.3	5.6
L. 85		10.9	4.0

5-16-60

STA. 0+00; 0+00 = 50' WLY. OF B/L

Dist	Sound	Elev	Dist	Sound	Elev
0+40		3.7		6.8	6.5
50		3.4		6.9	6.6
(0.3)		2.7	2+00	7.2	6.9
		1.8	Boats + Prev ON LINE		
9:25					
	0.8	0.5			
1+00	4.4	4.1			
	6.1	5.8	50		
	6.6	6.3			
	6.8	6.5			
	7.0	6.7			
50	6.8	6.5			
	6.8	6.5	3+00		
	6.8	6.5			

STA. 1+00; 0+00 = B/L

Sta	+ H.1	- Elev	on chis/ cross
0	14.90	2.92	11.98
L. 16		3.5	11.4
L. 25		5.9	9.0
L. 31		6.9	8.0
L. 43		8.8	6.1
L. 65		10.1	4.8
L. 75		11.1	3.8

STA. 1+00; 0+00 = 40' WLY. OF B/L

Dist	Sound	Elev	Dist	Sound	Elev
0+40		3.3	2+00	7.7	7.9
50		2.4		7.8	7.5
(0.3)		1.5		7.9	7.6
		0.8		8.0	7.7
9:30	0.4	0.1		8.4	8.1
	3.3	3.0	50	8.5	8.2
1+00	6.2	5.9		8.6	8.3
	7.1	6.8		8.6	8.3
	7.1	6.8	9:35	8.6	8.3
	7.2	6.9		8.7	8.4
	7.3	7.0	3+00	8.8	8.5
50	7.4	7.1			
	7.6	7.3			
	7.6	7.3			
	7.6	7.3			
	7.6	7.3			

5-13-60

STA. 2+00; 0+00 = B/L

Sta	+	H.I.	-	Elev
0		14.90	2.9	12.0
Lt. 15			3.5	11.4
Lt. 30			7.0	7.9
Lt. 38			7.7	7.2
Lt. 46			9.0	5.9
Lt. 75			11.1	3.8

5-16-60

STA. 2+00; 0+00 = 40' WLY. OF B/L

Dist	Sound	Elev	Dist	Sound	Elev
0+40		3.5	(0.4)	8.2	7.8
50		2.9		8.6	8.2
(0.4)		2.1		8.7	8.3
		1.2		8.7	8.3
<u>9:37</u>	0.1	+0.3	50	8.5	8.1
	2.0	1.6		8.2	7.8
1+00	5.8	5.4		8.2	7.8
	6.8	5.4		8.3	7.9
	7.2	6.8		8.3	7.9
	7.6	7.2	3+00	8.3	7.9
	7.9	7.5			
50	8.0	7.6			
	7.9	7.5			
	7.9	7.5			
	8.0	7.6			
	8.1	7.7			
2+00	8.2	7.8			

STA. 3+00; 0+00 = B/L

Sta	+	H.I.	-	Elev
0		14.90	3.0	11.9
Lt. 12			3.5	11.4
Lt. 23			6.3	8.6
Lt. 32			7.5	7.4
Lt. 40			9.0	5.9
Lt. 61			10.3	4.6
Lt. 73			11.2	3.7

STA. 3+00; 0+00 = 30' WLY. OF B/L

Dist	Sound	Elev	Dist	Sound	Elev
0+50		3.2	(0.4)	8.4	8.0
(0.4)		2.4		8.6	8.2
		1.5		8.8	8.4
		0.6	50	8.9	8.5
<u>9:42</u>	0.7	0.3		9.0	8.6
1+00	3.5	3.1		9.0	8.6
	6.2	5.8		8.8	8.4
	7.7	7.3		8.3	7.9
	8.5	8.1	3+00	8.2	7.8
	8.8	8.4			
50	9.0	8.6			
	9.1	8.7			
	9.1	8.7			
	9.1	8.7			
	9.0	8.6			
2+00	8.5	8.1			
	8.3	7.9			

5-13-60  
STA. 4+00; 0+00 = B/L

Sta.	+	H. I.	-	Elev
0		14.90	2.6	12.3
Lt. 12			2.7	12.2
R Lt. 22			5.8	9.1
R Lt. 30			6.9	8.0
R Lt. 53			10.3	4.6
L Lt. 63			11.4	3.5

5-16-60  
STA. 4+00; 0+00 = 30' WLY. OF B/L

Dist	Sound	Elev	Dist	Sound	Elev
0+40		3.0	(0.4)	8.3	7.9
50		2.2		8.3	7.9
(0.4)		1.6		8.4	8.0
		0.8		8.6	8.2
<u>9:45</u>	0.3	+0.1	50	8.7	8.3
	1.6	1.2		8.8	8.4
1+00	4.9	4.5		8.9	8.5
	6.4	6.0		8.9	8.5
	7.3	6.9		9.0	8.6
	7.8	7.4	3+00	8.9	8.5
	8.1	7.7			
50	8.4	8.0			
	8.6	8.2			
	8.5	8.1			
	8.3	7.9			
	8.2	7.8			
2+00	8.3	7.9			

STA. 5+00; 0+00 = B/L

Sta.	+	H. I.	-	Elev
0		14.90	2.7	12.2
Lt. 12			2.9	12.0
Lt. 23			6.1	8.8
Lt. 26			6.6	8.3
Lt. 30			8.2	6.7
Lt. 45			10.1	4.8
Lt. 65			11.2	3.7

STA. 5+00; 0+00 = 30' WLY. OF B/L

Dist	Sound	Elev	Dist	Sound	Elev
0+40		3.5	2+00	8.4	8.0
50		2.8	(0.4)	8.2	7.8
(0.4)		2.1		8.3	7.9
		1.1		8.5	8.1
<u>9:55</u>	0.1	+0.3		8.9	8.5
	1.3	0.9	50	9.0	8.6
1+00	4.5	4.1		9.1	8.7
	6.4	6.0		9.3	8.9
	7.2	6.8		9.3	8.9
	7.6	7.2		9.2	8.8
	7.7	7.3	3+00	9.2	8.8
50	8.0	7.6			
	8.1	7.7			
	8.1	7.7			
	8.1	7.7			
	8.7	8.3			

STA. 6+00; 0+00 = B/L 5-13-60

Sta	+ H.I.	- Elev
0	14.90	2.9 12.0
Lt. 21		3.3 11.6
Lt. 32		7.0 7.9
Lt. 46		8.8 6.1
Lt. 72		11.3 3.6

5-16-60  
STA. 6+00; 0+00 = 30' WLY. OF B/L

Dist	Sound	Elev	Dist	Sound	Elev
0+50		3.1	(0.5)	8.6	8.1
(0.5)		2.4		8.7	8.2
		1.6	50	9.0	8.5
10:00		0.6		9.0	8.5
	1.0	0.5		9.0	8.5
1+00	4.4	3.9		9.0	8.5
	6.3	5.8		9.0	8.5
	7.1	6.6	3+00	8.9	8.4
	7.5	7.0			
	7.9	7.4			
50	8.0	7.5			
	8.3	7.8			
	8.4	7.9			
	8.5	8.0			
	8.5	8.0			
2+00	8.7	8.2			
	8.7	8.2			
	8.6	8.1			

STA. 7+00; 0+00 = B/L

Sta	+ H.I.	- Elev
0	14.90	2.5 12.4
Lt. 18		2.6 12.3
Lt. 30		7.4 7.5
Lt. 50		9.6 5.3
Lt. 75		11.5 3.4

STA. 7+00; 0+00 = 30' WLY. OF B/L

Dist	Sound	Elev	Dist	Sound	Elev
0+50		3.2	(0.5)	8.5	8.0
(0.5)		2.3		8.6	8.1
		1.3	50	8.8	8.3
	0.0	40.5		8.9	8.4
10:05	1.8	1.3		9.0	8.5
1+00	5.0	4.5		9.0	8.5
	7.1	6.6		9.0	8.5
	7.8	7.3	3+00	8.7	8.2
	8.0	7.5			
	8.2	7.7			
50	8.3	7.8			
	8.3	7.8			
	8.4	7.9			
	8.5	8.0			
	8.9	8.4			
2+00	8.4	7.9			
	8.3	7.8			
	8.5	8.0			

STA. 8+00; 0+00 = B/L 5-13-60

Sta.	+ H.L.	-	Elev.
0	14.90	4.7	10.2
Rt. 20		3.8	11.1
Lt. 14		6.9	8.0
Lt. 20		7.9	7.0
Lt. 50		10.3	4.6
Lt. 61		11.2	3.7

5-16-60  
STA. 8+00; 0+00 = 20 WLY. OF B/L

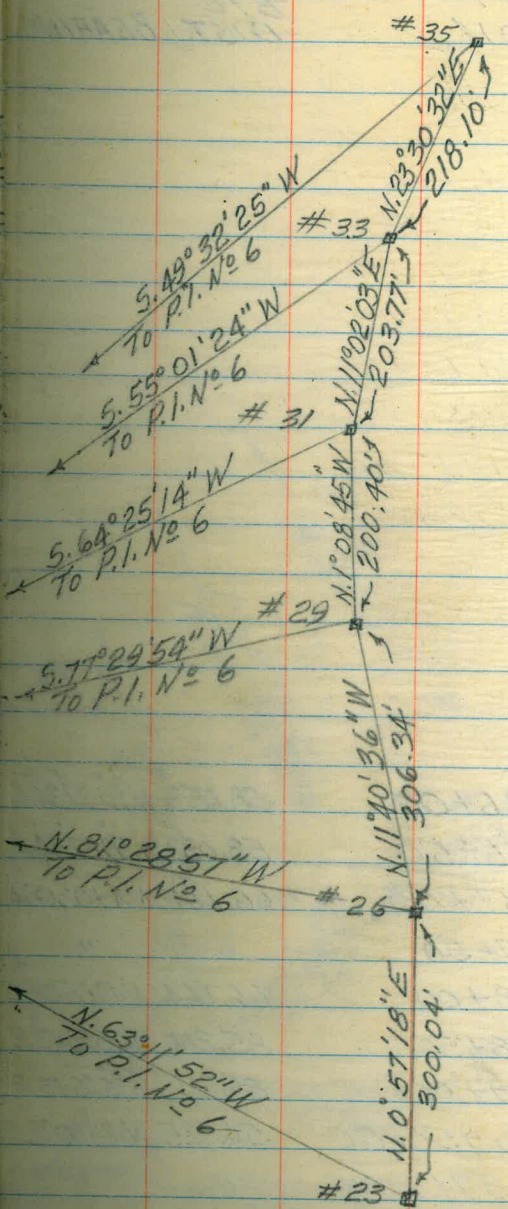
Dist	Sound	Elev.	Dist	Sound	Elev.
0+50		3.1	(0.5)	8.5	8.0
(0.5)		2.3		8.6	8.1
		1.5		8.9	8.4
			50	9.0	8.5
<u>10:10</u>	1.0	0.5		9.1	8.6
1+00	4.1	3.6		9.2	8.7
	7.0	6.5		9.3	8.8
	8.0	7.5		9.2	8.7
	8.3	7.8	3+00	9.0	8.5
	8.5	8.0			
50	8.6	8.1			
	8.7	8.2			
	8.8	8.3			
	9.0	8.5			
	8.9	8.4			
2+00	9.0	8.5			
	8.5	8.0			

BASELINE LAYOUT FOR SOUNDINGS ELY.  
CROWN POINT DREDGED AREA W.D. 64501

T. A. Stamper

STATION	B/L DIST	BEARING
N. 139+00; W. 13,	54.525	N. 23° 30' 32" E
N. 138+50; W. 14, 015.25	54.525	N. 23° 30' 32" E
N. 138+00; W. 14, 037.00	50.941	N. 11° 02' 03" E
N. 137+50; W. 14, 046.75	"	"
N. 137+00; W. 14, 056.50	"	"
N. 136+50; W. 14, 066.26	50.941	N. 11° 02' 03" E
N. 136+00; W. 14, 076.00	50.009	N. 1° 08' 45" W
N. 135+50; W. 14, 075.00	"	"
N. 135+00; W. 14, 074.00	"	"
N. 134+50; W. 14, 073.00	50.009	N. 1° 08' 45" W
N. 134+00; W. 14, 072.00	51.058	N. 11° 40' 36" W
N. 133+50; W. 14, 061.66	"	"
N. 133+00; W. 14, 051.33	"	"
N. 132+50; W. 14, 041.00	"	"
N. 132+00; W. 14, 030.66	"	"
N. 131+50; W. 14, 020.33	51.058	N. 11° 40' 36" W
N. 131+00; W. 14, 010.00	50.006	N. 0° 57' 18" E
N. 130+50; W. 14, 010.83	"	"
N. 130+00; W. 14, 011.67	"	"
N. 129+50; W. 14, 012.50	"	"
N. 129+00; W. 14, 013.33	"	"
N. 128+50; W. 14, 014.17	50.006	N. 0° 57' 18" E
N. 128+00; W. 14, 015.00		

COOED. SHEET  
S  
E  
S  
T  
A  
K  
E  
S  
D  
I  
D



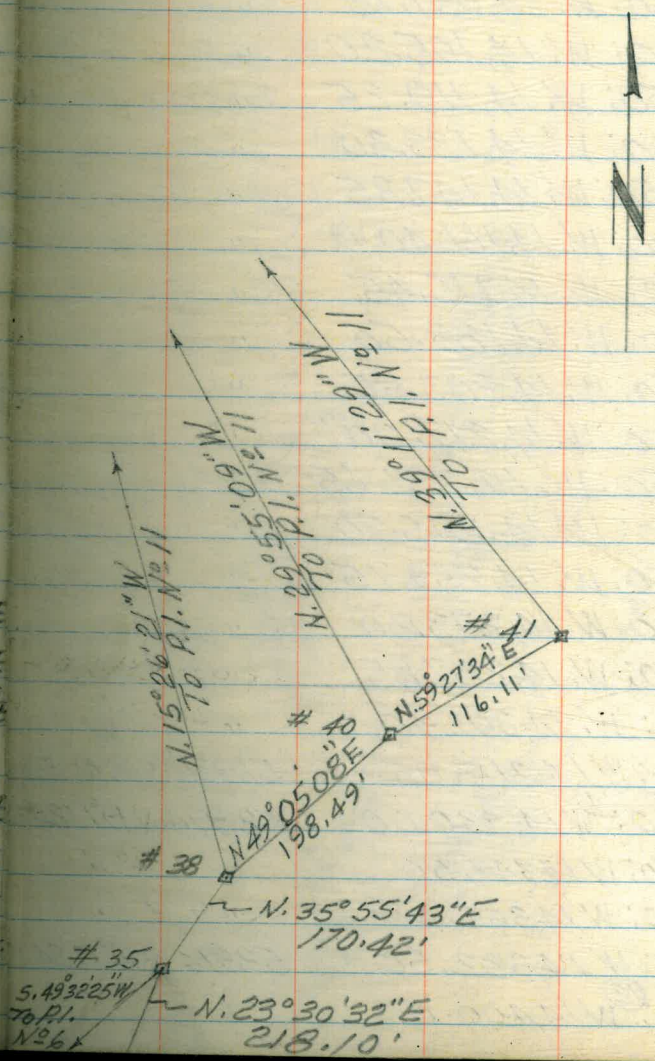
(Contd. 5/4, Pg. 14)



BASELINE LAYOUT CONT'D

STATION <sup>B/L</sup> DIST. BEARING

#41 N. 14,327.00; W. 136+00	58.053 N. 59° 27' 34" E
N. 14,297.50; W. 136+50	58.053 N. 59° 27' 34" E
#40 N. 14,268.00; W. 137+00	66.164 N. 49° 05' 08" E
N. 14,224.67; W. 137+50	" "
N. 14,181.33; W. 138+00	66.164 N. 49° 05' 08" E
#38 N. 14,138.00; W. 138+50	85.211 N. 35° 55' 43" E
N. 14,069.00; W. 139+00	85.211 N. 35° 55' 43" E
#35 N. 140+00; W. 13,950.00	54.525 N. 23° 30' 32" E
N. 139+50; W. 13,971.75	" "



BASELINE LAYOUT CONTD.

6-20-60

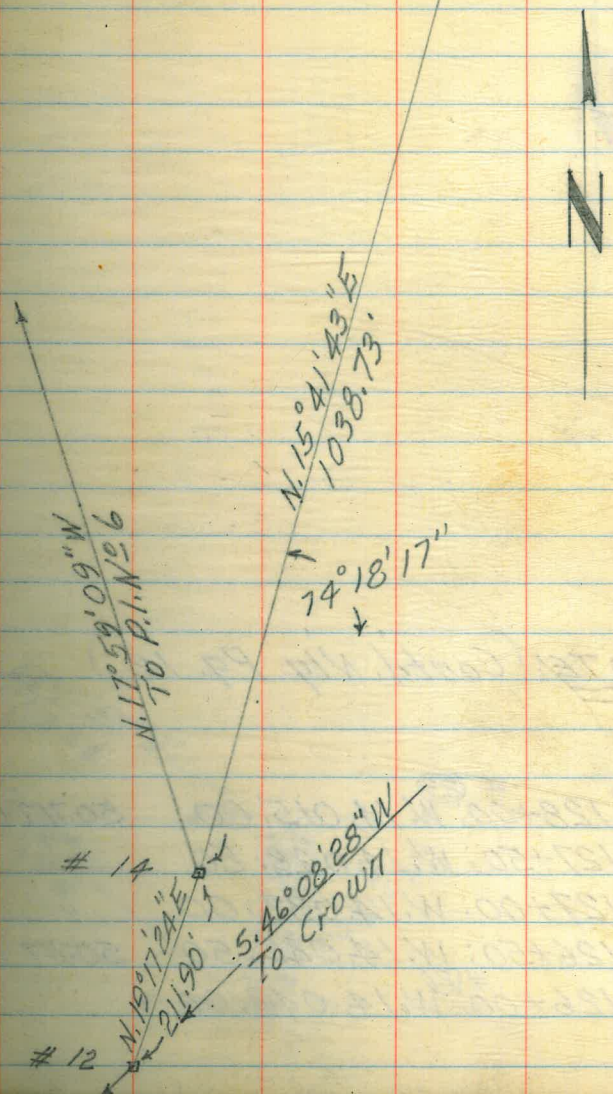
N. 52° 10' 15" W  
To P.I. N. 6

T.A. Stampen

NOTE: See F.B. No 102  
for Crown Point Drive # 21  
Ely. Baseline

STATION	B/L	DIST	BEARING
N. 126+00; W. 14,049.00	#2	51.936	N. 154' 43" E
N. 125+50; W. 14,063.05	"	"	"
N. 125+00; W. 14,077.10	#20	"	"
N. 124+50; W. 14,091.15	"	"	"
N. 124+00; W. 14,105.20	#19	"	"
N. 123+50; W. 14,119.25	"	"	"
N. 123+00; W. 14,133.30	#18	"	"
N. 122+50; W. 14,147.35	"	"	"
N. 122+00; W. 14,161.40	#17	"	"
N. 121+50; W. 14,175.45	"	"	"
N. 121+00; W. 14,189.50	"	"	"
N. 120+50; W. 14,203.55	"	"	"
N. 120+00; W. 14,217.60	#16	"	"
N. 119+50; W. 14,231.65	"	"	"
N. 119+00; W. 14,245.70	"	"	"
N. 118+50; W. 14,259.75	"	"	"
N. 118+00; W. 14,273.80	#15	"	"
N. 117+50; W. 14,287.85	"	"	"
N. 117+00; W. 14,301.90	"	"	"
N. 116+50; W. 14,315.95	51.936	N. 154' 43" E	
N. 116+00; W. 14,330.00	52.974	N. 19° 17' 24" E	
N. 115+50; W. 14,347.50	"	"	
N. 115+00; W. 14,365.00	"	"	
N. 114+50; W. 14,382.50	52.974	N. 19° 17' 24" E	
N. 114+00; W. 14,400.00	#12	"	"

USED TO N 12800



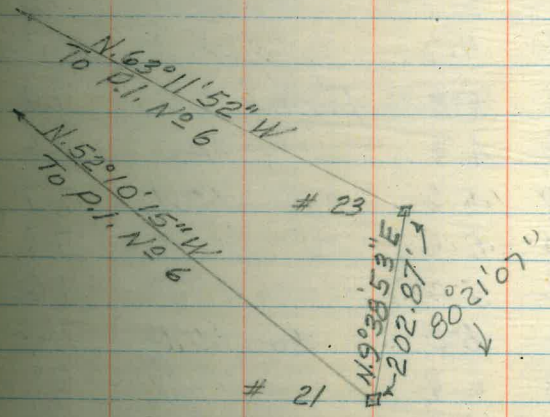
BASELINE LAYOUT CONT'D.

STATION <sup>B/L</sup> DIST BEARING



NOTE: (Cont'd. N14. Pg. 12)

N	N. 128+00; W. 14,015.00	50.717	N. 9°38'53"
	N. 127+50; W. 14,023.50	"	"
	N. 127+00; W. 14,032.00	"	"
	N. 126+50; W. 14,040.50	50.717	N. 9°38'53"
N	N. 126+00; W. 14,049.00		



## SOUNDINGS ELY. CROWN POINT AREA

AFTER DREDGING W.O. 64501

STA. N. 114+50; 0+00=W. 14,290; SOUND EAST

DIST SOUND ELEV DIST SOUND ELEV

0+00 (24) 8.3 5.9

50 8.3 5.9

(24) 8.6 6.2

225 0.3 +2.1 8.6 6.2

1.1 +1.3 8.8 6.4

50 1.6 +0.8 8.9 6.5

2.2 +0.2 3+00 9.1 6.7

2.3 +0.1 9.2 6.8

2.7 +0.3 9.2 6.8

3.3 .9 9.2 6.8

1+00 4.2 1.8 9.8 7.4

4.9 2.5 50 9.6 7.2

4.9 2.5 9.6 7.2

6.0 3.6 9.7 7.3

6.1 3.7 9.7 7.3

50 7.1 4.7 9.7 7.3

7.2 4.8 4+00 9.8 7.4

7.1 4.7 10.0 7.6

8.0 5.6 10.1 7.7

8.0 5.6 10.0 7.6

2+00 8.2 5.8 10.0 7.6

8.4 6.0 50 10.0 7.6

8.8 6.4 10.0 7.6

8.6 6.2 10.1 7.7

5+00 10.3 7.9

6-21-60

(16)

STA. N. 115+00; 0+00=W. 14,270; SOUND EAST

DIST SOUND ELEV DIST SOUND ELEV

0+00 (24) 8.2 5.8

50 8.3 5.9

8.6 6.2

230 0.3 +2.1 9.0 6.6

0.9 +1.5 9.1 6.7

50 1.1 +1.3 9.2 6.8

1.7 +0.7 3+00 9.2 6.8

2.2 +0.2 9.3 6.9

3.3 0.9 9.3 6.9

4.1 1.7 9.4 7.0

1+00 4.2 1.8 9.5 7.1

4.8 2.4 50 9.4 7.0

5.0 2.6 9.5 7.1

5.7 3.2 9.6 7.2

5.9 3.4 9.7 7.3

50 5.9 3.4 9.8 7.4

6.3 3.9 4+00 9.7 7.3

6.8 4.4 9.9 7.5

7.2 4.8 10.0 7.6

7.2 4.8 10.0 7.6

2+00 7.7 5.3 10.0 7.6

7.5 5.1 50 10.0 7.6

7.5 5.1 10.1 7.7

7.7 7.8

7.7 7.8

5+00 10.2 7.8

PX

6-21-60

STA. N. 115+50; 0+00 = W. 14,260; SOUND EAST

STA. N. 116+00; 0+00 = W. 14,260; SOUND EAST

Dist	Sound	Elev	Dist	Sound	Elev	Dist	Sound	Elev	Dist	Sound	Elev
0+00			(24)	7.9	5.5	0+00			(24)	8.0	5.6
(24)			50	8.5	6.1	(24)			50	8.3	5.9
				8.9	6.5					8.8	6.4
				9.0	6.6					8.4	6.0
<u>2:40</u>	0.9	+1.5		9.0	6.6	<u>2:45</u>				9.0	7.6
50	1.8	+0.6		9.2	6.8	50	0.4	+2.0		9.3	6.9
	2.1	+0.3	3+00	9.3	6.9		1.1	+1.3	3+00	9.7	7.3
	2.6	0.2		9.3	6.9		2.1	+0.3		9.6	7.2
	2.9	.5		9.5	7.1		2.3	+0.1	(25)	9.6	7.2
	3.3	.9		9.7	7.3		2.6	.2	<u>2:50</u>	9.9	7.5
1+00	3.7	1.3		9.7	7.3	1+00	3.4	1.0		9.9	7.5
	3.9	1.5	50	9.8	7.4		4.0	1.6	50	10.0	7.6
	4.3	1.9		9.8	7.4		4.7	2.3		9.9	7.5
	4.6	2.2		9.9	7.5		5.0	2.6		10.1	7.7
	4.9	2.5		9.9	7.5		5.3	2.9		10.0	7.6
50	5.3	2.9		9.9	7.5	50	5.7	3.3		10.1	7.7
	5.3	2.9	4+00	9.9	7.5		5.9	3.5	4+00	10.0	7.6
	6.8	4.4		10.0	7.6		6.2	3.8		10.0	7.6
	6.7	4.3		9.9	7.5		6.7	4.3		10.0	7.6
	6.8	4.4		10.0	7.6		7.0	4.6		10.1	7.7
2+00	6.5	4.1		10.0	7.6	2+00	7.8	5.4		10.2	7.8
	7.2	4.8	50	10.2	7.8		8.0	5.6	50	10.2	7.8
	7.3	4.9		10.1	7.7		8.0	5.6		10.1	7.7
	7.3	4.9		10.2	7.8		8.1	5.7		10.1	7.7
				10.3	7.9					10.3	7.9
				10.4	8.0					10.1	7.7
			5+00	10.0	7.6				5+00	10.2	7.8

6-21-60

(8)

STA. N. 116+50; 0+00 = W. 14,260 ; SOUND EAST

STA. N. 117+00; 0+00 = W. 14,230 ; SOUND EAST

Dist Sound Elev Dist Sound Elev Dist Sound Elev Dist Sound Elev

0+00 (2.5) 8.5 6.0 0+00 (2.5) 9.3 6.8

(2.5) 50 8.8 6.3 (2.5) 50 9.2 6.7

8.9 6.4 9.3 6.8

9.0 6.5 9.4 6.9

9.4 6.9 9.3 6.8

9.5 7.0 9.4 6.9

50 3+00 9.5 7.0 50 0.5 +2.0 9.4 6.9

9.5 7.0 1.9 +.6 3+00 9.3 6.8

9.6 7.1 3.0 0.5 9.4 6.9

9.7 7.2 3.3 0.8 9.4 6.9

9.9 7.4 4.0 1.5 10.0 7.5

1+00 2.0 +0.5 9.9 7.4 1+00 4.9 2.4 10.0 7.5

3.8 -1.3 50 9.9 7.4 5.0 2.5 50 10.0 7.5

4.9 2.4 9.9 7.4 5.8 3.3 10.0 7.5

5.0 2.5 9.9 7.4 7.1 4.6 9.9 7.4

6.0 3.5 9.9 7.4 7.0 4.5 9.9 7.4

50 6.1 3.6 10.0 7.5 50 6.8 4.3 9.9 7.4

6.9 4.4 4+00 9.9 7.4 7.2 4.7 4+00 9.9 7.4

6.9 4.4 10.0 7.5 7.8 5.3 9.9 7.4

7.0 4.5 10.2 7.7 8.1 5.6 9.9 7.4

7.1 4.6 10.0 7.5 8.2 5.7 10.0 7.5

2+00 7.3 4.8 10.0 7.5 2+00 8.4 5.9 10.0 7.5

7.8 5.3 50 10.0 7.5 8.5 6.0 50 10.0 7.5

8.0 5.5 10.1 7.6 9.0 6.5 10.0 7.5

8.1 5.6 10.1 7.6 9.1 6.6 10.1 7.5

10.0 7.5 10.2 7.7 10.2 7.6 10.1 7.5

5+00 10.3 7.8 10.2 7.7 10.2 7.6 10.2 7.6

10.3 7.8 10.3 7.8 10.3 7.8 10.3 7.8

6-22-60

(19)

STA. N. 117+50; 0+00 = W. 14,220; SOUND EAST

STA. N. 118+00; 0+00 = W. 14,210; SOUND EAST

Dist Sound Elev Dist Sound Elev Dist Sound Elev Dist Sound Elev

0+00 (43) 10.9 6.6 0+00 (42) 10.9 6.7

(43) 50 10.9 6.6 (42) 50 10.9 6.7

0.6 +3.7 11.0 6.7 0.4 +3.8 11.0 6.8

9:55 1.0 3.3 10.9 6.6 10:05 0.8 +2.4 11.1 6.9

1.3 3.0 11.0 6.7 1.1 +3.1 11.0 6.8

50 2.0 2.3 11.0 6.7 50 1.6 +2.6 11.3 7.1

2.9 1.4 3+00 11.1 6.8 3.0 +1.2 3+00 11.1 6.9

3.7 .6 11.1 6.8 4.3 0.1 11.3 7.1

4.2 +0.1 11.4 7.1 5.4 1.2 11.2 7.0

5.3 1.0 11.6 7.3 5.9 1.7 11.2 7.0

1+00 6.9 2.6 11.8 7.5 1+00 7.0 2.8 11.3 7.1

7.6 3.3 50 11.8 7.5 7.3 2.1 50 11.5 7.3

7.8 3.5 11.8 7.6 8.5 4.3 11.5 7.3

8.5 4.2 11.7 7.4 8.6 4.4 11.6 7.4

9.1 4.8 11.9 7.6 8.9 4.7 11.6 7.4

50 9.2 4.9 11.6 7.3 50 9.2 5.0 11.5 7.3

9.8 5.5 4+00 11.6 7.3 9.3 5.1 4+00 11.5 7.3

10.1 5.8 11.7 7.4 10.1 5.9 11.7 7.5

10.4 6.1 11.7 7.4 10.2 6.0 11.8 7.6

10.6 6.3 11.8 7.5 10.2 6.0 11.8 7.6

2+00 10.8 6.5 11.8 7.5 2+00 10.3 6.1 11.8 7.6

10.8 6.5 50 11.9 7.6 10.6 6.4 50 11.9 7.7

10.9 6.6 11.8 7.5 10.7 6.5 11.9 7.7

10.8 6.5 11.9 7.6 10.8 6.6 12.0 7.8

5+00 12.1 7.8 5+00 12.0 7.8

6-22-60

STA. N. 118+50; 0+00 = W. 14,200; SOUND EAST

Dist	Sound	Elev	Dist	Sound	Elev
0+00			(42)	10.0	5.8
(42)			50	9.8	5.6
				10.0	5.8
<u>10+10</u>	0.6	+3.6		9.9	5.7
	0.9	+3.3		9.9	5.7
50	1.8	+2.4		10.0	5.8
	2.4	+1.8	3+00	10.2	6.0
	4.0	+0.2		10.6	6.4
	4.9	0.5		10.8	6.6
	5.2	1.0		10.9	6.7
1+00	5.4	1.2		11.2	7.0
	6.7	2.5	50	11.2	7.0
	7.0	2.8		11.2	7.0
	7.1	2.9		11.3	7.1
	8.2	4.0		11.2	7.0
50	7.8	3.4		11.2	7.0
	8.5	4.3	4+00	11.2	7.0
	8.8	4.6		11.4	7.2
	9.2	5.0		11.4	7.2
	9.3	5.1		11.7	7.5
2+00	9.6	5.4		11.7	7.5
	9.5	5.3	50	11.8	7.6
	9.1	4.9		11.9	7.7
	9.3	5.1		11.8	7.6
				11.9	7.7
				11.9	7.7
			5+00	11.8	7.6

(20)

STA. N. 119+00; 0+00 = W. 14,180; SOUND EAST

Dist	Sound	Elev	Dist	Sound	Elev
0+00			(42)	8.6	4.4
(42)			50	8.9	4.7
				0.0	+4.2
				8.9	4.7
<u>10+20</u>	0.5	+3.7		9.1	4.9
	1.0	+3.2		9.0	4.8
50	1.3	+2.9		9.1	4.9
	2.2	+2.0	3+00	9.2	5.0
	3.0	+1.2		9.6	5.4
	3.7	+0.5		9.9	5.7
	4.2	0.0		10.0	5.8
1+00	4.9	.7		10.2	6.0
	5.3	.9	50	10.6	6.4
	6.3	1.9		10.9	6.7
	6.3	1.9		10.8	6.6
	7.0	2.8		10.9	6.7
50	7.0	2.8		11.0	6.8
	7.7	3.5	4+00	11.1	6.9
	7.7	3.5		11.1	6.9
	7.6	3.4		11.2	7.0
	7.9	3.7		11.3	7.1
2+00	7.9	3.7		11.3	7.1
	8.0	3.8	50	11.4	7.2
	7.9	3.7		11.4	7.2
	8.6	4.4		12.0	7.8
				11.9	7.5
				11.7	7.5
			5+00	11.7	7.5



6-22-60

STA. N. 119+50; CHOO=11.14, 160; SOUND EAST

Dist	Sound	Elev	Dist	Sound	Elev
0+00	(4.2)		(4.2)	8.4	4.2
			50	9.2	5.0
	0.3	+3.9		9.1	4.9
10+30	0.8	+3.4		9.1	4.9
	1.1	+3.1		9.6	5.4
50	1.9	+2.3		9.4	5.2
	2.8	+1.4	3+00	9.8	5.6
	3.7	+1.5		10.0	5.8
	4.3	0.1		10.1	5.9
	4.8	.6		10.2	6.0
1+00	5.1	.9		10.3	6.1
	5.3	1.1	50	10.3	6.1
	5.6	1.4		10.4	6.2
	5.8	1.6		10.5	6.3
	5.9	1.7		10.6	6.4
50	6.2	2.0		10.8	6.6
	6.7	2.5	4+00	10.8	6.6
	6.9	2.7		11.0	6.8
	7.0	2.8		11.0	6.8
	7.1	2.9		10.9	6.7
2+00	7.5	3.3		11.0	6.8
	7.7	3.5	50	11.1	6.9
	7.7	3.5		11.0	6.8
	8.3	4.1		11.5	7.3
				11.7	7.3
			5+00	11.9	7.7

②

STA. N. 120+00; CHOO=11.14, 140; SOUND EAST

Dist	Sound	Elev	Dist	Sound	Elev
0+00	(4.2)		(4.2)	9.0	4.8
			50	9.0	4.8
	0.3	+3.9		9.4	5.2
10+40	0.9	+3.3		9.7	5.5
	2.1	+2.1		9.8	5.6
50	2.9	+1.3		10.0	5.8
	3.6	+0.6	3+00	10.1	5.9
	4.0	+0.2		10.2	6.0
	4.7	-0.5		10.3	6.1
	4.9	0.7		10.3	6.1
1+00	5.0	0.8		10.5	6.3
	5.7	1.5	50	10.5	6.3
	5.8	1.6		10.8	6.6
	6.0	1.8		10.6	6.4
	6.1	1.9		10.7	6.5
50	6.5	2.3		11.0	6.8
	6.6	2.4	4+00	11.0	6.8
	6.9	2.7		10.9	6.7
	7.4	3.2		11.0	6.8
	7.5	3.3		11.2	7.0
2+00	8.3	4.1		11.1	6.9
	8.0	3.8	50	11.3	7.1
	8.2	4.0		11.3	7.1
	8.3	4.1		11.3	7.1
				11.5	7.3
				11.6	7.4
			5+00	11.6	7.3

6-22-60

STA. N. 120+50; 0+100 = W. 14, 130; SOUND EAST

STA. N. 121+00; 0+100 = W. 14, 120; SOUND EAST

DIST	Sound	Elev	DIST	Sound	Elev
0+100			(42)	9.5	5.3
(42)	0.0	+4.2	50	9.9	5.7
	0.4	+3.8		10.0	5.8
10+50	1.2	+3.0		10.0	5.8
	2.0	+2.2		10.0	5.8
50	2.8	+1.4		10.2	6.0
	3.5	+ .7	3+00	10.3	6.1
	4.0	+0.2		10.3	6.1
	4.3	0.1		10.4	6.2
	4.9	.7		10.5	6.3
1+00	5.6	1.4		10.7	6.5
	6.3	2.1	50	10.7	6.5
	7.0	2.8		10.8	6.6
	6.5	2.3		10.8	6.6
	6.9	2.7		11.0	6.8
50	7.2	3.0		10.9	6.7
	8.0	3.8	4+00	10.9	6.7
	7.9	3.7		11.1	6.9
	8.4	4.2		11.1	6.9
	8.3	4.1		11.2	7.0
2+00	8.9	4.7		11.0	6.8
	9.1	4.9	50	11.0	6.8
	9.3	5.1		11.3	7.1
				11.5	7.3
	9.6	5.4		11.2	7.0
				11.3	7.1
			5+00	11.4	7.2

DIST	Sound	Elev	DIST	Sound	Elev
0+100			(41)	9.8	5.7
			50	9.9	5.8
	0.7	+3.4		10.0	5.9
11+00	1.7	+2.4		10.1	6.0
	2.6	+1.5		10.2	6.1
50	4.6	-0.4		10.2	6.1
	6.2	2.1	3+00	10.2	6.1
	6.9	2.8		10.2	6.1
	6.3	2.2		10.2	6.1
	5.5	1.4		10.1	6.0
1+00	5.8	1.7		10.1	6.0
	7.0	2.9	50	10.2	6.1
	7.3	3.2		10.3	6.2
	7.4	3.3		10.5	6.4
	8.0	3.9		11.0	6.9
50	8.2	4.1		11.3	7.2
	8.3	4.2	4+00	11.3	7.2
	8.9	4.7		11.2	7.7
	9.0	4.9		11.1	7.0
	9.1	5.0		11.1	7.0
2+00	9.2	5.1		11.2	7.1
	9.8	5.7	50	11.3	7.2
				11.3	7.2
	9.6	5.5		11.2	7.1
	9.7	5.6		11.2	7.1
			5+00	11.1	7.0

6-22-60

STA. N. 121+50; 0+00=W. 14, 110; SOUND EAST

DIST	Sound	Elev	DIST	Sound	Elev
0+00			(A) 10.0	10.0	5.9
ADD → +0.1	4.2		50	10.0	5.9
(A)	0.8	3.3		10.1	6.0
	1.7	2.4		10.1	6.0
<u>11.05</u>	2.7	1.4		10.2	6.1
50	3.3	0.8		10.3	6.2
	4.0	+0.1	3+00	10.4	6.3
	4.5	0.4		10.3	6.2
	5.4	1.3		10.7	6.6
	6.4	2.3		10.6	6.5
1+00	6.8	2.7		10.9	6.8
	6.9	2.8	50	11.2	7.1
	7.8	3.7		11.2	7.1
	8.2	4.1		11.2	7.1
	8.9	4.7		11.3	7.2
50	9.3	5.2		11.3	7.2
	9.1	5.0	4+00	11.3	7.2
	9.2	5.1		11.2	7.1
	9.5	5.4		11.3	7.2
	9.9	5.8		11.2	7.1
2+00	10.0	5.9		11.2	7.1
	10.0	5.9	50	11.2	7.1
	9.9	5.8		11.3	7.2
	9.9	5.8		11.2	7.1
				11.7	7.7
				11.1	7.0
			5+00	10.7	6.8

(23)

STA. N. 122+00; 0+00=W. 14, 100; SOUND EAST

DIST	Sound	Elev	DIST	Sound	Elev
0+00			(A) 10.0	10.0	6.0
			50	9.9	5.9
	0.3	+3.7		10.1	6.1
	0.9	+3.1		10.1	6.1
<u>11.15</u>	1.9	+2.1		10.3	6.3
50	2.8	+1.2		10.7	6.7
	3.9	+0.1	3+00	10.3	6.3
	4.9	.9		10.5	6.5
	5.3	1.3		10.9	6.9
	6.0	2.0		10.9	6.9
1+00	6.2	2.2		11.0	7.0
	7.0	3.0	50	11.0	7.0
	7.3	3.3		10.8	6.8
	8.0	4.0		10.9	6.9
	8.7	4.7		10.8	6.8
50	8.6	4.6		11.0	7.0
	9.0	5.0	4+00	11.0	7.0
	9.0	5.0		10.9	6.9
	9.5	5.5		10.7	6.7
	9.8	5.8		10.8	6.8
2+00	9.9	5.9		10.9	6.9
	9.8	5.8	50	11.0	7.0
	9.7	5.7		11.0	7.0
	9.9	5.9		10.8	6.8
				11.1	7.1
			5+00	11.6	7.6
				11.2	7.2

6-22-60

(24)

STA. N. 122+50; 0+00 = W. 14090; SOUND EAST

DIST Sound Elev DIST Sound Elev DIST Sound Elev DIST Sound Elev

0+00 (40) 9.8 5.8 0+00 (30) 8.8 5.8

(40) 50 9.7 5.7 (30) 50 8.9 5.9

10.1 6.1 8.9 5.9

11.25 0.2 + 3.8 10.3 6.3 11.0 0.1 + 2.9 9.0 6.0

0.9 + 3.1 10.3 6.3 1.1 + 1.9 9.0 6.0

50 1.9 + 2.1 10.5 6.5 50 1.6 + 1.3 9.0 6.0

2.8 + 1.2 3+00 10.2 6.2 1.9 + 1.1 3+00 9.1 6.1

3.2 + 0.8 11.0 7.0 2.4 + 0.6 9.1 6.1

3.8 + 0.2 11.4 7.4 3.6 .6 9.2 6.2

4.4 0.4 10.9 6.9 3.7 .7 9.1 6.1

1+00 4.9 0.9 10.8 6.8 1+00 3.9 .9 9.3 6.3

5.5 1.5 50 10.7 6.7 3.9 .9 50 9.3 6.3

5.8 1.8 10.8 6.8 4.3 1.3 9.2 6.2

6.7 2.7 11.0 7.0 4.9 1.9 9.1 6.1

6.7 2.7 10.3 6.3 5.4 2.4 9.1 6.1

50 7.1 3.1 10.2 6.2 50 6.8 3.8 9.5 6.5

8.3 4.3 4+00 10.3 6.2 7.4 4.4 4+00 9.2 6.2

8.9 4.9 10.3 6.3 7.4 4.4 9.5 6.5

9.0 5.0 10.4 6.4 7.7 4.7 9.4 6.4

9.0 5.0 10.5 6.5 7.9 4.9 9.6 6.6

2+00 9.4 5.4 10.7 6.7 2+00 8.1 5.1 9.6 6.6

9.4 5.4 50 10.7 6.7 8.2 5.2 50 9.1 6.1

10.8 6.8 10.8 6.8 8.3 5.3 9.2 6.2

10.8 6.8 10.8 6.8 8.3 5.3 9.0 6.0

10.8 6.8 10.8 6.8 8.4 5.4 9.1 6.1

5+00 10.5 6.5 5+00 8.9 5.9

6-22-60

STA. N. 123+50; 0+00 = W. 14,050; SOUND EAST

Dist Sound Elev Dist Sound Elev

0+00

(30)

8.6 5.6

(30)

50 8.8 5.8

8.9 5.9

8.9 5.9

1:20 2.4 +0.6

3.1 -0.1

50 3.6 .6

3.6 .6 3+00 9.0 6.0

3.9 .9 9.0 6.0

4.3 1.3 9.4 6.4

4.7 1.7 (Soft) 9.0 6.0

1+00 5.5 2.5 = 9.0 6.0

5.6 2.6 50 9.0 6.0

5.9 2.9 9.1 6.1

5.7 2.7 9.3 6.3

6.2 3.2 9.4 6.4

50 6.9 3.9 9.4 6.4

7.1 4.1 4+00 9.1 6.1

7.5 4.5 9.2 6.2

8.0 5.0 8.9 5.9

8.0 5.0 8.9 5.9

2+00 8.2 5.2 8.9 5.9

8.2 5.2 50 9.0 6.0

8.5 5.5 9.3 6.3

8.7 5.7 8.8 5.8

5+00 8.9 5.9

8.9 5.9

8.8 5.8

(25)

STA. N. 124+00; 0+00 = W. 14,040; SOUND EAST

Dist Sound Elev Dist Sound Elev

0+00

(29)

9.5 6.6

(29)

50 9.5 6.6

9.5 6.6

9.5 6.6

1:30

0.5 +2.4

50 1.1 +1.8

1.9 +1.0 3+00 10.0 7.1

2.6 +0.3 10.0 7.1

3.2 -0.3 (Soft) 10.0 7.1

3.8 0.9 10.0 7.1

1+00 4.2 1.3 10.0 7.1

5.2 2.3 50 10.0 7.1

5.9 3.0 10.0 7.1

5.9 3.0 10.0 7.1

6.3 3.4 10.0 7.1

50 6.8 3.9 10.0 7.1

7.0 4.1 4+00 10.0 7.1

7.3 4.4 9.5 6.6

7.6 4.7 9.5 6.6

7.8 4.9 9.8 6.9

2+00 8.0 5.1 9.3 6.4

8.2 5.3 50 9.3 6.4

8.6 5.7 9.2 6.3

9.2 6.3 9.1 6.2

9.0 6.1

9.0 6.1

5+00 9.0 6.1

6-22-60

(26)

STATION 124+50; 0+00 = W. 14.030; SOUND EAST STATION 125+00; 0+00 = W. 14.020; SOUND EAST

STATION 124+50; 0+00 = W. 14.030; SOUND EAST			STATION 125+00; 0+00 = W. 14.020; SOUND EAST		
DIST	Sound	Elev	DIST	Sound	Elev
0+00			(Soft)	9.4	6.6
(2.8)			50	9.5	6.7
			(2.8)	10.0	7.2
1+00	0.1	+ 2.7		10.0	7.2
	1.1	+ 1.1		10.0	7.2
50	1.8	+ 1.0		9.5	6.7
	2.2	+ 0.6	3+00	9.5	6.7
	2.6	+ 0.2		9.5	6.7
	3.1	0.3		9.5	6.7
	3.8	1.0		9.5	6.7
1+00	4.5	1.3		10.0	7.2
	5.5	2.3	50	10.0	7.2
	5.8	3.0		9.5	6.7
	6.2	3.4		9.5	6.7
	6.7	3.9		9.5	6.7
50	7.1	4.3		9.2	6.4
	7.2	4.4	4+00	9.1	6.3
	7.8	5.0		9.1	6.3
	7.9	5.1		9.0	6.2
	8.0	5.2		9.0	6.2
2+00	8.2	5.4		9.2	6.4
	9.2	6.4	50	9.1	6.3
	8.9	6.1		9.2	6.4
	9.0	6.2		9.3	6.5
			5+00	9.1	6.3
				9.2	6.4
				9.3	6.5
				9.5	6.7
				9.6	6.8
				9.7	6.9
				9.8	7.0
				9.7	6.9
				9.8	7.0

6-22-60

(27)

STA. N. 125+50; 0+00 = W. 14,000; SOUND EAST

STA. N. 126+00; 0+00 = W. 13,990; SOUND EAST

Dist Sound Elev Dist Sound Elev

Dist Sound Elev Dist Sound Elev

Dist	Sound	Elev	Dist	Sound	Elev
0+00			(27)	8.8	6.1
(27)			50	9.1	6.4
				9.3	6.6
				9.0	6.3
<u>1+55</u>	0.5	+2.2		9.5	6.8
	1.9	+0.8		9.0	6.3
50	3.8	1.1		9.2	6.5
	4.8	2.1	3+00	9.2	6.5
	5.2	2.5		9.3	6.6
	5.9	3.2		9.1	6.4
	6.0	3.3		9.0	6.3
1+00	6.6	3.9		9.0	6.3
	6.7	4.0	50	9.0	6.3
	6.9	3.9		8.9	6.2
	7.1	4.4		8.9	6.2
	7.3	4.6		9.0	6.3
50	7.6	4.9		9.1	6.4
	7.7	5.0	4+00	9.3	6.6
	7.7	5.0		9.4	6.7
	8.2	5.5		9.5	6.8
	8.1	5.4		9.4	6.7
2+00	8.8	6.1		9.6	6.9
	8.3	5.6	50	9.4	6.7
	8.8	6.1		9.6	6.9
	8.7	6.0		9.7	7.0
			5+00	9.8	7.1

Dist	Sound	Elev	Dist	Sound	Elev
0+00			(27)	9.0	6.3
(27)			50	9.2	6.5
				9.2	6.5
				9.1	6.4
<u>2+00</u>	0.7	2.0		9.1	
	1.4	1.3		9.1	
50	2.2	+0.5		9.1	
	2.7	0.0	3+00	9.1	
	3.6	0.9		9.1	6.4
	3.7	1.0		9.0	6.3
	4.3	1.6		9.0	
1+00	4.4	1.7		9.0	
	5.0	2.3	50	9.0	
	5.3	2.6		9.0	6.3
	6.1	3.4		9.2	6.5
	6.2	3.5		9.5	6.8
50	6.6	3.9		9.5	6.8
	7.0	4.3	4+00	9.7	7.0
	7.6	4.9		9.6	6.9
	7.7	5.0		9.6	6.9
	7.8	5.1		9.7	7.0
2+00	7.7	5.0		9.7	7.0
	7.9	5.2	50	9.7	7.0
	8.1	5.4		9.5	6.8
	8.2	5.5		9.5	6.8
			5+00	9.8	7.1

6-22-60

STA. N. 126+50; 0+00=W13970; SOUND EAST

Dist Sound Elev Dist Sound Elev

Dist	Sound	Elev	Dist	Sound	Elev
0+00			(26)	8.8	6.2
(26)			50	9.0	6.4
				9.0	
2:10	0.7	+1.9		9.0	
	1.2	+1.4		9.0	
50	1.6	+1.0		9.0	
	2.2	+0.4	3+00	9.0	
	2.5	+0.1		9.0	
	2.7	0.1		9.0	
	3.0	0.4		9.0	6.4
1+00	3.2	0.6		9.1	6.5
	4.4	1.8	50	9.2	6.6
	4.3	1.7		9.3	6.7
	5.1	2.5		9.5	6.9
	5.5	2.9		9.5	6.9
50	5.6	3.0		9.5	6.9
	6.1	3.5	4+00	9.4	6.8
	6.3	3.7		9.4	
	7.0	4.4		9.4	
	7.9	5.3		9.4	
2+00	8.2	5.6		9.4	6.8
	8.1	5.5	50	9.6	7.0
	8.9	6.2		9.6	7.0
	8.6	6.0		9.6	7.0
			5+00	9.6	7.0

(28)

STA. N. 127+00; 0+00=W13,960; SOUND EAST

Dist Sound Elev Dist Sound Elev

Dist	Sound	Elev	Dist	Sound	Elev
0+00			(26)	9.3	6.7
(26)			50	9.2	6.6
				9.0	6.4
2:20	1.0	+1.6		8.9	6.3
	1.8	+0.8		9.0	6.4
50	2.1	+0.5		8.9	6.3
	2.7	0.1	3+00	8.9	6.3
	2.9	0.3		9.3	6.7
	3.1	0.5		9.7	7.1
	3.8	1.2		9.1	6.5
1+00	4.2	1.6		9.3	6.7
	4.8	2.2	50	9.4	6.8
	5.0	2.4		9.2	6.6
	5.3	2.7		9.4	6.8
	5.9	3.3		9.8	7.2
50	6.2	3.6		9.6	7.0
	7.0	4.4	4+00	9.8	7.2
	7.0	4.4		9.7	7.1
	8.1	5.5		9.7	7.1
	7.9	5.3		9.5	6.9
2+00	8.0	5.4		9.7	7.1
	8.1	5.5	50	9.5	6.9
	8.7	6.1		9.6	7.0
	8.9	6.3		9.6	7.0
			5+00	9.9	7.3
				10.1	7.5



6-22-60

STA. N. 127+50; 0+00 = W. 13,950 SOUND EAST

Dist Sound Elev Dist Sound Elev

0+00

(26)

0.1 +2.5

2+25

1.1 +2.5

2.3 +6.5

50

2.8 0.2

3.3 0.7

3.9 1.3

4.7 2.1

4.9 2.3

1+00

5.7 3.1

6.0 3.4

6.1 3.5

6.2 3.6

6.8 4.2

50

7.0 4.4

7.6 5.0

8.0 5.4

8.2 5.6

8.7 6.1

2+00

8.6 6.0

8.8 6.2

8.9 6.3

9.1 6.5

(26)

9.3 6.7

50 9.5 6.9

9.1 6.5

9.1 6.5

8.9 6.3

9.0 6.4

3+00

8.9 6.3

8.9 6.3

9.0 6.4

9.1 6.5

9.0 6.4

50

9.1 6.5

9.1 6.5

9.9 7.3

9.6 7.0

9.8 7.2

4+00

9.7 7.1

9.7 7.1

9.8 7.2

9.9 7.3

9.9 7.3

50

9.9 7.3

9.8 7.2

9.8 7.2

10.0 7.4

10.2 7.6

5+00

10.1 7.5

(29)

STA. N. 128+00; 0+00 = W. 13,940 SOUND EAST

Dist Sound Elev Dist Sound Elev Dist Sound Elev

0+00

(26)

0.2 +2.4

2+45

1.4 +1.2

3.1 0.5

50

4.2 1.6

4.2 1.6

4.8 2.2

5.1 2.5

5.4 2.8

1+00

5.7 3.1

6.2 3.6

6.9 4.3

7.0 4.4

7.1 4.5

50

7.5 4.9

8.1 5.5

8.2 5.6

8.2 5.6

8.7 6.1

2+00

8.8 6.2

8.9 6.3

8.9 6.3

8.9 6.3

(26)

9.1 6.5

50 10.7 8.1

11.0 8.4

10.6 8.0

11.5 6.9

12.0 9.4

3+00

12.1 9.5

11.7 9.1

11.0 8.4

10.3 7.7

9.0 6.4

50

8.9 6.3

9.0 6.4

9.1 6.5

9.5 6.9

9.5 6.9

4+00

9.5 6.9

9.6 7.0

9.4 6.8

9.2 6.6

9.2 6.6

50

9.4 6.8

9.4 6.8

9.5 6.9

9.6 7.0

9.8 7.2

5+00

10.0 7.4

6-24-60

STA. N. 128+50; 0+00 = W. 13,940; SOUND EAST

Dist	Sound	Elev	Dist	Sound	Elev
0+00			(37)	13.1	9.4
(37)			50	12.8	9.1
	1.0 + 2.7			12.9	9.2
1105	3.0 + 0.7			13.3	9.6
	3.7	0.0		13.2	9.5
50	4.9	1.2		13.3	9.6
	6.8	5.1	3+00	13.1	9.4
	7.2	3.5		12.9	9.2
	8.0	4.3		13.0	9.3
	8.7	5.0		12.8	9.1
1+00	8.9	5.2		12.4	8.7
	9.1	5.4	50	12.2	8.5
	8.9	5.2		12.2	8.5
	9.0	5.3		10.8	7.1
	9.1	5.4		10.1	6.4
50	9.1	5.4		10.1	6.4
	9.2	5.5	4+00	10.1	6.4
	9.3	5.6		10.1	6.4
	9.6	5.9		10.1	6.4
	9.9	6.2		10.1	6.4
2+00	10.1	6.4		10.4	6.7
	10.1	6.4	50	10.1	6.4
	10.2	6.5		10.1	6.4
	10.4	6.7		10.2	6.5
				10.2	6.5
				10.4	6.7
			5+00	10.6	6.7

30

STA. N. 129+00; 0+00 = W. 13,930; SOUND EAST

Dist	Sound	Elev	Dist	Sound	Elev
0+00			(36)	12.9	9.3
(36)			50	12.8	9.2
	1.9 + 2.3			12.8	9.2
	7.5	3.9		12.8	9.2
1115	9.3	5.7		12.6	9.0
	11.1	7.5		12.7	9.1
50	12.3	8.7		12.8	9.2
	12.7	9.1	3+00	12.8	9.2
	12.8	9.2		12.8	9.2
	13.0	9.4		12.8	9.2
	13.0	9.4		12.7	9.1
1+00	12.9	9.3		12.4	8.8
	12.9	9.3	50	12.8	9.2
	12.9	9.3		12.7	9.1
	13.0	9.4		12.8	9.2
	12.9	9.3		12.7	9.1
50	12.7	9.1		12.3	8.7
	13.0	9.4	4+00	10.8	7.2
	13.0	9.4		10.0	6.4
	12.9	9.3		10.0	6.4
	13.0	9.4		10.0	6.4
2+00	12.8	9.2		10.0	6.4
	12.5	8.9	50	10.1	6.5
	12.6	9.0		10.0	6.4
	12.6	9.0		10.0	6.4
				10.3	6.7
				10.3	6.7
			5+00	10.4	6.8

PROP. WASH

6-24-60

STA. N. 129+50: 0+00 = W. 13,930 ; SOUND EAST

DIST	Sound	Elev	DIST	Sound	Elev
0+00			(35)	12.1	8.6
(35)	1.7	+2.8	50	11.9	8.4
	6.9	3.4		11.9	8.4
1125	8.1	4.6		12.0	8.5
	10.7	7.2		12.0	8.5
50	11.3	7.8		12.1	8.6
	11.9	8.4	3+00	12.0	8.5
	11.8	8.3		11.9	8.4
	11.9	8.4		12.3	8.8
	11.9	8.4		10.8	7.3
1+00	12.0	8.5		10.8	7.3
	12.0	8.5	50	11.1	7.6
	12.2	8.7		11.9	8.4
	12.4	8.9		12.3	8.8
	12.7	9.2	11,30	11.9	8.4
50	12.8	9.3		9.8	6.3
	12.8	9.3	4+00	9.8	6.3
	12.7	9.2		10.1	6.6
	12.5	9.0		10.1	6.6
	12.3	8.8		10.0	6.5
2+00	12.5	9.0		10.1	6.6
	12.4	8.9	50	10.2	6.7
	12.3	8.8		10.0	6.5
	12.3	8.8		10.1	6.6
				10.0	6.5
			5+00	10.3	6.8

(31)

STA. N. 130+00: 0+00 = W. 13,930 ; SOUND EAST

DIST	Sound	Elev	DIST	Sound	Elev
0+00			(34)	12.3	8.9
(34)	0.4	+3.0	50	12.0	8.6
	6.7	3.3		12.0	8.6
1135	8.1	4.7		12.0	8.6
	10.9	7.5		12.0	8.6
50	11.2	7.8		12.1	8.7
	11.7	8.3	3+00	11.9	7.5
	11.4	8.0		12.1	8.7
	11.3	7.9		11.8	8.4
	11.3	7.9		11.9	8.5
1+00	11.6	8.2		11.3	7.9
	11.6	8.2	50	10.0	6.6
	11.8	8.4		9.8	6.4
	12.0	8.6		9.9	6.5
	12.1	8.7		10.2	6.8
50	12.3	8.9		9.9	6.5
	12.4	9.0	4+00	10.0	6.6
	12.7	9.3	11,40	10.0	6.6
	13.0	9.6		10.1	6.7
	12.9	9.5		11.8	8.3
2+00	12.8	9.4		10.0	6.6
	12.7	9.3	50	10.0	6.6
	12.4	9.4		10.2	6.8
	12.4	9.4		9.8	6.8
				10.1	6.5
			5+00	10.1	6.7

6-24-60

(32)

STA. N. 130+50; 0+00 = W. 13,940; SOUND EAST

STA. N. 131+00; 0+00 = W. 13,940; SOUND EAST

Dist Sound Elev Dist Sound Elev

Dist Sound Elev Dist Sound Elev

0+00 (3.3) 12.0 8.7 0+00 (3.2) 10.9 7.7

(3.3) 50 12.0 8.7 (3.2) 50 10.9 7.7

1.7 +1.6 11.9 8.6 4.0 -0.8 10.7 7.5

11.45 7.3 4.0 11.9 8.6 9.0 1.2 10.7 7.5

11.0 7.7 12.0 8.7 2+00 11.7 8.5 10.3 7.1

50 11.5 8.2 11.9 8.6 50 12.5 9.3 10.0 6.8

12.0 8.7 3+00 12.0 8.7 12.6 9.4 3+00 10.2 7.0

12.0 8.7 12.0 8.7 12.9 9.7 10.1 6.9

11.5 8.2 11.50 12.4 9.1 12.5 9.3 10.1 9.6

11.0 7.7 12.2 8.9 11.6 8.4 10.0 6.8

1+00 10.7 7.4 11.9 8.6 1+00 11.3 8.1 10.0 6.8

10.7 7.4 50 10.3 7.0 11.2 8.0 50 10.0 6.8

10.8 7.5 10.0 6.7 11.0 7.8 10.2 7.0

10.9 7.6 9.9 6.6 11.0 7.8 10.2 7.0

11.2 7.9 10.0 6.7 11.0 7.8 10.0 6.8

50 11.3 8.0 10.0 6.7 50 11.0 7.8 9.9 6.7

11.3 8.0 4+00 10.1 6.8 11.0 7.8 4+00 10.0 6.8

12.0 8.7 10.1 6.8 11.0 7.8 10.1 6.9

12.4 9.1 10.2 6.9 10.9 7.7 10.3 7.1

12.3 8.0 10.2 6.9 10.9 7.7 10.1 6.9

2+00 12.4 9.1 11.0 7.7 2+00 10.5 7.3 10.2 7.0

12.4 9.1 50 10.5 7.2 10.8 7.6 50 10.3 7.1

12.1 8.8 10.3 7.0 10.9 7.7 10.5 7.3

12.0 8.7 10.3 7.0 10.9 7.7 10.4 7.2

5+00 10.2 6.9 10.4 7.1 10.9 7.7 10.3 7.1

10.4 7.1 10.9 7.7 10.3 7.1

10.4 7.1 10.3 7.1

10.2 6.9 10.3 7.1

0+00 (3.2) 10.9 7.7

(3.2) 50 10.9 7.7

4.0 -0.8 10.7 7.5

9.0 1.2 10.7 7.5

2+00 11.7 8.5 10.3 7.1

50 12.5 9.3 10.0 6.8

12.6 9.4 3+00 10.2 7.0

12.9 9.7 10.1 6.9

12.5 9.3 10.1 9.6

11.6 8.4 10.0 6.8

1+00 11.3 8.1 10.0 6.8

11.2 8.0 50 10.0 6.8

11.0 7.8 10.2 7.0

11.0 7.8 10.2 7.0

11.0 7.8 10.0 6.8

50 11.0 7.8 9.9 6.7

11.0 7.8 4+00 10.0 6.8

11.0 7.8 10.1 6.9

10.9 7.7 10.3 7.1

10.9 7.7 10.1 6.9

2+00 10.5 7.3 10.2 7.0

10.8 7.6 50 10.3 7.1

10.9 7.7 10.5 7.3

10.9 7.7 10.4 7.2

10.9 7.7 10.3 7.1

10.9 7.7 10.3 7.1

10.9 7.7 10.3 7.1

10.9 7.7 10.3 7.1

6-24-60

33

STA. N. 131+50; 0+00 = W. 13,950; SOUND EAST

Dist Sound Elev Dist Sound Elev

0+00

(3)

2.3 +1.8

2+10

8.1 5.0

9.1 6.0

50

10.6 7.5

11.6 8.5

12.0 8.9

11.7 8.6

11.6 8.5

1+00

11.5 8.4

11.4 8.3

11.3 8.2

11.2 8.1

11.2 8.1

50

11.4 8.3

11.7 8.6

11.9 8.8

11.3 8.2

11.4 8.3

2+00

11.0 7.9

11.1 8.0

11.1 8.0

11.1 8.0

(3)

11.4 8.3

50 11.6 8.5

12.0 8.9

12.0 8.9

11.7 8.6

9.9 6.8

3+00 10.0 6.9

10.0 6.9

10.1 7.0

10.1 7.0

10.4 7.3

50 10.3 7.2

10.2 7.1

10.2 7.1

10.2 7.1

10.1 7.0

4+00 10.2 7.1

10.1 7.0

10.2 7.1

10.0 6.9

10.0 6.9

50 10.1 7.0

10.2 7.1

10.3 7.2

10.2 7.1

5+00 10.2 7.1

STA. N. 132+00; 0+00 = W. 13,960; SOUND EAST

Dist Sound Elev Dist Sound Elev

0+00

(3)

2.9 +1.8

2+15

7.9 -4.8

10.1 7.0

50

10.8 7.7

11.6 8.5

11.9 8.8

11.8 8.7

11.8 8.7

1+00

11.8 8.7

11.7 8.6

11.9 8.8

11.8 8.7

11.7 8.6

50

11.6 8.5

11.5 8.4

12.1 9.0

12.3 9.2

12.2 9.1

2+00

12.1 9.0

12.1 7.0

12.1 9.0

12.2 9.1

(3)

12.6 9.5

50 12.8 9.7

13.0 9.9

13.1 10.0

12.4 9.3

50

9.8 6.7

3+00

9.9 6.8

10.2 7.1

10.0 6.9

10.1 7.0

10.2 7.1

50

10.2 7.1

10.3 7.2

10.3 7.2

10.1 7.0

10.0 6.9

4+00

10.0 6.9

10.1 7.0

2+23

10.1 7.0

10.1 7.0

9.9 6.8

50

10.0 6.9

10.6 7.5

9.6 6.5

9.9 6.8

10.0 6.9



6-24-60

STA. N. 133+50; 0+00 = W. 13,980; SOUND EAST

Dist	Sound	Elev	Dist	Sound	Elev
0+00			(29)	12.8	9.9
(29)			50	12.3	9.2
	3.2	0.3		12.3	9.2
<u>3+00</u>	7.8	4.9		12.0	9.1
	9.0	6.1		11.5	8.6
50	10.1	7.2		11.8	8.9
	10.2	7.3	3+00	11.5	8.6
	10.4	7.5		12.0	9.1
	10.9	8.0		12.1	9.2
	11.0	8.1		12.2	9.3
1+00	10.9	8.0		12.2	9.3
	10.9	8.0	50	12.6	9.7
	10.9	8.0		13.5	10.6
	10.7	7.8		13.1	10.2
	10.6	7.7		12.8	9.9
50	11.1	8.2		12.8	9.9
	11.2	8.3	4+00	12.2	9.3
	12.1	9.2		11.9	9.0
	12.2	9.3	<u>3+05</u>	11.0	8.1
	12.8	9.9		10.4	7.5
2+00	13.0	10.1		10.2	7.3
	12.7	9.8	50	10.0	7.1
	12.3	9.4		10.0	7.1
	12.7	9.8		10.1	7.2
				10.1	7.2
			5+00	10.0	7.1

6-27-60

STA. N. 134+00; 0+00 = W. 13,990; SOUND EAST

Dist	Sound	Elev	Dist	Sound	Elev
0+00			(30)	12.3	9.3
(29)			50	12.4	9.4
	1.5	+1.4		12.7	9.7
<u>10+00</u>	4.9	2.0		12.8	9.8
	7.7	4.8		12.3	9.3
50	10.0	7.1		12.0	9.0
	10.8	7.9	3+00	12.0	9.0
	11.0	8.1		12.0	
	10.4	7.5		12.0	
	10.7	7.8	<u>10+15</u>	12.0	
1+00	10.7	7.8		12.0	
	10.9	8.0	50	12.0	9.0
	11.3	8.4		12.2	9.7
	11.9	9.0		13.0	10.0
	11.9	9.0		13.0	10.0
50	12.1	9.3		13.5	10.5
	12.6	9.7	4+00	13.0	10.0
	12.9	10.0		13.5	10.5
	13.2	10.3		13.0	10.0
	13.6	10.7		12.5	9.5
2+00	13.6	10.7		12.5	9.5
	12.8	9.9	50	11.5	8.5
	12.1	9.2		11.3	8.3
	12.1	9.2		11.0	8.0
				10.6	7.6
				10.5	7.5
			5+00	10.4	7.4

55 SILT IN  
SUSPENSION

(35)

6-27-60

STA. N. 134+50; 0+00 = W. 14,000; SOUND EAST

Dist	Sound	Elev	Dist	Sound	Elev
0+00			<u>32</u>	12.3	9.1
<u>(3.1)</u>			50	12.6	9.4
	0.9	12.2		12.6	9.4
<u>1025</u>	4.4	11.3		12.2	9.0
	8.3	5.2		11.8	8.6
50	9.1	6.0		11.5	8.3
	9.2	6.1	3+00	12.2	9.0
	10.0	6.9		12.1	8.9
	10.2	7.1		12.0	8.8
	10.6	7.5		11.8	8.6
1+00	10.8	7.7		11.9	8.7
	11.0	7.9	50	12.5	9.3
	11.1	8.0	<u>1030</u>	12.2	9.0
	11.2	8.1		12.2	9.0
	12.2	9.1		12.1	9.1
50	11.8	8.7		12.4	9.2
	11.4	8.3	4+00	12.5	9.3
	11.6	8.5		12.8	9.6
	12.1	9.0		13.0	9.8
	12.2	9.1		13.0	9.8
2+00	12.1	9.0		13.5	10.3
	12.1	9.0	50	13.8	10.6
	12.3	9.2		13.3	10.1
	12.9	9.8		13.2	10.1
				12.5	9.2
				17.4	8.2
			5+00	10.9	8.7

A° S 1/2

36

STA. N. 135+00; 0+00 = W. 14,010; SOUND EAST

Dist	Sound	Elev	Dist	Sound	Elev
0+00			<u>33</u>	12.7	9.4
<u>(3.3)</u>			50	12.8	9.5
	0.7	2.6		13.0	9.7
	3.2	+0.1		13.1	9.8
<u>1040</u>	6.7	3.4		12.3	9.0
	7.5	4.2		11.4	8.1
50	8.8	5.5		8.9	5.6
	8.9	5.6	3+00	11.4	8.1
	10.0	6.7		11.5	8.2
	10.0	6.7		11.5	8.2
	10.4	7.1		11.2	7.9
1+00	10.9	7.6		12.1	8.8
	11.1	7.8	50	11.6	8.3
	11.3	8.0		11.8	8.5
	11.7	8.4		11.9	8.6
	11.7	8.4		11.9	8.6
50	12.1	8.8		12.0	8.7
	11.8	8.5	4+00	12.0	8.7
	12.0	8.7		11.9	8.6
	11.9	8.6	<u>1045</u>	12.1	8.8
	11.9	8.6		12.5	9.2
2+00	12.5	9.2		12.7	9.0
	12.2	8.9	50	12.3	9.0
	12.4	9.1		13.0	9.7
	12.3	9.0		12.9	9.6
				12.9	9.6
				13.3	10.0
			5+00	12.8	9.5



6-27-60

STA. N. 135+50; 0+00 = W14,010; SOUND EAST

		DIST	SOUND	ELEV	DIST	SOUND	ELEV
	0+00				3.8	13.7	9.9
(3.8)	0.1	+3.7		50	13.9	10.1	
	2.9	+ .9			13.9	10.1	
<u>11:20</u>	6.9	3.1			14.0	10.2	
	8.0	4.2			13.9	10.1	
50	9.5	5.7			13.9	10.1	
	9.6	5.8	3+00		14.0	10.2	
	9.9	6.1			13.9	10.1	
	10.3	6.5			12.0	8.2	
	11.7	7.9			11.6	7.8	
1+00	12.0	8.2			11.7	7.9	
	12.3	8.5	50		12.1	8.3	
	12.9	9.1			12.1	8.3	
<u>50</u>	13.0	9.2	<u>11:25</u>		12.2	8.4	
	13.0	9.2	<u>50</u>		13.0	9.2	
	12.8	9.0			12.5	8.7	
	12.3	8.5	4+00		12.3	8.5	
	12.3	8.5			12.7	8.9	
	12.6	8.8			15.3	11.5	
	13.0	9.2			14.0	10.2	
2+00	13.3	9.5			14.2	10.4	
	13.7	9.9	50		14.7	10.9	
	13.7	9.9			12.9	9.1	
	13.6	9.8			13.0	9.2	
			5+00		13.0	9.2	
					13.1	9.3	

6-27-60

(37)

STA. N. 136+00; 0+00 = W14,000; SOUND EAST

		DIST	SOUND	ELEV	DIST	SOUND	ELEV
	0+00				4.0	15.3	11.4
(3.9)	0.8	+3.1		50	14.7	10.7	
	5.0	1.1		80	14.2	10.2	
<u>11:35</u>	8.1	4.2		80	13.6	9.6	
	9.4	5.5		72	12.4	8.4	
	11.1	7.2		71	11.8	7.8	
50	11.8	7.9	3+00		11.6	7.6	
	12.0	8.1			11.9	7.9	
	12.0	8.1			12.1	8.1	
	12.1	8.2			12.2	8.2	
1+00	12.9	9.0			15.1	11.1	
	13.2	9.3	50		14.8	10.8	
	13.6	9.7			14.8	10.8	
	14.0	10.1			14.7	10.7	
	14.2	10.3			14.3	10.3	
(6.9)	14.4	10.5			14.2	10.2	
50	15.0	11.1	4+00		14.0	10.0	
	15.1	11.2			13.7	9.7	
	15.4	11.5	<u>11:40</u>		14.4	10.4	
	15.0	11.4			14.0	10.0	
2+00	15.2	11.3			14.0	10.0	
	15.5	11.6	50		14.0	10.0	
	16.2	12.3			14.0	10.0	
	15.2	11.2			14.0	10.0	
	15.3	11.4			13.7	9.7	
			5+00		13.8	9.8	

June 27, 1960

STA. N. 136+50; 0+00 = W. 14,000; SOUND EAST

Dist Sound Elev Dist Sound Elev

0+00		1:50	13.9	9.8			
1:45		50	13.1	9.0			
(4)	0.6	+3.5	(4)	13.3	9.2		
	3.2	+0.9	4	14.3	10.1		
	7.8	3.7	10 1/2	13.8	10.7		
50	10.3	6.2	9	13.2	9.1		
	11.8	7.7	3+00	12.9	8.8		
	11.9	7.8		12.6	8.5		
	12.0	8.9		11.4	7.3		
	12.5	8.4		11.6	7.5		
1+00	12.9	8.8	11:55	12.0	7.9		
	12.1	9.0	50	13.8	9.7		
	13.3	9.2		13.6	7.5		
	13.9	9.8		13.3	9.2		
	14.1	10.0		12.9	8.7		
50	14.2	10.1		13.1	9.0		
	14.7	10.6	4+00	13.2	9.1		
	15.0	10.9		13.4	9.3		
	15.0	10.9		13.7	9.6		
	15.1	11.0		13.7	9.6		
2+00	14.8	10.7		13.5	9.4		
	15.1	11.0	50	13.7	9.6		
	14.8	10.7		13.8	9.7		
	14.7	10.6		13.4	9.3		
				13.3	9.2		
			2:00	13.4	9.3		
			5+00	13.4	9.3		

6-27-60

(38)

STA. N. 137+00; 0+00 = W. 13980; SOUND EAST

Dist Sound Elev Dist Sound Elev

0+00			(40)	12.1	8.9		
2:05	0.2	+3.2	50	13.0	9.0		
(40)	3.2	+0.8		13.1	9.1		
	6.9	2.9		13.0	9.0		
	10.2	6.2		13.5	9.4		
50	12.2	8.2		13.3	9.3		
	13.9	9.9	3+00	13.1	9.1		
	15.0	11.0		12.9	8.9		
	15.2	11.2		13.0	9.0		
	15.0	11.0		13.0	9.0		
1+00	14.9	10.9		13.6	9.6		
	15.0	11.0	50	13.2	9.2		
	14.8	10.8		13.0	9.0		
	14.6	10.6		12.5	8.5		
	14.8	10.8	2:05	12.2	8.2		
50	14.8	10.8		12.6	8.6		
	14.2	10.2	4+00	12.6	8.6		
	14.0	10.0		12.6	8.6		
	13.7	9.7		12.7	8.7		
	13.6	9.6		12.5	8.5		
2+00	13.5	9.5		13.1	9.1		
	13.3	9.3	50	13.1	9.1		
	13.2	9.2		13.1	9.1		
	13.0	9.0		13.1	9.1		
				13.1	9.1		
			5+00	13.2	9.2		

6-27-60

STA. N. 137+50.0+00=11.13,960; SOUND EAST

Dist	Sound	Elev	Dist	Sound	Elev
0+00			(39)	12.2	8.3
2:15	0.0	13.9	30	12.0	8.1
(39)	2.2	11.7		11.9	8.0
	7.7	3.8	41	13.0	9.1
	12.2	8.3	10 45	14.0	10.1
50	14.5	11.6		13.6	9.9
	15.0	11.1	3+00	13.2	9.3
	14.3	10.4		13.2	9.3
	14.0	10.1		13.0	9.1
	13.9	9.0		13.2	9.3
1+00	13.7	9.8		12.9	9.0
	13.3	9.4	50	13.0	9.1
	13.1	9.2		13.2	9.2
	13.0	9.1		13.0	9.1
	12.9	9.0		13.2	9.3
50	12.9	9.0	2:20	13.0	9.1
	12.8	8.9	4+00	12.8	8.9
	12.5	8.4		12.3	8.4
	12.8	8.9		12.9	9.0
	13.0	9.1		12.5	8.6
2+00	13.0	9.9		13.1	9.2
	13.0	9.1	50	13.0	9.1
	12.4	8.5		12.8	8.9
	12.3	8.4		12.3	8.4
	12.3	8.4		12.2	8.3
	12.1	8.2		12.1	8.2
	12.0	8.1	5+00	12.0	8.1

6-27-60

(39)

STA. N. 138+00.0+00=11.13,950; SOUND EAST

Dist	Sound	Elev	Dist	Sound	Elev
0+00			2:30	11.4	7.4
2:25			(38)	11.0	7.2
(38)	2.0	+1.8		10.9	7.1
	7.1	3.3	10 50	10.9	7.1
	9.5	3.7		10.9	7.1
50	13.2	9.4	8	11.1	7.3
	13.9	10.1	3+00	11.7	7.9
	13.2	9.4		12.0	8.2
	13.1	9.3	22 OF SILT	12.7	8.9
	13.2	9.4		12.9	9.1
1+00	13.1	9.3		12.0	8.2
	13.1	9.3	50	12.1	8.3
	13.0	9.2		12.3	8.5
	12.8	9.0		12.2	8.4
	12.8	9.0		12.0	8.2
50	12.4	8.4		11.9	8.1
	12.3	8.5	4+00	11.8	8.0
	12.3	8.5		11.9	8.1
	12.2	8.4		12.4	8.6
	12.1	8.3		12.2	8.4
2+00	12.1	8.3	2:35	12.5	8.7
	11.9	8.1	50	12.4	8.6
	11.6	7.2		12.7	8.9
	11.4	7.4		12.7	8.9
				11.8	8.0
				11.6	7.8
			5+00	11.9	8.1

6-27-60

STA. N. 138+50; 0+00-W. 139+30; SOUND EAST

Dist	Sound	Elev	Dist	Sound	Elev
0+00			(37)	10.6	6.9
2:50	0.0	+3.7	50	10.1	6.4
(37)	2.2	+1.5		9.9	6.2
	6.8	3.1		9.9	6.2
	11.3	6.6		9.9	6.2
50	12.6	8.9		10.1	6.4
	12.5	8.8	3+00	10.5	7.8
	12.6	8.9		11.2	7.5
	12.9	9.2		11.3	7.6
	12.8	9.1		12.0	8.3
1+00	12.8	9.1	2:55	11.7	8.0
	12.7	9.0	50	11.7	8.0
	12.5	8.8		11.2	7.5
	12.5	8.8		10.9	7.2
	12.3	8.4		11.0	7.3
50	12.0	8.3		11.4	7.7
	11.8	8.1	4+00	11.6	7.9
	11.8	8.1		11.7	8.0
	11.8	8.1		12.0	8.3
	11.0	7.3		12.6	8.9
2+00	11.1	7.4		11.8	8.1
	10.9	7.2	50	11.4	7.7
	11.1	7.4		11.2	7.5
	10.8	6.9		11.8	8.1
				12.0	8.3
				12.3	8.6
			5+00	12.2	8.5

6-27-60

40

STA. N. 139+00; 0+00-W. 139+20; SOUND EAST

Dist	Sound	Elev	Dist	Sound	Elev
0+00			(36)	10.5	6.9
3:00			50	10.6	7.0
				10.3	6.7
				10.5	6.9
				10.4	6.8
			50	12.1	8.5
				12.0	8.4
			3+00	10.9	8.8
				12.0	8.4
				12.0	8.4
				11.8	7.2
			3:05	11.2	7.6
1+00	11.4	7.8		11.2	7.6
	11.2	7.6	50	11.0	7.4
	11.1	7.5		10.8	7.2
	10.9	7.3		11.0	7.4
	10.5	6.9		11.0	7.4
50	10.4	6.8		11.2	7.6
	10.1	6.5	4+00	11.2	7.6
	10.1	6.5		11.2	7.6
	10.1	6.5		10.9	6.3
	10.1	6.5		10.3	6.7
2+00	10.1	6.5		10.2	6.6
	9.8	6.3	50	11.0	7.4
	9.9	6.4		10.9	7.3
				11.8	7.2
				11.1	7.5
				11.6	8.0
			5+00	11.7	8.1

6-28-60

④

STAN. 139+50; 0+00 = W. 13,890; SOUND EAST

STA. N. 140+00; 0+00 = W. 13,870; SOUND EAST

Dist Sound Elev Dist Sound Elev

Dist Sound Elev Dist Sound Elev

0+00 (19) 9.3 7.4 0+00 (20) 10.0 8.0

(19) 50 9.1 7.2 (20) 50 9.9 7.9

0.1 +1.8 9.1 7.2

9.9 7.9

9:20 4.2 2.3 9.2 7.3

9:30 2.5 .5 9.3 7.3

7.8 5.9 9.3 7.4

50 7.1 5.1 9.2 7.2

50 8.0 6.1 9.2 7.3

50 7.1 5.1 9.2 7.2

8.2 6.3 3+00 9.3 7.4

9.2 7.2 3+00 8.9 6.9

8.3 6.4 9.2 7.3

9.6 7.6 8.7 6.7

8.3 6.4 9.1 7.2

9.5 7.5 8.4 6.4

8.3 6.4 9.0 7.1

9.5 7.5 8.2 6.2

1+00 8.7 6.6 8.9 7.0 1+00 9.7 7.7

9.7 7.7 8.2 6.2

8.9 7.0 50 8.7 6.8

50 7.9 5.9

9.0 7.1 8.6 6.7

9.8 7.8 7.5 5.5

9.1 7.2 8.8 6.9

9.9 7.9 7.3 5.3

9.1 7.2 8.5 6.6

9.9 7.9 7.4 5.4

50 8.9 7.0 8.3 6.4

50 10.1 8.1 7.2 5.2

8.8 6.9 4+00 8.3 6.4

10.1 8.1 4+00 7.1 5.1

8.6 6.7 8.3 6.4

10.2 8.2 7.1 5.6

8.8 6.9 8.6 6.7

10.2 8.2 6.6 4.6

9.0 7.1 8.6 6.7

10.2 8.2 6.0 4.0

2+00 9.2 7.3 8.4 6.5 2+00 10.2 8.2

2+00 10.2 8.2 6.0 4.0

9.2 7.3 50 8.3 6.4

10.1 8.1 50 6.3 4.3

9.2 7.3 8.2 6.2

10.1 8.1 7.0 5.0

9.2 7.3 8.0 6.3

10.1 8.1 7.7 5.7

9.2 7.3 8.2 6.3

10.1 8.1 8.1 6.1

5+00 8.1 6.7 8.2 6.2

5+00 8.2 6.2

8.1 6.7

8.2 6.2

OMIT 6-27-60

(42)

STA. W. 139+50; 0+00=N. ; SOUND SOUTH

STA. W. 139+50-SOUTH

DIST SOUND ELEV

DIST SOUND ELEV DIST SOUND ELEV

0+00

50

5+00

50

3+00

50

1+00

50

6+00

50

4+00

2+00

50

(omit)

STA. W. 139+00; 0+00 = N. 44+00; SOUND SOUTH  
Dist Sound Elev Dist Sound Elev  
0+00

50

50

3+00

1+00

50

50

4+00

2+00

50

STA. W. 139+00 - SOUTH  
Dist Sound Elev

(13)

5+00

50

6+00

6-28-60

STA. W. 138+00; 0+00=N. 14,040. SOUND SOUTH

Dist Sound Elev Dist Sound Elev

0+00 0.4 +2.2 (26) 11.8 9.2

(26) 3.0 0.4 50 11.3 8.7

7.1 4.5 10.9 8.3

1000 9.0 6.4 10.8 8.2

10.2 6.6 11.1 8.5

50 10.1 6.5 11.7 9.1

10.2 6.6 3+00 12.0 9.4

10.1 6.5 12.2 9.6

9.8 6.2 12.3 9.7

9.4 5.8 12.2 9.6

1+00 9.2 5.6 12.3 9.7

9.3 5.7 50 12.8 10.2

9.7 6.1 13.4 10.8

9.9 6.2 13.7 11.1

10.2 6.6 4° SILT 13.6 11.0

50 10.2 6.6 13.7 11.1

10.3 6.7 4+00 13.6 11.0

10.7 7.1

11.4 8.8

11.7 9.1

2+00 11.9 9.3

11.9 9.3 50

11.6 9.0

11.8 9.2

STA. W. 138+00-SOUTH

Dist Sound Elev

5+00

50

6+00

(44)



6-28-60

STA. W. 137+00, 0+00 = N. 14, 140 SOUND SOUTH

	Dist	Sound	Elev	Dist	Sound	Elev
0+00	0.4		+1.7	(2.8)	9.5	6.5
(2.7)	5.5		-2.8	50	9.7	7.0
	8.1		3.4		9.7	7.0
<u>10:30</u>	8.7		6.0		9.2	6.5
	9.0		6.3		9.3	6.6
50	9.3		6.6		10.1	7.4
	9.8		7.1	3+00	10.3	7.6
	10.0		7.3		10.7	8.0
	10.7		8.0		10.5	7.8
	10.9		8.2	10:35	10.6	7.9
1+00	11.2		8.5		10.7	8.0
	11.2		8.5	50	10.7	8.0
	11.2		8.5		10.7	8.0
	11.8		9.1		10.7	8.0
	11.7		9.0		10.9	8.2
↑ 50	10.3		7.6		10.6	7.9
10:51	10.2		7.5	4+00	12.9	10.2
↑	9.7		7.0	↑	11.6	8.9
↑	9.9		7.2	↑	11.8	9.1
↑	10.0		7.3	↑	12.2	9.5
2+00	9.9		7.2		12.2	9.5
	10.0		7.3	50	12.3	9.6
	9.7		7.0		12.3	9.6
	9.8		7.1		12.0	9.3

STA. W. 137+00-SOUTH

Dist Sound Elev

(2.8)	12.0	9.3
	12.1	9.4
5+00	12.1	9.4

50

6+00

(45)

6-28-60

STA. W. 136+00; 0+00 = N. 14220; SOUND SOUTH

Dist	Sound	Elev	Dist	Sound	Elev
0+00			(29)	10.0	7.1
(29)	0.6	+2.3	50	10.0	7.1
	4.0	-1.1		10.2	7.3
<u>10:45</u>	7.5	4.6		10.3	7.4
	8.0	5.1		10.2	7.3
50	8.2	5.3		10.2	7.3
	8.8	5.9	3+00	10.3	7.4
	8.7	5.8		10.6	7.7
	8.9	6.0		10.9	8.0
	9.0	6.1		11.0	8.1
1+00	9.0	6.1		11.0	8.1
	9.2	6.3	50	11.0	8.1
	9.4	6.5		11.1	8.2
	9.7	6.8		11.0	8.1
	10.0	7.1		11.1	8.2
50	10.0	7.1		11.1	8.2
	10.0	7.1	4+00	11.1	8.2
	10.0	7.1		11.2	8.3
	10.0	7.1		11.5	8.6
	10.0	7.1		12.2	9.3
2+00	10.1	7.2		12.7	9.8
	10.2	7.3	50	12.5	9.6
	10.5	7.6		12.5	9.6
	10.4	7.5		12.3	9.4

STA. W. 136+00 - SOUTH

(46)

Dist Sound Elev

(29)	12.6	9.7
	12.0	9.1
5+00	11.9	9.0

50

6+00

6-27-60

STA. W. 135+00' 0+00 = N. 14318' SOUND SOUTH

Dist	Sound	Elev	Dist	Sound	Elev
0+00	1.6	+2.6	(4.2)	6.6	2.4
(4.2)	1.3	+2.9	50	7.6	3.4
	1.6	+2.6		6.9	2.7
<u>11.30</u>	1.2	+3.0		7.0	2.8
	2.1	+2.1		7.1	2.9
50	1.0	+3.2		8.0	3.8
	1.2	+3.0	3+00	8.2	4.0
	1.8	+2.4		9.3	5.1
	8.8	4.6		9.3	5.1
	8.4	4.2		9.7	5.5
1+00	8.5	4.3		10.1	5.9
	8.2	4.0	50	10.1	5.9
	8.3	4.1		10.1	5.9
	8.1	3.9		10.3	6.1
	7.9	3.7		10.9	6.7
50	7.9	3.7		11.1	6.9
	7.6	3.4	4+00	11.4	7.2
	7.4	3.2		11.4	7.2
	7.2	3.0		11.3	7.1
	7.1	2.9		11.3	7.1
2+00	7.1	2.9		11.8	7.6
	6.8	2.6	50	12.2	8.0
	6.8	2.6		13.0	8.8
	6.6	2.4		12.5	8.3

STA. W. 135+00 - SOUTH

(47)

Dist Sound Elev

Dist	Sound	Elev
(14.2)	12.2	8.0
	12.3	8.1
5+00	12.6	8.4
	13.0	8.8
<u>11.35</u>	12.8	8.6
	12.8	8.6
	13.0	8.8
50	13.0	8.8
	12.7	8.5
	12.6	8.4
	12.8	8.6
	13.0	8.8
6+00	13.1	8.9

6-27-60

STA. W. 134+00 - 0+00 = 11 1/2 260' SOUND SOUTH

DIST	SOUND	ELEV	DIST	SOUND	ELEV
0+00	1.6	+2.6	(42)	9.4	5.2
(42)	1.5	+2.7	50	9.7	5.5
	1.7	+2.5		9.8	5.6
1:15	1.8	+2.4		9.9	5.7
	2.7	+1.5		10.0	5.8
50	2.7	+1.5		10.1	5.9
	2.3	+1.9	3+00	10.7	6.5
	4.1	+0.1		10.9	6.7
	4.6	0.4		11.0	6.8
	4.8	0.6		11.1	6.9
1+00	4.7	0.5		11.4	7.2
	4.2	0.0	50	11.6	7.4
	4.3	0.1		12.7	8.5
	4.4	0.2		12.7	8.5
	4.3	0.1		12.7	8.5
50	4.8	0.6		12.6	8.4
	5.1	0.9	4+00	12.8	8.6
	5.3	1.1		12.7	8.5
	6.0	1.8		12.7	8.5
	6.8	2.6	11:20	12.9	8.7
2+00	7.1	2.9		14.0	9.8
	7.7	3.5	50	13.0	8.8
	8.3	4.1		13.7	9.5
	9.3	5.1		14.5	10.3

STA. W. 134+00 - SOUTH

DIST SOUND ELEV

(42)	14.2	10.0
	13.5	9.3
5+00	14.8	10.6

50  
 11:15  
 50

6+00

(48)

6-24-60 N

STA. W. 133+00			W. 14400. SOUND SOUTH		
Dist	Sound	Elev	Dist	Sound	Elev
0+00	1.2	+3.1	(43)	3.4	+0.9
(43)	1.1	+3.2	50	4.8	0.5
	1.1	+3.2		6.0	1.7
<u>10:55</u>	1.1	+3.2		6.3	2.0
	1.1	+3.2		7.2	2.9
50	1.2	3.1		7.3	3.0
	1.2	3.1	3+00	7.6	3.3
	1.2	3.1		7.5	3.2
	1.3	3.0		7.8	3.5
	1.4	2.9	<u>11:00</u>	7.1	2.6
1+00	1.3	2.8		7.0	2.7
	1.5	2.8	50	7.0	2.7
	1.5	2.8		7.6	3.3
	1.6	2.7		8.8	4.5
	1.6	2.7		10.0	5.7
50	1.7	2.6		10.8	6.5
	1.8	2.5	4+00	13.0	8.7
	1.9	2.4		12.5	8.2
	2.0	2.3		12.0	7.7
	2.0	2.3		11.5	7.2
2+00	2.1	2.2		12.0	7.7
	2.2	2.1	50	12.0	7.7
	2.3	2.0		12.0	7.7
	3.0	1.7		12.0	7.7

STA. W. 133+00 - SOUTH

Dist	Sound	Elev
(43)	12.5	8.2
	13.0	8.7
5+00	13.0	8.7
<u>11:05</u>	13.5	9.2
	13.5	9.2
	13.5	9.2
	14.0	9.7
50	14.0	9.7
	12.0	
	14.0	
	14.0	
	14.0	
6+00	14.0	9.7

6-24-60

(50)

STA. W. 132+00 - 0+00 = N. 14,500, SOUND SOUTH

STA. W. 132+00 - SOUTH

Dist Sound Elev Dist Sound Elev

Dist Sound Elev

0+00 1.7 + 2.6 (A3) 8.1 3.8

(A3) 11.5 7.2

(A3) 1.8 + 2.5 50 8.3 4.0

11.5 7.2

1.8 + 2.5 8.8 4.5

8+00 12.0 7.8

1.8 + 2.5 9.5 5.2

10,45 12.0 7.8

10,40 1.9 + 2.4 9.3 5.0

12.5 8.2

50 1.9 + 2.4 9.7 5.4

12.5 8.2

2.0 + 2.3 3+00 9.8 5.5

12.5 8.2

2.0 + 2.3 10.0 5.7

50 12.5 8.2

2.2 + 2.1 10.1 5.8

13.0 8.7

2.3 + 2.0 10.2 5.9

13.0 8.7

1+00 2.8 + 1.5 10.6 6.3

10,50 13.0 8.7

3.1 + 1.2 50 11.0 6.7

13.5 9.2

3.2 + 1.1 11.0 6.7

6+00 13.5 9.2

3.2 + 1.1 11.0 6.7

3.3 + 1.0 11.1 6.8

50 4.0 + 0.3 11.2 6.9

2.8 + 1.5 4+00 11.0 6.7

2.8 + 1.5 11.0 6.7

3.2 + 1.1 11.0 6.7

3.4 + 0.9 11.0 6.7

2+00 4.4 0.1 11.5 7.2

5.3 1.0 50 11.5 7.2

6.1 1.8 11.5 7.2

7.1 2.8 11.5 7.2

6-24-60

STA. W. 131+00 - N. 14,400 - SOUND SOUTH			SOUND SOUTH		
Dist	Sound	Elev	Dist	Sound	Elev
0+00	2.0	+2.1	(42)	6.5	2.3
(41)	2.0	+2.1	50	7.0	2.8
	2.1	+2.0		8.0	3.8
10:15	2.1	+2.0		8.5	4.3
	2.1	+2.0		8.9	4.7
50	2.2	+1.9		9.2	5.0
	2.3	+1.8	3+00	9.2	5.0
	2.4	+1.7		9.6	5.4
	2.5	+1.6		9.9	5.7
	2.5	+1.6		10.0	5.8
1+00	2.6	+1.5		10.1	5.9
	3.2	+0.9	50	11.0	6.8
	2.7	+1.6	(7.2 Top)	11.0	6.8
	2.8	+1.7	10:20	11.2	7.0
	3.2	+0.9		11.5	7.3
50	3.9	+0.2		11.5	7.3
	3.9	+0.2	4+00	12.0	7.8
	4.0	+0.1		11.5	7.3
	4.1	0.0		11.5	7.3
	4.3	0.4		12.0	7.8
2+00	4.9	0.8		12.0	
	4.9	0.8	50	12.0	
	5.3	1.2	10:25	12.0	
	6.2	2.1		12.0	7.8

STA. W. 131+00 - SOUTH

(51)

Dist	Sound	Elev
(43)	12.0	7.7
	12.0	
5+00	12.0	
	12.0	
	12.0	
	12.0	
50	12.0	7.7
(7.0 Top)	12.5	8.2
	12.0	7.8
10:30	12.5	8.2
	12.5	8.2
6+00	13.0	8.7

6-24-60

STA W. 130+00; 0+00 = N. 14,400; SOUND SOUTH

Dist	Sound	Elev	Dist	Sound	Elev
0+00	2.1	+1.8	(4.0)	9.0	5.0
(39)	2.0	+1.9	50	9.0	5.0
	2.0	+1.9		9.0	5.0
<u>9:50</u>	2.1	+1.8		9.1	5.1
	2.2	+1.7		9.5	5.5
50	2.3	+1.6		9.5	5.5
	2.3	+1.6	3+00	10.1	6.1
	2.3	+1.6		10.1	6.1
	2.3	+1.6		10.5	6.5
	2.3	+1.6		10.9	6.9
1+00	2.3	+1.6	(8.2) (4.5H)	12.3	8.3
	2.3	+1.6	50	12.0	8.0
	2.3	+1.6		11.8	7.8
	2.8	+1.1	<u>9:55</u>	11.8	7.8
	3.6	+0.3		12.0	8.0
50	4.2	0.3		12.2	8.2
	4.8	0.9	4+00	12.2	8.2
	6.4	2.5		12.2	8.2
	9.2	5.3		12.5	8.5
	9.7	5.8		12.5	8.5
2+00	9.7	5.8		13.0	9.0
	9.8	5.9	50	13.0	9.0
	9.3	5.4		12.5	8.5
	9.2	5.3		12.5	8.5

STA W. 130+00 - SOUTH

(52)

Dist	Sound	Elev	Dist	Sound	Elev
(4.0)	12.5	8.5			
	12.0	8.0			
5+00	12.0	8.0			
(9:10=Top)	12.0	8.0			
<u>10:00</u>	12.0	8.0			
	12.5	8.5			
	12.5	8.5			
50	13.0	9.0			
(8:0 Top)	13.0	9.0			
<u>10:05</u>	14.0	10.0			
	14.0	10.0			
	15.0	11.0			
6+00	15.0	11.0			
(10:0 Top)					

penetrate to 16.5

50  
+00



7-06-60

STA. N. 138+00; 0+00-W. 13,950; SOUND EAST

Dist	Sound	Elev	Dist	Sound	Elev
5+00	13.0	9.5	(34)	12.6	9.2
(35)	12.5	9.0	TOP → 9.0	5.6	
	12.3	8.8	50	12.5	9.1
	12.2	8.7	10:50	12.3	8.9
	12.6	8.1		12.0	8.6
50	12.5	9.0		12.2	8.8
	12.5	9.0		12.4	9.0
10:45	12.5	9.0	TOP → 8.5	5.1	
	12.5	9.0	8+00	12.8	9.4
	12.2	8.7		12.7	9.3
6+00	12.8	9.3	(33)	12.1	8.8
	12.8	9.3		12.6	9.3
	12.9	9.4	TOP → 8.5	5.2	
	13.2	9.7	50	12.2	8.9
	13.8	10.3		12.1	8.8
TOP → 50	13.9	10.4	10:55	12.4	9.1
	13.8	10.3		12.3	9.0
	14.0	10.5		13.2	8.9
	13.5	10.0	9+00	13.3	10.0
	13.8	10.3		13.2	9.8
	14.0	10.5		13.0	9.7
	13.8	10.3		13.6	10.3
7+00	14.3	10.8	11:00	14.0	10.7
	14.0	10.5	TOP → 8.0	4.7	
	12.5	9.0	50	14.2	10.9
	12.0	8.5		14.1	10.8
				14.1	10.8

STA. N. 138+00 - EAST

Dist	Sound	Elev	Dist	Sound	Elev
(32)	14.2	11.0	(31)	12.3	9.2
	14.6	11.4		12.2	9.9
TOP → 10+00	7.6	4.4	TOP → 50	8.5	5.4
	14.3	11.1		12.0	8.9
	14.3	11.1		11.5	8.4
	14.0	10.8		11.7	8.6
11:05	14.0	10.8	11:15	11.2	8.1
	14.0	10.8		11.2	8.1
TOP → 50	8.0	4.8	TOP → 13+00	8.0	4.9
	14.2	11.0		11.3	8.2
	14.1	10.9		11.6	8.5
	14.0	10.8		11.8	8.7
	14.0	10.8		12.0	8.9
TOP → 11+00	8.5	5.3		11.9	8.8
	14.0	10.8	TOP → 50	8.0	4.9
	13.9	10.7		11.8	8.7
	13.9	10.7	(30)	11.5	8.4
	13.8	10.6		11.3	8.2
TOP → 50	9.0	6.8		11.5	8.4
	13.8	10.6	TOP → 14+00	8.3	5.2
	13.5	10.3		11.7	8.6
	13.3	10.1		11.6	8.5
11:10	13.0	9.8	11:20	12.1	9.0
	13.0	9.8		12.0	8.9
TOP → 12+00	9.0	6.8		12.0	8.9
	13.0	9.8	TOP → 50	8.5	5.4
	13.0	9.8		12.0	8.9
	12.5	9.3		12.0	8.9
				11.8	8.8

STA. N. 138+00 - EAST 7-06-60

Dist	Sound	Elev	Dist	Sound	Elev
(30)	12.0	9.0	(29)	12.8	9.9
Top →	12.1	9.1	Top →	12.9	10.0
15+00	<u>8.6</u>	<u>5.6</u>	50	<u>9.2</u>	<u>6.3</u>
	11.9	8.9		12.8	9.9
	11.8	8.8		12.5	9.6
	11.9	8.9	11:30	12.5	9.6
	11.7	8.7	—	12.7	9.8
	11.6	8.6		12.6	9.7
Top 50	<u>8.8</u>	<u>5.8</u>	Top 50	<u>9.2</u>	<u>6.3</u>
	11.7	8.7	18+00	13.0	10.1
	11.3	8.3		12.9	10.0
11:25	11.1	8.1		12.8	9.9
	11.1	8.1		12.6	9.7
	11.2	8.2		12.7	9.8
Top →	<u>9.0</u>	<u>6.0</u>	Top →	<u>9.4</u>	<u>6.5</u>
16+00	12.2	9.2	50	12.8	9.9
	12.1	9.1		12.6	9.7
	12.1	9.1		12.7	9.8
	11.9	8.7	11:35	12.8	9.9
	12.0	9.0	—	12.4	9.5
Top 50	<u>9.0</u>	<u>6.0</u>	Top →	<u>9.8</u>	<u>6.9</u>
	12.0	9.0	19+00	12.6	9.7
	11.7	8.7		12.4	9.5
	11.8	8.8		12.5	9.6
	11.9	8.9		13.0	10.1
	11.9	8.9		13.1	10.2
Top →	<u>9.1</u>	<u>6.1</u>	Top →	<u>9.9</u>	<u>7.0</u>
17+00	12.2	9.2	50	13.1	10.2
	12.2	9.2		13.0	10.1
	12.7	9.7		13.0	10.1

STA. N. 138+00 - EAST

(54)

Dist	Sound	Elev	Dist	Sound	Elev
(28)	12.8	10.0	(27)	12.0	9.2
Top →	12.6	9.8	Top →	12.3	9.5
20+00	<u>9.9</u>	<u>7.1</u>	50	<u>10.9</u>	<u>8.1</u>
	12.5	9.7		12.2	9.4
	12.2	9.4		13.4	10.6
11:40	12.2	9.4		12.9	10.1
—	12.7	9.9		12.9	10.1
	13.0	10.2		12.7	9.9
Top 50	<u>10.0</u>	<u>7.2</u>	Top 50	<u>10.9</u>	<u>8.1</u>
	12.7	9.9	23+00	12.3	9.5
	12.6	9.8		12.4	9.6
	12.4	9.6	11:50	12.2	9.4
	12.2	9.4	—	12.0	9.2
	12.2	9.4		11.9	9.1
Top →	<u>10.2</u>	<u>7.4</u>	Top →	<u>10.9</u>	<u>8.1</u>
21+00	12.7	9.3	50	11.8	9.0
	12.1	9.3		11.8	9.0
	12.1	9.3		11.8	9.0
	12.3	9.5		11.3	8.5
	12.7	9.9		11.6	8.8
Top 50	<u>10.3</u>	<u>7.5</u>	Top →	<u>10.7</u>	<u>7.9</u>
	12.6	9.8	24+00	11.3	8.5
	12.5	9.7			
	12.6	9.8	11:55		
	12.6	9.8	—		
11:45	12.7	9.9			
—	12.9	10.1			
Top →	<u>10.6</u>	<u>7.8</u>	Top →		
22+00	12.3	9.5	50		
	12.3	9.5			
	12.1	9.3			

See F.B. 126 - For Baseline  
3-01-61

SOUNDINGS & X-SEC'S N' WLY. CRESCENT  
BAY CAZAMARAN & VICINITY W.D. 64160

STA. 0+50; 0+00 = 80 'SLY.'; SOUND 5.39° E

DIST SOUND ELEV DIST SOUND ELEV

0+00

(4.5)

1.5 + 3.0

2.0 + 2.5

2.0 + 2.5

50 2.1 + 2.4

2.3 + 2.2

10:35 2.4 + 2.1

2.5 + 2.0

2.9 + 1.6

1+00 3.2 + 1.3

3.9 + 0.6

5.2 0.7

7.3 2.8

8.0 3.5

50 8.3 3.8

7.9 3.4

7.6 3.1

(185) 8.4 3.9

9.5 5.0

2+00 8.8 4.3

9.2 4.7

(45)

10.1 5.6

10.9 6.4

11.8 7.3

50 12.4 7.9

12.5 8.0

12.8 8.3

12.9 8.4

12.7 8.2

3+00 12.9 8.4

(44)

1.5 + 2.9

2.5 + 1.9

50 2.8 + 1.6

2.8 + 1.6

10:40 2.9 + 1.5

3.0 + 1.4

3.6 + 0.8

1+00 5.1 0.7

6.9 2.5

7.5 3.1

7.8 3.4

8.0 3.6

50 8.0 3.6

8.0 3.6

7.9 3.5

7.3 2.9

8.2 3.8

2+00 8.9 4.5

9.4 5.0

9.3 4.9

10.7 6.3

(44)

50

12.2 7.8

12.6 8.2

12.6 8.2

13.0 8.6

13.0 8.6

13.2 8.8

3+00 13.3 8.9

13.3 8.9

13.3 8.9

13.3 8.9

13.3 8.9

13.3 8.9

13.3 8.9

13.3 8.9

13.3 8.9

13.3 8.9

13.3 8.9

13.3 8.9

13.3 8.9

13.3 8.9

13.3 8.9

13.3 8.9

13.3 8.9

13.3 8.9

3-01-61

STA. 1+50: 0+00=80 'SLY OF B/L SOUND 5.39° E

DIST	SOUND	ELEV	DIST	SOUND	ELEV
0+00			(4.2)	8.6	4.4
(4.2)			50	10.0	5.8
	1.4	+2.8		11.0	6.8
	2.2	+2.0		11.8	7.6
	2.8	+1.4		12.1	7.9
50	3.0	+1.2		12.0	7.8
	3.1	+1.3	3+00	12.4	8.2
10:50	3.3	+0.9			
	3.5	+0.7			
	3.5	+0.7			
1+00	4.0	+0.2			
	3.6	+0.6			
	4.1	+0.1			
	7.2	3.0			
	8.0	3.8			
50	8.2	4.0 (1+55)			
	8.8	4.6			
	8.3	4.1			
	8.5	4.3			
	8.4	4.2			
2+00	9.1	4.9			
	8.8	4.6			
	8.2	4.0			
	8.1	3.9			

(56)

STA. 2+00: 0+00=70 'SLY OF B/L SOUND 5.39° E

DIST	SOUND	ELEV	DIST	SOUND	ELEV
0+00			(4.1)	7.9	3.8
(4.1)			50	8.7	4.6
	1.0	+3.1		9.1	5.0
	2.5	+1.6		11.3	7.2
	2.9	+1.2		11.7	7.6
50	3.2	+0.9		11.9	7.8
	3.3	+0.8	3+00	12.3	8.2
10:55	3.3	+0.8		12.3	8.2
	3.3	+0.8			
	3.4	+0.7			
1+00	3.4	+0.7			
	3.4	+0.7			
	3.4	+0.7			
	3.4	+0.7			
	3.3	+0.8			
50	3.6	+0.5			
	6.1	2.0			
	8.0	3.9			
	8.0	3.9			
	8.1	4.0 (1+95)			
2+00	8.6	4.5			
	8.6	4.5			
	8.1	4.0			
	8.0	3.9			

3-01-61

STA. 2+50; 0+00=50' SLY. OF B/L. SOUND 5.39°E

	Dist	Sound	Elev		Dist	Sound	Elev
0+00				(39)	8.0		4.1
(3.9)				50	8.7		4.8
	0.0		+3.9		8.7		4.8
	1.3		+2.6		8.9		5.0
	3.0		+0.9		9.0		5.1
50	3.1		+0.8		10.0		6.1
	3.1		+0.8	3+00	11.2		7.3
11:05	3.1		+0.8		11.3		7.4
	3.1		+0.8		12.0		8.1
	3.1		+0.8		12.1		8.2
1+00	3.1		+0.8		12.6		8.7
	3.1		+0.8	50	12.4		8.5
	3.3		+0.6				
	3.2		+0.7				
	3.3		+0.6				
50	3.6		+0.3				
	3.6		+0.3				
	5.6		1.7				
	6.4		2.5				
	6.5		2.6				
2+00	5.9		2.0				
	6.9		3.0				
	7.4		3.5				
(235)	8.0		4.1				

(57)

STA. 3+00; 0+00=10' SLY. OF B/L. SOUND 5.39°E

	Dist	Sound	Elev		Dist	Sound	Elev
0+00				(38)	6.3		2.5
(3.8)				50	7.7		3.9
					7.2		3.4
					6.7		2.9
					7.3		3.5
				50	0.5	+3.3	(2+95) 7.9
					1.8	+2.0	3+00 8.1
				11:10	3.4	+0.4	8.5
					3.5	+0.3	9.6
					3.7	+0.1	11.9
1+00					3.2	+0.6	12.1
					3.0	+0.8	50 11.9
					3.0	+0.8	12.0
					3.0	+0.8	
					2.9	+0.9	
				50	2.9	+0.9	
					3.0	+0.8	
					3.2	+0.6	
					3.0	+0.8	
					3.0	+0.8	
2+00					3.1	+0.7	
					5.5	1.7	
					6.7	2.9	
					6.7	2.9	

3-01-61

53

STA. 3+50' 0+00 = 10' SLY. OF B/L; SOUND S. 39° E

STA. 4+00' 0+00 = 20' SLY. OF B/L; SOUND S. 39° E

DIST	Sound	Elev	DIST	Sound	Elev	DIST	Sound	Elev	DIST	Sound	Elev
0+00			(36)	7.6	4.0	0+00	(34)	8.1	4.7		
(3.6)			50	8.0	4.4	(3.4)		50	8.0	4.6	
				6.8	3.2		0.1	+3.3		8.2	4.8
				6.1	2.5		0.6	+2.8		8.2	4.8
				6.2	2.6		1.7	+1.7		8.5	5.1
50	1.4	2.2	(2+95)	7.4	3.8	50	2.8	+0.6		8.5	5.1
	3.6	0.0	3+00	8.4	4.8		3.8	0.4	3+00	8.2	4.8
11:20	3.7	0.1		9.0	5.4	11:30	4.0	0.6		10.9	7.5
	3.8	0.2		11.0	7.4		4.0	0.6		11.0	7.6
	3.2	+0.4		11.3	7.7		4.0	0.6		10.8	7.4
1+00	2.8	+0.8		11.5	7.9	1+00	3.7	0.3		11.0	7.6
	2.9	+0.7	50	11.4	7.8		3.0	+0.4	50	11.0	7.6
	2.9	+0.7		11.8	8.2		3.0	+0.4		11.0	7.6
	2.9	+0.7		12.3	8.7		3.0	+0.4		11.0	7.6
	2.9	+0.7		11.9	8.3		3.0	+0.4		11.0	7.6
50	3.0	+0.6		11.8	8.2	50	3.3	+0.1		10.9	7.5
	3.0	+0.6	4+00	12.0	8.4		3.2	+0.2	4+00	11.1	7.7
	2.9	+0.7					3.1	+0.1			
	2.9	+0.7					3.2	+0.2	STA. 4+50 - Pg. 62		
	2.7	+0.9					3.6	0.2			
2+00	2.7	+0.9				2+00	4.7	1.3			
	3.1	+0.5				(2+10)	8.1	4.7			
	3.2	+0.4					8.9	5.5			
	6.1	2.5					8.3	4.9			

3-01-61

59

CROSS SEC'S NWLY AREA CRESCENT  
BAY CATAMARAN & VICINITY

NOTE: See B/L Sketch FB126, Pg. 34  
Sec's Taken @ 90° To B/L.

STA. 0+00

STA.	Direct Elev	Rod Used	Elev.	Chis'd NW. Coy. Top Wall 24" Drain
B.M.			8.435	
0			8.3	FB126 35
Rt. 38			8.0	
Rt 52			2.6	
Rt. 79			2.8	
Rt 90			5.0	
Rt 120			5.3	
Rt 140			4.5	

STA. 0-50

Rt 100	8.5
Rt 120	7.8
Rt 160	6.0
Rt 190	5.0

STA

0

Rt 80

Rt 100

STA. 0+50

Elev

7.8

6.3

2.5

STA. 1+00

8.2

8.1

8.4

6.6

6.1

5.2

4.7

STA. 1+50

8.5

8.9

7.1

5.9

2.5

3-01-61

STA.	STA. 2+00	ELEV.
0		8.8
Lt. 30		8.9
Rt. 11		9.0
Rt. 70		6.5
Rt. 73		6.2
Rt. 90		2.7

STA. 2+50

0	7.4
Lt. 11	7.9
Lt. 40	9.2
Rt. 6	7.5
Rt. 8	6.6
Rt. 18	6.8
Rt. 50	6.2
Rt. 70	3.5

60

STA.	STA. 3+00	ELEV.
0		6.0
Lt. 6		6.4
Lt. 9		7.6
Lt. 50		9.0
Rt. 47		4.3
Rt. 50		3.9

STA. 3+50

0	7.2
Lt. 24	8.6
Rt. 10	6.1
Rt. 18	4.7
Rt. 45	4.0
Rt. 60	1.5



3-01-61

(61)

STA.	STA. 4+00	Elev
0		7.8
Lt. 10		8.5
Rt. 16		6.2
Rt 20		5.4
Rt 40		3.2

	STA. 4+50	Elev
0		9.6
Rt 4		9.3
Rt 5		8.3
Rt. 20		5.4
Rt 50		2.8

STA. 0+00; 0+00 = 120' SLY OF BL. SOUND S. 39° E.					
DIST	SOUND	Elev	DIST	SOUND	Elev
0+00			(4.7)	13.0	8.3
(4.7)			50	12.9	8.2
	0.1	+4.6		12.8	8.1
	1.0	+3.7		13.0	8.3
	1.1	+3.6		13.1	8.4
50	1.5	+3.2		13.5	8.8
	1.8	+2.9	3+00	13.3	8.6
10.25	2.2	+2.5			
<u>10.25</u>	2.3	+2.4			
	3.0	+1.7			
1+00	3.7	+1.0			
	4.6	+0.1			
	6.3	1.6			
	6.8	2.1			
	8.6	3.9			
50	8.6	3.9			
(1+55)	10.2	5.5			
	10.4	5.7			
	10.9	6.2			
	10.9	6.2			
2+00	11.3	6.6			
	13.3	8.6			
	12.8	8.1			
	12.9	8.2			

3-01-61

STA. 0-50; 0+00 = 170' SLY. OF B/L SOUND S. 39° E

Dist Sound Elev Dist Sound Elev

Dist	Sound	Elev	Dist	Sound	Elev
0+00			(4.9)	13.8	8.9
			50	14.2	9.3
(4.9)				13.9	9.0
0.0	+4.9			14.1	9.2
0.5	+4.4			14.0	9.1
50	1.1	+3.8		14.1	9.2
	1.7	+3.2	3+00	14.1	9.2
10:15	2.5	+2.4			
<u>    </u>	3.4	+1.5			
	4.0	+0.9			
1+00	4.8	+0.1			
	6.0	1.1	15		
	8.0	3.1			
1+25	11.0	6.1	(1+30)		
	11.1	6.2			
50	10.7	5.8			
	10.9	6.0			
	12.0	7.1			
	12.9	8.0			
	13.0	8.1			
2+00	13.3	8.4			
	13.6	8.7			
	13.8	8.9			
	13.8	8.9			

(62)

STA. 4+50; 0+00 = 50' SLY. OF B/L; SOUND S. 39° E

Dist Sound Elev Dist Sound Elev

Dist	Sound	Elev	Dist	Sound	Elev
0+00	0.2	+2.9	(3.1)	9.9	6.8
(3.1)	0.9	+2.2	50	9.2	6.1
	1.7	+1.4		9.1	6.0
	2.5	+0.6		11.0	7.9
	3.6	0.5		13.0	9.9
50	4.0	0.9		14.0	10.9
	4.1	1.0	3+00	14.4	11.3
11:45	6.7	3.6	(175)		
<u>    </u>	7.7	4.6			
	8.7	5.6			
1+00	8.2	5.1			
	8.0	4.9			
	8.0	4.9			
	9.0	5.9			
	9.0	5.9			
50	9.0	5.9			
	9.2	6.1			
	9.4	6.3			
	9.7	6.6			
	9.3	6.2			
2+00	9.4	6.3			
	8.4	5.3			
	9.3	6.2			
	9.5	6.4			

5-09-61

CROSS SECTIONS OF CATANARIN AREA  
AFTER ROCK SHOAL REMOVAL W.O. 64160

NOTE: See B/L Sketch FB 126-Pg. 34

STA. 0-50

STA.	Elev.
B.M.	8.435 See Pg. 34
Rt. 100	8.5
Rt. 120	7.8
Rt. 160	6.0
Rt. 190	5.0
STA. 0-50: 0+00 = 170' SLY. OF B/L SOUND 5.39° E	
Dist	Sound Elev
0+00	8.8 6.0

5-10-61

STA.	Dist	Sound Elev
(28)	50	9.0 6.2
		9.3 6.5
		10.8 8.0
		10.5 7.7
50		11.4 8.6
	2+00	11.8 9.0
<u>9:40</u>	0.5	+2.3
	1.4	+1.4
	2.3	+0.5
1+00	3.5	0.7
	5.2	2.4
	6.1	3.3
	7.0	4.2

STA. 0+00

(63)

STA	ELEV.
0	8.3
Rt. 48	8.9
Rt. 52	2.6
Rt. 79	2.8
Rt. 90	5.0
Rt. 120	5.3
Rt. 140	4.5
STA. 0+00: 0+00 = 120' SLY. OF B/L SOUND 5.39° E	
Dist	Sound Elev
0+00	7.0 4.3
	8.6 5.9
	9.2 6.5
	8.7 6.0
	10.1 7.4
50	0.1 +2.6
	1.0 +1.7
	1.2 +1.5
	2.4 +0.3
	3.1 0.4
1+00	3.2 0.5
	3.6 0.9
	5.8 3.1
	6.6 3.9
	7.0 4.3
50	6.9 4.2
	2+00
	3+00

5-09-61

STA.	STA. 0+50	Elev.
0		7.9
Rt. 36		8.6
Rt. 59		9.4
Rt. 100		3.9
Rt. 130		2.3

STA. 0+50:0+00 = 90' SLY. OF B/L; SOUND 5.39°E

Dist Sound Elev Dist Sound Elev

0+00 7.2 4.6

(5-10-61)

7.8 5.2

7.0 4.4

(2.6)

2+00 8.0 5.4

0.4 + 2.2

8.7 6.1

50 1.1 + 1.5

9.2 6.6

1.8 + 0.8

10.1 7.5

9:50 2.0 + 0.6

10.4 7.8

3.7 - 1.1

50 10.6 8.0

4.5 1.9

11.0 8.4

1+00 4.8 2.2

11.0 8.4

5.8 3.2

10.9 8.3

6.5 3.9

10.8 8.2

6.9 4.3

3+00 10.9 8.3

7.4 4.8

50 7.7 5.1

7.7 5.1

64

STA.	STA. 1+00	Elev
0		8.4
Rt. 25		8.6
Rt. 45		9.2
Rt. 100		2.6

STA. 1+00:0+00 = 70' SLY. OF B/L; SOUND 5.39°E

Dist Sound Elev Dist Sound Elev Dist Sound Elev

0+00 6.4 3.9

7.6 5.1

8.0 5.5

(2.5)

0.1 + 2.4 2+00 7.0 4.5

0.9 + 1.6

6.6 4.1

50 1.0 + 1.5

6.8 4.3

1.9 + 0.6

7.7 5.2

9:55 3.1 - 0.6

8.0 5.5

5.0 - 2.5

50 9.8 7.3

5.5 3.0

10.7 8.2

1+00 6.7 4.2

10.7 8.2

6.0 3.5

11.0 8.5

5.6 3.1

11.2 8.7

6.2 3.7

3+00 11.2 8.7

7.3 4.8

50 7.0 4.5

7.0 4.5

5-09-61

65

STA	STA. 1+50	Elev
0		8.7
Rt. 31		8.9
Rt. 60		4.4
Rt. 90		1.9

STA	STA. 2+00	Elev
0		8.8
Rt. 18		9.1
Rt. 70		2.9

STA. 1+50: 0+00 = 60' SLY. OF B/L; SOUND S. 39° E

STA. 2+00: 0+00 = 50' SLY. OF B/L; SOUND S. 39° E

Dist	Sound	Elev	Dist	Sound	Elev	Dist	Sound	Elev	Dist	Sound	Elev
0+00			50	6.2	3.8	0+00			50	6.6	4.4
	(5-10-61)			6.5	4.1					6.0	3.8
				7.0	4.6					6.2	4.0
(2.4)	0.7	+1.7		6.7	4.3	(2.2)	0.5	+1.7		6.4	4.2
	1.1	+1.3		6.6	4.2		1.4	+0.8		6.1	3.9
50	1.9	+0.5	2+00	6.4	4.0	50	2.2	0.0	2+00	6.3	4.1
	2.6	-0.2		6.4	4.0		3.1	-0.9		6.4	4.2
10:05	3.8	-1.4		6.9	4.5	10:10	4.9	-2.7		6.8	4.6
	5.2	2.8		6.5	4.1		5.9	3.7		6.8	4.6
	5.2	2.8		6.5	4.1		6.9	4.7		6.8	4.6
1+00	5.0	2.6	50	6.2	3.8	1+00	6.4	4.2	50	6.1	3.9
	5.5	3.1		6.9	4.5		6.4	4.2		6.4	4.2
	6.1	3.7		8.8	6.4		6.4	4.2		6.7	4.5
	6.3	3.9		9.4	7.0		6.9	4.7		9.7	4.5
	6.8	4.4		10.1	7.7		6.1	3.9		10.4	8.2
			3+00	10.4	8.0				3+00	10.8	8.6

5-09-61

(65)

STA	STA. 2+50	Elev
0		9.0
Rt 16		9.0
Rt 70		2.8

STA	STA. 3+00	Elev
0		8.6
Rt 11		8.7
Rt 50		4.0
Rt 70		2.6

STA. 2+50 O+00 = 50' SLY. OF B/L; SOUND 5.39°E  
 STA. 3+00 O+00 = 50' SLY. OF B/L; SOUND 5.39°E

DIST	SOUND	Elev	DIST	SOUND	Elev	DIST	SOUND	Elev	DIST	SOUND	Elev
0+00			50	6.6	4.5	0+00			50	5.7	3.7
	(5-10-61)			5.9	3.8					6.1	4.1
				5.9	3.8	(20)				6.0	4.0
(2.1)	0.5	+1.6		5.4	3.3		0.6	+1.4		6.0	4.0
	1.1	+1.0		5.7	3.6		1.1	+0.9		5.9	3.9
50	2.3	-0.2	2+00	4.6	2.5	50	2.1	-0.1	2+00	6.0	4.0
	3.0	0.9		4.9	2.8		3.5	1.5		5.8	3.8
10:15	4.8	2.7		5.1	3.0	10:20	4.3	2.3		5.9	3.9
	6.1	4.0		6.1	4.0		5.0	3.0		5.8	3.8
	6.1	4.0		6.3	4.2		6.0	4.0		5.9	3.9
1+00	5.6	3.5	50	6.7	4.6	1+00	6.5	4.5	50	6.3	4.3
	5.6	3.5		6.7	4.6		6.5	4.5		6.6	4.6
	5.9	3.8		7.1	5.0		6.0	4.0		9.2	7.2
	6.1	4.0		10.0	7.9		5.7	3.7		10.0	8.0
	6.4	4.3		10.0	7.9		6.6	4.6		10.2	8.2
			3+00	10.2	8.1				3+00	10.3	8.3



5-09-61

68

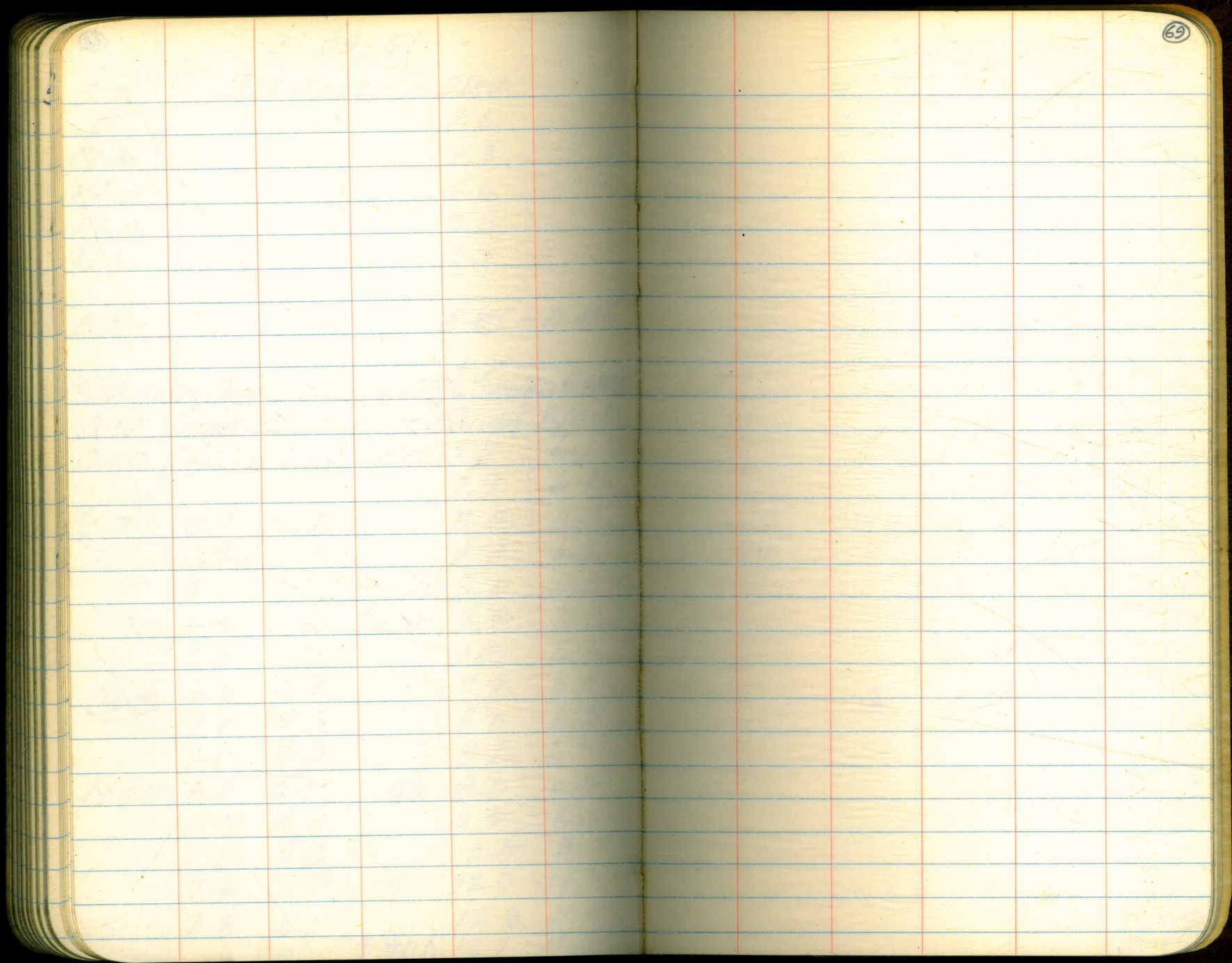
STA.	STA. 4+50	Elev.
0		9.6
Rt. 4		9.3
Rt. 43		4.6
Rt. 45		3.8
Rt 60		1.9

B.M.	8.435 - 8.435
------	---------------

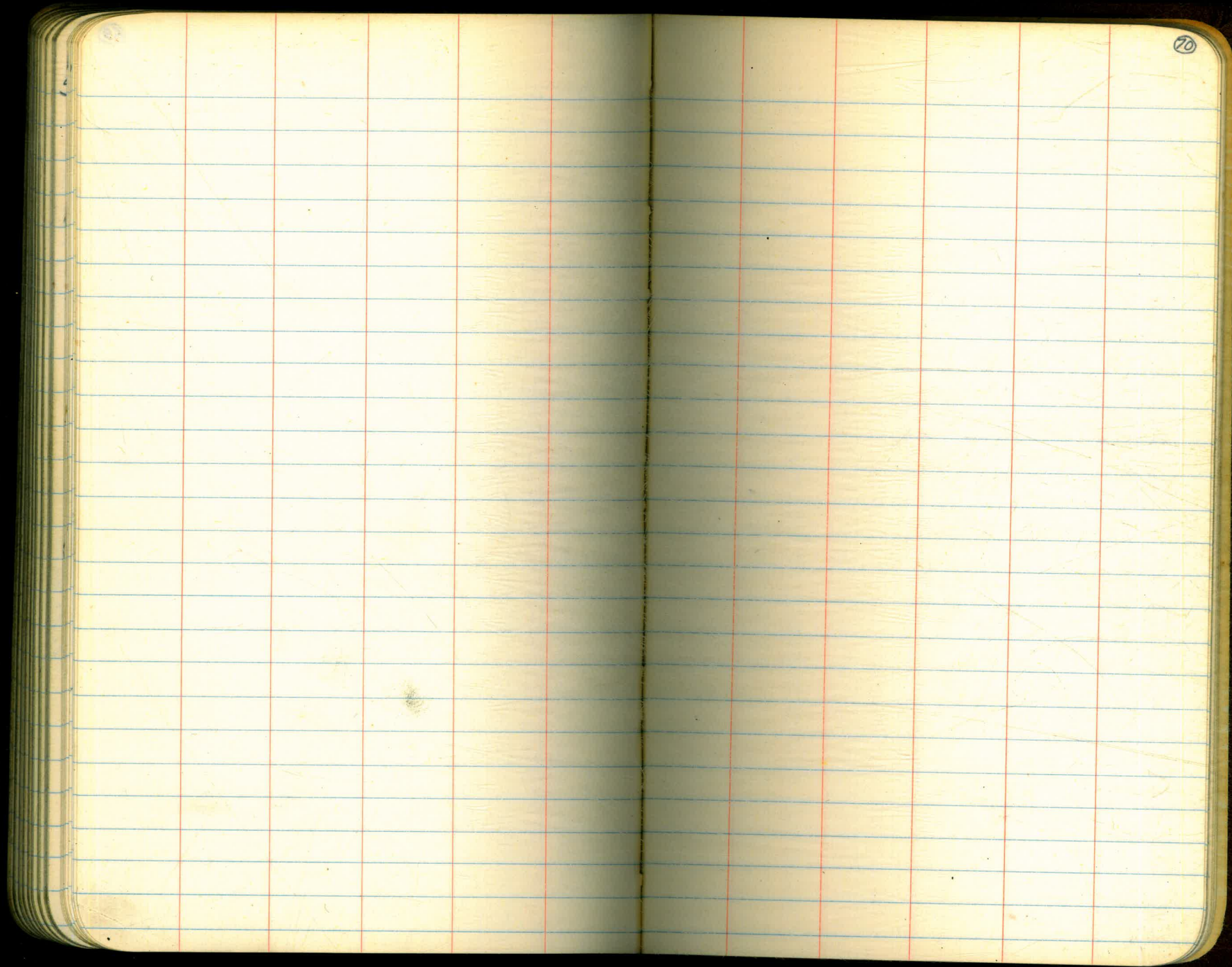
STA. 4+50: 0+00-50' SLY OF FB/LI SOUND 5.39°E

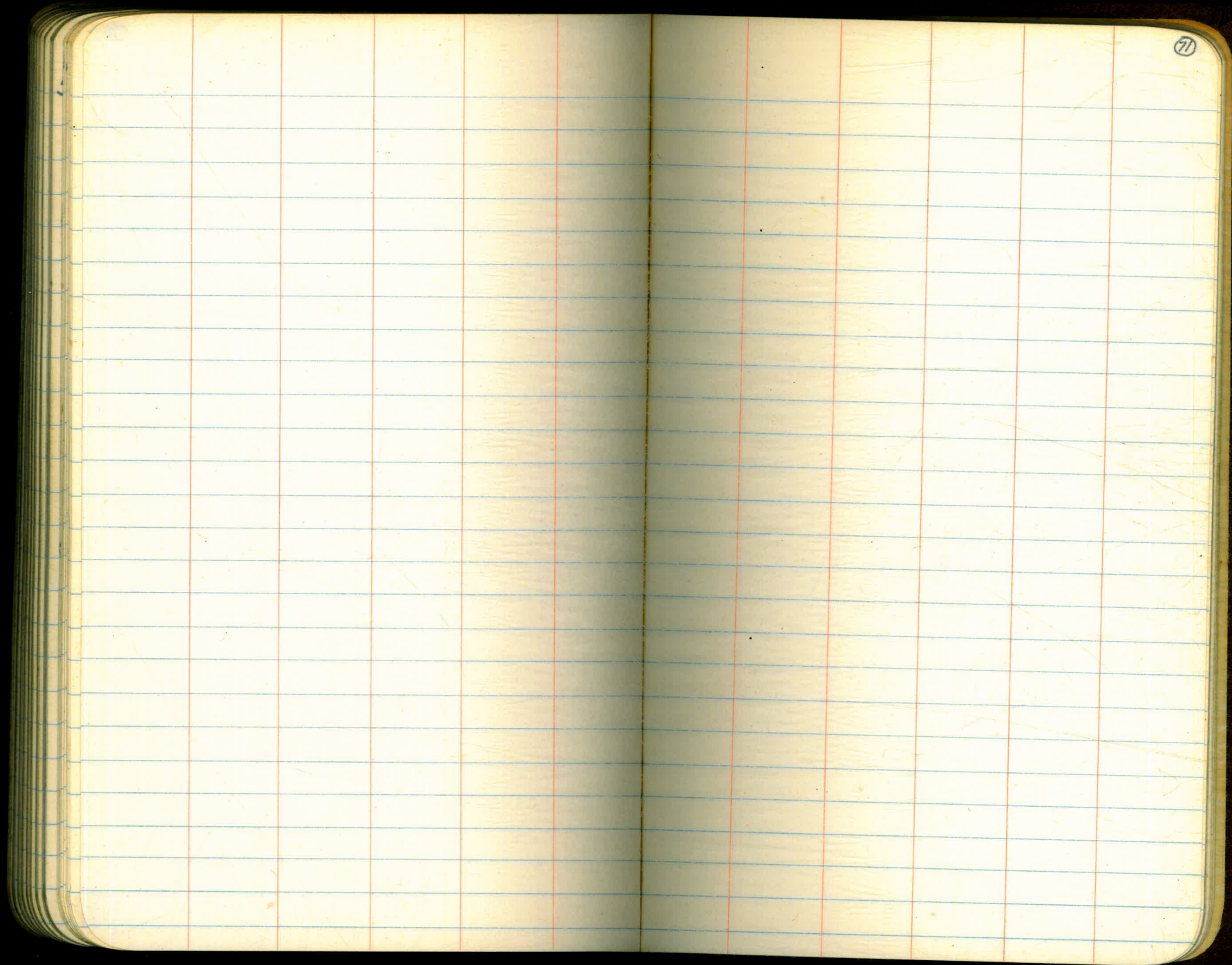
	DIST	SOUND	ELEV	DIST	SOUND	ELEV
0+00 (5-10-61)	50	7.8	6.1			
		7.9	6.2			
(1.7)	0.9	+0.8	8.0	6.3		
	1.9	0.2	8.0	6.3		
	3.7	2.0	8.0	6.3		
50	3.3	1.6	2+00	7.9	6.2	
	3.0	1.3		7.3	5.6	
<del>10:40</del>	6.0	4.3		7.7	6.0	
	7.0	5.3		8.0	6.3	
	7.0	5.3		8.2	6.5	
1+00	6.7	5.0	50	8.0	6.3	
	6.7	5.0		7.9	6.2	
	7.0	5.3		10.4	8.7	
	7.6	5.9		12.0	10.3	
	7.8	6.1		12.8	11.1	
			3+00	12.7	11.0	

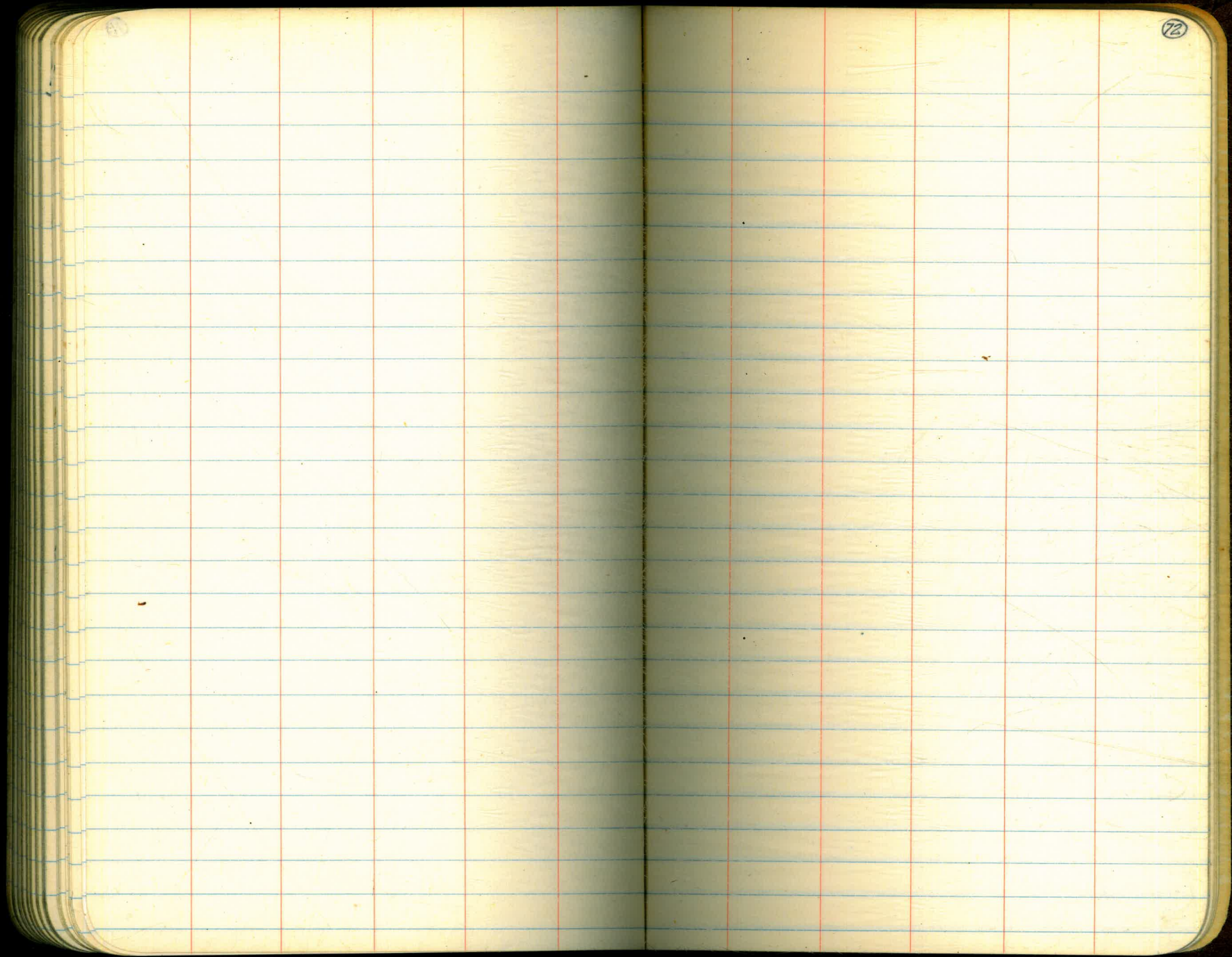




69



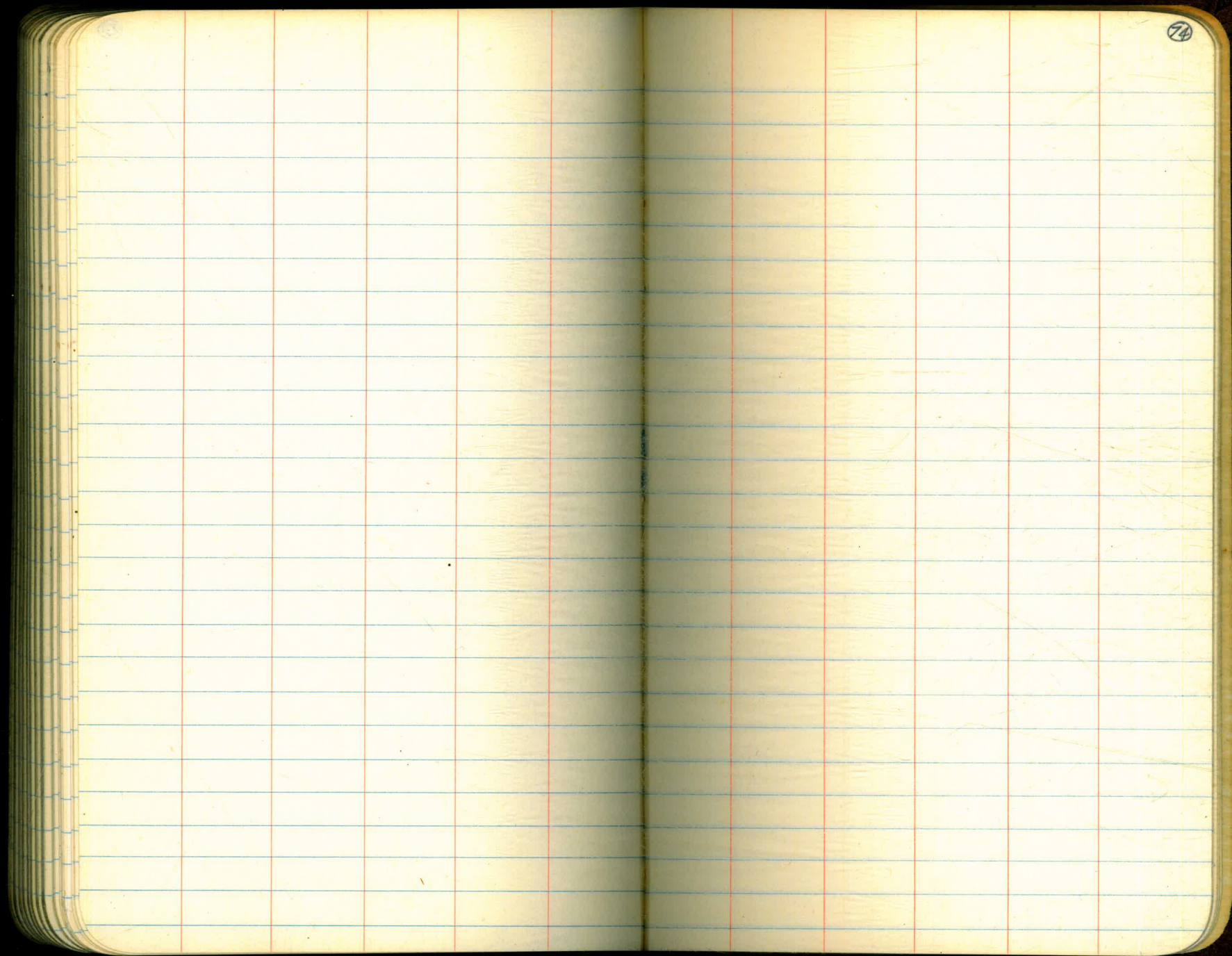


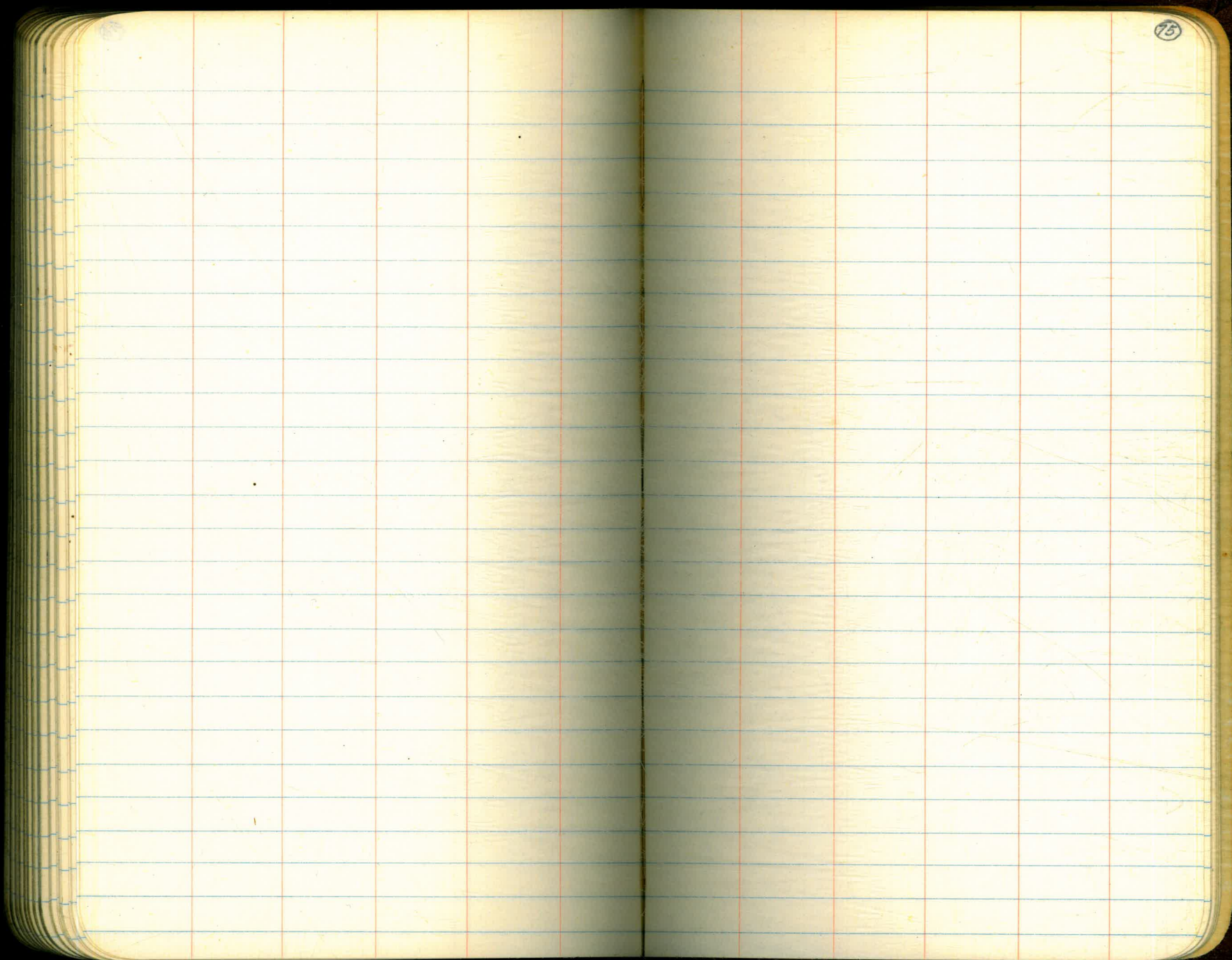


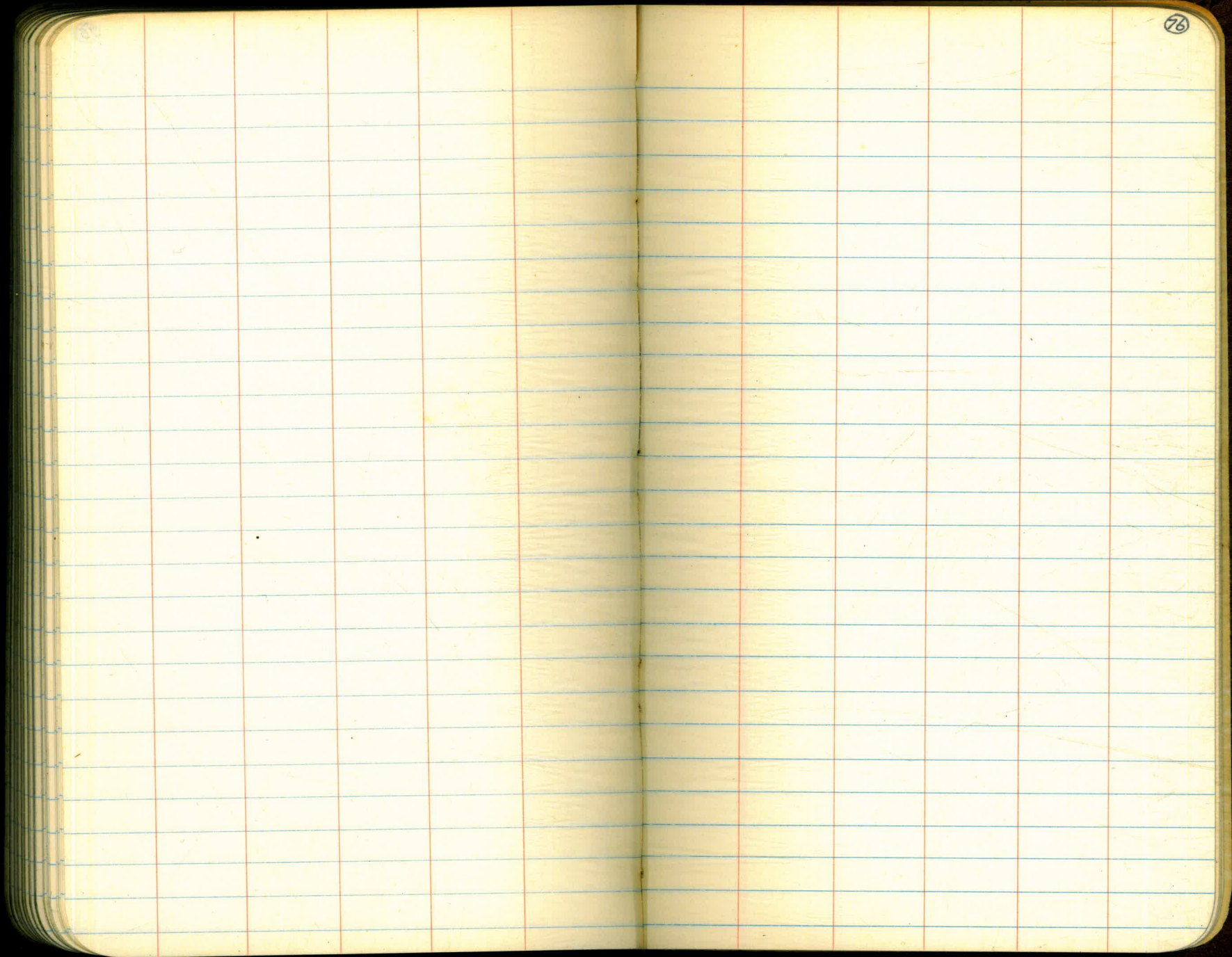
71

72

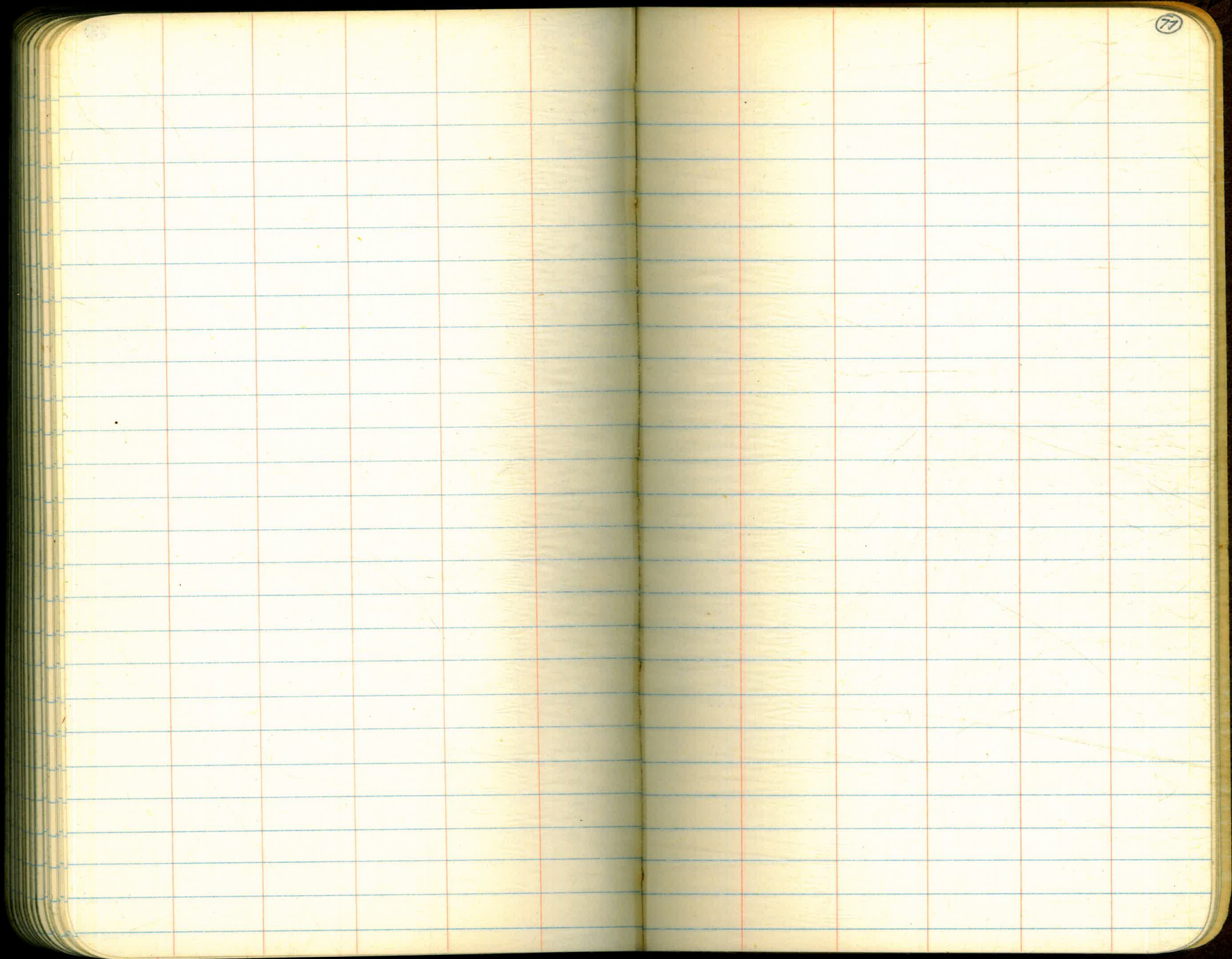














8  
2  
1

