

MB 133



—————

—————

113+50 - W12,190

114 - W12,200

**MICROFILMED**

115 - W12,170

115+50 - W12,140

116+00 - W.12,100

$$\begin{array}{r}
 10,992.1 \\
 679 \\
 \hline
 11,060.0
 \end{array}$$

$$\begin{array}{r}
 10892.6 \\
 67.4 \\
 \hline
 10960.0
 \end{array}$$

10960.0

$$\begin{array}{r}
 111900 \\
 1089.27 \\
 \hline
 2973.
 \end{array}$$

2973.

$$\begin{array}{r}
 10992.1 \\
 679 \\
 \hline
 11,060.0
 \end{array}$$

M.B. No 133

THIS BOOK INDEXED 2/12/62

189 39 60  
 5 50-14-48E

~~$$\begin{array}{r}
 1294512 \\
 90 \\
 \hline
 \end{array}$$~~

$$\begin{array}{r}
 39 \\
 9 \\
 \hline
 \end{array}$$

129-45-12

①

SOUNDINGS IN CRESENT BAY  
 AREA - JUNE 7, 1960  
 N 135 + 00; 0 + 00 = W 20 35 0.0 SOUND EAST

DIST	SOUND	ELEV	DIST	SOUND	ELEV
0			50	12.0	10.2
(1.8)			50	12.0	10.2
1:30	0.4	+1.4			
	1.5	+0.3			
	2.2	0.4			
50	4.2	2.4			
	6.0	4.2			
	7.0	5.2			
	7.8	6.0			
1:35	8.2	6.4			
1:40	11.0	9.2			
	11.0	9.2			
	11.2	9.4			
	11.2	9.4			
	11.2	9.4			
50	11.2	9.4			
	11.2	9.4			
	11.4	9.6			
	11.3	9.5			
	11.4	9.6			
2:00	11.8	10.0			
	11.6	9.8			
	12.0	10.2			
	12.0	10.2			
	11.8	10.0			

6-7-60  
NWLY CRESENT BAY

STAN 136400; 0+00=W 20340.0			SOUND EAST		
DIST	SOUND	ELEV	DIST	SOUND	ELEV
0				10.2	8.4
1:40	0.2	+1.6	50	10.2	8.4
(1.8)	1.2	+0.6	1:45	10.2	8.4
	2.8	1.0	(1.8)		
	6.6	4.8			
50	7.6	5.8			
	8.2	6.4	3+00		
	9.0	7.2			
	10.0	8.2			
	11.1	9.3			
1+00	11.1	9.3			
	11.0	9.2			
	11.0	9.2			
	11.0	9.2			
	11.1	9.3			
50	11.2	9.4			
	11.0	9.2			
	11.0	9.2			
	11.0	9.2			
	11.0	9.2			
2+00	11.1	9.3			
	11.0	9.2			
	11.0	9.2			
	10.6	8.8			

JUNE 7, 1960  
NWLY CRESENT BAY -

STAN 137400; 0+00=W 20,320.0			SOUND EAST		
DIST	SOUND	ELEV	DIST	SOUND	ELEV
1:50					
0	+0.3	+2.1		11.0	9.2
(1.8)	0.5	+1.3	50	11.2	9.4
	1.2	+0.6		11.0	9.2
	2.2	0.4		11.2	9.4
	4.2	2.4		11.2	9.4
50	5.7	3.9		11.0	9.2
	6.0	4.2	3+00	11.0	9.2
	6.8	5.0			
	6.4	4.6			
	6.2	4.4			
1+00	9.0	7.2			
	10.2	8.4			
	10.0	8.2			
	9.8	8.0			
	9.8	8.0			
+50	10.0	8.2			
	10.0	8.2			
	10.0	8.2			
	10.0	8.2			
	10.2	8.4			
2+00	10.4	8.6			
	10.8	9.0			
	11.0	9.2			
	11.0	9.2			

JUNE 7, 1960  
NWLY CRESENT BAY AREA.

STAN 138400; 0400 = W 20320.0			SOUND EAST		
DIST	SOUND	ELEV.	DIST	SOUND	ELEV
0				5.8	4.0
(1.8)			50	8.5	6.7
1155	0.2	+1.5		9.2	7.4
	0.5	+1.3		9.8	8.0
	0.5	+1.3		10.0	8.2
450	0.6	+1.2		8.8	7.0
	0.7	+1.1	3400	8.8	7.0
2100	1.0	+0.8		9.5	7.7
	1.0	+0.8		10.0	8.2
	1.2	+0.6		10.2	8.4
1400	2.2	0.4		10.0	8.2
	2.0	0.2	50	10.2	8.4
	1.5	+0.3		10.2	8.4
	1.4	+0.4		10.0	8.2
	1.7	+0.1	(1.8)	10.2	8.4
50	2.0	0.2	2105	10.2	8.4
	2.0	0.2	4400	10.2	8.4
	1.6	+0.2			
	1.4	+0.4			
	1.2	+0.6			
2400	1.2	+0.6			
	1.3	+0.5			
	2.2	+0.4			
	2.5	0.7			

JUNE 7, 1960  
NWLY CRESENT BAY AREA

(3)

STAN 139400; 0420 = W 20290.0			SOUND EAST		
DIST	SOUND	ELEV	DIST	SOUND	ELEV
0				1.1	+0.7
(1.8)			50	1.2	+0.6
2110	0.1	+1.7		1.2	+0.6
	0.2	+1.6		1.3	+0.5
	0.2	+1.6	(1.9)	1.4	+0.4
50	0.5	+1.3	2115	2.0	0.1
	0.6	+1.2	3400	2.0	0.1
	1.0	+0.8		2.2	0.3
	1.0	+0.8		3.2	1.3
	0.9	+0.9		7.2	5.3
1400	1.0	+0.8		9.8	7.9
	0.9	+0.9	50	10.0	8.1
	1.1	+0.7		10.0	8.1
	1.1	+0.7		10.0	8.1
	1.2	+0.6		9.8	7.9
50	1.2	+0.6		9.6	7.7
	1.0	+0.8	4400	10.0	8.1
	1.0	+0.8		10.0	8.1
	1.1	+0.7		10.1	8.2
	1.1	+0.7		10.1	8.2
2400	1.2	+0.6		9.7	7.8
	1.2	+0.6	50	9.5	7.6
	1.1	+0.7		9.5	7.6
	1.1	+0.7		9.5	7.6
				10.0	8.1

JUNE 7, 1960  
NWLY CRESENT BAY AREA.

JUNE 7, 1960  
NWLY CRESENT BAY AREA

(4)

STATION 140+00; 0+00=W 20,270.0 - SOUND EAST

STATION 140+00; 0+00=W 20,270.0 - SOUND EAST

DIST	SOUND	ELEV	DIST	SOUND	ELEV
0	0.1			1.2	
2:25	0.4		50	1.2	
	1.2			1.4	
	1.5			2.0	
	1.8			1.8	
50	1.8			1.6	
	2.0		3+00	1.8	
	2.0			1.8	
	2.0			2.0	
	1.8			1.8	
1+00	1.3			2.0	
	1.2		50	2.0	
	1.5			2.0	
	1.6			2.0	
	1.4			2.0	
50	1.2		2:30	2.5	
	1.5		4+00	5.2	
	1.2			10.7	
	1.1			10.5	
	1.0			11.0	
2+00	1.0			11.2	
	1.0		50		
	1.0				
	1.0				

V.O.D. distance line  
Became UN BOOKED

V.O.D.

DIST	SOUND	ELEV	DIST	SOUND	ELEV
0	0.2	+1.8		1.2	+0.8
2:40	0.3	+1.7	50	1.5	+0.5
(2.0)	1.2	+0.8		1.8	+0.2
	1.5	+0.5		2.0	0.0
	2.0	0.0		2.0	0.0
50	2.0	0.0		2.1	0.1
	2.0	0.0	3+00	2.0	0.0
	2.0	0.0		2.0	0.0
	1.8	+0.2		1.5	+0.5
	1.6	+0.4		1.5	+0.5
1+00	1.6	+0.4		1.2	+0.8
	1.5	+0.5	50	1.2	+0.8
	1.5	+0.5	2:45	1.0	+1.0
	1.5	+0.5	(2.1)	1.8	+0.3
	1.5	+0.5		2.2	0.1
50	1.5	+0.5		3.0	0.9
	1.6	+0.4	4+00	6.0	3.9
	1.2	+0.8		10.5	8.4
	1.1	+0.9		11.2	9.3
	1.1	+0.9		11.5	9.4
2+00	1.1	+0.9		11.5	9.4
	1.1	+0.9	50	11.5	9.4
	1.1	+0.9		11.2	9.1
	1.1	+0.9		11.0	8.9

STAN 140 +00 CONT EAST 6/7/60

DIST	SOUND	ELEV.
	11.5	9.4
	11.5	9.4
5+00	11.5	9.4
	12.0	9.9
	12.0	9.9
	11.2	9.1
	11.0	8.9
50	11.0	8.9

STA W 203+00 Skipped Due to Low TIDE  
See Northings

JUNE 7, 1960 - NWLY CRESENT BAY AREA - ⑤

STAN W 202+00; +00 = N 14, 0 80.0

DIST	SOUND	ELEV	DIST	SOUND	ELEV
				1.2	+1.0
	2:55	0.2 +2.0	50	1.3	+0.9
	(2.2)	0.8 +1.4		1.4	+0.8
		1.8 +0.4		1.5	+0.7
		3.0 0.8		2.8	0.6
50	3.0	0.8		3.0	0.8
	2.8	0.6	3+00	4.0	1.8
	2.6	0.4		4.0	1.8
	2.5	0.3		4.2	2.0
	2.0	+0.2		4.8	2.6
1+00	2.0	+0.2		5.5	3.3
	1.8	+0.4	50	10.8	8.6
	1.8	+0.4		10.2	8.0
	1.6	+0.6		10.2	8.0
	1.4	+0.8	(2.2)	10.2	8.0
50	1.4	+0.8	3:00	10.2	8.0
	1.2	+1.0	4+00	10.2	8.0
	1.2	+1.0		10.3	8.1
	1.1	+1.1		10.2	8.0
	1.2	+1.0		10.4	8.4
2+00	1.1	+1.1		10.5	8.3
	1.2	+1.0	50	10.5	8.3
	1.2	+1.0		11.0	8.8
	1.2	+1.0		11.2	9.0
				11.2	9.0

JUNE 7, 1960 - NWLY PRESENT BAY AREA

SOUND  
SOUTH

STAW	201400	0700=N	14,150.0		
DIST	SOUND	ELEV	DIST	SOUND	ELEV
0.				1.6	
3:05	0.4		50	1.6	
(2.3)	1.1			1.8	
	2.8			1.8	
	3.2			1.8	
50	3.2			1.8	
	3.0		3+00	1.9	
	2.0			2.0	
	1.6			2.0	
	1.2			2.5	
1+00	1.2			6.0	
	1.2		50	9.5	
	1.2			10.0	
	1.5			10.2	
	1.5			10.1	
50	1.6			10.2	
	1.8		4+00	10.1	
	1.8			10.2	
(2.4)	1.8			10.2	
3:10	1.6			11.8	
2+00	1.6			12.0	
	1.8		50	12.0	
	1.8		(2.4)	12.2	
	1.8		3:15	11.8	
				11.2	

NOTE: FOR B/L COND SWLY SE MB 19142

BASELINE LAYOUT TOP OF SHDR. @  
WLY. SIDE CABRILLO ISLAND W/O 64501

STA	DIST	BEARING
N.96+50; W. 11,547.50	51.54'	N.14°02'11" E
N.96+00; W. 11,560.00	50.56'	N.8°31'51" E
N.95+50; W. 11,567.50	"	"
N.95+00; W. 11,575.00	"	"
N.94+50; W. 11,582.50	50.56'	N.8°31'51" E
N.94+00; W. 11,590.00	51.856'	N.15°22'34" E
N.93+50; W. 11,603.75	"	"
N.93+00; W. 11,617.50	"	"
N.92+50; W. 11,631.25	"	"
N.92+00; W. 11,645.00	"	"
N.91+50; W. 11,658.75	"	"
N.91+00; W. 11,672.50	"	"
N.90+50; W. 11,686.25	51.856'	N.15°22'34" E
N.90+00; W. 11,700.00	54.83'	N.24°13'40" E
N.89+50; W. 11,722.50	"	"
N.89+00; W. 11,745.00	"	"
N.88+50; W. 11,767.50	54.83'	N.24°13'40" E
N.88+00; W. 11,790.00	58.31'	N.30°57'49" E
N.87+50; W. 11,820.00	"	"
N.87+00; W. 11,850.00	"	"
N.86+50; W. 11,880.00	58.31'	N.30°57'49" E
N.86+00; W. 11,910.00	61.03'	N.34°59'31" E
N.85+50; W. 11,945.00	"	"
N.85+00; W. 11,980.00	"	"
N.84+50; W. 12,015.00	61.03'	N.34°59'31" E
N.84+00; W. 12,050.00		

8/2  
DIST BEARING  
X=81°28'09" S To W  
" " " " " " " "

X=74°37'26" S To W

X=65°46'26" S To W

X=59°02' " " S To W

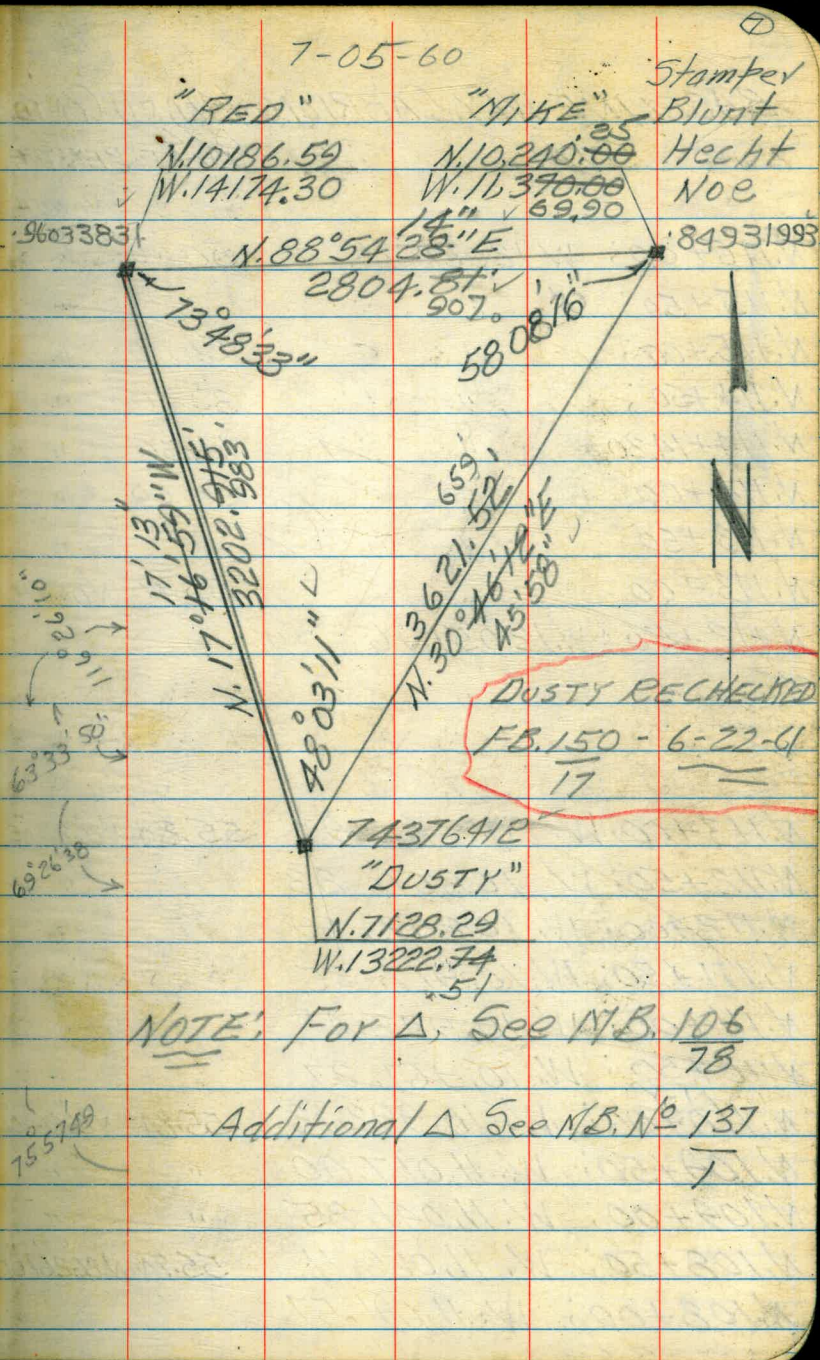
X=55°00'30" S To W



BASELINE LAYOUT FOR SOUNDINGS  
SWLY. CARRILLO ISLAND W. 64501

STA	E/L DIST	BEARING
N. 107+50; W. 11,116.43	55.84	N. 26° 26' 10" E
N. 107+00; W. 11,141.29	"	"
N. 106+50; W. 11,166.15	"	"
N. 106+00; W. 11,191.01	"	"
N. 105+50; W. 11,215.87	"	"
N. 105+00; W. 11,240.73	"	"
N. 104+50; W. 11,265.59	"	"
N. 104+00; W. 11,290.45	"	"
N. 103+50; W. 11,315.31	"	"
N. 103+00; W. 11,340.17	55.84	"
N. 102+50; W. 11,365.03	11.167	N. 26° 26' 10" E
N. 102+40; W. 11,370.00	42.72	N. 20° 33' 22" E
N. 102+00; W. 11,385.00	53.40	"
N. 101+50; W. 11,403.75	"	"
N. 101+00; W. 11,422.50	"	"
N. 100+50; W. 11,441.25	53.40	N. 20° 33' 22" E
N. 100+00; W. 11,460.00	51.538	N. 14° 02' 11" E
N. 99+50; W. 11,472.50	"	"
N. 99+00; W. 11,485.00	"	"
N. 98+50; W. 11,497.50	"	"
N. 98+00; W. 11,510.00	"	"
N. 97+50; W. 11,522.50	51.538	N. 14° 02' 11" E
N. 97+00; W. 11,535.00		

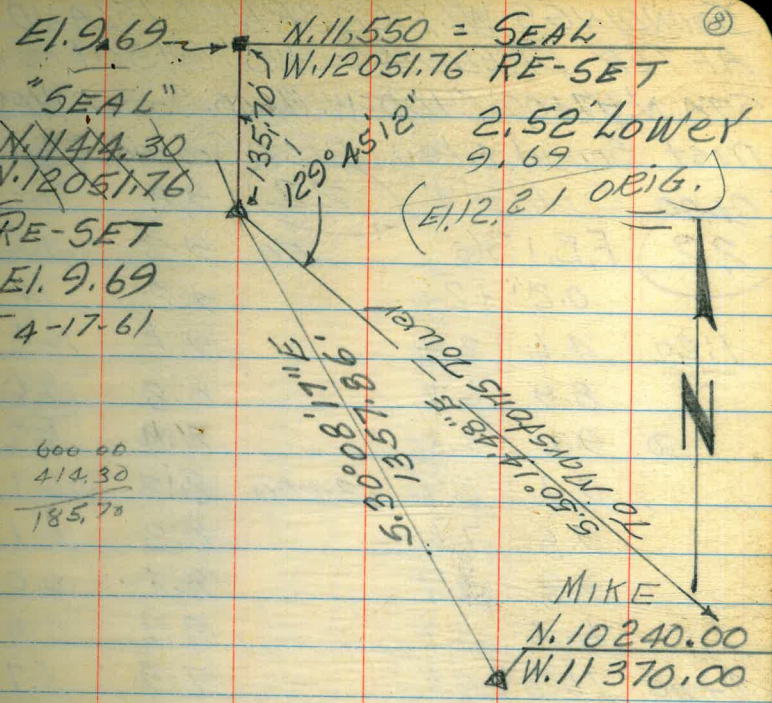
(Contd From Pg 6)



BASELINE WLY. CABRILLO ISLAND CONTD.

STA.	B/L DIST	BEARING NORTH
N.116+00; W.12051.76	50.00	"
N.115+50; W "	"	"
N.115+00; "	50.00	"
N.114+50; "	35.70	"
N.114+14.30	14.30	"
N.114+00	50.00	"
N.113+50	"	"
N.113+00	50.00	NORTH
N.112+50; W.12051.76		

N.113+00; W. 10,842.97	55.84	N26°26'00"
N.112+50; W 10867.83		
N.112+00; W. 10892.69	892.7 67.3	
N.111+50; W, 10,917.55	10962.0	
N.111+00; W. 10,942.41		
N.110+50; W. 10,967.27		
N.110+00; W. 10,992.13	55.84	N26°26'10"
N.109+50; W. 11,017.00	"	"
N.109+00; W. 11,041.85	"	"
N.108+50; W. 11,066.71	55.84	N26°26'10"
N.108+00; W. 11,091.57		



(BASELINE CONTD N14 Pg. 77)

600.00  
414.30  
185.70

SOUNDINGS WLY. CABRILLO ISLAND  
AFTER DREDGING W.O. 64501

STA. N. 97+00; 0+00 = W. 11,640; SOUND WEST

DIST	SOUND	ELEV	DIST	SOUND	ELEV
0+00	Cont'd 514.		22	9.2	7.0
22	F.B. 136		50	9.3	7.1
	0.2 +2.0			9.2	7.0
1:20	4.6	2.4		9.1	6.9
	8.9	6.7		8.8	6.6
50	9.0	6.8		8.4	6.2
	9.1	6.9	3+00	8.3	6.1
	9.8	7.6		8.3	6.1
	9.9	7.7		8.2	6.0
	10.1	8.9		8.1	5.9
1+00	10.0	8.8		7.9	5.7
	10.0	8.8	50	8.1	5.9
	9.9	7.7		8.0	5.8
	9.2	7.0		8.2	6.0
	9.0	6.8		8.7	6.5
50	9.0	6.8		8.7	6.5
	8.9	6.7	4+00	8.9	6.7
	8.9	6.7		9.1	6.9
	8.8	6.6		9.4	7.2
	8.9	6.7		9.6	7.4
2+00	8.9	6.7		9.7	7.5
	8.9	6.7	50	9.7	7.5
	8.9	6.7		9.7	7.5
	9.1	6.9		9.6	7.4

STA. N. 97+00 - WEST 7-06-60 (9)

DIST SOUND ELEV

12.2	9.9	7.7
	10.8	8.6
5+00	10.3	8.1
	10.4	8.2
	11.9	9.7
11:25	11.9	9.7
	11.8	9.6
50	12.0	9.8
	12.4	10.2
	12.7	10.5
	12.6	10.4
	12.3	10.1
6+00	12.0	9.8
	12.2	10.0
	12.2	10.0
	12.1	9.9
	11.9	9.7
50	12.0	9.8
	11.8	9.6
	11.4	9.2
	11.3	9.1
	11.2	9.0
7+00	11.3	9.1

NOTE: SEC'S CONT'D. 514; IN. F.B. 136 + 1A2  
4/45; ALSO FATHOMETER  
SEC'S.

7-06-60

STA. N. 97+50; 0+00 = W. 11,620; SOUND WEST

DIST	SOUND	ELEV	DIST	SOUND	ELEV
0+00			22	9.8	7.6
2.2			50	9.7	7.5
				9.5	7.3
11.30	0.8	+1.4		9.2	7.0
	6.2	4.0		8.9	6.7
50	7.3	5.1		9.0	6.8
	9.1	6.9	3+00	8.8	6.6
	9.2	7.0	11.35	8.7	6.5
	9.9	7.7		8.7	6.5
	9.9	7.7		8.9	6.7
1+00	9.9	7.7		9.0	6.8
	10.2	10.0	50	9.0	6.8
	9.9	7.7		9.1	6.9
	9.3	7.1		9.2	7.0
	9.1	6.9		9.2	7.0
50	9.1	6.9		9.4	7.2
	9.4	7.2	4+00	9.7	7.5
	9.2	7.0		9.9	7.7
	8.9	6.7		10.1	7.9
	9.0	6.8		10.0	7.8
2+00	9.2	7.0		9.9	7.7
	9.4	7.2	50	9.9	7.7
	9.7	7.5		10.2	8.0
	9.8	7.6		10.2	8.0

STA. N. 97+50 - WEST

DIST	SOUND	ELEV
22	10.0	9.8
	10.2	8.0
5+00	10.4	8.2
	11.0	8.8
	11.8	8.6
	12.1	9.9
	12.3	10.1
50	12.6	10.4
	12.3	10.1
	12.5	10.3
	12.5	10.3
	12.0	9.8
6+00	11.6	9.4
	11.2	9.0
	11.2	9.0
	11.3	9.1
	11.4	9.2
50	11.3	9.1
	11.4	9.2
11.40	11.6	9.4
	11.5	9.3
	11.3	9.1
7+00	11.3	9.1

7-06-60

STA. N. 98+00; 0+00 = W. 11,610; SOUND WEST

Dist Sound Elev Dist Sound Elev

0+00 (22) 9.7 7.5

(22) 50 9.6 7.4

9.9 7.7

11.45 0.3 +1.9 9.5 7.3

2.8 0.6 9.4 7.2

50 9.6 7.4 9.4 7.2

11.1 8.9 3+00 9.3 7.1

10.8 8.4 9.2 7.0

10.0 8.8 9.2 7.0

9.2 7.0 9.3 7.1

1+00 9.2 7.0 9.5 7.3

9.2 7.0 50 9.6 7.4

9.3 7.1 9.6 7.4

9.6 7.4 9.7 7.5

10.3 8.1 9.7 7.5

50 10.3 8.1 10.0 7.8

9.8 7.6 4+00 10.1 7.9

9.4 7.2 10.1 7.9

9.2 7.0 10.0 7.8

9.3 7.1 10.0 7.8

2+00 9.3 7.1 10.0 7.8

9.3 7.1 50 10.1 7.9

9.7 7.5 10.1 7.9

9.7 7.5 9.8 7.6

STA. N. 98+00 - WEST

Dist Sound Elev

(22) 9.9 7.7

10.0 7.8

5+00 10.3 8.1

11.0 8.8

11.5 9.3

12.2 10.0

12.1 9.9

50 12.0 9.8

12.0 9.8

11.50 11.3 9.1

11.2 9.0

11.0 8.8

6+00 11.1 8.9

11.1 8.9

11.1 8.9

11.1 8.9

11.1 8.9

50 11.0 8.8

11.1 8.9

11.2 9.0

11.2 9.0

11.3 9.1

7+00 11.3 9.1

7-06-60

STATION 98+50 - WEST

(12)

STATION 98+50: 0+100 = W. 11,590: SOUND WEST

DIST SOUND ELEV

DIST	SOUND	ELEV	DIST	SOUND	ELEV	DIST	SOUND	ELEV
			(22)	9.6	7.4	(22)	9.4	7.2
0+00				9.9	7.7	5+00	9.5	7.3
(22)			50	9.9	7.7		9.9	7.7
				9.8	7.6		10.2	8.0
<u>11.55</u>	0.0	+2.2		9.2	7.0		10.8	8.4
	2.2	0		9.4	7.2		11.0	8.8
50	6.9	4.7		9.4	7.2	50	11.1	8.9
	7.9	5.7	3+00	9.4	7.2		11.2	9.0
	10.4	8.2		9.4	7.2		11.2	9.0
	11.7	9.5		9.3	7.1		10.8	8.6
	11.2	9.0		9.2	7.0		10.4	8.2
1+00	11.1	8.9		9.2	7.0		10.5	8.3
	10.6	8.4	50	9.2	7.0	6+00	10.7	8.5
	10.6	8.4		9.3	7.1		11.0	8.8
	10.7	8.5		9.3	7.1		11.1	8.9
	10.3	8.1		9.6	7.4	2:05	11.1	8.9
50	10.3	8.1		9.7	7.5		11.1	8.9
	10.2	8.0	4+00	9.4	7.2	50	11.1	8.9
	9.4	7.2		9.5	7.3		11.0	8.9
	9.2	7.0	2:00	9.6	7.4		10.9	8.7
	9.5	7.3		9.7	7.5		10.9	8.7
2+00	9.5	7.3		9.8	7.6		11.1	8.9
	9.4	7.2	50	10.0	7.8	7+00		
	9.2	7.0		10.1	7.9			
	9.2	7.0		9.9	7.7			

7-06-60

STA. N. 99+00; 0+00 = W 11,580; SOUND WEST

Dist	Sound	Elev	Dist	Sound	Elev
			(22)	10.2	8.0
0+00			50	10.1	7.9
(22)				10.3	8.1
				10.5	8.3
<u>2:10</u>	0.5	1.7		10.4	8.2
	5.1	2.9		10.3	8.1
50	9.6	7.4	3+00	10.5	8.3
	11.3	9.1		10.0	7.8
	11.9	9.7		9.8	7.6
	10.5	8.3		9.9	7.7
	10.0	8.8		9.7	7.5
1+00	10.0	7.8		9.6	7.4
	10.2	8.0	50	9.2	7.0
	10.1	7.9		9.3	7.1
	10.0	7.8		9.4	7.2
	10.0	7.8		9.7	7.5
50	9.9	7.7	4+00	9.9	7.7
	10.1	7.9		9.9	7.7
	10.0	7.8		9.8	7.6
	10.0	7.8	<u>2:15</u>	8.9	6.7
	9.9	7.7		9.1	7.9
2+00	9.9	7.7		9.1	6.9
	9.9	7.7	50	9.8	7.8
	10.1	7.9		9.9	7.7
	10.1	7.9			

STA. N. 99+00 - WEST

Dist Sound Elev

Dist	Sound	Elev
(22)	9.8	7.6
	9.6	7.4
5+00	9.4	7.2
	9.5	7.3
	10.0	7.8
	10.8	8.6
	11.0	8.8
50	11.0	8.8
	10.9	8.7
	11.0	8.8
	11.0	8.8
	10.3	8.1
6+00	9.0	6.8
	9.2	7.0
	9.7	7.5
	9.9	7.7
	11.1	8.9
50	10.2	8.0
	10.3	8.1
	10.4	8.2
	10.8	8.6
	10.9	8.7
7+00	11.0	8.8

(13)

7-06-60

STA. N. 99+50; 0+00-W. 11,560; SOUND WEST

DIST SOUND ELEV DIST SOUND ELEV

0+00 (22) 50 10.1 7.9

(22) 50 10.1 7.9

10.0 7.8

10.2 8.0

225 9.9 7.7

50 5.7 3.5 10.0 7.8

10.2 8.0 3+00 9.9 7.7

10.0 7.8 10.0 7.8

11.1 8.9 9.8 7.6

11.2 9.0 9.9 7.7

1+00 9.3 7.1 9.9 7.7

9.3 7.1 50 9.9 7.7

9.4 7.2 10.0 7.8

9.6 7.4 10.0 7.8

9.7 7.5 9.9 7.7

50 9.4 7.2 10.1 7.9

9.7 7.5 4+00 10.1 7.9

9.7 7.5 10.1 7.9

9.9 7.7 10.0 7.8

9.9 7.7 10.0 7.8

2+00 10.0 7.8 9.9 7.7

10.0 7.8 50 10.0 7.8

10.0 7.8 9.9 7.7

10.1 7.9 10.0 7.8

STA N. 99+50-WEST

DIST SOUND ELEV

(2.2) 9.9 7.7

9.9 7.7

5+00 9.9 7.7

9.8 7.6

9.9 7.7

10.1 7.9

10.0 7.8

50 10.1 7.9

10.1 7.9

10.3 8.1

10.3 8.1

10.6 8.4

6+00 10.5 8.3

10.7 8.5

230 10.4 8.2

10.6 8.4

9.8 7.6

50 9.6 7.4

10.0 7.8

10.7 8.5

10.7 8.5

11.0 8.8

7+00 11.0 8.8



7-06-60

STA. N. 100+00: 0+00 = W. 11,560 ; SOUND WEST

DIST SOUND ELEV DIST SOUND ELEV

0+00 (23) 10.0 7.7

(23) 50 10.0 7.7

0.5 † 1.8 10.0 7.7

2:35 5.6 3.3 10.0 7.7

8.8 6.3 10.0 7.7

50 9.3 7.0 10.0 7.7

10.0 7.7 3+00 10.0 7.7

9.8 7.5 10.2 7.9

9.6 7.3 10.2 7.9

9.2 6.9 10.1 7.8

1+00 9.3 7.0 10.1 7.8

9.6 7.3 50 10.1 7.8

9.8 7.5 10.2 7.9

9.7 7.4 10.3 8.0

9.9 7.6 2:40 10.6 8.3

50 9.8 7.5 10.9 8.6

9.8 7.5 4+00 10.9 8.6

9.8 7.5 10.9 8.6

10.0 7.7 11.0 8.7

10.0 7.7 10.8 8.5

2+00 10.0 7.7 10.2 7.9

10.1 7.8 50 10.1 7.8

10.0 7.7 10.1 7.8

10.0 7.7 10.2 7.9

STA. N. 100+00 - WEST

DIST SOUND ELEV DIST SOUND ELEV

(23) 10.2 7.7 (23) 11.4 9.1

10.1 7.8 11.5 9.2

5+00 10.2 7.9 50 11.5 9.2

10.4 8.1 11.6 9.3

10.5 8.2 11.8 9.5

10.5 8.2 12.1 9.8

10.6 8.3 12.1 9.8

50 10.8 8.5 8+00 12.1 9.8

10.9 8.6 12.0 9.7

11.0 8.7 11.9 9.6

11.0 8.7 2:45 12.0 9.7

10.9 8.6 12.0 9.7

6+00 10.6 8.3 50 12.2 9.9

10.5 8.2 12.2 9.9

10.1 7.9 12.2 9.9

9.7 7.4 12.0 9.7

9.6 7.3 12.1 9.8

50 10.0 7.7 9+00 12.1 9.8

10.1 7.8

10.1 7.8

10.0 7.7

10.0 7.7

7+00 11.0 8.7

11.1 8.8

11.3 9.0

7-07-60

5 STA. N. 100+50; 0+00=W. 11.540; SOUND WEST

DIST	SOUND	ELEV	DIST	SOUND	ELEV
0	0+00		(46)	12.0	7.4
	(4.5)		50	12.1	7.5
	0.9	+3.6		12.3	7.7
	<u>9.26</u>	+2.3		12.2	7.6
	3.7	+0.8		11.4	6.8
	50	8.2		11.6	7.0
	9.3	4.8	3+00	11.8	7.2
	10.2	5.7		11.6	7.0
	10.5	6.0		11.7	7.1
	11.3	6.8		12.1	7.5
	1+00	11.5		12.3	7.7
	12.0	7.5	50	12.3	7.7
	12.1	7.6		12.4	7.6
	12.1	7.6		12.7	8.1
	11.9	7.4	930	12.8	8.2
50	11.5	7.0		13.2	8.6
	11.8	7.3	4+00	13.1	8.5
	11.6	7.2		13.0	8.4
	11.8	7.3		13.0	8.4
	11.9	7.4		13.0	8.4
2+00	11.7	7.2		12.7	8.2
	12.1	7.6	50	12.2	7.6
	11.9	7.4		12.4	7.8
	12.0	7.5		12.7	8.1

STA. N. 100+50-WEST

16

DIST	SOUND	ELEV	DIST	SOUND	ELEV
(46)	12.2	7.6	(45)	12.8	8.3
	12.3	7.7		13.1	8.6
5+00	12.3	7.7	50	13.8	9.3
	12.5	7.9		14.2	9.7
	13.0	8.4		13.2	8.7
	12.9	8.3		13.3	8.8
	13.2	8.6		13.6	9.1
50	13.2	8.6	8+00	13.4	8.9
	13.2	8.6		13.0	8.5
	13.2	8.6	935	13.2	8.7
	13.2	8.6		13.6	9.1
	13.1	8.5		14.0	9.5
6+00	13.1	8.5	50	13.9	9.4
	12.8	8.2		13.9	9.4
	11.2	7.5		13.9	9.4
	11.5	7.9		13.9	9.4
	12.0	7.4		14.2	9.7
50	12.2	7.6	9+00	14.1	9.5
	12.4	7.8			
	12.8	8.2			
	12.6	8.0			
	12.7	8.1			
7+00	12.8	8.2			
	12.7	8.1			
	12.5	7.9			



7-07-60

STAIN. 101+50 - WEST

(18)

STAIN. 101+50; DIST = W. 11. 490			SOUND WEST			STAIN. 101+50 - WEST			SOUND WEST		
DIST	SOUND	ELEV	DIST	SOUND	ELEV	DIST	SOUND	ELEV	DIST	SOUND	ELEV
			(4.4)	12.5	8.1	(4.4)	12.7	8.3			
0+00			50	12.7	8.3	5+00	12.7	8.3	50	12.8	8.4
(4.5)				12.3	7.9		12.6	8.2		12.8	8.4
	0.5	+4.0		12.5	8.1		12.8	8.4		12.9	8.5
<u>1000</u>	1.5	+3.0		12.3	7.9		12.9	8.5	<u>1040</u>	13.0	8.6
	3.0	+1.5		12.8	8.4		13.0	8.6		13.0	8.6
50	8.0	3.5		13.0	8.6	50	12.9	8.5	8+00	13.0	8.6
	9.2	4.7	3+00	13.0	8.6		12.9	8.5		13.0	8.6
	9.9	5.4		12.0	7.6		12.5	8.1		13.0	8.6
	10.0	5.5		12.1	7.7		12.0	7.6		13.0	8.6
1+00	10.1	5.6		12.5	8.1		12.0	7.6		13.1	8.7
	10.3	5.8	50	12.8	8.4	6+00	12.0	7.6	50	13.0	8.6
	10.8	6.3		13.1	8.7		12.5	8.1		13.0	8.6
	11.0	6.5		13.2	8.8		12.8	8.4		12.9	8.5
	11.2	6.7		13.3	8.9		13.0	8.6		13.1	8.7
50	11.3	6.8		13.3	8.9		12.8	8.4		13.0	8.6
	11.5	7.0	4+00	13.3	8.9	50	12.8	8.4	9+00	12.9	8.4
	11.2	6.7		13.8	9.4		12.6	8.2			
	11.1	6.6		13.9	9.5		12.0	7.6			
	11.2	6.7	<u>1005</u>	13.9	9.5		12.1	7.7			
2+00	11.3	6.8		12.8	8.4		12.1	7.7			
	11.8	7.3	50	12.8	8.4	7+00	12.2	7.8			
	12.0	7.5		12.7	8.3		12.5	8.1			
	12.2	7.7		12.8	8.4		12.6	8.2			

7-07-60

S	STA. N. 102+00 - 0+00 = W. 11,470			SOUND WEST		
L	DIST	SOUND	ELEV	DIST	SOUND	ELEV
	0+00			(43)	12.1	7.8
	(43)			50	12.1	7.8
		0.9	+3.4		12.0	7.7
	<u>10:22</u>	2.3	+2.0	<u>10:25</u>	11.3	7.0
		6.8	2.5		11.2	6.9
	50	9.8	5.5		10.9	6.6
		10.2	5.9	3+00	10.3	6.0
		10.6	6.3		10.1	5.8
		10.8	6.5		10.1	5.8
		11.1	6.8		10.3	6.0
	1+00	11.6	7.3		10.6	6.3
		12.2	7.9	50	11.2	6.9
		12.0	7.7		11.6	7.3
		11.7	7.4		12.1	7.8
		11.3	7.0		11.9	7.6
	50	11.5	7.2		11.9	7.6
		11.5	7.2	4+00	11.2	6.9
		11.6	7.3		11.4	7.1
		11.8	7.3		11.7	7.4
		11.9	7.6		12.8	8.5
	2+00	11.8	7.5		12.9	8.6
		12.1	7.8	50	12.6	8.3
		12.1	7.8		12.6	8.3
		12.0	7.7		12.7	8.4

STA. N. 102+00 - WEST

(49)

DIST	SOUND	ELEV	DIST	SOUND	ELEV
(43)	12.8	8.5	(43)	13.0	8.7
	13.0	8.7		12.9	8.6
5+00	12.9	8.6	50	12.9	8.6
	11.8	7.5		13.0	8.7
	11.6	7.3	<u>10:30</u>	12.7	8.4
	11.9	7.6		12.8	8.5
	12.0	7.7		12.9	8.6
50	12.2	7.9	8+00	12.7	8.4
	12.3	8.0		12.9	8.6
	12.2	7.9		13.0	8.7
	12.4	8.1		12.9	8.6
	12.2	7.9		12.8	8.5
6+00	12.3	8.0	50	12.8	8.5
	12.2	7.9		12.9	8.6
	12.6	8.3		12.8	8.5
	12.5	8.2		12.9	8.6
	12.4	8.1		12.9	8.6
50	12.3	8.0	9+00	13.1	8.8
	12.6	8.3			
	12.6	8.3			
	12.7	8.4			
	12.7	8.4			
7+00	12.8	8.5			
	13.0	8.7			
	12.9	8.6			

7-07-60

STAN. 102+50 - WEST

120

STAN. 102+50: 0400 = W. 11, 4.50			SOUND WEST			STAN. 102+50 - WEST					
DIST	Sound	Elev	DIST	Sound	Elev	DIST	Sound	Elev	DIST	Sound	Elev
			(4.2)	12.1	7.9	(4.2)	12.8	8.6	(4.1)	13.0	8.8
0400			50	11.8	7.6	5+00	12.7	8.5	50	13.1	8.9
(4.2)				11.7	7.5		12.5	8.3		13.0	8.8
	0.8	+ 3.4		11.8	7.6		12.2	8.0		13.2	9.0
1037	1.2	+ 3.0	1040	11.8	7.6	1045	12.0	7.8	10:50	13.5	9.3
	6.3	21		11.5	7.3		12.2	8.0		12.9	8.7
50	11.2	7.0		11.2	7.0		12.1	7.9		12.6	8.4
	12.2	8.0	3+00	10.2	6.0	50	11.9	7.6	8+00	12.2	8.0
	12.8	8.6		10.1	5.9		12.0	7.8		12.7	8.5
	12.8	8.6		10.2	6.0		11.6	7.4		12.2	8.0
	12.8	8.6		10.2	6.0		11.8	7.6		12.3	8.1
1+00	12.8	8.6		10.3	6.1		11.3	7.1		12.2	8.0
	12.1	7.9	50	10.9	6.7	6+00	11.9	7.7	50	12.6	8.4
	11.9	7.7		11.2	7.0		12.0	7.8		12.8	8.6
	11.8	7.6		11.3	7.1		12.1	7.9		12.6	8.4
	11.8	7.6		11.5	7.3		12.2	8.0		12.9	8.7
50	11.8	7.6		11.9	7.7		12.2	8.0		12.8	8.6
	11.5	7.3	4+00	12.0	7.8	50	12.4	8.2	9+00	12.9	8.7
	11.7	7.5		12.0	7.8		12.5	8.3			
	11.8	7.6		12.1	7.9		12.3	8.1			
	11.9	7.7		12.1	7.9		12.3	8.1			
2+00	11.9	7.7		12.2	8.0		12.1	7.9			
	12.0	7.8	50	12.2	8.0	7+00	12.8	8.6			
	12.0	7.8		12.4	8.2		12.9	8.7			
	12.1	7.9		12.6	8.4		13.0	8.8			

7-07-60

STA. N. 103+00 - WEST

(2)

STA. N. 103+00	0400 = W. 11, 430	SOUND WEST	DIST	SOUND	ELEV	DIST	SOUND	ELEV
			(30)	12.3	8.4	(30)	11.1	7.2
0400			(40)	12.4	8.4		11.3	7.4
(40)			50	12.3	8.3	5400	12.1	8.2
	1.0	+3.0		12.1	8.1		12.0	8.1
11:00	2.4	+1.6		12.1	8.1		10.4	6.5
	8.1	4.1		12.0	8.0	11:05	10.4	6.5
50	10.6	6.6		11.4	7.4		10.7	6.8
	12.4	8.4	3+00	10.3	6.3	50	11.0	7.1
	12.8	8.8		10.3	6.3	8+00	12.0	8.1
	13.0	9.0		10.3	6.3		11.9	8.0
	13.2	9.2		10.3	6.3		12.0	8.1
1+00	13.2	9.2		10.3	6.3		11.5	7.6
	13.2	9.2	50	10.4	6.4	6+00	11.9	8.0
	13.3	9.3		10.5	6.5		11.2	7.3
	13.4	9.4		10.9	6.9		11.3	7.4
	13.4	9.4		11.1	7.1		11.3	7.4
50	13.2	9.2		11.1	7.1		11.5	7.6
	13.1	9.1	4+00	10.9	6.9	50	11.8	7.9
	13.1	9.1		11.0	7.0		11.8	7.9
	13.1	9.1		11.2	7.2		11.8	7.9
	13.0	9.0		11.3	7.3		11.8	7.9
2+00	12.9	8.9		11.4	7.4		11.8	7.9
	13.0	9.0	50	11.7	7.7	50	11.7	7.8
	13.0	9.0		12.0	8.0	9+00	12.2	8.3
	12.8	8.8		12.2	8.2		11.4	7.5
							11.2	7.3
							11.2	7.3
							11.0	7.1
						7+00	11.0	7.1
							11.0	7.1
							11.1	7.2

7-07-60

STA. N. 103+50; 0+00 = W. 11,400			SOUND WEST		
DIST	SOUND	ELEV	DIST	SOUND	ELEV
0+00			(38)	13.4	9.6
(3.8)			50	13.5	9.7
	0.0	+3.8		13.5	9.7
11:15	1.4	+2.4		13.5	9.7
<u>    </u>	4.4	6		13.8	9.0
50	9.0	4.2		14.0	10.2
	11.2	7.4	3+00	13.9	10.1
	12.8	8.0		14.0	10.2
	12.5	7.7		13.9	10.1
	12.8	8.0		13.9	10.1
1+00	12.8	8.0		14.0	10.2
	12.9	8.1	50	14.0	10.2
	12.8	8.0		13.0	9.2
	13.0	9.2		12.5	8.7
	13.2	9.4		11.5	7.7
50	13.0	9.2		11.5	7.7
	13.2	9.4	4+00	11.2	7.4
	13.1	9.3		11.1	7.3
	13.1	9.3		11.1	7.3
	13.4	9.6		11.0	7.2
2+00	13.2	9.4		11.0	7.2
	13.6	9.8	50	11.1	7.3
	13.5	9.7		11.3	7.5
	13.4	9.6		11.5	7.7

STA. N. 103+50 - WEST

STA. N. 103+50 - WEST			SOUND WEST		
DIST	SOUND	ELEV	DIST	SOUND	ELEV
(37)	11.8	8.1	(36)	12.8	9.2
	11.9	8.2		12.0	8.4
5+00	11.9	8.2	50	11.8	8.2
	11.3	8.6		10.8	7.2
11:20	10.2	7.5		11.2	7.6
<u>    </u>	11.2	8.9		11.8	8.2
	10.8	7.4		11.9	8.3
50	10.8	7.4	8+00	11.5	7.9
	11.2	7.5		10.8	7.2
	11.8	8.4		10.6	7.0
	11.6	7.9	11:25	11.2	7.6
	11.6	7.9	<u>    </u>	11.2	7.6
6+00	11.8	8.4	50	11.2	7.6
	11.9	8.2		11.6	8.0
	11.8	8.4		11.6	8.0
	11.8	8.4		11.8	8.2
	11.1	7.4		11.8	8.2
50	11.0	7.2	9+00	11.8	8.2
	11.0	7.2			
	11.0	7.2			
	11.2	7.5			
7+00	11.1	7.3			
	13.1	9.4			
	13.2	9.5			



7-07-60

STAN. 104+00 - WEST

(23)

STAN. 104+00; 0+00 = W. 11,380; SOUND WEST			STAN. 104+00 - WEST					
DIST	SOUND	ELEV	DIST	SOUND	ELEV	DIST	SOUND	ELEV
			(26)	12.1	9.5	(26)	10.5	7.9
0+00			50	12.1	9.5	5+00	12.0	9.4
(26)				12.0	9.4		12.1	9.5
12:50	0.7	41.9		12.5	9.9		11.9	8.3
<u>      </u>	6.3	3.7		12.5	9.9		12.0	9.4
50	7.9	5.3		12.6	10.0		12.0	9.4
	10.5	7.9	3+00	12.1	9.5	50	9.7	7.1
	10.8	8.2		12.1	9.5	8+00	12.4	9.8
	10.8	8.2		12.1	9.5		11.8	9.2
	11.0	8.4		12.4	9.9		11.8	9.2
1+00	11.0	8.4		12.1	9.5		11.2	8.6
	11.1	8.5	50	11.6	9.0		9.7	7.1
	11.1	8.5		11.3	8.7	6+00	10.5	7.9
	11.3	8.7		10.9	8.3	50	10.2	7.6
	11.6	9.0		11.0	8.4		10.8	8.2
50	11.4	8.8		11.0	8.4		10.7	8.1
	11.8	9.2	4+00	11.0	8.4	1:00	10.7	8.1
	11.7	8.9		10.8	8.2	<u>      </u>	9.9	7.3
	11.8	9.2	12:55	11.4	7.8		10.0	7.4
	11.6	9.0	<u>      </u>	10.9	8.3		10.5	7.9
2+00	12.4	9.8		10.9	8.3		10.8	8.2
	11.9	9.3	50	10.9	8.3		11.2	8.6
	11.9	9.3		11.0	8.4		11.1	8.5
	11.9	9.3		11.2	8.6		11.1	8.5
						7+00	11.1	8.5
						50	11.1	8.5
							11.1	8.5
							11.4	8.8
							11.8	9.4
							11.1	8.5
						10+00	11.3	8.7

7-07-60

STA. N. 104+50 - WEST

(2A)

STA. N. 104+50			CHOO = W. 11,350			Sound WEST			DIST Sound ELEV			DIST Sound ELEV		
DIST	Sound	ELEV	DIST	Sound	ELEV	(2A)	11.4	9.0	(2A)	10.1	7.7			
0+00			(25)	11.6	9.1		11.5	9.1		10.1	7.7			
(25)			50	11.6	9.1	5+00	11.2	8.8	50	10.1	7.7			
			1:10	11.8	9.3	11:15	10.2	8.8		11.0	7.6			
1:07	0.4	+2.1		11.8	9.3		9.6	7.2		11.1	7.7			
	4.2	-2.3		11.2	8.7		9.1	6.7		11.2	7.8			
50	6.9	4.4		11.3	8.8		9.1	6.7		11.0	7.6			
	10.1	7.6	3+00	11.8	9.3	50	9.1	6.7	8+00	11.1	7.7			
	10.3	7.8		12.2	9.7		9.3	6.9		11.2	7.8			
	10.3	7.8		12.2	9.7		9.8	7.4	11:20	11.8	9.4			
	10.6	8.1		12.1	9.6		9.8	7.4		11.9	9.5			
1+00	10.8	8.3		12.0	9.5		9.8	7.4		12.0	9.6			
	10.9	8.4	50	11.5	9.0	6+00	10.0	7.6	50	11.8	9.4			
	10.8	8.3		11.5	9.0		10.2	7.8		11.9	9.5			
	10.6	8.1		11.0	8.5		10.1	7.7		11.9	9.5			
	10.6	8.1		11.0	8.5		10.0	7.6		12.0	9.6			
50	10.9	8.4		11.0	8.5		10.1	7.7		12.0	9.6			
	10.9	8.4	4+00	10.9	8.4	50	10.1	7.7	9+00	10.5	7.9			
	11.0	8.5		11.0	8.5		10.1	7.7		10.8	8.4			
	11.0	8.5		11.0	8.5		10.2	7.8		11.0	8.6			
	11.1	8.6		10.9	8.4		10.2	7.8		11.2	8.8			
2+00	11.1	8.6		10.9	8.4		10.2	7.8		11.0	8.6			
	11.1	8.6	50	11.1	8.6	7+00	10.2	7.8	50	11.8	9.4			
	11.2	8.7		11.2	8.7		10.2	7.8		10.8	8.4			
	11.5	9.0		11.4	8.9		10.2	7.8		10.8	8.4			
										11.0	8.6			
										10.8	8.4			
										10.9	8.5			
										10.8	8.4			
										11.0	8.6			
										10.7	8.7			

7-07-60

STA. N. 105+00; - WEST

(25)

STA. N. 105+00; DIST = W. 11, 320			SOUND WEST			STA. N. 105+00; - WEST			SOUND WEST		
DIST	SOUND	ELEV	DIST	SOUND	ELEV	DIST	SOUND	ELEV	DIST	SOUND	ELEV
			(23)	10.5	8.2	(23)	11.2	8.9			
0+00			50	10.7	8.3	5+00	11.9	9.6	50	10.2	(6.9)
(24)				10.8	8.4		11.9	9.6		10.6	7.3
				10.9	8.6		9.2	(6.9)	11.35	10.7	7.4
1:27	2.1	10.3	11:30	11.2	8.9		9.1	(6.8)		10.8	7.5
50	7.6	5.2		11.1	8.9		9.2	6.9		10.9	7.6
	10.0	7.6	3+00	11.1	8.8	50	9.2	(6.9)	8+00	11.2	8.9
	10.0	7.6		11.1	8.8		9.4	7.1		11.2	8.9
	10.0	7.6		11.2	8.9		9.7	7.4		11.3	9.0
	10.1	7.7		11.3	9.0		9.8	7.5		11.9	9.6
1+00	10.3	7.9		11.4	9.1		10.2	7.9		12.1	9.8
	10.1	7.7	50	11.3	9.0	6+00	10.2	7.9	50	12.1	9.8
	10.2	7.8		11.2	8.9		10.2	7.9		12.0	9.7
	10.2	7.8		10.9	8.6		10.1	7.8		12.2	9.9
	10.3	7.9		10.7	8.4		10.1	7.8		12.5	10.2
50	10.5	8.1		10.6	8.3		10.1	7.8		12.8	10.5
	10.6	8.2	4+00	10.8	8.9	50	10.1	7.8	9+00	12.6	10.3
	10.7	8.3		10.9	8.6		10.1	7.8		10.0	7.7
	10.5	8.1		11.0	8.7		10.2	7.9		10.2	7.9
	10.7	8.3		11.0	8.7		10.2	7.9		10.9	8.6
2+00	10.6	8.2		11.0	8.7		10.2	7.9		11.2	8.9
	10.7	8.3	50	11.1	8.9	7+00	10.2	7.9	50	11.3	9.0
	10.5	8.1		11.1	8.8		10.7	7.4		11.3	9.0
	10.6	8.2		11.2	8.9		11.6	8.3		11.4	9.1
										11.5	9.2
										11.7	9.4
									10+00	12.1	9.8

7-07-60

STA. N. 105+50; CHOO-W. 11,290; SOUND WEST

Dist	Sound	Elev	Dist	Sound	Elev
0+00			(22)	10.4	8.2
(2.2)			50	10.6	8.4
				10.8	8.6
<u>11.45</u>				10.8	
	0.6	1.6		10.8	
50	5.0	2.8		10.8	
	10.0	7.8	3+00	10.8	8.6
	10.6	8.4		11.0	9.8
	10.5	8.3		11.0	9.8
	10.1	7.9		11.5	9.3
1+00	10.2	8.0		11.5	9.3
	10.2	8.0	50	11.3	9.1
	10.3	8.1		10.9	8.7
	10.5	8.3		9.8	7.6
	10.3	8.1		10.0	7.8
50	10.2	8.0		10.1	7.9
	10.3	8.1	4+00	10.3	8.1
	10.5	8.3		10.1	7.9
	10.5	8.3		10.1	7.9
	10.2	8.0		10.1	7.9
2+00	10.2			10.2	8.0
	10.2		50	10.2	8.0
	10.2			10.6	8.4
	10.2	8.0		10.9	8.7

STA. N. 105+50-WEST

(26)

Dist	Sound	Elev	Dist	Sound	Elev
(22)	11.0	8.8	(22)	9.1	6.9
	11.3	9.1		9.0	6.8
5+00	12.0	9.8	50	9.6	7.4
	12.0	9.8		10.2	8.0
<u>11.50</u>	11.0	8.8	<u>11.55</u>	10.3	8.1
	9.0	6.8		10.4	8.2
	9.0	6.8		10.5	8.3
50	9.3	7.1	8+00	10.8	8.6
	9.3	7.1		10.8	8.6
	9.4	7.2		11.1	8.9
	9.2	7.0		11.4	9.2
	9.4	7.2		11.8	9.6
6+00	9.2	7.0	50	11.9	9.7
	9.5	7.3		12.0	9.8
	9.6	7.4		12.1	9.9
	9.8	7.6		12.3	10.1
	9.8	7.6		12.6	10.4
50	9.8		9+00	12.6	10.4
	9.8			12.2	10.0
	9.8			9.2	7.0
	9.8			9.5	7.3
	9.8	7.6		9.9	7.7
7+00	10.0	7.8	50	10.2	8.0
	10.1	7.9		10.8	8.6
	9.2	7.0		10.6	8.4

STA. N. 105+50 - WEST 7-07-60

Dist Sound Elev

(22) 10.7 8.5

11.1 8.9

10+00 11.1 8.9

11.6 9.4

11.5 9.3

11.7 9.5

11.7 9.5

50 11.8 9.6

11.8 9.6

2:00 11.8 9.6

11.9 9.7

12.0 9.8

11+00 12.0 9.8

12.0 9.8

11.6 9.4

10.1 7.9

10.0 7.8

50 10.0 7.8

10.3 8.1

10.3 8.1

10.2 8.0

10.1 7.9

12+00 10.1 7.9

(21)

STA. N. 106+00:0100=11.11.270 ; SOUND WEST

Dist Sound Elev Dist Sound Elev

0+00 (22) 10.8 8.6

(22) 50 10.9 8.7

11.0 7.8

2:27 0.3 +1.9 2:30 11.1 8.9

5.3 1.1 11.0 8.8

50 9.1 6.9 11.0 8.8

11.2 9.0 3+00 10.9 8.7

11.2 9.0 10.9 8.7

11.0 8.8 11.0 8.8

10.9 8.7 11.0 8.8

1+00 10.8 8.6 11.0 8.8

10.7 8.5 50 10.7 8.5

10.7 8.5 9.3 7.1

10.7 8.5 9.3 7.1

10.7 8.5 9.4 7.2

50 10.7 8.5 10.2 8.0

10.8 8.6 4+00 10.2 8.0

10.9 8.7 10.1 7.9

10.7 8.5 10.0 7.8

10.8 8.6 10.0 7.8

2+00 10.7 8.5 10.1 7.9

11.0 8.8 50 10.1 7.9

10.9 8.7 10.2 8.0

10.9 8.7 10.3 8.1

STATION 106+00-WEST 7-07-60

Dist	Sound	Elev	Dist	Sound	Elev
(22)	11.2	9.0	(22)	9.7	6.5
	11.2	9.0		10.0	7.8
5+00	12.2	10.0	50	9.8	7.6
	12.1	9.9		10.2	8.0
	10.0	7.8	<u>2:35</u>	10.1	7.9
	9.9	7.7		10.1	7.9
	9.6	7.4		10.1	7.9
50	10.0	7.8	8+00	10.2	8.0
	9.8	7.6		10.7	8.5
	9.9	7.7		10.8	8.6
	9.9	7.7		11.2	9.0
	9.5	7.3		11.7	9.5
6+00	9.8	7.6	50	11.9	9.7
	9.9	7.7		12.2	10.0
	10.0	7.8		12.2	10.0
	9.9	7.7		12.2	10.0
	10.0	7.8		12.3	10.1
50	10.0	7.8	9+00	12.3	10.1
	9.9	7.7		12.4	10.2
	9.9	7.7		11.2	9.0
	9.6	7.4		9.0	6.8
	9.4	7.2		9.1	6.9
7+00	9.2	7.0	50	9.1	6.9
	9.1	6.9		9.1	6.9
	9.1	6.9		9.3	7.1

STATION 106+00-WEST

Dist	Sound	Elev	Dist	Sound	Elev
(22)	9.6	7.4			
	9.6	7.4			
10+00	9.4	7.2			
	9.9	7.7			
	10.3	8.1			
	10.7	8.5			
	11.1	8.9			
50	11.2	9.0			
	11.1	8.9			
	11.1	8.9			
	11.3	9.1			
	12.2	10.0			
11+00	12.2	10.0			
	12.2	10.0			
	11.7	9.5	<u>2:40</u>		
	10.6	8.4			
	10.4	8.2			
50	10.6	8.4			
	10.6	8.4			
	10.9	8.7			
	10.9	8.7			
	10.9	8.7			
12+00	10.9	8.7			

7-08-60

STA. N. 106+50; 0+00 = W. N. 260 ; SOUND WEST

DIST	SOUND	ELEV	DIST	SOUND	ELEV
0+00	0.3	+4.6	(49)	14.0	9.1
(49)	2.0	+2.9	50	14.0	9.1
	3.5	+1.4		14.2	9.3
9:52	9.2	4.3	9:55	14.3	9.4
	11.2	6.3		14.3	9.4
50	13.0	8.1		14.3	9.4
	13.0	8.1	3+00	14.2	9.3
	13.3	8.4		14.5	9.6
	13.6	8.7		14.8	9.9
	13.6	8.7		14.6	9.7
1+00	14.3	9.4		13.9	9.0
	14.3	9.4	50	13.3	8.4
	14.2	9.3		12.8	7.9
	14.0	7.1		12.6	7.7
	14.1	9.2		12.8	7.9
50	14.2	9.3		12.8	7.9
	14.3	9.4	4+00	12.6	7.7
	14.0	9.1		12.6	7.7
	14.0	9.1		12.8	7.9
	14.0	9.1		12.8	7.9
2+00	13.9	9.0		12.9	8.0
	13.9	9.0	50	13.0	8.1
	14.0	9.1		13.2	8.3
	14.0	9.1		13.6	8.7

STA. N. 106+50 - WEST

DIST	SOUND	ELEV	DIST	SOUND	ELEV
(49)	14.0	9.1	(49)	11.9	7.0
	14.8	9.9		12.3	7.4
5+00	14.2	9.3	50	13.3	8.4
	14.1	9.2		13.2	8.3
	13.0	8.1		13.3	8.4
1000	12.8	7.9		13.2	8.3
	12.8	7.9		13.1	8.2
50	12.8	7.9	8+00	13.2	8.3
	12.8	7.9		13.3	8.4
	12.9	8.0		13.8	8.9
	12.8	7.9		14.0	9.1
	12.9	8.0		14.1	9.2
6+00	13.0	8.1	50	14.2	9.3
	13.0	8.1		14.6	9.7
	13.0	8.1		14.8	9.9
	13.0	8.1		14.9	10.0
	12.9	8.0		15.0	10.1
50	12.6	7.7	9+00	15.3	10.4
	12.3	7.4		15.3	10.4
	12.5	7.6		15.6	10.7
	12.3	7.4		15.5	10.6
	12.0	7.1		15.3	10.4
7+00	11.9	7.0	50	12.0	7.1
	12.1	7.2		12.0	7.1
	12.1	7.2		12.0	7.1

(29)

STAIN. 106+50-WEST 7-08-60

DIST	SOUND	ELEV	DIST	SOUND	ELEV
(49)	12.0	7.1	(49)	13.7	8.8
	12.0	7.1		13.4	8.5
10+00	12.0	7.1	50	13.2	8.3
	12.3	7.4		13.4	8.5
10+05	12.2	7.3		13.1	8.2
	11.9	7.0		13.0	8.1
	11.9	7.0		13.0	8.1
50	12.0	7.1	13+00	13.0	8.1
	12.2	7.3		12.8	7.9
	12.2	7.3		13.1	8.2
	12.3	7.4		12.9	8.0
	12.5	7.6		12.9	8.0
11+00	12.5	7.6	50	12.9	8.0
	12.7	7.8		13.1	8.2
	12.9	8.0	10+10	13.1	8.2
	12.8	7.9		13.4	8.5
	13.0	8.1		13.4	8.5
50	13.0	8.1	14+00	13.4	8.5
	13.1	8.2			
	13.5	8.6			
	13.3	8.4			
	13.4	8.5			
12+00	13.2	8.3			
	13.2	8.3			
	13.5	8.6			

STAIN. 107+00; 0+00=W. 11, 230; SOUND WEST

DIST	SOUND	ELEV	DIST	SOUND	ELEV
0+00			(49)	14.9	10.0
(49)	0.0	+4.9	50	14.8	9.9
	3.9	+1.0		14.9	10.0
10+17	8.8	3.9		14.8	9.9
	11.4	6.5		14.8	9.9
50	11.5	6.6		14.6	9.7
	13.2	8.3	3+00	14.2	9.3
	12.5	7.6		14.5	9.6
	12.6	7.7	10+20	14.7	9.8
	13.8	8.9		14.8	9.9
1+00	12.9	8.0		14.9	10.0
	13.9	9.0	50	12.6	7.7
	13.9	9.0		12.2	7.3
	13.5	8.6		12.6	7.7
	13.4	8.5		12.8	7.9
50	13.6	8.7		12.8	7.9
	13.8	8.9	4+00	12.7	7.8
	13.7	8.8		12.7	7.8
	14.3	9.4		12.7	7.8
	14.6	9.7		12.8	7.9
2+00	14.5	9.6		12.9	8.0
	14.8	9.9	50	12.8	7.9
	14.6	9.7		13.4	8.5
	13.9	9.0		14.0	9.1



STA. N. 107+00 - WEST 7-08-60

Dist	Sound	Elev	Dist	Sound	Elev
(49)	14.0	9.1	(49)	12.1	7.1
	14.1	9.2		12.9	8.0
5+00	13.7	8.8	50	14.0	9.1
	12.8	7.9		13.9	9.0
	12.7	7.8	10,25	13.4	8.5
	12.4	7.5		13.2	8.3
	12.5	7.6		13.1	8.2
50	12.3	7.4	8+00	13.1	8.2
	12.3	7.4		13.1	8.2
	12.3	7.4		13.2	8.3
14+00	13.0	8.1		13.2	8.3
	13.0	8.1		13.3	8.3
6+00	13.0	8.1	50	13.5	8.6
	13.1	8.2		13.9	9.0
	13.0	8.1		13.9	9.0
50	12.9	8.0		14.1	9.1
	12.8	7.9		14.3	9.4
50	12.8	7.9	9+00	14.3	9.4
	12.9	8.0		14.6	9.7
	12.7	7.8		14.9	10.0
2+00	12.7	7.8		14.4	9.5
	12.4	7.5	50	12.8	7.9
7+00	12.1	7.2	50	11.9	7.0
	11.9	6.9		11.9	7.0
	12.0	7.1		11.9	7.0

STA. N. 107+00 - WEST

Dist	Sound	Elev	Dist	Sound	Elev
(48)	12.1	7.3	(48)	13.0	8.2
	11.9	7.1		12.9	8.1
10+00	12.2	7.4	50	12.9	8.1
	12.8	8.0		13.1	8.3
	12.9	8.1		12.9	8.1
	13.1	8.3		12.8	8.0
	13.4	8.6		12.9	8.1
50	13.8	9.0	13+00	12.9	8.1
	13.3	8.5		12.9	8.1
	12.2	7.4		12.8	8.0
	12.0	7.2		12.5	7.7
	12.0	7.2	50	12.4	7.6
11+00	12.6	7.8	50	12.5	7.7
	12.9	8.1		12.8	8.0
	12.8	8.0		12.7	7.9
	12.9	8.1		12.9	8.1
	12.9	8.1		13.0	8.2
50	13.0	8.2	14+00	13.2	8.4
	12.9	8.1		13.4	8.6
10,30	13.0	8.2		13.3	8.5
	13.0	8.2		13.2	8.4
	13.2	8.4		13.1	8.3
12+00	13.1	8.3	50	13.2	8.4
	13.1	8.3			
	13.1	8.3			

7-08-60

STAN. 107+50; 0+00=W, 11, 220; SOUND WEST

DIST SOUND ELEV DIST SOUND ELEV

0+00

(48)

2.3 +2.5

(48)

13.2

50 13.2

5.3 0.5

13.8

10:40

10.0 5.2

13.6

11.0 6.2

12.8

50

12.4 7.6

12.6

12.5 7.7

3+00

12.2

12.9 8.1

12.0

13.0 8.2

11.1

6.3

11.8 7.0

11.1

6.3

1+00

12.9 8.1

11.3

6.5

13.0

50

11.6

6.8

12.1

11.9

7.1

12.9

10:45

12.0

13.0

12.1

50

12.9

12.1

13.2

4+00

12.1

13.6

12.1

13.2

12.3

14.0

12.3

2+00

13.2

12.6

13.4

50

13.0

13.6

13.2

13.2

13.3

STAN. 107+50 - WEST

DIST SOUND ELEV DIST SOUND ELEV

(47)

13.5

(47)

14.0

13.8

14.0

5+00

12.8

50

13.9

12.2

13.7

12.2

13.6

12.2

13.7

12.6

13.8

50

12.8

8+00

13.8

13.0

13.7

13.8

13.6

13.8

13.6

13.8

13.5

6+00

13.6

50

13.3

13.2

13.7

13.2

13.6

13.0

13.7

13.0

13.7

50

12.9

9+00

13.8

12.8

13.8

10:50

12.8

13.7

13.0

13.8

12.8

13.8

7+00

12.5

50

13.4

12.2

13.5

12.9

13.8

STA. N. 107+50 - WEST 7-08-60

Dist Sound Elev Dist Sound Elev

(4.7)	14.0	(4.6)	14.0
	13.9		14.0
10+00	13.9	50	14.2
	14.0		14.8
10:55	14.0		14.0
	14.1		14.9
	14.1		14.3
50	14.1	13+00	14.3
	14.4		14.1
	14.6		14.1
	14.8	11:00	14.2
	14.9		14.1
11+00	14.0	50	14.2
	12.6		13.0
	12.4		12.6
	12.5		13.0
	12.6		12.9
50	13.0	14+00	12.6
	13.4		12.8
	13.7		12.8
	13.5		12.9
	13.2		12.9
12+00	13.0	50	12.7
	13.8		12.8
	14.0		12.8
			12.9
			12.9
		15+00	12.9

STA. N. 108+00: 0+00 = W. 116 190 SOUND WEST

Dist Sound Elev Dist Sound Elev

0+00		(4.5)	12.9	7.9	
(4.6)		50	13.0	8.5	
	2.7	41.9	13.1	8.6	
11:12	6.8	2.2	11:15	13.1	8.6
	10.2	5.6		13.1	8.6
50	10.8	6.2		13.0	8.5
	11.2	6.6	3+00	13.0	8.5
	12.0	7.4		13.0	8.5
	12.0	7.4		12.8	8.3
	11.7	7.1		11.8	7.3
1+00	12.3	7.7		11.2	6.7
	12.3	7.7	50	10.9	6.4
	12.0	7.4		11.6	7.1
	12.2	7.6		11.3	6.8
	12.4	7.8		11.6	7.1
50	12.2	7.6		11.8	7.3
	12.6	8.0	4+00	11.8	7.3
	12.7	8.1		11.8	7.3
	12.9	8.3		12.0	7.5
	12.8	8.2		12.0	7.5
2+00	12.9	8.3		12.1	7.6
	12.3	7.7	50	12.2	7.7
	12.2	7.6		12.4	7.9
	12.2	7.6		12.3	7.8

STA. N. 108+00 - WEST 7-08-60

	Dist	Sound	Elev		Dist	Sound	Elev
	(4.5)	12.2	7.7		(4.5)	12.3	7.8
		12.2	7.7			12.6	8.1
5+00		12.7	7.6	50	13.2	8.7	
		11.1	6.6		13.0	8.5	
		11.3	6.8		13.2	8.7	
		11.6	7.1		13.2	8.7	
		11.7	7.2		13.6	9.1	
50	11.9	7.4		8+00	13.2	8.7	
	12.3	7.8			13.1	8.6	
	12.7	8.2			13.0	8.5	
	13.1	8.6			12.7	8.2	
	13.0	8.5			13.0	8.5	
6+00	13.0	8.5		50	13.3	8.8	
	13.0	8.5			13.4	8.9	
	13.1	8.6		11+20	13.3	8.8	
	12.9	8.4		—	13.3	8.8	
	12.9	8.4			13.2	8.7	
50	12.6	8.1		9+00	13.2	8.7	
	12.7	8.2			13.2	8.7	
	12.6	8.1			13.2	8.7	
	12.4	7.9			13.4	8.9	
	12.5	8.0			13.6	9.1	
7+00	12.4	7.9		50	13.4	8.9	
	12.2	7.7			13.5	9.0	
	12.3	7.8			13.5	9.0	

STA. N. 108+00 - WEST

(34)

	Dist	Sound	Elev		Dist	Sound	Elev
	(4.5)	13.5	9.0		(4.4)	14.4	10.0
		13.5	9.0			14.3	9.9
10+00		13.4	8.9	50	14.2	9.8	
		13.4	8.9		14.0	9.6	
		13.7	9.2		14.1	9.7	
		13.8	9.3		14.1	9.7	
		13.9	9.4		13.4	9.0	
50	13.9	9.4		13+00	13.3	8.9	
	14.0	9.5			13.3	8.9	
	14.0	9.5			13.2	8.8	
	14.1	9.6			13.8	9.4	
	14.1	9.6			13.9	9.5	
11+00	14.4	9.9		50	14.2	9.8	
	14.8	10.3			13.6	9.2	
	14.0	9.5		11+25	13.1	8.7	
	11.7	7.2		—	13.0	8.6	
	12.1	7.6			13.1	8.7	
50	12.2	7.7		14+00	13.0	8.6	
	12.2	7.7			12.9	8.5	
	12.2	7.7			12.9	8.5	
	12.3	7.8			12.4	8.0	
	12.6	8.1			12.3	7.9	
12+00	12.9	8.4		50	12.0	7.6	
	12.8	8.3			12.0	7.6	
	13.9	9.4			12.1	7.7	
					12.2	7.8	
				15+00	12.2	7.8	

7-08-60

STA. N. 108+50; 0+00=W. 116+50; SOUND WEST

Dist	Sound	Elev	Dist	Sound	Elev
0+00			(3.4)	11.9	
(3.4)			50	11.9	
	1.4			12.0	
12:50	5.2			12.0	
	9.2			12.0	
50	10.4			11.5	O.F.
	10.7		3+00	11.0	
	10.8			11.0	
	10.8			12.2	
	10.7			12.2	
1+00	10.7			11.0	
	10.9		50	10.2	6.8
	11.0			10.5	
	11.2	O.F.		10.5	
	11.3			10.5	
50	11.5			10.4	
	11.8		4+00	10.4	
	11.8			10.6	
	11.9			10.8	
	11.9			11.0	
2+00	12.0			11.2	
	11.9		50	11.2	
	11.9			11.2	
	11.9			11.2	

STA. N. 108+50-WEST

(35)

Dist	Sound	Elev	Dist	Sound	Elev
(3.2)	11.2			11.2	
	11.2			11.2	
5+00	11.2		50	11.2	
	11.2			11.8	
	10.0	6.7		12.0	
12:55	10.0	6.7		12.1	
	10.1	6.8		12.1	
50	10.4		8+00	12.1	
	10.8			12.1	
	11.0			11.8	
	11.1			11.8	
	11.4			12.0	
6+00	11.6		50	11.8	O.F.
	11.8			11.9	
	11.9			11.8	
	12.0		1:00	11.8	
	12.0			11.8	
50	12.0		9+00	11.8	
	11.9			11.9	
	11.9			11.9	
	11.8			12.0	
	11.7			12.2	
7+00	11.6		50	12.2	
	11.4			12.3	
	11.5			12.3	

STA. N. 108+50 - WEST 7-08-60

Dist	Sound	Elev	Dist	Sound	Elev
32	12.5		31	11.1	
	12.7			11.2	
10+00	12.8		50	11.2	
	12.9			10.9	
	12.9		11.05	11.5	
	13.0			11.8	
	13.1			11.8	
50	13.1		13+00	11.6	
	12.9			11.4	
	12.6			11.5	
	10.2			11.5	
	10.3			11.6	
11+00	10.8	0	50	11.8	
	10.8			12.0	
	10.9			11.9	
	11.0			11.9	
	11.1			11.9	
50	11.0		14+00	11.9	
	11.1			11.9	
	11.0			12.0	
	11.1			12.0	
	11.2			11.8	
12+00	11.1		50	11.8	
	11.1			11.6	
	11.1			11.5	

STA. N. 108+50 - WEST

Dist	Sound	Elev	Dist	Sound	Elev
31	11.5				
	11.0				
15+00	10.8				
	10.8				
	10.8				
	10.9				
	11.0				
50	11.1				
	11.3				
	11.3				
	11.3				
	11.0				
	11.1				
16+00	11.1				

7-08-60

STA. N. 109+00; 0+00 = W 11,140; SOUND WEST

DIST SOUND ELEV DIST SOUND ELEV

0+00

(30) 0.0  
3.7

1:15 9.3

10.5

50 10.5

10.7

10.9

11.0

10.9

1+00 10.9

10.9

10.8

10.8

10.8

50 10.7

10.6

10.7

10.6

10.6

2+00 10.7

10.8

10.9

11.1

(29) 11.3

50 11.3

11.6

12.0

1:20 11.9

11.4

3+00 11.2

11.2

10.8

10.4

10.3

50 10.2

10.3

10.2

10.2

10.2

4+00 10.3

10.1

10.3

10.4

10.6

50 10.7

10.8

10.5

STA. N. 109+00 - WEST

DIST SOUND ELEV DIST SOUND ELEV

(29) 10.6

10.5

5+00 10.6

10.7

10.6

10.7

10.7

50 10.8

10.9

10.9

11.1

11.0

6+00 11.0

10.9

11.2

11.0

11.0

50 11.1

11.3

11.2

11.0

11.1

7+00 10.9

11.1

11.0

(28) 11.2

12.2

50 12.4

12.3

11.9

12.0

11.8

8+00 11.6

11.4

11.6

11.5

12.0

50 11.9

11.7

1:25 11.8

11.8

11.7

9+00 11.4

11.5

11.5

11.7

11.8

50 12.0

12.0

12.0

(37)

STA. N. 109+00 - WEST 7-08-60

Dist Sound Elev Dist Sound Elev

(28)	10.6	0x	(28)	10.8
	9.7	6.9		10.8
10+00	9.7	6.9	50	10.9
	9.8	7.0		11.0
	10.0		1130	10.9
	9.9		<u>1130</u>	10.8
	10.0			10.7
50	10.4		13+00	10.4
	10.2		13+00	10.9
	9.8			11.6
	9.9			11.4
	11.0			11.4
11+00	11.6	L	50	11.1
	11.2	b.		11.3
	11.0			11.8
	11.0			11.7
	11.0			11.8
50	10.8		14+00	11.8
	10.8			11.5
	10.6			11.4
	10.7			11.8
	10.6			11.1
12+00	10.7		50	11.8
	10.8			10.9
	10.9			10.9

STA. N. 109+00 - WEST

Dist Sound Elev Dist Sound Elev

(28)	10.8			
	10.8			
15+00	10.5			
	10.3			
	10.3			
	10.5			
	10.2			
50	9.9			
	10.3			
	10.3	X.		
	10.4	0.		
	10.8			
16+00	10.8			
	10.9			
	10.8			
	11.3			
	10.9			
50	10.9			



7-08-60

STA. N. 109+50; 0+00 = W. 11, 120; SOUND WEST

DIST	SOUND	ELEV	DIST	SOUND	ELEV
0+00			(26)	11.1	
(27)			50	11.0	
	0.1			11.0	
11.42	3.9			11.0	
<u>    </u>	9.2			10.9	
50	10.6			10.9	OK
	10.8		3+00	11.0	
	10.5			11.3	
	11.0		1:45	11.2	
	11.1		<u>    </u>	9.8	
1+00	11.0			9.6	
	11.0		50	9.6	
	11.0			9.9	
	11.0	OK		9.9	
	11.1			9.9	
50	11.2			9.9	
	11.2		4+00	10.1	
	11.2			10.6	OK
	11.4			10.6	
	11.3			10.2	
2+00	11.3			10.6	
	11.6		50	10.7	
	11.9			10.7	
	11.2			10.8	

STA. N. 109+50 - WEST

(39)

DIST	SOUND	ELEV	DIST	SOUND	ELEV
(26)	10.8		(26)	11.0	
	10.5			11.1	
5+00	10.2		50	12.1	
	10.2			12.2	
	10.5		11:50	12.5	
	10.8		<u>    </u>	12.2	
	10.9			12.2	
50	11.0		8+00	12.0	
	11.1			11.8	
	11.1			11.2	
	10.9			11.2	
	11.0	OK		11.6	
6+00	11.0	OK	50	11.2	OK
	11.1			11.1	
	11.1			11.1	
	11.3			11.2	
	11.3			11.3	
50	11.3		9+00	11.5	
	11.3			11.5	
	11.0			11.7	
	11.1			11.6	
	11.1			11.8	
7+00	10.9		50	11.8	
	11.0			11.8	
	11.0			11.2	

STATION 109+50 - WEST 7-08-60

Dist Sound Elev. Dist Sound Elev.

(25)	10.2		(25)	10.7	
	10.0			10.7	
10+00	10.0		50	10.8	
	10.0			10.7	
	10.2			11.0	
	10.4			10.8	
	10.2			10.9	
50	10.1		13+00	11.0	
	9.8			10.9	
	10.0			11.0	
11:55	10.2			10.9	
<u>    </u>	11.3			10.9	
11+00	11.5	✓	50	11.1	ok
	11.2	0		11.3	
	11.1			11.6	
	11.1			11.1	
	11.1			10.9	
50	11.1		14+00	11.0	
	11.0			10.8	
	11.1		2:00	11.0	
	11.2		<u>    </u>	11.0	
	11.0			11.0	
12+00	10.8		50	11.1	
	10.6			10.8	
	10.7			10.9	

STATION 109+50 - WEST

Dist Sound Elev. Dist Sound Elev.

(25)	10.9				
	10.9				
15+00	10.4				
	10.8				
	10.7				
	10.8				
	10.8				
50	10.7				
	10.5				
	10.7				
	10.4				
	10.4				
16+00	10.5				
	10.8				
	10.9				
	11.1				
	11.0				
50	11.0				
	11.2				
	10.9				
	11.0				
	11.2				
17+00	11.0				

(157.9)

7-08-60

TA. 1-06-60

STA. N. 110+00.000 = N. 11, 150; SOUND WEST

	Dist	Sound	Elev	Dist	Sound	Elev
0+00				(24)	11.2	8.8
(24)	0.3	+2.1		50	11.2	8.8
	3.0	0.6			11.2	8.8
2:10	8.2	5.8			10.8	8.4
	10.2	7.8			9.9	7.5
50	11.1	8.7			9.8	7.4
	11.1	8.7		3+00	9.9	7.5
	10.7	8.3			10.2	7.8
	11.1	8.7			10.1	7.7
	11.2	8.8		2:15	10.2	7.8
1+00	11.1	8.7			10.2	7.8
	11.1	8.7		50	10.8	8.4
	10.8	8.4			10.4	8.0
	10.9	8.5			10.2	7.8
	10.9	8.5			10.1	7.7
50	11.0	8.6			10.2	7.8
	11.1	8.7		4+00	10.2	7.8
	11.2	8.8			10.2	7.8
	11.3	8.9			10.2	7.8
	11.2	8.8			10.2	7.8
2+00	11.4	9.0			10.2	7.8
	11.4	9.0		50	9.2	6.8
	11.3	8.9			9.6	7.2
	11.3	8.9			9.8	7.4

(21)

STA. N. 110+00 - WEST

Dist	Sound	Elev	Dist	Sound	Elev
(24)	10.0	7.6	(24)	11.4	9.0
	10.2	7.8		11.3	8.9
5+00	10.9	8.5	50	11.4	9.0
	10.8	8.4		11.5	9.1
	11.0	8.6		11.8	9.9
	11.0	8.6		11.6	9.2
	11.2	8.8		11.3	8.9
50	11.1	8.7	8+00	11.3	8.9
	11.1	8.7		11.8	9.4
	10.9	8.5		11.6	9.2
	10.9	8.5		11.8	9.4
	10.9	8.5		11.4	9.0
6+00	11.0	8.6	50	11.3	8.9
	11.0	8.6		11.3	8.9
	11.0	8.6		11.2	8.8
	10.6	8.2		11.2	8.8
	10.3	7.9		11.2	8.8
50	10.6	8.2	9+00	11.4	9.0
	11.1	8.7		11.5	9.1
	11.3	8.9		11.7	9.3
	11.2	8.8		11.2	8.8
	11.2	8.8		11.2	8.8
7+00	11.3	8.9	50	9.2	6.8
	11.4	9.0		9.0	6.6
	11.3	8.9		9.0	6.6

STA. N. 110+00 - WEST 7-08-60

DIST	Sound	Elev	DIST	Sound	Elev
(24)	9.1	6.7	(24)	10.5	8.1
	9.2	6.8		10.5	8.1
10+00	9.2	6.8	50	10.8	8.4
	9.4	7.0		10.7	8.3
	10.0	7.6		10.7	8.3
2320	10.1	7.7		10.7	8.3
-	10.1	7.7		10.7	8.3
50	10.2	7.8	13+00	10.8	8.4
	10.1	7.7		11.0	8.6
	10.3	7.9		11.1	8.7
	10.6	8.2		11.0	8.6
	10.7	8.3		9.8	7.4
11+00	10.4	8.0	50	10.0	7.6
	10.6	8.2		9.9	7.5
	10.5	8.1		10.2	7.8
	10.3	7.9		10.1	7.7
	10.4	8.0		10.2	7.8
50	10.6	8.2		10.4	8.0
	10.7	8.3		10.7	8.3
	10.9	8.5		11.1	8.7
	10.8	8.4		11.2	8.8
	10.8	8.4		11.6	9.2
12+00	10.6	8.2	50	11.5	9.1
	10.8	8.4		11.2	8.8
	10.4	8.0		11.4	9.0

STA. N. 110+00 - WEST

(42)

DIST	Sound	Elev	DIST	Sound	Elev
(23)	11.1	8.8	(23)	10.2	7.9
	11.1	8.8		10.2	7.9
15+00	11.2	8.9	50	10.1	7.8
	11.2	8.9		10.1	7.8
	11.0	8.7		10.0	7.7
225	11.1	8.8		10.2	7.9
-	11.0	8.7		10.1	7.8
50	10.6	8.3	18+00	10.1	7.8
	10.8	8.5		9.7	7.4
	11.0	8.7		9.9	7.6
	10.4	8.1		9.7	7.4
	10.8	8.5		9.6	7.3
16+00	10.3	8.0	50	9.7	7.4
	10.3	8.0	7-12-60	10.8	7.7
	10.3	8.0	(3.1)	10.9	7.8
	10.3	8.0	10:35	11.3	8.2
	10.4	8.1		11.5	8.4
50	10.5	8.2	19+00	11.3	8.2
	10.3	8.0		10.9	7.8
	10.4	8.1		10.8	7.7
	10.2	7.9		10.8	7.7
	10.3	8.0		10.9	7.8
17+00	10.8	8.5	50	10.9	7.8
	10.5	8.2		11.2	8.1
	10.3	8.0		11.3	8.2

STA. N. 110+00-WEST 7-12-60

DIST	Sound	Elev	DIST	Sound	Elev
(31)	11.8	8.7	(31)	11.8	8.7
	11.8	8.7		11.3	8.2
20+00	12.5	9.4	50	11.5	8.4
	12.5	9.4		11.2	8.1
	12.9	9.8	10+40	10.9	7.8
	12.3	9.2		10.8	7.7
	11.2	8.1		10.9	7.8
50	11.0	7.9	23+00	10.5	7.4
	10.8	7.7		10.6	7.5
	11.0	7.9		10.6	7.5
	11.2	8.1		10.8	7.7
	11.2	8.1		10.6	7.5
21+00	11.1	8.0	50	10.2	7.1
	11.0	7.9		10.0	6.9
	11.0	7.9		9.9	6.8
	11.2	8.1		9.9	6.8
	11.3	8.2		10.0	6.9
50	11.3	8.2	24+00	10.1	7.0
	11.3	8.2		9.9	6.8
	11.5	8.4		9.6	6.5
	11.7	8.6		9.5	6.4
	11.5	8.4		9.8	6.7
22+00	11.6	8.5	50	9.9	6.8
	11.7	8.6		10.0	6.9
	11.7	8.6		10.1	7.0

STA. N. 110+00-WEST

(13)

DIST	Sound	Elev
(32)	10.1	6.9
	10.1	6.9
25+00	10.0	6.8
	10.0	6.8
	10.1	6.9
10+45	9.9	6.7
	9.9	6.7
50	10.0	6.8
	10.2	7.0
	10.1	6.9
	10.2	7.0
	10.2	7.0
26+00	10.3	7.1

7-12-60

STA. N. 111+50; 0+00 = W. 11,210; SOUND WEST

DIST	SOUND	ELEV	DIST	SOUND	ELEV
0+00	0.4		(5)	13.1	
(5)	1.3		50	13.1	
	2.4			13.0	
<u>1140</u>	3.5			13.2	
	9.0		<u>1145</u>	13.5	
50	10.1			13.4	
	11.0		3+00	13.5	
	11.5			13.4	
	11.8			13.2	
	12.0			13.1	
1+00	11.1			13.0	
	12.5		50	12.9	
	11.5			12.9	
	13.0			12.9	
	13.1			13.0	
50	13.2			13.1	
	13.3		4+00	13.0	
	13.4			13.1	
	13.4			13.2	
	13.4			13.3	
2+00	13.2			13.4	
	13.1		50	13.3	
	13.0			13.4	
	13.0			13.4	

STA. N. 111+50 - WEST

DIST	SOUND	ELEV	DIST	SOUND	ELEV
(5)	13.2		(5)	13.3	
	13.5			13.5	
5+00	13.3		50	13.2	
	13.3			13.2	
	13.2			13.4	
	13.2			13.0	
	15.0			14.0	
50	14.9		8+00	14.0	
	14.2			14.1	
<u>1150</u>	14.2			14.2	
	14.2			14.6	
	14.1			14.5	
6+00	14.1		50	14.6	
	14.2			14.7	
	14.5			12.7	
	14.1			13.8	
	14.0			14.0	
50	14.0		9+00	14.5	
	14.0			14.8	
	14.0			14.3	
	14.0			14.1	
	14.0			14.0	
7+00	14.0		50	14.0	
	13.9			13.9	
	13.5			13.3	

STA. N. 111+50 - WEST 7-12-60

DIST	Sound	Elev	DIST	Sound	Elev
(51)	13.3		(51)	12.3	
	13.4			12.9	
10+00	13.0		50	13.0	
	13.0			13.1	
	12.5		2100	13.3	
<u>11.55</u>	12.5		<u>      </u>	13.3	
	12.8			13.5	
50	12.9		13+00	13.4	
	12.9			13.6	
	13.0			13.8	
	13.2			14.0	
	13.5	0.1		13.9	0.1
11+00	13.9		50	13.9	
	13.2			13.9	
	13.2			14.0	
	13.2			14.1	
	13.4			14.1	
50	13.6		14+00	14.0	
	13.2			14.0	
	13.1			14.2	
	13.2			14.2	
	13.0			14.2	
12+00	13.1		50	14.0	
	13.0			14.1	
	12.9			13.9	

STA. N. 111+50 - WEST

DIST	Sound	Elev	DIST	Sound	Elev
(49)	14.0		(49)	13.4	
	14.3			13.3	
15+00	13.9		50	13.2	
	13.3			13.2	
	13.6			13.2	
	14.0			13.8	
	13.3			13.8	
50	13.1		18+00	13.1	
	13.1			13.2	
	13.3			13.1	
	13.2			13.1	
	13.3	0.1		13.3	0.1
16+00	12.9		50	13.0	
	12.9			13.0	
	13.0			12.5	
	12.9			12.4	
	13.0			12.9	
50	12.9		19+00	12.8	
	13.0			12.8	
2105	12.3			12.7	
<u>      </u>	13.1			13.0	
	13.3			13.0	
17+00	13.2		50	12.8	
	13.2			12.5	
	13.8			12.7	
				12.8	
				12.5	
			20+00	12.5	

7-12-60

STA. N. 110450 - WEST

STA. N. 110450; CHOO = W 11,220; SOUND WEST

DIST SOUND Elev DIST SOUND Elev

DIST	SOUND	Elev	DIST	SOUND	Elev
0+00			(3.5)	11.0	
(34)			50	10.5	
				11.0	
1055	1.0			11.1	
	3.2			11.3	
50	6.9			11.5	
	9.9		3+00	12.0	
	11.0			11.5	
	11.1		11:05	12.0	
	12.0			12.0	
1+00	12.5			12.0	
	12.9		50	12.0	
	13.5			12.0	
	13.2			12.0	
	13.5			12.5	
50	13.5			12.5	
	13.0		4+00	12.5	
	13.0			12.4	
11:00	13.0			10.9	
	13.1			11.0	
2+00	13.3			11.0	
	13.2		50	11.0	
	13.0			11.1	
	12.0			11.5	

DIST	SOUND	Elev	DIST	SOUND	Elev
(36)	12.0		(36)	12.9	
	10.9			13.1	
5+00	12.0		50	13.0	
	11.0			13.1	
	12.0			13.0	
	12.0			13.9	
	12.1			13.1	
50	12.2		8+00	13.0	
	12.0			13.2	
11:10	12.9			13.1	
	12.5			13.2	
	12.9			13.2	
6+00	12.9		50	13.2	
	12.7			13.5	
	12.5			13.5	
	12.5			13.9	
	12.6			13.2	
50	12.3		9+00	13.5	
	12.5			13.1	
	12.5			12.0	
	12.2			11.5	
	12.2			11.0	
7+00	12.5		50	11.0	
	12.5			11.3	
	12.8			11.1	

OK

OK

OK



STA. N. 110+50 - WEST 7-12-60

Dist	Sound	Elev	Dist	Sound	Elev
(37)	12.0		(38)	12.0	
	12.3			12.1	
10+00	12.1		50	11.9	
	12.2			11.9	
11:15	12.1			12.0	
	12.0			12.0	
	12.0			12.0	
50	12.0		13+00	12.1	
	11.5			12.0	
	12.0			12.0	
	11.7		11:20	12.0	
	12.0			12.1	
11+00	12.0		50	12.0	
	12.1			11.9	
	12.0			12.1	
	12.0			12.3	
	12.0			13.1	
50	12.0		14+00	13.0	
	12.5			12.8	
	12.1			13.1	
	12.1			13.0	
	12.0			13.0	
12+00	12.0		50	13.1	
	12.1			13.0	
	12.2			13.1	

STA. N. 110+50 - WEST

Dist	Sound	Elev	Dist	Sound	Elev
(38)	13.1		(39)	12.1	
	13.1			12.1	
15+00	13.0		50	12.1	
	13.0			12.1	
	12.9		11:25	12.3	
	12.9			12.5	
	13.1			12.9	
50	12.5		18+00	13.0	
	12.5			13.1	
	12.1			13.1	
	12.0			13.0	
	12.0			12.5	
16+00	12.0		50	12.5	
	12.0			12.7	
	12.1			12.3	
	12.2			12.1	
	12.5			12.1	
50	13.0		19+00	12.0	
	12.5			11.3	
	12.2			11.0	
	12.2			11.2	
	12.5			11.5	
17+00	12.5		50	12.0	
	12.5			12.1	
	12.5			12.5	
	12.3			12.0	
				13.1	
			20+00	13.1	

4'

4'

4'

4'

7-12-60  
220  
210

STA. N. 111+00; 0+00 = W. 11, 210; SOUND WEST

Dist	Sound	Elev	Dist	Sound	WEST
0+00	0.4	+4.7	(5.1)	12.9	7.8
(5.1)	0.8	+4.3	50	12.9	}
	1.1	+4.0		12.9	
<u>1'00</u>	2.6	+2.5		12.9	}
	3.2	+1.9		12.9	
50	4.3	+0.8		13.0	7.9
	6.5	1.4	3+00	13.0	7.9
	10.8	5.7		13.1	8.0
	11.9	6.8		13.8	8.7
	12.0	6.9		13.7	8.6
1+00	12.2	7.1		13.7	8.6
	12.2	7.1	50	12.3	7.2
	12.1	7.0		12.4	7.3
	12.3	7.2		12.6	7.5
	12.3	7.2		12.9	7.8
50	12.4	7.3		13.0	7.9
	12.6	7.5	4+00	13.1	8.0
	12.5	7.4		13.0	7.9
	12.7	7.6		13.0	7.9
	13.0	7.9		13.1	8.0
2+00	12.8	7.7		13.4	8.3
	12.9	7.8	50	13.2	8.1
	12.7	7.6		13.2	8.1
	12.8	7.7		13.2	8.1

STA. N. 111+00 - WEST (48)

Dist	Sound	Elev	Dist	Sound	Elev
(5.1)	13.1	8.0	(5.1)	13.6	8.5
	13.1	8.0		13.9	8.8
5+00	13.1	8.0	50	14.2	9.1
	13.0	7.9		14.4	9.3
	13.2	8.1		14.4	9.3
<u>1'05</u>	13.3	8.2		14.5	9.4
	13.9	8.8		14.6	9.5
50	13.4	8.3	8+00	14.7	9.6
	13.9	8.8		14.7	9.6
	14.5	9.4		14.6	9.5
	14.1	9.0		14.9	9.8
	14.1	9.0		15.3	10.2
6+00	13.9	8.8	50	15.9	10.8
	13.8	8.7		14.2	9.1
	13.7	8.6		13.7	8.6
	13.7	8.6		13.6	8.5
	13.7	8.6		13.5	8.4
50	13.3	8.2	9+00	13.2	8.1
	13.2	8.1		13.1	8.0
	13.4	8.3		13.2	8.1
	13.2	8.1		13.7	8.6
	13.5	8.4		13.6	8.5
7+00	13.7	8.6	50	13.6	8.5
	13.4	8.3		13.6	8.5
	13.4	8.3		13.7	8.6

STA. N. 111+00 - WEST 7-12-60

Dist	Sound	Elev	Dist	Sound	Elev
(51)	13.2		(51)	12.9	
	13.2			12.8	
10+00	13.2		50	12.6	
	12.8			12.8	
11:10	12.9			13.2	
<u>    </u>	12.9			13.6	
	12.9			13.6	
50	12.7		13+00	13.9	
	12.7			13.9	
	12.8			14.1	
	13.0			14.2	
	13.0			14.1	
11+00	13.1	0	50	14.7	
	13.2			14.2	
	13.2			14.4	
	13.2			14.0	
	13.2			14.0	
50	13.1		14+00	14.1	
	13.0			14.0	
	13.1		11:15	13.9	
	12.9		<u>    </u>	13.9	
	12.9			13.9	
12+00	12.9		50	13.9	
	13.1			13.9	
	13.1			13.7	

STA. N. 111+00 - WEST

(49)

Dist	Sound	Elev	Dist	Sound	Elev
(51)	13.8		(51)	14.0	
	13.5			14.1	
15+00	13.7		50	14.1	
	13.6			14.5	
	13.2			14.5	
	13.2			14.0	
	13.0			13.9	
50	12.9		18+00	14.0	
	12.8			13.6	
	12.9			13.6	
	13.0			13.5	
	13.3			13.1	
16+00	13.8	0	50	12.9	0
	13.6			12.8	
	13.6			12.6	
	13.6			12.3	
	13.7			12.7	
50	13.7		19+00	12.8	
	13.7			12.9	
	13.7		11:20	13.0	
	13.5		<u>    </u>	13.7	
	13.4			14.3	
17+00	13.3		50	14.3	
	13.2			13.9	
	13.3			13.9	
				13.2	
				12.8	
			20+00	12.9	

7-12-60

STA. N.	112+00	0+00 = W 11,190	SOUND	WEST	
Dist	SOUND	Elev	Dist	SOUND	Elev
0+00	0.3	+4.5	(48)	13.6	8.8
(48)	1.0	+3.8	50	13.8	9.0
	2.1	+2.7		13.8	9.0
<u>2:20</u>	3.2	+1.6		13.8	9.0
	7.8	3.0		13.9	9.1
50	9.8	5.0		13.9	9.1
	11.2	6.4	3+00	13.9	9.1
	11.2	6.4		13.9	9.1
	11.9	7.1		13.9	9.1
	11.9	7.1		13.9	9.1
1+00	12.2	7.4		13.8	9.0
	12.2	7.4	50	13.8	9.0
	12.2	7.4		13.9	9.1
	12.5	7.7		13.0	8.2
	12.5	7.7		12.8	8.0
50	12.8	8.0		12.9	8.1
	13.2	8.4	4+00	13.0	8.2
	13.2	8.4		13.2	8.4
	13.3	8.5	<u>2:25</u>	13.2	8.4
	13.6	8.8		13.2	8.4
2+00	13.3	8.5		13.0	8.2
	13.5	8.7	50	13.2	8.4
	13.6	8.8		13.5	8.7
	13.6	8.8		13.2	8.4

STA. N. 112+00 - WEST

(30)

Dist	SOUND	Elev	Dist	SOUND	Elev
(48)	13.2	8.4	(47)	13.9	9.2
	13.2	8.4		13.9	9.2
5+00	13.1	8.3	50	14.0	9.3
	13.0	8.2		14.0	9.3
	13.0	8.2		14.0	9.3
	12.9	8.1		14.2	9.5
	13.7	8.9		14.4	9.7
50	14.1	9.3	8+00	11.8	7.1
	14.1	9.3		11.8	7.1
	14.0	9.2		11.8	7.1
	14.0	9.2		11.9	7.2
	14.2	9.4		11.8	7.1
6+00	14.2	9.4	50	11.0	6.3
	14.2	9.4		10.8	6.1
	14.2	9.4		9.6	4.9
	14.2	9.4		8.8	4.1
	14.1	9.3		9.0	4.3
50	14.1	9.3	7+00	10.0	5.3
	14.0	9.2		8.6	3.9
	14.2	9.4	<u>2:30</u>	12.0	7.3
	14.2	9.4		12.0	7.3
	14.0	9.2		12.4	7.7
7+00	14.0	9.2	50	13.0	8.3
	14.2	9.4		13.2	8.5
	13.9	9.1		12.9	8.2

TREE OF  
ISLAND

## STA. N. 112+00 - WEST 7-12-60

Dist	Sound	Elev	Dist	Sound	Elev
(4.7)	13.0	8.3	(4.7)	11.6	6.9
	13.0	8.3		12.0	7.3
10+00	13.2	8.5	50	12.2	7.5
	13.2	8.5		12.6	7.9
	13.0	8.3	2,35	12.8	8.1
	13.0	8.3		12.8	8.1
	13.0	8.3		12.8	8.1
50	13.1	8.4	13+00	12.6	7.9
	12.9	8.2		12.6	7.9
	12.8	8.1		12.6	7.9
	12.8	8.1		12.9	8.2
	12.9	8.2		12.9	8.2
11+00	12.8	8.1	50	13.0	8.3
	12.8	8.1		13.2	8.5
	12.8	8.1		13.2	8.5
	12.6	7.9		13.5	8.8
	12.7	8.0		13.2	8.5
50	12.8	8.1	14+00	13.2	8.5
	12.8	8.1		13.3	8.6
	12.7	8.0		13.5	8.8
	12.8	8.1		13.8	9.1
	12.8	8.1		13.6	8.9
12+00	12.4	7.7	50	13.7	9.0
	12.0	7.3		13.8	9.1
	11.6	6.9		13.7	9.0

## STA. N. 112+00 - WEST

(5)

Dist	Sound	Elev	Dist	Sound	Elev
(4.7)	13.8	9.1	(4.7)	13.0	8.3
	13.8	9.1		13.0	8.3
15+00	13.8	9.1	50	13.0	8.3
	13.8	9.1		13.1	8.4
	13.8	9.1		13.1	8.4
	13.8	9.1		12.9	8.2
	13.8	9.1		13.0	8.3
50	13.8	9.1	18+00	12.9	8.2
	13.6	8.9		12.9	8.2
	13.6	8.9		13.1	8.4
	13.6	8.9		12.8	8.1
	14.0	9.3		12.9	8.2
16+00	14.0	9.3	50	12.6	7.9
	13.6	9.1		12.6	7.9
	13.6	8.9		12.6	7.9
	13.4	8.7		12.2	7.5
	13.2	8.5		12.3	7.6
50	13.2	8.5	19+00	12.5	7.8
	13.0	8.3		12.7	8.0
24+00	12.8	8.1		12.4	7.7
	12.9	8.2		11.8	7.1
	12.9	8.2		11.9	7.2
17+00	12.9	8.2	50	12.3	7.6
	13.0	8.3		13.0	8.3
	13.0	8.3		12.4	7.7

STA. N. 112+00 - WEST 7-12-60

Dist	Sound	Elev	Dist	Sound	Elev
(46)	12.6	8.0	(46)	12.6	8.0
	12.9	8.3		12.7	8.1
20+00	13.1	8.5	50	12.9	8.3
	12.8	8.2		12.9	8.3
	12.8	8.2		12.9	8.3
	12.8	8.2		12.9	8.3
	12.9	8.3		12.8	8.2
50	12.9	8.3	23+00	12.8	8.2
	12.7	8.1		12.6	8.0
21.45	12.6	8.0		12.6	8.0
<u>      </u>	12.4	7.8		12.8	8.2
	12.1	7.5		12.8	8.2
21+00	12.1	7.5	50	12.8	8.2
	12.2	7.6		12.8	8.2
	12.2	7.6		12.9	8.3
	12.3	7.7		13.0	8.4
	12.0	7.4		13.0	8.4
50	12.0	7.4	24+00	13.0	8.4
	12.0	7.4		12.9	8.3
	12.2	7.6		12.9	8.3
	12.2	7.6		12.9	8.3
	12.2	7.6		12.9	8.3
22+00	12.4	7.8	50	12.9	8.3
	12.6	8.0		13.1	8.5
	12.5	7.9		13.0	8.4

STA. N. 112+00 - WEST

Dist	Sound	Elev
(46)	13.0	8.4
	13.0	8.4
25+00	13.0	8.4
	13.0	8.4
	13.0	8.4
	13.2	8.6
	13.2	8.6
50	13.2	8.6
	13.4	8.8
21.50	13.7	9.1
<u>      </u>	13.0	8.4
	13.2	8.6
26+00	13.2	8.6

(52)

7-13-60

STA. N. 112+50; 0+00 = W 11,170; SOUND WEST

Dist	Sound	Elev	Dist	Sound	Elev
0+00			(1.5)	10.2	
(1.5)			50	10.3	
				10.2	
<u>9:35</u>	0.3		<u>9:40</u>	10.3	
	5.0		-	10.5	
50	6.5			10.3	
	7.0		3+00	10.4	
	7.8			10.5	
	8.0			10.6	
	8.2			11.0	X'
1+00	8.8			11.2	0'
	8.5		50	11.2	
	8.8			11.3	
	9.0			11.0	
	9.1			10.1	
50	9.3			9.8	
	9.5		4+00	9.3	
	9.6			9.5	
	9.8			9.8	
	10.0			10.0	
2+00	10.0			9.9	
	10.0		50	9.9	
	10.2			9.9	
	10.1			10.1	

STA. N. 112+50 - WEST

Dist	Sound	Elev	Dist	Sound	Elev
(1.6)	10.2		(1.6)	11.0	
	10.0			11.0	
5+00	10.0		50	11.1	
	10.0			11.1	
<u>9:45</u>	10.0			8.0	
<u>9:45</u>	9.9			7.8	
	10.0			7.7	
50	10.1		8+00	7.1	
	10.1			5.0	
	10.2		<u>9:50</u>	2.1	
	10.5				
	10.9	X'			
6+00	11.1	0'	50		
	11.2				
	11.1				
	11.2				
	11.3				
50	11.4				
	11.3				
	11.5				
	11.2				
	11.0				
7+00	11.1				
	11.0				
	11.0				

7-13-60

STA. N. 112+50; 0+00 = W. 12, 140; SOUND WEST

Dist	Sound	Elev	Dist	Sound	Elev
0+00	0.0		(52)	13.1	
(52)	0.5		50	13.0	
	1.5			12.9	
<u>2:05</u>	2.5			12.9	
	3.5			12.9	
50	5.1			12.8	
	8.9		3+00	12.7	
	10.8			12.8	
	11.5			12.8	
	11.5			12.9	
1+00	11.9			12.6	
	12.0		50	12.8	
	11.9			12.8	
	11.1			12.5	
	12.0			12.5	
50	12.2			12.5	
	12.5		4+00	13.0	
	12.6			13.2	
	12.6			13.3	
	12.8			13.2	
2+00	12.8			13.2	
	13.0		50	13.0	
	13.1			13.1	
	13.0			13.1	

STA. N. 112+50 - WEST

Dist	Sound	Elev	Dist	Sound	Elev
(52)	13.2		(52)	13.0	
	13.3			12.9	
5+00	13.2		50	14.0	
	13.4			13.5	
<u>2:10</u>	13.6			13.3	
	14.2			13.6	
	14.2			14.0	
50	14.2		8+00	14.0	
	14.3			14.0	
	14.4		<u>2:15</u>	14.5	
	14.6			14.2	
	14.2			14.3	
6+00	14.0		50	14.3	
	14.1		SOFT	14.4	
	14.2		BOTTOM	14.5	
	14.3		BEGINS	14.5	
	14.6			14.6	
50	14.5		9+00	14.0	
	14.8			13.0	
	14.9			12.9	
	13.5			12.4	
	13.5			12.5	
7+00	13.2		50	12.5	
	13.1			12.6	
	13.1			12.9	
	13.1			13.0	
				13.0	
			10+00	13.0	



7-13-60

STA. N. 113+00 to 11,140; SOUND WEST

Dist	Sound	Elev	Dist	Sound	Elev
0+00			(1.8)	10.1	
(1.8)			50	10.2	
				10.3	
1000				10.3	
50	0.9			10.4	
	6.4			10.6	
	7.4		3+00	10.7	
	8.0			10.7	
	8.3			10.8	
	8.9			10.7	
1+00	8.9			10.7	
	8.8		50	10.7	
	8.9			9.8	
	9.2			9.3	
	9.1			9.0	
50	9.3			9.0	
	9.9		4+00	9.0	
	10.0			9.1	
	10.0			9.2	
	10.2			9.7	
2+00	10.1		50	9.7	
	10.1			9.7	
	10.1			9.9	
	10.1			9.9	

STA. N. 113+00 - WEST

(55)

Dist	Sound	Elev	Dist	Sound	Elev
(1.9)	9.9		(1.9)	11.1	
	9.9			11.0	
5+00	10.0		50	10.8	
	10.0			9.9	
	10.0			7.8	
1005	10.0			6.6	
	10.1			4.9	
50	11.1		8+00	0.2	
	11.0				
	11.0				
	11.0				
	10.9				
6+00	10.9		50		
	10.8				
	10.7				
	10.8				
	10.7				
50	10.6		9+00		
	10.8				
	10.8				
	11.0				
7+00	10.8				
	10.8				
	10.9				
	11.0				

7-13-60

(56)

STA. N. 113+00 - 0+00 = W13,170 SOUND WEST

STA. N. 113+00 - WEST

DIST	SOUND	ELEV	DIST	SOUND	ELEV
0+00	0.0		(52)	12.5	
(52)	1.1		50	12.4	
	2.2			12.6	
<u>2:25</u>	3.5			12.8	
	6.2			12.9	
50	9.5			12.9	
	10.1		3+00	12.9	
	11.5			12.9	
	11.5			12.9	
	11.8		230	13.0	
1+00	12.0			13.2	Y
	12.1		50	13.2	0
	12.2			13.2	
	12.5			13.2	
	12.5			13.2	
50	12.5			13.2	
	12.7		4+00	13.3	
	12.7	Y		13.4	
	12.7	0		13.4	
	12.7			13.5	
2+00	12.8			13.5	
	12.8		50	13.5	
	12.6			13.5	
	12.6			13.7	

DIST	SOUND	ELEV	DIST	SOUND	ELEV
(52)	14.0		(52)	13.6	
	14.1			13.8	
5+00	14.3		50	13.9	
50 FT	14.3			13.9	
=	14.3		2:35	14.1	
10	14.3			14.1	
=	14.3			14.3	
50	14.3		8+00	14.5	
	14.0			14.4	
	14.1			14.5	
	14.2			14.6	
	14.3			14.8	
6+00	14.6	Y	50	14.8	Y
	15.0	0		13.0	0
	14.8			12.6	
	14.9			12.8	
	13.7			12.8	
50	13.7		9+00	12.8	
	13.5			13.0	
	13.1			12.8	
	13.2			12.9	
	13.0			13.0	
7+00	13.2		50	13.0	
	13.2			13.1	
	13.2			13.1	
	14.0			13.2	
				13.3	
			10+00	13.0	

7-13-60

STA. N. 113+50; 0+00 = W. 11,930; SOUND EAST

Dist Sound Elev Dist Sound Elev

0+00

(3.1)

0.0

3.2

11:05

7.0

9.2

50

10.0

11.2

11.8

11.5

11.8

1+00

11.9

11.8

12.0

12.0

12.0

50

12.1

12.1

12.1

12.1

12.1

2+00

12.1

12.2

12.2

12.0

(3.1)

12.0

50

11.9

11.8

11.7

11:10

11.0

10.9

3+00

11.0

11.0

11.0

11.0

11.0

50

11.1

11.0

11.1

11.1

11.0

4+00

10.9

10.8

11.0

10.8

10.3

50

10.1

11.5

12.0

STA. N. 113+50-EAST

Dist Sound Elev Dist Sound Elev

(3.1)

11.5

11.5

5+00

11.5

11.5

11.1

11.2

11.0

50

11.0

11.0

11.1

11.1

11.0

6+00

11.0

10.9

10.9

10.9

11.1

50

11.0

11.2

11.0

11.0

10.9

7+00

11.0

11.0

10.9

(57)

(3.2)

10.5

10.2

50

10.1

9.5

11:15

7.1

3.0

8+00

50

7-13-60

STA. N. 114+00; 0+00 = W. 11,910 ; SOUND EAST

DIST SOUND ELEV DIST SOUND ELEV

0+00 (34) 12.2 8.8

(34) 1.8 +1.6 50 12.4 9.0

6.0 2.6 12.3 8.9

11:25 7.8 4.4 12.2 8.8

11.0 7.6 11.6 8.2

50 12.2 8.8 11.8 8.4

12.1 8.7 3+00 11.6 8.2

12.0 8.6 11.8 8.4

12.1 8.7 11.6 8.2

12.1 8.7 11.4 8.0

1+00 12.2 8.8 11.6 8.2

12.4 9.0 50 11.6 8.2

12.2 8.8 11.6 8.2

12.2 8.8 11.7 8.3

12.2 8.8 11.7 8.3

50 12.0 8.6 11.5 8.1

12.1 8.7 4+00 11.3 7.9

12.2 8.8 11.2 7.8

12.2 8.8 11.4 8.0

12.3 8.9 11.7 8.3

2+00 12.2 8.8 11.5 8.1

12.2 8.8 50 11.6 8.2

12.2 8.8 11.9 8.5

12.2 8.8 12.2 8.8

STA. N. 114+00 - EAST

DIST SOUND ELEV DIST SOUND ELEV

(35) 12.2 8.7 (35) 10.9 7.4

12.2 8.7 10.6 7.1

5+00 12.2 8.7 50 10.1 6.6

11.9 8.4 9.2 5.7

11:30 11.7 8.2 6.2 2.7

11.5 8.0 2.8 +0.7

11.6 8.1

50 11.5 8.0 8+00

11.3 7.8

11.3 7.8

11.3 7.8

11.3 7.8

6+00 11.5 8.0 50

11.3 7.8

11.3 7.8

11.7 8.2

11.5 8.0

50 11.5 8.0

11.3 7.8

11.3 7.8

11.3 7.8

11.3 7.8

7+00 11.3 7.8

11.2 7.7

11.0 7.5

(58)

7-13-60

STA. N. 114+50; 0+00 = W 11910; SOUND EAST

Dist	Sound	Elev	Dist	Sound	Elev
0+00			(47)	13.9	
(47)	1.6		50	13.9	
	4.9			13.9	
12:52	8.0		12:55	12.9	
	9.1			13.2	
50	13.0			13.9	
	13.0		3+00	13.8	
	13.0			13.7	
	13.1			13.8	
	13.1			13.6	
1+00	13.2			13.3	
	13.3		50	13.1	
	13.5			13.1	
	13.4			13.0	
	13.6			13.4	
50	13.6			13.0	
	13.6		4+00	13.0	
	13.8			12.9	
	13.9			12.9	
	13.9			12.7	
2+00	13.8			12.7	
	13.8		50	12.7	
	13.8			12.4	
	13.8			12.2	

STA. N. 114+50 EAST

Dist	Sound	Elev	Dist	Sound	Elev
(48)	12.4		(48)	12.8	
	12.4			12.8	
5+00	13.2		50	12.8	
	13.2			12.8	
	13.2			12.5	
	13.5			12.4	
	13.4			12.4	
50	13.5		8+00	11.9	
	13.5			11.3	
	13.6			8.7	
	13.5			3.0	
	13.5				
6+00	13.3		50		
	13.5				
	13.7				
	13.5				
	13.1				
50	13.3				
	13.2				
1:00	13.2				
	13.2				
	13.1				
7+00	13.0				
	12.9				
	12.9				

7-13-60

STA. N. 115+00; 0+00 = W. 11,910; SOUND EAST

Dist	Sound	Elev	Dist	Sound	Elev
0+00	0.0		(49)	13.5	
(49)	2.9		50	14.0	
	6.4			14.1	
1+10	8.8			14.3	
	9.8			14.3	
50	12.8			13.0	
	14.4		3+00	13.0	
	14.2			13.8	
	14.1			14.1	
	14.1			14.0	
1+00	14.1			14.0	
	14.0		50	14.0	
	14.0			13.5	
	14.0			13.5	
	14.1			13.2	
50	14.1			13.2	
	14.2		4+00	13.3	
	14.3			13.2	
	14.3			13.2	
	14.1			13.4	
2+00	14.0			13.2	
	14.0		50	13.4	
	14.0			13.0	
	13.8			13.0	

STA. N. 115+00 - EAST

(60)

Dist	Sound	Elev	Dist	Sound	Elev
(50)	12.8		(50)	13.2	
	12.9			13.1	
5+00	14.0		50	13.0	
	14.0			13.0	
	14.1			12.9	
1+15	14.0			12.8	
	13.9			12.5	
50	13.9		8+00	12.0	
	13.8			11.8	
	13.5			11.1	
	13.3			4.8	
	13.5			2.4	
6+00	13.5		50		
	13.2				
	13.2				
	13.3				
	13.6				
50	13.4				
	13.4				
	13.5				
	13.2				
	13.2				
7+00	13.1				
	13.0				
	13.1				

7-13-60

(61)

STA. N. 115+50		0+00 = W. 11,920		SOUND EAST	
Dist	Sound	Elev	Dist	Sound	Elev
0+00			(51)	14.4	
(50)	1.8		50	14.6	
	5.1			14.9	
1:25	8.3			15.0	
	9.9			15.1	
50	11.2			14.9	
	14.4		3+00	15.1	
	14.6			14.4	
	14.6		1:30	14.7	
	14.4			14.9	
1+00	14.2			14.9	
	14.2		50	15.2	
	14.2			15.0	
	14.2			15.0	
	14.1			15.1	
50	14.0			15.0	
	14.1		4+00	14.8	
	14.1			14.4	
	14.2			13.8	
	14.2			13.4	
2+00	14.4			13.8	
	14.4		50	13.4	
	14.4			13.6	
	14.4			14.0	

STA. N. 115+50 - EAST					
Dist	Sound	Elev	Dist	Sound	Elev
(51)	13.6		(51)	13.9	
	13.6			13.9	
5+00	13.4		50	13.9	
	13.0			13.9	
	12.9			13.9	
	14.0			13.6	
	15.0			13.0	
50	15.0		8+00	10.2	
	14.9			6.0	
	14.7			3.6	
	14.6			2.8	
	14.4				
6+00	14.2		50		
	14.1				
	13.9				
	13.7				
	13.7				
50	13.8				
	13.9				
1:35	13.9				
	13.9				
	13.9				
7+00	13.8				
	13.9				
	13.9				

7-13-60

STA. N. 116+00; 0+00 = W. 11,950; SOUND EAST					
Dist	Sound	Elev	Dist	Sound	Elev
0+00			(52)	15.6	10.4
(52)	1.3	+3.9	50	15.1	9.9
	3.4	+1.8		15.0	9.8
<u>11.45</u>	6.4	1.2		15.1	9.9
	9.9	4.7		15.0	9.8
50	12.0	6.8		14.8	9.6
	13.5	8.3	3+00	13.0	7.8
	12.1	6.9		11.5	6.3
	12.0	6.8		11.4	6.2
	15.0	9.8		12.9	7.7
1+00	15.9	10.7		12.5	7.3
	15.9	10.7	50	12.9	7.7
	15.9	10.7		13.0	7.8
	15.9	10.7		14.4	9.2
	15.8	10.6		16.1	10.9
50	15.5	10.3		16.1	10.9
	15.2	10.0	4+00	16.1	10.9
	15.1	9.9		16.0	10.8
	15.0	9.8		16.1	10.9
	15.1	9.9		16.0	10.8
2+00	15.1	9.9		16.0	10.8
	15.2	10.0	50	15.9	10.7
	15.2	10.0		15.0	9.8
	15.3	10.1		14.2	9.0

STA. N. 116+00-EAST

(62)

Dist	Sound	Elev	Dist	Sound	Elev
(52)	13.0	7.8	(52)	14.1	8.9
	14.0	8.8		13.8	8.6
5+00	14.1	8.9	50	13.0	7.8
	14.1	8.9		13.2	8.0
	14.2	9.0		12.5	7.3
	14.2	9.0		11.5	6.3
	14.0	8.8		10.3	5.1
50	13.6	8.4	8+00	5.3	0.1
	13.5	8.3		4.0	+1.2
11.50	13.7	8.5		3.0	+2.2
<u>13.4</u>	8.2				
	17.0	11.8			
6+00	17.2	12.0	50		
	16.9	11.7			
	15.2	10.0			
	15.2	10.0			
	15.0	9.8			
50	14.9	9.7			
	14.8	9.6			
	14.6	9.4			
	14.4	9.2			
	14.2	9.0			
7+00	14.0	8.8			
	14.0	8.8			
	14.0	8.8			



7-13-60

STA. N. 113+50. 0+00 = W 12, 190, SOUND WEST

Dist	Sound	Elev	Dist	Sound	Elev
0+00	0.4		(52)	12.8	
(52)	1.9		50	12.8	
	3.0			12.5	
<u>2:45</u>	5.0			12.3	
	9.2			12.8	
50	11.0			13.0	
	11.3		3+00	13.0	
	12.0			12.2	
	11.5			12.0	6.8
	11.5			11.8	6.6
1+00	12.0			12.5	
	12.1		50	12.5	
	12.2			12.8	
	12.1			12.8	
	12.2			12.7	
50	12.2			12.8	
	12.4		4+00	13.0	
	12.4			13.2	
	12.6			13.5	
	12.4			13.4	
2+00	12.5			13.6	
	12.5		50	13.8	
<u>2:50</u>	12.5			14.0	
	12.7			14.2	

STA. N. 113+50 - WEST

Dist	Sound	Elev	Dist	Sound	Elev
(52)	14.3		(52)	13.9	
	14.5			14.1	
5+00	14.6		50	14.2	
	14.6		19	14.5	
	14.7		<u>SOFT</u>	14.3	
<u>2:55</u>	14.7			14.3	
	14.8			14.2	
50	14.5		8+00	14.3	
	14.6			14.7	
	14.2			14.7	
	14.5			14.2	
	14.5			14.2	
6+00	14.5		50	13.8	
	14.0			13.0	
	13.0			13.0	
	12.9		31.00	12.5	
	13.0			12.2	
50	13.1		9+00	12.5	
	14.0			12.6	
	13.9			12.6	
	13.9			12.8	
	14.0			12.9	
7+00	13.4		50	13.0	
	13.7			13.9	
	13.9			13.0	
				13.9	
			10+00	13.7	

(63)

7-14-60

STA. N.	114+00	0400 = W. 12,200	SOUND	WEST		
	Dist	Sound	Elev	Dist	Sound	Elev
0+00	0.0			(2.0)	9.5	7.5
(1.9)	2.5			50	9.5	7.5
	0.0	+1.9			9.5	7.5
1025	2.5	0.6			9.5	7.5
	5.8	3.9			9.3	7.3
50	7.5	5.6			9.5	7.5
	8.1	6.2	3+00		9.5	7.5
	8.5	6.6			9.5	7.5
	8.6	6.7			9.6	7.6
	8.9	7.0			9.9	7.9
1+00	9.0	7.1			9.3	7.3
(2.0)	9.1	7.1	50		9.2	7.2
10:30	9.2	7.2			9.1	7.1
	9.3	7.3			9.0	7.0
	9.5	7.5	10:35		9.8	7.8
50	9.4	7.4			10.1	8.1
	9.6	7.6	4+00		10.2	8.2
	9.6	7.6			10.5	8.5
	9.6	7.6			10.8	8.8
	9.8	7.8			10.9	8.9
2+00	9.8	7.8			11.0	9.0
	9.4	7.4	50		10.9	8.9
	9.6	7.6			10.8	8.8
	9.7	7.7			10.8	8.8

STAN 114+00 - WEST

(64)

Dist	Sound	Elev	Dist	Sound	Elev
(2.0)	10.9	8.9	(2.0)	10.4	8.4
	11.2	9.2		10.2	8.2
5+00	11.5	9.5	50	10.5	8.5
	11.5	9.5	10:40	10.0	8.0
	11.8	9.8		10.2	8.2
	11.8	9.8		10.2	8.2
	12.0	10.0		10.5	8.5
50	12.0	10.0	8+00	10.8	8.8
	12.0	10.0		10.2	8.2
	11.3	9.3		10.1	8.1
	11.2	9.2		10.0	8.0
	11.2	9.2		10.1	8.1
6+00	11.3	9.3	50	10.0	8.0
	11.3	9.3		10.0	8.0
	11.2	9.2		9.9	7.9
	11.0	9.0		10.0	8.0
	10.8	8.8		10.0	8.0
50	10.2	8.2	9+00	10.2	8.2
	10.0	8.0		10.2	8.2
	9.9	7.9		10.0	8.0
	9.9	7.9		10.0	8.2
	10.2	8.2		9.4	7.4
7+00	10.2	8.2	50	9.1	7.1
	10.1	8.1		9.3	7.3
	10.3	8.3		9.8	7.8

STA. N. 114+00 - WEST 7-14-60

Dist	Sound	Elev	Dist	Sound	Elev
(21)	10.0	7.9	(21)	10.0	7.9
	10.2	8.1		10.1	8.0
10+00	10.4	8.3	50	10.0	7.9
	10.6	8.5		10.0	7.9
	11.0	8.9		10.0	7.9
	11.3	9.2		10.2	8.1
	11.4	9.3		10.4	8.3
50	11.0	8.9	13+00	10.0	7.9
	10.5	8.4		10.0	7.9
	10.3	8.2		10.0	7.9
	10.2	8.1		10.1	8.0
	10.0	7.9		10.1	8.0
11+00	10.0	7.9	50	10.1	8.0
	10.0	7.9		10.1	8.0
10:45	10.0	7.9		10.2	8.1
	10.1	8.1		10.2	8.1
	10.0	7.9		10.4	8.3
50	10.0	7.9	14+00	10.5	8.4
	10.0	7.9		10.5	8.4
	10.0	7.9		10.5	8.4
	10.0	7.9		10.6	8.5
	10.0	7.9		10.8	8.7
12+00	10.0	7.9	50	10.8	8.7
	10.1	8.0		10.5	8.4
	10.1	8.0		10.4	8.3

STA. N. 114+00 - WEST

Dist	Sound	Elev	Dist	Sound	Elev
(22)	10.4	8.2	(22)	9.9	7.7
	10.4	8.2		9.9	7.7
15+00	10.8	8.6	50	10.0	7.8
	10.8	8.6		10.0	7.8
	11.0	8.8		10.0	7.8
10:50	10.9	8.7		9.8	7.6
	11.0	8.8		9.1	6.9
50	11.0	8.8	18+00	9.2	7.0
	11.1	8.9			
	11.0	8.8			
	11.0	8.8			
	11.1	8.9			
16+00	11.0	8.8			
	10.9	8.7			
	10.8	8.6			
	10.5	8.3			
	10.6	8.4			
50	10.5	8.3			
	10.4	8.2			
	10.1	7.9			
	10.1	7.9			
	10.0	7.8			
17+00	10.1	7.9			
	10.0	7.8			
	10.0	7.8			

7-14-60

STA. N. 114+50, 0+00 = W 12, 190; SOUND WEST

DIST	SOUND	ELEV	DIST	SOUND	ELEV
0+00			(24)	9.9	
(24)			50	9.9	
	0.7			10.0	
11+00	5.0		11+05	10.1	
	7.5			10.1	
50	8.5			9.9	
	8.5		3+00	10.0	
	8.5			10.0	
	8.8			10.0	
	9.1			9.9	
1+00	9.6			9.8	
	9.6		50	10.5	
	9.7			10.3	
	9.7			10.2	
	9.7			10.5	
50	9.7			10.6	
	9.8		4+00	10.6	
	9.7			10.7	
	9.9			10.8	
	9.8			10.9	
2+00	9.8			11.1	
	9.8		50	11.0	
	9.9			11.4	
	9.9			11.7	

STA. N. 114+50 - WEST

(66)

DIST	SOUND	ELEV	DIST	SOUND	ELEV
(24)	11.7		(24)	11.0	
	11.4			11.0	
5+00	11.8		50	11.2	
	11.8			11.0	
	12.0			11.1	
	12.0			11.0	
	12.0			11.0	
50	12.3		8+00	10.9	
	12.1			11.0	
	12.0			11.0	
	11.9			11.0	
	11.9			11.0	
6+00	12.0		50	11.0	
	12.1			10.9	
	12.2			10.5	
11+00	12.4			10.2	
	12.8			10.2	
50	12.2		9+00	10.1	
	11.5			10.0	
	11.0			10.1	
	11.0			10.0	
	11.2			10.2	
7+00	11.1		50	9.7	
	11.0			10.1	
	11.3			10.6	

STA. N. 114+50 - WEST 7-14-60

Dist	Sound	Elev	Dist	Sound	Elev
(2.5)	10.4		(2.6)	11.0	
	11.2			10.9	
10+00	10.9		50	10.9	
	11.3			10.8	
11.15	11.2			10.2	
<u>    </u>	11.8			10.2	
	11.6			10.8	
50	11.0		13+00	10.2	
	11.8			10.3	
	11.0			10.8	
	10.5	X		10.7	
	10.0	0		10.6	
11+00	9.8		50	10.7	
	10.0			10.7	
	10.4		11.20	10.6	
	11.0		<u>    </u>	11.0	
	11.0			11.1	
50	11.0		14+00	11.2	
	11.0			11.2	
	11.0			11.2	
	11.0			11.3	
	10.9			11.2	
12+00	10.9		50	11.3	
	11.0			11.5	
	10.9			11.7	

STA. N. 114+50 - WEST

Dist	Sound	Elev	Dist	Sound	Elev
(2.7)	11.8		(2.7)	10.4	
	11.7			10.2	
15+00	11.8		50	10.3	
	11.8			9.9	
	11.2			9.8	
	11.1			9.7	
	11.3			9.7	
50	11.0		18+00	9.6	6.9
	11.0				
	11.2				
	11.0				
	11.0	X			
16+00	10.9	0			
	10.9				
	10.9				
	11.0				
	10.9				
50	10.9				
	10.8				
	10.5				
11.25	10.4				
<u>    </u>	10.7				
17+00	10.2				
	10.4				
	10.4				

7-14-60

STA. N. 115+00		0+00 = W 12,170		SOUND WEST	
Dist	Sound	Elev	Dist	Sound	Elev
0+00			(4)	11.9	
(4)	0.2		50	11.9	
	1.9			11.9	
<u>12:55</u>	3.8		<u>1:00</u>	12.0	
	7.8			11.9	
50	9.8			12.1	
	10.2		3+00	12.0	
	10.5			12.0	
	10.9			11.9	
	11.1			11.2	
1+00	11.0			11.1	
	11.5		50	11.8	
	11.6			11.7	
	11.6			11.8	
	11.6			11.8	
50	11.8			11.9	
	11.9		X' 4+00	12.1	
	11.9		O'	12.3	
	11.9			12.6	
	11.9			12.6	
2+00	11.9			12.6	
	11.9		50	12.6	
	11.9			12.4	
	11.9			12.8	

STA. N. 115+00 - WEST		(68)			
Dist	Sound	Elev	Dist	Sound	Elev
(4.2)	12.8		(4.3)	13.3	
	13.0			13.4	
5+00	13.2		50	13.4	
	13.3			13.1	
	13.4			13.0	
	13.6			13.0	
	14.0			13.1	
50	14.0		8+00	13.1	
<u>11:05</u>	14.0			13.0	
	14.0			12.9	
	14.0			12.8	
	14.1			12.9	
6+00	14.0		50	12.9	
	14.1			12.6	
	14.1			12.6	
	14.0		1:10	12.1	
	14.2			11.8	
50	14.0		9+00	11.9	
	14.0			11.8	
	13.8			11.9	
	13.2			12.0	
	13.2			12.0	
7+00	13.2		50	12.0	
	13.3			12.2	
	13.3			12.6	

STA. N. 115+00 - WEST 7-14-60

Dist	Sound	Elev	Dist	Sound	Elev
(43)	12.2		(43)	12.6	
	12.0			12.6	
10+00	12.0		50	12.8	
	11.9			12.8	
	11.8		11.15	12.8	
	11.8		~	12.7	
	11.8			12.8	
50	12.0		13+00	12.8	
	12.4			12.8	
	12.7			12.7	
	12.7			12.7	
	12.7			13.1	
11+00	12.4		50	13.1	
	12.2			13.1	
	11.9			13.1	
	12.2			13.1	
	11.8			13.1	
50	12.1		14+00	13.2	
	12.0			13.2	
	12.2			13.3	
	12.3			13.3	
	12.4			13.3	
12+00	12.5		50	13.3	
	12.7			13.3	
	12.8			13.3	

STA. N. 115+00 - WEST

Dist	Sound	Elev	Dist	Sound	Elev
(44)	13.2		(44)	11.9	
	13.3			12.0	
15+00	13.5		50	11.8	
	13.7			11.8	
	13.7			11.7	
	13.7			11.5	
	13.2			11.5	
50	13.1		18+00	11.4	
	13.1				
	13.0				
	12.9				
	13.0				
16+00	12.9				
	12.7				
11.20	12.5				
~	12.4				
	12.4				
50	12.2				
	12.2				
	12.2				
	12.5				
	12.6				
17+00	12.1				
	12.1				
	12.1				

K  
0.

K  
0.

K  
0.

7-14-60

STA. N. 115+50; 0+00 = W, 12, 140; SOUND WEST

Dist	Sound	Elev	Dist	Sound	Elev
0+00			(4.6)	12.7	
(4.6)	0.2		50	12.7	
	2.0			12.8	
<u>11.35</u>	3.7			12.5	
	7.0			12.5	
50	9.0			12.9	
	10.0		3+00	13.1	
	10.3			13.2	
	11.0			13.2	
	11.3			13.3	
1+00	11.5			13.5	
	11.6		50	13.3	X
	11.5			12.8	0.
	11.8			12.4	
	12.0			12.0	
50	12.0			12.0	
	12.2		4+00	12.0	
	12.3			12.2	
	12.5		<u>11.40</u>	12.1	
	12.6			12.5	
2+00	12.7			12.8	
	12.7		50	13.0	
	12.2			13.1	
	12.5			13.2	

STA. N. 115+50 - WEST

Dist	Sound	Elev	Dist	Sound	Elev
(4.6)	13.5		(4.6)	13.5	
	13.4			13.6	
5+00	14.0		50	13.2	
	13.9			13.4	
	13.9			13.2	
	14.0			13.4	
	13.9			13.3	
50	13.5		8+00	13.6	
	13.4			13.6	
	13.0			13.5	
	13.2			13.1	
	13.8	X		13.1	X
6+00	14.0	0.	50	13.2	0.
	14.0			13.3	
	14.2			13.4	
	13.9			13.6	
	14.1			13.2	
50	14.3		9+00	13.2	
	14.0			13.1	
<u>11.45</u>	13.3			13.0	
	13.5			12.8	
	13.0			13.0	
7+00	13.0		50	12.5	
	13.1			12.5	
	13.2			12.7	

(20)



STA. N. 115+50 - WEST 7-14-60

Dist	Sound	Elev	Dist	Sound	Elev
(4.7)	12.8		(4.7)	12.7	
	12.5			12.5	
10+00	12.5		50	12.2	
	12.5			12.7	
	12.8			12.7	
	12.1			13.0	
	12.3			13.2	
50	12.8		13+00	13.1	
	12.3			13.2	
	12.1			13.2	
	12.2			13.3	
	12.8	f		13.2	
11+00	13.0	0	50	13.2	f
	13.0			13.2	0
	13.1			13.3	
11.50	13.0			13.5	
	12.9			13.6	
50	12.5		14+00	13.5	
	12.5			13.2	
	12.6			13.5	
	12.2			13.6	
	12.5			13.6	
12+00	12.7		50	13.8	
	12.6			13.8	
	12.8			13.9	

STA. N. 115+50 - WEST

Dist	Sound	Elev	Dist	Sound	Elev
(4.8)	13.8		(4.8)	12.5	
	13.8			12.2	
15+00	13.8		50	12.2	
	13.9			12.2	
11.55	13.9			12.2	f
	13.8			12.1	0
	13.8			12.0	
50	13.2		18+00	12.0	
	13.3				
	13.3		2100		
	13.2				
	13.0				
16+00	12.9	f	50		
	13.2	0			
	13.0				
	13.1				
	13.2				
50	13.0				
	13.1				
	13.0				
	13.0				
	12.8				
17+00	12.8				
	12.5				
	12.3				

7-14-60

STA. N. 116+00.0+00=W 12,100'S			SOUND WEST		
Dist	Sound	Elev	Dist	Sound	Elev
0+00			(49)	13.0	8.1
(49)	0.4	+4.5	50	13.0	8.1
	1.7	+3.2		13.1	8.2
2:10	2.9	+2.0		13.0	8.1
<u>      </u>	4.6	+0.3		12.9	8.0
50	8.0	3.1		12.8	7.9
	9.8	4.9	3+00	12.9	8.0
	10.2	5.3		12.9	8.0
	10.3	5.4		12.6	7.7
	10.3	5.4		12.2	7.3
1+00	10.9	6.0		11.9	7.0
	11.4	6.5	50	12.4	7.5
	11.6	6.7		12.9	8.0
	11.9	7.0		13.2	8.3
	12.2	7.3		13.3	8.4
50	12.4	7.5		13.4	8.5
	12.8	7.9	4+00	13.5	8.6
	12.8	7.9		13.5	8.6
	12.8	7.9		13.5	8.6
	12.9	8.0		13.5	8.6
2+00	13.0	8.1		13.5	8.6
	13.0	8.1	50	13.4	8.5
	12.9	8.0		13.0	8.1
	13.0	8.1		13.0	8.1

STA. N. 116+00-WEST			72		
Dist	Sound	Elev	Dist	Sound	Elev
(50)	13.2	8.2	(5.0)	13.1	8.1
	13.2	8.2		13.2	8.2
5+00	13.5	8.5	50	12.9	7.9
	13.3	8.3		13.3	8.3
2:15	13.7	8.7		13.8	8.8
<u>      </u>	13.3	8.3		13.3	8.3
	13.2	8.2		13.6	8.6
50	13.2	8.2	8+00	13.9	8.9
	13.3	8.3		13.8	8.8
	13.4	8.4		13.8	8.8
	13.2	8.2		13.7	8.7
	13.3	8.3		14.1	9.1
6+00	12.9	7.9	50	14.1	9.1
	12.9	7.9		14.3	9.3
	13.2	8.2		14.1	9.1
	12.9	7.9		14.1	9.1
	14.1	9.1		14.2	9.2
50	14.1	9.1	9+00	13.9	8.9
	14.1	9.1		13.2	8.2
	14.1	9.1	2:20	13.1	8.1
	13.9	8.9	<u>      </u>	12.9	7.9
	13.2	8.2		13.0	8.0
7+00	13.4	8.4	50	13.1	8.1
	13.3	8.3		13.0	8.0
	13.3	8.3		13.1	8.1

STA. N. 116+00 - WEST 7-14-60

Dist	Sound	Elev	Dist	Sound	Elev
(50)	13.2	8.2	(51)	13.4	8.3
	13.2	8.2		13.8	8.7
10+00	13.2	8.2	50	13.7	8.6
	13.2	8.2		13.6	8.5
	13.3	8.3	2:25	13.2	8.1
	13.5	8.5		12.9	7.8
	13.2	8.2		12.9	7.8
50	13.1	8.1	13+00	12.8	7.7
	13.2	8.2		12.9	7.8
	12.9	7.9		13.7	8.6
	13.0	8.0		13.9	8.8
	12.9	7.9		13.9	8.8
11+00	12.8	7.8	50	13.9	8.8
	12.7	7.7		13.9	8.8
	12.8	7.8		13.9	8.8
	13.6	8.6		14.1	9.0
	13.2	8.2		14.0	8.9
50	13.3	8.3	14+00	14.4	9.3
	13.2	8.2		13.9	8.8
	13.2	8.2		13.8	8.7
	13.2	8.2		13.8	8.7
	13.1	8.1		13.9	8.8
12+00	13.2	8.2	50	13.9	8.8
	13.1	8.1		13.6	8.5
	13.3	8.3		13.6	8.5

STA. N. 116+00 - WEST

Dist	Sound	Elev	Dist	Sound	Elev
(51)	13.8	8.7	(51)	13.0	7.9
	13.9	8.8		12.9	7.8
15+00	14.1	9.0	50	13.0	7.9
	14.0	8.9		12.9	7.8
	14.1	9.0		13.1	8.0
	14.2	9.1		13.0	7.9
	14.1	9.0		13.0	7.9
50	13.5	8.9	18+00	12.9	7.8
	13.5	8.9			
	13.7	8.6			
	13.7	8.6			
	13.7	8.6			
16+00	13.7	8.6			
	13.7	8.6			
	13.6	8.5			
2:30	13.5	8.4			
	13.2	8.1			
50	13.1	8.0			
	13.1	8.0			
	13.1	8.0			
	13.2	8.1			
	13.1	8.0			
17+00	13.2	8.1			
	13.2	8.1			
	13.1	8.0			

7-14-60

STA. N. 116+50; 0+00 = W. 12,052; SOUND EAST

Dist	Sound	Elev	Dist	Sound	Elev
0+00	0.1		(1.5)	9.4	
(1.5)	0.0		50	9.1	
	0.1			9.1	
<u>9:35</u>	0.7			9.0	
	0.9			9.0	
50	1.1			9.1	
	2.3		3+00	9.3	
	3.8			9.3	
	4.9			9.2	
	6.4			9.0	
1+00	7.1			9.1	
	7.7		50	9.1	
	8.5			9.2	
	9.1			9.3	
	9.7			9.5	
50	9.9			9.7	
	10.4		4+00	9.7	
<u>9:40</u>	11.3			9.9	
	11.7			10.0	
	11.0			9.2	
2+00	11.9			9.5	
	12.3		50	9.7	
	12.4			9.8	
	12.8			9.9	

STA. N. 116+50 - EAST

Dist Sound Elev Dist Sound Elev

Dist	Sound	Elev	Dist	Sound	Elev
(1.5)	10.0				
	10.2				
5+00	12.0				
	12.1				
	12.1				
	11.8				
	11.4				
50	11.1				
	11.1				
	11.2				
	11.1				
	10.9				
6+00	10.8				
	10.8				
	10.9				
	10.9				
	10.9				
50	11.9				
	10.8				
	6.9	5.4			
	5.9	4.4	2+00	8.5	7.0
	5.2	3.7		8.9	
7+00	3.0	1.5		8.9	
	2.0	0.5		8.9	
				8.9	

(74)

SOUND WEST

Dist	Sound	Elev
0+10	0.6	
(1.5)	1.8	
	4.8	
<u>9:50</u>	5.9	
50	7.6	
	8.7	
	8.9	
	9.1	
	9.0	
1+00	9.0	
	9.9	
	8.9	
	7.0	5.5
	7.2	5.7
50	7.6	6.1
	7.8	6.3
	8.0	6.5
	8.1	6.6
	8.2	6.7
	8.5	7.0
	8.9	
	8.9	
	8.9	

STA. N. 116+50 - WEST 7-14-60

Dist	Sound	Elev	Dist	Sound	Elev
50	8.9		5+00	10.0	
(1.6)	9.0		(1.6)	9.9	
	8.9			9.7	
9.55	9.2			9.9	
	9.0			9.9	
3+00	8.9		50	9.8	
	9.0			9.9	
	9.0			9.6	
	9.2			9.3	
	9.1			9.4	
50	8.9		6+00	9.2	
	9.0			9.3	
	9.6			9.2	
	10.0			9.2	
	10.0			8.9	
4+00	10.0		50	9.0	
	9.6			8.9	
	9.7			8.9	
	9.9			9.1	
	9.9			10.2	
50	10.0		7+00	10.2	
	10.0			10.2	
	10.1			10.1	
	10.0			9.4	
	10.0			9.3	

STA. N. 116+50 - WEST

Dist	Sound	Elev	Dist	Sound	Elev
50	9.3		10+00	9.3	
(1.6)	9.4		(1.6)	9.3	
	9.6			9.9	
10.00	9.5			9.7	
	9.8			9.4	
8+00	10.1		50	9.4	
	10.1			9.2	
	10.0			9.2	
	10.0			9.2	
	10.3			9.1	
50	10.3		11+00	9.1	
	10.1			9.2	
	10.0			9.1	
	10.1			9.1	
	10.1			9.4	
9+00	10.2		50	9.5	
	10.3			8.9	
	10.3			9.0	
	10.2		10.05	9.2	
	10.1			9.6	
50	10.0		12+00	9.2	
	9.7			9.0	
	9.3			9.2	
	9.2			9.1	
	9.1			9.4	

STA. N. 116+50 - WEST 7-14-60

Dist Sound Elev Dist Sound Elev

50	9.3		15+00	9.7	
(1.7)	9.1		(1.7)	9.9	
	9.0			9.7	
	9.4			9.9	
	9.7			9.9	
13+00	9.0		50	9.9	
	9.5			10.0	
	9.4			9.9	
	9.9			9.9	
	9.7			10.0	
50	9.3		16+00	10.0	
	9.1	0.1		9.9	
	9.6		10.0	9.9	0.1
	9.6			9.8	
	9.7			9.8	
14+00	9.7		50	9.8	
	9.9			9.7	
	9.8			9.4	
	9.8			9.7	
	9.4			9.4	
50	10.0		17+00	9.6	
	9.8			9.9	
	9.6			9.9	
	9.7			9.9	
	9.5			9.8	

STA. N. 116+50 - WEST

Dist Sound Elev Dist Sound Elev

50	9.3				
(1.7)	9.1				
	9.1	0.1			
	9.1				
	9.2				
18+00	9.2				

Contd from Pg. 8.

BASELINE N'WLY, CABRILLO ISLAND.

STA.	B/C DIST	BEARING
N.125+00; W. 10 246.35	55.84	N262610E
N.124+50; W. 10 271.21	"	"
N.124+00; W. 10 296.07	"	"
N.123+50; W. 10 320.93	"	"
N.123+00; W. 10 345.79	"	"
N.122+50; W. 10 370.65	"	"
N.122+00; W. 10 395.51	"	"
N.121+50; W. 10 420.37	"	"
N.121+00; W. 10 445.23	"	"
N.120+50; W. 10 470.09	"	"
N.120+00; W. 10 494.95	"	"
N.119+50; W. 10 519.81	"	"
N.119+00; W. 10 544.67	"	"
N.118+50; W. 10 569.53	"	"
N.118+00; W. 10 594.39	"	"
N.117+50; W. 10 619.25	"	"
N.117+00; W. 10 644.11	"	"
N.116+50; W. 10 668.97	"	"
N.116+00; W. 10 693.83	"	"
N.115+50; W. 10 718.69	"	"
N.115+00; W. 10 743.55	"	"
N.114+50; W. 10 768.41	"	"
N.114+00; W. 10 793.27	"	"
N.113+50; W. 10 818.13	55.84	N262610E

BASELINE NWLY. CABRILLO ISLAND CONTD.

STA.	<sup>8/2.</sup> DIST.	BEARING
N.137+00; W. 9649.72	55.84'	N. 26° 26' 10" E
N.136+50; W. 9674.58	"	"
N.136+00; W. 9699.44	"	"
N.135+50; W. 9724.30	"	"
N.135+00; W. 9749.16	"	"
N.134+50; W. 9774.02	"	"
N.134+00; W. 9798.88	"	"
N.133+50; W. 9823.74	"	"
N.133+00; W. 9848.60	"	"
N.132+50; W. 9873.46	"	"
N.132+00; W. 9898.32	"	"
N.131+50; W. 9923.17	"	"
N.131+00; W. 9948.03	"	"
N.130+50; W. 9972.89	"	"
N.130+00; W. 9997.75	"	"
N.129+50; W. 10022.61	"	"
N.129+00; W. 10047.47	"	"
N.128+50; W. 10072.33	"	"
N.128+00; W. 10097.19	"	"
N.127+50; W. 10122.05	"	"
N.127+00; W. 10146.91	"	"
N.126+50; W. 10171.77	"	"
N.126+00; W. 10196.63	"	"
N.125+50; W. 10221.49	55.84'	N. 26° 26' 10" E

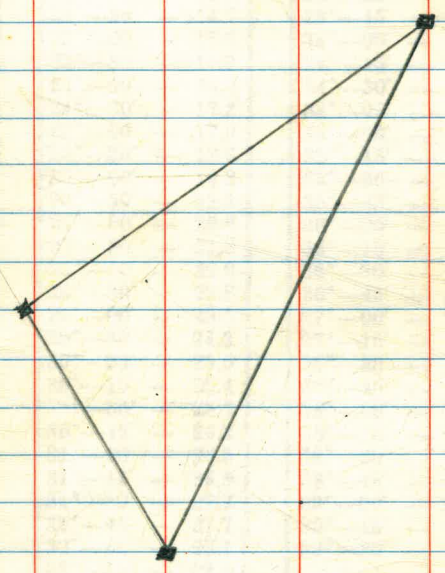
10 196.6



IMPROVED TABLES  
OF  
INTEGRATION

HORIZONTAL

53



N.140 <sup>P.T.</sup> +17; W. 9300	30.54	N.56°10'40"E
N.140+00; W. 9325.37	89.83	"
N.139 <sup>P.T.</sup> +50; W. 9400	88.92	N.56°10'40"E
N.139+00; W. 9473.53	32.01	N.55°47'03"E
N.138 <sup>P.T.</sup> +82; W. 9500	44.05	N.43°19'54"E
N.138+50; W. 9530.23	68.74	"
N.138+00; W. 9577.40	32.94	N.43°19'54"E
N.137 <sup>P.T.</sup> +76; W. 9600	31.07	N.33°11'35"E
N.137+50; W. 9617.01	59.75	N.33°11'35"E

$$2000 = 111$$

$$2600 = 112$$

$$W 1000 + 50$$

$$W 1000 = 113$$

$$W 1800 = 114$$

$$W 1800 = 116$$

$$(x)(3.00) - (4.00)(7.80 - x) = -3.6$$



$$\left( \frac{50}{394.28} \right)^2 \times 6.8^2$$

$$\begin{array}{r} 111.83 \\ 98.18 \\ \hline 13.65 \\ 6.8^2 \\ 98.18 \\ \hline 105.00 \end{array}$$