

MB 134



M.B. No 134

MICROFILMED

MICROFILMED

JH: JJ

MICROFILMED

THIS BOOK INDEXED 2/12/62

8013

7140

873

W-88 - N 15,250

+50 - N 15,230

89 - N 15,220

+50 - N 15,200

90 - N 15,190

+50 - N 15,180

91 - N 15,170

+50 - N 15,160

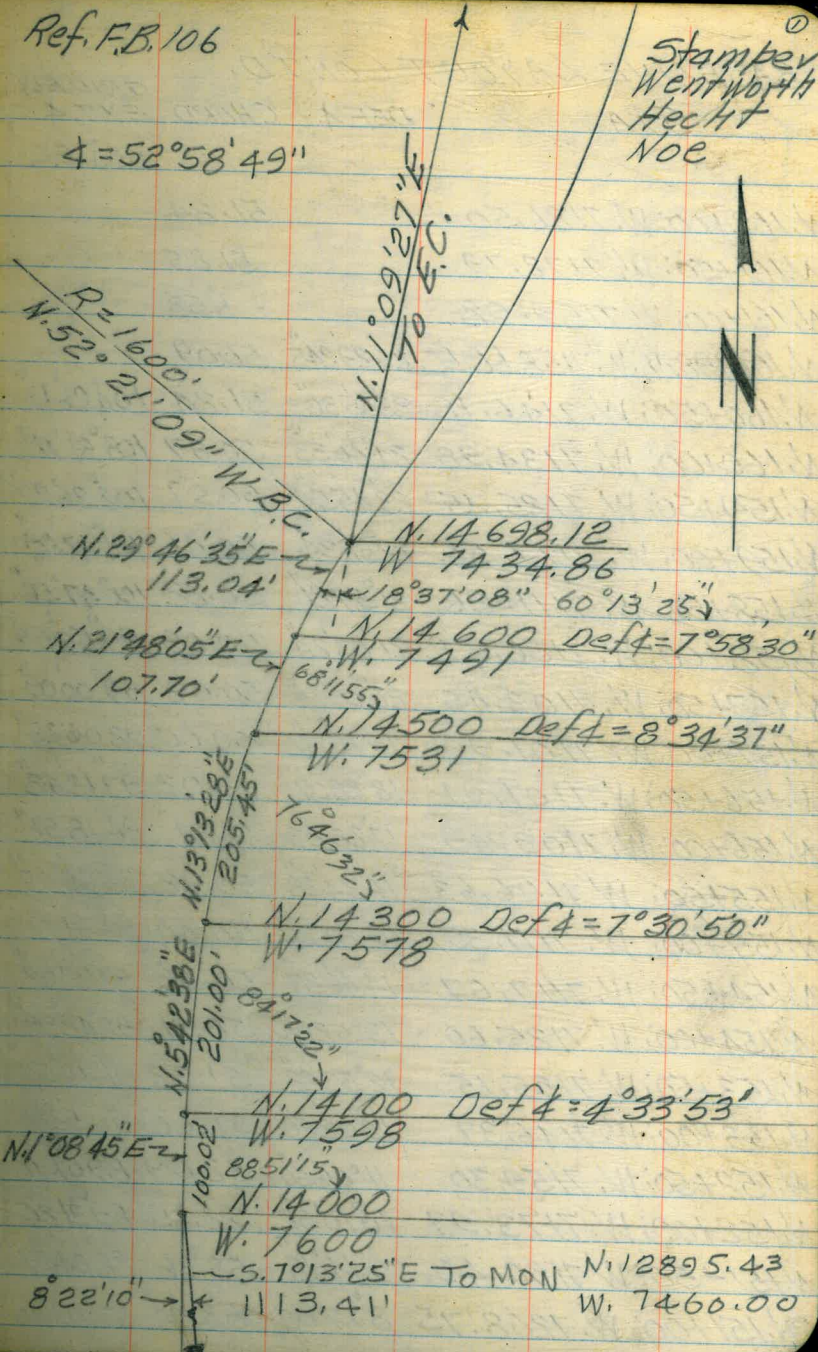
92 - N 15,140

+50 - N 15,130

BASELINE LAYOUT FOR SOUNDINGS ELY.
SHORE AREA, MISSION BAY W.O. 64501.

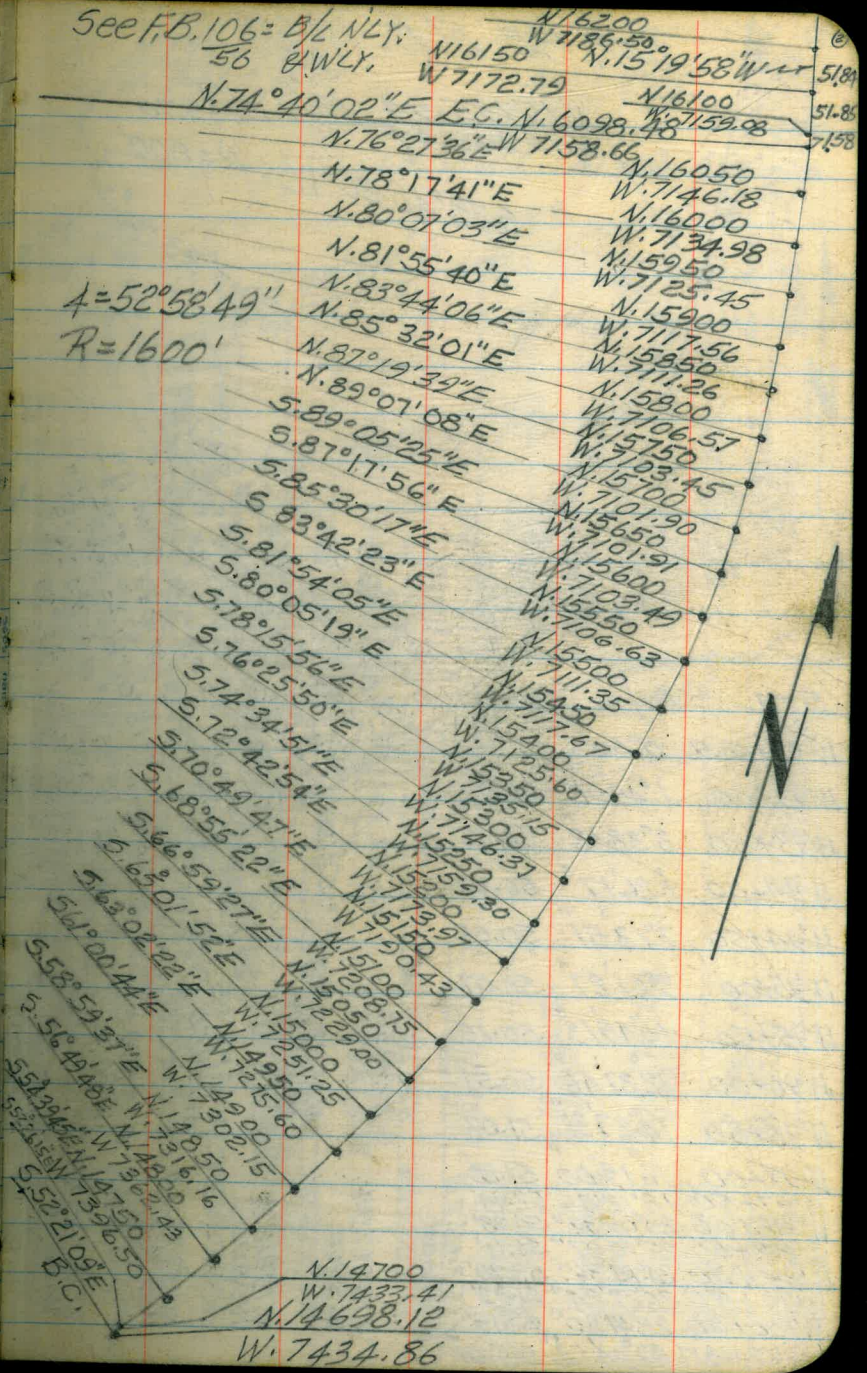
STA	Def \angle	B/L DIST.	GRID ELY. EXT. & ORG. E.C.
N.150+50; W. 7229.00	7°19'08"	54.71	860944
N.150+00; W. 7251.25	6°20'21"	55.62	850556
N.149+50; W. 7275.60	5°20'36"	56.61	841111"
N.149+00; W. 7302.15	4°19'47"	56.36	831022"
N.148+50; W. 7316.16	3°19'14"	59.49	820948"
N.148+00; W. 7362.43	2°14'19"	60.52	810454"
N.147+50; W. 7396.50	1°09'18"	62.13	79°59'52"
N.147+00; W. 7433.41	0°02'33"	2.37	BC-127°36'18" 78°53'07"
N.146+98.12; W. 7434.86		55.44	N.29°46'35"E BEARING
N.146+50; W. 7462.40		57.60	N.29°46'35"E
N.146+00; W. 7491		53.85	N.21°48'05"E
N.145+50; W. 7511		53.85	N.21°48'05"E
N.145+00; W. 7531		51.36	N.13°13'28"E
N.144+50; W. 7542.75		51.36	"
N.144+00; W. 7554.50		51.37	"
N.143+50; W. 7566.25		51.36	N.13°13'28"E
N.143+00; W. 7578		50.25	N.54°23'38"E
N.142+50; W. 7583		"	"
N.142+00; W. 7588		"	"
N.141+50; W. 7593		50.25	N.54°23'38"E
N.141+00; W. 7598		50.01	N.1°08'45"E
N.140+50; W. 7599		50.01	"
N.140+00; W. 7600			

Ref. F.B. 106



BASELINE LAYOUT CONT'D.

STA	DEF 4	CHORD	GRID ELY EXT. 4	OBJ EC.
N.162+00; W. 7186.50		51.84		
N.161+50; W. 7172.79		51.85		
N.161+00; W 7159.08		1.58		
N.160+9848; W. 7158.66 EC.	26°29'24"	50.09		
N.160+50; W. 7146.18	25°35'36"	51.24	104°26'13"	
N.160+00; W. 7134.98	24°40'33"	50.87	108°31'11"	
N.159+50; W. 7125.45	23°45'54"	50.57	102°36'27"	
N.159+00; W. 7117.56	22°51'34"	50.46	101°42'09"	
N.158+50; W. 7111.26	21°57'21"	50.22	100°47'56"	
N.158+00; W. 7106.57	21°03'24"	50.09	99°53'59"	
N.157+50; W. 7103.45	20°09'35"	50.03	99°00'09"	
N.157+00; W. 7101.90	19°15'50"	50.00	98°06'25"	
N.156+50; W. 7101.91	18°22'07"	50.02	97°12'42"	
N.156+00; W. 7103.49	17°28'23"	50.11	96°18'57"	
N.155+50; W 7106.63	16°34'33"	50.22	95°25'07"	
N.155+00; W. 7111.35	15°40'36"	50.40	94°31'11"	
N.154+50; W. 7117.67	14°46'27"	50.62	93°37'02"	
N.154+00; W. 7125.60	13°52'04"	50.91	92°42'39"	
N.153+50; W. 7135.15	12°57'22"	51.22	91°47'57"	
N.153+00; W. 7146.37	12°02'20"	51.66	90°52'54"	
N.152+50; W. 7159.30	11°06'50"	52.09	89°07'16"	
N.152+00; W. 7173.97	10°10'52"	52.65	89°31'26"	
N.151+50; W 7190.43	9°14'18"	53.26	88°04'57"	
N.151+00; W. 7208.75	8°17'05"	53.94	87°07'40"	



REF. FB. N.B. 106
58

N.15795.94 MON. EI.=9.70
W.10249.47

5.79°48'30"W R=800'
X=37°33'28" A=95°08'28"

N.15937.45
W.9462.10

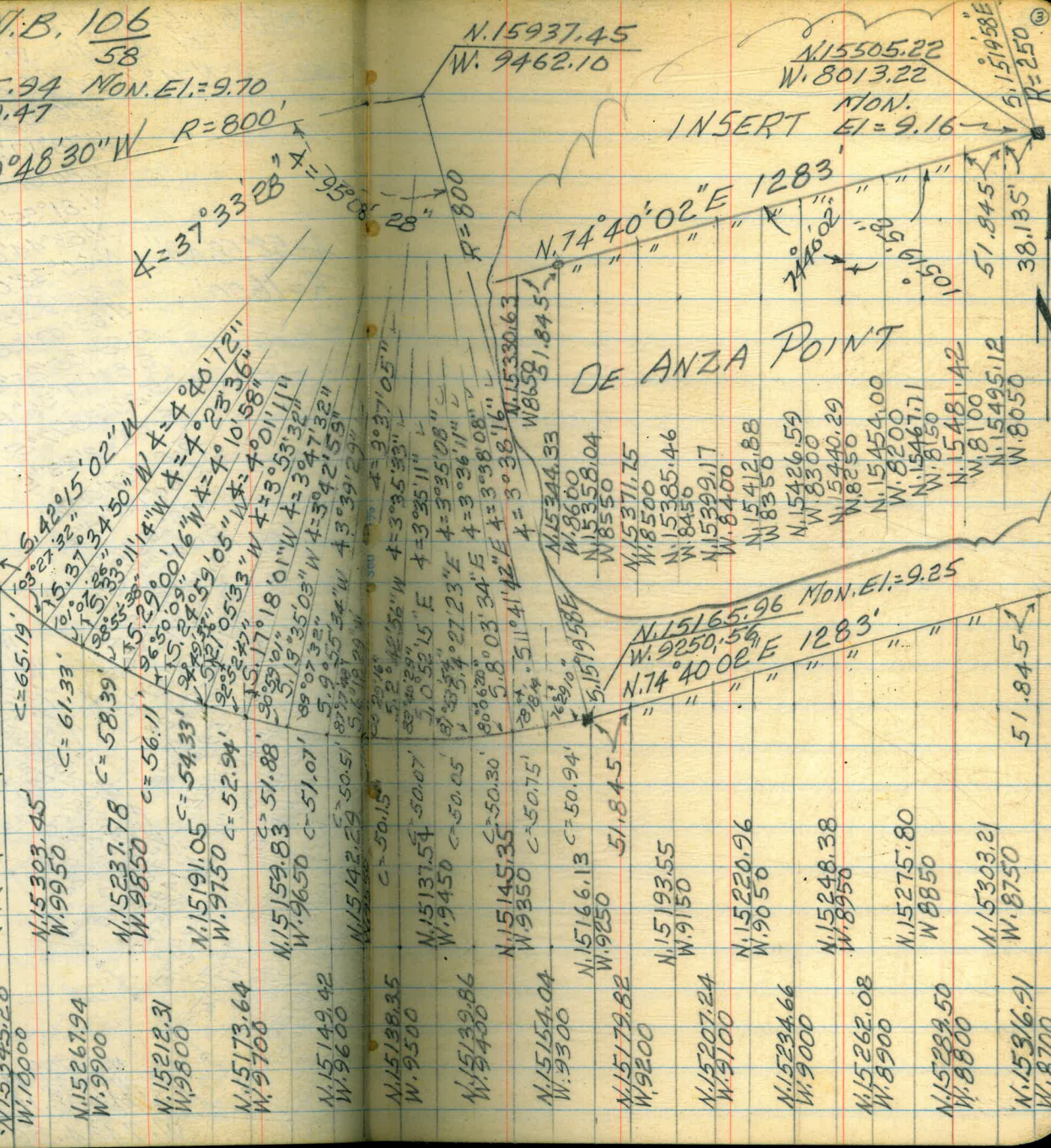
N.15505.22
W.8013.22

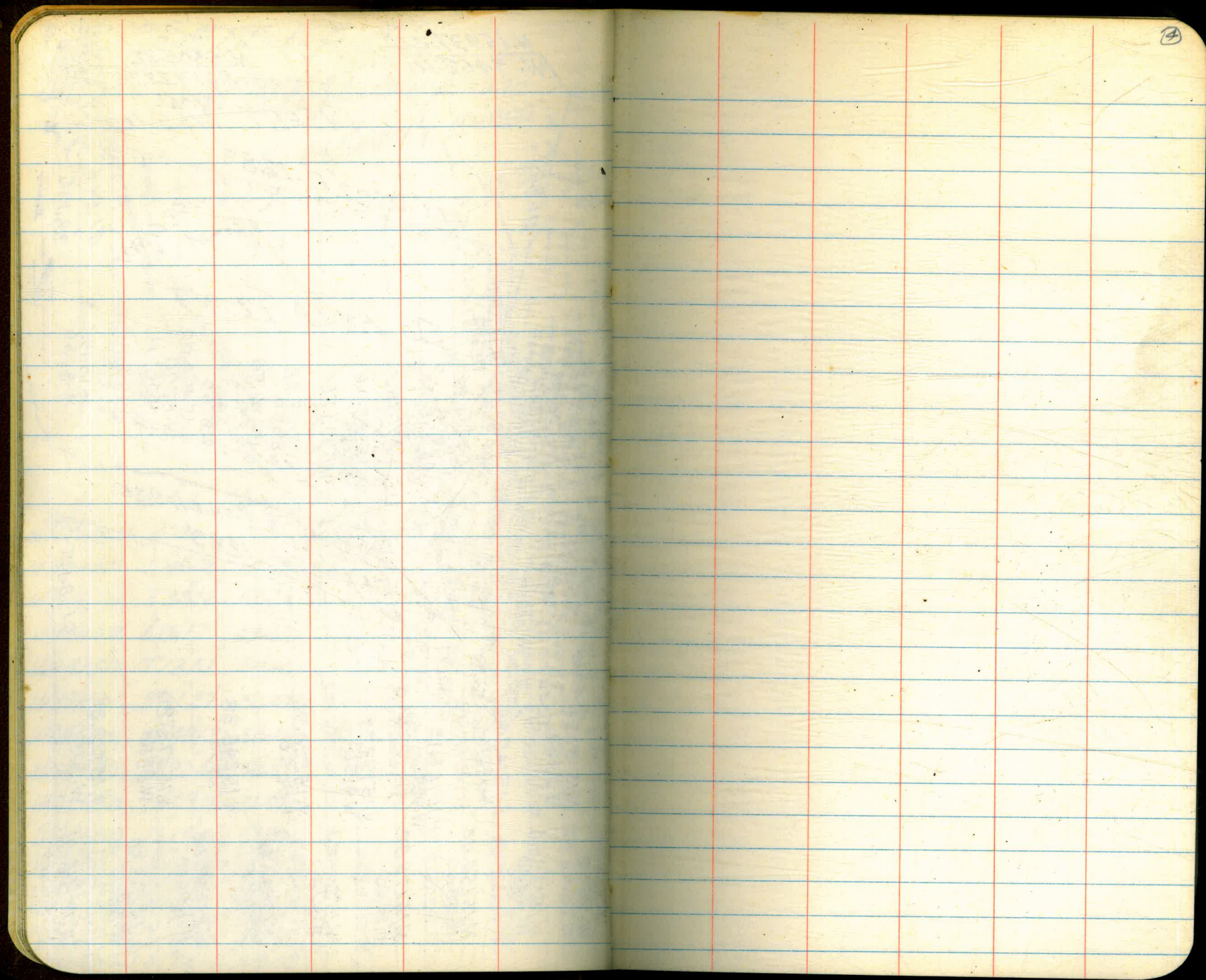
MON. EI.=9.16

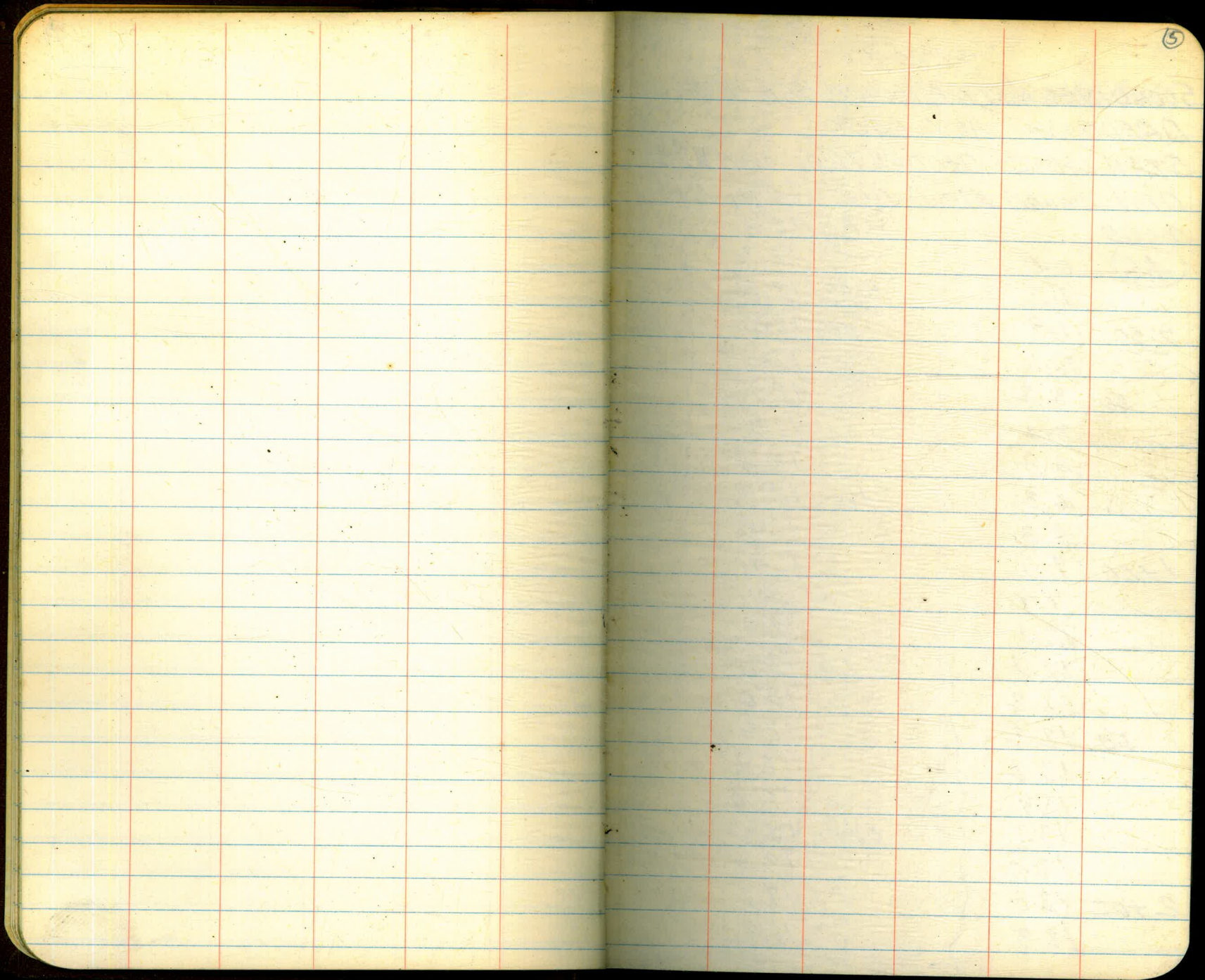
N.151988E
R=250'

DE ANZA POINT

STA.	Def	Chord
BC.	0°00'	
W92+50.56	1°49'08"	50.94
W93+00	3°38'12"	50.75
W94+00	5°26'17"	50.30
W94+50	7°13'51"	50.05
W95+00	9°01'27"	50.07
W95+50	10°49'13"	50.15
W96+00	12°37'46"	50.51
W96+50	14°27'31"	51.07
W97+00	16°19'00"	51.80
W97+50	18°12'46"	52.94
W98+00	20°09'32"	54.33
W98+50	22°10'07"	56.11
W99+00	24°15'36"	58.39
W99+50	26°27'24"	61.33
W100+00	28°47'30"	65.19







7-20-60

SOUNDINGS N'ELY. MISSION BAY AFTER
DREDGING. W.O. 64501

STAN. 140+50; 0+00 = W. 7610; SOUND WEST

Dist	Sound	Elev	Dist	Sound	Elev
0+00			(46)		12.6
(46)	0.0				12.7
	1.2		9:55		12.8
9:50	1.9		50		12.9
	2.1				12.5
50	3.2				12.9
	3.4				12.9
	4.0				12.6
	4.3		3+00		12.9
	4.8				12.8
1+00	7.0				12.8
	11.9				13.1
	12.1				12.9
	12.1		50		13.0
	12.2				13.0
50	12.2				12.9
	12.2				12.9
	11.9				13.0
	12.1		4+00		13.2
	12.0				13.4
2+00	12.0				13.1
	12.3				11.9

STA. N. 140+50 - WEST (6)

Dist Sound Elev Dist Sound Elev

(46)		11.9			
50		11.7			
		11.8			
		11.7			
		12.0			
		12.0			
5+00		12.0			
		12.2			
		12.3			
10:00		12.3			
		12.3			
50		12.3			
		12.5			
		12.6			
		12.6			
		12.5			
6+00		12.6			

0.4'

0.1'

0.4'

7-20-60

5 STA. N. 141+00; 0+00 = W. 7620 ; SOUND WEST

Dist	Sound	Elev	Dist	Sound	Elev
	(4.6)		(4.6)	12.6	
0+00			50	13.0	
				12.6	
				12.4	
				12.4	
				12.5	
50	0.1			12.5	
	1.7		3+00	12.7	
	4.3			12.8	
	9.6			12.8	
	11.0			12.8	
1+00	11.2			12.6	
	11.3		50	12.8	
	11.6			12.7	
	11.6		10+00	12.8	
	11.7			12.9	
50	11.8			13.2	
	11.9		4+00	13.1	
	11.9			12.7	
	12.0			11.9	
	12.1			11.6	
2+00	12.2			11.5	6.9
	12.3		50	12.0	
	12.3			12.1	
	12.5			12.2	

5 STA. N. 141+00 - WEST

DIST SOUND ELEV DIST SOUND ELEV

Dist	Sound	Elev	Dist	Sound	Elev
(4.6)	12.2				
	12.4				
5+00	12.4				
	12.6				
	12.5				
	12.6				
	12.4				
50	12.3				
	12.2				
	12.2				
	12.2				
	12.1				
6+00	12.3				

7-20-60

S.S. STA. N. 141+50; 0+00 = W. 7630 ; SOUND WEST

Dist	Sound	Elev	Dist	Sound	Elev
			(4.5)	12.8	
0+00			50	12.8	
(4.6)				12.8	
				12.4	
<u>10.5</u>				12.4	
0.5			<u>10.20</u>	12.7	
50	2.8			12.1	
	8.0		3+00	11.9	
	10.7			11.9	
	9.8			12.0	
	10.4			12.1	
1+00	10.9			11.9	
	11.1		50	11.9	
	11.1			11.8	
	11.1			11.9	
	11.1			12.2	
50	11.3			12.6	
	11.3		4+00	12.7	
	11.6			12.0	
	11.8			12.4	
	12.7			12.8	
2+00	12.0			13.0	
	12.7		50	13.0	
	12.5			13.1	
	12.8				

STA. N. 141+50 - WEST

(8)

Dist	Sound	Elev	Dist	Sound	Elev
(4.5)	13.2				
	13.2				
5+00	13.1				
	12.9				
	13.0				
	13.1				
	13.3				
50	13.3				
	13.3				
	12.9				
<u>10.25</u>	12.7				
	12.8				
6+00	12.8				

7-20-60

STA. N. 142+00			0+00 = W 7,620			SOUND WEST		
Dist	Sound	Elev	Dist	Sound	Elev	Dist	Sound	Elev
			4.5	12.9	8.4			
0+00			50	12.8	8.3			
4.5				12.6	8.1			
				12.4	7.9			
10:30			10:35	12.1	7.6			
	0.2	+4.3		12.1	7.6			
50	2.2	+2.3		12.0	7.5			
	7.0	2.5	3+00	12.0	7.5			
	11.2	6.7		12.0	7.5			
	11.0	6.5		12.2	7.7			
	11.8	7.3		12.6	8.1			
1+00	12.2	7.7		12.8	8.3			
	12.2	7.7	50	12.2	7.7			
	11.8	7.3		12.3	7.8			
	11.6	7.1		12.3	7.8			
	11.7	7.2		12.5	8.0			
50	11.8	7.3		12.7	8.2			
	11.8	7.3	4+00	12.8	8.3			
	11.9	7.4		12.9	8.4			
	12.1	7.6		13.1	8.6			
	12.5	8.0		13.1	8.6			
2+00	12.9	8.4		13.1	8.6			
	13.1	8.6	50	13.1	8.6			
2	12.9	8.4		13.2	8.7			
	13.1	8.6		13.1	8.6			

57A. N. 142+00 - WEST

(9)

Dist	Sound	Elev	Dist	Sound	Elev
4.5	13.1	8.6			
	13.3	8.8			
5+00	13.3	8.8			
	13.2	8.7			
	13.2	8.7			
	13.2	8.7			
	13.3	8.8			
50	13.4	8.9			
	13.1	8.6			
	13.1	8.6			
	13.1	8.6			
6+00	13.1	8.6			

7-20-60

Sta	Dist	Sound	Elev	Dist	Sound	Elev
5	0+00			(4.4)	12.5	
4	(4.5)			50	12.4	
3					12.1	
2	1045				12.2	
		0.8			12.1	
	50	4.0			12.3	
		11.5		3+00	12.0	
		12.1			12.2	
		11.9			12.1	
		12.0			12.2	
	1+00	12.8			12.2	
		13.0		50	12.2	
		13.0			12.1	
		13.1			12.4	
		13.2			12.3	
	50	13.3			12.4	
		13.1		4+00	12.6	
		13.1			12.8	
		13.3			12.9	
		13.8			13.0	
	2+00	13.0			13.1	
		13.0		50	13.0	
2		12.9			13.0	
		12.8			13.0	

STA. N. 142+50 - WEST

(10)

Dist	Sound	Elev	Dist	Sound	Elev
(4.4)	13.2				
	13.2				
5+00	13.2				
	13.2				
10+50	13.3				
7	13.3				
	13.2				
50	13.3				
	13.4				
	13.2				
	13.4				
	13.3				
6+00	13.2				

7-20-60

5 STA. N. 143+00; 0+00 = W. 7,610 SOUND WEST

Dist Sound Elev Dist Sound Elev

0+00

(4.4)

10:55

50

1.0

4.0

10.5

11.0

10.5

1+00

12.1

13.0

13.2

13.3

13.6

50

13.9

14.0

14.0

14.1

14.1

2+00

14.2

14.2

12.1

13.0

Dist Sound Elev

(4.4) 12.8

50 12.2

12.3

12.2

12.4

12.5

3+00 12.5

12.4

12.6

12.5

12.6

50 12.7

12.8

12.7

12.5

13.0

4+00 13.1

13.2

13.2

13.2

13.3

50 13.1

13.1

13.3

STA. N. 143+00 - WEST

Dist Sound Elev Dist Sound Elev

(4.4) 13.2

13.1

5+00 13.0

13.0

11:00 13.0

12.9

13.1

50 13.1

13.3

13.4

13.2

13.1

6+00 13.1

(11)

7-20-60

STA. N. 143+50; 0+00 = W. 7590; SOUND WEST

Dist	Sound	Elev	Dist	Sound	Elev
0+00			(4.3)	12.0	
(4.3)			50	12.0	
				12.0	
11.05				12.0	
				12.1	
50				12.1	
2.2			3+00	12.0	
8.9				11.9	
11.3			11.10	11.9	
10.9				11.9	
1+00	10.4			11.7	
	9.8		50	11.8	
	11.5			12.0	
	11.8			12.2	
	11.9			12.0	
50	11.9			12.1	
	12.9		4+00	12.0	
	12.2			12.0	
	12.0			12.3	
	12.0			12.4	
2+00	12.7			12.4	
	12.8		50	12.5	
	12.5			12.5	
	12.3			12.4	

STA. N. 143+50 - WEST

Dist Sound Elev

(4.3)	12.4	
	12.7	
5+00	12.5	
	12.3	
	12.3	
	12.2	
	12.1	
50	12.1	
	12.1	
	12.0	
	12.1	
	12.2	
6+00	12.3	
10	12.0	

(12)

7-20-60

STA. N. 144+00 - WEST

(13)

STA. N. 144+00	Dist	Sound	Elev	Dist	Sound	Elev	Dist	Sound	Elev
0+00				(4.2)	12.3	8.1	(4.2)	11.9	7.7
				50	12.1	7.9	5+00	12.7	8.5
					11.8	7.6		12.4	8.2
					12.0	7.8		12.3	8.1
11:20					11.8	7.6	11:30	12.2	8.0
	0.1	+4.2			11.8	7.6		12.1	7.9
	50	2.6	+1.7		11.9	7.7		12.1	7.9
		9.3	5.0	3+00	11.7	7.5	50	11.9	7.7
		9.9	5.6		11.7	7.5		11.9	7.7
		9.9	5.6		11.5	7.3		12.0	7.8
(4.3)		8.9	4.6		11.7	7.5		12.1	7.9
1+00		10.7	6.4		11.7	7.5		11.9	7.7
		11.4	7.1	50	11.6	7.4	6+00	12.0	7.8
11:25		10.8	6.5		11.6	7.4	10	12.0	7.8
		11.5	7.2		11.8	7.6			
		11.8	7.5		11.9	7.7			
50		11.9	7.6		11.8	7.6			
		11.8	7.5	4+00	11.8	7.6			
		11.9	7.6		11.9	7.7			
		12.2	7.9		12.0	7.8			
		12.1	7.8		12.0	7.8			
2+00		12.3	8.0		12.1	7.9			
		12.2	7.9	50	12.2	8.0			
		12.3	8.0		12.1	7.9			
		12.3	8.0		12.2	8.0			

7-20-60

STA. N. 144+50, 0+00 = W. 7580 ; SOUND WEST

Dist Sound Elev Dist Sound Elev

0+00

(4.1)

11.40

50

1.5

7.8

10.9

11.9

11.7

1+00

10.9

11.0

11.1

11.0

10.1

50

10.1

11.3

12.2

13.0

12.8

2+00

12.1

11.9

12.0

12.2

Dist Sound Elev

(4.1)

12.6

50

12.5

12.7

12.7

12.7

12.3

3+00

12.1

12.1

12.2

12.0

11.9

50

11.9

11.9

11.8

11.7

11.6

4+00

11.8

11.7

11.45

11.7

11.6

11.6

11.7

50

11.7

11.6

11.6

STA. N. 144+50 - WEST

Dist Sound Elev Dist Sound Elev

(4.1)

11.6

11.7

5+00

11.7

11.6

11.5

11.5

11.5

50

11.7

11.7

11.5

11.5

11.7

6+00

11.5

11.7

20

11.5

(19)

7-20-60

STA. N. 145+00 - WEST

STA. N. 145+00; 0+00 = W. 7,570 SOUND WEST

DIST SOUND ELEV 1

DIST	SOUND	ELEV	DIST	SOUND	ELEV
			(3.5)	12.9	
0+00			50	13.2	
(35)				12.7	
			1,25	12.5	
1,22				12.7	
50	0.0			12.8	
	3.0		3+00	13.1	
	8.0			12.8	
	11.0			13.1	
	10.8			13.6	
1+00	10.9			13.9	
	11.1		50	13.9	
	11.3			13.4	
	11.7			13.5	
	11.7			13.5	
50	11.7			13.7	
	11.7		4+00	13.7	
	10.8			13.5	
	10.6			13.7	
	10.2	6.7		13.7	
2+00	10.5	7.0		13.7	
	10.3	6.8	50	12.2	
	10.6			12.5	
	11.0			12.7	

DIST	SOUND	ELEV
(35)	12.9	
	13.1	
5+00	13.2	
	13.1	
	13.1	
	13.1	
	13.2	
50	13.3	
	13.0	
	13.1	
	13.1	
	13.1	
	13.1	
6+00	13.2	
	13.2	
	13.3	
30	13.5	

ok

ok

ok

7-20-60

STA. N. 145+50, 0+00 - W. 7,560 SOUND WEST

Dist	Sound	Elev	Dist	Sound	Elev
0+00			(34)	14.0	
(35)			50	13.2	
				12.5	
<u>11.35</u>			<u>1140</u>	12.6	
	0.2			12.8	
50	3.0			13.0	
	8.0		3+00	13.0	
	10.6			12.8	
	10.5			12.9	
	11.5			12.9	
1+00	11.5			13.2	
	11.5		50	12.5	
	11.8			12.6	
	11.5			12.4	
	11.5			12.6	
50	11.4			12.8	
	11.5		4+00	12.8	
	11.3			12.4	
	11.9			12.5	
	12.3			12.4	
2+00	12.5			12.2	
	12.6		50	12.0	
	12.8			12.2	
	13.2			12.2	

STA. N. 145+50 - WEST

Dist Sound Elev

Dist	Sound	Elev
(34)		12.8
		12.8
5+00		13.0
		13.0
		13.0
		13.3
		13.1
50		13.2
		13.2
		13.0
		13.2
		13.2
6+00		13.2
<u>1145</u>		13.3
		13.2
		13.2
40		13.2

7-20-60

STA. N. 146+00 - WEST

(17)

STA. N. 146+00; 0+00 = W. 7540			SOUND WEST			Dist Sound Elev		
Dist	Sound	Elev	Dist	Sound	Elev	Dist	Sound	Elev
			(34)	13.2	9.8	(34)	12.4	9.0
0+00			50	12.2	8.8	5+00	12.8	9.4
(34)				12.2	8.8		13.0	9.6
				12.2	8.8		12.9	9.5
1,50				12.3	8.9	1,55	12.9	9.5
	1.4	+2.0		12.4	9.0		13.1	9.7
50	5.2	1.8		12.3	8.9		13.2	9.8
	9.2	5.8	3+00	12.5	9.1	50	13.2	9.8
	10.9	7.5		12.6	9.2		13.3	9.9
	11.2	7.8		12.5	9.1		13.2	9.8
	11.1	7.7		12.6	9.2		13.2	9.8
1+00	11.2	7.8		12.6	9.2		13.4	10.0
	11.2	7.8	50	12.7	9.3	6+00	13.3	9.9
	11.2	7.8		12.7	9.3		13.3	9.9
	11.3	7.9		12.9	9.5		13.3	9.9
	11.3	7.9		12.8	9.4		13.3	9.9
50	11.3	7.9		12.7	9.3		13.4	10.0
	11.3	7.9	4+00	12.7	9.3	50	13.2	9.8
	11.4	8.0		12.8	9.4	60	13.3	9.9
	12.0	8.6		12.5	9.1			
	12.2	8.8		12.2	8.8			
2+00	12.7	9.3		12.0	8.6			
	12.7	9.3	50	12.0	8.6			
	13.0	9.6		12.3	8.9			
	13.1	9.7		12.4	9.0			

7-20-60

STA. N. 146+50; 0+00 = W. 7,520			SOUND WEST		
Dist	Sound	Elev	Dist	Sound	Elev
0+00			(33)	12.3	
(3.4)			50	13.0	
				12.4	
2:00	1.4		2:05	11.4	
	8.3			12.1	
50	10.3			12.4	
	11.2		3+00	12.3	
	11.2			12.2	
	11.7			12.1	
	12.0			12.2	
1+00	12.0			12.4	
	11.8		50	12.6	D.K.
	11.8			12.5	D.K.
	11.3			12.7	
	11.8			12.7	
50	11.8			12.6	
	11.7		4+00	12.5	
	11.9			12.3	
	11.8			12.7	
	11.5			12.7	
2+00	11.8			12.5	
	11.9		50	12.2	
	12.1			12.0	
	12.2			11.9	

(18)

STA. N. 146+50 - WEST					
Dist	Sound	Elev	Dist	Sound	Elev
(33)	12.1				
	12.6				
5+00	12.4				
	12.6				
	12.8				
	12.8				
	12.9				
50	12.7				
	12.3				
	12.4				
	12.3				
	12.3				
	12.3				
6+00	12.6				
	12.8				
2:10	12.8				
	12.7				
	12.8				
50	12.8				
	12.9				
70	12.9				

7-20-60

STA. N. 147+00.0+00 = N. 7490 SOUND WEST

Dist Sound Elev Dist Sound Elev

0+00

332:15 0.6

8.0

50 9.6

10.0

10.1

10.4

10.8

1+00 11.1

11.3

11.0

11.5

11.6

50 11.7

11.9

12.1

12.7

12.4

2+00 12.6

12.4

12.5

12.6

33 12.5

50 12.8

12.9

12.9

13.0

13.2

3+00 13.7

12.3

12.1

12.3

12.4

50 12.6

12.3

2:20 12.5

12.2

12.3

4+00 12.7

12.6

12.3

12.8

12.2

50 12.3

12.5

12.3

STA. N. 147+00 - WEST

Dist Sound Elev Dist Sound Elev

33 12.2

12.1

5+00 12.2

12.1

12.4

12.4

12.5

50 12.6

12.3

12.3

12.6

13.0

6+00 12.9

12.7

12.6

12.5

12.5

50 12.7

12.8

2:25 12.7

12.8

12.9

7+00 12.7

10 12.9

(19)

7-20-60

STA. N. 147+50 - WEST

(20)

STA. N. 147+50; 0+00 = W. 7450; SOUND WEST

DIST SOUND ELEV DIST SOUND ELEV

DIST	SOUND	ELEV	DIST	SOUND	ELEV
0+00			(33)	12.2	
(33)			50	12.0	
				12.0	
2:30			2:35	12.0	
				12.1	
50	0.6			12.1	
	3.9			12.1	
	9.8		3+00	12.3	
	10.2			12.6	
	10.6			12.7	
	10.5			13.0	
1+00	10.6			13.1	
	11.0		50	13.2	
	10.9			13.6	
	11.1			13.8	
	11.2			13.1	
50	11.0			12.9	
	11.5		4+00	13.0	
	11.7			12.9	
	11.9			13.0	
	11.9			12.9	
2+00	12.0			13.1	
	12.1		50	13.0	
	12.1			13.2	
	12.1			13.2	

DIST	SOUND	ELEV	DIST	SOUND	ELEV
(33)	13.1		(33)	13.3	
	13.1			13.2	
5+00	13.0		50	13.4	
	13.0				
	13.1				
	13.0				
	12.9				
50	13.0				
	12.6				
	12.7				
	12.8				
	12.8				
6+00	13.0				
	13.0				
	13.0				
2:40	13.0				
	13.1				
50	13.2				
	13.1				
	13.2				
	13.1				
	13.2				
7+00	13.5				
	13.8				
	13.8				

0+00

(33) 12.2

(33) 13.1

(33) 13.3

(33)

50 12.0

5+00 13.0

50 13.4

2:30

2:35 12.0

13.1

0.6

12.1

13.0

50 3.9

12.1

12.9

9.8

3+00 12.3

50 13.0

10.2

12.6

12.6

10.6

12.7

12.7

10.5

13.0

12.8

1+00 10.6

13.1

12.8

11.0

50 13.2

6+00 13.0

10.9

13.6

13.0

11.1

13.8

13.0

11.2

13.1

2:40 13.0

50 11.0

12.9

13.1

11.5

4+00 13.0

50 13.2

11.7

12.9

13.1

11.9

13.0

13.2

11.9

12.9

13.1

2+00 12.0

13.1

13.2

12.1

50 13.0

7+00 13.5

12.1

13.2

13.8

12.1

13.2

13.8

7-20-60

STA. N. 148+00; 0+00 = W. 7,400; SOUND WEST

Dist	Sound	Elev	Dist	Sound	Elev
0+00			(33)	11.8	8.5
(33)			50	12.0	8.7
				12.0	8.7
2:45				12.3	9.0
				12.4	9.1
50				12.2	8.9
	1.4	+1.9	3+00	12.1	8.8
	4.0	0.7		12.2	8.9
	10.2	6.9		12.3	9.0
	10.8	7.5		12.3	9.0
1+00	10.8	7.5		12.4	9.1
	10.8	7.5	50	12.5	9.2
	10.8	7.5		12.6	9.3
	10.9	7.6		12.8	9.5
	11.0	7.7		13.1	9.8
50	11.3	8.0		13.5	10.2
	11.3	8.0	4+00	13.5	10.2
	10.9	7.6		13.0	9.7
	11.2	7.9		12.9	9.6
	11.2	7.9		12.9	9.6
2+00	11.5	8.2		12.3	9.0
	11.5	8.2	50	12.1	8.8
	11.7	8.4		12.1	8.8
	11.7	8.4		13.0	9.7

STA. N. 148+00 - WEST (21)

Dist	Sound	Elev	Dist	Sound	Elev
(33)	13.1	9.8	(33)	12.8	9.5
	13.2	9.9		12.7	9.4
5+00	13.2	9.9	50	12.6	9.3
	13.2	9.9		12.4	9.1
	13.5	10.2		12.4	9.1
2:50	13.5	10.2		12.5	9.2
	13.2	9.9		12.9	9.6
50	13.2	9.9	8+00	12.9	9.6
	13.3	10.0			
	13.1	9.8			
	13.1	9.8			
	13.3	10.0			
6+00	13.2	9.9			
	13.2	9.9			
	13.2	9.9			
	13.1	9.8			
	13.1	9.8			
50	13.2	9.9			
	13.2	9.9			
	13.2	9.9			
	12.9	9.6			
	12.8	9.5			
7+00	12.9	9.6			
	12.8	9.5			
	13.0	9.7			

7-21-60

STAN. 148+50 - WEST

(22)

STAN. 148+50. 0+00=W. 7,360 ; SOUND WEST

Dist Sound Elev Dist Sound Elev

Dist Sound Elev Dist Sound Elev

(46) 13.8 (46) 13.9

0+00

(46) 13.1

13.7 13.9

(46)

50 13.1

5+00 13.9 50 13.9

12.9

13.9 13.8

9:50 13.1

13.9 13.7

9:48

13.2

13.9 13.8

50

1.0

13.3

13.9 13.8

2.2

3+00 13.2

50 13.9 8+00 13.9

6.3

13.3

13.8 14.1

11.2

13.3

13.8 14.0

12.3

13.4

13.9 14.0

1+00

12.5

13.5

14.0 14.1

12.2

50 13.7

6+00 13.9 50 14.3

12.4

14.0

13.9

12.8

14.5

13.9

12.8

15.0

13.8

50

12.8

15.2

13.8

12.4

4+00 14.2

50 14.0

12.2

13.7

14.0

12.3

13.3

9:55 14.0

12.5

13.3

14.2

2+00

12.6

13.3

14.1

12.7

50 13.1

7+00 14.1

12.6

13.2

13.9

13.0

13.9

13.9

7-21-60

STA. N. 149+00 - WEST

STA. N. 149+00; 0+00 - W. 7.350 SOUND WEST

DIST SOUND ELEV DIST SOUND ELEV

DIST	SOUND	ELEV	DIST	SOUND	ELEV
0+00			(46)	12.8	
(4.6)			50	12.9	
				12.9	
				13.0	
<u>10:00</u>				13.5	
	0.0			13.5	
50	1.2			13.5	
	3.2		3+00	13.4	
	6.0			13.2	
	10.8			13.7	
	12.2			13.7	
1+00	12.6			13.6	
	12.4		50	13.4	
	12.7			13.4	
	12.7			13.2	
	12.7			13.8	
50	12.5			14.2	
	12.4		4+00	14.2	
	12.5			14.1	
	12.6		4+00	13.7	
	12.8			13.2	
2+00	12.8			13.2	
	12.9		50	13.1	
	12.8			13.0	
	12.7			13.2	

DIST	SOUND	ELEV	DIST	SOUND	ELEV
(46)	13.2		(46)	14.0	
	13.5			14.0	
5+00	13.7		50	13.9	
	13.8			13.8	
<u>10:05</u>	14.0			13.8	
	14.0			13.2	
	14.0			13.1	
50	14.0		8+00	13.3	
	13.9			13.4	
	13.8			13.7	
	13.8			14.0	
	14.0			14.0	
6+00	14.1		50	14.0	
	14.1				
	14.1				
	14.1				
50	13.9				
	13.9				
	14.0				
	13.9				
	13.7				
7+00	13.8				
	13.8				
	14.0				

0.0

0.0

0.0

7-21-60

STAIN. 149+50, 0+00=W.7320; SOUND WEST

Dist Sound Elev Dist Sound Elev

0+00

(46)

(46)

50

12.7

12.5

12.7

12.8

12.3

12.3

50 0.6

2.7

3+00

12.3

4.0

12.5

10.5

12.2

12.0

12.4

1+00

12.0

12.4

12.3

50

12.4

12.5

12.9

12.5

13.0

12.5

13.1

50

12.6

13.4

12.5

4+00

14.0

12.6

14.1

12.4

14.1

12.3

13.9

2+00

12.6

13.2

12.6

50

13.0

12.6

12.9

12.7

13.0

STAIN. 149+50 - WEST

Dist Sound Elev Dist Sound Elev

(46)

12.5

(46)

13.2

13.0

13.5

5+00

13.2

50

13.5

13.8

13.2

13.9

13.4

10+00

13.5

13.3

13.9

13.3

50

14.0

8+00

13.4

13.9

13.1

13.9

13.0

13.9

13.0

13.9

13.2

6+00

13.9

50

13.4

13.5

13.4

13.7

13.9

13.8

80

13.4

13.8

50

13.9

13.8

13.3

13.3

13.2

9+00

13.4

13.5

13.2

(24)

O.K.

O.K.

O.K.

7-21-60

STA. N. 150+00 - WEST

(25)

STA. N. 150+00; 0+00 = W. 7.300; SOUND WEST

Dist Sound ELEV Dist Sound ELEV

DIST Sound ELEV DIST Sound ELEV

(4.5) 13.0 8.5 (4.5) 13.5 9.0

0+00 (4.5) 12.8 8.3 50 12.8 8.3 5+00 12.9 8.4 50 13.5 9.0

12.9 8.4 50 13.4 8.9

(4.5) 12.5 8.0 1035 13.0 8.5 13.6 9.1

12.4 7.9 13.8 9.3

10:30 12.2 7.7 13.2 8.7 13.6 9.1

12.5 8.0 13.4 8.9 13.8 9.3

0.2 +4.3 12.5 8.0 50 13.6 9.1 8+00 13.8 9.3

13.2 8.7 13.6 9.1

50 1.1 +3.4 12.5 8.0 50 13.4 8.9 13.8 9.3

13.4 8.9 13.8 9.3

3.2 +1.3 3+00 12.8 8.3 50 13.6 9.1 8+00 13.8 9.3

13.6 9.1 13.7 9.2

6.0 1.5 12.5 8.0 13.6 9.1 13.7 9.2

13.6 9.1 13.7 9.2

10.1 5.6 12.4 7.9 13.7 9.2 13.5 9.0

13.7 9.2 13.5 9.0

12.5 8.0 12.6 8.1 13.9 9.4 13.5 9.0

13.9 9.4 13.5 9.0

1+00 12.2 7.7 12.7 8.2 13.8 9.3 13.2 8.7

13.8 9.3 13.2 8.7

12.4 7.9 50 12.8 8.3 6+00 14.0 9.5 50 13.2 8.7

14.0 9.5 50 13.2 8.7

12.4 7.9 13.0 8.5 13.9 9.4 13.3 8.8

13.9 9.4 13.3 8.8

12.2 7.7 13.2 8.7 13.9 9.4 13.6 9.1

13.9 9.4 13.6 9.1

12.8 8.3 13.4 8.9 13.8 9.3 13.6 9.1

13.8 9.3 13.6 9.1

50 12.7 8.2 14.0 9.5 13.8 9.3 14.2 9.7

13.8 9.3 14.2 9.7

12.2 7.7 4+00 14.2 9.7 50 13.9 9.4 9+00 14.5 10.0

14.2 9.7 50 13.9 9.4 14.5 10.0

12.5 8.0 13.8 9.3 14.0 9.5 14.0 9.5

14.0 9.5 14.0 9.5

12.9 8.4 13.6 9.1 13.8 9.3 13.8 9.3

13.8 9.3 13.8 9.3

12.9 8.4 13.5 9.0 13.9 9.4 13.9 9.4

13.9 9.4 13.9 9.4

2+00 13.0 8.5 13.6 9.1 13.8 9.3 13.8 9.3

13.8 9.3 13.8 9.3

13.0 8.5 50 13.0 8.5 7+00 13.8 9.3 13.8 9.3

13.8 9.3 13.8 9.3

12.9 8.4 13.0 8.5 13.8 9.3 13.8 9.3

13.8 9.3 13.8 9.3

12.8 8.3 13.1 8.6 13.7 9.2 13.7 9.2

13.7 9.2 13.7 9.2

7-21-60

STA. N. 150+50, 0+100 = W. 7,280; SOUND WEST

Dist Sound Elev Dist Sound Elev

0+100 (4.3) 13.2 50 13.1

10:45 0.6 12.9

50 1.9 13.0

4.0 3+00 12.9

11.0 13.0

13.2 13.0

13.1 13.0

1+00 12.9 13.0

12.9 50 13.2

12.9 13.7

13.2 13.7

12.9 13.6

50 12.9 13.3

13.0 4+00 14.4

12.9 14.0

12.9 13.8

12.9 13.4

2+00 13.0 13.3

12.9 50 13.9

13.1 13.8

13.2 13.9

STA. N. 150+50 - WEST

Dist Sound Elev Dist Sound Elev

(4.5) 13.9 (4.5) 13.8

5400 13.7 50 14.0

5400 13.8 50 14.1

10:50 13.4 14.2

10:50 13.2 14.5

13.3 14.6

13.3 14.7

50 13.4 8+00 14.4

13.2 14.3

13.1 14.3

13.2 14.6

13.6 14.4

6+00 13.6 50 14.3

13.4 14.3

13.6 13.8

13.7 13.8

13.7 13.7

50 13.8 9+00 13.9

13.8 13.9

13.9 20 14.7

13.8 13.8

7+00 14.0

13.9

13.7

OK

7-21-60

STA. N. 151+00; 0+00 = W. 7,250; SOUND WEST

Dist Sound Elev Dist Sound Elev

Dist	Sound	Elev	Dist	Sound	Elev
0+00			(4.4)	12.4	
(4.4)			50	12.6	
				12.6	
<u>11.00</u>				12.7	
	0.3			12.3	
50	1.4			12.5	
	3.9		3+00	12.5	
	10.9			12.6	
	12.2			12.8	
	12.2			13.0	
1+00	12.8			14.2	↓
	12.7		50	15.1	0
	12.7			14.9	
	12.8			14.3	
	13.2			13.8	
50	13.7			13.1	
	13.5		4+00	13.1	
	13.5			13.0	
	13.4			13.9	
	13.3			13.0	
2+00	13.2			13.1	
	13.1		50	14.2	
	13.1			14.2	
	12.9			14.0	

STA. N. 151+00 - WEST

Dist Sound Elev Dist Sound Elev

Dist	Sound	Elev	Dist	Sound	Elev
(4.4)	14.8		(4.4)	13.1	
	14.9			13.0	
5+00	13.9		50	13.0	
	13.2			12.9	
<u>11.05</u>	13.3		<u>11.10</u>	12.9	
	13.0			13.0	
	13.0			13.4	
50	13.1		8+00	13.4	
	13.0			13.6	
	13.0			13.4	
	12.9			13.1	↓
	12.9			12.9	0
6+00	12.9		50	13.0	
	13.1			12.9	
	13.1			13.1	
	13.2			13.5	
	13.4			13.6	
50	13.8		9+00	13.3	
	13.2			13.2	
	13.0			13.3	
	12.7			13.5	
	12.7			13.8	
7+00	12.7		50	13.8	
	12.9				
	12.9				

7-21-60

STA. N. 151+50; 0+00 = W. 7,240 ; SOUND WEST

Dist	Sound	Elev	Dist	Sound	Elev
0+00			(43)	13.0	
(43)			50	13.1	
				13.1	
<u>11:18</u>				13.1	
	1.1			13.2	
50	3.5			13.2	
	11.1		3+00	13.3	
	11.2			13.5	
	12.6			14.2	
	12.2			15.0	
1+00	12.4			14.9	
	12.6		50	14.8	
	12.5			13.8	
	12.4			13.2	
	12.5			13.2	
50	12.8			13.3	
	12.8		0 4+00	13.0	
11:20	12.9			13.1	
	12.9			13.2	
	13.0			13.4	
2+00	13.5			13.8	
	13.4		50	13.9	
	13.5			13.9	
	13.2			13.9	

STA. N. 151+50 - WEST

(28)

Dist	Sound	Elev	Dist	Sound	Elev
(43)	13.9		(43)	13.6	
	13.8			13.7	
5+00	13.8		50	13.9	
	13.7			13.9	
<u>11:25</u>	13.7			13.8	
	13.9			13.7	
	13.8			13.8	
50	13.6		8+00	13.9	
	13.5			14.0	
	13.6			14.1	
	13.4			13.8	
	13.6			13.7	
6+00	13.6		50	14.0	
	14.2			13.7	
	14.3			13.6	
	14.1			13.7	
	14.2			13.4	
50	13.9		9+00	13.5	
	13.2			13.6	
	12.9		11:30	13.8	
	12.9			13.9	
	13.2			13.9	
7+00	13.8		50	14.0	
	13.8		60	14.2	
	13.7				

7-21-60

STA. N. 152+00 - WEST

STA. N. 152+00; 0+00 = W. 7,220; SOUND WEST

Dist	Sound	Elev	Dist	Sound	Elev
0+00			42	12.9	8.7
4.3			50	13.1	8.9
				13.1	8.9
11.35				13.1	8.9
	0.8	+3.5		13.1	8.9
50	3.2	1.1		13.1	8.9
	7.2	2.9	3+00	13.1	8.9
	10.2	5.9		13.2	9.0
	12.1	7.8		13.5	9.3
	12.4	8.1		14.2	10.0
1+00	12.0	7.7		13.2	9.0
	11.7	7.4	50	13.2	9.0
	11.6	7.3		13.2	9.0
	11.9	7.6		13.2	9.0
	11.9	7.6		13.1	8.9
50	11.8	7.5		13.1	8.9
	11.9	7.6	4+00	12.9	8.7
	12.0	7.7		12.9	8.7
	12.1	7.8		12.9	8.7
	12.3	8.0		13.4	9.2
2+00	12.4	8.1		13.8	9.6
	12.5	8.2	50	13.8	9.6
	12.4	8.1		13.9	9.7
	12.5	8.2		14.0	9.8

Dist	Sound	Elev	Dist	Sound	Elev
42	13.8	9.6	42	13.8	9.6
	13.8	9.6		13.8	9.6
5+00	13.7	9.5	50	13.9	9.7
	13.6	9.4		14.0	9.8
11.40	13.6	9.4		13.9	9.7
	13.6	9.4		14.0	9.8
	13.5	9.3		14.5	10.3
50	13.2	9.0	8+00	14.9	10.7
	13.4	9.2		14.9	10.7
	13.2	9.0		14.8	10.6
	13.1	8.9		14.6	10.4
	13.1	8.9		14.7	10.5
6+00	13.4	9.2	50	14.8	10.6
	14.1	9.9		13.8	9.6
	14.1	9.9		13.5	9.3
	14.3	10.1		13.5	9.3
	14.7	10.5		13.5	9.3
50	15.0	10.8	9+00	13.8	9.6
	15.0	10.8		13.9	9.7
	14.5	10.3		14.0	9.8
	13.2	9.0		14.2	10.0
	13.0	8.8		13.8	9.6
7+00	13.4	9.2	50	14.0	9.8
	13.6	9.4		14.0	9.8
	13.8	9.6		14.0	9.8
			80	13.9	9.7

7-21-60

STA. N. 152+50. 0+00 = W. 7,210 SOUND WEST

DIST	SOUND	ELEV	DIST	SOUND	ELEV
0+00			(36)	11.6	
(36)			50	12.0	
				12.1	
				12.0	
<u>1:05</u>				12.0	
	0.0			12.0	
50	2.4			12.0	
	10.0		3+00	12.4	
	11.5			13.2	
	11.9			12.9	
	11.9			12.6	
1+00	11.9			12.6	
	11.9		50	12.9	
	11.8			12.9	
	11.9			13.0	
	11.6			12.9	
50	11.2			12.9	
	11.0		4+00	13.2	
	10.6			12.9	
	11.0			12.9	
	11.2			13.0	
2+00	11.5			13.2	
	11.5		50	13.2	
	11.4			13.1	
	11.6			13.4	

STA. N. 152+50 - WEST

DIST SOUND ELEV DIST SOUND ELEV

DIST	SOUND	ELEV	DIST	SOUND	ELEV
(3.5)	13.5		(3.3)	13.9	
	13.5			13.8	
5+00	13.2		50	13.9	
	13.1			13.9	
<u>1:10</u>	13.2			14.0	
	13.0			14.1	
	13.0			14.1	
50	12.9		8+00	14.2	
	12.8			13.2	
	12.6		<u>1:15</u>	14.1	
	12.8			14.0	
	12.9			14.0	
6+00	12.8		50	13.9	
	13.0			14.0	
	13.2			13.0	
	13.8			13.5	
	13.6			13.2	
50	14.2		9+00	13.5	
	14.2			13.3	
	14.0			13.1	
	13.3			13.1	
	13.0			13.2	
7+00	12.8		50	13.2	
	13.0			14.0	
	13.2			13.9	
				13.9	
			20	13.6	

7-21-60

S STA. N. 153+00; 0+00=W, 7, 180			SOUND WEST		
DIST	SOUND	ELEV	DIST	SOUND	ELEV
0+00			3.5	12.0	
3.5			50	11.9	
				12.0	
			1:25	11.8	
			#	11.9	
				11.5	
50			3+00	11.2	
	0.0			11.0	
1:22	1.2			11.3	
<u>9.4</u>				11.2	
	11.0			11.5	
1+00	11.2			12.0	
	11.3		50	11.9	
	11.1			11.8	
	11.0			11.5	
	11.0			12.2	
50	11.2			12.3	
	11.3		4+00	12.9	
	11.4			12.8	
	11.2			12.9	
	11.5			13.2	
2+00	11.9			13.2	
	12.2		50	12.9	
	12.1			13.0	
	12.1				

STA. N. 153+00 - WEST			(3)		
DIST	SOUND	ELEV	DIST	SOUND	ELEV
3.5	13.2		3.4	13.9	
	13.3			13.9	
5+00	13.5		50	13.0	
	13.5			13.0	
	13.6		1:30	13.0	
	13.2			13.3	
	13.5			13.5	
50	13.6		8+00	13.2	
	13.2			13.3	
	12.9			13.5	
	12.9			13.9	
	13.1			13.8	
6+00	13.1		50	14.0	
	13.2			13.9	
	13.1			13.8	
	12.9			13.9	
	12.8			13.2	
50	13.0		9+00	13.9	
	13.3			14.0	
	13.5			14.1	
	13.9			13.9	
	13.9			13.2	
7+00	14.0		50	13.5	
	14.1			13.3	
	14.0			13.2	

STA. N. 153+00 - WEST 7-21-60

Dist	Sound	Elev
(3A)	13.4	} 0.1
	12.7	
10+00	13.2	
	13.2	
20	13.0	

7-21-60

(32)

STA. N. 153+50; 0+00 - W. 7, 160; SOUND WEST

Dist	Sound	Elev	Dist	Sound	Elev
0+00			(3.4)	11.9	} 0.1
(3.4)			50	11.8	
				11.9	
				11.8	
				12.0	
50				11.9	
	0.3		3+00	12.0	
1+00	6.4			12.1	
	9.9			12.0	
	9.9			12.1	
1+00	9.9			12.0	
	9.8		50	12.0	
	9.9			12.1	
	10.1			12.2	
	10.7			12.1	
50	10.8			12.3	
	11.2		4+00	12.3	
	11.6			12.1	
	11.9			12.0	
	12.0			12.1	
2+00	11.9			12.2	
	11.8		50	12.2	
	11.6			12.1	
	11.9			12.2	

STA. N. 153+50 - WEST 7-21-66

Dist	Sound	Elev	Dist	Sound	Elev
(3.4)	12.1		(3.3)	13.9	
	12.1			13.8	
5+00	12.1		50	13.9	
	12.0			13.9	
<u>11.45</u>	12.4			12.9	
	13.0			12.3	
	13.2			11.2	
50	13.1		8+00	11.2	
	13.1			11.2	
	13.0			11.7	
	13.0		<u>11.50</u>	11.9	
	13.2			12.1	
6+00	13.0		50	12.7	
	12.2			12.8	
	12.7			12.5	
	12.8			11.9	
	12.5			11.9	
50	12.6		9+00	12.4	
	12.2			11.0	
	12.2			10.2	6.9
	12.4			10.9	7.6
	12.8			10.1	6.7
7+00	13.1		50	6.0	2.7
	13.3			5.2	1.9
	13.7			6.0	2.7

STA. N. 153+50 - WEST

Dist	Sound	Elev
(3.3)	5.9	2.6
	5.3	2.0
10+00	4.6	1.3
	4.2	0.9
	3.7	0.4
	3.2	+0.1
	3.2	+0.1
50	3.0	+0.3

7-21-60

STAN. 154+00, 0+00=10.7, 140; SOUND WEST

Dist Sound Elev Dist Sound Elev

0+00

33	11.6	8.3
50	11.4	8.1

11.6 8.3

11.8 8.5

11.9 8.6

12.1 8.8

3+00 12.3 9.0

12.3 9.0

12.5 9.2

12.3 9.0

12.2 8.9

50 12.3 9.0

12.2 8.9

12.2 8.9

12.2 8.9

12.2 8.9

50 11.2 7.9 12.1 8.8

4+00 12.2 8.9

11.7 8.4

11.6 8.3

11.4 8.1

11.6 8.3

2+00 11.0 9.7 50 11.8 8.5

10.9 7.6 11.8 8.5

10.8 7.5 11.8 8.5

11.1 7.8 11.8 8.5

STAN. 154+00-WEST

Dist Sound Elev Dist Sound Elev

3.3 11.9 8.6 33 12.2 8.9

11.9 8.6 11.7 8.4

5+00 11.9 8.6 50 10.9 7.6

11.9 8.6 10.9 7.6

2:05 12.3 9.0 11.3 8.0

12.3 9.0 11.1 7.8

12.6 9.3 9.5 6.2

50 12.7 9.4 8+00 9.4 6.1

12.6 9.3 5.7 2.4

12.4 9.1 4.5 1.2

12.4 9.1 3.9 0.6

12.2 8.9 3.4 0.0

6+00 12.1 8.8 50 3.2 +0.1

12.1 8.8 3.1 +0.2

12.0 8.7 2.9 +0.4

12.7 9.4 2.6 +0.7

12.7 9.4 2.5 +0.8

50 12.8 9.5 9+00 2.4 +0.9

12.8 9.5 1.8 +1.5

12.9 9.6 1.4 +1.9

12.9 9.6 1.1 +2.2

13.0 9.7 1.3 +2.0

7+00 13.4 10.1 50.

14.1 10.8

14.3 11.0

STA. N. 154+00 - WEST 7-21-60
 Dist Sound Elev

10+00

50

60

7-21-60

(35)

STA. N. 154+50; 0+00 = W. 7, 130 ; SOUND WEST
 Dist Sound Elev Dist Sound Elev

0+00

3.2

50

2.18

2.0

7.1

9.9

1+00

10.2

10.4

10.1

10.1

10.2

50

10.8

11.0

11.2

11.6

11.8

2+00

11.8

11.8

11.8

11.9

3.2

50

12.0

12.0

12.0

11.8

2.20

12.0

12.2

3+00

12.2

12.4

12.5

12.5

12.5

50

12.5

12.3

12.5

12.8

12.9

4+00

13.0

13.0

13.2

12.9

12.5

50

11.9

11.5

11.7

OK

OK

OK

STA. N. 154+50 - WEST 7-21-60

DIST	Sound	Elev	DIST	Sound	Elev
3.2	11.7		3.2	4.8	1.6
	11.9			4.0	0.8
5+00	12.0		50	3.2	0.0
	12.0			2.5	+0.7
	12.1			1.8	+1.4
	12.2			1.5	+1.7
	12.2				
50	12.5		8+00		
	12.9				
	12.8				
	12.8	4.0			
	12.7				
6+00	12.8		50		
	12.9				
	12.9				
	12.9				
	13.0				
50	13.0		9+00		
	12.9				
2:25	12.6				
	7.0	3.8			
	6.8	3.6			
7+00	6.0	2.8	50		
	5.8	2.6			
	5.8	2.6			

STA. N. 154+50 - WEST

DIST Sound Elev

10+00

50

70

7-21-60

STA. N. 155+00 - 0+00 - W. 7140; SOUND WEST

Dist	Sound	Elev	Dist	Sound	Elev
0+00			(3)	12.3	
(3.1)			50	12.6	
				12.8	
2.32				13.1	
				13.2	
50	0.9			12.9	
	5.3		3+00	13.2	
	9.6			13.3	
	9.4		2.35	13.0	
	10.4			13.3	
1+00	10.8			13.5	
	10.6		50	13.7	
	10.4			13.4	
	10.0	6.9		13.2	
	10.0	6.9		13.0	
50	10.1	7.0		12.6	
	10.5		4+00	12.6	
	10.7			12.5	
	11.0			11.6	
	11.3			11.6	
2+00	11.4			11.5	
	11.7		50	11.0	
	12.0			11.2	
	12.0			11.5	

STA. N. 155+00 - WEST

Dist Sound Elev Dist Sound Elev

Dist	Sound	Elev	Dist	Sound	Elev
(3)	11.7				
	11.8				
5+00	11.9		50		
	12.0				
	12.0				
	12.0				
	12.2		50	12.2	
	12.2				
	12.2				
	12.1				
	12.1				
6+00	12.0		50		
	12.0				
	10.0				
	6.0				
	5.4				
50	4.4		9+00		
	3.7				
	2.7				
	1.8				
	1.1				
7+00			50		

(37)

7-21-60

STA. N. 155+50 0+00 = W. 7,130, SOUND WEST

Dist Sound Elev Dist Sound Elev

0+00

(3.1) 11.1
50 11.5

(3.1)

12.0

12.1

12.1

12.3

50 0.0

2.45 1.8

8.1

9.7

10.0

1+00 10.5

10.2

10.9

11.0

11.1

50 11.2

11.3

11.5

11.6

11.1

2+00 10.2

10.7

11.0

11.2

3+00 12.3

12.9

12.5

12.0

11.4

50 11.8

11.1

2.50 11.8

12.5

12.5

4+00 12.6

12.1

12.1

12.0

11.9

50 11.8

12.0

12.2

STA. N. 155+00 - WEST
Dist Sound Elev Dist Sound Elev

(3.1) 12.3

12.4

5+00 12.2

12.1

12.1

12.3

12.2

50 12.0

12.0

12.2

12.0

11.8

6+00 7.0

6.1

5.5

5.0

4.1

50 3.5

2.0

1.1

7+00

(38)

7-21-60

STA. N. 156+00, 0+00 - WEST 7730' SOUND WEST

Dist Sound Elev Dist Sound Elev

0+00

(31)

3:00

50 0.2 +2.9

3.1 0.0

8.0 4.9

9.7 6.6

10.0 6.9

1+00 10.4 7.3

10.6 7.5

10.5 7.4

11.0 7.9

11.8 8.7

50 12.0 8.9

12.0 8.9

11.8 8.7

11.5 8.4

11.8 8.7

2+00 11.6 8.5

11.3 8.2

10.8 7.7

10.7 7.6

Dist Sound Elev

(31) 10.6 7.5

50 10.8 7.7

11.0 7.9

11.4 8.3

11.4 8.3

11.5 8.4

3+00 11.2 8.1

11.4 8.3

11.6 8.5

11.5 8.4

11.5 8.4

50 11.0 7.9

11.6 8.5

12.0 8.9

12.4 9.3

12.4 9.3

4+00 12.0 8.9

12.2 9.1

3:05 12.2 9.1

12.1 9.0

12.0 8.9

50 12.2 9.1

12.2 9.1

12.3 9.2

STA. N. 156+00 - WEST

(39)

Dist Sound Elev Dist Sound Elev

(31) 12.4 9.3

12.5 9.4

5+00 12.2 9.1 50

12.2 9.1

12.3 9.2

12.1 9.0

12.3 9.2

50 12.3 9.2 8+00

12.3 9.2

12.4 9.3

12.0 8.9

6.1 3.1

6+00 5.5 2.4 50

4.4 1.3

3.1 0.0

2.0 +1.1

1.4 +1.7

50 9+00

7+00

7-22-60

STA. N. 156+50; D+00 = W. 7130; SOUND W/ST

STA. N. 156+50 - WEST

(40)

DIST	SOUND	ELEV	DIST	SOUND	ELEV
			4.5	12.9	
0+00			50	13.1	
4.5				13.5	
	0.5			13.8	
10:45	0.8			13.9	
	0.9			13.8	
	1.8			13.2	
	4.9		3+00	13.3	
	9.4			13.2	
	11.2			13.1	
	11.9			13.2	
1+00	12.4			14.6	
	12.6		50	14.9	
	12.6			14.3	
	12.6			14.5	
	12.5			13.8	
50	12.4			13.1	
	12.5		4+00	13.0	
	12.8			13.0	
	12.7			13.2	
	12.7			13.1	
2+00	12.8			13.2	
	12.8		50	13.4	
	12.9			13.6	
	12.7			13.6	

DIST	SOUND	ELEV	DIST	SOUND	ELEV
4.5	13.5				
	13.8				
5+00	14.0		50		
	13.9				
10:50	13.9				
	13.8				
	13.2				
	13.3		50	13.3	
	14.0				
	9.0				
	7.7				
	6.7				
	5.7		6+00	5.7	
	4.2				
	3.3				
	2.6				
	1.8				

50

9+00

7+00

7-22-60

STA. N. 157+00; 0+00 = W. 7,140; SOUND WEST

Dist Sound Elev

0+00

4.5 0.6 50 12.8

10;57 1.9 11:00 12.8

50 2.3 50 12.9

4.0 3+00 12.8

8.1 12.9

13.2 12.9

13.2 13.0

1+00 12.6 13.1

13.0 50 14.0

13.2 13.6

13.3 13.3

13.4 13.7

50 12.9 13.7

12.8 4+00 13.7

12.9 14.0

13.1 13.8

12.9 14.0

2+00 12.7 14.1

12.4 50 13.9

12.2 13.9

12.1 13.9

STA. N. 157+00 - WEST

Dist Sound Elev

4.5 13.9

13.3

5+00 13.1 50

13.0

13.1

13.7

12.6

50 8.4 8+00

7.9

6.8

5.6

4.7

6+00 3.6 50

2.8

1.8

1.8

1.8

50 9+00

1.8

1.8

1.8

1.8

7+00

1.8

1.8

1.8

7-22-60

STA. N. 157+50 - W. 7140, SOUND WEST

DIST SOUND ELEV DIST SOUND ELEV

0+00

(4.5) 13.2

(4.5) 0.6

50 13.2

1.4

13.7

11/10

2.0

13.4

50

2.6

13.5

50

2.9

13.4

3.5

3+00

13.3

4.5

13.2

7.2

13.5

12.6

13.8

1+00

13.7

13.9

13.9

50

13.8

14.1

14.2

14.2

15.0

14.5

14.0

50

14.4

13.1

14.2

4+00

13.0

14.0

13.2

13.9

11/15

13.2

13.9

13.4

2+00

13.5

13.5

13.2

50

14.0

13.1

13.9

13.0

14.0

STA. N. 157+50 - WEST

(92)

DIST SOUND ELEV DIST SOUND ELEV

(4.5) 13.6

13.3

5+00

13.3

50

13.2

13.0

9.0

8.8

50

8.1

8+00

7.3

6.2

5.0

4.6

6+00

3.5

50

2.6

50

9+00

7+00

7-22-60

STA. N. 158+00 to 0+100 - W. 7/40' SOUND WEST

DIST SOUND Elev DIST SOUND Elev

0+00

(44) 0.4 +4.0

1.1 +3.3

11.23 1.9 +2.5

2.5 +1.9

50 3.0 +1.4

3.6 +0.8

4.2 +0.2

11.9 7.5

13.9 9.5

1+00 13.3 8.9

13.2 8.8

13.9 9.5

14.2 9.8

14.2 9.8

50 13.6 9.2

11.25 13.6 9.2

14.0 9.6

13.8 9.4

13.9 9.5

2+00 14.0 9.6

14.1 9.7

14.1 9.7

14.2 9.8

(44)

14.4 10.0

50 14.2 9.8

14.4 10.0

14.9 10.5

15.0 10.6

14.8 10.4

3+00 14.5 10.1

14.2 9.8

14.0 9.6

13.8 9.4

13.7 9.3

50 13.9 9.5

14.5 10.1

14.5 10.1

14.8 10.4

14.0 9.6

4+00 12.9 8.5

13.1 8.7

13.2 8.8

13.2 8.8

13.1 8.7

50 12.8 8.4

12.8 8.4

12.9 8.5

STA. N. 158+00 - WEST

DIST SOUND Elev DIST SOUND Elev

(44) 12.5 8.1

12.1 7.7

5+00 13.0 8.6

12.0 7.6

12.5 8.1

10.0 5.6

9.0 4.6

50 8.2 3.8

7.6 3.2

6.9 2.5

5.6 1.2

4.5 0.1

6+00 3.7 +0.7

2.9 +1.5

2.1 +2.3

50

50 9+00

50

50

50

50

50

50

50

7+00 50

50

50

50

7-22-60

STA. N. 159+00; 0+00 = W. 7150; SOUND WEST

Dist	Sound	Elev	Dist	Sound	Elev
0+00			(39)	12.9	
(39)			50	12.9	
				13.1	
12:50	0.6		12:55	13.3	
	1.1			13.8	
50	1.7			13.3	
	2.1		3+00	12.8	
	2.8			13.0	
	9.8			12.9	
	12.1			13.0	
1+00	12.7			14.9	
	12.8		50	13.0	
	12.8			14.2	
	13.0			13.9	
	13.0			14.2	
50	13.1			12.8	
	12.9		4+00	12.8	
	12.9			12.9	
	12.9			12.6	
	12.7			12.2	
2+00	12.5			12.5	
	12.8		50	12.7	
	12.8			13.0	
	12.8			12.7	

STA. N. 159+00 - WEST

(45)

Dist Sound Elev Dist Sound Elev

(38)	13.1				
	13.1				
5+00	12.8				50
	13.3				
	12.8				
	12.7				
	12.0				
50	12.0				8+00
	11.5				
	10.8				
1+00	7.0				
	6.5				
6+00	5.9				50
	4.5				
	4.2				
	3.8				
	3.0				
50	1.8				9+00
7+00					50

7-22-60

STA. N. 159+50; 0+00 = W. 7160; SOUND WEST

Dist Sound Elev Dist Sound Elev

0+00

3.7

1305 0.2

0.8

50 1.2

2.1

6.0

10.7

11.6

1+00 11.8

11.9

12.0

12.8

13.0

50 12.9

13.0

12.8

12.7

12.7

2+00 12.8

12.6

12.8

12.9

(3.7) 13.0

50 12.9

13.1

13.1

13.0

12.7

3+00 12.5

12.4

12.6

12.6

12.6

50 12.7

12.9

13.7

13.7

13.6

4+00 13.0

12.6

11:10 12.7

12.8

13.0

50 13.0

13.0

13.1

STA. N. 159+50 - WEST.

Dist Sound Elev Dist Sound Elev

(3.7) 13.2

13.3

5+00 13.2

12.3

13.8

13.1

12.8

50 12.6

13.1

12.8

11.9

7.3

6+00 7.1

6.4

5.3

4.7

3.9

50 3.1

2.2

7+00

50

8+00

50

9+00

50

(46)

7-22-60

STA. N. 160+00 - WEST

Dist Sound Elev

0+00

(36)

1/20

0.2 +3.4

50 0.8 +2.8

2.5 +1.6 3+00

9.3 5.7

10.8 7.2

11.6 8.0

1+00 11.2 7.6

11.2 7.6 50

11.8 8.2

12.0 8.4

12.0 8.4

50 12.1 8.5

12.1 }

12.1 }

12.1 }

12.2 8.6

2+00 12.3 8.7

12.7 9.1 50

12.6 9.0

12.7 9.1

0+00 - W. 7170 SOUND WEST

Dist Sound Elev

(36) 12.9 9.3

50 13.0 9.4

13.0 9.4

12.9 9.3

12.8 9.2

12.8 9.2

3+00 12.9 9.3

12.7 9.1

12.7 9.1

12.7 9.1

12.8 9.2

50 12.9 9.3

13.9 10.3

13.9 10.3

13.8 10.2

13.9 10.3

4+00 13.0 9.4

12.9 9.3

12.3 8.7

12.4 8.8

12.6 9.0

50 12.6 9.0

12.7 9.1

13.1 9.5

STA. N. 160+00 - WEST

Dist Sound Elev

(35) 12.6 9.1

13.0 9.5

5+00 12.7 9.2 50

12.0 8.5

13.0 9.5

12.7 9.2

12.0 8.5

50 12.6 9.1 8+00

11.9 8.4

11.9 8.4

12.1 8.6

11.9 8.4

6+00 11.6 8.1 50

10.9 7.4

1/25 10.0 6.5

7.0 3.5

6.3 2.8

50 5.8 2.3 9+00

5.3 1.8

4.4 0.9

3.9 0.4

3.2 +0.3

7+00 2.8 +0.7 50

2.2 +1.3

1.8 +1.7

(47)

7-22-60

STA. N. 160+50; 0+00 = W. 7.190; SOUND WEST

Dist Sound Elev Dist Sound Elev

0+00

(35)

11.35

0.1

0.5

50

1.2

4.1

10.9

10.9

11.1

1+00

11.8

11.8

12.1

12.2

12.2

50

12.0

12.3

12.4

12.4

12.6

2+00

12.7

12.8

13.0

13.2

Dist Sound Elev

(35) 13.2

50 13.0

13.0

13.1

13.0

13.1

3+00 13.1

13.0

13.1

13.0

13.0

50 13.0

13.3

13.7

13.8

13.4

4+00 12.9

12.8

12.4

12.4

12.5

50 12.5

12.8

12.4

STA. N. 160+50 - WEST.

(48)

Dist Sound Elev Dist Sound Elev

(34) 12.6

12.8

5+00 12.3

12.1

12.9

12.2

12.0

50 12.2

12.3

11.40 12.2

12.2

12.0

6+00 12.1

12.4

12.4

12.0

10.0

50 8.0

5.9

5.8

5.5

4.8

7+00 4.9

4.4

4.0

8+00

50

9+00

50

7-22-60

STA. N. 16+00; 0+00 = W. 7200; SOUND WEST

Dist	Sound	Elev	Dist	Sound	Elev
0+00			(33)	12.3	
(33)			50	12.1	
				12.2	
<u>1+48</u>			<u>1+50</u>	12.2	
	0.0			12.8	
50	0.7			12.8	
	1.4		3+00	12.7	
	5.0			12.7	
	10.4			12.9	
	10.9			13.0	
1+00	10.8			13.0	
	10.8		50	12.3	
	10.8			12.9	
	11.0			13.2	
	11.0			13.0	
50	11.2			12.8	
	11.3		4+00	12.2	
	11.5			12.2	
	11.8			12.4	
	12.0			12.5	
2+00	12.1			12.3	
	12.1		50	12.4	
	12.2			12.5	
	12.3			12.8	

STA. N. 16+00 - WEST

Dist Sound Elev Dist Sound Elev

Dist	Sound	Elev	Dist	Sound	Elev
(33)	13.0		(33)	6.8	
	12.2			6.8	
5+00	12.3		50	6.5	
	12.3			6.0	
	12.0		<u>11+55</u>	5.8	
	12.2			5.2	
	12.2			5.1	
50	12.5		8+00	4.8	
	12.6			4.8	
	12.4			4.5	
	12.8			4.5	
	12.7			4.6	
6+00	12.0		50	4.8	
	12.0			4.8	
	12.0			4.8	
	12.0			4.8	
	12.1			4.2	
50	11.8		9+00	4.1	
	12.8				
	12.0				
	12.2				
	12.1				
7+00	12.1		50		
	12.2				
	7.5				

7-22-60

STA. N. 161+50; D400=W. 7220; SOUND WEST			DIST SOUND ELEV		
DIST	SOUND	ELEV	DIST	SOUND	ELEV
0+00			32	12.3	
32			50	12.4	
				13.1	
				12.8	
<u>2:05</u>	0.1			13.2	
	0.8			12.2	
50	1.4		3+00	13.4	
	2.8			12.0	
	8.2			12.1	
	10.4			12.9	
	10.8			12.2	
1+00	11.0		50	12.1	
	10.9			12.7	
	11.1			12.0	
	11.5			12.0	
	11.6			12.2	
50	11.7		4+00	12.5	
	11.6			12.6	
	11.7			12.6	
	11.7			12.7	
	11.8			12.9	
2+00	11.9		50	12.7	
	12.2			11.9	
	12.1			11.9	
	11.8			11.9	

STA. N. 161+50 - WEST

(50)

STA. N. 161+50 - WEST			DIST SOUND ELEV		
DIST	SOUND	ELEV	DIST	SOUND	ELEV
32	11.5		32	12.0	
	12.5			12.6	
5+00	12.9		50	13.5	
	11.9			9.2	
	13.0			9.3	
<u>2:10</u>	11.5			9.5	
	13.1			9.6	
50	12.2		8+00	9.5	
	12.8			9.3	
	12.2			9.7	
	12.4			9.7	
	11.9			9.7	
6+00	12.1		50	9.8	
	12.9			9.6	
	12.6			9.4	
	12.4			9.4	
	12.9			9.5	
50	12.4		9+00	9.9	
	12.3				
	12.7				
	12.3				
	11.9				
7+00	12.2		50		
	11.8				
	12.3				

7-22-60

STA. N. 162+00; 0+00 - W. 1230, SOUND WEST

Dist Sound Elev Dist Sound Elev

0+00 (3.0) 9.9 6.9

(31) 50 9.8 6.8

9.6 6.6

2:35 9.7 6.7

0.7 +2.4 9.8 6.8

50 1.3 +1.8 9.7 6.7

2.0 +1.1 3+00 9.7 6.7

2.8 +0.3 9.7 6.7

3.7 0.6 9.8 6.8

5.4 2.3 9.9 6.8

1+00 6.4 3.3 9.9 6.9

6.9 3.8 50 10.5 7.5

7.2 4.1 13.8 10.8

8.1 5.0 13.9 10.9

8.4 5.3 13.5 10.5

50 8.9 5.8 13.1 10.1

8.7 5.6 4+00 13.1 10.1

8.7 5.6 12.7 9.7

9.1 6.0 11.7 8.7

9.5 6.4 2:40 11.7 8.7

2+00 9.9 6.8 12.6 9.6

9.6 6.5 50 13.1 10.1

9.6 6.5 13.1 10.1

9.7 6.6 13.1 10.1

STA. N. 162+00 - WEST

Dist Sound Elev Dist Sound Elev

(30) 12.7 9.7 (30) 13.1 10.1

12.4 9.4 9.4 6.4

5+00 13.1 10.1 50 9.6 6.6

12.3 9.3 9.8 6.8

11.7 8.7 9.8 6.8

12.5 9.5 9.9 6.9

12.9 9.9 9.9 6.9

50 11.7 8.7 8+00 9.8 6.8

12.0 9.0 9.8 6.8

12.1 9.1 9.9 6.9

12.1 9.1 9.9 6.9

12.7 9.7 9.9 6.9

6+00 12.3 9.3 50 9.9 6.9

12.2 9.2

12.5 9.5

11.8 8.8

12.2 9.2

50 11.4 8.4 9+00

11.7 8.7

12.0 9.0

12.0 9.0

12.2 9.2

7+00 12.2 9.2

12.4 9.4

12.7 9.7

7-27-60

5TA. W. 82+00; 0+00=N. 15400; SOUND SOUTH

Dist Sound Elev Dist Sound Elev

0+00 3.3 13.2 9.933 50 13.0 9.79:37 9:40 12.9 9.61.0 0.3 +3.0 12.8 9.5

1.0 +2.3 12.9 9.6

50 1.6 +1.7 13.1 9.8

2.8 +0.5 3+00 12.9 9.6

3.3 0.0 12.9 9.6

6.1 2.8 13.0 9.7

9.9 6.6 13.0 9.7

1+00 12.1 8.8 13.2 9.9

5.47 12.3 9.0 ~~Top~~ 50 12.5 9.22⁰± 12.9 9.6 50 13.3 10.0

13.1 9.8 13.1 9.8

13.2 9.9 13.0 9.7

50 13.2 9.9 13.0 9.7

13.3 10.0 4+00 12.9 9.6

13.3 10.0 12.5 9.2

13.4 10.1 OK 12.2 8.913.3 10.0 OK 12.2 8.9~~Top~~ 2+00 11.9 8.6 13.3 10.0

13.3 10.0 50 12.1 8.8

13.4 10.1 12.1 8.8

13.6 10.3 12.1 8.8

5TA. W. 82+00-SOUTH

Dist Sound Elev Dist Sound Elev

3.4 12.2 8.8 3.5 13.2 9.7

12.3 8.9 13.2 9.7

5+00 12.7 9.3 50 13.3 9.8

12.6 9.2 13.1 9.6

12.7 9.3 12.9 9.4

9:45 12.7 9.3 12.8 9.3

12.8 9.4 12.8 9.3

50 12.7 9.3 8+00 13.0 9.5

12.9 9.5 12.9 9.4

12.8 9.4 13.1 9.6

12.9 9.5 13.0 9.5

13.0 9.6 13.1 9.6

6+00 12.7 9.3 50 13.1 9.6

12.5 9.1 13.0 9.5

12.7 9.3 9:50 13.1 9.612.9 9.5 OK 13.1 9.6

12.9 9.5 13.2 9.7

50 13.2 9.8 9+00 13.2 9.7

13.0 9.6 12.8 9.3

12.9 9.5 11.9 8.4

12.8 9.4 10.9 7.4

12.9 9.5 10.9 7.4

7+00 13.0 9.6 50 11.2 7.7

13.0 9.6 11.2 7.7

13.1 9.7 11.6 8.1

STA. W. 82+00 - SOUTH 7-27-60

DIST	SOUND	ELEV	DIST	SOUND	ELEV
35	11.5	8.0	35	11.8	8.3
	11.9	8.4		11.9	8.4
10+00	12.8	9.3	50	11.8	8.3
	11.3	7.8		11.8	8.3
	11.4	7.9	9:55	11.4	7.9
	11.3	7.8		11.2	7.7
	11.3	7.8		11.5	8.0
50	11.3	7.8	13+00	11.4	7.9
	11.3	7.8		11.6	8.1
	11.5	8.0		11.7	8.2
	11.6	8.1		11.7	8.2
	11.6	8.1		11.7	8.2
11+00	11.7	8.2	50	11.4	7.9
	11.3	7.8		11.5	8.0
	11.4	7.9		11.4	7.9
	11.7	8.2		11.4	7.9
	11.8	8.3		11.2	7.7
50	11.8	8.3	14+00	11.2	7.7
	12.0	8.5		11.0	7.5
	11.9	8.4		10.8	7.3
	11.9	8.4		10.2	6.7
	11.9	8.4		10.3	6.8
12+00	11.9	8.4	50	10.2	6.7
	11.9	8.4		10.1	6.6
	12.0	8.5		10.1	6.6
				10.1	6.6
				10.0	6.5
			15+00	10.0	6.5

STA. W. 82+50; 0+00 = N. 15390; SOUND SOUTH

DIST	SOUND	ELEV	DIST	SOUND	ELEV
0+00			3.8	13.2	
			50	13.2	
				13.1	
				12.8	
				12.7	
				12.5	
			3+00	12.2	
				12.0	
				12.1	
				13.3	
				13.7	
			50	13.9	
				13.8	
				13.9	
				13.7	
				13.8	
			4+00	13.4	
				13.0	
				12.9	
				12.8	
				12.8	
			50	13.0	
				12.8	
				12.6	

OK

OK

57A. W. 82+50-SOUTH 7-27-60

Dist	Sound	Elev	Dist	Sound	Elev
(38)	13.2		(3.8)	13.0	
	13.0			12.4	
5+00	13.1		50	12.6	
	13.7			12.8	
	13.5			12.9	
	13.7			13.0	
	13.8			13.2	
50	13.9		8+00	13.2	
	13.9			13.1	
	13.9		10+15	13.1	
	13.8			13.0	
	13.8			12.9	
6+00	13.9		50	12.9	
	13.8			13.1	
	13.4			13.2	
	13.2			13.3	
	13.0			13.3	
50	13.1		9+00	13.2	
	13.0			12.6	
	13.0			11.5	
	13.0			11.7	
	12.8			11.8	
7+00	13.0		50	11.8	
	12.9			11.9	
	13.0			11.9	

57A. W. 82+50-SOUTH

Dist	Sound	Elev	Dist	Sound	Elev
(39)	11.8		(3.9)	11.8	
	12.0			11.8	
10+00	12.0		50	11.7	
	12.0			11.9	
	12.0			11.8	
	12.1			11.5	
	11.9			11.3	
50	11.9		13+00	11.7	
	12.0			11.6	
	12.0			11.8	
	12.2			11.9	
	12.1			11.8	
11+00	12.2		50	11.8	
	12.1			11.5	
	12.0			11.3	
	11.9			11.0	
	12.0			10.7	6.8
50	11.9		14+00	10.9	7.0
	11.9			9.8	5.7
10+20	11.9			8.0	4.1
	11.8			6.0	2.1
	11.9			4.7	0.8
12+00	11.9		50	3.6	+0.3
	11.9				
	11.9				

7-27-60

STA. W. 83+00 to 100 = N. 15,370; SOUND SOUTH

Dist	Sound	Elev	Dist	Sound	Elev
0+00			(4.1)	13.5	
(4.0)	0.2		50	13.2	
	0.8		1035	13.1	
10:30	1.2		-	13.0	
	2.1			12.8	
50	3.2			12.9	
	4.0		3+00	12.9	
	5.1			13.0	
	9.5			13.0	
	11.2			13.9	
1+00	14.0			14.4	
	14.2		50	14.3	
	13.9			14.2	
	14.0			14.2	
	14.2			14.2	
50	14.1			14.2	
	14.0		4+00	14.1	
	14.2			13.9	
	14.4			13.7	
	14.2			13.4	
2+00	14.1			13.5	
	14.1		50	13.5	
	13.7			13.7	
	13.5			13.8	

57A. W. 83+00 - SOUTH

DIST SOUND ELEV DIST SOUND ELEV

Dist	Sound	Elev	Dist	Sound	Elev
(4.2)	14.0		(4.3)	13.4	
	14.0			13.4	
5+00	14.3		50	13.4	
	14.2			13.3	
	14.2			13.6	
	14.2			13.3	
	14.0			13.2	
50	14.1		8+00	13.2	
10:40	14.1			13.2	
-	14.1			13.3	
	13.7			13.5	
	13.6			13.6	
6+00	13.3		50	13.5	
	13.5			13.5	
	13.4			13.7	
	13.4			13.8	
	13.4			13.5	
50	13.4		9+00	13.6	
	13.5			12.8	
	13.3		10:45	12.2	
	13.3		-	12.1	
	13.3			12.2	
7+00	13.2		50	12.2	
	13.2			12.3	
	13.5			12.3	

STA. W 83+00 - SOUTH 7-27-60

Dist	Sound	Elev	Dist	Sound	Elev
(43)	12.3		(43)	12.5	
	12.4			12.3	
10+00	12.7		50	12.7	
	13.0			12.5	
	12.6		1050	12.1	0
	12.5			12.0	0
	12.9			11.8	
50	12.5		13+00	11.7	
	12.7			11.4	
	12.5			11.7	
	12.4			10.9	6.6
	12.3			10.1	5.8
11+00	12.3		50	9.6	5.3
	12.3			8.3	4.0
	12.4			3.6	10.7
	12.8			3.0	11.3
	12.8				
50	12.6		14+00		
	12.6				
	12.7				
	12.5				
	12.5				
12+00	12.7		50		
	12.5				
	12.2				

O.K.

STA. W 83+50; 0+00=N.15, 360; SOUND SOUTH

Dist	Sound	Elev	Dist	Sound	Elev
0+00			(45)	13.2	
(44)	0.2		50	13.1	
	0.9			13.0	
11:00	1.6		11:05	12.8	
	2.2			12.7	
50	3.0			12.6	
	4.0		3+00	12.4	
	4.5			12.2	
	5.8			12.2	
	6.9			14.3	
1+00	10.2			14.1	
	14.3		50	14.3	
	14.6			14.2	
	14.6			14.1	
	14.6			14.2	
50	13.9			14.2	
	13.9		4+00	14.2	
	13.8			14.1	
	13.6			14.0	
	13.6			14.1	
2+00	13.8			14.1	
	13.1		50	14.1	
	13.1			14.2	
	13.1			14.2	

O.K.

STA. W. 83+50-SOUTH 7-27-60

Dist	Sound	Elev	Dist	Sound	Elev
(4.5)	14.2		(4.6)	13.7	
	14.2			13.4	
5+00	14.2		50	13.4	
	14.5			13.4	
	14.5			13.6	
	14.5			13.4	
	14.4			13.4	
50	14.4		8+00	13.6	
	14.3			13.6	
<u>11/10</u>	14.1		<u>11/15</u>	13.7	
	13.9			13.7	
	13.8			13.7	
6+00	13.9	↓	50	13.7	↓
	14.1	0		13.7	0
	13.9			13.6	
	13.9			13.2	
	13.9			12.8	
50	14.0		9+00	12.3	
	13.9			12.5	
	13.6			12.6	
	13.6			12.5	
	13.6			12.5	
7+00	13.7		50	12.5	
	13.7			12.5	
	13.7			12.5	

STA. W. 83+50-SOUTH (57)

Dist	Sound	Elev	Dist	Sound	Elev
(4.6)	12.3		(4.6)	11.8	
	12.3			11.8	
10+00	12.4		50	11.7	
	12.6			11.4	6.8
	12.7			11.0	6.4
	12.7			10.5	5.9
	12.7			9.7	5.1
50	12.4		13+00	5.2	0.6
	12.4			5.0	0.4
	12.3			3.2	+ 1.4
	12.4			2.2	+ 2.4
	12.7				
11+00	12.7		50		
	12.7				
	12.5				
	12.5				
	12.5				
50	12.6		14+00		
	12.6				
11/20	12.6				
	12.4				
	12.5				
12+00	12.4				
	12.2				
	12.2				

7-27-60

STA. W. 84+00; 0+00=N. 15,340; SOUND SOUTH

DIST	Sound	Elev	DIST	Sound	Elev
0+00	0.5	+4.3	(48)	13.3	8.5
(48)	1.1	+3.7	50	13.3	8.5
	1.6	+3.2		13.5	8.7
<u>11:38</u>	2.5	+2.3		13.3	8.5
	3.0	+1.8		13.7	8.9
50	4.0	+0.8		13.3	8.5
	4.5	+0.3	3+00	13.5	8.7
	5.8	1.0		13.0	8.2
	6.8	2.0		13.2	8.4
	12.4	7.6		14.0	9.2
1+00	13.8	9.0		14.1	9.3
	14.0	9.2	50	14.8	10.0
	14.1	9.3		14.7	9.9
	14.1	9.3		14.9	10.1
	14.2	9.4		14.8	10.0
50	14.1	9.3		14.2	9.4
	14.0	9.2	4+00	14.1	9.3
<u>11:40</u>	13.9	9.1		14.6	9.8
	13.8	9.0		14.1	9.3
	13.8	9.0		14.3	9.5
2+00	13.3	8.5		14.2	9.4
	14.0	9.2	50	14.2	9.4
	13.5	8.7		14.5	9.7
	13.2	8.4		14.3	9.5

STA. W. 84+00 - SOUTH

(58)

DIST	Sound	Elev	DIST	Sound	Elev
(48)	14.6	9.8	(49)	14.3	9.9
	14.7	9.9		14.4	9.5
5+00	14.8	10.0	50	14.2	9.3
	15.0	10.2		14.1	9.2
<u>11:45</u>	14.8	10.0		14.2	9.3
	14.9	10.1		14.2	9.3
	14.9	10.1		13.9	9.0
50	14.8	10.0	8+00	13.9	9.0
	14.2	9.4		14.0	9.1
	14.0	9.2		14.1	9.2
	14.1	9.3		14.1	9.2
	14.2	9.4		13.9	9.0
6+00	14.1	9.3	50	13.9	9.0
	14.1	9.3		13.9	9.0
	14.2	9.4		12.2	7.3
	14.1	9.3	<u>11:50</u>	12.1	7.2
	14.2	9.4		12.2	7.3
50	13.9	9.1	9+00	12.3	7.4
	13.9	9.1		12.2	7.3
	13.9	9.1		12.5	7.6
	13.9	9.1		12.6	7.7
	14.0	9.2		12.7	7.8
7+00	14.1	9.3	50	12.9	8.0
	14.3	9.5		12.8	7.9
	14.3	9.5		12.9	8.0

STA. W. 84+00 - SOUTH 7-27-60

DIST SOUND ELEV DIST SOUND ELEV

(49)	12.9	8.0	(49)	4.2	+0.7
	12.9	8.0			
10+00	12.8	7.9	50		
	12.9	8.0			
	13.0	8.1			
	12.7	7.8			
	12.7	7.8			
50	12.8	7.9	13+00		
	12.8	7.9			
	12.8	7.9			
	12.7	7.8			
	12.8	7.9			
11+00	12.6	7.7	50		
	12.2	7.3			
	12.1	7.2			
	12.0	7.1			
	12.0	7.1			
50	12.0	7.1	14+00		
	12.0	7.1			
	11.9	7.0			
	11.8	6.9			
	11.1	6.2			
12+00	10.9	6.0			
	9.1	4.2			
	6.0	1.1			

STA. W. 84+50; 0+100 = N. 15, 330; SOUND SOUTH

DIST	SOUND	ELEV	DIST	SOUND	ELEV
0+00	0.6		(51)	14.8	
(51)	1.0		50	14.3	
	1.7			14.3	
11:07	2.3			14.5	
<u> </u>	3.0			14.7	
50	3.9			14.9	
	4.5		3+00	14.9	
	5.2			14.8	
	6.8			14.9	
	10.3			16.5	
1+00	13.9			16.0	
	14.0		50	15.5	
	14.0			14.9	
	14.3			14.3	
	14.4			14.0	
50	14.1			13.9	
	14.3		4+00	13.8	
11:10	15.1			13.3	
<u> </u>	15.5			13.3	
	15.1		11:15	13.1	
2+00	15.0		<u> </u>	13.7	
	15.0		50	13.9	
	15.1			14.0	
	14.9			14.0	

OK

STA. W. 84+50 - SOUTH 7-27-60

DIST	Sound	Elev	DIST	Sound	Elev
(50)	14.0		(50)	14.1	
	14.0			14.2	
5+00	14.2		50	14.2	
	14.4			14.3	
	14.6			14.3	
	14.4		1120	14.4	
	14.7		<u> </u>	14.4	
50	14.2		8+00	14.3	
	14.3			14.1	
	14.1			14.1	
	14.2			14.1	
	14.2			14.0	
6+00	14.0		50	13.5	
	14.0			12.2	
	14.1			12.1	
	14.0			12.2	
	14.0			12.5	
50	14.1		9+00	12.4	
	14.0			12.5	
	14.0			12.5	
	14.0			12.5	
	14.2			12.6	
7+00	14.0		50	12.6	
	14.0			12.6	
	14.1			12.6	

STA. W. 84+50 - SOUTH

DIST	Sound	Elev	DIST	Sound	Elev
(49)	12.7				
	12.6				
10+00	12.5		50	12.5	
	12.6			12.5	
	12.5			12.5	
	12.5			12.5	
	12.5		50	12.5	
	12.5			12.5	
	12.4			12.4	
	12.2			12.2	
	12.1			12.1	
11+00	12.0		50	12.0	
	11.9			11.9	
	11.8	6.9		11.8	6.9
	11.2	6.3		11.2	6.3
	11.0	6.1		11.0	6.1
50	10.0	5.1		10.0	5.1
	9.6	4.7		9.6	4.7
	5.5	0.6		5.5	0.6
	3.2	+1.7		3.2	+1.7
	3.1	+1.8		3.1	+1.8
12+00	2.9	+2.0		2.9	+2.0

7-27-60

STA. W. 85+00; 0+00 = N. 15,320; SOUND SOUTH

Dist	Sound	Elev	Dist	Sound	Elev
0+00	0.2		(4.8)	13.9	
(4.8)	0.9		50	14.0	
	1.6			14.3	
1,35	2.2			13.9	
<u> </u>	2.9			14.0	
50	3.7			14.2	
	4.3		3+00	14.3	
	5.2			14.5	
	6.6			15.0	
	7.8			16.3	
1+00	13.3			15.9	✓
	14.2		50	14.9	0
	14.8			14.0	
	14.9			13.8	
	15.2			13.9	
50	14.8			13.7	
	14.9	✓	4+00	13.1	
	14.9	0		13.2	
	14.9			13.2	
	14.8			13.6	
2+00	14.3			13.7	
	14.1		50	14.0	
	14.5			14.3	
	14.4			13.2	

STA. W. 85+00-SOUTH

Dist	Sound	Elev	Dist	Sound	Elev
(4.8)	13.3		(4.8)	14.1	
	13.5			14.0	
5+00	13.8		50	13.9	
	13.8			13.8	
	13.6			13.8	
1,40	13.8			13.8	
<u> </u>	13.6			13.9	
50	13.7		8+00	13.8	
	13.6			13.9	
	13.9			13.8	
	13.9			13.3	
	14.0	✓		13.1	
6+00	14.0	0	50	13.4	OK
	13.9			12.9	
	14.0			12.1	
	14.1			12.1	
	14.1			12.2	
50	14.1		9+00	12.4	
	13.9		1,45	12.3	
	14.1		<u> </u>	12.4	
	14.3			12.4	
	14.3			12.5	
7+00	14.2		50	12.3	
	14.0			12.0	
	14.2			12.0	

7-27-60

STA. W. 86+00; 0+00 = N. 15,290; SOUND SOUTH

DIST	Sound	ELEV	DIST	Sound	ELEV
0+00	0.4	+4.0	(44)	13.3	8.9
(44)	0.8	+3.6	50	13.4	9.0
	1.2	+3.2	225	13.5	9.1
220	1.9	+2.5		13.4	9.0
	2.6	+1.8		13.2	8.8
50	3.2	+1.2		13.0	8.6
	4.1	+0.3	3+00	13.1	8.7
	5.2	0.8		13.1	8.7
	6.2	1.8		13.7	9.3
	9.4	5.0		15.2	10.8
1+00	13.2	8.8		14.1	9.7
	13.1	8.7	50	12.8	8.4
	13.2	8.8		12.9	8.5
	13.2	8.8		12.2	7.8
	13.2	8.8		12.8	8.4
50	13.0	8.6		12.8	8.4
	13.4	9.0	4+00	12.9	8.5
	13.3	8.9		12.9	8.5
	13.2	8.8		12.9	8.5
	13.1	8.7		12.8	8.4
2+00	13.2	8.8		12.8	8.4
	13.6	9.2	50	12.8	8.4
	13.7	9.3		12.8	8.4
	13.3	8.9		12.8	8.4

STA. W. 86+00 - SOUTH

DIST	Sound	ELEV	DIST	Sound	ELEV
(44)	12.9	8.5	(44)	13.6	9.2
	12.7	8.3		13.6	9.2
5+00	12.8	8.4	50	13.8	9.4
230	12.9	8.5		13.8	9.4
	12.9	8.5	235	13.6	9.2
	12.8	8.4		13.2	8.8
	13.0	8.6		13.1	8.7
50	12.7	8.3	8+00	12.8	8.4
	13.0	8.6		12.3	7.9
	13.0	8.6		12.1	7.7
	13.1	8.7		11.9	7.5
	13.1	8.7		11.9	7.5
6+00	13.1	8.7	50	11.9	7.5
	13.1	8.7		11.9	7.5
	13.5	9.1		11.6	7.2
	13.5	9.1		11.9	7.5
	13.6	9.2		11.9	7.5
50	13.6	9.2	9+00	11.8	7.4
	13.4	9.0		11.9	7.5
	13.3	8.9		11.8	7.4
	13.3	8.9		11.8	7.4
	13.5	9.1		11.8	7.4
7+00	13.5	9.1	50	11.8	7.4
	13.5	9.1		11.8	7.4
	13.6	9.2		11.8	7.4

STA. W. 86+00 - SOUTH 7-27-60

Dist Sound Elev

(4.4)	11.8	7.4
	11.7	7.3
10+00	11.2	6.8
	11.0	6.6
	10.9	6.5
	10.6	6.2
	10.4	6.0
50	9.8	5.4
	8.0	3.6
	4.8	0.4
	3.2	+1.2
	2.7	+1.7

11+00

7-28-60

STA. W. 86+50, 0+00 = N. 15, 280, SOUND SOUTH

Dist Sound Elev Dist Sound Elev

0+00		(2.7)	12.9
(2.7)		50	12.6
			12.7
			12.6
9:35	0.1		12.7
	0.8		12.7
50	1.3		12.7
	3.0	3+00	12.7
	3.6		12.9
	4.4		13.2
	5.4		13.8
1+00	6.2		12.9
	12.8	50	12.3
	12.7		11.9
	12.9		11.7
	12.8		11.5
50	12.3		11.6
	12.8	4+00	11.6
	12.8		11.6
	12.7		11.5
	12.7		11.1
2+00	12.5		10.8
	12.6	50	10.9
	12.5		10.9
	12.7		10.9

STA. W. 86+50 - SOUTH 7-28-60

Dist	Sound	Elev	Dist	Sound	Elev
(27)	11.2		(27)	12.7	
	11.5			12.4	
5+00	11.5		50	12.4	
	11.6			12.3	
9:40	11.6			12.2	
	11.8			11.9	
	11.9			11.9	
50	11.5		8+00	10.6	
	11.7			10.2	
	12.0			10.2	
	12.1			10.3	
	12.1			10.5	
6+00	12.1		50	10.6	
	12.2			10.7	
	12.2			10.7	
	12.3			10.7	
	12.5			10.7	
50	12.9		9+00	10.6	
	12.7			10.6	
	12.6			10.6	
	12.5			10.5	
	12.4			10.6	
7+00	12.6		50	10.6	
	12.7			10.2	
	12.8			10.2	

66

STA. W. 86+50 - SOUTH

Dist	Sound	Elev
(28)	10.1	
	9.9	
10+00	9.9	
	9.6	
	9.1	
9:45	8.5	
	6.9	
50	3.1	
	1.5	
11+00		

7-28-60

STA. W. 87+00 S. 0400 = N. 15, 270; SOUND SOUTH

Dist Sound Elev Dist Sound Elev

Dist	Sound	Elev	Dist	Sound	Elev
0+00			(30)	13.1	
(30)			50	13.2	
				13.1	
9:55	0.3			13.1	
<u>9:55</u>	0.9			13.1	
50	1.4			13.2	
	2.2		3+00	15.0	
	3.6			15.4	
	4.6			15.2	
	5.9			13.7	
1+00	11.3			13.6	
	11.7		50	13.4	
	12.9			13.0	
	12.9			12.0	
	13.0			12.1	
50	13.6			12.6	
	13.0		4+00	12.1	
	13.0			12.1	
	13.2			12.3	
	13.1			12.3	
2+00	13.2			12.3	
	13.0		50	12.1	
	13.0			11.4	
	13.2			11.3	

STA. W. 87+00 - SOUTH

Dist Sound Elev Dist Sound Elev

Dist	Sound	Elev	Dist	Sound	Elev
(30)	11.8		(30)	12.9	
	11.3			13.0	
5+00	11.3		50	12.9	
	11.9			12.9	
1000	12.0			12.3	
<u>1000</u>	12.1			12.0	
	12.2			10.5	
50	12.3		8+00	10.5	
	12.4			10.6	
	12.5			10.8	
	12.6			10.8	
	12.3			10.8	
6+00	12.5		50	11.1	
	12.4			11.5	
	12.2			11.0	
	12.1			11.0	
	12.2			11.0	
50	12.2		9+00	11.1	
	12.4			11.2	
	12.6		1005	11.2	
	12.8		<u>1005</u>	11.1	
	12.9			11.0	
7+00	12.9		50	10.8	
	13.0			10.5	
	12.8			10.5	

STA. W. 87+00-SOUTH 7-28-60

DIST SOUND ELEV

(3.1)	10.2	OK
"	10.0	
10+00	9.5	
	9.0	
	5.2	
	2.1	
	2.1	
50		

11+00

(68)

STA. W. 87+50 0+100=N. 15260; SOUND SOUTH

DIST SOUND ELEV DIST SOUND ELEV

0+00		(3.3)	12.9
(3.3)		50	13.0
			13.1
10:15	0.3		13.2
	1.0		13.2
50	1.5		14.5
	2.2	3+00	15.3
	3.0		15.0
	4.2		14.5
	5.3		14.1
1+00	9.5		13.9
	12.8	50	13.2
	13.3		13.0
	13.5		12.8
	13.8	10:20	12.5
50	13.3		12.4
	13.1	4+00	12.5
	13.0		12.5
	13.2		12.4
	13.0		12.2
2+00	12.8		12.2
	12.8	50	12.2
	12.9		12.4
	12.9		12.4

OK

STA. W. 87+50 - SOUTH 7-28-60

DIST	Sound	Elev	DIST	Sound	Elev
33	12.4		33	13.4	
	12.4			13.2	
5+00	12.5		50	13.2	
	12.6			13.0	
	13.0		10+25	12.0	
	12.9			10.5	
	12.8			10.7	
50	12.2		8+00	10.8	
	12.5			10.9	
	12.8			11.0	
	13.0			10.9	
	13.0			11.1	
6+00	13.0		50	11.4	
	12.9			11.5	
	12.0			11.4	
	12.2			11.3	
	13.0			11.2	
50	13.0		9+00	11.2	
	13.2			11.3	
	13.3			11.2	
	13.3			11.1	
	13.4			11.0	
7+00	13.4		50	10.8	
	13.4			10.5	
	13.3			10.2	

69

STA. W. 87+50 - SOUTH

DIST	Sound	Elev
33	10.1	
	9.7	
10+00	9.1	
	7.0	
	3.2	
	2.0	
50		
11+00		

(18)

7-28-60

STA. W. 88+00; 0+00=N 15,250; SOUND SOUTH

	Dist	Sound	Elev	Dist	Sound	Elev
0+00				(35)	13.8	10.3
(35)				50	13.8	10.3
					14.3	10.8
10:35	0.2	+3.3			14.0	10.5
	0.9	+2.6			14.0	10.5
50	1.5	+2.0			14.1	10.6
	2.2	+1.3	3+00		14.0	10.5
	3.1	+0.4			14.1	10.6
	4.1	0.6			14.0	10.5
	5.1	1.6			14.6	11.1
1+00	6.5	3.0			14.8	11.3
	12.2	8.7	50		14.1	10.6
	12.9	9.4			13.8	10.3
	12.9	9.4			12.8	9.3
	13.0	9.5			12.2	8.7
50	13.1	9.6			12.1	8.6
	13.1	9.6	4+00		12.3	8.8
	13.0	9.5			12.5	9.0
	13.0	9.5			12.4	8.9
	13.1	9.6			12.4	8.9
2+00	14.2	10.7			12.5	9.0
	14.0	10.5	50		12.5	9.0
	13.8	10.3			13.1	9.6
	13.9	10.4			13.3	9.8

(20)

STA. W. 88+00-SOUTH

Dist	Sound	Elev	Dist	Sound	Elev
(36)	13.6	10.0	(36)	13.7	10.1
	13.2	9.6		13.6	10.0
5+00	13.3	9.7	50	13.6	10.0
	13.3	9.7		13.2	9.6
10:40	13.2	9.6		12.7	9.1
	13.1	9.5		11.0	7.4
	13.0	9.4		11.0	7.4
50	13.0	9.4	8+00	11.2	7.6
	13.0	9.4		11.5	7.9
	12.9	9.3		11.8	8.2
	12.9	9.3		11.8	8.2
	13.1	9.5		11.8	8.2
6+00	13.1	9.5	50	11.9	8.3
	13.0	9.4		11.8	8.2
	13.1	9.5		11.9	8.3
	13.2	9.6		11.9	8.3
	13.6	10.0		11.9	8.3
50	13.5	9.9	9+00	11.7	8.1
	13.7	10.1		11.7	8.1
	13.7	10.1		11.2	7.6
	13.3	9.7		11.0	7.4
	13.1	9.5		11.0	7.4
7+00	13.3	9.7	50	10.9	7.3
	13.5	9.9		10.6	7.0
	13.7	10.1		10.3	6.7

STA. W. 88+00 - SOUTH 7-28-60

Dist	Sound	Elev
(36)	10.0	6.4
	9.5	5.9
10+00	8.9	5.3
	5.6	2.0
	2.3	1.3

50

11+00

STA. W. 88+50; 0+00 = N. 15, 230; SOUND SOUTH

Dist	Sound	Elev	Dist	Sound	Elev
0+00			(38)	12.8	
(37)			50	12.9	
	0.2			12.8	
1050	1.0		1055	12.8	
	1.8			12.8	
50	2.2			12.9	
	3.1		3+00	12.3	
	3.9			12.2	
	5.8			12.4	
	6.5			12.7	
1+00	9.6			12.9	
	13.7		50	13.1	
	13.9			13.1	
	13.9			13.0	
	13.8			13.0	
50	13.8			13.2	
	14.0		4+00	13.9	
	13.9			14.2	
	13.9			14.7	
	13.9			14.1	
2+00	13.8			13.3	
	13.0		50	13.3	
	12.9			13.3	
	12.9			13.7	

(7)

STA. W. 88+50-SOUTH 7-28-60

STA. W. 88+50-SOUTH

Dist Sound Elev Dist Sound Elev

Dist Sound Elev

Dist	Sound	Elev	Dist	Sound	Elev
(38)	13.6		(39)	13.9	
	13.7			14.0	
5+00	13.7		50	11.9	
	13.8		11:00	11.8	
	13.3			11.9	
	13.2			11.8	
	13.1			11.9	
50	13.2		8+00	11.9	
	13.6			11.8	
	13.3			12.1	
	13.3			12.0	
	13.3			12.0	
6+00	13.1		50	12.0	
	13.0			12.0	
	13.1			12.0	
	13.2			11.9	
	13.8			12.1	
50	13.7		9+00	12.0	
	13.8			11.9	
	13.9			11.7	
	13.9			11.6	
	13.9			11.4	
7+00	13.9		50	11.1	
	14.0			10.9	
	14.0			10.2	

(39)	9.1	
	7.1	
10+00	3.0	

50

7-28-60

STA. W. 89+00 - 0+100 - N. 15,220 - SOUND SOUTH			STA. W. 89+00 - 50+100 - SOUND SOUTH		
DIST	SOUND	ELEV	DIST	SOUND	ELEV
0+00			(4.1)	12.8	
(14.0)			50	12.8	
	0.2			12.9	
<u>14.0</u>	0.9			13.0	
	1.4			13.0	
50	2.1			12.9	
	2.9		3+00	12.9	
	4.2			12.9	
	5.2			13.1	
	6.1			13.1	
1+00	10.0			13.1	
	13.2		50	13.1	
	13.9			13.2	
	14.0			13.2	
	13.2			13.2	
50	12.9			13.3	
	12.8		4+00	13.2	
	12.8		<u>10.5</u>	13.2	
	12.6			13.4	
	12.7			13.4	
2+00	12.7			13.3	
	12.6		50	13.0	
	12.8			13.0	
	12.8			13.1	

(73)

STA. W. 89+00 - SOUTH			STA. W. 89+00 - SOUTH		
DIST	SOUND	ELEV	DIST	SOUND	ELEV
(4.1)	13.2		(4.1)	13.2	
	13.1			12.2	
5+00	13.1		50	11.9	
	13.0			11.9	
	13.1		<u>14.20</u>	12.2	
	13.2			12.2	
	13.5			12.2	
50	14.0		8+00	12.1	
	14.0			12.3	
	13.9			12.5	
	13.7			12.5	
	13.2			12.7	
6+00	12.7		50	12.7	
	12.6			12.8	
	12.2			12.9	
	12.5			12.6	
	12.8			12.5	
50	12.9		9+00	12.2	
	12.9			12.2	
	12.9			12.1	
	12.9			12.0	
	13.0			11.9	
7+00	13.5		50	11.6	
	13.5			11.0	
	13.4			11.0	
				9.6	
				4.6	
			10+00	2.2	

7-28-60

STA. W. 89+50.0+00=N. 15,200; SOUND SOUTH		SOUND SOUTH	
DIST	SOUND ELEV	DIST	SOUND ELEV
0+00	0.0	(43)	13.0
(43)	0.4	50	12.9
	0.9		12.8
<u>11:30</u>	1.7		12.9
	2.1		12.9
50	2.8		12.7
	3.7	3+00	12.7
	4.7		12.8
	6.1		13.0
	6.7		13.2
1+00	7.3		13.2
	11.3	50	13.5
	13.1		13.3
	12.8		13.5
	12.9		13.3
50	12.9		13.3
	13.1	4+00	13.6
	12.9		13.6
	12.8		13.4
	12.9		13.2
2+00	12.9		13.5
	12.9	50	13.3
	13.0		13.2
	13.1		13.0

STA. W. 89+50-SOUTH

STA. W. 89+50-SOUTH		SOUND SOUTH	
DIST	SOUND ELEV	DIST	SOUND ELEV
(43)	13.5	(43)	12.1
	13.0		12.1
5+00	13.2	50	12.3
11:35	12.9		12.4
	13.0		12.5
	13.1		12.5
	13.4		12.7
50	13.6	8+00	12.7
	13.5		12.9
	13.2		12.9
	13.0		12.8
	12.3		12.9
6+00	12.6	50	12.9
	12.6		12.9
	12.8		12.9
	12.9		12.7
	12.9		12.6
50	13.0	9+00	12.6
	13.0		12.5
	13.0		11.9
	13.0		11.8
	13.1		11.9
7+00	13.2	50	11.2
	13.5		9.8
	14.1		7.2
			3.2
		10+00	

7-28-60

STA. W. 90+00; 0+00=N. 15, 190; SOUND SOUTH

DIST	SOUND	ELEV	DIST	SOUND	ELEV
0+00	0.3	+4.7	(50)	13.9	8.9
(50)	0.6	+4.4	50	13.4	8.4
	1.2	+3.8		13.5	8.5
<u>1,00</u>	2.3	+2.7		13.5	8.5
<u>—</u>	2.9	+2.1		13.5	8.5
50	3.5	+1.5		13.8	8.8
	4.2	+0.8	3+00	13.7	8.7
	5.0	0.0		13.5	8.5
	6.0	1.0		13.4	8.4
	7.1	2.1		13.6	8.6
1+00	7.8	2.8		13.6	8.6
	8.6	3.6	50	13.8	8.8
	12.9	7.9		13.9	8.9
	13.1	8.1		13.9	8.9
	13.3	8.3		13.9	8.9
50	13.1	8.1		13.8	8.8
	13.1	8.1	4+00	14.0	9.0
	13.1	8.1		13.4	8.4
	13.1	8.1		13.3	8.3
	13.1	8.1		13.8	8.8
2+00	13.0	8.0		14.0	9.0
	13.1	8.1	50	14.2	9.2
	13.4	8.4		14.4	9.4
	13.5	8.5		14.4	9.4

STA. W. 90+00-SOUTH

(25)

DIST	SOUND	ELEV	DIST	SOUND	ELEV
(50)	14.4	9.4	(5.0)	13.2	8.2
	14.7	9.7		13.3	8.3
5+00	15.0	10.0	50	13.1	8.1
	15.0	10.0		13.2	8.2
<u>1,05</u>	15.0	10.0		13.2	8.2
<u>—</u>	15.1	10.1		13.1	8.1
	14.9	9.9		13.4	8.4
50	14.9	9.9	8+00	13.2	8.2
	15.1	10.1		13.1	8.1
	14.9	9.9	<u>11,10</u>	13.0	8.0
	14.9	9.9	<u>—</u>	13.0	8.0
	14.8	9.8		12.8	7.8
6+00	14.9	9.9	50	12.9	7.9
	14.9	9.9		12.8	7.8
	14.7	9.7		12.7	7.7
	14.2	9.2		12.8	7.8
	14.8	9.8		12.5	7.5
50	14.8	9.8	9+00	12.6	7.6
	15.0	10.0		12.6	7.6
	14.8	9.8		12.2	7.2
	14.3	9.3		12.1	7.1
	14.2	9.2		12.0	7.0
7+00	14.1	9.1	50	11.0	6.0
	14.3	9.3		10.0	5.0
	14.0	9.0		5.5	0.5
				3.0	0.5
			10+00		+2.0

7-28-60

STA. W. 90+50.0+100=N. 15, 180; SOUND SOUTH

Dist	Sound	Elev	Dist	Sound	Elev
0+00			(5.0)	14.1	
(5.0)	0.5		50	14.2	
	1.5			14.1	
1+00	2.4			14.0	
	3.0			14.0	
50	3.5			14.0	
	4.1		3+00	14.0	
	5.2			14.0	
	5.9			14.1	
	7.0			14.0	
1+00	7.5			14.1	X
	10.5		50	14.0	0
	12.2			14.0	
	13.2			14.0	
	13.2			14.3	
50	13.5			14.2	
	13.5		4+00	14.5	
	13.7			14.2	
	13.8		1+25	14.9	
	13.9			14.8	
2+00	13.9			14.4	
	14.0		50	14.2	
	14.0			14.1	
	14.1			14.1	

STA. W. 90+50-SOUTH

Dist	Sound	Elev	Dist	Sound	Elev
(49)	14.1		(49)	13.3	
	14.0			13.2	
5+00	14.3		50	13.2	
	14.3			13.5	
	14.0			13.4	
	14.2			13.5	
	14.4			13.8	
50	14.5		8+00	13.7	
	14.4			13.8	
	14.4			13.4	
	14.2			13.2	
	14.3			13.1	
6+00	14.2		50	13.0	
	14.1		1+30	12.8	
	14.2			12.7	
	14.2			12.5	
	14.1			12.5	
50	14.2		9+00	12.4	
	14.5			12.3	
	14.8			12.2	
	14.9			12.0	
	14.9			11.8	
7+00	14.9		50	11.0	
	14.0			9.3	
	13.5			5.8	
				2.9	

76

7-28-60

STA. W. 91+00 - N. 15, 170; SOUND SOUTH

DIST	SOUND	ELEV	DIST	SOUND	ELEV
0+00			(4.9)	14.2	
(4.9)	0.3		50	13.9	
	1.4			13.9	
11.38	1.9		11.40	13.6	
	2.6			13.6	
50	3.1			13.8	
	3.8		3+00	13.7	
	4.5			13.5	
	5.3			13.7	
	6.5			13.9	
1+00	7.3			13.4	
	8.9		50	13.5	
	12.7			13.2	
	13.7			14.1	
	13.8			13.6	
50	13.9			14.0	
	14.0		4+00	14.0	
	14.0			13.9	
	14.2			14.2	
	13.9			14.1	
2+00	14.0			14.2	
	14.0		50	14.3	
	14.0			14.0	
	13.8			14.2	

STA. W. 91+00 - SOUTH

DIST	SOUND	ELEV	DIST	SOUND	ELEV
(4.9)	14.7		(4.9)	13.3	
	14.5			13.3	
5+00	14.5		50	13.8	
	14.5			13.5	
	14.4			13.4	
	14.6			13.4	
	14.7			13.3	
50	14.5		8+00	13.4	
	14.7			13.2	
	14.7			13.1	
	14.5			12.9	
	14.6			13.3	
6+00	14.7		50	13.2	
	13.5			13.1	
	14.2			13.2	
	14.6			13.1	
	13.9			13.0	
50	14.5		9+00	12.9	
	14.7			12.7	
11.45	14.5			12.2	
	14.6			12.1	
	14.5			11.6	
7+00	14.0		50	11.0	
	13.2			9.7	
	13.1			6.8	
				2.9	

7-28-60

STA. W. 91+50; 0400=N. 15, 160; SOUND SOUTH

Dist	Sound	Elev	Dist	Sound	Elev
0+00			(49)	14.3	
(49)	0.2		50	14.4	
	0.8			14.3	
<u>1:55</u>	1.6			14.2	
	1.9			14.2	
50	2.8			14.3	
	3.5		3+00	14.3	
	4.2			14.5	
	5.3			14.5	
	6.6			14.4	
1+00	7.0			14.7	
	7.8		50	14.4	
	9.1			14.1	
	13.1		2:00	13.8	
	13.8			13.9	
50	13.8			14.0	
	13.7		4+00	14.1	
	13.9			14.3	
	14.0			14.4	
	14.1			14.4	
2+00	14.3			14.3	
	14.2		50	14.2	
	14.1			14.5	
	14.5			14.1	

STA. W. 91+50-SOUTH

Dist	Sound	Elev	Dist	Sound	Elev
(49)	14.6		(48)	13.1	
	14.2			13.1	
5+00	14.5		50	13.5	
	14.2			13.8	
	14.1			13.8	
	14.2			13.9	
	14.1			13.7	
50	14.0		8+00	13.4	
	14.2			13.1	
	14.3			12.9	
	14.2			12.8	
	14.5			13.0	
6+00	14.5		50	13.0	
	14.6			13.2	
	14.8			13.3	
	14.6		2:05	13.4	
	14.6			13.2	
50	14.7		9+00	13.2	
	14.7			12.9	
	14.3			12.3	
	14.6			12.0	
	14.2			11.8	
7+00	13.8		50	10.9	
	13.0			9.3	
	13.1			4.7	
				2.8	

Cont'd. N.B. 135



Diagram illustrating the relationship between the sides of a triangle and the radius of the inscribed circle.

a	b	c	r	s	s-a	s-b	s-c
10	10	10	3.46	15	5	5	5
12	12	12	4.24	18	6	6	6
14	14	14	4.94	21	7	7	7
16	16	16	5.59	24	8	8	8
18	18	18	6.18	27	9	9	9
20	20	20	6.71	30	10	10	10
22	22	22	7.19	33	11	11	11
24	24	24	7.63	36	12	12	12
26	26	26	8.04	39	13	13	13
28	28	28	8.42	42	14	14	14
30	30	30	8.77	45	15	15	15
32	32	32	9.10	48	16	16	16
34	34	34	9.41	51	17	17	17
36	36	36	9.70	54	18	18	18
38	38	38	9.97	57	19	19	19
40	40	40	10.23	60	20	20	20
42	42	42	10.47	63	21	21	21
44	44	44	10.70	66	22	22	22
46	46	46	10.92	69	23	23	23
48	48	48	11.13	72	24	24	24
50	50	50	11.33	75	25	25	25
52	52	52	11.52	78	26	26	26
54	54	54	11.70	81	27	27	27
56	56	56	11.87	84	28	28	28
58	58	58	12.04	87	29	29	29
60	60	60	12.19	90	30	30	30
62	62	62	12.34	93	31	31	31
64	64	64	12.48	96	32	32	32
66	66	66	12.61	99	33	33	33
68	68	68	12.74	102	34	34	34
70	70	70	12.86	105	35	35	35
72	72	72	12.98	108	36	36	36
74	74	74	13.09	111	37	37	37
76	76	76	13.19	114	38	38	38
78	78	78	13.29	117	39	39	39
80	80	80	13.38	120	40	40	40
82	82	82	13.47	123	41	41	41
84	84	84	13.56	126	42	42	42
86	86	86	13.64	129	43	43	43
88	88	88	13.72	132	44	44	44
90	90	90	13.80	135	45	45	45
92	92	92	13.87	138	46	46	46
94	94	94	13.95	141	47	47	47
96	96	96	14.02	144	48	48	48
98	98	98	14.09	147	49	49	49
100	100	100	14.16	150	50	50	50

Compiled by E. J. Thacker, London