

MB 135



MICROFILMED

MB No 135

~

THIS BOOK INDEXED 2-13-62

W120 - N 15000
+50 - N 15035
119 - N 15070
+50 - N 15105
118 - N 15140
+50 - N 15175
117 - N 15210
+50 - N 15245
116 - N 15280
+50 - N 15315
115 - N 15350
+50 - N 15385
114 - N 15420
+50 - N 15455
113 - N 15490
+50 - N 15525
112 - N 15560
+50 - N 15595
111 - N 15630
+50 - N 15665
110 - N 15700
+50 - N "
109 - N "
+50 - N "
108 - N "
+50 - N "

STAKE PEREZ CAVE LEASE 77+78-

CONTD FROM BOOK, No 134 7-28-60
ROSE CREEK VIC. AFTER DREDGING

STA. W. 92+00, 0+00=N. 15, 140, SOUND SOUTH

DIST	SOUND	ELEV	DIST	SOUND	ELEV
0+00	0.0	+4.8	(48)	14.7	9.9
(48)	0.6	+4.2	50	14.7	9.9
	1.1	+3.7		14.7	9.9
<u>2:10</u>	1.8	+3.0	<u>2:15</u>	14.7	9.9
	2.4	+2.4		14.7	9.9
50	2.8	+2.0		14.9	10.1
	3.8	+1.0	3+00	14.9	10.1
	5.0	0.2		14.7	9.9
	5.9	0.3		14.7	9.9
	6.3	1.5		14.8	10.0
1+00	7.1	2.3		14.9	10.1
	8.2	3.4	50	14.9	10.1
	12.2	7.4		14.8	10.0
	14.2	9.4		15.1	10.3
	14.1	9.3		14.9	10.1
50	14.2	9.4		14.9	10.1
	14.2	9.4	4+00	14.7	9.9
	14.2	9.4		14.5	9.7
	14.4	9.6		14.3	9.5
	14.5	9.7		14.2	9.4
2+00	14.7	9.9		14.2	9.4
	14.7	9.9	50	14.2	9.4
	14.7	9.9		14.2	9.4
	14.7	9.9		14.2	9.4

SEE B/L MB-134
STA. W. 92+00-SOUTH

DIST	SOUND	ELEV	DIST	SOUND	ELEV
(48)	14.2	9.4	(48)	13.3	8.5
	14.2	9.4		13.3	8.5
5+00	14.1	9.3	50	13.5	8.7
	13.9	9.1		13.5	8.7
	13.9	9.1		13.5	8.7
	13.9	9.1		13.7	8.9
	13.9	9.1		13.8	9.0
50	14.0	9.2	8+00	13.8	9.0
	14.1	9.3		13.8	9.0
	14.1	9.3		13.8	9.0
	14.2	9.4		13.7	8.9
	14.2	9.4		13.4	8.6
6+00	14.2	9.4	50	13.3	8.5
<u>2:20</u>	14.2	9.4	<u>2:25</u>	13.3	8.5
	14.2	9.4		13.0	8.2
	14.2	9.4		13.1	8.3
	14.2	9.4		12.8	8.0
50	14.3	9.5	9+00	12.8	8.0
	14.8	10.0		12.6	7.8
	14.4	9.6		12.6	7.8
	12.8	8.0		12.1	7.3
	13.1	8.3		11.9	7.1
7+00	13.1	8.3	50	10.4	5.6
	13.1	8.3		7.6	2.8
	13.0	8.2		4.2	+0.6

7-28-60

STA. W. 92+50 - 0+100 = N 15, 130 - SOUND SOUTH

Dist	Sound	Elev	Dist	Sound	Elev
0+00			(4.6)	14.8	
(4.6)	0.4		50	14.8	
	0.9			14.9	
2:35	1.5			14.9	
<u> </u>	2.2			14.6	
50	3.0			14.6	
	3.3		3+00	14.5	
	4.1			14.6	
	4.9			14.6	
	5.1			14.9	
1+00	6.1			14.9	
	6.6		50	14.9	0.1
	9.7			15.0	
	13.0			15.0	
	14.0			14.7	
50	14.2			14.7	
	14.4		4+00	14.7	
	14.5			14.7	
	14.5			14.7	
	14.5			14.7	
2+00	14.8			14.9	
	14.8		50	14.9	
	14.8			14.8	
	14.8			14.8	

STA. W. 92+50 - SOUTH

(2)

Dist Sound Elev Dist Sound Elev

Dist	Sound	Elev	Dist	Sound	Elev
(4.6)	15.0		(4.6)	13.3	
	14.7			13.5	
5+00	14.7		50	13.6	
	14.4			13.6	
2+00	14.2			14.0	
<u> </u>	14.1			13.8	
	14.4			14.0	
50	14.5		8+00	14.0	
	14.7			14.0	
	14.8			14.0	
	14.8			14.0	
	14.6			13.9	0.1
6+00	14.6		50	14.0	0.1
	14.2			14.1	
	14.4		2:45	13.9	
	14.4		<u> </u>	13.7	
	14.4			13.5	
50	14.4		9+00	13.5	
	14.5			13.5	
	14.5			13.0	
	13.6			12.5	
	12.8			11.8	
7+00	12.8		50	11.2	
	13.5			10.0	
	13.5			5.5	

7-29-60

STA. W. 93+00-0+00 - N. 15, 140' SOUND SOUTH

Dist	Sound	Elev	Dist	Sound	Elev
0+00			(28)	12.6	
(28)			50	12.6	
				12.5	
10:05	0.0			12.7	
	0.7			12.8	
50	1.4			12.8	
	2.4		3+00	12.9	
	2.8			13.0	
	3.0			13.1	
	4.2			13.1	
1+00	5.0			13.2	
	6.1		50	13.4	
	9.9			13.3	
	10.9			13.5	
	12.0			13.6	
50	12.1			13.4	
	12.1		4+00	13.3	
	12.5			13.2	
	12.4			13.1	
	12.7			13.0	
2+00	12.5			13.2	
	12.5		50	13.1	
	12.8			13.0	
	12.7			13.0	

STA. W. 93+00 - SOUTH

Dist Sound Elev Dist Sound Elev

Dist	Sound	Elev	Dist	Sound	Elev
(29)	13.0		(30)	11.9	
	13.1			12.0	
5+00	13.2		50	12.0	
	13.1			12.0	
10:10	13.2			12.0	
	13.1			12.0	
	13.2			12.1	
50	13.1		8+00	12.0	
	13.2			12.0	
	13.1			12.1	
	13.1			12.1	
	13.0			12.2	
6+00	13.0		50	12.0	
	13.1			12.1	
	13.0			11.2	
	13.1			11.2	
	13.0			11.2	
50	12.5		9+00	11.3	
	12.1			11.4	
	11.7			11.3	
	11.5		10:15	11.3	
	11.4			11.1	
7+00	11.7		50	11.0	
	11.7			10.4	
	11.8			7.9	

STA. W. 93+00 - SOUTH. 7-29-60

Dist Sound Elev

3.6

10+00

50

11+00

40

STA. W. 93+50; 0+00 = N. 15,090 ; SOUND SOUTH

Dist Sound Elev Dist Sound Elev

0+00

(3.1)

0.6

10:20 1.4

1.5

50 2.2

3.4

3.9

4.8

5.8

1+00 9.8

10.5

11.5

12.0

12.3

50 12.6

12.9

12.9

12.9

13.0

2+00 13.0

13.3

13.2

13.3

(3.2) 13.1

50 13.1

10:25 13.2

13.4

13.4

13.5

3+00 13.5

13.3

13.2

13.4

13.4

50 13.1

12.9

12.9

12.7

12.5

4+00 12.3

12.2

12.0

12.0

12.0

50 12.0

11.8

11.5

STA. W. 93+50 - SOUTH 7-29-60

Dist Sound Elev Dist Sound Elev

Dist	Sound	Elev	Dist	Sound	Elev
32	11.4		32	12.1	
	11.6			12.1	
5+00	11.9		50	12.1	
	12.2			12.1	
	12.3			12.1	
	12.2			12.2	
	12.3			12.2	
50	12.4		8+00	12.1	
	12.3			12.0	
	12.2			12.1	
	12.5			12.0	
	12.9			12.0	
6+00	13.0		50	12.2	
	13.1			12.2	
	13.2			12.1	
	13.3			11.9	
	12.3			11.9	
50	11.8		9+00	11.8	
	11.8			11.7	
	11.8			11.3	
1030	11.9			11.5	
	12.0			11.8	
7+00	12.1		50	11.5	
	12.0			11.0	
	12.2			10.1	

STA. W. 93+50 - SOUTH (5)

Dist Sound Elev

Dist	Sound	Elev
32	4.0	
10+00		
50		
11+00		

7-29-60

STA. W. 94+00; CHCO = N. 15, 080; SOUND SOUTH

DIST	Sound	Elev	DIST	Sound	Elev
0+00			(3.5)	13.3	9.8
(3.5)	0.1	+3.4	50	13.4	9.9
	0.8	+2.7		13.3	9.8
10:45	1.0	+2.5		13.2	9.7
	1.7	+1.8	10:50	13.3	9.8
50	2.0	+1.5		13.4	9.9
	2.9	+0.6	3+00	13.7	10.2
	3.9	0.4		13.4	9.9
	5.9	2.4		13.5	10.0
	10.8	7.3		13.4	9.9
1+00	10.7	7.2		13.6	10.1
	11.6	8.1	50	12.9	9.4
	12.7	9.2		12.7	9.2
	13.0	9.5		12.6	9.1
	12.9	9.4		12.9	9.4
50	13.1	9.6		12.8	9.3
	13.1	9.6	4+00	12.8	9.3
	13.3	9.8		12.9	9.4
	13.2	9.7		12.9	9.4
	13.2	9.7		12.6	9.1
2+00	13.3	9.8		12.4	8.9
	13.3	9.8	50	12.5	9.0
	13.2	9.7		12.8	9.3
	13.2	9.7		12.9	9.4

STA. W. 94+00 - SOUTH

⑤

DIST	Sound	Elev	DIST	Sound	Elev
(3.5)	12.9	9.4	(3.5)	11.9	8.4
	12.9	9.4		12.0	8.5
5+00	12.9	9.4	50	12.0	8.5
	12.9	9.4		11.9	8.4
	13.0	9.5		11.8	8.3
	12.9	9.4		11.9	8.4
	12.9	9.4		11.7	8.2
50	12.8	9.3	8+00	11.8	8.3
	12.9	9.4		11.7	8.2
	12.9	9.4	10:55	11.9	8.4
	12.6	9.1		11.8	8.3
	12.8	9.3		11.6	8.1
6+00	12.8	9.3	50	11.6	8.1
	12.9	9.4		11.2	7.7
	13.1	9.6		11.1	7.6
	13.2	9.7		11.0	7.5
	11.5	8.0		11.1	7.6
50	11.2	7.7	9+00	11.3	7.8
	11.7	8.2		11.5	8.0
	11.7	8.2		11.3	7.8
	11.6	8.1		12.1	8.6
	11.9	8.4		11.9	8.4
7+00	11.9	8.4	50	11.2	7.7
	12.0	8.5		10.8	7.3
	12.0	8.5		10.3	6.8

STA. W. 94+00 - SOUTH 7-29-60

5: Dist Sound Elev Dist Sound Elev

L		9.1	5.6
6	(35)	4.2	0.7
	10+00	1.7	+1.8

50

80

2

(7)

STA. W. 94+50.0+00 = N. 15,080 ; SOUND SOUTH

Dist Sound Elev Dist Sound Elev

0+00		(3.7)	13.0
		50	12.9
			13.0
11:05			13.0
			13.1
			13.1
50			13.1
			2.0
		3+00	13.2
			13.4
			14.1
			13.9
			13.9
1+00			13.9
			11.1
			13.0
			12.9
			13.1
		50	13.0
			13.0
		11:10	12.9
			12.6
			12.9
50			12.9
			13.2
			13.3
			13.6
			13.5
		4+00	12.9
			12.8
			12.8
			12.9
2+00			12.9
			13.3
			13.1
			13.0
			13.0
		50	12.9
			12.6
			12.4

0.1

STA. W. 94+50 - SOUTH 7-29-60

STA. W. 94+50 - SOUTH

Dist	Sound	Elev	Dist	Sound	Elev
(37)	12.6		(38)	12.1	
	12.5			12.1	
5+00	12.8		50	12.1	
	12.8			12.1	
	12.8		11+5	11.9	
	12.9			11.8	
	12.8			11.9	
50	12.6		8+00	11.9	
	12.8			12.0	
	12.7			12.0	
	12.8			12.0	
	12.9			11.8	
6+00	12.8		50	11.8	
	12.9			11.6	
	12.9			11.4	
	12.2			11.2	
	11.3			11.1	
50	11.3		9+00	11.1	
	11.5			11.2	
	11.6			12.1	
	12.1			12.2	
	12.7			12.2	
7+00	12.0		50	11.9	
	12.0			11.8	
	12.0			11.4	

Dist	Sound	Elev
(38)	11.6	
	11.2	
10+00	11.1	
	10.3	
	7.1	
	2.9	
50		
11+00		

7-29-60

5 STA. W. 95+00.0+00 = N. 15,080 ; SOUND SOUTH

DIST	SOUND	ELEV	DIST	SOUND	ELEV
0+00	1.1		(49)	14.9	
(49)	1.6		50	15.0	
	1.9		1:25	15.0	
1:22	2.1		<u>15.0</u>		
<u>50</u>	2.5			15.0	
	3.0			15.0	
	3.3		3+00	15.0	
	4.8			15.0	
	5.2			15.0	
	10.1			14.9	
1+00	11.8			14.9	
	12.6		50	14.7	
	14.8			14.5	
	14.8			14.3	
	15.2			13.9	
50	15.2			14.1	
	15.5		4+00	13.9	
	15.7			13.9	
	15.7			13.8	
	15.6			13.9	
2+00	14.9			14.1	
	14.8		50	14.1	
	14.9			13.8	
	14.9			13.8	

STA. W. 95+00 - SOUTH

DIST	SOUND	ELEV	DIST	SOUND	ELEV
(50)	13.8		(50)	12.9	
	13.9			12.9	
5+00	14.0		50	13.0	
	14.1		1:30	13.0	
	14.0		<u>13.0</u>		
	14.0			13.0	
	14.0			13.0	
50	13.9		8+00	12.9	
	13.9			12.9	
	14.0			12.9	
	14.0			13.0	
6+00	13.9		50	12.8	
	13.7			12.8	
	13.6			12.7	
	13.0			12.6	
	12.8			12.6	
50	12.8		9+00	12.7	
	12.8			12.6	
	12.8			12.8	
	12.9			13.2	
	12.9			14.7	
7+00	12.9		50	14.4	
	12.9			13.8	
	12.9			13.2	

STA W. 95+00 - SOUTH 7-29-60

Dist	Sound	Elev
(50)	13.0	
	12.9	
10+00	12.9	
	12.8	
11.35	12.8	
<u> </u>	12.8	
	12.6	
50	11.4	
	8.8	
	4.2	
	2.1	

11+00

(20)

STA W. 95+50; 0+00 - N. 15,090			SOUND SOUTH		
Dist	Sound	Elev	Dist	Sound	Elev
0+00	1.1		(5.)	14.8	
(5.)	1.5		50	14.8	
	1.9			14.8	
11.45	2.3			15.0	
<u> </u>	2.8			15.1	
50	2.8			15.1	
	2.9		3+00	15.1	
	3.1			15.1	
	3.6			15.3	
	5.8			15.3	
1+00	10.4			15.3	
	10.4		50	15.3	
	12.4			15.4	
	14.4			15.2	
	14.8			15.2	
50	15.0			15.0	
	15.0		4+00	14.9	
	15.2			14.8	
	15.6			14.8	
	15.3			15.1	
2+00	15.0			15.0	
	14.8		50	14.8	
	14.9			14.8	
	14.8			14.7	

STA. W. 95+50 - SOUTH 7-29-60

Dist	Sound	Elev	Dist	Sound	Elev
(5)	14.8		(5)	13.2	
	14.8			13.2	
5+00	14.8		50	13.3	
	14.6			13.3	
<u>11.50</u>	14.4			13.3	
	14.5			13.2	
	14.4			13.2	
50	14.4		8+00	13.3	
	14.4			13.3	
	14.2			13.2	
	14.1			13.2	
	14.0			13.2	
6+00	14.0		50	13.0	
	14.2			13.0	
	14.4			13.0	
	14.6			13.0	
	14.7			13.0	
50	13.8		9+00	13.0	
	13.0			12.9	
	13.0			13.1	
	13.0			13.2	
	13.0			13.8	
7+00	12.9		50	14.4	
	13.0			14.4	
	13.0			14.4	

STA. W. 95+50 - SOUTH

Dist	Sound	Elev
(5)	14.4	
	14.1	
10+00	13.8	
	13.8	
<u>11.55</u>	13.2	
	13.0	
	13.0	
50	12.8	
	12.8	
	12.9	
	12.8	
	10.3	
11+00	9.0	

7-29-60

5 STA. W. 96+00 - 0+00 = N. 15,100 ; SOUND SOUTH			DIST SOUND ELEV		
DIST	SOUND	ELEV	DIST	SOUND	ELEV
0+00	1.0	+4.1	(5)	14.0	8.9
(5)	1.3	+3.8	50	14.1	9.0
	2.0	+3.1	2:05	13.9	8.8
<u>2:03</u>	2.0	+3.1		13.9	8.8
	2.9	+2.2		13.9	8.8
50	2.9	+2.2		13.9	8.8
	2.9	+2.2	3+00	14.1	9.0
	3.1	+2.0		14.5	9.9
	3.5	+1.6		14.9	9.8
	5.3	0.2		15.0	9.9
1+00	9.0	3.9		15.9	10.8
	11.1	6.0	50	15.1	10.0
	14.1	9.0		15.0	9.9
	15.0	9.9		14.9	9.8
	15.0	9.9		15.0	9.9
50	15.2	10.1		15.1	10.0
	15.3	10.2	4+00	15.0	9.9
	15.4	10.3		15.1	10.0
	15.1	10.1		15.1	10.0
	14.9	9.8		15.1	10.0
2+00	14.1	9.0		15.2	10.1
	14.1	9.0	50	15.1	10.0
	14.1	9.0		15.0	9.9
	14.2	9.1		15.0	9.9

STA. W. 96+00 - SOUTH

(12)

DIST SOUND ELEV			DIST SOUND ELEV		
(5)	15.0	9.9	(5)	13.1	8.0
	14.9	9.8		13.5	8.4
5+00	14.9	9.8	50	13.6	8.5
	14.8	9.7		13.5	8.4
	14.7	9.6		13.5	8.4
	14.6	9.5		13.8	8.7
	14.5	9.4		13.4	8.3
50	14.5	9.4	8+00	13.1	8.0
	14.6	9.5		13.3	8.2
2:10	14.3	9.2		13.1	8.0
	14.3	9.2		13.4	8.3
	14.3	9.2		13.4	8.3
6+00	14.4	9.3	50	13.3	8.2
	14.2	9.1		13.4	8.3
	14.2	9.1		13.4	8.3
	14.3	9.2		13.4	8.3
	14.8	9.7		13.8	8.7
50	15.2	10.1	9+00	13.6	8.5
	14.8	9.7		13.6	8.5
	13.0	7.9		13.7	8.6
	13.2	8.1		13.9	8.8
	13.1	8.0		14.0	8.9
7+00	13.1	8.0	50	14.1	9.0
	13.2	8.1		14.2	9.1
	13.1	8.0		14.3	9.2

STA. W. 96+00 - SOUTH 7-29-60

Dist	Sound	Elev
(5)	14.3	9.2
	14.3	9.2
10+00	14.2	9.1
	14.4	9.3
2:5	14.4	9.3
<u> </u>	14.4	9.3
	13.7	8.6
50	13.3	8.2
	13.2	8.1
	13.3	8.2
	13.4	8.3
	13.3	8.2
11+00	13.3	8.2

(13)

STA. W. 96+50; 0+00 = N. 15, 110 ; SOUND SOUTH

Dist	Sound	Elev	Dist	Sound	Elev
0+00	0.6		(5)	14.4	
(5)	1.0		50	14.1	
	1.5			14.3	
2:25	2.0			13.9	
<u> </u>	2.2			13.2	
50	2.3			13.2	
	2.5		3+00	13.0	
	2.8			13.1	
	3.2			13.9	
	5.1			14.9	
1+00	9.8			15.1	✓
	11.8		50	15.0	0
	13.8			15.1	
	15.0			15.3	
	15.2			15.2	
50	15.2			15.2	
	15.1		4+00	15.1	
	15.2		2:30	15.0	
	15.3		<u> </u>	14.9	
	15.2			14.9	
2+00	15.1			14.9	
	14.9		50	14.8	
	14.8			14.9	
	14.2			15.1	

STA. W. 96+50 - SOUTH 7-29-60

DIST	Sound	Elev	DIST	Sound	Elev
(5.1)	15.0		(5.1)	13.4	
	15.0			13.4	
5+00	14.9		50	13.4	
	15.0			13.6	
	14.9			13.6	
	14.8			13.2	
	14.5			13.3	
50	14.5		8+00	13.2	
	14.5			13.1	
	14.6			13.2	
	14.7			13.0	
	14.6			13.1	
6+00	14.6	W	50	13.1	W
	14.4	O	2:35	13.1	O
	14.4			13.2	
	14.3			13.3	
	14.6			13.2	
50	14.6		9+00	13.1	
	14.6			13.3	
	13.0			13.5	
	12.9			13.8	
	12.8			13.8	
7+00	12.9		50	13.9	
	12.9			13.9	
	13.0			13.9	

STA. W. 96+50 - SOUTH

(14)

DIST	Sound	Elev
(5.1)	13.9	
	14.0	
10+00	14.1	
	14.3	
	14.1	
	14.2	
	14.1	W
50	14.0	O
	14.0	
	14.0	
	13.7	
	13.5	
11+00	13.1	
10	13.0	

7-29-60

5 STA. W. 97+00 S 0+00 = N. 15, 120 SOUND SOUTH

DIST	SOUND	ELEV	DIST	SOUND	ELEV
0+00			(51)	14.3	
(51)	0.3		50	14.3	
	0.9			14.3	
<u>2:45</u>	1.7			14.4	
	1.9			14.9	
50	2.1			15.1	
	2.2		3+00	15.1	
	2.3			15.2	
	3.2			15.0	
	4.9			15.3	
1+00	9.3			15.3	✓
	12.8		50	15.3	0
	13.5			15.2	
	14.7			15.2	
	14.9			15.1	
50	15.0			15.2	
	15.0		(✓) 4+00	15.0	
	15.4		0	15.0	
	14.9			14.9	
	15.0			14.9	
2+00	15.0			14.8	
	14.7		50	14.9	
	14.3			14.7	
	14.3			14.6	

STA. W. 97+00 - SOUTH

(15)

DIST	SOUND	ELEV	DIST	SOUND	ELEV
(50)	14.7		(50)	13.6	
	15.0			13.5	
5+00	14.9		50	13.5	
	14.9			13.8	
	15.0			13.6	
<u>2:50</u>	14.9			13.6	
	14.9			13.9	
50	14.8		8+00	13.7	
	14.8			13.9	
	14.8			13.5	
	14.9			13.5	
	14.9			13.6	✓
6+00	14.9	0	50	13.9	0
	14.3			13.9	
	14.1			13.6	
	14.1			13.4	
	14.2			13.3	
50	14.1		9+00	13.5	
	13.8			13.5	
	13.2			13.3	
	13.2			13.2	
	13.1			13.1	
7+00	13.1		50	13.1	
	13.7			13.1	
	13.2			13.2	

STA. W. 97+00 - SOUTH 7-29-60

DIST Sound Elev

(5.0)	13.8	}
	13.8	
10+00	13.9	
	14.0	
<u>2:55</u>	13.9	
	14.3	
	14.0	
50	13.9	
	13.7	
	13.6	
	13.2	
	13.2	
11+00	13.5	
	13.2	
20	13.1	

K
0

8-02-60

(16)

STA. W. 97+50; 0+00 = N. 15, 130; SOUND SOUTH

DIST Sound Elev DIST Sound Elev

0+00	(2.9)	12.2	}
(2.9)	50	12.3	
		12.4	
<u>10:40</u>		13.1	
		12.9	
50		13.0	
	3+00	13.0	
		13.1	
		13.2	
		13.1	
1+00		13.1	
		13.0	
		12.8	
		12.8	
		12.5	
50		12.4	
		12.4	
		12.3	
		12.4	
		12.3	
2+00		12.1	
		12.0	
		12.0	
		12.1	

K
0

STA. W. 97+50 - SOUTH 8-02-60

STA. W. 97+50 - SOUTH

Dist	Sound	Elev	Dist	Sound	Elev
(29)	12.1		(29)	11.9	
	12.1			11.2	
5+00	12.4		50	11.1	
	12.3			11.1	
	12.4			11.1	
	12.8			11.2	
	12.8			11.0	
50	12.8		8+00	11.1	
	12.8			11.1	
	12.7		10+50	11.0	
	12.8			11.0	
	12.9			11.0	
6+00	12.8		50	11.0	
	12.8			11.0	
	12.6			11.1	
	12.7			11.0	
	12.9			11.2	
50	12.9		9+00	11.2	
	13.0			11.2	
	11.1			11.3	
	11.0			11.6	
	11.2			11.9	
7+00	11.2		50	11.9	
	11.5			11.9	
	11.8			11.9	

Dist	Sound	Elev
(29)	12.0	
	12.1	
10+00	12.1	
	12.0	
	11.9	
	11.8	
	11.7	
50	11.7	
	11.8	
	11.9	
	12.0	
	12.0	
11+00	11.9	
	11.8	
	11.9	
30	11.9	

OK

8-02-60

STA. W. 98+00; 0+00=N. 15, 150; SOUND SOUTH

DIST	SOUND	ELEV	DIST	SOUND	ELEV
0+00			(29)	12.0	9.1
(29)			50	12.0	9.1
				12.3	9.4
<u>10:03</u>				12.5	9.6
				12.5	9.6
50				12.7	9.8
			3+00	12.8	9.9
				12.9	10.0
	0.2	+2.7	<u>10:05</u>	13.0	10.1
	1.6	+1.3		13.0	10.1
1+00	4.0	1.1		13.1	10.2
	8.5	5.6	50	13.2	10.3
	10.0	7.1		13.2	10.3
	11.7	8.8		13.2	10.3
	12.0	9.1		12.0	9.1
50	12.0	9.1		11.8	8.9
	12.0	9.1	4+00	11.5	8.6
	12.2	9.3		11.7	8.8
	12.0	9.1		11.5	8.6
	12.0	9.1		11.8	8.9
2+00	12.3	9.4		12.0	9.1
	12.7	9.6	50	11.5	8.6
	12.4	9.5		12.0	9.1
	12.4	9.5		12.0	9.1

STA. W. 98+00 - SOUTH

DIST	SOUND	ELEV	DIST	SOUND	ELEV
(29)	12.0	9.1	(29)	11.0	8.1
	12.0	9.1		10.8	7.9
5+00	12.2	9.3	50	11.2	8.3
	12.2	9.3		11.2	8.3
	12.2	9.3	<u>10:10</u>	11.2	8.3
	12.5	9.6		11.2	8.3
	12.9	10.0		11.6	8.7
50	12.5	9.6	8+00	11.4	8.5
	12.7	9.8		11.0	8.1
	12.7	9.8		11.0	8.1
	12.1	9.2		11.1	8.2
	12.1	9.2		10.4	7.5
6+00	12.1	9.2	50	10.8	7.9
	12.1	9.2		10.9	8.0
	12.0	9.1		10.8	7.9
	12.0	9.1		10.8	7.9
	12.3	9.4		10.7	7.8
50	12.3	9.4	9+00	10.8	7.9
	12.9	10.0		10.9	8.0
	12.9	10.0		11.0	8.1
	13.1	10.2		11.0	8.1
	12.0	9.1		11.0	8.1
7+00	11.0	8.1	50	11.1	8.2
	10.8	7.9		11.2	8.3
	10.7	7.8		11.5	8.6

(28)

STA. W. 98+00 - SOUTH 8-02-60

DIST Sound Elev DIST Sound Elev

(29) 11.7 8.8

12.0 9.1

10+00 12.0 9.1

12.0 9.1

11,15 11.6 8.7

11.4 8.5

11.4 8.5

50 11.4 8.5

11.2 8.3

11.5 8.6

11.4 8.5

11.5 8.6

11+00 11.3 8.4

11.3 8.4

11.3 8.4

11.5 8.6

11.7 8.8

50 11.9 9.0

(19)

STA. W. 98+50; 0+00 = N. 15, 180; SOUND SOUTH

DIST Sound Elev DIST Sound Elev

0+00 (29) 12.1

50 12.2

12.3

11,25 0.7

1.1

50 1.6

1.5

0.3

Add → +0.7 3.6

+0.3 3.2

1+00 2.8

8.0

10.5

11.3

11.5

50 12.0

11.9

12.0

12.0

12.1

2+00 12.2

12.0

12.0

12.1

3+00 12.0

11.9

11.8

11.5

11.2

50 11.2

11.9

12.2

13.0

13.1

4+00 13.2

13.0

11.0

11.0

11.1

50 11.1

11.0

11.1

STA. W. 98+50-SOUTH 8-02-60

DIST	Sound	Elev	DIST	Sound	Elev
(29)	11.5		(29)	11.0	
	11.9			10.9	
5+00	11.3		50	11.0	
	11.5			11.2	
1130	11.4			11.1	
-	11.1			11.1	
	11.2			11.1	
50	11.0		8+00	11.1	
	11.0			11.4	
	11.1			11.4	
	11.0			11.0	
	11.1	X		10.9	X
6+00	11.1	0	50	10.9	0
	11.3			11.1	
	11.9			11.1	
	11.9			11.2	
	12.0			11.1	
50	12.0		9+00	11.1	
	12.2			11.3	
	12.5			11.2	
	12.8			11.2	
	12.7			11.0	
7+00	12.9		50	11.2	
	13.0			11.0	
	11.0			11.0	

STA. W. 98+50-SOUTH (20)

DIST	Sound	Elev
(29)	11.0	
	11.2	
10+00	11.9	
	11.8	
1135	11.9	
-	11.8	
	11.9	
50	12.0	
	11.8	
	11.5	X
	11.9	0
	11.7	
11+00	11.5	
	11.1	
	11.0	
	11.0	
	11.0	
50	10.8	
	10.5	
	10.4	
80	10.5	

8-04-60

STA. W. 107+50, 50+00 = N. 15,700; SOUND SOUTH

Dist	Sound	Elev	Dist	Sound	Elev
0+00	12.3		(3.6)	12.4	
(3.6)	13.2		50	12.2	
	13.5			12.0	
1050	13.0			12.0	
	12.6			11.8	
50	12.5			11.4	
	11.9		3+00	11.5	
	12.0			11.5	
	12.1			12.0	
	12.2			11.5	
1+00	12.0	OK		12.0	OK
	12.5		50	11.9	
	12.0			12.0	
	12.1			12.3	
	12.1			13.0	
50	12.4			13.1	
	12.5		4+00	12.8	
	12.4			12.9	
	12.3			13.0	
	12.4			13.1	
2+00	12.5			12.7	
	12.4		50	12.4	
	12.7			13.0	
	12.4			13.5	

W. 107+50 - SOUTH

(21)

Dist	Sound	Elev	Dist	Sound	Elev
(35)	13.4		(35)	12.9	
	13.3			13.4	OK
5+00	13.5		50	13.1	
	13.2				
1055	13.1				
	12.7				
	12.6				
50	11.8				
	12.0				
	12.0				
	12.5				
	12.6				
6+00	12.6				
	12.8				
	12.7				
	12.4				
	12.1				
50	11.9				
	12.7				
	13.1				
	13.0				
	12.3				
7+00	12.2				
	12.4				
	12.3				

8-04-60

STA. W. 108+00; 0+00-N. 15,700; SOUND SOUTH

DIST	SOUND	ELEV	DIST	SOUND	ELEV
0+00			(38)	12.7	8.9
(38)	0.3	+3.5	50	12.2	8.4
	2.9	+0.9		13.0	9.2
10:30	7.0	3.2		12.8	9.0
	11.4	7.6		12.8	9.0
50	12.5	8.7		12.0	8.2
	12.8	9.0	3+00	12.0	8.2
	12.0	8.2		11.8	8.0
	12.3	8.5		11.6	7.8
	12.3	8.5		11.3	7.5
1+00	12.0	8.2		11.4	7.6
	12.0	8.2	50	11.5	7.7
	12.3	8.5		12.6	8.8
	12.4	8.6		12.8	9.0
	12.5	8.7		12.5	8.7
50	12.5	8.7		12.5	8.7
	12.0	8.2	4+00	12.5	8.7
	12.4	8.6		12.3	8.5
	12.7	8.9		13.0	9.2
	12.5	8.7		13.0	9.2
2+00	12.0	8.2		12.4	8.6
	12.2	8.4	50	12.7	8.9
	12.4	8.6		12.9	9.1
	12.6	8.8		12.9	9.1

STA. W. 108+00-SOUTH

(22)

DIST	SOUND	ELEV	DIST	SOUND	ELEV
(38)	13.0	9.2	(3.8)	12.8	9.0
	13.0	9.2		13.0	9.2
5+00	12.6	8.8	50	12.9	9.1
	12.2	8.4		13.0	9.2
10:35	12.0	8.2	10+00	12.4	8.6
	12.0	8.2		12.4	8.6
	11.8	8.0		12.0	8.2
50	11.7	7.9	8+00	11.7	7.9
	12.3	8.5		11.4	7.6
	13.0	9.2		12.3	8.5
	13.1	9.3		12.0	8.2
	13.0	9.2		12.5	8.7
6+00	13.0	9.2	50	12.9	9.1
	12.9	9.1			
	12.6	8.8			
	12.0	8.2			
	12.0	8.2			
50	13.0	9.2			
	12.8	9.0			
	12.4	8.6			
	11.2	7.4			
	11.7	7.9			
7+00	11.7	7.9			
	12.0	8.2			
	13.0	9.2			

8-04-60

STA. W. 108+50 - SOUTH

(23)

STA. W. 108+50; DIST=0+00; SOUND SOUTH

DIST SOUND Elev DIST SOUND Elev

DIST	SOUND	Elev	DIST	SOUND	Elev
0+00			(4)	12.1	
(4)			50	12.0	
				12.0	
				12.0	
				12.7	
50	2.6			12.9	
	6.0		3+00	13.0	
10/5	10.1			13.0	
	12.9			13.1	
	13.0			13.1	
1+00	12.9			13.0	
	12.9		50	12.9	
	12.4			12.7	
	12.4			12.8	
	12.3			12.8	
50	12.3			12.8	
	12.3		4+00	12.0	
	12.7			12.3	
	12.7			12.4	
	12.5			12.5	
2+00	12.5			12.5	
	12.1		50	12.7	
	12.0			13.0	
	12.0			13.1	

DIST	SOUND	Elev	DIST	SOUND	Elev
(4)	13.1		(4)	12.7	
	12.9			12.7	
5+00	12.6		50	12.5	
	12.5			12.3	
10/20	12.2			11.7	
	12.1			11.1	
	11.8			11.0	
50	12.2		8+00	10.9	6.9
	12.8			11.3	
	13.0			11.7	
	13.4			11.9	
	13.2			12.7	
6+00	13.1		50	12.5	
	13.2				
	13.0				
	13.1				
	12.9				
50	12.9				
	13.0				
	12.5				
	11.4				
	11.3				
7+00	11.6				
	11.9				
	12.3				

8-04-60

(29)

STA W. 109+00; 0+00=N 15.700, SOUND SOUTH

57A W. 109+00-SOUTH

DIST SOUND ELEV DIST SOUND ELEV

DIST SOUND ELEV DIST SOUND ELEV

0+00

(4.1) 12.8

(4.1) 14.0

(4.1) 12.8

(4.2)

50 12.7

5+00 14.1

50 12.7

12.4

14.0

12.7

4'
0'10:00

12.6

13.8

12.5

12.8

13.0

10/0 12.4

50

12.8

12.4

12.5

3+00 13.1

50 12.9

8+00 12.2

13.0

12.8

1.2

13.0

13.0

1.7

12.9

13.4

2.8

12.8

13.6

1+00 5.1

50 12.9

6+00 13.7

10.1

12.8

13.5

13.9

12.9

13.5

13.2

12.3

1005 12.8

13.4

12.6

12.9

13.0

50

12.7

4+00 12.5

50 13.2

12.2

12.4

13.4

12.1

13.1

13.5

12.2

13.4

13.0

2+00

12.3

13.3

12.3

12.2

50 13.2

7+00 12.2

12.3

13.5

12.5

12.5

13.9

12.6

8-04-60

STA. W. 109+50: 0+00=N. 15.700; SOUND SOUTH

Dist	Sound	Elev	Dist	Sound	Elev
0+00			(44)	12.7	
(44)			50	12.7	
	1.0			12.7	
<u>9:35</u>	1.0			12.8	
	1.0			12.8	
50	1.2			12.8	
	1.1		3+00	12.9	
	1.3			13.0	
	1.0			13.0	
	1.5			12.9	
1+00	3.1			12.9	
	6.8		50	13.0	
	11.4			13.0	
	13.3			13.0	
	13.0			13.0	
50	13.1			13.0	
	12.8		4+00	13.1	
	13.3			13.1	
	13.0			12.2	
	12.9			12.8	
2+00	12.5			13.0	
	12.5		50	13.0	
	12.5			13.0	
	12.5			13.0	

STA. W. 109+50-SOUTH

(25)

Dist	Sound	Elev	Dist	Sound	Elev
(44)	13.1		(44)	14.0	
	13.3			14.0	
5+00	13.7		50	14.0	
	14.0			14.2	
<u>9:40</u>	14.0			14.4	
	13.8		<u>9:45</u>	14.3	
	13.5			12.7	
50	13.2		8+00	12.6	
	13.1			12.6	
	13.0			12.5	
	13.2			12.8	
	13.7		<u>CONTO F.B. 131</u>		
6+00	13.9				
	14.0				
	13.8				
	14.0				
	14.0				
50	13.5				
	13.0				
	13.6				
	13.9				
	13.9				
7+00	14.2				
	14.2				
	14.2				

(Red)

8-16-60

STA. W. 110+00 - 0+00 = N. 15,700; SOUND SOUTH

Dist Sound Elev Dist Sound Elev

0+00 (36) 11.9 8.3

50 11.9 8.3

(36) 11.9 8.3

12.0 8.4

12.0 8.4

12.0 8.4

3+00 11.9 8.3

12.0 8.4

12.0 8.4

12.1 8.5

1+00 0.5 13.1

2.0 11.6 50 12.2 8.6

2:10 5.1 1.5 12.3 8.7

10.6 7.0 12.0 8.4

11.8 8.2 12.1 8.5

50 12.7 9.1 12.2 8.6

12.7 9.1 4+00 12.6 9.0

12.7 9.1 12.4 8.8

12.7 9.1 12.7 9.1

12.4 8.8 12.4 8.8

2+00 11.8 8.2 12.2 8.6

11.2 7.6 50 11.9 8.3

11.6 8.0 11.9 8.3

11.7 8.1 11.9 8.3

STA. W. 110+00 - SOUTH

(26)

Dist Sound Elev Dist Sound Elev

(36) 12.1 8.5 (36) 12.9 9.3

12.2 8.6 13.0 9.4

5+00 12.1 8.5 50 13.0 9.4

12.1 8.5 13.1 9.5

11.9 8.3 13.0 9.4

11.9 8.3 13.0 9.4

NOTE, 11.3 7.7 13.0 9.4

50 8.2 4.6 8+00 13.0 9.4

12.6 9.0 12.9 9.3

2:15 13.7 10.1 12.8 9.2

13.7 10.1 12.7 9.1

13.2 9.6 12.8 9.2

6+00 11.6 8.0 50 12.9 9.3

12.0 8.4 12.9 9.3

12.0 8.4 12.8 9.2

12.1 8.5 12.9 9.3

12.3 8.7 12.6 9.0

50 12.8 9.2 9+00 12.7 9.1

12.8 9.2 12.7 9.1

12.9 9.3 12.9 9.3

12.9 9.3 12.9 9.3

13.0 9.4 12.9 9.3

7+00 13.0 9.4 50 12.9 9.3

12.8 9.2 13.0 9.4

12.9 9.3 13.0 9.4

STA W-110400-SOUTH 8-16-60

DIST	SOUND	ELEV	DIST	SOUND	ELEV
(37)	13.0	9.3	(37)	13.0	9.3
	13.1	9.4	1	13.3	9.6
10+00	13.0	9.3	50	13.2	9.5
2:20	13.0	9.3		13.2	9.5
<u> </u>	13.2	9.5		13.3	9.6
	13.1	9.4		13.4	9.7
	13.1	9.4		13.4	9.7
50	13.1	9.4	13+00	13.5	9.8
	13.0	9.3		13.0	9.3
	12.9	9.2		13.0	9.3
	13.0	9.3		12.0	8.3
	12.9	9.2		11.9	8.2
11+00	12.3	8.6	50	12.0	8.3
	12.4	8.7		11.9	8.2
	12.2	8.5		11.9	8.2
	12.1	8.4		11.7	8.0
	12.0	8.3		11.7	8.0
50	11.6	7.9	14+00	11.6	7.9
	11.1	7.4		11.3	7.6
	11.6	7.9		11.1	7.4
	11.9	8.2		11.1	7.4
	12.9	9.2		11.2	7.5
12+00	12.9	9.2	50	11.4	7.7
	13.0	9.3	(Contd)	11.6	7.9
	13.1	9.4	P959	11.7	8.0
				11.9	8.2
				11.9	8.2
			15+00	11.9	8.2

8-16-60

(27)

STA W-110450-D+00=N.15.665 S SOUND SOUTH

DIST	SOUND	ELEV	DIST	SOUND	ELEV
D+00			(34)	12.3	
			50	12.1	
				12.1	
				12.1	
				12.4	
50				13.2	
			3+00	12.9	
				12.7	
				12.3	
				12.5	
			1+00	5.0	
				9.9	
				11.1	
				11.9	
				11.9	
			50	12.0	
				12.0	
				11.9	
				12.0	
			4+00	12.5	
				12.4	
				13.0	
				13.0	
			2+00	12.0	
				12.0	
				12.1	
				12.3	
				13.1	
			50	13.2	
				13.2	
				13.0	

STA. W. 110+50 - SOUTH 8-16-60

Dist	Sound	Elev	Dist	Sound	Elev
(35)	12.9		(35)	12.8	
	12.8			12.9	
5+00	12.9		50	12.6	
	13.1			12.2	
	13.2			12.2	
	13.2			12.3	
	11.7			12.5	
50	11.5		8+00	12.4	
	11.9			12.2	
	12.0			12.5	
	12.1			12.3	
	12.0	✓		12.4	
6+00	12.2	0	50	12.2	✓
	12.3			12.2	0
	12.4			12.6	
11:50	12.4			12.6	
≈	12.5			12.8	
50	12.2		9+00	12.4	
	12.0			12.3	
	12.5			12.4	
	12.5			12.1	
	12.5			12.3	
7+00	12.9		50	12.4	
	12.8			12.8	
	12.8			12.6	

STA. W. 110+50 - SOUTH (28)

Dist	Sound	Elev	Dist	Sound	Elev
(35)	12.7		(35)	13.0	
	12.5			13.0	
10+00	12.3		50	13.1	
	12.5			12.0	
	12.4			11.5	
	12.0			11.2	
	11.3			11.4	
50	11.0		13+00	11.8	
	11.2			11.9	
	11.2			12.0	
	11.0			12.1	
	11.0	✓		12.1	✓
11+00	11.1	0	50	12.2	0
	11.2			12.0	
	11.5			11.9	
11:55	11.9			11.8	
≈	12.3			11.9	
50	12.5		14+00	11.7	
	12.9			11.7	
	12.9			11.9	
	13.0			11.9	
	13.0			11.9	
12+00	13.1		50	12.0	
	13.1			12.1	
	13.0			12.0	

STA. W. 110+50 - SOUTH 8-16-60

DIST SOUND ELEV

(35)	11.9
	11.8
15+00	11.7
	12.0
	12.1
<u>2+00</u>	11.9
	11.9
50	11.8
	11.8
	12.0
	12.1
	12.4
16+00	12.4
	12.5
	12.5
	12.1
	11.4
50	11.5
	11.9
70	12.1

x
0

8-16-60

(29)

STA. W. 111+00; 0+00 - N. 15, 630; SOUND SOUTH

DIST SOUND ELEV DIST SOUND ELEV

0+00		(35)	11.7
(3)		50	11.5
			11.1
			11.2
			11.7
			11.7
50			11.6
	0.3	3+00	11.6
	1.5		12.0
<u>1+05</u>	4.8		12.0
	9.3		12.0
1+00	12.0		12.3
	12.0		12.3
	12.0	50	12.6
	11.8		12.6
	11.0	<u>1+10</u>	12.4
	11.0		12.1
50	11.0		11.8
	11.2		11.8
	11.3	4+00	11.6
	11.2		11.9
	11.4		12.0
	11.4		11.8
2+00	11.4		11.8
	11.4		11.8
	11.2	50	11.8
	11.2		12.0
			12.4

x
0

STA. W. 111400 - SOUTH 8-16-60

Dist	Sound	Elev	Dist	Sound	Elev
(32)	12.7		(32)	11.5	
	12.7			11.5	
5+00	12.3		50	11.5	
	11.9			11.5	
	12.5			11.5	
	12.0			11.5	
	12.0			11.5	
50	12.0		8+00	11.9	
	12.0			11.9	
	12.1			11.9	
	12.1			11.9	
	12.0			12.0	
6+00	12.0	0	50	12.0	0
	12.0			12.3	
	11.8			11.0	
	11.7			11.3	
	11.8			11.0	
50	11.9		9+00	11.1	
	12.0			11.6	
11.15	12.0			11.5	
=	11.5			11.5	
	11.5			11.5	
7+00	11.5		50	11.7	
	11.5			11.9	
	11.5			12.0	

STA. W. 111700 - SOUTH

(30)

Dist	Sound	Elev	Dist	Sound	Elev
(33)	12.0		(33)	10.6	
	12.0			10.6	
10+00	11.4		50	10.8	
	11.1			11.0	
11.20	11.5		11.25	11.0	
=	11.3		=	11.0	
	11.4			11.4	
50	11.4		13+00	11.4	
	11.3			11.4	
	11.8			11.4	
	11.5			11.2	
	11.9	0		11.0	0
11+00	11.9	0	50	11.0	0
	12.1			11.0	
	12.4			10.9	
	12.8			11.0	
	12.3			10.9	
50	12.7		14+00	10.9	
	12.7			11.0	
	12.9			11.0	
	12.4			11.0	
	12.7			11.0	
12+00	12.8		50	11.0	
	12.7			11.5	
	11.8			11.5	

STA. W. 111+00 - SOUTH 8-16-60

DIST Sound Elev

(33)	11.5
	11.5
15+00	11.6
	11.8
	12.0
	11.8
	11.8
50	11.8
	11.8
11.30	11.8
	11.9
	12.0
16+00	12.2
	12.0
	12.0
30	12.0

0.6

8-16-60

(31)

STA. W. 111+50; 0+00 = N. 15, 595; SOUND SOUTH

DIST Sound Elev DIST Sound Elev

0+00	(31)	12.0
	50	11.9
		12.0
11.00	0.2	12.0
	1.1	12.0
50	4.9	11.7
	9.0	11.9
	11.8	11.8
	12.8	11.8
	12.6	11.9
1+00	11.7	11.9
	12.8	12.0
	12.0	11.8
	12.1	12.0
	12.1	12.1
50	11.9	12.3
	12.2	12.0
	12.5	12.0
	12.5	12.1
	12.3	12.3
2+00	12.7	12.4
	12.7	50 12.3
	12.2	12.5
	12.0	12.6

3+00

4+00

0.6

STA. W. 111+50 - SOUTH 8-16-60

DIST Sound Elev DIST Sound Elev

(3)	11.8		(3)	11.5	
	12.0			11.8	
5+00	12.1		50	11.8	
	12.1			12.0	
<u>11.05</u>	12.1			11.8	
	12.0			11.9	
	12.0			12.0	
50	12.0		8+00	12.0	
	12.0			12.0	
	11.7			12.0	
	11.7			12.0	
	11.3			11.8	
6+00	11.0		50	11.7	
	11.1			11.7	
	11.3			11.7	
	11.7		<u>11.10</u>	11.7	
	11.7			11.5	
50	11.6		9+00	11.3	
	11.8			11.6	
	11.8			11.6	
	11.8			11.9	
	11.8			12.0	
7+00	11.8		50	12.0	
	11.3			12.0	
	11.2			11.3	

STA. W. 111+50 - SOUTH

DIST Sound Elev DIST Sound Elev

(3)	10.9		(3)	10.3	
	11.0			11.0	
10+00	11.1		50	11.0	
	11.2			10.9	
	11.2			10.8	
	11.2			11.0	
	11.7			10.8	
50	11.7		13+00	10.9	
	12.0			10.9	
	12.1			10.9	
	12.1			10.7	
	12.0			10.9	
11+00	12.5		50	10.8	
	12.4			11.0	
<u>11.15</u>	12.5			11.0	
	12.3			11.0	
	12.2			11.0	
50	12.2		10+00	11.0	
	12.2			11.0	
	12.2		<u>11.20</u>	11.1	
	12.2			11.1	
	12.1			11.1	
12+00	10.8		50	11.0	
	10.1			11.0	
	10.3			11.1	

STA. W. 111+50 - SOUTH 8-16-60

DIST	Sound	Elev	DIST	Sound	Elev
(3)	11.1				
	11.0				
15+00	11.0				
	11.0				
	11.0				
	11.0				
	11.1				
50	11.1				
	11.0				
	11.0				
	11.4				
	11.5				
16+00	11.5				

K.
0.

8-04-60

(33)

STA. W. 112+00 S. 0+00 - N15, 560, SOUND SOUTH					
DIST	Sound	Elev	DIST	Sound	Elev
0+00	0.6	+2.9	(35)	12.2	8.7
(35)	0.6	+2.9	50	12.1	8.6
11+05	2.3	+1.2		12.0	8.5
10+05	4.8	1.3		11.8	8.3
	7.9	4.4		11.9	8.4
50	12.3	8.8		12.0	8.5
	12.2	8.7	3+00	12.1	8.6
	12.6	9.1		11.9	8.4
	12.0	8.5		12.1	8.6
	12.2	8.7		12.4	8.9
1+00	12.0	8.5		12.4	8.9
	12.0	8.5	50	12.5	9.0
	11.9	8.4		12.9	9.4
	11.7	8.2		12.7	9.2
	11.9	8.4		12.8	9.3
50	12.2	8.7		12.9	9.4
	12.7	9.2	4+00	12.7	9.2
	12.9	9.4		12.6	9.1
	12.8	9.3		12.6	9.1
	12.5	9.0		12.9	9.4
2+00	12.5	9.0		12.9	9.4
	12.3	8.8	50	13.0	9.5
	12.0	8.5		13.1	9.6
	12.2	8.7		12.5	9.0

STA. W. 112+00 8-04-60

	Dist	Sound	Elev	Dist	Sound	Elev
(3A)	12.2	8.8	(3A)	12.4	9.0	
	12.4	9.0		12.6	9.2	
5+00	12.5	9.1	50	12.3	8.9	
	12.3	8.9		12.2	8.8	
11+10	12.1	8.7		12.4	9.0	
<u>—</u>	12.0	8.6		12.6	9.2	
	12.2	8.8		12.5	9.1	
50	12.0	8.6	8+00	12.4	9.0	
	12.0	8.6		12.3	8.9	
	12.1	8.7		12.0	8.6	
	12.0	8.6		11.9	8.5	
	11.9	8.5		12.1	8.7	
6+00	11.9	8.5	50	12.4	8.7	
	12.2	8.8		12.0	8.6	
	12.7	9.3		11.9	8.5	
	12.8	9.4		11.9	8.5	
	12.9	9.5		12.0	8.6	
50	12.6	9.2	9+00	12.1	8.7	
	12.4	9.0		11.9	8.5	
	12.5	9.1		12.1	8.7	
	12.7	9.3		12.1	8.7	
	12.6	9.2		11.9	8.5	
7+00	12.0	8.6	50	11.9	8.5	
	12.0	8.6		11.8	8.4	
	12.0	8.6		11.7	8.3	

STA. W. 112+00 - SOUTH (34)

	Dist	Sound	Elev	Dist	Sound	Elev
(33)	11.6	8.3	(3.3)	11.5	8.2	
	11.7	8.4		11.6	8.3	
10+00	11.7	8.4	50	11.6	8.3	
	11.8	8.5		11.5	8.2	
11+5	12.3	9.0		11.6	8.3	
<u>—</u>	12.3	9.0		11.2	7.9	
	12.0	8.7		11.5	8.2	
50	12.3	9.0	13+00	11.3	8.0	
	12.7	9.4		11.2	7.9	
	12.9	9.6		11.2	7.9	
	13.1	9.8		11.4	8.1	
	12.9	9.6		11.4	8.1	
11+00	13.0	9.7	50	11.6	8.3	
	12.9	9.6		11.7	8.4	
	12.8	9.5		11.7	8.4	
	12.7	9.4		11.8	8.5	
	12.7	9.4		11.8	8.5	
50	12.8	9.5	14+00	11.8	8.5	
	12.6	9.3		11.7	8.4	
	11.9	8.6		11.9	8.6	
	10.7	7.4	11+20	11.8	8.5	
	10.9	7.6	<u>—</u>	11.2	7.9	
12+00	10.9	7.6	50	11.3	8.0	
	11.2	7.9		11.4	8.1	
	11.8	8.5		11.4	8.1	

STA. W. 112+00-SOUTH 8-04-60

Dist Sound Elev

33	11.3	8.0
	11.3	8.0
15+00	11.2	7.9
	11.7	8.4
	11.0	7.7
	11.0	7.7
	11.0	7.7
50	11.1	7.8
60	11.1	7.8

STA. W. 112+50, 0+00-N. 15, 525; SOUND SOUTH

Dist Sound Elev Dist Sound Elev

2+00			(24)	10.9	
(24)	0.2		50	10.4	
	2.1			10.3	
11.25	4.6			10.9	
<u>8.4</u>				11.0	
50	11.0			11.5	
	11.0		3+00	11.7	
	10.6			11.7	
	10.5			11.7	
	10.3			11.7	
1+00	10.8			11.4	
	10.9		50	11.5	
	11.6			11.5	
	11.4			11.5	
	12.0			11.2	
50	11.8			11.5	
	11.8		4+00	11.3	
	11.5			11.0	
	11.6			10.8	
	11.1			10.0	
2+00	11.3			13.3	
	11.3		50	13.0	
	11.1			12.0	
	11.0			12.0	

OK

STA. W. 112+50 - SOUTH 8-04-60

Dist Sound Elev Dist Sound Elev

(24)	12.0	(24)	12.0
	11.8		11.8
5+00	11.2	50	11.8
	11.2		11.7
	11.5		11.6
	11.5		11.6
	11.5		11.9
50	11.8	8+00	11.8
	11.8		11.9
	12.0		12.0
	12.0		12.2
	12.0		12.2
6+00	12.0	50	12.1
	12.0		12.2
	11.7		12.2
<u>11:30</u>	11.7		12.4
	11.5		12.5
50	11.5	9+00	12.1
	11.3		12.0
	11.5		10.4
	11.9		10.7
	12.0		10.5
7+00	12.0	50	11.0
	12.0		10.8
	12.0		11.1

STA. W. 112+50 - SOUTH

Dist Sound Elev Dist Sound Elev

(24)	11.0	(24)	10.0
	11.1		10.0
10+00	11.6	50	10.1
	10.8		10.1
	11.8		10.2
	12.0		10.1
	11.4		10.1
50	11.6	13+00	10.0
	11.6		10.0
<u>11:35</u>	12.0		10.3
	12.3		10.0
	12.3		10.5
11+00	12.3	50	10.3
	12.4		10.6
	13.0	11:40	10.6
	12.2		11.0
	12.2		10.7
50	12.3	14+00	10.0
	11.7		9.8
	12.0		9.8
	12.0		10.2
	10.0		10.3
12+00	10.0	50	10.3
	10.0		10.8
	10.2		10.8

(36)

STA. W. 112+50 - SOUTH 8-04-60

Dist Sound Elev Dist Sound Elev

(2A)	10.2	}
	10.2	
15+00	10.4	
	10.5	
	10.7	
	10.2	
	10.3	
50	10.2	

STA. W. 113+00; 0+00 = N. 15, 490; SOUND SOUTH

Dist Sound Elev Dist Sound Elev

0+00		(25)	11.6	}
(25)	0.3	50	11.6	
	1.8		11.5	
1155	5.4		11.7	
	10.1		12.2	
50	11.0		11.8	
	11.0	3+00	11.3	
	10.9		11.2	
	11.1		11.2	
	11.0		11.3	
1+00	11.4		11.4	}
	11.3	50	11.2	
	11.8		12.1	
	11.8		13.4	
	11.0		13.4	
50	11.3		13.2	
	11.2	4+00	13.0	
	11.3		12.4	
	11.0		12.0	
	11.1		11.2	
2+00	11.1		11.0	
	11.1	50	11.0	
	11.4		11.0	
	11.5		10.9	

STA. W. 113+00 - SOUTH 8-04-60

Dist	Sound	Elev	Dist	Sound	Elev
(25)	10.8		(25)	11.6	
	10.9			11.7	
5+00	11.0		50	11.8	
	11.2			11.9	
	11.7			12.0	
	11.9			12.3	
	12.0			12.2	
50	12.1		8+00	12.2	
	12.2			12.2	
2:00	12.2			12.2	
	11.9			12.4	
	11.7			12.4	
6+00	11.5		50	12.5	
	11.4			12.4	
	11.9			10.6	
	12.2			11.1	
	12.1			10.8	
50	12.0		9+00	10.9	
	12.2			10.9	
	12.3			10.8	
	12.2			10.9	
	12.0			10.7	
7+00	11.9		50	10.8	
	11.7			10.8	
	11.4			11.2	

STA. W. 113+00 - SOUTH

(38)

Dist	Sound	Elev	Dist	Sound	Elev
(25)	11.5		(25)	11.1	
	11.2			11.0	
10+00	11.4		50	11.2	
	11.7			11.1	
205	11.9			11.0	
	12.0			11.2	
	12.7			11.2	
50	12.4		13+00	11.0	
	12.5			11.0	
	12.7			11.0	
	12.5			10.9	
	12.4			11.1	
11+00	12.2		50	11.0	
	12.4			11.0	
	12.3			11.1	
	12.2			10.9	
	10.2			10.5	
50	10.2		14+00	10.2	
	10.5			10.4	
	10.5			10.4	
	10.4			10.5	
	10.4			10.6	
12+00	10.6		50	11.1	
	10.7			10.9	
	10.9			10.9	
				10.9	
				10.9	
			15+00	10.9	

8-04-60

STA W. 113+50, 0+00 = N. 15.455, SOUND SOUTH

DIST	SOUND	ELEV	DIST	SOUND	ELEV
0+00	0.7		(26)	11.8	
(26)	2.8		50	11.6	
	6.9			11.4	
2:20	11.5			11.2	
	11.6			11.0	
50	11.2			11.2	
	10.8		3+00	12.7	
	11.1			12.9	
	11.0			12.8	
	11.3			12.8	
1+00	11.3			12.0	
	11.3		50	11.2	
	11.6			11.2	
	11.8			11.0	
	11.3			11.4	
50	11.8			11.1	
	11.8		4+00	11.0	
	11.7			10.9	
	11.4			10.8	
	11.2			10.9	
2+00	11.1			10.7	
	11.2		50	11.0	
	11.3			11.1	
	11.9			11.0	

STA W. 113+50 - SOUTH

DIST SOUND ELEV DIST SOUND ELEV

DIST	SOUND	ELEV	DIST	SOUND	ELEV
(27)	11.2		(27)	11.9	
	11.3			11.9	
5+00	11.3		50	11.9	
	11.3			12.0	
	11.6			12.0	
	11.8			12.0	
	11.8			12.0	
50	11.7		8+00	11.9	
	11.4			12.0	
	11.2			12.1	
2:25	11.3			10.5	
	11.5			12.0	
6+00	11.6		50	11.5	
	11.9			11.4	
	11.9			11.5	
	11.9			11.6	
	11.9			11.6	
50	11.7		9+00	11.6	
	11.4			11.4	
	11.2			11.0	
	11.1			11.2	
	11.2			11.7	
7+00	11.4		50	11.9	
	11.6			11.7	
	11.7			11.8	

(39)

STA W. 113+50 - SOUTH 8-04-60

Dist	Sound	Elev	Dist	Sound	Elev
(27)	11.8		(27)	10.8	
	12.0			10.8	
10+00	11.9		50	10.9	
	12.0			10.9	
	11.9			10.9	
	12.6			10.8	
	12.6			11.0	
50	12.1		13+00	11.1	
	12.1			11.0	
<u>2:30</u>	12.0			11.2	
	12.1			11.4	
	12.1			10.9	
11+00	11.4		50	10.5	
	11.1			10.6	
	11.0			10.6	
	11.0			10.7	
	11.0			10.9	
50	10.9		14+00	10.9	
	10.9			10.8	
	10.9			10.9	
	10.9			10.8	
	11.0			10.9	
12+00	11.0		50	10.9	
	11.8		60	10.8	
	11.0				

(40)

STA. W. 114+00.0+00 = N. 15.420; SOUND SOUTH

Dist	Sound	Elev	Dist	Sound	Elev
0+00	1.7	+1.2	(29)	12.5	9.6
(29)	4.7	1.8	50	12.5	9.6
	8.2	5.3	2.45	11.9	9.0
2.42	11.3	8.4		12.3	9.4
	12.1	9.2		12.3	9.4
50	11.8	8.9		12.3	9.4
	13.1	10.2	3+00	11.7	8.8
	13.0	10.1		11.2	8.3
	12.5	9.6		11.1	8.2
	12.0	9.1		11.4	8.5
1+00	12.7	9.8		11.4	8.5
	12.2	9.3	50	11.6	8.7
	11.7	8.8		11.7	8.8
	12.4	9.5		11.7	8.8
	11.7	8.8		11.2	8.3
50	12.3	9.4		11.1	8.2
	11.7	8.8	4+00	11.4	8.5
	11.5	8.6		11.4	8.5
	11.5	8.6		11.4	8.5
	11.8	8.9		11.4	8.5
2+00	11.2	8.3		11.4	8.5
	11.3	8.4	50	11.7	8.8
	12.0	9.1		11.9	9.0
	12.4	9.5		11.5	8.6

STA. W. 114+00 - SOUTH 8-04-60

Dist	Sound	Elev	Dist	Sound	Elev
(29)	11.2	8.3	(29)	12.0	9.1
	11.2	8.3		12.0	9.1
5+00	11.2	8.3	50	12.0	9.1
	11.1	8.2		12.0	9.1
2+50	11.1	8.2		12.0	9.1
~	11.1	8.2		12.3	9.4
	11.2	8.3		12.1	9.2
50	11.0	8.1	8+00	11.3	8.4
	10.9	8.0		11.8	8.9
	11.1	8.2		11.8	8.9
	11.7	8.8		12.0	9.1
	11.8	8.9		12.0	9.1
6+00	12.2	9.3	50	12.0	9.1
	11.5	8.6		12.0	9.1
	11.6	8.7		12.0	9.1
	11.3	8.4		12.0	9.1
	11.2	8.3		12.0	9.1
50	11.7	8.8	9+00	12.0	9.1
	12.0	9.1		12.2	9.3
	12.0	9.1		12.2	9.3
	11.6	8.7		12.3	9.4
	12.0	9.1		12.2	9.3
7+00	12.0	9.1	50	12.3	9.4
	12.0	9.1		12.5	9.6
	12.0	9.1		12.5	9.6

STA. W. 114+00 - SOUTH

(41)

Dist	Sound	Elev	Dist	Sound	Elev
(30)	12.3	9.3	(3.1)	10.7	7.6
	12.7	9.7		10.8	7.7
10+00	13.2	10.2	50	11.1	8.0
	12.7	9.7		11.0	7.9
2+55	13.0	10.0		11.2	8.1
~	13.1	10.1		11.2	8.1
	12.4	9.4		11.2	8.1
50	12.9	9.9	13+00	11.5	8.4
	12.9	9.9		10.5	7.4
	11.6	8.6		11.0	7.9
	11.0	8.0	3+00	10.9	7.8
	11.0	8.0	~	11.0	7.9
11+00	11.0	8.0	50	11.1	8.0
	10.8	7.8		11.3	8.2
	10.9	7.9		11.3	8.2
	11.0	8.0		11.2	8.1
	10.8	7.8		10.7	7.6
50	10.8	7.8	14+00	10.6	7.5
	11.0	8.0		10.8	7.7
	11.0	8.0	20	11.0	7.9
	11.0	8.0			
12+00	11.0	8.0			
	11.0	8.0			
	10.7	7.7			

8-05-60

STA. W. 114+50, DIST. = N. 15,385. SOUND SOUTH

DIST	SOUND	ELEV	DIST	SOUND	ELEV
0+00	2.7	+1.6	(43)	12.9	
(43)	5.0	0.7	50	13.1	
	8.6			13.1	
10:50	13.0			13.1	
	14.1			12.9	
50	14.9			12.9	
	14.6		3+00	13.0	
	14.3			13.2	
	14.7			13.1	
	14.5			12.9	
1+00	14.0			13.0	↓
	14.2		50	12.8	0
	13.5	↓		12.8	
	13.6	0		12.4	
	13.0			12.5	
50	13.0			12.5	
	12.8		4+00	12.3	
	12.7			12.8	
	12.4			12.8	
	12.4			12.3	
2+00	12.5			12.5	
	13.3		50	12.5	
	13.0			12.2	
	12.9			12.1	

STA. W. 114+50 - SOUTH.

(42)

DIST	SOUND	ELEV	DIST	SOUND	ELEV
(42)	12.1		(41)	12.9	
	12.0			13.0	
5+00	13.9		50	13.0	
	13.4			13.0	
10:55	13.2			12.8	
	13.2			11.7	
	12.6			12.2	
50	11.5		8+00	12.2	
	11.6			12.0	
	11.9			12.4	
	12.0			12.4	
	12.0			12.2	
6+00	11.8	↓	50	12.2	↓
	12.0	0		12.3	0
	12.0		11:00	12.9	
	12.2			12.9	
	12.5			13.1	
50	12.5		9+00	13.0	
	12.5			13.0	
	12.7			13.1	
	12.7			13.4	
	13.0			13.7	
7+00	13.3		50	13.7	
	13.8			13.9	
	13.0			13.3	

STA. W. 114+50 - SOUTH 8-05-60

Dist	Sound	Elev	Dist	Sound	Elev
(4.1)	13.7		(4.1)	12.5	
	13.9			12.3	
10+00	14.0		50	12.1	
	13.8			12.0	
	13.7			12.0	
	13.5			11.9	
	13.3			12.0	
50	12.0		13+00	12.2	
	11.9			12.0	
	12.0		11+05	12.0	
	12.0			12.0	
	12.2			11.8	
11+00	12.0		50	11.8	
	12.0			11.8	
	11.5			12.0	
	11.7			12.2	
	11.9			12.5	
50	12.0		14+00	12.7	
	12.3				
	12.4				
	12.0				
	11.8				
12+00	11.8				
	12.0				
	12.4				

STA. W. 115+00, 0+00 = N. 15, 350; SOUND SOUTH

Dist	Sound	Elev	Dist	Sound	Elev
0+00	2.3		(4.0)	12.7	
(4.0)	3.7		50	12.9	
	8.0			12.4	
11+15	13.0			12.4	
	14.2			12.1	
50	14.0			12.2	
	14.0		3+00	12.3	
	13.8			12.0	
	13.8			12.1	
	13.7			12.2	
1+00	13.5			12.3	
	12.9		50	11.9	
	12.8			11.9	
	12.8			11.5	
	12.8			13.4	
50	12.9			13.6	
	12.5		4+00	15.5	
	12.4			15.5	
	12.0			15.2	
	12.4			15.2	
2+00	12.9			14.4	
	12.9		50	14.0	
	12.5			15.0	
	12.7			15.0	

STA. W. 115+00 - SOUTH 8-05-60

Dist Sound Elev Dist Sound Elev

(39)	13.9	}	(39)	13.4	}
	13.4			13.2	
5+00	13.0		50	13.0	
	12.8			13.0	
	12.1		11:20	12.9	
	12.2		<u> </u>	12.4	
	12.2			12.8	
50	12.4		8+00	12.9	
	12.9			13.1	
	12.8			13.5	
	12.7		13.4		
	12.9		13.9		
6+00	12.5	}	50	13.5	}
	12.9			13.1	
	12.9			13.1	
	13.0			13.0	
	13.0			13.0	
50	13.0		9+00	13.8	
	13.5			13.0	
	13.5			13.0	
	13.6			13.0	
	13.7			13.2	
7+00	13.7	}	50	13.4	}
	13.9			13.4	
	13.2			13.5	

STA. W. 115+00 - SOUTH

Dist Sound Elev Dist Sound Elev

(38)	13.7	}	(38)	13.0	}
	13.0			13.0	
10+00	12.9		50	12.8	
	12.2			12.5	
	13.1			12.7	
	12.9			12.3	
	12.5			12.3	
50	12.0		13+00	12.4	
	12.0			12.6	
	11.9			12.3	
	11.8		12.2		
	11.8		12.4		
11+00	11.9	}	50	12.5	}
	11.9				
	12.0				
11:25	11.9				
<u> </u>	12.0				
50	12.1				
11:30	11.9				
<u> </u>	12.1				
	12.5				
	12.4				
12+00	12.8				
	12.5				
	12.9				

(44)

8-04-60

STA. W. 115+50; 0+00 = N. 15.315; SOUND SOUTH

Dist	Sound	Elev	Dist	Sound	Elev
0+00	0.9		(26)	10.8	
(26)	0.8		50	10.9	
	2.0			10.4	
1+10	5.7			10.0	
≈	10.2			10.0	
50	11.2			11.0	
	11.9		3+00	12.2	
	12.0			14.3	
	11.8			14.3	
	11.0			12.1	
1+00	10.9			11.7	
	10.9		50	11.2	
	10.9			11.8	
	11.0			11.9	
	11.1			11.8	
50	11.0			11.8	
	11.0		4+00	11.9	
	10.9			11.2	
	10.6			10.9	
	10.7			9.9	
2+00	10.7			10.0	
	10.7		50	10.0	
	10.9			9.9	
	10.8			10.9	

W. 115+50 - SOUTH

Dist	Sound	Elev	Dist	Sound	Elev
(25)	10.9		(25)	11.8	
	11.6			11.5	
5+00	13.3		50	11.8	
	13.4			11.6	
	13.3			11.9	
1115	12.9			11.3	
≈	12.7			11.9	
50	12.2		8+00	11.9	
	11.8			12.1	
	11.9			11.8	
	12.1			11.9	
	11.9			11.8	
6+00	11.9		50	11.9	
	11.9			12.0	
	12.2			12.0	
	12.4			11.9	
	12.9			12.0	
50	12.3		9+00	11.9	
	12.9			12.1	
	12.2			12.4	
	12.2			12.4	
	12.0			12.5	
7+00	11.7		50	11.2	
	11.8			10.8	
	11.9			11.0	

STA. W. 115+50 - SOUTH 8-04-60

Dist	Sound	Elev	Dist	Sound	Elev
(25)	10.9		(25)	10.8	
	11.0			10.9	
10+00	10.9		50	10.9	
	10.6			11.0	
	11.0		1:20	10.9	
	10.9		≈	10.9	4'
	10.7			11.0	0'
50	10.8		13+00	11.1	
	10.8		"	11.0	
	10.7			11.1	
	10.8			10.9	
	10.6			10.9	
11+00	10.6		50	10.9	
	10.4				
	10.2				
	10.2				
	10.9				
50	10.9				
	11.0				
	11.0				
	11.1				
	11.3				
12+00	11.2				
	11.0				
	10.9				

(46)

STA. W. 116+00 S. D. 100 = N. 15, 280 S. SOUND SOUTH

Dist	Sound	Elev	Dist	Sound	Elev
0+00	0.2	+2.1	(23)	13.8	11.5
(23)	0.2	+2.1	50	14.2	11.9
	0.3	+2.0		12.6	10.3
1:35	0.8	+1.5	1:40	11.1	8.8
≈	2.7	0.4	≈	11.1	8.8
50	7.3	5.0		10.7	8.4
	11.0	8.7	3+00	10.8	8.5
	12.0	9.7		10.9	8.6
	11.6	9.3		11.0	8.7
	11.0	8.7		10.8	8.5
1+00	10.8	8.5		10.5	8.2
	10.8	8.5	50	10.0	7.7
	11.0	8.7		9.8	7.5
	11.0	8.7		9.8	7.5
	10.8	8.5		10.1	7.8
50	10.8	8.5		10.0	7.7
	10.6	8.3	4+00	10.2	7.9
	10.2	7.9		10.5	8.2
	11.0	8.7		10.7	8.4
	11.3	9.0		10.4	8.1
2+00	11.3	9.0		10.4	8.1
	9.9	7.6	50	10.6	8.3
	9.7	7.4		10.0	7.7
	11.2	8.9		9.7	7.4

STA. W. 116+00 - SOUTH 8-04-60

Dist	Sound	Elev	Dist	Sound	Elev
(22)	9.2	7.0	(22)	12.5	10.3
	9.2	7.0		12.7	10.5
5+00	9.8	7.6	50	12.4	10.2
	9.9	7.7		12.3	10.1
	10.0	7.8		12.3	10.1
	10.2	8.0		12.4	10.2
	10.2	8.0		12.5	10.3
50	10.0	7.8	8+00	12.3	10.1
	10.2	8.0		12.5	10.3
	10.5	8.3		12.1	9.9
	11.6	9.4		12.4	10.2
	11.4	9.2		12.4	10.2
6+00	12.1	9.9	50	12.0	9.8
	12.4	10.2		12.2	10.0
<u>11.45</u>	13.3	11.1		12.6	10.4
	13.6	11.4		12.9	10.7
	13.7	11.5		12.3	10.1
50	13.9	11.7	9+00	12.3	10.1
	13.3	11.1		12.5	10.3
	13.1	10.9		11.2	9.0
	12.9	10.7		10.4	8.2
	12.4	10.2		10.4	8.2
7+00	12.5	10.3	50	11.0	8.8
	13.0	10.8		9.6	7.4
	12.9	10.7		9.4	7.2

STA. W. 116+00 - SOUTH

(47)

Dist	Sound	Elev	Dist	Sound	Elev
(22)	10.1	7.9	(22)	10.5	8.3
	10.1	7.9		10.3	8.1
10+00	9.9	7.7	50	10.8	8.6
	10.1	7.9		10.8	8.6
<u>11.50</u>	10.2	8.0		10.5	8.3
	10.2	8.0		10.2	8.0
	10.2	8.0		10.2	8.0
50	10.4	8.2	13+00	10.1	7.9
	10.4	8.2			
	10.4	8.2			
	10.5	8.3			
	10.0	7.8			
11+00	10.0	7.8			
	10.0	7.8			
	10.0	7.8			
	10.4	8.2			
	10.4	8.2			
50	10.5	8.3			
	10.6	8.4			
	10.5	8.3			
	10.5	8.3			
	10.8	8.6			
12+00	10.8	8.6			
	10.8	8.6			
	10.8	8.6			

8-05-60

57A.W.116+50; 0+00=N15,24S, SOUND SOUTH

Dist	Sound	Elev	Dist	Sound	Elev
0+00	0.2		(21)	11.0	
(21)	0.4		50	11.0	
	0.5		2415	11.1	
2:10	0.6			11.0	
	0.4			11.0	
50	1.1			10.3	
	3.0		3+00	10.0	
	8.0			10.0	
	11.0			10.0	
	11.5			10.2	
1+00	11.7			10.4	
	11.3		50	10.8	
	11.3			10.8	
	11.5			10.9	
	11.3			10.9	
50	10.8			10.9	
	10.7		4+00	10.4	
	10.1			10.0	
	9.4			10.0	
	10.7			10.1	
2+00	11.1			10.8	
	11.8		50	10.9	
	11.6			11.0	
	11.0			11.1	

57A.W.116+50-SOUTH

(48)

Dist	Sound	Elev	Dist	Sound	Elev
(21)	11.0		(21)	10.2	
	11.0			10.2	
5+00	10.9		50	10.2	
	11.0			10.9	
	11.0			10.9	
	11.1			11.0	
	11.0			10.4	
50	11.0		8+00	10.3	
2:20	11.0			10.1	
	10.9			10.1	
	10.8			10.4	
	10.9			11.9	
6+00	10.9		50	11.0	
	10.7			13.0	
	10.5			12.8	
	10.4			12.9	
	10.3			12.5	
50	10.2		9+00	10.5	
	10.3			11.0	
	10.3			10.9	
	10.4			10.8	
	10.3			10.0	
7+00	10.4		50	9.9	
	10.1			9.8	
	10.0			10.0	

STA. W. 116+50 - SOUTH 8-05-60

Dist Sound Elev Dist Sound Elev

Dist	Sound	Elev	Dist	Sound	Elev
(2)	10.5		(2)	10.5	
	10.0			10.5	
10+00	9.9		50	10.6	
	10.0				
2:25	10.2				
	10.3				
	10.2				
50	10.1				
	10.3				
	10.4				
	10.2				
	10.5				
11+00	10.6				
	10.7				
	10.7				
	10.5				
	11.0				
50	10.7				
	10.5				
	10.5				
	10.8				
	10.9				
12+00	10.8				
	10.4				
	10.5				

8-05-60

(19)

STA. W. 117+00; 0+00 = N. 15, 210; SOUND SOUTH

Dist Sound Elev Dist Sound Elev

Dist	Sound	Elev	Dist	Sound	Elev
10+00	0.3		(2)	11.0	
(2)	0.3		50	10.6	
	0.4			10.2	
2:45	0.5			10.0	
	0.7			10.0	
50	0.7			10.6	
	0.5		3+00	11.0	
	1.0			11.1	
	1.0			11.0	
	1.5			10.9	
1+00	6.0			10.8	
	8.9		50	10.6	
	10.9			10.1	
	11.8			10.0	
	11.4			10.1	
50	11.2			10.4	
	10.7		4+00	10.9	
	11.0			10.9	
	11.1			11.0	
	11.0			11.1	
2+00	11.2			11.2	
	11.2		50	11.3	
	11.1			11.5	
	11.1			11.5	

STA. W. 117+00 - SOUTH 8-05-60

Dist	Sound	Elev	Dist	Sound	Elev
(2)	11.3		(2)	10.8	
	11.2			11.0	
5+00	11.4		50	10.9	
	11.3			10.9	
2:50	11.1			10.9	
	11.2			10.8	
	11.0			10.6	
50	11.1		8+00	10.6	
	11.2			10.8	
	11.0			11.1	
	10.9			11.2	
	10.8			11.1	
6+00	10.9	0'	50	10.9	0'
	10.7	0'		10.8	
	10.5			10.1	
	10.7			11.8	
	10.8			11.5	
50	10.7		9+00	11.4	
	10.1			11.4	
	10.7			11.3	
	10.9			11.2	
	10.9			11.1	
7+00	11.1		50	11.0	
	11.0			10.2	
	10.9			10.4	

STA. W. 117+00 - SOUTH (50)

Dist	Sound	Elev	Dist	Sound	Elev
(2)	10.0			10.8	
	9.8			10.9	
10+00	9.9		50	10.7	
	9.8			10.8	
2:55	9.8				
	9.7				
	9.6				
50	9.6				
	9.5				
	9.5				
	10.0				
	10.1				
11+00	9.9				
	9.9				
	10.2				
	10.4				
	10.2				
50	10.1				
	10.1				
	10.1				
	10.2				
	10.1				
12+00	10.4				
	10.8				
	10.7				

8-15-60

STA. W. 117+50.0+00-N. 15, 175 SOUND SOUTH

Dist	Sound	Elev	Dist	Sound	Elev
0+00	3.0		(41)	12.2	
(41)	3.0		50	12.5	
	3.0			12.7	
<u>2:05</u>	3.0			13.0	
	3.2			13.0	
50	2.9			12.8	
	3.3		3+00	12.8	
	3.3			12.3	
	3.1			12.1	
	3.3			12.0	
1+00	3.5			12.2	f
	3.5		50	12.6	0
	3.7			13.0	
	5.0			13.0	
	7.8			13.0	
50	11.2			13.0	
	13.2		4+00	13.2	
	14.0			13.3	
	13.9			13.5	
	13.2			13.5	
2+00	13.1			13.4	
	13.0		50	13.4	
	12.4			13.6	
	12.4			13.6	

STA. W. 117+50- SOUTH

(51)

Dist	Sound	Elev	Dist	Sound	Elev
(41)	13.6		(41)	12.8	
	13.4			12.7	
5+00	13.0		50	13.1	
<u>2:10</u>	13.0			13.0	
	12.9			13.2	
	13.0		<u>2:15</u>	13.2	
	13.0			13.1	
50	13.0		8+00	13.0	
	13.0			13.1	
	12.8			14.0	
	12.8			13.8	
	13.0			13.8	
6+00	13.5		50	13.7	
	13.4			13.6	
	13.4			13.6	
	13.4			13.6	
	13.1			13.6	
50	13.0		9+00	13.4	
	13.0			13.1	
	13.4			13.1	
	13.1			13.1	
	13.0			13.0	
7+00	12.8		50	12.8	
	13.0			12.8	
	13.0			13.0	

STA. W. 117+50-SOUTH 8-15-60

Dist Sound Elev Dist Sound Elev

(41)	13.4
	13.0
10+00	11.8
	11.4
	11.4
	11.6
	11.6
50	11.7
	12.0
	12.1
2120	12.5
	12.9
11+00	12.6
	12.6
	12.9
	13.1
	13.0
50	13.0
	12.8
	12.9
	12.6
	12.6
12+00	12.6

0.5

STA. W. 118+00.0+00=N. 15, 140'S SOUND SOUTH

Dist Sound Elev Dist Sound Elev

0+00	3.3	+1.0	(43)	13.1	8.8
(43)	3.2	+1.1	50	13.2	8.9
	3.2	+1.1		13.1	8.8
2130	3.4	+0.9		13.0	8.7
	3.5	+0.8		13.0	8.7
50	3.6	+0.7		12.6	8.3
	3.6	+0.7	3+00	12.6	8.3
	3.6	+0.7		12.2	7.9
	3.9	+0.4		12.9	8.6
	3.8	+0.5		13.1	8.8
1+00	3.7	+0.6		13.2	8.9
	3.7	+0.6	50	13.2	8.9
	3.8	+0.5		13.6	9.3
	3.8	+0.5		13.8	9.5
	3.9	+0.4		13.9	9.6
50	3.9	+0.4		13.8	9.5
	3.9	+0.4	4+00	13.8	9.5
	5.0	0.7		13.9	9.6
	5.9	1.6		13.9	9.6
	6.0	1.7		13.9	9.6
2+00	10.0	5.7		14.0	9.7
	9.6	5.3	50	13.9	9.6
	11.6	7.3		13.4	9.1
	13.0	8.7		13.2	8.9

STA. W. 118+00 - SOUTH 8-15-60

	Dist	Sound	Elev	Dist	Sound	Elev
	(4.3)	13.1	8.8	(4.3)	13.2	8.9
		13.1	8.8		13.5	9.2
5+00		13.0	8.7	50	13.7	9.4
		13.0	8.7		13.4	9.1
		13.0	8.7		13.8	9.5
		13.1	8.8		14.0	9.7
		12.9	8.6		14.0	9.7
50		13.0	8.7	8+00	13.9	9.6
		13.1	8.8		13.9	9.6
		13.3	9.0		13.9	9.6
		13.4	9.1		13.9	9.6
		13.6	9.3		13.7	9.4
6+00		13.6	9.3	50	13.6	9.3
		13.7	9.4		13.6	9.3
2:35		13.7	9.4		13.7	9.4
<u> </u>		13.6	9.3		13.6	9.3
		13.5	9.2		13.3	9.0
50		13.5	9.2	9+00	13.5	9.2
		13.0	8.7		13.6	9.3
		13.1	8.8		13.6	9.3
		13.0	8.7		13.6	9.3
		13.0	8.7		13.6	9.3
7+00		12.9	8.6	50	12.9	8.6
		12.9	8.6		11.9	7.6
		13.2	8.9		12.0	7.7

STA. W. 118+00 - SOUTH (53)

	Dist	Sound	Elev
	(4.3)	12.0	7.7
		12.0	7.7
10+00		12.0	7.7
		12.0	7.7
		12.2	7.9
2:40		12.5	8.2
<u> </u>		12.5	8.2
50		12.7	8.4
		12.8	8.5
		12.7	8.4
		12.7	8.4
		12.6	8.3
11+00		12.8	8.5
		12.8	8.5
		12.8	8.5
		12.9	8.6
		12.9	8.6
50		12.9	8.6

8-15-60

STA. W. 118+50 - 0+00 = N 15, 10 S, SOUND SOUTH

Dist	Sound	Elev	Dist	Sound	Elev
0+00	3.8		(4.5)	5.1	
(4.5)	3.9		50	5.0	
	3.8			9.0	
2:55	3.7			10.0	
	3.8			11.2	
50	4.0			12.3	
	4.0		3+00	12.9	
	3.9			13.3	
	4.0			13.9	
	4.0			14.0	
1+00	4.0			14.2	
	4.3		50	14.2	
	4.1			14.3	
	4.0			14.5	
	4.0			14.5	
50	4.5			14.5	
	4.0		4+00	14.4	
	4.3			14.5	
	4.2			14.5	
	4.3			14.3	
2+00	4.2			14.0	
	4.5		50	14.0	
	4.5			14.0	
	4.8			13.8	

OK

STA. W. 118+50 - SOUTH

(54)

Dist	Sound	Elev	Dist	Sound	Elev
(4.5)	13.7		(4.5)	14.4	
	13.5			14.7	
5+00	13.4		50	14.8	
	13.7			14.9	
3:00	13.8			14.9	
	13.8			15.0	
	14.0			15.0	
50	14.0		8+00	14.9	
	14.1			14.2	
	14.2			14.0	
	14.2			14.1	
	14.2			14.0	
6+00	14.2	0	50	14.0	
	14.0			14.0	
	14.0			14.0	
	14.2			14.1	
	14.3			14.3	
50	14.1		9+00	14.3	
	14.2			14.0	
	14.2			13.5	
	14.3			13.3	
	14.3			13.2	
7+00	14.3		50	13.2	
	14.1			13.0	
	14.3			13.0	

STA. W. 118+50 - SOUTH 8-15-60

DIST SOUND ELEV

(45)	13.1
	13.2
10+00	13.3
	13.2
3+05	13.2
<u> </u>	13.1
	13.1
50	13.1
	13.1
	13.3
	13.0
	13.1
11+00	13.1
10	13.0

}
0

8-16-60

(35)

STA. W. 119+00:0400=N. 15,070; SOUND SOUTH

DIST SOUND ELEV DIST SOUND ELEV

0+00	3.0	(36)	3.3
(36)	2.8	50	3.5
	2.9		3.8
<u>9:55</u>	3.0		3.7
	3.0		3.7
50	3.0		4.0
	3.0	3+00	3.9
	3.0		3.9
	3.1		3.9
	3.0		3.8
1+00	3.0		4.0
	3.0	50	4.0
	3.0		4.1
	3.1	10:00	4.3
	3.1	<u> </u>	4.0
50	3.0		4.0
	3.1	4+00	4.3
	3.1		4.5
	3.5		4.9
	3.6		5.2
2+00	3.8		5.1
	3.3	50	5.0
	3.5		5.9
	3.4		6.8

STA. W. 119+00 - SOUTH 8-16-60

DIST Sound Elev DIST Sound Elev

(3.5)	7.2		(3.5)	13.9	
	8.6			13.7	
5+00	7.1		50	13.6	
	10.2			13.7	
	11.5			13.2	
	12.4			13.0	
	13.0			12.8	
50	12.8		8+00	12.8	
	12.9			12.8	
	13.0			12.8	
	13.0			12.7	
	13.0			12.7	
6+00	13.0		50	12.9	
	13.0			13.0	
	12.8			13.0	
	12.8			13.0	
	13.0			12.6	
50	13.0		9+00	12.3	
	13.0			12.1	
	13.0			12.0	
10.05	13.0			11.7	
	13.0			11.9	
	13.2			11.9	
7+00	13.6		50	11.9	
	13.7			11.6	
	14.0			11.6	

STA. W. 119+00 - SOUTH

(56)

DIST Sound Elev

(3.5)	11.8	
	11.9	
10+00	12.1	
	12.0	
	11.8	
10/10	11.8	
	12.1	
50	12.0	
	12.0	
	12.0	
	12.0	
	11.9	
	12.1	
11+00	12.0	

8-16-60

STA. W. 119+50 to 0+00 = N. 15, 035; SOUND SOUTH

DIST	SOUND	ELEV	DIST	SOUND	ELEV
0+00	2.9		(3.5)	3.2	
(3.5)	2.9		50	3.3	
	2.9			2.9	
<u>1018</u>	3.0		<u>1020</u>	2.5	
	3.0			3.4	
50	3.0			3.2	
	3.0		3+00	2.9	
	3.0			3.3	
	3.1			3.4	
	3.1			3.5	
1+00	3.0			3.6	
	3.1		50	3.8	
	3.0			3.7	
	3.1			3.8	
	3.1			3.8	
50	3.1			3.8	
	3.2		4+00	3.9	
	3.3			4.0	
	3.2			4.0	
	3.4			4.0	
2+00	3.2			4.0	
	3.4		50	4.0	
	3.6			4.0	
	3.3			3.9	

STA. W. 119+50 - SOUTH

(57)

DIST	SOUND	ELEV	DIST	SOUND	ELEV
(3.4)	3.9		(3.4)	13.7	
	3.8			13.7	
5+00	3.9		50	13.4	
	3.9			13.3	
	3.8			13.0	
	3.8			12.3	
	3.9			12.7	
50	3.8		8+00	12.7	
	4.0			12.5	
	4.9			12.9	
	5.1			12.9	
	5.3			13.0	
6+00	8.5		50	13.1	
	9.0			13.1	
<u>1025</u>	10.0			13.1	
	10.0			13.0	
	10.5			13.0	
50	11.3		9+00	12.9	
	11.5			12.0	
	11.9			12.1	
	12.3			12.2	
	12.3			12.1	
7+00	13.4		50	12.0	
	13.7			12.1	
	13.9			12.2	

STA. W. 119+50 - SOUTH

8-16-60

DIST SOUND ELEV

DIST	SOUND	ELEV
(34)	12.2	
	12.4	
10+00	12.4	
SOFT	12.0	
	11.9	
1030	11.8	
	11.7	
50	11.4	

(58)

STA. W. 120+00; 0+00 = N. 15,000; SOUND SOUTH

DIST SOUND ELEV DIST SOUND ELEV

DIST	SOUND	ELEV	DIST	SOUND	ELEV
0+00	2.9	+0.4	(33)	3.0	+0.3
(33)	2.9	+0.4	50	3.1	+0.2
	2.9	+0.4		3.1	+0.2
1035	3.0	+0.3		3.1	+0.2
	2.9	+0.4		3.1	+0.2
50	2.9	+0.4		3.2	+0.1
	2.9	+0.4	3+00	3.7	0.4
	2.9	+0.4		3.2	+0.1
	3.0	+0.3		3.2	+0.1
	3.0	+0.3		3.2	+0.1
1+00	2.9	+0.4		3.1	+0.2
	3.0	+0.3	50	3.2	+0.1
	3.1	+0.2		3.1	+0.2
	3.1	+0.2		3.1	+0.2
	3.1	+0.2	1040	3.1	+0.2
50	3.0	+0.3		3.1	+0.1
	3.0	+0.3	4+00	2.9	+0.4
	3.0	+0.3		2.3	+1.0
	3.0	+0.3		1.9	+1.4
	3.0	+0.3		2.0	+1.3
2+00	3.0	+0.3		2.5	+0.8
	3.0	+0.3	50	2.4	+0.9
	3.0	+0.3		2.4	+0.9
	3.1	+0.2		2.2	+1.1

STA. W. 120+00 - SOUTH 8-16-60

Dist	Sound	Elev	Dist	Sound	Elev
(33)	2.1	+1.2	(33)	4.4	1.1
	2.5	+0.8		5.7	2.4
5+00	2.6	+0.7	50	8.3	5.0
	2.5	+0.8		10.1	6.8
	2.6	+0.7		11.3	8.0
	2.1	+1.2		11.9	8.6
	2.2	+1.1		11.9	8.6
50	2.1	+1.2	8+00	11.9	8.6
	2.1	+1.2		11.8	8.5
	2.1	+1.2		11.7	8.4
	2.3	+1.0	10+05	11.9	8.6
	2.2	+1.1		11.9	8.6
6+00	2.3	+1.0	50	12.1	8.8
	2.1	+1.2		12.0	8.7
	2.4	+0.9	SOFT	12.2	8.9
	2.6	+0.7		11.9	8.6
	2.4	+0.9		11.8	8.5
50	2.3	+1.0	9+00	11.8	8.5
	2.5	+0.8		11.6	8.3
	2.6	+0.7		11.7	8.4
	2.4	+0.9		11.8	8.5
	2.1	+1.2		11.8	8.5
7+00	2.3	+1.0	50	11.9	8.6
	2.9	+0.4		11.2	7.9
	3.2	+0.1		11.3	8.0
				11.3	8.0
				11.1	7.8
			10+00	10.9	7.6

(See pg 3)

(CONTD FROM PG 27) 8-16-60 (59)

Dist	Sound	Elev	Dist	Sound	Elev
STA W 110+00; CONTD SOUTH					
15+10	11.9	8.2			
(37)	11.9	8.2			
	12.0	8.3			
	11.9	8.2			
50	12.0	8.3			
50	11.9	8.2			
2+25	11.8	8.1			
	11.7	8.0			
	11.9	8.2			
16+00	11.7	8.0			
1+00	12.0	8.3			
	11.6	7.9			
	11.6	7.9			
	11.5	7.8			
50	11.6	7.9			
50	11.5	7.8			
	11.8	8.1			
	11.9	8.2			
	11.9	8.2			
17+00	11.8	8.1			
2+00					

STA. W. 120+50 - SOUTH
 Dist Sound Elev Dist Sound Elev

5+00 50

50 8+00

6+00 50

50 9+00

7+00 50

70

8-17-60

(60)

STA. W. 121+00; 0+00 = N. 14,300; SOUND SOUTH
 Dist Sound Elev Dist Sound Elev

0+00 1.2 (3) 11.4

(3.1) 1.0 50 11.6

1.0 11.2

2:10 1.3 11.1

1.9 11.2

50 2.9 11.0

NOTE: 4.1 3+00 11.0 8.0

Soft Nat. Begins @ 5.6 11.0

Toe of 7.3 11.0

Slope 8.8 11.0

1+00 9.0 11.1

9.8 50 10.9

SOFT 10.4 10.9

11.0 2:15 11.0

1st ± 11.0 10.9

50 11.1 10.9

11.0 4+00 11.0

11.2 11.1

11.0 11.1

11.1 11.7

2+00 11.2 11.0

11.3 50 10.8

11.5 10.8

11.7 11.0

5+00 11.1 10.9

8-17-60

STA. W. 122+00; 0+00 = N. 14,300; SOUND SOUTH

Dist Sound Elev. Dist Sound Elev.

0+00

3.2

50

0.6

1.0

2:25

2.0

3.1

4.3

1+00

6.2

8.1

9.8

10.2

10.2

50

10.3

10.5

10.6

11.0

11.1

2+00

11.0

11.0

SOFT

11.2

11.4

11.1

50

11.1

3.3

11.5

11.9

11.9

11.9

3+00

12.0

12.0

12.5

11.9

11.8

50

11.9

12.0

12.0

2:30

11.8

12.0

4+00

12.2

11.9

12.0

12.2

12.0

50

11.9

11.9

12.0

12.1

11.9

5+00

11.3

61

STA. W. 123+00; 0+00 = N. 14,300; SOUND SOUTH

Dist Sound Elev. Dist Sound Elev.

0+00

3.3

50

0.5

0.8

2:40

0.5

1.0

1.9

1+00

2.7

4.0

6.0

8.3

9.1

50

9.8

10.0

10.0

10.0

10.0

2+00

10.2

10.4

SOFT

10.6

3.3

11.0

3.3

11.1

50

11.0

11.1

2.2

11.0

Deep

11.0

3+00

11.1

11.0

2:45

11.0

3.3

10.5

4+00

10.5

5+00

10.8

5+00

10.3

5+00

10.5

5+00

10.4

5+00

10.4

5+00

10.5

5+00

10.7

5+00

10.5

5+00

10.5

5+00

10.5

5+00

10.5

5+00

10.5

5+00

10.5

5+00

10.4

5+00

10.1

5+00

10.1

5+00

10.1

5+00

10.1

8-17-60

STA. W. 124+00; 0+00 = N. 14,300, SOUND SOUTH

Dist	Sound	Elev	Dist	Sound	Elev
0+00			50	10.8	
(3.5)			(3.5)	10.8	
				10.9	
				11.0	
				10.9	
50	0.9		3+00	11.0	
	0.9			11.0	
<u>2:55</u>	0.9			11.0	
	0.9			10.9	
	0.5			11.0	
1+00	0.9		50	11.3	
	1.6			10.9	
	2.3			11.0	
	3.2		<u>3:00</u>	11.0	
	5.2			10.9	
50	7.1		4+00	11.0	
	9.1			11.0	
	9.9			10.7	
SOFT	10.2			10.7	
<u> </u>	10.1			10.6	
2+00	10.2		50	10.6	
	10.2			10.3	
7+00	10.3		50	10.5	
	10.2			10.5	
	10.4			10.6	
			5+00	10.7	

(62)

8-18-60

STA. W. 125+00; 0+00 = N. 14,300, SOUND SOUTH

Dist	Sound	Elev	Dist	Sound	Elev
0+00			50	10.5	
			(4.3)	10.5	
				10.7	
				10.7	
				10.7	
<u>9:40</u>	1.4			10.7	
	1.4			10.7	
50	1.5			11.0	
	1.9		3+00	11.0	
	2.0			11.0	
	1.6			11.1	
	1.7		9:45	11.1	
1+00	1.7		<u> </u>	11.1	
	1.3		50	11.1	
	1.6			11.0	
	2.8			11.0	
	3.7			11.0	
50	4.6			11.0	
	6.1		4+00	11.0	
	7.6			10.3	
	9.2			10.3±	
	10.1			10.4	
2+00	10.5			10.6	
	10.4		50	10.5	
SOFT	10.4			10.5	
<u> </u>	10.6			10.4	
				10.5	
				10.7	
			5+00	10.6	

8-18-60

(63)

STA. W. 126+00; 0+00 = N. 14,300; SOUND SOUTH

STA. W. 127+00; 0+00 = N. 14,300; SOUND SOUTH

Dist Sound Elev Dist Sound Elev

Dist Sound Elev Dist Sound Elev

Dist	Sound	Elev	Dist	Sound	Elev
0+00	2.9		(4.2)	10.9	
(4.3)	3.0		50	10.8	
	1.3			10.8	
9:55	1.4			10.8	
<u> </u>	1.4			10.8	
50	1.5			11.0	
	1.5		3+00	10.8	
	1.6			11.0	
	1.7		10:00	11.1	
	1.7		<u> </u>	11.2	
1+00	1.4			11.0	
	2.2		50	10.9	
	3.1			10.8	
	4.0			10.7	
	5.5			10.5	
50	8.9			10.5	
3 ^o	11.0		4+00	10.5	
50FT	11.2			11.4	
<u> </u>	11.9			11.1	
	10.9			11.0	
2+00	11.0			10.9	
	10.8		50	11.0	
	11.0			11.0	
	11.0			10.9	
				10.9	
				11.0	
			5+00	11.0	

Dist	Sound	Elev	Dist	Sound	Elev
0+00	1.5		(4.1)	10.0	
(4.1)	1.4		50	10.0	
	1.4			10.1	
10:10	1.3		10:15	10.5	
<u> </u>	1.5		<u> </u>	10.3	
50	1.6			10.0	
	2.5		3+00	10.0	
	3.8			10.0	
	2.4			10.0	
	1.5			9.9	
1+00	1.9			9.9	
	2.5		50	9.9	
	3.2			9.7	
	4.0			9.8	
	4.9			9.8	
50	7.3			9.9	
	9.5		4+00	9.7	
	10.3			9.6	
	10.7		10:20	9.4	
	10.8		<u> </u>	9.5	
2+00	10.8		(4.0)	9.5	
	10.0		50	9.6	
50FT	10.0			9.8	
<u> </u>	10.0		10:25	9.4	
3 ^o	10.0		<u> </u>	9.4	
				9.2	
			5+00	9.3	

8-18-60

(64)

STA. W. 128+00; 0+00=N. 14,300; SOUND SOUTH

STA. W. 129+00; 0+00=N. 14,300; SOUND SOUTH

Dist Sound Elev Dist Sound Elev

Dist Sound Elev Dist Sound Elev

0+00 1.5 (39) 9.8

0+00 3.0 (37) 9.0

(39) 2.1 50 9.8

(38) 3.9 50 8.8

2.8 30 9.8

5.9 8.9

10:30 3.8 50 FT 9.910:50 8.9 8.9

4.8 10.0

10.0 8.8

50 7.3 10.0

50 10.0 9.0

7.9 BOT. 12.9
3+00 9.4

10.0 3+00 9.0

6.8 9.1

10.1 9.0

4.7 9.4

10.1 9.1

6.8 10:40 9.1

9.4 8.9

1+00 9.1 9.2

1+00 9.1 8.9

9.4 50 9.5

9.0 50 8.9

9.5 9.4

50 FT 9.2 9.0

9.5 9.0

5 9.3 8.8

9.7 9.0

50 9.3 11:00 8.8

50 9.7 9.0

50 9.0 8.7

9.7 4+00 9.0

9.1 4+00 8.9

10:35 9.7 9.0

9.1 9.0

9.7 9.0

10:55 9.0 8.8

9.9 9.0

9.1 8.9

2+00 9.6 9.0

2+00 9.2 11:05 8.8

9.6 50 9.0

9.1 50 8.8

10.0 8.8

9.0 8.8

10.0 9.0

9.0 8.8

5+00 8.9

5+00 8.8

8.9

8.8

8.9

8.8

8.9

8.8

8.9

8.8

8.9

8.8

8.9

8.8

8-18-60

STA. W 130+00; 0+00 = N. 14,300; SOUND SOUTH

Dist	Sound	Elev	Dist	Sound	Elev
0+00	1.9		(36)	8.3	
(3.6)	1.9		50	8.2	
	2.0			8.2	
<u>11:15</u>	2.6		SOFT	8.1	
	3.1		<u>50</u>	8.1	
50	3.8			8.1	
	4.4		3+00	8.2	
	6.2			8.3	
	8.0			8.3	
	7.1		<u>11:20</u>	8.6	
1+00	8.5			8.7	
	8.7		50	8.7	
	8.6			8.8	
	8.4			8.7	
	8.5			8.5	
50	8.3			8.5	
	8.2		4+00	8.4	
	8.3		<u>11:25</u>	8.5	
	8.2			8.4	
	8.2			8.3	
2+00	8.4			8.4	
	8.4		50	8.3	
	8.5			8.5	
	8.5			8.6	
				8.6	
				8.7	
			5+00	8.7	

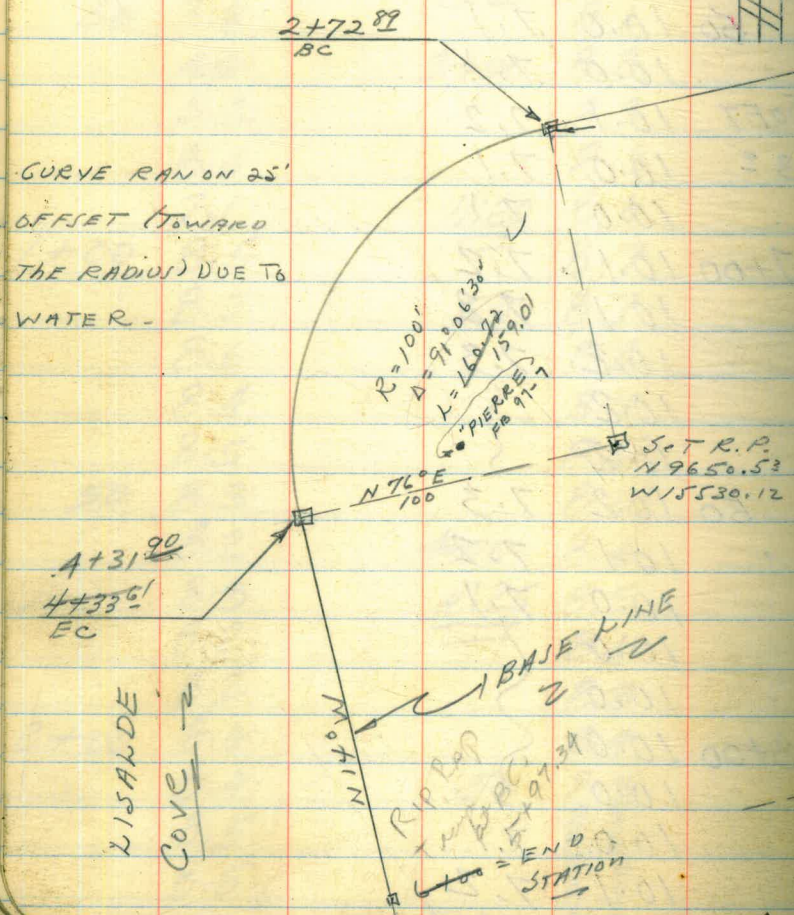
8-18-60

(65)

STA. N. 140+00; 0+00 = W. 13,840; SOUND EAST

Dist	Sound	Elev	Dist	Sound	Elev
16+00	10.1	7.2	2°	10.2	7.3
(29)	10.1			10.2	7.3
	10.1		50		
	10.1		(29)		
<u>12:55</u>	10.1				
	10.1	7.2			
50	10.0	7.1			
	10.0	7.1			
SOFT	10.1	7.2			
3°	10.0	7.1			
	10.0	7.1			
17+00	10.1	7.2			
	10.1	7.2			
	10.2	7.3			
	10.2				
	10.2				
50	10.2	7.3			
	10.1	7.2			
	10.0	7.1			
	10.0				
	10.0				
18+00	10.0				
	10.0				
	10.0	7.1			
	10.1	7.2			

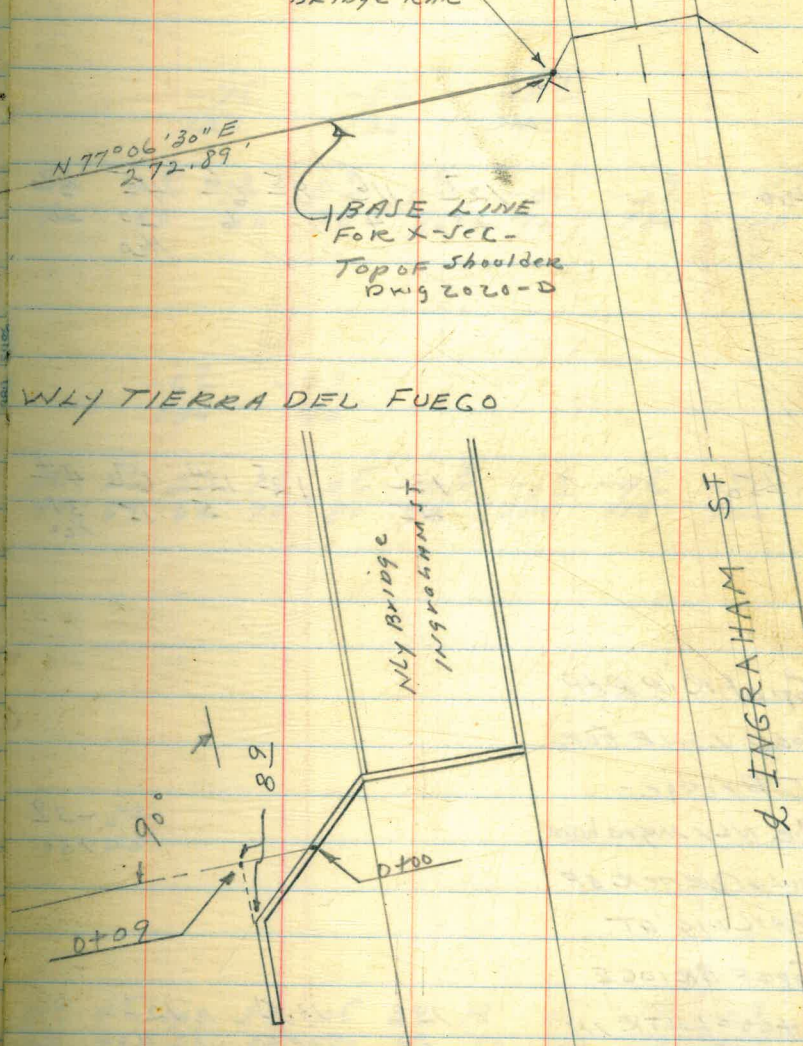
	NORTH	WEST
0+00	9808.89	15286.42
BC 2+72.89	9748.01	15552.43
1.90 4+33.61	9626.34	15627.15



X-SECTION FOR RIP-RAP
 NLY END OF WLY TIERRA DEL FUEGO - 9-7-60
 ALLEN, HAMILTON, GADDY, GLENN

0+00 { N 9808.89
 L+TK { W 15286.42

0+00-SET L+TK
 IN TOP OF
 BRIDGE RAIL



X-SECTIONS FOR RIP RAP STUDY

BM = 1404 CAUSWAY LT
 EL = 10.835

BASE
 LINE

NLY END OF WLY TIERKA DISEL FUEGO
 SOUNDINGS 9-19-60-
 RT.

(67)

										-75 120	-83 130	-87 140		
1+00	127 25	116 4	85	66 6	45 20 H ₂ O	32 30	22 40	19 50	13 60	09 70	00 80	-05 90	-29 100	-57 110

										-67 130	-79 140			
0+50	131 25	125	124 5	67 15	44 31 H ₂ O	35	27 40	21 50	13 60	05 80	-03 90	-19 100	-45 110	-58 120

Top of RIP RAP

GOOD LINE FOR

ST BRIDGE -

The NLY INGRAHAM

SWLY CORNER OF

RAILING AT

TOP OF BRIDGE

-39
130

-50
140

0+00 = LATH IN

130 20	130.81 TOP OF WING WALL	121 4	56 20	45 40	40 50	33 60	25 70	20 80	13 90	07 100	-10 110	-29 120
-----------	-------------------------------	----------	----------	----------	----------	----------	----------	----------	----------	-----------	------------	------------

GROUND STAR.
 WING

Sections Taken Radially
IN THIS AREABASE
LINE

CARELESSLY SCATTERED

Begin LARGE ROCKS

R=100'-Δ=91°06'30"

2+7.2 ⁸⁹	12 ¹	11 ²	9 ⁸	6 ³	4 ¹	4 ¹	3 ²	2 ⁰
	50	37	20	11		7	10	20
						H ₂ O		

12 ²	12 ²	-0 ¹	-1 ⁴	-3 ²	-4 ¹	-6 ⁰
30	40	50	60	70	80	90

-7 ¹	-7 ⁹
100	110

-7 ²	-7 ²
110	120

2+50	12 ¹	11 ⁵	10 ²	6 ⁹	5 ²	4 ⁰	2 ³	1 ⁸
	50	25	17	11		10	20	30
						H ₂ O		

1 ⁴	0 ⁰	-1 ⁹	-3 ⁴	-4 ³	-4 ⁹	-6 ⁰
40	50	60	70	80	90	100

-7 ⁶	-7 ⁸
120	130

2+00	11 ⁸	11 ²	9 ⁸	7 ¹	4 ⁴	4 ⁰
	30	18		9	25	30
					H ₂ O	

1 ⁹	1 ⁰	0 ¹	-1 ²	-4 ⁰	-5 ⁰	-6 ⁰
40	50	60	70	80	90	100

-6 ²	-7 ⁵
110	120

1+50	12 ⁰	11 ⁷	7 ⁴	6 ²	4 ⁵	3 ³
	30	14	6		12	20
					H ₂ O	

2 ³	2 ⁰	1 ³	0 ⁷	0 ¹	-0 ⁵	-1 ²	-4 ³
30	40	50	60	70	80	90	100

X-SECTION NELY CORNER TIERRA DEL FUEGO LWLY-

(69)

TBM = 1201 3/4" PIPE "PIERRE"
BASE
LINE

4 + 33.61 = EC - 12² 12³ 67 56 36 29
50 23 5 10 20
H₂O

DEF = 45° 33' 15" - Ch = 53.39

12² 118
50 28

3 + 80.03 98 66 37 31 19 15 07 -03 -11 -14 -23 -34
20 15 5 10 20 30 40 50 60 70 80
H₂O

DEF = 30° 22' 10" - Ch = 53.39

-70 -68
100 110

3 + 2646 119 98 56 40 31 20 12 07 02 -02 -10 -18 -28 -50
50 28 10 3 10 20 30 40 50 60 70 80 90
H₂O

DEF = 15° 11' 05" - Ch = 52.39'

X-SECTION NELY CORNER WLY TIERRA DEL FUEGO
 LEVELS TURNED BACK TO STARTING P.M.
 BASE

(70)

LINE

6+50

$\frac{12^5}{25}$ $\frac{12^6}{5}$ $\frac{7^6}{13}$ $\frac{4^3}{39}$ $\frac{3^3}{H_2O}$

$\frac{0^0}{90}$ $\frac{-2^6}{100}$ $\frac{-6^2}{110}$ $\frac{-6^2}{120}$ $\frac{-7^1}{130}$ $\frac{-7^4}{140}$
 $\frac{3^8}{40}$ $\frac{3^3}{50}$ $\frac{2^6}{60}$ $\frac{1^8}{70}$ $\frac{1^0}{80}$

✓
 597.34
 6+00

$\frac{12^4}{25}$ $\frac{12^6}{6}$ $\frac{9^2}{10}$ $\frac{7^2}{26}$ $\frac{3^5}{H_2O}$ $\frac{3^2}{30}$

$\frac{0^0}{90}$ $\frac{-1^3}{100}$ $\frac{-5^2}{110}$ $\frac{-6^3}{120}$ $\frac{-6^8}{130}$
 $\frac{3^5}{40}$ $\frac{2^7}{50}$ $\frac{2^4}{60}$ $\frac{1^7}{70}$ $\frac{0^7}{80}$

5+50

✓
 5+00

$\frac{12^3}{25}$ $\frac{12^4}{5}$ $\frac{10^6}{10}$ $\frac{7^1}{27}$ $\frac{3^4}{H_2O}$ $\frac{3^3}{30}$

$\frac{-0^8}{90}$ $\frac{-4^2}{100}$ $\frac{-5^4}{110}$ $\frac{-6^2}{120}$
 $\frac{2^5}{40}$ $\frac{1^8}{50}$ $\frac{1^4}{60}$ $\frac{0^8}{70}$ $\frac{0^0}{80}$

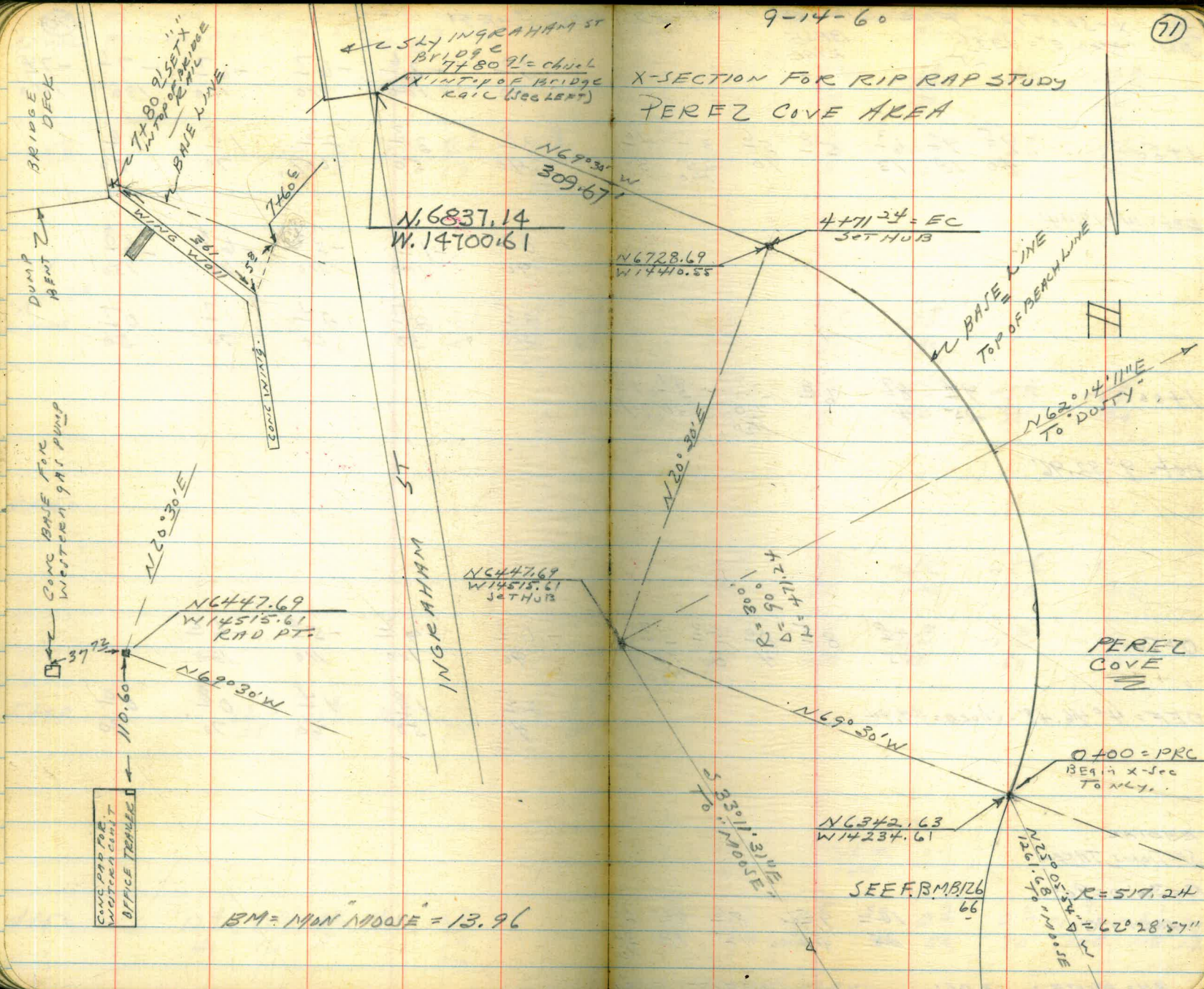
4+50

$\frac{12^4}{40}$ $\frac{12^0}{16}$ $\frac{8^0}{5}$ $\frac{7^2}{14}$ $\frac{3^7}{H_2O}$

9-14-60

(71)

X-SECTION FOR RIP RAP STUDY PEREZ COVE AREA



BRIDGE DECK

DUMP VENT

CONC BASE FOR WESTERN GAS PUMP

CONC PAD FOR WATER GALT OFFICE TRAILER

N 20° 30' E

N 64° 47.69
W 14515.61
RAD PT.

N 69° 30' W

110.60

37.73

BM = MIN MOOSE = 13.96

INGRAHAM ST
BY 109 C
7x80 21' = channel
X-INT. OF BRIDGE
RAIL (SEE LEFT)

INGRAHAM ST

N 64° 47.69
W 14515.61
32 THUB

N 6837.14
W. 14700.61

N 69° 30' W
309.67

N 6728.69
W 14410.55

4471.24 = EC
32 THUB

N 20° 30' E

R = 300'
Δ = 90'
L = 471.24

N 69° 30' W

S 33° 11' 31" E
To MOOSE

N 63° 42.63
W 14234.61

SEE FB.M.B. 126
66

BASE LINE
TOP OF BEACH LINE

N 62° 14' 11" E
To DOTT

PEREZ COVE

0.400 = PRC
BEH. X-SEC
To NLY.

N 25° 05' 11" E
1261.50 = MOOSE
R = 517.24'
Δ = 62° 28' 57"

X-SECTION FOR RIP RAP STUDY
 BM = "MOOSE" = 13.96
 LT

BASE
 LINE

1+50	95	90	63	58	56	37	40
	40	18	13		10	25	30
						H ₂ O	

Def = 14° 19.44'

1+00	94	89	68	37	31	18	
	25	7		20	30	40	
				H ₂ O			

Def = 9° 32.96'

0+50	98	85	80	53	37	36	22
	25		4	8	18	20	30
					H ₂ O		

DEF = 4° 46.48' - Chord = 49.94

RADIAL
 SECTIONS TAKEN

R = 300' Δ = 90°

0+00 = 130

102	952	86	63	39
25	H ₂ O	15	18	34
				H ₂ O

BM = MOOSE = 13.96'

PEREZ COVE AREA
 9-15-60

(72)

RT

-52	-52	-48	-52	-78
90	100	110	120	130
33	02	-21	-39	-51
40	50	60	70	80

-64	-69	-78
110	120	130

-08	-39	-42	-54	-56	-58
50	60	70	80	90	100

-43	-56	-55	-58	-61
80	90	100	110	120

36	22	10	-09	-19	-32
20	30	40	50	60	70

-78	L.S.M.
130	140

33	23	19	10	03	00	-17	-21	-37
40	50	60	70	80	90	100	110	120

DIRECT ELEV ROD - TRUE ELEV.

9-15-60

(73)

30' Toward Rad H.
LINE IN OFFSET
Beginning here Base

BASE
LINE

3+50 9³ 9⁰ 7⁷ 6⁹ 5⁸ 3⁶ 3^L 2⁵
80 60 58 30 21 H₂₀ 10 20

Def = 33° 25.36'

3+00

9² 8³ 5⁸ 4⁴ 3⁶ 2⁶
50 33 31 18 40
H₂₀

Def = 28° 38.88'

2+50

9⁹ 9⁴ 6⁷ 5⁵ 3⁵ 3³
50 34 32 23 30
H₂₀

Def = 23° 52.40'

2+00

9⁸ 9⁶ 7⁴ 6⁸ 5⁴ 3⁴ 2⁸
50 35 32 19 45 50
H₂₀

Def = 19° 05.92'

-4⁴ -4⁶ -4⁹ -5⁴
80 90 100 110

1⁹ 0⁹ -1² -3⁴ -3⁹
30 40 50 60 70

-5² -8²
110 120

1⁶ -0³ -2¹ -2⁹ -3³ -3⁹
50 60 70 80 90 100

-4² -5⁰ -7² -8²
100 110 120 130

2⁸ 2³ 2⁰ -0⁷ -2¹ -3⁷
40 50 60 70 80 90

-9³ -9⁴
140 150

1⁵ -1² -2⁷ -3⁶ -4⁹ -8⁰ -9¹ -9²
60 70 80 90 100 110 120 130

BASE
LINE

5+00	10 ³ ₈₀	9 ³ ₄₂	6 ⁷ ₃₈	3 ⁴ ₂₆	4 ² ₁₀	1 ⁸ ₂₀	1 ⁶ ₃₀	0 ⁸ ₄₀	-0 ⁶ ₅₀	-3 ⁴ ₆₀	-4 ⁷ ₇₀	-5 ⁶ ₈₀	-6 ² ₉₀	-6 ⁴ ₁₀₀	-6 ⁴ ₁₁₀
------	-------------------------------	------------------------------	------------------------------	------------------------------	------------------------------	------------------------------	------------------------------	------------------------------	-------------------------------	-------------------------------	-------------------------------	-------------------------------	-------------------------------	--------------------------------	--------------------------------

Toward R.P.
Offset 30'

4+71.24 = EC	10 ⁰ ₈₀	9 ⁶ ₄₅	6 ⁶ ₄₀	3 ⁷ ₂₆	2 ⁵ ₁₀	1 ⁹ ₂₀	1 ² ₃₀	0 ⁹ ₄₀	-2 ⁵ ₅₀	-4 ⁵ ₆₀	-5 ⁵ ₇₀	-5 ⁶ ₈₀	-5 ⁷ ₉₀	-5 ⁹ ₁₀₀	-6 ⁰ ₁₁₀
--------------	-------------------------------	------------------------------	------------------------------	------------------------------	------------------------------	------------------------------	------------------------------	------------------------------	-------------------------------	-------------------------------	-------------------------------	-------------------------------	-------------------------------	--------------------------------	--------------------------------

Def = 45°00' - ch = 21.23

Toward R.P.
Offset 30'

4+50	9 ⁹ ₈₀	9 ⁸ ₄₇	6 ⁷ ₄₂	3 ⁶ ₂₁	2 ⁵ ₁₀	2 ³ ₂₀	1 ⁹ ₃₀	1 ⁵ ₄₀	-2 ¹ ₅₀	-4 ⁴ ₆₀	-5 ⁵ ₇₀	-5 ³ ₈₀			
------	------------------------------	------------------------------	------------------------------	------------------------------	------------------------------	------------------------------	------------------------------	------------------------------	-------------------------------	-------------------------------	-------------------------------	-------------------------------	--	--	--

Def = 42°58.32' - ch = 49.94

Toward R.P.
Offset 30'

4+00	9 ⁸ ₈₀	9 ² ₆₇	7 ⁰ ₆₆	4 ⁸ ₃₀	3 ⁷ ₄₂₀	2 ³ ₂₀	1 ⁵ ₃₀	1 ⁰ ₄₀	-2 ² ₅₀	-3 ⁴ ₆₀	-4 ² ₇₀	-4 ⁵ ₈₀			
------	------------------------------	------------------------------	------------------------------	------------------------------	-------------------------------	------------------------------	------------------------------	------------------------------	-------------------------------	-------------------------------	-------------------------------	-------------------------------	--	--	--

Def 38°11.84'

-5⁵₉₀ -5⁵₁₀₀ -5⁸₁₁₀

-5³₉₀ -5⁷₁₀₀ -6⁰₁₁₀

BASE
LINE

Cont. on Page 76 -

7+50	$\frac{11^3}{30}$	$\frac{11^1}{12}$	$\frac{5^3}{10}$	$\frac{3^2}{10}$	$\frac{1^2}{30}$	$\frac{-85}{90}$	$\frac{-93}{100}$	$\frac{-98}{110}$	$\frac{-102}{120}$	
						$\frac{0^1}{40}$	$\frac{-35}{50}$	$\frac{-47}{60}$	$\frac{-58}{70}$	$\frac{-70}{80}$

14" RCP (outfall)

7+22 - 18" KT = NLY end of					$\frac{22^1}{18^3}$				
					$\frac{1^2}{1^2}$				

TO SLY - OFFSET 30'						$\frac{-87}{90}$	$\frac{-87}{100}$	$\frac{-94}{110}$	$\frac{-120}{120}$	
7+00	$\frac{10^4}{30}$	$\frac{10^3}{7}$	$\frac{6^2}{8}$	$\frac{3^2}{8}$	$\frac{1^5}{30}$	$\frac{0^2}{40}$	$\frac{-0^2}{50}$	$\frac{-38}{60}$	$\frac{-5^0}{70}$	$\frac{-6^4}{80}$

TO SLY - 30° OFFSET						$\frac{-73}{80}$	$\frac{-78}{90}$	$\frac{-86}{100}$	$\frac{-87}{110}$	$\frac{-93}{120}$
6+50	$\frac{9^6}{30}$	$\frac{9^3}{5}$	$\frac{7^3}{1}$	$\frac{6^0}{11}$	$\frac{3^6}{12}$	$\frac{1^5}{30}$	$\frac{0^5}{40}$	$\frac{-1^5}{50}$	$\frac{-4^3}{60}$	$\frac{-6^5}{70}$

SLY - OFFSET 30'						$\frac{-6^5}{80}$	$\frac{-7^5}{90}$	$\frac{-7^6}{100}$	$\frac{-7^7}{110}$	$\frac{-7^6}{120}$	$\frac{-7^7}{130}$
6+00	$\frac{6^2}{30}$	$\frac{9^0}{1}$	$\frac{7^1}{6}$	$\frac{4^7}{12}$	$\frac{3^8}{12}$	$\frac{2^6}{20}$	$\frac{1^5}{30}$	$\frac{-0^4}{40}$	$\frac{-3^2}{50}$	$\frac{-4^4}{60}$	$\frac{-5^5}{70}$

SLY - OFFSET 30'														
5+50	$\frac{10^7}{50}$	$\frac{9^2}{13}$	$\frac{5^2}{11}$	$\frac{3^3}{5}$	$\frac{1^6}{10}$	$\frac{1^3}{20}$	$\frac{1^3}{30}$	$\frac{0^6}{40}$	$\frac{-2^7}{50}$	$\frac{-4^7}{60}$	$\frac{-6^0}{70}$	$\frac{-6^5}{80}$	$\frac{-7^0}{90}$	$\frac{-7^4}{100}$

X-SECTION FOR RIP-RAP STUDY

BASE
LINE

PEREZ COVE AREA
9-15-60

(76)

Levels TURNED BACK TO STARTING B.M.

7+66

35

Sketch Page 71

RIP RAP-See
BRING IN TOPOG

BEST PLACE TO

112
25

Wall of Bridge +

CORNER OF WING

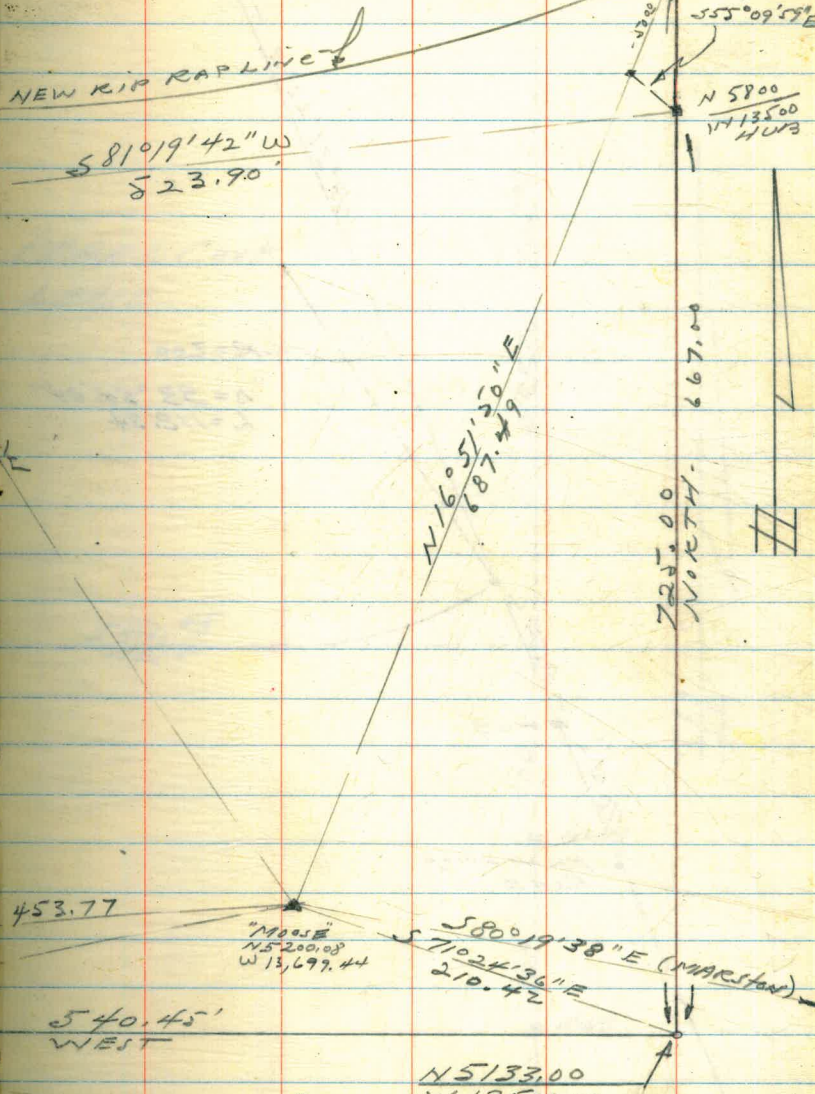
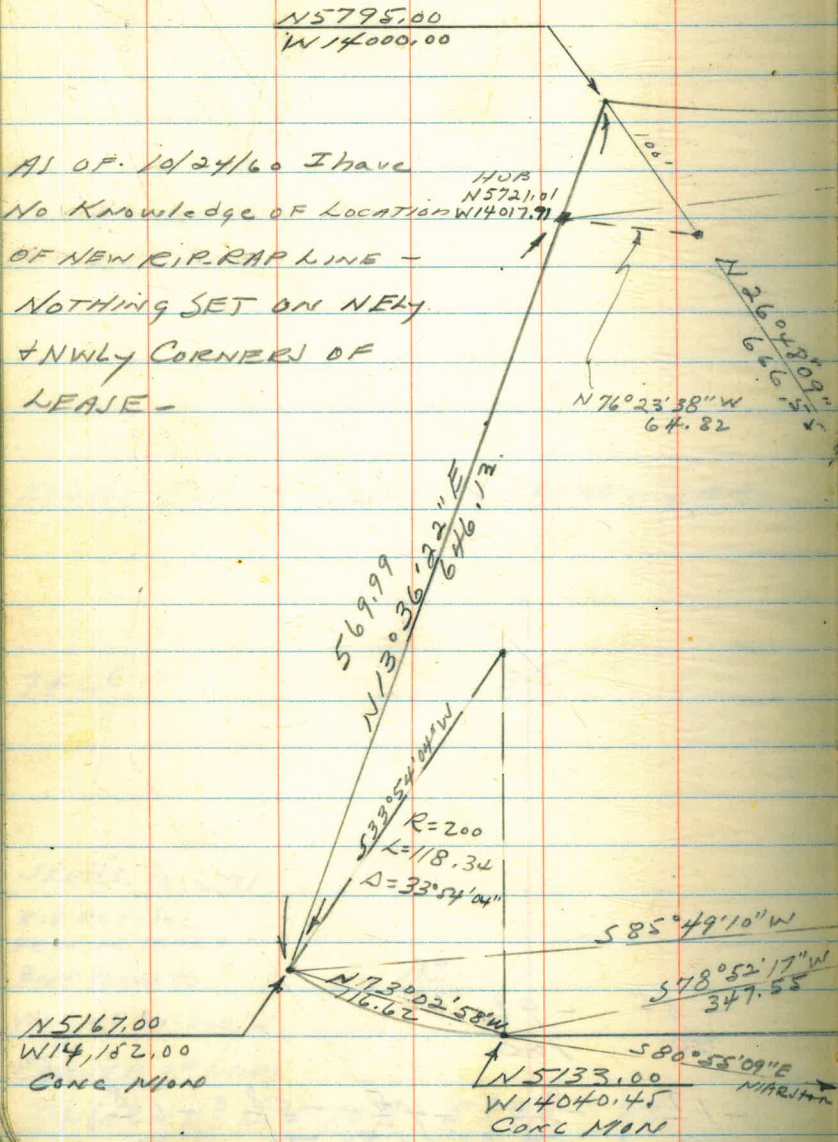
7+606 - 5⁸ LT = 1077 5249 34 10
58 58 5 30
TOPOFWW ground

-81 -92
90 100

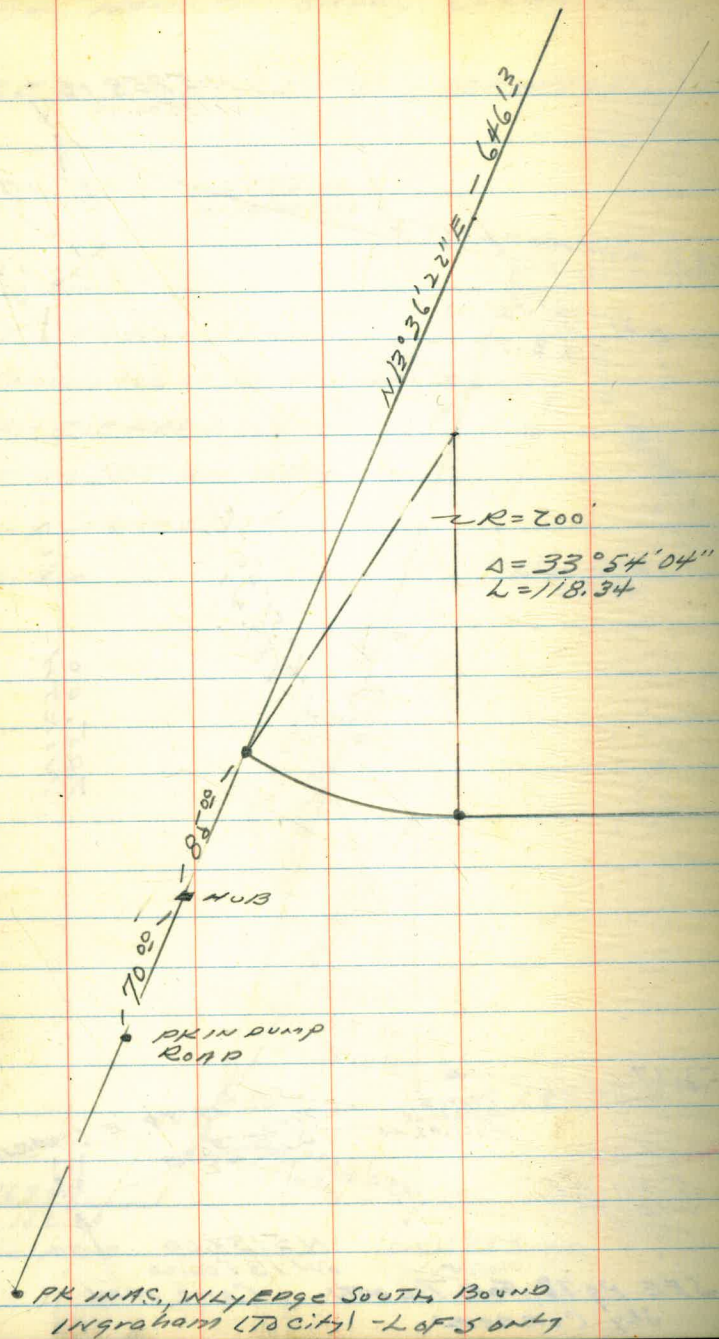
-12 -32 -45 -58 -68
40 50 60 70 80

PEREZ COVE LEASE - 10/24/60

AS OF 10/24/60 I have
NO KNOWLEDGE OF LOCATION
OF NEW RIP RAP LINE -
NOTHING SET ON NEELY
& NWLY CORNER OF
LEASE -



SEE P 978 FOR TIE OUTS
SLY CORNER



(78)

"TIE OUTS" OF SEELY + SWLY CORNER OF
 PEREZ COVE LEASE - 10/25/60 - ALLEN

PEREZ COVE
 LEASE

540.45
 WEST

NORTH 725.00 -

100'

HUB

100'

HUB



DISTANCE FROM THE STATION FOR CALCULATING
THE CORRECTION OF ANY POINT

Distance	Correction
0	0
10	0.0000
20	0.0000
30	0.0000
40	0.0000
50	0.0000
60	0.0000
70	0.0000
80	0.0000
90	0.0000
100	0.0000
110	0.0000
120	0.0000
130	0.0000
140	0.0000
150	0.0000
160	0.0000
170	0.0000
180	0.0000
190	0.0000
200	0.0000
210	0.0000
220	0.0000
230	0.0000
240	0.0000
250	0.0000
260	0.0000
270	0.0000
280	0.0000
290	0.0000
300	0.0000
310	0.0000
320	0.0000
330	0.0000
340	0.0000
350	0.0000
360	0.0000
370	0.0000
380	0.0000
390	0.0000
400	0.0000
410	0.0000
420	0.0000
430	0.0000
440	0.0000
450	0.0000
460	0.0000
470	0.0000
480	0.0000
490	0.0000
500	0.0000
510	0.0000
520	0.0000
530	0.0000
540	0.0000
550	0.0000
560	0.0000
570	0.0000
580	0.0000
590	0.0000
600	0.0000
610	0.0000
620	0.0000
630	0.0000
640	0.0000
650	0.0000
660	0.0000
670	0.0000
680	0.0000
690	0.0000
700	0.0000
710	0.0000
720	0.0000
730	0.0000
740	0.0000
750	0.0000
760	0.0000
770	0.0000
780	0.0000
790	0.0000
800	0.0000
810	0.0000
820	0.0000
830	0.0000
840	0.0000
850	0.0000
860	0.0000
870	0.0000
880	0.0000
890	0.0000
900	0.0000
910	0.0000
920	0.0000
930	0.0000
940	0.0000
950	0.0000
960	0.0000
970	0.0000
980	0.0000
990	0.0000
1000	0.0000

