

MB 137



MB. No 137

MICROFILMED

JAN

THIS Book INDEXED 2-13-62

TRIANGULATION FOR DREDGING
CONTROL N.W. Y. CABRILLO
ISLAND & VICINITY W. 64501

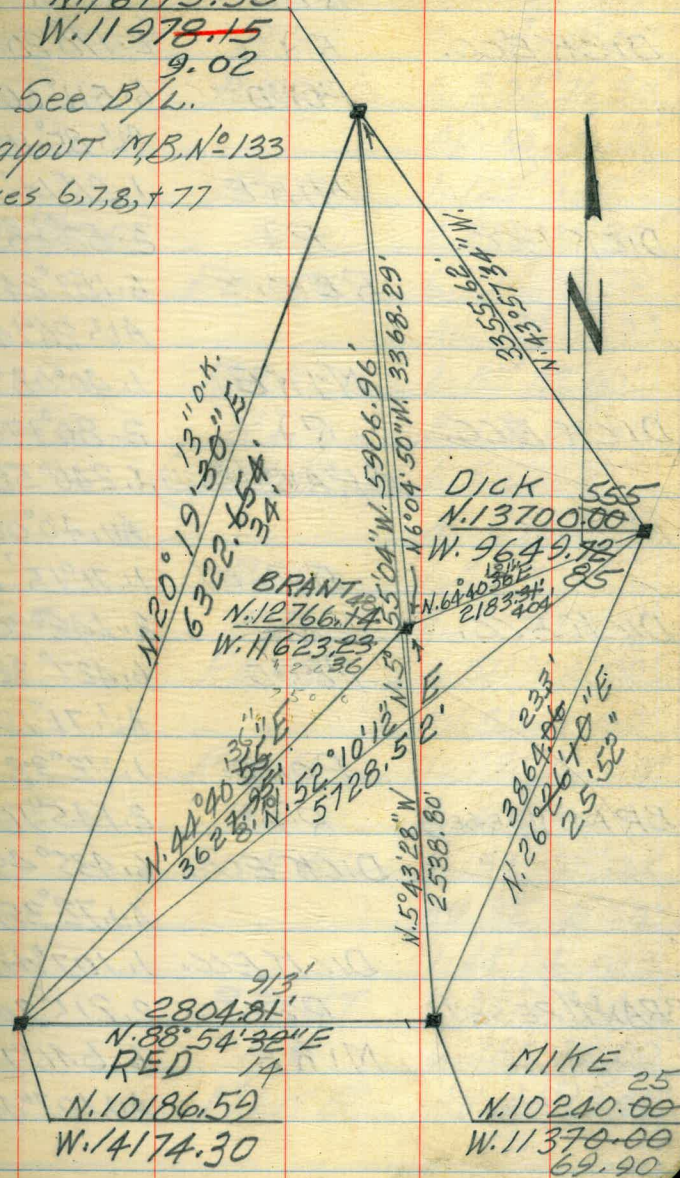
STA.	OBJECT	ANGLES
		1.32°20'30"
	POND	2.64°41'10"
RED	R ₁	6.194°03'42"
	DICK ECC.	AV. 32°20'37"
		1.62°29'40"
	DICK ECC	2.124°59'00"
POND	R ₂	6.374°57'00'
	RED	AV. 62°29'30"
		1.24°21'50"
	POND	2.48°43'20"
RED	R ₃	6.146°10'12"
	BRANT	AV. 24°21'42"
		1.36°14'50"
	DICK ECC	2.72°29'40"
RED	R ₄	6.217°29'06"
	MIKE	AV. 36°14'51"
		1.68°35'20"
	POND	2.137°11'20"
RED	R ₅	6.411°33'00"
	MIKE	AV. 68°35'30"

8-30-60

POND⁴⁸
N. 16115.58
W. 11978.15
9.02

Stampex

NOTE: See B/L.
= LAYOUT M.B.N. 133
Pages 6, 7, 8, & 77



STA.	OBJECT	ANGLES
	RED	1.85°10'10"
DICK ECC.	R↓	2.170°20'40"
	POND	6.511°00'42"
		AV. 85°10'07"
	MIKE	1.26°14'10"
DICK ECC.	R↓	2.52°28'20"
	RED	6.157°24'42"
		AV. 26°14'07"
	MIKE	1.40°08'40"
DICK ECC.	R↓	2.80°17'20"
	BRANT(RESET)	6.240°52'00"
		AV. 40°08'40"
	BRANT	1.71°15'20"
DICK ECC.	R↓	2.142°30'40"
	POND	6.427°32'42"
		AV. 71°15'27"
	POND	1.72°38'30"
BRANT(RESET)	R↓	2.145°16'30"
	DICK ECC.	6.435°49'00"
		AV. 72°38'10"
	DICK ECC.	1.107°42'00"
BRANT(RESET)	R↓	2.215°20'50"
	MIKE	6.646°13'42"
		AV. 107°42'17"

②

STA.	OBJECT	ANGLES
	MIKE	1.50°24'40"
BRANT(RESET)	R↓	2.100°49'00"
	RED	6.302°26'30"
		AV. 50°24'25"
	RED	1.129°15'10"
BRANT(RESET)	R↓	2.258°31'00"
	POND	6.775°33'20"
		AV. 129°15'33"
	RED	1.85°22'00"
	R↓	2.170°44'00"
	BRANT	6.512°12'20"
		AV. 85°22'03"
	RED	1.85°10'40"
	R↓	2.170°21'20"
	POND	6.511°04'00"
		AV. 85°10'40"
	POND	1.32°20'50"
	R↓	2.64'41'40"
	DICK ECC.	6.194°05'00"
		AV. 32°20'50"
		1.44°14'10"
	BRANT	2.88°27'40"
	R↓	6.265°22'00"
	MIKE	AV. 44°13'40"

STA.	OBJECT	ANGLES
	DICKECC	1.36°06'40"
POND	R7	2.72°13'20"
	BRANT	6.216°39'48"
		AV.36°06'38"
	DICKECC	1.36°15'00"
POND	R7	2.72°30'10"
	MIKE	6.217°30'36"
		AV.36°15'06"
	MIKE	1.26°14'50"
POND	R7	2.52°29'20"
	RED	6.157°26'36"
		AV.26°14'26"
		1.32°09'10"
	BRANT	2.64°18'20"
MIKE	R7	6.192°54'30"
	DICK ECC.	AV.32°09'05"
		1.117°31'10"
	RED	2.235°02'20"
MIKE	R7	6.705°07'20"
	DICKECC.	AV.117°31'13"
		1.111°24'00"
	MIKE	2.222°48'40"
DICK ECC	R7	6.668 ^{25'20"} 26'00"
	POND	AV.111°24'20"
		21.5 → 17"

(CONTD FROM NB 136) 9-06-60

STA. N. 124+50; 0+00=W. 10.370; SOUND WEST

Dist SOUND ELEV Dist SOUND ELEV

Dist	SOUND	ELEV	Dist	SOUND	ELEV
0+00			24	10.5	
25			30	10.9	
	1.0			10.8	
2:40	6.2			10.9	
	10.0			10.5	
50	10.1			10.2	
	10.3		3+00	10.8	
	11.0			11.0	
	10.8			11.0	
	11.0			11.3	
1+00	11.3			11.1	
	11.2		50	10.8	
	11.2			11.0	
	11.6		2:45	10.9	
	12.0			10.6	
50	11.6			10.1	
	11.4		4+00	10.2	
	11.1			10.3	
	11.0			10.0	
	10.9			10.0	
2+00	10.8			10.2	
	10.4		50	10.2	
	10.7			10.1	
	10.3			10.0	

STA. N. 124+50-WEST

Dist SOUND ELEV Dist SOUND ELEV

Dist	SOUND	ELEV	Dist	SOUND	ELEV
24	10.0		23	10.0	
	9.8			10.1	
5+00	9.7		50	10.2	
	9.4			10.2	
	9.2	6.8		10.1	
	9.1	6.7	2:50	9.1	
	9.7			8.7	6.4
50	10.0		8+00	8.6	6.3
	10.9			10.0	
	10.8			11.2	
	10.8			11.4	
	10.5			11.5	
6+00	10.1		50	11.5	
	10.3			11.5	
	10.5			11.3	
	10.6			11.2	
	10.8			11.0	
50	11.0		9+00	10.9	
	10.8			11.0	
	10.9			11.0	
	10.8			11.0	
	10.8			10.9	
7+00	9.9		50	10.8	
	10.2			10.9	
	10.0			10.2	

STA. N. 124+50 - WEST 9-06-60

STA. N. 124+50 - WEST

(5)

Dist	Sound	Elev	Dist	Sound	Elev
(22)	10.0		(22)	11.9	
	10.0			11.8	
10+00	10.3		50	11.5	
	12.0			11.9	
	12.0			11.8	
	12.0			12.0	
	12.0			11.8	
50	11.7		13+00	11.4	
	11.7			11.4	
	11.7			11.0	
	11.4			10.8	
	11.9			10.2	
11+00	12.0		50	8.5	6.3
	11.2			8.5	6.3
	11.6			8.7	6.5
2:55	11.0			8.7	6.5
	9.8			8.7	6.5
50	9.6		14+00	8.4	6.2
	9.3			8.2	6.0
	9.0	6.8		10.1	
	9.0	6.8		13.0	
	9.2			12.6	
12+00	9.9		50	12.3	
	9.9			12.2	
	11.8			12.7	

Dist	Sound	Elev	Dist	Sound	Elev
(2)	12.3		(2)	10.3	
	12.0			9.6	
15+00	11.7		50	9.9	
	12.0			10.1	
3:00	11.9			11.0	
	11.8			11.1	
	11.8			11.7	
50	11.6		18+00	11.8	
	11.7			11.9	
	11.7			11.6	
	11.2			11.4	
	11.0			11.5	
16+00	11.0		50	11.2	
	11.1			11.1	
	11.2			10.8	
	11.0			10.2	
	11.1			10.3	
50	11.0		19+00	10.4	
	11.0			10.9	
	11.0			11.0	
	11.6			11.0	
	11.3			11.0	
17+00	10.5		50	10.9	
	12.0			11.2	
	12.1			11.0	

STA. N. 124+50 - WEST 9-06-60

Dist	Sound	Elev	Dist	Sound	Elev
(2.4)	9.0	6.9	(20)	7.6	5.6
	8.8	6.7		7.3	5.3
20+00	8.8	6.7	50	7.1	5.1
	9.0	6.9		8.0	6.0
31.05	9.0	6.9		9.2	7.2
	9.0	6.9		10.0	
	8.7	6.6		10.0	
50	8.9	6.8	23+00	9.8	
	8.3	6.2		9.1	
	8.4	6.3		9.3	
	8.1	6.0		9.3	
	8.4	6.3		9.3	
21+00	8.0	5.9	50	9.3	
	8.1	6.0		9.1	
	8.3	6.2		9.0	
	8.0	5.9		9.0	
	8.0	5.9		9.0	
50	8.0	5.9	24+00	8.9	6.9
	8.1	6.0		8.9	6.9
	8.0	5.9		8.9	6.9
	7.8	5.7		9.1	
	7.9	5.8		9.2	
22+00	7.6	5.5	50	9.0	
	7.8	5.7		9.4	
	8.0	5.9		9.2	
				9.4	
			25+00	9.1	

9-07-60

(6)

STA. N. 125+00; 0+00 = N/10,340; SOUND WEST					
Dist	Sound	Elev	Dist	Sound	Elev
0+00	0.4	+5.2	(56)	14.2	
(5.6)	2.1	+3.5	50	14.4	
9.51	4.0	+1.6		14.4	
	7.0	1.4		14.5	
	12.2	6.6		14.3	
50	13.5	7.9		13.9	
	14.0		3+00	13.9	
	14.0			13.3	
	14.0			13.3	
	14.0			13.8	
1700	14.0			13.9	
	14.0		50	13.9	
	14.5			14.3	
	14.4			14.3	
	14.0			14.7	
50	14.1			14.4	
	14.0		4+00	14.5	
	13.9			14.8	
	14.3			14.6	
	14.2			14.9	
2400	14.2			14.7	
	14.0		50	14.9	
	14.0			14.9	
	14.1			13.5	

STA. N. 125700 - WEST 9-07-60

STA. N. 125700 - WEST

②

Dist	SOUND	Elev	Dist	SOUND	Elev	Dist	SOUND	Elev	Dist	SOUND	Elev
(57)	13.4		(57)	14.2		(5.8)	16.0		(5.8)	13.0	
	13.5			14.2			15.5			13.1	
5700	13.0		50	14.4		10700	15.4		50	13.1	
	13.2			14.1			15.3			13.0	
	13.2		10:02	13.1			15.2			13.0	
	13.1			13.2			15.3			12.9	
	13.3			13.1			15.3			12.8	
50	13.1		8700	13.3		50	15.0		13700	12.8	
	14.0			13.5			14.9			12.9	
	14.0			13.8		10:05	15.0			12.9	
9:55	14.1			13.9			15.2			12.9	
	14.3			15.0			16.3			12.9	
6700	14.4		50	15.0		11700	16.3		50	12.9	
	14.4			14.9			16.5			13.0	
	14.3			14.8			16.9			12.9	
	14.3			14.8			16.8			12.7	6.9
	14.3			14.5			15.8			13.0	
50	14.9		9700	14.6		50	15.4		14700	13.2	
	14.9			14.6			16.2			13.3	
	14.8			14.3			16.0			15.0	
	15.0			14.1			16.0			16.8	
	15.0			14.0			16.0			17.5	
7700	14.7		50	14.3		12700	15.7		50	17.1	
	14.3			15.2			13.2			16.6	
	14.2			14.8			13.1			16.3	

STA. N. 125+00 - WEST 9-07-80

STA. N. 125+00 - WEST

(8)

Dist	SOUND	Elev	Dist	SOUND	Elev	Dist	SOUND	Elev	Dist	SOUND	Elev
(59)	16.1		(59)	13.4		(610)	12.1	6.1	(60)	12.9	6.9
10:19	15.5			13.9			12.3	6.3		14.0	
15+00	15.3		50	14.0		20+00	12.5	6.5	50	14.1	
	15.8			14.4			12.7	6.7		14.3	
	15.2			14.0			12.8	6.8	10:22	14.2	
	15.2			14.1			12.9	6.9		13.7	
	15.2			14.4			12.7	6.7		13.7	
50	15.6		18+00	14.7		50	12.9	6.9	23+00	13.7	
	15.3			14.8			13.0			13.7	
	15.3		10:15	14.9			13.1			13.6	
	15.5			15.0			13.0			13.5	
	15.7			15.1			13.0			13.5	
16+00	15.7		+50	15.3		21+00	13.0		50	14.0	
	15.5			15.1			12.9	6.9		14.2	
	15.4			15.0		10:20	12.7	6.7		14.3	
	15.4			14.9			12.4	6.4		14.3	
	15.1			14.9			12.5	6.5		14.6	
50	15.1		19+00	15.0		50	12.9	6.9	24+00	14.6	
	15.1			15.2			12.5	6.5		14.5	
	15.0			15.3			12.3	6.3		14.5	
	15.0			15.9			12.2	6.2		14.2	
	14.9			16.0			12.0	6.0		14.2	
17+00	15.0		50	15.9		22+00	11.9	5.9	50	14.1	
	15.0			14.1			11.9	5.9		14.0	
	13.3			12.2	6.3		12.2	6.2		14.0	
										14.2	
										14.1	
									25+00	14.2	

9-07-60

STA. N. 125+50; 0+00 = W. 10, 310; SOUND WEST

Dist	SOUND	Elev	Dist	SOUND	Elev
0+00	0.2	+6.0	62	14.4	
62	1.7	+4.5	50	14.4	
	3.9	+2.3		14.3	
10:50	5.0	+1.2		14.4	
	9.7	3.5		14.6	
50	13.2	7.0		14.0	
50	13.7		3+00	13.2	
	13.9			13.0	
	14.0			13.2	
	14.0			13.2	
1400	14.0			13.3	
	14.0		50	13.4	
	14.1			13.5	
	14.1			13.5	
	14.2			13.9	
50	14.1			13.9	
50	14.1		4+00	13.9	
	14.0			14.0	
	14.2			14.2	
	14.2			14.1	
2+00	14.3			14.1	
2+00	14.4		50	14.0	
	14.4			14.0	
	14.4			14.3	

STA. N. 125+50 - WEST

⑨

Dist	SOUND	Elev	Dist	SOUND	Elev
62	14.0		62	14.6	
	14.1			14.6	
5+00	14.0		50	14.6	
	13.9			14.3	
10:55	13.9			14.1	
	13.9			14.0	
	14.0			13.9	
50	15.3		8+00	14.0	
	15.3			14.0	
	15.1			14.2	
	15.0			14.7	
	14.8			14.7	
6+00	14.9		50	14.8	
	14.8			14.8	
	14.6			14.8	
	14.7			14.7	
	14.8			14.3	
50	14.8		9+00	13.9	
	14.7			13.9	
	14.7			13.8	
	14.5			13.7	
	14.4			13.4	
7+00	14.5		50	13.4	
	14.4			15.6	
	14.5			16.0	

STA. N. 125+50 - WEST 9-07-60

STA. N. 125+50 - WEST

(10)

Dist	SOUND	Elev	Dist	SOUND	Elev	Dist	SOUND	Elev	Dist	SOUND	Elev
(63)	15.7		(63)	16.1		(63)	15.0		(63)	14.0	
	15.4			15.6	OK		14.9			14.0	
10+00	15.4		50	14.7		15+00	14.8		50	14.1	
	15.8			12.8	6.5		14.9			14.2	
	15.9			11.3	5.0		15.1			14.6	
	15.6			5.1	+1.2		15.1			14.7	
	15.2			3.2	+3.1		15.3			14.8	
50	15.4		13+00	2.0	+4.3	50	15.8		18+00	14.8	
	15.3			1.0	+5.3		15.8			14.7	
11:00	15.0			1.2	+5.1		15.8			15.0	
	15.0			1.0	+5.3		15.9			15.0	
	15.0			0.6	+5.7		15.9			15.3	
11+00	15.1		50	On Island		16+00	16.0		50	15.3	
	14.9			} SLY. TIP			16.0			15.2	
	14.9		11:05				16.1			15.6	
	15.0			0.5	+5.8		16.0			15.3	
	14.9			1.4	+4.9		16.0			15.2	
50	15.0		14+00	2.1	+4.2	50	15.9		19+00	15.2	
	15.0			2.6	+3.7		15.8			15.3	
	15.2			3.9	+2.4		14.9			15.3	
	15.6			5.0	+1.3		14.5			15.5	
	15.2			9.4	3.1		14.8			15.6	
12+00	15.6		50	13.3	7.0	17+00	15.2		50	15.7	
	16.3			14.4			14.9			15.7	
	16.2			15.0	OK		14.7			14.7	

STA. N. 125+50 - WEST 9-07-60

Dist	SOUND	Elev	Dist	SOUND	Elev
(63)	13.0	6.7	(63)	11.9	5.6
	12.9	6.6		12.0	5.7
20+00	13.0	6.7	50	14.1	
	12.9	6.6		14.1	
11:10	13.0	6.7		14.5	
	13.0	6.7		14.6	
	13.0	6.7		14.8	
50	12.9	6.6	23+00	14.6	
	12.9	6.6		14.3	
	13.1	6.8		14.0	
	13.1	6.8		13.9	
	13.0	6.7		13.8	
21+00	13.1	6.8	50	13.8	
	13.0	6.7		13.9	
	13.1	6.8	11:15	13.9	
	12.8	6.5		14.1	
	12.8	6.5		13.9	
50	12.3	6.6	24+00	14.0	
	12.7	6.4		14.0	
	12.2	5.9		14.0	
	12.1	5.8		13.9	
	11.9	5.6		14.0	
22+00	12.0	5.7	50	14.0	
	11.9	5.6		14.0	
	11.9	5.6		14.0	
				13.9	
			25+00	13.2	6.9

10

STA. N. 126+00; 0+00 = W. 10, 290; SOUND WEST

Dist	SOUND	Elev	Dist	SOUND	Elev
0+00	1.0	+5.2	(62)	14.3	8.1
(62)	3.2	+3.0	50	14.7	8.5
	4.6	+1.6		14.5	8.3
11:30	7.2	1.0		14.6	8.4
	12.1	5.9		14.6	8.4
50	12.1	5.9		14.1	7.9
	13.4	7.2	3+00	14.0	7.8
	13.5	7.3		14.0	7.8
	13.5	7.3		14.0	7.8
	13.8	7.6		14.2	8.0
1+00	14.0	7.8		14.4	8.2
	14.0	7.8	50	14.0	7.8
	14.2	8.0		14.0	7.8
	14.2	8.0		14.0	7.8
	14.7	8.5		13.9	7.7
50	14.7	8.5		14.3	8.1
	14.1	7.9	4+00	14.1	7.9
	14.5	8.3		14.4	8.2
	14.4	8.2		14.1	7.9
	14.6	8.4		14.2	8.0
2+00	14.6	8.4		14.0	7.8
	14.3	8.1	50	14.0	7.8
	14.3	8.1		14.0	7.8
	14.3	8.1		14.0	7.8

STA. N. 126+00 - WEST 9-07-60

Dist	Sound	Elev	Dist	Sound	Elev
(62)	13.8	7.6	(62)	14.5	8.3
	13.9	7.7		14.8	8.6
5+00	13.9	7.7	50	14.8	8.6
	13.8	7.6		14.6	8.4
11:35	13.5	7.3		14.3	8.1
	14.4	8.2		14.1	7.9
	14.8	8.6		14.1	7.9
50	14.6	8.4	8+00	14.1	7.9
	14.5	8.3		14.0	7.8
	14.5	8.3		13.8	7.6
	14.1	7.9		13.9	7.7
	14.0	7.8		14.8	8.6
6+00	14.0	7.8	50	14.7	8.5
	13.9	7.7		15.1	8.9
	13.9	7.7		14.9	8.7
	13.9	7.7		14.8	8.6
	14.0	7.8		14.2	8.0
50	14.0	7.8	9+00	14.2	8.0
	14.0	7.8		14.0	7.8
	14.0	7.8		13.9	7.7
	14.0	7.8		13.9	7.7
	14.3	8.1		16.0	9.8
7+00	14.3	8.1	50	17.2	11.0
	14.2	8.0		17.0	10.8
	14.2	8.0		16.7	10.5

STA. N. 126+00 - WEST

Dist	Sound	Elev	Dist	Sound	Elev
(62)	16.5	10.3	(62)	13.0	6.8
	16.1	9.9		11.7	6.5
10+00	15.8	9.6	50	9.3	3.1
	15.7	9.5		8.5	2.3
11:40	15.4	9.2		5.1	+0.1
	15.1	8.9		3.0	+3.2
	15.2	9.0	(ISLAND)	SOUND EAST	
50	15.4	9.2	0+00	W. 11.5 60	
	15.3	9.1	0+00	0.4	+4.0
	15.1	8.9	(44)	3.7	+0.7
	14.9	8.7		8.0	3.6
	14.7	8.5		10.2	5.8
11+00	14.5	8.3	50	11.5	7.1
	14.3	8.1	50	11.9	7.5
	14.0	7.8		11.8	7.4
	13.9	7.7		11.8	}
	13.9	7.7		11.8	}
50	14.0	7.8	1+00	12.0	7.6
	14.1	7.9	1+00	12.0	7.6
	13.8	7.6	11:45	12.3	7.9
	13.7	7.5		12.3	7.9
	13.7	7.5		12.4	8.0
12+00	13.2	7.0	50	12.3	7.9
	13.1	6.9	50	12.6	8.2
	13.1	6.9			

NOTES
Use this sec for
Pay to 50 of 50

(12)

9-13-60

STAN. 126+00; 0+00 = W. 11.740; SOUND WEST

Dist	Sound	Elev	Dist	Sound	Elev
0+00			(4.5)	14.9	10.4
(4.5)	0.9	+3.6	50	14.3	9.8
	2.3	+2.2		14.3	9.8
1:55	5.7	1.2		14.2	9.7
	10.1	5.6		13.9	9.4
50	11.9	7.4		13.7	9.2
	12.2	7.7	3+00	13.3	8.8
	12.6	8.1		13.3	8.8
	12.8	8.3		13.0	8.5
	13.1	8.6		13.0	8.5
1+00	13.2	8.7		12.9	8.4
	13.6	9.1	50	12.9	8.4
	13.8	9.3		13.0	8.5
	14.0	9.5		12.9	8.4
	13.9	9.4		13.0	8.5
50	14.0	9.5		13.8	9.3
	14.0	9.5	4+00	13.7	9.2
	14.1	9.6		13.7	9.2
	14.5	10.0		13.8	9.3
	14.4	9.9		13.9	9.4
2+00	14.8	10.3		13.9	9.4
1:50	14.8	10.3	50	13.8	9.3
	15.0	10.5		14.0	9.5
	15.0	10.5		14.0	9.5

STAN. 126+00 - WEST

(13)

Dist	Sound	Elev	Dist	Sound	Elev
(4.5)	14.0	9.5	(4.5)	10.9	6.4
	14.1	9.6		10.9	6.4
5+00	14.0	9.5	50	12.2	7.7
	13.3	8.8		13.0	8.5
	11.7	7.2		13.0	}
	11.7	}		13.0	}
	11.7	}		12.2	7.7
50	11.7	}	8+00	12.1	7.6
	11.5	7.0		11.9	7.4
	11.3	6.8		11.9	7.4
	11.2	6.7	2:00	12.0	7.5
	11.2	6.7		12.0	}
6+00	11.1	6.6	50	12.0	}
	11.6	7.1		11.6	7.1
	11.2	6.7		11.3	6.8
	11.5	7.0		11.3	6.8
	11.4	6.9		11.8	7.3
50	11.5	7.0	9+00	11.9	7.4
	11.7	7.2		12.0	7.5
	11.3	6.8		12.0	7.5
	11.8	7.3		12.3	7.8
	11.2	6.7		12.0	7.5
7+00	11.1	6.6	50	12.0	7.5
	11.0	6.5			
	11.0	6.5			

CONTD PG 72

9-13-60

STA. N. 126+50; 0+00 = W. 10, 270; SOUND WEST

DIST	SOUND	Elev	DIST	SOUND	Elev
0+00			(38)	12.0	
(3.8)			50	12.0	
	0.6	+3.2		11.8	
<u>9:40</u>	4.2	0.4		11.8	
	7.5	3.7		11.8	
50	9.5	5.7		11.4	
	10.5	6.7	3+00	11.1	
	11.0	7.2		11.2	
	11.3			11.5	
	11.8			11.8	
1+00	11.9			11.8	
	12.0		50	11.3	OK
	12.0			11.4	OK
	12.0			11.1	
	12.1			11.1	
50	12.1			11.0	
	12.3		4+00	11.1	
	12.3			11.1	
	12.2			11.3	
	12.1			11.8	
2+00	12.0			11.6	
	11.9		50	11.5	
	12.0			11.8	
	11.9			11.9	

STA. N. 126+50 - WEST

(19)

DIST	SOUND	Elev	DIST	SOUND	Elev
(38)	11.6		(38)	11.8	
	11.1			11.9	
5+00	11.2		50	11.9	
	11.1			12.4	
	11.0			12.0	
9:45	11.1			11.8	
	11.4			11.9	
50	12.1		8+00	11.8	
	11.9			11.9	
	12.1			11.9	
	12.1			11.8	
	12.0			11.2	OK
6+00	12.0		50	12.3	OK
	11.8			12.8	
	12.0			12.8	
	12.0			12.8	
	12.0			12.5	
50	11.7		9+00	12.4	
	11.3			12.1	
	11.3			12.2	
	11.3			11.9	
	11.6			11.8	
7+00	11.5		50	11.7	
	11.8			11.6	
	11.8			11.6	

STA. N. 126+50-WEST 9-13-60

STA. N. 126+50-WEST

(15)

Dist	Sound	Elev	Dist	Sound	Elev	Dist	Sound	Elev	Dist	Sound	Elev
(38)	12.3		(38)	9.7		(46)	14.1		(46)	14.5	
	13.0			8.0		2+00	14.3		50	14.8	
10+00	13.0		50	14.0		15+00	14.2		50	14.5	
	13.0		(Island) > 0.5				14.4		2:15	14.2	
9:50	13.0		0+00 = W. 1/2 750				14.8		-	13.3	
-	12.9		SOUND WEST				14.7			13.1	
	13.0		0+00			50	14.9		5+00	13.1	
50	13.0		(46)	1.4			15.1		18+00	13.1	
	12.9			3.9			15.4			13.1	
	12.9		2:10	8.8			15.3			12.7	
	12.8		-	11.0			12.5			12.5	
	12.1		50	12.6		3+00	12.8		50	12.1	
11+00	12.1		50	13.1		16+00	12.9		50	12.1	
	11.8			13.5			13.1			12.3	
	11.1			13.9			13.5			12.2	
	11.0			14.0			13.9			12.1	
	10.8		1+00	14.1		50	14.0		6+00	12.1	
50	10.8		14+00	14.2		50	13.8		17+00	12.1	
	10.8			14.4			13.9			12.0	
	10.6	6.8		14.3			14.1			11.9	
	10.7	6.9		14.7			14.2			11.5	6.9
2	10.7	6.9	50	14.9		4+00	14.1		50	11.4	6.8
12+00	10.6	6.8	50	15.0			14.2		50	11.5	6.9
	10.6	6.8		14.2			14.3			11.2	6.6
	10.1			14.3			14.3			11.2	6.6

OK

STA N. 126+50 - WEST 9-13-60

STA N. 126+50 - WEST

(18)

Dist	SOUND	Elev	Dist	SOUND	Elev	Dist	SOUND	Elev	Dist	SOUND	Elev
(46)	11.2	6.6	(47)	12.3							
7+00	11.1	6.5	50	12.3		12+00			50		
20+00	11.1	6.5	50	12.9							
	11.5	6.9		12.8							
	11.9			13.0							
	12.3			13.2							
50	13.0		10+00	13.5		50			15+00		
50	13.2		23+00	13.4							
2:20	13.2			11.8							
	12.9			11.2							
	13.0			10.3							
8+00	13.2		50	8.0		13+00			50		
21+00	13.0		50	3.5							
	12.9		2:25	2.1							
	12.5			0.5							
	12.2										
50	12.3		11+00			50			16+00		
50	12.3		24+00								
	12.2										
	12.4										
	12.4										
9+00	12.9		50			10+00					
22+00	12.3		50								
	12.1										
	12.2										

of

OK

STA. N. 127+00-WEST 9-13-60

DIST	SOUND	Elev	DIST	SOUND	Elev
(3.7)	11.0		(3.7)	5.4	1.7
	10.9		(Island)	0.9	+2.8
10+00	10.9		0+00	W. 16.760	
	11.2		SOUND - WEST		
	11.9		0+00	0.9	
	12.1		(4.7)	4.2	
	12.3			9.8	
50	12.2		2:30	12.3	
	12.0	ox		13.1	
	12.1		50	13.7	
	12.1			14.0	
	12.1			14.1	
11+00	12.4		150	14.4	
	12.0			14.4	
	12.0		1+00	14.4	
	11.4			14.5	
	11.0			14.7	
50	10.9		14+00	14.8	
	10.4	6.7		14.4	
10:10	10.1	6.4	50	14.6	
	10.1	6.4		14.1	
	10.0	6.3		14.3	
12+00	9.8	6.1	50	14.0	
	9.2	5.5		14.3	
	8.3	4.6	2+00	14.6	

STA. N. 127+00-WEST

(18)

DIST	SOUND	Elev	DIST	SOUND	Elev
(4.7)	14.8		(4.7)	13.9	
	14.8			13.7	
	14.9			13.7	
	14.7			13.1	
50	14.1		5+00	13.2	
	12.8			13.0	
	12.9			13.0	
	12.9			12.9	
	13.0			13.0	
3+00	13.0		50	13.0	
	13.1			12.8	
	13.3	ox		12.8	ox
2:35	13.8			12.7	
	13.9			12.7	
50	13.9		6+00	12.4	
	14.0			12.0	
	14.0			11.9	
	14.2			11.9	
	14.7			12.5	
4+00	14.7		50	12.3	
	14.8			11.8	
	14.8			11.8	
	14.5		50	11.3	6.6
	14.1			11.7	7.0
50	13.2		7+00	11.4	6.7

57A.N.127+00-WEST 9-13-60

DIST	SOUND	Elev	DIST	SOUND	Elev
(48)	11.1	6.3	(48)	12.1	<
	11.4	6.6		12.0	
20+00	12.4		50	12.0	
	12.8			12.0	y.
50	12.5		10+00	12.0	
21+00	12.3			12.0	
	13.4			11.9	
50	13.1		23+00	9.7	
	12.9			5.0	
8+00	12.5		50	3.6	
	12.4			2.3	
	12.1	y.			
34+00	12.0	0	50		
	12.0			1	
50	12.1		11+00		
	12.0				
	12.2				
50	12.1		24+00		
	12.0				
9+00	12.0		50		
	12.0				
	12.0				
23+00	12.0		50		
	12.0				
50	12.1		12+00		

57A.N.127+00-WEST

(19)

DIST	SOUND	Elev	DIST	SOUND	Elev
			50		
			50		15+00
			13+00		50
			50		16+00
			14+00		50
			50		17+00

9-13-60

STA. N. 127450; 0400 = W. 10, 220; SOUND WEST

DIST SOUND ELEV DIST SOUND ELEV

0400

(37)

12.7

(3.7)

0.9

50

12.5

2.5

12.5

10:20

8.0

4.3

12.0

9.9

6.2

11.9

50

11.1

7.4

11.9

11.4

3400

11.1

11.4

11.1

11.8

11.3

11.8

11.3

1400

11.9

11.5

11.9

50

11.5

12.0

11.4

12.1

11.8

12.3

12.0

50

12.5

11.9

12.5

4400

12.0

12.5

12.2

12.5

12.0

12.6

12.0

2400

12.7

12.0

13.0

50

12.1

13.1

12.0

12.9

12.0

STA. N. 127450 - WEST

(20)

DIST SOUND ELEV DIST SOUND ELEV

(37)

11.9

(37)

12.1

11.9

12.0

5400

11.8

50

12.0

11.5

12.0

11.3

11.8

12.7

11.9

12.9

11.8

50

12.9

8400

11.3

12.8

11.2

12.6

11.4

12.3

12.4

12.5

12.8

6400

12.3

50

12.8

12.3

12.4

12.3

12.1

12.3

12.0

12.3

11.9

50

12.3

9400

11.9

12.1

11.9

12.0

11.9

10:25

12.0

11.7

11.8

11.7

12.0

11.9

7400

11.9

50

12.0

12.0

12.1

12.0

11.5

STA. N. 127+50 - WEST 9-13-60

DIST	SOUND	Elev	DIST	SOUND	Elev
(37)	11.4		(37)	4.4	0.7
	11.1		(Island)	1.0	+2.7
10+00	11.0		0+00 = W. 11,740		
	12.0		SOUND WEST		
	12.9		0+00		
	12.8		(48)	1.2	+3.6
	12.9			3.4	+1.4
50	12.7		2:50	8.9	4.1
	12.4			11.9	
	11.9	4'	50	12.6	
	11.5	0'		12.8	
	12.1			12.9	
11+00	12.5		50	13.1	
	12.3			13.6	
	12.1		1+00	13.8	
10:30	12.0			13.6	4'
	11.5			14.0	0'
50	11.1		14:50	14.1	
	11.0			14.1	
	10.9		50	14.0	
	10.6	6.9		14.7	
	10.2	6.5		14.3	
12+00	10.0	6.3	50	14.4	
	9.7	6.0		14.4	
	8.3	4.6	2+00	14.8	

STA. N. 127+50 - WEST (2)

DIST	SOUND	Elev	DIST	SOUND	Elev
(48)	14.8		(48)	14.4	
	14.9			14.0	
	14.8		2:55	14.1	
	14.8			14.0	
50	14.8		5+00	13.9	
	13.9			13.6	
	13.0			13.1	
50	13.1			13.0	
	13.5			13.1	
3+00	13.8		50	13.0	
	13.9			12.9	
	13.6	4'		12.8	4'
	13.5	0'	50	12.6	0'
	13.9			12.5	
50	13.7		6+00	12.4	
	13.9			12.1	
	13.8			12.0	
50	14.0		19:50	12.0	
	14.0			12.4	
4+00	14.2		50	12.4	
	14.1			12.4	
	14.5			12.2	
	14.5		50	12.1	
	14.5			12.1	
50	14.5		7+00	12.1	

STA. N. 127+50 - WEST 9-13-60

STA. N. 127+50 - WEST

(22)

DIST	SOUND	ELEV	DIST	SOUND	ELEV	DIST	SOUND	ELEV	DIST	SOUND	ELEV
(49)	12.1	}	(49)	12.0	}						
	12.3					12.0					
20+00	13.8	}	3+00	12.1	}						
	13.9			12.0							
50	13.8	}	10+00	11.9	}	50			15+00		
	13.5			11.7							
	13.5	}		11.5	}						
50	13.0			10.9							
	12.9	}		8.4	}						
8+00	12.6			50		4.2		13+00			50
	12.0	}		3.6	}						
	11.9			2.3							
24+00	11.9	}	50	1.3	}						
	11.8										
50	11.9	6.9	11+00			50			16+00		
	12.0	}			}						
	12.6										
50	12.7	}	24+00		}						
	12.6										
9+00	12.4	}	50		}	14+00			50		
	12.1										
	12.0	}			}						
22+00	12.0			50							
	11.9	}			}						
50	12.0			12+00				50			17+00

9-13-60

STA. N. 128+00-WEST

(23)

STA. N. 128+00: 0+00 = W/10, 190; SOUND WEST			DIST SOUND ELEV			DIST SOUND ELEV			DIST SOUND ELEV		
			(3.7)	12.9	9.2	(3.7)	11.8	8.1	(3.7)	12.0	8.3
0+00			50	13.0	9.3	5+00	11.6	7.9	50	12.0	8.3
(3.7)	0.1	+2.6		13.0	9.3		11.6	7.9		11.7	8.0
	2.0	+1.7		13.1	9.4		11.7	8.0	10,50	11.7	8.0
10,40	5.7	2.0		11.1	7.4		12.0	8.3		11.2	7.5
	10.8	7.1		11.1	7.4		12.6	8.9		11.0	7.3
50	12.0	8.3	3+00	11.4	7.7	50	11.4	7.7	8+00	11.0	7.3
	12.0	8.3		11.2	7.5		11.5	7.8		12.8	9.1
	12.2	8.5		11.3	7.6		11.8	8.1		12.9	9.2
	12.2	8.5	10,45	11.5	7.8		11.5	7.8		12.9	9.2
	12.6	8.9		11.8	8.1		11.5	7.8		12.8	9.1
1400	12.9	9.2		11.7	8.0	6+00	11.8	8.1	50	12.7	9.0
	12.9	9.2	50	12.0	8.3		11.8	8.1		12.7	9.0
	13.0	9.3		12.0	8.3		11.9	8.2		12.8	9.1
	13.3	9.6		12.0	8.3		11.9	8.2		12.8	9.1
	13.1	9.4		11.8	8.1		11.9	8.2		12.7	9.0
50	13.0	9.3		11.9	8.2	50	11.9	8.2	9+00	12.7	9.0
	12.8	9.1	4+00	12.1	8.4		12.0	8.3		12.5	8.8
	12.8	9.1		11.9	8.2		12.0	8.3		12.2	8.5
	12.4	8.7		11.7	8.0		12.0	8.3		12.1	8.4
	12.3	8.6		11.7	8.0		12.1	8.4		11.3	7.6
2+00	12.4	8.7		12.0	8.3	7+00	11.9	8.2	50	11.8	8.1
	12.6	8.9	50	12.0	8.3		12.0	8.3		11.6	7.9
	12.6	8.9		12.0	8.3		12.0	8.3		11.6	7.9
	12.8	9.1		12.0	8.3		12.0	8.3		11.6	7.9

STAN. N. 128400 - WEST 9-13-60

STAN. 128400, 0100 = W. 11,720 ; SOUND WEST ⁹⁻¹⁴⁻⁶⁰ (29)

DIST	SOUND	ELEV	DIST	SOUND	ELEV	DIST	SOUND	ELEV	DIST	SOUND	ELEV
(37)	11.2	7.5	(37)	8.9	5.2	0+00			50	13.2	9.3
	11.1	7.4		7.9	4.2	(39)			(39)	13.7	9.8
10+00	11.2	7.5	50	4.1	0.4		1.8	+2.1	50	13.5	9.6
	12.2	8.5	(Island)	0.2	+2.5	10:05	7.3	3.4		10.9	7.0
	12.8	9.1	0+00 = W. 11,450				9.9	6.0		10.9	7.0
	12.8	9.1	SOUND EAST			50	10.9	7.0	3+00	11.0	7.1
	12.7	9.0	0+00 ⁹⁻¹⁴⁻⁶⁰	0.3	+3.6		11.0	7.1		11.0	7.1
50	12.0	8.3	(39)	3.6	+0.1		11.2	7.3		11.2	7.3
	12.0	8.3		7.2	3.5		11.5	7.6		11.4	7.5
	12.0	8.3		9.4	5.7		11.8	7.9		11.3	7.4
	12.0	8.3		10.0	6.3	1+00	12.0	8.1	50	11.3	7.4
	12.0	8.3		10.3	6.6		12.2	8.3		11.5	7.6
11+00	11.8	8.1		10.9	7.2		12.4	8.5	50	11.8	7.9
	11.4	7.7		11.0	7.3		12.2	8.3		11.8	7.9
	11.0	7.3		11.0	7.3		12.0	8.1		11.9	8.0
10:55	11.5	7.8		11.0	7.3	50	12.8	8.9	4+00	12.3	8.4
	11.2	7.5	1+00	11.0	7.3		12.4	8.5		12.7	8.8
50	10.9	7.2	11+00	11.0	7.3		12.5	8.6	12:50	13.0	9.1
	10.9	7.2	9:55	11.2	7.5		12.4	8.5		13.1	9.2
	10.8	7.1		11.9	8.2		12.3	8.4		13.0	9.1
	10.8	7.1		11.0	7.3	2+00	12.5	8.6	50	12.4	8.5
	10.6	6.9	50	12.0	8.3		12.9	9.0		13.0	9.1
12+00	10.4	6.7					13.0	9.1		13.3	9.4
	10.0	6.3					13.0	9.1		13.4	9.5
	9.8	6.1					13.1	9.2		13.8	9.9

NOTE: Use This Sec For Pay To Top of 50 ft Slope

9-13-60

(26)

STA. N. 128+50: 0+00 = W. 10, 160; SOUND WEST

STA. N. 128+50 - WEST

DIST	SOUND	Elev	DIST	SOUND	Elev
0+00			(37)	13.0	
(37)			50	12.9	
	1.0			12.9	
11:05	3.6			13.0	
	9.2	5.5		13.0	
50	11.1	7.4		11.1	
	11.7		3+00	11.8	
	11.9			11.2	
	12.0			11.3	
	12.0			11.3	
1+00	12.0			11.4	
	12.0		50	11.3	
	12.2			11.2	
	12.2			11.1	
	12.5			11.5	
50	12.6			11.4	
	12.5		4+00	11.7	
	12.8			11.7	
	12.8			11.7	
	12.8			11.6	
2+00	12.9			11.6	
	12.9		50	11.6	
	12.9			11.5	
	12.8			11.5	

DIST	SOUND	Elev	DIST	SOUND	Elev
(37)	11.4		(37)	11.9	
	11.3			11.9	
5+00	11.2		50	11.7	
	11.2			11.8	
11:10	11.9			11.6	
	11.9			11.5	
	12.5			11.1	
50	12.7		8+00	11.0	
	12.8			11.0	
	12.4			11.4	
	12.7			12.0	
	12.6			12.0	
6+00	12.6		50	12.2	
	12.4			12.0	
	12.3			12.0	
	12.3			11.8	
	12.4			11.9	
50	12.5		9+00	11.9	
	12.3			11.8	
	12.3			11.7	
	12.1			11.7	
	11.9			11.6	
7+00	11.9		50	11.5	
	11.8			11.3	
	11.9			11.4	

STAIN. 128+50 - WEST 9-13-60

Dist	Sound	Elev	Dist	Sound	Elev
(37)	11.1		(37)	10.3	6.6
	11.2			10.2	6.5
10+00	11.0		50	9.9	6.2
	10.9			8.8	5.1
	10.9			4.2	0.5
	12.3		(Island)	0.7	+3.0
	13.2		0+00	9-14-60 = W. 11, 690	
50	13.3		SOUND WEST		
	13.0		0+00		
	13.1		(39)	0.6	
	13.1			2.1	
	12.8				
11400	12.5	X	10:20	6.4	
	12.0			8.9	
	11.9		50	10.6	
	11.6			10.9	
	12.0			11.0	
50	11.9		11:00	11.4	
	11.2		1+00	11.4	
11:15	11.0			11.9	
	10.9			12.1	
	10.8			12.2	
12+00	10.8			12.5	
	10.7		50	12.3	
	10.6	6.9	50	12.6	
				12.2	

STAIN. 128+50 - WEST 9-14-60 (27)

Dist	Sound	Elev	Dist	Sound	Elev
(39)	12.6		(38)	12.4	
	12.2			11.7	
15+00	12.1		50	11.1	
2+00	12.0		50	10.8	
	11.8			11.2	
	11.6		10:25	11.9	
	10.8	6.9		11.7	
	9.9	6.0		11.9	
50	9.6	5.7	5+00	12.3	
	9.8	5.9		12.2	
	10.0	6.1		12.5	
	10.1	6.2		12.9	
	10.4	6.5	50	13.0	
3+00	10.7	6.8	50	13.1	
	11.0			13.0	
	11.0			12.9	
	11.2			12.7	
50	11.6		19+00	12.5	
50	12.0		6+00	12.1	
	12.0			12.2	
	11.9			12.0	
	12.0			12.0	
17+00	12.7		50	11.9	
4+00	12.2		50	11.9	
	12.6			11.8	

STAIN. 128+50-WEST 9-14-60

DIST	SOUND	Elev	DIST	SOUND	Elev
(38)	11.6	}	(38)	11.9	}
	11.7			12.0	
2400	11.4		50	12.1	
7+00	11.2		50	12.2	
	11.1		1030	12.3	
	11.3		<u> </u>	12.3	
	14.3			12.6	
50	15.0		23+00	12.7	
50	15.8		10+00	12.7	
	14.8			12.9	
	13.8		13.0		
	13.0		12.6		
2400	12.4	50	18.9		
8+00	11.9	50	3.2		
	11.9	(HOT-DOG)	2.0		
	11.5	ISLAND	1.0		
	11.2				
50	11.5	24+00			
50	11.3	11+00			
	11.3				
	11.4				
	11.4				
22+00	11.4	50			
9+00	11.6	50			
	11.8				

STAIN. 128+50-WEST

(28)

DIST	SOUND	Elev	DIST	SOUND	Elev
			12+00		50
			50		15+00
			13+00		50
			50		16+00
			14+00		50

9-13-60

STA. N. 129+00; 0+00 = W. 10, 140; SOUND WEST

DIST	SOUND	Elev	DIST	SOUND	Elev
0+00			(37)	12.8	
(37)	0.2		50	12.9	
	2.1			13.1	
11:25	6.0	2.3		13.4	
	10.7	7.0		13.2	
50	11.5	7.8		13.0	
	12.0		3+00	12.9	
	12.2			12.8	
	12.5			12.5	
	12.4			12.3	
1+00	12.5			12.3	
	12.9		50	12.5	
	13.0			12.5	
	13.1			12.4	
	13.2			12.4	
50	13.3			12.2	
	13.3		4+00	12.4	
	13.5			12.4	
	13.2			12.1	
	13.1			12.2	
2+00	13.0			12.2	
	13.0		50	12.0	
	13.0			12.0	
	12.9			11.9	

STA. N. 129+00 - WEST

(29)

DIST	SOUND	Elev	DIST	SOUND	Elev
(37)	11.9		(37)	13.0	
	12.0			13.0	
5+00	12.0		50	12.5	
	12.0			12.3	
	12.3			12.1	
	12.4			12.1	
	12.6			12.0	
50	13.4		8+00	11.5	
	13.6			11.3	
	13.5			11.8	
	13.0			13.0	
	13.1			12.9	
6+00	13.2		50	12.9	
	13.3			12.6	
11:30	13.2			12.5	
	13.4			12.1	
	13.3			12.1	
50	13.4		9+00	12.0	
	13.3			11.9	
	13.1			11.9	
	13.0			11.9	
	13.0			11.9	
7+00	13.1		50	12.0	
	13.1			12.0	
	13.0			12.0	

5 STA. N. 129+00 - WEST 9-13-60

Dist	Sound	Elev	Dist	Sound	Elev
(38)	11.9		(38)	10.9	7.1
	11.7			10.7	6.9
10+00	11.1		50	10.9	7.1
	10.9			10.5	6.7
	10.7	6.9		10.2	6.4
	11.0			9.4	5.6
	11.0			8.0	4.2
50	13.0		13+00	2.9	+0.9
	13.1		0+00	9-14-60 W. 11.650	
	13.0		SOUND WEST		
	13.0		0+00	0.0	
	12.8		(3.8)	1.5	
11+00	12.2			4.6	
	12.1		10+00	7.9	
11:35	12.0			9.6	
	11.9		50	10.1	
	12.0			10.8	7.0
50	11.9		14+00	11.0	
	11.8			11.2	
	11.3			11.3	
	11.3		1+00	11.8	
	11.1			12.0	
12+00	11.0		50	12.1	
	10.8			12.0	
	10.7	6.9		12.1	

5 STA. N. 129+00 - WEST 9-14-60 (30)

Dist	Sound	Elev	Dist	Sound	Elev
50	12.1		4+00	12.4	
(38)	12.2		(37)	11.5	
	12.9			11.8	
	12.3			11.9	
	12.4			11.9	
2+00	12.7		50	11.7	
	12.3			11.0	
	12.3			9.9	6.2
	12.0			10.0	6.3
	11.9			10.2	6.5
50	12.0		5+00	10.8	
	11.0			10.9	
	11.0		10+00	11.2	
	11.4			11.5	
	11.4			11.7	
3+00	11.2		50	12.2	
	11.4			12.3	
	11.0			12.5	
	10.9			12.5	
	10.9			12.2	
50	10.8		6+00	12.8	
	10.8			12.9	
	10.9			12.9	
	11.0			12.9	
	11.1			12.9	

57A.N.129+00-WEST 9-14-60

Dist	SOUND	Elev	Dist	SOUND	Elev	
50	12.9	}	9+00	12.3	}	
(3.7)	12.9		(3.7)	12.2		
20+00	12.9		50	12.1		
	12.8			12.0		
	12.7			11.9		
7+00	12.0		0	50		11.9
	11.9					11.8
50	11.7			10+50		11.8
	11.5			11.9		0
	11.1			12.1		
50	10.1	6.4	10+00	12.5	}	
	9.5	5.8		12.9		
21+00	8.1	4.4	50	13.1		
	4.2	0.5		13.5		
	4.1	0.4		13.1		
8+00	11.1	7.4	50	12.0		
	11.2			7.0		
50	12.2		24+00	3.5		
	12.5			1.7		
	12.3			0.6		
50	12.1	}	11+00			
	12.1					
22+00	12.3			50		
	12.3					
	12.4					

57A.N.129+00-WEST (31)

Dist	SOUND	Elev	Dist	SOUND	Elev
50			14+00		
			12+00		50
			50		15+00
			13+00		50
			50		16+00

9-13-60

STAN. 129+50; 0400=11.10, 110; SOUND WEST

Dist	SOUND	Elev	Dist	SOUND	Elev
0400			4.2	13.0	
4.1	0.2		50	13.2	
	1.9			13.1	
11.05	5.0			13.4	
	9.6	5.5		13.3	
50	11.0	6.9		12.0	
	11.5	7.4	3400	12.0	
	11.8			12.0	
	12.0			12.0	
	12.0			12.0	
1400	12.2			12.0	
	12.4		50	12.1	
	12.7			12.5	
	12.9			12.8	
	13.0			12.8	
50	12.9			12.6	
	13.0		4400	13.0	
	13.0			12.7	
	13.1		1110	12.5	
	12.9			12.6	
2400	13.0			12.6	
	12.9		50	12.8	
	12.9			12.6	
	13.0			12.7	

STAN. 129+50 - WEST

(32)

Dist	SOUND	Elev	Dist	SOUND	Elev
42	12.6		43	13.6	
	12.4			13.4	
5400	12.4		50	13.1	
	12.1			12.9	
	12.1			12.7	
	12.9			12.6	
	13.2			12.5	
50	13.8		8400	12.3	
	13.7			12.0	
	13.1			12.0	
	12.8			12.9	
	12.9			12.3	
6400	13.1		50	13.0	
	13.2			12.8	
	13.4			12.6	
	13.6		1115	12.7	
	13.9			12.7	
50	13.7		9400	12.8	
	13.5			12.7	
	13.2			12.5	
	13.3			12.6	
	13.7			12.4	
7400	13.7		50	12.5	
	13.6			12.1	
	13.8			12.3	

STA. N. 129+50 - WEST 9-13-60

Dist	Sound	Elev	Dist	Sound	Elev
(43)	12.3		(43)	12.0	
	12.0			12.0	
10+00	12.1	x	50	11.8	
	11.9			11.8	
	11.5			11.9	
	11.0	6.7		11.9	0
	10.9	6.6		11.7	
50	13.0		13+00	11.7	
	13.7			11.4	
	13.5			11.8	
	13.1			11.8	
	13.0			11.2	6.9
11+00	12.9		50	10.3	6.0
	12.9			8.8	4.5
	12.9	x	1:20	7.2	2.9
	13.0	0.	—	6.4	2.1
	12.8			2.8	+1.5
50	12.8		14+00	2.4	+1.9
	12.8			1.7	+2.6
	12.7			1.7	+2.6
	12.3			1.8	+2.5
	12.2			1.8	+2.5
12+00	12.0		50	2.0	+2.3
	12.1			4.4	0.1
	12.0			8.0	3.7

NEXT TIP OF ISLAND

STA. N. 129+50 - WEST

Dist	Sound	Elev	Dist	Sound	Elev
(43)	8.7	4.4	(43)	12.8	
	10.0	5.7		13.0	
15+00	10.0	5.7	50	13.6	x
	10.9	6.6		14.2	0
	11.3	7.0		13.7	
	11.5			13.1	
	11.7			11.2	6.9
50	11.9		18+00	11.8	
	11.9			11.9	
	12.0			11.7	
	12.0			11.9	
	12.1			12.0	
16+00	12.3		50	12.0	
	12.6			12.4	
	12.4	x		12.9	x
1:25	12.3	0		12.9	0
	12.0			13.0	
50	12.0		19+00	13.0	
	12.0			13.1	
	12.4			13.0	
	12.8			13.0	
	12.5			13.2	
17+00	12.7		50	13.4	
	12.7			13.1	
	12.9			12.9	

9-14-60

STA. N. 130+00 SOUND WEST

DIST	SOUND	Elev	DIST	SOUND	Elev
0+00			(37)	12.0	8.3
(37)	0.3	+2.4	50	12.0	8.3
	2.0	+1.7		11.9	8.2
<u>11:05</u>	7.1	3.4		11.9	8.2
	10.0	6.3		11.8	8.1
50	10.4	6.7		11.8	8.1
	10.8	7.1	3+00	12.0	8.3
	11.0	7.3		12.0	8.3
	11.1	7.4		11.9	8.2
	11.6	7.9		11.4	7.7
1+00	11.5	7.8		11.2	7.5
	11.8	8.1	50	11.3	7.6
	12.0	8.3		11.2	7.5
	12.2	8.5		11.1	7.4
	12.2	8.5		11.2	7.5
50	12.1	8.4		11.3	7.6
	12.2	8.5	4+00	11.4	7.7
	12.8	9.1		11.6	7.9
	12.7	9.0		11.6	7.9
	12.5	8.8		11.7	8.0
2+00	12.2	8.5		11.8	8.1
	12.1	8.4	50	11.9	8.2
	12.1	8.4		11.9	8.2
	12.1	8.4		11.9	8.2

STA. N. 130+00 - WEST

(35)

DIST	SOUND	Elev	DIST	SOUND	Elev
(37)	11.9	8.2	(37)	12.5	8.8
	11.9	8.2		12.3	8.6
5+00	11.8	8.1	50	12.2	8.5
	11.8	8.1		12.2	8.5
	11.5	7.8	<u>11:10</u>	12.2	8.5
	11.7	8.0		12.1	8.4
	12.7	9.0		12.0	8.3
50	13.2	9.5	8+00	12.0	8.3
	12.3	8.6		11.8	8.1
	12.2	8.5		11.5	7.8
	12.0	8.3		12.1	8.4
	11.9	8.2		12.2	8.5
6+00	12.0	8.3	50	12.2	8.5
	12.1	8.4		12.0	8.3
	12.1	8.4		12.0	8.3
	12.7	9.0		11.9	8.1
	12.8	9.1		12.0	8.3
50	12.9	9.2	9+00	11.8	8.1
	13.0	9.3		11.9	8.2
	12.9	9.2		11.7	8.0
	12.8	9.1		11.8	8.1
	12.9	9.2		11.9	8.2
7+00	12.8	9.1	50	11.9	8.2
	12.6	8.9		12.0	8.3
	12.7	9.0		12.0	8.3

STA. N. 130+00 - WEST 9-14-60

Dist	Sound	Elev	Dist	Sound	Elev
(37)	12.2	8.5	(37)	11.3	7.6
	12.0	8.3		11.1	7.4
10+00	12.0	8.3	50	10.9	7.2
	12.0	8.3		10.8	7.1
	11.1	7.4		10.4	6.7
	11.6	7.9		10.4	6.7
	11.2	7.5		10.5	6.8
50	10.9	7.2	13+00	10.3	6.6
	11.3	7.6		10.8	7.1
	13.4	9.7		11.0	7.3
	13.2	9.5		11.0	7.3
	13.0	9.3		11.0	7.3
11+00	12.9	9.2	50	10.9	7.2
	12.9	9.2		10.9	7.2
	12.9	9.2	11.15	11.0	7.3
	12.6	8.9		11.1	7.4
	12.5	8.8		12.0	8.3
50	12.0	8.3	14+00	12.3	8.6
	12.0	8.3		13.4	9.7
	11.9	8.2		12.8	9.1
	11.9	8.2		11.8	8.1
	12.0	8.3		11.9	8.2
12+00	12.0	8.3	50	11.7	8.0
	12.0	8.3		11.7	8.0
	11.7	8.0		11.7	8.0

STA. N. 130+00 - WEST

(36)

Dist	Sound	Elev	Dist	Sound	Elev
(37)	11.0	7.3	(36)	11.8	8.2
	11.0	7.3		11.8	8.2
15+00	11.0	7.3	50	11.9	8.3
	11.1	7.4		12.0	8.4
	11.3	7.6	11.20	12.5	8.9
	11.4	7.7		13.0	9.4
	11.5	7.8		13.4	9.8
50	11.4	7.7	18+00	11.6	8.0
	11.4	7.7		10.2	6.6
	11.3	7.6		10.8	7.2
	11.5	7.8		10.8	7.2
	11.3	7.6		10.7	7.1
16+00	11.6	7.9	50	10.8	7.2
	11.8	8.1		10.9	7.3
	11.8	8.1		11.3	7.7
	11.9	8.2		11.4	7.8
	11.9	8.2		11.7	8.1
50	11.9	8.2	19+00	11.9	8.3
	11.7	8.0		12.0	8.4
	11.5	7.8		11.9	8.3
	11.8	8.1		12.5	8.9
	11.8	8.1		12.3	8.7
17+00	11.8	8.1	50	12.4	8.8
	11.7	8.0	Contd	12.2	8.6
	11.8	8.1	P 9. 78	12.0	8.4
				11.2	7.6
				11.1	7.5
			20+00	11.0	7.4

9-14-60

STA. N. 130+50; 0400 = W. 10, 060; SOUND WEST

DIST	SOUND	Elev	DIST	SOUND	Elev
0400			(37)	12.0	
(37)			50	12.0	
	1.2			11.9	
12:45	4.3			11.9	
	9.7	6.0		11.9	
50	11.0	7.3		12.0	
	11.4		3400	12.0	
	11.8			12.0	
	11.9			11.6	
	12.0			11.5	
1400	12.2			11.1	
	12.8		50	11.3	
	12.6			11.1	
	12.7			11.1	
	12.7			11.2	
50	12.4			11.0	
	12.5		4400	11.1	
	12.4			11.1	
	12.5			11.0	
	12.2			11.0	
2400	12.2			11.1	
	12.0		50	11.0	
	12.0			11.0	
	12.0			11.3	

STA. N. 130+50 - WEST

DIST	SOUND	Elev	DIST	SOUND	Elev
(37)	11.2		(37)	11.9	
	11.1			11.8	
5400	11.0		50	11.8	
	11.1			11.4	
	11.8		12:50	11.5	
	11.7			11.5	
	11.9			11.6	
50	12.3		8400	11.2	
	12.7			10.9	
	12.1			11.2	
	11.9			11.6	
	11.9			11.6	
6400	11.7		50	12.2	
	11.8			12.1	
	11.8			12.0	
	11.9			12.0	
	11.8			12.0	
50	11.9		9400	12.0	
	11.9			11.9	
	12.0			11.9	
	12.3			11.7	
	11.8			11.9	
7400	11.9		50	11.8	
	11.8			11.5	
	11.9			11.3	

STA. N. 130+50 - WEST 9-14-60

DIST	SOUND	Elev	DIST	SOUND	Elev
(37)	11.2	}	(37)	12.3	}
	11.3			12.4	
10+00	11.5		50	12.4	
	11.7			12.0	
	11.2		1255	11.8	
	11.0		<u> </u>	11.4	
	11.0			11.3	
50	11.0		13+00	11.0	
	11.5			11.1	
	11.8			11.0	
	12.1		11.2		
	14.0	x'	11.0		
11+00	13.8	0	50	10.7	
	13.7			10.3	6.6
	13.4			10.0	6.3
	13.1			9.9	6.2
	13.1			11.8	
50	13.0		14+00	14.0	
	1.27			14.0	
	12.9			13.9	x'
	12.5			13.4	0.
	12.3			13.0	
12+00	12.2		50	12.9	
	12.2			12.7	
	12.4			12.1	

STA. N. 130+50 - WEST

(38)

DIST	SOUND	Elev	DIST	SOUND	Elev
(37)	11.9	}	(37)	11.5	}
	11.5			11.6	
15+00	11.5		50	11.9	
	11.2			11.9	
	11.1		1100	11.9	
	11.0		<u> </u>	11.9	
	10.9			11.9	
50	11.0		18+00	11.9	
	11.0			11.3	
	11.0			11.5	
	11.1		10.3	6.6	
	11.2	x'	10.4	6.7	
16+00	11.2	0	50	10.4	6.7
	11.6			10.8	
	11.5			11.0	
	11.8			11.0	
	12.0			11.0	
50	11.8		19+00	11.2	x'
	11.7			11.9	0
	11.6			11.9	
	11.4			12.0	
	11.5			12.2	
17+00	11.2		50	12.3	
	11.5				
	11.5				

NOTE: This Sec. Cont'd
West. Pg. 79

9-14-60

STA. N. 131+00: SOUND WEST

DIST	SOUND	Elev	DIST	SOUND	Elev
0+00			(37)	12.6	
(37)	0.1		50	12.5	
	2.1			12.5	
1:15	7.9	4.2		12.4	
	10.9	7.2		12.4	
50	11.9			12.3	
	11.9		3+00	12.2	
	12.0			12.1	
	12.2			12.0	
	12.3			12.0	
1+00	12.3			12.0	
	12.4		50	11.8	
	12.6			11.9	
	12.7			11.9	
	12.8			11.9	
50	12.4			11.7	
	12.7		4+00	11.6	
	12.9			11.8	
	12.9			11.6	
	12.9			11.6	
2+00	12.8			11.9	
	12.8		50	11.8	
	12.8			11.5	
	12.8			11.6	

STA. N. 131+00-WEST

DIST	SOUND	Elev	DIST	SOUND	Elev
(38)	11.9		(38)	11.9	
	11.6			11.9	
5+00	11.9		50	11.9	
	11.6			11.9	
1:20	11.3			11.8	
	12.5			11.8	
	13.9			11.6	
50	13.2		8+00	11.5	
	13.1			11.5	
	13.1		1:25	11.5	
	12.9			11.9	
	12.9			12.5	
6+00	12.9		50	12.8	
	12.8			12.8	
	12.4			12.8	
	12.3			12.8	
	12.4			12.7	
50	12.8		9+00	12.7	
	12.7			12.5	
	12.2			12.5	
	12.2			12.4	
	12.5			12.2	
7+00	12.5		50	12.1	
	12.3			12.2	
	12.0			12.2	

57A.N. 131+00 - WEST 9-14-60

57A.N. 131+00 - WEST

Dist	Sound	Elev	Dist	Sound	Elev	Dist	Sound	Elev	Dist	Sound	Elev
(138)	12.0		(38)	12.2		(39)	13.0		(39)	11.9	
	12.1			12.9			12.8			11.9	
10+00	12.1		50	13.1		15+00	12.8		50	12.0	
	12.0			13.0			12.4			11.9	
	11.8		11.30	12.9			12.2			12.0	
	11.5		<u> </u>	12.3			12.0			11.9	
	11.4			12.2			11.9			12.0	
50	11.1		13+00	12.1		50	11.5		18+00	12.0	
	11.0			12.2			11.3			11.5	
	11.2			12.2			11.3			11.0	
	12.3			11.1			11.4			11.0	X ₁
	12.9			11.2			11.3			11.0	0
11+00	13.0	X ₁ 0	50	11.2	0	16+00	11.2	0	50	11.1	
	13.0			11.1			11.0			11.5	
	12.9			11.2			11.5			11.8	
	12.8			11.4			11.9			11.8	
	12.9			11.6			11.5			11.9	
50	12.8		14+00	13.5		50	11.9		19+00	12.1	
	12.8			13.4			11.9			12.4	
	12.8			13.6		11.35	12.5			12.8	
	12.9			13.8		<u> </u>	12.3			12.9	
	12.9			13.8			12.9			13.1	
12+00	12.9		50	13.4		17+00	13.0		50	13.1	
	12.6			13.2			12.9			13.0	
	12.3			13.1			12.8			11.9	

9-14-60

STA. N. 13450; CHD = 11.10, 0.10; SOUND WEST

DIST	SOUND	Elev	DIST	SOUND	Elev
0100			(39)	12.8	
(39)			50	12.8	
	1.6			12.8	
	5.9			12.2	
	10.3	6.4		12.4	
50	11.3	7.4		12.3	
	11.7		3400	12.4	
1:55	12.0			12.3	
	12.1			12.2	
	12.1			12.5	
1400	12.0			12.4	
	12.4		50	12.7	
	12.9			12.0	
	13.1			11.9	
	13.2	x		12.1	
50	13.2	0.		11.9	
	13.2		4400	11.9	
	13.0			11.9	
	13.0			12.0	
	13.0			12.0	
2400	13.0			12.0	
	13.0		50	12.0	
	13.0			11.8	
	12.8			11.6	

STA. N. 13450-WEST

(42)

DIST	SOUND	Elev	DIST	SOUND	Elev
(40)	11.7		(40)	12.0	
	11.7			12.0	
5400	11.2		50	12.1	
	11.2			12.0	
2:00	12.0			12.0	
	13.2			12.0	
	13.8			12.0	
50	13.9		8400	11.9	
	13.6			11.4	
	13.1			11.3	
	12.7			11.2	
	12.9			11.8	
6400	12.9	x	50	12.5	
	13.0	0.		12.7	
	13.0			12.9	
	13.0			12.9	
	12.8			12.8	
50	12.8		9400	12.8	
	12.5			12.9	
	12.7			12.8	
	12.6			12.8	
	12.3			12.9	
7400	12.8		50	12.9	
	12.5			12.9	
	12.1			12.6	

STA. N. 131+50 - WEST 9-14-60

DIST	SOUND	Elev	DIST	SOUND	Elev
(40)	12.5		(40)	12.2	
	12.6			12.2	
10+00	12.3		50	12.3	
	12.5			12.7	
2:05	12.1			12.5	
→	12.1			12.4	
	12.0			12.1	
50	11.8		13+00	12.0	
	11.9			12.0	
	11.7			12.2	
	11.4			12.3	
	12.6			11.9	
11+00	13.0	o.k.	50	12.2	o.k.
	13.0			12.0	
	12.9			12.0	
	12.9			11.7	
	12.9			11.8	
50	12.9		14+00	11.9	
	12.8			12.0	
	12.8			13.0	
	12.7			13.4	
	12.7			13.9	
12+00	12.6		50	13.8	
	12.6			13.6	
	12.4			13.5	

STA. N. 131+50 - WEST

(B)

DIST	SOUND	Elev	DIST	SOUND	Elev
(41)	13.3		(41)	12.7	
	13.1			12.9	
15+00	13.0		50	12.3	
	13.0			11.8	
2:10	12.9			11.3	
→	12.9			11.5	
	13.0			11.0	6.9
50	12.9		18+00	10.8	6.7
	12.9			10.8	6.7
	12.6			11.1	
	12.5			11.2	
	12.5			11.1	
16+00	12.9	o.k.	50	11.0	6.9
	13.0			11.5	
	12.4			11.8	
	12.8			11.9	
	12.7			12.0	
50	12.4		19+00	12.3	
	12.0			12.5	
	12.2			12.8	
	12.2			12.8	
	12.1			12.9	
17+00	12.1		50	13.0	
	12.1			12.4	
	12.3			12.0	

9-15-60

STATION 132+00 - WEST

(45)

STATION 132+00 - WEST			STATION 132+00 - WEST			STATION 132+00 - WEST			STATION 132+00 - WEST		
DIST	SOUND	Elev	DIST	SOUND	Elev	DIST	SOUND	Elev	DIST	SOUND	Elev
			(42)	12.9	8.7	(42)	11.9	7.7	(42)	12.3	8.1
0+00				13.0	8.8	5+00	12.0	7.8		12.4	8.2
(42)	0.7	+3.5	50	13.0	8.8		11.8	7.6	50	12.7	8.5
	2.4	+1.8		13.0	8.8		11.8	7.6	9:50	12.8	8.6
9:45	6.0	1.8		12.3	8.1		11.9	7.7		11.6	7.4
	10.6	6.4		12.0	7.8		12.0	7.8		12.1	7.9
50	10.8	6.6		12.0			13.2	9.0		12.0	7.8
	11.2	7.0	3+00	12.0		50	13.3	9.1	8+00	12.2	8.0
	11.2	7.0		11.8	7.6		13.1	8.9		12.3	8.1
	11.1	6.9		11.3	7.1		13.0	8.8		12.8	8.6
	11.0	6.8		11.5	7.3		12.8	8.6		12.8	8.6
1+00	11.5	7.3		11.6	7.4		12.9	8.7		13.4	9.2
	11.7	7.5	50	11.9	7.7	6+00	13.0	8.8	50	13.5	9.3
	12.0	7.8		12.0	7.8		13.0			13.1	8.9
	12.3	8.1		12.0	7.8		13.0			13.0	8.8
	12.7	8.5		12.0	7.8		13.1	8.9		12.9	8.7
50	12.9	8.7		11.9	7.7		13.1	8.9		12.8	8.6
	12.8	8.6	4+00	12.1	7.9	50	13.0	8.8	9+00	12.8	8.6
	12.9	8.7		12.1	7.9		12.9	8.7		12.7	8.5
	12.9	8.7		12.0	7.8		12.9	8.7		12.7	8.5
	13.0	8.8		12.2	8.0		13.0	8.8		12.6	8.4
2+00	13.0			11.8	7.6		13.0	8.8		12.7	8.5
	13.0		50	11.9	7.7	7+00	12.9	8.7	50	12.7	
	13.0			11.9	7.7		12.5	8.3		12.7	
	12.9	8.7		12.0	7.8		12.3	8.1		12.5	8.3

STA. N. 132+00 - WEST 9-15-60

DIST	SOUND	Elev	DIST	SOUND	Elev
(42)	12.3	8.1	(42)	12.3	8.1
	12.0	7.8		12.0	7.8
10+00	12.0	7.8	50	12.0	7.8
	11.7	7.5		12.3	8.1
	11.7	7.5		12.4	8.2
9:55	11.8	7.6		12.4	8.2
	11.9	7.7		12.3	8.1
50	11.8	7.6	13+00	12.1	7.9
	11.8	7.6		12.0	7.8
	11.7	7.5		12.0	
	11.3	7.1		12.0	
	11.4	7.2		12.0	
11+00	12.6	8.4	50	11.9	7.7
	12.8	8.6		11.7	7.5
	12.9	8.7		11.4	7.2
	12.9			11.3	7.1
	12.9			11.6	7.4
50	12.8	8.6	14+00	11.7	7.5
	12.5	8.3		13.0	8.8
	12.2	8.0		13.1	8.9
	12.2	8.0		13.9	9.7
	12.1	7.9		13.6	9.4
12+00	12.2	8.0	50	12.6	8.4
	12.1	7.9		12.8	8.6
	12.1	7.9		12.4	8.2

STA. N. 132+00 - WEST

(26)

DIST	SOUND	Elev	DIST	SOUND	Elev
(14)	12.3	8.2	(4)	12.1	8.0
	12.4	8.3		12.2	8.1
15+00	12.2	8.1	50	11.7	7.6
	12.2			11.4	7.3
	12.2			10.8	6.7
10+00	12.1	8.0		10.8	6.7
	12.1	8.0		11.1	7.0
50	12.0	7.9	18+00	11.3	7.2
	12.2	8.1		11.1	7.0
	12.7	8.6		11.2	7.1
	12.5	8.4		11.2	7.1
	12.3	8.2		11.1	7.0
16+00	12.6	8.5	50	11.3	7.2
	12.7	8.6		11.5	7.4
	12.7	8.6		11.9	7.8
	12.6	8.5		12.0	7.9
	12.9	8.8		12.1	8.0
50	12.6	8.5	19+00	12.7	8.6
	12.5	8.4		12.6	8.5
	12.1	8.0		13.0	8.9
	12.0	7.9		13.0	8.9
	12.0	7.9		12.9	8.8
17+00	11.8	7.7	50	12.9	8.8
	11.9	7.8		13.0	8.9
	12.0	7.9		13.0	8.9

9-15-60

STAN. 132+50: CHD=K. 9,960 SOUND WEST

Dist	Sound	Elev	Dist	Sound	Elev
0+00			(39)	12.0	
(39)			50	12.1	
	1.1			12.3	
1020	2.9			12.1	
	8.3	4.4		11.3	
50	10.9	7.0		11.8	
	11.1		3+00	11.7	
	11.2			11.6	
	11.3			11.5	0.
	11.4			11.6	0.
1+00	11.5			11.9	
	11.5		50	11.6	
	11.6			11.8	
	11.8			12.0	
	12.0	0.		11.4	
50	12.1	0.		11.0	
	12.3		4+00	10.8	
	12.5			10.9	
	12.3			10.7	6.8
	12.4			10.9	7.0
2+00	12.3			10.6	6.7
	12.2		50	10.6	6.7
	12.3			10.9	7.0
	12.1			10.5	6.6

STAN. 132+50-WEST

(48)

Dist	Sound	Elev	Dist	Sound	Elev
(39)	11.0	7.1	(39)	12.0	
	11.2	7.3		11.9	
5+00	10.8	6.9	50	11.9	
	11.0			11.7	
	11.0			11.8	
	11.1			11.7	
	12.5			11.9	
50	12.8		8+00	12.0	
	12.9			12.0	
	12.3			12.1	
	12.2			12.8	
	12.1	0.		13.1	
6+00	12.0	0.	50	13.1	0.
	12.3			13.1	
	12.3			12.9	
	12.6			12.9	
	12.7			12.6	
50	12.8		9+00	12.2	
	12.3			12.2	
10+25	12.1			12.2	
	12.2			12.1	
	12.1			12.1	
7+00	12.3		50	12.0	
	11.9			11.9	
	11.9			11.9	

STA. N. 132+50 - WEST 9-15-60

Dist	Sound	Elev	Dist	Sound	Elev
(39)	11.9		(39)	12.0	
	11.9			12.0	
10+00	11.6		50	12.0	
	11.6			12.0	
	11.4		10+30	11.9	
	11.5			11.9	
	11.1			11.9	
50	11.2		13+00	11.8	
	11.3			11.7	
	11.1			11.6	
	11.0			11.5	
	10.9	4'		11.3	
11+00	10.9	0'	50	11.2	0'
	11.1			11.0	
	12.1			10.9	
	12.7			10.9	
	12.6			11.1	
50	12.3		14+00	11.6	
	12.3			12.3	
	12.2			12.3	
	12.1			12.8	
	12.0			12.7	
12+00	12.0		50	12.5	
	12.0			12.3	
	11.9			11.9	

STA. N. 132+50 - WEST

(49)

Dist	Sound	Elev	Dist	Sound	Elev
(39)	11.8		(38)	10.9	
	11.8			10.9	
15+00	11.7		50	11.0	
	11.6			11.0	
	11.5		10+35	10.9	
	11.6			11.1	
	11.8			11.2	
50	11.8		18+00	11.1	
	12.1			11.2	
	11.9			11.3	
	12.0			11.7	
	11.9	4'		11.7	
16+00	11.6	0'	50	11.7	0'
	11.6			11.8	
	11.7			11.9	
	11.6			11.9	
	11.7			11.9	
50	11.7		19+00	12.0	
	11.7			12.0	
	11.6			12.1	
	11.8			12.4	
	11.9			12.5	
17+00	11.1		50	12.9	
	10.9			12.9	
	10.9			12.8	

STA. No. 132+50 - WEST 9-15-60

STA. No. 132+50 - WEST

(50)

Dist	Sound	Elev	Dist	Sound	Elev
(38)	12.9		(38)	13.3	
	12.8			13.1	
20+00	11.3		50	13.0	
	11.4			12.6	4'
	11.4			13.2	0'
	11.0			14.0	
	11.4			14.0	
50	11.7		23+00	12.8	
	11.7			8.9	5.1
	11.8		10+40	2.9	+0.9
	11.5			1.9	+1.9
	11.5				
21+00	11.4	4'	50		
	11.3	0'			
	11.4				
	11.1				
	11.2				
50	11.8		24+00		
	11.8				
	11.9				
	11.9				
	12.0				
22+60	12.2		50		
	12.4				
	13.4				

380 50%

9-15-60

STAN. 133700 - WEST

Dist	SOUND	Elev	Dist	SOUND	Elev
0100			3.6	12.1	
3.6			50	12.0	
	1.6			11.9	
1110	4.2	0.6		12.0	
	10.0	6.4		12.0	
50	12.0			11.5	
	12.2		3700	11.4	
	12.5			11.3	
	12.5			11.5	
	12.4			11.5	
1700	12.2			11.5	
	12.2		50	11.4	o.k.
	12.2			11.7	
	12.3		1115	11.5	
	12.4			11.4	
50	12.3			11.4	
	12.2		4700	11.3	
	12.2			11.3	
	12.1			11.4	
	11.9			11.3	
2700	11.9			11.3	
	12.0		50	11.3	
	12.0			11.3	
	12.1			11.0	

STAN. 133700 - WEST

Dist	SOUND	Elev	Dist	SOUND	Elev
36	10.5	6.9	36	11.9	
	10.1	6.5		11.8	
5700	10.2	6.6	50	11.9	
	10.3	6.7		11.5	
	10.1	6.5		11.5	
	10.9			11.5	
	12.6			11.4	
50	13.1		8700	11.8	
	13.2			11.7	
	12.9			11.5	
	12.7			12.0	
	12.4			13.5	
6700	12.2		50	13.2	o.k.
	12.1			13.3	
	12.4		1120	13.2	
	12.4			13.0	
	12.5			12.9	
50	12.5		9700	12.5	
	12.5			12.5	
	12.4			12.4	
	12.2			12.4	
	12.1			12.3	
7700	12.2		50	12.2	
	12.0			12.2	
	11.9			12.1	

(51)

STA. N. 133+00 - WEST 9-15-60

DIST	SOUND	ELEV	DIST	SOUND	ELEV
(36)	12.2		(36)	11.9	
	12.3			11.9	
10+00	12.0		50	11.9	
	12.1			12.1	
	12.0			12.2	
	12.0			12.1	
	11.8			12.1	
50	11.5		13+00	12.0	
	11.3			11.9	
	11.3			11.6	
	11.2		11:25	11.2	
	11.0			11.4	
11+00	10.9	X'	50	11.3	0'
	11.0	0'		11.2	
	12.8			11.1	
	13.0			11.1	
	13.0			11.0	
50	13.0		14+00	11.1	
	12.8			13.0	
	12.4			13.2	
	12.1			13.1	
	12.1			13.1	
12+00	12.1		50	13.4	
	12.0			13.0	
	11.9			12.3	

STA. N. 133+00 - WEST

DIST	SOUND	ELEV	DIST	SOUND	ELEV
(36)	12.2		(36)	11.0	
	12.0			11.0	
15+00	12.0		50	11.1	
	12.0			11.2	
	12.0			11.1	
	12.1			11.1	
	12.1			11.1	
50	12.1		18+00	11.1	
	12.2			11.2	
	12.4			11.1	
	12.2			11.3	
	12.1			11.5	
16+00	11.9	0'	50	11.5	0'
	11.8			11.7	
	11.9			11.9	
	11.8			11.9	
	11.8			12.0	
50	11.9		19+00	12.1	
	11.9			12.2	
	12.1			12.4	
	11.1			12.5	
	11.2			12.5	
17+00	10.8		50	12.9	
	11.1			12.9	
	11.0			12.9	

STA. N. 133+00 - WEST 9-15-60

DIST	SOUND	ELEV	DIST	SOUND	ELEV
(35)	11.5	x	(35)	13.4	
	10.5	0		13.3	
20+00	10.2	6.7	50	12.8	
	10.1	6.6		14.0	
11:30	11.0		11:35	14.0	
	11.1			12.3	0
	11.4			13.2	
50	11.5		23+00	14.3	
	11.5			13.7	
	11.9			11.7	
	11.5			4.9	1.4
	11.5			3.0	+0.5
21+00	11.0	x	50	2.2	+1.3
	11.0	0			
	10.9				
	11.0				
	11.1				
50	11.2		24+00		
	11.5				
	11.9				
	11.9				
	12.0				
22+00	12.0		50		
	12.3				
	12.8				

STA. N. 133+00 - WEST

DIST	SOUND	ELEV	DIST	SOUND	ELEV
			25+00		

9-15-60

STAN. 133+50; 0+00-11.9, 910; SOUND WEST

DIST	SOUND	Elev	DIST	SOUND	Elev
			(33)	12.2	
(3.3)			50	12.1	ok
	0.0			11.2	
12:40	1.8			10.1	6.8
	7.8	4.5		9.8	6.5
50	11.4	8.1		10.0	6.7
	12.3		3+00	10.0	6.7
	12.7			10.2	6.9
	13.0			10.4	
	13.1			10.7	ok
1+00	13.0			10.9	
	13.0		50	10.0	6.7
	13.0			10.5	
	12.9	ok		10.9	
	12.9	0		10.7	
50	12.9			10.7	
	12.8		4+00	10.8	ok
	12.6			10.8	0
	12.7			10.9	
	12.3			10.7	
2+00	12.6			10.3	
	12.5		50	10.4	
	12.5			10.4	
	12.4			10.2	6.9

STAN. 133+50-WEST

(54)

DIST	SOUND	Elev	DIST	SOUND	Elev
(32)	10.0	6.8	(32)	10.9	
	10.1	6.9		11.0	
5+00	9.9	6.7	50	10.8	
	9.3	6.1		10.8	
12:45	9.3	6.1		10.8	
	9.2	6.0		10.8	
	9.9	6.7		10.8	
50	9.9	6.7	8+00	10.8	
	10.1	6.9		10.7	
	10.0	6.8		10.7	
	10.0	6.8		10.6	
	10.0	6.8		10.9	
6+00	10.0	6.8	50	11.4	ok
	10.2			11.5	
	10.6			11.3	
	10.9			11.3	
	10.8			11.3	
50	10.9		9+00	11.3	
	11.1			11.1	
	11.0		12:50	11.0	
	11.2	ok		11.0	
	11.0			11.0	
7+00	11.0		50	10.9	
	11.1			10.5	
	11.1			10.6	

STA. N. 133+50 - WEST 9-15-60

DIST	SOUND	Elev	DIST	SOUND	Elev	
(32)	11.0	}	(32)	11.5	}	
	11.0			11.2		
10+00	11.0		50	11.4		
	11.2			11.6		
	11.2			11.6		
	10.5			11.3		
	10.9		o.k.	11.1		
50	10.8			13+00 11.0		}
	10.7			11.0		
	10.7			11.0		
	10.3		10.9			
	10.2		10.8			
11+00	10.1	6.9	50 10.7			
	11.7		10.4			
	12.0		10.2			
	12.0		10.0	6.8		
	12.0		10.3			
50	11.9		14+00 10.8	}		
	11.9		11.4			
	11.9	o.k.	12:55 12.9			
	11.8		13.0			
	11.7		13.0			
12+00	11.9		50 12.8			
	11.7		12.8			
	11.4		12.5			

STA. N. 133+50 - WEST

(33)

DIST	SOUND	Elev	DIST	SOUND	Elev
(32)	12.2	}	(32)	10.0	6.8
	12.0			10.1	6.9
15+00	12.0			50 11.0	}
	12.1			11.4	
	12.2			11.7	
	12.1			11.6	
	12.4			11.9	
50	12.4			18+00 12.1	
	12.8			11.7	
	12.6			11.4	
	12.9		11.5		
	12.7	o.k.	11.7		
16+00	12.7		50 11.5	}	
	12.1		11.6		
	11.9		11.3		
	11.6		11.8		
	11.8		11.9		
50	11.9		19+00 11.8		
	11.7		11.9		
	11.6		11.9		
	11.4		11.9		
	10.9		12.0		
17+00	11.2		50 12.3		
	11.8		12.3		
	9.8	6.6	10.9		

9-15-60

STA. N. 134100: 0100 = W. 9.890 SOUND WEST

Dist SOUND ELEV Dist SOUND ELEV

0100

(33)

12.9 9.6

(33)

50

12.7 9.4

0.9 +2.4

12.4 9.1

1:15

3.9 0.6

12.0 8.7

=

9.1 5.8

11.9 8.6

50

11.1 7.8

11.6 8.3

11.5 8.2

3100

11.4 8.1

11.5 8.2

11.2 7.9

11.7 8.4

11.5 8.2

11.6 8.3

11.3 8.0

1400

11.8 8.5

11.3 8.0

11.8 8.5

50

11.1 7.8

11.9 8.6

11.0 7.7

11.9 8.6

11.0 7.7

12.0 8.7

11.0 7.7

50

12.1 8.8

11.1 7.8

12.2 8.9

4100

11.0 7.7

12.4 9.1

10.9 7.6

12.5 9.2

10.8 7.5

12.3 9.0

10.5 7.2

2400

12.6 9.3

10.2 6.9

12.5 9.2

50

10.2 6.9

12.3 9.0

10.1 6.8

12.5 9.2

10.2 6.9

STA. N. 134100 - WEST

(5)

Dist SOUND ELEV Dist SOUND ELEV

(33)

10.3 7.0

(33)

9.8 6.5

10.1 6.8

9.9 6.6

5100

9.9 6.6

50

10.3 7.0

9.9 6.6

10.2 6.9

1:20

9.9 6.6

10.2 6.9

10.0 6.7

10.3 7.0

11.0 7.7

10.6 7.3

50

10.7 7.4

8100

10.3 7.0

10.3 7.0

10.4 7.1

10.3 7.0

10.7 7.4

10.3 7.0

10.9 7.6

10.5 7.2

11.3 8.0

6100

10.4 7.1

50

11.7 8.4

10.6 7.3

11.8 8.5

10.6 7.3

11.7 8.4

10.6 7.3

11.8 8.5

10.7 7.4

11.9 8.6

50

10.6 7.3

9100

11.8 8.5

10.4 7.1

11.6 8.3

10.4 7.1

11.6 8.3

10.5 7.2

11.6 8.3

10.3 7.0

11.6 8.3

7100

10.0 6.7

50

11.7 8.4

10.0 6.7

11.3 8.0

9.9 6.6

11.1 7.8

STA. N. 134+00 - WEST 9-15-60

DIST	SOUND	Elev	DIST	SOUND	Elev
(33)	10.9	7.6	(33)	11.4	8.1
	10.8	7.5		11.5	8.2
10+00	10.5	7.2	50	11.3	8.0
	10.9	7.6		11.2	7.9
11:25	10.6	7.3		11.4	8.1
<u> </u>	10.7	7.4		11.5	8.2
	10.4	7.1		11.4	8.1
50	10.2	6.9	13+00	11.5	8.2
	10.0	6.7		11.5	8.2
	10.1	6.8		11.3	8.0
	10.1	6.8		11.4	8.1
	10.0	6.7		11.2	7.9
11+00	10.1	6.8	50	10.8	7.5
	10.0	6.7		10.7	7.4
	10.9	7.6		10.3	7.0
	11.8	8.5		10.1	6.8
	11.8	8.5		10.0	6.7
50	11.9	8.6	14+00	10.0	6.7
	11.7	8.4		10.4	7.1
	11.8	8.5		11.1	7.8
	11.7	8.4		12.9	9.6
	11.8	8.5		12.9	9.6
12+00	11.6	8.3	50	13.0	9.7
	11.1	7.8		12.6	9.3
	11.4	8.1		12.3	9.0

STA. N. 134+00 - WEST

(58)

DIST	SOUND	Elev	DIST	SOUND	Elev
(34)	12.3	8.9	(34)	10.0	6.6
	12.4	9.0		10.0	6.6
15+00	12.6	9.2	50	10.0	6.6
	12.6	9.2		10.0	6.6
11:30	12.8	9.4		10.3	6.9
<u> </u>	12.9	9.5		10.3	6.9
	12.5	9.1		10.4	7.0
50	12.5	9.1	18+00	10.7	7.3
	12.6	9.2		10.9	7.5
	12.7	9.3		11.0	7.6
	12.5	9.1		10.9	7.5
	12.4	9.0		11.0	7.6
16+00	12.1	8.7	50	10.9	7.5
	12.0	8.6		10.9	7.5
	12.0	8.6		11.0	7.6
	12.2	8.8		11.0	7.6
	12.2	8.8		11.2	7.8
50	12.3	8.9	19+00	11.4	8.0
	12.0	8.6		11.2	7.8
	11.4	8.0		11.5	8.1
	11.5	8.1	11:35	11.6	8.2
	11.1	7.7	<u> </u>	11.7	8.3
17+00	10.8	7.4	50	11.8	8.4
	11.0	7.6		11.9	8.5
	10.0	6.6		11.9	8.5

STA. N. 134+00 - WEST 9-15-60

DIST	SOUND	ELV	DIST	SOUND	ELV
(34)	11.8	8.4	(34)	12.9	9.5
	11.1	7.7		12.8	9.4
20+00	10.8	7.4	50	12.6	9.2
	10.1	6.7		12.8	9.4
	10.0	6.6		12.9	9.5
	10.1	6.7		12.7	9.3
	10.2	6.8		12.5	9.1
50	10.3	6.9	23+00	12.5	9.1
	10.8	7.4		12.2	8.8
	10.8	7.4		11.8	8.4
	10.7	7.3	11.40	12.1	8.7
	10.9	7.5		13.9	10.5
21+00	10.9	7.5	50	14.0	10.6
	10.9	7.5		14.0	10.6
	10.9	7.5		14.0	10.6
	10.9	7.5		14.3	10.9
	10.6	7.2		14.5	11.1
50	10.6	7.2	24+00	14.8	11.4
	10.8	7.4		14.6	11.2
	10.9	7.5		13.0	9.6
	10.7	7.3		11.2	7.8
	10.9	7.5		11.0	7.6
22+00	11.7	8.3	50	11.1	7.7
	13.0	9.6		11.0	7.6
	13.1	9.7		11.0	7.6

STA. N. 134+00 - WEST

DIST	SOUND	ELV	DIST	SOUND	ELV
(34)	11.2	7.8			
	11.9	8.5			
25+00	11.8	8.4			
	11.9	8.5			
	12.0	8.6			
	12.2	8.8			
	11.8	7.4			
50	8.4	5.0			
	4.5	1.1			
	4.1	0.7			
	4.0	0.6			
26+00					

(59)

9-15-60

STAN. 134+50 - WEST

Dist	SOUND	Elev	Dist	SOUND	Elev
0400			(35)	12.0	
(35)			50	12.9	
	1.5			13.0	
1155	4.9			13.1	
	10.0	6.5		13.0	
50	12.0			11.7	
	12.3		3400	11.7	
	12.3			11.8	
	12.3			11.9	
	12.4			11.9	
1400	12.4			11.9	x
	12.3		50	12.0	0
	12.5			12.1	
	12.4	x		12.1	
	12.3	0	2100	11.9	
50	12.3			11.9	
	12.9		4400	11.9	
	12.9			11.9	
	12.6			11.8	
	12.4			11.8	
2400	12.5			11.5	
	12.5		50	11.5	
	12.3			11.6	
	12.1			11.9	

STAN. 134+50 - WEST

(60)

Dist	SOUND	Elev	Dist	SOUND	Elev
(35)	11.0		(35)	10.8	
	11.1			10.8	x
5400	11.0		50	10.5	
	11.0			10.0	6.5
	11.2		2105	9.8	6.3
	11.5			9.7	6.2
	12.2			9.8	6.3
50	12.5		8400	9.9	6.4
	12.4			10.0	6.5
	12.1			10.2	6.7
	12.0			10.9	
	11.6			11.5	
6400	11.8		50	13.1	
	11.7			13.3	
	11.9			13.2	
	11.8			13.0	
	11.9			12.9	
50	12.0		9400	12.8	
	11.9			12.8	0
	11.3			12.7	
	11.3			12.5	
	11.5			12.3	
7400	11.1		50	12.2	
	11.1			12.1	
	10.9			12.0	

STA. N. 134+50 - WEST 9-15-60

DIST	SOUND	Elev	DIST	SOUND	Elev
(36)	11.5		(36)	11.7	
	11.9			11.9	
10+00	11.9		50	12.1	
	12.0			12.1	
	12.1			12.0	
	12.0			12.2	
	11.7			12.3	
50	11.9		13+00	12.1	
	11.9			12.2	
	12.0			12.1	OK
	12.0			12.1	
	11.5			12.1	
11+00	11.0		50	12.0	
	10.8			11.9	
	10.5	6.9		11.8	
2:10	12.0			11.6	
	12.4			11.4	
50	12.4		14+00	11.1	
	12.5			10.7	
	12.4			9.9	6.3
	12.1			13.0	
	12.0			13.5	
12+00	11.9		50	14.0	OK
	11.9			13.5	
	11.8			13.2	

STA. N. 134+50 - WEST

DIST	SOUND	Elev	DIST	SOUND	Elev
(36)	13.1		(36)	10.5	6.9
	12.8			11.1	
15+00	12.3		50	11.4	
	12.1			11.0	
	12.1			11.0	
	12.0			11.1	OK
	12.0			11.1	
50	12.1		18+00	11.1	
	12.3			11.1	
	12.4			11.1	
2:15	12.7			11.0	
	12.6			10.4	6.8
16+00	12.7		50	10.3	6.7
	12.6	OK		10.3	6.7
	12.4			10.9	
	12.4			10.8	
	12.3			10.9	
50	12.3		19+00	11.0	
	12.3			11.4	
	12.4			11.3	OK
	12.6			11.5	
	12.8			12.0	
17+00	13.1		50	12.1	
	11.9			12.2	
	10.8			12.2	

STA. N. 134+50 - WEST 9-15-60

DIST	SOUND	ELU	DIST	SOUND	ELU
(37)	11.4		(37)	12.8	
	11.4			13.5	
20+00	10.9		50	13.2	
	11.1			13.2	
220	11.1			13.1	
	11.1			11.9	
	11.1			12.4	
50	11.2		23+00	12.9	
	11.4			12.9	
	11.2			12.7	
	10.9			12.3	
	10.8			12.3	
21+00	11.0		50	12.2	
	10.9			12.0	
	11.0			12.0	
	10.9			12.0	
	10.8			12.1	
50	10.5	6.8	24+00	13.1	
	10.5	6.8		12.3	
	10.5	6.8		11.2	
	10.5	6.8		11.5	
	10.8	7.1		11.9	
22+00	10.9	7.2	50	11.8	
	10.5	6.8		11.6	
	11.5	7.8		11.9	

STA. N. 134+50 - WEST

DIST	SOUND	ELU	DIST	SOUND	ELU
(37)	11.7				
	11.7				
25+00	11.5				
	11.9				
2:25	12.0				
	12.8				
	12.9				
50	13.1				
	13.2				
	13.8				
	12.4				
	9.4				
26+00	5.4				

9-15-60

STAN. 135+00, 0+00 = W. 2,840 ; SOUND WEST

DIST	SOUND	EAU	DIST	SOUND	EAU
0+00			(38)	12.5	
(38)	1.0		50	12.4	
	3.2			12.3	
2:40	8.7	4.9		12.1	
	11.1	7.3		12.0	
50	11.4	7.6		12.0	
	10.1	6.3	3+00	11.9	
	10.2	6.4		11.7	
	9.8	6.0		11.8	
	9.8	6.0		11.9	
1+00	10.0	6.2		11.8	
	10.2	6.4	50	11.8	
	10.4	6.6		11.7	
	10.6	6.8		11.5	
	10.9			11.4	
50	10.9			11.2	
	11.1		4+00	11.1	
	11.7			11.3	
	12.2			11.3	
	12.3			11.2	
2+00	12.7			11.2	
	12.7		50	11.2	
	12.4			11.1	
	12.6			11.4	

STAN. 135+00 - WEST

(63)

DIST	SOUND	EAU	DIST	SOUND	EAU
(39)	11.6		(39)	10.9	
	11.7			10.9	
5+00	11.3		50	11.3	
	11.0			11.1	
	11.0			11.0	
2:45	12.8			10.7	6.8
	12.9			10.7	6.8
50	12.9		8+00	10.3	6.4
	12.8			10.3	6.4
	12.7			10.6	6.7
	12.5			11.0	
	12.4			12.8	
6+00	12.6		50	13.0	
	12.6			13.0	
	12.7			12.8	
	12.8			12.7	
	12.8			12.5	
50	12.8		9+00	12.5	
	12.6			12.1	
	12.2			12.2	
	11.4			12.2	
	12.2			12.4	
7+00	11.8		50	12.6	
	11.8			12.6	
	11.2			12.5	

STA. N. 135+00-WEST 9-15-60

DIST	SOUND	Elev	DIST	SOUND	Elev
(39)	12.5		(40)	12.1	
	12.5			12.0	
10+00	12.3		50	11.8	
	12.0			11.8	
	12.4			11.5	
2:50	12.1			11.2	
	12.1			11.5	
50	12.0		13+00	11.9	
	11.9			11.9	
	11.9			11.9	
	11.9			11.9	
	11.9			12.0	
11+00	11.9		50	12.0	
	11.9			12.0	
	12.0			11.9	
	12.4			12.0	
	13.1			11.8	
50	13.2		14+00	11.8	
	13.2			11.8	
	12.8		2:55	11.8	
	12.7			12.2	
	12.4			13.2	
12+00	12.1		50	14.0	
	12.1			14.0	
	12.0			13.8	

STA. N. 135+00-WEST

DIST	SOUND	Elev	DIST	SOUND	Elev
(40)	13.6		(40)	11.1	
	13.0			11.1	
15+00	13.0		50	11.2	
	12.9			11.2	
	12.9			11.5	
	12.9			11.6	
	12.9			11.6	
50	12.8		18+00	11.9	
	12.9			11.5	
	12.9			11.4	
	12.9			11.4	
	12.8			11.4	
16+00	12.6		50	11.6	
	12.4			11.9	
	12.1			11.9	
	12.0			11.8	
	12.0			11.4	
50	12.1		19+00	11.1	
	12.2			11.3	
	12.4		3:00	11.3	
	12.7			11.6	
	12.5			11.6	
17+00	12.8		50	11.5	
	12.9			11.7	
	12.3			11.8	

STA. N. 135+00 - WEST 9-15-60

DIST	SOUND	Elev	DIST	SOUND	Elev
(40)	12.2		(4)	11.9	
	12.1			12.9	
20+00	11.7		50	13.0	
	11.1			13.8	
	11.2			13.7	
	11.4			13.4	
	11.6			13.0	
50	11.6		23+00	12.4	
	11.7			13.1	
	11.8			13.4	
	11.3		3:05	13.6	
	11.4		<u>3:05</u>	13.1	
21+00	11.4	x. 0.	50	13.1	
	11.4			13.0	
	11.5			13.0	
	11.7			13.0	
	11.9			13.0	
50	11.3		24+00	12.8	
	11.4			12.5	
	11.7			12.0	
	11.6			12.0	
	11.6			12.0	
22+00	11.6		50	12.0	
	11.1			12.1	
	11.1			12.1	

STA. N. 135+00 - WEST

DIST	SOUND	Elev	DIST	SOUND	Elev
(4)	12.1				
	12.0				
25+00	12.0				
	12.0				
	12.0				
	12.0				
	12.0				
50	12.6				
	12.9				
	13.1				
	13.2				
	14.0				
26+00	13.1				

x.
0.

x.
0.

9-16-60

STATION 135+50 SOUND WEST

DIST	SOUND	ELU	DIST	SOUND	ELU
0+00	0.0		(47)	13.5	
(47)	1.0		50	13.5	
	2.9			13.5	
<u>9:25</u>	6.5			13.5	
	11.9			13.5	
50	12.5			13.4	
	12.8		3+00	13.0	
	13.0			12.8	
	12.3			12.9	
	12.0			12.9	
1+00	11.8			12.9	
	11.9		50	12.9	
	11.9	x'		12.9	
	12.0	0.		12.9	
	12.1			12.8	
50	12.5			12.5	
	12.7		4+00	12.2	
	12.7			12.3	
	12.5			12.7	
	13.0			12.7	
2+00	13.1			12.5	
	13.1		50	12.5	
	13.1			12.4	
	13.3			12.0	

STATION 135+50 WEST

DIST	SOUND	ELU	DIST	SOUND	ELU
(46)	12.0		(45)	12.9	
	12.0	0		12.9	
5+00	11.5	6.9	50	12.9	
<u>9:30</u>	11.4	6.8		12.8	
	11.4	6.8		12.7	
	12.4			12.4	
	13.0			12.3	
50	13.5		8+00	12.1	
	13.5			11.2	6.7
	13.7			11.1	6.6
	13.5			11.1	6.6
	13.5			12.8	
	13.9		50	13.1	
	13.5			13.0	
	13.5	0		13.0	
	13.4		9:35	13.0	
	13.5			13.1	
50	13.8		9+00	13.0	
	13.8			13.0	0
	13.7			13.0	
	13.4			13.1	
	13.4			13.0	
7+00	13.5		50	12.9	
	13.2			12.7	
	13.0			12.8	

STA. N. 135+50 - WEST 9-16-60

DIST	SOUND	Elev	DIST	SOUND	Elev
(45)	12.5		(45)	13.8	
	12.5			13.7	
10+00	12.9		50	13.1	
	12.7			13.0	
	12.9		9:40	13.0	
	13.0		—	13.0	
	13.0			12.8	
50	13.0		13+00	12.7	
	13.2			12.9	
	13.4			13.0	
	13.2			12.5	
	13.0			12.1	
11+00	13.0	0.5'	50	11.9	0.5'
	13.0			11.6	
	13.1			11.9	
	13.1			12.0	
	14.6			12.1	
50	14.8		14+00	12.4	
	14.9			12.0	
	14.9			12.4	
	14.5			13.5	
	14.3			15.0	
12+00	14.2		50	15.1	
	14.0			15.1	
	13.9			15.0	

STA. N. 135+50 - WEST

(57)

DIST	SOUND	Elev	DIST	SOUND	Elev
(45)	14.9		(45)	12.3	
	14.4			12.0	
15+00	14.0		50	12.0	0.5'
	14.0			12.0	
	13.9			11.8	
	13.5			11.8	
	13.5			11.8	
50	13.5		18+00	11.3	6.8
	13.4			11.4	6.9
	13.4		9:45	11.5	7.0
	13.7		—	11.9	
	13.4			12.1	
16+00	13.3	0.5'	50	12.1	
	13.2			12.2	
	13.1			12.3	
	13.0			12.3	
	13.0			12.5	0.5'
50	12.8		19+00	12.2	0.5'
	12.5			12.3	
	12.2			12.2	
	12.0			12.3	
	12.1			12.5	
17+00	12.4		50	12.5	
	12.5			12.8	
	12.9			13.1	

STA. N. 135+50 - WEST 9-16-60

DIST	SOUND	Elev	DIST	SOUND	Elev
(4A)	13.5	}	(4A)	12.5	}
	13.6			13.0	
20+00	13.9		50	13.5	
	13.0		9:50	13.5	
	12.8			13.9	
	12.1			13.9	
	12.2			13.9	
50	12.9		23+00	13.1	
	12.1			13.0	
	12.1			13.7	
	12.9		14.0		
	13.0		14.0		
21+00	12.9	} O.K.	50	13.9	} O.K.
	12.8			13.6	
	12.4			13.4	
	12.4			13.3	
	12.4			13.5	
50	12.4		24+00	13.2	
	12.5			13.1	
	12.5			13.0	
	12.4			13.1	
	12.3			13.0	
22+00	12.3	}	50	13.0	
	12.3			13.1	
	12.2			13.5	

STA. N. 135+50 - WEST (68)

DIST	SOUND	Elev	DIST	SOUND	Elev
(4A)	13.5	}	(4A)	13.5	}
	13.5			13.5	
25+00	13.2			13.2	
	13.2			13.2	
	13.5			13.5	
	13.5			13.5	
50	13.5			13.5	
	13.7			13.7	
	13.9			13.9	
	14.0			14.0	
	13.9		13.9		
26+00	13.5		13.5		

9-16-60

STA. N. 136+00; CHOD = 11,9,780; SOUND WEST			DIST SOUND ELEV		
DIST	SOUND	ELEV	DIST	SOUND	ELEV
0+00			(43)	12.0	7.7
(43)	0.2	+4.1	50	12.0	7.7
	1.5	+2.8		11.9	7.6
10+05	3.6	+0.7		12.0	7.7
	9.4	-5.1		12.4	8.1
50	10.8	6.5		12.9	8.6
	10.9	6.6	3+00	12.5	8.2
	10.9	6.6		12.5	8.2
	11.7	7.4		12.6	8.3
	11.8	7.5		12.3	8.0
1+00	11.9	7.6		12.0	7.7
	11.9	7.6	50	12.0	7.7
	11.9	7.6		11.9	7.6
	11.9	7.6		11.7	7.4
	12.0	7.7		11.9	7.6
50	12.0	7.7		11.9	7.6
	12.0	7.7	4+00	11.9	7.6
	12.0	7.7		11.8	7.5
	12.0	7.7		12.0	7.7
	12.0	7.7		11.9	7.6
2+00	12.0	7.7		12.0	7.7
	12.0	7.7	50	12.1	7.8
	11.9	7.6		12.0	7.7
	11.9	7.6		11.7	7.4

STA. N. 136+00 - WEST

(69)

DIST SOUND ELEV			DIST SOUND ELEV		
(43)	11.7	7.4	(43)	12.6	8.3
	11.7	7.4		12.1	7.8
5+00	11.8	7.5	50	11.9	7.6
	11.3	7.0		11.8	7.5
10+10	11.7	7.4		11.6	7.3
	11.9	7.6		11.8	7.5
	12.9	8.6		12.0	7.7
50	13.5	9.2	8+00	11.7	7.4
	13.2	8.9		11.5	7.2
	13.1	8.8		11.3	7.0
	13.0	8.7		11.1	6.8
	13.0	8.7		11.9	7.6
6+00	13.0	8.7	50	12.0	7.7
	13.0	8.7		12.0	7.7
	13.0	8.7		12.6	8.3
	12.9	8.6		11.7	7.4
	12.9	8.6		11.7	7.4
50	12.9	8.6	9+00	11.3	7.0
	12.5	8.2		11.7	7.4
	12.4	8.1		11.7	7.4
	12.3	8.0		11.9	7.6
	12.6	8.3		11.8	7.5
7+00	12.7	8.4	50	11.9	7.6
	12.7	8.4		11.9	7.6
	12.6	8.3		11.9	7.6

STA. N. 136+00 - WEST 9-16-60

Dist	Sound	Elev	Dist	Sound	Elev
(42)	11.9	7.7	(42)	13.1	8.9
	11.9	7.7		13.1	8.9
10+00	12.0	7.8	50	13.2	9.0
	12.1	7.9		13.1	8.9
	11.9	7.7		13.1	8.9
	11.9	7.7		13.2	9.0
	11.9	7.7		13.3	9.1
50	11.9	7.7	13+00	13.2	9.0
	11.6	7.4		13.2	9.0
	11.6	7.4		13.1	8.9
	11.6	7.4		13.0	8.8
	11.4	7.2		12.9	8.7
11+00	11.4	7.2	50	13.0	8.8
	11.8	7.6		13.0	8.8
	13.9	9.7		13.3	9.1
10+15	13.9	9.7		12.9	8.7
<u> </u>	14.1	9.9		12.7	8.5
50	14.1	9.9	14+00	12.6	8.4
	13.9	9.7		12.6	8.4
	13.9	9.7		11.9	7.7
	13.7	9.5		11.4	7.2
	13.6	9.4		12.9	8.7
12+00	13.3	9.1	50	13.0	8.8
	13.2	9.0		13.1	8.9
	13.2	9.0		12.9	8.7

STA. N. 136+00 - WEST

Dist	Sound	Elev	Dist	Sound	Elev
(42)	12.8	8.6	(42)	12.7	8.5
	12.7	8.5		12.4	8.2
15+00	12.8	8.6	50	12.7	8.5
	12.8	8.6		12.7	8.5
	12.7	8.5		12.7	8.5
	12.6	8.4		12.8	8.6
	12.6	8.4		12.9	8.7
50	12.9	8.7	18+00	12.9	8.7
	12.9	8.7		12.9	8.7
10+00	12.9	8.7		12.6	8.4
<u> </u>	12.9	8.7		12.6	8.4
	13.0	8.8		12.7	8.5
16+00	13.1	8.9	50	12.9	8.7
	13.1	8.9		13.0	8.8
	13.4	9.2		12.9	8.7
	13.3	9.1		13.4	9.2
	13.4	9.2		12.5	8.3
50	13.1	8.9	19+00	12.6	8.4
	12.9	8.7		12.3	8.1
	12.9	8.7		12.2	8.0
	13.0	8.8		12.2	8.0
	12.9	8.7		12.1	7.9
17+00	12.7	8.5	50	12.1	7.9
	12.6	8.4		12.0	7.8
	12.7	8.5		12.0	7.8

STA. N. 136+00 - WEST 9-16-60

Dist	Sound	Elev	Dist	Sound	Elev
(42)	12.1	7.9	(41)	16.9	12.8
	12.2	8.0		16.3	12.2
20+00	12.3	8.1	50	15.8	11.7
	12.3	8.1		15.0	10.9
	12.7	8.5		14.1	10.0
10:25	12.8	8.6		13.8	9.7
	12.9	8.7		13.7	9.6
50	12.6	8.4	23+00	13.8	9.7
	12.7	8.5		13.9	9.8
	12.5	8.3		13.9	9.8
	12.5	8.3		13.6	9.5
	12.4	8.2		13.5	9.4
21+00	12.6	8.4	50	13.5	9.4
	12.4	8.2		13.4	9.3
	12.5	8.3		13.4	9.3
	12.6	8.4		13.1	9.0
	12.6	8.4		13.1	9.0
50	14.7	10.5	24+00	13.2	9.1
	17.4	13.2		14.0	9.9
	17.5	13.3		16.0	11.9
	17.5	13.3		17.2	13.1
	17.3	13.1		17.7	13.6
22+00	17.0	12.8	50	17.7	13.6
	17.1	12.9		15.0	10.9
	16.8	12.6		12.8	9.7

STA. N. 136+00 - WEST (71)

Dist	Sound	Elev	Dist	Sound	Elev
(41)	12.8	8.7			
	12.9	8.8			
25+00	12.9	8.8			
	12.9	8.8			
	13.0	8.9			
10:30	13.1	9.0			
	13.1	9.0			
50	13.2	9.1			
	13.5	9.4			
	13.8	9.7			
	13.9	9.8			
	13.8	9.7			
26+00	13.8	9.7			

9-13-60 (Contd from)
 STA. N. 126+00 - WEST Pg. 13

DIST	Sound	Elev	DIST	Sound	Elev
(4.5)	12.2	7.7			
	12.3	7.8			
	12.3	7.8			
	12.5	8.0			
10+00	12.7	8.2	50		
	12.7	8.2			
	12.9	8.4			
	12.9	}			
	12.9	}			
50	12.2	7.7	12+00		
	10.1	5.6			
2:05	7.1	2.6			
	3.0	+1.5			
(island)	1.9	+2.6			
11+00	0.9	+3.6			

50

9-16-60

(12)

STA. N. 138+00; 0+00 = W. 9, 660; SOUND WEST

DIST	Sound	Elev	DIST	Sound	Elev
0+00			(30)	11.9	8.9
(30)			50	11.9	8.9
				11.6	8.6
1:32				11.7	8.7
~	1.4	+1.6		11.7	8.7
50	4.9	1.9		11.7	8.7
	6.5	3.5	3+00	11.7	8.7
	7.7	4.7		11.7	8.7
	8.4	5.4		11.6	8.6
	9.2	6.2		11.0	8.0
1+00	9.8	6.8		11.2	8.2
	9.9	6.9	50	11.1	8.1
	10.9	7.9		11.0	8.0
	9.8	6.8		11.0	8.0
	10.0	7.0		10.9	7.9
50	10.1	7.1		11.0	8.0
	11.0	8.0	4+00	11.0	8.0
	11.0	8.0		11.0	8.0
	11.0	8.0	1:35	11.0	8.0
	11.2	8.2	~	11.0	8.0
2+00	11.3	8.3		11.2	8.2
	11.7	8.7	50	11.1	8.1
	11.7	8.7		11.2	8.2
	11.8	8.8		11.2	8.2

STAN. 138+00 - WEST 9-16-60

DIST	Sound	Elev	DIST	Sound	Elev
(30)	11.0	8.0	(30)	11.1	8.1
	11.0	8.0		10.7	7.7
5+00	11.0	8.0	50	10.8	7.8
	11.0	8.0		10.8	7.8
	11.1	8.1		11.0	8.0
	11.0	8.0		11.1	8.1
	11.0	8.0		11.0	8.0
50	11.0	8.0	8+00	11.1	8.1
	10.9	7.9		11.0	8.0
	10.8	7.8		11.5	8.5
	11.2	8.2		11.1	8.1
	11.0	8.0		11.0	—
6+00	11.0	8.0	50	11.0	8.0
	11.0	8.0		11.0	8.0
	10.9	7.9		11.1	8.1
	10.9	7.9		11.1	8.1
	10.9	7.9		11.0	8.0
50	10.9	7.9	9+00	11.0	8.0
	10.8	7.8		11.0	8.0
	10.9	7.9	1.40	11.0	8.0
	10.9	7.9	~	10.9	7.9
	10.9	7.9		10.9	7.9
7+00	10.9	7.9	50	11.0	8.0
	11.0	8.0		10.7	7.7
	11.1	8.1		10.9	7.9

STAN. 138+00 - WEST (23)

DIST	Sound	Elev	DIST	Sound	Elev
(30)	10.8	7.8	(30)	10.2	7.2
	10.7	7.7		10.3	7.3
10+00	10.2	7.2	50	10.1	7.1
	10.4	7.4		10.1	7.1
	10.4	7.4		10.0	7.0
	10.5	7.5		10.0	7.0
	10.2	7.2		10.0	7.0
50	10.4	7.4	13+00	10.5	7.5
	10.1	7.1		10.5	7.5
	10.2	7.2	1.45	10.9	7.9
	10.2	7.2	—	11.0	8.0
	10.0	7.0		10.8	7.8
11+00	10.5	7.5	50	10.7	7.7
	10.4	7.4		10.8	7.8
	10.6	7.6		10.9	7.9
	10.2	7.2		10.9	7.9
	10.1	7.1		10.5	7.5
50	10.1	7.1	14+00	10.6	7.6
	10.0	7.0		10.6	7.6
	10.1	7.1		10.5	7.5
	10.2	7.2		10.6	7.6
	10.3	7.3		10.7	7.7
12+00	10.2	7.2	50	10.3	7.3
	10.1	7.1		11.4	8.4
	10.5	7.5		10.8	7.8

STA. N. 138+00 - WEST 9-16-60

DIST	Sound	Elev	DIST	Sound	Elev
(30)	10.8	7.8	(30)	11.0	8.0
	11.0	8.0		11.0	8.0
15+00	11.0	8.0	50	11.0	8.0
	11.0	8.0		10.9	7.9
	11.0	8.0	1.50	11.0	8.0
	11.0	8.0		11.0	8.0
	11.1	8.1		11.2	8.2
50	11.0	8.0	18+00	11.2	8.2
	11.0	8.0		11.3	8.3
	10.9	7.9		11.0	8.0
	10.9	7.9		11.0	8.0
	11.0	8.0		11.2	8.2
16+00	11.0	8.0	50	11.0	8.0
	11.1	8.1		10.8	7.8
	11.0	8.0		10.9	7.9
	11.0	8.0		10.9	7.9
	10.8	7.8		11.0	8.0
50	10.8	7.8	19+00	11.1	8.1
	10.9	7.9		11.1	8.1
	10.9	7.9		11.1	8.1
	10.9	7.9		11.0	8.0
	10.9	7.9		11.2	8.2
17+00	11.1	8.1	50	11.1	8.1
	11.0	8.0		11.4	8.4
	10.8	7.8		11.4	8.4

STA. N. 138+00 - WEST (22)

DIST	Sound	Elev	DIST	Sound	Elev
(30)	11.1	8.1	(30)	11.0	8.0
	11.1	8.1		11.2	8.2
20+00	11.2	8.2	50	10.6	7.6
	11.2	8.2		10.9	7.9
	11.2	8.2		10.9	7.9
	11.3	8.3		10.9	7.9
	11.7	8.7		11.0	8.0
50	11.4	8.4	23+00	11.1	8.1
	11.3	8.3		11.0	8.0
	11.3	8.3		10.8	7.8
	11.4	8.4		10.8	7.8
	11.0	8.0		10.9	7.9
21+00	11.0	8.0	50	10.9	7.9
	10.9	7.9		10.7	7.7
	10.9	7.9		10.9	7.9
	11.1	8.1		10.9	7.9
	11.2	8.2		10.7	7.7
50	11.1	8.1	24+00	10.6	7.6
	11.0	8.0		10.5	7.5
	11.0	8.0		10.1	7.1
1.55	11.0	8.0		10.0	7.0
	11.0	8.0		10.2	7.2
22+00	11.0	8.0	50	10.7	7.7
	10.9	7.9		10.6	7.6
	11.0	8.0		10.4	7.4

STA. N. 138+00 - WEST 9-16-60

DIST	Sound	Elev	DIST	Sound	Elev
(30)	10.2	7.2			
	10.4	7.4			
25+00	10.3	7.3			
	10.3	7.3			
	10.8	7.8			
	10.0	7.0			
	10.4	7.4			
50	10.1	7.1			
	10.1	7.1			
	10.2	7.2			
2:00	10.4	7.4			
	10.0	7.0			
26+00	10.1	7.1			

9-16-60

(25)

STA. N. 140+00; 0+00 = W 9,480			Sound WEST		
DIST	Sound	Elev	DIST	Sound	Elev
0+00			(3)	11.2	8.1
(31)			50	11.4	8.3
<u>2:10</u>	0.3	+2.8		11.9	8.8
	1.9	+1.2		12.3	9.1
	3.5	0.4		12.5	9.4
50	6.0	2.9		12.2	9.1
	7.0	3.9	3+00	12.1	9.0
	9.5	6.4		12.2	9.1
	10.5	7.4		12.0	8.9
	10.9	7.8		11.9	8.8
1+00	10.5	7.4		11.5	8.4
	10.8	7.7	50	11.0	7.9
	10.8	7.7		10.8	7.7
	11.0	7.9		10.9	7.8
	11.3	8.2		10.9	7.8
50	11.4	8.3		10.9	7.8
	11.2	8.1	4+00	10.9	7.8
	11.0	7.9		10.9	7.8
	10.7	7.6		10.8	7.7
	10.9	7.8		10.9	7.8
2+00	10.9	7.8		10.9	7.8
	11.2	8.1	50	10.9	7.8
	11.3	8.2		10.9	7.8
	11.4	8.3		11.0	7.9

STATION 140+00-WEST 9-16-60

DIST	Sound	Elev	DIST	Sound	Elev
(31)	11.0	7.9	(31)	11.1	8.0
	11.1	8.0		11.2	8.1
5+00	11.1	8.0	50	11.3	8.2
	11.2	8.1		11.2	8.1
2:15	11.2	8.1		11.5	8.4
	11.2	8.1		11.6	8.5
	11.4	8.3		11.9	8.8
50	11.5	8.4	8+00	11.9	8.8
	11.2	8.1		11.8	8.7
	11.2	8.1		11.9	8.8
	11.2	8.1		11.9	8.8
	11.4	8.3		11.9	8.8
6+00	11.5	8.4	50	11.5	8.4
	11.4	8.3		11.5	8.4
	11.5	8.4		11.5	8.4
	11.5	8.4		11.4	8.3
	11.2	8.1		11.5	8.4
50	11.1	8.0	9+00	11.2	8.1
	11.2	8.1		11.1	8.0
	11.2	8.1		11.1	8.0
	11.1	8.0		11.1	8.0
	11.3	8.2		11.2	8.1
7+00	11.5	8.4	50	11.4	8.3
	11.1	8.0		11.3	8.2
	11.1	8.0		11.2	8.1

STATION 140+00-WEST

(76)

DIST	Sound	Elev	DIST	Sound	Elev
(31)	11.2	8.1	(32)	11.1	7.9
	11.3	8.2		11.3	8.1
10+00	11.3	8.2	50	11.3	8.1
	11.5	8.4		11.4	8.2
	12.0	8.9		11.3	8.1
	12.0	8.9		11.3	8.1
	11.9	8.8		11.3	8.1
50	11.5	8.4	13+00	11.4	8.2
	11.5	8.4		11.5	8.3
	11.5	8.4		11.3	8.1
2:20	11.4	8.3		11.2	8.0
	11.6	8.5		11.2	8.0
11+00	11.8	8.7	50	11.2	8.0
	11.7	8.6		11.1	7.9
	11.9	8.8		11.0	7.8
	11.9	8.8		11.0	7.8
	11.9	8.8		11.2	8.0
50	12.0	8.9	14+00	11.1	7.9
	11.9	8.8		11.0	7.8
	11.9	8.8		11.1	7.9
	11.2	8.1		11.0	7.8
	11.3	8.2		11.1	7.9
12+00	11.2	8.1	50	11.0	7.8
	11.2	8.1		10.9	7.7
	11.2	8.1		10.8	7.6

STA. N. 140+00 - WEST 9-16-60					
DIST	Sound	Elev	DIST	Sound	Elev
(32)	10.9	7.7	(32)	11.5	8.3
	10.9	7.7		11.2	8.0
15+00	11.0	7.8	50	11.1	7.9
	11.1	7.9		11.1	7.9
	11.0	7.8		11.5	8.3
	11.2	8.0	<u>2:25</u>	11.7	8.5
	11.2	8.0		11.3	8.1
50	11.2	8.0	18+00	11.3	8.1
	11.5	8.3		11.4	8.2
	11.8	8.6		11.5	8.3
	11.9	8.7		11.5	8.3
	11.9	8.7		11.7	8.5
16+00	11.9	8.7	50	11.4	8.2
	12.0	8.8		11.5	8.3
	12.2	9.0		11.5	8.3
	12.1	8.9		11.3	8.1
	12.0	8.8		11.3	8.1
50	12.0	8.8	19+00	11.4	8.2
	12.0	8.8		11.4	8.2
	11.9	8.7		11.1	7.9
	11.9	8.7		11.2	8.0
	11.9	8.7		11.3	8.1
17+00	11.7	8.5	50	11.5	8.3
	11.4	8.2		11.8	8.6
	11.4	8.2		11.9	8.7

STA. N. 140+00 - WEST					
DIST	Sound	Elev	DIST	Sound	Elev
(32)	11.9	8.7	(32)	11.8	8.6
	11.9	8.7		11.9	8.7
20+00	12.0	8.8	50	11.8	8.6
	12.1	8.9		11.9	8.7
<u>2:30</u>	12.1	8.9		11.9	8.7
<u> </u>	12.1	8.9		12.0	8.8
	12.0	8.8		12.0	8.8
50	12.0	8.8	23+00	12.0	8.8
	12.1	8.9		11.9	8.7
	12.1	8.9		11.8	8.6
	12.1	8.9		11.7	8.5
	12.1	8.9		11.6	8.4
21+00	12.1	8.9	50	11.6	8.4
	12.1	8.9		11.7	8.5
	11.9	8.7		11.5	8.3
	11.9	8.7		11.3	8.1
	11.9	8.7		11.3	8.1
50	11.9	8.7	24+00	11.3	8.1
	11.3	8.1		11.5	8.3
	11.5	8.3		11.7	8.5
	11.5	8.3		11.5	8.3
	11.5	8.3		11.7	8.5
22+00	11.7	8.5	50	11.8	8.6
	11.6	8.4		11.8	8.6
	11.7	8.5		11.7	8.5

STA. N. 140+00 - WEST 9-16-60

Dist Sound Elev

(32) 11.5 8.3

11.3 8.1

25+00 11.3 8.1

11.9 8.7

2135 11.9 8.7

11.8 8.6

11.4 8.2

50 11.3 8.1

11.3 8.1

11.5 8.3

11.7 8.5

11.7 8.5

26+00 11.3 8.1

cont'd from Pg 34
STA. N. 130+00 - WEST 9-14-60 (28)

Dist Sound Elev Dist Sound Elev

(36) 11.4 7.8 (36) 7.1 3.5

11.7 8.1 4.0 0.4

11.7 8.1 2.0 +1.6

12.0 8.4 0.9 +2.7

50 12.1 8.5 23+00

12.1 8.5

12.2 8.6

12.3 8.7

12.4 8.8

21+00 12.2 8.8

12.2 8.6

12.6 9.0

12.5 8.9

12.0 8.4

50 11.9 8.3

11.9 8.3

11.9 8.3

1125 11.8 8.2

11.4 7.8

22+00 11.2 7.6

11.1 7.5

10.9 7.3

10.1 6.5

9.8 5.2

50 8.9 5.3

STA. N. 130+50 - WEST 9-14-60 Cont'd from Pg. 38

Dist	Sound	Elev	Dist	Sound	Elev
(37)	12.7		(37)	12.2	
	12.4			11.9	
	11.9			11.7	
	11.5			11.5	
20+00	11.2		50	11.0	
	11.3			9.6	5.9
	11.1		1105	6.8	3.1
	11.1			3.0	+0.7
	11.1			1.5	+2.2
50	11.4		23+00		
	11.3				
	11.5				
	11.7				
	11.8				
21+00	12.1		50		
	12.0				
	12.1				
	12.3				
	12.5				
50	12.5		24+00		
	12.4				
	12.5				
	12.4				
	12.3				
22+00	12.2				

IMPROVED TABLES AND INFORMATION

HORIZONTAL STADIA CORRECTIONS

2°-00'	— 0.1	21°-00'	— 12.8	33°-00'	— 29.7
3°-00'	— 0.3	21°-30'	— 13.4	33°-15'	— 30.1
4°-00'	— 0.5	22°-00'	— 14.0	33°-30'	— 30.5
5°-00'	— 0.8	22°-30'	— 14.7	33°-45'	— 30.9
6°-00'	— 1.1	23°-00'	— 15.3	34°-00'	— 31.3
7°-00'	— 1.5	23°-30'	— 15.9	34°-15'	— 31.7
8°-00'	— 1.9	24°-00'	— 16.5	34°-30'	— 32.1
9°-00'	— 2.5	24°-30'	— 17.2	34°-45'	— 32.5
10°-00'	— 3.0	25°-00'	— 17.9	35°-00'	— 32.9
10°-30'	— 3.3	25°-30'	— 18.6	35°-15'	— 33.3
11°-00'	— 3.6	26°-00'	— 19.2	35°-30'	— 33.7
11°-30'	— 4.0	26°-30'	— 19.9	35°-45'	— 34.1
12°-00'	— 4.3	27°-00'	— 20.6	36°-00'	— 34.6
12°-30'	— 4.7	27°-30'	— 21.3	36°-15'	— 35.0
13°-00'	— 5.1	28°-00'	— 22.0	36°-30'	— 35.4
13°-30'	— 5.5	28°-30'	— 22.8	36°-45'	— 35.8
14°-00'	— 5.9	29°-00'	— 23.5	37°-00'	— 36.2
14°-30'	— 6.3	29°-30'	— 24.3	37°-15'	— 36.6
15°-00'	— 6.7	30°-00'	— 25.0	37°-30'	— 37.1
15°-30'	— 7.2	30°-15'	— 25.4	37°-45'	— 37.5
16°-00'	— 7.6	30°-30'	— 25.8	38°-00'	— 37.9
16°-30'	— 8.1	30°-45'	— 26.2	38°-15'	— 38.3
17°-00'	— 8.5	31°-00'	— 26.5	38°-30'	— 38.7
17°-30'	— 9.0	31°-15'	— 26.9	38°-45'	— 39.1
18°-00'	— 9.5	31°-30'	— 27.3	39°-00'	— 39.6
18°-30'	— 10.1	31°-45'	— 27.7	39°-15'	— 40.0
19°-00'	— 10.6	32°-00'	— 28.1	39°-30'	— 40.5
19°-30'	— 11.2	32°-15'	— 28.5		
20°-00'	— 11.7	32°-30'	— 28.9		
20°-30'	— 12.3	32°-45'	— 29.3		

Chains to Feet

1	66
2	132
3	198
4	264
5	330
6	396
7	462
8	528
9	594
10	660

Feet to Chains

100	1.515
200	3.030
300	4.545
400	6.060
500	7.575
600	9.090
700	10.606
800	12.121
900	13.636
1,000	15.151

