

MB 140



$$\begin{array}{r} 16797.9 \quad 16827.3 \\ 52.7 \quad 52.7 \\ \hline 16,850,0 \quad 16,880,0 \end{array}$$
$$\begin{array}{r} 46.9 \\ 16683.1 \\ \hline 7300 \end{array}$$

167683

51.5

$$\begin{array}{r} 50.2 \\ 167098 \\ \hline 16760,0 \end{array}$$
MICROFILMED  
MICROFILMED

50.9

167391

16,7900

16856.2

43.8

$$\begin{array}{r} 46.7 \\ 16,603.3 \\ \hline 16,650,0 \end{array}$$

16886

44

16,930

FB N<sup>o</sup> 140

THIS BOOK INDEXED- 2-13-62

$$\begin{array}{r} 592.9 \\ 47.1 \\ \hline 16,640,0 \end{array}$$

16,629.9

50.1

16,6800

$$\begin{array}{r} 53.5 \\ 16,656.5 \\ \hline 7100 \end{array}$$

(Ref. N.B. 101 + 97)

9-12-60

CROSS SECTIONS CRESCENT  
BAY AREA FOR PROPOSED

DREDGING; NOTE DIRECT ELEV <sup>Rod</sup> USED

STA. N. 135+00; 0+00 = W. 20,431.94

Sta	NOTE; For Add.	Elev
B.M.	X-sec's Sec	8.56
0	M.B. N. 139	8.49
E 4 <sup>2</sup>	Soundings NB 137	8.42
E 47		7.2
E 73		3.6
STA. N. 136+00; 0+00 = W. 20,388.36		
0		7.5
E 8		6.9
E 32		3.6

STA. N. 137+00; 0+00 = W. 20,388.70

0	7.3
W 11	7.8
E 11.	7.1
E 41	3.8
STA. N. 138+00; 0+00 = W. 20,389.04	
0	7.4
W 24	8.6
E 9	7.0
E 38	3.7
TP.	8.67

STA. N. 139+00; 0+00 = W. 20,389.37

Sta	Elev
0	5.5
<u>Two-Levels</u>	
	3.8
W. 13	7.8
W. 33	8.0
E. 15	3.8

STA. N. 140+00; 0+00 = W. 20,355.56

0	8.3
W 25	8.6
E 23	7.5
E 35	6.3
E 58	3.8

STA. W. 203+00; 0+00 = N. 14,039.77

0	7.5
N. 42	8.5
S. 17	6.2
S 40	3.8

STA. W. 202+00; 0+00 = N. 14,111.34

0	5.8
N. 12	7.1
N. 61	8.8
S 20	3.7

9-12-60

STA. W. 201+00, 0+00 = N. 14, 182.92

Sta	Elev
0	6.3
N. 22	8.7
N. 33	10.1
N. 49	8.9
S. 21	3.8

STA. W. 200+00, 0+00 = N. 14, 254.5

Sta	Elev	Notes
0 TP	7.69	on Hub
N. 12	8.8	
N. 25	9.1	@ fence
S. 24	3.8	

STA. W. 199+00, 0+00 = N. 14, 326.07

Sta	Elev
0	7.5
N. 5	7.8
N. 8	8.7
N. 15	9.3
S. 11	7.1
S. 40	3.9

(2)

STA. W. 198+00, 0+00 = N. 14, 397.65

Sta	Elev
0	7.2
N. 12	9.5
N. 25	10.8
S. 31	4.0

STA. W. 197+00, 0+00 = N. 14, 469.94

Sta	Elev	Notes
0	9.3	
S. 3	9.8	B/H
S. 6	4.5	
S. 8	3.8	R.I. Hub
TP	8.78	W 197+00 <sup>83</sup> on Hub

STA. W. 196+00, 0+00 = N. 14, 627.85

Sta	Elev	Notes
0	9.21	on Hub
S. 11	9.40	Conc
S. 12	6.2	
S. 35	3.9	

9-12-60

STA.W. 195+00; 0+00 = N. 14,753.06

Sta	Elev	
0	9.7	
513	9.7	Top Bulk-Head
513	5.0	
533	3.9	

STA.W. 194+00; 0+00 = N. 14,785.56

Sta	Elev	
0	7.2	
N. 7	7.11	Bot. Step
N. 8	7.6	Ground
N. 10.5	9.11	Top Sky
5.6	7.0	
5.14	5.9	
5.28	3.9	

STA.W. 193+00; 0+00 = N. 14,768.50

Sta	Elev	
0	3.7	
N. 14	4.3	
N. 25	5.5	
N. 29	5.4	
N. 29	9.6	B/H

T.P.

STA.W. 192+00; 0+00 = N. 14,770.23

Sta	Elev	
0	9.89	Conc
5.96	9.80	Patio
5.20	8.67	Bot Step
5.29	8.3	B/H
5.29	4.5	Ground
5.31	3.9	

B.M. Circle Ecc. 9.11 ~ 9.11

NOTE: For Sec's Contd Elev. See  
 M.B. F.B. No 139

9-12-60

STA. N. 128+00; 0+00 = W 16,518.61

Sta	Elev	
B.M.	9.89	R/H. Top conc. Bk Wall FBI 101 58
0	5.9	
E 17	6.8	
W. 50	4.2	

N. 129+00; 0+00 = W. 16,564.75

0	6.3	
E 11 Z	7.2	
E 11 Z	8.63	TOP Bk-Wall
W 11	5.7	
W. 44	4.1	

STA. N. 130+00; 0+00 = W 16,603.27

0	6.0	
E 2	6.3	
E 2	8.75	Top Wall
W. 15	5.1	
W. 31	4.2	

STA. N. 131+00; 0+00 = W 16,629.89

Sta	Elev	
0	6.4	
E 08	6.5	
E 08	9.91	TOP Bk Wall
W. 24	4.8	
W. 37	4.2	

NOTE: For Additional See's Nilp  
 See MB. F.B. No 139

(1-3)

BASELINE LAYOUT FOR TOP OF SHLDR  
STAKES CRESCENT BAY W.O. 64160

STA.	B/L DIST	BEARING
N. 14,470; W. 19,705	121.25'	N. 54° 44' 13" E
N. 14,400; W. 19,804	119.40'	N. 53° 30' 50" E
N. 14,329; W. 19,900	123.81'	N. 53° 52' 14" E
N. 14,256; W. 20,000	125.60'	N. 52° 45' 55" E
N. 14,180; W. 20,100	130.42'	N. 52° 09' 49" E
N. 14,100; W. 20,203	140.715'	N. 44° 42' 43" E
N. 14,000; W. 20,302	111.36'	N. 26° 06' 17" E
N. 13,900; W. 20,351	103.58'	N. 15° 06' 34" E
N. 13,800; W. 20,378	100.975'	N. 7° 58' 11" E
N. 13,700; W. 20,392	100.02'	N. 1° 08' 45" E
N. 13,600; W. 20,394	81.91'	N. 4° 12' 03" W
N. 13,518.31; W. 20,388.09'		

Ref. F.B. M.B. No 97

" D.W. 95.8614-XD

8615-YD 12-09-60

Stamped  
Wentworth  
Hecht

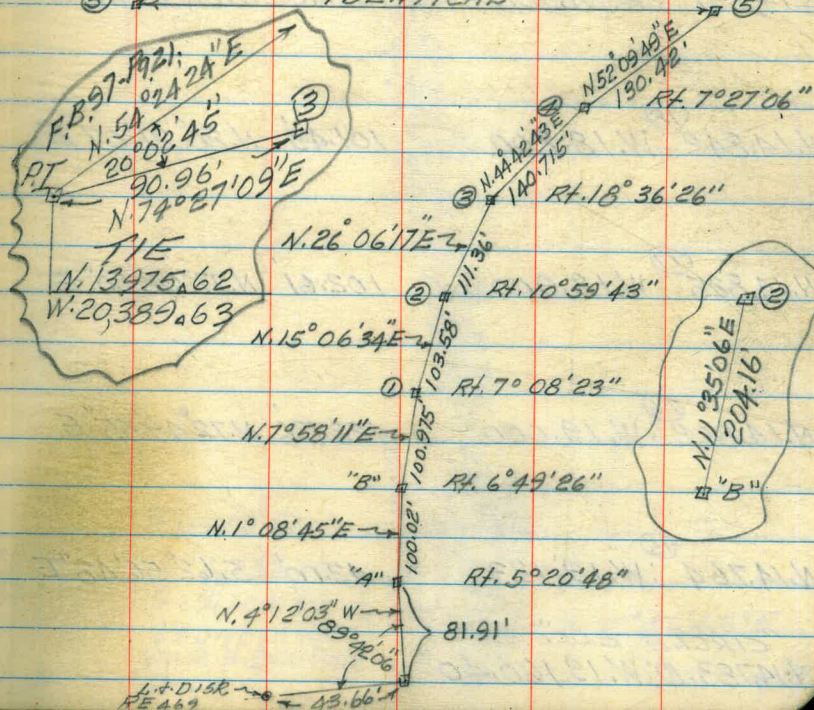
TIE  
P.L. N. 14468.62  
W. 19700.83  
S. 71° 41' 20" E

NOTE: Top of Shldr.  
Elev. + 8.5  
SLOPE 9:1

PROJ. DEPTH. - 4.0 =  
112.5' from L.O. 21' 24"  
Top Shldr

Rt. 1° 06' 19" N. 53° 52' 14" E  
123.81'  
Rt. 0° 36' 06" N. 52° 45' 55" E  
125.60'

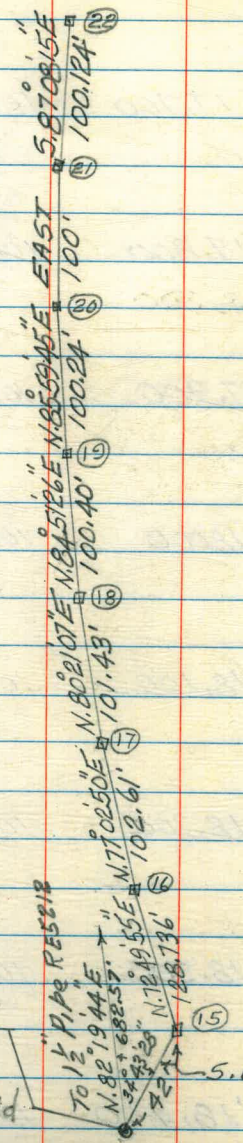
NOTE: SEE PG  
11, FOR N 99-15



12-12-60

STA	B/L DIST	BEARING
N. 14,853 ; W. 18,400	100.124	5.87° 08' 15" E
N. 14,858 ; W. 18,500	100.00	E. A. S. T
N. 14,858 ; W. 18,600	100.24	N. 85° 59' 45" E
N. 14,851 ; W. 18,700	100.40	N. 84° 51' 26" E
N. 14,842 ; W. 18,800	101.43	N. 80° 21' 07" E
N. 14,825 ; W. 18,900	102.61	N. 77° 02' 50" E
N. 14,802 ; W. 19,000	128.736	N. 72° 49' 55" E
N. 14,764 ; W. 19,123	42.00	5.62° 56' 48" E

"CIRCLE ECC"  
 N. 14,783.10 ; W. 19,160.40

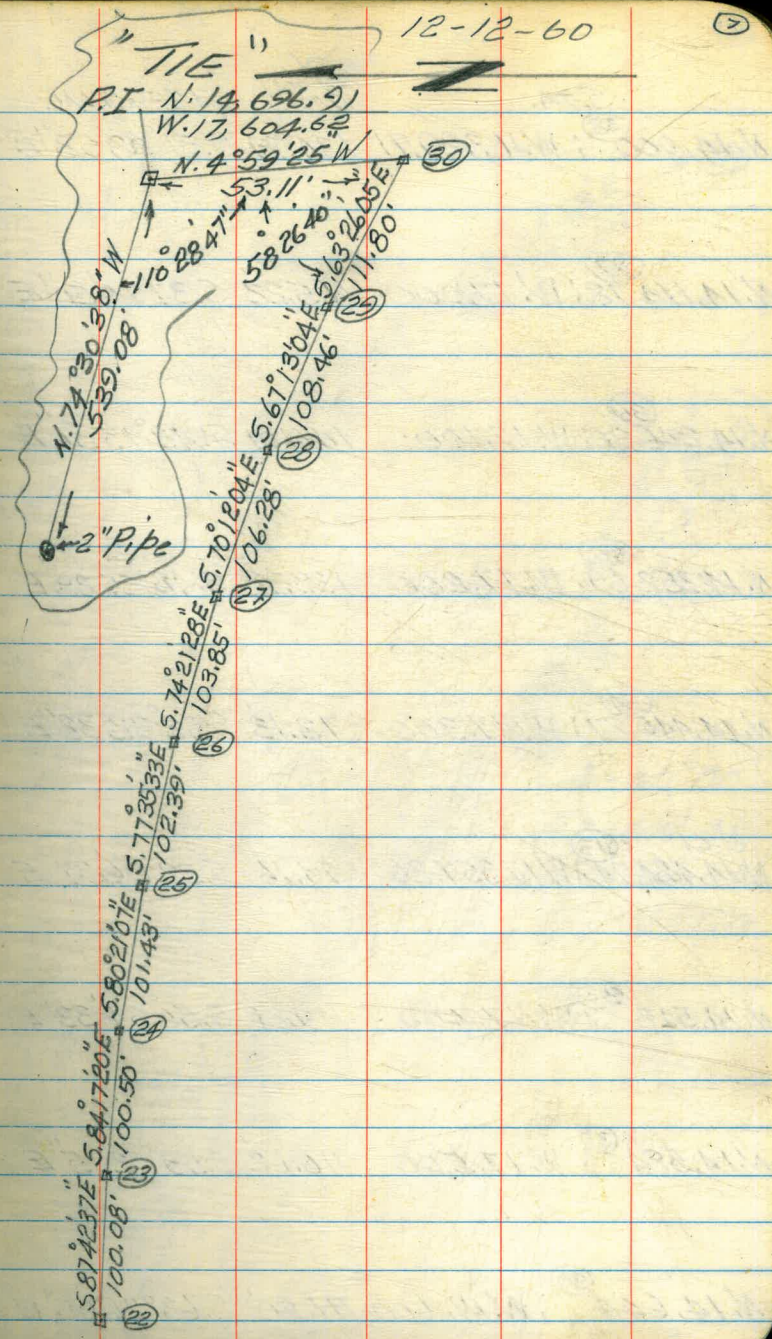


"CIRCLE ECC"  
 N. 14,783.10  
 W. 19,160.40  
 L. + DISK in wty.  
 Walk E. Briarfield  
 DRIVE

5.62° 56' 48" E



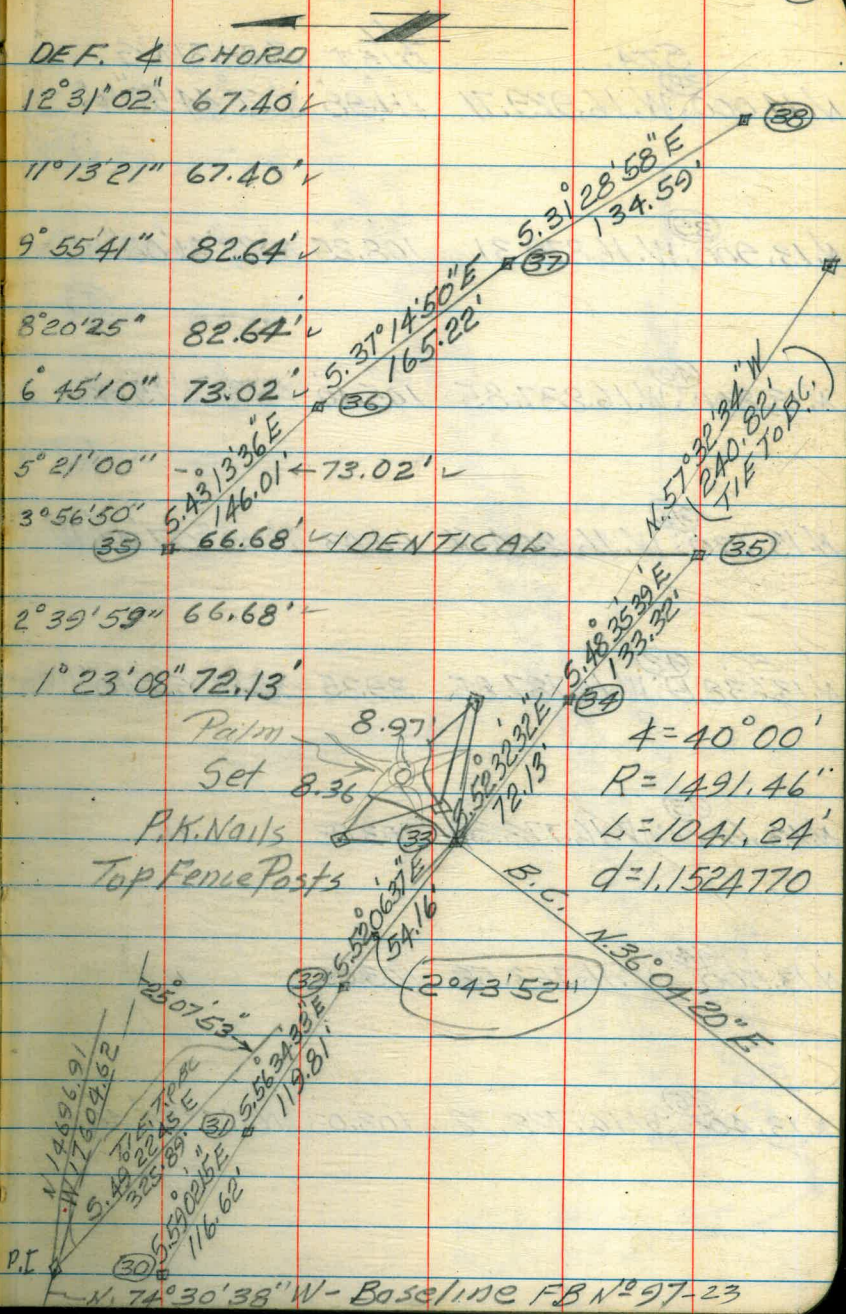
STA	B/C	BEARING
N. 14,644 <sup>(20)</sup> ; W. 17,600	111.80'	5.63°26'05"E
N. 14,694 <sup>(21)</sup> ; W. 17,700	108.46'	5.67°13'04"E
N. 14,736 <sup>(22)</sup> ; W. 17,800	106.28'	5.70°12'04"E
N. 14,772 <sup>(27)</sup> ; W. 17,900	103.85'	5.74°21'28"E
N. 14,800 <sup>(26)</sup> ; W. 18,000	102.39'	5.77°35'33"E
N. 14,822 <sup>(25)</sup> ; W. 18,100	101.43'	5.80°21'07"E
N. 14,839 <sup>(24)</sup> ; W. 18,200	100.50'	5.84°17'20"E
N. 14,849 <sup>(23)</sup> ; W. 18,300	100.08'	5.87°42'37"E
N. 14,853 <sup>(22)</sup> ; W. 18,400	100.124'	5.87°08'15"E



12-12-60

(8)

STA.	B/L DIST	BEARING	DEF. & CHORD
N. 14,000 <sup>(38)</sup> ; W. 16,929.71	<sup>67.30</sup> 134.59	5.31° 28' 58" E	12° 31' 02" 67.40'
N. 14,114.78; W. 17,000	<sup>82.61</sup> 165.22	5.37° 14' 50" E	9° 55' 41" 82.64'
N. 14,246.30; W. 17,100	<sup>73.00</sup> 146.01	5.43° 13' 36" E	6° 45' 10" 73.02'
N. 14,352.69; W. 17,200	<sup>66.66</sup> 133.32	5.48° 35' 39" E	3° 56' 50" 66.68'
N. 14,440.87; W. 17,300	72.13	5.52° 32' 32" E	1° 23' 08" 72.13'
B.C. N. 14,484.74; W. 17,357.26	54.16	5.52° 06' 37" E	
N. 14,518 <sup>(32)</sup> ; W. 17,400	119.81	5.56° 34' 33" E	
N. 14,584 <sup>(31)</sup> ; W. 17,500	116.62	5.59° 02' 15" E	
N. 14,644 <sup>(30)</sup> ; W. 17,600	111.80	5.63° 26' 05" E	

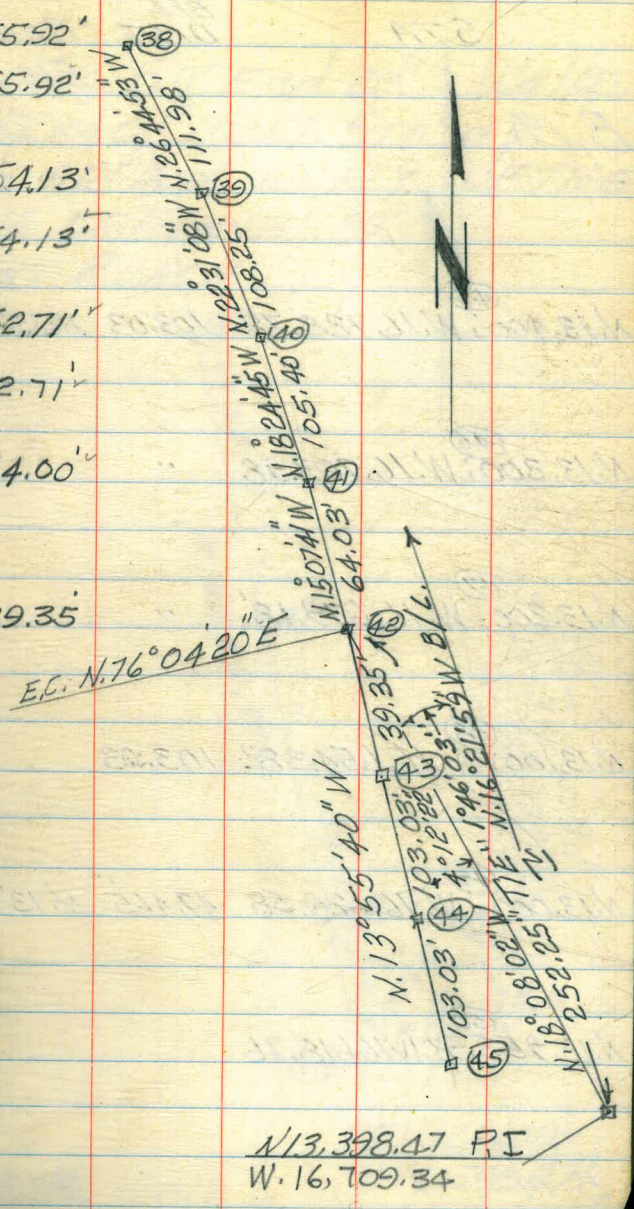


STA.	B/L	DIST	BEARING
(38) N. 14,000; W. 16,929.71	56.	111.98	N. 26° 44' 53" W
(39) N. 13,900; W. 16,879.31	54.12.	108.25	N. 22° 31' 08" W
(40) N. 13,800; W. 16,837.85	52.70.	105.40	N. 18° 24' 45" W
(41) N. 13,700; W. 16,804.56	64.03	64.03	N. 15° 07' 41" W
EC. (42) N. 13,638.19; W. 16,787.85	39.35	39.35	N. 13° 55' 40" W
(43) N. 13,600; W. 16,778.38	103.03	103.03	"
(44) N. 13,500; W. 16,753.58	103.03	103.03	"
(45) N. 13,400; W. 16,728.78	103.03	103.03	N. 13° 55' 40" W

DEF	CHORD
12° 31' 02"	55.92'
13° 35' 29"	55.92'
14° 39' 56"	54.13'
15° 42' 19"	54.13'
16° 44' 43"	52.71'
17° 45' 07"	52.71'
18° 45' 51"	64.00'
20° 00' 00"	39.35'

12-13-60

9

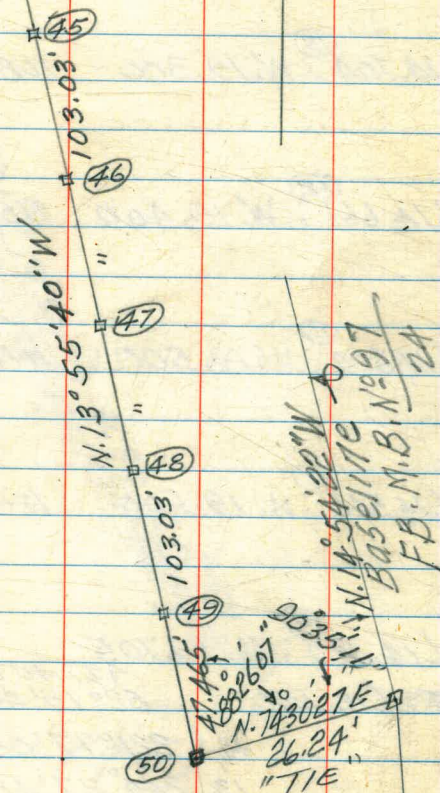


N. 13,398.47 PI  
W. 16,709.34

STA	B/L DIST	BEARING	ELV
B.M.			11.28
	(45) N.13,400; W.16,728.78	103.03	N.13°55'40"W
	(46) N.13,300; W.16,703.98	"	"
	(47) N.13,200; W.16,679.18'	"	"
	(48) N.13,100; W.16,654.38	103.03	"
	(49) N.13,000; W.16,629.58	47.465	N.13°55'40"W
	(50) N.12,953.93; W.16,618.16		
B.M.		9.89	Nail in Post @ Top Blk Wall

12-13-60

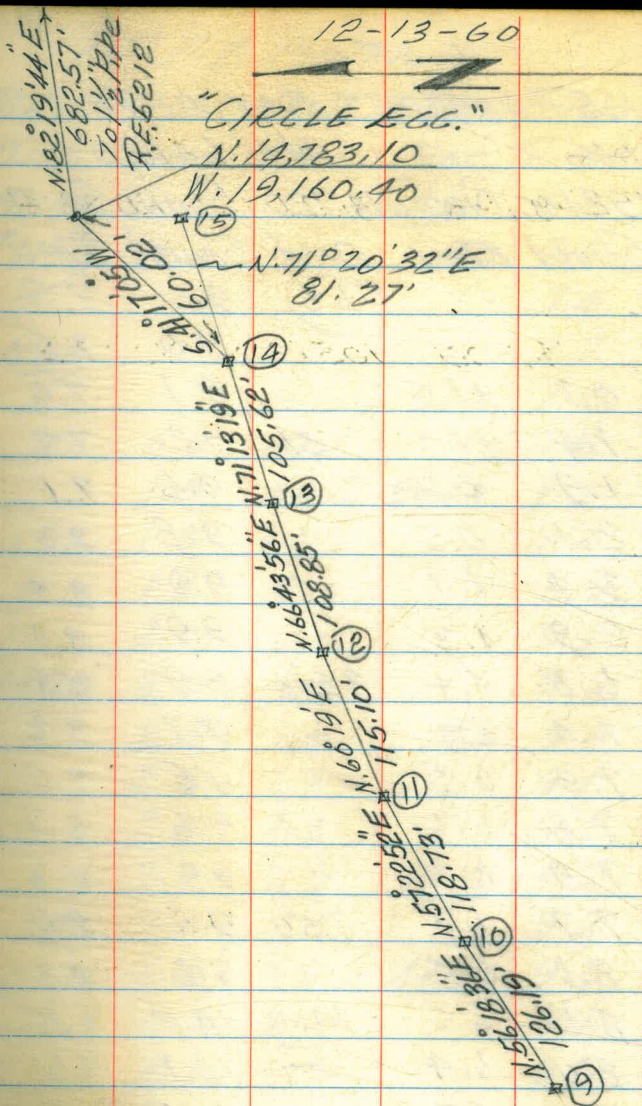
Set chis/0 @ S.W. End of Walk  
@ SWLY. End of MULT. STORY  
HOUSING APPROX 100' ELY OF THE  
ELY LINE OF FANUEL ST.  
CRESCENT BEACH



P.I. N.12,960.94  
W.16,592.87

STA.	B/L DIST	BEARING
N. 14,764 <sup>(15)</sup> ; W. 19,123	81.27	N. 71° 20' 32" E
N. 14,738 <sup>(14)</sup> ; W. 19,200	105.62	N. 71° 13' 19" E
N. 14,704 <sup>(13)</sup> ; W. 19,300	108.85	N. 66° 43' 56" E
N. 14,661 <sup>(12)</sup> ; W. 19,400	115.10	N. 60° 19' E
N. 14,604 <sup>(11)</sup> ; W. 19,500	118.73	N. 57° 22' 52" E
N. 14,540 <sup>(10)</sup> ; W. 19,600	126.19	N. 56° 18' 36" E

STA.	AZIMUTH	BEARING
N. 14,470 <sup>(9)</sup> ; W. 19,705	82° 19' 44"	N 82° 19' 44" E
14	221° 17' 05"	5.41° 17' 05" W
13	240° 27' 48"	5.60° 27' 48" W
12	242° 59' 48"	5.62° 59' 48" W
11	242° 11' 37"	5.62° 11' 37" W
10	241° 03' 26"	5.61° 03' 26" W



NOTE: (See Pg. 5)

1-25-61

SOUNDINGS CRESCENT BAY AFTER  
DREDGING

W.O. 64160

STA. W. 192+00; 0+00=N. 14,720 ; SOUND SOUTH

Dist Sound Elev Dist Sound Elev

0+00 (1.5) 9.0 7.5

(1.6) 0.1 +1.5 9.0 7.5

0.1 +1.5 9.1 7.6

10:55 1.4 +0.2 50 9.2 7.7

1.9 0.3 9.6 8.1

50 2.1 0.5 9.8 8.3

3.3 1.7 9.9 8.4

2.9 1.3 9.9 8.4

6.0 4.4 3+00 9.9 8.4

7.4 5.8 9.7 8.2

1+00 7.9 6.3 9.5 8.0

7.8 6.2 9.6 8.1

7.9 6.3 9.8 8.3

7.7 6.1 50 9.5 8.0

8.1 6.5 9.8 8.3

50 8.1 6.5 11:00 10.0 8.5

8.0 6.4 10.1 8.6

7.3 5.7 10.3 8.8

7.2 5.6 4+00 11.5 10.0

7.4 5.8

2+00 7.6 6.0

8.1 6.5

Ref. F.B. No 97

12

STA. W. 193+00; 0+00=N. 14,780 ; SOUND SOUTH

Dist Sound Elev Dist Sound Elev

0+00 (1.5) 7.4 5.9

(1.5) 50 7.6 6.1

7.4 5.9

11:05 7.7 6.2

7.3 5.8

50 0.0 +1.5 7.8 6.3

1.0 +0.5 3+00 8.2 6.7

1.3 +0.2 8.0 6.5

1.9 0.4 8.9 7.4

2.0 0.5 9.1 7.6

1+00 3.0 1.5 8.9 7.4

2.5 1.0 50 9.0 7.5

2.8 1.3 9.1 7.6

2.8 1.3 9.2 7.7

3.2 1.7 11:10 9.2 7.7

50 3.0 1.5 9.2 7.7

2.4 0.9 4+00 9.3 7.8

4.3 2.8 9.1 7.6

4.7 3.2 9.3 7.8

7.2 5.7 9.7 8.2

2+00 7.9 6.4 9.5 8.0

8.1 6.6 50 9.7 8.2

7.7 6.2

7.4 5.9

STA. W. 194400: 0400 = N. 14,750			SOUND SOUTH		
Dist	Sound	Elev	Dist	Sound	Elev
0400			(1.4)	7.8	6.4
(1.5)			50	7.4	6.0
				7.7	6.3
<u>11:15</u>				8.0	6.6
	0.3	+1.2		7.6	6.2
50	1.0	+0.5		7.9	6.5
	1.8	0.3	3+00	8.5	7.1
	2.0	0.5		9.3	7.9
	2.1	0.6		10.0	8.6
	2.3	0.8		10.0	8.6
1+00	2.5	1.0		10.0	8.6
	2.5	1.0	50	9.9	8.5
	2.8	1.3		9.0	7.6
	2.8	1.3		9.7	8.3
	3.0	1.5	<u>11:20</u>	9.8	8.4
50	2.9	1.4		9.8	8.4
	2.8	1.3	4+00	10.0	8.6
	2.8	1.3		8.1	6.7
	2.9	1.4		8.5	7.1
	4.0	2.5		8.9	7.5
2+00	6.2	4.7		9.0	7.6
	8.0	6.5	50	9.4	8.0
	8.0	6.5			
	7.8	6.3			

1-25-61 (13)

STA. W. 195400: 0400 = N. 14,660			SOUND SOUTH		
Dist	Sound	Elev	Dist	Sound	Elev
0400			(1.4)	6.9	5.5
(1.4)			50	6.9	5.5
				6.8	5.4
				7.0	5.6
				7.2	5.8
50	0.2	+1.2		8.8	7.4
	0.5	+0.9	3+00	9.1	7.7
<u>11:30</u>	0.8	+0.6		9.0	7.6
	0.8	+0.6		9.2	7.8
	1.2	+0.2		9.5	8.1
1+00	2.0	0.6		9.7	8.3
	2.4	1.0	50	9.8	8.4
	2.4	1.0		9.8	8.4
	2.6	1.2		9.8	8.4
	2.8	1.4		10.0	8.6
50	5.3	3.9		10.0	8.6
	6.8	5.4	4+00	9.8	8.4
	6.8	5.4		10.0	8.6
	7.5	6.1	<u>11:35</u>	9.9	8.5
	7.8	6.4		10.0	8.6
2+00	8.2	6.8		10.0	8.6
	7.5	6.1	50	10.2	8.8
	7.2	5.8			
	7.0	5.6			

STA. W. 196400' CHORD = N. 14.570' SOUND SOUTH

1-25-61 (74)  
STA. W. 197400' CHORD = N. 14.450' SOUND SOUTH

Dist	Sound	Elev	Dist	Sound	Elev
0+00			(1.4)	8.0	6.6
(1.4)			50	8.9	7.5
				9.7	8.3
				9.7	8.3
				9.9	8.5
50				9.2	7.8
			3+00	9.9	8.5
11:40	0.1	+1.3		9.0	7.6
<u>11:40</u>	0.9	+0.5		9.9	8.5
	1.8	0.4		9.9	8.5
1+00	2.2	0.8		9.4	8.0
	2.5	1.1	50	9.1	7.7
	2.8	1.4		9.3	7.9
	4.1	2.7		9.8	8.4
	4.1	2.7		9.9	8.5
50	5.1	3.7		10.0	8.6
	7.9	0.5	4+00	10.2	8.8
	7.7	6.3		10.1	8.7
	9.1	7.7	11:45	10.0	8.6
	9.1	7.7	<u>11:45</u>	10.1	8.7
2+00	8.3	6.9		10.2	8.8
	9.0	7.6	50	10.5	9.1
	8.4	7.0			
	8.0	6.6			

Dist	Sound	Elev	Dist	Sound	Elev
0+00			(1.4)	8.1	6.7
(1.4)			50	8.2	6.8
				8.5	7.1
				9.1	7.7
	0.0	+1.4		9.0	7.6
50	0.8	+0.6		9.6	8.2
	1.7	0.3	3+00	10.0	8.6
11:50	2.7	1.3		10.0	8.6
<u>11:50</u>	3.0	1.6		10.0	8.6
	3.9	2.5		10.2	8.8
1+00	4.6	3.2		10.0	8.6
	6.4	5.0	50	10.0	8.6
	6.4	5.0			
	6.8	5.4			
	6.4	5.0			
50	6.7	5.3			
	6.0	4.6	4+00		
	5.9	4.5			
	6.2	4.8			
	6.0	4.6			
2+00	6.8	5.4			
	7.2	5.8	50		
	7.4	6.0			
	7.9	6.5			

(Pipe-Line)



1-25-61

STA. N. 198100: 0+00 = N. 14.380 SOUND SOUTH

DIST SOUND Elev DIST SOUND Elev

0+00

(1A) 7.0 5.6

(1A)

50 6.5 5.1

7.1 5.7

7.0 5.6

7.8 6.4

50

7.8 6.4

3+00 7.8 6.4

12+00

0.2 +1.2

(Pipe-Line)

1.5 0.1

5.3 3.9

(CONTD. Pg. 17)

1+00

6.9 5.5

7.1 5.7

50

7.3 5.9

7.3 5.9

7.8 6.4

50

7.6 6.2

7.9 6.5

4+00

8.0 6.6

7.8 6.4

7.8 6.4

2+00

7.5 6.1

6.8 5.7

50

6.5 5.1

7.0 5.6

(15)

PROPOSED DREDGING EXTENSION  
 WLY. & ELY. BRIARFIELD DRIVE &  
 VICINITY SLY. W.O. 64160

STA. OBJECT AZIMUTH  
 P.I. ELY. 82° 19' 44"

CIRCLE ECC.

~~A~~ REVISED 226° 37' 19"

B 190' 240° 09' 14"  
~~250° 59' 38"~~

C 100' 235° 14' 14"

~~D~~ REVISED 200° 45' 19"

E 280' 225° 09' 46"

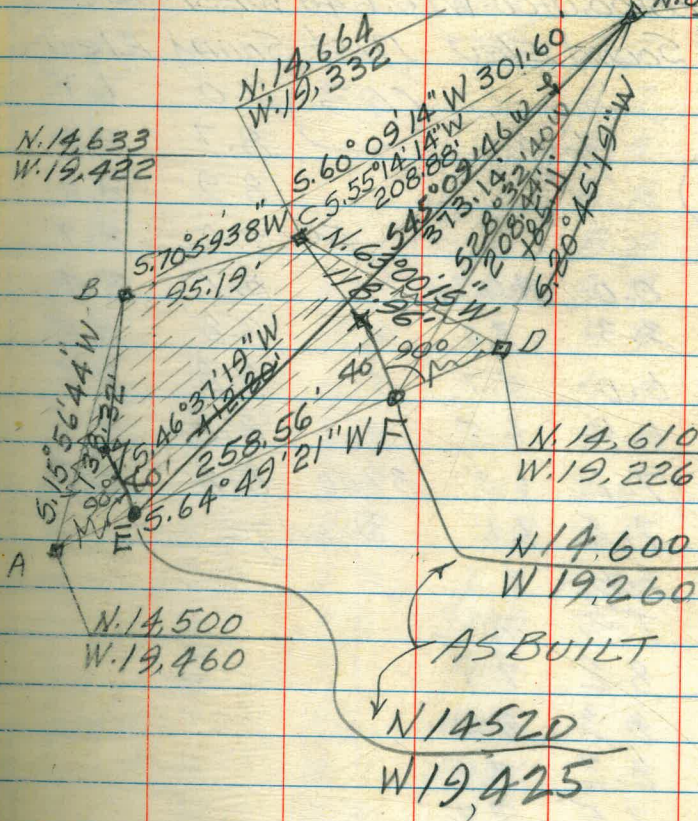
F 146' 208° 32' 40"

"CIRCLE ECC."

Ref. F.B. N° 97 N. 14,783.10  
~~23~~ W. 19,160.40

Stampex

N. 82° 19' 44" E  
 To P.I.



2-27-61

SOUNDINGS AFTER DREDGING CRESCENT

BAY NOTE: STAS N118 THRU N127 FB 145

STAN. 128+00: 0+00: W 16,640 SOUND WEST 52-56

Dist Sound Elev Dist Sound Elev

0+00 (103) 7.0 6.7

(103) 8.7 8.4

8.9 8.6

50 9.0 8.7

8.7 8.4

50 3.3 3.0 8.8 8.5

2:20 6.0 5.7 8.8 8.5

6.8 6.5 8.8 8.5

7.1 6.8 3+00 8.8 8.5

7.4 7.1 Dredge

1+00 7.6 7.3

7.9 7.6

8.2 7.9

8.3 8.0

8.2 7.9

50 7.5 7.2

7.1 6.8

6.2 5.9

6.3 6.0

6.3 6.0

2+00 6.8 6.5

6.8 6.5

(17)

STA. N. 129+00: 0+00: W 16,640 SOUND WEST

Dist Sound Elev Dist Sound Elev

0+00 (103) 7.0 6.7

(103) 50 8.7 8.4

8.7 8.4

8.9 8.6

8.8 8.5

50 8.9 8.6

0.2 +0.1 3+00 8.9 8.6

2:25 3.7 3.4 8.9 8.6

6.0 5.7 9.0 8.7

6.1 5.8 9.0 8.7

1+00 6.2 5.9 9.0 8.7

6.6 6.3 50 9.0 8.7

7.0 6.7 Pipe

7.7 7.4 2:30

8.0 7.7

50 8.4 8.1

8.6 8.3 4+00

8.7 8.4

8.1 7.8

7.6 7.3

2+00 7.0 6.7

6.7 6.4

6.8 6.5

6.8 6.5

2-27-61

STA. N. 130+00; 0+00=W/6650; SOUND WEST

DIST	SOUND	ELEV	DIST	SOUND	ELEV
0+00			(0.4)	6.2	5.8
(10.4)			50	6.5	6.1
				6.7	6.3
				6.8	6.4
				6.9	6.5
50				6.9	6.5
			3+00	7.0	6.6
<u>2.35</u>	0.3	+0.1		7.1	6.7
	4.6	4.2		7.4	7.0
	6.4	6.0		7.6	7.2
1+00	6.5	6.1		7.6	7.2
	6.5	6.1	50	7.7	7.3
	6.2	5.8		8.1	7.7
	6.8	6.4		8.2	7.8
	7.7	7.3		8.3	7.9
50	7.8	7.4		8.8	8.4
	7.9	7.5	4+00	8.9	8.5
	7.9	7.5			
	7.6	7.2			
	7.1	6.7			
2+00	6.8	6.4			
	6.9	6.5			
	6.5	6.1			
	6.3	5.9			

(18)

STA. N. 131+00; 0+00=W/16,680; SOUND WEST

DIST	SOUND	ELEV	DIST	SOUND	ELEV
0+00				6.6	6.2
			50	7.0	6.6
(10.4)			(0.4)	7.2	6.8
				7.0	6.6
				7.2	6.8
			50	7.2	6.8
				7.2	6.8
			3+00	7.0	6.6
				7.1	6.7
<u>2.40</u>				7.1	6.7
	2.6	2.2		7.1	6.7
	5.4	5.0		7.4	7.0
1+00	6.9	6.5		7.5	7.1
	7.1	6.7	50	7.9	7.5
	7.6	7.2		8.2	7.8
	8.0	7.6		8.8	8.4
	8.1	7.7		9.0	8.6
50	8.3	7.9		9.1	8.7
	9.2	8.8	4+00	9.1	8.7
	10.0	9.6			
	10.7	10.3			
	11.0	10.6			
2+00	11.0	10.6			
	11.0	10.6			
	10.4	10.0			
	6.6	6.2			

2-27-61

STA. N. 132+00; 0+00=W16,710; SOUND WEST

Dist Sound Elev Dist Sound Elev

0+00

(0.5) 6.9 6.4

50 6.9 6.4

7.0 6.5

7.0 6.5

7.0 6.5

7.0 6.5

50

0.4 +0.1 3+00 7.0 6.5

2:50 5.5 5.0 7.1 6.6

8.0 7.5 7.2 6.7

7.3 6.8 8.3 7.8

1+00 6.9 6.4 9.0 8.5

7.0 6.5 50 9.1 8.6

7.0 6.5 9.1 8.6

7.6 7.1 9.1 8.6

8.0 7.5 9.3 8.8

50 7.8 7.3 9.4 8.9

8.2 7.7 4+00 9.4 8.9

8.1 7.6

8.1 7.6

7.9 7.4

2+00 7.6 7.1

7.6 7.1

6.1 5.6

6.6 6.1

(19)

STA. N. 133+00; 0+00=W16,730; SOUND WEST

Dist Sound Elev Dist Sound Elev

0+00

(0.5) 7.0 6.5

50 7.1 6.6

7.1 6.6

7.2 6.7

7.5 7.0

8.7 8.2

50

3+00 8.9 8.4

2:55 8.9 8.4

2.0 1.5 8.9 8.4

5.8 5.3 9.0 8.5

1+00 5.8 5.3 9.0 8.5

5.8 5.3 50 9.0 8.5

6.0 5.5 9.1 8.6

6.2 5.7 9.0 8.5

6.4 5.9 9.2 8.7

50 6.9 6.4 9.1 8.6

7.1 6.7 4+00 9.3 8.8

7.9 7.4

8.3 7.8

8.6 8.1

2+00 8.5 8.0

7.0 6.5

6.8 6.3

6.9 6.4

2-27-61

STA. N. 134+00.0+00=W 16,760; SOUND WEST

Dist Sound Elev Dist Sound Elev

0+00

0.6

9.2 8.6

0.6

50

9.5 8.9

9.2 8.6

9.1 8.5

9.1 8.5

50

9.2 8.4

3:05

3+00

9.3 8.7

2.8 2.2

9.4 8.8

5.7 5.1

9.5 8.9

5.8 5.2

9.5 8.9

1+00

5.9 5.3

9.6 9.0

6.1 5.5

50

9.5 8.9

6.5 5.9

9.5 8.9

6.8 6.2

9.6 9.0

6.8 6.2

9.7 9.1

50

7.0 6.4

9.9 9.3

6.8 6.2

4+00

9.9 9.3

6.5 5.9

6.7 6.1

7.0 6.4

2+00

7.3 6.7

7.1 6.5

7.1 6.5

7.2 6.6

(20)

STA. N. 135+00.0+00=W 16,790; SOUND WEST

Dist Sound Elev Dist Sound Elev

0+00

0.7

7.8 7.1

0.7

50

8.0 7.3

8.0 7.3

8.2 7.5

8.1 7.4

50

8.1 7.4

0.5 10.2

3+00

8.3 7.6

3:15

5.2 4.5

8.2 7.5

7.4

7.4 6.7

8.0 7.3

8.0 7.3

8.2 7.5

1+00

8.1 7.4

8.4 7.7

7.8 7.1

50

8.7 8.0

7.3 6.6

8.9 8.2

6.8 6.1

9.0 8.3

6.9 6.2

9.2 8.5

50

7.6 6.9

9.4 8.7

8.0 7.3

4+00

9.4 8.7

8.1 7.4

7.9 7.2

6.8 5.9

2+00

7.0 6.3

7.3 6.6

7.9 7.2

7.6 6.9

2-27-61

STA. N. 136+00; 0+00 = W/16,820; SOUND WEST

Dist	Sound	Elev	Dist	Sound	Elev
0+00			(0.8)	7.8	7.0
(0.8)			50	7.9	7.1
				8.0	7.2
				8.0	7.2
				7.9	7.1
50				8.3	7.5
	2.5	1.7	3+00	8.4	7.6
3:20	5.3	4.5		8.6	7.8
<u>5.9</u>	5.9	5.1		8.9	8.1
	6.0	5.2		9.0	8.2
1+00	6.1	5.3		9.2	8.4
	6.2	5.4	50	9.1	8.3
	6.5	5.7		9.1	8.3
	6.5	5.7		9.0	8.2
	7.0	6.2		9.0	8.2
50	7.7	7.1		8.9	8.1
	7.5	6.7	4+00	8.8	8.0
	7.2	6.4			
	7.2	6.4			
	7.1	6.3			
2+00	7.3	6.5			
	7.3	6.5			
	7.5	6.7			
	7.6	6.8			

2-28-61 (2)

STA. N. 137+00; 0+00 = W/16,850; SOUND WEST

Dist	Sound	Elev	Dist	Sound	Elev
0+00			(0.6)	10.5	9.9
(0.6)			50	10.8	10.2
				10.8	10.2
				11.0	10.4
			<u>11.40</u>	11.0	10.4
50				11.0	10.4
	2.3	1.7	3+00	11.2	10.6
	6.3	5.7		11.1	10.5
	6.4	5.8		11.4	10.8
	6.4	5.8		11.3	10.7
1+00	6.6	6.0		11.5	10.9
	6.8	6.2	50	11.6	11.0
	6.7	6.1		11.1	10.5
	6.4	5.8		11.0	10.4
	7.0	6.4		10.3	10.7
50	7.8	7.2		9.5	8.9
	8.0	7.4	4+00	8.3	7.7
	8.7	8.1		8.2	7.6
	9.2	8.6		8.4	7.8
	10.0	9.4		8.2	7.6
2+00	10.2	9.6		8.5	7.9
	10.4	9.8	50	8.3	7.7
	10.6	10.0		8.2	7.6
	10.4	9.8		8.2	7.6
				8.2	7.6
				8.2	7.6
			5+00	8.2	7.6

2-28-61

STA. N. 138+00; 0+00 = W 16,880; SOUND WEST

Dist	Sound	Elev	Dist	Sound	Elev
0+00			(05)	8.5	8.0
(05)			50	7.9	7.4
				7.8	7.3
				8.3	7.8
				8.3	7.8
50				8.4	7.9
	0.6	0.1	3+00	8.4	7.9
11.50	4.7	4.2		8.7	8.2
<u>    </u>	6.0	5.5		9.0	8.5
	6.1	5.6		9.0	8.5
1+00	6.4	5.9		9.1	8.6
	6.5	6.0	50	9.4	8.9
	6.6	6.1		9.5	9.0
	6.8	6.3		9.4	8.9
	7.0	6.5		9.3	8.8
50	7.2	6.7		8.6	8.1
	6.7	6.2	4+00	8.3	7.8
	7.1	6.6			
	7.6	7.1			
	8.0	7.5			
2+00	7.9	7.4			
	8.1	7.6			
	8.5	8.0			
	8.4	7.9			

(22)

STA. N. 139+00; 0+00 = W 16,900; SOUND WEST

Dist	Sound	Elev	Dist	Sound	Elev
0+00			(04)	7.9	7.5
			50	8.1	7.7
				7.5	7.1
				7.8	7.4
				7.8	7.4
50				7.9	7.5
			3+00	8.3	7.9
				8.3	7.9
				8.6	8.2
				8.8	8.4
			1+00	6.3	5.9
				7.0	6.6
			50	9.2	8.8
				9.4	9.0
				9.4	9.0
				9.0	8.6
			50	7.0	6.6
				8.8	8.4
			4+00	9.0	8.6
				9.0	8.6
				8.9	8.5
				8.4	8.0
			2+00	8.8	8.4
				8.4	8.0
			50	8.0	7.6
				8.1	7.7
				8.0	7.6
				8.2	7.8
			5+00	8.0	7.6



2-28-61

STA. N/140+00: 0+00-W/16,930; SOUND WEST

Dist	Sound	Elev	Dist	Sound	Elev
0+00			(12.7)	8.9	8.5
			50	8.2	7.8
(0.4)				7.3	6.9
				7.7	7.3
				7.7	7.3
50				7.8	7.4
			3+00	7.3	6.9
<u>2:10</u>				7.4	7.0
				7.6	7.2
				8.0	7.6
1+00				8.2	7.8
	1.5	1.1	50	8.4	8.0
	6.5	6.1		8.8	8.4
	7.3	6.9		8.8	8.4
	8.5	8.1		8.9	8.5
50	7.9	7.5		8.9	8.5
	6.7	6.3	4+00	9.0	8.6
	6.6	6.2			
	6.5	6.1			
	6.6	6.2			
2+00	6.7	6.3			
	6.7	6.3			
	7.3	6.9			
	7.2	6.8			

(23)

STA. W/170+00: 0+00-N/14,080; SOUND SOUTH

Dist	Sound	Elev	Dist	Sound	Elev
0+00			(0.3)	6.5	6.2
			50	6.6	6.3
				7.1	6.8
				6.6	6.3
				6.6	6.3
50				6.5	6.2
			3+00	6.7	6.4
				6.5	6.2
				6.4	6.1
				6.6	6.3
				6.5	6.2
1+00			50	6.6	6.3
				6.9	6.6
			<u>2:20</u>	6.9	6.6
				7.4	7.1
			50	7.7	7.4
	1.5	1.2			
	3.8	3.5	4+00	8.3	8.0
	6.0	5.7		8.3	8.0
	6.5	6.2		8.0	7.7
	6.8	6.5		7.7	7.4
2+00	6.7	6.4		7.7	7.4
	6.8	6.5	50	7.7	7.4
	6.4	6.1			
	6.2	5.9			

2-28-61

STA. W. 171+00; 0+00 = N. 14, 200; SOUND SOUTH

	Dist	Sound	Elev	Dist	Sound	Elev
0+00				(0.3)	7.3	7.0
				50	7.7	7.4
(0.3)					7.8	7.5
					7.2	6.9
					7.6	7.3
50					8.8	8.5
				3+00	8.6	8.3
<u>2:30</u>					8.5	8.2
					8.5	8.2
					8.7	8.4
1+00	0.0	+0.3			8.9	8.6
	4.5	4.2		50	8.8	8.5
	5.2	4.9			8.2	7.9
	5.4	5.1			7.1	6.8
	5.7	5.4			7.2	6.9
50	6.1	5.8			7.4	7.1
	6.3	6.0	4+00		8.0	7.7
	6.2	5.9				
	6.4	6.1				
	6.4	6.1				
2+00	6.6	6.3				
	6.6	6.3				
	6.7	6.4				
	7.3	7.0				

(2A)

STA. W. 172+00; 0+00 = N. 14, 300; SOUND SOUTH

	Dist	Sound	Elev	Dist	Sound	Elev
0+00				(0.3)	9.0	8.7
				50	8.9	8.6
(0.3)					8.9	8.6
					8.2	7.9
					7.4	7.1
50					7.3	7.0
				3+00	7.9	7.6
<u>2:40</u>					7.0	6.7
					7.4	7.1
				2.4	2.1	
				4.2	3.9	
1+00					4.8	4.5
				5.7	5.4	50
				5.9	5.6	
				5.5	5.2	
				5.6	5.3	
50				5.7	5.4	
				5.6	5.3	4+00
				5.9	5.6	
				6.1	5.8	
				6.0	5.7	
2+00				6.1	5.8	
				6.9	6.6	50
				7.6	7.3	
				8.3	8.0	

2-28-61

STA. W. 173+00; OHOO = N. 14, 390; SOUND SOUTH

Dist	Sound	Elev	Dist	Sound	Elev
0+00			(0.3)	7.5	7.2
			50	7.5	7.2
(0.3)				7.9	7.6
				8.2	7.9
				8.3	8.0
50				9.0	8.7
	0.0	10.3	3+00	8.9	8.6
2:50	4.0	3.7		6.7	6.4
	6.2	5.9		6.6	6.3
	6.9	6.6		7.0	6.7
1+00	7.0	6.7		7.5	7.2
	7.0	6.7	50	7.8	7.5
	6.8	6.5		8.2	7.9
	6.6	6.3		8.8	8.5
	6.7	6.4		8.9	8.6
50	6.9	6.6		8.9	8.6
	6.9	6.6	4+00	9.3	9.0
	6.9	6.6			
	7.0	6.7			
	6.6	6.3			
2+00	5.6	5.3			
	6.4	6.1			
	6.8	6.5			
	6.8	6.5			

(25)

STA. W. 174+00; OHOO = N. 14, 470; SOUND SOUTH

Dist	Sound	Elev	Dist	Sound	Elev
0+00			(0.3)	6.8	6.5
			50	6.9	6.6
(0.3)				7.0	6.7
				6.6	6.3
				6.2	5.9
50				6.1	5.8
	0.8	0.5	3+00	6.2	5.9
3:00	4.0	3.5		6.0	5.7
	4.3	4.0		6.4	6.1
	4.5	4.2		6.7	6.4
1+00	4.4	4.1		7.0	6.7
	5.0	4.7	50	7.0	6.7
	5.6	5.3		7.2	6.9
	5.4	5.1		7.4	7.1
	6.0	5.7		7.9	7.6
50	5.9	5.6		7.9	7.6
	5.7	5.4	4+00	8.2	7.9
	6.0	5.7			
	6.1	5.8			
	6.1	5.8			
2+00	5.8	5.5			
	6.0	5.7			
	6.2	5.9			
	6.3	6.0			

2-28-61

STA. W. 175+00; 0+00 = N. 14.540; SOUND SOUTH

DIST SOUND ELEV DIST SOUND ELEV

0+00

(0.4)  
50

7.7 7.3

8.0 7.6

8.6 8.2

8.3 7.9

8.5 8.1

8.7 8.3

50 0.0 +0.4

3:05 4.0 3.6 3+00 8.6 8.2

4.9 4.5 8.2 7.8

5.1 4.7 7.6 7.2

5.1 4.7 7.5 7.1

1+00 5.2 4.8 7.5 7.1

5.2 4.8 50 7.7 7.3

5.3 4.9 8.1 7.7

5.3 4.9 8.0 7.6

5.4 5.0 8.1 7.7

50 5.4 5.0 8.9 8.5

5.8 5.4 4+00 9.4 9.0

6.0 5.6

6.7 6.3

6.8 6.4

2+00 7.0 6.6

7.4 7.0

7.5 7.1

7.8 7.4

(26)

STA. W. 176+00; 0+00 = N. 14.610; SOUND SOUTH

DIST SOUND ELEV DIST SOUND ELEV

0+00

(0.4)  
50

9.0 8.6

8.7 8.3

8.7 8.3

8.7 8.3

9.0 8.6

9.2 8.8

50 1.4 1.0 3+00 9.3 8.9

3:10 5.0 4.6 9.6 9.2

5.7 5.3 9.8 9.4

5.5 5.1 9.8 9.4

1+00 5.1 4.7 10.0 9.6

5.2 4.8 50 10.2 9.8

5.2 4.8 10.0 9.6

5.4 5.0 9.4 9.0

5.9 5.5 9.0 8.6

50 6.0 5.6 8.9 8.5

6.0 5.6 4+00 8.8 8.4

6.3 5.9

6.8 6.4

7.8 7.4

2+00 8.1 7.7

8.5 8.1

9.0 8.6

8.8 8.4

2-28-61

STA. W. 177+00: 0+00 = N. 14, 670 : SOUND SOUTH

Dist Sound Elev Dist Sound Elev

0+00

(04) 7.0 6.6

50 7.8 7.4

8.5 8.1

9.0 8.6

9.3 8.9

9.3 8.9

9.5 9.1

9.7 9.3

10.0 9.6

10.1 9.7

10.0 9.6

50 9.9 9.5

9.7 9.3

9.3 8.9

9.6 9.2

10.0 9.6

4+00 10.0 9.6

6.1 5.7

6.0 5.6

6.3 5.9

2+00 6.5 6.1

6.5 6.1

6.8 6.4

6.7 6.3

3-01-61

(27)

STA. W. 178+00: 0+00 = N. 14, 710 : SOUND SOUTH

Dist Sound Elev Dist Sound Elev

0+00

(03) 6.8 6.5

(03)

50 7.2 6.9

7.3 7.0

7.7 7.4

7.5 7.2

7.2 6.9

50 0.7 0.4

4.1 3.8 3+00 7.2 6.9

2+45 4.8 4.5 7.1 6.8

4.9 4.6 7.4 7.1

5.0 4.7 7.8 7.5

1+400 5.0 4.7 8.0 7.7

5.1 4.8 50 8.1 7.8

5.2 4.9 8.4 8.1

5.2 4.9 8.6 8.3

5.7 5.4 8.5 8.2

50 5.7 5.4 8.7 8.4

5.8 5.5 4+00 8.7 8.4

5.9 5.6

6.0 5.7

6.1 5.8

2+00 6.9 6.6

6.9 6.6

5.3 5.0

5.4 5.1

3-01-61

STA. W. 179+00; 0+00 = N. 14,740; SOUND SOUTH

DIST	Sound	Elev	DIST	Sound	Elev
0+00			(0.4)	7.1	6.7
			50	7.2	6.8
(0.4)				7.4	7.0
				7.3	6.9
				7.6	7.2
50	2.1	1.7		7.7	7.3
	2.9	2.5	3+00	7.2	6.8
2:50	3.6	3.2		7.4	7.0
<u>    </u>	4.1	3.7		7.5	7.1
	4.7	4.3		7.8	7.4
1+00	4.8	4.4		8.0	7.6
	4.9	4.5	50	8.1	7.7
	4.9	4.5		8.3	7.9
	5.0	4.6		8.3	7.9
	5.4	5.0		8.5	8.1
50	4.9	4.5		9.0	8.6
	4.8	4.4	4+00	9.2	8.8
	4.9	4.5			
	5.3	4.9			
	5.6	5.2			
2+00	6.0	5.6			
	6.1	5.7			
	6.7	6.3			
	6.9	6.5			

(28)

STA. W. 180+00; 0+00 = N. 14,770; SOUND SOUTH

DIST	Sound	Elev	DIST	Sound	Elev
0+00			(0.4)	8.1	7.7
			50	8.1	7.7
			(0.4)	8.6	8.2
				8.1	7.7
				8.0	7.6
50	0.6	0.2		7.7	7.3
	4.5	4.1	3+00	7.7	7.3
3:05	6.5	6.1		7.8	7.4
<u>    </u>	7.0	6.6		8.2	7.8
	6.9	6.5		7.9	7.5
1+00	6.8	6.4		7.9	7.5
	6.5	6.1	50	8.0	7.6
	6.4	6.0		8.0	7.6
	6.2	5.8		7.9	7.5
	6.4	6.0		8.1	7.7
50	6.7	6.3		8.1	7.7
	6.9	6.5	4+00	8.1	7.7
	7.0	6.6			
	7.2	6.8			
	7.8	7.4			
2+00	8.0	7.6			
	8.3	7.9			
	8.5	8.1			
	8.5	8.1			

3-01-61

STA. W. 181+00; CHD = N. 14,790; SOUND SOUTH

DIST	SOUND	ELEV	DIST	SOUND	ELEV
0+00			(0.4)	9.8	9.4
(0.4)			50	10.0	9.6
				10.0	9.6
				9.9	9.5
				9.9	9.5
50	0.2	+0.2		10.0	9.6
	4.4	4.0	3+00	10.0	9.6
3+10	6.3	5.9		10.1	9.7
≈	6.5	6.1		10.0	9.6
	6.5	6.1		9.8	9.4
1+00	6.7	6.3		9.9	9.5
	6.7	6.3	50	9.8	9.4
	6.8	6.4		9.7	9.3
	6.7	6.3		9.8	9.4
	6.5	6.1		10.0	9.6
50	6.3	5.9		9.7	9.3
	6.5	6.1	4+00	9.2	8.8
	6.6	6.2			
	7.2	6.8			
	7.4	7.0			
2+00	7.6	7.2			
	8.2	7.8			
	9.2	8.8			
	9.3	8.9			

(29)

STA. W. 182+00; CHD = N. 14,800; SOUND SOUTH

DIST	SOUND	ELEV	DIST	SOUND	ELEV
0+00			(0.4)	7.6	7.2
(0.4)			50	7.5	7.1
				7.7	7.3
				7.6	7.2
				7.5	7.1
50	2.6	2.2		7.8	7.4
	4.9	4.5	3+00	7.9	7.5
3+20	5.5	5.1		8.0	7.6
-	5.6	5.2		8.0	7.6
	5.8	5.4		8.1	7.7
1+00	5.7	5.3		8.4	8.0
	5.7	5.3	50	8.4	8.0
	5.8	5.4		8.8	8.4
	5.5	5.1		8.3	7.9
	5.7	5.3		8.3	7.9
50	5.8	5.4		8.4	8.0
	5.5	5.1	4+00	8.6	8.2
	6.1	5.7			
	6.0	5.6			
	6.1	5.7			
2+00	6.7	6.3			
	7.5	7.1			
	8.0	7.6			
	7.8	7.4			

3-02-61

STA. W. 183100: 0+00 = N. 14810: SOUND SOUTH

	Dist	Sound	Elev	Dist	Sound	Elev
0+00	0.0		+4.8	(4.8)	12.5	7.7
(4.8)	0.6		+4.2	50	11.7	6.9
	1.3		+3.5		12.2	7.4
	2.6		+2.2		12.1	7.3
	4.0		+0.8		12.1	7.3
50	5.6		0.8		12.3	7.5
	9.8		5.0	3+00	12.5	7.7
10:55	11.6		6.8		12.6	7.8
<u>—</u>	11.2		6.4		12.6	7.8
	11.0		6.2		12.7	7.9
1+00	10.7		5.9		12.8	8.0
	10.0		5.2	50	12.8	8.0
	10.3		5.5		13.0	8.2
	10.2		5.4		13.0	8.2
	10.1		5.3		13.1	8.3
50	10.3		5.5		13.1	8.3
	11.0		6.2	4+00	13.1	8.3
	11.3		6.5			
	11.0		6.2			
	10.9		6.1			
2+00	11.0		6.2			
	11.0		6.2			
	11.2		6.4			
	12.0		7.2			

(30)

STA. W. 184100: 0+00 = N. 14820: SOUND SOUTH

	Dist	Sound	Elev	Dist	Sound	Elev
0+00				(4.6)	10.6	6.0
(4.6)	0.3		+4.3	50	10.7	6.1
	1.2		+3.4		11.0	6.4
	2.9		+1.7		11.4	6.8
	3.7		+0.9		11.7	7.1
50	6.3		1.7		12.1	7.5
	9.4		4.8	3+00	12.4	7.8
11:05	10.6		6.0		12.6	8.0
<u>—</u>	10.4		5.8		12.6	8.0
	10.3		5.7		12.9	8.3
1+00	10.2		5.6		12.7	8.1
	10.1		5.5	50	13.0	8.4
	10.5		5.9		12.9	8.3
	10.7		6.1		12.7	8.1
	10.8		6.2		12.6	8.0
50	10.9		6.3		12.6	8.0
	11.0		6.4	4+00	12.7	8.1
	11.0		6.4			
	10.8		6.2			
	11.0		6.4			
2+00	10.7		6.1			
	11.3		6.7			
	11.4		6.8			
	11.0		6.4			



3-02-61

STA. W. 185400; 0400 = N. 14.820; SOUND SOUTH

Dist	Sound	Elev	Dist	Sound	Elev
0400			(45)	11.9	7.4
(45)	0.3	+4.2	50	11.6	7.1
	1.3	+3.2		12.0	7.5
	2.7	+2.8		12.7	8.2
	4.0	+0.5		12.2	7.7
50	6.2	1.7		12.5	8.0
	9.2	4.7	3400	12.5	8.0
11:10	10.8	6.3		12.5	8.0
<u>11:10</u>	11.0	6.5		12.6	8.1
	10.4	5.9		12.6	8.1
1400	10.3	5.8		12.6	8.1
	10.1	5.6	50	12.8	8.3
	10.5	6.0		12.7	8.2
	10.6	6.1		12.6	8.1
	10.6	6.1		12.6	8.1
50	10.5	6.0		12.9	8.4
	10.9	6.4	4400	13.0	8.5
	11.2	6.7			
	11.1	6.6			
2400	11.1	6.6			
	11.3	6.8			
	11.9	7.4			
	11.9	7.4			

(31)

STA. W. 186400; 0400 = N. 14.820; SOUND SOUTH

Dist	Sound	Elev	Dist	Sound	Elev
0400			(4.3)	12.7	8.4
(4.3)	0.6	+3.7	50	12.0	7.7
	1.2	+3.1		12.6	8.3
	2.5	+1.8		12.7	8.4
	4.1	+0.2		12.8	8.5
50	8.1	3.8		12.9	8.6
	10.1	5.8	3400	13.0	8.7
11:20	11.4	7.1		12.8	8.5
<u>11:20</u>	11.5	7.2		13.3	9.0
	10.7	6.4		13.1	8.8
1400	10.0	5.7		13.1	8.8
	9.7	5.4	50	13.3	9.0
	9.3	5.0		13.4	9.1
	9.0	4.7		13.3	9.0
	9.2	4.9		13.5	9.2
50	9.6	5.3		13.4	9.1
	9.9	5.6	4400	13.5	9.2
	10.2	5.9			
	10.3	6.0			
	10.5	6.2			
2400	10.7	6.4			
	10.4	6.1			
	10.8	6.5			
	11.0	6.7			

3-02-61

STA. W. 187400 0400 = N. 14,830; SOUND SOUTH

Dist	Sound	Elev	Dist	Sound	Elev
0400			(4)	11.0	6.9
(4.1)			50	11.3	7.2
	0.7	+3.4		11.7	7.6
	1.3	+2.8		11.9	7.8
	1.9	+2.2		12.0	7.9
50	3.3	+0.8		12.0	7.9
	5.6	1.5	3+00	12.0	7.9
11:30	8.9	4.8		12.0	7.9
<u>    </u>	10.3	6.2		12.2	8.1
	11.0	6.9		12.2	8.1
1+00	11.3	7.2		12.2	8.1
	11.3	7.2	50	12.1	8.0
	11.0	6.9		12.9	8.8
	10.1	6.0		12.7	8.6
	9.3	5.2		12.7	8.6
50	9.2	5.1		12.6	8.5
	9.5	5.4	4+00	12.4	8.3
	9.7	5.6			
	10.0	5.9			
	10.2	6.1			
2+00	10.4	6.3			
	10.5	6.4			
	10.6	6.5			
	10.9	6.8			

(32)

STA. W. 188100 0400 = N. 14,810; SOUND SOUTH

Dist	Sound	Elev	Dist	Sound	Elev
0400			(40)	11.0	7.0
(40)			50	11.0	7.0
	0.7	+3.3		11.0	7.0
	1.5	+2.5		11.1	7.1
	2.4	+1.6		11.3	7.3
50	3.7	+0.3		11.8	7.8
	4.8	0.8	3+00	11.9	7.9
11:35	7.8	3.8		11.9	7.9
<u>    </u>	8.5	4.5		11.9	7.9
	9.9	5.9		12.0	8.0
1+00	10.0	6.0		12.0	8.0
	10.5	6.5	50	12.0	8.0
	10.3	6.3		12.2	8.2
	10.1	6.1		12.0	8.0
	9.8	5.8		12.0	8.0
50	9.8	5.8		12.1	8.1
	9.8	5.8	4+00	12.1	8.1
	9.9	5.9			
	10.1	6.1			
	10.6	6.6			
2+00	10.7	6.7			
	11.0	7.0			
	10.6	6.6			
	11.1	7.1			

3-02-61

STA. W. 189+00: 0+00 = N. 14, 800. SOUND SOUTH

DIST	Sound	Elev	DIST	Sound	Elev
0+00			(38)	11.5	7.7
(3.8)			50	11.0	7.2
	0.3	+3.5		11.0	7.2
	1.0	+2.8		11.0	7.2
	2.1	+1.7		11.2	7.4
50	3.5	+0.3		11.2	7.4
	4.5	0.7	3+00	11.2	7.4
11+45	6.3	2.5		11.2	7.4
	8.4	4.6		11.2	7.4
	9.6	5.8		11.4	7.6
1+00	10.6	6.8		11.4	7.6
	11.1	7.3	50	11.8	8.0
	11.5	7.7		12.0	8.2
	11.5	7.7		12.0	8.2
	11.0	7.2		12.0	8.2
50	10.8	7.0		12.0	8.2
	10.3	6.5	4+00	12.0	8.2
	10.0	6.2			
	10.0	6.2			
	10.0	6.2			
2+00	10.5	6.7			
	10.8	7.0			
	10.9	7.1			
	11.6	7.8			

(33)

STA. W. 190+00: 0+00 = N. 14, 810. SOUND SOUTH

DIST	Sound	Elev	DIST	Sound	Elev
0+00			(36)	10.1	6.5
(3.5)			50	10.5	6.9
	0.0	+3.6		10.7	7.1
	0.7	+2.9		10.7	7.1
	0.8	+2.8		10.3	6.7
50	0.9	+2.7		10.5	6.9
	1.0	+2.6	3+00	10.5	6.9
11+55	1.3	+2.3		10.8	7.2
	1.7	+1.9		10.9	7.3
	2.4	+1.2		11.0	7.4
1+00	3.6	0.0		10.9	7.3
	7.2	3.6	50	11.0	7.4
	9.9	6.3		11.0	7.4
	10.0	6.4		11.3	7.7
	10.0	6.4		11.2	7.6
50	10.0	6.4		11.5	7.9
	10.0	6.4	4+00	11.7	8.1
	10.1	6.5		11.8	8.2
	10.0	6.4		11.8	8.2
	9.9	6.3		11.9	8.3
2+00	10.0	6.4		11.9	8.3
	10.1	6.5	50	12.2	8.6
	10.1	6.5			
	10.1	6.5			

NOTE: See Sta's. W. 192 - W. 198; Pgs. 12-15)

3-02-61

(34)

STA. W. 191+00: 0+00 = N. 14, 750; SOUND SOUTH

DIST	SOUND	ELEV	DIST	SOUND	ELEV
0+00			(34)	9.5	6.1
(3.4)			50	10.0	6.6
	1.2	+2.2		10.0	6.6
	2.0	+1.4		10.1	6.7
	2.9	+0.5		10.2	6.8
50	3.6	0.2		10.6	7.2
	4.5	1.1	3+00	10.5	7.1
12:05	8.8	5.4		10.7	7.3
	9.8	6.4		10.8	7.4
	9.2	5.8		11.1	7.7
1+00	9.5	6.1		11.4	8.0
	10.0	6.6	50	11.7	8.3
	10.0	6.6		11.7	8.3
	9.6	6.2		12.0	8.6
	9.3	5.9		12.0	8.6
50	9.0	5.6		12.1	8.7
	9.1	5.7	4+00	12.2	8.8
	9.5	6.1			
	9.6	6.2			
	9.8	6.4			
2+00	10.0	6.6			
	10.8	7.4			
	10.4	7.0			
	9.9	6.5			

STA. W. 199+00: 0+00 = N. 14, 310; SOUND SOUTH

DIST	SOUND	ELEV	DIST	SOUND	ELEV
0+00			(5)	11.1	6.0
(5)			50	11.0	5.9
	0.7	+4.4		11.3	6.2
	1.2	+3.9		11.5	6.4
	2.0	+3.1		12.0	6.9
50	2.7	+2.4		11.3	6.2
	3.2	+1.9	3+00	10.8	5.7
10:40	3.6	+1.5		11.2	6.1
	4.3	+0.8		11.2	6.1
	5.2	0.1		10.1	5.0
1+00	6.2	1.1		10.3	5.2
	8.3	3.2	50	10.5	5.4
	10.8	5.7		10.4	5.3
	12.2	7.1		10.1	5.0
	12.2	7.1		12.2	7.1
50	12.3	7.2		11.7	6.6
	12.2	7.1	4+00	12.9	7.8
	12.3	7.2		12.7	7.6
	12.4	7.3		12.8	7.7
	12.1	7.0		12.9	7.8
2+00	11.9	6.8		12.4	7.3
	11.7	6.6	50	12.9	7.8
	11.6	6.5			
	11.1	6.0			

3-02-61

STA. W. 200+00: 0+00 = N. 14, 240 ; SOUND SOUTH

DIST	Sound	Elev	DIST	Sound	Elev
0+00			(52)	5.0	+0.2
(52)	0.6	+4.6	50	5.4	0.2
	1.1	+4.1		5.2	0.0
	2.5	+2.7		7.0	1.8
	3.0	+2.2		9.4	4.2
50	3.6	+1.6		9.2	4.0
	4.1	+1.1	3+00	8.5	3.3
10:30	5.0	+0.2		9.4	4.2
-	6.5	1.3		8.9	3.7
	8.3	3.1		8.6	3.4
1+00	9.8	4.6		9.0	3.8
	9.8	4.6	50	9.2	4.0
	9.2	4.0		9.7	4.5
	7.8	2.6		9.7	4.5
	5.9	0.7		10.0	4.8
50	5.1	+0.1		10.9	5.7
	5.0	+0.2	4+00	12.0	6.8
	5.0	+0.2		12.6	7.4
	5.0	+0.2		12.8	7.6
	5.0	+0.2		12.7	7.5
2+00	5.1	+0.1		12.9	7.7
	5.0	+0.2	50	12.9	7.7
	5.0	+0.2			
	5.0	+0.2			

STA. W. 20+00: 0+00 = N. 14, 160 ; SOUND SOUTH

DIST	Sound	Elev	DIST	Sound	Elev
0+00	1.8	+3.9	(57)	7.8	2.1
(57)	2.2	+3.5	50	8.2	2.5
	2.4	+3.3		8.5	2.8
	3.5	+2.2		8.8	3.1
	4.9	+0.8		9.1	3.4
50	5.8	0.1		9.9	4.2
	5.8	0.1	3+00	9.9	4.2
10:00	5.8	0.1		10.1	4.4
-	5.9	0.2		10.0	4.3
	5.0	+0.7		10.0	4.3
1+00	4.9	+0.8		9.8	4.1
	4.9	+0.8	50	10.0	4.3
	4.9	+0.8		10.0	4.3
	4.9	+0.8		10.0	4.3
	4.9	+0.8		11.9	6.2
50	4.8	+0.9		12.7	7.0
	4.9	+0.8	4+00	13.0	7.3
	5.0	+0.7			
	5.0	+0.7			
	5.0	+0.7			
2+00	5.0	+0.7			
	5.1	+0.6			
	5.0	+0.6			
	5.7	0.0			

3-02-61

STA. W. 202400; CHD = N. 14,060 SOUND SOUTH

STA. W. 203400; CHD = N. 13,940 SOUND SOUTH

DIST	Sound	Elev	DIST	Sound	Elev
0+00			(58)	9.2	3.4
(58)			50	9.3	3.5
	0.3	+5.5		9.2	3.4
	1.0	+4.8		9.0	3.2
	1.4	+4.4		9.9	4.1
50	2.6	+3.2		10.6	4.8
	4.0	+1.8	3+00	10.4	4.6
9:50	4.5	+1.3		10.5	4.7
	4.6	+1.2		11.0	5.2
	4.8	+1.0		11.7	5.9
1+00	4.8	+1.0		12.1	6.3
	4.8	+1.0	50	13.3	7.5
	4.9	+0.9		13.6	7.8
	4.9	+0.9		13.5	7.7
	5.0	+0.8		14.0	8.2
50	5.0	+0.8		14.0	8.2
	5.0	+0.8	4+00	13.7	7.9
	5.0	+0.8			
	5.4	+0.4			
	6.1	0.3			
2+00	9.0	3.2			
	9.0	3.2			
	8.9	3.1			
	9.3	3.5			

DIST	Sound	Elev	DIST	Sound	Elev
0+00			(60)	5.3	+0.7
			50	5.9	+0.1
(60)	0.2	+5.8		6.5	0.5
	0.8	+5.2		7.9	1.9
	2.4	+3.6		8.6	2.6
50	3.8	+2.2		8.9	2.9
	3.8	+2.2	3+00	9.2	3.2
9:15	3.9	+2.1		9.3	3.3
	4.0	+2.0		10.8	4.8
	4.0	+2.0		10.1	4.1
1+00	4.1	+1.9		9.6	3.6
	4.1	+1.9	50	9.3	3.3
	4.2	+1.8			
	4.1	+1.9			
	4.1	+1.9			
50	4.1	+1.9			
	4.0	+2.0	4+00		
	4.1	+1.9			
	4.4	+1.6			
	4.7	+1.3			
2+00	4.8	+1.2			
	4.8	+1.2			
	5.0	+1.0			
	5.1	+0.9			

3-02-61

STA. N. 140+00; 0+00=W. 20,230			SOUND EAST		
DIST	Sound	Elev	DIST	Sound	Elev
0+00	0.4	+5.6	(60)	8.5	2.5
(60)	1.8	+4.2	50	9.9	3.9
	2.7	+3.3		10.2	4.2
	4.3	+1.7		10.8	4.8
	5.0	+1.0		10.7	4.7
50	5.0	+1.0		10.9	4.9
	5.1	+0.9	3+00	10.8	4.8
9:25	5.1	+0.9		10.8	4.8
<u>    </u>	5.2	+0.8		12.0	6.0
	5.2	+0.8		12.1	6.1
1+00	5.3	+0.7		12.4	6.4
	5.2	+0.8	50	12.7	6.7
	5.2	+0.8		13.0	7.0
	5.1	+0.9		13.2	7.2
	5.2	+0.8		13.8	7.8
50	5.2	+0.8		14.5	8.5
	4.9	+1.1	4+00	14.7	8.7
	4.7	+1.3			
	5.0	+1.0			
	5.1	+0.9			
2+00	5.1	+0.9			
	5.3	+0.7			
	5.5	+0.5			
	6.0	0.0			

STA. N. 139+00; 0+00=W. 20,390			SOUND EAST		
DIST	Sound	Elev	DIST	Sound	Elev
0+00			(50)	5.0	+0.9
(50)	0.4	+5.5	50	5.1	+0.8
	0.8	+5.1		5.0	+0.9
	0.6	+5.2		5.4	+0.5
	0.2	+5.7		7.9	2.0
50	0.1	+5.8		8.5	2.6
	0.6	+5.3	3+00	8.9	3.0
9:40	1.3	+4.6		8.1	2.2
<u>    </u>	2.0	+3.9		7.9	2.0
	2.2	+3.7		8.5	2.6
1+00	3.2	+2.7		9.3	3.4
	4.0	+1.9	50	9.0	3.1
	4.1	+1.8		9.0	3.1
	4.2	+1.7		9.2	3.3
	4.3	+1.6		9.7	3.8
50	4.5	+1.4		9.8	3.9
	4.8	+1.1	4+00	10.3	4.4
	4.9	+1.0		11.3	5.4
	5.2	+0.7		11.0	5.1
	5.3	+0.6		11.9	6.0
2+00	5.2	+0.7		13.4	7.5
	5.0	+0.9	50	13.8	7.9
	5.0	+0.9			
	5.0	+0.9			

3-02-61

STA. N. 138+00.0+00=W. 20.340			SOUND EAST		
Dist	Sound	Elev	Dist	Sound	Elev
0+00	0.3	+5.3	(5.6)	10.2	4.6
(5.6)	1.1	+4.5	50	10.1	4.5
	2.6	+3.0		10.0	4.4
	3.7	+1.9		10.3	4.7
	3.8	+1.8		11.5	5.9
50	4.2	+1.4		12.5	6.9
	6.0	0.4	3+00	13.1	7.5
<u>10:10</u>	8.0	2.4		12.7	7.1
	8.5	2.9		12.5	6.9
	9.0	3.4		12.8	7.2
1+00	9.4	3.8		13.6	8.0
	9.1	3.5	50	13.7	8.1
	9.2	3.6		14.0	8.4
	9.0	3.4		14.0	8.4
	9.0	3.4		14.1	8.5
50	9.1	3.5		13.7	8.1
	9.3	3.7	4+00	14.0	8.4
	9.0	3.4			
	9.6	4.0			
	9.7	4.1			
2+00	10.4	4.8			
	10.0	4.4			
	9.9	4.3			
	10.0	4.4			

(38)

STA. N. 137+00.0+00=W. 20.350			SOUND EAST		
Dist	Sound	Elev	Dist	Sound	Elev
0+00	1.4	+4.1	(5.5)	14.7	9.2
(5.5)	1.8	+3.7	50	14.7	9.2
	2.5	+3.0		14.8	9.3
	3.4	+2.1		14.5	9.0
	4.3	+1.2		14.5	9.0
50	5.0	+0.5		14.9	9.4
	6.0	0.5	3+00	14.7	9.2
<u>10:15</u>	8.7	3.2			
	10.1	4.6			
	11.3	5.8			
1+00	11.6	6.1			
	11.8	6.3	50		
	11.9	6.4			
	11.6	6.1			
	13.7	8.2			
50	13.8	8.3			
	13.2	7.7	4+00		
	13.4	7.9			
	13.5	8.0			
	13.3	7.8			
2+00	13.6	8.1			
	13.8	8.3			
	14.0	8.5			
	14.6	9.1			



3-02-61

STA. N. 136+00; 0+00 = W. 20,360; SOUND EAST

Dist	Sound	Elev	Dist	Sound	Elev
0+00	1.0	+4.3			
(5.3)	2.2	+3.1	50		
	3.0	+2.3			
	4.1	+1.2			
	4.8	+0.5			
50	5.6	0.3			
	8.7	3.4	3+00		
10.25	10.8	5.5			
	12.3	7.0			
	13.4	8.1			
1+00	13.2	7.9			
	14.7	9.4	50		
	14.6	9.3			
	14.7	9.4			
	14.6	9.3			
50	14.8	9.5			
	14.8	9.5	4+00		
	15.1	9.8			
	14.6	9.3			
	14.9	9.6			
2+00	14.7	9.4			

3-10-61 (39)

STA. N. 173+00; 0+00 = N. 14,390; SOUND SOUTH

Dist	Sound	Elev	Dist	Sound	Elev
1+50	7.5	6.3		9.7	8.5
(1.2)	7.6	6.4	4+00	Pipeline	
	7.8	6.6			
	7.9	6.7			
	7.3	6.1			
2+00	7.0	5.8			
10.35	8.6	7.4	50		
	8.5	7.3			
	8.7	7.5			
	8.5	7.3			
50	8.6	7.4			
	8.8	7.6	5+00		
	8.8	7.6			
	9.1	7.9			
	9.7	8.5			
3+00	9.7	8.5			
	8.3	7.1			
	7.2	6.0			
	7.8	6.6			
	8.6	7.4			
50	8.6	7.4			
	9.4	8.2			
	9.7	8.5			
	9.7	8.5			

3-10-61

STA. W. 174+00, CHODEN. 14,470 SOUND SOUTH

DIST Sound Elev DIST Sound Elev

2+00 6.8 5.6 (1.2) 10.0 8.8

(1.2) 8.5 7.3 50 Pipeline

8.8 7.6

9.0 7.8

8.8 7.6

50 8.7 7.5

8.5 7.3 5+00

10:30 8.7 7.5

8.8 7.6

8.7 7.5

3+00 8.9 7.7

8.5 7.3

8.5 7.3

8.6 7.4

8.7 7.5

50 8.7 7.5

9.2 8.0

8.5 7.3

8.8 7.5

8.9 7.7

4+00 9.3 8.1

9.5 8.3

9.9 8.7

10.2 9.0

3-10-61

STA. W. 177+00, CHODEN. 14,670 SOUND SOUTH

DIST Sound Elev DIST Sound Elev

2+00 6.8 5.6 (1.2) 11.1 9.9

(1.2) 7.4 6.2 50 11.0 9.8

6.7 5.5 11.3 9.1

9.0 7.8 11.4 9.2

9.3 8.1 11.4 9.2

50 9.4 8.2 11.5 9.3

9.7 8.5 5+00 11.5 9.3

10:15 9.5 8.3

10.0 8.8

9.9 8.7

3+00 10.2 9.0

10.6 9.4

10.5 9.3

10.5 9.3

10.3 9.1

50 10.1 8.9

10.0 8.8

10.1 8.9

10.4 9.2

10.6 9.4

4+00 10.8 9.6

10.7 9.5

10.9 9.7

11.0 9.8

3-10-61

STA. W. 178+00.0+00 = N. 14,710. SOUND SOUTH

DIST	SOUND	ELEV	DIST	SOUND	ELEV
2+00	7.7	6.5	(12)	9.9	
(1.2)	8.2	7.0	50	10.0	
	8.2	7.0		10.0	
	8.2	7.0		10.2	
	8.7	7.5		10.2	
50	9.0	7.8		10.4	
	9.3	8.1	5+00	10.7	
10+00	9.7	8.5			
	9.8	8.6			
	9.5	8.3			
3+00	9.3	8.1			
	9.0	7.8			
	9.5	8.3			
	9.5	8.3			
	9.8	8.6			
50	10.0	8.8			
	9.1	7.9			
	9.0	7.8			
	9.1				
	9.2				
4+00	9.2				
	9.3				
	9.7				
	9.7				

3-10-61

STA. W. 184+00.0+00 = N. 14,820. SOUND SOUTH

DIST	SOUND	ELEV	DIST	SOUND	ELEV
2+00	8.0	6.8	(1.2)	10.0	
(1.2)	8.7	7.5	50	10.2	
	8.7	7.5		10.1	
	8.8	7.6		10.0	
	8.8	7.6		9.9	
50	9.0	7.8		9.6	
	8.7	7.5	5+00	9.6	
11+00	9.3	8.1			
	9.4	8.2			
	9.5	8.3			
3+00	9.6	8.4			
	9.5	8.3			
	8.9	7.7			
	9.2	8.0			
	8.9	7.7			
50	9.0	7.8			
	9.0				
	9.0				
	9.0				
4+00	8.9				
	9.0				
	9.0				
	9.1				

3-10-61

STATION 130+00: 0+00=W/16,650 SOUND WEST

Dist	Sound	Elev	Dist	Sound	Elev
1+50	9.5	7.3	(2.2)	10.5	
(2.2)	9.8	7.6	4+00	10.5	
	9.8	7.6		10.5	
	10.7	8.5		10.6	
	10.5	8.3		10.7	
2+00	10.6	8.4		10.8	
	10.5	8.3	50	10.8	
1:20	10.0	7.8		11.0	
<u>    </u>	10.6	8.4		11.4	
	11.0	8.8		11.4	
50	10.8	8.6		11.8	
	10.6	8.4	5+00	11.5	
	10.6	8.3			
	10.4	8.2			
	10.1	7.9			
3+00	9.9	7.7			
	9.8	7.6			
	10.0	7.8			
	9.8	7.6			
	9.7	7.5			
50	9.7	7.3			
	10.0	7.8			
	10.2	8.0			
	10.3				

(72)

STATION 132+00: 0+00=W/16,710 SOUND WEST

Dist	Sound	Elev	Dist	Sound	Elev
2+00	11.0	8.9	(2.1)	11.4	
(2.1)	11.1	9.0	50	11.5	
	11.1	9.0		11.5	
	11.0	8.9		11.6	
	11.2	9.0		11.3	
50	11.3	9.2		10.1	
1:10	11.2	9.1	5+00	9.9	
<u>    </u>	11.4	9.3		10.0	
	11.5	9.4		10.0	
	11.5	9.4		9.8	
3+00	11.7	9.6		9.7	
	11.2	9.1	50	9.8	
	11.3	9.2		9.8	
	11.0	8.9		9.8	
50	10.1	9.0		10.0	
50	10.8	8.7		10.2	
	11.0	8.9	6+00	10.2	
	11.0	8.9			
	11.1	9.0			
	11.1				
4+00	11.3				
	11.3				
	11.3				
	11.4				

3-10-61

STA. N. 134+00, 0+00 = W. 16, 760, SOUND WEST

Dist	Sound	Elev	Dist	Sound	Elev
1+50	7.8	5.7	(21)	11.1	
(21)	7.9	5.8	4+00	11.1	
	7.7	5.6		11.2	
	7.8	5.7		11.4	
	9.8	7.7		11.2	
2+00	10.3	8.2		11.3	
	10.2	8.1	50	11.4	
11:05	10.0	7.9		11.0	
<u>    </u>	10.4	8.3		11.2	
	10.7	8.6		11.2	
50	10.8	8.7		11.2	
	11.1	9.0	5+00	11.5	
	10.5	8.4			
	10.4	8.3			
	10.5	8.4			
3+00	10.7				
	10.6				
	10.8				
	11.0				
	10.7				
50	10.9				
	10.9				
	11.0				
	11.0				

(43)

STA. N. 136+00, 0+00 = W. 16, 820, SOUND WEST

Dist	Sound	Elev	Dist	Sound	Elev
1+50	9.4	7.4	(20)	10.0	
(20)	9.8	7.8	4+00	10.0	
	9.7	7.7		9.8	
	10.0	8.0		10.0	
	10.2	8.2		10.0	
2+00	10.1	8.1		10.1	
	10.3	8.3	50	10.2	
12:55	10.4	8.4		10.2	
<u>    </u>	10.4	8.4		10.2	
	10.5	8.5		10.0	
50	10.5	8.5		10.1	
	10.5	8.5	5+00	10.2	
	9.7	7.7			
	9.5	7.5			
	9.5	7.5			
3+00	9.6	7.6			
	9.8	7.8			
	9.8	7.8			
	10.0				
	10.3				
50	10.2				
	10.2				
	10.3				
	10.1				

3-13-67

STA. N. 129400:0100=W. 16640 SOUND WEST

Dist Sound Elev Dist Sound Elev

1+50 7.8 8.1 (-0.3) 8.8 9.1

(-0.3) 7.9 8.2 4+00 8.7 9.0

1.40 8.1 8.4

8.3 8.6

8.0 8.3

2+00 8.1 8.4

8.1 8.4

8.0 8.3

8.2 8.5

7.8 8.3

1+50 8.1 8.4

8.4 8.7

8.4 8.7

8.3 8.6

8.5 8.8

3+00 8.8 9.1

8.8 9.1

8.8 9.1

8.8 9.1

8.8 9.1

2+50 8.9 9.2

9.0 9.3

9.0 9.3

9.0 9.3

(14)

STA. N. 131400:0100=W. 16680 SOUND WEST

Dist Sound Elev Dist Sound Elev

2+00 10.0 10.2

(-0.2) 10.0 10.2

1.50 9.3 9.5

8.5 8.7

8.8 9.0

50 8.8 9.0

8.9 9.1

9.1 9.3

9.2 9.4

8.8 9.0

3+00 9.0 9.2

9.1 9.3

9.1 9.3

9.2 9.4

8.2 8.4

50 7.1 7.3

7.8 8.0

8.2 8.4

8.8 9.0

8.5 8.7

4+00 8.7 8.9

3-13-61

STA. N. 133+00.0+00 = W. 16,730. SOUND WEST

DIST SOUND ELEV DIST SOUND ELEV

2+00 7.3 7.4

(-0.1) 8.1 8.2

1.55 8.1 8.2

8.3 8.4

8.2 8.3

50 8.3 8.4

8.4 8.5

8.6 8.7

8.7 8.8

8.4 8.5

3+00 8.2 8.3

8.2 8.3

8.3 8.4

8.5 8.6

8.5 8.6

50 8.5 8.6

8.7 8.8

8.7 8.8

8.8 8.9

8.8 8.9

4+00 8.7 8.8

(45)

STA. N. 135+00.0+00 = W. 16,790. SOUND WEST

DIST SOUND ELEV DIST SOUND ELEV

1+50 6.6 6.7 8.6 8.7

(-0.1) 6.8 6.9 4+00 8.7 8.8

6.8 6.9

2:00 7.9 8.0

7.8 7.9

2+00 7.8 7.9

7.9 8.0

8.0 8.1

8.0 8.1

8.0 8.1

50 8.0 8.1

8.3 8.4

8.1 8.2

7.8 7.9

7.8 7.9

3+00 8.2 8.3

8.0 8.1

8.1 8.2

7.9 8.0

7.8 7.9

50 8.0 8.1

8.1 8.2

8.3 8.4

8.5 8.6

3-13-61

STA. W. 173+00; 0+00 = N. 14,390; SOUND SOUTH

Dist	Sound	Elev
3+00	7.9	7.9
0.0	8.5	8.5
	8.4	8.4
<u>2+10</u>	8.4	8.4
<u>50</u>	8.6	8.6
	8.7	8.7
	8.3	8.3
	8.4	8.4
	8.7	8.7
	8.9	8.9
4+00	9.1	9.1

(46)

STA. W. 195+00; 0+00 = N. 14,604; SOUND SOUTH

Dist	Sound	Elev
2+00	5.5	5.4
(0.1)	5.5	5.4
2+20	5.9	5.8
<u>7.0</u>		6.9
	7.4	7.3
50	8.1	8.0
	8.2	8.1
	8.0	7.9
	8.1	8.0
	8.3	8.2
3+00	8.1	8.0
	8.2	8.1
	8.4	8.3
	8.7	8.6
	8.8	8.7
50	8.8	8.7
	8.4	8.3
	8.8	8.7
	8.9	8.8
	9.1	9.0
4+00	9.0	8.9



3-13-61

STA. W. 199+00; CHD = N. 14, 310; SOUND SOUTH

Dist	Sound	Elev	Dist	Sound	Elev
2+00	6.8	6.6	(0.2)	8.2	8.0
(0.2)	6.7	6.5	50	8.5	8.3
	6.4	6.2		8.3	8.1
<u>2:30</u>	6.3	6.1		8.6	8.4
	6.0	5.8		8.4	8.2
50	6.2	6.0		8.5	8.3
	6.6	6.4	5+00	8.5	8.3
	7.2	7.0			
	7.0	6.8			
	6.7	6.5			
3+00	6.7	6.0			
	6.4	6.2			
	6.2	6.0			
	5.6	5.4			
	5.9	5.7			
50	5.5	5.3			
	5.6	5.4			
	6.0	5.8			
	7.9	7.7			
	8.5	8.3			
4+00	7.9	7.7			
	8.7	8.5			
	8.5	8.3			
	8.0	7.8			

(47)

STA. W. 200+00; CHD = N. 14, 240; SOUND SOUTH

Dist	Sound	Elev	Dist	Sound	Elev
2+00	(+)	-	(0.3)	8.5	8.2
(0.3)	(+)	-	50	8.6	8.3
	0.1	+0.2		8.7	8.4
<u>2:40</u>	0.0	+0.3		8.5	8.2
	0.3	0.0		8.9	8.6
50	0.8	0.5		8.9	8.6
	0.9	0.6	5+00	9.0	8.7
	1.6	1.3			
	4.5	4.2			
	3.8	3.5			
3+00	3.8	3.5			
	4.6	4.3			
	3.7	3.4			
	3.7	3.4			
	4.2	3.9			
50	4.7	4.4			
	4.6	4.3			
	4.5	4.2			
<u>2:45</u>	7.1	6.8			
	7.3	7.0			
4+00	8.3	8.0			
(0.4)	8.2	7.9			
	8.4	8.1			
	8.6	8.3			

3-13-61

NOTE: See B/L IN BK. OF BOOK.

(48)

STA. N. 138+00: 0+00 = W 20.340 SOUND EAST

STA. N. 117+00: 0+00 = W. 16.560 SOUND WEST

Dist Sound Elev Dist Sound Elev

Dist Sound Elev Dist Sound Elev

2+00 4.5 4.0

0+00 -0.3 8.1 8.40.5 4.3 3.8-0.3 50 8.1 8.4

4.5 4.0

1.30

8.2 8.5

2:50 4.5 4.0

8.4 8.7

4.7 4.2

8.4 8.7

50 5.6 5.1

50

8.3 8.6

7.6 6.1

2.3 2.6 3+00 8.5 8.8

8.3 7.8

3.4 3.7 8.6 8.9

8.2 7.7

4.3 4.6 8.2 8.5

8.6 8.1

5.1 5.4 8.3 8.6

3+00 8.5 8.0

1+00 5.7 6.0 8.1 8.4

8.8 8.3

6.0 6.3 50 8.6 8.9

8.0 7.5

6.4 6.7 8.4 8.7

8.5 8.0

6.7 7.0 8.0 8.3

8.8 8.3

6.8 7.1 7.8 8.1

50 8.8 8.3

50 7.1 7.4 7.8 8.1

9.7 9.2

7.3 7.6 4+00 7.9 8.2

8.9 8.4

7.7 8.0 7.9 8.2

9.1 8.6

7.9 8.2 7.8 8.1

9.0 8.5

7.9 8.2 8.0 8.3

4+00 9.5 9.0

2+00 7.8 8.1 8.1 8.4

8.0 8.3 50 8.2 8.5

8.0 8.3

8.0 8.3

3-13-61

STA. N. 116+00: O+00 = W. 16,520			SOUND WEST		
DIST	SOUND	ELEV	DIST	SOUND	ELEV
O+00			<u>-0.3</u>	7.8	8.1
<u>-0.3</u>			50	7.7	8.0
<u>1.20</u>				7.8	
				8.0	
				8.1	
50	0.5	0.8		8.0	
	1.2	1.5	3+00	8.3	
	2.0	2.3		8.4	
	2.9	3.2		8.5	
	3.8	4.1		8.4	
1+00	5.0	5.3		8.6	
	5.3	5.6	50	8.6	
	5.6	5.9		8.8	
	5.8	6.1		8.9	
	6.1	6.4		8.7	
50	6.8	7.1		8.6	
	7.0	7.3	4+00	8.5	
	7.2	7.5		7.8	
	7.3	7.6		7.5	
	7.9	8.2		7.5	
2+00	8.1	8.4		7.7	
	8.0	8.3	50	7.8	
	7.9	8.2			
	7.7	8.0			

(40)

STA. N. 115+00: O+00 = W. 16,450			SOUND WEST		
DIST	SOUND	ELEV	DIST	SOUND	ELEV
O+00			<u>-0.3</u>	7.9	8.2
<u>-0.3</u>			50	8.0	8.3
<u>1.10</u>				7.9	8.2
				8.0	8.3
				8.1	8.4
				8.2	8.5
50	0.5	0.8	3+00	8.4	
	1.2	1.5		8.2	
	3.0	3.3		8.3	
	4.3	4.6		8.3	
1+00	5.1	5.4		8.2	
	5.5	5.8	50	8.3	
	5.8	6.1		8.5	
	5.6	5.9		8.4	
	5.7	6.0		8.4	
50	5.7	6.0		8.5	
	5.8	6.1	4+00	8.5	
	5.9	6.2		8.3	
	6.0	6.3		8.4	
	6.3	6.6		8.6	
2+00	6.9	7.2		8.6	
	7.2	7.5	50	8.7	
	7.4	7.7			
	7.6	7.9			

3-13-61

CHECK ON AREA BETWEEN E & W  
BRIARFIELD DRIVES SUPPLEMENTAL

STA. W. 192+75; 0+00=N. 14,740; SOUND SOUTH

DIST SOUND ELEV DIST SOUND ELEV

0+00

(1.1)

(1.1)

6.9

7.3

7.2

50 7.3

7.9

7.2

3+00

3:25 0.0

0.7

50 1.6

1.8

1.9

2.0

4.3

1+00 3.9

6.6

6.6

7.0

7.0

50 7.1

7.1

7.3

7.7

7.7

2+00 6.8

6.7

(50)

STA. W. 193+00; 0+00=N. 14,750; SOUND SOUTH

DIST SOUND ELEV DIST SOUND ELEV

0+00

(1.1)

(1.1)

7.1

6.0

50

7.1

6.0

7.6

6.5

3:25

0.3

+0.8

7.5

6.4

1.1

0.0

8.4

7.3

50

1.9

0.8

9.2

8.1

1.9

0.8

3+00

9.1

8.0

2.4

1.3

2.1

1.0

5.3

4.2

390 50%

1+00

6.1

5.0

7.1

6.0

6.9

5.8

6.7

5.6

7.0

5.9

50

6.9

5.8

7.1

6.0

7.2

6.1

7.4

6.3

7.1

6.0

2+00

6.9

5.8

7.0

5.9

7.1

6.0

7.1

6.0

3-13-64

STA. W. 193425; 0+00 = N14,760 SOUND SOUTH

DIST SOUND ELEV DIST SOUND ELEV

0+00

(12)

7.4

(1.2)

50

7.9

7.6

3:30

0.1

7.6

50

0.9

7.5

50

1.9

8.0

2.0

3+00

8.7

4.0

3.9

5.9

1+00

7.1

7.1

7.1

7.1

6.8

50

7.0

7.0

6.7

7.0

7.4

2+00

7.5

7.3

7.0

7.4

(81)

STA. W. 193450; 0+00 = N14,760 SOUND SOUTH

DIST SOUND ELEV DIST SOUND ELEV

0+00

(1.3)

7.9

(1.3)

50

8.1

8.3

3:35

0.0

7.9

50

0.7

7.3

50

1.7

7.5

2.1

3+00

7.6

4.0

4.0

5.7

1+00

6.0

7.0

6.8

7.0

7.0

50

6.9

6.9

7.1

7.0

7.1

2+00

7.5

7.5

7.9

7.4

3-13-61

STA. W. 194+00; CHOD = N. 14750' SOUND SOUTH

STA. W. 194+25; CHOD = N. 14750' SOUND SOUTH

DIST SOUND ELEV DIST SOUND ELEV

DIST SOUND ELEV DIST SOUND ELEV

0+00 (14) 7.5 6.1 0+00 (15) 8.3

(19) 50 7.8 6.4 50 8.0

8.0 6.6

8.0

3:40

7.9 6.5

3:45

7.9

0.4 +1.0

7.9 6.5

9.0

50 1.0 +0.4

7.9 6.5

50 0.3

9.7

2.0 0.6 3+00

8.9 7.5

1.0 3+00

9.6

3.8 2.4

1.8

4.5 3.1

2.1

5.6 4.2

2.4

1+00 7.0 5.6

1+00 3.1

7.4 6.0

4.3

7.0 5.6

5.0

6.6 5.2

6.6

7.1 5.7

6.7

50 7.1 5.7

50 7.1

7.1 5.7

~~50~~ 7.1

7.1 5.7

7.1

7.4 6.0

7.3

7.6 6.2

7.7

2+00 7.8 6.4

2+00 7.7

7.9 6.5

2+00 7.7

8.0 6.6

7.9

7.7 6.3

8.2

3-13-61

STA. W. 194+40; 0+00 = N. 14,440; SOUND SOUTH

DIST SOUND ELEV DIST SOUND ELEV

0+00		(1.5)	8.1
(1.5)		50	8.1
			8.3
<u>3.45</u>			9.5
	0.1		9.0
50	0.7		8.5
	1.3	3+00	8.1
	1.9		
	2.1		
	2.4		
1+00	3.6		
	3.1		
	3.9		
	4.1		
	4.4		
50	5.1		
	6.3		
	6.6		
	6.8		
	7.4		
2+00	7.4		
	7.9		
	7.4		
	7.6		

(53)

STA. W. 192+60; 0+00 = N. 14,720; SOUND SOUTH

DIST SOUND ELEV DIST SOUND ELEV

0+00		(1.0)	8.4
(1.0)		50	8.4
			0.4
<u>3.20</u>			1.3
			1.6
50			1.8
			1.9
			2.1
			2.0
			3.2
1+00			5.7
			6.8
			7.0
			7.0
			7.0
1+50			7.1
			7.2
			7.3
			7.5
			7.1
2+00			6.3
			6.9
			7.0
			8.1

Ref. F.B. (159) (147) 9-01-61  
 N. BAY. (12) (1)

SOUNDINGS PEREZ COVER VICINITY  
 THROUGH LEASE AREA W.O. 64501

STA. W. 130400:0400=N. 6110 SOUND NORTH

DIST SOUND ELEV DIST SOUND ELEV

0400 (29) 14.3

NOTE: (See Shore Secs) 14.1

129 P 9.60 14.5

0.3 +2.6 50 14.5

1.7 +1.2 14.8

50 7.3 4.4 9:55 15.2

10.1 7.2 15.2

9:50 11.0 8.1 15.4

11.5 8.6 3+00 15.6

11.3 8.4 15.8

1+00 11.1 8.2 15.8

11.3 8.4 14.4

11.6 8.7 11.9

12.2 9.3 50 11.0

12.8 9.9 11.0

50 13.2 10.3 11.0

13.4 10.5 11.0

13.5 11.2

13.7 4+00 11.3

13.9

2+00 13.8

14.0

STA. W. 13400:0400=N. 6080 SOUND NORTH

DIST SOUND ELEV DIST SOUND ELEV

0400 (30) 12.6

(30) 50 12.8

1.4 +1.6 12.8

4.3 1.3 12.9

50 9.3 6.3 13.1

11.9 8.9 3+00 13.2

10:00 12.3 9.3 12.8

12.3 9.3 10:05 13.0

12.3 9.3 12.7

1400 12.2 9.2 12.6

12.2 9.2 50 12.4

12.6 9.6 11.8

12.5 9.5 11.4

12.5 9.5 11.5

50 12.6 9.6 11.7

12.9 9.9 4+00 11.8

12.6 9.6

12.6 9.6

12.8

2+00 12.8

12.9

13.0

12.5

(59)



9-01-61

STA. W. 132+00; 0+00 = N. 6040; SOUND NORTH

DIST Sound Elev

DIST	Sound	Elev	DIST	Sound	Elev
0+00			(3)	13.0	
(30)			50	12.9	
	0.4	+2.6		12.6	
	1.5	+1.5		12.5	
	3.4	0.4		12.6	
50	7.2	4.2		12.8	
	11.3	8.3	3+00	12.7	
10:10	11.6	8.6		12.7	
	12.0	9.0	10:15	12.8	
	12.2	9.2		12.9	
1+00	12.4	9.4		12.8	
	12.2	9.2	50	12.7	
	12.3	9.3		12.7	
	12.3	9.3		12.6	
	12.6	9.6		12.3	
50	12.9	9.9		12.2	
	13.0	10.0	4+00	12.1	
	12.8				
	12.7				
	12.8				
2+00	12.8				
	12.9				
	12.9				
	13.1				

(55)

STA. W. 133+00; 0+00 = N. 5980; SOUND NORTH

DIST Sound Elev

DIST	Sound	Elev	DIST	Sound	Elev
0+00			(3)	11.0	
			50	11.0	
				10.9	
	1.0	+2.1		10.9	
	1.8	+1.3		10.9	
50	3.0	+0.1		10.9	
	6.2	3.1	3+00	10.9	
	9.9	6.8		10.6	7.5
10:20	11.5	8.4	10:25	11.0	
	11.2	8.1		10.7	
1+00	11.2	8.1		11.0	
	12.0	8.9	50	11.3	
	11.4	8.3		11.8	
	11.5	8.4		11.8	
	11.9	8.8		11.9	
50	12.0	8.9		11.9	
	11.6	8.5	4+00	11.6	
	10.7	7.6			
	11.4	8.3			
	11.2	8.1			
2+00	11.3	8.2			
	11.1	8.0			
	11.2	8.1			
	11.2	8.1			

9-01-61

STA. W. 13400' OADEN 5910 SOUND NORTH			STA. W. 135400' OADEN 5850 SOUND NORTH		
Dist	Sound	Elev	Dist	Sound	Elev
0+00			(31)	11.8	
(31)			50	11.8	
				11.6	
				11.6	
	0.5	+2.6		11.4	
50	1.6	+1.5		11.4	
	3.2	0.1	3+00	11.5	
10:30	7.5	4.4		11.6	
	9.1	6.0		11.3	
	9.8	6.7		11.7	
1+00	11.8	8.7		11.9	
	11.8	8.7	50	11.8	
	11.4	8.3		11.6	
	11.8	8.7		11.6	
	11.9	8.8		11.6	
50	11.9	8.8		11.6	
	11.7	8.6	4+00	11.6	
	12.0	8.9			
	11.8	8.7			
	11.7	8.6			
2+00	11.4	8.3			
	11.2	8.1			
	11.2	8.1			
	11.3	8.2			

(56)

STA. W. 135400' OADEN 5850 SOUND NORTH			STA. W. 135400' OADEN 5850 SOUND NORTH		
Dist	Sound	Elev	Dist	Sound	Elev
0+00			(32)	11.9	
(32)			50	11.6	
				11.9	
				12.0	
				11.8	
				11.4	
50	0.0	+3.2		11.4	
	1.1	+2.1	3+00	11.9	
	1.9	+1.3		11.9	
	4.3	1.1		11.8	
	9.8	6.6		11.9	
1+00	11.2	8.0		11.4	
	11.9	8.7	50	11.2	
10:40	12.0	8.8		11.4	
	12.1	8.9		11.7	
	12.1	8.9		11.8	
50	12.4	9.2		11.3	
	11.9	8.7	4+00	11.6	
	12.1	8.9			
	12.3	9.1			
	12.6	9.4			
2+00	12.1	8.9			
	11.9				
	12.0				
	11.9				

9-01-61

STA. W. 136+00; CHD = N. 5810; SOUND NORTH

Dist Sound Elev Dist Sound Elev

0+00			(3.2)	12.2
(3.2)			50	12.1
				12.2
				12.2
				12.1
				12.2
50	0.7	+2.5		12.2
	1.5	+1.7	3+00	12.1
10:45	3.0	+0.2		11.9
	8.1	4.9		12.0
	11.0	7.8		12.0
1+00	11.2	8.0		11.9
	12.3	9.1	50	12.1
	12.3	9.1		11.9
	12.6	9.4		12.0
	12.5	9.3		12.0
50	12.8	9.6		11.9
	12.9	9.7	4+00	11.8
	13.0	9.8		
	13.0	9.8		
	12.5	9.3		
2+00	12.4	9.2		
	12.1	8.9		
	12.1			
	12.1			

(57)

STA. W. 137+00; CHD = N. 5770; SOUND NORTH

Dist Sound Elev Dist Sound Elev

0+00			(3.3)	12.3
(3.3)			50	12.2
				12.3
				12.1
				12.1
	0.7	+2.6		12.1
50	1.1	+2.2		12.3
	1.7	+1.6	3+00	12.0
10:55	2.2	+1.1		12.1
	2.9	+0.4		12.1
	4.8	1.5		12.1
1+00	10.6	7.4		12.1
	11.1	7.8	50	12.1
	12.0	8.7		12.2
	11.8	8.5		12.4
	12.5	9.2		12.3
50	12.7	9.4		12.4
	12.0	8.7	4+00	12.2
	12.1	8.8		
	12.2	8.9		
	12.4	9.1		
2+00	12.5	9.2		
	12.3	9.0		
	12.2	8.9		
	12.2	8.9		

9-01-61  
 STA. W. 138400 DIST = N. 5750 SOUND NORTH

	Dist	South	Elev	Dist	South	Elev
0+00				(33)	12.1	
(33)				50	11.9	
					12.0	
	0.7	+2.6			12.0	
	1.3	+2.0			11.9	
50	1.8	+1.5			12.2	
	2.5	+0.8	3+00		12.3	
11:05	5.6	2.3			12.5	
	8.5	5.2			12.2	
	10.6	7.3			12.1	
1+00	10.8	7.5			12.1	
	11.0	7.7	50		12.3	
	11.0	7.7			12.1	
	11.1	7.8			12.0	
	11.2	7.9			12.0	
50	11.2	7.9			11.7	
	11.0	7.7	4+00		11.6	
	11.7	8.4				
	12.0	8.7				
	12.1	8.8				
2+00	12.3	9.0				
	12.4					
	12.3					
	12.2					

STA. W. 139400 DIST = N. 5750 SOUND NORTH

	Dist	South	Elev	Dist	South	Elev
0+00				(34)	11.2	
(34)				50	11.0	
					11.0	
	1.0	+2.4			11.1	
	2.2	+1.2			11.1	
50	4.1	0.7			11.1	
	8.5	5.1	3+00		11.0	
11:10	10.6	7.2			10.9	7.5
	11.1	7.7			10.9	7.5
	11.2	7.8			10.9	7.5
1+00	11.4	8.0			11.0	
	11.5	8.1	50		11.6	
	11.3	7.9			13.0	
	10.9	7.5			12.6	
	10.8	7.4			12.3	
50	11.0	7.6			12.4	
	11.0	7.6	4+00		12.2	
	11.0	7.6				
	11.0	7.6				
	11.0	7.6				
2+00	10.8	7.4				
	10.8	7.4				
	10.9	7.5				
	11.0					

9-01-61

STA. W. 1401000 CHD = N. 5760 SOUND NORTH

Dist Sound Elev Dist Sound Elev

0+00			(3.5)	11.1		
(3.3)			50	11.1		
				11.1		
	0.2	+3.3		11.1		
	2.0	+1.5		11.1		
50	3.2	+0.3		11.1		
	3.6	0.1	3+00	11.1		
<u>11:20</u>	4.1	0.6		11.1		
<u>—</u>	7.4	3.9		11.1		
	9.4	5.9		12.6		
1+00	10.7	7.2		13.0		
	10.9	7.4	50	12.8		
	10.9	7.4		12.4		
	10.9	7.4		12.2		
	11.0	7.5		11.9		
50	10.9	7.4		11.9		
	11.0	7.5	4+00	11.9		
	10.9	7.4				
	10.9	7.4				
	10.9	7.4				
2+00	11.0	7.5				
	11.1	7.6				
	11.1	7.6				
	11.1	7.6				

(59)

STA. W. 1401000 CHD = N. 5810 SOUND NORTH

Dist Sound Elev Dist Sound Elev

0+00			(3.6)	11.0		
(3.6)			50	11.0		
				10.8	7.2	
				10.9	7.3	
				11.0		
50	0.2	+3.4		12.0		
	1.7	+1.9	3+00	12.1		
<u>11:30</u>	2.9	+0.7		12.1		
<u>—</u>	3.8	0.2		11.7		
	4.0	0.4		11.4		
1+00	4.2	0.6		11.1		
	5.2	1.6	50	11.1	7.3	
	6.8	3.2		10.9	7.3	
	6.8	3.2		10.8	7.2	
	7.8	4.2		11.1		
50	8.1	4.5		11.6		
	9.0	5.4	4+00	11.4		
	10.4	6.8				
	11.0	7.4				
	11.2	7.6				
2+00	11.4	7.8				
	11.2	7.6				
	11.0	7.4				
	11.0	7.4				

08-31-61

CROSS SECTIONS PEREZ COVE VICINITY  
THROUGH LEASE AREA WD. 64501

STA. W. 130+00; O.H.O. = N. 6051.60

Sta	Elev.	Non.
B.M.	18.10	"MOOSE"
0	16.2	
N. 19	13.3	
N. 29	15.8	
N. 44	13.1	
N. 58	7.2	
N. 68	5.8	
S. 50	16.4	
S. 100	16.3	
STA. W. 131+00; O.H.O. = N. 6012.88		
0	16.5	
N. 24	14.4	
N. 40	14.8	
N. 58	11.9	
N. 68	6.6	
S. 50	17.1	
S. 100	16.9	

NOTE: (See Sounding Notes Pg. 54)

NOTE: See B/L LAYOUT F.B. N. 147.150 <sup>1</sup>/<sub>42</sub> (60)

STA. W. 132+00; O.H.O. = N. 5974.16

STA.	Elev
0	15.5
S. 21	16.0
S. 50	16.7
S. 100	17.1
N. 39	11.7
N. 65	7.3
N. 70	5.6

STA. W. 133+00; O.H.O. = N. 5935.44

0	14.2
S. 50	15.6
S. 100	16.5
N. 30	13.4
N. 44	5.7

08-31-61

STA. W. 134+00; 0+00 = N. 5896.72

STA.	Elev
0	14.0
S. 25	13.8
S. 50	15.0
S. 100	15.7
N. 6	14.0
N. 6	7.5
N. 23	5.5

STA. W. 135+00; 0+00 = N. 5833.26

STA.	Elev
0	9.5
S. 6	13.1
S. 50	14.9
S. 100	16.4
N. 5	6.9
N. 25	5.4

(6)

STA. W. 136+00; 0+00 = N. 5768.67

STA.	Elev
0	10.4
S. 7	13.4
S. 25	14.3
S. 50	15.7
S. 100	16.6
N. 15	9.8
N. 23	7.3
N. 40	5.8

STA. W. 137+00; 0+00 = N. 5726.48

STA.	Elev
0	12.3
S. 17	12.3
S. 23	14.2
S. 50	15.4
S. 100	16.9
N. 4	11.0
N. 50	5.9

08-31-61

STA. W. 138+00) O+00 = N. 5704.42

STA.	Elev
0	11.6
5.30	14.6
5.50	13.8
5.100	15.1
N. 27	10.0
N. 51	6.6
N. 60	5.3

STA. W. 139+00) O+00 = N. 5700.55

0	12.6
5.30	14.6
5.50	13.9
5.100	13.5
N. 35	9.2
N. 50	6.9
N. 60	5.6

(62)

STA. W. 140+00) O+00 = N. 5722.92

STA.	Elev
0	10.7
5.25	13.2
5.50	13.3
5.100	13.3
N. 17	9.2
N. 50	5.9

STA. W. 141+00) O+00 = N. 5722.97

0	13.6
5.25	12.6
5.50	12.6
5.100	13.6
N. 16	13.3
<del>N. 28</del>	<del>11.8</del>
N. 44	13.0
N. 100	7.5
N. 110	6.5
B.M.	18.10 ~ 18.10

(omit) →

Mon.  
Moose



CROSS SECTIONS MARINELAND  
OF MATERIAL FOR FIESTA ISLAND  
ALLEN, ELMORE, TENNIE

SEE PAGE 60 + FB 147

SEE Pg 61 - This Book

STA W135+00; 0+00 = N 5806.29

STA		ELEV
0		14.2
N42 <sup>4</sup>	= ELY END CONC WALL - MARINA + TOP OF BCH	14.5
N48	ON ROCK RIP RAP	12.1
N64	H <sub>2</sub> O	3.2

STA W134+75; 0+00 = N 5815.97

0		14.9
N37	{ = APPROX ELY END PEREZ COVE ROCK RIP RAP + TOP BCH }	15.0
N40		13.0
N44		ON ROCK R.R.
N53 <sup>0</sup>	= H <sub>2</sub> O	3.2

STA W134+50; 0+00 = N 5825.65

0		15.1
N18	= TOP BCH (EXIST)	15.2
N25		5.7
N36	= H <sub>2</sub> O	3.2

LEAVE TO CHECK REMOVAL  
SLUDGE LINE - 1-15-63

(63)

STA W134+00; 0+00 = N 5846.06

STA		ELEV
0		15.0
N18		15.1
N30	= TOP EXIST BCH	12.6
N32		5.8
N42 <sup>0</sup>		4.7
N43 <sup>0</sup>	= H <sub>2</sub> O	3.2
N43 <sup>0</sup>	UNDER H <sub>2</sub> O	1.4

STA W133+50; 0+00 = N 5905.65

0		15.6
N15		15.6
N7 <sup>0</sup>	= TOP BCH	14.8
N16 <sup>0</sup>		6.5
N28 <sup>5</sup>		4.4
N29	IN H <sub>2</sub> O	2.2

BCH TO ELY OF W133+50 NOT DISTURBED BY CONT.

STA W133+00; 0+00 = N 5935.44

0		14.9
N30	= TOP EXIST BCH	13.3
N32		8.4
N39		5.4
N46		3.9
N47	IN H <sub>2</sub> O	2.1

CONT Pg 64

## TOP OF BEACH SECTIONS

STA W 132+00; N 5974.16		
0	IN EXCAVATION FOR	
	Lease Area	
N30	on Beach	14.6
N52	= Top Bch	13.4
N55		7.4
N63		5.6
N70		4.7
N74	= H <sub>2</sub> O	3.2

STA W 131+00; 0+00 = N 6012.88

0		15.4
N16		13.6
N34		12.1
N63	= Top Bch	11.9
N65		6.4
N71		5.0
N82	= H <sub>2</sub> O	3.3

MARINE LAND Lease  
1-16-63

64

STA W 130+00; 0+00 = N 6051.60

0		15.2
N20		11.8
N40		11.2
N65		11.4
N69		6.6
N79		4.3
N94	= H <sub>2</sub> O	3.3

This section approx WLY END OF  
ROCK RIP RAP - SOUTH SHORE  
SECTION TAKEN ON NATURAL  
Beach SECTION

N. 129 - 16830  
 N 131 - 16900  
 N 133 - 16930  
 135 - 16960

