

MB 141



LEVEL 1000

1900

2:50

**MICROFILMED**

1:45

1:35

11:30

11:20

10:50

10:45

10:05

MB No 141

THIS BOOK INDEXED 2-13-62

N139+50-W8320      N123 - W9080  
N139 - W8270      N122+50-W  
N138+50W8240      N121+50 -W9260  
N138 - W      N121 - W9310  
N137+50-W8200      N120+50-W9330  
N137 ~~5~~ W8170      N117+50-W9420  
N136+50-W8150      N117 - W9420  
N135+50-W8100      N116+50-W9430  
N135 - W8080      N115+50-W9430  
N134+50-W8060  
N134.  
N133+50-W8040  
N133 - W8040  
N132+50-W8040  
N132 - W8030  
N131+50-W8040  
N131+00-W8050  
N130+50-W8080  
N129+50-W8100  
N129+00-W8120  
N128+50-W8150  
N127+50-W8240  
N127 - W8290  
N126+50-W8360  
N125+50-W8500  
N125 - W8620  
N124+50-W8760  
N123+50-W8990  
N123 - W  
N122+50-W

130  
54  

---

-7.6

ANCHOR STAKES  
BIG ISLAND  
SELY (COVE AREA)

N	W	N	W
<del>68</del>	7680		
69	7690	105	8750
79	7880	106	8820
80	8200	107	8900
81	8600	108	8980
<del>82</del>	8760		
100	10150	109	9070
91	9830	110	9150
92	9930	111	9230
93	10000	112	9300
94	10050	113	9350
95	10090	114	9390
96	10140	115	9420
97	10170	116	9440
98	10190	117	9420
<u>99</u>	<u>10180</u>	118	9410
		119	9400
95	8500	120	9350
96	8500	121	9300
97	8480	122	9240
98	8490	123	9120
99	8500	124	8920
100	8510	125	8660
101	8540		
102	8580		
103	8630		
104	8690		

(88-completed)

REF. F.B. NB. N. 117 - FOR B/L & TRIANGULATION  
 " " " No 106 " " " "  
 SOUNDINGS ELY. CABRILLO ISLAND  
 AFTER DREDGING W.O. 64501

9-28-60

DEANZA POINT  
 N. 15505.22  
 W. 8013.22  
 Stamped

"DICK"  
 N. 26°26'10"E  
 3864.06  
 N. 13700.00  
 W. 9649.72

"FRAN"  
 N. 14000  
 W. 8471.26

N. 16°55'32"E  
 1573.37'

CABRILLO ISLAND

"DEL"  
 N. 12000  
 W. 9430

N. 42°28'30"W  
 1497.57'

2667.78  
 N. 11°58'06"W

BRG FRAN TO  
 MARSTON = 53°07'30"E

42-28-30  
 65-33-24  
 159 57 60  
 108 01 54  
 71-58-06  
 87-59 60  
 65-33-24  
 24-26-36

N. 65°33'24"E  
 2163.95'

N. 12895.43  
 W. 7460.00

N. 22°39'38"W  
 2167.31'

N. 43°22'12"W  
 2082.40'

N. 21°24'18"E  
 3109.94'

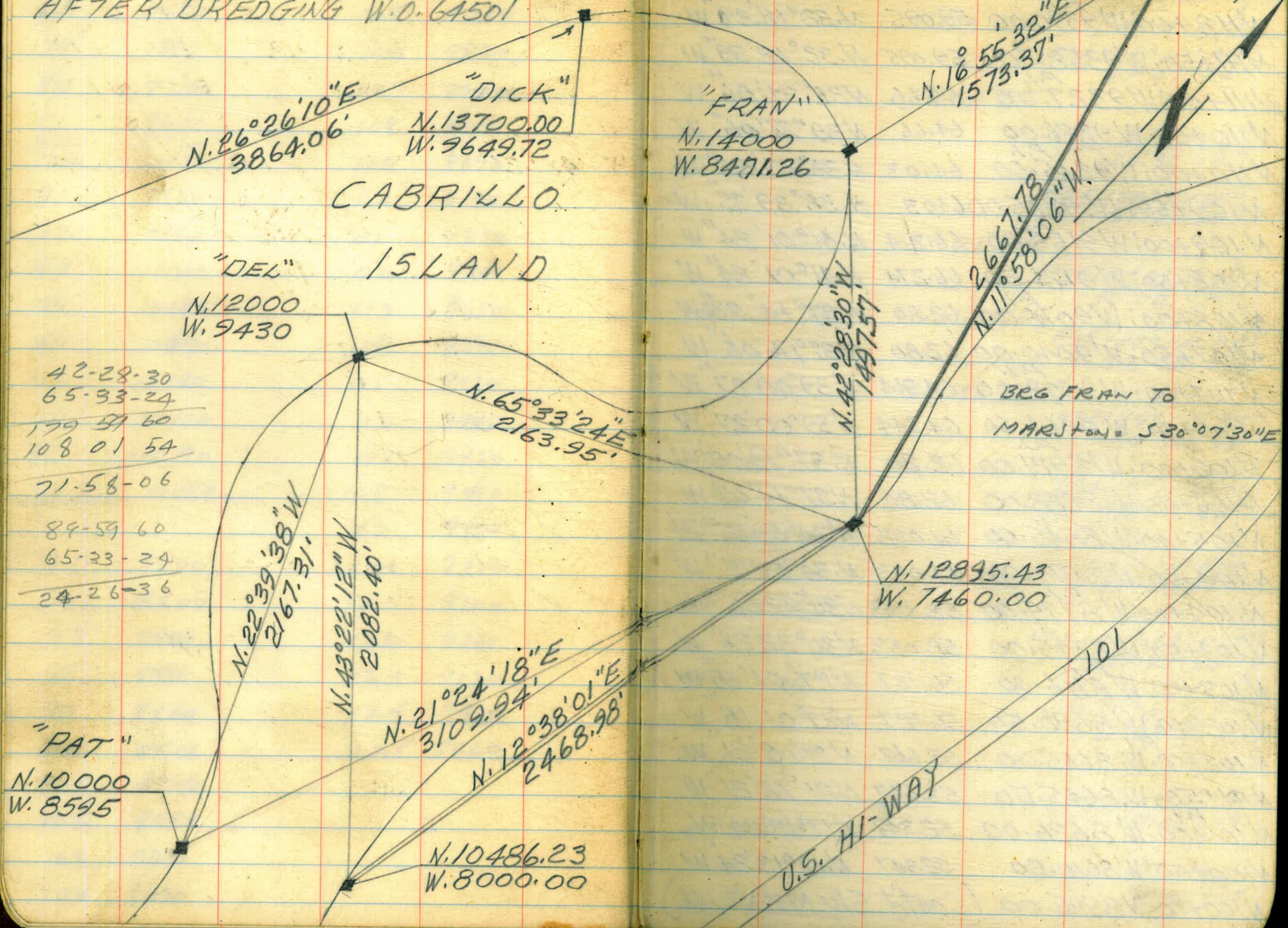
N. 12°38'01"E  
 2468.98'

"PAT"  
 N. 10000  
 W. 8595

N. 10486.23  
 W. 8000.00

U.S. HI-WAY

101



GRID STATIONS FOR SOUNDING CONTROL

STA	B/L DIST	BEARING	DEF. LT.	LS	RT	GRID LS
N112+00; W 9390.00	59.095	N.32°12'39" W			7°58'59"	FROM B/L
N111+50; W 9358.50	59.095	N.32°12'39" W				<u>NTOE</u> 122°12'39" 57°47'21"
N111+00; W 9327.00	64.66	N39°21'06" W			7°08'27"	
N110+50; W 9286.00	64.66	N39°21'06" W				<u>NTOE</u> 129°21'06" 50°38'54"
N110+00; W 9245.00	64.03	N38°39'35" W	0°41'31"			<u>NTOE</u> 128°39'35" 51°20'25"
N109+50; W 9205.00	64.03	N.38°39'35" W				
N109+00; W 9165.00	66.274	N.41°01'24" W			2°21'49"	<u>NTOE</u> 131°01'24" 48°58'36"
N108+50; W 9121.50	66.274	N.41°01'24" W				
N108+00; W 9078.00	62.80	N37°14'05" W	3°47'19"			<u>NTOE</u> 127°14'05" 52°45'55"
N107+50; W 9040.00	62.80	N37°14'05" W				
N107+00; W 9002.00	64.344	N.39°00'27" W			1°46'22"	<u>NTOE</u> 129°00'27" 50°59'33"
N106+50; W 8961.50	64.344	N39°00'27" W				
N106+00; W 8921.00	62.80	N.37°14'05" W	1°46'22"			<u>NTOE</u> 127°14'05" 52°45'55"
N105+50; W 8883.00	62.80	N37°14'05" W				
N105+00; W 8845.00	61.032	N34°59'31" W	2°14'34"			<u>NTOE</u> 124°59'31" 55°00'29"
N104+50; W 8810.00	61.032	N.34°59'31" W				
N104+00; W 8775.00	58.053	N30°32'26" W	4°27'05"			<u>NTOE</u> 120°32'26" 59°27'34"
N103+50; W 8745.00	58.053	N30°32'26" W				
N103+00; W 8716.00	56.127	N27°01'18" W	3°31'08"			<u>NTOE</u> 117°01'18" 62°58'42"
N102+50; W 8690.50	56.127	N27°01'18" W				
N102+00; W 8665.00	53.667	N21°18'21" W	5°42'57"			<u>NTOE</u> 111°18'21" 68°41'39"
N101+50; W 8645.50	53.667	N21°18'21" W				
N101+00; W 8626.00	52.347	N17°13'24" W	4°04'57"			<u>NTOE</u> 107°13'24" 72°46'36"
N100+50; W 8610.50	52.347	N.17°13'24" W				
N100+00; W 8595.00		(Cont'd 514 N/B No. 146)				

# GRID STAs SOUNDING CONTROL

STA	B/L DIST	BEARING	DEF LT	LS RT	GRID LS FROM B/L
N123+14; W. 9200.00	20.676	N. 47° 23' 09" E			6° 51' 37"
N123+00; W. 9215.22	47.26	N. 47° 23' 09" E			NTOE 42° 36' 51" 137° 23' 09"
N122+68; W. 9250.00	24.53	N. 42° 47' 51" E			4° 35' 18"
N122+50; W. 9266.66	49.06	N. 42° 47' 51" E			NTOE 47° 12' 09" 132° 47' 51"
N122+14; W. 9300.00	17.765	N. 37° 59' 55" E			4° 47' 56"
N122+00; W. 9310.94	63.45	N. 37° 59' 55" E			NTOE 52° 00' 05" 127° 59' 55"
N124+50; W. 9350.00	58.31	N. 30° 57' 50" E			7° 02' 05"
N121+00; W. 9380.00	58.31	N. 30° 57' 50" E			59° 02' 10" 120° 57' 50"
N120+50; W. 9410.00	53.85	N. 21° 48' 05" E			9° 09' 45"
N120+00; W. 9430.00	53.85	N. 21° 48' 05" E			NTOE 68° 11' 55" 111° 48' 05"
N119+50; W. 9450.00	52.20	N. 16° 41' 57" E			5° 06' 08"
N119+00; W. 9465.00	52.20	N. 16° 41' 57" E			NTOE 73° 18' 03" 106° 41' 57"
N118+50; W. 9480.00	50.635	N. 9° 05' 25" E			7° 36' 32"
N118+00; W. 9488.00	50.635	N. 9° 05' 25" E			NTOE 80° 54' 35" 99° 05' 25"
N117+50; W. 9496.00	50.122	N. 4° 00' 15" E			5° 05' 10"
N117+00; W. 9499.50	50.122	N. 4° 00' 15" E			NTOE 85° 59' 45" 94° 00' 15"
N116+50; W. 9503.00	50.07	N. 3° 03' 10" W			7° 03' 25"
N116+00; W. 9500.33	50.07	N. 3° 03' 10" W			
N115+50; W. 9497.67	50.07	N. 3° 03' 10" W			NTOE 93° 03' 10" 86° 56' 50"
N115+00; W. 9495.00	51.79	N. 15° 06' 34" W			12° 03' 24"
N114+50; W. 9481.50	51.79	N. 15° 06' 34" W			NTOE 105° 06' 34" 74° 53' 26"
N114+00; W. 9468.00	52.65	N. 18° 15' 46" W			3° 09' 12"
N113+50; W. 9451.50	52.65	N. 18° 15' 46" W			NTOE 108° 15' 46" 71° 44' 14"
N113+00; W. 9435.00	54.83	N. 24° 13' 40" W			5° 57' 54"
N112+50; W. 9412.50	54.83	N. 24° 13' 40" W			NTOE 114° 13' 40" 65° 46' 20"

③

GRID STA'S. FOR SOUNDING CONTROL

STA	B/L DIST	BEARING	DEF. Ls LT	RT	GRID Ls FROM B/L
N.131 <sup>P.I.</sup> +00; W.8112.00	52.50	N.17°44'41" E	13°44'26"		
N.130+50; W.8128.00	52.50	N.17°44'41" E			NToE 72°15'19"
N.130+00; W.8144.00	58.31	N.30°57'50" E	13°13'09"		107°44'41"
N.129+50; W.8174.00	58.31	N.30°57'50" E			NToE 59°02'10"
N.129+00; W.8204.00	64.344	N.39°00'27" E	8°02'37"		120°57'50"
N.128+50; W.8214.50	64.344	N.39°00'27" E			NToE 50°59'33"
N.128+00; W.8285.00	76.91	N.49°27'04" E	10°26'37"		129°00'27"
N.127+50; W.8343.44	41.53	N.49°27'04" E			NToE 40°32'56"
N.127+23; W.8375.00	40.90	N.55°47'04" E	6°20'00"		139°27'04"
N.127+00; W.8408.82	49.79	N.55°47'04" E			NToE 34°12'56"
N.126+72; W.8450.00	43.48	N.59°36'05" E	3°49'01"		145°47'04"
N.126+50; W.8487.50	43.48	N.59°36'05" E			NToE 30°23'55"
N.126+28; W.8525.00	59.50	N.61°55'39" E	2-19-34"		149°36'05"
N.126+00; W.8577.50	25.50	N.61°55'39" E			NToE 28°04'21"
N.125+88; W.8600.00	93.11	N.65°54'45" E	3°59'06"		151°55'39"
N.125+50; W.8685.00	69.64	N.68°57'45" E	3°03'00"		NToE 24°05'15"
N.125+25; W.8750.00	75.68	N.70°42'36" E	1°44'51"		155°54'45"
N.125+00; W.8821.43	136.22	N.70°42'36" E			NToE 21°02'15"
N.124+55; W.8950; 00	13.46	N.68°11'55" E			158°57'45"
N.124+50; W.8962.50	40.39	N.68°11'55" E			NToE 19°17'24"
N.124+35; W.9000.00	79.54	N.63°53'43" E			160°42'36"
N.124+00; W.9071.43	31.82	N.63°53'43" E			2°30'41"
N.123+86; W.9100.00	61.61	N.54°14'46" E			NToE 21°48'05"
N.123+50; W.9150.00	61.61	N.54°14'46" E			158°11'55"
					4°18'12"
					NToE 26°06'17"
					153°53'43"
					9°38'57"
					NToE 35°45'14"
					144°14'46"



GRID STA'S. FOR SOUNDING CONTROL

STA	B/L DIST	BEARING	DEF. Ls Lt.	Rt.	GRID Ls FROM B/L
N.140+25 <sup>P.I.</sup> W. 8500.00	38.09	N.48°58'38"W			
N.140+00 <sup>P.I.</sup> W. 8471.26	76.18	"			
N.139+50 <sup>P.I.</sup> W. 8413.79	18.28	N.48°58'38"W			N. To E. 138°58'38"
N.139+38 <sup>P.I.</sup> W. 8400.00	49.134	N.39°20'26"W	9°38'12"		41°01'22"
N.139+00 <sup>P.I.</sup> W. 8368.85	29.74	N.39°20'26"W			N. To E. 129°20'26"
N.138+77 <sup>P.I.</sup> W. 8350.00	32.19	N.32°59'51"W	6°20'35"		50°39'34"
N.138+50 <sup>P.I.</sup> W. 8332.47	59.616	N.32°59'51"W			N. To E. 122°59'51"
N.138+00 <sup>P.I.</sup> W. 8300.00	57.20	N.29°03'17"W	3°56'34"		57°00'09"
N.137+50 <sup>P.I.</sup> W. 8272.22	45.76	N.29°03'17"W			N. To E. 119°03'17"
N.137+10 <sup>P.I.</sup> W. 8250.00	11.075	N.25°27'48"W	3°35'29"		60°56'43"
N.137+00 <sup>P.I.</sup> W. 8245.24	55.38	116.295 "			N. To E. 115°27'48"
N.136+50 <sup>P.I.</sup> W. 8221.43	49.84	N.25°27'48"W			64°32'12"
N.136+05 <sup>P.I.</sup> W. 8200.00	5.37	N.21°20'13"W	4°07'35"		
N.136+00 <sup>P.I.</sup> W. 8198.05	53.68	"			
N.135+50 <sup>P.I.</sup> W. 8178.51	53.68	"			N. To E. 111°20'13"
N.135+00 <sup>P.I.</sup> W. 8158.98	24.69	N.21°20'13"W			68°39'47"
N.134+77 <sup>P.I.</sup> W. 8150.00	27.88	N.14°27'09"W	6°53'04"		
N.134+50 <sup>P.I.</sup> W. 8143.04	51.63	"			N. To E. 104°27'09"
N.134+00 <sup>P.I.</sup> W. 8130.16	20.65	N.14°27'09"W			75°32'51"
N.133+80 <sup>P.I.</sup> W. 8125.00	30.39	N.9°13'48"W	5°13'21"		
N.133+50 <sup>P.I.</sup> W. 8120.12	50.655	N.9°13'48"W			N. To E. 99°13'48"
N.133+00 <sup>P.I.</sup> W. 8112.00	50.122	N.4°00'15"W	5°13'33"		80°46'12"
N.132+50 <sup>P.I.</sup> W. 8108.50	50.122	N.4°00'15"W			N. To E. 94°00'15"
N.132+00 <sup>P.I.</sup> W. 8105.00	50.122	N.4°00'15"E	8°00'30"		85°59'45"
N.131+50 <sup>P.I.</sup> W. 8108.50	50.122	N.4°00'15"E			N. To E. 85°59'45"
					94°00'15"

SOUNDINGS ELY. SIDE OF CARRILLO ISLAND AFTER DREDGING. W. 0.64501

STA. N. 140+00. 0+00 = W. 8.370; SOUND EAST

Dist	Sound	Elev	Dist	Sound	Elev
0+00			(35)	13.2	9.7
(DICK)			50	13.3	9.8
(35)				13.4	9.9
10:15				13.5	10.0
50	0.4	+3.1		13.6	10.1
	1.1	+2.4	3+00	13.7	10.2
	2.1	+1.4		13.4	9.9
	2.9	+0.6		13.6	10.1
	5.0	1.5		13.9	10.4
1+00	8.9	5.4		13.9	10.4
	11.1	7.6	50	11.8	8.3
	12.2	8.7		13.5	10.0
	12.1	8.6		13.9	10.4
	12.5	9.0	10:20	12.2	8.7
50	12.3	8.8		12.0	8.5
	12.3	8.8	4+00	14.4	10.9
	12.4	8.9	7° of	15.5	12.0
	12.5	9.0	SILT →	10.0	
	12.8	9.3	10:25	17.0	13.5
2+00	12.8	9.3		17.6	14.1
	12.9	9.4		17.0	13.5
	13.0	9.5	TOP 12.0	17.1	13.6
	13.1	9.6	= 50	16.3	12.8
				16.1	12.6

STA. N. 140+00 - EAST 9-28-60

DIST SOUND ELEV DIST SOUND ELEV

Dist	Sound	Elev	Dist	Sound	Elev
(3.6)	16.3	12.7			
	15.9	12.3			
5+00	TOP → 12.0				
	16.5	12.9	50		
	16.3	12.7			
10:30	16.0	12.4			
	16.1	12.5			
	16.8	13.2			
TOP →	11.8				
60	16.0	12.4			
	16.0	12.4			
	15.5	11.9			
	15.5	11.9			
10:35	15.3	11.7			
TOP →	11.2				
6+00	16.0	12.4			
	15.2	11.6			
	15.5	11.9			
	15.5	11.9			
	15.0	11.4			
TOP →	11.2				
50	14.9	11.3			
	14.0	10.4			
	11.9	8.3			
	6.0	2.4			
	2.0	+1.6			
7+00	1.0	+2.6			

(144e) 9-28-60

5 STA. N. 138+00; 0+00=W. 8,220; SOUND EAST

	Dist	Sound	Elev	Dist	Sound	Elev
0 0+00				(13.7)	13.5	9.8
(13.6)				Top → 11.3		
				50	12.3	8.6
	1.0	+2.6			12.0	8.3
10:45	2.8	+0.8			13.4	9.7
	6.9	3.3			13.1	9.4
50	11.0	7.4			14.0	10.3
	12.1	8.5		Top → 11.5		
	13.0	9.4		3+00	14.9	11.2
	13.0	9.4			13.2	9.5
	12.9	9.3			13.5	9.8
Top → 11.8					13.9	10.2
1+00	13.1	9.5			13.8	10.1
	13.0	9.4		Top → 11.6		
	13.1	9.5		50	14.0	10.3
	13.0	9.4			13.3	9.6
	13.0	9.4		10:55	13.2	9.5
	13.0	9.4			13.2	9.5
Top → 11.5					13.0	9.3
50	13.2	9.6		Top → 11.7		
	13.2	9.6		4+00	13.0	9.3
10:50	13.0	9.4			12.8	9.1
	13.5	9.9			12.9	9.2
	13.9	10.3			12.9	9.2
Top → 11.8					12.8	9.1
2+00	13.9	10.3		Top → 11.2		
	13.2	9.6		50	12.8	9.1
	13.4	9.8			12.8	9.1
	13.1	9.5			12.9	9.2

5 STA. N. 138+00 - EAST

	Dist	Sound	Elev	Dist	Sound	Elev
(3.7)	13.0		9.3			
	13.0		9.3			
Top → 11.6						
5+00	13.1		9.4	50		
	11.7		8.0			
	11.0		7.3			
	10.0		6.3			
	4.1		0.4			
50	1.4		+2.3			

6+00

50

7+00

(red)

9-28-60

STAN. 136400 - EAST

(3)

STAN. 136400: 0400 = W. 8, 130 SOUND EAST

DIST SOUND ELEV

DIST SOUND ELEV DIST SOUND ELEV

1.1

0400 ~~38~~ 12.6 8.8

37 ~~Top → 10.9~~  
50 12.9 9.1

5400

0.9 +2.8 12.6 8.8

11/105 2.9 +0.8 11/10 11.9 8.1

7.0 3.3 11.7 7.9

50 11.1 7.4 11.2 7.4

11.8 8.1 ~~Top → 10.8~~  
3400 11.0 7.2

50

12.0 8.3 11.2 7.4

12.5 8.8 11.3 7.5

13.0 9.3 11.7 7.9

~~Top → 10.2~~  
1400 12.8 9.1 11.8 8.0

12.8 9.1 ~~Top → 11.8~~  
50 11.8 8.0

6400

12.8 9.1 12.0 8.2

13.0 9.3 12.7 8.9

13.0 9.3 12.4 8.6

~~Top → 10.5~~  
50 13.0 9.3 12.5

13.1 9.4 ~~Top → 11.7~~  
4400 12.7

13.1 9.4 12.6

13.1 9.4 12.6

13.2 9.5 12.6

~~Top → 10.5~~  
2400 13.0 9.3 13.2

13.0 9.3 ~~Top → 11.0~~  
50

12.9 9.2 10.7

12.9 9.2 4.3

(Dike)

9-28-60

STA. N. 134+00 - EAST

STA. N. 134+00; 0+00 = W. 8,050; SOUND EAST

Dist Sound Elev

Dist Sound Elev Dist Sound Elev

0+00

(139) 14.0

(39) 0.5

50 13.1

2.4

13.1

11:20

6.1

13.0

8.8

13.1

50 10.1

13.2

11.1

3+00 13.2

11.3

13.1

11.9

13.0

12.0

13.0

1+00 12.2

13.1

12.2

Top - 12.0  
50 13.0

12.2

13.1

12.6

11:25 13.2

12.9

13.1

50 13.0

13.0

13.1

Top - 11.9  
4+00 12.7

13.2

12.1

13.4

8.9

13.4

3.0

2+00 13.1

1.0

13.0

50

13.1

13.8

5+00

50

6+00

(Clyde)

9-28-60

STAN. 132+00 - 0+00 - W. 8.030 ; SOUND EAST

Dist Sound Elev Dist Sound Elev

0+00

(40) 14.0

(40) 1.0

50 14.0

2.8

13.6

11:33 8.5

13.5

10.1

13.6

50 11.0

13.9

11.6

3+00 13.7

11.8

13.1

12.0

13.2

12.2

13.1

1+00 12.0

13.0

12.4

50 12.8

12.3

12.9

12.2

12.4

12.0

12.5

50 12.0

12.5

12.2

4+00 12.3

12.8

12.5

11:36 12.8

12.7

12.9

12.1

2+00 12.7

12.1

13.0

50 11.0

13.2

7.9

13.9

2.0

STAN. 132+00 - EAST

Dist Sound Elev

5+00

(10)

(C14de)

9-28-60

STAIN. 130400-0400 = W. 8,080 SOUND EAST

Dist	Sound	Elev	Dist	Sound	Elev
0400			(53)	15.1	
(52)	0.2		50	15.4	
	1.8			15.9	
<u>1:45</u>	3.2			16.2	
	9.4			17.0	
50	11.7			17.7	
	13.2		Top →	13.0	
	13.4		300	18.0	
	13.9			18.0	
	14.0		1:50	17.7	
	14.2		—	16.0	
1+00	14.2			14.6	
	14.4		Top →	13.0	
	14.5		50	14.7	
	14.4			14.6	
	14.4			15.0	
	14.4			14.9	
50	14.3			15.2	
	14.8		Top →	14.0	
	14.8		4+00	14.9	
	14.8			15.0	
	14.9			14.8	
	14.9			14.7	
1+00	14.8			14.8	
	14.6		50	14.8	
	14.8			14.4	
	14.9			14.0	

STAIN. 130400-EAST

Dist Sound Elev

(53)	13.9	
	13.2	
5+00	13.4	
	13.2	
	13.0	
<u>1:55</u>	12.0	
	6.4	
50	2.8	
	1.0	

6+00

50

(DICK)

9-28-60

STA. N. 128100 - 0100 = W 8, 170 SOUND EAST

DIST SOUND ELEV DIST SOUND ELEV

DIST	SOUND	ELEV	DIST	SOUND	ELEV
0+00			(53)	14.8	
(53)	1.1		50	15.2	
	2.4		Beginns	15.4	
2:00	4.5		2:05	15.9	
	8.8			15.9	
50	10.1		Top	16.0	
	11.3		3+00	16.4	
	11.8			15.6	
	12.2			15.0	
	12.3			14.0	
1+00	12.5		Top	14.1	
	12.7		50	14.5	
	12.8		(54)	14.4	
	12.8			14.9	
	12.9			14.9	
50	13.2			15.0	
	13.2		Top	15.1	
	13.5		4+00	15.1	
	14.1			15.0	
	14.2		2:10	15.2	
				15.5	
2+00	14.4		Top	15.3	
	14.3		50	15.3	
	14.4			15.2	
	14.6			14.9	

(12)

STA. N. 128100 - EAST

DIST SOUND ELEV DIST SOUND ELEV

DIST	SOUND	ELEV	DIST	SOUND	ELEV
(5.4)	14.9				
	15.0				
Top	13.0				
5+00	15.0				
	15.0				
	14.9				
	14.9				
Top	14.8				
50	14.4				
	14.2				
2:15	14.1				
	13.5				
	13.0				
6+00	12.0				
	8.9				
	3.4				
	1.7				



(Red) 9-28-60

STAN. 126400 - CHAD: W. 8, 420 SOUND EAST

DIST	SOUND	ELEV	DIST	SOUND	ELEV
0+00			(55)	12.8	
(54)	0.9		50	12.8	
	2.4			12.8	
2:20	3.4			12.9	
	6.7			13.0	
50	10.2			13.2	
	11.4		3+00	13.2	
	11.8			13.7	
	11.9			13.6	
	12.1			13.9	
Top → 11.8				14.1	
1+00	12.7			14.0	
	12.6		50	14.0	
	12.3			14.2	
	12.6			14.1	
	12.5			14.2	
Top → 11.5				14.3	
50	12.7		Top → 14.2		
	12.6		4+00	15.0	
	12.8			15.0	
2:25	12.9		2:30	15.5	
	12.9			15.7	
Top → 12.5				14.9	
2+00	12.9			14.2	
	12.9		50	14.2	
	12.7			14.1	
	12.7			14.0	

Very Fine SILT

STAN. 126400 - EAST

DIST	SOUND	ELEV	DIST	SOUND	ELEV
(55)	13.8		(55)	13.8	
	13.8			13.6	
5+00	13.8		50	12.6	
	13.8			10.2	
	13.7		2:35	4.3	
	13.6			2.9	
	13.6			1.2	
50	13.6		8+00	0.6	
	13.5				
	13.7				
	13.8				
	13.9				
6+00	14.0				
	14.1				
	14.1				
	14.1				
	14.0				
50	14.3				
	14.4				
	14.5				
	14.6				
	14.6				
7+00	14.3				
	14.1				
	13.9				

(Grade)

9-28-60

STA. N. 124+00 - W. 8870 ; SOUND EAST

DIST	SOUND	ELEV	DIST	SOUND	ELEV
0+00			(5.5)	12.3	6.8
(5.5)			50	12.8	
	0.2			13.1	
2:45	0.9		2:50	13.7	
<u>    </u>	1.8		<u>    </u>	13.9	
50	2.1			14.0	
	2.8		Top →	13.0	
	4.0		3+00	14.1	
	11.5			14.1	
	12.2			13.8	
1+00	13.2			13.4	
	13.0			13.2	
	13.1		50	13.2	
	13.1			13.1	
	13.0			12.9	
	13.0			12.9	
50	12.9			12.8	
	12.9		Top →	11.8	
	13.0		4+00	12.8	
	12.9			13.1	
	13.0			13.2	
	12.9			13.7	
2+00	13.0			13.9	
	13.0		50	14.0	
	12.9			14.0	
	12.3	6.8		14.2	

(19)

STA. N. 124+00 - EAST

DIST	SOUND	ELEV	DIST	SOUND	ELEV
(5.5)	14.3		(5.6)	16.0	
	14.5			15.9	
Top →	12.2			15.9	
5+00	14.5		50	15.9	
	14.1			16.1	
	14.1			16.7	
	14.0			16.1	
	14.0			14.8	
50	14.0		Top →	11.9	
	14.0		8+00	15.0	
	14.0			14.8	
	14.0		3:00	14.8	
	13.7		<u>    </u>	14.6	
	13.8			14.0	
Top →	12.0			14.0	
6+00	14.0		50	14.0	
	14.4			13.9	
2:55	14.2			13.9	
<u>    </u>	14.4			13.9	
	15.0			14.0	
50	15.0		Top →	12.0	
	15.3		9+00	13.9	
	15.7			14.0	
	15.8			14.0	
	15.8			14.0	
Top →	15.4			14.0	
7+00	15.8		50	14.2	
	15.3			14.6	
	15.8			14.8	

6 STA. N. 124+00 - EAST 9-28-60

5 Dist Sound Elev Dist Sound Elev

(56) 14.8

Top 15.0

10+00 11.8

15.1

14.8

3:05 15.0

15.2

15.5

50 15.3

15.4

15.1

15.3

15.3

Top 12.6

11+00 15.0

14.9

14.5

12.8

9.1

50 3.7

2.0

0.7

(red)

10-03-60

STA. N. 122+00 TO 100 = W. 9,220 SOUND EAST

Dist Sound Elev Dist Sound Elev

0+00

(4.2)

1.7

10:20 4.0

4.9

50 9.7

11.5

11.8

11.8

11.6

11.4

1+00 11.1

10.9

11.0

11.1

50 11.2

11.1

11.0

11.0

10.9

10.9

2+00 10.9

10.9

11.1

11.1

(4)

50

11.3

11.3

11.2

11.5

11.6

11.7

3+00 11.7

11.7

10:25 11.9

12.0

12.2

50 12.4

12.4

12.5

12.8

13.0

4+00 13.4

13.9

14.1

14.3

14.2

50 13.6

12.9

12.9

(15)

STATION 122+00-EAST 10-03-60

DIST	Sound	Elev	DIST	Sound	Elev
(4.0)	12.9		5+00	17.3	
	13.5		OF		
5+00	13.8		SOUP	18.0	
	13.8		(3.5)	16.5	
	13.6		DEEPER	14.8	
	13.3		AREA	14.8	
	12.4			14.6	
50	13.1		8+00	15.3	
	14.1			13.2	
	14.8			13.0	
	14.0		10:35	12.9	
	14.0		≈	12.6	
6+00	14.3		50	12.5	
	14.4			12.4	
SOUPY	15.0			12.2	
≈	14.8			12.0	
	15.2			11.8	
50	15.0		9+00	11.8	
	15.1			11.9	
10:30	14.8			11.9	
≈	15.0			12.0	
	15.0			12.0	
7+00	15.1		50	12.1	
	15.1			12.0	
	14.7			11.9	

STATION 122+00-EAST

(16)

DIST	Sound	Elev	DIST	Sound	Elev
(3.7)	11.8		(3.6)	12.0	
	12.0			11.8	
10+00	11.8		50	12.0	
	12.0			12.0	
	12.1			12.0	
	12.3			12.1	
	12.7			12.3	
50	12.6		13+00	12.2	
	12.8			12.4	
	12.9			12.5	
	13.0			12.4	
	13.0			12.4	
11+00	12.8		50	12.0	
	12.1			11.8	
	11.8			11.5	
	11.6			10.5	
	12.1			7.9	
50	11.9		14+00	3.1	
	12.1				
10:40	12.0				
≈	12.0				
	11.9				
12+00	12.0		50		
	11.6				
	11.8				

STAN. 122+00 - EAST

Dist Sound Elev Dist Sound Elev

15+00

50

16+00

10-03-60

(17)

STAN. 120+00; 0+00 = W. 9340 SOUND EAST

Dist Sound Elev Dist Sound Elev

0+00

(1.0)

2:15

9.5

50

1+00

2+00

1.0

9.0

9.5

9.3

9.2

9.3

9.3

9.3

9.3

9.2

9.8

9.9

9.9

50

8.6

8.3

8.5

8.7

9.0

9.0

9.2

9.3

(1.0)

50

3+00

2:20

10.0

10.0

50

4+00

50

9.3

9.4

9.6

9.7

9.9

9.9

10.0

10.0

10.1

10.0

10.0

9.9

10.8

9.8

9.1

9.1

9.0

9.0

9.1

9.3

9.3

9.3

9.3

9.4

STA. N. 120+00 - EAST 10-03-60

Dist	Sound	Elev	Dist	Sound	Elev
(1.1)	9.8		(1.1)	8.9	
	10.3			9.0	
5+00	10.3		50	9.1	
	10.1			8.9	
	9.8			9.1	
	9.6			9.2	
	9.8			9.4	
50	9.4		8+00	9.6	
	9.7			9.8	
	9.9			9.7	
	9.4			9.7	
	9.1			9.4	
6+00	9.1		50	9.5	
	8.5			9.3	
<u>2:25</u>	8.6			8.4	
	9.0			8.4	
	9.3			8.3	
50	9.5		9+00	8.5	
	9.3			8.8	
	9.0			8.7	
	9.0			9.1	
	9.0			9.3	
7+00	8.9		50	9.3	
	8.8			9.3	
	8.9			9.3	

STA. N. 120+00 - EAST

Dist	Sound	Elev	Dist	Sound	Elev
(1.1)	9.4		(1.1)	9.1	
	9.3			9.0	
10+00	9.4		50	9.0	
	9.3		<u>8:35</u>	9.1	
	9.3			9.0	
	9.5			9.3	
	9.9			9.3	
50	10.1		13+00	9.4	
	9.5		(1.2)	9.7	
	9.5			9.8	
<u>2:30</u>	9.8			10.1	
	9.8			9.9	
11+00	10.0		50	9.8	
	10.1			9.8	
	10.4			9.7	
	10.8		<u>2:40</u>	9.9	
	10.0			9.9	
50	10.2		14+00	9.5	
	9.9		<u>2:50</u>	9.2	
	9.8			7.5	
	9.9		(1.2)	5.0	
	9.7			0.2	
12+00	9.5		50		
	9.0				
	8.9				

(18)

STA. N. 120+00 - EAST

Dist Sound Elev Dist Sound Elev

15+00

50

16+00

(Clyde)

10-04-60

(19)

STA. N. 118+00:0+00 = W. 9.4.10 Sound EAST

Dist Sound Elev Dist Sound Elev

0+00

(11)

0.9

11.35

7.5

10.0

50

9.4

9.1

9.1

9.2

9.4

1+00

9.4

9.4

9.8

9.8

9.8

50

9.7

9.3

8.6

9.1

9.7

2+00

8.9

8.7

8.8

8.9

(10)

9.0

50

9.0

9.1

9.3

9.6

10.0

3+00

10.4

11.0

11.0

10.2

9.8

50

9.5

9.9

10.0

11.40

10.2

10.1

4+00

10.0

10.1

10.0

10.0

10.0

50

10.0

9.6

9.4

STA. N. 118+00 - EAST 10-04-60

Dist	Sound	Elev	Dist	Sound	Elev
(10)	9.1		(0.9)	8.9	
	9.1			8.8	
5+00	9.1		50	8.8	
	9.1			9.0	
	9.1			9.0	
	9.1			9.1	
	9.0			9.3	
50	9.2		8+00	9.6	
	9.7			9.9	
	10.0		11.45	10.0	
	10.7		≈	10.1	
	10.9			10.5	
6+00	11.0		50	10.7	
	10.4			11.0	
	10.0			11.2	
	9.3			11.1	
	9.1			10.3	
50	9.1		9+00	8.1	
	9.0			8.2	
	9.0			8.7	
	9.0			8.9	
	9.1			9.0	
7+00	9.1		50	9.2	
	9.1			9.1	
	9.0			9.1	

STA. N. 118+00 - EAST

(20)

Dist	Sound	Elev	Dist	Sound	Elev
(0.9)	9.2		(0.9)	8.8	
	9.2			8.8	
10+00	9.9		50	8.8	
	9.4			7.9	
	9.5			8.1	
	9.4			8.1	
	9.4			8.9	
50	9.2		13+00	9.2	
	9.2			9.2	
	9.5		11.50	9.2	
	9.7		≈	9.6	
	10.1			9.8	
11+00	10.1		50	9.9	
	10.5			9.8	
	10.9			9.8	
	11.0			10.0	
	10.8			9.9	
50	10.8		14+00	9.9	
	10.3			9.1	
	9.7			8.5	
	9.0			7.7	
	9.0			4.9	
12+00	9.0		50		
	8.9				
	8.8				



STAIN 118+00 - EAST

DIST SOUND ELEV DIST SOUND ELEV

15+00

(slide) (FATH CHECK) 10-06-60

STAIN 116+00: CHAD = W. 9,430 SOUND EAST

DIST SOUND ELEV DIST SOUND ELEV

0+00

(59)

10:30

50

1+00

2+00

(59)

50

3+00

50

4+00

50

13.6 7.7

13.9 8.0

14.6 8.7

15.4 9.5

16.0 10.1

16.8 10.9

17.0 11.1

18.0 12.1

16.1 10.2

16.9 11.0

16.9 11.0

17.0 11.1

16.2 10.3

15.9 10.0

15.8 9.9

15.6 9.7

15.0 9.1

14.9 9.0

14.5 8.6

14.3 8.4

14.3 8.4

14.0 8.1

14.2 8.3

14.2 8.3

4.2 +1.7

9.4 3.5

14.0 8.1

14.8 8.9

14.3 8.4

14.3 8.4

14.1 8.2

14.9 9.0

15.0 9.1

14.9 9.0

14.9 9.0

14.8 8.9

14.6 8.7

14.4 8.5

14.3 8.4

14.5 8.6

14.5 8.6

14.9 9.0

14.7 8.8

14.7 8.8

14.7 8.8

14.0 8.1

5TA N. 116+00 - EAST 10-06-60

	Dist	Sound	Elev	Dist	Sound	Elev
(58)	14.1	8.3	(58)	14.9	9.1	
	14.1	8.3		14.8	9.0	
5+00	14.1	8.3	50	15.0	9.2	
	14.2	8.4		15.0	9.2	
	14.2	8.4		15.0	9.2	
	14.4	8.6		15.0	9.2	
	14.8	9.0		15.0	9.2	
50	15.0	9.2	8+00	14.9	9.1	
	15.7	9.9		15.3	9.5	
	16.0	10.2		15.9	10.1	
10:35	16.4	10.6		16.1	10.3	
	15.0	9.2		15.9	10.1	
6+00	14.7	8.9	50	14.0	8.2	
	14.3	8.5		12.9	7.1	
	14.9	9.1		13.0	7.2	
	15.1	9.3		12.8	7.0	
	15.0	9.2		12.8	7.0	
50	15.1	9.3	9+00	13.1	7.3	
	15.0	9.2		13.5	7.7	
	14.9	9.1		13.8	8.0	
	15.0	9.2		13.8	8.0	
	15.0	9.2		13.8	8.0	
7+00	15.0	9.2	50	13.9	8.1	
	15.0	9.2		13.9	8.1	
	14.9	9.1		14.1	8.3	

5TA N. 116+00 - EAST

	Dist	Sound	Elev	Dist	Sound	Elev
(58)	14.2	8.4	(57)	14.0	8.3	
	14.8	9.0		14.0	8.3	
10+00	14.9	9.1	50	14.0	8.3	
	15.0	9.2		14.6	8.9	
	15.2	9.4		14.6	8.9	
10:40	15.4	9.4		14.9	9.2	
	15.9	10.1		15.0	9.3	
50	16.1	10.3	13+00	15.8	10.1	
	16.1	10.3		15.7	10.0	
	16.2	10.4	10:45	15.9	10.2	
	16.5	10.7		15.8	10.1	
	17.0	11.2		16.1	10.4	
11+00	18.0	12.2	50	16.2	10.5	
	18.2	12.4		16.0	10.3	
	15.3	9.5		15.5	9.8	
	14.9	9.1		15.0	9.3	
	14.6	8.8		12.6	6.9	
50	14.1	8.3	14+00	6.0	0.3	
	14.1	8.3		3.7	+2.0	
	14.0	8.2		0.6	+5.1	
	13.8	8.0				
	13.9	8.1				
12+00	13.9	8.1	50			
	14.0	8.2				
	14.0	8.2				

5 STA. N. 116+00 - EAST  
Dist Sound Elev

5 15+00

(FATH)  
CHECK  
10-06-60 (23)  
STA. N. 114+00; 0+00 = N. 9390; SOUND EAST  
Dist Sound Elev Dist Sound Elev  
0+00 (4.5) 12.8 8.3  
(4.6) 50 12.0 7.5  
2.3 + 2.3 11.9 7.4  
11:50 8.2 3.6 11.8 7.3  
12.0 7.4 11.9 7.4  
50 13.0 8.4 12.3 7.8  
12.9 8.3 3+00 13.4 8.9  
13.2 8.6 13.9 9.4  
13.5 8.9 14.4 9.9  
13.4 8.8 14.8 10.3  
1+00 13.3 8.7 14.8 10.3  
13.2 8.6 50 14.7 10.2  
13.1 8.5 14.6 10.1  
13.1 8.5 14.1 9.6  
13.1 8.5 11:55 13.3 8.8  
50 13.1 8.5 13.2 8.7  
13.3 8.7 4+00 13.2 8.7  
13.5 8.9 13.0 8.5  
13.4 8.8 13.0 8.5  
13.6 9.0 12.9 8.4  
2+00 13.5 8.9 12.2 7.7  
13.5 8.9 50 12.1 7.6  
13.3 8.7 12.2 7.7  
13.1 8.5 12.3 7.8

STA. N. 114+00-EAST 10-06-60

STA. N. 114+00-EAST

Dist	Sound	Elev	Dist	Sound	Elev
(4.4)	12.2	7.8	(4.4)	12.8	8.4
	12.0	7.6		13.0	8.6
5400	11.9	7.5	50	13.7	9.3
	11.7	7.3		13.3	8.9
	11.4	7.0		13.1	8.7
	12.0	7.6		12.8	8.4
	12.2	7.8		12.3	7.9
50	12.9	8.5	8+00	12.1	7.7
	13.1	8.7		12.1	7.7
	13.1	8.7		12.0	7.6
	13.3	8.9		11.9	7.5
	12.7	8.3		11.5	7.1
6+00	12.8	8.4	50	11.4	7.0
	12.5	8.1		11.3	6.9
	12.5	8.1		11.8	7.4
	12.4	8.0		11.6	7.2
	12.4	8.0		12.0	7.6
50	12.3	7.9	9+00	12.2	7.8
	12.5	8.1		12.5	8.1
	12.5	8.1		12.6	8.2
1200	12.9	8.5		12.6	8.2
	13.0	8.6		12.8	8.4
7+00	13.0	8.6	50	13.1	8.7
	13.0	8.6		13.1	8.7
	13.0	8.6		13.0	8.6

Dist	Sound	Elev	Dist	Sound	Elev
(4.3)	13.1	8.8	(4.3)	11.8	7.5
	13.0	8.7		12.0	7.7
10+00	12.9	8.6	50	12.1	7.8
	13.2	8.9		12.0	7.7
	13.3	9.0		11.8	7.5
12+05	12.8	8.5		11.9	7.6
	13.0	8.7		11.8	7.5
50	12.5	8.2	13+00	11.3	7.0
	12.7	8.4		11.0	6.7
	12.2	7.9		8.0	3.7
	12.2	7.9		3.6	+0.7
	12.4	8.1			
11+00	12.3	8.0	50		
	12.3	8.0			
	12.0	7.7			
	11.9	7.6			
	11.8	7.5			
50	11.8	7.5	14+00		
	11.8	7.5			
	12.0	7.7			
	12.1	7.8			
	11.9	7.6			
12+00	12.0	7.7			
	12.0	7.7			
	12.0	7.7			

10-07-60

STA. N. 112+00 - W. 9.310 SOUND EAST

DIST	Sound	Elev	DIST	Sound	Elev
0+00			(60)	15.2	9.2
(60)			50	15.4	9.4
	0.8	+5.2		15.6	9.6
<u>10:10</u>	4.1	+1.9		13.9	7.9
	5.8	+0.2		13.1	7.1
50	11.3	5.3		13.7	7.7
	14.3	8.3	3+00	13.9	7.9
	14.5	8.5		14.1	8.1
	14.0	8.0		14.1	8.1
	14.8	8.8	10:15	14.7	8.7
1+00	14.8	8.8	<u>      </u>	14.3	8.3
	14.9	8.9	50	14.4	8.4
	15.0	9.0		14.1	8.1
	15.0	9.0		13.9	7.9
	15.0	9.0		13.0	7.0
50	15.0	9.0		13.2	7.2
	15.0	9.0	4+00	13.9	7.9
	15.0	9.0		13.8	7.8
	15.1	9.1		14.5	8.5
	15.6	9.6		15.0	9.0
2+00	15.6	9.6		15.3	9.3
	15.8	9.8	50	15.1	9.1
	15.2	9.2		15.0	9.0
	15.3	9.3		15.0	9.0

STA. N. 112+00 - EAST

(25)

DIST	Sound	Elev	DIST	Sound	Elev
(60)	15.0	9.0	(66)	15.2	9.2
	15.0	9.0		15.5	9.5
5+00	14.8	8.8	50	15.1	9.1
	14.8	8.8		15.2	9.2
	14.6	8.6	10:20	15.4	9.4
	14.6	8.6	<u>      </u>	15.0	9.0
	14.6	8.6		14.9	8.9
50	14.6	8.6	8+00	15.0	9.0
	14.4	8.4		14.9	8.9
	14.9	8.9		15.0	9.0
	14.9	8.9		15.0	9.0
	15.0	9.0		14.8	8.8
6+00	15.3	9.3	50	14.7	8.7
	15.2	9.2		15.0	9.0
	15.7	9.7		15.0	9.0
	16.2	10.2		15.0	9.0
	16.6	10.6		15.0	9.0
50	16.4	10.4	9+00	15.3	9.3
	15.3	9.3		15.8	9.8
	15.2	9.2		15.8	9.8
	15.1	9.1		15.4	9.4
	14.7	8.7		15.4	9.4
7+00	14.5	8.5	50	15.0	9.0
	14.5	8.5		14.7	8.7
	14.9	8.5		14.7	8.7

STA. N. 112+00 - EAST 10-07-60

DIST	Sound	Elev	DIST	Sound	Elev
(60)	14.5	8.5	(60)	3.4	+2.6
	14.1	8.1		1.7	+4.3
10+00	14.1	8.1	50	0.9	+5.1
	13.9	7.9			
	14.0	8.0			
	13.7	7.7			
	13.7	7.7			
50	13.7	7.7	13+00		
	13.7	7.7			
	14.0	8.0			
	14.4	8.4			
	14.6	8.6			
11+00	14.5	8.5	50		
	14.6	8.6			
	14.8	8.8			
	14.6	8.6			
	14.9	8.9			
50	14.9	8.9	14+00		
	15.0	9.0			
10+25	15.0	9.0			
	15.3	9.3			
	15.8	9.8			
12+00	16.0	10.0	50		
	12.3	6.3			
	7.8	1.8			

(26)

STA. N. 110+00: 0+00 - W. 9, 160 SOUND EAST

DIST	Sound	Elev	DIST	Sound	Elev
0+00			(15.7)	14.2	8.5
(5.8)			50	14.0	8.3
				14.0	8.3
11:05	1.1	+4.7		13.6	7.9
	3.5	+2.3		13.4	7.7
50	5.1	+0.7		13.7	7.9
	10.1	4.3	3+00	14.0	8.3
	12.3	6.5		13.9	8.2
	12.4	6.6		14.1	8.4
	13.5	7.7		14.1	8.4
1+00	14.0	8.2		14.3	8.6
	14.2	8.4	50	14.1	8.4
	14.3	8.5		14.1	8.4
	14.2	8.4		14.2	8.5
	14.1	8.3		14.2	8.5
50	13.9	8.1		14.2	8.5
	13.5	7.7	4+00	14.3	8.6
	13.3	7.5		14.3	8.6
	13.3	7.5	11:10	14.4	8.7
	13.0	7.2		14.5	8.8
2+00	13.7	7.9		14.7	9.0
	14.3	8.5	50	14.7	9.0
	14.9	9.1		14.8	9.1
	15.2	9.4		14.6	8.9



10-07-60

STA. N. 108+00; 0+00 = W. 8,980; SOUND EAST

Dist	Sound	Elev	Dist	Sound	Elev
0+00			(26)	8.9	6.3
(2.7)			50	8.9	6.3
				8.9	6.3
<u>2:00</u>	1.4	+1.3	<u>2:05</u>	8.8	6.2
	5.6	2.9		8.9	6.3
50	8.5	5.8		8.9	6.3
	10.9	8.2	3+00	8.9	6.3
	11.7	9.0		8.7	6.1
	12.3	9.6		8.4	5.8
	12.8	10.1		8.4	5.8
1+00	12.6	9.9		8.7	6.1
	11.2	8.5	50	8.9	6.3
	9.7	7.0		8.9	6.3
	10.7	8.0		8.9	6.3
	10.9	8.2		9.2	6.6
50	11.4	8.7		9.5	6.9
	10.9	8.2	4+00	9.3	6.7
	10.3	7.7		9.5	6.9
	9.4	6.7		9.9	7.3
	9.3	6.6		10.0	7.4
2+00	9.3	6.6		10.2	7.6
	9.1	6.7	50	9.9	7.3
	9.1	6.4		9.7	7.1
	8.9	6.2		9.4	6.8

STA. N. 108+00 - EAST

Dist	Sound	Elev	Dist	Sound	Elev
(2.5)	9.4	6.9	(25)	10.4	7.9
	9.6	7.1		10.4	7.9
5+00	10.1	7.6	50	9.1	6.6
	11.0	8.5		8.3	5.8
	11.4	8.9		8.9	6.4
	11.6	9.1		8.8	6.3
	11.5	9.0		7.1	4.6
50	11.5	9.0	8+00	5.7	3.2
	11.6	9.1		5.4	2.9
	11.7	9.2		4.0	1.5
	11.8	9.3		2.9	0.4
	11.6	9.1		1.8	+0.7
6+00	11.9	9.4	50	1.3	+1.2
	11.7	9.2			
	11.6	9.1			
	11.4	8.9			
	11.3	8.8			
50	11.2	8.7	9+00		
	10.9	8.4			
2:10	10.6	8.1			
	10.5	8.0			
	10.5	8.0			
7+00	10.4	7.9	50		
	10.3	7.8			
	10.1	7.6			

(28)



STA. N. 108+00 - EAST

Dist Sound Elev Dist Sound Elev

10+00

50

50

13+00

11+00

50

50

14+00

12+00

50

10-07-60

STA. N. 106+00; 0+00 = W. 8,820 SOUND EAST

Dist Sound Elev Dist Sound Elev

0+00

2.4

2:20

2.3

50

7.0

9.4

9.9

10.0

10.1

9.8

9.9

10.0

10.4

10.7

50

10.3

10.3

10.3

10.0

9.5

2+00

9.4

9.1

9.0

9.0

23

50

9.0

9.0

9.0

9.0

8.7

9.1

3+00

9.8

9.8

9.7

8.1

3.5

50

8.2

11.4

2:25

12.1

11.8

11.3

4+00

11.1

11.0

10.8

10.5

10.3

50

10.0

10.0

9.8

STA. N. 106+00 - EAST 10-07-60

Dist Sound Elev Dist Sound Elev

(23) 9.8

9.6

5+00 9.6

50

9.6

9.6

9.9

9.8

50 10.0

8+00

10.0

10.0

10.0

10.0

6+00 10.0

50

10.0

10.0

10.0

6.0

50 6.0

9+00

4.0

2.0

2.0

1.7

7+00 1.7

30

(red)

9-29-60

STATION 139+50 - EAST

STATION 139+50, 0+00 = W. 8320; SOUND EAST DIST SOUND ELEV

DIST	SOUND	ELEV	DIST	SOUND	ELEV	DIST	SOUND	ELEV
0+00			30	12.4		30	14.8	
30			50	12.5		5+00	15.0	
				12.4			14.5	
				12.6		10:20	14.7	
10:05				12.5			14.6	
	0.2			10.9			14.6	
NOTE: Large Silt Deposit Exists	50	0.9						
Here Approx 4-5' Will		2.6	3+00	11.7		50	14.3	0.1
Check Label With Fathometer		6.0		12.2			13.9	
		9.1		12.3			13.9	
		10.8	10:10	12.8			13.6	
		11.0		12.6			13.2	
		11.6	50	11.6	0	6+00	12.9	
		11.9		14.0			11.7	
		12.0		14.8			10.1	
		12.1		15.3			3.4	
		12.0		14.9			1.0	
		12.1	4+00	16.0		50		
		12.2		15.7				
		12.2	10:15	15.5				
		12.1		15.3				
2+00	12.2			15.0				
	12.6		50	14.8		7+00		
	12.7			14.9				
	12.5			14.5				

(214de)

9-29-60

STATION 139+00 - EAST

(32)

STATION 139+00 - WEST 8370; SOUND EAST DIST SOUND ELEV

DIST	SOUND	ELEV	DIST	SOUND	ELEV	DIST	SOUND	ELEV
0+00			(30)	12.9		(30)	12.4	
(30)			50	12.9		5+00	12.2	
	0.0			12.8			12.0	
10:30	1.1			13.0			12.1	0.1
	3.0			13.1			12.1	
50	6.0			13.0			12.1	
	10.1		3+00	13.2		50	12.0	
	11.2			13.4			10.4	
	12.0			13.6			9.1	
	12.0			13.5			3.2	
1+00	12.1			13.5			0.9	
	12.7		50	13.6		6+00		
	12.4			13.9				
	12.8			13.3				
	12.0			13.7				
50	12.0	0.1		14.0				
	12.6		4+00	12.8		50		
	12.6			12.2				
	12.8		10:35	12.5				
	12.9			13.0				
2+00	12.8			12.5				
	12.8		50	12.9				
	12.8			12.7				
	12.9			13.0				

(DICK)

9-29-60

STA. N. 138+50 - EAST

33

STA. N. 138+50; 0+00 = W. 8.240; SOUND EAST DIST SOUND ELEV

	DIST	SOUND	ELEV	DIST	SOUND	ELEV	DIST	SOUND	ELEV
	0+00			(30)	13.1		(30)	12.0	
	(30)			50	13.0		5+00	11.9	
		0.9			13.0			11.7	
	<u>10:45</u>	3.4			13.0			11.4	
		7.6			13.2			11.8	
					13.1			11.9	
	50	9.8			13.0			9.9	
		11.0		3+00	12.8		50	4.6	
		12.0			12.7			0.9	
		12.2			12.9				
		12.3			12.4				
	1+00	12.4			12.3				
		12.2		50	12.3		6+00		
		12.0			12.3				
		12.4			12.3				
		12.0			12.1				
	50	12.2			12.1				
		12.1		4+00	12.1		50		
		12.5			12.1				
		12.9		10:50	12.2				
		12.9			12.2				
	2+00	12.6			12.2				
		12.8		50	12.1				
		12.8			12.2				
		12.9			12.1				

7th 5 Sec

5:15

Very little

2+00

0.1

0.1

0.1

(Red)

9-29-60

STAN. 137450-EAST

34

STAN. 137450; 0+00 = W. 8200; SOUND EAST

Dist Sound Elev

Dist Sound Elev Dist Sound Elev

Dist Sound Elev

0+00

(30) 12.4

(30) 11.5

(30)

50 12.3

5+00 10.6

0.1

12.3

9.2

10:55 1.7

12.2

3.0

3.9

12.7

50 7.4

13.1

10.8

3+00 13.0

50

11.5

13.0

11.8

13.9

11.6

13.0

1+00 11.9

13.0

12.0

50 12.8

50

6+00

12.0

12.7

12.2

12.5

12.1

12.0

50 12.0

11.9

12.1

4+00 11.5

12.1

11.5

12.6

11:00 11.2

12.5

11.0

2+00 12.6

11.0

12.7

50 11.5

12.6

11.8

12.3

11.5

( Clyde )

9-29-60

STAIN. 13700- EAST

STAIN. 13700: 0400-118170, SOUND EAST

DIST SOUND ELEV

DIST	SOUND	ELEV	DIST	SOUND	ELEV
0400			(30)	12.7	
(30)			50	13.0	
	0.5			12.4	
11105	1.9			13.0	
	3.6			13.5	
50	8.1			13.4	
	11.8		3400	13.2	
	12.5			12.9	
	12.8			12.5	
	12.7			12.2	
1400	12.9			12.4	
	13.0		50	12.3	
	12.9			12.0	
	12.9		11110	12.0	
	12.9			11.9	
50	12.6			11.9	
	12.8		4400	11.9	
	12.9			12.0	
	12.8			12.0	
	12.8			12.1	
2400	12.8			12.0	
	12.7		50	11.9	
	12.6			11.3	
	12.7			11.0	

0.4

0.4

DIST	SOUND	ELEV
(30)	9.2	
	6.3	
5700	1.1	

50

6400

(Dick)

9-29-60

STA. N. 136+50; 0+00 = W. 8,150; SOUND EAST

Dist Sound Elev Dist Sound Elev

0+00

(3.1)

11:20 1.2

4.0

50 9.8

11.0

11.8

11.9

12.0

1+00 12.1

12.2

12.4

12.7

12.8

50 12.9

12.5

12.8

12.9

12.8

2+00 12.5

12.9

13.0

13.2

OK

(3.1)

50

3+00

4+00

11:25

50

13.4

13.9

14.1

13.5

12.9

10.9

11.2

11.6

11.9

12.5

13.0

12.9

13.0

13.1

12.9

12.2

12.3

12.2

12.1

12.0

11.4

11.1

10.6

9.0

3.6

1.1

OK

(Red)

STA. N. 135+50; 0+00 = W. 8,100; SOUND EAST

Dist Sound Elev Dist Sound Elev

0+00

(3.1)

0.5

11:30 3.5

7.5

50 9.8

10.5

10.8

10.9

11.0

1+00 11.0

11.0

11.1

11.1

11.2

50 11.4

11.7

11.8

11.9

12.0

2+00 12.0

12.0

12.2

12.1

OK

(3.1)

50

3+00

4+00

50

12.0

11.6

11.6

11.5

11.5

11.6

11.8

12.0

12.2

12.2

12.3

50 12.6

12.7

12.6

12.3

11.8

12.0

12.1

12.0

10.6

8.0

2.0

OK



(Clyde)

9-29-60

STA. N. 135+00; 0+00 = W. 8100; SOUND EAST

Dist	Sound	Elev	Dist	Sound	Elev
0+00			(32)	12.9	
(32)			50	12.4	
	0.2			12.1	
<u>11:40</u>	2.2			12.0	
	7.4			12.0	
50	9.0			12.1	
	9.5		3+00	12.2	
	10.0			12.0	
	10.0			12.0	X
	10.0			12.0	0
1+00	10.1			12.1	
	10.1		50	12.4	
	10.2			12.4	
	10.4			12.0	
	10.7			12.3	
50	10.9			12.5	
	11.2		4+00	12.1	
	11.8			11.3	
	12.0		<u>11:45</u>	10.0	
	12.5			5.1	
2+00	12.8			1.2	
	12.7		50		
	12.9				
	12.5				

(Dick)

(37)

STA. N. 134+50; 0+00 = W. 8, 060; SOUND EAST

Dist	Sound	Elev	Dist	Sound	Elev
0+00			(AD)	13.4	
(39)			50	13.1	
	0.9			13.2	
	2.9			13.2	
<u>11:15</u>	7.3		<u>1:20</u>	13.2	
	9.4			13.3	
50	10.3			13.3	
	10.7		3+00	13.4	
	11.0			13.4	
	11.2			13.5	
	11.1			13.4	
1+00	11.2			13.5	
	11.4		50	13.3	
	12.1			13.2	
	12.4			13.3	
	12.9			13.3	
50	13.1			12.9	
	13.3		4+00	12.1	
	13.4			11.1	
	13.5			9.1	
	13.9			3.0	
2+00	14.2			1.1	
	14.3		50		
	14.4				
	13.9				

(Red)

9-29-60

STA. N. 133+50 to 0+100 = W. 8.040; SOUND EAST

DIST SOUND ELEV DIST SOUND ELEV

DIST	SOUND	ELEV	DIST	SOUND	ELEV
0+00			(4.1)	14.6	
(4.1)	1.1		50	14.9	
	4.1			13.5	
<u>11.25</u>	8.1			12.7	
	9.9		<u>11.30</u>	12.7	
50	10.9			12.9	
	11.5		3+00	13.2	
	11.9			13.3	
	12.1			13.2	
	12.3			13.4	OK
1+00	12.2			13.4	
	12.5		50	13.5	
	12.4			13.9	
	12.8			13.7	
	12.9			13.7	
50	13.1			13.6	
	13.2		4+00	12.9	
	13.2			11.7	
	13.7			6.7	
	13.7			2.6	
2+00	14.1			1.1	
	14.7		50		
	14.4				
	14.3				

38

(Clyde)

STA. N. 133+00 to 0+100 = W. 8.040; SOUND EAST

DIST SOUND ELEV DIST SOUND ELEV

DIST	SOUND	ELEV	DIST	SOUND	ELEV
0+00			(4.2)	15.3	
(4.2)	0.5		50	14.2	
	2.0			13.9	
<u>11.35</u>	6.4			13.9	
	9.2			13.8	
50	10.7			13.2	
	11.4		3+00	13.4	
	12.2			13.4	
	12.5			13.0	
	12.5			13.0	OK
1+00	12.7			12.9	
	12.8		50	12.8	
	12.8			13.0	
	12.9			12.9	
	13.0		<u>11.40</u>	13.0	
50	13.1			13.0	
	13.3		4+00	13.0	
	13.6			12.7	
	13.8			11.1	
	13.7			8.0	
2+00	14.0			2.8	
	14.1		50	1.1	
	14.6				
	15.0				

(Dick)

9-29-60

5 STA. N. 132+50; 0+00=W. 8,040; SOUND EAST

Dist	Sound	Elev	Dist	Sound	Elev
0+00			(44)	14.5	
(43)	0.5		50	15.7	
	2.0			14.5	
<u>11.45</u>	7.0			14.3	
	9.9			14.5	
50	11.0			14.2	
	11.3		3+00	14.2	
	11.6			13.9	
	12.0			13.5	
	12.2			13.5	
1+00	12.2			13.3	
	12.2		50	13.2	
	12.3			13.1	
	12.4		<u>11.50</u>	13.2	
	12.5			13.0	
50	12.6			13.0	
	12.7		4+00	12.0	
	12.9			13.0	
	13.1			13.0	
	13.0			12.7	
2+00	13.1			11.9	
	13.3		50	8.1	
	13.4			3.5	
	13.8			1.6	

x  
0

(Rat)

5 STA. N. 131+50; 0+00=W. 8,040; SOUND EAST

Dist	Sound	Elev	Dist	Sound	Elev
0+00			(45)	15.8	
(43)			50	16.1	
	1.5			16.4	
<u>11.55</u>	2.9			17.5	
	7.0			16.9	
50	10.9			15.6	
	12.0		3+00	14.9	
	12.6			14.9	
	12.8		<u>2:00</u>	15.0	
	13.1			15.0	
1+00	13.3			14.9	
	13.2		50	14.7	
	13.7			14.8	
	13.8			14.9	
	13.8			14.7	
50	13.9			14.4	
	13.9		4+00	14.7	
	14.1			14.9	
	14.1			15.1	
	14.3			15.1	
2+00	14.4			15.3	
	14.4		50	16.4	
	14.7			17.5	
	15.3			17.6	

lots of soup

x  
0

STA. N. 131+50 - EAST  
 DIST SOUND ELEV  
 (45) 13.3  
 10.1  
 5+00 3.6  
 1.6

(c/ly/e) 9-29-60 (40)  
 STA. N. 131+00; 0+00 = W. 8,050; SOUND EAST  
 DIST SOUND ELEV DIST SOUND ELEV  
 0+00 (48) 14.9 10.1  
 (47) 50 15.4 10.6  
 1.6 +3.1 17.0 12.2  
 2:10 3.9 +0.8 18.3 13.5  
 9.0 4.3 18.5 13.7  
 50 10.8 6.1 19.0 14.2  
 12.1 7.4 3+00 19.0 14.2  
 12.8 8.1 19.0 14.2  
 13.0 8.3 2:15 18.8 14.0  
 13.3 8.6 18.8 14.0  
 1+00 13.3 8.6 19.0 14.2  
 13.8 9.1 50 18.7 13.9  
 13.9 9.2 19.0 14.2  
 14.0 9.3 18.7 13.9  
 14.0 9.3 19.1 14.3  
 50 14.0 9.3 18.9 14.1  
 14.0 9.3 19.1 14.3  
 14.0 9.3 19.0 14.2  
 14.1 9.4 18.8 14.0  
 14.1 9.4 18.9 14.1  
 2+00 14.0 9.3 18.9 14.1  
 14.0 9.3 50 18.5 13.7  
 14.0 9.3 18.2 13.4  
 14.2 9.5 18.0 13.2

DITCH #

DRAIN

THIS SEC IS

LOTS OF SILT

STA. N. 131+00 - EAST

DIST	Sound	Elev
(48)	16.9	12.1
	15.4	10.6
5+00	13.2	8.4
	5.0	0.2
	2.8	+2.0
	1.5	+3.3

50

(Cont)

9-29-60

(4)

STA. N. 130+50; 0+00 = W 8,080; SOUND EAST

DIST	Sound	Elev	DIST	Sound	Elev
0+00			(50)	13.9	
(49)			50	14.5	
	0.7			14.8	
<u>2:30</u>	1.4			14.8	
	2.2			15.1	
50	3.5			15.9	
4+00	10.1		3+00	16.0	
	13.0			17.0	
	13.9			17.2	
	13.9			17.5	
1+00	14.1			17.2	
	13.9		50	17.2	
	14.1			17.2	
	14.2			17.2	
	14.9			17.1	
50	14.1			17.3	
	14.2		4+00	17.2	
	14.4			18.0	
	14.4		<u>2:35</u>	18.0	
	14.5			17.4	
2+00	14.1			16.8	
	14.1		50	16.9	
	14.0			16.3	
	13.9			16.4	

OK

STA. N. 130+50 - EAST

Dist	Sound	Elev
(5.1)	16.1	} OK
	16.0	
5+00	15.3	
	15.5	
2:40	15.0	
<u>      </u>	11.5	
	4.6	
50	2.1	

(Red) 9-29-60

STA. N. 129+50; 0+00 = W. 8,100'; SOUND EAST

Dist	Sound	Elev	Dist	Sound	Elev
0+00			(5.1)	14.7	} OK
(5.1)	0.0		50	14.9	
	1.6			15.3	
2:45	3.3			15.9	
<u>      </u>	7.7		2:50	16.0	
50	10.7		<u>      </u>	16.8	
4° 70.5'	11.9		3+00	16.7	
	12.3			16.9	
	12.9			17.6	
	13.0			15.7	
1+00	13.3			15.1	
SILT	13.4		50	14.7	
	13.3			14.5	
	13.6			14.4	
	13.6			14.0	
50	13.6			13.9	
MUCHA	13.8		4+00	13.9	
	13.9			13.8	
	14.0			13.9	
	14.2			13.7	
2+00	13.9			13.6	
	13.9		50	13.8	
	14.0			13.9	
	14.3			13.9	

STAN. 129+50 - EAST 9-29-60

(wide)

9-30-60

STAN. 129+00 to 0+00 = W. 8, 120, SOUND EAST

Dist Sound Elev

Dist Sound Elev Dist Sound Elev

(5) 14.0

13.9

5+00 13.8

13.4

2:55 13.1

13.0

12.6

50 10.6

4.5

1.9

6+00

0+00

(3.2)

9:50 2.1

6.9

50 8.7

9.3

10.1

10.2

10.6

1+00 11.1

10.9

10.9

10.9

10.9

SOUPY  
50

11.1

11.2

11.2

11.7

11.8

2+00 11.9

12.0

12.2

12.8

(3.1) 13.1

50 13.3

13.7

13.7

13.0

12.8

3+00 12.7

13.0

9:55 12.9

12.9

13.0

50 13.1

13.0

12.9

12.5

12.1

4+00 13.7

12.7

12.6

12.2

12.1

50 12.0

12.0

11.7

STA. N. 129+00 - EAST

Dist Sound Elev

(3.0) 12.1

12.1

5+00 12.1

12.0

11.9

10+00 11.9

11.8

50 11.1

8.5

2.0

(red)

9-30-60

(44)

STA. N. 128+50; 0+00 - W. 8+50; SOUND EAST

Dist Sound Elev Dist Sound Elev

0+00

(3.0) 12.0

(3.0)

50 12.3

0.0

12.7

10+05 1.9

12.9

6.4

12.8

50 8.5

12.7

9.0

3+00 12.0

9.7

13.7

10.0

13.0

10.1

11.8

1+00 10.4

12.0

10.5

50 12.4

10.6

12.6

10.6

12.9

10.6

12.7

50 10.7

12.6

10.9

4+00 12.7

11.0

12.7

11.0

12.8

11.2

12.9

2+00 11.2

12.9

11.3

50 12.9

11.6

12.8

12.0

12.6

SOUP



STA. N. 128+50 - EAST

DIST	Sound	Elev
(29)	12.2	
	12.1	
5700	12.1	
	12.1	
	11.9	
	11.8	
	11.6	
50	11.2	
	10.9	
	9.9	
	7.0	
	2.2	

6+00

(Dice)

9-30-60

(45)

STA. N. 127+50:0+00 = W. 8,240 SOUND EAST

DIST	Sound	Elev	DIST	Sound	Elev
0+00			(29)	11.3	
(29)			50	11.5	
				11.9	
				12.6	
<u>10.15</u>	1.4			13.0	
50	7.0			12.9	
	7.3		3+00	13.2	
	8.2			13.3	
	9.0			13.4	
	9.3			13.8	
1+00	9.4			13.8	
	9.5			13.3	
	9.9			13.0	
	10.0		10:20	12.5	
	10.0			11.0	
50	10.0			11.2	
	10.0		4+00	11.4	
	10.0			11.5	
	10.2			11.6	
	10.3			11.6	
2+00	10.4			11.9	
	10.5		50	12.3	
	10.9			12.3	
	11.0			12.5	

STAN. 127+50 - EAST

DIST SOUND ELEV

(28)	12.4
	12.4
5+00	12.5
	12.3
	12.3
	12.2
	12.1
50	12.0
	12.1
	12.0
	12.0
	11.8
6+00	11.4
	10.9
<u>10:25</u>	11.0
	10.3
	8.4
50	4.0

(Clyde)

9-30-60

(46)

STAN. 127+00; 0+00 = W 8,290; SOUND EAST

DIST SOUND ELEV DIST SOUND ELEV

0+00		(27)	10.3
(28)		50	10.7
			10.8
<u>10:30</u>	1.2		10.6
	5.9		10.4
50	6.5		10.9
	8.3	3+00	11.2
	9.1		11.8
	9.0	SOUPY	12.0
	9.1	<u>      </u>	12.3
1+00	9.5		12.4
	9.7	50	11.9
	9.7		10.9
	9.8	<u>10:35</u>	10.7
	9.9		10.6
50	9.9		10.1
	10.0	4+00	10.2
	9.9		10.4
	9.9		10.7
	9.9		10.8
2+00	10.1		10.9
	10.0	50	10.9
	10.0		10.8
	10.1		11.0

STAN. 127+00 - EAST

Dist Sound Elev

(27) 11.4

11.6

5+00 11.9

11.9

12.1

12.3

12.8

50 12.5

12.5

12.7

12.6

12.8

6+00 12.8

12.8

12.5

12.4

12.1

50 12.0

11.3

6.8

2.0

7+00

(Red)

9-30-60

(47)

STAN. 126+50; 0+00 = W. 8,360; SOUND EAST

Dist Sound Elev Dist Sound Elev

0+00

(27)

10:45 0.8

2.1

50 6.3

7.7

8.1

8.7

9.0

1+00 9.2

9.2

9.3

9.3

9.3

50 9.6

9.3

9.5

9.5

9.6

2+00 9.7

9.7

9.7

9.8

(26)

50 10.0

10.0

10.1

10.8

10.7

3+00 10.9

11.0

11.4

11.6

11.6

SOUND

50 11.8

12.1

12.1

12.1

12.7

4+00 12.7

12.6

12.5

11.5

10.2

50 10.0

9.8

9.9

STA. N. 126+50 - EAST

DIST	Sound	Elev	DIST	Sound	Elev
(26)	10.0				
	10.2				
5+00	10.3		50		
	10.3				
10+50	10.7				
	10.9				
	10.9				
50	11.0		8+00		
	11.0				
	11.2				
	11.6				
	11.6				
6+00	12.0		50		
	12.0				
	12.0				
	12.2				
	12.3				
50	12.2				
	11.9				
	11.6				
	11.5				
	10.9				
7+00	10.9				
	9.1				
	7.1				

(DICK) 9-30-60

STA. N. 125+50; 0+00 = W. 8,500; SOUND EAST

DIST	Sound	Elev	DIST	Sound	Elev
0+00			(25)	10.1	
(25)			50	10.0	
				10.0	
11+05				10.1	
	2.0			10.2	
50	6.3			10.2	
	7.3		3+00	10.3	
	7.8			10.4	
	8.3			10.4	
	9.3			10.5	
1+00	9.0			10.3	x.
	10.0		50	10.4	0.
	9.9			10.9	
	9.8			11.0	
	9.9			11.2	
50	9.9			11.3	
	9.9		4+00	11.7	
	9.5			12.0	
	9.5			12.0	
	9.7			12.0	
2+00	9.9			11.9	
	9.9		50	12.0	
	10.0			12.2	
	10.1			12.4	

OK

STA. N. 125+50-EAST

DIST	Sound	Elev	DIST	Sound	Elev
(23)	12.3		(25)	11.5	
	12.0			11.4	
5+00	11.1		50	11.7	
	11.1			12.0	
	11.3			11.5	0x
<u>11:10</u>	11.2			11.4	
	11.2			11.4	
50	11.1		8+00	10.9	
	11.2			10.0	
	11.2			7.9	
	11.2			1.4	
	11.1	0x			
6+00	11.2	0.	50		
	11.0				
	11.0				
	11.1				
	11.1				
50	11.3		9+00		
	11.7				
	11.8				
	11.4				
	11.4				
7+00	11.4		50		
	11.5				
	11.7				

( Clyde )

9-30-60

(49)

STA. N. 125+00; 0+00=W. 8620; SOUND EAST

DIST	Sound	Elev	DIST	Sound	Elev
0+00			(25)	9.9	
(25)			50	9.8	
				10.0	
				10.0	
<u>11:30</u>				10.0	
	0.0			10.0	
50	2.6			9.8	
	4.7		3+00	9.8	
	7.2			9.9	
	8.0			10.0	
	7.9			10.0	
1+00	8.1			10.0	0x
	8.7		50	10.1	
	8.3			10.5	
	8.8			10.7	
	8.9			10.8	
50	9.0			10.6	
	9.2		4+00	10.6	
	9.6			10.2	
	9.7			10.5	
	9.7			10.7	
2+00	9.9	0x		10.8	
	10.0		50	10.8	
	10.0			11.0	
	10.0			11.0	

STA. N. 125+00 - EAST					
Dist	Sound	Elev	Dist	Sound	Elev
(25)	10.9		(25)	11.2	
	10.4			11.3	
5+00	10.1		50	11.4	
	10.1			11.7	
	10.8			11.6	
	11.3			11.6	
	11.2			11.4	
50	11.9		8+00	11.5	
	12.0			11.7	
11:35	12.1			11.7	
<u>11.9</u>				11.8	
	11.2			12.0	
6+00	11.5		50	12.1	
	11.0			12.1	
	11.0			12.5	
	11.0			12.6	
	11.0			12.7	
50	11.1		9+00	12.0	
	11.1			11.7	
	11.2			8.0	
	11.4			2.9	
	11.5				
7+00	11.3		50		
	11.2				
	11.1				

(Red)			9-30-60		
STA. N. 124+50; 0+00 - W 8,160; SOUND EAST					
Dist	Sound	Elev	Dist	Sound	Elev
0+00			(3.1)	10.3	
(30)			50	10.0	
				10.0	
<u>11:20</u>				9.9	
				9.7	
50				9.7	
	0.0		3+00	9.9	
	0.9			10.0	
	2.7		<u>1:25</u>	10.3	
	4.7			10.6	
1+00	7.8			10.6	
	8.9		50	10.7	
	9.2			10.6	
	9.0			10.6	
	9.4			10.6	
50	9.5			10.6	
	9.9		4+00	10.7	
	10.2			10.7	
	10.4			10.9	
	10.5			11.1	
2+00	10.7			11.0	
	10.5		50	10.5	
	10.4			10.3	
	10.8			10.7	

STA. N. 124+50 - EAST 9-30-60

Dist Sound Elev Dist Sound Elev

Dist	Sound	Elev	Dist	Sound	Elev
(31)	10.8		(32)	11.2	
	10.9			11.0	
5+00	10.9		50	11.0	
	11.0		1:30	11.1	
	10.9		<u>11</u>	11.3	
	11.1			11.4	
	11.1			11.7	
50	11.3		8+00	11.9	
	11.8			11.9	
	11.9			12.0	
	11.8			11.9	
	11.7			12.0	
6+00	11.7		50	11.9	
	11.4			12.1	
	11.3			12.1	
	11.6			12.1	
	12.1			12.0	
50	12.1		9+00	12.0	
	11.9			11.9	
	11.8			12.0	
	11.6			12.1	
	12.0			12.2	
7+00	12.1		50	12.4	
	11.9			12.6	
	11.6			12.7	

STA. N. 124+50 - EAST

Dist Sound Elev

Dist	Sound	Elev
(32)	12.9	
	13.0	
10+00	12.8	
	12.7	
	12.3	
	11.5	
	9.0	
50	3.9	
	0.9	

11+00

(5)

(DICK) 9-30-60

STA. N. 123+50 DIST 0+00 = W. 8,990 SOUND EAST

DIST	SOUND	ELEV	DIST	SOUND	ELEV
0+00			(34)	10.1	
(33)			50	10.1	
				10.2	
<u>11.45</u>	0.5			10.3	
	1.9			10.1	
50	7.3			10.2	
	8.2		3+00	10.3	
	9.3			10.4	
	9.7			10.4	
	9.5			10.4	
1+00	9.7			10.3	
	9.9		50	10.2	
	9.9			10.1	
	10.3			10.2	
	10.4			10.9	
50	11.0			11.4	
	11.1		1+00	12.0	
	11.3			12.4	
	11.3			12.4	
	11.3			12.5	
2+00	11.1			13.0	
	10.6		50	12.4	
	10.7			12.1	
	10.8			12.3	

STA. N. 123+50 - EAST

DIST	SOUND	ELEV	DIST	SOUND	ELEV
(35)	12.4		(35)	11.2	
	12.2			11.4	
5+00	12.0		50	12.0	
	11.8			12.2	
<u>11.50</u>	11.3			12.2	
	11.2			12.1	
	11.1			11.5	
50	11.1		8+00	11.0	
	11.9			10.8	
	12.4			10.3	
	12.9			10.1	
	13.2			10.4	
6+00	13.1		50	10.9	
	13.0			12.0	
	13.0			12.0	
	12.0			12.3	
	11.8			12.0	
50	12.3		9+00	12.2	
	12.4			12.1	
	12.1			12.1	
	12.0			12.3	
	11.9			12.3	
7+00	11.6		50	12.0	
	11.3			12.0	
	11.1			12.1	



STATION 123+50 - EAST 9-30-60

DIST	Sound	Elev	DIST	Sound	Elev
(35)	12.0		(35)	10.3	
	12.0			6.9	
10+00	12.0		50	2.7	
	12.8				
11:55	12.3				
<u>12.1</u>	12.1				
	12.0				
50	12.0				
	11.9				
	12.0				
	12.0				
11+00	12.0				
	12.0				
	12.1				
	12.1				
	12.1				
50	12.1				
	12.1				
	12.1				
	12.3				
	12.1				
12+00	12.0				
	12.0				
	11.2				

(Clyde) 53

STATION 123+00 0+00 = 11.9, 080 SOUND EAST

DIST	Sound	Elev	DIST	Sound	Elev
0+00			(41)	11.9	
(40)			50	12.0	
	0.7			11.9	
2:30	1.9			11.9	
<u>6.6</u>	6.6			11.4	
50	9.5			11.5	
	10.0		3+00	11.5	
	10.7			11.6	
	10.7			11.6	
	10.7		2:35	11.7	
1+00	10.7		<u>11.5</u>	11.5	
	11.0		50	11.6	
	11.1			11.5	
	11.2			11.3	
	11.2			11.3	
50	11.2			11.8	
	11.3		4+00	11.9	
	11.5			12.0	
	11.6			12.0	
	11.6			12.0	
2+00	11.4			11.9	
	11.3		50	11.4	
	11.5			11.5	
	11.9			11.5	

STA. N. 123+00 - EAST 9-30-60

Dist	Sound	Elev	Dist	Sound	Elev
(42)	11.7		(43)	14.0	
	12.0			13.6	
5+00	12.6		50	13.3	
	13.5			13.0	
↑ Sloopy	14.0			12.9	
≈	14.1			12.9	
↓	14.2			12.8	
50	14.2		8+00	12.9	
	13.8			13.0	
	13.6			13.0	
	14.0			13.0	
	14.0			12.8	
6+00	13.7		50	12.9	
	13.7			12.7	
	13.6			12.7	
2:40	13.9		2:45	13.1	
≈	13.8		≈	13.1	
50	13.5		9+00	13.5	
	13.1			13.7	
	13.2			13.9	
	13.2			13.9	
	13.5			14.0	
7+00	13.4		50	14.4	
	14.6			14.9	
	14.1			15.0	

STA. N. 123+00 - EAST

(54)

Dist	Sound	Elev	Dist	Sound	Elev
(43)	12.9		(43)	12.9	
	13.0			12.8	
10+00	12.0		50	12.6	
	13.0			12.7	
	13.0			12.8	
	13.2		2:50	12.8	
	13.6		≈	12.5	
	13.6			12.1	
50	13.4		13+00	8.1	
	13.8			4.0	
	13.7			2.8	
	13.1				
	13.1				
11+00	13.0		50		
	13.0				
	12.7				
	12.8				
	12.8				
50	12.8		14+00		
	12.8				
	12.6				
	12.7				
	12.5				
12+00	12.6		50		
	12.7				
	12.8				

(Clyde)

10-03-60

STA. N. 122+50			0+00 = N. 9, 160			SOUND EAST		
Dist	Sound	Elev	Dist	Sound	Elev	Dist	Sound	Elev
0+00			(46)	12.1	7.5			
(46)	0.0	+4.6	50	12.2	7.6			
	1.7	+2.9		12.5	7.9			
10:00	3.7	+0.9		12.6	8.0			
	6.0	1.4		12.4	7.8			
50	8.1	3.5		12.4	7.8			
	10.4	5.8	3+00	12.6	8.0			
	11.9	7.3		12.8	8.2			
	11.9	7.3		13.0	8.4			
	12.0	7.4		13.0	8.4			
1+00	12.0	7.4		13.0	8.4			
	11.7	7.1	50	13.0	8.4			
	11.3	6.7		13.0	8.4			
	11.1	6.5		12.9	8.3			
	11.1	6.5		12.8	8.2			
50	11.1	6.5		12.8	8.2			
	11.0	6.4	4+00	12.8	8.2			
	11.2	6.6		12.8	8.2			
	11.5	6.9		12.8	8.2			
	11.8	7.2		12.6	8.0			
2+00	11.8	7.2		12.6	8.0			
	11.9	7.3	50	12.8	8.2			
	12.0	7.4		12.9	8.3			
	12.0	7.4		12.9	8.3			

STA. N. 122+50 - EAST

(55)

Dist	Sound	Elev	Dist	Sound	Elev
(45)	12.9	8.4	(45)	12.8	8.3
	13.0	8.5		13.0	8.5
5+00	13.5	9.0	50	13.0	8.5
	13.5	9.0		13.2	8.7
	13.5	9.0		13.9	9.4
	13.5	9.0		14.0	9.5
	13.2	8.7		14.0	9.5
50	12.1	7.6	8+00	13.9	9.4
	12.7	8.2		13.8	9.3
	12.7	8.2		13.3	8.8
10:05	12.8	8.3		13.0	8.5
	13.0	8.5		13.0	8.5
6+00	13.4	8.9	50	13.0	8.5
	13.9	9.4		12.8	8.3
SOUPY	15.5	11.0		12.8	8.3
	15.7	11.2		12.8	8.3
	15.8	11.3		13.0	8.5
50	16.0	11.5	9+00	13.0	8.5
	15.7	11.2		13.2	8.7
	15.3	10.8		13.2	8.7
	15.3	10.8		13.2	8.7
	15.0	10.5		13.4	8.9
7+00	14.7	10.2	50	13.6	9.1
	14.0	9.5		14.1	9.6
	13.0	8.5		14.4	9.9

STA. N. 122+50 - EAST

Dist	Sound	Elev	Dist	Sound	Elev
(44)	14.9	10.5	(43)	12.4	8.1
	15.0	10.6		12.1	7.8
10+00	15.3	10.9	50	12.0	7.7
	15.3	10.9		11.9	7.6
	14.3	9.9		11.8	7.5
10:10	14.0	9.6		11.0	6.7
	13.0	8.6		11.1	6.8
50	13.1	8.7	13+00	11.3	7.0
	14.1	9.7		11.6	7.3
	14.1	9.7		11.5	7.2
	14.0	9.6		11.5	7.2
	13.9	9.5		11.5	7.2
11+00	13.9	9.5	50	11.1	6.8
	13.9	9.5		4.9	0.6
	13.1	8.7	10:15	2.1	+2.1
	12.9	8.5			
	12.9	8.5			
50	12.8	8.4	14+00		
	12.8	8.4			
	12.6	8.2			
	12.5	8.1			
	12.5	8.1			
12+00	12.5	8.1	50		
	12.8	8.4			
	12.7	8.3			

(Cont)

10-03-60

(56)

Dist	Sound	Elev	Dist	Sound	Elev
STA. N. 121+50; 0+00=W. 9.260;	SOUND	EAST			
0+00			(39)	11.2	
(35)			50	11.3	
	0.8			11.1	
10:50	2.8			10.9	
	6.1			10.8	
50	10.7			10.7	
	11.8		3+00	10.9	
	11.8			11.0	
	11.6			11.0	
	11.8			11.1	
1+00	11.9			11.1	
	11.5		50	11.1	
	11.4			11.3	
	11.3			11.6	
	11.1			11.8	
50	11.0			12.0	
	10.9		4+00	12.2	
	10.6			12.5	
	10.8		10:55	12.8	
	11.1			12.9	
2+00	11.1			13.0	
	11.3		50	12.9	
	11.3			12.7	
	11.2			12.6	

STA. N. 121+50 - EAST 10-03-60

Dist	Sound	Elev	Dist	Sound	Elev
(34)	12.4		(33)	11.5	
	12.6			11.6	
5+00	12.9		50	11.9	
	13.3			11.9	
	12.2			12.1	
	10.8			12.4	
	11.5			13.0	
50	12.3		8+00	13.1	
	12.7			13.3	
	13.2			13.9	
	13.4		11:00	13.4	
	13.4		<u>      </u>	13.4	
6+00	13.2		50	11.1	
	13.0			11.5	
	13.1			11.6	
	13.0			11.4	
	12.8			11.5	
50	12.2		9+00	11.5	
	12.0			11.4	
	11.6			11.3	
	11.2			11.3	
	11.1			11.6	
7+00	11.1		50	11.8	
	11.1			12.1	
	11.2			12.0	

STA. N. 121+50 - EAST (57)

Dist	Sound	Elev	Dist	Sound	Elev
(32)	11.9		(31)	11.3	
	12.0			11.3	
10+00	12.3		50	11.4	
	12.2			11.5	
	12.2			11.6	
	12.5			11.5	
	12.8			11.7	
50	12.8		13+00	12.0	
	12.8			12.2	
	13.0			12.2	
	13.1			12.4	
	13.4			12.4	
11+00	13.5		50	12.3	
	13.0			12.2	
11:05	11.8		11:10	12.3	
<u>      </u>	11.5		<u>      </u>	12.1	
	11.3			11.9	
50	11.3		14+00	10.0	
	11.9			9.4	
	11.8			2.8	
	11.3				
	11.1				
12+00	11.1		50		
	11.1				
	11.2				

(14d)

10-03-60

STA. N. 121400; 0+00 = W. 9310; Sound EAST

Dist Sound Elev Dist Sound Elev

0+00 (28) 11.0

(28) 50 11.0

10.8

11.0

11.0

0.7 11.0

50 2.6 11.3

7.1 3+00 11.1

9.8 11.0

10.6 11.0

10.2 10.9

1+00 10.5 10.9

10.8 50 10.9

10.8 10.9

10.9 11.0

11.1 11.0

50 11.2 11.0

11.4 4+00 11.0

11.2 11.0

11.0 11.0

10.9 11.2

2+00 10.9 12.1

10.9 50 12.4

10.9 12.7

10.9 14.0

STA. N. 121400 - EAST

Dist Sound Elev Dist Sound Elev

(27) 14.6 (27) 10.0

15.1 10.0

5+00 15.0 50 10.0

15.4 10.0

15.4 10.0

13.4 Hard 10.0

13.9 = 10.2

50 14.0 8+00 11.0

14.1 11.0

14.5 11.0

13.8 10.1

12.1 10.1

6+00 12.0 50 10.7

12.1 10.9

11:25 11.8 10.5

= 11.9 10.4

12.0 11.0

50 12.0 9+00 11.0

12.0 10.9

11.9 10.8

11.4 10.3

11.4 10.1

7+00 10.3 50 10.4

10.3 10.7

10.0 11.0

(58)

STA. N. 121+00 - EAST 10-03-60

Dist	Sound	Elev	Dist	Sound	Elev
(26)	11.1		(25)	10.8	
	11.1			10.8	
10+00	11.4		50	10.8	
	11.4			10.8	
	11.4			10.8	
11:30	12.0			10.8	
~	11.9			10.8	
50	12.2		13+00	11.0	
	12.2			11.0	
	12.0			11.2	
	12.1			11.3	
	12.5			11.4	
11+00	13.0		50	11.7	
	13.0			11.9	
	13.1			11.8	
	13.3			11.9	
	14.2			11.8	
50	12.7		14+00	11.8	
	12.7			11.0	
	12.0			9.6	
	11.1			9.0	
	11.1			5.4	
12+00	11.0		50	9.8	
	10.7			9.8	
	10.8			9.6	

(53)

STA. N. 120+50, 0+00=W	9.330	SOUND	EAST		
Dist	Sound	Elev	Dist	Sound	Elev
0+00			(10)	9.0	
			50	8.9	
(10)				8.9	
				9.0	
	0.9			9.0	
50	7.4			9.1	
	7.7		3+00	9.4	
1:40	7.9			9.5	
~	7.8			9.6	
	7.5			9.8	
1+00	7.8			10.2	
	7.8		50	10.3	
	7.9			10.6	
	8.1			10.7	
	8.4			10.3	
50	8.7			9.8	
	8.7		4+00	10.4	
	8.9			10.3	
	8.9			10.4	
	9.2			10.2	
2+00	9.5			10.1	
	9.4		50	10.4	
	9.5			10.5	
	9.5			11.0	

(red)

STAIN. 120+50-EAST 10-03-60

Dist	Sound	Elev	Dist	Sound	Elev
(1.0)	11.4		(1.0)	8.7	
	11.0			8.7	
5+00	10.7		50	8.8	
	10.7			8.9	
	10.2			9.0	
	9.9			9.1	
	9.2			9.0	
50	9.0		8+00	9.1	
	8.8			8.9	
<u>1.45</u>	8.3			8.5	
<u>-</u>	8.2			8.1	
	8.8			7.8	
6+00	9.0		50	7.3	
	9.0			7.6	
	9.2			7.7	
	9.7			7.9	
	9.8			8.1	
50	9.8		9+00	8.7	
	9.7			8.7	
	9.6			8.9	
	9.3			8.5	
	9.3			8.5	
7+00	9.1		50	8.7	
	9.0			8.7	
	8.8			8.8	

NOTE:  
5

STAIN. 120+50-EAST (60)

Dist	Sound	Elev	Dist	Sound	Elev
(1.0)	8.9		(1.0)	9.3	
	9.0			9.0	
10+00	9.1		50	8.9	
	9.0			9.0	
	8.9			9.1	
	9.2			8.9	
	9.2			8.9	
50	9.3		13+00	8.4	
	9.5			8.7	
<u>1.50</u>	9.8			8.7	
<u>-</u>	10.0			8.9	
	10.1			9.0	
11+00	10.2		50	9.1	
	10.7			9.2	
	10.8			9.7	
	11.0		<u>1.55</u>	9.5	
	11.1		<u>-</u>	9.6	
50	10.0		14+00	9.4	
	10.0			8.9	
	10.0			8.5	
	9.8			7.0	
	9.6			0.5	
12+00	9.3		50		
	8.8				
	8.9				



( Clyde )

10-04-60

STA. N. 119+50. 0+00=W. 9360 SOUND EAST

Dist	Sound	Elev	Dist	Sound	Elev
0+00	0.9		(41)	12.0	
(42)	4.4		50	12.1	
	11.0			12.4	
<u>11:00</u>	12.8			12.7	
	12.9			12.8	
50	12.3			13.0	
	12.1		3+00	13.0	
	12.1			13.0	
	12.2			13.5	
	12.3		11:05	14.8	
1+00	12.2			15.5	
	12.0		50	15.9	
	12.0			15.4	
	12.0			14.1	
	12.3			13.4	
50	12.5			13.0	
	12.2		4+00	12.9	
	12.0			12.7	
	11.6			12.5	
	11.9			12.5	
2+00	11.8			12.2	
	11.4		50	12.3	
	11.5			12.3	
	11.9			12.4	

STA. N. 119+50-EAST

(6)

Dist	Sound	Elev	Dist	Sound	Elev
(41)	12.1		(40)	11.9	
	12.1			12.5	
5+00	12.3		50	12.2	
	12.7			12.7	
	12.7			12.5	
	12.9			12.5	
	13.0			12.4	
50	13.1		8+00	12.5	
	13.2			12.8	
	14.0			12.9	
	14.6			13.0	
	15.0			13.1	
6+00	15.0		50	13.0	
	14.9			12.3	
	12.4		11:10	12.3	
	12.8			12.4	
	13.0			12.9	
50	12.9		9+00	12.8	
	12.8			13.0	
	12.4			12.8	
	12.3			12.8	
	12.0			12.8	
7+00	11.8		50	12.2	
	11.8			12.1	
	11.8			12.5	

STA. N. 119+50 - EAST 10-04-60

Dist Sound Elev Dist Sound Elev

(40)	12.4	(39)	12.0
	12.7		12.0
10+00	12.8	50	12.0
	12.8		12.1
	12.8		12.2
	13.0		12.6
	13.2		12.5
50	13.7	13+00	12.5
	13.8		12.7
	14.0	11,15	12.8
	14.1	<u>    </u>	12.9
	14.6		12.3
11+00	14.1	50	12.9
	13.5		13.5
	13.0		13.1
	13.0		13.4
	13.0		13.4
50	13.1	14+00	12.8
	13.2		4.3
	13.1		0.9
	12.9		
	12.9		
12+00	12.4	50	
	12.1		
	12.1		

(red)

STA. N. 119+00; 0+00 = W. 9.400 SOUND EAST

Dist Sound Elev Dist Sound Elev

0+00		(37)	11.1
(37)		50	11.1
	1.9		11.3
11,25	5.7		11.3
<u>    </u>	9.9		12.0
50	12.3		12.0
	12.3	3+00	12.2
	11.6		12.5
	12.4		12.5
	12.5		12.7
1+00	12.0		13.1
	12.0	50	13.8
	12.0		13.3
	11.9		12.6
	11.8		12.7
50	11.8		12.5
	11.9	4+00	12.4
	12.1		12.3
	12.3		12.1
	12.1		11.9
2+00	12.0		12.1
	11.6	50	12.2
	11.4		11.7
	11.3		11.3

STA. N. 119+00 - EAST 10-04-60

Dist Sound Elev Dist Sound Elev

(36)	11.3	(36)	11.4
	11.1		11.4
5+00	10.9	50	11.6
	10.9		11.5
	11.0		11.6
	11.0		11.9
	11.2		11.8
50	11.1	8+00	11.7
	11.4		11.7
	11.6		11.8
	11.9		11.9
	12.5		12.1
6+00	13.8	50	12.9
	13.9		13.2
	14.0		13.0
	13.4		13.9
	12.6		12.0
50	12.1	9+00	11.9
11:30	12.1		11.9
	12.0		11.9
	12.3		11.9
	12.1		11.8
7+00	11.7	50	11.7
	11.5		11.4
	11.3		11.0

STA. N. 119+00 - EAST

(63)

Dist Sound Elev Dist Sound Elev

(35)	11.1	(35)	11.0
	11.3		10.8
10+00	11.5	50	11.4
	11.6		11.0
	11.8		11.0
	12.1		11.0
	12.1		11.0
50	12.2	13+00	11.1
	12.1		11.0
	12.0		11.3
	12.2		11.7
	12.3		11.6
11+00	13.0	50	11.6
	13.0		11.8
	13.1		12.0
	13.5		12.1
	14.0		12.1
50	13.7	14+00	12.3
	13.9		12.1
11:35	13.3		12.1
	11.7		12.0
	11.6		11.9
12+00	11.9	50	10.2
	11.3		9.0
	11.2		2.6

(Diak) 10-04-60

STA. N. 118+50, 0+100 = W. 9400; SOUND EAST

Dist	Sound	Elev	Dist	Sound	Elev
0+00			(14)	9.2	7.8
(14)			50	9.2	7.8
	0.3	+1.1		9.5	8.1
<u>1:10</u>	6.6	5.2		9.7	8.3
	9.5	8.1		9.9	8.5
50	10.0	8.6		10.4	9.0
	10.0	8.6	3+00	10.3	8.9
	10.0	8.6		10.3	8.9
	9.9	8.5		10.3	8.9
	9.8	8.4		10.4	9.0
1+00	9.8	8.4		10.5	9.1
	9.8	8.4	50	11.2	9.8
	9.9	8.5		11.9	10.5
	9.9	8.5		12.0	10.6
	10.0	8.6		11.3	9.9
50	10.0	8.6		11.0	9.6
	10.0	8.6	4+00	10.9	9.5
	10.0	8.6		10.3	8.9
	9.5	8.1		10.3	8.9
	9.0	7.6		11.1	9.7
2+00	9.1	7.7		10.9	9.5
	9.0	7.6	50	10.3	8.9
	9.0	7.6		10.1	8.7
	9.1	7.7		9.9	8.5

(64) STA. N. 118+50 - EAST

Dist	Sound	Elev	Dist	Sound	Elev
(13)	9.7	8.4	(13)	8.9	
	9.5	8.2		8.8	
5+00	9.5	8.2	50	8.9	
	9.7	8.4		9.0	
	9.8	8.5		8.8	
	10.0			9.1	
	10.0			9.3	
50	10.1		8+00	9.5	
	10.2			9.6	
	10.2			10.0	
	10.2			10.1	
	10.6			10.5	
6+00	11.3		50	10.9	
	11.1			11.1	
	10.8			11.9	
<u>1:15</u>	10.0			11.2	
	9.7			10.5	
50	9.2		9+00	10.1	
	9.1			10.1	
	9.0			9.8	
	9.0			9.2	
	8.7			9.1	
7+00	8.8		50	9.2	
	8.8			9.3	
	8.9			9.4	

STA. N. 118+50 - EAST 10-04-60

DIST	Sound	Elev	DIST	Sound	Elev
(13)	9.4		(12)	8.5	
	9.4			8.7	
10+00	9.8		50	8.7	
	9.7			9.0	
	9.9			8.8	
	9.9			8.5	
	9.9			8.9	
50	9.9		13+00	9.2	
	10.1			9.3	
<u>11:20</u>	10.4		<u>11:25</u>	9.8	
	10.8			10.0	
	10.8			9.8	
11+00	11.1		50	9.2	
	11.4			9.3	
	11.7			9.8	
	11.9			9.7	
	12.3			9.9	
50	12.2		14+00	10.0	
	10.1			9.3	
	9.5			8.4	
	9.3			8.0	
	9.1			7.0	
12+00	9.0		50	2.1	
	8.9				
	8.5				

(Red)

STA. N. 117+50, 0+00 = W. 9, 420; SOUND EAST

DIST	Sound	Elev	DIST	Sound	Elev
0+00			(0.8)	8.3	
(0.8)			50	8.5	
				8.7	
				8.8	
<u>2:00</u>	5.5			8.8	
	8.9			9.0	
50	9.5			9.4	
	9.3		3+00	10.2	
	9.1			11.0	
	9.2			10.8	
	9.1			10.0	
1+00	9.0			9.4	
	8.9		50	9.0	
	9.0			8.6	
	9.0			8.4	
	10.3			8.6	
50	9.2			8.9	
	9.5		4+00	9.1	
	9.4			9.6	
	9.3			9.6	
	9.5			9.6	
2+00	9.5		'	9.6	
	9.5		50	9.5	
	9.5			9.3	
	8.2			8.9	

(65)

STA. N. 117450 - EAST 10-24-60

Dist	Sound	Elev	Dist	Sound	Elev
(07)	9.0		(07)	10.0	
	8.9			9.9	
5700	9.0		50	9.8	
	8.9			9.9	
<u>2:05</u>	8.9			9.9	
<u>    </u>	9.0			10.0	
	9.0			9.9	
50	9.1		8700	10.1	
	9.7			10.9	
	10.0			10.4	
	10.4			10.3	
	10.0			10.0	
6700	9.6		50	10.5	
	10.1			11.0	
	10.0			10.8	
	10.0			9.8	
	10.0			9.0	
50	10.1		9700	8.9	
	9.9			8.9	
	9.9		<u>2:10</u>	8.9	
	9.9		<u>    </u>	8.5	
	10.0			8.5	
7400	10.2		50	8.8	
	10.0			8.8	
	9.9			8.6	

STA. N. 117450 - EAST

(66)

Dist	Sound	Elev	Dist	Sound	Elev
(07)	8.7		(07)	8.7	
	8.6			8.9	
10700	8.6		50	8.5	
	8.7			8.5	
	9.3			8.5	
	9.1			8.4	
	9.5			8.4	
50	9.6		13700	8.4	
	9.3			8.7	
	9.3		<u>2:15</u>	8.9	
	9.5		<u>    </u>	9.0	
	9.7			9.2	
11700	9.7		50	9.9	
	9.8			9.9	
	10.0			9.8	
	10.5			10.0	
	10.0			10.0	
50	9.8		14700	10.0	
	9.6			10.0	
	9.0			8.8	
	8.6			5.8	
	8.6			0.8	
12700	8.5		50		
	8.6				
	8.5				

10-04-60

STA. N. 117400 S. 0400 = W. 9420. SOUND EAST

Dist Sound Elev Dist Sound Elev

0700			(07)	8.5	
(07)			50	8.7	
	1.5			8.8	
2:25	7.3			8.9	
	9.1			9.0	
50	9.1			9.1	
	8.9		3400	9.9	
	9.0			11.0	
	8.9			9.1	
	9.0			9.1	
1400	9.0			9.3	
	9.0		50	9.1	
	9.1			9.4	
	9.1		2:30	9.5	
	9.4			9.7	
50	9.4			9.6	
	9.4		4400	9.5	
	9.4			9.6	
	9.4			9.8	
	9.6			9.8	
2400	9.6			9.9	
	7.9		50	9.5	
	8.0			9.4	
	8.2			9.3	

STA. N. 117400 - EAST

Dist Sound Elev Dist Sound Elev

(07)	9.1		(07)	10.0	
	9.2			10.2	
5400	9.1		50	10.1	
	9.2			10.6	
	9.3			10.6	
	9.5			10.9	
	9.6			11.1	
50	9.9		8400	10.8	
	10.4			10.4	
	10.2			10.9	
	10.1			10.1	
	9.6			9.0	
6400	8.9		50	8.9	
	9.0			9.0	
	9.2		2:35	9.3	
	9.3			9.4	
	9.7			9.3	
50	10.0		9400	9.1	
	10.3			9.3	
	10.3			9.2	
	10.3			9.2	
	10.2			9.0	
7400	10.1		50	8.8	
	10.1			8.6	
	10.1			8.5	

STA. N. 11700 - EAST 10-04-60

Dist	Sound	Elev	Dist	Sound	Elev
(07)	8.5		(07)	8.6	
	8.6			8.9	
10+00	9.0		50	8.9	
	8.9			8.6	
	8.9			8.8	
	9.0			8.9	
	9.3			8.9	
50	9.4		13+00	9.0	
	9.6			9.0	
	9.7			9.0	
	9.8			8.9	
	9.8			9.3	
11+00	10.0		50	9.4	
	9.7			9.2	
	9.2		21+45	9.2	
21+40	8.2			9.3	
	8.9			9.2	
50	9.3		14+00	8.2	
	9.0			6.5	
	8.6			2.0	
	8.9				
	8.6				
12+00	8.9		50		
	8.4				
	8.5				

(68)

STA. N. 116+50, 12+00 = W. 9, 430; SOUND EAST

Dist	Sound	Elev	Dist	Sound	Elev
0+00					
			50		
			50		
			3+00		
			1+00		
			50		
			4+00		
			2+00		
			50		



STA. N. 116+50-EAST  
Dist Sound Elev Dist Sound Elev

5+00

50

50

8+00

6+00

50

50

9+00

7+00

50

STA. N. 116+50-EAST (69)  
Dist Sound Elev Dist Sound Elev

10+00

50

50

13+00

11+00

50

50

14+00

12+00

50

STA. N. 115+50; 0+00 = W. 9,430; SOUND EAST

Dist Sound Elev Dist Sound Elev

0+00

50

50

3+00

1+00

50

50

4+00

2+00

50

STA. N. 115+50 - EAST

Dist Sound Elev. Dist Sound Elev

5+00

50

50

8+00

6+00

50

50

9+00

7+00

50

(70)

STA. N. 115+50 - EAST

Dist Sound Elev Dist Sound Elev

10+00

50

50

13+00

11+00

50

50

14+00

12+00

50

(7)

STA. N. 115+00; 0+00 = W.

Dist Sound Elev Dist Sound Elev

0+00

50

50

3+00

1+00

50

50

4+00

2+00

50

STA. N. 115+00 - EAST

DIST Sound Elev DIST Sound Elev

5+00

50

50

8+00

6+00

50

50

9+00

7+00

50

STA. N. 115+00 - EAST

DIST Sound Elev DIST Sound Elev

10+00

50

50

13+00

11+00

50

50

14+00

12+00

50

(72)

STA. N. 114+50. 0+00 = W.

SOUND EAST

DIST SOUND ELEV DIST SOUND ELEV

0+00

50

50

3+00

1+00

50

50

4+00

2+00

50

STA. N. 114+50 - EAST

(73)

DIST SOUND ELEV DIST SOUND ELEV

5+00

50

50

8+00

6+00

50

50

9+00

7+00

50

STA. N. 114+50 - EAST

Dist Sound Elev Dist. Sound Elev

10+00

50

50

13+00

11+00

50

12+00

(74)

STA. N. 113+50:0+00 = W.

SOUND EAST  
Dist Sound Elev Dist Sound Elev

0+00

50

50

3+00

1+00

50

50

4+00

2+00

50

STA. N. 113+50 - EAST

Dist Sound Elev Dist Sound Elev

5+00

50

50

8+00

6+00

50

50

9+00

7+00

50

STA. N. 113+50 - EAST

Dist Sound Elev Dist Sound Elev

10+00

50

11+00

50

12+00

(75)

STA. N. 113+00 S 0+00 = W.

Dist Sound Elev Dist Sound Elev

0+00

50

50

3+00

1+00

50

50

4+00

2+00

50

STA. N. 113+00 - EAST

Dist Sound Elev Dist Sound Elev

5+00

50

50

8+00

6+00

50

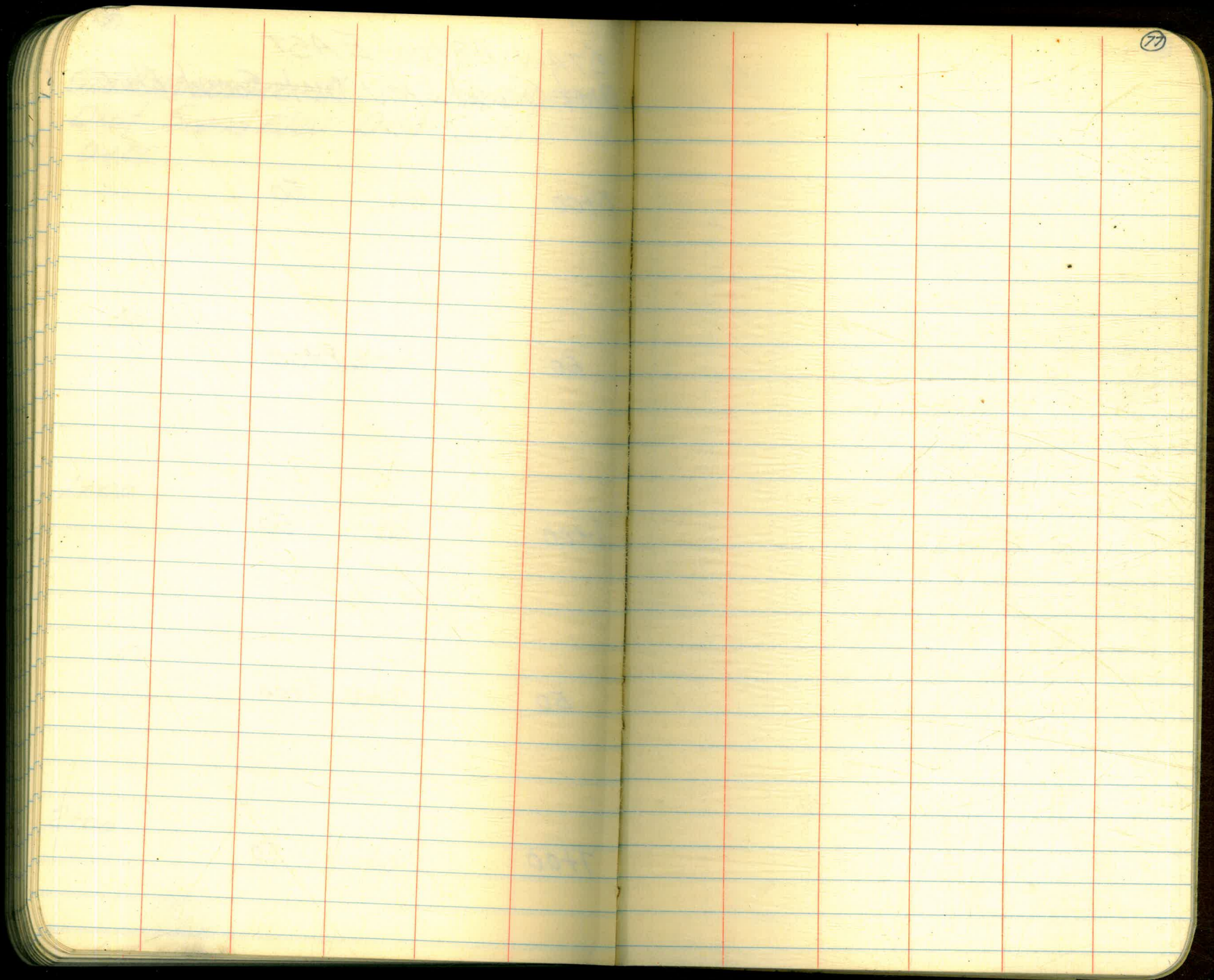
50

9+00

7+00

50





# IMPROVED TABLES AND INFORMATION

AMERICAN		EUROPEAN	
NO.	NAME	NO.	NAME
1	...	1	...
2	...	2	...
3	...	3	...
4	...	4	...
5	...	5	...
6	...	6	...
7	...	7	...
8	...	8	...
9	...	9	...
10	...	10	...
11	...	11	...
12	...	12	...
13	...	13	...
14	...	14	...
15	...	15	...
16	...	16	...
17	...	17	...
18	...	18	...
19	...	19	...
20	...	20	...
21	...	21	...
22	...	22	...
23	...	23	...
24	...	24	...
25	...	25	...
26	...	26	...
27	...	27	...
28	...	28	...
29	...	29	...
30	...	30	...
31	...	31	...
32	...	32	...
33	...	33	...
34	...	34	...
35	...	35	...
36	...	36	...
37	...	37	...
38	...	38	...
39	...	39	...
40	...	40	...
41	...	41	...
42	...	42	...
43	...	43	...
44	...	44	...
45	...	45	...
46	...	46	...
47	...	47	...
48	...	48	...
49	...	49	...
50	...	50	...

NO.	NAME
1	...
2	...
3	...
4	...
5	...
6	...
7	...
8	...
9	...
10	...
11	...
12	...
13	...
14	...
15	...
16	...
17	...
18	...
19	...
20	...
21	...
22	...
23	...
24	...
25	...
26	...
27	...
28	...
29	...
30	...
31	...
32	...
33	...
34	...
35	...
36	...
37	...
38	...
39	...
40	...
41	...
42	...
43	...
44	...
45	...
46	...
47	...
48	...
49	...
50	...

NO.	NAME
1	...
2	...
3	...
4	...
5	...
6	...
7	...
8	...
9	...
10	...
11	...
12	...
13	...
14	...
15	...
16	...
17	...
18	...
19	...
20	...
21	...
22	...
23	...
24	...
25	...
26	...
27	...
28	...
29	...
30	...
31	...
32	...
33	...
34	...
35	...
36	...
37	...
38	...
39	...
40	...
41	...
42	...
43	...
44	...
45	...
46	...
47	...
48	...
49	...
50	...

# IMPROVED TABLES AND INFORMATION

## HORIZONTAL STADIA CORRECTIONS

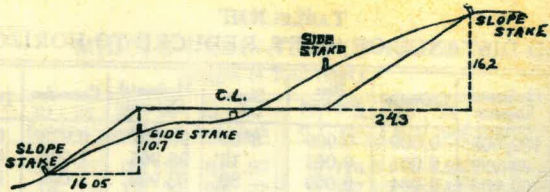
2°-00' — 0.1	21°-00' — 12.3	33°-00' — 29.7
3°-00' — 0.3	21°-30' — 13.4	33°-15' — 30.1
4°-00' — 0.5	22°-00' — 14.0	33°-30' — 30.5
5°-00' — 0.8	22°-30' — 14.7	33°-45' — 30.9
6°-00' — 1.1	23°-00' — 15.3	34°-00' — 31.3
7°-00' — 1.5	23°-30' — 15.9	34°-15' — 31.7
8°-00' — 1.9	24°-00' — 16.5	34°-30' — 32.1
9°-00' — 2.5	24°-30' — 17.2	34°-45' — 32.5
10°-00' — 3.0	25°-00' — 17.9	35°-00' — 32.9
10°-30' — 3.3	25°-30' — 18.6	35°-15' — 33.3
11°-00' — 3.6	26°-00' — 19.2	35°-30' — 33.7
11°-30' — 4.0	26°-30' — 19.9	35°-45' — 34.1
12°-00' — 4.3	27°-00' — 20.6	36°-00' — 34.6
12°-30' — 4.7	27°-30' — 21.3	36°-15' — 35.0
13°-00' — 5.1	28°-00' — 22.0	36°-30' — 35.4
13°-30' — 5.5	28°-30' — 22.8	36°-45' — 35.8
14°-00' — 5.9	29°-00' — 23.5	37°-00' — 36.2
14°-30' — 6.3	29°-30' — 24.3	37°-15' — 36.6
15°-00' — 6.7	30°-00' — 25.0	37°-30' — 37.1
15°-30' — 7.2	30°-15' — 25.4	37°-45' — 37.5
16°-00' — 7.6	30°-30' — 25.8	38°-00' — 37.9
16°-30' — 8.1	30°-45' — 26.2	38°-15' — 38.3
17°-00' — 8.5	31°-00' — 26.5	38°-30' — 38.7
17°-30' — 9.0	31°-15' — 26.9	38°-45' — 39.1
18°-00' — 9.5	31°-30' — 27.3	39°-00' — 39.6
18°-30' — 10.1	31°-45' — 27.7	39°-15' — 40.0
19°-00' — 10.6	32°-00' — 28.1	39°-30' — 40.5
19°-30' — 11.2	32°-15' — 28.5	
20°-00' — 11.7	32°-30' — 28.9	
20°-30' — 12.3	32°-45' — 29.3	

### Chains to Feet

1 .....	66
2 .....	132
3 .....	198
4 .....	264
5 .....	330
6 .....	396
7 .....	462
8 .....	528
9 .....	594
10 .....	660

### Feet to Chains

100 ....	1.515
200 ....	3.030
300 ....	4.545
400 ....	6.060
500 ....	7.575
600 ....	9.090
700 ....	10.606
800 ....	12.121
900 ....	13.636
1,000 ....	15.151



DISTANCES FROM SIDE STAKES FOR CROSS-SECTIONING.

SLOPE 1 1/4 TO 1. ROADWAY OF ANY WIDTH.

	0	.1	.2	.3	.4	.5	.6	.7	.8	.9	
0	0.00	0.15	0.30	0.45	0.60	0.75	0.90	1.05	1.20	1.35	0
1	1.50	1.65	1.80	1.95	2.10	2.25	2.40	2.55	2.70	2.85	1
2	3.00	3.15	3.30	3.45	3.60	3.75	3.90	4.05	4.20	4.35	2
3	4.50	4.65	4.80	4.95	5.10	5.25	5.40	5.55	5.70	5.85	3
4	6.00	6.15	6.30	6.45	6.60	6.75	6.90	7.05	7.20	7.35	4
5	7.50	7.65	7.80	7.95	8.10	8.25	8.40	8.55	8.70	8.85	5
6	9.00	9.15	9.30	9.45	9.60	9.75	9.90	10.05	10.20	10.35	6
7	10.50	10.65	10.80	10.95	11.10	11.25	11.40	11.55	11.70	11.85	7
8	12.00	12.15	12.30	12.45	12.60	12.75	12.90	13.05	13.20	13.35	8
9	13.50	13.65	13.80	13.95	14.10	14.25	14.40	14.55	14.70	14.85	9
10	15.00	15.15	15.30	15.45	15.60	15.75	15.90	16.05	16.20	16.35	10
11	16.50	16.65	16.80	16.95	17.10	17.25	17.40	17.55	17.70	17.85	11
12	18.00	18.15	18.30	18.45	18.60	18.75	18.90	19.05	19.20	19.35	12
13	19.50	19.65	19.80	19.95	20.10	20.25	20.40	20.55	20.70	20.85	13
14	21.00	21.15	21.30	21.45	21.60	21.75	21.90	22.05	22.20	22.35	14
15	22.50	22.65	22.80	22.95	23.10	23.25	23.40	23.55	23.70	23.85	15
16	24.00	24.15	24.30	24.45	24.60	24.75	24.90	25.05	25.20	25.35	16
17	25.50	25.65	25.80	25.95	26.10	26.25	26.40	26.55	26.70	26.85	17
18	27.00	27.15	27.30	27.45	27.60	27.75	27.90	28.05	28.20	28.35	18
19	28.50	28.65	28.80	28.95	29.10	29.25	29.40	29.55	29.70	29.85	19
20	30.00	30.15	30.30	30.45	30.60	30.75	30.90	31.05	31.20	31.35	20
21	31.50	31.65	31.80	31.95	32.10	32.25	32.40	32.55	32.70	32.85	21
22	33.00	33.15	33.30	33.45	33.60	33.75	33.90	34.05	34.20	34.35	22
23	34.50	34.65	34.80	34.95	35.10	35.25	35.40	35.55	35.70	35.85	23
24	36.00	36.15	36.30	36.45	36.60	36.75	36.90	37.05	37.20	37.35	24
25	37.50	37.65	37.80	37.95	38.10	38.25	38.40	38.55	38.70	38.85	25
26	39.00	39.15	39.30	39.45	39.60	39.75	39.90	40.05	40.20	40.35	26
27	40.50	40.65	40.80	40.95	41.10	41.25	41.40	41.55	41.70	41.85	27
28	42.00	42.15	42.30	42.45	42.60	42.75	42.90	43.05	43.20	43.35	28
29	43.50	43.65	43.80	43.95	44.10	44.25	44.40	44.55	44.70	44.85	29
30	45.00	45.15	45.30	45.45	45.60	45.75	45.90	46.05	46.20	46.35	30
31	46.50	46.65	46.80	46.95	47.10	47.25	47.40	47.55	47.70	47.85	31
32	48.00	48.15	48.30	48.45	48.60	48.75	48.90	49.05	49.20	49.35	32
33	49.50	49.65	49.80	49.95	50.10	50.25	50.40	50.55	50.70	50.85	33
34	51.00	51.15	51.30	51.45	51.60	51.75	51.90	52.05	52.20	52.35	34
35	52.50	52.65	52.80	52.95	53.10	53.25	53.40	53.55	53.70	53.85	35
36	54.00	54.15	54.30	54.45	54.60	54.75	54.90	55.05	55.20	55.35	36
37	55.50	55.65	55.80	55.95	56.10	56.25	56.40	56.55	56.70	56.85	37
38	57.00	57.15	57.30	57.45	57.60	57.75	57.90	58.05	58.20	58.35	38
39	58.50	58.65	58.80	58.95	59.10	59.25	59.40	59.55	59.70	59.85	39
40	60.00	60.15	60.30	60.45	60.60	60.75	60.90	61.05	61.20	61.35	40
41	61.50	61.65	61.80	61.95	62.10	62.25	62.40	62.55	62.70	62.85	41
42	63.00	63.15	63.30	63.45	63.60	63.75	63.90	64.05	64.20	64.35	42
43	64.50	64.65	64.80	64.95	65.10	65.25	65.40	65.55	65.70	65.85	43
44	66.00	66.15	66.30	66.45	66.60	66.75	66.90	67.05	67.20	67.35	44
45	67.50	67.65	67.80	67.95	68.10	68.25	68.40	68.55	68.70	68.85	45
46	69.00	69.15	69.30	69.45	69.60	69.75	69.90	70.05	70.20	70.35	46
47	70.50	70.65	70.80	70.95	71.10	71.25	71.40	71.55	71.70	71.85	47
48	72.00	72.15	72.30	72.45	72.60	72.75	72.90	73.05	73.20	73.35	48
49	73.50	73.65	73.80	73.95	74.10	74.25	74.40	74.55	74.70	74.85	49
50	75.00	75.15	75.30	75.45	75.60	75.75	75.90	76.05	76.20	76.35	50

Computed by L. Leland Locke.

N 14000 - W 93 34.  
5 57° W 1 86

9 520

N.115 - W 9420	
N.114+50 - W 9410	
N.114+00 - W 9390	10:35 59
N.113+50 - W 9370	10:40 59
N.113 - W 9350	10:55-5.8
N.112+50 - W 9330	11:00 58
N.112 - W 9310	11:50 2.9
N.111+50 - W 9270	11:55 2.9
N.111 - W 9240	2:35 2.1
N.110+50 - W 9240	2:40 2.0
N.110+00 - W 9160	2:45 1.9
N.109+50 - W 9115	2:50 1.9
N.109 - W 9070	2:55 1.8
N.108+50 - W 9030	3:00 1.7
N.108 - W 8980	3:05 1.6
N.107+50 - W 8940	3:10 1.5
N.107 - W 8900	
N.106+50 - W 8860	
N.106 - W 8820	

9165  
 95  
 9070

11-02-60

FATH. SEC'S BEGIN

N.108+00 NLY To

1