

MB 142



EMERSON

1830

MICROFILMED

74-13-40

MB No 142

70180-38

~~9:30 - 4.8~~

~~9:35 - 4.7~~

~~9:45 - 4.5~~

~~9:50 - 4.4~~

~~10:00 - 4.3~~

~~10:10 - 4.1~~

~~10:15 - 4.0~~

~~10:25 - 3.8~~

~~10:30 - 3.7~~

~~10:40 - 3.5~~

~~10:50 - 3.3~~

~~11:00 - 3.0~~

INDEXED 2/13/62

10:05 - 4.3

10:20 - 3.4

10:35 - 3.5

10:40 - 3.5

10:50 - 3.6

10:55 - 3.6

11:00 - 3.7

N80 - W
N80+50 - W 12500
N81 - W 12430
N81+50 - W 12380
N82 - W
N82+50 - W 12280
N83 - W 12230
N83+50 - W 12190
N84 - W
N84+50 - W 12110
N85 - W 12070
N85+50 - W 12040 (5+80-7+30) (9+20-9+90)
N88+50 - W 11860 (3+30-4+50)
N90 - W
N90+50 - W 11770 (2+50-3+00)
N92 - W
N92+50 - W 11710 (4+50-5+50)
N93 - W 11690 (4+70-5+50)
N93+50 - W 11680 (6+80-9+20) (-complete)
N94 - W 11660 W. Fath
N94+50 - W 11650 (2+40-3+00)
N95 - W 11640 (2+90-3+50)
N96 - W 11630 (2+20-5+10)
N96+50 - W 11620 (2+60-5+10)
N97 - W 11610 (1+60-4+50)
N97+50 - W 11600 (1+50-3+90)
N99 - W 11560 (4+40-4+80) (6+10-6+30)
N102 - W 11450 (2+90-3+80)
N102+50 - W 11430 (3+10-3+80)
N103 - W 11410 (3+10-4+00) (5+30-5+70)
N104 - W 11370 (5+30-5+60)
N104+50 - W 11350 (5+20-5+70)
N105 - W 11310 (5+20-5+70)

N105+50 - W 11290 -
N106 - W 11260 -
N107+50 - W 11190 -

89 59 60

26-26-10

63-33-56

10-11-60

BASELINE LAYOUT FOR SOUNDINGS
AFTER DREDGING WLY. CABRILLO ISLAND
STA ^{B/L} DIST BEARING

CONTD SLY 145
1

NOTE: B/L CONTD NLY SEE M.B. N^o 133
6

N. 84+00; W. 12,050	65.622 N. 40° 21' 52" E
N. 83+50; W. 12,092.50	"
N. 83+00; W. 12,135	"
N. 82+50; W. 12,177.50	65.622 N. 40° 21' 52" E
N. 82+00; W. 12,220	67.268 N. 41° 59' 14" E
N. 81+50; W. 12,265	" "
N. 81+00; W. 12,310	" "
N. 80+50; W. 12,355	67.268 N. 41° 59' 14" E
N. 80+00; W. 12,400	

10-11-60

SOUNDINGS WLY. CABELLO ISLAND W.D. 64501

STA. N. 80+00 S. 0+00 = W. 12, 550, SOUND WEST

	Dist	Sound	Elev	Dist	Sound	Elev
0+00				(46)	13.4	8.8
				50	13.2	8.6
(4.6)					13.4	8.8
1:20	2.3	+2.3			13.8	9.2
	6.9	2.3			13.8	9.2
50	9.0	4.4			14.0	9.9
	10.2	5.6	3+00		14.0	9.9
	11.7	7.1			14.1	9.5
	12.9	8.3			14.4	9.8
	12.5	7.9			14.5	9.9
1+00	12.4	7.8			11.9	7.3
	12.5	7.9	50		11.9	7.3
	12.6	8.0			11.9	7.3
	12.8	8.2			12.0	7.4
	12.9	8.3			12.2	7.6
50	12.5	7.9			12.3	7.7
	12.2	7.6	4+00		12.0	7.4
	12.3	7.7			11.9	7.3
	12.4	7.8			11.6	7.0
	12.7	8.1			11.4	6.8
2+00	13.1	8.5			11.3	6.7
	13.0	8.4	50		11.3	6.7
	13.1	8.5			11.5	6.9
	13.1	8.5			11.9	7.3

(2)

STA. N. 80+00 - WEST

	Dist	Sound	Elev	Dist	Sound	Elev
	(46)	13.1	8.5	(46)	12.3	7.7
		13.2	8.6		12.1	7.5
5+00		13.4	8.8	50	12.2	7.6
		13.5	8.9		11.9	7.3
		13.7	9.1		11.6	7.0
		13.9	9.3		11.4	6.8
		13.7	9.1		11.2	6.6
50		13.7	9.1	8+00	11.0	6.4
		13.7	9.1		11.0	6.4
		13.8	9.2		10.9	6.3
		13.9	9.3		10.7	6.1
		13.8	9.2		10.9	6.3
6+00		13.9	9.3	50	11.4	6.8
		13.7	9.1		12.0	7.4
		14.1	9.5		11.9	7.3
		14.0	9.4		11.9	7.3
		14.1	9.5		11.9	7.3
50		13.5	8.9	9+00	12.0	7.4
		14.5	9.9		12.2	7.6
1:25		11.8	7.2		12.1	7.5
		12.0	7.4		12.2	7.6
		12.1	7.5		12.4	7.8
7+00		12.3	7.7	50	12.7	8.1
		12.3	7.7		12.9	8.3
		12.4	7.8		13.0	8.4

STAIN 80400-WEST 10-11-60

DIST SOUND ELEV

(46)	13.0	8.4
	13.0	8.4
10+00	13.3	8.7
	13.2	8.6
	13.2	8.6
11:30	13.2	8.6
<u> </u>	13.1	8.5
50	13.1	8.5
	13.0	8.4
	13.0	8.4
	13.1	8.5
	13.9	9.3
11+00	14.2	9.6
	14.0	9.4
	14.0	9.4
	14.1	9.5
	14.1	9.5
50	13.1	8.5
	13.0	8.4
	13.1	8.5
	13.0	8.4
	12.9	8.3
12+00	12.9	8.3

10-13-60

(3)

STAIN 82400 0+00 = W. 12,320 SOUND WEST

DIST SOUND ELEV DIST SOUND ELEV

0+00			(35)	11.7	8.2
(35)			50	11.9	8.4
				12.1	8.6
9:37				12.1	8.6
<u> </u>				12.1	8.6
50	2.0	+1.5		12.1	8.6
	6:8	3.3	3+00	12.3	8.8
	10.5	7.0		12.1	8.6
	11.9	8.4		12.7	9.2
	12.4	8.9		12.3	8.8
1+00	11.9	8.4		12.2	8.7
	11.9	8.4	50	12.2	8.7
	11.7	8.2		12.4	8.9
	11.4	7.9		11.9	8.4
	11.2	7.7	9:40	11.9	8.4
50	11.1	7.6	<u> </u>	11.5	8.0
	10.9	7.4	4+00	11.5	8.0
	10.7	7.2		11.5	8.0
	10.4	6.9		11.4	7.9
	10.3	6.8		11.4	7.9
2+00	10.4	6.9		11.0	7.5
	10.3	6.8	50	11.0	7.5
	10.9	7.4		11.0	7.5
	11.5	8.0		10.7	7.2

STAIN. 82400-WEST 10-13-60

DIST	Sound	Elev	DIST	Sound	Elev
(3.5)	10.8	7.3	(35)	13.5	10.0
	10.2	6.7		13.4	9.9
5+00	9.7	6.2	50	13.4	9.9
	9.6	6.1		13.1	9.6
	9.8	6.3		12.8	9.3
	11.9	8.4		12.9	9.4
	12.0	8.5		12.9	9.4
50	11.9	8.4	8+00	13.0	9.5
	10.8	7.3		12.7	9.2
	9.7	6.2	9:45	12.9	9.4
	4.0	0.5	-	12.9	9.4
	6.0	2.5		12.6	9.1
6+00	8.5	5.0	50	12.4	8.9
	13.0	9.5		12.2	8.7
	13.0	9.5		12.2	8.7
	13.1	9.6		12.1	8.6
	13.1	9.6		12.2	8.7
50	13.0	9.5	9+00	12.0	8.5
	13.0	9.5		12.0	8.5
	13.0	9.5		10.9	7.4
	13.1	9.6		10.8	7.3
	13.2	9.7		10.9	7.4
7+00	13.1	9.6	50	10.9	7.4
	13.3	9.8		11.2	7.7
	13.4	9.9		12.1	8.6

STAIN. 82400-WEST (4)

DIST	Sound	Elev
(35)	12.8	9.3
	12.9	9.4
10+00	13.2	9.7
	13.5	10.0
	13.4	9.9
	13.2	9.7
	13.2	9.7
50	13.0	9.5
	13.0	9.5
	13.1	9.6
	13.0	9.5
	12.8	9.3
11+00	12.4	8.9
	12.3	8.8
	12.4	8.9
9:50	12.2	8.7
-	12.4	8.9
50	12.4	8.9
	12.0	8.5
	12.0	8.5
	11.9	8.4
	11.8	8.3
12+00	11.5	8.0

10-13-60

STAN. 84400: 0400 = 11.12.150			SOUND WEST		
DIST	Sound	ELEV	DIST	Sound	ELEV
0400			(35)	12.5	9.0
			50	12.1	8.6
				12.6	9.1
				12.0	8.5
	1.9	+1.6		12.0	8.5
50	4.7	-1.2		11.8	8.3
	9.4	5.9	3400	11.9	8.4
10:00	11.0	7.5		11.9	8.4
	11.1	7.6		11.9	8.4
	11.7	8.2		11.4	7.9
1400	11.9	8.4		11.4	7.9
	11.3	7.8	50	11.4	7.9
	11.2	7.7		11.4	7.9
	11.2	7.7		11.7	8.2
	11.3	7.8		11.2	7.7
50	11.3	7.8		11.2	7.7
	11.8	8.3	4400	11.2	7.7
	11.8	8.3		11.2	7.7
	11.5	8.0		11.0	7.5
	11.9	8.4		11.0	7.5
2400	11.9	8.4		10.8	7.3
	12.2	8.7	50	11.1	7.6
	12.2	8.7		11.3	7.8
	12.5	9.0		11.2	7.7

STAN. 84400 - WEST			SOUND WEST		
DIST	Sound	ELEV	DIST	Sound	ELEV
(35)	11.9	8.4	(35)	11.1	7.6
	12.8	9.3		11.3	7.8
5400	12.3	8.8	50	11.5	8.0
	12.0	8.5		11.1	7.6
	11.6	8.1		11.2	7.7
	11.4	7.9	10:05	11.2	7.7
	11.0	7.5		11.2	7.7
50	11.0	7.5	8400	11.0	7.5
	10.8	7.3		11.3	7.8
	10.8	7.3		11.2	7.7
	10.8	7.3		11.0	7.5
	11.0	7.5		11.0	7.5
6400	11.2	7.7	50	11.5	8.0
	11.2	7.7		11.8	8.3
	11.7	8.2		11.9	8.4
	11.7	8.2		12.0	8.5
	12.1	8.6		12.3	8.8
50	12.1	8.6	9400	12.3	8.8
	12.0	8.5		12.5	9.0
	12.0	8.5		12.5	9.0
	11.9	8.4		12.2	8.7
	11.5	8.0		12.0	8.5
7400	11.1	7.6	50	11.8	8.3
	11.3	7.8		11.9	8.4
	11.2	7.7		12.0	8.5

STAIN 84+00 - WEST 10-13-60

DIST SOUND ELEV

(35)	13.0	9.5
	13.0	9.5
10+00	13.2	9.7
	13.7	10.2
	14.1	10.6
	14.8	11.3
	14.8	11.3
50	14.8	11.3
	15.0	11.5
	15.0	11.5
	15.0	11.5
	15.0	11.5
11+00	14.9	11.4

NOTE: SEC'S CONTD. NLY IN FB

136 + 133

10-14-60

STAIN 90+00:01+00 = W. 11, 790 ; SOUND WEST

DIST SOUND ELEV DIST SOUND ELEV

3+00	11.1	7.3
(38)	11.2	7.4
	11.2	7.4
2:15	11.2	7.4
	10.6	6.8
50	9.9	6.1
	10.0	6.2
	10.1	6.3
	10.4	6.6
	10.4	6.6
4+00	10.7	6.9
	11.0	7.2
	11.3	7.5
	11.7	7.9
	11.3	7.5
50	11.4	7.6

10-14-60

STA. N. 93400' CHD = W. 11,730 SOUND WEST

	Dist	Sound	Elev.		Dist	Sound	Elev.
	2+00	13.0	9.1	(39)	11.3	7.4	
	3+00	12.8	8.9		11.2	7.3	
	(39)	12.3	8.4	50	11.1	7.2	
		12.7	8.8		11.3	7.4	
	2:25	13.2	9.3		11.2	7.3	
		13.3	9.4		11.2	7.3	
	50	13.0	9.1		12.9	9.0	
		12.9	9.0	6+00	13.8	8.9	
		12.7	8.8				
		12.8	8.9				
		12.8	8.9				
4+00	12.8	8.9					
	12.8	8.9					
	12.8	8.9					
	12.1	8.2					
	12.7	8.8					
50	12.5	8.6					
	12.9	9.0					
	13.1	9.2					
	12.8	8.9					
	12.4	8.5					
5+00	11.5	7.6					
	11.7	7.8					
	11.5	7.6					

STA. N. 94400' CHD = W. 11,660 SOUND WEST

	Dist	Sound	Elev.		Dist	Sound	Elev.
	3+00	13.3	9.3		10.5	6.5	
	(40)	13.2	9.2	50	11.5		
		13.2	9.2		13.0		
	2:40	12.3	8.3				
		12.6	8.6				
	50	12.6	8.6				
		12.4	8.4				
		12.8	8.8				
		12.7	8.7				
		12.8	8.8				
4+00	12.8	8.8					
	12.1	8.1					
	11.8	7.8					
	10.2	6.2					
	10.5	6.5					
50	10.4	6.4					
	11.0	7.0					
	11.2	7.2					
	11.0	7.0					
	10.1	6.1					
5+00	10.2	6.2					
	10.2	6.2					
	10.2	6.2					
	10.2	6.2					

10-14-60

STA. N. 96+00; O+100=W. 11, 630; SOUND WEST

Dist Sound Elev Dist Sound Elev

2+20 12.8 8.7 (4.1) 10.9 / 6.8

(4.1) 13.0 8.9 (4.1) 11.0

13.1 9.0 11.2

50 13.7 9.6 11.2

2+50 13.8 9.7 5+00 11.1

13.6 9.5 10 11.9

13.2 9.1 13.3

12.3 8.2 13.9

3+00 11.9 7.8

11.8 7.7

11.3 7.2

12.5 8.4

12.3 8.2

50 12.1 8.0

11.8 7.7

11.1 7.0

10.9 6.8

10.7 6.6

4+00 10.6 6.5

11.1 7.0

11.0 6.9

10.5 6.7

10.4 6.3

50 10.3 6.2

10-18-60

STA. N. 102+00; O+100=W. 11, 450; SOUND WEST

Dist Sound Elev Dist Sound Elev

2+50 10.5 8.0

(2.5) 11.2 8.7

10.7 8.2

11.2 8.7

10.6 8.1

3+00 11.4 8.9

10.9 8.4

11.30 11.1 8.6

10.9 8.4

11.9 9.4

50 11.5 9.0

11.4 8.9

11.0 8.5

11.3 8.8

11.3 8.8

4+00 11.8 9.3

5 STA. N. 104+00; CADD=W. 11,370 SOUND WEST

DIST SOUND ELEV DIST SOUND ELEV

5+00 10.4 7.7

10.7 8.0

(2.7) 10.0 7.3

60 9.5 6.8

9.8 7.1

50 9.5 6.8

11:20 9.8 7.1

~ 10.0 7.3

10.0 7.3

10.2 7.5

6+00 10.1 7.4

10.1 7.4

10.1 7.4

10.3 7.6

10.4 7.7

50 10.3 7.6

10-18-60

(9)

5 STA. N. 106+00; CADD=W. 11,260 SOUND WEST

DIST SOUND ELEV DIST SOUND ELEV

7+10 10.3 7.4

(2.9) 10.3 7.4

10.4 7.5

11:10 10.5 7.6

50 10.4 7.5

10.4 7.5

10.5 7.6

10.8 7.9

10.9 8.0

8+00 10.8 7.9

11.0 8.1

9+30 11.9 9.0

9.8 6.9

50 9.6 6.7

9.5 6.6

9.7 6.8

80 9.7 6.8

9.7 6.8

10+00 10.0 7.1

10.1 7.2

10.3 7.4

10.6 7.7

11.0 8.1

TRIANGULATION OF MON. "HOT DOG"

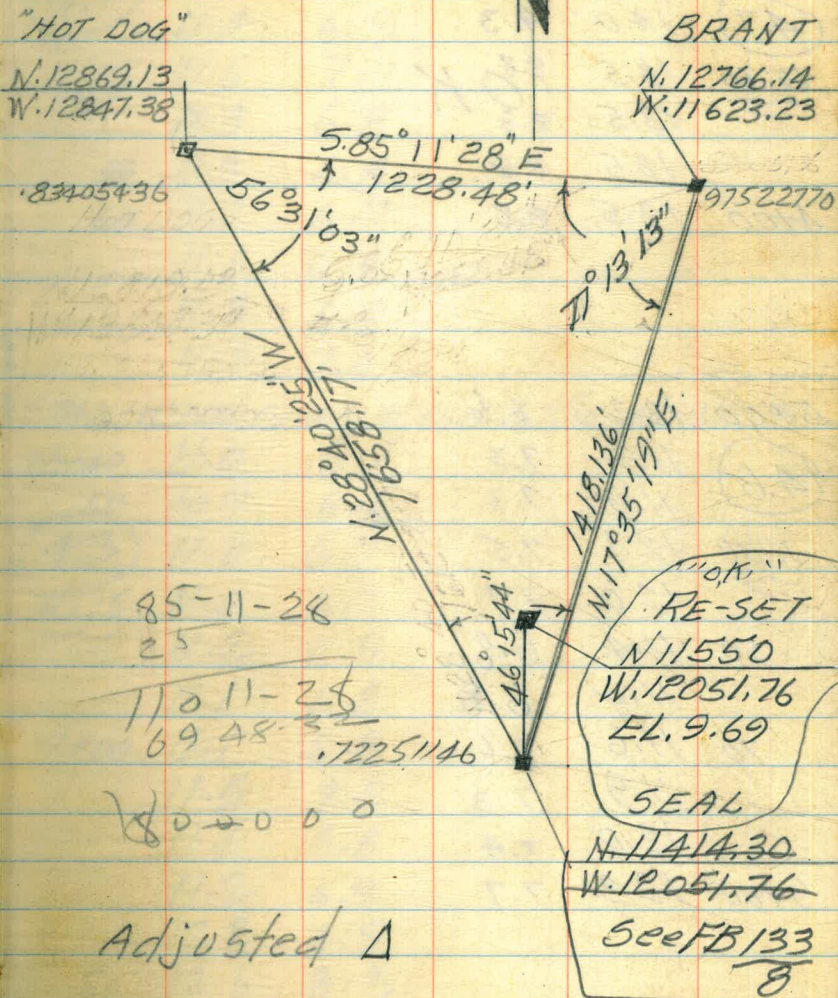
STA.	OBJECT	ANGLES
		1.46°16'00"
	HOT DOG	2.92°31'40"
SEAL	R 7	6.277°34'18"
	BRANT	AV. 46°15'43"
		1.56°31'00"
	BRANT	2.113°02'00"
HOT DOG	R 7	6.339°06'18"
	SEAL	AV. 56°31'03"
		1.77°13'15"
	SEAL	2.154°26'20"
BRANT	R 7	6.463°19'18"
	HOT DOG	AV. 77°13'13"

N132+00; W.12693.10	55.17
N131+50; W.12716.42	"
N131+00; W.12739.73	"
N.130+50; W.12763.05	"
N.130+00; W.12786.36	"
N.129+50; W.12809.68	"
N.129+00; W.12832.99	55.17
N.128+69.13; W.12847.38	34.06
N.128+50; W.12856.30	21.11
N.128+00; W.12879.61	55.17
N.127+50; W.12902.93	"
N.127+00; W.12926.24	"
N.126+50; W.12949.56	55.17
N.126+00; W.12972.87	

N.25°00'E
 Baseline
 "HOT DOG"
 ISLAND
 HOT DOG

10-18-60

- Stampex
- Wentworth
- Elmore
- Hecht



10-20-60

STAN. 108+00; 0+00 = W. 11,160 ; SOUND WEST

DIST	SOUND	ELEV	DIST	SOUND	ELEV
3+40	13.2	8.5			
50	13.8	9.1			
(4.7)	14.0	9.3			
10:55	13.5	8.8			
	13.5	8.8			
	13.5	8.8			
4+00	13.5	8.8			

5+00	13.2	8.6
(4.6)	11.9	7.3
	11.9	7.3
11:00	12.1	7.5
	12.0	7.4
50	11.4	6.8
	11.4	6.8
70	11.6	7.0
	11.9	7.3
	12.0	7.4
6+00	12.3	7.7

STAN. 108+50; 0+00 = W. 11,140 ; SOUND WEST

DIST	SOUND	ELEV	DIST	SOUND	ELEV
5+00	11.2	6.7	6+00	12.0	7.5
(4.5)	11.2	6.7			
	11.4	6.9			
11:05	11.6	7.1			
	11.3	6.8			
50	11.3	6.8			
60	11.2	6.7			
	11.1	6.6			
	11.3	6.8			
	11.5	7.0			

STAN. 110+00; 0+00 = W. 11,060 ; SOUND WEST

10+40	11.0	6.7
50	10.9	6.6
(4.3)	11.0	6.7
11:15	11.0	6.7
	11.2	6.9
	11.1	6.8
11+00	11.1	6.8
	11.5	7.2
	11.1	6.8
	11.2	6.9
	12.8	8.5
50	12.6	8.3

10-20-60

STA. N. 113+00; O.H.D. = W. 10,910; SOUND WEST

Dist Sound Elev Dist Sound Elev

3+60	12.1			11.7	
(3.9)	11.0			11.6	
11:30	10.9	7.0	50	11.6	
—	11.1			11.7	
4+00	11.4			11.8	
	11.7			11.8	
	11.6			11.9	

STA. N. 113+50; O.H.D. = W. 10,890; SOUND WEST

3+00 11.7 6+00 11.0

(3.8) 11.9 11.0

12.0 11.0

11:35 12.1 11.0

— 12.4 10.9

50 12.5 50 10.9

11.0 10.9

11.0 11.0

10.9 11.2

10.9 11.5

4+00 11.0 7+00 11.3

11.2

11.3

11.0

11.0

50 11.0

11.1

OK

(22)

STA. N. 114+00; O.H.D. = W. 10,860; SOUND WEST

Dist Sound Elev Dist Sound Elev

3+30	11.6			4+00	10.8
(3.5)	10.8				11.0
50	10.4	6.9			11.2
	10.6				11.1
11:45	10.5	7.0			10.8
—	10.6			50	11.0
	10.8				

STA. N. 115+00; O.H.D. = W. 10,810; SOUND WEST

3+00 10.5 10.2 6.8

(3.4) 10.8 10.9

10.6 11.9

11:50 9.8 6.4 4+00 10.5

— 10.0 6.6

50 10.2 6.8

10.4 7.0

10-24-60

STA. N. 116+00; O.H.D. = W. 10,760; SOUND WEST

7+50 15.5 (6.0) 15.7 9.1

(6.0) 16.1 13.3 7.3

15.9 50 13.3 7.3

10:00 15.9 60 13.3 7.3

— 15.9 13.2 7.2

8+00 15.9 13.5 7.5

16.0 15.1 9.1

15.9 9.9 9+00 15.9 9.9

0.99
 10.0
 9.9

10-24-60

STA. N. 116+50.0+100 = W. 12.052; SOUND WEST

DIST	Sound	Elev	DIST	Sound	Elev
1+30	15.8	} ok	(6.1)	14.3	} ok
(6.1)	15.3		2+00	14.4	
50	15.0			14.6	
10:25	14.8			14.7	
<u>11:25</u>	14.5			15.0	
	14.3			15.0	
			50-15.3		

STA. N. 117+00.0+100 = W. 10.720; SOUND WEST

DIST	Sound	Elev	DIST	Sound	Elev
15+00	15.1	} ok	19+80	15.5	} ok
(6.3)	15.0		(6.3)	15.3	
	15.1		20+00	15.2	
<u>11:00</u>	14.9			15.1	
	14.8		<u>11:05</u>	15.1	
50	14.8		<u>11:05</u>	14.9	
	15.0			14.9	
	15.1		50	14.8	
	14.9		60	15.1	
	14.8			15.1	
16+00	14.8		15.3		
			14.9		
			21+00	15.6	

13

STA. N. 118+00.0+100 = W. 10.670; SOUND WEST

DIST	Sound	Elev	DIST	Sound	Elev
20+00	15.1	} ok	50	15.0	} ok
(6.2)	15.0		(6.2)	15.0	
	15.0			15.1	
11:25	15.0			15.1	
<u>11:25</u>	14.9			15.3	
				21+00	

STA. N. 118+50.0+100 = W. 10.650; SOUND WEST

DIST	Sound	Elev	DIST	Sound	Elev	
7+50	13.5	} ok	19+50	14.9	} ok	
(6.2)	13.3		(6.2)	15.0		
	13.3			15.1		
11:35	13.1		6.9	11:40		15.0
<u>11:35</u>	13.2		ok	<u>11:40</u>		14.9
8+00	13.1		6.9	20+00		15.0
	13.3					15.0
	13.7					14.9
	14.0					14.7
	15.1					14.6
50	15.2		50	14.5		
				14.5		
				14.5		
				14.5		
				14.6		
			21+00	14.5		

10-24-60

STA. N. 119+00.0+00 = W. 10,620 ; SOUND WEST

Dist	Sound	Elev	Dist	Sound	Elev
10+50	13.5		18+00	12.7	
(5.3)	13.4		(5.3)	12.4	
	13.3			12.4	
11:00	12.9		11:05	12.4	
<u>11:00</u>	12.9		<u>11:05</u>	12.7	
11+00	12.8		50	12.4	
	12.8			12.6	
	12.2			15.0	
	12.6			15.1	
	13.2			14.3	
50	13.4		19+00	14.2	
				14.2	
				14.1	
			50	14.1	
				14.1	
			50	14.0	
				13.8	
				13.9	
				13.9	
				13.9	
			20+00	13.8	

STA. N. 119+50.0+00 = W. 10,590 ; SOUND WEST

Dist	Sound	Elev	Dist	Sound	Elev
18+50	13.3		(4.9)	13.8	
(5.0)	13.4		21+00	13.5	
	13.2			13.2	
11:20	13.2			13.2	
<u>11:20</u>	13.0			13.3	
19+00	13.7			13.3	
	13.9		50	13.3	
	13.7			13.5	
	14.0		<u>11:25</u>	13.9	
	14.1		<u>11:25</u>	13.8	
50	14.1			13.6	
	13.8		22+00	13.8	
	13.6		10	13.8	
	13.9			14.0	
	13.7			11.7	6.8
20+00	13.3			11.9	7.0
	13.3		50	11.9	7.0
	13.5			12.0	
	13.5			12.6	
	13.4			13.0	
50	13.2			13.1	
	13.2		23+00	12.1	
	13.6			12.0	
	13.4			12.3	

10-24-60

STAN. 120+00; 0+00=W/10.570; SOUND WEST

	DIST	Sound	ELEV		DIST	Sound	ELEV
	19+00	12.7	8.2		22+00	13.0	8.6
	(45)	12.5	8.0		(44)	13.2	8.8
		12.6	8.1			13.2	8.8
	11:45	13.6	9.1		11:50	13.3	8.9
		12.8	8.3			13.6	9.2
	50	12.7	8.2		50	11.3	6.9
		13.3	8.8			11.3	6.9
		13.2	8.7			11.3	6.9
		13.1	8.6			11.4	7.0
		13.1	8.6			11.8	7.4
	20+00	13.1	8.6		23+00	12.1	7.7
		13.0	8.5			12.3	7.9
		12.8	8.3				
		12.9	8.4				
		12.7	8.2				
	50	12.9	8.4				
		12.8	8.3				
		13.0	8.5				
		12.9	8.4				
		12.9	8.4				
	21+00	13.1	8.6				

(15)

STAN. 120+50; 0+00=W/10.540; SOUND WEST

	DIST	Sound	ELEV		DIST	Sound	ELEV
	18+50	12.8			(41)	12.9	
					(41)	12.7	
					21+00	12.8	
						12.7	
						12.4	
						12.5	
	19+00	12.7				12.4	
		12.4				12.3	
					50	12.3	
						12.3	
						12.4	
						12.5	
						12.4	
	50	12.1				12.4	
		12.1				12.3	
		11.9			22+00	12.4	
		12.0				12.5	
		12.2				12.4	
	20+00	13.2				12.3	
		12.9			50	12.3	
		13.2					
		13.1					
		13.0					
	50	13.0					
		13.0					
		13.0					
		12.9					

10-24-60

STAN. 121400; 0100 = W. 10,520; SOUND WEST

Dist	Sound	Elev	Dist	Sound	Elev
19+00	12.1		(37)	12.0	
(37)	12.0		50	12.0	
	12.0		50	12.1	
2130	12.0			12.2	
	12.0			12.4	
50	12.0			12.0	
	12.1		22+00	12.0	
	11.8		22+00	12.0	
	11.7			12.0	
	11.8			12.0	
20+00	11.3			12.0	
20+00	11.2		50	12.0	
	11.0		50		
50	12.7				
	12.5				
50	12.0				
50	12.1				
50	12.3				
	12.4				
	12.7				
21+00	12.7				
21+00	12.5				
	12.2				
	12.0				

OK

OK

(78)

STAN. 121450; 0100 = W. 10,490; SOUND WEST

Dist	Sound	Elev	Dist	Sound	Elev
7+50	10.9		18+50	10.7	
(34)	10.6		(33)	12.3	
	10.8			11.7	
2145	10.5		2150	11.7	
	10.4			11.7	
8+00	9.9	6.5	19+00	11.8	
	10.5			11.9	
	11.1			11.8	
	11.2			11.6	
	11.3		50	11.6	
				11.2	
10+50	11.0			11.1	
	11.7		20+00	11.1	
	11.1			10.9	
	11.1			10.9	
	11.1			11.1	
	11.1		50	10.3	
11+00	10.9			11.0	
	10.5		50	11.0	
	10.2	6.8		11.5	
	10.0	6.6	21+00	11.5	
	9.8	6.4		11.4	
50	10.2	6.8		11.5	
	10.4			11.7	
	10.5		50	11.6	
	10.9			11.6	
	11.0			11.6	
				11.6	
				11.5	
				11.5	
			50	11.6	
			60	11.6	
				11.6	

OK

OK

OK

OK

10-27-60

STAN. 122+00; 0+00 = W. 10,470 SOUND WEST					
Dist	Sound	Elev	Dist	Sound	Elev
12+30	13.5	8.6	(49)	12.9	8.0
(49)	12.7	1.8		13.4	8.5
50	12.0	1.1		13.5	8.6
	12.3	1.0		13.7	8.8
1:35	12.3	1.4		21+00	13.8
	12.5	1.6			8.9
18+70	13.7	8.8		13.6	8.7
	13.1	8.2		13.6	8.7
	13.2	8.3		12.9	8.0
19+00	12.7	7.8		13.1	8.2
	13.2	8.3	50	13.1	8.2
	13.4	8.5		13.3	8.4
	13.3	8.4		13.3	8.4
	13.3	8.4		13.1	8.2
50	13.0	8.1		13.1	8.2
	13.0	8.1	22+00	13.3	8.4
1:40	13.1	8.2		13.3	8.4
	13.2	8.3		13.7	8.8
	13.0	8.1		13.5	8.6
20+00	13.0	8.1	40	13.0	8.1
	13.0	8.1	50	13.3	8.4
	13.1	8.2		13.2	8.3
	12.5	7.6		13.4	8.5
	12.6	7.7			
50	12.7	7.8			

(2)

STAN. 122+50; 0+00 = W. 10,440 SOUND WEST					
Dist	Sound	Elev	Dist	Sound	Elev
12+50	13.9		(51)	13.5	
(50)	13.9			13.7	
	13.9		20+00	13.5	
	13.1			13.5	
	13.1			13.6	
13+00	12.9			13.4	
	12.9			13.1	
1:55	12.3		50	12.8	
	12.2			12.9	
	12.1			13.1	
50	11.8	6.8		13.9	
50	11.8	6.8		14.0	
	12.3			14.0	
18+50	12.2		21+00	14.0	
(51)	13.2			13.7	
	13.8			13.7	
	13.6		2:05	13.6	
19+00	13.3			13.9	
19+00	13.9		50	14.1	
	14.2			14.2	
2:00	13.9			14.1	
	13.9			14.1	
	13.4			13.8	
50	13.7		22+00	13.9	
	13.5			13.8	
	13.6			13.8	
				13.7	
				13.7	
				13.7	
				13.7	
				13.9	

ELY. CR. PT. 10-26-60

STA. N. 123400, 0+00 = W. 14,070; SOUND EAST

DIST	SOUND	ELEV	DIST	SOUND	ELEV
10+00	13.7		(4.0)	11.6	
(39)	14.0		50	11.5	
	15.2			11.5	
<u>9:45</u>	15.1			11.2	
	14.5			11.5	
50	14.8			11.8	
	14.0		13+00	11.9	
	13.2			11.9	
	13.0			12.2	
	13.1			13.1	
11+00	13.0			12.3	
	13.1		50	13.0	
	13.2			13.0	
	13.0		<u>9:50</u>	13.0	
	12.8			12.4	
50	12.4			12.9	
12+00	12.0		14+00	12.9	
	12.0			12.9	
	11.7			12.7	
	11.9			12.7	
12+00	11.7			12.8	
	11.4		50	12.9	
	11.4			13.0	
	11.6			13.0	

STA. N. 123400 - EAST

DIST SOUND ELEV DIST SOUND ELEV

DIST	SOUND	ELEV	DIST	SOUND	ELEV
(40)	13.0		(40)	12.9	
	13.0			13.0	
15+00	13.2		50	13.0	
	13.2				
	13.1				
	13.1				
50	13.4				
	13.6				
	12.3				
	12.5				
	12.5				
16+00	12.0				
	12.1				
	12.4				
	12.7				
	12.8				
50	12.7				
	13.0				
	13.0				
	12.8				
	12.9				
17+00	13.0				
	13.0				
	12.4				

0+00 = W. 10,420 (CARR)

10-27-60 SOUND WEST

DIST	SOUND	ELEV
5+00	12.9	
(52)	13.0	
	12.8	
2:15	12.3	
	12.3	
50	12.0	6.8
	11.9	6.7
	13.0	
	13.2	
	13.7	
6+00	13.4	

10-27-60

STA. N. 123+50, 0+00 = W. 10,390, SOUND WEST

Dist Sound Elev Dist Sound Elev

7+50 12.6

(5.2) 12.7

12.8

2:25 12.8

12.9

8+00 12.9

13.2

14.1

14.2

14.3

50 13.8

4'
010-26-60, ELY. CROWN PT. (722)
0+00 = W. 14,050, SOUND EAST

10+00 14.5 10.4 13.1 9.0

(4.1) 14.6 10.5 12.9 8.8

14.6 10.5 12.7 8.6

10:05 14.5 10.4 50 12.6 8.5

14.1 10.0 12.1 8.0

50 13.5 9.4 11.7 7.6

12.6 8.5 11.7 7.6

12.6 8.5 11.5 7.4

12.5 8.4 12+00 11.5 7.4

13.1 9.0 11.5 7.4

11+00 13.0 8.9 11.5 7.4

13.1 9.0 11.4 7.3

STA. N. 123+50 - EAST

Dist Sound Elev Dist Sound Elev

11.5 7.4 13.2 9.1

50 11.4 7.3 15+00 13.2 9.1

11.0 6.9 (4.1) 13.4 9.3

11.0 6.9 7:10 13.2 9.1

11.1 7.0 12.9 8.8

11.0 6.9 13.6 9.5

13+00 11.6 7.5 50 13.6 9.5

11.3 7.2 12.9 8.8

13.0 8.9 12.7 8.6

13.2 9.1 12.6 8.5

12.9 8.8 12.5 8.4

50 12.7 8.6 16+00 12.7 8.6

12.7 8.6 12.6 8.5

12.7 8.6 12.6 8.5

13.0 8.9 12.8 8.7

12.8 8.7 13.0 8.9

14+00 12.8 8.7 50 13.0 8.9

12.8 8.7 12.8 8.7

12.9 8.8 12.9 8.8

12.9 8.8 13.0 8.9

13.2 9.1 13.0 8.9

50 13.2 9.1 17+00 13.0 8.9

13.1 9.0 12.9 8.8

13.1 9.0 12.9 8.8

13.5 9.4 13.0 8.9

STAN. 123+50 - EAST 10-26-60

Dist	Sound	Elev
(4.1)	12.9	8.8
17+50	13.1	9.0
	11.8	7.7
	11.9	7.8
	12.0	7.9
	12.5	8.4
18+00	12.6	8.5

10-27-60

(20)

STAN. 124+00: 0400 = W. 10,370; SOUND WEST

Dist	Sound	Elev	Dist	Sound	Elev
7+50	12.6	7.4	(52)	14.1	8.9
(52)	12.1	6.9	'	14.1	8.9
	12.8	7.6	21+00	14.1	8.9
	12.6	7.4		13.9	8.7
	12.7	7.5		14.3	9.1
8+00	12.3	7.1		14.1	8.9
	12.2	7.0		14.1	8.9
2135	12.2	7.0	50	14.1	8.9
~	12.9	7.7		14.1	8.9
	14.6	9.4		14.0	8.8
50	14.6	9.4		14.0	8.8
19+50	14.7	9.5		14.1	8.9
(52)	14.9	9.7	22+00	14.0	8.8
	14.7	9.5		14.1	8.9
	14.8	9.6		14.1	8.9
	14.3	9.1		14.1	8.9
20+00	14.2	9.0		14.0	8.8
	14.1	8.9	50	14.1	8.9
2140	14.2	9.0	60	14.3	9.1
~	14.2	9.0		14.1	8.9
	14.3	9.1		14.2	9.0
50	14.0	8.8		14.3	9.1
	14.3	9.1	23+00	14.3	9.1
	14.3	9.1		14.3	9.1

10-28-60

STA. N. 124+50; 0400 = W. 10,340; SOUND WEST

DIST	SOUND	ELEV	DIST	SOUND	ELEV
4+00	12.4		(4.0)	14.0	
(4.0)	12.8			13.8	
	12.5			13.5	
<u>1:25</u>	12.1		50	13.2	
	12.0			12.7	
50	12.0			12.1	
	12.0			10.8	6.8
	12.0			10.9	6.8
	12.0		14+00	10.9	6.9
	12.0			11.0	7.0
5+00	12.0		18+50	13.0	
7+00	12.3		(4.2)	13.2	
(4.0)	12.6			13.0	
<u>1:30</u>	12.1			13.0	
	11.9		19+00	12.8	
	11.9			12.8	
50	11.9		<u>1:40</u>	12.4	
12+50	12.4			12.2	
	13.2			12.4	
	11.9		50	13.0	
	13.3			13.0	
	13.1			14.4	
13+00	13.9			14.2	
	14.0			13.1	

STA. N. 124+50 - WEST

DIST SOUND ELEV

20+00 13.1

(4.2) 13.0

13.0

13.0

13.0

13.0

50 13.0

13.0

13.0

12.7

21+00 12.3

12.0

12.0

12.0

12.0

50 12.0

12.5

13.5

13.5

13.5

22+00 13.0

(2)

10-18-60

STAN. 125+00; CHOO = W. 10,320 SOUND WEST

Dist Sound Elev Dist Sound Elev

19+50	13.0	(4.4)	12.9
(4.4)	13.4	22+00	12.6
	13.7		12.4
2100	13.9		12.7
	13.9		12.8
20+00	13.7		13.1
	13.4	50	13.5
	13.4		13.3
	13.0		13.1
	13.1		12.8
50	13.1		12.4
	13.2	23+00	12.4
	13.1		
	13.0		
	12.9		
21+00	13.1		
	13.1		
	13.0		
	12.9		
	12.9		
50	12.6		
	12.8		
	12.9		
	12.9		

(22)

STAN. 125+50; CHOO = W. 10,290; SOUND WEST

Dist Sound Elev Dist Sound Elev

19+50	13.3	(4.6)	13.3
(4.6)	14.1	22+00	13.1
	14.1		12.9
2120	13.9		12.8
	13.8		12.9
20+00	13.7		12.8
	13.4	50	12.9
	13.4		12.9
	13.3		13.2
	13.3		13.3
50	13.0		13.9
	13.1	23+00	14.1
	13.2		
	13.3		
	13.5		
21+00	13.9		
	13.3		
	13.1		
	13.0		
	13.0		
50	13.0		
	13.1		
	13.3		
	13.0		

(Countd From) 10-27-60
Pg. 36

Dist	Sound	Elev	Dist	Sound	Elev
4+50	13.6			13.7	
(47)	13.3		8+00	13.6	
50	13.3			12.1	
1+10	13.3		3+00	13.0	
1+20	13.3			13.1	
5+00	13.2			13.3	
	13.4		50	13.4	
1+00	13.4			13.2	
	13.4		50	13.2	
	13.6			13.0	
50	14.1			13.8	
	14.1		9+00	13.5	
50	14.1			12.3	
	14.2		1+00	13.2	
	14.1			13.2	
6+00	14.0			13.1	
	13.8		50	13.1	
2+00	13.8			13.1	
	12.6		5+00	13.5	
	12.4			13.6	
50	12.4			13.7	
	12.3		50	13.5	
50	12.3			12.9	
	12.3			13.6	
				13.7	
			6+00	13.4	

(126.8 W)
(Brant 13/10)

(23)

STAN. 126+50; 0+00 = W. 11, 750; SOUND WEST
DIST SOUND ELEV DIST SOUND ELEV
6+50

O.K. 50

50

SEE PG 37

7+00

(136.8 W)
STAN. 127+00; 0+00 = W. 11, 760; SOUND WEST
6+50

O.K. PG

7+00

50

STAN. 128+50; 0+00 = W. 12800; SOUND EAST

DIST	SOUND	ELEV	DIST	SOUND	ELEV
0+30	1.5			12.7	
	2.7			12.6	
50	4.2		6+00	12.1	
(4.9)	6.4		3+00	12.0	
	10.4			12.1	
11:20	13.8			12.2	
	13.9			12.9	
1+00	14.0		50	13.7	
	14.0		50	13.9	OK
	13.5			13.9	
3+00	13.1			13.8	
	13.0			13.5	
50	13.0		7+00	13.2	
	13.0		4+00	13.2	
	12.9	OK		12.8	
50	12.8			3.1	
5+00	12.8			13.1	
2+00	12.8		50	11.6	6.7
	12.6		50	11.8	6.9
	12.4			12.2	
	12.4			12.4	
50	12.3			12.2	OK
50	12.3		6+00	12.0	
	12.3		5+00	12.5	

STAN. 128+50 - EAST

DIST SOUND ELEV DIST SOUND ELEV

DIST	SOUND	ELEV	DIST	SOUND	ELEV
	12.6			14.0	
	12.7			14.1	
11:25	13.0			14.2	
	13.1		11+00	14.4	
50	13.5		8+00	14.4	
(4.9)	13.9	OK		14.4	
	13.6			14.2	
	13.7			14.1	
	13.7			14.0	
6+00	13.4		50	13.9	OK
(5.0)	13.2			13.9	
	13.4			13.8	
11:50	13.0			13.9	
	12.8			14.1	
50	12.9		9+00	13.7	
	12.7			12.5	
	12.3	OK		12.9	
	12.4			13.1	
7+00	13.0			13.6	
7+00	13.0		50	13.1	
	13.0				
	12.9				
	13.5				
	14.4				
50	14.3				

10-26-60

STAN. 129400-0400 = W. 12770			SOUND EAST.		
DIST	SOUND	ELEV	DIST	SOUND	ELEV
0+00				13.4	
(5.0)			50	13.4	
	0.9			13.4	
11:35	2.2			13.8	
	3.3			13.9	
5 50	4.9			13.8	
	10.4		3+00	13.7	
	12.9			13.3	
	13.9			13.0	
	14.5			12.9	
1+00	14.4			13.2	
	14.5		5 50	13.3	
	14.5			13.2	
	14.6			13.0	
	14.4			13.1	
6 50	14.3			13.1	
	14.1		4+00	13.0	
	14.0		(5.0)	12.9	
	13.8			12.1	
	13.8		11:40	11.9	6.9
2+00	13.7			11.9	6.9
	13.8		7 50	12.2	
	13.7			12.6	
	13.3			12.7	

STAN. 129400-EAST

(25)

DIST	SOUND	ELEV	DIST	SOUND	ELEV
	12.9				
	13.2				
5+00	13.2				
	13.3				
	13.1				
	13.1				
	13.0				
	13.0		50	13.0	
	13.1				
	13.1				
	13.1				
	12.9				
	12.2		6+00	12.2	
	12.1				
	11.9	6.9			
	11.8	6.8			
	11.3	6.3			
	11.0	6.0	50	11.0	
	11.2	6.2			
	11.9	6.9			
	12.0				
	12.1				
	13.7		7+00	13.7	

STA. N. 129+50: 0+00 = W. 12,740 SOUND EAST			DIST SOUND ELEV		
0+00		13.5			
(5.3)	1.8	50 13.5			
<u>1:35</u>	2.4	13.4			
	3.4	13.7			
50	4.0	13.6			OK
	5.4	13.1			
	11.1	3+00 12.9			
	12.6	12.5			
	14.6	12.4			
1+00	15.0	12.5			
	13.6	50 12.2	6.9		
	13.7	12.3	7.0		
	13.6	12.5			
	13.5	12.6			OK
50	13.4	4+00 12.7			
	13.4	12.6			
	13.6	12.8			
	13.6	12.1	6.8		
	13.4	50 12.1	6.8		
	13.6	12.6			
	13.6	12.7			
	13.6	13.2			OK
	13.4	13.0			
2+00	13.5	12.7			
	13.6	5+00 12.9			
	13.5				
	13.6				

(CONTD PG. 39)

(NOT OOG- ISLAND)

STA. N. 130+00: 0+00 = W. 12,720 SOUND EAST			DIST SOUND ELEV		
0+00		12.0			6.7
		50 12.2			6.9
		12.3			7.0
	0.8	+4.5	12.3		7.0
	2.0	+3.3	12.6		7.3
50	3.0	+2.3	12.7		7.4
	4.0	+1.3	3+00 12.8		7.5
	4.0	+1.3	12.6		7.3
	4.1	+1.2	12.8		7.5
	4.2	+1.1	12.7		7.4
1+00	10.0	4.7	12.7		7.4
(5.3)	13.3	8.0	50 12.7		7.4
	13.9	8.6	12.7		7.4
14.5	14.4	9.1	12.7		7.4
	14.2	8.9	12.4		7.1
50	14.1	8.8	12.8		7.5
	13.8	8.5	4+00 12.9		7.6
	13.8	8.5	13.1		7.8
	13.4	8.1	13.2		7.9
	13.1	7.8	12.6		7.3
2+00	13.0	7.7	12.1		6.8
	12.9	7.6	50 12.2		6.9
	12.3	7.0	12.5		7.2
	12.1	6.8	12.7		7.4

STA. N. 130+00 - EAST

Dist Sound Elev Dist Sound Elev

	12.9	7.6
	13.1	7.8
5+00	13.3	8.0
	13.2	7.9
	13.3	8.0
	13.7	8.4
	13.3	8.0
50	13.4	8.1

8+00	14.4	9.2
	14.2	9.0

1:50 14.3 9.1

14.3 9.1

5.2 14.6 9.4

50 14.7 9.5

13+00 12.7 7.5

12.4 7.2

12.0 6.8

12.1 6.9

12.1 6.9

50 12.3 7.1

STA. N. 130+00 - EAST

Dist Sound Elev Dist Sound Elev

STA. N. 130+50 - EAST = W. 12,680 SOUND EAST

DIST	Sound	Elev	DIST	Sound	Elev
0+00				12.4	
			50	12.9	
2:00				12.7	
<u>2:00</u>	1.0			12.7	
	2.2			12.8	
50	2.2			12.9	
(5.2)	2.2		3+00	13.0	
	2.7			13.6	
	4.0			13.9	
	6.5			13.9	
1+00	12.1			13.9	
	12.7		50	13.9	
	12.9		(5.2)	13.7	
	12.5		2:05	13.4	
	12.3		<u>2:05</u>	13.4	
50	12.4			13.6	
	12.4		4+00	13.6	
	12.3			13.0	
	12.3			13.0	
	12.4			13.0	
2+00	12.1	6.9		13.3	
	12.2		50	13.6	
	12.3			13.9	
	12.3			13.8	

STA. N. 130+50 - EAST (28)

DIST	Sound	Elev	DIST	Sound	Elev
				14.0	
				14.0	
5+00	13.9				
7+50	14.6				
(5.2)	14.7				
(5.2)	14.7				
2:05	14.4				
<u>2:05</u>	14.4				
8+00	14.1				
	14.4				
	14.9				
	15.0				
	15.0				
50	13.0				
12+00	15.3				
(5.2)	15.5				
(5.2)	13.5				
2:10	12.8				
<u>2:10</u>	12.2				
50	12.2				
	12.0	6.8			
	12.1	6.9			
	12.3				
	12.7				
13+00	12.7				

STA. N. 130+50 - EAST

DIST SOUND ELEV DIST SOUND ELEV

STA. N. 131+00:0+00 = W. 12,650; SOUND EAST

DIST SOUND ELEV DIST SOUND ELEV

0+00

(5) 13.0

50 13.0

0.6 12.8

0.7 12.9

1.1 12.6

50 1.3 12.8

1.7 3+00 13.0

~~2.25~~ 2.1 13.1

~~4.5~~ 13.4

9.9 13.5

1+00 11.9 13.6

12.0 50 13.6

(5.1)

12.3 13.5

12.6 13.1

12.6 13.3

50 12.7 12.8

12.7 4+00 12.6

12.7 13.0

12.9 13.0

12.9 13.2

2+00 13.0 13.3

12.9 50 13.3

12.8 13.5

12.8 13.5

0.4

0.4

STA. N. 131+00 - EAST

DIST SOUND ELEV DIST SOUND ELEV

(5.1)	13.4	} O.K.
	13.4	
5+00	13.0	
	13.0	
	12.6	
	12.6	
	12.7	
30	12.7	

STA. N. 131+50.0400 = W. 12,620, SOUND EAST

DIST SOUND ELEV DIST SOUND ELEV

0+00					12.8	} O.K.
				50	12.7	
	0.1				12.5	
2:30	1.8				12.7	
	2.1				12.7	
50	2.1				13.0	
(5.1)	4.0			3+00	13.1	
	10.3				13.3	
	12.1	} O.K.			13.3	
	12.8					
1+00	12.9					13.7
	12.8				50	13.5
	12.7					13.3
	12.4					13.3
	12.8					13.2
50	12.4					12.8
	12.5					12.9
	12.5				4+00	13.1
	12.5			(5.1)	13.1	
	12.2			2:35	13.3	
2+00	12.3				13.5	
	12.7				13.6	
	12.7			50	13.6	
	12.7				13.4	
	12.7				13.4	

STA. N. 131450 - EAST

DIST SOUND ELEV DIST SOUND ELEV

	13.2	
	13.0	
5+00	13.1	
	12.9	
	13.0	
	13.7	
+50	13.0	
	12.9	
	12.9	
	12.7	
	12.8	
6+00	12.8	
	12.1	
	11.9	6.9
	11.7	6.7
	11.7	6.7
	14.8	
50	15.1	

7+50	14.4	
	14.5	
2:40	14.4	
	14.2	
(5.0)	14.3	
8+00	14.2	
	14.4	
	14.3	
	13.5	
	13.2	
56	13.8	

STA. N. 132+00; G100 = W. 12,620; SOUND EAST

DIST SOUND ELEV DIST SOUND ELEV

0+00			12.4	7.4	
			50	12.3	7.3
				12.2	7.2
2:50	1.2	+3.8		12.1	7.1
	1.6	+3.4		12.5	7.5
50	1.9	+3.1		12.7	7.7
	2.3	+2.7	3+00	12.8	7.8
(5.0)	5.2	0.2		12.9	7.9
	11.4	6.4		13.1	8.1
	12.1	7.1		13.6	8.6
1+00	12.1	7.1		14.0	9.0
	12.3	7.3	50	14.2	9.2
	12.3	7.3		14.3	9.3
	12.4	7.4		14.7	9.7
	12.8	7.8		13.9	8.9
50	12.9	7.9		13.8	8.8
	12.6	7.6	4+00	13.6	8.6
	12.5	7.5	(4.9)	13.8	8.8
	12.4	7.4		14.0	9.1
	12.2	7.2	2:55	14.0	9.1
2+00	12.3	7.3		14.0	9.1
	12.6	7.6	50	14.0	9.1
	12.8	7.8		13.9	8.0
	12.7	7.7		13.5	8.6

STA. N. 132+00 - EAST

	Dist	Sound	Elev	Dist	Sound	Elev
	6+00	12.6	8.7			
		12.2	8.3			
		11.6	6.8			
3:00		11.8	7.0			
<u>50</u>		11.8	7.0			
	50	12.0	7.2			
		13.0	8.2			
(4.8)		13.1	8.3			
		13.8	9.0			
		14.7	9.9			
7+00		14.3	9.5			
8+00		14.1	9.3			
		13.8	9.0			
		14.0	9.2			
3:00		13.8	9.0			
<u>50</u>		14.4	9.6			
	50	14.0	9.2			
(4.8)		14.2	9.4			
		14.2	9.4			
		14.3	9.5			
		13.8	9.0			
9+00		14.0	9.2			

10-28-60

STA. N. 132+50, 0+00 - W. 9940; SOUND WEST

	Dist	Sound	Elev	Dist	Sound	Elev
	4+00	11.6	6.6	(5.1)		15.0
(5.0)		12.2	7.2			14.9
		11.9	6.9	50		14.7
		11.9	6.9			14.6
		11.3	6.3			14.0
50		11.6	6.6			13.6
		11.2	6.2			13.5
2:50		11.7	6.7	24+00		13.3
<u>50</u>		11.9	6.9			13.1
		11.8	6.8			13.1
5+00		11.8	6.8			13.1
		12.0	7.0			13.2
		11.8	6.8	50		13.2
		11.9	6.9			13.1
		11.8	6.8			13.0
50		11.9	6.9			13.1
22+50		13.9				12.9
(5.1)		14.1		25+00		13.0
		13.7				13.0
2:55		13.4		3:00		13.2
<u>50</u>		13.4				13.1
23+00		14.1				13.1
		14.8		50		13.3
		14.9				13.3

STA. N. 132+50 - EAST 10-18-60
 DIST SOUND ELEV DIST SOUND ELEV
 (5) 13.4
 13.4
 13.3
 26+00 13.2

33

10-31-60
 STA. N. 133+00 (10+00) - W/9, 920 SOUND WEST
 DIST SOUND ELEV DIST SOUND ELEV
 4+50 11.0 7.1 (3.9) 12.8 8.9
 (3.9) 11.0 7.1 12.5 8.6
 11.2 7.3 13.1 9.2
 9:40 11.2 7.3 23+00 12.2 8.3
 11.1 7.2 13.0 9.1
 5+00 10.9 7.0 9:45 13.4 9.5
 10.3 6.4 14.0 10.1
 10.1 6.2 14.0 10.1
 10.1 6.2 50 14.0 10.1
 10.1 6.2 13.7 9.8
 50 11.2 7.3 13.3 9.4
 15.0 11.1 12.9 9.0
 14.0 10.1 13.2 9.3
 13.8 9.9 24+00 12.8 8.9
 13.9 10.0 12.8 8.9
 6+00 13.9 10.0 12.6 8.7
 10+00 12.9 9.0 12.8 8.9
 13.5 9.6 12.8 8.9
 13.5 9.6 50 12.8 8.9
 13.3 9.4 12.8 8.9
 12.7 8.8 12.4 8.5
 50 13.4 9.5 12.4 8.5
 22+50 12.9 9.0 12.4 8.5
 13.0 9.1 25+00 12.4 8.5

PAGE 64
SEE

STA. N. 133+00 - WEST 10-31-60

DIST SOUND ELEV. DIST SOUND ELEV

(38)	12.4	8.6			
	12.9	9.1			
9:50	12.7	8.9			
	12.9	9.1			
50	12.8	9.0			
	12.7	8.9			
	12.7	8.9			
	12.9	9.1			
	13.1	9.3			
26+00	13.8	10.0			

(32)

STA. N. 133+50/0+00 = W 9890 ; SOUND WEST

DIST SOUND ELEV DIST SOUND ELEV

2+50	12.0		(34)	10.4	ok.
(3.5)	12.0		5+00	10.4	
	12.0	ok.		10.2	6.8
10:05	11.8			10.1	6.7
	10.5			9.9	6.5
3+00	10.1	6.6		9.7	6.3
	10.2	6.7	50	9.4	6.0
	10.2	6.7		12.6	
	10.2	6.7		13.8	
	10.7			13.3	
50	10.9	ok.		13.1	
	10.8		6+00	12.3	
	10.3	6.8		12.9	
	10.6			12.4	ok.
	10.6			12.9	
4+00	10.6			12.9	
	10.5		50	12.1	
	10.6	ok.	10:10	12.7	
	10.8			12.8	
	10.7			12.8	
50	10.7			13.0	
	10.6		7+00	12.9	
	10.4	6.9			
	10.3	6.8			

ALSO PAGE 64
SEE

STAN. 133+50 - WEST 10-31-60

DIST SOUND ELEV DIST SOUND ELEV

17+00	11.4	} ok.			
(33)	11.4				
	11.2				
	11.2				
	10.5				
50	11.8				
	12.1				
10:15	12.1				
—	12.5				
	12.3				
18+00	11.9				
	12.0				
	12.0				
	12.3				
50	11.9				
50	12.0				

STAN. 134+00 10:00 - W. 9870 ; SOUND WEST

DIST SOUND ELEV DIST SOUND ELEV

4+00	10.9	7.9	(2.9)	12.2	9.3	
(130)	10.8	7.8		11.9	9.0	
	10.9	7.9		50	11.3	8.4
	10.8	7.8	10:30	11.8	8.9	
	10.7	7.7	—	12.3	9.4	
50	10.3	7.3		12.4	9.5	
	10.3	7.3		12.1	9.2	
10:25	10.1	7.1	8+00	12.5	9.6	
—	10.1	7.1		11+00	12.3	9.4
	10.1	7.1			12.4	9.5
5+00	10.0	7.0			12.8	9.9
	10.0	7.0			12.0	9.1
	9.7	6.7			12.1	9.2
	9.8	6.8	50	12.7	9.8	
	9.4	6.4		12.5	9.6	
50	9.8	6.8		12.0	9.1	
	10.4	7.4		12+00	12.8	9.9
	13.2	10.2			12.8	9.9
	13.7	10.7	12+00	12.4	9.5	
	12.5	9.5				
6+00	12.6	9.6	(CONTD PG 49)			
7+00	12.1	9.1				
	12.8	9.8				
	12.2	9.2				

SEE ALSO PGS 48, 49, 50

10-31-60

STA. N. 134+50; 0+00 = W. 98.50 ; SOUND WEST

Dist Sound Elev Dist Sound Elev

7+50 12.0

(26) 11.8

11.9

11.6

11.8

8+00 12.0

12.2

10+45 12.0

12.1

12.0

50 12.0

14+00 12.8

11.9

12.0

12.2

12.8

50 12.7

18+00 9.9

(25) 9.9

10.0

10+50 9.8

9.8

50 11.1

12.0

(25) 11.4

11.1

11.1

19+00 11.5

STA. N. 135+50

SEE PG 39

SEE ALSO PG. 50

O.K.

(36)

10-26-60

STA. N. 126+00; 0+00 = W. 12,870 ; SOUND EAST

Dist Sound Elev Dist Sound Elev

0+00 12.0 7.6

(4.4)

50 11.0 6.6

11.0 6.6

10+30

11.1 6.7

1.0

11.3 6.9

50 2.7

11.2 6.8

4.6

3+00 11.1 6.7

9.0

12.1 6.7

10.9

12.5

11.7

12.8

1+00 12.0

12.9

12.1

50 12.8

12.0

12.7

12.0

13.1

11.5

13.3

50 11.5

13.2

11.3

6.9

4+00 13.1

11.2

6.8

13.1

11.1

6.7

13.0

11.1

6.7

13.1

2+00 11.3

6.9

13.1

11.1

6.7

50 13.2

10.6

6.2

(Cont'd Pg. 23)

11.5

7.1

10-26-60

STA. N. 126+50; 0+00 = W. 12,850; SOUND EAST

Dist Sound Elev Dist Sound Elev

Dist	Sound	Elev	Dist	Sound	Elev
0+00				13.2	
			50	13.2	
				13.0	
				12.8	
				11.4	6.9
				11.9	
			3+00	12.1	
				12.4	
				12.4	
				13.0	
				13.6	
			50	13.8	
				13.8	
				13.6	
				13.7	
				13.8	
			50	13.3	
				13.5	
			4+00	13.4	
				13.2	
				13.2	
				13.1	
				13.0	
			50	13.0	
				13.0	
				13.2	
				13.2	

STA. N. 127+00; 0+00 = W. 12,850; SOUND EAST

Dist Sound Elev Dist Sound Elev

Dist	Sound	Elev	Dist	Sound	Elev
0+00				13.6	
			50	13.7	
				13.8	
				14.3	
				13.7	
				13.6	
			3+00	12.0	
				12.3	
				12.5	
				12.4	
				11.9	
			50	13.4	
				13.6	
				13.3	
				13.3	
			50	13.3	
				13.1	
			4+00	13.0	
				12.7	
				12.8	
				12.9	
				13.0	
			50	13.5	
				13.8	
				13.5	
				13.6	

(37)

10-26-60

STAN. 127+50; 0+00 = W. 12,840' SOUND EAST

DIST SOUND Elev DIST SOUND Elev

DIST	SOUND	Elev	DIST	SOUND	Elev
0+00				13.9	OK
			50	11.5	6.8
				11.5	6.8
11:00	1.1			12.6	
	2.3			12.1	
50	3.0			12.5	
	4.7		3+00	12.6	
	8.5			12.8	
	10.4			12.8	
	12.1			13.1	
1+00	13.0			13.1	
	13.5		50	13.0	
	14.1			12.9	
	14.3			13.1	
	14.7		11:05	13.1	
50	14.8			13.0	
	14.8		4+00	11.9	
	14.7			12.2	
	14.5			13.3	
	14.1			13.2	
2+00	14.1			13.2	
	14.3		50	13.2	
	14.4				
	14.3				

(38)

STAN. 128+00; 0+00 = W. 12,810' SOUND EAST

DIST SOUND Elev DIST SOUND Elev

DIST	SOUND	Elev	DIST	SOUND	Elev
0+00				13.4	
			50	13.4	
				13.9	
				13.8	
11:10	0.9			14.0	
	2.8			13.6	
50	4.2			13.2	
	7.9		3+00	13.2	
	11.1			13.3	
	12.2			13.3	
	12.8			13.1	
	13.1			13.1	
1+00	13.1			13.0	
	13.1		50	13.0	
	13.0			12.8	
	13.0			12.4	
	12.9		11:15	12.1	
50	12.9			12.3	
	13.0		4+00	12.8	
	13.5			12.6	
	13.1			11.9	
	13.1			12.0	
2+00	13.1			12.0	
	13.3		50	12.0	
	13.1			13.1	
	13.1			13.9	
	13.1			13.8	
	13.1			13.8	
			5+00	13.8	

10-31-60

STA. N. 135+50; 0+00 = W. 9,800; SOUND WEST

Dist Sound Elev Dist Sound Elev

7+50 11.9

23 12.0

10.8

12.0

11.8

8+00 10.8

11.3

11:00 12.0

12.6

11.9

50 11.7

11.6

11.4

11.1

11.7

9+00 11.5

O.K.

10-18-60

STA. N. 129+50; 0+00 = W. 10,090; SOUND WEST

Dist Sound Elev

10+00 12.9

4.9 12.7

12.7

12.1

2:40 11.8

50 11.4

11.2

12.9

14.1

14.1

11+00 14.0

SEE ALSO
PG 57

10-31-60

STA. N. 126+00, 0+00 = W 130' 10" ; SOUND WEST

Dist	Sound	Elev	Dist	Sound	Elev
0+00			(19)	11.0	9.1
(19)			50	11.0	9.1
				11.0	9.1
				11.0	9.1
				11.2	9.3
50	0.1	+1.8		11.1	9.2
	0.3	+1.6	3+00	11.0	9.1
11:20	1.0	+0.9		11.0	9.1
<u>11:20</u>	5.9	4.0		11.0	9.1
	8.9	7.0		10.7	8.8
1+00	9.1	7.2		10.2	8.3
	9.8	7.9	50	10.2	8.3
	9.9	8.0		10.2	8.3
	10.0	8.1		10.8	8.9
	10.2	8.3		10.8	8.9
50	10.7	8.8		10.8	8.9
	10.9	9.0	4+00	10.8	8.9
	10.8	8.9			
	10.5	8.6			
	10.3	8.4			
2+00	10.4	8.5			
	10.5	8.6			
	10.8	8.9			
	10.8	8.9			

(40)

STA. N. 126+50, 0+00 = W 130' 10" ; SOUND WEST

Dist	Sound	Elev	Dist	Sound	Elev
0+00			(18)	10.4	
(18)			50	10.3	
				10.4	
				10.5	
				10.3	
50				10.3	
			3+00	10.2	
				10.2	
				10.3	
				10.4	
1+00				10.3	
			50	10.1	
				10.2	
				10.3	
				10.9	
50				10.8	
			4+00	10.7	
				10.5	
				8.0	6.2
				8.0	6.2
2+00				8.1	6.3
			50	8.0	6.0
				10.3	
				10.3	

K
0.

10-31-60

STA. N. 127+50; 0+00 = W. 13,000; SOUND WEST

Dist Sound Elev Dist Sound Elev

Dist	Sound	Elev	Dist	Sound	Elev
0+00			15	10.3	
16			50	10.1	
				10.0	
<u>11:40</u>				10.1	
				10.0	
50				10.0	
			3+00	10.0	
				10.0	
	1.9			10.0	K.
	6.4			10.0	0.
1+00	9.1			10.0	
	9.2		50	10.0	
	9.4			9.9	
	9.7			9.9	
	9.7		<u>11:45</u>	9.9	
50	9.7			9.7	
	10.0		4+00	9.9	
	10.2	K.		8.2	6.7
	10.1	0.		7.3	5.8
	10.3			7.6	6.1
2+00	10.2			7.6	6.1
	10.3		50	7.6	6.1
	10.7			7.7	6.2
	10.4			8.6	
				9.7	
			5+00	9.7	OK.

②

STA. N. 128+00; 0+00 = W. 13,000; SOUND WEST

Dist Sound Elev Dist Sound Elev

Dist	Sound	Elev	Dist	Sound	Elev
0+00			0	10.6	9.7
50			50	10.3	9.4
				10.1	9.2
				9.7	8.8
				9.4	8.5
50				9.5	8.6
			3+00	9.5	8.6
				9.5	8.6
<u>1:20</u>	2.8	+1.9		9.5	8.6
	7.2	6.3		8.5	7.6
	7.4	6.5		8.5	7.6
1+00	7.8	6.9		8.8	7.9
	7.9	7.0	50	9.2	8.3
	8.0	7.1		9.1	8.2
	8.7	7.8		8.9	8.0
	8.9	8.0		9.2	8.3
50	9.1	8.2		8.8	7.9
	9.4	8.5	4+00	7.1	6.2
	9.8	8.9		7.2	6.3
	9.9	9.0		7.0	6.1
	10.0	9.1		7.1	6.2
2+00	10.3	9.4		7.1	6.2
	10.4	9.5	50	7.3	6.4
	10.1	9.2		7.2	6.3
	10.9	10.0		7.0	6.1
				7.8	6.9
				9.9	9.0
			5+00	9.9	9.0

10-31-60

STA. N. 128+50; 0+00 = W. 12986; SOUND WEST

Dist	Sound	Elev	Dist	Sound	Elev
0+00			190	9.1	
(00)			50	9.2	
				9.1	
				9.0	
				9.0	
50				8.9	
			3+00	9.1	
11,30	0.8			9.1	
<u> </u>	8.0			9.5	
	7.8			9.0	
1+00	7.8			9.1	
	8.0		50	9.3	
	8.1			9.3	
	8.1			8.3	
	8.2			9.3	
50	8.4			9.3	
	8.7		4+00	9.4	
	8.9			7.7	6.8
	9.0			7.1	6.2
	9.0			7.1	6.2
2+00	9.2			7.2	6.3
	9.1		50	7.2	6.3
	9.1			7.1	6.2
	9.2			7.0	6.1
				7.0	6.1
			5+00	7.7	6.2

STA. N. 129+50; 0+00 = W. 12910; SOUND WEST

Dist	Sound	Elev	Dist	Sound	Elev
0+50			10	9.8	
(10)			3+00	9.9	
				9.9	
				9.9	
				9.8	
	2.4			9.7	
1+00	6.5			9.7	
	7.1		3+50	9.7	
	7.7			9.6	
1,40	7.4			9.6	
<u> </u>	7.1			9.6	
1+50	7.1			9.5	
	7.2		4+00	9.5	
	7.7			9.6	
	7.9			9.6	
	8.1			9.9	
2+00	8.7			9.8	
	8.9		4+50	8.5	
	9.0			7.5	6.5
	9.6			7.0	6.0
	9.5			7.0	6.0
2+50	9.7			6.7	5.7
	9.6		5+00	6.8	5.8
	9.9			6.7	5.7
				6.8	5.8
				7.2	6.2
	10.1			6.9	6.9
			50	6.5	5.5

10-31-60

STAN. 130+00 to 100 = W. 12,880 SOUND WEST

Dist	Sound	Elev	Dist	Sound	Elev
0+80			(1)	9.8	8.7
(1)	0.8	+0.3	50	9.8	8.7
1+00	6.7	5.6		10.0	8.9
	7.8	6.7	50	9.8	8.7
	8.1	7.0		9.0	7.9
1.55	8.0	6.9		9.1	8.0
<u>1.55</u>	8.0	6.9	3+00	9.0	7.9
50	8.2	7.1		9.0	7.9
	8.2	7.1	4+00	8.9	7.8
	8.2	7.1		8.6	7.5
1+10	8.5	7.4		8.4	7.3
	8.4	7.3	50	9.2	7.1
2+00	8.5	7.4		9.2	7.1
	8.9	7.8	50	9.4	7.3
	9.0	7.9		9.7	7.6
50	9.1	8.0		9.8	7.7
	9.3	8.2	4+00	6.9	5.8
50	9.6	8.5		7.0	5.9
	9.8	8.7	5+00	7.0	5.9
	9.9	8.8		7.0	5.9
2+00	9.8	8.7		7.0	5.9
	9.9	8.8		7.1	6.0
3+00	9.7	8.6		7.1	6.0
	9.8	8.7	50	7.1	6.0

43

STAN. 130+50 to 100 = W. 12,860 SOUND WEST

Dist	Sound	Elev	Dist	Sound	Elev
0+80	0.5		(1.2)	9.1	
(1.2)	7.7			9.1	
1+00	8.8			9.2	
	8.7		50	9.3	
	8.8			9.6	
2+10	8.7			9.5	
<u>2+10</u>	8.4		3+00	9.6	
50	8.8			9.5	
	8.9		4+00	9.7	
	9.0			9.6	
1+00	9.0			9.3	
	9.2			8.8	
2+00	9.4			9.1	
	9.6		50	9.4	
	9.6			9.0	
	9.7			8.3	
	9.6		4+00	7.2	6.0
50	9.8			6.8	5.6
	9.8		5+00	6.9	5.7
	9.8			7.0	5.8
2+00	9.7			7.0	5.8
	9.7			7.1	5.9
3+00	9.4			7.0	5.8
	9.1		50	7.5	6.3

10-31-60

STA. N. 131+50, 0+00 = W 12,790, SOUND WEST

Dist	Sound	Elev	Dist	Sound	Elev
0+20	0.1		(13)	9.6	
(13)	1.3			9.6	
	2.9			9.6	
1+00	8.1			9.6	
	9.7		50	9.6	
2:20	9.7			9.4	
	9.6			9.4	
	9.7			9.4	
50	9.6			9.4	
	9.7		4+00	9.2	
	9.7			9.3	
	9.8			9.4	
	9.9			9.4	
2+00	9.8			9.4	
	9.7		50	9.5	
	9.7			9.6	
	9.8			9.8	
	9.8			9.6	
50	9.8			9.1	
	9.9		5+00	7.5	6.2
	9.9			6.6	5.3
	9.8			6.7	5.4
	9.7			6.7	5.4
3+00	9.6			6.8	5.5
			50	7.1	5.8

(14)

STA. N. 132+00, 0+00 = W 12,750, SOUND WEST

Dist	Sound	Elev	Dist	Sound	Elev
0+50			(14)	10.1	
			3+00	10.1	
	0.8	+0.6		10.0	
	2.6	1.2		10.0	
	3.0	1.6		10.0	
1+00	7.8	6.4		10.2	
	8.8	7.4	50	10.3	
	8.7	7.3		10.5	
2:30	8.7	7.3		10.5	
	8.2	6.8		10.2	
50	8.8			10.4	
	9.1		4+00	10.3	
	9.4			10.1	
	9.7			10.1	
	9.9			10.2	
2+00	10.0			10.4	
	10.3		50	10.7	
	10.8			10.4	
	10.5			10.9	
	10.4			9.2	
50	9.6			7.1	
	10.0		5+00	6.6	
	10.1				
	10.1				

10-31-60

STA. N. 132+50, 0+00 = W. 12.670, SOUND EAST

Dist Sound Elev Dist Sound Elev

0+90 2.2 (17) 10.0

1+90 7.0 10.3

(1.7) 9.2 50 10.2

2.50 11.0 10.4

10.6 11.0 ok

10.3 11.3

50 10.3 11.4

10.3 4+00 11.7

10.3 SOUND WEST

10.2 1+00 6.9

10.1 10.1 ok (17) 8.5

2+00 10.0 8.8

9.9 2.55 8.8

9.8 8.8 ok

9.9 50 9.0

9.9 9.0

50 9.9 8.9 6.8

9.8 8.5

9.9 8.7

9.9 2+00 8.9

9.9 8.9 ok

3+00 9.9 9.2

9.9 9.2

9.9 9.4

STA. N. 132+50 - WEST

Dist Sound Elev Dist Sound Elev

1.50 9.9 5+00 11.0

(1.8) 9.9 (1.8) 10.6

10.3 10.7

10.4 10.9 ok

10.4 11.2

3+00 10.1 50 6.9 5.1

10.0 7.0

10.0 3+00 7.0

10.0 7.1

10.0 7.3

50 9.8 6+00 7.1

9.9 6.8

10.0

10.0

4+00 10.0 50

10.0

10.0

10.5

10.7

50 10.7

10.8

10.8

10.9

10.9

10-31-60

STA. N. 133+00 S. 0+00 = W. 12.646 SOUND EAST

DIST	SOUND	ELEV	DIST	SOUND	ELEV
0+00	7.7		(20)	10.7	
(20)	9.3		50	11.0	
	9.4			10.9	
	9.8			10.9	
	9.9			10.9	
50	10.1			10.9	
	10.4		3+00	10.9	
3+10	10.7			11.0	
	10.8			10.9	OK
	13.1			10.9	
1+00	13.8	OK		11.0	
	13.8		50	11.4	
	13.0			11.5	
	12.8			12.0	
	12.0			12.1	
50	11.7			12.1	
	11.1		4+00	13.4	
	10.9		SOUND WEST		
	10.9		0+10	7.9	
	11.2		(21)	7.8	
2+00	11.1			8.1	
	11.1			8.3	
	11.0		50	8.2	
	10.8			9.8	OK

STA. N. 133+00 - WEST

(46)

DIST	SOUND	ELEV	DIST	SOUND	ELEV
(21)	10.1		(21)	10.8	
	9.9			10.4	
	10.0			10.2	
1+00	10.0		50	10.3	
	9.6		50	10.3	
3+20	9.4			10.3	
	9.3			10.6	
	9.5			10.5	
50	9.9		4+00	10.5	
	9.9		4+00	10.5	
	9.9			10.2	OK
	9.9	OK		10.2	
	9.9			10.3	
2+00	9.8		50	10.4	
	9.7		50	10.4	
	9.8			10.6	
	9.8			10.6	
	9.7			10.6	
50	9.9		5+00	10.4	
	9.9			10.8	
	10.1			10.9	
	10.0			10.9	
	10.3		50	10.0	
	10.3			7.9	5.8
3+00	11.0			7.9	
	10.5			7.8	5.5
				7.9	
			6+00	7.9	
			6+00		

11-01-60

STA. N. 124+00, 0+00 = W. 14,040, SOUND EAST

DIST	Sound	Elev	DIST	Sound	Elev
9+50	12.4	9.9	(2.9)	10.3	7.9
(2.5)	12.2	9.7	12+00	10.1	7.7
	12.2	9.7		10.0	7.6
<u>11:25</u>	12.0	9.5		10.0	7.6
	11.9	9.4		8.8	6.4
10+00	11.6	9.1		8.8	6.4
	11.3	8.5	50	8.9	6.5
	11.7	9.2		9.0	6.6
	11.7	9.2		9.1	6.7
	11.9	9.4		9.3	6.9
50	11.9	9.4		9.5	7.1
	11.4	8.9	13+00	9.0	6.6
	11.0	8.5		8.9	6.5
	10.8	8.3	<u>11:30</u>	9.4	7.0
	10.6	8.1		9.9	7.5
11+00	10.3	7.8		10.0	7.6
	10.4	7.9	50	11.1	8.7
	10.8	8.3		11.1	8.7
	10.7	8.2		11.1	8.7
	10.8	8.3		11.1	8.7
50	10.6	8.1		11.1	8.7
	10.5	8.0	14+00	11.1	8.7
	10.4	7.9			
	10.2	7.7			

(47)

STA. N. 124+50, 0+00 = W. 14,040, SOUND EAST

DIST	Sound	Elev	DIST	Sound	Elev
9+50	11.2		(2.1)	9.0	6.9
(2.2)	10.9		12+00	8.0	5.9
	10.6			7.6	5.5
	10.4			7.6	5.5
	10.1			7.8	5.7
10+00	9.9			7.9	5.8
	10.0		50	7.9	5.8
<u>11:40</u>	10.1			8.0	5.9
	10.1			8.3	6.2
	10.0			9.2	7.1
50	10.4			9.2	
	10.2		K. 13+00	9.1	
	10.2			9.8	
	10.6			9.5	
	10.9			8.9	6.8
11+00	10.9			8.8	6.7
	10.9		50	9.2	
	11.0			9.1	
	11.0		11:45	9.1	
	10.8			10.0	
50	10.7			10.5	
	10.3		14+00	10.4	
	9.7			10.3	
	9.5			10.2	
				10.0	
				10.0	
			50	9.9	

(STA. N. 125+50)
see Pg. 50

11-01-60

STA. N. 125+00: 0+00 = W. 14,020; SOUND EAST

Dist	Sound	Elev	Dist	Sound	Elev
9+00	10.1		(0.8)	8.3	
(0.8)	10.0		50	9.0	
7+00	9.8			9.2	
	9.5			8.8	
	9.2		<u>1.05</u>	8.3	
50	9.0			8.7	
	9.0		12+00	8.9	
	8.9			9.0	
	7.7			8.9	
	5.1			8.9	
10+00	4.6			9.0	
	3.8		50	9.2	
	1.1			8.8	
				8.7	
				8.5	
				8.4	
50			13+00	8.0	
HOT-DOG				8.0	
ISLAND				7.9	
	0.3			7.9	
11+00	0.8			7.9	
	3.7		50	7.8	
	4.2			7.6 - 6.8	
	6.7			7.3 - 6.5	
				7.5 - 6.7	
				7.7 - 6.9	
			14+00	8.5	
				8.5	

(48)

STA. N. 133+50; 0+00 = W. 13,980; SOUND EAST

Dist	Sound	Elev	Dist	Sound	Elev
11+00	9.3		(0.6)	9.0	
(0.6)	9.7		50	9.0	
	9.8			9.2	
	9.6			9.3	
	9.7			9.3	
50	9.4			9.4	
	9.4		14+00	9.7	
11:55	9.3			9.6	
	9.0			9.5	
	9.1			9.9	
12+00	9.1			10.9	
	9.2			11.1	
	9.0		50	10.9	
	8.9			10.1	
	8.9			10.1	
50	9.0			9.9	
	9.0		15+00	9.9	
	9.2			9.7	
	9.2			9.3	
	9.1		<u>2:00</u>	9.4	
13+00	9.1			9.3	
	9.1			9.4	
	9.1		50	9.4	
	9.0			9.9	
				9.8	
				9.7	
				9.5	
			16+00	9.2	

OK

OK

11-01-60

STA. N. 134+00; 0+100 = W 13,980; SOUND EAST

Dist	Sound	Elev	Dist	Sound	Elev
14+00	10.8	10.2	(0.6)	8.3	7.7
(0.6)	11.9	11.3	50	9.0	8.4
	11.7	11.1		10.2	9.6
	11.3	10.7		10.3	9.7
	10.9	10.3		11.1	10.5
50	11.0	10.4		11.1	10.5
	10.5	9.9	17+00	11.0	10.4
2:15	10.0	9.4		11.0	10.4
	9.6	9.0		10.9	10.3
	9.3	8.7		10.8	10.2
15+00	8.9	8.3		10.9	10.3
	8.9	8.3	50	10.7	10.1
	8.6	8.0		10.4	9.8
	9.3	8.7		9.4	9.8
	9.6	9.0		9.1	8.5
50	10.0	9.4		8.9	8.3
	9.9	9.3	18+00	9.1	8.5
	10.1	9.5		9.4	8.8
	10.2	9.6		9.5	8.9
	9.9	9.3		9.5	8.9
16+00	9.4	8.8		9.5	8.9
	8.2	7.6	50	9.6	9.0
	8.1	7.5		9.9	9.3
	8.1	7.5		9.7	9.1
				9.7	9.1
				8.9	8.3
			19+00	7.7	7.1

(Contd. from Pg. 35) 11-01-60

(49)

STA. N. 134+00; 0+100 = W 9,870; SOUND WEST

Dist	Sound	Elev	Dist	Sound	Elev
13+50	10.4	9.6	(0.9)	9.5	8.6
(1.08)	10.1	9.3		9.4	8.5
	10.4	9.6	50	9.9	9.0
2:55	10.9	10.1	20+00	9.9	8.9
	10.6	9.8	(1.0)	9.8	8.8
14+00	10.4	9.6		9.1	8.1
	11.1	10.3	3:05	8.9	7.9
	10.9	10.1		9.5	8.5
	11.1	10.3	50	9.9	8.9
	11.3	10.5		9.8	8.8
50	10.6	9.8		9.9	8.9
17+00	8.5	7.6		9.3	8.3
(0.9)	8.5	7.6		9.1	8.1
	8.3	7.7	21+00	7.9	6.9
	8.2	7.3		8.0	7.0
	8.1	7.2		8.0	7.0
50	8.0	7.1		8.1	7.1
	8.0	7.1		8.0	7.0
3:00	8.0	7.1	50	7.8	6.8
	8.0	7.1		7.9	6.9
	8.2	7.3		7.8	6.8
18+00	8.4	7.5		7.7	6.7
	9.4	7.5		7.8	6.8
	9.7	7.8	22+00	7.9	6.9
				8.0	
				8.9	

11-01-60

STA. N. 134+50, 0+00 = W. 13,990, SOUND EAST			STA. N. 125+50, 0+00 = W. 12,990, SOUND WEST		
Dist	Sound	Elev	Dist	Sound	Elev
11+00	9.7		(0.7)	10.4	
(0.6)	9.9		50	10.3	
	9.6			10.3	
	9.3			10.1	
	9.3			10.7	
50	9.8			10.7	
	9.9		14+00	10.4	
2:30	9.9			10.6	
<u> </u>	9.5			12.1	
	9.3			11.9	
12+00	9.4	OK		11.9	OK
	9.5		50	11.2	
	9.7			10.8	
	9.5			10.1	
	9.8			9.9	
50	9.8			9.2	
	9.9		15+00	9.0	
	10.2			8.9	
	10.0		2:35	8.9	
	10.1		<u> </u>	9.1	
13+00	10.0			9.1	
	10.2		50	9.5	
	10.5			9.7	
	10.3			9.6	
				9.6	
			16+00	8.6	

STA. N. 125+50, 0+00 = W. 12,990, SOUND WEST			STA. N. 125+50, 0+00 = W. 12,990, SOUND WEST		
Dist	Sound	Elev	Dist	Sound	Elev
0+50			(0.6)	9.5	
(0.6)			3+00	9.6	
				9.7	
	5.4			9.5	
	8.2			9.7	
1+00	8.4		50	9.6	
	8.6			9.8	
1:35	8.9			9.9	
<u> </u>	9.0			9.7	
	9.3			9.9	
50	9.6			9.7	
	9.8		4+00	9.7	
	9.8			9.5	
	9.3			7.5	
	9.0			6.7	6.1
2+00	9.0			6.6	6.0
	9.0		50	7.0	6.4
	9.0			7.0	6.4
	9.0			7.0	6.4
	9.0			7.0	6.4
50	9.1			7.0	6.4
	9.4		5+00	7.2	6.6
	9.3			8.6	
	9.3			9.0	
				9.0	
				9.7	
			50	9.1	

OK SOUNDED
OK REPEATED

11-01-60

STA. N. 125+50; 0+00 = W. 12,990; SOUND EAST

Dist	Sound	Elev	Dist	Sound	Elev
1+50	0.0		(0.7)	7.8	
(0.7)	3.8		4+00	8.0	
<u>1:25</u>	6.1			9.9	
<u> </u>	7.0			9.6	
	7.8			9.4	
2+00	7.9			9.0	
	7.9		50	8.9	
	7.9			8.8	
	7.9			8.8	
	7.9			8.8	
50	7.9			8.7	
	7.7		5+00	8.8	
	7.8			8.9	
	8.0			9.0	
	7.9			9.0	
3+00	7.9			9.0	
	7.9		50	9.0	
	7.9				
	7.7				
	7.7				
50	7.2	6.5			
	7.3	6.6			
	7.5	6.8			
	7.9	7.2			

SEE PG 55

11-16-60

STA. N. 108+00; 0+00 = W. 11,160; SOUND WEST

Dist	Sound	Elev	Dist	Sound	Elev
4+50	10.3				
	11.0				
(1.7)	10.5				
	11.0				
	10.7				
5+00	8.9				
	8.8				
<u>11:25</u>	9.0				
<u> </u>	9.0				
	9.1				
50	9.4				
	9.4				
	9.6				
	9.6				
	9.3				
6+00	9.1				
	9.4				
	9.9				
	9.6				
	9.6				
50	9.8				

(57)

11-16-60

STA. N. 110+00; 0+00 = W. 11,060; SOUND WEST

DIST SOUND ELEV DIST SOUND ELEV

DIST	SOUND	ELEV
10+00	10.6	9.2
(1.4)	10.4	9.0
	10.1	8.7
	9.3	7.9
	9.1	7.7
50	8.8	7.4
	8.8	7.4
11+40	8.6	7.2
<u> </u>	8.7	7.3
	8.8	7.4
11+00	8.9	7.5
	9.0	7.6
	9.0	7.6
	9.0	7.6
	9.0	7.6
50	9.7	8.3
	9.8	8.4
	9.8	8.4
	9.7	8.3
	9.7	8.3
12+00	9.8	8.4

(52)

STA. N. 115+00; 0+00 = W. 10,810; SOUND WEST

DIST SOUND ELEV

DIST	SOUND	ELEV
3+00	7.9	7.4
(0.5)	7.7	7.2
	7.4	6.9
	7.4	6.9
	7.4	6.9
50	7.6	7.1
	7.9	7
11+10	8.2	} 0.4
<u> </u>	8.2	
	8.0	
4+00	7.7	

11-16-60

STA. N. 121+50; 0+00 = W 10,490; SOUND WEST

Dist Sound Elev Dist Sound Elev

7+50	7.7	}	11+00	7.5	7.1
(0.5)	7.7		(0.4)	7.2	6.8
	7.6			6.8	6.4
	7.6			6.3	5.9
	8.0			7.3	6.9
8+00	8.3	} ok	50	8.1	}
	8.4		1:25	9.2	
<u>1:20</u>	8.0		<u>10.0</u>	} ok	
	8.1		9.6		
	8.1		8.5		
50	8.0		12+00	10.1	

SEE
PG 61

(53)

STA. N. 124+00; 0+00 = W 10,370; SOUND WEST

Dist Sound Elev Dist Sound Elev

23+00	9.2	}		} ok
(0.4)	9.0			
	9.0			
	8.9			
	7.7			
	7.9	}		
	6.5			
<u>1:40</u>	6.7	6.3		
	7.0	6.6		
	7.0	6.6		
24+00	6.8	6.4		
	6.8	6.4		
	6.7	6.3		
	6.6	6.2		
	6.4	6.0		
50	7.1	6.7		
	7.8	}		
	7.4			
	8.0	}		
	8.2			
25+00	8.2			

SEE PG 61

11-16-60

STA. N. 124+50: 0+00 = W. 10,340: SOUND WEST

Dist	Sound	Elev	Dist	Sound	Elev
8+00	8.1		19+50	9.4	
(0.5)	7.9		(0.5)	9.1	
	7.7			10.5	
2:00	7.6	OK		10.0	
	7.8			9.4	
50	8.1		20+00	9.2	
	8.7			9.0	
				9.0	
13+50	9.3			8.9	OK
(0.5)	8.9			9.0	
	8.7		50	8.9	
	7.3	6.8		9.0	
	7.7	OK		8.9	
14+00	7.7				9.0
	7.7			8.8	
2:05	7.6		21+00	8.5	
	7.7			8.4	
	7.9			8.3	
50	8.1			8.2	
				8.1	
			50	8.4	
				8.7	
				9.4	
				9.4	

STA. N. 124+50 - WEST

Dist	Sound	Elev	Dist	Sound	Elev
(0.5)	9.4		(0.5)	7.3	6.8
22+00	9.3		50	7.2	6.7
	9.1			7.0	6.5
	8.8			6.9	6.4
	8.5			6.9	6.4
	8.4			6.6	6.1
50	8.5		25+00	6.2	5.7
	8.4			6.8	6.3
2:10	8.4			7.3	6.8
	8.5	OK		7.8	OK
	8.6				
23+00	8.7		50	8.2	
	8.9			8.3	
	8.9				
	7.9				
	7.7				
50	7.8				
	7.6				
	7.6				
	7.4	6.9			
	7.5	7.0			
24+00	7.8				
	7.7	OK			
	7.5				
	7.5				

SEE PAGE 2

11-16-60

STA. N. 125+00.0400 = W. 10320 SOUND WEST

Dist Sound Elev Dist Sound Elev

Dist	Sound	Elev	
22+50	9.4	}	
(0.6)	8.9		
	8.7		
	8.7		
	8.8		
23+50	8.7	}	
	8.6		
2130	8.8		
<u> </u>	7.3		6.7
	7.6		7.0
50	7.5		6.9
	7.5		6.9
	7.3		6.7
	7.9		
	8.5		
24+00	8.9	}	
	8.9		
	9.0		
	8.9		
	8.9		
50	8.8		

(33)

STA. N. 125+50.0400 = W. 12990 SOUND EAST

Dist Sound Elev Dist Sound Elev

Dist	Sound	Elev	
3+50	8.8	6.8	
(2.0)	8.9	6.9	
	9.0	7.0	
	9.2		
	9.2	}	
4+00	9.3		
	11.1		
11:10	11.0		
<u> </u>	10.7		ok.
	10.4		
50	10.8		
	10.1		
	10.1		
	10.1		
5+00	10.0		

(H.D. Isle)

11-16-60

STA. N. 126400; O. 100 = W. 12870; SOUND EAST

Dist Sound Elev

1450 9.5 6.9

9.8 7.2

(2.6) 9.9 7.3

9.9 7.3

9.7 7.1

2400 9.4 6.8

9.1 6.5

10:40 8.9 6.3

9.9 7.3

10.4

50 9.4

9.5

8.9

9.2

9.0

3400 9.1

9.9

10.7

10.8

10.7

50 10.9

OK

SEE PG. 62

(38)

(H.D. Isle)

STA. N. 129400; O. 100 = W. 12770; SOUND EAST

Dist Sound Elev

6400 9.0 6.6

(24) 9.2 6.8

9.0 6.6

9.1 6.7

9.2 6.8

50 9.0 6.6

10:50 8.9 6.5

9.3 6.9

9.6

9.4

7400 10.0

OK

SEE PG. 63

11-16-60

STAN. 129+50; OKO=W 10,090; SOUND WEST

Dist	Sound	Elev
10+00	8.4	} ok.
(07)	8.3	
	8.4	
	8.4	
	8.1	
11 50	8.0	
<u>2:45</u>	8.0	
	7.9	
	9.1	
	10.0	
11+00	10.0	

(57)

STAN. 132+50; OKO=W 9,940; SOUND WEST

Dist	Sound	Elev	Dist	Sound	Elev
13+50	9.6	} ok.	(09)	9.0	} ok.
(09)	11.1		16+00	8.7	
	10.9				
	10.5				
	9.9				
14+00	9.9				
	10.3				
<u>3:00</u>	10.5				
	10.3				
	10.6				
50	10.5	} ok.			
	10.0				
	10.1				
	10.0				
	9.8				
15+00	8.4				
	8.4				
	8.4				
	8.3				
	8.2				
50	8.2				
	8.4				
	8.6				
	8.7				

11-17-60

STA. N. 133+00; 0400 = W. 9,920; SOUND WEST

Dist	Sound	Elev	Dist	Sound	Elev
4+50	11.4	9.0	(43)	12.1	
(44)	11.5	7.1		12.5	} 6K
	11.7	7.3	50	12.7	
	11.9	7.5		11.8	
	11.3	6.9		11.2	6.9
5700	11.3	6.9		11.5	} OK
	10.9	6.5		11.5	
<u>10:05</u>	10.7	6.3	21+00	11.7	} OK
	10.5	6.1			
	10.5	6.1			
50	12.7	8.3			
	15.0	10.6			
	14.1	9.7			
	13.6	9.2			
	14.0	9.6			
6+00	14.2	9.8			
19+50	13.4				} OK
(43)	13.2				
	13.2				
<u>10:10</u>	13.7				
	13.7				
20+00	12.0				
	11.9				
	12.0				

SEE PG. 64

STA. N. 133+50; 0400 = W. 9890; SOUND WEST

Dist	Sound	Elev	Dist	Sound	Elev
2+50	13.0		17+00	12.0	
(41)	13.0		(38)	11.7	} OK
	12.8			11.8	
	12.3			11.8	} OK
<u>10:20</u>	11.2		<u>10:30</u>	10.7	
3+00	10.8	6.7	50	12.9	} OK
	10.8	6.7		12.9	
	10.8	6.7		12.6	
	10.9	6.8		13.1	
	11.3			12.8	
50	11.4		18+00	12.8	
5+00	10.9	6.8	19+80	13.0	} OK
(41)	11.1	7.0	(38)	12.7	
	10.9	6.8	20+00	12.3	
	10.5	6.4		12.3	
	10.1	6.0		12.2	
50	10.1	6.0	50	12.2	
	13.2	9.1		12.0	} OK
	13.9	9.8	50	11.9	
	13.8	9.7		12.5	
	13.7	9.6		12.9	
6+00	13.1	9.0	11+00	12.7	
				10.8	
			21+00	10.6	6.8
				10.9	7.1

SEE PG. 64

11-17-60

STA. N. 134+00, 0+00=W. 9,870, SOUND WEST

Dist Sound Elev Dist Sound Elev

5+00	10.3	6.8	(34)	12.1	} 6k
(3.5)	10.2	6.7	(34)	12.4	
	9.9	6.4	50	12.3	

	10.0	6.5
	9.8	6.3

50	10.4	6.9
----	------	-----

	10.7	
--	------	--

10:45	12.6	} OK
-	13.7	
	12.5	

6+00	12.3	
------	------	--

21+00	10.1	6.7
-------	------	-----

(34)	10.2	6.8
------	------	-----

	10.2	6.8
--	------	-----

	10.2	6.8
--	------	-----

	10.3	6.9
--	------	-----

50	10.1	6.7
----	------	-----

	9.9	6.5
--	-----	-----

10:50	9.9	6.5
-------	-----	-----

	9.9	6.5
--	-----	-----

	10.0	6.6
--	------	-----

22+00	10.0	6.6
-------	------	-----

	10.2	6.8
--	------	-----

	11.0	7.6
--	------	-----

SEE PG 65

11-17-60

STA. N. 132+50, 0+00=W. 9,940, SOUND WEST

Dist Sound Elev

3+50	12.5	} OK
(47)	12.4	
	12.5	
	12.6	

	11.9	
--	------	--

4+00	11.2	6.5
------	------	-----

	11.2	6.5
--	------	-----

9:55	11.0	6.3
------	------	-----

	11.1	6.4
--	------	-----

	11.1	6.4
--	------	-----

50	11.1	6.4
----	------	-----

	11.1	6.4
--	------	-----

	11.1	6.4
--	------	-----

	11.3	6.6
--	------	-----

	11.3	6.6
--	------	-----

5+00	11.5	6.8
------	------	-----

	11.5	6.8
--	------	-----

	11.3	6.6
--	------	-----

	11.4	6.7
--	------	-----

	11.4	6.7
--	------	-----

50	11.6	6.9
----	------	-----

	12.3	} OK
--	------	------

	13.0
--	------

	14.8
--	------

SEE PG 63

11-28-60

STA. N. 110+00; 0+00=W. 14500; SOUND EAST

DIST	Sound	Elev	DIST	Sound	Elev
7+00	8.7	7.5	(12)	10.1	8.9
(1.2)	8.6	7.4	50	10.1	8.9
	8.4	7.2		9.8	8.6
1120	8.2	7.0		9.4	8.2
	8.0	6.8		9.0	7.8
50	9.3	8.1		9.5	8.3
	9.7	8.5	10+00	9.1	7.9
	9.7	8.5		9.5	8.3
	10.0	8.8		9.5	8.3
	10.0	8.8		9.5	8.3
8+00	9.8	8.6		8.8	7.6
	10.0	8.8	50	8.9	7.7
	9.7	8.5		9.9	8.7
	10.0	8.8		9.4	8.2
	9.9	8.7		9.5	8.3
50	10.0	8.8		9.9	8.7
	9.8	8.6	11+00	9.0	7.8
	9.4	8.2		8.2	7.0
	9.5	8.3		8.3	7.1
	9.9	8.7		9.0	7.8
9+00	10.0	8.8		8.6	7.4
	10.0	}	50	8.9	7.7
	10.0	}		9.0	7.8
	10.1	8.9		9.0	7.8

STA N. 110+00 - EAST

DIST	Sound	Elev
(1.2)	8.8	7.6
	8.9	7.7
12+00	8.9	7.7

(60)

11-29-60

STA. N. 121+50; 0+00 = W. 10,490; SOUND WEST

Dist Sound Elev

11+00	7.9	7.1
	7.4	6.6
0.8	7.0	6.2
	8.0	7.2
	10.3	9.5
50	10.3	9.5
	10.7	9.9
1:00	10.8	10.0
<u>—</u>	10.5	9.7
	10.4	9.6
12+00	10.3	9.5

④

STA. N. 124+00; 0+00 = W. 10,370; SOUND WEST

Dist Sound Elev

23+50	7.4	6.6
0.8	7.3	6.5
	7.2	6.4
	7.2	6.4
	7.3	6.5
24+00	7.2	6.4
	7.1	6.3
1:10	7.1	6.3
<u>—</u>	7.1	6.3
	7.0	6.2
50	7.6	6.8
	7.6	6.8
	8.1	7.3
	8.3	7.5
	8.4	7.6
25+00	8.4	7.6

11-29-60

STAN. 124+50; 0+00 = W. 10,340; SOUND WEST

Dist	Sound	Elev
24+40	7.4	6.6
50	7.3	6.5
(08)	7.3	6.5
	7.2	6.4
<u>11:35</u>	7.3	6.5
	7.4	6.6
25+00	7.3	6.5
	7.5	6.7
	7.8	7.0
	8.3	7.5
	8.3	7.5
50	8.4	7.6

11-28-60

STAN. 126+00; 0+00 = W. 12,870; SOUND EAST

Dist	Sound	Elev
2+00	9.1	6.9
(2.2)	8.9	6.7
	8.3	6.1
	9.1	6.9
	9.3	7.1
50	8.9	6.7
	9.1	6.9
<u>2:45</u>	8.5	6.3
	9.1	6.9
	9.0	6.8
3+00	8.9	6.7

11-28-60

STA. N. 129+00; 0+00 = N. 12,720; SOUND EAST.

Dist Sound Elev

6+00 9.1

9.1

(2.0) 9.1

9.0

9.0

OK

50 9.0

9.0

2135 9.2

9.3

9.5

7+00 10.7

11-29-60

63

STA. N. 132+50; 0+00 = W. 9940; SOUND WEST

Dist Sound Elev Dist Sound Elev

3+50 8.7 7.8

10.4 9.5

(0.9) 8.8 7.9

6+00 10.2 9.3

8.9 8.0

8.8 7.9

8.4 7.5

4+00 8.1 7.2

8.1 7.2

8.0 7.1

1:50 8.0 7.1

8.0 7.1

50 8.1 7.2

8.0 7.1

8.1 7.2

8.0 7.1

8.0 7.1

5+00 8.0 7.1

8.0 7.1

8.0 7.1

8.0 7.1

8.0 7.1

50 8.0 7.1

8.7 7.8

9.3 8.4

10.8 9.9

11-29-60

STA. N. 133+00; 0+00 = W. 9,920; SOUND WEST

Dist Sound Elev

5+00	7.9	6.9
	7.8	6.8
(1.0)	7.5	6.5
	7.5	6.5
	8.0	7.0
50	8.4	7.4
<u>2+00</u>	11.0	10.0
	10.8	9.8
	10.2	9.2
	10.7	9.7
6+00	10.9	9.9

STA. N. 133+50; 0+00 = W. 9890; SOUND WEST

Dist Sound Elev

2+50	9.8	8.7
(1.1)	9.7	8.6
	9.7	8.6
	9.3	8.2
	8.3	7.2
3+00	8.6	7.5
	8.4	7.3
<u>2+05</u>	8.6	7.5
	8.3	7.2
	8.3	7.2
<u>50</u>	8.4	7.3
<u>5+00</u>	8.3	7.2
	8.4	7.3
	8.3	7.2
	7.7	6.6
	7.4	6.3
50	7.9	6.8
	10.1	9.0
	10.4	9.3
	10.7	9.6
	10.7	9.6
6+00	10.8	9.7

SEE ALSO
PAGE 69

530

11-29-60

STA. N. 134+00 S. 0+00 = W. 9870' SOUND WEST

Dist Sound Elev Dist Sound Elev

4+50	8.1	7.0	(11)	8.7	7.6
(11)	8.2	7.1		8.3	7.2
	8.2	7.1	50	8.0	6.9
	8.4	7.3		8.0	6.9
	8.3	7.2		7.9	6.8
5+00	8.4	7.3		7.9	6.8
	8.5	7.4		7.8	6.7
<u>2:15</u>	8.2	7.1	22+00	8.0	6.9
	7.7	6.6		8.5	7.4
	7.4	6.3		9.0	7.9
50	8.1	7.0		10.3	9.2
	8.5	7.4		10.3	9.2
	10.9	9.8	50	10.4	9.3
	11.3	10.2		10.4	9.3
	11.0	9.9		10.4	9.3
6+00	10.1	9.0		10.1	9.0
20+50	9.1	8.0		10.3	9.2
(11)	9.1	8.0	23+00	10.5	9.4
	9.9	8.8			
<u>2:20</u>	9.6	8.5			
	8.9	7.8			
2+00	8.2	7.1			
	8.0	6.9			
	8.1	7.0			

11-28-60

STA. N. 138+00 S. 0+00 = W. 13,960' SOUND EAST

Dist Sound Elev

14+50	9.1	7.6
(1.5)	9.0	7.5
	9.0	7.5
	8.9	7.4
	8.7	7.2
15+00	8.6	7.1
	8.5	7.0
<u>1:55</u>	8.1	6.6
	7.7	6.2
	7.8	6.3
50	7.8	6.3
	7.7	6.2
	7.8	6.3
	7.8	6.3
16+00	7.7	6.2
	9.1	7.6
	9.5	8.0
	9.0	7.5
	9.4	7.9
50	9.3	7.8

(35)

11-28-60

STA. N. 139+00; 0+00=W. 13,920; SOUND EAST

Dist Sound Elev

13+50 10.3 8.7

10.4 8.8

(1.6) 10.4 8.8

10.4 8.8

10.5 8.9

14+00 9.6 8.0

8.2 6.6

2:10 8.1 6.5

8.2 6.6

8.3 6.7

50 8.3 6.7

8.3 6.7

8.1 6.5

8.1 6.5

8.1 6.5

15+00 8.3 6.7

8.4 6.8

8.7 7.1

8.7 7.1

8.8 7.2

50 8.8 7.2

8.8 7.2

12-09-60

STA. N. 121+50; 0+00=W. 10,490; SOUND WEST

Dist Sound Elev

11+00 11.3 7.1

(4.2) 11.0 6.8

11.3 7.1

10:00 12.1 7.9

13.5 9.3

50 13.9 9.7

14.0 9.8

14.1 9.9

14.1 9.9

13.9 9.7

12+00 13.9 9.7

OK

12-09-60

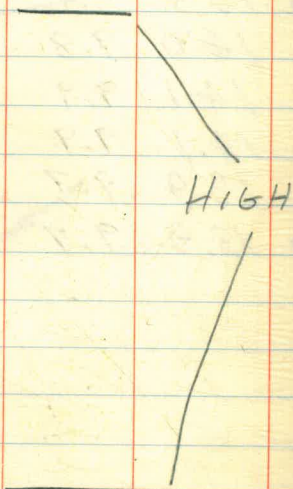
STA. N. 124+00: 0+00 = W. 10,370; SOUND WEST

Dist Sound Elev

23+00 13.0 8.7
13.0 8.7
13.0 8.710:20 12.8 8.5
11.6 7.350 11.7 7.4
10.8 6.5(4.3) 10.7 6.4
10.9 6.6
11.1 6.824+00 11.0 6.7
11.0 6.7
10.5 6.2
10.3 6.0
10.3 6.050 10.6 6.3
11.2 6.911.3 7.0
11.7 7.4

12.1 7.8

25+00 12.4 8.1



STA. N. 124+50: 0+00 = W. 10,340; SOUND WEST

Dist Sound Elev

23+00 12.6 50 12.1 7.7

(4.4) 12.8 12.3 7.9
12.7

11.7

11.5

50 11.6

11.4 7.0

10:35 11.4 7.0

11.4 7.0

11.4 7.0

24+00 11.7 7.3

11.3 6.9

11.2 6.8

11.3 6.9

11.5 7.1

50 11.1 6.7

10.9 6.5

10.9 6.5

10.6 6.2

25+00 10.3 5.9

10.5 6.1

10.8 6.4

11.7 7.3

12.1 7.7

HIGH

TOE OF SAND ISLAND

12-09-60

STAN. 126+00; 0+00 = W. 12870' SOUND EAST

Dist Sound Elev

1+50 11.5 7.0

11.7 7.2

4.5 11.8 7.3

11.8 7.3

11.7 7.2

2+00 11.4 6.9

11.3 6.8

11:50 10.8 6.3

11.7 7.2

12.0

50 12.3

12.3

10.8 6.3

11.1 6.6

11.0 6.5

3+00 11.1 6.6

11.9 7.4

12.3

12.7

12.5

50 12.7

OK

HIGH

HIGH

(8)

STAN. 133+00; 0+00 = W. 9,920' SOUND WEST

Dist Sound Elev

4+50 12.2

12.2

4.5 12.0

12.0

12.1

5+00 11.9 7.4

11.6 7.1

10:55 11.6 7.1

11.3 6.8

11.5 6.9

50 12.7 8.2

13.3 8.8

OK

12-09-60

STA. N. 133+50; 0+00 = W. 9,890; SOUND WEST

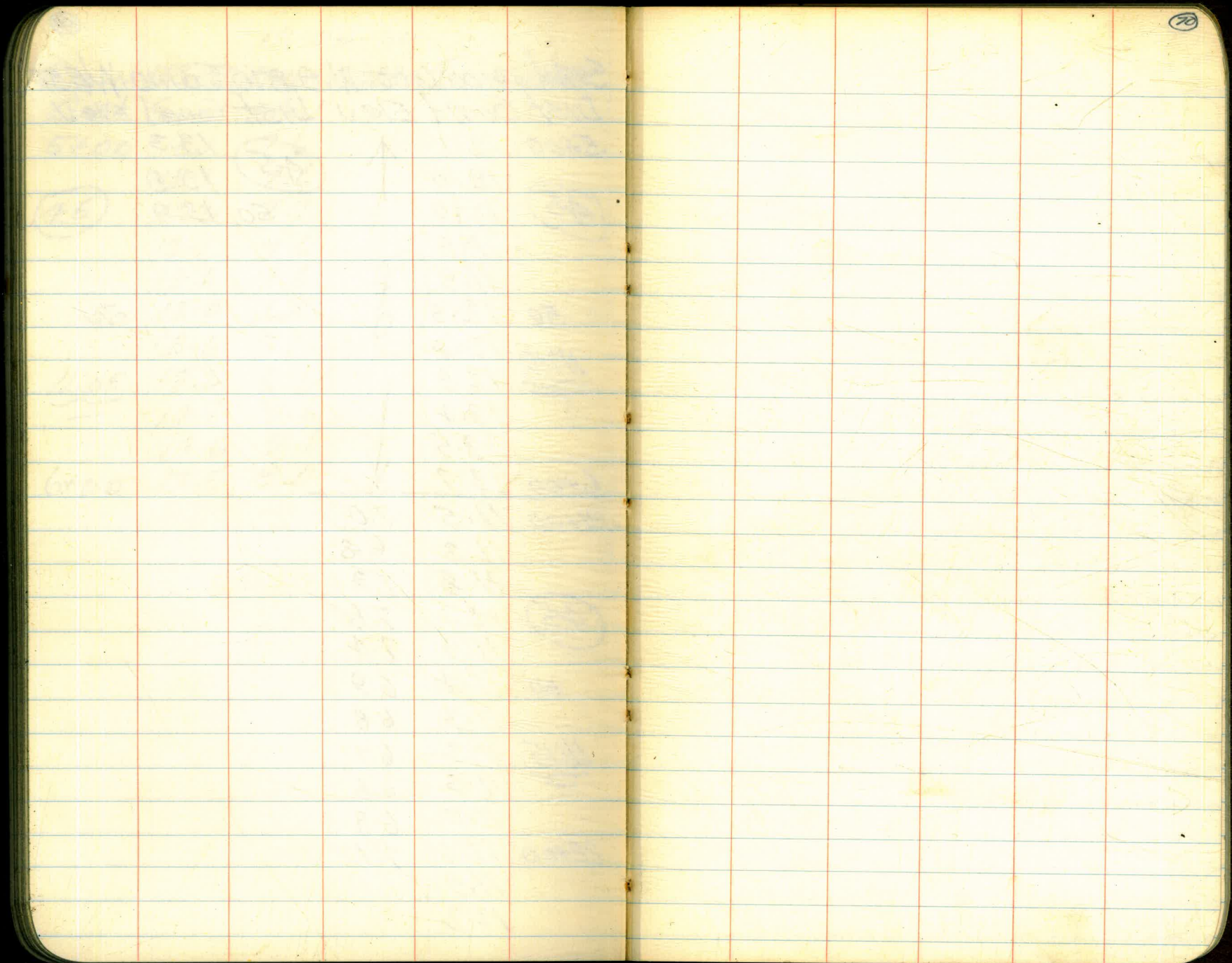
	Dist	Sound	Elev
	5+00	12.1	7.6
		12.1	7.6
(4.5)		12.2	7.7
		12.1	7.6
		12.1	7.6
50	12.0	OK	
	12.6	8.1	
<u>11:05</u>	13.2	8.7	
	14.1	9.6	
	13.6	9.1	
6+00	13.5	9.0	

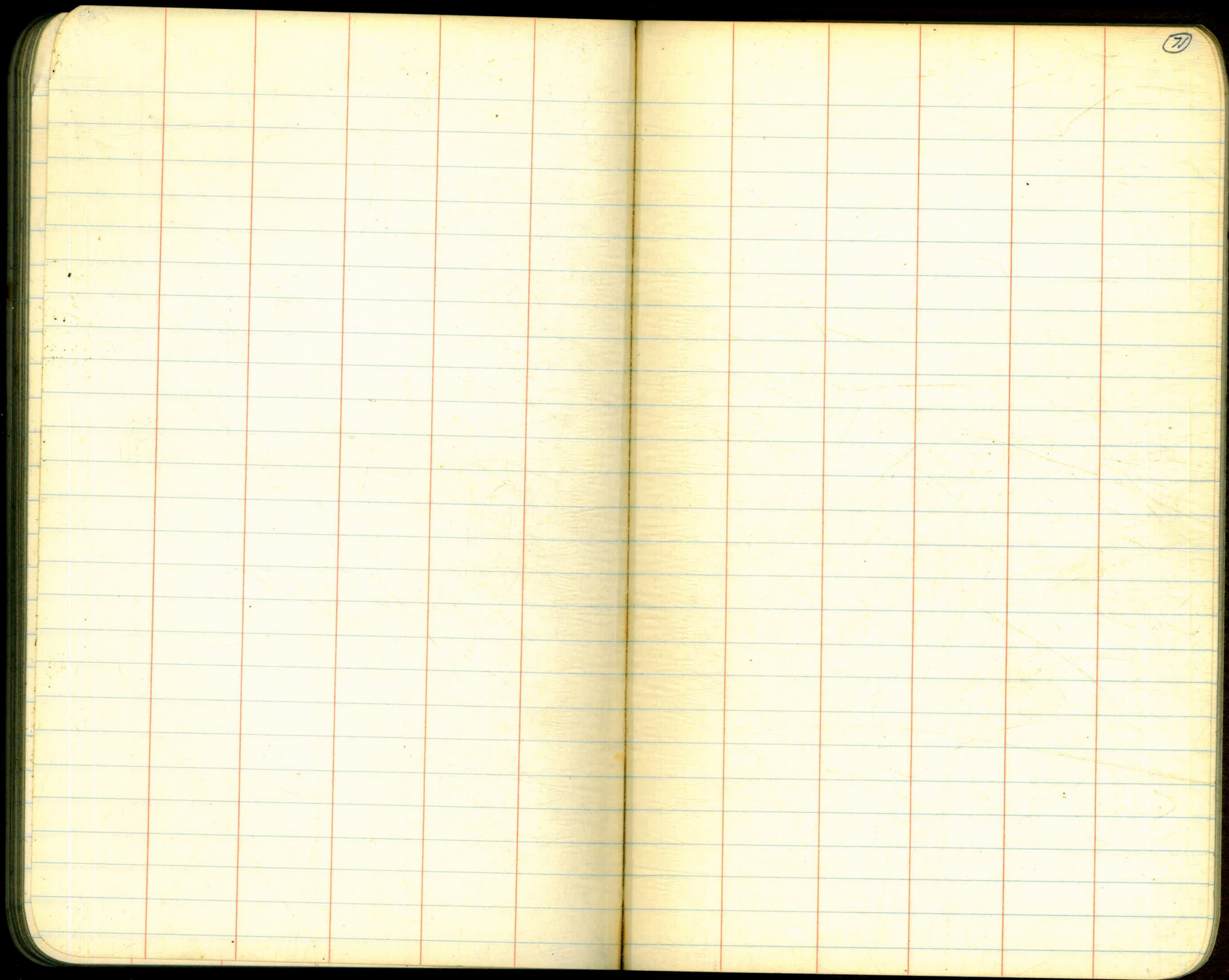
OK

(69)

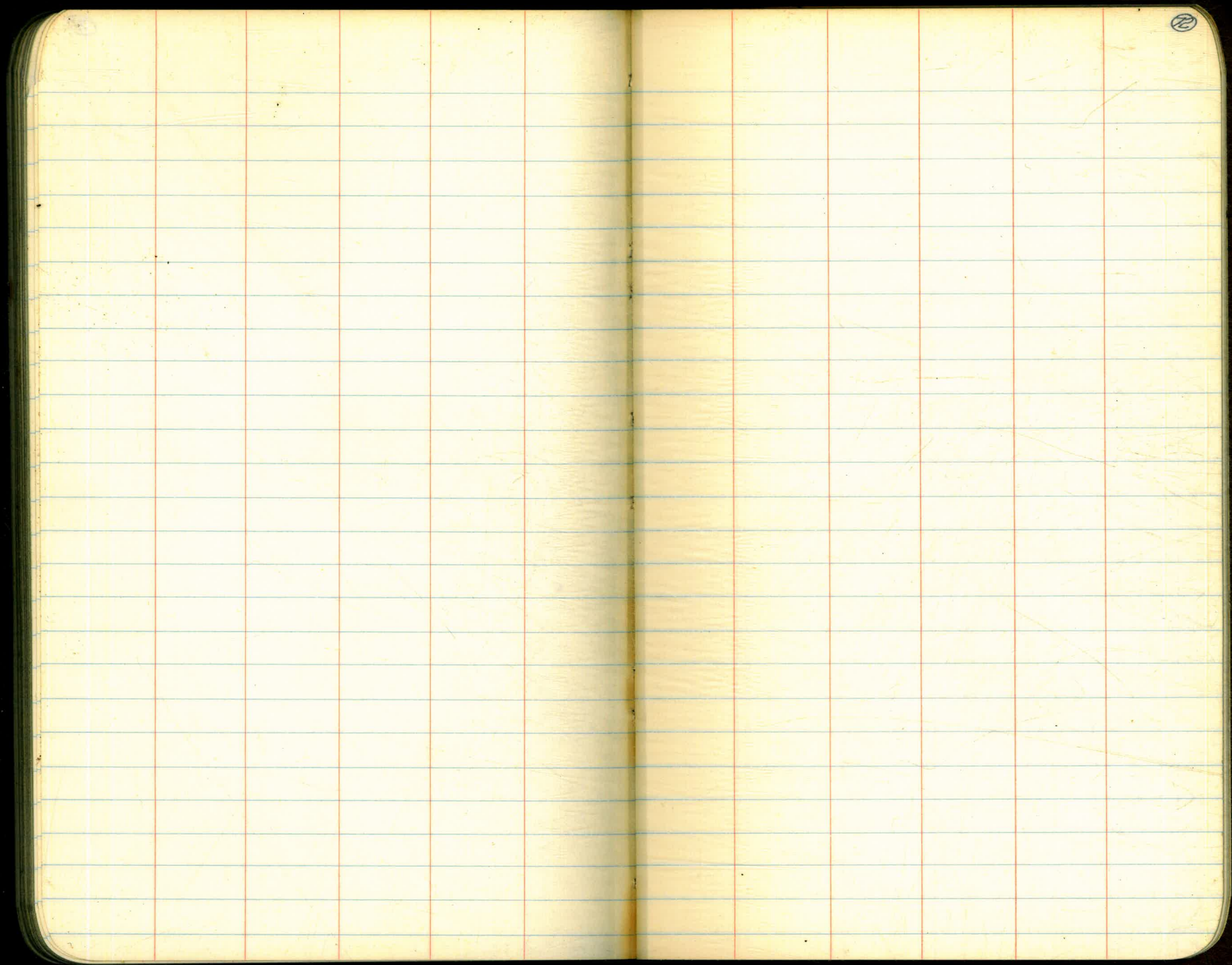
STA. N. 134+00; 0+00 = W. 9,870; SOUND WEST

	Dist	Sound	Elev	Dist	Sound	Elev
	5+00	12.1			13.3	
		12.0			13.8	
(4.5)		12.0		50	13.9	
		11.8				
		11.9				
50	12.3					
	12.4					
<u>11:10</u>	12.9					
	13.4					
	13.5					
6+00	13.7					
21+00	11.5	7.0				
	11.3	6.8				
	11.8	7.3				
(4.5)	12.1	7.6				
	11.9	7.4				
50	11.4	6.9				
	11.3	6.8				
<u>11:15</u>	11.2	6.7				
	11.3	6.8				
	11.3	6.8				
22+00	11.6	7.1				
	11.9					
	12.2					

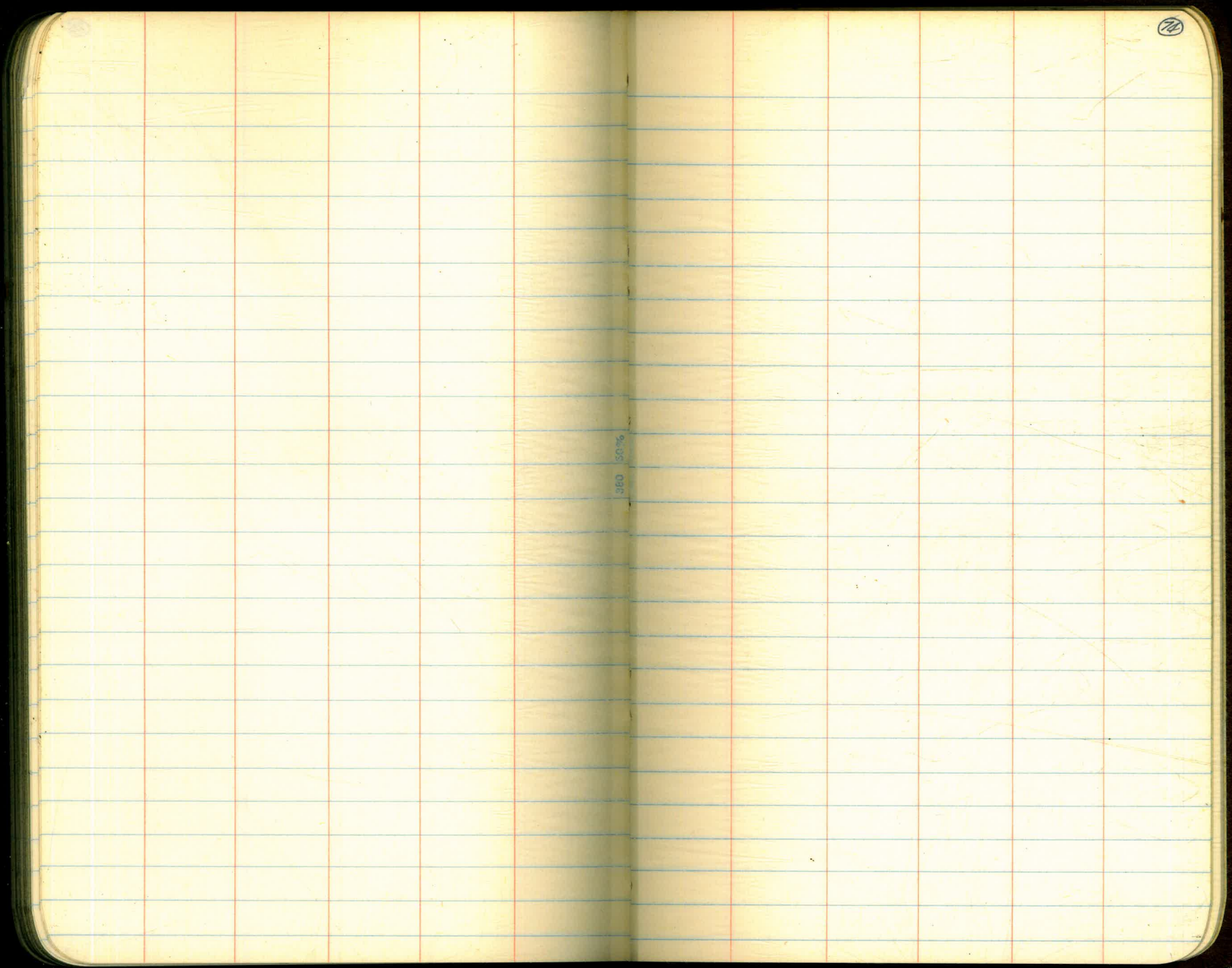




71



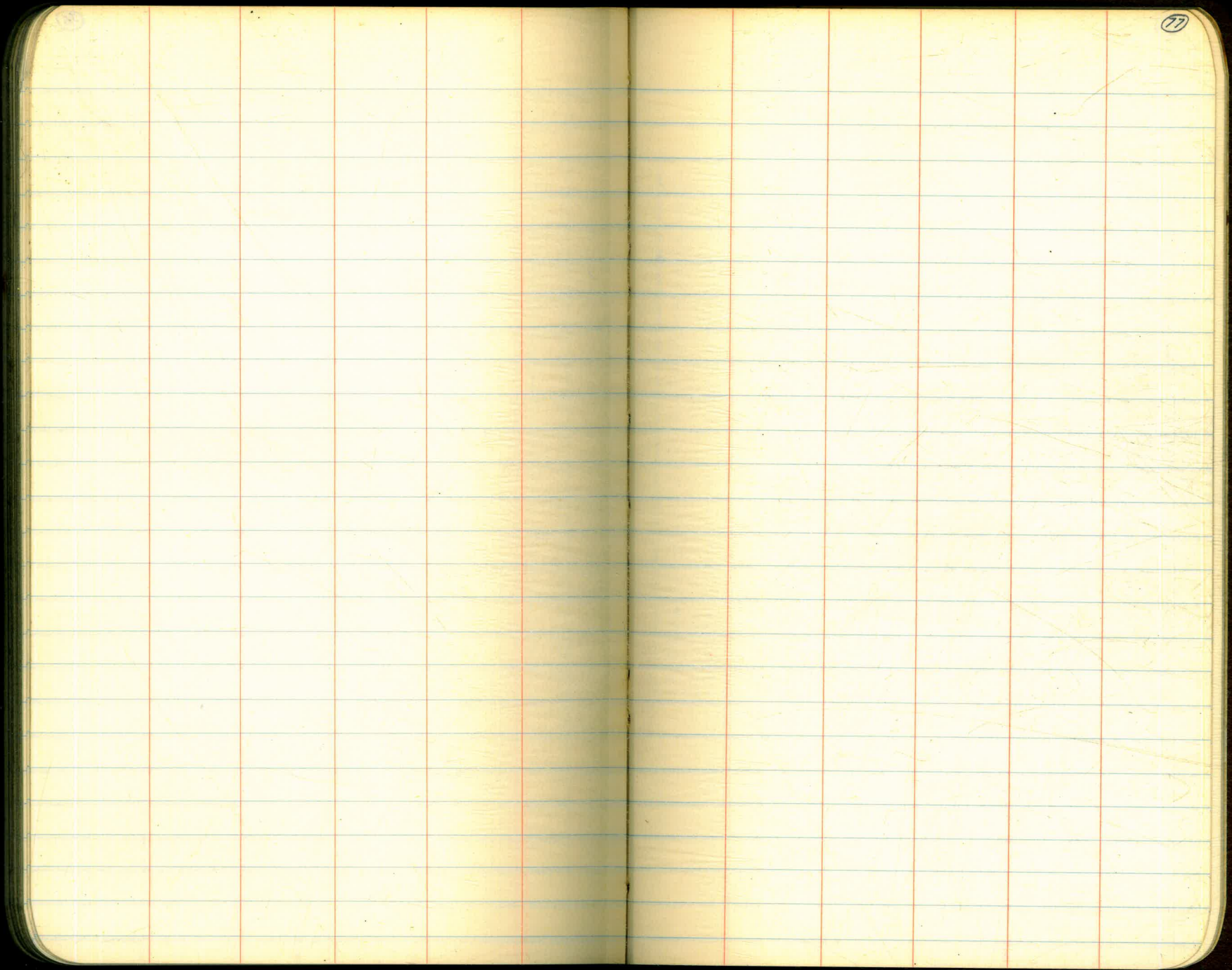
The image shows an open notebook with two facing pages. The pages are cream-colored and feature light blue horizontal ruling. Red vertical lines create margins on both sides of the central gutter. The notebook has rounded corners and a dark cover is visible at the edges. The pages are blank, with no writing or markings other than the page number '73' in the top right corner of the right page.



72

560 50%

380 30%



IMPROVED TABLES AND INFORMATION

HORIZONTAL STADIA CORRECTIONS

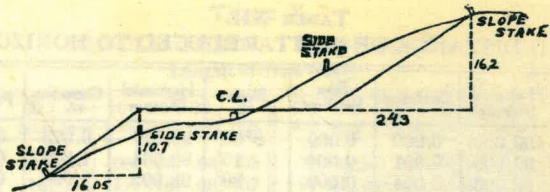
2°-00' — 0.1	21°-00' — 12.3	33°-00' — 29.7
3°-00' — 0.3	21°-30' — 13.4	33°-15' — 30.1
4°-00' — 0.5	22°-00' — 14.0	33°-30' — 30.5
5°-00' — 0.8	22°-30' — 14.7	33°-45' — 30.9
6°-00' — 1.1	23°-00' — 15.3	34°-00' — 31.3
7°-00' — 1.5	23°-30' — 15.9	34°-15' — 31.7
8°-00' — 1.9	24°-00' — 16.5	34°-30' — 32.1
9°-00' — 2.5	24°-30' — 17.2	34°-45' — 32.5
10°-00' — 3.0	25°-00' — 17.9	35°-00' — 32.9
10°-30' — 3.3	25°-30' — 18.6	35°-15' — 33.3
11°-00' — 3.6	26°-00' — 19.2	35°-30' — 33.7
11°-30' — 4.0	26°-30' — 19.9	35°-45' — 34.1
12°-00' — 4.3	27°-00' — 20.6	36°-00' — 34.6
12°-30' — 4.7	27°-30' — 21.3	36°-15' — 35.0
13°-00' — 5.1	28°-00' — 22.0	36°-30' — 35.4
13°-30' — 5.5	28°-30' — 22.8	36°-45' — 35.8
14°-00' — 5.9	29°-00' — 23.5	37°-00' — 36.2
14°-30' — 6.3	29°-30' — 24.3	37°-15' — 36.6
15°-00' — 6.7	30°-00' — 25.0	37°-30' — 37.1
15°-30' — 7.2	30°-15' — 25.4	37°-45' — 37.5
16°-00' — 7.6	30°-30' — 25.8	38°-00' — 37.9
16°-30' — 8.1	30°-45' — 26.2	38°-15' — 38.3
17°-00' — 8.5	31°-00' — 26.5	38°-30' — 38.7
17°-30' — 9.0	31°-15' — 26.9	38°-45' — 39.1
18°-00' — 9.5	31°-30' — 27.3	39°-00' — 39.6
18°-30' — 10.1	31°-45' — 27.7	39°-15' — 40.0
19°-00' — 10.6	32°-00' — 28.1	39°-30' — 40.5
19°-30' — 11.2	32°-15' — 28.5	
20°-00' — 11.7	32°-30' — 28.9	
20°-30' — 12.3	32°-45' — 29.3	

Chains to Feet

1	66
2	132
3	198
4	264
5	330
6	396
7	462
8	528
9	594
10	660

Feet to Chains

100	1.515
200	3.030
300	4.545
400	6.060
500	7.575
600	9.090
700	10.606
800	12.121
900	13.636
1,000	15.151



DISTANCES FROM SIDE STAKES FOR CROSS-SECTIONING.

SLOPE 1 1/4 TO 1. ROADWAY OF ANY WIDTH.

	0	.1	.2	.3	.4	.5	.6	.7	.8	.9	
0	0 00	0 15	0 30	0 45	0 60	0 75	0 90	1 05	1 20	1 35	0
1	1 50	1 65	1 80	1 95	2 10	2 25	2 40	2 55	2 70	2 85	1
2	3 00	3 15	3 30	3 45	3 60	3 75	3 90	4 05	4 20	4 35	2
3	4 50	4 65	4 80	4 95	5 10	5 25	5 40	5 55	5 70	5 85	3
4	6 00	6 15	6 30	6 45	6 60	6 75	6 90	7 05	7 20	7 35	4
5	7 50	7 65	7 80	7 95	8 10	8 25	8 40	8 55	8 70	8 85	5
6	9 00	9 15	9 30	9 45	9 60	9 75	9 90	10 05	10 20	10 35	6
7	10 50	10 65	10 80	10 95	11 10	11 25	11 40	11 55	11 70	11 85	7
8	12 00	12 15	12 30	12 45	12 60	12 75	12 90	13 05	13 20	13 35	8
9	13 50	13 65	13 80	13 95	14 10	14 25	14 40	14 55	14 70	14 85	9
10	15 00	15 15	15 30	15 45	15 60	15 75	15 90	16 05	16 20	16 35	10
11	16 50	16 65	16 80	16 95	17 10	17 25	17 40	17 55	17 70	17 85	11
12	18 00	18 15	18 30	18 45	18 60	18 75	18 90	19 05	19 20	19 35	12
13	19 50	19 65	19 80	19 95	20 10	20 25	20 40	20 55	20 70	20 85	13
14	21 00	21 15	21 30	21 45	21 60	21 75	21 90	22 05	22 20	22 35	14
15	22 50	22 65	22 80	22 95	23 10	23 25	23 40	23 55	23 70	23 85	15
16	24 00	24 15	24 30	24 45	24 60	24 75	24 90	25 05	25 20	25 35	16
17	25 50	25 65	25 80	25 95	26 10	26 25	26 40	26 55	26 70	26 85	17
18	27 00	27 15	27 30	27 45	27 60	27 75	27 90	28 05	28 20	28 35	18
19	28 60	28 65	28 80	28 85	29 00	29 05	29 20	29 25	29 40	29 45	19
20	30 00	30 15	30 30	30 45	30 60	30 75	30 90	31 05	31 20	31 35	20
21	31 50	31 65	31 80	31 95	32 10	32 25	32 40	32 55	32 70	32 85	21
22	33 00	33 15	33 30	33 45	33 60	33 75	33 90	34 05	34 20	34 35	22
23	34 50	34 65	34 80	34 95	35 10	35 25	35 40	35 55	35 70	35 85	23
24	36 00	36 15	36 30	36 45	36 60	36 75	36 90	37 05	37 20	37 35	24
25	37 50	37 65	37 80	37 95	38 10	38 25	38 40	38 55	38 70	38 85	25
26	39 00	39 15	39 30	39 45	39 60	39 75	39 90	40 05	40 20	40 35	26
27	40 50	40 65	40 80	40 95	41 10	41 25	41 40	41 55	41 70	41 85	27
28	42 00	42 15	42 30	42 45	42 60	42 75	42 90	43 05	43 20	43 35	28
29	43 50	43 65	43 80	43 95	44 10	44 25	44 40	44 55	44 70	44 85	29
30	45 00	45 15	45 30	45 45	45 60	45 75	45 90	46 05	46 20	46 35	30
31	46 50	46 65	46 80	46 95	47 10	47 25	47 40	47 55	47 70	47 85	31
32	48 00	48 15	48 30	48 45	48 60	48 75	48 90	49 05	49 20	49 35	32
33	49 50	49 65	49 80	49 95	50 10	50 25	50 40	50 55	50 70	50 85	33
34	51 00	51 15	51 30	51 45	51 60	51 75	51 90	52 05	52 20	52 35	34
35	52 50	52 65	52 80	52 95	53 10	53 25	53 40	53 55	53 70	53 85	35
36	54 00	54 15	54 30	54 45	54 60	54 75	54 90	55 05	55 20	55 35	36
37	55 50	55 65	55 80	55 95	56 10	56 25	56 40	56 55	56 70	56 85	37
38	57 00	57 15	57 30	57 45	57 60	57 75	57 90	58 05	58 20	58 35	38
39	58 50	58 65	58 80	58 95	59 10	59 25	59 40	59 55	59 70	59 85	39
40	60 00	60 15	60 30	60 45	60 60	60 75	60 90	61 05	61 20	61 35	40
41	61 50	61 65	61 80	61 95	62 10	62 25	62 40	62 55	62 70	62 85	41
42	63 00	63 15	63 30	63 45	63 60	63 75	63 90	64 05	64 20	64 35	42
43	64 50	64 65	64 80	64 95	65 10	65 25	65 40	65 55	65 70	65 85	43
44	66 00	66 15	66 30	66 45	66 60	66 75	66 90	67 05	67 20	67 35	44
45	67 50	67 65	67 80	67 95	68 10	68 25	68 40	68 55	68 70	68 85	45
46	69 00	69 15	69 30	69 45	69 60	69 75	69 90	70 05	70 20	70 35	46
47	70 50	70 65	70 80	70 95	71 10	71 25	71 40	71 55	71 70	71 85	47
48	72 00	72 15	72 30	72 45	72 60	72 75	72 90	73 05	73 20	73 35	48
49	73 50	73 65	73 80	73 95	74 10	74 25	74 40	74 55	74 70	74 85	49
50	75 00	75 15	75 30	75 45	75 60	75 75	75 90	76 05	76 20	76 35	50

Computed by L. Leland Locke.

L 124 - W129⁰⁰ - W13100

123 " " "

125 - W12800 - W13,100

134 - W12400 - W12550

133+50 - W12,310 - W12550

(134+50 - W12410 - W12600
 (0400 = W13,990) 240

14020

131

920

13,980

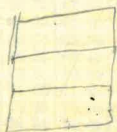
12550

1430

150

1580

1:05 4.6
1:10 4.6
1:40 4.6
1:45 4.6
1:55 4.6
2:00 4.6
2:10 4.5
2:15 4.5
2:30 4.4
2:35 4.4
2:45 4.3
2:50 4.3
3:00 4.2
3:05 4.2



4.4