

MB 143



1930

95
285
1215
2

14053.6
9

MICROFILMED

~~2
32.30
14.15
18.15~~

~~386
190
576~~

~~13,969.7
49
920~~

~~027
27.4
13,900~~

~~14044
74.9~~

~~13970~~

FB 143

THIS BOOK INDEXED 2-13-62

E. CRPT,
Check,
N11000

	14055.2
	65
14108.8	13990 14162
<u>.688</u>	72
140000 - 124	14001.7
13990 - 126	61
13940 - 128	1394
13930 - 130	13983.6
13950 - 132	5
13980 - 134	<u>930</u>
14000 - 136	14135
10:55 - 3.8	6
11:00 - 3.8	14001.7
11:15 - 3.9	65.7
11:20 - 3.9	13940
11:30 - 3.9	13974.9
11:35 - 4.0	44
11:45 - 4.0	14018.6
11:50 - 4.1	13938
11:55 - 4.1	3
12:00 - 4.1	13992.4
12:05 - 4.1	52
12:10 - 4.2	14036.1
12:15 - 4.2	940
12:20 - 4.2	30
	14053.6
	9
	138 - 13960
	13885.8
	358
	140 - 13850
	13801.9
	519
	141 - 137500
	13718.
	78
	142 - 13648

14082
62
<u>14020</u>
14028.5
5
<u>13970</u>
14009.9
39
<u>13970</u>

PAGES

INDEX

DATE

1-

X-SEC OF PEASE LEASE AREA

8-3-60

BASE LINE FOR X-SECTION OF FILL
PEASE LEASE + CROWN POINT DRIVE

FB M13103-3

AUG 3, 1960

ALLEN

HAMILTON

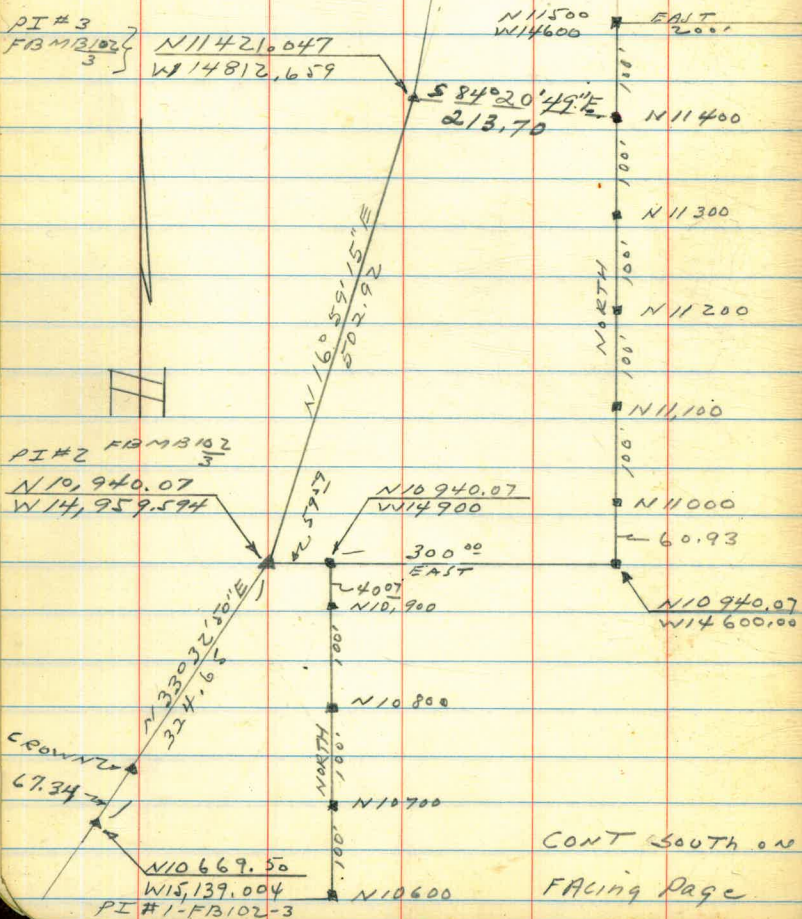
94844

POETER

W064501

See FB M13102
Page 3

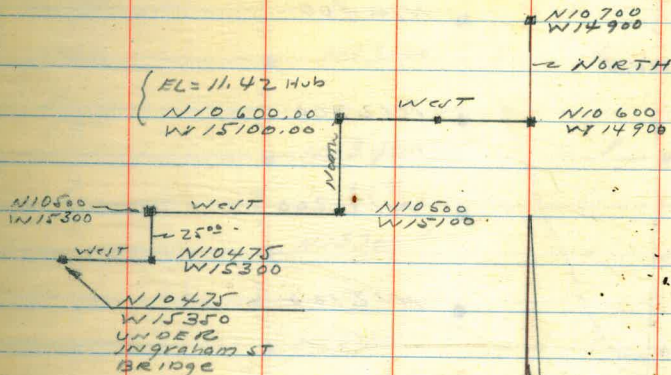
CONT NORTH
Page 2



CONT SOUTH ON
Facing Page

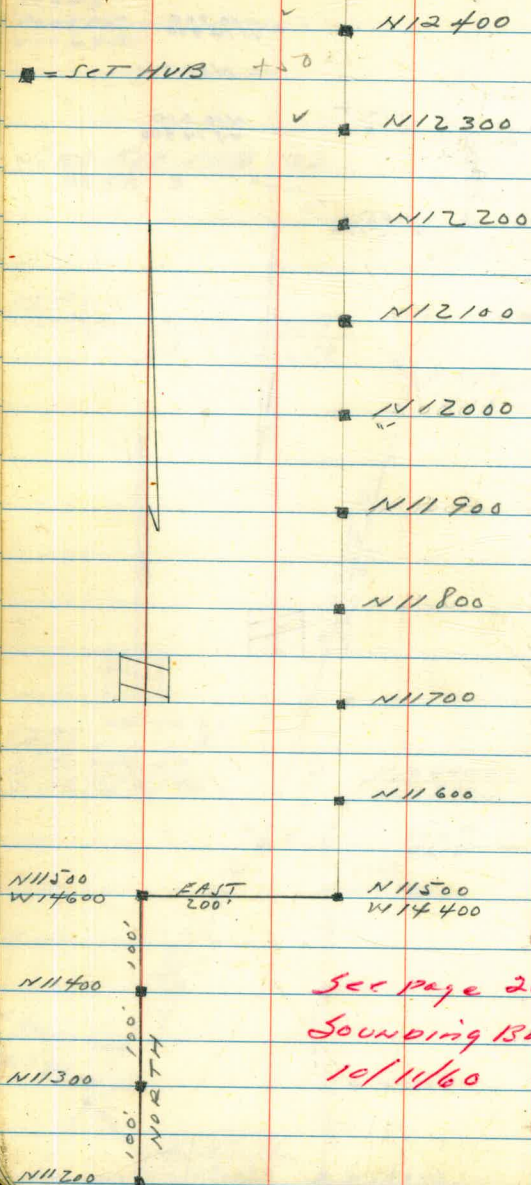
SEE LOOSE LEAF X-SECTIONS
C-15, W0# 64926 - OCT. 3, 1962

CONT FROM Facing Page



BASE LINE FOR PEASE LEASE
AREA CONT NORTH FROM PAGE 1

CONT ON FACING PAGE



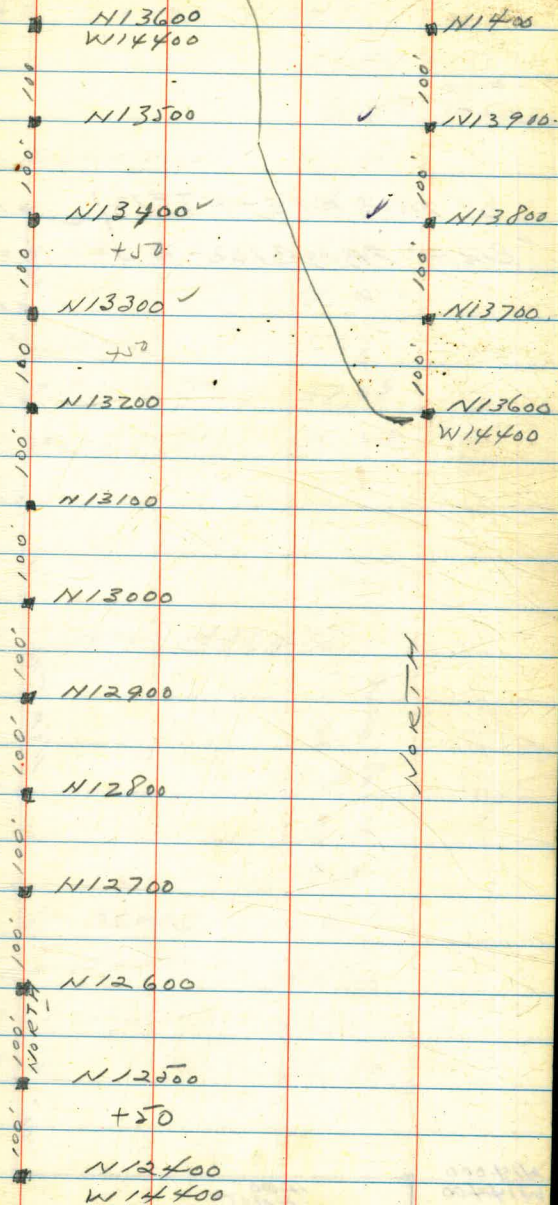
See page 26 For
Sounding BASE LINE
10/11/60

BASE LINE LAYOUT FOR X-SEC OF
PEASE LEASE AREA. 8-8-60

(2)

CONT

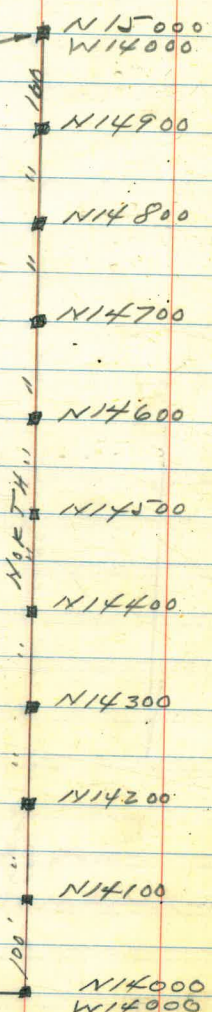
CONT P93



CONT FROM FACING PAGE

BASELINE FOR PEASE LEASE AREA.

2" IRON PIPE - PI#12 }
 "Beam" FBMB102-S }



X-SECTION IN PEASE LEASE AREA
 AUG 4, 1960

W 153450; 0+00 = N10475

STA		ELEV	
0		6.53	HUB - SANDS
520	UNDER BRIDGE PILES	4.5	
348		3.0	
N14	TOE OF BANK	8.7	
N24		11.0	
N65	TOP OF BANK	37.1	
N87	TOP OF CURB	37.08	CROWN POINT
N87	GUTTER -	36.28	DR -

W 153400; 0+00 = N10475

0		7.9	
515		6.8	
535		4.8	
550		2.6	
N25		9.8	
N30	= TOE OF SLOPE	10.1	
N78	= TOP OF BANK	37.2	
N107.5	= TOP OF CURB	37.40	CROWN POINT
N107.5	= GUTTER	36.83	DR

N14000
 W14400

400' EAST

N14000
 W14000

CONT FROM SHEET #2

X-sec Pease Lease Area cont

W 152+00; 0+00 = N 10500

STA	ELEV
0	8.4
525	6.7
543	5.2
560	2.5
N 27	10.7
N 54 = Top of Slope	11.6
N 123 = Top of BANK	38.2
N 140.7 = Top of CURB	38.58
N 140.7 = GUTTER	38.07

[N 1072.2] = END CURB CROWN POINT DR TC=38.53
 W 15112.7] GUT=37.95

W 151+00; 0+00 = N 10500

0	6.5
530	2.5
N 52	10.8
N 100	11.2
N 118 = Top of Slope	11.0
N 217 = Top of BANK	38.0
N 245.9 = Edge A.C. Pave	37.56

TBM 11.42 Hub at N 10600 - W 15100

X-SECTION PEASE LEASE AREA

STA ELEV

W 150+00; 0+00 = N 10600

0	10.9
550	7.2
558	6.8
597	2.0
N 50	11.4
N 100	11.9
N 150	12.4
N 188 = Top of BANK	13.8
N 253 = Top of BANK	35.0
N 288.3 = Edge A.C. Pave	34.60

W 14900 - N 106+00; 0+00

0	7.0
E 40	4.6
E 85	2.0
W 50	9.0
W 100	10.9
W 150	11.3
W 200	11.3
W 222 = Top of BANK	10.9
W 332 = Top of BANK	38.0
W 365.6 = Top CURB CROWN PT DR	37.81

STA	ELEV.
N 106+00 CONT	
W 365.6 = GUTTER CROWN PT. DR.	37.24
N 107+00; 0+00 = W 14900	
0	11.5
E 50	11.3
E 62	11.0
E 100	8.2
E 132	6.7
E 203	2.2
W 50	11.7
W 100	11.9
W 150 =	12.6
W 159 = TOE OF BANK	12.7
W 213 = TOP OF BANK	38.4
W 233.3 = TOP CURB	38.73
W 233.3 = GUTTER	38.21

AUG 5, 1960

TBM 12.52 N 10800; 0+00 = W 14900	
N 108+00; 0+00 = W 14900	
0	12.0
E 50	12.0
E 100	11.9
E 150	11.2

STA	ELEV.
N 108+00 CONT	
E 170	9.9
E 200	7.6
E 208	7.0
E 249 H ₂ O	4.1
W 50	12.5
W 94 = TOE OF BANK	13.8
W 137 = TOP OF BANK	36.4
W 162.1 = Edge A.C. ^{CROWN} PT. DR.	36.37

STA N 109+00; 0+00 = W 14900

0	12.7
E 50	12.4
E 100	12.0
E 150'	11.7
E 200	11.0
E 233	11.3
E 280	7.6
E 300	5.9
E 325 H ₂ O	4.4
W 37 = TOE BANK	14.0
W 66 = TOP BANK	33.9
W 91.7 = Edge A.C.	34.34

AUG 5, 60

STA		ELEV
N 110+00; 0+00 =	W 14600	
0		10.6
E 42		7.0
E 79	H ₂₀	4.2
W 50		10.6
W 100		11.5
W 150		12.0
W 200		12.7
W 250		13.3
W 300		13.8
W 306	= Toe OF BANK	14.2
W 331	= TOP OF BANK	33.0
W 347.5	= Edge A.C.	32.96

N 111+00; 0+00 = W 14600.

0		11.1
E 50		10.8
E 54		10.6
E 100		7.0
E 138	H ₂₀	4.1
W 50		12.1
W 100		12.6
W 150		12.7
W 200		13.2
W 250		13.6

N 111+00 CONT

⑥

STA		ELEV
W 274	= Toe OF BANK	14.3
W 294	= TOP OF BANK	31.4
W 316.8	= Edge AC	31.18

N 112+00; 0+00 = W 14600.

0		12.0
E 50		11.0
E 100		11.6
E 105		11.4
E 150		7.4
E 193	H ₂₀	4.1
W 50		12.7
W 100		12.8
W 150		13.3
W 200		13.7
W 244	= Toe OF BANK	14.6
W 266	= TOP OF BANK	29.9
W 286.7	= Edge A.C. Pave	29.39

N 113+00; 0+00 = W 14600

0		12.2
E 50		11.9
E 100		11.6
E 147		11.6
E 174		9.9

Aug 5, 60
STA N 113+00 CONT

STA		ELEV
E 200		7.6
E 210		6.9
E 249	H ₂₀ .	4.0
W 50		12.6
W 100		13.2
W 150		13.7
W 200		13.7
W 210	= TOE OF BANK	14.2
W 230	= TOP OF BANK	28.3
W 256.0	= EDGE A.C. PAVE	27.64

N 114+00; 0+00 = W 14600.0

0		12.6
E 50		12.0
E 100		11.6
E 150		11.6
E 200		11.2
E 205		11.2
E 250		7.7
E 298	H ₂₀	3.8
W 50	ON EXTRA SAND	14.0
W 100	PLACED FOR LACIMA DRIVE	16.5
W 150		18.2
W 195	= TOE OF BANK	20.0

STA N 114+00 CONT

STA		ELEV
W 204	= TOP OF BANK	26.5
W 226.1	= EDGE A.C. PAVE	25.86

Aug 8, 1960

N 115+00; 0+00 = W 14600.0

0		13.1
E 50		11.9
E 100		11.5
E 150		11.6
E 200		11.0
E 250		10.3
E 255		10.5
E 285		7.9
E 288		7.2
E 337	H ₂₀	3.7
W 50		15.1
W 100		18.1
W 150		19.6
W 172	= TOE OF BANK	19.5
W 193.0	= TOP OF BANK	25.2
W 204.4	= EDGE A.C. PAVE	24.63

N 116+00; 0+00 = W 14,400.0

0		11.2
E 50		10.3

Aug 8, 60

STA N116+00 cont

STA	ELEV
E 84	10.5
E 150	5.0
E 162 H ₂ O	4.2
W 50	11.2
W 100	12.0
W 150	12.4
W 200	13.3
W 250	14.7
W 300	15.4
W 350 = Toe of BANK	16.0
W 362 = Top of BANK	23.9
W 386.9 = EDGE A.C. Pave	23.76
N 117+00; 0+00 = W 14400	
0	11.5
E 50	11.0
E 100	10.8
E 108	10.6
E 150	6.8
E 179 H ₂ O	4.4
W 50	12.3
W 100	12.5
W 150	13.2
W 200	13.8
W 250	14.4

N 117+00 cont

⑧

STA	ELEV
W 300	14.2
W 327 = Toe of BANK	14.6
W 342 = Top of BANK	24.0
W 369.3 = EDGE A.C. Pave	23.10
TBM = 11.90 = Hub at N 11800 - W 14400	
N 118+00; 0+00 = W 14400.0	
0	11.9
E 50	11.2
E 100	11.0
E 135	11.3
E 160	8.6
E 200 H ₂ O	4.6
W 50	12.3
W 100	12.7
W 150	13.4
W 200	13.8
W 250	13.9
W 300	14.0
W 308 = Toe of BANK	14.8
W 324 = Top of BANK	23.9
W 352.0 = EDGE A.C. Pave	22.97
N 119+00; 0+00 = W 14400	
0	12.0
E 50	11.6

N 119400 CONT

STA	ELEV
E100	11.3
E148	11.5
E167	10.5
E200	7.6
E231 H ₂ O	4.6
W50	12.2
W100	13.3
W150	13.5
W200	13.6
W250	13.4
W297 = Toe of BANK	13.7
W311 = Top of BANK	24.0
W334.4 = Edge A.C. Pave	23.62
N 120400; 0+00 = W14400	
0	12.2
E50	11.9
E100	11.9
E150	12.1
E166	11.9
E200	10.0
E233	6.7
E262 H ₂ O	4.6
W50	12.6
W100	13.2
W150	14.0

A-98, 1960
STA N120400 CONT

(9)

STA	ELEV
W200	14.0
W250	14.2
W280 = Toe of BANK	14.6
W294 = Top of BANK	24.2
W316.7 = Edge of A.C. Pave	24.38
N 121400; 0+00 = W14400	
0	13.0
E50	12.5
E100	12.2
E150	12.3
E200	12.3
E220	10.7
E252	7.2
E278 H ₂ O	4.8
W50	13.1
W100	13.4
W150	14.3
W200	14.6
W250	14.4
W270 = Toe of BANK	14.6
W282 = Top of BANK	24.8
W299.3 = Edge of A.C. Pav.	25.07

PEASE LEASE AREA:

Sta.	ELEV.
N 122+00 ; 0+00 = W 14400	
0	12.6
E 50	12.3
E 100	12.3
E 150	12.5
E 200	12.4
E 220	12.6
E 250	10.0
E 300 H ₂ O	5.0
W 50	13.0
W 100	14.0
W 150	14.6
W 200	15.0
W 250	15.2
W 259 = Toe OF BANK	15.6
W 271 = TOP OF BANK	25.5
W 285.5 = EDGE OF PAVE	25.70
TBM. 13.06 HUB AT N 12300; W 14400	
N 123+00 ; 0+00 = W 14400	
0	13.0
E 50	12.1
E 100	12.1

STA N 123+00 Cont.

STA	ELEV
E 150	12.1
E 200	12.1
E 250	12.3
E 300	7.6
E 330	5.6
E 352	3.3
W 50	13.5
W 100	14.4
W 150	14.7
W 200	14.9
W 250	14.7
W 276 = Toe OF BANK	14.9
W 269 = TOP OF BANK	26.2
W 285.6 = EDGE A.C. PAVE	26.28
N 124+00 ; 0+00 = W 14400	
0	13.3
E 50	12.6
E 100	12.2
E 150	12.3
E 200	12.0
E 250	11.9
E 270	11.9
E 300	10.0
E 330	7.2

AUG 8, 1960
N 124+00 Cont.

STA		ELEV
E371	H ₂₀	3.5
W50		13.5
W100		14.3
W150		15.0
W200		15.0
W250		15.8
W264	= TOE OF BANK	16.0
W282	= TOP OF BANK	27.9
W295.6	= EDGE A.C. PAVE	27.05

N 125+00; 0+00 = W 14400

0		13.3
E50		12.6
E100		12.1
E150		12.1
E200		12.0
E250		12.0
E300		11.9
E324		11.3
E364		7.2
E402	H ₂₀	3.2
W50		13.6
W100		14.8
W150		15.3

AUG 8, 1960
N 125+00 Cont.

STA		ELEV
W200		15.4
W250		15.4
W281	= TOE OF BANK	15.7
W298	= TOP OF BANK	27.5
W309.4	= EDGE A.C. PAVE	27.67
TBM	- 14.00	HUB N12600; W14400

N 126+00; 0+00 = W14400

0		14.0
E50		13.1
E100		12.5
E150		12.3
E200		12.0
E250		12.0
E300		11.7
E350		11.6
E400		6.0
E430	H ₂₀	3.0
W50		14.1
W100		14.6
W150		15.0
W200		14.8
W250		15.7
W296	= TOE OF BANK	15.8
W311.0	= TOP OF BANK	28.3
W323.2	= EDGE A.C. PAVE	28.23

Aug 8, 1960

(2)

N 127+00; 0+00 = W 14400

N 128+00; 0+00 = W 14400

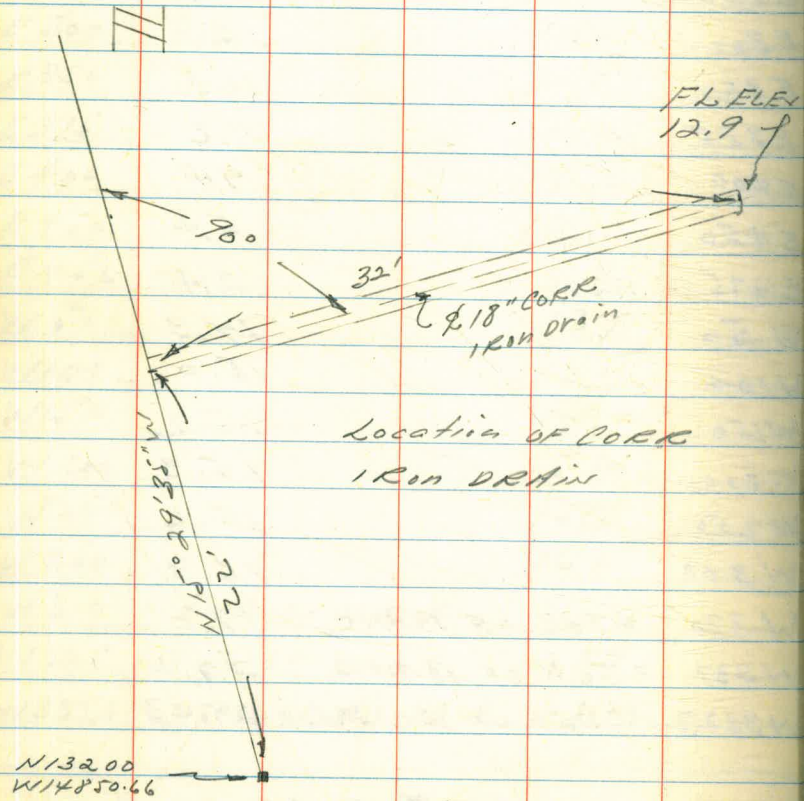
STA	ELEV
0	13.5
E 50	13.3
E 100	12.5
E 150	12.8
E 200	12.5
E 250	12.5
E 300	12.2
E 350	11.4
E 375	11.2
E 400	9.2
E 450	3.1
E 456 H ₂ O	2.9
W 50	13.9
W 100	14.5
W 150	14.9
W 200	15.6
W 250	15.6
W 300	16.0
W 310 = TOE OF BANK	16.2
W 325 = TOP OF BANK	28.9
W 337.1 = EDGE OF A.C. PAVE	28.79

STA	ELEV.
0	13.8
E 50	13.2
E 100	12.7
E 150	13.2
E 200	13.0
E 250	12.5
E 300	12.0
E 350	11.8
E 385	11.2
E 400	9.4
E 450	5.4
E 475 H ₂ O	2.4
W 50	14.3
W 100	15.0
W 150	15.2
W 200	15.3
W 250	15.6
W 300	16.3
W 320 = TOE OF BANK	17.2
W 337 = TOP OF BANK	29.4
W 352.7 = EDGE OF A.C. PAVE	29.43

TBM 29.55 PI # 5- FB102-4

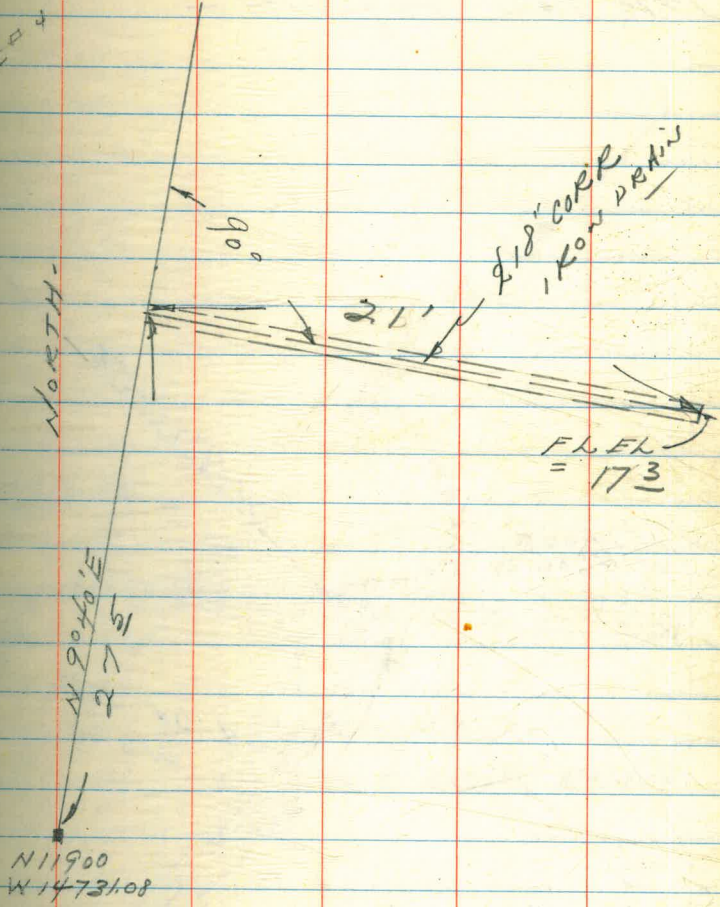
X-SECTIONS CONT Page 15

PIG 6



Location of CORR
1 IN DRAIN

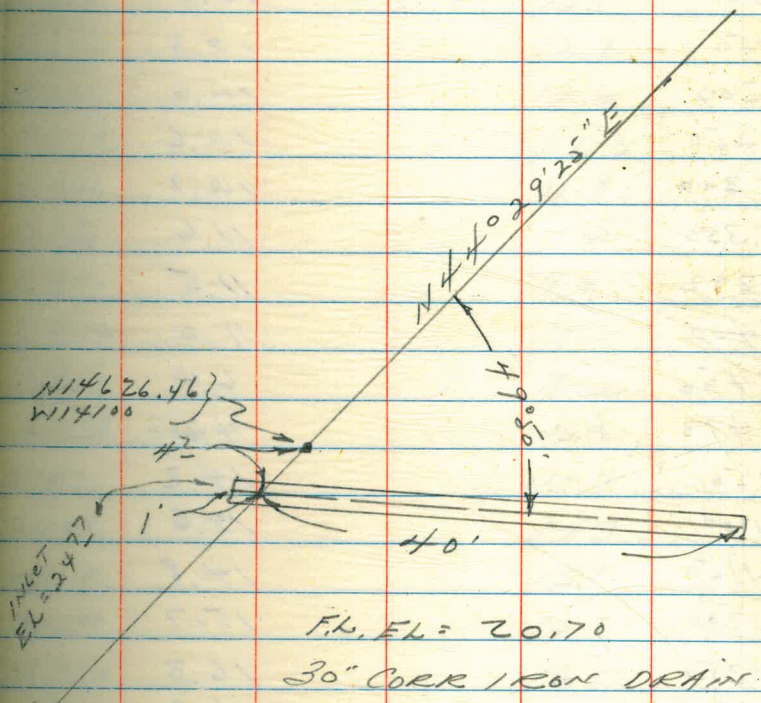
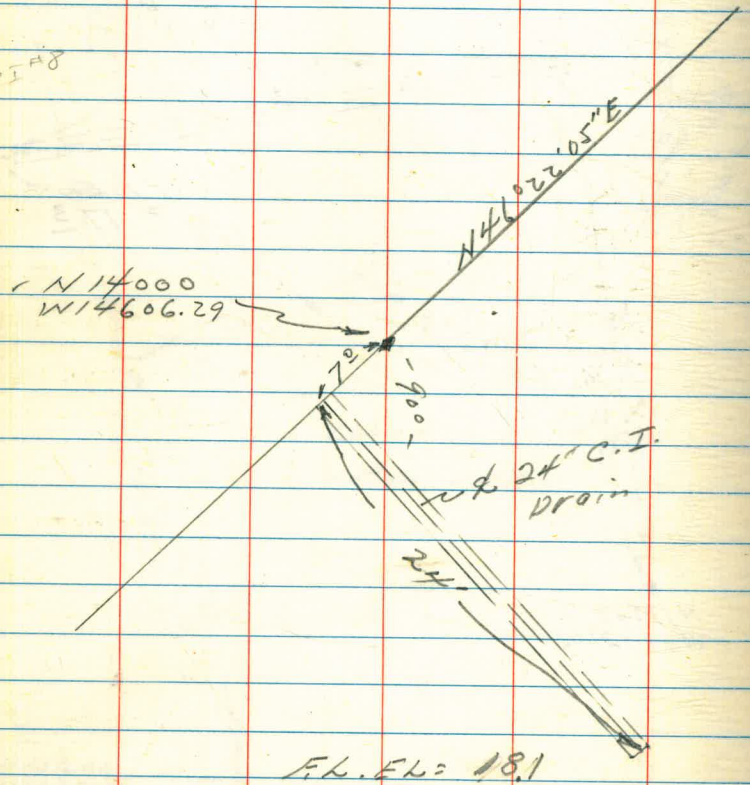
PIG 4



NORTH

FOR LOCATION OF SEWER
PUMP STATION Sec FB
MB 102 Page 14 -

PI#8



- Aug 9, 1960 -
PEASE LEASE AREA

N 129+00; 0+00 = W 14400

STA		ELEV
0		13.8
E 50		13.4
E 100		13.0
E 150		12.8
E 200		12.6
E 250		12.6
E 300		12.1
E 350		11.6
E 392		11.5
E 400		11.0
E 450		6.4
E 473	H ₂₀	4.2
W 50		14.2
W 100		14.6
W 150		14.8
W 200		15.7
W 250		16.3
W 300		16.9
W 339	= TOE OF BANK	17.2
W 355	= TOP OF BANK	32.2
W 378.1	= EDGE A.C. PAVE	30.00

N 130+00; 0+00 = W 14400

STA		ELEV
0		13.6
E 50		13.4
E 100		13.1
E 150		12.9
E 200		12.6
E 250		12.3
E 300		11.8
E 350		11.4
E 390		11.6
E 400		11.0
E 450		7.2
E 478	W ₂₀	4.2
W 50		13.7
W 100		14.3
W 150		15.1
W 200		15.7
W 250		16.2
W 300		17.0
W 350		17.5
W 372	= TOE OF BANK	17.8
W 390	= TOP OF BANK	31.7
W 409.8	= EDGE OF PAVE	30.57

Aug 9 1960

16

STA	ELEV	STA	ELEV
N 13060.8	} = BEGIN CURB ON T.C. = 31.58 ELY OF CROWN PT DR 9" T = 31.04	STA. 131+00	CON'T.
W 14829.1			
N 131+00; 0+00 = W 14400		N 405 = TOE OF BANK	17.8
0	13.3	N 422 = TOP OF BANK	30.8
E 50	13.2	N 440.2 = TOP OF CURB	31.54
E 100	13.0	W 440.2 = GUTTER	31.03
E 150	12.9	N 132+00; 0+00 = W 14400	
E 200	12.3	0	13.82 TBM
E 250	12.2	E 50	13.1
E 300	12.0	E 100	12.7
E 350	11.7	E 150	12.6
E 392	11.0	E 200	12.1
E 400	10.4	E 250	11.9
E 450	6.4	E 300	11.6
E 469 H ₂ O	4.3	E 350	11.2
W 50	14.0	E 371	11.0
W 100	14.6	E 400	8.7
W 150	15.3	E 426	6.6
W 200	15.7	E 448 H ₂ O	4.6
W 250	16.2	W 50	13.7
W 300	16.6	W 100	14.5
W 350	17.0	W 150	14.8
W 400	17.5	W 200	15.2

N133+00 Cont

STA.	ELEV
STA. 132+00 Cont	
W 250	15.9
W 300	16.5
W 350	16.5
W 400	17.0
W 421 = TOE OF BANK	17.3
W 444 = Top OF BANK	30.9
W 454.7 = Top OF CURB	31.11
W 454.7 = GUTTER (P.C.C.)	30.48
TBM 30.96 PI#6 - Lt DK in cb	
" 13.82 Horn 13200 - W14400	
N133+00; 0+00 = W14400	
0	13.1
E50	12.8
E100	12.6
E150	12.3
E200	12.0
E250	11.9
E300	11.1
E350	11.0
E400	6.8
E441 H20	3.6
W50	13.1

STA	ELEV
W100	14.1
W150	14.1
W200	14.6
W250	15.3
W300	15.2
W350	16.2
W400	16.1
W428 = Top OF BANK	16.5
W448 = Top OF BANK	31.5
W465.9 = Top OF CURB	30.95
W465.9 = GUTTER (P.C.C.)	30.34

N134+00; 0+00 = W14400.

0	13.0
E50	12.7
E100	12.3
E150	12.2
E200	12.0
E250	12.0
E300	11.6
E330	11.4
E350	9.4
E400	5.4
E427 H20	3.6
W50	13.5

N 134+00 Cont

STA	ELEV
W100	14.2
W150	14.3
W200	14.7
W250	15.4
W300	15.8
W350	17.2
W400	17.0
W426 = TOE OF BANK	17.5
W445 = TOP OF BANK	32.1
W460.4 = TOP OF CURB	32.10
W460.4 = GUTTER (P.C.C.)	31.44

{ W134182 } = END CURB ON T.C. = 32.32
 { W14859 } = ELY OF CROWN PT GUT = 31.68
 ALSO NLY END P.C.C. PAVE - AC PAVEMENT NLY OF
 HERE IS IN POOR CONDITION

W13420.2 } = FIRE HYD
 W14857.2 }

N 135+00; 0+00 = W14000

0	13.1
E50	12.9
E100	12.5
E150	12.4
E200	12.3
E250	12.2

N 135+00 Cont

68

STA	ELEV
E300	11.8
E325	11.3
E350	9.4
E400	5.1
E412 H20	3.5
W50	13.4
W100	14.0
W150	14.3
W200	14.7
W250	15.1
W300	16.3
W350	16.8
W400	17.0
W418 = TOE OF BANK	16.6
W439 = TOP OF BANK	33.0
W459.4 = EDGE A.C. PAVE	32.26

N 136+00; 0+00 = W14400

0	13.0
E50	13.0
E100	13.0
E150	13.0
E200	12.5
E250	12.4
E300	12.0

STA N136+00 CONT

STA	ELEV
E 323	11.3
E 350	9.4
E 400	5.2
E 413 H ₂ O	3.4
W 50	13.2
W 100	13.8
W 150	14.2
W 200	14.6
W 250	15.6
W 300	16.2
W 350	16.6
W 400	16.8
W 415 = TOE OF BANK	17.1
W 435 = TOP OF BANK	33.1
W 454.6 = EDGE H.C. PAVE	32.42

N 137+00; 0+00 = W 14400

0	13.0
E 50	13.2
E 100	13.0
E 150	12.9
E 200	12.6
E 250	12.0
E 300	12.1
E 340	11.4

PEASE LAKE ACSE
N 137+00 CONT

62

STA	ELEV
E 350	9.9
E 400	6.3
E 446 H ₂ O	3.0
W 50	12.9
W 100	13.7
W 150	13.9
W 200	15.2
W 250	15.6
W 300	15.6
W 350	15.6
W 400 = TOE OF BANK	16.7
W 427 = TOP OF BANK	33.4
W 433.2 = EDGE OF H.C.	32.58

AUG 10, 1960

N 138+00; 0+00 = W 14400

0	13.0
E 50	12.9
E 100	13.0
E 150	12.7
E 200	12.2
E 250	12.3
E 300	12.0
E 350	11.4
E 370	10.9
E 400	8.6

N138+00 CONT

STA	ELEV
E450 H ₂ O	5.3
W50	13.2
W100	13.5
W150	14.6
W200	15.0
W250	15.0
W300	15.2
W340 = TOE OF BANK	16.0
W383 = TOP OF BANK	33.3
W401.6 = EDGE OF A.C. PAV	32.94

This line hits BANK at
an angle -

N139+00; 0+00 = W14400 -

STA	ELEV
D	13.5
E50	13.4
E100	13.0
E150	13.0
E200	12.8
E250	13.0
E300	12.5
E350	12.4
E400	11.1
E450	7.6
E488 H ₂ O	4.8

N139+00 CONT

STA	ELEV
W50	13.6
W100	14.2
W150	14.9
W200	15.6
W250	15.8
W267 = TOE OF BANK	16.2
W296 = TOP OF BANK	33.7
W327.9 = EDGE OF A.C. PAV	33.15

N140+00; 0+00 = W14400

STA	ELEV
0	13.9
E 50	13.6
E 100	13.1
E 150	13.0
E 200	13.0
E 250	13.1
E 300	13.2
E 350	13.2
E 400	12.8
E 435	12.5
E 450	11.3
E 500	7.6
E 540 H ₂ O	4.4
W50	14.0

N140+00 CONT

STA	ELEV
W100	14.4
W148 = TOE OF BANK	15.2
W190 = TOP OF BANK	32.3
W239.3 = EDGE OF A.C. PAVE	32.83
N14145.94 } = 4 SMH. W14383.86 }	18.72 = Rim

N141+00 } 0+00 = W14400

0	15.0
E50	14.6
E100	14.3
E150	14.0
E200	13.8
E250	13.6
E300	13.8
E350	13.8
E400	13.8
E450	13.6
E500	13.0
E550	9.8
E600	7.0
E638 H ₂ O	4.2
W35 = TOE OF BANK	14.8
W75 = TOP OF BANK	32.1
W118.9 = EDGE OF A.C. PAVE	32.22

N14101.7 }
W14479.5 } = 4 Power Pole # P1825

STA ELEV
FOR TIES TO SEWER PUMP
STA IN THIS AREA SEE
FB - M13 102 - PAGE 14

AUG 11, 1960 - W064501-

N142+00 } 0+00 = W14000

0	14.6
E50	13.1
E100	12.6
E150	12.0
E200	11.9
E218	11.2
E250	9.7
E300	7.3
E346 H ₂ O	5.1
W50	14.1
W100	14.0
W150	14.0
W200	14.9
W250	14.9
W300	15.1
W350	15.4
W375 = TOE OF BANK	15.6
W395 = TOP OF BANK	29.7

N142+00 CONT

AUG 11, 1960

(22)

STA	ELEV
W422.4 = EDGE A.C. PAVE	30.50

STA	ELEV
N14393.07	19.20 = RIM
W14267.43	

N143+00; 0+00 = W14000

} = ^{Sewer} MH
 N14393.07 }
 W14267.43 }

0	14.1
E50	14.4
E100	14.6
E127	14.2
E136	12.0
E175	12.6
E200	11.8
E250	11.9
E300	11.8
E350	11.5
E400	9.0
E450	6.5
E476 H ₂ O	5.3
W50	14.7
W100	15.2
W150	14.9
W200	14.6
W250	15.2
W300	15.9
W338 = TOE OF BANK	15.9
W357 = TOP OF BANK	28.7
W376.0 = EDGE A.C. PAVE	29.20

N144+00; 0+00 = W14000

0	14.3
E50	14.0
E100	14.0
E150	14.1
E200	13.9
E250	13.2
E300	12.6
E350	12.5
E365	12.3
E400	6.5
E450	8.6
E483	8.6
E500	7.0
E532 H ₂ O	4.8
W50	14.6
W100	15.2
W150	14.8
W200	15.4
W250	15.7
W284 = TOE OF BANK	16.0

Aug 11, 1960

STA N144+00 cont

STA	ELEV
W304 = TOP OF BANK	28.6
W323.5 = EDGE A.C. PAVE	28.21
N 145+00; 0+00 = W14000	
0	13.2
E50	13.7
E100	13.7
E150	13.7
E200	13.7
E250	13.9
E300	13.6
E350 H ₂₀	4.8
W50	14.0
W100	14.7
W150	15.0
W173 = TOE OF BANK	15.4
W198 = TOP OF BANK	28.2
W236.4 = EDGE A.C. PAVE	27.03
N14578- } = Sewer MH	16.99 = Rim
W14029.7 } =	
N145854 = ELY CORNER (26.00
W14158 } (END) A.C. PAVE	
	ON CROWN POINT
	Dr - Near Intersection
	OF FLAMING ST

23

N 146+00; 0+00 = W14000

STA	ELEV
0	13.8
E50	13.5
E100	13.4
E150	13.7
E200	13.9
E233	14.2
E250	11.4
E287 H ₂₀	4.7
W50	14.4
W52 = TOE OF BANK	14.4
W64 = TOP OF BANK	26.7
W109	27.4
W119	25.0
W150 IN ROADWAY	26.0

Aug 19, 1960

N 147+00; 0+00 = W14000 -

0	13.5
E50	13.3
E100	13.1
E150	13.5
E175	13.7
E200	10.0
E236 H ₂₀	4.6

STA 147+00. CON'T

STA	ELEV
W 50	13.7
W 70 = TOE BANK	13.7
W 83 = TOP OF BANK	27.5
W 90	27.3
W 110 IN ROAD	26.4
$\frac{N 14776.5}{W 14056.5} \}$ = 2 SHM - RIM EL = 16.45	
N 148+00 ; 0+00 = W 14000	
0	12.7
E 50	12.7
E 100	13.9
E 120	13.6
E 175 = TOE	5.9
W 50	13.4
W 54 = TOE BANK	13.5
W 68 = TOP OF BANK	28.0
W 74	28.0
W 90 IN ROAD	27.4
N 14886.58 } = SLY END (BEGIN) ELY	
W 14048.07 } CURB CROWN POINT OR	
T.C. = 27.48	
(TYPE G) GUT = 27.07	

N 14892.397 = SLY END (BEGIN)
 W 14079.98 } WLY CURB CROWN POINT
 ON Partial Return - See 1977 PROVISION
 Plans -
 T.C. = 28.06 GUTTER = 27.60
 TYPE G

STA	ELEV
N 149+00 ; 0+00 = W 14000 -	
0	12.8
E 50	13.6
E 60	13.7
E 100	8.3
E 105 = TOE OF FILL	7.3
W 27 = TOE OF BANK	13.3
W 39 = TOP OF BANK	27.7
W 43.7 = TOP OF CURB	27.76
W 43.7 = GUTTER (TYPE G)	27.31
W 60 ON A.C. PAVE	28.01

N 14909 } = 2 SHM - RIM EL = 17.39
 W 14011.5 }

N 149+56 = INLY END CROWN POINT FILL

N 149+56 ; 0+00 = W 14000	
0 = TOE OF BANK	13.1
E 20	12.8
E 70	6.2

W 149+56 Cont

25

STA		ELEV
E 80	= TOE OF FILL	4.9
W 20	= TOP OF BANK	28.2

N 150+00; 0+00 = W 14000 -

E 3	= TOP OF BANK	28.0
E 32	= TOP OF BANK	10.1
E 53	ON ORIGINAL ground	5.8
E 75	" " "	2.9
W 01.4	= TOP OF CURB	28.46
W 01.4	- GUTTER (TYPE 6)	27.99
W 20	ON A.C. PAVE	28.76
W 35 ²	TOP OF WLY CURB	28.94
W 35 ⁰	GUTTER WLY CURB CR. WIND POINT DR	28.48

SOUNDING BAE LINE 9/11/60
 ELYCROWN POINT FILL CONT
 CONT FACING P9-

B7

NORTH = 130.54

WEST = 83.91

$\frac{1}{2} = 41.95$
 13717.98

13759.93
 39.9

13720

13802

750

52

END B/L

N14400
 W13550.46

N14300
 W13634.07

N14200
 W13717.98

N14150
 W13759.93

N14100
 W13801.89

N14000
 W13885.80

N13900
 W13969.71

N13800
 W14053.62

N13700
 W14044.87

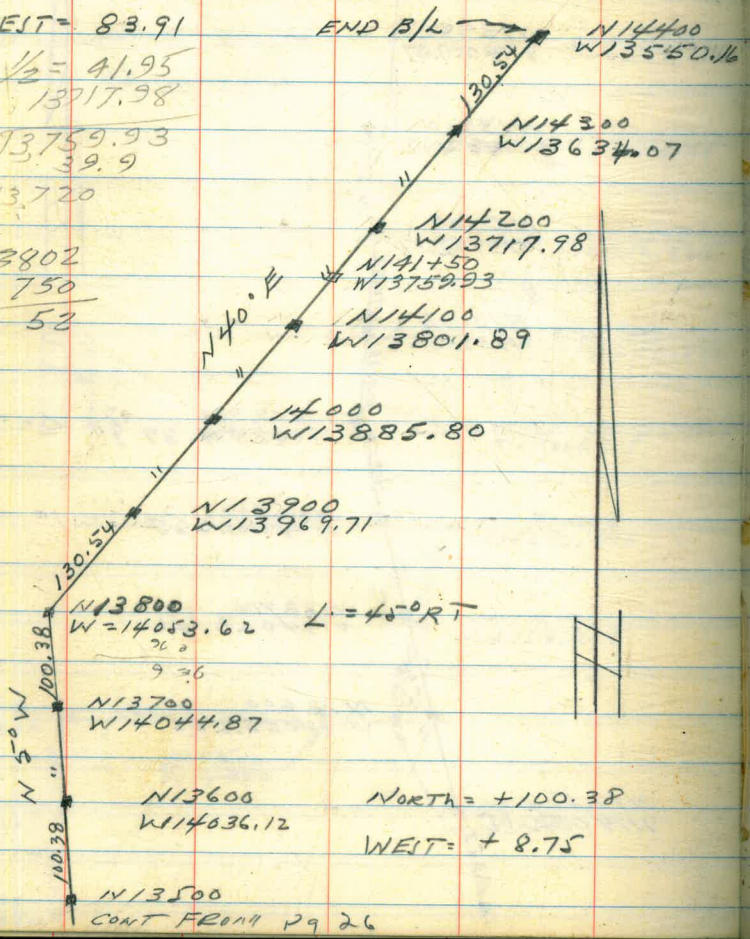
N13600
 W14036.12

N13500
 CONT FROM P9 26

L = 45° RT

NORTH = +100.38

WEST = +8.75



10-12-60

SOUNDINGS FLY CROWN POINT

STA. N. 124+00; 0+00 = W. 14,040; SOUND EAST

DIST SOUND ELEV DIST SOUND ELEV

0+00 (37) 10.0 6.3

(37) 10.1 6.4

0.6 +3.1 50 9.8 6.1

8:40 1.5 +2.2 10.1 6.4

2.1 +1.6 10.3 6.6

50 2.7 +1.0 10.0 6.3

3.2 +0.5 10.0 6.3

3.7 0.0 3+00 10.0 6.3

4.2 0.5 10.0 6.3

5.0 1.3 10.0 6.3

1+00 5.3 1.6 10.0 6.3

6.3 2.6 10.0 6.3

6.8 3.1 50 10.0 6.3

6.8 3.1 10.5 6.8

7.1 3.4 10.1 6.2

50 7.9 4.2 8:45 10.0 6.3

7.9 4.2 9.9 6.2

8.0 4.3 4+00 9.8 6.1

8.4 4.7 9.4 5.7

8.8 5.1 9.8 6.1

2+00 9.0 5.3 9.9 6.2

9.1 5.4 9.6 5.9

9.3 5.6 50 9.6 5.9

128

STA. N. 124+00 - EAST

DIST SOUND ELEV DIST SOUND ELEV

(37) 9.5 5.8 (37) 11.2 7.5

(37) 9.5 5.8 (37) 11.5 7.8

9.3 5.6 11.7 8.0

9.3 5.6 11.7 8.0

5+00 9.4 5.7 50 11.8 8.1

10.0 6.3 11.8 8.1

10.0 6.3 11.8 8.1

10.1 6.4 11.9 8.2

10.2 6.5 11.9 8.2

50 10.3 6.6 8+00 11.9 8.2

10.4 6.7 11.8 8.1

10.5 6.8 11.9 8.2

10.7 7.0 11.8 8.1

10.7 7.0 11.9 8.2

6+00 10.9 7.2 50 12.0 8.3

10.9 7.2 11.9 8.2

11.0 7.3 11.9 8.2

11.0 7.3 11.8 8.1

11.0 7.3 11.9 8.2

50 11.0 7.3 9+00 11.9 8.2

11.1 7.4 12.0 8.3

11.0 7.3 11.6 7.9

11.0 7.3 11.4 7.7

11.0 7.3 11.1 7.4

7+00 11.2 7.5 50 9.3 5.6

STA. N. 124+00 - EAST 10-12-60

Dist Sound Elev

(37)	7.8	4.1
	4.5	0.8
	4.0	0.3
	3.5	+0.2
10+00	3.0	+0.7

(29)

STA. N. 126+00:0+00 = W. 13,990; SOUND EAST

Dist Sound Elev Dist Sound Elev

0+00			(37)	9.5	5.8
(37)			50	9.7	6.0
	0.5	+3.2		9.6	5.9
9:05	1.2	+2.5		9.6	5.9
	2.0	+1.7		9.6	5.9
50	2.8	+0.9		9.7	6.0
	3.9	0.2	3+00	9.8	6.1
	4.8	1.1		9.7	6.0
	4.9	1.2		9.5	5.8
	5.1	1.4		9.6	5.9
1+00	5.5	1.8		9.6	5.9
	6.0	2.3	50	9.6	5.9
	6.3	2.6		9.7	6.0
	6.8	3.1		9.8	6.1
	7.0	3.3		9.9	6.2
50	7.5	3.8		9.9	6.2
	8.1	4.4	4+00	10.0	6.3
	8.5	4.8		9.9	6.2
	8.6	4.9		10.0	6.3
	8.6	4.9		10.0	6.3
2+00	8.6	4.9		10.0	6.3
	8.9	5.2	50	10.0	6.3
	9.1	5.4		10.0	6.3
	9.4	5.7		9.9	6.2

STA. N. 126+00. EAST 10-12-60

DIST SOUND ELEV DIST SOUND ELEV

(37)	10.0	6.3	(37)	10.9	7.2
	10.2	6.5		10.8	7.1
5+00	10.1	6.4	50	10.9	7.2
	10.0	6.3		10.9	7.2
	10.2	6.5		10.7	7.0
	10.2	6.5		10.7	7.0
	10.1	6.4		10.6	6.9
50	10.0	6.3	8+00	10.6	6.9
<u>Top Stone</u>	10.1	6.4		9.9	6.2
	10.3	6.6		8.2	4.5
	10.5	6.8		5.4	1.7
	10.7	7.0		4.1	0.4
6+00	10.7	7.0	50	3.9	0.2
	10.9	7.2		3.5	+0.2
	10.8	7.1		3.2	+0.5
<u>9:10</u>	10.8	7.1		2.8	+0.9
	10.9	7.2		2.4	+1.3
50	10.9	7.2	9+00	2.1	+1.6
	10.9	7.2		1.9	+1.8
	11.0	7.3		1.9	+1.8
	10.9	7.2		1.8	+1.9
	10.9	7.2			
7+00	10.9	7.2	50		
	10.9	7.2			
	10.8	7.1			

10-12-60

30

STA. N. 128+00:0+00=W/13,940, SOUND EAST

DIST SOUND ELEV DIST SOUND ELEV

0+00			(37)	11.1	7.4
(37)			50	11.0	7.3
	1.3	+2.4		11.0	7.3
<u>9:20</u>	2.4	+1.3		11.0	7.3
	4.2	0.5		11.2	7.5
50	5.7	2.0		11.2	7.5
	5.9	2.2	3+00	11.2	7.5
	6.1	2.4		11.0	7.3
	6.9	3.2		11.1	7.4
	6.9	3.2		10.9	7.2
1+00	7.0	3.3		9.9	6.2
	7.8	4.1	50	9.9	6.2
	8.1	4.4		9.9	6.2
	8.1	4.4		9.9	6.2
	8.3	4.6		9.9	6.2
50	8.7	5.0		9.9	6.2
	9.0	5.3	4+00	9.9	6.2
	9.3	5.6		10.0	6.3
	9.3	5.6		9.9	6.2
	9.4	5.7		9.9	6.2
2+00	9.3	5.6		9.8	6.1
	9.5	5.8	50	9.7	6.0
	9.5	5.8		9.9	6.2
	10.4	6.7		9.9	6.2

STA. N. 128+00 - EAST 10-12-60

10-12-60

	DIST	Source	Elev	DIST	Source	Elev
(37)	9.9		6.2	(37)	8.6	4.9
	10.0		6.3		7.0	3.3
5+00	10.1		6.4	50	4.9	1.2
	9.9		6.2		4.3	0.6
	10.0		6.3		4.3	0.6
	10.1		6.4		3.6	+0.1
	10.0		6.3		3.2	+0.5
Top of stage 50	10.1		6.4	8+00	3.1	+0.6
	10.1		6.4		3.1	+0.6
	10.2		6.5	9:25	4.4	0.7
	10.3		6.6		5.0	1.3
	10.3		6.6		5.1	1.4
6+00	10.4		6.7	50	4.9	1.2
	10.3		6.6		4.5	0.8
	10.2		6.5		3.7	0.6
	10.1		6.4		3.0	+0.7
	10.3		6.6			
50	10.3		6.6	9+00		
	10.3		6.6			
	10.3		6.6			
	10.3		6.6			
	10.3		6.6			
7+00	10.3		6.6	50		
	10.3		6.6			
	10.0		6.3			

STA. N. 130+00: CHOD = W. 13,930; SOUND EAST

	DIST	Source	Elev	DIST	Source	Elev
0+00				(37)	11.9	8.2
(37)	0.0		+3.7	50	11.9	8.2
	1.7		+2.0		11.8	8.1
9:30	4.0		0.3		11.8	8.1
	7.4		3.7		11.6	7.9
50	9.2		5.5		11.5	7.8
	9.8		6.1	3+00	11.5	7.8
50 FT	10.0		6.3		11.5	7.8
	10.1		6.4		11.6	7.9
	10.1		6.4		11.5	7.8
1+00	10.5		6.8		11.5	7.8
	10.9		7.2	50	11.2	7.5
	11.4		7.7		10.0	6.3
	11.8		8.1		10.1	6.4
	11.8		8.1	9:35	10.1	6.4
50	12.0		8.3		10.2	6.5
	12.0		8.3	4+00	10.2	6.5
	12.0		8.3		10.2	6.5
	12.1		8.4		10.2	6.5
	12.2		8.5		10.5	6.8
2+00	12.1		8.4		10.7	7.0
	12.0		8.3	50	10.6	6.9
	11.9		8.2		10.4	6.7
	11.9		8.2		10.4	6.7

STA. N. 130+00 - EAST 10-12-60

	Dist	Sound	Elev	Dist	Sound	Elev
(37)	10.2	6.5	(37)	9.8	6.1	
	10.4	6.7		9.9	6.2	
5+00	10.4	6.7	50	10.0	6.3	
	10.4	6.7		9.7	6.0	
	10.4	6.7		9.4	5.7	
	10.1	6.4		9.3	5.6	
	10.1	6.4		9.3	5.6	
50	10.1	6.4	8+00	9.0	5.3	
	10.3	6.6		8.9	5.2	
	10.2	6.5		8.9	5.2	
	10.3	6.6		8.0	4.3	
	10.3	6.6		7.3	3.6	
6+00	10.2	6.5	50	4.3	0.6	
	10.2	6.5		3.8	0.1	
	10.2	6.5	10+00	2.8	+0.9	
	10.2	6.5		2.7	+1.0	
	10.4	6.7		2.7	+1.0	
50	10.5	6.8	9+00	2.7	+1.0	
	10.6	6.9		3.0	+0.7	
	10.3	6.6		3.0	+0.7	
	10.2	6.5		3.2	+0.5	
	10.2	6.5		3.2	+0.5	
7+00	10.2	6.5	50	3.8	0.1	
	10.0	6.3		3.1	+0.6	
	10.0	6.3		2.9	+0.8	
				1.6	+2.1	

STA. N. 132+00, 0+00 - W. 13,950, SOUND EAST

Dist	Sound	Elev	Dist	Sound	Elev
0+00			(37)	10.9	7.2
			50	11.0	7.3
				11.0	7.3
			9+50	10.8	7.1
				10.3	6.6
			50	9.9	6.2
			3+00	9.8	6.1
				9.8	6.1
				9.6	5.9
				9.7	6.0
			1+00	9.8	4.1
			50	9.7	6.0
				9.8	6.1
				9.8	6.1
				9.6	5.9
			50	9.6	?
			4+00	9.6	?
				9.7	6.0
				9.5	5.8
				9.7	6.0
			2+00	9.4	5.7
			50	9.4	?
				9.4	?
				9.5	5.8
				9.5	5.8

STA. N. 132+00 - EAST 10-12-60

Dist Sound Elev Dist Sound Elev

(37)	9.7	6.0	Test	9.2	5.5
	9.7	}	(37)	9.3	5.4
5+00	9.7		50	9.3	}
	9.8	6.1		9.3	}
	9.9	6.2		9.4	5.7
	9.9	6.2		9.5	5.8
	9.8	6.1		9.5	5.8
50	9.7	6.0	8+00	9.4	5.7
	9.7	}		9.4	5.7
	9.7	}		9.2	5.5
	9.6	5.9		9.1	5.4
	9.5	5.8		9.0	5.3
6+00	9.5	}	50	9.1	5.4
	9.5	}		9.0	5.3
	9.5	}		9.0	}
	9.5	}	9:55	9.0	}
	9.5	}	~	9.0	}
50	9.5		9+00	9.0	}
	9.3	5.6		8.9	5.2
	9.1	5.4		8.7	5.0
	9.1	5.4		8.9	5.2
	9.2	5.5		8.7	5.0
7+00	9.0	5.3	50	8.5	4.8
	9.0	5.3		8.1	4.4
	9.2	5.5		7.7	4.0

STA. N. 132+00 - EAST

Dist Sound Elev

(37)	5.9	2.2
	4.9	1.2
10+00	4.9	1.2
	4.8	1.9
	4.4	0.7
	4.0	0.3
	4.4	0.7
50	5.7	2.0
	7.1	3.4
	7.7	4.0
	7.0	3.3
	6.3	2.6
11+00	5.2	1.5
	5.1	1.4
	4.7	1.0
	3.5	40.2
	2.6	41.1
50	1.7	42.0

10-12-60

STA. N. 134+00 - WEST			STA. N. 134+00 - EAST		
Dist	Sound	Elev	Dist	Sound	Elev
0+00			(37)	11.1	7.4
(37)	0.9	+2.8	50	11.1	
	2.0	+1.7		11.1	
10/05	4.9	1.2		11.0	7.3
	8.2	4.5		10.9	7.2
50	9.9	6.2		10.7	7.0
	10.0	6.3	3+00	10.5	6.8
	10.1	6.4		10.5	
	10.0	6.3		10.5	
	10.3	6.6		10.8	7.1
1+00	10.3			10.9	7.2
	10.3		50	11.0	7.3
	10.3			11.1	7.4
	10.9	7.2		11.1	
	10.9			11.1	
50	10.9			11.1	
	11.0	7.3	4+00	11.1	
	11.3	7.6		11.0	7.3
	11.3	7.6		10.9	7.2
	11.4	7.7		10.8	7.1
2+00	11.3	7.4		10.5	6.8
	11.4	7.7	50	10.1	6.4
	11.1	7.4		10.0	6.3
	11.1	7.4		9.7	6.0

134

STA. N. 134+00 - EAST

Dist	Sound	Elev	Dist	Sound	Elev
(37)	9.3	5.6	(37)	9.9	6.2
	9.3	5.6		9.9	
5+00	9.4	5.7	50	9.9	
	9.3	5.6		9.7	6.0
	9.5	5.8		9.6	5.9
	9.5			9.5	5.8
	9.5			9.4	5.7
50	9.3	5.6	8+00	9.7	6.0
	9.2	5.5		9.7	6.0
	9.3	5.6		9.5	5.8
10/10	9.4	5.7		9.6	5.9
	9.4	5.7		9.6	
6+00	9.6	5.9	50	9.6	
	9.5	5.8		9.8	6.1
	9.8	6.1		9.8	6.1
	10.0	6.3		9.9	6.2
	9.9	6.2	Top Site 9+00	9.9	
50	9.8	6.1		9.9	
	9.6	5.9		9.9	
	9.6	5.9		9.9	
	9.8	6.1		9.9	
	9.8			9.9	
7+00	9.8		50	9.8	6.1
	9.7	6.0		9.9	6.2
	9.9	6.2		9.9	6.2

STA. N. 134+00 - EAST

DIST	Sound	Elev	DIST	Sound	Elev
(37)	9.9	6.2	(37)	7.9	4.2
	9.9	6.2		7.7	4.0
10+00	9.1	5.4	50	7.9	
	9.9	6.2		8.1	
	9.9	6.2	10:15	8.1	
	9.8	6.1	—	8.0	
	9.7	6.0		7.9	
50	9.7	6.0	13+00	7.9	
	9.5	5.8		8.0	
	9.3	5.6		8.1	
	9.3	}		8.2	
	9.3	}		8.3	
11+00	9.2	5.5	50	8.1	
	9.2	5.5		8.2	
	9.1	5.4		8.4	
	9.1	}		8.8	
	9.1	}		8.9	
50	9.0	5.3	14+00	8.9	
	9.0	5.3		9.0	
	8.5	4.8		9.0	
	8.6	4.9		9.0	
	8.4	4.7		8.9	
12+00	8.3	4.6	50	8.4	
	8.3	4.6		8.0	
	8.1	4.4		9.1	
				6.1	
				5.3	
			15+00	4.8	

PG 38
CONT'D

10-12-60

135

STA. N. 136+00 (MOD = W) 14+000 SOUND EAST

DIST	Sound	Elev	DIST	Sound	Elev
0+00			(38)	13.1	9.3
(38)	0.5	+3.3	50	12.9	9.1
	2.1	+1.7		12.7	8.9
10:30	5.3	1.5		12.7	8.9
—	8.4	4.6		12.1	8.3
50	9.2	5.4		11.6	7.8
	9.7	5.9	3+00	11.2	7.4
	9.8	6.0		11.2	7.4
	10.0	6.2		11.5	7.7
	10.2	6.4		11.5	7.7
1+00	11.2	7.4		12.0	8.2
	12.2	8.4	50	12.1	8.3
50 FT	12.2	8.4		12.3	8.5
—	12.7	8.9		12.6	8.8
	12.8	9.0		12.8	9.0
50	12.8	9.0		12.8	}
	13.0	9.2	4+00	12.8	}
	13.0	9.2		12.8	}
	13.2	9.4		12.8	}
	13.7	9.9		12.8	}
2+00	14.0	10.2		13.0	9.2
	14.2	10.4	50	13.0	}
	14.1	10.3		13.0	}
	14.0	10.2		12.4	8.6

STA. N. 136+00 - EAST 10-12-60

Dist	Sound	Elev	Dist	Sound	Elev
(38)	12.4	8.6	(38)	11.4	7.6
	12.4	8.6		11.8	8.0
5+00	12.2	8.4	50	12.0	8.2
	12.0	8.2		12.0	8.2
	11.8	8.0		12.3	8.5
	11.8	}		12.4	8.6
	11.8	}		12.5	8.7
50	11.5	7.7	8+00	12.4	8.6
	11.7	7.9		11.8	8.0
	11.7	7.9		13.1	9.4
	11.1	7.3		13.5	9.7
	10.5	6.7		13.7	9.9
6+00	10.2	6.4	50	13.4	9.6
	10.0	6.2		13.1	9.3
	10.4	6.6		12.0	8.8
	10.9	7.1		12.3	8.5
	11.0	7.2		12.6	8.8
50	10.8	7.0	9+00	11.0	7.2
	11.3	7.5		11.2	7.4
10:35	12.0	8.2		11.6	7.8
	11.9	8.1		11.8	8.0
	11.2	7.4		11.4	7.6
7+00	11.0	7.2	50	11.0	7.2
	11.1	7.3		10.5	6.7
	10.8	7.0		10.2	6.4

LOADED

THIS SEC. 15
WITH SAMP

WITH

STA. N. 136+00 - EAST

Dist	Sound	Elev	Dist	Sound	Elev
(38)	10.4	6.6	(38)	10.5	6.7
(38)	10.1	6.3	(38)	10.5	}
10+00	10.2	6.4	50	10.5	}
	10.4	6.6		10.5	}
	10.4	6.6		10.8	7.0
	10.1	6.3		10.8	}
	10.3	6.5		10.8	}
50	10.2	6.4	13+00	10.8	}
	10.8	7.0		10.8	}
10+00	11.0	7.2		10.8	}
	10.6	6.8		10.7	6.9
	10.6	6.8		10.7	6.9
11+00	10.3	6.5	50	10.9	7.1
	10.8	7.0	TOP STR.	10.9	}
	10.8	}		10.9	}
	10.8	}		10.9	}
	10.8	}		10.9	}
50	10.8	}	14+00	11.0	7.2
	10.9	7.1		10.8	7.0
	10.9	}		10.8	7.0
	10.9	}		10.5	6.7
	10.8	7.0		10.4	6.6
12+00	10.8	7.0	50	10.4	6.6
	10.5	6.7		10.8	7.0
	10.2	6.4		10.8	7.0

STATION. 136+00 - EAST 10-12-60

DIST SOUND ELEV DIST SOUND ELEV

38 10.9 7.1

38 10.7 6.9

15+00 10.5 6.7

10.8 7.0

11.0 7.2

11.0 }

11.0 }

50 11.0 }

11.3 7.5

11.3 }

11.3 }

11.5 7.7

16+00 11.5 }

11.5 }

12.0 8.2

13.8 10.0

14.4 10.6

50 14.2 10.4

14.7 10.9

15.0 11.2

14.9 11.1

14.5 10.7

17+00 14.3 10.5

37

STA. N 134+00 - EAST 10-12-60

138

Dist Sound Elev

4.7

4.9

7.5

11.7

50 12.9

13.1

12.9

12.8

12.5

16+00 12.1

CONTD FROM

PG 35

10-15-60

STA. N. 122+00 - EAST

57A. N. 122+00; 0+00 = W. 14,090; SOUND EAST

Dist	Sound	Elev	Dist	Sound	Elev
0+00			(3.7)	9.6	5.9
(3.7)	0.0	+3.7	50	9.7	6.0
	0.9	+2.8		9.7	6.0
9:00	1.7	+2.0		10.0	6.3
	2.6	+1.1		10.2	6.5
50	3.5	+0.2		10.2	6.5
	4.5	0.8	3+00	10.1	6.4
	5.2	1.5		10.3	6.6
	5.7	2.0		10.2	6.5
	6.9	3.2		10.1	6.4
1+00	6.9	3.2		10.7	7.0
	7.2	3.5	50	10.4	6.7
	7.8	4.1		10.2	6.5
	8.5	4.8		10.2	6.5
	8.5	4.8		10.3	6.6
50	8.8	5.1		10.2	6.5
	8.4	4.7	4+00	10.2	6.5
	9.1	5.4		10.1	6.4
	9.3	5.6		10.1	6.4
	9.3	5.6	9:05	10.1	6.4
2+00	9.3	5.6		10.1	6.4
	9.5	5.8	50	10.1	6.4
	9.6	5.9		10.2	6.5
	9.7	6.0		10.3	6.6

Dist	Sound	Elev	Dist	Sound	Elev
(3.7)	10.9	7.2	(3.7)	12.0	8.3
	10.7	7.0		11.8	8.1
5+00	11.0	7.3	50	11.6	7.9
	10.8	7.1		11.8	8.1
	10.5	6.8		11.9	8.2
	10.4	6.7		11.9	8.2
	10.6	6.9		12.0	8.3
50	10.7	7.0	8+00	12.0	8.3
	10.8	7.1		12.0	8.3
	10.3	6.6		12.1	8.4
	10.7	7.0		12.1	8.4
	10.7	7.0		12.2	8.5
6+00	10.0	6.3	50	11.7	8.0
	10.0	6.3		12.1	8.4
	11.1	7.4		12.1	8.4
	10.9	7.2		12.2	8.5
	11.2	7.5		12.4	8.7
50	12.0	8.3	9+00	12.3	8.6
	11.3	7.6		12.1	8.4
	11.5	7.8		12.1	8.4
	11.7	8.0		12.2	8.5
	11.6	7.9		12.0	8.3
7+00	11.9	8.2	50	11.9	8.2
	12.0	8.3		12.6	8.9
	11.9	8.2		12.9	9.2

STA. N. 122+00 - EAST 10-15-60

DIST SOUND ELEV DIST SOUND ELEV

(37) 12.7 9.0

12.8 9.1

10+00 12.8 9.1

13.1 9.4

13.5 9.8

14.3 10.6

14.7 11.0

50 15.6 11.9

(40)

STA. N. 123+00; 0+00 = W. 14.076; SOUND EAST

DIST SOUND ELEV DIST SOUND ELEV

0+00

(36) 9.4 5.8

(36)

50 9.4 5.8

9.5 5.9

9/20

10.0 6.4

1.4 +2.2

10.0 6.4

50 2.2 +1.9

9.9 6.3

2.9 +0.7 3+00 9.8 6.2

3.4 +0.2 10.0 6.4

4.1 0.5 10.0 6.4

4.2 0.6 10.0 6.4

1+00 4.4 0.8 10.1 6.5

4.9 1.3 50 10.0 6.4

5.3 1.7 10.1 6.5

5.8 2.2 10.1 6.5

6.3 2.7 10.0 6.4

50 7.2 3.6 10.0 6.4

8.0 4.4 4+00 10.0 6.4

8.0 4.4 10.3 6.7

8.1 4.5 10.3 6.7

8.3 4.7 10.2 6.6

2+00 8.8 5.2 10.1 6.5

9.0 5.4 50 10.1 6.5

9.1 5.5 10.1 6.5

9.2 5.6 10.0 6.4

STAN. 123+00 - EAST 10-15-60

DIST SOUND ELEV DIST SOUND ELEV

36	9.9	6.3	35	11.0	7.5
	9.9	6.3		11.0	7.5
5+00	10.0	6.4	50	11.0	7.5
	9.8	6.2		11.1	7.6
	9.4	5.8	9+25	11.3	7.8
	9.5	5.9		11.0	7.5
	9.8	6.2		10.9	7.4
50	9.9	6.3	8+00	11.0	7.5
	10.0	6.4		10.9	7.4
	10.1	6.5		12.9	9.4
	9.8	6.2		12.7	9.2
	9.9	6.3		13.0	9.5
6+00	9.9	6.3	50	12.8	9.3
	10.1	6.5		12.9	9.4
	10.2	6.6		12.7	9.2
	10.3	6.7		12.6	9.1
	10.4	6.8		13.1	9.6
50	10.6	7.0	9+00	13.3	9.8
	10.8	7.2		13.3	9.8
	11.0	7.4		13.3	9.8
	11.0	7.4		13.3	9.8
	11.0	7.4		12.9	9.4
7+00	12.0	8.4	50	12.5	9.0
	11.5	7.9			
	11.0	7.4			

STAN. 125+00, 10+00 = W. 14, 020 ; SOUND EAST
DIST SOUND ELEV DIST SOUND ELEV

0+00			34	10.1	6.7
34			50	10.0	6.6
				10.1	6.7
				10.1	6.7
				10.3	6.9
9+35				10.3	6.9
	1.7	+1.7		10.3	6.9
50	2.4	+1.0		10.2	6.8
	3.8	0.4	3+00	10.0	6.6
	4.5	1.1		10.2	6.8
	5.0	1.6		10.1	6.7
	6.0	2.6		10.2	6.8
1+00	6.8	3.4		10.3	6.9
	7.0	3.6	50	10.0	6.6
	7.2	3.8		10.0	6.6
	7.8	4.4		10.0	6.6
	8.1	4.7		10.0	6.6
50	8.3	4.9		9.6	6.2
	8.7	5.3	4+00	9.4	6.0
	8.7	5.3		9.4	6.0
	9.0	5.6		9.6	6.2
	9.2	5.8		9.9	6.5
2+00	9.8	6.4		10.0	6.6
	10.0	6.6	50	10.0	6.6
	9.4	6.0		9.8	6.4
	9.9	6.5		10.1	6.7

STA. N. 125+00 - EAST 10-15-60

DIST	Sound	Elev	DIST	Sound	Elev
(34)	10.1	6.7	(34)	12.3	8.9
	10.1	6.7		12.3	8.9
5+00	10.4	9.0	50	12.3	8.9
	10.2	6.8		12.3	8.9
	10.5	7.1		12.3	8.9
	10.4	7.0		12.6	9.2
	10.4	7.0		12.9	9.5
50	10.7	7.3	8+00	12.9	9.5
	10.5	7.1			
	10.5	7.1			
	10.8	7.4			
	10.6	7.2			
6+00	10.4	7.0	50		
	10.4	7.0			
	10.1	6.7			
<u>9:40</u>	12.2	8.8			
	13.2	9.8			
50	12.7	9.3	9+00		
	13.0	9.6			
	13.0	9.6			
	12.8	9.4			
	12.8	9.4			
7+00	13.1	9.5			
	12.7	9.3			
	12.4	9.0			

(42)

STA. N. 127+00; 0+00 = W. 13,970

DIST	Sound	Elev	DIST	Sound	Elev
0+00			(33)	9.1	5.8
(33)			50	9.3	6.0
				9.3	6.0
<u>9:45</u>				9.3	6.0
	1.5	+1.8		9.4	6.1
50	2.1	+1.2		9.2	5.9
	2.8	+0.5	3+00	9.3	6.0
	3.3	0.0		9.5	6.2
	3.8	0.5		9.6	6.3
	3.9	0.6		9.5	6.2
1+00	4.4	1.1		9.7	6.4
	5.0	1.7	50	9.7	6.4
	5.4	2.1		9.6	6.3
	5.9	2.6		9.5	6.2
	6.1	2.8		9.5	6.2
50	6.6	3.3		9.6	6.3
	7.1	3.8	4+00	9.6	6.3
	7.8	4.5		9.4	6.1
	8.0	4.7		9.6	6.3
	8.8	5.5		9.6	6.3
2+00	8.6	5.3		9.4	6.1
	8.8	5.5	50	9.4	6.1
	8.9	5.6		9.4	6.1
	9.1	5.8		9.6	6.3

STAIN. 127+00 - EAST 10-15-60

DIST	Sound	Elev	DIST	Sound	Elev
(32)	9.7	6.5			
	9.7	6.5			
5+00	9.9	6.7	50		
	9.9	6.7			
9:50	10.0	6.8			
<u>—</u>	10.0	6.8			
	10.0	6.8			
50	9.9	6.7	8+00		
	12.0	8.8			
	12.7	9.5			
	12.1	8.9			
	12.3	9.1			
6+00	12.7	9.5	50		
	12.7	9.5			
	12.3	9.1			
	12.0	8.8			
	11.9	8.7			
50	11.9	8.7	9+00		
	11.9	8.7			
	12.0	8.8			
	11.9	8.7			
	11.9	8.7			
7+00	11.8	8.6			

(43)

STA. N. 129+00; 0+00 = W. 13,930 ; SOUND EAST

DIST	Sound	Elev	DIST	Sound	Elev
0+00			(3)	10.8	7.7
(3.1)			50	10.7	7.6
	1.5	+1.6		10.8	7.7
10:00	4.8	1.7		10.8	7.7
<u>—</u>	7.9	4.8		10.8	7.7
50	9.2	6.1		10.7	7.6
	9.9	6.8	3+00	10.8	7.7
	10.1	7.0		10.7	7.6
	10.2	7.1		10.7	7.6
	10.3	7.2		10.6	7.5
1+00	10.3	7.2		10.5	7.4
	10.4	7.3	50	10.4	7.3
	10.9	7.8		10.3	7.2
	11.0	7.9		10.4	7.3
	10.9	7.8	10:05	10.4	7.3
50	10.9	7.8	<u>—</u>	10.2	7.1
	10.9	7.8	4+00	9.5	6.4
	10.9	7.8		9.5	6.4
	10.9	7.8		9.4	6.3
	10.9	7.8		9.5	6.4
2+00	11.0	7.9		9.7	6.6
	10.9	7.8	50	9.4	6.3
	10.9	7.8		9.3	6.2
	10.8	7.7		9.3	6.2

STAN. 129400-EAST 10-15-60

DIST SOUND ELEV DIST SOUND ELEV

DIST	SOUND	ELEV	DIST	SOUND	ELEV
(3)	9.3	6.2			
	9.3	6.2			
5+00	9.4	6.3	50		
	9.3	6.2			
	9.3	6.2			
	9.5	6.4			
	9.8	6.7			
50	9.9	6.8	8+00		
	12.3	9.2			
	12.5	9.4			
	12.2	9.1			
	12.1	9.0			
6+00	12.0	8.9	50		
	11.9	8.8			
	11.6	8.5			
	11.5	8.4			
50	11.5	8.4	9+00		
7+00			50		

(44)

STAN. 131400; 0+00 = W. 13,940 ; SOUND EAST

DIST SOUND ELEV DIST SOUND ELEV

DIST	SOUND	ELEV	DIST	SOUND	ELEV
0+00			(30)	10.7	7.7
(30)			50	10.7	7.7
	0.8	+2.2		10.2	7.2
10+15	2.9	+0.1		10.2	7.2
	6.3	3.3		10.0	7.0
50	8.4	5.4		9.6	6.6
	9.1	6.1	3+00	9.7	6.7
	9.9	6.9		9.7	6.7
	10.2	7.2		9.7	6.7
	10.2	7.2		9.4	6.4
1+00	10.0	7.0		9.4	6.4
	9.7	6.7	50	9.3	6.3
	10.0	7.0		9.2	6.2
	10.0	7.0		9.3	6.3
	10.6	7.6		9.3	6.3
50	10.7	7.7		9.3	6.3
	10.1	7.1	4+00	9.6	6.6
	10.3	7.3		9.5	6.5
	10.7	7.7		9.5	6.5
	10.7	7.7		9.7	6.7
2+00	10.7	7.7		9.8	6.8
	10.7	7.7	50	9.6	6.6
	10.7	7.7		9.8	6.8
	10.7	7.7		9.8	6.8

STA. N. 131+00 - EAST 10-15-60

DIST Sound Elev DIST Sound Elev

(29)	9.8	6.9			
	9.8	6.9			
5+00	9.7	6.8	50		
	9.8	6.9			
	9.6	6.7			
10+20	9.5	6.6			
	9.3	6.4			
50	9.4	6.5	8+00		
	9.3	6.4			
	9.2	6.3			
	9.2	6.3			
	9.0	6.1			
6+00	9.0	6.1	50		
	9.0	6.1			
	9.0	6.1			
	9.0	6.1			
	8.8	5.9			
50	10.1	7.2	9+00		
	12.4	9.5			
	12.7	9.8			
	12.3	9.4			
	12.1	9.2			
7+00	11.8	8.9	50		

STA. N. 131+00 - EAST

DIST Sound Elev

10+00

50

11+00

10-15-60

STA. N. 133 top - WEST = W. 13,970 SOUND EAST

DIST	SOUND	ELEV	DIST	SOUND	ELEV
0+00			(29)	10.2	7.3
(29)			50	10.2	7.3
	0.7	+2.2		10.2	7.3
10:25	3.2	0.3		10.1	7.2
	6.3	3.4		9.9	7.0
50	7.9	5.0		9.8	6.9
	8.3	5.4	3+00	10.0	7.1
	8.9	6.0		10.0	7.1
	9.4	6.5		9.9	7.0
	9.5	6.6		9.9	7.0
1+00	9.6	6.7		9.9	7.0
	9.6	6.7	50	9.7	6.8
	9.5	6.6		9.6	6.7
	9.5	6.6		9.1	6.2
	9.5	6.6		8.9	6.0
50	9.7	6.8		9.0	6.1
	9.9	7.0	4+00	8.9	6.0
	10.0	7.1		9.0	6.1
	10.0	7.1		8.9	6.0
	10.1	7.2		8.9	6.0
2+00	10.2	7.3		8.9	6.0
	10.2	7.3	50	9.0	6.1
	10.1	7.2		8.9	6.0
	10.1	7.2		8.9	6.0

STA. N. 133 top - EAST

DIST SOUND ELEV DIST SOUND ELEV

DIST	SOUND	ELEV	DIST	SOUND	ELEV
(29)	8.8	5.9	(29)	8.9	6.0
	8.9	6.0		8.7	5.8
5+00	8.9	6.0	50	8.7	5.8
	8.8	5.9		8.2	5.3
	9.0	6.1	10:30	8.3	5.4
	8.9	6.0		8.3	5.4
	9.0	6.1		8.4	5.5
50	9.0	6.1	8+00	8.3	5.4
	9.0	6.1		9.5	6.6
	9.0	6.1		11.9	9.0
	8.9	6.0		11.5	8.6
	9.0	6.1		11.7	8.8
6+00	9.0	6.1	50	11.6	8.7
	9.0	6.1		11.6	8.7
	8.9	6.0		11.1	8.2
	9.0	6.1		10.9	8.0
	9.0	6.1		10.9	8.0
50	9.0	6.1	9+00	11.0	8.1
	8.9	6.0		11.2	8.3
	8.9	6.0		11.5	8.6
	9.0	6.1		11.3	8.4
	8.9	6.0		11.6	8.7
7+00	8.9	6.0	50	11.7	8.8
	9.0	6.1			
	8.9	6.0			

(46)

STA. N. 133+00 - EAST

DIST SOUND ELEV

10+00

(47)

10-15-60

STA. N. 135+00; 0+00 = W. 13,900; SOUND EAST

DIST SOUND ELEV DIST SOUND ELEV

DIST	SOUND	ELEV	DIST	SOUND	ELEV
0+00			(28)	9.9	7.1
(28)			50	9.9	7.1
	1.0	+1.8		9.9	7.1
<u>10+00</u>	3.9	1.1		9.9	7.1
	6.9	4.1		9.9	7.1
50	7.5	4.7		9.7	6.9
	8.0	5.2	3+00	9.1	6.3
	8.3	5.5		9.2	6.4
	9.0	6.2		9.3	6.4
	9.5	6.7		9.4	6.6
1+00	9.9	7.1		9.4	6.6
	9.9	7.1	50	9.4	6.6
	9.9	7.1		9.4	6.6
	9.8	7.0		9.5	6.7
	9.9	7.1		9.3	6.5
50	9.9	7.1		9.5	6.7
	9.9	7.1	4+00	9.4	6.6
	9.9	7.1		9.5	6.7
	9.9	7.1		9.6	6.8
	9.9	7.1		9.8	7.0
2+00	10.0	7.2		9.9	7.1
	10.1	7.3	50	9.9	7.1
	10.0	7.2		9.9	7.1
	9.9	7.1		9.8	7.0

STA. N. 135+00 - EAST 10-15-60

Dist	Sound	Elev	Dist	Sound	Elev
(28)	9.8	7.0	(28)	9.1	6.3
	9.5	6.7		9.2	6.4
5+00	9.7	6.7	50	9.2	6.4
	9.6	6.8		9.3	6.5
	9.4	6.6		9.3	6.5
	9.3	6.5		9.4	6.6
	9.1	6.3		9.4	6.6
50	9.0	6.2	8+00	9.4	6.6
	9.0	6.2		9.0	6.2
	8.8	6.0		9.1	6.3
	8.5	5.7		9.1	6.3
	8.5	5.7		9.1	6.3
6+00	8.5	5.7	50	9.0	6.2
	8.5	5.7		9.1	6.3
	8.6	5.8		9.0	6.2
	8.6	5.8		8.8	6.0
	8.4	5.6		8.5	5.7
50	8.4	5.6	9+00	8.8	6.0
	8.5	5.7		8.7	5.9
	8.3	5.5		8.7	5.9
	8.4	5.6		8.7	5.9
	8.4	5.6		8.8	6.0
7+00	8.6	5.8	50	8.8	6.0
	8.9	6.1		8.8	6.0
	9.1	6.3		8.9	6.1

STA. N. 135+00 - EAST

(48)

Dist	Sound	Elev
(28)	10.5	7.7
	10.2	7.4
10+00	10.4	7.6
	12.9	10.1
10+45	13.0	10.2
	13.6	10.8
	13.1	10.3
50	13.0	10.2
	13.2	10.4
	13.2	10.4
	13.3	10.5
	11.5	8.7
11+00	11.5	8.7

10-15-60

STA. N. 137+00: 0+00 = W 13,970			SOUND EAST		
Dist	Sound	Elev	Dist	Sound	Elev
0+00			(27)	10.8	8.1
(27)			50	10.8	8.1
	0.5	+2.2		10.5	7.8
10:55	2.0	+0.7		10.6	7.9
	6.9	4.2		10.6	7.9
50	9.0	6.3		10.2	7.5
	9.0	6.3	3+00	10.2	7.5
	10.0	7.3		10.8	8.1
	10.7	8.0		11.0	8.3
	11.1	8.4		11.0	8.3
1+00	9.7	7.0		10.8	8.1
	12.0	9.3	50	10.8	8.1
	12.0	9.3		10.5	7.8
	12.0	9.3		10.2	7.5
	11.8	9.1		10.4	7.7
50	12.0	9.3		10.4	7.7
	11.1	8.4	4+00	10.4	7.7
	11.3	8.6		10.3	7.6
	11.6	8.9	11:00	10.7	8.0
	11.5	8.8		10.8	8.1
2+00	11.2	8.5		10.8	8.1
	11.2	8.5	50	10.9	8.2
	11.0	8.3		10.8	8.1
	10.8	8.1		10.7	8.0

(49)

STA. N. 137+00 - EAST			SOUND EAST		
Dist	Sound	Elev	Dist	Sound	Elev
(27)	10.9	8.2	(27)	10.9	8.2
	10.5	7.8		11.0	8.3
5+00	10.5	7.8	50	11.0	8.3
	10.5	7.8		11.0	8.3
	10.7	8.0	11:05	11.0	8.3
	10.8	8.1		10.7	8.0
	10.8	8.1		10.5	7.8
50	11.0	8.3	8+00	10.4	7.7
	11.0	8.3		10.5	7.8
	11.2	8.5		10.8	8.1
	11.9	9.2		10.8	8.1
	11.8	9.1		10.9	8.2
6+00	11.8	9.1	50	12.3	9.6
	11.2	8.5		11.8	9.1
	11.0	8.3		12.0	9.3
	11.1	8.4		11.8	9.1
	11.3	8.6		12.4	9.7
50	10.5	7.8	9+00	12.4	9.7
	11.2	8.5		12.7	10.0
	11.4	8.7		12.2	9.5
	11.2	8.5		12.0	9.3
	10.8	8.1		12.1	9.4
7+00	11.0	8.3	50	11.9	9.2
	11.0	8.3		12.5	9.8
	10.5	7.8		11.9	9.2

STA. N. 137+00 - EAST 10-15-60

Dist Sound Elev

(26)	11.6	9.0
	11.8	9.2
10+00	11.2	8.6
	11.2	8.6
	11.0	8.4
<u>11:10</u>	11.1	8.5
	11.0	8.4
50	11.0	8.4
	10.9	8.3
	10.9	8.3
	11.2	8.6
	10.7	8.1
11+00	10.7	8.1
	11.1	8.5
	11.8	9.2
	11.2	8.6
	11.7	9.1
50	11.7	9.1
	11.8	9.2
70	12.0	9.4

(50)

STA. N. 138+00: O+O = N. 13, 960 ; SOUND EAST

Dist Sound Elev Dist Sound Elev

O+O			(26)	8.6	6.0
(26)			50	8.6	6.0
				8.5	5.9
<u>11:20</u>				8.6	6.0
	0.9	+1.7		8.3	5.7
50	8.7	1.1		8.6	6.0
	7.8	5.2	3+00	9.0	6.4
	8.7	6.1		9.0	6.4
	8.9	6.3		9.0	6.4
	9.0	6.4		9.1	6.5
1+00	9.0	6.4		9.2	6.6
	9.2	6.6	50	9.2	6.6
	9.1	6.5		9.4	6.8
	9.2	6.6		9.5	6.9
	9.1	6.5		9.6	7.0
50	9.3	6.7		9.2	6.6
	9.0	6.4	4+00	9.2	6.6
	9.0	6.4		9.1	6.5
	9.1	6.5		9.2	6.6
	8.9	6.3		9.4	6.8
2+00	8.9	6.3		9.5	6.9
	8.7	6.1	50	9.6	7.0
	8.8	6.2		9.5	6.9
	8.9	6.3		9.5	6.9

STAIN. 138+00 - EAST 10-15-60

Dist	Sound	Elev	Dist	Sound	Elev
(26)	9.4	6.8	(26)	9.3	6.7
	9.5	6.9		9.0	6.4
5+00	9.5	6.9	50	9.0	6.4
	9.6	7.0		9.1	6.5
	9.7	7.1		8.9	6.3
11:25	9.8	7.2		8.8	6.2
<u> </u>	9.8	7.2		8.6	6.0
50	9.9	7.3	8+00	8.7	6.1
	9.9	7.3		8.8	6.2
	9.9	7.3		8.6	6.0
	9.7	7.1		8.6	6.0
	9.8	7.2		8.4	5.8
6+00	9.7	7.1	50	8.6	6.0
	9.7	7.1		8.3	5.7
	9.8	7.2		8.4	5.8
	9.7	7.1		8.5	5.9
	9.7	7.1		8.5	5.9
50	9.9	7.3	9+00	8.5	5.9
	9.9	7.3		8.6	6.0
	9.9	7.3		8.6	6.0
	9.7	7.1		8.6	6.0
	9.7	7.1		8.7	6.1
7+00	10.0	7.4	50	8.6	6.0
	9.7	7.1		8.5	5.9
	9.6	7.0		8.7	6.1

STAIN. 138+00 - EAST

(51)

Dist	Sound	Elev
(26)	8.7	6.1
	8.7	6.1
10+00	8.5	5.9
	8.6	6.0
	8.4	5.8
	8.5	5.9
	8.7	6.1
50	8.8	6.2
	8.7	6.1
11:30	8.7	6.1
<u> </u>	8.6	6.0
	8.6	6.0
11+00	8.9	6.3
	8.2	5.6
	8.6	6.0
	8.6	6.0
	8.6	6.0
50	8.7	6.1

10-15-60

STAN. 139+00 = W. 13,920			SOUND EAST		
DIST	Sound	Elev	DIST	Sound	Elev
0+00			(25)	8.4	5.9
(25)			50	8.4	5.9
				8.5	6.0
12:45	0.7	+1.8		8.3	5.8
	3.8	1.3		8.3	5.8
50	6.9	4.4		8.2	5.7
	7.2	4.7	3+00	8.4	5.9
	7.5	5.0		8.6	6.1
	8.1	5.6		8.8	6.3
	8.9	6.4		8.8	6.3
1+00	8.2	5.7		8.9	6.4
	8.3	5.8	50	8.9	6.4
	8.8	6.3		8.9	6.4
	8.7	6.2		8.9	6.4
	8.4	5.9		8.8	6.3
50	8.6	6.1		8.9	6.4
	8.5	6.0	4+00	8.9	6.4
	8.5	6.0		9.0	6.5
	8.5	6.0		8.9	6.4
	8.5	6.0		8.8	6.3
2+00	8.5	6.0		8.7	6.2
	8.4	5.9	50	8.8	6.3
	8.4	5.9		8.9	6.4
	8.4	5.9		9.1	6.6

STAN. 139+00 - EAST

(52)

DIST	Sound	Elev	DIST	Sound	Elev
(25)	9.0	6.5	(25)	8.4	5.9
	8.9	6.4		8.5	6.0
5+00	8.9	6.4	50	8.5	6.0
	9.0	6.5		8.5	6.0
	9.0	6.5		8.4	5.9
	9.1	6.6		8.4	5.9
	9.1	6.6		8.6	6.1
50	9.1	6.6	8+00	8.5	6.0
	9.0	6.5		8.3	5.8
	9.0	6.5		8.4	5.9
	9.1	6.6		8.3	5.8
	9.2	6.7		8.3	5.8
6+00	9.3	6.8	50	8.3	5.8
	9.4	6.9		8.2	5.7
	9.4	6.9		8.2	5.7
12:50	9.5	7.0		8.3	5.8
	9.3	6.8		8.3	5.8
50	9.3	6.8	9+00	8.4	5.9
	9.2	6.7		8.2	5.7
	9.3	6.8		8.3	5.8
	9.3	6.8		8.3	5.8
	9.2	6.7		8.2	5.7
7+00	9.2	6.7	50	8.4	5.9
	9.0	6.5		8.5	6.0
	8.7	6.2		8.8	6.3

STA. N. 139+00 - EAST 10-15-60

DIST SOUND ELEV

(25)	8.9	6.4
	8.8	6.3
10+00	8.9	6.4
	8.8	6.3
	8.9	6.4
	8.8	6.3
	8.9	6.4
50	9.0	6.5
	9.0	6.5
	9.0	6.5
	8.9	6.4
	9.0	6.5
11+00	8.9	6.4
	9.0	6.5
20	8.9	6.4

10-15-60

STA. N. 140+00; 0+00 = W. 13,850 ; SOUND EAST

DIST SOUND ELEV DIST SOUND ELEV

0+00			(25)	9.7	7.2
			50	9.7	7.2
				9.4	6.9
1+00	2.9	0.4		9.1	6.6
	6.4	3.9		9.1	6.6
50	7.2	4.7		9.0	6.5
	7.4	4.9	3+00	9.0	6.5
	7.9	5.4		8.9	6.4
	8.5	6.0		8.9	6.4
	8.3	5.8		8.2	5.7
1+00	9.3	6.8		8.0	5.5
	8.7	6.2	50	8.0	5.5
	8.8	6.3		8.0	5.5
	9.0	6.5		7.4	4.9
	9.0	6.5		7.3	4.8
50	9.4	6.9		7.3	4.8
	9.4	6.9	4+00	7.0	4.5
	9.8	7.3		6.9	4.4
	9.8	7.3		6.9	4.4
	9.7	7.2		7.1	4.6
2+00	9.7	7.2		7.5	5.0
	9.7	7.2	50	7.8	5.3
	9.7	7.2		8.1	5.6
	9.7	7.2		8.4	5.9

(53)

STA. N. 140+00 - EAST 10-15-60

Dist Sound Elev Dist Sound Elev

23	8.6	6.1	23	8.4	5.9
	8.7	6.2		8.4	5.9
5+00	8.7	6.2	50	8.9	6.4
	8.7	6.2		8.9	6.4
	9.0	6.5		9.0	6.5
	9.2	6.7	1105	9.3	6.8
	9.5	7.0	~	9.6	7.1
50	9.8	7.3	8+00	9.8	7.3
	9.4	6.9		9.8	7.3
	8.8	6.3		10.0	7.5
	8.5	6.0		9.8	7.3
	8.5	6.0		10.0	7.5
6+00	8.5	6.0	50	9.9	7.4
	8.5	6.0		9.8	7.3
	8.5	6.0		9.8	7.3
	8.5	6.0		10.0	7.5
	8.5	6.0		10.0	7.5
50	8.9	6.4	9+00	10.0	7.5
	8.9	6.4		10.0	7.5
	8.8	6.3		9.5	7.0
	8.8	6.3		9.6	7.1
	8.9	6.4		9.8	7.3
7+00	8.8	6.3	50	9.8	7.3
	8.4	5.9		9.8	7.3
	8.4	5.9		9.8	7.3

STA. N. 140+00 - EAST

Dist Sound Elev

25	9.9	7.4
25	9.9	7.4
10+00	9.7	7.2
	9.8	7.3
	10.0	7.5
	10.0	7.5
	10.1	7.6
50	10.2	7.7

(54)

10-15-60

STAN. 141+00; 0+00 = W. 13,750 ; SOUND EAST

DIST	SOUND	ELEV	DIST	SOUND	ELEV
0+00			(26)	6.3	3.7
(26)			50	5.7	3.1
	0.2	+2.4		5.4	2.8
1:15	0.9	+1.7		4.9	2.3
	1.9	+0.7		4.1	1.5
50	3.1	0.5		4.3	1.7
	6.0	3.4	3+00	4.1	1.5
	6.7	4.1		4.5	1.9
	6.8	4.2		4.9	2.3
	6.8	4.2		4.2	1.6
1+00	7.0	4.4		3.8	1.2
	7.3	4.7	50	3.9	1.3
	7.3	4.7		4.1	1.5
	7.9	5.3		4.0	1.4
	8.1	5.5		4.0	1.4
50	8.2	5.6		4.9	2.3
	8.1	5.5	4+00	4.7	2.1
	8.0	5.4		4.9	2.3
	8.0	5.4		5.0	2.4
	7.9	5.3		5.1	2.5
2+00	7.4	4.8		5.3	2.7
	7.1	4.5	50	5.6	3.0
	6.9	4.3		6.0	3.4
	6.7	4.1		6.3	3.7

STAN. 141+00-EAST

DIST	SOUND	ELEV	DIST	SOUND	ELEV
(26)	6.5	3.9	(26)	7.4	4.8
	6.6	4.0		7.8	5.2
5+00	6.9	4.3	50	7.9	5.3
	7.0	4.4		7.8	5.2
	7.1	4.5		8.0	5.4
	7.0	4.4		8.1	5.5
	7.1	4.5		8.3	5.7
50	7.1	4.5	8+00	8.7	6.1
	6.9	4.3		8.7	6.1
	6.8	4.2		8.8	6.2
	6.9	4.3		8.7	6.1
	6.9	4.3		8.8	6.2
6+00	6.9	4.3	50	8.9	6.3
	6.6	4.0		8.9	6.3
	6.6	4.0	1:20	9.0	6.4
	6.8	4.2		8.9	6.3
	6.9	4.3		9.0	6.4
50	6.8	4.2	9+00	9.2	6.6
	6.9	4.3		9.2	6.6
	7.2	4.6		9.1	6.5
	7.3	4.7		9.1	6.5
	7.5	4.9		9.0	6.4
7+00	7.3	4.7	50	9.0	6.4
	7.3	4.7		9.1	6.5
	7.1	4.5		9.2	6.6

55

STA. N. 141+00 - EAST

DIST SOUND ELEV

(26)	9.1	6.5
	8.7	6.1
10+00	8.6	6.0
	9.0	6.4
	9.6	7.0
	9.9	7.3
	9.7	7.1
50	10.0	7.4

10-15-60

(56)

STA. N. 141+50 S. 140+00 = W. 13,720 SOUND EAST

DIST SOUND ELEV DIST SOUND ELEV

0+00			(27)	5.6	2.9
(27)			50	5.0	2.3
				4.0	1.3
				4.0	1.3
				3.9	1.2
50	0.4	+2.3		3.6	0.9
	1.2	+1.5	3+00	3.7	1.0
1125	2.2	+0.5		3.4	0.7
1125	5.0	2.3		3.2	0.5
	6.3	3.6		3.1	0.4
1+00	6.9	4.2		2.9	0.2
	6.9	4.2	50	2.8	0.1
	7.2	4.5		2.6	+0.1
	7.6	4.9		2.1	+0.6
	8.0	5.3		2.0	+0.7
50	8.0	5.3		2.1	+0.6
	7.8	5.1	4+00	3.0	0.3
	7.5	4.8		3.3	0.6
	7.2	4.5		3.1	0.4
	7.2	4.5		3.2	0.5
2+00	7.0	4.3		3.9	1.2
	6.9	4.2	50	3.9	1.2
	6.5	3.8		4.0	1.3
	5.9	3.2		4.1	1.4

STATION 141+50 - EAST 10-15-60

Dist	Sound	Elev	Dist	Sound	Elev
(27)	4.2	1.5	(28)	8.0	5.2
	4.5	1.8		7.9	5.1
5+00	5.0	2.3	50	8.1	5.3
	5.5	2.8		8.0	5.2
<u>11:30</u>	6.1	3.4		8.1	5.3
<u>—</u>	6.1	3.4		8.2	5.4
	6.1	3.4		8.6	5.8
50	6.1	3.4	8+00	8.6	5.8
	6.0	3.3		8.8	6.0
	5.8	3.1		8.9	6.1
	5.5	2.8		9.0	6.2
	5.3	2.6		9.1	6.3
6+00	5.2	2.5	50	9.1	6.3
	5.1	2.4		9.3	6.5
	5.1	2.4		9.4	6.6
	6.0	3.3		9.3	6.5
	6.2	3.5		9.3	6.5
50	6.0	3.3	9+00	9.4	6.6
	6.1	3.4		9.3	6.5
	6.2	3.5	11:35	9.4	6.6
	6.7	4.0	<u>—</u>	9.4	6.6
	7.0	4.3		9.3	6.5
7+00	7.5	4.8	50	7.2	4.4
	7.9	5.2			
	7.8	5.1			

10-17-60

(57)

STATION 122+00 to 140+00 = W. 14,090; SOUND EAST

Dist	Sound	Elev	Dist	Sound	Elev
0+00			(37)	9.3	5.6
(37)			50	9.6	5.9
	0.7	+3.0		9.7	6.0
10:00	1.6	+2.1		9.8	6.1
<u>—</u>	2.4	+1.3		10.8	7.1
50	3.3	+0.4		12.1	8.4
	4.4	0.7	3+00	13.0	9.3
	5.0	1.3		12.7	9.0
	5.7	2.0		12.6	8.9
	6.4	2.7		12.6	8.9
1+00	6.9	3.2		12.6	8.9
	7.1	3.4	50	11.8	8.1
	7.7	4.0		13.0	9.3
	8.4	4.7		12.9	9.2
	8.6	4.9		12.2	8.5
50	8.7	5.0		12.2	8.5
	8.5	4.8	4+00	12.5	8.8
	9.0	5.3		12.4	8.7
	9.3	5.6		12.1	8.4
	9.2	5.5		12.0	8.3
2+00	9.1	5.4		11.9	8.2
	9.2	5.5	50	11.8	8.1
	9.3	5.6		11.7	8.0
	9.3	5.6		11.7	8.0

STA. N. 122+00 - EAST					
Dist	Sound	Elev	Dist	Sound	Elev
(36)	11.6	8.0	(36)	11.7	8.1
	11.9	8.3		11.6	8.0
5+00	12.2	8.6	50	11.6	8.0
	12.1	8.5		11.5	7.9
	12.2	8.6		11.5	7.9
	12.7	9.1		11.7	8.1
	12.2	8.6		11.8	8.2
50	12.5	8.9	8+00	11.8	8.2
	12.5	8.9		11.9	8.3
	12.4	8.8		11.9	8.3
	12.3	8.7		11.9	8.3
	12.9	9.3		11.9	8.3
6+00	11.3	7.7	50	11.8	8.2
	10.3	6.7		11.9	8.3
	10.8	7.1		11.9	8.3
10:05	10.7	7.0		12.0	8.4
≈	11.0	7.4		12.0	8.4
50	11.6	8.0	9+00	11.9	8.3
	11.5	7.9		11.9	8.3
	11.4	7.8		11.8	8.2
	11.5	7.9		11.9	8.3
	11.7	8.1		11.8	8.2
7+00	11.7	8.1	50	11.8	8.2
	11.8	8.2		12.8	9.2
	11.6	8.0		12.6	9.0

10-17-60 (58)

STA. N. 123+00 - W 14.070 SOUND EAST					
Dist	Sound	Elev	Dist	Sound	Elev
0+00			(34)	9.4	6.0
(3.4)			50	9.4	6.0
				9.6	6.2
10:15	0.6	+2.8		12.2	8.8
≈	1.3	+2.1		11.9	8.5
50	2.0	+1.4		11.9	8.5
	2.7	+0.7	3+00	12.0	8.6
	3.2	+0.2		12.0	8.6
	4.0	0.6		11.5	8.1
	4.1	0.7		12.6	9.2
1+00	4.3	0.9		11.9	8.5
	4.7	1.3	50	11.2	7.8
	5.0	1.6		12.8	9.4
	5.4	2.0		12.4	9.0
	6.0	2.6		12.3	8.9
50	7.0	3.6		12.1	8.7
	7.8	4.4	4+00	12.0	8.6
	7.9	4.5		12.0	8.6
	8.1	4.7		12.2	8.8
	8.1	4.7		11.8	8.4
2+00	8.6	5.2		11.3	7.9
	8.9	5.5	50	11.1	7.7
	8.9	5.5		11.4	8.0
	9.2	5.8		11.9	8.5

STA. N. 123+00 - EAST 10-17-60

(59)

Dist	Sound	Elev	Dist	Sound	Elev
(33)	11.2	7.9	(33)	11.0	7.7
	11.9	8.6		11.1	7.8
5+00	11.9	8.6	50	11.1	7.8
	11.8	8.5		11.1	7.8
	11.3	8.0		11.1	7.8
	11.5	8.2		10.9	7.6
	11.7	8.4		10.7	7.4
50	11.3	8.0	8+00	11.2	7.9
	11.7	8.4		11.2	7.9
	11.5	8.2		11.8	8.5
	11.7	8.4		13.0	9.7
	9.3	6.0		13.0	9.7
6+00	9.9	6.6	50	12.8	9.5
	9.9	6.6	50	12.8	9.5
	9.9	6.6		12.2	8.9
	10.1	6.8		12.3	9.0
	10.2	6.9		13.0	9.7
50	10.4	7.1	9+00	13.1	9.8
	10.8	7.5		13.3	10.0
10+00	11.0	7.7		13.2	9.9
	11.0	7.7		13.2	9.9
	11.1	7.8		12.8	9.5
7+00	11.9	8.6	50	12.1	8.8
	11.2	7.9			
	10.9	7.6			

STA. N. 124+00 - W 1/4 0+00 - SOUND EAST

Dist	Sound	Elev	Dist	Sound	Elev
0+00			(32)	12.0	8.8
			50	12.0	8.8
	0.0	+32		11.9	8.7
10+30	0.8	+2.4		11.8	8.6
	1.5	+1.7		11.4	8.2
50	2.2	+1.0		11.3	8.1
	2.9	+0.3	3+00	11.2	8.0
	3.2	0.0		11.2	8.0
	3.9	0.7		11.0	7.8
	4.4	1.2		11.1	7.9
1+00	5.0	1.8		11.6	8.4
	5.8	2.6	50	11.7	8.5
	6.2	3.0		11.6	8.4
	6.2	3.0		11.4	8.2
	7.0	3.8		11.3	8.1
50	7.5	4.3		11.3	8.1
	7.4	4.2	4+00	11.3	8.1
	7.9	4.7		11.5	8.3
	8.1	4.9		11.5	8.3
	8.2	5.0		11.1	7.9
2+00	8.9	5.7		11.2	8.0
	9.0	5.8	50	11.5	8.3
	9.0	5.8		11.7	8.5
	11.0	7.8		11.3	8.1

STA. N. 124+00 - EAST

DIST	Sound	Elev	DIST	Sound	Elev
(31)	11.8	8.7	(31)	12.0	8.9
	11.8	8.7		12.0	8.9
5+00	11.8	8.7	50	12.0	8.9
	11.9	8.8		12.1	9.0
	12.0	8.9		12.1	9.0
	11.9	8.8		12.2	9.1
	12.0	8.9		12.2	9.1
50	11.7	8.6	8+00	12.3	9.2
	9.5	6.4		12.5	9.4
<u>10:35</u>	9.9	6.8		12.3	9.2
	9.8	6.7		12.2	9.1
	9.8	6.7		12.1	9.0
6+00	9.9	6.8	50	12.9	9.8
	9.9	6.8		12.9	9.8
	9.8	6.7		13.6	10.5
	9.5	6.4		13.7	10.6
	9.9	6.8		13.8	10.7
50	10.0	6.9	9+00	13.8	10.7
	10.0	6.9		13.9	10.8
	9.9	6.8	10+00	13.9	10.8
	9.9	6.8		13.6	10.5
	11.8	8.7		13.3	10.2
7+00	10.1	7.0	50	13.0	9.9
	11.3	8.2		12.9	9.8
	12.1	9.0		12.6	9.5
				12.3	9.2
				12.0	8.9
			10+00	12.0	8.9

10-17-60

(60)

STA. N. 125+00, 0+00 - W. 14,020			SOUND EAST		
DIST	Sound	Elev	DIST	Sound	Elev
0+00			(30)	11.0	8.0
(30)			50	11.4	8.4
				10.6	7.6
<u>10:45</u>	0.1	2.9		11.6	8.6
	1.0	+2.0		11.8	8.8
50	1.9	+1.1		10.8	7.8
	3.2	0.2	3+00	10.9	7.9
	4.0	1.0		11.8	8.8
	4.5	1.5		11.9	8.9
	5.4	2.4		11.9	8.9
1+00	6.1	3.1		11.6	8.6
	6.6	3.6	50	11.6	8.6
	6.8	3.8		11.6	8.6
	7.1	4.1		11.3	8.3
	7.5	4.5		11.3	8.3
50	7.6	4.6		11.3	8.3
	7.8	4.8	4+00	11.4	8.4
	8.1	5.1		11.4	8.4
	8.2	5.2		11.6	8.6
	8.6	5.6		11.5	8.5
2+00	8.9	5.9		11.4	8.4
	9.3	6.3	50	11.7	8.7
	11.1	8.1		11.8	8.8
	11.2	8.2		11.5	8.5

STA. N. 125+00 - EAST

Dist	Sound	Elev	Dist	Sound	Elev
(29)	11.6	8.7	(29)	11.4	8.5
	11.7	8.8		11.9	9.0
5+00	11.5	8.6	50	11.7	8.8
	11.3	8.4		11.6	8.7
10:50	11.4	8.5		11.6	8.7
<u> </u>	10.6	7.7		11.9	9.0
	9.3	6.4		12.1	9.2
50	9.5	6.6	8+00	12.3	9.4
	9.3	6.4		12.3	9.4
	9.5	6.6		12.3	9.4
	9.5	6.6		12.8	9.7
	9.6	6.7		13.9	11.0
6+00	9.5	6.6	50	13.9	11.0
	9.2	6.3		13.5	10.6
	9.1	6.2		13.2	10.3
	11.5	8.6		12.9	10.0
	12.4	9.5		12.4	9.5
50	10.9	8.0	9+00	12.0	9.1
	12.0	9.1		11.9	9.0
	12.0	9.1		11.8	8.9
	11.8	8.9		11.3	8.4
	12.1	9.2		11.1	8.2
7+00	11.6	8.7	50	11.0	8.1
	11.5	8.6		11.0	8.1
	11.8	8.9		10.9	8.0
				8.7	5.8
				3.8	0.9
			10+00	0.7	+2.2

10-17-66

(6)

STA. N. 126+00; 0+00=W. 13.990; SOUND EAST

Dist	Sound	Elev	Dist	Sound	Elev
0+00			(2.6)	10.2	7.6
(2.7)			50	10.9	8.3
				11.1	8.5
11:00	0.4	+2.3		11.3	8.7
<u> </u>	1.2	+1.5		11.1	8.5
50	2.0	+0.7		11.4	8.8
	3.1	0.4	3+00	12.2	9.6
	3.9	1.2		11.7	9.1
	4.0	1.3	11:05	11.7	9.1
	4.2	1.5	<u> </u>	11.2	8.6
1+00	4.6	1.9		11.2	8.6
	5.0	2.3	50	11.0	8.4
	5.2	2.5		11.0	8.4
	6.0	3.3		11.0	8.4
	6.2	3.5		11.0	8.4
50	6.8	4.1		11.0	8.4
	7.1	4.4	4+00	11.0	8.4
	7.4	4.7		11.0	8.4
	8.4	5.7		11.5	8.9
	11.1	8.4		11.2	8.6
2+00	10.9	8.2		11.9	9.3
	10.9	8.2	50	11.2	8.6
	9.9	7.2		11.1	8.5
	11.1	8.4		11.0	8.4

STA. N. 126+00 - EAST

DIST	Sound	Elev	DIST	Sound	Elev
(2.5)	11.0	8.5	(25)	11.8	9.3
	11.6	9.1		11.8	9.3
5+00	11.3	8.8	50	11.7	9.2
	9.1	6.6		11.4	8.9
	9.3	6.8		11.4	8.9
	9.3	6.8		11.1	8.6
	9.2	6.7		11.1	8.6
50	9.4	6.9	8+00	11.5	9.0
	9.9	7.4		11.6	9.1
	12.3	9.8		11.6	9.1
	11.8	9.3		11.4	8.9
	11.6	9.1		11.1	8.6
6+00	11.8	9.3	50	11.0	8.5
	11.4	8.9		10.8	8.3
	11.6	9.1		10.2	7.7
	11.5	9.0		10.1	7.6
	11.1	8.6		9.8	7.3
50	11.2	8.7	9+00	8.6	6.1
	11.6	9.1		2.0	+0.5
11/10	12.0	9.5		1.0	+1.5
	12.1	9.6			
	12.0	9.5			
7+00	12.1	9.6	50		
	12.0	9.5			
	11.9	9.4			

10-17-60

(62)

STA. N. 127+00' 0+00 = W. 13,970; SOUND EAST

DIST	Sound	Elev	DIST	Sound	Elev
0+00			(24)	11.0	8.6
(12A)			50	10.9	8.5
				11.0	8.6
				11.0	8.6
	0.4	+2.0		11.2	8.8
50	1.2	+1.2		11.0	8.6
	1.9	+0.5	3+00	11.0	8.6
	2.3	+0.1		11.2	8.8
	2.8	0.4		11.3	8.9
	3.1	0.7		11.3	8.9
1+00	3.7	1.3		11.1	8.7
	4.1	1.7	50	11.0	8.6
	4.6	2.2		10.9	8.5
	5.0	2.6		10.9	8.5
	5.2	2.8		11.0	8.6
50	5.9	3.5		10.9	8.5
	8.1	5.7	4+00	10.9	8.5
	11.5	9.1		10.9	8.5
	11.9	9.5		11.0	8.6
	11.5	9.1		11.0	8.6
2+00	11.2	8.8		11.1	8.7
	11.1	8.7	50	11.2	8.8
	10.9	8.5		11.2	8.8
	10.9	8.5		11.1	8.7

STA. N. 127+00 - EAST

DIST	Sound	Elev	DIST	Sound	Elev
(23)	11.3	9.0	(23)	10.9	8.6
	11.3	9.0		11.0	8.7
5+00	8.9	6.6	50	11.0	8.7
	8.9	6.6		10.9	8.6
	8.9	6.6		11.0	8.7
	9.0	6.7		10.9	8.6
	9.0	6.7		10.7	8.4
50	9.0	6.7	8+00	10.6	8.3
	11.4	9.1		10.3	8.0
	11.3	9.0		10.3	8.0
	11.3	9.0		10.2	7.9
	11.2	8.9		10.2	7.9
6+00	11.4	9.1	50	10.3	8.0
	11.7	9.4		10.3	8.0
	11.4	9.1		9.3	7.0
	11.3	9.0		2.0	0.3
	11.1	8.8		0.7	+1.6
50	11.1	8.8	9+00		
	11.1	8.8			
11.25	11.0	8.7			
	10.9	8.6			
	10.9	8.6			
7+00	10.9	8.6	50		
	10.9	8.6			
	10.9	8.6			

10-17-60

(63)

STA. N. 128+00 - W 13,940; SOUND EAST

DIST	Sound	Elev	DIST	Sound	Elev
0+00			(20)	11.5	9.5
(20)			50	11.6	9.6
				11.4	9.4
11.40	0.9	+1.1		11.3	9.3
	2.4	0.4		11.1	9.1
50	4.0	2.0		11.1	9.1
	4.2	2.2	3+00	11.3	9.3
	4.5	2.5		11.4	9.4
	4.9	2.9		10.9	8.9
	5.0	3.0		10.8	8.8
1+00	5.3	3.3		10.8	8.8
	6.1	4.1	50	10.8	8.8
	6.3	4.3		10.5	8.5
	6.6	4.6		10.8	8.8
	8.5	6.5		10.9	8.9
50	12.1	10.1		10.8	8.8
	11.2	9.2	4+00	10.8	8.8
	12.0	10.0		10.7	8.7
	12.1	10.1		10.8	8.8
	12.0	10.0		10.7	8.7
2+00	11.3	9.3		10.7	8.7
	10.9	8.9	50	10.9	8.9
	10.9	8.9		10.4	8.4
	11.3	9.3		8.2	6.2

STA. N. 128+00 - EAST

DIST	Sound	Elev	DIST	Sound	Elev
(20)	8.3	6.3	(20)	10.9	8.9
	8.4	6.4		11.4	9.4
5+00	8.6	6.6	50	11.4	9.4
	8.3	6.3		11.3	9.3
	8.0	6.0		10.8	8.8
11.45	8.1	6.1		10.7	8.7
	8.3	6.3		10.5	8.5
50	8.9	6.9	8+00	10.0	8.0
	10.4	8.4		9.6	7.6
	10.2	8.2		9.0	7.0
	10.3	8.3		9.1	7.1
	9.9	7.9		9.1	7.1
6+00	10.1	8.1	50	8.8	6.8
	9.9	7.9		8.8	6.8
	10.0	8.0		8.0	6.0
	10.3	8.3		1.0	+1.0
	10.7	8.7			
50	11.0	9.0	9+00		
	10.7	8.7			
	10.5	8.5			
	10.6	8.6			
	11.2	9.2			
7+00	11.2	9.2	50		
	10.8	8.8			
	11.0	9.0			

10-17-60

(6)

STA. N. 129+00; 0+00 = W 13,930 SOUND EAST

DIST	Sound	Elev	DIST	Sound	Elev
0+00			(16)	11.2	9.6
(16)			50	11.5	9.9
				11.1	9.5
1+00	3.0	1.4		12.0	10.4
	6.1	4.5		11.2	9.6
50	7.8	6.2		11.8	10.2
	8.3	6.7	3+00	11.2	9.6
	8.5	6.9		11.1	9.5
	8.8	7.2		11.1	9.5
	8.7	7.1		11.1	9.5
1+00	8.9	7.3		11.1	9.5
	8.9	7.3	50	11.1	9.5
	9.0	7.4		11.0	9.4
	10.8	9.2		10.9	9.3
	12.0	10.4		10.3	8.7
50	11.2	9.6		10.1	8.5
	11.1	9.5	4+00	9.9	8.3
	11.9	10.3		9.7	8.1
	11.2	9.6		9.8	8.2
	11.4	9.8		9.7	8.1
2+00	11.4	9.8		10.0	8.4
	11.7	10.1	50	10.8	9.2
	12.1	10.5		9.4	7.8
	11.2	9.6		8.1	6.5

STA. N. 129+00 - EAST					
Dist	Sound	Elev	Dist	Sound	Elev
(1.6)	7.9	6.3	(1.6)	11.1	9.5
	7.7	6.1		11.0	9.4
5+00	7.9	6.3	50	11.0	9.4
	7.8	6.2		10.6	9.0
<u>11.05</u>	8.0	6.4		10.3	8.7
	8.0	6.4		10.1	8.5
	7.4	5.8		10.0	8.4
50	7.9	6.3	8+00	10.0	8.4
	10.4	8.8		9.8	8.2
	10.9	9.3		9.4	7.8
	10.8	9.2		9.2	7.6
	10.3	8.7		9.0	7.4
6+00	10.1	8.5	50	8.5	6.9
	10.0	8.4		7.9	6.3
	10.0	8.4	<u>11.10</u>	7.6	6.0
	10.0	8.4		7.8	6.2
	10.0	8.4		7.9	6.3
50	10.0	8.4	9+00	6.5	4.9
	10.0	8.4		0.0	+1.6
	10.0	8.4			
	10.0	8.4			
	10.0	8.4			
7+00	10.0	8.4	50		
	10.5	8.9			
	10.8	9.2			

10-17-60 (65)

STA. N. 130+00; 0+00 - W. 13,930 ; SOUND EAST					
Dist	Sound	Elev	Dist	Sound	Elev
0+00	(1.6)	10.1			8.5
(1.6)		10.0			8.4
		10.3			8.7
<u>11.15</u>	1.1	+0.5			10.0
	5.6	4.0			10.1
50	7.1	5.5			10.1
	7.7	6.1	3+00	10.1	8.5
	8.1	6.5		10.1	8.5
	8.1	6.5		10.3	8.7
	8.0	6.4		11.0	9.4
1+00	8.1	6.5		10.4	8.8
	8.3	6.7	50	9.9	8.3
	9.0	7.4		9.7	8.1
	11.0	9.4		9.7	8.1
	11.0	9.4		9.9	8.3
50	11.0	9.4		9.9	8.3
	11.0	9.4	4+00	9.9	8.3
	10.8	9.2		10.3	8.7
	10.8	9.2	<u>11.20</u>	10.3	8.7
	10.7	9.1		10.4	8.8
2+00	10.5	8.9		10.5	8.9
	10.4	8.8	50	10.5	8.9
	10.3	8.7		10.4	8.8
	10.0	8.4		10.5	8.9

STA. N. 130+00 - EAST

DIST	SOUND	ELEV	DIST	SOUND	ELEV
(16)	10.4	8.8	(16)	10.0	8.4
	10.3	8.7		9.9	8.3
5+00	7.6	6.0	50	9.7	8.1
	7.7	6.1		9.7	8.1
	7.8	6.2		9.9	8.3
	8.1	6.5		9.9	8.3
	7.9	6.3		10.1	8.5
50	7.7	6.1	8+00	10.1	8.5
	7.5	5.9		10.2	8.6
	7.4	5.8		10.1	8.5
	8.0	6.4		9.8	8.2
	10.1	8.5		9.3	7.7
6+00	10.2	8.6	50	9.3	7.7
	10.2	8.6		9.2	7.6
	10.1	8.5		9.3	7.7
	10.0	8.4		9.3	7.7
	9.9	8.3		9.2	7.6
50	9.9	8.3	9+00	9.2	7.6
	9.9	8.3		9.0	7.4
11.25	9.8	8.2		8.9	7.3
<u> </u>	9.7	8.1		8.8	7.2
	9.8	8.2		8.9	7.3
7+00	10.0	8.4	50	8.9	7.3
	10.1	8.5		8.9	7.3
	10.0	8.4		3.6	2.0
				0.0	+1.6

10-17-60

(66)

STA. N. 131+00.0+00 - W. 13,940 ; SOUND EAST

DIST	SOUND	ELEV	DIST	SOUND	ELEV
0+00			(16)	10.9	9.3
(16)			50	10.7	9.1
				10.5	8.9
11.40	0.9	+0.7		10.3	8.7
<u> </u>	4.8	3.2		10.2	8.6
50	7.0	5.4		10.1	8.5
	7.8	6.2	3+00	10.0	8.4
	8.3	6.7		10.1	8.5
	8.1	6.5		10.3	8.7
	8.1	6.5		10.3	8.7
1+00	8.0	6.4		10.4	8.8
	8.0	6.4	50	10.2	8.6
	8.0	6.4		10.0	8.4
	8.0	6.4		10.1	8.5
	7.9	6.3		10.1	8.5
50	8.0	6.4		10.2	8.6
	7.9	6.3	4+00	10.0	8.4
	7.9	6.3		10.3	8.7
	8.9	7.3		10.3	8.7
	11.2	9.6		10.0	8.4
2+00	11.0	9.4		10.0	8.4
	10.9	9.3	50	10.3	8.7
	11.0	9.4		10.3	8.7
	10.9	9.3		10.4	8.8

STA. N. 134+00 - EAST

DIST	Sound	Elev	DIST	Sound	Elev
(1.6)	10.4	8.8	(1.6)	9.6	8.0
	10.3	8.7		9.4	7.8
5+00	10.7	9.1	50	9.5	7.9
	10.1	8.5		9.6	8.0
	10.3	8.7	11:45	9.5	7.9
	10.4	8.8		9.3	7.7
	10.7	9.1		9.7	8.1
50	10.9	9.3	8+00	9.9	8.3
	10.3	8.7		9.6	8.0
	9.3	7.7		9.6	8.0
	8.8	7.2		9.7	8.1
	7.0	5.4		9.9	8.3
6+00	7.1	5.5	50	9.7	8.1
	7.0	5.4		9.8	8.2
	7.1	5.5		9.6	8.0
	6.9	5.3		9.9	8.3
	6.9	5.3		10.0	8.4
50	10.0	8.4	9+00	10.1	8.5
	10.3	8.7		10.1	8.5
	10.1	8.5		10.1	8.5
	9.9	8.3		9.9	8.3
	9.8	8.2	50	9.8	8.2
	9.8	8.2		9.9	8.3
7+00	9.8	8.2		9.7	8.1
	10.0	8.4		9.9	8.3
	9.8	8.2	10+00	10.0	8.4
				10.0	8.4
				10.3	8.7
				9.3	8.1
				6.5	4.9
			40	1.6	0.0

10-17-60

(67)

STA. N. 132+00; 0+00 = W. 13, 950; SOUND EAST

DIST	Sound	Elev	DIST	Sound	Elev
0+00			(1.7)	12.0	10.3
			50	12.0	10.3
	0.5	11.2		10.9	9.2
11:55	4.2	2.5		11.2	9.5
	6.2	4.5		11.1	9.4
50	7.0	5.3		10.8	9.1
	7.4	5.7	3+00	10.3	8.6
	7.6	5.9		10.4	8.7
	8.0	6.3		10.4	8.7
	8.7	7.0		11.0	9.3
1+00	8.2	6.5		11.0	9.3
	8.1	6.4	50	11.0	9.3
	8.2	6.5		11.0	9.3
	8.1	6.4		11.0	9.3
	8.3	6.6		11.0	9.3
50	8.5	6.8		10.7	9.0
	8.5	6.8	4+00	10.5	8.8
	8.9	7.2		10.5	8.8
	9.0	7.3		10.5	8.8
	8.6	6.9		10.4	8.7
2+00	8.7	7.0		10.3	8.6
	9.0	7.3	50	10.1	8.4
	8.3	6.6		10.1	8.4
	10.8	9.1		10.0	8.3

10-17-60

STA. N. 133+00 TO 100 = W 13,970' SOUND EAST

DIST	SOUND	ELEV	DIST	SOUND	ELEV
0+00			(19)	9.3	7.4
(1.9)			50	9.4	7.5
				9.9	8.0
2.15	1.1	+0.8		9.9	8.0
	5.2	3.3		9.5	7.6
50	6.6	4.7		9.3	7.4
	8.0	6.1	3+00	9.3	7.4
	8.2	6.3		9.4	7.5
	8.3	6.4		10.0	8.1
	8.8	6.9		10.3	8.4
1+00	8.8	6.9		11.3	8.4
	8.5	6.6	50	11.8	8.9
	8.5	6.6		12.1	10.2
	8.4	6.5		12.0	10.1
	8.3	6.4		11.9	10.0
50	8.8	6.9		11.6	9.7
	8.9	7.0	4+00	11.5	9.6
	9.0	7.1		11.6	9.7
	9.1	7.2		11.4	9.5
	9.2	7.3		11.4	9.5
2+00	9.3	7.4		11.7	9.8
	9.4	7.5	50	11.3	9.4
	9.4	7.5		11.5	9.6
	9.4	7.5		11.3	9.4

STA. N. 133+00 - EAST

DIST	SOUND	ELEV	DIST	SOUND	ELEV
(19)	11.5	9.6	(19)	7.8	5.9
	11.9	10.0		7.3	5.4
5+00	11.3	9.4	50	7.3	5.4
	11.5	9.6		7.3	5.4
	11.1	9.2		7.3	5.4
	11.0	9.1		7.2	5.3
	11.2	9.3		7.4	5.5
50	11.1	9.2	8+00	8.4	6.5
	11.1	9.2		8.9	7.0
	11.0	9.1		10.1	8.2
	11.1	9.2		10.4	8.5
	11.0	9.1		10.3	8.4
6+00	11.0	9.1	50	10.2	8.3
	11.1	9.2		10.1	8.2
	11.0	9.1		10.3	8.4
	11.0	9.1		10.1	8.2
	10.8	8.9		9.8	7.9
50	11.0	9.1	9+00	10.0	8.1
	10.5	8.6		10.3	8.4
2:20	10.6	8.7		10.4	8.5
	10.4	8.5		10.4	8.5
	10.6	8.7		10.4	8.5
7+00	10.3	8.4	50	10.4	8.5
	10.2	8.3		10.1	8.2
	10.9	9.0		10.1	8.2

(69)

STA. N. 133+00 - EAST					
Dist	Sound	Elev	Dist	Sound	Elev
(20)	10.1	8.1	(20)	10.0	8.0
	10.1	8.1		10.1	8.1
10+00	10.2	8.2	50	10.2	8.2
	10.3	8.3		10.3	8.3
2:25	10.3	8.3		10.5	8.5
<u> </u>	10.7	8.7		10.6	8.6
	10.3	8.3		10.5	8.5
50	10.5	8.5	13+00	10.2	8.2
	10.2	8.2		10.1	8.1
	9.9	7.9		9.5	7.5
	9.9	7.9		9.5	7.5
	10.0	8.0		9.3	7.3
11+00	9.7	7.7	50	9.9	7.9
	9.8	7.8	50	9.9	7.9
	9.9	7.9		10.5	8.5
	10.1	8.1		10.7	8.7
	9.9	7.9		10.4	8.4
50	10.0	8.0	14+00	10.9	8.9
	10.0	8.0		12.0	10.0
	10.1	8.1		11.9	9.9
	10.0	8.0		9.6	7.6
	9.8	7.8		5.8	3.8
12+00	9.6	7.6	50	4.4	2.4
	9.7	7.7		4.0	2.0
	9.9	7.9		3.1	1.1
				3.4	0.4
				1.0	+1.0

10-17-60					
STA. N. 134+00: 0+00 - W. 13,980: SOUND EAST					
Dist	Sound	Elev	Dist	Sound	Elev
0+00			(21)	2.1	9.0
			50	9.2	7.1
	0.5	+1.6		9.0	6.9
2:40	2.3	0.2		8.7	6.6
<u> </u>	8.6	4.5		8.6	6.5
50	7.3	5.2		8.5	6.4
	8.0	5.9	3+00	8.5	6.4
	8.7	6.6		8.5	6.4
	8.2	6.1		8.6	6.5
	8.3	6.2		8.7	6.6
1+00	8.3	6.2		8.8	6.7
	8.2	6.1	50	9.1	7.0
	8.3	6.2		9.0	6.9
	8.5	6.4		9.3	7.2
	8.6	6.5		9.0	6.9
50	8.9	6.8		10.0	7.9
	9.1	7.0	4+00	10.7	8.6
	9.3	7.2		10.3	8.2
	9.3	7.2		10.3	8.2
	9.3	7.2		11.9	9.8
2+00	9.2	7.1		11.8	9.7
	8.9	6.8	50	11.8	9.7
	8.9	6.8		11.5	9.4
	9.0	6.9		11.6	9.5

STA. N. 134+00 - EAST 10-17-60

Dist	Sound	Elev	Dist	Sound	Elev
(21)	11.8	9.7	(21)	11.3	9.2
	11.8	9.7		11.9	9.8
5+00	11.7	9.6	50	11.7	9.6
	11.6	9.5		11.4	9.3
	11.2	9.1	2:45	11.5	9.4
	11.7	9.5		12.1	10.0
	12.0	9.9		12.9	10.8
50	11.7	9.6	8+00	12.2	10.1
	11.3	9.2		9.3	7.2
	11.4	9.3		8.5	6.4
	11.6	9.5		8.0	5.9
	11.5	9.4		7.9	5.8
6+00	11.3	9.2	50	7.9	5.8
	11.6	9.5		7.9	5.8
	12.0	9.9		7.9	5.8
	11.3	9.2		7.8	5.7
	11.5	9.4		8.6	5.5
50	11.2	9.1	9+00	10.5	8.4
	11.2	9.1		10.7	8.6
	11.0	8.9		10.8	8.7
	11.3	9.2		10.8	8.7
	11.4	9.3		10.8	8.7
7+00	11.3	9.2	50	10.7	8.6
	11.7	9.6		10.6	8.5
	11.6	9.5		10.6	8.5

STA. N. 134+00 - EAST

Dist	Sound	Elev	Dist	Sound	Elev
(22)	10.5	8.3	(22)	11.1	8.9
	10.6	8.4		11.0	8.8
10+00	10.6	8.4	50	11.3	9.1
	10.7	8.5		11.1	8.9
	10.8	8.6		11.3	9.1
	10.7	8.5		11.5	9.3
	11.0	8.8		11.6	9.4
50	11.0	8.8	13+00	11.5	9.3
	11.1	8.9		11.7	9.5
	11.2	9.0		11.7	9.5
	10.9	8.7		11.8	9.6
	11.2	9.0		11.8	9.6
11+00	11.3	9.1	50	11.5	9.3
	11.2	9.0		11.5	9.3
	11.2	9.0	2:50	11.7	9.5
	11.2	9.0		11.8	9.6
	11.0	8.8		11.8	9.6
50	11.0	8.8	14+00	12.0	9.8
	11.1	8.9		12.3	9.1
	11.2	9.0		12.3	9.1
	11.0	8.8		12.5	9.3
	11.7	9.5		12.6	9.4
12+00	11.3	9.1	50	13.3	9.1
	11.5	9.3		9.2	7.0
	11.0	8.8		5.6	3.4

STA. N. 135+00 - EAST 10-20-60

Dist	Sound	Elev	Dist	Sound	Elev
(107)	7.7	7.0	(67)	11.2	10.5
	7.7	7.0		11.1	10.4
5+00	8.4	7.7	50	11.0	10.3
	9.9	9.2		10.8	10.1
	10.2	9.5		10.7	10.0
2:10	10.2	9.5		11.0	10.3
	10.1	9.4		11.3	10.6
50	10.2	9.5	8+00	10.9	10.2
	10.4	9.7		10.9	10.2
	10.4	9.7		10.7	10.0
	10.4	9.7		10.2	9.5
	10.8	10.1		10.0	9.3
6+00	10.8	10.1	50	10.0	9.3
	10.6	9.9		9.8	9.1
	10.4	9.7		9.8	9.1
	10.0	9.3		10.1	9.4
	9.4	8.7		10.0	9.3
50	9.6	8.9	9+00	10.3	9.6
	9.4	8.7		9.8	9.1
	9.4	8.7	2:15	10.0	9.3
	9.5	8.8		9.4	8.7
	9.6	8.9		7.4	6.7
7+00	10.0	9.3	50	6.9	6.2
	10.8	10.1		6.3	5.6
	10.5	9.8		6.8	6.1

STA. N. 135+00 - EAST

(73)

Dist	Sound	Elev	Dist	Sound	Elev
(107)	7.5	6.8	(106)	9.9	9.3
	8.0	7.3		10.0	9.4
10+00	9.2	8.5	50	10.0	9.4
	10.0	9.3		10.1	9.5
	10.0	9.3		10.1	9.5
	10.0	9.3		10.1	9.5
	9.6	8.9		10.1	9.5
50	9.5	8.8	13+00	10.1	9.5
	9.5	8.8		10.5	9.9
	9.8	9.1		10.2	9.6
	9.8	9.1		10.3	9.7
	9.8	9.1		10.7	10.1
11+00	10.0	9.3	50	10.4	9.8
	10.2	9.5		10.2	9.6
	10.2	9.5		10.1	9.5
	9.7	9.0		10.0	9.4
	9.4	8.7		10.2	9.6
50	9.5	8.8	14+00	10.5	9.9
	9.1	8.4		9.8	9.2
	9.5	8.8	2:20	10.0	9.4
	9.7	9.0		11.9	11.3
	9.7	9.0		11.4	10.8
12+00	10.0	9.3	50	10.0	9.4
	9.9	9.2		9.9	9.3
	9.5	8.8		9.3	8.7
				8.7	8.1

10-20-60

STA. N. 136700 - W. 14000 - SOUND EAST

Dist	Sound	Elev	Dist	Sound	Elev
0400			(06)	11.3	10.7
(06)			50	10.1	9.5
				9.9	9.3
2:30				9.5	8.9
	4.4	+3.8		9.6	9.0
50	5.8	5.2		9.5	8.9
	6.0	5.4	3+00	9.7	9.1
	6.1	5.5		9.6	9.0
	6.4	5.8		10.2	9.6
	6.8	6.2		10.9	10.3
1400	7.1	6.5		11.3	10.7
	7.4	6.9	50	10.9	10.3
	7.4	6.9		11.0	10.4
	7.7	7.1		11.0	10.4
	7.8	7.2	2:35	11.3	10.7
50	7.9	7.3		11.7	11.1
	8.3	7.7	4+00	11.5	10.9
	11.7	11.1		11.8	11.2
	11.6	11.0		11.1	10.5
	10.1	9.5		11.5	10.9
2+00	9.8	9.2		11.2	10.6
	10.2	9.6	50	11.5	10.9
	10.0	9.4		11.1	10.5
	9.9	9.3		10.6	10.0

STA. N. 136700 - EAST

Dist	Sound	Elev	Dist	Sound	Elev
(05)	10.3	9.8	(05)	10.5	10.0
	10.3	9.8		10.5	10.0
5+00	9.8	9.3	50	10.3	9.8
	10.0	9.5		10.1	9.6
	10.4	9.9		10.1	9.6
	10.3	9.8		11.2	10.7
	10.5	10.0		11.3	10.8
50	10.6	10.1	8+00	9.8	9.3
	10.5	10.0		9.5	9.0
	10.7	10.2		9.7	9.2
	11.1	10.6		9.9	9.4
	11.4	10.9		10.1	9.6
6+00	11.7	11.2	50	10.1	9.6
	11.1	10.6		9.8	9.3
	10.8	10.3	2:45	9.9	9.4
	10.5	10.0		10.0	9.5
	10.4	9.9		9.6	9.1
50	10.8	10.3	9+00	9.7	9.2
2:40	10.7	10.2		9.5	9.0
	10.6	10.1		9.2	8.7
	10.7	10.2		9.2	8.7
	10.3	9.8		9.3	8.8
7+00	10.6	10.1	50	9.5	9.0
	10.6	10.1		9.3	8.8
	10.4	9.9		9.2	8.7

STA. N. 136+00 - EAST 10-20-60

Dist	Sound	Elev	Dist	Sound	Elev
(05)	9.3	8.8	(05)	10.6	10.1
	8.9	8.4		10.5	10.0
10+00	8.9	8.4	50	10.5	10.0
	9.1	8.6		10.6	10.1
	8.9	8.4		10.5	10.0
<u>21.50</u>	8.9	8.4		10.5	10.0
	9.1	8.6		10.5	10.0
50	8.9	8.4	13+00	10.0	9.5
	8.9	8.4		9.9	9.4
	8.8	8.3		9.7	9.2
	9.2	8.7	<u>31.00</u>	9.8	9.3
	9.2	8.7		10.1	9.6
11+00	9.0	8.5	50	10.2	9.7
	9.0	8.5		10.7	10.2
	9.3	8.8		10.1	9.6
	9.0	8.5		9.7	9.2
	9.6	9.1		9.7	9.2
50	9.8	9.3	14+00	9.0	8.5
<u>21.55</u>	10.0	9.5		9.0	8.5
	10.4	9.9		8.3	7.8
	10.8	10.3		9.4	8.9
	10.0	9.5		9.7	9.2
12+00	11.0	10.5	50	9.7	9.2
	10.2	9.7		9.9	9.4
	10.7	10.2		10.1	9.6

STA. N. 136+00 - EAST

Dist	Sound	Elev	Dist	Sound	Elev
(05)	10.1	9.6	(05)	9.0	8.5
	10.1	9.6		9.0	8.5
15+00	10.1	9.6	50	9.2	8.7
	10.0	9.5		12.0	11.5
	9.7	9.2		13.9	13.4
	9.4	8.9		13.7	13.2
	9.6	9.1		13.8	13.3
50	9.8	9.3	18+00	13.7	13.2
	9.7	9.2		13.3	12.8
	9.5	9.0	<u>31.05</u>	13.2	12.7
	9.8	9.3		12.8	12.3
	9.8	9.3		12.3	11.8
16+00	9.5	9.0	50	11.9	11.4
	9.4	8.9		11.9	11.4
	9.3	8.8		12.0	11.5
	9.5	9.0		11.9	11.4
	9.8	9.3		11.7	11.2
50	10.0	9.5	19+00	11.5	11.0
	9.9	9.4		11.4	10.9
	9.8	9.3		11.2	10.7
	9.8	9.3		11.3	10.8
	9.5	9.0		11.5	11.0
17+00	9.4	8.9	50	12.3	11.8
	9.3	8.8		12.9	12.4
	9.0	8.5		12.8	12.3
				13.1	12.6
				13.3	12.8
			20+00	13.1	12.6

10-21-60					
STA. N.	137+00	0+00=W	13970	SOUND	EAST
Dist	Sound	Elev	Dist	Sound	Elev
0+00	2.6	+3.9	(65)	17.1	10.6
(65)	3.2	+3.3	50	18.0	11.5
	4.4	+2.1		18.0	11.5
9:25	6.3	+0.2		17.0	10.5
<u> </u>	10.5	4.0		18.2	11.7
50	12.7	6.2		17.9	11.4
	13.2	6.7	3+00	17.9	11.4
	13.9	7.4		17.2	10.7
	13.8	7.3		16.7	10.2
	13.8	7.3	9:30	16.4	9.9
1+00	13.4	6.9	<u> </u>	16.8	10.3
	13.7	7.2	50	17.3	10.8
	14.0	7.5		17.8	11.3
	14.5	8.0		17.8	11.3
	15.7	9.2		17.3	10.8
50	16.0	9.5		16.8	10.3
	18.2	11.7	4+00	17.5	11.0
	17.0	10.5		17.3	10.8
	16.0	9.9		16.4	9.9
	16.6	10.1		17.1	10.6
2+00	16.8	10.3		17.2	10.7
	16.5	10.0	50	17.0	10.5
	16.1	9.6		17.0	10.5
	17.0	10.5		16.5	10.0

76					
STA. N.	137+00	EAST	Dist	Sound	Elev
Dist	Sound	Elev	Dist	Sound	Elev
(64)	16.0	9.6	(64)	16.0	9.6
	16.1	9.7		18.0	11.6
5+00	16.1	9.7	50	18.5	12.1
	16.2	9.8		19.0	12.6
	17.0	10.6		17.5	11.1
	17.0	10.6		17.6	11.2
	17.0	10.6		18.3	11.9
50	18.0	11.6	8+00	18.0	11.6
	18.1	11.7		17.0	10.6
	18.1	11.7		17.3	10.9
	17.9	11.5	9:40	17.8	11.4
	18.5	12.1	<u> </u>	17.0	10.6
6+00	18.7	12.3	50	17.0	10.6
	20.0	13.6		17.4	11.0
	18.9	12.5		17.1	10.7
	17.5	11.1		17.9	11.5
	19.2	12.8		17.5	11.1
50	19.0	12.6	9+00	17.3	10.9
	18.2	11.8		17.9	11.5
9:35	18.5	12.1		18.0	11.6
<u> </u>	18.5	12.1		17.9	11.5
	18.1	11.7		16.9	10.5
7+00	18.2	11.8	50	16.9	10.5
	17.4	11.0		16.9	10.5
	17.4	11.0		16.9	10.5

STA. N. 137+00 - EAST 10-21-60

Dist	Sound	Elev	Dist	Sound	Elev
(63)	17.0	10.7	(63)	17.6	11.3
	17.0	10.7		16.8	10.5
10+00	17.0	10.7	50	16.8	10.5
	16.9	10.6		16.2	9.9
9:45	17.2	10.9		16.2	9.9
	17.0	10.7	9:50	16.2	9.9
	17.4	11.1		16.5	10.2
50	17.0	10.7	13+00	16.8	10.5
	16.8	10.5		16.5	10.2
	17.1	10.8		17.0	10.7
	17.0	10.7		16.5	10.2
	16.4	10.1		16.5	10.2
11+00	16.4	10.1	50	14.7	8.4
	17.0	10.7		15.5	9.2
	16.9	10.6		15.1	8.8
	17.2	10.9		15.7	9.4
	16.7	10.4		15.4	9.1
50	15.8	9.5	14+00	15.0	8.7
	16.0	9.7		15.0	8.7
	16.9	10.6		15.3	9.0
	16.9	10.6		15.5	9.2
	17.0	10.7		15.9	9.6
12+00	16.8	10.5	50	16.0	9.7
	16.9	10.6		15.3	9.0
	17.0	10.7		13.1	6.8

STA. N. 137+00 - EAST

(77)

Dist	Sound	Elev	Dist	Sound	Elev
(6.2)	13.5	7.3	(62)	14.2	8.0
	13.0	6.8		14.2	8.0
15+00	13.3	7.1	50	14.5	8.3
	13.4	7.2		14.5	8.3
	13.4	7.2		14.5	8.3
	13.6	7.4		14.7	8.5
	13.8	7.6		14.9	8.7
50	13.8	7.6	18+00	14.7	8.5
9:55	13.7	7.5		14.9	8.7
	13.9	7.7			
	13.9	7.7			
	13.9	7.7			
16+00	13.9	7.7			
	13.5	7.3			
	13.5	7.3			
	13.8	7.6			
	13.9	7.7			
50	13.9	7.7			
	13.9	7.7			
	13.8	7.6			
	13.8	7.6			
	14.0	7.8			
17+00	14.1	7.9			
	14.1	7.9			
	14.2	8.0			

CONTD NLY M.B.
F.B. No 144

PG. 1

IMPROVED TABLES AND INFORMATION

HORIZONTAL STADIA CORRECTIONS

2°-00' — 0.1	21°-00' — 12.3	33°-00' — 29.7
3°-00' — 0.3	21°-30' — 13.4	33°-15' — 30.1
4°-00' — 0.5	22°-00' — 14.0	33°-30' — 30.5
5°-00' — 0.8	22°-30' — 14.7	33°-45' — 30.9
6°-00' — 1.1	23°-00' — 15.3	34°-00' — 31.3
7°-00' — 1.5	23°-30' — 15.9	34°-15' — 31.7
8°-00' — 1.9	24°-00' — 16.5	34°-30' — 32.1
9°-00' — 2.5	24°-30' — 17.2	34°-45' — 32.5
10°-00' — 3.0	25°-00' — 17.9	35°-00' — 32.9
10°-30' — 3.3	25°-30' — 18.6	35°-15' — 33.3
11°-00' — 3.6	26°-00' — 19.2	35°-30' — 33.7
11°-30' — 4.0	26°-30' — 19.9	35°-45' — 34.1
12°-00' — 4.3	27°-00' — 20.6	36°-00' — 34.6
12°-30' — 4.7	27°-30' — 21.3	36°-15' — 35.0
13°-00' — 5.1	28°-00' — 22.0	36°-30' — 35.4
13°-30' — 5.5	28°-30' — 22.8	36°-45' — 35.8
14°-00' — 5.9	29°-00' — 23.5	37°-00' — 36.2
14°-30' — 6.3	29°-30' — 24.3	37°-15' — 36.6
15°-00' — 6.7	30°-00' — 25.0	37°-30' — 37.1
15°-30' — 7.2	30°-15' — 25.4	37°-45' — 37.5
16°-00' — 7.6	30°-30' — 25.8	38°-00' — 37.9
16°-30' — 8.1	30°-45' — 26.2	38°-15' — 38.3
17°-00' — 8.5	31°-00' — 26.5	38°-30' — 38.7
17°-30' — 9.0	31°-15' — 26.9	38°-45' — 39.1
18°-00' — 9.5	31°-30' — 27.3	39°-00' — 39.6
18°-30' — 10.1	31°-45' — 27.7	39°-15' — 40.0
19°-00' — 10.6	32°-00' — 28.1	39°-30' — 40.5
19°-30' — 11.2	32°-15' — 28.5	
20°-00' — 11.7	32°-30' — 28.9	
20°-30' — 12.3	32°-45' — 29.3	

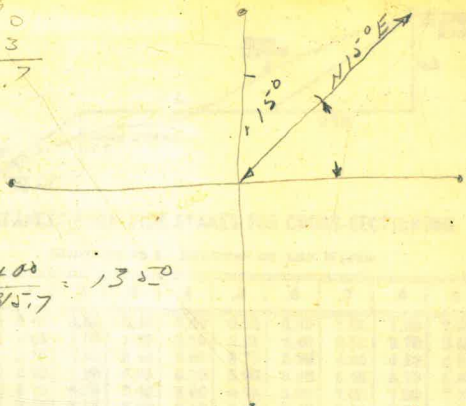
Chains to Feet

1	66
2	132
3	198
4	264
5	330
6	396
7	462
8	528
9	594
10	660

Feet to Chains

100	1.515
200	3.030
300	4.545
400	6.060
500	7.575
600	9.090
700	10.606
800	12.121
900	13.636
1,000	15.151

4000
843
315.7



N 137 + 00 = 1350
W 14 315.7

Bay Point - 38.58

N 11500 } 0400
~~W 14350~~
14350

BRG OF BASELINE = N 15° E