

MB 144



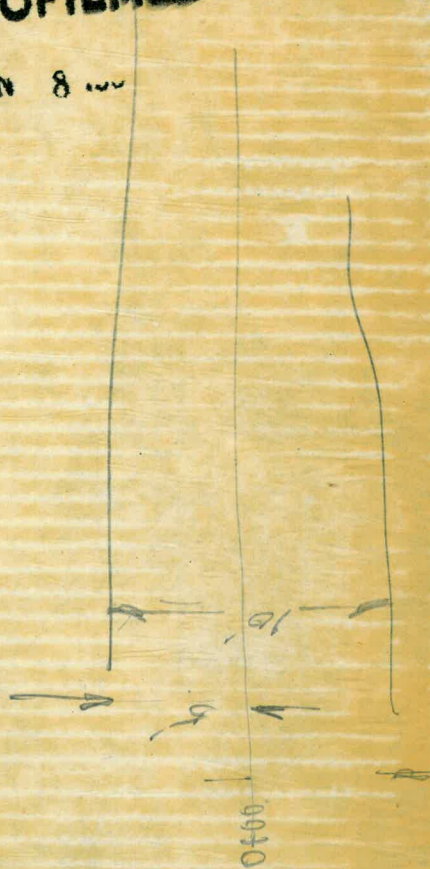
EMERALD

EMERALD

EMERALD

MICROFILMED

JAN 8 1962



FB 144

THIS BOOK INDEXED 2-13-62

ELY CROWN POINT
 CONTD. FROM FB. NO. 143 10-21-60

STA. N. 138+00: 0+00 = W. 13,960; SOUND EAST

DIST	SOUND	ELEV	DIST	SOUND	ELEV
0+00	0.1	+6.0	(61)	11.9	5.8
(61)	0.9	+5.2	50	12.5	6.4
	2.1	+4.0		12.0	5.9
<u>10:05</u>	3.3	+2.8		11.8	5.7
	4.7	+1.4		14.3	8.2
50	7.5	1.4		16.3	10.2
	11.1	5.0	3+00	16.2	10.1
	11.9	5.8		15.9	9.8
	12.1	6.0		15.9	9.8
	12.4	6.3	<u>10:10</u>	15.5	9.4
1+00	12.4	6.3		15.6	9.5
	12.6	6.5	50	15.9	9.8
	12.5	6.4		15.9	9.8
	12.6	6.5		15.4	9.3
	12.5	6.4		15.5	9.4
50	12.5	6.4		15.7	9.6
	12.6	6.5	4+00	15.8	9.7
	12.2	6.1		15.7	9.6
	12.1	6.0		15.8	9.7
	12.1	6.0		16.1	10.0
2+00	12.0	5.9		16.5	10.4
	12.0	5.9	50	16.3	10.2
	12.0	5.9		15.7	9.6
	12.0	5.9		16.3	10.2

STA. N. 138+00 - EAST

DIST	SOUND	ELEV	DIST	SOUND	ELEV
(60)	16.5	10.5	(60)	15.2	9.2
	15.9	9.9		14.9	8.9
5+00	16.0	10.0	50	15.3	9.3
	15.8	9.8		15.1	9.1
	15.8	9.8		15.1	9.1
	15.9	9.9		15.1	9.1
	15.6	9.6		14.9	8.9
50	15.5	9.5	8+00	14.8	8.8
	15.5	9.5		14.7	8.7
<u>10:15</u>	15.4	9.4		14.6	8.6
	15.3	9.3		15.0	9.0
	15.5	9.5		15.1	9.1
6+00	15.3	9.3	50	14.9	8.9
	15.7	9.7		14.5	8.5
	15.4	9.4		14.7	8.7
	15.9	9.9		14.6	8.6
	15.7	9.7		15.0	9.0
50	16.0	10.0	9+00	15.1	9.1
	15.8	9.8		14.8	8.8
	15.8	9.8	<u>10:20</u>	15.0	9.0
	15.5	9.5		15.5	9.5
	15.4	9.4		15.0	9.0
7+00	15.5	9.5	50	15.4	9.4
	14.9	8.9		14.9	8.9
	15.3	9.3		15.2	9.2

STA. N. 138+00 - EAST 10-21-60

Dist	Sound	Elev	Dist	Sound	Elev
(59)	15.7	9.8	(57)	14.7	9.0
	15.8	9.9		14.8	9.1
10+00	16.1	10.2	50	14.5	8.8
	16.1	10.2		14.3	8.6
	14.5	8.6		14.3	8.6
	14.8	8.9	10:35	14.2	8.5
	14.7	8.8		14.6	8.9
MUCHA	50	14.4	13+00	14.3	8.6
	14.3	8.4		14.3	8.6
	14.9	9.0		14.2	8.5
10:25	15.0	9.1		14.2	8.5
	14.6	8.7		14.1	8.4
11+00	15.1	9.2	50	14.2	8.5
	15.2	9.3		14.4	8.7
	15.3	9.4		14.4	8.7
SOUP	(58)	15.3		14.4	8.7
	15.4	9.6		14.5	8.8
50	15.3	9.5	14+00	14.6	8.9
	15.3	9.5		14.5	8.8
10:30	15.1	9.3		14.1	8.4
	14.7	8.9		14.5	8.8
	14.5	8.7		14.5	8.8
12+00	14.2	8.4	50	13.6	7.9
	14.7	8.9		12.1	6.4
	14.3	8.5		12.1	6.4

STA. N. 138+00 - EAST (2)

Dist	Sound	Elev	Dist	Sound	Elev
(56)	12.3	6.7	(56)	12.8	7.2
	12.1	6.5		12.8	7.2
15+00	12.1	6.5	50	12.8	7.2
	12.0	6.4		12.9	7.3
	12.1	6.5		12.9	7.3
	12.1	6.5		12.9	7.3
	12.1	6.5		13.0	7.4
50	12.2	6.6	18+00	12.9	7.3
	12.1	6.5		13.0	7.4
	12.1	6.5		13.0	7.4
	12.2	6.6		12.9	7.3
	12.3	6.7		13.0	7.4
16+00	12.3	6.7	50	12.9	7.3
	12.3	6.7		12.9	7.3
	12.5	6.9		13.0	7.4
	12.4	6.8		13.0	7.4
	12.5	6.9		12.9	7.3
50	12.5	6.9	19+00	12.9	7.3
	12.6	7.0			
10:40	12.6	7.0			
	12.5	6.9			
	12.5	6.9			
17+00	12.7	7.1			
	12.6	7.0			
	12.6	7.0			

10-21-60

STA. N. 139+00; 0+00=11/13,920; SOUND EAST

Dist	Sound	Elev	Dist	Sound	Elev
0+00	0.0	+5.4	(54)	11.0	5.6
(54)	0.9	+4.5	50	13.7	8.3
	2.2	+3.2		14.9	9.5
<u>10:55</u>	4.3	+1.1		14.8	9.4
	7.9	2.5		14.6	9.2
50	9.9	4.5		14.3	8.9
	10.2	4.8	3+00	14.3	8.9
	10.5	5.1		14.2	8.8
	11.0	5.6		13.9	8.5
	11.3	5.9		14.0	8.6
1+00	11.3	5.9		14.5	9.1
	11.2	5.8	50	14.8	9.4
	11.2	5.8		14.4	9.0
	11.2	5.8		14.5	9.1
	11.2	5.8		14.3	8.9
50	11.3	5.9		14.3	8.9
	11.1	5.7	4+00	14.1	8.7
	11.0	5.6		14.0	8.6
	11.0	5.6		13.9	8.5
	10.9	5.5		14.1	8.7
2+00	11.1	5.7		14.1	8.7
	11.0	5.6	50	14.2	8.8
	11.0	5.6		14.3	8.9
	11.1	5.7		14.2	8.8

STA. N. 139+00-EAST

③

Dist	Sound	Elev	Dist	Sound	Elev
(54)	14.1	8.7	(53)	13.9	8.6
	14.2	8.8		13.9	8.6
5+00	14.1	8.7	50	13.9	8.6
	14.0	8.6		13.7	8.4
	14.0	8.6		13.7	8.4
	14.1	8.7		13.8	8.5
	14.1	8.7		13.9	8.6
50	13.9	8.5	8+00	14.0	8.7
	13.9	8.5		13.9	8.6
	13.9	8.5	11:00	13.9	8.6
	13.9	8.5		13.9	8.6
	13.9	8.5		14.1	8.8
6+00	13.9	8.5	50	14.2	8.9
	13.9	8.5		14.1	8.8
	14.0	8.6		14.2	8.9
	13.7	8.3		14.1	8.8
	13.9	8.5		14.3	9.0
50	13.9	8.5	9+00	14.2	8.9
	14.1	8.7		14.2	8.9
	14.0	8.6		14.2	8.9
	14.7	9.3		14.2	8.9
	14.0	8.6		14.3	9.0
7+00	13.9	8.5	50	14.2	8.9
	14.0	8.6		14.3	9.0
	13.9	8.5		14.4	9.1

STA. N. 139+00-EAST

DIST	Sound	Elev	DIST	Sound	Elev
(52)	14.2	9.0	(5.1)	14.2	9.1
	14.2	9.0		14.0	8.9
10+00	14.4	9.2	50	14.2	9.1
	14.2	9.0		14.0	8.9
11.05	14.2	9.0		14.1	9.0
	14.2	9.0	14.10	14.0	8.9
	14.2	9.0		13.5	8.4
50	14.2	9.0	13+00	13.8	8.7
	14.2	9.0		13.9	8.8
	14.2	9.0		14.0	8.9
	14.2	9.0		14.1	9.0
	14.3	9.1		14.2	9.1
11+00	14.4	9.2	50	14.1	9.0
	14.5	9.3		14.1	9.0
	15.0	9.8		14.0	8.9
	15.4	10.2		13.6	8.5
	16.0	10.8		11.5	6.4
50	16.0	10.8	14+00	11.5	6.4
	16.0	10.8		11.5	6.4
	16.0	10.8		11.8	6.7
	15.9	10.7		11.7	6.6
	15.1	9.9		11.7	6.6
12+00	15.1	9.9	50	11.7	6.6
	14.1	8.9		11.5	6.4
	14.1	8.9		11.9	6.8

STA. N. 139+00-EAST

DIST	Sound	Elev	DIST	Sound	Elev
(50)	11.9	6.9	(50)	12.2	7.2
	12.0	7.0		12.4	7.4
15+00	11.9	6.9	50	12.5	7.5
	12.1	7.1		12.4	7.4
11.15	12.1	7.1		12.4	7.4
	12.2	7.2		12.4	7.4
	12.2	7.2		12.5	7.5
50	12.2	7.2	18+00	12.5	7.5
	12.1	7.1	11.20		
	12.3	7.3			
	12.3	7.3			
	12.3	7.3			
16+00	12.3	7.3			
	12.2	7.2			
	12.2	7.2			
	12.1	7.1			
	12.3	7.3			
50	12.2	7.2			
	12.3	7.3			
	12.2	7.2			
	12.1	7.1			
	12.2	7.2			
17+00	12.1	7.1			
	12.0	7.0			
	12.1	7.1			

10-21-60

STA. N. 140+00, 0+100 = W/3.850: SOUND EAST

DIST	Sound	Elev	DIST	Sound	Elev
0+00			44	11.5	8.5
45			50	11.8	8.8
<u>3.1</u>	1.3	11.8	<u>3.0</u>	11.9	8.9
<u>12.35</u>	5.2	2.1		11.9	8.9
	7.2	4.1		11.8	8.8
50	7.8	4.7		11.8	8.8
	8.1	5.0	3+00	11.5	8.5
	8.3	5.2		11.2	8.2
	8.6	5.5		11.2	8.2
	9.0	5.9		11.4	8.4
1+00	9.0	5.9		11.2	8.2
	9.0	5.9	50	11.2	8.2
	9.0	5.9		11.2	8.2
	9.0	5.9		11.4	8.4
	9.0	5.9		11.9	8.9
50	11.5	8.4		11.6	8.6
	13.3	10.2	4+00	11.5	8.5
	12.0	8.9		11.3	8.3
	12.1	9.0	<u>12.40</u>	11.4	8.4
	12.2	9.1		11.4	8.4
2+00	11.9	8.8		11.4	8.4
	11.7	8.6	50	11.3	8.3
	11.5	8.4		11.2	8.2
	11.3	8.2		11.2	8.2

STA. N. 140+00-EAST

⑤

DIST	Sound	Elev	DIST	Sound	Elev
44	11.2	8.2	42	11.8	8.9
	11.1	8.1		11.9	9.0
5+00	11.1	8.1	50	12.0	9.1
<u>3.0</u>	11.2	8.2	<u>2.9</u>	11.9	9.0
	11.2	8.2		12.3	9.4
	11.4	8.4		12.0	9.1
	11.3	8.3		12.2	9.3
50	11.4	8.4	8+00	12.1	9.2
	11.5	8.5		12.4	9.5
	11.5	8.5		13.0	10.1
	11.5	8.5		13.0	10.1
	11.7	8.7		13.2	10.3
6+00	11.4	8.4	50	13.1	10.2
	11.2	8.2		12.9	10.0
	11.2	8.2	<u>12.45</u>	12.8	9.9
	11.3	8.3		13.0	10.1
	11.4	8.4		12.4	9.5
50	11.4	8.4	9+00	12.8	9.9
	11.4	8.4		12.4	9.5
	11.6	8.6		12.8	9.9
	11.6	8.6		12.5	9.6
	11.6	8.6		12.0	9.1
7+00	11.7	8.7	50	12.0	9.1
	11.2	8.2		12.3	9.4
	11.7	8.7		12.0	9.1

STA. N. 140+00 - EAST 10-21-60

	Dist	Sound	Elev	Dist	Sound	Elev
	43	12.4	9.5	42	12.5	9.8
		12.2	9.3		12.5	9.8
10+00		12.2	9.3	50	12.4	9.7
(29)		12.4	9.5	(27)	11.8	9.1
		12.7	9.8		12.0	9.3
		12.7	9.8		12.3	9.6
		13.0	10.1		12.0	9.3
50		14.0	11.1	13+00	12.0	9.3
		14.4	11.5		12.0	9.3
		14.4	11.5		11.9	9.2
		14.4	11.5	1250	12.0	9.3
		14.0	11.1		9.0	6.3
11+00		13.6	10.7	50	9.3	6.6
		13.8	10.9		9.5	6.8
		13.1	10.2		9.8	7.1
		12.8	9.9		9.8	7.1
		12.8	9.9		10.0	7.3
50		12.7	9.8	14+00	9.8	7.1
		12.5	9.6		10.0	7.3
		12.9	10.0		10.7	8.0
		12.9	10.0		10.4	7.7
		12.9	10.0		10.2	7.5
12+00		12.2	9.3	50	10.6	7.9
		12.5	9.6		10.8	8.1
		12.4	9.5		10.9	8.2

STA. N. 140+00 - EAST

(6)

	Dist	Sound	Elev	Dist	Sound	Elev
	42	10.9	8.2	41	11.5	9.0
		11.0	8.3		11.4	8.9
15+00		10.7	8.0	50	11.6	9.1
(27)		10.2	7.5		11.7	9.2
		10.6	7.9	12:55	11.7	9.2
		10.8	8.1		11.6	9.1
		10.8	8.1		11.4	8.9
50		10.7	8.0	18+00	11.4	8.9
		10.7	8.0	(25)	11.4	8.9
		10.9	8.2		11.1	8.6
		11.0	8.3		11.0	8.5
		11.0	8.3		11.0	8.5
16+00		11.0	8.3	50	11.1	8.6
		11.2	8.5		11.0	8.5
		11.0	8.3		11.0	8.5
		10.9	8.2		11.0	8.5
		10.9	8.2		11.0	8.5
50		11.0	8.3	19+00	11.2	8.7
		10.9	8.2			
		11.0	8.3			
		11.0	8.3			
		11.1	8.4			
17+00		11.2	8.5			
		11.2	8.5			
		11.3	8.6			

10-21-60

STA. N. 141+00 TO 104+00 - W. 13,750, SOUND EAST

Dist	Sound	Elev	Dist	Sound	Elev
0+00			(21)	10.2	8.1
(21)			50	10.2	8.1
				10.2	8.1
11.15	0.6	+1.5		10.2	8.1
	1.9	+0.2		10.2	8.1
50	4.6	2.5		10.0	7.9
	5.7	3.6	3+00	10.0	7.9
	6.1	4.0		9.9	7.8
	6.2	4.1		9.9	7.8
	6.2	4.1		9.6	7.5
1+00	6.5	4.4		9.3	7.2
	6.8	4.7	50	9.4	7.3
	7.0	4.9		9.2	7.1
	9.4	7.3		9.1	7.0
	10.5	8.4		9.1	7.0
50	10.7	8.6		9.1	7.0
	10.9	8.8	4+00	9.1	7.0
	11.0	8.9		9.0	6.9
	11.0	8.9		9.0	6.9
	10.9	8.8		9.5	7.4
2+00	11.0	8.9		9.3	7.2
	10.6	8.5	50	9.2	7.1
	10.7	8.6		9.5	7.4
	10.6	8.5		9.4	7.3

STA. N. 141+00 - EAST

(7)

Dist	Sound	Elev	Dist	Sound	Elev
(21)	9.6	7.5	(20)	10.7	8.7
	9.7	7.6		10.6	8.6
5+00	9.9	7.8	50	10.6	8.6
	9.9	7.8		10.6	8.6
	10.1	8.0	11.20	10.8	8.8
	10.1	8.0		10.7	8.7
	10.1	8.0		10.9	8.9
50	9.9	7.8	8+00	10.5	8.5
	10.0	7.9		10.7	8.7
	10.1	8.0		10.8	8.8
	10.3	8.2		10.7	8.7
	10.3	8.2		11.1	9.1
6+00	10.5	8.4	50	10.8	8.8
	10.5	8.4		10.8	8.8
	10.5	8.4		10.7	8.7
	10.4	8.3		10.6	8.6
	10.4	8.3		10.5	8.5
50	10.4	8.3	9+00	10.3	8.3
	10.5	8.4		10.3	8.3
	10.3	8.2		10.4	8.4
	10.4	8.3		10.7	8.7
	10.7	8.6		10.8	8.8
7+00	10.8	8.7	50	11.1	9.1
	10.8	8.7		11.4	9.4
	10.7	8.6		11.8	9.8

STA. N. 141+00 - EAST 10-21-60					
DIST	Sound	Elev	DIST	Sound	Elev
(19)	12.7	10.8	(18)	7.6	5.8
	12.4	10.5		7.6	5.8
10+00	12.4	10.5	50	7.5	5.7
	12.5	10.6		7.6	5.8
	12.1	10.2		7.4	5.6
	11.1	9.2		7.5	5.7
	10.9	9.0		7.8	6.0
50	10.7	8.8	13+00	7.7	5.9
	10.1	8.2		7.9	6.1
11.25	10.1	8.2		8.0	6.2
~	10.0	8.1		8.0	6.2
	10.0	8.1		8.0	6.2
11+00	10.0	8.1	50	8.1	6.3
	10.0	8.1		8.1	6.3
	10.2	8.3		8.1	6.3
	10.3	8.4		8.2	6.4
	10.5	8.6		8.2	6.4
50	10.0	8.1	14+00	8.1	6.3
	10.3	8.4		8.0	6.2
	10.7	8.8	11.30	8.1	6.3
	10.5	8.6	~	8.2	6.4
	10.5	8.6		8.3	6.5
12+00	10.8	8.9	50	8.3	6.5
	10.8	8.9		8.4	6.6
	7.9	6.0		8.3	6.5

STA. N. 141+00 - EAST (8)					
DIST	Sound	Elev	DIST	Sound	Elev
(18)	8.3	6.5	(17)	9.8	8.1
	8.6	6.8		9.9	8.2
15+00	8.5	6.7	50	9.9	8.2
	8.6	6.8		9.9	8.2
	8.7	6.9		9.8	8.1
	8.8	7.0		9.9	8.2
	8.8	7.0		9.8	8.1
50	8.9	7.1	18+00	9.7	8.0
	8.9	7.1		9.8	8.1
	9.0	7.2		9.7	8.0
	9.2	7.4		9.3	7.6
	9.1	7.3		9.3	7.6
16+00	9.2	7.4	50	9.4	7.7
	9.3	7.5		9.3	7.6
	9.5	7.7	11.35	9.3	7.6
	9.5	7.7	~	9.4	7.7
	9.5	7.7		9.5	7.8
50	9.7	7.9	19+00	9.5	7.8
	9.9	8.1		9.6	7.9
	9.8	8.1		9.5	7.8
	9.8	8.1		9.4	7.7
	9.9	8.2		9.5	7.8
17+00	9.8	8.1	50	9.4	7.7
	9.9	8.2		9.3	7.6
	9.9	8.2		9.3	7.6
	9.9	8.2		9.3	7.6
	9.9	8.2		9.2	7.5
			20+00	9.3	7.6

10-21-60

STA. N. 141+50; 0+00 - W. 13,720; SOUND EAST

DIST	SOUND	ELEV	DIST	SOUND	ELEV
0+00			(14)	10.1	8.7
(1.5)			50	9.9	8.5
				9.7	8.3
1.45				9.6	8.2
				9.6	8.2
50				9.7	8.3
			3+00	9.5	8.1
	0.4	+1.1		9.2	7.8
	3.9	2.4		9.1	7.7
	5.0	3.5		9.0	7.6
1+00	6.0	4.5		8.3	6.9
	5.3	3.8	50	8.0	6.6
	6.0	4.5		7.9	6.5
	6.1	4.6	1.50	7.8	6.4
	6.5	5.0		7.4	6.0
50	6.7	5.2		7.3	5.9
	9.1	7.6	4+00	7.3	5.9
	10.3	8.8		7.2	5.8
	10.4	8.9		7.1	5.7
	10.6	9.1		7.4	6.0
2+00	10.6	9.1		7.8	6.4
	10.6	9.1	50	8.2	6.8
	10.5	9.0		8.2	6.8
	10.1	8.6		8.1	6.7

STA. N. 141+50 - EAST

(9)

DIST	SOUND	ELEV	DIST	SOUND	ELEV
(1.4)	8.9	7.5	(0.7)	9.8	9.1
	9.0	7.6		9.9	9.2
5+00	8.9	7.5	50	10.0	9.3
	9.6	8.2		10.2	9.5
	9.8	8.4		10.6	9.9
	9.9	8.5		10.4	9.7
	9.9	8.5		10.9	10.2
50	9.9	8.5	8+00	10.2	9.5
	9.9	8.5		10.2	9.5
	9.9	8.5		10.0	9.3
	9.8	8.4		10.0	9.3
	9.9	8.5		10.0	9.3
6+00	9.9	8.5	50	9.8	9.1
(0.7)	9.2	8.5		9.6	8.9
	9.3	8.6		10.1	9.4
2.35	9.3	8.6		9.8	9.1
	9.4	8.7		10.2	9.5
RECHECK	50	9.4	8+00	10.7	10.0
OFF		9.2		10.0	9.3
LINE		9.5		9.5	8.8
		9.3		10.0	9.3
		9.7		10.2	9.5
7+00	9.7	9.0	50	10.0	9.3
	9.9	9.2		9.8	9.1
	9.7	9.0		9.9	9.2

STA. N. 141+50 - EAST 10-21-60

Dist	Sound	Elev	Dist	Sound	Elev
(10.7)	10.2	9.5	(0.6)	1.6	1.0
	10.0	9.3		1.2	0.6
10+00	10.0	9.3	50	0.8	0.2
	10.2	9.5		1.2	0.6
2:40	10.0	9.3	2:50	0.8	0.2
	9.4	8.7		0.7	0.1
	8.9	8.2		0.7	0.1
50	9.3	8.6	13+00	1.5	0.9
	10.1	9.4		2.8	2.2
	10.3	9.6		3.9	3.3
	10.4	9.7		4.5	3.9
	9.6	8.9		5.0	4.4
11+00	6.1	5.4	50	5.0	4.4
	4.4	3.7		5.0	4.4
	2.8	2.1		5.1	4.5
	3.5	2.8		5.4	4.8
	1.9	1.2		6.5	5.9
50	1.7	1.0	14+00	6.8	6.2
	2.0	1.3		6.8	6.2
	0.9	0.2		6.9	6.3
	1.5	0.8		6.7	6.1
	1.0	0.3		7.0	6.4
12+00	1.0	0.3	50	6.9	6.3
	0.8	0.1		6.9	6.3
	1.3	0.6		7.0	6.4

STA. N. 141+50 - EAST

(10)

Dist	Sound	Elev	Dist	Sound	Elev
(0.6)	7.2	6.6	(0.6)	10.0	9.4
	7.2	6.6		9.8	9.2
15+00	7.3	6.7	50	9.8	9.2
	7.3	6.7		9.8	9.2
2:55	7.3	6.7		9.4	8.8
	7.5	6.9		9.2	8.6
	7.9	7.3		9.2	8.6
50	7.8	7.2	18+00	9.0	8.4
	7.9	7.3			
	8.0	7.4			
	8.0	7.4			
	8.2	7.6			
16+00	8.4	7.8			
	8.5	7.9			
	8.7	8.1			
	9.0	8.4			
	9.0	8.4			
50	9.0	8.4			
	9.0	8.4			
	9.0	8.4			
	9.0	8.4			
17+00	9.0	8.4			
	9.2	8.6			
	9.5	8.9			
	9.8	9.2			

(W.12600-W.13000) 4-10-61

STA. N. 123+00; OHOO=W.14060; SOUND EAST

Dist Sound Elev Dist Sound Elev

10+50	12.2		(28)	9.9	
(27)	11.8		13+00	9.8	
	11.6			10.2	
	11.6			10.0	
	11.9			10.7	
11+00	11.8			10.4	
	11.6		50	10.1	
3:10	11.4			10.4	
~~~~	11.1			10.7	
	11.0			11.2	
50	10.2			11.2	
	9.9		14+00	11.2	
	9.9			11.0	
	9.9			11.0	
	10.0			11.0	
12+00	10.0			11.2	
	10.0		50	11.5	
	9.8				
	9.8				
	9.8				
50	9.6	6.9			
	9.6	6.9			
	9.5	6.8			
	9.5	6.8			

(W.12600-W.13000) 4-10-61

STA. N. 123+50; OHOO=W.14060; SOUND EAST

Dist Sound Elev Dist Sound Elev

10+50	11.7		(26)	11.5	
(26)	11.3		13+00	10.1	
	10.9			9.6	
	10.4			10.3	
	10.5			10.2	
11+00	11.1			10.1	
	11.0		50	10.2	
3:00	11.0			10.3	
==	11.1			10.3	
	10.7			10.4	
50	10.5			10.3	
	10.3		14+00	10.6	
	10.0			10.6	
	9.7			10.8	
	9.7			11.0	
12+00	9.7			11.0	
	9.7		50	11.0	
	9.6				
	9.8				
	10.3				
50	12.5				
	11.9				
	11.7				
	10.7				



(12,600-13000) 4-10-61

STA. N. 12+00; OAD = W. 14,040 SOUND EAST

DIST SOUND ELEV DIST SOUND ELEV

10+00	11.1	8.8	(2.3)	10.8	8.5
(2.3)	11.7	9.4	50	10.9	8.6
	11.5	9.2		11.0	8.7
	11.8	9.5		11.0	8.7
	11.8	9.5		11.0	8.7
50	11.4	9.1		11.0	8.7
	11.0	8.7	13+00	11.0	8.7
<u>2:45</u>	10.8	8.5		11.0	8.7
	10.5	8.2		11.2	8.9
	10.1	7.8		11.3	9.0
11+00	10.1	7.8		10.8	8.5
	10.1	7.8	50	10.0	7.7
	10.4	8.1		10.0	7.7
	10.3	8.0		10.0	7.7
	10.0	7.7		10.2	7.9
50	9.8	7.5		10.4	8.1
	9.8	7.5	14+00	10.5	8.2
	10.0	7.7		10.6	8.3
	12.7	10.4		10.6	8.3
	12.0	9.7		10.9	8.6
12+00	11.3	9.0		10.8	8.5
	11.0	8.7	50	10.8	8.5
	10.9	8.6			
	10.8	8.5			

(W12600-W13000) 4-10-61

(12)

STA. N. 12+50; OAD = W. 14,040 SOUND EAST

DIST SOUND ELEV DIST SOUND ELEV

10+00	10.2		(2.1)	10.4	
(2.1)	10.3		50	10.3	
	10.2			10.2	
	10.2			10.2	
	10.2			10.3	
	10.1			10.2	
50	10.1			10.9	
	10.0		13+00	11.2	
<u>2:35</u>	10.0			10.9	
	10.4			10.2	
	10.5			11.1	
11+00	10.5			10.7	
	10.4		50	11.3	
	10.3			11.1	
	10.0			11.2	
	9.8			10.7	
50	12.5			10.2	
	11.7		14+00	10.1	
	11.6			9.8	
	11.0			10.0	
	11.0			10.0	
12+00	11.1			9.8	
	10.4		50	10.0	
	10.2				
	10.1				



(W. 12500 - W. 12700)

4-11-61

STAN. 126+00; 0+00 = W. 12,890; SOUND EAST

DIST SOUND ELEV DIST SOUND ELEV

1+50 11.3 8.8 (25) 10.3 7.8

(25) 11.8 9.3 4+00 10.6 8.1

11.8 9.3 10.9 8.4

11.8 9.3 10.8 8.3

11.8 9.3 10.4 7.9

2+00 11.8 9.3 10.8 8.3

11.4 8.9 50 11.0 8.5

9:35 11.4 8.9

11.3 8.8

11.7 9.2

50 11.6 9.1

11.8 9.3

11.5 9.0

11.2 8.7

11.9 9.4

3+00 12.0 9.5

12.0 9.5

11.5 9.0

10.6 8.1

10.5 8.0

50 10.0 7.5

10.0 7.5

9.8 7.3

10.0 7.5

(W. 12550 - W. 12900)

4-11-61

(13)

STAN. 132+00; 0+00 = W. 12,760; SOUND WEST

DIST SOUND ELEV DIST SOUND ELEV

0+00 SOUND EAST

(20) 0+00 = W. 12,610.

(2.3)

0.0 +2.0

50 0.7 +1.3

1.6 +0.4 50 0.9 +1.4

10:00 2.6 0.6 3.3 1.0

3.0 1.0 7.5 5.2

8.0 6.0 9:45 8.8 6.5

1+00 9.0 7.0 9.2 6.9

9.1 7.1 1+00 9.5 7.2

9.0 7.0 9.6 7.3

8.9 6.9 9.6 7.3

9.5 7.5 9.8 7.5

50 9.9 7.9 9.9 7.6

9.9 7.9 50 9.8 7.5

10.1 8.1 9.8 7.5

10.3 8.3 9.7 7.4

10.6 8.6 9.6 7.3

2+00 11.0 9.0 9.8 7.5

2+00 9.8 7.5



(W. 12,550 - W. 12,900) 4-11-61

STA. N. 132450. 0+00 = W. 12,730 SOUND WEST

DIST SOUND ELEV DIST SOUND ELEV

0+00

0.0

(2.1)

0.7

1.9

5.4

50 8.0

8.7

9:55 8.9

8.6

8.8

1+00 8.8

8.8

8.6

8.8

9.0

50 9.3

9.5

9.4

9.5

9.7

2+00 10.0

4-11-61

SOUND WEST

DIST SOUND ELEV

SOUND EAST

0+00 = W. 12,660

(2.2)

50 0.0

0.6

9:50 1.3

3.1

6.5

1+00 9.8

10.8

10.6

10.6

10.6

50 10.8

10.8

10.8

10.4

10.1

2+00 10.1

SOUNDINGS TAKEN TO CHECK AREA  
AFTER DIKE BROKE ON SKI ISLAND.

(W. 12,550 - W. 12,900) 4-10-61

(14)

STA. N. 133400. 0+00 = W. 13,980 SOUND EAST

DIST SOUND ELEV DIST SOUND ELEV

10+50 10.0

(1.8) 9.8

9.5

9.5

9.3

11+00 9.3

9.3

2:20 9.1

9.4

9.7

50 9.7

9.8

9.8

9.7

9.5

12+00 9.2

9.1

9.1

9.3

9.4

50 9.5

9.6

9.0

8.4

6.6

(1.8) 7.7

13+00 7.3

7.9

7.9

8.1

9.0

50 9.0

9.0

9.1

9.8

12.0

14+00 10.0

10.4

12.0

12.3

12.2

50 12.0

12.0

12.0

12.3

12.2

12.0

12.3

12.2

12.0

TOE OF SKI  
ISLAND OK

CHECK AREA  
AFTER DIKE BROKE  
ON SKI ISLAND



(W12,550-W12,900) 4-10-61

5 STA. N. 133+50; 0+00=W. 13980; SOUND EAST

Dist Sound Elev Dist Sound Elev

10+50	9.9		16	10.1	
1.6	9.8		13+00	10.0	
	10.0			10.0	
	10.0			10.0	
	10.1			9.8	
11+00	10.2			9.9	
	10.2		50	9.7	
2:10	10.3			9.9	
<u>10.2</u>	10.2			10.0	
	10.2			10.1	
50	10.3	OK		10.2	
	10.3		14+00	10.4	
	10.2			10.6	
	10.1			10.7	
	10.0			10.7	
12+00	10.0			11.3	
	10.0		50	11.4	
	9.9				
	9.9				
	10.0				
50	10.0				
	10.2				
	10.2				
	10.1				

CHECK AREA AFTER DIKE BROKE ON SKI ISLAND

(W12,550-W12,900) 4-10-61

(15)

5 STA. N. 134+00; 0+00=W. 13990; SOUND EAST

Dist Sound Elev Dist Sound Elev

10+50	9.8	8.5	1.4	10.9	
1.3	10.0		13+00	10.9	
	10.2			10.9	
	10.1			10.8	
	10.2			10.3	
11+00	10.3			10.9	
	10.5		50	10.2	
1:55	10.4			10.5	
<u>10.3</u>	10.3			10.9	
	10.3			10.9	
50	10.1	OK		11.9	
	10.5		14+00	11.2	
	10.7			10.8	
	10.7			11.8	
	10.3		2:00	12.0	
12+00	10.3		<u>11.9</u>		
	10.7		50	11.9	
	10.6				
	10.6				
	10.8				
50	10.4				
	10.4				
	10.8				
	10.8				

CHECK AREA AFTER DIKE BROKE ON SKI ISLAND



(see pg. 2) RE-CHECK  
4-10-61

STA. N. 138+00: OHD= W. 13,960: SOUND EAST

DIST SOUND ELEV DIST SOUND ELEV

14+00	10.9	(1.2)	10.9
(1.1)	10.6	50	10.5
	10.9		11.0
	10.7		11.0
	10.7		10.8
50	10.9		10.6
	11.0	17+00	10.6
11.40	11.0		10.4
	10.6		10.1
	10.5		10.3
15+00	10.4		8.1 6.9
	10.0	50	8.0 6.8
	9.7		8.2
	9.8		8.3
	9.9		8.4
50	9.9		8.4
	10.2	18+00	8.6
	9.5		8.6
	10.1		8.6
	10.2	11.45	8.5
16+00	10.0		8.6
	10.1	50	8.6
	10.7		8.6
	11.0		8.7
			8.7
		19+00	8.9

(see pg. 4)

STA. N. 139+00: OHD= W. 13,920: SOUND EAST

DIST SOUND ELEV DIST SOUND ELEV

14+00	10.7	(1.0)	10.1
(1.09)	10.2	50	10.1
	10.2		10.3
	10.2		9.5
	10.0		7.6 6.6
50	9.7		8.0 7.0
	9.2	17+00	8.5
11.25	9.6		8.8
	9.5		8.9
	9.9		8.8
15+00	9.9		8.8
	9.8	50	9.2
	10.0		8.6
	10.1	11.30	9.0
	10.0		9.2
50	10.2		9.1
	10.6	18+00	9.0
	10.6		
	10.1		
	10.0		
16+00	10.1		
	10.2		
	10.4		
	10.0		

(16)



(W. 11,900¹³⁰-W. 12,030) 4-11-61  
(F.B. 145)

STAN. 103+00. 0+00=W. 11,430 SOUND WEST

DIST	Sound	Elev	DIST	Sound	Elev
4+50	9.9		(16)	8.9	
(16)	10.6		7+00	9.0	
	11.1			8.9	
	10.5			8.9	
	10.7			9.0	
5+00	10.9			9.2	
	10.9		50	9.4	
<u>10:20</u>	10.7			9.3	
	10.4			9.5	
	10.6			9.3	
50	10.9			9.1	
	10.0		8+00	9.3	
	10.4			9.1	
	10.7				
	10.2				
6+00	9.7				
	11.0				
	11.0				
	10.6				
	8.8				
50	8.5	6.9			
	8.4	6.8			
	8.6	7.0			
	8.7				

(W. 11,800¹⁴⁰-W. 11,860) 4-11-61  
(F.B. 145)

STAN. 105+50. 0+00=W. 11,290. SOUND WEST

DIST	Sound	Elev	DIST	Sound	Elev
5+00	9.9		(14)	10.6	
(14)	9.7			10.0	
	10.8			9.6	
<u>10:30</u>	10.8			9.6	
	10.1		6+00	10.0	
50	10.1				

(W. 11,800¹³⁰-W. 12,030) (F.B. 135) STAN. 106+00. 0+00=W. 11,270. SOUND WEST.

DIST	Sound	Elev	DIST	Sound	Elev
5+00	10.0	8.7	(13)	9.9	8.6
(13)	9.8	8.5		10.0	8.7
	8.9	1.6		10.0	8.7
	8.3	7.0	7+00	10.0	8.7
	8.1	6.8			
50	8.3	7.0			
	8.2	6.9			
<u>10:35</u>	8.3	7.0			
	9.5	8.2			
	10.8	9.5			
6+00	10.6	9.3			
	10.3	9.0			
	9.6	8.3			
	9.7	8.4			
	9.9	8.6			
50	9.9	8.6			
	9.8	8.5			



4-11-61

STA. N. 72+00: 0+00 = W. 13, 310; SOUND WEST

Dist Sound Elev Dist Sound Elev

3+30	10.6	9.6			
(1.0)	10.7	9.7			
50	11.0	10.0			
	12.0	11.0			
	11.6	10.6			
10:55	11.6	10.4			
→	11.7	10.7			
4+00	11.6	10.6			
	11.9	10.9			
	11.8	10.8			
	11.7	10.7			
	11.7	10.7			
50	11.6	10.6			
	9.7	8.7			
	10.0	9.0			
	10.0	9.0			
	10.3	9.3			
5+00	10.2	9.2			

4-11-61

(18)

STA. N. 73+00: 0+00 = W. 13, 250; SOUND WEST

Dist Sound Elev

4+00	9.8				
(.98)	10.8				
	11.6				
	11.6				
	10.9				
50	10.7				
	11.0				
11:10	10.8				
→	10.8				
	10.7				
5+00	11.2				
	11.7				
	10.2				
	9.3				
	9.6				
50	9.5				
	9.6				
	9.5				
	9.7				
	10.2				
6+00	9.6				



4-11-61

STA. N. 74+00; 0+00 = W. 13, 190; SOUND WEST

Dist Sound Elev Dist Sound Elev

4+00	10.4	9.7	(06)	9.7	9.1
(07)	11.6	10.9	50	9.7	9.1
	11.0	10.3		9.5	8.9
	10.9	10.2	11:20	9.6	9.0
	10.3	9.6	~	9.7	9.1
50	11.3	10.6		9.6	9.0
	11.1	10.4	7+00	9.8	9.2
11:15	10.7	10.0		9.9	9.3
~	10.6	9.9		9.8	9.2
	9.9	9.2		10.0	9.4
5+00	11.2	10.5		10.0	9.4
	12.3	11.6	50	10.0	9.4
	12.0	11.3			
	11.3	10.6			
	10.6	9.9			
50	10.0	9.3			
	9.2	8.5			
	9.5	8.8			
	9.3	8.6			
	9.4	8.7			
6+00	9.3	8.6			
	9.6	8.9			
	9.6	8.9			
	9.7	9.0			

4-11-61

STA. N. 74+50; 0+00 = W. 13, 140; SOUND WEST

Dist Sound Elev

6+00	9.5	
(05)	9.6	
	9.7	
	9.8	
	9.9	
50	9.7	
11:25	9.7	
~	9.9	
	9.7	
	9.7	
7+00	9.9	

(19)



BOUNDINGS 4-20-61 AND  
CROSS SECTIONS FOR PROPOSED RIP  
RAP SWLY CABRILLO ISLAND

STA. W. 126+00.0400-N. 6,990 SOUND SOUTH

DIST SOUND ELEV DIST SOUND ELEV

DIST	SOUND	ELEV	DIST	SOUND	ELEV
0+00			(36)	18.5	14.9
(36)	0.1	+3.5		18.9	15.3
	2.0	+1.6		19.0	15.4
	5.8	2.2	50	19.1	15.5
	11.0	7.4		19.4	15.8
50	12.0	8.4		19.8	16.2
	12.1	8.5		20.0	16.4
2:55	13.0	19.4		20.2	16.6
~	14.1	10.5	3+00	20.9	17.3
	16.7	13.1		21.2	17.6
1+00	16.9	13.3		20.9	17.3
	17.2	13.6		20.0	16.4
	17.3	13.7		14.0	10.4
	18.2	14.6	50	13.8	10.2
	18.5	14.9		14.0	10.4
50	18.1	14.5		14.9	11.3
	17.8	14.2		13.9	10.3
	17.7	14.1		13.5	9.9
	17.7	14.1	4+00	12.9	9.3
	17.4	13.0		13.9	10.3
2+00	17.9	14.3		13.9	10.3
	17.9	14.3		13.8	10.2

STA. W. 126+00 - SOUTH (20)

DIST SOUND ELEV DIST SOUND ELEV

(36)	73.5	9.9	(36)	14.5	10.9
50	13.9	10.3	7+00	14.0	10.4
	14.1	10.5	50	14.7	11.1
	14.4	10.8		13.1	9.5
	14.2	10.6		14.5	10.9
	14.2	10.6		15.0	11.4
5+00	14.2	10.6	50	15.0	11.4
	14.2	10.6		14.0	10.4
	13.9	10.3		13.7	10.1
3:00	13.5	9.9		12.7	9.1
	13.5	9.9		12.1	8.5
+50	13.1	9.5	8+00	12.9	9.3
	13.9	10.3		6.8	3.2
	14.0	10.4		3.1	+0.5
	14.0	10.4		1.9	+1.7
	14.2	10.6		0.9	+2.7
6+00	14.9	11.3	50		
	14.5	10.9			
	13.8	10.2			
	12.5	8.9			
	13.1	9.5			
+50	13.1	9.5			
	13.5	9.9			
	14.0	10.4			
	15.0	11.4			



4-20-61

STA. W. 126+50; Q100=N. 6,990 ; SOUND SOUTH

DIST Sound Elev DIST Sound Elev

0+00			(36)	20.0	16.4
(36)			50	20.4	16.8
	1.2	+ 2.4		20.9	17.3
	6.3	- 2.7		20.9	17.3
	10.0	6.2		21.1	17.5
50	10.4	6.8		21.4	17.9
	11.7	8.1	3+00	21.4	17.8
<u>2:45</u>	12.3	8.7		21.7	18.1
-	13.6	10.0		21.7	18.1
	17.4	13.8		21.7	18.1
1+00	18.6	15.0		21.9	18.3
	18.5	14.9	50	21.5	17.9
	18.5	14.9		20.9	17.3
	18.5	14.9	2:50	19.0	15.4
	18.5	14.9	-	13.4	9.8
50	18.5	14.9		13.6	10.0
	18.6	15.0	4+00	13.2	9.6
	18.8	15.2			
	18.8	15.2			
	19.0	15.4			
2+00	19.3	15.7			
	19.4	15.8			
	19.7	16.1			
	20.0	16.4			

(21)

STA. W. 127+00; Q100=N. 6,990 ; SOUND SOUTH

DIST Sound Elev DIST Sound Elev

0+00			(36)	19.2	15.6
(36)			50	19.2	15.6
	0.5	+ 3.1		20.0	16.4
	3.0	+ 0.6		20.4	16.8
	9.7	- 6.1		20.8	17.2
50	11.0	7.4		20.9	17.3
	11.5	7.9	3+00	21.2	17.6
<u>2:40</u>	12.3	8.7		21.8	18.2
-	11.8	8.2		21.9	18.3
	12.4	8.8		21.5	17.9
1+00	15.0	11.4		20.3	16.7
	17.6	14.0	50	16.4	12.8
	19.8	16.2		13.1	9.5
	20.0	16.4		13.2	9.6
	20.4	16.8		14.1	10.5
50	20.8	17.2		13.1	9.5
	20.5	16.9	4+00	13.7	10.1
	20.1	16.5			
	19.8	16.2			
	19.7	16.1			
2+00	19.7	16.1			
	19.7	16.1			
	19.6	16.0			
	19.1	15.5			



4-20-61

STA. W. 127450: 0400 = N. 6990 SOUND SOUTH

DIST SOUND ELEV DIST SOUND ELEV

0400			(36)	13.4	9.8		
(36)			50	13.3	9.7		
	0.4	+3.2		14.0	10.4		
	3.0	+0.6		13.6	10.0		
	8.9	5.3		14.5	10.9		
50	10.4	6.8		13.4	9.8		
	10.8	7.2	3+00	14.4	10.8		
2:30	11.6	8.0		14.0	10.4		
	12.4	8.8		14.3	10.7		
	12.6	9.0		14.1	10.5		
1+00	13.1	9.5		14.2	10.6		
	13.0	9.4	50	13.7	10.1		
	12.9	9.3		14.0	10.4		
	12.8	9.2		14.0	10.4		
	13.4	9.8		13.8	10.2		
50	14.3	10.7		13.6	10.0		
	14.0	10.4	4+00	13.9	10.3		
	14.0	10.4					
	13.8	10.2					
	14.3	10.7					
2+00	13.9	10.3					
	13.2	9.6					
	13.8	10.2					
	13.8	10.2					

(22)

STA. W. 128400: 0400 = N. 6990 SOUND SOUTH

DIST SOUND ELEV DIST SOUND ELEV

0400			(36)	13.5	9.9		
(36)			50	14.9	11.3		
	0.2	+3.4		14.4	10.8		
	2.1	+1.5		14.1	10.5		
	7.3	-3.7		14.1	10.5		
50	10.0	6.4		13.0	9.4		
	11.0	7.4	3+00	12.3	8.7		
2:20	11.6	8.0		14.7	11.1		
	12.1	8.5		14.2	10.6		
	12.8	9.2		14.1	10.5		
1+00	13.0	9.4		14.2	10.6		
	12.7	9.1	50	14.1	10.5		
	13.2	9.6		14.3	10.7		
	13.1	9.5		13.8	10.2		
	13.0	9.4		13.9	10.3		
50	13.4	9.8		13.9	10.3		
	13.5	9.9	4+00	13.7	10.1		
	13.8	10.2		X			
	13.8	10.2					
	14.0	10.4					
2+00	14.1	10.5					
	14.1	10.5					
	14.6	11.0					
	14.1	10.5					



4-20-61

5. STA. W. 128+50: 0+00 = N. 7.010 SOUND SOUTH

D Dist Sound Elev Dist Sound Elev

0+00

(36)

13.6 10.0

50

13.3 9.7

14.4 10.8

13.3 9.7

14.5 10.9

0.2 +3.4

50 3.3 +0.3

13.8 10.2

8.7 5.1

3+00

13.6 10.0

2:15

10.1 6.5

14.2 10.6

11.3 7.7

13.9 10.3

12.0 8.4

13.7 10.1

1+00

12.1 8.5

14.2 10.6

12.6 9.0

50

14.4 10.8

12.6 9.0

13.9 10.3

12.9 9.3

13.8 10.2

13.0 9.4

13.8 10.2

50 13.2 9.6

13.9 10.3

13.5 9.9

4+00

13.6 10.0

13.5 9.9

13.7 10.1

13.8 10.2

2+00

13.9 10.3

14.0 10.4

14.0 10.4

14.2 10.6

(23)

5. STA. W. 129+00: 0+00 = W. 7.010 SOUND SOUTH

D Dist Sound Elev Dist Sound Elev

0+00

(36)

14.0 10.4

(36)

50

14.1 10.5

13.7 10.1

0.2 +3.4

3.0 +0.6

50 6.2 -2.6

13.1 9.5

14.2 10.6

9.7 6.1

3+00

13.5 9.9

12.5 8.9

2:05 10.0 6.4

12.0 8.4

13.0 9.4

13.0 9.4

14.7 11.1

1+00 13.4 9.8

13.5 9.9

13.1 9.5

50

14.1 10.5

13.0 9.4

50

14.0 10.4

13.9 10.3

14.2 10.6

13.8 10.2

12.9 9.3

50 13.8 10.2

13.6 10.0

50 12.9 10.3

13.1 9.5

13.6 10.0

4+00

13.5 9.9

14.0 10.4

14.0 10.4

13.6 10.0

2+00 13.5 9.9

13.1 9.5

12.6 9.0

13.0 9.4



4-20-61

STA. W. 129+50: 0+00-N. 7010 SOUND SOUTH

DIST Sound Elev DIST Sound Elev

0+00			(36)	12.8	9.2			
(36)	0.7	2.9	50	13.5	9.9			
	0.9	2.7		13.2	9.6			
	2.4	1.2		13.0	9.4			
	5.8	2.2		13.1	9.5			
50	8.2	4.6		13.2	9.6			
	10.7	7.1	3+00	13.3	9.7			
<u>11.55</u>	12.8	9.2		13.7	10.1			
	12.6	9.0		14.5	10.9			
	13.0	9.4	<u>2:00</u>	14.1	10.5			
1+00	13.0	9.4		14.3	10.7			
	13.4	9.8	50	14.2	10.6			
	13.6	10.0		14.3	10.7			
	13.8	10.2		14.3	10.7			
	13.5	9.9		13.8	10.2			
50	13.3	9.7		13.6	10.0			
	13.1	9.5	4+00	13.5	9.9			
	13.5	9.9						
	13.4	9.8						
	13.6	10.0						
2+00	13.5	9.9						
	13.3	9.7						
	13.4	9.8						
	13.4	9.8						

(24)

STA. W. 130+00: 0+00-N. 7000 SOUND SOUTH

DIST Sound Elev DIST Sound Elev

0+00			(36)	14.1	10.5			
(36)	0.0	3.6	50	13.3	9.7			
	1.7	1.9		14.0	10.4			
	3.6	0.0		13.8	10.2			
	6.9	3.3		13.5	9.9			
50	10.2	6.6		13.2	9.6			
	12.5	8.9	3+00	13.9	10.3			
<u>11.45</u>	13.3	9.7		13.0	9.4			
	13.9	10.3		13.9	10.3			
	13.1	9.5		14.2	10.6			
1+00	13.8	10.2		14.4	10.8			
	13.0	9.4	50	14.6	11.0			
	13.7	10.1		14.2	10.6			
	13.6	10.0	<u>11.50</u>	13.1	9.5			
	13.1	9.5		13.6	10.0			
50	13.2	9.6		12.4	8.8			
	14.1	10.5	4+00	12.5	8.9			
	14.4	10.8						
	13.9	10.3						
	14.3	10.7						
2+00	14.1	10.5						
	14.1	10.5						
	14.1	10.5						
	14.1	10.5						



4-20-61

STA. W. 130+50.0+00 = N. 7.000 ; SOUND SOUTH

DIST Sound Elev DIST Sound Elev

0+00

(36) 14.2 10.6

(36)

50 14.6 11.0

0.7 2.9 14.6 11.0

2.4 1.2 13.8 10.2

4.2 0.6 13.8 10.2

50 7.8 4.2 14.3 10.7

11.8 8.2 3+00 13.7 10.1

12.3 8.7 13.6 10.0

1:40 13.2 9.6 14.7 11.1

13.2 9.6 14.5 10.9

1+00 13.4 9.8 13.7 10.1

13.7 10.1 50 14.0 10.4

13.7 10.1 14.4 10.8

13.8 10.2 14.0 10.4

13.5 9.9 14.1 10.5

50 13.5 9.9 12.9 9.3

14.2 10.6 4+00 13.1 9.5

14.3 10.7

14.5 10.9

14.3 10.7

2+00 14.5 10.9

14.5 10.9

14.5 10.9

14.3 10.7

(25)

STA. W. 134+00.0+00 = N. 7.010 ; SOUND SOUTH

DIST Sound Elev DIST Sound Elev

0+00

(36) 15.0 11.4

(36)

50 15.0 11.4

14.8 11.2

0.5 3.1 14.1 10.5

2.2 1.4 14.4 10.8

50 6.7 3.1 14.9 11.3

9.4 5.8 3+00 14.8 11.2

1:30 12.0 8.4 14.6 11.0

12.9 9.3 15.0 11.4

13.6 10.0 14.1 10.5

1+00 13.9 10.3 13.9 10.3

13.9 10.3 50 14.0 10.4

14.3 10.7 14.0 10.4

14.0 10.4 14.1 10.5

14.1 10.5 13.6 10.0

50 14.4 10.8 13.4 9.8

14.5 10.9 4+00 13.0 9.4

14.5 10.9

14.2 10.6

14.1 10.5

2+00 13.9 10.3

14.1 10.5

14.6 11.0

14.8 11.2



4-20-61

STA. W. 131450; 0400 = N. 7030; SOUND SOUTH

DIST SOUND ELEV DIST SOUND ELEV

0400

(3.6)

(3.6)

50

14.5 10.9

14.7 11.1

14.4 10.8

14.5 10.9

14.5 10.9

0.2 +3.4

50 0.7 +2.9

3.6 0.0

3+00

14.4 10.8

11:25 6.4 2.8

14.0 10.4

9.2 5.6

14.5 10.9

10.3 6.7

13.8 10.2

1+00 10.9 7.3

14.0 10.4

12.4 8.8

50

14.2 10.6

12.7 9.1

14.5 10.9

13.0 9.4

14.5 10.9

13.2 9.6

14.2 10.6

50 13.3 9.7

14.2 10.6

13.5 9.9

4+00

14.0 10.4

14.2 10.6

14.4 10.8

14.5 10.9

2+00 14.8 11.2

13.9 10.3

13.7 10.1

13.4 9.8

4-20-61

(26)

STA. W. 132400; 0400 = N. 7070; SOUND SOUTH

DIST SOUND ELEV DIST SOUND ELEV

0400

(3.0)

(3.0)

50

12.5 9.5

12.6 9.6

13.0 10.0

13.1 10.1

13.4 10.4

13.6 10.6

50

3+00

13.1 10.1

11:40 0.2 2.8

13.1 10.1

0.8 2.2

13.2 10.2

1.0 2.0

12.7 9.7

1+00 2.7 0.3

13.2 10.2

6.9 3.9

50

14.4 11.4

9.6 6.6

13.6 10.2

11.1 8.1

11:45

14.1 11.1

12.1 9.1

13.7

13.7 10.7

50 12.4 9.4

14.0 11.0

12.3 9.3

4+00

13.9 10.9

12.2 9.2

11.9 8.9

12.9 9.9

2+00 12.5 9.5

12.3 9.3

13.0 10.0

12.7 9.7



4-20-61

STA. W. 132+50: 0+00 = N. 7, 100 SOUND SOUTH

Dist Sound Elev Dist Sound Elev

0+00 (28) 12.2 9.4

50 12.2 9.4

12.1 9.3

12.5 9.7

12.2 9.4

12.4 9.6

50

0.5 2.3 3+00 12.5 9.7

11.20 0.8 2.0 12.6 9.8

1.1 1.7 12.6 9.8

1.3 1.5 12.4 9.6

1+00 2.6 0.2 12.9 10.1

6.8 4.0 50 13.0 10.2

8.0 5.2 12.8 10.0

9.8 7.0 12.0 9.2

10.0 7.2 12.6 9.8

50 11.2 8.4 14.0 11.2

11.6 8.8 4+00 12.8 10.0

11.5 8.7

12.4 9.6

12.6 9.8

2+00 13.0 10.2

12.7 9.9

12.3 9.5

12.3 9.5

SOUP

4-24-61

(27)

STA. W. 133+00: 0+00 = N. 7, 150 SOUND SOUTH

Dist Sound Elev Dist Sound Elev

0+00 (27) 12.0 9.9

50 12.0 9.9

(2.0) 11.6 9.5

11.6 9.5

11.8 9.7

50 11.8 9.7

1.1 3+00 12.0 9.9

2.10 12.0 9.9

0.2 1.8 12.0 9.9

1.6 0.4 12.0 9.9

1+00 1.7 0.3 11.7 9.6

2.0 0.0 50 11.3 9.2

3.8 1.8 11.5 9.4

6.2 4.2 2+5 11.6 9.5

8.0 6.0 11.2 9.1

50 10.2 8.2 12.3 10.2

10.8 8.8 4+00 11.8 9.7

11.6 9.6

11.9 9.9

11.0 9.0

2+00 11.4 9.4

11.1 9.1

11.5 9.5

11.2.0 10.0



4-20-61

STA. N. 71+00: 0+00 = W. 13250 ; SOUND WEST

Dist	Sound	Elev	Dist	Sound	Elev
0+00			(26)	11.6	9.0
(2.6)			50	11.1	8.5
				11.0	8.4
				11.7	9.1
				12.3	9.7
50				12.0	9.4
	0.0	2.6	3+00	12.0	9.4
11:05	0.9	1.7		12.0	9.4
	2.0	0.6		11.6	9.0
	2.8	0.2		11.4	8.8
1+00	3.2	0.6		11.3	8.7
	4.0	1.4	50	12.3	9.7
	7.3	4.7		12.6	10.0
	7.7	5.1		12.4	9.8
	10.1	7.5		12.6	10.0
50	11.3	8.7		11.5	8.9
	11.0	8.4	4+00	11.7	9.1
	10.6	8.0			
	10.6	8.0			
	10.7	8.1			
2+00	10.8	8.2			
	11.0	8.4			
	11.6	9.0			
	11.6	9.0			

(28)

STA. N. 71+50: 0+00 = W. 13300 ; SOUND WEST

Dist	Sound	Elev	Dist	Sound	Elev
0+00			(26)	12.0	9.4
(26)			50	12.0	9.4
				12.1	9.5
				12.0	9.4
	0.5	2.1		12.1	9.5
50	1.6	+1.0		12.0	9.4
	2.1	+0.5	3+00	12.5	9.9
10:55	3.0	-0.4		12.5	9.9
	4.0	1.3		12.5	9.9
	7.2	4.6		12.3	9.7
1+00	10.6	8.0		12.2	9.6
	12.0	9.4	50	12.8	10.2
	12.0	9.4		12.5	9.9
	11.9	9.3		12.1	9.5
	11.6	9.0		12.5	9.9
50	11.8	9.2		13.0	10.4
	11.8	9.2	4+00	13.2	10.6
	12.0	9.4			
	12.2	9.6			
	12.8	10.2			
2+00	12.8	10.2			
	12.8	10.2			
	12.8	10.2			
	12.2	9.6			



4-20-61

5 STA. N. 72+00: QDD = W. 13,300 SOUND WEST

DIST SOUND ELEV DIST SOUND ELEV

0+00			(25)	11.0	8.5
(25)			50	11.0	8.5
				11.3	8.8
				11.1	8.6
	0.3	+2.2		11.4	8.9
50	1.1	+1.4		11.3	8.8
	1.7	+0.8	3+00	11.6	9.1
	2.2	+0.3		11.9	9.4
<u>10.45</u>	2.6	-0.1		12.0	9.5
	3.2	-0.7		12.0	9.5
1+00	7.7	5.2		12.0	9.5
	12.0	9.5	50	12.1	9.6
	11.7	9.2		12.2	9.7
	11.4	8.9		12.7	10.2
	11.0	8.5		12.9	10.4
50	10.5	8.0		12.7	10.2
	11.3	8.8	4+00	12.7	10.2
	11.6	9.1			
	11.5	9.0			
	11.5	9.0			
2+00	11.7	9.2			
	11.1	8.6			
	11.2	8.7			
	11.2	8.7			

(29)

5 STA. N. 73+00: QDD = W. 13,250 SOUND WEST

DIST SOUND ELEV DIST SOUND ELEV

0+00			22	11.8	9.6
(22)			50	11.4	9.2
				11.8	9.6
				12.0	9.8
				11.9	9.7
			50	11.2	9.0
			3+00	11.2	9.0
				11.6	9.4
				11.6	9.4
				1.9	+0.3
			1+00	2.4	0.2
				3.1	0.9
			50	6.6	4.4
				10.1	7.9
				10.8	8.6
			50	11.0	8.8
				11.0	8.8
			4+00	11.7	9.5
				11.2	9.0
				11.2	9.0
				11.0	8.8
			2+00	11.6	9.4
				11.1	8.9
				11.5	9.3
				11.4	9.2



4-20-61

STA. N. 72+50: 0+00 = W/13,280 SOUND WEST

Dist Sound Elev Dist Sound Elev

0+00

(23)

11.0 8.7

(23)

50

11.0 8.7

10.9 8.6

11.0 8.7

11.0 8.7

50

11.6 9.3

0.5 +1.8

3+00

11.5 9.2

10:30

1.2 +1.1

11.6 9.3

=

1.9 +1.4

11.6 9.3

2.3 0.0

12.2 9.9

1+00

4.6 -2.3

12.0 9.7

8.7 6.4

50

11.7 9.4

10.7 8.4

12.1 9.8

10.9 8.6

11.9 9.6

10.6 8.3

11.8 9.5

50

10.6 8.3

12.5 10.2

11.0 8.7

4+00

13.0 10.7

10.8 8.5

10.6 8.3

10.9 8.6

2+00

11.1 8.8

10.8 8.5

11.3 9.0

11.1 8.8

(30)

STA. N. 73+50: 0+00 = W/13,220 SOUND WEST

Dist Sound Elev Dist Sound Elev

0+00

(21)

10.9 8.8

(21)

50

10.5 8.4

11.1 9.0

10.7 8.6

10.9 8.8

50

0.0

11.6 9.5

0.9 1.2

3+00

11.4 9.3

1.3 0.8

11.6 9.5

10:15

2.1 0.0

10.9 8.8

=

2.5 0.4

11.1 9.0

1+00

2.8 0.7

10.9 8.9

3.3 1.2

50

10.9 8.9

3.1 1.0

11.0 9.9

6.8 4.7

11.0 9.9

9.3 7.2

11.6 9.5

50

10.2 8.1

11.0 9.9

10.4 8.3

4+00

10.9 9.8

10.6 8.5

10.7 8.6

10.6 8.5

2+00

10.6 8.5

10.4 8.3

10.6 8.5

10.6 8.5



4-20-61

STA. N. 74+00; CHOO = W. 13, 190 SOUND WEST

Dist Sound Elev Dist Sound Elev

0+00			(21)	11.1	9.0
			50	11.4	9.3
				10.8	8.7
				11.9	9.8
	0.3			11.9	9.8
50	1.0			11.4	9.3
	1.3		3+00	11.4	9.3
10:05	2.2	0.1		11.6	9.5
	2.6	0.5		11.8	9.7
	2.8	0.7		11.1	9.0
1+00	3.0	0.9		11.1	9.0
	3.2	1.1	50	11.1	9.0
	6.0	3.9		11.5	9.4
	8.2	6.1		11.9	9.8
	8.7	6.5		11.9	9.8
50	9.3	7.2		11.9	9.8
	9.8	7.7	4+00	12.6	10.5
	9.9	7.8			
	10.2	8.1			
	10.4	8.3			
2+00	9.8	7.7			
	10.8	8.7			
	10.5	8.5			
	11.3	9.2			

(31)

STA. N. 74+50; CHOO = W. 13, 140 SOUND WEST

Dist Sound Elev Dist Sound Elev

0+00			(19)	10.1	8.2
			50	10.7	8.8
				10.0	8.1
				11.2	9.3
				10.4	8.5
			50	10.6	8.7
	0.3		3+00	10.9	9.0
9:50	1.1			10.1	8.2
	1.8	0.1		10.8	8.9
	2.3	0.4		10.8	8.9
1+00	2.5	0.6		11.0	9.1
	2.5	0.6	50	11.5	9.6
	3.0	1.1		11.9	10.0
	5.7	3.8		11.9	10.0
	8.9	7.0		11.6	9.7
50	9.2	7.3		11.6	9.7
	9.2	7.3	4+00	11.6	9.7
	9.6	7.7			
	10.0	8.1			
	10.9	9.0			
2+00	10.9	9.0			
	10.3	8.4			
	10.5	8.6			
	10.8	8.9			



4-20-61

4-20-61

(32)

STAN. 75+00; 0+00 = W. 13,080 ; SOUND WEST

STAN. 75+50; 0+00 = W. 13,000 ; SOUND WEST

Dist Sound Elev Dist Sound Elev

Dist Sound Elev Dist Sound Elev

0+00

(1.8) 10.4 8.6

0+00

(1.8) 10.2 8.4

(1.8)

50 10.2 8.4

(1.8)

50 10.4 8.6

10.1 8.3

10.6 8.8

10.1 8.3

10.9 9.1

10.3 8.5

10.7 8.9

50

10.8 9.0

50

10.7 8.9

3+00 11.0 9.2

3+00 10.7 8.9

10.7 8.9

10.4 8.6

0.2 1.6

10.8 9.0

9:35

10.9 9.1

0.7 1.1

10.9 9.1

10.9 9.1

1+00 1.1 0.7

11.0 9.2

1+00

11.0 9.2

1.8 0.0

50 11.1 9.3

50 10.8 9.0

9:40 2.0 0.2

10.9 9.1

11.0 9.2

2.1 0.3

10.8 9.0

0.0

11.3 9.5

4.2 2.4

11.0 9.2

0.4 1.4

10.9 9.1

50 5.9 4.1

10.6 8.8

50 1.0 0.8

11.1 9.3

9.0 7.2

4+00 10.3 8.5

1.2 0.6

4+00 11.1 9.3

9.0 7.2

1.8 0.0

9.1 7.3

1.9 0.1

9.5 7.7

5.6 3.8

2+00 10.6 8.8

2+00 8.3 6.5

10.8 9.0

9.0 7.2

10.6 8.8

9.0 7.2

10.3 8.5

9.7 7.9



4-19-61

STA. N. 76+00; 0+00 = W. 12,980; SOUND WEST

DIST	Sound	Elev	DIST	Sound	Elev
0+00			(3A)	12.1	8.7
(3A)			50	12.2	8.8
				12.2	8.8
				12.3	8.9
				12.1	8.7
50				12.0	8.6
			3+00	12.1	8.7
				12.2	8.8
<u>3.05</u>				12.4	9.0
	0.4			12.4	9.0
	0.8			12.5	9.1
1+00	1.3			12.5	9.1
	1.7		50	12.4	9.0
	2.3			12.6	9.2
	2.5			12.7	9.3
	2.9			12.8	9.4
50	3.4	0.0		12.5	9.1
	3.5	0.1	4+00		
	6.0	2.6			
	9.8	6.4			
	11.6	8.2			
2+00	11.7	8.3			
	12.2	8.8			
	12.1	8.7			
	12.1	8.7			

33

STA. N. 76+50; 0+00 = W. 12,900; SOUND WEST

DIST	Sound	Elev	DIST	Sound	Elev
0+00			(35)	12.0	8.5
(35)			50	12.3	8.8
				12.2	8.7
				12.1	8.6
				12.1	8.6
				12.4	8.9
50			3+00	12.4	8.9
				12.3	8.8
				12.3	8.8
				12.4	8.9
	0.2	3.3		12.3	8.8
1+00	0.6	2.9		12.0	8.5
	0.9	2.6	50	12.0	8.5
	1.4	2.1		12.0	8.5
	2.0	1.5		12.0	8.5
	2.2	1.3		12.2	8.7
	2.5	1.0		12.5	9.0
50	2.9	0.6	4+00	12.5	9.0
	3.1	+0.4			
	3.4	+0.1			
	3.6	0.1			
2+00	4.7	1.2			
	7.6	4.1			
	10.7	6.7			
	12.2	6.7			



4-19-61.

STAN. 77+00; 0+00=W. 12,850; SOUND WEST

Dist Sound Elev Dist Sound Elev

0+00

(3.6)

(36)

13.3 9.7

50 13.8 10.2

13.8 10.2

13.9 10.3

13.5 9.9

13.1 9.5

50 0.2 3.4

0.5 3.1

3+00 13.0 9.4

2:35 0.9 2.5 12.8 9.2

1.6 2.0 12.8 9.2

1.8 1.8 12.5 8.9

1+00 2.1 1.5 12.5 8.9

2.6 1.0 50 12.5 8.9

3.0 0.6 12.5 8.9

3.1 0.5 12.3 8.7

3.3 0.3 12.6 9.0

50 3.6 0.0 12.6 9.0

5.2 1.6 4+00 12.6 9.0

5.7 2.1

9.1 5.5

9.8 6.2

2+00 10.0 6.4

10.0 6.4

10.6 7.0

11.0 7.4

(34)

N 77+50; 0+00=W. 12,790; SOUND WEST

Dist Sound Elev Dist Sound Elev

0+00

(36)

(36)

12.6 9.0

50 13.0 9.4

12.7 9.1

12.6 9.0

12.7 9.1

12.5 8.9

50

0.0 3+00 13.0 9.4

0.4 3.2 14.8 11.2

1.0 2.6 14.6 11.0

2.2 1.4 14.5 10.9

1+00 2.0 1.6 14.2 10.6

3.4 0.2 50 13.8 10.2

2:25 3.0 0.6 13.6 10.0

3.3 0.3 13.0 9.4

3.6 0.0 12.5 8.9

50 3.9 0.3 12.6 9.0

4.1 0.5 4+00 12.7 9.1

4.5 0.9

9.1 5.5

11.2 7.6

2+00 11.1 7.5

11.4 7.8

11.7 8.1

11.9 8.3



4-19-61

STA. N. 78+00; 0+00 = W. 12.760; SOUND WEST

Dist	Sound	Elev	Dist	Sound	Elev
0+00			(32)	12.9	9.7
			50	12.8	9.6
				12.0	8.8
				12.0	8.8
				12.4	9.2
50				12.7	9.5
			3+00	12.5	9.3
	0.4	2.8		12.9	9.7
	0.6	2.6		12.9	9.7
	1.1	2.1		12.8	9.6
1+00	1.7	1.5		12.5	9.3
	2.0	1.2	50	12.7	9.5
10:45	2.5	0.7		12.8	9.6
	3.0	0.2		13.6	10.4
	3.8	0.6		14.1	10.9
50	8.0	4.8		14.2	11.0
	9.4	6.2	4+00	13.6	10.4
	9.8	6.6			
	10.0	6.8			
	12.2	9.0			
2+00	12.3	9.1			
	12.2	9.0			
	12.4	9.2			
	12.8	9.6			

4-19-61

(35)

STA. N. 78+50; 0+00 = W. 12.680; SOUND WEST

Dist	Sound	Elev	Dist	Sound	Elev
0+00			(33)	12.5	9.2
			50	12.3	9.0
				12.5	9.2
				12.0	8.7
				12.0	8.7
50				12.0	8.7
			3+00	12.4	9.1
				12.3	9.0
				12.4	9.1
				12.5	9.2
1+00	0.8	2.5		12.2	8.9
	1.3	2.0	50	12.5	9.2
	1.5	1.8		12.6	9.3
10:55	2.0	1.3		12.6	9.3
	2.4	0.9		12.6	9.3
50	2.6	0.7		12.7	9.4
	2.9	0.4	4+00	12.7	9.4
	3.2	0.1			
	4.0	0.7			
	7.4	4.1			
2+00	9.6	6.3			
	9.8	6.5			
	9.9	6.6			
	11.4	8.1			



4-19-61

STA. N. 79+00, 0+00 = W. 12,630: SOUND WEST

Dist	Sound	Elev	Dist	Sound	Elev
0+00			(33)	11.7	8.4
			50	12.4	9.1
(33)				12.5	9.2
				12.4	9.1
				12.4	9.1
50	1.2			12.0	8.7
	2.0		3+00	12.0	8.7
	2.2			12.0	8.7
11:05	2.8			12.0	8.7
	3.1			12.0	8.7
1+00	3.1			12.3	9.0
	3.5	0.2	50	12.7	9.4
	8.0	4.7		12.7	9.4
	9.0	5.7		12.6	9.3
	9.0	5.7		12.4	9.1
50	10.1	6.8		12.5	9.2
	9.8	6.3	4+00	12.5	9.2
	10.3	7.0			
	10.8	7.5			
	10.8	7.5			
2+00	11.1	7.8			
	11.1	7.8			
	11.1	7.8			
	11.5	8.2			

(36)

STA. N. 79+50, 0+00 = W. 12,580: SOUND WEST

Dist	Sound	Elev	Dist	Sound	Elev
0+00			(34)	12.1	8.7
			50	12.3	8.9
(34)				12.8	9.4
				12.8	9.4
				12.6	9.2
	1.0	+2.4		12.7	9.3
50	1.8	1.6		12.6	9.2
	2.1	1.3	3+00	12.8	9.4
11:10	2.3	1.1		12.8	9.4
	2.6	0.8		12.8	9.4
	3.4	0.0	11:15	12.0	8.6
1+00	7.6	4.2		12.3	8.9
	8.3	4.9	50	12.6	9.2
	9.7	6.3		12.5	9.1
	10.1	6.7		12.7	9.3
	10.6	7.2		12.6	9.2
50	10.6	7.2		12.6	9.1
	11.0	7.6	4+00	12.6	9.2
	11.0	7.6			
	11.3	7.9			
	11.2	7.8			
2+00	11.4	8.0			
	11.4	8.0			
	11.6	8.2			
	11.7	8.3			



4-19-61

STA. N 80+00; 0+00 = W 12,540; SOUND WEST

Dist	Sound	Elev	Dist	Sound	Elev
0+00	0.1	3.4	(35)	12.3	8.8
(35)	0.6	2.9	50	12.4	8.9
	1.1	2.4		12.7	9.2
	1.7	1.8		12.1	8.6
	2.2	1.3		12.2	8.7
50	2.3	1.2		13.0	9.5
	2.9	0.6	3+00	13.3	9.8
11:20	3.0	0.5		13.6	10.1
	3.7	0.2		13.4	9.9
	7.1	3.6		13.4	9.9
1+00	9.4	5.9		13.8	10.3
	10.4	6.9	50	13.5	10.0
	10.7	7.2		12.9	9.4
	10.9	7.4		12.1	8.6
	11.0	7.5		13.0	9.5
50	11.3	7.8		13.2	9.7
	11.3	7.8	4+00	13.8	10.3
	11.1	7.6			
	11.2	7.7			
	11.5	8.0			
2+00	11.8	8.3			
	12.3	8.8			
	11.1	7.6			
	11.6	8.0			

(37)

STA. N 80+50; 0+00 = W 12,440; SOUND WEST

Dist	Sound	Elev	Dist	Sound	Elev
0+00			(36)	11.1	7.5
			50	11.1	7.5
				11.1	7.5
				11.0	7.4
	0.2	3.4		11.9	8.3
50	0.7	2.9		12.9	9.3
	1.1	2.5	3+00	11.3	7.7
	2.0	1.6		13.0	9.4
	2.4	1.2		12.0	8.4
	2.8	0.8		11.8	8.2
1+00	3.1	0.5		12.4	8.8
	3.3	0.3	50	12.5	8.9
	3.8	0.2		13.5	9.9
11:45	7.1	3.5		13.9	10.3
	11.3	7.7		14.0	10.4
50	11.6	8.0		14.0	10.4
	11.7	8.1	4+00	14.0	10.4
	11.5	7.9			
	11.2	7.6			
	11.4	7.8			
2+00	11.2	7.6			
	11.5	7.9			
	11.1	7.5			
	11.1	7.5			



4-19-61

STA. N. 81+00; 0+00 = W. 12370; SOUND WEST

Dist Sound Elev Dist Sound Elev

0+00

(38) 11.5 7.7

(38)

50 11.5 7.7

11.2 7.4

11.3 7.5

11.5 7.7

50

11.7 7.9

3+00 11.4 7.6

1:30 0.5 3.3

12.2 7.4

1.1 2.7

12.1 7.3

1.8 2.0

12.7 7.9

1+00 2.1 1.7

13.0 9.2

2.8 1.0

50 11.9 8.1

3.3 0.5

12.6 8.8

4.0 0.2

11.8 8.0

8.2 4.4

12.8 9.0

50 11.0 7.2

13.0 9.2

12.9 9.1

4+00 12.0 8.2

12.5 8.7

12.1 8.3

12.0 8.2

2+00 11.8 8.0

11.8 8.0

11.6 7.8

11.5 7.7

(38)

STA. N. 81+50; 0+00 = W. 12360; SOUND WEST

Dist Sound Elev Dist Sound Elev

0+00

(37) 12.0 8.3

(37)

50 11.9 8.2

11.9 8.2

0.4 3.3

11.8 8.1

1.1 2.6

11.9 8.2

50 1.7 2.0

11.9 8.2

2.0 1.7

3+00 11.7 8.0

2.6 1.1

11.6 7.9

1:45 2.9 0.8

11.3 7.6

3.8 0.1

12.8 9.1

1+00 7.2 3.5

11.5 7.8

11.1 7.4

50 12.8 9.1

12.6 8.9

12.7 9.0

12.8 9.1

10.9 7.2

12.6 8.9

12.4 8.7

50 12.5 8.8

1.2.1 8.4

12.6 8.9

4+00 11.1 7.4

12.3 8.6

12.2 8.5

12.1 8.4

2+00 11.9 8.2

11.8 8.1

12.1 8.4

12.1 8.4



4-19-61						4-19-61 SEC. ON SPLIT 4					
STA. N. 82+00; 0+00 = W. 12320; SOUND WEST			STA. N. 80+00; 0+00 = 80' WLY. OF SHLDR N 43° 54' 33" W								
DIST	SOUND	ELEV	DIST	SOUND	ELEV	DIST	SOUND	ELEV	DIST	SOUND	ELEV
0+00	0.5	3.2	(37)	12.8	9.1	0+00	(36)	12.5	8.9		
(37)	1.2	2.5	50	12.2	8.5	(36)	50	12.4	8.8		
	1.7	2.0		12.9	9.2		0.9	2.7		12.2	8.6
	2.0	1.7		13.4	9.7		1.3	2.3		12.1	8.5
	2.3	1.4		13.0	9.3		2.0	1.6		12.2	8.6
50	2.9	0.8		12.8	9.1	50	2.8	0.8		12.2	8.6
	3.1	0.6	3+00	12.2	8.5		3.6	0.0	3+00	12.2	8.6
1:50	3.5	0.2		12.2	8.5	11:35	8.6	5.0		12.2	8.6
	4.1	0.4		12.4	8.7		12.4	8.8		12.0	8.4
	9.2	5.5		12.2	8.5		12.7	9.1		12.0	8.4
1+00	10.9	6.6		12.0	8.3	1+00	12.6	9.0		12.0	8.4
	11.2	7.5	50	12.1	8.4		12.4	8.8	50	12.0	8.4
	11.1	7.4		12.1	8.4		12.1	9.5		12.0	8.4
	11.1	7.4		11.9	8.2		12.0	8.4		12.1	8.5
	11.1	7.4		11.5	7.8		12.0	8.4		12.1	8.5
50	11.3	7.6		13.0	9.3	50	11.6	8.0		12.0	8.4
	11.0	7.3	4+00	12.0	8.3		11.6	8.0	4+00	12.0	8.4
	10.6	6.9					11.5	7.9			
	10.8	7.1					12.4	8.8			
	10.4	6.7					12.4	8.8			
2+00	10.4	6.7				2+00	12.6	9.0			
	10.7	7.0					13.0	9.4			
	11.7	8.0					12.4	8.8			
	12.3	8.6					12.8	9.2			



SEC. ON SPLIT 4 4-19-61

STA. N. 83+00; 0+00 = 70' WLY. OF. TOP SHLDR. N 48° 49' 27" W

DIST	SOUND	ELEV	DIST	SOUND	ELEV
0+00			(35)	13.1	9.4
(37)	0.3	3.4	50	13.2	9.5
	1.3	2.4		12.1	8.4
	2.1	1.6		12.4	8.7
	2.9	0.8		13.0	9.3
50	3.4	0.3		13.2	9.5
	5.5	1.8	3+00	13.0	9.3
2:05	10.6	6.9		13.1	9.4
	11.4	7.7		13.0	9.3
	11.2	7.5		13.3	9.6
1+00	11.1	7.4		13.4	9.7
	11.0	7.3	50	13.4	9.7
	11.1	7.4		13.6	9.9
	11.4	7.7		13.6	9.9
	11.6	7.9		13.7	10.0
50	11.6	7.9		13.7	10.0
	11.7	8.0	4+00	13.3	9.6
	11.6	7.9			
	12.0	8.3			
	12.6	8.9			
2+00	12.6	8.9			
	12.6	8.9			
	13.0	9.3			
	11.7	8.0			

4-19-61

STA. N. 78+00; 0+00 = 86' WLY. TOP SHLDR. N 41° 02' 23" W

DIST	SOUND	ELEV	DIST	SOUND	ELEV
0+00			(36)	14.0	10.4
			50	14.0	10.4
	0.3	3.3		13.7	10.1
	1.1	2.5		14.0	10.4
	2.1	1.5		13.6	10.0
50	3.2	0.4		14.1	10.5
	3.8	0.2	3+00	14.0	10.4
2:15	8.0	4.4		14.0	10.4
	9.9	6.3		14.4	10.8
	10.1	6.5		13.9	10.3
1+00	10.9	7.3		13.9	10.3
	11.0	7.4	50	14.0	10.4
	11.8	8.2		14.0	10.4
	11.8	8.2		13.8	10.2
	11.8	8.2		13.9	10.3
50	11.8	8.2		14.0	10.4
	13.0	9.4	4+00	14.0	10.4
	12.6	9.0			
	12.8	9.2			
	12.6	9.0			
2+00	12.5	8.9			
	12.1	8.5			
	14.0	10.4			
	14.2	10.6			



SEC. ON SPLIT 4 4-19-61 SOUND  
 STA. N. 76+00.0+00 = 60' WLY. OF SHLDR. N. 38° 41' 13" W

Dist	Sound	Elev	Dist	Sound	Elev
0+00			(35)	13.0	9.5
(35)			50	13.0	9.5
				13.0	9.5
				13.0	9.5
	0.2	3.3		13.0	9.5
50	0.6	2.9		12.9	9.4
	1.4	2.1	3+00	13.0	9.5
<u>2:50</u>	2.0	1.5		12.8	9.3
	2.8	0.7		12.5	9.0
	3.0	0.5		12.6	9.1
1+00	3.5	0.0		12.6	9.1
	5.2	1.7	50	12.6	9.1
	8.9	5.4		12.6	9.1
	11.2	7.7	2:55	12.6	9.1
	12.1	8.6		12.1	8.6
50	11.9	8.4		12.3	8.8
	12.8	9.3	4+00	13.0	9.5
	12.2	8.7			
	12.9	9.4			
	12.8	9.3			
2+00	12.9	9.4			
	13.0	9.5			
	13.0	9.5			
	12.8	9.3			

SEC. ON SPLIT 4 4-20-61 SOUND (41)  
 STA. N. 74+00.0+00 = 40' WLY. OF SHLDR. N. 48° 30' 50" W

Dist	Sound	Elev	Dist	Sound	Elev
0+00			(20)	11.0	9.0
			50	11.0	9.0
				11.0	9.0
				11.1	9.1
	0.1	1.9		11.1	9.1
50	1.0	1.0		11.3	9.3
	1.5	0.5	3+00	11.2	9.2
<u>9:55</u>	2.0	0.0		11.5	9.5
	2.1	0.1		11.3	9.3
	2.6	0.6		11.4	9.4
1+00	6.9	4.9		11.5	9.5
	9.6	7.6	50	11.4	9.4
	9.9	7.9		12.0	10.0
	9.4	7.4		11.8	9.8
	10.0	8.0		12.1	10.1
50	10.9	8.9		12.3	10.3
	11.0	9.0	4+00	12.1	10.1
	11.0	9.0			
	10.9	8.9			
	10.9	8.9			
2+00	10.9	8.9			
	10.9	8.9			
	10.8	8.8			
	10.9	8.9			



SEC. ON SPLIT & 4-20-61 SOUND  
 STA. N. 72+00. 0+00 = 60' WLY. OF SHLDR. N. 79° 43' 47" W

Dist	Sound	Elev	Dist	Sound	Elev
0+00			(29)	11.7	9.3
(2A)			50	11.3	8.9
				11.2	8.8
				11.8	9.4
	0.1	2.3		12.0	9.6
50	0.7	1.7		12.0	9.6
	1.7	0.7	3+00	12.2	9.8
10+00	2.2	0.2		12.1	9.7
	2.7	0.3		12.0	9.6
	6.4	4.0		12.4	10.0
1+00	9.2	6.8		12.5	10.1
	10.9	8.5	50	12.0	9.6
	11.3	8.9		11.8	9.4
	11.3	8.9		12.1	9.7
	10.8	8.4		13.0	10.6
50	11.1	8.7		13.0	10.6
	11.0	8.6	4+00	13.0	10.4
	11.2	8.8			
	11.5	9.1			
	11.9	9.5			
2+00	11.6	9.2			
	11.8	9.4			
	11.8	9.4			
	11.9	9.5			

SEC. ON SPLIT & 4-20-61 SOUND (72)  
 STA. W. 132+00. 0+00 = 40' SLY. SHLDR. S. 32° 55' 52" W

Dist	Sound	Elev	Dist	Sound	Elev
0+00			(29)	12.7	9.8
(29)			50	12.5	9.6
				13.0	10.1
				12.8	9.9
				13.0	10.1
50	0.8	2.1		12.5	9.6
	1.0	1.9	3+00	12.6	9.7
11:35	1.3	1.6		13.1	10.2
	3.5	0.6		13.1	10.2
	6.8	3.9		13.4	10.5
1+00	9.3	6.4		13.4	10.5
	10.1	7.2	50	13.8	10.9
	11.0	8.1		13.4	10.5
	11.9	9.0		13.9	11.0
	12.4	9.5		13.6	10.7
50	12.5	9.6		13.4	10.5
	12.2	9.3	4+00	13.3	10.4
	12.6	9.7			
	12.9	10.0			
	11.9	9.0			
2+00	12.8	9.9			
	12.3	9.4			
	12.8	9.9			
	12.5	9.6			



4-21-61

CROSS SECTIONS FOR PROPOSED RIP  
RAP SWLY. CABRILLO ISLAND

STA. W. 126+00; 0+00 = N. 7, 089

STA.	ELEV.	NOT "DUSTY"
B.M.	14.16	
0	16.1	
N. 10	15.7	
S 38	15.8	
S 100	7.3	
S 103	5.1	
S 108	3.5	
S 118	2.3	
S 121	1.2	

STA. N. 126+50; 0+00 = N. 7, 087

0	15.9
N. 10	15.9
S. 37	16.1
S. 97	7.3
S. 100	5.9
S. 106	4.1
S. 108	3.6
S 116	2.5

STA. W. 127+00; 0+00 = N. 7, 085

STA.	ELEV.
0	16.1
N. 10	16.0
S 39	15.9
S 103	8.0
S 110	3.6
S 121	1.6
S	

STA. W. 127+50; 0+00 = N. 7, 083.50

0	16.2
N. 10	16.1
S 36	15.7
S 105	7.2
S 110	3.9
S 121	1.5

(23)



4-21-61

STA. W. 128+00; 0+00 = N. 7.082

STA.	ELEV
0	16.7
N. 10	16.8
S. 37	15.8
S. 84	9.9
S. 85	7.0
S. 104	5.4
S. 109	3.6
S. 120	1.5

STA. W. 128+50; 0+00 = N. 7.081

STA.	ELEV
0	16.8
N. 10	16.5
S. 35	16.1
S. 67	12.0
S. 71	6.5
S. 106	4.2
S. 118	1.7

STA. W. 129+00; 0+00 = N. 7.080

STA.	ELEV
0	16.3
N. 10	16.4
S. 33	15.9
S. 60	12.3
S. 62	6.2
S. 92	4.0
S. 103	2.2

STA. W. 129+50; 0+00 = N. 7.080

STA.	ELEV
0	16.7
N. 10	16.5
S. 34	16.0
S. 59	13.1
S. 64	6.7
S. 76	3.0
S. 95	2.3



NOTE: This Sec. is End of Graded  
4-21-61 Area from West

STA. W. 130+00; 0+00 = N. 7,080

STA.	ELEV.
0	14.7
N. 10	15.1
S. 75	9.6
S. 79	5.9
S. 100	2.3

STA. W. 131+00; 0+00 = N. 7,080.78

STA.	ELEV.
0	14.4
N. 10	14.6
S. 66	9.6
S. 67	6.6
S. 94	4.1
S. 100	3.2

STA. W. 130+50; 0+00 = N. 7,080

0	14.6
N. 10	14.9
S. 79	9.2
S. 82	6.1
S. 100	3.1

STA. W. 131+50; 0+00 = N. 7,088.96

0	14.2
N. 10	14.6
S. 52	9.9
S. 52	7.7
S. 100	3.0
S	



4-21-61

STA. W. 132+00' 0+00 = N. 7, 111. 91

STA.	ELEV.
0	14.5
N. 10	14.5
S 34	12.1
S 35	8.6
S 48	7.6
S 54	6.3
S 100	3.2

SEC. ON SPLIT &amp; STA. W. 132+00' 0+00 = N. 7, 111. 91

SEC. 5. 32° 55' 32" W

0	14.5
N 14 10	14.5
S.W. 25	12.8
S.W. 27	8.7
S.W. 77	4.2
S.W. 82	2.4

TR 14.16 Dusty

46

STA. W. 132+50' 0+00 = N. 7, 200

STA.	ELEV.
0	13.7
S 82	12.1
S 86	7.4
S 147	4.2
S 155	2.4

STA. W. 133+00' 0+00 = N. 7, 200

0	7.5
S 23	7.3
S 23	9.5
S 42	9.0
S 43	7.7
S 100	2.5
S	



4-21-61

STA. N. 71+00; 0+00 = W. 13, 177.22

STA.	ELEV
0	14.4
E 10	14.6
W. 46	12.6
W. 47	8.3
W. 100	5.3
W. 120	4.3

STA. N. 71+50; 0+00 = W. 13, 234.32

STA.	ELEV
0	14.3
E 10	14.6
W. 69	8.9
W. 70	7.7
W. 100	2.6

SEC. ON. SPLIT &amp; N. 79° 43' 47" W.

STA. N. 72+00; 0+00 = W. 13, 240

STA.	ELEV
0	14.5
SE 10	14.8
NW 50	11.0
NW 51	8.6
NW 90	3.0

STA. N. 72+00; 0+00 = W. 13, 240

STA.	ELEV
0	14.5
E 10	14.8
W 59	10.3
W 60	7.9
W 100	2.1



4-21-61

STA. N. 72+50; O+00 = W. 13,214.50

STA.	ELEV
0	14.9
E 10	15.2
W 58	11.3
W 58	8.5
W 100	3.6

STA. N. 73+00; O+00 = W. 13,189

0	14.7
E 10	15.0
W 48	12.0
W 48	8.7
W 100	4.1

28

STA. N. 73+50; O+00 = W. 13,159.50

STA.	ELEV.
0	14.4
E 10	14.8
W 39	12.4
W 40	7.2
W 74	4.6
W 89	4.4
W 90	3.4
W 94	3.1

STA. N. 74+00; O+00 = W. 13,130

0	14.5
E 10	14.8
W 29	12.9
W 30	7.0
W 74	3.5
W 86	4.4
W 95	1.8



4-21-61

STA. N. 74+00; 0+00 = W. 13,130; SEC. N. 48°30'50"W

STA.	ELEV
0	14.5
SE 10	14.8
NW 28	12.7
NW 30	6.1
NW 61	4.1
NW 65	3.0

STA. N. 75+00; 0+00 = W. 13,000

STA.	ELEV.
0	14.5
E 10	14.5
W 82	10.5
W 83	7.3
W 100	5.0
W 130	3.0

STA. N. 74+50; 0+00 = W. 13,065

0	14.7
E 10	14.9
W 63	11.7
W 65	6.5
W 74	4.2
W 100	2.7

STA. N. 75+50; 0+00 = W. 12,935

0	14.6
E 10	14.6
W 72	10.9
W 73	8.6
W 100	6.6
W 150	3.8



SEC. ON SPLIT 4 4-21-61

STA. N. 76+00: 0+00 = W. 12.870; SEC. N. 38° 41' 13" W

STA. N. 76+50: 0+00 = W. 12.810

STA.	ELEV.
0	14.8
SE 10	14.9
NW 57	10.2
NW 58	7.7
NW 100	3.4

STA.	ELEV.
0	14.4
E 10	14.4
W 92	10.0
W 93	7.6
W 150	4.2

STA. N. 76+00: 0+00 = W. 12.870

NOTE: N. 77+00 = End of Graded Area + Shldr. Slopes

STA. N. 77+00: 0+00 = W. 12.750

STA.	ELEV.
0	14.8
E 10	14.9
W 69	11.3
W 69	8.5
W 120	4.9

STA.	ELEV.
0	14.8
E 10	15.2
W 95	10.2
W 95	7.6
W 150	3.3

TP.

16.23



4-21-61

STA. N. 77+50'S 0+100=W. 12,690

STA.	ELEV.
0	15.7
E 10	15.7
W 105	10.6
W 110	8.3
W 122	6.1
W 160	3.7

STA. N. 78+00'S 0+100=W. 12,630

0	15.8
E 10	15.8
W 25	15.6
W 100	12.2
W 101	8.4
W 180	3.8

SEC. ON SPLIT 4

STA. N. 78+00'S 0+100=W. 12,630, SEC. N. 41° 22' 23" W

STA.	ELEV.
0	15.8
SE 10	15.8
NW 33	15.7
NW 77	11.3
NW 78	7.0
NW 100	3.5

STA. N. 78+50'S 0+100=W. 12,575

0	15.4
E 10	15.5
W 52	15.8
W 111	11.5
W 114	6.8
W 150	3.8

(51)



4-21-61

STA. N. 79+00; 0+00 = W. 12,520

STA.	ELEV.
0	15.2
E 10	15.3
W 58	15.5
W 120	10.8
W 121	7.3
W 140	4.1

STA. N. 79+50; 0+00 = W. 12,455

STA.	ELEV.
0	15.5
E 10	15.3
W 56	15.7
W 116	11.3
W 116	6.7
W 147	3.4

SEC. ON SPLIT 4

(52)

STA. N. 80+00; 0+00 = W. 12,400; SEC. N. 41° 02' 23" W

STA.	ELEV.
0	14.9
SE 10	14.9
NW 39	14.7
NW 69	11.2
NW 70	6.1
NW 90	3.8

STA. N. 80+00; 0+00 = W. 12,400

STA.	ELEV.
0	14.9
E 10	14.9
W 64	15.7
W 116	10.8
W 116	6.0
W 140	3.0



4-21-61

STA. N. 80+50; 0+00 = W. 12,355

STA	ELEV.
0	15.4
E10	15.4
W48	14.7
W93	11.2
W93	6.4
W120	3.4

STA. N. 81+00; 0+00 = W. 12,310

0	15.4
E10	15.5
W31	15.3
W65	12.8
W65	7.1
W115	3.6

(53)

STA. N. 81+50; 0+00 = W. 12,265

STA	ELEV.
0	15.0
E10	15.1
W31	14.5
W91	9.7
W93	6.2
W116	3.9

STA. N. 82+00; 0+00 = W. 12,220

0	14.8
E10	14.9
W32	14.4
W81	10.0
W82	6.6
W95	5.2
W100	3.3



4-21-61

STA. N. 82+00.0+00=W. 12,220; SEG. N. 48°49'27" W

STA.	ELEV.
0	14.8
SE 10	14.9
NW 26	14.6
NW 48	11.4
NW 48	7.3
NW 76	4.5
NW 80	3.1

54



NOTE: N = NLY, S = SLY, ON BEARINGS AS  
SHOWN

RE CROSS SECTION SWLY. CABRILLO  
ISLAND FOR RIP-RAP W.O. 64731

STA. W. 128+00; 0+00 = N. 7,082 SEC. 5. 1°08'45" E

STA.	Elev.	NOT. "DUSTY"
B.M.	14.16	
0	14.7	
N 10	14.5	
5.50	10.4	
5100	6.3	
5115	4.9	

NOTE: This Area has been Graded Since  
Original Sec's Were Taken

STA. W. 128+50; 0+00 = N. 7,081 SEC. 5. 1°08'45" E

0	14.6
N 10	14.5
5.50	10.2
5100	6.0
5110	5.3

8-15-61 Stamped Shorey (55)  
Hecht  
Burns

STA. W. 129+00; 0+00 = N. 7,080; SEC. 5. 0°34'23" E

STA.	Elev
0	14.6
N. 10	14.5
5.50	10.0
5.100	5.8
5110	4.7

STA. W. 129+50; 0+00 = N. 7,080; SEC. SOUTH

0	14.2
N. 10	14.1
5.50	9.8
5100	5.4
5110	4.5



8-15-61

(56)

STA. W. 130+00; 0+00 = N. 7, 080; SEC. 5 SOUTH

STA.	Elev
0	14.6
N 10	14.7
S 50	10.1
S 100	5.0

STA. W. 131+00; 0+00 = N. 7, 080.78; SEC. 5. 5°00'32" W

STA	Elev
0	14.3
N 10	14.6
S 60	10.0
S 61	8.0
S 63	7.7
S 63	6.4
S 88	4.4

STA. W. 130+50; 0+00 = N. 7, 080; SEC. 5. 0°26'48" W

	Elev
0	14.6
N. 10	14.8
S. 52	10.8
S. 78	8.3
S. 80	6.6
S. 93	4.4

STA. W. 131+50; 0+00 = N. 7, 088.96; SEC. 5. 16°58'23" W

	Elev
0	14.2
N 10	14.5
S 10	11.1
S 40	7.8
S 75	4.3



8-15-61

STA. W. 132+00; 0+00 = N. 71° 11' 91" SEC. 5. 36° 19' 03" W

STA.	Elev
0	14.3
N. 10	14.5
S 25	12.8
S 25	9.6
S 70	4.5

STA. N. 72+00; 0+00 = W. 13,240; SEC. N. 79° 43' 47" W

STA.	Elev
0	14.3
E. 10	14.8
W. 49	11.2
W 54	8.0
W 80	4.3
TP	15.47

STA. N. 71+50; 0+00 = W. 13,234.32; SEC. 5. 65° 45' W

0	14.4
E. 10	14.7
W. 41	11.0
W 42	7.5
W 80	4.3

STA. N. 72+50; 0+00 = W. 13,214.50; SEC. N. 62° 58' 42" W

0	14.9
E 10	15.1
W 50	11.6
W 54	7.7
W 84	4.7
W 100	4.2



8-15-61

(58)

STA. N. 73+00; O.H.O. = W. 13,189; SEC. N. 61°30'08" W

STA.	Elev.
0	14.7
E. 10	15.2
W. 37	12.0
W. 40	8.1
W. 70	4.3

STA. N. 74+00; O.H.O. = W. 13,130; SEC. N. 48°30'50" W

STA.	Elev.
0	14.6
E. 10	15.1
W. 23	12.9
W. 25	6.7
W. 55	4.0

STA. N. 73+50; O.H.O. = W. 13,159.50; SEC. N. 59°27'34" W

STA.	Elev.
0	14.5
E. 10	14.9
W. 25	13.1
W. 28	7.8
W. 71	4.5
W. 74	3.2

STA. N. 74+50; O.H.O. = W. 13,065; SEC. N. 37°34'07" W

STA.	Elev.
0	14.6
E. 10	15.0
W. 43	11.1
W. 44	6.9
W. 70	3.8



STA. N. 75+00: CHDD = W 13,000; SEC. N. 37° 34' 07" W

STA.	Elev
0	14.4
E 10	14.5
W 45	10.7
W 47	8.4
W 56	6.4
W 90	4.1

STA. N. 76+00: CHDD = W 12,870; SEC. N. 38° 41' 13" W

STA	Elev
0	14.7
E 10	14.8
W 41	11.4
W 71	6.8
W 100	4.0

STA. N. 75+50: CHDD = W 12,935; SEC. N. 37° 34' 07" W

0	14.6
E 10	14.6
W 39	11.8
W 59	7.8
W 100	3.8

STA. N. 76+50: CHDD = W 12,810; SEC. N. 39° 18' 20" W

0	14.5
E 10	14.6
W 44	10.9
W 80	6.7
W 100	4.7



8-15-61

STA. N. 7400; O+00 = W 12.750; SEC. N 39° 48' 20" W

STA	Elev
0	14.3
E 10	14.8
W 89	7.0
W 115	4.0
	DUSTY
BM	14.15 ~ 14.16

8-16-61

SOUNDINGS SWLY. CABRILLO ISLAND  
STA. W. 128+00; 0+00 = 90' SWLY. OF B/L SOUND 5.18845

Dist	Sound	Elev	Dist	Sound	Elev
0+00				12.5	9.4
(3.1)				12.5	9.4
			50	12.5	9.4
				12.5	9.4
				12.4	9.3
	50	0.5		12.5	9.4
		1.8		12.3	9.2
9.40		4.3	3+00	12.5	9.4
		8.1			
		9.0			
1+00		9.7			
		10.2			
		10.5			
		10.8			
		11.1			
50		11.3			
		11.9			
		12.0			
		12.2			
		12.2			
2+00		12.5			
		12.6			
		12.6			

(60)



8-16-61.

61

STA. W. 128+50: 0+00 = 90° SLY OF B/L SOUNDS. 1° 28' 45" E

STA. W. 129+00: 0+00 = 90° SLY OF B/L SOUNDS. 0° 34' 23" E

Dist	Sound	Elev	Dist	Sound	Elev
0+00				12.5	9.4
			50	12.5	9.4
				12.5	9.4
				12.5	9.4
				12.5	9.4
50	1.1	+2.0		12.3	9.2
	2.9	+0.2	3+00	12.5	9.4
9:45	7.3	4.2			
	8.9	5.8			
(3.7)	9.6	6.5			
1+00	10.1	7.0			
	10.4	7.3			
	10.7	7.6			
	10.9	7.8			
	11.0	7.9			
50	11.2	8.1			
	11.8	8.7			
	11.7	8.6			
	11.9	8.8			
	12.1	9.0			
2+00	12.1	9.0			
	12.2	9.1			
	12.3	9.2			
	12.2	9.1			

Dist	Sound	Elev	Dist	Sound	Elev
0+00				12.2	8.9
			50	12.2	8.9
				12.3	9.0
				12.2	8.9
	0.8	+2.5		12.2	8.9
50	2.8	+0.5		12.3	9.0
	7.0	3.7	3+00	12.4	9.1
	9.1	5.8			
9:55	9.5	6.2			
	9.7	6.4			
1+00	9.9	6.6			
(3.3)	10.3	7.0			
	11.4	8.1			
	11.6	8.3			
	11.7	8.4			
50	11.8	8.5			
	12.0	8.7			
	12.2	8.9			
	12.1	8.8			
	12.2	8.9			
2+00	12.2	8.9			
	12.2	8.9			
	12.1	8.8			
	12.1	8.8			



8-16-61

STA. W. 129+50; 0+00 = 90° SLY. OF B/L; SOUND SOUTH

Dist	Sound	Elev	Dist	Sound	Elev
0+00			12.2	8.9	
			50	12.2	8.9
				12.2	8.9
				12.2	8.9
	1.2	+2.1		12.3	9.0
50	3.9	0.6		12.4	9.1
	8.0	4.7	3+00	12.6	9.3
	10.1	6.8			
10:00	10.4	7.1			
	9.2	5.9			
1+00	9.8	6.5			
	10.3	7.0			
(3.3)	10.8	7.5			
	11.6	8.3			
	11.9	8.6			
50	12.2	8.9			
	12.1	8.8			
	12.1	8.8			
	12.1	8.8			
	12.2	8.9			
2+00	12.2	8.9			
	12.1	8.8			
	12.2	8.9			
	12.3	9.0			

(62)

STA. W. 130+00; 0+00 = 90° SLY. OF B/L; SOUND SOUTH

Dist	Sound	Elev	Dist	Sound	Elev
0+00			12.5	9.2	
			50	12.6	9.3
				12.6	9.3
				12.5	9.2
	1.1	+2.2		12.7	9.4
	2.9	+0.4		12.6	9.3
50	6.8	3.5		12.6	9.3
	9.1	5.8	3+00	12.6	9.3
10:05	9.8	6.5			
	10.2	6.9			
(3.3)	10.5	7.2			
1+00	10.7	7.4			
	11.4	8.1			
	12.0	8.7			
	12.2	8.9			
	12.2	8.9			
50	12.3	9.0			
	12.2	8.9			
	12.4	9.1			
	12.4	9.1			
	12.5	9.2			
2+00	12.5	9.2			
	12.5	9.2			
	12.5	9.2			
	12.5	9.2			



8-16-61

STA. W. 130+50, 0+00 = 80° SLY. OF B/L, SOUND 50° 26' 48" W

Dist	Sound	Elev	Dist	Sound	Elev
0+00				12.6	9.2
			50	12.5	9.1
	0.0	+3.4		12.5	9.1
	1.1	+2.3		12.3	8.9
	3.8	0.4		12.2	8.8
50	8.0	4.6		12.5	9.1
	10.9	7.5	3+00	12.4	9.0
10;10	11.6	8.2			
	11.9	8.5			
(3.4)	12.0	8.6			
1+00	12.2	8.8			
	12.2	8.8			
	12.2	8.8			
	12.6	9.2			
	12.6	9.2			
50	12.6	9.2			
	12.5	9.1			
	12.5	9.1			
	12.6	9.2			
	12.7	9.3			
2+00	12.6	9.2			
	12.6	9.2			
	12.5	9.1			
	12.5	9.1			

(63)

STA. W. 131+00, 0+00 = 70° SLY. OF B/L, SOUND 55° 00' 32" W

Dist	Sound	Elev	Dist	Sound	Elev
0+00				12.4	8.9
			50	12.5	9.0
				12.6	9.1
	0.5	+3.0		12.5	9.0
	1.9	+1.6		12.5	9.0
50	4.0	0.5		12.5	9.0
	8.8	5.3	3+00	12.3	8.8
10;15	11.1	7.6			
	12.0	8.5			
(3.5)	12.1	8.6			
1+00	12.0	8.5			
	12.1	8.6			
	12.1	8.6			
	12.0	8.5			
	12.5	9.0			
50	12.3	8.8			
	12.2	8.7			
	12.4	8.9			
	12.1	8.6			
	12.2	8.7			
2+00	12.4	8.9			
	12.6	9.1			
	12.7	9.2			
	12.6	9.1			



8-16-61

STA. W. 131450; 0400 = 50° SLY. OF B/L; SOUND 5.16° 58' 23" W

Dist	Sound	Elev	Dist	Sound	Elev
0+00			12.4	8.8	
			50	12.5	8.9
			12.7	9.1	
			12.4	8.8	
	0.7	+2.9	12.6	9.0	
50	1.1	+2.5	12.3	8.7	
	1.9	+1.7	3+00	12.5	8.9
10:20	2.2	+1.4			
~	4.2	0.6			
(3.6)	7.9	4.3			
1+00	11.3	7.7			
	12.0	8.4			
	11.9	8.3			
	12.0	8.4			
	12.1	8.5			
50	12.0	8.4			
	12.2	8.6			
	11.8	8.2			
	12.0	8.4			
	12.1	8.5			
2+00	12.0	8.4			
	12.4	8.8			
	12.4	8.8			
	12.0	8.4			

(64)

STA. W. 132400; 0400 = 40° SLY. OF B/L; SOUND 5.36° 19' 03" W

Dist	Sound	Elev	Dist	Sound	Elev
0+00			12.0	8.4	
			50	12.4	8.8
			12.4	8.8	
			12.5	8.9	
	0.3	+3.3	12.5	8.9	
50	1.6	+2.0	12.5	8.9	
	2.2	+1.4	3+00	12.5	8.9
	3.0	+0.6			
10:25	3.6	0.0			
~	6.1	2.5			
1+00	9.7	6.1			
1+00	11.1	7.5			
(3.6)	11.6	8.0			
	12.0	8.4			
	11.9	8.3			
50	11.9	8.3			
50	12.0	8.4			
	12.1	8.5			
	12.0	8.4			
	12.1	8.5			
2+00	12.2	8.6			
	12.1	8.5			
	12.1	8.5			
	12.2	8.6			



8-16-61

STA. N. 71+50. 0+00 = 50' W. OF B/L; SOUND S. 65° 45' W

Dist	Sound	Elev
0+00		

50	12.1	8.4
----	------	-----

	12.3	8.6
--	------	-----

	12.1	8.4
--	------	-----

	12.3	8.6
--	------	-----

50	2.0	+1.7
----	-----	------

	3.5	+0.2
--	-----	------

3+00	12.5	8.8
------	------	-----

10:30	4.0	0.3
-------	-----	-----

<u>    </u>	5.0	1.3
-------------	-----	-----

(3.7)	6.9	3.2
-------	-----	-----

1+00	9.4	5.7
------	-----	-----

	12.0	8.3
--	------	-----

	12.2	8.5
--	------	-----

	11.9	8.2
--	------	-----

	11.9	8.2
--	------	-----

50	11.9	8.2
----	------	-----

	11.7	8.0
--	------	-----

	11.9	8.2
--	------	-----

	12.0	8.3
--	------	-----

	12.0	8.3
--	------	-----

2+00	12.2	8.5
------	------	-----

	12.4	8.7
--	------	-----

	12.1	8.4
--	------	-----

	12.1	8.4
--	------	-----

(65)

STA. N. 72+00. 0+00 = 60' W. OF B/L; SOUND N. 79° 43' 47" W

Dist	Sound	Elev
0+00		

	12.7	8.9
--	------	-----

50	12.9	9.1
----	------	-----

	12.8	9.0
--	------	-----

	12.7	8.9
--	------	-----

	0.7	+3.1
--	-----	------

	1.6	+2.2
--	-----	------

50	2.5	+1.3
----	-----	------

	3.1	+0.7
--	-----	------

3+00	13.0	9.2
------	------	-----

10:40	3.6	+0.2
-------	-----	------

<u>    </u>	4.3	0.5
-------------	-----	-----

(3.8)	5.4	1.6
-------	-----	-----

1+00	10.6	6.8
------	------	-----

	11.8	8.0
--	------	-----

	12.4	8.6
--	------	-----

	12.5	8.7
--	------	-----

	12.6	8.8
--	------	-----

50	12.8	9.0
----	------	-----

	12.7	8.9
--	------	-----

	12.8	9.0
--	------	-----

	12.8	9.0
--	------	-----

	12.6	8.8
--	------	-----

2+00	12.6	8.8
------	------	-----

	12.9	9.1
--	------	-----

	12.8	9.0
--	------	-----

	12.7	8.9
--	------	-----



8-16-61

STA. N. 72150: 0+00 = 60' W. OF B/L; SOUND N. 62° 58' 42" W

Dist	Sound	Elev	Dist	Sound	Elev
0+00				13.2	9.3
			50	13.1	9.2
				13.1	9.2
				13.1	9.2
				13.2	9.3
50	0.4	+3.5		13.1	9.2
	2.3	+1.6	3+00	13.3	9.4
10:45	3.8	+0.1			
	4.7	0.8			
(3.9)	5.1	1.2			
1+00	6.2	2.3			
	9.8	5.9			
	12.1	8.2			
	12.3	8.4			
	12.7	8.8			
50	12.9	9.0			
	12.9	9.0			
	12.8	8.9			
	12.6	8.7			
	12.5	8.6			
2+00	12.5	8.6			
	13.0	9.1			
	13.0	9.1			
	13.0	9.1			

(66)

STA. N. 73700: 0+00 = 50' W. OF B/L; SOUND N. 61° 3' 08" W

Dist	Sound	Elev	Dist	Sound	Elev
0+00				13.0	9.1
			50	13.0	9.1
				13.2	9.3
				13.0	9.1
	0.8	+3.1		13.1	9.2
	2.0	+1.9		13.1	9.2
50	2.8	+1.1		13.2	9.3
	3.4	+0.5	3+00	13.4	9.5
10:50	4.0	0.1			
	4.7	0.8			
(3.9)	5.0	1.1			
1+00	5.2	1.3			
	8.7	4.8			
	10.1	6.2			
	11.2	7.3			
	11.7	7.8			
50	11.7	7.8			
	12.5	8.6			
	12.4	8.5			
	11.9	8.0			
	12.8	8.9			
2+00	12.8	8.9			
	12.8	8.9			
	13.0	9.1			
	13.1	9.2			



8-16-61

STA. N. 73°150'0400=40' W. OF B/L; SOUND N 59°27'34" W

Dist	Sound	Elev	Dist	Sound
0+00				13.5 9.5
			50	13.6 9.6
				13.7 9.7
				13.7 9.7
	2.3	+1.7		13.8 9.8
50	2.9	+1.1		13.6 9.6
	3.6	+0.4	3+00	13.6 9.6
10:55	4.2	0.2		
	4.6	0.6		
(4.0)	5.1	1.1		
1+00	6.0	2.0		
	8.9	4.9		
	11.1	7.1		
	11.6	7.6		
	11.6	7.6		
50	12.1	8.1		
	12.9	8.9		
	13.0	9.0		
	13.0	9.0		
	13.0	9.0		
2+00	13.3	9.3		
	13.3	9.3		
	13.0	9.0		
	13.3	9.3		

(67)

STA. N. 74°00'0400=30' W. OF B/L; SOUND N. 48°30'50" W

Dist	Sound	Elev	Dist	Sound	Elev
0+00				13.5	9.4
			50	13.5	9.4
				13.6	9.5
				13.6	9.5
	1.0	+3.1		13.6	9.5
	2.1	+2.0		13.5	9.4
50	2.8	+1.3		13.6	9.5
	3.4	+0.7	3+00	13.3	9.2
11:00	3.9	+0.2			
	4.3	0.2			
(4.1)	4.8	0.7			
1+00	5.2	1.1			
	7.8	3.7			
	10.7	6.6			
	10.7	6.6			
	11.5	7.4			
50	12.2	8.1			
	13.0	8.9			
	13.2	9.1			
	13.1	9.0			
	13.0	8.9			
2+00	13.1	9.0			
	12.9	8.8			
	13.1	9.0			
	13.4	9.3			



8-16-61

STA. N. 74+50 CHOD=50' W. OF B/L; SOUND N. 37340TW

Dist Sound Elev Dist Sound Elev

0+00			13.0	8.9
		50	13.0	8.9
	0.4	+3.7	13.1	9.0
	0.9	+3.2	13.1	9.0
	1.6	+2.5	13.1	9.0
50	2.2	+1.9	13.3	9.2
	3.0	+1.1	3+00 13.2	9.1
11:10	3.5	+0.6		
≡	4.0	+0.1		
(4.1)	4.5	0.4		
1+00	4.6	0.5		
	4.8	0.7		
	5.4	1.3		
	10.5	6.4		
	13.0	8.9		
50	13.1	9.0		
	12.7	8.6		
	12.8	8.7		
	13.0	8.9		
	12.9	8.8		
2+00	12.9	8.8		
	12.9	8.8		
	13.0	8.9		
	13.0	8.9		

68

STA. N. 75+00 CHOD=60' W. OF B/L; SOUND N. 37340TW

Dist Sound Elev Dist Sound Elev

0+00			13.3	9.1
		50	13.4	9.2
			13.5	9.3
	0.0	+4.2	13.5	9.3
	0.7	+3.5	13.4	9.2
50	1.1	+3.1	13.7	9.5
	2.0	+2.2	3+00 13.8	9.6
11:15	2.6	+1.6		
≡	3.0	+1.2		
(4.2)	3.2	+1.0		
1+00	3.8	+0.4		
	4.0	+0.2		
	4.9	0.7		
	7.6	3.4		
	13.0	8.8		
50	13.0	8.8		
	13.5	9.3		
	13.4	9.2		
	13.1	8.9		
	13.6	9.4		
2+00	13.6	9.4		
	13.4	9.2		
	13.3	9.1		
	13.4	9.2		



8-16-61

STA. N. 75°50'00" = 60° W. OF B/L SOUND N. 37°34'00" W

Dist	Sound	Elev	Dist	Sound	Elev
0+00			13.7	9.4	
			50 13.5	9.2	
			13.5	9.2	
			13.6	9.3	
	0.3	+4.0	13.6	9.3	
50	0.9	+3.4	13.6	9.3	
	1.8	+2.5	3+00 13.5	9.2	
11:20	2.3	+2.0			
≈	3.9	+0.4			
(4.3)	4.5	0.2			
1+00	5.0	0.7			
	6.8	2.5			
	10.3	6.0			
	10.6	6.3			
	10.9	6.6			
50	11.1	6.8			
	14.0	9.7			
	14.0	9.7			
	13.5	9.2			
	13.7	9.4			
2+00	13.2	8.9			
	13.9	9.6			
	13.8	9.5			
	13.7	9.4			

(6)

STA. N. 76°00'00" = 70° W. OF B/L SOUND N. 38°41'13" W

Dist	Sound	Elev	Dist	Sound	Elev
0+00			13.6	9.3	
			50 13.8	9.5	
			13.5	9.2	
	0.2	+4.1	13.6	9.3	
	1.1	+3.2	13.6	9.3	
50	1.9	+2.4	13.3	9.0	
	3.0	+1.3	3+00 13.6	9.3	
11:25	3.8	+0.5			
≈	4.6	0.3			
(4.3)	5.0	0.7			
1+00	5.6	1.3			
	9.6	5.3			
	11.6	7.3			
	13.0	8.7			
	13.2	8.9			
50	13.2	8.9			
	13.4	9.1			
	13.6	9.3			
	13.6	9.3			
	13.5	9.2			
2+00	13.8	9.5			
	13.4	9.1			
	13.6	9.3			
	13.7	9.4			



8-16-61

STAN: 76+50: 0+00 = 80' W. OF B/L SOUND N. 39° 48' 00" W

Dist Sound Elev Dist Sound Elev

0+00 13.8 9.4

50 13.5 9.1

13.6 9.2

0.6 +3.8 13.6 9.2

1.5 +2.9 13.6 9.2

50 2.1 +2.3 13.7 9.3

3.0 +1.4 3+00 13.5 9.1

11:30 4.0 +0.4

4.5 0.1

(4.4) 4.8 0.4

1+00 7.9 3.5

10.6 6.2

12.0 7.6

13.4 9.0

13.7 9.3

50 13.2 8.8

13.3 8.9

13.1 8.7

13.3 8.9

13.5 9.1

2+00 13.5 9.1

13.6 9.2

13.6 9.2

13.5 9.1

(70)

STAN: 77+00: 0+00 = 80' W. OF B/L SOUND N. 39° 48' 00" W

Dist Sound Elev Dist Sound Elev

0+00 13.5 9.0

50 13.7 9.2

13.6 9.1

0.0 +4.5 13.9 9.4

0.8 +3.7 14.0 9.5

50 1.6 +2.9 14.0 9.5

2.2 +2.3 3+00 14.0 9.5

11:40 2.9 +1.6

3.5 +1.0

(4.5) 4.0 +0.5

1+00 4.3 +0.2

5.0 0.5

9.1 4.6

11.1 6.6

11.0 6.5

50 12.1 7.6

12.9 8.4

13.8 9.3

12.9 8.4

13.5 9.0

2+00 13.5 9.0

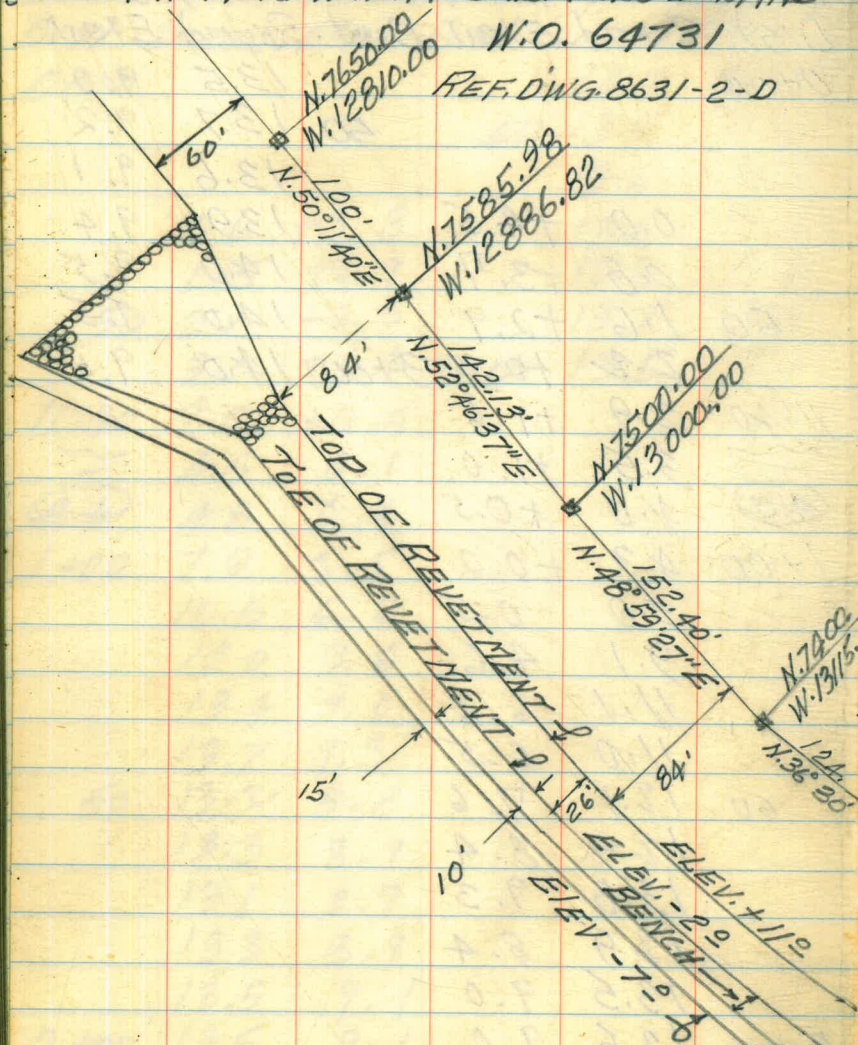
13.7 9.2

13.5 9.0

13.8 9.3

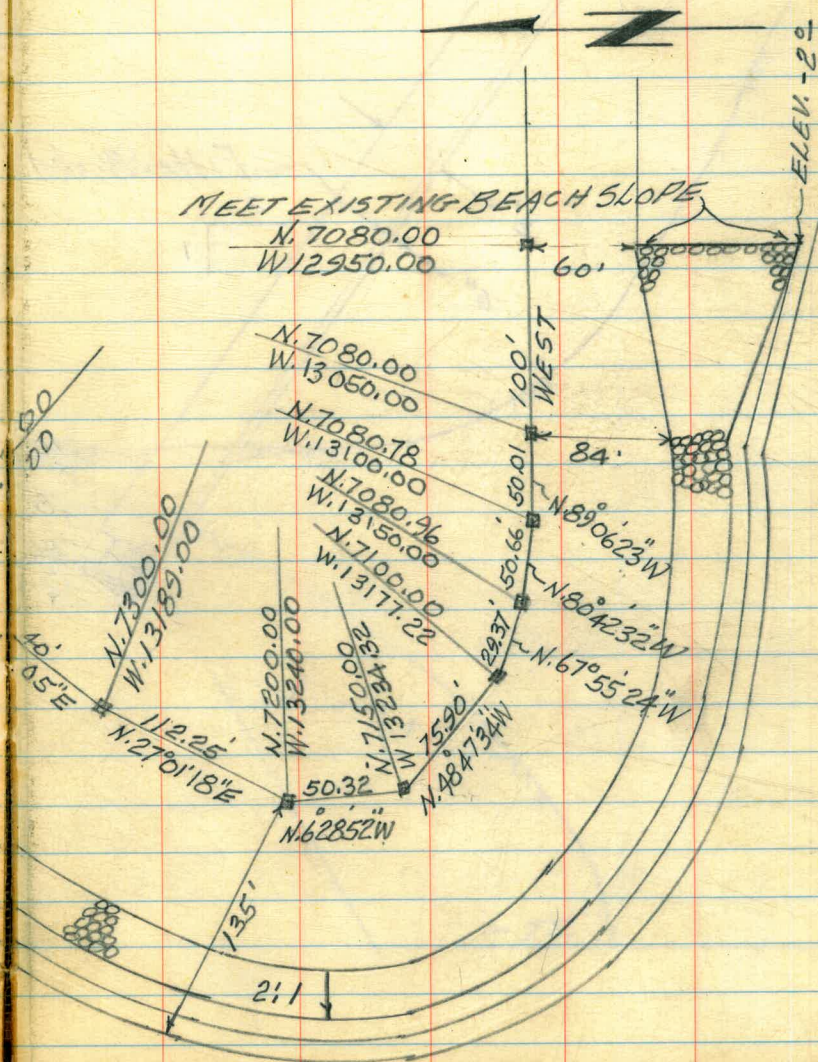


RIP RAP ALIGNMENT CABRILLO ISLAND



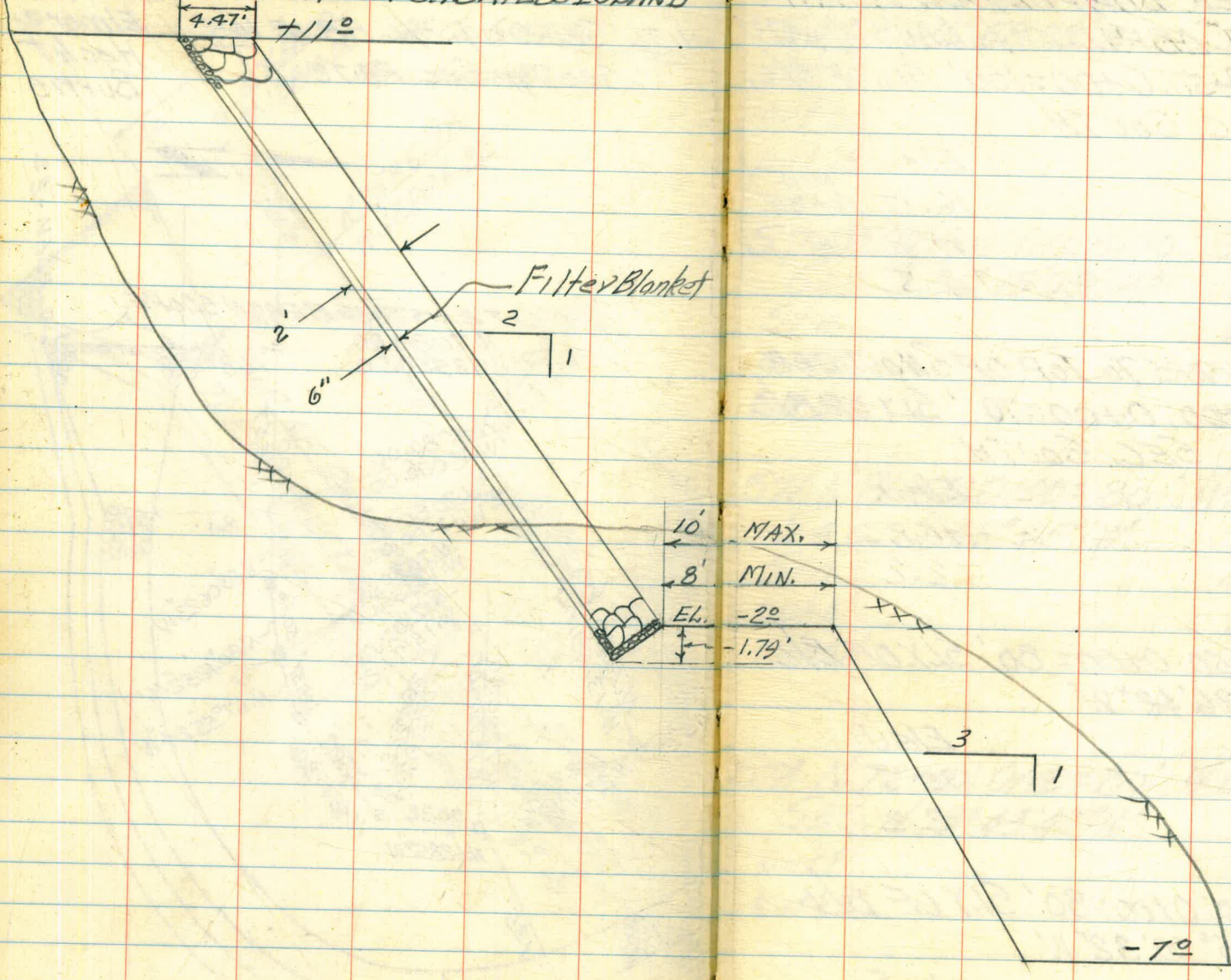
NOTE: See Orig. B/L. F.B. No 145  
See Typ. Sec. Pg. 72

(71)  
Stamper  
Elmore  
Hecht  
Burris





# TYPICAL SECTION FOR CABRILLO ISLAND





6-06-62

X-SEC'S AFTER COMPLETION OF RIP  
RAP, SWLY CABRILLO ISLAND No. 69731

STA. W. 129+50; 0+00=100' SLY. OF B/L.

SEC. SOUTH

Sta.	Elev	MON.
B.M.	16.17	GABE
17 37'	11.6	
out 24'	1.5	

NOTE: B/L REFERS TO TOP OF SHOULDER

STA. W. 130+00; 0+00=70' SLY OF B/L

SEC. SOUTH

Sta.	Elev.
out 5'	10.8
out 40'	2.2

STA. W. 130+50; 0+00=80' SLY. OF B/L

SEC. S. 0°26'48"W

Sta.	Elev
out 6'	10.5
out 24'	2.2

STA. W. 131+00; 0+00=80' SLY OF B/L

SEC. S. 5°00'32"W

out 4'	10.5
out 20'	2.0

(73)

STA. W. 131+50; 0+00=80' SLY OF B/L

SEC. S. 16°58'23"W

Sta.	Elev.
out 2'	10.4
out 19'	2.0

STA. W. 132+00; 0+00=70' SLY. OF B/L

SEC. S. 36°19'03"W

Sta.	Elev.
out 8'	10.5
out 26'	2.0

STA. N. 71+50; 0+00=80' W. OF B/L

SEC. S. 65°45'W

Sta.	Elev.
out 4'	10.1
out 20'	2.0

STA. N. 72+00; 0+00=80' W. OF B/L

SEC. N. 79°43'47"W

out 8'	10.8
out 25'	2.0



STA. N. 72+50; 0+100 = 90' WLY. OF B/L  
SEC. N. 62°58'42" W

Sta.	Elev.
out 4'	10.5
out 22'	2.2

STA. N. 73+00; 0+100 = 80' WLY. OF B/L  
SEC. N. 61°13'08" W

Sta.	Elev.
out 8'	10.2
out 24'	2.0

STA. N. 73+50; 0+100 = 80' WLY. OF B/L  
SEC. N. 59°27'34" W

Sta.	Elev.
out 3'	9.9
out 19'	2.2

STA. N. 74+00; 0+100 = 70' WLY. OF B/L  
SEC. N. 48°30'50" W

Sta.	Elev.
out 7'	9.6
out 23'	2.0

TP 10.98 N74 W13130

6-06-62

74  
SEC. "

STA. N. 74+50; 0+100 = 90' WLY. OF B/L N. 37°34'07" W

Sta.	Elev.
out 6'	10.2
out 22'	2.0

SEC.  
STA. N. 75+00; 0+100 = 100' WLY. OF B/L N. 37°34'07" W

Sta.	Elev.
out 9'	10.1
out 23'	2.2

SEC.  
STA. N. 75+50; 0+100 = 110' WLY. OF B/L N. 37°34'07" W

Sta.	Elev.
out 0.0	10.9
out 17'	2.2

SEC.  
STA. N. 76+00; 0+100 = 90' WLY. OF B/L N. 38°41'13" W

Sta.	Elev.
out 7'	11.0
out 34'	2.2

SEC.  
STA. N. 76+50; 0+100 = 90' WLY. OF B/L N. 38°41'13" W

21' 17"	11.2
out 43'	2.2



SOUNDINGS SWLY. CABRILLO ISLAND  
AFTER COMPLETION OF RIF. RAP

Stamped Hecht 6-13-62  
Newbern Burris

(75)

STA. W. 129+50: 0+00 = 100' S. OF B/L SOUND SOUTH

STA. W. 130+50: 0+00 = 80' SLY OF B/L SOUND " 5.0°26'48"W

Dist	Sound	Elev	Dist	Sound	Elev
0+00	(25)		9.7	7.2	
			10.1	7.6	
			10.1	7.6	
	2.2	+0.3	10.1	7.6	
	3.6	1.1	50	10.2	7.7
50	4.5	2.0	10.2	7.7	
	7.8	5.3	10.2		
10:55	9.0	6.5	10.2		
	8.3	5.7	10.2		
	8.6	6.1	2+00	10.2	7.7
1+00	9.4	6.9			

Dist	Sound	Elev	Dist	Sound	Elev
0+00	(24)		10.1	7.7	
			10.1	7.7	
			10.4	8.0	
	3.7	1.3	10.3	7.9	
	7.0	4.6	50	10.3	7.9
50	8.0	5.6	10.5	8.1	
	8.4	6.0	10.6	8.2	
11:05	8.6	6.2	10.5	8.1	
	8.8	6.4	10.5	8.1	
	8.9	6.5	2+00	10.5	8.1
1+00	9.7	7.3			

STA. W. 130+00: 0+00 = 70' S. OF B/L SOUND SOUTH

STA. W. 131+00: 0+00 = 80' SLY OF B/L SOUND " 5.5°00'32"W

Dist	Sound	Elev	Dist	Sound	Elev
0+00	(25)		9.4	6.9	
			9.8	7.3	
			10.2	7.7	
			50	10.2	7.7
	0.0	+2.5	10.3	7.8	
50	3.8	1.3	10.2	7.7	
	5.0	2.5	10.3	7.8	
11:00	5.5	3.0	10.4	7.9	
	5.9	3.4	2+00	10.4	7.9
	7.6	5.1			
1+00	8.1	5.6			
	9.0	6.5			

Dist	Sound	Elev	Dist	Sound	Elev
0+00	(23)		10.5	8.2	
			10.4	8.1	
			10.3	8.0	
	5.4	3.1	50	10.5	8.2
	6.6	4.3	10.5		
50	6.6	4.3	10.5		
	7.2	4.9	11.1		
11:10	8.5	6.2	10.6		
	8.5	6.2	2+00	10.6	
	9.3	7.0			
1+00	9.8	7.5			
	10.1	7.8			



6-13-62

STA. W. 131+50; 0+00=80' SLY. OF B/L ^{SOUND} 5.16°58'23" N

Dist Sound Elev. Dist Sound Elev.

0+00					
(23)			(23)	10.4	8.1
				10.4	8.1
	0.2	+2.1		10.5	
	4.3	2.0		10.5	
	6.7	4.4	50	10.5	
50	8.8	6.5		10.5	
	8.9	6.6		10.6	
11:15	8.5	6.2		10.7	
<u>      </u>	8.6	6.3		10.6	
	9.3	7.0	2+00	10.6	
1+00	10.0	7.7			

STA. W. 132+00; 0+00=70' SLY. OF B/L ^{SOUND} 5.36°19'03" W

0+00					
(23)			(23)	10.0	7.7
				10.1	7.8
				10.1	
	1.2	+1.1	50	10.1	
	7.5	5.2		10.2	
50	8.6	6.3		10.2	
	9.1	6.8		10.2	
11:20	8.9	6.6		10.2	
<u>      </u>	8.8	6.5	2+00	10.2	
	9.0	6.7			
1+00	9.7	7.4			
	10.0	7.7			

(76)

STA. N. 71+50; 0+00=80' W. OF B/L ^{SOUND} 5.65°45' W

Dist Sound Elev. Dist Sound Elev.

0+00					
(22)			(22)	9.9	7.7
				9.9	7.7
	0.0	+2.2		9.9	7.7
	5.5	3.3		10.0	
	7.4	5.2	50	10.0	
50	8.8	6.6		10.2	
	9.6	7.4		10.2	
	9.8	7.6		10.3	
11:25	10.0	7.8		10.2	
<u>      </u>	10.0	7.8	2+00	10.2	
1+00	10.0	7.8			

STA. N. 72+00; 0+00=80' W. OF B/L ^{SOUND} N. 79°43'47" W

0+00					
(22)			(22)	10.0	7.8
				10.0	7.8
				10.1	7.9
	1.7	+0.5	50	10.3	8.1
	5.7	3.5		10.3	
50	8.2	6.0		10.4	
	8.5	6.3		10.4	
11:30	9.0	6.8		10.5	
<u>      </u>	9.1	6.9	2+00	10.5	
	9.0	6.8			
1+00	9.9	7.7			
	10.0	7.8			



6-13-62

SOUND  
STA. N. 72+50; CHOO=90' W. OF BL. N. 62°58'42" W

DIST SOUND ELEV DIST SOUND ELEV

0+00  
(21)  
21  
10.0 7.9  
10.1 8.0  
10.1  
6.1 4.0  
8.4 6.3 50 10.1  
50 8.9 6.8 10.2  
9.7 7.6 10.4  
11:35 10.1 8.0 10.5  
10.0 7.9 10.4  
9.3 7.2 2+00 10.5  
1+00 9.6 7.5

SOUND  
STA. N. 73+00; CHOO=80' W. OF BL. N. 61°13'08" W

0+00  
(21)  
21  
9.7 7.6  
10.0 7.9  
10.1 8.0

3.7 1.6 50 9.8 7.7  
5.3 3.2 10.4 8.3  
50 8.2 6.1 10.5  
10.8 8.7 10.5  
11:20 11.4 9.3 10.5  
11.2 9.1 2+00 10.5  
11.0 8.9  
1+00 9.0 6.9  
9.3 7.2

(77)

SOUND  
STA. N. 73+50; CHOO=80' W. OF BL. N. 59°27'34" W

DIST SOUND ELEV DIST SOUND ELEV

0+00  
(20)  
20  
9.9 7.9  
10.3 8.3  
10.5  
6.1 4.1  
7.6 5.6 50 10.6  
50 9.2 7.2 10.8  
9.9 7.9 10.7  
11:50 10.0 8.0 10.7  
10.1 8.1 10.8  
9.1 7.1 2+00 10.8  
1+00 9.0 7.0

SOUND  
STA. N. 74+00; CHOO=70' W. OF BL. N. 48°30'50" W

0+00  
(20)  
20  
10.7 8.7  
10.8 8.8  
10.7

3.0 1.0 50 10.7  
5.2 3.2 10.7  
50 8.1 6.1 10.7  
8.3 6.3 10.6  
11:55 9.3 7.3 10.8  
11.0 9.0 2+00 10.8  
9.6 7.6  
1+00 9.4 7.4  
10.0 8.0



6-13-62

SOUND

STA. N. 74+50 | CHOO=90' W. OF B/L | N. 37° 34' 07" W

	Dist	Sound	Elev	Dist	Sound	Elev
0+00	(19)	10.1	8.2			
		10.1	8.2			
		10.1	8.2			

3.8 1.9

5.4 3.5

50

10.3

50 5.0 3.1

10.5

5.8 3.9

10.6

12:00 6.3 4.4

10.5

6.9 5.0

10.5

7.7 5.8

2+00

10.5

1+00 9.7 7.8

STA. N. 75+00 | CHOO=100' W. OF B/L | SOUND N. 37° 34' 07" W

	Dist	Sound	Elev	Dist	Sound	Elev
0+00	(19)	10.3	8.4			
		10.7	8.8			
		10.8	8.9			

3.0 1.1

50

10.8

4.2 2.3

10.7

50 5.9 4.0

10.8

6.4 4.5

10.8

12:05 6.3 4.4

10.8

7.5 5.6

2+00

10.8

8.0 6.1

1+00 8.5 6.6

9.8 7.9

(78)

STA. N. 75+50 | CHOO=110' W. OF B/L | SOUND N. 37° 34' 07" W

	Dist	Sound	Elev	Dist	Sound	Elev
0+00	(19)	10.0	8.1			
		11.1	9.2			
		11.1	9.2			

6.2 4.3

11.2

8.1 6.2

50

11.1

50 8.9 7.0

11.4

9.4 7.5

11.2

12:10 10.0 8.1

11.3

10.0 8.1

11.5

9.4 7.5

2+00

11.5

1+00 8.5 6.6

STA. N. 76+00 | CHOO=90' W. OF B/L | SOUND N. 38° 13' W

	Dist	Sound	Elev	Dist	Sound	Elev
0+00	(19)	9.8	7.9			
		10.3	8.4			
		10.5	8.5			

50

10.7

1.5 +0.4

10.7

50 4.7 2.8

10.7

6.0 4.1

10.9

12:15 6.8 4.9

10.9

7.0 5.1

2+00

11.0

7.8 5.9

1+00 9.3 7.4

9.7 7.8



6-13-62

SOUND

5 STA. N. 76+50 CHOO=90' W. OF B/L N. 38° 41' 13" W.

	Dist	Sound	Elev.	Dist	Sound	Elev.
0+00						
18				18	8.0	6.2
					9.4	7.6
					10.1	8.3
					10.5	8.7
	0.3	11.5		50	10.5	
50	3.5	1.7			10.5	
	6.2	4.4			10.5	
12:20	6.9	5.1			10.9	
	6.6	4.8			10.9	
	6.3	4.5	2+00		11.0	
1+00	6.5	4.7				

# IMPROVED TABLES AND INFORMATION

## HORIZONTAL STADIA CORRECTIONS

2°-00'	— 0.1	21°-00'	— 12.3	33°-00'	— 29.7
3°-00'	— 0.3	21°-30'	— 13.4	33°-15'	— 30.1
4°-00'	— 0.5	22°-00'	— 14.0	33°-30'	— 30.5
5°-00'	— 0.8	22°-30'	— 14.7	33°-45'	— 30.9
6°-00'	— 1.1	23°-00'	— 15.3	34°-00'	— 31.3
7°-00'	— 1.5	23°-30'	— 15.9	34°-15'	— 31.7
8°-00'	— 1.9	24°-00'	— 16.5	34°-30'	— 32.1
9°-00'	— 2.5	24°-30'	— 17.2	34°-45'	— 32.5
10°-00'	— 3.0	25°-00'	— 17.9	35°-00'	— 32.9
10°-30'	— 3.3	25°-30'	— 18.6	35°-15'	— 33.3
11°-00'	— 3.6	26°-00'	— 19.2	35°-30'	— 33.7
11°-30'	— 4.0	26°-30'	— 19.9	35°-45'	— 34.1
12°-00'	— 4.3	27°-00'	— 20.6	36°-00'	— 34.6
12°-30'	— 4.7	27°-30'	— 21.3	36°-15'	— 35.0
13°-00'	— 5.1	28°-00'	— 22.0	36°-30'	— 35.4
13°-30'	— 5.5	28°-30'	— 22.8	36°-45'	— 35.8
14°-00'	— 5.9	29°-00'	— 23.5	37°-00'	— 36.2
14°-30'	— 6.3	29°-30'	— 24.3	37°-15'	— 36.6
15°-00'	— 6.7	30°-00'	— 25.0	37°-30'	— 37.1
15°-30'	— 7.2	30°-15'	— 25.4	37°-45'	— 37.5
16°-00'	— 7.6	30°-30'	— 25.8	38°-00'	— 37.9
16°-30'	— 8.1	30°-45'	— 26.2	38°-15'	— 38.3
17°-00'	— 8.5	31°-00'	— 26.5	38°-30'	— 38.7
17°-30'	— 9.0	31°-15'	— 26.9	38°-45'	— 39.1
18°-00'	— 9.5	31°-30'	— 27.3	39°-00'	— 39.6
18°-30'	— 10.1	31°-45'	— 27.7	39°-15'	— 40.0
19°-00'	— 10.6	32°-00'	— 28.1	39°-30'	— 40.5
19°-30'	— 11.2	32°-15'	— 28.5		
20°-00'	— 11.7	32°-30'	— 28.9		
20°-30'	— 12.3	32°-45'	— 29.3		

### Chains to Feet

1	.....	66
2	.....	132
3	.....	198
4	.....	264
5	.....	330
6	.....	396
7	.....	462
8	.....	528
9	.....	594
10	.....	660

### Feet to Chains

100	....	1.515
200	....	3.030
300	....	4.545
400	....	6.060
500	....	7.575
600	....	9.090
700	....	10.606
800	....	12.121
900	....	13.636
1,000	....	15.151



14.74 = 100' R.P.

15.39 = 200' R.P.

10.93 TP

10.68 TP