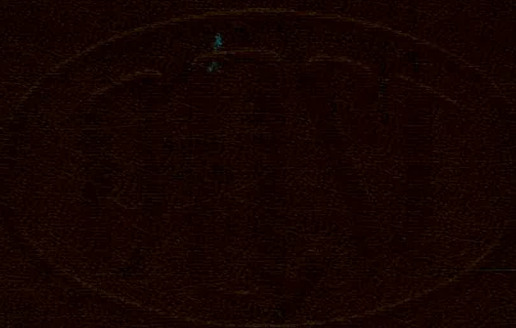


MB147



5985.7
34.3

6020.0

MICROFILMED
MICROFILMED

5952.2
17.6

6020.0

6019.0 852.6
21.0 27.4

6040.0 880.0

6052.2 919.1
17.8 30.9

6070.0 895.0

6068.9 5935.8
21.1 24.2

6090.0 5960.0

6085.5
24.5

6110.0

2:25 - 3.1
2:35 - 2.8
2:45 - 2.6

3
1:35 - 4.0
2:55 - 2.4

1:55 - 3.8

2:05 3.6

2:15 3.3

MB No 147

THIS BOOK INDEXED 2-19-62

179 60

68 50

111.10

90

89 60

68-50

21.10

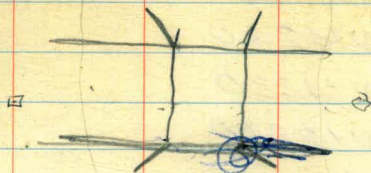
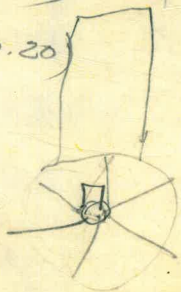
128 - N 6150
 128+50 - N 6140
 129 - N 6130
 +50 - N 6120
 130 - N 6100
 +50 - N 6090
 131 - N 6080
 +50 - N 6060
 132 - N 6040
 +50 - N 6000
 133 - N 5970
 +50 - N 5940
 134 - N 5910
 127+50 - N 6160
 127 - N 6150
 126+50 - N 6140
 136 - N 5800
 138 - N 5750
 140 - N 5760

W.119+50 - N 5916
 W 119 - N 5900
 W 118+50 N 5880
 W 120+50 - N 5950
 W 121 - N 5950
 W 12150 - N 5970
 W 12250 - N 6020 - 12-29
 W 123 - N 6020
 W 12350 - N 6040
 W 12450 - N 6070
 W 125 - N 6090
 W 12550 - N 6110
 W 134+50 N 5890
 W 135 - N 5850
 W 135+50 N 5820
 W 136+50 - N 5780
 W 137 - N 5770
 W 137+50 - N 5760

(58-66)
 W 14270.20

89-60
 68-50
 21-10

46



72 00

59

134 00

Completed Fath. Check 1-03-60

N.62 - W14250
N6150 - W14260
N61' - W14240
N6050 - W14220
N60 - W14210
N5950 - W14190
N59 - W14160
N5850 ✓ - W14120
W141 - N5840
W14050 - N5780
W13950 - N5750
W139 - N5750
W13850 - N5850
W13750 - N5760
W13650 - N5780
W137 - N5770

13616

101.10

3506

BASELINE LAYOUT PEREC. COVE & VICINITY

STA. DEF 4 CHORD

W.O. 64501 12-14-60

Stampes
Wentworth
Lund
Helict

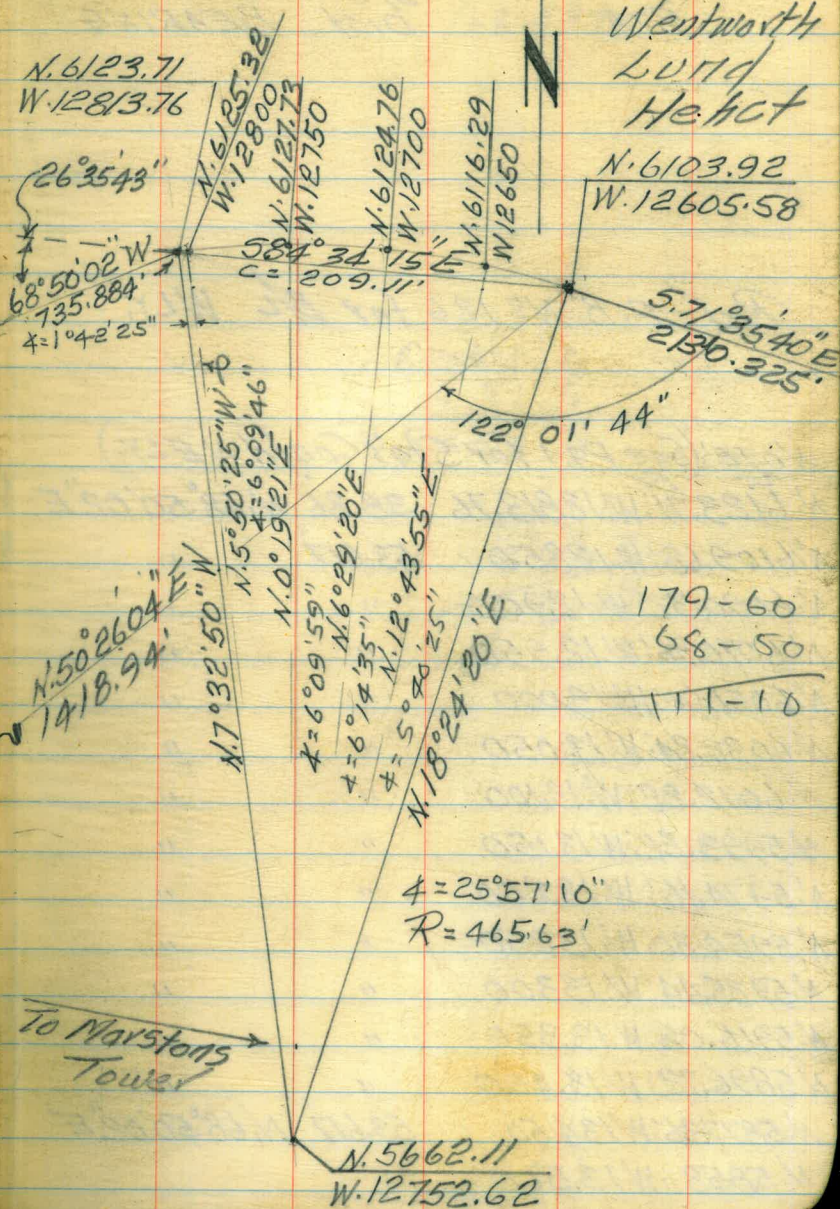
NOTE (See Pg. 2 for Sec's Cont'd SWLY.)

E.C.		
N. 6123.71 W. 12843.76	12° 58' 35"	13.87
N. 6125.32 W. 128400	12° 07' 22.5"	50.06
N. 6127.73 W. 127450	9° 02' 30."	50.09
N. 6124.76 W. 127400	5° 57' 30"	50.71
N. 6116.29 W. 126450	2° 50' 12.5"	46.09

B.C.H.
N. 6103.92; W. 12605.58

"MOOSE"
N. 5200.08
W. 13699.44

S 71-35-40 E



179-60
68-50
111-10

To Marston's
Tower

STA

B/L
DIST

BEARING

53.617
~~2~~
 107.234

Ref. F.B. No 126 for B/L WLY.

NOTE: (See Pg. 1 for Sta's Cont'd N'ELY.)

N. 6123.71; W. 12813.76	38.86	N. 68° 50' 02" E
N. 6109.68; W. 12850	53.617	"
N. 6090.32; W. 12900	"	"
N. 6070.96; W. 12950	"	"
N. 6051.60; W. 13000	"	"
N. 6032.24; W. 13050	"	"
N. 6012.88; W. 13100	"	"
N. 5993.52; W. 13150	"	"
N. 5974.16; W. 13200	"	"
N. 5954.80; W. 13250	"	"
N. 5935.44; W. 13300	"	"
N. 5916.08; W. 13350	"	"
N. 5896.72; W. 13400	"	"
N. 5877.36; W. 13450	53.617	N. 68° 50' 02" E
N. 5858; W. 13500		

6051.6
 6516

N. 5400 0

38.86

53.62

92.48

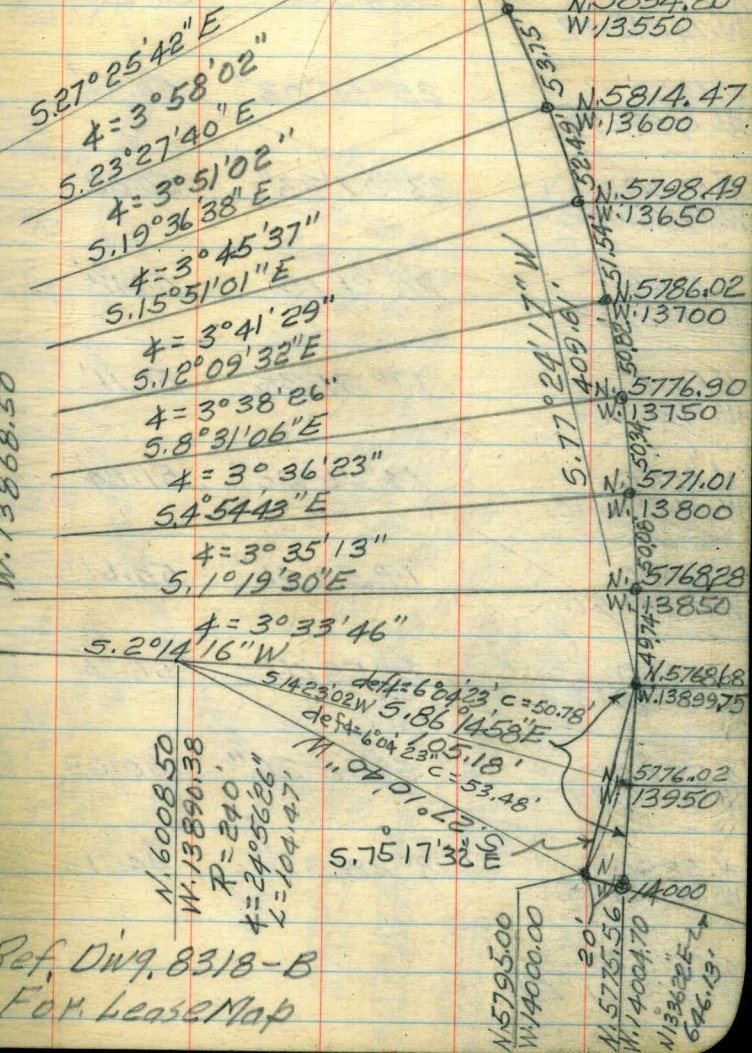
STA.	B/L	BEARING
N.5702.75 W. 11,400	52.695	5.71°35'40"E
N.5,719.39 W. 11,450	"	"
N.5736.02 W. 11,500	"	"
N.5752.86 W. 11,550	"	"
N.5769.30 W. 11,600	"	"
N.5785.94 W. 11,650	"	"
N.5802.57 W. 11,700	"	"
N.5819.22 W. 11,750	"	"
N.5835.85 W. 11,800	"	"
N.5852.49 W. 11,850	"	"
N.5869.13 W. 11,900	"	"
N.5885.77 W. 11,950	"	"
N.5902.40 W. 12,000	"	"
N.5919.04 W. 12,050	"	"
N.5935.68 W. 12,100	"	"
N.5952.32 W. 12,150	"	"
N.5968.95 W. 12,200	"	"
N.5985.60 W. 12,250	"	"
N.6002.23 W. 12,300	"	"
N.6018.87 W. 12,350	"	"
N.6035.51 W. 12,400	"	"
N.6052.15 W. 12,450	"	"
N.6068.78 W. 12,500	"	"
N.6085.42 W. 12,550	52.695	"
N.6102.06 W. 12,600	5.88	5.71°35'40"E
N.6103.92 W. 12,605.58	NOTE: (See Sketch Pg. 1)	

NOTE: FOR STA'S CONT'D. ELY
 ≈ See F.B. No 150
20

STA.	DEF. Δ	CHORD
N. 5858.00 W. 135+00	14° 49' 59"	55.38'
N. 5834.20 W. 135+50	12° 50' 58"	53.75'
N. 5814.47 W. 136+00	10° 55' 27"	52.49'
N. 5798.49 W. 136+50	9° 02' 39"	51.54'
N. 5786.02 W. 137+00	7° 11' 54"	50.82'
N. 5776.90 W. 137+50	5° 22' 41"	50.34'
N. 5771.01 W. 138+00	3° 34' 29"	50.08'
N. 5768.28 W. 138+50	1° 46' 53"	49.74'
P.C.C. N. 5768.68 W. 13899.75 W. 139+50	To S. 104° 42' 28"	To S. 81° 41' 21"

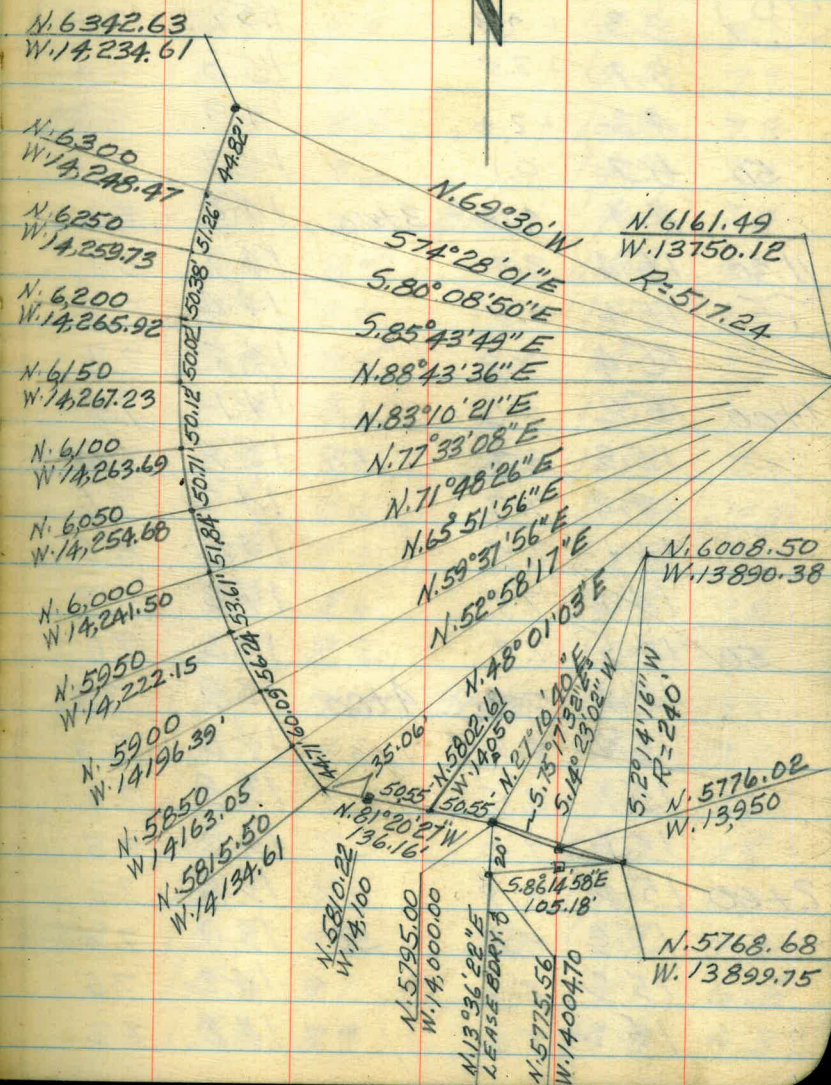
Ch. Coords
N. 6568.07
W. 13868.50

R = 800'
 $\Delta = 29° 39' 58"$
L = 414.22'



Ref. Div. 8318-B
For Lease Map

STA.	DEF \angle	CHORD
P.R.C.		
N. 6342.63 W. 14234.61	31° 14' 28"	44.82'
N. 6300 W. 14248.47	28° 45' 28"	51.26'
N. 6250 W. 14259.73	25° 55' 03"	50.38'
N. 6200 W. 14265.92	23° 07' 33"	50.02'
N. 6150 W. 14267.23	20° 21' 15"	50.12'
N. 6100 W. 14263.69	17° 34' 38"	50.71'
N. 6050 W. 14254.68	14° 46' 02"	51.84'
N. 6000 W. 14241.50	11° 53' 41"	53.61'
N. 5950 W. 14222.15	8° 55' 26"	56.24'
N. 5900 W. 14196.39	5° 48' 26"	60.09'
N. 5850 W. 14163.05	2° 28' 37"	44.71'
N. 5815.50 = P.C. W. 14134.61 R.A.		



SOUNDINGS PEREZ COVE & VICINITY
 F 12-21-60 W.D. 64501
 STA. W. 118+00.0+00=N. 5.860 ; SOUND NORTH

Dist	Sound	Elev	Dist	Sound	Elev
0+00			(66)	15.3	8.7
(66)	0.8	+5.8	50	15.2	8.6
	2.3	+4.3		15.1	8.5
	3.1	+3.5		15.0	8.4
	4.2	+2.4		14.9	8.3
50	6.7	0.1		14.7	8.1
	11.4	4.8	3+00	14.8	8.2
11:30	15.4	8.8		14.7	8.1
	15.4	8.8		14.4	7.8
	15.4	8.8		14.5	7.9
1+00	15.2	8.6		14.1	7.5
	15.3	8.7	50	13.8	7.2
	14.3	7.7		14.2	7.6
	14.1	7.5		14.6	8.0
	14.1	7.5		14.3	7.7
50	14.5	7.9		14.2	7.6
	14.4	7.8	4+00	13.9	7.3
	15.2	8.6		14.0	7.4
	15.1	8.5		13.9	7.3
	15.6	9.0		13.9	7.3
2+00	15.4	8.8		13.8	7.2
	15.2	8.6	50	13.9	7.3
	15.2	8.6		14.2	7.6
	15.2	8.6		14.8	8.2

STA. W. 118+00-NORTH (6)

Dist	Sound	Elev	Dist	Sound	Elev
(63)	15.1	8.6	(63)	15.2	8.7
	15.0	8.5		14.8	8.3
5+00	15.0	8.5	50	14.5	8.0
	14.9	8.4		14.6	8.1
	15.0	8.5		14.4	7.9
11:35	15.0	8.5		14.3	7.8
	15.1	8.6		14.3	7.8
50	15.1	8.6	8+00	14.3	7.8
	15.0	8.5		14.4	7.9
	14.9	8.4		14.3	7.8
	15.0	8.5		14.3	7.8
	15.1	8.6		14.3	7.8
6+00	15.3	8.8	50	14.3	7.8
	15.1	8.6		14.2	7.7
	14.9	8.4		14.3	7.8
	14.9	8.4		14.3	7.8
	14.7	8.2		14.3	7.8
50	14.3	7.8	9+00	14.2	7.7
	15.1	8.6		14.2	7.7
	14.8	8.3		14.1	7.6
	15.8	9.3		14.0	7.5
	15.7	9.2		13.9	7.4
7+00	15.7	9.2	50	13.7	7.2
	15.6	9.1		13.1	6.6
	15.4	8.9		10.8	4.3

STA. W. 118+00 - NORTH

	Dist	Sound	Elev	Dist	Sound	Elev
(63)	9.7		3.2			
1	9.0		2.5			
10+00	5.9		+0.6			
	3.7		+2.8			

50

11+00

50

12+00

12-20-60

STA. N. 120+00: 0+00 = N. 5930; SOUND NORTH

	Dist	Sound	Elev	Dist	Sound	Elev
0+00				(57)	14.0	8.3
(58)	1.7		+4.1	50	14.0	8.3
	1.9		+3.9		14.0	8.3
<u>11:40</u>	3.9		+1.9		14.0	8.3
	4.9		+0.9		13.9	8.2
50	8.0		2.2		13.6	7.9
	13.1		7.3	3+00	13.7	8.0
	14.5		8.7		13.5	7.8
	14.6		8.8		13.6	7.9
	14.5		8.7		13.6	7.9
1+00	14.4		8.6		13.6	7.9
	14.0		8.2	50	13.5	7.8
	14.4		8.6		15.6	9.9
	14.2		8.4		15.7	10.0
	14.1		8.3		15.7	10.0
50	13.8		8.0		15.7	10.0
	14.1		8.3	4+00	15.7	10.0
	14.1		8.3		15.7	10.0
	14.0		8.2		15.8	10.1
	14.1		8.3		15.6	9.9
2+00	14.3		8.5		15.8	10.1
	14.0		8.2	50	15.5	9.8
	14.0		8.2		15.5	9.8
	14.1		8.3		15.3	9.6

STA. W. 120+00 - NORTH			12-20-60		
DIST	Sound	Elev	DIST	Sound	Elev
(56)	15.3	9.7	(56)	15.2	9.6
	15.3	9.7		15.2	9.6
5+00	15.0	9.4	50	14.9	9.3
	14.9	9.3		14.7	9.1
	14.9	9.3		14.6	9.0
	14.8	9.2		14.6	9.0
	14.8	9.2		14.6	9.0
50	14.9	9.3	8+00	14.4	8.8
	15.0	9.4		14.4	8.8
11.45	15.0	9.4		14.2	8.6
<u>11.45</u>	14.9	9.3		14.3	8.7
	15.0	9.4		13.7	8.1
6+00	15.0	9.4	50	14.0	8.4
	14.7	9.1		15.0	9.4
	14.6	9.0		15.0	9.4
	14.6	9.0		14.9	9.3
	14.5	8.9		14.9	9.3
50	14.5	8.9	9+00	14.8	9.2
	14.4	8.8		14.9	9.3
	14.6	9.0		14.1	8.5
	14.7	9.1		14.3	8.7
	14.7	9.1		14.0	8.4
7+00	15.1	9.5	50	14.0	8.4
	15.3	9.7		11.4	5.8
	15.3	9.7		10.1	4.5

STA. W. 120+00 - NORTH		
DIST	Sound	Elev
(56)	8.6	3.2
	5.0	+0.6
10+00	2.0	+3.6

50

11+00

50

(8)

(Completed)
Fath. check.

12-20-60

STA. W. 122+00. CORD: N. 5990. SOUND NORTH

Dist	Sound	Elev	Dist	Sound	Elev
0+00			(32)	11.7	8.5
			50	11.5	8.3
(32)				11.6	8.4
				11.2	8.0
				11.1	7.9
	0.1	+3.1		11.0	7.8
50	1.6	+1.6		11.0	7.8
	5.2	2.0	3+00	10.9	7.7
1:20	10.0	6.8		10.9	7.7
	11.4	8.2		10.4	7.2
	11.8	8.6		10.5	7.3
1+00	12.0	8.8		10.4	7.2
	11.8	8.6	50	10.0	6.8
	12.2	9.0		10.0	6.8
	13.0	9.8		12.2	9.0
	12.8	9.6		12.3	9.1
50	12.8	9.6		12.5	9.3
	12.3	9.1	4+00	12.2	9.0
	12.4	9.2		12.4	9.2
	12.1	8.9		12.5	9.3
	12.0	8.8		12.5	9.3
2+00	12.0	8.8		12.7	9.5
	11.7	8.5	50	12.7	9.5
	11.7	8.5		12.8	9.6
	11.4	8.2		12.8	9.6

STA. W. 122+00 - NORTH

(9)

Dist	Sound	Elev	Dist	Sound	Elev
(31)	12.6	9.5	(31)	12.2	9.1
	12.1	9.0		12.2	9.1
5+00	12.6	9.5	50	12.1	9.0
	12.2	9.1		12.1	9.0
	12.2	9.1	1:25	12.0	8.9
	12.1	9.0	≈	12.0	8.9
	12.3	9.2		11.9	8.8
50	12.1	9.0	8+00	12.0	8.9
	12.2	9.1		12.0	8.9
	12.5	9.4		12.0	8.9
	12.1	9.0		12.0	8.9
	12.1	9.0		12.0	8.9
6+00	11.9	8.8	50	12.0	8.9
	11.9	8.8		12.0	8.9
	11.0	7.9		12.0	8.9
	12.0	8.9		12.0	8.9
	12.1	9.0		12.0	8.9
50	13.0	9.9	9+00	12.0	8.9
	12.5	9.4		11.4	8.3
	12.8	9.7		11.2	8.1
	12.7	9.6		11.3	8.2
	12.1	9.0		10.9	7.8
7+00	12.1	9.0	50	10.0	6.9
	12.3	9.2		8.4	5.3
	12.1	9.0		3.9	0.8

12-20-60

STA. W. 124+00: 0+00: N. 6,060: SOUND NORTH

Dist	Sound	Elev	Dist	Sound	Elev
0+00			(27)	11.3	8.6
(27)			50	11.2	8.5
				11.2	8.5
				11.1	8.4
				11.0	8.3
				11.0	8.3
50	0.9	+1.8		11.1	8.7
	6.4	3.7	3+00	11.0	8.3
1:35	10.2	7.5		10.7	8.0
	11.0	8.3		10.3	7.6
	10.8	8.1		10.4	7.7
1+00	10.4	7.7		11.0	8.3
	11.6	8.9	50	11.0	8.3
	11.3	8.6		10.9	8.2
	10.6	7.9		10.9	8.2
	10.8	8.1		11.1	8.4
50	11.0	8.3		11.2	8.5
	11.0	8.3	4+00	11.9	9.2
	11.0	8.3		11.6	8.9
	11.0	8.3		11.6	8.9
	11.2	8.5		11.7	9.0
2+00	11.6	8.9	50	11.9	9.2
	11.6	8.9		12.0	9.3
	11.3	8.6		11.9	9.2

STA. W. 124+00-NORTH

(10)

Dist	Sound	Elev	Dist	Sound	Elev
(26)	11.9	9.3	(26)	10.8	8.2
	11.9	9.3		10.9	8.3
5+00	11.6	9.0	50	11.0	8.4
	11.6	9.0		11.2	8.6
	11.7	9.1		10.8	8.2
	11.7	9.1		10.8	8.2
	12.2	9.6		10.7	8.1
50	11.4	8.8	8+00	10.7	8.1
	11.0	8.4		10.7	8.1
11:40	11.0	8.4		10.8	8.2
	10.9	8.3		10.9	8.3
	10.8	8.2		11.3	8.7
6+00	10.9	8.3	50	10.5	7.9
	11.0	8.4		10.9	8.3
	11.2	8.6		10.9	8.3
	11.3	8.7		10.0	7.4
	11.4	8.8		9.6	7.0
50	11.4	8.8	9+00	6.1	3.5
	11.5	8.9		2.8	0.2
	11.5	8.9			
	11.3	8.7			
	11.1	8.5			
7+00	11.0	8.4	50		
	11.0	8.4			
	10.9	8.3			

12-20-60

STA. W. 126+00: 0+00 = N 6/30: SOUND NORTH			STA. W. 126+00: 0+00 = N 6/30: SOUND NORTH		
Dist	Sound	Elev	Dist	Sound	Elev
0+00			(2.1)	10.3	8.2
(2.1)			50	10.8	8.7
	0.9	+1.2		10.8	8.7
	3.0	0.9		10.6	8.5
50	6.1	4.0		10.0	7.9
	10.0	7.9	3+00	9.7	7.6
1:55	11.2	9.1		10.0	7.9
	11.0	8.9		10.2	8.1
	11.2	9.1		10.9	8.8
1+00	11.0	8.9		11.1	9.0
	11.2	9.1	50	11.0	8.9
	11.6	9.5		11.1	9.0
	11.6	9.5		11.3	9.2
	11.4	9.3		11.2	9.1
50	11.2	9.1		11.1	9.0
	11.3	9.2	4+00	11.2	9.1
	11.0	8.9		11.0	8.9
	11.0	8.9		11.0	8.9
	11.0	8.9		11.0	8.9
2+00	11.0	8.9		11.0	8.9
	10.8	8.7	50	11.0	8.9
	10.5	8.4		10.7	8.6
	10.2	8.1		10.3	8.2

STA. W. 126+00 - NORTH

Dist	Sound	Elev	Dist	Sound	Elev
(2.0)	9.5	7.5	(2.0)	10.0	8.0
	10.1	8.1		10.2	8.2
5+00	10.0	8.0	50	11.0	9.0
	11.6	9.6		11.1	9.1
	11.4	9.4		11.0	9.0
	11.3	9.3		11.8	9.8
	11.1	9.1		11.0	9.0
50	11.3	9.3	8+00	10.9	8.9
	11.5	9.5		10.7	8.7
	11.7	9.7		10.0	8.0
	11.8	9.8		7.7	5.7
	11.7	9.7		6.2	4.2
6+00	11.5	9.5	50	2.0	0.0
	11.5	9.5			
2:00	11.4	9.4			
	11.3	9.3			
	11.1	9.1			
50	11.4	9.4	9+00		
	11.0	9.0			
	11.0	9.0			
	10.8	8.8			
	10.4	8.4			
7+00	10.1	8.1	50		
	10.2	8.2			
	10.0	8.0			

12-20-60

STA. W. 128+00 - 0+00 - N 6, 150' SOUND NORTH

	Dist	Sound	Elev	Dist	Sound	Elev
				(1.7)	9.9	8.2
0+00				50	9.5	7.8
(1.7)					9.3	7.6
					9.9	8.2
	1.0	10.7			9.6	7.9
50	4.3	2.6			9.3	7.6
	9.3	7.6	3+00	9.3	7.6	
2:15	9.5	7.8		8.9	7.2	
<u> </u>	9.1	7.4		8.4	6.7	
	9.7	8.0		7.9	6.2	
1+00	9.9	8.2		7.7	6.0	
	10.0	8.3	50	7.6	5.9	
	10.0	8.3		7.7	6.0	
	10.2	8.5		9.0	7.3	
	10.4	8.7		8.1	6.4	
50	10.1	8.4		8.1	6.4	
	10.3	8.6	4+00	8.1	6.4	
	10.2	8.5		8.1	6.4	
	10.4	8.7		8.3	6.6	
	9.8	8.1		8.5	6.8	
2+00	10.2	8.5		8.5	6.8	
	10.0	8.3	50	8.7	7.0	
	9.9	8.2		8.7	7.0	
	10.0	8.3		8.7	7.0	

STA. W. 128+00 - NORTH

	Dist	Sound	Elev	Dist	Sound	Elev
	(1.6)	9.0	7.4	(1.6)	9.6	8.0
		9.1	7.5		10.6	9.0
5+00	8.8	7.2	50	10.5	8.9	
	8.9	7.3		10.6	9.0	
	8.7	7.1		10.3	8.7	
	8.6	7.0		6.3	4.7	
	8.6	7.0		5.7	4.1	
50	8.6	7.0	8+00	4.5	2.9	
	8.3	6.7		0.0	+1.6	
	10.4	8.8				
2:20	11.0	9.4				
<u> </u>	11.0	9.4				
6+00	10.8	9.2	50			
	10.9	9.3				
	10.7	9.1				
	10.5	8.9				
	10.6	9.0				
50	10.7	9.1	9+00			
	10.6	9.0				
	10.8	9.2				
	11.1	9.5				
	11.1	9.5				
7+00	10.1	8.5	50			
	11.0	9.4				
	11.0	9.4				

12-20-60

STA. W. 130+00 - N. 6100 - SOUND NORTH

Dist	Sound	Elev	Dist	Sound	Elev
0+00			(13)	10.2	8.9
(13)			50	10.4	9.1
				10.4	9.1
				10.4	9.1
				10.3	9.0
50	0.4	10.9		9.8	8.5
	5.4	9.1	3+00	9.5	8.2
<u>2:35</u>	9.0	7.7		9.2	7.9
	10.8	9.5		9.0	7.7
	10.9	9.6		10.0	8.7
1+00	10.8	9.5		10.0	8.7
	10.6	9.3	50	10.0	8.7
	10.4	9.1		10.0	8.7
	10.5	9.2		10.0	8.7
	10.5	9.2		10.0	8.7
50	10.2	8.9		9.8	8.5
	10.0	8.7	4+00	9.8	8.5
	10.1	8.8		9.9	8.6
	10.5	9.2		10.0	8.7
	10.4	9.1		10.0	8.7
2+00	10.2	8.9		10.2	8.9
	10.4	9.1	50	10.2	8.9
	10.4	9.1		9.8	8.5
	10.2	8.9		10.0	8.7

STA. W. 130+00 - NORTH

(13)

Dist	Sound	Elev	Dist	Sound	Elev
(12)	10.0	8.8	(12)	10.0	8.8
	10.0	8.8		10.0	8.8
5+00	9.0	7.8	50	10.2	9.0
	9.7	8.5		10.2	9.0
	10.0	8.8		10.3	9.1
	10.0	8.8		10.0	8.8
	10.0	8.8		10.0	8.8
50	10.0	8.8	8+00	10.2	9.0
	9.7	8.5		10.2	9.0
	9.6	8.4		9.4	8.2
	9.2	8.0		10.0	8.8
	9.5	8.3		9.2	7.0
6+00	9.7	8.5	50	7.7	6.5
	9.9	8.7		6.8	5.6
<u>2:40</u>	10.2	9.0		2.4	1.2
	10.2	9.0			
	9.9	8.7			
50	10.2	9.0	9+00		
	10.0	8.8			
	10.0	8.8			
	10.0	8.8			
	10.4	9.2			
7+00	10.2	9.0			
	10.2	9.0			
	10.1	8.9			

12-20-60

STA. W. 132+00 - GND. N. 6,040 - SOUND NORTH

	Dist	Sound	Elev	Dist	Sound	Elev
				(109)	10.0	9.1
0+00				50	10.0	9.1
(09)					10.0	9.1
					9.7	8.8
	1.7	0.8			9.6	8.7
50	6.1	5.2			9.7	8.8
	9.0	8.1	3+00		9.3	8.4
2:50	9.3	8.4			9.0	8.1
	9.3	8.4			9.2	8.3
	9.3	8.4			9.1	8.2
1+00	9.2	8.3			9.1	8.2
	8.9	8.0	50		8.8	7.9
	9.6	8.7			8.9	8.0
	9.6	8.7			8.9	8.0
	9.9	9.0			8.7	7.8
50	9.9	9.0			9.5	8.6
	9.9	9.0	4+00		9.5	8.6
	10.0	9.1			9.7	8.8
	9.9	9.0			9.9	9.0
	10.0	9.1			9.8	8.9
2+00	10.1	9.2			9.8	8.9
	10.1	9.2	50		10.1	9.2
	10.0	9.1			10.0	9.1
	10.0	9.1			10.1	9.2

STA W. 132+00 - NORTH

	Dist	Sound	Elev	Dist	Sound	Elev
	(08)	10.1	9.3	(08)	11.9	11.1
		10.1	9.3		11.9	11.1
5+00		10.1	9.3	50	11.4	10.6
		10.0	9.2		10.9	10.1
		9.9	9.1		11.1	10.3
2:55		9.9	9.1		11.0	10.2
		9.9	9.1		10.7	9.9
50		11.4	10.6	8+00	10.6	9.8
		9.5	8.7		10.7	9.9
		11.7	10.9		11.0	10.2
		11.3	10.5		10.6	9.8
		10.7	9.9		10.6	9.8
6+00		11.7	10.9	50	10.7	9.9
		11.6	10.8		10.1	9.3
		11.6	10.8		10.4	9.6
		11.8	11.0		10.1	9.3
		11.6	10.8		10.9	10.1
50		11.6	10.8	9+00	11.1	10.3
		11.7	10.9		11.0	10.2
		11.6	10.8		6.9	6.1
		11.9	11.1		3.6	2.8
		11.5	10.7			
7+00		11.9	11.1	50		
		11.2	10.4			
		11.6	10.8			

12-21-60

5 STA. W. 134+00.0+00-N. 5,910 ; SOUND NORTH

	Dist	Sound	Elev	Dist	Sound	Elev
0+00				(6.6)	14.3	7.7
(6.5)	0.5	+6.0		50	14.3	7.7
	1.3	+5.2			14.4	7.8
	2.4	+4.1			14.4	7.8
	3.8	+2.7			14.4	7.8
50	4.6	+1.9			14.2	7.6
	6.4	+0.1		3+00	14.3	7.7
9:40	9.8	3.3			14.1	7.5
	12.9	6.4			14.1	7.5
	13.4	6.9			14.0	7.4
1+00	13.3	6.8			14.0	7.4
	13.4	6.9		50	14.1	7.5
	13.6	7.1			13.9	7.3
	13.8	7.3		9:45	14.0	7.4
	14.3	7.8			13.9	7.3
50	14.3	7.8			14.0	7.4
	14.1	7.6		4+00	13.9	7.3
	14.2	7.7			14.0	7.4
	14.4	7.9			14.3	7.7
	14.6	8.1			14.7	8.1
2+00	14.7	8.2			14.6	8.0
	15.0	8.5		50	14.6	8.0
	14.5	8.0			14.6	8.0
	14.5	8.0			14.7	8.1

STA. W. 134+00-NORTH

(75)

Dist	Sound	Elev	Dist	Sound	Elev
(6.6)	14.6	8.0	(6.6)	15.3	8.7
	14.3	7.7		15.6	9.0
5+00	15.6	9.0	50	15.6	9.0
	16.2	9.6		15.6	9.0
	16.1	9.5		15.9	9.3
	15.8	9.2	9:50	15.9	9.3
	16.1	9.5		16.0	9.4
50	16.0	9.4	8+00	16.4	9.8
	15.7	9.1		16.8	10.2
	16.1	9.5		16.5	9.9
	15.9	9.3		16.2	9.6
	15.5	8.9		16.1	9.5
6+00	15.2	8.6	50	16.0	9.4
	15.2	8.6		16.1	9.5
	15.1	8.5		15.9	9.3
	14.9	8.3		15.8	9.2
	14.9	8.3		15.6	9.0
50	14.9	8.3	9+00	16.2	9.6
	14.9	8.3		16.4	9.8
	15.1	8.5		16.4	9.8
	15.3	8.7		15.9	9.3
	15.4	8.8		15.9	9.3
7+00	15.3	8.7	50	16.1	9.5
	15.3	8.7		16.0	9.4
	15.2	8.6		16.2	9.6

STA. W. 134+00 - NORTH 12-21-60

DIST	Sound	Elev	DIST	Sound	Elev
(6.7)	16.3	9.6	(6.7)	13.4	6.7
	16.6	9.9		13.6	6.9
10+00	16.4	9.7	50	13.6	6.9
	16.3	9.6		13.7	7.0
	16.3	9.6		13.8	7.1
	16.7	10.0		13.3	6.6
	16.1	9.4		13.1	6.4
50	16.1	9.4	13+00	13.3	6.6
	16.0	9.3			
	16.3	9.6			
	16.4	9.7			
	16.4	9.7			
11+00	16.6	9.9			
	16.2	9.5			
	13.8	7.1			
	13.5	6.8			
	13.5	6.8			
50	13.3	6.6			
9:55	13.3	6.6			
	13.3	6.6			
	13.2	6.5			
	13.1	6.4			
12+00	13.1	6.4			
	13.1	6.4			
	13.2	6.5			

(16)

STA. W. 136+00 - 10400 = N. 5800 ; SOUND NORTH

DIST	Sound	Elev	DIST	Sound	Elev
0+00	0.2	+6.5	(6.7)	16.2	9.5
(6.7)	0.7	+6.0	50	17.2	10.5
	1.8	+4.9		17.1	10.4
	2.2	+4.5		17.0	10.3
	2.2	+4.5		17.0	10.3
50	3.7	+3.0		16.7	10.0
	4.0	+2.7	3+00	16.9	10.2
10:05	4.3	+2.4		16.5	9.8
	6.0	+0.7		16.1	9.4
	8.9	2.2		16.3	9.6
1+00	14.4	7.7		16.8	10.1
	17.0	10.3	50	16.5	9.8
	16.9	10.2		16.9	10.2
	17.0	10.3		16.9	10.2
	16.7	10.0		16.6	9.9
50	16.4	9.7		16.1	9.4
	16.4	9.7	4+00	16.3	9.6
	16.4	9.7		17.1	10.4
	16.4	9.7		17.9	11.2
	16.0	9.3		17.2	10.5
2+00	16.2	9.5		16.6	9.9
	15.9	9.2	50	16.0	9.3
	16.0	9.3		15.5	8.8
	16.9	10.2		17.0	10.3

STA. W. 136+00-NORTH 12-21-60

DIST Sound Elev DIST Sound Elev

67	16.4	9.7	67	16.0	9.3
	16.8	10.1		15.8	9.1
5+00	15.3	8.6	50	16.0	9.3
	14.3	7.6		15.8	9.1
	14.7	8.0		16.3	9.6
	14.9	8.2		16.0	9.3
	15.0	8.3		16.4	9.7
50	14.8	8.1	8+00	16.4	9.7
	14.9	8.2		16.7	10.0
	14.9	8.2		16.4	9.7
	14.9	8.2		16.2	9.5
	14.9	8.2		16.1	9.4
6+00	15.0	8.3	50	16.1	9.4
	15.0	8.3		16.2	9.5
10:10	15.0	8.3		16.1	9.4
~	15.3	8.6		16.0	9.3
	15.3	8.6		16.0	9.3
50	15.9	9.2	9+00	16.0	9.3
	17.1	10.4		16.2	9.5
	16.2	9.5		16.4	9.7
	16.5	9.8		16.7	10.0
	16.0	9.3		16.7	10.0
7+00	16.0	9.3	50	16.1	9.4
	15.9	9.2		14.2	7.5
	16.0	9.3		14.2	7.5

STA. W. 136+00-NORTH

DIST Sound Elev DIST Sound Elev

68	14.7	7.9	68	16.8	10.0
	15.5	8.7		17.0	10.2
10+00	16.0	9.2	50	16.9	10.1
	16.5	9.7		17.0	10.2
10:15	16.2	9.4		17.2	10.4
~	15.7	8.9		17.0	10.2
	14.4	7.6		17.0	10.2
50	15.6	8.8	13+00	17.1	10.3
	16.1	9.3		17.0	10.2
	16.7	9.9		17.2	10.4
	16.1	9.3		17.8	11.0
	16.9	10.1		17.3	10.5
11+00	16.9	10.1	50	16.8	10.0
	16.9	10.1		17.0	10.2
	16.9	10.1	10:20	17.0	10.2
	16.4	9.6	~	17.0	10.2
	16.7	9.9		17.0	10.2
50	16.8	10.0	14+00	17.1	10.3
	14.8	8.0			
	14.1	7.3			
	14.5	7.7			
	14.2	7.4			
12+00	14.2	7.4			
	16.0	9.2			
	17.0	10.2			

12-21-60

STA. W. 138+00' 0+00 = N 5.750' SOUND NORTH

DIST	SOUND	ELEV	DIST	SOUND	ELEV
0+00			(68)	14.0	7.2
(68)	0.8	+6.0	50	13.7	6.9
	2.7	+4.1		13.6	6.8
	3.9	+2.9		14.1	7.3
	4.7	+2.1	10:30	14.6	7.8
50	5.3	+1.5	-	14.7	7.9
10:27	5.7	+1.1	3+00	14.6	7.8
-	7.5	0.7		14.7	7.9
	11.9	5.1		15.0	8.2
	15.4	8.6		14.7	7.9
1+00	16.1	9.3		15.1	8.3
	16.2	9.4	50	15.6	8.8
	16.2	9.4		15.4	8.6
	16.1	9.3		15.6	8.8
	16.1	9.3		16.1	9.3
50	15.8	9.0		15.6	8.8
	15.1	8.3	4+00	15.4	8.6
	14.8	8.0		15.3	8.5
	14.1	7.3		15.4	8.6
	13.9	7.1		14.6	7.8
2+00	13.7	6.9		14.2	7.4
	14.0	7.2	50	14.5	7.7
	14.0	7.2		14.8	8.0
	13.9	7.1		14.6	7.8

STA. W. 138+00 - NORTH

(78)

DIST	SOUND	ELEV	DIST	SOUND	ELEV
(68)	14.6	7.8	(68)	15.1	8.3
	14.9	8.1		15.3	8.5
5+00	14.3	7.5	50	16.0	9.2
	14.3	7.5		15.0	8.2
	14.6	7.8		15.0	8.2
	14.5	7.7		15.2	8.4
	14.3	7.5		15.0	8.2
50	14.1	7.3	8+00	15.3	8.5
	14.1	7.3		15.6	8.8
	14.1	7.3		15.1	8.3
10:35	14.1	7.3		15.3	8.5
-	14.2	7.4		15.1	8.3
6+00	14.8	8.0	50	15.2	8.4
	14.5	7.7		15.2	8.4
	14.6	7.8		15.0	8.2
	14.3	7.5		14.7	7.9
	14.4	7.6		14.6	7.8
50	14.0	7.2	9+00	14.6	7.8
	14.2	7.4		14.7	7.9
	14.9	8.1		15.0	8.2
	14.6	7.8		14.9	8.1
	14.6	7.8		14.9	8.1
7+00	14.7	7.9	50	15.0	8.2
	15.0	8.2		15.1	8.3
	15.0	8.2		15.0	8.2

STA. W. 138+00-NORTH 12-21-60

DIST	Sound	Elev	DIST	Sound	Elev
(68)	15.1	8.3	(68)	15.0	8.2
	15.0	8.2		15.3	8.5
10+00	16.2	9.4	50	15.1	8.3
	15.6	8.8		15.1	8.3
	15.1	8.3		15.0	8.2
	15.0	8.2		15.0	8.2
	14.9	8.1		14.7	7.9
50	14.9	8.1	13+00	14.9	8.1
	14.8	8.0		14.6	7.8
10+00	15.0	8.2		14.1	7.3
	14.9	8.1		13.3	6.5
	15.0	8.2		13.3	6.5
11+00	15.1	8.3	50	13.3	6.5
	15.2	8.4		13.4	6.6
	15.3	8.5		13.6	6.8
	15.6	8.8		13.7	6.9
	15.6	8.8		13.6	6.8
50	15.3	8.5	14+00	13.6	6.8
	15.1	8.3		13.8	7.0
	15.0	8.2		13.9	7.1
	15.0	8.2		13.9	7.1
	15.0	8.2		14.0	7.2
12+00	15.0	8.2	50	14.0	7.2
	15.0	8.2		14.0	7.2
	15.0	8.2		14.2	7.4

12-21-60

(19)

STA. W. 140+00: 0+00=N. 5,760; SOUND NORTH

DIST	Sound	Elev	DIST	Sound	Elev
0+00			(68)	17.3	10.5
(68)	0.5	+6.3	50	17.2	10.4
	2.4	+4.4		17.3	10.5
	4.2	+2.6		17.5	10.7
	5.3	+1.5		17.4	10.6
50	6.1	+0.7		17.4	10.6
	7.0	0.2	3+00	17.4	10.6
10+55	7.8	1.0		17.6	10.8
	11.6	4.8		17.9	11.1
	13.3	6.5		18.0	11.2
1+00	14.6	7.8		18.0	11.2
	14.8	8.0	50	17.8	11.0
	15.2	8.4		17.7	10.9
	15.3	8.5		17.3	10.5
	15.8	9.0		17.2	10.4
50	15.9	9.1		17.3	10.5
	15.9	9.1	4+00	17.1	10.3
	16.0	9.2		17.2	10.4
	16.1	9.3	11+00	17.3	10.5
2+00	16.2	9.4		17.3	10.5
	16.5	9.7		17.0	10.2
	16.8	10.0	50	17.2	10.4
	16.9	10.1		17.2	10.4
	17.2	10.4		17.1	10.3

STA. W. 140+00 - NORTH. 12-21-60

Dist	Sound	Elev	Dist	Sound	Elev
68	17.3	10.5	68	16.0	9.2
	17.5	10.7		16.0	9.2
5+00	17.5	10.7	50	16.0	9.2
	17.2	10.4		15.8	9.0
	17.4	10.6		15.9	9.1
	17.1	10.3		16.0	9.2
	17.2	10.4		15.9	9.1
50	17.2	10.4	8+00	15.9	9.1
	17.0	10.2		15.9	9.1
	17.8	11.0		16.0	9.2
	17.5	10.7		16.0	9.2
	16.1	9.3		16.0	9.2
6+00	16.4	9.6	50	16.0	9.2
	16.0	9.2		16.0	9.2
	16.0	9.2		16.0	9.2
	15.9	9.1	11+05	16.0	9.2
	16.0	9.2		16.0	9.2
50	16.8	10.0	9+00	16.0	9.2
	16.2	9.4		16.0	9.2
	16.1	9.3		16.4	9.6
	16.2	9.4		16.7	9.9
	16.2	9.4		16.9	10.1
7+00	16.3	9.5	50	16.7	9.9
	15.8	9.0		16.4	9.6
	15.9	9.1		16.5	9.7

STA. W. 140+00 - NORTH (20)

Dist	Sound	Elev	Dist	Sound	Elev
68	16.4	9.6	67	16.1	9.4
	16.5	9.7		16.0	9.3
10+00	16.8	10.0	50	14.8	8.1
	16.9	10.1		15.0	8.3
	17.2	10.4		15.0	8.3
	17.0	10.2		14.9	8.2
	16.8	10.0		14.9	8.2
50	16.6	9.8	13+00	15.0	8.3
	16.8	10.0		15.0	8.3
	16.9	10.1		15.0	8.3
	16.8	10.0		15.0	8.3
	16.5	9.7		15.1	8.4
11+00	16.4	9.6	50	15.2	8.5
	16.2	9.4		15.2	8.5
	16.3	9.5		15.1	8.4
	16.2	9.4		15.1	8.4
	16.0	9.2		14.7	8.0
50	16.0	9.2	14+00	14.2	7.5
	16.0	9.2		14.5	7.8
	16.0	9.2	11+10	15.0	8.3
	16.0	9.2		15.2	8.5
	16.0	9.2		15.0	8.3
12+00	16.1	9.3	50	15.0	8.3
	16.1	9.3			
	16.1	9.3			

1-31-61

STA. N. 60+00; 0+00=W. 14,210; SOUND EAST

Dist	Sound	Elev	Dist	Sound	Elev
0+00			1.6	12.2	10.6
1.7			50	12.2	10.6
				12.2	10.6
				12.0	10.4
	0.4	+1.3		11.9	10.3
50	1.2	+0.5		10.8	9.2
	2.1	0.4	3+00	10.8	9.2
12:55	3.8	2.1		10.7	9.1
	5.0	3.3	1:00	10.5	8.9
	8.3	6.6		10.3	8.7
1+00	11.2	9.5		9.7	8.1
	11.7	10.0	50	9.8	8.2
	11.8	10.1		9.8	8.2
	12.0	10.3		9.8	8.2
	12.0	10.3		9.7	8.1
50	12.1	10.4		9.7	8.1
	12.1	10.4	4+00	9.5	7.9
	12.2	10.5		9.0	7.4
	12.3	10.6		9.2	7.6
	12.5	10.8		9.3	7.7
2+00	12.4	10.7		9.3	7.7
	12.4	10.7	50	9.3	7.7
	12.1	10.4		9.5	7.9
	12.2	10.5		9.5	7.9
				9.8	8.2
				9.9	8.3
			5+00	10.1	8.5

1-31-61

(2)

STA. N. 62+00; 0+00=W. 14,250; SOUND EAST

Dist	Sound	Elev	Dist	Sound	Elev
0+00					
3.6					
	0.6	+3.0	50	13.8	10.3
	1.5	+2.1		14.2	10.7
	2.5	+1.1		14.1	10.6
	3.8	0.2		14.1	10.6
50	6.2	2.6		14.2	10.7
	9.7	6.1	3+00	14.0	10.5
11:35	11.3	7.7	3.4	14.0	10.6
	11.8	8.2		13.5	10.1
	12.4	8.8		12.9	9.5
1+00	12.2	8.6		12.5	9.1
	12.8	9.2	50	12.5	9.1
	13.2	9.6		12.3	8.9
	13.5	9.9		12.2	8.8
	13.7	10.1		12.9	9.5
50	13.8	10.2		12.6	9.2
3.5	14.2	10.7	4+00	11.8	8.4
11:40	14.5	11.0		11.8	8.4
	14.7	11.2		11.6	8.2
	14.7	11.2	11:45	11.9	8.5
2+00	14.9	11.4		12.0	8.6
	14.6	11.1	50	12.1	8.7
	14.3	10.8		12.1	8.7
	14.3	10.8		12.0	8.6
				12.1	8.7
				12.0	8.6
				12.1	8.7
				13.7	10.3
			5+00	12.5	9.1

RE-CHECK SEC'S 1-31-61

STA. W. 119+00.0+00 = N. 5900 SOUND NORTH

DIST SOUND ELEV DIST SOUND ELEV

0+00

1.3

50 2.8 1.5

7.6 6.3

1:15 9.3 8.0

9.3 8.0

9.0 7.7

1+00 9.1 7.8

9.3 8.0

9.6 8.3

9.7 8.4

9.8 8.5

50 9.8 8.5

1-31-61

STA. W. 123+00.0+00 = N. 6,020; SOUND NORTH

DIST SOUND ELEV DIST SOUND ELEV

3+00 10.0 8.8 (12) 9.5 8.3

(12) 10.2 9.0 50 9.5 8.3

10.0 8.8 9.2 8.0

9.8 8.6 9.3 8.1

9.4 8.2 9.3 8.1

50 9.3 8.1 9.0 7.8

8.4 7.2 6+00 9.0 7.8

1:20 10.1 8.9 8.9 7.7

10.2 9.0 9.2 8.0

10.4 9.2 9.9 8.7

4+00 10.3 9.1 10.0 8.8

10.5 9.3 50 10.0 8.8

10.5 9.3

10.1 8.9

10.2 9.0

50 10.1 8.9

10.0 8.8

9.8 8.6

9.8 8.6

9.8 8.6

5+00 9.8 8.6

9.6 8.4

9.5 8.3

9.4 8.2

1-31-61

S, STA. W. 125+00 to +00 = N. 6, 090; SOUND NORTH

Dist	Sound	Elev	Dist	Sound	Elev
3+00	9.0	8.0	(10)	9.8	8.8
(1.0)	9.2	8.2		10.0	9.0
	9.2	8.2		10.0	9.0
<u>1:30</u>	8.2	7.2		10.1	9.1
	8.6	7.6	4+00	10.1	9.1
50	8.9	7.9			

STA. W. 125+50 to +00 = N. 6, 110; SOUND NORTH

3+00	8.8	7.9
(10.9)	8.7	7.8
	8.2	7.3
	8.2	7.3
	8.4	7.5
50	9.4	8.5
	9.8	8.9
<u>1:35</u>	10.0	9.1
	10.0	9.1
	10.0	9.1
4+00	10.1	9.2

(23)

STA. W. 128+50 to +00 = N. 6, 140; SOUND NORTH

Dist	Sound	Elev	Dist	Sound	Elev
2+50	8.4	7.6			
(0.8)	8.4	7.6			
	8.5	7.7			
	8.6	7.8			
	8.3	7.5			
3+00	8.1	7.3			
	8.1	7.3			
<u>1:45</u>	7.9	7.1			
	7.8	7.0			
	7.3	6.5			
50	7.1	6.3			
	7.2	6.4			
	8.9	8.1			
	8.7	7.9			
	8.5	7.7			
4+00	8.6	7.8			

1-31-61

(24)

5. STA. W. 130+50; 0+00 = N. 6,090; SOUND NORTH

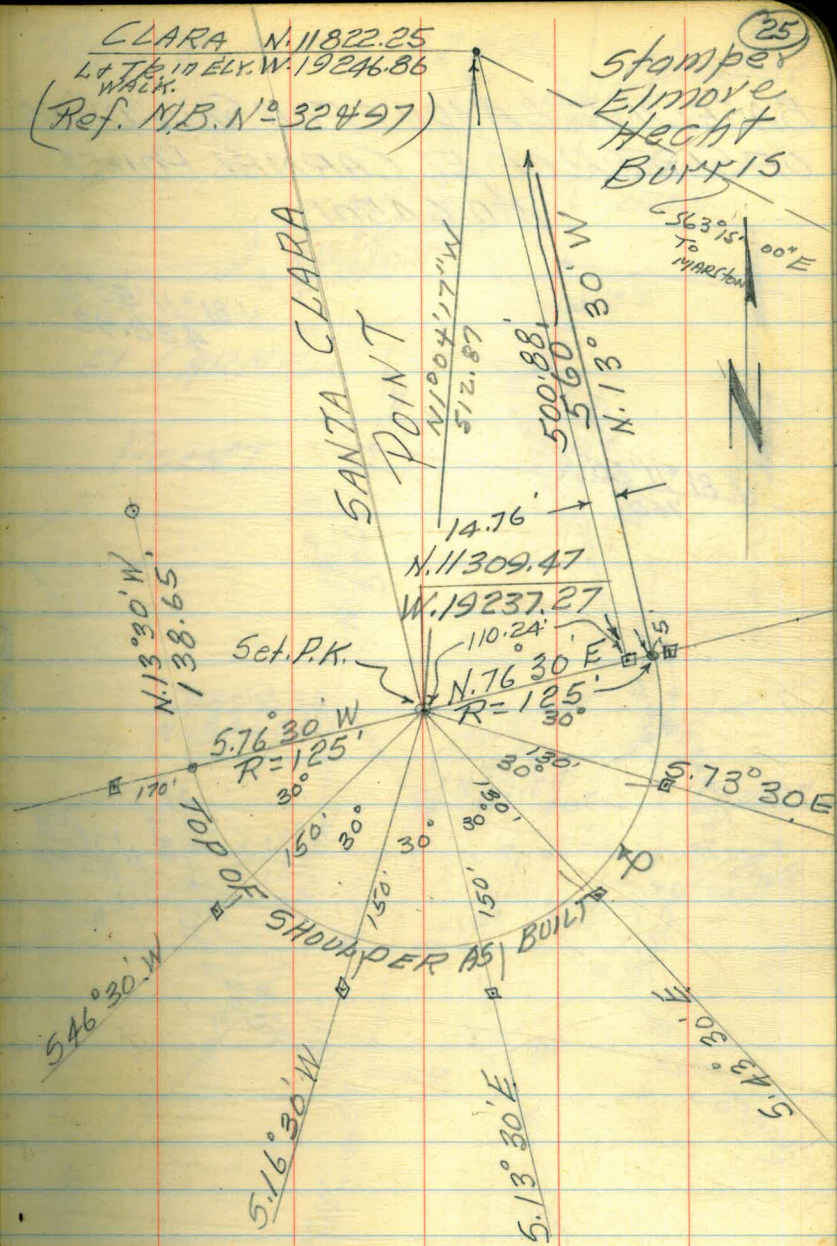
L	DIST	Sound	Elev	DIST	Sound	Elev
	1+00	9.6	8.9	(07)	8.1	7.4
	(07)	9.6	8.9		8.4	7.7
		9.0	8.3		8.4	7.7
		8.1	7.4		8.7	8.0
		8.0	7.3	50	7.9	7.2
	50	7.8	7.1		7.7	7.0
		7.6	6.9		8.0	7.3
	1:50	7.9	7.2		9.0	8.3
	<u> </u>	7.9	7.2		8.5	7.8
		7.9	7.2	3+00	8.4	7.7
	2+00	8.3	7.6			

5. STA. W. 133+00; 0+00 = N. 5,970; SOUND NORTH

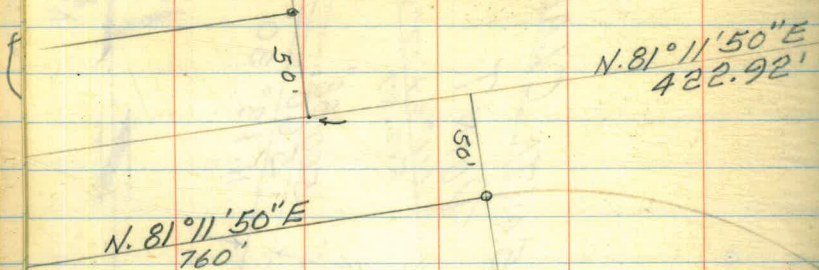
	2+50	8.4	7.8	(06)	8.6	8.0
	(0.6)	8.0	7.4		8.7	8.1
		7.8	7.2		9.6	9.0
		7.7	7.1	4+00	9.8	9.2
		8.0	7.4			
	3+00	8.1	7.5			
		8.3	7.7			
	<u>2:00</u>	8.2	7.6			
	<u> </u>	8.2	7.6			
		7.9	7.3			
	50	8.1	7.5			
		8.8	8.2			

5. BASELINE LAYOUT FOR SOUNDINGS OF
 5LY TIP OF SANTA CLARA POINT
 W.O. 64501

CLARA N. 11822.25
 L + 76.10 ELY. W. 19246.86
 WACK.
 (Ref. M.B. N° 32497)

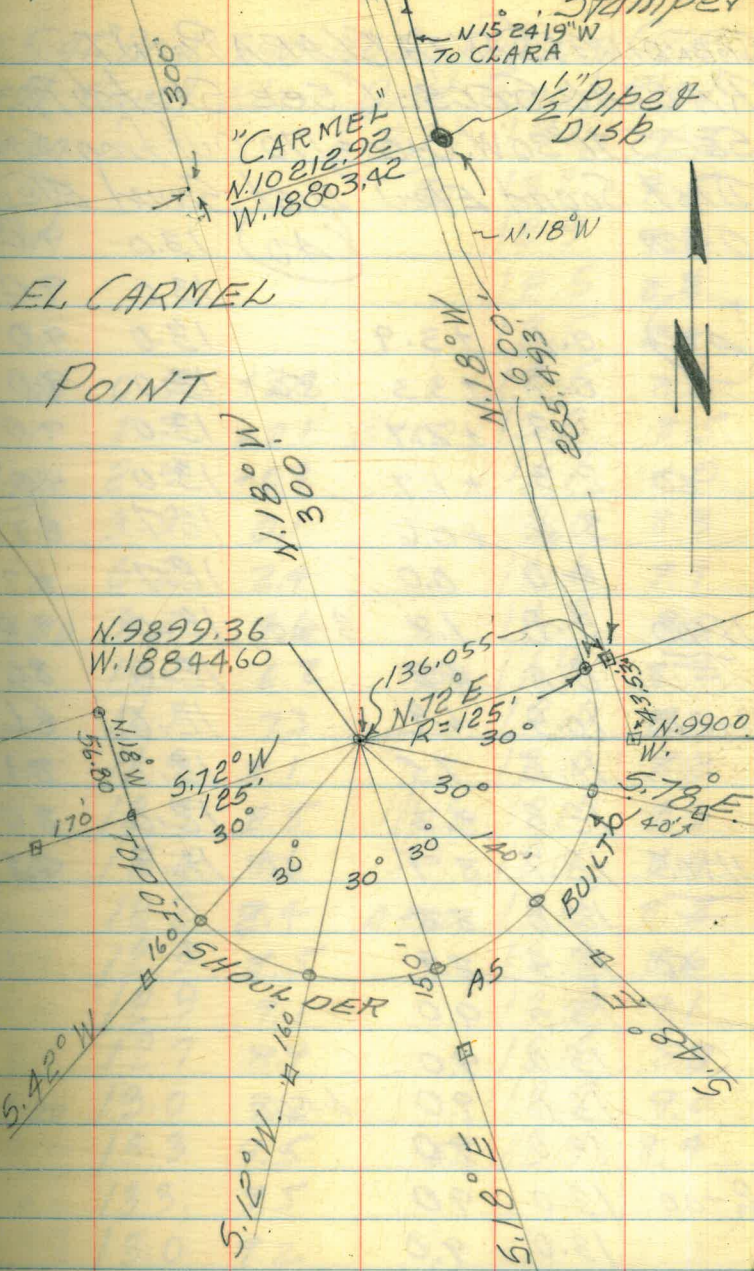


5 BASELINE LAYOUT FOR SOUNDINGS
 OF SLY. TIP OF EL CARMEL POINT
 W.O. 64501



Ref. F.B. M.B. N° 97832

(26) Stamped



1-30-61

SOUNDINGS SANTA CLARA POINT
RADIAL SEC'S. (See Sketch Pg. 25)

SEC. 5. 46° 30' W. 0+00 = 150' OUT FROM CTR.

SEC. 5. 76° 30' W. 0+00 = 170' Out. from Ctr.

Dist Sound Elev Dist Sound Elev

0+00

(37) 13.0 9.3

50 13.2 9.5

(38) 12.9 9.2

12.5 8.8

12.5 8.8

12.5 8.8

50 0.9 +2.9 12.2 8.5

1.7 +2.1 3+00 11.7 8.0

11:10 2.9 +0.9 12.0 8.3

3.9 0.1 11.6 7.9

6.2 2.4 11.7 8.0

1+00 8.4 4.6 10.0 6.2 50 11.9 8.2

11.1 7.3 12.0 8.3

11.9 8.1 12.0 8.3

12.3 8.5 11:15 12.0 8.3

50 12.4 8.6 12.1 8.4

12.2 8.4 4+00 12.5 8.8

12.3 8.5 12.3 8.6

12.9 9.1 12.8 9.1

12.7 8.9 12.5 8.8

2+00 13.0 9.2 12.7 9.0

13.3 9.5 50 12.1 8.4

13.3 9.5

13.0 9.2

Dist Sound Elev Dist Sound Elev

0+00 (4.0) 13.0 9.0

13.0 9.0

(4.0) 0.1 +3.9 13.0 9.0

0.7 +3.3 50 13.0 9.0

1.3 +2.7 13.0 9.0

50 2.3 +1.7 13.0 9.0

3.4 +0.6 12.7 8.7

4.0 0.0 12.7 8.7

11:00 5.8 1.8 3+00 13.0 9.0

8.8 4.8 12.6 8.6

1+00 10.9 6.9 12.6 8.6

11.5 7.5 12.1 8.1

12.3 8.3 12.0 8.0

11:05 12.7 8.7 50 11.9 7.9

12.8 8.8

50 12.9 8.9

13.0 9.0

13.0 9.0

13.0 9.0 4+00

13.0 9.0

2+00 13.0 9.0

13.0 9.0

1-30-61

SEC. 5. 16°30' W; 0+00 = 150' OUT FROM CTR.

	Dist	Sound	Elev	Dist	Sound	Elev
0+00				(36)	12.1	8.5
(3.6)				50	11.9	8.3
					12.0	8.4
					12.2	8.6
					11.9	8.3
50					12.1	8.5
				3+00	12.3	8.7
11:20	1.3	+2.3			12.8	9.2
	2.3	+1.3			12.4	8.8
	3.8	0.2			12.1	8.5
1+00	8.2	4.6			12.3	8.7
	10.1	6.5	50		12.5	8.9
	10.5	6.9			12.3	8.7
	11.1	7.5			11.8	8.2
	11.8	8.2			11.8	8.2
50	11.6	8.0			11.8	8.2
	11.9	8.3	4+00		11.9	8.3
	12.0	8.4			12.2	8.6
	12.1	8.5			12.3	8.9
	12.0	8.4			12.2	8.6
2+00	12.0	8.4			12.5	8.9
	12.0	8.4	50		13.8	10.2
	12.3	8.7			13.5	9.9
	12.1	8.5			13.3	9.7
					13.0	9.4
					13.2	9.6
			5+00		13.2	9.6

(28)

SEC. 5. 13°30' E; 0+00 = 150' OUT FROM CTR.

	Dist	Sound	Elev	Dist	Sound	Elev
0+00				(3A)	11.1	7.7
				50	11.0	7.6
					11.1	7.7
					11.3	7.9
					11.5	8.1
50					11.4	8.0
				0.0	+3.4	3+00
					11.8	8.4
11:30	0.7	+2.7			11.9	8.5
	1.4	+2.0			11.8	8.4
	2.0	+1.4			11.5	8.1
1+00	3.1	+0.3			11.7	8.3
	4.1	0.7	50		12.0	8.6
	8.0	4.6			11.4	8.0
	9.8	6.4			11.8	8.4
	10.2	6.8			11.6	8.2
50	10.9	7.5			11.3	7.9
	11.0	7.6	4+00		11.0	7.6
	11.0	7.6			11.0	7.6
	11.0	7.6			11.0	7.6
	11.5	8.1			11.0	7.6
	11.5	8.1			10.7	7.3
2+00	11.3	7.9			10.0	6.6
	11.1	7.7			8.4	5.0
	11.1	7.7			6.9	3.5
					5.8	2.4

N14Slope

El Carmel

Point

SEC. 5. 13°30'E CONTD. 1-30-61

Dist	Sound	Elev
(34)	3.4	0.0
	2.4	+1.0
5+00	1.8	+1.6

(29)

SEC. 5. 43°30'E; 0+00=130 OUT FROM CTR.

Dist	Sound	Elev	Dist	Sound	Elev
0+00			(38)	11.5	8.5
(3.0)			50	11.4	8.4
				11.6	8.6
				11.4	8.4
				11.8	8.8
50	0.2	+2.8		11.7	8.7
	0.7	+2.3	3+00	11.3	8.3
	1.2	+1.8		11.9	8.9
11:40	1.7	+1.3		12.2	9.2
	2.1	+0.9		12.0	9.0
1+00	2.8	+0.2		11.6	8.6
	3.1	0.1	50	11.4	8.4
	4.8	1.8		11.2	8.2
	6.2	3.2		11.2	8.2
	8.9	5.9		11.6	8.6
50	9.6	6.6		11.7	8.7
	9.9	6.9	4+00	11.8	8.8
	10.9	7.9		11.7	8.7
	10.9	7.9		11.8	8.8
	11.1	8.1		11.8	8.8
2+00	11.3	8.3		11.5	8.5
	11.7	8.2	50	11.9	8.9
	11.0	8.0		11.4	8.4
	11.3	8.3		11.5	8.5

SEC. 5. 43°30' E CONTD. 1-30-61

DIST	Sound	Elev	DIST	Sound	Elev
(29)	10.4	7.5	(29)	10.5	7.6
	10.9	8.0		10.2	7.3
5+00	11.1	8.2	50	10.8	7.9
	10.5	7.6		10.8	7.9
	10.8	7.9		10.9	8.0
	11.0	8.1	(1145)	11.0	8.1
	10.7	7.8		10.6	7.7
50	11.0	8.1	8+00	10.4	7.5
	11.0	8.1		10.2	7.3
	11.3	8.4		10.3	7.4
	10.5	7.6		10.6	7.7
	10.6	7.7		9.5	6.6
6+00	10.9	8.0	50	9.6	6.7
	10.7	7.8		9.2	6.3
	10.3	7.4		9.3	6.4
	11.0	8.1		9.7	6.8
	10.0	7.1		9.9	7.0
50	10.0	7.1	9+00	9.6	6.7
	10.0	7.1		9.5	6.6
	10.3	7.4		10.0	7.1
	10.9	8.0		9.9	7.0
	10.8	7.9		10.1	7.2
7+00	10.9	8.0	50	10.3	7.4
	11.0	8.1		10.7	7.8
	11.0	8.1		10.1	7.2
				10.0	7.1
				10.8	7.3
			10+00	10.1	7.2

SEC. 5. 73°30' E; 0+00 = 130' OUT FROM CTR.

DIST	Sound	Elev	DIST	Sound	Elev
0+00			(27)	11.7	9.0
(2.7)			50	11.8	9.1
				11.8	9.1
				12.3	9.6
				10.9	8.2
50	0.3	+2.4		10.8	8.1
	0.8	+1.9	3+00	10.8	8.1
11:55	1.0	+1.7		10.4	7.7
	1.3	+1.4		11.0	8.3
	2.0	+0.7		11.0	8.3
1+00	2.7	0.0		11.0	8.3
	3.3	0.6	50	10.0	7.3
	5.6	2.9		9.9	7.2
	7.3	4.6		10.0	7.3
	8.3	5.6		10.2	7.5
50	9.1	6.4		10.3	7.6
	9.4	6.7	4+00	9.9	7.2
	10.0	7.3		10.7	8.0
	10.8	8.1		9.8	7.1
	11.1	8.4		9.8	7.0
2+00	11.3	8.6		9.4	6.7
	11.8	9.1	50	9.7	7.0
	12.0	9.3		9.8	7.1
	12.0	9.3		9.9	7.2

SEC. 5. 73°30'E CONTD 1-30-61

DIST	Sound	Elev	DIST	Sound	Elev
(26)	10.0	7.4	(26)	11.1	8.5
	10.0	7.4		11.1	8.5
5+00	9.9	7.3	50	11.1	8.5
	9.9	7.3		11.1	8.5
	10.0	7.4		11.1	8.5
	10.0	7.4		10.9	8.3
	10.7	8.1		11.0	8.4
50	10.1	7.5	8+00	11.6	9.0
	10.2	7.6		11.7	9.1
	10.2	7.6		11.9	9.3
	10.1	7.5		13.0	10.4
	10.0	7.4		12.8	10.2
6+00	10.0	7.4	50	12.9	10.3
	10.9	8.3		12.5	9.9
	10.8	8.2		12.5	9.9
	10.5	7.9		12.0	9.4
	10.8	8.2		11.7	9.1
50	10.6	8.0	9+00	11.5	8.9
12:00	11.0	8.4			
	11.0	8.4			
	10.9	8.3			
	11.0	8.4			
7+00	11.1	8.5			
	11.1	8.5			
	11.1	8.5			

SEC. N. 76°30'E; 0+00=130' OUT FROM CTR.

DIST	Sound	Elev	DIST	Sound	Elev
0+00			(2.3)	9.9	7.6
			50	10.0	7.7
				10.0	7.7
				10.1	7.8
				10.3	8.0
				10.3	8.0
			0.1	+2.3	3+00
			12:10	0.4	+2.0
				0.7	+1.7
				1.0	+1.4
			1+00	1.6	+0.8
				2.1	+0.3
				3.0	0.6
				5.1	2.7
			12:15		
				7.7	5.3
			50	8.6	6.2
				9.0	6.6
				9.2	6.8
				9.8	7.4
				9.8	7.4
			2+00	9.8	7.4
				9.8	7.4
				10.0	7.6
				10.0	7.6
				10.4	8.1
				10.0	7.7
				10.4	8.1

SEC. N. 76°30'E CONTD. 1-30-61

DIST	Sound	Elev	DIST	Sound	Elev
(23)	10.4	8.1	(22)	9.4	7.2
	10.5	8.2		9.8	7.6
5+00	10.2	7.9	50	9.8	7.6
	9.9	7.6		10.0	7.8
	9.3	7.0		10.0	7.8
	9.8	7.5		9.8	7.6
	9.8	7.5		9.8	7.6
50	10.8	8.5	8+00	9.8	7.6
	9.2	6.9		9.8	7.6
	9.4	7.1		10.0	7.8
	10.0	7.7	12:20	10.1	7.9
	10.0	7.7	<u>11.9</u>	9.7	
6+00	9.9	7.6	50	13.0	10.8
	9.8	7.5		13.0	10.8
	9.9	7.6		13.1	10.9
	10.0	7.7		12.5	10.3
	10.0	7.7		12.1	9.9
50	9.6	7.3	9+00	12.1	9.9
	9.5	7.2			
	9.1	6.8			
	9.1	6.8			
	9.2	6.9			
7+00	9.3	7.0			
	9.2	6.9			
	9.4	7.1			

SOUNDINGS EL CARMEL POINT SEC'S
 RADIALLY (See sketch Pg. 26)
 SEC. S. 72°W: 0+00=170' OUT FROM CTR.

DIST	Sound	Elev	DIST	Sound	Elev
0+00			(0.3)	8.3	8.0
(0.4)				8.4	8.1
				8.7	8.4
			50	8.6	8.3
				8.6	8.3
50				8.4	8.1
				8.2	7.9
1:50				8.2	7.9
	0.6	0.2	3+00	8.2	7.9
	2.7	2.3		8.1	7.8
1+00	5.3	4.9	2+00	8.1	7.8
	6.1	5.7	<u>1:50</u>	8.2	7.9
	7.2	6.8		8.4	8.1
	7.6	7.2	50	8.6	8.3
	8.0	7.6		8.8	8.5
50	8.1	7.7		8.8	8.5
	8.3	7.9		8.8	8.5
	8.0	7.6		8.7	8.4
	8.1	7.7	4+00	8.7	8.4
	8.2	7.8			
2+00	8.2	7.8			
	8.2	7.8			

1-30-61

SEC. 5. 42° W; 0+00=160 OUT FROM C.T.R.

	Dist	Sound	Elev	Dist	Sound	Elev
	0+00			(03)	8.4	8.1
				50	8.2	7.9
(03)					8.1	7.8
					7.9	7.6
					7.7	7.4
50					7.7	7.4
				3+00	7.7	7.4
<u>2:10</u>					7.8	7.5
	0.1	+0.2			7.8	7.5
	1.5	1.2			8.0	7.7
1+00	4.4	4.1			8.1	7.8
	6.8	6.5	50		8.0	7.7
	7.7	7.4			8.1	7.8
	8.1	7.8			8.1	7.8
	8.7	8.4			8.2	7.9
50	8.8	8.5			8.3	8.0
	9.0	8.7	4+00		8.1	7.8
	9.0	8.7			7.9	7.6
	8.9	8.6			7.8	7.5
	8.9	8.6			7.8	7.5
2+00	8.8	8.5			7.9	7.6
	8.5	8.2	50		8.1	7.8
	8.6	8.3			8.6	8.3
	8.4	8.1			9.9	9.6
					11.9	11.6
					12.9	12.6
			5+00		13.6	13.3

(33)

SEC. 5. 12° W; 0+00=160 OUT FROM C.T.R.

	Dist	Sound	Elev	Dist	Sound	Elev
	0+00			(02)	18.1	17.9
				50	17.6	17.4
(02)					16.7	16.5
					15.7	15.5
					15.9	15.7
				50	16.0	15.8
				3+00	15.8	15.6
<u>2:20</u>					14.9	14.7
	0.7	0.5			13.6	13.4
	2.5	2.3			11.8	11.6
1+00	4.0	3.8			10.8	10.6
	5.8	5.6	50		10.9	10.7
	6.6	6.4			11.2	11.0
	6.8	6.6			11.3	11.1
	7.0	6.8			11.2	11.0
50	6.9	6.7			11.4	11.2
	6.9	6.7	4+00		12.0	11.8
	7.7	7.5				
	10.0	9.8				
	11.7	11.5				
2+00	13.1	12.9				
	15.3	15.1	50			
	17.3	17.1				
	18.1	17.9				

SEC. 5. 12° W. CONTD. 1-30-61
 Dist Sound Elev Dist Sound Elev

5+00

50

6+00

(34)

SEC. 5. 18° E; 0+00 = 150' OUT FROM CTR.

Dist Sound Elev Dist Sound Elev

0+00

(101)

50

2:30

1+00

2+00

(101)

50

3+00

4+00

50

9.9 9.8

10.0 9.9

10.5 10.4

10.7 10.6

10.9 10.8

10.8 10.7

10.8 10.7

10.7 10.6

10.6 10.6

10.6 10.6

10.5 10.4

50 10.4 10.3

10.2 10.1

10.0 9.9

9.9 9.8

50 11.2 11.1 9.9 9.8

11.4 11.3 4+00 9.6 9.5

11.7 11.6 9.3 9.2

11.8 11.7 9.0 8.9

11.1 11.0 9.4 9.3

2+00 10.2 10.1 9.5 9.4

10.3 10.2 50 9.8 9.7

10.2 10.1 10.0 9.9

10.0 9.9 9.7 9.6

SEC. 5. 18° E CONTD 1-30-61

DIST SOUND ELEV

(0.1)	9.6	9.5
	9.6	9.5
5+00	9.6	9.5
	9.7	9.6
	9.8	9.7
	9.6	9.5
	9.6	9.5
50	9.1	9.0
N 1/4 Slope	8.2	8.1
of Gleason	6.9	6.8
Point	4.9	4.8
	2.5	2.4
6+00	0.0	10.1

SEC. 5. 48° E; 0+00 = 140' OUT FROM CENTER

DIST SOUND ELEV DIST SOUND ELEV

0+00	(0.1)	8.0	7.9		
	50	7.9	7.8		
(0.1)		7.7	7.6		
		7.9	7.8		
		8.0	7.9		
50		8.3	8.2		
	3+00	8.6	8.5		
2+00		8.6	8.5		
		8.8	8.7		
		8.8	8.7		
1+00	0.3	0.2	8.8	8.7	
	1.2	1.1	8.8	8.7	
	3.6	3.5	50	8.6	8.5
	5.1	5.0	8.6	8.5	
	6.9	6.8	8.9	8.8	
	8.0	7.9	9.1	9.0	
50	8.0	7.9	9.3	9.2	
	7.3	7.2	4+00	9.3	9.2
	7.1	7.0	9.4	9.3	
	7.0	6.9	9.6	9.5	
	7.3	7.2	9.7	9.6	
2+00	7.5	7.4	10.0	9.9	
	7.9	7.8	50	10.0	9.9
	8.0	7.9	10.2	10.1	
	8.0	7.7	10.6	10.5	

SEC. 5. 48°E CONTD. 1-30-61

DIST	SOUND	ELEV	DIST	SOUND	ELEV
(90)	10.2	10.1	(0)	9.0	8.9
	10.0	9.9		9.0	8.9
5+00	9.9	9.8	50	9.1	9.0
	9.9	9.8		9.1	9.0
	9.0	8.9		8.8	8.7
	8.7	8.6		8.6	8.5
	8.6	8.5		8.6	8.5
50	8.4	8.3	8+00	8.9	8.8
	8.7	8.6		8.9	8.8
	8.7	8.6	<u>2:45</u>	9.1	9.0
	8.6	8.5		9.1	9.0
	8.2	8.1		9.1	9.0
6+00	7.9	7.8	50	9.3	9.2
	7.4	7.3		9.2	9.1
	7.7	7.6		9.0	8.9
	7.8	7.7		9.0	8.9
	8.0	7.9		9.0	8.9
50	8.7	8.6	9+00	8.9	8.8
	8.5	8.4			
	9.1	9.0			
	8.9	8.8			
	8.8	8.7			
7+00	8.9	8.8			
	9.0	8.9			
	9.0	8.9			

SEC. 5. 78°E; 0+00=140' OUT FROM CTR.

DIST	SOUND	ELEV	DIST	SOUND	ELEV
0+00			(0.0)	7.0	
			50	7.0	
			(0.0)	7.0	
				7.1	
			NOTE: Fran I Reduced	7.1	
			<u>THIS</u> SEC.	7.1	
			50	7.0	
				7.0	
			3+00	7.0	
				7.5	
			<u>2:55</u>	7.5	
				7.5	
			0.0	7.5	
			0.7	7.5	
			1+00	1.3	
				7.6	
				4.9	
			50	7.5	
				7.2	
				6.1	
				7.1	
				7.3	
				7.8	
				7.4	
			50	7.9	
				7.2	
				7.8	
			4+00	7.2	
				7.2	
				7.9	
				7.6	
				7.2	
				7.5	
				7.2	
			2+00	7.2	
				8.3	
				7.7	
			50	8.5	
				8.4	
				8.4	
				7.2	
				6.9	

SEC. 5. 78°E CONTD 1-30-61

DIST	SOUND	ELEV	DIST	SOUND	ELEV
(0.0)	8.3		(0.0)	6.7	
	8.0			6.8	
5+00	7.6		50	6.8	
	7.3			6.9	
	7.1			6.9	
	7.7			6.9	
	7.3			6.9	
50	7.4		8+00	7.0	
	7.4			7.1	
	7.6			7.3	
	7.9			7.6	
	7.8			7.6	
6+00	8.0		50	7.4	
	7.9			7.3	
	8.0			7.2	
	7.9			7.6	
	7.8			7.6	
50	7.7		9+00	7.3	
	7.3			7.3	
3+00	7.1			7.2	
	6.9			7.2	
	6.6			7.2	
7+00	6.7		50	7.3	
	6.5			7.3	
	6.6			7.2	
				6.9	
			10+00	7.0	

(37)

SEC. N. 72°E; 0+00=180 OUT FROM CTR.

DIST	SOUND	ELEV	DIST	SOUND	ELEV
0+00			(0.0)	7.4	
(0.0)			50	7.2	
				7.0	
				7.0	
				7.0	
			50	6.7	
			3+00	6.7	
				6.4	
			3+15	0.8	
				4.5	
				5.8	
			1+00	6.3	
				7.0	
				7.3	
				7.3	
				7.7	
			50	7.8	
				8.2	
			4+00	8.0	
				8.0	
				8.0	
				8.1	
			2+00	7.9	
				7.9	
			50	8.8	
				8.9	
				8.9	

And This One

SEC. N. 72° E CONT'D. 1-30-61

DIST	Sound	Elev	DIST	Sound	Elev
(00)	8.6		(00)	8.4	
	8.3			7.9	
5+00	8.1		50	8.6	
	7.8			8.8	
	7.6			8.6	
	8.1			8.6	
	8.1			8.3	
50	8.0		8+00	8.3	
	8.1			7.8	
	7.9			7.6	
	8.1		<u>3:20</u>	7.1	
	8.1			7.0	
6+00	8.3		50	7.6	
	8.0			7.9	
	8.1			7.6	
	8.1			7.6	
	8.3			7.7	
50	8.2		9+00	7.7	
	8.2			7.7	
	8.0			8.1	
	8.1			7.9	
	8.0			7.9	
7+00	8.0		50	7.1	
	8.3			7.8	
	8.7			7.9	

SEC. N 72° E CONT'D

(38)

DIST	Sound	Elev
(00)	7.8	
	7.7	
10+00	7.7	
	7.1	
	7.3	
	7.8	
	8.3	
50	7.6	
	7.3	
	7.5	
	8.0	
	8.9	
11+00	9.3	
	9.3	
	9.2	
	9.3	
	9.7	
50	10.1	
	10.3	
	10.4	
	10.2	
	9.9	
12+00	9.7	

3-09-61

STA. W. 138+00: 0+00 = N 5,750: SOUND NORTH

DIST SOUND ELEV DIST SOUND ELEV

0+00

(1.6)

8.7 7.1

50

8.3 6.7

8.3 6.7

9.2 7.6

9.5 7.9

9.5 7.9

50

0.2 +1.4

0.5 +1.1

3+00

9.7 8.1

10:15

2.1 0.5

9.6 8.0

6.3

4.7

9.6 8.0

9.6 8.0

9.7 8.1

1+00

10.2 8.6

10.1 8.5

10.8 9.2

50

10.2 8.6

10.9 9.3

10.4 8.8

10.9 9.3

10.5 8.9

11.0 9.4

10.8 9.2

50

10.4 8.8

10.2 8.6

9.9 8.3

4+00

10.3 8.7

9.7 8.1

10.2 8.6

9.0 7.4

9.8 8.2

8.8 7.2

9.2 7.6

2+00

8.7 7.1

9.3 7.7

9.0 7.4

50

9.5 7.9

9.1 7.5

9.7 8.1

8.8 7.2

9.4 7.8

STA. W. 138+00-NORTH

(39)

DIST SOUND ELEV DIST SOUND ELEV

10.0 8.4

(1.6)

9.9 8.3

(1.6)

9.5 7.9

9.8 8.2

5+00

9.7 8.1

50

9.7 8.1

9.8 8.2

9.8 8.2

10:20

9.3 7.7

9.9 8.3

9.3 7.7

9.8 8.2

9.4 7.8

10.0 8.4

50

9.2 7.6

8+00

9.9 8.3

9.3 7.7

9.8 8.2

9.5 7.9

9.6 8.0

9.5 7.9

9.7 8.1

9.3 7.7

9.5 7.9

6+00

9.7 8.1

50

9.7 8.1

9.4 7.8

9.8 8.2

9.1 7.5

10:25

9.6 8.0

9.0 7.4

9.3 7.7

9.3 7.7

9.4 7.8

50

8.9 7.3

9+00

9.5 7.9

9.1 7.5

9.6 8.0

9.4 7.8

9.7 8.1

9.3 7.7

9.6 8.0

9.5 7.9

9.8 8.2

7+00

9.7 8.1

50

9.6 8.0

9.8 8.2

9.7 8.1

9.7 8.1

9.9 8.3

STA. W. 138+00 - NORTH. 3-09-61

DIST SOUND ELEV DIST SOUND ELEV

(1.7)	9.8	8.1	(1.7)	10.2	8.5
	9.9	8.2		10.3	8.6
10+00	10.2	8.5	50	10.3	8.6
	10.1	8.4		10.1	8.4
	9.9	8.2		10.0	8.3
	9.8	8.1	10:30	10.0	8.3
	9.8	8.1		10.2	8.5
50	9.7	8.0	13+00	9.9	8.2
	9.7	8.0		9.4	7.7
	10.0	8.3		8.9	7.2
	9.8	8.1		8.1	6.4
	9.8	8.1		8.5	6.8
11+00	10.2	8.5	50	8.5	6.8
	10.1	8.4		8.4	6.7
	10.2	8.5		8.3	6.6
	10.1	8.4		8.4	6.7
	10.0	8.3		8.5	6.8
50	9.9	8.2	14+00	8.8	7.1
	9.9	8.2		8.9	7.2
	10.0	8.3		8.9	7.2
	9.9	8.2		9.0	7.3
	9.8	8.1		9.0	7.3
12+00	10.1	8.4	50	8.8	7.1
	10.0	8.3		9.0	7.3
	10.2	8.5		9.2	7.5
				9.1	7.4
				9.1	7.4
			15+00	9.3	7.6

NOTES: SLIGHT SINK INDICATION ON THIS LINE

STA. W. 136+00 - NORTH. N. 5,800. SOUND NORTH

DIST SOUND ELEV DIST SOUND ELEV

0+00			(1.8)	10.6	8.8
			50	11.0	9.2
				10.9	9.1
				10.9	9.1
				11.0	9.2
			50	10.7	8.9
			3+00	10.9	9.1
				10.6	8.8
				10.7	8.9
			10+00	10.7	8.9
				3.0	1.2
			1+00	9.1	7.3
				10.6	8.8
			50	10.5	8.7
				10.6	8.8
				10.6	8.8
				10.9	9.1
				10.8	9.0
			50	10.8	9.0
				10.6	8.8
			4+00	10.7	8.9
				10.9	9.1
				10.8	9.0
				10.7	8.9
				10.5	8.7
			2+00	10.0	8.2
				10.6	8.8
			50	10.1	8.3
				10.6	8.8
				10.0	8.2
				10.9	9.1
				9.1	7.3

STA. W. 136+00 - NORTH 3-09-61

STA. W. 136+00 - NORTH (4)

Dist	Sound	Elev	Dist	Sound	Elev
(1.8)	8.9	7.1	(1.8)	9.7	7.9
	8.9	7.1		9.0	7.2
5+00	8.9	7.1	50	9.3	7.5
	8.8	7.0		9.6	7.8
	8.8	7.0		10.0	8.2
	8.8	7.0		10.5	8.7
	8.9	7.1		10.0	8.2
50	9.0	7.2	8+00	9.0	7.2
	9.0	7.2		8.9	7.1
	9.0	7.2		9.1	7.3
	9.0	7.2		9.7	7.9
	9.0	7.2		9.5	7.7
6+00	9.0	7.2	50	9.6	7.8
	9.0	7.2		9.6	7.8
10:50	9.0	7.2		9.7	7.9
	8.9	7.1		9.7	7.9
	8.7	6.9		9.8	8.0
50	8.7	6.9	9+00	9.8	8.0
	8.8	7.0		9.3	7.5
	8.6	6.8		9.3	7.5
	8.6	6.8		9.4	7.6
	9.0	7.2		9.1	7.3
7+00	8.6	6.8	50	9.2	7.4
	8.8	7.0		9.3	7.5
	9.0	7.2		9.4	7.6

SOUPY
 8+00
 GREATER INTENSITY
 THIS AREA

Dist	Sound	Elev	Dist	Sound	Elev
(1.8)	9.5	7.7	(1.9)	9.0	7.1
	9.5	7.7		9.1	7.2
10+00	8.6	6.8	50	9.3	7.4
	9.0	7.2		9.7	7.8
10:55	8.9	7.1		9.7	7.8
	9.0	7.2		9.8	7.9
	9.1	7.3		9.7	7.8
50	9.2	7.4	13+00	9.7	7.8
	9.2	7.4		9.8	7.9
	9.0	7.2		9.9	8.0
	9.2	7.4	11:00	9.8	7.9
	9.0	7.2		9.8	7.9
11+00	9.1	7.3	50	9.9	8.0
	9.2	7.4		9.9	8.0
	9.0	7.2		9.8	7.9
	9.3	7.5		9.7	7.8
	9.5	7.7		9.9	8.0
50	9.3	7.5	14+00	9.7	7.8
	9.1	7.3		9.6	7.7
	9.1	7.3		9.5	7.6
	9.0	7.2		9.5	7.6
	8.7	6.9		9.0	7.1
12+00	8.8	7.0	50	9.1	7.2
	9.3	7.5	(10.6:Bot.)	9.0	7.1
	9.1	7.3	(CONTD)	9.2	7.4
			(Bg. 43)	9.1	7.2
			15+00	9.1	7.2

SOUPY
 10:55

3-09-61

STA. W. 134+00 DIST. 0+00 = N. 5,910 Sound NORTH

DIST	SOUND	ELEV	DIST	SOUND	ELEV
0+00			(21)	9.4	7.3
			50	9.8	7.7
				9.7	7.6
				9.8	7.7
				9.7	7.6
50	0.1	+2.0		9.5	7.4
	1.7	+0.4	3+00	8.9	6.8
11:30	6.0	3.9		9.3	7.2
	8.8	6.7		9.5	7.4
	9.1	7.0		9.7	7.6
1+00	8.8	6.7		9.6	7.5
	9.1	7.0	50	9.4	7.3
	9.4	7.3		9.5	7.4
	9.6	7.5		9.4	7.3
	9.8	7.7		9.6	7.5
50	9.7	7.6		9.5	7.4
	9.7	7.6	4+00	9.4	7.3
	9.6	7.5		9.6	7.5
	9.8	7.7		9.7	7.6
	9.8	7.7		10.0	7.9
2+00	9.8	7.7		10.2	8.1
	9.7	7.6	50	10.2	8.1
	9.6	7.5		10.1	8.0
	9.6	7.5		10.0	7.9

STA. W. 134+00 - NORTH

DIST	SOUND	ELEV	DIST	SOUND	ELEV
(22)	10.2	8.0	(23)	9.4	7.1
	10.3	8.1		9.2	6.9
5+00	10.5	8.3	50	9.0	6.7
	9.8	7.6		9.0	6.7
	9.5	7.3		9.0	6.7
11:35	9.5	7.3		9.0	6.7
	9.5	7.3		9.0	6.7
50	9.5	7.3	8+00	9.0	6.7
	9.5	7.3		9.0	6.7
	9.5	7.3		9.0	6.7
	9.4	7.2	11:50	9.0	6.7
11:40	9.3	7.1		9.0	6.7
6+00	9.2	7.0	50	9.0	6.7
	9.2	7.0		9.0	6.7
	9.2	7.0		9.0	6.7
	9.2	7.0		9.0	6.7
	9.2	7.0		9.0	6.7
50	9.2	7.0	9+00	9.0	6.7
	9.3	7.1		9.2	6.9
	9.4	7.2		9.4	7.1
11:45	9.6	7.4		9.6	7.3
	9.7	7.5		9.8	7.5
7+00	9.8	7.6	50	10.0	7.7
	9.7	7.5		10.0	7.7
	9.6	7.4		10.0	7.7

STA W. 134+00-NORTH 3-09-61

DIST	Sound	Elev	DIST	Sound	Elev
(23)	10.0	7.7	(23)	9.0	6.7
	10.0	7.7		9.2	6.9
10+00	10.0	7.7	50	9.3	7.0
	10.0	7.7		9.4	7.1
<u>11:55</u>	10.0	7.7		9.3	7.0
	10.0	7.7		9.0	6.7
	10.0	7.7		8.5	6.2
50	10.0	7.7	13+00	8.0	5.7
	10.0	7.7			
	10.0	7.7			
	10.0	7.7			
11+00	10.0	7.7	50		
	9.8	7.5			
	9.6	7.3			
	9.4	7.1			
	9.0	6.7			
50	8.8	6.5	14+00		
	8.8	6.5			
	8.8	6.5			
	9.0	6.7			
	9.2	6.9			
12+00	9.2	6.9			
	9.2	6.9			
	9.2	6.9			

(CONTD FROM PG 41) STA W. 136+00 CONTD NORTH (93)

DIST	Sound	Elev	DIST	Sound	Elev
(19)	9.4	7.5	(20)	9.9	7.9
	9.4	7.5		9.8	7.8
<u>11:05</u>	9.3	7.4		9.8	7.8
	9.6	7.7		9.9	7.9
50	9.5	7.6	18+00	9.8	7.8
	9.4	7.5	<u>11:10</u>	9.8	7.8
	9.6	7.7		9.8	7.8
	9.1	7.2		9.9	7.9
	9.7	7.8		9.9	7.9
16+00	9.5	7.6	50	9.9	7.9
	9.5	7.6		10.0	8.0
	9.1	7.2		9.7	7.7
	9.6	7.7		9.8	7.8
	9.8	7.9		10.0	8.0
50	9.8	7.9	19+00	10.0	8.0
	9.7	7.8		10.0	8.0
	9.7	7.8		9.8	7.8
	9.7	7.8		9.9	7.9
	9.7	7.8		9.8	7.8
17+00	9.6	7.7	50	10.0	8.0
	9.8	7.9		9.7	7.7
	9.8	7.9		9.7	7.7
	9.8	7.9		9.8	7.8
	9.9	8.0		9.8	7.8
50	9.7	7.8	1104-Boat 20+00	9.6	7.6

CHECK SOUNDINGS PEREZ COVE

3-31-61

STAN. 59+00:0+100=W. 14, 130; SOUND EAST

DIST SOUND ELEV DIST SOUND ELEV

DIST	SOUND	ELEV	DIST	SOUND	ELEV
0+00			(106)	8.1	
(0.6)			50	8.3	
				8.3	
	0.6	0.0		8.2	
	1.2			8.2	
50	2.9			8.6	
	3.2		3+00	8.8	
	4.2			8.9	
2:20	4.9			9.0	
	6.0			9.0	
1+00	8.9			9.2	
	9.0		50	9.4	
	8.9			9.1	
	9.0			8.7	
	9.0			7.9	
50	9.0			7.9	
	9.0		4+00	8.0	
	8.8			7.9	
	8.8			8.1	
	8.6			8.3	
2+00	8.6			8.6	
	8.5		50	8.3	
	8.5			8.3	
	8.5			8.2	

STAN. 59+00-EAST

DIST SOUND ELEV DIST SOUND ELEV

DIST	SOUND	ELEV	DIST	SOUND	ELEV
(106)	8.2				
	8.1				
5+00	8.1				
	8.0				
	7.1				
	6.7				
	5.0				
50	4.2				

6+00

50

3-31-61

STATION 60+00; 0+00=W. 14.180; SOUND EAST

DIST SOUND ELEV DIST SOUND ELEV

DIST	SOUND	ELEV	DIST	SOUND	ELEV
0+00			(0.7)	8.7	
(0.7)			50	8.6	
				8.5	
				8.4	
	0.1	+0.6		8.3	
50	1.4	0.7		8.3	
	3.9	3.2	3+00	8.1	
<u>2+05</u>	6.1	5.4		8.1	
	8.4	7.7		8.1	
	8.6	7.9		8.1	
1+00	8.6	7.9		8.0	
	8.7	8.0	50	8.0	
	8.7	8.0		7.6	
	8.6	7.9		7.3	
	8.7	8.0		7.5	
50	8.6	7.9		7.6	
	8.6	7.9	4+00	7.6	
	8.6	7.9		7.6	
	8.7	8.0		7.7	
	8.8	8.1		7.6	
2+00	8.6			7.7	
	8.6		50	7.7	
	8.6			7.8	
	8.6			7.8	

STATION 60+00-EAST

DIST SOUND ELEV

DIST	SOUND	ELEV
(0.6)	7.6	
	7.6	
5+00	7.6	
	7.6	
	7.6	
<u>2+10</u>	7.8	
	7.7	
50	7.8	
	7.8	
	7.7	
	7.7	
	7.6	
6+00	7.6	
	7.6	
	7.6	
	7.6	
	7.5	
50	7.5	
	7.4	
	7.5	
	7.8	
	7.3	
7+00	7.6	

(15)

3-31-61

STAIN. 61+00; 0+00 = W. 14, 190; SOUND EAST

DIST SOUND ELEV DIST SOUND ELEV

DIST	SOUND	ELEV	DIST	SOUND	ELEV
0+00			(0.8)	9.4	
(0.8)			50	9.7	
				9.2	
	2.6	1.8		9.4	
	6.3	5.5		9.2	
50	8.7	7.9		9.2	
	9.2	8.4	3+00	9.2	
1:50	9.4	8.6		9.0	
<u> </u>	9.7	8.9	1:55	9.0	
	10.0	9.2	<u> </u>	9.0	
1+00	10.0	9.2		9.0	
	10.0	9.2	50	8.8	
	9.8	9.0		8.8	
	10.2	9.4		8.5	
	10.0	9.2		8.6	
50	9.9	9.1		8.4	
	10.0	9.2	4+00	8.7	
	9.6			8.4	
	9.6			8.3	
	9.6			8.2	
2+00	9.6			8.1	
	9.3		50	8.2	
	9.5			8.1	
	9.7			8.1	

STAIN. 61+00 - EAST

DIST SOUND ELEV

DIST	SOUND	ELEV
(0.8)	8.3	
	8.6	
5+00	8.8	
	8.9	
	9.0	
	9.0	
	9.0	
50	8.9	
	8.9	
	8.9	
	9.0	
6+00	8.9	

(46)

30' ± SW OF
 SW Side of LSN 3-31-61

STA. N. 62+00; CHD = W 14230; SOUND EAST

Dist Sound Elev Dist Sound Elev

Dist	Sound	Elev	Dist	Sound	Elev
0+00			(109)	9.0	8.1
(109)			50	9.0	8.1
				8.9	8.0
				8.7	7.8
				8.8	7.9
50	1.4	0.5		8.8	7.9
	3.9	3.0	3+00	8.6	7.7
1:35	6.9	6.0		8.6	7.7
	8.1	7.2		8.5	7.6
	8.3	7.4		8.5	7.6
1+00	8.6	7.7		8.3	7.4
	8.6	7.7	50	8.5	7.6
	8.8	7.9		8.3	7.4
	9.0	8.1	1:40	8.2	7.3
	9.5	8.6		8.1	7.2
50	9.2	8.3		8.1	7.2
	9.0	8.1	4+00	8.2	
	9.1	8.2		8.1	
	9.1	8.2		8.0	
	9.0	8.1		8.0	
2+00	9.1	8.2		7.9	
	9.0	8.1	50	7.8	
	9.0	8.1		7.9	
	9.0	8.1		7.8	

STA. N. 62+00-EAST

Dist Sound Elev

Dist	Sound	Elev
(109)	7.8	
	7.8	
5+00	7.7	
	7.9	
	7.9	
	7.9	
50	7.9	
	7.8	
	7.9	
	7.8	
	8.0	
6+00	7.8	
	7.9	
	7.7	
	7.6	
	7.6	
50	7.6	

WLY Side of L.S.M.

3-31-61

STAN. 63100-EAST

(48)

STAN. 63100 (0+00) = W. 14.230 SOUND EAST

DIST SOUND ELEV

DIST	SOUND	ELEV	DIST	SOUND	ELEV
0+00			(1.1)	9.9	8.8
(1.2)			50	10.0	8.9
				10.0	8.9
			<u>1.25</u>	10.0	8.9
				9.6	8.5
50				9.2	8.1
			3+00	9.1	8.0
<u>1.15</u>	0.5	+0.7		9.2	8.1
	1.4	0.2		9.4	8.3
	2.0	0.8		9.0	7.9
1+00	3.6	2.4		8.8	7.7
	7.1	5.9	50	9.0	7.9
	8.7	7.5		8.8	7.7
	9.4	8.2		8.8	7.7
	9.8	8.6		8.6	7.5
50	9.6	8.4		8.8	7.7
	9.4	8.2	4+00	8.5	7.4
	9.5	8.3		8.5	
	9.6	8.4		8.5	
	9.5	8.3		8.0	
2+00	9.6	8.4		8.0	
	9.8	8.6	50	8.0	
	9.6	8.4		8.0	
(1.1)	9.8	8.7		8.0	

DIST	SOUND	ELEV
(1.0)	8.0	
	7.8	
5+00	7.8	
	8.0	
	8.0	
	8.0	
50	8.0	
	8.0	
	8.0	
	8.0	
6+00	8.4	
	8.2	
<u>1.30</u>	8.0	
7	8.0	
	8.0	
	8.0	
50	7.9	
	8.0	

3-31-61

STA. N. 6A+00 - W. 14,220; SOUND EAST

DIST SOUND ELEV DIST SOUND ELEV

0+00 (14) 9.6 8.2

(1.5) 50 9.6 8.2

9.5 8.1

3.8 2.3 9.5 8.1

3.8 2.3 9.4 8.0

50 4.3 2.8 9.4 8.0

5.2 3.7 3+00 9.4 8.0

12:55 6.4 4.9 9.0 7.6

7.5 6.0 9.0 7.6

7.8 6.3 9.0 7.6

1+00 8.1 6.6 8.9 7.5

8.1 6.6 50 8.8 7.4

8.3 6.8 8.9 7.5

8.6 7.1 1100 8.7 7.3

9.6 8.1 8.5 7.1

50 9.7 8.2 8.5 7.1

9.7 8.2 4+00 8.5 7.1

9.8 8.3 8.5 7.1

9.8 8.3 8.3 6.9

9.9 8.4 8.2 6.8

2+00 9.8 8.3 8.3

9.7 8.2 50 8.3

9.6 8.1 8.3

9.6 8.1 8.1

STA. N. 6A+00 - EAST

DIST SOUND ELEV DIST SOUND ELEV

(13) 8.1 (13) 7.2

8.1 7.5

5+00 8.1 50 7.5

8.1 7.5

8.1 7.8

8.0 7.8

7.9 7.9

50 7.9 8+00 7.8

7.9 8.0

8.0 7.8

8.0 7.9

8.0 7.7

6+00 7.9 50 8.0

8.0 8.2

8.0 8.3

8.1 7.7

8.1 7.8

50 7.5 9+00 7.7

7.5

1105 7.2

6.9

6.9

7+00 6.7

6.9

7.2

3-31-61

STA. N. 65+00; Q400=W. 14220; SOUND EAST

DIST SOUND ELEV DIST SOUND ELEV

DIST	SOUND	ELEV	DIST	SOUND	ELEV
Q400			(29)	10.9	8.0
(2.9)			50	10.9	8.0
(Rock)	0.5	+2.4		10.6	7.7
	2.8	+0.1	11:35	10.6	7.7
	2.0	+0.9		10.6	7.7
50	2.2	+0.7		10.5	7.6
	3.2	0.3	3+00	10.3	7.4
11:33	5.3	2.4		10.3	
	7.0	4.1		10.3	
	7.3	4.4		10.2	
1+00	7.9	5.0		10.1	
	7.8	4.9	50	10.0	
	8.8	5.9		10.0	
	10.4	7.5		10.0	
	10.7	7.8		9.9	
50	10.7	7.8		9.6	
	10.8	7.9	4+00	9.6	
	10.9	8.0		9.6	
	10.9	8.0		9.6	
	11.0	8.1		9.6	
2+00	10.8	7.9		9.4	
	10.8	7.9	50	9.2	
	10.7	7.8		9.0	
	10.8	7.9		9.0	

STA. N. 65+00 - EAST

DIST SOUND ELEV

DIST	SOUND	ELEV
(2.8)	9.0	
	8.9	
5+00	8.9	
	8.8	
11:40	8.8	
	8.7	
	8.7	
50	8.7	
	8.7	
	8.8	
	8.9	
	8.5	
6+00	8.5	
	8.4	
	8.9	
	8.1	
	8.6	
50	8.8	

(50)

3-31-61

STATION 66+00 - EAST

(61)

STATION 66+00		STATION 66+00 - EAST			
Dist	South	Elev	Dist	South	Elev
0+00	(3.9)	12.0	(33)	10.1	
(34)	50	11.9	5+00	10.2	
		11.9		10.2	
	3.1	11.8	11:15	10.3	
	3.2	11.8		10.2	
50	2.4	11.8		10.0	
	2.0	3+00 11.8	50	9.7	
11:10	2.0	12.0		9.6	
	2.2	12.0		9.4	
	2.8	11.9		9.8	
1+00	3.5	11.8		10.2	
	5.4	50 11.6	6+00	10.5	
	6.9	11.5		10.5	
	8.5	11.3		10.5	
	11.6	11.1		10.8	
50	11.5	11.0		10.8	
	11.5	4+00 10.8	50	10.6	
	11.7	10.4		10.5	
	11.8	10.4		10.5	
	11.8	10.5		10.8	
2+00	11.8	10.5		10.8	
	11.8	50 10.3	7+00	10.8	
	12.0	10.1			
	12.0	10.1			

SOUNDINGS AFTER DREDGING PEREZ
COVE & VICINITY W.D. 64501

STA. W. 118+00 0+00 = N. 6890; SOUND SOUTH

Dist	Sound	Elev	Dist	Sound	Elev
0+00			(23)	11.2	8.9
(2.3)			50	11.5	9.2
	1.7 +0.6			12.1	9.8
	6.1 -3.8			12.8	10.5
50	9.5 -7.2			12.8	10.5
	9.8 7.5	3+00		12.9	10.6
2:25	9.5 7.2			12.7	10.4
~	9.7 7.4			12.6	10.3
	9.6 7.3			12.4	10.1
1+00	9.7 7.4			12.0	9.7
	9.9 7.6	50		12.0	9.7
	9.9 7.6			12.1	9.8
	9.8 7.5			12.7	10.4
	9.8 7.5			14.1	11.8
50	9.9 7.6			14.0	11.7
	9.9 7.6	4+00		13.4	11.1
	9.7 7.4			12.9	10.6
	9.8 7.5			12.7	10.4
	10.1 7.8			12.4	10.1
2+00	10.3 8.0			12.2	9.9
	10.6 8.3	50		12.1	9.8
	10.8 8.5			11.8	9.5
	10.9 8.6			11.7	9.4
				11.7	9.4

4-24-61

(52)

STA. W. 118+00 SOUTH

Dist	Sound	Elev	Dist	Sound	Elev
(23)	11.6	9.3	(23)	5.8	3.5
	11.5	9.2		5.8	3.5
5+00	11.5	9.2	50	6.2	3.9
	11.2	8.9		6.0	3.7
	11.3	9.0		6.2	3.9
	11.1	8.8		5.9	3.6
	11.0	8.7		5.7	3.4
50	10.9	8.6	8+00	5.4	3.1
	11.4	9.1		5.1	2.8
2:30	11.1	8.8		5.7	3.4
~	12.0	9.7		6.3	4.0
	12.0	9.7		5.8	3.5
6+00	12.4	10.1	50	4.6	2.3
	12.7	10.4		4.6	2.3
	12.3	10.0		4.8	2.5
	12.0	9.7		4.7	2.4
	12.0	9.7		4.5	2.2
50	11.8	9.5	9+00	4.1	1.8
	11.5	9.2		3.7	1.4
	10.8	8.5		3.1	0.8
	8.5	6.2		2.3	0.0
	6.9	4.6		1.8	+0.5
7+00	5.9	3.6	50	1.7	+0.6
	5.9	3.6		1.6	+0.7
	5.9	3.6		1.5	+0.8
				1.0	+1.3

4-24-61

STA. W. 120+00: 0100-N. 6,950: SOUND SOUTH

Dist South Elev Dist South Elev

0+00

(2.4)

1.1 +1.3

8.0 -5.6

50 12.0 -9.6

12.4 10.0

2:40 12.2 -9.8

12.0 9.6

12.0 9.6

1+00 11.9 9.0

11.7 9.3

12.5 10.1

12.8 10.4

12.8 10.4

50 12.5 10.1

12.4 10.0

12.0 9.6

12.0 9.6

11.9 9.5

2+00 11.9 9.5

11.9 9.5

11.9 9.5

11.6 9.2

Dist South Elev Dist South Elev

(2.9)

11.5 9.1

50 11.8 9.4

12.0 9.6

11.8 9.4

12.0 9.6

12.3 9.9

3+00 12.2 9.8

12.8 10.4

12.4 10.0

12.0 9.6

12.0 9.6

50 11.9 9.5

11.6 9.2

11.4 9.0

11.1 8.7

11.2 8.8

4+00 11.0 8.6

11.0 8.6

11.0 8.6

10.9 8.5

11.1 8.7

50 11.3 8.9

11.4 9.0

11.9 9.5

5 STA. W. 120+00 - SOUTH

Dist South Elev Dist South Elev

(2.4) 12.0 9.6

12.6 10.2

5+00 12.2 9.8

12.1 9.7

12.1 9.7

12.2 9.8

12.3 9.9

50 12.7 10.3

12.8 10.4

12.7 10.3

12.9 10.5

13.2 10.8

6+00 13.3 10.9

13.9 11.5

13.5 11.1

14.0 11.6

14.0 11.6

50 14.2 11.8

14.0 11.6

2:45 13.2 10.8

13.0 10.6

12.4 10.0

7+00 12.1 9.7

12.0 9.6

12.1 9.7

(2.4) 11.6 9.2

12.1 9.7

50 12.2 9.8

11.9 9.5

11.7 9.3

11.7 9.3

11.6 9.2

8+00 11.3 8.9

11.1 8.7

10.9 8.5

10.9 8.5

10.6 8.2

50 10.6 8.2

11.0 8.6

11.3 8.9

12.2 9.8

12.9 9.5

9+00 13.0 9.6

13.0 9.6

13.2 9.8

13.0 9.6

12.8 10.4

50 12.3 9.9

11.9 - 9.5

10.6 - 8.2

6.1 - 3.7

0.8 - +1.6

(53)

4-24-61

STA. W. 122+00 - GROUND 6,990			SOUND SOUTH		
DIST	SOUND	ELEV	DIST	SOUND	ELEV
0+00			(26)	14.4	11.8
(26)			50	13.1	10.5
				12.9	10.3
	0.7	+1.9		12.7	10.1
	6.7	-4.1		12.5	9.9
50	10.6	8.0		12.6	10.0
	11.9	9.3	3+00	12.6	10.0
	12.0	9.4		13.0	10.4
2:55	12.5	9.9		13.0	10.4
<u>2:55</u>	12.6	10.0		13.3	10.7
1+00	12.6	10.0		13.2	10.6
	12.1	9.5	50	13.2	10.6
	13.1	10.5		13.1	10.5
	13.3	10.7		13.3	10.7
	13.4	10.8		12.8	10.2
50	13.7	11.1		12.4	9.8
	14.2	11.6	4+00	12.3	9.7
	14.9	12.3		12.1	9.5
	14.7	12.1		12.4	9.8
	14.5	11.9		12.4	9.8
2+00	14.8	12.2		12.9	10.3
	15.0	12.4	50	12.9	10.3
	14.9	12.3		12.6	10.0
	14.6	12.0		12.5	9.9

(54)

STA. W. 122+00 - SOUTH			SOUND SOUTH		
DIST	SOUND	ELEV	DIST	SOUND	ELEV
(26)	12.0	9.4	(27)	15.6	12.9
	12.6	10.0		15.4	12.7
5+00	12.5	9.9	50	15.5	12.8
	12.5	9.9		15.6	12.9
	12.2	9.6		15.3	12.8
	12.4	9.8		15.2	12.5
	12.4	9.8		16.0	13.3
50	12.7	10.1	8+00	15.7	13.0
	12.8	10.2		16.0	13.3
	12.6	10.0		15.6	12.9
	12.4	9.8		15.6	12.9
	12.9	10.3		13.6	10.9
6+00	14.4	11.8	50	12.1	9.4
	14.5	11.9		12.0	9.3
	14.4	11.8	3:05	11.8	9.1
3:00	15.0	12.4	<u>3:05</u>	11.6	8.9
	14.2	11.6		11.6	8.9
50	13.8	11.2	9+00	11.6	8.9
	13.4	10.8		11.8	9.1
	14.4	11.8		11.7	9.0
	14.8	12.2		11.4	8.7
	15.6	13.0		6.7	4.0
7+00	14.7	12.1	50	2.0	+0.7
	15.0	12.4		0.8	+1.9
	15.6	13.0			

4-25-61

STA. W. 124+00: 0+00 = N. 7,000; SOUND SOUTH

	Dist	Sound	Elev	Dist	Sound	Elev
0+00				(21)	16.0	13.9
				50	15.7	13.6
(21)					15.3	13.2
	1.2	0.9			14.8	12.7
	5.0	2.9			13.7	11.6
50	7.8	5.7			14.6	12.5
	9.5	7.4	3+00		13.9	11.8
<u>9:35</u>	10.0	7.9			13.2	11.1
	10.2	8.1			12.8	10.7
	10.3	8.2			12.6	10.5
1+00	10.5	8.4			12.0	9.9
	10.8	8.7	50		11.1	9.0
	11.9	9.8			11.7	9.6
	11.8	9.7			15.8	13.7
	12.3	10.2			16.5	14.4
50	13.9	11.8			17.2	15.1
	13.6	11.5	4+00		18.1	16.0
	13.9	11.8			18.7	16.6
	14.6	12.5			18.8	16.7
	16.0	13.9			18.5	16.4
2+00	16.6	14.5			18.6	16.5
	16.9	14.8	50		18.7	16.6
	17.3	15.2			18.8	16.7
	16.8	14.7			19.0	16.9

STA. W. 124+00 - SOUTH

(55)

	Dist	Sound	Elev	Dist	Sound	Elev
	(20)	19.0	17.0	(20)	10.2	8.2
		19.2	17.2		10.7	8.7
5+00		19.0	17.0	50	11.0	9.0
		18.7	16.7		10.8	8.8
<u>9:40</u>		18.0	16.0		11.1	9.1
		11.8	9.8		11.0	9.0
		11.8	9.8		11.0	9.0
50		12.1	10.1	8+00	11.1	9.1
		12.3	10.3		11.0	9.0
		12.3	10.3		11.0	9.0
		12.0	10.0		11.0	9.0
		11.8	9.8		11.2	9.2
6+00		11.2	9.2	50	11.5	9.5
		11.4	9.4		11.2	9.2
		11.0	9.0	<u>9:45</u>	10.3	8.3
		11.4	9.4		8.9	6.9
		11.5	9.5		4.0	2.0
50		11.1	9.1	9+00		
		11.1	9.1			
		10.8	8.8			
		10.4	8.4			
		10.3	8.3			
7+00		10.5	8.5	50		
		10.6	8.6			
		10.8	8.8			

4-20-61

STA. W. 126+00; OAD = N. 6, 990; SOUND SOUTH

	Dist	Sound	Elev	Dist	Sound	Elev
0+00				(36)	19.0	15.4
(36)	0.1	+3.5		50	19.1	15.5
	2.0	+1.6			19.4	15.9
	5.8	2.2			19.8	16.2
	11.0	7.4			20.0	16.4
50	12.0	8.4			20.2	16.6
	12.1	8.5	3+00	20.9	17.3	
	13.0	9.4		21.2	17.6	
	14.1	10.5		20.9	17.3	
	16.7	13.1		20.0	16.4	
1+00	16.9	12.8		14.0	10.4	
	17.2	13.6	50	13.8	10.2	
	17.3	13.7		14.0	10.4	
	18.2	14.6		14.9	11.3	
	18.5	14.9		13.9	10.3	
50	18.1	14.5		13.5	9.9	
	17.8	14.2	4+00	12.9	9.3	
	17.7	14.1		13.9	10.3	
	17.7	14.1		13.9	10.3	
	17.4	13.8		13.8	10.2	
2+00	17.9	14.3		13.5	9.9	
	17.9	14.3	50	13.9	10.3	
	18.5	14.9		14.1	10.5	
	18.9	15.3		14.4	10.8	

STA. W. 126+00 - SOUTH

(36)

Dist	Sound	Elev	Dist	Sound	Elev
(36)	14.2	10.6	(36)	14.5	10.9
	14.2	10.6		15.0	11.4
5+00	14.2	10.6	50	15.0	11.4
	14.2	10.6		14.0	10.4
	13.9	10.3		13.7	10.1
	13.5	9.9		12.7	9.1
	13.5	9.9		12.1	8.5
50	13.1	9.5	8+00	12.9	9.3
	13.9	10.3		6.8	3.0
	14.0	10.4		3.1	+0.5
	14.0	10.4		1.9	+1.7
	14.2	10.6		0.9	+2.5
6+00	14.9	11.3	50		
	14.5	10.9			
	13.8	10.2			
	12.5	8.9			
	13.1	9.5			
50	13.1	9.5			
	13.5	9.9			
	14.0	10.4			
	15.0	11.4			
	14.5	10.9			
7+00	14.0	10.4			
	14.7	11.1			
	13.1	9.5			

4-25-61

W. 128+00: 0+00 = N. 6, 990 ; SOUND SOUTH

Dist	Sound	Elev	Dist	Sound	Elev
0+00			(1.8)	11.7	9.9
			50	11.6	9.8
(1.8)				11.6	9.8
	0.6	+1.2		10.9	9.1
	6.0	-4.2		11.0	9.2
50	8.0	6.2		11.3	9.5
	8.9	7.1	3+00	10.4	8.6
9:55	9.2	7.4		11.2	9.4
	9.6	7.8		11.6	9.8
	10.3	8.5		11.8	10.0
1+00	10.6	8.8		11.4	9.6
	10.5	8.7	50	11.6	9.8
	10.6	8.8		11.6	9.8
	11.0	9.2		11.7	9.9
	10.8	9.0		11.5	9.7
50	10.9	9.1		11.3	9.5
	11.0	9.2	4+00	11.3	9.5
	11.0	9.2		11.6	9.8
	11.4	9.6		11.7	9.9
	11.6	9.8		11.7	9.9
2+00	11.5	9.7		11.9	10.1
	10.7	8.9	50	12.0	10.2
	10.8	9.0		11.5	9.7
	11.6	9.8		11.7	9.9

57A. W. 128+00 - SOUTH

(57)

Dist	Sound	Elev	Dist	Sound	Elev
(1.8)	11.9	10.1	(1.8)	15.1	13.3
	12.0	10.2		15.7	13.9
5+00	11.9	10.1	50	16.3	14.5
	12.3	10.5		15.4	13.6
	12.8	11.0		11.4	9.6
	12.5	10.7		9.8	8.0
	12.4	10.6		6.1	4.3
50	12.4	10.6	8+00	0.9	+0.9
	12.3	10.5			
	12.1	10.3			
	12.1	10.3			
	12.3	10.5			
6+00	12.0	10.2			
	11.7	9.4			
10:00	10.7	8.9			
	10.9	9.1			
	10.9	9.1			
50	11.0	9.2			
	11.6	9.8			
	11.9	10.1			
	11.4	9.6			
	11.5	9.7			
7+00	11.6	9.8			
	13.0	11.2			
	14.0	12.2			

4-25-61

STA. W. 130400; 0+00 = N. 7,000; SOUND SOUTH

DIST SOUND ELEV DIST SOUND ELEV

0+00

(1.6)

(1.6)

50

12.0 10.4

11.8 10.2

11.3 9.7

11.6 10.0

11.4 9.8

3+00

11.6 10.0

11.0 9.4

11.6 10.0

11.7 10.1

11.9 10.3

50

11.8 10.2

11.3 9.7

11.3 9.7

10.0 8.4

10.6 9.0

4+00

10.4 8.8

10.8 9.2

10.8 9.2

11.3 9.7

11.0 9.4

50

10.8 9.2

11.0 9.4

10.7 9.1

57A. W. 130400 - SOUTH

DIST SOUND ELEV DIST SOUND ELEV

(1.6)

11.2 9.6

10.6 9.0

10.5 8.9

10.7 9.1

10.7 9.1

10.7 9.1

10.3 8.7

50

10.8 9.2

13.8 12.2

10:15

16.2 14.6

16.2 14.6

16.0 14.4

6+00

15.6 14.0

15.5 13.9

15.5 13.9

15.7 14.1

15.7 14.1

2

16.0 14.4

16.0 14.4

16.0 14.4

15.5 13.9

15.8 14.2

7+00

16.0 14.4

15.8 14.2

15.8 14.2

(58)

4-25-61

STA. W. 132+00 - 0+00 - N. 7.070 SOUND SOUTH

Dist Sound Elev Dist Sound Elev

0+00

(1.4)

(1.4) 10.3 8.9

50 10.6 9.2

10.6 9.2

10.6 9.2

10.6 9.2

10.5 9.1

3+00 10.6 9.2

10.8 9.4

10.6 9.2

10.5 9.1

10.7 9.3

50 10.6 9.2

10.6 9.2

10.8 9.4

10.9 9.5

10.6 9.2

4+00 10.6 9.2

10.5 9.1

10.8 9.4

10.7 9.3

10.6 9.2

50 10.5 9.1

10.7 9.3

10.6 9.2

10:30

0.0

1+00 1.2 +0.2

4.6 3.2

7.6 6.2

9.2 8.0

10.4 9.0

50 10.6 9.2

10.8 9.4

10.7 9.3

10.8 9.4

10.9 9.5

2+00 11.0 9.6

10.9 9.5

10.9 9.5

10.7 9.3

STA. W. 132+00 - SOUTH

Dist Sound Elev Dist Sound Elev

(1.4) 10.4 9.0 (1.4) 11.2 9.8

10.4 9.0 11.2 9.8

5+00 10.8 9.4 50 11.0 9.6

10.7 9.3 11.0 9.6

10.8 9.4 11.0 9.6

10.6 9.2 11.0 9.6

10.6 9.2 10.8 9.4

50 10.6 9.2 8+00 11.4 10.0

10.7 9.3 11.1 9.7

10.7 9.3 10.6 9.2

10.7 9.3 10.8 9.4

10.6 9.2 10.6 9.2

6+00 10.1 8.7 50 10.4 9.0

10.4 9.0 10.5 9.1

10.0 8.6 10.9 9.5

10:35 9.9 8.5 10.6 9.2

10.0 8.6 10.4 9.0

50 9.6 8.2 9+00 10.4 9.0

11.0 9.6 10.0 8.6

12.0 10.6 9.8 8.4

11.6 10.2 9.7 8.3

11.2 9.8 9.9 8.5

7+00 10.9 9.5 50 10.0 - 8.6

11.7 10.3 9.7 - 8.3

11.8 10.4 6.9 - 5.5

3.5 - 2.1

4-25-61

STA W. 134+00; CHOO-N. 5.930 SOUND NORTH

DIST	Sound	Elev	DIST	Sound	Elev
0+00			(1.3)	10.0	8.7
(1.3)			50	10.0	8.7
				9.8	8.5
				9.9	8.6
	1.6	0.3		10.1	8.8
50	4.0	2.7		10.3	9.0
	7.1	5.8	3+00	10.3	9.0
10:50	8.0	6.7		11.0	9.7
	10.4	9.1		10.8	9.5
	10.7	9.4		10.8	9.5
1+00	10.8	9.5		10.8	9.5
	10.6	9.3	50	10.2	8.9
	10.8	9.5		10.6	9.3
	10.5	9.2		10.8	9.5
	10.6	9.3		10.7	9.4
50	10.6	9.3		9.8	8.5
	10.4	9.1	4+00	10.0	8.7
	10.4	9.1		10.0	8.7
	10.2	8.9		9.5	8.2
	10.0	8.7		10.5	9.2
2+00	10.0	8.7		10.9	9.6
	10.2	8.9	50	10.6	9.3
	10.4	9.1		10.3	9.0
	10.6	9.3		8.8	7.5

STA. W. 134+00-NORTH

(60)

DIST	Sound	Elev	DIST	Sound	Elev
(1.2)	10.6	9.4	(1.2)	11.0	9.8
	10.6	9.4		10.9	9.7
5+00	11.1	9.9	50	11.9	10.7
	11.2	10.0		11.5	10.3
10:55	10.2	9.0		11.5	10.3
	11.0	9.8		11.2	10.0
	12.0	10.8		11.1	9.9
50	10.1	8.9	8+00	11.2	10.0
	10.5	9.3		11.8	10.6
	11.2	10.0		11.3	10.1
	11.2	10.0		11.2	10.0
	10.7	9.5		11.6	10.4
6+00	10.1	8.9	50	11.7	10.5
	10.9	9.7		11.8	10.6
	10.8	9.6		11.4	10.2
	10.9	9.7		11.4	10.2
	11.0	9.8		11.1	9.9
50	10.7	9.5	9+00	11.3	10.1
	10.7	9.5		11.1	9.9
	11.3	10.1		11.2	10.0
	11.1	9.9	11:00	10.9	9.7
	10.8	9.6		10.8	9.6
7+00	11.9	9.7	50	10.9	9.7
	10.9	9.7		10.8	9.6
	11.2	10.0		11.0	9.8

STA. W. 134+00 - NORTH.

DIST	SOUND	ELEV	DIST	SOUND	ELEV
(12)	11.0	9.8	(12)	9.1	7.9
	10.9	9.7		7.0	5.8
10+00	10.8	9.6	50	8.7	7.5
	10.5	9.3		8.5	7.3
	10.7	9.5		7.5	6.3
	10.8	9.6		8.1	6.9
	10.9	9.7		9.8	8.6
50	11.1	9.9	13+00	10.0	8.8
	10.9	9.7		10.0	8.8
	10.9	9.7		10.0	8.8
	10.8	9.6		10.0	8.8
	9.8	8.6		10.0	8.8
11+00	9.2	8.0	50	10.0	8.8
	9.3	9.1			
	9.6	8.4			
	9.8	8.6			
	9.9	8.7			
50	9.0	7.8			
	10.0	8.8			
	10.0	8.8			
	9.8	8.6			
	10.2	9.0			
12+00	10.0	8.8			
	10.9	9.7			
	9.8	8.6			

4-24-61

(6)

STA. W. 136+00.0+00 = N. 5,850 SOUND NORTH

DIST	SOUND	ELEV	DIST	SOUND	ELEV
0+00			(10)	10.6	9.6
(1.0)			50	10.6	9.6
				10.7	9.7
	0.8	0.2		10.9	9.9
	7.9	6.9		11.0	10.0
50	9.5	8.5		10.4	9.4
	10.7	9.7	3+00	10.8	9.8
	10.6	9.6		11.2	10.2
11.20	10.7	9.7		10.7	9.7
	10.7	9.7		10.8	9.8
1+00	10.6	9.6		10.9	9.9
	10.7	9.7	50	10.7	9.7
	11.7	10.7		10.5	9.5
	12.0	11.0		10.5	9.5
	11.0	10.0		10.5	9.5
50	10.4	9.4		10.2	9.2
	10.2	9.2	4+00	10.2	9.2
	10.4	9.4		10.3	9.3
	10.5	9.5		10.2	9.2
	10.5	9.5		10.0	9.0
2+00	10.6	9.6		9.9	8.9
	10.6	9.6	50	9.9	8.9
	10.6	9.6		9.9	8.9
	10.5	9.5		9.7	8.7

STA. W. 136+00-NORTH 4-25-61

Dist	Sound	Elev	Dist	Sound	Elev
(1.0)	9.5	8.5	(1.0)	10.9	9.9
	9.5	8.5		11.3	10.3
5+00	9.5	8.5	50	11.3	10.3
	10.0	9.0		10.8	9.8
	10.3	9.3		10.9	9.9
11:25	10.2	9.2		10.9	9.9
	10.0	9.0		10.9	9.9
50	10.0	9.0	8+00	11.1	10.1
	10.0	9.0		10.6	9.6
	9.7	8.7		10.4	9.4
	9.4	8.4		10.8	9.8
	9.4	8.4		10.7	9.7
6+00	9.4	8.4	50	10.8	9.8
	9.9	8.9		10.7	9.7
	10.0	9.0		10.6	9.5
	9.8	8.8		10.6	9.5
	9.6	8.6		10.4	9.4
50	9.9	8.9	9+00	10.4	9.4
	9.0	8.0		10.4	9.4
	10.3	9.3		10.4	9.4
	10.5	9.5		10.6	9.6
	10.8	9.8		10.0	9.0
7+00	11.1	10.1	50	10.0	9.0
	10.7	9.7		9.8	8.8
	10.7	9.7		10.0	9.0

STA. W. 136+00-NORTH

62

Dist	Sound	Elev	Dist	Sound	Elev
(1.0)	10.0	9.0	(1.0)	9.6	8.6
	10.1	9.1		9.6	8.6
10+00	10.0	9.0	50	9.4	8.4
	10.4	9.4		10.0	9.0
11:30	10.1	9.1		10.7	9.7
	10.1	9.1		10.2	9.2
	10.2	9.2		10.0	9.0
50	10.3	9.3	13+00	9.7	8.7
	10.3	9.3		9.8	8.8
	10.0	9.0		10.1	9.1
	9.8	8.8		10.4	9.4
	9.9	8.9		10.0	9.0
11+00	9.9	8.9	50	10.0	9.0
	9.9	8.9		9.9	8.9
	9.6	8.6	11:35	9.7	8.7
	9.5	8.5		9.8	8.8
	9.7	8.7		10.2	9.2
50	10.2	9.2	14+00	10.1	9.1
	9.9	8.9			
	9.8	8.8			
	9.7	8.7			
	9.9	8.9			
12+00	10.0	9.0			
	9.8	8.8			
	10.1	9.1			

4-25-61

STA. W. 138+00 - CHOO = N. 5800			SOUND NORTH		
DIST	SOUND	ELEV	DIST	SOUND	ELEV
0+00			(7.0)	10.5	9.5
(1.0)	0.2	-0.8	50	10.4	9.4
	3.5	2.5		10.8	9.8
	6.8	5.8		10.8	9.8
	8.4	7.4		10.8	9.8
50	9.0	8.0		11.0	10.0
	9.0	8.0	3+00	11.0	10.0
12:50	9.0	8.0		10.7	9.7
	9.2	8.2		10.4	9.4
	9.0	8.0		10.6	9.6
1+00	9.2	8.2		10.4	9.4
	9.4	8.4	50	10.3	9.3
	9.1	8.1		10.3	9.3
	10.2	9.2		10.5	9.5
	11.0	10.0		10.1	9.1
50	11.0	10.0		10.2	9.2
	10.6	9.6	4+00	10.0	9.0
	10.3	9.3		10.1	9.1
	10.5	9.5		10.0	9.0
	10.2	9.2		10.0	9.0
2+00	10.4	9.4		10.1	9.1
	10.0	9.0	50	10.2	9.2
	10.2	9.2		10.1	9.1
	10.2	9.2		10.3	9.3

57A. W. 138+00 - NORTH

(63)

DIST SOUND ELEV			DIST SOUND ELEV		
(10)	10.6	9.6	(10)	10.0	9.0
	10.2	9.2		10.1	9.1
5+00	10.1	9.1	50	10.0	9.0
	10.1	9.1		10.3	9.3
12:55	10.2	9.2		10.6	9.6
	10.4	9.4		10.8	9.8
	10.2	9.2		10.7	9.7
50	10.0	9.0	8+00	10.9	9.9
	10.3	9.3		10.8	9.8
	10.3	9.3		9.8	9.8
	10.3	9.3		10.0	9.0
	10.1	9.1		9.9	8.9
6+00	9.4	8.4	50	10.0	9.0
	9.6	8.6		10.2	9.2
	9.6	8.6		10.0	9.0
	9.6	8.6		10.0	9.0
	9.5	8.5		10.0	9.0
50	9.4	8.4	9+00	10.0	9.0
	9.2	8.2		10.0	9.0
	9.1	8.1		10.0	9.0
	9.7	8.7		10.0	9.0
	9.8	8.8		9.8	8.8
7+00	9.8	8.8	50	9.8	8.8
	9.8	8.8		9.9	8.9
	9.8	8.8		10.0	9.0

STA. W. 138+00 - NORTH

4-25-61

(69)

Dist	Sound	Elev	Dist	Sound	Elev
(1.0)	10.0	9.0	(11)	10.0	8.9
	10.0	9.0		10.0	8.9
10+00	10.1	9.1	50	10.0	8.9
	10.2	9.2		10.0	8.9
	10.4	9.4		10.3	9.2
11:00	10.4	9.4		10.2	9.1
<u> </u>	10.4	9.4		10.2	9.1
50	10.8	9.8	13+00	10.1	9.0
	10.6	9.6		10.0	8.9
	10.7	9.7		10.0	8.9
	10.2	9.2		10.0	8.9
	10.3	9.3		10.4	9.3
11+00	10.7	9.7	50	11.8	10.7
	10.3	9.3		10.4	9.3
	10.2	9.2	11:05	10.2	9.1
	10.0	9.0	<u> </u>	10.5	9.4
	10.0	9.0		10.7	9.6
50	10.0	9.0	14+00	10.7	9.6
	9.8	8.8			
	9.9	8.9			
	9.8	8.8			
	10.1	9.1			
12+00	10.1	9.1	50		
	10.0	9.0			
	10.0	9.0			

Dist	Sound	Elev	Dist	Sound	Elev
0+00			(12)	8.9	7.7
(1.2)			50	9.0	7.8
				9.1	7.9
				8.8	7.6
	0.8	+0.4		8.7	7.5
50	1.8	0.6		8.9	7.7
	4.2	3.0	3+00	8.7	7.5
	7.0	5.8		8.7	7.5
11:20	8.5	7.3		8.7	7.5
<u> </u>	8.7	7.5		8.3	7.1
1+00	9.0	7.8		9.4	8.2
	9.0	7.8	50	9.5	8.3
	9.0	7.8		10.3	9.1
	9.0	7.8		10.4	9.2
	9.1	7.9		10.4	9.2
50	9.0	7.8		10.1	8.9
	9.0	7.8	4+00	10.6	9.4
	9.0	7.8		10.4	9.2
	9.2	8.0		10.5	9.3
	9.1	7.9		10.5	9.3
2+00	9.1	7.9		10.3	9.1
	9.1	7.9	50	10.3	9.1
	9.1	7.9		10.2	9.0
	9.0	7.8		10.3	9.1

STA. N. 60+00 - EAST

Dist	Sound	Elev	Dist	Sound	Elev
(1.2)	10.3	9.1			
	10.4	9.2			
5+00	10.6	9.4			
	10.7	9.5			
	10.8	9.6			
	11.0	9.8			
	11.3	10.1			
50	11.3	10.1			
	11.1	9.9			
11.25	11.2	10.0			
<u>—</u>	11.0	9.8			
	10.7	9.5			
6+00	10.7	9.5			
	10.7	9.5			
	11.3	10.1			
	11.5	10.3			
	11.5	10.3			
50	11.1	9.9			
	11.6	10.4			
	11.6	10.4			
	10.8	9.6			
	11.4	10.2			
7+00	11.3	10.1			

4-25-62

(65)

STA. N. 62+00 - W. 190			SOUND EAST		
Dist	Sound	Elev	Dist	Sound	Elev
0+00			(1.3)	9.8	8.5
(1.3)			50	9.6	8.3
				9.5	8.2
				9.2	7.9
	1.0	+0.3		9.2	7.9
50	4.6	-3.3		9.0	7.7
	7.1	5.8	3+00	10.3	9.0
11.30	8.5	7.2		11.2	9.9
<u>—</u>	8.9	7.6		11.3	10.0
	9.0	7.7		11.2	9.9
1+00	9.2	7.9		11.2	9.9
	9.3	8.0	50	11.0	9.7
	9.7	8.4		11.0	9.7
	10.0	8.7		11.0	9.7
	10.0	8.7		10.8	9.5
50	9.8	8.5		10.9	9.6
	9.8	8.5	4+00	11.0	9.7
	9.8	8.5		10.8	9.5
	10.0	8.7		11.0	9.7
	9.7	8.4		11.1	9.8
2+00	9.8	8.5		11.0	9.7
	9.8	8.5	50	11.0	9.7
	10.0	8.7		11.0	9.7
	9.8	8.5		11.0	9.7

STA. N. 62400 - EAST

Dist	Sound	Elev	Dist	Sound	Elev
(1.3)	11.0	9.7			
	11.0	9.7			
5+00	11.1	9.8			
	11.1	9.8			
	11.1	9.8			
11.35	10.9	9.6			
<u> </u>	10.5	9.2			
50	10.7	9.4			
	10.9	9.6			
	11.0	9.7			
	11.1	9.8			
	11.3	10.0			
6+00	11.8	10.5			

4-25-61

(66)

STA. N. 64400 - 0400 = N. 14, 220					
Dist	Sound	Elev	Dist	Sound	Elev
0+00			(1.4)	9.2	7.8
			50	9.9	8.5
				10.6	9.2
	2.7	1.3		10.9	9.5
	2.9	1.5		11.0	9.6
50	4.9	3.5		10.3	8.9
	5.8	4.4	3+00	10.2	8.8
11.40	6.7	5.3		10.1	8.7
<u> </u>	7.5	6.1		10.2	8.8
	7.9	6.5		10.3	8.9
1+00	8.0	6.6		10.6	9.2
	8.3	6.9	50	10.5	9.1
	8.4	7.0		10.5	9.1
	8.6	7.2		10.5	9.1
	9.0	7.6		10.6	9.2
50	9.3	7.9		10.5	9.1
	9.4	8.0	4+00	10.1	8.7
	9.6	8.2		10.1	8.7
	9.6	8.2		9.8	8.4
	9.6	8.2		9.8	8.4
2+00	9.3	7.9		10.3	8.9
	9.1	7.7	50	11.0	9.6
	9.0	7.6			
	9.0	7.6			

4-25-61

STA. N. 66+00. 0+00=W. 14,260; SOUND EAST

Dist	Sound	Elev	Dist	Sound	Elev
0+00			(15)	9.8	8.3
(15)			50	9.5	8.0
				9.4	7.9
	2.0	-0.5		9.1	7.6
	1.0	+0.5		9.2	7.7
50	0.5	+1.0		9.1	7.6
	0.3	+1.2	3+00	9.2	7.7
	0.3	+1.2		9.2	7.7
	0.5	+1.0		9.1	7.6
	0.7	+0.8		9.0	7.5
1+00	1.6	-0.1		10.0	8.5
	4.0	-2.5	50	11.2	9.7
11.55	5.2	-3.7		11.8	10.3
	7.8	6.3		11.7	10.2
	9.1	7.6		11.3	9.8
50	9.3	7.8		11.2	9.7
	9.6	8.1	4+00	11.0	9.5
	9.6	8.1		11.0	9.5
	9.6	8.1		11.0	9.5
	9.6	8.1		10.1	8.6
2+00	9.6	8.1		10.3	8.8
	9.8	8.3	50	10.6	9.1
	9.5	8.0	60	10.8	9.3
	9.8	8.0			

4-24-61

STA. W. 133+00. 0+00=N. 7,150; SOUND SOUTH

Dist	Sound	Elev	Dist	Sound	Elev
0+00			(21)	12.0	9.9
			50	12.0	9.9
				11.6	9.5
				11.6	9.5
				11.8	9.7
			50	11.8	9.7
			3+00	12.0	9.9
				12.0	9.9
				12.0	9.9
				12.0	9.9
				12.0	9.9
				11.7	9.6
1+00	1.7	+0.3		11.7	9.6
	2.0	0.0	50	11.3	9.2
	3.8	1.8		11.5	9.4
	6.2	4.2		11.6	9.5
	8.0	6.0		11.2	9.1
50	10.2	8.2		12.3	9.2
	10.8	8.8	4+00	11.8	9.7
	11.6	9.6			
	11.9	9.9			
	11.0	9.0			
2+00	11.4	9.4			
	11.1	9.1			
	11.5	9.5			
	12.0	10.0			

6-23-61

CHECK SOUNDINGS PEREZ COVE AFTER
LEVEE BREAK FOR SHOALING

STA. N. 60+00; 0+00 = W. 14/80; SOUND EAST

Dist Sound Elev Dist Sound Elev

0+00

(20) 9.9 7.9

0.7 +1.3 50 9.6 7.6

1.8 +0.2 9.8 7.8

50 2.7 0.7 9.7 7.7

4.9 2.9 9.6 7.6

12:45 8.2 6.2 9.5 7.5

9.2 7.2 3+00 9.6 7.6

9.6 7.6 9.6 7.6

1+00 9.7 7.7 9.5 7.5

9.6 7.6 9.4 7.4

9.8 7.8 9.9 7.9

9.5 7.5 50 10.7 8.7

9.8 7.8 10.8 8.8

50 9.7 7.7 10.7 8.7

9.7 7.7 10.8 8.8

9.8 7.8 11.1 9.1

9.8 7.8 4+00 11.2 9.2

9.8 7.8

2+00 9.7 7.7

9.8 7.8

STA. N. 60+50; 0+00 = W. 14/200; SOUND EAST

Dist Sound Elev Dist Sound Elev

0+00

(21) 9.5 7.4

50 9.7 7.6

10.0 7.9

0.6 +1.5 10.0 7.9

1.3 +0.8 9.7 7.6

50 2.8 0.7 9.4 7.3

5.9 3.8 3+00 9.3 7.2

12:55 8.0 5.9 9.6 7.5

9.4 7.3 9.4 7.3

9.8 7.7 9.7 7.6

1+00 10.0 7.9 10.2 8.1

10.2 8.1 50 11.1 9.0

9.6 7.5 10.8 8.7

9.9 7.8 11.0 8.9

9.8 7.7 11.1 9.0

50 9.8 7.7 11.3 9.2

9.8 7.7 4+00 11.5 9.9

9.8 7.7

9.6 7.5

9.5 7.4

2+00 9.5 7.4

9.9 7.8

9.8 7.7

9.5 7.4

(68)

6-23-61

STA. N. 61400: 0+00 = W. 14, 210 SOUND EAST

Dist	Sound	Elev	Dist	Sound	Elev
0+00			(21)	9.8	7.7
			50	9.5	7.4
(21)				9.7	7.6
	2.0	+0.1		9.7	7.6
	4.6	2.5		9.7	7.6
50	5.1	3.0		9.5	7.4
	8.0	5.9	3+00	9.6	7.5
<u>1:00</u>	9.1	7.6		9.8	7.7
	9.3	7.2		10.0	7.9
	9.4	7.3		10.2	8.1
1+00	9.5	7.4		10.5	8.4
	9.5	7.4	50	10.6	8.5
	9.7	7.6		10.4	8.3
	9.7	7.6		10.4	8.3
	9.7	7.6		10.7	8.6
50	9.7	7.6		10.6	8.5
	9.6	7.5	4+00	10.8	8.7
	9.6	7.5			
	9.9	7.8			
	9.6	7.5			
2+00	9.6	7.5			
	9.7	7.6			
	9.6	7.5			
	9.6	7.5			

(69)

STA. N. 61450: 0+00 = W. 14, 210 SOUND EAST

Dist	Sound	Elev	Dist	Sound	Elev
0+00			(22)	9.3	7.1
			50	9.3	7.1
(22)				9.3	7.1
	0.9	+1.3		9.3	7.1
	3.7	1.5		9.3	7.1
	5.5	3.3		9.4	7.2
50	7.8	5.6		9.5	7.3
	7.8	5.6	3+00	9.5	7.3
<u>1:05</u>	7.4	5.2		9.9	7.7
	8.2	6.0		10.1	7.9
	8.9	6.7		10.2	8.0
1+00	9.0	6.8		10.2	8.0
	9.1	6.9	50	10.3	8.1
	9.2	7.0		10.1	7.9
	9.5	7.3		10.1	7.9
	9.3	7.1		10.0	7.8
50	9.5	7.3		10.1	7.9
	9.4	7.2	4+00	10.1	7.9
	9.4	7.2			
	9.4	7.2			
	9.4	7.2			
2+00	9.4	7.2			
	9.4	7.2			
	9.6	7.4			
	9.6	7.4			

6-23-61

STAN. 62+00; 0+00 = W. 14, 210			SOUND EAST		
Dist	Sound	Elev	Dist	Sound	Elev
0+00			(23)	9.4	7.1
Sec. OPP. Drain Pipe			50	9.4	7.1
	0.8	+1.5		9.3	7.0
(23)	1.4	+0.9		9.3	7.0
	4.3	2.0		9.2	6.9
50	7.5	5.2		9.3	7.0
	8.4	6.1	3+00	10.4	8.1
1115	7.8	5.5		10.3	8.0
	7.1	4.8		10.4	8.1
	8.1	5.8		10.3	8.0
1+00	8.0	5.7		10.2	7.9
	7.9	5.6	50	10.1	7.8
	8.1	5.8		10.1	7.8
	8.3	6.0		10.1	7.8
	8.4	6.1		10.1	7.8
50	8.7	6.4		10.2	7.9
	9.0	6.7	4+00	10.3	8.0
	9.1	6.8			
	9.2	6.9			
	9.2	6.9			
2+00	9.2	6.9			
	9.4	7.1			
	9.4	7.1			
	9.4	7.1			

(70)

STAN. 62+50; 0+00 = W. 14, 210			SOUND EAST		
Dist	Sound	Elev	Dist	Sound	Elev
0+00			(23)	9.5	7.2
			50	9.5	7.2
	0.9	+1.4		9.5	7.2
	3.0	0.7		9.7	7.4
	6.0	3.7		10.0	7.7
50	8.2	5.9		10.4	8.1
	9.4	7.1	3+00	10.4	
1120	9.5	7.2		10.4	
	8.9	6.6		10.4	8.1
	9.0	6.7		10.2	7.9
1+00	9.4	7.1		10.3	8.0
	9.7	7.4	50	10.3	
	8.8	6.5		10.3	
	8.6	6.3		10.3	
	9.3	7.0		10.3	8.0
50	8.5	6.2		10.4	8.1
	8.1	5.8	4+00	10.3	8.0
	8.5	6.2			
	8.8	6.5			
	9.0	6.7			
2+00	9.2	6.9			
	9.2	6.9			
	9.6	7.3			
	9.5	7.2			

6-23-61

STA. N. 63+00; CHOD = W. 14, 210; SOUND EAST

	Dist	Sound	Elev	Dist	Sound	Elev
0+00				(2A)	9.5	7.1
				50	9.5	7.1
(2.4)					9.6	7.2
	2.5	0.1			10.1	7.7
	4.6	2.2			10.4	8.0
50	7.0	4.6			10.4	8.0
	9.5	7.1	3+00		10.4	8.0
<u>1:30</u>	9.6	7.2			10.4	8.0
-	9.0	6.6			10.4	8.0
	9.0	6.6			10.3	7.9
1+00	9.3	6.9			10.2	7.8
	9.5	7.1	50		10.3	7.9
	9.6	7.2			10.1	7.7
	8.9	6.5			10.1	7.7
	9.4	7.0			10.1	7.7
50	9.4	7.0			10.1	7.7
	9.1	6.7	4+00		10.2	7.8
	8.4	6.0				
	8.6	6.2				
	8.7	6.3				
2+00	8.9	6.5				
	9.1	6.7				
	9.3	6.9				
	9.5	7.1				

⑦

STA. N. 63+50; CHOD = W. 14, 230; SOUND EAST

	Dist	Sound	Elev	Dist	Sound	Elev
0+00				(25)	8.9	6.4
				50	8.9	6.4
This Sec. Opp. End of Rip-Rap					8.9	6.4
(25)					9.9	7.4
	0.3	+2.2			10.1	7.6
50	2.2	+0.3			10.0	7.5
	5.5	3.0	3+00		10.1	7.6
<u>1:35</u>	7.8	5.3			10.1	7.6
-	8.8	6.3			10.1	7.6
	9.3	6.8			10.2	7.7
1+00	9.7	7.2			10.4	7.9
	9.8	7.3	50		10.3	7.8
	9.3	6.8			10.3	7.8
	11.1	8.6			10.3	7.8
	8.9	6.4			10.1	7.6
50	9.2	6.7			10.2	7.7
	8.8	6.3	4+00		10.4	7.9
	8.5	6.0				
	7.8	5.3				
	7.1	4.6				
2+00	7.9	5.4				
	8.4	5.9				
	8.5	6.0				
	8.5	6.0				

6-23-61

STA. N. 64+00 O+00 = W. 14,220			SOUND EAST		
Dist	Sound	Elev	Dist	Sound	Elev
0+00			(26)	8.8	6.2
(26)			50	10.0	7.4
				10.1	7.5
	2.3	+0.3		10.0	7.4
	3.4	0.8		10.0	7.4
50	5.4	2.8		9.8	7.2
	7.0	4.4	3+00	9.7	7.1
<u>1:45</u>	7.8	5.2		9.9	7.3
	8.3	5.7		10.0	7.4
	8.2	5.6		10.0	7.4
1+00	8.4	5.8		10.1	7.5
	8.5	5.9	50	10.1	7.5
	8.4	5.8		10.1	7.5
	9.0	6.4		10.2	7.6
	8.8	6.2		10.3	7.7
50	8.7	6.1		10.3	7.7
	8.4	5.8	4+00	10.3	7.7
	8.4	5.8			
	8.4	5.8			
	8.4	5.8			
2+00	8.5	5.9			
	8.5	5.9			
	8.5	5.9			
	8.6	6.0			

(72)

STA. N. 64+50 O+00 = W. 14,220			SOUND EAST		
Dist	Sound	Elev	Dist	Sound	Elev
0+00			(27)	9.1	6.4
(27)			50	9.0	6.3
				10.0	7.3
	3.1	0.4		10.1	7.4
	3.4	0.7		10.2	7.5
50	3.4	0.7		10.1	7.4
	3.5	0.8	3+00	10.1	7.4
<u>1:55</u>	4.5	1.8		10.3	7.6
	6.1	3.4		10.5	7.8
	6.7	4.0		10.2	7.5
1+00	7.5	4.8		10.2	7.5
	9.2	6.5	50	10.1	7.4
	9.1	6.4		10.0	7.3
	9.2	6.5		10.1	7.4
	9.6	6.9		10.2	7.5
50	9.8	7.1		10.2	7.5
	9.6	6.9	4+00	10.2	7.5
	9.5	6.8			
	9.4	6.7			
	9.4	6.7			
2+00	9.1	6.4			
	9.1	6.4			
	9.1	6.4			
	9.2	6.5			

6-23-61

STA. N. 65+00; 0+00 = W. 14, 220; SOUND EAST

Dist Sound Elev Dist Sound Elev

0+00 (28) 9.6 6.7

(28) 50 9.6 6.7

10.0 7.1

2.0 +0.8 10.9 8.0

2.2 +0.6 2:05 11.0 8.1

50 2.7 +0.1 10.5 7.6

2.9 0.1 3+00 10.5 7.6

2:00 5.1 2.3 10.5 7.6

6.8 4.0 10.5 7.6

7.1 4.3 10.5 7.6

1+00 7.2 4.4 10.6 7.7

7.6 4.8 50 10.6 7.7

8.4 5.6 10.7 7.8

9.5 6.7 10.6 7.7

9.7 6.9 10.6 7.7

50 9.8 7.0 10.6 7.7

9.7 6.9 4+00 10.6 7.7

9.8 7.0

9.9 7.1

9.9 7.1

2+00 9.8 7.0

9.8 7.0

9.7 6.9

9.7 6.9

8-08-61

RE-CHECK SEL'S PEREZ COVE

STA. N. 62+00; 0+00 = W. 14, 220; SOUND EAST

Dist Sound Elev Dist Sound Elev

0+00 (39) 11.4 7.5

(39) 0.2 +3.7 11.3 7.4

1.7 +2.2 50 11.2 7.3

2.5 +1.4 11.4 7.5

3.0 +0.9 11.4 7.5

50 4.8 0.9 11.5 7.6

9.1 5.2 11.5 7.6

11:25 12.1 8.2 3+00 11.6 7.7

10.9 7.0

10.9 7.0

1+00 10.8 6.9

10.7 6.8

11.0 7.1

11.8 7.9

11.8 7.9

50 12.0 8.1

12.0 8.1

11.6 7.7

11.6 7.7

11.7 7.8

2+00 11.6 7.7

11.5 7.6

11.3 7.4

(73)

PX

8-08-61

STAN. 62+50; 0+00 = W. 14, 220; SOUND EAST

Dist	Sound	Elev	Dist	Sound	Elev
0+00			(39)	11.9	8.0
(39)			50	11.7	7.8
	1.5	+2.4		11.7	7.8
	4.0	0.1		11.9	8.0
50	7.1	3.2		11.6	7.7
	9.0	5.1	3+00	11.9	8.0
11.35	10.7	6.8			
≈	11.1	7.2			
	10.9	7.0			
1+00	11.0	7.1			
	11.0	7.1			
	11.0	7.1			
	11.3	7.4			
	10.0	6.1			
50	10.9	7.0			
	11.8	7.9			
	11.9	8.0			
	11.1	7.2			
	11.2	7.3			
2+00	11.5	7.6			
	11.1	7.2			
	11.9	8.0			
	11.8	7.9			

79

STAN. 63+00; 0+00 = W. 14, 210; SOUND EAST

Dist	Sound	Elev	Dist	Sound	Elev
0+00			(37)	11.7	8.0
(37)			50	11.8	8.1
	0.6	+3.1		11.8	8.1
	3.4	+0.3		12.0	8.3
	6.0	2.3		11.9	8.2
50	8.3	4.6		12.2	8.5
	10.0	6.3	3+00	12.4	8.7
11.45	11.1	7.4			
≈	11.1				
	11.1				
1+00	11.1	7.4			
	11.3	7.6			
	11.3	7.6			
	11.4	7.7			
	11.1	7.4			
50	11.6	7.9			
	11.4	7.7			
	11.1	7.4			
	11.2	7.5			
	11.3	7.6			
2+00	11.5	7.8			
	11.5	7.8			
	11.5	7.8			
	11.3	7.6			

8-08-61

STA. N. 63+50, 0+00 = W. 14, 230, SOUND EAST

Dist	Sound	Elev	Dist	Sound	Elev
0+00			(37)	10.7	7.0
(37)			50	11.0	7.3
				11.1	7.4
	0.2	+3.5		11.1	7.4
	1.8	+1.9		11.3	7.6
50	3.4	+0.3		11.6	7.9
	6.9	3.2	3+00	11.8	8.0
11:50	9.0	5.3			
9.2	5.5				
	10.1	6.4			
1+00	10.6	6.9			
	12.0	8.3			
	11.2	7.5			
	11.2	7.5			
	11.3	7.6			
50	11.0	7.3			
	11.0	7.3			
	11.0	7.3			
	10.7	7.0			
	10.6	6.9			
2+00	10.6	6.9			
	10.5	6.8			
	10.5	6.8			
	10.9	7.2			

75

STA. N. 64+00, 0+00 = W. 14, 220, SOUND EAST

Dist	Sound	Elev	Dist	Sound	Elev
0+00			(37)	11.5	7.8
(37)			50	11.4	7.7
				11.3	7.6
	3.2	+0.5		11.3	7.6
	4.1	0.4		11.7	8.0
50	6.4	2.7		11.8	8.1
	7.5	3.8	3+00	11.3	7.6
	8.3	4.6			
11:55	8.7	5.0			
9.0	5.3				
1+00	10.4	6.7			
	11.2	7.5			
	11.6	7.9			
	10.7	7.0			
	11.5	7.8			
50	11.3	7.6			
	11.2	7.5			
	11.2	7.5			
	11.1	7.4			
	10.9	7.2			
2+00	10.9	7.2			
	11.0	7.3			
	10.8	7.1			
	11.1	7.4			

8-08-61

STA. N 64+50: 0+00 = W. 14,220 SOUND EAST

Dist Sound Elev Dist Sound Elev

0+00 35 11.3 7.8

35 50 11.3 7.8

11.5 8.0

3.9 0.4 11.7 8.2

4.0 0.5 11.6 8.1

50 4.0 0.5 11.6 8.1

4.1 0.6 3+00 11.8 8.3

12:05 5.5 2.0

6.6 3.1

7.2 3.7

1+00 8.3 4.8

10.1 6.6

13.0 9.5

10.6 7.1

12.1 8.6

50 12.1 8.6

11.1 7.6

11.8 8.3

11.3 7.8

11.1 7.6

2+00 10.8 7.3

11.0 7.5

11.3 7.8

11.5 8.0

(76)

100	7.8
105	7.9
110	8.0
115	8.1
120	8.2
125	8.3
130	8.4
135	8.5
140	8.6
145	8.7
150	8.8
155	8.9
160	9.0
165	9.1
170	9.2
175	9.3
180	9.4
185	9.5
190	9.6
195	9.7
200	9.8
205	9.9
210	10.0

215	10.1
220	10.2
225	10.3
230	10.4
235	10.5
240	10.6
245	10.7
250	10.8
255	10.9
260	11.0
265	11.1
270	11.2
275	11.3
280	11.4
285	11.5
290	11.6
295	11.7
300	11.8
305	11.9
310	12.0
315	12.1
320	12.2
325	12.3
330	12.4
335	12.5
340	12.6
345	12.7
350	12.8
355	12.9
360	13.0
365	13.1
370	13.2
375	13.3
380	13.4
385	13.5
390	13.6
395	13.7
400	13.8
405	13.9
410	14.0
415	14.1
420	14.2
425	14.3
430	14.4
435	14.5
440	14.6
445	14.7
450	14.8
455	14.9
460	15.0
465	15.1
470	15.2
475	15.3
480	15.4
485	15.5
490	15.6
495	15.7
500	15.8
505	15.9
510	16.0
515	16.1
520	16.2
525	16.3
530	16.4
535	16.5
540	16.6
545	16.7
550	16.8
555	16.9
560	17.0
565	17.1
570	17.2
575	17.3
580	17.4
585	17.5
590	17.6
595	17.7
600	17.8
605	17.9
610	18.0
615	18.1
620	18.2
625	18.3
630	18.4
635	18.5
640	18.6
645	18.7
650	18.8
655	18.9
660	19.0
665	19.1
670	19.2
675	19.3
680	19.4
685	19.5
690	19.6
695	19.7
700	19.8
705	19.9
710	20.0
715	20.1
720	20.2
725	20.3
730	20.4
735	20.5
740	20.6
745	20.7
750	20.8
755	20.9
760	21.0
765	21.1
770	21.2
775	21.3
780	21.4
785	21.5
790	21.6
795	21.7
800	21.8
805	21.9
810	22.0
815	22.1
820	22.2
825	22.3
830	22.4
835	22.5
840	22.6
845	22.7
850	22.8
855	22.9
860	23.0
865	23.1
870	23.2
875	23.3
880	23.4
885	23.5
890	23.6
895	23.7
900	23.8
905	23.9
910	24.0
915	24.1
920	24.2
925	24.3
930	24.4
935	24.5
940	24.6
945	24.7
950	24.8
955	24.9
960	25.0
965	25.1
970	25.2
975	25.3
980	25.4
985	25.5
990	25.6
995	25.7
1000	25.8

IMPROVED TABLES AND INFORMATION

MORNING AT STATION CORRECTIONS					
Time	Temp	Wind	Bar	Humid	Dir
5:00	52	SE	30.1	85	100
5:15	52	SE	30.1	85	100
5:30	52	SE	30.1	85	100
5:45	52	SE	30.1	85	100
6:00	52	SE	30.1	85	100
6:15	52	SE	30.1	85	100
6:30	52	SE	30.1	85	100
6:45	52	SE	30.1	85	100
7:00	52	SE	30.1	85	100
7:15	52	SE	30.1	85	100
7:30	52	SE	30.1	85	100
7:45	52	SE	30.1	85	100
8:00	52	SE	30.1	85	100
8:15	52	SE	30.1	85	100
8:30	52	SE	30.1	85	100
8:45	52	SE	30.1	85	100
9:00	52	SE	30.1	85	100
9:15	52	SE	30.1	85	100
9:30	52	SE	30.1	85	100
9:45	52	SE	30.1	85	100
10:00	52	SE	30.1	85	100
10:15	52	SE	30.1	85	100
10:30	52	SE	30.1	85	100
10:45	52	SE	30.1	85	100
11:00	52	SE	30.1	85	100
11:15	52	SE	30.1	85	100
11:30	52	SE	30.1	85	100
11:45	52	SE	30.1	85	100
12:00	52	SE	30.1	85	100

Time	Temp	Wind	Bar	Humid	Dir
12:15	52	SE	30.1	85	100
12:30	52	SE	30.1	85	100
12:45	52	SE	30.1	85	100
1:00	52	SE	30.1	85	100
1:15	52	SE	30.1	85	100
1:30	52	SE	30.1	85	100
1:45	52	SE	30.1	85	100
2:00	52	SE	30.1	85	100
2:15	52	SE	30.1	85	100
2:30	52	SE	30.1	85	100
2:45	52	SE	30.1	85	100
3:00	52	SE	30.1	85	100
3:15	52	SE	30.1	85	100
3:30	52	SE	30.1	85	100
3:45	52	SE	30.1	85	100
4:00	52	SE	30.1	85	100
4:15	52	SE	30.1	85	100
4:30	52	SE	30.1	85	100
4:45	52	SE	30.1	85	100
5:00	52	SE	30.1	85	100

Time	Temp	Wind	Bar	Humid	Dir
5:15	52	SE	30.1	85	100
5:30	52	SE	30.1	85	100
5:45	52	SE	30.1	85	100
6:00	52	SE	30.1	85	100
6:15	52	SE	30.1	85	100
6:30	52	SE	30.1	85	100
6:45	52	SE	30.1	85	100
7:00	52	SE	30.1	85	100
7:15	52	SE	30.1	85	100
7:30	52	SE	30.1	85	100
7:45	52	SE	30.1	85	100
8:00	52	SE	30.1	85	100
8:15	52	SE	30.1	85	100
8:30	52	SE	30.1	85	100
8:45	52	SE	30.1	85	100
9:00	52	SE	30.1	85	100
9:15	52	SE	30.1	85	100
9:30	52	SE	30.1	85	100
9:45	52	SE	30.1	85	100
10:00	52	SE	30.1	85	100
10:15	52	SE	30.1	85	100
10:30	52	SE	30.1	85	100
10:45	52	SE	30.1	85	100
11:00	52	SE	30.1	85	100
11:15	52	SE	30.1	85	100
11:30	52	SE	30.1	85	100
11:45	52	SE	30.1	85	100
12:00	52	SE	30.1	85	100

IMPROVED TABLES AND INFORMATION

HORIZONTAL STADIA CORRECTIONS

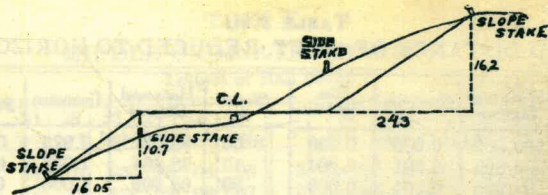
2°-00' — 0.1	21°-00' — 12.8	33°-00' — 29.7
3°-00' — 0.3	21°-30' — 13.4	33°-15' — 30.1
4°-00' — 0.5	22°-00' — 14.0	33°-30' — 30.5
5°-00' — 0.8	22°-30' — 14.7	33°-45' — 30.9
6°-00' — 1.1	23°-00' — 15.3	34°-00' — 31.3
7°-00' — 1.5	23°-30' — 15.9	34°-15' — 31.7
8°-00' — 1.9	24°-00' — 16.5	34°-30' — 32.1
9°-00' — 2.5	24°-30' — 17.2	34°-45' — 32.5
10°-00' — 3.0	25°-00' — 17.9	35°-00' — 32.9
10°-30' — 3.3	25°-30' — 18.6	35°-15' — 33.3
11°-00' — 3.6	26°-00' — 19.2	35°-30' — 33.7
11°-30' — 4.0	26°-30' — 19.9	35°-45' — 34.1
12°-00' — 4.3	27°-00' — 20.6	36°-00' — 34.6
12°-30' — 4.7	27°-30' — 21.3	36°-15' — 35.0
13°-00' — 5.1	28°-00' — 22.0	36°-30' — 35.4
13°-30' — 5.5	28°-30' — 22.8	36°-45' — 35.8
14°-00' — 5.9	29°-00' — 23.5	37°-00' — 36.2
14°-30' — 6.3	29°-30' — 24.3	37°-15' — 36.6
15°-00' — 6.7	30°-00' — 25.0	37°-30' — 37.1
15°-30' — 7.2	30°-15' — 25.4	37°-45' — 37.5
16°-00' — 7.6	30°-30' — 25.8	38°-00' — 37.9
16°-30' — 8.1	30°-45' — 26.2	38°-15' — 38.3
17°-00' — 8.5	31°-00' — 26.5	38°-30' — 38.7
17°-30' — 9.0	31°-15' — 26.9	38°-45' — 39.1
18°-00' — 9.5	31°-30' — 27.3	39°-00' — 39.6
18°-30' — 10.1	31°-45' — 27.7	39°-15' — 40.0
19°-00' — 10.6	32°-00' — 28.1	39°-30' — 40.5
19°-30' — 11.2	32°-15' — 28.5	
20°-00' — 11.7	32°-30' — 28.9	
20°-30' — 12.3	32°-45' — 29.3	

Chains to Feet

1	66
2	132
3	198
4	264
5	330
6	396
7	462
8	528
9	594
10	660

Feet to Chains

100	1.515
200	3.030
300	4.545
400	6.060
500	7.575
600	9.090
700	10.606
800	12.121
900	13.636
1,000	15.151



DISTANCES FROM SIDE STAKES FOR CROSS-SECTIONING.

SLOPE 1 1/4 TO 1. ROADWAY OF ANY WIDTH.

	0	.1	.2	.3	.4	.5	.6	.7	.8	.9	
0	0.00	0.15	0.30	0.45	0.60	0.75	0.90	1.05	1.20	1.35	0
1	1.50	1.65	1.80	1.95	2.10	2.25	2.40	2.55	2.70	2.85	1
2	3.00	3.15	3.30	3.45	3.60	3.75	3.90	4.05	4.20	4.35	2
3	4.50	4.65	4.80	4.95	5.10	5.25	5.40	5.55	5.70	5.85	3
4	6.00	6.15	6.30	6.45	6.60	6.75	6.90	7.05	7.20	7.35	4
5	7.50	7.65	7.80	7.95	8.10	8.25	8.40	8.55	8.70	8.85	5
6	9.00	9.15	9.30	9.45	9.60	9.75	9.90	10.05	10.20	10.35	6
7	10.50	10.65	10.80	10.95	11.10	11.25	11.40	11.55	11.70	11.85	7
8	12.00	12.15	12.30	12.45	12.60	12.75	12.90	13.05	13.20	13.35	8
9	13.50	13.65	13.80	13.95	14.10	14.25	14.40	14.55	14.70	14.85	9
10	15.00	15.15	15.30	15.45	15.60	15.75	15.90	16.05	16.20	16.35	10
11	16.50	16.65	16.80	16.95	17.10	17.25	17.40	17.55	17.70	17.85	11
12	18.00	18.15	18.30	18.45	18.60	18.75	18.90	19.05	19.20	19.35	12
13	19.50	19.65	19.80	19.95	20.10	20.25	20.40	20.55	20.70	20.85	13
14	21.00	21.15	21.30	21.45	21.60	21.75	21.90	22.05	22.20	22.35	14
15	22.50	22.65	22.80	22.95	23.10	23.25	23.40	23.55	23.70	23.85	15
16	24.00	24.15	24.30	24.45	24.60	24.75	24.90	25.05	25.20	25.35	16
17	25.50	25.65	25.80	25.95	26.10	26.25	26.40	26.55	26.70	26.85	17
18	27.00	27.15	27.30	27.45	27.60	27.75	27.90	28.05	28.20	28.35	18
19	28.50	28.65	28.80	28.95	29.10	29.25	29.40	29.55	29.70	29.85	19
20	30.00	30.15	30.30	30.45	30.60	30.75	30.90	31.05	31.20	31.35	20
21	31.50	31.65	31.80	31.95	32.10	32.25	32.40	32.55	32.70	32.85	21
22	33.00	33.15	33.30	33.45	33.60	33.75	33.90	34.05	34.20	34.35	22
23	34.50	34.65	34.80	34.95	35.10	35.25	35.40	35.55	35.70	35.85	23
24	36.00	36.15	36.30	36.45	36.60	36.75	36.90	37.05	37.20	37.35	24
25	37.50	37.65	37.80	37.95	38.10	38.25	38.40	38.55	38.70	38.85	25
26	39.00	39.15	39.30	39.45	39.60	39.75	39.90	40.05	40.20	40.35	26
27	40.50	40.65	40.80	40.95	41.10	41.25	41.40	41.55	41.70	41.85	27
28	42.00	42.15	42.30	42.45	42.60	42.75	42.90	43.05	43.20	43.35	28
29	43.50	43.65	43.80	43.95	44.10	44.25	44.40	44.55	44.70	44.85	29
30	45.00	45.15	45.30	45.45	45.60	45.75	45.90	46.05	46.20	46.35	30
31	46.50	46.65	46.80	46.95	47.10	47.25	47.40	47.55	47.70	47.85	31
32	48.00	48.15	48.30	48.45	48.60	48.75	48.90	49.05	49.20	49.35	32
33	49.50	49.65	49.80	49.95	50.10	50.25	50.40	50.55	50.70	50.85	33
34	51.00	51.15	51.30	51.45	51.60	51.75	51.90	52.05	52.20	52.35	34
35	52.50	52.65	52.80	52.95	53.10	53.25	53.40	53.55	53.70	53.85	35
36	54.00	54.15	54.30	54.45	54.60	54.75	54.90	55.05	55.20	55.35	36
37	55.50	55.65	55.80	55.95	56.10	56.25	56.40	56.55	56.70	56.85	37
38	57.00	57.15	57.30	57.45	57.60	57.75	57.90	58.05	58.20	58.35	38
39	58.50	58.65	58.80	58.95	59.10	59.25	59.40	59.55	59.70	59.85	39
40	60.00	60.15	60.30	60.45	60.60	60.75	60.90	61.05	61.20	61.35	40
41	61.50	61.65	61.80	61.95	62.10	62.25	62.40	62.55	62.70	62.85	41
42	63.00	63.15	63.30	63.45	63.60	63.75	63.90	64.05	64.20	64.35	42
43	64.50	64.65	64.80	64.95	65.10	65.25	65.40	65.55	65.70	65.85	43
44	66.00	66.15	66.30	66.45	66.60	66.75	66.90	67.05	67.20	67.35	44
45	67.50	67.65	67.80	67.95	68.10	68.25	68.40	68.55	68.70	68.85	45
46	69.00	69.15	69.30	69.45	69.60	69.75	69.90	70.05	70.20	70.35	46
47	70.50	70.65	70.80	70.95	71.10	71.25	71.40	71.55	71.70	71.85	47
48	72.00	72.15	72.30	72.45	72.60	72.75	72.90	73.05	73.20	73.35	48
49	73.50	73.65	73.80	73.95	74.10	74.25	74.40	74.55	74.70	74.85	49
50	75.00	75.15	75.30	75.45	75.60	75.75	75.90	76.05	76.20	76.35	50

Computed by L. Leland Locke.

STA. W. 118 - N 6890
STA. W. 119 - N 6920

" 120 - N 6950
" 121 - N 6970
122 - N 6990
123 - N 6980
124 - N 7000
125 - N 7000

126 - N 6990

127 - N 6990

128 - N 6990

129 - N 7010

130 - N 7000

131 - N 7010

132 - N 7070 - Comp Fath. 4-28-61

133 - N 7140

134 - N 5930

135 - N 5890

136 - N 5850

137 - N 5820

138 - N 5800

N. 59 - W 14, 140

N. 60 - W 14, 180

61 - W 14, 190

62 - W 14, 190

63 - W 14, 230

64 - W 14, 220

65 - W 14, 220

66 - W 14, 260

14270.2

1.90

PEREZ COVE

N. 62

N64+50 INCL

N 62 = W 14 2 20

N 62 + 50 = "